

# POSTAL BULLETIN

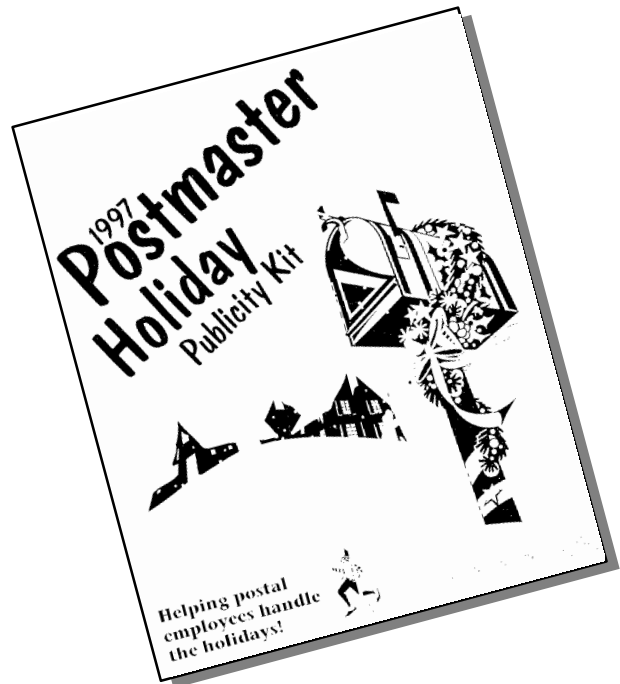
PUBLISHED SINCE MARCH 4, 1880

PB 21959, NOVEMBER 20, 1997

## CONTENTS

The *Postal Bulletin* is also available on the World Wide Web at <<http://www.usps.gov>>.

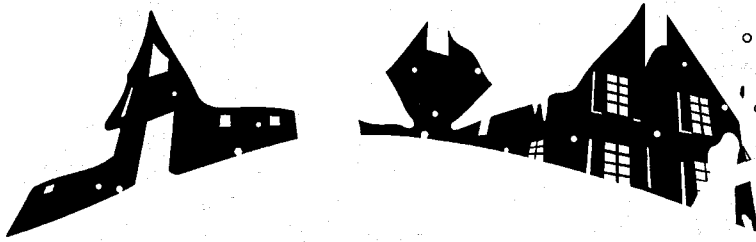
<b>1997 Postmaster Holiday Publicity Kit</b> .....	3	
<b>Administrative Services</b>		
New Release of F3 Fill Forms .....	17	
Notice to Postmasters: Transportation Costs for Christmas Mail .....	20	
Clarification of Ordering Quantities .....	20	
<b>Customer Relations</b>		
Mail Alert .....	21	
<b>Domestic Mail</b>		
DMM Revision: Nonprofit Standard Mail Eligibility .....	23	
POM and Handbook PO-512 Revision: Use of Form 3607-C .....	23	
DMM Issue 52 Changes .....	24	
Overseas Military Mail .....	26	
<b>Fraud Alert</b>		
Foreign Order No. 407 .....	38	
Domestic Orders .....	39	
Withholding of Mail Orders .....	39	
Missing U.S. Money Order Forms .....	40	
Missing Canadian Money Order Forms .....	43	
Counterfeited Canadian Money Order Forms .....	44	
800 Number Available to Verify Canadian Money Orders ..	44	
Invalid Express Mail Corporate Account Numbers .....	45	
<b>International Mail</b>		
IMM and Publication 273 Revision: Express Mail International Service to Haiti .....	50	
IMM Revision: International Mail Labeling Changes .....	51	
IMM Revision: Changes in the Conditions of Mailing .....	53	
<b>Philately</b>		
Stamp Announcement 97-44: Mars Pathfinder ("Mars Rover Sojourner") Priority Mail Stamp .....	54	
Pictorial Cancellations Announcement 97-23 .....	56	
<b>Post Offices</b>		
Post Office Changes Number 19 .....	62	
Thanksgiving Day Holiday Posters .....	63	
Christmas Day Holiday Posters .....	67	
<b>Postal Employees</b>		
Thrift Savings Plan Fact Sheet .....	71	
<b>POM Revision Pages</b> .....		73
<b>Postal Bulletin Indexes</b>		
Quarterly Index .....	PB 21956 (10-9-97)	
1996 Annual Index .....	PB 21936 (1-2-97)	



The 1997 Postmaster Holiday Publicity Kit appears on pages 3–15.

This page intentionally left blank

# 1997 Postmaster Holiday Publicity Kit



**Helping postal  
employees handle  
the holidays!**



*The holidays are here.  
And we're here to help.*

**HOLIDAY PUBLICITY KIT**



**1997 POSTMASTER HOLIDAY PUBLICITY KIT**

The holidays are here. And this kit is here to help share important holiday mailing information with our customers, and to generate positive publicity for the U.S. Postal Service.

Yes, Postmasters, this is the one time of year that television, radio, and newspaper reporters are eager to come to you to discuss mailing deadlines, Santa letters, and the caring activities which our employees become involved.

To help get important U.S. Postal Service messages to your customers, this kit has been prepared just for you. It includes helpful tips and fill-in news releases on package wrapping tips, correct addressing for customers, mailing deadlines, cool stocking stuffers, extended hours, and options for buying stamps.

Further information and advice on publicity are available at local Corporate Relations Centers. Questions about advertising should be directed to the area advertising and promotion specialists.

***Holiday Theme***

This year's advertising theme for the 1997 U.S. Postal Service Holiday Campaign is: "The holidays are here. And we're here to help." It highlights the many ways postal employees help customers make the season bright.

As a postal "first," the holiday posters and banners this year star actual postal employees. The lucky employees chosen to pose for the posters and point-of-purchase elements came from postal districts that scored well in achieving customer satisfaction.

***1997 Holiday Campaign Materials***

At the end of October, every postmaster received a large red box that contained the holiday advertising and promotion kits, called the *1997 Holiday Campaign Materials Kit*.

New and exciting elements were added to the 1997 holiday kits, including cute stockings for counter display and a window poster hung with suction cups.

The campaign materials kit includes a choice of 15 ads that postal managers can run in local newspapers. There are even Spanish versions of the most popular ads.

Holiday promotional materials should now be on display in all post offices. Postmasters needing additional promotional materials may call the Holiday Hotline at 1-(888) 999-6623.

*The holidays are here.  
And we're here to help.*

**HOLIDAY PUBLICITY KIT**



### ***Holiday Advertising***

Television and radio ads are timed to coincide with post office lobby advertising, beginning November 17. Holiday television ads will air on shows such as *Cosby*, *Drew Carey*, *Touched by An Angel*, and *Dr. Quinn, Medicine Woman*.

As a special note, the television ads feature actual postal employees working in a plant. Scenes in the post office lobby feature actors.

### ***Publicity Tips***

- 1) Use the sample news releases included in this kit or develop your own. Send the completed releases to local newspapers, radio, and television stations. Several days after mailing your release, follow up with a phone call to the local reporter, editor, or news director.
- 2) Plan special events to get media attention. Special events could include hosting:
  - A wrapping demonstration in the post office lobby; and,
  - A "mail early" event. For example, customers mailing cards and packages on a designated day could receive cookies or special postage stamp cancellations, or they could mail items in a giant-sized "holiday mail only" mail box.
- 3) Call local radio and television news and talk show producers. Offer to guest on programs airing before Christmas to discuss mailing deadlines, proper addressing and packaging, and the gifts available at your post office.
- 4) Invite radio and television to:
  - Do a "live remote" on December 15, the busiest mailing day; or,
  - Follow employees, dressed as "Santa's helpers," delivering Express Mail items on Christmas Eve or Christmas Day (if applicable).
- 5) To promote this year's theme, contact local media about volunteer efforts undertaken by postal employees during the holidays.
- 6) Provide reporters and editors with the handy *Holiday Mailing Tips sheet*, on page 7. Consider making copies of the *Holiday Mailing Tips* available to your post office lobby customers, as well.

*The holidays are here.  
And we're here to help.*

**HOLIDAY PUBLICITY KIT**



**1997 Holiday Season Outlook**

- The domestic Christmas holiday mailing season begins after Thanksgiving and ends on December 30. We expect Americans to mail more than 5 billion stamped cards, letters, and packages this year during this time—up 2.5 percent from last year.
- On an average day from October through December, the Postal Service receives about 95 million letters and cards nationwide. This number is expected to increase to 150 million a day during the Christmas mailing season, November 28 through December 30.
- Because Christmas falls on a Thursday, the “busiest mail day” will be Monday, December 15. We expect to cancel approximately 280 million cards and letters on that day. The busiest delivery day will be Wednesday, December 17.
- We don't have suggested “holiday mail deadlines” for domestic mail. Our goal this holiday is to deliver increased holiday mail volumes at our normal year-round service levels. Delivery standards vary according to location (on average: First-Class Mail takes 1 to 3 days; Priority Mail takes 2 days to most areas; Standard Mail B, or parcel post, takes 1 day per zone; and Express Mail is guaranteed for overnight delivery to most major cities). Post offices can provide information on local delivery standards.
- We want to encourage our customers to keep mailing, even at the last minute! However, we ask the general public to mail early to prevent a backup of mail during Christmas week.
- To move the large volumes of mail during the holiday season we will add: temporary processing facilities; over 100 additional airplanes; thousands of trucks; and dozens of additional trains. We will also put about 16 million more mail sacks and trays in service. Nationwide, we plan to add 40,000 temporary holiday employees.
- For International Mail, the projected volume from November 8, 1997 through January 2, 1998, is 194.1 million pieces—a 7.5 percent increase over last year.

***1997 Holiday Volume Figures (November 28 through December 30, 1997)***

	Christmas <u>1995</u>	Christmas <u>1996</u>	Christmas <u>1997 (Projected)</u>	% Increase <u>(Projected)</u>
Stamped cards and letters	4.7 billion	4.9 billion	5 billion	2.5%
Priority parcels/parcel post	99.9 million	109 million	119.9 million	10%
Total mail volume	17.9 billion	18.7 billion	19.3 billion	3.3%

**Holiday Stamps**

<u>Date of Issue</u>	<u>Stamp/Type</u>	<u>Amount Printed</u>
October 22	KWANZAA — (Holiday Celebrations)	
	Self-Adhesive Sheets of 50	133 million stamps
October 27	SANO DI PIETRO'S MADONNA AND CHILD WITH SAINTS AND ANGELS — (Holiday Traditional)	
	Self-Adhesive Booklet of 20	882.5 million stamps
October 30	AMERICAN HOLLY — (Holiday Contemporary)	
	Self-Adhesive Booklets of 15, 20, and 30	1.621 billion stamps
Issued 1996	HANUKKAH — (Holiday Celebrations)	
	Self-Adhesive Pane of 20	62 million stamps
Issued 1996	SKATERS — (Holiday)	
	Self-Adhesive Booklet of 20	1.4 million stamps
	<b>Total:</b>	<b>2.7 billion self-adhesive stamps</b>

*Note: This is the first year that all holiday stamps are self-adhesive.*

*The holidays are here.  
And we're here to help.*

**HOLIDAY PUBLICITY KIT**



## Holiday Mailing Tips

*Santa has elves to help deliver his bounty around the globe; the U.S. Postal Service has you to help make it possible for us deliver the billions of cards and parcels that come our way during the holiday season.*

*No pointy-toed shoes, little red hats, or green felt jackets are required for your chores, but we do ask that you practice the following mailing tips:*

### Addressing Tips

- Write, type, or print the complete address neatly.
- Always use a return address.
- Always use complete address information, such as Ave., Blvd., and St. Always use the apartment or suite number. Always use correct directionals, such as N, W, and SW.
- Don't let an incorrect ZIP Code delay delivery of cards and letters. Local post offices and the Postal Service website, [www.usps.gov](http://www.usps.gov), offer ZIP Code information.

### Packaging Tips

- Select a box that's strong enough to protect the contents. Leave space for cushioning inside the carton.
- Cushion package contents with shredded or rolled newspaper, bubble wrap, and Styrofoam peanuts. Plain air-popped popcorn is also good for cushioning, it's inexpensive and environmentally friendly, and you can string leftover popcorn for holiday decoration.
- Always use tape that is designed for shipping, such as pressure-sensitive tape, nylon-reinforced craft paper tape, or glass-reinforced pressure-sensitive tape.
- The only addresses on packages for mailing should be the delivery and return addresses.  
*Extra tip:* Place a return address label inside the package, also.
- Stuff glass and fragile hollow items, like vases, with newspaper or packing material to avoid damage due to shock. When mailing framed photographs, take the glass out of the frame and wrap it separately.
- Remove batteries from toys. Wrap and place them next to the toys in the mailing box.
- Packages that weigh at least one pound must be taken into the post office for mailing.

### Special Tips

- Purchase convenient packaging materials, including boxes and padding materials, at your local post office. Express Mail and Priority Mail boxes, envelopes, and tubes are free.
- Access the Postal Service's website, [www.usps.gov](http://www.usps.gov), for postage calculations, the latest address information, and unique gifts.
- Avoid waiting in line for holiday stamps by buying holiday Stamps by Phone (1 800 STAMP 24), Stamps by Mail, or stamps from postal vending machines.
- Don't forget that most post offices are open on Christmas Eve, which means last-minute packages can still make it by Christmas Day via Express Mail.
- Last-minute international mailers should not despair. Global Priority Mail averages 4 days to many countries for items up to 4 pounds. Express Mail International Service averages 1 or 2 days to most major cities.
- For those traditional domestic procrastinators, we offer Priority Mail, which gets packages to their destinations in 2 days to most major areas. It's a great buy at \$3.00 for up to two pounds. For \$10.75, we also have Express Mail Service that gets mail to most major cities overnight.
- When writing Santa, be sure to use a return address. Santa may write back!

*The holidays are here.  
And we're here to help.*

**HOLIDAY PUBLICITY KIT**



## **News Releases**

*News releases should be typed on postal letterhead stationery and double spaced.  
The City/State on the first line should be from the site where the release is originated.  
Note: News releases use Associated Press style rules.*

### **(Help for the holidays)**

FOR IMMEDIATE RELEASE

(Contact Name)  
(Contact Phone No.)

## **REHEARSED AND READY FOR HOLIDAY SEASON**

CITY, STATE (date, year) — The holiday mailing season traditionally begins the day after Thanksgiving and this year the (city) Post Office is extra-ready to help customers handle the holidays.

“We have the widest array of holiday stamps, holiday gifts and holiday assistance programs ever,” says (city) Postmaster (full name). To illustrate the point, Postmaster (name) offers the following list of “holiday helpfuls:”

### **Special hours, deliveries and conveniences**

- To help customers this 1997 holiday season, we have earlier and later hours.  
(List hours.)
- We will deliver Express Mail packages on Christmas Eve and Christmas Day.
- We accept credit and debit cards.

### **Stamps offer selection with ease**

- This year, we have a wide variety of holiday stamps: Madonna and Child, Hanukkah, Kwanzaa, American Holly and Midnight Angel, as well as the Snowman and Santa stamps offered through vending machines and Skaters through ATMs.

-more-



*The holidays are here.  
And we're here to help.*

**HOLIDAY PUBLICITY KIT**



- Most holiday stamps are available at selected grocery stores, banks and various other locations. There is also a toll-free, 1 800 STAMP 24, number for ordering stamps.
- Priority and Express Mail stamps are available for last-minute mailings.
- Forms to receive Stamps by Mail are available from our letter carriers.

**Great gifts [choose those that apply]**

- For the first time, the American Holly and Midnight Angel stamps are on a host of gift and stationery items.
- The American Holly, Midnight Angel, Hanukkah and Kwanzaa stamp designs are available on FirstClass PhoneCards. The Holly and Midnight Angel phone cards come with a free matching gift folder and envelope.
- We have "Holiday Traditions" holiday cards and gifts ranging from mailing labels, to tree ornaments, to puzzles for children and adults.

**Holiday help**

- Call the post office [provide number] or the holiday mail information line [if applicable] for answers to questions about mailing options, best dates to mail, availability of gift items and packaging pointers.
- The Postal Service's web site, [www.usps.gov](http://www.usps.gov), also offers advice, ZIP Codes and other information.

"As these 'holiday helpfuls' show," Postmaster (name) said, "we're prepared to meet the needs of our customers. We're serious when we say the holidays are here, and we're here to help."

*The holidays are here.  
And we're here to help.*

**HOLIDAY PUBLICITY KIT**



*(Mail early message)*

FOR IMMEDIATE RELEASE

(Contact Name)

(Contact Phone No.)

**POST OFFICE ASKS CUSTOMERS TO MAIL EARLY; PROVIDES TIPS**

CITY, STATE (date, year) — “Mail early” is the word from the (name) Post Office.

“This 1997 holiday season, U.S. Postal Service customers will bring more than 19 billion cards, letters and packages to post offices during the holiday season starting after Thanksgiving,” (city) Postmaster (full name) said.

(He/she) added that (city) employees are gearing up for the busiest time of the year. “We are asking customers to keep it coming, but please start early so we can make sure everything is delivered on time,” (name) said.

Postmaster (name) said that customers can help by providing window clerks with full information on packages, such as requirements for insurance, delivery confirmation, desired time for package arrival and other pertinent information.

To help customers, (he/she) suggests the following mailing tips:

- Write, type, or print the complete delivery address neatly.
- Always use a return address.
- Always use complete address information, such as Ave., Blvd. and St. Always use the apartment or suite number. Always use correct directionals, such as N, W and SW.
- Don't let an incorrect ZIP Code delay delivery of cards and letters. Local post offices and the Postal Service website, [www.usps.gov](http://www.usps.gov), offer ZIP Code information.
- Select a container that's strong enough to protect the contents. Leave space for cushioning inside the carton.

-more-

*The holidays are here.  
And we're here to help.*

**HOLIDAY PUBLICITY KIT**



- Always use tape that is designed for shipping, such as pressure-sensitive tape, nylon-reinforced craft paper tape or glass-reinforced pressure-sensitive tape.
- Plain air-popped popcorn, shredded or rolled newspaper, bubble wrap, and Styrofoam peanuts work well for cushioning package contents.
- The only addresses on packages for mailing should be the delivery and return addresses. *Extra tip:* Place a return address label inside the package, also.
- Stuff glass and fragile hollow items, like vases, with newspaper or packing material to avoid damage due to shock. When mailing framed photographs, take the glass out of the frame and wrap it separately.
- Packages that weigh at least one pound must be taken into the post office for mailing.
- Access the Postal Service's website, [www.usps.gov](http://www.usps.gov), for postage calculations, the latest address information and unique gifts.
- When writing to Santa, be sure to use a return address. Santa may write back!

"The holidays are here, and we're here to help get everything delivered on time. Just help us by mailing early," (name) said.

*The holidays are here.  
And we're here to help.*

**HOLIDAY PUBLICITY KIT**



***(Post office extends hours)***

FOR IMMEDIATE RELEASE

(Contact Name)  
(Contact Phone No.)

**(NAME) POST OFFICE EXTENDS HOURS FOR THE HOLIDAY SEASON**

CITY, STATE (date, year) — As a special holiday season convenience for (city) postal customers the (name) Post Office, (address), will extend its business hours from (list new hours) beginning (date) and continuing through (date).

“The holidays are here, and we’re here to help,” (city) Postmaster (full name) announced.

“We will also be open on Sundays beginning (date) between the hours of (list times),” Postmaster (name) added.

Postmaster (name) noted also that the (city) Post Office will continue to provide its other convenient services to assist customers, such as Stamps by Mail, Stamps by Phone (1 800 STAMP 24), and Priority Mail and Express Mail services.

-30-

***(Several post offices offer Sunday hours)***

FOR IMMEDIATE RELEASE

(Contact Name)  
(Contact Phone No.)

**MANY (CITY) POST OFFICES OPEN SUNDAY, DECEMBER 21:  
EXPRESS MAIL WILL GUARANTEE CHRISTMAS DELIVERY**

CITY, STATE (date, year) — If you’re a nick-of-time mailer and haven’t yet sent off your holiday cards, letters and packages, a number of (city) area post offices will be open this Sunday, Dec. 21. (See attached list.)

Also, on Christmas Eve and Hanukkah, Dec. 24, (number/all) (state) post offices will be open for regular customer service hours, mail delivery and parcel pick up, said Postmaster (city) (full name).

-more-

*The holidays are here.  
And we're here to help.*

**HOLIDAY PUBLICITY KIT**



To have last-minute holiday gifts and cards arrive on time, Postmaster (name) advises customers to use guaranteed Express Mail, which is delivered every day of the year—even Christmas Day.

*[List local plans for mail collection or processing on Christmas Eve.]*

*[If applicable: As a reminder, the (office name), (address), is open every day of the year including Christmas (list hours).]*

Post offices will be closed on Christmas Day, (he/she) added.

-30-

*[The attached page should list the full schedule, including operating hours, of post offices open Sunday, Dec. 21, and other special holiday hour information.]*

**(One pound reminder)**

FOR IMMEDIATE RELEASE

(Contact Name)  
(Contact Phone No.)

**BRING PACKAGES INTO LOCAL POST OFFICE FOR WEIGHING**

CITY, STATE (date, year) — The U.S. Postal Service strives to provide service and safety to the public and its employees, especially during the holidays, said (city) Postmaster (full name).

In order to avoid delays, as a reminder to (city) residents, special security rules still apply when mailing stamped packages that weigh one pound or more sent to addresses in the United States 13.

“Even if you’ve carefully calculated and applied the correct amount of postage, you must bring these packages to the post office for mailing,” (name) said.

Packages found in mail collection boxes, under security guidelines, may be returned to the sender, Postmaster (name) explained. The only exceptions are business packages using metered postage, (he/she) added.

Packages for international destinations, including those to APO and FPO, have special customs requirements and must be mailed personally at the post office, (name) said.

-30-

*The holidays are here.  
And we're here to help.*

**HOLIDAY PUBLICITY KIT**



***(Stocking stuffers)***

FOR IMMEDIATE RELEASE

(Contact Name)  
(Contact Phone No.)

**NEED GIFT IDEAS? POST OFFICE GREAT PLACE FOR 'STOCKING' UP**

CITY, STATE (date, year) — (City) Post Office customers can now shop where they ship!

"The holidays are here," said (City) Postmaster (full name), "and we're here to help with a wide assortment of unique gifts."

(He/she) said that one of the best gifts this holiday is the new 1997 Commemorative Stamp Collection and other inexpensive stamp starter kits that feature the best postal commemorative stamps for the year.

"These gifts will keep on giving because stamp collecting is the hobby of a lifetime for the young or old," (he/she) said. They make thoughtful gifts for those that you like to remember around this time of year including co-workers, secretaries, barbers and hairdressers, (name) added.

Today's post office is also a great place for stocking up when it comes to stocking stuffers. Among the choices [select those that apply to local office]:

- A new 1997 Commemorative Stamp Collection that features the best of the Postal Service's commemorative stamps for the year.
- Stamp collecting starter kits.
- A collection of colorful, historic and inexpensive stamp art gift collectibles.
- "Holiday Traditions" gift items—developed in conjunction with Ensemble, a subsidiary of Hallmark—that range from tree ornaments and gift bags to puzzles for children and adults.
- A new line of Looney Tunes merchandise which features the Bugs Bunny stamp on neckties, pens, earrings, ornaments and other unique gifts.

-more-

*The holidays are here.  
And we're here to help.*

**HOLIDAY PUBLICITY KIT**



- Commemorative self-adhesive and holiday postage stamps.
- FirstClass PhoneCards that come with a free gift folder.
- A sing-along video with songs from the classic animated television specials "Rudolph the Red Nosed Reindeer" and "Frosty the Snowman."

Postmaster (name) also suggests customers pick up a free holiday mailing brochure, which includes information about wrapping and addressing mail and the types of services available with mailing options, including insurance and registry.

For last minute shoppers, Priority Mail and Express Mail Service are two excellent options for getting packages to friends and loved ones on time and in good shape, (name) said.

-30-

***(Santa Express, if applicable)***

FOR IMMEDIATE RELEASE

(Contact Name)  
(Contact Phone No.)

**PHOTO OPPORTUNITY**

**LETTER CARRIER 'SANTA'S' DELIVER ON CHRISTMAS DAY**

CITY, STATE (date, year) — Sometimes it pays to mail late! Last-minute Express Mail gifts for customers living in (city) will be delivered personally by a "Santa's Helper" on Christmas Eve and/or Christmas Day.

The tradition began 12 years ago when several U.S. Postal Service delivery employees decided to make working on the holiday more fun by donning Santa outfits and becoming "Santa-for-a-Day."

*[Talk about local program]:*

-30-

This page intentionally left blank



# Administrative Services

## New Release of F3 Fill Forms

An updated batch of F3 Fill forms has been released. These forms are used with F3 Fill for Windows (version 1.54E). This release includes both new and revised forms. All obsolete forms have been removed from this batch.

F3 Fill is the corporate standard for the automation of internal postal forms. The software enables USPS employees and contractors to complete automated postal forms on their computers. These intelligent forms perform functions such as calculating, routing, generating pop-up lists, and providing help screens.

The Postal Service has a corporate license for F3 Fill software. This includes a right to copy and distribute to all USPS employees and contractors for USPS business purposes.

Postal employees and contractors may obtain copies of the forms and/or F3 Fill software from the following sources:

- Intranet (USPS Blue Web Server): <http://fcsc.usps.gov/lanpub/F3Fill.htm>.
- General Technology Inc.: 800-989-5484 (request F3 Fill forms for **November 1997**).
- Field employees: Contact your local IS manager.
- HQ employees: Call the Help Desk: 202-268-5588.
- **F3 Software only:** Customer Support, Field Computing Service Center: 800-877-7435 (option 5, option 0). Order forms from General Technology Inc. (see above).

The above sources also have the following related documents:

- FORMLIST.DOC: List of current automated forms, including file date and size.
- FORMCHG.DOC: Summary of form changes, including official updates, revisions, new forms, obsolete forms, outdated forms, and software tips.
- INSTALLW.DOC: Software installation instructions for standalone users of F3 Fill for Windows.
- FORMINST.DOC: Instructions for updating form files.

To request that a form be automated or to request enhancements to an existing automated form:

- Send a cc:Mail to **F3 FILL FORM REQUEST**.
- Leave a voice message with your form request on 202-268-4096.

The following forms are available in the **November 1997** production batch. This current list of production forms can be found in the FORMLIST.DOC file dated 10-23-97. Before using these forms, please review FORMCHG.DOC (dated 10-17-97) for a summary of form changes and software tips.

**Note:** The BFF Date column gives the date the form file was created, not the official edition date at the bottom of each printed form. BFF = extension of form files for F3 Fill for Windows.

## Available Forms (November 1997)

Form Number	Form Name	BFF Date	BFF Size
<b>BUCKSLIP</b>	Routing Slip	4/17/96	10632
<b>PS 17</b>	Stamp Requisition	9/17/97	36835
<b>PS 144</b>	Prior Federal Civilian and Military Service Statement	6/25/97	262049
<b>PS 150</b>	Postmaster Workload Information	7/22/96	54889
<b>PS 337</b>	Clearance Record for Separated Employee	1/17/97	46875
<b>PS 546</b>	Post Office Telephone Number Register	10/10/97	20450
<b>PS 571</b>	Discrepancy of \$100 or More in Financial Responsibility	6/24/97	42376
<b>PS 800-B</b>	Money Order Post Audit Request	4/24/96	17396
<b>PS 928</b>	Materiel Inventory Change	3/2/94	20285
<b>PS 969</b>	Materiel Recycling and Disposal	10/2/97	65081
<b>PS 990</b>	Vacancy Announcement	6/14/94	5978
<b>PS 991</b>	Application for Promotion or Assignment	4/11/97	71720
<b>PS 991-M</b>	Application for Management Associate Position	3/7/94	128185
<b>PS 991-REQ</b>	Requirements Page of PS991	6/27/96	36698
<b>PS 1011</b>	Travel Advance Request and Itinerary Schedule	6/3/97	29027
<b>PS 1012</b>	Travel Voucher	7/17/97	108277
<b>PS 1012-A</b>	Travel Voucher — Continuation Sheet	7/18/97	75150

Form Number	Form Name	BFF Date	BFF Size
PS 1129	Cashier Reimbursement Voucher and/or Accountability Report	1/22/97	30641
PS 1164	Claim for Reimbursement	7/17/97	107149
PS 1221	Advanced Sick Leave Authorization	10/16/96	9811
PS 1231	Board of Governors/Officers Expense Report	10/5/95	66065
PS 1236-A	Weekly Loan, Transfer, and Training Hours	6/30/97	286416
PS 1261	Non-Transactor Report	10/3/97	56781
PS 1345	Request for Service Award Certificate/Letter	3/3/94	19069
PS 1357	Request for Computer Access	7/30/96	100819
PS 1360	Information Systems Security Incident Report	4/16/97	33850
PS 1476	PSDS EMR Items Transcript	2/13/96	204305
PS 1510	Mail/Loss Rifling Report	3/27/97	73661
PS 1555	Statement of Account (CAGs A-L)	10/9/96	277020
PS 1564-A	Delivery Instructions	7/19/96	60296
PS 1567	Requisition for Rubber and Steel Stamps Only	4/24/96	18107
PS 1576	Requisition for Duplicating Service	10/2/96	24088
PS 1590	Supplies and Equipment Receipt	3/4/94	14085
PS 1627	General Purpose Ruled Form	4/18/96	81192
PS 1716	Notice of Vacancy in Assignments	10/3/97	7774
PS 1723	Assignment Order	10/3/95	33420
PS 1727	Award Recommendation/Authorization	10/3/95	17921
PS 1752	Health Unit Daily Record	7/18/97	252642
PS 1770	Hazardous Materials Incident Report	6/3/97	44922
PS 1782	Training Request and Authorization	4/25/96	32577
PS 1783	On-the-Job Safety Review/Analysis	3/4/94	98613
PS 1796-A	Qualifications Rating Sheet for Senior Qualified Positions	4/8/97	90685
PS 1796-B	Qualifications Rating Sheet for Best Qualified Positions	7/16/97	157560
PS 1902	Justification For Billing Accounts Receivable	5/14/97	26340
PS 1997	Health Unit Case Record	7/17/97	104198
PS 2013	Sensitive Security Clearance Processing Request	7/18/96	22424
PS 2025	Contract Personnel Questionnaire	7/26/96	85128
PS 2106	Adjudication — Tort Claims	4/29/97	43559
PS 2181	Authorization and Release	7/22/96	10908
PS 2181-C	Authorization and Release — Background Investigation	7/22/96	14636
PS 2198	Accident Report — Tort Claim	3/4/94	25582
PS 2240	Pay, Leave, or Other Hours Adjustment Request	10/23/96	65924
PS 2432	Individual Training Progress Report	7/7/97	92516
PS 2487	Requisition for Test Materials	2/12/97	20139
PS 2548	Individual Training Record	4/11/96	22768
PS 2550	Interview Notice	10/7/96	22557
PS 2608	Grievance Summary — Step 1	10/16/96	17718
PS 2609	Grievance Summary — Step 2	7/17/95	24358
PS 2610	Grievance Summary — Step 3	3/4/94	11178
PS 2629	Free Trial Test Agreement	5/17/96	10850
PS 2805	Military Deposit Worksheet	4/29/96	39015
PS 2880	Physical Inventory	9/19/97	37970
PS 3037	Telecommunications Service Request	2/13/96	31919
PS 3239	Payroll Deduction Authorization to Liquidate Postal Service Indebtedness	1/21/97	28914
PS 3533	Application and Voucher for Refund of Postage Fees	10/22/96	65489
PS 3621-A	Renewal Notice for Annual Fee(s)	4/9/97	25722
PS 3655	International Surface Airlift (ISAL) Direct Shipment Option Advisement and Confirmation of Transportation	10/23/97	47703
PS 3749	Irregularities in the Preparation of Mail	10/24/96	57763
PS 3823	Packaging Improvement Notice	10/17/96	31942
PS 3970-T	Donated Leave Transfer	4/8/97	15324

Form Number	Form Name	BFF Date	BFF Size
PS 3971	Request For or Notification of Absence	10/26/95	55062
PS 4314-C	Consumer Service Card	9/10/97	31222
PS 4503	Vehicle Delivery Control Sheet	10/22/97	75957
PS 4508	Vehicle Maintenance Facility Inventory Order	10/5/95	51943
PS 4533	MVS Schedule	3/8/94	49486
PS 4541	Order-Invoice for Vehicle Repair	7/8/97	42535
PS 4583	Physical Fitness Inquiry for Motor Vehicle Operators	3/9/94	36676
PS 4587	Request to Repair, Replace, or Dispose of Postal-Owned Vehicle	4/23/96	44053
PS 4594	Vehicle Sales Request and Report	10/22/97	45299
PS 4595	Sale Purchase Agreement	3/9/94	28963
PS 4777	Maintenance Checklist	9/6/95	186927
PS 4805	Maintenance Work Record Sheet	4/23/96	59994
PS 4872	Claim for Subsistence Expenses — Temporary Quarters	6/30/97	175263
PS 4983	Postal Key and Lock Requisition	7/22/96	23085
PS 4984	Repair Parts Requisition	3/9/94	30066
PS 5305	Security Supervisor Daily Report	10/17/97	39869
PS 5309	Incident Report	10/16/97	35897
PS 5407	Highway Contract Route Survey/Service Change	7/22/97	75085
PS 5429	Certification of Exceptional Contract Service Performed	6/30/97	86265
PS 5560	Team Project Planning Worksheet	4/18/97	159087
PS 5637	Express Mail Corporate Account/Custom Designed Agreement	1/22/96	71404
PS 5900	Hiring Worksheet	10/22/96	91995
PS 6075	Status of Employee Benefits	4/1/97	18254
PS 7314	Medical Agreement	7/15/97	85247
PS 7330	Amendment to Solicitation	7/18/97	18643
PS 7366	Funded Procurement Request	10/5/95	34705
PS 7380	Supply Center Requisition	10/2/96	31264
PS 7381	Requisition for Supplies, Services, or Equipment	7/18/97	110509
PS 8006	Uniform Allowance Code Sheet (For Regular, Contract, or Work Clothes Program)	7/22/96	17969
PS 8038	Employee Statement to Recover Back Pay	1/3/97	72267
PS 8039	Back Pay Decision/Settlement Worksheet	1/23/97	294878
PS 8059	Request for Relocation Management Firm (RMF) Service	6/3/97	16306
PS 8139-A	Telephone Requirements-Large Systems (13–5,000 instruments)	2/28/96	330211
PS 8139-B	Telephone Requirements-Small Systems (2–12 instruments)	3/1/96	189385
PS 8139-PG1	Attachment to PS8139-A	3/4/96	131552
PS 8179-C	Individual Development Plan	4/24/96	32648
PS 8181	Project Service Agreement (PSA)	10/2/95	55684
PS 8187	Hazardous and Regulated Substance Release Notification	1/22/97	79727
PS 8192	FEDSTRIP/Address Activity Code Request	10/22/97	35959
PS 8194	Record of Environmental Consideration	1/7/97	12814
PS 8195	Operational Environmental Checklist	1/21/97	73406
PS 8203	Order/Solicitation/Offer/Award	7/22/97	55675

**Database Files**

DBF Name	DBF Date	DBF Size
PS 7381	5/13/96	5954

*NOTICE TO POSTMASTERS***Transportation Costs for Christmas Mail**

Effective November 20, 1997, in order to identify Christmas mail transportation costs, offices must enter code "C" (for Christmas) in Service (column C) of Form 5429, *Certification of Exceptional Service Performed*, for additional trips incurred during the Christmas season.

—Logistics, Operations Support, 11-20-97

**Clarification of Ordering Quantities**

Please note that "carton" (CT) is the correct unit of issue for PSIN 1257C, Insert, Box, Collection, and PSIN 1263, Insert, Collection Box, High Density. PSIN 1257C is packaged in 10 units/CT. PSIN 1263 is packaged in 4 units/CT. Orders should be submitted for the number of *cartons* required for each item.

—Logistics Programs,  
Purchasing and Materials, 11-20-97

# Customer Relations

## Mail Alert

The mailings below will be deposited in the near future. Offices should honor the requested home delivery dates. Mailers wishing to participate in these alerts, for mailings of

1 million pieces or more, should contact Customer Relations Program Management at 202-268-3612 at least 1 month preceding the requested delivery dates.

Title of Mailing	Class and Type of Mail	Requested Delivery Date	Number of Pieces (Millions)	Distribution	Presort Level	Comments
Billy Graham Letter	Standard Mail A/Letter	Nov. 17–Nov. 28	1.9	Nationwide	3/5-Digit, Barcoded	3 7/8" x 7 1/8"
Service Merchandise	Standard Mail A/Flat	Nov. 20–Nov. 21	5.7	Nationwide	Car-Rt., 3/5-Digit	World Color, Corinth, MS
JCPenney Cold Weather Remedies	Standard Mail A/Catalog	Nov. 20–Nov. 22	8.0	Nationwide	Car-Rt.	World Color
Sears November Craftsman	Standard Mail A	Nov. 20–Nov. 22	9.3	Nationwide	Car-Rt., 3/5-Digit, Basic	Harte-Hanks
JCPenney Thanksgiving	Standard Mail A/Postcard	Nov. 21, Nov. 22, Nov. 24	15.0	Nationwide	Car-Rt.	Harte-Hanks
The Territory Ahead Holiday II	Standard Mail A/Catalog	Nov. 24	1.0	Nationwide	Car-Rt., 3/5-Digit Basic	8 3/4" x 10"
Service Merchandise	Standard Mail A/Flat	Nov. 24–Nov. 25	4.7	Nationwide	Car-Rt., 3/5-Digit	World Color, Augusta, GA, Jonesboro, AR
Eddie Bauer December Gift 1	Standard Mail A/Flat	Nov. 24–Nov. 26	1.8	Nationwide	3-Digit/SCF	10" x 13", Harte-Hanks
Sears Holiday Card	Standard Mail A	Nov. 24–Nov. 26	7.0	Nationwide	Car-Rt.	
Kmart Database	Standard Mail A	Nov. 24–Nov. 26	6.0	Nationwide	Car-Rt., 3/5-Digit, Basic	Harte-Hanks
Kmart Jewelry	Standard Mail A	Nov. 24–Nov. 26	1.0	Nationwide	Car-Rt., 3/5-Digit, Basic	Harte-Hanks
Nordstrom Catalog — "Your Every Wish"	Standard Mail A/Flat	Nov. 24–Nov. 28	1.1	Nationwide	3-Digit, SCF, Barcoded	88 pages, RR Donnelley
The Company Store	Standard Mail A/Catalog	Nov. 24–Nov. 28	3.4	Nationwide	Car-Rt., Presorted	Quad Graphics, Saratoga Springs, NY
DECISION Magazine	Standard Mail A/Flats	Nov. 24–Nov. 29	1.5	Nationwide	Car-Rt., 3/5-Digit, Basic, Barcoded	8" x 10 5/8", 44-page magazine, Minneapolis, MN
Home Depot	Standard Mail A	Nov. 25–Nov. 27	12.1	Nationwide	Car-Rt., 3/5-Digit, Basic	Harte-Hanks
Sally Beauty Supply	Standard Mail A/Letter	Nov. 26–Nov. 29	2.6	Nationwide	Car-Rt., 3/5-Digit, Basic	Time dated
Eddie Bauer 1997 Gift Resource	Standard Mail A/Catalog	Nov. 28–Dec. 1	3.9	Nationwide	Car-Rt., 3/5-Digit, Basic	RR Donnelley
Service Merchandise	Standard Mail A/Flat	Dec. 1–Dec. 2	7.0	Nationwide	Car-Rt., 3/5-Digit	World Color, Augusta, GA

Title of Mailing	Class and Type of Mail	Requested Delivery Date	Number of Pieces (Millions)	Distribution	Presort Level	Comments
JCPenney Holiday Jewelry Mailer	Standard Mail A/Booklet	Dec. 1–Dec. 3	5.4	Nationwide	Car-Rt.	Harte-Hanks
Nordstrom Holiday Catalog remail	Standard Mail A/Flat	Dec. 1–Dec. 5	1.0	Nationwide	3-Digit/SCF, Barcoded	RR Donnelley
LL Bean Inc. 1997 Christmas Digest	Standard Mail A	Dec. 2–Dec. 4	9.2	Nationwide	Car-Rt., 5-Digit, Basic	6" x 8 7/16", 76 pages
JCPenney Home	Standard Mail A/Booklet	Dec. 3–Dec. 5	1.0	Nationwide	Car-Rt.	Harte-Hanks
JCPenney Christmas Scratch Off	Standard Mail A/Postcard	Dec. 4–Dec. 6	6.6	Nationwide	Car-Rt.	Harte-Hanks
JCPenney Clearance	Standard Mail A/Catalog	Dec. 4–Dec. 6	2.5	Nationwide	Car-Rt.	Perry Printing/CH Robinson
Sterling Jewelers	First-Class Presort/Automation/Letter	Dec. 5–Dec. 6	3.1	Nationwide	Car-Rt., 3/5-Digit, Barcoded	6" x 8" envelope, First-Class Mail presort stamp, Great Lakes Mailing
Sterling Jewelers	First-Class Presort/Automation/Letter	Dec. 5–Dec. 6	1.0	Nationwide	Car-Rt., 3/5-Digit, Barcoded	4 1/4" x 6" postcard, First-Class Mail presort, Great Lakes Mailing
Sterling Jewelers	First-Class Presort/Automation/Letter	Dec. 5–Dec. 6	1.4	Nationwide	Car-Rt., 3/5-Digit, Barcoded	6" x 8" envelope, First-Class Mail Presort Stamp, Harte-Hanks
Kmart Database Gift	Standard Mail A	Dec. 5–Dec. 6	8.0	Nationwide	Car-Rt., 3/5-Digit, Basic	Harte-Hanks
Rent-A-Center	Standard Mail A	Dec. 8–Dec. 9	8.9	Nationwide	Car-Rt., 3/5-Digit, Basic	Harte-Hanks

—Customer Relations, Sales, 11-20-97

# Domestic Mail

*DMM REVISION*

## Nonprofit Standard Mail Eligibility

Effective November 14, 1997, *Domestic Mail Manual* (DMM) E670.5.9 is added to facilitate acceptance at the Nonprofit Standard Mail rates of certain material requesting donations or payment of membership dues when "premiums" are provided in exchange for the donation or membership dues payment.

### *Domestic Mail Manual* (DMM)

<b>E</b>	<b>Eligibility</b>				
*	*	*	*	*	*
<b>E670</b>	<b>Nonprofit Standard Mail</b>				
*	*	*	*	*	*

## 5.0 ELIGIBLE AND INELIGIBLE MATTER

*[Redesignate 5.9, 5.10, 5.11, and 5.12 as 5.10, 5.11, 5.12, and 5.13 respectively; add new 5.9 to read as follows:]*

### 5.9 Contribution and Membership Premiums

Announcements for premiums received as a result of a contribution or payment of membership dues are not considered advertisements if the requested contribution or membership dues is more than 4 times the cost of the premium item(s) offered and more than 2 times the represented value in the mailpiece, if any, of the premium item(s) offered.

—*Business Mail Acceptance, Marketing Systems, 11-20-97*

*POM AND HANDBOOK PO-512 REVISION*

## Use of Form 3607-C

Effective immediately, *Postal Operations Manual* (POM) 327.7 and Handbook PO-512, *Plant Loading Authorization and Procedures Guidelines*, are revised to reflect that acceptance personnel at detached mail units (DMUs) are no longer required to complete Form 3607-C, *Plant Load Verification*, for each mailing or mailing segment loaded on postal vehicles and are not required to place the form on the right rear interior sidewall of the vehicle. POM Issue 8 and a future edition of Handbook PO-512 will include this change.

*[Amend the first sentence of (2)c. by deleting "Forms 3607-C" to read as follows:]*

**(2)c.** Ensure that all clearance documents (postage statements, transportation forms and placards, etc.) are properly completed for each mailing or mailing segment within each vehicle and that the required Form 5111-R, *Revenue Protection Placard*, is affixed to the outside rear of the vehicle after loading is finished and the vehicle is securely sealed.

\* \* \* \* \*

### *Postal Operations Manual*

Revision pages for POM 327.7 appear at the back of this *Postal Bulletin*.

### *Handbook PO-512, Plant Loading Authorization and Procedures Guidelines*

<b>350</b>	<b>Verification Procedures</b>				
<b>351</b>	<b>Verification at a Mailer's Plant</b>				
		*	*	*	*
<b>351.2</b>	<b>Minimal Requirements</b>				
		*	*	*	*

### 351.3 Postage Statement Requirements

*[Amend 351.31 by deleting the last sentence to read as follows:]*

**351.31 General** To ensure that mail is properly claimed by mailers on postage statements, and that the Postal Service can verify mailings to assure proper postage payments, authorized plant load mailers are required to submit postage statements (except for Periodicals mailings) consistent with the alternatives in 351.32 and 351.33.

\* \* \* \* \*

**351.4 Detached Mail Unit (DMU).** DMU employees must:

\* \* \* \* \*

[Amend 351.4k by removing the reference to Form 3607-C to read as follows:]

k. Complete Form 5111-R, *Revenue Protection Placard*, and other required clearance forms for each mailing in vehicles containing plant loaded mail; affix Form 5111-R to the outside of the vehicle as required.

[Remove 351.4l and redesignate current 351.4m as 351.4l.]

\* \* \* \* \*

#### Form Index (page 428)

Delete Form 3607-C, *Plant Load Verification*, and POM references 327.736 and 327.737 from the form index.

—*Business Mail Acceptance, 11-20-97*

## DMM Issue 52 Changes

The following summary tracks all amendments and revisions to *Domestic Mail Manual* (DMM) Issue 52 (July 1, 1997) that will appear in DMM Issue 53 (January 1, 1998). Any change published after *Postal Bulletin* 21957 (10-23-97) will not be included in DMM Issue 53.

This summary appears in chronological order by *Postal Bulletin* (PB) number, with the articles identified with their published titles and effective dates.

### PB 21947 (6-5-97)

#### *Folded Self-Mailers — Additional Options*

DMM C810.7.2 and C810.7.3 are amended to allow mailers to prepare letter-size self-mailers with the final fold positioned as the right side (leading edge) of the piece and to claim an automation rate. In addition, other tabbing form designs for self-mailers have been approved for automation rates. *Effective June 5, 1997* (PB 21947 (6-5-97)).

### PB 21948 (6-19-97)

#### *Post Office Box and Caller Service — McLean, VA 22103 ZIP Code Redesignated as Group C*

DMM Exhibit D910.5.3 and Exhibit D920.4.1 are amended by removing the entry “McLean, VA 22103” from the Group B group categories for post office box service and caller service to a Group C group category. *Effective June 8, 1997* (PB 21948 (6-19-97)).

### PB 21949 (7-3-97)

#### *Content Identifier Numbers*

DMM Exhibit M032.1.3a is revised for changes to certain international mail content identifier numbers (CINs) for bar-coded tray and sack labels. *Effective July 3, 1997* (PB 21949 (7-3-97)).

#### *Labeling List Changes*

DMM L002, L003, L005, L601, L602, L603, L604, and L801 are amended to reflect changes in mail processing operations. *Effective July 3, 1997* (PB 21949 (7-3-97)).

### PB 21951 (7-31-97)

#### *Changes in Preferred Postage Rates — Periodicals and Standard Mail (A)*

DMM C810.2.3a, C810.2.3f, C840.2.1, E240.1.1, E240.2.1, E240.2.2, E612.4.2, M011.1.3g, M011.1.3h, M012.4.5, M032.1.3, M810.1.2, M810.3.1a, M810.3.1b, P013.4.3, R100 (chart), R200.2.2, R200.3.1a, R200.3.2, R200.4.1, R200.4.2, R200.4.3, R600.4.0, and R600.5.1 are amended to revise the postage rates, change in breakpoint, and elimination of ZIP+4 letter discount category for Classroom Publications. *Effective October 5, 1997* (PB 21951 (7-31-97)).

### PB 21952 (8-14-97)

#### *Reusable Mailpieces — Optional Preparation*

DMM C010.6.3 and C010.6.4 are revised to incorporate optional preparation standards for reusable mailpieces that originate as permit imprint mailings. *Effective August 14, 1997* (PB 21952 (8-14-97)).

### PB 21953 (8-28-97)

#### *NonMachinable Surcharge — Parcel Post*

DMM E620.2.5 is amended to clarify that a nonmachinable surcharge applies only to certain listed pieces of Parcel Post if pieces are mailed at the inter-BMC/ASF Parcel Post rates and no special handling fee is paid. *Effective August 28, 1997* (PB 21953 (8-28-97)).

### PB 21955 (9-25-97)

#### *Bound Printed Matter — Maximum Weight Increased*

DMM C600.1.2, E620.3.1, P013.5.3, and R600.7.0 are amended to increase the weight limit for Bound Printed Matter from 10 pounds to 15 pounds, whether single-piece, bulk, or bulk carrier route. *Effective October 5, 1997* (PB 21955 (9-25-97)).



**PB 21956 (10-9-97)***Labeling List Changes*

DMM L002, L004, L005, L102, L601, L602, L603, L604, L801, and L803, are amended to reflect changes in mail processing operations. *Effective October 9, 1997* (PB 21956 (10-9-97)).

*Consolidation of Processing of Form 3510*

DMM D230.3.11, D230.6.2, E214.3.2, E214.3.4, E214.3.7, E214.3.8, E270.8.1, and E270.9.1 are amended regarding the processing of Form 3510, *Application for Additional Entry, Reentry, or Special Rate Request for Periodicals Publication*. In order to improve customer satisfaction and to better utilize resources, post processing of Form 3510 is being consolidated at the Memphis Rates and Classification Service Center (RCSC). *Effective October 9, 1997* (PB 21956 (10-9-97)).

**PB 21957 (10-23-97)***Envelopes and Pieces Sealed on All Sides*

DMM C810.1.0 and C810.7.5 are amended to clarify acceptable characteristics of automation letter-size mailpieces. *Effective October 23, 1997* (PB 21957 (10-23-97)).

*Bulk Parcel Return Service and Shipper Paid Forwarding*

DMM F010.5.3, F020.3.5, F030.2.1, F030.2.5, R600.10.1, R600.10.4, are amended and new S924 is added to establish Bulk Parcel Return Service and Shipper Paid Forwarding, two new services affecting the forwarding and return of Standard Mail (A) parcels. *Effective October 12, 1997*, for Bulk Parcel Return Service; *January 4, 1998*, for Shipper Paid Forwarding (PB 21957 (10-23-97)).

—*Mail Preparation and Standards,  
Marketing Systems, 11-20-97*

## Overseas Military Mail

Mail addressed to, from, or between military post offices overseas is subject to certain conditions or restrictions of mailing regarding content, preparation, and handling. The table below outlines these conditions by APO/FPO ZIP Codes through the use of footnoted mailing restriction codes, which appear on the page following the table.

Acceptance clerks should use this table with the inte-

grated retail terminal (IRT) to determine whether an APO/FPO ZIP Code is active and which conditions of mailing apply. For Express Mail Military Service (EMMS) availability, refer to the local hardcopy EMMS directory.

The complete table appears in the last *Postal Bulletin* of each month.

## Conditions Applied to Mail Addressed to Military Post Offices Overseas

APO/ FPO	See Restrictions	APO/ FPO	See Restrictions	APO/ FPO	See Restrictions
09001	Not Active	09041	Not Active	09081	B-B1-C-D-U
09002	Not Active	09042	B-B1-C-D-U	09082	Not Active
09003	Not Active	09043	Not Active	09083	Not Active
09004	Not Active	09044	Not Active	09084	Not Active
09005	Not Active	09045	B-B1-C-D-U	09085	Not Active
09006	Not Active	09046	B-B1-C-D-U	09086	B-B1-C-D-U
09007	B-B1-C-D-U	09047	Not Active	09087	Not Active
09008	Not Active	09048	Not Active	09088	Not Active
09009	B-B1-C-D-U	09049	Not Active	09089	B-B1-C-D-U
09010	Not Active	09050	B-B1-C-D-U	09090	B-B1-C-D-U
09011	Not Active	09051	Not Active	09091	Not Active
09012	B-B1-C-D-U	09052	Not Active	09092	Not Active
09013	Not Active	09053	B-B1-C-D-U	09093	Not Active
09014	B-B1-C-D-U	09054	B-B1-C-D-U	09094	B-B1-C-D
09015	Not Active	09055	Not Active	09095	B-B1-C-D-U
09016	Not Active	09056	B-B1-C-D-U	09096	B-B1-C-D-U
09017	Not Active	09057	Not Active	09097	Not Active
09018	Not Active	09058	B-B1-C-D-U	09098	B-B1-C-D-U
09019	Not Active	09059	B-B1-C-D-U	09099	B-B1-C-D-U
09020	Not Active	09060	B-B1-C-D-U	09100	B-B1-C-D-U
09021	B-B1-C-D-U	09061	Not Active	09101	Not Active
09022	Not Active	09062	Not Active	09102	B-B1-C-D-U
09023	Not Active	09063	B-B1-C-D-L-U	09103	B-B1-D-U
09024	Not Active	09064	Not Active	09104	B-B1-C-D-U
09025	Not Active	09065	Not Active	09105	Not Active
09026	Not Active	09066	Not Active	09106	Not Active
09027	Not Active	09067	B-B1-C-D-U	09107	B-B1-C-D-U
09028	B-B1-C-D-U	09068	Not Active	09108	Not Active
09029	Not Active	09069	B-B1-C-D-U	09109	Not Active
09030	Not Active	09070	Not Active	09110	B-B1-C-D-U
09031	B-B1-C-D-U	09071	Not Active	09111	B-B1-C-D-U
09032	Not Active	09072	Not Active	09112	B-B1-C-D-U
09033	B-B1-C-D-U	09073	Not Active	09113	Not Active
09034	B-B1-C-D-U	09074	B-B1-C-D-U	09114	B-B1-C-D-U
09035	Not Active	09075	Not Active	09115	Not Active
09036	B-B1-C-D-U	09076	B-B1-C-D-U	09116	Not Active
09037	Not Active	09077	Not Active	09117	Not Active
09038	Not Active	09078	Not Active	09118	Not Active
09039	Not Active	09079	Not Active	09119	Not Active
09040	Not Active	09080	B-B1-C-D-U	09120	Not Active

<b>APO/ FPO</b>	<b>See Restrictions</b>	<b>APO/ FPO</b>	<b>See Restrictions</b>	<b>APO/ FPO</b>	<b>See Restrictions</b>
09121	Not Active	09173	B-B1-C-D-U	09226	B-B1-C-D-U
09122	Not Active	09174	Not Active	09227	B-B1-C-D-U
09123	B-B1-C-D-U	09175	B-B1-C-D-U	09228	Not Active
09124	Not Active	09176	Not Active	09229	B-B1-C-D-U
09125	Not Active	09177	B-B1-C-D-U	09230	Not Active
09126	B-B1-C-D	09178	B-B1-C-D-U	09231	Not Active
09127	Not Active	09179	Not Active	09232	Not Active
09128	B-B1-C-D-U	09180	B-B1-C-D-U	09233	Not Active
09129	Not Active	09181	Not Active	09234	Not Active
09130	Not Active	09182	B-B1-C-D-U	09235	Not Active
09131	B-B1-C-D-U	09183	B-B1-C-D-U	09236	Not Active
09132	Not Active	09184	Not Active	09237	B-B1-C-D-U
09133	Not Active	09185	B-B1-C-D-U	09238	Not Active
09134	Not Active	09186	B-B1-C-D-U	09239	Not Active
09135	B-B1-Y	09187	Not Active	09240	Not Active
09136	B-B1-C-D	09188	Not Active	09241	Not Active
09137	B-B1-C-D-U	09189	Not Active	09242	Not Active
09138	B-B1-C-D-U	09190	Not Active	09243	Not Active
09139	B-B1-C-D	09191	Not Active	09244	B-B1-C-D-U
09140	B-B1-C-D-U	09192	Not Active	09245	B-B1-C-D-U
09141	Not Active	09193	Not Active	09246	Not Active
09142	B-B1-C-D-U	09194	Not Active	09247	Not Active
09143	B-B1-C-D-U	09195	Not Active	09248	Not Active
09144	Not Active	09196	Not Active	09249	Not Active
09145	Not Active	09197	Not Active	09250	B-B1-C-D-U
09146	Not Active	09198	Not Active	09251	Not Active
09147	Not Active	09199	Not Active	09252	B-B1-C-D-U
09148	Not Active	09201	Not Active	09253	Not Active
09149	Not Active	09202	Not Active	09254	Not Active
09150	Not Active	09203	Not Active	09255	Not Active
09151	Not Active	09204	Not Active	09256	Not Active
09152	Not Active	09205	Not Active	09257	Not Active
09153	Not Active	09206	Not Active	09258	Not Active
09154	B-B1-C-D-U	09207	Not Active	09259	Not Active
09155	Not Active	09208	Not Active	09260	Not Active
09156	Not Active	09209	Not Active	09261	Not Active
09157	B-B1-C-D-U	09210	Not Active	09262	B-B1-C-D-U
09158	Not Active	09211	B-B1-C-D-U	09263	B-B1-C-D-U
09159	Not Active	09212	B-B1-C-D-U	09264	B-B1-C-D-U
09160	Not Active	09213	B-B1-C-D-U	09265	B-B1-C-D-N-U
09161	Not Active	09214	B-B1-C-D-U	09266	B-B1-C-D-U
09162	Not Active	09215	Not Active	09267	B-B1-C-D-U
09163	Not Active	09216	Not Active	09268	Not Active
09164	Not Active	09217	Not Active	09269	Not Active
09165	B-B1-C-D-U	09218	Not Active	09270	Not Active
09166	B-B1-C-D-U	09219	Not Active	09271	Not Active
09167	Not Active	09220	Not Active	09272	Not Active
09168	Not Active	09221	Not Active	09273	Not Active
09169	B-B1-C-D-U	09222	Not Active	09274	Not Active
09170	Not Active	09223	Not Active	09275	Not Active
09171	Not Active	09224	Not Active	09276	Not Active
09172	B-B1-C-D-U	09225	B-B1-C-D-U	09277	Not Active

<b>APO/ FPO</b>	<b>See Restrictions</b>	<b>APO/ FPO</b>	<b>See Restrictions</b>	<b>APO/ FPO</b>	<b>See Restrictions</b>
09278	Not Active	09330	Not Active	09383	Not Active
09279	Not Active	09331	Not Active	09384	Not Active
09280	Not Active	09332	Not Active	09385	Not Active
09281	Not Active	09334	Not Active	09386	Not Active
09282	Not Active	09335	Not Active	09387	Not Active
09283	Not Active	09336	Not Active	09388	Not Active
09284	Not Active	09337	Not Active	09389	Not Active
09285	Not Active	09338	Not Active	09390	Not Active
09286	Not Active	09339	Not Active	09391-0001	B-B1-X
09287	Not Active	09340	Not Active	09392-0001	B-B1
09288	Not Active	09341	Not Active	09393	Not Active
09289	Not Active	09342	Not Active	09394	Not Active
09290	Not Active	09343	Not Active	09395	Not Active
09291	Not Active	09344	Not Active	09396	A-B-B1-F
09292	Not Active	09345	Not Active	09397	A-B-B1-C1-F-R
09293	Not Active	09346	Not Active	09398	B-B1
09294	Not Active	09347	Not Active	09399	B-B1-C-D-U
09295	Not Active	09348	Not Active	09401	Not Active
09296	Not Active	09349	Not Active	09402	Not Active
09297	Not Active	09350	Not Active	09403	Not Active
09298	Not Active	09351	Not Active	09404	Not Active
09299	Not Active	09352	Not Active	09405	Not Active
09301-0001	A-B-B1-F-F1-R	09353	Not Active	09406	Not Active
09301-8580	A-B-B1-F-F1-R	09354	Not Active	09407	Not Active
09302-0002	B-B1-E2-F-H1-I-R-R1-U2	09355	Not Active	09408	Not Active
09303	Not Active	09356	Not Active	09409	B-B1-C-C1-U
09304	Not Active	09357	Not Active	09410	Not Active
09305	Not Active	09358	Not Active	09411	Not Active
09306	Not Active	09359	Not Active	09412	Not Active
09307	Not Active	09360-0005	B-B1-I-N	09413	Not Active
09308	Not Active	09361	Not Active	09414	Not Active
09309	Not Active	09362	Not Active	09415	Not Active
09310	Not Active	09363	Not Active	09416	Not Active
09311	Not Active	09364	Not Active	09417	Not Active
09312	Not Active	09365	Not Active	09418	Not Active
09313	Not Active	09366	Not Active	09419	Not Active
09314	Not Active	09367	Not Active	09420	Not Active
09315	Not Active	09368	Not Active	09421	B-B1-C-C1-U
09316	Not Active	09369	Not Active	09422	Not Active
09317	Not Active	09370	Not Active	09423	Not Active
09318	Not Active	09371-0001	A-B-B1-F-F1-R	09424	Not Active
09319	Not Active	09372-0004	A-B-B1-F-F1-R	09425	Not Active
09320	Not Active	09373	Not Active	09426	Not Active
09321	Not Active	09374	Not Active	09427	Not Active
09322	Not Active	09375	Not Active	09428	Not Active
09323	Not Active	09376	Not Active	09429	Not Active
09324	Not Active	09377	Not Active	09430	Not Active
09325	Not Active	09378	Not Active	09431	Not Active
09326	Not Active	09379	Not Active	09432	Not Active
09327	Not Active	09380	Not Active	09433	Not Active
09328	Not Active	09381	Not Active	09434	Not Active
09329	Not Active	09382	Not Active	09435	Not Active

APO/ FPO	See Restrictions	APO/ FPO	See Restrictions	APO/ FPO	See Restrictions
09436	Not Active	09488	Not Active	09541	Not Active
09437	Not Active	09489	Not Active	09542	B
09438	Not Active	09490	Not Active	09543	B
09439	Not Active	09491	Not Active	09544	Not Active
09440	Not Active	09492	Not Active	09545	B
09441	Not Active	09493	Not Active	09546	Not Active
09442	Not Active	09494	B-B1-C-C1-U	09547	Not Active
09443	Not Active	09495	Not Active	09548	Not Active
09444	Not Active	09496	B-B1-C-C1-U	09549	B
09445	Not Active	09497	Not Active	09550	B
09446	Not Active	09498	B-B1-C-C1-U	09551	Not Active
09447	B-B1-C-C1-U	09499	B-B1-C-C1-U	09552	Not Active
09448	B-B1-C-C1-U	09501	B	09553	Not Active
09449	Not Active	09502	B	09554	B-B1
09450	Not Active	09503	B	09555	Not Active
09451	Not Active	09504	B	09556	B
09452	Not Active	09505	B	09557	B
09453	Not Active	09506	B	09558	B
09454	B-B1-C-C1-U	09507	B	09559	Not Active
09455	Not Active	09508	B	09560	Not Active
09456	B-B1-C-C1-U	09509	B	09561	Not Active
09457	Not Active	09510	B-C-I	09562	Not Active
09458	Not Active	09511	B	09563	B
09459	B-B1-C-C1-U	09512	Not Active	09564	B
09460	Not Active	09513	Not Active	09565	B
09461	B-B1-C-C1-U	09514	Not Active	09566	B
09462	Not Active	09515	Not Active	09567	B
09463	B-B1-C-C1-U	09516	Not Active	09568	B
09464	B-B1-C-C1-U	09517	B	09569	B
09465	Not Active	09518	Not Active	09570	B
09466	Not Active	09519	Not Active	09571	Not Active
09467	Not Active	09520	Not Active	09572	Not Active
09468	B-B1-C-C1-U	09521	B-B1	09573	B
09469	B-B1-C-C1-U	09522	Not Active	09574	B
09470	B-B1-C-C1-U	09523	Not Active	09575	B
09471	Not Active	09524	Not Active	09576	B
09472	Not Active	09525	Not Active	09577	B
09473	Not Active	09526	Not Active	09578	B
09474	Not Active	09527	Not Active	09579	B
09475	Not Active	09528	Not Active	<b>09580</b>	<b>Not Active</b>
09476	Not Active	<b>09529</b>	<b>Not Active</b>	09581	B
09477	Not Active	09530	Not Active	09582	B
09478	Not Active	09531	Not Active	09583	Not Active
09479	Not Active	09532	B	09584	Not Active
09480	Not Active	09533	Not Active	09585	Not Active
09481	Not Active	09534	B	09586	B
09482	Not Active	09535	Not Active	09587	B
09483	Not Active	09536	B	09588	B
09484	Not Active	09537	Not Active	09589	Not Active
09485	Not Active	09538	Not Active	09590	B
09486	Not Active	09539	Not Active	09591	B
09487	Not Active	09540	Not Active	09592	Not Active

APO/ FPO	See Restrictions	APO/ FPO	See Restrictions	APO/ FPO	See Restrictions
09593	B	09646	B-B1-Y	09698	Not Active
09594	B	09647	B-B1-N-U	09699	Not Active
09595	B	09648	Not Active	09701	Not Active
09596	B	09649	Not Active	09702	Not Active
09597	Not Active	09650	Not Active	09703	B-B1-C-F1
09598	Not Active	09651	Not Active	09704	B-B1-C-D
09599	B	09652	Not Active	09705	B-B1-U
09601	B-B1-C-F-F1-U	09653	Not Active	09706	B-B1-C-D-U
09602	Not Active	09654	Not Active	09707	B-B1-C-D-N-U
09603	B-B1-C-F-F1-U	09655	Not Active	09708	B-B1
09604	Not Active	09656	Not Active	09709	B-B1-F1
09605	Not Active	09657	Not Active	<b>09710</b>	<b>B-B1</b>
09606	Not Active	09658	Not Active	09711	Not Active
09607	Not Active	09659	Not Active	09712	Not Active
09608	Not Active	09660	Not Active	09713	B-B1-C-F1
09609	B-B1-C-F-U	09661	Not Active	09714	B-B1
09610	B-B1-C-F-U	09662	Not Active	09715	B-B1-F1
09611	Not Active	09663	Not Active	09716	B-B1-C-D-N-U
09612	B-B1-C-F-U	09664	Not Active	09717	B-B1-M-W
09613	B-B1-C-F-U	09665	Not Active	09718	B-B1-F-I-N-U
09614	Not Active	09666	Not Active	09719	Not Active
09615	Not Active	09667	Not Active	09720	B-B1-U
09616	Not Active	09668	Not Active	09721	B-B1-N-U
09617	B-B1-C-F-U	09669	Not Active	09722	B-B1-C-D-N-U
09618	B-B1-C-F-U	09670	Not Active	09723	B-B1-N-U
09619	B-B1-C-F-U	09671	Not Active	09724	B-B1
09620	B-B1-C-F-U	09672	Not Active	09725	B-C
09621	B-B1-C-F-U	09673	Not Active	09726	B-B1-N-U
09622	B-B1-C-F-U	09674	Not Active	09727	Not Active
09623	B-B1-C-F-U	09675	Not Active	09728	B-C
09624	B-B1-C-F-U	09676	Not Active	09729	B-C
09625	B-B1-C-F-U	09677	Not Active	09730	Not Active
09626	B-B1-C-F-U	09678	Not Active	09731	Not Active
09627	B-B1-C-F-U	09679	Not Active	09732	B-B1
09628	B-B1-C-F-F1-U	09680	Not Active	09733	B-B1-I
09629	Not Active	09681	Not Active	09734	Not Active
09630	B-B1-C-F-U	09682	Not Active	09735	B-B1
09631	B-B1-C-F-U	09683	Not Active	09736	Not Active
09632	Not Active	09684	Not Active	09737	Not Active
09633	Not Active	09685	Not Active	09738	Not Active
09634	Not Active	09686	Not Active	09739	Not Active
09635	Not Active	09687	Not Active	09740	Not Active
09636	B-B1-C-F-U	09688	Not Active	09741	Not Active
09637	Not Active	09689	Not Active	09742	Not Active
09638	B-B1-C-E2-F-U	09690	Not Active	09743	Not Active
09639	Not Active	09691	Not Active	09744	Not Active
09640	Not Active	09692	Not Active	09745	Not Active
09641	Not Active	09693	Not Active	09746	Not Active
09642	B-B1-N-U	09694	Not Active	09747	Not Active
09643	B-B1-U	09695	Not Active	09748	Not Active
09644	B-B1-U	09696	Not Active	09749	Not Active
09645	B-B1-U	09697	Not Active	09750	Not Active

APO/ FPO	See Restrictions	APO/ FPO	See Restrictions	APO/ FPO	See Restrictions
09751	Not Active	09803	B-B1-E2-E3-F-H1-I-R-R1-U1-Z1	09849	Not Active
09752	Not Active			09850	Not Active
09753	Not Active	09804	B-B1-E2-E3-F-H1-I-R-R1-U1-Z1	09851	Not Active
09754	Not Active			09852	B-B1-E2-E3-F-H1-I-R-R1-U1-Z1
09755	Not Active	09805	B-B1-E2-E3-F-H1-I-R-R1-U1-Z1		
09756	Not Active	09806	Not Active	09853	B-B1-E2-F-H1-I-R-R1-U2-Z1
09757	Not Active	09807	Not Active	09854	B-B1-E2-F-H1-I-R-R1-U2-Z1
09758	Not Active	09808	B-B1-E2-E3-F-H1-I-R-R1-U1-Z1	09855	B-B1-F-H1-I-R-U1-Z1
09759	Not Active			09856	Not Active
09760	Not Active	09809	B-B1-E2-E3-F-H1-I-R-R1-U1-Z1	09857	Not Active
09761	Not Active			09858	B-B1-E2-E3-F-H1-I-R-R1-U1-Z1
09762	Not Active	09810	B-B1-E2-E3-F-H1-I-R-R1-U1-Z1		
09763	Not Active			09859	Not Active
09764	Not Active	09811	B-B1-E2-E3-F-H1-I-R-R1-U1-Z1	09860	Not Active
09765	Not Active			09861	Not Active
09766	Not Active	09812	B-B1-E2-E3-F-F1-I-N-R-U-Z1	09862	Not Active
09767	Not Active	09813	Not Active	09863	Not Active
09768	Not Active	09814	B-B1-E2-E3-F-F1-I-N-R-U-Z1	09864	Not Active
09769	Not Active	09815	Not Active	09865	A-B-B1-Z1
09770	Not Active	09816	Not Active	09866	Not Active
09771	Not Active	09817	Not Active	09867	A-B-B1-F-I-R-R1-Z1
09772	Not Active	09818	Not Active	09868	A-B-B1-U-Z1
09773	Not Active	09819	A-B-F-P-Z1	<b>09869</b>	<b>Not Active</b>
09774	Not Active	09820	Not Active	09870	Not Active
09775	Not Active	09821	A-B-F-Z1	09871	B-B1-E2-E3-F-H1-I-R-U1-Z1
09776	Not Active	09822	A-B-F-Z1	09872	B-B1-E2-E3-F-H1-I-R-R1-U2-Z1
09777	A-B-B1-C-E1-N	09823	A-B-F-Z1		
09778	Not Active	09824	A-B-F-Z1	09873	B-B1-E2-F-H1-R-R1-U2-Z1
09779	A-B-B1-C1-F-R	<b>09825</b>	<b>Not Active</b>	<b>09874</b>	<b>Not Active</b>
09780	A-B-B1-C1-F-R	09826	B-B1-E2-F-H1-I-R-R1-U1-Z1	09875	B-B1-E2-F-H1-R-R1-U2-Z1
09781	A-B-B1-C1-F-R	09827	A-B-F-Z1	09876	B-B1-E2-F-H1-I-R-R1-U2-Z1
09782	A-B-B1-C1-F-R	09828	B-I-N-Z1	09877	B-B1-E2-F-H1-R-R1-U2-Z1
09783	A-B-B1-C1-F-I-N-R	09829	B-I-N-Z1	<b>09878</b>	<b>Not Active</b>
09784	Not Active	09830	B-B1-C-Z1	09879	B-B1-E2-F-H1-I-R-R1-U2-Z1
09785	A-B-B1-C1-F-I-N-R	09831	B-B1-F-N-U-Z1	09880	B-B1-E2-F-H1-I-R-R1-U2-Z1
09786	A-B-B1-C1-F-I-N-R	09832	B-B1-U1-Z1	09881	B-B1-E2-F-H1-I-R-R1-U2-Z1
09787	A-B-B1-C1-F-I-N-R	09833	B-B1-U1-Z1	09882	B-B1-E2-E3-F-H1-I-R-R1-U2-Z1
09788	A-B-B1-C1-F-R	09834	B-B1-Z1		
09789	A-B-B1-C1-F-R	09835	A-B-B1-Z1	09883	B-B1-E2-F-H1-R-R1-U2-Z1
09790	A-B-B1-C1-F-I-N-R	09836	A-B-B1-C-F-M-Z1	09884	B-B1-E2-F-H1-R-R1-U2-Z1
09791	A-B-B1-C1-E1-F-I-M-R	09837	B-B1-Z1	09885	B-B1-E2-F-H1-R-R1-U2-Z1
09792	B-B1-C-F-U	09838	B-B1-Z1	09886	B-B1-E2-F-H1-R-R1-U2-Z1
09793	A-B-B1-C1-F-R	09839	A-B-B1-U-Z1	09887	B-B1-E2-F-H1-R-R1-U2-Z1
09794	A-B-B1-C1-F-R	09840	Not Active	09888	B-B1-E2-F-H1-I-R-R1-U2-Z1
09795	A-B-B1-C1-F-I-N-R	09841	A-B-B1-Z1	09889	B-B1-E2-F-H1-I-R-R1-U2-Z1
09796	A-B-B1-C1-F-I-N-R	09842	A-B-B1-Z1	09890	B-B1-E2-F-H1-I-R-R1-U3-Z1
09797	Not Active	09843	A-B-B1-Z1	09891	B-B1-E2-F-H1-R-R1-U2-Z1
09798	Not Active	09844	Not Active	09892	A-B-B1-F-I-R-R1-Z1
09799	Not Active	09845	Not Active	09893	B-B1-E2-F-H1-I-R-R1-U2-Z1
09801	Not Active	09846	Not Active	09894	B-B1-E2-E3-F-H1-I-R-R1-U1-Z1
09802	B-B1-E2-E3-F-H1-I-R-R1-U1-Z1	09847	Not Active		
		09848	Not Active	09895	B-B1-E2-F-H1-R-R1-U2-Z1

APO/ FPO	See Restrictions	APO/ FPO	See Restrictions	APO/ FPO	See Restrictions
09896	B-B1-E2-E3-F-H1-I-R-R1-U2-Z1	09947	Not Active	09998	Not Active
09897	B-B1-Z1	09948	Not Active	09999	Not Active
09898	B-B1-E2-F-H1-I-R-R1-U2-Z1	09949	Not Active	34001	B-B1-U
09899	B-F-N-Z1	09950	Not Active	34002	B-B1-U
09901	Not Active	09951	Not Active	<b>34003</b>	<b>Not Active</b>
09902	Not Active	09952	Not Active	34004	B-B1-U
09903	Not Active	09953	Not Active	34005	B-B1-U
09904	Not Active	09954	Not Active	34006	B-B1
09905	Not Active	09955	Not Active	34007	Not Active
09906	Not Active	09956	Not Active	34008	Not Active
09907	Not Active	09957	Not Active	34009	B-B1
09908	Not Active	09958	Not Active	34010	Not Active
09909	Not Active	09959	Not Active	34011	B-B1
09910	Not Active	09960	Not Active	34012	B-B1-U
09911	Not Active	09961	Not Active	34013	Not Active
09912	Not Active	09962	Not Active	34014	Not Active
09913	Not Active	09963	Not Active	34015	Not Active
09914	Not Active	09964	Not Active	34016	Not Active
09915	Not Active	09965	Not Active	34017	Not Active
09916	Not Active	09966	Not Active	34018	Not Active
09917	Not Active	09967	Not Active	34019	Not Active
09918	Not Active	09968	Not Active	34020	B-B1-M-N
09919	Not Active	09969	Not Active	34021	B-M-N
09920	Not Active	09970	Not Active	34022	B-B1-D-F-M
09921	Not Active	09971	Not Active	34023	B-B1-M-N
09922	Not Active	09972	Not Active	34024	B-B1-M-N
09923	Not Active	09973	Not Active	34025	B-B1-F-N-U
09924	Not Active	09974	Not Active	34026	Not Active
09925	Not Active	09975	Not Active	34027	Not Active
09926	Not Active	09976	Not Active	34028	Not Active
09927	Not Active	09977	Not Active	34029	Not Active
09928	Not Active	09978	Not Active	34030	B-B1-I-M
09929	Not Active	09979	Not Active	34031	B-B1-M-N
09930	Not Active	09980	Not Active	34032	B-M-N
09931	Not Active	09981	Not Active	34033	B-C-F-M-N
09932	Not Active	09982	Not Active	34034	B-B1-M-N
09933	Not Active	09983	Not Active	34035	B-B1-H-M-N
09934	Not Active	09984	Not Active	34036	B-M-N
09935	Not Active	09985	Not Active	34037	B-B1-C-F-H-I-M-N
09936	Not Active	09986	Not Active	<b>34038</b>	<b>B-B1-M-N</b>
09937	Not Active	09987	Not Active	34039	B
09938	Not Active	09988	Not Active	34040	B
09939	Not Active	09989	Not Active	34041	B-B1-M-N-U
09940	Not Active	09990	Not Active	34042	B-B1-D-F-M
09941	Not Active	09991	Not Active	34043	Not Active
09942	Not Active	09992	Not Active	<b>34044</b>	<b>Not Active</b>
09943	Not Active	09993	Not Active	34045	B-B1-I-N
09944	Not Active	09994	Not Active	34046	Not Active
09945	Not Active	09995	Not Active	34047	Not Active
09946	Not Active	09996	Not Active	34048	Not Active
		09997	Not Active	34049	Not Active



<b>APO/ FPO</b>	<b>See Restrictions</b>	<b>APO/ FPO</b>	<b>See Restrictions</b>	<b>APO/ FPO</b>	<b>See Restrictions</b>
34050	B	96203	A-B	96255	Not Active
34051	B	96204	A-B-B1	96256	Not Active
34052	Not Active	96205	A-B-B1-U	96257	A-B-B1-U
34053	B	96206	A-B-B1-U	96258	A-B-B1-U
34054	Not Active	96207	A-B-B1	96259	A-B-B1-U
34055	B-N	96208	A-B-B1-U	96260	A-B-B1-U
34056	Not Active	96209	Not Active	96261	Not Active
34057	Not Active	96210	Not Active	96262	A-B-B1-U
34058	B-B1	96211	Not Active	96263	Not Active
34059	Not Active	96212	A-B-B1-U	96264	A-B-B1-U
34060	Not Active	96213	Not Active	96265	Not Active
34061	B-B1-U	96214	A-B-B1-U	96266	A-B-B1-U
34062	Not Active	96215	A-B-B1-U	96267	A-B-B1-U
34063	Not Active	96216	Not Active	96268	Not Active
34064	Not Active	96217	A-B-B1-U	96269	A-B-B1-U
34065	Not Active	96218	A-B-B1-U	96270	Not Active
34066	Not Active	96219	A-B-B1-U	96271	A-B-B1-U
34067	Not Active	96220	A-B-B1-U	96272	Not Active
34068	Not Active	96221	A-B-B1-U	96273	Not Active
34069	Not Active	96222	Not Active	96274	Not Active
34070	Not Active	96223	Not Active	96275	A-B-B1
34071	Not Active	96224	A-B-B1-U	96276	A-B-B1
34072	Not Active	96225	Not Active	96277	Not Active
34073	Not Active	96226	Not Active	96278	A-B-B1-U
34074	Not Active	96227	Not Active	96279	Not Active
34075	Not Active	96228	Not Active	96280	Not Active
34076	Not Active	96229	Not Active	96281	Not Active
34077	B-Y	96230	Not Active	96282	Not Active
34078	Not Active	96231	Not Active	96283	A-B-B1-U
34079	Not Active	96232	Not Active	96284	A-B-B1-U
34080	Not Active	96233	Not Active	96285	B-B1-Y
34081	Not Active	96234	Not Active	96286	Not Active
34082	Not Active	96235	Not Active	96287	Not Active
34083	Not Active	96236	Not Active	96288	Not Active
34084	Not Active	96237	Not Active	96289	Not Active
34085	B-B1-Y	96238	Not Active	96290	Not Active
34086	B	96239	Not Active	96291	Not Active
34087	Not Active	96240	Not Active	96292	Not Active
34088	Not Active	96241	Not Active	96293	Not Active
34089	Not Active	96242	Not Active	96294	Not Active
34090	B	96243	Not Active	96295	Not Active
34091	B	96244	Not Active	96296	Not Active
34092	B	96245	Not Active	96297	A-B-B1-U
34093	B	96246	Not Active	96298	Not Active
34094	Not Active	96247	Not Active	96299	Not Active
34095	B	96248	Not Active	96301	Not Active
34096	Not Active	96249	Not Active	96302	Not Active
34097	Not Active	96250	Not Active	96303	Not Active
34098	B	96251	A-B-B1-U	96304	Not Active
34099	B	96252	Not Active	96305	Not Active
96201	A-B	96253	Not Active	96306	B-B1-M-W
96202	Not Active	96254	Not Active	96307	Not Active

<b>APO/ FPO</b>	<b>See Restrictions</b>	<b>APO/ FPO</b>	<b>See Restrictions</b>	<b>APO/ FPO</b>	<b>See Restrictions</b>
96308	Not Active	96360	Not Active	96413	Not Active
96309	B-B1-M-W	96361	Not Active	96414	Not Active
96310	B-B1-M-W	96362	B-B1-M-W	96415	Not Active
96311	Not Active	96363	Not Active	96416	Not Active
96312	Not Active	96364	B-B1-L-M-W	96417	Not Active
96313	B-B1-M-W	96365	B-B1-M-W	96418	Not Active
96314	Not Active	96366	Not Active	96419	Not Active
96315	Not Active	96367	B-B1-L-M-W	96420	Not Active
96316	Not Active	96368	B-B1-M-W	96421	Not Active
96317	Not Active	96369	Not Active	96422	Not Active
96318	Not Active	96370	B-B1-M-W	96423	Not Active
96319	B-B1-M-W	96371	Not Active	96424	Not Active
96320	Not Active	96372	B-B1-M-W	96425	Not Active
96321	B-B1-M-W	96373	B-B1-M-W	96426	Not Active
96322	B-B1-M-W	96374	B-B1-M-W	96427	Not Active
96323	B-B1-M-W	96375	B-B1-M-W	96428	Not Active
96324	Not Active	96376	B-B1-M-W	96429	Not Active
96325	B-B1-M-W	96377	B-B1-M-W	96430	Not Active
96326	B-B1-M-W	96378	B-B1-M-W	96431	Not Active
96327	Not Active	96379	B-B1-M-W	96432	Not Active
96328	B-B1-M-W	96380	Not Active	96433	Not Active
96329	Not Active	96381	Not Active	96434	Not Active
96330	B-B1-M-W	96382	Not Active	96435	Not Active
96331	Not Active	96383	Not Active	96436	Not Active
96332	Not Active	96384	B-B1-M-W	96437	Not Active
96333	Not Active	96385	B-B1-Y	96438	Not Active
96334	Not Active	96386	B-B1-M-W	96439	Not Active
96335	Not Active	96387	B-B1-M-W	96440	B-B1-F
96336	B-B1-M-W	96388	B-B1-M-W	96441	Not Active
96337	B-B1-M-W	96389	Not Active	96442	Not Active
96338	B-B1-M-W	96390	Not Active	96443	Not Active
96339	B-B1-M-W	96391	Not Active	96444	Not Active
96340	Not Active	96392	Not Active	96445	Not Active
96341	Not Active	96393	Not Active	96446	Not Active
96342	Not Active	96394	Not Active	96447	Not Active
96343	B-B1-M-W	96395	Not Active	96448	Not Active
96344	Not Active	96396	Not Active	96449	Not Active
96345	Not Active	96397	Not Active	96450	Not Active
96346	Not Active	96398	Not Active	96451	Not Active
96347	B-B1-M-W	96399	Not Active	96452	Not Active
96348	B-B1-M-W	96401	Not Active	96453	Not Active
96349	B-B1-M-W	96402	Not Active	96454	Not Active
96350	B-B1-M-W	96403	Not Active	96455	Not Active
96351	Not Active	96404	Not Active	96456	Not Active
96352	Not Active	96405	Not Active	96457	Not Active
96353	Not Active	96406	Not Active	96458	Not Active
96354	Not Active	96407	Not Active	96459	Not Active
96355	Not Active	96408	Not Active	96460	Not Active
96356	Not Active	96409	Not Active	96461	Not Active
96357	Not Active	96410	Not Active	96462	Not Active
96358	Not Active	96411	Not Active	96463	Not Active
96359	Not Active	96412	Not Active	96464	Not Active

<b>APO/ FPO</b>	<b>See Restrictions</b>	<b>APO/ FPO</b>	<b>See Restrictions</b>	<b>APO/ FPO</b>	<b>See Restrictions</b>
96465	Not Active	96518	B-B1	96570	Not Active
96466	Not Active	96519	Not Active	96571	Not Active
96467	Not Active	96520	B-F-U3	96572	Not Active
96468	Not Active	96521	B-F	96573	Not Active
96469	Not Active	96522	B-F-U	96574	Not Active
96470	Not Active	96523	Not Active	96575	Not Active
96471	Not Active	96524	Not Active	96576	Not Active
96472	Not Active	96525	Not Active	96577	Not Active
96473	Not Active	96526	Not Active	96578	Not Active
96474	Not Active	96527	Not Active	96579	Not Active
96475	Not Active	96528	Not Active	96580	A-B-B1-H-I-M-N-U
96476	Not Active	96529	Not Active	96581	Not Active
96477	Not Active	96530	A-B-B1-H-M-N-U	96582	Not Active
96478	Not Active	96531	B-B1-H-M	96583	Not Active
96479	Not Active	96532	Not Active	96584	Not Active
96480	Not Active	96533	Not Active	96585	Not Active
96481	Not Active	96534	A-B-F	96586	Not Active
96482	Not Active	96535	A-B-B1-F	96587	Not Active
96483	Not Active	96536	B-B1	96588	Not Active
96484	Not Active	96537	B-B1	96589	Not Active
96485	Not Active	96538	B-B1	96590	Not Active
96486	Not Active	96539	Not Active	96591	Not Active
96487	Not Active	96540	B-B1	96592	Not Active
96488	Not Active	96541	B-B1	96593	Not Active
96489	Not Active	96542	B-B1	96594	A-B-B1-H-I-M-N-U
96490	Not Active	96543	B-B1-P	96595	B-B1
96491	Not Active	96544	Not Active	96596	A-B-B1-H-I-M-N-U
96492	Not Active	96545	A-B-B1-H-I-M-N-U	96597	A-B-B1-H-I-M-N-U
96493	Not Active	96546	B-F-U3	96598	B
96494	Not Active	96547	Not Active	96599	B
96495	Not Active	96548	A-B-B1-H-M-U	96601	B
96496	Not Active	96549	A-B-B1-H-M-U	96602	B
96497	Not Active	96550	Not Active	96603	B
96498	Not Active	96551	A-B-B1-H-M-U	96604	B
96499	Not Active	96552	A-B-B1-H-M-U	96605	B-O
96501	Not Active	96553	A-B-B1-H-I-M-N-U	96606	B
96502	Not Active	96554	A-B-B1-H-M-U	96607	B
96503	Not Active	96555	B-B1-F-M	96608	B
96504	Not Active	96556	B	96609	B
96505	B	96557	B-B1-F-M	96610	B
96506	B	96558	B	96611	B
96507	Not Active	96559	Not Active	96612	B
96508	B	96560	Not Active	96613	Not Active
96509	Not Active	96561	Not Active	96614	Not Active
96510	Not Active	96562	Not Active	96615	Not Active
96511	B-B1-I-N	96563	Not Active	96616	Not Active
96512	Not Active	96564	Not Active	96617	Not Active
96513	Not Active	96565	Not Active	96618	B
96514	Not Active	96566	Not Active	96619	Not Active
96515	B-B1-F	96567	Not Active	96621	B
96516	B	96568	Not Active	96622	B
96517	B-B1-F-U3	96569	Not Active	96623	B

APO/ FPO	See Restrictions	APO/ FPO	See Restrictions	APO/ FPO	See Restrictions
96624	B	96650	Not Active	96676	B
96625	B	96651	Not Active	96677	B
96626	Not Active	96652	Not Active	96678	B
<b>96627</b>	<b>Not Active</b>	96653	Not Active	96679	B
96628	B	96654	Not Active	96680	Not Active
96629	B	96655	Not Active	96681	B
96630	Not Active	96656	Not Active	96682	B
96631	Not Active	96657	B	96683	B
96632	Not Active	96658	Not Active	96684	B
96633	Not Active	96659	Not Active	96685	Not Active
96634	B	96660	B	96686	B
96635	B	96661	B	96687	B
96636	Not Active	96662	B	96688	Not Active
96637	Not Active	96663	B	96689	Not Active
96638	Not Active	96664	B	96690	Not Active
96639	Not Active	96665	B	96691	Not Active
96640	Not Active	96666	B	96692	Not Active
96641	Not Active	96667	B	96693	Not Active
96642	Not Active	96668	B	96694	Not Active
96643	B	96669	B	96695	Not Active
96644	Not Active	96670	B	96696	Not Active
96645	Not Active	96671	B	96697	B
96646	Not Active	96672	B	96698	B
96647	Not Active	96673	B	96699	Not Active
96648	Not Active	96674	B		
96649	Not Active	96675	B		

RESTRICTIONS

LEGEND	
Form 2976, <i>Customs</i> — CN22	
Form 2976-A, <i>Customs Declaration and Dispatch Note</i>	
AAFES	= Army and Air Force Exchange Service
APO	= Army/Air Force Post Office
Box R	= Retired military personnel
FPO	= Fleet Post Office
DMM	= <i>Domestic Mail Manual</i>
MOM	= Military Ordinary Mail
MPO	= Military Post Office
PAL	= Parcel Airlift
PSC	= Postal Service Center
SAM	= Space Available Mail
USDA	= United States Department of Agriculture
Note: Mail order catalogs are prohibited as SAM or PAL mail.	

**A.** Securities, currency, or precious metals in their raw, unmanufactured state are prohibited. Official shipments are exempt from this restriction.

**B.** Form 2976-A is required for all mail weighing 16 ounces or more.  
**Exceptions:** Prepaid mail from contractors addressed to a military organizations for official use need not bear a customs declaration, but must be endorsed "Contents for Official Use-Exempt from Customs Requirement." Official mail from government agencies does not require a customs declaration or exemption endorsement. Known Mailers may use either Form 2976-A on each item or Form 2976 (or facsimile) with a mail manifest in conjunction with a packing list. Form 2976 must state "packing list enclosed." The packing list must include a description of the items, the dollar values of the items, and the complete address including the PSC box number and APO/FPO ZIP Code of the addressee, the date of mailing, the insurance registry number, if applicable, and the serial number of any item over \$25 in value and any electrical item over \$15 in value. The packing list should be enclosed in the parcel or attached to the outside of the parcel. The mail manifest which itemizes all parcels that a Known Mailer deposits will be given to Postal Official at Business Mail Acceptance Unit. Form 2976 may be used if the mailer does not wish to list the contents on the wrapper or in any case if the value exceeds \$400. Affix only the upper portion of the label on the package. A completed Form 2976-A (listing the contents and value in US dollars) must be enclosed in the package.

**B1.** Form 2976 or 2976-A is required. Articles are liable for customs duty and/or purchase tax unless they are bona fide gifts intended for use by military personnel or their dependents. When the contents of a parcel meet these requirements, the mailer must endorse the customs form, "Certified to be a bona fide gift, personal effects, or items for personal use of military personnel and dependents," under the heading, Description of Contents.  
**Exceptions:** All other exceptions listed in restriction B above are applicable to this restriction.

**C.** Cigarettes and other tobacco products are prohibited.

**C1.** Obscene articles, prints, paintings, cards, films, videotapes, etc., and horror comics and matrices are prohibited.

**D.** Coffee is prohibited.

**E1.** Medicines or vaccines not conforming to French laws are prohibited.

**E2.** Any matter containing religious materials contrary to Islamic faith or depicting nude or seminude persons, pornographic or sexual items, or nonauthorized political materials is prohibited.

**E3.** Radio transceivers, cordless telephones, global positioning systems, scanners, base stations, and hand-held transmitters are prohibited.

**F.** Firearms of any type are prohibited in all classes of mail. See definitions of firearms in DMM C022.1.1. This restriction does not apply to firearms mailed to or by official U.S. government agencies.

**F1.** Privately owned weapons addressed to an individual are prohibited in any class of mail.

**F2.** Importation of firearms is restricted to one shotgun and one single shot .22 caliber rifle per individual.

**G.** Only First-Class letters, second- and third-class mail are authorized.

**H.** Meats, including preserved meats, whether hermetically sealed or not, are prohibited.

**H1.** Pork or pork by-products are prohibited.

**I.** Mail of all classes must fit in a mail sack. Mail may not exceed the following dimensions:

Length	
42" .....	72" length and girth combined
over 42" to 44" .....	24" girth
over 44" to 46" .....	20" girth
over 46" to 48" .....	16" girth
Maximum length	48"

This restriction does not apply to registered mail and official government mail marked MOM.

**I1.** This restriction does not apply to registered mail.

**I2.** This restriction does not apply to official government mail marked MOM.

**K.** Mail that includes in the address the words, "Dependent Mail Section," may consist only of letter mail, newspapers, magazines, and books. No parcel of any class containing any other matter may be mailed to the Dependent Mail section. This restriction does not apply if the address does not include the words "Dependent Mail Section."

**L.** All official mail is prohibited.

**M.** Fruits, animals, and living plants are prohibited.

**N.** Registered mail is prohibited.

**O.** Personal mail addressed to vessels using this number is limited to unregistered First-Class Mail and certified mail. Other classes of mail are prohibited.

**P.** APO is used for the receipt and dispatch of official mail only.

**Q.** Mail may not exceed 66 pounds, and size is limited to 42 inches maximum length and 72 inches maximum length and girth combined.

**R.** All alcoholic beverages, including those mailable under DMM C021, are prohibited.

**R1.** Materials used in the production of alcoholic beverages (i.e., distilling material, hops, malts, yeast, etc.) are prohibited.

**T.** Mailings of case lots of food and supplemental household shipments must be approved by the sender's parent agency prior to mailing.

**U.** Parcels must weigh less than 16 ounces when addressed to Box R. This restriction does not apply to mail endorsed "Free Matter for the Blind or Handicapped."

**U1.** Mail is limited to First-Class Mail weighing 11 ounces or less when addressed to Box R. This restriction does not apply to mail endorsed "Free Matter for the Blind or Handicapped." Videotapes are prohibited when addressed to Box R, regardless of weight.

**U2.** Mail is limited to First-Class letters only when addressed to Box R.

**U3.** Mail is limited to First-Class correspondence (including voice and video cassettes), newspapers, magazines, photographs, not exceeding 16 ounces, when addressed to Box R.

**W.** Meat products, such as dried beef, salami, and sausage, may be mailed, provided they remain in their original, hermetically sealed packages and bear USDA certification. Other meats, bones, skin, hair, feathers, horns or hoofs of hoofed animals, wool samples, tobacco leaves, including chewing and pipe tobacco, snuff, cigars, and cigarettes, or obscene material, including obscene drawings, photographs, films, and carvings, are prohibited. Exception: 200 grams of tobacco per parcel are permitted duty free.

**X.** Personal mail is limited to First-Class Mail (to include audio cassettes and voice tapes) weighing 11 ounces or less. This limitation does not apply to official mail.

**Y.** Mail is limited to First-Class and Priority Mail only. All second-class, third-class, and fourth-class mail (including SAM and PAL) are not authorized. This restriction also applies to official mail.

**Z.** No outside pieces (OSPs).

**Z1.** The Anti-Pilferage Seal (Item No O818-A) is required on all pouches and sacks.

## Fraud Alert

ALL PERSONNEL PROCESSING MAIL FOR DISPATCH ABROAD

### Foreign Order No. 407

Keep all foreign order notices for use as reference.

#### Tentative Orders

A Tentative Lottery Order has been issued against the following.

##### Australia

ALA/KSS  
POST OFFICE BOX 19  
WAVELL HEIGHTS QLD 4012  
AUSTRALIA

ALA/KSS  
GENERAL POST OFFICE BOX 1345  
BRISBANE QUEENSLAND 4001  
AUSTRALIA

ALA  
GPO BOX 2615  
BRISBANE QUEENSLAND 4001  
AUSTRALIA

ALA  
POST OFFICE BOX 19  
WAVELL HEIGHTS QLD 4012  
AUSTRALIA

ALA/KSS  
GENERAL POST OFFICE BOX 610  
BRISBANE QLD 4001  
AUSTRALIA

##### Canada

EMS  
PO BOX 80350  
BURNABY BC V5H 3X6  
CANADA

ILMC  
SUBSCRIPTION DEPARTMENT  
SUITE #229 #800-15355 24TH AVENUE  
SURREY BC V4A 2H9  
CANADA

#### Final Orders

The Tentative Decision and Order issued against the following has become final.

##### Australia

ALA  
GENERAL POST OFFICE BOX 465  
BRISBANE QUEENSLAND 4001  
AUSTRALIA

ALA  
GPO BOX 443  
BRN QLD 4001  
AUSTRALIA

ALA  
PO BOX 932  
BRISBANE QLD 4001  
AUSTRALIA

ALA  
PO BOX 656  
TULLAMARINE VICTORIA 3043  
AUSTRALIA

ALA  
GPO BOX 789  
BRISBANE QLD 4001  
AUSTRALIA

ALH  
GPO BOX 511  
BRISBANE QLD 4001  
AUSTRALIA

ALA/KSS  
GENERAL POST OFFICE BOX 396  
BRISBANE QUEENSLAND 4001  
AUSTRALIA

##### Canada

ALFI  
NORTH AMERICAN FOWARDING CENTER  
PO BOX 9550 STN TERMINAL  
VANCOUVER BC V6B 4G3  
CANADA

CASH AWARD CENTER  
PO BOX 9100 STN TERMINAL  
SURREY BC V3T 5V8  
CANADA

Do not dispatch any mail to the above. Place the mailpieces in a pouch endorsed Foreign Order Mail and send it to:

POSTMASTER  
CLAIMS AND INQUIRY  
JAMES A FARLEY BLDG RM 2029-A  
NEW YORK NY 10199-9652

Do not place any endorsement on the mailpieces themselves. Personnel may post this notice at the outgoing primary. They must post it on the Foreign Order Board at all Processing and Distribution Plants, designated international exchange offices, and customer service plants.

—Judicial Officer, 11-20-97

**Domestic Orders**

False representation is enforced by postmasters at the cities listed below:

State/City	Names Covered	Product
CA, Anaheim 92804-6418	Shana Shoblaska d/b/a Local Shoppers Network, 9852 W. Katella Avenue, #168	An employment scheme.
FL, Hialeah 33011-1780	Edna H. Minor, P.O. Box 111780 and	A failure to pay scheme.
FL, Hialeah 33017-1838	P.O. Box 171838 and	
FL, Miami 33144-0517	P.O. Box 517 and	
FL, Coral Gables 33146-3020	1578 Madruga Avenue, #152 and	
FL, Miami 33152-4322	P.O. Box 524322 and	
FL, Miami 33152-0993	P.O. Box 520993 and	
FL, Miami 33155-3755	6800 SW 40th Street, #506 and	
FL, Miami 33155-6423	6400 SW 56th Street and	
FL, Miami 33255-8565	P.O. Box 558565 and	
FL, Miami 33255-8727	P.O. Box 558727 and	
FL, Miami 33255-8990	P.O. Box 558990 and	
FL, Miami 33156-9509	P.O. Box 9509 S. Dixie Hwy., #106 and	
FL, Miami 33265-3409	P.O. Box 3409 and	
FL, Miami 33265-2007	P.O. Box 2007 and	
FL, Miami 33186-2102	11762 SW 88 Street, #308	
FL, Lakeland 33805-4009	Beth J. Silbernagle Using Various Names, 1057 N. Davis Ave.	A failure to pay scheme.
NY, White Plains 10607-1349	Borden Barrows and The Kaplan Group, Inc. and The Wooden Group, Inc. all d/b/a National Cash Distribution Bureau. 405 Tarrytown Road. #206	A prize scheme.

—Judicial Officer, 11-20-97

**Withholding of Mail Orders**

Withholding of mail orders is enforced by postmasters at the cities listed below:

State/City	Names Covered
CA, Bel Air 90077-1724	Any And All Names, 2934 1/2 Beverly Glen Circle, Box 78
MI, Detroit 48214-0942	Any And All Various Names Other Than The Name Stella Jean Williams, P.O. Box 14942
MI, Highland Park 48203-3731	Any And All Various Names Other Than The Surnames Mumphord or Montgomery, 238 Midland Street
NE, Lincoln 68516-2709	National Data, 3800 Old Cheney Rd., #101–317
NC, Durham 27717-1093	Any And All Various Names Other Than The Surname Coffey, P.O. Box 51093
OH, Columbus 43229-6212	Any And All Names, 1014 Morse Road, Box #108
PA, Philadelphia 19130-3814	Any And All Various Names, 2000 Hamilton Street, Box No. 551
TX, Houston 77019-4946	Elliott Briggs, Information Centers — USA, 1436 West Gray, #444

—Judicial Officer, 11-20-97

## Missing U.S. Money Order Forms

### Do Not Cash

To be posted and used by retail window employees. As directed, destroy previous notices. All interim notices should be destroyed when the numbers listed appear in the *Postal Bulletin*. The actual serial numbers consist of the first 10 digits on the money orders. Check for altered dollar amounts by holding money orders to the light.

The *Postal Bulletin* is available on the World Wide Web on the U.S. Postal Service home page at <http://www.usps.gov>. To access a *Postal Bulletin*, go to

"The Business Section," then to "Business Publications," and then to "The Postal Bulletin."

The *Postal Bulletin* is also available on the Postal Service Internal Home Page under "Policies and Procedures," then "Postal Bulletin."

Back issues through *Postal Bulletin* 21883A (1-1-95) are available for downloading, as are the 1995 and 1996 annual indexes. Once downloaded, the *Postal Bulletin*, including all forms and posters, may be read and printed.

<b>210 221 0548 to</b>	390 545 5974 to	5999	404 726 4500 to	4599	418 962 2848 to	2899
<b>210 221 0599</b>	391 104 6146 to	6199	404 961 5001 to	5199	419 543 0286 to	0299
<b>273 775 7700 to</b>	391 574 1466 to	1499	405 325 0188 to	0198	419 730 0300 to	0399
<b>273 775 7899</b>	391 783 3020 to	3599	406 009 4587 to	4599	<b>420 277 0015 to</b>	<b>0049</b>
<b>302 000 0000 to</b>	391 792 6100 to	6199	406 260 6830 to	6899	420 599 0734 to	0798
<b>302 123 9999</b>	392 668 2956 to	2999	406 459 6641 to	6999	420 661 4115 to	4199
<b>349 746 2056 to</b>	392 854 8500 to	8899	406 733 3000 to	3999	420 758 9500 to	9699
<b>2099</b>	393 584 7566 to	7699	407 545 1557 to	1599	420 969 3951 to	3971
<b>350 518 7350 to</b>	393 650 0074 to	0099	407 594 0412 to	0599	420 969 3973 to	3999
<b>7374</b>	393 838 8316 to	8499	407 692 9100 to	9299	421 116 3565 to	3599
<b>360 011 1690 to</b>	393 893 6007 to	6099	407 959 2190 to	2199	421 130 9300 to	9399
360 168 6008 to	394 126 6907 to	6999	408 265 2275 to	2288	421 313 4500 to	4999
360 173 8800 to	394 189 0405 to	0599	408 499 7700 to	7799	421 364 5537 to	5599
362 861 3064 to	394 822 3243 to	3278	408 499 7900 to	7999	421 656 2609 to	2699
<b>373 006 2176 to</b>	394 990 1810 to	1899	408 682 8484 to	8599	421 988 9700 to	9799
<b>2199</b>	395 343 3264 to	3299	408 698 7015 to	7099	422 172 4667 to	4699
374 768 2600 to	395 373 3035 to	3099	409 072 3941 to	3999	422 484 4212 to	4299
375 169 4400 to	395 396 9649 to	9799	<b>410 491 2311 to</b>	<b>2399</b>	422 556 1270 to	1299
375 829 3400 to	395 970 3240 to	3299	410 694 8400 to	8599	422 587 7024 to	7099
375 851 9100 to	397 622 4054 to	4099	410 775 1500 to	1599	422 819 7533 to	7599
376 196 0911 to	397 819 8902 to	8999	410 795 7927 to	7999	422 842 5073 to	5087
376 196 0911 to	398 149 7200 to	7699	410 867 0917 to	0966	422 907 7563 to	7599
378 085 3679 to	399 070 0872 to	0899	410 867 0970 to	0999	424 500 6050 to	6099
378 351 1063 to	399 156 7119 to	7199	411 868 1023 to	1199	424 641 8500 to	8599
378 351 1063 to	399 203 5064 to	5099	411 922 2322 to	2399	424 871 6600 to	6699
379 843 5100 to	399 296 9910 to	9999	412 193 0900 to	0999	425 298 2352 to	2399
<b>380 093 9600 to</b>	399 396 8935 to	8999	412 395 8599 to	8699	425 418 4269 to	4299
<b>9699</b>	399 792 7775 to	7799	412 485 6500 to	6599	425 418 4405 to	4499
380 165 1165 to	399 792 8300 to	8399	412 485 6610 to	6699	426 547 4566 to	4599
381 325 4500 to	<b>400 427 1051 to</b>	<b>1999</b>	412 885 5953 to	5999	427 412 6337 to	6499
381 604 2510 to	401 045 1505 to	1549	414 193 3608 to	3674	427 481 0900 to	0999
381 645 9525 to	401 045 1571 to	1599	414 193 3677 to	3699	428 027 2742 to	2752
383 314 3968 to	401 294 2700 to	2799	414 411 7348 to	7399	429 474 4172 to	4199
383 892 1000 to	401 310 9505 to	9599	414 640 0757 to	0799	429 889 2900 to	2999
383 892 1382 to	401 382 5312 to	5399	414 965 1727 to	1799	<b>430 150 4401 to</b>	<b>4599</b>
384 925 3641 to	402 578 7876 to	7899	417 302 8104 to	8199	430 172 9800 to	9899
385 568 2331 to	403 125 6744 to	6799	417 387 6532 to	6599	430 177 1900 to	2099
385 599 7554 to	403 260 7000 to	7499	417 496 6800 to	6999	430 444 9500 to	9699
385 774 2024 to	403 280 6470 to	6499	417 871 9250 to	9299	430 664 4070 to	4099
386 624 1412 to	403 685 8600 to	8699	417 930 9533 to	9599	432 168 8419 to	8499
386 883 8936 to	404 003 0300 to	0399	418 164 6500 to	6799	432 708 6800 to	6999
387 314 5574 to	404 041 8838 to	8899	418 423 9863 to	9899	432 744 1544 to	1599
387 837 6300 to	404 071 4268 to	4299	418 633 5922 to	5999	432 995 9775 to	9799
388 828 0656 to	404 347 5356 to	5399	418 719 8520 to	8599	433 003 5800 to	5899
388 828 0656 to	404 347 5548 to	5599	418 744 2235 to	2299	433 757 3047 to	3099
389 696 2400 to						
389 846 3104 to						
389 846 3145 to						
389 887 9211 to						
389 887 9234 to						
<b>390 001 3182 to</b>						
<b>3199</b>						
390 001 3500 to						



433 765 4003	to	4099	457 729 1767	to	1777	475 167 9667	to	9699	490 721 6000	to	6099
434 482 7060	to	7199	457 937 8615	to	8699	475 319 3415	to	3499	490 793 1500	to	2099
434 513 2386	to	2399	458 028 9810	to	9899	475 319 3649	to	3799	490 886 8171	to	8199
434 968 3076	to	3092	458 057 2712	to	2999	475 340 6400	to	6599	490 977 9221	to	9240
435 303 1831	to	1842	458 069 9537	to	9599	475 424 8410	to	8499	491 258 8100	to	9099
435 303 1986	to	1999	458 069 9665	to	9699	475 629 9156	to	9199	491 567 1376	to	1399
435 666 6092	to	6399	458 337 5222	to	5299	475 850 6101	to	6199	492 254 4800	to	4899
436 082 6400	to	6899	458 354 7653	to	7999	475 875 2500	to	2599	492 283 5100	to	5199
436 160 6441	to	6499	458 671 8678	to	8699	476 169 8264	to	8299	492 610 6813	to	6899
437 316 7115	to	7199	458 671 8721	to	8798	476 189 3000	to	3499	493 394 5568	to	5599
437 427 0500	to	3499	458 847 5044	to	5999	476 331 2480	to	2499	493 470 2562	to	2599
439 179 2300	to	2399	459 274 7624	to	7699	477 289 8601	to	8699	493 473 7700	to	7799
439 310 0458	to	0499	459 365 5432	to	5499	477 681 5206	to	5299	493 716 2153	to	2199
<b>440 698 1947</b>	<b>to</b>	<b>1999</b>	459 378 5764	to	5799	478 010 4243	to	4268	494 206 2972	to	2999
440 858 6300	to	6399	459 472 4816	to	4999	478 010 4270	to	4291	494 217 3446	to	3999
440 858 6420	to	7299	<b>460 349 6878</b>	<b>to</b>	<b>6899</b>	478 450 5071	to	5099	494 224 0500	to	0599
441 199 1655	to	1699	460 550 1909	to	1999	478 469 7838	to	7858	495 145 0600	to	0699
443 127 3648	to	3699	460 997 5234	to	5299	478 469 7883	to	7899	496 209 7425	to	7499
443 127 4000	to	4099	461 973 6443	to	6499	479 280 9800	to	9899	496 213 8728	to	8799
443 673 7900	to	7999	462 152 0107	to	0299	479 365 9116	to	9176	496 474 5226	to	5248
443 800 9335	to	9399	462 274 1072	to	1099	479 412 9900	to	9999	497 053 8517	to	8699
444 382 8822	to	8899	462 277 8373	to	8399	479 667 6190	to	6199	497 854 8673	to	8699
444 390 1667	to	1699	463 011 5529	to	5540	479 748 9680	to	9699	498 449 8888	to	8899
444 457 3854	to	3899	463 176 4115	to	4199	479 860 7000	to	7199	498 929 8285	to	8499
<b>450 048 4173</b>	<b>to</b>	<b>4199</b>	463 176 4229	to	4299	<b>480 526 2000</b>	<b>to</b>	<b>2099</b>	498 936 5310	to	5399
450 048 4442	to	4699	463 185 2600	to	2799	480 640 6330	to	6399	499 016 5425	to	5499
450 560 5173	to	5199	463 227 7711	to	7799	480 658 0568	to	0599	499 440 8575	to	8899
450 620 3077	to	3099	463 414 4869	to	4899	480 689 5100	to	5199	499 731 6717	to	6799
450 620 3135	to	3199	463 808 3484	to	3499	481 072 9463	to	9499	<b>500 064 1858</b>	<b>to</b>	<b>1869</b>
450 780 2716	to	2799	463 945 7400	to	7899	481 673 0074	to	0095	500 070 5725	to	7799
450 801 2700	to	2799	464 629 9000	to	9399	482 527 1500	to	1599	<b>600 645 3223</b>	<b>to</b>	<b>3299</b>
451 109 2967	to	2984	464 711 4332	to	4399	482 541 5255	to	5299	601 339 1200	to	1399
451 115 4110	to	4125	465 692 3963	to	3999	482 729 6800	to	6899	601 661 7700	to	7799
451 115 4127	to	4199	465 698 8300	to	8599	483 363 7207	to	7299	601 682 5343	to	5399
452 265 0074	to	0099	465 743 7745	to	7799	483 402 2356	to	2399	601 928 1600	to	1699
452 265 0246	to	0299	466 798 6056	to	6067	483 486 5100	to	5199	602 512 2972	to	2999
452 265 0335	to	0999	467 147 4300	to	4399	483 632 1521	to	1599	602 555 2400	to	2799
452 509 1169	to	1199	468 079 5782	to	5799	483 632 2600	to	2799	602 829 7061	to	7099
452 855 6471	to	6499	469 067 2817	to	2899	483 849 1615	to	1699	603 483 9572	to	9599
452 890 4679	to	4799	469 127 8000	to	8199	484 174 4803	to	5299	603 490 7200	to	7299
452 900 8215	to	8238	469 213 0359	to	0399	484 323 8900	to	9199	603 678 7100	to	7199
453 117 9146	to	9199	469 213 0500	to	0599	484 680 5000	to	5038	603 678 7662	to	7699
453 334 3631	to	3699	469 561 8011	to	8099	484 680 5040	to	5074	603 678 7902	to	7999
453 603 7841	to	7891	469 658 1961	to	1999	484 680 5077	to	5099	603 678 8418	to	8499
453 650 1140	to	1199	469 666 9900	to	9999	485 029 4913	to	4999	603 678 8700	to	9999
453 741 1300	to	1399	469 678 1900	to	1999	486 176 0600	to	0699	604 086 0880	to	0899
454 013 2919	to	2999	469 781 4900	to	4999	486 559 7555	to	7599	604 349 1414	to	1499
454 186 2411	to	2499	469 947 6960	to	6999	486 696 3023	to	3199	604 503 7776	to	7799
454 268 4883	to	4899	<b>470 755 5800</b>	<b>to</b>	<b>5818</b>	488 173 7900	to	7999	605 520 9037	to	9099
454 302 5400	to	5499	471 918 0300	to	0999	488 206 4100	to	4199	605 685 4010	to	4099
454 490 8300	to	8399	471 985 2408	to	2419	488 226 0200	to	0299	605 988 6467	to	6499
454 547 7434	to	7499	472 191 6700	to	6799	488 709 3906	to	3999	607 689 7951	to	7960
454 922 4867	to	4895	472 270 2555	to	2599	488 855 8359	to	8399	607 728 1276	to	1299
455 221 1348	to	1499	472 987 0213	to	0241	489 181 8963	to	8999	608 727 7100	to	7199
455 364 2147	to	2199	472 987 0290	to	0299	489 223 2000	to	2099	608 727 7273	to	7599
455 399 5400	to	5499	473 151 2069	to	2199	489 311 1930	to	1999	608 813 9950	to	9999
455 476 0676	to	0699	473 666 9138	to	9199	489 318 6200	to	6300	609 067 5325	to	5399
455 543 0618	to	0699	473 952 3429	to	3499	489 384 0027	to	0099	609 067 5488	to	5499
456 410 9006	to	9099	474 108 5402	to	5499	489 427 0658	to	0899	609 067 5600	to	5699
456 470 4146	to	4299	474 356 5193	to	5299	489 997 5252	to	5299	609 289 6123	to	6199
456 619 4460	to	4499	474 949 3366	to	3399	<b>490 669 5850</b>	<b>to</b>	<b>6099</b>	609 438 4400	to	4499
457 333 2686	to	2699	475 134 9362	to	9399	490 717 7080	to	7099	609 493 1100	to	1199

609 766 8091	to	8999	631 762 9325	to	9399	645 821 0657	to	0699	661 906 6522	to	6599
609 825 4100	to	4115	632 217 4933	to	4999	645 930 7948	to	7999	662 021 8332	to	8399
609 884 2981	to	2999	632 500 0000	to	99 9999	645 975 0737	to	0762	662 068 0700	to	0899
609 893 1000	to	1099	633 110 4165	to	4199	646 242 6200	to	6299	662 553 0774	to	0799
<b>610 092 3200</b>	<b>to</b>	<b>3299</b>	633 110 4303	to	4499	646 270 7639	to	7799	663 078 7034	to	7099
610 582 4200	to	4299	633 438 6429	to	6599	646 798 4000	to	4999	663 763 5300	to	5399
611 879 6939	to	6999	633 588 7173	to	7182	647 048 7035	to	7099	663 883 7039	to	7499
612 291 8013	to	8099	634 725 0700	to	0799	647 049 2900	to	2999	664 253 8000	to	8499
612 751 5171	to	5199	634 803 3239	to	3299	647 398 8300	to	8399	664 656 3055	to	3099
612 751 5226	to	5299	634 807 2474	to	2499	647 398 8481	to	8499	665 274 8208	to	8299
612 751 6083	to	6099	634 827 5900	to	5999	647 437 3000	to	4999	666 132 8226	to	8299
612 751 6268	to	6299	634 886 3428	to	3499	647 811 2188	to	2199	666 696 2209	to	2299
612 751 6572	to	6599	635 559 3449	to	3499	648 009 6057	to	6099	666 696 2309	to	2399
612 774 2111	to	2199	636 289 6214	to	6299	648 163 5300	to	5499	667 032 9300	to	9399
612 774 2254	to	2299	636 634 8007	to	8042	648 722 5283	to	5299	667 729 5529	to	5599
612 774 2500	to	2599	637 150 1200	to	1299	648 892 3164	to	3199	668 383 8400	to	8699
614 469 0979	to	0999	637 562 5828	to	5899	649 100 3989	to	3999	670 369 7336	to	7399
614 474 3000	to	3099	638 042 1647	to	1699	649 647 0370	to	0399	670 750 7169	to	7199
614 521 3490	to	3499	638 049 4984	to	4999	649 647 0522	to	0599	671 046 6200	to	6399
614 645 1800	to	1899	638 318 1115	to	1199	649 647 0522	to	0599	671 926 5600	to	5799
614 832 1100	to	2099	638 318 1453	to	1499	649 647 5237	to	5399	672 444 2000	to	2999
615 017 7505	to	7599	638 885 0000	to	0299	649 647 9100	to	9299	672 828 3410	to	3499
617 711 6609	to	6699	638 903 4362	to	4373	649 666 7800	to	8299	673 167 5776	to	5799
617 760 5266	to	5299	639 415 1929	to	1999	<b>650 114 7707</b>	<b>to</b>	<b>7719</b>	<b>700 065 2570</b>	<b>to</b>	<b>2599</b>
617 813 3601	to	3699	639 415 2019	to	2099	650 130 3400	to	3599	700 065 4800	to	4899
618 840 9200	to	9299	639 420 6200	to	6299	650 213 0406	to	0499	700 190 3350	to	3359
619 551 7229	to	7299	639 469 3517	to	3799	650 555 1749	to	1799	700 228 6048	to	6099
619 859 3000	to	3099	639 605 2143	to	2199	650 564 1900	to	1999	700 650 0452	to	0499
<b>620 073 9400</b>	<b>to</b>	<b>9499</b>	639 657 8600	to	8799	650 627 4212	to	4299	700 666 1323	to	1349
621 614 7907	to	7930	<b>640 289 7500</b>	<b>to</b>	<b>7599</b>	650 627 4212	to	4299	700 786 9106	to	9142
621 614 7932	to	7999	640 289 7700	to	7999	650 736 2043	to	2099	700 859 0744	to	0758
621 648 8021	to	8199	641 170 4420	to	4499	650 739 1540	to	1699	701 028 6780	to	6899
621 648 8500	to	8599	641 318 3133	to	3199	651 741 4415	to	4499	701 213 3900	to	3999
621 904 8351	to	8599	641 378 6500	to	6999	651 882 2800	to	2899	701 267 2000	to	3999
621 916 1978	to	1989	641 383 8739	to	8799	652 754 6317	to	6399	701 335 7312	to	7399
622 989 8032	to	8099	641 877 3187	to	3299	653 131 4945	to	4999	701 369 2005	to	2050
623 076 9300	to	9399	641 877 3310	to	3399	653 426 3300	to	3399	701 503 2247	to	2299
623 819 5006	to	5099	642 355 8094	to	8199	653 455 4874	to	4899	701 553 6557	to	6599
623 895 8200	to	8399	642 355 8308	to	8999	654 238 0000	to	0399	701 601 3457	to	3499
623 917 0000	to	0099	642 900 0018	to	0099	654 404 3065	to	3092	701 605 5913	to	5999
623 917 0200	to	0299	643 030 6254	to	6299	654 962 2900	to	3199	701 708 1741	to	1799
624 468 5288	to	5299	644 066 0882	to	0899	655 103 5081	to	5199	701 736 3966	to	3999
624 665 3162	to	3198	644 069 0600	to	0699	655 523 2600	to	2999	701 838 2800	to	2899
625 088 6735	to	6799	644 077 7506	to	7699	656 305 2448	to	2499	701 941 0600	to	0699
625 916 9500	to	9799	644 085 8157	to	8199	657 347 4438	to	4999	702 254 9300	to	9399
625 968 8956	to	8999	644 112 9839	to	9899	657 710 8100	to	8999	<b>806 087 1100</b>	<b>to</b>	<b>1499</b>
627 005 3938	to	3999	644 373 9083	to	9099	657 780 0985	to	0999	806 268 9275	to	9299
627 384 3907	to	4099	644 380 1460	to	1499	658 877 8000	to	8199	806 534 3400	to	3477
627 496 7549	to	7599	644 733 4715	to	4799	658 880 8000	to	8199	807 342 3283	to	3399
627 708 3605	to	3699	644 900 9712	to	9799	659 398 7300	to	7399	808 086 7100	to	7199
627 776 2500	to	2599	644 901 0109	to	1299	659 706 8113	to	8199	808 090 3440	to	3499
628 226 3100	to	3199	644 901 1325	to	1399	659 846 7837	to	7899	808 325 5161	to	5699
628 814 4702	to	4799	644 923 6800	to	7799	<b>660 510 4100</b>	<b>to</b>	<b>4199</b>	808 784 8000	to	8299
628 851 9689	to	9699	644 932 4655	to	4699	660 673 0400	to	0599	<b>870 054 4814</b>	<b>to</b>	<b>4899</b>
629 510 7200	to	7299	644 932 4792	to	4799	661 488 5000	to	5099	870 491 4812	to	4849
629 964 4200	to	4294	645 318 7240	to	7499	661 609 9100	to	9199	870 541 7167	to	7239
<b>630 389 3056</b>	<b>to</b>	<b>3071</b>	645 333 1766	to	1799	661 716 9420	to	9499			
630 463 0588	to	0599	645 790 8632	to	8699						
631 459 9117	to	9199									

## Missing Canadian Money Order Forms

### Do Not Cash

To be posted and used by retail window employees. As directed, destroy previous notices. Destroy any interim notices when the numbers listed appear in the *Postal Bulletin*. The new money order serial numbers consist of the first nine digits. The 10th digit is a check digit only.

Do not cash new style money orders **000 000 001 to 692 600 000**. Advise holders to send invalid money orders to: Canada Post Corporation, Ottawa, Canada K1A 0B1. Check for altered dollar amounts by holding money orders to the light.

<b>000 000 001 to 692 600 000</b>	702 051 501 to 1 750	708 116 251 to 6 310	718 466 370 to 6 420
<b>692 720 871 to 0 900</b>	702 053 601 to 3 800	708 138 301 to 8 480	718 568 451 to 8 479
692 876 955 to 7 050	702 104 368 to 4 900	709 222 591 to 2 920	718 590 741 to 0 770
693 290 380 to 0 400	702 128 306 to 8 400	709 243 479 to 3 500	718 714 210 to 4 370
693 290 426 to 0 450	702 179 891 to 9 900	709 411 171 to 1 320	718 795 881 to 6 000
694 063 700 to 3 897	702 260 751 to 0 850	709 649 804 to 9 820	718 961 721 to 1 780
694 063 900 to 4 000	702 410 595 to 1 050	709 733 281 to 3 580	718 982 001 to 2 300
694 550 501 to 0 530	702 660 151 to 0 540	<b>710 046 813 to 6 840</b>	719 869 731 to 9 760
694 595 031 to 5 050	702 723 429 to 3 450	710 358 093 to 8 166	<b>720 227 871 to 7 930</b>
694 595 087 to 5 300	703 004 401 to 4 820	710 358 257 to 8 270	720 227 949 to 7 960
694 698 551 to 8 650	703 083 819 to 4 020	711 021 501 to 1 510	720 368 543 to 8 570
695 105 313 to 5 350	703 432 131 to 2 230	711 049 411 to 9 560	720 392 151 to 2 570
695 142 809 to 3 050	703 626 061 to 6 090	711 408 045 to 8 090	720 556 491 to 6 640
695 144 666 to 4 700	703 863 121 to 3 240	712 003 381 to 3 650	720 558 621 to 8 650
695 272 601 to 2 750	703 863 477 to 3 540	712 104 220 to 4 230	720 575 361 to 5 570
695 277 576 to 7 650	703 867 801 to 7 980	712 327 861 to 7 890	720 590 152 to 0 179
695 530 761 to 0 800	704 030 628 to 0 640	712 327 952 to 7 980	721 638 331 to 9 170
696 487 701 to 7 800	704 154 024 to 4 120	712 647 061 to 7 090	721 815 391 to 5 420
696 784 101 to 4 550	704 227 561 to 7 829	713 284 171 to 4 260	721 969 713 to 9 740
696 870 601 to 0 650	704 227 831 to 8 069	713 292 871 to 2 990	722 072 137 to 2 160
697 047 501 to 7 600	704 228 071 to 8 100	714 035 101 to 5 160	722 378 265 to 8 280
697 052 101 to 2 350	704 420 344 to 0 490	714 155 011 to 5 400	722 413 990 to 4 004
697 217 251 to 7 400	704 568 751 to 8 990	714 328 231 to 8 440	722 764 948 to 4 980
697 249 952 to 0 050	704 965 301 to 5 770	714 442 952 to 2 980	722 825 840 to 5 889
697 414 886 to 4 900	705 116 780 to 6 790	714 562 843 to 2 860	723 153 841 to 3 850
697 469 606 to 9 700	705 280 801 to 0 980	714 590 391 to 0 430	723 237 616 to 7 630
697 850 401 to 0 750	705 475 651 to 6 040	714 609 811 to 9 930	723 331 081 to 1 110
698 098 446 to 8 550	705 566 127 to 6 280	714 609 961 to 9 990	723 496 443 to 6 470
698 300 251 to 0 300	705 740 581 to 0 730	714 807 181 to 7 240	723 967 291 to 7 320
698 504 383 to 4 650	705 782 796 to 2 820	714 871 321 to 1 500	724 655 196 to 5 340
698 533 927 to 4 200	705 822 271 to 2 480	714 928 529 to 8 590	724 711 441 to 1 500
698 562 268 to 2 400	706 180 148 to 0 290	715 128 183 to 8 330	724 711 538 to 1 560
699 090 686 to 0 750	706 184 041 to 4 220	715 144 171 to 4 470	724 793 221 to 3 250
699 752 699 to 2 850	706 357 861 to 8 190	715 197 211 to 7 570	724 908 109 to 8 120
<b>700 068 473 to 8 500</b>	706 382 419 to 2 430	715 595 910 to 6 180	724 937 461 to 7 670
700 161 501 to 1 650	706 628 735 to 8 820	715 941 781 to 1 810	725 163 118 to 3 151
700 202 522 to 2 700	706 638 211 to 8 420	715 962 421 to 2 480	725 202 735 to 2 750
700 290 275 to 0 300	706 817 959 to 8 000	716 477 396 to 7 430	725 398 591 to 8 800
700 465 730 to 5 750	707 034 391 to 4 450	716 556 635 to 6 660	725 464 591 to 4 920
700 561 444 to 1 550	707 292 636 to 2 660	717 191 648 to 1 690	725 475 321 to 5 330
701 423 101 to 3 150	707 441 401 to 1 687	717 193 161 to 3 490	725 711 057 to 1 070
701 625 469 to 5 550	707 441 836 to 1 940	717 228 591 to 8 680	725 738 581 to 8 730
701 643 829 to 3 850	707 958 541 to 8 570	717 333 902 to 3 950	725 981 311 to 1 430
701 945 451 to 5 500	707 960 107 to 0 160	717 739 745 to 9 910	725 987 835 to 7 880
702 033 701 to 4 050	708 059 941 to 60 000	717 884 991 to 5 050	726 060 811 to 0 900
	708 115 830 to 5 860	718 026 171 to 6 290	726 391 970 to 2 520

726 484 771	to	4 800	728 702 338	to	2 400	730 569 278	to	9 360	732 018 481	to	8 600
726 493 351	to	5 300	728 915 371	to	5 850	730 711 711	to	1 740	732 067 972	to	8 370
726 504 031	to	4 063	728 953 141	to	3 410	730 722 991	to	3 230	732 086 374	to	6 400
726 504 070	to	4 090	729 169 081	to	9 140	730 845 970	to	5 990	732 193 460	to	3 470
726 504 331	to	4 390	729 363 841	to	3 870	730 888 291	to	8 320	732 201 241	to	1 390
726 563 701	to	4 060	729 682 891	to	3 190	730 927 591	to	7 680	732 355 201	to	5 380
726 599 371	to	9 460	729 838 940	to	9 070	731 402 431	to	2 460	732 446 761	to	6 850
727 182 271	to	2 510	729 839 101	to	9 130	731 407 232	to	7 320	732 507 811	to	7 900
727 416 181	to	6 240	<b>730 077 683</b>	<b>to</b>	<b>7 840</b>	731 588 301	to	8 340	732 961 261	to	1 320
727 481 431	to	1 460	730 109 847	to	9 880	731 703 211	to	3 240	733 297 171	to	7 290
727 749 241	to	9 780	730 373 761	to	3 850	731 767 273	to	7 320	733 446 631	to	7 110
728 382 331	to	2 480	730 501 951	to	2 130	731 781 061	to	1 120	733 474 665	to	4 770
728 458 201	to	8 260	730 519 379	to	9 470	731 841 377	to	1 450	733 751 041	to	1 130
						731 837 821	to	7 910	736 366 051	to	6 110

—Inspection Service, 11-20-97

## Counterfeited Canadian Money Order Forms

### Do Not Cash

To be posted and used by retail window employees. As directed, destroy previous notices. All interim notices should be destroyed when the numbers listed appear in the *Postal Bulletin*.

671,819,086	686,794,382
676,612,640	686,794,426
677,891,039	686,794,427
678,282,493	686,794,431
678,916,031	687,262,502
679,552,215	687,262,503
679,751,983	687,262,525
679,694,334	687,262,526
679,800,207	687,287,578
681,130,536	687,287,581
681,844,376	687,287,582
683,594,542	694,063,898
684,683,610	694,063,899
686,619,878	694,063,980
686,619,886	701,321,725
686,619,887	

—Inspection Service, 11-20-97

## 800 Number Available to Verify Canadian Money Orders

The Canada Post Corporation is now providing an 800 number that cashing agents can call to verify the validity of Canadian Postal Money Orders. The number is 1-800-563-0444.

This 800 number is printed on the back of the Canadian Postal Money Orders.

—Inspection Service, 11-20-97

### Invalid Express Mail Corporate Account Numbers

These numbers are to be posted and used by retail/acceptance clerks. This listing supersedes all previous notices, which must be destroyed. Retail/acceptance clerks must not accept Express Mail shipments bearing any of the invalid numbers (listed below) in the "customer number" or

"agreement number" section of the label or form.

**Note:** The first 6 digits of a 9-digit Custom Designed Service and Next Day Pickup Service Agreement make up the Corporate Account Number.

<b>005139</b>	014659	020408	022426	028129	042312	064832	070959	085642	093406	097053	098406	108027
005290	014689	020412	022457	028261	044057	064897	071113	085646	093474	097055	098408	108197
006003	014791	020421	022465	028338	044061	064902	071263	085654	093762	097071	098453	108310
006125	014851	020427	022480	028447	045004	064969	071328	085756	093775	097244	098477	108452
006171	014878	020433	022506	028450	045301	065060	071333	085762	093914	097253	098499	108483
006197	014934	020442	022513	028466	045307	065160	071357	088162	093944	097308	<b>100342</b>	108538
006444	015103	020446	022534	028504	047098	065190	071477	088351	094016	097309	100387	108571
006634	015142	020515	022558	028556	048036	065239	071545	088383	094100	097381	100388	108624
006705	015316	020541	022559	028719	051013	065296	071884	088509	094140	097391	100565	108659
006708	015323	021016	022598	028747	051016	065347	075174	088581	094210	097435	100599	108675
006725	015398	021027	022618	028881	051057	065386	075228	088603	094331	097441	101107	108700
006932	016013	021038	022641	028892	052052	065387	075333	088634	094488	097512	101240	108727
006997	016092	021053	022658	028901	054159	065628	075380	088660	094591	097554	102081	108739
007072	016283	021099	022662	028999	054174	065695	075384	088664	094769	097564	102311	108795
007336	016847	021147	022671	029347	055021	065759	075390	088690	094791	097574	102423	108828
007372	016931	021158	022750	029357	055074	065802	075400	088694	094797	097587	102463	108839
008140	016934	021182	022778	029631	055241	065815	075412	089149	095122	097605	102519	108850
008469	018158	021205	022779	029646	056046	065880	075432	089294	095125	097618	102635	109199
008475	018160	021233	022860	029668	058021	065964	075514	089699	095174	097632	102677	109592
008532	018207	021338	022879	029930	058071	065967	075520	089863	095207	097635	102731	109666
008649	018396	021443	022887	029977	058073	066101	075848	089886	095368	097643	102918	109734
008678	018443	021483	022936	030115	060063	066272	075907	089937	095428	097652	102979	109813
008693	018702	021535	022993	030160	060146	066296	075913	090154	095457	097654	103202	109835
008793	018786	021543	023083	030195	060157	066433	075926	090208	095519	097778	103722	109861
008809	018817	021557	023122	030226	060275	067194	076261	090330	095654	097827	103736	109894
008818	018872	021577	023241	030294	060303	067246	076348	090640	095687	097841	103785	109918
008823	018890	021593	023270	030329	060435	067315	076805	090692	095868	097900	103848	109940
008831	018961	021621	023288	030377	060485	068180	076881	090822	095899	097908	103949	109968
008846	019265	021661	023318	030404	060494	068346	076973	091042	095926	097954	104247	110068
008902	019283	021691	023330	030441	060495	068351	076995	091099	096018	097976	104404	110132
009043	019297	021781	023359	030449	060596	068358	077005	091116	096051	097987	104483	110135
009234	019452	021799	023434	030465	060709	068410	077029	091153	096070	097992	104500	110346
009289	019575	021807	023456	032032	060913	068554	077072	091224	096086	098008	104619	110374
009375	019580	021839	023491	034606	061004	068635	077278	091306	096210	098011	104645	110413
009402	019803	021952	023512	037104	061190	069416	077566	091404	096245	098046	105072	110414
009465	019823	021964	023517	038021	061257	069630	077654	091457	096288	098063	105164	110508
009543	019887	021991	023520	038091	062096	069666	077832	091561	096340	098083	105471	110578
009676	020143	022006	023569	038094	062099	070008	077835	091645	096341	098090	105491	110616
009811	020155	022013	023578	038123	063113	070078	078182	091654	096371	098117	105711	110648
009994	020215	022033	023606	038151	063170	070156	078204	091781	096373	098166	105762	110654
010359	020225	022087	024164	038204	063173	070244	078242	091915	096445	098169	105903	110655
010649	020245	022089	024173	038497	063404	070263	079795	092144	096453	098180	105930	110750
010709	020271	022150	024179	038520	064060	070367	080057	092150	096518	098216	106439	110838
010718	020274	022158	025144	040112	064145	070409	080271	092170	096544	098233	106510	110839
012385	020279	022188	025338	040305	064193	070493	080312	092216	096598	098236	106515	110853
013160	020289	022340	025400	040315	064302	070540	080313	092376	096664	098243	106579	110854
013193	020304	022350	026570	041094	064321	070576	080391	092602	096690	098254	107060	110856
013237	020327	022352	027025	041153	064448	070623	080435	092615	096704	098273	107085	110858
013238	020363	022365	027028	041194	064552	070706	080505	092698	096865	098320	107191	111252
014408	020378	022392	027585	041327	064606	070768	080719	092853	096900	098386	107263	111383
014632	020399	022416	027891	041344	064729	070915	085170	093075	096931	098393	107305	111443
014658	020402	022425	027947	042310	064819	070916	085296	093088	096940	098402	107328	111460

111539	117333	132043	142709	148241	191500	207162	221588	276020	314319	330058	335365	344076
111564	117374	132057	142719	148257	191577	207274	221603	276036	314387	330063	335652	344088
111635	117521	132116	142749	148285	191650	207300	221645	276049	314390	330077	335694	344118
111739	117535	132157	142750	148309	191691	207307	222290	276064	314999	330127	335892	347086
112499	117540	132161	142766	148314	191839	207332	222323	276074	315001	330200	335906	349012
112632	117581	132173	142767	148315	191841	207360	222335	276320	317260	330217	336009	349070
112753	117583	132261	142798	148339	191869	207374	223123	277021	317264	330223	336020	349116
113019	117727	132434	142811	148344	191987	207409	223344	278887	320153	330228	336021	349272
113038	117762	133003	142821	148369	191996	207471	224012	282229	320974	330384	336024	349487
113085	118009	133009	142827	148404	192057	207501	224014	282741	321141	330409	336026	349564
113094	118164	134030	142832	150054	192113	207521	226063	282785	321196	330502	336048	349698
113123	118547	134045	142843	150089	192179	207573	226076	282801	321273	330520	336055	349989
113148	118690	134049	142851	150189	192208	207585	227113	282807	321385	330525	336095	350030
113187	118708	135140	142855	151030	192227	207589	229054	282883	322018	330558	336300	350064
113207	119060	135149	142856	151156	192253	207601	229063	283146	322073	330563	336395	350075
113214	119108	135231	142858	151193	192286	207660	229079	283471	322130	330605	336628	350079
113229	119542	136047	142883	151215	192310	207667	229091	283487	322134	330618	337005	351024
113309	120149	139085	142896	152168	192392	207682	229093	292358	322350	330777	337015	352255
113342	120221	139107	142904	152234	192501	207684	230004	292545	322371	330908	337017	352294
113495	120238	139126	142906	152458	192507	207702	231012	292590	322390	331022	337188	352301
113578	121200	139130	142910	152464	192522	207754	231017	292594	322449	331102	338010	352303
113602	121202	139201	142927	152477	192611	207837	232031	292606	322494	331126	338014	352375
113760	121213	142015	142933	152523	192656	207844	232037	292612	322833	331127	338063	352390
113788	121231	142034	142948	152527	192664	207858	232048	292613	322842	331138	339320	352485
113801	122129	142043	142960	152719	192742	207895	232050	293108	322927	331155	339584	352572
113810	122179	142046	142961	152725	192769	208204	232064	294127	323496	331160	339625	352626
113870	122223	142056	142969	152942	192792	208474	232121	296275	323536	331276	339794	352684
113909	122282	142071	142988	153033	192813	208483	232153	296484	323560	331371	340027	352701
114217	122312	142080	142994	156042	192844	208568	232171	299025	323634	331412	340063	352727
114253	122320	142112	146177	156060	192845	208703	232199	299027	323713	331730	340076	352732
114278	122328	142124	146256	159043	192849	208829	232252	<b>300013</b>	323732	331747	340102	354051
114343	122355	142172	146286	165059	192861	208958	232257	300033	325002	331815	340176	354052
114378	122361	142190	146291	165288	192904	209087	232295	300034	325039	331856	340240	354084
114395	122377	142191	146327	165307	192969	209136	232296	300216	325097	331902	340309	354095
114486	123126	142239	146362	165327	193154	209183	232315	300306	325704	332199	340325	356011
114487	123128	142267	146368	170166	193243	209195	232332	300632	326253	332357	340352	356310
114502	123130	142307	146380	170228	193416	209211	235150	300664	326302	332440	340384	358011
114555	123144	142315	146404	170319	193478	209219	235206	300773	326501	332839	340425	358115
114557	124029	142343	146438	171217	193516	209270	235381	300778	326589	332874	340439	358280
114558	124033	142374	146498	174081	196089	209272	235419	300853	326636	333117	340449	358365
114560	124038	142375	146550	174083	196092	210479	238008	300858	326689	333411	340474	359019
114576	124095	142405	146571	176072	196093	212977	240012	300902	326746	333472	340478	359950
114586	124097	142406	146606	180052	196096	212997	240516	300934	326758	333642	340523	361096
114604	125012	142412	146620	181013	197004	220058	243102	300938	327068	333683	340557	361099
114610	125255	142464	146630	181049	198034	220379	245202	300995	327524	333735	340566	361159
114616	125332	142465	146645	183001	198208	220572	247111	301422	327766	333745	340569	361175
114618	125428	142471	146679	183007	<b>200028</b>	220725	253171	301742	327812	333749	340576	361198
115085	126046	142493	146685	185015	200090	220742	256922	302044	327815	333761	340627	361239
115104	128116	142510	146699	187064	200108	220764	257157	305494	327828	333772	340648	361258
115114	128122	142531	146708	191003	200197	220769	258013	305944	328178	333816	340718	361273
115448	128944	142567	146717	191021	200281	220786	260049	306918	328484	333875	340738	361313
115678	128949	142575	146735	191048	200412	221078	263030	306953	328604	333928	340739	362067
115757	128965	142594	146737	191066	200557	221091	264002	307038	328803	334219	340749	363120
115924	129820	142625	146738	191072	200939	221101	265027	311198	328930	334457	340761	365002
116042	129845	142646	146753	191090	200953	221231	270011	311202	328981	334856	340830	366032
116043	129868	142656	146764	191116	206107	221255	271154	311207	329213	335016	340859	366048
117042	129881	142675	146790	191165	206114	221274	272023	312139	329575	335024	340870	366109
117149	130011	142687	146819	191190	206130	221528	272333	312288	329637	335054	340911	366127
117198	130028	142690	146826	191253	207035	221546	272367	312433	329662	335094	340984	366135
117268	132020	142698	148238	191265	207114	221587	274264	314210	330027	335298	344061	366143

366144	402263	452714	477129	488567	551973	602973	611148	662614	730736	740526	747022	752505
366154	402341	453015	478001	488987	551988	603038	615005	662616	730750	740541	748025	752520
370020	402705	454221	480102	489210	553611	603072	615019	666025	730763	740568	749001	752744
372033	402762	454263	480104	489339	553846	603192	616173	666035	730801	740622	749012	752833
372443	402990	454309	480169	489453	553989	603224	617158	668110	730828	740642	749014	752835
372574	405038	454383	480192	490079	554055	604108	617191	670004	730853	740649	749015	752843
372636	405087	454426	480199	490448	554339	604141	618002	672303	730859	740674	749108	752846
372670	405152	454544	480285	490584	554366	604167	618065	672480	730860	740750	749117	752911
372675	410038	454684	480396	490660	554801	604327	619100	679016	730867	740820	749126	752948
372700	410104	454693	480427	492041	554953	604634	626031	680070	730884	740849	749132	753019
372704	411002	454703	480461	492076	554955	605073	627078	681515	730896	740850	749134	754020
372719	420020	454794	480552	492098	554959	605194	627114	681615	730916	740865	749157	757153
372738	420053	457121	480717	492107	564027	605283	628124	685077	730970	740902	750049	757284
372740	420054	458138	480791	494073	565003	605444	629083	685267	731006	740934	750054	757586
372838	420055	460014	480822	494214	570183	605565	631087	688118	731019	740955	750076	760021
372839	420056	460088	480835	494217	571022	605599	631123	<b>701137</b>	731334	741013	750104	760033
372927	420074	460092	480844	494219	571091	605708	631126	701236	731402	741052	750109	760040
372999	420301	460112	480864	495076	577091	605759	631184	701256	731433	741075	750166	760054
373002	420400	460114	480894	495251	577093	606075	631194	701289	731442	741093	750196	760056
373020	423040	462298	480895	495286	581074	606078	631216	701329	731544	741116	750200	760083
373026	423062	462314	480974	495467	585259	606147	631238	705029	731547	741200	750210	760103
374032	423069	462454	480989	495482	596515	606165	631289	705196	731564	741238	750272	760104
374057	423088	462465	481450	495485	596522	606205	631291	706178	731571	741243	750273	760114
374103	423090	462508	481464	495538	597535	606222	631313	708470	731592	741247	750306	760273
374174	424078	462545	481554	496623	599511	606253	631365	708577	731603	741360	750307	760406
376145	427023	462556	481679	497243	<b>600064</b>	606276	631386	716013	731622	741362	750326	760411
378127	430099	462640	481690	498060	600211	606324	631456	721027	731623	741419	750355	760550
378133	430105	462643	481723	498290	600218	606444	631466	721038	731624	741422	750381	760566
379292	430125	462664	481761	<b>501013</b>	600434	606540	631476	722115	731639	741482	750386	760582
379527	430131	462835	481780	503129	600476	606605	631501	722221	731678	741527	750546	760613
379529	432571	462840	481854	503130	600548	606606	631560	723046	731694	741558	750608	760635
380162	432723	462855	481875	504205	600588	606726	631561	724051	731732	741574	750697	760647
381037	432859	462906	481889	510032	600590	606753	631563	725012	731861	741581	750708	760650
381060	432895	462912	481894	524005	600618	606874	631598	727068	731940	741728	750848	760685
381074	433029	462956	481898	524084	600782	606888	631620	730012	731957	741753	750855	760705
381106	441351	463028	482365	531617	600783	606920	631645	730036	731962	741766	751002	760728
381232	441437	463044	482417	531631	600792	606943	631704	730052	734006	741798	751016	760742
381240	441790	464035	482584	531675	600800	607157	631730	730056	734007	741858	751157	760745
381245	441801	464138	482658	532246	600846	607302	631821	730095	735000	741906	751161	760748
381270	441979	464192	482672	532271	600886	607542	631876	730110	735004	741907	752006	761026
381295	441981	464196	482705	532408	601025	607604	631919	730112	735049	741923	752068	761027
381367	443004	464207	482873	532723	601036	607643	631940	730132	735063	741934	752082	761054
381439	443272	465093	482889	532763	601079	607651	631959	730150	737004	741948	752104	761070
381464	443330	465099	482964	532768	601329	607692	631981	730191	740021	741974	752128	761119
381472	443336	466519	483402	532856	601335	607785	641010	730226	740028	743002	752130	761313
381484	444411	466595	483481	532907	601471	607822	641043	730227	740078	743004	752133	761412
381617	444603	468206	483553	537299	601525	607986	641071	730233	740094	743076	752156	761502
381618	445123	468312	483681	537340	601574	608032	641560	730314	740143	743083	752172	761664
381642	448021	469149	483797	537357	601611	608065	641936	730364	740152	743102	752195	761752
381866	448890	469193	483862	537366	601657	608123	648102	730376	740197	743103	752218	761755
392453	450074	471099	483902	537369	601838	608153	648108	730391	740209	744009	752327	761763
392479	450108	473036	483939	547556	602195	608166	648138	730426	740290	744093	752362	761865
392617	450162	473097	484005	551036	602256	608241	648183	730428	740332	744113	752427	761868
392666	452073	473113	485013	551040	602304	608315	652210	730451	740363	744146	752450	761872
392689	452103	473135	485105	551042	602364	608354	652520	730478	740398	744157	752459	762006
392697	452161	474002	485185	551103	602432	608407	656102	730503	740405	744160	752460	762013
392706	452351	474019	485190	551444	602503	608442	657104	730567	740454	744500	752463	762021
393056	452435	474025	488007	551493	602636	608512	658163	730576	740470	745006	752464	762064
396206	452604	475680	488243	551719	602670	608542	660617	730665	740477	745022	752476	763081
<b>402090</b>	452670	476016	488479	551901	602701	610170	662528	730670	740492	746012	752490	764017

764020	771731	791165	803339	850647	860045	901405	902812	903895	906334	914717	918090	924591
765537	771869	791180	804160	850698	860144	901413	902856	903900	906338	914779	918092	924633
765544	772088	791281	805092	850764	871421	901452	902862	903909	906344	915240	918103	924635
765560	772682	791288	805287	850786	871589	901456	902887	903959	906371	915269	918104	924636
767569	772750	791301	805397	850814	871605	901485	902896	903984	906378	915293	918162	925167
769542	773055	792004	805592	850865	875017	901537	902920	903992	906456	915358	918181	926005
770015	773445	793032	806194	850880	882004	901594	902923	904003	906458	915441	918219	926006
770039	773479	794013	809048	850963	882115	901597	902961	904009	906472	915466	918222	926007
770139	773498	794085	809116	852038	891211	901647	902965	904013	906555	915509	918228	926048
770162	773511	794105	809224	852055	891223	901673	903005	904034	906558	915605	918242	926149
770163	773542	794248	810074	852065	891242	901732	903029	904037	906596	915635	918290	926206
770186	773554	794294	811051	852106	891308	901914	903047	904046	906616	915637	918431	926216
770196	775018	794312	813068	852151	891395	901985	903092	904063	906621	917128	918485	926332
770199	775221	794358	813078	852215	891689	902020	903102	904075	907027	917138	918493	926341
770238	775292	794389	813305	852242	891721	902037	903138	904089	907061	917165	918518	926355
770239	775306	794392	816143	852269	891762	902077	903195	904127	907077	917180	918534	926416
770259	775319	794429	816152	852271	891764	902078	903219	904150	907152	917185	918596	926455
770265	775321	794445	816187	852294	895057	902093	903246	904156	907209	917206	918611	926478
770278	775358	794475	816188	852311	895191	902100	903263	904171	907210	917229	918625	926626
770284	775364	794480	816360	852349	895328	902108	903275	904179	907330	917231	918686	926650
770304	782172	794490	816405	852360	895516	902111	903282	904212	907351	917267	918704	926732
770332	782567	796527	816411	852400	898004	902112	903313	904215	907425	917270	918862	926799
770334	782694	796535	820830	852454	898044	902117	903352	904228	907426	917272	918989	926821
770346	782783	797004	828011	852474	<b>900050</b>	902119	903355	904240	907438	917282	920042	926856
770357	784224	797009	832025	852512	900183	902129	903360	904246	907440	917303	920129	926869
770361	784322	797011	832088	852606	900194	902131	903377	904266	907446	917313	920176	926870
770386	784360	797213	832091	852636	900215	902152	903401	904268	907482	917315	920267	926897
770400	784364	799063	834047	852647	900218	902178	903406	904269	907483	917316	920277	926940
770402	784385	799107	834067	852656	900235	902245	903408	904284	907521	917317	920304	926965
770414	784397	799114	836800	852665	900270	902261	903422	904316	907554	917322	920349	926966
770419	785330	799168	837153	852674	900278	902269	903452	904318	907597	917323	920358	926975
770436	785336	799255	837173	852716	900324	902322	903460	904324	907601	917341	920363	926981
770465	785369	<b>800110</b>	837175	852753	900379	902395	903464	904370	907655	917368	920371	926989
770474	785373	800285	837184	852766	900380	902420	903496	904374	907681	917373	920377	927061
770502	785483	800322	840239	852777	900525	902426	903503	904376	907702	917380	921037	927075
770507	785508	800512	840303	852823	900600	902433	903509	904386	907752	917402	921061	927088
770509	785727	800532	840319	852828	900635	902480	903511	904403	907774	917404	921110	927100
770537	786029	800537	840353	852851	900716	902488	903512	904407	907784	917407	921143	927196
770588	786098	800547	840517	853028	900731	902489	903529	904409	907804	917410	921144	927211
770590	787416	800551	840532	853061	900880	902536	903539	904412	907814	917445	921243	927258
770628	787472	801237	841021	853089	900901	902557	903546	904435	907834	917490	921308	927290
771050	787534	801381	841094	853091	900956	902563	903562	904444	907852	917521	921358	927327
771055	787559	801408	841113	853146	901019	902583	903587	904449	907955	917553	921443	927348
771080	787643	801601	841160	853181	901046	902587	903612	904455	907977	917554	921481	927376
771156	787645	801618	841259	853186	901051	902601	903658	904469	907998	917555	921528	927484
771259	787727	801633	841281	853195	901056	902605	903664	904477	910318	917557	921632	927521
771351	787898	802041	841301	853198	901100	902608	903668	904492	910341	917575	921731	927535
771378	787908	802058	841478	853224	901110	902628	903670	904498	911238	917579	921803	927576
771448	787975	802059	841742	853239	901145	902657	903684	904505	911312	917602	921962	927597
771512	787978	802061	841763	853249	901170	902660	903699	904527	912419	917611	922121	927671
771514	790010	802155	841960	853278	901209	902673	903714	904530	912437	917651	922222	927714
771551	790020	802192	843055	853280	901219	902676	903715	904536	913486	917763	922283	927746
771554	790031	802209	843070	853296	901222	902693	903729	906013	913688	917815	922302	927772
771570	790061	802213	846160	853400	901267	902700	903734	906070	913771	917853	924097	927780
771617	791011	802260	846233	856046	901273	902706	903739	906153	913813	917859	924208	927817
771642	791085	802357	850044	856096	901281	902721	903748	906223	914085	917860	924257	927848
771666	791111	802368	850123	856174	901300	902748	903772	906225	914311	917870	924288	928111
771702	791115	802369	850269	856203	901343	902755	903774	906271	914521	917905	924339	928176
771711	791128	802600	850328	856210	901396	902764	903812	906290	914564	917984	924393	928177
771726	791152	803317	850645	856256	901401	902806	903882	906324	914605	918020	924583	928219



928259	931529	940046	940596	941103	941679	945350	948292	949378	952213	959008	970616	982094
928289	931569	940052	940603	941105	941704	945514	948345	949384	952334	960025	970699	982097
928308	931628	940060	940619	941106	941705	945550	948362	949412	952337	960026	970723	982150
928322	931684	940078	940632	941107	941737	945573	948367	949456	953277	967076	970734	984263
928404	931711	940087	940679	941110	941750	945754	948374	949539	954099	967184	970739	992304
928474	932752	940090	940687	941114	941751	945831	948392	949551	954103	967338	970747	992323
928500	933300	940102	940710	941123	941762	945836	948395	949558	954156	967339	972435	992380
928506	933486	940116	940773	941128	941771	945852	948428	949569	954157	967373	972653	992415
928510	934234	940140	940774	941173	941780	945931	948442	949721	954188	967420	972766	992476
928531	934276	940160	940787	941196	941788	945942	948444	950021	954310	968049	972826	992515
928712	935229	940173	940831	941215	941789	946174	948451	950064	954311	968314	972950	992629
928857	936096	940179	940862	941241	941801	946189	948464	950212	954319	968447	973204	992659
928882	937244	940185	940863	941243	941816	946223	948494	950269	954320	968481	974035	992676
928892	937483	940196	940878	941267	941859	946396	948511	950284	954321	968532	974121	995061
930223	937512	940239	940896	941269	941871	946457	948513	950303	954356	968547	974193	995134
930387	937630	940280	940906	941299	941889	946477	949105	950340	954366	968735	976038	995548
930391	937640	940305	940936	941322	941892	946511	949171	950344	954419	968751	977059	995779
931056	937713	940317	940951	941342	941898	946515	949182	950546	954714	968772	980076	995948
931057	937745	940322	940961	941405	941908	947032	949183	950591	955016	968809	980238	995967
931100	937789	940329	940978	941429	941910	947056	949214	950706	955310	968854	980284	997080
931152	937802	940345	941009	941483	941933	947094	949223	950748	955801	968879	980319	997134
931157	937842	940488	941010	941513	941934	947242	949231	950776	958349	970094	980419	998178
931170	937845	940494	941014	941611	941953	948139	949232	950821	958578	970196	980478	998312
931171	939016	940531	941027	941616	941955	948182	949300	951203	958762	970325	980948	998340
931174	940002	940545	941043	941630	941981	948204	949315	951220	958800	970430	980960	998500
931175	940012	940547	941057	941652	941983	948210	949344	951376	958861	970431	980977	
931413	940017	940565	941058	941659	941989	948258	949370	951563	958863	970597	981873	
931478	940038	940567	941077	941678	941995	948286	949371	951858	958902	970601	982083	

—Express and Priority Mail, Marketing, 11-20-97

# International Mail

IMM AND PUBLICATION 273 REVISION

## Express Mail International Service to Haiti

Effective immediately, Haiti has increased the number of destination areas for Express Mail International Service (EMS) shipments and increased the weight limit for EMS shipments to 70 pounds. The newly added areas are indicated by an asterisk.

Make a pen and ink change to the Haiti listing in the Individual Country Listing section of the *International Mail Manual* (IMM) and replace the current EMS chart with the chart below.

IMM Issue 20 and a future edition of Publication 273, *Express Mail International Service Guide*, will include this change.

### Country: Haiti

*Aquin	Delmas	*Miragoane
*Cap-Haitien	*Gonaives	Petion-Ville
Carrefour	*Jacmel	*Petit-Goave
*Cayes	*Jeremie	Port-au-Prince
Croix-des-Bouquets	Kenscoff	*Saint Marc
Croix-des-Missions	Leogane	

Postage Rates		
On Demand	Weight Not Over (lbs.)	Custom Designed
\$18.00	1/2	\$26.00
19.75	1	27.75
26.00	2	34.00
29.50	3	37.50
33.50	4	41.50
37.50	5	45.50
41.40	6	49.40
45.30	7	53.30
49.20	8	57.20
53.10	9	61.10
57.00	10	65.00
60.90	11	68.90
64.80	12	72.80
68.70	13	76.70
72.60	14	80.60
76.50	15	84.50
80.40	16	88.40
84.30	17	92.30
88.20	18	96.20
92.10	19	100.10
96.00	20	104.00
99.90	21	107.90
103.80	22	111.80
107.70	23	115.70
111.60	24	119.60
115.50	25	123.50

Postage Rates		
On Demand	Weight Not Over (lbs.)	Custom Designed
119.40	26	127.40
123.30	27	131.30
127.20	28	135.20
131.10	29	139.10
135.00	30	143.00
138.90	31	146.90
142.80	32	150.80
146.70	33	154.70
150.60	34	158.60
154.50	35	162.50
158.40	36	166.40
162.30	37	170.30
166.20	38	174.20
170.10	39	178.10
174.00	40	182.00
177.90	41	185.90
181.80	42	189.80
185.70	43	193.70
189.60	44	197.60
193.50	45	201.50
197.40	46	205.40
201.30	47	209.30
205.20	48	213.20
209.10	49	217.10
213.00	50	221.00
216.90	51	224.90
220.80	52	228.80
224.70	53	232.70
228.60	54	236.60
232.50	55	240.50
236.40	56	244.40
240.30	57	248.30
244.20	58	252.20
248.10	59	256.10
252.00	60	260.00
255.90	61	263.90
259.80	62	267.80
263.70	63	271.70
267.60	64	275.60
271.50	65	279.50
275.40	66	283.40
279.30	67	287.30
283.20	68	291.20
287.10	69	295.10
291.00	70	299.00

**Maximum Weight: 70 lbs.**

IMM REVISION

**International Mail Labeling Changes**

Effective November 20, 1997, the *International Mail Manual* (IMM) is revised to incorporate labeling and routing changes for Bulk Letter Service Mail to Canada and International Priority Airmail. The regulatory changes contained in this announcement will be incorporated into IMM Issue 20.

**Bulk Letter Service Mail to Canada**

1. Exhibit 225.1 is revised to reflect new labeling and routing instructions for working trays of Bulk Letter Service mail to Canada. It specifies which ZIP Code areas dispatch Bulk Letter Service mail to each of the designated USPS exchange offices.
2. The Working Tray Label example in section 225.34 is replaced.

**International Priority Airmail (IPA)**

1. Exhibit 284.622 is revised to reflect new labeling and routing instructions for sacks of IPA mail. It specifies which ZIP Code areas dispatch IPA mail to each of the designated USPS exchange offices.
2. The Mixed Direct Country Sack Label example in section 284.622 and the Worldwide Nonpresort Mail Sack Label example in section 284.632 are replaced.

**International Mail Manual (IMM)**

<b>2</b>	<b>Conditions for Mailing</b>	* * * * *
<b>225</b>	<b>Bulk Letter Service (Canada Only)</b>	* * * * *

**Exhibit 225.1**

**Bulk Letter Service to Canada Working Tray Labels**

Mailing Office ZIP Code Prefix Ranges	Line 1 U.S. Exchange Office
004-005, 010-098, 100-129, 150-199, 250-267	AMC KENNEDY NY 003
130-149	P&DC BUFFALO NY 140
200-249, 254, 268, 283-285, 400-418, 420-427, 476-477	P&DC DULLES VA 201
270-282, 286-326, 344, 350-397, 399	AMC ATLANTA GA 300
335-339, 341-342, 346	P&DC TAMPA FL 335
006-009, 327-334, 340, 347, 349	AMC MIAMI FL 330
430-459, 480-497	AMC DETROIT MI 481
460-479, 498-516, 520-528, 530-567, 570-578, 600-631, 633-641, 644-658, 660-662, 664-681, 683-693, 739, 800-816, 822-831, 840-847, 870-884, 893, 898	AMC O'HARE IL 606
700-708, 710-738, 740-799, 885	ISC DALLAS TX 753
590-599, 821, 832-838, 970-986, 988-999	AMC SEATTLE WA 980
850, 852-853, 855-857, 859-860, 863-865, 889-891, 896, 900-908, 910-928, 930-936	AMC LOS ANGELES CA 900
894-895, 897, 937-966	AMC SAN FRANCISCO CA 940
967-969	P&DC HONOLULU HI 967

\* \* \* \* \*

**225.34 Labels**

\* \* \* \* \*

**Example:**

AMC KENNEDY NY 003  
LTRS CANADA WKG  
XYZ MAILING CO NEW YORK NY

\* \* \* \* \*

**284 Preparation Requirements for Individual Items**

\* \* \* \* \*

**284.622 Mixed Direct Country Sack Label**

\* \* \* \* \*

**Example:**

AMC MIAMI FL 330  
INTL PRIORITY AIR DRX  
ABC TRADING CORP FT LAUDERDALE FL

\* \* \* \* \*

**Exhibit 284.622**

**Labeling of IPA Mail to USPS Exchange Offices**

IPA Acceptance Office 3-Digit ZIP Code Prefix	U.S. Exchange Office and Routing Code for Line 1
004-005, 010-098, 100-199, 250-267	AMC KENNEDY NY 003
200-249, 254, 268, 283-285, 400-418, 420-427, 476-477	P&DC DULLES VA 201
270-282, 286-326, 344, 350-397, 399	AMC ATLANTA GA 300
006-009, 327-342, 346-347, 349	AMC MIAMI FL 330
424, 430-459, 460-516, 520-528, 530-532, 534-535, 537-567, 570-588, 600-620, 622-631, 633-641, 644-658, 660-662, 664-681, 683-693, 739	AMC O'HARE 606
700-708, 710-738, 740-799, 885	ISC DALLAS TX 753
590-599, 821, 832-838, 970-986, 988-999	AMC SEATTLE WA 980
850, 852-853, 855-857, 859-860, 863-865, 870-875, 877-884, 889-891, 900-908, 910-928, 930-936	AMC LOS ANGELES CA 900
800-816, 820, 822-831, 840-847, 893-898, 937-966	AMC SAN FRANCISCO CA 940
967-969	P&DC HONOLULU HI 967

\* \* \* \* \*

**284.632 Worldwide Nonpresort Mail Sack Label**

\* \* \* \* \*

**Example:**

AMC LOS ANGELES CA 900  
INTL PRIORITY AIR WKG  
BCD EXPORT CO LONG BEACH CA

\* \* \* \* \*

IMM REVISION

**Changes in the Conditions of Mailing**

The *International Mail Manual* (IMM) is revised to change conditions of mailing to Macao, Romania, and Singapore. These changes will be included in IMM Issue 20.

**Macao**

Effective November 20, 1997, the size limits for air and surface parcels is increased to **60 inches** (maximum length) and **108 inches** (maximum length and girth combined).

**Romania**

*Postal Bulletin* 21955 (9-25-97) announced that the prohibition against enclosing merchandise and articles subject to customs duty no longer applied to Express Mail International Service (EMS) shipments to Romania. Therefore, effective November 20, 1997, an entry that pertains to the mailing of merchandise samples without commercial value is

**added** to the EMS customs form information for that country. It reads as follows:

Articles Admitted	Required Customs Form/Endorsement
Merchandise samples without commercial value.	PS Form 2976, <i>Customs - CN 22 (Old C1) and Sender's Declaration</i> (green label). Endorse item clearly next to mailing label as SAMPLES.

**Singapore**

Effective December 1, 1997, the maximum indemnity limit for insured air and surface parcels is increased to **\$4,975**.

—Pricing, Costing, & Classification,  
*International Business Unit, 11-20-97*

# Philately

STAMP ANNOUNCEMENT 97-44

## Mars Pathfinder ("Mars Rover Sojourner") Priority Mail Stamp



### Copyright USPS 1997

The Postal Service will issue a \$3 Priority Mail stamp, the *Mars Pathfinder* Souvenir Sheet, in a water-activated pane of one (Item 5598), on December 10, 1997, in Pasadena, California. The stamp goes on sale nationwide December 11, 1997.

Designed by Terry McCaffrey of the U.S. Postal Service, the stamp features the *Sojourner* rover resting on the *Pathfinder* with a panoramic view of the Ares Vallis region of Mars in the background. Due to the many unique features associated with this issue, both Priority Mail users and stamp collectors will be attracted to this stamp issue.

A very limited run of only 15 million stamps will be produced and the stamps will be on sale for a limited period — just six months. Additionally, the printing plates are scheduled for immediate destruction, ensuring that no additional quantities of this unique stamp will be reprinted. As with previous stamps (specifically the 1997 Classic Movie Monsters, the 1997 Department of the Air Force, and the 1997 Padre Felix Varela), the Mars Landing stamp will feature a hidden message visible only through the USPS STAMP DECODER (the DECODER is available through the Philatelic Fulfillment Service Center (PFSC) for \$4.95). Another unique feature of this stamp are the letters "USA" in the stamp perforation. This stamp, the largest in size ever produced by the Postal Service, could be the first sellout of 1998.

The products associated with this stamp are:

A **Press Sheet** of 18 stamps: a limited quantity of only 5,000 are available through the PFSC, *USA Philatelic* catalog.

<b>Issue:</b>	Mars Pathfinder
<b>Denomination &amp; Type of Issue:</b>	\$3.00 Souvenir Sheet
<b>Format:</b>	Pane of one (one design)
<b>Item Number:</b>	5598
<b>Issue Date &amp; City:</b>	December 10, 1997, Pasadena, CA
<b>Photographer:</b>	NASA
<b>Designer:</b>	Terry McCaffrey, USPS, Stamp Services
<b>Art Director:</b>	Terry McCaffrey, USPS, Stamp Services
<b>Typographer:</b>	Terry McCaffrey, USPS, Stamp Services
<b>Modeler:</b>	Donald H. Woo
<b>Manufacturing Process:</b>	Gravure
<b>Printer:</b>	Stamp Venturers (SVS)
<b>Colors (PMS Colors):</b>	Magenta, yellow, cyan, black, and metallic bronze
<b>Image Area:</b>	1.5 x 3.0 in./38.10 x 76.20 mm
<b>Overall Size:</b>	1.5 x 3.0 in./38.10 x 76.20 mm
<b>Full Pane Size:</b>	3.25 x 5.75 in./82.55 x 146.05 mm
<b>Catalog Item Number:</b>	559800 Pane of one — \$3.00

A **Matted Pane** of the Mars Pathfinder stamp, suitable for framing: a limited quantity of 10,000 is available through the PFSC, *USA Philatelic* catalog.

A limited production (5,000) **Framed Collectible** featuring the \$.18 Space Achievement, the \$2.40 Moon Landing, and eight other previously released space-related issues (many no longer on sale) available through the PFSC, *USA Philatelic* catalog.

### How to Order the First Day of Issue Postmark

Customers have 30 days to obtain the first day of issue postmark by mail. They may purchase the new stamp at their local post offices, affix the stamp to envelopes of their choice, address the envelopes (to themselves or others), and place them in a larger envelope addressed to:

MARS PATHFINDER STAMP  
POSTMASTER  
600 LINCOLN AVE  
PASADENA CA 91109-9998

After applying the first day of issue postmark, the Postal Service returns the envelopes through the mail. There is no charge for the postmark. All orders must be postmarked by January 9, 1998.

The Philatelic Fulfillment Service Center also offers first day covers for new stamp issues and postal stationery items postmarked with the official first day of issue cancellation. Each item has an individual catalog number and is offered in the quarterly *USA Philatelic* catalog. Customers may request a free catalog by writing to:

INFORMATION FULFILLMENT  
 US POSTAL SERVICE  
 DEPT 6270  
 PO BOX 419014  
 KANSAS CITY MO 64141-6014

or by telephoning 1 800 STAMP-24.

First day covers remain on sale for at least one year after the stamp's issuance.

**Distribution**

Stamp distribution offices (SDOs) and stamp distribution networks (SDNs) will receive an automatic distribution of this one stamp per pane souvenir sheet in master cartons of 5,000 panes/stamps.

SDOs and SDNs That Receive This Standard Distribution Quantity for Commemorative Sheet Stamps	Will Receive This Quantity of <i>Mars Pathfinder</i> Souvenir Sheets, Item 5598
150,000 to 250,000	50,000
280,000 to 500,000	75,000
625,000 to 1,000,000	100,000
1,120,000 to 1,375,000	125,000
1,500,000 to 2,000,000	150,000
3,375,000	250,000
5,125,000	500,000

*Initial Supply for Post Offices*

The Minneapolis Information System Service Center **will not** use Form 3309, *Advice of Shipment/Stamp Invoice*, to automatically distribute this one stamp per pane souvenir sheet to post offices. To obtain an initial supply of *Mars Pathfinder* souvenir sheets, all post offices must immediately submit a separate Form 17, *Stamp Requisition*, to their designated SDO. Post offices under the SDN concept must follow their normal procedures for acquiring supplies of this item. SDOs and SDNs must not distribute stamps to post offices before **December 3, 1997**.

*Philatelic Requirement*

SDOs and SDNs **will not** receive a separate quantity for their authorized philatelic centers. Philatelic centers must be supplied their quantities from the initial automatic distribution made to the SDOs and SDNs.

*Additional Supply*

Post offices requiring additional souvenir sheets must requisition them from their designated SDO or SDN, using Form 17. SDOs requiring additional souvenir sheets must order them from the appropriate accountable paper depository (APD) using Form 17.

The Kansas City and Dulles SDNs will receive 326,000 and 250,000 souvenir sheets respectively for filling supplemental orders. All APDs will receive 150,000 souvenir sheets for filling supplemental orders, with the exception of Denver APD, which will receive 75,000 souvenir sheets.

*Sales Policy*

All post offices must acquire and maintain a supply of each new commemorative stamp as long as customer demand exists or the stamp is officially withdrawn from sale, generally one year from date of issue. If supplies run low, post offices must reorder additional quantities using their normal ordering procedures.

—Stamp Services, Marketing, 11-20-97

## Pictorial Cancellations Announcement 97-23

As a community service, the Postal Service offers pictorial cancellations to commemorate local events celebrated in communities throughout the nation. A list of upcoming events for which pictorial cancellations are authorized appears below. If available, the sponsor of the pictorial cancellation appears in italics under the date. Also provided, as space permits, are illustrations of those cancellations that were reproducible and available at press time.

People attending these local events may obtain the cancellation in person at the temporary post office station established there. Those who cannot attend the event, but who wish to obtain the cancellation, may submit a mail order request. Pictorial cancellations are available only for the dates indicated, and *requests must be postmarked no later than 30 days following the requested pictorial cancellation date.*

All requests must include a stamped envelope or postcard bearing at least the minimum First-Class Mail postage (32 cents per envelope or 20 cents per postcard). Items sub-

mitted for cancellation may not include postage issued after the date of the requested cancellation. Such items will be returned unserved.

Customers wishing to obtain a cancellation should affix stamps to any envelope or postcard of their choice, address the envelope or postcard to themselves or others, insert a card of postcard thickness in envelopes for sturdiness, and tuck in the flap. Place the envelope or postcard in a larger envelope and address it to: PICTORIAL CANCELLATIONS, followed by the NAME OF THE STATION, ADDRESS, CITY, STATE, ZIP + 4 CODE, exactly as listed below (using all capitals and no punctuation, except the hyphen in the ZIP + 4 code).

After applying the pictorial cancellation, the Postal Service returns the envelope or postcard through the mail. Customers who want their serviced item returned under protected cover should include a larger, stamped, self-addressed envelope.



BUY RECYCLED  
November 12, 1997  
Springfield MA 01101

November 12, 1997

AMERICA RECYCLES DAY STATION  
POSTMASTER  
1883 MAIN ST  
SPRINGFIELD MA 01101-9998

November 12, 1997

AMERICA RECYCLES DAY STATION  
POSTMASTER  
212 FENN ST  
PITTSFIELD MA 01201-9998

November 12, 1997

AMERICA RECYCLES DAY STATION  
POSTMASTER  
204 MAIN ST  
BRATTLEBORO VT 05301-9998

November 13, 1997

AMERICA RECYCLES DAY STATION  
POSTMASTER  
11 ELMWOOD AVE  
BURLINGTON VT 05401-9711

November 13, 1997

AMERICA RECYCLES DAY STATION  
POSTMASTER  
151 WEST ST  
RUTLAND VT 05701-9998





October 1–December 31, 1997

CLASSIC MOVIE MONSTERS STATION  
PLANT MANAGER  
345 HERITAGE AVE  
PORTSMOUTH NH 03901-9997

CLASSIC MOVIE MONSTERS STATION  
PLANT MANAGER  
24 CORLISS ST  
PROVIDENCE RI 02904-9997

CLASSIC MOVIE MONSTERS STATION  
PLANT MANAGER  
1335 JEFFERSON RD  
ROCHESTER NY 14692-9998

CLASSIC MOVIE MONSTERS STATION  
PLANT MANAGER  
190 FIBERLOID ST  
SPRINGFIELD MA 01152-9997

CLASSIC MOVIE MONSTERS STATION  
PLANT MANAGER  
427 WEST AVE  
STAMFORD CT 06910-9997

CLASSIC MOVIE MONSTERS STATION  
PLANT MANAGER  
5640 EAST TAFT RD  
SYRACUSE NY 13220-9997

CLASSIC MOVIE MONSTERS STATION  
PLANT MANAGER  
100 PITCHER ST  
UTICA NY 13504-9997

CLASSIC MOVIE MONSTERS STATION  
PLANT MANAGER  
135 GRAND ST  
WATERBURY CT 06701-9997

CLASSIC MOVIE MONSTERS STATION  
PLANT MANAGER  
10 SYKES AVE  
WHITE RIVER JCT VT 05001-9997

CLASSIC MOVIE MONSTERS STATION  
PLANT MANAGER  
235 FOREST ST  
WAUSAU WI 54401-9997

CLASSIC MOVIE MONSTERS STATION  
PLANT MANAGER  
701 N LOARA ST  
ANAHEIM CA 92803-9998

CLASSIC MOVIE MONSTERS STATION  
PLANT MANAGER  
3400 PEGASUS DR  
BAKERSFIELD CA 93380-8000

CLASSIC MOVIE MONSTERS STATION  
PLANT MANAGER  
1900 E ST  
FRESNO CA 93706-8000

CLASSIC MOVIE MONSTERS STATION  
PLANT MANAGER  
3600 AOELLE ST  
HONOLULU HI 96820-9998

CLASSIC MOVIE MONSTERS STATION  
PLANT MANAGER  
15421 GALE AVE  
CITY OF INDUSTRY CA 91715-9998

CLASSIC MOVIE MONSTERS STATION  
PLANT MANAGER  
2300 REDONDO AVE  
LONG BEACH CA 90809-8998

CLASSIC MOVIE MONSTERS STATION  
PLANT MANAGER  
7001 S CENTRAL AVE RM 354  
LOS ANGELES CA 90052-9997

CLASSIC MOVIE MONSTERS STATION  
PLANT MANAGER  
11251 RANCHO CARMEL DR  
SAN DIEGO CA 92199-9997

CLASSIC MOVIE MONSTERS STATION  
PLANT MANAGER  
13031 W JEFFERSON BLVD  
INGLEWOOD CA 90311-9998

CLASSIC MOVIE MONSTERS STATION  
PLANT MANAGER  
407 C ST  
MARYSVILLE CA 95901-9998

CLASSIC MOVIE MONSTERS STATION  
PLANT MANAGER  
1150 N MCDOWELL BLVD  
PETALUMA CA 94999-9998

CLASSIC MOVIE MONSTERS STATION  
PLANT MANAGER  
1675 7TH ST  
OAKLAND CA 94615-9998

CLASSIC MOVIE MONSTERS STATION  
PLANT MANAGER  
2901 E CAMINO DEL SOL  
OXNARD CA 93030-9998

CLASSIC MOVIE MONSTERS STATION  
PLANT MANAGER  
600 LINCOLN AVE  
PASADENA CA 91109-9998

CLASSIC MOVIE MONSTERS STATION  
PLANT MANAGER  
3775 INDUSTRIAL BLVD  
W SACRAMENTO CA 95799-9998

CLASSIC MOVIE MONSTERS STATION  
PLANT MANAGER  
1011 POST DR  
SALINAS CA 93909-9998

CLASSIC MOVIE MONSTERS STATION  
PLANT MANAGER  
PO BOX 884024  
SAN FRANCISCO CA 94188-4024

CLASSIC MOVIE MONSTERS STATION  
PLANT MANAGER  
1750 LUNDY AVE  
SAN JOSE CA 95101-8000

CLASSIC MOVIE MONSTERS STATION  
PLANT MANAGER  
3101 W SUNFLOWER  
SANTA ANA CA 92799-9998

CLASSIC MOVIE MONSTERS STATION  
PLANT MANAGER  
PO BOX 1900  
GOLETA CA 93116-9997

CLASSIC MOVIE MONSTERS STATION  
PLANT MANAGER  
3131 ARCH AIRPORT RD  
STOCKTON CA 95213-9998

CLASSIC MOVIE MONSTERS STATION  
PLANT MANAGER  
15701 SHERMAN WAY  
VAN NUYS CA 91409-9998

CLASSIC MOVIE MONSTERS STATION  
PLANT MANAGER  
PO BOX 8530  
SAN DIEGO CA 92186-9997

CLASSIC MOVIE MONSTERS STATION  
PLANT MANAGER  
3900 CROWN RD SW  
ATLANTA GA 30304-9997

CLASSIC MOVIE MONSTERS STATION  
PLANT MANAGER  
525 8TH ST  
AUGUSTA GA 30901-9997

CLASSIC MOVIE MONSTERS STATION  
PLANT MANAGER  
351 24TH ST N  
BIRMINGHAM AL 35203-9979

CLASSIC MOVIE MONSTERS STATION  
PLANT MANAGER  
6050 SHALLOWFORD RD  
CHATTANOOGA TN 37421-9998

CLASSIC MOVIE MONSTERS STATION  
PLANT MANAGER  
500 BILL FRANCE BLVD  
DAYTONA BEACH FL 32114-9997

CLASSIC MOVIE MONSTERS STATION  
PLANT MANAGER  
1900 W OAKLAND PARK BLVD  
FORT LAUDERDALE FL 33310-9998

CLASSIC MOVIE MONSTERS STATION  
PLANT MANAGER  
14080 JETPORT LOOP  
FORT MYERS FL 33913-9997

CLASSIC MOVIE MONSTERS STATION  
PLANT MANAGER  
4600 SW 34TH ST  
GAINESVILLE FL 32708-9997

CLASSIC MOVIE MONSTERS STATION  
PLANT MANAGER  
1110 HIGHWAY 49 N  
GULFPORT MS 39503-9997

CLASSIC MOVIE MONSTERS STATION  
PLANT MANAGER  
3408 WALL TRIANA HWY  
HUNTSVILLE AL 35813-9979

CLASSIC MOVIE MONSTERS STATION  
PLANT MANAGER  
401 E SOUTH ST  
JACKSON MS 39201-9997

CLASSIC MOVIE MONSTERS STATION  
PLANT MANAGER  
1100 KINGS RD  
JACKSONVILLE FL 32203-9997

CLASSIC MOVIE MONSTERS STATION  
PLANT MANAGER  
1237 E WEISGARBER RD  
KNOXVILLE TN 37950-9997

CLASSIC MOVIE MONSTERS STATION  
PLANT MANAGER  
2800 LAKELAND HILLS BLVD  
LAKELAND FL 33805-9997

CLASSIC MOVIE MONSTERS STATION PLANT MANAGER 451 COLLEGE ST MACON GA 31213-9998	CLASSIC MOVIE MONSTERS STATION PLANT MANAGER 3200 SUMMIT BLVD WEST PALM BEACH FL 33406-9998	CLASSIC MOVIE MONSTERS STATION PLANT MANAGER 4600 ALDINE BENDER RD RM 224 HOUSTON TX 77315-9998	CLASSIC MOVIE MONSTERS STATION PLANT MANAGER 1001 E SUNSET RD LAS VEGAS NV 89199-5000
CLASSIC MOVIE MONSTERS STATION PLANT MANAGER 850 TALLEVAST RD MANASOTA FL 34260-9998	CLASSIC MOVIE MONSTERS STATION PLANT MANAGER 2301 ROSS ST AMARILLO TX 79120-9997	CLASSIC MOVIE MONSTERS STATION PLANT MANAGER 951 W BETHEL RD COPPELL TX 75099-8888	CLASSIC MOVIE MONSTERS STATION PLANT MANAGER 900 JEFFERSON ST SE OLYMPIA WA 98501-9998
CLASSIC MOVIE MONSTERS STATION PLANT MANAGER 555 S 3RD ST MEMPHIS TN 38101-9997	CLASSIC MOVIE MONSTERS STATION PLANT MANAGER 8225 CROSS PARK DR AUSTIN TX 78710-9997	CLASSIC MOVIE MONSTERS STATION PLANT MANAGER 320 SW 5TH ST OKLAHOMA CITY OK 73125-9998	CLASSIC MOVIE MONSTERS STATION PLANT MANAGER 3500 W COURT ST PASCO WA 99301-9998
CLASSIC MOVIE MONSTERS STATION PLANT MANAGER 2200 NW 72ND AVE MIAMI FL 33152-9998	CLASSIC MOVIE MONSTERS STATION PLANT MANAGER PO BOX 262100 BATON ROUGE LA 70836-9998	CLASSIC MOVIE MONSTERS STATION PLANT MANAGER 10410 PERRIN BEITEL RD SAN ANTONIO TX 78284-9997	CLASSIC MOVIE MONSTERS STATION PLANT MANAGER 4949 E VAN BUREN ST RM 186 PHOENIX AZ 85026-9998
CLASSIC MOVIE MONSTERS STATION PLANT MANAGER 800 RINEHARD RD LAKE MARY FL 32799-9997	CLASSIC MOVIE MONSTERS STATION PLANT MANAGER 5815 WALDEN RD BEAUMONT TX 77707-9997	CLASSIC MOVIE MONSTERS STATION PLANT MANAGER 2400 TEXAS AVE SHREVEPORT LA 71102-9997	CLASSIC MOVIE MONSTERS STATION PLANT MANAGER 715 NORTHEAST HOYT ST PORTLAND OR 97208-3099
CLASSIC MOVIE MONSTERS STATION PLANT MANAGER 250 SAINT JOSEPH ST MOBILE AL 36601-9998	CLASSIC MOVIE MONSTERS STATION PLANT MANAGER 809 NUECES BAY BLVD CORPUS CHRISTI TX 78469-9997	CLASSIC MOVIE MONSTERS STATION PLANT MANAGER 333 W 4TH ST RM 244 TULSA OK 74103-9997	CLASSIC MOVIE MONSTERS STATION PLANT MANAGER 2000 VASSAR ST RENO NV 89510-9997
CLASSIC MOVIE MONSTERS STATION PLANT MANAGER 6701 WINTON BLOUNT BLVD MONTGOMERY AL 36119-9997	CLASSIC MOVIE MONSTERS STATION PLANT MANAGER 401 DFW TURNPIKE DALLAS TX 75260-9997	CLASSIC MOVIE MONSTERS STATION PLANT MANAGER PO BOX 4000 TYLER TX 75702-9997	CLASSIC MOVIE MONSTERS STATION PLANT MANAGER PO BOX 14930 SALEM OR 97309-5930
CLASSIC MOVIE MONSTERS STATION PLANT MANAGER 525 ROYAL PKY NASHVILLE TN 37230-9998	CLASSIC MOVIE MONSTERS STATION PLANT MANAGER 5300 E PAISANO DR EL PASO TX 79910-9997	CLASSIC MOVIE MONSTERS STATION PLANT MANAGER 430 W SATE HWY 6 WACO TX 76702-9997	CLASSIC MOVIE MONSTERS STATION PLANT MANAGER 1760 W 2100 S SALT LAKE CITY UT 84199-9997
CLASSIC MOVIE MONSTERS STATION PLANT MANAGER PO BOX 599000 NORTH METRO GA 30159-9998	CLASSIC MOVIE MONSTERS STATION PLANT MANAGER 12 W DICKSON ST FAYETTEVILLE AR 72701-9997	CLASSIC MOVIE MONSTERS STATION PLANT MANAGER 1135 BROADWAY NE ALBUQUERQUE NM 87101-9998	CLASSIC MOVIE MONSTERS STATION PLANT MANAGER 2445 3RD AVE S SEATTLE WA 98134-9993
CLASSIC MOVIE MONSTERS STATION PLANT MANAGER 10401 TRADEPORT DR ORLANDO FL 32862-9998	CLASSIC MOVIE MONSTERS STATION PLANT MANAGER 4600 MARK IV PKWY FORT WORTH TX 76161-9997	CLASSIC MOVIE MONSTERS STATION PLANT MANAGER PO BOX 199997 ANCHORAGE AK 99502-9998	CLASSIC MOVIE MONSTERS STATION PLANT MANAGER 703 E TRENT AVE SPOKANE WA 99202-9997
CLASSIC MOVIE MONSTERS STATION PLANT MANAGER 1336 SHERMAN AVE PANAMA CITY FL 32401-9997	CLASSIC MOVIE MONSTERS STATION PLANT MANAGER 401 FRANKLIN ST RM 331 HOUSTON TX 77201-9997	CLASSIC MOVIE MONSTERS STATION PLANT MANAGER 841 S 26TH ST BILLINGS MT 59101-9997	CLASSIC MOVIE MONSTERS STATION PLANT MANAGER 4001 S PINE ST TACOMA WA 98413-9998
CLASSIC MOVIE MONSTERS STATION PLANT MANAGER 1400 W JORDAN ST PENSACOLA FL 32501-9701	CLASSIC MOVIE MONSTERS STATION PLANT MANAGER 1105 MOSS ST LAFAYETTE LA 70501-9997	CLASSIC MOVIE MONSTERS STATION PLANT MANAGER 770 S 13TH ST BOISE ID 83708-9997	CLASSIC MOVIE MONSTERS STATION PLANT MANAGER 1501 S CHERRYBELL TUSCON AZ 85726-9998
CLASSIC MOVIE MONSTERS STATION PLANT MANAGER 3135 1ST AVE N SAINT PETERSBURG FL 33730-9997	CLASSIC MOVIE MONSTERS STATION PLANT MANAGER 4700 E MCCAIN BLVD LITTLE ROCK AR 72231-9997	CLASSIC MOVIE MONSTERS STATION PLANT MANAGER 2120 CAPITOL AVE CHEYENNE WY 82001-9997	CLASSIC MOVIE MONSTERS STATION PLANT MANAGER 433 W VAN BUREN ST CHICAGO IL 60607-9700
CLASSIC MOVIE MONSTERS STATION PLANT MANAGER 2 N FAHM ST SAVANNAH GA 31402-9701	CLASSIC MOVIE MONSTERS STATION PLANT MANAGER 1515 AVENUE G LUBBOCK TX 79402-9997	CLASSIC MOVIE MONSTERS STATION PLANT MANAGER 3655 E FOUNTAIN BLVD COLORADO SPRINGS CO 80910-9998	CLASSIC MOVIE MONSTERS STATION PLANT MANAGER 1121 MILLER RD KALAMAZOO MI 49001-9997
CLASSIC MOVIE MONSTERS STATION PLANT MANAGER 1600 PINES BLVD PEMBROKE PINES FL 33082-9997	CLASSIC MOVIE MONSTERS STATION PLANT MANAGER 620 E PECAN AVE MCALLEN TX 78501-9997	CLASSIC MOVIE MONSTERS STATION PLANT MANAGER 7500 E 53RD PL RM 1129 DENVER CO 80266-9998	CLASSIC MOVIE MONSTERS STATION PLANT MANAGER 3450 STATE RED 26E LAFAYETTE IN 47901-9997
CLASSIC MOVIE MONSTERS STATION PLANT MANAGER 2800 S ADAMS ST TALLAHASSEE FL 32301-9996	CLASSIC MOVIE MONSTERS STATION PLANT MANAGER PO BOX 60000 MIDLAND TX 79711-9997	CLASSIC MOVIE MONSTERS STATION PLANT MANAGER PO BOX 7000 EUGENE OR 97401-0100	CLASSIC MOVIE MONSTERS STATION PLANT MANAGER PO BOX 19001 SAN BERNARDINO CA 92423-9001
CLASSIC MOVIE MONSTERS STATION PLANT MANAGER 5201 W SPRUCE ST TAMPA FL 33630-9997	CLASSIC MOVIE MONSTERS STATION PLANT MANAGER 701 LOYOLA AVE NEW ORLEANS LA 70113-9997	CLASSIC MOVIE MONSTERS STATION PLANT MANAGER 8120 HARDESON RD EVERETT WA 98203-9998	



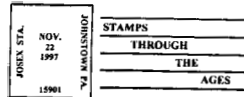
November 8 & 9, 1997  
 EXHIBITION STATION  
 POSTMASTER  
 PO BOX 9998  
 PARMA OH 44134-9998



November 22, 1997  
 HOMETOWN CHRISTMAS STATION  
 POSTMASTER  
 1217 YOLO ST  
 CORNING CA 96021-9998



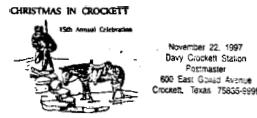
November 9, 1997  
 CIVIL WAR SUNDAY REMEMBRANCE DAY  
 STATION  
 POSTMASTER  
 2000 ROYAL OAKS DR  
 SACRAMENTO CA 95813-9998



November 22, 1997  
 Johnstown Stamp Club  
 JOSEX STATION  
 POSTMASTER  
 111 FRANKLIN ST  
 JOHNSTOWN PA 15901-9998



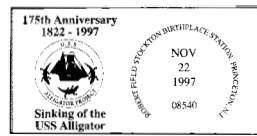
November 15, 1997  
 BICENTENNIAL STATION  
 POSTMASTER  
 1 FRONT ST  
 BALLSTON SPA NY 12020-9998



November 22, 1997  
 Houston County Chamber of Commerce  
 DAVY CROCKETT STATION  
 POSTMASTER  
 600 E GOLIAD AVE  
 CROCKETT TX 75835-9998



November 15 & 16, 1997  
 DOWNTOWN FESTIVAL & ART SHOW  
 STATION  
 POSTMASTER  
 4600 SW 34TH ST  
 GAINESVILLE FL 32608-9998



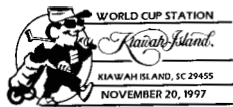
November 22, 1997  
 ROBERT FIELD STOCKTON BIRTHPLACE  
 STATION  
 POSTMASTER  
 20 PALMER SQ  
 PRINCETON NJ 08542-9998



November 18, 1997  
 CANDO ARTS STATION  
 POSTMASTER  
 PO BOX 9998  
 CANDO ND 58324-9998



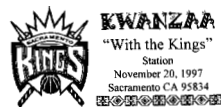
November 22, 1997  
 KWANZAA STATION  
 POSTMASTER  
 2000 ROYAL OAKS DR  
 SACRAMENTO CA 95813-9998



November 20, 1997  
 WORLD CUP STATION  
 POSTMASTER  
 2860 MAYBANK HWY  
 JOHNS ISLAND SC 29455-9998



November 22 & 23, 1997  
 Chamber of Commerce  
 NASCAR DAYS STATION  
 POSTMASTER  
 PO BOX 9998  
 RANDLEMAN NC 27317-9998



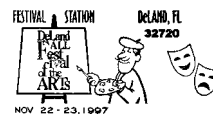
November 20, 1997  
 KWANZAA WITH THE KINGS STATION  
 POSTMASTER  
 2000 ROYAL OAKS DR  
 SACRAMENTO CA 95813-9998



November 22 & 23, 1997  
 Black River Stamp Club  
 BLACK RIVER STAMP CLUB STATION  
 POSTMASTER  
 345 EAST BRIDGE ST  
 ELYRIA OH 44035-99980

(ARTWORK UNAVAILABLE)

November 21, 1997  
 STAMP EXPO STATION  
 POSTMASTER  
 14900 MAGNOLIA BLVD  
 SHERMAN OAKS CA 91403-9998



November 22 & 23, 1997  
 FESTIVAL STATION  
 POSTMASTER  
 9241 WEST NEW YORK AVE  
 ORLANDO FL 32720-9998



November 21, 1997  
 USPS  
 COLORADO RIVER CROSSING BALLOON  
 FESTIVAL STATION  
 POSTMASTER  
 2222 4TH AVE  
 YUMA AZ 85364-9998



November 23, 1997  
 MOUNTAIN MANDARIN FESTIVAL  
 STATION  
 POSTMASTER  
 9241 OLD STATE HWY  
 NEWCASTLE CA 95658-9998



November 21 & 22, 1997  
 FAIRMONT GLOWS STATION  
 POSTMASTER  
 57 DOWNTOWN PLZ  
 FAIRMONT MN 56031-9998



November 23, 1997  
 Mt. Juliet Post Office  
 MT JULIET STATION  
 POSTMASTER  
 2491 N MT JULIET RD  
 MT JULIET TN 37122-9998



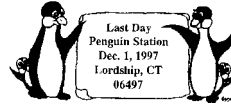
November 24, 1997  
**CELEBRATING OUR 180<sup>TH</sup> ANNIVERSARY STATION**  
 POSTMASTER  
 PO BOX 9998  
 WAWARSING NY 12489-9998



November 29 & 30, 1997  
**CHECOPEX STATION**  
 POSTMASTER  
 1200 WILLIAM ST  
 BUFFALO NY 14240-9998



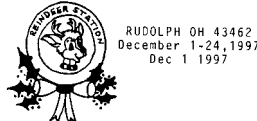
November 25, 1997  
**50TH ANNIVERSARY STATION**  
 POSTMASTER  
 PO BOX 9998  
 TOMS RIVER NJ 08753-9998



December 1, 1997  
**PENGUIN STATION**  
 POSTMASTER  
 348 STRATFORD RD  
 STRATFORD CT 06497-7836



November 25, 1997  
**100TH ANNIVERSARY STATION**  
 POSTMASTER  
 PO BOX 9998  
 MONTICELLO NY 12701-9998



December 1-24, 1997  
*Postmaster*  
**REINDEER STATION**  
 POSTMASTER  
 PO BOX 9998  
 RUDOLPH OH 43462-9998



November 27, 1997  
*Port Angeles' Olde Fashioned Thanksgiving*  
**LINCOLN PARK STATION**  
 POSTMASTER  
 731 E 11TH ST  
 PORT ANGELES WA 98362-9998



December 1-25, 1997  
**JOY TO THE WORLD STATION**  
 POSTMASTER  
 PO BOX 9998  
 JOY IL 61260-9998



November 28-30, 1997  
**FESTIVAL OF TREES CELEBRATION STATION**  
 POSTMASTER  
 4140 CHICAGO AVE  
 RIVERSIDE CA 92507-9998



December 1-25, 1997  
*Bells Elementary School*  
**JINGLE BELLS STATION**  
 POSTMASTER  
 1111 HIGHWAY 82 W  
 BELLS TX 75414-9998



November 28-December 24, 1997  
**DEAR SANTA STATION**  
 POSTMASTER  
 2000 ROYAL OAKS DR  
 SACRAMENTO CA 95813-9998



December 1-25, 1997  
*Yakima Valley Stamp Club*  
**YAKIMA CHRISTMAS FESTIVAL STATION**  
 POSTMASTER  
 205 W WASHINGTON AVE  
 YAKIMA WA 98903-9998



November 29, 1997  
*USPS*  
**TC LINDSEY STORE STATION**  
 POSTMASTER  
 HWY 134  
 JONESVILLE TX 75659-9998



December 1-25, 1997  
*Santa Claus Chamber of Commerce*  
**SANTA CLAUS STATION**  
 POSTMASTER  
 PO BOX 9998  
 SANTA CLAUS IN 47579-9998



November 29, 1997  
**PINEY HILLS STATION**  
 POSTMASTER  
 610 E MAIN ST  
 JONESBORO LA 71251-9998



December 1-31, 1997  
*Chimney Rock Post Office*  
**SANTAS STATION**  
 POSTMASTER  
 PO BOX 9998  
 CHIMNEY ROCK NC 28720-9998



November 29, 1997  
*East Peoria Chamber of Commerce*  
**EAST PEORIA FESTIVAL OF LIGHTS STATION**  
 POSTMASTER  
 100 S MAIN ST  
 EAST PEORIA IL 61611-9998



December 3, 1997  
**COAHOMA COMMUNITY COLLEGE STATION**  
 POSTMASTER  
 236 SHARKEY AVE  
 CLARKSDALE MS 38614-9998



November 29, 1997  
**CHRISTMAS IN COMFORT STATION**  
 POSTMASTER  
 726 FRONT ST  
 COMFORT TX 78013-9998



December 4, 1997  
*Sonora Chamber of Commerce*  
**COWBOY CHRISTMAS LIGHT PROMENADE STATION**  
 POSTMASTER  
 109 N WATER AVE  
 SONORA TX 76950-9998



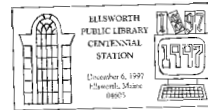
December 4, 1997  
 SARATOGA SPRINGS STATION  
 POSTMASTER  
 245 WASHINGTON ST  
 SARATOGA SPRINGS NY 12866-9998



December 6, 1997  
 City of Woodstock  
 DEPOT STATION  
 POSTMASTER  
 PO BOX 9998  
 WOODSTOCK GA 30188-9998



December 5, 1997  
 Old Fort Concho Association  
 CHRISTMAS AT OLD FORT CONCHO  
 STATION  
 POSTMASTER  
 1 N BRYANT BLVD  
 SAN ANGELO TX 76902-9998



December 6, 1997  
 ELLSWORTH PUBLIC LIBRARY  
 CENTENNIAL STATION  
 POSTMASTER  
 199 MAIN ST  
 ELLSWORTH ME 04605-9998



December 5, 1997  
 VICTORIAN CHRISTMAS STATION  
 POSTMASTER  
 PO BOX 9998  
 SHARON WI 53585-9998



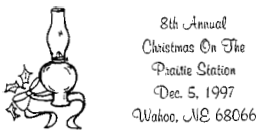
December 6 & 7, 1997  
 ALLAIRE VILLAGE STATION  
 POSTMASTER  
 66 MAIN ST  
 FARMINGDALE NJ 07727-9998



December 5, 1997  
 OZARK LIGHTS STATION  
 POSTMASTER  
 PO BOX 9998  
 FAYETTEVILLE AR 72701-9998



December 6 & 7, 1997  
 OLD FASHIONED CHRISTMAS STATION  
 POSTMASTER  
 208 CENTRAL AVE  
 COON VALLEY WI 54623-9998



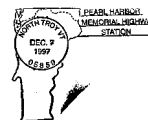
December 5-7, 1997  
 CHRISTMAS ON THE PRARIE STATION  
 POSTMASTER  
 PO BOX 9998  
 WAHOO NE 68066-9998



December 6, 7, 13, & 14, 1997  
 SANDWICH STATION  
 POSTMASTER  
 69 ROUTE 6A  
 SANDWICH MA 02563-9998



December 5-7, 1997  
 WITHLACOOCHEE GEMBOREE STATION  
 POSTMASTER  
 PO BOX 9998  
 BROOKSVILLE FL 34601-9998



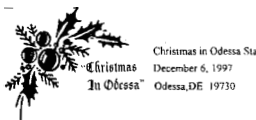
December 7, 1997  
 PEARL HARBOR MEMORIAL HIGHWAY  
 STATION  
 POSTMASTER  
 SOUTH STREET  
 NORTH TROY VT 05859-9998



December 5-8, 1997  
 CUSTOM HOUSE STATION  
 POSTMASTER  
 RTE 6A MAIN ST  
 BARNSTABLE MA 02630-9998



December 7, 1997  
 GRAND OPENING STATION  
 POSTMASTER  
 4439 DEVILS GLEN RD  
 BETTENDORF IA 52722-9998



December 6, 1997  
 Odes Women's Club  
 CHRISTMAS IN ODESSA STATION  
 POSTMASTER  
 PO BOX 9998  
 ODESSA DE 19730-9998



December 7, 1997  
 SANTA MONICA STATION  
 POSTMASTER  
 1248 5TH ST  
 SANTA MONICA CA 90401-9998



December 6, 1997  
 GREAT AMERICAN MAIN STREET CITY  
 STATION  
 POSTMASTER  
 315 BRIDGE ST  
 CHIPPEWA FALLS WI 54729-9998

—Stamp Services, Marketing, 11-20-97

## *Post Offices*

---

### **Post Office Changes Number 19**

<b>Old/ New</b>	<b>Finance No.</b>	<b>ZIP Code</b>	<b>State</b>	<b>P.O. Name</b>	<b>County/ Parish</b>	<b>Station/Branch/ Unit</b>	<b>Unit Type</b>	<b>Effective Date</b>	<b>Comments</b>
Old	05-5376	92663	CA	Newport Beach	Orange	Riverside	Classified Station	12/01/97	This announcement changes the name of the Riverside Station in Newport Beach CA to the Bay Station.
New	05-5376	92663	CA	Newport Beach	Orange	Bay	Classified Station	12/01/97	

—Address Management, Operations Support, 11-20-97



This office  
will be closed  
**Thursday,**  
**November 27, 1997,**  
to celebrate  
**Thanksgiving Day.**

This page intentionally left blank





This office  
will be closed  
**Thursday,**  
**November 27, 1997,**  
to celebrate  
**Thanksgiving Day.**

This page intentionally left blank



This office  
will be closed  
**Thursday,**  
**December 25, 1997,**  
to celebrate  
**Christmas Day.**

This page intentionally left blank



This office  
will be closed  
**Thursday,**  
**December 25, 1997,**  
to celebrate  
**Christmas Day.**

This page intentionally left blank

NOTICE TO ALL EMPLOYEES

# THRIFT SAVINGS PLAN FACT SHEET

C, F, and G Fund Monthly Returns

Released November 9, 1997

<b>MONTHS</b>	<b>C</b>	<b>F</b>	<b>G</b>
1989 JAN.-DEC. %	31.03	13.89*	8.81
1990	-3.15	8.00*	8.90
1991	30.77	15.75	8.15
1992	7.70	7.20	7.23
1993	10.13	9.52	6.14
1994	1.33	-2.96	7.22
1995	37.41	18.31	7.03
1996	22.85	3.66	6.76
<b>1996</b>			
NOVEMBER	7.54	1.69	.53
DECEMBER	-1.97	-.93	.53
<b>1997</b>			
JANUARY	6.22	.30	.56
FEBRUARY	.79	.24	.51
MARCH	-4.13	-1.11	.57
APRIL	6.00	1.49	.58
MAY	6.07	.94	.58
JUNE	4.45	1.18	.56
JULY	7.94	2.69	.57
AUGUST	-5.59	-.86	.53
SEPTEMBER	5.46	1.48	.54
OCTOBER	-3.38	1.45	.54
<b>LAST 12 MONTHS</b>	<b>31.94</b>	<b>8.83</b>	<b>6.81</b>

\*Through 1990 the F Fund was invested in the Wells Fargo Bond Index Fund.

The C Fund is invested in the Barclays Equity Index Fund, which tracks the S&P 500 stock index. The F Fund is invested in the Barclays U.S. Debt Index Fund, which tracks the Lehman Brothers Aggregate Bond index. Because of expenses and changing balances in the C and F Funds, their returns vary from Barclays' returns. The G Fund is invested in special issues of U.S. Treasury securities.

Future performance of the three funds will vary and may differ significantly from the returns shown above. See the "Summary of the Thrift Savings Plan" for detailed information about the funds and their investment risks.

The monthly C, F, and G Fund returns represent net earnings after deduction of accrued administrative expenses. The C and F Fund returns also reflect the deduction of trading costs and accrued investment management fees.

The C, F, and G Fund monthly returns are dollar-weighted: they reflect net earnings on the changing balances invested during the month. The C, F, and G Fund returns for the last 12 months assume, except for the crediting of earnings, unchanging balances (time-weighting) from month to month and that earnings are compounded on a monthly basis.

**Federal Retirement Thrift Investment Board**



**Please post on bulletin boards.  
Destroy all previous notices.**

This page intentionally left blank





*Revision Pages*

This page intentionally left blank

**327.7 Transportation****327.71 Selection of Mode of Transportation**

The DNO selects the least costly mode of transportation that can meet the service objectives for the class of plant-loaded mail. The mode of transportation is not changed at the request of the mailer.

**327.72 Mailer Transportation**

Mailers may transport their own plant loaded mail when there is a highway contract between the USPS and the mailer or when the mailer is authorized to transport plant-verified mail under 327.73 and has entered into an Expedited Plant Load Shipment Agreement with the USPS. The awarding of a highway contract to the mailer or authorization under 327.73 is not a factor in deciding whether to authorize the plant load. Any cost savings that result from an expedited plant load shipment authorization may not be included in the cost-savings analysis for initial plant load authorization or renewal.

**327.73 Expedited Plant Load Shipment****327.731 Definition**

Under an expedited plant load shipment authorization, the USPS verifies the mail for presort and proper preparation at the mailer's plant. Postage is paid at the post office where the mailer is authorized plant load. The mailer then transports the expedited plant load shipment at the mailer's expense to destination postal facilities where the shipment is deposited and accepted into the mailstream. Only plant load mailers authorized to do so may transport expedited plant load shipments at their own expense under the conditions in 327.732 through 327.737.

**327.732 Authorization**

The procedure for obtaining authorization for expedited plant load shipments is as follows:

- a. An authorized plant load mailer may seek authorization to submit expedited plant load shipments by submitting a written request to the area manager who authorized the plant load. The mailer's request must describe, for each destination to which mail is to be transported, the material to be deposited as an expedited plant load shipment (e.g., the class, characteristics, and quantity), the frequency of mailing, and whether the request is for one or for a series of mailings. No form is provided for this purpose.
- b. The area manager or designee reviews the mailer's request, obtains advice from the serving DNO, ensures the availability of enough postal resources (e.g., detached mail unit staff) to support the mailer's request, and provides the mailer with a written decision. If the request is approved, the authorization is for a mailing or group of mailings and for a time period not to exceed 2 years, after which a new request must be submitted. If the request is denied, the denial notice must explain the reasons for that decision. A denial is a classification decision and may be appealed under DMM G020.

- c. The mailer's request for expedited plant load shipment authorization may be approved when such approval is in the best interest of the USPS and the following conditions exist:
  - (1) The mailer is in compliance with the requirements for a plant load operation.
  - (2) The mailer has complied with the additional requirements for expedited plant load shipment.
  - (3) The mailer has obtained the necessary permits, and has established the appropriate postage accounts at the post office administering the plant load (office of mailing).
  - (4) The mailer has demonstrated the need for authorization because the nature of the mailings to be prepared as expedited plant-load shipments requires a level of service or a time frame for delivery (delivery window) that the normal mode of USPS transportation for that class of mail cannot provide or meet.
- d. If the expedited plant load shipment request is approved for more than one-time use, the plant load agreement must be amended by attaching a completed and signed Form 8026, *Expedited Plant-Load Shipment Agreement — Plant Load Mailings*, and additional documents detailing the material to be prepared as expedited plant-load shipments.

**327.733 Verification and Collection of Postage**

All mail that is part of an expedited plant load shipment mailing must be verified and have postage and fees collected according to the class of mail as required in this manual; Handbook DM-102, *Bulk Mail Acceptance*; and Handbook DM-103, *Penalty Mail*, before it is loaded into mailer-supplied transportation and dispatched. The plant load requirements in 327.421, 327.422, 327.43, and 327.44 must be met.

**327.734 Liability**

The mailer assumes all liability and responsibility for any loss or damage to the expedited plant load shipment before it is deposited in and accepted at a postal facility whether or not a third party is used to transport it. The Postal Service is not liable or responsible for any loss or damage to an expedited plant load shipment, except after accepted and deposited in a postal facility as provided for in the DMM.

**327.735 Mailer Responsibilities**

Mailers who are authorized to have mail verified in their plant and paid for at the post office serving the mailer's plant (plant load authorization) and to transport that mail at their own expense for deposit at a destination postal facility (or facilities) must adhere to the following requirements before expedited plant load shipments can be deposited at destination postal facilities:

- a. The postal facility (or facilities) at which the mail is to be deposited must be one that processes the class of mail to be deposited.
- b. All the mailpieces in each expedited plant load shipment must have a destination within the service area of the postal facility where the shipment is deposited and accepted. For example, if an expedited plant load shipment

is deposited at a BMC, all the pieces in the shipment must be for addresses within the service area of that BMC.

- c. The mailer must contact each postal facility where the expedited plant load shipment is to be deposited to arrange and obtain approval for a time and location to deposit the plant-verified mail.
- d. When a vehicle contains more than one expedited plant load shipment to be drop-shipped to a single destination postal facility, each shipment must be physically separated. When a vehicle contains mailings or mailing segments for more than one destination facility, the mail must be physically separated by destination, and then within each destination the mail must be physically separated by mailing or mailing segment.
- e. When the vehicle used for expedited plant load shipment also contains other material carried as freight, the mailer must load all freight in the nose (front) of the vehicle, clearly marked and separated from the expedited plant load shipment. The mailer must ensure that the separation method prevents the freight and expedited plant load shipment from becoming mixed in transit.
- f. When the vehicle is loaded to make multiple stops, the mailer must ensure that only the appropriate shipment is removed at each stop, that no other material (mail or freight) is added, and that any remaining shipments are kept separate from any other freight remaining on the vehicle.
- g. The mailer must present the required mailing statements and documentation to the DMU for each mailing. At destination, the mailer must provide the necessary documentation (provided by the USPS) to prove the required postage was paid for the expedited plant load shipment.
- h. The mailer must meet the requirements that apply to any presort or automation-based rates claimed on the mailing being prepared as an expedited plant load shipment. Expedited plant load shipments are not eligible for destination entry rates.

**327.736 Detached Mail Unit Responsibilities**

When mailers are authorized to transport an expedited plant load shipment at their own expense to a destination postal facility, the detached mail unit (DMU) employees assigned to the mailer's plant must verify those mailings as they would all other mail to be accepted under the plant load authorization, including the following:

- a. Before the dispatch of an expedited plant load shipment, DMU employees must complete the following additional activities for mail loaded onto mailer-provided transportation:
  - (1) Observe the loading of each vehicle used to transport an expedited plant-load shipment.
  - (2) Complete a Form 8017, *Expedited Plant Load Shipment Record*, for each vehicle dispatched. Place the form on the inside rear sidewall of the vehicle. Completion of more than one Form 8017 is required for mail to be deposited at multiple postal facilities.

- (3) Ensure that any material carried as freight on the same vehicle as an expedited plant load shipment is confined to the nose (front) of the vehicle, is separated by a clearly marked separation, and is loaded to avoid becoming mixed with the expedited plant load shipment in transit.
  - (4) Placard the mailer-provided transportation with Form 5111-R, *Revenue Protection Placard*, and seal the vehicle.
- b. After the dispatch of an expedited plant load shipment, the DMU must complete the following activities:
- (1) On receipt of Forms 8017 from destination post offices pursuant to 327.737, reconcile the forms with the postage statements to ensure that those offices received the correct volume of mail.
  - (2) Follow up with any post office where an expedited plant load shipment was deposited but from which no Form 8017 was returned.

**327.737 Destination Postal Facility Responsibilities**

Destination postal facilities have the following responsibilities:

- a. Postal facilities where expedited plant load shipment mailings are deposited must complete the destination post office section of Form 8017 that accompanies the vehicle and return it to the postmaster of the post office where the mailer's plant load is authorized.
- b. Each destination postal facility receiving expedited plant load shipments must determine whether the mailer's vehicle has other expedited plant load shipments on board for deposit at other postal facilities. If more shipments are found, the vehicle must be sealed by USPS employees before departure. If the vehicle is empty or found to contain only freight, no postal seal is applied.
- c. Additional mail for downstream postal facilities must not be loaded onto the mailer's vehicle by any postal facility at which the mailer has deposited an expedited plant load shipment.

**327.738 Refunds**

The Postal Service does not refund postage for any failure to provide service caused in whole or in part by any event occurring before the shipment is deposited in and accepted at a postal facility, except in accordance with the provisions of the DMM (see DMM P014).

**327.74 Holding, Storing, or Delaying Dispatch**

The USPS does not hold, store, or otherwise delay the dispatch of plant-loaded mail released to the USPS, except under the plant load agreement with the mailer.

**327.75 Relocation of Trailers**

The USPS must not relocate trailers at a mailer's plant.

This page intentionally left blank



475 L'ENFANT PLAZA SW  
WASHINGTON DC 20260-1540

First-Class Mail  
Postage & Fees Paid  
USPS  
Permit No. G-10

**Postal Service Orders for Postal Bulletin**

- New Order       Change of Address  
(Include *Postal Bulletin* mailing label.)

Attention Line \_\_\_\_\_

Postal Facility Name \_\_\_\_\_

Delivery Address \_\_\_\_\_

City \_\_\_\_\_ State \_\_\_\_\_ ZIP+4 \_\_\_\_\_

Person to Contact  
( ) \_\_\_\_\_

Daytime Telephone \_\_\_\_\_

- Change Quantity of Subscription  
(Include *Postal Bulletin* mailing label.)

Current Quantity \_\_\_\_\_ New Quantity \_\_\_\_\_

**Distribution:** The GPO distributes the *Postal Bulletin* for the Postal Service to all postal facilities except classified stations and branches, contract postal units, and detached mail units, which receive copies from their administrative post office.

**Missing Issues:** If postal facilities that receive the *Bulletin* from GPO do not receive their order, they should call the *Postal Bulletin* editor at 202-268-5258. All other facilities should contact their administrative post office.

**Address and Quantity Changes and Subscription Problems:** Postal facilities may send address and quantity changes and subscription queries via cc:Mail to POSTAL BULLETIN or via the Internet to pbulleti@email.usps.gov. Please include old and new address and quantities, and the "P00" subscription number from your address label. Postal facilities may also complete this form and mail it to:

ATTN POSTAL BULLETIN  
US POSTAL SERVICE  
475 L'ENFANT PLZ SW RM 2800  
WASHINGTON DC 20260-1540

All other facilities should contact their administrative post office.

**Single Copies (back to 1 year):** To order extra copies or back issues, call MDC Customer Service at 800-332-0317 or send Form 7380, *MDC Supply Requisition*, to:

MATERIAL DISTRIBUTION CENTER  
ATTN SUPPLY REQUISITIONS  
500 SW MONTARA PKY  
TOPEKA KS 66624-9602

Please use the correct item number: PB [5-digit issue number].



**Public Orders for Postal Bulletin**

- New Order       Change of Address  
(Include *Postal Bulletin* mailing label.)

Attention Line \_\_\_\_\_

Company Name \_\_\_\_\_

Delivery Address \_\_\_\_\_

City \_\_\_\_\_ State \_\_\_\_\_ ZIP+4 \_\_\_\_\_  
( ) \_\_\_\_\_

Daytime Telephone \_\_\_\_\_

**Subscription:** Domestic - \$83.00 per year; International - \$103.75 per year

**Subscription Orders:** 202-512-1800

**Subscription Inquiries:** 202-512-1806 Fax: 202-512-2250

**Single Copies (back to 16 issues):** Domestic - \$5.00; International - \$6.25

- Enter \_\_\_\_\_ Annual Subscription(s).  
Total Amount \$ \_\_\_\_\_

- Send \_\_\_\_\_ additional copies of Bulletin # \_\_\_\_\_  
Total Amount \$ \_\_\_\_\_

- GPO deposit account [ ] [ ] [ ] [ ] [ ] [ ] [ ] [ ] - [ ]

- Check/money order payable to: Superintendent of Documents

- VISA       MasterCard

Credit Card Number \_\_\_\_\_

Expiration Date \_\_\_\_\_

Signature \_\_\_\_\_

**Mail Completed Form and Payment To:**

SUPERINTENDENT OF DOCUMENTS  
US GOVERNMENT PRINTING OFFICE  
PO BOX 371954  
PITTSBURGH PA 15250-7954