

Postal Bulletin

Published Since March 4, 1880

July 10, 2025
PB 22680

The image shows a close-up of a USPS carrier's uniform. The carrier is wearing a light blue polo shirt with a USPS patch on the left chest. A blue lanyard with the USPS logo is around their neck, and a white card is attached to it. The card is titled "Prevent Heat Illnesses. Know the signs and act." and lists symptoms for Heat Exhaustion and Heat Stroke. The carrier is holding a clear plastic water bottle with both hands. A red banner at the bottom left contains the text "Be Prepared to Beat the Heat" and "See page 3". A yellow diamond-shaped sign at the bottom right contains the text "SAFETY DEPENDS ON ME!" and "UNITED STATES POSTAL SERVICE".

Prevent Heat Illnesses. Know the signs and act.

HEAT EXHAUSTION	OR	HEAT STROKE
Central or body temperature rising		Headache, vomiting
Heavy sweating		Excessive sweating or no sweat, dry skin
Dark urine		Very high body temperature
Weakness or dizziness		Blurred or double vision
Throbbing, rapid pulse		Loss of consciousness
Nausea or vomiting		

Call 9-1-1
If you suspect heat stroke, call 9-1-1 immediately. Do not give anyone alcohol or drugs.

Seek Immediate Medical Assistance for Heat-Related Illnesses. Call 9-1-1.

© 2025 United States Postal Service. All rights reserved.

Be Prepared to Beat the Heat

See page 3

SAFETY DEPENDS ON ME!

UNITED STATES POSTAL SERVICE

Contents

COVER STORY

Be Prepared to Beat the Heat	3
--	---

POLICIES, PROCEDURES, AND FORMS UPDATES

Manuals

DMM Revision: Overseas Military and Diplomatic Post Office Mail.	5
IMM Revision: Elimination of International Postal Money Order Service	5

Management Instructions

EL 310-2025-1: Telework Program for Eligible Nonbargaining Employees and PCES.	6
--	---

Forms

PS Form 5659 Revision: Daily Passport Application (DS-11) Transmittal	7
---	---

ORGANIZATION INFORMATION

Address Management

Post Office Changes	8
-------------------------------	---

Corporate Communications

250 Years of Delivering Stamp Overview	8
--	---

Domestic Mail

Labeling List Changes	18
---------------------------------	----

Environmental Management

Required Procedures for Used Batteries.	40
---	----

Finance

Maintain Up-to-Date Tax Withholding Information in PostalEASE.	40
--	----

Information Security

CyberSafe Training Course: Deadline Is August 27, 2025, for Bargaining Employees and September 3, 2025, for Non-bargaining Employees.	41
Don't Get Locked Out: Add Your Backup MFA Method	42
Keep Ransomware Away From your Data.	42

International Mail

Price Changes for International Mailing Services	43
--	----

Office of Postmaster General

Equal Employment Opportunity Policy Statement	44
Postal Service's Policy on Workplace Harassment.	44

Stamp Services

Pictorial Postmarks Announcement	45
How to Order the First-Day-of-Issue Digital Color or Traditional Postmarks	50

Supply Management

Interest Rate on Contract Claims	55
--	----

Transportation Services

The Fast Track to Fuel Savings Starts with The Preferred Fueling Network	55
--	----

PULL-OUT INFORMATION

Fraud

Missing, Lost, or Stolen U.S. Money Order Forms	19
Missing, Lost, or Stolen Canadian Money Order Forms	27
Verifying U.S. Postal Service Money Orders	29
Counterfeit Canadian Money Order Forms	30
Toll-Free Number Available to Verify Canadian Money Orders	30

Other Information

Overseas Military/Diplomatic Mail	31
Freely Associated States Restrictions.	38

POSTAL BULLETIN 2024 ANNUAL INDEX

2024 Annual Index	PB 22667 (1-9-25)
-----------------------------	-------------------

Find the latest in mail and delivery information and services offered by U.S. Postal® in the *Postal Bulletin* at about.usps.com/postal-bulletin

Mail Moment®

The U.S. Postal Service Is Everywhere
So You Can Be Anywhere®

Cover Story

Be Prepared to Beat the Heat

The climate in our country is changing and temperatures continue to rise almost everywhere. As this happens more frequently, areas are exposed to high heat conditions for longer periods of time. Higher heat conditions trigger the criteria for the USPS® Heat Illness Prevention Program (HIPP).

This program is intended for times when outside heat index temperatures are expected to exceed 80 degrees Fahrenheit during a workday or work shift. The HIPP was created by the Postal Service™ in 2018 to help provide awareness, highlight potential symptoms, and address issues that could occur from heat-related illnesses and heat exposure.

What are the improvements to the HIPP?

To ensure the HIPP is comprehensive, clear, and updated, the following enhancements will be made:

- Moving forward, the Heat Stress Recognition and Prevention video is required viewing for every newly hired employee.
- Annual refresher training will be provided to everyone and consist of the following safety talks: 1) Heat Illness and Prevention and 2) Annual Refresher. The safety talks will provide the same information contained in the video.
- All employees will have a Heat Illness Prevention publication mailed to their residence. The new HIPP provides multiple access points for information that can keep employees safe during high heat periods.
- The image for the Prevent Heat Illnesses vehicle sticker, badge tag, and poster has also been modernized. Facilities must get the updated versions of all of them.
- Everyone is required to have an updated Prevent Heat Illness badge tag. Also, every vehicle must have an updated Prevent Heat Illnesses sticker and facilities must feature the updated poster.

Using the resources the Postal Service is providing for the HIPP will ensure our employees are well-trained and informed when it comes to preventing heat-related illness. Expanded information will be provided annually to all employees through the program.

Additionally, here are some proactive tips to help beat the heat:

- **Hydrate before, during, and after work.** Prevention is important — drink at least 8 ounces of water every 20 minutes.
- **Dress appropriately for the weather.** On warm days, wear light-colored, loose-fitting, and breathable clothing to keep your body temperature down.
- **Use the shade to stay cool.** When possible, use shaded areas to stay out of direct sunlight.

Heat illness can range from minor discomforts to life-threatening emergencies. The key to prevention is awareness, hydration, and preparation. It's about understanding the risks that come with working in hot conditions and taking proactive steps to minimize those risks before they become serious. That means planning, staying mindful of changing temperatures, and encouraging a safety-first mindset across all work environments.

eBuy+ HIPP Material Ordering Information:

Poster:

POS326
February 2025
PSN 7690130007004

Employee Badge:

PS1280, February 2025
PSN 7530180004041

Vehicle Sticker:

LAB128, February 2025
PSN 7690180004040

— Occupational Safety and Health,
Human Resources, 7-10-25

Prevent Heat Illnesses. Know the Signs and Act.

HEAT EXHAUSTION	OR	HEAT STROKE
Faint or dizzy		Throbbing headache
Heavy sweating		Excessive sweating or red, hot, dry skin
Cool, pale, clammy skin		Very high body temperature
Nausea or vomiting		Nausea or vomiting
Rapid, weak pulse		Rapid, strong pulse
Muscle cramps		May lose consciousness
CALL 9-1-1 <ul style="list-style-type: none">• Get to a cooler, air conditioned place• Drink water, if fully conscious• Take a cool shower or use cold compresses		CALL 9-1-1 <ul style="list-style-type: none">• Take immediate action to cool the person until help arrives



**Seek Immediate Medical Assistance for Heat Related Illnesses.
Call 9-1-1.**

Policies, Procedures, and Forms Updates

Manuals

DMM Revision: Overseas Military and Diplomatic Post Office Mail

Effective November 3, 2025, the Postal Service™ will revise *Mailing Standards of the United States Postal Service*, Domestic Mail Manual (DMM®), in various sections, to clarify Postal Service standards for overseas military and diplomatic Post Office® mail.

The Postal Service is reorganizing the text of DMM section 703.2.0, “Overseas Military and Diplomatic Post Office Mail,” for consistency within the DMM. For clarity and consistency, the Postal Service is also revising the text of reorganized DMM section 703.2.0 to include the Army Post Office (APO), Fleet Post Office (FPO), and Diplomatic Post Office (DPO) acronyms consistently throughout the section.

Additionally, the DMM is being revised to reflect that the Postal Service is discontinuing the Space Available Mail (SAM) and Military Ordinary Mail (MOM) services. This decision was made in consultation with the U.S. Department of Defense (DOD) and the U.S. Department of State.

Except for the discontinued SAM and MOM services; the relocation of section 703.2.3.2, related to firearms (which will be placed in Publication 52, *Hazardous, Restricted, and Perishable Mail*), and a few minor revisions, the current text of 703.2.0 will otherwise remain intact.

Other revisions include updating section references in the DMM index based on the reorganization of DMM section 703.2.0, and removing references to SAM and MOM services.

The Postal Service will revise the Quick Service Guide (QSG) 800, “Glossary of Postal Terms and Abbreviations in the DMM,” to reflect these changes.

Although these revisions will not be published in the DMM until November 3, 2025, they are effective immediately after being published in Postal Explorer®.

The Postal Service will incorporate these revisions into the November 3, 2025, edition of the online DMM, which is available via Postal Explorer at pe.usps.com.

— Product Classification,
Product Solutions, 7-10-25

IMM Revision: Elimination of International Postal Money Order Service

Effective October 1, 2025, the Postal Service™ will revise *Mailing Standards of the United States Postal Service*, International Mail Manual (IMM®), part 371, to reflect the elimination of the competitive international extra service for the International Money Transfer Service known as international postal money orders. This revision is the second phase of the elimination in accordance with the PRC’s Order No. 7352 issued in Docket No. MC2024-413 on August 9, 2024, which was described in the article titled “IMM Revision: Elimination of International Postal Money Order Service” in *Postal Bulletin* 22658 (9-5-24, pages 15–16).

Effective October 1, 2025, the foreign posts for the following countries will stop cashing international postal money orders issued by the Postal Service:

- Albania.
- Belize.
- Bolivia.
- Cape Verde.
- Dominican Republic.

- Ecuador.
- El Salvador.
- Guinea.
- Guyana.
- Honduras.
- Mali.
- Peru.
- Sierra Leone.

Likewise, effective October 1, 2025, the Postal Service will stop cashing international postal money orders issued by the following countries:

- Belize.
- Peru.

A customer who is in possession of an international postal money order issued by the U.S. Postal Service® may redeem it at a U.S. Post Office™ facility at face value until September 30, 2025. A customer who is in possession of an international postal money order issued by the U.S. Postal

Service who does not redeem it at a U.S. Post Office facility by September 30, 2025, may file a PS Form 6401, *Money Order Inquiry*, pursuant to IMM 371.4. Direct inquiries about an international postal money order issued by another country to the postal operator of the issuing country.

Mailing Standards of the United States Postal Service, International Mail Manual (IMM)

* * * * *

3 Extra Services

* * * * *

370 International Money Transfer Services

[Insert a new first paragraph to read as follows:]

Note: Effective October 1, 2025, foreign postal operators stopped cashing international postal money orders issued by the U.S. Postal Service. Likewise, effective October 1, 2025, the Postal Service stopped cashing international postal money orders destined for the United States.

371 International Money Orders

* * * * *

371.1 Description

[Revise the text to read as follows:]

International postal money order service is a service used to transfer funds to individuals or firms in countries that have entered into agreements with the United States Postal Service for the exchange of international postal money orders. Effective October 1, 2024, the United States Postal Service no longer offered customers the ability to purchase international postal money orders. Effective October 1, 2025, foreign postal operators stopped cashing international postal money orders issued by the U.S. Postal Service. Likewise, effective October 1, 2025, the Postal Service stopped cashing international postal money orders destined for the United States.

* * * * *

[Delete 371.2 and 371.3 and renumber current 371.4 as 371.2.]

371.2 Inquiries Regarding Payment of International Postal Money Orders (Form MP1)

* * * * *

Although effective October 1, 2025, the Postal Service will incorporate these revisions into a later edition of the online IMM (the one scheduled after September 8, 2025). The IMM is available via Postal Explorer® at pe.usps.com.

— Product Classification,
Product Solutions, 7-10-25

Management Instructions

EL 310-2025-1: Telework Program for Eligible Nonbargaining Employees and PCES

Effective June 2025, the Postal Service™ revised Management Instruction EL-310-2024-2, *Telework Program for Eligible Nonbargaining Employees and PCES*. MI EL-310-2024-2 is now obsolete and will be replaced with version MI EL-310-2025-1. The updated Management Instruction reflects the change in teleworking to an allowable 1 day per week effective June 9, 2025.

The online version of EL 310-2025-1, *Telework Program for Eligible Nonbargaining Employees and PCES* is available on the Postal Service PolicyNet website (blue.usps.gov/cpim):

- Go to <https://blue.usps.gov>.
- In the left-hand column under “Essential Links,” click *PolicyNet*.
- Go to the right-hand side under “Published Forms and Directives.”
- Click *Management Instructions*.
- Scroll down to EL-310-2025-1 and click the PDF icon.

— National Human Resources,
Employment Policy and Programs, 7-10-25

Forms

PS Form 5659 Revision: Daily Passport Application (DS-11) Transmittal

Effective June 28, 2025, the Postal Service™ revised PS Form 5659, *Daily Passport Application (DS-11) Transmittal*, to reflect updated information regarding the fee for 1–3-day service from the Department of State.

USPS® facilities can use the following information to order PS Form 5659 through eBuy+:

PSIN:	PS 5659
PSN:	7530-02-000-9490
Unit of Measure:	EA
Minimum Order Quantity:	100
Maximum Order Quantity:	2,000
Quick Pick Number:	333
Price:	\$0.0149 *
Edition Date:	6/25

* The price is current as of this date and is subject to change. Any change in price will be reflected in eBuy+.

The June 2025 edition of PS Form 5659 (which replaces the January 2024 edition) is available on the Postal Service PolicyNet website:

- Go to blue.usps.gov.
- In the left-hand column, click *Essential Links*, and then click *PolicyNet*.
- Go to the right-hand side under “Published Forms and Directives,” click *Forms*, and then click on the ranges 5000–5999.
- Scroll down to the form entry and click the PDF icon.

The direct URL for the Postal Service PolicyNet website is blue.usps.gov/cpim.

— Retail Operations,
Retail and Post Office Operations, 7-10-25

Organization Information

Address Management

Post Office Changes

The table shown here includes Post Offices that have been suspended for years. Customers in these communities are being served by nearby offices. The listings in this table represent the administrative action of the Postal Service™ officially closing these offices.

Old/New	Finance No.	ZIP Code	State	P.O. Name	County/Parish	Station/Branch/Unit	Unit Type	Effective Date	Comments
Old	16-8292	60557	IL	Wedron	La Salle	Main Office	Post Office	12/28/2018	
New	16-7206	60557	IL	Sheridan	La Salle	Place Name	Post Office	07/05/2025	Post Office™ discontinued. Retain ZIP Code™. Establish a Place Name. Continue to use Wedron, IL 60557 as the last line of address.

— Address Management, Addressing and Geospatial Technology, 7-10-25

Corporate Communications

250th Anniversary Stamps Overview

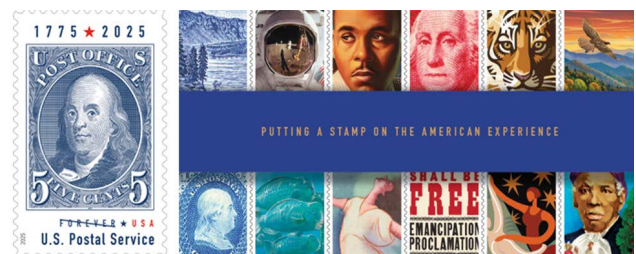


250 Years of Delivering Stamp

Issued to celebrate a major U.S. Postal Service® anniversary, 250 Years of Delivering is an illustrated pane of 20 interconnected stamps representing the ubiquitous presence of USPS® throughout the years and the vital role the postal system has played in American life since 1775. The

artwork, created by artist Chris Ware, shows a bird's-eye view of a bustling town. Each individual stamp is a frame of sequential art that tells the story of a mail carrier's daily journey as she walks her route through four seasons. The artwork contains numerous icons representing the Postal Service™. Art director Antonio Alcalá designed the stamps with Chris Ware.

The 250 Years of Delivering stamps will be available for purchase at local Post Offices, The Postal Store® at usps.com/shop, the USA Philatelic catalog or by calling 1-844-737-7826.



Putting a Stamp on the American Experience Booklet and Stamp Overview

This prestige booklet commemorates the 250th anniversary of our nation's postal system and celebrates the enduring impact of stamps on our shared heritage. Highlighting the popular series and subjects that give the U.S. stamp program its remarkable range and depth, this 32-page prestige booklet, only the fourth ever issued by the Postal Service, includes two self-adhesive sheets of a new First-Class Forever® stamp available exclusively with the

booklet. The stamp is a “reframed” modern interpretation of an 1875 reproduction of the 1847 Benjamin Franklin 5-cent stamp, one of the first official U.S. postage stamps. Art director Ethel Kessler designed the prestige booklet and the stamp.

The *Putting a Stamp on the American Experience* booklet will only be available for purchase on the Postal Store at usps.com/shop, the *USA Philatelic* catalog or by calling 1-844-737-7826.

Special Dedication Ceremonies

The 250 Years of Delivering stamps and the *Putting a Stamp on the American Experience* booklet will be unveiled and issued at the USPS headquarters on July 23, 2025. Sixty (60) Post Offices have been identified that were in operation on July 26, 1775. **Postmasters of those offices are receiving separate details on how to host special unveilings.**

Postmasters of all other offices may conduct special dedication ceremonies after July 23. Please note that other special dedication ceremonies **cannot** take place on the same day as a first-day-of-issue stamp dedication.

Special Dedication Ceremony Resources:

For all special dedication ceremony resources, go to:

- National Events homepage at blue.usps.gov/corpcomm/national-events/welcome.htm.
- Standard operating procedures field stamp ceremonies: blue.usps.gov/corpcomm/national-events/_pdf/sop-fdoi-stamp-ceremonies-july2018.pdf.
- Ordering stamp image enlargements: blue.usps.gov/corpcomm/national-events/ordering-images.htm.

Suggested Planning Timeline for First-Day-of-Sale and Special Dedication Events

Action	Suggested Timing
1. Send invitations to local and area dignitaries.	A few weeks before event
2. Send announcements and invitations to employees.	A few weeks before event
3. Distribute media advisory to all news media.	1 week before event
4. Distribute community invitation letter to the editor.	1 week before event
5. Remind invited dignitaries about event via telephone.	5 days before event
6. Redistribute media advisory to all news media.	1 to 2 days before event
7. Make follow-up calls to local news media.	1 day before event
8. Send letter to newspaper editor thanking community.	1 day after event
9. Send media clips to field Corporate Communications manager.	Within 1 week after event

Note: If you have any questions or need assistance with any of these items, please notify your Corporate Communications local contacts at blue.usps.gov/corpcomm/field-communications/welcome.htm.



FOR IMMEDIATE RELEASE
Xxx. XX, 2025

MEDIA ADVISORY

Contact: xxxxx xxxxxx
xxxxx.xxxxx@usps.gov
<https://usps.com/news>



[Post Office Name] Invites Community To Celebrate 250 Years of Service With New Stamps

WHAT: The [Post Office Name] will hold an unveiling ceremony for two new stamps, one of which comes as part of a 32-page prestige booklet, to commemorate the Postal Service's 250 years of service to the nation.

The illustrated Forever stamps, 250 Years of Delivering, tell the story of a mail carrier making her daily rounds during a year in the life of the community she serves. The *Putting a Stamp on the American Experience* booklet highlights popular subjects that give the U.S. stamp program its remarkable range and depth. Exclusively available with this booklet are two sheets of a new Forever stamp featuring the first Postmaster General, Benjamin Franklin.

WHO: [Dedicating official Title, Name]

WHEN: [Day, Month XX, at Time]

WHERE: Name of Location
Street Address
City, State ZIP code:

(Special instructions, if needed)

BACKGROUND: 250 Years of Delivering stamps

Established in 1775, the postal system was so essential to winning American independence and creating a free nation that it is mentioned in the U.S. Constitution.

For 250 years, the U.S. Postal Service has continued to serve the same ideals, connecting individuals, communities, and businesses through an ongoing exchange of ideas, information, and goods. Although the United States only makes up 4 percent of the world's population, the U.S. Postal Service handles 44 percent of mail across the entire globe.

In snow, rain, heat, and gloom of night, USPS reliably reaches the American where they live and work. Today, at nearly 169 million addresses nationwide, American communities near and far are connected by mail.

The 250 Years of Delivering stamps are a meticulously illustrated pane of 20 interconnected stamps that offers a bird's-eye view of a bustling town. Each stamp is a frame of sequential art that tells the story of a mail carrier's daily journey as she walks her route. Laid out in four rows of five stamps, the story progresses through the four seasons, from top-left to bottom-right.

Chris Ware created the stamp artwork and co-designed the pane with Antonio Alcalá, an art director for USPS.

Putting a Stamp on the American Experience prestige booklet

Highlighting the popular subjects and series that give the U.S. stamp program its remarkable range, *Putting a Stamp on the American Experience* provides an in-depth look at some of the Postal Service's most popular stamps. The 32-page prestige booklet includes two self-adhesive sheets of a new Forever stamp available exclusively with this purchase. The stamps feature a reframed, modern interpretation of a 5-cent stamp depicting Benjamin Franklin, originally released in 1847. This booklet is only available through the *Postal Store*, by calling 844-737-7826, or by mail through *USA Philatelic*.

As one of the first two honorees on U.S. stamps, Franklin is a longtime icon of the stamp program, appearing on more than 100 releases in the 178-year history of American stamps. Appointed postmaster general of the Colonies by the Second Continental Congress in 1775, Franklin appreciated that the postal system could help unite the Colonies and the nation they became. As a printer, scientist and diplomat, he played a monumental role in shaping American culture, and his postal legacy of adaptability and innovation continues to inspire the modern-day Postal Service.

Ethel Kessler, an art director for USPS, designed the prestige booklet and the stamp.

Sample Letter to the Editor — Community invitation

[Insert Date]
[Insert Name]
[Insert Title]
[Insert Name of Publication]
[Insert Street Address]
[Insert City, State, ZIP+4]

Dear Editor,

As Postmaster of **[Insert Post Office Name]**, I would like to express my gratitude to the community for your unwavering support, trust, and allowing us to serve you each and every day. The United States Postal Service this year is celebrating 250 years of connecting neighbors, supporting businesses, and strengthening communities.

To mark this historic milestone, we invite the community to join us for the unveiling of two stamps. More than just postage, these commemorative stamps tell the story of our history. The artwork of the 250 Years of Delivering stamps illustrates a community's year and exemplifies the faithful presence of the U.S. Postal Service in American life. And, a reframed 1875 Benjamin Franklin stamp is part of a 32-page booklet titled, *Putting a Stamp on the American Experience*. The booklet pays tribute to long-running stamps series, highlights printing innovations and recognizes the importance of stamps and the causes they bring to light.

The ceremony will take place on **[Day of the week, Month, Day at Time]**, at the **[Post Office Name]**.

We hope this unveiling brings neighbors, families, civic leaders and postal employees together to celebrate a quarter-millennium of dedication, connection, and progress.

It is truly an honor to be part of this community, and we look forward to celebrating this significant moment with you.

Sincerely,

[Insert Postmaster's Name]
Postmaster
U.S. Postal Service
[Insert City, State, ZIP+4]

Sample Letter to the Editor — Thank you

[Insert Date]
[Insert Name]
[Insert Title]
[Insert Name of Publication]
[Insert Street Address]
[Insert City, State, ZIP+4]

Dear Editor,

On behalf of the [Insert Post Office Name], we would like to thank the citizens of [Insert City Name] for their enthusiasm and support in making yesterday's release of the 250 Years of Delivering stamps and *Putting a Stamp on the American Experience* prestige stamp booklet a successful event for our community and the U.S. Postal Service (USPS).

Writing and sending greetings is a tradition that has pre-served our nation's history and changed lives. Unlike other communications, written correspondence is timeless, personal and immediately tangible. An event like this is a reminder that USPS is not just a delivery service; it is an integral part of every community.

Whether by providing universal mail service throughout our great nation, or through our responsibilities as a community leader, the Postal Service will continue to work hard to deliver quality communications services across the country and right here in [Insert City Name].

Sincerely,

[Insert Postmaster's Name]
Postmaster
U.S. Postal Service
[Insert City, State, ZIP+4]

Stock Script for Dedicating Official
Special Dedication Ceremony
250 Years of Delivering — 2025
#USPS250

Good **morning/afternoon/evening** everyone! Thank you for that kind introduction. **(Or if not introduced, use the following self-intro).**

Good **morning/afternoon/evening**, everyone! I'm **(NAME and TITLE)** and I'm happy to be here on behalf of the United States Postal Service, as we present the 250 Years of Delivering stamps and the *Putting a Stamp on the American Experience* prestige booklet.

I'd first like to thank all of our speakers, honored guests, customers, and community leaders for joining us today. **(Recognize VIPs by name, as appropriate.)**

[PAUSE]

America's founders established our postal system in 1775 because they knew it would be essential to winning independence and creating a free nation.

Two hundred fifty (250) years later, the Postal Service still serve the same ideals of connecting individuals, communities, and businesses through an ongoing exchange of ideas, information, and goods.

Those connections to community, friends, and families are made possible by our employees, mail carriers, mail handlers, retail associates, postmasters, and others in a range of roles nationwide.

Together, these 640,000 dedicated men and women work toward a shared mission; to provide the nation with reliable, affordable, universal mail service. Whether it's the carrier delivering your mail, the mechanic keeping their vehicle running, the retail associate at your local Post Office, or the mail handlers making sure every envelope or package gets sent to the right destination, they're working together to serve our country.

The 250 Years of Delivering stamps are a testament to that dedication.

Together, they tell the story of a mail carrier's daily journey as she walks her route. The 20 frames depict the ubiquitous presence a carrier has in every community, every day, in every kind of weather.

Like all Postal Service employees, mail carriers are uniquely familiar with the customers they serve. They provide consistency and normality to communities; they are your friends, neighbors, and sometimes heroes in emergency situations.

Artwork for the 250 Years of Delivering stamps was created by Chris Ware and co-designed with art director Antonio Alcalá ("Al-Ca-La").

In addition to this beautiful pane showcasing 250 years of delivery, we are also presenting a 32-page prestige booklet entitled *Putting a Stamp on the American Experience*. This booklet celebrates the cultural importance and enduring influence stamps have on our shared heritage.

A reproduction of one of the first official U.S. postage stamps is included in the booklet. The stamp is based on an 1847 5-cent stamp featuring the first Postmaster General, Benjamin Franklin.

The 250 Years of Delivering stamps are available at local Post Offices or online at The Postal Store. The prestige booklet is available for purchase online, or through the USA Philatelic catalog.

And now, on behalf of the United States Postal Service, I would like to invite our guests to join me in presenting the 250 Years of Delivering stamps and prestige booklet.

[PARTICIPANTS UNVEIL STAMP]**[PHOTO OP]***250 Years of Delivering Hidden Object Game*

Postal delivery is such a ubiquitous part of our national life that it can sometimes go almost unnoticed. These unique stamps celebrate our connection by mail, a bond Americans have shared since 1775. The artwork tells the story of a U.S. Postal Service carrier making her daily rounds and a year in the life of the community she serves. Many USPS-related items are included, listed below in bold type. Have fun exploring and finding them all!

The **Post Office** is often at the heart of the community, and the U.S. has more than 31,000 locations.

A green **drop (or relay) box** securely stores mail for a carrier.

Curbside collection boxes, now painted dark blue, multiplied as suburbs boomed in the 1950s (find two).

A post rider on horseback was the symbol of the Post Office Department, predecessor of USPS.

Boxy and durable, **Long-Life Vehicles (LLV)** rolled out in 1987 (find two).

Next Generation Delivery Vehicles (NGDV), energy-efficient and spacious, debuted in 2024 (find two).

A stamp collector may be an experienced expert, or a rookie just beginning to enjoy these tiny designs that express big ideas.

Signing a carrier's **Mobile Delivery Device** lets the sender know that delivery is complete (find two).

USPS® packaging is available in a variety of convenient sizes.

Apartment dwellers often receive mail in a **cluster mailbox**.

Before the **post-mounted residential mailbox** was standardized, people improvised, hanging up buckets, soap boxes, syrup cans, whatever!

A toy mail truck is among the fun merchandise found at usps.com/store.

Writing a letter is a thoughtful mode of expression...

...and the joy of **reading a greeting** never grows old; opening the mailbox to find your note or card can make a friend's day.



First-Day-of-Issue Postmark

Customers have 120 days to obtain the first-day-of-issue postmark by mail. They may purchase new stamps at their local Post Office or on The Postal Store website at usps.com/shop. They must affix the stamps to envelopes of their choice, address the envelopes (to themselves or others), and place them in a larger envelope addressed to:

FDOI — 250 Years of Delivering Stamps
USPS Stamp Fulfillment Services
8300 NE Underground Drive, Suite 300
Kansas City, MO 64144-9900

FDOI — Putting a Stamp on the
American Experience
USPS Stamp Fulfillment Services
8300 NE Underground Drive, Suite 300
Kansas City, MO 64144-9900

After applying the first-day-of-issue postmark, the Postal Service will return the envelopes through the mail. There is no charge for the postmark up to a quantity of 50. There is a 5-cent charge for each additional postmark over 50. All orders must be postmarked by November 23, 2025.

Philatelic Products

In addition to stamps, there are three products that Post Offices can order by contacting SFS and using PS Form 17 at blue.usps.gov/formmgmt/forms/ps17.pdf.

Item Number	Product Type	Price
487116	First Day Covers (set of 20)	\$27.20
487121	Digital Color Postmark (set of 20)	\$44.20
487133	Retail Panel	\$18.95

The minimum order for each is 5 sets.

While the Prestige booklet with Ben Franklin stamp is only available for purchase at store.usps.com/store/home, the USA Philatelic Catalog or by calling 1-844-737-7826, those Post Office holding a 250th Special Dedication can order a minimal quantity of the Prestige booklets with the Benjamin Franklin Stamp using PS Form 17 at blue.usps.gov/formmgmt/forms/ps17.pdf.

Item Number	Product Type	Price
894500	USPS 250th Prestige Booklet <i>Putting a Stamp on the American Experience</i> FDOI July 23, 2025	\$20.95

Pictorial Postmark

Only the following pictorial postmark is permitted for *250 Years of Delivering* stamps. The word “Station” or the abbreviation “STA” is required somewhere in the design because it will be a temporary station. **Use of any image other than the following special pictorial image is prohibited.**



The Postal Service must make all special postmarks known to collectors through advance publicity in the *Postal Bulletin*. Therefore, all special dedication cancellations must be reported to Stamp Services four weeks before the event using PS Form 413, *Pictorial Postmark Announcement/Report*. For a fillable PDF version of the form, go to blue.usps.gov/formmgmt/forms/ps413.pdf.

To learn more information about pictorial postmarks, read Handbook PO-230 (see about.usps.com/handbooks/po230.pdf.)

For more information about Postmaster Publicity Kit, go to the Postal Communicator's Toolbox at blue.usps.gov/corpcomm/toolbox.

Domestic Mail

Labeling List Changes

Effective August 1, 2025, the Postal Service™ will revise Labeling List(s) L002, L004, L005, L007, L010, L012, L601, L605, and L606 to reflect changes in mail processing operations. Mailers are expected to label according to these revised lists for mailings inducted on or after the August 1, 2025, effective date through the September 30, 2025, expiration date.

Labeling Lists

* * * * *

L002 3-Digit ZIP Code Prefix Matrix

Changes

3-Digit ZIP Code Prefix	Column A 3-Digit Destinations Label To (Change From)	Column B 3-Digit/Scheme Destinations Label To (Change From)	Column C SCF Destinations Label To (Change From)	Column A 3-Digit Destinations Label To (Change To)	Column B 3-Digit/Scheme Destination Label To (Change To)	Column C SCF Destinations Label To (Change To)
321	ORLANDO FL 321	ORLANDO FL 321	SCF MID-FLORIDA FL 327	ORLANDO FL 321	ORLANDO FL 321	SCF ORLANDO FL 328
327	ORLANDO FL 327	ORLANDO FL 327	SCF MID-FLORIDA FL 327	ORLANDO FL 327	ORLANDO FL 327	SCF ORLANDO FL 328

* * * * *

L004 3-Digit ZIP Code Prefix Groups — ADC Sortation

Changes

Column A 3-Digit ZIP Code Prefix Group	Column B Label To (Change From)	Column B Label To (Change To)
166	ADC ALTOONA PA 166	ADC JOHNSTOWN PA 159
168	ADC ALTOONA PA 166	ADC JOHNSTOWN PA 159
184	ADC SCRANTON PA 184	ADC LEHIGH VALLEY PA 180
185	ADC SCRANTON PA 184	ADC LEHIGH VALLEY PA 180
186	ADC SCRANTON PA 184	ADC LEHIGH VALLEY PA 180
187	ADC SCRANTON PA 184	ADC LEHIGH VALLEY PA 180
188	ADC SCRANTON PA 184	ADC LEHIGH VALLEY PA 180
242	ADC JOHNSON CITY TN 376	ADC KNOXVILLE TN 377
376	ADC JOHNSON CITY TN 376	ADC KNOXVILLE TN 377
560	ADC MANKATO MN 560	ADC ST PAUL MN 550
561	ADC MANKATO MN 560	ADC ST PAUL MN 550
683	ADC LINCOLN NE 683	ADC OMAHA NE 680
684	ADC LINCOLN NE 683	ADC OMAHA NE 680
685	ADC LINCOLN NE 683	ADC OMAHA NE 680
688	ADC LINCOLN NE 683	ADC OMAHA NE 680
689	ADC LINCOLN NE 683	ADC OMAHA NE 680
949	ADC NORTH BAY CA 949	ADC SAN FRANCISCO CA 940
954	ADC NORTH BAY CA 949	ADC SAN FRANCISCO CA 940

Newly Added

Column A 3-Digit ZIP Code Prefix Group	Column B Label To (Added To)
321	(BPM, FCM, PER, STD) ADC ORLANDO FL 328
327	(BPM, FCM, PER, STD) ADC ORLANDO FL 328

Deleted

Column A 3-Digit ZIP Code Prefix Group	Column B Label To (Deleted From)
321	ADC MID-FLORIDA FL 327
327	ADC MID-FLORIDA FL 327

* * * * *

L005 3-Digit ZIP Code Prefix Groups — SCF Sortation

Changes

Column A Destination ZIP Codes	Column B Label To (Change From)	Column B Label To (Change To)
321	SCF MID-FLORIDA FL 327	SCF ORLANDO FL 328
327	SCF MID-FLORIDA FL 327	SCF ORLANDO FL 328

* * * * *

Pull-Out Information

Fraud

Missing, Lost, or Stolen U.S. Money Order Forms

Do Not Cash — Upon Receipt, Notify Local Postal Inspectors

Provide this listing to all Postal Service™ employees responsible for accepting and cashing postal money orders. Destroy all interim notices when the numbers listed appear in the *Postal Bulletin*. The new money order serial numbers consist of the first 10 digits. The eleventh digit is a check digit only.

Do not cash outdated money orders **104 151 601 to 692 600 000**. Advise holders to send invalid money orders to Canada Post Corporation, Ottawa, Canada K1A 0B1. Check for altered dollar amounts by holding money orders to the light.

010 001 0200 to 0299	035 035 4337 to 4399	066 648 2880 to 2899	094 580 7062 to 7099
010 504 1932 to 1999	037 312 7500 to 7599	066 787 3639 to 3699	094 639 4200 to 4299
011 582 1889 to 1899	037 706 9578 to 9599	066 845 7500 to 9999	095 070 7186 to 7199
011 588 2900 to 3099	037 805 3677 to 3699	067 093 3869 to 3899	095 076 8300 to 8399
012 441 0784 to 0799	037 909 5490 to 5499	068 895 0334 to 0399	095 354 6864 to 6899
012 579 5675 to 5699	037 931 4660 to 4699	070 724 4488 to 4499	097 224 1350 to 1599
013 289 6176 to 6199	039 145 6521 to 6595	070 841 9181 to 9199	100 160 3800 to 3899
013 610 0014 to 0099	040 024 3901 to 3999	070 844 2546 to 2599	104 667 6400 to 6499
014 932 1000 to 1099	040 674 7100 to 7199	070 916 1340 to 1399	104 876 8937 to 8999
014 972 0800 to 0899	040 688 8816 to 8899	071 047 5768 to 5799	112 049 4413 to 4499
015 363 0065 to 0099	041 299 6752 to 6799	071 179 9800 to 9899	112 870 9765 to 9799
017 028 3200 to 3299	041 623 8889 to 8899	071 386 3682 to 3699	113 319 2000 to 2099
018 569 5333 to 5399	041 803 6565 to 6599	071 507 6840 to 6899	114 402 3850 to 3899
018 986 5264 to 5299	043 129 1968 to 1997	072 045 9641 to 9699	114 866 5368 to 5397
019 518 2814 to 2899	043 205 5922 to 5999	072 675 8287 to 8299	116 154 2800 to 2899
020 698 5159 to 5199	044 087 3457 to 3499	073 763 0867 to 0876	116 986 4400 to 4499
020 844 7307 to 7399	044 087 4000 to 4099	073 763 0878 to 0887	117 175 1647 to 5169
020 972 8948 to 8999	044 226 2487 to 2512	073 763 0889 to 0898	117 951 4687 to 4699
022 021 9110 to 9181	044 306 4200 to 4299	077 617 5481 to 5499	117 951 5200 to 5299
022 037 1411 to 1499	044 306 4370 to 4599	077 999 4001 to 4090	119 786 3051 to 3064
022 527 9201 to 9210	045 524 4121 to 4298	078 174 4475 to 4499	119 815 8961 to 6199
022 529 1882 to 1899	046 800 9870 to 9899	078 219 4931 to 4999	119 850 7400 to 7499
023 637 7169 to 7199	047 352 4000 to 4099	078 250 4756 to 4799	119 850 7700 to 7999
024 380 4100 to 4199	048 383 7650 to 7659	078 823 8312 to 8399	121 634 0460 to 0499
024 496 6870 to 6896	048 396 3647 to 3699	079 374 0300 to 2499	122 451 9879 to 9899
025 092 0987 to 0999	051 142 0755 to 0799	079 807 2342 to 2399	122 714 6805 to 6900
025 369 5535 to 5599	051 774 8857 to 8899	082 721 0228 to 0254	124 916 0304 to 0499
025 729 1151 to 1199	051 781 2875 to 2885	083 140 5000 to 7499	126 423 0136 to 0169
025 729 1643 to 1799	051 977 7010 to 7023	083 784 8886 to 8899	127 500 2328 to 2399
026 492 3180 to 3199	052 058 7115 to 7199	083 913 6915 to 6999	160 901 2254 to 2299
027 361 0430 to 0499	054 450 1130 to 1167	084 478 3920 to 3999	161 103 6581 to 6599
027 369 4482 to 4495	057 670 0563 to 0599	086 000 8271 to 8299	161 194 2857 to 2899
027 671 8762 to 8776	058 187 3836 to 3899	086 798 3840 to 3849	162 032 4447 to 4499
027 787 9886 to 9899	058 523 3003 to 3099	088 404 4472 to 4499	163 257 1085 to 1099
027 965 9487 to 9499	058 591 1153 to 1299	088 404 5584 to 5699	164 359 2406 to 2499
028 100 8069 to 8099	058 895 3746 to 3799	088 757 8688 to 8699	166 101 1433 to 1499
028 191 1852 to 1999	059 986 0814 to 0899	088 757 9400 to 9499	167 555 5201 to 5212
028 850 3000 to 3199	060 406 7650 to 7699	089 358 2248 to 2257	167 555 5214 to 5299
029 510 1500 to 1599	063 491 8122 to 8199	090 663 9678 to 9684	169 618 6274 to 6299
030 687 0903 to 0999	063 916 9968 to 9999	091 818 0071 to 0099	171 806 6878 to 6893
030 701 3442 to 3499	064 091 4500 to 4599	093 106 9346 to 9355	173 639 4685 to 4699
031 077 4507 to 4799	065 170 0471 to 0499	093 203 0500 to 0599	174 238 2779 to 2799
032 295 7500 to 9999	065 255 7909 to 7999	093 684 3630 to 3699	174 281 9347 to 9399
034 394 1000 to 1099	065 392 6345 to 6399	094 081 5074 to 5099	175 251 2600 to 0699
034 943 0400 to 0799	066 099 2014 to 2099	094 216 2555 to 2599	176 281 7937 to 7950

176 281 7963	to	7999	219 568 7435	to	7456	252 612 3683	to	3699	258 405 4200	to	4299
176 731 6586	to	6599	219 568 7469	to	7487	252 469 2125	to	2199	258 405 4600	to	4699
178 254 5000	to	9999	221 316 5757	to	5799	252 833 3286	to	3297	258 405 5600	to	5699
178 881 9900	to	9999	223 476 3914	to	3999	253 470 3948	to	3999	258 405 5700	to	5799
180 031 2089	to	2098	223 565 4921	to	4957	253 565 7400	to	7499	258 405 5800	to	5899
180 403 7723	to	7741	223 565 4979	to	4999	254 252 2800	to	2899	258 405 5900	to	5999
180 428 4580	to	0599	224 636 4745	to	4765	254 252 2900	to	2999	258 405 6000	to	6099
182 368 7544	to	0599	224 636 4776	to	4799	254 252 3000	to	3099	258 405 6100	to	6199
182 475 3229	to	3258	224 636 4855	to	4885	254 252 3100	to	3199	258 405 6200	to	6299
182 475 3904	to	3933	224 636 4932	to	4948	254 252 3200	to	3299	258 405 6300	to	6399
182 631 0031	to	0099	224 636 4950	to	4962	254 252 3300	to	3399	258 405 6400	to	6499
182 911 6539	to	6600	224 636 4985	to	4999	254 252 3400	to	3499	258 405 6800	to	6899
184 218 2760	to	2799	224 723 0757	to	0799	254 252 3500	to	3599	258 405 6900	to	6999
185 828 1474	to	1499	224 730 2207	to	2299	254 252 3600	to	3699	258 405 7000	to	7099
186 132 7583	to	0599	225 970 0500	to	0599	254 252 3700	to	3799	258 405 7100	to	7199
186 629 0589	to	0599	225 970 0600	to	0699	254 252 3800	to	3899	258 405 7200	to	7299
187 184 6177	to	0199	225 970 0700	to	0799	254 252 3900	to	3999	258 405 7300	to	7399
187 323 8200	to	8299	227 033 8679	to	8699	254 252 4000	to	4099	258 405 7400	to	7499
187 441 6080	to	6099	227 275 9400	to	9999	254 252 4100	to	4199	258 405 7800	to	7899
188 831 6774	to	6799	228 463 2456	to	2499	254 252 4200	to	4299	258 405 7900	to	7999
188 835 6370	to	6399	228 510 4852	to	4899	254 252 4300	to	4399	258 405 8000	to	8099
189 083 1064	to	1099	229 462 8451	to	8475	254 252 4400	to	4499	258 405 8100	to	8199
189 660 9583	to	9599	229 668 5977	to	5999	254 252 4500	to	4599	258 405 8200	to	8299
191 179 0377	to	0399	229 923 9176	to	9199	254 252 4600	to	4699	258 405 8300	to	8399
192 050 5762	to	5781	229 924 6696	to	6699	254 252 4700	to	4799	258 405 8400	to	8499
194 456 8600	to	0699	230 051 9500	to	9999	254 252 4800	to	4899	258 405 8500	to	8599
195 194 6881	to	6899	236 366 2431	to	2499	254 252 4900	to	4999	258 405 8600	to	8699
195 874 1112	to	1199	236 607 6882	to	6899	254 565 7607	to	7700	258 405 8700	to	8799
196 979 0524	to	0599	236 660 5853	to	5872	254 907 1203	to	1299	258 405 8800	to	8899
197 244 6100	to	6199	239 322 5200	to	5299	255 185 9527	to	9599	258 405 8900	to	8999
197 244 6300	to	6399	239 322 5400	to	5499	255 397 1557	to	1576	258 405 9600	to	9699
197 244 6400	to	6499	239 322 5600	to	5699	255 425 2989	to	2998	258 405 9700	to	9799
197 244 6500	to	6599	239 322 5800	to	5899	255 728 6412	to	6499	258 405 9800	to	9899
197 244 6600	to	6699	239 322 5900	to	5999	255 728 9842	to	9899	258 405 9900	to	9999
197 244 6700	to	6799	239 607 4783	to	4799	256 134 9833	to	9839	259 014 9989	to	9999
197 244 6800	to	8999	240 593 1879	to	1899	256 134 9840	to	9849	259 062 4788	to	4798
198 285 2556	to	2566	242 591 2048	to	2099	256 134 9850	to	9859	259 218 1400	to	1499
199 105 0778	to	0799	242 735 0388	to	0398	256 134 9860	to	9869	259 218 1500	to	1599
199 678 2968	to	2999	242 951 7276	to	7299	256 134 9870	to	9879	259 218 1600	to	1699
202 748 5133	to	5199	243 535 6370	to	6399	256 134 9880	to	9889	259 590 5654	to	5699
202 748 5245	to	5299	244 004 9985	to	9999	256 134 9890	to	9899	259 670 8268	to	8299
202 748 5300	to	5399	244 004 9985	to	9999	256 247 6900	to	6999	259 835 6238	to	6399
202 748 5400	to	5499	244 268 9765	to	9799	256 550 5536	to	5545	259 835 6701	to	6799
203 256 1240	to	1299	244 347 4471	to	4499	256 799 2257	to	2299	260 224 4600	to	4699
204 230 3577	to	3595	249 056 1551	to	1599	257 154 8763	to	8799	260 224 5941	to	5999
205 019 0174	to	0199	249 336 9438	to	9499	257 154 8800	to	8899	260 310 2821	to	2899
206 936 3184	to	3199	249 399 4000	to	4099	257 765 4567	to	4599	260 452 0010	to	0022
207 196 9900	to	9999	249 399 4100	to	4199	257 765 4610	to	4696	260 452 0049	to	4299
207 204 0700	to	0799	249 399 4200	to	4299	257 765 4737	to	4799	260 553 8200	to	8299
207 204 0800	to	0899	249 399 4300	to	4399	257 792 7800	to	7889	260 553 8600	to	8699
207 514 3857	to	3899	249 399 4400	to	4499	257 792 7900	to	7999	260 553 9600	to	9799
208 556 4707	to	4799	249 399 4500	to	4599	257 792 8000	to	8099	260 553 9800	to	9899
210 057 4038	to	4047	249 399 4600	to	4699	257 856 9863	to	9899	260 553 9900	to	9999
210 221 0548	to	0599	249 399 4700	to	4799	258 103 1773	to	1782	260 761 1603	to	1662
214 061 4711	to	4724	249 399 4800	to	4899	258 405 1800	to	1899	261 183 2100	to	2299
214 303 6311	to	6325	249 399 4900	to	4999	258 405 1900	to	1999	261 426 0408	to	0499
214 303 6239	to	6258	250 159 7502	to	7599	258 405 3300	to	3399	262 082 8000	to	8099
214 877 4251	to	4273	250 566 9644	to	9699	258 405 3400	to	3499	262 082 8100	to	8199
215 252 3918	to	3992	250 661 8425	to	8499	258 405 3500	to	3599	262 082 8200	to	8299
217 585 1400	to	1499	251 335 5731	to	5799	258 405 3700	to	3799	262 082 8300	to	8399
218 698 2157	to	2199	251 379 2380	to	2399	258 405 3800	to	3899	262 082 8400	to	8499
218 746 0800	to	0899	252 005 7626	to	7699	258 405 3900	to	3999	262 288 7302	to	7399
219 095 0100	to	0399	252 421 8401	to	8499	258 405 4000	to	4099	262 288 7400	to	7499
219 389 1885	to	1899	252 464 2810	to	2899	258 405 4100	to	4199	262 288 9900	to	9999

262 337 2600	to	2699	262 337 9000	to	9099	273 775 7700	to	7899	395 343 3264	to	3299
262 337 2700	to	2700	262 337 9100	to	9199	273 882 1913	to	1998	395 373 3035	to	3099
262 337 2800	to	2800	262 337 9200	to	9299	274 750 0300	to	0400	395 396 9649	to	9799
262 337 2900	to	2900	262 337 9300	to	9399	274 782 0549	to	0599	395 970 3240	to	3299
262 337 3000	to	3099	262 337 9400	to	9499	279 517 9330	to	9399	397 622 4054	to	4099
262 337 3100	to	3199	262 337 9500	to	9599	279 517 9594	to	9599	397 819 8902	to	8999
262 337 3200	to	3299	262 337 9600	to	9699	279 517 9623	to	9699	398 149 7200	to	7699
262 337 3300	to	3399	262 337 9700	to	9799	282 667 2500 to 4999			399 070 0872	to	0899
262 337 3400	to	3499	262 337 9800	to	9899	302 000 0000 to 9999			399 156 7119	to	7199
262 337 3500	to	3599	262 337 9900	to	9999	349 746 2056 to 2099			399 203 5064	to	5099
262 337 3600	to	3699	262 472 3188	to	3199	350 518 7350 to 7374			399 296 9910	to	9999
262 337 3700	to	3799	262 472 3200	to	3299	360 011 1690 to 1699			399 396 8935	to	8999
262 337 3800	to	3899	262 546 3100	to	3199	360 168 6008	to	6099	399 792 7775	to	7799
262 337 3900	to	3999	262 546 3200	to	3299	360 173 8800	to	8899	399 792 8300	to	8399
262 337 4000	to	4099	262 546 3300	to	3399	360 324 2326	to	2399	400 427 1051 to 1999		
262 337 4100	to	4199	262 546 3400	to	3499	362 861 3064	to	3099	401 045 1505	to	1549
262 337 4200	to	4299	262 546 3500	to	3599	373 006 2176 to 2199			401 045 1571	to	1599
262 337 4300	to	4399	262 546 3600	to	3699	374 768 2600	to	2699	401 294 2700	to	2799
262 337 4400	to	4499	262 546 3900	to	3999	375 169 4400	to	4599	401 310 9505	to	9599
262 337 4500	to	4599	262 546 4300	to	4399	375 829 3400	to	3499	401 382 5312	to	5399
262 337 4600	to	4699	262 546 4400	to	4499	375 851 9100	to	9199	402 578 7876	to	7899
262 337 4700	to	4799	262 546 4500	to	4599	376 196 0911	to	0999	403 125 6744	to	6799
262 337 4800	to	4899	262 546 4600	to	4699	378 085 3679	to	3699	403 260 7000	to	7499
262 337 4900	to	4999	262 546 4700	to	4799	378 351 1063	to	1099	403 280 6470	to	6499
262 337 5000	to	5099	262 546 4800	to	4899	379 843 5100	to	5199	403 685 8600	to	8699
262 337 5100	to	5199	262 546 4900	to	4999	380 093 9600 to 9699			404 003 0300	to	0399
262 337 5200	to	5299	262 546 7100	to	7199	380 165 1165	to	1199	404 041 8838	to	8899
262 337 5300	to	5399	262 546 7200	to	7299	381 325 4500	to	4599	404 071 4268	to	4299
262 337 5400	to	5499	262 546 7300	to	7399	381 604 2510	to	2699	404 347 5356	to	5399
262 337 5500	to	5599	262 546 7400	to	7499	381 645 9525	to	9599	404 347 5548	to	5599
262 337 5600	to	5699	262 546 9800	to	9899	383 314 3968	to	3999	404 726 4500	to	4599
262 337 5700	to	5799	262 546 9900	to	9999	383 892 1000	to	1344	404 961 5001	to	5199
262 337 5800	to	5899	262 567 1788	to	1799	383 892 1382	to	1399	405 325 0188	to	0198
262 337 5900	to	5999	263 254 2500	to	2500	384 925 3641	to	3654	406 009 4587	to	4599
262 337 6000	to	6099	263 340 0000	to	0099	385 568 2331	to	2399	406 260 6830	to	6899
262 337 6100	to	6199	263 340 0100	to	0199	385 599 7554	to	7575	406 459 6641	to	6999
262 337 6200	to	6299	263 340 0500	to	0599	385 774 2024	to	2099	406 733 3000	to	3999
262 337 6300	to	6399	263 340 0600	to	0699	386 624 1412	to	1599	407 545 1557	to	1599
262 337 6400	to	6499	263 340 2700	to	2799	386 883 8936	to	8999	407 594 0412	to	0599
262 337 6500	to	6599	263 340 2800	to	2899	387 314 5574	to	5599	407 692 9100	to	9299
262 337 6600	to	6699	263 340 3000	to	3099	387 837 6300	to	6399	407 959 2190	to	2199
262 337 6700	to	6799	264 341 2360	to	2399	388 828 0656	to	0699	408 265 2275	to	2288
262 337 6800	to	6899	264 380 4000	to	4099	389 696 2400	to	2799	408 499 7700	to	7799
262 337 6900	to	6999	264 380 4100	to	4199	389 846 3104	to	3135	408 499 7900	to	7999
262 337 7000	to	7099	264 799 6049	to	6099	389 846 3145	to	3195	408 682 8484	to	8599
262 337 7100	to	7199	264 860 7832	to	7868	389 887 9211	to	9230	408 698 7015	to	7099
262 337 7200	to	7299	265 127 3658	to	3699	389 887 9234	to	9299	409 072 3941	to	3999
262 337 7300	to	7399	265 380 7111	to	7137	390 001 3182 to 3199			410 491 2311 to 2399		
262 337 7400	to	7499	265 444 4762	to	4799	390 001 3500	to	3699	410 694 8400	to	8599
262 337 7500	to	7599	265 548 7074	to	7099	390 545 5974	to	5999	410 775 1500	to	1599
262 337 7600	to	7699	266 106 0000	to	2499	391 104 6146	to	6199	410 795 7927	to	7999
262 337 7700	to	7799	266 129 5809	to	5899	391 574 1466	to	1499	410 867 0917	to	0966
262 337 7800	to	7899	266 673 0000	to	2499	391 783 3020	to	3599	410 867 0970	to	0999
262 337 7900	to	7999	266 749 7900	to	7999	391 792 6100	to	6199	411 868 1023	to	1199
262 337 8000	to	8099	266 868 0952	to	0999	392 668 2956	to	2999	411 922 2322	to	2399
262 337 8100	to	8199	266 868 1028	to	1099	392 854 8500	to	8899	412 193 0900	to	0999
262 337 8200	to	8299	266 868 1100	to	1199	393 584 7566	to	7699	412 395 8599	to	8699
262 337 8300	to	8399	266 868 1200	to	1299	393 650 0074	to	0099	412 485 6500	to	6599
262 337 8400	to	8499	267 296 1237	to	1299	393 838 8316	to	8499	412 485 6610	to	6699
262 337 8500	to	8599	267 324 8946	to	8998	393 893 6007	to	6099	412 885 5953	to	5999
262 337 8600	to	8699	268 072 1203	to	1299	394 126 6907	to	6999	414 193 3608	to	3674
262 337 8700	to	8799	271 660 4333 to 4400			394 189 0405	to	0599	414 193 3677	to	3699
262 337 8800	to	8899	273 520 0000	to	9999	394 822 3243	to	3278	414 411 7348	to	7399
262 337 8900	to	8999	273 520 6000	to	8999	394 990 1810	to	1899	414 640 0757	to	0799

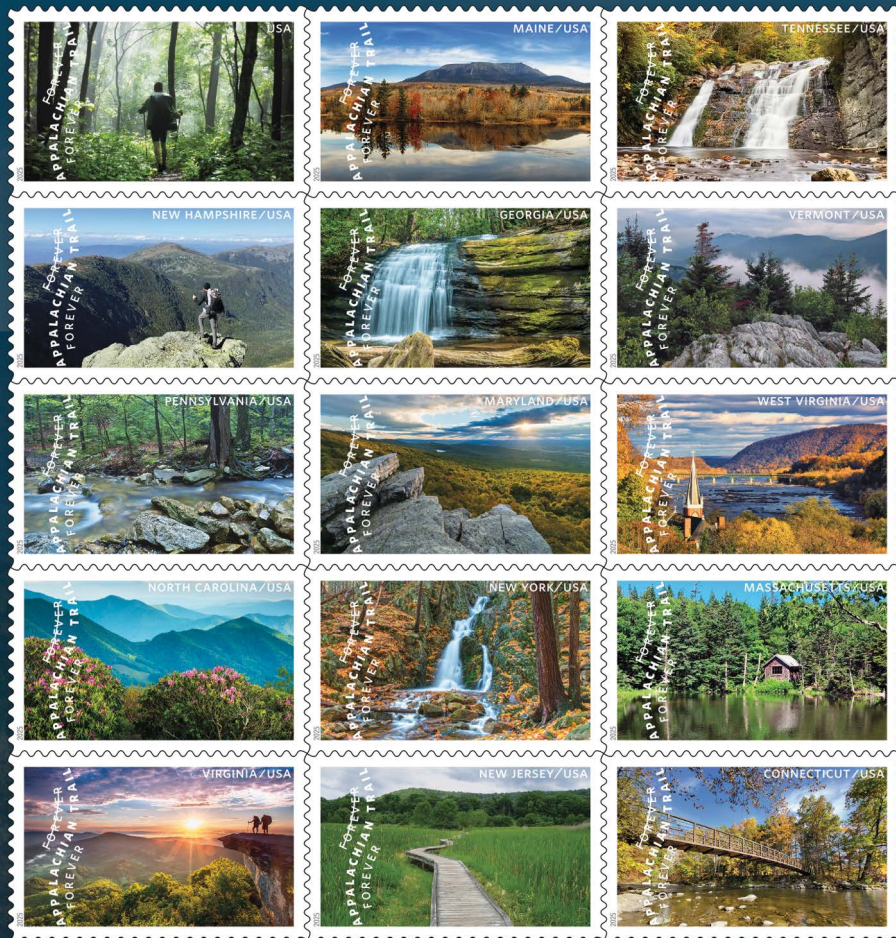
414 965 1727	to	1799	436 160 6441	to	6499	458 671 8721	to	8798	476 331 2480	to	2499
417 302 8104	to	8199	437 316 7115	to	7199	458 847 5044	to	5999	477 289 8601	to	8699
417 387 6532	to	6599	437 427 0500	to	3499	459 274 7624	to	7699	477 681 5206	to	5299
417 496 6800	to	6999	439 179 2300	to	2399	459 365 5432	to	5499	478 010 4243	to	4268
417 871 9250	to	9299	439 310 0458	to	0499	459 378 5764	to	5799	478 010 4270	to	4291
417 930 9533	to	9599	440 698 1947 to 1999			459 472 4816	to	4999	478 450 5071	to	5099
418 164 6500	to	6799	440 858 6300	to	6399	460 349 6878 to 6899			478 469 7838	to	7858
418 423 9863	to	9899	440 858 6420	to	7299	460 550 1909	to	1999	478 469 7883	to	7899
418 633 5922	to	5999	441 199 1655	to	1699	460 997 5234	to	5299	479 280 9800	to	9899
418 719 8520	to	8599	443 127 3648	to	3699	461 973 6443	to	6499	479 365 9116	to	9176
418 744 2235	to	2299	443 127 4000	to	4099	462 152 0107	to	0299	479 412 9900	to	9999
418 962 2848	to	2899	443 673 7900	to	7999	462 274 1072	to	1099	479 667 6190	to	6199
419 543 0286	to	0299	443 800 9335	to	9399	462 277 8373	to	8399	479 748 9680	to	9699
419 730 0300	to	0399	444 382 8822	to	8899	462 554 6051	to	6099	479 860 7000	to	7199
420 277 0015 to 0049			444 390 1667	to	1699	463 011 5529	to	5540	480 526 2000 to 2099		
420 599 0734	to	0798	444 457 3854	to	3899	463 176 4115	to	4199	480 640 6330	to	6399
420 661 4115	to	4199	450 048 4173 to 4199			463 176 4229	to	4299	480 658 0568	to	0599
420 758 9500	to	9699	450 048 4442	to	4699	463 185 2600	to	2799	480 689 5100	to	5199
420 969 3951	to	3971	450 560 5173	to	5199	463 227 7711	to	7799	481 072 9463	to	9499
420 969 3973	to	3999	450 620 3077	to	3099	463 414 4869	to	4899	481 673 0074	to	0095
421 116 3565	to	3599	450 620 3135	to	3199	463 808 3484	to	3499	482 527 1500	to	1599
421 130 9300	to	9399	450 780 2716	to	2799	463 945 7400	to	7899	482 541 5255	to	5299
421 313 4500	to	4999	450 801 2700	to	2799	464 629 9000	to	9399	482 729 6800	to	6899
421 364 5537	to	5599	451 109 2967	to	2984	464 711 4332	to	4399	483 363 7207	to	7299
421 656 2609	to	2699	451 115 4110	to	4125	465 692 3963	to	3999	483 402 2356	to	2399
421 988 9700	to	9799	451 115 4127	to	4199	465 698 8300	to	8599	483 486 5100	to	5199
422 172 4667	to	4699	451 746 0700	to	0799	465 743 7745	to	7799	483 632 1521	to	1599
422 484 4212	to	4299	452 265 0074	to	0099	466 798 6056	to	6067	483 632 2600	to	2799
422 556 1270	to	1299	452 265 0246	to	0299	467 147 4300	to	4399	483 849 1615	to	1699
422 587 7024	to	7099	452 265 0335	to	0999	468 079 5782	to	5799	484 174 4803	to	5299
422 819 7533	to	7599	452 509 1169	to	1199	469 067 2817	to	2899	484 323 8900	to	9199
422 842 5073	to	5087	452 855 6471	to	6499	469 127 8000	to	8199	484 680 5000	to	5038
422 907 7563	to	7599	452 890 4679	to	4799	469 213 0359	to	0399	484 680 5040	to	5074
424 500 6050	to	6099	452 900 8215	to	8238	469 213 0500	to	0599	484 680 5077	to	5099
424 641 8500	to	8599	453 117 9146	to	9199	469 561 8011	to	8099	485 029 4913	to	4999
424 871 6600	to	6699	453 334 3631	to	3699	469 658 1961	to	1999	486 176 0600	to	0699
425 298 2352	to	2399	453 603 7841	to	7891	469 666 9900	to	9999	486 559 7555	to	7599
425 418 4269	to	4299	453 650 1140	to	1199	469 678 1900	to	1999	486 696 3023	to	3199
425 418 4405	to	4499	453 741 1300	to	1399	469 781 4900	to	4999	488 173 7900	to	7999
426 547 4566	to	4599	454 013 2919	to	2999	469 947 6960	to	6999	488 206 4100	to	4199
427 412 6337	to	6499	454 186 2411	to	2499	470 755 5800 to 5818			488 226 0200	to	0299
427 481 0900	to	0999	454 268 4883	to	4899	471 918 0300	to	0999	488 709 3906	to	3999
428 027 2742	to	2752	454 302 5400	to	5499	471 985 2408	to	2419	488 855 8359	to	8399
429 474 4172	to	4199	454 490 8300	to	8399	472 191 6700	to	6799	489 181 8963	to	8999
429 889 2900	to	2999	454 547 7434	to	7499	472 270 2555	to	2599	489 223 2000	to	2099
430 150 4401 to 4599			454 922 4867	to	4895	472 987 0213	to	0241	489 311 1930	to	1999
430 172 9800	to	9899	455 221 1348	to	1499	472 987 0290	to	0299	489 318 6200	to	6300
430 177 1900	to	2099	455 364 2147	to	2199	473 151 2069	to	2199	489 384 0027	to	0099
430 444 9500	to	9699	455 399 5400	to	5499	473 666 9138	to	9199	489 427 0658	to	0899
430 664 4070	to	4099	455 476 0676	to	0699	473 952 3429	to	3499	489 997 5252	to	5299
432 168 8419	to	8499	455 543 0618	to	0699	474 108 5402	to	5499	490 669 5850 to 6099		
432 708 6800	to	6999	456 410 9006	to	9099	474 356 5193	to	5299	490 717 7080	to	7099
432 744 1544	to	1599	456 470 4146	to	4299	474 949 3366	to	3399	490 721 6000	to	6099
432 995 9775	to	9799	456 619 4460	to	4499	475 134 9362	to	9399	490 793 1500	to	2099
433 003 5800	to	5899	457 333 2686	to	2699	475 167 9667	to	9699	490 886 8171	to	8199
433 757 3047	to	3099	457 729 1767	to	1777	475 319 3415	to	3499	490 977 9221	to	9240
433 765 4003	to	4099	457 937 8615	to	8699	475 319 3649	to	3799	491 258 8100	to	9099
434 482 7060	to	7199	458 028 9810	to	9899	475 340 6400	to	6599	491 567 1376	to	1399
434 513 2386	to	2399	458 057 2712	to	2999	475 424 8410	to	8499	492 254 4800	to	4899
434 968 3076	to	3092	458 069 9537	to	9599	475 629 9156	to	9199	492 283 5100	to	5199
435 303 1831	to	1842	458 069 9665	to	9699	475 850 6101	to	6199	492 610 6813	to	6899
435 303 1986	to	1999	458 337 5222	to	5299	475 875 2500	to	2599	493 394 5568	to	5599
435 666 6092	to	6399	458 354 7653	to	7999	476 169 8264	to	8299	493 470 2562	to	2599
436 082 6400	to	6899	458 671 8678	to	8699	476 189 3000	to	3499	493 473 7700	to	7799

493 716 2153	to 2199	513 539 9985	to 9999	618 840 9200	to 9299	640 289 7700	to 7999
494 206 2972	to 2999	513 606 5459	to 5490	619 551 7229	to 7299	641 170 4420	to 4499
494 217 3446	to 3999	513 812 1751	to 1799	619 859 3000	to 3099	641 318 3133	to 3199
494 224 0500	to 0599	514 103 3600	to 3699	620 073 9400 to 9499		641 378 6500	to 6999
495 145 0600	to 0699	514 103 3700	to 3799	621 614 7907	to 7930	641 383 8739	to 8799
496 209 7425	to 7499	514 103 3800	to 3899	621 614 7932	to 7999	641 877 3187	to 3299
496 213 8728	to 8799	600 645 3223 to 3299		621 648 8021	to 8199	641 877 3310	to 3399
496 474 5226	to 5248	601 339 1200	to 1399	621 648 8500	to 8599	642 355 8094	to 8199
497 053 8517	to 8699	601 653 5884	to 5899	621 904 8351	to 8599	642 355 8308	to 8999
497 854 8673	to 8699	601 661 7700	to 7799	621 916 1978	to 1989	642 900 0018	to 0099
498 449 8888	to 8899	601 682 5343	to 5399	622 989 8032	to 8099	643 030 6254	to 6299
498 929 8285	to 8499	601 928 1600	to 1699	623 076 9300	to 9399	644 066 0882	to 0899
498 936 5310	to 5399	602 512 2972	to 2999	623 819 5006	to 5099	644 069 0600	to 0699
499 016 5425	to 5499	602 555 2400	to 2799	623 895 8200	to 8399	644 077 7506	to 7699
499 440 8575	to 8899	602 829 7061	to 7099	623 917 0000	to 0099	644 085 8157	to 8199
499 731 6717	to 6799	603 483 9572	to 9599	623 917 0200	to 0299	644 112 9839	to 9899
500 064 1858 to 1869		603 490 7200	to 7299	624 468 5288	to 5299	644 373 9083	to 9099
500 070 5725	to 7799	603 678 7100	to 7199	624 665 3162	to 3198	644 380 1460	to 1499
501 058 0016	to 0026	603 678 7662	to 7699	625 088 6735	to 6799	644 733 4715	to 4799
501 331 0300	to 0399	603 678 7902	to 7999	625 916 9500	to 9799	644 900 9712	to 9799
501 460 0977	to 0999	603 678 8418	to 8499	625 968 8956	to 8999	644 901 0109	to 1299
502 227 7645	to 7699	603 678 8700	to 9999	627 005 3938	to 3999	644 901 1325	to 1399
502 424 0200	to 0499	604 086 0880	to 0899	627 384 3907	to 4099	644 923 6800	to 7799
502 424 0600	to 0699	604 349 1414	to 1499	627 496 7549	to 7599	644 932 4655	to 4699
502 496 6923	to 6999	604 503 7776	to 7799	627 708 3605	to 3699	645 318 7240	to 7499
503 003 2700	to 2899	605 520 9037	to 9099	627 776 2500	to 2599	645 333 1766	to 1799
503 194 5144	to 5153	605 685 4010	to 4099	628 226 3100	to 3199	645 790 8632	to 8699
503 790 9922	to 9948	605 988 6467	to 6499	628 814 4702	to 4799	645 821 0657	to 0699
504 045 4030	to 4099	607 689 7951	to 7960	628 851 9689	to 9699	645 930 7948	to 7999
504 166 0200	to 0599	607 728 1276	to 1299	629 510 7200	to 7299	645 975 0737	to 0762
504 240 1062	to 1399	608 727 7100	to 7199	629 964 4200	to 4294	646 242 6200	to 6299
504 805 3300	to 3499	608 727 7273	to 7599	630 389 3056 to 3071		646 270 7639	to 7799
505 096 0662	to 0699	608 813 9950	to 9999	630 463 0588	to 0599	646 798 4000	to 4999
505 893 7739	to 7799	609 067 5325	to 5399	631 459 9117	to 9199	647 048 7035	to 7099
505 893 7800	to 7999	609 067 5488	to 5499	631 762 9325	to 9399	647 049 2900	to 2999
506 124 0800	to 0999	609 067 5600	to 5699	632 217 4933	to 4999	647 398 8300	to 8399
506 165 7027	to 0099	609 289 6123	to 6199	632 500 0000	to 640 3999	647 398 8481	to 8499
506 502 5209	to 5299	609 438 4400	to 4499	633 110 4165	to 4199	647 437 3000	to 4999
506 756 1682	to 1699	609 493 1100	to 1199	633 110 4303	to 4499	647 811 2188	to 2199
506 756 1700	to 1799	609 766 8091	to 8999	633 438 6429	to 6599	648 009 6057	to 6099
506 756 1800	to 1899	609 825 4100	to 4115	633 588 7173	to 7182	648 163 5300	to 5499
506 836 5326	to 5399	609 884 2981	to 2999	634 725 0700	to 0799	648 722 5283	to 5299
508 488 6226	to 6299	609 893 1000	to 1099	634 803 3239	to 3299	648 892 3164	to 3199
508 789 8332	to 8399	610 092 3200 to 3299		634 807 2474	to 2499	649 100 3989	to 3999
508 789 8400	to 8499	610 582 4200	to 4299	634 827 5900	to 5999	649 647 0370	to 0399
509 909 0425	to 0435	611 879 6939	to 6999	634 886 3428	to 3499	649 647 0522	to 0599
510 150 2400 to 2499		612 291 8013	to 8099	635 559 3449	to 3499	649 647 5237	to 5399
510 381 3200	to 3299	612 751 5171	to 5199	636 289 6214	to 6299	649 647 9100	to 9299
510 587 9500	to 9599	612 751 5226	to 5299	636 634 8007	to 8042	649 666 7800	to 8299
510 587 9659	to 9699	612 751 6083	to 6099	637 150 1200	to 1299	650 114 7707 to 7719	
510 269 9770	to 9999	612 751 6268	to 6299	637 562 5828	to 5899	650 130 3400	to 3599
511 021 5042	to 5099	612 751 6572	to 6599	638 042 1647	to 1699	650 213 0406	to 0499
511 021 5100	to 5199	612 774 2111	to 2199	638 049 4984	to 4999	650 555 1749	to 1799
511 468 1747	to 1799	612 774 2254	to 2299	638 318 1115	to 1199	650 564 1900	to 1999
511 844 0100	to 0199	612 774 2500	to 2599	638 318 1453	to 1499	650 627 4212	to 4299
511 844 0340	to 0399	614 469 0979	to 0999	638 885 0000	to 0299	650 736 2043	to 2099
512 805 3913	to 3919	614 474 3000	to 3099	638 903 4362	to 4373	650 739 1540	to 1699
513 046 0700	to 0726	614 521 3490	to 3499	639 415 1929	to 1999	651 741 4415	to 4499
513 149 0600	to 0699	614 645 1800	to 1899	639 415 2019	to 2099	651 882 2800	to 2899
513 445 3000	to 3199	614 832 1100	to 2099	639 420 6200	to 6299	652 754 6317	to 6399
513 466 2034	to 2044	615 017 7505	to 7599	639 469 3517	to 3799	653 131 4945	to 4999
513 539 9052	to 9099	617 711 6609	to 6699	639 605 2143	to 2199	653 426 3300	to 3399
513 539 9267	to 9299	617 760 5266	to 5299	639 657 8600	to 8799	653 455 4874	to 4899
513 539 9800	to 9899	617 813 3601	to 3699	640 289 7500 to 7599		654 238 0000	to 0399

654 404 3065	to	3092	682 956 6490	to	6599	701 499 2260	to	2299	740 918 5531	to	5549
654 962 2900	to	3199	682 956 6700	to	6799	701 503 2247	to	2299	741 037 8528	to	8551
655 103 5081	to	5199	682 965 1178	to	1199	701 541 2271	to	2299	742 030 6135	to	6149
655 523 2600	to	2999	682 965 1201	to	1299	701 553 6557	to	6599	742 033 2663	to	2674
656 305 2448	to	2499	683 118 2389	to	2399	701 578 7460	to	7469	742 040 3300	to	3309
657 347 4438	to	4999	683 378 2000	to	2099	701 578 7475	to	7499	742 112 8155	to	8199
657 710 8100	to	8999	683 378 2117	to	2299	701 601 3457	to	3499	742 151 5000	to	5014
657 780 0985	to	0999	683 415 1200	to	1499	701 605 5913	to	5999	742 191 4640	to	4649
658 586 1400	to	1499	683 444 8159	to	8199	701 695 3982	to	3999	742 192 5210	to	5224
658 877 8000	to	8199	685 154 7780	to	7789	701 695 4148	to	4199	742 222 9200	to	9210
658 880 8000	to	8199	685 297 7645	to	7699	701 695 4227	to	4299	742 228 9660	to	9669
659 398 7300	to	7399	685 623 5264	to	5299	701 708 1741	to	1799	742 247 6980	to	6989
659 706 8113	to	8199	685 650 9487	to	9499	701 736 3966	to	3999	742 290 0936	to	0950
659 846 7837	to	7899	685 669 4200	to	4299	701 772 0870	to	0899	742 302 7600	to	7699
660 510 4100	to	4199	685 757 8452	to	8499	701 838 2800	to	2899	742 305 3711	to	3799
660 673 0400	to	0599	686 071 2694	to	2799	701 941 0600	to	0699	742 305 3800	to	3899
661 488 5000	to	0599	686 176 3333	to	3354	702 171 1603	to	1699	742 305 3900	to	3999
661 609 9100	to	9199	686 372 3200	to	3299	702 195 5109	to	5199	742 305 4000	to	4099
661 716 9420	to	9499	686 644 5879	to	5899	702 254 9300	to	9399	742 305 4100	to	4199
661 906 6522	to	6599	686 899 1371	to	1399	702 264 7569	to	7599	805 885 8411	to	8499
662 021 8332	to	8399	686 931 7636	to	7699	702 519 0513	to	0524	806 087 1100	to	1499
662 068 0700	to	0899	687 601 0973	to	0999	702 713 1800	to	1809	806 268 9275	to	9299
662 553 0774	to	0799	687 614 6774	to	6799	702 821 5730	to	5799	806 534 3400	to	3477
663 078 7034	to	7099	688 120 9000	to	9999	702 821 5805	to	5899	807 342 3283	to	3399
663 763 5300	to	5399	688 314 3107	to	3191	702 844 6975	to	6994	808 086 7100	to	7199
663 883 7039	to	7499	690 291 1361	to	1371	702 846 6331	to	6399	808 090 3440	to	3499
663 938 9200	to	9299	690 788 2877	to	2899	702 848 3900	to	3999	808 325 5161	to	5699
664 253 8000	to	8499	690 893 5344	to	5399	702 857 7302	to	7499	808 784 8000	to	8299
664 656 3055	to	3099	690 893 5512	to	5599	702 878 0114	to	0199	830 125 0672	to	0699
665 174 6400	to	6499	690 904 1300	to	1599	703 364 1707	to	1799	830 602 5800	to	5999
665 274 8208	to	8299	690 941 6000	to	6199	740 002 7710	to	7719	830 610 3700	to	3799
665 669 5400	to	5499	691 313 6383	to	6399	740 037 6730	to	6800	830 983 3500	to	3599
666 132 8226	to	8299	691 313 6600	to	6699	740 119 2275	to	2284	830 983 3635	to	3699
666 696 2209	to	2299	691 582 8003	to	8099	740 130 6688	to	6698	831 354 1387	to	1399
666 696 2309	to	2399	691 664 1800	to	1999	740 144 2780	to	2795	831 815 8240	to	8299
667 032 9300	to	9399	691 664 2400	to	2499	740 241 9049	to	9099	832 525 3810	to	3899
667 729 5529	to	5599	692 727 9362	to	9399	740 252 9265	to	9294	833 159 1884	to	1899
668 383 8400	to	8699	692 798 1800	to	1899	740 255 1718	to	1799	833 456 2567	to	2599
670 368 3400	to	3499	693 249 0779	to	0799	740 274 2602	to	2619	833 566 3015	to	3071
670 369 7336	to	7399	693 249 0877	to	1699	740 277 0366	to	0392	834 130 5200	to	5299
670 750 7169	to	7199	693 445 0566	to	0999	740 332 7658	to	7671	834 316 5444	to	5499
671 046 6200	to	6399	693 448 8500	to	8999	740 348 6641	to	6658	834 354 8747	to	8766
671 251 5448	to	5499	693 645 9583	to	9599	740 351 4790	to	4799	834 354 8824	to	8838
671 926 5600	to	5799	693 965 4200	to	4299	740 374 7416	to	7499	835 269 5700	to	5799
672 444 2000	to	2999	695 741 2906	to	2999	740 470 2420	to	2443	835 496 7303	to	7399
672 828 3410	to	3499	695 947 8518	to	8599	740 514 0300	to	0499	835 539 5200	to	5999
673 167 5776	to	5799	696 662 8247	to	8299	740 523 7432	to	7449	835 813 3015	to	3099
675 464 3700	to	3799	697 447 8285	to	8296	740 535 1555	to	1580	837 672 8967	to	8999
675 464 4000	to	4199	698 042 4816	to	4899	740 557 3570	to	3579	837 784 3282	to	3299
676 365 5958	to	5999	698 131 2138	to	2157	740 650 4104	to	4140	838 176 8377	to	8399
676 669 1024	to	1099	698 227 0000	to	0099	740 684 0620	to	0800	838 518 1257	to	1299
677 126 6734	to	6799	700 065 2570	to	2599	740 701 6105	to	6114	839 718 8257	to	8299
677 333 9979	to	9999	700 065 4800	to	4899	740 705 9790	to	9799	840 323 0600	to	0699
677 466 1088	to	1099	700 190 3350	to	3359	740 726 6400	to	6500	840 875 6235	to	6299
678 071 4500	to	4799	700 228 6048	to	6099	740 748 8319	to	8329	840 910 0900	to	0999
678 096 7531	to	7599	700 650 0452	to	0499	740 765 3306	to	3399	841 349 5000	to	5099
679 909 2578	to	2599	700 666 1323	to	1349	740 774 8434	to	8499	841 805 7747	to	7899
680 112 9565	to	9599	700 786 9106	to	9142	740 779 4259	to	4299	841 805 7944	to	8099
680 244 0903	to	0999	700 859 0744	to	0758	740 786 1885	to	1899	842 226 0685	to	0695
680 412 6046	to	6099	701 028 6780	to	6899	740 790 5989	to	5999	842 685 4600	to	4699
680 761 6800	to	6899	701 213 3900	to	3999	740 803 4870	to	4879	842 685 4742	to	4999
681 677 0540	to	0699	701 267 2000	to	3999	740 820 4854	to	7836	842 860 0300	to	0399
682 070 1029	to	1099	701 335 7312	to	7399	740 827 7578	to	7594	842 898 5582	to	5599
682 956 6280	to	6299	701 369 2005	to	2050	740 917 7490	to	7499	843 062 7100	to	7199

843 077 6288	to 6299	864 520 6117	to 6136	907 815 0216	to 0257	919 915 2774	to 2787
843 077 6378	to 6399	865 151 0526	to 0599	908 622 4225	to 4235	920 155 4662	to 4687
843 758 5769	to 5778	865 500 4034	to 4099	908 936 9254	to 9299	920 309 9039	to 9199
843 786 2554	to 2699	865 883 6082	to 6099	909 066 4494	to 7499	920 771 5321	to 5399
845 656 8165	to 8199	866 004 3000	to 3999	909 067 7400	to 7499	920 857 5500	to 5899
845 727 2100	to 2199	866 442 4100	to 4899	909 100 1787	to 1799	920 864 3480	to 3499
845 746 2618	to 2635	867 366 9108	to 9118	909 100 1900	to 2099	920 963 4567	to 4599
846 390 7531	to 7599	867 633 7403	to 7499	909 355 0422	to 0499	921 333 7400	to 7499
846 918 0572	to 0599	867 737 5623	to 5699	909 568 8900	to 9099	921 477 3762	to 3799
847 237 7690	to 7699	868 169 4529	to 4599	909 568 9300	to 9499	922 278 1048	to 1399
847 284 2481	to 2499	868 173 8400	to 8599	909 725 7307	to 7399	922 280 2019	to 2099
847 374 7055	to 7065	868 514 9000	to 9099	909 833 0947	to 0999	922 280 2233	to 2299
847 374 7055	to 7065	868 566 9200	to 9299	910 219 8631	to 8699	922 773 0459	to 0499
847 636 5304	to 5399	869 200 0000	to 9999	910 265 1100	to 1199	923 032 7000	to 7399
847 700 5447	to 5499	869 387 1150	to 1199	910 471 7273	to 7299	923 045 3630	to 3699
847 723 7500	to 7599	869 505 3500	to 3599	910 536 2505	to 2599	923 484 3600	to 3699
849 485 3427	to 3499	869 523 7033	to 7099	910 958 7499	to 7599	923 493 9403	to 9599
849 520 9850	to 9899	869 566 6150	to 6167	911 140 1000	to 2199	923 493 9681	to 9699
849 608 1357	to 1399	869 776 8785	to 8786	911 245 2545	to 2599	923 604 4424	to 4499
849 792 2600	to 2699	869 800 0000	to 999 9999	911 268 9077	to 9099	923 810 7800	to 8299
850 546 1862	to 1899	870 054 4814	to 4899	911 400 8948	to 8999	924 252 1200	to 1299
851 143 6826	to 6844	870 491 4812	to 4849	911 508 1620	to 1799	924 252 1400	to 1499
851 209 9880	to 9899	870 536 5820	to 5829	911 509 9310	to 9399	924 533 0711	to 0799
851 928 9221	to 9299	870 541 7167	to 7239	911 523 3000	to 3999	924 533 2343	to 2399
852 589 6560	to 6599	870 575 8155	to 8999	912 057 9922	to 9999	924 533 2428	to 2499
853 049 3646	to 3699	870 589 0485	to 0494	912 882 0563	to 0899	924 685 1957	to 1999
854 304 4089	to 4999	870 691 7060	to 7099	913 605 2218	to 2299	924 946 6300	to 6699
854 529 2200	to 2299	872 028 4850	to 4899	913 709 2429	to 2499	925 333 5900	to 6099
854 532 0000	to 2999	872 029 9306	to 9399	913 818 3501	to 3999	925 336 2300	to 2399
855 001 6204	to 6249	872 078 3709	to 3799	914 063 4300	to 4399	926 432 5907	to 5999
855 319 9364	to 9399	872 100 0445	to 0459	914 346 7621	to 7644	926 436 3600	to 3699
855 361 3390	to 3399	900 556 4178	to 4199	914 453 1366	to 1399	927 765 6257	to 6299
856 226 0490	to 0499	900 845 0044	to 0099	914 529 6185	to 6299	928 197 8100	to 8199
856 656 5800	to 5999	900 936 0217	to 0299	914 896 4658	to 4699	928 197 8283	to 8299
856 752 0200	to 0299	900 936 0435	to 0499	915 187 8774	to 8779	928 856 2059	to 2068
857 111 1352	to 1399	901 058 5255	to 5280	915 300 2783	to 2799	930 078 5800	to 5899
857 279 3450	to 3499	901 273 1082	to 1099	915 546 6822	to 6999	930 219 1722	to 1799
857 843 4000	to 4099	901 287 5143	to 5199	915 646 5183	to 5199	930 335 7810	to 7819
858 124 7644	to 7699	901 291 2789	to 2799	915 671 3963	to 3980	931 097 9259	to 9299
858 756 3111	to 3299	901 525 7122	to 7199	915 671 3982	to 3999	931 156 1502	to 1579
859 063 8200	to 8699	902 089 1253	to 1299	915 675 2217	to 2299	931 156 1600	to 1625
859 190 0600	to 0644	902 198 9769	to 9799	916 440 3377	to 3399	931 156 1671	to 1699
859 437 5538	to 5599	902 948 1269	to 1299	916 670 6352	to 6399	932 506 6400	to 6599
859 811 2888	to 2899	902 985 0833	to 0899	916 682 5300	to 5399	932 732 1796	to 1799
859 855 8873	to 8999	903 370 6934	to 6999	916 694 1414	to 1499	932 827 9026	to 9099
860 240 8520	to 8599	904 600 6523	to 6599	916 703 0802	to 0821	932 957 2300	to 2399
860 275 3900	to 3999	904 892 0378	to 0399	917 089 0709	to 0799	933 060 6160	to 6189
860 518 9629	to 9699	904 892 0648	to 1299	917 089 0842	to 0899	933 387 2541	to 2561
860 600 0021	to 0999	905 056 2216	to 2299	917 216 2928	to 2999	933 760 3609	to 4199
861 158 2350	to 2599	905 510 6647	to 6799	917 370 6300	to 6499	933 894 0928	to 0999
861 367 5400	to 5499	905 510 6900	to 7099	917 486 4900	to 4999	934 018 2729	to 2741
861 637 6010	to 6099	905 794 0000	to 0199	918 460 0602	to 0699	934 180 0300	to 0399
861 979 7292	to 7499	905 794 0288	to 0299	918 951 7231	to 7299	934 236 3954	to 3999
862 216 6100	to 6199	905 873 6900	to 6999	919 519 2786	to 2799	934 622 8717	to 8999
862 263 9213	to 9299	905 873 7100	to 7299	919 536 0770	to 0799	935 216 0312	to 0399
862 271 0800	to 0999	905 880 8900	to 8999	919 814 3095	to 3199	935 843 2202	to 2247
862 271 5000	to 5099	905 889 7100	to 7199	919 889 5110	to 5134	936 024 8889	to 8899
863 871 5138	to 5199	906 158 1508	to 1599	919 889 5137	to 5176	936 339 4455	to 4499
863 949 5300	to 5399	906 558 8812	to 8899	919 889 5178	to 5199		
864 088 8200	to 8299	906 982 2214	to 2299	919 889 5030	to 5070		
864 426 3972	to 3999	907 725 8500	to 8599	919 889 5090	to 5099		

Experience America's Natural Beauty with
The Appalachian Trail
Forever® Stamps



On Sale **February 28, 2025**

Missing, Lost, or Stolen Canadian Money Order Forms

Do Not Cash — Upon Receipt, Notify Local Postal Inspectors

Provide this listing to all Postal Service™ employees responsible for accepting and cashing postal money orders. Destroy all interim notices when the numbers listed appear in the *Postal Bulletin*. The new money order serial

numbers consist of the first 9 digits. The tenth digit is a check digit only.

Do not cash outdated money orders **104 151 601 to 692 600 000**. Advise holders to send invalid money orders to Canada Post Corporation, Ottawa, Canada K1A 0B1. Check for altered dollar amounts by holding money orders to the light.

719 869 731	to	9 760	728 382 331	to	2 480	734 797 201	to	7 320	741 764 431	to	4 520
720 227 871	to	7 930	728 702 338	to	2 400	734 939 611	to	9 640	742 178 834	to	8 880
720 227 949	to	7 960	728 915 371	to	5 850	734 950 111	to	0 170	742 325 500	to	5 520
720 368 543	to	8 570	728 953 141	to	3 410	735 120 331	to	0 840	742 325 668	to	5 700
720 392 151	to	2 570	728 954 280	to	4 310	735 283 008	to	3 020	742 408 771	to	8 830
720 556 491	to	6 640	729 169 081	to	9 140	735 293 131	to	3 220	742 512 120	to	2 150
720 558 621	to	8 650	729 363 841	to	3 870	735 635 010	to	5 040	742 684 849	to	4 890
720 575 361	to	5 570	729 682 891	to	3 190	735 783 961	to	3 990	742 839 553	to	9 630
720 590 152	to	0 179	729 838 940	to	9 070	735 803 401	to	3 430	742 913 668	to	3 700
721 638 331	to	9 170	729 839 101	to	9 130	736 005 420	to	5 440	742 917 287	to	7 296
721 815 391	to	5 420	730 077 683	to	7 840	736 366 021	to	6 110	742 921 891	to	1 980
721 969 713	to	9 740	730 109 847	to	9 880	736 624 456	to	4 500	742 983 631	to	3 810
722 072 137	to	2 160	730 373 761	to	3 850	736 670 851	to	1 060	743 020 021	to	0 170
722 378 265	to	8 280	730 501 951	to	2 130	736 767 061	to	7 090	743 206 491	to	6 500
722 413 990	to	4 004	730 519 379	to	9 470	736 767 093	to	7 120	743 235 992	to	6 050
722 764 948	to	4 980	730 569 278	to	9 360	736 982 191	to	2 370	743 940 631	to	0 900
722 825 840	to	5 889	730 711 711	to	1 740	736 982 551	to	2 730	743 978 011	to	8 070
723 153 841	to	3 850	730 722 991	to	3 230	737 110 141	to	0 170	744 234 751	to	4 780
723 237 616	to	7 630	730 845 970	to	5 990	737 185 501	to	5 710	744 499 591	to	9 680
723 331 081	to	1 110	730 888 291	to	8 320	737 317 321	to	7 350	744 626 901	to	6 910
723 496 443	to	6 470	730 927 591	to	7 680	737 517 781	to	7 840	745 388 794	to	8 910
723 967 291	to	7 320	731 307 914	to	7 930	737 628 181	to	8 210	746 446 806	to	6 820
724 655 196	to	5 340	731 402 431	to	2 460	737 634 258	to	4 270	746 818 351	to	8 410
724 711 441	to	1 500	731 407 232	to	7 320	738 361 971	to	1 980	747 245 266	to	5 280
724 711 538	to	1 560	731 588 301	to	8 340	738 447 601	to	7 660	747 364 813	to	4 830
724 793 221	to	3 250	731 767 273	to	7 320	738 648 355	to	8 450	747 501 434	to	1 450
724 908 109	to	8 120	731 781 061	to	1 120	738 849 811	to	9 900	747 739 891	to	0 070
724 937 461	to	7 670	731 837 821	to	7 910	738 892 270	to	2 290	748 148 649	to	8 760
725 163 118	to	3 151	731 841 377	to	1 450	738 997 259	to	7 380	748 259 960	to	9 970
725 202 735	to	2 750	732 018 481	to	8 600	739 161 451	to	1 540	748 565 162	to	5 280
725 398 591	to	8 800	732 067 972	to	8 370	739 219 381	to	9 440	748 874 988	to	5 030
725 464 591	to	4 920	732 188 649	to	8 670	739 740 151	to	0 180	749 137 381	to	7 410
725 475 321	to	5 330	732 193 460	to	3 470	739 793 491	to	3 520	749 190 192	to	0 210
725 711 057	to	1 070	732 201 241	to	1 390	739 793 527	to	3 550	749 685 421	to	5 450
725 738 581	to	8 730	732 220 431	to	0 440	739 942 621	to	2 650	749 846 791	to	6 850
725 981 311	to	1 430	732 355 201	to	5 380	739 999 231	to	9 320	749 993 131	to	3 580
725 987 835	to	7 880	732 472 320	to	2 560	740 011 517	to	1 530	750 071 587	to	1 610
726 060 811	to	0 900	732 541 605	to	1 620	740 030 701	to	0 970	750 408 167	to	8 183
726 391 970	to	2 520	732 572 221	to	2 490	740 261 740	to	1 820	750 438 421	to	8 501
726 484 771	to	4 800	732 586 479	to	6 710	740 265 811	to	6 290	750 743 911	to	4 030
726 493 351	to	5 300	732 994 037	to	4 080	740 299 111	to	9 170	750 779 118	to	9 400
726 504 031	to	4 063	733 163 449	to	3 460	740 299 231	to	9 260	750 910 981	to	1 010
726 504 070	to	4 090	733 297 171	to	7 290	740 329 266	to	9 320	750 960 841	to	0 900
726 504 331	to	4 390	733 446 631	to	7 110	740 889 081	to	9 090	751 296 211	to	6 240
726 563 701	to	4 060	733 474 665	to	4 770	741 010 421	to	0 530	751 539 121	to	9 180
726 599 371	to	9 460	733 704 482	to	4 570	741 113 041	to	3 370	751 541 311	to	1 790
726 626 356	to	6 370	733 751 041	to	1 130	741 373 891	to	4 340	751 757 641	to	7 700
727 182 271	to	2 510	734 009 101	to	9 130	741 452 369	to	2 490	751 936 951	to	7 010
727 416 181	to	6 240	734 290 759	to	0 770	741 492 991	to	3 140	751 951 861	to	1 890
727 481 431	to	1 460	734 389 273	to	9 290	741 553 460	to	3 470	751 999 021	to	9 110
727 749 241	to	9 780	734 440 031	to	0 111	741 764 431	to	4 520	752 139 516	to	9 570

752 182 892	to	2 950	762 324 931	to	4 960	773 112 031	to	2 060	799 177 626	to	7 650
752 206 861	to	7 100	762 439 261	to	9 290	773 125 387	to	5 410	799 854 751	to	5 200
752 295 241	to	5 600	762 524 158	to	4 220	773 179 320	to	9 410	800 044 320	to	4 410
752 731 351	to	1 410	762 584 872	to	4 970	773 202 989	to	3 140	800 211 901	to	2 440
752 767 441	to	7 470	762 593 431	to	3 460	773 208 991	to	9 290	800 427 530	to	7 540
753 008 941	to	9 030	763 155 160	to	5 180	773 231 311	to	1 340	800 872 741	to	2 830
753 194 311	to	4 370	763 178 631	to	8 660	773 348 739	to	8 940	801 349 801	to	9 830
753 620 378	to	0 400	763 506 001	to	6 060	773 348 739	to	8 940	801 676 681	to	7 100
754 013 917	to	3 940	763 522 141	to	2 470	773 575 891	to	5 950	802 967 821	to	7 940
754 161 061	to	1 120	763 717 694	to	7 800	773 852 971	to	3 030	803 217 601	to	7 780
754 358 445	to	8 610	763 826 461	to	6 520	775 373 449	to	3 460	803 729 731	to	9 850
754 410 451	to	0 660	763 900 460	to	0 471	789 257 191	to	7 250	803 747 402	to	7 520
754 438 393	to	8 410	763 900 479	to	0 530	790 448 020	to	8 460	804 138 181	to	8 420
754 493 109	to	3 130	763 917 271	to	7 750	790 597 485	to	7 530	804 428 224	to	8 250
754 664 182	to	4 220	764 125 801	to	5 860	790 911 883	to	1 900	804 682 411	to	2 710
754 816 377	to	6 470	764 284 525	to	4 560	791 057 441	to	7 550	805 272 525	to	2 540
755 487 421	to	7 600	764 526 241	to	6 330	791 239 081	to	9 290	805 523 445	to	3 460
755 592 901	to	3 140	764 601 421	to	1 600	791 374 483	to	4 500	805 745 704	to	5 730
755 790 020	to	0 030	764 650 231	to	0 470	791 387 971	to	8 030	806 452 907	to	2 980
755 791 730	to	1 800	764 984 371	to	4 850	791 447 521	to	7 850	806 744 781	to	4 850
755 926 951	to	7 070	765 003 667	to	3 680	791 451 151	to	1 240	806 982 181	to	2 300
755 934 332	to	4 510	765 042 517	to	2 540	791 500 009	to	0 470	807 764 791	to	4 910
755 957 701	to	8 000	765 194 728	to	4 970	791 771 431	to	1 490	808 089 931	to	9 960
755 962 981	to	3 280	765 387 365	to	7 450	792 004 293	to	4 320	808 656 423	to	6 450
756 035 371	to	5 490	765 541 801	to	2 100	792 018 379	to	8 420	808 753 771	to	3 800
756 301 257	to	1 290	765 638 461	to	8 970	792 070 621	to	0 740	809 189 001	to	9 010
756 371 565	to	1 580	765 647 101	to	7 190	792 145 211	to	5 230	809 886 879	to	6 930
756 876 031	to	6 120	765 813 781	to	4 029	792 391 381	to	1 620	809 890 489	to	0 500
756 876 151	to	6 240	765 879 314	to	9 390	792 452 779	to	2 790	810 323 734	to	3 760
756 970 129	to	0 140	765 954 001	to	4 030	792 772 728	to	2 770	810 367 116	to	7 140
757 059 613	to	9 630	766 120 286	to	0 320	792 903 511	to	3 990	810 526 351	to	6 500
757 078 540	to	8 560	766 125 716	to	5 750	793 282 518	to	2 533	810 806 911	to	6 940
757 086 209	to	6 240	766 158 824	to	8 840	794 041 831	to	2 040	810 807 211	to	7 240
757 240 591	to	0 650	766 388 433	to	8 460	794 397 709	to	7 780	811 423 021	to	3 110
757 277 371	to	7 700	766 509 421	to	9 660	794 581 741	to	2 040	811 517 221	to	7 239
757 291 591	to	2 730	766 572 901	to	3 020	794 592 122	to	2 150	811 721 101	to	1 130
757 964 251	to	4 280	766 748 500	to	8 521	795 032 251	to	2 340	812 025 721	to	5 900
758 067 001	to	7 090	767 024 341	to	4 370	795 796 291	to	6 350	812 093 073	to	3 130
758 105 221	to	5 250	767 326 471	to	6 590	796 070 139	to	0 160	812 100 821	to	0 840
758 324 941	to	5 000	767 332 561	to	2 950	796 143 151	to	3 630	812 465 251	to	5 610
758 593 628	to	3 650	768 009 841	to	9 960	796 159 725	to	9 740	812 918 341	to	8 670
758 709 038	to	9 060	768 011 489	to	1 520	796 169 306	to	9 340	812 918 701	to	8 760
758 744 101	to	4 160	768 177 980	to	7 990	796 373 406	to	3 430	813 050 491	to	0 520
758 850 883	to	0 900	768 391 081	to	1 170	796 602 961	to	3 050	813 073 171	to	3 200
758 860 951	to	1 550	768 661 569	to	1 650	796 708 441	to	8 500	813 398 476	to	8 550
759 152 851	to	2 880	769 000 051	to	0 080	796 886 281	to	6 430	813 713 971	to	4 000
759 740 941	to	1 090	769 050 841	to	0 900	796 901 701	to	2 000	813 858 121	to	8 150
760 004 596	to	4 610	769 159 081	to	9 178	796 975 466	to	5 590	814 789 330	to	9 349
760 118 191	to	8 250	769 737 496	to	7 510	797 272 917	to	2 950	814 984 656	to	4 680
760 155 001	to	5 090	769 778 491	to	8 730	797 519 441	to	9 460	815 016 020	to	6 030
760 378 002	to	8 020	769 827 331	to	7 450	797 519 731	to	0 240	815 199 410	to	9 420
760 692 722	to	2 749	770 216 071	to	6 100	797 535 181	to	5 330	815 240 491	to	0 520
761 055 460	to	5 480	770 723 281	to	3 400	797 646 151	to	6 180	815 755 591	to	5 620
761 169 781	to	9 810	770 790 451	to	0 480	798 040 053	to	0 080	815 755 622	to	5 650
761 504 941	to	5 120	770 915 150	to	5 490	798 055 813	to	5 830	815 806 381	to	6 680
761 516 836	to	6 910	771 455 551	to	5 610	798 055 891	to	5 950	816 126 834	to	6 870
761 613 588	to	3 600	771 609 661	to	9 690	798 326 371	to	6 520	816 156 721	to	6 780
761 688 631	to	8 690	771 932 551	to	2 580	798 339 167	to	9 210	816 580 903	to	0 920
761 805 199	to	5 240	772 057 224	to	7 440	798 562 411	to	2 440	816 945 571	to	5 600
761 826 106	to	6 120	772 162 660	to	3 070	798 632 461	to	2 490	817 253 011	to	3 280
761 881 171	to	1 560	772 718 615	to	8 640	798 807 151	to	7 510	817 763 881	to	4 060
761 975 641	to	5 670	772 940 140	to	0 160	798 944 761	to	5 030	818 330 562	to	0 610
761 975 886	to	5 895	772 970 886	to	0 940	799 118 616	to	8 640	818 459 641	to	9 670
762 304 144	to	4 170	773 009 419	to	9 430	799 133 191	to	3 220	818 926 273	to	6 320

818 950 351	to 0 380	821 903 731	to 3 910	825 472 171	to 2 200	828 539 316	to 9 340
818 962 492	to 2 530	821 927 841	to 7 850	826 042 898	to 2 920	828 539 341	to 9 370
819 032 341	to 2 730	822 505 801	to 5 830	826 226 644	to 6 670	828 732 331	to 2 390
819 127 054	to 7 080	822 703 442	to 3 470	826 582 951	to 3 430	828 807 781	to 7 840
819 278 540	to 8 670	822 900 991	to 1 020	826 720 201	to 0 230	828 830 952	to 0 963
819 544 681	to 4 740	822 925 951	to 6 100	827 005 671	to 5 830	828 939 781	to 0 050
819 928 441	to 8 650	823 284 931	to 4 990	827 287 861	to 7 950	829 002 721	to 2 870
820 034 406	to 4 430	823 293 031	to 3 210	827 291 502	to 1 520	829 005 301	to 5 540
820 070 761	to 1 540	823 556 011	to 6 100	827 575 381	to 5 470	829 080 241	to 0 330
820 191 342	to 1 360	824 078 341	to 8 370	827 609 085	to 9 100	829 160 986	to 1 000
820 274 856	to 4 880	824 156 325	to 6 340	827 619 811	to 9 840	829 176 841	to 6 930
820 600 171	to 0 230	824 511 252	to 1 270	827 883 511	to 3 600	829 471 561	to 1 590
821 172 241	to 2 360	824 588 281	to 8 370	828 160 441	to 0 530	829 561 065	to 1 080
821 229 661	to 9 720	825 140 397	to 0 460	828 376 201	to 6 260	829 566 481	to 6 510
821 229 743	to 9 780	825 409 651	to 9 680	828 441 602	to 1 630	829 569 931	to 9 960

— Criminal Investigations Group, U.S. Postal Inspection Service, 7-10-25

Verifying U.S. Postal Service Money Orders

Follow these steps to cash a Postal Service™ money order:

1. Check that the amount does not exceed the legal limit: \$1,000 for domestic, and \$700 for international Postal money orders.
2. Check that the proper security features are present:
 - For the legacy, green Postal Service money orders:
 - a. Green coloring at the top and bottom.
 - b. A U.S. Mail eagle logo in the center.
 - c. A left-side watermark of Benjamin Franklin repeating top to bottom that is only visible when held up to a light source.
 - d. On the right of the Benjamin Franklin watermark, a vertical, multicolored security thread with the letters “USPS®” weaves in and out of the paper.
 - e. Discoloration around the dollar amounts might indicate the amounts were changed.
 - For the new red and blue Postal Service money orders:
 - a. Red and blue ink with subtle design features of an eagle head and an American flag.
 - b. Two watermarks that are only visible when held up to a light source:
 1. A watermark of a Pony Express® rider.
 2. A watermark that reads “United States Postal Service” in a rectangular box.

- c. A security thread that runs from the top to the bottom of the Postal Service money order, just to the right of the Pony Express rider watermark. When held to the light, the thread reveals the letters “USPS” alternating right side up and upside down throughout the thread.
- d. A Quick Response (QR) code that directs users to the USPS website to verify the status of money orders using three pieces of information.
- e. Discoloration around the dollar amounts might indicate the amounts were changed.

These features also appear at usps.com/shop/money-orders.htm.

If you or a customer suspects fraud, follow the guidance from the U.S. Postal Inspection Service:

- If you question the validity of a Postal Money Order, use the Money Order Verification System at 1-866-459-7822.
- You can also check the money order status at usps.com/shop/money-orders.htm. Go to “Check Money Order Status” and input the information.
- If you suspect fraud or criminal activity, call the Inspection Service at 1-877-876-2455 at your earliest convenience.

The legacy, green Postal Service money order will stay in circulation until all existing stock is depleted. As of October 1, 2024, USPS no longer sells international money orders. USPS will no longer cash international money orders after September 30, 2025.

— Criminal Investigations Group,
U.S. Postal Inspection Service, 7-10-25

Counterfeit Canadian Money Order Forms

Do Not Cash

To be posted and used by retail window employees. As directed, destroy previous notices. Destroy all interim notices when the numbers listed appear in the *Postal Bulletin*.

671,819,086	683,594,542	687,262,503
676,612,640	684,683,610	687,262,525
677,891,039	686,619,878	687,262,526
678,282,493	686,619,886	687,287,578
678,916,031	686,619,887	687,287,581
679,552,215	686,794,382	687,287,582
679,694,334	686,794,426	694,063,898
679,751,983	686,794,427	694,063,899
679,800,207	686,794,431	694,063,980
681,130,536	687,262,502	701,321,725
681,844,376		

— *Criminal Investigations Group,
U.S. Postal Inspection Service, 7-10-25*

Toll-Free Number Available to Verify Canadian Money Orders

The Canada Post Corporation has a toll-free number that cashing agents can call to verify the validity of Canadian Postal Money Orders. The number is 800-563-0444.

This toll-free number is printed on the back of the Canadian Postal Money Orders.

— *Criminal Investigations Group,
U.S. Postal Inspection Service, 7-10-25*

Other Information

Overseas Military/Diplomatic Mail

Mail addressed to military and diplomatic post offices overseas is subject to certain conditions or restrictions of mailing regarding content, preparation, and handling. The APO/FPO/DPO table outlines these conditions by APO/FPO/DPO ZIP Codes™ through the use of footnoted mailing restrictions codes (see the [Restrictions](#) page following the table).

Acceptance clerks must use the table with the Retail System Software terminal to determine which APO/FPO/DPO ZIP Codes are active and which conditions of mailing apply.

The entries under “Changes” appear in bold in the following APO/FPO/DPO table:

Changes

APO/FPO/DPO	Action	Effective Date	See Restrictions
APO AE 09009	Add F	06/26/2025	B-C-C2-D-E-F-F3-H-M-R-S-U-Z1
APO AE 09012	Add F	06/26/2025	B-C-C2-D-E-F-F3-H-M-R-S-U-Z1
APO AE 09021	Add F	06/26/2025	B-C-C2-D-E-F-F3-H-M-R-S-U-Z1
APO AE 09060	Add F	06/26/2025	B-C-C2-D-E-F-F1-F3-H-M-N-R-S-U-Z1
APO AE 09094	Add F	06/26/2025	B-C-C2-D-F-F3-H-M-P-R-S-Z1
APO AE 09104	Add F	06/26/2025	B-C-C2-D-F-F3-H-M-R-S-U-Z1
APO AE 09123	Add F	06/26/2025	B-C-C2-D-E-F-F3-H-M-R-S-U-Z1
APO AE 09126	Add F	06/26/2025	B-C-C2-F-F3-H-M-P-R-S-Z1
APO AE 09135	Add C	06/26/2025	A-B-C-C2-F-F3-H-N-R-S-U-V-Z1
APO AE 09214	Add F	06/26/2025	B-C-C2-D-E-F-F3-H-M-R-S-U-Z1
APO AE 09261	Add F	06/26/2025	B-C-C2-D-E-F-F3-H-M-N-R-S-U-V-Z1
FPO AE 09266	Add M	06/13/2025	A-B-C-C2-F-F1-F2-F3-M-R-S-U-U1-V-W-X-Z1
APO AE 09401	Add F	06/26/2025	B-C-C1-C2-F-F3-M-R-S-U-Z1
APO AE 09403	Add F	06/26/2025	B-C-C1-C2-F-F3-M-R-S-U-Z1
APO AE 09421	Add F	06/26/2025	B-C-C1-C2-F-F3-M-R-S-U-Z1
APO AE 09447	Add F	06/26/2025	B-C-C1-C2-F-F3-M-R-S-U-V-Z1
APO AE 09454	Add F	06/26/2025	B-C-C1-C2-F-F3-M-R-S-U-V-Z1
APO AE 09456	Add F	06/26/2025	B-C-C1-C2-F-F3-M-N-R-S-U-V-Z1
APO AE 09459	Add F	06/26/2025	B-C-C1-C2-F-F3-M-R-S-U-Z1
APO AE 09461	Add F	06/26/2025	B-C-C1-C2-F-F3-M-P-R-S-U-Z1
APO AE 09463	Add F	06/26/2025	B-C-C1-C2-F-F3-M-R-S-U-Z1
APO AE 09464	Add F	06/26/2025	B-C-C1-C2-F-F3-M-R-S-U-Z1
APO AE 09468	Add F	06/26/2025	B-C-C1-C2-F-F3-M-R-S-U-Z1
APO AE 09469	Add F	06/26/2025	B-C-C1-C2-F-F3-R-S-U-Z1
APO AE 09470	Add F	06/26/2025	B-C-C1-C2-F-F3-M-R-S-U-Z1
APO AE 09494	Add F	06/26/2025	B-C-C1-C2-F-F3-M-R-S-U-Z1
APO AE 09643	Add F	06/26/2025	B-C-C2-F-F3-M-R-S-U-V-Z1
APO AE 09706	Add F	06/26/2025	B-C-C2-F-F3-M-N-R-S-U-V-Z1
APO AE 09717	Add F	06/26/2025	A-B-C-C2-F-F3-M-R-S-V-W-Z1
APO AE 09719	Add F	06/26/2025	B-C-C2-D-F-F3-M-R-S-U-V-Z1
APO AE 09720	Add C, F	06/26/2025	B-C-C2-F-F3-M-R-S-U-V-Z1
APO AE 09745	Add C	06/26/2025	A-B-C-C2-F-F1-F3-M-N-R-R1-S-V-Z1
APO AE 09810	Add C	06/26/2025	A-B-C-C2-F-F1-F3-N-R-S-V-Z1
FPO AA 34058	Add C, I1, N	06/26/2025	B-C-C2-F-F1-F2-F3-I1-N-R-R1-S-V-Z1
FPO AP 96268	Open	06/23/2025	A-B-C-C2-F3-R-F1-S-Z1
FPO AP 96373	Close	07/01/2025	

We have eliminated “Not Active” entries from the table below to save space and paper.

APO/FPO/DPO Table

APO/ FPO/ DPO	See Restrictions	APO/ FPO/ DPO	See Restrictions	APO/ FPO/ DPO	See Restrictions	APO/ FPO/ DPO	See Restrictions
09002	A-B-C-C2-F-F3-H-N-R-S-V-Z-Z1	09005	B-C-C2-D-E-F-F3-H-M-P-R-S	09009	B-C-C2-D-E-F-F3-H-M-R-S-U-Z1	09012	B-C-C2-D-E-F-F3-H-M-R-S-U-Z1
09003	B-C-C2-D-E-F-F3-H-M-P-R-S	09006	B-C-C2-D-E-F-F3-H-M-R-S-U	09010	B-C-C2-D-E-F-F3-H-M-R-S-U2	09013	B-C-C2-D-E-F-F1-F3-H-M-R-S-U-Z1
09004	B-C-C2-D-E-F-F3-H-M-R-S-U	09008	A-B-C-C2-F-F3-H-N-R-S-V-Z1	09011	B-C-C2-D-E-F-F3-H-M-R-S	09014	B-C-C2-D-E-F-F3-H-M-P-R-S-U

APO/ FPO/ DPO	See Restrictions	APO/ FPO/ DPO	See Restrictions	APO/ FPO/ DPO	See Restrictions	APO/ FPO/ DPO	See Restrictions
09015	A-B-C-C1-C2-F-F1-F3-J-L-M-N-R-R1-S-V-Z1	09136	B-C-C2-D-E-F-F3-H-M-P-R-S-U	09241	A-B-C-C2-F3-N-R-S-U-Z1	09294	B-C-C1-C2-E2-F1-F3-H1-L-N-R-R1-S-T-V-X-Z1
09016	B-C-C2-D-E-F1-F3-H-M-R-S-U	09140	B-C-C2-D-E-F-F3-H-M-R-S-U	09242	A-B-C-C1-C2-F-F3-H-N-R-S-V	09295	B-C-C1-C2-E2-F1-F3-H1-J-L-M-N-R-R1-S-T-V-X-Z1
09017	A-B-C-C2-F-F3-H-N-R-S-V-Z1	09142	B-C-C2-D-E-F-F3-H-M-R-S-U	09250	B-C-C2-D-E-F-F3-H-M-R-S-U	09296	A-B-C-C2-E1-F1-F3-L-N-R-S-T-V-X-Z1
09018	A-B-C-C2-F-F3-H-N-R-S-V-Z1	09154	B-C-C2-D-E-F-F3-H-M-R-S-U	09261	B-C-C2-D-E-F-F3-H-M-N-R-S-U-V-Z1	09297	A-B-C-C2-E-E1-F1-F3-J-L-M-N-R-S-T-V-X-Z1
09020	B-C-C2-D-E-F-F3-H-M-R-S-U	09160	B-C-C2-F1-F3-H-J-L-M-N-R-R1-S-T-U-V-X-Z1	09263	B-C-C2-D-E-F3-H-M-R-S-U	09298	A-B-C-C2-E-E1-F-F3-I3-L-M-N-R-S-T-V-X-Z-Z1
09021	B-C-C2-D-E-F-F3-H-M-R-S-U-Z1	09170	A-B-C-C2-F1-F3-J-L-M-N-R-R1-S-T-V-X-Z1	09264	B-C-C2-D-E-F-F3-H-M-R-S-U	09299	A-B-C-C2-E-E1-F1-F3-I3-L-M-N-R-S-T-V-Z-X-Z1
09034	B-C-C2-D-E-F-F3-H-M-R-S-U	09171	A-B-C-C1-C2-E3-F1-F3-J-L-M-N-R-R1-S-T-V-X-Z1	09266	A-B-C-C2-F-F1-F2-F3-M-R-S-U-U1-V-W-X-Z1	09301	A-B-C-C1-C2-E2-F1-F3-H1-I3-L-M-N-R-R1-S-T-U4-V-X-Z-Z1
09044	B-C-C2-D-E-F-F3-H-R-S-U	09172	B-C-C2-D-E-F-F3-H-M-R-S-U	09276	A-B-C-C2-F-F3-I3-L-M-N-R-S-T-V-X-Z-Z1	09304	A-B-C-C1-C2-F-F1-F3-H-M-N-R-S-V-Z-Z1
09046	B-C-C2-D-E-F-F3-H-M-R-S-U	09173	B-C-C2-D-E-F-F3-H-M-R-S-U	09277	A-B-C-C2-E-E1-E2-F1-F3-L-N-R-S-T-V-X-Z1	09305	A-B-C-C1-C2-E2-F-F1-F3-H1-I3-M-N-R-R1-S-T-V-Z-Z1
09049	B-C-C2-D-E-F-F3-H-M-R-S-U	09174	B-C-C2-F1-F3-L-N-R-R1-S-T-V-Z1	09278	A-B-C-C2-F-F3-I3-L-M-N-R-S-T-V-X-Z-Z1	09306	A-B-C-C1-C2-E2-F-F1-F3-H1-R-R1-S-U2-V-Z1
09053	B-C-C2-D-E-F-F3-H-M-R-S-U	09175	A-B-C-C1-C2-E2-F1-F3-H1-J-L-M-N-R-R1-S-T-V-W-X-Z1	09279	A-B-C-C2-E-E1-F-F3-I3-L-M-N-R-S-T-V-X-Z-Z1	09307	B-C-C2-F-F3-N-R-R1-S-Z1
09060	B-C-C2-D-E-F-F1-F3-H-M-N-R-S-U-Z1	09176	A-B-C-C2-F1-F3-J-L-M-N-R-R1-S-T-V-X-Z1	09280	A-B-C-C1-C2-E-E2-F1-F3-H-I3-L-M-N-R-S-T-V-W-X-Z-Z1	09309	A-B-C-C1-C2-E1-E2-F-F1-F3-H-H1-M-N-R-R1-S-V-Z1
09067	B-C-C2-D-E-F-F3-H-M-R-S-U	09177	B-C-C2-D-E-F-F3-H-M-R-S-U	09281	A-B-C-C1-C2-E2-E3-F1-F3-H-H1-I3-J-L-M-N-R-R1-S-T-V-X-Z-Z1	09310	A-B-C-C1-E2-F1-F3-H1-I3-L-M-N-R-R1-S-T-U4-V-Z
09068	B-C-C2-D-E-F3-H-R-S-U-Z1	09178	B-C-C1-C2-E2-F1-F3-I3-L-M-N-R-S-T-V-X-Z-Z1	09282	A-B-C-C1-C2-E2-E3-F1-F3-H-H1-J-L-M-N-R-R1-S-T-V-X-Z1	09311	A-B-C1-C2-E2-F-F1-F3-H1-I3-L-M-N-R-R1-S-T-U4-V-Z-Z1
09069	A-B-C-C2-D-E-F3-H-N-R-S-U-V	09179	A-B-C-C1-C2-F1-F3-I2-J-L-M-N-R-R1-S-T-V-X-Z1	09283	A-B-C-C2-E-E1-F1-F3-L-M-N-R-S-T-V-X-Z1	09312	A-B-C-C1-E2-F1-F3-H1-I3-L-M-N-R-R1-S-T-U4-V-X-Z-Z1
09079	B-C-C2-D-E-F-F3-H-M-R-S-U	09180	B-C-C2-D-E-F-F3-H-M-R-S-U	09284	A-B-C-C2-F1-F3-I3-L-M-N-R-S-T-V-Z	09315	A-B-C1-E2-F-F3-N-R-R1-S-V-Z1
09094	B-C-C2-D-F-F3-H-M-P-R-S-Z1	09181	A-B-B2-C-C2-E1-F1-F3-J-L-M-N-R-S-T-V-V1-X-Z1	09285	A-B-C-C2-E-E1-F1-F3-H-I3-L-M-N-R-S-T-V-X-Z-Z1	09316	A-B-C-C1-C2-E2-F-F1-F3-H1-I3-M-N-R-R1-S-T-V-Z-Z1
09095	B-C-C2-D-E-F-F3-H-M-R-S-U	09186	B-C-C2-D-E-F-F3-H-M-P-R-S-U	09287	B-C-C2-E1-F1-F3-J-L-N-R-S-T-V-X-Z1	09321	A-B-C-C1-C2-E2-F-F3-H1-M-N-R-R1-S-V-Z1
09096	B-C-C2-D-E-F-F3-H-M-R-S-U	09203	A-B-C-C1-C2-F1-F3-I3-J-L-M-N-R-R1-S-T-V-X-Z-Z1	09288	A-B-C-C1-C2-E2-F1-F3-H-H1-J-L-M-N-R-R1-S-T-V-X-Z1	09330	A-B-C1-C2-D-E-E2-F-F1-F3-H-H1-M-R-R1-S-V-Z1
09101	A-B-C-C2-F-F3-H-N-Q-R-S-V-Z-Z1	09204	B-C-F3-M-N-R-S-V-Z1	09289	B-C-C2-E2-F1-F3-H1-J-L-M-N-R-R1-S-T-U2-V-X-Z1	09333	A-B-C-C1-C2-E2-F-F1-F3-H1-I3-M-N-R-R1-S-V-V1-Z-Z1
09103	A-B-C-C2-F-F3-H-N-R-S-V-Z1	09205	A-B-C-C2-E2-F-F3-M-N-R-S-T-V-X	09290	A-B-C-C1-C2-F1-F3-J-L-M-N-R-S-T-U2-V-X-Z1	09343	A-B-C1-C2-F-F3-M-N-R-R1-S-V-Z1
09104	B-C-C2-D-F-F3-H-M-R-S-U-Z1	09211	B-C-C2-D-E-F-F3-H-M-P-R-S-U	09291	B-C-C1-C2-E2-F1-F3-H1-L-N-R-R1-S-T-V-X-Z1	09348	A-B-C-C1-C2-E2-F-F1-F3-H1-I3-M-N-R-R1-S-T-V-Z-Z1
09112	B-C-C2-D-E-F-F3-H-M-R-S-U	09213	B-C-C2-F1-F3-H-J-L-M-N-R-R1-S-T-U-V-X-Z1	09292	A-B-C-C2-E-E2-E3-F1-F3-H-H1-J-L-M-N-R-R1-S-T-V-X-Z1	09357	A-B-C-C1-C2-F-F1-F3-M-R-S-U
09114	B-C-C2-D-E-F-F3-H-M-R-S-U	09214	B-C-C2-D-E-F-F3-H-M-R-S-U-Z1	09293	A-B-C-C1-C2-E-E2-F1-F3-I3-L-M-N-R-S-T-V-X-Z-Z1		
09116	A-B-C-C2-F-F3-H-N-R-S-V-Z1	09216	B,C,F1,F3,M,N,R,S,V,Z1				
09118	A-B-C-C2-F-F1-F3-M-N-R-R1-S-V-Z1	09227	B-C-C2-D-E-F-F3-H-M-R-S-U				
09123	B-C-C2-D-E-F-F3-H-M-R-S-U-Z1	09240	A-B-C1-C2-F-F3-H-N-R-S-V				
09126	B-C-C2-F-F3-H-M-P-R-S-Z1						
09128	B-C-C2-D-E-F-F3-H-M-R-S-U						
09131	B-C-C2-D-E-F-F3-H-M-R-S-U						
09135	A-B-C-C2-F-F3-H-N-R-S-U-V-Z1						

APO/ FPO/ DPO	See Restrictions	APO/ FPO/ DPO	See Restrictions	APO/ FPO/ DPO	See Restrictions	APO/ FPO/ DPO	See Restrictions
09365	A-B-C-C1-C2-E2-F-F3-H1-M-N-R-S-V-Z1	09507	B-V	09576	B-C-C2-F-F1-F3-R-R1-S-V	09622	B-C-C2-D-E2-E3-F-F1-F2-F3-H-R-S-U-Z1
09366	A-B-C-C1-C2-E2-F-F1-F3-H-H1-M-R-R1-S-V-Z1	09508	B-C-C2-F-F3-R-R1-S-V	09577	B-C-C2-F-F1-F3-R-R1-S-V	09623	B-C-C2-F-F3-R-S-U-V-Z1
09401	B-C-C1-C2-F-F3-M-R-S-U-Z1	09509	B-C-C2-F-F3-R-R1-S-V	09578	B-C-C2-F-F1-F3-R-R1-S-V	09624	B-C-C2-F1-F3-I3-L-M-N-R-R1-S-T-U-V-X-Z1
09403	B-C-C1-C2-F-F3-M-R-S-U-Z1	09510	B-C-C2-F-F3-R-R1-S-V	09579	B-C-C2-F-F1-F3-R-R1-S-V	09625	B-C-C2-F-F3-N-R-S-U-Z1
09410	B-C-C2-F-F1-F3-N-R-S-U2	09511	B-C-C2-F-F3-R-R1-S-V	09581	B-C-C2-F-F1-F3-R-R1-S-V	09627	B-C-C2-F-F3-R-S-U-V-Z1
09421	B-C-C1-C2-F-F3-M-R-S-U-Z1	09512	B-C-C2-F-F1-F3-R-R1-S-V	09582	B-C-C2-F-F1-F3-R-R1-S-V	09630	B-C-C2-F-F3-R-S-U-V
09424	B-C-C2-F1-F3-M-N-R-S-U-Z1	09513	B-C-C2-F-F1-F3-R-R1-S-V	09583	B-C-C2-F-F1-F3-R-R1-S-V	09633	B-C-C2-D-F-F3-M-R-S-U-U1-U2-U3-V-Z1
09447	B-C-C1-C2-F-F3-M-R-S-U-V-Z1	09514	B-C-C2-F-F1-F3-R-R1-V	09586	B-C-C2-F-F1-F3-R-R1-S-V	09634	A-B-C-C2-F-F3-M-N-R-S-V
09454	B-C-C1-C2-F-F3-M-R-S-U-V-Z1	09516	B-C-C2-F-F1-F3-R-R1-S-V	09587	B-C-C2-F-F1-F3-R-R1-S-V	09636	B-C-C2-F-F3-R-S-U-V-Z1
09456	B-C-C1-C2-F-F3-M-N-R-S-U-V-Z1	09517	B-C-C2-F-F1-F3-R-R1-S-V	09588	B-C-C2-F-F1-F3-R-R1-S-V	09642	B-C-C2-F1-F3-J-L-M-N-R-S-T-U-V-X
09459	B-C-C1-C2-F-F3-M-R-S-U-Z1	09518	B-C-C2-F-F1-F3-R-R1-S-V	09590	B-C-C2-F-F1-F3-R-R1-S-V	09643	B-C-C2-F-F3-M-R-S-U-V-Z1
09461	B-C-C1-C2-F-F3-M-P-R-S-U-Z1	09523	B-C-C2-F-F1-F3-R-R1-S-V	09591	B-C-C2-F-F1-F3-R-R1-S-V	09645	B-B2-C-C1-C2-E1-E2-F-F1-F3-M-R-S-U-X-Z1
09463	B-C-C1-C2-F-F3-M-R-S-U-Z1	09524	B-C-C2-F-F1-F3-R-R1-S-V	09592	B-C-C2-F-F1-F3-R-R1-S-V	09647	B-C-C2-E1-F1-F3-M-N-R-S-U-X-Z1
09464	B-C-C1-C2-F-F3-M-R-S-U-Z1	09532	B-C-C2-F-F1-F3-R-R1-S-V	09594	B-C-C1-C2-F-F1-F3-R-R1-S-V	09648	B-C-C1-C2-E1-F1-F3-M-N-R-S-U-V-X-Z1
09467	B-C-C2-E-E1-F1-F3-J-L-M-N-R-S-T-V-W-X-Z1	09533	B-V	09595	B-C-C2-F-F1-F3-I3-J-R-R1-S-V-V1-Z1	09649	B-C-C2-E1-F1-F3-M-N-R-S-U-X-Z1
09468	B-C-C1-C2-F-F3-M-R-S-U-Z1	09534	B-F-F1-F3-R-R1-S-V	09596	B-F-F1-R-R1-V	09701	A-B-C-C1-C2-F1-F3-J-L-M-N-R-R1-S-T-V-X-Z1
09469	B-C-C1-C2-F-F3-R-S-U-Z1	09541	A-B-C-C2-F-F3-M-N-R-S-V-Z1	09599	B-F-F1-R-R1-V	09704	B-C-C2-F-F1-F3-R-R1-S-U2-V
09470	B-C-C1-C2-F-F3-M-R-S-U-Z1	09542	A-B-C-C2-F-F3-M-N-R-S-V-Z1	09600	B-B2-C-C1-C2-E1-E2-F-F1-F3-M-R-S-U-X-Z1	09705	B-C-C1-C2-F1-F3-M-R-R1-S-U
09487	A-B-C-C1-C2-E2-F1-F3-I3-L-M-N-R-R1-S-T-V-W-X-Z1	09543	A-B-C-C2-F-F3-M-N-R-S-V-Z1	09602	B-C-C2-F-F1-F3-N-R-S-U-V	09706	B-C-C2-F-F3-M-N-R-S-U-V-Z1
09488	A-B-C-C1-C2-E2-F1-F3-J-L-M-N-R-S-T-V-W-X-Z1	09544	A-B-C-C2-F-F3-M-N-R-S-V-Z1	09603	B-C-C2-F-F1-F3-R-S-U-V-Z1	09707	B-C-C2-F1-F3-J-L-M-N-R-R1-S-T-V-X-Z1
09489	A-B-C-C1-C2-E2-F1-F3-L-M-N-R-R1-S-T-V-W-X-Z1	09545	A-B-C-C2-F-F3-M-N-R-S-V-Z1	09604	B-C-C2-F-F1-F3-P-R-S-U-V-Z1	09708	B-C-C1-C2-F-F3-M-R-R1-S-U
09490	A-B-C1-C2-E2-F-F1-F3-H1-J-L-M-N-R-R1-S-T-V-X-Z1	09550	B-C-C2-F-F1-F3-R-R1-S-V	09605	B-C-C2-D-F-F1-F3-H-M-P-R-S-V	09709	B-C-C1-C2-E2-F1-F3-H-H1-J-L-N-R-R1-S-T-V-X-Z1
09491	A-B-C-C1-C2-E2-F1-F3-H1-J-L-M-N-R-R1-S-T-V-X-Z1	09554	B-C-C2-F-F1-F3-R-R1-S-V	09606	B-C-C2-D-F-F3-H-M-R-S-U-V	09710	B-C-C1-F-F1-J-L-M-N-R-R1-T-U-V-Z1
09494	B-C-C1-C2-F-F3-M-R-S-U-Z1	09556	B-F-F1-R-R1-V	09608	B-C-C2-F-F3-N-R-S-U-V-Z1	09711	A-B-C-C2-E2-F-F1-F3-M-N-R-S-T-V-X
09498	B-C-C1-C2-F1-F3-J-L-M-N-R-R1-S-T-V-X-Z1	09564	B-C-C2-F-F1-F3-R-R1-S-V	09609	B-C-C2-F-F3-R-S-U-V	09712	A-B-C-C2-F-F3-H-R-S-U-V-Z1
09501	B-V	09565	B-C-C2-F-F1-F3-R-R1-S-V	09610	B-C-C2-F-F1-F3-M-R-S-U-V-Z1	09714	B-C-C1-C2-F-F3-M-R-R1-S-U
09502	B-V	09566	B-C-C2-E2-E3-F-F1-F3-R-R1-S-V	09613	B-C-C2-F-F3-N-R-S-U-V	09715	B-F-F1-J-L-M-N-R-T-V-Z1
09503	B-F-F1-R-R1-V	09567	B-C-C2-E2-E3-F-F1-F3-R-R1-S-V	09614	A-B-C-C1-C2-E2-F1-F3-H1-J-L-M-N-R-R1-S-T-U-V-X-Z1	09716	B-C-C2-F1-F3-J-L-M-N-R-R1-S-T-V-X-Z1
09504	B-V	09570	B-C-C2-F-F1-F3-R-R1-S-V	09618	B-C-C2-F-F3-R-S-U-Z1	09717	A-B-C-C2-F-F3-M-R-S-V-W-Z1
09505	B-V	09573	B-C-C2-E2-E3-F-F1-F3-R-R1-S-V-Z1	09620	B-C-C2-F-F1-F2-F3-H-R-S-U-V-Z1		
09506	B-C-C2-F-F3-R-S-V	09575	B-C-C2-F-F1-F3-R-R1-S-V	09621	B-C-C2-F-F3-R-S-U-Z1		

APO/ FPO/ DPO	See Restrictions	APO/ FPO/ DPO	See Restrictions	APO/ FPO/ DPO	See Restrictions	APO/ FPO/ DPO	See Restrictions
09718	B-F-F1-J-L-M-N-R-T-U-V-Z1	09749	A-B-C2-F-F3-H-N-R-S-U-V-Z1	09812	B-E2-E3-F-F1-I-J-L-N-R-T-U-V-Z-Z1	09842	A-B-C-C1-C2-E3-F1-F3-J-L-M-N-R-R1-S-T-V-X-Z1
09719	B-C-C2-D-F-F3-M-R-S-U-V-Z1	09750	A-B-C-C1-C2-F1-F3-J-L-M-N-R-R1-S-T-V-X-Z1	09813	A-B-C-C1-C2-E2-E3-F1-F3-J-L-N-R-R1-S-T-V-X-Z1	09844	A-B-C-C1-C2-F1-F3-J-L-M-N-R-R1-S-T-V-X-Z1
09720	B-C-C2-F-F3-M-R-S-U-V-Z1	09751	B-C-C2-D-E-F-F3-H-M-R-S-U	09814	B-C-C2-E2-E3-F1-F3-I3-J-L-M-N-R-R1-S-T-V-X-Z-Z1	09845	A-B-C-C1-C2-E3-F1-F3-J-L-M-N-R-R1-S-T-V-X-Z1
09722	A-B-C-C2-F-F3-H-N-R-S-V-Z-Z1	09752	B-C-C2-D-F-F3-H-R-S-U	09815	A-B-C-C2-E-E2-E3-F1-F3-H-H1-J-M-N-R-R1-S-U-V-Z1	09846	A-B-C-C1-C2-F1-F3-J-L-M-N-R-R1-S-T-V-X-Z1
09723	B-C-C2-F1-F3-J-L-M-N-R-R1-S-T-V-X-Z1	09753	A-B-C-C1-C2-D-E-F1-F3-H-M-N-R-S-V-W-Z1	09816	A-B-C-C1-C2-E2-E3-F1-F3-J-L-M-N-R-R1-S-T-V-X-Z1	09847	B-C-C2-F1-F3-J-L-M-N-R-R1-S-T-V-X-Z1
09724	B-C-C1-C2-F-F3-M-R-R1-S-U	09754	A-B-C-C2-F-F3-H-N-R-S-V-Z-Z1	09817	A-B-C-C1-C2-E2-E3-F1-F3-H-H1-J-L-M-N-R-R1-S-T-V-X-Z1	09848	A-B-C2-F-F3-M-R-S-V-Z1
09725	A-B-C-C2-F-F3-H-N-R-S-V-V1-Z-Z1	09755	A-B-C-C1-C2-D-F-F1-F3-J-L-M-N-Q-R-R1-S-T-V-Z1	09818	A-B-C-C2-F-F3-M-R-S-V-Z1	09853	B-C-C1-C2-E2-F-F1-F3-H1-N-R-R1-S-U2-V
09726	B-F-F1-J-L-M-N-R-T-U-V-Z1	09756	A-B-E3-F-F1-F3-J-L-N-Q-R-R1-S-T-V-Z1	09819	A-B-C-C1-C2-E2-F-F1-F3-H-H1-M-R-R1-S-V-Z1	09854	A-B-C-C1-C2-F1-F3-J-L-M-N-R-R1-S-T-V-X-Z1
09727	A-B-C-C1-C2-F1-F3-J-L-M-N-R-R1-S-T-V-X-Z1	09759	A-B-C-C1-C2-E2-F1-F3-J-L-M-N-R-R1-S-T-V-X-Z1	09820	A-B-C-C2-F1-F3-H-H1-J-L-M-N-R-R1-S-T-V-X-Z1	09855	A-B-C-C1-C2-E2-F-F1-F3-H1-M-R-R1-S-U2-V-Z1
09728	A-B-C-C1-C2-F1-F3-J-L-M-N-R-R1-S-T-V-X-Z1	09761	B-C-C2-F-F1-F3-M-R-R1-S-V-Z1	09821	A-B-C-C2-F-F3-N-R-S-V-Z1	09856	B-C-C1-C2-F-F1-F3-H-H1-J-L-M-N-S-T-V-Z1
09729	B-C-C2-F-F3-N-R-R1-S-U-V-Z1	09762	A-B-C-C1-E3-F1-F3-J-L-M-N-R-R1-S-T-V-Y-Z1	09822	A-B-C-C2-F-F3-M-R-S-V-Z1	09857	A-B-C-C2-E2-F1-F3-I3-L-M-N-R-R1-S-T-V-X-Z-Z1
09730	A-B-C-C1-C2-F1-F3-J-L-M-N-R-R1-S-T-V-X-Z1	09769	A-B-C-C1-E3-F1-F3-J-L-M-N-R-R1-S-T-V-Y-Z1	09823	A-B-C-C1-C2-F1-F3-I2-J-L-M-N-R-R1-S-T-V-X-Z1	09858	A-B-C-C1-C2-E2-E3-F1-F3-H-H1-J-M-N-R-R1-S-U-V-Z1
09731	A-B-C-C1-C2-F1-F3-J-L-M-N-R-R1-S-T-V-X-Z1	09777	A-B-C-C1-C2-E1-F1-F3-J-L-M-N-R-R1-S-T-V-X-Z1	09824	A-B-C-C2-F-F3-M-R-S-V-Z1	09859	B-C-C1-C2-E2-E3-F-F1-F3-H1-R-R1-S-U-Z1
09732	B-F-F3-N-S-V-Z-Z1	09780	A-B-C2-F-F3-H-N-R-S-V	09825	A-B-C-C1-C2-F1-F3-J-L-M-N-R-R1-S-T-V-X-Z1	09860	A-B-C-C2-F1-F3-J-L-M-N-R-R1-S-T-V-X-Z1
09733	B-F-F3-N-R-S-V-Z	09801	A-B-C-C1-C2-E2-F-F3-H1-M-N-R-R1-S-V-Z1	09826	A-B-C-C1-C2-E1-E2-E3-F1-F3-J-L-M-N-R-R1-S-T-V-W-X-Z1	09862	A-B-C-C2-F1-F3-I3-L-M-N-R-R1-S-T-V-X-Z1
09734	A-B-C-C1-C2-F1-F3-I3-J-L-M-N-R-R1-S-T-V-X-Z-Z1	09802	A-B-C-C2-D-F1-F3-H-H1-I3-L-M-N-R-R1-S-T-V-W-X-Z-Z1	09827	A-B-C-C2-F-F1-F3-I2-J-L-M-N-R-S-T-V-Z1	09864	A-B-C-C1-C2-E2-F1-F3-L-M-N-R-R1-S-T-V-W-X-Z1
09735	B-C-C2-F-F3-N-R-S-V-Z-Z1	09803	A-B-C-C2-E-E2-E3-F1-F3-H-H1-J-M-N-R-R1-S-U-V-Z1	09828	A-B-C-C1-C2-F1-F3-I3-L-M-N-R-R1-S-T-V-X-Z-Z1	09867	A-B-C-C1-C2-E2-F1-F3-I3-L-M-N-R-R1-S-T-V-W-X-Z-Z1
09736	A-B-C-C1-C2-F1-F3-J-L-M-N-R-R1-S-T-V-X-Z1	09804	A-B-C-C2-F-F1-F3-M-N-R-S-V-Z1	09829	B-C-N-R-V-Z1	09869	A-B-C-C1-C2-E2-F1-F3-L-M-N-R-R1-S-T-V-W-X-Z1
09737	A-B-C-C1-C2-F1-F3-I3-J-L-M-N-R-R1-S-T-V-W-X-Y-Z-Z1	09805	B-C-C2-E2-E3-F-F1-F3-R-R1-S-Z1	09830	B-C-F-F1-F3-J-L-M-N-R-R1-S-T-V-Z1	09870	A-B-C-C1-C2-E2-F1-F3-H1-I3-L-M-N-R-R1-S-T-U4-V-X-Z-Z1
09738	A-B-C-C1-C2-F1-F3-J-L-M-N-R-R1-S-T-V-X-Z1	09806	A-B-C-C1-C2-E2-F-F1-F3-H1-J-L-M-N-R-R1-S-T-V-Z1	09831	B-C-C1-C2-F1-F3-J-L-M-N-R-R1-S-T-V-X-Z1	09873	A-B-C-C1-C2-E2-F1-F3-H1-I3-L-M-N-R-R1-S-T-U4-V-X-Z-Z1
09739	A-B-C-C1-C2-F1-F3-J-L-M-N-R-R1-S-T-V-X-Z1	09807	A-B-C-C1-C2-E2-F-F1-F3-H1-I3-M-N-R-R1-S-T-V-Z-Z1	09832	A-B-C-C1-C2-E2-E3-F1-F3-H-H1-J-M-N-R-R1-S-V-Z1	09874	A-B-C-C1-C2-E2-F1-F3-H1-I3-L-M-N-R-R1-S-T-U4-V-X-Z-Z1
09741	A-B-C-C1-C2-E2-F1-F3-H1-J-L-M-N-R-R1-S-T-V-W-X-Y-Z1	09808	A-B-C-C1-C2-E2-F1-F3-H-H1-J-L-M-N-R-R1-S-T-V-X-Z1	09833	B-C-C2-E2-E3-F-F1-F3-R-R1-S-U-Z1	09875	A-B-C1-C2-E2-F-F1-F3-H1-I3-L-M-N-R-R1-S-T-U4-V-Z-Z1
09742	A-B-C-C1-C2-F1-F3-J-L-M-N-R-R1-S-T-V-X-Z1	09809	B-C-C1-C2-E3-F1-F3-J-L-M-N-R-S-T-V-X-Z1	09836	A-B-C-C1-C2-F1-F3-J-L-M-N-R-R1-S-T-V-X-Z1		
09743	A-B-C-C2-F-F3-H-N-R-S-V-Z-Z1	09810	A-B-C-C2-F-F1-F3-N-R-S-V-Z1	09837	B-E2-E3-F1-F3-R-S-V-Z1		
09744	A-B-C-C1-C2-F1-F3-J-L-M-N-R-R1-S-T-V-X-Z1	09811	A-B-C-C2-E-E2-E3-F1-F3-H-H1-J-M-N-R-R1-S-U-V-Z1	09838	B-C-C2-E2-E3-F-F1-F3-R-S-U-Z1		
09745	A-B-C-C2-F-F1-F3-M-N-R-R1-S-V-Z1						
09748	A-B-C-C1-C2-F1-F3-J-L-M-N-R-R1-S-T-V-X-Z1						

APO/ FPO/ DPO	See Restrictions	APO/ FPO/ DPO	See Restrictions	APO/ FPO/ DPO	See Restrictions	APO/ FPO/ DPO	See Restrictions
09877	A-B-C-C2-E-E2-E3-F1-F3-H-H1-J-M-N-R-R1-S-U-V-Z1	34009	B-C-C2-F-F1-F3-R-S-V	34066	B-C-C1-C2-F1-F3-I3-J-L-M-N-R-R1-S-T-V-X-Z1	96207	A-B-F-F1-F3-M-R-S-U-V
09880	A-B-C1-C2-E2-F-F1-F3-H1J-L-N-R-R1-S-T-U-V-Z1	34010	B-C-C2-F-F1-F3-R-S-V	34067	B-C-C1-C2-F1-F3-J-L-M-N-R-R1-S-T-V-X-Z1	96208	A-B-C-C2-F-F1-F3-I1-M-R-S-T-U
09898	B-C-C1-C2-E2-F-F1-F2-H1-N-R-R1-S-U2-V-Z1	34011	B-C-C1-C2-E2-F1-F3-J-L-M-N-R-R1-S-T-V-X-Z1	34068	B-C-C1-C2-F1-F3-J-L-M-N-R-R1-S-T-V-X-Z1	96209	A-B-C-C1-C2-F1-F3-J-L-M-N-R-S-T-U-V-X-Z1
09892	A-B-C-C1-C2-E2-F1-F3-J-L-M-N-R-R1-S-T-V-X-Z1	34013	B-C-C2-F-F1-F3-R-S-V	34069	B-C-C1-C2-F1-F3-I3-J-L-M-N-R-R1-S-T-V-X-Z1	96210	A-B-C-C1-C2-F1-F3-I3-L-M-N-R-R1-S-T-V-X-Z1
09895	A-B-C-C1-C2-E2-F1-F3-J-L-M-N-R-S-T-V-W-X-Z1	34020	B-C-C1-C2-F1-F3-J-L-M-N-R-R1-S-T-V-X-Z1	34070	A-B-C-C2-E3-F1-F3-I3-J-L-M-N-R-S-T-V-X-Z1	96212	B-F-F1-F2-H-M-W-Z1
09902	A-B-C1-C2-E2-F-F3-H1-M-R-R1-S-V-Z1	34021	B-C-C1-C2-F1-F3-J-L-M-N-R-R1-S-T-V-X-Z1	34071	A-B-C-C2-F1-F3-I3-L-M-N-R-S-T-V-W-X-Z1	96213	A-B-C-C2-F1-F3-N-R-S
09903	B-C-C1-C2-E2-F1-F3-N-R-S-V-Z1	34022	B-C-C1-C2-F1-F3-J-L-M-N-R-R1-S-T-V-X-Z1	34072	B-C-C2-F1-F3-J-L-M-N-R-S-T-V-X-Z1	96214	A-B-C-C2-F1-F3-N-R-S-U
09904	B-C-C1-C2-E2-F1-F3-N-R-S-V-Z1	34023	B-C-C1-C2-F1-F3-J-L-M-N-R-R1-S-T-V-X-Z1	34073	B-C-C2-E1-F1-F3-J-L-M-N-R-S-T-V-X-Z1	96215	A-B-C-C2-F-F1-F3-M-R-S-U
09905	A-B-C-C1-C2-E2-F-F3-H1-M-R-R1-S-V-Z1	34024	B-C-C1-C2-F1-F3-J-L-M-N-R-R1-S-T-V-X-Z1	34078	B-F1-F3-N-R-S-V-Z1	96218	A-B-C-C2-F-F1-F3-I1-M-R-S-T-U
09974	B-C-C2-F1-F3-J-L-M-N-R-S-T-U2-V-X-Z1	34025	B-C-C2-F1-F3-J-L-M-N-R-S-T-U2-V-X-Z1	34080	B-F-F1-R-R1-V	96224	A-B-C-C2-F-F1-F3-I1-M-R-S-T-U
09975	B-C-C2-F1-F3-I3-L-M-N-R-S-T-U2-V-X-Z1	34030	B-C-C1-C2-F1-F3-J-L-M-N-R-R1-S-T-V-X-Z1	34081	B-F-F1-R-R1-V	96251	A-B-C-C2-F-F1-F3-I1-M-R-S-T-U
09976	B-C-C2-F1-F3-J-L-M-N-R-S-T-U2-V-X-Z1	34031	B-C-C1-C2-F1-F3-J-L-M-N-R-R1-S-T-V-X-Z1	34082	B-F-F1-R-R1-V	96257	A-B-C-C2-F-F1-F3-I1-M-N-R-S-T-U
09977	B-C-C2-F1-F3-J-L-M-N-R-S-T-U2-V-X-Z1	34032	B-C-C1-C2-F1-F3-J-L-M-N-R-R1-S-T-V-X-Z1	34083	B-F-F1-R-R1-V	96258	B-C-C2-F-F1-F3-M-P-R-S
09978	B-C-C2-D-E1-F-F1-F3-H-H1-M-N-R-R1-S-T-X-Z1	34033	B-C-C1-C2-F1-F3-I3-L-M-N-R-S-T-V-X-Z1	34084	B-F-F1-R-R1-V	96260	A-B-C-C2-F-F1-F3-I1-M-R-S-T-U
09980	B-C-C1-C2-F1-F3-J-L-M-N-R-R1-S-T-V-X-Z1	34034	B-C-C1-C2-F1-F3-I3-L-M-N-R-R1-S-T-V-X-Z1	34085	B-C-C1-C2-E2-E3-F1-F3-H1-R-R1-S-T-V-V1	96262	A-B-C-C2-F-F1-F3-R-S-U-V-Z1
09981	B-C-C1-C2-F1-F3-J-L-M-N-R-R1-S-T-V-X-Z1	34035	B-C-C1-C2-F1-F3-H-J-L-M-N-R-R1-S-T-V-X-Z1	34086	B-C-C1-C2-E2-E3-F1-F3-H1-J-R-R1-S-T-V-V1	96264	A-B-C-C2-F1-F3-R-S-U
09982	B-C-C1-C2-F1-F3-J-L-M-N-R-R1-S-T-V-X-Z1	34036	B-C-C1-C2-F1-F3-J-L-M-N-R-R1-S-T-V-X-Z1	34087	B-C-C2-E2-F-F1-F3-R-R1-S-V	96266	A-B-C-C2-F1-F3-R-S-U
09983	B-C-C1-C2-F1-F3-J-L-M-N-R-R1-S-T-V-X-Z1	34037	B-C-C1-C2-F1-F3-H-J-L-M-N-R-R1-S-T-V-X-Z1	34088	B-C-C2-F-F1-F3-R-R1-S-V	96268 A-B-C-C2-F3-R-F1-S-Z1	
09984	B-C-C1-C2-F1-F3-J-L-M-N-R-R1-S-T-V-X-Z1	34039	B-C-C1-C2-F1-F3-J-L-M-N-R-R1-S-T-V-X-Z1	34089	B-C-C2-F-F1-F3-R-R1-S-V	96269	A-B-C-C2-F1-F2-F3-R-S-U-Z1
34001	A-B-C-C1-C2-F1-F3-J-L-M-N-R-R1-S-T-V-X-Z1	34041	B-C-C1-C2-F1-F3-J-L-M-N-R-R1-S-T-V-X-Z1	34090	B-C-C2-F-F1-F3-R-R1-S-V	96271	B-C-C2-F-F1-F3-I1-M-P-R-S-T
34002	B-C-C1-C2-F1-F3-J-L-M-N-R-R1-S-T-V-X-Z1	34042	A-B-C-F-F1-F3-M-N-R-S-U-V-W-Z1	34091	B-C-C2-E2-E3-F-F1-F3-R-R1-S-V-Z1	96273	B-C-C2-F-F1-F3-I1-M-R-S-T-U
34004	B-C-C1-C2-F1-F3-J-L-M-N-R-R1-S-T-V-X-Z1	34055	B-C-C1-C2-F1-F3-J-L-M-N-R-R1-S-T-V-X-Z1	34092	B-C-C2-F-F1-F3-R-R1-S-V-Z1	96275	A-B-C-C2-F-F1-F3-M-R-S-U
34007	B-F-F1-H-J-M-N-R-R1-V-Z1	34058 B-C-C2-F-F1-F2-F3-I1-N-R-R1-S-V-Z1		34093	B-C-C2-F-F1-F3-R-R1-S-V	96276	A-B-C-C2-F1-F3-R-S
34008	B-C-C1-C2-D-E1-F1-F3-H-H1-J-L-M-N-R-R1-S-T-V-X-Z	34061	B-C-C2-F-F1-F3-R-S-V	34094	B-F-F1-F3-R-R1-S-V	96278	A-B-C-C2-F1-F3-R-S-U
				34095	B-F-F1-R-R1-V	96283	A-B-F-F1-F3-S-U
				96201	A-B-F-F1-F3-I1-M-R-S-U	96284	A-B-C-C2-F-F1-F3-I1-M-R-S-T-U
				96202	A-B-C-C2-F-F1-F3-I1-M-R-S-T-U	96297	A-B-C-C2-F-F1-F3-I1-M-R-S-T-U
				96203	A-B-F-F1-F3-M-R-S-U	96301	A-B-C-C2-F-F3-I1-M-N-R-S-T-U2-W
				96204	A-B-C-C2-F-F1-F3-I1-M-R-S-T-U2	96303	B-C-C1-C2-F1-F3-H-J-L-M-N-R-S-T-V-W-X-Z1
				96205	B-C-C2-F-F1-F3-I1-M-P-R-S-T-U	96306	B-F-F1-F2-F3-H-M-R-S-W-Z1
				96206	A-B-C-C2-F-F1-F3-I1-M-R-S-T-U	96309	B-C-C2-F-F1-F3-M-N-R-S-V-W

APO/ FPO/ DPO	See Restrictions	APO/ FPO/ DPO	See Restrictions	APO/ FPO/ DPO	See Restrictions	APO/ FPO/ DPO	See Restrictions
96310	B-C-C2-F-F3-M-R-S-W	96387	B-C-C2-F-F3-M-R-S-W	96550	A-B-H-M-N-U-V-Z1	96657	B-C-C2-F-F1-F3-R-R1-S-V
96311	B-C-C2-F-F3-M-R-S-W	96388	B-C-C2-F-F3-M-R-S-W	96551	A-B-C-C1-C2-F1-F3-H-J-L-M-N-R-R1-S-T-V-X-Z1	96660	B-C-C2-F-F1-F3-R-R1-S-V
96315	B-C-C2-F-F3-M-R-S-W	96401	B-C-F-F3-N-R-S-V-V1-Z1	96552	B-Z1	96661	B-C-C2-F-F1-F3-R-R1-S-V
96319	B-C-C2-F3-M-R-S-W	96502	A-B-C-C1-C2-F-F1-F3-J-M-N-R-R1-S-T-U-V	96553	A-B-C-C2-F-F1-F3-H-M-N-R-S-U	96662	B-C-C2-F-F1-F3-R-R1-S-V
96321	B-F-F1-F2-F3-H-M-R-S-W-Z1	96503	B-C-C2-D-E1-E2-F-F1-F3-H-H1-M-N-R-S-T-Z1	96554	A-B-C-C1-C2-F1-F3-H-J-L-M-N-R-R1-S-T-V-X-Z1	96663	B-C-C2-F-F1-F3-R-R1-S-V
96322	B-C-C2-F-F1-F2-F3-H-M-R-S-W-Z1	96504	A-B-C-C1-C2-F1-F3-I3-L-M-N-R-R1-S-T-V-W-X-Z-Z1	96555	A-B-C-C2-F-F1-F3-I1-M-R-S-T-U2-V	96664	B-C-C2-F-F1-F3-R-R1-S-V
96326	B-C-C2-F-F3-M-R-S-W	96505	A-B-C-C1-C2-F1-F3-I3-L-M-N-R-R1-S-T-V-W-X-Z-Z1	96557	A-B-C-C2-F-F1-F3-I1-M-R-S-T-U2-V	96665	B-C-C2-F-F1-F3-R-R1-S-V
96328	B-C-C2-F3-M-R-S-W	96506	B-C-C2-D-E1-E2-F-F1-F3-H-H1-M-N-R-S-T-Z1	96562	A-B-C-C1-C2-D-E2-E3-F1-F3-H-H1-I3-LM-N-R-R1-S-T-V-X-ZZ1	96666	B-C-C2-F-F1-F3-R-R1-S-V
96331	A-B-C-C2-F-F1-F3-J-L-M-N-R-S-U2-W	96507	A-B-C-C1-C2-F1-F3-H-J-L-M-N-R-S-T-V-X-Z1	96577	A-B-C-C2-F-F3-H-M-N-R-S-U	96667	B-C-C2-F-F1-F3-R-R1-S-V
96336	B-C-C2-F3-M-R-S-V-W	96511	B-I3-N-V	96578	B-C-C2-F1-F3-H-J-N-R-S-Z1	96668	B-C-C2-F-F1-F3-R-R1-S-V
96337	B-C-C2-F-F1-F3-M-R-R1-S-W	96515	B-C-D-E1-F-F1-F3-H-H1-M-N-R-S-T-Z1	96595	B-F-F3-R-S-V-Z1	96669	B-C-C2-F-F1-F3-R-R1-S-V
96338	A-B-C-C2-F-F3-I1-M-R-S-T-U2-W	96516	B-C-C2-D-E1-E2-F-F1-F3-H-H1-I1-I2-M-N-R-S-T-Z1	96598	B-C2-F3-I3-N-R-S-V-V1	96670	B-C-C2-F-F1-F3-R-R1-S-V
96339	A-B-C-C2-F-F3-M-N-R-S-U2-W	96517	B-C-C2-D-E1-E2-F-F1-F3-H-H1-I1-I2-M-N-R-S-T-U-V-Z1	96599	B-C2-F3-N-R-S-V	96671	B-C-C2-F-F1-F3-R-R1-S-V
96343	A-B-C-C2-F-F3-M-P-R-S-U2	96520	B-F-N-U3-V	96601	B-V	96672	B-C-C2-F-F1-F3-R-R1-S-V
96346	B-F-F1-F2-F3-H-M-R-S-W-Z1	96521	B-C-C1-C2-F-F1-F3-J-L-M-N-R-R1-S-T-V-X-Z1	96602	B-V	96673	B-C-C2-F-F1-F3-R-R1-S-V
96347	B-C2-F-F1-F2-F3-H-M-R-S-W-Z1	96530	A-B-C-C1-C2-F1-F3-H-H1-J-L-M-N-R-R1-S-T-V-X-Z1	96603	B-V	96674	B-C-C2-F-F1-F3-R-R1-S-V
96349	B-C-C2-F-F1-F2-F3-H-M-R-S-Z1	96531	A-B-C-C2-F-F1-F3-H-M-N-R-S-U-V	96604	B-V	96675	B-C-C2-F-F1-F3-R-R1-S-V
96350	B-F-F1-F2-F3-H-M-R-S-W-Z1	96532	A-B-C-C1-C2-F1-F3-H-J-L-M-N-R-R1-S-T-V-X-Z1	96605	B-V	96677	B-C-C2-F-F1-F3-R-R1-S-V
96351	B-C-C2-F-F1-F2-F3-H-M-R-S-Z1	96533	A-B-C-C1-C2-F1-F3-J-L-M-N-R-R1-S-T-V-X-Z1	96607	B-V	96678	B-C-C2-F-F1-F3-R-R1-S-V
96362	B-C2-F-F1-F2-F3-H-M-R-S-W-Z1	96534	A-B-C-C2-F-F1-F2-F3-R-R1-S-U-V-Z1	96610	B-C-C2-F-F3-H1-R-R1-S-U2-V-Z1	96679	B-C-C2-F-F1-F3-R-R1-S-V
96365	B-C-C2-F-F3-M-R-S-V-W	96535	A-B-C-C1-C2-F1-F3-J-L-M-N-R-R1-S-T-V-X-Z1	96611	B-C-C2-F-F3-H1-R-R1-S-U2-V-Z1	96681	B-C-C2-F-F1-F3-R-R1-S-V
96367	B-C-C2-E1-F3-M-R-S-U2-W	96537	B-C-C2-F3-R-S-V-Z1	96612	B-C-C2-F-F3-H1-R-R1-S-U2-V-Z1	96682	B-C-C2-F-F1-F3-R-R1-S-V
96368	B-C-C2-F3-M-R-S-W	96539	C-C1-C2-F-F3-M-N-R-R1-S-T-U2-V	96613	B-C-C2-F-F3-H1-R-R1-S-U2-V-Z1	96683	B-C-C2-F-F1-F3-R-R1-S-V
96370	A-B-C-C2-F-F1-F2-F3-H-M-R-S-U2-W-Z1	96540	B-C-C2-F1-F2-F3-R-S-Z1	96615	B-F-F1-R-R1-V	96686	B-C-C2-F-F1-F3-R-R1-S-V
96371	B-C-C2-F-F3-M-R-S-W	96542	B-C-C2-F-F1-F2-F3-R-S	96616	B-C2-F-F1-F3-R-R1-S-V	96691	B-C-C2-F-F1-F3-R-R1-S-V
96374	B-C-C2-F-F3-M-R-S-T-W	96543	B-C-C2-F-F1-F2-F3-P-R-S	96619	B-C-C2-F1-F3-R-S-V	96692	B-C-C2-E2-F-F1-F3-R-R1-S-V
96375	B-C-C2-F-F3-M-R-S-W	96548	A-B-C-C2-F-F1-F3-H-M-R-S-U	96620	B-C-C2-F-F1-F3-R-R1-S-V	96693	B-C-C2-F-F1-F3-R-R1-S-V
96376	B-C-C2-F-F3-I1-M-R-S-T-W	96549	A-B-C-C1-C2-F1-F3-H-J-L-M-N-R-R1-S-T-V-X-Z1	96628	B-C-C2-F-F1-F3-R-R1-S-V	96694	B-C-C2-F-F1-F3-I3-J-R-R1-S-V-Z
96377	B-C-C2-F-F3-M-R-S-W			96629	B-C-C2-F-F1-F3-R-R1-S-V	96695	B-C-C2-F-F1-F3-R-R1-S-V
96379	B-C-C2-F-F3-M-R-S-W			96632	B-C-C2-F-F1-F3-R-R1-S-V	96696	B-F-F1-R-R1-V
96384	B-C-C2-F-F3-M-R-S-W			96633	B-V	96698	B-C-C2-F-F1-F3-R-R1-S-V
96386	B-C-C2-F-F3-M-R-S-W			96641	B-V		
				96642	B-V		
				96643	B-F-F1-F3-R-R1-S-V		
				96644	B-V		
				96645	B-V		
				96649	B-C-C2-F-F1-F3-R-R1-S-V		
				96650	B-F-F1-R-R1-V		

RESTRICTIONS

LEGEND

PS Form 2976, *Customs — CN 22 (Old C 1) and Sender's Declaration*
 PS Form 2976-A, *Customs Declaration and Dispatch Note*
 PS Form 2976-B, *Priority Mail Express International Shipping Label and Customs Form*

ATF = Bureau of Alcohol, Tobacco, Firearms, and Explosives
 Box C = Department of State (DOS) contractor personnel
 Box R = Retired military personnel
 DPO = Diplomatic Post Office
 MPO = Military Post Office
 PACT = Prevent All Cigarette Trafficking Act
 PAL = Parcel Airlift
 PMEMS = Priority Mail Express Military Service
 PUB 52 = Publication 52, *Hazardous, Restricted, and Perishable Mail*
 SAM = Space Available Mail
 USDA = United States Department of Agriculture

Note: Mail order catalogs are prohibited as SAM or PAL mail.

A. Securities, currency, or precious metals, including in their raw, unmanufactured state, are prohibited. Official Mail shipments are exempt from this restriction.

A1. Reserved for future use.

A2. Reserved for future use.

B. Other than for PMEMS and the exceptions listed below, a customs declaration PS Form 2976 or PS Form 2976-A is required for all items weighing 16 ounces or more, and for all items (regardless of weight) containing potentially dutiable mail contents (e.g., merchandise or goods) addressed to or from this ZIP Code. Other than the exceptions listed below, all PMEMS mailpieces (regardless of mail contents or weight) addressed to or from this ZIP Code must bear a properly completed PS Form 2976-B. The surface area of the address side of the mailpiece must be large enough to contain the applicable customs declaration. The following exceptions apply to known mailers, who for this purpose are defined as follows:

- Business mailers who enter volume mailings through business mail entry units or other bulk mail acceptance locations, pay postage through advance deposit accounts, use permit imprints for postage payment, and submit completed postage statements at the time of entry that certify that the mailpieces contain no dangerous materials that are prohibited by postal regulations. Such business mailers are exempt from providing customs documentation on non-dutiable letters and printed matter.
- All federal, state, and local government agencies whose mailings are regarded as "Official Mail." Such agencies are exempt from providing customs documentation, except for any items addressed to an MPO or DPO to which restriction "B2" applies.

B2. All federal, state, and local government agencies must complete customs documentation when sending potentially dutiable mail addressed to or from this MPO or DPO.

C. Cigarettes and other tobacco products, including tobacco leaves, chewing and pipe tobacco, snuff, and cigars are prohibited, including those that are authorized in Publication 52 under PACT.

C1. Obscene and horror articles, images, prints, paintings, cards, films, videotapes, comic books, etc., are prohibited.

C2. E-cigarettes and related products (e.g., nicotine liquids, e-liquids, parts, or supplies) are prohibited.

D. Coffee is prohibited.

E. Medicines (prescription, over-the-counter, vitamins, and supplements) are prohibited when mailed to individuals for human or animal use. This prohibition does not apply when medicines are sent as Official Mail only between specifically designated agencies such as pharmaceutical distributors, hospitals, clinics, and pharmacies.

E1. Mailers are responsible to ensure that all medicines and vaccines conform to host nation laws.

E2. Any matter depicting nude or seminude persons, pornographic, or sexual items are prohibited. Non-authorized political materials are prohibited. Religious materials contrary to the Islamic faith are prohibited in bulk quantities, but individual items for the personal use of the addressee are permissible.

E3. Radio transceivers, cordless/cellular telephones, global positioning systems, scanners, base stations, and handheld transmitters are prohibited.

F. Firearms of any type are prohibited, except firearms mailed to or by official U.S. government agencies. This restriction does not apply to firearms mailed from this MPO ZIP Code, provided ATF and USPS regulations are met. Antique firearms do not require an ATF form.

F1. Weapons of any type are prohibited.

F2. Mailing firearms to or from this MPO ZIP Code is restricted to one shotgun and one single shot .22 caliber rifle per individual.

F3. Replica weapons and inert explosive devices (such as grenades) and weapons parts are prohibited.

G. Parcels of any class are prohibited.

H. Meats, including preserved meats, bones, skin, hair, feathers, horns or hoofs of hoofed animals, and wool samples whether hermetically sealed or not, are prohibited.

H1. Pork or pork by-products are prohibited.

I. Reserved for future use.

I1. Lithium cells and batteries — including items containing lithium cells and batteries under 135.6.

I2. Liquids of any type.

I3. Mail of all classes must fit in a mail sack. Mail may not exceed the following dimensions:

- Maximum length 27 inches.
- Maximum width 14 inches.
- Maximum height 14 inches.

J. Standard Post and Parcel Select parcels may not exceed 108 inches in length and girth combined.

K. Reserved for future use.

L. All Official Mail is prohibited.

M. Fruits, vegetables, live animals, and live plants are prohibited.

N. Registered Mail service is prohibited.

O. Reserved for future use.

P. Official Mail only.

Q. Mail may not exceed 66 pounds, and size is limited to 42 inches maximum length and 72 inches maximum length and girth combined.

R. All alcoholic beverages, including those mailable under Publication 52, Part 421, are prohibited.

R1. Materials used in the production of alcoholic beverages (i.e., distilling material, hops, malts, yeast, etc.) are prohibited.

S. Synthetic cannabinoids used to stimulate the central nervous system commonly known as "synthetic marijuana," "K2," or "Spice" are prohibited.

T. Mailings of household shipments and case lots of food to or from an MPO require military transportation office approval prior to mailing. Mailings to or from a DPO require pre-approval from the Diplomatic Pouch and Mail Director.

U. Mail addressed to Retirees (Box R) is limited to 16 ounces and up to a 90-day supply of TRICARE medications. This restriction does not apply to mail endorsed "Free Matter for the Blind or Handicapped."

U1. Mail is limited to First-Class Mail items, including audio and video media, weighing 13 ounces or less. This limitation does not apply to Official Mail.

U2. Retirees (Box R) are not authorized mail service.

U3. Reserved for future use.

U4. Mail addressed to Box C is limited to 2 lbs.

V. PMEMS is not available.

V1. Electronic Delivery status information for Extra Services is not available on *USPS.com*. Manual record of delivery may be available upon request.

W. Hermetically sealed packages of meat products bearing USDA certification, such as dried beef, salami, and sausage, may be mailed. 200 grams of tobacco per parcel are permitted duty free.

X. Cremated remains are prohibited.

Y. Mail is limited to First-Class Mail and Priority Mail items only. This restriction also applies to Official Mail.

Z. No outside pieces (OSPs).

Z1. The following restriction is applicable only to International Service Centers (ISC)/Exchange Offices. An Anti-Pilferage Seal (Item No O817E or O818A) is required on all pouches and sacks.

Freely Associated States Restrictions

We list the mailing restrictions for Freely Associated States (FAS) in the Pull-Out section of the *Postal Bulletin*. All FAS Restrictions will be updated periodically.

Freely Associated States

Mail addressed to freely associated states is subject to certain conditions or restrictions of mailing regarding content, preparation, and handling. The following FAS Restrictions table outlines these conditions as listed by each affected FAS ZIP Code™ through the use of footnoted mailing restrictions codes (see the [Restrictions](#) following the table). For more information on available extra services for FAS destinations, see *Mailing Standards of the United States Postal Service, Domestic Mail Manual (DMM®)*, part 503.

Acceptance clerks must use the table with the Retail System Software terminal to determine which FAS ZIP Codes are active and which conditions of mailing apply.

FAS Restrictions Table

FAS Table	See Restrictions
96939	A, B
96940	A, B
96941	A, B
96942	A, B
96943	A, B
96944	A, B
96960	A, B
96970	A, B, D
Marshall Islands	C
Federated States of Micronesia	C

RESTRICTIONS LEGEND

PS Form 2976, *Customs Declaration CN 22 — Sender's Declaration*

PS Form 2976-A, *Customs Declaration and Dispatch Note*

FAS = Freely Associated State

- A.** Bank currency (coin and paper) is prohibited.
- B.** Signature Confirmation, Signature Confirmation Restricted Delivery, Adult Signature Requested, Adult Signature Restricted Delivery, Certified Mail Adult Signature Required, and Certified Mail Adult Signature Restricted Delivery not available.
- C.** Collect on Delivery is prohibited.
- D.** Betel nut (*Areca catechu*) is prohibited.

— *Asia-Pacific Relations,
Global Business, 7-10-25*

Labeling List Changes (continued)

L007 5-Digit Scheme — Periodicals, Standard Mail, and Package Services Flats in Bundles

* * * * *

Newly Added

Column A Destination ZIP Codes	Column B Label Container To (Added To)
14805	BATH NY 14810
14838	BATH NY 14810

* * * * *

L010 NDC/ASF Entry — Standard Mail Letters and Package Services Irregular Parcels

* * * * *

Newly Added

Column A Entry NDC/ASF	Column B Label To (Added To)
NORTH HOUSTON RPDC	MXD NORTH HOUSTON TX 773

* * * * *

L012 5 Digit ZIP Scheme Combination

Due to the extensive number of changes to the L012, these changes will not be published in the *Postal Bulletin*. The changes effective August 1, 2025, for the L012 can be found in Postal Pro at the following link: postalpro.usps.com/operations/labeling-lists/changes-august-2025

All other EELs changes effective August 1, 2025, can be found in Postal Pro as well.

L601 Network Distribution Centers (NDCs)**Changes**

Column A Destination ZIP Codes	Column B Label To (Change From)	Column B Label To (Change To)
770	NDC DALLAS TX 75199	RPDC NORTH HOUSTON TX 773
772	NDC DALLAS TX 75199	RPDC NORTH HOUSTON TX 773
773	NDC DALLAS TX 75199	RPDC NORTH HOUSTON TX 773
774	NDC DALLAS TX 75199	RPDC NORTH HOUSTON TX 773
775	NDC DALLAS TX 75199	RPDC NORTH HOUSTON TX 773
776	NDC DALLAS TX 75199	RPDC NORTH HOUSTON TX 773
777	NDC DALLAS TX 75199	RPDC NORTH HOUSTON TX 773
778	NDC DALLAS TX 75199	RPDC NORTH HOUSTON TX 773

* * * * *

L605 NDCs/ASFs — Nonmachinable Parcel Select Changes

Column A Destination ZIP Codes	Column B Label To (Change From)	Column B Label To (Change To)
770	NDC DALLAS TX 75199	RPDC NORTH HOUSTON TX 773
772	NDC DALLAS TX 75199	RPDC NORTH HOUSTON TX 773
773	NDC DALLAS TX 75199	RPDC NORTH HOUSTON TX 773
774	NDC DALLAS TX 75199	RPDC NORTH HOUSTON TX 773
775	NDC DALLAS TX 75199	RPDC NORTH HOUSTON TX 773
776	NDC DALLAS TX 75199	RPDC NORTH HOUSTON TX 773
777	NDC DALLAS TX 75199	RPDC NORTH HOUSTON TX 773
778	NDC DALLAS TX 75199	RPDC NORTH HOUSTON TX 773

* * * * *

L606 5-Digit Scheme — Standard Mail, First-Class Mail, and Package Services Parcels**Changes**

Column A Destination ZIP Codes	Column B Label Container To (Change From)	Column B Label Container To (Change To)
27518	CARY NC 27511	CARY NC 27518
27519	CARY NC 27511	CARY NC 27518
29420	CHARLESTON SC 29418	NORTH CHARLESTON SC 29420
29423	CHARLESTON SC 29418	NORTH CHARLESTON SC 29420

* * * * *

Deleted

Column A Destination ZIP Codes	Column B Label Container To (Deleted From)
29418	CHARLESTON SC 29418

— Logistics, Network Development, and Support,
Network Operations, 7-10-25

Environmental Management

Required Procedures for Used Batteries

Most batteries contain hazardous components and must not be disposed of in the trash. Non-alkaline batteries such as the following are typically regulated and are subject to strict waste management requirements:

- Lithium,
- Lithium-ion,
- Other dry cell batteries, and
- Sealed lead-acid batteries.
- Regulated batteries also include spent or inoperable batteries from mobile scanners, phones, laptops, emergency lighting, and other electronic equipment. California also regulates alkaline batteries.

The following procedures are required for USPS® sites to ensure compliance with environmental regulations:

- Store regulated batteries in closed containers that are properly labeled (e.g., Waste Batteries or Used Batteries).
- Send regulated batteries off site for recycling within 1 year.
- Recycle regulated batteries using one of the following services provided by Cleanlites Recycling, Inc. on

eBuyPlus (see USA Lamp & Ballast Recycling, Inc. catalog):

- **Mailback services:** Use the appropriate Cleanlites “Lampmaster” recycling kit based on battery type.
- **Direct or on-site pickup services:** Sites with large quantities of regulated batteries can schedule a direct pickup.
- Maintain shipment or recycling records.
- Do *NOT* send waste batteries to the Atlanta Mail Recovery Center, Ybor City Processing and Distribution Center (Tampa Logistics and Distribution Center), or the Topeka Material Distribution Center.

Note: Large batteries, such as vehicle and forklift batteries have different requirements.

For more information about managing waste batteries:

- Review the *Used Small Batteries Environmental Compliance Bulletin / Standard Work Instruction* at blue.usps.gov/sustainability/environmental/_pdf/waste/ecb-used-batteries.pdf.
- Consult your designated Environmental Specialist at blue.usps.gov/sustainability/regional-environmental-compliance-all.htm.

— Environmental Affairs and
Corporate Sustainability, 7-10-25

Finance

Maintain Up-to-Date Tax Withholding Information in PostalEASE

Postal Service™ employees are reminded that they are bound by the materials contained within the *Code of Ethics, Principles of Ethical Conduct for Government Officers and Employees*. This includes Principle 12, which states: “Employees shall satisfy in good faith their obligations as citizens, including all just financial obligations, especially those — such as federal, state, and local taxes — that are imposed by law.” It is vital that all Postal Service employees adhere to the highest possible ethical standards concerning the payment of their taxes and other debts.

As a Postal Service employee, you are personally responsible for ensuring correct federal, state, and local taxes are deducted from your pay. If you are subject to federal, state, or local taxes and the correct deductions are not being withheld from your pay, you must take immediate action to ensure appropriate tax withholdings. Adherence to these requirements will help employees avoid penalties and the potential of tax enforcement action by the IRS.

The IRS offers several online resources to help taxpayers bring taxes withheld closer to what is owed. The following resources are available anytime on irs.gov:

- A tax withholding estimator which helps determine the correct amount of federal tax to withhold at irs.gov/individuals/tax-withholding-estimator
- Complete information on withholding, estimated taxes, FAQs, and more: irs.gov/individuals/employees/tax-withholding.

To Update Federal or State Tax Withholdings:

- Complete the federal Form W-4, *Withholding Allowance Certificate*, or the state equivalent of the federal Form W-4. (For example, to update Minnesota tax withholdings, complete Form W-4MN, *Minnesota Withholding Allowance/Exemption Certificate*). Complete the federal Form W-4, if your state does not have its own state equivalent to the federal Form W-4.

- Go to the *LiteBlue* home page (liteblue.usps.gov) to access the *PostalEASE* App.
- Update your Federal W-4 Payroll Module or your State Tax Payroll Module.
- If you do not have access to a computer or the Internet, you can call *PostalEASE* toll-free at 877-477-3273, option 1 and follow the instructions.

Note: It is to your advantage to complete the paper form prior to your *PostalEASE* update, as the paper form comes with helpful instructions for complex state withholding selections.

To Update Local Tax Withholdings:

- Complete PS Form 4, *Employee's City or County Withholding Certificate*.

- Forward your completed PS Form 4 to the HR Shared Service Center, PO Box 970400, Greensboro, NC 27497-0400.
- For additional information on local tax refer to Postal Bulletin # 22645 dated March 07, 2024.

Direct all questions concerning these taxes to the HRSSC at 877-477-3273, option 5 (TDD/TTY 800-877-8339).

The Postal Service does not provide tax advice to employees. Any questions regarding your tax liability or responsibility must be directed to the IRS or a qualified tax preparer.

— Payroll, Controller,
Payroll, 7-10-25

Information Security

CyberSafe Training Course: Deadline Is August 27, 2025, for Bargaining Employees and September 3, 2025, for Non-bargaining Employees

It is that time of year again for Postal Service™ employees to do their part to protect critical Postal Service data by completing the mandatory, annual CyberSafe training for bargaining and non-bargaining employees.

By taking this year's assigned CyberSafe training course, employees will learn how to protect critical USPS® information from cyber threats. The course, "CyberSafe Fundamentals," provides the fundamental skills and knowledge necessary for adhering to cybersecurity practices and policy to protect USPS electronic information. The training also provides best practices for handling sensitive and sensitive-enhanced information to keep USPS electronic data secure.

Course Availability

The course is available now and must be completed by August 27, 2025, for bargaining employees and September 3, 2025, for non-bargaining employees. Employees can access the course now through *MyHR*.

Test-Out of Course Option

This year, we are offering a one-time, test-out option for those who already practice effective cybersecurity.

Employees who do not meet August 27, 2025, and September 3, 2025, deadlines are subject to limited ACE system access until they complete the course.

For more information, go to CyberSafe training page on Blue at blue.usps.gov/cyber/training.htm or contact CyberSafeComms@usps.gov.

— Corporate Information Security Office,
Chief Information Officer, 7-10-25

Don't Get Locked Out: Add Your Backup MFA Method

The Postal Service™ is encouraging employees who use multifactor authentication (MFA) to access *LiteBlue* to add a backup security method on a secondary device. This helps prevent being locked out of USPS® systems and applications if your primary method becomes unavailable (such as a lost or broken phone). Setup takes less than 15 minutes.

To add a backup method:

- Go to LiteBlue (liteblue.usps.gov).
- Select Self-Service Profile, then Enter SSP.
- Enter your Employee Identification Number and password.
- Chose a backup MFA method.
- Follow the prompts to finish (note: available options may vary based on current setup).

Recommended MFA methods (in order of priority):

- Okta Verify (mobile or desktop)
- Google Authenticator (mobile)
- Biometric Authentication (face, fingerprint, or PIN)

Already have a backup MFA method on a secondary device? No further action is needed.

For detailed instructions, refer to the *MFA User Guide* at liteblue.usps.gov/cyber/assets/pdf/mfa-user-guide.pdf

For questions about backup MFA method, call the USPS IT Service Desk at 1-800-877-7435.

— Corporate Information Security Office,
Chief Information Officer, 7-10-25

Keep Ransomware Away From your Data

Postal Service™ employees and contractors need to be aware of an advanced form of malware known as ransomware. Ransomware limits a user's access to data, either by disabling their system screen or locking files, until the ransom, normally in the form of virtual currency is paid.

The *CyberSafe at USPS®* team suggests the following preventative measures to avoid an attack:

- Keep all files and software, specifically antivirus, up to date.
- Back up your data daily.
- Don't fall for phishing attacks.
- Verify links are legitimate before clicking.
- Be aware of attachments which could contain malware.

If you believe your computer or device has been affected by ransomware, immediately:

- Stop using the infected device.
- Contact the Cybersecurity Operations Center at 866-877-7247.
- Report the incident to your manager or supervisor.

Remember: Don't use the infected device unless instructed to do so by the Postal Service's Computer Incident Response Team or the IT Help Desk.

For additional information on ransomware, go to the Monthly Awareness Campaigns page on *Blue* at blue.usps.gov/cyber/comms-2023-archive.htm#accordion1s9.

— Corporate Information Security Office,
Chief Information Officer, 7-10-25

International Mail

Price Changes for International Mailing Services

Effective July 13, 2025, the Postal Service™ will revise Notice 123, *Price List*, to reflect changes to prices and fees for the International Mailing Services noted in this article. The following information is based on Postal Regulatory Commission (PRC) Order No. 8867 issued on May 30, 2025, in PRC Docket No. R2025-1. In that order, the PRC concluded that the price adjustments in the Postal Service's notice may go into effect on July 13, 2025. The order is available on the PRC website at [prc.gov](https://www.prc.gov).

On July 13, 2025, the Postal Service will increase prices for the following market-dominant international services:

- **First-Class Mail International® (FCMI):** The price for a single-piece postcard will be \$1.70 worldwide. The price for the FCMI letter nonmachinable surcharge will be \$0.49. The FCMI single-piece letter and flat prices will be as follows:

Letters				
Weight Not Over (oz.)	Price Groups			
	1	2	3-5	6-9
1	\$1.70	\$1.70	\$1.70	\$1.70
2	2.00	2.55	3.40	3.40
3	2.70	3.40	5.10	5.10
3.5	3.40	4.15	5.75	5.75

Flats				
Weight Not Over (oz.)	Price Groups			
	1	2	3-5	6-9
1	\$3.15	\$3.15	\$3.15	\$3.15
2	3.65	4.25	4.55	4.55
3	4.15	5.35	5.95	5.95
4	4.65	6.45	7.35	7.35
5	5.15	7.55	8.75	8.75
6	5.65	8.65	10.15	10.15
7	6.15	9.75	11.55	11.55
8	6.65	10.85	12.95	12.95
12	7.60	13.00	15.75	15.75
15.994	8.55	15.15	18.55	18.55

- **International Extra Services and Fees:** The Postal Service will increase prices for certain market-dominant International extra services as noted:

- **Certificate of Mailing service:** Fees for Certificate of Mailing service for FCMI will increase as follows:

Certificate of Mailing	
Individual pieces	Fee
Individual article (PS Form 3817)	
First-Class Mail International only	\$2.40
Duplicate copy of PS Form 3817 or PS Form 3665 (per page) First-Class Mail International only	2.40
Firm mailing sheet (PS Form 3665), per piece (minimum 3) First-Class Mail International only	0.70
Bulk quantities	
For the first 1,000 pieces (or fraction thereof)	
First-Class Mail International only	\$13.50
Each additional 1,000 pieces (or fraction thereof)	
First-Class Mail International only	1.70
Duplicate copy of PS Form 3606	
First-Class Mail International only	2.40

- **Registered Mail® service:** The fee for international Registered Mail service for FCMI will increase to \$23.40.
- **Return Receipt service:** The fee for international Return Receipt service for FCMI will increase to \$6.70.
- **Customs Clearance and Delivery Fee:** The Customs Clearance and Delivery Fee per dutiable item for Inbound Letter Post letters and flats will increase to \$9.50.
- **International Business Reply™ service (IBRS):** The price for IBRS cards will increase to \$2.45, and the price for IBRS envelopes (up to 2 ounces) will increase to \$3.05.

The Postal Service will incorporate these revisions into the July 13, 2025, edition of Notice 123, *Price List*, which is available via Postal Explorer® at pe.usps.com.

— Product Classification,
Product Solutions, 7-10-25

Office of Postmaster General

Equal Employment Opportunity Policy Statement

Effective May 20, 2025, the Postal Service™ revised Memorandum of Policy (MOP) HR-05-20-2025-1, *Equal Employment Opportunity Policy Statement* to meet the requirements of the Equal Employment Opportunity Commission's (EEOC's) Management Directive 715 (MD 715). In accordance with the EEOC's MD 715, the *Equal Employment Opportunity Policy Statement* will be updated annually and prominently posted in the following locations:

- All personnel offices;
- Equal Employment Opportunity offices;
- On the agency's internal website; and
- Throughout the workplace.

This policy reaffirms the Postal Service's commitment to equality of opportunity in every aspect of employment and supersedes MOP HR-05-01-2024-1.

The revised *Equal Employment Opportunity Policy Statement* is available on the Postal Service PolicyNet website.

- Go to blue.usps.gov.
- In the left-hand column, click *Essential Links*, and then click *PolicyNet*.
- Go to the right-hand side under "Published Forms and Directives."
- Click *Memorandums of Policy*.
- Click *Human Resources*.

The direct URL for the Postal Service PolicyNet website is blue.usps.gov/cpim.

— Acting Postmaster General & CEO,
Equal Employment Opportunity Office, 7-10-25

Postal Service's Policy on Workplace Harassment

Effective May 20, 2025, the Postal Service™ revised Memorandum of Policy (MOP) HR-05-20-2025-2, *Postal Service's Policy on Workplace Harassment* to meet the requirements of the Equal Employment Opportunity Commission's (EEOC's) Management Directive 715 (MD 715). MOP HR-05-20-2025-2 must be posted prominently in the following locations:

- All personnel offices;
- Equal Employment Opportunity offices;
- On the agency's internal website; and
- Throughout the workplace.

This policy reaffirms the Postal Service's commitment to providing a work environment free of harassment and supersedes MOP HR-05-01-2024-2.

Memorandum of Policy (MOP) HR-05-20-2025-2, *Postal Service's Policy on Workplace Harassment* is available via the Postal Service PolicyNet website.

- Go to blue.usps.gov.
- In the left-hand column, click *Essential Links*, and then click *PolicyNet*.
- Go to the right-hand side under "Published Forms and Directives."
- Click *Memorandums of Policy*.
- Click *Human Resources*.

The direct URL for the Postal Service PolicyNet website is blue.usps.gov/cpim.

— Acting Postmaster General & CEO,
Equal Employment Opportunity Office, 7-10-25

Stamp Services

Pictorial Postmarks Announcement

As a community service, the Postal Service™ offers pictorial postmarks to commemorate local events celebrated in communities throughout the nation. A list of events for which pictorial postmarks are authorized appears on the following pages. The sponsor of the pictorial postmark appears in italics under the date. Also provided are illustrations of these postmarks.

People attending these local events may get the postmark in person at the temporary Post Office™ station established there. Those who cannot attend the event but who wish to get the postmark may submit a mail order request. Pictorial postmarks are available only for the dates indicated, and *requests must be postmarked no later than 30 days after the requested pictorial postmark date.*

All requests must include a stamped envelope or postcard bearing at least the minimum First-Class Mail® postage. Items submitted for postmark may not include

postage issued after the date of the requested postmark. Such items will be returned unserved.

Customers who want a postmark must affix stamps to any envelope or postcard of their choice, address the envelope or postcard to themselves or others, insert a card of postcard thickness in envelopes for sturdiness, and tuck in the flap. Place the envelope or postcard in a larger envelope and address it to: Pictorial Postmarks, followed by the Name of the Station, Address, City, State, ZIP+4® Code, as listed next to the postmark.

Customers can also send stamped envelopes and postcards without addresses for postmark, as long as they supply a larger envelope with adequate postage and their return address. After applying the pictorial postmark, the Postal Service returns the items (with or without addresses) under addressed protective cover.

The following pictorial postmarks have been extended for 90 days. They are grouped together since the artwork and date are the same.



July 23, 2025

United States Postal Service

Newark, NJ Station
Postmaster
2 Federal Square
Newark, NJ 07102-9998

Ipswich, MA Station
Postmaster
27 Market Street
Ipswich, MA 01938-9998

Marblehead, MA Station
Postmaster
27 Smith Street
Marblehead, MA 01945-9998

Boston, MA Station
Postmaster
25 Dorchester Avenue Room 1
Boston, MA 02205-9761

Bristol, PA Station
Postmaster
699 Beaver Street
Bristol, PA 19007-9998

Chester, PA Station
Postmaster
400 Edgmont Avenue
Chester, PA 19013-9998

Chestertown, MD Station
Postmaster
104 Spring Avenue
Chestertown, MD 21620-9998

Easton, MD Station
Postmaster
116 East Dover Street
Easton, MD 21601-9998

Edenton, NC Station
Postmaster
100 North Broad Street
Edenton, NC 27932-9998

Elizabeth, NJ Station
Postmaster
310 North Broad Street
Elizabeth, NJ 07208-9998

Hampton, VA Station
Postmaster
809 Aberdeen Road
Hampton, VA 23670-9702

Hartford, CT Station
Postmaster
141 Weston Street
Hartford, CT 06101-9998

New Bern, NC Station
Postmaster
1851 South Glenburnie Road
New Bern, NC 28562-5268

New Haven, CT Station
Postmaster
50 Brewery Street
New Haven, CT 06511-5925

New Castle, DE Station
Postmaster
501 Delaware Street
New Castle, DE 19720-9998

New London, CT Station
Postmaster
27 Masonic Street, Suite 1
New London, CT 06320-9998

Newburyport, MA Station
Postmaster
61 Pleasant Street
Newburyport, MA 01950-9998

Petersburg, VA Station
Postmaster
29 Franklin Street
Petersburg, VA 23803-9997

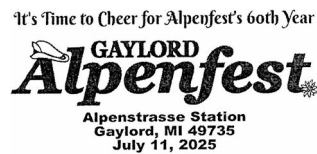
Norfolk, VA Station
Postmaster
600 Church Street
Norfolk, VA 23501-9943

Portland, ME Station
Postmaster
125 Forest Avenue
Portland, ME 04101-9998

Princeton, NJ Station Postmaster 213 Carnegie Center Princeton, NJ 08540-9998	Salem, MA Station Postmaster 2 Margin Street Salem, MA 01970-9998	Smithfield, VA Station Postmaster 234 Main Street Smithfield, VA 23430-9998	Suffolk, VA Station Postmaster 445 North Main Street Suffolk, VA 23434-9998
Urbanna, VA Station Postmaster 251 Virginia Street Urbanna, VA 23175-9998	Williamsburg, VA Station Postmaster 425 North Boundary Street Williamsburg, VA 23185-9998	Wilmington, NC Station Postmaster 152 North Front Street Wilmington, NC 28401-3925	Yorktown, VA Station Postmaster 126 Ballard Street Yorktown, VA 23690-9998
Worcester, MA Station Postmaster 4 East Central Street Worcester, MA 01613-9998	Woodbridge, NJ Station Postmaster 60 Main Street Woodbridge, NJ 07095-9998	Wilmington, DE Station Postmaster 3911 Concord Pike Wilmington, DE 19803-9997	Upper Marlboro, MD Station Postmaster 14605 Elm Street Upper Marlboro, MD 20772-9998
Charlestown, MD Station Postmaster 241 Market Street Charlestown, MD 21914-9998	Annapolis, MD Station Postmaster 60 West Street, Suite 101 Annapolis, MD 21401-9998	Albany, NY Station Postmaster 30 Old Karner Road Albany, NY 12288-9998	Fairfield, CT Station Postmaster 1300 Post Road, Suite 5 Fairfield, CT 06824-9998
Baltimore, MD Station Postmaster 900 East Fayette Street, Room 118 Baltimore, MD 21233-9715	Bath, NC Station Postmaster 415 Carteret Street Bath, NC 27808-9998	Middletown, CT Station Postmaster 11 Silver Street Middletown, CT 06457-9998	Fredericksburg, VA Station Postmaster 600 Princess Anne Street Fredericksburg, VA 22401-9998
Trenton, NJ Station Postmaster 680 US Highway 130 Trenton, NJ 08650-9998	Springfield, MA Station Postmaster 1883 Main Street Springfield, MA 01101-9998	Stamford, CT Station Postmaster 47 West Avenue, Room 334 Stamford, CT 06910-9997	Savannah, GA Station Postmaster 2 North Fahm Street, Room 1A Savannah, GA 31401-9998
Port Royal, VA Station Postmaster 602 Main Street Port Royal, VA 22535-9998	Portsmouth, NH Station Postmaster 345 Heritage Avenue, Unit 100 Portsmouth, NH 03801-9995	New York, NY Station Postmaster 421 8th Avenue New York, NY 10001-9998	New Brunswick, NJ Station Postmaster 86 Bayard Street New Brunswick, NJ 08901-2169
Bladensburg, MD Station Postmaster 4921 Tilden Road Bladensburg, MD 20710-9998	Westerly, RI Station Postmaster 110 Tom Harvey Road Westerly, RI 02891-9998	Warren, RI Station Postmaster 53 Child Street Warren, RI 02885-9998	Lancaster, PA Station Postmaster 1400 Harrisburg Pike Lancaster, PA 17604-9992
Philadelphia, PA Station Postmaster 2970 Market Street Philadelphia, PA 19104-5002	Providence, RI Station Postmaster 24 Corliss Street, Room 100 Providence, RI 02904-2477	Newport, RI Station Postmaster 320 Thames Street, Suite 1 Newport, RI 02840-9998	Georgetown, SC Station Postmaster 1101 Charlotte Street Georgetown, SC 29440-9998
East Greenwich, RI Station Postmaster 5775 Post Road East Greenwich, RI 02818-9998	Dumfries, VA Station Postmaster 17949 Main Street Dumfries, VA 22026-9998	Charleston, SC Station Postmaster 83 Broad Street Charleston, SC 29401-9998	Alexandria, VA Station Postmaster 1100 Wythe Street Alexandria, VA 22313-9998



July 10, 2025
 United States Postal Service
 Midway Station
 Customer Relations
 Coordinator C/O
 Postmaster
 11251 Rancho Carmel Drive
 Room 1159
 San Diego, CA 92199



July 11, 2025
 Alpenfest
 Alpenstrasse Station
 BMEU
 PO Box 9998
 Gaylord, MI 49734



July 11, 2025
 California State Fair
 Opening Day Station
 Cancellation Services
 8300 NE Underground Drive
 Pilar 210
 Kansas City, MO 64144-9998



July 12, 2025
 Rotary Club of Newport
 70th Anniversary Station
 Postmaster
 310 Southwest 2nd Street
 Newport, OR 97365-5065



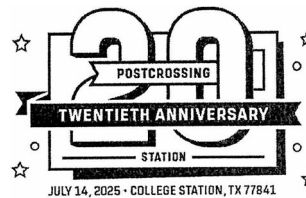
July 12, 2025
 Danbury Railway Museum
 Owney Day Station
 Postmaster
 23 Backus Avenue
 Danbury, CT 06810



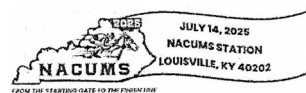
July 12, 2025
 California State Fair
 Best of CA Brewfest Station
 Cancellation Services
 8300 NE Underground Drive
 Pilar 210
 Kansas City, MO 64144-9998



July 13, 2025
 California State Fair
 Livestock Station
 Cancellation Services
 8300 NE Underground Drive
 Pilar 210
 Kansas City, MO 64144-9998



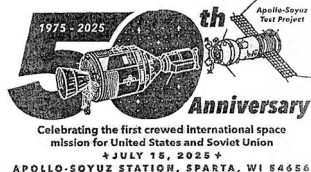
July 14, 2025
 Trevor Bills
 Postcrossing 20th
 Anniversary Station
 Postmaster
 PO Box 2887
 College Station, TX 77841



July 14, 2025
 National Association of
 College and University Mail
 Services
 NACUMS Station
 Postmaster
 PO Box 31998
 Louisville, KY 40231-9998



July 14, 2025
 California State Fair
 Popnology Station
 Cancellation Services
 8300 NE Underground Drive
 Pilar 210
 Kansas City, MO 64144-9998



July 15, 2025

Deke Slayton Memorial
Space & Bicycle Museum
Apollo-Soyuz Station
Postmaster
123 West Main Street
Sparta, WI 54656-9998



July 18, 2025

Danish Days
Danish Days Station
Postmaster
103 South Main Street
Viborg, SD 57070



July 15, 2025

California State Fair
Kid's Day Station
Cancellation Services
8300 NE Underground Drive
Pilar 210
Kansas City, MO 64144-9998



July 18, 2025

Town of Litchville
Litchville Station
Postmaster
23 Center Avenue East
LaMoure, ND 58458-9998



July 16, 2025

California State Fair
Best of CA Station
Cancellation Services
8300 NE Underground Drive
Pilar 210
Kansas City, MO 64144-9998



July 18, 2025

California State Fair
Fireworks Station
Cancellation Services
8300 NE Underground Drive
Pilar 210
Kansas City, MO 64144-9998



July 17, 2025

California State Fair
It's a Wild Wild World Station
Cancellation Services
8300 NE Underground Drive
Pilar 210
Kansas City, MO 64144-9998



July 19, 2025

Addison Twp. Fire Dept.
Strawberry Festival
Station
Postmaster
22 East Elmwood Street
Leonard, MI 48367-9998



July 17 – 21, 2025

Historical Society
Sesquicentennial Station
Postmaster
113 North Main Street
Tampico, IL 61283



July 19, 2025

California State Fair
Out at the Fair Station
Cancellation Services
8300 NE Underground Drive
Pilar 210
Kansas City, MO 64144-9998



July 20, 2025

California State Fair
Viva El Mariachi Station
Cancellation Services
8300 NE Underground Drive
Pilar 210
Kansas City, MO 64144-9998



July 24, 2025

California State Fair
Calowifornia Love Station
Cancellation Services
8300 NE Underground Drive
Pilar 210
Kansas City, MO 64144-9998



July 21, 2025

California State Fair
Candy Maze Station
Cancellation Services
8300 NE Underground Drive
Pilar 210
Kansas City, MO 64144-9998



July 25, 2025

California State Fair
Free Concerts Station
Cancellation Services
8300 NE Underground Drive
Pilar 210
Kansas City, MO 64144-9998



July 22, 2025

California State Fair
Poppy's Birthday Station
Cancellation Services
8300 NE Underground Drive
Pilar 210
Kansas City, MO 64144-9998



July 26, 2025

California State Fair
Midway Fun Station
Cancellation Services
8300 NE Underground Drive
Pilar 210
Kansas City, MO 64144-9998



July 23, 2025

California State Fair
Military, Veteran & First
Responder Appreciation
Day Station
Cancellation Services
8300 NE Underground Drive
Pilar 210
Kansas City, MO 64144-9998



July 27, 2025

California State Fair
Closing Day Station
Cancellation Services
8300 NE Underground Drive
Pilar 210
Kansas City, MO 64144-9998

— Stamp Services,
Marketing, 7-10-25

How to Order the First-Day-of-Issue Digital Color or Traditional Postmarks

Customers have 120 days to obtain the first-day-of-issue postmarks by mail. Each cover must have sufficient postage to meet First-Class Mail® requirements. Customers may purchase new stamps at their local Post Office™, by phone at 844-737-7826, or on The Postal Store® website at usps.com/shop.

Digital Color Postmarks

Only select stamp issues offer a digital color postmark. Customers may submit #6 or #10 envelopes constructed of paper rated as "laser safe." The Postal Service™ recommends envelopes of 80-pound Accent Opaque, acid-free, 9/16-inch side seams with no glue on the flap. The maximum size of all digital color postmarks is 2 inches (vertically) by 4 inches (horizontally). Allow sufficient space on the envelope to accommodate the postmark. Do not use self-adhesive labels for addresses on the envelope. Two test envelopes must be included. There is a 50-cent charge per postmark at the time of servicing. Customers must submit a check, money order, or credit card for payment.

The Postal Service reserves the right to not accept hand-painted and other cachet envelopes that are not compatible with our digital color postmark equipment. The Postal Service also reserves the right to substitute traditional black rubber postmarks if use of nonspecified envelopes results in poor image quality or damage to equipment.

Customers must affix the stamps to the envelopes and address them to themselves or others for return through the mail. Or, they may include an additional self-addressed return envelope, large enough to accommodate their canceled items, with sufficient postage affixed for return of

their postmarked items. Address customer requests for digital color postmarks to:

FDOI – (Name of Stamp Issue)
USPS Stamp Fulfillment Services
8300 NE Underground Drive, Suite 300
Kansas City, MO 64144-9900

After applying the first-day-of-issue postmark, the Postal Service will return the envelopes to the customer by U.S. Mail®.

Traditional Postmarks

Customers must affix the stamps to the envelopes and address them to themselves or others for return through the mail. Or, they may include an additional self-addressed return envelope, large enough to accommodate their canceled items, with sufficient postage affixed for return of their postmarked items. Address customer requests for traditional postmarks to:

FDOI – (Name of Stamp Issue)
USPS Stamp Fulfillment Services
8300 NE Underground Drive, Suite 300
Kansas City, MO 64144-9900

After applying the first-day-of-issue postmark, the Postal Service will return the envelopes to the customer by U.S. Mail. There is no charge for the first 50 postmarks. There is a 5-cent charge for each additional postmark over 50. Customers must submit a check, money order, or credit card for payment.

Locally produced items are not authorized. Only merchandise that has been approved and assigned an item number by Headquarters Retail Marketing may be produced and sold.



Digital Color Pictorial

FDOI – Freshwater Fishing Lures Stamps

USPS Stamp Fulfillment Services
8300 NE Underground Drive, Suite 300
Kansas City, MO 64144-9900

July 13, 2025



Black and White Pictorial

FDOI – Freshwater Fishing Lures Stamps

USPS Stamp Fulfillment Services
8300 NE Underground Drive, Suite 300
Kansas City, MO 64144-9900

July 13, 2025



FIRST DAY OF ISSUE

FDOI – Vibrant Leaves StampsUSPS Stamp Fulfillment Services
8300 NE Underground Drive, Suite 300
Kansas City, MO 64144-9900

July 14, 2025

Black and White Pictorial**FDOI – Betty White Stamp**USPS Stamp Fulfillment Services
8300 NE Underground Drive, Suite 300
Kansas City, MO 64144-9900

July 27, 2025

Digital Color Pictorial**FDOI – Betty White Stamp**USPS Stamp Fulfillment Services
8300 NE Underground Drive, Suite 300
Kansas City, MO 64144-9900

July 27, 2025

Black and White Pictorial**FDOI – Battlefields of the American Revolution Stamps**USPS Stamp Fulfillment Services
8300 NE Underground Drive, Suite 300
Kansas City, MO 64144-9900

August 16, 2025

Digital Color Pictorial**FDOI – Battlefields of the American Revolution Stamps**USPS Stamp Fulfillment Services
8300 NE Underground Drive, Suite 300
Kansas City, MO 64144-9900

August 16, 2025

Black and White Pictorial**FDOI – Powwows: Celebrating Native American Culture Stamps**USPS Stamp Fulfillment Services
8300 NE Underground Drive, Suite 300
Kansas City, MO 64144-9900

August 25, 2025

Digital Color Pictorial**FDOI – Powwows: Celebrating Native American Culture Stamps**USPS Stamp Fulfillment Services
8300 NE Underground Drive, Suite 300
Kansas City, MO 64144-9900

August 25, 2025

Black and White Pictorial



Digital Color Pictorial

FDOI – Dahlias Stamps

USPS Stamp Fulfillment Services
8300 NE Underground Drive, Suite 300
Kansas City, MO 64144-9900

August 26, 2025



Black and White Pictorial

FDOI – Dahlias Stamps

USPS Stamp Fulfillment Services
8300 NE Underground Drive, Suite 300
Kansas City, MO 64144-9900

August 26, 2025



Digital Color Pictorial

FDOI – Goodnight Moon Stamps

USPS Stamp Fulfillment Services
8300 NE Underground Drive, Suite 300
Kansas City, MO 64144-9900

September 2, 2025



Black and White Pictorial

FDOI – Goodnight Moon Stamps

USPS Stamp Fulfillment Services
8300 NE Underground Drive, Suite 300
Kansas City, MO 64144-9900

September 2, 2025



Digital Color Pictorial

FDOI – U.S. Army 250th Stamp

USPS Stamp Fulfillment Services
8300 NE Underground Drive, Suite 300
Kansas City, MO 64144-9900

September 16, 2025



Black and White Pictorial

FDOI – U.S. Army 250th Stamp

USPS Stamp Fulfillment Services
8300 NE Underground Drive, Suite 300
Kansas City, MO 64144-9900

September 16, 2025



Digital Color Pictorial

FDOI – U.S. Marine Corps 250th Stamp

USPS Stamp Fulfillment Services
8300 NE Underground Drive, Suite 300
Kansas City, MO 64144-9900

September 16, 2025

**FDOI – U.S. Marine Corps 250th Stamp**

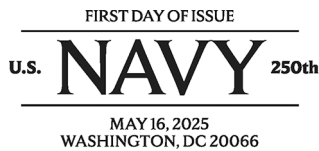
USPS Stamp Fulfillment Services
8300 NE Underground Drive, Suite 300
Kansas City, MO 64144-9900

September 16, 2025

Black and White Pictorial**FDOI – U.S. Navy 250th Stamp**

USPS Stamp Fulfillment Services
8300 NE Underground Drive, Suite 300
Kansas City, MO 64144-9900

September 16, 2025

Digital Color Pictorial**FDOI – U.S. Navy 250th Stamp**

USPS Stamp Fulfillment Services
8300 NE Underground Drive, Suite 300
Kansas City, MO 64144-9900

September 16, 2025

Black and White Pictorial**FDOI – Baby Wild Animals Stamps**

USPS Stamp Fulfillment Services
8300 NE Underground Drive, Suite 300
Kansas City, MO 64144-9900

September 23, 2025

Digital Color Pictorial**FDOI – Baby Wild Animals Stamps**

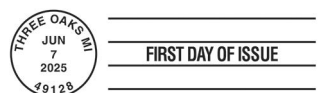
USPS Stamp Fulfillment Services
8300 NE Underground Drive, Suite 300
Kansas City, MO 64144-9900

September 23, 2025

Black and White Pictorial**FDOI – U.S. Flag Stamp**

USPS Stamp Fulfillment Services
8300 NE Underground Drive, Suite 300
Kansas City, MO 64144-9900

October 7, 2025

Digital Color Pictorial**FDOI – U.S. Flag Stamp**

USPS Stamp Fulfillment Services
8300 NE Underground Drive, Suite 300
Kansas City, MO 64144-9900

October 7, 2025

Black and White Pictorial

FIRST DAY OF ISSUE

**BARBARA
BUSH**

JUNE 10, 2025 • KENNEBUNKPORT, ME 04046

Digital Color Pictorial**FDOL – Barbara Bush Stamp**

USPS Stamp Fulfillment Services
8300 NE Underground Drive, Suite 300
Kansas City, MO 64144-9900

October 10, 2025

FIRST DAY OF ISSUE

**BARBARA
BUSH**

JUNE 10, 2025 • KENNEBUNKPORT, ME 04046

Black and White Pictorial**FDOL – Barbara Bush Stamp**

USPS Stamp Fulfillment Services
8300 NE Underground Drive, Suite 300
Kansas City, MO 64144-9900

October 10, 2025



FIRST DAY OF ISSUE

FDOL – Schooner Stamped Cards

USPS Stamp Fulfillment Services
8300 NE Underground Drive, Suite 300
Kansas City, MO 64144-9900

November 18, 2025

Black and White Pictorial

FIRST DAY OF ISSUE

*Putting a Stamp
on the American Experience* 1775 ★ 2025
JULY 23, 2025 ★ WASHINGTON, D.C. 20066

FDOL – Putting a Stamp on the American Experience Prestige Booklet

USPS Stamp Fulfillment Services
8300 NE Underground Drive, Suite 300
Kansas City, MO 64144-9900

November 23, 2025

Digital Color Pictorial

FIRST DAY OF ISSUE

**PUTTING A STAMP ON
THE AMERICAN EXPERIENCE**
JULY 23, 2025 ★ WASHINGTON, D.C. 20066

FDOL – Putting a Stamp on the American Experience Prestige Booklet

USPS Stamp Fulfillment Services
8300 NE Underground Drive, Suite 300
Kansas City, MO 64144-9900

November 23, 2025

Black and White Pictorial

**250 YEARS
OF DELIVERING**

First Day of Issue

July 23, 2025 • Washington, DC 20066

FDOL – 250 Years of Delivering Stamps

USPS Stamp Fulfillment Services
8300 NE Underground Drive, Suite 300
Kansas City, MO 64144-9900

November 23, 2025

Digital Color Pictorial**FDOL – 250 Years of Delivering Stamps**

USPS Stamp Fulfillment Services
8300 NE Underground Drive, Suite 300
Kansas City, MO 64144-9900

November 23, 2025

Black and White Pictorial

**FDOL – SpongeBob SquarePants
Stamps**

USPS Stamp Fulfillment Services
8300 NE Underground Drive, Suite 300
Kansas City, MO 64144-9900

December 1, 2025

Digital Color Pictorial**FDOL – SpongeBob SquarePants
Stamps**

USPS Stamp Fulfillment Services
8300 NE Underground Drive, Suite 300
Kansas City, MO 64144-9900

December 1, 2025

Black and White Pictorial

— Stamp Services,
Marketing, 7-10-25

Supply Management

Interest Rate on Contract Claims

The Postal Service™ periodically publishes the interest rate payable on a claim decided in a supplier's favor under the Contract Disputes Act of 1978 in the *Postal Bulletin*. This rate also applies for late payments to suppliers under the Prompt Payment Act, as amended.

The interest rate effective for the 6-month period of July 1, 2025, to December 31, 2025, is 4.625 percent.

— Supply Management Infrastructure,
Supply Management, 7-10-25

Transportation Services

The Fast Track to Fuel Savings Starts with The Preferred Fueling Network

The Postal Service™ urges you to act now to cut fuel costs by exclusively using the Preferred Fueling Network (PFN), where fleet managers and drivers increase savings and boost efficiency. With over 26,000 locations, PFN consistently offers the best fuel rates, reducing overall costs. The PFN has 42 discount brands including the following;

- 7-ELEVEN,
- Casey's,
- Circle K,
- Cumberland Farms,

- Racetrac,
- Sheetz,
- Speedway,
- WAWA.

Use PFN for regular unleaded and lowest-grade diesel to deliver maximum value for our organization.

For more information about Preferred Fueling Locations, email USPSPreferredFuelingNetwork@usps.gov or go to about.usps.com/who/legal/foia/documents/pfn-locations.xlsx.

— Transportation Services,
Fuel Programs, 7-10-25



475 L'ENFANT PLAZA SW
WASHINGTON DC 20260-5540

First-Class Mail
Postage & Fees Paid
USPS
Permit No. G-10

Brighten Someone's Day with the Lush Beauty of ***Dahlias Forever***[®] Stamps



On Sale **April 26, 2025**

