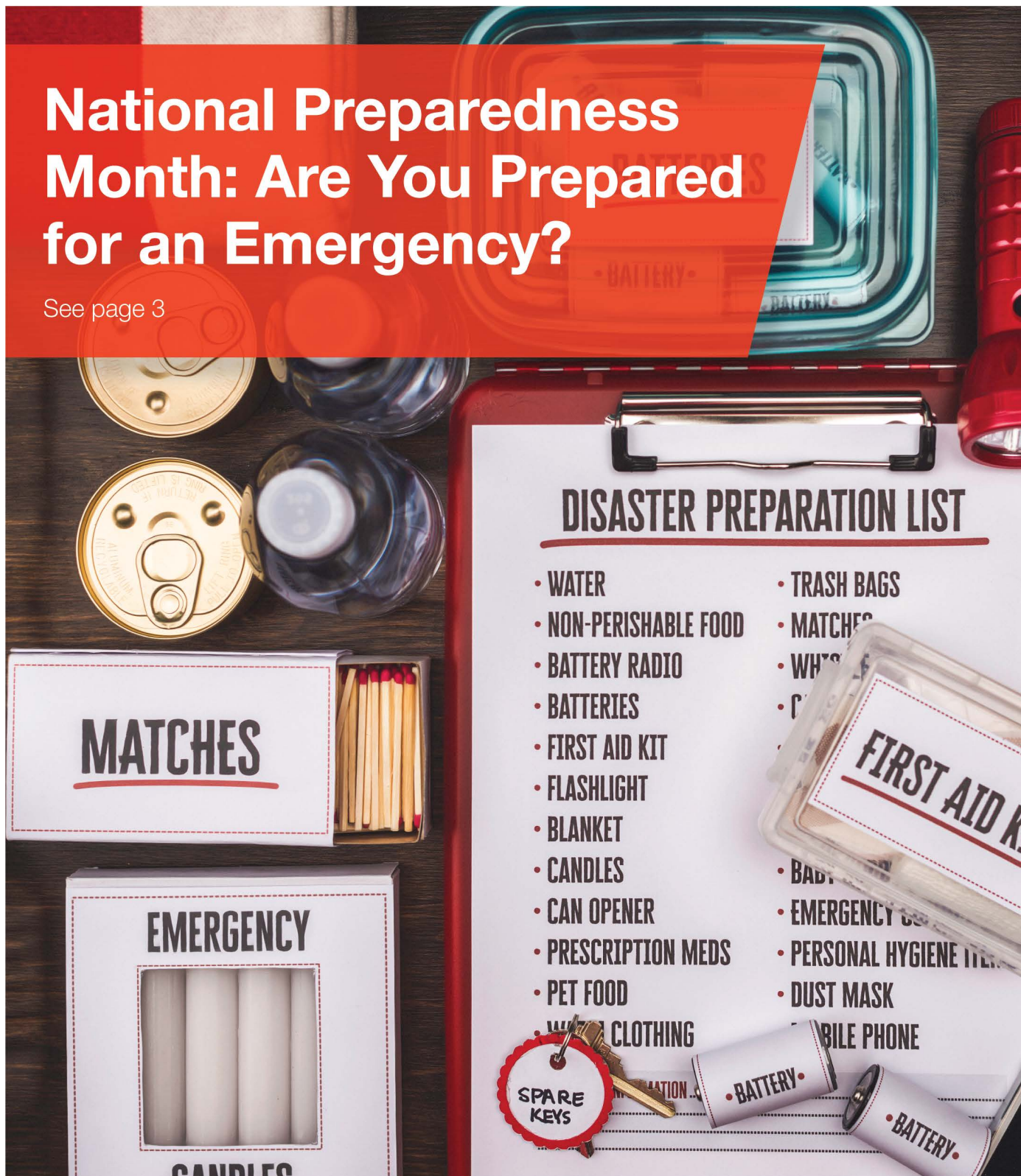


## National Preparedness Month: Are You Prepared for an Emergency?

See page 3



# Contents

## COVER STORY

Are You Prepared for An Emergency? . . . . . 3

## POLICIES, PROCEDURES, AND FORMS UPDATES

### Manuals

DMM Revision: Exceptions to Markings and Weight Standards for Permit-Imprint Mailings . . . . . 4

DMM Revision: Hazardous Materials Enclosed in Priority Mail Express and Priority Mail Open-and-Distribute Containers . . . . . 5

DMM Revision: Internet Change-of-Address Application Filing Enhancement. . . . . 6

DMM Revision: Optional Endorsement Lines and Carrier-Route Information Lines . . . . . 6

### Handbooks

Handbook EL-802 Revision: Executives' and Managers' Safety and Health Program and Compliance Guide. . . . . 7

### Publications

Publication 431 Revision: Changes to Post Office Box Service and Caller Service Fee Groups . . . . . 36

## ORGANIZATION INFORMATION

### Address Management

Post Office Changes . . . . . 37

### Environmental Management

Used Battery Disposal Requirements . . . . . 37

### Finance

Rural Timekeeping: Transition to 3-Digit Hours Codes. . . . . 38

### Stamp Services

Update: Stamp Announcement 24-37: Hanukkah 2024 Stamp. . . . . 39

Update: Stamp Announcement 24-39: Thank You, Healthcare Community Stamp . . . . . 39

Pictorial Postmarks Announcement . . . . . 40

How to Order the First-Day-of-Issue Digital Color or Traditional Postmarks . . . . . 42

## PULL-OUT INFORMATION

### Fraud

Missing, Lost, or Stolen U.S. Money Order Forms . . . . . 15

Missing, Lost, or Stolen Canadian Money Order Forms . . . . . 23

Verifying U.S. Postal Service Money Orders . . . . . 25

Counterfeit Canadian Money Order Forms . . . . . 25

Toll-Free Number Available to Verify Canadian Money Orders . . . . . 25

### Other Information

Overseas Military/Diplomatic Mail . . . . . 27

Freely Associated States Restrictions . . . . . 34

## POSTAL BULLETIN 2024 SEMI-ANNUAL INDEX

2024 Semi-Annual Index . . . . . PB 22656 (8-8-24)

Find the latest in mail and delivery information and services offered by U.S. Postal® in the *Postal Bulletin* at [about.usps.com/postal-bulletin](https://about.usps.com/postal-bulletin)

**Mail Moment®**

# Cover Story

## Are You Prepared for An Emergency?

Wildfires, hurricanes, and earthquakes are just a few of the disasters experienced in the United States. These types of emergencies can produce fear and cause overall anxiety with the disruptions they can bring. Because natural disasters will always be part of life, preparing for them can better our response, speed up recovery time, and reduce the anxiety and stress.

Here are some best practices to prepare for an emergency:

- Find out what types of emergencies occur in the areas where you live or work.
- Research what to do for each type of emergency.
- Sign up for electronic services (such as National Weather Service) to receive emergency alerts and warnings where you live, work, or vacation.
- Refresh your home emergency preparedness kit.
- Practice your family or household communication plan.
- Know your evacuation routes at home and work.

- Verify contact numbers in your mobile device are current.
- Ensure your electronic devices are fully charged.
- Keep your vehicle fueled.
- Store emergency cash in case loss of power affects the ATM.

You and your loved ones are worth the short investment of time and resources to plan for emergency events. See the following resources for more information:

- View the USPS® National Preparedness website at [blue.usps.gov/nationalpreparedness](https://blue.usps.gov/nationalpreparedness).
- Download preparedness lists for you and your family at [blue.usps.gov/nationalpreparedness/personal-preparedness.htm](https://blue.usps.gov/nationalpreparedness/personal-preparedness.htm).
- Get information to promote and encourage planning readiness during the month of September at [ready.gov](https://ready.gov).

Are you prepared?

— *Continuity and Preparedness,*  
*Corporate Affairs, 9-19-24*

# Policies, Procedures, and Forms Updates

## Manuals

### DMM Revision: Exceptions to Markings and Weight Standards for Permit-Imprint Mailings

Effective November 4, 2024, the Postal Service™ will revise *Mailing Standards of the United States Postal Service, Domestic Mail Manual (DMM®)*, section 202.3.10, to replace the section titled “Marking Hazardous Materials” with a section titled “Exceptions to Markings,” which was erroneously deleted in a previous DMM edition. The Postal Service will also revise section 604.5.1.8 to reflect an update in the Postal Service weight standard for permit-imprint mailings.

Although these revisions will not be published in the DMM until November 4, 2024, the standards are effective immediately.

#### ***Mailing Standards of the United States Postal Service, Domestic Mail Manual (DMM)***

	*	*	*	*	*
<b>200</b>	<b>Commercial Mail Letters, Cards, Flats, and Parcels</b>				
	*	*	*	*	*
<b>202</b>	<b>Elements on the Face of a Mailpiece</b>				
	*	*	*	*	*
<b>3.0</b>	<b>Placement and Content of Mail Markings</b>				
	*	*	*	*	*

*[Delete the current section 3.10, “Marking Hazardous Materials,” in its entirety and add new 3.10 to read as follows:]*

#### **3.10 Exceptions to Markings**

Exceptions are as follows:

- Automation Letters and Flats.* Automation letters and flats do not require an “AUTO” marking if they bear an Intelligent Mail barcode with a delivery-point routing code in the address block or on an insert visible through a window. First-Class Mail letters not marked “AUTO” must bear both the “Presorted” or “PRSRT” and “First-Class” markings. USPS Marketing Mail letters not marked “AUTO” must bear the appropriate basic marking in 3.5a.

- Manifest Mailings.* The following apply:

- The basic marking must appear in the postage area on each piece as required in 3.5a.

- The two-letter price-category code, printed in the keyline on manifest-mailing-system pieces using batch processing under 705.2.0, meets the requirement for other price markings when those pieces are part of a manifest mailing or another automation mailing.
- If a single-piece marking (“SP”) has been applied to pieces that subsequently become part of a presorted or automation mailing, the “SP” marking must be marked out and replaced with a “Presorted” or “PRSRT” marking.
- Mail manifested using the Electronic Verification System (eVS) under 705.2.0 must bear the basic marking and the additional marking “eVS” (or the alternative “e-VS” or “EVS”) in two places:
  - In the required permit imprint as described in 604.5.0.
  - In the human-readable text above the required barcode described in 705.2.9 and 204.2.0.

- MLOCR Prepared Automation Mailings.* The basic marking must appear in the postage area on each piece as required in 3.5a. The other “AUTO” marking described in 3.5b must be replaced by the appropriate identifier/price code marking described in 705.5.0, on those pieces that have the marking applied by an MLOCR. This seven-character marking provides a description of the following:

- Product Month Designator;
- NCOALink MPE system identifier;
- Postage-payment method; and
- The price of affixed postage or other postage information for permit-imprint mail.

	*	*	*	*	*
<b>600</b>	<b>Basic Standards for All Mailing Services</b>				
	*	*	*	*	*
<b>604</b>	<b>Postage Payment Methods and Refunds</b>				
	*	*	*	*	*
<b>5.0</b>	<b>Permit Imprint (Indicia)</b>				
<b>5.1</b>	<b>General Standards</b>				
	*	*	*	*	*

**5.1.8 Weight Standards for Permit Imprint Mailing**

*[Revise the text of 5.1.8 to read as follows:]*

All pieces in a permit-imprint mailing must be of identical weight, except for pieces from mailers participating in the Seamless Acceptance Program for letters and flats and eVS or USPS SHIP for parcels.

\* \* \* \* \*

The Postal Service will incorporate these revisions into the next edition of the online DMM, which is available on Postal Explorer® at [pe.usps.com](https://pe.usps.com).

— Product Classification, Product Solutions, 9-19-24

**DMM Revision: Hazardous Materials Enclosed in Priority Mail Express and Priority Mail Open-and-Distribute Containers**

Effective November 4, 2024, the Postal Service™ will revise *Mailing Standards of the United States Postal Service, Domestic Mail Manual (DMM®)*, section 705.18.2.2, to clarify Postal Service standards for hazardous materials enclosed in Priority Mail Express® and Priority Mail® Open-and-Distribute containers.

The Postal Service is revising section 705.18.2.2 to clarify that mail enclosed in a Priority Mail Express or Priority Mail Open-and-Distribute container may only contain hazardous materials that are eligible at Priority Mail Express or Priority Mail prices.

Although the Postal Service will not publish this revision in the DMM until November 4, 2024, these standards are effective immediately.

***Mailing Standards of the United States Postal Service, Domestic Mail Manual (DMM)***

\* \* \* \* \*

**705 Advanced Preparation and Special Postage Payment Systems**

\* \* \* \* \*

**18.0 Priority Mail Express Open and Distribute and Priority Mail Open and Distribute**

\* \* \* \* \*

**18.2 Basic Standards**

\* \* \* \* \*

**18.2.2 Content Standards**

*[Revise the text of 18.2.2 to read as follows:]*

The Priority Mail Express or Priority Mail shipment and the enclosed mail must meet all corresponding eligibility and preparation standards. (See 210 for Priority Mail Express standards and 220 for Priority Mail standards.) Additional standards for the enclosed mail are as follows:

- a. Customers mailing mail enclosed in a Priority Mail Express Open-and-Distribute container may only add the extra services described in 18.3.2. Customers mailing mail enclosed in a Priority Mail Open-and-Distribute container may only add the extra services described in 18.4.2.
- b. Mailpieces requiring cancellation may not be included in a Priority Mail Express Open-and-Distribute or a Priority Mail Open-and-Distribute shipment.
- c. Mailers are not required to place bundles of mail in sacks or trays when all of the mail enclosed in an Open-and-Distribute sack is destined to a 5-digit facility and the Open-and-Distribute sack weighs at least 5 pounds.
- d. Mail enclosed in a Priority Mail Express or Priority Mail Open-and-Distribute container may only contain hazardous materials that are eligible at Priority Mail Express or Priority Mail prices.

\* \* \* \* \*

The Postal Service will publish this revision in the next online edition of the DMM, which is available on Postal Explorer® at [pe.usps.com](https://pe.usps.com).

— Product Classification, Product Solutions, 9-19-24

## DMM Revision: Internet Change-of-Address Application Filing Enhancement

Effective November 4, 2024, the Postal Service™ will revise *Mailing Standards of the United States Postal Service*, Domestic Mail Manual (DMM®), section 507.2.0, to delete information that has become redundant because of an enhancement to the Postal Service Internet Change of Address (ICOA) filing procedure.

Previously, the Postal Service only allowed customers to submit one change-of-address request in a single transaction. On May 30, 2024, the Postal Service deployed an enhancement to the filing procedure via the ICOA application Mover's Guide Online (MGO), available at [movers-guide.usps.com](https://movers-guide.usps.com). Customers are now able to submit up to 99 change-of-address requests in a single transaction. As a result of this enhancement, DMM section 507.2.1.6, "Temporary Business Bulk Forwarding," is no longer applicable and will be deleted.

Although The Postal Service will not publish this revision in the DMM until November 4, 2024, this standard is effective immediately.

### ***Mailing Standards of the United States Postal Service, Domestic Mail Manual (DMM)***

\* \* \* \* \*

#### **500 Additional Mailing Services**

\* \* \* \* \*

## DMM Revision: Optional Endorsement Lines and Carrier-Route Information Lines

Effective January 19, 2025, the Postal Service™ will revise *Mailing Standards of the United States Postal Service*, Domestic Mail Manual (DMM®), section 203.8.1, to reflect the Postal Service's change in requirements for using optional endorsement lines or carrier-route information lines on USPS Marketing Mail® carrier-route letters.

This revision will be published in the DMM on January 19, 2025, which is when this standard will become effective.

### ***Mailing Standards of the United States Postal Service, Domestic Mail Manual (DMM)***

\* \* \* \* \*

#### **200 Commercial Mail Letters, Cards, Flats, and Parcels**

\* \* \* \* \*

#### **203 Basic Postage Statement, Documentation, and Preparation Standards**

\* \* \* \* \*

#### **507 Mailer Services**

\* \* \* \* \*

#### **2.0 Forwarding**

##### **2.1 Change-of-Address Order**

\* \* \* \* \*

##### **2.1.3 Temporary Forwarding**

*[Delete the last sentence of the text of 2.1.3.]*

##### **2.1.4 Methods of Filing**

*[Revise the introductory text of 2.1.4 to read as follows:]*

Customers may use one of the following methods to file a change-of-address request with the Post Office:

\* \* \* \* \*

*[Delete section 2.1.6, "Temporary Business Bulk Forwarding," in its entirety.]*

\* \* \* \* \*

The Postal Service will publish this revision in the next online edition of the DMM, which is available on Postal Explorer® at [pe.usps.com](https://pe.usps.com).

— Product Classification, Product Solutions, 9-19-24

#### **8.0 Carrier Route Information Lines**

##### **8.1 Basic Information**

*[Revise the text of 8.1 to read as follows:]*

Mailers must prepare bundles of all mailpieces mailed at carrier-route prices with optional endorsement lines under 7.0, carrier-route information lines under 8.2, or facing slips (see 203.4.0). Mailers must use optional endorsement lines or carrier-route information lines on all pieces in mailings of USPS Marketing Mail letters prepared under 245.6.7 and 245.6.10.

\* \* \* \* \*

The Postal Service will incorporate this revision into the January 19, 2025, edition of the online DMM. The DMM is available on Postal Explorer® at [pe.usps.com](https://pe.usps.com).

— Product Classification, Product Solutions, 9-19-24

## Handbooks

### Handbook EL-802 Revision: Executives' and Managers' Safety and Health Program and Compliance Guide

In article “Handbook EL-802 Revision: *Executives' and Managers' Safety and Health Program and Compliance Guide*,” published in the September 8, 2022, *Postal Bulletin* (22606), the Postal Service™ announced that Handbook EL-802, *Executives' and Managers' Safety and Health Program and Compliance Guide*, would be revised and published in late 2022. However, this did not occur due to a delay.

Effective later this year, the Postal Service will revise Handbook EL-802, in its entirety, to reflect changes and updates in Occupational Safety and Health Administration (OSHA) and Postal Service Occupational Safety and Health programs.

Although the Postal Service will not publish the revisions in Handbook EL-802 until later this year, these standards are effective immediately.

#### Handbook EL-802, *Executives' and Managers' Safety and Health Program and Compliance Guide*

\* \* \* \* \*

#### 1 Introduction

##### 1-1 Purpose

[Revise the text of 1-1 to read as follows:]

The Postal Service™ focuses on engaging in innovative safety efforts to reduce the number of, and prevent, employee workplace accidents and injuries. The purpose of this handbook is to help Postal Service nonbargaining employees:

- Understand their roles in the Postal Service commitment to safety as a smart business practice.
- Get involved in promoting safety programs, and to recognize and correct unsafe acts, working conditions and practices.
- Ensure accountability for effective programs in all Postal Service facilities.

The handbook also includes information on management responsibilities under the Occupational Safety and Health (OSH) Act, and regarding Occupational Safety and Health Administration (OSHA®) inspections and citations.

##### 1-2 Content Summary

[Revise the text of 1-2 to read as follows:]

**Chapter 1** — Includes the purpose of this handbook, a summary of the handbook's content, and a list of references.

**Chapter 2** — Provides an overview of Postal Service obligations under the OSH Act so that managers understand their legal and Postal Service responsibilities under the OSH Act.

**Chapter 3** — Includes an overview of the Postal Service Safety and Health Program, including information on using the safety, environmental, and ergonomic resources in the Safety and Health Management Tool (SHMT) to manage Safety and Health programs.

**Chapter 4** — Provides information on working with OSHA, including responding to employee complaints, handling OSHA inspections and citations, and managing citations.

**Appendix** — Postal Service Executives' Safety and Health Planner.

#### 1-3 References

[Revise the text of 1-3 to read as follows:]

Key references used throughout this handbook include:

- *Employee and Labor Relations Manual* (ELM), Chapter 8, “Safety, Health and Environment” ([blue.usps.gov/cpim/manuals.htm](http://blue.usps.gov/cpim/manuals.htm)).
- Safety and Health Management Tool (SHMT).
- Postal Employees Safety Enhancement Act (Pub L. 105–241) ([govinfo.gov/app/details/PLAW-105publ241](http://govinfo.gov/app/details/PLAW-105publ241)).
- Occupational Safety and Health Administration (OSHA) ([osha.gov](http://osha.gov)).

Information on OSHA inspections and compliance activity, and employer rights and responsibilities following an OSHA inspection is available on the “OSHA® FactSheet: Occupational Safety and Health Administration (OSHA) Inspections” at [osha.gov/sites/default/files/publications/factsheet-inspections.pdf](http://osha.gov/sites/default/files/publications/factsheet-inspections.pdf).

#### 2 Regulatory Requirements and Postal Service Policy

##### 2-1 Postal Employees Safety Enhancement Act

##### 2-1.1 Change in Postal Service Status as Employer Under OSHA

[Revise the last sentence of the text of 2-1-1 to read as follows:]

\*\*\*Previously, the Postal Service, as a federal agency, had been exempt from the private-sector provisions of the OSH Act.<sup>1</sup>

## 2-1.2 PESEA Requirements and the OSH Act

*[Revise the text of 2-1.2 to read as follows:]*

When PESEA became effective, the Postal Service, like most private-sector employers in the United States, became fully subject to the OSH Act. This means that OSHA has jurisdiction over the Postal Service in matters relating to employee safety and health. The Postal Service must comply with the OSH Act and OSHA standards and regulations. If violations occur, the Postal Service may be cited, fined, and, in extreme cases, referred for criminal prosecution by OSHA.

PESEA also does the following:

- Amends federal law to prohibit the Postal Service from:
- Considering compliance with OSHA in determining whether to close or consolidate a Post Office®; or
- Restricting, eliminating, or adversely affecting any service it provides because of a paid penalty imposed under OSHA.
- Prohibits the Postal Regulatory Commission from considering compliance with OSHA in determining whether to increase rates and provides that OSHA compliance must not otherwise affect the service of the Postal Service.

\* \* \* \* \*

## 2-2 Postal Service Policy

*[Revise the text of 2-2 to read as follows:]*

The Postal Service complies with OSHA requirements described in 2-1. The Postal Service is committed to:

- Developing and promoting safety programs.
- Recognizing and correcting unsafe acts, working conditions and practices.
- Ensuring accountability for effective programs in all Postal Service facilities.
- Promoting safety as part of smart business practices.

See the *Employee and Labor Relations Manual* (ELM).

*[Delete Chapter 3 in its entirety and renumber current chapters 4 and 5 as chapters 3 and 4, respectively.]*

## 3 Postal Service Safety and Health Program

*[Revise the title and text of renumbered 3-1 to read as follows:]*

### 3-1 Guidelines

The Postal Service has a Safety and Health program, which includes the following guidelines:

- A. *Management leadership and employee participation:*
- Management commitment and employee involvement are complementary.

- Management commitment provides the motivating force and the resources for organizing and controlling activities within an organization.
- Employee involvement provides the means through which workers develop and express their commitment to safety and health protection.

B. *Workplace analysis (surveys and job hazard analysis, inspections and hazard controls, and employee hazard reporting):*

- Workplace analysis involves a variety of worksite examinations to identify not only existing hazards, but also the conditions and operations where changes may occur to create hazards.
- Effective management actively analyzes the work and the workplace to anticipate and prevent harmful occurrences.

C. *Accident reporting, investigation, and analysis:*

- Reporting and investigating accidents and near-miss incidents and analyzing their causes helps determine a means for preventing them.
- Analyzing injury and illness trends over time helps identify common causes and develop preventive measures.

D. *Hazard prevention and control:*

- This activity is triggered by a determination that a hazard or potential hazard exists.
- Where elimination is feasible, hazards are prevented by effectively designing job tasks and/or the job site.
- Where elimination is not feasible, hazards are controlled to prevent unsafe conditions and unhealthful exposure.
- Elimination or control is accomplished in a timely manner.

E. *Emergency response:*

Effective emergency response includes written emergency action plans, training, fire inspections, and first aid.

F. *Safety and health training:*

- Effective safety and health training addresses the safety and health responsibilities of all personnel, whether salaried or hourly.
- Safety and health training is most effective when incorporated into other training about performance requirements and job practices.
- The complexity of training depends on the size and complexity of the workplace and nature of hazards.
- Effective safety and health training ensures that all employees understand the hazards to which they



may be exposed and how to prevent harm to themselves and others from exposure to these hazards.

- Such training ensures that supervisors carry out their safety and health responsibilities, including:
  - Analyzing the work under their supervision to identify unrecognized potential hazards;
  - Maintaining physical protection in work areas;
  - Reinforcing employee training through continual performance feedback; and
  - Enforcing safe work practices.

G. *Motor vehicle safety and driver training:*

- Effective motor vehicle safety and driver training ensures proper driver selection, training, and supervision, in accordance with Handbook ELH804, *Safe Driver Program*.
- Such training ensures compliance with U.S. Department of Transportation regulations.

### 3-2 Postal Service Program

#### 3-2.1 Requirements

*[Revise the text of renumbered 3-2.1 to read as follows:]*

Managers must:

- Demonstrate a commitment to providing safe and healthful working conditions in all Postal Service owned and leased installations, along with being involved in day-to-day safety performance.
- Be held accountable for safety performance and compliance with OSHA standards and regulations.

Installation heads in facilities that do not have a full-time safety professional assigned, must designate an Executive and Administrative Schedule (EAS) employee as facility safety coordinator (FSC).

#### 3-2.2 Program Elements

*[Revise the text of renumbered 3-2.2 to read as follows:]*

The Postal Service program elements include management commitment, involvement, and accountability.

### 3-3 Management Commitment, Involvement, and Accountability

#### 3-3.1 How to Demonstrate Commitment

*[Revise the text of renumbered 3-3.1 to read as follows:]*

Key steps for demonstrating commitment include the following:

- **Develop a written policy statement.**

Executives and managers at all levels should ensure that a current written safety policy statement is in effect. This policy should stress that safety is a line-management responsibility supported by Postal

Service Safety and Health Program professionals and senior management officials.

- **Establish personal communications.**

Executives and managers should:

- Periodically send to targeted audiences memorandums, articles, and other communications highlighting major safety initiatives, success stories, exceptional safety performance, and other safety-related activities.
- Stress commitment, involvement, and accountability to their managers and supervisors.
- Publicize information on OSHA compliance activities and the Postal Service Safety and Health Program.

- **Consider funding needs.**

During annual budget reviews, managers must give consideration to adequately funding locally the Postal Service Safety and Health Program, as noted in ELM section 818, "Safety and Health Program Budgeting."

- **Establish Executive Safety and Health committees.**

ELM section 815, "Executive and Management Safety and Health Committees," requires executives and managers to establish these committees at all levels. Executives must ensure that the committees meet at least quarterly to address safety program issues, as required by standards in the ELM.

- **Attend Joint Labor-Management Safety and Health Committee meetings.**

Executives and managers should attend meetings of the Joint Labor-Management Safety and Health Committee, and do the following:

- Discuss the Postal Service Safety and Health Program and their personal commitment to safety in the workplace and to the program.
- Discuss the committee's function and responsibility, and their expectations of and support for the committee.
- Review local initiatives.
- Review successes and failures.
- Ask about the agenda, minutes, and recurring items.
- Review employee complaints and PS Forms 1767, Report of Hazard, Unsafe Condition or Practice, submitted by employees, and entered into SHMT.
- Review accident data and accident-reduction plan performance as compared to established accident-reduction targets in SHMT and on the Safety Dashboard.

- Ensure that committee members receive appropriate training.

- **Encourage employee participation.**

Executives and managers should encourage and be involved in national and local employee participation programs. Refer to SHMT for the latest information on facility efforts.

### 3-3.2 How to Demonstrate Involvement

#### 3-3.2.1 Conduct Safety-Specific Executive and Management Field Visits

*[Revise the introductory text of renumbered 3-3.2.1 to read as follows:]*

Field visits present excellent opportunities for executives and managers to demonstrate their commitment and direct support for doing business safely. Executives and managers should focus visits solely on demonstrating commitment and involvement in the safety process. Suggested activities for these visits include:

\* \* \* \* \*

*[Revise the text of the second through fourth bullets of renumbered 3-3.2.1 to read as follows:]*

- **Meet with safety professionals and other supporting employees.**
  - Discuss support for safety and solicit comments on the local program's effectiveness.
  - Review interaction between Postal Service Safety and Health Program and Occupational Health Claims (OHC) functions.
- **Attend safety and health-related awards ceremonies.**

Opportunities include:

  - National Safety Council's Safe Driver annual pin recognition, and Kaplan and Million Mile awards.
  - Safety Leadership and Vision Award.
  - Local ceremonies that acknowledge excellent safety performance.
- **Visit employee orientation, craft safety training, and initial-level supervisor, associate, or supervisor refresher training.**

These activities provide excellent opportunities to discuss:

  - How safety is smart business.
  - The Postal Service Safety and Health Program and processes.
  - Line-management responsibility and accountability.
  - Employee rights and responsibilities.

#### 3-3.2.2 Inspect and Observe

*[Revise the text of renumbered 3-3.2.2 to read as follows:]*

Managers at all levels must periodically check for unsafe acts, conditions, and work practices.

### 3-3.3 How to Demonstrate Accountability

#### 3-3.3.1 National Performance Assessment

*[Revise the text of renumbered 3-3.3.1 to read as follows:]*

The National Performance Assessment (NPA) provides scorecards that may be used to *monitor performance* of the entire enterprise across the nation. The scorecards include safety-performance criteria, such as OSHA Injury and Illness rates, the Total Accident Rate, and OHC initiatives.

#### 3-3.3.2 Pay for Performance

*[Revise the text of renumbered 3-3.3.2 to read as follows:]*

The Pay for Performance (PFP) program emphasizes the organization's success through objective *measurable performance indicators* that are aligned at the corporate level, and include Safety and OHC indicators. Headquarters establishes Postal Service Safety and Health Program and OHC indicators and targets. By implementing effective program management and accident-reduction programs, executives and managers can achieve these targets.

**Note:** Executives' and managers' performance in this program is measured based on Postal Service Safety and Health Program performance.

### 3-3.4 Resources

*[Revise the text of renumbered 3-3.4 to read as follows:]*

See SHMT and the OSH Scorecard.

*[Revise the title and text of renumbered 3-4 to read as follows:]*

### 3-4 Accident-Reduction Plans

Accident-reduction plans target specific Postal Service Safety and Health Program indicators (such as slips, trips, and falls) with specific actions and tasks to reduce the number of accidents. Each year accident-reduction plans that target specific Safety and Health Program indicators must be implemented and tracked in SHMT.

*[Revise the title and text of renumbered 3-5 to read as follows:]*

### 3-5 Inspections, Improvement Plans, and Written OSHA Compliance Programs

The following includes benefits of safety inspections, safety-improvement plans, and OSHA safety-compliance programs, and information on templates available for OSHA safety programs:

- Inspections identify hazards.

- Improvement plans identify procedures to abate hazards.
- Templates for OSHA-required written programs ensure compliance with specific OSHA standards. Templates are available for programs, such as hazard communication, personal protective equipment, and confined-space safety. Templates are also available on the following safety topics:
  - Asbestos.
  - Bloodborne pathogens.
  - Electrical work plan
  - Hazardous material.
  - Hearing conservation.
  - Lead.
  - Respiratory protection.

### 3-6 Engagement of Postal Service Unions and Employees

*[Revise the text of renumbered 3-6 to read as follows:]*

Effective engagement promotes employee involvement and includes agreements with unions on specific Postal Service Safety and Health Program initiatives. (See Article 14 of labor-contract agreements between the Postal Service and national unions.) Examples of effective engagement:

- Promoting active participation in practicing safety and ergonomics in the workplace.
- Providing methods for employee feedback on ideas to improve safety.
- Showing to employees the Postal Service Safety and Health Program video series, “Safety Depends on Me,” which enables communication with employees on safety and fosters motivation for using safe practices.

### 3-7 Safe Driver Program

*[Revise the second sentence of renumbered 3-7 to read as follows:]*

\*\*\*The program also provides guidance on refresher training for Postal Service drivers.\*\*\*

*[Revise the title and text of renumbered 3-8 to read as follows:]*

### 3-8 Safety and Health Management Tool (SHMT)

#### 3-8.1 Purpose

The Safety and Health Management Tool (SHMT) is designed to be used by all levels of the organization,

providing managers and employees with access to information about Postal Service Safety and Health Program inspections, accident and hazard reporting, and tools to track safety-program progress.

#### 3-8.2 Content

SHMT provides Postal Service employees with a wealth of safety, health, environmental, and ergonomics information.

The SHMT library contains accident-reduction information. This site also provides the following resources, including but not limited to:

- Guidance and tools for managing accident-reduction plans and goals.
- Best practices and countermeasures.
- Tools for data management and accident analysis.
- National Job Safety Analyses (JSAs) for many tasks for local adaptation.
- Safety inspection checklists.
- Written program guides and templates for 10 OSHA standards.
- Guidance and references for safety and health topics, such as:
  - Developing Emergency Action Plans (EAPs).
  - Reporting on motor vehicle and industrial accidents.
  - Giving safety talks (including sample safety talks on many topics).
- Links to Postal Service safety references (manuals, handbooks, management instructions, etc.).

#### 3-8.3 Access

To access SHMT:

- Go to *Blue* at [blue.usps.gov](http://blue.usps.gov).
- Click on *MyHR* on the bar at the top of the page or *Featured Topics* at left on the page.
- Under *MyHR* click on *Safety & Labor* and then *Safety Tools for Managers*.
- Under *Featured Topics*, click on *Front Line Supervisor's Toolkit*, and then the tab “Apps/Tools.” Under *Apps/Tools* click on *SHMT*.

Contact the local Safety office or OHC for additional assistance.

*[Delete the two graphic images of renumbered 3-8 in their entirety.]*

*[Revise the title of renumbered Chapter 4 to read as follows:]*

## **4 Working With OSHA**

### **4-1 Investigating Employee Safety and Health Complaints**

#### **4-1.1 Complaints and Inspections**

##### **4-1.1.1 Employee Complaints to OSHA**

*[Revise the text of renumbered 4-1.1.1 to read as follows:]*

Many investigations and inspections result from employee complaints. The most effective method to reduce the number of employee complaints to OSHA is to ensure that:

- PS Forms 1767, *Report of Hazard, Unsafe Condition or Practice*, submitted by employees, or entered into SHMT, are handled expeditiously.
- Hazards are abated in accordance with Postal Service policy and documented in accordance with requirements in the ELM.

##### **4-1.1.2 Handling Complaints Internally**

\* \* \* \* \*

*[Revise the bulleted text of renumbered 4-1.1.2 to read as follows:]*

- OSHA procedures allow for contacting the employer to:
  - Advise management of the complaint; and
  - Request an investigation and correction of hazards by the employer.
- Managers may avoid an unnecessary inspection by:
  - Responding within 5 working days and correcting any hazards;
  - Posting the information that the complaint has been addressed and any hazard corrected; and
  - Notifying employees of any hazard and that it has been corrected.
- Managers may also request additional time and dispute complaints with detailed evidence of the conditions. OSHA shares the information obtained from management with the complainants.
- OSHA has wide discretion to forego an inspection if OSHA personnel believe the hazard:
  - Does not exist; or
  - Has been abated.

##### **4-1.1.3 NIOSH Health Hazard Evaluations**

*[Revise the text of renumbered 4-1.1.3 to read as follows:]*

Based on employee complaints, the National Institute for Occupational Safety and Health (NIOSH) may indicate the

intent to conduct a Health Hazard Evaluation (HHE). A manager who receives a written or telephone notification that NIOSH intends to conduct an HHE must immediately contact area Senior Field Safety and Health specialists. Managers must not refuse an investigation or deny NIOSH entry onto the premises. However, they may request time to coordinate with Senior Field Safety and Health. A manager must not initiate a request to NIOSH for an HHE without consulting Senior Field Safety and Health.

#### **4-1.2 Steps to Take**

*[Revise the text of renumbered 4-1.2 to read as follows:]*

Managers should take the following steps to ensure that employee safety complaints are handled expeditiously:

- Ensure that PS Forms 1767 submitted or entered into SHMT by employees are properly tracked and responded to in accordance with ELM section 824.6, "Investigating Employee Reports of Hazard, Unsafe Condition, or Practice."
- Hold supervisors responsible for responding timely to submitted PS Forms 1767.
- Place the highest priority on responding to requests by OSHA for investigation of employee complaints, as follows:
  - Upon receipt of such a request, notify the installation head and the supporting Safety office.
  - Make sure the response to OSHA is signed by the installation head and transmitted on time (within 5 working days).
- Notify Senior Field Safety and Health if NIOSH communicates the intent to conduct an HHE.

### **4-2 OSHA Inspections and Citation Management – Postal Service Responsibilities**

#### **4-2.1 Executives and Managers**

\* \* \* \* \*

*[Revise the text of the last two bullets of renumbered 4-2.1 to read as follows:]*

- Review and be familiar with ELM section 825, "OSHA Inspections." (The ELM is available at [blue.usps.gov/cpim/manuals.htm](http://blue.usps.gov/cpim/manuals.htm).)
- Review OSHA guidance on conducting inspections, information on employer rights and responsibilities, and other safety and health information available at [osha.gov](http://osha.gov).

#### **4-2.2 Installation Heads**

*[Revise the text of renumbered 4-2.2 to read as follows:]*

*Installation heads must do the following:*

- Achieve compliance with OSHA standards within the facilities under their control.

- Review and be familiar with ELM section 825, “OSHA Inspections.” (The ELM is available at [blue.usps.gov/cpim/manuals.htm](http://blue.usps.gov/cpim/manuals.htm).)
- Review OSHA guidance on conducting inspections, information on employer rights and responsibilities, and other safety and health information available at [osha.gov](http://osha.gov).

Information on OSHA inspections and compliance activity, and employer rights and responsibilities following an OSHA inspection is available on the “OSHA<sup>®</sup> FactSheet: Occupational Safety and Health Administration (OSHA) Inspections” at [osha.gov/sites/default/files/publications/factsheet-inspections.pdf](http://osha.gov/sites/default/files/publications/factsheet-inspections.pdf).

*[Revise the title and text of renumbered 4-2.3 to read as follows:]*

#### 4-2.3 Occupational Safety and Health (OSH)

OSH Headquarters:

- Oversees the citation management process for Headquarters.
- Coordinates with the General Counsel and affected Headquarters organizations responses to citations for violations.
- Oversees quality control of citation information entered in the OSHA Citation Management in SHMT.
- Resolves discrepancies in the information with the responsible safety specialist.
- Analyzes citation information.
- Reports the results of the analysis to key Postal Service personnel.
- Identifies national opportunities to prevent further citations and improve safety and health programs based on the analysis of citation data.
- Assists on-site to resolve citation issues as required.

#### 4-2.4 General Counsel

*[Revise the text of renumbered 4-2.4 to read as follows:]*

The Postal Service General Counsel’s centralized OSHA unit:

- Oversees legal aspects of the citation management process nationally, at Headquarters and in the field.
- Is responsible for approving citation-related correspondence to be sent to OSHA.
- Prepares all protective notices and notices of contest and mails them to OSHA.
- Prepares and distributes additional correspondence to OSHA for selected citations as determined citation by citation.
- Provides consultative assistance to Occupational Safety and Health field staff and Senior Field Safety and Health personnel.

- Helps Occupational Safety and Health field staff and Senior Field Safety and Health personnel resolve citation issues.
- Oversees and handles all required litigation with the Occupational Safety and Health Review Commission and federal courts.

*[Delete renumbered 4-2.5 (current 5-2.5) in its entirety and renumber renumbered 4-2.6 through 4-2.11 (current 5-2.6 through 5-2.11) as 4-2.5 through 4-2.10, respectively.]*

#### 4-2.5 Maintenance Policy and Programs, Engineering

\* \* \* \* \*

*[Revise the text of the first bullet of renumbered 4-2.5 to read as follows:]*

- Helps implement programs to abate systemic maintenance-related hazards.

\* \* \* \* \*

#### 4-2.6 Maintenance Operations (Area)

*[Revise the text of renumbered 4-2.6 to read as follows:]*

Managers of Maintenance Operations (Area):

- Oversee abatement of hazards resulting in violations in their area of responsibility.
- Support district and plant managers in abating hazards.
- Help implement programs to abate systemic maintenance-related hazards.

#### 4-2.7 Facilities Service Offices

*[Revise the text of renumbered 4-2.7 to read as follows:]*

Personnel in Facilities Service offices confirm that processes are in place to ensure prioritizing projects based on OSHA citations and abatement schedules.

*[Delete renumbered 4-2.8 (current 5-2.9) in its entirety and renumber renumbered 4-2.9 and 4-2.10 (current 5-2.10 and 5-2.11) as 4-2.8 and 4-2.9, respectively.]*

*[Revise the title and text of renumbered 4-2.8 (current 5.2.10) to read as follows:]*

#### 4-2.8 Safety Specialists

Field safety specialists, assigned by managers of Safety and Health within each field office, enter OSHA inspection and citation data into SHMT. To perform this task, they must:

- Enter citation information for facilities in their area of responsibility (including Headquarters field units) as soon as they are received, but no later than by close of business (COB) on the day the citation is received from OSHA.

- Fax or email copies of the citation to OSH, the General Counsel at Headquarters, and Senior Field Safety and Health, preceding the faxes or emails with a telephone call.
- Keep the citation information current and accurate as hazards are abated and citation management activities progress. Enter this information as soon as these activities are accomplished, but no later than COB that day.
- Enter abatement actions as soon as they are accomplished, but no later than COB that day.
- Keep informed Senior Field Safety and Health and the responsible manager.
- Facilitate abatement actions with responsible managers.
- Before transmittal, coordinate all citation-related correspondence to OSHA with OSH, the General Counsel at Headquarters, managing counsels, field offices, and Senior Field Safety and Health.

*[Revise the title and text of renumbered 4-2.9 (current 5-2.11) to read as follows:]*

#### **4-2.9 Senior Field Safety and Health**

Senior Field Safety and Health personnel will oversee the citation management process within their areas. Senior Field Safety and Health personnel:

- Identify facilities, program areas, and procedures within their areas that require improvement, and notify management.
- Support implementation of nationally targeted efforts to improve program areas and procedures.
- Before transmittal, coordinate all citation-related correspondence to OSHA with OSH, the General Counsel at Headquarters, and with their area Legal Department staff representative.

*[Revise the title of renumbered 4-3 to read as follows:]*

#### **4-3 OSHA Citation Management in SHMT**

*[Revise the title and text of renumbered 4-3.1 to read as follows:]*

##### **4-3.1 About SHMT**

The Safety and Health Management Tool (SHMT) is a real-time application that safety specialists use to record OSHA inspection and citation information. Once safety specialists digitally enter key information from OSHA citations, the information is made electronically available in a series of views, reports, and charts. SHMT users with authorized access may view the data or print the presentation-quality reports and charts. The views, reports, and charts present the inspection information in logical, easy-to-understand formats that simplify analyzing the data.

The benefit of using SHMT is to provide quick and reliable access to OSHA inspection information so that managers:

- Address citation settlement promptly.
- Ensure prompt abatement of hazards.
- See the types of citations their facilities or like facilities receive and take appropriate preventive or corrective action at their facilities.
- May identify trends in the OSHA citations and develop action plans to prevent similar citations at like facilities.

SHMT also allows the Postal Service to maintain an accurate electronic record of OSHA citations.

##### **4-3.2 Access**

*[Revise the text of renumbered 4-3.2 to read as follows:]*

The opening inspection screen shows the main view of the citation data, year to date, and provides:

- A list of inspections by area and access to the full text of each inspection report.
- Access to data-entry forms for new citations by:
  - Clicking the *Audit* tab at left on the home page;
  - Then clicking *Inspection Management*; and then
  - Clicking *Inspections*.

To locate the applicable OSHA inspection, use the search option to view details of each violation associated with the citation. To review entries, select report tabs located at the bottom of the page.

For help, contact Senior Field Safety or local Field Safety.



176 281 7963	to	7999	219 568 7435	to	7456	252 612 3683	to	3699	258 405 4200	to	4299
176 731 6586	to	6599	219 568 7469	to	7487	252 469 2125	to	2199	258 405 4600	to	4699
178 254 5000	to	9999	<b>221 316 5757</b>	<b>to</b>	<b>5799</b>	252 833 3286	to	3297	258 405 5600	to	5699
178 881 9900	to	9999	223 476 3914	to	3999	253 470 3948	to	3999	258 405 5700	to	5799
<b>180 031 2089</b>	<b>to</b>	<b>2098</b>	223 565 4921	to	4957	253 565 7400	to	7499	258 405 5800	to	5899
180 403 7723	to	7741	223 565 4979	to	4999	254 252 2800	to	2899	258 405 5900	to	5999
180 428 4580	to	0599	224 636 4745	to	4765	254 252 2900	to	2999	258 405 6000	to	6099
182 368 7544	to	0599	224 636 4776	to	4799	254 252 3000	to	3099	258 405 6100	to	6199
182 475 3229	to	3258	224 636 4855	to	4885	254 252 3100	to	3199	258 405 6200	to	6299
182 475 3904	to	3933	224 636 4932	to	4948	254 252 3200	to	3299	258 405 6300	to	6399
182 631 0031	to	0099	224 636 4950	to	4962	254 252 3300	to	3399	258 405 6400	to	6499
182 911 6539	to	6600	224 636 4985	to	4999	254 252 3400	to	3499	258 405 6800	to	6899
184 218 2760	to	2799	224 723 0757	to	0799	254 252 3500	to	3599	258 405 6900	to	6999
185 828 1474	to	1499	224 730 2207	to	2299	254 252 3600	to	3699	258 405 7000	to	7099
186 132 7583	to	0599	225 970 0500	to	0599	254 252 3700	to	3799	258 405 7100	to	7199
186 629 0589	to	0599	225 970 0600	to	0699	254 252 3800	to	3899	258 405 7200	to	7299
187 184 6177	to	0199	225 970 0700	to	0799	254 252 3900	to	3999	258 405 7300	to	7399
187 323 8200	to	8299	227 033 8679	to	8699	254 252 4000	to	4099	258 405 7400	to	7499
187 441 6080	to	6099	227 275 9400	to	9999	254 252 4100	to	4199	258 405 7800	to	7899
188 831 6774	to	6799	228 463 2456	to	2499	254 252 4200	to	4299	258 405 7900	to	7999
188 835 6370	to	6399	228 510 4852	to	4899	254 252 4300	to	4399	258 405 8000	to	8099
189 083 1064	to	1099	229 462 8451	to	8475	254 252 4400	to	4499	258 405 8100	to	8199
189 660 9583	to	9599	229 668 5977	to	5999	254 252 4500	to	4599	258 405 8200	to	8299
<b>191 179 0377</b>	<b>to</b>	<b>0399</b>	229 923 9176	to	9199	254 252 4600	to	4699	258 405 8300	to	8399
192 050 5762	to	5781	229 924 6696	to	6699	254 252 4700	to	4799	258 405 8400	to	8499
194 456 8600	to	0699	<b>230 051 9500</b>	<b>to</b>	<b>9999</b>	254 252 4800	to	4899	258 405 8500	to	8599
195 194 6881	to	6899	236 366 2431	to	2499	254 252 4900	to	4999	258 405 8600	to	8699
195 874 1112	to	1199	236 607 6882	to	6899	254 565 7607	to	7700	258 405 8700	to	8799
196 979 0524	to	0599	236 660 5853	to	5872	254 907 1203	to	1299	258 405 8800	to	8899
197 244 6100	to	6199	239 322 5200	to	5299	255 185 9527	to	9599	258 405 8900	to	8999
197 244 6300	to	6399	239 322 5400	to	5499	255 397 1557	to	1576	258 405 9600	to	9699
197 244 6400	to	6499	239 322 5600	to	5699	255 425 2989	to	2998	258 405 9700	to	9799
197 244 6500	to	6599	239 322 5800	to	5899	255 728 6412	to	6499	258 405 9800	to	9899
197 244 6600	to	6699	239 322 5900	to	5999	255 728 9842	to	9899	258 405 9900	to	9999
197 244 6700	to	6799	239 607 4783	to	4799	256 134 9833	to	9839	259 014 9989	to	9999
197 244 6800	to	8999	<b>240 593 1879</b>	<b>to</b>	<b>1899</b>	256 134 9840	to	9849	259 062 4788	to	4798
198 285 2556	to	2566	242 591 2048	to	2099	256 134 9850	to	9859	259 218 1400	to	1499
199 105 0778	to	0799	242 735 0388	to	0398	256 134 9860	to	9869	259 218 1500	to	1599
199 678 2968	to	2999	242 951 7276	to	7299	256 134 9870	to	9879	259 218 1600	to	1699
<b>202 748 5133</b>	<b>to</b>	<b>5199</b>	243 535 6370	to	6399	256 134 9880	to	9889	259 590 5654	to	5699
202 748 5245	to	5299	244 004 9985	to	9999	256 134 9890	to	9899	259 670 8268	to	8299
202 748 5300	to	5399	244 004 9985	to	9999	256 247 6900	to	6999	259 835 6238	to	6399
202 748 5400	to	5499	244 268 9765	to	9799	256 550 5536	to	5545	259 835 6701	to	6799
203 256 1240	to	1299	244 347 4471	to	4499	256 799 2257	to	2299	<b>260 224 4600</b>	<b>to</b>	<b>4699</b>
204 230 3577	to	3595	249 056 1551	to	1599	257 154 8763	to	8799	260 224 5941	to	5999
205 019 0174	to	0199	249 336 9438	to	9499	257 154 8800	to	8899	260 310 2821	to	2899
206 936 3184	to	3199	249 399 4000	to	4099	257 765 4567	to	4599	260 452 0010	to	0022
207 196 9900	to	9999	249 399 4100	to	4199	257 765 4610	to	4696	260 452 0049	to	4299
207 204 0700	to	0799	249 399 4200	to	4299	257 765 4737	to	4799	260 553 8200	to	8299
207 204 0800	to	0899	249 399 4300	to	4399	257 792 7800	to	7889	260 553 8600	to	8699
207 514 3857	to	3899	249 399 4400	to	4499	257 792 7900	to	7999	260 553 9600	to	9799
208 556 4707	to	4799	249 399 4500	to	4599	257 792 8000	to	8099	260 553 9800	to	9899
<b>210 057 4038</b>	<b>to</b>	<b>4047</b>	249 399 4600	to	4699	257 856 9863	to	9899	260 553 9900	to	9999
210 221 0548	to	0599	249 399 4700	to	4799	258 103 1773	to	1782	260 761 1603	to	1662
214 061 4711	to	4724	249 399 4800	to	4899	258 405 1800	to	1899	261 183 2100	to	2299
214 303 6311	to	6325	249 399 4900	to	4999	258 405 1900	to	1999	261 426 0408	to	0499
214 303 6239	to	6258	<b>250 159 7502</b>	<b>to</b>	<b>7599</b>	258 405 3300	to	3399	262 082 8000	to	8099
214 877 4251	to	4273	250 566 9644	to	9699	258 405 3400	to	3499	262 082 8100	to	8199
215 252 3918	to	3992	250 661 8425	to	8499	258 405 3500	to	3599	262 082 8200	to	8299
<b>217 585 1400</b>	<b>to</b>	<b>1499</b>	251 335 5731	to	5799	258 405 3700	to	3799	262 082 8300	to	8399
218 698 2157	to	2199	251 379 2380	to	2399	258 405 3800	to	3899	262 082 8400	to	8499
218 746 0800	to	0899	252 005 7626	to	7699	258 405 3900	to	3999	262 288 7302	to	7399
219 095 0100	to	0399	252 421 8401	to	8499	258 405 4000	to	4099	262 288 7400	to	7499
219 389 1885	to	1899	252 464 2810	to	2899	258 405 4100	to	4199	262 288 9900	to	9999



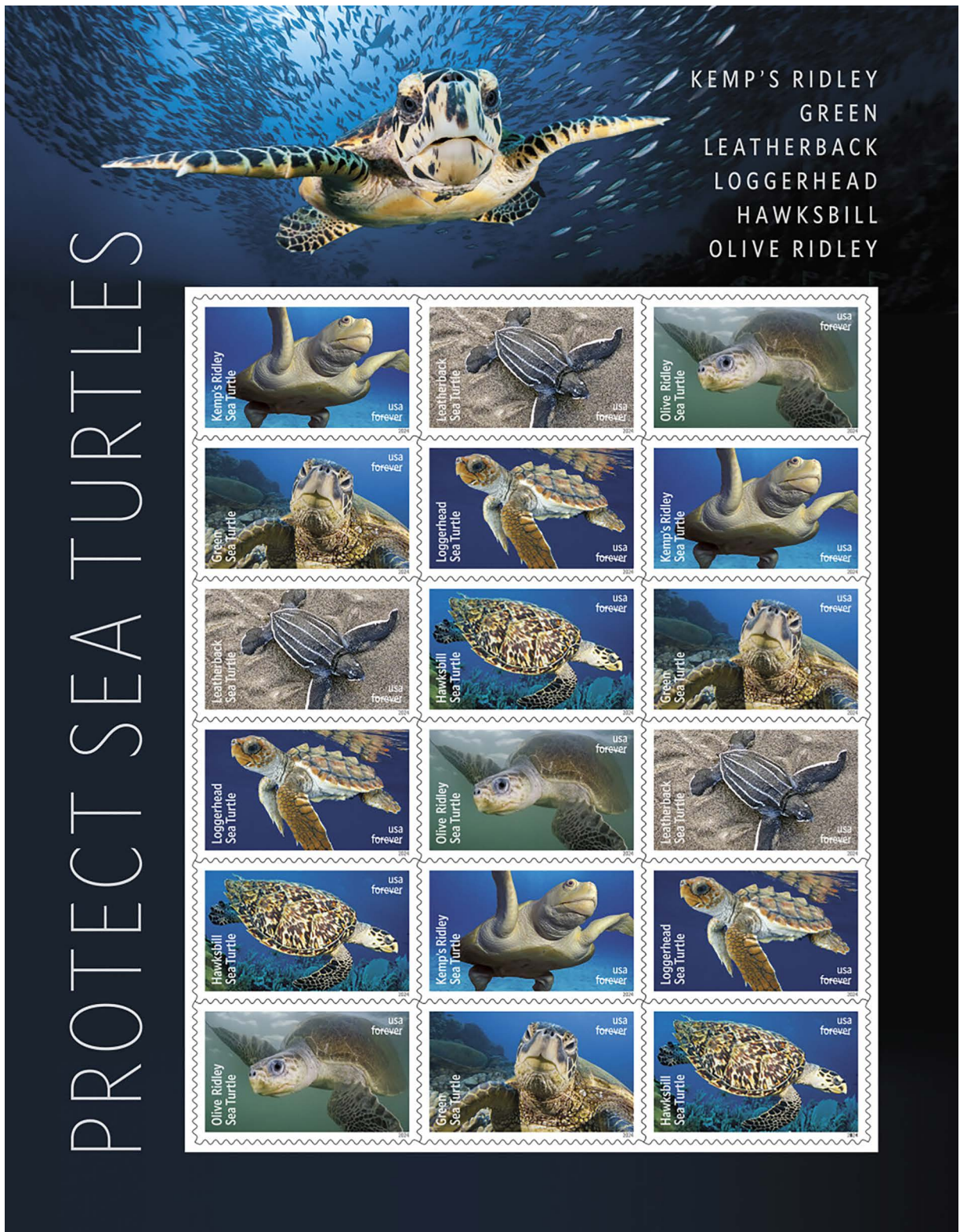
262 337 2600	to	2699	262 337 9000	to	9099	273 775 7700	to	7899	395 343 3264	to	3299
262 337 2700	to	2700	262 337 9100	to	9199	273 882 1913	to	1998	395 373 3035	to	3099
262 337 2800	to	2800	262 337 9200	to	9299	274 750 0300	to	0400	395 396 9649	to	9799
262 337 2900	to	2900	262 337 9300	to	9399	274 782 0549	to	0599	395 970 3240	to	3299
262 337 3000	to	3099	262 337 9400	to	9499	279 517 9330	to	9399	397 622 4054	to	4099
262 337 3100	to	3199	262 337 9500	to	9599	279 517 9594	to	9599	397 819 8902	to	8999
262 337 3200	to	3299	262 337 9600	to	9699	279 517 9623	to	9699	398 149 7200	to	7699
262 337 3300	to	3399	262 337 9700	to	9799	<b>282 667 2500 to 4999</b>			399 070 0872	to	0899
262 337 3400	to	3499	262 337 9800	to	9899	<b>302 000 0000 to 9999</b>			399 156 7119	to	7199
262 337 3500	to	3599	262 337 9900	to	9999	<b>349 746 2056 to 2099</b>			399 203 5064	to	5099
262 337 3600	to	3699	262 472 3188	to	3199	<b>350 518 7350 to 7374</b>			399 296 9910	to	9999
262 337 3700	to	3799	262 472 3200	to	3299	<b>360 011 1690 to 1699</b>			399 396 8935	to	8999
262 337 3800	to	3899	262 546 3100	to	3199	360 168 6008	to	6099	399 792 7775	to	7799
262 337 3900	to	3999	262 546 3200	to	3299	360 173 8800	to	8899	399 792 8300	to	8399
262 337 4000	to	4099	262 546 3300	to	3399	360 324 2326	to	2399	<b>400 427 1051 to 1999</b>		
262 337 4100	to	4199	262 546 3400	to	3499	362 861 3064	to	3099	401 045 1505	to	1549
262 337 4200	to	4299	262 546 3500	to	3599	<b>373 006 2176 to 2199</b>			401 045 1571	to	1599
262 337 4300	to	4399	262 546 3600	to	3699	374 768 2600	to	2699	401 294 2700	to	2799
262 337 4400	to	4499	262 546 3900	to	3999	375 169 4400	to	4599	401 310 9505	to	9599
262 337 4500	to	4599	262 546 4300	to	4399	375 829 3400	to	3499	401 382 5312	to	5399
262 337 4600	to	4699	262 546 4400	to	4499	375 851 9100	to	9199	402 578 7876	to	7899
262 337 4700	to	4799	262 546 4500	to	4599	376 196 0911	to	0999	403 125 6744	to	6799
262 337 4800	to	4899	262 546 4600	to	4699	378 085 3679	to	3699	403 260 7000	to	7499
262 337 4900	to	4999	262 546 4700	to	4799	378 351 1063	to	1099	403 280 6470	to	6499
262 337 5000	to	5099	262 546 4800	to	4899	379 843 5100	to	5199	403 685 8600	to	8699
262 337 5100	to	5199	262 546 4900	to	4999	<b>380 093 9600 to 9699</b>			404 003 0300	to	0399
262 337 5200	to	5299	262 546 7100	to	7199	380 165 1165	to	1199	404 041 8838	to	8899
262 337 5300	to	5399	262 546 7200	to	7299	381 325 4500	to	4599	404 071 4268	to	4299
262 337 5400	to	5499	262 546 7300	to	7399	381 604 2510	to	2699	404 347 5356	to	5399
262 337 5500	to	5599	262 546 7400	to	7499	381 645 9525	to	9599	404 347 5548	to	5599
262 337 5600	to	5699	262 546 9800	to	9899	383 314 3968	to	3999	404 726 4500	to	4599
262 337 5700	to	5799	262 546 9900	to	9999	383 892 1000	to	1344	404 961 5001	to	5199
262 337 5800	to	5899	262 567 1788	to	1799	383 892 1382	to	1399	405 325 0188	to	0198
262 337 5900	to	5999	263 254 2500	to	2500	384 925 3641	to	3654	406 009 4587	to	4599
262 337 6000	to	6099	263 340 0000	to	0099	385 568 2331	to	2399	406 260 6830	to	6899
262 337 6100	to	6199	263 340 0100	to	0199	385 599 7554	to	7575	406 459 6641	to	6999
262 337 6200	to	6299	263 340 0500	to	0599	385 774 2024	to	2099	406 733 3000	to	3999
262 337 6300	to	6399	263 340 0600	to	0699	386 624 1412	to	1599	407 545 1557	to	1599
262 337 6400	to	6499	263 340 2700	to	2799	386 883 8936	to	8999	407 594 0412	to	0599
262 337 6500	to	6599	263 340 2800	to	2899	387 314 5574	to	5599	407 692 9100	to	9299
262 337 6600	to	6699	263 340 3000	to	3099	387 837 6300	to	6399	407 959 2190	to	2199
262 337 6700	to	6799	264 341 2360	to	2399	388 828 0656	to	0699	408 265 2275	to	2288
262 337 6800	to	6899	264 380 4000	to	4099	389 696 2400	to	2799	408 499 7700	to	7799
262 337 6900	to	6999	264 380 4100	to	4199	389 846 3104	to	3135	408 499 7900	to	7999
262 337 7000	to	7099	264 799 6049	to	6099	389 846 3145	to	3195	408 682 8484	to	8599
262 337 7100	to	7199	264 860 7832	to	7868	389 887 9211	to	9230	408 698 7015	to	7099
262 337 7200	to	7299	265 127 3658	to	3699	389 887 9234	to	9299	409 072 3941	to	3999
262 337 7300	to	7399	265 380 7111	to	7137	<b>390 001 3182 to 3199</b>			<b>410 491 2311 to 2399</b>		
262 337 7400	to	7499	265 444 4762	to	4799	390 001 3500	to	3699	410 694 8400	to	8599
262 337 7500	to	7599	265 548 7074	to	7099	390 545 5974	to	5999	410 775 1500	to	1599
262 337 7600	to	7699	266 106 0000	to	2499	391 104 6146	to	6199	410 795 7927	to	7999
262 337 7700	to	7799	266 129 5809	to	5899	391 574 1466	to	1499	410 867 0917	to	0966
262 337 7800	to	7899	266 673 0000	to	2499	391 783 3020	to	3599	410 867 0970	to	0999
262 337 7900	to	7999	266 749 7900	to	7999	391 792 6100	to	6199	411 868 1023	to	1199
262 337 8000	to	8099	266 868 0952	to	0999	392 668 2956	to	2999	411 922 2322	to	2399
262 337 8100	to	8199	266 868 1028	to	1099	392 854 8500	to	8899	412 193 0900	to	0999
262 337 8200	to	8299	266 868 1100	to	1199	393 584 7566	to	7699	412 395 8599	to	8699
262 337 8300	to	8399	266 868 1200	to	1299	393 650 0074	to	0099	412 485 6500	to	6599
262 337 8400	to	8499	267 296 1237	to	1299	393 838 8316	to	8499	412 485 6610	to	6699
262 337 8500	to	8599	267 324 8946	to	8998	393 893 6007	to	6099	412 885 5953	to	5999
262 337 8600	to	8699	268 072 1203	to	1299	394 126 6907	to	6999	414 193 3608	to	3674
262 337 8700	to	8799	<b>271 660 4333 to 4400</b>			394 189 0405	to	0599	414 193 3677	to	3699
262 337 8800	to	8899	273 520 0000	to	9999	394 822 3243	to	3278	414 411 7348	to	7399
262 337 8900	to	8999	273 520 6000	to	8999	394 990 1810	to	1899	414 640 0757	to	0799

414 965 1727	to	1799	436 160 6441	to	6499	458 671 8721	to	8798	476 331 2480	to	2499
417 302 8104	to	8199	437 316 7115	to	7199	458 847 5044	to	5999	477 289 8601	to	8699
417 387 6532	to	6599	437 427 0500	to	3499	459 274 7624	to	7699	477 681 5206	to	5299
417 496 6800	to	6999	439 179 2300	to	2399	459 365 5432	to	5499	478 010 4243	to	4268
417 871 9250	to	9299	439 310 0458	to	0499	459 378 5764	to	5799	478 010 4270	to	4291
417 930 9533	to	9599	<b>440 698 1947</b>	<b>to</b>	<b>1999</b>	459 472 4816	to	4999	478 450 5071	to	5099
418 164 6500	to	6799	440 858 6300	to	6399	<b>460 349 6878</b>	<b>to</b>	<b>6899</b>	478 469 7838	to	7858
418 423 9863	to	9899	440 858 6420	to	7299	460 550 1909	to	1999	478 469 7883	to	7899
418 633 5922	to	5999	441 199 1655	to	1699	460 997 5234	to	5299	479 280 9800	to	9899
418 719 8520	to	8599	443 127 3648	to	3699	461 973 6443	to	6499	479 365 9116	to	9176
418 744 2235	to	2299	443 127 4000	to	4099	462 152 0107	to	0299	479 412 9900	to	9999
418 962 2848	to	2899	443 673 7900	to	7999	462 274 1072	to	1099	479 667 6190	to	6199
419 543 0286	to	0299	443 800 9335	to	9399	462 277 8373	to	8399	479 748 9680	to	9699
419 730 0300	to	0399	444 382 8822	to	8899	462 554 6051	to	6099	479 860 7000	to	7199
<b>420 277 0015</b>	<b>to</b>	<b>0049</b>	444 390 1667	to	1699	463 011 5529	to	5540	<b>480 526 2000</b>	<b>to</b>	<b>2099</b>
420 599 0734	to	0798	444 457 3854	to	3899	463 176 4115	to	4199	480 640 6330	to	6399
420 661 4115	to	4199	<b>450 048 4173</b>	<b>to</b>	<b>4199</b>	463 176 4229	to	4299	480 658 0568	to	0599
420 758 9500	to	9699	450 048 4442	to	4699	463 185 2600	to	2799	480 689 5100	to	5199
420 969 3951	to	3971	450 560 5173	to	5199	463 227 7711	to	7799	481 072 9463	to	9499
420 969 3973	to	3999	450 620 3077	to	3099	463 414 4869	to	4899	481 673 0074	to	0095
421 116 3565	to	3599	450 620 3135	to	3199	463 808 3484	to	3499	482 527 1500	to	1599
421 130 9300	to	9399	450 780 2716	to	2799	463 945 7400	to	7899	482 541 5255	to	5299
421 313 4500	to	4999	450 801 2700	to	2799	464 629 9000	to	9399	482 729 6800	to	6899
421 364 5537	to	5599	451 109 2967	to	2984	464 711 4332	to	4399	483 363 7207	to	7299
421 656 2609	to	2699	451 115 4110	to	4125	465 692 3963	to	3999	483 402 2356	to	2399
421 988 9700	to	9799	451 115 4127	to	4199	465 698 8300	to	8599	483 486 5100	to	5199
422 172 4667	to	4699	451 746 0700	to	0799	465 743 7745	to	7799	483 632 1521	to	1599
422 484 4212	to	4299	452 265 0074	to	0099	466 798 6056	to	6067	483 632 2600	to	2799
422 556 1270	to	1299	452 265 0246	to	0299	467 147 4300	to	4399	483 849 1615	to	1699
422 587 7024	to	7099	452 265 0335	to	0999	468 079 5782	to	5799	484 174 4803	to	5299
422 819 7533	to	7599	452 509 1169	to	1199	469 067 2817	to	2899	484 323 8900	to	9199
422 842 5073	to	5087	452 855 6471	to	6499	469 127 8000	to	8199	484 680 5000	to	5038
422 907 7563	to	7599	452 890 4679	to	4799	469 213 0359	to	0399	484 680 5040	to	5074
424 500 6050	to	6099	452 900 8215	to	8238	469 213 0500	to	0599	484 680 5077	to	5099
424 641 8500	to	8599	453 117 9146	to	9199	469 561 8011	to	8099	485 029 4913	to	4999
424 871 6600	to	6699	453 334 3631	to	3699	469 658 1961	to	1999	486 176 0600	to	0699
425 298 2352	to	2399	453 603 7841	to	7891	469 666 9900	to	9999	486 559 7555	to	7599
425 418 4269	to	4299	453 650 1140	to	1199	469 678 1900	to	1999	486 696 3023	to	3199
425 418 4405	to	4499	453 741 1300	to	1399	469 781 4900	to	4999	488 173 7900	to	7999
426 547 4566	to	4599	454 013 2919	to	2999	469 947 6960	to	6999	488 206 4100	to	4199
427 412 6337	to	6499	454 186 2411	to	2499	<b>470 755 5800</b>	<b>to</b>	<b>5818</b>	488 226 0200	to	0299
427 481 0900	to	0999	454 268 4883	to	4899	471 918 0300	to	0999	488 709 3906	to	3999
428 027 2742	to	2752	454 302 5400	to	5499	471 985 2408	to	2419	488 855 8359	to	8399
429 474 4172	to	4199	454 490 8300	to	8399	472 191 6700	to	6799	489 181 8963	to	8999
429 889 2900	to	2999	454 547 7434	to	7499	472 270 2555	to	2599	489 223 2000	to	2099
<b>430 150 4401</b>	<b>to</b>	<b>4599</b>	454 922 4867	to	4895	472 987 0213	to	0241	489 311 1930	to	1999
430 172 9800	to	9899	455 221 1348	to	1499	472 987 0290	to	0299	489 318 6200	to	6300
430 177 1900	to	2099	455 364 2147	to	2199	473 151 2069	to	2199	489 384 0027	to	0099
430 444 9500	to	9699	455 399 5400	to	5499	473 666 9138	to	9199	489 427 0658	to	0899
430 664 4070	to	4099	455 476 0676	to	0699	473 952 3429	to	3499	489 997 5252	to	5299
432 168 8419	to	8499	455 543 0618	to	0699	474 108 5402	to	5499	<b>490 669 5850</b>	<b>to</b>	<b>6099</b>
432 708 6800	to	6999	456 410 9006	to	9099	474 356 5193	to	5299	490 717 7080	to	7099
432 744 1544	to	1599	456 470 4146	to	4299	474 949 3366	to	3399	490 721 6000	to	6099
432 995 9775	to	9799	456 619 4460	to	4499	475 134 9362	to	9399	490 793 1500	to	2099
433 003 5800	to	5899	457 333 2686	to	2699	475 167 9667	to	9699	490 886 8171	to	8199
433 757 3047	to	3099	457 729 1767	to	1777	475 319 3415	to	3499	490 977 9221	to	9240
433 765 4003	to	4099	457 937 8615	to	8699	475 319 3649	to	3799	491 258 8100	to	9099
434 482 7060	to	7199	458 028 9810	to	9899	475 340 6400	to	6599	491 567 1376	to	1399
434 513 2386	to	2399	458 057 2712	to	2999	475 424 8410	to	8499	492 254 4800	to	4899
434 968 3076	to	3092	458 069 9537	to	9599	475 629 9156	to	9199	492 283 5100	to	5199
435 303 1831	to	1842	458 069 9665	to	9699	475 850 6101	to	6199	492 610 6813	to	6899
435 303 1986	to	1999	458 337 5222	to	5299	475 875 2500	to	2599	493 394 5568	to	5599
435 666 6092	to	6399	458 354 7653	to	7999	476 169 8264	to	8299	493 470 2562	to	2599
436 082 6400	to	6899	458 671 8678	to	8699	476 189 3000	to	3499	493 473 7700	to	7799

493 716 2153	to	2199	513 539 9985	to	9999	618 840 9200	to	9299	640 289 7700	to	7999
494 206 2972	to	2999	513 606 5459	to	5490	619 551 7229	to	7299	641 170 4420	to	4499
494 217 3446	to	3999	513 812 1751	to	1799	619 859 3000	to	3099	641 318 3133	to	3199
494 224 0500	to	0599	514 103 3600	to	3699	<b>620 073 9400 to 9499</b>			641 378 6500	to	6999
495 145 0600	to	0699	514 103 3700	to	3799	621 614 7907	to	7930	641 383 8739	to	8799
496 209 7425	to	7499	514 103 3800	to	3899	621 614 7932	to	7999	641 877 3187	to	3299
496 213 8728	to	8799	<b>600 645 3223 to 3299</b>			621 648 8021	to	8199	641 877 3310	to	3399
496 474 5226	to	5248	601 339 1200	to	1399	621 648 8500	to	8599	642 355 8094	to	8199
497 053 8517	to	8699	601 653 5884	to	5899	621 904 8351	to	8599	642 355 8308	to	8999
497 854 8673	to	8699	601 661 7700	to	7799	621 916 1978	to	1989	642 900 0018	to	0099
498 449 8888	to	8899	601 682 5343	to	5399	622 989 8032	to	8099	643 030 6254	to	6299
498 929 8285	to	8499	601 928 1600	to	1699	623 076 9300	to	9399	644 066 0882	to	0899
498 936 5310	to	5399	602 512 2972	to	2999	623 819 5006	to	5099	644 069 0600	to	0699
499 016 5425	to	5499	602 555 2400	to	2799	623 895 8200	to	8399	644 077 7506	to	7699
499 440 8575	to	8899	602 829 7061	to	7099	623 917 0000	to	0099	644 085 8157	to	8199
499 731 6717	to	6799	603 483 9572	to	9599	623 917 0200	to	0299	644 112 9839	to	8899
<b>500 064 1858 to 1869</b>			603 490 7200	to	7299	624 468 5288	to	5299	644 373 9083	to	9099
500 070 5725	to	7799	603 678 7100	to	7199	624 665 3162	to	3198	644 380 1460	to	1499
501 058 0016	to	0026	603 678 7662	to	7699	625 088 6735	to	6799	644 733 4715	to	4799
501 331 0300	to	0399	603 678 7902	to	7999	625 916 9500	to	9799	644 900 9712	to	9799
501 460 0977	to	0999	603 678 8418	to	8499	625 968 8956	to	8999	644 901 0109	to	1299
502 227 7645	to	7699	603 678 8700	to	9999	627 005 3938	to	3999	644 901 1325	to	1399
502 424 0200	to	0499	604 086 0880	to	0899	627 384 3907	to	4099	644 923 6800	to	7799
502 424 0600	to	0699	604 349 1414	to	1499	627 496 7549	to	7599	644 932 4655	to	4699
502 496 6923	to	6999	604 503 7776	to	7799	627 708 3605	to	3699	645 318 7240	to	7499
503 003 2700	to	2899	605 520 9037	to	9099	627 776 2500	to	2599	645 333 1766	to	1799
503 194 5144	to	5153	605 685 4010	to	4099	628 226 3100	to	3199	645 790 8632	to	8699
503 790 9922	to	9948	605 988 6467	to	6499	628 814 4702	to	4799	645 821 0657	to	0699
504 045 4030	to	4099	607 689 7951	to	7960	628 851 9689	to	9699	645 930 7948	to	7999
504 166 0200	to	0599	607 728 1276	to	1299	629 510 7200	to	7299	645 975 0737	to	0762
504 240 1062	to	1399	608 727 7100	to	7199	629 964 4200	to	4294	646 242 6200	to	6299
504 805 3300	to	3499	608 727 7273	to	7599	<b>630 389 3056 to 3071</b>			646 270 7639	to	7799
505 096 0662	to	0699	608 813 9950	to	9999	630 463 0588	to	0599	646 798 4000	to	4999
505 893 7739	to	7799	609 067 5325	to	5399	631 459 9117	to	9199	647 048 7035	to	7099
505 893 7800	to	7999	609 067 5488	to	5499	631 762 9325	to	9399	647 049 2900	to	2999
506 124 0800	to	0999	609 067 5600	to	5699	632 217 4933	to	4999	647 398 8300	to	8399
506 165 7027	to	0099	609 289 6123	to	6199	632 500 0000	to	640 3999	647 398 8481	to	8499
506 502 5209	to	5299	609 438 4400	to	4499	633 110 4165	to	4199	647 437 3000	to	4999
506 756 1682	to	1699	609 493 1100	to	1199	633 110 4303	to	4499	647 811 2188	to	2199
506 756 1700	to	1799	609 766 8091	to	8999	633 438 6429	to	6599	648 009 6057	to	6099
506 756 1800	to	1899	609 825 4100	to	4115	633 588 7173	to	7182	648 163 5300	to	5499
506 836 5326	to	5399	609 884 2981	to	2999	634 725 0700	to	0799	648 722 5283	to	5299
508 488 6226	to	6299	609 893 1000	to	1099	634 803 3239	to	3299	648 892 3164	to	3199
508 789 8332	to	8399	<b>610 092 3200 to 3299</b>			634 807 2474	to	2499	649 100 3989	to	3999
508 789 8400	to	8499	610 582 4200	to	4299	634 827 5900	to	5999	649 647 0370	to	0399
509 909 0425	to	0435	611 879 6939	to	6999	634 886 3428	to	3499	649 647 0522	to	0599
<b>510 150 2400 to 2499</b>			612 291 8013	to	8099	635 559 3449	to	3499	649 647 5237	to	5399
510 381 3200	to	3299	612 751 5171	to	5199	636 289 6214	to	6299	649 647 9100	to	9299
510 587 9500	to	9599	612 751 5226	to	5299	636 634 8007	to	8042	649 666 7800	to	8299
510 587 9659	to	9699	612 751 6083	to	6099	637 150 1200	to	1299	<b>650 114 7707 to 7719</b>		
510 269 9770	to	9999	612 751 6268	to	6299	637 562 5828	to	5899	650 130 3400	to	3599
511 021 5042	to	5099	612 751 6572	to	6599	638 042 1647	to	1699	650 213 0406	to	0499
511 021 5100	to	5199	612 774 2111	to	2199	638 049 4984	to	4999	650 555 1749	to	1799
511 468 1747	to	1799	612 774 2254	to	2299	638 318 1115	to	1199	650 564 1900	to	1999
511 844 0100	to	0199	612 774 2500	to	2599	638 318 1453	to	1499	650 627 4212	to	4299
511 844 0340	to	0399	614 469 0979	to	0999	638 885 0000	to	0299	650 736 2043	to	2099
512 805 3913	to	3919	614 474 3000	to	3099	638 903 4362	to	4373	650 739 1540	to	1699
513 046 0700	to	0726	614 521 3490	to	3499	639 415 1929	to	1999	651 741 4415	to	4499
513 149 0600	to	0699	614 645 1800	to	1899	639 415 2019	to	2099	651 882 2800	to	2899
513 445 3000	to	3199	614 832 1100	to	2099	639 420 6200	to	6299	652 754 6317	to	6399
513 466 2034	to	2044	615 017 7505	to	7599	639 469 3517	to	3799	653 131 4945	to	4999
513 539 9052	to	9099	617 711 6609	to	6699	639 605 2143	to	2199	653 426 3300	to	3399
513 539 9267	to	9299	617 760 5266	to	5299	639 657 8600	to	8799	653 455 4874	to	4899
513 539 9800	to	9899	617 813 3601	to	3699	<b>640 289 7500 to 7599</b>			654 238 0000	to	0399

654 404 3065	to	3092	682 956 6490	to	6599	701 499 2260	to	2299	740 918 5531	to	5549
654 962 2900	to	3199	682 956 6700	to	6799	701 503 2247	to	2299	741 037 8528	to	8551
655 103 5081	to	5199	682 965 1178	to	1199	701 541 2271	to	2299	742 030 6135	to	6149
655 523 2600	to	2999	682 965 1201	to	1299	701 553 6557	to	6599	742 033 2663	to	2674
656 305 2448	to	2499	683 118 2389	to	2399	701 578 7460	to	7469	742 040 3300	to	3309
657 347 4438	to	4999	683 378 2000	to	2099	701 578 7475	to	7499	742 112 8155	to	8199
657 710 8100	to	8999	683 378 2117	to	2299	701 601 3457	to	3499	742 151 5000	to	5014
657 780 0985	to	0999	683 415 1200	to	1499	701 605 5913	to	5999	742 191 4640	to	4649
658 586 1400	to	1499	683 444 8159	to	8199	701 695 3982	to	3999	742 192 5210	to	5224
658 877 8000	to	8199	685 154 7780	to	7789	701 695 4148	to	4199	742 222 9200	to	9210
658 880 8000	to	8199	685 297 7645	to	7699	701 695 4227	to	4299	742 228 9660	to	9669
659 398 7300	to	7399	685 623 5264	to	5299	701 708 1741	to	1799	742 247 6980	to	6989
659 706 8113	to	8199	685 650 9487	to	9499	701 736 3966	to	3999	742 290 0936	to	0950
659 846 7837	to	7899	685 669 4200	to	4299	701 772 0870	to	0899	742 302 7600	to	7699
<b>660 510 4100</b>	<b>to</b>	<b>4199</b>	685 757 8452	to	8499	701 838 2800	to	2899	742 305 3711	to	3799
660 673 0400	to	0599	686 071 2694	to	2799	701 941 0600	to	0699	742 305 3800	to	3899
661 488 5000	to	5099	686 176 3333	to	3354	702 171 1603	to	1699	742 305 3900	to	3999
661 609 9100	to	9199	686 372 3200	to	3299	702 195 5109	to	5199	742 305 4000	to	4099
661 716 9420	to	9499	686 644 5879	to	5899	702 254 9300	to	9399	742 305 4100	to	4199
661 906 6522	to	6599	686 899 1371	to	1399	702 264 7569	to	7599	<b>805 885 8411</b>	<b>to</b>	<b>8499</b>
662 021 8332	to	8399	686 931 7636	to	7699	702 519 0513	to	0524	806 087 1100	to	1499
662 068 0700	to	0899	687 601 0973	to	0999	702 713 1800	to	1809	806 268 9275	to	9299
662 553 0774	to	0799	687 614 6774	to	6799	702 821 5730	to	5799	806 534 3400	to	3477
663 078 7034	to	7099	688 120 9000	to	9999	702 821 5805	to	5899	807 342 3283	to	3399
663 763 5300	to	5399	688 314 3107	to	3191	702 844 6975	to	6994	808 086 7100	to	7199
663 883 7039	to	7499	<b>690 291 1361</b>	<b>to</b>	<b>1371</b>	702 846 6331	to	6399	808 090 3440	to	3499
663 938 9200	to	9299	690 788 2877	to	2899	702 848 3900	to	3999	808 325 5161	to	5699
664 253 8000	to	8499	690 893 5344	to	5399	702 857 7302	to	7499	808 784 8000	to	8299
664 656 3055	to	3099	690 893 5512	to	5599	702 878 0114	to	0199	<b>830 125 0672</b>	<b>to</b>	<b>0699</b>
665 174 6400	to	6499	690 904 1300	to	1599	703 364 1707	to	1799	830 602 5800	to	5999
665 274 8208	to	8299	690 941 6000	to	6199	<b>740 002 7710</b>	<b>to</b>	<b>7719</b>	830 610 3700	to	3799
665 669 5400	to	5499	691 313 6383	to	6399	740 037 6730	to	6800	830 983 3500	to	3599
666 132 8226	to	8299	691 313 6600	to	6699	740 119 2275	to	2284	830 983 3635	to	3699
666 696 2209	to	2299	691 582 8003	to	8099	740 130 6688	to	6698	831 354 1387	to	1399
666 696 2309	to	2399	691 664 1800	to	1999	740 144 2780	to	2795	831 815 8240	to	8299
667 032 9300	to	9399	691 664 2400	to	2499	740 241 9049	to	9099	832 525 3810	to	3899
667 729 5529	to	5599	692 727 9362	to	9399	740 252 9265	to	9294	833 159 1884	to	1899
668 383 8400	to	8699	692 798 1800	to	1899	740 255 1718	to	1799	833 456 2567	to	2599
<b>670 368 3400</b>	<b>to</b>	<b>3499</b>	693 249 0779	to	0799	740 274 2602	to	2619	833 566 3015	to	3071
670 369 7336	to	7399	693 249 0877	to	1699	740 277 0366	to	0392	834 130 5200	to	5299
670 750 7169	to	7199	693 445 0566	to	0999	740 332 7658	to	7671	834 316 5444	to	5499
671 046 6200	to	6399	693 448 8500	to	8999	740 348 6641	to	6658	834 354 8747	to	8766
671 251 5448	to	5499	693 645 9583	to	9599	740 351 4790	to	4799	834 354 8824	to	8838
671 926 5600	to	5799	693 965 4200	to	4299	740 374 7416	to	7499	835 269 5700	to	5799
672 444 2000	to	2999	695 741 2906	to	2999	740 470 2420	to	2443	835 496 7303	to	7399
672 828 3410	to	3499	695 947 8518	to	8599	740 514 0300	to	0499	835 539 5200	to	5999
673 167 5776	to	5799	696 662 8247	to	8299	740 523 7432	to	7449	835 813 3015	to	3099
675 464 3700	to	3799	697 447 8285	to	8296	740 535 1555	to	1580	837 672 8967	to	8999
675 464 4000	to	4199	698 042 4816	to	4899	740 557 3570	to	3579	837 784 3282	to	3299
676 365 5958	to	5999	698 131 2138	to	2157	740 650 4104	to	4140	838 176 8377	to	8399
676 669 1024	to	1099	698 227 0000	to	0099	740 684 0620	to	0800	838 518 1257	to	1299
677 126 6734	to	6799	<b>700 065 2570</b>	<b>to</b>	<b>2599</b>	740 701 6105	to	6114	839 718 8257	to	8299
677 333 9979	to	9999	700 065 4800	to	4899	740 705 9790	to	9799	<b>840 323 0600</b>	<b>to</b>	<b>0699</b>
677 466 1088	to	1099	700 190 3350	to	3359	740 726 6400	to	6500	840 875 6235	to	6299
678 071 4500	to	4799	700 228 6048	to	6099	740 748 8319	to	8329	840 910 0900	to	0999
678 096 7531	to	7599	700 650 0452	to	0499	740 765 3306	to	3399	841 349 5000	to	5099
679 909 2578	to	2599	700 666 1323	to	1349	740 774 8434	to	8499	841 805 7747	to	7899
<b>680 112 9565</b>	<b>to</b>	<b>9599</b>	700 786 9106	to	9142	740 779 4259	to	4299	841 805 7944	to	8099
680 244 0903	to	0999	700 859 0744	to	0758	740 786 1885	to	1899	842 226 0685	to	0695
680 412 6046	to	6099	701 028 6780	to	6899	740 790 5989	to	5999	842 685 4600	to	4699
680 761 6800	to	6899	701 213 3900	to	3999	740 803 4870	to	4879	842 685 4742	to	4999
681 677 0540	to	0699	701 267 2000	to	3999	740 820 4854	to	7836	842 860 0300	to	0399
682 070 1029	to	1099	701 335 7312	to	7399	740 827 7578	to	7594	842 898 5582	to	5599
682 956 6280	to	6299	701 369 2005	to	2050	740 917 7490	to	7499	843 062 7100	to	7199

843 077 6288	to	6299	864 520 6117	to	6136	907 815 0216	to	0257	919 915 2774	to	2787
843 077 6378	to	6399	865 151 0526	to	0599	908 622 4225	to	4235	<b>920 155 4662</b>	<b>to</b>	<b>4687</b>
843 758 5769	to	5778	865 500 4034	to	4099	908 936 9254	to	9299	920 309 9039	to	9199
843 786 2554	to	2699	865 883 6082	to	6099	909 066 4494	to	7499	920 771 5321	to	5399
845 656 8165	to	8199	866 004 3000	to	3999	909 067 7400	to	7499	920 857 5500	to	5899
845 727 2100	to	2199	866 442 4100	to	4899	909 100 1787	to	1799	920 864 3480	to	3499
845 746 2618	to	2635	867 366 9108	to	9118	909 100 1900	to	2099	920 963 4567	to	4599
846 390 7531	to	7599	867 633 7403	to	7499	909 355 0422	to	0499	921 333 7400	to	7499
846 918 0572	to	0599	867 737 5623	to	5699	909 568 8900	to	9099	921 477 3762	to	3799
847 237 7690	to	7699	868 169 4529	to	4599	909 568 9300	to	9499	922 278 1048	to	1399
847 284 2481	to	2499	868 173 8400	to	8599	909 725 7307	to	7399	922 280 2019	to	2099
847 374 7055	to	7065	868 514 9000	to	9099	909 833 0947	to	0999	922 280 2233	to	2299
847 374 7055	to	7065	868 566 9200	to	9299	<b>910 219 8631</b>	<b>to</b>	<b>8699</b>	922 773 0459	to	0499
847 636 5304	to	5399	869 200 0000	to	9999	910 265 1100	to	1199	923 032 7000	to	7399
847 700 5447	to	5499	869 387 1150	to	1199	910 471 7273	to	7299	923 045 3630	to	3699
847 723 7500	to	7599	869 505 3500	to	3599	910 536 2505	to	2599	923 484 3600	to	3699
849 485 3427	to	3499	869 523 7033	to	7099	910 958 7499	to	7599	923 493 9403	to	9599
849 520 9850	to	9899	869 566 6150	to	6167	911 140 1000	to	2199	923 493 9681	to	9699
849 608 1357	to	1399	869 776 8785	to	8786	911 245 2545	to	2599	923 604 4424	to	4499
849 792 2600	to	2699	869 800 0000	to	999 9999	911 268 9077	to	9099	923 810 7800	to	8299
<b>850 546 1862</b>	<b>to</b>	<b>1899</b>	<b>870 054 4814</b>	<b>to</b>	<b>4899</b>	911 400 8948	to	8999	924 252 1200	to	1299
851 143 6826	to	6844	870 491 4812	to	4849	911 508 1620	to	1799	924 252 1400	to	1499
851 209 9880	to	9899	870 536 5820	to	5829	911 509 9310	to	9399	924 533 0711	to	0799
851 928 9221	to	9299	870 541 7167	to	7239	911 523 3000	to	3999	924 533 2343	to	2399
852 589 6560	to	6599	870 575 8155	to	8999	912 057 9922	to	9999	924 533 2428	to	2499
853 049 3646	to	3699	870 589 0485	to	0494	912 882 0563	to	0899	924 685 1957	to	1999
854 304 4089	to	4999	870 691 7060	to	7099	913 605 2218	to	2299	924 946 6300	to	6699
854 529 2200	to	2299	872 028 4850	to	4899	913 709 2429	to	2499	925 333 5900	to	6099
854 532 0000	to	2999	872 029 9306	to	9399	913 818 3501	to	3999	925 336 2300	to	2399
855 001 6204	to	6249	872 078 3709	to	3799	914 063 4300	to	4399	926 432 5907	to	5999
855 319 9364	to	9399	872 100 0445	to	0459	914 346 7621	to	7644	926 436 3600	to	3699
855 361 3390	to	3399	<b>900 556 4178</b>	<b>to</b>	<b>4199</b>	914 453 1366	to	1399	927 765 6257	to	6299
856 226 0490	to	0499	900 845 0044	to	0099	914 529 6185	to	6299	928 197 8100	to	8199
856 656 5800	to	5999	900 936 0217	to	0299	914 896 4658	to	4699	928 197 8283	to	8299
856 752 0200	to	0299	900 936 0435	to	0499	915 187 8774	to	8779	928 856 2059	to	2068
857 111 1352	to	1399	901 058 5255	to	5280	915 300 2783	to	2799	<b>930 078 5800</b>	<b>to</b>	<b>5899</b>
857 279 3450	to	3499	901 273 1082	to	1099	915 546 6822	to	6999	930 219 1722	to	1799
857 843 4000	to	4099	901 287 5143	to	5199	915 646 5183	to	5199	930 335 7810	to	7819
858 124 7644	to	7699	901 291 2789	to	2799	915 671 3963	to	3980	931 097 9259	to	9299
858 756 3111	to	3299	901 525 7122	to	7199	915 671 3982	to	3999	931 156 1502	to	1579
859 063 8200	to	8699	902 089 1253	to	1299	915 675 2217	to	2299	931 156 1600	to	1625
859 190 0600	to	0644	902 198 9769	to	9799	916 440 3377	to	3399	931 156 1671	to	1699
859 437 5538	to	5599	902 948 1269	to	1299	916 670 6352	to	6399	932 506 6400	to	6599
859 811 2888	to	2899	902 985 0833	to	0899	916 682 5300	to	5399	932 732 1796	to	1799
859 855 8873	to	8999	903 370 6934	to	6999	916 694 1414	to	1499	932 827 9026	to	9099
<b>860 240 8520</b>	<b>to</b>	<b>8599</b>	904 600 6523	to	6599	916 703 0802	to	0821	932 957 2300	to	2399
860 275 3900	to	3999	904 892 0378	to	0399	917 089 0709	to	0799	933 060 6160	to	6189
860 518 9629	to	9699	904 892 0648	to	1299	917 089 0842	to	0899	933 387 2541	to	2561
860 600 0021	to	0999	905 056 2216	to	2299	917 216 2928	to	2999	933 760 3609	to	4199
861 158 2350	to	2599	905 510 6647	to	6799	917 370 6300	to	6499	933 894 0928	to	0999
861 367 5400	to	5499	905 510 6900	to	7099	917 486 4900	to	4999	934 018 2729	to	2741
861 637 6010	to	6099	905 794 0000	to	0199	918 460 0602	to	0699	934 180 0300	to	0399
861 979 7292	to	7499	905 794 0288	to	0299	918 951 7231	to	7299	934 236 3954	to	3999
862 216 6100	to	6199	905 873 6900	to	6999	919 519 2786	to	2799	934 622 8717	to	8999
862 263 9213	to	9299	905 873 7100	to	7299	919 536 0770	to	0799	935 216 0312	to	0399
862 271 0800	to	0999	905 880 8900	to	8999	919 814 3095	to	3199	935 843 2202	to	2247
862 271 5000	to	5099	905 889 7100	to	7199	919 889 5110	to	5134	936 024 8889	to	8899
863 871 5138	to	5199	906 158 1508	to	1599	919 889 5137	to	5176	936 339 4455	to	4499
863 949 5300	to	5399	906 558 8812	to	8899	919 889 5178	to	5199			
864 088 8200	to	8299	906 982 2214	to	2299	919 889 5030	to	5070			
864 426 3972	to	3999	907 725 8500	to	8599	919 889 5090	to	5099			



KEMP'S RIDLEY  
 GREEN  
 LEATHERBACK  
 LOGGERHEAD  
 HAWKSBILL  
 OLIVE RIDLEY

PROTECT SEA TURTLES



## Missing, Lost, or Stolen Canadian Money Order Forms

### Do Not Cash — Upon Receipt, Notify Local Postal Inspectors

Provide this listing to all Postal Service™ employees responsible for accepting and cashing postal money orders. Destroy all interim notices when the numbers listed appear in the *Postal Bulletin*. The new money order serial

numbers consist of the first 9 digits. The tenth digit is a check digit only.

Do not cash outdated money orders **104 151 601 to 692 600 000**. Advise holders to send invalid money orders to Canada Post Corporation, Ottawa, Canada K1A 0B1. Check for altered dollar amounts by holding money orders to the light.

719 869 731	to	9 760	728 382 331	to	2 480	734 797 201	to	7 320	741 764 431	to	4 520
<b>720 227 871</b>	<b>to</b>	<b>7 930</b>	728 702 338	to	2 400	734 939 611	to	9 640	742 178 834	to	8 880
720 227 949	to	7 960	728 915 371	to	5 850	734 950 111	to	0 170	742 325 500	to	5 520
720 368 543	to	8 570	728 953 141	to	3 410	735 120 331	to	0 840	742 325 668	to	5 700
720 392 151	to	2 570	728 954 280	to	4 310	735 283 008	to	3 020	742 408 771	to	8 830
720 556 491	to	6 640	729 169 081	to	9 140	735 293 131	to	3 220	742 512 120	to	2 150
720 558 621	to	8 650	729 363 841	to	3 870	735 635 010	to	5 040	742 684 849	to	4 890
720 575 361	to	5 570	729 682 891	to	3 190	735 783 961	to	3 990	742 839 553	to	9 630
720 590 152	to	0 179	729 838 940	to	9 070	735 803 401	to	3 430	742 913 668	to	3 700
721 638 331	to	9 170	729 839 101	to	9 130	736 005 420	to	5 440	742 917 287	to	7 296
721 815 391	to	5 420	<b>730 077 683</b>	<b>to</b>	<b>7 840</b>	736 366 021	to	6 110	742 921 891	to	1 980
721 969 713	to	9 740	730 109 847	to	9 880	736 624 456	to	4 500	742 983 631	to	3 810
722 072 137	to	2 160	730 373 761	to	3 850	736 670 851	to	1 060	743 020 021	to	0 170
722 378 265	to	8 280	730 501 951	to	2 130	736 767 061	to	7 090	743 206 491	to	6 500
722 413 990	to	4 004	730 519 379	to	9 470	736 767 093	to	7 120	743 235 992	to	6 050
722 764 948	to	4 980	730 569 278	to	9 360	736 982 191	to	2 370	743 940 631	to	0 900
722 825 840	to	5 889	730 711 711	to	1 740	736 982 551	to	2 730	743 978 011	to	8 070
723 153 841	to	3 850	730 722 991	to	3 230	737 110 141	to	0 170	744 234 751	to	4 780
723 237 616	to	7 630	730 845 970	to	5 990	737 185 501	to	5 710	744 499 591	to	9 680
723 331 081	to	1 110	730 888 291	to	8 320	737 317 321	to	7 350	744 626 901	to	6 910
723 496 443	to	6 470	730 927 591	to	7 680	737 517 781	to	7 840	745 388 794	to	8 910
723 967 291	to	7 320	731 307 914	to	7 930	737 628 181	to	8 210	746 446 806	to	6 820
724 655 196	to	5 340	731 402 431	to	2 460	737 634 258	to	4 270	746 818 351	to	8 410
724 711 441	to	1 500	731 407 232	to	7 320	738 361 971	to	1 980	747 245 266	to	5 280
724 711 538	to	1 560	731 588 301	to	8 340	738 447 601	to	7 660	747 364 813	to	4 830
724 793 221	to	3 250	731 767 273	to	7 320	738 648 355	to	8 450	747 501 434	to	1 450
724 908 109	to	8 120	731 781 061	to	1 120	738 849 811	to	9 900	747 739 891	to	0 070
724 937 461	to	7 670	731 837 821	to	7 910	738 892 270	to	2 290	748 148 649	to	8 760
725 163 118	to	3 151	731 841 377	to	1 450	738 997 259	to	7 380	748 259 960	to	9 970
725 202 735	to	2 750	732 018 481	to	8 600	739 161 451	to	1 540	748 565 162	to	5 280
725 398 591	to	8 800	732 067 972	to	8 370	739 219 381	to	9 440	748 874 988	to	5 030
725 464 591	to	4 920	732 188 649	to	8 670	739 740 151	to	0 180	749 137 381	to	7 410
725 475 321	to	5 330	732 193 460	to	3 470	739 793 491	to	3 520	749 190 192	to	0 210
725 711 057	to	1 070	732 201 241	to	1 390	739 793 527	to	3 550	749 685 421	to	5 450
725 738 581	to	8 730	732 220 431	to	0 440	739 942 621	to	2 650	749 846 791	to	6 850
725 981 311	to	1 430	732 355 201	to	5 380	739 999 231	to	9 320	749 993 131	to	3 580
725 987 835	to	7 880	732 472 320	to	2 560	<b>740 011 517</b>	<b>to</b>	<b>1 530</b>	<b>750 071 587</b>	<b>to</b>	<b>1 610</b>
726 060 811	to	0 900	732 541 605	to	1 620	740 030 701	to	0 970	750 408 167	to	8 183
726 391 970	to	2 520	732 572 221	to	2 490	740 261 740	to	1 820	750 438 421	to	8 501
726 484 771	to	4 800	732 586 479	to	6 710	740 265 811	to	6 290	750 743 911	to	4 030
726 493 351	to	5 300	732 994 037	to	4 080	740 299 111	to	9 170	750 779 118	to	9 400
726 504 031	to	4 063	733 163 449	to	3 460	740 299 231	to	9 260	750 910 981	to	1 010
726 504 070	to	4 090	733 297 171	to	7 290	740 329 266	to	9 320	750 960 841	to	0 900
726 504 331	to	4 390	733 446 631	to	7 110	740 889 081	to	9 090	751 296 211	to	6 240
726 563 701	to	4 060	733 474 665	to	4 770	741 010 421	to	0 530	751 539 121	to	9 180
726 599 371	to	9 460	733 704 482	to	4 570	741 113 041	to	3 370	751 541 311	to	1 790
726 626 356	to	6 370	733 751 041	to	1 130	741 373 891	to	4 340	751 757 641	to	7 700
727 182 271	to	2 510	734 009 101	to	9 130	741 452 369	to	2 490	751 936 951	to	7 010
727 416 181	to	6 240	734 290 759	to	0 770	741 492 991	to	3 140	751 951 861	to	1 890
727 481 431	to	1 460	734 389 273	to	9 290	741 553 460	to	3 470	751 999 021	to	9 110
727 749 241	to	9 780	734 440 031	to	0 111	741 764 431	to	4 520	752 139 516	to	9 570

752 182 892	to	2 950	762 324 931	to	4 960	773 112 031	to	2 060	799 177 626	to	7 650
752 206 861	to	7 100	762 439 261	to	9 290	773 125 387	to	5 410	799 854 751	to	5 200
752 295 241	to	5 600	762 524 158	to	4 220	773 179 320	to	9 410	<b>800 044 320</b>	<b>to</b>	<b>4 410</b>
752 731 351	to	1 410	762 584 872	to	4 970	773 202 989	to	3 140	800 211 901	to	2 440
752 767 441	to	7 470	762 593 431	to	3 460	773 208 991	to	9 290	800 427 530	to	7 540
753 008 941	to	9 030	763 155 160	to	5 180	773 231 311	to	1 340	800 872 741	to	2 830
753 194 311	to	4 370	763 178 631	to	8 660	773 348 739	to	8 940	801 349 801	to	9 830
753 620 378	to	0 400	763 506 001	to	6 060	773 348 739	to	8 940	801 676 681	to	7 100
754 013 917	to	3 940	763 522 141	to	2 470	773 575 891	to	5 950	802 967 821	to	7 940
754 161 061	to	1 120	763 717 694	to	7 800	773 852 971	to	3 030	803 217 601	to	7 780
754 358 445	to	8 610	763 826 461	to	6 520	775 373 449	to	3 460	803 729 731	to	9 850
754 410 451	to	0 660	763 900 460	to	0 471	<b>789 257 191</b>	<b>to</b>	<b>7 250</b>	803 747 402	to	7 520
754 438 393	to	8 410	763 900 479	to	0 530	<b>790 448 020</b>	<b>to</b>	<b>8 460</b>	804 138 181	to	8 420
754 493 109	to	3 130	763 917 271	to	7 750	790 597 485	to	7 530	804 428 224	to	8 250
754 664 182	to	4 220	764 125 801	to	5 860	790 911 883	to	1 900	804 682 411	to	2 710
754 816 377	to	6 470	764 284 525	to	4 560	791 057 441	to	7 550	805 272 525	to	2 540
755 487 421	to	7 600	764 526 241	to	6 330	791 239 081	to	9 290	805 523 445	to	3 460
755 592 901	to	3 140	764 601 421	to	1 600	791 374 483	to	4 500	805 745 704	to	5 730
755 790 020	to	0 030	764 650 231	to	0 470	791 387 971	to	8 030	806 452 907	to	2 980
755 791 730	to	1 800	764 984 371	to	4 850	791 447 521	to	7 850	806 744 781	to	4 850
755 926 951	to	7 070	765 003 667	to	3 680	791 451 151	to	1 240	806 982 181	to	2 300
755 934 332	to	4 510	765 042 517	to	2 540	791 500 009	to	0 470	807 764 791	to	4 910
755 957 701	to	8 000	765 194 728	to	4 970	791 771 431	to	1 490	808 089 931	to	9 960
755 962 981	to	3 280	765 387 365	to	7 450	792 004 293	to	4 320	808 656 423	to	6 450
756 035 371	to	5 490	765 541 801	to	2 100	792 018 379	to	8 420	808 753 771	to	3 800
756 301 257	to	1 290	765 638 461	to	8 970	792 070 621	to	0 740	809 189 001	to	9 010
756 371 565	to	1 580	765 647 101	to	7 190	792 145 211	to	5 230	809 886 879	to	6 930
756 876 031	to	6 120	765 813 781	to	4 029	792 391 381	to	1 620	809 890 489	to	0 500
756 876 151	to	6 240	765 879 314	to	9 390	792 452 779	to	2 790	<b>810 323 734</b>	<b>to</b>	<b>3 760</b>
756 970 129	to	0 140	765 954 001	to	4 030	792 772 728	to	2 770	810 367 116	to	7 140
757 059 613	to	9 630	766 120 286	to	0 320	792 903 511	to	3 990	810 526 351	to	6 500
757 078 540	to	8 560	766 125 716	to	5 750	793 282 518	to	2 533	810 806 911	to	6 940
757 086 209	to	6 240	766 158 824	to	8 840	794 041 831	to	2 040	810 807 211	to	7 240
757 240 591	to	0 650	766 388 433	to	8 460	794 397 709	to	7 780	811 423 021	to	3 110
757 277 371	to	7 700	766 509 421	to	9 660	794 581 741	to	2 040	811 517 221	to	7 239
757 291 591	to	2 730	766 572 901	to	3 020	794 592 122	to	2 150	811 721 101	to	1 130
757 964 251	to	4 280	766 748 500	to	8 521	795 032 251	to	2 340	812 025 721	to	5 900
758 067 001	to	7 090	767 024 341	to	4 370	795 796 291	to	6 350	812 093 073	to	3 130
758 105 221	to	5 250	767 326 471	to	6 590	796 070 139	to	0 160	812 100 821	to	0 840
758 324 941	to	5 000	767 332 561	to	2 950	796 143 151	to	3 630	812 465 251	to	5 610
758 593 628	to	3 650	768 009 841	to	9 960	796 159 725	to	9 740	812 918 341	to	8 670
758 709 038	to	9 060	768 011 489	to	1 520	796 169 306	to	9 340	812 918 701	to	8 760
758 744 101	to	4 160	768 177 980	to	7 990	796 373 406	to	3 430	813 050 491	to	0 520
758 850 883	to	0 900	768 391 081	to	1 170	796 602 961	to	3 050	813 073 171	to	3 200
758 860 951	to	1 550	768 661 569	to	1 650	796 708 441	to	8 500	813 398 476	to	8 550
759 152 851	to	2 880	769 000 051	to	0 080	796 886 281	to	6 430	813 713 971	to	4 000
759 740 941	to	1 090	769 050 841	to	0 900	796 901 701	to	2 000	813 858 121	to	8 150
<b>760 004 596</b>	<b>to</b>	<b>4 610</b>	769 159 081	to	9 178	796 975 466	to	5 590	814 789 330	to	9 349
760 118 191	to	8 250	769 737 496	to	7 510	797 272 917	to	2 950	814 984 656	to	4 680
760 155 001	to	5 090	769 778 491	to	8 730	797 519 441	to	9 460	815 016 020	to	6 030
760 378 002	to	8 020	769 827 331	to	7 450	797 519 731	to	0 240	815 199 410	to	9 420
760 692 722	to	2 749	<b>770 216 071</b>	<b>to</b>	<b>6 100</b>	797 535 181	to	5 330	815 240 491	to	0 520
761 055 460	to	5 480	770 723 281	to	3 400	797 646 151	to	6 180	815 755 591	to	5 620
761 169 781	to	9 810	770 790 451	to	0 480	798 040 053	to	0 080	815 755 622	to	5 650
761 504 941	to	5 120	770 915 150	to	5 490	798 055 813	to	5 830	815 806 381	to	6 680
761 516 836	to	6 910	771 455 551	to	5 610	798 055 891	to	5 950	816 126 834	to	6 870
761 613 588	to	3 600	771 609 661	to	9 690	798 326 371	to	6 520	816 156 721	to	6 780
761 688 631	to	8 690	771 932 551	to	2 580	798 339 167	to	9 210	816 580 903	to	0 920
761 805 199	to	5 240	772 057 224	to	7 440	798 562 411	to	2 440	816 945 571	to	5 600
761 826 106	to	6 120	772 162 660	to	3 070	798 632 461	to	2 490	817 253 011	to	3 280
761 881 171	to	1 560	772 718 615	to	8 640	798 807 151	to	7 510	817 763 881	to	4 060
761 975 641	to	5 670	772 940 140	to	0 160	798 944 761	to	5 030	818 330 562	to	0 610
761 975 886	to	5 895	772 970 886	to	0 940	799 118 616	to	8 640	818 459 641	to	9 670
762 304 144	to	4 170	773 009 419	to	9 430	799 133 191	to	3 220	818 926 273	to	6 320



818 950 351	to	0 380	821 903 731	to	3 910	825 472 171	to	2 200	828 539 316	to	9 340
818 962 492	to	2 530	821 927 841	to	7 850	826 042 898	to	2 920	828 539 341	to	9 370
819 032 341	to	2 730	822 505 801	to	5 830	826 226 644	to	6 670	828 732 331	to	2 390
819 127 054	to	7 080	822 703 442	to	3 470	826 582 951	to	3 430	828 807 781	to	7 840
819 278 540	to	8 670	822 900 991	to	1 020	826 720 201	to	0 230	828 830 952	to	0 963
819 544 681	to	4 740	822 925 951	to	6 100	827 005 671	to	5 830	828 939 781	to	0 050
819 928 441	to	8 650	823 284 931	to	4 990	827 287 861	to	7 950	829 002 721	to	2 870
<b>820 034 406</b>	<b>to</b>	<b>4 430</b>	823 293 031	to	3 210	827 291 502	to	1 520	829 005 301	to	5 540
820 070 761	to	1 540	823 556 011	to	6 100	827 575 381	to	5 470	829 080 241	to	0 330
820 191 342	to	1 360	824 078 341	to	8 370	827 609 085	to	9 100	829 160 986	to	1 000
820 274 856	to	4 880	824 156 325	to	6 340	827 619 811	to	9 840	829 176 841	to	6 930
820 600 171	to	0 230	824 511 252	to	1 270	827 883 511	to	3 600	829 471 561	to	1 590
821 172 241	to	2 360	824 588 281	to	8 370	828 160 441	to	0 530	829 561 065	to	1 080
821 229 661	to	9 720	825 140 397	to	0 460	828 376 201	to	6 260	829 566 481	to	6 510
821 229 743	to	9 780	825 409 651	to	9 680	828 441 602	to	1 630	829 569 931	to	9 960

— Criminal Investigations Group, U.S. Postal Inspection Service, 9-19-24

### Verifying U.S. Postal Service Money Orders

Follow these steps to cash a Postal Service™ money order:

1. Check that the amount does not exceed the legal limit: \$1,000 for domestic, and \$700 for international Postal Service money orders.
2. Check that the proper security features are present:
  - When held to the light, a watermark of Benjamin Franklin is repeated from top to bottom on the left side.
  - When held to the light, a dark line (security thread) runs from top to bottom with the word “USPS” repeated.
  - When there is discoloration around the dollar amounts, this might indicate the amounts were changed.

These appear in Postal Service Notice 299, *U.S. Postal Money Order Reference Card*, or online at [usps.com/shop/money-orders.htm](https://usps.com/shop/money-orders.htm).

3. If the money order seems suspicious, call the U.S. Postal Service Money Order Verification System at 866-459-7822.

Provide this information to local banks and retailers, as they also receive Postal Service money orders for cashing.

— *Delivery and Retail Customer Service Operations, 9-19-24*

### Counterfeit Canadian Money Order Forms

#### Do Not Cash

To be posted and used by retail window employees. As directed, destroy previous notices. Destroy all interim notices when the numbers listed appear in the *Postal Bulletin*.

671,819,086	683,594,542	687,262,503
676,612,640	684,683,610	687,262,525
677,891,039	686,619,878	687,262,526
678,282,493	686,619,886	687,287,578
678,916,031	686,619,887	687,287,581
679,552,215	686,794,382	687,287,582
679,694,334	686,794,426	694,063,898
679,751,983	686,794,427	694,063,899
679,800,207	686,794,431	694,063,980
681,130,536	687,262,502	701,321,725
681,844,376		

— *Criminal Investigations Group, U.S. Postal Inspection Service, 9-19-24*

### Toll-Free Number Available to Verify Canadian Money Orders

The Canada Post Corporation has a toll-free number that cashing agents can call to verify the validity of Canadian Postal Money Orders. The number is 800-563-0444.

This toll-free number is printed on the back of the Canadian Postal Money Orders.

— *Criminal Investigations Group, U.S. Postal Inspection Service, 9-19-24*

Celebrate American Music with  
**Bluegrass**  
Forever® Stamps



ON SALE MARCH 15, 2024

## Other Information

### Overseas Military/Diplomatic Mail

Mail addressed to military and diplomatic post offices overseas is subject to certain conditions or restrictions of mailing regarding content, preparation, and handling. The APO/FPO/DPO table outlines these conditions by APO/FPO/DPO ZIP Codes™ through the use of footnoted mailing restrictions codes (see the [Restrictions](#) page following the table).

Acceptance clerks must use the table with the Retail System Software terminal to determine which APO/FPO/DPO ZIP Codes are active and which conditions of mailing apply.

The entries under “Changes” appear in bold in the following APO/FPO/DPO table:

### Changes

<b>APO/FPO/DPO</b>	<b>Action</b>	<b>Effective Date</b>	<b>See Restrictions</b>
APO AE 09306	Close	08/28/2024	
APO AE 09309	Add E, H	09/04/2024	A-B-C-C1-C2-E-E2-F-F1-F3-H-H1-M-N-R-R1-S-V-Z1
APO AE 09321	Add C	09/04/2024	A-B-C-C1-C2-E2-F-F3-H1-M-N-R-R1-S-V-Z1
APO AE 09605	Add F1, P; Remove U	09/05/2024	B-C-C2-D-F-F1-F3-H-M-P-R-S-V
FPO AE 09645	Add B2	08/22/2024	B-B2-C-C1-C2-E1-E2-F-F1-F3-M-R-S-U-X-Z1
APO AP 96343	Add C, C2	08/30/2024	A-B-C-C2-F-F3-M-P-R-S-U2

We have eliminated “Not Active” entries from the table below to save space and paper.

### APO/FPO/DPO Table

<b>APO/ FPO/ DPO</b>	<b>See Restrictions</b>	<b>APO/ FPO/ DPO</b>	<b>See Restrictions</b>	<b>APO/ FPO/ DPO</b>	<b>See Restrictions</b>	<b>APO/ FPO/ DPO</b>	<b>See Restrictions</b>
09002	A-B-C-C2-F-F3-H-N-R-S-V-Z1	09020	B-C-C2-D-E-F-F3-H-M-R-S-U	09103	A-B-C-C2-F-F3-H-N-R-S-V-Z1	09154	B-C-C2-D-E-F-F3-H-M-R-S-U
09003	B-C-C2-D-E-F-F3-H-M-P-R-S-U	09021	B-C-C2-D-E-F-F3-H-M-R-S-U-Z1	09104	B-C-C2-D-F3-H-M-R-S-U-Z1	09160	B-C-C2-F1-F3-H-J-L-M-N-R-R1-S-T-U-V-X-Z1
09004	B-C-C2-D-E-F-F3-H-M-R-S-U	09034	B-C-C2-D-E-F-F3-H-M-R-S-U	09107	B-C-C2-D-E-F-F3-H-M-R-S-U	09170	A-B-C-C2-F1-F3-J-L-M-N-R-R1-S-T-V-X-Z1
09005	B-C-C2-D-E-F-F3-H-M-P-R-S	09044	B-C-C2-D-E-F-F3-H-M-R-S-U	09112	B-C-C2-D-E-F-F3-H-M-R-S-U	09171	A-B-C-C1-C2-E3-F1-F3-J-L-M-N-R-R1-S-T-V-X-Z1
09006	B-C-C2-D-E-F-F3-H-M-R-S-U	09046	B-C-C2-D-E-F-F3-H-M-R-S-U	09114	B-C-C2-D-E-F-F3-H-M-R-S-U	09172	B-C-C2-D-E-F-F3-H-M-R-S-U
09008	A-B-C-C2-F-F3-H-N-R-S-V-Z1	09049	B-C-C2-D-E-F-F3-H-M-R-S-U	09116	A-B-C-C2-F-F3-H-N-R-S-V-Z1	09173	B-C-C2-D-E-F-F3-H-M-R-S-U
09009	B-C-C2-D-E-F-F3-H-M-R-S-U-Z1	09053	B-C-C2-D-E-F-F3-H-M-R-S-U	09118	A-B-C-C2-F-F1-F3-M-N-R-R1-S-V-Z1	09174	B-C-C2-F1-F3-L-N-R-R1-S-T-V-Z1
09010	B-C-C2-D-E-F-F3-H-M-R-S-U2	09060	B-C-C2-D-E-F1-F3-H-M-N-R-S-U-Z1	09123	B-C-C2-D-E-F3-H-M-R-S-U-Z1	09175	A-B-C-C1-C2-E2-F1-F3-H1-J-L-M-N-R-R1-S-T-V-W-X-Z1
09011	B-C-C2-D-E-F3-H-M-R-S	09067	B-C-C2-D-E-F-F3-H-M-R-S-U	09126	B-C-C2-F3-H-M-P-R-S-Z1	09176	A-B-C-C2-F1-F3-J-L-M-N-R-R1-S-T-V-X-Z1
09012	B-C-C2-D-E-F3-H-M-R-S-U-Z1	09068	B-C-C2-D-E-F3-H-R-S-U-Z1	09128	B-C-C2-D-E-F-F3-H-M-R-S-U	09177	B-C-C2-D-E-F-F3-H-M-R-S-U
09013	B-C-C2-D-E-F-F1-F3-H-M-R-S-U-Z1	09069	A-B-C-C2-D-E-F-F3-H-N-R-S-U-V	09131	B-C-C2-D-E-F-F3-H-M-R-S-U	09178	B-C1-C2-E2-F1-F3-I3-L-M-N-R-S-T-V-X-Z1
09014	B-C-C2-D-E-F3-H-M-P-R-S-U	09079	B-C-C2-D-E-F-F3-H-M-R-S-U	09135	A-B-C2-F-F3-H-N-R-S-U-V-Z1	09179	A-B-C-C1-C2-F1-F3-J-L-M-N-R-R1-S-T-V-X-Z1
09015	A-B-C-C1-C2-F-F1-F3-J-L-M-N-R-R1-S-V-Z1	09094	B-C-C2-D-F3-H-M-P-R-S-Z1	09136	B-C-C2-D-E-F-F3-H-M-P-R-S-U	09180	B-C-C2-D-E-F-F3-H-M-R-S-U
09016	B-C-C2-D-E-F1-F3-H-M-R-S-U	09095	B-C-C2-D-E-F-F3-H-M-R-S-U	09138	B-C-C2-D-F-F3-H-M-R-S-U		
09017	A-B-C-C2-F-F3-H-N-R-S-V-Z1	09096	B-C-C2-D-E-F-F3-H-M-R-S-U	09140	B-C-C2-D-E-F-F3-H-M-R-S-U		
09018	A-B-C-C2-F-F3-H-N-R-S-V-Z1	09101	A-B-C-C2-F-F3-H-N-Q-R-S-V-Z1	09142	B-C-C2-D-E-F-F3-H-M-R-S-U		

APO/ FPO/ DPO	See Restrictions	APO/ FPO/ DPO	See Restrictions	APO/ FPO/ DPO	See Restrictions	APO/ FPO/ DPO	See Restrictions
09186	B-C-C2-D-E-F-F3-H-M-P-R-S-U	09284	A-B-C-C2-F1-F3-I3-L-M-N-R-S-T-V-Z	09312	A-B-C-C1-E2-F1-F3-H1-I3-L-M-N-R-R1-S-T-U-U4-V-X-Z-Z1	09470	B-C-C1-C2-F3-M-R-S-U-Z1
09203	A-B-C-C1-C2-F1-F3-I3-J-L-M-N-R-R1-S-T-V-X-Z-Z1	09285	A-B-C-E-E-1-F1-F3-H-I3-L-M-N-R-S-T-V-X-Z-Z1	09315	A-B-C1-E2-F-F3-N-R-R1-S-V-Z1	09487	A-B-C-C1-C2-E2-F1-F3-I3-L-M-N-R-R1-S-T-V-W-X-Z-Z1
09204	B-C-F3-M-N-R-S-V-Z1	09287	B-C2-E1-F1-F3-J-L-N-R-S-T-V-X-Z1	09316	A-B-C1-E2-F-F1-F3-H1-I3-M-N-R-R1-S-T-V-Z-Z1	09488	A-B-C-C1-C2-E2-F1-F3-J-L-M-N-R-S-T-V-W-X-Z1
09205	A-B-C-C2-E2-F-F3-M-N-R-S-T-V-X	09288	A-B-C-C1-C2-E2-F1-F3-H-H1-J-L-M-N-R-R1-S-T-V-X-Z1	<b>09321</b>	<b>A-B-C-C1-C2-E2-F-F3-H1-M-N-R-R1-S-V-Z1</b>	09489	A-B-C-C1-C2-E2-F1-F3-L-M-N-R-R1-S-T-V-W-X-Z1
09211	B-C-C2-D-E-F-F3-H-M-P-R-S-U	09289	B-E2-F1-F3-H1-J-L-M-N-R-R1-S-T-U2-V-X-Z1	09330	A-B-C1-C2-D-E-E2-F-F1-F3-H-H1-M-R-R1-S-V-Z1	09490	A-B-C1-C2-E2-F-F1-F3-H1-J-L-M-N-R-R1-S-T-V-X-Z1
09213	B-C-C2-F1-F3-H-J-L-M-N-R-R1-S-T-U-V-X-Z1	09290	A-B-F1-F3-J-L-M-N-R-S-T-U2-V-X-Z1	09333	A-B-C-C1-C2-E2-F-F1-F3-H1-I3-M-N-R-R1-S-V-V1-Z-Z1	09491	A-B-C-C1-C2-E2-F-F1-F3-H1-J-L-M-N-R-R1-S-T-V-X-Z1
09214	B-C-C2-D-E-F3-H-M-R-S-U-Z1	09291	B-C-C1-C2-E2-F1-F3-H1-L-N-R-R1-S-T-V-X-Z1	09343	A-B-C1-C2-F-F3-M-N-R-R1-S-V-Z1	09494	B-C-C1-C2-F3-M-R-S-U-Z1
09216	B,C,F1,F3,M,N,R,S,V,Z1	09292	A-B-C-C2-E-E2-E3-F1-F3-H-H1-J-L-M-N-R-R1-S-T-V-X-Z1	09348	A-B-C-C1-C2-E2-F-F1-F3-H1-I3-M-N-R-R1-S-T-V-Z-Z1	09498	B-C-C1-C2-F1-F3-J-L-M-N-R-R1-S-T-V-X-Z1
09227	B-C-C2-D-E-F-F3-H-M-R-S-U	09293	A-B-C-C1-C2-E-E2-F1-F3-I3-L-M-N-R-S-T-V-X-Z-Z1	09357	A-B-C-C1-C2-F-F1-F3-M-R-S-U	09501	B-V
09240	A-B-C1-C2-F-F3-H-N-R-S-V	09294	B-C-C1-C2-E2-F1-F3-H1-L-N-R-R1-S-T-V-X-Z1	09365	A-B-C-C1-E2-F-F3-H1-M-N-R-V-Z1	09502	B-V
09241	A-B-C-C2-F3-N-R-S-U-Z1	09295	B-C-C1-C2-E2-F1-F3-H1-J-L-M-N-R-R1-S-T-V-X-Z1	09366	A-B-C-C1-E2-F-F1-F3-H-H1-M-R-R1-S-V-Z1	09503	B-F-F1-R-R1-V
09242	A-B-C-C1-C2-F-F3-H-N-R-S-V	09296	A-B-C-C2-E1-F1-F3-L-N-R-S-T-V-X-Z1	09401	B-C-C1-C2-F3-M-R-S-U-Z1	09504	B-V
09250	B-C-C2-D-E-F-F3-H-M-R-S-U	09297	A-B-C-C2-E-E1-F1-F3-J-L-M-N-R-S-T-V-X-Z1	09403	B-C-C1-C2-F3-M-R-S-U-Z1	09505	B-V
09261	B-C-C2-D-E-F3-H-M-N-R-S-U-V-Z1	09298	A-B-C-C2-E-E1-F-F3-I3-L-M-N-R-S-T-V-X-Z-Z1	09410	B-C-C2-F-F1-F3-N-R-S-U2	09506	B-V
09263	B-C-C2-D-E-F3-H-M-R-S-U	09299	A-B-C-C2-E-E1-F1-F3-I3-L-M-N-R-S-T-V-X-Z-Z1	09421	B-C-C1-C2-F3-M-R-S-U-Z1	09507	B-V
09264	B-C-C2-D-E-F-F3-H-M-R-S-U	09301	A-B-C-C1-C2-E2-F1-F3-H1-I3-L-M-N-R-R1-S-T-U4-V-X-Z-Z1	09424	B-C-C2-F1-F3-M-N-R-S-U-Z1	09508	B-C-C2-F-F3-R-R1-S-V
09265	B-C-D-F-F1-H-J-L-M-N-R-S-T-U-V-Z1	09304	A-B-C-C1-C2-F-F1-F3-H-M-N-R-S-V-Z1	09447	B-C-C1-C2-F3-M-R-S-U-V-Z1	09509	B-C-C2-F-F3-R-R1-S-V
09266	A-B-C2-F3-S-U-R-V-Z1	09305	A-B-C1-E2-F-F1-F3-H1-I3-M-N-R-R1-S-T-V-Z1	09454	B-C-C1-C2-F3-M-R-S-U-V-Z1	09510	B-C-C2-F-F3-R-R1-S-V
09276	A-B-F-F3-I3-L-M-N-R-S-T-V-X-Z-Z1	09307	B-C-C2-F-F3-N-R-R1-S-Z1	09455	B-C-C1-C2-F3-M-N-R-S-U-V-Z1	09511	B-C-C2-F-F3-R-R1-S-V
09277	A-B-C-C2-E-E1-E2-F1-F3-L-N-R-S-T-V-X-Z1	<b>09309</b>	<b>A-B-C-C1-C2-E-E2-F-F1-F3-H-H1-M-N-R-R1-S-V-Z1</b>	09456	B-C-C1-C2-F3-M-N-R-S-U-V-Z1	09512	B-C-C2-F-F1-F3-R-R1-S-V
09278	A-B-F-F3-I3-L-M-N-R-S-T-V-X-Z-Z1	09310	A-B-C-C1-E2-F1-F3-H1-I3-L-M-N-R-R1-S-T-U4-V-Z	09459	B-C-C1-C2-F3-M-R-S-U-Z1	09513	B-C-C2-F-F1-F3-R-R1-S-V
09279	A-B-E-E1-F-F3-I3-L-M-N-R-S-T-V-X-Z-Z1	09311	A-B-C1-C2-E2-F-F1-F3-H1-I3-L-M-N-R-R1-S-T-U4-V-Z-Z1	09461	B-C-C1-C2-F3-M-P-R-S-U-Z1	09514	B-C-C2-F-F1-F3-R-R1-V
09280	A-B-C-C1-C2-E-E2-F1-F3-H-I3-L-M-N-R-S-T-V-W-X-Z-Z1			09463	B-C-C1-C2-F3-M-R-S-U-Z1	09516	B-C-C2-F-F1-F3-R-R1-S-V
09281	A-B-C-C1-C2-E2-E3-F1-F3-H-H1-I3-J-L-M-N-R-R1-S-T-V-X-Z-Z1			09466	B-C-C1-C2-F3-M-R-S-U-Z1	09517	B-C-C2-F-F1-F3-R-R1-S-V
09282	A-B-C-C1-C2-E2-E3-F1-F3-H-H1-J-L-M-N-R-R1-S-T-V-X-Z1			09467	B-C-C2-E-E1-F1-F3-J-L-M-N-R-S-T-V-W-X-Z1	09523	B-C-C2-F-F1-F3-R-R1-S-V
09283	A-B-C-C2-E-E1-F1-F3-L-M-N-R-S-T-V-X-Z1			09468	B-C-C1-C2-F3-M-R-S-U-Z1	09524	B-C-C2-F-F1-F3-R-R1-S-V
				09469	B-C-C1-C2-F3-R-S-U-Z1	09532	B-C-C2-F-F1-F3-R-R1-S-V
						09533	B-V
						09534	B-F-F1-F3-R-R1-S-V
						09541	A-B-C-F-F3-M-N-S-V-Z1
						09542	A-B-C-F-F3-M-N-S-V-Z1

APO/ FPO/ DPO	See Restrictions	APO/ FPO/ DPO	See Restrictions	APO/ FPO/ DPO	See Restrictions	APO/ FPO/ DPO	See Restrictions
09543	A-B-C-F-F3-M-N-S-V-Z1	09596	B-F-F1-R-R1-V	09648	B-C2-F3-N-R-S-U-V-Z1	09731	A-B-C-C1-C2-F1-F3-J-L-M-N-R-R1-S-T-V-X-Z1
09544	A-B-C-F-F3-M-N-S-V-Z1	09599	B-F-F1-R-R1-V	09649	B-C2-F3-N-R-S-U-Z1	09732	B-F-F3-N-S-V-Z-Z1
09545	A-B-C-F-F3-M-N-S-V-Z1	09600	B-C-C2-F-F1-F3-R-S-U-Z1	09701	A-B-C-C1-C2-F1-F3-J-L-M-N-R-R1-S-T-V-X-Z1	09733	B-F-F3-N-R-S-V-Z
09550	B-C-C2-F-F1-F3-R-R1-S-V	09602	B-C-C2-F-F1-F3-N-R-S-U-V	09704	B-C-C2-F-F1-F3-R-R1-S-U2-V	09734	A-B-C-C1-C2-F1-F3-I3-J-L-M-N-R-R1-S-T-V-X-Z1
09554	B-C-C2-F-F1-F3-R-R1-S-V	09603	B-C-C2-F-F1-F3-R-S-U-V-Z1	09705	B-C-C1-C2-F1-F3-M-R-R1-S-U	09735	B-F3-N-R-S-V-Z-Z1
09556	B-F-F1-R-R1-V	09604	B-C-C2-F-F1-F3-P-R-S-U-V-Z1	09706	B-C-C2-F3-M-N-R-S-U-V-Z1	09736	A-B-C-C1-C2-F1-F3-J-L-M-N-R-R1-S-T-V-X-Z1
09564	B-C-C2-F-F1-F3-R-R1-S-V	<b>09605</b>	<b>B-C-C2-D-F-F1-F3-H-M-P-R-S-V</b>	09707	B-C-C2-F1-F3-J-L-M-N-R-R1-S-T-V-X-Z1	09737	A-B-C-C1-C2-F1-F3-I3-J-L-M-N-R-R1-S-T-V-W-X-Y-Z1
09565	B-C-C2-F-F1-F3-R-R1-S-V	09606	B-C-C2-D-F-F3-H-M-R-S-U-V	09708	B-C-C1-C2-F-F3-M-R-R1-S-U	09738	A-B-C-C1-C2-F1-F3-J-L-M-N-R-R1-S-T-V-X-Z1
09566	B-C-C2-E2-E3-F-F1-F3-R-R1-S-V	09608	B-C-F-F3-N-R-S-U-V-Z1	09709	B-C-C1-C2-E2-F1-F3-H-H1-J-L-N-R-R1-S-T-V-X-Z1	09739	A-B-C-C1-C2-F1-F3-J-L-M-N-R-R1-S-T-V-X-Z1
09567	B-C-C2-E2-E3-F-F1-F3-R-R1-S-V	09609	B-C-C2-F-F3-R-S-U-V	09710	B-C-C1-F-F1-J-L-M-N-R-R1-T-U-V-Z1	09741	A-B-C-C1-C2-E2-F1-F3-H1-J-L-M-N-R-R1-S-T-V-W-X-Y-Z1
09568	B-C-C2-F-F1-F3-R-R1-S-V	09610	B-C-C2-F-F1-F3-M-R-S-U-V-Z1	09711	A-B-C-C2-E2-F-F1-F3-M-N-R-S-T-V-X	09742	A-B-C-C1-C2-F1-F3-J-L-M-N-R-R1-S-T-V-X-Z1
09569	B-C-C2-E2-E3-F-F1-F3-R-R1-S-V-Z1	09613	B-C-C2-F-F3-N-R-S-U-V	09712	A-B-C-C2-F-F3-H-R-S-U-V-Z1	09743	A-B-C-C2-F-F3-H-N-R-S-V-Z-Z1
09570	B-C-C2-F-F1-F3-R-R1-S-V	09614	A-B-C-C1-C2-E2-F1-F3-H1-J-L-M-N-R-R1-S-T-U-V-X-Z1	09714	B-C-C1-C2-F-F3-M-R-R1-S-U	09744	A-B-C-C1-C2-F1-F3-J-L-M-N-R-R1-S-T-V-X-Z1
09573	B-C-C2-E2-E3-F-F1-F3-R-R1-S-V-Z1	09618	B-C-C2-F-F3-R-S-U-Z1	09715	B-F-F1-J-L-M-N-R-T-V-Z1	09745	A-B-C2-F-F1-F3-M-N-R-R1-S-V-Z1
09575	B-C-C2-F-F1-F3-R-R1-S-V	09620	B-C-C2-F-F3-R-S-U-V-Z1	09716	B-C-C2-F1-F3-J-L-M-N-R-R1-S-T-V-X-Z1	09748	A-B-C-C1-C2-F1-F3-J-L-M-N-R-R1-S-T-V-X-Z1
09576	B-C-C2-F-F1-F3-R-R1-S-V	09621	B-C-F-F3-R-U-Z1	09717	A-B-C-C2-F-F3-M-R-S-V-W-Z1	09749	A-B-C2-F-F3-H-N-R-S-U-V-Z1
09577	B-C-C2-F-F1-F3-R-R1-S-V	09622	B-C-C2-F-F3-R-S-U-Z1	09718	B-F-F1-J-L-M-N-R-T-U-V-Z1	09750	A-B-C-C1-C2-F1-F3-J-L-M-N-R-R1-S-T-V-X-Z1
09578	B-C-C2-F-F1-F3-R-R1-S-V	09623	B-C-C2-F-F3-R-S-U-V-Z1	09719	B-C-C2-D-F3-M-R-S-U-V-Z1	09751	B-C-C2-D-E-F-F3-H-M-R-S-U
09579	B-C-C2-F-F1-F3-R-R1-S-V	09624	B-C-C2-F1-F3-I3-L-M-N-R-R1-S-T-U-V-X-Z1	09720	B-C2-F3-M-R-S-U-V-Z1	09752	B-C-C2-D-F-F3-H-R-S-U
09581	B-C-C2-F-F1-F3-R-R1-S-V	09625	B-C-C2-F-F3-N-R-S-U-Z1	09722	A-B-C-C2-F-F3-H-N-R-S-V-Z-Z1	09753	A-B-C-C1-C2-D-E-F1-F3-H-M-N-R-S-V-W-Z1
09582	B-C-C2-F-F1-F3-R-R1-S-V	09627	B-C-C2-F-F3-R-S-U-V-Z1	09723	B-C-C2-F1-F3-J-L-M-N-R-R1-S-T-V-X-Z1	09754	A-B-C-C2-F-F3-H-N-R-S-V-Z-Z1
09583	B-C-C2-F-F1-F3-R-R1-S-V	09630	B-C-C2-F-F3-R-S-U-V	09724	B-C-C1-C2-F-F3-M-R-R1-S-U	09755	A-B-C-C1-C2-D-F-F1-F3-J-L-M-N-Q-R-R1-S-T-V-Z1
09586	B-C-C2-F-F1-F3-R-R1-S-V	09633	B-C-C2-D-F-F3-M-R-S-U-U1-U2-U3-V-Z1	09725	A-B-C-C2-F-F3-H-N-R-S-V-V1-Z-Z1	09756	A-B-E3-F-F1-F3-J-L-N-Q-R-R1-S-T-V-Z1
09587	B-C-C2-F-F1-F3-R-R1-S-V	09634	A-B-C-C2-F-F3-M-N-R-S-V	09726	B-F-F1-J-L-M-N-R-T-U-V-Z1	09759	A-B-C-C1-C2-E2-F1-F3-J-L-M-N-R-R1-S-T-V-X-Z1
09588	B-C-C2-F-F1-F3-R-R1-S-V	09636	B-C-C2-F-F3-R-S-U-V-Z1	09727	A-B-C-C1-C2-F1-F3-J-L-M-N-R-R1-S-T-V-X-Z1	09761	B-C-C2-F-F1-F3-M-R-R1-S-V-Z1
09590	B-C-C2-F-F1-F3-R-R1-S-V	09642	B-C-C2-F1-F3-J-L-M-N-R-S-T-U-V-X	09728	A-B-C-C1-C2-F1-F3-J-L-M-N-R-R1-S-T-V-X-Z1		
09591	B-C-C2-F-F1-F3-R-R1-S-V	09643	B-C-C2-F3-M-R-S-U-V-Z1	09729	B-C-C2-F-F3-N-R-R1-S-U-V-Z1		
09592	B-C-C2-F-F1-F3-R-R1-S-V	<b>09645</b>	<b>B-B2-C-C1-C2-E1-E2-F-F1-F3-M-R-S-U-X-Z1</b>	09730	A-B-C-C1-C2-F1-F3-J-L-M-N-R-R1-S-T-V-X-Z1		
09594	B-C-C1-C2-F-F1-F3-R-R1-S-V	09647	B-C-C2-E1-F1-F3-M-N-R-S-U-X-Z1				
09595	B-C-C2-F-F1-F3-I3-J-R-R1-S-V-V1-Z1						

APO/ FPO/ DPO	See Restrictions	APO/ FPO/ DPO	See Restrictions	APO/ FPO/ DPO	See Restrictions	APO/ FPO/ DPO	See Restrictions
09762	A-B-C-C1-E3-F1-F3-J-L-M-N-R-R1-S-T-V-Y-Z1	09820	A-B-C-C2-F1-F3-H1-J-L-M-N-R-R1-S-T-V-X-Z1	09854	A-B-C-C1-C2-F1-F3-J-L-M-N-R-R1-S-T-V-X-Z1	09902	A-B-C1-C2-E2-F-F3-H1-M-R-R1-S-V-Z1
09769	A-B-C-C1-E3-F1-F3-J-L-M-N-R-R1-S-T-V-Y-Z1	09821	A-B-C-C2-F-F3-N-R-S-V-Z1	09855	A-B-C-C1-C2-E2-F-F1-F3-H1-M-R-R1-S-U2-V-Z1	09903	B-C-C1-C2-E2-F1-F3-N-R-S-V-Z1
09777	A-B-C-C1-C2-E1-F1-F3-J-L-M-N-R-R1-S-T-V-X-Z1	09822	A-B-C-C2-F-F3-M-R-S-V-Z1	09856	B-C-C1-C2-F-F1-F3-H-H1-J-L-M-N-S-T-V-Z1	09904	B-C-C1-C2-E2-F1-F3-N-R-S-V-Z1
09780	A-B-C2-F-F3-H-N-R-S-V	09823	A-B-C-C1-C2-F1-F3-J-L-M-N-R-R1-S-T-V-X-Z1	09857	A-B-C-C2-E2-F1-F3-I3-L-M-N-R-R1-S-T-V-X-Z1	09905	A-B-C-C1-C2-E2-F-F3-H1-M-R-R1-S-V-Z1
09801	A-B-C1-E2-F-F3-H1-M-N-R-R1-S-V-Z1	09824	A-B-C-C2-F-F3-M-R-S-V-Z1	09858	A-B-C-C1-C2-E2-E3-F1-F3-H-H1-J-M-N-R-R1-S-U-V-Z1	09974	B-C-C2-F1-F3-J-L-M-N-R-S-T-U2-V-X-Z1
09802	A-B-C-C2-D-F1-F3-H-H1-I3-L-M-N-R-R1-S-T-V-W-X-Z1	09825	A-B-C-C1-C2-F1-F3-J-L-M-N-R-R1-S-T-V-X-Z1	09859	B-C-C1-C2-E2-E3-F-F1-F3-H1-R-R1-S-U-Z1	09975	B-C-C2-F1-F3-I3-L-M-N-R-S-T-U2-V-X-Z1
09803	A-B-C-C2-E-E2-E3-F1-F3-H-H1-J-M-N-R-R1-S-U-V-Z1	09826	A-B-C-C1-C2-E1-E2-E3-F1-F3-J-L-M-N-R-R1-S-T-V-W-X-Z1	09860	A-B-C-C2-F1-F3-J-L-M-N-R-R1-S-T-V-X-Z1	09976	B-C-C2-F1-F3-J-L-M-N-R-S-T-U2-V-X-Z1
09804	A-B-C-C2-F-F1-F3-M-N-R-S-V-Z1	09827	A-B-F-F1-J-L-M-N-R-T-V-Z1	09862	A-B-C-C2-F1-F3-I3-L-M-N-R-R1-S-T-V-X-Z1	09977	B-C-C2-F1-F3-J-L-M-N-R-S-T-U2-V-X-Z1
09805	B-C-C2-E2-E3-F-F1-F3-R-R1-S-Z1	09828	A-B-C-C1-C2-F1-F3-I3-L-M-N-R-R1-S-T-V-X-Z1	09864	A-B-C-C1-C2-E2-F1-F3-L-M-N-R-R1-S-T-V-W-X-Z1	09978	B-C-C2-D-E1-F-F1-F3-H-H1-M-N-R-R1-S-T-X-Z1
09807	A-B-C1-C2-E2-F-F1-F3-H1-I3-M-N-R-R1-S-T-V-Z1	09829	B-C-N-R-V-Z1	09866	A-B-C-C1-C2-E2-F1-F3-L-M-N-R-R1-S-T-V-W-X-Z1	09980	B-C-C1-C2-F1-F3-J-L-M-N-R-R1-S-T-V-X-Z1
09808	A-B-C-C1-C2-E2-F1-F3-H-H1-J-L-M-N-R-R1-S-T-V-X-Z1	09830	B-C-F-F1-F3-J-L-M-N-R-R1-S-T-V-Z1	09867	A-B-C-C1-C2-E2-F1-F3-I3-L-M-N-R-R1-S-T-V-W-X-Z1	09981	B-C-C1-C2-F1-F3-J-L-M-N-R-R1-S-T-V-X-Z1
09809	B-C-C1-C2-E3-F1-F3-J-L-M-N-R-S-T-V-X-Z1	09831	B-C-C1-C2-F1-F3-J-L-M-N-R-R1-S-T-V-X-Z1	09869	A-B-C-C1-C2-E2-F1-F3-L-M-N-R-R1-S-T-V-W-X-Z1	09982	B-C-C1-C2-F1-F3-J-L-M-N-R-R1-S-T-V-X-Z1
09810	A-B-C2-F-F1-F3-N-R-S-V-Z1	09832	A-B-C-C1-C2-E2-E3-F1-F3-H-H1-J-M-N-R-R1-S-V-Z1	09870	A-B-C-C1-C2-E2-F1-F3-H1-I3-L-M-N-R-R1-S-T-U4-V-X-Z1	09983	B-C-C1-C2-F1-F3-J-L-M-N-R-R1-S-T-V-X-Z1
09811	A-B-C-C2-E-E2-E3-F1-F3-H-H1-J-M-N-R-R1-S-U-V-Z1	09833	A-B-C-C1-C2-E2-E3-F1-F3-H-H1-J-M-N-R-R1-S-V-Z1	09873	A-B-C-C1-C2-E2-F1-F3-H1-I3-L-M-N-R-R1-S-T-U-U4-V-X-Z1	09984	B-C-C1-C2-F1-F3-J-L-M-N-R-R1-S-T-V-X-Z1
09812	B-E2-E3-F-F1-I-J-L-N-R-T-U-V-Z1	09834	B-C-C2-E2-E3-F-F1-F3-R-R1-S-U-Z1	09875	A-B-C1-C2-E2-F-F1-F3-H1-I3-L-M-N-R-R1-S-T-U-U4-V-Z1	34001	A-B-C-C1-C2-F1-F3-J-L-M-N-R-R1-S-T-V-X-Z1
09813	A-B-C-C1-C2-E2-E3-F1-F3-J-L-N-R-R1-S-T-V-X-Z1	09836	A-B-C-C1-C2-F1-F3-J-L-M-N-R-R1-S-T-V-X-Z1	09877	A-B-C-C2-E-E2-E3-F1-F3-H-H1-J-M-N-R-R1-S-U-V-Z1	34002	B-C-C1-C2-F1-F3-J-L-M-N-R-R1-S-T-V-X-Z1
09814	B-C-C2-E2-E3-F1-F3-I3-J-L-M-N-R-R1-S-T-V-X-Z1	09837	B-E2-E3-F1-F3-R-S-V-Z1	09880	A-B-C1-C2-E2-F-F1-F3-H1-J-L--N-R-R1-S-T-U-V-Z1	34004	B-C-C1-C2-F1-F3-J-L-M-N-R-R1-S-T-V-X-Z1
09815	A-B-C-C2-E-E2-E3-F1-F3-H-H1-J-M-N-R-R1-S-U-V-Z1	09838	B-C-C2-E2-E3-F-F1-F3-R-S-U-Z1	09887	A-B-C-C2-E-E2-E3-F1-F3-H-H1-J-M-N-R-R1-S-U-V-Z1	34007	B-F-F1-H-J-M-N-R-R1-V-Z1
09816	A-B-C-C1-C2-E2-E3-F1-F3-J-L-M-N-R-R1-S-T-V-X-Z1	09842	A-B-C-C1-C2-E3-F1-F3-J-L-M-N-R-R1-S-T-V-X-Z1	09888	A-B-C1-C2-E2-F-F1-F3-H1-J-L--N-R-R1-S-T-U-V-Z1	34008	B-C-C1-C2-D-E1-F1-F3-H-H1-J-L-M-N-R-R1-S-T-V-X-Z
09817	A-B-C-C1-C2-E2-E3-F1-F3-H-H1-J-L-M-N-R-R1-S-T-V-X-Z1	09844	A-B-C-C1-C2-F1-F3-J-L-M-N-R-R1-S-T-V-X-Z1	09892	A-B-C-C1-C2-E2-F1-F3-J-L-M-N-R-R1-S-T-V-X-Z1	34009	B, C, C2, F, F1, F3, R, S, V
09818	A-B-C-C2-F-F3-M-R-S-V-Z1	09845	A-B-C-C1-C2-E3-F1-F3-J-L-M-N-R-R1-S-T-V-X-Z1	09898	B-C-C1-C2-E2-F-F1-F2-H1-N-R-R1-S-U2-V-Z1	34010	B-C-C2-F-F1-F3-R-S-V
09819	A-B-C-C1-C2-E2-F-F1-F3-H-H1-M-R-R1-S-V-Z1	09846	A-B-C-C1-C2-F1-F3-J-L-M-N-R-R1-S-T-V-X-Z1	09899	A-B-C-C1-C2-E2-F1-F3-J-L-M-N-R-R1-S-T-V-X-Z1	34011	B-C-C1-C2-E2-F1-F3-J-L-M-N-R-R1-S-T-V-X-Z1
		09847	B-C-C2-F1-F3-J-L-M-N-R-R1-S-T-V-X-Z1	09895	A-B-C-C1-C2-E2-F1-F3-J-L-M-N-R-S-T-V-W-X-Z1	34012	A-B-C-C1-C2-F-F3-H-M-R-S
		09848	A-B-C2-F-F3-M-R-S-V-Z1				
		09853	B-C-C1-C2-E2-F-F1-F3-H1-N-R-R1-S-U2-V				

APO/ FPO/ DPO	See Restrictions	APO/ FPO/ DPO	See Restrictions	APO/ FPO/ DPO	See Restrictions	APO/ FPO/ DPO	See Restrictions
34020	B-C-C1-C2-F1-F3-J-L-M-N-R-R1-S-T-V-X-Z1	34068	B-C-C1-C2-F1-F3-J-L-M-N-R-R1-S-T-V-X-Z1	96210	A-B-C-C1-C2-F1-F3-I3-L-M-N-R-R1-S-T-V-X-Z-Z1	96321	B-F-F1-F2-F3-H-M-R-S-W-Z1
34021	B-C-C1-C2-F1-F3-J-L-M-N-R-R1-S-T-V-X-Z1	34069	B-C-C1-C2-F1-F3-I3-J-L-M-N-R-R1-S-T-V-X-Z-Z1	96212	B-F-F1-F2-H-M-W-Z1	96322	B-F-F1-F2-F3-H-M-R-S-W-Z1
34022	B-C-C1-C2-F1-F3-J-L-M-N-R-R1-S-T-V-X-Z1	34071	A-B-C-C2-F1-F3-I3-L-M-N-R-S-T-V-W-X-Z-Z1	96213	A-B-C-C2-F1-F3-N-R-S	96326	B-C-C2-F-F3-M-R-S-W
34023	B-C-C1-C2-F1-F3-J-L-M-N-R-R1-S-T-V-X-Z1	34072	B-C-C2-F1-F3-J-L-M-N-R-S-T-V-X-Z1	96214	A-B-C-C2-F1-F3-N-R-S-U	96328	B-C-C2-F3-M-R-S-W
34024	B-C-C1-C2-F1-F3-J-L-M-N-R-R1-S-T-V-X-Z1	34078	B-F1-F3-N-R-S-V-Z1	96215	A-B-C-C2-F-F1-F3-M-R-S-U	96331	A-B-C-C2-F-F1-F3-J-L-M-N-R-S-U2-W
34025	B-C-C2-F1-F3-J-L-M-N-R-S-T-U2-V-X-Z1	34080	B-F-F1-R-R1-V	96218	A-B-C-C2-F-F1-F3-M-R-S-U	96336	B-C-C2-F3-M-R-S-V-W
34030	B-C-C1-C2-F1-F3-J-L-M-N-R-R1-S-T-V-X-Z1	34081	B-F-F1-R-R1-V	96224	A-B-C-C2-F-F1-F3-M-R-S-U	96337	B-C-C2-F-F1-F3-M-R-R1-S-W
34031	B-C-C1-C2-F1-F3-J-L-M-N-R-R1-S-T-V-X-Z1	34082	B-F-F1-R-R1-V	96251	A-B-C-C2-F-F1-F3-M-R-S-U	96338	A-B-C-C2-F-F3-M-R-S-U2-W
34032	B-C-C1-C2-F1-F3-J-L-M-N-R-R1-S-T-V-X-Z1	34083	B-F-F1-R-R1-V	96257	A-B-F-F1-F3-S-U	96339	A-B-C-C2-F-F3-M-N-R-S-U2-W
34033	B-C-C1-C2-F1-F3-I3-L-M-N-R-S-T-V-X-Z-Z1	34084	B-F-F1-R-R1-V	96258	B-C-C2-F-F1-F3-M-P-R-S	<b>96343</b>	<b>A-B-C-C2-F-F3-M-P-R-S-U2</b>
34034	B-C-C1-C2-F1-F3-I3-L-M-N-R-R1-S-T-V-X-Z-Z1	34085	B-C-C1-C2-E2-E3-F1-F3-H1-R-R1-S-T-V-V1	96260	A-B-C-C2-F-F1-F3-M-R-S-U	96346	B-F-F1-F2-F3-H-M-R-S-W-Z1
34035	B-C-C1-C2-F1-F3-H-J-L-M-N-R-R1-S-T-V-X-Z1	34086	B-C-C1-C2-E2-E3-F1-F3-H1-J-R-R1-S-T-V-V1	96262	A-B-C2-F-F1-F3-R-S-U-V-Z1	96347	B-C2-F-F1-F2-F3-H-M-R-S-W-Z1
34036	B-C-C1-C2-F1-F3-J-L-M-N-R-R1-S-T-V-X-Z1	34087	B-C-C2-E2-F-F1-F3-R-R1-S-V	96264	A-B-C-C2-F1-F3-R-S-U	96349	B-C-C2-F-F1-F2-F3-H-M-R-S-Z1
34037	B-C-C1-C2-F1-F3-H-J-L-M-N-R-R1-S-T-V-X-Z1	34088	B-C-C2-F-F1-F3-R-R1-S-V	96266	A-B-C-C2-F1-F3-R-S-U	96350	B-F-F1-F2-F3-H-M-R-S-W-Z1
34039	B-C-C1-C2-F1-F3-J-L-M-N-R-R1-S-T-V-X-Z1	34089	B-C-C2-F-F1-F3-R-R1-S-V	96269	A-B-C-C2-F1-F2-F3-R-S-U-Z1	96351	B-C-C2-F-F1-F2-F3-H-M-R-S-Z1
34041	B-C-C1-C2-F1-F3-J-L-M-N-R-R1-S-T-V-X-Z1	34090	B-C-C2-F-F1-F3-R-R1-S-V	96271	B-C-C2-F-F1-F3-M-P-R-S	96362	B-C2-F-F1-F2-F3-H-M-R-S-W-Z1
34042	A-B-C-F-F1-F3-M-N-R-S-U-V-W-Z1	34091	B-C-C2-E2-E3-F-F1-F3-R-R1-S-V-Z1	96273	B-C-C2-F-F1-F3-M-R-S-U	96365	B-C-C2-F3-M-R-S-W-V
34055	B-C-C1-C2-F1-F3-J-L-M-N-R-R1-S-T-V-X-Z1	34092	B-C-C2-F-F1-F3-R-R1-S-V-Z1	96275	A-B-C-C2-F-F1-F3-M-R-S-U	96367	B-C-C2-E1-F3-M-R-S-U2-W
34058	B-C2-F-F1-F2-F3-R-R1-S-V-Z1	34093	B-C-C2-F-F1-F3-R-R1-S-V	96276	A-B-C-C2-F1-F3-R-S	96368	B-C-C2-F3-M-R-S-W
34060	B-C-C1-C2-E2-F1-F3-J-L-M-N-R-R1-S-T-V-X-Z1	34094	B-F-F1-F3-R-R1-S-V	96278	A-B-C-C2-F1-F3-R-S-U	96370	B-F-F1-F2-H-M-W-Z1
34066	B-C-C1-C2-F1-F3-I3-J-L-M-N-R-R1-S-T-V-X-Z1	34095	B-F-F1-R-R1-V	96283	A-B-F-F1-F3-S-U	96371	B-C-C2-F-F3-M-R-S-W
34067	B-C-C1-C2-F1-F3-J-L-M-N-R-R1-S-T-V-X-Z1	96201	A-B-F-F1-F3-M-R-S-U	96284	A-B-C-C2-F-F1-F3-M-R-S-U	96372	B-C-C2-F-F3-M-R-S-W
		96202	A-B-C-C2-F-F1-F3-M-R-S	96297	A-B-C-C2-F-F1-F3-M-R-S-U	96373	B-C-C2-F-F3-M-R-S-W
		96203	A-B-F-F1-F3-M-R-S-U	96301	A-B-C-C2-F-F3-M-N-R-S-U2-W	96374	B-C-C2-F-F3-M-R-S-W
		96204	A-B-C-C2-F-F1-F3-M-R-S-U-U2	96303	B-C-C1-C2-F1-F3-H-J-L-M-N-R-S-T-V-W-X-Z1	96375	B-C-C2-F-F3-M-R-S-W
		96205	B-C-C2-F-F1-F3-M-P-R-S-U	96306	B-F-F1-F2-F3-H-M-R-S-W-Z1	96376	B-C-C2-F-F3-M-R-S-W
		96206	A-B-C-C2-F-F1-F3-M-R-S-U	96309	B-C-C2-F-F1-F3-M-N-R-S-V-W	96377	B-C-C2-F-F3-M-R-S-W
		96207	A-B-F-F1-F3-M-R-S-U-V	96310	B-C-C2-F-F3-M-R-S-W	96378	B-C-C2-F-F3-M-R-S-W
		96208	A-B-C-C2-F-F1-F3-M-R-S-U	96311	B-C-C2-F-F3-M-R-S-W	96379	B-C-C2-F-F3-M-R-S-W
		96209	A-B-C-C1-C2-F1-F3-J-L-M-N-R-S-T-U-V-X-Z1	96315	B-C-C2-F-F3-M-R-S-W	96380	B-C-C2-F-F3-M-R-S-W
				96319	B-C-C2-F3-M-R-S-W	96382	B-C-C2-F-F3-M-R-S-W

<b>APO/ FPO/ DPO</b>	<b>See Restrictions</b>	<b>APO/ FPO/ DPO</b>	<b>See Restrictions</b>	<b>APO/ FPO/ DPO</b>	<b>See Restrictions</b>	<b>APO/ FPO/ DPO</b>	<b>See Restrictions</b>
96384	B-C-C2-F-F3-M-R-S-W	96532	A-B-C-C1-C2-F1-F3-H-J-L-M-N-R-R1-S-T-V-X-Z1	96603	B-V	96666	B-C-C2-F-F1-F3-R-R1-S-V
96385	B-C-C2-F-F3-M-R-S-W	96534	A-B-C-C2-F-F1-F2-F3-R-R1-S-U-V-Z1	96604	B-V	96667	B-C-C2-F-F1-F3-R-R1-S-V
96386	B-C-C2-F-F3-M-R-S-W	96535	A-B-C-C1-C2-F1-F3-J-L-M-N-R-R1-S-T-V-X-Z1	96605	B-V	96668	B-C-C2-F-F1-F3-R-R1-S-V
96387	B-C-C2-F-F3-M-R-S-W	96537	B-C-C2-F3-R-S-V-Z1	96607	B-V	96669	B-C-C2-F-F1-F3-R-R1-S-V
96388	B-C-C2-F-F3-M-R-S-W	96540	B-C-C2-F1-F2-F3-R-S-Z1	96610	B-C-C2-F-F3-H1-R-R1-S-U2-V-Z1	96670	B-C-C2-F-F1-F3-R-R1-S-V
96389	B-C-C2-F-F3-M-R-S-W	96542	B-C-C2-F-F1-F2-F3-R-S	96611	B-C-C2-F-F3-H1-R-R1-S-U2-V-Z1	96671	B-C-C2-F-F1-F3-R-R1-S-V
96401	B-C-F-F3-N-R-S-V-V1-Z1	96543	B-C-C2-F-F1-F2-F3-P-R-S	96612	B-C-C2-F-F3-H1-R-R1-S-U2-V-Z1	96672	B-C-C2-F-F1-F3-R-R1-S-V
96502	A-B-C-C1-C2-F-F1-F3-J-M-N-R-R1-S-T-U-V	96544	A-B-C-C2-F-F1-F3-H-M-R-S-U	96613	B-C-C2-F-F3-H1-R-R1-S-U2-V-Z1	96673	B-C-C2-F-F1-F3-R-R1-S-V
96503	B-C-C2-D-E1-E2-F-F1-F3-H-H1-M-N-R-S-T-Z1	96548	A-B-C-C2-F-F1-F3-H-M-R-S-U	96615	B-F-F1-R-R1-V	96674	B-C-C2-F-F1-F3-R-R1-S-V
96504	A-B-C-C1-C2-F1-F3-I3-L-M-N-R-R1-S-T-V-W-X-Z-Z1	96549	A-B-C-C1-C2-F1-F3-H-J-L-M-N-R-R1-S-T-V-X-Z1	96616	B-C-F-F1-F3-R-R1-S-V	96675	B-C-C2-F-F1-F3-R-R1-S-V
96505	A-B-C-C1-C2-F1-F3-I3-L-M-N-R-R1-S-T-V-W-X-Z-Z1	96550	A-B-H-M-N-U-V-Z1	96619	B-C-C2-F1-F3-R-S-V	96677	B-C-C2-F-F1-F3-R-R1-S-V
96506	B-C-C2-D-E1-E2-F-F1-F3-H-H1-M-N-R-S-T-Z1	96551	A-B-C-C1-C2-F1-F3-H-J-L-M-N-R-R1-S-T-V-X-Z1	96620	B-C-C2-F-F1-F3-R-R1-S-V	96678	B-C-C2-F-F1-F3-R-R1-S-V
96507	A-B-C-C1-C2-F1-F3-H-J-L-M-N-R-S-T-V-X-Z1	96552	B-Z1	96628	B-C-C2-F-F1-F3-R-R1-S-V	96679	B-C-C2-F-F1-F3-R-R1-S-V
96511	B-I3-N-V	96553	A-B-C-C2-F-F1-F3-H-M-N-R-S-U	96629	B-C-C2-F-F1-F3-R-R1-S-V	96681	B-C-C2-F-F1-F3-R-S-V
96515	B-C-D-E1-F-F1-F3-H-H1-M-N-R-S-T-Z1	96554	A-B-C-C1-C2-F1-F3-H-J-L-M-N-R-R1-S-T-V-X-Z1	96632	B-C-C2-F-F1-F3-R-R1-S-V	96682	B-C-C2-F-F1-F3-R-R1-S-V
96516	B-C-C2-D-E1-E2-F-F1-F3-H-H1-M-N-R-S-T-Z1	96555	A-B-C-C2-F-F1-F3-M-R-S-U2-V	96633	B-V	96683	B-C-C2-F-F1-F3-R-R1-S-V
96517	B-C-C2-D-E1-E2-F-F1-F3-H-H1-M-N-R-S-T-U-V-Z1	96557	A-B-C-C2-F-F1-F3-M-R-S-U2-V	96641	B-V	96686	B-C-C2-F-F1-F3-R-R1-S-V
96520	B-F-N-U3-V	96562	A-B-C-C1-C2-D-E2-E3-F1-F3-H-H1-I3-L-M-N-R-R1-S-T-V-X-Z-Z1	96642	B-V	96688	B-C-C2-F-F1-F3-R-R1-S-V
96521	B-C-C1-C2-F-F1-F3-J-L-M-N-R-R1-S-T-V-X-Z1	96577	A-B-C2-F-F3-H-M-N-R-S-U	96643	B-F-F1-F3-R-R1-S-V	96691	B-C-C2-F-F1-F3-R-R1-S-V
96530	A-B-C-C1-C2-F1-F3-H-H1-J-L-M-N-R-R1-S-T-V-X-Z1	96578	B-C-C2-F1-F3-H-J-N-R-S	96644	B-V	96692	B-C-C2-E2-F-F1-F3-R-R1-S-V
96531	A-B-C-C2-F-F1-F3-H-M-N-R-S-U-V	96595	B-F-F3-R-S-V-Z1	96645	B-V	96693	B-C-C2-F-F1-F3-R-R1-S-V
		96598	B-C2-F3-I3-N-R-S-V-V1	96649	B-C-C2-F-F1-F3-R-R1-S-V	96694	B-C-C2-F-F1-F3-I3-J-R-R1-S-V-Z
		96599	B-C2-F3-N-R-S-V	96650	B-F-F1-R-R1-V	96695	B-C-C2-F-F1-F3-R-R1-S-V
		96601	B-V	96657	B-C-C2-F-F1-F3-R-R1-S-V	96696	B-F-F1-R-R1-V
		96602	B-V	96660	B-C-C2-F-F1-F3-R-R1-S-V	96698	B-C-C2-F-F1-F3-R-R1-S-V
				96661	B-C-C2-F-F1-F3-R-R1-S-V		
				96662	B-C-C2-F-F1-F3-R-R1-S-V		
				96663	B-C-C2-F-F1-F3-R-R1-S-V		
				96664	B-C-C2-F-F1-F3-R-R1-S-V		
				96665	B-C-C2-F-F1-F3-R-R1-S-V		



## RESTRICTIONS

## LEGEND

PS Form 2976, *Customs — CN 22 (Old C 1) and Sender's Declaration*  
 PS Form 2976-A, *Customs Declaration and Dispatch Note*  
 PS Form 2976-B, *Priority Mail Express International Shipping Label and Customs Form*

ATF = Bureau of Alcohol, Tobacco, Firearms, and Explosives  
 Box C = Department of State (DOS) contractor personnel  
 Box R = Retired military personnel  
 DPO = Diplomatic Post Office  
 MPO = Military Post Office  
 PACT = Prevent All Cigarette Trafficking Act  
 PAL = Parcel Airlift  
 PMEMS = Priority Mail Express Military Service  
 PUB 52 = Publication 52, *Hazardous, Restricted, and Perishable Mail*  
 SAM = Space Available Mail  
 USDA = United States Department of Agriculture

**Note:** Mail order catalogs are prohibited as SAM or PAL mail.

**A.** Securities, currency, or precious metals, including in their raw, unmanufactured state, are prohibited. Official Mail shipments are exempt from this restriction.

**A1.** Reserved for future use.

**A2.** Reserved for future use.

**B.** Other than for PMEMS and the exceptions listed below, a customs declaration PS Form 2976 or PS Form 2976-A is required for all items weighing 16 ounces or more, and for all items (regardless of weight) containing potentially dutiable mail contents (e.g., merchandise or goods) addressed to or from this ZIP Code. Other than the exceptions listed below, all PMEMS mailpieces (regardless of mail contents or weight) addressed to or from this ZIP Code must bear a properly completed PS Form 2976-B. The surface area of the address side of the mailpiece must be large enough to contain the applicable customs declaration. The following exceptions apply to known mailers, who for this purpose are defined as follows:

- Business mailers who enter volume mailings through business mail entry units or other bulk mail acceptance locations, pay postage through advance deposit accounts, use permit imprints for postage payment, and submit completed postage statements at the time of entry that certify that the mailpieces contain no dangerous materials that are prohibited by postal regulations. Such business mailers are exempt from providing customs documentation on non-dutiable letters and printed matter.
- All federal, state, and local government agencies whose mailings are regarded as "Official Mail." Such agencies are exempt from providing customs documentation, except for any items addressed to an MPO or DPO to which restriction "B2" applies.

**B2.** All federal, state, and local government agencies must complete customs documentation when sending potentially dutiable mail addressed to or from this MPO or DPO.

**C.** Cigarettes and other tobacco products, including tobacco leaves, chewing and pipe tobacco, snuff, and cigars are prohibited, including those that are authorized in Publication 52 under PACT.

**C1.** Obscene and horror articles, images, prints, paintings, cards, films, videotapes, comic books, etc., are prohibited.

**C2.** E-cigarettes and related products (e.g., nicotine liquids, e-liquids, parts, or supplies) are prohibited.

**D.** Coffee is prohibited.

**E.** Medicines (prescription, over-the-counter, vitamins, and supplements) are prohibited when mailed to individuals for human or animal use. This prohibition does not apply when medicines are sent as Official Mail only between specifically designated agencies such as pharmaceutical distributors, hospitals, clinics, and pharmacies.

**E1.** Mailers are responsible to ensure that all medicines and vaccines conform to host nation laws.

**E2.** Any matter depicting nude or seminude persons, pornographic, or sexual items are prohibited. Non-authorized political materials are prohibited. Religious materials contrary to the Islamic faith are prohibited in bulk quantities, but individual items for the personal use of the addressee are permissible.

**E3.** Radio transceivers, cordless/cellular telephones, global positioning systems, scanners, base stations, and handheld transmitters are prohibited.

**F.** Firearms of any type are prohibited, except firearms mailed to or by official U.S. government agencies. This restriction does not apply to firearms mailed from this MPO ZIP Code, provided ATF and USPS regulations are met. Antique firearms do not require an ATF form.

**F1.** Weapons of any type are prohibited.

**F2.** Mailing firearms to or from this MPO ZIP Code is restricted to one shotgun and one single shot .22 caliber rifle per individual.

**F3.** Replica weapons and inert explosive devices (such as grenades) and weapons parts are prohibited.

**G.** Parcels of any class are prohibited.

**H.** Meats, including preserved meats, bones, skin, hair, feathers, horns or hoofs of hoofed animals, and wool samples whether hermetically sealed or not, are prohibited.

**H1.** Pork or pork by-products are prohibited.

**I.** Reserved for future use.

**I1.** Reserved for future use.

**I2.** Reserved for future use.

**I3.** Mail of all classes must fit in a mail sack. Mail may not exceed the following dimensions:

- Maximum length 27 inches.
- Maximum width 14 inches.
- Maximum height 14 inches.

**J.** Standard Post and Parcel Select parcels may not exceed 108 inches in length and girth combined.

**K.** Reserved for future use.

**L.** All Official Mail is prohibited.

**M.** Fruits, vegetables, live animals, and live plants are prohibited.

**N.** Registered Mail service is prohibited.

**O.** Reserved for future use.

**P.** Official Mail only.

**Q.** Mail may not exceed 66 pounds, and size is limited to 42 inches maximum length and 72 inches maximum length and girth combined.

**R.** All alcoholic beverages, including those mailable under Publication 52, Part 421, are prohibited.

**R1.** Materials used in the production of alcoholic beverages (i.e., distilling material, hops, malts, yeast, etc.) are prohibited.

**S.** Synthetic cannabinoids used to stimulate the central nervous system commonly known as "synthetic marijuana," "K2," or "Spice" are prohibited.

**T.** Mailings of household shipments and case lots of food to or from an MPO require military transportation office approval prior to mailing. Mailings to or from a DPO require pre-approval from the Diplomatic Pouch and Mail Director.

**U.** Mail addressed to Retirees (Box R) is limited to 16 ounces and up to a 90-day supply of TRICARE medications. This restriction does not apply to mail endorsed "Free Matter for the Blind or Handicapped."

**U1.** Mail is limited to First-Class Mail items, including audio and video media, weighing 13 ounces or less. This limitation does not apply to Official Mail.

**U2.** Retirees (Box R) are not authorized mail service.

**U3.** Reserved for future use.

**U4.** Mail addressed to Box C is limited to 2 lbs.

**V.** PMEMS is not available.

**V1.** Electronic Delivery status information for Extra Services is not available on *USPS.com*. Manual record of delivery may be available upon request.

**W.** Hermetically sealed packages of meat products bearing USDA certification, such as dried beef, salami, and sausage, may be mailed. 200 grams of tobacco per parcel are permitted duty free.

**X.** Cremated remains are prohibited.

**Y.** Mail is limited to First-Class Mail and Priority Mail items only. This restriction also applies to Official Mail.

**Z.** No outside pieces (OSPs).

**Z1.** The following restriction is applicable only to International Service Centers (ISC)/Exchange Offices. An Anti-Pilferage Seal (Item No O817E or O818A) is required on all pouches and sacks.

## Freely Associated States Restrictions

We list the mailing restrictions for Freely Associated States (FAS) in the Pull-Out section of the *Postal Bulletin*. All FAS Restrictions will be updated periodically.

### Freely Associated States

Mail addressed to freely associated states is subject to certain conditions or restrictions of mailing regarding content, preparation, and handling. The following FAS Restrictions table outlines these conditions as listed by each affected FAS ZIP Code™ through the use of footnoted mailing restrictions codes (see the [Restrictions](#) following the table). For more information on available extra services for FAS destinations, see *Mailing Standards of the United States Postal Service, Domestic Mail Manual (DMM®)*, part 503.

Acceptance clerks must use the table with the Retail System Software terminal to determine which FAS ZIP Codes are active and which conditions of mailing apply.

### FAS Restrictions Table

FAS Table	See Restrictions
96939	A, B
96940	A, B
96941	A, B
96942	A, B
96943	A, B
96944	A, B
96960	A, B
96970	A, B, D
Marshall Islands	C
Federated States of Micronesia	C

### RESTRICTIONS LEGEND

PS Form 2976, *Customs Declaration CN 22 – Sender's Declaration*

PS Form 2976-A, *Customs Declaration and Dispatch Note*

FAS = Freely Associated State

- A.** Bank currency (coin and paper) is prohibited.
- B.** Signature Confirmation, Signature Confirmation Restricted Delivery, Adult Signature Requested, Adult Signature Restricted Delivery, Certified Mail Adult Signature Required, and Certified Mail Adult Signature Restricted Delivery not available.
- C.** Collect on Delivery is prohibited.
- D.** Betel nut (Areca catechu) is prohibited.

— *Asia-Pacific Relations,  
Global Business, 9-19-24*

## Handbook EL-802 Revision: Executives' and Managers' Safety and Health Program and Compliance Guide (continued)

[Revise the title and text of Appendix A to read as follows:]

### Appendix

#### Postal Service Executives' and Managers' Safety and Health Planner

Demonstrate Safety Principles	Activity	Yes	No	Comments/ Required Actions
Personal Commitment	Post the current policy statement.			
	Send memos to targeted employee groups.			
	Prepare articles on safety issues.			
	Review the budget for safety issues.			
	Review accident data (SHMT and the Safety Dashboard).			
	Establish accident-reduction plans.			
	Establish an Executive Safety and Health (S&H) Committee.			
	Attend Executive S&H Committee meetings (quarterly).			
	Attend Joint Labor-Management S&H Committee meetings.			
Involvement in Safety	Conduct field visits:			
	Meet with the craft supervisor.			
	Meet with safety staff.			
	Attend ceremonies (e.g., Safety and Safe Driver awards).			
	Visit orientation and training sessions.			
Facility Conditions	Inspect and observe:			
	<ul style="list-style-type: none"> <li>■ Facilities – clear aisles and passageways, exits, etc.</li> </ul>			
	<ul style="list-style-type: none"> <li>■ Vehicles – vehicles off street and chocked, if applicable; vehicles in good condition.</li> </ul>			
	<ul style="list-style-type: none"> <li>■ Driving – driver's license checked.</li> </ul>			
	<ul style="list-style-type: none"> <li>■ Work practices and behaviors.</li> </ul>			
	<ul style="list-style-type: none"> <li>■ Check paperwork and records.</li> </ul>			

Demonstrate Safety Principles	Activity	Yes	No	Comments/ Required Actions
Accountability	Review:			
	■ Inspection and action plans (in SHMT).			
	■ OSHA citations and abatements (in SHMT).			
	■ Accident-reduction target progress (Safety Dashboard).			
	Ensure that personnel evaluations include safety performance.			
	OSHA 300a posted Feb 1 – April 30).			
	Ensure that 5 years of OSHA records are available for review.			
	Review any past OSHA inquiries to ensure that the facility complies with OSHA requirements.			

[Delete Appendix B in its entirety.]

The Postal Service will incorporate these revisions into the next online edition of Handbook EL-802.

Handbook EL-802 is available on the Postal Service PolicyNet website:

- Go to [blue.usps.gov](http://blue.usps.gov).
- In the left-hand column, click *Essential Links*, and then click *PolicyNet*.

- Go to the right-hand side under “Published Forms and Directives.”
- Click *Handbooks*.

The direct URL for the Postal Service PolicyNet website is [blue.usps.gov/cpim](http://blue.usps.gov/cpim).

— Occupational Safety and Health, Human Resources, 9-19-24

## Publications

### Publication 431 Revision: Changes to Post Office Box Service and Caller Service Fee Groups

Effective September 19, 2024, Publication 431, *Post Office Box Service and Caller Service Fee Groups*, is revised to include the following changes.

#### Publication 431, Post Office Box Service and Caller Service Fee Groups

\* \* \* \* \*

[Revise the following entries:]

ZIP Code	Fee Group
34264	35
79556	36

\* \* \* \* \*

The online version of Publication 431 is dated July 2013. Publication 431 is currently available on the Postal Service™ PolicyNet website ([blue.usps.gov/cpim](http://blue.usps.gov/cpim)):

- Go to [blue.usps.gov](http://blue.usps.gov).
- In the left-hand column, click *Essential Links*, and then click *PolicyNet*.
- Go to the right-hand side under “Published Forms and Directives.”
- Click *Publications*.

Offices with WebBATS Manager/Supervisor access can view current Publication 431 information by going to the WebBATS Edit Facility Information page, as follows:

1. Go to the WebBATS main menu, and select Utility> Facility>Edit Facility option.
2. View the Fee Group field on the Edit Facility Information page.

— Post Office Operations, Retail and Post Office Operations, 9-19-24

# Organization Information

## Address Management

### Post Office Changes

Old/ New	Finance No.	ZIP Code	State	P.O. Name	County/ Parish	Station/Branch/ Unit	Unit Type	Effective Date	Comments
Old	14-0100	96861	HI	Aiea	Honolulu	Camp H M Smith	Classified Branch	11/30/2016	
New	14-0100	96861	HI	Aiea	Honolulu	Camp H M Smith	Place Name	09/19/2024	Classified Branch discontinued. Retain ZIP Code. Establish a Place Name. Continue to use Camp H M Smith HI 96861 as last line of address.
Old	41-2748	16225	PA	Fisher	Clarion	Main Office	Post Office	08/01/2019	
New	41-8188	16225	PA	Strattanville	Clarion	Fisher	Place Name	09/19/2024	Post Office discontinued. Retain ZIP Code. Establish a Place Name. Continue to use Fisher PA 16225 as last line of address.

— Address Management, Addressing and Geospatial Technology, 9-19-24

## Environmental Management

### Used Battery Disposal Requirements

Most used batteries contain hazardous components and cannot be disposed of in the trash. These batteries are typically regulated as Universal Waste and are subject to strict management requirements. Examples of regulated Universal Waste include spent or inoperable batteries from mobile scanners, phones, laptops, and other electronic equipment.

USPS® sites must recycle Universal Waste batteries using the following services provided by Cleanlites

Recycling, Inc. on eBuyPlus (see USA Lamp & Ballast Recycling, Inc. catalog):

- **Mailback services.** Waste batteries must only be shipped using the appropriate Cleanlites “LampMaster” recycling kits.
- **Direct or on-site pickup services.** Sites with large quantities of Universal Waste batteries can schedule a direct pickup.

**Important:** Do NOT send waste batteries to the Atlanta Mail Recovery Center, Ybor City Processing and Distribution Center (Tampa Logistics and Distribution Center), or the Topeka Material Distribution Center.

USPS employees must determine the battery type and follow the appropriate handling, storage, and disposal procedures (see table):

Used Battery Type	Waste Classification	Recycling Method
Alkaline batteries	Non-hazardous Waste	Recycle through a local recycling center or through Cleanlites’ recycling service on eBuyPlus. When recycling is impractical, alkaline batteries can be disposed of in the trash. <b>Note:</b> alkaline batteries in California must be managed as a <i>Universal Waste</i> and recycled through Cleanlites’ recycling services on eBuyPlus.
Small non-alkaline dry cell batteries and small sealed lead-acid batteries	Universal Waste	Recycle through Cleanlites’ recycling service on eBuyPlus.
Large lead-acid batteries	Not classified as Universal Waste (or Hazardous Waste) if they are reclaimed/recycled	Arrange pickup of vehicular lead-acid batteries through the facility’s vehicle battery supplier and pickup of industrial lead-acid batteries through EnerSys® Inc.

For more information about battery disposal and recycling:

- Consult your designated Environmental Specialist at [blue.usps.gov/sustainability/regional-environmental-compliance-all.htm](https://blue.usps.gov/sustainability/regional-environmental-compliance-all.htm).
- Review the guidance from *Environmental Compliance Bulletin: Used Batteries* at [blue.usps.gov/sustainability/environmental/\\_pdf/waste/ecb-used-batteries.pdf](https://blue.usps.gov/sustainability/environmental/_pdf/waste/ecb-used-batteries.pdf).

- Visit the Environmental Affairs battery recycling website at [blue.usps.gov/sustainability/battery-recycling.htm](https://blue.usps.gov/sustainability/battery-recycling.htm).

— Environmental Affairs and Corporate Sustainability,  
Corporate Affairs, 9-19-24

## Finance

### Rural Timekeeping: Transition to 3-Digit Hours Codes

In PP19/2024, all single-digit rural DACA (Days Assigned Carrier Absent) codes will be transitioned to the three-digit city hours code equivalent. Beginning with PP 19/2024 timekeeping (covering 8/24/2024 through 9/6/2024), all DACA days reported on rural timecards must be entered using three-digit hours codes as seen in **Figure 1** below.

Existing business rules for single-digit DACA codes will also apply to the three-digit hours code equivalent. However, DACA code K and J have been combined into a single “Scheduled Relief Day” code 100.

When submitting rural hours adjustments through AdjustPay or EIWS Online Forms, complete adjustments relevant to pay period 18/2024 or earlier using single-digit DACA codes. Adjustments relevant to pay period 19/2024 or later must be completed using the three-digit hours codes.

**Figure 1**

1314 DACA DESCRIPTION	Single-Digit Through PP 18/2024	Three-Digit Beginning PP 19/2024
10 Day (K) Route Relief Day	K	100
11 Day (J) Route Relief Day	J	100
Absence Without Leave (AWOL)	U	024
Annual Leave	A	055
A/L in Lieu of Holiday Work, Rural	G	028
A/L in Lieu of Holiday Work, Non-Rural		106
Continuation of Pay	C	071
Court Leave	6	061
Day of Reflection	4	107
Donated Leave	D	046
Emergency Sick Leave - Other (April 1, 2020 - Dec 31, 2020)	8	081
Full-Time Union Official LWOP	F	084
Holiday Leave	H	058
Holiday Work, Rural	V	057
Holiday Work, Non-Rural	B	105
HQ-Authorized Administrative Leave	2	079
Injured On Duty/Leave Without Pay (IOD/LWOP)	W	049
Leave Without Pay (LWOP)	L	060
Limited Duty	E	101
Military Leave	M	067
Military Leave Without Pay	N	044
Other Leave (Administrative)	O	086
Pandemic Leave (EFEL March 11, 2021 - Sept 30, 2021)	1	042

1314 DACA DESCRIPTION	Single-Digit Through PP 18/2024	Three-Digit Beginning PP 19/2024
Public Health Leave (April 1, 2020 - Dec 31, 2020)	9	066
Relief Day (X-Day) Taken	X	087
Relief Day Worked (+ X-Day)	R	064
Relief Day Worked (150%)	5	037
Relief Day Worked (50% + X-Day)	3	038
Relief Day Worked, Non-Rural (+ X-Day)	Y	104
Scheduled Relief Day		100
Sick Leave	S	056
Steward Duty	Z	070
Training	T	102
Workday, Rural	Blank	Blank
Workday, Non-Rural	P	103
Wounded Warrior Leave	7	027
Xmas Holiday Work, Rural	V	057
Xmas Holiday Work, Non-Rural	B	105
1314-A DACA DESCRIPTION	Single-Digit Through PP 18/2024	Three-Digit Beginning PP 19/2024
Holiday	H	058
HQ-Authorized Administrative Leave	2	079
No Service	N	076
Other Leave (Administrative)	O	086
Workday	Blank	Blank

— Payroll, Controller,  
9-19-2024

## Stamp Services

### Update: Stamp Announcement 24-37: Hanukkah 2024 Stamp

In the article “Stamp Announcement 24-37: Hanukkah 2024 Stamp,” in *Postal Bulletin* 22656 (8-08-24, page 12-13), the technical details for press sheet size were listed.

Below are the corrected technical details for the *Hanukkah 2024* stamp, pane of 20.

There are no press sheets for this issue.

Full Pane Size (w x h):	5.5500 x 5.7600 in. / 140.9700 x 146.3040 mm
Plate Size:	320 stamps per revolution

– Stamp Services,  
Marketing, 9-19-24

### Update: Stamp Announcement 24-39: Thank You, Healthcare Community Stamp

There is an update to article “Stamp Announcement 24-39: Thank You, Healthcare Community Stamp,” in *Postal Bulletin* 22657 (8-22-24, page 35). The first-day-of-issue is October 1, 2024 as previously announced and stamps may begin being sold on October 1, 2024. There will be a Special Dedication event on October 3, 2024 with a Special Dedication postmark.

#### Special Dedication Postmarks

Only the following pictorial postmark is permitted for the *Thank You, Healthcare Community* stamp. The word “Station” or the abbreviation “STA” is required somewhere in the design because it will be a temporary station. Use of any image other than the following special pictorial image is prohibited.

#### Guidelines for Finalizing Thank You, Healthcare Community Stamp Pictorial Postmark Art



To finalize the *Thank You, Healthcare Community* stamp pictorial postmark art, insert the date, city, state, and ZIP Code™ of the physical location of your event adjacent to the stamp image. Overall dimensions of the pictorial postmark must not exceed 4 inches (horizontally) by 2 inches (vertically). Collectors prefer the dimensions 3-1/2 inches by 1 inch.

The Postal Service™ must make all special postmarks known to collectors through advance publicity in the *Postal Bulletin*. Therefore, all special dedication cancellations must be reported to Stamp Services 4 weeks before the event using PS Form 413, *Pictorial Postmark Announcement/Report*. To get a copy of the form, go to [blue.usps.gov/form-mgmt/forms/ps413.pdf](https://blue.usps.gov/form-mgmt/forms/ps413.pdf).

– Stamp Services,  
Marketing, 9-19-24

## Pictorial Postmarks Announcement

As a community service, the Postal Service™ offers pictorial postmarks to commemorate local events celebrated in communities throughout the nation. A list of events for which pictorial postmarks are authorized appears on the following pages. The sponsor of the pictorial postmark appears in italics under the date. Also provided are illustrations of these postmarks.

People attending these local events may get the postmark in person at the temporary Post Office® station established there. Those who cannot attend the event but who wish to get the postmark may submit a mail order request. Pictorial postmarks are available only for the dates indicated, and *requests must be postmarked no later than 30 days after the requested pictorial postmark date.*

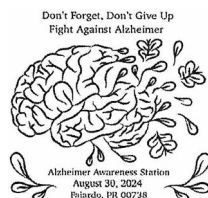
All requests must include a stamped envelope or postcard bearing at least the minimum First-Class Mail® postage. Items submitted for postmark may not include

postage issued after the date of the requested postmark. Such items will be returned unserved.

Customers who want a postmark must affix stamps to any envelope or postcard of their choice, address the envelope or postcard to themselves or others, insert a card of postcard thickness in envelopes for sturdiness, and tuck in the flap. Place the envelope or postcard in a larger envelope and address it to: Pictorial Postmarks, followed by the Name of the Station, Address, City, State, ZIP+4® Code, as listed next to the postmark.

Customers can also send stamped envelopes and postcards without addresses for postmark, as long as they supply a larger envelope with adequate postage and their return address. After applying the pictorial postmark, the Postal Service returns the items (with or without addresses) under addressed protective cover.

The following pictorial postmark has been extended for 30 days:



August 30, 2024

*Magdalena Velez*  
Alzheimer Awareness Station  
Customer Relations Specialist  
585 Avenue FD Roosevelt Suite 223  
San Juan, PR 00936-9998



September 16, 2024

*Joseph Lopresto*  
25th Anniversary Station  
Postmaster  
10421 Motor City Drive  
Bethesda, MD 20817-9996



September 20 – 22, 2024

*Indiana Stamp Club*  
INDYPEX Station  
Postmaster  
125 West South Street  
Indianapolis, IN 42606-9998



September 19, 2024

*Stamp Our Story Committee*  
– Las Vegas  
Nisei Legacy Station  
Postmaster  
201 Las Vegas Boulevard  
South, #100  
Las Vegas, NV 89101



September 21, 2024

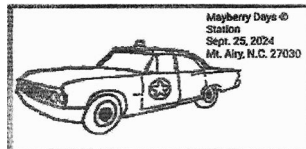
*Marcos Cruz Molina*  
Centennial Celebration  
Station  
Customer Relations  
Specialist  
585 Avenue FD Roosevelt  
Suite 223  
San Juan, PR 00936-9998





COVERED BRIDGE FESTIVAL  
WHITE BRIDGE STATION  
GARARDS FORT, PA 15334  
SEPTEMBER 21, 2024

September 21, 2024  
*White Covered Bridge Association*  
White Bridge Station  
Postmaster  
PO Box 9998  
Garards Fort, PA 15334



Mayberry Days  
Station  
Sept. 25, 2024  
Mt. Airy, N.C. 27030

September 25 – 27, 2024  
*Sunny Arts Council for Mount Airy Days Celebration*  
Mayberry Days Station  
Postmaster  
PO Box 9998  
Mount Airy, NC 27030



50th Anniversary Station  
Boone, NC, 28607  
September 21, 2024

September 21, 2024  
*Friends of the Watauga County Public Library*  
50th Anniversary Station  
Postmaster  
1544 Blowing Rock Road  
Boone, NC 28607



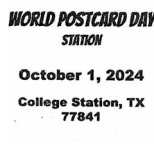
MICHIGAN FALL  
COLOR TOURS STATION  
SEPTEMBER 27, 2024  
COMSTOCK MI 49041

September 27, 2024  
*Kalamazoo Stamp Club*  
Michigan Fall Color Tours  
Station  
Postmaster  
PO Box 9998  
Comstock, MI 49041



September 21, 2024  
SAN DIEGO, CA 92124  
Date Meets Zip Station

September 21, 2024  
*United States Postal Service*  
Date Meets Zip Station  
Postmaster  
6030 Santo Road Suite 1  
San Diego, CA 92124



October 1, 2024  
*United States Postal Service*  
World Postcard Day Station  
Postmaster  
PO Box 2887  
College Station, TX 77841



September 23, 2024  
COLTON, CA 92324  
Date Meets Zip Station

September 23, 2024  
*United States Postal Service*  
Date Meets Zip Station  
Postmaster  
265 North 7th Street  
Colton, CA 92324-2952



October 3, 2024  
*United States Postal Service*  
Washington, DC Station  
Cancellation Services/  
Pictorial Postmark  
8300 Northeast  
Underground Drive Pillar  
210  
Kansas City, MO 64144-0001

– Stamp Services,  
Marketing, 9-19-24

## How to Order the First-Day-of-Issue Digital Color or Traditional Postmarks

Customers have 120 days to obtain the first-day-of-issue postmarks by mail. Each cover must have sufficient postage to meet First-Class Mail® requirements. Customers may purchase new stamps at their local Post Office®, by phone at 844-737-7826, or on The Postal Store® website at [usps.com/shop](https://usps.com/shop).

### Digital Color Postmarks

Only select stamp issues offer a digital color postmark. Customers may submit #6 or #10 envelopes constructed of paper rated as “laser safe.” The Postal Service™ recommends envelopes of 80-pound Accent Opaque, acid-free, 9/16-inch side seams with no glue on the flap. The maximum size of all digital color postmarks is 2 inches (vertically) by 4 inches (horizontally). Allow sufficient space on the envelope to accommodate the postmark. Do not use self-adhesive labels for addresses on the envelope. Two test envelopes must be included. There is a 50-cent charge per postmark at the time of servicing. Customers must submit a check, money order, or credit card for payment.

The Postal Service reserves the right to not accept hand-painted and other cachet envelopes that are not compatible with our digital color postmark equipment. The Postal Service also reserves the right to substitute traditional black rubber postmarks if use of nonspecified envelopes results in poor image quality or damage to equipment.

Customers must affix the stamps to the envelopes and address them to themselves or others for return through the mail. Or, they may include an additional self-addressed return envelope, large enough to accommodate their canceled items, with sufficient postage affixed for return of

their postmarked items. Address customer requests for digital color postmarks to:

FDOI – (Name of Stamp Issue)  
USPS Stamp Fulfillment Services  
8300 NE Underground Drive, Suite 300  
Kansas City, MO 64144-9900

After applying the first-day-of-issue postmark, the Postal Service will return the envelopes to the customer by U.S. Mail®.

### Traditional Postmarks

Customers must affix the stamps to the envelopes and address them to themselves or others for return through the mail. Or, they may include an additional self-addressed return envelope, large enough to accommodate their canceled items, with sufficient postage affixed for return of their postmarked items. Address customer requests for traditional postmarks to:

FDOI – (Name of Stamp Issue)  
USPS Stamp Fulfillment Services  
8300 NE Underground Drive, Suite 300  
Kansas City, MO 64144-9900

After applying the first-day-of-issue postmark, the Postal Service will return the envelopes to the customer by U.S. Mail. There is no charge for the first 50 postmarks. There is a 5-cent charge for each additional postmark over 50. Customers must submit a check, money order, or credit card for payment.

Locally produced items are not authorized. Only merchandise that has been approved and assigned an item number by Headquarters Retail Marketing may be produced and sold.



Digital Color Pictorial

#### FDOI – Carnival Nights Stamps

USPS Stamp Fulfillment Services  
8300 NE Underground Drive, Suite 300  
Kansas City, MO 64144-9900

October 6, 2024



Black and White Pictorial

#### FDOI – Carnival Nights Stamps

USPS Stamp Fulfillment Services  
8300 NE Underground Drive, Suite 300  
Kansas City, MO 64144-9900

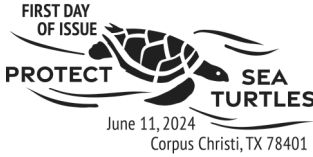
October 6, 2024



**FDI – Protect Sea Turtles Stamps**  
 USPS Stamp Fulfillment Services  
 8300 NE Underground Drive, Suite 300  
 Kansas City, MO 64144-9900

October 11, 2024

**Digital Color Pictorial**



**FDI – Protect Sea Turtles Stamps**  
 USPS Stamp Fulfillment Services  
 8300 NE Underground Drive, Suite 300  
 Kansas City, MO 64144-9900

October 11, 2024

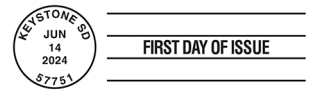
**Black and White Pictorial**



**FDI – U.S. Flags Stamps**  
 USPS Stamp Fulfillment Services  
 8300 NE Underground Drive, Suite 300  
 Kansas City, MO 64144-9900

October 14, 2024

**Digital Color Pictorial**



**FDI – U.S. Flags Stamps**  
 USPS Stamp Fulfillment Services  
 8300 NE Underground Drive, Suite 300  
 Kansas City, MO 64144-9900

October 14, 2024

**Black and White Pictorial**



**FDI – Horses Stamps**  
 USPS Stamp Fulfillment Services  
 8300 NE Underground Drive, Suite 300  
 Kansas City, MO 64144-9900

October 17, 2024

**Digital Color Pictorial**



**FDI – Horses Stamps**  
 USPS Stamp Fulfillment Services  
 8300 NE Underground Drive, Suite 300  
 Kansas City, MO 64144-9900

October 17, 2024

**Black and White Pictorial**



**FDI – Shaker Design Stamps**  
 USPS Stamp Fulfillment Services  
 8300 NE Underground Drive, Suite 300  
 Kansas City, MO 64144-9900

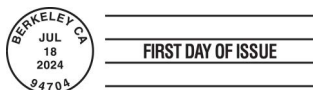
October 20, 2024

**Digital Color Pictorial**

**FDI – Shaker Design Stamps**

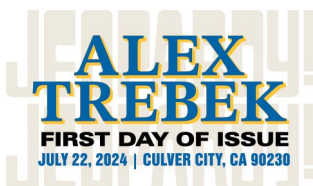
USPS Stamp Fulfillment Services  
8300 NE Underground Drive, Suite 300  
Kansas City, MO 64144-9900

October 20, 2024

**Black and White Pictorial****FDI – Low-Denomination Stamps**

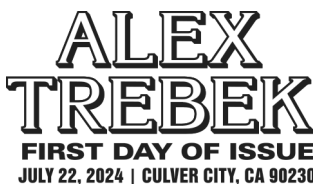
USPS Stamp Fulfillment Services  
8300 NE Underground Drive, Suite 300  
Kansas City, MO 64144-9900

November 18, 2024

**Black and White Pictorial****FDI – Alex Trebek Stamp**

USPS Stamp Fulfillment Services  
8300 NE Underground Drive, Suite 300  
Kansas City, MO 64144-9900

November 22, 2024

**Digital Color Pictorial****FDI – Alex Trebek Stamp**

8300 NE Underground Drive, Suite 300  
Kansas City, MO 64144-9900

November 22, 2024

**Black and White Pictorial****FDI – Hank Aaron Stamp**

USPS Stamp Fulfillment Services  
8300 NE Underground Drive, Suite 300  
Kansas City, MO 64144-9900

November 31, 2024

**Digital Color Pictorial****FDI – Hank Aaron Stamp**

8300 NE Underground Drive, Suite 300  
Kansas City, MO 64144-9900

November 31, 2024

**Black and White Pictorial****FDI – Dungeons & Dragons Stamps**

USPS Stamp Fulfillment Services  
8300 NE Underground Drive, Suite 300  
Kansas City, MO 64144-9900

December 1, 2024

**Digital Color Pictorial**



**FDOI – Dungeons & Dragons Stamps**  
8300 NE Underground Drive, Suite 300  
Kansas City, MO 64144-9900

December 1, 2024

**Black and White Pictorial**



**FDOI – Pinback Buttons Stamps**  
USPS Stamp Fulfillment Services  
8300 NE Underground Drive, Suite 300  
Kansas City, MO 64144-9900

December 15, 2024

**Digital Color Pictorial**



**FDOI – Pinback Buttons Stamps**  
8300 NE Underground Drive, Suite 300  
Kansas City, MO 64144-9900

December 15, 2024

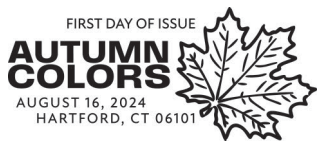
**Black and White Pictorial**



**FDOI – Autumn Colors Stamps**  
USPS Stamp Fulfillment Services  
8300 NE Underground Drive, Suite 300  
Kansas City, MO 64144-9900

December 16, 2024

**Digital Color Pictorial**



**FDOI – Autumn Colors Stamps**  
USPS Stamp Fulfillment Services  
8300 NE Underground Drive, Suite 300  
Kansas City, MO 64144-9900

December 16, 2024

**Black and White Pictorial**



**FDOI – First Continental Congress, 1774**  
USPS Stamp Fulfillment Services  
8300 NE Underground Drive, Suite 300  
Kansas City, MO 64144-9900

January 5, 2025

**Digital Color Pictorial**



**FDOI – First Continental Congress, 1774**  
USPS Stamp Fulfillment Services  
8300 NE Underground Drive, Suite 300  
Kansas City, MO 64144-9900

January 5, 2025

**Black and White Pictorial**

**FDI – Holiday Joy Stamps**

USPS Stamp Fulfillment Services  
8300 NE Underground Drive, Suite 300  
Kansas City, MO 64144-9900

January 14, 2025

**Digital Color Pictorial****FDI – Holiday Joy Stamps**

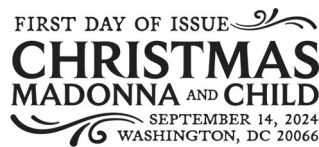
USPS Stamp Fulfillment Services  
8300 NE Underground Drive, Suite 300  
Kansas City, MO 64144-9900

January 14, 2025

**Black and White Pictorial****FDI – Christmas Madonna and Child Stamp**

USPS Stamp Fulfillment Services  
8300 NE Underground Drive, Suite 300  
Kansas City, MO 64144-9900

January 14, 2025

**Digital Color Pictorial****FDI – Christmas Madonna and Child Stamp**

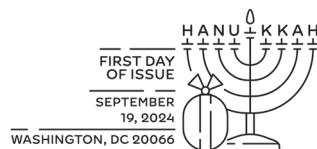
USPS Stamp Fulfillment Services  
8300 NE Underground Drive, Suite 300  
Kansas City, MO 64144-9900

January 14, 2025

**Black and White Pictorial****FDI – Hanukkah 2024 Stamp**

USPS Stamp Fulfillment Services  
8300 NE Underground Drive, Suite 300  
Kansas City, MO 64144-9900

January 19, 2025

**Digital Color Pictorial****FDI – Hanukkah 2024 Stamp**

USPS Stamp Fulfillment Services  
8300 NE Underground Drive, Suite 300  
Kansas City, MO 64144-9900

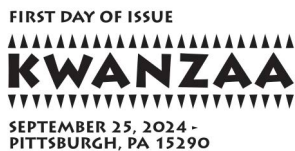
January 19, 2025

**Black and White Pictorial****FDI – Kwanzaa Stamp**

USPS Stamp Fulfillment Services  
8300 NE Underground Drive, Suite 300  
Kansas City, MO 64144-9900

January 25, 2025

**Digital Color Pictorial**



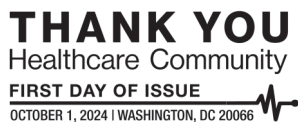
**FDI – Kwanzaa Stamp**  
 USPS Stamp Fulfillment Services  
 8300 NE Underground Drive, Suite 300  
 Kansas City, MO 64144-9900  
 January 25, 2025

**Black and White Pictorial**



**FDI – Thank You, Healthcare Community Stamp**  
 USPS Stamp Fulfillment Services  
 8300 NE Underground Drive, Suite 300  
 Kansas City, MO 64144-9900  
 February 1, 2025

**Digital Color Pictorial**



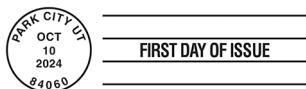
**FDI – Thank You, Healthcare Community Stamp**  
 USPS Stamp Fulfillment Services  
 8300 NE Underground Drive, Suite 300  
 Kansas City, MO 64144-9900  
 February 1, 2025

**Black and White Pictorial**



**FDI – Winter Whimsy Stamps**  
 USPS Stamp Fulfillment Services  
 8300 NE Underground Drive, Suite 300  
 Kansas City, MO 64144-9900  
 February 10, 2025

**Digital Color Pictorial**



**FDI – Winter Whimsy Stamps**  
 USPS Stamp Fulfillment Services  
 8300 NE Underground Drive, Suite 300  
 Kansas City, MO 64144-9900  
 February 10, 2025

**Black and White Pictorial**

– Stamp Services,  
Marketing, 9-19-24



475 L'ENFANT PLAZA SW  
WASHINGTON DC 20260-5540

First-Class Mail  
Postage & Fees Paid  
USPS  
Permit No. G-10

# Celebrate the radiant beauty of fall with *Autumn Colors* Forever® Stamps



**SOLD AS PANE OF 20 AUGUST 16, 2024**

