



Protect Yourself Against Heat Illness When Delivering for America

See page 3

Contents

COVER STORY

Protect Yourself Against Heat Illness When Delivering for America	3
---	---

POLICIES, PROCEDURES, AND FORMS UPDATES

Manuals

DMM Revision: Domestic Competitive Products Pricing and Mailing Standards Changes	5
DMM Revision: Removal of Sacks — USPS Marketing Mail and Periodicals Flats Clarification	7
IMM Revision: Individual Country Listing for New Caledonia	14

Publications

Publication 223 Revision: Directives and Forms Update.	15
--	----

Forms

PS Form 3227-R Revision: Rural or Highway Contract Route Carrier Stamp Purchase Order Form	16
--	----

ORGANIZATION INFORMATION

Hazardous Materials

Don't Mail Mercury	33
--------------------------	----

Human Resources

Learn More About Viral Hepatitis	34
--	----

Information Security

CyberSafe Employee Training Available Now	36
---	----

International Mail

Competitive Services Price Changes	36
--	----

Stamp Services

Stamp Announcement 23-27: Bridges Stamps	37
Pictorial Postmarks Announcement	39

How to Order the First-Day-of-Issue Digital Color or Traditional Postmarks	42
--	----

Supply Management

Interest Rate on Contract Claims	47
--	----

PULL-OUT INFORMATION

Fraud

Missing, Lost, or Stolen U.S. Money Order Forms	17
Missing, Lost, or Stolen Canadian Money Order Forms	24
Verifying U.S. Postal Service Money Orders	26
Counterfeit Canadian Money Order Forms	26
Toll-Free Number Available to Verify Canadian Money Orders	26

Other Information

Overseas Military/Diplomatic Mail	27
Freely Associated States Restrictions	32

POSTAL BULLETIN 2022 ANNUAL INDEX

2022 Annual Index	PB 22616 (1-26-23)
-------------------------	--------------------

Find the latest in mail and delivery information and services offered by U.S. Postal® in the *Postal Bulletin* at about.usps.com/postal-bulletin

Mail Moment®

Cover Story

Protect Yourself Against Heat Illness When Delivering for America

Rising temperatures can put employees at risk for heat illnesses. When the body is unable to cool itself by sweating, heat illnesses such as heat stress, heat cramps, heat exhaustion, and heat stroke may occur. Symptoms range from mild and easily correctable to severe and potentially life-threatening.

The United States Postal Service® (USPS®) implemented the Heat Illness Prevention Program (HIPP) to protect employees from heat illnesses and to educate them on how to stay safe during hot weather. HIPP is triggered during the period of April 1 through October 31, and at any other time when weather reports issued by the National Weather Service (NWS)¹ for a particular work location indicate that outdoor heat index temperatures are expected to exceed 80° Fahrenheit during the course of a workday or work shift.

High temperatures and humidity, direct sun or heat, limited air movement, physical exertion, poor physical condition, and some medicines are also contributing factors to heat illnesses. Heat illnesses and deaths are preventable when employees recognize the symptoms and know what to do.

Heat Stroke

Heat stroke, the most serious illness caused by heat stress, occurs when the body becomes unable to control its temperature or cool itself down. When this takes place, the body can experience major physical disabilities or in the most severe cases, death.

Symptoms	First Aid
<ul style="list-style-type: none"> ■ Hot, dry skin or profuse sweating. ■ Hallucinations. ■ Chills. ■ Headache. ■ High body temperature. ■ Confusion. ■ Dizziness. ■ Slurred speech. 	<ul style="list-style-type: none"> ■ Call 9-1-1. ■ Notify supervision. ■ Move to a shaded or cooler area. ■ Cool the body with water or by fanning.

Heat Exhaustion

Heat exhaustion is severe dehydration due to the loss of water through sweating.

Symptoms	First Aid
<ul style="list-style-type: none"> ■ Heavy sweating. ■ Extreme weakness. ■ Dizziness. ■ Nausea. ■ Clammy skin. ■ Pale complexion. ■ Cramps. ■ Elevated temperature. 	<ul style="list-style-type: none"> ■ Call 9-1-1. ■ Move to a shaded or cooler area. ■ Drink plenty of water. ■ Cool the body with water or by fanning.

Heat Syncope

Heat syncope is fainting due to dehydration or lack of acclimatization to hot environments.

Symptoms	First Aid
<ul style="list-style-type: none"> ■ Light-headed feeling. ■ Dizziness. ■ Fainting. 	<ul style="list-style-type: none"> ■ Move to a shaded or cooler area. ■ Drink plenty of water.

Heat Cramps

Heat cramps occur when the body sweats excessively and depletes the muscles of proper nutrients, causing the muscles to tense.

Symptoms	First Aid
<ul style="list-style-type: none"> ■ Muscle pain or spasms. 	<ul style="list-style-type: none"> ■ Stop all activity. ■ Move to a shaded or cooler area. ■ Drink plenty of water.

Heat Rash

Heat rash is a skin irritation caused by excessive sweating.

Symptoms	First Aid
<ul style="list-style-type: none"> ■ Red cluster of pimples or small blisters. 	<ul style="list-style-type: none"> ■ Keep affected area dry. ■ Baby powder can prevent discomfort.

1. NWS weather reports can be obtained at weather.gov.

If an employee experiences signs of heat-related illness, they must seek immediate medical assistance by calling 9-1-1. Also, here are some proactive tips to beat the heat:

- **Hydrate before, during, and after work.** Prevention is important — drink at least 8 ounces of water every 20 minutes.
- **Dress appropriately for the weather.** On warm days, wear light-colored, loose-fitting, and breathable clothing to keep your body temperature down.
- **Use the shade to stay cool.** When possible, use shaded areas to stay out of direct sunlight.

Employees who have difficulty breathing or experience discomfort as a result of the heat while wearing a face covering must remove the covering until the discomfort ceases. However, if employees remove their face coverings, they must practice social distancing while in contact with others, and sneeze or cough into their elbow or into a tissue.

For more information about preventing heat illnesses, review the following resources:

- HERO Safety talk: Heat Illness Prevention Program Safety Talk #2068;

- HERO Course: Heat Illness Recognition and Prevention;
- COVID-19 SUT 37: blue.usps.gov/blue/covid-19/stand-up-talks.htm;
- Safety Depends on Me videos: blue.usps.gov/corp-comm/uspstv/safety-and-health/;
- Safety Resource Tools, A–Z, OSH Topics — Heat Illness Prevention: blue.usps.gov/hr/safety/heat-related-illness-prevention.htm;
- Occupational Safety and Health Administration (OSHA) website: osha.gov/heat/; and
- National Safety Council website: nsc.org/home-safety/tools-resources/seasonal-safety/summer/heat.

eBuy+ HIPP material ordering information:

Vehicle Sticker:

Label 128, June 2018
PSN 7690-18-000-4040

Employee Badge:

PS Form 1280, June 2019
PSN 7530-18-000-4041

— Occupational Safety and Health,
HQ Human Resources, 7-13-23

Policies, Procedures, and Forms Updates

Manuals

DMM Revision: Domestic Competitive Products Pricing and Mailing Standards Changes

The Postal Service™ will revise *Mailing Standards of the United States Postal Service*, Domestic Mail Manual (DMM®), to reflect changes to certain prices and mailing standards for the following competitive products:

- Priority Mail Express®.
- Priority Mail®.
- USPS Ground Advantage™ (formerly First-Class Package Service®).
- Parcel Select®.
- Extra Services.
- Return Services.
- Mailer Services.
- Recipient Services.
- Other.

This article describes new prices and product features for competitive products established by the Governors of the United States Postal Service®. These revised standards were effective July 9, 2023.

New prices and an article with detailed revisions to be made to the DMM regarding these standards are available on the Postal Explorer® website at pe.usps.com.

Competitive products changes are identified by product as follows:

Priority Mail Express

There are no Priority Mail Express retail or commercial price or structural changes scheduled for July 9, 2023.

Priority Mail

There are no Priority Mail retail or commercial price or structural changes scheduled for July 9, 2023.

USPS Ground Advantage (formerly First-Class Package Service)

First-Class Package Service Rebranded as USPS Ground Advantage

USPS Ground Advantage, a rebranding of First-Class Package Service, will consolidate USPS Retail Ground® and Parcel Select Ground into the respective retail and commercial price categories. The USPS Ground

Advantage — Retail and USPS Ground Advantage — Commercial features are as follows:

USPS Ground Advantage — Retail

- Weight: 1 ounce to 70 pounds. (Ounce pricing will be in 4-ounce, 8-ounce, 12-ounce, and 15.999-ounce increments for USPS Ground Advantage — Retail.)
- Dimensions: Pieces up to 130 inches in length and girth (oversized price).
- USPS Ground Advantage — Limited Overland Route (LOR) prices.
- Dimensional weight (DIM) will apply to USPS Ground Advantage — Retail and USPS Ground Advantage — LOR.
- Nonstandard Fees will apply to USPS Ground Advantage — Retail and USPS Ground Advantage — LOR.
- Sealed against inspection.
- \$100 of insurance included with USPS Ground Advantage — Retail and USPS Ground Advantage — LOR. (See “USPS Ground Advantage Insurance” below.)
- USPS Click-N-Ship® added as a payment method.
- Extra Services: Certified Mail® and Certificate of Mailing will no longer be offered.

USPS Ground Advantage — Commercial

- Weight: 1 ounce to 70 pounds. (Ounce pricing will be in 4-ounce., 8-ounce., 12-ounce, and 15.999-ounce increments.)
- Dimensions: Pieces up to 130 inches in length and girth (oversized price).
- USPS Ground Advantage — Cubic prices.
- Dimensional weight (DIM) will apply to USPS Ground Advantage — Commercial.
- Nonstandard Fees will apply to USPS Ground Advantage — Commercial.
- Not Sealed against inspection.
- \$100 of insurance coverage included with USPS Ground Advantage — Commercial and USPS Ground Advantage — Cubic. (See “USPS Ground Advantage Insurance” below.)

- USPS Click-N-Ship added as a payment method.
- Extra Services: Certified Mail and Certificate of Mailing will no longer be offered.

Prices

- Overall, USPS Ground Advantage prices will decrease 1.4 percent.
- USPS Ground Advantage — Retail prices will decrease 3.2 percent.
- USPS Ground Advantage — Commercial prices will decrease 0.7 percent.

USPS Ground Advantage Insurance

The Postal Service is including \$100 of insurance coverage with USPS Ground Advantage — Retail and USPS Ground Advantage — Commercial product offerings. See *Federal Register* notice, “New Mailing Standards for Domestic Mailing Services Products,” (87 FR 21601-21603) for additional information.

Parcel Select

Prices

The prices for Parcel Select Destination Entry will increase an average of 2.1 percent. The prices for Parcel Select Lightweight® will decrease an average of 0.1 percent. The prices for USPS Connect® Local will remain the same.

Parcel Select Destination Entry Pricing

The Postal Service is revising the Parcel Select Destination Entry pricing structure to eliminate the nonmachinable price table and have one price table that will include price increments for weights from 1 pound through 70 pounds and oversized.

Parcel Select Destination Entry and Parcel Select Lightweight Pricing Component Restructuring

The Postal Service is revising the pricing components of Parcel Select Destination Entry and Parcel Select Lightweight for consistency within the products. Both products will have four pricing components:

1. Destination Delivery Unit (DDU);
2. Destination Hub (DHub);
3. Destination Sectional Center Facility (DSCF); and
4. Destination Network Distribution Center (DNDC).

This revision of pricing components will make Parcel Select Lightweight consistent with Parcel Select Destination Entry. Additionally, Parcel Select Lightweight will be priced at 4-ounce, 8-ounce, 12-ounce, and 15.999-ounce increments.

Parcel Select Ground Discontinued

As a result of rebranding and enhancing the USPS Ground Advantage — Commercial product, the Postal Service is discontinuing the Parcel Select Ground price category offering.

USPS Retail Ground

USPS Retail Ground Discontinued

As a result of rebranding and enhancing the USPS Ground Advantage — Retail product, the Postal Service is discontinuing the USPS Retail Ground product offering.

Return Services

USPS Returns

Priority Mail Express Return Service

The Postal Service is adding Priority Mail Express Return Service to the suite of USPS Returns services. Priority Mail Express standards will apply to Priority Mail Express Return service pieces.

USPS Ground Advantage Return Service (formerly First-Class Package Return Service)

The Postal Service is rebranding First-Class Package Return Service as USPS Ground Advantage Return Service.

USPS Ground Advantage Return Service Insurance

The Postal Service is including \$100.00 of insurance coverage with USPS Ground Advantage Return service pieces. See *Federal Register* notice, “New Mailing Standards for Domestic Mailing Services Products,” (87 FR 21601-21603) for additional information.

Ground Return Service Discontinued

As a result of rebranding and enhancing the USPS Ground Advantage — Commercial product and the Postal Service discontinuing the Parcel Select Ground price category offering, the Postal Service is discontinuing the Ground Return Service (Parcel Select Ground) USPS Returns product offering.

Mailer Services

Pickup on Demand Service

The Pickup on Demand® service fee will remain the same.

USPS Tracking Plus Service

The USPS Premium Tracking Service™ prices will remain the same.

USPS Label Delivery Service

The USPS Label Delivery Service prices will remain the same.

Recipient Services

Post Office Box Service

The competitive Post Office Box™ service prices will remain the same.

Premium Forwarding Service

Premium Forwarding Service® (PFS®) prices will remain the same.

USPS Package Intercept

The USPS Package Intercept® fee will remain the same.

Other

Address Enhancement Service

Address Enhancement Service competitive product prices will remain the same.

Small Parcel Forwarding Fee

The small parcel forwarding fee will remain the same.

Physical Standards for Parcels

The Postal Service is revising the maximum dimensions and weight permitted for machinable parcels. The maximum permitted dimensions for a machinable parcel are 22 inches x 18 inches x 15 inches. The maximum permitted weight for a machinable parcel is 25 pounds.

Resources

The Postal Service provides additional resources to assist customers with this price change for competitive products. These tools include price lists, downloadable price files, and *Federal Register* notices, which are available on the Postal Explorer website at pe.usps.com.

The Postal Service will incorporate these revisions into the July 9, 2023, edition of the online DMM, which is available via Postal Explorer at pe.usps.com.

— *Product Classification, Product Solutions, 7-13-23*

DMM Revision: Removal of Sacks — USPS Marketing Mail and Periodicals Flats Clarification

The Postal Service™ will revise *Mailing Standards of the United States Postal Service*, Domestic Mail Manual (DMM®), in various sections, to clarify requirements for using flat trays and sacks, when applicable, as a handling unit for USPS Marketing Mail® and Periodicals flats.

These revisions (scheduled to publish in the July 9, 2023, DMM edition) clarify revised standards from *Postal Bulletin* 22616 (1-26-23, pages 5–23) that published in the January 22, 2023, DMM edition and pertain to using flat trays and sacks. In that edition, the Postal Service removed references to sacks as a handling unit for certain USPS Marketing Mail and Periodicals flats.

This article also includes corrections for section 705.8.10.3d planned for the July 9, 2023, DMM edition. The revisions for that section included in the recently published article “New Mailing Standards for Domestic Mailing Services Products,” in *Postal Bulletin* 22626 (6-15-23, 4–6), were incorrect.

The Postal Service will publish these revisions in the July 9, 2023, DMM edition, which is expected to post online in the coming weeks. These standards became effective July 9, 2023.

Mailing Standards of the United States Postal Service, Domestic Mail Manual (DMM)

* * * * *

200 Commercial Mail Letters, Cards, Flats and Parcels

* * * * *

207 Periodicals

* * * * *

18.0 General Mail Preparation

* * * * *

18.4 Mail Preparation Terms

* * * * *

[Revise the text of item s. to read as follows:]

- s. An *origin/entry SCF flat tray or sack* contains all 5-digit and 3-digit bundles (regardless of quantity) for the SCF in whose service area the mail is verified. At the mailer’s option, such a flat tray/sack may be prepared for the SCF area of each entry Post Office. This presort level applies only to nonletter-size Periodicals prepared in flat trays/sacks.

* * * * *

20.0 Sacks and Trays

20.1 Basic Standards

20.1.1 General

[Revise the text of 20.1.1 to read as follows:]

Mailings must be prepared in letter trays (letters), flat trays (flats) under 22.7 and 25.5, or sacks (carrier route, 5-digit scheme cr-rt and 5-digit cr-rt flats, nonpalletized residual 5-digit flats entered at a DDU along with carrier route flats, nonpalletized carrier route flats entered at the DSCF (origin), nonpalletized 5-digit flats entered at the DSCF (origin), and nonpalletized 3-digit/SCF flats entered at the DSCF (origin), and all periodicals parcels). DSCF (origin) 5-digit and 3-digit/SCF sacks must be entered at the BMEU and emptied into a designated container. Palletized mail is subject to 705.8.0. See 203.5.0 and 203.6.0 for tray and sack standards.

* * * * *

22.0 Preparing Nonbarcoded (Presorted) Periodicals

* * * * *

22.2 Bundle Preparation

[Add a new first sentence to the introductory text of 22.2 to read as follows:]

Bundling in flat trays is optional unless a bundle is more finely presorted than the tray's presort destination.***

[Revise the current second sentence of the introductory text of 22.2 to read as follows:]

Prepare a bundle when the quantity of addressed pieces for a required presort level reaches the minimum bundle size.

* * * * *

[Revise the title and introductory text of 22.6 to read as follows:]

22.6 Sack Preparation

Sack preparation is allowed only for the following: Parcels; Nonpalletized residual 5-digit flats entered at a DDU along with carrier route flats; Nonpalletized carrier route flats entered at the DSCF (origin); Nonpalletized 5-digit flats entered at the DSCF (origin); and nonpalletized 3-digit/SCF flats entered at the DSCF (origin). DSCF (origin) 5-digit and 3-digit/SCF sacks must be entered at the BMEU and emptied into a designated container. For mailing jobs that also contain a barcoded mailing, see 22.1.2. For other mailing jobs, preparation sequence, sack size, and labeling:

[Revise the text of items a. through d. to read as follows:]

- a. 5-digit, required at 72 pieces, optional at 24 pieces minimum.
 1. Line 1: use city, state, and 5-digit ZIP Code on mail. (See 21.0 for overseas military mail.)
 2. Line 2: use "PER" or NEWS" as applicable; followed by "FLTS" or "IRREG" as applicable; followed by "5D"; followed by "NON BC" for flats.

- b. 3-digit, required at 72 pieces, optional at 24 pieces minimum.
 1. Line 1: use L002, Column A.
 2. Line 2: use "PER" or "NEWS" as applicable; followed by "FLTS" or "IRREG" as applicable; followed by "3D"; followed by "NON BC" for flats.

- c. SCF, required at 72 pieces, optional at 24 pieces minimum.
 1. Line 1: use L002, Column C.
 2. Line 2: use "PER" or "NEWS" as applicable; followed by "FLTS" or "IRREG" as applicable; followed by "SCF"; followed by "NON BC" for flats.

- d. Origin/entry SCF, required for the SCF of the origin (verification) office, optional for the SCF of an entry office other than the origin office, (no minimum).
 1. Line 1: use L002, Column C.
 2. Line 2: use "PER" or "NEWS" as applicable; followed by "FLTS" or "IRREG" as applicable; followed by "SCF"; followed by "NON BC" for flats.

* * * * *

22.7 Tray Preparation — Flat-Size Nonbarcoded Pieces

[Revise the Introductory text of 22.7 to read as follows:]

Mailers must place machinable and nonmachinable (26.0) flat-sized pieces in flat trays (203.5.6) instead of sacks unless prepared as the following: Direct carrier route; 5-digit scheme carrier route; 5-digit carrier route (23.4.1, 705.9.0, and 705.10.0); Nonpalletized residual 5-digit entered at a DDU along with carrier route flats; Nonpalletized 5-digit flats entered at the DSCF (origin); or nonpalletized 3-digit/SCF entered at the DSCF (origin). Bundling is optional unless a bundle is more finely presorted than the tray's presort destination. The trays are subject to a container charge and any bundles are subject to a bundle charge. Tray preparation, sequence, and labeling:

* * * * *

23.0 Preparing Carrier Route Periodicals

* * * * *

23.4 Preparation — Flat-Size Pieces and Irregular Parcels

[Revise the title of 23.4.1 to read as follows:]

23.4.1 Flat Tray and Sacking Preparation and Labeling

* * * * *

[Revise the introductory text of item d. to read as follows:]

- d. 3-digit carrier routes, required with one 6-piece bundle. Flat-sized pieces must be prepared in flat trays (see 203.5.6).

* * * * *

[Revise the title and introductory text of 23.4.2 to read as follows:]

23.4.2 Exception to Flat Traying and Sacking

Sacking or traying is not required for carrier route bundles entered at a DDU when the mailer unloads bundles under 29.6.5. Mail presented under this preparation is not subject to the container charge (but is subject to the bundle charge). Mailers must prepare unsacked, untrayed bundles as follows:

* * * * *

25.0 Preparing Flat-Size Barcoded (Automation) Periodicals

* * * * *

25.4 Sacking and Labeling

[Revise the text of 25.4 to read as follows:]

Sack preparation is allowed only for nonpalletized residual 5-digit flats entered at a DDU along with carrier route flats, nonpalletized 5-digit flats entered at the DSCF (origin), and nonpalletized 3-digit/SCF flats entered at the DSCF (origin). DSCF (origin) 5-digit and 3-digit/SCF sacks must be entered at the BMEU and emptied into a designated container. For mailing jobs that also contain a machinable non-barcode price mailing, see 25.1.9 and 705.9.0. Other mailing jobs are prepared, sacked, and labeled as follows:

- a. 5-digit, required at 72 pieces, optional at 24 pieces; fewer pieces not permitted; labeling:
 1. Line 1: use city, state, and 5-digit ZIP Code on mail. (See 21.0 for overseas military mail.)
 2. Line 2: use "PER FLTS 5D BC" or "NEWS FLTS 5D BC," as applicable.
- b. 3-digit, required at 72 pieces, optional at 24 pieces; fewer pieces not permitted; labeling:
 1. Line 1: use L002, Column A.
 2. Line 2: use "PER FLTS 3D BC" or "NEWS FLTS 3D BC," as applicable.
- c. SCF, required at 72 pieces, optional at 24 pieces; fewer pieces not permitted; labeling:
 1. Line 1: use L002, Column C.
 2. Line 2: use "PER FLTS SCF BC" or "NEWS FLTS SCF BC," as applicable.

- d. Origin SCF (required) and entry SCF(s) (optional), no minimum; labeling:

1. Line 1: use L002, Column C.
2. Line 2: use "PER FLTS SCF BC" or "NEWS FLTS SCF BC," as applicable.

25.5 Tray Preparation – Flat-Size Barcoded Pieces

[Revise the introductory text of 25.5 to read as follows:]

Mailers must place machinable flats (under 201.6.0) in flats trays (see 24.0) instead of sacks unless prepared as the following: Direct carrier route; 5-digit scheme carrier route; 5-digit carrier route; Nonpalletized residual 5-digit and entered at a DDU along with carrier route flats; Nonpalletized 5-digit flats entered at the DSCF (origin); or nonpalletized 3-digit/SCF entered at the DSCF (origin). Mailers must group together all pieces for each 5-digit scheme, 5-digit, 3-digit scheme, 3-digit, SCF, and ADC destination. Bundling is optional unless it achieves a finer presort than the tray's presort destination. The trays are subject to a container charge and any bundles are subject to a bundle charge. Tray preparation, sequence, and labeling:

* * * * *

29.0 Destination Entry

* * * * *

29.4 Destination Sectional Center Facility

* * * * *

29.4.2 Price Eligibility

* * * * *

[Add new item c. to read as follows:]

- c. Nonpalletized carrier route, 5-digit scheme carrier route, 5-digit carrier route, 5-digit, or 3-digit flats may be prepared in sacks when entered at the DSCF (origin). DSCF (origin) 5-digit and 3-digit/SCF sacks must be entered at the BMEU and emptied into a designated container.

29.5 Destination Delivery Unit

* * * * *

29.5.2 Price Eligibility

* * * * *

[Add new item d. to read as follows:]

- d. Nonpalletized residual 5-digit flats remaining after a carrier route sortation may be prepared in sacks and deposited at the DDU along with a carrier route mailing.

* * * * *

240 Commercial Mail USPS Marketing Mail**243 Prices and Eligibility**

* * * * *

6.0 Additional Eligibility Standards for Enhanced Carrier Route USPS Marketing Mail Letters and Flats

* * * * *

6.5 High Density and High Density Plus (Enhanced Carrier Route) Standards — Flats

* * * * *

6.5.4 High Density Plus Carrier Route Bundles on a 5-digit/Direct Container (High Density Plus-CR Bundles/Container Discount Eligibility) — Flats*[Revise the text of 6.5.4 to read as follows:]*

The High Density Plus-CR Bundles/Container discount applies to 300 or more High Density Plus-eligible pieces that are palletized under 705.8.0, 705.10.0, 705.12.0, or 705.13.0 on a 5-digit merged, 5-digit (scheme) merged, 5-digit carrier route, 5-digit carrier routes, or 5-digit scheme carrier route pallet entered at an Origin (None), DNDC, DSCF, or DDU entry, or in a carrier route sack or tub under 245.9.7a or 203.5.8 and entered at the DDU.

* * * * *

6.7 Saturation Enhanced Carrier Route Standards — Flats

* * * * *

6.7.3 Saturation — (including EDDM) Carrier Route Bundles on a 5-digit/Direct Container (Saturation-CR Bundles/Container Discount Eligibility) — Flats*[Revise the text of 6.7.3 to read as follows:]*

The Saturation-CR Bundles/Container discount applies to at least 90 percent or more of the total number of active residential addresses or 75 percent or more of the total number of active possible delivery addresses on each carrier route that are palletized under 705.8.0, 705.10.0, 705.12.0, or 705.13.0 on a 5-digit merged, 5-digit (scheme) merged, 5-digit carrier route, 5-digit carrier routes, or 5-digit scheme carrier route pallet entered at an Origin (None), DNDC, DSCF, or DDU entry, or in a carrier route sack or tub under 245.9.7a or 203.5.8 and entered at the DDU.

* * * * *

245 Mail Preparation

* * * * *

3.0 Letter Trays, Flat Trays, and Sacks*[Revise the second sentence of 3.0 to read as follows:]*

Flat mailings must be prepared in flat trays except when permitted to be prepared in sacks or letter trays under other applicable standards in this section.

* * * * *

8.0 Preparing Nonautomation Flats

* * * * *

*[Revise the title and text of 8.2 to read as follows:]***8.2 Bundle Preparation**

Bundling in flat trays is optional unless a bundle is more finely presorted than the tray's presort destination. Prepare a bundle when the quantity of addressed pieces for a required presort level reaches the required minimum bundle size specified in 8.3. Smaller volumes are not permitted except under 203.4.0 and for mixed ADC bundles.

* * * * *

[Delete current item 8.4 in its entirety and renumber current items 8.5 through 8.10 as 8.4 through 8.9, respectively:]

* * * * *

8.4 Required Traying*[Revise the introductory text of renumbered 8.4 to read as follows:]*

Except as provided in 8.6, a flat tray, or a letter tray under 3.0, must be prepared when the quantity of mail for a required presort destination reaches a full flat tray (up to the handholds), 125 pieces, or 15 pounds, whichever occurs first, subject to these conditions:

* * * * *

*[Revise the title and introductory text of renumbered 8.6 to read as follows:]***8.6 Traying, Sacking, and Labeling**

Flat trays are allowed for all sortations. Sack preparation is allowed only for the following: Nonpalletized residual 5-digit flats entered at a DDU along with carrier route flats; Nonpalletized carrier route flats entered at the DSCF (origin); Nonpalletized 5-digit flats entered at the DSCF (origin); and nonpalletized 3-digit flats entered at the DSCF (origin). DSCF (origin) 5-digit and 3-digit/SCF sacks must be entered at the BMEU and emptied into a designated container. All other sortations require flat tray preparation. Preparation sequence and labeling:

[Revise the introductory text of item a. to read as follows:]

- a. 5-digit/scheme (required); scheme sort required (before 5-digit sort), only for pieces meeting the automation-flats criteria in 201.6.0 (see the definition

in 1.4j); full flat tray, 125-piece, or 15-pound minimum; labeling:

* * * * *

[Revise the introductory text of item b. to read as follows:]

b. 3-digit (required); full flat tray, 125-piece, or 15-pound minimum; labeling:

* * * * *

[Revise the introductory text of item d. to read as follows:]

d. ADC (required); full flat tray, 125-piece, or 15-pound minimum; labeling:

* * * * *

10.0 Preparing Automation Flats

* * * * *

10.4 USPS Marketing Mail Bundle and Flat Tray Preparation

10.4.1 Bundling and Labeling

[Revise the introductory text of 10.4.1 to read as follows:]

Bundling in flat trays is optional unless a bundle is more finely presorted than the tray’s presort destination. Preparation sequence, bundle size, except as allowed under 203.4.0, and labeling:

* * * * *

[Revise the title and introductory text of 10.4.3 to read as follows:]

10.4.3 Traying, Sacking, and Labeling

Sack preparation is allowed only for the following: Nonpalletized residual 5-digit flats entered at a DDU along with carrier route flats; Nonpalletized carrier route flats entered at the DSCF (origin); Nonpalletized 5-digit flats entered at the DSCF (origin); and nonpalletized 3-digit flats entered at the DSCF (origin). DSCF (origin) 5-digit and 3-digit/SCF sacks must be entered at the BMEU and emptied into a designated container. All other sortations require flat tray preparation. Preparation sequence and labeling:

* * * * *

[Revise the text of item a. to read as follows:]

a. 5-digit/scheme (required); scheme sort required before 5-digit sort (see the definition in 1.4g.); full flat tray, 125-piece, or 15-pound minimum; labeling:

- 1. Line 1: For 5-digit scheme flat trays, use L007, Column B. For 5-digit flat trays/sacks, use city, state, and 5-digit ZIP Code on mail. (See 203.5.11 for overseas military mail.)

- 2. Line 2: For 5-digit scheme flat trays, use “STD FLTS 5D SCH BC.” For 5-digit flat trays/sacks, use “STD FLTS 5D BC.”

* * * * *

246 Enter and Deposit

* * * * *

4.0 Destination Sectional Center Facility (DSCF) Entry

* * * * *

4.2 Eligibility

* * * * *

4.2.2 Flats

* * * * *

[Revise the text of items a. and b. to read as follows:]

- a. When deposited at a DSCF or USPS-designated facility, addressed for delivery within the DSCF’s service area, and placed in a flat tray, sack (when applicable), or on a pallet labeled to the DSCF or to a destination within its service area. This includes flat trays labeled to an ADC facility with the same service area as the DSCF.
b. When prepared in 5-digit bundles and placed in or on a merged 5-digit scheme or merged 5-digit flat tray, sack (when applicable), or pallet that is deposited at the destination delivery unit as defined in 5.1.

[Add new item c. to read as follows:]

- c. When prepared as nonpalletized carrier route, 5-digit scheme carrier route, 5-digit carrier route, 5-digit, or 3-digit flats in sacks entered at the DSCF (origin). DSCF (origin) 5-digit and 3-digit/SCF sacks must be entered at the BMEU and emptied into a designated container.

* * * * *

5.0 Destination Delivery Unit (DDU) Entry

* * * * *

5.2 Eligibility

* * * * *

5.2.2 Flats

[Add new last sentence to the text of 5.2.2 to read as follows.]

***Nonpalletized residual 5-digit flats remaining after a carrier route sortation may be prepared in sacks and deposited at the DDU along with a carrier route mailing.

* * * * *

700 Special Standards

* * * * *

705 Advanced Preparation and Special Postage Payment Systems

* * * * *

8.0 Preparing Pallets

* * * * *

8.5 General Preparation

* * * * *

8.5.2 Required Preparation*[Revise the text of item c. to read as follows:]*

- c. Bundles that cannot be placed on an ADC, NDC/ASF, or SCF pallet may be placed on mixed ADC pallets if allowed by the specific standards for the class and shape of mail, or be placed in sacks or flat trays (when applicable) (see 8.9.1).

* * * * *

*[Revise the title and text of 8.5.12 to read as follows:]***8.5.12 Nonpalletized Mail**

The following applies:

- a. Mail that is not palletized (e.g., the mailer chooses not to prepare NDC pallets or the bundles do not meet the machinability standards in 8.5.7 through 8.5.11) must be prepared under the standards for the price claimed.
- b. For Periodicals, the mailer must separately tray or sack (when applicable) bundles of each publication that are not palletized or that are excluded from palletization.
- c. Trays that are not palletized must be bedloaded.
- d. Trays and sacks (including trays and sacks of bundles not placed on pallets) containing bundles remaining after all pallets are prepared may be presented with the palletized mail (and reported on the same postage statement) if separated from the palletized portion of the mailing.
- e. Sack preparation is allowed only for the following:
1. Direct carrier route flats;
 2. 5-digit scheme carrier route flats;
 3. 5-digit carrier route flats;
 4. Nonpalletized residual 5-digit flats entered at a DDU along with carrier route flats;
 5. Nonpalletized carrier route flats entered at the DSCF (origin);
 6. Nonpalletized 5-digit flats entered at the DSCF (origin); and

7. Nonpalletized 3-digit/SCF flats entered at the DSCF (origin).

- f. DSCF (origin) 5-digit and 3-digit/SCF sacks must be entered at the BMEU and emptied into a designated container.

* * * * *

8.10 Pallet Presort and Labeling

* * * * *

8.10.3 USPS Marketing Mail or Parcel Select Lightweight — Bundles, Sacks, or Trays

* * * * *

[Revise the text of item d. to read as follows]

- d. 5-digit, required except for trays, permitted for bundles, trays, and sacks (when applicable). The pallet must contain only automation price and/or Presorted price mail for the same 5-digit ZIP Code or same 5-digit scheme. 5-digit scheme bundles and trays are assigned to 5-digit pallets according to the "label to" 5-digit ZIP Code. Labeling:

1. Line 1: use city, state, and 5-digit ZIP Code destination. (See 8.6.4c for overseas military mail.)
2. Line 2: For flats and irregular parcels, use "STD" followed by "FLTS" or "IRREG," as applicable; followed by "5D"; followed by "BARCODED" (or "BC") if the pallet contains automation-price mail; followed by "NONBARCODED" (or "NBC") if the pallet contains Presorted-price mail. For letters, use "STD LTRS 5D"; followed by "BC" if the pallet contains barcoded letters; followed by "MACH" if the pallet contains machinable letters; followed by "MAN" if the pallet contains nonmachinable letters.

* * * * *

*[Revise the title of 9.0 to read as follows:]***9.0 Combining Bundles of Automation and Nonautomation Flats in Trays and Sacks**

* * * * *

9.2 Periodicals

* * * * *

9.2.4 Optional Sack Preparation and Labeling*[Revise the text of 9.2.4 to read as follows:]*

Optional sack preparation and labeling are allowed for nonpalletized residual 5-digit flats entered at the DDU along with carrier route flats, nonpalletized 5-digit flats entered at the DSCF (origin) and nonpalletized 3-digit/SCF flats entered at the DSCF (origin). DSCF (origin) 5-digit and 3-digit/SCF sacks must be entered at the BMEU and emptied

into a designated container. Machinable barcoded price and machinable nonbarcoded price bundles must be presorted together into sacks (cosacked) in the sequence listed below. Sacks must be labeled using the following information for Lines 1 and 2 and 207.21.0 for other sack-label criteria. If, due to the physical size of the mailpieces, the machinable barcoded price pieces are considered flat-size under 201.6.0 and the machinable nonbarcoded price pieces are considered irregular parcels under 201.7.6, the processing category shown on the sack label must show "FLTS." Preparation sequence and labeling:

- a. 5-digit, required at 72 pieces; optional at 24 pieces minimum; labeling:
 - 1. Line 1: use city, state, and 5-digit ZIP Code on mail (see 204.3.2.2 for overseas military mail).
 - 2. Line 2: use "PER" or "NEWS" as applicable; followed by "FLTS"; followed by "5D BC/NBC."
- b. 3-digit, required at 72 pieces, optional at 24 pieces minimum; labeling:
 - 1. Line 1: use L002, Column A.
 - 2. Line 2: use "PER" or "NEWS" as applicable and "FLTS 3D BC/NBC."
- c. SCF, required at 72 pieces, optional at 24 pieces minimum; labeling:
 - 1. Line 1: use L002, Column C.
 - 2. Line 2: use "PER" or "NEWS" as applicable and "FLTS SCF BC/NBC."
- d. Origin SCF (required) and entry SCF(s) (optional), no minimum; labeling:
 - 1. Line 1: use L002, Column C.
 - 2. Line 2: use "PER" or "NEWS" as applicable; followed by "FLTS"; followed by "SCF BC/NBC."

9.2.5 Flat Tray Preparation — Flat-Size Machinable Pieces

[Revise the introductory text of 9.2.5 to read as follows:]
See 207.20.0 for use of flat trays. Machinable pieces meeting the criteria in 201.6.0: Mailers must bundle or group all pieces as specified in 207.25.0 and 207.22.0 for each 5-digit scheme, 5-digit, 3-digit scheme, 3-digit, SCF, and ADC destination. Bundling is optional unless a bundle is more finely presorted than the tray's presort destination. The trays are subject to a container charge and any bundles are subject to a bundle charge. Tray preparation, sequence, and labeling:

* * * * *

9.3 USPS Marketing Mail

* * * * *

[Revise the title and text of 9.3.4 to read as follows:]

9.3.4 Traying/Sacking Minimums Rule

When the minimum quantity of a full flat tray, 125 pieces, or 15 pounds of mail is specified for a sortation level in 9.3.5, the provisions of 245.1.4e and 245.7.4 apply.

[Revise the title and introductory text of 9.3.5 to read as follows:]

9.3.5 Flat Tray/Sack Preparation and Labeling

Presorted price and automation price bundles prepared under 9.3.2 and 9.3.3 must be presorted together into flat trays (cotrayed) or sacks (when applicable) in the sequence listed below. Flat trays/sacks must be labeled using the following information for Lines 1 and 2, and 245.4.0 for other flat-tray label criteria. Sacks are only allowed for non-palletized residual 5-digit flats entered at the DDU along with carrier route flats, nonpalletized 5-digit flats entered at the DSCF (origin), and nonpalletized 3-digit/SCF flats entered at the DSCF (origin). DSCF (origin) 5-digit and 3-digit/SCF sacks must be entered at the BMEU and emptied into a designated container.

[Revise the text of item a. to read as follows:]

- a. 5-digit/scheme, required; scheme sort required, only for pieces meeting the automation-compatibility criteria in 201.6.0; full tray/125-piece/15-pound minimum; labeling:
 - 1. Line 1: For 5-digit scheme flat trays, use L007, Column B. For 5-digit flat trays/sacks, use city, state, and 5-digit ZIP Code destination on pieces.
 - 2. Line 2: For 5-digit scheme flat trays, use "STD FLT 5D SCH BC/NBC"; for 5-digit flat trays/sacks, use "STD FLT 5D BC/NBC."

[Revise the introductory text of item b. to read as follows:]

- b. 3-digit, required, full tray/125-piece/15-pound minimum; labeling:
 - * * * * *

[Revise the introductory text of item d. to read as follows:]

- d. ADC, required, full tray/125-piece/15-pound minimum; use L004 to determine ZIP Codes served by each ADC; labeling:
 - * * * * *

10.0 Merging Bundles of Flats Using the City State Product

* * * * *

10.2 USPS Marketing Mail

* * * * *

10.2.3 Sacking and Traying Rules

[Revise the text of 10.2.3 to read as follows:]

When the minimum quantity of 125 pieces, 15 pounds, or a full flat tray is specified for a sortation level in 10.2.4, the provisions of 245.7.4 and 245.1.4e apply.

* * * * *

IMM Revision: Individual Country Listing for New Caledonia

Effective July 13, 2023, the Postal Service™ is revising the Individual Country Listing for New Caledonia in *Mailing Standards of the United States Postal Service*, International Mail Manual (IMM®) to add an observation to include certain addressee contact information on the customs form for items mailed to New Caledonia.

This revision is based on a formal request that the Office of Posts and Telecommunications (OPT-NC, the designated postal operator of New Caledonia) made through the Universal Postal Union via *International Bureau Circular* 91, dated June 12, 2023.

Mailing Standards of the United States Postal Service, International Mail Manual (IMM)

* * * * *

Individual Country Listings

* * * * *

The Postal Service will incorporate these revisions into the July 9, 2023, edition of the online DMM, which is available via Postal Explorer® at pe.usps.com.

— Product Classification,
Product Solutions, 7-13-23

New Caledonia**Country Conditions for Mailing**

* * * * *

Observations

[Add a new entry to read as follows:]

4. Display, if possible, the addressee's landline telephone number or mobile phone number and email address on the customs declaration form of each item mailed to New Caledonia. This contact information assists the Office of Posts and Telecommunications in contacting and delivering items to the addressee.

* * * * *

Although effective July 13, 2023, the Postal Service will incorporate this revision into the next edition of the online IMM, which is available via Postal Explorer® at pe.usps.com.

— Product Classification,
Product Solutions, 7-13-23

Publications

Publication 223 Revision: Directives and Forms Update

Effective June 30, 2023, Publication 223, *Directives and Forms Catalog*, is revised to include current information for the items noted in this article. See Chapter 1 of Publication 223 for information on how to order directives and forms. Publication 223 is available online at about.usps.com/publications/pub223.pdf.

New

- MI AS-690-2022-13, *Signature and Certification Requirements for Environmental Documents*.
- MI AS-800-2023-2, *Technology Solution Lifecycle Policy Exception Process*.
- MI AS-800-2023-3, *Electronic Mail Open Relay Decommissioning*.
- MI FM-640-2023-1, *Expenses for Internal and External Events*.
- MI PO-130-2023-1, *Responding to Matter Nonmailable Under the PACT Act and POSECCA*.
- MI PO-610-2023-1, *Function 4 Standardized Customer Service Workload Reporting System*.

Revised

- HBK AS-805, *Information Security*.
- MAN DMM, *Mailing Standards of the United States Postal Service*, Domestic Mail Manual.

- MAN IMM, *Mailing Standards of the United States Postal Service*, International Mail Manual.
- MAN POM, *Postal Operations Manual*.
- MAN SPP, *Supplying Principles and Practices*.
- PUB 22, *Expedited Packaging Supplies*.
- PUB 52, *Hazardous, Restricted, and Perishable Mail*.
- PUB 139, *How to Package and Ship Cremated Remains*.
- PUB 141, *Global Express Guaranteed Service Guide*.
- PUB 223, *Directives and Forms Catalog*.
- PUB 685, *Publication for Streamlined Mail Acceptance for Letters and Flats*.
- PS 1583, *Application for Delivery of Mail Through Agent*.
- PS 1583-A, *Application to Act as a Commercial Mail Receiving Agency*.
- PS 1910, Tag 191, *Domestic and International Ballots, Order Form*.
- PS 3582-P, *Invoice for BRM or Postage Due Mail*.
- PS 5957, *Requirement-by-Applicant Matrix*.

Reinstated

- MI EL-810-2006-3, *Response to Hazardous Materials Releases* (replacing MI EL-810-2019-5, which had the same title).

Obsolete

PSIN	Ed. Date	Title	Replaced By
MI FM-640-2020-1	1/20	<i>Expenses for Internal and External Events</i>	MI FM-640-2023-1
MI PO-130-2021-2	10/21	<i>Responding to Matter Nonmailable Under the PACT Act and POSECCA</i>	MI PO-130-2023-1
MI PO-610-2009-1	7/9	<i>Function 4 Standardized Customer Service Workload Reporting System</i>	MI PO-610-2023-1
MI PO-610-2008-2	10/8		
MI PO-610-2002-3	11/2		
PUB 342	5/6	<i>USPS Anti-Money Laundering Program</i>	N/A
PUB 531	6/3	<i>Section 508 and the Postal Service: Stamping Out Barriers</i>	N/A

— Brand and Policy,
Corporate Communications, 7-13-23

Forms

PS Form 3227-R Revision: Rural or Highway Contract Route Carrier Stamp Purchase Order Form

Effective July 2023, the Postal Service™ revised PS Form 3227-R, *Rural or Highway Contract Route Carrier Stamp Purchase Order Form*, to update the information based on the recent rate increase.

The revised edition is dated July 2023. All previous editions of PS Form 3227-R are obsolete and must be recycled.

The July 2023 edition of PS Form 3227-R is available from the Material Distribution Center (MDC) in Topeka, KS. USPS® facilities can order the revised PS Form 3227-R through the MDC eBuy+ catalog using the following information:

PSIN:	PS 3227-R
PSN:	7530-01-000-9885
Unit of Issue:	EA
Minimum Order Quantity:	100
Quick Pick Number:	164
Price*:	\$0.0478
Edition Date:	7/23

* Price is current as of this date but is subject to change.

The July 2023 edition of PS Form 3227-R is available on the PolicyNet website:

- Go to blue.usps.gov.
- In the left-hand column, click *Essential Links*, and then click *PolicyNet*.
- On the right-hand side under “Published Forms and Directives,” click *Forms*, and then click on the range 3000–3999.
- Scroll down to the form entry and click the PDF icon.

The direct URL for the Postal Service PolicyNet website is blue.usps.gov/cpim.

— *Rural Strategy and Transformation,
Delivery Operations, 7-13-23*

Pull-Out Information

Fraud

Missing, Lost, or Stolen U.S. Money Order Forms

Do Not Cash — Upon Receipt, Notify Local Postal Inspectors

Provide this listing to all Postal Service™ employees responsible for accepting and cashing postal money orders. Destroy all interim notices when the numbers listed appear in the *Postal Bulletin*. The new money order serial numbers consist of the first 10 digits. The eleventh digit is a check digit only.

Do not cash outdated money orders **104 151 601 to 692 600 000**. Advise holders to send invalid money orders to Canada Post Corporation, Ottawa, Canada K1A 0B1. Check for altered dollar amounts by holding money orders to the light.

010 001 0200	to 0299	035 035 4337	to 4399	066 648 2880	to 2899	094 580 7062	to 7099
010 504 1932	to 1999	037 312 7500	to 7599	066 787 3639	to 3699	094 639 4200	to 4299
011 582 1889	to 1899	037 706 9578	to 9599	066 845 7500	to 9999	095 070 7186	to 7199
011 588 2900	to 3099	037 805 3677	to 3699	067 093 3869	to 3899	095 076 8300	to 8399
012 441 0784	to 0799	037 909 5490	to 5499	068 895 0334	to 0399	095 354 6864	to 6899
012 579 5675	to 5699	037 931 4660	to 4699	070 724 4488	to 4499	097 224 1350	to 1599
013 289 6176	to 6199	039 145 6521	to 6595	070 841 9181	to 9199	100 160 3800	to 3899
013 610 0014	to 0099	040 024 3901	to 3999	070 844 2546	to 2599	104 667 6400	to 6499
014 932 1000	to 1099	040 674 7100	to 7199	070 916 1340	to 1399	104 876 8937	to 8999
014 972 0800	to 0899	040 688 8816	to 8899	071 047 5768	to 5799	112 049 4413	to 4499
015 363 0065	to 0099	041 299 6752	to 6799	071 179 9800	to 9899	112 870 9765	to 9799
017 028 3200	to 3299	041 623 8889	to 8899	071 386 3682	to 3699	113 319 2000	to 2099
018 569 5333	to 5399	041 803 6565	to 6599	071 507 6840	to 6899	114 402 3850	to 3899
018 986 5264	to 5299	043 129 1968	to 1997	072 045 9641	to 9699	114 866 5368	to 5397
019 518 2814	to 2899	043 205 5922	to 5999	072 675 8287	to 8299	116 154 2800	to 2899
020 698 5159	to 5199	044 087 3457	to 3499	073 763 0867	to 0876	116 986 4400	to 4499
020 844 7307	to 7399	044 087 4000	to 4099	073 763 0878	to 0887	117 175 1647	to 5169
020 972 8948	to 8999	044 226 2487	to 2512	073 763 0889	to 0898	117 951 4687	to 4699
022 021 9110	to 9181	044 306 4200	to 4299	077 617 5481	to 5499	117 951 5200	to 5299
022 037 1411	to 1499	044 306 4370	to 4599	077 999 4001	to 4090	119 786 3051	to 3064
022 527 9201	to 9210	045 524 4121	to 4298	078 174 4475	to 4499	119 815 8961	to 6199
022 529 1882	to 1899	046 800 9870	to 9899	078 219 4931	to 4999	119 850 7400	to 7499
023 637 7169	to 7199	047 352 4000	to 4099	078 250 4756	to 4799	119 850 7700	to 7999
024 380 4100	to 4199	048 383 7650	to 7659	078 823 8312	to 8399	121 634 0460	to 0499
024 496 6870	to 6896	048 396 3647	to 3699	079 374 0300	to 2499	122 451 9879	to 9899
025 092 0987	to 0999	051 142 0755	to 0799	079 807 2342	to 2399	122 714 6805	to 6900
025 369 5535	to 5599	051 774 8857	to 8899	082 721 0228	to 0254	124 916 0304	to 0499
025 729 1151	to 1199	051 781 2875	to 2885	083 140 5000	to 7499	126 423 0136	to 0169
025 729 1643	to 1799	051 977 7010	to 7023	083 784 8886	to 8899	127 500 2328	to 2399
026 492 3180	to 3199	052 058 7115	to 7199	083 913 6915	to 6999	160 901 2254	to 2299
027 361 0430	to 0499	054 450 1130	to 1167	084 478 3920	to 3999	161 103 6581	to 6599
027 369 4482	to 4495	057 670 0563	to 0599	086 000 8271	to 8299	161 194 2857	to 0899
027 671 8762	to 8776	058 187 3836	to 3899	086 798 3840	to 3849	162 032 4447	to 4499
027 787 9886	to 9899	058 523 3003	to 3099	088 404 4472	to 4499	163 257 1085	to 1099
027 965 9487	to 9499	058 591 1153	to 1299	088 404 5584	to 5699	164 359 2406	to 2499
028 100 8069	to 8099	058 895 3746	to 3799	088 757 8688	to 8699	166 101 1433	to 1499
028 191 1852	to 1999	059 986 0814	to 0899	088 757 9400	to 9499	167 555 5201	to 5212
028 850 3000	to 3199	060 406 7650	to 7699	089 358 2248	to 2257	167 555 5214	to 5299
029 510 1500	to 1599	063 491 8122	to 8199	090 663 9678	to 9684	169 618 6274	to 6299
030 687 0903	to 0999	063 916 9968	to 9999	091 818 0071	to 0099	171 806 6878	to 6893
030 701 3442	to 3499	064 091 4500	to 4599	093 106 9346	to 9355	173 639 4685	to 4699
031 077 4507	to 4799	065 170 0471	to 0499	093 203 0500	to 0599	174 238 2779	to 2799
032 295 7500	to 9999	065 255 7909	to 7999	093 684 3630	to 3699	174 281 9347	to 9399
034 394 1000	to 1099	065 392 6345	to 6399	094 081 5074	to 5099	175 251 2600	to 0699
034 943 0400	to 0799	066 099 2014	to 2099	094 216 2555	to 2599	176 281 7937	to 7950

176 281 7963	to	7999	219 568 7435	to	7456	252 612 3683	to	3699	258 405 4200	to	4299
176 731 6586	to	6599	219 568 7469	to	7487	252 469 2125	to	2199	258 405 4600	to	4699
178 254 5000	to	9999	221 316 5757	to	5799	252 833 3286	to	3297	258 405 5600	to	5699
178 881 9900	to	9999	223 476 3914	to	3999	253 470 3948	to	3999	258 405 5700	to	5799
180 031 2089	to	2098	223 565 4921	to	4957	253 565 7400	to	7499	258 405 5800	to	5899
180 403 7723	to	7741	223 565 4979	to	4999	254 252 2800	to	2899	258 405 5900	to	5999
180 428 4580	to	0599	224 636 4745	to	4765	254 252 2900	to	2999	258 405 6000	to	6099
182 368 7544	to	0599	224 636 4776	to	4799	254 252 3000	to	3099	258 405 6100	to	6199
182 475 3229	to	3258	224 636 4855	to	4885	254 252 3100	to	3199	258 405 6200	to	6299
182 475 3904	to	3933	224 636 4932	to	4948	254 252 3200	to	3299	258 405 6300	to	6399
182 631 0031	to	0099	224 636 4950	to	4962	254 252 3300	to	3399	258 405 6400	to	6499
182 911 6539	to	6600	224 636 4985	to	4999	254 252 3400	to	3499	258 405 6800	to	6899
184 218 2760	to	2799	224 723 0757	to	0799	254 252 3500	to	3599	258 405 6900	to	6999
185 828 1474	to	1499	224 730 2207	to	2299	254 252 3600	to	3699	258 405 7000	to	7099
186 132 7583	to	0599	225 970 0500	to	0599	254 252 3700	to	3799	258 405 7100	to	7199
186 629 0589	to	0599	225 970 0600	to	0699	254 252 3800	to	3899	258 405 7200	to	7299
187 184 6177	to	0199	225 970 0700	to	0799	254 252 3900	to	3999	258 405 7300	to	7399
187 323 8200	to	8299	227 033 8679	to	8699	254 252 4000	to	4099	258 405 7400	to	7499
187 441 6080	to	6099	227 275 9400	to	9999	254 252 4100	to	4199	258 405 7800	to	7899
188 831 6774	to	6799	228 463 2456	to	2499	254 252 4200	to	4299	258 405 7900	to	7999
188 835 6370	to	6399	228 510 4852	to	4899	254 252 4300	to	4399	258 405 8000	to	8099
189 083 1064	to	1099	229 462 8451	to	8475	254 252 4400	to	4499	258 405 8100	to	8199
189 660 9583	to	9599	229 668 5977	to	5999	254 252 4500	to	4599	258 405 8200	to	8299
191 179 0377	to	0399	229 923 9176	to	9199	254 252 4600	to	4699	258 405 8300	to	8399
192 050 5762	to	5781	229 924 6696	to	6699	254 252 4700	to	4799	258 405 8400	to	8499
194 456 8600	to	0699	230 051 9500	to	9999	254 252 4800	to	4899	258 405 8500	to	8599
195 194 6881	to	6899	236 366 2431	to	2499	254 252 4900	to	4999	258 405 8600	to	8699
195 874 1112	to	1199	236 607 6882	to	6899	254 565 7607	to	7700	258 405 8700	to	8799
196 979 0524	to	0599	236 660 5853	to	5872	254 907 1203	to	1299	258 405 8800	to	8899
197 244 6100	to	6199	239 322 5200	to	5299	255 185 9527	to	9599	258 405 8900	to	8999
197 244 6300	to	6399	239 322 5400	to	5499	255 397 1557	to	1576	258 405 9600	to	9699
197 244 6400	to	6499	239 322 5600	to	5699	255 425 2989	to	2998	258 405 9700	to	9799
197 244 6500	to	6599	239 322 5800	to	5899	255 728 6412	to	6499	258 405 9800	to	9899
197 244 6600	to	6699	239 322 5900	to	5999	255 728 9842	to	9899	258 405 9900	to	9999
197 244 6700	to	6799	239 607 4783	to	4799	256 134 9833	to	9839	259 014 9989	to	9999
197 244 6800	to	8999	240 593 1879	to	1899	256 134 9840	to	9849	259 062 4788	to	4798
198 285 2556	to	2566	242 591 2048	to	2099	256 134 9850	to	9859	259 218 1400	to	1499
199 105 0778	to	0799	242 735 0388	to	0398	256 134 9860	to	9869	259 218 1500	to	1599
199 678 2968	to	2999	242 951 7276	to	7299	256 134 9870	to	9879	259 218 1600	to	1699
202 748 5133	to	5199	243 535 6370	to	6399	256 134 9880	to	9889	259 590 5654	to	5699
202 748 5245	to	5299	244 004 9985	to	9999	256 134 9890	to	9899	259 670 8268	to	8299
202 748 5300	to	5399	244 004 9985	to	9999	256 247 6900	to	6999	259 835 6238	to	6399
202 748 5400	to	5499	244 268 9765	to	9799	256 550 5536	to	5545	259 835 6701	to	6799
203 256 1240	to	1299	244 347 4471	to	4499	256 799 2257	to	2299	260 224 4600	to	4699
204 230 3577	to	3595	249 056 1551	to	1599	257 154 8763	to	8799	260 224 5941	to	5999
205 019 0174	to	0199	249 336 9438	to	9499	257 154 8800	to	8899	260 310 2821	to	2899
206 936 3184	to	3199	249 399 4000	to	4099	257 765 4567	to	4599	260 452 0010	to	0022
207 196 9900	to	9999	249 399 4100	to	4199	257 765 4610	to	4696	260 452 0049	to	4299
207 204 0700	to	0799	249 399 4200	to	4299	257 765 4737	to	4799	260 553 8200	to	8299
207 204 0800	to	0899	249 399 4300	to	4399	257 792 7800	to	7889	260 553 8600	to	8699
207 514 3857	to	3899	249 399 4400	to	4499	257 792 7900	to	7999	260 553 9600	to	9799
208 556 4707	to	4799	249 399 4500	to	4599	257 792 8000	to	8099	260 553 9800	to	9899
210 057 4038	to	4047	249 399 4600	to	4699	257 856 9863	to	9899	260 553 9900	to	9999
210 221 0548	to	0599	249 399 4700	to	4799	258 103 1773	to	1782	260 761 1603	to	1662
214 061 4711	to	4724	249 399 4800	to	4899	258 405 1800	to	1899	261 183 2100	to	2299
214 303 6311	to	6325	249 399 4900	to	4999	258 405 1900	to	1999	261 426 0408	to	0499
214 303 6239	to	6258	250 159 7502	to	7599	258 405 3300	to	3399	262 082 8000	to	8099
214 877 4251	to	4273	250 566 9644	to	9699	258 405 3400	to	3499	262 082 8100	to	8199
215 252 3918	to	3992	250 661 8425	to	8499	258 405 3500	to	3599	262 082 8200	to	8299
217 585 1400	to	1499	251 335 5731	to	5799	258 405 3700	to	3799	262 082 8300	to	8399
218 698 2157	to	2199	251 379 2380	to	2399	258 405 3800	to	3899	262 082 8400	to	8499
218 746 0800	to	0899	252 005 7626	to	7699	258 405 3900	to	3999	262 288 7302	to	7399
219 095 0100	to	0399	252 421 8401	to	8499	258 405 4000	to	4099	262 288 7400	to	7499
219 389 1885	to	1899	252 464 2810	to	2899	258 405 4100	to	4199	262 288 9900	to	9999

262 337 2600	to	2699	262 337 9100	to	9199	274 750 0300	to	0400	395 970 3240	to	3299
262 337 2700	to	2700	262 337 9200	to	9299	274 782 0549	to	0599	397 622 4054	to	4099
262 337 2800	to	2800	262 337 9300	to	9399	279 517 9330	to	9399	397 819 8902	to	8999
262 337 2900	to	2900	262 337 9400	to	9499	279 517 9594	to	9599	398 149 7200	to	7699
262 337 3000	to	3099	262 337 9500	to	9599	279 517 9623	to	9699	399 070 0872	to	0899
262 337 3100	to	3199	262 337 9600	to	9699	282 667 2500	to	4999	399 156 7119	to	7199
262 337 3200	to	3299	262 337 9700	to	9799	302 000 0000	to	9999	399 203 5064	to	5099
262 337 3300	to	3399	262 337 9800	to	9899	349 746 2056	to	2099	399 296 9910	to	9999
262 337 3400	to	3499	262 337 9900	to	9999	350 518 7350	to	7374	399 396 8935	to	8999
262 337 3500	to	3599	262 472 3188	to	3199	360 011 1690	to	1699	399 792 7775	to	7799
262 337 3600	to	3699	262 472 3200	to	3299	360 168 6008	to	6099	399 792 8300	to	8399
262 337 3700	to	3799	262 546 3100	to	3199	360 173 8800	to	8899	400 427 1051	to	1999
262 337 3800	to	3899	262 546 3200	to	3299	360 324 2326	to	2399	401 045 1505	to	1549
262 337 3900	to	3999	262 546 3300	to	3399	362 861 3064	to	3099	401 045 1571	to	1599
262 337 4000	to	4099	262 546 3400	to	3499	373 006 2176	to	2199	401 294 2700	to	2799
262 337 4100	to	4199	262 546 3500	to	3599	374 768 2600	to	2699	401 310 9505	to	9599
262 337 4200	to	4299	262 546 3600	to	3699	375 169 4400	to	4599	401 382 5312	to	5399
262 337 4300	to	4399	262 546 3900	to	3999	375 829 3400	to	3499	402 578 7876	to	7899
262 337 4400	to	4499	262 546 4300	to	4399	375 851 9100	to	9199	403 125 6744	to	6799
262 337 4500	to	4599	262 546 4400	to	4499	376 196 0911	to	0999	403 260 7000	to	7499
262 337 4600	to	4699	262 546 4500	to	4599	378 085 3679	to	3699	403 280 6470	to	6499
262 337 4700	to	4799	262 546 4600	to	4699	378 351 1063	to	1099	403 685 8600	to	8699
262 337 4800	to	4899	262 546 4700	to	4799	379 843 5100	to	5199	404 003 0300	to	0399
262 337 4900	to	4999	262 546 4800	to	4899	380 093 9600	to	9699	404 041 8838	to	8899
262 337 5000	to	5099	262 546 4900	to	4999	380 165 1165	to	1199	404 071 4268	to	4299
262 337 5100	to	5199	262 546 7100	to	7199	381 325 4500	to	4599	404 347 5356	to	5399
262 337 5200	to	5299	262 546 7200	to	7299	381 604 2510	to	2699	404 347 5548	to	5599
262 337 5300	to	5399	262 546 7300	to	7399	381 645 9525	to	9599	404 726 4500	to	4599
262 337 5400	to	5499	262 546 7400	to	7499	383 314 3968	to	3999	404 961 5001	to	5199
262 337 5500	to	5599	262 546 9800	to	9899	383 892 1000	to	1344	405 325 0188	to	0198
262 337 5600	to	5699	262 546 9900	to	9999	383 892 1382	to	1399	406 009 4587	to	4599
262 337 5700	to	5799	262 567 1788	to	1799	384 925 3641	to	3654	406 260 6830	to	6899
262 337 5800	to	5899	263 254 2500	to	2500	385 568 2331	to	2399	406 459 6641	to	6999
262 337 5900	to	5999	263 340 0000	to	0099	385 599 7554	to	7575	406 733 3000	to	3999
262 337 6000	to	6099	263 340 0100	to	0199	385 774 2024	to	2099	407 545 1557	to	1599
262 337 6100	to	6199	263 340 0500	to	0599	386 624 1412	to	1599	407 594 0412	to	0599
262 337 6200	to	6299	263 340 0600	to	0699	386 883 8936	to	8999	407 692 9100	to	9299
262 337 6300	to	6399	263 340 2700	to	2799	387 314 5574	to	5599	407 959 2190	to	2199
262 337 6400	to	6499	263 340 2800	to	2899	387 837 6300	to	6399	408 265 2275	to	2288
262 337 6500	to	6599	263 340 3000	to	3099	388 828 0656	to	0699	408 499 7700	to	7799
262 337 6600	to	6699	264 341 2360	to	2399	389 696 2400	to	2799	408 499 7900	to	7999
262 337 6700	to	6799	264 380 4000	to	4099	389 846 3104	to	3135	408 682 8484	to	8599
262 337 6800	to	6899	264 380 4100	to	4199	389 846 3145	to	3195	408 698 7015	to	7099
262 337 6900	to	6999	264 799 6049	to	6099	389 887 9211	to	9230	409 072 3941	to	3999
262 337 7000	to	7099	264 860 7832	to	7868	389 887 9234	to	9299	410 491 2311	to	2399
262 337 7100	to	7199	265 127 3658	to	3699	390 001 3182	to	3199	410 694 8400	to	8599
262 337 7200	to	7299	265 380 7111	to	7137	390 001 3500	to	3699	410 775 1500	to	1599
262 337 7300	to	7399	265 444 4762	to	4799	390 545 5974	to	5999	410 795 7927	to	7999
262 337 7400	to	7499	265 548 7074	to	7099	391 104 6146	to	6199	410 867 0917	to	0966
262 337 7500	to	7599	266 106 0000	to	2499	391 574 1466	to	1499	410 867 0970	to	0999
262 337 7600	to	7699	266 129 5809	to	5899	391 783 3020	to	3599	411 868 1023	to	1199
262 337 7700	to	7799	266 673 0000	to	2499	391 792 6100	to	6199	411 922 2322	to	2399
262 337 7800	to	7899	266 749 7900	to	7999	392 668 2956	to	2999	412 193 0900	to	0999
262 337 7900	to	7999	266 868 0952	to	0999	392 854 8500	to	8899	412 395 8599	to	8699
262 337 8000	to	8099	266 868 1028	to	1099	393 584 7566	to	7699	412 485 6500	to	6599
262 337 8100	to	8199	266 868 1100	to	1199	393 650 0074	to	0099	412 485 6610	to	6699
262 337 8200	to	8299	266 868 1200	to	1299	393 838 8316	to	8499	412 885 5953	to	5999
262 337 8300	to	8399	267 296 1237	to	1299	393 893 6007	to	6099	414 193 3608	to	3674
262 337 8400	to	8499	267 324 8946	to	8998	394 126 6907	to	6999	414 193 3677	to	3699
262 337 8500	to	8599	268 072 1203	to	1299	394 189 0405	to	0599	414 411 7348	to	7399
262 337 8600	to	8699	271 660 4333	to	4400	394 822 3243	to	3278	414 640 0757	to	0799
262 337 8700	to	8799	273 520 0000	to	9999	394 990 1810	to	1899	414 965 1727	to	1799
262 337 8800	to	8899	273 520 6000	to	8999	395 343 3264	to	3299	417 302 8104	to	8199
262 337 8900	to	8999	273 775 7700	to	7899	395 373 3035	to	3099	417 387 6532	to	6599
262 337 9000	to	9099	273 882 1913	to	1998	395 396 9649	to	9799	417 496 6800	to	6999

417 871 9250	to	9299	440 698 1947	to	1999	460 349 6878	to	6899	478 469 7883	to	7899
417 930 9533	to	9599	440 858 6300	to	6399	460 550 1909	to	1999	479 280 9800	to	9899
418 164 6500	to	6799	440 858 6420	to	7299	460 997 5234	to	5299	479 365 9116	to	9176
418 423 9863	to	9899	441 199 1655	to	1699	461 973 6443	to	6499	479 412 9900	to	9999
418 633 5922	to	5999	443 127 3648	to	3699	462 152 0107	to	0299	479 667 6190	to	6199
418 719 8520	to	8599	443 127 4000	to	4099	462 274 1072	to	1099	479 748 9680	to	9699
418 744 2235	to	2299	443 673 7900	to	7999	462 277 8373	to	8399	479 860 7000	to	7199
418 962 2848	to	2899	443 800 9335	to	9399	462 554 6051	to	6099	480 526 2000	to	2099
419 543 0286	to	0299	444 382 8822	to	8899	463 011 5529	to	5540	480 640 6330	to	6399
419 730 0300	to	0399	444 390 1667	to	1699	463 176 4115	to	4199	480 658 0568	to	0599
420 277 0015	to	0049	444 457 3854	to	3899	463 176 4229	to	4299	480 689 5100	to	5199
420 599 0734	to	0798	450 048 4173	to	4199	463 185 2600	to	2799	481 072 9463	to	9499
420 661 4115	to	4199	450 048 4442	to	4699	463 227 7711	to	7799	481 673 0074	to	0095
420 758 9500	to	9699	450 560 5173	to	5199	463 414 4869	to	4899	482 527 1500	to	1599
420 969 3951	to	3971	450 620 3077	to	3099	463 808 3484	to	3499	482 541 5255	to	5299
420 969 3973	to	3999	450 620 3135	to	3199	463 945 7400	to	7899	482 729 6800	to	6899
421 116 3565	to	3599	450 780 2716	to	2799	464 629 9000	to	9399	483 363 7207	to	7299
421 130 9300	to	9399	450 801 2700	to	2799	464 711 4332	to	4399	483 402 2356	to	2399
421 313 4500	to	4999	451 109 2967	to	2984	465 692 3963	to	3999	483 486 5100	to	5199
421 364 5537	to	5599	451 115 4110	to	4125	465 698 8300	to	8599	483 632 1521	to	1599
421 656 2609	to	2699	451 115 4127	to	4199	465 743 7745	to	7799	483 632 2600	to	2799
421 988 9700	to	9799	451 746 0700	to	0799	466 798 6056	to	6067	483 849 1615	to	1699
422 172 4667	to	4699	452 265 0074	to	0099	467 147 4300	to	4399	484 174 4803	to	5299
422 484 4212	to	4299	452 265 0246	to	0299	468 079 5782	to	5799	484 323 8900	to	9199
422 556 1270	to	1299	452 265 0335	to	0999	469 067 2817	to	2899	484 680 5000	to	5038
422 587 7024	to	7099	452 509 1169	to	1199	469 127 8000	to	8199	484 680 5040	to	5074
422 819 7533	to	7599	452 855 6471	to	6499	469 213 0359	to	0399	484 680 5077	to	5099
422 842 5073	to	5087	452 890 4679	to	4799	469 213 0500	to	0599	485 029 4913	to	4999
422 907 7563	to	7599	452 900 8215	to	8238	469 561 8011	to	8099	486 176 0600	to	0699
424 500 6050	to	6099	453 117 9146	to	9199	469 658 1961	to	1999	486 559 7555	to	7599
424 641 8500	to	8599	453 334 3631	to	3699	469 666 9900	to	9999	486 696 3023	to	3199
424 871 6600	to	6699	453 603 7841	to	7891	469 678 1900	to	1999	488 173 7900	to	7999
425 298 2352	to	2399	453 650 1140	to	1199	469 781 4900	to	4999	488 206 4100	to	4199
425 418 4269	to	4299	453 741 1300	to	1399	469 947 6960	to	6999	488 226 0200	to	0299
425 418 4405	to	4499	454 013 2919	to	2999	470 755 5800	to	5818	488 709 3906	to	3999
426 547 4566	to	4599	454 186 2411	to	2499	471 918 0300	to	0999	488 855 8359	to	8399
427 412 6337	to	6499	454 268 4883	to	4899	471 985 2408	to	2419	489 181 8963	to	8999
427 481 0900	to	0999	454 302 5400	to	5499	472 191 6700	to	6799	489 223 2000	to	2099
428 027 2742	to	2752	454 490 8300	to	8399	472 270 2555	to	2599	489 311 1930	to	1999
429 474 4172	to	4199	454 547 7434	to	7499	472 987 0213	to	0241	489 318 6200	to	6300
429 889 2900	to	2999	454 922 4867	to	4895	472 987 0290	to	0299	489 384 0027	to	0099
430 150 4401	to	4599	455 221 1348	to	1499	473 151 2069	to	2199	489 427 0658	to	0899
430 172 9800	to	9899	455 364 2147	to	2199	473 666 9138	to	9199	489 997 5252	to	5299
430 177 1900	to	2099	455 399 5400	to	5499	473 952 3429	to	3499	490 669 5850	to	6099
430 444 9500	to	9699	455 476 0676	to	0699	474 108 5402	to	5499	490 717 7080	to	7099
430 664 4070	to	4099	455 543 0618	to	0699	474 356 5193	to	5299	490 721 6000	to	6099
432 168 8419	to	8499	456 410 9006	to	9099	474 949 3366	to	3399	490 793 1500	to	2099
432 708 6800	to	6999	456 470 4146	to	4299	475 134 9362	to	9399	490 886 8171	to	8199
432 744 1544	to	1599	456 619 4460	to	4499	475 167 9667	to	9699	490 977 9221	to	9240
432 995 9775	to	9799	457 333 2686	to	2699	475 319 3415	to	3499	491 258 8100	to	9099
433 003 5800	to	5899	457 729 1767	to	1777	475 319 3649	to	3799	491 567 1376	to	1399
433 757 3047	to	3099	457 937 8615	to	8699	475 340 6400	to	6599	492 254 4800	to	4899
433 765 4003	to	4099	458 028 9810	to	9899	475 424 8410	to	8499	492 283 5100	to	5199
434 482 7060	to	7199	458 057 2712	to	2999	475 629 9156	to	9199	492 610 6813	to	6899
434 513 2386	to	2399	458 069 9537	to	9599	475 850 6101	to	6199	493 394 5568	to	5599
434 968 3076	to	3092	458 069 9665	to	9699	475 875 2500	to	2599	493 470 2562	to	2599
435 303 1831	to	1842	458 337 5222	to	5299	476 169 8264	to	8299	493 473 7700	to	7799
435 303 1986	to	1999	458 354 7653	to	7999	476 189 3000	to	3499	493 716 2153	to	2199
435 666 6092	to	6399	458 671 8678	to	8699	476 331 2480	to	2499	494 206 2972	to	2999
436 082 6400	to	6899	458 671 8721	to	8798	477 289 8601	to	8699	494 217 3446	to	3999
436 160 6441	to	6499	458 847 5044	to	5999	477 681 5206	to	5299	494 224 0500	to	0599
437 316 7115	to	7199	459 274 7624	to	7699	478 010 4243	to	4268	495 145 0600	to	0699
437 427 0500	to	3499	459 365 5432	to	5499	478 010 4270	to	4291	496 209 7425	to	7499
439 179 2300	to	2399	459 378 5764	to	5799	478 450 5071	to	5099	496 213 8728	to	8799
439 310 0458	to	0499	459 472 4816	to	4999	478 469 7838	to	7858	496 474 5226	to	5248

497 053 8517	to	8699	601 653 5884	to	5899	621 904 8351	to	8599	642 355 8308	to	8999
497 854 8673	to	8699	601 661 7700	to	7799	621 916 1978	to	1989	642 900 0018	to	0099
498 449 8888	to	8899	601 682 5343	to	5399	622 989 8032	to	8099	643 030 6254	to	6299
498 929 8285	to	8499	601 928 1600	to	1699	623 076 9300	to	9399	644 066 0882	to	0899
498 936 5310	to	5399	602 512 2972	to	2999	623 819 5006	to	5099	644 069 0600	to	0699
499 016 5425	to	5499	602 555 2400	to	2799	623 895 8200	to	8399	644 077 7506	to	7699
499 440 8575	to	8899	602 829 7061	to	7099	623 917 0000	to	0099	644 085 8157	to	8199
499 731 6717	to	6799	603 483 9572	to	9599	623 917 0200	to	0299	644 112 9839	to	9899
500 064 1858	to	1869	603 490 7200	to	7299	624 468 5288	to	5299	644 373 9083	to	9099
500 070 5725	to	7799	603 678 7100	to	7199	624 665 3162	to	3198	644 380 1460	to	1499
501 058 0016	to	0026	603 678 7662	to	7699	625 088 6735	to	6799	644 733 4715	to	4799
501 331 0300	to	0399	603 678 7902	to	7999	625 916 9500	to	9799	644 900 9712	to	9799
501 460 0977	to	0999	603 678 8418	to	8499	625 968 8956	to	8999	644 901 0109	to	1299
502 227 7645	to	7699	603 678 8700	to	9999	627 005 3938	to	3999	644 901 1325	to	1399
502 424 0200	to	0499	604 086 0880	to	0899	627 384 3907	to	4099	644 923 6800	to	7799
502 424 0600	to	0699	604 349 1414	to	1499	627 496 7549	to	7599	644 932 4655	to	4699
502 496 6923	to	6999	604 503 7776	to	7799	627 708 3605	to	3699	645 318 7240	to	7499
503 003 2700	to	2899	605 520 9037	to	9099	627 776 2500	to	2599	645 333 1766	to	1799
503 194 5144	to	5153	605 685 4010	to	4099	628 226 3100	to	3199	645 790 8632	to	8699
503 790 9922	to	9948	605 988 6467	to	6499	628 814 4702	to	4799	645 821 0657	to	0699
504 045 4030	to	4099	607 689 7951	to	7960	628 851 9689	to	9699	645 930 7948	to	7999
504 166 0200	to	0599	607 728 1276	to	1299	629 510 7200	to	7299	645 975 0737	to	0762
504 240 1062	to	1399	608 727 7100	to	7199	629 964 4200	to	4294	646 242 6200	to	6299
504 805 3300	to	3499	608 727 7273	to	7599	630 389 3056	to	3071	646 270 7639	to	7799
505 096 0662	to	0699	608 813 9950	to	9999	630 463 0588	to	0599	646 798 4000	to	4999
505 893 7739	to	7799	609 067 5325	to	5399	631 459 9117	to	9199	647 048 7035	to	7099
505 893 7800	to	7999	609 067 5488	to	5499	631 762 9325	to	9399	647 049 2900	to	2999
506 124 0800	to	0999	609 067 5600	to	5699	632 217 4933	to	4999	647 398 8300	to	8399
506 165 7027	to	0099	609 289 6123	to	6199	632 500 0000	to	640 3999	647 398 8481	to	8499
506 502 5209	to	5299	609 438 4400	to	4499	633 110 4165	to	4199	647 437 3000	to	4999
506 756 1682	to	1699	609 493 1100	to	1199	633 110 4303	to	4499	647 811 2188	to	2199
506 756 1700	to	1799	609 766 8091	to	8999	633 438 6429	to	6599	648 009 6057	to	6099
506 756 1800	to	1899	609 825 4100	to	4115	633 588 7173	to	7182	648 163 5300	to	5499
506 836 5326	to	5399	609 884 2981	to	2999	634 725 0700	to	0799	648 722 5283	to	5299
508 488 6226	to	6299	609 893 1000	to	1099	634 803 3239	to	3299	648 892 3164	to	3199
508 789 8332	to	8399	610 092 3200	to	3299	634 807 2474	to	2499	649 100 3989	to	3999
508 789 8400	to	8499	610 582 4200	to	4299	634 827 5900	to	5999	649 647 0370	to	0399
509 909 0425	to	0435	611 879 6939	to	6999	634 886 3428	to	3499	649 647 0522	to	0599
510 150 2400	to	2499	612 291 8013	to	8099	635 559 3449	to	3499	649 647 5237	to	5399
510 381 3200	to	3299	612 751 5171	to	5199	636 289 6214	to	6299	649 647 9100	to	9299
510 587 9500	to	9599	612 751 5226	to	5299	636 634 8007	to	8042	649 666 7800	to	8299
510 587 9659	to	9699	612 751 6083	to	6099	637 150 1200	to	1299	650 114 7707	to	7719
510 269 9770	to	9999	612 751 6268	to	6299	637 562 5828	to	5899	650 130 3400	to	3599
511 021 5042	to	5099	612 751 6572	to	6599	638 042 1647	to	1699	650 213 0406	to	0499
511 021 5100	to	5199	612 774 2111	to	2199	638 049 4984	to	4999	650 555 1749	to	1799
511 468 1747	to	1799	612 774 2254	to	2299	638 318 1115	to	1199	650 564 1900	to	1999
511 844 0100	to	0199	612 774 2500	to	2599	638 318 1453	to	1499	650 627 4212	to	4299
511 844 0340	to	0399	614 469 0979	to	0999	638 885 0000	to	0299	650 736 2043	to	2099
512 805 3913	to	3919	614 474 3000	to	3099	638 903 4362	to	4373	650 739 1540	to	1699
513 046 0700	to	0726	614 521 3490	to	3499	639 415 1929	to	1999	651 741 4415	to	4499
513 149 0600	to	0699	614 645 1800	to	1899	639 415 2019	to	2099	651 882 2800	to	2899
513 445 3000	to	3199	614 832 1100	to	2099	639 420 6200	to	6299	652 754 6317	to	6399
513 466 2034	to	2044	615 017 7505	to	7599	639 469 3517	to	3799	653 131 4945	to	4999
513 539 9052	to	9099	617 711 6609	to	6699	639 605 2143	to	2199	653 426 3300	to	3399
513 539 9267	to	9299	617 760 5266	to	5299	639 657 8600	to	8799	653 455 4874	to	4899
513 539 9800	to	9899	617 813 3601	to	3699	640 289 7500	to	7599	654 238 0000	to	0399
513 539 9985	to	9999	618 840 9200	to	9299	640 289 7700	to	7999	654 404 3065	to	3092
513 606 5459	to	5490	619 551 7229	to	7299	641 170 4420	to	4499	654 962 2900	to	3199
513 812 1751	to	1799	619 859 3000	to	3099	641 318 3133	to	3199	655 103 5081	to	5199
514 103 3600	to	3699	620 073 9400	to	9499	641 378 6500	to	6999	655 523 2600	to	2999
514 103 3700	to	3799	621 614 7907	to	7930	641 383 8739	to	8799	656 305 2448	to	2499
514 103 3800	to	3899	621 614 7932	to	7999	641 877 3187	to	3299	657 347 4438	to	4999
600 645 3223	to	3299	621 648 8021	to	8199	641 877 3310	to	3399	657 710 8100	to	8999
601 339 1200	to	1399	621 648 8500	to	8599	642 355 8094	to	8199	657 780 0985	to	0999

658 586 1400	to	1499	683 444 8159	to	8199	701 695 3982	to	3999	742 192 5210	to	5224
658 877 8000	to	8199	685 154 7780	to	7789	701 695 4148	to	4199	742 222 9200	to	9210
658 880 8000	to	8199	685 297 7645	to	7699	701 695 4227	to	4299	742 228 9660	to	9669
659 398 7300	to	7399	685 623 5264	to	5299	701 708 1741	to	1799	742 247 6980	to	6989
659 706 8113	to	8199	685 650 9487	to	9499	701 736 3966	to	3999	742 290 0936	to	0950
659 846 7837	to	7899	685 669 4200	to	4299	701 772 0870	to	0899	742 302 7600	to	7699
660 510 4100	to	4199	685 757 8452	to	8499	701 838 2800	to	2899	742 305 3711	to	3799
660 673 0400	to	0599	686 071 2694	to	2799	701 941 0600	to	0699	742 305 3800	to	3899
661 488 5000	to	5099	686 176 3333	to	3354	702 171 1603	to	1699	742 305 3900	to	3999
661 609 9100	to	9199	686 372 3200	to	3299	702 195 5109	to	5199	742 305 4000	to	4099
661 716 9420	to	9499	686 644 5879	to	5899	702 254 9300	to	9399	742 305 4100	to	4199
661 906 6522	to	6599	686 899 1371	to	1399	702 264 7569	to	7599	805 885 8411	to	8499
662 021 8332	to	8399	686 931 7636	to	7699	702 519 0513	to	0524	806 087 1100	to	1499
662 068 0700	to	0899	687 601 0973	to	0999	702 713 1800	to	1809	806 268 9275	to	9299
662 553 0774	to	0799	687 614 6774	to	6799	702 821 5730	to	5799	806 534 3400	to	3477
663 078 7034	to	7099	688 120 9000	to	9999	702 821 5805	to	5899	807 342 3283	to	3399
663 763 5300	to	5399	688 314 3107	to	3191	702 844 6975	to	6994	808 086 7100	to	7199
663 883 7039	to	7499	690 291 1361	to	1371	702 846 6331	to	6399	808 090 3440	to	3499
663 938 9200	to	9299	690 788 2877	to	2899	702 848 3900	to	3999	808 325 5161	to	5699
664 253 8000	to	8499	690 893 5344	to	5399	702 857 7302	to	7499	808 784 8000	to	8299
664 656 3055	to	3099	690 893 5512	to	5599	702 878 0114	to	0199	830 125 0672	to	0699
665 174 6400	to	6499	690 904 1300	to	1599	703 364 1707	to	1799	830 602 5800	to	5999
665 274 8208	to	8299	690 941 6000	to	6199	740 002 7710	to	7719	830 610 3700	to	3799
665 669 5400	to	5499	691 313 6383	to	6399	740 037 6730	to	6800	830 983 3500	to	3599
666 132 8226	to	8299	691 313 6600	to	6699	740 119 2275	to	2284	830 983 3635	to	3699
666 696 2209	to	2299	691 582 8003	to	8099	740 130 6688	to	6698	831 354 1387	to	1399
666 696 2309	to	2399	691 664 1800	to	1999	740 144 2780	to	2795	831 815 8240	to	8299
667 032 9300	to	9399	691 664 2400	to	2499	740 241 9049	to	9099	832 525 3810	to	3899
667 729 5529	to	5599	692 727 9362	to	9399	740 252 9265	to	9294	833 159 1884	to	1899
668 383 8400	to	8699	692 798 1800	to	1899	740 255 1718	to	1799	833 456 2567	to	2599
670 368 3400	to	3499	693 249 0779	to	0799	740 274 2602	to	2619	833 566 3015	to	3071
670 369 7336	to	7399	693 249 0877	to	1699	740 277 0366	to	0392	834 130 5200	to	5299
670 750 7169	to	7199	693 445 0566	to	0999	740 332 7658	to	7671	834 316 5444	to	5499
671 046 6200	to	6399	693 448 8500	to	8999	740 348 6641	to	6658	834 354 8747	to	8766
671 251 5448	to	5499	693 645 9583	to	9599	740 351 4790	to	4799	834 354 8824	to	8838
671 926 5600	to	5799	693 965 4200	to	4299	740 374 7416	to	7499	835 269 5700	to	5799
672 444 2000	to	2999	695 741 2906	to	2999	740 470 2420	to	2443	835 496 7303	to	7399
672 828 3410	to	3499	695 947 8518	to	8599	740 514 0300	to	0499	835 539 5200	to	5999
673 167 5776	to	5799	696 662 8247	to	8299	740 523 7432	to	7449	835 813 3015	to	3099
675 464 3700	to	3799	697 447 8285	to	8296	740 535 1555	to	1580	837 672 8967	to	8999
675 464 4000	to	4199	698 042 4816	to	4899	740 557 3570	to	3579	837 784 3282	to	3299
676 365 5958	to	5999	698 131 2138	to	2157	740 650 4104	to	4140	838 176 8377	to	8399
676 669 1024	to	1099	698 227 0000	to	0099	740 684 0620	to	0800	838 518 1257	to	1299
677 126 6734	to	6799	700 065 2570	to	2599	740 701 6105	to	6114	839 718 8257	to	8299
677 333 9979	to	9999	700 065 4800	to	4899	740 705 9790	to	9799	840 323 0600	to	0699
677 466 1088	to	1099	700 190 3350	to	3359	740 726 6400	to	6500	840 875 6235	to	6299
678 071 4500	to	4799	700 228 6048	to	6099	740 748 8319	to	8329	840 910 0900	to	0999
678 096 7531	to	7599	700 650 0452	to	0499	740 765 3306	to	3399	841 349 5000	to	5099
679 909 2578	to	2599	700 666 1323	to	1349	740 774 8434	to	8499	841 805 7747	to	7899
680 112 9565	to	9599	700 786 9106	to	9142	740 779 4259	to	4299	841 805 7944	to	8099
680 244 0903	to	0999	700 859 0744	to	0758	740 786 1885	to	1899	842 226 0685	to	0695
680 412 6046	to	6099	701 028 6780	to	6899	740 790 5989	to	5999	842 685 4600	to	4699
680 761 6800	to	6899	701 213 3900	to	3999	740 803 4870	to	4879	842 685 4742	to	4999
681 677 0540	to	0699	701 267 2000	to	3999	740 820 4854	to	7836	842 860 0300	to	0399
682 070 1029	to	1099	701 335 7312	to	7399	740 827 7578	to	7594	842 898 5582	to	5599
682 956 6280	to	6299	701 369 2005	to	2050	740 917 7490	to	7499	843 062 7100	to	7199
682 956 6490	to	6599	701 499 2260	to	2299	740 918 5531	to	5549	843 077 6288	to	6299
682 956 6700	to	6799	701 503 2247	to	2299	741 037 8528	to	8551	843 077 6378	to	6399
682 965 1178	to	1199	701 541 2271	to	2299	742 030 6135	to	6149	843 758 5769	to	5778
682 965 1201	to	1299	701 553 6557	to	6599	742 033 2663	to	2674	843 786 2554	to	2699
683 118 2389	to	2399	701 578 7460	to	7469	742 040 3300	to	3309	845 656 8165	to	8199
683 378 2000	to	2099	701 578 7475	to	7499	742 112 8155	to	8199	845 727 2100	to	2199
683 378 2117	to	2299	701 601 3457	to	3499	742 151 5000	to	5014	845 746 2618	to	2635
683 415 1200	to	1499	701 605 5913	to	5999	742 191 4640	to	4649	846 390 7531	to	7599

846 918 0572	to	0599	867 366 9108	to	9118	909 067 7400	to	7499	920 309 9039	to	9199
847 237 7690	to	7699	867 633 7403	to	7499	909 100 1787	to	1799	920 771 5321	to	5399
847 284 2481	to	2499	867 737 5623	to	5699	909 100 1900	to	2099	920 857 5500	to	5899
847 374 7055	to	7065	868 169 4529	to	4599	909 355 0422	to	0499	920 864 3480	to	3499
847 374 7055	to	7065	868 173 8400	to	8599	909 568 8900	to	9099	920 963 4567	to	4599
847 636 5304	to	5399	868 514 9000	to	9099	909 568 9300	to	9499	921 333 7400	to	7499
847 700 5447	to	5499	868 566 9200	to	9299	909 725 7307	to	7399	921 477 3762	to	3799
847 723 7500	to	7599	869 200 0000	to	9999	909 833 0947	to	0999	922 278 1048	to	1399
849 485 3427	to	3499	869 387 1150	to	1199	910 219 8631	to	8699	922 280 2019	to	2099
849 520 9850	to	9899	869 505 3500	to	3599	910 265 1100	to	1199	922 280 2233	to	2299
849 608 1357	to	1399	869 523 7033	to	7099	910 471 7273	to	7299	922 773 0459	to	0499
849 792 2600	to	2699	869 566 6150	to	6167	910 536 2505	to	2599	923 032 7000	to	7399
850 546 1862	to	1899	869 776 8785	to	8786	910 958 7499	to	7599	923 045 3630	to	3699
851 143 6826	to	6844	869 800 0000	to	999 9999	911 140 1000	to	2199	923 484 3600	to	3699
851 209 9880	to	9899	870 054 4814	to	4899	911 245 2545	to	2599	923 493 9403	to	9599
851 928 9221	to	9299	870 491 4812	to	4849	911 268 9077	to	9099	923 493 9681	to	9699
852 589 6560	to	6599	870 536 5820	to	5829	911 400 8948	to	8999	923 604 4424	to	4499
853 049 3646	to	3699	870 541 7167	to	7239	911 508 1620	to	1799	923 810 7800	to	8299
854 304 4089	to	4999	870 575 8155	to	8999	911 509 9310	to	9399	924 252 1200	to	1299
854 529 2200	to	2299	870 589 0485	to	0494	911 523 3000	to	3999	924 252 1400	to	1499
854 532 0000	to	2999	870 691 7060	to	7099	912 057 9922	to	9999	924 533 0711	to	0799
855 001 6204	to	6249	872 028 4850	to	4899	912 882 0563	to	0899	924 533 2343	to	2399
855 319 9364	to	9399	872 029 9306	to	9399	913 605 2218	to	2299	924 533 2428	to	2499
855 361 3390	to	3399	872 078 3709	to	3799	913 709 2429	to	2499	924 685 1957	to	1999
856 226 0490	to	0499	872 100 0445	to	0459	913 818 3501	to	3999	924 946 6300	to	6699
856 656 5800	to	5999	900 556 4178	to	4199	914 063 4300	to	4399	925 333 5900	to	6099
856 752 0200	to	0299	900 845 0044	to	0099	914 346 7621	to	7644	925 336 2300	to	2399
857 111 1352	to	1399	900 936 0217	to	0299	914 453 1366	to	1399	926 432 5907	to	5999
857 279 3450	to	3499	900 936 0435	to	0499	914 529 6185	to	6299	926 436 3600	to	3699
857 843 4000	to	4099	901 058 5255	to	5280	914 896 4658	to	4699	927 765 6257	to	6299
858 124 7644	to	7699	901 273 1082	to	1099	915 187 8774	to	8779	928 197 8100	to	8199
858 756 3111	to	3299	901 287 5143	to	5199	915 300 2783	to	2799	928 197 8283	to	8299
859 063 8200	to	8699	901 291 2789	to	2799	915 546 6822	to	6999	928 856 2059	to	2068
859 190 0600	to	0644	901 525 7122	to	7199	915 646 5183	to	5199	930 078 5800	to	5899
859 437 5538	to	5599	902 089 1253	to	1299	915 671 3963	to	3980	930 219 1722	to	1799
859 811 2888	to	2899	902 198 9769	to	9799	915 671 3982	to	3999	930 335 7810	to	7819
859 855 8873	to	8999	902 948 1269	to	1299	915 675 2217	to	2299	931 097 9259	to	9299
860 240 8520	to	8599	902 985 0833	to	0899	916 440 3377	to	3399	931 156 1502	to	1579
860 275 3900	to	3999	903 370 6934	to	6999	916 670 6352	to	6399	931 156 1600	to	1625
860 518 9629	to	9699	904 600 6523	to	6599	916 682 5300	to	5399	931 156 1671	to	1699
860 600 0021	to	0999	904 892 0378	to	0399	916 694 1414	to	1499	932 506 6400	to	6599
861 158 2350	to	2599	904 892 0648	to	1299	916 703 0802	to	0821	932 732 1796	to	1799
861 367 5400	to	5499	905 056 2216	to	2299	917 089 0709	to	0799	932 827 9026	to	9099
861 637 6010	to	6099	905 510 6647	to	6799	917 089 0842	to	0899	932 957 2300	to	2399
861 979 7292	to	7499	905 510 6900	to	7099	917 216 2928	to	2999	933 060 6160	to	6189
862 216 6100	to	6199	905 794 0000	to	0199	917 370 6300	to	6499	933 387 2541	to	2561
862 263 9213	to	9299	905 794 0288	to	0299	917 486 4900	to	4999	933 760 3609	to	4199
862 271 0800	to	0999	905 873 6900	to	6999	918 460 0602	to	0699	933 894 0928	to	0999
862 271 5000	to	5099	905 873 7100	to	7299	918 951 7231	to	7299	934 018 2729	to	2741
863 871 5138	to	5199	905 880 8900	to	8999	919 519 2786	to	2799	934 180 0300	to	0399
863 949 5300	to	5399	905 889 7100	to	7199	919 536 0770	to	0799	934 236 3954	to	3999
864 088 8200	to	8299	906 158 1508	to	1599	919 814 3095	to	3199	934 622 8717	to	8999
864 426 3972	to	3999	906 558 8812	to	8899	919 889 5110	to	5134	935 216 0312	to	0399
864 520 6117	to	6136	906 982 2214	to	2299	919 889 5137	to	5176	935 843 2202	to	2247
865 151 0526	to	0599	907 725 8500	to	8599	919 889 5178	to	5199	936 024 8889	to	8899
865 500 4034	to	4099	907 815 0216	to	0257	919 889 5030	to	5070	936 339 4455	to	4499
865 883 6082	to	6099	908 622 4225	to	4235	919 889 5090	to	5099			
866 004 3000	to	3999	908 936 9254	to	9299	919 915 2774	to	2787			
866 442 4100	to	4899	909 066 4494	to	7499	920 155 4662	to	4687			

Missing, Lost, or Stolen Canadian Money Order Forms

Do Not Cash — Upon Receipt, Notify Local Postal Inspectors

Provide this listing to all Postal Service™ employees responsible for accepting and cashing postal money orders. Destroy all interim notices when the numbers listed appear in the *Postal Bulletin*. The new money order serial

numbers consist of the first 9 digits. The tenth digit is a check digit only.

Do not cash outdated money orders **104 151 601 to 692 600 000**. Advise holders to send invalid money orders to Canada Post Corporation, Ottawa, Canada K1A 0B1. Check for altered dollar amounts by holding money orders to the light.

719 869 731	to	9 760	728 382 331	to	2 480	734 797 201	to	7 320	741 764 431	to	4 520
720 227 871	to	7 930	728 702 338	to	2 400	734 939 611	to	9 640	742 178 834	to	8 880
720 227 949	to	7 960	728 915 371	to	5 850	734 950 111	to	0 170	742 325 500	to	5 520
720 368 543	to	8 570	728 953 141	to	3 410	735 120 331	to	0 840	742 325 668	to	5 700
720 392 151	to	2 570	728 954 280	to	4 310	735 283 008	to	3 020	742 408 771	to	8 830
720 556 491	to	6 640	729 169 081	to	9 140	735 293 131	to	3 220	742 512 120	to	2 150
720 558 621	to	8 650	729 363 841	to	3 870	735 635 010	to	5 040	742 684 849	to	4 890
720 575 361	to	5 570	729 682 891	to	3 190	735 783 961	to	3 990	742 839 553	to	9 630
720 590 152	to	0 179	729 838 940	to	9 070	735 803 401	to	3 430	742 913 668	to	3 700
721 638 331	to	9 170	729 839 101	to	9 130	736 005 420	to	5 440	742 917 287	to	7 296
721 815 391	to	5 420	730 077 683	to	7 840	736 366 021	to	6 110	742 921 891	to	1 980
721 969 713	to	9 740	730 109 847	to	9 880	736 624 456	to	4 500	742 983 631	to	3 810
722 072 137	to	2 160	730 373 761	to	3 850	736 670 851	to	1 060	743 020 021	to	0 170
722 378 265	to	8 280	730 501 951	to	2 130	736 767 061	to	7 090	743 206 491	to	6 500
722 413 990	to	4 004	730 519 379	to	9 470	736 767 093	to	7 120	743 235 992	to	6 050
722 764 948	to	4 980	730 569 278	to	9 360	736 982 191	to	2 370	743 940 631	to	0 900
722 825 840	to	5 889	730 711 711	to	1 740	736 982 551	to	2 730	743 978 011	to	8 070
723 153 841	to	3 850	730 722 991	to	3 230	737 110 141	to	0 170	744 234 751	to	4 780
723 237 616	to	7 630	730 845 970	to	5 990	737 185 501	to	5 710	744 499 591	to	9 680
723 331 081	to	1 110	730 888 291	to	8 320	737 317 321	to	7 350	744 626 901	to	6 910
723 496 443	to	6 470	730 927 591	to	7 680	737 517 781	to	7 840	745 388 794	to	8 910
723 967 291	to	7 320	731 307 914	to	7 930	737 628 181	to	8 210	746 446 806	to	6 820
724 655 196	to	5 340	731 402 431	to	2 460	737 634 258	to	4 270	746 818 351	to	8 410
724 711 441	to	1 500	731 407 232	to	7 320	738 361 971	to	1 980	747 245 266	to	5 280
724 711 538	to	1 560	731 588 301	to	8 340	738 447 601	to	7 660	747 364 813	to	4 830
724 793 221	to	3 250	731 767 273	to	7 320	738 648 355	to	8 450	747 501 434	to	1 450
724 908 109	to	8 120	731 781 061	to	1 120	738 849 811	to	9 900	747 739 891	to	0 070
724 937 461	to	7 670	731 837 821	to	7 910	738 892 270	to	2 290	748 148 649	to	8 760
725 163 118	to	3 151	731 841 377	to	1 450	738 997 259	to	7 380	748 259 960	to	9 970
725 202 735	to	2 750	732 018 481	to	8 600	739 161 451	to	1 540	748 565 162	to	5 280
725 398 591	to	8 800	732 067 972	to	8 370	739 219 381	to	9 440	748 874 988	to	5 030
725 464 591	to	4 920	732 188 649	to	8 670	739 740 151	to	0 180	749 137 381	to	7 410
725 475 321	to	5 330	732 193 460	to	3 470	739 793 491	to	3 520	749 190 192	to	0 210
725 711 057	to	1 070	732 201 241	to	1 390	739 793 527	to	3 550	749 685 421	to	5 450
725 738 581	to	8 730	732 220 431	to	0 440	739 942 621	to	2 650	749 846 791	to	6 850
725 981 311	to	1 430	732 355 201	to	5 380	739 999 231	to	9 320	749 993 131	to	3 580
725 987 835	to	7 880	732 472 320	to	2 560	740 011 517	to	1 530	750 071 587	to	1 610
726 060 811	to	0 900	732 541 605	to	1 620	740 030 701	to	0 970	750 408 167	to	8 183
726 391 970	to	2 520	732 572 221	to	2 490	740 261 740	to	1 820	750 438 421	to	8 501
726 484 771	to	4 800	732 586 479	to	6 710	740 265 811	to	6 290	750 743 911	to	4 030
726 493 351	to	5 300	732 994 037	to	4 080	740 299 111	to	9 170	750 779 118	to	9 400
726 504 031	to	4 063	733 163 449	to	3 460	740 299 231	to	9 260	750 910 981	to	1 010
726 504 070	to	4 090	733 297 171	to	7 290	740 329 266	to	9 320	750 960 841	to	0 900
726 504 331	to	4 390	733 446 631	to	7 110	740 889 081	to	9 090	751 296 211	to	6 240
726 563 701	to	4 060	733 474 665	to	4 770	741 010 421	to	0 530	751 539 121	to	9 180
726 599 371	to	9 460	733 704 482	to	4 570	741 113 041	to	3 370	751 541 311	to	1 790
726 626 356	to	6 370	733 751 041	to	1 130	741 373 891	to	4 340	751 757 641	to	7 700
727 182 271	to	2 510	734 009 101	to	9 130	741 452 369	to	2 490	751 936 951	to	7 010
727 416 181	to	6 240	734 290 759	to	0 770	741 492 991	to	3 140	751 951 861	to	1 890
727 481 431	to	1 460	734 389 273	to	9 290	741 553 460	to	3 470	751 999 021	to	9 110
727 749 241	to	9 780	734 440 031	to	0 111	741 764 431	to	4 520	752 139 516	to	9 570

752 182 892	to	2 950	762 324 931	to	4 960	773 112 031	to	2 060	799 177 626	to	7 650
752 206 861	to	7 100	762 439 261	to	9 290	773 125 387	to	5 410	799 854 751	to	5 200
752 295 241	to	5 600	762 524 158	to	4 220	773 179 320	to	9 410	800 044 320	to	4 410
752 731 351	to	1 410	762 584 872	to	4 970	773 202 989	to	3 140	800 211 901	to	2 440
752 767 441	to	7 470	762 593 431	to	3 460	773 208 991	to	9 290	800 427 530	to	7 540
753 008 941	to	9 030	763 155 160	to	5 180	773 231 311	to	1 340	800 872 741	to	2 830
753 194 311	to	4 370	763 178 631	to	8 660	773 348 739	to	8 940	801 349 801	to	9 830
753 620 378	to	0 400	763 506 001	to	6 060	773 348 739	to	8 940	801 676 681	to	7 100
754 013 917	to	3 940	763 522 141	to	2 470	773 575 891	to	5 950	802 967 821	to	7 940
754 161 061	to	1 120	763 717 694	to	7 800	773 852 971	to	3 030	803 217 601	to	7 780
754 358 445	to	8 610	763 826 461	to	6 520	775 373 449	to	3 460	803 729 731	to	9 850
754 410 451	to	0 660	763 900 460	to	0 471	789 257 191	to	7 250	803 747 402	to	7 520
754 438 393	to	8 410	763 900 479	to	0 530	790 448 020	to	8 460	804 138 181	to	8 420
754 493 109	to	3 130	763 917 271	to	7 750	790 597 485	to	7 530	804 428 224	to	8 250
754 664 182	to	4 220	764 125 801	to	5 860	790 911 883	to	1 900	804 682 411	to	2 710
754 816 377	to	6 470	764 284 525	to	4 560	791 057 441	to	7 550	805 272 525	to	2 540
755 487 421	to	7 600	764 526 241	to	6 330	791 239 081	to	9 290	805 523 445	to	3 460
755 592 901	to	3 140	764 601 421	to	1 600	791 374 483	to	4 500	805 745 704	to	5 730
755 790 020	to	0 030	764 650 231	to	0 470	791 387 971	to	8 030	806 452 907	to	2 980
755 791 730	to	1 800	764 984 371	to	4 850	791 447 521	to	7 850	806 744 781	to	4 850
755 926 951	to	7 070	765 003 667	to	3 680	791 451 151	to	1 240	806 982 181	to	2 300
755 934 332	to	4 510	765 042 517	to	2 540	791 500 009	to	0 470	807 764 791	to	4 910
755 957 701	to	8 000	765 194 728	to	4 970	791 771 431	to	1 490	808 089 931	to	9 960
755 962 981	to	3 280	765 387 365	to	7 450	792 004 293	to	4 320	808 656 423	to	6 450
756 035 371	to	5 490	765 541 801	to	2 100	792 018 379	to	8 420	808 753 771	to	3 800
756 301 257	to	1 290	765 638 461	to	8 970	792 070 621	to	0 740	809 189 001	to	9 010
756 371 565	to	1 580	765 647 101	to	7 190	792 145 211	to	5 230	809 886 879	to	6 930
756 876 031	to	6 120	765 813 781	to	4 029	792 391 381	to	1 620	809 890 489	to	0 500
756 876 151	to	6 240	765 879 314	to	9 390	792 452 779	to	2 790	810 323 734	to	3 760
756 970 129	to	0 140	765 954 001	to	4 030	792 772 728	to	2 770	810 367 116	to	7 140
757 059 613	to	9 630	766 120 286	to	0 320	792 903 511	to	3 990	810 526 351	to	6 500
757 078 540	to	8 560	766 125 716	to	5 750	793 282 518	to	2 533	810 806 911	to	6 940
757 086 209	to	6 240	766 158 824	to	8 840	794 041 831	to	2 040	810 807 211	to	7 240
757 240 591	to	0 650	766 388 433	to	8 460	794 397 709	to	7 780	811 423 021	to	3 110
757 277 371	to	7 700	766 509 421	to	9 660	794 581 741	to	2 040	811 517 221	to	7 239
757 291 591	to	2 730	766 572 901	to	3 020	794 592 122	to	2 150	811 721 101	to	1 130
757 964 251	to	4 280	766 748 500	to	8 521	795 032 251	to	2 340	812 025 721	to	5 900
758 067 001	to	7 090	767 024 341	to	4 370	795 796 291	to	6 350	812 093 073	to	3 130
758 105 221	to	5 250	767 326 471	to	6 590	796 070 139	to	0 160	812 100 821	to	0 840
758 324 941	to	5 000	767 332 561	to	2 950	796 143 151	to	3 630	812 465 251	to	5 610
758 593 628	to	3 650	768 009 841	to	9 960	796 159 725	to	9 740	812 918 341	to	8 670
758 709 038	to	9 060	768 011 489	to	1 520	796 169 306	to	9 340	812 918 701	to	8 760
758 744 101	to	4 160	768 177 980	to	7 990	796 373 406	to	3 430	813 050 491	to	0 520
758 850 883	to	0 900	768 391 081	to	1 170	796 602 961	to	3 050	813 073 171	to	3 200
758 860 951	to	1 550	768 661 569	to	1 650	796 708 441	to	8 500	813 398 476	to	8 550
759 152 851	to	2 880	769 000 051	to	0 080	796 886 281	to	6 430	813 713 971	to	4 000
759 740 941	to	1 090	769 050 841	to	0 900	796 901 701	to	2 000	813 858 121	to	8 150
760 004 596	to	4 610	769 159 081	to	9 178	796 975 466	to	5 590	814 789 330	to	9 349
760 118 191	to	8 250	769 737 496	to	7 510	797 272 917	to	2 950	814 984 656	to	4 680
760 155 001	to	5 090	769 778 491	to	8 730	797 519 441	to	9 460	815 016 020	to	6 030
760 378 002	to	8 020	769 827 331	to	7 450	797 519 731	to	0 240	815 199 410	to	9 420
760 692 722	to	2 749	770 216 071	to	6 100	797 535 181	to	5 330	815 240 491	to	0 520
761 055 460	to	5 480	770 723 281	to	3 400	797 646 151	to	6 180	815 755 591	to	5 620
761 169 781	to	9 810	770 790 451	to	0 480	798 040 053	to	0 080	815 755 622	to	5 650
761 504 941	to	5 120	770 915 150	to	5 490	798 055 813	to	5 830	815 806 381	to	6 680
761 516 836	to	6 910	771 455 551	to	5 610	798 055 891	to	5 950	816 126 834	to	6 870
761 613 588	to	3 600	771 609 661	to	9 690	798 326 371	to	6 520	816 156 721	to	6 780
761 688 631	to	8 690	771 932 551	to	2 580	798 339 167	to	9 210	816 580 903	to	0 920
761 805 199	to	5 240	772 057 224	to	7 440	798 562 411	to	2 440	816 945 571	to	5 600
761 826 106	to	6 120	772 162 660	to	3 070	798 632 461	to	2 490	817 253 011	to	3 280
761 881 171	to	1 560	772 718 615	to	8 640	798 807 151	to	7 510	817 763 881	to	4 060
761 975 641	to	5 670	772 940 140	to	0 160	798 944 761	to	5 030	818 330 562	to	0 610
761 975 886	to	5 895	772 970 886	to	0 940	799 118 616	to	8 640	818 459 641	to	9 670
762 304 144	to	4 170	773 009 419	to	9 430	799 133 191	to	3 220	818 926 273	to	6 320

818 950 351	to	0 380 821 172 241	to	2 360 824 078 341	to	8 370 827 287 861	to	7 950 828 807 781	to	7 840
818 962 492	to	2 530 821 229 661	to	9 720 824 156 325	to	6 340 827 291 502	to	1 520 828 830 952	to	0 963
819 032 341	to	2 730 821 229 743	to	9 780 824 511 252	to	1 270 827 575 381	to	5 470 828 939 781	to	0 050
819 127 054	to	7 080 821 903 731	to	3 910 824 588 281	to	8 370 827 609 085	to	9 100 829 002 721	to	2 870
819 278 540	to	8 670 821 927 841	to	7 850 825 140 397	to	0 460 827 619 811	to	9 840 829 005 301	to	5 540
819 544 681	to	4 740 822 505 801	to	5 830 825 409 651	to	9 680 827 883 511	to	3 600 829 080 241	to	0 330
819 928 441	to	8 650 822 703 442	to	3 470 825 472 171	to	2 200 828 160 441	to	0 530 829 160 986	to	1 000
820 034 406	to	4 430 822 900 991	to	1 020 826 042 898	to	2 920 828 376 201	to	6 260 829 176 841	to	6 930
820 070 761	to	1 540 822 925 951	to	6 100 826 226 644	to	6 670 828 441 602	to	1 630 829 471 561	to	1 590
820 191 342	to	1 360 823 284 931	to	4 990 826 582 951	to	3 430 828 539 316	to	9 340 829 561 065	to	1 080
820 274 856	to	4 880 823 293 031	to	3 210 826 720 201	to	0 230 828 539 341	to	9 370 829 566 481	to	6 510
820 600 171	to	0 230 823 556 011	to	6 100 827 005 671	to	5 830 828 732 331	to	2 390 829 569 931	to	9 960

— Criminal Investigations Group, U.S. Postal Inspection Service, 7-13-23

Verifying U.S. Postal Service Money Orders

Follow these steps to cash a Postal Service™ money order:

1. Check that the amount does not exceed the legal limit: \$1,000 for domestic, and \$700 for international Postal Service money orders.
2. Check that the proper security features are present:
 - When held to the light, a watermark of Benjamin Franklin is repeated from top to bottom on the left side.
 - When held to the light, a dark line (security thread) runs from top to bottom with the word “USPS” repeated.
 - When there is discoloration around the dollar amounts, this might indicate the amounts were changed.

These appear in Postal Service Notice 299, *U.S. Postal Money Order Reference Card*, or online at usps.com/shop/money-orders.htm.

3. If the money order seems suspicious, call the U.S. Postal Service Money Order Verification System at 866-459-7822.

Provide this information to local banks and retailers, as they also receive Postal Service money orders for cashing.

— Delivery and Retail
Customer Service Operations, 7-13-23

Counterfeit Canadian Money Order Forms

Do Not Cash

To be posted and used by retail window employees. As directed, destroy previous notices. Destroy all interim notices when the numbers listed appear in the *Postal Bulletin*.

671,819,086	683,594,542	687,262,503
676,612,640	684,683,610	687,262,525
677,891,039	686,619,878	687,262,526
678,282,493	686,619,886	687,287,578
678,916,031	686,619,887	687,287,581
679,552,215	686,794,382	687,287,582
679,694,334	686,794,426	694,063,898
679,751,983	686,794,427	694,063,899
679,800,207	686,794,431	694,063,980
681,130,536	687,262,502	701,321,725
681,844,376		

— Criminal Investigations Group,
U.S. Postal Inspection Service, 7-13-23

Toll-Free Number Available to Verify Canadian Money Orders

The Canada Post Corporation has a toll-free number that cashing agents can call to verify the validity of Canadian Postal Money Orders. The number is 800-563-0444.

This toll-free number is printed on the back of the Canadian Postal Money Orders.

— Criminal Investigations Group,
U.S. Postal Inspection Service, 7-13-23

Other Information

Overseas Military/Diplomatic Mail

Mail addressed to military and diplomatic post offices overseas is subject to certain conditions or restrictions of mailing regarding content, preparation, and handling. The APO/FPO/DPO table outlines these conditions by APO/FPO/DPO ZIP Codes™ through the use of footnoted mailing restrictions codes (see the [Restrictions](#) page following the table).

Acceptance clerks must use the table with the Retail System Software terminal to determine which APO/FPO/DPO ZIP Codes are active and which conditions of mailing apply.

The entries under “Changes” appear in bold in the following APO/FPO/DPO table:

Changes

APO/FPO/DPO	Action	Effective Date	See Restrictions
DPO AA 34071	Open	06/28/2023	A-B-F1-F3-I3-L-M-N-R-S-T-V-W-X-Z-Z1

We have eliminated “Not Active” entries from the table below to save space and paper.

APO/FPO/DPO Table

APO/FPO/DPO	See Restrictions	APO/FPO/DPO	See Restrictions	APO/FPO/DPO	See Restrictions	APO/FPO/DPO	See Restrictions
09002	A-B-C-C2-F-F3-H-N-R-S-V-Z-Z1	09068	B-C-C2-D-E-F-F3-H-R-S-U-Z1	09154	B-C-C2-D-E-F-F3-H-M-R-S-U	09242	A-B-C-C1-C2-F-F3-H-N-R-S-V
09003	B-C-C2-D-E-F-F3-H-M-P-R-S-U	09069	A-B-C-C2-D-E-F-F3-H-N-R-S-U-V	09160	B-C-C2-F1-F3-H-J-L-M-N-R-R1-S-T-U-V-X-Z1	09250	B-C-C2-D-E-F-F3-H-M-R-S-U
09004	B-C-C2-D-E-F-F3-H-M-R-S-U	09079	B-C-C2-D-E-F-F3-H-M-R-S-U	09170	A-B-C-C2-F1-F3-J-L-M-N-R-R1-S-T-V-X-Z1	09261	B-C-C2-D-E-F-F3-H-M-N-R-S-U-V-Z1
09005	B-C-C2-D-E-F-F3-H-M-P-R-S	09094	B-C-C2-D-F3-H-M-P-R-S-Z1	09171	A-B-C-C1-C2-E3-F1-F3-J-L-M-N-R-R1-S-T-V-X-Z1	09263	B-C-C2-D-E-F-F3-H-M-R-S-U
09006	B-C-C2-D-E-F-F3-H-M-R-S-U	09095	B-C-C2-D-E-F-F3-H-M-R-S-U	09172	B-C-C2-D-E-F-F3-H-M-R-S-U	09264	B-C-C2-D-E-F-F3-H-M-R-S-U
09008	A-B-C-C2-F-F3-H-N-R-S-V-Z1	09096	B-C-C2-D-E-F-F3-H-M-R-S-U	09173	B-C-C2-D-E-F-F3-H-M-R-S-U	09265	B-C-D-F-F1-H-J-L-M-N-R-S-T-U-V-Z1
09009	B-C-C2-D-E-F-F3-H-M-R-S-U-Z1	09101	A-B-C-C2-F-F3-H-N-Q-R-S-V-Z-Z1	09174	B-C-C2-F1-F3-L-N-R-R1-S-T-V-Z1	09266	A-B-C2-F3-S-U-R-V-Z1
09010	B-C-C2-D-E-F-F3-H-M-R-S-U2	09103	A-B-C-C2-F-F3-H-N-R-S-V-Z1	09175	A-B-C-C1-C2-E2-F1-F3-H1-J-L-M-N-R-R1-S-T-V-W-X-Z1	09276	A-B-F-F3-I3-L-M-N-R-S-T-V-X-Z-Z1
09011	B-C-C2-D-E-F-F3-H-M-R-S	09104	B-C-C2-D-F3-H-M-R-S-U-Z1	09176	A-B-C-C2-F1-F3-J-L-M-N-R-R1-S-T-V-X-Z1	09277	A-B-E-E1-E2-F1-F3-I3-L-N-R-S-T-V-X-Z-Z1
09012	B-C-C2-D-E-F-F3-H-M-R-S-U-Z1	09107	B-C-C2-D-E-F-F3-H-M-R-S-U	09177	B-C-C2-D-E-F-F3-H-M-R-S-U	09278	A-B-F-F3-I3-L-M-N-R-S-T-V-X-Z1
09013	B-C-C2-D-E-F-F1-F3-H-M-R-S-U-Z1	09112	B-C-C2-D-E-F-F3-H-M-R-S-U	09178	B-C1-C2-E2-F1-F3-I3-L-M-N-R-S-T-V-X-Z-Z1	09279	A-B-E-E1-F-F3-I3-L-M-N-R-S-T-V-X-Z-Z1
09014	B-C-C2-D-E-F-F3-H-M-P-R-S-U	09114	B-C-C2-D-E-F-F3-H-M-R-S-U	09179	A-B-C-C1-C2-F1-F3-J-L-M-N-R-R1-S-T-V-X-Z1	09280	A-B-C-C1-C2-E-E2-F1-F3-H13-L-M-N-R-S-T-V-W-X-Z-Z1
09015	A-B-C-C1-C2-F-F1-F3-J-L-M-N-R-R1-S-V-Z1	09116	A-B-C-C2-F-F3-H-N-R-S-V-Z1	09180	B-C-C2-D-E-F-F3-H-M-R-S-U	09281	A-B-C-C1-C2-E2-E3-F1-F3-H13-L-M-N-R-R1-S-T-V-X-Z1
09016	B-C-C2-D-E-F1-F3-H-M-R-S-U	09117	A-B-C-C2-F-F3-H-N-R-S-V-Z1	09186	B-C-C2-D-E-F-F3-H-M-P-R-S-U	09282	A-B-C-C1-C2-E2-E3-F1-F3-H13-L-M-N-R-R1-S-T-V-X-Z1
09017	A-B-C-C2-F-F3-H-N-R-S-V-Z1	09118	A-B-C-C2-F-F1-F3-M-N-R-R1-S-V-Z1	09203	A-B-C-C1-C2-F1-F3-I3-J-L-M-N-R-R1-S-T-V-X-Z-Z1	09283	A-B-C-C2-E-E1-F1-F3-L-M-N-R-S-T-V-X-Z1
09018	A-B-C-C2-F-F3-H-N-R-S-V-Z1	09123	B-C-C2-D-E-F-F3-H-M-R-S-U-Z1	09204	B-C-F3-M-N-R-S-V-Z1	09284	A-B-C-C2-F1-F3-I3-L-M-N-R-S-T-V-Z
09020	B-C-C2-D-E-F-F3-H-M-R-S-U	09126	B-C-C2-F3-H-M-P-R-S-Z1	09205	A-B-C-C2-E2-F-F3-M-N-R-S-T-V-X	09285	A-B-C-E-E-1-F1-F3-H-I3-L-M-N-R-S-T-V-X-Z-Z1
09021	B-C-C2-D-E-F-F3-H-M-R-S-U-Z1	09128	B-C-C2-D-E-F-F3-H-M-R-S-U	09211	B-C-C2-D-E-F-F3-H-M-P-R-S-U	09287	B-C2-E1-F1-F3-J-L-N-R-S-T-V-X-Z1
09034	B-C-C2-D-E-F-F3-H-M-R-S-U	09131	B-C-C2-D-E-F-F3-H-M-R-S-U	09213	B-C-C2-F1-F3-H-J-L-M-N-R-R1-S-T-U-V-X-Z1	09288	B-E2-F1-F3-H1-J-L-M-N-R-R1-S-T-U2-V-X-Z1
09044	B-C-C2-D-E-F-F3-H-R-S-U	09135	A-B-C2-F-F3-H-N-R-S-U-V-Z1	09214	B-C-C2-D-E-F-F3-H-M-R-S-U-Z1	09289	A-B-F1-F3-J-L-M-N-R-S-T-U2-V-X-Z1
09046	B-C-C2-D-E-F-F3-H-M-R-S-U	09136	B-C-C2-D-E-F-F3-H-M-P-R-S-U	09216	B,C,F1,F3,M,N,R,S,V,Z1	09290	A-B-C1-C2-E2-F1-F3-H1-L-N-R-R1-S-T-V-X-Z1
09049	B-C-C2-D-E-F-F3-H-M-R-S-U	09138	B-C-C2-D-F-F3-H-M-R-S-U	09227	B-C-C2-D-E-F-F3-H-M-R-S-U	09291	B-C-C1-C2-E2-F1-F3-H1-L-N-R-R1-S-T-V-X-Z1
09053	B-C-C2-D-E-F-F3-H-M-R-S-U	09140	B-C-C2-D-E-F-F3-H-M-R-S-U	09240	A-B-C1-C2-F-F3-H-N-R-S-V		
09060	B-C-C2-D-E-F1-F3-H-M-N-R-S-U-Z1	09142	B-C-C2-D-E-F-F3-H-M-R-S-U	09241	A-B-C-C2-F3-N-R-S-U-Z1		
09067	B-C-C2-D-E-F-F3-H-M-R-S-U						

APO/ FPO/ DPO	See Restrictions	APO/ FPO/ DPO	See Restrictions	APO/ FPO/ DPO	See Restrictions	APO/ FPO/ DPO	See Restrictions
09292	A-B-C-C2-E-E2-E3-F1-F3-H-H1-J-L-M-N-R-R1-S-T-V-X-Z1	09467	B-C-C2-E-E1-F1-F3-J-L-M-N-R-S-T-V-W-X-Z1	09568	B-C-C2-F-F1-F3-R-R1-S-V	09625	B-C-C2-F-F3-N-R-S-U-Z1
09293	A-B-C-C1-C2-E-E2-F1-F3-I3-L-M-N-R-S-T-V-X-Z1	09468	B-C-C1-C2-F3-M-R-S-U-Z1	09569	B-C-C2-E2-E3-F-F1-F3-R-R1-S-V-Z1	09627	B-C-C2-F-F3-R-S-U-V-Z1
09294	B-C-C1-C2-E2-F1-F3-H1-L-N-R-R1-S-T-V-X-Z1	09469	B-C-C1-C2-F3-R-S-U-Z1	09570	B-C-C2-F-F1-F3-R-R1-S-V	09630	B-C-C2-F-F3-R-S-U-V
09295	B-C-C1-C2-E2-F1-F3-H1-J-L-M-N-R-R1-S-T-V-X-Z1	09470	B-C-C1-C2-F3-M-R-S-U-Z1	09573	B-C-C2-E2-E3-F-F1-F3-R-R1-S-V-Z1	09633	B-C-C2-D-F-F3-M-R-S-U-U1-U2-U3-V-Z1
09301	A-B-C-C1-C2-E2-F1-F3-H1-I3-L-M-N-R-R1-S-T-U4-V-X-Z1	09487	A-B-C-C1-C2-E2-F1-F3-I3-L-M-N-R-R1-S-T-V-W-X-Z1	09574	B-F-F1-R-R1-V	09634	A-B-C2-F-F3-M-N-R-S-V
09304	A-B-C-C1-C2-F-F1-F3-H-M-N-R-S-V-Z1	09488	A-B-C-C1-C2-E2-F1-F3-J-L-M-N-R-S-T-V-W-X-Z1	09575	B-C-C2-F-F1-F3-R-R1-S-V	09636	B-C-C2-F-F3-R-S-U-V-Z1
09305	A-B-C1-E2-F-F1-F3-H1-I3-M-N-R-R1-S-T-V-Z1	09489	A-B-C-C1-C2-E2-F1-F3-L-M-N-R-R1-S-T-V-W-X-Z1	09576	B-C-C2-F-F1-F3-R-R1-S-V	09642	B-C-C2-F1-F3-J-L-M-N-R-S-T-U-V-X
09306	A-B-C1-E2-F-F1-F3-H1-R-R1-S-U2-V-Z1	09490	A-B-C1-C2-E2-F-F1-F3-H1-J-L-M-N-R-R1-S-T-V-X-Z1	09577	B-C-C2-F-F1-F3-R-R1-S-V	09643	B-C-C2-F3-M-R-S-U-V-Z1
09307	B-C-C2-F-F3-N-R-R1-S-Z1	09491	A-B-C1-C2-E2-F1-F3-H1-J-L-M-N-R-R1-S-T-V-Z1	09578	B-C-C2-F-F1-F3-R-R1-S-V	09645	B-C-C1-E1-E2-F-F1-F3-M-R-S-U-X-Z1
09309	A-B-C-C1-C2-E2-F-F1-F3-H1-M-N-R-R1-S-V-Z1	09494	B-C-C1-C2-F3-M-R-S-U-Z1	09579	B-C-C2-F-F1-F3-R-R1-S-V	09647	B-C2-F1-F3-M-N-R-S-U-Z1
09310	A-B-C-C1-E2-F1-F3-H1-I3-L-M-N-R-R1-S-T-U4-V-Z1	09498	B-C-C1-C2-F1-F3-J-L-M-N-R-R1-S-T-V-X-Z1	09582	B-C-C2-F-F1-F3-R-R1-S-V	09648	B-C2-F3-N-R-S-U-V-Z1
09311	A-B-C1-C2-E2-F-F1-F3-H1-I3-L-M-N-R-R1-S-T-U4-V-Z1	09501	B-V	09583	B-C-C2-F-F1-F3-R-R1-S-V	09649	B-C2-F3-N-R-S-U-Z1
09312	A-B-C-C1-E2-F1-F3-H1-I3-L-M-N-R-R1-S-T-U4-V-X-Z1	09502	B-V	09586	B-C-C2-F-F1-F3-R-R1-S-V	09701	A-B-C-C1-C2-F1-F3-J-L-M-N-R-R1-S-T-V-X-Z1
09315	A-B-C1-E2-F-F3-N-R-R1-S-V-Z1	09503	B-F-F1-R-R1-V	09587	B-C-C2-F-F1-F3-R-R1-S-V	09702	B-C-C2-F-F1-M-R-R1-S-U
09316	A-B-C1-E2-F-F1-F3-H1-I3-M-N-R-R1-S-T-V-Z1	09504	B-V	09588	B-C-C2-F-F1-F3-R-R1-S-V	09704	B-C-C2-F-F1-F3-R-R1-S-U2-V
09321	A-B-C1-C2-E2-F-F3-H1-M-N-R-R1-S-V-Z1	09505	B-V	09589	B-F-F1-F3-R-S-V	09705	B-C-C1-C2-F1-F3-M-R-R1-S-U
09330	A-B-C1-C2-D-E-E2-F-F1-F3-H-H1-M-R-R1-S-V-Z1	09506	B-V	09590	B-C-C2-F-F1-F3-R-R1-S-V	09706	B-C-C2-F3-M-N-R-S-U-V-Z1
09333	A-B-C-C1-C2-E2-F-F1-F3-H1-I3-M-N-R-R1-S-V-V1-Z1	09507	B-V	09591	B-C-C2-F-F1-F3-R-R1-S-V	09707	B-C-C2-F1-F3-J-L-M-N-R-R1-S-T-V-X-Z1
09343	A-B-C1-C2-F-F3-M-N-R-R1-S-V-Z1	09508	B-C-C2-F-F3-R-R1-S-V	09592	B-C-C2-F-F1-F3-R-R1-S-V	09708	B-C-C1-C2-F-F3-M-R-R1-S-U
09348	A-B-C1-E2-F-F1-F3-H1-I3-M-N-R-R1-S-T-V-Z1	09509	B-C-C2-F-F3-R-R1-S-V	09593	B-F-F1-F3-R-S-V	09709	B-C-C1-C2-E2-F1-F3-H1-J-L-N-R-R1-S-T-V-X-Z1
09357	A-B-C1-E2-F-F3-H1-M-R-V-Z1	09510	B-C-C2-F-F3-R-R1-S-V	09594	B-C-C1-C2-F-F1-F3-R-R1-S-V	09710	B-C-C1-F-F1-J-L-M-N-R-R1-T-U-V-Z1
09365	A-B-C-C1-E2-F-F3-H1-M-N-R-V-Z1	09511	B-C-C2-F-F3-R-R1-S-V	09595	B-C-C2-F-F1-F3-I3-J-R-R1-S-V-V1-Z1	09711	A-B-C-C2-E2-F-F1-F3-M-N-R-S-T-V-X
09366	A-B-C-C1-E2-F-F1-F3-H1-M-R-R1-S-V-Z1	09512	B-C-C2-F-F1-F3-R-R1-S-V	09596	B-F-F1-R-R1-V	09712	A-B-C2-F-F3-H-R-S-U-V-Z1
09401	B-C-C1-C2-F3-M-R-S-U-Z1	09513	B-C-C2-F-F1-F3-R-R1-S-V	09599	B-F-F1-R-R1-V	09714	B-C-C1-C2-F-F3-M-R-R1-S-U
09403	B-C-C1-C2-F3-M-R-S-U-Z1	09514	B-C-C2-F-F1-F3-R-R1-V	09600	B-C-C2-F-F1-F3-R-S-U-Z1	09715	B-F-F1-J-L-M-N-R-T-V-Z1
09410	C-C2-F-F1-F3-N-R-S-U2	09516	B-C-C2-F-F1-F3-R-R1-S-V	09602	B-C-C2-F-F1-F3-N-R-S-U-V	09716	B-C-C2-F1-F3-J-L-M-N-R-R1-S-T-V-X-Z1
09421	B-C-C1-C2-F3-M-R-S-U-Z1	09517	B-C-C2-F-F1-F3-R-R1-S-V	09603	B-C-C2-F-F1-F3-R-S-U-V-Z1	09717	A-B-C-C2-F3-M-R-S-V-W-Z1
09424	B-C-C2-F1-F3-M-N-R-S-U-Z1	09520	B-F-F1-F3-R-R1-S-V	09604	B-C-C2-F-F1-F3-P-R-S-U-V-Z1	09718	B-F-F1-J-L-M-N-R-T-U-V-Z1
09447	B-C-C1-C2-F3-M-R-S-U-V-Z1	09522	B-F-F1-F3-R-S-V	09605	B-C-C2-D-F-F3-H-M-R-S-U-V	09719	B-C-C2-D-F3-M-R-S-U-V-Z1
09454	B-C-C1-C2-F3-M-R-S-U-V-Z1	09523	B-C-C2-F-F1-F3-R-R1-S-V	09606	B-C-C2-D-F-F3-H-M-R-S-U-V	09720	B-C2-F3-M-R-S-U-V-Z1
09456	B-C-C1-C2-F3-M-N-R-S-U-V-Z1	09524	B-C-C2-F-F1-F3-R-R1-S-V	09608	B-C-F-F3-N-R-S-U-V-Z1	09722	A-B-C-C2-F-F3-H-N-R-S-V-Z1
09459	B-C-C1-C2-F3-M-R-S-U-Z1	09525	B-C-C2-F-F1-F3-R-R1-S-V	09609	B-C-C2-F-F3-N-R-S-U-V-Z1	09723	B-C-C2-F1-F3-J-L-M-N-R-R1-S-T-V-X-Z1
09461	B-C-C1-C2-F3-M-P-R-S-U-Z1	09526	B-C-C2-F-F1-F3-R-R1-S-V	09610	B-C-C2-F-F1-F3-M-R-S-U-V-Z1	09724	B-C-C1-C2-F-F3-M-R-R1-S-U
09463	B-C-C2-E2-E3-F-F1-F3-R-R1-S-V	09554	B-C-C2-F-F1-F3-R-R1-S-V	09613	B-C-C2-F-F3-N-R-S-U-V	09725	A-B-C2-F-F3-H-N-Q-R-S-V-V1-Z1
09464	B-C-C1-C2-F3-R-S-U-Z1	09556	B-F-F1-R-R1-V	09614	A-B-C-C1-C2-E2-F1-F3-H1-J-L-M-N-R-R1-S-T-U-V-X-Z1	09726	B-F-F1-J-L-M-N-R-T-U-V-Z1
		09564	B-C-C2-F-F1-F3-R-R1-S-V	09618	B-C-C2-F-F3-R-S-U-Z1	09727	A-B-C-C1-C2-F1-F3-J-L-M-N-R-R1-S-T-V-X-Z1
		09565	B-C-C2-F-F1-F3-R-R1-S-V	09620	B-C-C2-F-F3-R-S-U-V-Z1	09728	A-B-C-C1-C2-F1-F3-J-L-M-N-R-R1-S-T-V-X-Z1
		09566	B-C-C2-E2-E3-F-F1-F3-R-R1-S-V	09621	B-C-F-F3-R-U-Z1	09729	B-C-C2-F-F3-N-R-R1-S-U-V-Z1
		09567	B-C-C2-E2-E3-F-F1-F3-R-R1-S-V	09622	B-C-C2-F-F3-R-S-U-Z1	09730	A-B-C-C1-C2-F1-F3-J-L-M-N-R-R1-S-T-V-X-Z1
				09623	B-C-C2-F-F3-R-S-U-V-Z1	09731	A-B-C-C1-C2-F1-F3-J-L-M-N-R-R1-S-T-V-X-Z1
				09624	B-C-C2-F1-F3-I3-L-M-N-R-R1-S-T-U-V-X-Z1	09732	B-F-F3-N-S-V-Z1
						09733	B-F-F3-N-R-S-V-Z

APO/ FPO/ DPO	See Restrictions	APO/ FPO/ DPO	See Restrictions	APO/ FPO/ DPO	See Restrictions	APO/ FPO/ DPO	See Restrictions
09734	A-B-C-C1-C2-F1-F3-I3-J-L-M-N-R-R1-S-T-V-X-Z-Z1	09810	A-B-C2-F-F1-F3-N-R-S-V-Z1	09854	A-B-C-C1-C2-F1-F3-J-L-M-N-R-R1-S-T-V-X-Z1	09984	B-C-C1-C2-F1-F3-J-L-M-N-R-R1-S-T-V-X-Z1
09735	B-F3-N-R-S-V-Z-Z1	09811	A-B-C-C2-E-E2-E3-F1-F3-H-H1-J-M-N-R-R1-S-U-V-Z1	09855	A-B-C-C1-C2-E2-F-F1-F3-H1-M-R-R1-S-U2-V-Z1	34001	A-B-C-C1-C2-F1-F3-J-L-M-N-R-R1-S-T-V-X-Z1
09736	A-B-C-C1-C2-F1-F3-J-L-M-N-R-R1-S-T-V-X-Z1	09812	B-E2-E3-F-F1-I-J-L-N-R-T-U-V-Z-Z1	09857	A-B-C-C2-E2-F1-F3-I3-L-M-N-R-R1-S-T-V-X-Z1	34002	B-C-C1-C2-F1-F3-J-L-M-N-R-R1-S-T-V-X-Z1
09737	A-B-C-C1-C2-F1-F3-I3-J-L-M-N-R-R1-S-T-V-W-X-Y-Z-Z1	09813	A-B-C-C1-C2-E2-E3-F1-F3-J-L-N-R-R1-S-T-V-X-Z1	09858	A-B-C-C1-C2-E2-E3-F1-F3-H-H1-J-M-N-R-R1-S-U-V-Z1	34004	B-C-C1-C2-F1-F3-J-L-M-N-R-R1-S-T-V-X-Z1
09738	A-B-C-C1-C2-F1-F3-J-L-M-N-R-R1-S-T-V-X-Z1	09814	B-C-C2-E2-E3-F1-F3-I3-J-L-M-N-R-R1-S-T-V-X-Z1	09859	B-C-C1-C2-E2-E3-F-F1-F3-H1-R-R1-S-U-Z1	34007	B-F-F1-H-J-M-N-R-R1-V-Z1
09739	A-B-C-C1-C2-F1-F3-J-L-M-N-R-R1-S-T-V-X-Z1	09815	A-B-C-C2-E-E2-E3-F1-F3-H-H1-J-M-N-R-R1-S-U-V-Z1	09860	A-B-C2-F1-F3-J-L-M-N-R-R1-S-T-V-X-Z1	34008	B-C-C1-C2-D-E1-F1-F3-H-H1-J-L-M-N-R-R1-S-T-V-X-Z1
09741	A-B-C-C1-C2-E2-F1-F3-H1-J-L-M-N-R-R1-S-T-V-W-X-Y-Z1	09816	A-B-C-C1-C2-E2-E3-F1-F3-J-L-M-N-R-R1-S-T-V-X-Z1	09862	A-B-C-C2-F1-F3-I3-L-M-N-R-R1-S-T-V-X-Z1	34009	B-C2-F-F1-F3-R-S-V
09742	A-B-C-C1-C2-F1-F3-J-L-M-N-R-R1-S-T-V-X-Z1	09817	A-B-C-C1-C2-E2-E3-F1-F3-H-H1-J-L-M-N-R-R1-S-T-V-X-Z1	09864	A-B-C-C1-C2-E2-F1-F3-L-M-N-R-R1-S-T-V-W-X-Z1	34010	B-C2-F-F1-F3-R-S-V
09743	A-B-C-C2-F-F3-H-N-R-S-V-Z-Z1	09818	A-B-C-C2-F-F3-M-R-S-V-Z1	09867	A-B-C-C1-C2-E2-F1-F3-L-M-N-R-R1-S-T-V-W-X-Z1	34011	B-C-C1-C2-E2-F1-F3-J-L-M-N-R-R1-S-T-V-X-Z1
09744	A-B-C-C1-C2-F1-F3-J-L-M-N-R-R1-S-T-V-X-Z1	09819	A-B-C-C1-C2-E2-F-F1-F3-H-H1-M-R-R1-S-V-Z1	09869	A-B-C-C1-C2-E2-F1-F3-L-M-N-R-R1-S-T-V-W-X-Z1	34021	B-C-C1-C2-F1-F3-J-L-M-N-R-R1-S-T-V-X-Z1
09745	A-B-C2-F-F1-F3-M-N-R-R1-S-V-Z1	09820	A-B-C-C2-F1-F3-H-H1-J-L-M-N-R-R1-S-T-V-X-Z1	09870	A-B-C-C1-C2-E2-F1-F3-H1-I3-L-M-N-R-R1-S-T-U4-V-X-Z-Z1	34022	B-C-C1-C2-F1-F3-J-L-M-N-R-R1-S-T-V-X-Z1
09748	A-B-C-C1-C2-F1-F3-J-L-M-N-R-R1-S-T-V-X-Z1	09821	A-B-C-C2-F-F3-N-R-S-V-Z1	09874	A-B-C-C1-C2-E2-F1-F3-H1-I3-L-M-N-R-R1-S-T-U4-V-X-Z-Z1	34023	B-C-C1-C2-F1-F3-J-L-M-N-R-R1-S-T-V-X-Z1
09749	A-B-C2-F-F3-H-N-R-S-U-V-Z1	09822	A-B-C-C2-F-F3-M-R-S-V-Z1	09875	A-B-C1-C2-E2-F1-F3-H1-I3-L-M-N-R-R1-S-T-U4-V-X-Z1	34024	B-C-C1-C2-F1-F3-J-L-M-N-R-R1-S-T-V-X-Z1
09750	A-B-C-C1-C2-F1-F3-J-L-M-N-R-R1-S-T-V-X-Z1	09823	A-B-C-C1-C2-F1-F3-J-L-M-N-R-R1-S-T-V-X-Z1	09877	A-B-C-C2-E-E2-E3-F1-F3-H-H1-J-M-N-R-R1-S-U-V-Z1	34025	B-F-F1-F3-J-L-M-N-R-R1-T-V-Z1
09751	B-C-C2-D-E-F-F3-H-M-R-S-U	09824	A-B-C-C2-F-F3-M-R-S-V-Z1	09880	A-B-C1-C2-E2-F1-F3-H1-J-L--N-R-R1-S-T-U-V-Z1	34030	B-C-C1-C2-F1-F3-J-L-M-N-R-R1-S-T-V-X-Z1
09752	B-C-C2-D-F-F3-H-R-S-U	09825	A-B-C-C1-C2-F1-F3-J-L-M-N-R-R1-S-T-V-X-Z1	09882	A-B-C-C1-C2-E2-F1-F3-H1-J-L--N-R-R1-S-T-U-V-Z1	34031	B-C-C1-C2-F1-F3-J-L-M-N-R-R1-S-T-V-X-Z1
09753	A-B-C-C1-C2-D-E-F1-F3-H-M-N-R-S-V-W-Z1	09826	A-B-C-C1-C2-E1-E2-E3-F1-F3-J-L-M-N-R-R1-S-T-V-W-X-Z1	09887	A-B-C-C2-E-E2-E3-F1-F3-H-H1-J-M-N-R-R1-S-U-V-Z1	34032	B-C-C1-C2-F1-F3-J-L-M-N-R-R1-S-T-V-X-Z1
09754	A-B-C-C2-F-F3-H-N-R-S-V-Z-Z1	09827	A-B-F-F1-J-L-M-N-R-T-V-Z1	09889	A-B-C-C1-C2-E2-F1-F3-J-L-M-N-R-R1-S-T-V-X-Z1	34033	B-C-C1-C2-F1-F3-I3-L-M-N-R-S-T-V-X-Z1
09755	A-B-C-C1-C2-D-F-F1-F3-J-L-M-N-Q-R-R1-S-T-V-Z1	09828	A-B-C-C1-C2-F1-F3-I3-L-M-N-R-R1-S-T-V-X-Z1	09892	A-B-C-C1-C2-E2-F1-F3-J-L-M-N-R-R1-S-T-V-X-Z1	34034	B-C-C1-C2-F1-F3-I3-L-M-N-R-R1-S-T-V-X-Z1
09756	A-B-E3-F-F1-F3-J-L-N-Q-R-R1-S-T-V-Z1	09829	B-C-N-R-V-Z1	09895	A-B-C1-C2-E2-F-F1-F3-J-L-M-N-R-T-V-W-Z1	34035	B-C-C1-C2-F1-F3-H-J-L-M-N-R-R1-S-T-V-X-Z1
09759	A-B-C-C1-C2-E2-F1-F3-J-L-M-N-R-R1-S-T-V-X-Z1	09830	B-C-F-F1-F3-J-L-M-N-R-R1-S-T-V-Z1	09898	B-C-C1-C2-E2-F-F1-F2-H1-N-R-R1-S-U2-V-Z1	34036	B-C-C1-C2-F1-F3-J-L-M-N-R-R1-S-T-V-X-Z1
09761	B-C2-F-F1-F3-M-R-R1-S-V-Z-Z1	09831	B-C-C1-C2-F1-F3-J-L-M-N-R-R1-S-T-V-X-Z1	09902	A-B-C1-C2-E2-F-F3-H1-M-R-R1-S-V-Z1	34037	B-C-C1-C2-F1-F3-H-J-L-M-N-R-R1-S-T-V-X-Z1
09762	A-B-C-C1-E3-F1-F3-J-L-M-N-R-R1-S-T-V-Y-Z1	09832	A-B-C-C1-C2-E2-E3-F1-F3-H-H1-J-M-N-R-R1-S-V-Z1	09903	B-C1-E2-F1-F3-S-V-Z1	34039	B-C-C1-C2-F1-F3-J-L-M-N-R-R1-S-T-V-X-Z1
09769	A-B-C-C1-E3-F1-F3-J-L-M-N-R-R1-S-T-V-Y-Z1	09834	B-C-C2-E2-E3-F-F1-F3-R-R1-S-U-Z1	09904	B-C1-E2-F1-F3-S-V-Z1	34041	B-C-C1-C2-F1-F3-J-L-M-N-R-R1-S-T-V-X-Z1
09777	A-B-C-C1-C2-E1-F1-F3-J-L-M-N-R-R1-S-T-V-X-Z1	09836	A-B-C-C1-C2-F1-F3-J-L-M-N-R-R1-S-T-V-X-Z1	09908	A-B-C2-F-F1-F3-N-R-R1-S-V-Z1	34042	A-B-C-F-F1-F3-M-N-R-S-U-V-W-Z1
09780	A-B-C2-F-F3-H-N-R-S-V	09837	B-E2-E3-F1-F3-R-S-V-Z1	09909	A-B-C2-F-F1-F3-N-R-R1-S-V-V1-Z1	34055	B-C-C1-C2-F1-F3-J-L-M-N-R-R1-S-T-V-X-Z1
09801	A-B-C1-E2-F-F3-H1-M-N-R-R1-S-V-Z1	09838	B-C-C2-E2-E3-F-F1-F3-R-S-U-Z1	09974	B-F1-F3-J-L-M-N-R-S-T-U2-V-X-Z1	34058	B-C2-F-F1-F2-F3-R-R1-S-V-Z1
09802	A-B-C-C2-D-F1-F3-H-H1-I3-L-M-N-R-R1-S-T-V-W-X-Z-Z1	09842	A-B-C-C1-C2-E3-F1-F3-J-L-M-N-R-R1-S-T-V-X-Z1	09975	B-F1-F3-I3-L-M-N-R-S-T-U2-V-X-Z-Z1	34060	B-C-C1-C2-E2-F1-F3-J-L-M-N-R-R1-S-T-V-X-Z1
09803	A-B-C-C2-E-E2-E3-F1-F3-H-H1-J-M-N-R-R1-S-U-V-Z1	09844	A-B-C-C1-C2-F1-F3-J-L-M-N-R-R1-S-T-V-X-Z1	09976	B-F1-F3-J-L-M-N-R-S-T-U2-V-X-Z1	34066	B-C-C1-C2-F1-F3-I3-J-L-M-N-R-R1-S-T-V-X-Z1
09804	A-B-C-C2-F-F1-F3-M-N-R-S-V-Z1	09845	A-B-C-C1-C2-E3-F1-F3-J-L-M-N-R-R1-S-T-V-X-Z1	09977	B-F1-F3-J-L-M-N-R-S-T-U2-V-X-Z1	34067	B-C-C1-C2-F1-F3-J-L-M-N-R-R1-S-T-V-X-Z1
09805	B-C-C2-E2-E3-F-F1-F3-R-R1-S-Z1	09846	A-B-C-C1-C2-F1-F3-J-L-M-N-R-R1-S-T-V-X-Z1	09978	B-C-C2-D-E1-F-F1-F3-H1-M-N-R-R1-S-T-X-Z1	34068	B-C-C1-C2-F1-F3-J-L-M-N-R-R1-S-T-V-X-Z1
09807	A-B-C1-C2-E2-F-F1-F3-H1-I3-M-N-R-R1-S-T-V-Z1	09847	B-C-C2-F1-F3-J-L-M-N-R-R1-S-T-V-X-Z1	09980	B-C-C1-C2-F1-F3-J-L-M-N-R-R1-S-T-V-X-Z1	34069	B-C-C1-C2-F1-F3-I3-J-L-M-N-R-R1-S-T-V-X-Z1
09808	A-B-C-C1-C2-E2-F1-F3-H-H1-J-L-M-N-R-R1-S-T-V-X-Z1	09848	A-B-C2-F-F3-M-R-S-V-Z1	09981	B-C-C1-C2-F1-F3-J-L-M-N-R-R1-S-T-V-X-Z1	34071	A-B-F1-F3-I3-L-M-N-R-S-T-V-W-X-Z-Z1
09809	B-C-C1-C2-E3-F1-F3-J-L-M-N-R-S-T-V-X-Z1	09853	B-C1-C2-E2-F-F1-F3-H1-N-R-R1-S-U2-V-Z1	09982	B-C-C1-C2-F1-F3-J-L-M-N-R-R1-S-T-V-X-Z1	34072	B-C-C2-F1-F3-J-L-M-N-R-S-T-V-X-Z1
				09983	B-C-C1-C2-F1-F3-J-L-M-N-R-R1-S-T-V-X-Z1	34078	B-F1-F3-N-R-S-V-Z1
						34080	B-F-F1-R-R1-V
						34081	B-F-F1-R-R1-V
						34082	B-F-F1-R-R1-V
						34083	B-F-F1-R-R1-V

APO/ FPO/ DPO	See Restrictions	APO/ FPO/ DPO	See Restrictions	APO/ FPO/ DPO	See Restrictions	APO/ FPO/ DPO	See Restrictions
34084	B-F-F1-R-R1-V	96306	B-F-F1-F2-F3-H-M-R-S-W-Z1	96515	B-C-D-E1-F-F1-F3-H-H1-M-N-R-S-T-Z1	96629	B-C-C2-F-F1-F3-R-R1-S-V
34085	B-C-C1-C2-E2-E3-F-F1-F3-H1-J-R-R1-S-T-V-V1	96309	B-C-C2-F-F1-F3-M-N-R-S-V-W	96516	B-C-C2-D-E1-E2-F-F1-F3-H-H1-M-N-R-S-T-Z1	96632	B-C-C2-F-F1-F3-R-R1-S-V
34086	B-C-C1-C2-E2-E3-F-F1-F3-H1-J-R-R1-S-T-V-V1	96310	B-C-C2-F-F3-M-R-S-W	96517	B-C-D-E1-E2-F-F1-F3-H-H1-M-N-R-T-U-V-Z1	96633	B-V
34087	B-C-C2-E2-F-F1-F3-R-R1-S-V	96311	B-C-C2-F-F3-M-R-S-W	96520	B-F-N-U3-V	96641	B-V
34088	B-C-C2-F-F1-F3-R-R1-S-V	96315	B-C-C2-F-F3-M-R-S-W	96521	B-C-C1-C2-F-F1-F3-J-L-M-N-R-R1-S-T-V-X-Z1	96642	B-V
34089	B-C-C2-F-F1-F3-R-R1-S-V	96319	B-C-C2-F3-M-R-S-W	96530	A-B-C-C1-C2-F1-F3-H-H1-J-L-M-N-R-R1-S-T-V-X-Z1	96643	B-F-F1-F3-R-R1-S-V
34090	B-C-C2-F-F1-F3-R-R1-S-V	96322	B-F-F1-F2-F3-H-M-R-S-W-Z1	96531	A-B-C-C2-F-F1-F3-H-M-N-R-S-U-V	96644	B-V
34091	B-C-C2-E2-E3-F-F1-F3-R-R1-S-V-Z1	96326	B-C-C2-F-F3-M-R-S-W	96532	A-B-C-C1-C2-F1-F3-H-J-L-M-N-R-R1-S-T-V-X-Z1	96645	B-V
34092	B-C-C2-F-F1-F3-R-R1-S-V-Z1	96328	B-C-C2-F3-M-R-S-W	96534	A-B-C-C2-F-F1-F2-F3-R-R1-S-U-V-Z1	96649	B-C-C2-F-F1-F3-R-R1-S-V
34093	B-C-C2-F-F1-F3-R-R1-S-V	96331	A-B-C-C2-F-F1-F3-J-L-M-N-R-S-U2-W	96535	A-B-C-C1-C2-F1-F3-J-L-M-N-R-R1-S-T-V-X-Z1	96650	B-F-F1-R-R1-V
34094	B-F-F1-F3-R-R1-S-V	96336	B-C-C2-F3-M-R-S-V-W	96537	B-V-Z1	96657	B-C-C2-F-F1-F3-R-R1-S-V
34095	B-F-F1-R-R1-V	96337	B-C2-F-F1-F3-M-R-R1-S-W	96540	B-F1-F2-F3-S-V-Z1	96660	B-C-C2-F-F1-F3-R-R1-S-V
96201	A-B-F-F1-F3-M-R-S-U	96338	A-B-C-C2-F-F3-M-R-S-U2-W	96542	B-C-C2-F-F1-F2-F3-R-S-U2-W	96661	B-C-C2-F-F1-F3-R-R1-S-V
96202	A-B-C-C2-F-F1-F3-M-R-S-U	96339	A-B-C-C2-F-F3-M-N-R-S-U2-W	96543	B-C-C2-F-F1-F2-F3-P-R-S	96662	B-C-C2-F-F1-F3-R-R1-S-V
96203	A-B-F-F1-F3-M-R-S-U	96343	A-B-F-F3-M-P-R-S-U2	96548	A-B-C2-F-F1-F3-H-M-R-S-U	96663	B-C-C2-F-F1-F3-R-R1-S-V
96204	A-B-C-C2-F-F1-F3-M-R-S-U2	96346	B-F-F1-F2-F3-H-M-R-S-W	96549	A-B-C-C1-C2-F1-F3-H-J-L-M-N-R-R1-S-T-V-X-Z1	96664	B-C-C2-F-F1-F3-R-R1-S-V
96205	B-C-C2-F-F1-F3-M-P-R-S-U	96347	B-C2-F-F1-F2-F3-H-M-R-S-W-Z1	96550	A-B-H-M-N-U-V-Z1	96665	B-C-C2-F-F1-F3-R-R1-S-V
96206	A-B-C-C2-F-F1-F3-M-R-S-U	96349	B-C-C2-F-F1-F2-F3-H-M-R-S-Z1	96551	A-B-C-C1-C2-F1-F3-H-J-L-M-N-R-R1-S-T-V-X-Z1	96666	B-C-C2-F-F1-F3-R-R1-S-V
96207	A-B-F-F1-F3-M-R-S-U-V	96350	B-F-F1-F2-F3-H-M-R-S-W-Z1	96552	B-Z1	96667	B-C-C2-F-F1-F3-R-R1-S-V
96208	A-B-C-C2-F-F1-F3-M-R-S-U	96351	B-C-C2-F-F1-F2-F3-H-M-R-S-Z1	96553	A-B-C-C2-F-F1-F3-H-M-N-R-S-U	96668	B-C-C2-F-F1-F3-R-R1-S-V
96209	A-B-C-C1-C2-F1-F3-J-L-M-N-R-S-T-U-V-X-Z1	96352	B-C2-F-F1-F2-F3-H-M-R-S-W-Z1	96554	A-B-C-C1-C2-F1-F3-H-J-L-M-N-R-R1-S-T-V-X-Z1	96669	B-C-C2-F-F1-F3-R-R1-S-V
96210	A-B-C-C1-C2-F1-F3-I3-L-M-N-R-R1-S-T-V-X-Z1	96365	B-C-C2-F3-M-R-S-W-V	96555	A-B-C-C2-F-F1-F3-M-R-S-U2-V	96670	B-C-C2-F-F1-F3-R-R1-S-V
96212	B-F-F1-F2-H-M-W-Z1	96367	B-C-C2-F3-L-M-R-S-W	96557	A-B-C-C2-F-F1-F3-M-R-S-U2-V	96671	B-C-C2-F-F1-F3-R-R1-S-V
96213	A-B-C-C2-F1-F3-N-R-S	96368	B-C-C2-F3-M-R-S-W	96562	A-B-C-C1-C2-D-E2-E3-F1-F3-H-H1-I3-L-M-N-R-R1-S-T-V-X-Z1	96672	B-C-C2-F-F1-F3-R-R1-S-V
96214	A-B-C-C2-F1-F3-N-R-S-U	96370	B-F-F1-F2-H-M-W-Z1	96567	A-B-C-C1-C2-D-E2-E3-F1-F3-H-H1-I3-L-M-N-R-R1-S-T-V-X-Z1	96673	B-C-C2-F-F1-F3-R-R1-S-V
96218	A-B-C-C2-F-F1-F3-M-R-S-U	96371	B-C-C2-F-F3-M-R-S-W	96601	B-V	96674	B-C-C2-F-F1-F3-R-R1-S-V
96224	A-B-C-C2-F-F1-F3-M-R-S-U	96372	B-C-C2-F-F3-M-R-S-W	96602	B-V	96675	B-C-C2-F-F1-F3-R-R1-S-V
96251	A-B-C-C2-F-F1-F3-M-R-S-U	96373	B-C-C2-F-F3-M-R-S-W	96603	B-V	96677	B-C-C2-F-F1-F3-R-R1-S-V
96257	A-B-F-F1-F3-S-U	96374	B-C-C2-F-F3-M-R-S-W	96604	B-V	96678	B-C-C2-F-F1-F3-R-R1-S-V
96258	B-C-C2-F-F1-F3-M-P-R-S	96376	B-C-C2-F-F3-M-R-S-W	96605	B-V	96679	B-C-C2-F-F1-F3-R-R1-S-V
96260	A-B-C-C2-F-F1-F3-M-R-S-U	96377	B-C-C2-F-F3-M-R-S-W	96606	B-C-C2-F-F3-M-R-S-V-W	96681	B-V
96262	A-B-C2-F-F1-F3-R-S-U-V-Z1	96378	B-C-C2-F-F3-M-R-S-W	96607	B-V	96682	B-C-C2-F-F1-F3-R-R1-S-V
96264	A-B-C-C2-F1-F3-R-S-U	96379	B-C-C2-F-F3-M-R-S-W	96608	B-E2-F-H1-R1-U2-V-Z1	96683	B-C-C2-F-F1-F3-R-R1-S-V
96266	A-B-C-C2-F1-F3-R-S-U	96380	B-C-C2-F-F3-M-R-S-W	96609	B-E2-F-H1-R1-U2-V-Z1	96686	B-C-C2-F-F1-F3-R-R1-S-V
96269	A-B-C-C2-F1-F2-F3-R-S-U-Z1	96382	B-C-C2-F-F3-M-R-S-W	96610	B-C-C2-F-F3-H1-R-R1-S-U2-V-Z1	96691	B-C-C2-F-F1-F3-R-R1-S-V
96271	B-C-C2-F-F1-F3-M-P-R-S	96384	B-C-C2-F-F3-M-R-S-W	96611	B-C-C2-F-F3-H1-R-R1-S-U2-V-Z1	96693	B-C-C2-F-F1-F3-R-R1-S-V
96273	B-C-C2-F-F1-F3-M-R-S-U	96385	B-C-C2-F-F3-M-R-S-W	96612	B-C-C2-F-F3-H1-R-R1-S-U2-V-Z1	96694	B-C-C2-F-F1-F3-I3-J-R-R1-S-V-Z
96275	A-B-F-F1-F3-M-R-S-U	96386	B-C-C2-F-F3-M-R-S-W	96613	B-C-C2-F-F3-H1-R-R1-S-U2-V-Z1	96695	B-C-C2-F-F1-F3-R-R1-S-V
96276	A-B-C-C2-F1-F3-R-S	96387	B-C-C2-F-F3-M-R-S-W	96615	B-F-F1-R-R1-V	96696	B-F-F1-R-R1-V
96278	A-B-C-C2-F1-F3-R-S-U	96388	B-C-C2-F-F3-M-R-S-W	96616	B-C2-F-F1-F3-R-R1-S-V	96698	B-C-C2-F-F1-F3-R-R1-S-V
96283	A-B-F-F1-F3-S-U	96389	B-C-C2-F-F3-M-R-S-W	96619	B-C-C2-F1-F3-R-S-V		
96284	A-B-C-C2-F-F1-F3-M-R-S-U	96401	B-C-F-F3-N-R-S-V-V1-Z1	96620	B-C-C2-F-F1-F3-R-R1-S-V		
96297	A-B-C-C2-F-F1-F3-M-R-S-U	96502	A-B-C-C1-C2-F-F1-F3-J-M-N-R-R1-S-T-U-V	96628	B-C-C2-F-F1-F3-R-R1-S-V		
96300	A-B-F3-M-R-S-V-Z1	96504	A-B-C-C1-C2-F1-F3-I3-L-M-N-R-R1-S-T-V-W-X-Z1				
96301	A-B-C-C2-F-F3-M-N-R-S-U2-W	96505	A-B-C-C1-C2-F1-F3-I3-L-M-N-R-R1-S-T-V-W-X-Z1				
96303	B-C-C1-C2-F1-F3-H-J-L-M-N-R-S-T-V-W-X-Z1	96506	B-C-C2-D-E1-E2-F-F1-F3-H-H1-M-N-R-S-T-Z1				
		96507	A-B-C-C1-C2-F1-F3-H-J-L-M-N-R-S-T-V-X-Z1				
		96510	B-I3-N-V				
		96511	B-I3-N-V				

RESTRICTIONS

LEGEND

PS Form 2976, *Customs — CN 22 (Old C 1) and Sender's Declaration*
 PS Form 2976-A, *Customs Declaration and Dispatch Note*
 PS Form 2976-B, *Priority Mail Express International Shipping Label and Customs Form*

ATF = Bureau of Alcohol, Tobacco, Firearms, and Explosives
 Box C = Department of State (DOS) contractor personnel
 Box R = Retired military personnel
 DPO = Diplomatic Post Office
 MPO = Military Post Office
 PACT = Prevent All Cigarette Trafficking Act
 PAL = Parcel Airlift
 PMEMS = Priority Mail Express Military Service
 PUB 52 = Publication 52, *Hazardous, Restricted, and Perishable Mail*
 SAM = Space Available Mail
 USDA = United States Department of Agriculture

Note: Mail order catalogs are prohibited as SAM or PAL mail.

A. Securities, currency, or precious metals, including in their raw, unmanufactured state, are prohibited. Official Mail shipments are exempt from this restriction.

A1. Reserved for future use.

A2. Reserved for future use.

B. Other than for PMEMS and the exceptions listed below, a customs declaration PS Form 2976 or PS Form 2976-A is required for all items weighing 16 ounces or more, and for all items (regardless of weight) containing potentially dutiable mail contents (e.g., merchandise or goods) addressed to or from this ZIP Code. Other than the exceptions listed below, all PMEMS mailpieces (regardless of mail contents or weight) addressed to or from this ZIP Code must bear a properly completed PS Form 2976-B. The surface area of the address side of the mailpiece must be large enough to contain the applicable customs declaration. The following exceptions apply to known mailers, who for this purpose are defined as follows:

- Business mailers who enter volume mailings through business mail entry units or other bulk mail acceptance locations, pay postage through advance deposit accounts, use permit imprints for postage payment, and submit completed postage statements at the time of entry that certify that the mailpieces contain no dangerous materials that are prohibited by postal regulations. Such business mailers are exempt from providing customs documentation on non-dutiable letters and printed matter.
- All federal, state, and local government agencies whose mailings are regarded as "Official Mail." Such agencies are exempt from providing customs documentation, except for any items addressed to an MPO or DPO to which restriction "B2" applies.

B2. All federal, state, and local government agencies must complete customs documentation when sending potentially dutiable mail addressed to or from this MPO or DPO.

C. Cigarettes and other tobacco products, including tobacco leaves, chewing and pipe tobacco, snuff, and cigars are prohibited, including those that are authorized in Publication 52 under PACT.

C1. Obscene and horror articles, images, prints, paintings, cards, films, videotapes, comic books, etc., are prohibited.

C2. E-cigarettes and related products (e.g., nicotine liquids, e-liquids, parts, or supplies) are prohibited.

D. Coffee is prohibited.

E. Medicines (prescription, over-the-counter, vitamins, and supplements) are prohibited when mailed to individuals for human or animal use. This prohibition does not apply when medicines are sent as Official Mail only between specifically designated agencies such as pharmaceutical distributors, hospitals, clinics, and pharmacies.

E1. Mailers are responsible to ensure that all medicines and vaccines conform to host nation laws.

E2. Any matter depicting nude or seminude persons, pornographic, or sexual items are prohibited. Non-authorized political materials are prohibited. Religious materials contrary to the Islamic faith are prohibited in bulk quantities, but individual items for the personal use of the addressee are permissible.

E3. Radio transceivers, cordless/cellular telephones, global positioning systems, scanners, base stations, and handheld transmitters are prohibited.

F. Firearms of any type are prohibited, except firearms mailed to or by official U.S. government agencies. This restriction does not apply to firearms mailed from this MPO ZIP Code, provided ATF and USPS regulations are met. Antique firearms do not require an ATF form.

F1. Weapons of any type are prohibited.

F2. Mailing firearms to or from this MPO ZIP Code is restricted to one shotgun and one single shot .22 caliber rifle per individual.

F3. Replica weapons and inert explosive devices (such as grenades) and weapons parts are prohibited.

G. Parcels of any class are prohibited.

H. Meats, including preserved meats, bones, skin, hair, feathers, horns or hoofs of hoofed animals, and wool samples whether hermetically sealed or not, are prohibited.

H1. Pork or pork by-products are prohibited.

I. Reserved for future use.

I1. Reserved for future use.

I2. Reserved for future use.

I3. Mail of all classes must fit in a mail sack. Mail may not exceed the following dimensions:

- Maximum length 27 inches.
- Maximum width 14 inches.
- Maximum height 14 inches.

J. Standard Post and Parcel Select parcels may not exceed 108 inches in length and girth combined.

K. Reserved for future use.

L. All Official Mail is prohibited.

M. Fruits, vegetables, live animals, and live plants are prohibited.

N. Registered Mail service is prohibited.

O. Reserved for future use.

P. Official Mail only.

Q. Mail may not exceed 66 pounds, and size is limited to 42 inches maximum length and 72 inches maximum length and girth combined.

R. All alcoholic beverages, including those mailable under Publication 52, Part 421, are prohibited.

R1. Materials used in the production of alcoholic beverages (i.e., distilling material, hops, malts, yeast, etc.) are prohibited.

S. Synthetic cannabinoids used to stimulate the central nervous system commonly known as "synthetic marijuana," "K2," or "Spice" are prohibited.

T. Mailings of household shipments and case lots of food to or from an MPO require military transportation office approval prior to mailing. Mailings to or from a DPO require pre-approval from the Diplomatic Pouch and Mail Director.

U. Mail addressed to Retirees (Box R) is limited to 16 ounces and up to a 90-day supply of TRICARE medications. This restriction does not apply to mail endorsed "Free Matter for the Blind or Handicapped."

U1. Mail is limited to First-Class Mail items, including audio and video media, weighing 13 ounces or less. This limitation does not apply to Official Mail.

U2. Retirees (Box R) are not authorized mail service.

U3. Reserved for future use.

U4. Mail addressed to Box C is limited to 2 lbs.

V. PMEMS is not available.

V1. Electronic Delivery status information for Extra Services is not available on *USPS.com*. Manual record of delivery may be available upon request.

W. Hermetically sealed packages of meat products bearing USDA certification, such as dried beef, salami, and sausage, may be mailed. 200 grams of tobacco per parcel are permitted duty free.

X. Cremated remains are prohibited.

Y. Mail is limited to First-Class Mail and Priority Mail items only. This restriction also applies to Official Mail.

Z. No outside pieces (OSPs).

Z1. The following restriction is applicable only to International Service Centers (ISC)/Exchange Offices. An Anti-Pilferage Seal (Item No O817E or O818A) is required on all pouches and sacks.

Freely Associated States Restrictions

We list the mailing restrictions for Freely Associated States (FAS) in the Pull-Out section of the *Postal Bulletin*. All FAS Restrictions will be updated periodically.

Freely Associated States

Mail addressed to freely associated states is subject to certain conditions or restrictions of mailing regarding content, preparation, and handling. The following FAS Restrictions table outlines these conditions as listed by each affected FAS ZIP Code™ through the use of footnoted mailing restrictions codes (see the [Restrictions](#) following the table). For more information on available extra services for FAS destinations, see *Mailing Standards of the United States Postal Service, Domestic Mail Manual (DMM®)*, part 503.

Acceptance clerks must use the table with the Retail System Software terminal to determine which FAS ZIP Codes are active and which conditions of mailing apply.

FAS Restrictions Table

FAS Table	See Restrictions
96939	A, B
96940	A, B
96941	A, B
96942	A, B
96943	A, B
96944	A, B
96960	A, B
96970	A, B, D
Marshall Islands	C
Federated States of Micronesia	C

RESTRICTIONS LEGEND

PS Form 2976, *Customs Declaration CN 22 – Sender's Declaration*

PS Form 2976-A, *Customs Declaration and Dispatch Note*

FAS = Freely Associated State

- A.** Bank currency (coin and paper) is prohibited.
- B.** Signature Confirmation, Signature Confirmation Restricted Delivery, Adult Signature Requested, Adult Signature Restricted Delivery, Certified Mail Adult Signature Required, and Certified Mail Adult Signature Restricted Delivery not available.
- C.** Collect on Delivery is prohibited.
- D.** Betel nut (Areca catechu) is prohibited.

— *Asia-Pacific Relations,
Global Business, 7-13-23*

Organization Information

Hazardous Materials

Don't Mail Mercury

The Postal Service™ is reminding customers that metallic mercury and devices containing metallic mercury are always prohibited in the mailstream. This includes antique items such as thermometers, barometers, blood pressure monitors, and similar devices. However, manufactured devices that contain trace amounts of mercury, such as

compact fluorescent lamps (100 mg or less per lamp or 1 g per mailpiece), can be mailed domestically.

For more information about mercury in the mailstream, go to our public service announcement at [youtube.com/watch?v=wriu99Z01r8](https://www.youtube.com/watch?v=wriu99Z01r8).

Commonly Encountered Items Containing Mercury

Item Description	Item Mailability
<p>Liquid mercury is often encountered in a wide range of volumes. Reasons for sending include uses for gold reclamation or refinement, preparation of dental amalgams, and element collections.</p>	<p>Domestic Ground – Prohibited Domestic Air – Prohibited International – Prohibited Prohibited per section 348.21e of Publication 52, <i>Hazardous, Restricted, and Perishable Mail</i> (Pub 52).</p>
<p>Mercury barometers often contain significant amounts of mercury that are not well-contained. These barometers have been responsible for several leaks.</p> <p>Note: Fully digital versions are mailable without restrictions.</p>	<p>Domestic Ground – Prohibited Domestic Air – Prohibited International – Prohibited Prohibited per section 348.21e of Pub 52.</p>
<p>Mercury thermometers may contain significant amounts of mercury in breakable containment (glass).</p> <p>Note: Modern versions (i.e., digital or those containing red liquid (alcohol with red coloring), are mailable without restrictions.</p>	<p>Domestic Ground – Prohibited Domestic Air – Prohibited International – Prohibited Prohibited per section 348.21e of Pub 52.</p>
<p>Mercury sphygmomanometers, or blood pressure gauges, may contain significant amounts of mercury in breakable containment (glass).</p> <p>Note: Fully digital versions are mailable without restrictions.</p>	<p>Domestic Ground – Prohibited Domestic Air – Prohibited International – Prohibited Prohibited per section 348.21e of Pub 52.</p>
<p>Mercury switches may exist in a small enough size to get below the 100 mg limit; however, this would be the exception rather than the rule. If you can see the mercury, it is not mailable.</p>	<p>Domestic Ground – Prohibited Domestic Air – Prohibited International – Prohibited Prohibited per section 348.21e of Pub 52; may encounter some items that are covered under section 348.22g.</p>
<p>Mercury relays may exist in a small enough size to get below the 100 mg limit; however, this would be the exception rather than the rule. If you can see the mercury, it is not mailable.</p>	<p>Domestic Ground – Prohibited Domestic Air – Prohibited International – Prohibited Prohibited per section 348.21e of Pub 52; may encounter some items that are covered under section 348.22g.</p>
<p>Compact fluorescent lamps contain small amounts of mercury vapor. If broken, there will be no visible mercury and the vapors will readily disperse.</p>	<p>Domestic Ground – Mailable Domestic Air – Mailable International – Mailable Mailable per section 348.22g of Pub 52. See also Packaging Instruction 8C.</p>

Hazardous materials (HAZMAT), such as mercury, might be prohibited or allowed under certain conditions. To determine if you can mail your item:

1. Review Publication 52, *Hazardous, Restricted, and Perishable Mail*, to find out if your item is mailable: pe.usps.com/text/pub52/welcome.htm.
2. Follow the United States Postal Service® (USPS®) HAZMAT guidelines and any U.S. Laws.
3. Take your package to a Post Office™ location for assistance in determining the mailability of your product, as well as guidance regarding packaging, labeling, and marking requirements for acceptable items.

USPS is committed to the safety and security of its employees, its customers, and its transportation networks. We must remain vigilant in safeguarding the mailstream against any article that might pose a hazard to health, safety, property, or the environment. Shipping improperly prepared, undeclared, or prohibited HAZMAT can have serious consequences for everyone involved.

If a person knowingly mails items or materials that are dangerous or injurious to life, health, or property, they face a civil penalty of at least \$250, but not more than \$100,000 per violation, the costs of any clean-up associated with each violation, and damages. They may also face criminal penalties.

For more information about mailing HAZMAT, follow the guidance in this tutorial: uspsdelivers.com/hazmat-ship-ping-safety.

As of July 9, 2023, mailers are required to apply one of six product-specific Service Type Codes based upon the shipping product chosen (e.g., Priority Mail Express®, Priority Mail®, or USPS Ground Advantage™) that simply indicates the contents are HAZMAT. This is the minimum information the Postal Service will accept when a mailer ships HAZMAT.

— *Product Classification,
Product Solutions, 7-13-23*

Human Resources

Learn More About Viral Hepatitis

The liver is a vital organ that processes nutrients, filters the blood, and fights infections. Hepatitis is inflammation of the liver — heavy alcohol use, toxins, some medications, and certain medical conditions can cause hepatitis.

Hepatitis can also be caused by a virus. In the United States, the most common types of viral hepatitis are hepatitis A, hepatitis B, and hepatitis C. Additionally, hepatitis can be contracted from contaminated food, blood, bodily fluids, syringes, needles, and childbirth.

When the liver is inflamed or damaged, its function can be affected. A person infected with hepatitis can have long-term or short-term effects. Long-term (chronic) hepatitis B and C are the leading cause of liver cancer.

The symptoms of hepatitis usually last several weeks, but some people feel sick for as long as 6 months. Many

people do not have symptoms and do not know they are infected. If they do have symptoms, they may experience:

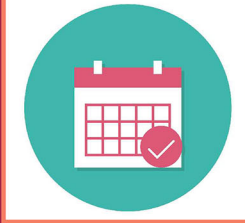
- Fever.
- Fatigue.
- Loss of appetite.
- Nausea.
- Vomiting or abdominal pain.
- Dark urine and clay-colored bowel movements.
- Joint pain.
- Jaundice (yellow color in the skin or the eyes).

The CDC recommends all adults get tested for hepatitis B and hepatitis C at least once in their lifetime. Pregnant women should get tested during each pregnancy.

You can find out more about viral hepatitis on the CDC website at cdc.gov/hepatitis/abc/index.htm.

— *Compensation and Benefits,
Human Resources, 7-13-23*

Viral Hepatitis Key Facts



1

July 28th is World Hepatitis Day, and the month of May is designated as Hepatitis Awareness Month.



2

Chronic hepatitis B and hepatitis C are leading causes of liver cancer in the United States.



3

About 66% of people with hepatitis B are unaware of their infection and about 40% of people living with hepatitis C do not know they are infected.



4

Both hepatitis A and hepatitis B are preventable with safe and effective vaccines, and hepatitis C is curable with prescribed treatment.



5

The CDC recommends all adults get tested for hepatitis B and hepatitis C at least once in their lifetime and pregnant women get tested during each pregnancy.

Information Security

CyberSafe Employee Training Available Now

It's once again time for all USPS® employees to take the annual CyberSafe training. All training is due by **September 26**.

Threats to digital information are growing in frequency and sophistication worldwide. Protecting USPS employees, customers, and supplier data from these threats is a priority for the Postal Service™. Everyone plays a role in protecting critical Postal Service data.

By taking the assigned CyberSafe training course this year, employees will learn how to protect critical USPS information from cyberthreats:

- **CyberSafe Fundamentals:** Provides the fundamental skills and knowledge needed to adhere to cybersecurity practices and policy for the protection of USPS electronic information. Also provides best practices for handling sensitive and sensitive-enhanced information to keep USPS electronic data secure.

While this training is mandatory for all employees, the Postal Service is offering a one-time test-out option for individuals who successfully pass a pretest.

This test allows employees one chance to show they understand the subject. Employees must score 80 percent or higher to pass the test. If employees pass the test, they will receive credit and will not need to take the full course; just refresh *HERO* to receive the credit. If employees do not pass, they must select the full course, complete it, and pass the final test to receive credit.

Employees can access the CyberSafe Fundamentals course now at usps.csod.com/LMS/catalog/Welcome.aspx?tab_page_id=-67&tab_id=-1.

The deadline for completing the course is **September 26**. Employees who do not meet the deadline are subject to limited ACE system access until completion of the course.

Visit the CyberSafe training page at blue.usps.gov/cyber/training.htm or contact CyberSafeComms@usps.gov for more information.

— Corporate Information Security Office
Chief Information Security Officer, 7-13-23

International Mail

Competitive Services Price Changes

Effective July 9, 2023, the Postal Service™ revised Notice 123, *Price List*, to reflect price changes to certain Competitive International Services, as established by the Governors of the Postal Service. New prices are posted under Docket Number CP2023-151 on the Postal Regulatory Commission (PRC) website at prc.gov.

This article provides the International Extra Services and Fees price changes for the following Competitive International Services:

- International Certificate of Mailing.
- International Registered Mail®.
- International Return Receipt.
- Customs Clearance and Delivery Fee.

New prices are located on the Postal Explorer® website at pe.usps.com.

International Extra Services and Fees: The Postal Service prices for certain Competitive International Extra Services are as follows:

- **Certificate of Mailing service:** Fees for Certificate of Mailing service are as follows:

Certificate of Mailing	
Individual Pieces	Fee
Individual article (PS Form 3817)	\$1.95
Duplicate copy of PS Form 3817 or PS Form 3665 (per page)	1.95
Bulk Quantities	
For first 1,000 pieces (or fraction thereof)	\$10.90
Each additional 1,000 pieces (or fraction thereof)	1.40
Duplicate copy of PS Form 3606	1.95

- **International Registered Mail service:** The fee for competitive international Registered Mail service is \$20.25.
- **International Return Receipt service:** The fee for competitive international Return Receipt service is \$5.65.
- **Customs Clearance and Delivery Fee:** The competitive Customs Clearance and Delivery Fee per dutiable item is \$8.30.

The Postal Service incorporated these revisions into the July 9, 2023, edition of Notice 123, *Price List*, which is available via Postal Explorer at pe.usps.com.

— Product Classification
Product Solutions, 7-13-23

Stamp Services

Stamp Announcement 23-27: Bridges Stamps



©2022 USPS

On August 24, 2023, in Portland, CT, the United States Postal Service® will issue the non-denominated, Presorted First-Class Mail® rate (25-cent value) *Bridges* stamps in four designs, in pressure-sensitive adhesive coils of 3,000 (Item 751600) and 10,000 (Item 761800). These stamps will go on sale nationwide August 24, 2023, and must not be sold or canceled before the first-day-of-issue.

The *Bridges* stamp issuance features photographs of four bridges, ranging from modern to historic and pedestrian to car-carrying. All are important landmarks in their communities:

- Arrigoni Bridge connecting Middletown and Portland, CT;
- Bob Kerrey Pedestrian Bridge between Council Bluffs, IA, and Omaha, NE;
- Skydance Bridge in Oklahoma City, OK; and
- Iowa-Illinois Memorial Bridge connecting Bettendorf, IA, and Moline, IL.

These stamps, intended for bulk mail users, will be issued in coils. Art director Ethel Kessler designed the stamps with existing photographs.

Availability to Post Offices: Item 751600, Bridges, Presorted First-Class (25 Cents), PSA Coil of 3,000 Stamps

Stamp Fulfillment Services will not make an automatic push distribution to Post Offices. Post Offices may begin ordering stamps before the first-day-of-issue through SFS Web at sfsweb.usps.gov/sfsweb.

Availability to Post Offices: Item 761800, Bridges, Presorted First-Class (25 Cents), PSA Coil of 10,000 Stamps

Stamp Fulfillment Services will not make an automatic push distribution to Post Offices. Post Offices may begin

ordering stamps before the first-day-of-issue through SFS Web at sfsweb.usps.gov/sfsweb.

How to Order the First-Day-of-Issue Postmark

Customers have 120 days to obtain the first-day-of-issue postmark by mail. Each cover must have sufficient postage to meet First-Class Mail requirements. They may purchase new stamps at their local Post Office™ or at The Postal Store® website at store.usps.com/store/home. They must affix the stamps to envelopes of their choice, address the envelopes (to themselves or others), and place them in a larger envelope addressed to:

FDI – Bridges Stamps
 USPS Stamp Fulfillment Services
 8300 NE Underground Drive, Suite 300
 Kansas City, MO 64144-9900

After applying the first-day-of-issue postmark, the Postal Service™ will return the envelopes through the mail. There is no charge for the postmark up to a quantity of 50. There is a 5-cent charge for each additional postmark over 50. All orders must be postmarked by December 24, 2023.

How to Order First-Day Covers

The Postal Service also offers first-day covers for new stamp issues and Postal Service stationery items postmarked with the official first-day-of-issue cancellation. Each item has an individual catalog number and is offered in the *USA Philatelic* catalog and online at store.usps.com/store/home. Customers may register to receive a free *USA Philatelic* catalog online at usps.com/philatelic.

Locally produced items are not authorized. Only merchandise that has been approved and assigned an item number by Headquarters Retail Marketing may be produced and sold.

Issue:	<i>Bridges Stamps</i>
Item Number:	751600
Denomination & Type of Issue:	Non-denominated, Presorted First-Class Mail Rate
Format:	Coil of 3,000 (4 designs)
Series:	N/A
Issue Date & City:	August 24, 2023, Portland, CT 06480
Art Director:	Ethel Kessler, Bethesda, MD
Designer:	Ethel Kessler, Bethesda, MD
Existing Photo:	Kyle Henderson
Existing Photo:	Christina Woods
Existing Photo:	MILLER + MILLER Architectural Photography
Existing Photo:	Joe Gowac
Modeler:	Joseph Sheeran
Manufacturing Process:	Offset
Printer:	Ashton Potter (USA) Ltd (APU)
Press Type:	Muller A76
Stamps per Coil:	3,000
Print Quantity:	20,100,000
Paper Type:	Nonphosphored Type III, Block Tagged
Adhesive Type:	Pressure-sensitive
Colors:	Black, Cyan, Magenta, Yellow
Stamp Orientation:	Vertical
Image Area (w x h):	0.73 x 0.84 in / 18.542 x 21.336 mm
Stamp Size (w x h):	0.87 x 0.98 in / 22.098 x 24.892 mm
Plate Size:	594 stamps per revolution
Plate Numbers:	"P" followed by four (4) single digits
Coil Number Frequency:	Plate numbers every 27th stamp below stamp image

Issue:	<i>Bridges Stamps</i>
Item Number:	761800
Denomination & Type of Issue:	Non-denominated, Presorted First-Class Mail Rate
Format:	Coil of 10,000 (4 designs)
Series:	N/A
Issue Date & City:	August 24, 2023, Portland, CT 06480
Art Director:	Ethel Kessler, Bethesda, MD
Designer:	Ethel Kessler, Bethesda, MD
Existing Photo:	Kyle Henderson
Existing Photo:	Christina Woods
Existing Photo:	MILLER + MILLER Architectural Photography
Existing Photo:	Joe Gowac
Modeler:	Joseph Sheeran
Manufacturing Process:	Offset
Printer:	Ashton Potter (USA) Ltd (APU)
Press Type:	Muller A76
Stamps per Coil:	10,000
Print Quantity:	600,000,000
Paper Type:	Nonphosphored Type III, Block Tagged
Adhesive Type:	Pressure-sensitive
Colors:	Black, Cyan, Magenta, Yellow
Stamp Orientation:	Vertical
Image Area (w x h):	0.73 x 0.84 in / 18.542 x 21.336 mm
Stamp Size (w x h):	0.87 x 0.98 in / 22.098 x 24.892 mm
Plate Size:	594 stamps per revolution
Plate Numbers:	"P" followed by four (4) single digits
Coil Number Frequency:	Plate numbers every 27th stamp below stamp image

— Stamp Services,
Marketing, 7-13-23

Pictorial Postmarks Announcement

As a community service, the Postal Service™ offers pictorial postmarks to commemorate local events celebrated in communities throughout the nation. A list of events for which pictorial postmarks are authorized appears on the following pages. The sponsor of the pictorial postmark appears in italics under the date. Also provided are illustrations of these postmarks.

People attending these local events may obtain the postmark in person at the temporary Post Office™ station established there. Those who cannot attend the event but who wish to obtain the postmark may submit a mail order request. Pictorial postmarks are available only for the dates indicated, and requests must be postmarked no later than 30 days following the requested pictorial postmark date.

All requests must include a stamped envelope or postcard bearing at least the minimum First-Class Mail® postage. Items submitted for postmark may not include

postage issued after the date of the requested postmark. Such items will be returned unserved.

Customers wishing to obtain a postmark must affix stamps to any envelope or postcard of their choice, address the envelope or postcard to themselves or others, insert a card of postcard thickness in envelopes for sturdiness, and tuck in the flap. Place the envelope or postcard in a larger envelope and address it to: Pictorial Postmarks, followed by the Name of the Station, Address, City, State, ZIP+4® Code, as listed next to the postmark.

Customers can also send stamped envelopes and postcards without addresses for postmark, as long as they supply a larger envelope with adequate postage and their return address. After applying the pictorial postmark, the Postal Service returns the items (with or without addresses) under addressed protective cover.

The following pictorial postmarks have been extended for 60 days:



May 3, 2023

Stephen Decatur Chapter #4, Universal Ship Cancellation Society
 15th Anniversary Station
 Postmaster
 101 25th Street
 New Port News, VA 23607



May 6, 2023

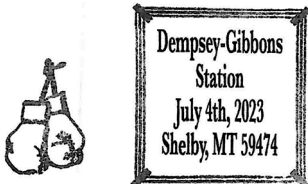
Stephen Decatur Chapter #4, Universal Ship Cancellation Society
 Christening Station
 Postmaster
 101 25th Street
 New Port News, VA 23607

The following pictorial postmarks have been extended for 30 days:



June 23, 2023

United States Fish and Wildlife Service
 Duck Stamp Station
 Cancellation Services/Pictorial Postmarks
 8300 NE Underground Drive, Pillar 210
 Kansas City, MO 64144-9998



July 4, 2023

United States Postal Service
 Dempsey-Gibbons Station
 Postmaster
 14 5th Avenue Southwest
 Conrad, MT 59425-9998



JULY 14, 2023

OPENING DAY

STATION, SACRAMENTO CA 95815

July 14, 2023

California State Fair
 Opening Day Station
 Postmaster
 2000 Royal Oaks Drive
 Sacramento, CA 95813-9998



CALIFORNIA STATE FAIR

FOOD FESTIVAL COMPETITION

JULY 18, 2023 | STATION, SACRAMENTO CA 95815

July 18, 2023

California State Fair
 Food Festival Competition
 Station
 Postmaster
 2000 Royal Oaks Drive
 Sacramento, CA 95813-9998



Addison Township Firefighters
 Strawberry Festival
 Station
July 15, 2023
 Leonard Michigan 48367

July 15, 2023

Addison Township Firefighters
 Strawberry Festival Station
 Postmaster
 22 East Elmwood Street
 Leonard, MI 48367-9998



CALIFORNIA STATE FAIR

LOST WORLD OF DRAGONS EXHIBIT

JULY 19, 2023 | STATION, SACRAMENTO CA 95815

July 19, 2023

California State Fair
 Lost World of Dragons
 Exhibit Station
 Postmaster
 2000 Royal Oaks Drive
 Sacramento, CA 95813-9998



CALIFORNIA STATE FAIR

OUT AT THE FAIR

JULY 15, 2023 | STATION, SACRAMENTO CA 95815

July 15, 2023

California State Fair
 Out at the Fair Station
 Postmaster
 2000 Royal Oaks Drive
 Sacramento, CA 95813-9998



CALIFORNIA STATE FAIR

17 LIVE CONCERTS

JULY 20, 2023 | STATION, SACRAMENTO CA 95815

July 20, 2023

California State Fair
 17 Live Concerts Station
 Postmaster
 2000 Royal Oaks Drive
 Sacramento, CA 95813-9998



CENTENNIAL CELEBRATION
 July 15, 2023
 NENANA, AK 99760

July 15, 2023

Alaska Railroad Corporation
 Centennial Celebration
 Station
 Postmaster
 PO Box 9998
 Nenana, AK 99760-9998



July 20, 2023

Central Arkansas Postal Customer Council
 Date Meets ZIP Station
 Postmaster
 200 East Main Street
 Cabot, AR 72023



CALIFORNIA STATE FAIR

JUNIOR LIVESTOCK AWARDS CEREMONY

JULY 16, 2023 | STATION, SACRAMENTO CA 95815

July 16, 2023

California State Fair
 Junior Livestock Awards
 Ceremony Station
 Postmaster
 2000 Royal Oaks Drive
 Sacramento, CA 95813-9998



CALIFORNIA STATE FAIR

ESPORTS BEAR CUP

JULY 21, 2023 | STATION, SACRAMENTO CA 95815

July 21, 2023

California State Fair
 Esports Bear Cup Station
 Postmaster
 2000 Royal Oaks Drive
 Sacramento, CA 95813-9998



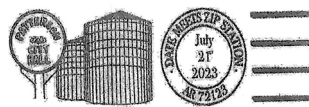
CALIFORNIA STATE FAIR

BEST OF CA

JULY 17, 2023 | STATION, SACRAMENTO CA 95815

July 17, 2023

California State Fair
 Best of CA Station
 Postmaster
 2000 Royal Oaks Drive
 Sacramento, CA 95813-9998



July 21, 2023

Central Arkansas Postal Customer Council
 Date Meets ZIP Station
 Postmaster
 111 South Main Street
 Patterson, AR 72123



July 22, 2023
 Central Arkansas Postal
 Customer Council
 Date Meets ZIP Station
 Postmaster
 815 Technology Drive
 Little Rock, AR 72223-9998



July 25, 2023
 California State Fair
 Poppy's Birthday Station
 Postmaster
 2000 Royal Oaks Drive
 Sacramento, CA 95813-9998



July 22, 2023
 California State Fair
 Corndog Eating Contest
 Station
 Postmaster
 2000 Royal Oaks Drive
 Sacramento, CA 95813-9998



July 25, 2023
 United States Postal Service
 Concord Station
 Postmaster
 10845 Heber Springs Road
 North
 Concord, AR 72523-9998



July 23, 2023
 California State Fair
 Freestyle Motocross Station
 Postmaster
 2000 Royal Oaks Drive
 Sacramento, CA 95813-9998



July 26, 2023
 California State Fair
 Candy Maze Selfie
 Experience Station
 Postmaster
 2000 Royal Oaks Drive
 Sacramento, CA 95813-9998



July 23, 2023
 National Baseball Hall of
 Fame and Museum
 Induction Day Station
 Postmaster
 40 Main Street
 Cooperstown, NY 13326



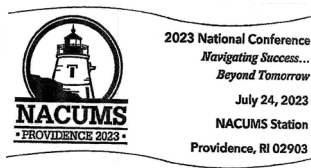
July 26, 2023
 83rd Infantry Division — US
 Army
 83rd Infantry Division
 Station
 Postmaster
 6815 Central Avenue
 Crestwood, KY 40014-9998



July 24, 2023
 California State Fair
 Best in Livestock Station
 Postmaster
 2000 Royal Oaks Drive
 Sacramento, CA 95813-9998



July 27, 2023
 California State Fair
 Military, Veteran, and First
 Responder Appreciation
 Day Station
 Postmaster
 2000 Royal Oaks Drive
 Sacramento, CA 95813-9998



July 24, 2023
 NACUMS
 NACUMS Station
 Postmaster
 24 Corliss Street
 Providence, RI 02904

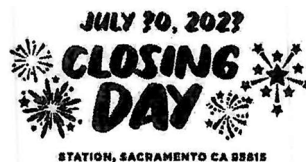


July 28, 2023
 California State Fair
 Horse Racing Station
 Postmaster
 2000 Royal Oaks Drive
 Sacramento, CA 95813-9998



July 29, 2023

California State Fair
Wild Science! Station
Postmaster
2000 Royal Oaks Drive
Sacramento, CA 95813-9998



July 30, 2023

California State Fair
Closing Day Station
Postmaster
2000 Royal Oaks Drive
Sacramento, CA 95813-9998

— Stamp Services,
Marketing, 7-13-23

How to Order the First-Day-of-Issue Digital Color or Traditional Postmarks

Customers have 120 days to obtain the first-day-of-issue postmarks by mail. Each cover must have sufficient postage to meet First-Class Mail[®] requirements. Customers may purchase new stamps at their local Post Office[™], by phone at 844-737-7826, or on The Postal Store[®] website at usps.com/shop.

Digital Color Postmarks

Only select stamp issues offer a digital color postmark. Customers may submit #6 or #10 envelopes constructed of paper rated as “laser safe.” The Postal Service[™] recommends envelopes of 80-pound Accent Opaque, acid-free, 9/16-inch side seams with no glue on the flap. The maximum size of all digital color postmarks is 2 inches (vertically) by 4 inches (horizontally). Allow sufficient space on the envelope to accommodate the postmark. Do not use self-adhesive labels for addresses on the envelope. Two test envelopes must be included. There is a minimum of 10 envelopes at 50 cents per postmark required at the time of servicing. Customers must submit a check, money order, or credit card for payment.

The Postal Service reserves the right to not accept hand-painted and other cachet envelopes that are not compatible with our digital color postmark equipment. The Postal Service also reserves the right to substitute traditional black rubber postmarks if use of nonspecified envelopes results in poor image quality or damage to equipment.

Customers must affix the stamps to the envelopes and address them to themselves or others for return through the mail. Or, they may include an additional self-addressed return envelope, large enough to accommodate their canceled items, with sufficient postage affixed for return of

their postmarked items. Address customer requests for digital color postmarks to:

FDOI – (Name of Stamp Issue)
USPS Stamp Fulfillment Services
8300 NE Underground Drive, Suite 300
Kansas City, MO 64144-9900

After applying the first-day-of-issue postmark, the Postal Service will return the envelopes to the customer by U.S. Mail[®].

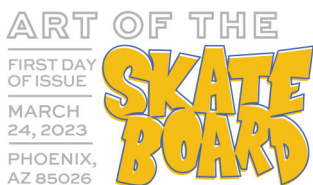
Traditional Postmarks

Customers must affix the stamps to the envelopes and address them to themselves or others for return through the mail. Or, they may include an additional self-addressed return envelope, large enough to accommodate their canceled items, with sufficient postage affixed for return of their postmarked items. Address customer requests for traditional postmarks to:

FDOI – (Name of Stamp Issue)
USPS Stamp Fulfillment Services
8300 NE Underground Drive, Suite 300
Kansas City, MO 64144-9900

After applying the first-day-of-issue postmark, the Postal Service will return the envelopes to the customer by U.S. Mail. There is no charge for the first 50 postmarks. There is a 5-cent charge for each additional postmark over 50. Customers must submit a check, money order, or credit card for payment.

Locally produced items are not authorized. Only merchandise that has been approved and assigned an item number by Headquarters Retail Marketing may be produced and sold.



FDOI – Art of the Skateboard Stamps
 USPS Stamp Fulfillment Services
 8300 NE Underground Drive, Suite 300
 Kansas City, MO 64144-9900

July 24, 2023

Digital Color Pictorial



FDOI – Art of the Skateboard Stamps
 USPS Stamp Fulfillment Services
 8300 NE Underground Drive, Suite 300
 Kansas City, MO 64144-9900

July 24, 2023

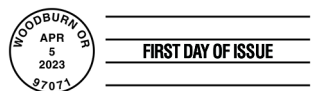
Black and White Pictorial



FDOI – Tulip Blossoms Stamps
 USPS Stamp Fulfillment Services
 8300 NE Underground Drive, Suite 300
 Kansas City, MO 64144-9900

August 5, 2023

Digital Color Pictorial



FDOI – Tulip Blossoms Stamps
 USPS Stamp Fulfillment Services
 8300 NE Underground Drive, Suite 300
 Kansas City, MO 64144-9900

August 5, 2023

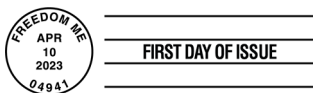
Black and White Pictorial



FDOI – U.S. Flag Stamp
 USPS Stamp Fulfillment Services
 8300 NE Underground Drive, Suite 300
 Kansas City, MO 64144-9900

August 10, 2023

Digital Color Pictorial



FDOI – U.S. Flag Stamp
 USPS Stamp Fulfillment Services
 8300 NE Underground Drive, Suite 300
 Kansas City, MO 64144-9900

August 10, 2023

Black and White Pictorial



Digital Color Pictorial

FDI – Roy Lichtenstein Stamps
 USPS Stamp Fulfillment Services
 8300 NE Underground Drive, Suite 300
 Kansas City, MO 64144-9900

August 24, 2023



Black and White Pictorial

FDI – Roy Lichtenstein Stamps
 USPS Stamp Fulfillment Services
 8300 NE Underground Drive, Suite 300
 Kansas City, MO 64144-9900

August 24, 2023



Digital Color Pictorial

FDI – Tomie dePaola Stamp
 USPS Stamp Fulfillment Services
 8300 NE Underground Drive, Suite 300
 Kansas City, MO 64144-9900

September 5, 2023



Black and White Pictorial

FDI – Tomie dePaola Stamp
 USPS Stamp Fulfillment Services
 8300 NE Underground Drive, Suite 300
 Kansas City, MO 64144-990027

September 5, 2023



Digital Color Pictorial

FDI – Chief Standing Bear Stamp
 USPS Stamp Fulfillment Services
 8300 NE Underground Drive, Suite 300
 Kansas City, MO 64144-9900

September 12, 2023



Black and White Pictorial

FDI – Chief Standing Bear Stamp
 USPS Stamp Fulfillment Services
 8300 NE Underground Drive, Suite 300
 Kansas City, MO 64144-9900

September 12, 2023



FDOI – Endangered Species Stamps
 USPS Stamp Fulfillment Services
 8300 NE Underground Drive, Suite 300
 Kansas City, MO 64144-9900

September 19, 2023

Digital Color Pictorial



FDOI – Endangered Species Stamps
 USPS Stamp Fulfillment Services
 8300 NE Underground Drive, Suite 300
 Kansas City, MO 64144-9900

September 19, 2023

Black and White Pictorial



FDOI – Waterfalls Stamps
 USPS Stamp Fulfillment Services
 8300 NE Underground Drive, Suite 300
 Kansas City, MO 64144-9900

October 13, 2023

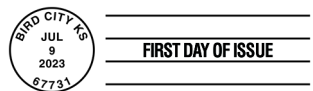
Digital Color Pictorial



FDOI – Waterfalls Stamps
 USPS Stamp Fulfillment Services
 8300 NE Underground Drive, Suite 300
 Kansas City, MO 64144-9900

October 13, 2023

Black and White Pictorial



FDOI – Northern Cardinal Stamped Envelope
 USPS Stamp Fulfillment Services
 8300 NE Underground Drive, Suite 300
 Kansas City, MO 64144-9900

November 9, 2023

Black and White Pictorial



FDOI – John Lewis Stamp
 USPS Stamp Fulfillment Services
 8300 NE Underground Drive, Suite 300
 Kansas City, MO 64144-9900

November 21, 2023

Digital Color Pictorial



Black and White Pictorial

FDOI – John Lewis Stamp

USPS Stamp Fulfillment Services
8300 NE Underground Drive, Suite 300
Kansas City, MO 64144-9900

November 21, 2023



Digital Color Pictorial

FDOI – Life Magnified Stamps

USPS Stamp Fulfillment Services
8300 NE Underground Drive, Suite 300
Kansas City, MO 64144-9900

December 10, 2023

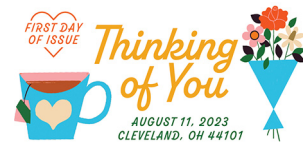


Black and White Pictorial

FDOI – Life Magnified Stamps

USPS Stamp Fulfillment Services
8300 NE Underground Drive, Suite 300
Kansas City, MO 64144-9900

December 10, 2023



Digital Color Pictorial

FDOI – Thinking of You Stamps

USPS Stamp Fulfillment Services
8300 NE Underground Drive, Suite 300
Kansas City, MO 64144-9900

December 11, 2023

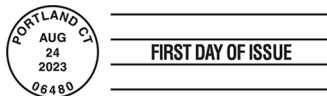


Black and White Pictorial

FDOI – Thinking of You Stamps

USPS Stamp Fulfillment Services
8300 NE Underground Drive, Suite 300
Kansas City, MO 64144-9900

December 11, 2023



Black and White Pictorial

FDOI – Bridges Stamps

USPS Stamp Fulfillment Services
8300 NE Underground Drive, Suite 300
Kansas City, MO 64144-9900

December 24, 2023

Supply Management

Interest Rate on Contract Claims

The Postal Service™ periodically publishes the interest rate payable on a claim decided in a supplier's favor under the Contract Disputes Act of 1978 in the *Postal Bulletin*. This rate also applies for late payments to suppliers under the Prompt Payment Act, as amended. The interest rate effective for the 6-month period of July 1 to December 31, 2023, is 4.875 percent.

— *Supply Management Infrastructure,
Supply Management, 7-13-23*



475 L'ENFANT PLAZA SW
WASHINGTON DC 20260-5540

First-Class Mail
Postage & Fees Paid
USPS
Permit No. G-10

Celebrate Summer Vacation with **Sailboats** Postcard Rate Stamps



ON SALE NATIONWIDE: **JANUARY 22, 2023**

