



Protect Yourself Against Heat Illness When Delivering for America

See page 3

Contents

COVER STORY

Protect Yourself Against Heat Illness When Delivering for America	3
---	---

POLICIES, PROCEDURES, AND FORMS UPDATES

Manuals

DMM Notice: Grace-Period Extension to Pay PO Box Renewal Fees Rescinded	5
DMM Revision: Mailing Currency	5

ORGANIZATION INFORMATION

Address Management

Post Office Changes	7
-------------------------------	---

Domestic Mail

Labeling List Changes	8
---------------------------------	---

Environmental Management

Recycling Resumes for Inkjet and Toner Cartridges	11
Required Procedures for Environmental Agency Inspection Visits and Notices of Violation	12

Human Resources

Prevent Chronic Kidney Disease	13
--	----

Information Security

Have You Visited the CyberSafe Page on Blue?	13
--	----

Safety and Health

Be Ready for an Emergency	35
-------------------------------------	----

Stamp Services

Stamp Announcement 23-17: Roy Lichtenstein Stamps	36
Stamp Announcement 23-18: Tomie dePaola Stamp	38
Pictorial Postmarks Announcement	40

How to Order the First-Day-of-Issue Digital Color or Traditional Postmarks	42
--	----

PULL-OUT INFORMATION

Fraud

Invalid USPS Corporate Account Numbers	15
Missing, Lost, or Stolen U.S. Money Order Forms	17
Missing, Lost, or Stolen Canadian Money Order Forms	23
Verifying U.S. Postal Service Money Orders	25
Counterfeit Canadian Money Order Forms	25
Toll-Free Number Available to Verify Canadian Money Orders	25

Other Information

Overseas Military/Diplomatic Mail	26
Thrift Savings Plan Fact Sheet	32
Freely Associated States Restrictions	34

POSTAL BULLETIN 2022 ANNUAL INDEX

2022 Annual Index	PB 22616 (1-26-23)
-----------------------------	--------------------

Find the latest in mail and delivery information and services offered by U.S. Postal® in the *Postal Bulletin* at about.usps.com/postal-bulletin

Mail Moment®

Cover Story

Protect Yourself Against Heat Illness When Delivering for America

Rising temperatures can put employees at risk for heat illnesses. When the body is unable to cool itself by sweating, heat illnesses such as heat stress, heat cramps, heat exhaustion, and heat stroke may occur. Symptoms range from mild and easily correctable to severe and potentially life-threatening.

The United States Postal Service® (USPS®) implemented the Heat Illness Prevention Program (HIPP) to protect employees from heat illnesses and to educate them on how to stay safe during hot weather. HIPP is triggered during the period of April 1 through October 31, and at any other time when weather reports issued by the National Weather Service (NWS)¹ for a particular work location indicate that outdoor heat index temperatures are expected to exceed 80° Fahrenheit during the course of a workday or work shift.

High temperatures and humidity, direct sun or heat, limited air movement, physical exertion, poor physical condition, and some medicines are also contributing factors to heat illnesses. Heat illnesses and deaths are preventable when employees recognize the symptoms and know what to do.

Heat Stroke

Heat stroke, the most serious illness caused by heat stress, occurs when the body becomes unable to control its temperature or cool itself down. When this takes place, the body can experience major physical disabilities or in the most severe cases, death.

Symptoms	First Aid
<ul style="list-style-type: none"> ■ Hot, dry skin or profuse sweating. ■ Hallucinations. ■ Chills. ■ Headache. ■ High body temperature. ■ Confusion. ■ Dizziness. ■ Slurred speech. 	<ul style="list-style-type: none"> ■ Call 9-1-1. ■ Notify supervision. ■ Move to a shaded or cooler area. ■ Cool the body with water or by fanning.

Heat Exhaustion

Heat exhaustion is severe dehydration due to the loss of water through sweating.

Symptoms	First Aid
<ul style="list-style-type: none"> ■ Heavy sweating. ■ Extreme weakness. ■ Dizziness. ■ Nausea. ■ Clammy skin. ■ Pale complexion. ■ Cramps. ■ Elevated temperature. 	<ul style="list-style-type: none"> ■ Call 9-1-1. ■ Move to a shaded or cooler area. ■ Drink plenty of water. ■ Cool the body with water or by fanning.

Heat Syncope

Heat syncope is fainting due to dehydration or lack of acclimatization to hot environments.

Symptoms	First Aid
<ul style="list-style-type: none"> ■ Light-headed feeling. ■ Dizziness. ■ Fainting. 	<ul style="list-style-type: none"> ■ Move to a shaded or cooler area. ■ Drink plenty of water.

Heat Cramps

Heat cramps occur when the body sweats excessively and depletes the muscles of proper nutrients, causing the muscles to tense.

Symptoms	First Aid
<ul style="list-style-type: none"> ■ Muscle pain or spasms. 	<ul style="list-style-type: none"> ■ Stop all activity. ■ Move to a shaded or cooler area. ■ Drink plenty of water.

Heat Rash

Heat rash is a skin irritation caused by excessive sweating.

Symptoms	First Aid
<ul style="list-style-type: none"> ■ Red cluster of pimples or small blisters. 	<ul style="list-style-type: none"> ■ Keep affected area dry. ■ Baby powder can prevent discomfort.

1. NWS weather reports can be obtained at [weather.gov](https://www.weather.gov).

If an employee experiences signs of heat-related illness, they must seek immediate medical assistance by calling 9-1-1. Also, here are some proactive tips to beat the heat:

- **Hydrate before, during, and after work.** Prevention is important — drink at least 8 ounces of water every 20 minutes.
- **Dress appropriately for the weather.** On warm days, wear light-colored, loose-fitting, and breathable clothing to keep your body temperature down.
- **Use the shade to stay cool.** When possible, use shaded areas to stay out of direct sunlight.

Employees who have difficulty breathing or experience discomfort as a result of the heat while wearing a face covering must remove the covering until the discomfort ceases. However, if employees remove their face coverings, they must practice social distancing while in contact with others, and sneeze or cough into their elbow or into a tissue.

For more information about preventing heat illnesses, review the following resources:

- HERO Safety talk: Heat Illness Prevention Program Safety Talk #2068;

- HERO Course: Heat Illness Recognition and Prevention;
- COVID-19 SUT 37: blue.usps.gov/blue/covid-19/stand-up-talks.htm;
- Safety Depends on Me videos: blue.usps.gov/corp-comm/uspstv/safety-and-health.
- Safety Resource Tools, A–Z, OSH Topics — Heat Illness Prevention: blue.usps.gov/hr/safety/heat-related-illness-prevention.htm;
- Occupational Safety and Health Administration (OSHA) website: osha.gov/heat; and
- National Safety Council website: nsc.org/home-safety/tools-resources/seasonal-safety/summer/heat.

eBuy+ HIPP material ordering information:

Vehicle Sticker:

Label 128, June 2018
PSN 7690-18-000-4040

Employee Badge:

PS Form 1280, June 2019
PSN 7530-18-000-4041

— Occupational Safety and Health,
HQ Human Resources, 3-23-23

Policies, Procedures, and Forms Updates

Manuals

DMM Notice: Grace-Period Extension to Pay PO Box Renewal Fees Rescinded

Effective March 23, 2023, the Postal Service™ is discontinuing the extended grace period for customers to pay PO Box™ renewal fees. The 10-day grace period, under section 508.4.7.5, “Late Fee Payment,” of *Mailing Standards of the United States Postal Service*, Domestic Mail Manual (DMM®), resumes.

In April 2020, to assist PO Box customers during the COVID-19 pandemic, the Postal Service temporarily extended the 10-day grace period to 30 days to pay PO Box renewal fees (see “DMM Notice: Extension of

PO Box Renewal Fee Payment” in *Postal Bulletin* 22543 [4-9-20, page 9]). This temporary change allowed customers to pay their PO Box renewal fees up to 30 days after the due date without penalty of a PO Box closure and eliminated handling fees associated with reopening a closed PO Box.

The Postal Service will automatically close a PO Box for nonpayment if the Postal Service receives no payment for the PO Box by the end of the 10-day grace period.

— Product Classification, Product Solutions, 3-23-23

DMM Revision: Mailing Currency

Effective July 9, 2023, the Postal Service™ will revise *Mailing Standards of the United States Postal Service*, Domestic Mail Manual (DMM®), sections 503.2.1 and 601.1.0, to clarify Postal Service standards for mailing currency.

The Postal Service is revising section 503.2.1 to add a standard requiring commercial cash transactions over \$500.00 be sent using Registered Mail® service. In addition, the Postal Service is adding new section 601.1.3, “Mailing Currency,” to the DMM standards for mailing currency, including the requirement to send commercial cash transactions over \$500.00 as Registered Mail. Requirements in new section 601.1.3 will also state that mailers must not use USPS-provided packaging (i.e., expedited packaging supplies) for any commercial cash transaction, regardless of amount.

The Postal Service believes these new standards will provide customers with a safe and secure service for their mailing needs.

Although the Postal Service will not publish these revisions in the DMM until July 9, 2023, the standards are effective April 30, 2023.

Mailing Standards of the United States Postal Service, Domestic Mail Manual (DMM)

* * * * *

500 Additional Mailing Services

503 Extra Services

* * * * *

2.0 Registered Mail

2.1 Basic Standards

* * * * *

[Add new 2.1.6 to read as follows:]

2.1.6 Mailing Cash Transactions

Items mailed containing commercial cash transactions over \$500.00 must be sent as Registered Mail (see 601.1.3.4).

* * * * *

600 Basic Standards for All Mailing Services

601 Mailability

* * * * *

[Add new 1.3 to read as follows and renumber current 1.3 and 1.4 as 1.4 and 1.5:]

1.3 Mailing Currency

1.3.1 General

Currency (i.e., coins, Federal Reserve notes or other bank notes) is mailable under any class of mail except where prohibited by standards.

1.3.2 Insurance

Except for philatelic items and numismatic coins under 609.4.1g, eligible classes of mail containing currency may be insured with a maximum indemnity of \$15.00.

1.3.3 Registered Mail

Except under 1.3.4, eligible classes of mail containing currency may use Registered Mail service with included insurance payable at full value up to the applicable limit (see 503.2.2.1).

1.3.4 Mailing Cash Transactions

The following standards apply for sending commercial cash transactions:

- a. Mailers must use Registered Mail service under 503.2.1.6 for commercial cash transactions over \$500.00.
- b. Mailers must not use any USPS-provided packaging (i.e., expedited packaging supplies) when mailing commercial cash transactions, regardless of the amount.

* * * * *

The Postal Service will incorporate these revisions into the July 9, 2023, edition of the online DMM, which is available via Postal Explorer[®] at pe.usps.com.

*— Product Classification,
Product Solutions, 3-23-23*

Organization Information

Address Management

Post Office Changes

Old/ New	Finance No.	ZIP Code	State	PO Name	County	Station/ Branch/ Unit	Unit Type	Effective Date	Comments
Old	01-2270	36362	AL	Daleville	Dale	Fort Rucker	Classified Branch		
New	01-2270	36362	AL	Daleville	Dale	Fort Novoset	Classified Branch	02/25/2023	This announcement changes the preferred last line of this ZIP Code™ from Fort Rucker, AL to Fort Novoset, AL. Use Fort Novoset, AL 36362 as the last line of address.
Old	12-1991	31905	GA	Columbus	Muscogee	Fort Benning	Classified Branch		
New	12-1991	31905	GA	Columbus	Muscogee	Fort Moore	Classified Branch	02/25/2023	This announcement changes the preferred last line of this ZIP Code from Fort Benning, GA to Fort Moore, GA. Use Fort Moore, GA 31905 as the last line of address.
Old	12-0473	30905	GA	Augusta	Richmond	Fort Gordon	Classified Branch		
New	12-0473	30905	GA	Augusta	Richmond	Fort Eisenhower	Classified Branch	02/25/2023	This announcement changes the preferred last line of this ZIP Code from Fort Gordon, GA to Fort Eisenhower, GA. Use Fort Eisenhower, GA 30905 as the last line of address.
Old	21-5239	71459	LA	Leesville	Vernon	Fort Polk	Classified Branch		
New	21-5239	71459	LA	Leesville	Vernon	Fort Johnson	Classified Branch	02/25/2023	This announcement changes the preferred last line of this ZIP Code from Fort Polk, LA to Fort Johnson, LA. Use Fort Johnson, LA 71459 as the last line of address.
Old	36-2680	28307	NC	Fayetteville	Cumberland	Fort Bragg	Classified Branch		
New	36-2680	28307	NC	Fayetteville	Cumberland	Fort Liberty	Classified Branch	02/25/2023	This announcement changes the preferred last line of this ZIP Code from Fort Bragg, NC to Fort Liberty, NC. Use Fort Liberty, NC 28307 as the last line of address.
Old	33-8815	07470	NJ	Wayne	Passaic	Sheffield	Classified Station	08/28/2011	
New	33-8815	07470	NJ	Wayne	Passaic	Post Office	Main Office	05/13/2022	Classified Station discontinued. Retain ZIP Code. Continue to use Wayne, NJ 07470 as the last line of address. This amends <i>Postal Bulletin</i> 22599.
Old	48-4700	76544	TX	Killeen	Bell	Fort Hood	Classified Branch		
New	48-4700	76544	TX	Killeen	Bell	Fort Cavazos	Classified Branch	02/25/2023	This announcement changes the preferred last line of this ZIP Code from Fort Hood, TX to Fort Cavazos, TX. Use Fort Cavazos, TX 76544 as the last line of address.
Old	51-7092	23801	VA	Petersburg	Prince George	Fort Lee	Classified Branch		
New	51-7092	23801	VA	Petersburg	Prince George	Fort Gregg Adams	Classified Branch	02/25/2023	This announcement changes the preferred last line of this ZIP Code from Fort Lee, VA to Fort Gregg Adams, VA. Use Fort Gregg Adams, VA 23801 as the last line of address.

Domestic Mail

Labeling List Changes

Effective April 1, 2023, the Postal Service™ will revise Labeling List(s) L001, L007, L009, L011, L012, L051, L201, and L606 to reflect changes in mail processing operations. Mailers are expected to label according to these revised lists for mailings inducted on or after the April 1, 2023, effective date through the May 31, 2023, expiration date.

Note: Due to the extensive number of changes to the following Labeling Lists, the changes will not be published in this *Postal Bulletin*:

- **L009 Mixed ADCs – Periodicals, Package Services Flats and Irregular Parcels, and Standard Mail Flats**
- **L011 Non-NDC/ASF Entry – Periodicals and Standard Mail Letters**
- **L201 Periodicals Origin Split and First-Class Mail Mixed ADC/AADC**

To access the L009, L011, and L201 Labeling List changes, as well as a complete listing of EELs changes in Postal Pro (effective April 1, 2023), visit postalpro.usps.com/operations/labeling-lists/changes-april-2023.

Labeling Lists

* * * * *

L001 5-Digit Scheme – Periodicals, Standard Mail, and Package Services Flats and Irregular Parcels

Change

Column A Destination ZIP Codes	Column B Label Container To (Change From)	Column B Label Container To (Change To)
92052	OCEANSIDE CA 92056	OCEANSIDE CA 92052
92057	OCEANSIDE CA 92056	OCEANSIDE CA 92052

* * * * *

Deleted

Column A Destination ZIP Codes	Column B Label Container To (Deleted From)
92056	OCEANSIDE CA 92056

* * * * *

L007 5-Digit Scheme – Periodicals, Standard Mail, and Package Services Flats in Bundles

Changes

Column A Destination ZIP Codes	Column B Label Container To (Change From)	Column B Label Container To (Change To)
60101	ADDISON IL 60101	SCHAUMBURG IL 60196
60112	CORTLAND IL 60112	SCHAUMBURG IL 60159
60119	HUNTLEY IL 60142	BARTLETT IL 60103
60135	CORTLAND IL 60112	MELROSE PARK IL 60160
60136	CORTLAND IL 60112	BLOOMINGDALE IL 60108
60140	HUNTLEY IL 60142	BARTLETT IL 60103
60142	HUNTLEY IL 60142	SAINT CHARLES IL 60174
60143	ADDISON IL 60101	MAYWOOD IL 60153
60145	CORTLAND IL 60112	SCHAUMBURG IL 60159
60146	CORTLAND IL 60112	SCHAUMBURG IL 60159
60151	CORTLAND IL 60112	SCHAUMBURG IL 60159
60157	CORTLAND IL 60112	BLOOMINGDALE IL 60108
60159	SCHAUMBURG IL 60195	SCHAUMBURG IL 60159
60168	SCHAUMBURG IL 60195	SCHAUMBURG IL 60159

Column A Destination ZIP Codes	Column B Label Container To (Change From)	Column B Label Container To (Change To)
60177	VILLA PARK IL 60181	BENSENVILLE IL 60106
60180	CORTLAND IL 60112	ROSELLE IL 60172
60181	VILLA PARK IL 60181	GLEN ELLYN IL 60137
60184	CORTLAND IL 60112	ROSELLE IL 60172
60191	HUNTLEY IL 60142	FOREST PARK IL 60130
60193	SCHAUMBURG IL 60195	SCHAUMBURG IL 60159
60195	SCHAUMBURG IL 60195	SCHAUMBURG IL 60196

Newly Added

Column A Destination ZIP Codes	Column B Label Container To (Added To)
07050	ORANGE NJ 07050
07051	ORANGE NJ 07050
07060	PLAINFIELD NJ 07060
07061	PLAINFIELD NJ 07060
07062	PLAINFIELD NJ 07060
07063	PLAINFIELD NJ 07060
08855	PISCATAWAY NJ 08854
60196	SCHAUMBURG IL 60196

Deleted

Column A Destination ZIP Codes	Column B Label Container To (Deleted From)
07004	CALDWELL NJ 07006
07005	PARSIPPANY NJ 07054
07009	SUMMIT NJ 07901
07011	CLIFTON NJ 07011
07012	CLIFTON NJ 07011
07013	BERKELEY HEIGHTS NJ 07922
07014	CLIFTON NJ 07011
07015	CLIFTON NJ 07011
07016	CRANFORD NJ 07016
07021	CALDWELL NJ 07006
07027	CRANFORD NJ 07016
07033	KENILWORTH NJ 07033
07034	BERKELEY HEIGHTS NJ 07922
07035	BERKELEY HEIGHTS NJ 07922
07036	SOMERSET NJ 08873
07039	LIVINGSTON NJ 07039
07040	CRANFORD NJ 07016
07042	MONTCLAIR NJ 07042
07043	MONTCLAIR NJ 07042
07044	MONTCLAIR NJ 07042
07045	CLIFTON NJ 07011
07046	PARSIPPANY NJ 07054
07054	PARSIPPANY NJ 07054
07058	SOUTH ORANGE NJ 07079
07059	WESTFIELD NJ 07090
07065	RAHWAY NJ 07065
07066	RAHWAY NJ 07065
07067	RAHWAY NJ 07065
07068	LIVINGSTON NJ 07039
07069	MONTCLAIR NJ 07042
07076	SOUTH ORANGE NJ 07079
07078	SOUTH ORANGE NJ 07079
07079	SOUTH ORANGE NJ 07079
07080	HILLSBOROUGH NJ 08844
07082	SOUTH ORANGE NJ 07079
07088	CRANFORD NJ 07016
07092	CRANFORD NJ 07016
07104	NEWARK NJ 07104
07109	NEWARK NJ 07104
07110	NEWARK NJ 07104
07920	BASKING RIDGE NJ 07920
07922	BERKELEY HEIGHTS NJ 07922
07927	SUMMIT NJ 07901
07928	WESTFIELD NJ 07090
07932	KENILWORTH NJ 07033
07936	MORRIS PLAINS NJ 07950
07940	MORRIS PLAINS NJ 07950
07945	PARSIPPANY NJ 07054
07950	MORRIS PLAINS NJ 07950
07974	SUMMIT NJ 07901
07981	MORRISTOWN NJ 07960
08807	BASKING RIDGE NJ 07920
08816	EAST BRUNSWICK NJ 08816
08817	EDISON NJ 08817
08818	EDISON NJ 08817
08820	EDISON NJ 08817
08822	RAHWAY NJ 07065
08835	SUMMIT NJ 07901
08837	EDISON NJ 08817
08840	CALDWELL NJ 07006
08844	HILLSBOROUGH NJ 08844

Column A Destination ZIP Codes	Column B Label Container To (Deleted From)
08846	MORRIS PLAINS NJ 07950
08850	EAST BRUNSWICK NJ 08816
08857	PISCATAWAY NJ 08854
08876	LIVINGSTON NJ 07039
08884	PISCATAWAY NJ 08854
08901	NEW BRUNSWICK NJ 08901
08902	NEW BRUNSWICK NJ 08901
08903	NEW BRUNSWICK NJ 08901
08904	NEW BRUNSWICK NJ 08901

* * * * *

L012 5-Digit ZIP Scheme Combination

Changes

Column A Destination ZIP Codes	Column B Label Container To (Change From)	Column B Label Container To (Change To)
42025	MURRAY KY 42071	MAYFIELD KY 42066
78597	ALAMO TX 78516	BROWNSVILLE TX 78521

* * * * *

L051 DSCF for Parcel Select

Changes

Column A Destination ZIP Codes	Column B Label To (Change From)	Column B Label To (Change To)
189	DIS PHILADELPHIA PA 189	SCF PHILADELPHIA PA 190
194	DIS PHILADELPHIA PA 189	SCF PHILADELPHIA PA 190

* * * * *

L606 5-Digit Scheme – Standard Mail, First-Class Mail, and Package Services Parcels

Changes

Column A Destination ZIP Codes	Column B Label Container To (Change From)	Column B Label Container To (Change To)
12804	GLENS FALLS NY 12801	QUEENSBURY NY 12804
12839	GLENS FALLS NY 12801	QUEENSBURY NY 12804
16102	NEW CASTLE PA 16102	NEW CASTLE PA 16108
16105	NEW CASTLE PA 16102	NEW CASTLE PA 16108
17702	WILLIAMSPORT PA 17702	WILLIAMSPORT PA 17701
17703	WILLIAMSPORT PA 17702	WILLIAMSPORT PA 17701
17728	WILLIAMSPORT PA 17702	WILLIAMSPORT PA 17701
42303	OWENSBORO KY 42303	OWENSBORO KY 42301
42304	OWENSBORO KY 42303	OWENSBORO KY 42301
48086	SOUTHFIELD MI 48037	SOUTHFIELD MI 48086
57702	RAPID CITY SD 57701	RAPID CITY SD 57702

Newly Added

Column A Destination ZIP Codes	Column B Label Container To (Added To)
06820	STAMFORD CT 06905
06840	STAMFORD CT 06903
06903	STAMFORD CT 06903
06905	STAMFORD CT 06905
06906	STAMFORD CT 06905
06907	STAMFORD CT 06903
10003	NEW YORK NY 10003
10028	NEW YORK NY 10028
10065	NEW YORK NY 10065
10075	NEW YORK NY 10065
10128	NEW YORK NY 10028
10130	NEW YORK NY 10028
10156	NEW YORK NY 10016
10157	NEW YORK NY 10016
10211	NEW YORK NY 10003
10276	NEW YORK NY 10003
17211	WARFORDSBURG PA 17267
17267	WARFORDSBURG PA 17267
17701	WILLIAMSPORT PA 17701
17705	WILLIAMSPORT PA 17701
17744	WILLIAMSPORT PA 17701
17771	WILLIAMSPORT PA 17701
21032	ANNAPOLIS MD 21401
21401	ANNAPOLIS MD 21401
21402	ANNAPOLIS MD 21401
21403	ANNAPOLIS MD 21401
21405	ANNAPOLIS MD 21401
21409	ANNAPOLIS MD 21401
27260	HIGH POINT NC 27260
27261	HIGH POINT NC 27260
27262	HIGH POINT NC 27260
27263	HIGH POINT NC 27260
27264	HIGH POINT NC 27260
27265	HIGH POINT NC 27260
27268	HIGH POINT NC 27260
27401	GREENSBORO NC 27401
27402	GREENSBORO NC 27401
27403	GREENSBORO NC 27401
27408	GREENSBORO NC 27408
27411	GREENSBORO NC 27401
27412	GREENSBORO NC 27401
27413	GREENSBORO NC 27401
27420	GREENSBORO NC 27401
27429	GREENSBORO NC 27401
27435	GREENSBORO NC 27401

Column A Destination ZIP Codes	Column B Label Container To (Added To)
27455	GREENSBORO NC 27408
37663	KINGSPORT TN 37664
37664	KINGSPORT TN 37664
37669	KINGSPORT TN 37660
42334	OWENSBORO KY 42301
42356	OWENSBORO KY 42301
48025	SOUTHFIELD MI 48037
48033	SOUTHFIELD MI 48037
48034	SOUTHFIELD MI 48037
48075	SOUTHFIELD MI 48086
48076	SOUTHFIELD MI 48086
55317	CHANHASSEN MN 55317
55318	CHASKA MN 55318
55331	CHANHASSEN MN 55317
55386	CHASKA MN 55318
57703	RAPID CITY SD 57702
57709	RAPID CITY SD 57701
58503	BISMARCK ND 58503
58504	BISMARCK ND 58503
60103	HANOVER PARK IL 60133
60107	HANOVER PARK IL 60133
60133	HANOVER PARK IL 60133
60611	CHICAGO IL 60610
76012	ARLINGTON TX 76012
76013	ARLINGTON TX 76012
80018	AURORA CO 80017
80019	AURORA CO 80017
80124	LONE TREE CO 80124
80126	LITTLETON CO 80130
80129	LONE TREE CO 80124
80130	LITTLETON CO 80130
80163	LONE TREE CO 80124
80215	DENVER CO 80226
80226	DENVER CO 80226

Deleted

Column A Destination ZIP Codes	Column B Label Container To (Deleted From)
47467	BEDFORD IN 47421
47470	BEDFORD IN 47421

– Logistics, Network Development, and Support,
Network Operations, 3-23-23

Environmental Management

Recycling Resumes for Inkjet and Toner Cartridges

Supply Management and the Office of Environmental Affairs and Corporate Sustainability have identified Clover Technologies in Calexico, CA, as the corporate-wide recycler for used inkjet and toner cartridges. Employees are expected to use the internal Click-N-Ship® application for shipping used inkjet and toner cartridges.

Inkjet and Toner Cartridge Recycling Instructions

Employees must first request their manager's permission to use the internal Click-N-Ship application through Access Registration and Identity Services (ARIS):

- Go to aris.usps.gov/Welcome.htm or click the "Essential Links" tab on *Blue* to log in.
- Select "Manage User Access."
- Within the Manage User Access module, enter your ACE ID and click the search button (magnifying glass).
- When the username comes up, click on the small check mark next to the username, which selects that user, and click "Next."
- On the following screen, enter the "CARP G10 User" function and click the search button (magnifying glass).
- Click the check mark next to that selection, then click "Next."
- Review the request and then click "Submit."

Once your access has been approved, use your ACE ID and password to log into the Click-N-Ship application (G10 platform) to create and print labels for recycling used inkjet and toner cartridges at cns-b.usps.gov/g10/index.html.

Here are a few tips for hassle-free shipping:

- Consolidate single cartridges into one box (a minimum of six toner cartridges or 20 inkjet cartridges per shipment).
- Pack items securely in a sturdy box; empty paper boxes work well for shipping.
- Ensure boxes weigh less than 70 pounds and that box length plus girth is less than 108 inches.
- Address shipments to:
Cartridge Return Center
315 Weakley Street
Calexico, CA 92231
- Attach the printed shipping label to the box.

Note: Ricoh toners and tubes are not eligible for this recycling program.

For more information about the new inkjet and toner cartridge recycling process, use the following resources:

- For guidance, review *Creating Administrative Shipping Labels Using Click-N-Ship User Guide 02022023* at blue.usps.gov/commercebusiness/shipping-products/_pdf/creating-adminstrative-shipping-labels-using-click-n-ship-user-guide.pdf.
- For Click-N-Ship questions, send an email to the Click-N-Ship inbox at DH5BN0@usps.gov.
- For technical issues, contact the MSSC help desk at 877-672-0007, option 2, then option 1.
- For recycling-related inquiries, send an email to HQInvestmentRecovery@usps.gov.

— Supply Management and Environmental Affairs
and Corporate Sustainability, 3-23-23

Required Procedures for Environmental Agency Inspection Visits and Notices of Violation

United States Postal Service® (USPS®) policy requires full compliance with all applicable local, state, and federal environmental regulations, and full cooperation with environmental regulators conducting site inspections.

Environmental Agency Inspections and Site Visits

The site installation head *must immediately* report visits and site inspections by the U.S. Environmental Protection Agency (EPA), or any state or local environmental regulatory agency, to the appropriate USPS Environmental Implementation regional manager, regardless of whether the site visit is pre-scheduled or unannounced.

In addition, the site installation head, or his or her designee, *must follow* the guidelines in the *Standard Operating Procedure for Environmental Agency Inspections and Site Visits* to ensure appropriate support and facility compliance during environmental agency inspections at USPS facilities (see blue.usps.gov/sustainability/environmental/facility-inspection.htm).

Environmental Notices of Violation and Similarly Entitled Notices

A notice of violation (NOV) or similarly entitled notice, such as a warning letter, request for information, request to show cause, or notice of non-compliance, can be issued to USPS for failure to comply with an environmental regulation. NOV, issued by the EPA or a state or local agency, may occur as the result of a regulatory site visit or inspection.

Contact your respective Environmental Implementation regional manager *immediately* (and send an electronic copy of the notice) if your site receives an NOV or similarly

entitled action, such as a warning letter, notification of non-compliance, or request for compliance documentation.

USPS Environmental Affairs Points of Contact

Report an environmental regulatory agency visit or NOV (or similarly entitled notice) by sending an email to the appropriate USPS Environmental Implementation regional manager, who will assign an Environmental Field Support specialist to assist the site:

- For the Processing facilities and Headquarters facilities located within the Eastern processing region (except the Southwest division and the state of Michigan), and Retail and Delivery facilities located within the Atlantic and portions of the Central (i.e. KY-WV, OH 1, and OH 2) and Southern Areas (i.e. AL-MS, FL 1, FL 2, FL 3, GA, PR, SC, and TN), contact Nicholas DeCarlo at nicholas.decarlo@usps.gov.
- For the Processing facilities and Headquarters facilities located within the Western processing region, the state of Michigan, and the Southwest division of the Eastern processing region and Retail and Delivery facilities located within the WestPac and portions of the Central (i.e. IA-NE-SD, IL 1, IL 2, IN, KS-MO, MI 1, MI 2, MN-ND, and WS) and Southern Areas (i.e. AR-OK, LA, TX 1, TX 2, and TX 3), contact Judy Wingo-Stalinger at judy.wingostalinger@usps.gov.

— *Environmental Affairs and Corporate Sustainability,
Corporate Affairs, 3-23-23*

Human Resources

Prevent Chronic Kidney Disease

Did you know that your kidneys filter all the blood in your body every 30 minutes? Even though the kidneys are as small as a computer mouse, they work hard to remove wastes, toxins, and excess fluid. Kidneys that function properly are critical for maintaining good health; however, more than one in seven American adults — or about 37 million people — have chronic kidney disease (CKD).

CKD is a condition in which the kidneys are damaged and cannot filter blood as well as they should. Because of this, excess fluid and waste from blood remain in the body and may cause other health problems, such as heart disease and stroke.

Some other health consequences of CKD include:

- Anemia or low number of red blood cells.
- Increased occurrence of infections.
- Low calcium levels, high potassium levels, and high phosphorus levels in the blood.
- Loss of appetite or eating less.
- Depression or lower quality of life.

CKD has varying levels of seriousness. It usually gets worse over time, though treatment has been shown to slow progression. If left untreated, CKD can progress to kidney failure and early cardiovascular disease. When the kidneys stop working, dialysis or kidney transplant is needed for survival. Kidney failure treated with dialysis or kidney transplant is called end-stage renal disease.

Not all patients with kidney disease progress to kidney failure. Follow these tips to help prevent CKD and lower the risk for kidney failure:

- Control risk factors for CKD.
- Get tested yearly.
- Make lifestyle changes.
- Take medication as needed.
- See your health care team regularly.

For more information about chronic kidney disease prevention, visit [cdc.gov/kidneydisease/basics.html](https://www.cdc.gov/kidneydisease/basics.html) and [cdc.gov/kidneydisease/index.html](https://www.cdc.gov/kidneydisease/index.html).

— *Benefits and Wellness,*
Human Resources, 3-23-23

Information Security

Have You Visited the CyberSafe Page on Blue?

Explore all the exciting materials the CyberSafe at USPS® page at blue.usps.gov/cyber offers — from virtual cybersecurity awareness activities to informative videos — this web page is the go-to place to learn about best practices in cybersecurity.

Here are some of the resources the CyberSafe at USPS page offers:

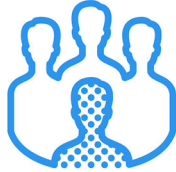
- **CyberSafe Guardian Program** is a resource for volunteers who serve as points of contact and spread cybersecurity awareness to their networks.
- **Monthly awareness campaigns** highlight cybersecurity initiatives for work and home through smart cybersecurity moments, talking points, FAQs, and other resources.
- **Virtual awareness activities** include engaging in online activities to test your awareness skills, and prepackaged, customizable templates to help instill best practices and USPS® policy awareness.
- **CyberSafe Studio** is a collection of short and entertaining videos that puts cyber threats into real-life scenarios and shows the impact of making the wrong decisions.
- **Incident reporting** promotes USPS' anti-phishing initiative titled "Report to CyberSafe," and provides steps to take if you think you've been a target.
- **Training modules** provide cybersecurity courses for Corporate Information Security Office Academy and CyberSafe training.
- **Cybersecurity Awareness Month** takes place annually during October and provides information and resources to advance a culture of cybersecurity at USPS.
- **Posters for the Office** are a collection of CyberSafe materials to display in work areas to help spread cybersecurity awareness across USPS.

Check out the CyberSafe at USPS page at blue.usps.gov/cyber to strengthen your cybersecurity awareness skills.

— *Corporate Information Security Office*
Chief Information Security Officer, 3-23-23

Let's Talk About Kidney Disease

Kidney diseases are a **leading cause of death** in the United States.



In the United States, diabetes and high blood pressure are the leading causes of kidney failure, accounting for **3 out of 4** new cases.



About **37 million** US adults are estimated to have chronic kidney disease (CKD), and most are undiagnosed.



40%

of people with severely reduced kidney function (not on dialysis) are not aware of having CKD.



360

Every 24 hours, 360 people begin dialysis treatment for kidney failure.



In 2019, treating Medicare beneficiaries with CKD cost \$87.2 billion, and treating people with end-stage renal disease (ESRD) cost an additional \$37.3 billion.

Talk to your doctor if you have any of the following risk factors: diabetes, high blood pressure, heart disease, obesity, or a family history of chronic kidney disease.



Pull-Out Information

Fraud

Invalid USPS Corporate Account Numbers

Provide this listing to Contract Postal Units and acceptance clerks in non-POS locations without intranet access to validate a USPS Corporate Account (USPSCA) number online. For all other locations, online USPSCA validation is preferred. This list supersedes all previous notices, which you must recycle.

Acceptance clerks must not accept Priority Mail Express® shipments bearing an invalid USPSCA number in the “Payment by Account” or “Agreement Number” section of the label or form.

Note: The first 6 digits of a 9-digit Custom Designed Service and Next Day Pickup Agreement make up the Corporate Account Number.

008176	021774	076080	107997	125351	232350	423067	495078	608032	754027	853902	921198	959064
008282	027188	077311	117097	159025	270038	441823	537392	708474	757072	875121	931775	995022
010806	033002	100237	124187	185066	326003	454436	553006	752118	811045	901629	933181	995356
021177	070421	105324	125228	223027	380180	473150	554787	752931	853411	904532	941516	

— Product Information Requirements, Mail Entry and Payment Technology, 3-23-23

Send Warmth and Cheer in Winter with
Snowy Beauty Forever® Stamps



ON SALE NATIONWIDE: OCTOBER 11, 2022

Missing, Lost, or Stolen U.S. Money Order Forms

Do Not Cash — Upon Receipt, Notify Local Postal Inspectors

Provide this listing to all Postal Service™ employees responsible for accepting and cashing postal money orders. Destroy all interim notices when the numbers listed appear in the *Postal Bulletin*. The new money order serial

numbers consist of the first 10 digits. The eleventh digit is a check digit only.

Do not cash outdated money orders **104 151 601 to 692 600 000**. Advise holders to send invalid money orders to Canada Post Corporation, Ottawa, Canada K1A 0B1. Check for altered dollar amounts by holding money orders to the light.

010 001 0200 to 0299	043 205 5922 to 5999	083 784 8886 to 8899	174 281 9347 to 9399
010 504 1932 to 1999	044 087 3457 to 3499	083 913 6915 to 6999	175 251 2600 to 0699
011 582 1889 to 1899	044 087 4000 to 4099	084 478 3920 to 3999	176 281 7937 to 7950
011 588 2900 to 3099	044 226 2487 to 2512	086 000 8271 to 8299	176 281 7963 to 7999
012 441 0784 to 0799	044 306 4200 to 4299	086 798 3840 to 3849	176 731 6586 to 6599
012 579 5675 to 5699	044 306 4370 to 4599	088 404 4472 to 4499	178 254 5000 to 9999
013 289 6176 to 6199	045 524 4121 to 4298	088 404 5584 to 5699	178 881 9900 to 9999
013 610 0014 to 0099	046 800 9870 to 9899	088 757 8688 to 8699	180 031 2089 to 2098
014 932 1000 to 1099	047 352 4000 to 4099	088 757 9400 to 9499	180 403 7723 to 7741
014 972 0800 to 0899	048 383 7650 to 7659	089 358 2248 to 2257	180 428 4580 to 0599
015 363 0065 to 0099	048 396 3647 to 3699	090 663 9678 to 9684	182 368 7544 to 0599
017 028 3200 to 3299	051 142 0755 to 0799	091 818 0071 to 0099	182 475 3229 to 3258
018 569 5333 to 5399	051 774 8857 to 8899	093 106 9346 to 9355	182 475 3904 to 3933
018 986 5264 to 5299	051 781 2875 to 2885	093 203 0500 to 0599	182 631 0031 to 0099
019 518 2814 to 2899	051 977 7010 to 7023	093 684 3630 to 3699	182 911 6539 to 6600
020 698 5159 to 5199	052 058 7115 to 7199	094 081 5074 to 5099	184 218 2760 to 2799
020 844 7307 to 7399	054 450 1130 to 1167	094 216 2555 to 2599	185 828 1474 to 1499
020 972 8948 to 8999	057 670 0563 to 0599	094 580 7062 to 7099	186 132 7583 to 0599
022 021 9110 to 9181	058 187 3836 to 3899	094 639 4200 to 4299	186 629 0589 to 0599
022 037 1411 to 1499	058 523 3003 to 3099	095 070 7186 to 7199	187 184 6177 to 0199
022 527 9201 to 9210	058 591 1153 to 1299	095 076 8300 to 8399	187 323 8200 to 8299
022 529 1882 to 1899	058 895 3746 to 3799	095 354 6864 to 6899	187 441 6080 to 6099
023 637 7169 to 7199	059 986 0814 to 0899	097 224 1350 to 1599	188 831 6774 to 6799
024 380 4100 to 4199	060 406 7650 to 7699	100 160 3800 to 3899	188 835 6370 to 6399
024 496 6870 to 6896	063 491 8122 to 8199	104 667 6400 to 6499	189 083 1064 to 1099
025 092 0987 to 0999	063 916 9968 to 9999	104 876 8937 to 8999	189 660 9583 to 9599
025 369 5535 to 5599	064 091 4500 to 4599	112 049 4413 to 4499	191 179 0377 to 0399
025 729 1151 to 1199	065 170 0471 to 0499	112 870 9765 to 9799	192 050 5762 to 5781
025 729 1643 to 1799	065 255 7909 to 7999	113 319 2000 to 2099	194 456 8600 to 0699
026 492 3180 to 3199	065 392 6345 to 6399	114 402 3850 to 3899	195 194 6881 to 6899
027 361 0430 to 0499	066 099 2014 to 2099	114 866 5368 to 5397	195 874 1112 to 1199
027 369 4482 to 4495	066 648 2880 to 2899	116 154 2800 to 2899	196 979 0524 to 0599
027 671 8762 to 8776	066 787 3639 to 3699	116 986 4400 to 4499	197 244 6100 to 6199
027 787 9886 to 9899	066 845 7500 to 9999	117 175 1647 to 5169	197 244 6300 to 6399
027 965 9487 to 9499	067 093 3869 to 3899	117 951 4687 to 4699	197 244 6400 to 6499
028 100 8069 to 8099	068 895 0334 to 0399	117 951 5200 to 5299	197 244 6500 to 6599
028 191 1852 to 1999	070 724 4488 to 4499	119 786 3051 to 3064	197 244 6600 to 6699
028 850 3000 to 3199	070 841 9181 to 9199	119 815 8961 to 6199	197 244 6700 to 6799
029 510 1500 to 1599	070 844 2546 to 2599	119 850 7400 to 7499	197 244 6800 to 8999
030 687 0903 to 0999	070 916 1340 to 1399	119 850 7700 to 7999	198 285 2556 to 2566
030 701 3442 to 3499	071 047 5768 to 5799	121 634 0460 to 0499	199 105 0778 to 0799
031 077 4507 to 4799	071 179 9800 to 9899	122 451 9879 to 9899	199 678 2968 to 2999
032 295 7500 to 9999	071 386 3682 to 3699	122 714 6805 to 6900	202 748 5133 to 5199
034 394 1000 to 1099	071 507 6840 to 6899	124 916 0304 to 0499	202 748 5245 to 5299
034 943 0400 to 0799	072 045 9641 to 9699	126 423 0136 to 0169	202 748 5300 to 5399
035 035 4337 to 4399	072 675 8287 to 8299	127 500 2328 to 2399	202 748 5400 to 5499
037 312 7500 to 7599	073 763 0867 to 0876	160 901 2254 to 2299	203 256 1240 to 1299
037 706 9578 to 9599	073 763 0878 to 0887	161 103 6581 to 6599	204 230 3577 to 3595
037 805 3677 to 3699	073 763 0889 to 0898	161 194 2857 to 0899	205 019 0174 to 0199
037 909 5490 to 5499	077 617 5481 to 5499	162 032 4447 to 4499	206 936 3184 to 3199
037 931 4660 to 4699	077 999 4001 to 4090	163 257 1085 to 1099	207 196 9900 to 9999
039 145 6521 to 6595	078 174 4475 to 4499	164 359 2406 to 2499	207 204 0700 to 0799
040 024 3901 to 3999	078 219 4931 to 4999	166 101 1433 to 1499	207 204 0800 to 0899
040 674 7100 to 7199	078 250 4756 to 4799	167 555 5201 to 5212	207 514 3857 to 3899
040 688 8816 to 8899	078 823 8312 to 8399	167 555 5214 to 5299	208 556 4707 to 4799
041 299 6752 to 6799	079 374 0300 to 2499	169 618 6274 to 6299	210 057 4038 to 4047
041 623 8889 to 8899	079 807 2342 to 2399	171 806 6878 to 6893	210 221 0548 to 0599
041 803 6565 to 6599	082 721 0228 to 0254	173 639 4685 to 4699	214 061 4711 to 4724
043 129 1968 to 1997	083 140 5000 to 7499	174 238 2779 to 2799	214 303 6311 to 6325

214 303 6239	to	6258	252 833 3286	to	3297	258 405 6900	to	6999	262 337 4800	to	4899
214 877 4251	to	4273	253 470 3948	to	3999	258 405 7000	to	7099	262 337 4900	to	4999
215 252 3918	to	3992	253 565 7400	to	7499	258 405 7100	to	7199	262 337 5000	to	5099
217 585 1400	to	1499	254 252 2800	to	2899	258 405 7200	to	7299	262 337 5100	to	5199
218 698 2157	to	2199	254 252 2900	to	2999	258 405 7300	to	7399	262 337 5200	to	5299
218 746 0800	to	0899	254 252 3000	to	3099	258 405 7400	to	7499	262 337 5300	to	5399
219 095 0100	to	0399	254 252 3100	to	3199	258 405 7800	to	7899	262 337 5400	to	5499
219 389 1885	to	1899	254 252 3200	to	3299	258 405 7900	to	7999	262 337 5500	to	5599
219 568 7435	to	7456	254 252 3300	to	3399	258 405 8000	to	8099	262 337 5600	to	5699
219 568 7469	to	7487	254 252 3400	to	3499	258 405 8100	to	8199	262 337 5700	to	5799
221 316 5757	to	5799	254 252 3500	to	3599	258 405 8200	to	8299	262 337 5800	to	5899
223 476 3914	to	3999	254 252 3600	to	3699	258 405 8300	to	8399	262 337 5900	to	5999
223 565 4921	to	4957	254 252 3700	to	3799	258 405 8400	to	8499	262 337 6000	to	6099
223 565 4979	to	4999	254 252 3800	to	3899	258 405 8500	to	8599	262 337 6100	to	6199
224 636 4745	to	4765	254 252 3900	to	3999	258 405 8600	to	8699	262 337 6200	to	6299
224 636 4776	to	4799	254 252 4000	to	4099	258 405 8700	to	8799	262 337 6300	to	6399
224 636 4855	to	4885	254 252 4100	to	4199	258 405 8800	to	8899	262 337 6400	to	6499
224 636 4932	to	4948	254 252 4200	to	4299	258 405 8900	to	8999	262 337 6500	to	6599
224 636 4950	to	4962	254 252 4300	to	4399	258 405 9600	to	9699	262 337 6600	to	6699
224 636 4985	to	4999	254 252 4400	to	4499	258 405 9700	to	9799	262 337 6700	to	6799
224 723 0757	to	0799	254 252 4500	to	4599	258 405 9800	to	9899	262 337 6800	to	6899
224 730 2207	to	2299	254 252 4600	to	4699	258 405 9900	to	9999	262 337 6900	to	6999
225 970 0500	to	0599	254 252 4700	to	4799	259 014 9989	to	9999	262 337 7000	to	7099
225 970 0600	to	0699	254 252 4800	to	4899	259 062 4788	to	4798	262 337 7100	to	7199
225 970 0700	to	0799	254 252 4900	to	4999	259 218 1400	to	1499	262 337 7200	to	7299
227 033 8679	to	8699	254 565 7607	to	7700	259 218 1500	to	1599	262 337 7300	to	7399
227 275 9400	to	9999	254 907 1203	to	1299	259 218 1600	to	1699	262 337 7400	to	7499
228 463 2456	to	2499	255 185 9527	to	9599	259 590 5654	to	5699	262 337 7500	to	7599
228 510 4852	to	4899	255 397 1557	to	1576	259 670 8268	to	8299	262 337 7600	to	7699
229 462 8451	to	8475	255 425 2989	to	2998	259 835 6238	to	6399	262 337 7700	to	7799
229 668 5977	to	5999	255 728 6412	to	6499	259 835 6701	to	6799	262 337 7800	to	7899
229 923 9176	to	9199	255 728 9842	to	9899	260 224 4600	to	4699	262 337 7900	to	7999
229 924 6696	to	6699	256 134 9833	to	9839	260 224 5941	to	5999	262 337 8000	to	8099
230 051 9500	to	9999	256 134 9840	to	9849	260 310 2821	to	2899	262 337 8100	to	8199
236 366 2431	to	2499	256 134 9850	to	9859	260 452 0010	to	0022	262 337 8200	to	8299
236 607 6882	to	6899	256 134 9860	to	9869	260 452 0049	to	4299	262 337 8300	to	8399
236 660 5853	to	5872	256 134 9870	to	9879	260 553 8200	to	8299	262 337 8400	to	8499
239 322 5200	to	5299	256 134 9880	to	9889	260 553 8600	to	8699	262 337 8500	to	8599
239 322 5400	to	5499	256 134 9890	to	9899	260 553 9600	to	9799	262 337 8600	to	8699
239 322 5600	to	5699	256 247 6900	to	6999	260 553 9800	to	9899	262 337 8700	to	8799
239 322 5800	to	5899	256 550 5536	to	5545	260 553 9900	to	9999	262 337 8800	to	8899
239 322 5900	to	5999	256 799 2257	to	2299	260 761 1603	to	1662	262 337 8900	to	8999
239 607 4783	to	4799	257 154 8763	to	8799	261 183 2100	to	2299	262 337 9000	to	9099
240 593 1879	to	1899	257 154 8800	to	8899	261 426 0408	to	0499	262 337 9100	to	9199
242 591 2048	to	2099	257 765 4567	to	4599	262 082 8000	to	8099	262 337 9200	to	9299
242 735 0388	to	0398	257 765 4610	to	4696	262 082 8100	to	8199	262 337 9300	to	9399
242 951 7276	to	7299	257 765 4737	to	4799	262 082 8200	to	8299	262 337 9400	to	9499
243 535 6370	to	6399	257 792 7800	to	7889	262 082 8300	to	8399	262 337 9500	to	9599
244 004 9985	to	9999	257 792 7900	to	7999	262 082 8400	to	8499	262 337 9600	to	9699
244 004 9985	to	9999	257 792 8000	to	8099	262 288 7302	to	7399	262 337 9700	to	9799
244 268 9765	to	9799	257 856 9863	to	9899	262 288 7400	to	7499	262 337 9800	to	9899
244 347 4471	to	4499	258 103 1773	to	1782	262 288 9900	to	9999	262 337 9900	to	9999
249 056 1551	to	1599	258 405 1800	to	1899	262 337 2600	to	2699	262 472 3188	to	3199
249 336 9438	to	9499	258 405 1900	to	1999	262 337 2700	to	2700	262 472 3200	to	3299
249 399 4000	to	4099	258 405 3300	to	3399	262 337 2800	to	2800	262 546 3100	to	3199
249 399 4100	to	4199	258 405 3400	to	3499	262 337 2900	to	2900	262 546 3200	to	3299
249 399 4200	to	4299	258 405 3500	to	3599	262 337 3000	to	3099	262 546 3300	to	3399
249 399 4300	to	4399	258 405 3700	to	3799	262 337 3100	to	3199	262 546 3400	to	3499
249 399 4400	to	4499	258 405 3800	to	3899	262 337 3200	to	3299	262 546 3500	to	3599
249 399 4500	to	4599	258 405 3900	to	3999	262 337 3300	to	3399	262 546 3600	to	3699
249 399 4600	to	4699	258 405 4000	to	4099	262 337 3400	to	3499	262 546 3900	to	3999
249 399 4700	to	4799	258 405 4100	to	4199	262 337 3500	to	3599	262 546 4300	to	4399
249 399 4800	to	4899	258 405 4200	to	4299	262 337 3600	to	3699	262 546 4400	to	4499
249 399 4900	to	4999	258 405 4600	to	4699	262 337 3700	to	3799	262 546 4500	to	4599
250 159 7502	to	7599	258 405 5600	to	5699	262 337 3800	to	3899	262 546 4600	to	4699
250 566 9644	to	9699	258 405 5700	to	5799	262 337 3900	to	3999	262 546 4700	to	4799
250 661 8425	to	8499	258 405 5800	to	5899	262 337 4000	to	4099	262 546 4800	to	4899
251 335 5731	to	5799	258 405 5900	to	5999	262 337 4100	to	4199	262 546 4900	to	4999
251 379 2380	to	2399	258 405 6000	to	6099	262 337 4200	to	4299	262 546 7100	to	7199
252 005 7626	to	7699	258 405 6100	to	6199	262 337 4300	to	4399	262 546 7200	to	7299
252 421 8401	to	8499	258 405 6200	to	6299	262 337 4400	to	4499	262 546 7300	to	7399
252 464 2810	to	2899	258 405 6300	to	6399	262 337 4500	to	4599	262 546 7400	to	7499
252 612 3683	to	3699	258 405 6400	to	6499	262 337 4600	to	4699	262 546 9800	to	9899
252 469 2125	to	2199	258 405 6800	to	6899	262 337 4700	to	4799	262 546 9900	to	9999

262 567 1788	to	1799	389 696 2400	to	2799	410 867 0970	to	0999	435 666 6092	to	6399
263 254 2500	to	2500	389 846 3104	to	3135	411 868 1023	to	1199	436 082 6400	to	6899
263 340 0000	to	0099	389 846 3145	to	3195	411 922 2322	to	2399	436 160 6441	to	6499
263 340 0100	to	0199	389 887 9211	to	9230	412 193 0900	to	0999	437 316 7115	to	7199
263 340 0500	to	0599	389 887 9234	to	9299	412 395 8599	to	8699	437 427 0500	to	3499
263 340 0600	to	0699	390 001 3182	to	3199	412 485 6500	to	6599	439 179 2300	to	2399
263 340 2700	to	2799	390 001 3500	to	3699	412 485 6610	to	6699	439 310 0458	to	0499
263 340 2800	to	2899	390 545 5974	to	5999	412 885 5953	to	5999	440 698 1947	to	1999
263 340 3000	to	3099	391 104 6146	to	6199	414 193 3608	to	3674	440 858 6300	to	6399
264 341 2360	to	2399	391 574 1466	to	1499	414 193 3677	to	3699	440 858 6420	to	7299
264 380 4000	to	4099	391 783 3020	to	3599	414 411 7348	to	7399	441 199 1655	to	1699
264 380 4100	to	4199	391 792 6100	to	6199	414 640 0757	to	0799	443 127 3648	to	3699
264 799 6049	to	6099	392 668 2956	to	2999	414 965 1727	to	1799	443 127 4000	to	4099
264 860 7832	to	7868	392 854 8500	to	8899	417 302 8104	to	8199	443 673 7900	to	7999
265 127 3658	to	3699	393 584 7566	to	7699	417 887 6532	to	6599	443 800 9335	to	9399
265 380 7111	to	7137	393 650 0074	to	0099	417 496 6800	to	6999	444 382 8822	to	8899
265 444 4762	to	4799	393 838 8316	to	8499	417 871 9250	to	9299	444 390 1667	to	1699
265 548 7074	to	7099	393 893 6007	to	6099	417 930 9533	to	9599	444 457 3854	to	3899
266 106 0000	to	2499	394 126 6907	to	6999	418 164 6500	to	6799	450 048 4173	to	4199
266 129 5809	to	5899	394 189 0405	to	0599	418 423 9863	to	9899	450 048 4442	to	4699
266 673 0000	to	2499	394 822 3243	to	3278	418 633 5922	to	5999	450 560 5173	to	5199
266 749 7900	to	7999	394 990 1810	to	1899	418 719 8520	to	8599	450 620 3077	to	3099
266 868 0952	to	0999	395 343 3264	to	3299	418 744 2235	to	2299	450 620 3135	to	3199
266 868 1028	to	1099	395 373 3035	to	3099	418 962 2848	to	2899	450 780 2716	to	2799
266 868 1100	to	1199	395 396 9649	to	9799	419 543 0286	to	0299	450 801 2700	to	2799
266 868 1200	to	1299	395 970 3240	to	3299	419 730 0300	to	0399	451 109 2967	to	2984
267 296 1237	to	1299	397 622 4054	to	4099	420 277 0015	to	0049	451 115 4110	to	4125
267 324 8946	to	8998	397 819 8902	to	8999	420 599 0734	to	0798	451 115 4127	to	4199
268 072 1203	to	1299	398 149 7200	to	7699	420 661 4115	to	4199	451 746 0700	to	0799
271 660 4333	to	4400	399 070 0872	to	0899	420 758 9500	to	9699	452 265 0074	to	0099
273 520 0000	to	9999	399 156 7119	to	7199	420 969 3951	to	3971	452 265 0246	to	0299
273 520 6000	to	8999	399 203 5064	to	5099	420 969 3973	to	3999	452 265 0335	to	0999
273 775 7700	to	7899	399 296 9910	to	9999	421 116 3565	to	3599	452 509 1169	to	1199
273 882 1913	to	1998	399 396 8935	to	8999	421 130 9300	to	9399	452 855 6471	to	6499
274 750 0300	to	0400	399 792 7775	to	7799	421 313 4500	to	4999	452 890 4679	to	4799
274 782 0549	to	0599	399 792 8300	to	8399	421 364 5537	to	5599	452 900 8215	to	8238
279 517 9330	to	9399	400 427 1051	to	1999	421 656 2609	to	2699	453 117 9146	to	9199
279 517 9594	to	9599	401 045 1505	to	1549	421 988 9700	to	9799	453 334 3631	to	3699
279 517 9623	to	9699	401 045 1571	to	1599	422 172 4667	to	4699	453 603 7841	to	7891
282 667 2500	to	4999	401 294 2700	to	2799	422 484 4212	to	4299	453 650 1140	to	1199
302 000 0000	to	9999	401 310 9505	to	9599	422 556 1270	to	1299	453 741 1300	to	1399
349 746 2056	to	2099	401 382 5312	to	5399	422 587 7024	to	7099	454 013 2919	to	2999
350 518 7350	to	7374	402 578 7876	to	7899	422 819 7533	to	7599	454 186 2411	to	2499
360 011 1690	to	1699	403 125 6744	to	6799	422 842 5073	to	5087	454 268 4883	to	4899
360 168 6008	to	6099	403 260 7000	to	7499	422 907 7563	to	7599	454 302 5400	to	5499
360 173 8800	to	8899	403 280 6470	to	6499	424 500 6050	to	6099	454 490 8300	to	8399
360 324 2326	to	2399	403 685 8600	to	8699	424 641 8500	to	8599	454 547 7434	to	7499
362 861 3064	to	3099	404 003 0300	to	0399	424 871 6600	to	6699	454 922 4867	to	4895
373 006 2176	to	2199	404 041 8838	to	8899	425 298 2352	to	2399	455 221 1348	to	1499
374 768 2600	to	2699	404 071 4268	to	4299	425 418 4269	to	4299	455 364 2147	to	2199
375 169 4400	to	4599	404 347 5356	to	5399	425 418 4405	to	4499	455 399 5400	to	5499
375 829 3400	to	3499	404 347 5548	to	5599	426 547 4566	to	4599	455 476 0676	to	0699
375 851 9100	to	9199	404 726 4500	to	4599	427 412 6337	to	6499	455 543 0618	to	0699
376 196 0911	to	0999	404 961 5001	to	5199	427 481 0900	to	0999	456 410 9006	to	9099
378 085 3679	to	3699	405 325 0188	to	0198	428 027 2742	to	2752	456 470 4146	to	4299
378 351 1063	to	1099	406 009 4587	to	4599	429 474 4172	to	4199	456 619 4460	to	4499
379 843 5100	to	5199	406 260 6830	to	6899	429 889 2900	to	2999	457 333 2686	to	2699
380 093 9600	to	9699	406 459 6641	to	6999	430 150 4401	to	4599	457 729 1767	to	1777
380 165 1165	to	1199	406 733 3000	to	3999	430 172 9800	to	9899	457 937 8615	to	8699
381 325 4500	to	4599	407 545 1557	to	1599	430 177 1900	to	2099	458 028 9810	to	9899
381 604 2510	to	2699	407 594 0412	to	0599	430 444 9500	to	9699	458 057 2712	to	2999
381 645 9525	to	9599	407 692 9100	to	9299	430 664 4070	to	4099	458 069 9537	to	9599
383 314 3968	to	3999	407 959 2190	to	2199	432 168 8419	to	8499	458 069 9665	to	9699
383 892 1000	to	1344	408 265 2275	to	2288	432 708 6800	to	6999	458 337 5222	to	5299
383 892 1382	to	1399	408 499 7700	to	7799	432 744 1544	to	1599	458 354 7653	to	7999
384 925 3641	to	3654	408 499 7900	to	7999	432 995 9775	to	9799	458 671 8678	to	8699
385 568 2331	to	2399	408 682 8484	to	8599	433 003 5800	to	5899	458 671 8721	to	8798
385 599 7554	to	7575	408 698 7015	to	7099	433 757 3047	to	3099	458 847 5044	to	5999
385 774 2024	to	2099	409 072 3941	to	3999	433 765 4003	to	4099	459 274 7624	to	7699
386 624 1412	to	1599	410 491 2311	to	2399	434 482 7060	to	7199	459 365 5432	to	5499
386 883 8936	to	8999	410 694 8400	to	8599	434 513 2386	to	2399	459 378 5764	to	5799
387 314 5574	to	5599	410 775 1500	to	1599	434 968 3076	to	3092	459 472 4816	to	4999
387 837 6300	to	6399	410 795 7927	to	7999	435 303 1831	to	1842	460 349 6878	to	6899
388 828 0656	to	0699	410 867 0917	to	0966	435 303 1986	to	1999	460 550 1909	to	1999

460 997 5234	to	5299	481 072 9463	to	9499	504 045 4030	to	4099	609 493 1100	to	1199
461 973 6443	to	6499	481 673 0074	to	0095	504 166 0200	to	0599	609 766 8091	to	8999
462 152 0107	to	0299	482 527 1500	to	1599	504 240 1062	to	1399	609 825 4100	to	4115
462 274 1072	to	1099	482 541 5255	to	5299	504 805 3300	to	3499	609 884 2981	to	2999
462 277 8373	to	8399	482 729 6800	to	6899	505 096 0662	to	0699	609 893 1000	to	1099
462 554 6051	to	6099	483 363 7207	to	7299	505 893 7739	to	7799	610 092 3200	to	3299
463 011 5529	to	5540	483 402 2356	to	2399	505 893 7800	to	7999	610 582 4200	to	4299
463 176 4115	to	4199	483 486 5100	to	5199	506 124 0800	to	0999	611 879 6939	to	6999
463 176 4229	to	4299	483 632 1521	to	1599	506 165 7027	to	0099	612 291 8013	to	8099
463 185 2600	to	2799	483 632 2600	to	2799	506 502 5209	to	5299	612 751 5171	to	5199
463 227 7711	to	7799	483 849 1615	to	1699	506 756 1682	to	1699	612 751 5226	to	5299
463 414 4869	to	4899	484 174 4803	to	5299	506 756 1700	to	1799	612 751 6083	to	6099
463 808 3484	to	3499	484 323 8900	to	9199	506 756 1800	to	1899	612 751 6268	to	6299
463 945 7400	to	7899	484 680 5000	to	5038	506 836 5326	to	5399	612 751 6572	to	6599
464 629 9000	to	9399	484 680 5040	to	5074	508 488 6226	to	6299	612 774 2111	to	2199
464 711 4332	to	4399	484 680 5077	to	5099	508 789 8332	to	8399	612 774 2254	to	2299
465 692 3963	to	3999	485 029 4913	to	4999	508 789 8400	to	8499	612 774 2500	to	2599
465 698 8300	to	8599	486 176 0600	to	0699	509 909 0425	to	0435	614 469 0979	to	0999
465 743 7745	to	7799	486 559 7555	to	7599	510 150 2400	to	2499	614 474 3000	to	3099
466 798 6056	to	6067	486 696 3023	to	3199	510 381 3200	to	3299	614 521 3490	to	3499
467 147 4300	to	4399	488 173 7900	to	7999	510 587 9500	to	9599	614 645 1800	to	1899
468 079 5782	to	5799	488 206 4100	to	4199	510 587 9659	to	9699	614 832 1100	to	2099
469 067 2817	to	2899	488 226 0200	to	0299	510 269 9770	to	9999	615 017 7505	to	7599
469 127 8000	to	8199	488 709 3906	to	3999	511 021 5042	to	5099	617 711 6609	to	6699
469 213 0359	to	0399	488 855 8359	to	8399	511 021 5100	to	5199	617 760 5266	to	5299
469 213 0500	to	0599	489 181 8963	to	8999	511 468 1747	to	1799	617 813 3601	to	3699
469 561 8011	to	8099	489 223 2000	to	2099	511 844 0100	to	0199	618 840 9200	to	9299
469 658 1961	to	1999	489 311 1930	to	1999	511 844 0340	to	0399	619 551 7229	to	7299
469 666 9900	to	9999	489 318 6200	to	6300	512 805 3913	to	3919	619 859 3000	to	3099
469 678 1900	to	1999	489 384 0027	to	0099	513 046 0700	to	0726	620 073 9400	to	9499
469 781 4900	to	4999	489 427 0658	to	0899	513 149 0600	to	0699	621 614 7907	to	7930
469 947 6960	to	6999	489 997 5252	to	5299	513 445 3000	to	3199	621 614 7932	to	7999
470 755 5800	to	5818	490 669 5850	to	6099	513 466 2034	to	2044	621 648 8021	to	8199
471 918 0300	to	0999	490 717 7080	to	7099	513 539 9052	to	9099	621 648 8500	to	8599
471 985 2408	to	2419	490 721 6000	to	6099	513 539 9267	to	9299	621 904 8351	to	8599
472 191 6700	to	6799	490 793 1500	to	2099	513 539 9800	to	9899	621 916 1978	to	1989
472 270 2555	to	2599	490 886 8171	to	8199	513 539 9985	to	9999	622 989 8032	to	8099
472 987 0213	to	0241	490 977 9221	to	9240	513 606 5459	to	5490	623 076 9300	to	9399
472 987 0290	to	0299	491 258 8100	to	9099	513 812 1751	to	1799	623 819 5006	to	5099
473 151 2069	to	2199	491 567 1376	to	1399	514 103 3600	to	3699	623 895 8200	to	8399
473 666 9138	to	9199	492 254 4800	to	4899	514 103 3700	to	3799	623 917 0000	to	0099
473 952 3429	to	3499	492 283 5100	to	5199	514 103 3800	to	3899	623 917 0200	to	0299
474 108 5402	to	5499	492 610 6813	to	6899	600 645 3223	to	3299	624 468 5288	to	5299
474 356 5193	to	5299	493 394 5568	to	5599	601 339 1200	to	1399	624 665 3162	to	3198
474 949 3366	to	3399	493 470 2562	to	2599	601 653 5884	to	5899	625 088 6735	to	6799
475 134 9362	to	9399	493 473 7700	to	7799	601 661 7700	to	7799	625 916 9500	to	9799
475 167 9667	to	9699	493 716 2153	to	2199	601 682 5343	to	5399	625 968 8956	to	8999
475 319 3415	to	3499	494 206 2972	to	2999	601 928 1600	to	1699	627 005 3938	to	3999
475 319 3649	to	3799	494 217 3446	to	3999	602 512 2972	to	2999	627 384 3907	to	4099
475 340 6400	to	6599	494 224 0500	to	0599	602 555 2400	to	2799	627 496 7549	to	7599
475 424 8410	to	8499	495 145 0600	to	0699	602 829 7061	to	7099	627 708 3605	to	3699
475 629 9156	to	9199	496 209 7425	to	7499	603 483 9572	to	9599	627 776 2500	to	2599
475 850 6101	to	6199	496 213 8728	to	8799	603 490 7200	to	7299	628 226 3100	to	3199
475 875 2500	to	2599	496 474 5226	to	5248	603 678 7100	to	7199	628 814 4702	to	4799
476 169 8264	to	8299	497 053 8517	to	8699	603 678 7662	to	7699	628 851 9689	to	9699
476 189 3000	to	3499	497 854 8673	to	8699	603 678 7902	to	7999	629 510 7200	to	7299
476 331 2480	to	2499	498 449 8888	to	8899	603 678 8418	to	8499	629 964 4200	to	4294
477 289 8601	to	8699	498 929 8285	to	8499	603 678 8700	to	9999	630 389 3056	to	3071
477 681 5206	to	5299	498 936 5310	to	5399	604 086 0880	to	0899	630 463 0588	to	0599
478 010 4243	to	4268	499 016 5425	to	5499	604 349 1414	to	1499	631 459 9117	to	9199
478 010 4270	to	4291	499 440 8575	to	8899	604 503 7776	to	7799	631 762 9325	to	9399
478 450 5071	to	5099	499 731 6717	to	6799	605 520 9037	to	9099	632 217 4933	to	4999
478 469 7838	to	7858	500 064 1858	to	1869	605 685 4010	to	4099	632 500 0000	to	640 3999
478 469 7883	to	7899	500 070 5725	to	7799	605 988 6467	to	6499	633 110 4165	to	4199
479 280 9800	to	9899	501 058 0016	to	0026	607 689 7951	to	7960	633 110 4303	to	4499
479 365 9116	to	9176	501 331 0300	to	0399	607 728 1276	to	1299	633 438 6429	to	6599
479 412 9900	to	9999	501 460 0977	to	0999	608 727 7100	to	7199	633 588 7173	to	7182
479 667 6190	to	6199	502 227 7645	to	7699	608 727 7273	to	7599	634 725 0700	to	0799
479 748 9680	to	9699	502 424 0200	to	0499	608 813 9950	to	9999	634 803 3239	to	3299
479 860 7000	to	7199	502 424 0600	to	0699	609 067 5325	to	5399	634 807 2474	to	2499
480 526 2000	to	2099	502 496 6923	to	6999	609 067 5488	to	5499	634 827 5900	to	5999
480 640 6330	to	6399	503 003 2700	to	2899	609 067 5600	to	5699	634 886 3428	to	3499
480 658 0568	to	0599	503 194 5144	to	5153	609 289 6123	to	6199	635 559 3449	to	3499
480 689 5100	to	5199	503 790 9922	to	9948	609 438 4400	to	4499	636 289 6214	to	6299

636 634 8007	to	8042	651 882 2800	to	2899	683 118 2389	to	2399	701 838 2800	to	2899
637 150 1200	to	1299	652 754 6317	to	6399	683 378 2000	to	2099	701 941 0600	to	0699
637 562 5828	to	5899	653 131 4945	to	4999	683 378 2117	to	2299	702 171 1603	to	1699
638 042 1647	to	1699	653 426 3300	to	3399	683 415 1200	to	1499	702 195 5109	to	5199
638 049 4984	to	4999	653 455 4874	to	4899	683 444 8159	to	8199	702 254 9300	to	9399
638 318 1115	to	1199	654 238 0000	to	0399	685 154 7780	to	7789	702 264 7569	to	7599
638 318 1453	to	1499	654 404 3065	to	3092	685 297 7645	to	7699	702 519 0513	to	0524
638 885 0000	to	0299	654 962 2900	to	3199	685 623 5264	to	5299	702 713 1800	to	1809
638 903 4362	to	4373	655 103 5081	to	5199	685 650 9487	to	9499	702 821 5730	to	5799
639 415 1929	to	1999	655 523 2600	to	2999	685 669 4200	to	4299	702 821 5805	to	5899
639 415 2019	to	2099	656 305 2448	to	2499	685 757 8452	to	8499	702 844 6975	to	6994
639 420 6200	to	6299	657 347 4438	to	4999	686 071 2694	to	2799	702 846 6331	to	6399
639 469 3517	to	3799	657 710 8100	to	8999	686 176 3333	to	3354	702 848 3900	to	3999
639 605 2143	to	2199	657 780 0985	to	0999	686 372 3200	to	3299	702 857 7302	to	7499
639 657 8600	to	8799	658 586 1400	to	1499	686 644 5879	to	5899	702 878 0114	to	0199
640 289 7500	to	7599	658 877 8000	to	8199	686 899 1371	to	1399	703 364 1707	to	1799
640 289 7700	to	7999	658 880 8000	to	8199	686 931 7636	to	7699	740 002 7710	to	7719
641 170 4420	to	4499	659 398 7300	to	7399	687 601 0973	to	0999	740 037 6730	to	6800
641 318 3133	to	3199	659 706 8113	to	8199	687 614 6774	to	6799	740 119 2275	to	2284
641 378 6500	to	6999	659 846 7837	to	7899	688 120 9000	to	9999	740 130 6688	to	6698
641 383 8739	to	8799	660 510 4100	to	4199	688 314 3107	to	3191	740 144 2780	to	2795
641 877 3187	to	3299	660 673 0400	to	0599	690 291 1361	to	1371	740 241 9049	to	9099
641 877 3310	to	3399	661 488 5000	to	5099	690 788 2877	to	2899	740 252 9265	to	9294
642 355 8094	to	8199	661 609 9100	to	9199	690 893 5344	to	5399	740 255 1718	to	1799
642 355 8308	to	8999	661 716 9420	to	9499	690 893 5512	to	5599	740 274 2602	to	2619
642 900 0018	to	0099	661 906 6522	to	6599	690 904 1300	to	1599	740 277 0366	to	0392
643 030 6254	to	6299	662 021 8332	to	8399	690 941 6000	to	6199	740 332 7658	to	7671
644 066 0882	to	0899	662 068 0700	to	0899	691 313 6383	to	6399	740 348 6641	to	6658
644 069 0600	to	0699	662 553 0774	to	0799	691 313 6600	to	6699	740 351 4790	to	4799
644 077 7506	to	7699	663 078 7034	to	7099	691 582 8003	to	8099	740 374 7416	to	7499
644 085 8157	to	8199	663 763 5300	to	5399	691 664 1800	to	1999	740 470 2420	to	2443
644 112 9839	to	9899	663 883 7039	to	7499	691 664 2400	to	2499	740 514 0300	to	0499
644 373 9083	to	9099	663 938 9200	to	9299	692 727 9362	to	9399	740 523 7432	to	7449
644 380 1460	to	1499	664 253 8000	to	8499	692 798 1800	to	1899	740 535 1555	to	1580
644 733 4715	to	4799	664 656 3055	to	3099	693 249 0779	to	0799	740 557 3570	to	3579
644 900 9712	to	9799	665 174 6400	to	6499	693 249 0877	to	1699	740 650 4104	to	4140
644 901 0109	to	1299	665 274 8208	to	8299	693 445 0566	to	0999	740 684 0620	to	0800
644 901 1325	to	1399	666 669 5400	to	5499	693 448 8500	to	8999	740 701 6105	to	6114
644 923 6800	to	7799	666 132 8226	to	8299	693 645 9583	to	9599	740 705 9790	to	9799
644 932 4655	to	4699	666 696 2209	to	2299	693 965 4200	to	4299	740 726 6400	to	6500
645 318 7240	to	7499	666 696 2309	to	2399	695 741 2906	to	2999	740 748 8319	to	8329
645 333 1766	to	1799	667 032 9300	to	9399	695 947 8518	to	8599	740 765 3306	to	3399
645 790 8632	to	8699	667 729 5529	to	5599	696 662 8247	to	8299	740 774 8434	to	8499
645 821 0657	to	0699	668 383 8400	to	8699	697 447 8285	to	8296	740 779 4259	to	4299
645 930 7948	to	7999	670 368 3400	to	3499	698 042 4816	to	4899	740 786 1885	to	1899
645 975 0737	to	0762	670 369 7336	to	7399	698 131 2138	to	2157	740 790 5989	to	5999
646 242 6200	to	6299	670 750 7169	to	7199	698 227 0000	to	0099	740 803 4870	to	4879
646 270 7639	to	7799	671 046 6200	to	6399	700 065 2570	to	2599	740 820 4854	to	7836
646 798 4000	to	4999	671 251 5448	to	5499	700 065 4800	to	4899	740 827 7578	to	7594
647 048 7035	to	7099	671 926 5600	to	5799	700 190 3350	to	3359	740 917 7490	to	7499
647 049 2900	to	2999	672 444 2000	to	2999	700 228 6048	to	6099	740 918 5531	to	5549
647 398 8300	to	8399	672 828 3410	to	3499	700 650 0452	to	0499	741 037 8528	to	8551
647 398 8481	to	8499	673 167 5776	to	5799	700 666 1323	to	1349	742 030 6135	to	6149
647 437 3000	to	4999	675 464 3700	to	3799	700 786 9106	to	9142	742 033 2663	to	2674
647 811 2188	to	2199	675 464 4000	to	4199	700 859 0744	to	0758	742 040 3300	to	3309
648 009 6057	to	6099	676 365 5958	to	5999	701 028 6780	to	6899	742 112 8155	to	8199
648 163 5300	to	5499	676 669 1024	to	1099	701 213 3900	to	3999	742 151 5000	to	5014
648 722 5283	to	5299	677 126 6734	to	6799	701 267 2000	to	3999	742 191 4640	to	4649
648 892 3164	to	3199	677 333 9979	to	9999	701 335 7312	to	7399	742 192 5210	to	5224
649 100 3989	to	3999	677 466 1088	to	1099	701 369 2005	to	2050	742 222 9200	to	9210
649 647 0370	to	0399	678 071 4500	to	4799	701 499 2260	to	2299	742 228 9660	to	9669
649 647 0522	to	0599	678 096 7531	to	7599	701 503 2247	to	2299	742 247 6980	to	6989
649 647 5237	to	5399	679 909 2578	to	2599	701 541 2271	to	2299	742 290 0936	to	0950
649 647 9100	to	9299	680 112 9565	to	9599	701 553 6557	to	6599	742 302 7600	to	7699
649 666 7800	to	8299	680 244 0903	to	0999	701 578 7460	to	7469	742 305 3711	to	3799
650 114 7707	to	7719	680 412 6046	to	6099	701 578 7475	to	7499	742 305 3800	to	3899
650 130 3400	to	3599	680 761 6800	to	6899	701 601 3457	to	3499	742 305 3900	to	3999
650 213 0406	to	0499	681 677 0540	to	0699	701 605 5913	to	5999	742 305 4000	to	4099
650 555 1749	to	1799	682 070 1029	to	1099	701 695 3982	to	3999	742 305 4100	to	4199
650 564 1900	to	1999	682 956 6280	to	6299	701 695 4148	to	4199	805 885 8411	to	8499
650 627 4212	to	4299	682 956 6490	to	6599	701 695 4227	to	4299	806 087 1100	to	1499
650 736 2043	to	2099	682 956 6700	to	6799	701 708 1741	to	1799	806 268 9275	to	9299
650 739 1540	to	1699	682 965 1178	to	1199	701 736 3966	to	3999	806 534 3400	to	3477
651 741 4415	to	4499	682 965 1201	to	1299	701 772 0870	to	0899	807 342 3283	to	3399

808 086 7100	to	7199	855 361 3390	to	3399	902 198 9769	to	9799	918 460 0602	to	0699
808 090 3440	to	3499	856 226 0490	to	0499	902 948 1269	to	1299	918 951 7231	to	7299
808 325 5161	to	5699	856 656 5800	to	5999	902 985 0833	to	0899	919 519 2786	to	2799
808 784 8000	to	8299	856 752 0200	to	0299	903 370 6934	to	6999	919 536 0770	to	0799
830 125 0672	to	0699	857 111 1352	to	1399	904 600 6523	to	6599	919 814 3095	to	3199
830 602 5800	to	5999	857 279 3450	to	3499	904 892 0378	to	0399	919 889 5110	to	5134
830 610 3700	to	3799	857 843 4000	to	4099	904 892 0648	to	1299	919 889 5137	to	5176
830 983 3500	to	3599	858 124 7644	to	7699	905 056 2216	to	2299	919 889 5178	to	5199
830 983 3635	to	3699	858 756 3111	to	3299	905 510 6647	to	6799	919 889 5030	to	5070
831 354 1387	to	1399	859 063 8200	to	8699	905 510 6900	to	7099	919 889 5090	to	5099
831 815 8240	to	8299	859 190 0600	to	0644	905 794 0000	to	0199	919 915 2774	to	2787
832 525 3810	to	3899	859 437 5538	to	5599	905 794 0288	to	0299	920 155 4662	to	4687
833 159 1884	to	1899	859 811 2888	to	2899	905 873 6900	to	6999	920 309 9039	to	9199
833 456 2567	to	2599	859 855 8873	to	8999	905 873 7100	to	7299	920 771 5321	to	5399
833 566 3015	to	3071	860 240 8520	to	8599	905 882 8900	to	8999	920 857 5500	to	8899
834 130 5200	to	5299	860 275 3900	to	3999	905 889 7100	to	7199	920 864 3480	to	3499
834 316 5444	to	5499	860 518 9629	to	9699	906 158 1508	to	1599	920 963 4567	to	4599
834 354 8747	to	8766	860 600 0021	to	0999	906 558 8812	to	8899	921 333 7400	to	7499
834 354 8824	to	8838	861 158 2350	to	2599	906 892 2214	to	2299	921 477 3762	to	3799
835 269 5700	to	5799	861 367 5400	to	5499	907 725 8500	to	8599	922 278 1048	to	1399
835 496 7303	to	7399	861 637 6010	to	6099	907 815 0216	to	0257	922 280 2019	to	2099
835 539 5200	to	5999	861 979 7292	to	7499	908 622 4225	to	4235	922 280 2233	to	2299
835 813 3015	to	3099	862 216 6100	to	6199	908 936 9254	to	9299	922 773 0459	to	0499
837 672 8967	to	8999	862 263 9213	to	9299	909 066 4494	to	7499	923 032 7000	to	7399
837 784 3282	to	3299	862 271 0800	to	0999	909 067 7400	to	7499	923 045 3630	to	3699
838 176 8377	to	8399	862 271 5000	to	5099	909 100 1787	to	1799	923 484 3600	to	3699
838 518 1257	to	1299	863 871 5138	to	5199	909 100 1900	to	2099	923 493 9403	to	9599
839 718 8257	to	8299	863 949 5300	to	5399	909 355 0422	to	0499	923 493 9681	to	9699
840 323 0600	to	0699	864 088 8200	to	8299	909 568 8900	to	9099	923 604 4424	to	4499
840 875 6235	to	6299	864 426 3972	to	3999	909 568 9300	to	9499	923 810 7800	to	8299
840 910 0900	to	0999	864 520 6117	to	6136	909 725 7307	to	7399	924 252 1200	to	1299
841 349 5000	to	5099	865 151 0526	to	0599	909 833 0947	to	0999	924 252 1400	to	1499
841 805 7747	to	7899	865 500 4034	to	4099	910 219 8631	to	8699	924 533 0711	to	0799
841 805 7944	to	8099	865 883 6082	to	6099	910 265 1100	to	1199	924 533 2343	to	2399
842 226 0685	to	0695	866 004 3000	to	3999	910 471 7273	to	7299	924 533 2428	to	2499
842 685 4600	to	4699	866 442 4100	to	4899	910 536 2505	to	2599	924 685 1957	to	1999
842 685 4742	to	4999	867 366 9108	to	9118	910 958 7499	to	7599	924 946 6300	to	6699
842 860 0300	to	0399	867 633 7403	to	7499	911 140 1000	to	2199	925 333 5900	to	6099
842 898 5582	to	5599	867 737 5623	to	5699	911 245 2545	to	2599	925 336 2300	to	2399
843 062 7100	to	7199	868 169 4529	to	4599	911 268 9077	to	9099	926 432 5907	to	5999
843 077 6288	to	6299	868 173 8400	to	8599	911 400 8948	to	8999	926 436 3600	to	3699
843 077 6378	to	6399	868 514 9000	to	9099	911 508 1620	to	1799	927 765 6257	to	6299
843 758 5769	to	5778	868 566 9200	to	9299	911 509 9310	to	9399	928 197 8100	to	8199
843 786 2554	to	2699	869 200 0000	to	9999	911 523 3000	to	3999	928 197 8283	to	8299
845 656 8165	to	8199	869 387 1150	to	1199	912 057 9922	to	9999	928 856 2059	to	2068
845 727 2100	to	2199	869 505 3500	to	3599	912 882 0563	to	0899	930 078 5800	to	5899
845 746 2618	to	2635	869 523 7033	to	7099	913 605 2218	to	2299	930 219 1722	to	1799
846 390 7531	to	7599	869 566 6150	to	6167	913 709 2429	to	2499	930 335 7810	to	7819
846 918 0572	to	0599	869 776 8785	to	8786	913 818 3501	to	3999	931 097 9259	to	9299
847 237 7690	to	7699	869 800 0000	to	9999	914 063 4300	to	4399	931 156 1502	to	1579
847 284 2481	to	2499	870 054 4814	to	4899	914 346 7621	to	7644	931 156 1600	to	1625
847 374 7055	to	7065	870 491 4812	to	4849	914 453 1366	to	1399	931 156 1671	to	1699
847 374 7055	to	7065	870 536 5820	to	5829	914 529 6185	to	6299	932 506 6400	to	6599
847 636 5304	to	5399	870 541 7167	to	7239	914 896 4658	to	4699	932 732 1796	to	1799
847 700 5447	to	5499	870 575 8155	to	8999	915 187 8774	to	8779	932 827 9026	to	9099
847 723 7500	to	7599	870 589 0485	to	0494	915 300 2783	to	2799	932 957 2300	to	2399
849 485 3427	to	3499	870 691 7060	to	7099	915 546 6822	to	6999	933 060 6160	to	6189
849 520 9850	to	9899	872 028 4850	to	4899	915 646 5183	to	5199	933 387 2541	to	2561
849 608 1357	to	1399	872 029 9306	to	9399	915 671 3963	to	3980	933 760 3609	to	4199
849 792 2600	to	2699	872 078 3709	to	3799	915 671 3982	to	3999	933 894 0928	to	0999
850 546 1862	to	1899	872 100 0445	to	0459	915 675 2217	to	2299	934 018 2729	to	2741
851 143 6826	to	6844	900 556 4178	to	4199	916 440 3377	to	3399	934 180 0300	to	0399
851 209 9880	to	9899	900 845 0044	to	0099	916 670 6352	to	6399	934 236 3954	to	3999
851 928 9221	to	9299	900 936 0217	to	0299	916 682 5300	to	5399	934 622 8717	to	8999
852 589 6560	to	6599	900 936 0435	to	0499	916 694 1414	to	1499	935 216 0312	to	0399
853 049 3646	to	3699	901 058 5255	to	5280	916 703 0802	to	0821	935 843 2202	to	2247
854 304 4089	to	4999	901 273 1082	to	1099	917 089 0709	to	0799	936 024 8889	to	8899
854 529 2200	to	2299	901 287 5143	to	5199	917 089 0842	to	0899	936 339 4455	to	4499
854 532 0000	to	2999	901 291 2789	to	2799	917 216 2928	to	2999			
855 001 6204	to	6249	901 525 7122	to	7199	917 370 6300	to	6499			
855 319 9364	to	9399	902 089 1253	to	1299	917 486 4900	to	4999			

Missing, Lost, or Stolen Canadian Money Order Forms

Do Not Cash — Upon Receipt, Notify Local Postal Inspectors

Provide this listing to all Postal Service™ employees responsible for accepting and cashing postal money orders. Destroy all interim notices when the numbers listed appear in the *Postal Bulletin*. The new money order serial

numbers consist of the first 9 digits. The tenth digit is a check digit only.

Do not cash outdated money orders **104 151 601 to 692 600 000**. Advise holders to send invalid money orders to Canada Post Corporation, Ottawa, Canada K1A 0B1. Check for altered dollar amounts by holding money orders to the light.

719 869 731	to	9 760	728 702 338	to	2 400	734 950 111	to	0 170	742 325 668	to	5 700
720 227 871	to	7 930	728 915 371	to	5 850	735 120 331	to	0 840	742 408 771	to	8 830
720 227 949	to	7 960	728 953 141	to	3 410	735 283 008	to	3 020	742 512 120	to	2 150
720 368 543	to	8 570	728 954 280	to	4 310	735 293 131	to	3 220	742 684 849	to	4 890
720 392 151	to	2 570	729 169 081	to	9 140	735 635 010	to	5 040	742 839 553	to	9 630
720 556 491	to	6 640	729 363 841	to	3 870	735 783 961	to	3 990	742 913 668	to	3 700
720 558 621	to	8 650	729 682 891	to	3 190	735 803 401	to	3 430	742 917 287	to	7 296
720 575 361	to	5 570	729 838 940	to	9 070	736 005 420	to	5 440	742 921 891	to	1 980
720 590 152	to	0 179	729 839 101	to	9 130	736 366 021	to	6 110	742 983 631	to	3 810
721 638 331	to	9 170	730 077 683	to	7 840	736 624 456	to	4 500	743 020 021	to	0 170
721 815 391	to	5 420	730 109 847	to	9 880	736 670 851	to	1 060	743 206 491	to	6 500
721 969 713	to	9 740	730 373 761	to	3 850	736 767 061	to	7 090	743 235 992	to	6 050
722 072 137	to	2 160	730 501 951	to	2 130	736 767 093	to	7 120	743 940 631	to	0 900
722 378 265	to	8 280	730 519 379	to	9 470	736 982 191	to	2 370	743 978 011	to	8 070
722 413 990	to	4 004	730 569 278	to	9 360	736 982 551	to	2 730	744 234 751	to	4 780
722 764 948	to	4 980	730 711 711	to	1 740	737 110 141	to	0 170	744 499 591	to	9 680
722 825 840	to	5 889	730 722 991	to	3 230	737 185 501	to	5 710	744 626 901	to	6 910
723 153 841	to	3 850	730 845 970	to	5 990	737 317 321	to	7 350	745 388 794	to	8 910
723 237 616	to	7 630	730 888 291	to	8 320	737 517 781	to	7 840	746 446 806	to	6 820
723 331 081	to	1 110	730 927 591	to	7 680	737 628 181	to	8 210	746 818 351	to	8 410
723 496 443	to	6 470	731 307 914	to	7 930	737 634 258	to	4 270	747 245 266	to	5 280
723 967 291	to	7 320	731 402 431	to	2 460	738 361 971	to	1 980	747 364 813	to	4 830
724 655 196	to	5 340	731 407 232	to	7 320	738 447 601	to	7 660	747 501 434	to	1 450
724 711 441	to	1 500	731 588 301	to	8 340	738 648 355	to	8 450	747 739 891	to	0 070
724 711 538	to	1 560	731 767 273	to	7 320	738 849 811	to	9 900	748 148 649	to	8 760
724 793 221	to	3 250	731 781 061	to	1 120	738 892 270	to	2 290	748 259 960	to	9 970
724 908 109	to	8 120	731 837 821	to	7 910	738 997 259	to	7 380	748 565 162	to	5 280
724 937 461	to	7 670	731 841 377	to	1 450	739 161 451	to	1 540	748 874 988	to	5 030
725 163 118	to	3 151	732 018 481	to	8 600	739 219 381	to	9 440	749 137 381	to	7 410
725 202 735	to	2 750	732 067 972	to	8 370	739 740 151	to	0 180	749 190 192	to	0 210
725 398 591	to	8 800	732 188 649	to	8 670	739 793 491	to	3 520	749 685 421	to	5 450
725 464 591	to	4 920	732 193 460	to	3 470	739 793 527	to	3 550	749 846 791	to	6 850
725 475 321	to	5 330	732 201 241	to	1 390	739 942 621	to	2 650	749 993 131	to	3 580
725 711 057	to	1 070	732 220 431	to	0 440	739 999 231	to	9 320	750 071 587	to	1 610
725 738 581	to	8 730	732 355 201	to	5 380	740 011 517	to	1 530	750 408 167	to	8 183
725 981 311	to	1 430	732 472 320	to	2 560	740 030 701	to	0 970	750 438 421	to	8 501
725 987 835	to	7 880	732 541 605	to	1 620	740 261 740	to	1 820	750 743 911	to	4 030
726 060 811	to	0 900	732 572 221	to	2 490	740 265 811	to	6 290	750 779 118	to	9 400
726 391 970	to	2 520	732 586 479	to	6 710	740 299 111	to	9 170	750 910 981	to	1 010
726 484 771	to	4 800	732 994 037	to	4 080	740 299 231	to	9 260	750 960 841	to	0 900
726 493 351	to	5 300	733 163 449	to	3 460	740 329 266	to	9 320	751 296 211	to	6 240
726 504 031	to	4 063	733 297 171	to	7 290	740 889 081	to	9 090	751 539 121	to	9 180
726 504 070	to	4 090	733 446 631	to	7 110	741 010 421	to	0 530	751 541 311	to	1 790
726 504 331	to	4 390	733 474 665	to	4 770	741 113 041	to	3 370	751 757 641	to	7 700
726 563 701	to	4 060	733 704 482	to	4 570	741 373 891	to	4 340	751 936 951	to	7 010
726 599 371	to	9 460	733 751 041	to	1 130	741 452 369	to	2 490	751 951 861	to	1 890
726 626 356	to	6 370	734 009 101	to	9 130	741 492 991	to	3 140	751 999 021	to	9 110
727 182 271	to	2 510	734 290 759	to	0 770	741 553 460	to	3 470	752 139 516	to	9 570
727 416 181	to	6 240	734 389 273	to	9 290	741 764 431	to	4 520	752 182 892	to	2 950
727 481 431	to	1 460	734 440 031	to	0 111	741 764 431	to	4 520	752 206 861	to	7 100
727 749 241	to	9 780	734 797 201	to	7 320	742 178 834	to	8 880	752 295 241	to	5 600
728 382 331	to	2 480	734 939 611	to	9 640	742 325 500	to	5 520	752 731 351	to	1 410

752 767 441	to	7 470	762 593 431	to	3 460	773 208 991	to	9 290	800 427 530	to	7 540
753 008 941	to	9 030	763 155 160	to	5 180	773 231 311	to	1 340	800 872 741	to	2 830
753 194 311	to	4 370	763 178 631	to	8 660	773 348 739	to	8 940	801 349 801	to	9 830
753 620 378	to	0 400	763 506 001	to	6 060	773 348 739	to	8 940	801 676 681	to	7 100
754 013 917	to	3 940	763 522 141	to	2 470	773 575 891	to	5 950	802 967 821	to	7 940
754 161 061	to	1 120	763 717 694	to	7 800	773 852 971	to	3 030	803 217 601	to	7 780
754 358 445	to	8 610	763 826 461	to	6 520	775 373 449	to	3 460	803 729 731	to	9 850
754 410 451	to	0 660	763 900 460	to	0 471	789 257 191	to	7 250	803 747 402	to	7 520
754 438 393	to	8 410	763 900 479	to	0 530	790 448 020	to	8 460	804 138 181	to	8 420
754 493 109	to	3 130	763 917 271	to	7 750	790 597 485	to	7 530	804 428 224	to	8 250
754 664 182	to	4 220	764 125 801	to	5 860	790 911 883	to	1 900	804 682 411	to	2 710
754 816 377	to	6 470	764 284 525	to	4 560	791 057 441	to	7 550	805 272 525	to	2 540
755 487 421	to	7 600	764 526 241	to	6 330	791 239 081	to	9 290	805 523 445	to	3 460
755 592 901	to	3 140	764 601 421	to	1 600	791 374 483	to	4 500	805 745 704	to	5 730
755 790 020	to	0 030	764 650 231	to	0 470	791 387 971	to	8 030	806 452 907	to	2 980
755 791 730	to	1 800	764 984 371	to	4 850	791 447 521	to	7 850	806 744 781	to	4 850
755 926 951	to	7 070	765 003 667	to	3 680	791 451 151	to	1 240	806 982 181	to	2 300
755 934 332	to	4 510	765 042 517	to	2 540	791 500 009	to	0 470	807 764 791	to	4 910
755 957 701	to	8 000	765 194 728	to	4 970	791 771 431	to	1 490	808 089 931	to	9 960
755 962 981	to	3 280	765 387 365	to	7 450	792 004 293	to	4 320	808 656 423	to	6 450
756 035 371	to	5 490	765 541 801	to	2 100	792 018 379	to	8 420	808 753 771	to	3 800
756 301 257	to	1 290	765 638 461	to	8 970	792 070 621	to	0 740	809 189 001	to	9 010
756 371 565	to	1 580	765 647 101	to	7 190	792 145 211	to	5 230	809 886 879	to	6 930
756 876 031	to	6 120	765 813 781	to	4 029	792 391 381	to	1 620	809 890 489	to	0 500
756 876 151	to	6 240	765 879 314	to	9 390	792 452 779	to	2 790	810 323 734	to	3 760
756 970 129	to	0 140	765 954 001	to	4 030	792 772 728	to	2 770	810 367 116	to	7 140
757 059 613	to	9 630	766 120 286	to	0 320	792 903 511	to	3 990	810 526 351	to	6 500
757 078 540	to	8 560	766 125 716	to	5 750	793 282 518	to	2 533	810 806 911	to	6 940
757 086 209	to	6 240	766 158 824	to	8 840	794 041 831	to	2 040	810 807 211	to	7 240
757 240 591	to	0 650	766 388 433	to	8 460	794 397 709	to	7 780	811 423 021	to	3 110
757 277 371	to	7 700	766 509 421	to	9 660	794 581 741	to	2 040	811 517 221	to	7 239
757 291 591	to	2 730	766 572 901	to	3 020	794 592 122	to	2 150	811 721 101	to	1 130
757 964 251	to	4 280	766 748 500	to	8 521	795 032 251	to	2 340	812 025 721	to	5 900
758 067 001	to	7 090	767 024 341	to	4 370	795 796 291	to	6 350	812 093 073	to	3 130
758 105 221	to	5 250	767 326 471	to	6 590	796 070 139	to	0 160	812 100 821	to	0 840
758 324 941	to	5 000	767 332 561	to	2 950	796 143 151	to	3 630	812 465 251	to	5 610
758 593 628	to	3 650	768 009 841	to	9 960	796 159 725	to	9 740	812 918 341	to	8 670
758 709 038	to	9 060	768 011 489	to	1 520	796 169 306	to	9 340	812 918 701	to	8 760
758 744 101	to	4 160	768 177 980	to	7 990	796 373 406	to	3 430	813 050 491	to	0 520
758 850 883	to	0 900	768 391 081	to	1 170	796 602 961	to	3 050	813 073 171	to	3 200
758 860 951	to	1 550	768 661 569	to	1 650	796 708 441	to	8 500	813 398 476	to	8 550
759 152 851	to	2 880	769 000 051	to	0 080	796 886 281	to	6 430	813 713 971	to	4 000
759 740 941	to	1 090	769 050 841	to	0 900	796 901 701	to	2 000	813 858 121	to	8 150
760 004 596	to	4 610	769 159 081	to	9 178	796 975 466	to	5 590	814 789 330	to	9 349
760 118 191	to	8 250	769 737 496	to	7 510	797 272 917	to	2 950	814 984 656	to	4 680
760 155 001	to	5 090	769 778 491	to	8 730	797 519 441	to	9 460	815 016 020	to	6 030
760 378 002	to	8 020	769 827 331	to	7 450	797 519 731	to	0 240	815 199 410	to	9 420
760 692 722	to	2 749	770 216 071	to	6 100	797 535 181	to	5 330	815 240 491	to	0 520
761 055 460	to	5 480	770 723 281	to	3 400	797 646 151	to	6 180	815 755 591	to	5 620
761 169 781	to	9 810	770 790 451	to	0 480	798 040 053	to	0 080	815 755 622	to	5 650
761 504 941	to	5 120	770 915 150	to	5 490	798 055 813	to	5 830	815 806 381	to	6 680
761 516 836	to	6 910	771 455 551	to	5 610	798 055 891	to	5 950	816 126 834	to	6 870
761 613 588	to	3 600	771 609 661	to	9 690	798 326 371	to	6 520	816 156 721	to	6 780
761 688 631	to	8 690	771 932 551	to	2 580	798 339 167	to	9 210	816 580 903	to	0 920
761 805 199	to	5 240	772 057 224	to	7 440	798 562 411	to	2 440	816 945 571	to	5 600
761 826 106	to	6 120	772 162 660	to	3 070	798 632 461	to	2 490	817 253 011	to	3 280
761 881 171	to	1 560	772 718 615	to	8 640	798 807 151	to	7 510	817 763 881	to	4 060
761 975 641	to	5 670	772 940 140	to	0 160	798 944 761	to	5 030	818 330 562	to	0 610
761 975 886	to	5 895	772 970 886	to	0 940	799 118 616	to	8 640	818 459 641	to	9 670
762 304 144	to	4 170	773 009 419	to	9 430	799 133 191	to	3 220	818 926 273	to	6 320
762 324 931	to	4 960	773 112 031	to	2 060	799 177 626	to	7 650	818 950 351	to	0 380
762 439 261	to	9 290	773 125 387	to	5 410	799 854 751	to	5 200	818 962 492	to	2 530
762 524 158	to	4 220	773 179 320	to	9 410	800 044 320	to	4 410	819 032 341	to	2 730
762 584 872	to	4 970	773 202 989	to	3 140	800 211 901	to	2 440	819 127 054	to	7 080

819 278 540	to 8 670	822 703 442	to 3 470	826 226 644	to 6 670	828 539 341	to 9 370
819 544 681	to 4 740	822 900 991	to 1 020	826 582 951	to 3 430	828 732 331	to 2 390
819 928 441	to 8 650	822 925 951	to 6 100	826 720 201	to 0 230	828 807 781	to 7 840
820 034 406	to 4 430	823 284 931	to 4 990	827 005 671	to 5 830	828 830 952	to 0 963
820 070 761	to 1 540	823 293 031	to 3 210	827 287 861	to 7 950	828 939 781	to 0 050
820 191 342	to 1 360	823 556 011	to 6 100	827 291 502	to 1 520	829 002 721	to 2 870
820 274 856	to 4 880	824 078 341	to 8 370	827 575 381	to 5 470	829 005 301	to 5 540
820 600 171	to 0 230	824 156 325	to 6 340	827 609 085	to 9 100	829 080 241	to 0 330
821 172 241	to 2 360	824 511 252	to 1 270	827 619 811	to 9 840	829 160 986	to 1 000
821 229 661	to 9 720	824 588 281	to 8 370	827 883 511	to 3 600	829 176 841	to 6 930
821 229 743	to 9 780	825 140 397	to 0 460	828 160 441	to 0 530	829 471 561	to 1 590
821 903 731	to 3 910	825 409 651	to 9 680	828 376 201	to 6 260	829 561 065	to 1 080
821 927 841	to 7 850	825 472 171	to 2 200	828 441 602	to 1 630	829 566 481	to 6 510
822 505 801	to 5 830	826 042 898	to 2 920	828 539 316	to 9 340	829 569 931	to 9 960

— Criminal Investigations Group, U.S. Postal Inspection Service, 3-23-23

Verifying U.S. Postal Service Money Orders

Follow these steps to cash a Postal Service™ money order:

1. Check that the amount does not exceed the legal limit: \$1,000 for domestic, and \$700 for international Postal Service money orders.
2. Check that the proper security features are present:
 - When held to the light, a watermark of Benjamin Franklin is repeated from top to bottom on the left side.
 - When held to the light, a dark line (security thread) runs from top to bottom with the word “USPS” repeated.
 - When there is discoloration around the dollar amounts, this might indicate the amounts were changed.

These appear in Postal Service Notice 299, *U.S. Postal Money Order Reference Card*, or online at usps.com/shop/money-orders.htm.

3. If the money order seems suspicious, call the U.S. Postal Service Money Order Verification System at 866-459-7822.

Provide this information to local banks and retailers, as they also receive Postal Service money orders for cashing.

— *Delivery and Retail Customer Service Operations, 3-23-23*

Counterfeit Canadian Money Order Forms

Do Not Cash

To be posted and used by retail window employees. As directed, destroy previous notices. Destroy all interim notices when the numbers listed appear in the *Postal Bulletin*.

671,819,086	683,594,542	687,262,503
676,612,640	684,683,610	687,262,525
677,891,039	686,619,878	687,262,526
678,282,493	686,619,886	687,287,578
678,916,031	686,619,887	687,287,581
679,552,215	686,794,382	687,287,582
679,694,334	686,794,426	694,063,898
679,751,983	686,794,427	694,063,899
679,800,207	686,794,431	694,063,980
681,130,536	687,262,502	701,321,725
681,844,376		

— *Criminal Investigations Group, U.S. Postal Inspection Service, 3-23-23*

Toll-Free Number Available to Verify Canadian Money Orders

The Canada Post Corporation has a toll-free number that cashing agents can call to verify the validity of Canadian Postal Money Orders. The number is 800-563-0444.

This toll-free number is printed on the back of the Canadian Postal Money Orders.

— *Criminal Investigations Group, U.S. Postal Inspection Service, 3-23-23*

Other Information

Overseas Military/Diplomatic Mail

Mail addressed to military and diplomatic post offices overseas is subject to certain conditions or restrictions of mailing regarding content, preparation, and handling. The APO/FPO/DPO table outlines these conditions by APO/FPO/DPO ZIP Codes™ through the use of footnoted mailing restrictions codes (see the [Restrictions](#) page following the table).

Acceptance clerks must use the table with the Retail System Software terminal to determine which APO/FPO/DPO ZIP Codes are active and which conditions of mailing apply.

The entries under “Changes” appear in bold in the following APO/FPO/DPO table:

Changes

APO/FPO/DPO	Action	Effective Date	See Restrictions
APO AE 09116	Add C	03/08/2023	A-B-C-C2-F-F3-H-N-R-S-V-Z1
APO AE 09756	Add C, C2	03/10/2023	A-B-C-C2-E3-F-F1-F3-J-L-N-Q-R-R1-S-T-V-Z1
APO AP 96202	Add C; Remove U	03/01/2023	A-B-C-C2-F-F1-F3-M-R-S
APO AP 96214	Add N	03/08/2023	A-B-C-C2-F1-F3-N-R-S-U
APO AP 96218	Add C, C2	03/01/2023	A-B-C-C2-F-F1-F3-M-R-S-U
APO AP 96224	Add C, C2	03/02/2023	A-B-C-C2-F-F1-F3-M-R-S-U
APO AP 96258	Add B, C, C2, F1; Remove A, U	03/02/2023	B-C-C2-F-F1-F3-M-P-R-S
APO AP 96260	Add C, C2	03/01/2023	A-B-C-C2-F-F1-F3-M-R-S-U
APO AP 96273	Add C; Remove A	03/09/2023	B-C-C2-F-F1-F3-M-R-S-U
APO AP 96284	Add C	03/01/2023	A-B-C-C2-F-F1-F3-M-R-S-U
FPO AP 96351	Remove R1	03/09/2023	B-C-C2-F-F1-F2-F3-H-M-R-S-T-Z1
APO AP 96555	Add C, C2, F1, U2.	03/01/2023	A-B-C-C2-F-F1-F3-M-R-S-U2-V
APO AP 96557	Add C, C2, F1, U2	03/01/2023	A-B-C-C2-F-F1-F3-M-R-S-U2-V

We have eliminated “Not Active” entries from the table below to save space and paper.

APO/FPO/DPO Table

APO/FPO/DPO	See Restrictions	APO/FPO/DPO	See Restrictions	APO/FPO/DPO	See Restrictions	APO/FPO/DPO	See Restrictions
09002	A-B-C-C2-F-F3-H-N-R-S-V-Z1	09018	A-B-C-C2-F-F3-H-N-R-S-V-Z1	09096	B-C-C2-D-E-F-F3-H-M-R-S-U	09136	B-C-C2-D-E-F-F3-H-M-P-R-S-U
09003	B-C-C2-D-E-F-F3-H-M-P-R-S-U	09020	B-C-C2-D-E-F-F3-H-M-R-S-U	09101	A-B-C-C2-F-F3-H-N-Q-R-S-V-Z1	09138	B-C-C2-D-F-F3-H-M-R-S-U
09004	B-C-C2-D-E-F-F3-H-M-R-S-U	09021	B-C-C2-D-E-F-F3-H-M-R-S-U-Z1	09103	A-B-C-C2-F-F3-H-N-R-S-V-Z1	09140	B-C-C2-D-E-F-F3-H-M-R-S-U
09005	B-C-C2-D-E-F-F3-H-M-P-R-S	09034	B-C-C2-D-E-F-F3-H-M-R-S-U	09104	B-C-C2-D-F3-H-M-R-S-U-Z1	09142	B-C-C2-D-E-F-F3-H-M-R-S-U
09006	B-C-C2-D-E-F-F3-H-M-R-S-U	09044	B-C-C2-D-F-F3-H-R-S-U	09107	B-C-C2-D-E-F-F3-H-M-R-S-U	09154	B-C-C2-D-E-F-F3-H-M-R-S-U
09008	A-B-C-C2-F-F3-H-N-R-S-V-Z1	09046	B-C-C2-D-E-F-F3-H-M-R-S-U	09112	B-C-C2-D-E-F-F3-H-M-R-S-U	09160	B-C-C2-F1-F3-H-J-L-M-N-R-R1-S-T-U-V-X-Z1
09009	B-C-C2-D-E-F-F3-H-M-R-S-U-Z1	09049	B-C-C2-D-E-F-F3-H-M-R-S-U	09114	B-C-C2-D-E-F-F3-H-M-R-S-U	09170	A-B-C-C2-F1-F3-J-L-M-N-R-R1-S-T-V-X-Z1
09010	B-C-C2-D-E-F-F3-H-M-R-S-U2	09053	B-C-C2-D-E-F-F3-H-M-R-S-U	09115	A-B-C2-F-F3-H-N-R-S-V-Z1	09171	A-B-C-C1-C2-E3-F1-F3-J-L-M-N-R-R1-S-T-V-X-Z1
09011	B-C-C2-D-E-F-F3-H-M-R-S	09060	B-C-C2-D-E-F1-F3-H-M-N-R-S-U-Z1	09116	A-B-C-C2-F-F3-H-N-R-S-V-Z1	09172	B-C-C2-D-E-F-F3-H-M-R-S-U
09012	B-C-C2-D-E-F-F3-H-M-R-S-U-Z1	09067	B-C-C2-D-E-F-F3-H-M-R-S-U	09117	A-B-C-C2-F-F3-H-N-R-S-V-Z1	09173	B-C-C2-D-E-F-F3-H-M-R-S-U
09013	B-C-C2-D-E-F-F1-F3-H-M-R-S-U-Z1	09068	B-C-C2-D-E-F-F3-H-R-S-U-Z1	09123	B-C-C2-D-E-F-F3-H-M-R-S-U-Z1	09174	B-C-C2-F1-F3-L-N-R-R1-S-T-V-Z1
09014	B-C-C2-D-E-F-F3-H-M-P-R-S-U	09069	A-B-C-C2-D-E-F-F3-H-N-R-S-U-V	09126	B-C-C2-F3-H-M-P-R-S-Z1	09175	A-B-C-C1-C2-E2-F1-F3-H1-J-L-M-N-R-R1-S-T-V-W-X-Z1
09015	A-B-C-C1-C2-F-F1-F3-J-L-M-N-R-R1-S-V-Z1	09079	B-C-C2-D-E-F-F3-H-M-R-S-U	09128	B-C-C2-D-E-F-F3-H-M-R-S-U	09176	A-B-C-C2-F1-F3-J-L-M-N-R-R1-S-T-V-X-Z1
09016	B-C-C2-D-E-F1-F3-H-M-R-S-U	09094	B-C-C2-D-F3-H-M-P-R-S-Z1	09131	B-C-C2-D-E-F-F3-H-M-R-S-U	09177	B-C-C2-D-E-F-F3-H-M-R-S-U
09017	A-B-C-C2-F-F3-H-N-R-S-V-Z1	09095	B-C-C2-D-E-F-F3-H-M-R-S-U	09135	A-B-C2-F-F3-H-N-R-S-U-V-Z1		

APO/ FPO/ DPO	See Restrictions	APO/ FPO/ DPO	See Restrictions	APO/ FPO/ DPO	See Restrictions	APO/ FPO/ DPO	See Restrictions
09178	B-C1-C2-E2-F1-F3-I3-L-M-N-R-S-T-V-X-Z1	09287	B-C2-E1-F1-F3-J-L-N-R-S-T-V-X-Z1	09366	A-B-C-C1-E2-F-F1-F3-H-H1-M-R-R1-S-V-Z1	09513	B-C-C2-F-F1-F3-R-R1-S-V
09179	A-B-C-C1-C2-F1-F3-J-L-M-N-R-R1-S-T-V-X-Z1	09288	A-B-C-C1-C2-E2-F1-F3-H-H1-J-L-M-N-R-R1-S-T-V-X-Z1	09401	B-C-C1-C2-F3-M-R-S-U-Z1	09514	B-C-C2-F-F1-F3-R-R1-V
09180	B-C-C2-D-E-F-F3-H-M-R-S-U	09289	B-E2-F1-F3-H1-J-L-M-N-R-R1-S-T-U2-V-X-Z1	09403	B-C-C1-C2-F3-M-R-S-U-Z1	09516	B-C-C2-F-F1-F3-R-R1-S-V
09186	B-C-C2-D-E-F-F3-H-M-P-R-S-U	09290	A-B-F1-F3-J-L-M-N-R-S-T-U2-V-X-Z1	09410	C-C2-F-F1-F3-N-R-S-U2	09517	B-C-C2-F-F1-F3-R-R1-S-V
09203	A-B-C-C1-C2-F1-F3-I3-J-L-M-N-R-R1-S-T-V-X-Z1	09291	B-C-C1-C2-E2-F1-F3-H1-L-N-R-R1-S-T-V-X-Z1	09421	B-C-C1-C2-F3-M-R-S-U-Z1	09520	B-F-F1-F3-R-R1-S-V
09204	B-C-F3-M-N-R-S-V-Z1	09292	A-B-C-C2-E-E2-E3-F1-F3-H-H1-J-L-M-N-R-R1-S-T-V-X-Z1	09424	B-C-C2-F1-F3-M-N-R-S-U-Z1	09522	B-F-F1-F3-R-S-V
09205	A-B-C-C2-E2-F-F3-M-N-R-S-T-V-X	09293	A-B-C-C1-C2-E-E2-F1-F3-I3-L-M-N-R-S-T-V-X-Z1	09447	B-C-C1-C2-F3-M-R-S-U-V-Z1	09523	B-C-C2-F-F1-F3-R-R1-S-V
09211	B-C-C2-D-E-F-F3-H-M-P-R-S-U	09294	B-C-C1-C2-E2-F1-F3-H1-L-N-R-R1-S-T-V-X-Z1	09454	B-C-C1-C2-F3-M-R-S-U-V-Z1	09524	B-C-C2-F-F1-F3-R-R1-S-V
09213	B-C-C2-F1-F3-H-J-L-M-N-R-R1-S-T-U-V-X-Z1	09295	B-C-C1-C2-E2-F1-F3-H1-J-L-M-N-R-R1-S-T-V-X-Z1	09456	B-C-C1-C2-F3-M-N-R-S-U-V-Z1	09532	B-C-C2-F-F1-F3-R-R1-S-V
09214	B-C-C2-D-E-F3-H-M-R-S-U-Z1	09301	A-B-C-C1-C2-E2-F1-F3-H1-I3-L-M-N-R-R1-S-T-U4-V-X-Z1	09459	B-C-C1-C2-F3-M-R-S-U-Z1	09533	B-V
09216	B,C,F1,F3,M,N,R,S,V,Z1	09304	A-B-C-C1-C2-F-F1-F3-H-M-N-R-S-V-Z1	09461	B-C-C1-C2-F3-M-P-R-S-U-Z1	09534	B-F-F1-F3-R-R1-S-V
09227	B-C-C2-D-E-F-F3-H-M-R-S-U	09305	A-B-C1-E2-F-F1-F3-H1-I3-M-N-R-R1-S-T-V-Z1	09463	B-C-C1-C2-F3-M-R-S-U-Z1	09541	A-B-C-F-F3-M-N-S-V-Z1
09240	A-B-C1-C2-F-F3-H-N-R-S-V	09306	A-B-C1-E2-F-F1-F3-H1-R-R1-S-U2-V-Z1	09464	B-C-C1-C2-F3-R-S-U-Z1	09542	A-B-C-F-F3-M-N-S-V-Z1
09241	A-B-C-C2-F3-N-R-S-U-Z1	09307	B-C-C2-F-F3-N-R-R1-S-Z1	09467	B-C-C2-E-E1-F1-F3-J-L-M-N-R-S-T-V-W-X-Z1	09543	A-B-C-F-F3-M-N-S-V-Z1
09242	A-B-C1-C2-F-F3-H-N-R-S-V	09309	A-B-C-C1-C2-E2-F-F1-F3-H1-M-N-R-R1-S-V-Z1	09468	B-C-C1-C2-F3-M-R-S-U-Z1	09544	A-B-C-F-F3-M-N-S-V-Z1
09250	B-C-C2-D-E-F-F3-H-M-R-S-U	09310	A-B-C-C1-E2-F-F1-F3-H1-I3-L-M-N-R-R1-S-T-U4-V-Z	09469	B-C-C1-C2-F3-R-S-U-Z1	09545	A-B-C-F-F3-M-N-S-V-Z1
09261	B-C-C2-D-E-F3-H-M-N-R-S-U-V-Z1	09311	A-B-C1-C2-E2-F-F1-F3-H1-I3-L-M-N-R-R1-S-T-U4-V-Z1	09470	B-C-C1-C2-F3-M-R-S-U-Z1	09550	B-C-C2-F-F1-F3-R-R1-S-V
09263	B-C-C2-D-E-F3-H-M-R-S-U	09312	A-B-C-C1-E2-F-F1-F3-H1-I3-L-M-N-R-R1-S-T-U4-V-X-Z1	09487	A-B-C-C1-C2-E2-F1-F3-I3-L-M-N-R-R1-S-T-V-W-X-Z1	09554	B-C-C2-F-F1-F3-R-R1-S-V
09264	B-C-C2-D-E-F-F3-H-M-R-S-U	09315	A-B-C1-E2-F-F3-N-R-R1-S-V-Z1	09488	A-B-C-C1-C2-E2-F1-F3-J-L-M-N-R-S-T-V-W-X-Z1	09556	B-F-F1-R-R1-V
09265	B-C-D-F-F1-H-J-L-M-N-R-S-T-U-V-Z1	09316	A-B-C1-E2-F-F1-F3-H1-I3-M-N-R-R1-S-T-V-Z1	09489	A-B-C-C1-C2-E2-F1-F3-L-M-N-R-R1-S-T-V-W-X-Z1	09564	B-C-C2-F-F1-F3-R-R1-S-V
09266	A-B-C2-F3-S-U-R-V-Z1	09321	A-B-C1-C2-E2-F-F3-H1-M-N-R-R1-S-V-Z1	09490	A-B-C1-C2-E2-F-F1-F3-H1-J-L-M-N-R-R1-S-T-V-X-Z1	09565	B-C-C2-F-F1-F3-R-R1-S-V
09276	A-B-F-F3-I3-L-M-N-R-S-T-V-X-Z1	09330	A-B-C1-C2-D-E-E2-F-F1-F3-H-H1-M-R-R1-S-V-Z1	09491	A-B-C1-C2-E2-F1-F3-H1-J-L-M-N-R-R1-S-T-V-Z1	09566	B-C-C2-E2-E3-F-F1-F3-R-R1-S-V
09277	A-B-E-E1-E2-F1-F3-I3-L-N-R-S-T-V-X-Z1	09333	A-B-C-C1-C2-E2-F-F1-F3-H1-I3-M-N-R-R1-S-V1-Z1	09494	B-C-C1-C2-F3-M-R-S-U-Z1	09567	B-C-C2-E2-E3-F-F1-F3-R-R1-S-V
09278	A-B-F-F3-I3-L-M-N-R-S-T-V-X-Z1	09343	A-B-C1-C2-F-F3-M-N-R-R1-S-V-Z1	09498	B-C-C1-C2-F1-F3-J-L-M-N-R-R1-S-T-V-X-Z1	09568	B-C-C2-F-F1-F3-R-R1-S-V
09279	A-B-E-E1-F-F3-I3-L-M-N-R-S-T-V-X-Z1	09348	A-B-C1-E2-F-F1-F3-H1-I3-M-N-R-R1-S-T-V-Z1	09501	B-V	09569	B-C-C2-E2-E3-F-F1-F3-R-R1-S-V-Z1
09280	A-B-C-C1-C2-E-E2-F1-F3-H-I3-L-M-N-R-S-T-V-W-X-Z1	09357	A-B-C1-E2-F-F3-H1-M-R-V-Z1	09502	B-V	09570	B-C-C2-F-F1-F3-R-R1-S-V
09281	A-B-C-C1-C2-E2-E3-F1-F3-H-H1-J-L-M-N-R-R1-S-T-V-X-Z1	09365	A-B-C-C1-E2-F-F3-H1-M-N-R-V-Z1	09503	B-F-F1-R-R1-V	09573	B-C-C2-E2-E3-F-F1-F3-R-R1-S-V-Z1
09282	A-B-C-C1-C2-E2-E3-F1-F3-H-H1-J-L-M-N-R-R1-S-T-V-X-Z1			09504	B-V	09574	B-F-F1-R-R1-V
09283	A-B-C-C2-E-E1-F1-F3-L-M-N-R-S-T-V-X-Z1			09505	B-V	09575	B-C-C2-F-F1-F3-R-R1-S-V
09284	A-B-C-C2-F1-F3-I3-L-M-N-R-S-T-V-Z			09506	B-V	09576	B-C-C2-F-F1-F3-R-R1-S-V
09285	A-B-C-E-E-1-F1-F3-H-I3-L-M-N-R-S-T-V-X-Z1			09507	B-V	09577	B-C-C2-F-F1-F3-R-R1-S-V
				09508	B-C-C2-F-F3-R-R1-S-V	09578	B-C-C2-F-F1-F3-R-R1-S-V
				09509	B-C-C2-F-F3-R-R1-S-V	09579	B-C-C2-F-F1-F3-R-R1-S-V
				09510	B-C-C2-F-F3-R-R1-S-V	09581	B-C-C2-F-F1-F3-R-R1-S-V
				09511	B-C-C2-F-F3-R-R1-S-V	09582	B-C-C2-F-F1-F3-R-R1-S-V
				09512	B-C-C2-F-F1-F3-R-R1-S-V	09583	B-C-C2-F-F1-F3-R-R1-S-V

APO/ FPO/ DPO	See Restrictions	APO/ FPO/ DPO	See Restrictions	APO/ FPO/ DPO	See Restrictions	APO/ FPO/ DPO	See Restrictions
09586	B-C-C2-F-F1-F3-R-R1-S-V	09642	B-C-C2-F1-F3-J-L-M-N-R-S-T-U-V-X	09730	A-B-C-C1-C2-F1-F3-J-L-M-N-R-R1-S-T-V-X-Z1	09777	A-B-C-C1-C2-E1-F1-F3-J-L-M-N-R-R1-S-T-V-X-Z1
09587	B-C-C2-F-F1-F3-R-R1-S-V	09643	B-C-C2-F3-M-R-S-U-V-Z1	09731	A-B-C-C1-C2-F1-F3-J-L-M-N-R-R1-S-T-V-X-Z1	09780	A-B-C2-F-F3-H-N-R-S-V
09588	B-C-C2-F-F1-F3-R-R1-S-V	09645	B-C-C1-E1-E2-F-F1-F3-M-R-S-U-X-Z1	09732	B-F-F3-N-S-V-Z-Z1	09801	A-B-C1-E2-F-F3-H1-M-N-R-R1-S-V-Z1
09589	B-F-F1-F3-R-S-V	09647	B-C2-F1-F3-M-N-R-S-U-Z1	09733	B-F-F3-N-R-S-V-Z	09802	A-B-C-C2-D-F1-F3-H1-I3-L-M-N-R-R1-S-T-V-W-X-Z-Z1
09590	B-C-C2-F-F1-F3-R-R1-S-V	09648	B-C2-F3-N-R-S-U-V-Z1	09734	A-B-C-C1-C2-F1-F3-I3-J-L-M-N-R-R1-S-T-V-X-Z-Z1	09803	A-B-C-C2-E-E2-E3-F1-F3-H-H1-J-M-N-R-R1-S-U-V-Z1
09591	B-C-C2-F-F1-F3-R-R1-S-V	09649	B-C2-F3-N-R-S-U-Z1	09735	B-F3-N-R-S-V-Z-Z1	09804	A-B-C-C2-F-F1-F3-M-N-R-S-V-Z1
09592	B-C-C2-F-F1-F3-R-R1-S-V	09701	A-B-C-C1-C2-F1-F3-J-L-M-N-R-R1-S-T-V-X-Z1	09736	A-B-C-C1-C2-F1-F3-J-L-M-N-R-R1-S-T-V-X-Z1	09805	B-C-C2-E2-E3-F-F1-F3-R-R1-S-Z1
09593	B-F-F1-F3-R-S-V	09702	B-C-C2-F-F1-M-R-R1-S-U	09737	A-B-C-C1-C2-F1-F3-I3-J-L-M-N-R-R1-S-T-V-W-X-Y-Z-Z1	09807	A-B-C1-C2-E2-F-F1-F3-H1-I3-M-N-R-R1-S-T-V-Z-Z1
09594	B-C-C1-C2-F-F1-F3-R-R1-S-V	09704	B-C-F-F1-F3-R-R1-S-U2-V	09738	A-B-C-C1-C2-F1-F3-J-L-M-N-R-R1-S-T-V-X-Z1	09808	A-B-C-C1-C2-E2-F1-F3-H-H1-J-L-M-N-R-R1-S-T-V-X-Z1
09595	B-C-C2-F-F1-F3-I3-J-R-R1-S-V-V1-Z1	09705	B-C-C1-C2-F1-F3-M-R-R1-S-U	09739	A-B-C-C1-C2-F1-F3-J-L-M-N-R-R1-S-T-V-X-Z1	09809	B-C-C1-C2-E3-F1-F3-J-L-M-N-R-S-T-V-X-Z1
09596	B-F-F1-R-R1-V	09706	B-C-C2-F3-M-N-R-S-U-V-Z1	09741	A-B-C-C1-C2-E2-F1-F3-H1-J-L-M-N-R-R1-S-T-V-W-X-Y-Z1	09810	A-B-C2-F-F1-F3-N-R-S-V-Z1
09599	B-F-F1-R-R1-V	09707	B-C-C2-F1-F3-J-L-M-N-R-R1-S-T-V-X-Z1	09742	A-B-C-C1-C2-F1-F3-J-L-M-N-R-R1-S-T-V-X-Z1	09811	A-B-C-C2-E-E2-E3-F1-F3-H-H1-J-M-N-R-R1-S-U-V-Z1
09600	B-C-C2-F-F1-F3-R-S-U-Z1	09708	B-C-C1-C2-F-F3-M-R-R1-S-U	09743	A-B-C-C2-F-F3-H-N-R-S-V-Z-Z1	09812	B-E2-E3-F-F1-I-J-L-N-R-T-U-V-Z-Z1
09602	B-C-C2-F-F1-F3-N-R-S-U-V	09709	B-C-C1-C2-E2-F1-F3-H-H1-J-L-N-R-R1-S-T-V-X-Z1	09744	A-B-C-C1-C2-F1-F3-J-L-M-N-R-R1-S-T-V-X-Z1	09813	A-B-C-C1-C2-E2-E3-F1-F3-J-L-N-R-R1-S-T-V-X-Z1
09603	B-C-C2-F-F1-F3-R-S-U-V-Z1	09710	B-C-C1-F-F1-J-L-M-N-R-R1-T-U-V-Z1	09745	A-B-C2-F-F1-F3-M-N-R-R1-S-V-Z1	09814	B-C-C2-E2-E3-F1-F3-I3-J-L-M-N-R-R1-S-T-V-X-Z-Z1
09604	B-C-C2-F-F1-F3-P-R-S-U-V-Z1	09711	A-B-C-C2-E2-F-F1-F3-M-N-R-S-T-V-X	09748	A-B-C-C1-C2-F1-F3-J-L-M-N-R-R1-S-T-V-X-Z1	09815	A-B-C-C2-E-E2-E3-F1-F3-H-H1-J-M-N-R-R1-S-U-V-Z1
09605	B-C-C2-D-F-F3-H-M-R-S-U-V	09712	A-B-C2-F-F3-H-R-S-U-V-Z1	09749	A-B-C2-F-F3-H-N-R-S-U-V-Z1	09816	A-B-C-C1-C2-E2-E3-F1-F3-J-L-M-N-R-R1-S-T-V-X-Z1
09606	B-C-C2-D-F-F3-H-M-R-S-U-V	09714	B-C-C1-C2-F-F3-M-R-R1-S-U	09750	A-B-C-C1-C2-F1-F3-J-L-M-N-R-R1-S-T-V-X-Z1	09817	A-B-C-C1-C2-E2-E3-F1-F3-H-H1-J-L-M-N-R-R1-S-T-V-X-Z1
09608	B-C-F-F3-N-R-S-U-V-Z1	09715	B-F-F1-J-L-M-N-R-T-V-Z1	09751	B-C-C2-D-E-F-F3-H-M-R-S-U	09818	A-B-C-C2-F-F3-M-R-S-V-Z1
09609	B-C-C2-F-F3-N-R-S-U-V-Z1	09716	B-C-C2-F1-F3-J-L-M-N-R-R1-S-T-V-X-Z1	09752	B-C-C2-D-F-F3-H-R-S-U	09819	A-B-C-C1-C2-E2-F-F1-F3-H-H1-M-R-R1-S-V-Z1
09610	B-C-C2-F-F1-F3-M-R-S-U-V-Z1	09717	A-B-C-C2-F3-M-R-S-V-W-Z1	09753	A-B-C-C1-C2-D-E-F1-F3-H-M-N-R-S-V-W-Z1	09820	A-B-C-C2-F1-F3-H-H1-J-L-M-N-R-R1-S-T-V-X-Z1
09613	B-C-C2-F-F3-N-R-S-U-V	09718	B-F-F1-J-L-M-N-R-T-U-V-Z1	09754	A-B-C-C2-F-F3-H-N-R-S-V-Z-Z1	09821	A-B-C-C2-F-F3-N-R-S-V-Z1
09614	A-B-C-C1-C2-E2-F1-F3-H1-J-L-M-N-R-R1-S-T-U-V-X-Z1	09719	B-C-C2-D-F3-M-R-S-U-V-Z1	09755	A-B-C-C1-C2-D-F-F1-F3-J-L-M-N-Q-R-R1-S-T-V-Z1	09822	A-B-C-C2-F-F3-M-R-S-V-Z1
09618	B-C-C2-F-F3-R-S-U-Z1	09720	B-C2-F3-M-R-S-U-V-Z1	09756	A-B-C-C2-E3-F-F1-F3-J-L-N-Q-R-R1-S-T-V-Z1	09823	A-B-C-C1-C2-F1-F3-J-L-M-N-R-R1-S-T-V-X-Z1
09620	B-C-C2-F-F3-R-S-U-V-Z1	09722	A-B-C-C2-F-F3-H-N-R-S-V-Z-Z1	09759	A-B-C-C1-C2-E2-F1-F3-J-L-M-N-R-R1-S-T-V-X-Z1	09824	A-B-C-C2-F-F3-M-R-S-V-Z1
09621	B-C-F-F3-R-U-Z1	09723	B-C-C2-F1-F3-J-L-M-N-R-R1-S-T-V-X-Z1	09761	B-C2-F-F1-F3-M-R-R1-S-V-Z-Z1	09825	A-B-C-C1-C2-F1-F3-J-L-M-N-R-R1-S-T-V-X-Z1
09622	B-C-C2-F-F3-R-S-U-Z1	09724	B-C-C1-C2-F-F3-M-R-R1-S-U	09762	A-B-C-C1-E3-F1-F3-J-L-M-N-R-R1-S-T-V-Y-Z1	09826	A-B-C-C1-C2-E1-E2-E3-F1-F3-J-L-M-N-R-R1-S-T-V-W-X-Z1
09623	B-C-C2-F-F3-R-S-U-V-Z1	09725	A-B-C2-F-F3-H-N-Q-R-S-V-V1-Z-Z1	09769	A-B-C-C1-C2-F1-F3-J-L-M-N-R-R1-S-T-V-X-Z1		
09624	B-C-C2-F1-F3-I3-L-M-N-R-R1-S-T-U-V-X-Z1	09726	B-F-F1-J-L-M-N-R-T-U-V-Z1				
09625	B-C-C2-F-F3-N-R-S-U-Z1	09727	A-B-C-C1-C2-F1-F3-J-L-M-N-R-R1-S-T-V-X-Z1				
09627	B-C-C2-F-F3-R-S-U-V-Z1	09728	A-B-C-C1-C2-F1-F3-J-L-M-N-R-R1-S-T-V-X-Z1				
09630	B-C-C2-F-F3-R-S-U-V	09729	B-C-C2-F-F3-N-R-R1-S-U-V-Z1				
09633	B-C-C2-D-F-F3-M-R-S-U-U1-U2-U3-V-Z1						
09634	A-B-C2-F-F3-M-N-R-S-V						
09636	B-C-C2-F-F3-R-S-U-V-Z1						

APO/ FPO/ DPO	See Restrictions	APO/ FPO/ DPO	See Restrictions	APO/ FPO/ DPO	See Restrictions	APO/ FPO/ DPO	See Restrictions
09827	A-B-F-F1-J-L-M-N-R-T-V-Z1	09870	A-B-C-C1-C2-E2-F1-F3-H1-I3-L-M-N-R-R1-S-T-U4-V-X-Z-Z1	34010	B-C2-F-F1-F3-R-S-V	34085	B-C-C1-C2-E2-E3-F-F1-F3-H1-J-R-R1-S-T-V-V1
09828	A-B-C-C1-C2-F1-F3-I3-L-M-N-R-R1-S-T-V-X-Z-Z1	09873	A-B-C-C1-C2-E2-F1-F3-H1-I3-L-M-N-R-R1-S-T-U-U4-V-X-Z-Z1	34011	B-C-C1-C2-E2-F1-F3-J-L-M-N-R-R1-S-T-V-X-Z1	34086	B-C-C1-C2-E2-E3-F-F1-F3-H1-J-R-R1-S-T-V-V1
09829	B-C-N-R-V-Z1	09874	A-B-C-C1-C2-E2-F1-F3-H1-I3-L-M-N-R-R1-S-T-U-U4-V-X-Z-Z1	34020	B-C-C1-C2-F1-F3-J-L-M-N-R-R1-S-T-V-X-Z1	34087	B-C-C2-E2-F-F1-F3-R-R1-S-V
09830	B-C-F-F1-F3-J-L-M-N-R-R1-S-T-V-Z1	09875	A-B-C1-C2-E2-F-F1-F3-H1-I3-L-M-N-R-R1-S-T-U-U4-V-X-Z1	34021	B-C-C1-C2-F1-F3-J-L-M-N-R-R1-S-T-V-X-Z1	34088	B-C-C2-F-F1-F3-R-R1-S-V
09831	B-C-C1-C2-F1-F3-J-L-M-N-R-R1-S-T-V-X-Z1	09877	A-B-C-C2-E-E2-E3-F1-F3-H-H1-J-M-N-R-R1-S-U-V-Z1	34022	B-C-C1-C2-F1-F3-J-L-M-N-R-R1-S-T-V-X-Z1	34089	B-C-C2-F-F1-F3-R-R1-S-V
09832	A-B-C-C1-C2-E2-E3-F1-F3-H-H1-J-M-N-R-R1-S-V-Z1	09880	A-B-C1-C2-E2-F-F1-F3-H1J-L-N-R-R1-S-T-U-V-Z1	34023	B-C-C1-C2-F1-F3-J-L-M-N-R-R1-S-T-V-X-Z1	34090	B-C-C2-F-F1-F3-R-R1-S-V
09834	B-C-C2-E2-E3-F-F1-F3-R-R1-S-U-Z1	09892	A-B-C-C1-C2-E2-F1-F3-J-L-M-N-R-R1-S-T-V-X-Z1	34024	B-C-C1-C2-F1-F3-J-L-M-N-R-R1-S-T-V-X-Z1	34091	B-C-C2-E2-E3-F-F1-F3-R-R1-S-V-Z1
09836	A-B-C-C1-C2-F1-F3-J-L-M-N-R-R1-S-T-V-X-Z1	09895	A-B-C1-C2-E2-F-F1-F3-J-L-M-N-R-T-V-W-Z1	34025	B-F-F1-F3-J-L-M-N-R-R1-T-V-Z1	34092	B-C-C2-F-F1-F3-R-R1-S-V-Z1
09837	B-E2-E3-F1-F3-R-S-V-Z1	09898	B-C-C1-C2-E2-F-F1-F2-H1-N-R-R1-S-U2-V-Z1	34030	B-C-C1-C2-F1-F3-J-L-M-N-R-R1-S-T-V-X-Z1	34093	B-C-C2-F-F1-F3-R-R1-S-V
09838	B-C-C2-E2-E3-F-F1-F3-R-S-U-Z1	09902	A-B-C1-C2-E2-F-F3-H1-M-R-R1-S-V-Z1	34031	B-C-C1-C2-F1-F3-J-L-M-N-R-R1-S-T-V-X-Z1	34094	B-F-F1-F3-R-R1-S-V
09842	A-B-C-C1-C2-E3-F1-F3-J-L-M-N-R-R1-S-T-V-X-Z1	09903	B-C1-E2-F1-F3-S-V-Z1	34032	B-C-C1-C2-F1-F3-J-L-M-N-R-R1-S-T-V-X-Z1	34095	B-F-F1-R-R1-V
09844	A-B-C-C1-C2-F1-F3-J-L-M-N-R-R1-S-T-V-X-Z1	09904	B-C1-E2-F1-F3-S-V-Z1	34033	B-C-C1-C2-F1-F3-I3-L-M-N-R-S-T-V-X-Z1	96201	A-B-F-F1-F3-M-R-S-U
09845	A-B-C-C1-C2-E3-F1-F3-J-L-M-N-R-R1-S-T-V-X-Z1	09908	A-B-C2-F-F1-F3-N-R-R1-S-V-Z1	34034	B-C-C1-C2-F1-F3-I3-L-M-N-R-R1-S-T-V-X-Z1	96202	A-B-C-C2-F-F1-F3-M-R-S
09846	A-B-C-C1-C2-F1-F3-J-L-M-N-R-R1-S-T-V-X-Z1	09909	A-B-C2-F-F1-F3-N-R-R1-S-V-V1-Z1	34035	B-C-C1-C2-F1-F3-H-J-L-M-N-R-R1-S-T-V-X-Z1	96203	A-B-F-F1-F3-M-R-S-U
09847	B-C-C2-F1-F3-J-L-M-N-R-R1-S-T-V-X-Z1	09974	B-F1-F3-J-L-M-N-R-S-T-U2-V-X-Z1	34036	B-C-C1-C2-F1-F3-J-L-M-N-R-R1-S-T-V-X-Z1	96204	A-B-F-F1-F3-M-R-S-U
09848	A-B-C2-F-F3-M-R-S-V-Z1	09975	B-F1-F3-I3-L-M-N-R-S-T-U2-V-X-Z1	34037	B-C-C1-C2-F1-F3-H-J-L-M-N-R-R1-S-T-V-X-Z1	96205	A-B-C-C2-F-F1-F3-M-R-S-U
09853	B-C1-C2-E2-F-F1-F3-H1-N-R-R1-S-U2-V-Z1	09976	B-F1-F3-J-L-M-N-R-S-T-U2-V-X-Z1	34041	B-C-C1-C2-F1-F3-J-L-M-N-R-R1-S-T-V-X-Z1	96206	A-B-C-C2-F-F1-F3-M-R-S-U
09854	A-B-C-C1-C2-F1-F3-J-L-M-N-R-R1-S-T-V-X-Z1	09977	B-F1-F3-J-L-M-N-R-S-T-U2-V-X-Z1	34042	A-B-C-F-F1-F3-M-N-R-S-U-V-W-Z1	96207	A-B-F-F1-F3-M-R-S-U-V
09855	A-B-C-C1-C2-E2-F-F1-F3-H1-M-R-R1-S-U2-V-Z1	09978	B-C-C2-D-E1-F-F1-F3-H-H1-M-N-R-R1-S-T-X-Z1	34045	B-C-C1-C2-F1-F3-J-L-M-N-R-R1-S-T-V-X-Z1	96208	A-B-F-F1-F3-M-R-S-U
09857	A-B-C-C2-E2-F1-F3-I3-L-M-N-R-R1-S-T-V-X-Z-Z1	09980	B-C-C1-C2-F1-F3-J-L-M-N-R-R1-S-T-V-X-Z1	34058	B-C2-F-F1-F2-F3-R-R1-S-V-Z1	96209	A-B-C-C1-C2-F1-F3-J-L-M-N-R-S-T-U-V-X-Z1
09858	A-B-C-C1-C2-E2-E3-F1-F3-H-H1-J-M-N-R-R1-S-U-V-Z1	09981	B-C-C1-C2-F1-F3-J-L-M-N-R-R1-S-T-V-X-Z1	34060	B-C-C1-C2-E2-F1-F3-J-L-M-N-R-R1-S-T-V-X-Z1	96210	A-B-C-C1-C2-F1-F3-I3-L-M-N-R-R1-S-T-V-X-Z-Z1
09859	B-C-C1-C2-E2-E3-F-F1-F3-H1-R-R1-S-U-Z1	09982	B-C-C1-C2-F1-F3-J-L-M-N-R-R1-S-T-V-X-Z1	34066	B-C-C1-C2-F1-F3-I3-J-L-M-N-R-R1-S-T-V-X-Z1	96212	B-F-F1-F2-H-M-W-Z1
09860	A-B-C-C2-F1-F3-J-L-M-N-R-R1-S-T-V-X-Z1	09983	B-C-C1-C2-F1-F3-J-L-M-N-R-R1-S-T-V-X-Z1	34067	B-C-C1-C2-F1-F3-J-L-M-N-R-R1-S-T-V-X-Z1	96213	A-B-C-C2-F1-F3-N-R-S
09862	A-B-C-C2-F1-F3-I3-L-M-N-R-R1-S-T-V-X-Z-Z1	09984	B-C-C1-C2-F1-F3-J-L-M-N-R-R1-S-T-V-X-Z1	34068	B-C-C1-C2-F1-F3-J-L-M-N-R-R1-S-T-V-X-Z1	96214	A-B-C-C2-F1-F3-N-R-S-U
09864	A-B-C-C1-C2-E2-F1-F3-L-M-N-R-R1-S-T-V-W-X-Z1	34001	A-B-C-C1-C2-F1-F3-J-L-M-N-R-R1-S-T-V-X-Z1	34069	B-C-C1-C2-F1-F3-I3-J-L-M-N-R-R1-S-T-V-X-Z1	96218	A-B-C-C2-F-F1-F3-M-R-S-U
09867	A-B-C-C1-C2-E2-F1-F3-L-M-N-R-R1-S-T-V-W-X-Z1	34002	B-C-C1-C2-F1-F3-J-L-M-N-R-R1-S-T-V-X-Z1	34072	B-C-C2-F1-F3-J-L-M-N-R-S-T-V-X-Z1	96224	A-B-C-C2-F-F1-F3-M-R-S-U
09869	A-B-C-C1-C2-E2-F1-F3-L-M-N-R-R1-S-T-V-W-X-Z1	34004	B-C-C1-C2-F1-F3-J-L-M-N-R-R1-S-T-V-X-Z1	34078	B-F1-F3-N-R-S-V-Z1	96251	A-B-F-F1-F3-M-R-S-U
		34007	B-F-F1-H-J-M-N-R-R1-V-Z1	34080	B-F-F1-R-R1-V	96257	A-B-F-F1-F3-S-U
		34008	B-C-C1-C2-D-E1-F1-F3-H-H1-J-L-M-N-R-R1-S-T-V-X-Z	34081	B-F-F1-R-R1-V	96258	B-C-C2-F-F1-F3-M-P-R-S
		34009	B-C2-F-F1-F3-R-S-V	34082	B-F-F1-R-R1-V	96260	A-B-C-C2-F-F1-F3-M-R-S-U
				34083	B-F-F1-R-R1-V	96262	A-B-C2-F-F1-F3-R-S-U-V-Z1
				34084	B-F-F1-R-R1-V	96264	A-B-C-C2-F1-F3-R-S-U
						96266	A-B-C-C2-F1-F3-R-S-U
						96269	A-B-C-C2-F1-F2-F3-R-S-U-Z1
						96271	A-B-F-F3-M-P-R-S-U
						96273	B-C-C2-F-F1-F3-M-R-S-U

APO/ FPO/ DPO	See Restrictions	APO/ FPO/ DPO	See Restrictions	APO/ FPO/ DPO	See Restrictions	APO/ FPO/ DPO	See Restrictions
96275	A-B-F-F1-F3-M-R-S-U	96378	B-C-C2-F-F3-M-R-S-W	96552	B-Z1	96657	B-C-C2-F-F1-F3-R-R1-S-V
96276	A-B-C-C2-F1-F3-R-S	96379	B-C-C2-F-F3-M-R-S-W	96553	A-B-C-C2-F-F1-F3-H-M-N-R-S-U	96660	B-C-C2-F-F1-F3-R-R1-S-V
96278	A-B-C-C2-F1-F3-R-S-U	96380	B-C-C2-F-F3-M-R-S-W	96554	A-B-C-C1-C2-F1-F3-H-J-L-M-N-R-R1-S-T-V-X-Z1	96661	B-C-C2-F-F1-F3-R-R1-S-V
96283	A-B-F-F1-F3-S-U	96382	B-C-C2-F-F3-M-R-S-W	96555	A-B-C-C2-F-F1-F3-M-R-S-U2-V	96662	B-C-C2-F-F1-F3-R-R1-S-V
96284	A-B-C-C2-F-F1-F3-M-R-S-U	96384	B-C-C2-F-F3-M-R-S-W	96557	A-B-C-C2-F-F1-F3-M-R-S-U2-V	96663	B-C-C2-F-F1-F3-R-R1-S-V
96297	A-B-F-F1-F3-R-S-U	96385	B-C-C2-F-F3-M-R-S-W	96562	A-B-C-C1-C2-D-E2-E3-F1-F3-H-H1-I3-L-M-N-R-R1-S-T-V-X-Z1	96664	B-C-C2-F-F1-F3-R-R1-S-V
96300	A-B-F3-M-R-S-V-Z1	96386	B-C-C2-F-F3-M-R-S-W	96577	A-B-C2-F-F3-H-M-N-R-S-U	96665	B-C-C2-F-F1-F3-R-R1-S-V
96301	A-B-C-C2-F-F3-M-N-R-S-U2-W	96387	B-C-C2-F-F3-M-R-S-W	96578	B-C-C2-F1-F3-H-J-N-R-S	96666	B-C-C2-F-F1-F3-R-R1-S-V
96303	B-C-C1-C2-F1-F3-H-J-L-M-N-R-S-T-V-W-X-Z1	96388	B-C-C2-F-F3-M-R-S-W	96595	B-F-F3-R-S-V-Z1	96667	B-C-C2-F-F1-F3-R-R1-S-V
96306	B-F-F1-F2-F3-H-M-R-S-W-Z1	96389	B-C-C2-F-F3-M-R-S-W	96598	B-C2-F3-I3-N-R-S-V-V1	96668	B-C-C2-F-F1-F3-R-R1-S-V
96309	B-C-C2-F-F1-F3-M-N-R-S-V-W	96401	B-C-F-F3-N-R-S-V-V1-Z1	96599	B-C2-F3-N-R-S-V	96669	B-C-C2-F-F1-F3-R-R1-S-V
96310	B-C-C2-F-F3-M-R-S-W	96502	A-B-C-C1-C2-F-F1-F3-J-M-N-R-R1-S-T-U-V	96601	B-V	96670	B-C-C2-F-F1-F3-R-R1-S-V
96311	B-C-C2-F-F3-M-R-S-W	96504	A-B-C-C1-C2-F1-F3-I3-L-M-N-R-R1-S-T-V-W-X-Z1	96602	B-V	96671	B-C-C2-F-F1-F3-R-R1-S-V
96315	B-C-C2-F-F3-M-R-S-W	96505	A-B-C-C1-C2-F1-F3-I3-L-M-N-R-R1-S-T-V-W-X-Z1	96603	B-V	96672	B-C-C2-F-F1-F3-R-R1-S-V
96319	B-C-C2-F3-M-R-S-W	96507	A-B-C-C1-C2-F1-F3-H-J-L-M-N-R-S-T-V-X-Z1	96604	B-V	96673	B-C-C2-F-F1-F3-R-R1-S-V
96321	B-F-F1-F2-F3-H-M-R-S-W-Z1	96510	B-I3-N-V	96605	B-V	96674	B-C-C2-F-F1-F3-R-R1-S-V
96322	B-F-F1-F2-F3-H-M-R-S-W-Z1	96511	B-I3-N-V	96606	B-C-C2-F-F3-M-R-S-V-W	96675	B-C-C2-F-F1-F3-R-R1-S-V
96326	B-C-C2-F-F3-M-R-S-W	96515	B-C-D-E1-F-F1-F3-H-H1-M-N-R-S-T-Z1	96607	B-V	96677	B-C-C2-F-F1-F3-R-R1-S-V
96328	B-C-C2-F3-M-R-S-W	96516	B-C-C2-D-E1-E2-F-F1-F3-H-H1-M-N-R-S-T-Z1	96608	B-E2-F-H1-R1-U2-V-Z1	96678	B-C-C2-F-F1-F3-R-R1-S-V
96331	A-B-C-C2-F-F1-F3-J-L-M-N-R-S-U2-W	96517	B-C-D-E1-E2-F-F1-F3-H-H1-M-N-R-T-U-V-Z1	96609	B-E2-F-H1-R1-U2-V-Z1	96679	B-C-C2-F-F1-F3-R-R1-S-V
96336	B-C-C2-F3-M-R-S-V-W	96520	B-F-N-U3-V	96610	B-C-C2-F-F3-H1-R-R1-S-U2-V-Z1	96681	B-V
96337	B-C2-F-F1-F3-M-R-R1-S-W	96521	B-C-C1-C2-F-F1-F3-J-L-M-N-R-R1-S-T-V-X-Z1	96611	B-C-C2-F-F3-H1-R-R1-S-U2-V-Z1	96682	B-C-C2-F-F1-F3-R-R1-S-V
96338	A-B-C-C2-F-F3-M-R-S-U2-W	96530	A-B-C-C1-C2-F1-F3-H-H1-J-L-M-N-R-R1-S-T-V-X-Z1	96612	B-C-C2-F-F3-H1-R-R1-S-U2-V-Z1	96683	B-C-C2-F-F1-F3-R-R1-S-V
96339	A-B-C-C2-F-F3-M-N-R-S-U2-W	96531	A-B-C-C2-F-F1-F3-H-M-N-R-S-U-V	96613	B-C-C2-F-F3-H1-R-R1-S-U2-V-Z1	96686	B-C-C2-F-F1-F3-R-R1-S-V
96343	A-B-F-F3-M-P-R-S-U2	96532	A-B-C-C1-C2-F1-F3-H-J-L-M-N-R-R1-S-T-V-X-Z1	96615	B-F-F1-R-R1-V	96688	B-C-C2-F-F1-F3-R-R1-S-V
96346	B-F-F1-F2-F3-H-M-R-S-W-Z1	96534	A-B-C-C2-F-F1-F2-F3-R-R1-S-U-V-Z1	96616	B-C2-F-F1-F3-R-R1-S-V	96691	B-C-C2-F-F1-F3-R-R1-S-V
96347	B-C2-F-F1-F2-F3-H-M-R-S-W-Z1	96535	A-B-C-C1-C2-F1-F3-J-L-M-N-R-R1-S-T-V-X-Z1	96619	B-C-C2-F1-F3-R-S-V	96692	B-C-C2-F-F1-F3-R-R1-S-V
96349	B-C-C2-F-F1-F2-F3-H-M-R-S-Z1	96537	B-V-Z1	96620	B-C-C2-F-F1-F3-R-R1-S-V	96693	B-C-C2-F-F1-F3-R-R1-S-V
96350	B-F-F1-F2-F3-H-M-R-S-W-Z1	96540	B-F1-F2-F3-S-V-Z1	96628	B-C-C2-F-F1-F3-R-R1-S-V	96694	B-C-C2-F-F1-F3-I3-J-R-R1-S-V-Z
96351	B-C-C2-F-F1-F2-F3-H-M-R-S-T-Z1	96542	B-C-C2-F-F1-F2-F3-R-S	96629	B-C-C2-F-F1-F3-R-R1-S-V	96695	B-C-C2-F-F1-F3-R-R1-S-V
96362	B-C2-F-F1-F2-F3-H-M-R-S-W-Z1	96543	B-C-C2-F-F1-F2-F3-P-R-S	96632	B-C-C2-F-F1-F3-R-R1-S-V	96696	B-F-F1-R-R1-V
96365	B-C-C2-F3-M-R-S-W-V	96548	A-B-C2-F-F1-F3-H-M-R-S-U	96633	B-V	96698	B-C-C2-F-F1-F3-R-R1-S-V
96367	B-C-C2-F3-L-M-R-S-W	96549	A-B-C-C1-C2-F1-F3-H-J-L-M-N-R-R1-S-T-V-X-Z1	96641	B-V		
96368	B-C-C2-F3-M-R-S-W	96550	A-B-H-M-N-U-V-Z1	96642	B-V		
96370	B-F-F1-F2-H-M-W-Z1	96551	A-B-C-C1-C2-F1-F3-H-J-L-M-N-R-R1-S-T-V-X-Z1	96643	B-F-F1-F3-R-R1-S-V		
96371	B-C-C2-F-F3-M-R-S-W			96644	B-V		
96372	B-C-C2-F-F3-M-R-S-W			96645	B-V		
96373	B-C-C2-F-F3-M-R-S-W			96649	B-C-C2-F-F1-F3-R-R1-S-V		
96374	B-C-C2-F-F3-M-R-S-W			96650	B-F-F1-R-R1-V		
96375	B-C-C2-F-F3-M-R-S-W						
96376	B-C-C2-F-F3-M-R-S-W						
96377	B-C-C2-F-F3-M-R-S-W						

RESTRICTIONS

LEGEND

PS Form 2976, *Customs — CN 22 (Old C 1) and Sender's Declaration* (green label)

PS Form 2976-A, *Customs Declaration and Dispatch Note*

PS Form 2976-B, *Priority Mail Express International Shipping Label and Customs Form*

ATF	= Bureau of Alcohol, Tobacco, Firearms, and Explosives
Box C	= Department of State (DOS) contractor personnel
Box R	= Retired military personnel
DPO	= Diplomatic Post Office
MPO	= Military Post Office
PACT	= Prevent All Cigarette Trafficking Act
PAL	= Parcel Airlift
PMEMS	= Priority Mail Express Military Service
PUB 52	= Publication 52, <i>Hazardous, Restricted, and Perishable Mail</i>
SAM	= Space Available Mail
USDA	= United States Department of Agriculture

Note: Mail order catalogs are prohibited as SAM or PAL mail.

A. Securities, currency, or precious metals, including in their raw, unmanufactured state, are prohibited. Official Mail shipments are exempt from this restriction.

A1. Reserved for future use.

A2. Reserved for future use.

B. Other than for PMEMS and the exceptions listed below, a customs declaration PS Form 2976 or PS Form 2976-A is required for all items weighing 16 ounces or more, and for all items (regardless of weight) containing potentially dutiable mail contents (e.g., merchandise or goods) addressed to or from this ZIP Code. Other than the exceptions listed below, all PMEMS mailpieces (regardless of mail contents or weight) addressed to or from this ZIP Code must bear a properly completed PS Form 2976-B. The surface area of the address side of the mailpiece must be large enough to contain the applicable customs declaration. The following exceptions apply to known mailers, who for this purpose are defined as follows:

- Business mailers who enter volume mailings through business mail entry units or other bulk mail acceptance locations, pay postage through advance deposit accounts, use permit imprints for postage payment, and submit completed postage statements at the time of entry that certify that the mailpieces contain no dangerous materials that are prohibited by postal regulations. Such business mailers are exempt from providing customs documentation on non-dutiable letters and printed matter.
- All federal, state, and local government agencies whose mailings are regarded as "Official Mail." Such agencies are exempt from providing customs documentation, except for any items addressed to an MPO or DPO to which restriction "B2" applies.

B2. All federal, state, and local government agencies must complete customs documentation when sending potentially dutiable mail addressed to or from this MPO or DPO.

C. Cigarettes and other tobacco products, including tobacco leaves, chewing and pipe tobacco, snuff, and cigars are prohibited, including those that are authorized in Publication 52 under PACT.

C1. Obscene and horror articles, images, prints, paintings, cards, films, videotapes, comic books, etc., are prohibited.

C2. E-cigarettes and related products (e.g., nicotine liquids, e-liquids, parts, or supplies) are prohibited.

D. Coffee is prohibited.

E. Medicines (prescription, over-the-counter, vitamins, and supplements) are prohibited when mailed to individuals for human or animal use. This prohibition does not apply when medicines are sent as Official Mail only between specifically designated agencies such as pharmaceutical distributors, hospitals, clinics, and pharmacies.

E1. Mailers are responsible to ensure that all medicines and vaccines conform to host nation laws.

E2. Any matter depicting nude or seminude persons, pornographic, or sexual items are prohibited. Non-authorized political materials are prohibited. Religious materials contrary to the Islamic faith are prohibited in bulk quantities, but individual items for the personal use of the addressee are permissible.

E3. Radio transceivers, cordless/cellular telephones, global positioning systems, scanners, base stations, and handheld transmitters are prohibited.

F. Firearms of any type are prohibited, except firearms mailed to or by official U.S. government agencies. This restriction does not apply to firearms mailed from this MPO ZIP Code, provided ATF and USPS regulations are met. Antique firearms do not require an ATF form.

F1. Weapons of any type are prohibited.

F2. Mailing firearms to or from this MPO ZIP Code is restricted to one shotgun and one single shot .22 caliber rifle per individual.

F3. Replica weapons and inert explosive devices (such as grenades) and weapons parts are prohibited.

G. Parcels of any class are prohibited.

H. Meats, including preserved meats, bones, skin, hair, feathers, horns or hoofs of hoofed animals, and wool samples whether hermetically sealed or not, are prohibited.

H1. Pork or pork by-products are prohibited.

I. Reserved for future use.

I1. Reserved for future use.

I2. Reserved for future use.

I3. Mail of all classes must fit in a mail sack. Mail may not exceed the following dimensions:

- Maximum length 27 inches.
- Maximum width 14 inches.
- Maximum height 14 inches.

J. Standard Post and Parcel Select parcels may not exceed 108 inches in length and girth combined.

K. Reserved for future use.

L. All Official Mail is prohibited.

M. Fruits, vegetables, live animals, and live plants are prohibited.

N. Registered Mail service is prohibited.

O. Reserved for future use.

P. Official Mail only.

Q. Mail may not exceed 66 pounds, and size is limited to 42 inches maximum length and 72 inches maximum length and girth combined.

R. All alcoholic beverages, including those mailable under Publication 52, Part 421, are prohibited.

R1. Materials used in the production of alcoholic beverages (i.e., distilling material, hops, malts, yeast, etc.) are prohibited.

S. Synthetic cannabinoids used to stimulate the central nervous system commonly known as "synthetic marijuana," "K2," or "Spice" are prohibited.

T. Mailings of household shipments and case lots of food to or from an MPO require military transportation office approval prior to mailing. Mailings to or from a DPO require pre-approval from the Diplomatic Pouch and Mail Director.

U. Mail addressed to Retirees (Box R) is limited to 16 ounces and up to a 90-day supply of TRICARE medications. This restriction does not apply to mail endorsed "Free Matter for the Blind or Handicapped."

U1. Mail is limited to First-Class Mail items, including audio and video media, weighing 13 ounces or less. This limitation does not apply to Official Mail.

U2. Retirees (Box R) are not authorized mail service.

U3. Reserved for future use.

U4. Mail addressed to Box C is limited to 2 lbs.

V. PMEMS is not available.

V1. Electronic Delivery status information for Extra Services is not available on *USPS.com*. Manual record of delivery may be available upon request.

W. Hermetically sealed packages of meat products bearing USDA certification, such as dried beef, salami, and sausage, may be mailed. 200 grams of tobacco per parcel are permitted duty free.

X. Cremated remains are prohibited.

Y. Mail is limited to First-Class Mail and Priority Mail items only. This restriction also applies to Official Mail.

Z. No outside pieces (OSPs).

Z1. The following restriction is applicable only to International Service Centers (ISC)/Exchange Offices. An Anti-Pilferage Seal (Item No O817E or O818A) is required on all pouches and sacks.

— *International Network Operations,
Global Business, 3-23-23*

Thrift Savings Plan Fact Sheet

ANNUAL RETURNS	G Fund	F Fund	U.S. Aggregate Index	C Fund	S&P 500 Stock Index	S Fund	Dow Jones U.S. Completion TSM Index	I Fund	EAFE Stock Index
2015	2.04	0.91	0.55	1.46	1.38	-2.92	-3.42	-0.51	-0.81
2016	1.82	2.91	2.65	12.01	11.96	16.35	15.75	2.10	1.00
2017	2.33	3.82	3.54	21.82	21.83	18.22	18.12	25.42	25.03
2018	2.91	0.15	0.01	-4.41	-4.38	-9.26	-9.57	-13.43	-13.79
2019	2.24	8.68	8.72	31.45	31.49	27.97	27.94	22.47	22.01
2020	0.97	7.50	7.51	18.31	18.40	31.85	32.17	8.17	7.82
2021	1.38	-1.46	-1.54	28.68	28.71	12.45	12.35	11.45	11.26
2022	2.98	-12.83	-13.01	-18.13	-18.11	-26.26	-26.54	-13.94	-14.45

MONTHLY RETURNS	G Fund	F Fund	U.S. Aggregate Index	C Fund	S&P 500 Stock Index	S * Fund	Dow Jones U.S. Completion TSM Index	I * Fund	EAFE Stock Index
2022									
Mar	0.17	-2.73	-2.78	3.72	3.71	0.90	0.86	-0.33	0.64
Apr	0.20	-3.75	-3.79	-8.72	-8.72	-10.57	-10.58	-6.39	-6.47
May	0.21	1.13	0.64	-1.65	0.18	-3.53	-2.24	1.19	0.75
June	0.29	-1.94	-1.57	-6.55	-8.25	-7.95	-9.26	-8.21	-9.28
July	0.26	2.47	2.44	9.22	9.22	10.32	10.26	5.15	4.98
Aug	0.25	-2.80	-2.83	-4.08	-4.08	-2.08	-2.11	-5.79	-4.75
Sept	0.28	-4.31	-4.32	-9.21	-9.21	-9.91	-9.93	-9.40	-9.35
Oct	0.34	-1.26	-1.30	8.10	8.10	8.59	8.53	5.98	5.38
Nov	0.35	3.70	3.68	5.58	5.59	3.59	3.59	13.72	11.26
Dec	0.32	-0.65	-0.45	-5.78	-5.76	-6.55	-6.53	-1.85	0.08
2023									
Jan	0.34	3.25	3.08	6.28	6.28	10.82	10.80	8.43	8.10
Feb	0.28	-2.58	-2.59	-2.44	-2.44	-1.63	-1.66	-2.84	-2.09
YTD	0.62	0.58	0.41	3.68	3.69	9.01	8.96	5.36	5.84

The G Fund is managed internally by the Federal Retirement Thrift Investment Board. Assets of the F, C, S, and I Funds are managed externally. The Board currently has contracts with BlackRock Institutional Trust Company, N.A., to manage the F, C, S, and I Fund assets. The F, C, S, and I Funds invest in commingled trust funds, in which the assets of tax-deferred employee benefit plans are combined and invested together. The F, C, S, and I Funds and the BlackRock funds are passively managed index funds. Future performance of the funds will vary and may be significantly different from the returns shown above. See the *Summary of the*

Thrift Savings Plan for detailed information about the funds and their investment risks. The monthly returns of the TSP Funds represent net earnings for the month after deduction of accrued administrative expenses and, except for the G Fund, after deduction of trading costs and accrued investment management fees as well. The returns for the four indexes shown do not include any of these deductions.

* Implemented May 2001.

See next page for L Funds.

L Funds

Annual Returns	L Income	L 2020	L 2030	L 2040	L 2050
2015	1.85	1.35	1.04	0.73	0.45
2016	3.58	5.47	7.07	7.90	8.65
2017	6.19	9.86	14.54	16.77	18.81
2018	0.71	-0.36	-3.58	-4.89	-6.02
2019	7.60	9.38	17.60	20.69	23.33
2020	5.15		11.26	13.16	14.79

Annual Returns	L Income	L 2025	L 2030	L 2035	L 2040	L 2045	L 2050	L 2055	L 2060	L 2065
2021	5.42	9.75	12.37	13.43	14.51	15.40	16.34	19.90	19.90	19.90
2022	-2.70	-6.72	-10.32	-11.65	-12.90	-14.03	-15.05	-17.60	-17.61	-17.62

Monthly Returns	L Income	L 2025	L 2030	L 2035	L 2040	L 2045	L 2050	L 2055	L 2060	L 2065
2022										
Mar	0.49	0.85	1.14	1.21	1.29	1.34	1.42	1.88	1.88	1.87
Apr	-2.04	-3.59	-5.12	-5.63	-6.12	-6.56	-6.97	-8.11	-8.11	-8.11
May	0.04	-0.15	-0.35	-0.41	-0.48	-0.54	-0.61	-0.89	-0.89	-0.89
June	-1.60	-2.98	-4.37	-4.84	-5.29	-5.69	-6.07	-7.25	-7.25	-7.25
July	2.21	3.50	5.00	5.47	5.92	6.33	6.71	7.89	7.90	7.90
Aug	-1.04	-1.83	-2.74	-3.03	-3.30	-3.55	-3.77	-4.36	-4.36	-4.36
Sept	-2.33	-3.98	-5.85	-6.44	-7.01	-7.50	-7.97	-9.29	-9.29	-9.29
Oct	1.98	3.07	4.52	4.91	5.32	5.66	6.02	7.36	7.36	7.36
Nov	2.41	3.62	5.21	5.69	6.15	6.55	6.93	8.03	8.03	8.03
Dec	-0.90	-1.65	-2.64	-2.93	-3.22	-3.47	-3.71	-4.48	-4.49	-4.49
2023										
Jan	2.26	3.28	4.87	5.33	5.78	6.17	6.54	7.62	7.62	7.63
Feb	-0.55	-0.94	-1.54	-1.72	-1.88	-2.03	-2.16	-2.43	-2.44	-2.44
YTD	1.69	2.31	3.26	3.52	3.78	4.01	4.24	5.00	5.00	5.00

The TSP also added six new L Funds that have 5-year increments rather than the previous 10-year increments.

Freely Associated States Restrictions

We list the mailing restrictions for Freely Associated States (FAS) in the Pull-Out section of the *Postal Bulletin*. All FAS Restrictions will be updated periodically.

Freely Associated States

Mail addressed to freely associated states is subject to certain conditions or restrictions of mailing regarding content, preparation, and handling. The following FAS Restrictions table outlines these conditions as listed by each affected FAS ZIP Code™ through the use of footnoted mailing restrictions codes (see the [Restrictions](#) following the table). For more information on available extra services for FAS destinations, see *Mailing Standards of the United States Postal Service, Domestic Mail Manual (DMM®)*, part 503.

Acceptance clerks must use the table with the Retail System Software terminal to determine which FAS ZIP Codes are active and which conditions of mailing apply.

FAS Restrictions Table

FAS Table	See Restrictions
96939	A, B
96940	A, B
96941	A, B
96942	A, B
96943	A, B
96944	A, B
96960	A, B
96970	A, B, D
Marshall Islands	C
Federated States of Micronesia	C

RESTRICTIONS LEGEND

PS Form 2976, *Customs Declaration CN 22 – Sender's Declaration*

PS Form 2976-A, *Customs Declaration and Dispatch Note*

FAS = Freely Associated State

- A.** Bank currency (coin and paper) is prohibited.
- B.** Signature Confirmation, Signature Confirmation Restricted Delivery, Adult Signature Requested, Adult Signature Restricted Delivery, Certified Mail Adult Signature Required, and Certified Mail Adult Signature Restricted Delivery not available.
- C.** Collect on Delivery is prohibited.
- D.** Betel nut (Areca catechu) is prohibited.

— *Asia-Pacific Relations,
Global Business, 3-23-23*

Safety and Health

Be Ready for an Emergency

Natural disasters are inevitable and experienced globally. They can occur at any moment, at any place, and at any time. They can injure people, damage property, and sometimes, take lives. Prepared individuals are known to be the most resilient in the face of a natural disaster.

While some disasters, such as hurricanes, have early warning information, other disasters, such as earthquakes, are more unpredictable and unavoidable. We must do our part to foster a culture of preparedness for ourselves, our families, our workplaces, and the community.

How can we foster a culture of preparedness?

- Create a plan.
- Understand the types of emergencies likely to occur in your geographic area.
- Participate in awareness drills, if possible.
- Stock up on emergency supplies.
- Heed early warning information.
- Ensure personal documents such as passports, identification cards, and birth certificates are kept in a sealed, secure, and waterproof container.

- Familiarize yourself with your surroundings and know where to find the nearest evacuation routes, emergency exits, and emergency shelters.
- Develop contingencies for charging mobile devices, fueling vehicles, and accessing emergency funds in the event of a widespread power outage.
- Practice continuous risk assessment.
- Make preparedness a priority.

These and other precautionary measures can form the framework of your preparedness plan and help you and your loved ones to be ready for an emergency.

Use the following resources to help develop or augment your plans:

- USPS® National Preparedness page at blue.usps.gov/nationalpreparedness.
- Department of Homeland Security at ready.gov.
- Centers for Disease Control and Prevention at cdc.gov/disasters/index.html.

Why is it essential that USPS cultivates and fosters a culture of preparedness? Because it makes all of us less vulnerable when disaster strikes.

— *National Preparedness,
Corporate Affairs, 3-23-23*

Stamp Services

Stamp Announcement 23-17: Roy Lichtenstein Stamps



©2022 USPS

On April 24, 2023, in New York, NY, the United States Postal Service® will issue the *Roy Lichtenstein* stamps (Forever® priced at the First-Class Mail® rate) in five designs, in a pressure-sensitive adhesive (PSA) pane of 20 stamps (Item 483500). These stamps will go on sale nationwide April 24, 2023, and must not be sold or canceled before the first-day-of-issue. **The Roy Lichtenstein commemorative pane of 20 stamps must not be split and the stamps must not be sold individually.**

With these stamps, the Postal Service™ honors Roy Lichtenstein (1923–1997), the iconic American artist of the pop art movement. Each of the five stamps in this pane of 20 features one work of art by Lichtenstein:

- *Standing Explosion (Red)* (porcelain enamel on steel, 1965).
- *Modern Painting I* (acrylic, oil, graphite pencil on canvas, 1966).

- *Still Life with Crystal Bowl* (acrylic, oil, graphite pencil on canvas, 1972).
- *Still Life with Goldfish* (acrylic, oil, graphite pencil on canvas, 1972).
- *Portrait of a Woman* (acrylic, oil, graphite pencil on canvas, 1979).

The selvage features a photograph by Bob Adelman of Lichtenstein, his face framed by a model of his 1983 sculpture, *Brushstrokes in Flight*. Derry Noyes served as art director and designer for this issuance.

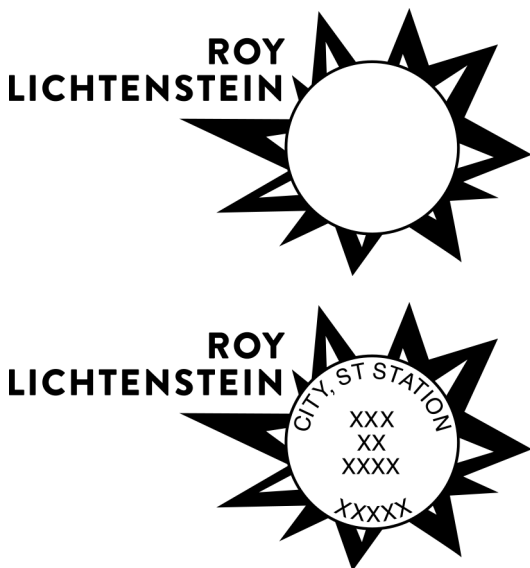
Availability to Post Offices: Item 483500, Roy Lichtenstein (Forever Priced at the First-Class Mail Rate) Pane of 20 Stamps

Stamp Fulfillment Services will not make an automatic push distribution to Post Offices. Post Offices may begin ordering stamps before the first-day-of-issue through SFS Web at sfsweb.usps.gov/sfsweb.

Special Dedication Postmarks

Only the following pictorial postmark is permitted for the *Roy Lichtenstein* stamps. The word “Station” or the abbreviation “STA” is required somewhere in the design because it will be a temporary station. Use of any image other than the following special pictorial image is prohibited.

Guidelines for Finalizing Roy Lichtenstein Stamps Pictorial Postmark Art



To finalize the *Roy Lichtenstein* stamps pictorial postmark art, insert the date, city, state, and ZIP Code™ of the physical location of your event adjacent to the stamp image. Overall dimensions of the pictorial postmark must not exceed 4 inches (horizontally) by 2 inches (vertically). Collectors prefer the dimensions 3-1/2 inches by 1 inch.

The Postal Service must make all special postmarks known to collectors through advance publicity in the *Postal Bulletin*. Therefore, all special dedication cancellations must be reported to Stamp Services 4 weeks before the event using PS Form 413, *Pictorial Postmark Announcement/Report*. To get a copy of the form, go to blue.usps.gov/formmgmt/forms/ps413.pdf.

How to Order the First-Day-of-Issue Postmark

Customers have 120 days to obtain the first-day-of-issue postmark by mail. They may purchase new stamps at their local Post Office™ or at The Postal Store® website at store.usps.com/store/home. They must affix the stamps to envelopes of their choice, address the envelopes (to themselves or others), and place them in a larger envelope addressed to:

FDOI – Roy Lichtenstein Stamps
 USPS Stamp Fulfillment Services
 8300 NE Underground Drive, Suite 300
 Kansas City, MO 64144-9900

After applying the first-day-of-issue postmark, the Postal Service will return the envelopes through the mail. There is no charge for the postmark up to a quantity of 50. There is a 5-cent charge for each additional postmark over 50. All orders must be postmarked by August 24, 2023.

How to Order First-Day Covers

The Postal Service also offers first-day covers for new stamp issues and Postal Service stationery items postmarked with the official first-day-of-issue cancellation. Each item has an individual catalog number and is offered in the *USA Philatelic* catalog and online at store.usps.com/store/home. Customers may register to receive a free *USA Philatelic* catalog online at usps.com/philatelic.

Locally produced items are not authorized. Only merchandise that has been approved and assigned an item number by Headquarters Retail Marketing may be produced and sold.

Issue:	<i>Roy Lichtenstein</i> Stamps
Item Number:	483500
Denomination & Type of Issue:	First-Class Mail Forever
Format:	Pane of 20 (5 designs)
Series:	N/A
Issue Date & City:	April 24, 2023, New York, NY 10199
Art Director:	Derry Noyes, Washington, DC
Designer:	Derry Noyes, Washington, DC
Existing Art:	Roy Lichtenstein
Modeler:	Sandra Lane / Michelle Finn
Manufacturing Process:	Offset / Flexographic
Printer:	Banknote Corporation of America
Press Type:	Gallus RCS
Stamps per Pane:	20
Print Quantity:	18,000,000 stamps
Paper Type:	Phosphor Tagged Paper, Block
Adhesive Type:	Pressure-sensitive
Colors:	Cyan, Magenta, Yellow, Black, Pantone 1805C, Pantone 2104C
Stamp Orientation:	Vertical
Image Area (w x h):	1.085 x 1.42 in / 27.559 x 36.068 mm
Overall Size (w x h):	1.225 x 1.56 in / 31.115 x 39.624 mm
Full Pane Size (w x h):	9.70 x 7.30 in / 246.38 x 185.42 mm
Press Sheets Size (w x h):	19.40 x 14.60 in / 492.76 x 370.84 mm
Plate Size:	80 stamps per revolution
Plate Number:	“B” followed by six (6) single digits in two corners
Marginal Markings:	
Front:	Header: Roy Lichtenstein 1923–1997 • Plate number in bottom 2 corners
Back:	©2022 Estate of Roy Lichtenstein. All rights reserved. • ©2022 USPS • USPS logo • Two barcodes (483500) • Plate position diagram (4) • Promotional text

– Stamp Services,
 Marketing, 3-23-23

Stamp Announcement 23-18: Tomie dePaola Stamp



©2022 USPS

On May 5, 2023, in Manchester, NH, the United States Postal Service® will issue the *Tomie dePaola* stamp (Forever® priced at the First-Class Mail® rate) in one design, in a pressure-sensitive adhesive (PSA) pane of 20 stamps (Item 483600). This stamp will go on sale nationwide May 5, 2023, and must not be sold or canceled before the first-day-of-issue.

This stamp honors prolific children's book author and illustrator Tomie dePaola (1934–2020), whose extraordinarily varied body of work encompasses folktales and legends, informational books, religious and holiday stories, and touching autobiographical tales. The stamp art features a detail from the cover of *Strega Nona* (1975), the Caldecott Honor-winning first book in the series. The story focuses on Strega Nona, “Grandma Witch,” who uses magic to help with matters of the heart and to cure her neighbors’ ills. The cover shows Strega Nona carrying her magic pasta pot. Art director Derry Noyes designed the stamp with Tomie dePaola’s original art.

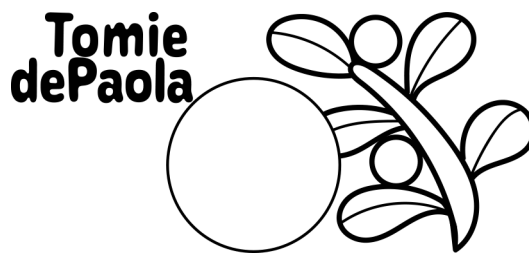
Availability to Post Offices: Item 483600, Tomie dePaola (Forever Priced at the First-Class Mail Rate) Pane of 20 Stamps

Stamp Fulfillment Services will not make an automatic push distribution to Post Offices. Post Offices may begin ordering stamps before the first-day-of-issue through SFS Web at sfsweb.usps.gov/sfsweb.

Special Dedication Postmarks

Only the following pictorial postmark is permitted for the *Tomie dePaola* stamp. The word “Station” or the abbreviation “STA” is required somewhere in the design because it will be a temporary station. Use of any image other than the following special pictorial image is prohibited.

Guidelines for Finalizing Tomie dePaola Stamp Pictorial Postmark Art



To finalize the *Tomie dePaola* stamp pictorial postmark art, insert the date, city state, and ZIP Code™ of the physical location of your event adjacent to the stamp image. Overall dimensions of the pictorial postmark must not exceed 4 inches (horizontally) by 2 inches (vertically). Collectors prefer the dimensions 3-1/2 inches by 1 inch.

The Postal Service™ must make all special postmarks known to collectors through advance publicity in the *Postal Bulletin*. Therefore, all special dedication cancellations must be reported to Stamp Services 4 weeks before the event using PS Form 413, *Pictorial Postmark Announcement/Report*. To get a copy of the form, go to blue.usps.gov/formmgmt/forms/ps413.pdf.

How to Order the First-Day-of-Issue Postmark

Customers have 120 days to obtain the first-day-of-issue postmark by mail. They may purchase new stamps at their local Post Office™ or at The Postal Store® website at store.usps.com/store/home. They must affix the stamps to envelopes of their choice, address the envelopes (to themselves or others), and place them in a larger envelope addressed to:

FDI – Tomie dePaola Stamp
USPS Stamp Fulfillment Services
8300 NE Underground Drive, Suite 300
Kansas City, MO 64144-9900

After applying the first-day-of-issue postmark, the Postal Service will return the envelopes through the mail. There is no charge for the postmark up to a quantity of 50. There is a 5-cent charge for each additional postmark over 50. All orders must be postmarked by September 5, 2023.

How to Order First-Day Covers

The Postal Service also offers first-day covers for new stamp issues and Postal Service stationery items post-marked with the official first-day-of-issue cancellation. Each item has an individual catalog number and is offered in the *USA Philatelic* catalog and online at store.usps.com/store/home. Customers may register to receive a free *USA Philatelic* catalog online at usps.com/philatelic.

Locally produced items are not authorized. Only merchandise that has been approved and assigned an item number by Headquarters Retail Marketing may be produced and sold.

Issue:	<i>Tomie dePaola</i> Stamp
Item Number:	483600
Denomination & Type of Issue:	First-Class Mail Forever
Format:	Pane of 20 (1 design)
Series:	N/A
Issue Date & City:	May 5, 2023, Manchester, NH, 03103
Art Director:	Derry Noyes, Washington, DC
Designer:	Derry Noyes, Washington, DC
Existing Art:	Tomie dePaola
Modeler:	Ty Schroeder
Manufacturing Process:	Offset, Microprint
Printer:	Ashton Potter (USA) Ltd (APU)
Press Type:	Muller A76
Stamps per Pane:	20
Print Quantity:	22,000,000 stamps
Paper Type:	Nonphosphored Type III, Block Tagged
Adhesive Type:	Pressure-sensitive
Colors:	Black, Cyan, Magenta, Yellow, Pantone 7584C, Pantone 624C
Stamp Orientation:	Horizontal
Image Area (w x h):	1.42 x 1.085 in / 36.068 x 27.559 mm
Overall Size (w x h):	1.56 x 1.225 in / 39.624 x 31.115 mm
Full Pane Size (w x h):	7.24 x 7.90 in / 183.896 x 200.66 mm
Press Sheets Size (w x h):	22.75 x 27 in / 577.85 x 685.80 mm
Plate Size:	180 stamps per revolution
Plate Number:	"P" followed by six (6) single digits in two corners
Marginal Markings:	
Front:	Header: Tomie • Plate number in bottom 2 corners
Back:	©2022 USPS • USPS logo • Two barcodes (483600) • Plate position diagram (9) • Promotional text

— Stamp Services,
Marketing, 3-23-23

Pictorial Postmarks Announcement

As a community service, the Postal Service™ offers pictorial postmarks to commemorate local events celebrated in communities throughout the nation. A list of events for which pictorial postmarks are authorized appears on the following pages. The sponsor of the pictorial postmark appears in italics under the date. Also provided are illustrations of these postmarks.

People attending these local events may obtain the postmark in person at the temporary Post Office™ station established there. Those who cannot attend the event but who wish to obtain the postmark may submit a mail order request. Pictorial postmarks are available only for the dates indicated, and *requests must be postmarked no later than 30 days following the requested pictorial postmark date.*

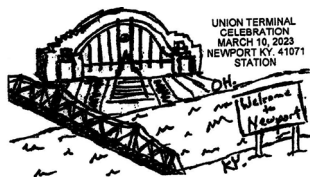
All requests must include a stamped envelope or postcard bearing at least the minimum First-Class Mail® postage. Items submitted for postmark may not include

postage issued after the date of the requested postmark. Such items will be returned unserved.

Customers wishing to obtain a postmark must affix stamps to any envelope or postcard of their choice, address the envelope or postcard to themselves or others, insert a card of postcard thickness in envelopes for sturdiness, and tuck in the flap. Place the envelope or postcard in a larger envelope and address it to: Pictorial Postmarks, followed by the Name of the Station, Address, City, State, ZIP+4® Code, as listed next to the postmark.

Customers can also send stamped envelopes and postcards without addresses for postmark, as long as they supply a larger envelope with adequate postage and their return address. After applying the pictorial postmark, the Postal Service returns the items (with or without addresses) under addressed protective cover.

The following pictorial postmarks have been extended for 30 days:



March 10, 2023

United States Postal Service
Newport, KY Station
Postmaster
420 Columbia Street
Newport, KY 41071-9998



March 21, 2023

*North Carolina Ebony Society of Philatelic Events and Reflections
and The Friendship Seniors in the Spotlight Stamp Club*
Charlotte, NC Station
Postmaster
2901 Scott Futrell Drive
Charlotte, NC 28228-9998



March 22, 2023

Museo de AAH de UPR
UPR Rio Piedras Museum Station
Customer Relations Specialist
585 Avenue Franklin D. Roosevelt, Suite 223
San Juan, PR 00936-9998



March 24, 2023
City of Port Hueneme
75th Anniversary Station
Postmaster
560 East Pleasant Valley Road
Port Hueneme, CA 93041-9998



April 1, 2023
City of Manassas
Manassas, VA Station
Postmaster
8801 Sudley Road
Manassas, VA 20110-9998



March 24-26, 2023
United States Postal Service
Mighty Mississippi River Station
Postmaster
1720 Market Street, Room 1015-A
St Louis, MO 63155-9998



April 4, 2023
United States Postal Service
Star Dedication Station
Postmaster
333 North Sunrise Way
Palm Springs, CA 92262-9998

— Stamp Services,
Marketing, 3-23-23

How to Order the First-Day-of-Issue Digital Color or Traditional Postmarks

Customers have 120 days to obtain the first-day-of-issue postmarks by mail. Each cover must have sufficient postage to meet First-Class Mail® requirements. Customers may purchase new stamps at their local Post Office™, by phone at 844-737-7826, or on The Postal Store® website at usps.com/shop.

Digital Color Postmarks

Only select stamp issues offer a digital color postmark. Customers may submit #6 or #10 envelopes constructed of paper rated as “laser safe.” The Postal Service™ recommends envelopes of 80-pound Accent Opaque, acid-free, 9/16-inch side seams with no glue on the flap. The maximum size of all digital color postmarks is 2 inches (vertically) by 4 inches (horizontally). Allow sufficient space on the envelope to accommodate the postmark. Do not use self-adhesive labels for addresses on the envelope. Two test envelopes must be included. There is a minimum of 10 envelopes at 50 cents per postmark required at the time of servicing. Customers must submit a check, money order, or credit card for payment.

The Postal Service reserves the right to not accept hand-painted and other cachet envelopes that are not compatible with our digital color postmark equipment. The Postal Service also reserves the right to substitute traditional black rubber postmarks if use of nonspecified envelopes results in poor image quality or damage to equipment.

Customers must affix the stamps to the envelopes and address them to themselves or others for return through the mail. Or, they may include an additional self-addressed return envelope, large enough to accommodate their canceled items, with sufficient postage affixed for return of

their postmarked items. Address customer requests for digital color postmarks to:

FDOI – (Name of Stamp Issue)
USPS Stamp Fulfillment Services
8300 NE Underground Drive, Suite 300
Kansas City, MO 64144-9900

After applying the first-day-of-issue postmark, the Postal Service will return the envelopes to the customer by U.S. Mail®.

Traditional Postmarks

Customers must affix the stamps to the envelopes and address them to themselves or others for return through the mail. Or, they may include an additional self-addressed return envelope, large enough to accommodate their canceled items, with sufficient postage affixed for return of their postmarked items. Address customer requests for traditional postmarks to:

FDOI – (Name of Stamp Issue)
USPS Stamp Fulfillment Services
8300 NE Underground Drive, Suite 300
Kansas City, MO 64144-9900

After applying the first-day-of-issue postmark, the Postal Service will return the envelopes to the customer by U.S. Mail. There is no charge for the first 50 postmarks. There is a 5-cent charge for each additional postmark over 50. Customers must submit a check, money order, or credit card for payment.

Locally produced items are not authorized. Only merchandise that has been approved and assigned an item number by Headquarters Retail Marketing may be produced and sold.



FIRST DAY OF ISSUE

FDOI – Red Fox Stamp

USPS Stamp Fulfillment Services
8300 NE Underground Drive, Suite 300
Kansas City, MO 64144-9900

May 5, 2023

Black and White Pictorial



FIRST DAY OF ISSUE

FDOI – School Bus Stamp

USPS Stamp Fulfillment Services
8300 NE Underground Drive, Suite 300
Kansas City, MO 64144-9900

May 5, 2023

Black and White Pictorial



FDI – Lunar New Year: Year of the Rabbit Stamp

USPS Stamp Fulfillment Services
8300 NE Underground Drive, Suite 300
Kansas City, MO 64144-9900

May 12, 2023

Digital Color Pictorial



FDI – Lunar New Year: Year of the Rabbit Stamp

USPS Stamp Fulfillment Services
8300 NE Underground Drive, Suite 300
Kansas City, MO 64144-9900

May 12, 2023

Black and White Pictorial



FDI – Love 2023 Stamps

USPS Stamp Fulfillment Services
8300 NE Underground Drive, Suite 300
Kansas City, MO 64144-9900

May 19, 2023

Digital Color Pictorial



FDI – Love 2023 Stamps

USPS Stamp Fulfillment Services
8300 NE Underground Drive, Suite 300
Kansas City, MO 64144-9900

May 19, 2023

Black and White Pictorial

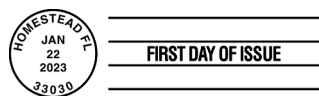


FDI – Florida Everglades Stamp

USPS Stamp Fulfillment Services
8300 NE Underground Drive, Suite 300
Kansas City, MO 64144-9900

May 22, 2023

Digital Color Pictorial



FDI – Florida Everglades Stamp

USPS Stamp Fulfillment Services
8300 NE Underground Drive, Suite 300
Kansas City, MO 64144-9900

May 22, 2023

Black and White Pictorial

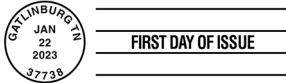


Digital Color Pictorial

FDOI – Great Smoky Mountains Stamp

USPS Stamp Fulfillment Services
8300 NE Underground Drive, Suite 300
Kansas City, MO 64144-9900

May 22, 2023



Black and White Pictorial

FDOI – Great Smoky Mountains Stamp

USPS Stamp Fulfillment Services
8300 NE Underground Drive, Suite 300
Kansas City, MO 64144-9900

May 22, 2023



Digital Color Pictorial

FDOI – Ernest J. Gaines Stamp

USPS Stamp Fulfillment Services
8300 NE Underground Drive, Suite 300
Kansas City, MO 64144-9900

May 23, 2023



Black and White Pictorial

FDOI – Ernest J. Gaines Stamp

USPS Stamp Fulfillment Services
8300 NE Underground Drive, Suite 300
Kansas City, MO 64144-9900

May 23, 2023



Digital Color Pictorial

FDOI – Women's Soccer Stamp

USPS Stamp Fulfillment Services
8300 NE Underground Drive, Suite 300
Kansas City, MO 64144-9900

June 16, 2023



Black and White Pictorial

FDOI – Women's Soccer Stamp

USPS Stamp Fulfillment Services
8300 NE Underground Drive, Suite 300
Kansas City, MO 64144-9900

June 16, 2023



FDI – Floral Geometry Stamp
 USPS Stamp Fulfillment Services
 8300 NE Underground Drive, Suite 300
 Kansas City, MO 64144-9900

June 24, 2023

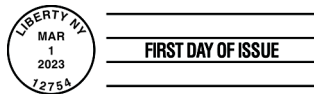
Digital Color Pictorial



FDI – Floral Geometry Stamp
 USPS Stamp Fulfillment Services
 8300 NE Underground Drive, Suite 300
 Kansas City, MO 64144-9900

June 24, 2023

Black and White Pictorial



FDI – Patriotic Block Stamp
 USPS Stamp Fulfillment Services
 8300 NE Underground Drive, Suite 300
 Kansas City, MO 64144-9900

July 1, 2023

Black and White Pictorial



FDI – Toni Morrison Stamp
 USPS Stamp Fulfillment Services
 8300 NE Underground Drive, Suite 300
 Kansas City, MO 64144-9900

July 7, 2023

Digital Color Pictorial



FDI – Toni Morrison Stamp
 USPS Stamp Fulfillment Services
 8300 NE Underground Drive, Suite 300
 Kansas City, MO 64144-9900

July 7, 2023

Black and White Pictorial



FDI – Railroad Stations Stamps
 USPS Stamp Fulfillment Services
 8300 NE Underground Drive, Suite 300
 Kansas City, MO 64144-9900

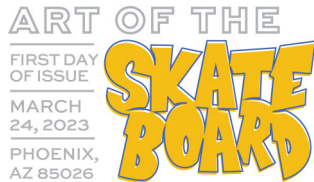
July 9, 2023

Digital Color Pictorial

**FDOI – Railroad Stations Stamps**

USPS Stamp Fulfillment Services
8300 NE Underground Drive, Suite 300
Kansas City, MO 64144-9900

July 9, 2023

Black and White Pictorial**FDOI – Art of the Skateboard Stamps**

USPS Stamp Fulfillment Services
8300 NE Underground Drive, Suite 300
Kansas City, MO 64144-9900

July 24, 2023

Digital Color Pictorial**FDOI – Art of the Skateboard Stamps**

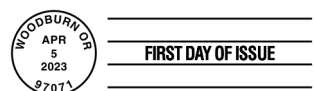
USPS Stamp Fulfillment Services
8300 NE Underground Drive, Suite 300
Kansas City, MO 64144-9900

July 24, 2023

Black and White Pictorial**FDOI – Tulip Blossoms Stamps**

USPS Stamp Fulfillment Services
8300 NE Underground Drive, Suite 300
Kansas City, MO 64144-9900

August 5, 2023

Digital Color Pictorial**FDOI – Tulip Blossoms Stamps**

USPS Stamp Fulfillment Services
8300 NE Underground Drive, Suite 300
Kansas City, MO 64144-9900

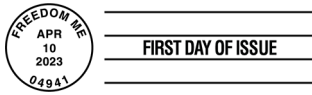
August 5, 2023

Black and White Pictorial**FDOI – U.S. Flag Stamp**

USPS Stamp Fulfillment Services
8300 NE Underground Drive, Suite 300
Kansas City, MO 64144-9900

August 10, 2023

Digital Color Pictorial



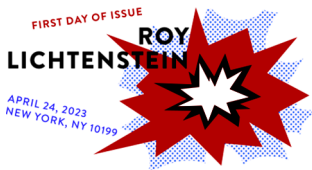
FIRST DAY OF ISSUE

FDOI – U.S. Flag Stamp

USPS Stamp Fulfillment Services
8300 NE Underground Drive, Suite 300
Kansas City, MO 64144-9900

August 10, 2023

Black and White Pictorial



FDOI – Roy Lichtenstein Stamps

USPS Stamp Fulfillment Services
8300 NE Underground Drive, Suite 300
Kansas City, MO 64144-9900

August 24, 2023

Digital Color Pictorial



FDOI – Roy Lichtenstein Stamps

USPS Stamp Fulfillment Services
8300 NE Underground Drive, Suite 300
Kansas City, MO 64144-9900

August 24, 2023

Black and White Pictorial



FDOI – Tomie dePaola Stamp

USPS Stamp Fulfillment Services
8300 NE Underground Drive, Suite 300
Kansas City, MO 64144-9900

September 5, 2023

Digital Color Pictorial



FDOI – Tomie dePaola Stamp

USPS Stamp Fulfillment Services
8300 NE Underground Drive, Suite 300
Kansas City, MO 64144-990027

September 5, 2023

Black and White Pictorial

Add Joy to Your Mailings with
Love 2023
Forever[®] Stamps



ON SALE NATIONWIDE: **JANUARY 19, 2023**

