

Postal Bulletin

Published Since March 4, 1880

February 9, 2023
PB 22617



Using Safe Ergonomic Practices to Deliver for America

See page 3

Contents

COVER STORY

Using Safe Ergonomic Practices to Deliver for America 3

POLICIES, PROCEDURES, AND FORMS UPDATES

Manuals

IMM Revision: Change to Country Name for Turkey 5

IMM Revision: Priority Mail International Availability
and Price Application to Canada 7

Publications

Publication 52 Correction: Required Hazardous Materials
Separations 8

Publication 431 Revision: Changes to Post Office Box
Service and Caller Service Fee Groups 16

Forms

New PS Form 42, Declaration of Voluntary Resignation
to Enter Military Service for Career and Non-Career
Employees, is Now Available 16

PS Form 3227-R Revision: Rural or Highway Contract
Route Carrier Stamp Purchase Order Form 17

PS Form 3972 Revision: Leave Absence Analysis 17

ORGANIZATION INFORMATION

Address Management

Post Office Changes 18

Domestic Mail

Labeling List Changes 48

Environmental Management

Tier II Reporting Requirements 49

Information Security

Internet of Things: Exposed Now More Than Ever 50

International Mail

Competitive Services Product and Price Changes 50

Stamp Services

Stamp Announcement 23-13: Railroad Stations Stamps . . . 53

Update: Stamp Announcement 23-11: Patriotic Block 55

Pictorial Postmarks Announcement 56

How to Order the First-Day-of-Issue Digital Color or
Traditional Postmarks 58

Supply Management

Bottled Drinking Water Services for FY 2023 63

PULL-OUT INFORMATION

Elimination of Corporate Accounts 23

Fraud

Invalid USPS Corporate Account Numbers 25

Missing, Lost, or Stolen U.S. Money Order Forms 26

Missing, Lost, or Stolen Canadian Money Order Forms . . . 33

Verifying U.S. Postal Service Money Orders 35

Counterfeit Canadian Money Order Forms 35

Toll-Free Number Available to Verify Canadian
Money Orders 35

Other Information

Overseas Military/Diplomatic Mail 36

Freely Associated States Restrictions 42

POSTAL BULLETIN 2022 ANNUAL INDEX

2022 Annual Index PB 22616 (1-26-23)

Find the latest in mail and delivery information
and services offered by U.S. Postal®
in the *Postal Bulletin* at
about.usps.com/postal-bulletin

Mail Moment®

Cover Story

Using Safe Ergonomic Practices to Deliver for America

Ergonomic-related injuries or musculoskeletal disorders (MSDs) make up 25 to 30 percent of all recordable industrial accidents reported by Postal Service™ employees. MSDs are illnesses or injuries that affect one or more parts of the musculoskeletal system, which is the soft tissue and bone structure of the body. These injuries primarily involve the muscles, tendons, and ligaments that allow us to move and use our joints.

MSDs are caused by “wear-and-tear” of the body over time. They develop differently than sudden, traumatic injuries, such as cuts, bruises, or broken bones. MSDs can take weeks, months, or even years to develop.

MSD risk factors include:

- **Awkward posture.** When the body is in a posture that creates significant bending, twisting, or added stress to the joints and connective tissue.
- **Forceful exertion.** When excessive force is needed to perform a task, such as lifting a heavy object or pushing loaded mail transport equipment. Even something like holding an object between the thumb and fingers in a pinch grip can create excessive force to the hand.
- **Repetitive motion.** When a joint or body part repeats the same motion many times. This is especially an issue if the repetition involves the other risk factors of awkward posture and forceful exertion, such as in the task of unloading heavy objects from a pallet with bending, reaching, and forceful lifting.

Ergonomic practices help prevent MSD injuries by addressing these risk factors. Simply put, ergonomics is “fitting the task to the person.” Each task is evaluated to understand what it takes to perform the job and what risk factors may be present. Using ergonomic practices makes manual work less difficult, safer, and more user-friendly.

The Postal Service™ may initiate an ergonomic evaluation as part of an MSD injury investigation to determine the cause. Once the task is evaluated, an accident reduction plan would identify a viable ergonomics solution for the cause. When an employee is returning to work from an on-the-job injury, an ergonomic evaluation is often required to ensure the job meets any restrictions or limitations the employee might have. It’s often best if ergonomic evaluations take place initially in the design phase of equipment or workstations.

Ergonomic principles commonly used in USPS® facilities include:

- Modifying the workspace for reach reduction by moving the person closer to the object or perhaps recommending a reach extender tool.
- Raising the work with equipment, such as a pallet lifter or a container tilter to eliminate bending and overreaching when unloading packages or mail trays.
- Adjusting a computer workstation to ensure monitors are at the right height for optimum viewing, the keyboard and mouse are positioned at about elbow height, and everything is within easy reach.
- Improving methods, such as work practices and techniques, or applying administrative methods, such as job rotation, to help decrease risk factors.

Reduce the wear-and-tear on your body and help prevent MSDs by following the safety policies and procedures established at your facility and using proven ergonomic methods for every activity.

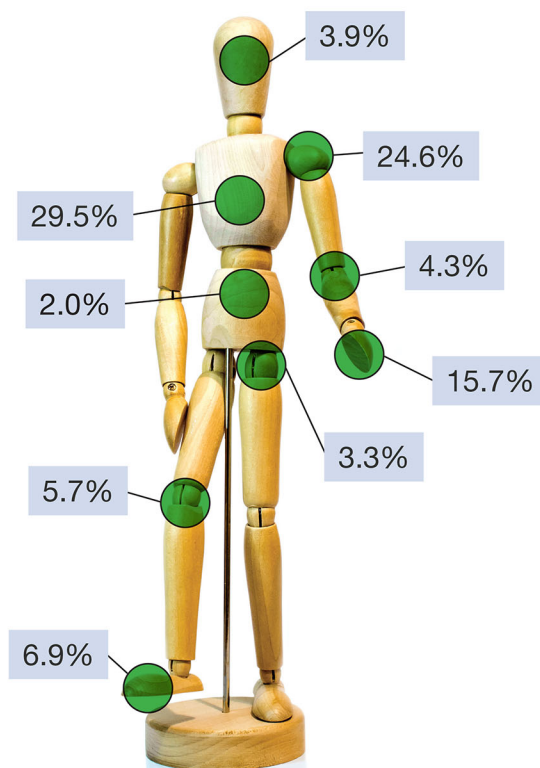
For more information about ergonomic practices, see the following resources:

- Ergonomic Safety talks module in the HERO system under “My Learning.”
- For a printable version of the Ergonomics poster on page 4, look under “Resources” at blue.usps.gov/hr/safety/ergonomics.htm.
- Safety Depends on Me videos: blue.usps.gov/corp-comm/uspstv/safety-and-health.
- A–Z Safety Topics on Blue: blue.usps.gov/hr/safety/a-z-safety-toolkit.htm.
- Wellness videos: liteblue.usps.gov/humanresources/benefits/health-wellness/wellness-videos.htm.
- Occupational Safety and Health Administration (OSHA): osha.gov/ergonomics.
- Centers for Disease Control (CDC): cdc.gov/niosh/topics/ergonomics.
- National Safety Council: nsc.org/workplace/safety-topics/msd.

— Occupational Safety and Health,
Human Resources, 2-9-23

Ergonomics Poster

Ergonomics Affects the Whole Body - Head, Shoulders, Knees and Toes



Musculoskeletal Disorders (MSDs)

Injury Location	# MSD Injuries	% of MSD Injuries
Back/Chest	3797	29.5%
Shoulder	3171	24.6%
Hand	2017	15.7%
Foot/Ankle	884	6.9%
Knee	737	5.7%
Arm	560	4.3%
Head/Neck	504	3.9%
Hip	423	3.3%
Abdomen	253	2.0%



UNITED STATES
POSTAL SERVICE

Policies, Procedures, and Forms Updates

Manuals

IMM Revision: Change to Country Name for Turkey

The Postal Service™ is revising *Mailing Standards of the United States Postal Service*, International Mail Manual (IMM®) to conform to requested country nomenclature by changing the official name of Turkey to the Republic of Türkiye (with Türkiye as the short name) in the sections of the IMM noted in this article.

This revision is based on a formal request that Turkish PTT Corporation (the designated postal operator of Türkiye) made through the Universal Postal Union via *International Bureau Circular* 141, dated August 15, 2022, and through subsequent information received by email on January 23, 2023.

The name change for Turkey also appears in Notice 123, *Price List*, and is mentioned in “International Mail: Price Changes and Minor Classification Changes for International Mailing Services” in *Postal Bulletin* 22614 (12-29-22, page 35), and in “International Mail: Competitive Services Product and Price Changes” on pages [50–52](#) in this issue of the *Postal Bulletin*.

The Postal Service will publish these revisions in the next edition of the online IMM, but in accordance with the notification from the UPU, the standards are effective immediately.

Mailing Standards of the United States Postal Service, International Mail Manual (IMM)

	*	*	*	*	*
2	Conditions for Mailing				
210	Global Express Guaranteed				
	*	*	*	*	*
213	Prices and Postage Payment Methods				
	*	*	*	*	*
213.5	Destinating Countries and Price Groups				
	*	*	*	*	*

Exhibit 213.5

Destinating Countries and Price Groups

[Revise the entry for Turkey to read as follows (reflecting the new country name):]

Country Name	GXG Price Group
*	*
Türkiye, Republic of	6
*	*

*

250 First-Class Package International Service

*

252 Eligibility

*

252.22 Availability

*

Exhibit 252.22

Countries Accepting Electronic USPS Delivery Confirmation International Service (E-USPS DELCON INTL)

[Revise the entry for Turkey to read as follows (reflecting the new country name):]

Türkiye, Republic of	*	*	*	*	*
----------------------	---	---	---	---	---

290 Commercial Services

*

292 International Priority Airmail (IPA) Service

*

292.4 Mail Preparation

*

292.45 IPA Foreign Office of Exchange Codes and Price Groups

*

Exhibit 292.45a

IPA Foreign Office of Exchange Codes and Price Groups

[Revise the entry for Turkey to read as follows (reflecting the new country name):]

Country Labeling Name	Foreign Office of Exchange Code	Price Group
*	*	*
Turkiye, Republic of	IST	3
*	*	*

293 International Surface Air Lift (ISAL) Service

* * * *

293.4 Mail Preparation

* * * *

293.45 ISAL Foreign Office of Exchange Codes and Price Groups

* * * *

Exhibit 293.45a

ISAL Foreign Office of Exchange Codes and Price Groups

[Revise the entry for Turkey to read as follows (reflecting the new country name):]

Country Labeling Name	Foreign Office of Exchange Code	Price Group
*	*	*
Turkiye, Republic of	IST	3
*	*	*
*	*	*

3 Extra Services

* * * *

320 Insurance

* * * *

322 Priority Mail Express International Insurance

* * * *

322.2 Availability

* * * *

Exhibit 322.2

Priority Mail Express International and Priority Mail International Merchandise Insurance Limits (in U.S. Dollars)

[Revise the entry for Turkey to read as follows (reflecting the new country name):]

Country	PMEI	PMI
*	*	*
Turkiye, Republic of	5,000	952
*	*	*
*	*	*

Index of Countries and Localities

* * * *

[Revise the entry for Turkey to read as follows (reflecting the new country name):]

Turkiye, Republic of

* * * *

Country Price Groups and Weight Limits

[Revise the entry for Turkey to read as follows (reflecting the new country name):]

Country	Global Express Guaranteed		Priority Mail Express International			Priority Mail International			First-Class Mail International and First-Class Package International Service	
	Price Group	Max. Wt. (lbs.)	Price Group	Max. Wt. (lbs.)	PMEI Flat Rate Envelopes Price Group ¹	Price Group	Max. Wt. (lbs.)	PMI Flat Rate Envelopes and Boxes Price Group ²	FCMI Price Group ³	FCMI Price Group ⁴
*	*	*	*	*	*	*	*	*	*	*
Turkiye, Republic of	6	70	74	66	8	4	66	8	4	3
*	*	*	*	*	*	*	*	*	*	*
*	*	*	*	*	*	*	*	*	*	*

Individual Country Listings

* * * *

[Revise the country name "Turkey" to read as follows (reflecting the new country name):]

Turkiye, Republic of

Country Conditions for Mailing — Türkiye, Republic of

* * * *

Restrictions

* * * *

[Revise the entry beginning with “Food supplements” to read as follows (reflecting the new country name):]

Food supplements and foods for athletes may be sent to Türkiye only when a medical report, prescription, or national sportsperson’s certificate is enclosed with the item by the addressee.

* * * * *

[Revise the entry beginning with “Stocks, bonds, and coupons” to read as follows (reflecting the new country name and the new bank name):]

Stocks, bonds, and coupons require authorization from the Turkish exchange control authorities unless they are addressed to the Central Bank of the Republic of Türkiye Head Office.

* * * * *

Observations

[Revise the second entry to read as follows (reflecting the new country name):]

- Each commercial shipment for Türkiye must have enclosed a combined certificate of origin and consular invoice, which must be certified by a chamber of commerce or other trade organization or by a notary public, and be legalized by a Turkish consul.

* * * * *

Priority Mail Express International

* * * * *

Customs Forms Required

* * * * *

Notes:

[Revise the second entry to read as follows (reflecting the new country name):]

- Coins; banknotes; currency notes, including paper money; securities of any kind payable to bearer; traveler’s checks; platinum, gold, and silver; precious stones; jewelry; watches; and other valuable articles are prohibited in Priority Mail Express International shipments to Türkiye.

* * * * *

The Postal Service will incorporate these revisions into the next edition of the online IMM, which is available via Postal Explorer® at pe.usps.com.

— Product Classification,
Product Solutions, 2-9-23

IMM Revision: Priority Mail International Availability and Price Application to Canada

The Postal Service™ is revising *Mailing Standards of the United States Postal Service*, International Mail Manual (IMM®), section 233.11, to reflect current availability and price application to Canada. (For more information, see “International Mail: Competitive Services Product and Price Changes” on pages [50–52](#) in this issue of the *Postal Bulletin*.)

Although the Postal Service will publish this revision in the next edition of the online IMM, the standards are effective immediately.

Mailing Standards of the United States Postal Service, International Mail Manual (IMM)

* * * * *

2 Conditions for Mailing

* * * * *

230 Priority Mail International

* * * * *

233 Prices and Postage Payment Methods

233.1 Prices

233.11 Availability and Price Application — General

[Revise the text in its entirety to read as follows (removing information specific to Canada):]

Except under 233.14 and 233.15, Priority Mail International shipments are charged postage for each addressed piece according to its weight and Price Group. See the Individual Country Listings for countries that offer Priority Mail International service.

* * * * *

The Postal Service will incorporate this revision into the next edition of the online IMM, which is available via Postal Explorer® at pe.usps.com.

— Product Classification,
Product Solutions, 2-9-23

Publications

Publication 52 Correction: Required Hazardous Materials Separations

In the article titled “Required Hazardous Materials Separations,” in *Postal Bulletin* 22600 (6-16-22, pages 9–12), the Postal Service™ published revisions planned for Publication 52, *Hazardous, Restricted and Perishable Mail* (Pub 52) that were based on the *Federal Register* notice that the Postal Service published in the *Federal Register* on June 6, 2022.

The published revisions included new requirements for mailers to separate, into identifiable containers, all hazardous material (HAZMAT) requiring “Hazardous” marks or labels from other mail when tendering to the Postal Service.

Additionally, the revisions reflected the Postal Service requirement that used, damaged, or defective electronic devices (such as cell phones, laptops, tablets, and cameras) packaged with or containing lithium batteries are to be mailed only via surface transportation (USPS Retail Ground®, Parcel Select®, Parcel Return Service or Ground Return Service) and to bear specified markings. This rule prohibits used, damaged, or defective electronic devices containing lithium batteries from being mailed internationally or to, from, or between Army/Air Force Post Office, Fleet Post Office, and Diplomatic Post Office (APO/FPO/DPO) destinations.

Public comments received regarding these new requirements were reviewed, and a final *Federal Register* notice was published on November 30, 2022. The final notice provides clarification that manufacturer-certified new or refurbished devices are excluded from the definition of “used,” and specific remote ZIP Code™ locations that are serviced by air transportation only are exempt from text-marking and surface-transportation requirements.

This article, which replaces the previously published article, includes these new revisions based on the final *Federal Register* notice. Although these revisions will not be published in Publication 52 until the next edition, the standards are effective immediately.

Publication 52, *Hazardous, Restricted and Perishable Mail*

	*	*	*	*	*
2	General Guidelines				
	*	*	*	*	*

[Revise the title of subchapter 25 to read as follows:]

25	Basic Guidelines for Postal Service Personnel
251	Guidelines for Acceptance Personnel

[Revise the text of 251 to read as follows:]

Postal Service personnel may not open mail sealed against inspection except under the circumstances described in ASM 274. Accordingly, knowledge of the content of such mail may be obtained directly from the mailer (e.g., a mailer may ask questions about mailing requirements or mark the outside of the mailpiece to indicate the contents) or indirectly through leakage or other escape of the contents. Subject to the applicable restrictions, acceptance personnel must:

- Determine the mailability of all hazardous materials, perishable matter, or otherwise restricted matter offered for mailing at a retail unit or business mail entry unit (BMEU). This process must include a thorough inspection of all sides of the mailpiece for evidence of hazardous materials (e.g., markings). At retail units, mailers must be asked the question: “Do any of your articles contain anything liquid, fragile, perishable, or potentially hazardous, such as lithium batteries, perfume, mercury, or aerosols?”
- If the contents are mailable, determine the specific quantity limitations, labeling, and packaging requirements that apply.
- With the exception of destination-entered mail entered at a destination delivery unit (DDU), destination sectional center facility (DSCF), or destination network distribution center (DNDC), verify that all mailpieces containing mailable hazardous materials are presented separately from mailpieces not containing hazardous materials.
- Refuse (as permitted in POM 139) to accept material that does not meet applicable requirements for mailing and refer the circumstances to the local postmaster or PCSC for a mailability ruling under 213 or 215, as appropriate.
- If a mailpiece containing a diagnostic (clinical) specimen is in a sack or tub, PS Tag 44 must be attached to ensure that the sack or tub will be emptied at the processing point.
- With the exception of destination-entered mail entered at a DDU, DSCF, or DNDC, ensure mailpieces containing hazardous materials remain separated from other mailpieces and are placed into labeled containers further separated by transportation type. See 327.1a and 327.1b.
- See 253 for guidance regarding hazardous materials found in lobby drops or retail collection boxes.

See Chapter 7 for guidelines Postal Service acceptance personnel must follow when handling hazardous materials, restricted matter, or perishable matter to be transported by air.

252 Guidelines for Dispatch Personnel

* * * * *

[Add new item b. to read as follows and renumber current item b. as item c.]

- b. Ensure that all mailpieces with a hazardous-materials mark or label are separated from all other mail and are placed into labeled containers further separated by transportation type. See 327.1a and 327.1b.

* * * * *

[In renumbered item c., revise bullet (5) to read as follows:]

- (5) If the mailpiece contains a material believed to be nonmailable, remove it from the mailstream and treat it in accordance with POM 139.117-118, as appropriate.

* * * * *

[Add new part 253 to read as follows:]

253 Guidelines for Delivery and Collection Personnel

Delivery and collection personnel must follow these procedures when delivering and collecting mail:

- a. Conduct a thorough examination of all sides of the mailpiece for hazardous-material labels and markings or any nonmailable hazardous characteristics (e.g., prohibited marks or labels). If the mailpiece is nonmailable, leaking, or stained, do not collect it; notify the customer if present, and contact the supervisor.
- b. Ensure that mailable hazardous materials are separated from all other mail.

3 Hazardous Materials

* * * * *

32 General

* * * * *

327 Transportation Requirements

327.1 General

* * * * *

[Revise the text of items a. and b. to read as follows:]

- a. *Air Transportation.* When eligibility for air transportation is sought, mailable hazardous materials eligible for air transportation per subchapter 34 must be sent as Priority Mail Express, Priority Mail, or First-Class Mail. Mailpieces must be prepared to meet all require-

ments that apply to air transportation. Mailpieces must be properly packaged and labeled within DMM requirements and the operator variations of the air carrier. When required, a shipper's declaration for dangerous goods must be affixed to the outside of the mailpiece.

Note: Mailable hazardous materials that are prohibited from air transportation may not be sent as Priority Mail Express, Priority Mail, or First-Class Mail.

- b. *Surface Transportation.* All mailable hazardous materials eligible to be sent as First-Class Package Service, USPS Marketing Mail, USPS Retail Ground, Parcel Select, or Parcel Return Service must be prepared under the requirements that apply to surface transportation. A mailpiece containing mailable hazardous material with postage paid at First-Class Package Service, USPS Marketing Mail, USPS Retail Ground, Parcel Select, or Parcel Return Service prices must not, under any circumstance, be transported on air transportation, except for 5-digit air-only destinations identified in 327.2g.

327.2 Air Transportation Prohibitions

[Revise the introductory paragraph to read as follows:]

All mailable hazardous materials sent as Priority Mail Express, Priority Mail, or First-Class Mail must meet requirements for air transportation. The following types of hazardous materials are always prohibited on air transportation, regardless of class of mail:

* * * * *

[Add new item g. to read as follows and renumber current item g. as item h.]

- g. Used, damaged, or defective electronic devices (excluding devices that are new in original packaging, and manufacturer-certified new or refurbished devices) containing or packaged with lithium batteries (see 349.12e). For those ZIP Codes that are air transportation only due to the absence of ground transportation, a multimodal-transportation solution may be used to transport used, damaged, or defective electronic devices containing or packed with lithium batteries. See Appendix F for a list of 5-digit ZIP Codes where this exception applies.

* * * * *

[Add new part 329 to read as follows:]

329 Presentation of Hazardous-Materials Mailings

With the exception of destination-entered mail entered at a DDU, DSCF, or DNDC, each mailer of mailable hazardous materials requiring a label or marking must do the following:

- a. Present mailpieces containing hazardous materials separately from any mailpieces not containing

hazardous materials. Where mailpieces are tendered in containers, pallets, or other mail transport equipment (see Handbook PO-502, *Mail Transport Equipment*), hazardous-materials mailpieces must be presented in a separate receptacle from non-hazardous-materials mailpieces.

- b. Clearly mark an exterior side of all receptacles containing hazardous-materials mailpieces as “HAZMAT.”

* * * * *

34 Mailability by Hazard Class

* * * * *

349 Miscellaneous Hazardous Materials (Hazard Class 9)

349.1 Definition

* * * * *

349.12 Lithium Battery — Definitions

* * * * *

[Add new item e. to read as follows:]

e. *Used, damaged, or defective electronic device* means an electronic device containing or packaged with one or more lithium cells or batteries, and the electronic device:

- (1) Is not new in original packaging;
- (2) Is not manufacturer-certified new or refurbished; and/or
- (3) Has some form of damage or defect.

* * * * *

349.2 Mailability

* * * * *

349.21 Nonmailable Class 9 Materials

* * * * *

[Add new items g. and h. to read as follows:]

- g. Damaged, defective, or recalled batteries unless approved by the director, Product Classification (see 214 for address).
- h. All used, damaged, or defective electronic devices in international mail or domestic air transportation. This excludes devices that are new in original packaging, and manufacturer-certified new or refurbished devices.

349.22 Mailable Class 9 Materials

349.221 Lithium Metal (Nonrechargeable) Cells and Batteries — Domestic

* * * * *

[Under item a., add new bullet (8) to read as follows:]

- (8) All used, damaged, or defective lithium metal cells or batteries or electronic devices contained in or packed with lithium metal cells or batteries (excluding electronic devices that are new in original packaging, and manufacturer-certified new or refurbished devices) must be marked with the text “Restricted Electronic Device” and “Surface Transportation Only” on the address side of the mailpiece.

* * * * *

349.222 Lithium-ion (Rechargeable) Cells and Batteries — Domestic

* * * * *

[Under item a., add new bullet (8) to read as follows:]

- (8) All used, damaged, or defective lithium-ion cells or batteries or electronic devices contained in or packed with lithium-ion cells or batteries (excluding electronic devices that are new in original packaging, and manufacturer-certified new or refurbished devices) must be marked with the text “Restricted Electronic Device” and “Surface Transportation Only” on the address side of the mailpiece.

* * * * *

Exhibit 349.222

Domestic Lithium Battery Mailability

[Revise the text of Exhibit 349.222 to read as follows:]

	Surface Transportation	Air Transportation ¹	Mailpiece Limitations ²
Lithium Metal or Lithium Alloy Batteries^{3, 4}			
<i>Small, non-rechargeable, consumer-type batteries</i>			
Contained in (properly installed in equipment)	Mailable	Mailable	8 cells or 2 batteries 11 lbs.
Packed with equipment, but not installed in the equipment	Mailable	Mailable	8 cells or 2 batteries 11 lbs.
Without the equipment they operate (individual batteries in originally sealed packaging)	Mailable	Prohibited	5 lbs.

	Surface Transportation	Air Transportation ¹	Mailpiece Limitations ²
Lithium-ion or Lithium Polymer Batteries^{5, 6} <i>Small, rechargeable, consumer-type batteries</i>			
Contained in (properly installed in equipment)	Mailable	Mailable	8 cells or 2 batteries
Packed with equipment, but not installed in the equipment	Mailable	Mailable	8 cells or 2 batteries
Without the equipment they operate (individual batteries in originally sealed packaging)	Mailable	Prohibited ⁷	5 lbs.
Very Small Lithium Metal or Lithium-ion Batteries^{8, 9} <i>Exception for very small consumer-type batteries in USPS air transportation</i>			
Contained in (properly installed in equipment)	Mailable	Mailable	No limit on cells/ batteries 5.5 pounds
Packed with equipment, but not installed in the equipment	Mailable	Mailable	No limit on cells/ batteries 5.5 pounds
Damaged, Defective, or Recalled Batteries	Prohibited, unless approved by the director, Product Classification.		

1. Used, damaged, or defective electronic devices are prohibited from air transportation. This excludes devices that are new in original packaging and manufacturer-certified new or refurbished devices.
2. When a mailpiece limitation of 8 cells or 2 batteries is applicable, a mailpiece may contain either 8 cells or 2 batteries, not both.
3. Each cell must not contain more than 1 g (gram) of lithium content.
4. Each battery must not contain more than 2 g aggregate lithium content.
5. Each cell must not exceed more than 20 Wh (watt-hour rating).
6. Each battery must not exceed 100 Wh.
7. Mailable intra-Alaska via air transportation is limited to 8 cells or 2 batteries.
8. Each lithium metal or lithium alloy cell or battery must not exceed 0.3 g of lithium content.
9. Each lithium-ion or lithium polymer cell or battery must not exceed 2.7 Wh.

	*	*	*	*	*
6	International Mail				
	*	*	*	*	*
62	Hazardous Materials: International Mail				
	*	*	*	*	*
622	Mailable Hazardous Materials				
	*	*	*	*	*
622.5	Lithium and Lithium-ion Cells and Batteries — General				

[Revise the first paragraph to read as follows:]

Only lithium batteries under 622.51 and 622.52 that are properly installed in the equipment they operate may be sent internationally or to, from, or between APO, FPO, or DPO locations (subject to the conditions prescribed by the U.S. Department of Defense listed in *Overseas Military/Diplomatic Mail* in the *Postal Bulletin*). Used, damaged, defective, or recalled lithium batteries and used, damaged, or defective electronic devices (excluding devices that are new in original packaging, and manufacturer-certified new or refurbished devices) containing or packaged with lithium batteries are prohibited and may not be mailed internation-

ally or to, from, or between APO, FPO, or DPO locations under any circumstances. See 349.21.

* * * * *

Exhibit 622.5

International Lithium Battery Mailability

[Revise the text of Exhibit 622.5 to read as follows:]

	International APO/FPO/DPO ^{1,2}	Mailpiece Battery Limit ³
Lithium Metal or Lithium Alloy Batteries^{4, 5} <i>Small, non-rechargeable, consumer-type batteries</i>		
Contained in (properly installed in equipment)	Mailable	Maximum of 4 cells or 2 batteries
Packed with equipment, but not installed in the equipment	Prohibited	
Without the equipment they operate (individual batteries in originally sealed packaging)	Prohibited	
Lithium-ion or Lithium Polymer Batteries^{6, 7} <i>Small, rechargeable, consumer-type batteries</i>		
Contained in (properly installed in equipment)	Mailable	Maximum of 4 cells or 2 batteries
Packed with equipment, but not installed in the equipment	Prohibited	
Without the equipment they operate (individual batteries in originally sealed packaging),	Prohibited	

	International APO/FPO/ DPO ^{1,2}	Mailpiece Battery Limit ³
Very Small Lithium Metal or Lithium-ion Batteries^{8, 9} <i>Exception for very small consumer-type batteries in international transportation</i>		
Contained in (properly installed in equipment)	Mailable	Maximum of 4 cells or 2 batteries
Packed with equipment, but not installed in the equipment	Prohibited	
Without the equipment they operate (individual batteries in originally sealed packaging)	Prohibited	

1. Unless otherwise prohibited by the international destination country or specific APO/FPO/DPO ZIP Code location.
2. Used, damaged, defective, or recalled lithium batteries and used, damaged, or defective electronic devices containing or packaged with lithium batteries are prohibited and may not be mailed internationally or to, from or between APO, FPO, or DPO locations under any circumstances. This excludes devices that are new in original packaging and manufacturer-certified new or refurbished devices.
3. When a mailpiece limitation of 4 cells or 2 batteries is applicable, a mailpiece may contain either 4 cells or 2 batteries, not both.
4. Each lithium metal or lithium alloy cell must not contain more than 1 g (gram) of lithium content.
5. Each lithium metal or lithium alloy battery must not contain more than 2 g of aggregate lithium content.
6. Each lithium-ion or lithium polymer cell must not exceed more than 20 Wh (watt-hour rating).
7. Each lithium-ion or lithium polymer battery must not exceed 100 Wh.
8. Each lithium metal or lithium alloy cell or battery must not exceed 0.3 g of lithium content.
9. Each lithium-ion or lithium polymer cell or battery must not exceed a watt-hour rating of 2.7 Wh.

Note: Shipments containing lithium batteries are not permitted in Global Express Guaranteed mailpieces.

623 Nonmailable Hazardous Materials

* * * * *

[Revise the text of item j. to read as follows:]

- j. Class 9, miscellaneous hazardous materials (349), except as permitted in 622.4 and 622.5.

* * * * *

[Revise the text of item l. to read as follows:]

- l. Magnetized materials capable of causing a compass deviation at a distance of 7 feet or more (see 349.24).

[Add new items m. and n. to read as follows:]

- m. All damaged, defective, or recalled lithium batteries (see 349.21).

- n. All used, damaged, or defective electronic devices containing or packaged with lithium batteries (see 349.21). This excludes devices that are new in original packaging, and manufacturer-certified new or refurbished devices.

* * * * *

Appendix C

USPS Packaging Instructions for Mailable Hazardous Materials

* * * * *

USPS Packaging Instruction 9D

Lithium Metal and Lithium-Ion Cells and Batteries — Domestic

[Revise the first paragraph to read as follows:]

Except according to 349.21, lithium metal (non-rechargeable) cells and batteries and lithium-ion (rechargeable) cells and batteries are mailable in limited quantities domestically via air or surface transportation when they are installed in or packed with the equipment they are intended to operate. Unless otherwise excepted, lithium metal and lithium-ion batteries (without equipment) are mailable in limited quantities domestically via surface transportation only. Lithium metal and lithium-ion batteries installed in or packed with used, damaged, or defective electronic devices (excluding devices that are new in original packaging, and manufacturer-certified new or refurbished devices) meeting all mailability requirements in 349, are mailable via surface transportation only.

* * * * *

Mailability

[Revise the text of the first bullet to read as follows:]

- Lithium metal and lithium-ion cells and batteries installed in or packed with equipment may be mailable via air or surface transportation.

* * * * *

[Add a new fourth bullet to read as follows:]

- Used, damaged, or defective electronic devices (excluding devices that are new in original packaging, and manufacturer-certified new or refurbished devices) containing or packaged with lithium batteries (see 349.12e) must be mailed via domestic surface transportation only, provided they meet eligibility requirements in accordance with 349.

* * * * *

Markings

* * * * *

[Under the first main bullet, which begins “Lithium metal batteries properly installed,” add a new fifth bullet to read as follows:]

- Used, damaged, or defective electronic devices (excluding devices that are new in original packaging, and manufacturer-certified new or refurbished devices) must include the text “Restricted Electronic Device” and “Surface Transportation Only” on the address side of the mailpiece.

* * * * *

[Under the second main bullet, which begins “Lithium metal batteries packed with,” add a new fourth bullet to read as follows:]

- Used, damaged, or defective electronic devices (excluding devices that are new in original packaging, and manufacturer-certified new or refurbished devices) must include the text “Restricted Electronic Device” and “Surface Mail Only” on the address side on the mailpiece.

* * * * *

[Under the fourth main bullet, which begins “Lithium-ion batteries properly installed,” add a new fourth bullet to read as follows:]

- Used, damaged, or defective electronic devices (excluding devices that are new in original packaging, and manufacturer-certified new or refurbished devices) must include the text “Restricted Electronic Device” and “Surface Mail Only” on the address side on the mailpiece.

* * * * *

[Under the fifth main bullet, which begins “Lithium-ion batteries packed with,” add a new fifth bullet to read as follows:]

- Used, damaged, or defective electronic devices (excluding devices that are new in original packaging, and manufacturer-certified new or refurbished devices) must include the text “Restricted Electronic Device” and “Surface Mail Only” on the address side on the mailpiece.

* * * * *

[Add a new main bullet (seventh) at the end of the section “Markings” to read as follows:]

- **Used, damaged, or defective electronic devices:**
In addition to applicable marking requirements listed above, packages containing used, damaged, or defective electronic devices (excluding devices that are new in original packaging, and manufacturer-certified new or refurbished devices) containing or packaged with lithium batteries must be marked with the text “Restricted Electronic Device” and “Surface Transportation Only” on the address side of the package. (See 221.1 and 325.1.) Products being returned via Parcel Return Service (PRS), Return Delivery Unit (RDU), or Return Sectional Center Facility (RSCF) are exempt from this marking requirement.

Quantities**Domestic — Small Lithium Metal or Lithium-ion Batteries**

* * * * *

Domestic Lithium Battery Mailability Exhibit

[Revise the text of the Exhibit to read as follows:]

	Surface Transportation	Air Transportation¹	Mailpiece Limitations²
Lithium Metal or Lithium Alloy Batteries^{3, 4} <i>Small, non-rechargeable, consumer-type batteries</i>			
Contained in (properly installed in equipment)	Mailable	Mailable	8 cells or 2 batteries 11 lbs.
Packed with equipment, but not installed in the equipment	Mailable	Mailable	8 cells or 2 batteries 11 lbs.
Without the equipment they operate (individual batteries in originally sealed packaging)	Mailable	Prohibited	5 lbs.
Lithium-ion or Lithium Polymer Batteries^{5, 6} <i>Small, rechargeable, consumer-type batteries</i>			
Contained in (properly installed in equipment)	Mailable	Mailable	8 cells or 2 batteries
Packed with equipment, but not installed in the equipment	Mailable	Mailable	8 cells or 2 batteries
Without the equipment they operate (individual batteries in originally sealed packaging)	Mailable	Prohibited ⁷	5 lbs.

	Surface Transportation	Air Transportation ¹	Mailpiece Limitations ²
Very Small Lithium Metal or Lithium-ion Batteries^{8,9} <i>Exception for very small consumer-type batteries in USPS air transportation</i>			
Contained in (properly installed in equipment)	Mailable	Mailable	No limit on cells/ batteries 5.5 pounds
Packed with equipment, but not installed in the equipment	Mailable	Mailable	No limit on cells/ batteries 5.5 pounds
Damaged, Defective, or Recalled Batteries	Prohibited, unless approved by the director, Product Classification.		

1. Used, damaged, or defective electronic devices are prohibited from air transportation. This excludes devices that are new in original packaging and manufacturer-certified new or refurbished devices.
2. When a mailpiece limitation of 8 cells or 2 batteries is applicable, a mailpiece may contain either 8 cells or 2 batteries, not both.
3. Each cell must not contain more than 1 g (gram) of lithium content.
4. Each battery must not contain more than 2 g aggregate lithium content.
5. Each cell must not exceed more than 20 Wh (watt-hour rating).
6. Each battery must not exceed 100 Wh.
7. Mailable intra-Alaska via air transportation is limited to 8 cells or 2 batteries.
8. Each lithium metal or lithium alloy cell or battery must not exceed 0.3 g of lithium content.
9. Each lithium-ion or lithium polymer cell or battery must not exceed 2.7 Wh.

USPS Packaging Instruction 9E

Lithium Metal and Lithium-ion Cells and Batteries — International and APO/FPO/DPO

* * * * *

Mailability

[Revise the second bullet to read as follows:]

- Lithium metal and lithium-ion cells and batteries not packed in equipment (i.e., batteries packed with equipment or batteries sent separately from equipment) are prohibited.

[Add a new third bullet to read as follows:]

- Used, damaged, and defective electronic devices (excluding devices that are new in original packaging, and manufacturer-certified new or refurbished devices) containing lithium batteries are prohibited (see 623).

* * * * *

Quantities

International — Very Small Lithium Metal and Lithium-ion Cells and Batteries:

* * * * *

International Lithium Battery Mailability Exhibit

[Revise the text of the Exhibit to read as follows:]

	International APO/FPO/ DPO ^{1,2}	Mailpiece Battery Limit ³
Lithium Metal or Lithium Alloy Batteries^{4,5} <i>Small, non-rechargeable, consumer-type batteries</i>		
Contained in (properly installed in equipment)	Mailable	Maximum of 4 cells or 2 batteries
Packed with equipment, but not installed in the equipment	Prohibited	
Without the equipment they operate (individual batteries in originally sealed packaging)	Prohibited	
Lithium-ion or Lithium Polymer Batteries^{6,7} <i>Small, rechargeable, consumer-type batteries</i>		
Contained in (properly installed in equipment)	Mailable	Maximum of 4 cells or 2 batteries
Packed with equipment, but not installed in the equipment	Prohibited	
Without the equipment they operate (individual batteries in originally sealed packaging)	Prohibited	
Very Small Lithium Metal or Lithium-ion Batteries^{8,9} <i>Exception for very small consumer-type batteries in international transportation</i>		
Contained in (properly installed in equipment)	Mailable	Maximum of 4 cells or 2 batteries
Packed with equipment, but not installed in the equipment	Prohibited	
Without the equipment they operate (individual batteries in originally sealed packaging)	Prohibited	

1. Unless otherwise prohibited by the international destination country or specific APO/FPO/DPO ZIP Code location.
 2. Used, damaged, defective, or recalled lithium batteries and used damaged, or defective electronic devices containing lithium batteries are prohibited and may not be mailed internationally or to, from, or between APO, FPO, or DPO locations under any circumstances. This excludes electronic devices that are new in original packaging and manufacturer-certified new or refurbished devices.
 3. When a mailpiece limitation of 4 cells or 2 batteries is applicable, a mailpiece may contain either 4 cells or 2 batteries, not both.
 4. Each lithium metal or lithium alloy cell must not contain more than 1 g (gram) of lithium content.
 5. Each lithium metal or lithium alloy battery must not contain more than 2 g of aggregate lithium content.
 6. Each lithium-ion or lithium polymer cell must not exceed more than 20 Wh (watt-hour rating).
 7. Each lithium-ion or lithium polymer battery must not exceed 100 Wh.
 8. Each lithium metal or lithium alloy cell or battery must not exceed 0.3 g of lithium content.
 9. Each lithium-ion or lithium polymer cell or battery must not exceed a watt-hour rating of 2.7 Wh.
- * * * * *

[Add new Appendix F to read as follows:]

Appendix F

Alaska Routes Serviced by Air Transportation Only

The following ZIP Codes in Alaska are only serviced by air transportation:

99545	99561	99585	99619	99637	99657	99677	99720	99740	99757	99773	99801	99833	99926
99546	99563	99589	99620	99638	99658	99678	99721	99741	99758	99774	99802	99835	99927
99547	99564	99590	99621	99640	99659	99679	99722	99742	99759	99777	99803	99836	99928
99548	99565	99591	99622	99641	99660	99680	99723	99745	99761	99778	99811	99840	99929
99549	99569	99602	99624	99643	99661	99681	99724	99746	99762	99781	99812	99841	99950
99550	99571	99604	99625	99644	99662	99682	99726	99747	99763	99782	99820	99850	
99551	99574	99606	99626	99647	99663	99684	99727	99748	99765	99783	99821	99901	
99552	99575	99607	99627	99648	99665	99685	99730	99749	99766	99784	99824	99903	
99553	99576	99608	99628	99649	99666	99689	99732	99750	99767	99785	99825	99918	
99554	99578	99609	99630	99650	99667	99690	99733	99751	99768	99786	99826	99919	
99555	99579	99612	99632	99651	99668	99691	99734	99752	99769	99788	99827	99921	
99557	99580	99613	99633	99653	99670	99692	99736	99753	99770	99789	99829	99922	
99558	99581	99614	99634	99655	99671	99695	99738	99754	99771	99790	99830	99923	
99559	99583	99615	99636	99656	99675	99697	99739	99756	99772	99791	99832	99925	
	*	*	*	*	*								

The Postal Service will incorporate these revisions into the next edition of Publication 52, which is available via Postal Explorer® at pe.usps.com.

— Product Classification,
Product Solutions, 2-9-23

Publication 431 Revision: Changes to Post Office Box Service and Caller Service Fee Groups

Effective February 9, 2023, Publication 431, *Post Office Box Service and Caller Service Fee Groups*, is revised to include the following changes.

Publication 431, *Post Office Box Service and Caller Service Fee Groups*

* * * *

[Revise the following entry:]

ZIP Code	Fee Group
41725	6

* * * *

[Delete the following entry:]

ZIP Code	Fee Group
83433	5

* * * *

The online version of Publication 431 is dated July 2013. Publication 431 is currently available on the Postal Service™ PolicyNet website (blue.usps.gov/cpim):

- Go to blue.usps.gov.
- In the left-hand column, click *Essential Links*, and then click *PolicyNet*.
- Go to the right-hand side under “Published Forms and Directives.”
- Click *Publications*.

Offices with WebBATS Manager/Supervisor access can view current Publication 431 information by going to the WebBATS Edit Facility Information page, as follows:

1. Go to the WebBATS main menu, and select Utility> Facility>Edit Facility option.
2. View the Fee Group field on the Edit Facility Information page.

— *Post Office Operations,
Retail and Post Office Operations, 2-9-23*

Forms

New PS Form 42, Declaration of Voluntary Resignation to Enter Military Service for Career and Non-Career Employees, is Now Available

Effective July 2022, the Postal Service™ discontinued form USPS 41, *Resignation to Enter Military Service Declaration*, and replaced it with new PS Form 42, *Declaration of Voluntary Resignation to Enter Military Service for Career and Non-Career Employees*. The new form can now be used by both Career and Non-Career Employees.

New PS Form 42 is available on the PolicyNet website:

- Go to blue.usps.gov.
- In the left-hand column, click *Essential Links*, and then click *PolicyNet*.
- Go to the right-hand side under “Published Forms and Directives,” click *Forms*, and then click on the range 0–999.
- Scroll down to the form entry and click the PDF icon.

The direct URL for the Postal Service PolicyNet website is blue.usps.gov/cpim.

— *National Human Resources,
Human Resources, 2-9-23*

PS Form 3227-R Revision: Rural or Highway Contract Route Carrier Stamp Purchase Order Form

Effective January 2023, the Postal Service™ revised PS Form 3227-R, *Rural or Highway Contract Route Carrier Stamp Purchase Order Form*, to update the information based on the recent rate increase and to incorporate information related to the mailing of hazardous, restricted, and perishable mail.

The revised edition is dated January 2023. All previous editions of PS Form 3227-R are obsolete and must be recycled.

The January 2023 edition of PS Form 3227-R is available from the Material Distribution Center (MDC) in Topeka, KS. USPS® facilities can use the following information to order revised PS Form 3227-R through the MDC eBuy+ catalog:

PSIN:	PS 3227-R
PSN:	7530-01-000-9885
Unit of Issue:	EA
Minimum Order Quantity:	100

Quick Pick Number:	164
Price*:	\$0.0416
Edition Date:	1/23

* Price is current as of this date but is subject to change. Any change in price will be reflected in eBuy+.

The January 2023 edition of PS Form 3227-R is available on the PolicyNet website:

- Go to blue.usps.gov.
- In the left-hand column, click *Essential Links*, and then click *PolicyNet*.
- Go to the right-hand side under “Published Forms and Directives,” click *Forms*, and then click on the range 3000–3999.
- Scroll down to the form entry and click the PDF icon.

The direct URL for the Postal Service PolicyNet website is blue.usps.gov/cpim.

— *Rural Strategy and Transformation, Delivery Operations, 2-9-23*

PS Form 3972 Revision: Leave Absence Analysis

Effective December 2022, the Postal Service™ revised PS Form 3972, *Leave Year 2023 Absence Analysis*, to update the form information for the 2023 Leave Year.

The December 2022 edition replaces the November 2022 edition, which did not reflect the correct start date for Leave Year 2023. Per *Employee and Labor Relations Manual*, section 512.12a, the leave year begins “with the first day of the first complete pay period in a calendar year.” For Leave Year 2023, the correct start date is January 14, 2023, as is shown on the December 2022 edition of PS Form 3972.

USPS® facilities can use the following information to order PS Form 3972 through eBuy+:

PSIN:	PS 3972
PSN:	7530-02-000-9137
Unit of Measure:	EA
Minimum Order Quantity:	1
Bulk Pack Quantity:	1800
Quick Pick Number:	228
Price:	\$0.0640 *
Edition Date:	12/22

* Price is current as of this date and is subject to change. Any change in price will be reflected in eBuy+.

All orders received at the MDC will get the 12/22 edition of PS Form 3972 for Leave Year 2023. However, the 12/21 edition for Leave Year 2022 will be available for individual printing from the Postal Service PolicyNet website throughout 2023.

Note: To the extent possible, managers are to use the electronic version of PS Form 3972 available on the Enterprise Resource Management System (eRMS) site before using paper copies of PS Form 3972.

The revised PS Form 3972 is available on the PolicyNet website (as is the edition dated December 2021 for Leave Year 2022):

- Go to blue.usps.gov.
- In the left-hand column, click *Essential Links*, and then click *PolicyNet*.
- Go to the right-hand side under “Published Forms and Directives,” click *Forms*, and then click on the range 3000–3999.
- Scroll down to the form entry and click the PDF icon.

The direct URL for the Postal Service PolicyNet website is blue.usps.gov/cpim.

— *Policies and Programs, Labor Relations, 2-9-23*

Organization Information

Address Management

Post Office Changes

The table shown here includes Post Offices that have been suspended for years. Customers in these communities are being served by nearby offices. The listings in this table represent the administrative action of the Postal Service™ officially closing these offices.

Old/ New	Finance No.	ZIP Code	State	P.O. Name	County/Parish	Station/Branch/ Unit	Unit Type	Effective Date	Comments
Old	020312	99501	AK	Anchorage	Anchorage	Downtown	Classified Station	05/20/2013	
New	020312	99501	AK	Anchorage	Anchorage	Main Office	Post Office	08/15/2022	Classified Station discontinued. Retain ZIP Code™. Continue to use Anchorage, AK 99501 as the last line of address.
Old	01-5440	36913	AL	Melvin	Choctaw	Main Office	Post Office	09/27/2013	
New	01-3500	36913	AL	Gilbertown	Choctaw	Melvin	Place Name	08/15/2022	Post Office discontinued. Retain ZIP Code. Establish a Place Name. Continue to use Melvin, AL 36913 as the last line of address.
Old	05-4530	90035	CA	Los Angeles	Los Angeles	Century City	Classified Station	07/31/2015	
New	05-4530	90035	CA	Los Angeles	Los Angeles	Main Office	Post Office	08/15/2022	Classified Station discontinued. Retain ZIP Code. Continue to use Los Angeles, CA 90035 as the last line of address.
Old	05-4155	90716	CA	Lakewood	Los Angeles	Hawaiian Gardens	Classified Branch	11/16/2012	
New	05-4155	90716	CA	Lakewood	Los Angeles	Hawaiian Gardens	Place Name	08/15/2022	Classified Branch discontinued. Retain ZIP Code. Establish a Place Name. Continue to use Hawaiian Gardens, CA 90716 as the last line of address.
Old	05-4014	95550	CA	Korbel	Humbolt	Main Office	Post Office	03/11/2014	
New	05-0810	95550	CA	Blue Lake	Humbolt	Korbel	Place Name	08/15/2022	Post Office discontinued. Retain ZIP Code. Establish a Place Name. Continue to use Korbel, CA 95550 as the last line of address.
Old	05-4530	90015	CA	Los Angeles	Los Angeles	Textile	Classified Station	02/14/2014	
New	05-4530	90015	CA	Los Angeles	Los Angeles	Main Office	Post Office	08/15/2022	Classified Station discontinued. Retain ZIP Code. Continue to use Los Angeles, CA 90015 as the last line of address.
Old	05-5430	90064	CA	Los Angeles	Los Angeles	Westside Pavilion	Classified Station	12/31/2014	
New	05-5430	90064	CA	Los Angeles	Los Angeles	Main Office	Post Office	08/15/2022	Classified Station discontinued. Retain ZIP Code. Continue to use Los Angeles, CA 90064 as the last line of address.
Old	05-5562	92055	CA	Oceanside	San Diego	Pendleton Hospital	Classified Station	01/01/2014	
New	05-5662	92055	CA	Oceanside	San Diego	Main Office	Post Office	08/15/2022	Classified Station discontinued. Retain ZIP Code. Continue to use Camp Pendleton, CA 92055 as the last line of address.

Old/ New	Finance No.	ZIP Code	State	P.O. Name	County/Parish	Station/Branch/ Unit	Unit Type	Effective Date	Comments
Old New	05-7866 05-1686	96133 96133	CA CA	Topaz Coleville	Mono Mono	Main Office Topaz	Post Office Place Name	05/27/2016 08/15/2022	Post Office discontinued. Retain ZIP Code. Establish a Place Name. Continue to use Topaz, CA 96133 as the last line of address.
Old New	11-8535 11-3585	32357 32357	FL FL	Shady Grove Greenville	Taylor Taylor	Main Office Shady Grove	Post Office Place Name	05/29/2013 08/15/2022	Post Office discontinued. Retain ZIP Code. Establish a Place Name. Continue to use Shady Grove, FL 32357 as the last line of address.
Old New	18-7200 18-2529	52648 52648	IA IA	Pilot Grove Donnellson	Lee Lee	Main Office Pilot Grove	Post Office Place Name	08/28/2013 08/15/2022	Post Office discontinued. Retain ZIP Code. Establish a Place Name. Continue to use Pilot Grove, IA 52648 as the last line of address.
Old New	18-8019 18-0774	52071 52071	IA IA	Saint Donatus Bellevue	Jackson Jackson	Main Office Saint Donatus	Place Name Place Name	03/04/2015 08/15/2022	Post Office discontinued. Retain ZIP Code. Establish a Place Name. Continue to use Saint Donatus, IA 52071 as the last line of address.
Old New	18-8820 18-0063	50254 50254	IA IA	Thayer Afton	Union Union	Main Office Thayer	Post Office Place Name	08/18/2014 08/15/2022	Post Office discontinued. Retain ZIP Code. Establish a Place Name. Continue to use Thayer, IA 50254 as the last line of address.
Old New	16-4338 16-1236	62346 62346	IL IL	La Prairie Camp Point	Adams Adams	Main Office La Prairie	Post Office Place Name	05/23/2014 08/15/2022	Post Office discontinued. Retain ZIP Code. Establish a Place Name. Continue to use La Prairie, IL 62346 as the last line of address.
Old New	16-5970 16-8358	62874 62874	IL IL	Orient West Frankfort	Franklin Franklin	Main Office Orient	Post Office Place Name	04/30/2013 08/15/2022	Post Office discontinued. Retain ZIP Code. Establish a Place Name. Continue to use Orient, IL 62874 as the last line of address.
Old New	17-0308 17-7436	46912 46912	IN IN	Athens Rochester	Fulton Fulton	Main Office Athens	Post Office Place Name	12/28/2013 08/15/2022	Post Office discontinued. Retain ZIP Code. Establish a Place Name. Continue to use Athens, IN 46912 as the last line of address.
Old New	17-0693 17-2684	46110 46110	IN IN	Boggstown Fairland	Shelby Shelby	Main Office Boggstown	Post Office Place Name	02/28/2015 08/15/2022	Post Office discontinued. Retain ZIP Code. Establish a Place Name. Continue to use Boggstown, IN 46110 as the last line of address.
Old New	17-2145 17-6897	46921 46921	IN IN	Deedsville Peru	Miami Miami	Main Office Deedsville	Post Office Place Name	11/09/2018 08/15/2022	Post Office discontinued. Retain ZIP Code. Establish a Place Name. Continue to use Deedsville, IN 46921 as the last line of address.

Old/ New	Finance No.	ZIP Code	State	P.O. Name	County/Parish	Station/Branch/ Unit	Unit Type	Effective Date	Comments
Old New	17-5720 17-0924	47962 47962	IN IN	Montmorenci Brookston	Tippecanoe Tippecanoe	Main Office Montmorenci	Post Office Place Name	02/28/2015 08/15/2022	Post Office discontinued. Retain ZIP Code. Establish a Place Name. Continue to use Montmorenci, IN 47962 as the last line of address.
Old New	17-9339 17-4378	46995 46995	IN IN	West Middleton Kokomo	Howard Howard	Main Office West Middleton	Post Office Place Name	02/26/2016 08/15/2022	Post Office discontinued. Retain ZIP Code. Establish a Place Name. Continue to use West Middleton, IN 46995 as the last line of address.
Old New	19-1639 19-6347	67627 67627	KS KS	Catharine Victoria	Ellis Ellis	Main Office Catharine	Post Office Place Name	08/13/2014 08/15/2022	Post Office discontinued. Retain ZIP Code. Establish a Place Name. Continue to use Catharine, KS 67627 as the last line of address.
Old New	19-3256 19-0374	67049 67049	KS KS	Freeport Anthony	Harper Harper	Main Office Freeport	Post Office Place Name	09/17/2016 08/15/2022	Post Office discontinued. Retain ZIP Code. Establish a Place Name. Continue to use Freeport, KS 67049 as the last line of address.
Old New	19-5929 19-3872	67105 67105	KS KS	Milan Harper	Sumner Sumner	Main Office Milan	Post Office Place Name	12/01/2011 08/15/2022	Post Office discontinued. Retain ZIP Code. Establish a Place Name. Continue to use Milan, KS 67105 as the last line of address.
Old New	20-0108 20-5516	42020 42020	KY KY	Almo Murray	Calloway Calloway	Main Office Almo	Post Office Place Name	07/22/2015 08/15/2022	Post Office discontinued. Retain ZIP Code. Establish a Place Name. Continue to use Almo, KY 42020 as the last line of address.
Old New	20-0304 20-3152	42123 42123	KY KY	Austin Glasgow	Barren Barren	Main Office Austin	Post Office Place Name	08/09/2013 08/15/2022	Post Office discontinued. Retain ZIP Code. Establish a Place Name. Continue to use Austin, KY 42123 as the last line of address.
Old New	24-9537 24-9520	01475 01475	MA MA	Winchendon Springs Winchendon	Worcester Worcester	Main Office Main Office	Post Office Post Office	09/21/2012 08/15/2022	Post Office discontinued. Retain ZIP Code. Use Winchendon, MA 01475 as the last line of address.
Old New	23-4230 23-6012	20635 20659	MD MD	Helen Mechanicsville	Saint Marys Saint Marys	Main Office Main Office	Post Office Post Office	10/31/2012 08/15/2022	Post Office and ZIP Code discontinued. Use Mechanicsville, MD 20659 as the last line of address.
Old New	22-9315 22-0780	04287 04287	ME ME	Bowdoin Bowdoinham	Sagadahoc Sagadahoc	Main Office Bowdoin	Post Office Place Name	07/03/2015 08/15/2022	Post Office discontinued. Retain ZIP Code. Establish a Place Name. Continue to use Bowdoin, ME 04287 as the last line of address.

Old/ New	Finance No.	ZIP Code	State	P.O. Name	County/Parish	Station/Branch/ Unit	Unit Type	Effective Date	Comments
Old	28-7140	63108	MO	Saint Loius	Saint Louis City	Field	Classified Station	06/13/2013	
New	28-7140	63108	MO	Saint Louis	Saint Louis City	Main Office	Post Office	08/15/2022	Classified Station discontinued. Retain ZIP Code. Continue to use Saint Loius, MO 63108 as the last line of address.
Old	28-3114	63541	MO	Glenwood	Schuyler	Main Office	Post Office	12/01/2014	
New	28-4488	63541	MO	Lancaster	Schuyler	Glenwood	Place Name	08/15/2022	Post Office discontinued. Retain ZIP Code. Establish a Place Name. Continue to use Glenwood, MO 63541 as the last line of address.
Old	28-3180	63543	MO	Gorin	Scotland	Main Office	Post Office	02/02/2016	
New	28-5202	63543	MO	Memphis	Scotland	Gorin	Place Name	08/15/2022	Post Office discontinued. Retain ZIP Code. Establish a Place Name. Continue to use Gorin, MO 63543 as the last line of address.
Old	28-7230	63467	MO	Saverton	Ralls	Main Office	Post Office	06/25/2016	
New	28-5772	63467	MO	New London	Ralls	Saverton	Place Name	08/15/2022	Post Office discontinued. Retain ZIP Code. Establish a Place Name. Continue to use Saverton, MO 63467 as the last line of address.
Old	27-1404	39632	MS	Chatawa	Pike	Main Office	Post Office	12/03/2012	
New	27-4836	39632	MS	Magnolia	Pike	Chatawa	Place Name	08/15/2022	Post Office discontinued. Retain ZIP Code. Establish a Place Name. Continue to use Catawa, MS 39632 as the last line of address.
Old	27-4524	38644	MS	Lula	Coahoma	Main Office	Post Office	02/25/2014	
New	27-1495	38644	MS	Clarksdale	Coahoma	Lula	Place Name	08/15/2022	Post Office discontinued. Retain ZIP Code. Establish a Place Name. Continue to use Lula, MS 38644 as the last line of address.
Old	33-6615	08865	NJ	Phillipsburg	Warren	Alpha	Classified Branch	05/01/2008	
New	33-6615	08865	NJ	Phillipsburg	Warren	Main Office	Post Office	08/15/2022	Classified Branch discontinued. Retain ZIP Code. Continue to use Phillipsburg, NJ 08865 as the last line of address.
Old	33-1200	07829	NJ	Buttville	Warren	Main Office	Post Office	06/01/2009	
New	33-6255	07863	NJ	Oxford	Warren	Main Office	Post Office	08/15/2022	Post Office and ZIP Code discontinued. Use Oxford, NJ 07863 as the last line of address.
Old	33-3850	08527	NJ	Jackson	Ocean	Cassville	Classified Station	12/15/2012	
New	33-3850	08527	NJ	Jackson	Ocean	Main Office	Post Office	08/15/2022	Classified Station discontinued. Retain ZIP Code. Continue to use Jackson, NJ 08527 as the last line of address.
Old	33-6405	07055	NJ	Passaic	Passaic	Dundee	Classified Station	01/16/2015	
New	33-6406	07055	NJ	Passaic	Passaic	Main Office	Post Office	08/15/2022	Classified Station discontinued. Retain ZIP Code. Continue to use Passaic, NJ 07055 as the last line of address.

Old/ New	Finance No.	ZIP Code	State	P.O. Name	County/Parish	Station/Branch/ Unit	Unit Type	Effective Date	Comments
Old	33-5445	07950	NJ	Morris Plains	Morris	Greystone Park	Classified Branch	01/31/2012	
New	33-5445	07950	NJ	Morris Plains	Morris	Main Office	Post Office	08/15/2022	Classified Branch discontinued. Retain ZIP Code. Continue to use Morris Plains, NJ 07950 as the last line of address.
Old	33-4530	08834	NJ	Little York	Hunterdon	Main Office	Post Office	10/01/1993	
New	33-5175	08834	NJ	Milford	Hunterdon	Little York	Place Name	08/15/2022	Post Office discontinued. Retain ZIP Code. Establish a Place Name. Continue to use Little York, NJ 08834 as the last line of address.
Old	35-0270	10910	NY	Arden	Orange	Main Office	Post Office	07/18/2009	
New	35-7815	10910	NY	Sloatsburg	Orange	Arden	Place Name	08/15/2022	Post Office discontinued. Retain ZIP Code. Establish a Place Name. Continue to use Arden, NY 10910 as the last line of address.
Old	35-0625	10912	NY	Bellvale	Orange	Main Office	Post Office	08/25/2010	
New	35-3425	10912	NY	Greenwood Lake	Orange	Bellvale	Place Name	08/15/2022	Post Office discontinued. Retain ZIP Code. Establish a Place Name. Continue to use Bellvale, NY 10912 as the last line of address.
Old	35-2200	13633	NY	De Peyster	Saint Lawrence	Main Office	Post Office	11/30/2015	
New	35-3765	13633	NY	Heuvelton	Saint Lawrence	De Peyster	Place Name	08/15/2022	Post Office discontinued. Retain ZIP Code. Establish a Place Name. Continue to use De Peyster, NY 13633 as the last line of address.
Old	35-8380	12424	NY	Tannersville	Greene	East Jewett	Classified Branch	09/30/2013	
New	35-8380	12424	NY	Tannersville	Greene	East Jewett	Place Name	08/15/2022	Classified Branch discontinued. Retain ZIP Code. Establish a Place Name. Continue to use East Jewett, NY 12424 as the last line of address.
Old	35-2995	13341	NY	Franklin Springs	Oneida	Main Office	Post Office	01/25/2013	
New	35-1660	13341	NY	Clinton	Oneida	Franklin Springs	Place Name	08/15/2022	Post Office discontinued. Retain ZIP Code. Establish a Place Name. Continue to use Franklin Springs, NY 13341 as the last line of address.
Old	35-3930	12089	NY	Hoosick	Rensselaer	Main Office	Post Office	06/27/2014	
New	35-3935	12089	NY	Hoosick Falls	Rensselaer	Hoosick	Place Name	08/15/2022	Post Office discontinued. Retain ZIP Code. Establish a Place Name. Continue to use Hoosick, NY 12089 as the last line of address.

Pull-Out Information

Elimination of Corporate Accounts

The Postal Service™ is discontinuing USPSCA®, a corporate account payment method used for Express Mail Corporate Accounts and Priority Mail Express Manifest Accounts. USPSCAs — also known as United States Postal Service Corporate Accounts — are prefunded by customers to ship documents or packages by Priority Mail Express®.

Effective January 1, 2023, the Postal Service began closing inactive USPSCA accounts and will discontinue the corporate account payment method on July 1 due to rising costs and declining demand.

Customers who use USPSCA are encouraged to switch to an available alternative payment method. Alternative payment methods may include Click-N-Ship® (CNS), USPS Ship, Electronic Verification System (eVS®), ePostage®, PC Postage®, or Meter.

For information on how to migrate, customers should contact their Sales Account/Business Service Network (BSN) Representative or their local Post Office™, or they can send an email to the Mailing and Shipping Solutions Center at MSSC@usps.gov.

Any account with a balance can make payments or request a refund by contacting MSSC@usps.gov:

- Refund requests must include a signed authorization on letterhead, the EMCA number, business name, and location.
- Accounts with a negative balance after July 1, 2023, will be sent to Accounts Receivable for collection.

For questions about the elimination of Corporate Accounts, send an email to ShippingServices@usps.gov.

— *Shipping and Commerce Product Management,
Business Solutions, 2-9-23*

Enjoy the Thrill of Iconic **Pony Cars** Forever® Stamps



ON SALE NATIONWIDE: AUGUST 25, 2022
Sold as a full pane.

Fraud

Invalid USPS Corporate Account Numbers

Provide this listing to Contract Postal Units and acceptance clerks in non-POS locations without intranet access to validate a USPS Corporate Account (USPSCA) number online. For all other locations, online USPSCA validation is preferred. This list supersedes all previous notices, which you must recycle.

Acceptance clerks must not accept Priority Mail Express® shipments bearing an invalid USPSCA number in the “Payment by Account” or “Agreement Number” section of the label or form.

Note: The first 6 digits of a 9-digit Custom Designed Service and Next Day Pickup Agreement make up the Corporate Account Number.

005691	022913	110398	152668	326003	379505	481264	608032	752118	921790	941004	967069
018005	056013	117097	185066	366005	380180	481366	725044	754027	927981	941516	982075
021177	076080	142056	221361	370005	381529	553006	730836	853411	931775	945548	982480
021636	077311	142272	223281	372274	381543	553019	731432	853902	933181	950985	997170
022631	105324	142822	312504	374006	481222	604333	752076	901629	940086	951112	

— Product Information Requirements, Mail Entry and Payment Technology, 2-9-23

Missing, Lost, or Stolen U.S. Money Order Forms

Do Not Cash — Upon Receipt, Notify Local Postal Inspectors

Provide this listing to all Postal Service™ employees responsible for accepting and cashing postal money orders. Destroy all interim notices when the numbers listed appear in the *Postal Bulletin*. The new money order serial

numbers consist of the first 10 digits. The eleventh digit is a check digit only.

Do not cash outdated money orders **104 151 601 to 692 600 000**. Advise holders to send invalid money orders to Canada Post Corporation, Ottawa, Canada K1A 0B1. Check for altered dollar amounts by holding money orders to the light.

010 001 0200 to 0299	043 205 5922 to 5999	083 784 8886 to 8899	174 281 9347 to 9399
010 504 1932 to 1999	044 087 3457 to 3499	083 913 6915 to 6999	175 251 2600 to 0699
011 582 1889 to 1899	044 087 4000 to 4099	084 478 3920 to 3999	176 281 7937 to 7950
011 588 2900 to 3099	044 226 2487 to 2512	086 000 8271 to 8299	176 281 7963 to 7999
012 441 0784 to 0799	044 306 4200 to 4299	086 798 3840 to 3849	176 731 6586 to 6599
012 579 5675 to 5699	044 306 4370 to 4599	088 404 4472 to 4499	178 254 5000 to 9999
013 289 6176 to 6199	045 524 4121 to 4298	088 404 5584 to 5699	178 881 9900 to 9999
013 610 0014 to 0099	046 800 9870 to 9899	088 757 8688 to 8699	180 031 2089 to 2098
014 932 1000 to 1099	047 352 4000 to 4099	088 757 9400 to 9499	180 403 7723 to 7741
014 972 0800 to 0899	048 383 7650 to 7659	089 358 2248 to 2257	180 428 4580 to 0599
015 363 0065 to 0099	048 396 3647 to 3699	090 663 9678 to 9684	182 368 7544 to 0599
017 028 3200 to 3299	051 142 0755 to 0799	091 818 0071 to 0099	182 475 3229 to 3258
018 569 5333 to 5399	051 774 8857 to 8899	093 106 9346 to 9355	182 475 3904 to 3933
018 986 5264 to 5299	051 781 2875 to 2885	093 203 0500 to 0599	182 631 0031 to 0099
019 518 2814 to 2899	051 977 7010 to 7023	093 684 3630 to 3699	182 911 6539 to 6600
020 698 5159 to 5199	052 058 7115 to 7199	094 081 5074 to 5099	184 218 2760 to 2799
020 844 7307 to 7399	054 450 1130 to 1167	094 216 2555 to 2599	185 828 1474 to 1499
020 972 8948 to 8999	057 670 0563 to 0599	094 580 7062 to 7099	186 132 7583 to 0599
022 021 9110 to 9181	058 187 3836 to 3899	094 639 4200 to 4299	186 629 0589 to 0599
022 037 1411 to 1499	058 523 3003 to 3099	095 070 7186 to 7199	187 184 6177 to 0199
022 527 9201 to 9210	058 591 1153 to 1299	095 076 8300 to 8399	187 323 8200 to 8299
022 529 1882 to 1899	058 895 3746 to 3799	095 354 6864 to 6899	187 441 6080 to 6099
023 637 7169 to 7199	059 986 0814 to 0899	097 224 1350 to 1599	188 831 6774 to 6799
024 380 4100 to 4199	060 406 7650 to 7699	100 160 3800 to 3899	188 835 6370 to 6399
024 496 6870 to 6896	063 491 8122 to 8199	104 667 6400 to 6499	189 083 1064 to 1099
025 092 0987 to 0999	063 916 9968 to 9999	104 876 8937 to 8999	189 660 9583 to 9599
025 369 5535 to 5599	064 091 4500 to 4599	112 049 4413 to 4499	191 179 0377 to 0399
025 729 1151 to 1199	065 170 0471 to 0499	112 870 9765 to 9799	192 050 5762 to 5781
025 729 1643 to 1799	065 255 7909 to 7999	113 319 2000 to 2099	194 456 8600 to 0699
026 492 3180 to 3199	065 392 6345 to 6399	114 402 3850 to 3899	195 194 6881 to 6899
027 361 0430 to 0499	066 099 2014 to 2099	114 866 5368 to 5397	195 874 1112 to 1199
027 369 4482 to 4495	066 648 2880 to 2899	116 154 2800 to 2899	196 979 0524 to 0599
027 671 8762 to 8776	066 787 3639 to 3699	116 986 4400 to 4499	197 244 6100 to 6199
027 787 9886 to 9899	066 845 7500 to 9999	117 175 1647 to 5169	197 244 6300 to 6399
027 965 9487 to 9499	067 093 3869 to 3899	117 951 4687 to 4699	197 244 6400 to 6499
028 100 8069 to 8099	068 895 0334 to 0399	117 951 5200 to 5299	197 244 6500 to 6599
028 191 1852 to 1999	070 724 4488 to 4499	119 786 3051 to 3064	197 244 6600 to 6699
028 850 3000 to 3199	070 841 9181 to 9199	119 815 8961 to 6199	197 244 6700 to 6799
029 510 1500 to 1599	070 844 2546 to 2599	119 850 7400 to 7499	197 244 6800 to 8999
030 687 0903 to 0999	070 916 1340 to 1399	119 850 7700 to 7999	198 285 2556 to 2566
030 701 3442 to 3499	071 047 5768 to 5799	121 634 0460 to 0499	199 105 0778 to 0799
031 077 4507 to 4799	071 179 9800 to 9899	122 451 9879 to 9899	199 678 2968 to 2999
032 295 7500 to 9999	071 386 3682 to 3699	122 714 6805 to 6900	202 748 5133 to 5199
034 394 1000 to 1099	071 507 6840 to 6899	124 916 0304 to 0499	202 748 5245 to 5299
034 943 0400 to 0799	072 045 9641 to 9699	126 423 0136 to 0169	202 748 5300 to 5399
035 035 4337 to 4399	072 675 8287 to 8299	127 500 2328 to 2399	202 748 5400 to 5499
037 312 7500 to 7599	073 763 0867 to 0876	160 901 2254 to 2299	203 256 1240 to 1299
037 706 9578 to 9599	073 763 0878 to 0887	161 103 6581 to 6599	204 230 3577 to 3595
037 805 3677 to 3699	073 763 0889 to 0898	161 194 2857 to 0899	205 019 0174 to 0199
037 909 5490 to 5499	077 617 5481 to 5499	162 032 4447 to 4499	206 936 3184 to 3199
037 931 4660 to 4699	077 999 4001 to 4090	163 257 1085 to 1099	207 196 9900 to 9999
039 145 6521 to 6595	078 174 4475 to 4499	164 359 2406 to 2499	207 204 0700 to 0799
040 024 3901 to 3999	078 219 4931 to 4999	166 101 1433 to 1499	207 204 0800 to 0899
040 674 7100 to 7199	078 250 4756 to 4799	167 555 5201 to 5212	207 514 3857 to 3899
040 688 8816 to 8899	078 823 8312 to 8399	167 555 5214 to 5299	208 556 4707 to 4799
041 299 6752 to 6799	079 374 0300 to 2499	169 618 6274 to 6299	210 057 4038 to 4047
041 623 8889 to 8899	079 807 2342 to 2399	171 806 6878 to 6893	210 221 0548 to 0599
041 803 6565 to 6599	082 721 0228 to 0254	173 639 4685 to 4699	214 061 4711 to 4724
043 129 1968 to 1997	083 140 5000 to 7499	174 238 2779 to 2799	214 303 6311 to 6325

214 303 6239 to 6258	252 469 2125 to 2199	258 405 6400 to 6499	262 337 4500 to 4599
214 877 4251 to 4273	252 833 3286 to 3297	258 405 6800 to 6899	262 337 4600 to 4699
215 252 3918 to 3992	253 470 3948 to 3999	258 405 6900 to 6999	262 337 4700 to 4799
217 585 1400 to 1499	253 565 7400 to 7499	258 405 7000 to 7099	262 337 4800 to 4899
218 698 2157 to 2199	254 252 2800 to 2899	258 405 7100 to 7199	262 337 4900 to 4999
218 746 0800 to 0899	254 252 2900 to 2999	258 405 7200 to 7299	262 337 5000 to 5099
219 095 0100 to 0399	254 252 3000 to 3099	258 405 7300 to 7399	262 337 5100 to 5199
219 389 1885 to 1899	254 252 3100 to 3199	258 405 7400 to 7499	262 337 5200 to 5299
219 568 7435 to 7456	254 252 3200 to 3299	258 405 7800 to 7899	262 337 5300 to 5399
219 568 7469 to 7487	254 252 3300 to 3399	258 405 7900 to 7999	262 337 5400 to 5499
221 316 5757 to 5799	254 252 3400 to 3499	258 405 8000 to 8099	262 337 5500 to 5599
223 476 3914 to 3999	254 252 3500 to 3599	258 405 8100 to 8199	262 337 5600 to 5699
223 565 4921 to 4957	254 252 3600 to 3699	258 405 8200 to 8299	262 337 5700 to 5799
223 565 4979 to 4999	254 252 3700 to 3799	258 405 8300 to 8399	262 337 5800 to 5899
224 636 4745 to 4765	254 252 3800 to 3899	258 405 8400 to 8499	262 337 5900 to 5999
224 636 4776 to 4799	254 252 3900 to 3999	258 405 8500 to 8599	262 337 6000 to 6099
224 636 4855 to 4885	254 252 4000 to 4099	258 405 8600 to 8699	262 337 6100 to 6199
224 636 4932 to 4948	254 252 4100 to 4199	258 405 8700 to 8799	262 337 6200 to 6299
224 636 4950 to 4962	254 252 4200 to 4299	258 405 8800 to 8899	262 337 6300 to 6399
224 636 4985 to 4999	254 252 4300 to 4399	258 405 8900 to 8999	262 337 6400 to 6499
224 723 0757 to 0799	254 252 4400 to 4499	258 405 9600 to 9699	262 337 6500 to 6599
224 730 2207 to 2299	254 252 4500 to 4599	258 405 9700 to 9799	262 337 6600 to 6699
225 970 0500 to 0599	254 252 4600 to 4699	258 405 9800 to 9899	262 337 6700 to 6799
225 970 0600 to 0699	254 252 4700 to 4799	258 405 9900 to 9999	262 337 6800 to 6899
225 970 0700 to 0799	254 252 4800 to 4899	259 014 9989 to 9999	262 337 6900 to 6999
227 033 8679 to 8699	254 252 4900 to 4999	259 062 4788 to 4798	262 337 7000 to 7099
227 275 9400 to 9999	254 565 7607 to 7700	259 218 1400 to 1499	262 337 7100 to 7199
228 463 2456 to 2499	254 907 1203 to 1299	259 218 1500 to 1599	262 337 7200 to 7299
228 510 4852 to 4899	255 185 9527 to 9599	259 218 1600 to 1699	262 337 7300 to 7399
229 462 8451 to 8475	255 397 1557 to 1576	259 590 5654 to 5699	262 337 7400 to 7499
229 668 5977 to 5999	255 425 2989 to 2998	259 670 8268 to 8299	262 337 7500 to 7599
229 923 9176 to 9199	255 728 6412 to 6499	259 835 6238 to 6399	262 337 7600 to 7699
229 924 6696 to 6699	255 728 9842 to 9899	259 835 6701 to 6799	262 337 7700 to 7799
230 051 9500 to 9999	256 134 9833 to 9839	260 224 4600 to 4699	262 337 7800 to 7899
236 366 2431 to 2499	256 134 9840 to 9849	260 224 5941 to 5999	262 337 7900 to 7999
236 607 6882 to 6899	256 134 9850 to 9859	260 310 2821 to 2899	262 337 8000 to 8099
236 660 5853 to 5872	256 134 9860 to 9869	260 452 0010 to 0022	262 337 8100 to 8199
239 322 5200 to 5299	256 134 9870 to 9879	260 452 0049 to 4299	262 337 8200 to 8299
239 322 5400 to 5499	256 134 9880 to 9889	260 553 8200 to 8299	262 337 8300 to 8399
239 322 5600 to 5699	256 134 9890 to 9899	260 553 8600 to 8699	262 337 8400 to 8499
239 322 5800 to 5899	256 247 6900 to 6999	260 553 9600 to 9799	262 337 8500 to 8599
239 322 5900 to 5999	256 550 5536 to 5545	260 553 9800 to 9899	262 337 8600 to 8699
239 607 4783 to 4799	256 799 2257 to 2299	260 553 9900 to 9999	262 337 8700 to 8799
240 593 1879 to 1899	257 154 8763 to 8799	260 761 1603 to 1662	262 337 8800 to 8899
242 591 2048 to 2099	257 154 8800 to 8899	261 183 2100 to 2299	262 337 8900 to 8999
242 735 0388 to 0398	257 765 4567 to 4599	261 426 0408 to 0499	262 337 9000 to 9099
242 951 7276 to 7299	257 765 4610 to 4696	262 082 8000 to 8099	262 337 9100 to 9199
243 535 6370 to 6399	257 765 4737 to 4799	262 082 8100 to 8199	262 337 9200 to 9299
244 004 9985 to 9999	257 792 7800 to 7889	262 082 8200 to 8299	262 337 9300 to 9399
244 004 9985 to 9999	257 792 7900 to 7999	262 082 8300 to 8399	262 337 9400 to 9499
244 268 9765 to 9799	257 792 8000 to 8099	262 082 8400 to 8499	262 337 9500 to 9599
244 347 4471 to 4499	257 856 9863 to 9899	262 288 7302 to 7399	262 337 9600 to 9699
249 056 1551 to 1599	258 103 1773 to 1782	262 288 7400 to 7499	262 337 9700 to 9799
249 336 9438 to 9499	258 405 1800 to 1899	262 288 9900 to 9999	262 337 9800 to 9899
249 399 4000 to 4099	258 405 1900 to 1999	262 337 2600 to 2699	262 337 9900 to 9999
249 399 4100 to 4199	258 405 3300 to 3399	262 337 2700 to 2700	262 472 3188 to 3199
249 399 4200 to 4299	258 405 3400 to 3499	262 337 2800 to 2800	262 472 3200 to 3299
249 399 4300 to 4399	258 405 3500 to 3599	262 337 2900 to 2900	262 546 3100 to 3199
249 399 4400 to 4499	258 405 3700 to 3799	262 337 3000 to 3099	262 546 3200 to 3299
249 399 4500 to 4599	258 405 3800 to 3899	262 337 3100 to 3199	262 546 3300 to 3399
249 399 4600 to 4699	258 405 3900 to 3999	262 337 3200 to 3299	262 546 3400 to 3499
249 399 4700 to 4799	258 405 4000 to 4099	262 337 3300 to 3399	262 546 3500 to 3599
249 399 4800 to 4899	258 405 4100 to 4199	262 337 3400 to 3499	262 546 3600 to 3699
249 399 4900 to 4999	258 405 4200 to 4299	262 337 3500 to 3599	262 546 3900 to 3999
250 159 7502 to 7599	258 405 4600 to 4699	262 337 3600 to 3699	262 546 4300 to 4399
250 566 9644 to 9699	258 405 5600 to 5699	262 337 3700 to 3799	262 546 4400 to 4499
250 661 8425 to 8499	258 405 5700 to 5799	262 337 3800 to 3899	262 546 4500 to 4599
251 335 5731 to 5799	258 405 5800 to 5899	262 337 3900 to 3999	262 546 4600 to 4699
251 379 2380 to 2399	258 405 5900 to 5999	262 337 4000 to 4099	262 546 4700 to 4799
252 005 7626 to 7699	258 405 6000 to 6099	262 337 4100 to 4199	262 546 4800 to 4899
252 421 8401 to 8499	258 405 6100 to 6199	262 337 4200 to 4299	262 546 4900 to 4999
252 464 2810 to 2899	258 405 6200 to 6299	262 337 4300 to 4399	262 546 7100 to 7199
252 612 3683 to 3699	258 405 6300 to 6399	262 337 4400 to 4499	262 546 7200 to 7299

262 546 7300	to	7399	386 883 8936	to	8999	410 694 8400	to	8599	434 513 2386	to	2399
262 546 7400	to	7499	387 314 5574	to	5599	410 775 1500	to	1599	434 968 3076	to	3092
262 546 9800	to	9899	387 837 6300	to	6399	410 795 7927	to	7999	435 303 1831	to	1842
262 546 9900	to	9999	388 828 0656	to	0699	410 867 0917	to	0966	435 303 1986	to	1999
262 567 1788	to	1799	389 696 2400	to	2799	410 867 0970	to	0999	435 666 6092	to	6399
263 254 2500	to	2500	389 846 3104	to	3135	411 868 1023	to	1199	436 082 6400	to	6899
263 340 0000	to	0099	389 846 3145	to	3195	411 922 2322	to	2399	436 160 6441	to	6499
263 340 0100	to	0199	389 887 9211	to	9230	412 193 0900	to	0999	437 316 7115	to	7199
263 340 0500	to	0599	389 887 9234	to	9299	412 395 8599	to	8699	437 427 0500	to	3499
263 340 0600	to	0699	390 001 3182 to 3199			412 485 6500	to	6599	439 179 2300	to	2399
263 340 2700	to	2799	390 001 3500	to	3699	412 485 6610	to	6699	439 310 0458	to	0499
263 340 2800	to	2899	390 545 5974	to	5999	412 885 5953	to	5999	440 698 1947 to 1999		
263 340 3000	to	3099	391 104 6146	to	6199	414 193 3608	to	3674	440 858 6300	to	6399
264 341 2360	to	2399	391 574 1466	to	1499	414 193 3677	to	3699	440 858 6420	to	7299
264 380 4000	to	4099	391 783 3020	to	3599	414 411 7348	to	7399	441 199 1655	to	1699
264 380 4100	to	4199	391 792 6100	to	6199	414 640 0757	to	0799	443 127 3648	to	3699
264 799 6049	to	6099	392 668 2956	to	2999	414 965 1727	to	1799	443 127 4000	to	4099
264 860 7832	to	7868	392 854 8500	to	8899	417 302 8104	to	8199	443 673 7900	to	7999
265 127 3658	to	3699	393 584 7566	to	7699	417 867 6532	to	6599	443 800 9335	to	9399
265 380 7111	to	7137	393 650 0074	to	0099	417 496 6800	to	6999	444 382 8822	to	8899
265 444 4762	to	4799	393 838 8316	to	8499	417 871 9250	to	9299	444 390 1667	to	1699
265 548 7074	to	7099	393 893 6007	to	6099	417 930 9533	to	9599	444 457 3854	to	3899
266 106 0000	to	2499	394 126 6907	to	6999	418 164 6500	to	6799	450 048 4173 to 4199		
266 129 5809	to	5899	394 189 0405	to	0599	418 423 9863	to	9899	450 048 4442	to	4699
266 673 0000	to	2499	394 822 3243	to	3278	418 633 5922	to	5999	450 560 5173	to	5199
266 749 7900	to	7999	394 990 1810	to	1899	418 719 8520	to	8599	450 620 3077	to	3099
266 868 0952	to	0999	395 343 3264	to	3299	418 744 2235	to	2299	450 620 3135	to	3199
266 868 1028	to	1099	395 373 3035	to	3099	418 962 2848	to	2899	450 780 2716	to	2799
266 868 1100	to	1199	395 396 9649	to	9799	419 543 0286	to	0299	450 801 2700	to	2799
266 868 1200	to	1299	395 970 3240	to	3299	419 730 0300	to	0399	451 109 2967	to	2984
267 296 1237	to	1299	397 622 4054	to	4099	420 277 0015 to 0049			451 115 4110	to	4125
267 324 8946	to	8998	397 819 8902	to	8999	420 599 0734	to	0798	451 115 4127	to	4199
268 072 1203	to	1299	398 149 7200	to	7699	420 661 4115	to	4199	451 746 0700	to	0799
271 660 4333 to 4400			399 070 0872	to	0899	420 758 9500	to	9699	452 265 0074	to	0099
273 520 0000	to	9999	399 156 7119	to	7199	420 969 3951	to	3971	452 265 0246	to	0299
273 520 6000	to	8999	399 203 5064	to	5099	420 969 3973	to	3999	452 265 0335	to	0999
273 775 7700	to	7899	399 296 9910	to	9999	421 116 3565	to	3599	452 509 1169	to	1199
273 882 1913	to	1998	399 396 8935	to	8999	421 130 9300	to	9399	452 855 6471	to	6499
274 750 0300	to	0400	399 792 7775	to	7799	421 313 4500	to	4999	452 890 4679	to	4799
274 782 0549	to	0599	399 792 8300	to	8399	421 364 5537	to	5599	452 900 8215	to	8238
279 517 9330	to	9399	400 427 1051 to 1999			421 656 2609	to	2699	453 117 9146	to	9199
279 517 9594	to	9599	401 045 1505	to	1549	421 988 9700	to	9799	453 334 3631	to	3699
279 517 9623	to	9699	401 045 1571	to	1599	422 172 4667	to	4699	453 603 7841	to	7891
282 667 2500 to 4999			401 294 2700	to	2799	422 484 4212	to	4299	453 650 1140	to	1199
302 000 0000 to 9999			401 310 9505	to	9599	422 556 1270	to	1299	453 741 1300	to	1399
349 746 2056 to 2099			401 382 5312	to	5399	422 587 7024	to	7099	454 013 2919	to	2999
350 518 7350 to 7374			402 578 7876	to	7899	422 819 7533	to	7599	454 186 2411	to	2499
360 011 1690 to 1699			403 125 6744	to	6799	422 842 5073	to	5087	454 268 4883	to	4899
360 168 6008	to	6099	403 260 7000	to	7499	422 907 7563	to	7599	454 302 5400	to	5499
360 173 8800	to	8899	403 280 6470	to	6499	424 500 6050	to	6099	454 490 8300	to	8399
360 324 2326	to	2399	403 685 8600	to	8699	424 641 8500	to	8599	454 547 7434	to	7499
362 861 3064	to	3099	404 003 0300	to	0399	424 871 6600	to	6699	454 922 4867	to	4895
373 006 2176 to 2199			404 041 8838	to	8899	425 298 2352	to	2399	455 221 1348	to	1499
374 768 2600	to	2699	404 071 4268	to	4299	425 418 4269	to	4299	455 364 2147	to	2199
375 169 4400	to	4599	404 347 5356	to	5399	425 418 4405	to	4499	455 399 5400	to	5499
375 829 3400	to	3499	404 347 5548	to	5599	426 547 4566	to	4599	455 476 0676	to	0699
375 851 9100	to	9199	404 726 4500	to	4599	427 412 6337	to	6499	455 543 0618	to	0699
376 196 0911	to	0999	404 961 5001	to	5199	427 481 0900	to	0999	456 410 9006	to	9099
378 085 3679	to	3699	405 325 0188	to	0198	428 027 2742	to	2752	456 470 4146	to	4299
378 351 1063	to	1099	406 009 4587	to	4599	429 474 4172	to	4199	456 619 4460	to	4499
379 843 5100	to	5199	406 260 6830	to	6899	429 889 2900	to	2999	457 333 2686	to	2699
380 093 9600 to 9699			406 459 6641	to	6999	430 150 4401 to 4599			457 729 1767	to	1777
380 165 1165	to	1199	406 733 3000	to	3999	430 172 9800	to	9899	457 937 8615	to	8699
381 325 4500	to	4599	407 545 1557	to	1599	430 177 1900	to	2099	458 028 9810	to	9899
381 604 2510	to	2699	407 594 0412	to	0599	430 444 9500	to	9699	458 057 2712	to	2999
381 645 9525	to	9599	407 692 9100	to	9299	430 664 4070	to	4099	458 069 9537	to	9599
383 314 3968	to	3999	407 959 2190	to	2199	432 168 8419	to	8499	458 069 9665	to	9699
383 892 1000	to	1344	408 265 2275	to	2288	432 708 6800	to	6999	458 337 5222	to	5299
383 892 1382	to	1399	408 499 7700	to	7799	432 744 1544	to	1599	458 354 7653	to	7999
384 925 3641	to	3654	408 499 7900	to	7999	432 995 9775	to	9799	458 671 8678	to	8699
385 568 2331	to	2399	408 682 8484	to	8599	433 003 5800	to	5899	458 671 8721	to	8798
385 599 7554	to	7575	408 698 7015	to	7099	433 757 3047	to	3099	458 847 5044	to	5999
385 774 2024	to	2099	409 072 3941	to	3999	433 765 4003	to	4099	459 274 7624	to	7699
386 624 1412	to	1599	410 491 2311 to 2399			434 482 7060	to	7199	459 365 5432	to	5499

459 378 5764 to 5799	480 526 2000 to 2099	502 496 6923 to 6999	609 067 5488 to 5499
459 472 4816 to 4999	480 640 6330 to 6399	503 003 2700 to 2899	609 067 5600 to 5699
460 349 6878 to 6899	480 658 0568 to 0599	503 194 5144 to 5153	609 289 6123 to 6199
460 550 1909 to 1999	480 689 5100 to 5199	503 790 9922 to 9948	609 438 4400 to 4499
460 997 5234 to 5299	481 072 9463 to 9499	504 045 4030 to 4099	609 493 1100 to 1199
461 973 6443 to 6499	481 673 0074 to 0095	504 166 0200 to 0599	609 766 8091 to 8999
462 152 0107 to 0299	482 527 1500 to 1599	504 240 1062 to 1399	609 825 4100 to 4115
462 274 1072 to 1099	482 541 5255 to 5299	504 805 3300 to 3499	609 884 2981 to 2999
462 277 8373 to 8399	482 729 6800 to 6899	505 096 0662 to 0699	609 893 1000 to 1099
462 554 6051 to 6099	483 363 7207 to 7299	505 893 7739 to 7799	610 092 3200 to 3299
463 011 5529 to 5540	483 402 2356 to 2399	505 893 7800 to 7999	610 582 4200 to 4299
463 176 4115 to 4199	483 486 5100 to 5199	506 124 0800 to 0999	611 879 6939 to 6999
463 176 4229 to 4299	483 632 1521 to 1599	506 165 7027 to 0099	612 291 8013 to 8099
463 185 2600 to 2799	483 632 2600 to 2799	506 502 5209 to 5299	612 751 5171 to 5199
463 227 7711 to 7799	483 849 1615 to 1699	506 756 1682 to 1699	612 751 5226 to 5299
463 414 4869 to 4899	484 174 4803 to 5299	506 756 1700 to 1799	612 751 6083 to 6099
463 808 3484 to 3499	484 323 8900 to 9199	506 756 1800 to 1899	612 751 6268 to 6299
463 945 7400 to 7899	484 680 5000 to 5038	506 836 5326 to 5399	612 751 6572 to 6599
464 629 9000 to 9399	484 680 5040 to 5074	508 488 6226 to 6299	612 774 2111 to 2199
464 711 4332 to 4399	484 680 5077 to 5099	508 789 8332 to 8399	612 774 2254 to 2299
465 692 3963 to 3999	485 029 4913 to 4999	508 789 8400 to 8499	612 774 2500 to 2599
465 698 8300 to 8599	486 176 0600 to 0699	509 909 0425 to 0435	614 469 0979 to 0999
465 743 7745 to 7799	486 559 7555 to 7599	510 150 2400 to 2499	614 474 3000 to 3099
466 798 6056 to 6067	486 696 3023 to 3199	510 381 3200 to 3299	614 521 3490 to 3499
467 147 4300 to 4399	488 173 7900 to 7999	510 587 9500 to 9599	614 645 1800 to 1899
468 079 5782 to 5799	488 206 4100 to 4199	510 587 9659 to 9699	614 832 1100 to 2099
469 067 2817 to 2899	488 226 0200 to 0299	510 269 9770 to 9999	615 017 7505 to 7599
469 127 8000 to 8199	488 709 3906 to 3999	511 021 5042 to 5099	617 711 6609 to 6699
469 213 0359 to 0399	488 855 8359 to 8399	511 021 5100 to 5199	617 760 5266 to 5299
469 213 0500 to 0599	489 181 8963 to 8999	511 468 1747 to 1799	617 813 3601 to 3699
469 561 8011 to 8099	489 223 2000 to 2099	511 844 0100 to 0199	618 840 9200 to 9299
469 658 1961 to 1999	489 311 1930 to 1999	511 844 0340 to 0399	619 551 7229 to 7299
469 666 9900 to 9999	489 318 6200 to 6300	512 805 3913 to 3919	619 859 3000 to 3099
469 678 1900 to 1999	489 384 0027 to 0099	513 046 0700 to 0726	620 073 9400 to 9499
469 781 4900 to 4999	489 427 0658 to 0899	513 149 0600 to 0699	621 614 7907 to 7930
469 947 6960 to 6999	489 997 5252 to 5299	513 445 3000 to 3199	621 614 7932 to 7999
470 755 5800 to 5818	490 669 5850 to 6099	513 466 2034 to 2044	621 648 8021 to 8199
471 918 0300 to 0999	490 717 7080 to 7099	513 539 9052 to 9099	621 648 8500 to 8599
471 985 2408 to 2419	490 721 6000 to 6099	513 539 9267 to 9299	621 904 8351 to 8599
472 191 6700 to 6799	490 793 1500 to 2099	513 539 9800 to 9899	621 916 1978 to 1989
472 270 2555 to 2599	490 886 8171 to 8199	513 539 9985 to 9999	622 989 8032 to 8099
472 987 0213 to 0241	490 977 9221 to 9240	513 606 5459 to 5490	623 076 9300 to 9399
472 987 0290 to 0299	491 258 8100 to 9099	513 812 1751 to 1799	623 819 5006 to 5099
473 151 2069 to 2199	491 567 1376 to 1399	514 103 3600 to 3699	623 895 8200 to 8399
473 666 9138 to 9199	492 254 4800 to 4899	514 103 3700 to 3799	623 917 0000 to 0099
473 952 3429 to 3499	492 283 5100 to 5199	514 103 3800 to 3899	623 917 0200 to 0299
474 108 5402 to 5499	492 610 6813 to 6899	600 645 3223 to 3299	624 468 5288 to 5299
474 356 5193 to 5299	493 394 5568 to 5599	601 339 1200 to 1399	624 665 3162 to 3198
474 949 3366 to 3399	493 470 2562 to 2599	601 653 5884 to 5899	625 088 6735 to 6799
475 134 9362 to 9399	493 473 7700 to 7799	601 661 7700 to 7799	625 916 9500 to 9799
475 167 9667 to 9699	493 716 2153 to 2199	601 682 5343 to 5399	625 968 8956 to 8999
475 319 3415 to 3499	494 206 2972 to 2999	601 928 1600 to 1699	627 005 3938 to 3999
475 319 3649 to 3799	494 217 3446 to 3999	602 512 2972 to 2999	627 384 3907 to 4099
475 340 6400 to 6599	494 224 0500 to 0599	602 555 2400 to 2799	627 496 7549 to 7599
475 424 8410 to 8499	495 145 0600 to 0699	602 829 7061 to 7099	627 708 3605 to 3699
475 629 9156 to 9199	496 209 7425 to 7499	603 483 9572 to 9599	627 776 2500 to 2599
475 850 6101 to 6199	496 213 8728 to 8799	603 490 7200 to 7299	628 226 3100 to 3199
475 875 2500 to 2599	496 474 5226 to 5248	603 678 7100 to 7199	628 814 4702 to 4799
476 169 8264 to 8299	497 053 8517 to 8699	603 678 7662 to 7699	628 851 9689 to 9699
476 189 3000 to 3499	497 854 8673 to 8699	603 678 7902 to 7999	629 510 7200 to 7299
476 331 2480 to 2499	498 449 8888 to 8899	603 678 8418 to 8499	629 964 4200 to 4294
477 289 8601 to 8699	498 929 8285 to 8499	603 678 8700 to 9999	630 389 3056 to 3071
477 681 5206 to 5299	498 936 5310 to 5399	604 086 0880 to 0899	630 463 0588 to 0599
478 010 4243 to 4268	499 016 5425 to 5499	604 349 1414 to 1499	631 459 9117 to 9199
478 010 4270 to 4291	499 440 8575 to 8899	604 503 7776 to 7799	631 762 9325 to 9399
478 450 5071 to 5099	499 731 6717 to 6799	605 520 9037 to 9099	632 217 4933 to 4999
478 469 7838 to 7858	500 064 1858 to 1869	605 685 4010 to 4099	632 500 0000 to 640 3999
478 469 7883 to 7899	500 070 5725 to 7799	605 988 6467 to 6499	633 110 4165 to 4199
479 280 9800 to 9899	501 058 0016 to 0026	607 689 7951 to 7960	633 110 4303 to 4499
479 365 9116 to 9176	501 331 0300 to 0399	607 728 1276 to 1299	633 438 6429 to 6599
479 412 9900 to 9999	501 460 0977 to 0999	608 727 7100 to 7199	633 588 7173 to 7182
479 667 6190 to 6199	502 227 7645 to 7699	608 727 7273 to 7599	634 725 0700 to 0799
479 748 9680 to 9699	502 424 0200 to 0499	608 813 9950 to 9999	634 803 3239 to 3299
479 860 7000 to 7199	502 424 0600 to 0699	609 067 5325 to 5399	634 807 2474 to 2499

634 827 5900	to 5999	650 627 4212	to 4299	682 956 6490	to 6599	701 695 4227	to 4299
634 886 3428	to 3499	650 736 2043	to 2099	682 956 6700	to 6799	701 708 1741	to 1799
635 559 3449	to 3499	650 739 1540	to 1699	682 965 1178	to 1199	701 736 3966	to 3999
636 289 6214	to 6299	651 741 4415	to 4499	682 965 1201	to 1299	701 772 0870	to 0899
636 634 8007	to 8042	651 882 2800	to 2899	683 118 2389	to 2399	701 838 2800	to 2899
637 150 1200	to 1299	652 754 6317	to 6399	683 378 2000	to 2099	701 941 0600	to 0699
637 562 5828	to 5899	653 131 4945	to 4999	683 378 2117	to 2299	702 171 1603	to 1699
638 042 1647	to 1699	653 426 3300	to 3399	683 415 1200	to 1499	702 195 5109	to 5199
638 049 4984	to 4999	653 455 4874	to 4899	683 444 8159	to 8199	702 254 9300	to 9399
638 318 1115	to 1199	654 238 0000	to 0399	685 154 7780	to 7789	702 264 7569	to 7599
638 318 1453	to 1499	654 404 3065	to 3092	685 297 7645	to 7699	702 519 0513	to 0524
638 885 0000	to 0299	654 962 2900	to 3199	685 623 5264	to 5299	702 713 1800	to 1809
638 903 4362	to 4373	655 103 5081	to 5199	685 650 9487	to 9499	702 821 5730	to 5799
639 415 1929	to 1999	655 523 2600	to 2999	685 669 4200	to 4299	702 821 5805	to 5899
639 415 2019	to 2099	656 305 2448	to 2499	685 757 8452	to 8499	702 844 6975	to 6994
639 420 6200	to 6299	657 347 4438	to 4999	686 071 2694	to 2799	702 846 6331	to 6399
639 469 3517	to 3799	657 710 8100	to 8999	686 176 3333	to 3354	702 848 3900	to 3999
639 605 2143	to 2199	657 780 0985	to 0999	686 372 3200	to 3299	702 857 7302	to 7499
639 657 8600	to 8799	658 586 1400	to 1499	686 644 5879	to 5899	702 878 0114	to 0199
640 289 7500 to 7599		658 877 8000	to 8199	686 899 1371	to 1399	703 364 1707	to 1799
640 289 7700	to 7999	658 880 8000	to 8199	686 931 7636	to 7699	740 002 7710 to 7719	
641 170 4420	to 4499	659 398 7300	to 7399	687 601 0973	to 0999	740 037 6730	to 6800
641 318 3133	to 3199	659 706 8113	to 8199	687 614 6774	to 6799	740 119 2275	to 2284
641 378 6500	to 6999	659 846 7837	to 7899	688 120 9000	to 9999	740 130 6688	to 6698
641 383 8739	to 8799	660 510 4100 to 4199		688 314 3107	to 3191	740 144 2780	to 2795
641 877 3187	to 3299	660 673 0400	to 0599	690 291 1361 to 1371		740 241 9049	to 9099
641 877 3310	to 3399	661 488 5000	to 5099	690 788 2877	to 2899	740 252 9265	to 9294
642 355 8094	to 8199	661 609 9100	to 9199	690 893 5344	to 5399	740 255 1718	to 1799
642 355 8308	to 8999	661 716 9420	to 9499	690 893 5512	to 5599	740 274 2602	to 2619
642 900 0018	to 0099	661 906 6522	to 6599	690 904 1300	to 1599	740 277 0366	to 0392
643 030 6254	to 6299	662 021 8332	to 8399	690 941 6000	to 6199	740 332 7658	to 7671
644 066 0882	to 0899	662 068 0700	to 0899	691 313 6383	to 6399	740 348 6641	to 6658
644 069 0600	to 0699	662 553 0774	to 0799	691 313 6600	to 6699	740 351 4790	to 4799
644 077 7506	to 7699	663 078 7034	to 7099	691 582 8003	to 8099	740 374 7416	to 7499
644 085 8157	to 8199	663 763 5300	to 5399	691 664 1800	to 1999	740 470 2420	to 2443
644 112 9839	to 9899	663 883 7039	to 7499	691 664 2400	to 2499	740 514 0300	to 0499
644 373 9083	to 9099	663 938 9200	to 9299	692 727 9362	to 9399	740 523 7432	to 7449
644 380 1460	to 1499	664 253 8000	to 8499	692 798 1800	to 1899	740 535 1555	to 1580
644 733 4715	to 4799	664 656 3055	to 3099	693 249 0779	to 0799	740 557 3570	to 3579
644 900 9712	to 9799	665 174 6400	to 6499	693 249 0877	to 1699	740 650 4104	to 4140
644 901 0109	to 1299	665 274 8208	to 8299	693 445 0566	to 0999	740 684 0620	to 0800
644 901 1325	to 1399	665 669 5400	to 5499	693 448 8500	to 8999	740 701 6105	to 6114
644 923 6800	to 7799	666 132 8226	to 8299	693 645 9583	to 9599	740 705 9790	to 9799
644 932 4655	to 4699	666 696 2209	to 2299	693 965 4200	to 4299	740 726 6400	to 6500
645 318 7240	to 7499	666 696 2309	to 2399	695 741 2906	to 2999	740 748 8319	to 8329
645 333 1766	to 1799	667 032 9300	to 9399	695 947 8518	to 8599	740 765 3306	to 3399
645 790 8632	to 8699	667 729 5529	to 5599	696 662 8247	to 8299	740 774 8434	to 8499
645 821 0657	to 0699	668 383 8400	to 8699	697 447 8285	to 8296	740 779 4259	to 4299
645 930 7948	to 7999	670 368 3400 to 3499		698 042 4816	to 4899	740 786 1885	to 1899
645 975 0737	to 0762	670 369 7336	to 7399	698 131 2138	to 2157	740 790 5989	to 5999
646 242 6200	to 6299	670 750 7169	to 7199	698 227 0000	to 0099	740 803 4870	to 4879
646 270 7639	to 7799	671 046 6200	to 6399	700 065 2570 to 2599		740 820 4854	to 7836
646 798 4000	to 4999	671 251 5448	to 5499	700 065 4800	to 4899	740 827 7578	to 7594
647 048 7035	to 7099	671 926 5600	to 5799	700 190 3350	to 3359	740 917 7490	to 7499
647 049 2900	to 2999	672 444 2000	to 2999	700 228 6048	to 6099	740 918 5531	to 5549
647 398 8300	to 8399	672 828 3410	to 3499	700 650 0452	to 0499	741 037 8528	to 8551
647 398 8481	to 8499	673 167 5776	to 5799	700 666 1323	to 1349	742 030 6135	to 6149
647 437 3000	to 4999	675 464 3700	to 3799	700 786 9106	to 9142	742 033 2663	to 2674
647 811 2188	to 2199	675 464 4000	to 4199	700 859 0744	to 0758	742 040 3300	to 3309
648 009 6057	to 6099	676 365 5958	to 5999	701 028 6780	to 6899	742 112 8155	to 8199
648 163 5300	to 5499	676 669 1024	to 1099	701 213 3900	to 3999	742 151 5000	to 5014
648 722 5283	to 5299	677 126 6734	to 6799	701 267 2000	to 3999	742 191 4640	to 4649
648 892 3164	to 3199	677 333 9979	to 9999	701 335 7312	to 7399	742 192 5210	to 5224
649 100 3989	to 3999	677 466 1088	to 1099	701 369 2005	to 2050	742 222 9200	to 9210
649 647 0370	to 0399	678 071 4500	to 4799	701 499 2260	to 2299	742 228 9660	to 9669
649 647 0522	to 0599	678 096 7531	to 7599	701 503 2247	to 2299	742 247 6980	to 6989
649 647 5237	to 5399	679 909 2578	to 2599	701 541 2271	to 2299	742 290 0936	to 0950
649 647 9100	to 9299	680 112 9565 to 9599		701 553 6557	to 6599	742 302 7600	to 7699
649 666 7800	to 8299	680 244 0903	to 0999	701 578 7460	to 7469	742 305 3711	to 3799
650 114 7707 to 7719		680 412 6046	to 6099	701 578 7475	to 7499	742 305 3800	to 3899
650 130 3400	to 3599	680 761 6800	to 6899	701 601 3457	to 3499	742 305 3900	to 3999
650 213 0406	to 0499	681 677 0540	to 0699	701 605 5913	to 5999	742 305 4000	to 4099
650 555 1749	to 1799	682 070 1029	to 1099	701 695 3982	to 3999	742 305 4100	to 4199
650 564 1900	to 1999	682 956 6280	to 6299	701 695 4148	to 4199	805 885 8411 to 8499	

806 087 1100	to 1499	854 532 0000	to 2999	901 525 7122	to 7199	917 486 4900	to 4999
806 268 9275	to 9299	855 001 6204	to 6249	902 089 1253	to 1299	918 460 0602	to 0699
806 534 3400	to 3477	855 319 9364	to 9399	902 198 9769	to 9799	918 951 7231	to 7299
807 342 3283	to 3399	855 361 3390	to 3399	902 948 1269	to 1299	919 519 2786	to 2799
808 086 7100	to 7199	856 226 0490	to 0499	902 985 0833	to 0899	919 536 0770	to 0799
808 090 3440	to 3499	856 656 5800	to 5999	903 370 6934	to 6999	919 814 3095	to 3199
808 325 5161	to 5699	856 752 0200	to 0299	904 600 6523	to 6599	919 889 5110	to 5134
808 784 8000	to 8299	857 111 1352	to 1399	904 892 0378	to 0399	919 889 5137	to 5176
830 125 0672	to 0699	857 279 3450	to 3499	904 892 0648	to 1299	919 889 5178	to 5199
830 602 5800	to 5999	857 843 4000	to 4099	905 056 2216	to 2299	919 889 5030	to 5070
830 610 3700	to 3799	858 124 7644	to 7699	905 510 6647	to 6799	919 889 5090	to 5099
830 983 3500	to 3599	858 756 3111	to 3299	905 510 6900	to 7099	919 915 2774	to 2787
830 983 3635	to 3699	859 063 8200	to 8699	905 794 0000	to 0199	920 155 4662	to 4687
831 354 1387	to 1399	859 190 0600	to 0644	905 794 0288	to 0299	920 309 9039	to 9199
831 815 8240	to 8299	859 437 5538	to 5599	905 873 6900	to 6999	920 771 5321	to 5399
832 525 3810	to 3899	859 811 2888	to 2899	905 873 7100	to 7299	920 857 5500	to 5899
833 159 1884	to 1899	859 855 8873	to 8999	905 880 8900	to 8999	920 864 3480	to 3499
833 456 2567	to 2599	860 240 8520	to 8599	905 889 7100	to 7199	920 963 4567	to 4599
833 566 3015	to 3071	860 275 3900	to 3999	906 158 1508	to 1599	921 333 7400	to 7499
834 130 5200	to 5299	860 518 9629	to 9699	906 558 8812	to 8899	921 477 3762	to 3799
834 316 5444	to 5499	860 600 0021	to 0999	906 982 2214	to 2299	922 278 1048	to 1399
834 354 8747	to 8766	861 158 2350	to 2599	907 725 8500	to 8599	922 280 2019	to 2099
834 354 8824	to 8838	861 367 5400	to 5499	907 815 0216	to 0257	922 280 2233	to 2299
835 269 5700	to 5799	861 637 6010	to 6099	908 622 4225	to 4235	922 773 0459	to 0499
835 496 7303	to 7399	861 979 7292	to 7499	908 936 9254	to 9299	923 032 7000	to 7399
835 539 5200	to 5999	862 216 6100	to 6199	909 066 4494	to 7499	923 045 3630	to 3699
835 813 3015	to 3099	862 263 9213	to 9299	909 067 7400	to 7499	923 484 3600	to 3699
837 672 8967	to 8999	862 271 0800	to 0999	909 100 1787	to 1799	923 493 9403	to 9599
837 784 3282	to 3299	862 271 5000	to 5099	909 100 1900	to 2099	923 493 9681	to 9699
838 176 8377	to 8399	863 871 5138	to 5199	909 355 0422	to 0499	923 604 4424	to 4499
838 518 1257	to 1299	863 949 5300	to 5399	909 568 8900	to 9099	923 810 7800	to 8299
839 718 8257	to 8299	864 088 8200	to 8299	909 568 9300	to 9499	924 252 1200	to 1299
840 323 0600	to 0699	864 426 3972	to 3999	909 725 7307	to 7399	924 252 1400	to 1499
840 875 6235	to 6299	864 520 6117	to 6136	909 833 0947	to 0999	924 533 0711	to 0799
840 910 0900	to 0999	865 151 0526	to 0599	910 219 8631	to 8699	924 533 2343	to 2399
841 349 5000	to 5099	865 500 4034	to 4099	910 265 1100	to 1199	924 533 2428	to 2499
841 805 7747	to 7899	865 883 6082	to 6099	910 471 7273	to 7299	924 685 1957	to 1999
841 805 7944	to 8099	866 004 3000	to 3999	910 536 2505	to 2599	924 946 6300	to 6699
842 226 0685	to 0695	866 442 4100	to 4899	910 958 7499	to 7599	925 333 5900	to 6099
842 685 4600	to 4699	867 366 9108	to 9118	911 140 1000	to 2199	925 336 2300	to 2399
842 685 4742	to 4999	867 633 7403	to 7499	911 245 2545	to 2599	926 432 5907	to 5999
842 860 0300	to 0399	867 737 5623	to 5699	911 268 9077	to 9099	926 436 3600	to 3699
842 898 5582	to 5599	868 169 4529	to 4599	911 400 8948	to 8999	927 765 6257	to 6299
843 062 7100	to 7199	868 173 8400	to 8599	911 508 1620	to 1799	928 197 8100	to 8199
843 077 6288	to 6299	868 514 9000	to 9099	911 509 9310	to 9399	928 197 8283	to 8299
843 077 6378	to 6399	868 566 9200	to 9299	911 523 3000	to 3999	928 856 2059	to 2068
843 758 5769	to 5778	869 200 0000	to 9999	912 057 9922	to 9999	930 078 5800	to 5899
843 786 2554	to 2699	869 387 1150	to 1199	912 882 0563	to 0899	930 219 1722	to 1799
845 656 8165	to 8199	869 505 3500	to 3599	913 605 2218	to 2299	930 335 7810	to 7819
845 727 2100	to 2199	869 523 7033	to 7099	913 709 2429	to 2499	931 097 9259	to 9299
845 746 2618	to 2635	869 566 6150	to 6167	913 818 3501	to 3999	931 156 1502	to 1579
846 390 7531	to 7599	869 776 8785	to 8786	914 063 4300	to 4399	931 156 1600	to 1625
846 918 0572	to 0599	869 800 0000	to 999 9999	914 346 7621	to 7644	931 156 1671	to 1699
847 237 7690	to 7699	870 054 4814	to 4899	914 453 1366	to 1399	932 506 6400	to 6599
847 284 2481	to 2499	870 491 4812	to 4849	914 529 6185	to 6299	932 732 1796	to 1799
847 374 7055	to 7065	870 536 5820	to 5829	914 896 4658	to 4699	932 827 9026	to 9099
847 374 7055	to 7065	870 541 7167	to 7239	915 187 8774	to 8779	932 957 2300	to 2399
847 636 5304	to 5399	870 575 8155	to 8999	915 300 2783	to 2799	933 060 6160	to 6189
847 700 5447	to 5499	870 589 0485	to 0494	915 546 6822	to 6999	933 387 2541	to 2561
847 723 7500	to 7599	870 691 7060	to 7099	915 646 5183	to 5199	933 760 3609	to 4199
849 485 3427	to 3499	872 028 4850	to 4899	915 671 3963	to 3980	933 894 0928	to 0999
849 520 9850	to 9899	872 029 9306	to 9399	915 671 3982	to 3999	934 018 2729	to 2741
849 608 1357	to 1399	872 078 3709	to 3799	915 675 2217	to 2299	934 180 0300	to 0399
849 792 2600	to 2699	872 100 0445	to 0459	916 440 3377	to 3399	934 236 3954	to 3999
850 546 1862	to 1899	900 556 4178	to 4199	916 670 6352	to 6399	934 622 8717	to 8999
851 143 6826	to 6844	900 845 0044	to 0099	916 682 5300	to 5399	935 216 0312	to 0399
851 209 9880	to 9899	900 936 0217	to 0299	916 694 1414	to 1499	935 843 2202	to 2247
851 928 9221	to 9299	900 936 0435	to 0499	916 703 0802	to 0821	936 024 8889	to 8899
852 589 6560	to 6599	901 058 5255	to 5280	917 089 0709	to 0799	936 339 4455	to 4499
853 049 3646	to 3699	901 273 1082	to 1099	917 089 0842	to 0899		
854 304 4089	to 4999	901 287 5143	to 5199	917 216 2928	to 2999		
854 529 2200	to 2299	901 291 2789	to 2799	917 370 6300	to 6499		

Send Warmth and Cheer in Winter with
Snowy Beauty Forever® Stamps



ON SALE NATIONWIDE: **OCTOBER 11, 2022**

Missing, Lost, or Stolen Canadian Money Order Forms

Do Not Cash — Upon Receipt, Notify Local Postal Inspectors

Provide this listing to all Postal Service™ employees responsible for accepting and cashing postal money orders. Destroy all interim notices when the numbers listed appear in the *Postal Bulletin*. The new money order serial

numbers consist of the first 9 digits. The tenth digit is a check digit only.

Do not cash outdated money orders **104 151 601 to 692 600 000**. Advise holders to send invalid money orders to Canada Post Corporation, Ottawa, Canada K1A 0B1. Check for altered dollar amounts by holding money orders to the light.

719 869 731	to 9 760	728 382 331	to 2 480	734 797 201	to 7 320	741 764 431	to 4 520
720 227 871	to 7 930	728 702 338	to 2 400	734 939 611	to 9 640	742 178 834	to 8 880
720 227 949	to 7 960	728 915 371	to 5 850	734 950 111	to 0 170	742 325 500	to 5 520
720 368 543	to 8 570	728 953 141	to 3 410	735 120 331	to 0 840	742 325 668	to 5 700
720 392 151	to 2 570	728 954 280	to 4 310	735 283 008	to 3 020	742 408 771	to 8 830
720 556 491	to 6 640	729 169 081	to 9 140	735 293 131	to 3 220	742 512 120	to 2 150
720 558 621	to 8 650	729 363 841	to 3 870	735 635 010	to 5 040	742 684 849	to 4 890
720 575 361	to 5 570	729 682 891	to 3 190	735 783 961	to 3 990	742 839 553	to 9 630
720 590 152	to 0 179	729 838 940	to 9 070	735 803 401	to 3 430	742 913 668	to 3 700
721 638 331	to 9 170	729 839 101	to 9 130	736 005 420	to 5 440	742 917 287	to 7 296
721 815 391	to 5 420	730 077 683	to 7 840	736 366 021	to 6 110	742 921 891	to 1 980
721 969 713	to 9 740	730 109 847	to 9 880	736 624 456	to 4 500	742 983 631	to 3 810
722 072 137	to 2 160	730 373 761	to 3 850	736 670 851	to 1 060	743 020 021	to 0 170
722 378 265	to 8 280	730 501 951	to 2 130	736 767 061	to 7 090	743 206 491	to 6 500
722 413 990	to 4 004	730 519 379	to 9 470	736 767 093	to 7 120	743 235 992	to 6 050
722 764 948	to 4 980	730 569 278	to 9 360	736 982 191	to 2 370	743 940 631	to 0 900
722 825 840	to 5 889	730 711 711	to 1 740	736 982 551	to 2 730	743 978 011	to 8 070
723 153 841	to 3 850	730 722 991	to 3 230	737 110 141	to 0 170	744 234 751	to 4 780
723 237 616	to 7 630	730 845 970	to 5 990	737 185 501	to 5 710	744 499 591	to 9 680
723 331 081	to 1 110	730 888 291	to 8 320	737 317 321	to 7 350	744 626 901	to 6 910
723 496 443	to 6 470	730 927 591	to 7 680	737 517 781	to 7 840	745 388 794	to 8 910
723 967 291	to 7 320	731 307 914	to 7 930	737 628 181	to 8 210	746 446 806	to 6 820
724 655 196	to 5 340	731 402 431	to 2 460	737 634 258	to 4 270	746 818 351	to 8 410
724 711 441	to 1 500	731 407 232	to 7 320	738 361 971	to 1 980	747 245 266	to 5 280
724 711 538	to 1 560	731 588 301	to 8 340	738 447 601	to 7 660	747 364 813	to 4 830
724 793 221	to 3 250	731 767 273	to 7 320	738 648 355	to 8 450	747 501 434	to 1 450
724 908 109	to 8 120	731 781 061	to 1 120	738 849 811	to 9 900	747 739 891	to 0 070
724 937 461	to 7 670	731 837 821	to 7 910	738 892 270	to 2 290	748 148 649	to 8 760
725 163 118	to 3 151	731 841 377	to 1 450	738 997 259	to 7 380	748 259 960	to 9 970
725 202 735	to 2 750	732 018 481	to 8 600	739 161 451	to 1 540	748 565 162	to 5 280
725 398 591	to 8 800	732 067 972	to 8 370	739 219 381	to 9 440	748 874 988	to 5 030
725 464 591	to 4 920	732 188 649	to 8 670	739 740 151	to 0 180	749 137 381	to 7 410
725 475 321	to 5 330	732 193 460	to 3 470	739 793 491	to 3 520	749 190 192	to 0 210
725 711 057	to 1 070	732 201 241	to 1 390	739 793 527	to 3 550	749 685 421	to 5 450
725 738 581	to 8 730	732 220 431	to 0 440	739 942 621	to 2 650	749 846 791	to 6 850
725 981 311	to 1 430	732 355 201	to 5 380	739 999 231	to 9 320	749 993 131	to 3 580
725 987 835	to 7 880	732 472 320	to 2 560	740 011 517	to 1 530	750 071 587	to 1 610
726 060 811	to 0 900	732 541 605	to 1 620	740 030 701	to 0 970	750 408 167	to 8 183
726 391 970	to 2 520	732 572 221	to 2 490	740 261 740	to 1 820	750 438 421	to 8 501
726 484 771	to 4 800	732 586 479	to 6 710	740 265 811	to 6 290	750 743 911	to 4 030
726 493 351	to 5 300	732 994 037	to 4 080	740 299 111	to 9 170	750 779 118	to 9 400
726 504 031	to 4 063	733 163 449	to 3 460	740 299 231	to 9 260	750 910 981	to 1 010
726 504 070	to 4 090	733 297 171	to 7 290	740 329 266	to 9 320	750 960 841	to 0 900
726 504 331	to 4 390	733 446 631	to 7 110	740 889 081	to 9 090	751 296 211	to 6 240
726 563 701	to 4 060	733 474 665	to 4 770	741 010 421	to 0 530	751 539 121	to 9 180
726 599 371	to 9 460	733 704 482	to 4 570	741 113 041	to 3 370	751 541 311	to 1 790
726 626 356	to 6 370	733 751 041	to 1 130	741 373 891	to 4 340	751 757 641	to 7 700
727 182 271	to 2 510	734 009 101	to 9 130	741 452 369	to 2 490	751 936 951	to 7 010
727 416 181	to 6 240	734 290 759	to 0 770	741 492 991	to 3 140	751 951 861	to 1 890
727 481 431	to 1 460	734 389 273	to 9 290	741 553 460	to 3 470	751 999 021	to 9 110
727 749 241	to 9 780	734 440 031	to 0 111	741 764 431	to 4 520	752 139 516	to 9 570

752 182 892	to 2 950	762 324 931	to 4 960	773 112 031	to 2 060	799 177 626	to 7 650
752 206 861	to 7 100	762 439 261	to 9 290	773 125 387	to 5 410	799 854 751	to 5 200
752 295 241	to 5 600	762 524 158	to 4 220	773 179 320	to 9 410	800 044 320	to 4 410
752 731 351	to 1 410	762 584 872	to 4 970	773 202 989	to 3 140	800 211 901	to 2 440
752 767 441	to 7 470	762 593 431	to 3 460	773 208 991	to 9 290	800 427 530	to 7 540
753 008 941	to 9 030	763 155 160	to 5 180	773 231 311	to 1 340	800 872 741	to 2 830
753 194 311	to 4 370	763 178 631	to 8 660	773 348 739	to 8 940	801 349 801	to 9 830
753 620 378	to 0 400	763 506 001	to 6 060	773 348 739	to 8 940	801 676 681	to 7 100
754 013 917	to 3 940	763 522 141	to 2 470	773 575 891	to 5 950	802 967 821	to 7 940
754 161 061	to 1 120	763 717 694	to 7 800	773 852 971	to 3 030	803 217 601	to 7 780
754 358 445	to 8 610	763 826 461	to 6 520	775 373 449	to 3 460	803 729 731	to 9 850
754 410 451	to 0 660	763 900 460	to 0 471	789 257 191	to 7 250	803 747 402	to 7 520
754 438 393	to 8 410	763 900 479	to 0 530	790 448 020	to 8 460	804 138 181	to 8 420
754 493 109	to 3 130	763 917 271	to 7 750	790 597 485	to 7 530	804 428 224	to 8 250
754 664 182	to 4 220	764 125 801	to 5 860	790 911 883	to 1 900	804 682 411	to 2 710
754 816 377	to 6 470	764 284 525	to 4 560	791 057 441	to 7 550	805 272 525	to 2 540
755 487 421	to 7 600	764 526 241	to 6 330	791 239 081	to 9 290	805 523 445	to 3 460
755 592 901	to 3 140	764 601 421	to 1 600	791 374 483	to 4 500	805 745 704	to 5 730
755 790 020	to 0 030	764 650 231	to 0 470	791 387 971	to 8 030	806 452 907	to 2 980
755 791 730	to 1 800	764 984 371	to 4 850	791 447 521	to 7 850	806 744 781	to 4 850
755 926 951	to 7 070	765 003 667	to 3 680	791 451 151	to 1 240	806 982 181	to 2 300
755 934 332	to 4 510	765 042 517	to 2 540	791 500 009	to 0 470	807 764 791	to 4 910
755 957 701	to 8 000	765 194 728	to 4 970	791 771 431	to 1 490	808 089 931	to 9 960
755 962 981	to 3 280	765 387 365	to 7 450	792 004 293	to 4 320	808 656 423	to 6 450
756 035 371	to 5 490	765 541 801	to 2 100	792 018 379	to 8 420	808 753 771	to 3 800
756 301 257	to 1 290	765 638 461	to 8 970	792 070 621	to 0 740	809 189 001	to 9 010
756 371 565	to 1 580	765 647 101	to 7 190	792 145 211	to 5 230	809 886 879	to 6 930
756 876 031	to 6 120	765 813 781	to 4 029	792 391 381	to 1 620	809 890 489	to 0 500
756 876 151	to 6 240	765 879 314	to 9 390	792 452 779	to 2 790	810 323 734	to 3 760
756 970 129	to 0 140	765 954 001	to 4 030	792 772 728	to 2 770	810 367 116	to 7 140
757 059 613	to 9 630	766 120 286	to 0 320	792 903 511	to 3 990	810 526 351	to 6 500
757 078 540	to 8 560	766 125 716	to 5 750	793 282 518	to 2 533	810 806 911	to 6 940
757 086 209	to 6 240	766 158 824	to 8 840	794 041 831	to 2 040	810 807 211	to 7 240
757 240 591	to 0 650	766 388 433	to 8 460	794 397 709	to 7 780	811 423 021	to 3 110
757 277 371	to 7 700	766 509 421	to 9 660	794 581 741	to 2 040	811 517 221	to 7 239
757 291 591	to 2 730	766 572 901	to 3 020	794 592 122	to 2 150	811 721 101	to 1 130
757 964 251	to 4 280	766 748 500	to 8 521	795 032 251	to 2 340	812 025 721	to 5 900
758 067 001	to 7 090	767 024 341	to 4 370	795 796 291	to 6 350	812 093 073	to 3 130
758 105 221	to 5 250	767 326 471	to 6 590	796 070 139	to 0 160	812 100 821	to 0 840
758 324 941	to 5 000	767 332 561	to 2 950	796 143 151	to 3 630	812 465 251	to 5 610
758 593 628	to 3 650	768 009 841	to 9 960	796 159 725	to 9 740	812 918 341	to 8 670
758 709 038	to 9 060	768 011 489	to 1 520	796 169 306	to 9 340	812 918 701	to 8 760
758 744 101	to 4 160	768 177 980	to 7 990	796 373 406	to 3 430	813 050 491	to 0 520
758 850 883	to 0 900	768 391 081	to 1 170	796 602 961	to 3 050	813 073 171	to 3 200
758 860 951	to 1 550	768 661 569	to 1 650	796 708 441	to 8 500	813 398 476	to 8 550
759 152 851	to 2 880	769 000 051	to 0 080	796 886 281	to 6 430	813 713 971	to 4 000
759 740 941	to 1 090	769 050 841	to 0 900	796 901 701	to 2 000	813 858 121	to 8 150
760 004 596	to 4 610	769 159 081	to 9 178	796 975 466	to 5 590	814 789 330	to 9 349
760 118 191	to 8 250	769 737 496	to 7 510	797 272 917	to 2 950	814 984 656	to 4 680
760 155 001	to 5 090	769 778 491	to 8 730	797 519 441	to 9 460	815 016 020	to 6 030
760 378 002	to 8 020	769 827 331	to 7 450	797 519 731	to 0 240	815 199 410	to 9 420
760 692 722	to 2 749	770 216 071	to 6 100	797 535 181	to 5 330	815 240 491	to 0 520
761 055 460	to 5 480	770 723 281	to 3 400	797 646 151	to 6 180	815 755 591	to 5 620
761 169 781	to 9 810	770 790 451	to 0 480	798 040 053	to 0 080	815 755 622	to 5 650
761 504 941	to 5 120	770 915 150	to 5 490	798 055 813	to 5 830	815 806 381	to 6 680
761 516 836	to 6 910	771 455 551	to 5 610	798 055 891	to 5 950	816 126 834	to 6 870
761 613 588	to 3 600	771 609 661	to 9 690	798 326 371	to 6 520	816 156 721	to 6 780
761 688 631	to 8 690	771 932 551	to 2 580	798 339 167	to 9 210	816 580 903	to 0 920
761 805 199	to 5 240	772 057 224	to 7 440	798 562 411	to 2 440	816 945 571	to 5 600
761 826 106	to 6 120	772 162 660	to 3 070	798 632 461	to 2 490	817 253 011	to 3 280
761 881 171	to 1 560	772 718 615	to 8 640	798 807 151	to 7 510	817 763 881	to 4 060
761 975 641	to 5 670	772 940 140	to 0 160	798 944 761	to 5 030	818 330 562	to 0 610
761 975 886	to 5 895	772 970 886	to 0 940	799 118 616	to 8 640	818 459 641	to 9 670
762 304 144	to 4 170	773 009 419	to 9 430	799 133 191	to 3 220	818 926 273	to 6 320

818 950 351	to 0 380	821 903 731	to 3 910	825 472 171	to 2 200	828 539 316	to 9 340
818 962 492	to 2 530	821 927 841	to 7 850	826 042 898	to 2 920	828 539 341	to 9 370
819 032 341	to 2 730	822 505 801	to 5 830	826 226 644	to 6 670	828 732 331	to 2 390
819 127 054	to 7 080	822 703 442	to 3 470	826 582 951	to 3 430	828 807 781	to 7 840
819 278 540	to 8 670	822 900 991	to 1 020	826 720 201	to 0 230	828 830 952	to 0 963
819 544 681	to 4 740	822 925 951	to 6 100	827 005 671	to 5 830	828 939 781	to 0 050
819 928 441	to 8 650	823 284 931	to 4 990	827 287 861	to 7 950	829 002 721	to 2 870
820 034 406	to 4 430	823 293 031	to 3 210	827 291 502	to 1 520	829 005 301	to 5 540
820 070 761	to 1 540	823 556 011	to 6 100	827 575 381	to 5 470	829 080 241	to 0 330
820 191 342	to 1 360	824 078 341	to 8 370	827 609 085	to 9 100	829 160 986	to 1 000
820 274 856	to 4 880	824 156 325	to 6 340	827 619 811	to 9 840	829 176 841	to 6 930
820 600 171	to 0 230	824 511 252	to 1 270	827 883 511	to 3 600	829 471 561	to 1 590
821 172 241	to 2 360	824 588 281	to 8 370	828 160 441	to 0 530	829 561 065	to 1 080
821 229 661	to 9 720	825 140 397	to 0 460	828 376 201	to 6 260	829 566 481	to 6 510
821 229 743	to 9 780	825 409 651	to 9 680	828 441 602	to 1 630	829 569 931	to 9 960

— Criminal Investigations Group, U.S. Postal Inspection Service, 2-9-23

Verifying U.S. Postal Service Money Orders

Follow these steps to cash a Postal Service™ money order:

1. Check that the amount does not exceed the legal limit: \$1,000 for domestic, and \$700 for international Postal Service money orders.
2. Check that the proper security features are present:
 - When held to the light, a watermark of Benjamin Franklin is repeated from top to bottom on the left side.
 - When held to the light, a dark line (security thread) runs from top to bottom with the word "USPS" repeated.
 - When there is discoloration around the dollar amounts, this might indicate the amounts were changed.

These appear in Postal Service Notice 299, *U.S. Postal Money Order Reference Card*, or online at usps.com/shop/money-orders.htm.

3. If the money order seems suspicious, call the U.S. Postal Service Money Order Verification System at 866-459-7822.

Provide this information to local banks and retailers, as they also receive Postal Service money orders for cashing.

— Delivery and Retail
Customer Service Operations, 2-9-23

Counterfeit Canadian Money Order Forms

Do Not Cash

To be posted and used by retail window employees. As directed, destroy previous notices. Destroy all interim notices when the numbers listed appear in the *Postal Bulletin*.

671,819,086	683,594,542	687,262,503
676,612,640	684,683,610	687,262,525
677,891,039	686,619,878	687,262,526
678,282,493	686,619,886	687,287,578
678,916,031	686,619,887	687,287,581
679,552,215	686,794,382	687,287,582
679,694,334	686,794,426	694,063,898
679,751,983	686,794,427	694,063,899
679,800,207	686,794,431	694,063,980
681,130,536	687,262,502	701,321,725
681,844,376		

— Criminal Investigations Group,
U.S. Postal Inspection Service, 2-9-23

Toll-Free Number Available to Verify Canadian Money Orders

The Canada Post Corporation has a toll-free number that cashing agents can call to verify the validity of Canadian Postal Money Orders. The number is 800-563-0444.

This toll-free number is printed on the back of the Canadian Postal Money Orders.

— Criminal Investigations Group,
U.S. Postal Inspection Service, 2-9-23

Other Information

Overseas Military/Diplomatic Mail

Mail addressed to military and diplomatic post offices overseas is subject to certain conditions or restrictions of mailing regarding content, preparation, and handling. The APO/FPO/DPO table outlines these conditions by APO/FPO/DPO ZIP Codes™ through the use of footnoted mailing restrictions codes (see the [Restrictions](#) page following the table).

Acceptance clerks must use the table with the Retail System Software terminal to determine which APO/FPO/DPO ZIP Codes are active and which conditions of mailing apply.

Changes

APO/FPO/DPO	Action	Effective Date	See Restrictions
APO AE 96339	Add C, C2, N	01/18/2023	A-B-C-C2-F-F3-M-N-R-S-U2-W
FPO AP 96578	Add C, C2	01/26/2023	B-C-C2-F1-F3-H-J-N-R-S

We have eliminated “Not Active” entries from the table below to save space and paper.

APO/FPO/DPO Table

APO/ FPO/ DPO	See Restrictions	APO/ FPO/ DPO	See Restrictions	APO/ FPO/ DPO	See Restrictions	APO/ FPO/ DPO	See Restrictions
09002	A-B-C-C2-F-F3-H-N-R-S-V-Z-Z1	09046	B-C-C2-D-E-F-F3-H-M-R-S-U	09123	B-C-C2-D-E-F-F3-H-M-R-S-U-Z1	09177	B-C-C2-D-E-F-F3-H-M-R-S-U
09003	B-C-C2-D-E-F-F3-H-M-P-R-S-U	09049	B-C-C2-D-E-F-F3-H-M-R-S-U	09126	B-C-C2-F3-H-M-P-R-S-Z1	09178	B-C1-C2-E2-F1-F3-I3-L-M-N-R-S-T-V-X-Z-Z1
09004	B-C-C2-D-E-F-F3-H-M-R-S-U	09053	B-C-C2-D-E-F-F3-H-M-R-S-U	09128	B-C-C2-D-E-F-F3-H-M-R-S-U	09179	A-B-C-C1-C2-F-F1-F3-J-L-M-N-R-R1-S-T-V-X-Z1
09005	B-C-C2-D-E-F-F3-H-M-P-R-S	09060	B-C-C2-D-E-F1-F3-H-M-N-R-S-U-Z1	09131	B-C-C2-D-E-F-F3-H-M-R-S-U	09180	B-C-C2-D-E-F-F3-H-M-R-S-U
09006	B-C-C2-D-E-F-F3-H-M-R-S-U	09067	B-C-C2-D-E-F-F3-H-M-R-S-U	09135	A-B-C2-F-F3-H-N-R-S-U-V-Z1	09186	B-C-C2-D-E-F-F3-H-M-P-R-S-U
09008	A-B-C2-F-F3-H-N-R-S-V-Z-Z1	09068	B-C-C2-D-E-F3-H-R-S-U-Z1	09136	B-C-C2-D-E-F-F3-H-M-P-R-S-U	09203	A-B-C-C1-C2-F-F1-F3-I3-J-L-M-N-R-R1-T-V-Z-Z1
09009	B-C-C2-D-E-F3-H-M-R-S-U-Z1	09069	A-B-C-C2-D-E-F3-H-N-R-S-U-V	09138	B-C-C2-D-F-F3-H-M-R-S-U	09204	B-C-F3-M-N-R-S-V-Z1
09010	B-C-C2-D-E-F-F3-H-M-R-S-U2	09079	B-C-C2-D-E-F-F3-H-M-R-S-U	09140	B-C-C2-D-E-F-F3-H-M-R-S-U	09205	A-B-C-C2-E2-F-F3-M-N-R-S-T-V-X
09011	B-C-C2-D-E-F3-H-M-R-S	09094	B-C-C2-D-F3-H-M-P-R-S-Z1	09142	B-C-C2-D-E-F-F3-H-M-R-S-U	09211	B-C-C2-D-E-F-F3-H-M-P-R-S-U
09012	B-C-C2-D-E-F3-H-M-R-S-U-Z1	09095	B-C-C2-D-E-F-F3-H-M-R-S-U	09154	B-C-C2-D-E-F-F3-H-M-R-S-U	09213	B-C2-F-F1-F3-H-J-L-M-N-R-R1-T-U-V-Z1
09013	B-C-C2-D-E-F-F1-F3-H-M-R-S-U-Z1	09096	B-C-C2-D-E-F-F3-H-M-R-S-U	09160	B-C-C2-D-F-F1-F3-H-J-L-M-N-R-R1-T-U-V-Z1	09214	B-C-C2-D-E-F3-H-M-R-S-U-Z1
09014	B-C-C2-D-E-F3-H-M-P-R-S-U	09101	A-B-C-C2-F-F3-H-N-Q-R-S-V-Z-Z1	09170	A-B-C2-F-F1-F3-J-L-M-N-R-R1-S-T-V-X-Z1	09216	B,C,F1,F3,M,N,R,S,V,Z1
09015	A-B-C-C1-C2-F-F1-F3-J-L-M-N-R-R1-S-V-Z1	09103	A-B-C-C2-F-F3-H-N-R-S-V-Z-Z1	09171	A-B-C1-C2-E3-F-F1-F3-J-L-M-N-R-R1-S-T-V-X-Z1	09227	B-C-C2-D-E-F-F3-H-M-R-S-U
09016	B-C-C2-D-E-F1-F3-H-M-R-S-U	09104	B-C-C2-D-F3-H-M-R-S-U-Z1	09172	B-C-C2-D-E-F-F3-H-M-R-S-U	09240	A-B-C1-C2-F-F3-H-N-R-S-V
09017	A-B-C2-F-F3-H-N-R-S-V-Z-Z1	09107	B-C-C2-D-E-F-F3-H-M-R-S-U	09173	B-C-C2-D-E-F-F3-H-M-R-S-U	09241	A-B-C-C2-F3-N-R-S-U-Z1
09018	A-B-C-C2-F-F3-H-N-R-S-V-Z-Z1	09112	B-C-C2-D-E-F-F3-H-M-R-S-U	09174	B-C-C2-F-F1-F3-L-N-R-R1-S-T-V-X-Z1	09242	A-B-C1-C2-F-F3-H-N-R-S-V
09020	B-C-C2-D-E-F-F3-H-M-R-S-U	09114	B-C-C2-D-E-F-F3-H-M-R-S-U	09175	A-B-C1-C2-E2-F-F1-F3-H1-J-L-M-N-R-R1-S-T-V-W-X-Z1	09250	B-C-C2-D-E-F-F3-H-M-R-S-U
09021	B-C-C2-D-E-F3-H-M-R-S-U-Z1	09115	A-B-C2-F-F3-H-N-R-S-V-Z1	09176	A-B-C2-F-F1-F3-J-L-M-N-R-R1-S-T-V-X-Z1	09261	B-C-C2-D-E-F3-H-M-N-R-S-U-V-Z1
09034	B-C-C2-D-E-F-F3-H-M-R-S-U	09116	A-B-C2-F-F3-H-N-R-S-V-Z1			09263	B-C-C2-D-E-F3-H-M-R-S-U
09044	B-C-C2-D-F-F3-H-R-S-U	09117	A-B-C-C2-F-F3-H-N-R-S-V-Z1				

APO/ FPO/ DPO	See Restrictions	APO/ FPO/ DPO	See Restrictions	APO/ FPO/ DPO	See Restrictions	APO/ FPO/ DPO	See Restrictions
09264	B-C-C2-D-E-F-F3-H-M-R-S-U	09307	B-C-C2-F-F3-N-R-R1-S-Z1	09470	B-C-C1-C2-F3-M-R-S-U-Z1	09550	B-C-C2-F-F1-F3-R-R1-S-V
09265	B-C-D-F-F1-H-J-L-M-N-R-S-T-U-V-Z1	09309	A-B-C-C1-C2-E2-F-F1-F3-H1-M-N-R-R1-S-V-Z1	09487	A-B-C-C1-C2-E2-F1-F3-I3-L-M-N-R-R1-S-T-V-W-X-Z-Z1	09554	B-C-C2-F-F1-F3-R-R1-S-V
09266	A-B-C2-F3-S-U-R-V-Z1	09310	A-B-C1-C2-E2-F-F1-F3-H1-I3-L-M-N-R-R1-S-T-U4-V-Z-Z1	09488	A-B-C-C1-C2-E2-F3-J-L-M-N-S-T-V-W-X-Z1	09556	B-F-F1-R-R1-V
09276	A-B-F-F3-I3-L-M-N-R-S-T-V-X-Z-Z1	09311	A-B-C1-C2-E2-F-F1-F3-H1-I3-L-M-N-R-R1-S-T-U4-V-Z-Z1	09489	A-B-C-C1-C2-E2-F1-F3-L-M-N-R-R1-S-T-V-W-X-Z1	09564	B-C-C2-F-F1-F3-R-R1-S-V
09277	A-B-E-E1-E2-F1-F3-I3-L-N-R-S-T-V-X-Z-Z1	09312	A-B-C1-C2-E2-F-F1-F3-H1-I3-L-M-N-R-R1-S-T-U-U4-V-Z-Z1	09490	A-B-C1-C2-E2-F-F1-F3-H1-J-L-M-N-R-R1-S-T-V-X-Z1	09565	B-C-C2-F-F1-F3-R-R1-S-V
09278	A-B-F-F3-I3-L-M-N-R-S-T-V-X-Z-Z1	09315	A-B-C1-E2-F-F3-N-R-R1-S-V-Z1	09491	A-B-C1-C2-E2-F1-F3-H1-J-L-M-N-R-R1-S-T-V-Z1	09566	B-C-C2-E2-E3-F-F1-F3-R-R1-S-V
09279	A-B-E-E1-F-F3-I3-L-M-N-R-S-T-V-X-Z-Z1	09316	A-B-C1-E2-F-F1-F3-H1-I3-M-N-R-R1-S-T-V-Z-Z1	09494	B-C-C1-C2-F3-M-R-S-U-Z1	09567	B-C-C2-E2-E3-F-F1-F3-R-R1-S-V
09280	A-B-C-C1-C2-E-E2-F1-F3-H-I3-L-M-N-R-S-T-V-W-X-Z-Z1	09321	A-B-C1-C2-E2-F-F3-H1-M-N-R-R1-S-V-Z1	09498	B-C1-C2-F-F1-F3-J-L-N-R-R1-T-V-Z1	09568	B-C-C2-F-F1-F3-R-R1-S-V
09281	A-B-C1-C2-E2-E3-F-F1-F3-H-H1-J-L-M-N-R-R1-S-T-V-X-Z1	09330	A-B-C1-C2-D-E-E2-F-F1-F3-H-H1-M-R-R1-S-V-Z1	09501	B-V	09569	B-C-C2-E2-E3-F-F1-F3-R-R1-S-V-Z1
09282	A-B-C1-C2-E2-E3-F-F1-F3-H-H1-J-L-M-N-R-R1-S-T-V-X-Z1	09333	A-B-C-C1-C2-E2-F-F1-F3-H1-I3-M-N-R-R1-S-V-V1-Z-Z1	09502	B-V	09570	B-C-C2-F-F1-F3-R-R1-S-V
09283	A-B-E-E1-F-F3-L-M-N-R-S-T-V-X-Z1	09343	A-B-C1-C2-F-F3-M-N-R-R1-S-V-Z1	09503	B-F-F1-R-R1-V	09573	B-C-C2-E2-E3-F-F1-F3-R-R1-S-V-Z1
09284	A-B-C-C2-F-F3-I3-L-M-N-R-S-T-V-X-Z-Z1	09348	A-B-C1-E2-F-F1-F3-H1-I3-M-N-R-R1-S-T-V-Z-Z1	09504	B-V	09574	B-F-F1-R-R1-V
09285	A-B-C-E-E1-F1-F3-H-I3-L-M-N-R-S-T-V-X-Z-Z1	09357	A-B-C1-E2-F-F3-H1-M-R-V-Z1	09505	B-V	09575	B-C-C2-F-F1-F3-R-R1-S-V
09287	B-C2-E1-F1-F3-J-L-N-R-S-T-V-X-Z1	09365	A-B-C-C1-E2-F-F3-H1-M-N-R-V-Z1	09506	B-V	09576	B-C-C2-F-F1-F3-R-R1-S-V
09288	A-B-C-C1-C2-E2-F1-F3-H-H1-J-L-M-N-R-R1-S-T-V-X-Z1	09366	A-B-C-C1-E2-F-F1-F3-H-H1-M-R-R1-S-V-Z1	09507	B-V	09577	B-C-C2-F-F1-F3-R-R1-S-V
09289	B-E2-F1-F3-H1-J-L-M-N-R-R1-S-T-U2-V-X-Z1	09401	B-C-C1-C2-F3-M-R-S-U-Z1	09508	B-C-C2-F-F3-R-R1-S-V	09578	B-C-C2-F-F1-F3-R-R1-S-V
09290	A-B-F1-F3-J-L-M-N-R-S-T-U2-V-X-Z1	09403	B-C-C1-C2-F3-M-R-S-U-Z1	09509	B-C-C2-F-F3-R-R1-S-V	09579	B-C-C2-F-F1-F3-R-R1-S-V
09291	B-C-C1-C2-E2-F1-F3-H1-L-N-R-R1-S-T-V-X-Z1	09410	C-C2-F-F1-F3-N-R-S-U2	09510	B-C-C2-F-F3-R-R1-S-V	09581	B-C-C2-F-F1-F3-R-R1-S-V
09292	A-B-C-C2-E-E2-E3-F1-F3-H-H1-J-L-M-N-R-R1-S-T-V-X-Z1	09421	B-C-C1-C2-F3-M-R-S-U-Z1	09511	B-C-C2-F-F3-R-R1-S-V	09582	B-C-C2-F-F1-F3-R-R1-S-V
09293	A-B-C-C1-C2-E-E2-F1-F3-I3-L-M-N-R-S-T-V-X-Z-Z1	09447	B-C-C1-C2-F3-M-R-S-U-V-Z1	09512	B-C-C2-F-F1-F3-R-R1-S-V	09583	B-C-C2-F-F1-F3-R-R1-S-V
09294	B-C-C1-C2-E2-F1-F3-H1-L-N-R-R1-S-T-V-X-Z1	09454	B-C-C1-C2-F3-M-R-S-U-V-Z1	09513	B-C-C2-F-F1-F3-R-R1-S-V	09586	B-C-C2-F-F1-F3-R-R1-S-V
09295	B-C-C1-C2-E2-F1-F3-H1-J-L-M-N-R-R1-S-T-V-X-Z1	09456	B-C-C1-C2-F3-M-N-R-S-U-V-Z1	09514	B-C-C2-F-F1-F3-R-R1-V	09587	B-C-C2-F-F1-F3-R-R1-S-V
09301	A-B-C1-C2-E2-F-F1-F3-H1-I3-L-M-N-R-R1-S-T-U4-V-Z-Z1	09459	B-C-C1-C2-F3-M-R-S-U-Z1	09516	B-C-C2-F-F1-F3-R-R1-S-V	09588	B-C-C2-F-F1-F3-R-R1-S-V
09304	A-B-C-C1-C2-F-F1-F3-H-M-N-R-S-V-Z-Z1	09461	B-C-C1-C2-F3-M-P-R-S-U-Z1	09517	B-C-C2-F-F1-F3-R-R1-S-V	09589	B-F-F1-F3-R-S-V
09305	A-B-C1-E2-F-F1-F3-H1-I3-M-N-R-R1-S-T-V-Z-Z1	09463	B-C-C1-C2-F3-M-R-S-U-Z1	09520	B-F-F1-F3-R-R1-S-V	09590	B-C-C2-F-F1-F3-R-R1-S-V
09306	A-B-C1-E2-F-F1-F3-H1-R-R1-S-U2-V-Z1	09464	B-C-C1-C2-F3-R-S-U-Z1	09522	B-F-F1-F3-R-S-V	09591	B-C-C2-F-F1-F3-R-R1-S-V
		09467	B-E-E1-F-F3-J-L-M-N-R-S-T-V-X-Z1	09523	B-C-C2-F-F1-F3-R-R1-S-V	09592	B-C-C2-F-F1-F3-R-R1-S-V
		09468	B-C-C1-C2-F3-M-R-S-U-Z1	09524	B-C-C2-F-F1-F3-R-R1-S-V	09593	B-F-F1-F3-R-S-V
		09469	B-C-C1-C2-F3-R-S-U-Z1	09532	B-C-C2-F-F1-F3-R-R1-S-V	09594	B-C-C1-C2-F-F1-F3-R-R1-S-V
				09533	B-V	09595	B-C-C2-F-F1-F3-I3-J-R-R1-S-V-V1-Z1
				09534	B-F-F1-F3-R-R1-S-V	09596	B-F-F1-R-R1-V
				09541	A-B-C-F-F3-M-N-S-V-Z1	09599	B-F-F1-R-R1-V
				09542	A-B-C-F-F3-M-N-S-V-Z1	09600	B-C-C2-F-F1-F3-R-S-U-Z1
				09543	A-B-C-F-F3-M-N-S-V-Z1	09602	B-C-C2-F-F1-F3-N-R-S-U-V
				09544	A-B-C-F-F3-M-N-S-V-Z1	09603	B-C-C2-F-F1-F3-R-S-U-V-Z1
				09545	A-B-C-F-F3-M-N-S-V-Z1	09604	B-C-C2-F-F1-F3-P-R-S-U-V-Z1

APO/ FPO/ DPO	See Restrictions	APO/ FPO/ DPO	See Restrictions	APO/ FPO/ DPO	See Restrictions	APO/ FPO/ DPO	See Restrictions
09605	B-C-C2-D-F-F3-H-M-R-S-U-V	09710	B-C-C1-F-F1-J-L-M-N-R-R1-T-U-V-Z1	09748	A-B-C1-C2-F-F1-F3-J-L-M-N-R-R1-T-V-Z1	09815	A-B-C-C2-E-E2-E3-F1-F3-H-H1-J-M-N-R-R1-S-U-V-Z1
09606	B-C-C2-D-F-F3-H-M-R-S-U-V	09711	A-B-C-C2-E2-F-F1-F3-M-N-R-S-T-V-X	09749	A-B-C2-F-F3-H-N-R-S-U-V-Z1	09816	A-B-C1-C2-E2-E3-F1-F3-J-L-N-R-R1-T-V-Z1
09608	B-C-F-F3-N-R-S-U-V-Z1	09712	A-B-C2-F-F3-H-R-S-U-V-Z1	09750	A-B-C1-C2-F-F1-F3-J-L-M-N-R-R1-T-V-Z1	09817	A-B-C1-C2-E2-E3-F1-F3-H-H1-J-L-M-N-R-R1-T-V-Z1
09609	B-C-C2-F-F3-N-R-S-U-V-Z1	09714	B-C-C1-C2-F-F3-M-R-R1-S-U	09751	B-C-C2-D-E-F-F3-H-M-R-S-U	09818	A-B-C-C2-F-F3-M-R-S-V-Z1
09610	B-C-C2-F-F1-F3-M-R-S-U-V-Z1	09715	B-F-F1-J-L-M-N-R-T-V-Z1	09752	B-C-C2-D-F-F3-H-R-S-U	09819	A-B-C-C1-C2-E2-F-F1-F3-H-H1-M-R-R1-S-V-Z1
09613	B-C-C2-F-F3-N-R-S-U-V	09716	B-C-C2-F-F1-F3-J-L-M-N-R-R1-T-V-Z1	09753	A-B-C-C1-C2-D-E-F1-F3-H-M-N-R-S-V-W-Z1	09820	A-B-C2-F-F1-F3-H-H1-J-L-M-N-R-R1-T-V-Z1
09614	A-B-C1-C2-E2-F-F1-F3-H1-J-L-M-N-R-R1-T-V-W-Z1	09717	A-B-C-C2-F3-M-R-S-V-W-Z1	09754	A-B-C-C2-F-F3-H-N-R-S-V-Z1	09821	A-B-C-C2-F-F3-N-R-S-V-Z1
09618	B-C-C2-F-F3-R-S-U-Z1	09718	B-F-F1-J-L-M-N-R-T-U-V-Z1	09755	A-B-C-C1-C2-D-F-F1-F3-J-L-M-N-Q-R-R1-S-T-V-Z1	09822	A-B-C-C2-F-F3-M-R-S-V-Z1
09620	B-C-C2-F-F3-R-S-U-V-Z1	09719	B-C-C2-D-F3-M-R-S-U-V-Z1	09759	A-B-C-C1-C2-E2-F-F1-F3-J-L-N-R-R1-T-V-Z1	09823	A-B-C1-C2-F-F1-F3-J-L-M-N-R-R1-T-V-Z1
09621	B-C-F-F3-R-U-Z1	09720	B-C2-F3-M-R-S-U-V-Z1	09761	B-C2-F-F1-F3-M-R-R1-S-V-Z1	09824	A-B-C-C2-F-F3-M-R-S-V-Z1
09622	B-C-C2-F-F3-R-S-U-Z1	09722	A-B-C-C2-F-F3-H-N-R-S-V-Z1	09762	A-B-C2-E3-F-F1-F3-J-L-N-R-R1-T-V-Z1	09825	A-B-C1-C2-F-F1-F3-J-L-M-N-R-R1-T-V-Z1
09623	B-C-C2-F-F3-R-S-U-V-Z1	09723	B-C2-F-F1-F3-J-L-M-N-R-R1-T-V-Z1	09769	A-B-C-C1-C2-F-F1-F3-J-L-M-N-R-R1-T-V-Z1	09826	A-B-C1-C2-E1-E2-E3-F-F1-F3-J-L-M-N-R-R1-T-V-W-Z1
09624	B-C-C2-F-F1-F3-I3-L-N-R-R1-T-U-V-Z1	09724	B-C-C1-C2-F-F3-M-R-R1-S-U	09777	A-B-C-C1-C2-E1-F-F1-F3-J-L-M-N-R-R1-T-V-Z1	09827	A-B-F-F1-J-L-M-N-R-T-V-Z1
09625	B-C-C2-F-F3-N-R-S-U-Z1	09725	A-B-C2-F-F3-H-N-Q-R-S-V-V1-Z1	09780	A-B-C2-F-F3-H-N-R-S-V	09828	A-B-C1-C2-F-F1-F3-I3-L-N-R-R1-T-V-Z1
09627	B-C-C2-F-F3-R-S-U-V-Z1	09726	B-F-F1-J-L-M-N-R-T-U-V-Z1	09801	A-B-C1-E2-F-F3-H1-M-N-R-R1-S-V-Z1	09829	B-C-N-R-V-Z1
09630	B-C-C2-F-F3-R-S-U-V	09727	A-B-C1-C2-F-F1-F3-J-L-M-N-R-R1-T-V-Z1	09802	A-B-C-C2-D-F-F1-F3-H-H1-I3-L-M-N-R-R1-S-T-V-W-Z1	09830	B-C-F-F1-F3-J-L-M-N-R-R1-S-T-V-Z1
09633	B-C-C2-D-F-F3-M-R-S-U-U1-U2-U3-V-Z1	09728	A-B-C-C1-C2-F-F1-F3-J-L-N-R-R1-T-V-Z1	09803	A-B-C-C2-E-E2-E3-F1-F3-H-H1-J-M-N-R-R1-S-U-V-Z1	09831	B-C1-C2-F-F1-F3-J-L-N-R-R1-T-V-Z1
09634	A-B-C2-F-F3-M-N-R-S-V	09729	B-C-C2-F-F3-N-R-R1-S-U-V-Z1	09804	A-B-C-C2-F-F1-F3-M-N-R-S-V-Z1	09832	A-B-C-C1-C2-E2-E3-F1-F3-H-H1-J-M-N-R-R1-S-V-Z1
09636	B-C-C2-F-F3-R-S-U-V-Z1	09730	A-B-C1-C2-F-F1-F3-J-L-M-N-R-R1-T-V-Z1	09805	B-C-C2-E2-E3-F-F1-F3-R-R1-S-Z1	09833	B-C-C2-E2-E3-F-F1-F3-R-R1-S-U-Z1
09642	B-C2-F-F1-F3-J-L-M-N-R-T-U-V	09731	A-B-C1-C2-F-F1-F3-J-L-M-N-R-R1-T-V-Z1	09807	A-B-C1-C2-E2-F-F1-F3-H1-I3-M-N-R-R1-S-T-V-Z1	09836	A-B-C1-C2-F-F1-F3-J-L-M-N-R-R1-V-Z1
09643	B-C-C2-F3-M-R-S-U-V-Z1	09732	B-F-F3-N-S-V-Z1	09808	A-B-C1-C2-E2-F-F1-F3-H-H1-J-L-N-R-R1-T-V-Z1	09837	B-E2-E3-F1-F3-R-S-V-Z1
09645	B-C-C1-E1-E2-F-F1-F3-M-R-S-U-X-Z1	09733	B-F-F3-N-R-S-V-Z1	09809	B-C1-C2-E3-F-F1-F3-J-L-N-T-V-Z1	09838	B-C-C2-E2-E3-F-F1-F3-R-S-U-Z1
09647	B-C2-F1-F3-M-N-R-S-U-Z1	09734	A-B-C-C1-C2-F-F1-F3-I3-J-L-M-N-R-R1-T-V-Z1	09810	A-B-C2-F-F1-F3-N-R-S-V-Z1	09842	A-B-C1-C2-F-F1-F3-J-L-N-R-R1-T-V-Z1
09648	B-C2-F3-N-R-S-U-V-Z1	09735	B-F3-N-R-S-V-Z1	09811	A-B-C-C2-E-E2-E3-F1-F3-H-H1-J-M-N-R-R1-S-U-V-Z1	09844	A-B-C1-C2-F-F1-F3-J-L-M-N-R-R1-T-V-Z1
09649	B-C2-F3-N-R-S-U-Z1	09736	A-B-C1-F-F1-F3-J-L-M-N-R-R1-T-V-Z1	09812	B-E2-E3-F-F1-I-J-L-N-R-T-U-V-Z1	09845	A-B-C1-C2-E3-F-F1-F3-J-L-M-N-R-R1-T-V-Z1
09701	A-B-C1-C2-F-F1-F3-J-L-M-N-R-R1-T-V-Z1	09737	A-B-C1-C2-F-F1-F3-I3-J-L-M-N-R-R1-T-V-W-Y-Z1	09813	A-B-C1-C2-E2-E3-F1-F3-J-L-N-R-R1-T-V-Z1	09846	A-B-C1-C2-F-F1-F3-J-L-N-R-R1-T-V-Z1
09702	B-C-C2-F-F1-M-R-R1-S-U	09738	A-B-C1-C2-F-F1-F3-J-L-M-N-R-R1-T-V-Z1	09814	B-C2-E2-E3-F-F1-F3-I3-J-L-N-R-R1-T-V-Z1	09847	B-C-C2-F-F1-F3-J-L-M-N-R-R1-S-T-V-Z1
09704	B-C-F-F1-F3-R-R1-S-U2-V	09739	A-B-C1-C2-F-F1-F3-J-L-M-N-R-R1-T-V-Z1			09848	A-B-C2-F-F3-M-R-S-V-Z1
09705	B-C-C1-C2-F1-F3-M-R-R1-S-U	09741	A-B-C1-C2-E2-F-F1-F3-H1-J-L-M-N-R-R1-T-V-W-Y-Z1			09853	B-C1-C2-E2-F-F1-F3-H1-N-R-R1-S-U2-V-Z1
09706	B-C-C2-F3-M-N-R-S-U-V-Z1	09742	A-B-C2-F-F1-F3-J-L-M-N-R-S-T-V-Z1				
09707	B-C2-F-F1-F3-J-L-M-N-R-R1-T-V-Z1	09743	A-B-C-C2-F-F3-H-N-R-S-V-Z1				
09708	B-C-C1-C2-F-F3-M-R-R1-S-U	09744	A-B-C1-C2-F-F1-F3-J-L-M-N-R-R1-T-V-Z1				
09709	B-C1-C2-E2-F-F1-F3-H-H1-J-L-N-R-R1-T-V-Z1	09745	A-B-C2-F-F1-F3-M-N-R-R1-S-V-Z1				

APO/ FPO/ DPO	See Restrictions	APO/ FPO/ DPO	See Restrictions	APO/ FPO/ DPO	See Restrictions	APO/ FPO/ DPO	See Restrictions
09854	A-B-C1-C2-F-F1-F3-J-L-N-R-R1-S-T-V-Z1	09974	B-F1-F3-J-L-M-N-R-S-T-U2-V-X-Z1	34036	B-C1-C2-F-F1-F3-J-L-M-N-R-R1-T-V-Z1	96202	A-B-C2-F-F1-F3-M-R-S-U
09855	A-B-C-C1-C2-E2-F-F1-F3-H1-M-R-R1-S-U2-V-Z1	09975	B-F1-F3-I3-L-M-N-R-S-T-U2-V-X-Z1	34037	B-C-C1-C2-F-F1-F3-H-J-L-M-N-R-R1-T-V-Z1	96203	A-B-F-F1-F3-M-R-S-U
09857	A-B-C2-E2-F-F1-F3-13-L-M-N-R-R1-S-T-V-Z-Z1	09976	B-F1-F3-J-L-M-N-R-S-T-U2-V-X-Z1	34039	B-C1-C2-F-F1-J-L-M-N-T-V-Z1	96204	A-B-F-F1-F3-M-R-S-U
09858	A-B-C-C1-C2-E2-E3-F1-F3-H-H1-J-M-N-R-R1-S-U-V-Z1	09977	B-F1-F3-J-L-M-N-R-S-T-U2-V-X-Z1	34041	B-C1-C2-F-F1-F3-J-L-M-N-R-R1-T-V-Z1	96205	A-B-C-C2-F-F1-F3-M-R-S-U
09859	B-C-C1-C2-E2-E3-F-F1-F3-H1-R-R1-S-U-Z1	09978	B-C-C2-D-E1-F-F1-F3-H-H1-M-N-R-R1-S-T-X-Z1	34042	A-B-C-F-F1-F3-M-N-R-S-U-V-W-Z1	96206	A-B-C-C2-F-F1-F3-M-R-S-U
09860	A-B-C2-F-F1-F3-J-L-M-N-R-R1-S-T-V-Z1	09980	B-C-C1-C2-F1-F3-J-L-M-N-R-R1-S-T-V-X-Z1	34050	B-V	96207	A-B-F-F1-F3-M-R-S-U-V
09862	A-B-C-C2-F-F1-F3-I3-L-M-N-R-R1-S-T-V-X-Z-Z1	09981	B-C-C1-C2-F1-F3-J-L-M-N-R-R1-S-T-V-X-Z1	34051	B-V	96208	A-B-F-F1-F3-M-R-S-U
09864	A-B-C-C1-C2-E2-F1-F3-L-M-N-R-R1-S-T-V-W-Z1	09982	B-C-C1-C2-F1-F3-J-L-M-N-R-R1-S-T-V-X-Z1	34052	B-V	96209	A-B-C1-C2-F-F1-J-L-M-N-T-U-V-Z1
09867	A-B-C-C1-C2-E2-F1-F3-L-M-N-R-R1-S-T-V-W-Z1	09983	B-C-C1-C2-F1-F3-J-L-M-N-R-R1-S-T-V-X-Z1	34053	B-V	96210	A-B-C1-C2-F-F1-F3-I3-L-M-N-R-R1-T-V-Z1
09869	A-B-C1-C2-E2-F1-F3-L-M-N-R-R1-S-T-V-W-Z1	09984	B-C-C1-C2-F1-F3-J-L-M-N-R-R1-S-T-V-X-Z1	34054	B-V	96212	B-F-F1-F2-H-M-W-Z1
09870	A-B-C1-C2-E2-F-F1-F3-H1-I3-L-M-N-R-R1-S-T-U4-V-Z-Z1	34001	A-B-C1-C2-F-F1-F3-J-L-M-N-R-R1-S-T-V-Z1	34055	B-C1-C2-F-F1-F3-J-L-M-N-R-R1-T-V-Z1	96213	A-B-C-C2-F1-F3-N-R-S
09873	A-B-C1-C2-E2-F-F1-F3-H1-I3-L-M-N-R-R1-S-T-U-U4-V-Z-Z1	34002	B-C1-C2-F-F1-F3-J-L-M-N-R-R1-T-V-Z1	34058	B-C2-F-F1-F2-F3-R-R1-S-V-Z1	96214	A-B-C-C2-F1-F3-R-S-U
09874	A-B-C1-C2-E2-F-F1-F3-H1-I3-L-M-N-R-R1-S-T-U-U4-V-Z-Z1	34004	B-C1-C2-F-F1-F3-J-L-M-N-R-R1-T-V-Z1	34060	B-C1-C2-E2-F-F1-F3-J-L-M-N-R-R1-T-V-Z1	96218	A-B-F-F1-F3-M-R-S-U
09875	A-B-C1-C2-E2-F-F1-F3-H1-I3-L-M-N-R-R1-S-T-U-U4-V-Z-Z1	34007	B-F-F1-H-J-M-N-R-R1-V-Z1	34066	B-C1-C2-F-F1-F3-I3-J-L-M-N-R-R1-S-T-V-X-Z-Z1	96224	A-B-F-F1-F3-M-R-S-U
09877	A-B-C-C2-E-E2-E3-F1-F3-H-H1-J-M-N-R-R1-S-U-V-Z1	34008	B-C1-C2-D-E1-F-F1-H-H1-J-L-M-N-R-R1-T-V-Z1	34067	B-C1-C2-F-F1-F3-J-L-M-N-R-R1-S-T-V-X-Z1	96251	A-B-F-F1-F3-M-R-S-U
09880	A-B-C1-C2-E2-F-F1-F3-H1J-L-N-R-R1-S-T-U-V-Z1	34009	B-C2-F-F1-F3-R-S-V	34068	B-C1-C2-F-F1-F3-J-L-M-N-R-R1-S-T-V-X-Z1	96257	A-B-F-F1-F3-S-U
09890	B-E2-F-H1-N-R-R1-U2-V-Z1	34010	B-C2-F-F1-F3-R-S-V	34069	B-C1-C2-F-F1-F3-I3-J-L-M-N-R-R1-S-T-V-X-Z-Z1	96258	A-F-F3-M-P-R-S-U
09892	A-B-C1-C2-E2-F-F1-F3-J-L-M-N-R-R1-T-V-Z1	34011	B-C1-C2-E2-F-F1-F3-J-L-M-N-R-R1-T-V-Z1	34072	B-C-C2-F1-F3-J-L-M-N-R-S-T-V-X-Z1	96260	A-B-F-F1-F3-M-R-S-U
09895	A-B-C1-C2-E2-F-F1-F3-J-L-M-N-R-T-V-W-Z1	34020	B-C1-C2-F-F1-F3-J-L-M-N-R-R1-T-V-Z1	34078	B-F1-F3-N-R-S-V-Z1	96262	A-B-C2-F-F1-F3-R-S-U-V-Z1
09898	B-C-C1-C2-E2-F-F1-F2-H1-N-R-R1-S-U2-V-Z1	34021	B-C1-C2-F-F1-F3-J-L-M-N-R-R1-T-V-Z1	34080	B-F-F1-R-R1-V	96264	A-B-C-C2-F1-F3-R-S-U
09902	A-B-C1-C2-E2-F-F3-H1-M-R-R1-S-V-Z1	34022	B-C1-C2-F-F1-F3-J-L-M-N-R-R1-T-V-Z1	34081	B-F-F1-R-R1-V	96266	A-B-C-C2-F1-F3-R-S-U
09903	B-C1-E2-F1-F3-S-V-Z1	34023	B-C1-C2-F-F1-F3-J-L-M-N-R-R1-T-V-Z1	34082	B-F-F1-R-R1-V	96269	A-B-C-C2-F1-F2-F3-R-S-U-Z1
09904	B-C1-E2-F1-F3-S-V-Z1	34024	B-C1-C2-F-F1-F3-J-L-M-N-R-R1-T-V-Z1	34083	B-F-F1-R-R1-V	96271	A-B-F-F3-M-P-R-S-U
09908	A-B-C2-F-F1-F3-N-R-R1-S-V-Z1	34025	B-F-F1-F3-J-L-M-N-R-R1-T-V-Z1	34084	B-F-F1-R-R1-V	96273	A-B-C2-F-F1-F3-M-R-S-U
09909	A-B-C2-F-F1-F3-N-R-R1-S-V-V1-Z1	34030	B-C1-C2-F-F1-F3-J-L-M-N-R-R1-T-V-Z1	34085	B-C-C1-C2-E2-E3-F-F1-F3-H1-J-R-R1-S-T-V-V1	96275	A-B-F-F1-F3-M-R-S-U
		34031	B-C1-C2-F-F1-F3-J-L-M-N-R-R1-T-V-Z1	34086	B-C-C1-C2-E2-E3-F-F1-F3-H1-J-R-R1-S-T-V-V1	96276	A-B-C-C2-F1-F3-R-S
		34032	B-C1-C2-F-F1-F3-J-L-M-N-R-R1-T-V-Z1	34087	B-C-C2-E2-F-F1-F3-R-R1-S-V	96278	A-B-C-C2-F1-F3-R-S-U
		34033	B-C1-C2-F-F1-F3-I3-L-M-N-R-T-V-Z-Z1	34088	B-C-C2-F-F1-F3-R-R1-S-V	96283	A-B-F-F1-F3-S-U
		34034	B-C1-C2-F-F1-F3-I3-L-M-N-R-R1-T-V-Z-Z1	34089	B-C-C2-F-F1-F3-R-R1-S-V	96284	A-B-C2-F-F1-F3-M-R-S-U
		34035	B-C1-C2-F-F1-F3-H-J-L-M-N-R-R1-T-V-Z1	34090	B-C-C2-F-F1-F3-R-R1-S-V	96297	A-B-F-F1-F3-R-S-U
				34091	B-C-C2-E2-E3-F-F1-F3-R-R1-S-V-Z1	96300	A-B-F3-M-R-S-V-Z1
				34092	B-C-C2-F-F1-F3-R-R1-S-V-Z1	96301	A-B-C-C2-F-F3-M-N-R-S-U2-W
				34093	B-C-C2-F-F1-F3-R-R1-S-V	96303	B-C1-C2-F-F1-H-J-L-M-N-T-V-W-Z1
				34094	B-F-F1-F3-R-R1-S-V	96306	B-F-F1-F2-F3-H-M-R-S-W-Z1
				34095	B-F-F1-R-R1-V	96309	B-C-C2-F-F1-F3-M-N-R-S-V-W
				96201	A-B-F-F1-F3-M-R-S-U	96310	B-C-C2-F-F3-M-R-S-W

APO/ FPO/ DPO	See Restrictions	APO/ FPO/ DPO	See Restrictions	APO/ FPO/ DPO	See Restrictions	APO/ FPO/ DPO	See Restrictions
96311	B-C-C2-F-F3-M-R-S-W	96380	B-C-C2-F-F3-M-R-S-W	96550	A-B-H-M-N-U-V-Z1	96650	B-F-F1-R-R1-V
96315	B-C-C2-F-F3-M-R-S-W	96382	B-C-C2-F-F3-M-R-S-W	96551	A-B-C1-C2-F-F1-H-J-L-M-N-R-R1-S-T-V-Z1	96657	B-C-C2-F-F1-F3-R-R1-S-V
96319	B-C-C2-F3-M-R-S-W	96384	B-C-C2-F-F3-M-R-S-W	96552	B-Z1	96660	B-C-C2-F-F1-F3-R-R1-S-V
96321	B-F-F1-F2-F3-H-M-R-S-W-Z1	96385	B-C-C2-F-F3-M-R-S-W	96553	A-B-C-C2-F-F1-F3-H-M-N-R-S-U	96661	B-C-C2-F-F1-F3-R-R1-S-V
96322	B-F-F1-F2-F3-H-M-R-S-W-Z1	96386	B-C-C2-F-F3-M-R-S-W	96554	A-B-C1-C2-F-F1-H-J-L-M-N-R-R1-S-T-V-Z1	96662	B-C-C2-F-F1-F3-R-R1-S-V
96326	B-C-C2-F-F3-M-R-S-W	96387	B-C-C2-F-F3-M-R-S-W	96555	A-B-F-F3-M-R-S-V	96663	B-C-C2-F-F1-F3-R-R1-S-V
96328	B-C-C2-F3-M-R-S-W	96388	B-C-C2-F-F3-M-R-S-W	96557	A-B-F-F3-M-R-S-V	96664	B-C-C2-F-F1-F3-R-R1-S-V
96331	A-B-C-C2-F-F1-F3-J-L-M-N-R-S-U2-W	96389	B-C-C2-F-F3-M-R-S-W	96562	A-B-C1-C2-D-E2-E3-F-F1-H-H1-I3-L-M-N-R-R1-S-T-V-Z-Z1	96665	B-C-C2-F-F1-F3-R-R1-S-V
96336	B-C-C2-F3-M-R-S-V-W	96401	B-C-F-F3-N-R-S-V-V1-Z1	96577	A-B-C2-F-F3-H-M-N-R-S-U	96666	B-C-C2-F-F1-F3-R-R1-S-V
96337	B-C2-F-F1-F3-M-R-R1-S-W	96502	A-B-C-C1-C2-F-F1-F3-J-M-N-R-R1-S-T-U-V	96578	B-C-C2-F1-F3-H-J-N-R-S	96667	B-C-C2-F-F1-F3-R-R1-S-V
96338	A-B-C-C2-F-F3-M-R-S-U2-W	96504	A-B-C-C1-C2-F-F1-F3-I3-L-M-N-R-R1-T-V-W-Z-Z1	96595	B-F-F3-R-S-V-Z1	96668	B-C-C2-F-F1-F3-R-R1-S-V
96339	A-B-C-C2-F-F3-M-N-R-S-U2-W	96505	A-B-C-C1-C2-F-F1-F3-I3-L-M-N-R-R1-S-T-V-W-Z-Z1	96599	B-C2-F3-N-R-S-V	96669	B-C-C2-F-F1-F3-R-R1-S-V
96343	A-B-F-F3-M-P-R-S-U2	96507	A-B-C1-C2-F-F1-H-J-L-M-N-T-V-Z1	96601	B-V	96670	B-C-C2-F-F1-F3-R-R1-S-V
96346	B-F-F1-F2-F3-H-M-R-S-W-Z1	96510	B-I3-N-V	96602	B-V	96671	B-C-C2-F-F1-F3-R-R1-S-V
96347	B-C2-F-F1-F2-F3-H-M-R-S-W-Z1	96511	B-I3-N-V	96603	B-V	96672	B-C-C2-F-F1-F3-R-R1-S-V
96349	B-C-C2-F-F1-F2-F3-H-M-R-S-Z1	96515	B-C-D-E1-F-F1-F3-H-H1-M-N-R-S-T-Z1	96605	B-V	96673	B-C-C2-F-F1-F3-R-R1-S-V
96350	B-F-F1-F2-F3-H-M-R-S-W-Z1	96516	B-C-C2-D-E1-E2-F-F1-F3-H-H1-M-N-R-S-T-Z1	96606	B-C-C2-F-F3-M-R-S-V-W	96674	B-C-C2-F-F1-F3-R-R1-S-V
96351	B-C-C2-F-F1-F2-F3-H-M-R-R1-S-T-Z1	96517	B-C-D-E1-E2-F-F1-F3-H-H1-M-N-R-T-U-V-Z1	96607	B-V	96675	B-C-C2-F-F1-F3-R-R1-S-V
96362	B-C2-F-F1-F2-F3-H-M-R-S-W-Z1	96520	B-F-N-U3-V	96608	B-E2-F-H1-R1-U2-V-Z1	96677	B-C-C2-F-F1-F3-R-R1-S-V
96365	B-C-C2-F3-M-R-S-W-V	96521	B-C1-C2-F-F1-J-L-M-N-R-R1-S-T-V-Z1	96609	B-E2-F-H1-R1-U2-V-Z1	96678	B-C-C2-F-F1-F3-R-R1-S-V
96367	B-C-C2-F3-L-M-R-S-W	96530	A-B-C1-C2-F-F1-H-H1-J-L-M-N-R-R1-S-T-V-Z1	96610	B-C-C2-F-F3-H1-R-R1-S-U2-V-Z1	96679	B-C-C2-F-F1-F3-R-R1-S-V
96368	B-C-C2-F3-M-R-S-W	96531	A-B-C-C2-F-F1-F3-H-M-N-R-S-U-V	96611	B-C-C2-F-F3-H1-R-R1-S-U2-V-Z1	96681	B-V
96370	B-F-F1-F2-H-M-W-Z1	96532	A-B-C1-C2-F-F1-H-J-L-M-N-R-R1-S-T-V-Z1	96612	B-C-C2-F-F3-H1-R-R1-S-U2-V-Z1	96682	B-C-C2-F-F1-F3-R-R1-S-V
96371	B-C-C2-F-F3-M-R-S-W	96533	A-B-C-C2-F-F1-F2-F3-R-R1-S-U-V-Z1	96613	B-C-C2-F-F3-H1-R-R1-S-U2-V-Z1	96683	B-C-C2-F-F1-F3-R-R1-S-V
96372	B-C-C2-F-F3-M-R-S-W	96534	A-B-C1-C2-F-F1-J-L-M-N-R-R1-S-T-V-Z1	96615	B-F-F1-R-R1-V	96686	B-C-C2-F-F1-F3-R-R1-S-V
96373	B-C-C2-F-F3-M-R-S-W	96535	A-B-C1-C2-F-F1-J-L-M-N-R-R1-S-T-V-Z1	96616	B-C2-F-F1-F3-R-R1-S-V	96691	B-C-C2-F-F1-F3-R-R1-S-V
96374	B-C-C2-F-F3-M-R-S-W	96537	B-V-Z1	96619	B-C-C2-F-F1-F3-R-S-V	96692	B-C-C2-F-F1-F3-R-R1-S-V
96375	B-C-C2-F-F3-M-R-S-W	96540	B-F1-F2-F3-S-V-Z1	96620	B-C-C2-F-F1-F3-R-R1-S-V	96693	B-C-C2-F-F1-F3-R-R1-S-V
96376	B-C-C2-F-F3-M-R-S-W	96542	B-F-F1-F2-F3-S-V-Z1	96628	B-C-C2-F-F1-F3-R-R1-S-V	96694	B-C-C2-F-F1-F3-I3-J-R-R1-S-V-Z
96377	B-C-C2-F-F3-M-R-S-W	96543	B-F-F1-F2-F3-P-S-V-Z1	96629	B-C-C2-F-F1-F3-R-R1-S-V	96695	B-C-C2-F-F1-F3-R-R1-S-V
96378	B-C-C2-F-F3-M-R-S-W	96548	A-B-C2-F-F1-F3-H-M-R-S-U	96632	B-C-C2-F-F1-F3-R-R1-S-V	96696	B-F-F1-R-R1-V
96379	B-C-C2-F-F3-M-R-S-W	96549	A-B-C1-C2-F-F1-H-J-L-M-N-R-R1-S-T-V-Z1	96633	B-V	96698	B-C-C2-F-F1-F3-R-R1-S-V
				96641	B-V		
				96642	B-V		
				96643	B-F-F1-F3-R-R1-S-V		
				96644	B-V		
				96645	B-V		
				96649	B-C-C2-F-F1-F3-R-R1-S-V		

RESTRICTIONS

LEGEND

PS Form 2976, *Customs — CN 22 (Old C 1) and Sender's Declaration* (green label)

PS Form 2976-A, *Customs Declaration and Dispatch Note*

PS Form 2976-B, *Priority Mail Express International Shipping Label and Customs Form*

ATF	= Bureau of Alcohol, Tobacco, Firearms, and Explosives
Box C	= Department of State (DOS) contractor personnel
Box R	= Retired military personnel
DPO	= Diplomatic Post Office
MPO	= Military Post Office
PACT	= Prevent All Cigarette Trafficking Act
PAL	= Parcel Airlift
PMEMS	= Priority Mail Express Military Service
PUB 52	= Publication 52, <i>Hazardous, Restricted, and Perishable Mail</i>
SAM	= Space Available Mail
USDA	= United States Department of Agriculture

Note: Mail order catalogs are prohibited as SAM or PAL mail.

A. Securities, currency, or precious metals, including in their raw, unmanufactured state, are prohibited. Official Mail shipments are exempt from this restriction.

A1. Reserved for future use.

A2. Reserved for future use.

B. Other than for PMEMS and the exceptions listed below, a customs declaration PS Form 2976 or PS Form 2976-A is required for all items weighing 16 ounces or more, and for all items (regardless of weight) containing potentially dutiable mail contents (e.g., merchandise or goods) addressed to or from this ZIP Code. Other than the exceptions listed below, all PMEMS mailpieces (regardless of mail contents or weight) addressed to or from this ZIP Code must bear a properly completed PS Form 2976-B. The surface area of the address side of the mailpiece must be large enough to contain the applicable customs declaration. The following exceptions apply to known mailers, who for this purpose are defined as follows:

- Business mailers who enter volume mailings through business mail entry units or other bulk mail acceptance locations, pay postage through advance deposit accounts, use permit imprints for postage payment, and submit completed postage statements at the time of entry that certify that the mailpieces contain no dangerous materials that are prohibited by postal regulations. Such business mailers are exempt from providing customs documentation on non-dutiable letters and printed matter.
- All federal, state, and local government agencies whose mailings are regarded as "Official Mail." Such agencies are exempt from providing customs documentation, except for any items addressed to an MPO or DPO to which restriction "B2" applies.

B2. All federal, state, and local government agencies must complete customs documentation when sending potentially dutiable mail addressed to or from this MPO or DPO.

C. Cigarettes and other tobacco products, including tobacco leaves, chewing and pipe tobacco, snuff, and cigars are prohibited, including those that are authorized in Publication 52 under PACT.

C1. Obscene and horror articles, images, prints, paintings, cards, films, videotapes, comic books, etc., are prohibited.

C2. E-cigarettes and related products (e.g., nicotine liquids, e-liquids, parts, or supplies) are prohibited.

D. Coffee is prohibited.

E. Medicines (prescription, over-the-counter, vitamins, and supplements) are prohibited when mailed to individuals for human or animal use. This prohibition does not apply when medicines are sent as Official Mail only between specifically designated agencies such as pharmaceutical distributors, hospitals, clinics, and pharmacies.

E1. Mailers are responsible to ensure that all medicines and vaccines conform to host nation laws.

E2. Any matter depicting nude or seminude persons, pornographic, or sexual items are prohibited. Non-authorized political materials are prohibited. Religious materials contrary to the Islamic faith are prohibited in bulk quantities, but individual items for the personal use of the addressee are permissible.

E3. Radio transceivers, cordless/cellular telephones, global positioning systems, scanners, base stations, and handheld transmitters are prohibited.

F. Firearms of any type are prohibited, except firearms mailed to or by official U.S. government agencies. This restriction does not apply to firearms mailed from this MPO ZIP Code, provided ATF and USPS regulations are met. Antique firearms do not require an ATF form.

F1. Weapons of any type are prohibited.

F2. Mailing firearms to or from this MPO ZIP Code is restricted to one shotgun and one single shot .22 caliber rifle per individual.

F3. Replica weapons and inert explosive devices (such as grenades) and weapons parts are prohibited.

G. Parcels of any class are prohibited.

H. Meats, including preserved meats, bones, skin, hair, feathers, horns or hoofs of hoofed animals, and wool samples whether hermetically sealed or not, are prohibited.

H1. Pork or pork by-products are prohibited.

I. Reserved for future use.

I1. Reserved for future use.

I2. Reserved for future use.

I3. Mail of all classes must fit in a mail sack. Mail may not exceed the following dimensions:

- Maximum length 27 inches.
- Maximum width 14 inches.
- Maximum height 14 inches.

J. Standard Post and Parcel Select parcels may not exceed 108 inches in length and girth combined.

K. Reserved for future use.

L. All Official Mail is prohibited.

M. Fruits, vegetables, live animals, and live plants are prohibited.

N. Registered Mail service is prohibited.

O. Reserved for future use.

P. Official Mail only.

Q. Mail may not exceed 66 pounds, and size is limited to 42 inches maximum length and 72 inches maximum length and girth combined.

R. All alcoholic beverages, including those available under Publication 52, Part 421, are prohibited.

R1. Materials used in the production of alcoholic beverages (i.e., distilling material, hops, malts, yeast, etc.) are prohibited.

S. Synthetic cannabinoids used to stimulate the central nervous system commonly known as "synthetic marijuana," "K2," or "Spice" are prohibited.

T. Mailings of household shipments and case lots of food to or from an MPO require military transportation office approval prior to mailing. Mailings to or from a DPO require pre-approval from the Diplomatic Pouch and Mail Director.

U. Mail addressed to Retirees (Box R) is limited to 16 ounces and up to a 90-day supply of TRICARE medications. This restriction does not apply to mail endorsed "Free Matter for the Blind or Handicapped."

U1. Mail is limited to First-Class Mail items, including audio and video media, weighing 13 ounces or less. This limitation does not apply to Official Mail.

U2. Retirees (Box R) are not authorized mail service.

U3. Reserved for future use.

U4. Mail addressed to Box C is limited to 2 lbs.

V. PMEMS is not available.

V1. Electronic Delivery status information for Extra Services is not available on *USPS.com*. Manual record of delivery may be available upon request.

W. Hermetically sealed packages of meat products bearing USDA certification, such as dried beef, salami, and sausage, may be mailed. 200 grams of tobacco per parcel are permitted duty free.

X. Cremated remains are prohibited.

Y. Mail is limited to First-Class Mail and Priority Mail items only. This restriction also applies to Official Mail.

Z. No outside pieces (OSPs).

Z1. The following restriction is applicable only to International Service Centers (ISC)/Exchange Offices. An Anti-Pilferage Seal (Item No 0817E or 0818A) is required on all pouches and sacks.

— *International Network Operations,
Global Business, 2-9-23*

Freely Associated States Restrictions

We list the mailing restrictions for Freely Associated States (FAS) in the Pull-Out section of the *Postal Bulletin*. All FAS Restrictions will be updated periodically.

Freely Associated States

Mail addressed to freely associated states is subject to certain conditions or restrictions of mailing regarding content, preparation, and handling. The following FAS Restrictions table outlines these conditions as listed by each affected FAS ZIP Code™ through the use of footnoted mailing restrictions codes (see the [Restrictions](#) following the table). For more information on available extra services for FAS destinations, see *Mailing Standards of the United States Postal Service, Domestic Mail Manual (DMM®)*, part 503.

Acceptance clerks must use the table with the Retail System Software terminal to determine which FAS ZIP Codes are active and which conditions of mailing apply.

FAS Restrictions Table

FAS Table	See Restrictions
96939	A, B
96940	A, B
96941	A, B
96942	A, B
96943	A, B
96944	A, B
96960	A, B
96970	A, B, D
Marshall Islands	C
Federated States of Micronesia	C

RESTRICTIONS LEGEND

PS Form 2976, *Customs Declaration CN 22 — Sender's Declaration*

PS Form 2976-A, *Customs Declaration and Dispatch Note*

FAS = Freely Associated State

- A.** Bank currency (coin and paper) is prohibited.
- B.** Signature Confirmation, Signature Confirmation Restricted Delivery, Adult Signature Requested, Adult Signature Restricted Delivery, Certified Mail Adult Signature Required, and Certified Mail Adult Signature Restricted Delivery not available.
- C.** Collect on Delivery is prohibited.
- D.** Betel nut (*Areca catechu*) is prohibited.

— *Asia-Pacific Relations,
Global Business, 2-9-23*

Post Office Changes (continued)

Old/ New	Finance No.	ZIP Code	State	P.O. Name	County/Parish	Station/Branch/ Unit	Unit Type	Effective Date	Comments
Old New	35-6885 35-1205	13677 13677	NY NY	Pyrites Canton	Saint Lawrence Saint Lawrence	Main Office Pyrites	Post Office Place Name	10/01/2015 08/15/2022	Post Office discontinued. Retain ZIP Code. Establish a Place Name. Continue to use Pyrites, NY 13677 as the last line of address.
Old New	35-8205 35-3425	10979 10979	NY NY	Sterling Forest Greenwood Lake	Orange Orange	Main Office Sterling Forest	Post Office Place Name	07/01/2001 08/15/2022	Post Office discontinued. Retain ZIP Code. Establish a Place Name. Continue to use Sterling Forest, NY 10979 as the last line of address.
Old New	38-0056 38-4319	43101 43101	OH OH	Adelphi Laurelville	Ross Ross	Main Office Adelphi	Post Office Place Name	10/02/2015 08/15/2022	Post Office discontinued. Retain ZIP Code. Establish a Place Name. Continue to use Adelphi, OH 43101 as the last line of address.
Old New	38-3703 38-3087	43746 43746	OH OH	Hopewell Glenford	Muskingum Muskingum	Main Office Hopewell	Post Office Place Name	10/23/2015 08/15/2022	Post Office discontinued. Retain ZIP Code. Establish a Place Name. Continue to use Hopewell, OH 43746 as the last line of address.
Old New	38-7308 38-3003	45168 45168	OH OH	Russellville Georgetown	Brown Brown	Main Office Russellville	Post Office Place Name	02/21/2014 08/15/2022	Post Office discontinued. Retain ZIP Code. Establish a Place Name. Continue to use Russellville, OH 45168 as the last line of address.
Old New	38-8638 38-8638	44485 44485	OH OH	Warren Warren	Trumbull Trumbull	West Warren Main Office	Classified Station Post Office	03/02/2013 08/15/2022	Classified Station discontinued. Retain ZIP Code. Continue to use Warren, OH 44485 as the last line of address.
Old New	41-1880 41-5388	17017 17017	PA PA	Dalmatia Millersburg	Northumberland Northumberland	Main Office Dalmatia	Post Office Place Name	10/31/2015 08/15/2022	Post Office discontinued. Retain ZIP Code. Establish a Place Name. Continue to use Dalmatia, PA 17017 as the last line of address.
Old New	41-2860 41-2860	19025 19025	PA PA	Fort Washington Fort Washington	Montgomery Montgomery	Dresher Dresher	Classified Branch Place Name	09/21/2012 08/15/2022	Classified Branch discontinued. Retain ZIP Code. Establish a Place Name. Continue to use Dresher, PA 19025 as the last line of address.
Old New	41-3460 41-5972	18823 18823	PA PA	Harford New Milford	Susquehanna Susquehanna	Main Office Harford	Post Office Place Name	05/22/2015 08/15/2022	Post Office discontinued. Retain ZIP Code. Establish a Place Name. Continue to use Harford, PA 18823 as the last line of address.

Old/ New	Finance No.	ZIP Code	State	P.O. Name	County/Parish	Station/Branch/ Unit	Unit Type	Effective Date	Comments
Old New	41-3908 41-5048	19345 19345	PA PA	Immaculata Malvern	Chester Chester	Main Office Immaculata	Post Office Place Name	12/31/2014 08/15/2022	Post Office discontinued. Retain ZIP Code. Establish a Place Name. Continue to use Immaculata, PA 19345 as the last line of address.
Old New	41-6608 41-6608	15221 15221	PA PA	Pittsburgh Pittsburgh	Allegheny Allegheny	Wilkinsburg Main Office	Classified Branch Post Office	05/28/2010 08/15/2022	Classified Branch discontinued. Retain ZIP Code. Continue to use Pittsburgh, PA 15221 as the last line of address.
Old New	41-8268 41-3756	19371 19344	PA PA	Suplee Honey Brook	Chester Chester	Main Office Suplee	Post Office Place Name	10/31/2011 08/15/2022	Post Office and ZIP Code discontinued. Establish a Place Name. Suplee, PA becomes an acceptable last line for use with ZIP Code 19344.
Old New	43-7140 43-7140	02912 02912	RI RI	Providence Providence	Providence Providence	Brown Main Office	Classified Station Post Office	10/31/2008 08/15/2022	Classified Station discontinued. Retain ZIP Code. Continue to use Providence, RI 02912 as the last line of address.
Old New	46-5148 46-2772	57457 57457	SD SD	Long Lake Eureka	Mcperson Mcperson	Main Office Long Lake	Post Office Place Name	03/31/2010 08/15/2022	Post Office discontinued. Retain ZIP Code. Establish a Place Name. Continue to use Long Lake, SD 57457 as the last line of address.
Old New	47-5664 47-5664	38108 38108	TN TN	Memphis Memphis	Shelby Shelby	Binghamton Main Office	Classified Station Post Office	12/01/2011 08/15/2022	Classified Station discontinued. Retain ZIP Code. Continue to use Memphis, TN 38108 as the last line of address.
Old New	47-3144 47-4932	38457 38457	TN TN	Five Points Leoma	Lawrence Lawrence	Main Office Five Points	Post Office Place Name	04/20/2012 08/15/2022	Post Office discontinued. Retain ZIP Code. Establish a Place Name. Continue to use Five Points, TN 38457 as the last line of address.
Old New	47-5664 47-5664	38103 38103	TN TN	Memphis Memphis	Shelby Shelby	Front Street Main Office	Classified Station Post Office	08/30/2010 08/15/2022	Classified Station discontinued. Retain ZIP Code. Continue to use Memphis, TN 38103 as the last line of address.
Old New	47-5664 47-5664	38103 38103	TN TN	Memphis Memphis	Shelby Shelby	Lee Carrier Unit Main Office	Classified Station Post Office	06/15/2011 08/15/2022	Classified Station discontinued. Retain ZIP Code. Continue to use Memphis, TN 38103 as the last line of address.
Old New	47-1560 47-1560	37419 37419	TN TN	Chattanooga Chattanooga	Hamilton Hamilton	Lookout Valley Main Office	Classified Station Post Office	02/23/2001 08/15/2022	Classified Station discontinued. Retain ZIP Code. Continue to use Chattanooga, TN 37419 as the last line of address.

Old/ New	Finance No.	ZIP Code	State	P.O. Name	County/Parish	Station/Branch/ Unit	Unit Type	Effective Date	Comments
Old New	47-5256 47-1848	38471 38471	TN TN	Lutts Collinwood	Wayne Wayne	Main Office Lutts	Post Office Place Name	09/30/2016 08/15/2022	Post Office discontinued. Retain ZIP Code. Establish a Place Name. Continue to use Lutts, TN 38471 as the last line of address.
Old New	47-5412 47-5412	37115 37115	TN TN	Madison Madison	Davidson Davidson	Madison College Main Office	Classified Branch Post Office	12/31/2002 08/15/2022	Classified Branch discontinued. Retain ZIP Code. Continue to use Madison, TN 37115 as the last line of address.
Old New	48-2540 48-9570	79230 79230	TX TX	Dodson Wellington	Collingsworth Collingsworth	Main Office Dodson	Post Office Place Name	03/07/2015 08/15/2022	Post Office discontinued. Retain ZIP Code. Establish a Place Name. Continue to use Dodson, TX 79230 as the last line of address.
Old New	48-3265 48-5700	76842 76842	TX TX	Fredonia Mason	Mason Mason	Main Office Fredonia	Post Office Place Name	11/22/2013 08/15/2022	Post Office discontinued. Retain ZIP Code. Establish a Place Name. Continue to use Fredonia, TX 76842 as the last line of address.
Old New	48-3740 48-2330	76246 76246	TX TX	Greenwood Decatur	Wise Wise	Main Office Greenwood	Post Office Place Name	06/14/2013 08/15/2022	Post Office discontinued. Retain ZIP Code. Establish a Place Name. Continue to use Greenwood, TX 76246 as the last line of address.
Old New	48-5385 48-5925	76855 76855	TX TX	Lowake Miles	Concho Concho	Main Office Lowake	Post Office Place Name	01/24/2014 08/15/2022	Post Office discontinued. Retain ZIP Code. Establish a Place Name. Continue to use Lowake, TX 76855 as the last line of address.
Old New	48-7380 48-9570	79251 79251	TX TX	Quail Wellington	Collingsworth Collingsworth	Main Office Quail	Post Office Place Name	05/30/2014 08/15/2022	Post Office discontinued. Retain ZIP Code. Establish a Place Name. Continue to use Quail, TX 79251 as the last line of address.
Old New	48-7790 48-9230	76263 76263	TX TX	Rosston Valley View	Cooke Cooke	Main Office Rosston	Post Office Place Name	06/01/2013 08/15/2022	Post Office discontinued. Retain ZIP Code. Establish a Place Name. Continue to use Rosston, TX 76263 as the last line of address.
Old New	48-8140 48-5660	76685 76685	TX TX	Satin Marlin	Falls Falls	Main Office Satin	Post Office Place Name	06/28/2016 08/15/2022	Post Office discontinued. Retain ZIP Code. Establish a Place Name. Continue to use Satin, TX 76685 as the last line of address.
Old New	51-1128 51-7974	24316 24316	VA VA	Broadford Saltville	Tazewell Tazewell	Main Office Broadford	Post Office Place Name	10/28/2014 08/15/2022	Post Office discontinued. Retain ZIP Code. Establish a Place Name. Continue to use Broadford, VA 24316 as the last line of address.

Old/ New	Finance No.	ZIP Code	State	P.O. Name	County/Parish	Station/Branch/ Unit	Unit Type	Effective Date	Comments
Old New	51-1338 51-9180	22433 22433	VA VA	Burr Hill Unionville	Orange Orange	Main Office Burr Hill	Post Office Place Name	08/14/2014 08/15/2022	Post Office discontinued. Retain ZIP Code. Establish a Place Name. Continue to use Burr Hill, VA 22433 as the last line of address.
Old New	51-3978 51-3978	23651 23651	VA VA	Hampton Hampton	Hampton City Hampton City	Fort Monroe Main Office	Classified Station Post Office	09/01/2011 08/15/2022	Classified Station discontinued. Retain ZIP Code. Continue to use Fort Monroe, VA 23651 as the last line of address.
Old New	51-7716 51-7716	24019 24019	VA VA	Roanoke Roanoke	Roanoke Roanoke	Hollins College Main Office	Classified Branch Post Office	06/30/2015 08/15/2022	Classified Branch discontinued. Retain ZIP Code. Continue to use Roanoke, VA 24019 as the last line of address.
Old New	51-4620 51-0390	24350 24350	VA VA	Ivanhoe Austinville	Wythe Wythe	Main Office Ivanhoe	Post Office Place Name	04/16/2002 08/15/2022	Post Office discontinued. Retain ZIP Code. Establish a Place Name. Continue to use Ivanhoe, VA 24350 as the last line of address.
Old New	51-6594 51-0204	24581 24581	VA VA	Norwood Amherst	Nelson Nelson	Main Office Norwood	Post Office Place Name	04/16/2004 08/15/2022	Post Office discontinued. Retain ZIP Code. Establish a Place Name. Continue to use Norwood, VA 24581 as the last line of address.
Old New	51-8028 51-6642	23426 23426	VA VA	Sanford Oak Hall	Accomack Accomack	Main Office Sanford	Post Office Place Name	09/16/2011 08/15/2022	Post Office discontinued. Retain ZIP Code. Establish a Place Name. Continue to use Sanford, VA 23426 as the last line of address.
Old New	50-1148 50-6832	05141 05141	VT VT	Cambridgeport Saxtons River	Windham Windham	Main Office Cambridgeport	Post Office Place Name	09/17/2016 08/15/2022	Post Office discontinued. Retain ZIP Code. Establish a Place Name. Continue to use Cambridgeport, VT 05141 as the last line of address.
Old New	50-3528 50-3500	05049 05049	VT VT	Hartland Four Corners Hartland	Windsor Windsor	Main Office Hartland Four Corners	Post Office Place Name	12/16/2015 08/15/2022	Post Office discontinued. Retain ZIP Code. Establish a Place Name. Continue to use Hartland Four Corners, VT 05049 as the last line of address.
Old New	55-0564 55-0564	25801 25801	WV WV	Beckley Beckley	Beckley Beckley	Tamarack Main Office	Classified Station Post Office	10/31/2010 08/15/2022	Classified Station discontinued. Retain ZIP Code. Continue to use Beckley, WV 25801 as the last line of address.
Old New	55-3420 55-7056	26222 26222	WV WV	Hacker Valley Rock Cave	Webster Webster	Main Office Hacker Valley	Post Office Place Name	06/25/2009 08/15/2022	Post Office discontinued. Retain ZIP Code. Establish a Place Name. Continue to use Hacker Valley, WV 26222 as the last line of address.

Old/ New	Finance No.	ZIP Code	State	P.O. Name	County/Parish	Station/Branch/ Unit	Unit Type	Effective Date	Comments
Old New	55-3726 55-6594	24729 24729	WV WV	Hiawatha Princeton	Mercer Mercer	Main Office Hiawatha	Post Office Place Name	08/07/2015 08/15/2022	Post Office discontinued. Retain ZIP Code. Establish a Place Name. Continue to use Hiawatha, WV 24729 as the last line of address.
Old New	55-4212 55-1128	26228 26228	WV WV	Kanawha Head Buckhannon	Upshur Upshur	Main Office Kanawha Head	Post Office Place Name	11/08/2010 08/15/2022	Post Office discontinued. Retain ZIP Code. Establish a Place Name. Continue to use Kanawha Head, WV 26228 as the last line of address.
Old New	55-4344 55-1014	25534 25534	WV WV	Kiahsville Branchland	Wayne Wayne	Main Office Kiahsville	Post Office Place Name	06/23/2016 08/15/2022	Post Office discontinued. Retain ZIP Code. Establish a Place Name. Continue to use Kiahsville, WV 25534 as the last line of address.
Old New	55-4476 55-3240	26384 26384	WV WV	Linn Glenville	Gilmer Gilmer	Main Office Linn	Post Office Place Name	03/05/2015 08/15/2022	Post Office discontinued. Retain ZIP Code. Establish a Place Name. Continue to use Linn, WV 26384 as the last line of address.
Old New	55-3894 55-3894	25703 25703	WV WV	Huntington Huntington	Cabell Cabell	Marshall University Main Office	Classified Station Post Office	07/09/2010 08/15/2022	Classified Station discontinued. Retain ZIP Code. Continue to use Huntington, WV 25703 as the last line of address.
Old New	55-6774 55-4998	25913 25913	WV WV	Ravenclyff McGraws	Wyoming Wyoming	Main Office Ravenclyff	Post Office Place Name	07/28/2014 08/15/2022	Post Office discontinued. Retain ZIP Code. Establish a Place Name. Continue to use Ravenclyff, WV 25913 as the last line of address.
Old New	55-7338 55-8202	24974 24974	WV WV	Secondcreek Union	Monroe Monroe	Main Office Secondcreek	Post Office Place Name	05/27/2010 08/15/2022	Post Office discontinued. Retain ZIP Code. Establish a Place Name. Continue to use Secondcreek, WV 24974 as the last line of address.
Old New	57-9880 57-8322	82845 82845	WY WY	Wyarno Sheridan	Sheridan Sheridan	Main Office Wyarno	Post Office Place Name	06/27/2015 08/15/2022	Post Office discontinued. Retain ZIP Code. Establish a Place Name. Continue to use Wyarno, WY 82845 as the last line of address.

Domestic Mail

Labeling List Changes

Effective March 1, 2023, the Postal Service™ will revise Labeling List(s) L007, L012, and L606 to reflect changes in mail processing operations. Mailers are expected to label according to these revised lists for mailings inducted on or after the March 1, 2023, effective date through the April 30, 2023, expiration date.

Labeling Lists

* * * * *

L007 5-Digit Scheme — Periodicals, Standard Mail, and Package Services Flats in Bundles

Changes

Column A Destination ZIP Codes	Column B Label Container To (Change From)	Column B Label Container To (Change To)
20855	ROCKVILLE MD 20851	ROCKVILLE MD 20850
20905	GAITHERSBURG MD 20877	SILVER SPRING MD 20905
20914	GAITHERSBURG MD 20877	SILVER SPRING MD 20905

* * * * *

L012 5-Digit ZIP Scheme Combination

* * * * *

Deleted

Column A Destination ZIP Codes	Column B Label Container To (Deleted From)
01470	HUDSON MA 01749

* * * * *

L606 5-Digit Scheme — Standard Mail, First-Class Mail, and Package Services Parcels

Changes

Column A Destination ZIP Codes	Column B Label Container To (Change From)	Column B Label Container To (Change To)
33810	LAKELAND FL 33805	LAKELAND FL 33810
75275	DALLAS TX 75205	DALLAS TX 75222

Newly Added

Column A Destination ZIP Codes	Column B Label Container To (Added To)
33804	LAKELAND FL 33810
33809	LAKELAND FL 33805
53718	MADISON WI 53704

Deleted

Column A Destination ZIP Codes	Column B Label Container To (Deleted From)
01470	GROTON MA 01450
53518	MADISON WI 53704

— Logistics, Network Development, and Support,
Network Operations, 2-9-23

Environmental Management

Tier II Reporting Requirements

United States Postal Service® (USPS®) policy requires USPS sites that store quantities of hazardous chemicals exceeding reporting thresholds to comply with Emergency Planning and Community Right-to-Know Act (EPCRA) Tier II reporting requirements. The Tier II form contains information on the quantities, hazards, and locations of onsite hazardous materials storage.

The EPCRA Tier II form must be completed annually by March 1 (for reporting year 2022) to ensure state and local emergency response organizations are notified about any potential onsite hazards.

Commonly reported chemicals and thresholds applicable to USPS sites include:

- **Lead-acid and gel cell batteries.** The 500-pound threshold for sulfuric acid is met by onsite storage of more than six tow motor batteries or more than two forklift batteries, or a combination of these batteries. Estimate the percent weight of sulfuric acid in the battery by multiplying the battery weight by 18 percent.
- **Gasoline, diesel, or heating fuel.** The 10,000-pound threshold is equivalent to 1,639 gallons of gasoline (6.1 pounds/gallon) or 1,351 gallons of diesel/heating fuel (7.4 pounds/gallon).
- **Ice melt and anti-skid products.** Rock salt, calcium magnesium acetate, calcium chloride, and sand have a 10,000-pound threshold. The threshold applies whether the materials are stored in one bulk location or dispersed in bags or on pallets throughout the site.
- **Propane.** The 10,000-pound threshold is equivalent to 2,380 gallons of propane as liquified petroleum gas (LPG) using the weight of 4.2 pounds per gallon.

Note: Due to COVID-19, many USPS facilities stored bulk quantities of hazardous materials associated with cleaning and disinfection during 2022. While it is unlikely these chemicals were stored in quantities that require Tier II reporting, review each product's safety data sheet to confirm ingredients and the associated reporting thresholds. In most cases, the federal reporting threshold is 10,000 pounds. For USPS-approved, alcohol-based hand sanitizers, 10,000 pounds is equivalent to storing more than twenty 55-gallon drums of hand sanitizer onsite at one time.

Reporting requirements apply to any location that stores threshold quantities of EPCRA-regulated hazardous and toxic chemicals. In most cases, the federal reporting threshold is 10,000 pounds. Each state has different Tier II submission procedures. States may require:

- Hard copy submission of the Tier II form;
- Electronic reporting through the EPA Tier2 Submit software program; or
- Reporting through their own state-specific software programs or websites.

For more information, review the Environmental Affairs Tier II Reporting website at blue.usps.gov/sustainability/environmental/tier-ii-reporting.htm or consult your designated environmental contact at blue.usps.gov/sustainability/contact.htm.

— Environmental Affairs and Corporate Sustainability,
Corporate Affairs, 2-9-23

Information Security

Internet of Things: Exposed Now More Than Ever

What do smart TVs, fitness equipment, and home security systems all have in common? They can all be Internet-enabled.

This technology, known as the “Internet of things,” refers to everyday devices connected to the Internet, which makes them susceptible to targeting by hackers. These devices can be given an Internet Protocol (IP) address to transfer data over a network for everything from a heart monitor implant to manufactured items like an oven.

These devices are often disregarded for security updates and are not protected with strong passphrases. They can disclose as much personal information as a computer.

Workplace devices are also exposed to risks associated with the Internet of things. Plugging any personal devices — such as smartphones, tablets, wearable technology, and smart home devices — into USPS equipment puts the

organization’s data at risk and violates Postal Service policy (see Handbook AS-805, *Information Security* at blue.usps.gov/cpim/ftp/hand/as805/welcome.htm).

Follow these tips to protect yourself and your devices:

- **Update.** Stay current on all software updates and security patches.
- **Disable.** If your device is fully functioning without the Internet, it’s safest to disable the online connection.
- **Protect.** Use a strong, original, and memorable passphrase to serve as your password.

For more information about cybersecurity best practices, visit CyberSafe at USPS® on *Blue* at blue.usps.gov/cyber and *LiteBlue* at liteblue.usps.gov/cyber.

— Corporate Information Security Office,
Chief Information Security Officer, 2-9-23

International Mail

Competitive Services Product and Price Changes

Effective January 22, 2023, the Postal Service™ revised Notice 123, *Price List*, to reflect price changes and classification changes to certain international Competitive Services, as established by the Governors of the Postal Service. The new prices are based on Postal Regulatory Commission (PRC) Order No. 6384 issued on December 22, 2022, in Docket Number CP2023-42. In that order, the PRC found that the price adjustments included in the Postal Service’s notice may go into effect on January 22, 2023. The order is available on the PRC website at prc.gov. The entire Notice 123 is available for review on Postal Explorer® at pe.usps.com.

Also effective January 22, 2023, the Postal Service revised Notice 123 to conform to requested country nomenclature by changing the official name of Turkey to the Republic of Türkiye (with Türkiye as the short name). (For more information, see “IMM Revision: Change to Country Name for Turkey on pages [5-7](#) in this issue of the *Postal Bulletin*.)

Regarding price changes, for Priority Mail International® items destined to Canada, the Postal Service collapsed price groups 1.1 through 1.8 (which are based on origin ZIP Code™) into a single country group. In addition, the Postal Service eliminated the related fee for the International Service Center (ISC) Official Zone Chart for Priority Mail International pieces destined to Canada.

This article further describes the international price and classification changes and the corresponding mailing standards changes for international Competitive Services approved by the PRC on December 22, 2022.

The Postal Service incorporated price changes into the January 22, 2023, edition of Notice 123 for the following Competitive Services:

- Global Express Guaranteed®.
- Priority Mail Express International®.
- Priority Mail International®.
- First-Class Package International Service®.
- International Priority Airmail®.
- International Surface Air Lift®.
- Direct Sacks of Printed Matter to One Addressee (Airmail M-bag®).
- The following competitive international extra services and fees:
 - International Insurance.
 - Certificate of Mailing.
 - International Registered Mail.
 - International Return Receipt.
 - Customs Clearance and Delivery Fee.

For pricing, see the Postal Explorer website at pe.usps.com.

Global Express Guaranteed

Global Express Guaranteed (GXG[®]) service provides fast international shipping, with international transportation and delivery provided through an alliance with FedEx Express[®]. The price increase for GXG service averaged 4.9 percent.

The Postal Service provides Commercial Base[®] pricing to online customers who prepare and pay for GXG shipments via payment methods approved by the Postal Service (other than Click-N-Ship[®] service), with a discount below the published retail prices for GXG service. Customers who prepare GXG shipments via Click-N-Ship service will continue to pay retail prices. Commercial Plus[®] prices are set to match the Commercial Base prices.

Priority Mail Express International

Priority Mail Express International (PMEI) service provides fast service to approximately 180 countries in 3–5 business days for many major markets, although the actual number of days may vary based upon origin, destination, and customs delays. PMEI with Money-Back Guarantee service is available for certain destinations. (Due to COVID-19 service impacts, PMEI with Money-Back Guarantee service has been suspended for several destinations until further notice. For more information, see the USPS[®] Service Updates page on usps.com.) The price increase for PMEI service averaged 6.0 percent. The Commercial Base price provides a discount below the published retail prices for customers who prepare and pay for PMEI shipments via permit imprint, online at usps.com, or as registered end-users using an authorized PC Postage[®] vendor (with the exception of Click-N-Ship service). Customers who prepare PMEI shipments via Click-N-Ship service pay retail prices. Commercial Plus is equivalent to Commercial Base; however, deeper discounting may be available to customers through negotiated service agreements.

The Postal Service continues to include PMEI service in customized contracts offered to customers who meet certain revenue thresholds and who are willing to commit a larger amount of revenue to the Postal Service for PMEI service and PMI service.

PMEI flat rate pricing continues to be available for Flat Rate Envelopes.

Priority Mail International

Priority Mail International (PMI) is an economical way to send merchandise and documents to approximately 180 countries in 6–10 business days for many major markets, although the actual number of days may vary based upon origin, destination, and customs delays. The price increase for PMI service averaged 6.0 percent. The Commercial Base price provides a discount below the published retail prices for customers who prepare and pay for PMI items via permit imprint, online at usps.com, or as registered end-

users using an authorized PC Postage vendor (with the exception of Click-N-Ship). Customers who prepare PMI shipments via Click-N-Ship pay retail prices. Commercial Plus prices are equivalent to Commercial Base; however, deeper discounting may be available to customers through negotiated service agreements.

The Postal Service continues to include PMI service in customized contracts offered to customers who meet certain revenue thresholds and are willing to commit to a larger amount of revenue to the USPS for PMEI and PMI.

PMI flat rate pricing continues to be available for Flat Rate Envelopes, Small Flat Rate Boxes, and Medium and Large Flat Rate Boxes.

First-Class Package International Service

First-Class Package International Service (FCPIS[®]) is an economical international service for small packages not exceeding 4 pounds in weight and \$400 in value. The price increase for FCPIS averaged 6.5 percent. The Commercial Base price provides a discount below the published retail prices for customers who prepare and pay for FCPIS items via permit imprint or by USPS-approved online payment methods. Customers who prepare FCPIS shipments via Click-N-Ship service pay retail prices. Commercial Plus prices are equivalent to Commercial Base; however, deeper discounting may be available to customers through negotiated service agreements.

Electronic USPS Delivery Confirmation International service (E-USPS DELCON INTL[®]) is a tracking service available at no charge for FCPIS items to select destination countries.

International Priority Airmail and International Surface Air Lift

International Priority Airmail (IPA[®]) service, including IPA M-bags, is a commercial service designed for volume mailings of all First-Class Mail International postcards, letters, and large envelopes (flats), and for volume mailings of FCPIS packages (small packets) weighing up to a maximum of 4.4 pounds. IPA shipments are typically flown to foreign destinations (exceptions apply to Canada) and are then entered into that country's air or surface priority mail system for delivery. The price for IPA service increased 3.5 percent. International Surface Airlift (ISAL[®]) service is like IPA service except that, once flown to the foreign destination, ISAL shipments are entered into that country's air or surface nonpriority mail system for delivery. The price for ISAL service increased 12.0 percent.

Direct Sacks of Printed Matter to One Addressee (Airmail M-bags)

An Airmail M-bag is a direct sack of printed matter sent to a single foreign addressee at a single address. Prices are based on the weight of the sack. The price increase for Airmail M-bag service averaged 6.4 percent.

International Extra Services and Fees

Depending on country destination and mail type, customers may add a variety of extra services to their outbound shipments and pay a variety of fees. The Postal Service increased fees for certain competitive international extra services as follows:

- **GXG insurance:** There is no charge for GXG insurance for coverage up to \$100. The fee for GXG insurance increased to \$2.45 for each additional \$100 or fraction over \$100, up to a maximum indemnity of \$2,499 per shipment (the maximum indemnity varies by country).

GXG Insurance	Fee
\$100	\$0.00
Each additional \$100 or fraction over \$100	2.45
Maximum insurance \$2,499 (varies by country)	

- **PMEI and PMI merchandise insurance:** There is no charge for PMEI and PMI merchandise insurance coverage up to \$200. The fee for PMEI and PMI merchandise insurance increased to \$3.40 for each additional \$100 or fraction over \$200 as set forth in the table shown here, up to a maximum indemnity of \$5,000 (the maximum indemnity varies by country).

Indemnity Limit Not Over	Fee
Up to \$200	\$0.00
\$200.01 - \$300.00	12.75
\$300.01 - \$400.00	16.15
\$400.01 - \$500.00	19.55
\$500.01 - \$600.00	22.95
\$600.01 - \$700.00	26.35
\$700.01 - \$800.00	29.75
\$800.01 - \$900.00	33.15

\$33.15 plus \$3.40 per \$100 or fraction thereof over \$900 in declared value. Maximum insurance \$5,000 (varies by country)

- **Certificate of Mailing service:** Prices for competitive international Certificate of Mailing service increased as follows:

Certificate of Mailing	
Individual pieces	Fee
Individual article (PS Form 3817)	\$1.85
Duplicate copy of PS Form 3817 or PS Form 3665 (per page)	1.85
Firm mailing sheet (PS Form 3665), per piece (minimum 3)	0.57
All other qualifying classes of mail	
Bulk quantities	
For first 1,000 pieces (or fraction thereof)	\$10.40
Each additional 1,000 pieces (or fraction thereof)	1.35
Duplicate copy of PS Form 3606	1.85

- **International Registered Mail service:** The fee for competitive international Registered Mail increased to \$19.05.
- **International Return Receipt service:** The fee for competitive international Return Receipt service increased to \$5.30.
- **Customs clearance and delivery fee:** The competitive customs clearance and delivery fee per dutiable item increased to \$7.85.
- **Pickup on Demand:** The fee for Pickup on Demand[®] increased to \$26.50.

The Postal Service has already incorporated these revisions into Notice 123, which is available via Postal Explorer at pe.usps.com.

— Product Classification,
Product Solutions, 2-9-23

Stamp Services

Stamp Announcement 23-13: Railroad Stations Stamps



©2022 USPS

On March 9, 2023, in Cincinnati, OH, the United States Postal Service® will issue the *Railroad Stations* stamps (Forever® priced at the First-Class Mail® rate) in five designs, in a pressure-sensitive adhesive (PSA) pane of 20 stamps (Item 483900). These stamps will go on sale nationwide March 9, 2023, and must not be sold or canceled before the first-day-of-issue. **The *Railroad Stations* commemorative pane of 20 stamps must not be split and the stamps must not be sold individually.**

Noteworthy railroad stations began brightening the American landscape by the 1870s and, although many fell to the wrecking ball once they had outlived their original purpose, hundreds survived. This issuance of five different stamps features five architectural gems that continue to play an important role in their community:

- Point of Rocks Station in Maryland;
- Main Street Station in Richmond, Virginia;
- Santa Fe Station in San Bernardino, California;
- Tamaqua Station in Pennsylvania; and
- Union Terminal in Cincinnati, Ohio.

The pane resembles a page in an old-fashioned photo album, with the title “Historic Railroad Stations of the United States” and drawings of a train and a one-ride ticket in the header. Derry Noyes art directed the project. Down the Street Designs designed and created the digital illustrations and typography.

Availability to Post Offices: Item 483900, Railroad Stations (Forever Priced at the First-Class Mail Rate) Pane of 20 Stamps

Stamp Fulfillment Services will not make an automatic push distribution to Post Offices. Post Offices may begin ordering stamps before the first-day-of-issue through SFS Web at sfsweb.usps.gov/sfsweb.

How to Order the First-Day-of-Issue Postmark

Customers have 120 days to obtain the first-day-of-issue postmark by mail. They may purchase new stamps at their local Post Office™ or at The Postal Store® website at store.usps.com/store/home. They must affix the stamps to envelopes of their choice, address the envelopes (to themselves or others), and place them in a larger envelope addressed to:

FDOI – Railroad Stations Stamps
 USPS Stamp Fulfillment Services
 8300 NE Underground Drive, Suite 300
 Kansas City, MO 64144-9900

After applying the first-day-of-issue postmark, the Postal Service™ will return the envelopes through the mail. There is no charge for the postmark up to a quantity of 50. There is a 5-cent charge for each additional postmark over 50. All orders must be postmarked by July 9, 2023.

How to Order First-Day Covers

The Postal Service also offers first-day covers for new stamp issues and Postal Service stationery items postmarked with the official first-day-of-issue cancellation. Each item has an individual catalog number and is offered in the *USA Philatelic* catalog and online at store.usps.com/store/home. Customers may register to receive a free *USA Philatelic* catalog online at usps.com/philatelic.

Locally produced items are not authorized. Only merchandise that has been approved and assigned an item number by Headquarters Retail Marketing may be produced and sold.

Issue:	<i>Railroad Stations</i> Stamps
Item Number:	483900
Denomination & Type of Issue:	First-Class Mail Forever
Format:	Pane of 20 (5 designs)
Series:	N/A
Issue Date & City:	March 9, 2023, Cincinnati, OH 45234
Art Director:	Derry Noyes, Washington, DC
Designer:	Down the Street Designs
Artist:	Down the Street Designs
Typographer:	Down the Street Designs
Modeler:	Sandra Lane / Michelle Finn
Manufacturing Process:	Offset, Flexographic
Printer:	Banknote Corporation of America
Press Type:	Gallus RCS
Stamps per Pane:	20
Print Quantity:	30,000,000 stamps
Paper Type:	Phosphor Tagged Paper, Block
Adhesive Type:	Pressure-sensitive
Colors:	Cyan, Magenta, Yellow, Black, Pantone 4135C
Stamp Orientation:	Horizontal
Image Area (w x h):	1.42 x 1.085 in / 36.068 x 27.559 mm
Overall Size (w x h):	1.56 x 1.225 in / 39.624 x 31.115 mm
Full Pane Size (w x h):	7.24 x 8.25 in / 183.896 x 209.550 mm
Press Sheets Size (w x h):	14.48 x 16.50 in / 367.792 x 419.100 mm
Plate Size:	80 stamps per revolution
Plate Number:	"B" followed by five (5) single digits
Marginal Markings:	
Front:	Header: Historic Railroad Stations of the United States • USPS Forever Stamps One Trip from Sea to Shining Sea • Plate number in two corners of the pane
Back:	©2022 USPS • USPS logo • Two barcodes (483900) • Plate position diagram (4) • Promotional text

— Stamp Services,
Marketing, 2-9-23

Update: Stamp Announcement 23-11: Patriotic Block

In the article titled “Stamp Announcement 23-11: Patriotic Block” in *Postal Bulletin* 22616, (1-26-23, page 54), the technical details were unavailable for *Patriotic Block* stamps.

The technical details tables for the coil of 3,000 and coil of 10,000 *Patriotic Block* stamps are shown here:

Issue:	<i>Patriotic Block</i> Stamp
Item Number:	751400
Denomination & Type of Issue:	Nondenominated Nonprofit (5-cent value)
Format:	Coil of 3,000 (1 design)
Series:	N/A
Issue Date & City:	March 1, 2023, Liberty, NY 12754
Art Director:	Antonio Alcalá, Alexandria, VA
Designer:	Carol Beehler
Modeler:	Sandra Lane / Michelle Finn
Manufacturing Process:	Gravure
Printer:	American Packaging Corp. / Banknote Corporation of America
Press Type:	Rotogravure Cerutti
Stamps per Coil:	3,000
Print Quantity:	30,000,000 stamps
Paper Type:	Nonphosphored Type III
Adhesive Type:	Pressure-sensitive
Colors:	Pantone 1795C, Pantone 7687C, Pantone Cool Gray 7C
Stamp Orientation:	Vertical
Image Area (w x h):	0.73 x 0.84 in / 18.542 x 21.336 mm
Stamp Size (w x h):	0.87 x 0.98 in / 22.098 x 24.892 mm
Plate Size:	500 stamps per revolution
Plate Number:	“B” followed by three (3) single digits
Coil Number Frequency:	Plate number every 25th stamp below stamp image

Issue:	<i>Patriotic Block</i> Stamp
Item Number:	761600
Denomination & Type of Issue:	Nondenominated Nonprofit (5-cent value)
Format:	Coil of 10,000 (1 design)
Series:	N/A
Issue Date & City:	March 1, 2023, Liberty, NY 12754
Art Director:	Antonio Alcalá, Alexandria, VA
Designer:	Carol Beehler
Modeler:	Sandra Lane / Michelle Finn
Manufacturing Process:	Gravure
Printer:	American Packaging Corp. / Banknote Corporation of America
Press Type:	Rotogravure Cerutti
Stamps per Coil:	10,000
Print Quantity:	1,000,000,000 stamps
Paper Type:	Nonphosphored Type III
Adhesive Type:	Pressure-sensitive
Colors:	Pantone 1795C, Pantone 7687C, Pantone Cool Gray 7C
Stamp Orientation:	Vertical
Image Area (w x h):	0.73 x 0.84 in / 18.542 x 21.336 mm
Stamp Size (w x h):	0.87 x 0.98 in / 22.098 x 24.892 mm
Plate Size:	500 stamps per revolution
Plate Number:	“B” followed by three (3) single digits
Coil Number Frequency:	Plate number every 25th stamp below stamp image

— Stamp Services,
Marketing, 2-9-23

Pictorial Postmarks Announcement

As a community service, the Postal Service™ offers pictorial postmarks to commemorate local events celebrated in communities throughout the nation. A list of events for which pictorial postmarks are authorized appears on the following pages. The sponsor of the pictorial postmark appears in italics under the date. Also provided are illustrations of these postmarks.

People attending these local events may obtain the postmark in person at the temporary Post Office™ station established there. Those who cannot attend the event but who wish to obtain the postmark may submit a mail order request. Pictorial postmarks are available only for the dates indicated, and *requests must be postmarked no later than 30 days following the requested pictorial postmark date.*

All requests must include a stamped envelope or postcard bearing at least the minimum First-Class Mail® postage. Items submitted for postmark may not include

postage issued after the date of the requested postmark. Such items will be returned unserved.

Customers wishing to obtain a postmark must affix stamps to any envelope or postcard of their choice, address the envelope or postcard to themselves or others, insert a card of postcard thickness in envelopes for sturdiness, and tuck in the flap. Place the envelope or postcard in a larger envelope and address it to: Pictorial Postmarks, followed by the Name of the Station, Address, City, State, ZIP+4® Code, as listed next to the postmark.

Customers can also send stamped envelopes and postcards without addresses for postmark, as long as they supply a larger envelope with adequate postage and their return address. After applying the pictorial postmark, the Postal Service returns the items (with or without addresses) under addressed protective cover.

The following pictorial postmark has been extended for 30 days:



January 30, 2023

Fundación Osorio Y Barreto

Mall of San Juan Station
Customer Relations Specialist
585 Avenue FD Roosevelt, Suite 223
San Juan, PR 00936-9998



February 8, 2023

United States Postal Service
Fiskeville, RI 02823 Station
Postmaster
206 Main Street
Fiskeville, RI 02823-9998



February 11, 2023

Janesville Stamp Club
Exhibition Station
Postmaster
102 East Walworth Street
Elkhorn, WI 53121-9998



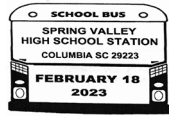
February 10, 2023

Medora Ball Museum of Local History
Bicentennial Station
Postmaster
PO Box 9998
Otto, NY 14766-9998



February 14, 2023

City of Valentine
Love Station
Postmaster
311 West California Avenue
Valentine, TX 79854-9998



*S.C. Bus Drivers
Driving Safely
Every day!
Thank You!*

February 18, 2023

Columbia Philatelic Society
Spring Valley High School
Station
Postmaster
1601 Assembly Street
Columbia, SC 29201-9998



February 22, 2023

*George Washington
Masonic Stamp Club*

George Washington
Masonic Stamp Club
Station

Postmaster
3500T Mount Vernon
Memorial Highway
Mount Vernon, VA 22121-
9998

*—Stamp Services,
Marketing, 2-9-23*

How to Order the First-Day-of-Issue Digital Color or Traditional Postmarks

Customers have 120 days to obtain the first-day-of-issue postmarks by mail. Each cover must have sufficient postage to meet First-Class Mail® requirements. Customers may purchase new stamps at their local Post Office™, by phone at 844-737-7826, or on The Postal Store® website at usps.com/shop.

Digital Color Postmarks

Only select stamp issues offer a digital color postmark. Customers may submit #6 or #10 envelopes constructed of paper rated as "laser safe." The Postal Service™ recommends envelopes of 80-pound Accent Opaque, acid-free, 9/16-inch side seams with no glue on the flap. The maximum size of all digital color postmarks is 2 inches (vertically) by 4 inches (horizontally). Allow sufficient space on the envelope to accommodate the postmark. Do not use self-adhesive labels for addresses on the envelope. Two test envelopes must be included. There is a minimum of 10 envelopes at 50 cents per postmark required at the time of servicing. Customers must submit a check, money order, or credit card for payment.

The Postal Service reserves the right to not accept hand-painted and other cachet envelopes that are not compatible with our digital color postmark equipment. The Postal Service also reserves the right to substitute traditional black rubber postmarks if use of nonspecified envelopes results in poor image quality or damage to equipment.

Customers must affix the stamps to the envelopes and address them to themselves or others for return through the mail. Or, they may include an additional self-addressed return envelope, large enough to accommodate their canceled items, with sufficient postage affixed for return of

their postmarked items. Address customer requests for digital color postmarks to:

FDOI – (Name of Stamp Issue)
USPS Stamp Fulfillment Services
8300 NE Underground Drive, Suite 300
Kansas City, MO 64144-9900

After applying the first-day-of-issue postmark, the Postal Service will return the envelopes to the customer by U.S. Mail®.

Traditional Postmarks

Customers must affix the stamps to the envelopes and address them to themselves or others for return through the mail. Or, they may include an additional self-addressed return envelope, large enough to accommodate their canceled items, with sufficient postage affixed for return of their postmarked items. Address customer requests for traditional postmarks to:

FDOI – (Name of Stamp Issue)
USPS Stamp Fulfillment Services
8300 NE Underground Drive, Suite 300
Kansas City, MO 64144-9900

After applying the first-day-of-issue postmark, the Postal Service will return the envelopes to the customer by U.S. Mail. There is no charge for the first 50 postmarks. There is a 5-cent charge for each additional postmark over 50. Customers must submit a check, money order, or credit card for payment.

Locally produced items are not authorized. Only merchandise that has been approved and assigned an item number by Headquarters Retail Marketing may be produced and sold.



FDOI – Snowy Beauty Stamps
USPS Stamp Fulfillment Services
8300 NE Underground Drive, Suite 300
Kansas City, MO 64144-9900

February 11, 2023

Digital Color Pictorial



FIRST DAY OF ISSUE

FDOI – Snowy Beauty Stamps
USPS Stamp Fulfillment Services
8300 NE Underground Drive, Suite 300
Kansas City, MO 64144-9900

February 11, 2023

Black and White Pictorial

**FDI – Kwanzaa 2022 Stamp**

USPS Stamp Fulfillment Services
8300 NE Underground Drive, Suite 300
Kansas City, MO 64144-9900

February 13, 2023

Digital Color Pictorial**FDI – Kwanzaa 2022 Stamp**

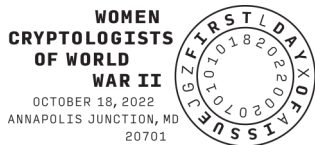
USPS Stamp Fulfillment Services
8300 NE Underground Drive, Suite 300
Kansas City, MO 64144-9900

February 13, 2023

Black and White Pictorial**FDI – Women Cryptologists of World War II Stamp**

USPS Stamp Fulfillment Services
8300 NE Underground Drive, Suite 300
Kansas City, MO 64144-9900

February 18, 2023

Digital Color Pictorial**FDI – Women Cryptologists of World War II Stamp**

USPS Stamp Fulfillment Services
8300 NE Underground Drive, Suite 300
Kansas City, MO 64144-9900

February 18, 2023

Black and White Pictorial**FDI – Hanukkah 2022 Stamp**

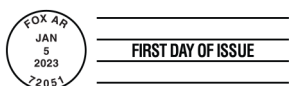
USPS Stamp Fulfillment Services
8300 NE Underground Drive, Suite 300
Kansas City, MO 64144-9900

February 20, 2023

Digital Color Pictorial**FDI – Hanukkah 2022 Stamp**

USPS Stamp Fulfillment Services
8300 NE Underground Drive, Suite 300
Kansas City, MO 64144-9900

February 20, 2023

Black and White Pictorial**FDI – Red Fox Stamp**

USPS Stamp Fulfillment Services
8300 NE Underground Drive, Suite 300
Kansas City, MO 64144-9900

May 5, 2023

Black and White Pictorial



FIRST DAY OF ISSUE

FDOL – School Bus Stamp

USPS Stamp Fulfillment Services
8300 NE Underground Drive, Suite 300
Kansas City, MO 64144-9900

May 5, 2023

Black and White Pictorial**FDOL – Lunar New Year: Year of the Rabbit Stamp**

USPS Stamp Fulfillment Services
8300 NE Underground Drive, Suite 300
Kansas City, MO 64144-9900

May 12, 2023

Digital Color Pictorial**FDOL – Lunar New Year: Year of the Rabbit Stamp**

USPS Stamp Fulfillment Services
8300 NE Underground Drive, Suite 300
Kansas City, MO 64144-9900

May 12, 2023

Black and White Pictorial**FDOL – Love 2023 Stamps**

USPS Stamp Fulfillment Services
8300 NE Underground Drive, Suite 300
Kansas City, MO 64144-9900

May 19, 2023

Digital Color Pictorial**FDOL – Love 2023 Stamps**

USPS Stamp Fulfillment Services
8300 NE Underground Drive, Suite 300
Kansas City, MO 64144-9900

May 19, 2023

Black and White Pictorial**FDOL – Florida Everglades Stamp**

USPS Stamp Fulfillment Services
8300 NE Underground Drive, Suite 300
Kansas City, MO 64144-9900

May 22, 2023

Digital Color Pictorial

FIRST DAY OF ISSUE

FDOL – Florida Everglades Stamp

USPS Stamp Fulfillment Services
8300 NE Underground Drive, Suite 300
Kansas City, MO 64144-9900

May 22, 2023

Black and White Pictorial



Digital Color Pictorial

FDOI – Great Smoky Mountains Stamp

USPS Stamp Fulfillment Services
8300 NE Underground Drive, Suite 300
Kansas City, MO 64144-9900

May 22, 2023



Black and White Pictorial

FDOI – Great Smoky Mountains Stamp

USPS Stamp Fulfillment Services
8300 NE Underground Drive, Suite 300
Kansas City, MO 64144-9900

May 22, 2023



Digital Color Pictorial

FDOI – Ernest J. Gaines Stamp

USPS Stamp Fulfillment Services
8300 NE Underground Drive, Suite 300
Kansas City, MO 64144-9900

May 23, 2023



Black and White Pictorial

FDOI – Ernest J. Gaines Stamp

USPS Stamp Fulfillment Services
8300 NE Underground Drive, Suite 300
Kansas City, MO 64144-9900

May 23, 2023



Digital Color Pictorial

FDOI – Women's Soccer Stamp

USPS Stamp Fulfillment Services
8300 NE Underground Drive, Suite 300
Kansas City, MO 64144-9900

June 16, 2023



Black and White Pictorial

FDOI – Women's Soccer Stamp

USPS Stamp Fulfillment Services
8300 NE Underground Drive, Suite 300
Kansas City, MO 64144-9900

June 16, 2023



Digital Color Pictorial

FDOI – Floral Geometry Stamp

USPS Stamp Fulfillment Services
8300 NE Underground Drive, Suite 300
Kansas City, MO 64144-9900

June 24, 2023



FIRST DAY OF ISSUE

FDOL – Floral Geometry Stamp

USPS Stamp Fulfillment Services
8300 NE Underground Drive, Suite 300
Kansas City, MO 64144-9900

June 24, 2023

Black and White Pictorial



FIRST DAY OF ISSUE

FDOL – Patriotic Block Stamp

USPS Stamp Fulfillment Services
8300 NE Underground Drive, Suite 300
Kansas City, MO 64144-9900

July 1, 2023

Black and White Pictorial



FDOL – Toni Morrison Stamp

USPS Stamp Fulfillment Services
8300 NE Underground Drive, Suite 300
Kansas City, MO 64144-9900

July 7, 2023

Digital Color Pictorial



FDOL – Toni Morrison Stamp

USPS Stamp Fulfillment Services
8300 NE Underground Drive, Suite 300
Kansas City, MO 64144-9900

July 7, 2023

Black and White Pictorial



FDOL – Railroad Stations Stamps

USPS Stamp Fulfillment Services
8300 NE Underground Drive, Suite 300
Kansas City, MO 64144-9900

July 9, 2023

Digital Color Pictorial



FDOL – Railroad Stations Stamps

USPS Stamp Fulfillment Services
8300 NE Underground Drive, Suite 300
Kansas City, MO 64144-9900

July 9, 2023

Black and White Pictorial

Supply Management

Bottled Drinking Water Services for FY 2023

The bottled drinking water services (BDWS) supplier name has changed from Nestle to BlueTriton Brands, Inc. All sites currently receiving BDWS from BlueTriton (formerly Nestle) must complete a new eBuy+ requisition between February 1–15, 2023, based on the updated EPA price increase (effective February 1, 2023).

For instructions on how to complete your eBuy+ requisition, see blue.usps.gov/supplymanagement/_pdf/am_nmcs_mlb19-001.pdf.

Follow these guidelines to determine your submission requirements:

- Sites that currently have a valid eBuy+ Nestle purchase order must complete a new eBuy+ BlueTriton purchase order on or after February 1 for sufficient quantity to cover the next 8 months (February 1–September 30, 2023).
- Sites with existing service from BlueTriton (formerly Nestle) that do not have a valid eBuy+ purchase order must complete an eBuy+ BlueTriton requisition for sufficient quantity to cover the next 12 months.
- Sites requesting new service must follow the instructions provided in MLB-CO-19-001 at blue.usps.gov/supplymanagement/_pdf/am_nmcs_mlb19-001.pdf.

For questions or comments:

- Call Paulita Sandoval at 214-819-7115 or send an email to paulita.sandoval@usps.gov; or
- Call Jorge V. Galvan at 202-268-7681 or send an email to jorge.v.galvan@usps.gov.

— *Operational Supplies and MTE Equipment,
Supply Management, 2-9-23*



475 L'ENFANT PLAZA SW
WASHINGTON DC 20260-5540

First-Class Mail
Postage & Fees Paid
USPS
Permit No. G-10

Celebrate with
Lunar New Year • Year of the Rabbit
Forever® Stamps



ON SALE NATIONWIDE: **JANUARY 12, 2023**

