

# Postal Bulletin

Published Since March 4, 1880

November 3, 2022

PB 22610



## Open Season 2022 is Here

Your Health. Your Plan. Your Savings.

See page 3

# Contents

## COVER STORY

Open Season 2022 .....	3
Benefits Programs and Key Dates.....	5

## POLICIES, PROCEDURES, AND FORMS UPDATES

### Manuals

IMM Revision: Individual Country Listing for Rwanda.....	37
--	----

### Publications

Publication 431 Revision: Changes to Post Office Box Service and Caller Service Fee Groups.....	37
--	----

## ORGANIZATION INFORMATION

### Environmental Management

Monthly Inspections for Aboveground Storage Tanks .....	38
---	----

### Information Security

Telework Refresh .....	39
Watch Out for Phishing Emails .....	39

### Stamp Services

Pictorial Postmarks Announcement .....	40
How to Order the First-Day-of-Issue Digital Color or Traditional Postmarks .....	41

### Transportation Strategies

Peak Season: Buy the Lowest Cost Fuel and Use the Preferred Fueling Network .....	46
--	----

### United States Postal Inspection Service

Protect Yourself from Work-from-Home Scams .....	46
--	----

### Veterans Affairs

Debt of Gratitude: USPS to Honor Military Veterans.....	47
---	----

## PULL-OUT INFORMATION

Elimination of Corporate Accounts .....	15
---	----

### Fraud

Invalid USPS Corporate Account Numbers.....	17
Missing, Lost, or Stolen U.S. Money Order Forms .....	18
Missing, Lost, or Stolen Canadian Money Order Forms .....	24
Verifying U.S. Postal Service Money Orders .....	26
Counterfeit Canadian Money Order Forms .....	26
Toll-Free Number Available to Verify Canadian Money Orders .....	26

### Other Information

Overseas Military/Diplomatic Mail .....	27
Freely Associated States Restrictions .....	34

## POSTAL BULLETIN 2022 SEMI-ANNUAL INDEX

2022 Semi-Annual Index .....	PB 22604 (8-11-22)
------------------------------	--------------------

Find the latest in mail and delivery information  
and services offered by U.S. Postal®  
in the *Postal Bulletin* at  
[about.usps.com/postal-bulletin](https://about.usps.com/postal-bulletin)

**Mail Moment®**

# Cover Story



OPEN SEASON 2022

## Your Health Your Plan Your Savings

IT'S ALL ABOUT THE BENEFITS!

November 14, 2022 – December 12, 2022



[liteblue.usps.gov/openseason](https://liteblue.usps.gov/openseason)

- ✓ Annual Leave Exchange
- ✓ CHECKBOOK's Guide to Health Plans (tool)
- ✓ FEDVIP (dental and vision benefits)
- ✓ Flexible Spending Account
- ✓ USPS Health Benefits Plan (pre-career)
- ✓ Virtual Benefits Fair

## Welcome to Open Season 2022

Dear Employees,

Open Season 2022 is here! This is your once-a-year opportunity to make changes to your benefits if you have not experienced a qualified life event. Open Season 2022 officially begins November 14 and ends December 12, 2022. The information on the following pages is being provided to assist you in reviewing your benefits coverage for 2023.

You will find information about the following programs:

- Federal Employees Health Benefits (FEHB).
- USPS<sup>®</sup> Health Benefits Plan (USPS HB) for our non-career employees.
- Federal Employees Dental and Vision Insurance Programs (FEDVIP).
- Flexible Spending Accounts (FSA).
- Annual Leave Exchange Program (ALE).
- Educational material about how your benefits work.

You are also encouraged to visit the Virtual Benefits Fair throughout Open Season 2022. During the live event day, you can view live presentations and chat with a specialist. Additionally, the Benefits and Wellness Team will host webinars throughout Open Season 2022 via the Virtual Benefits Fair platform. You will find detailed information about the Virtual Benefits Fair at [liteblue.usps.gov/openseason](https://liteblue.usps.gov/openseason).

On the website, you will also find a link to CHECKBOOK's Guide to Health Plans for Federal Employees. This tool helps you compare plans and determine the best plan for you and your family's health care needs. Premiums are expected to increase this year, so now is a good time to review your coverage and costs.

Let's stay connected. For important updates throughout Open Season 2022 and beyond, text "Benefits" to 39369. Carrier Short Message Service (SMS) and data rates may apply.

Stay safe and healthy,  
Your USPS Benefits and Wellness Team

## Benefits Programs and Key Dates

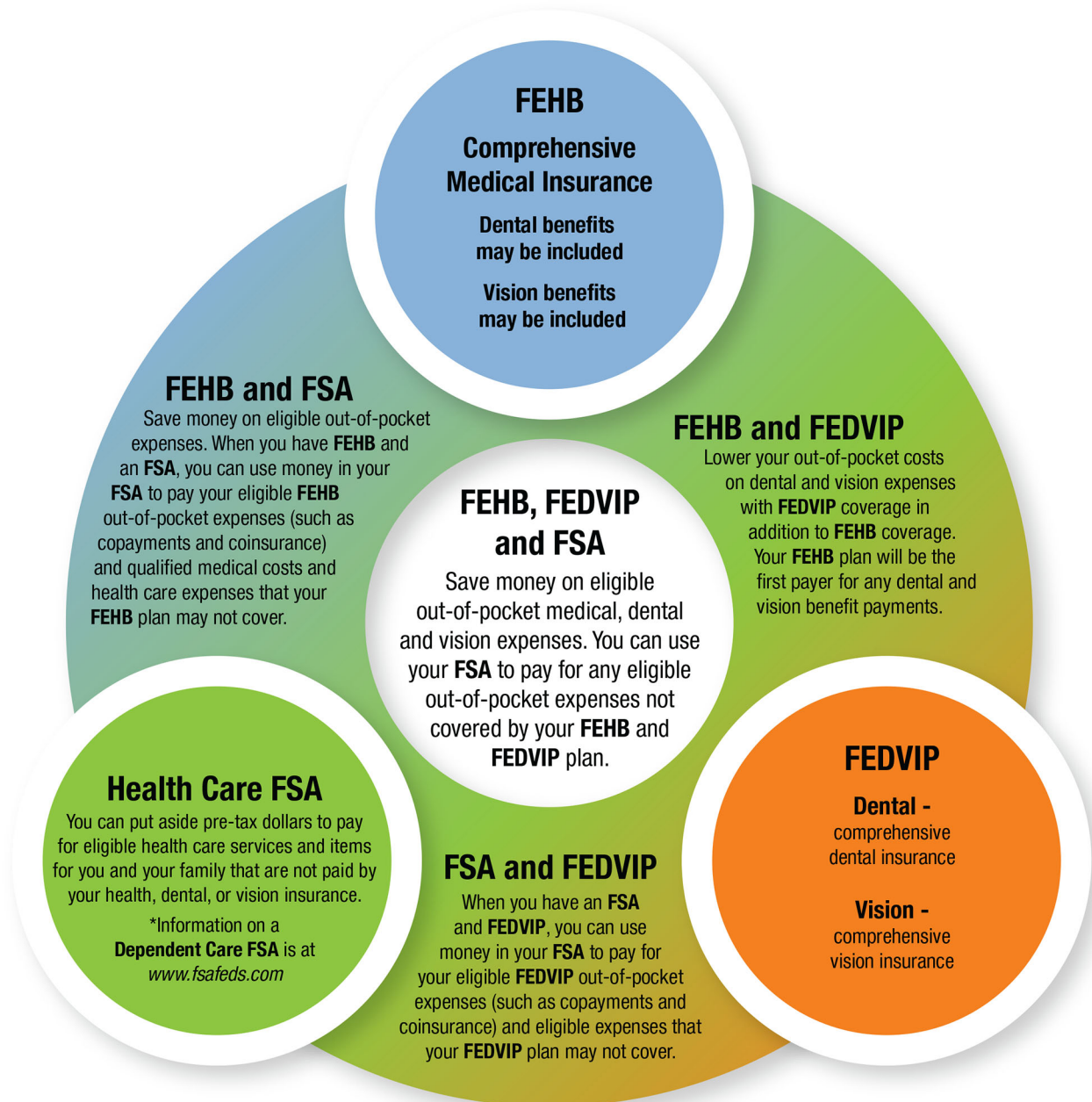
During Open Season, you have the opportunity to enroll, cancel, or change your enrollment in a number of benefits programs. The *LiteBlue* Open Season page ([liteblue.usps.gov/openseason](http://liteblue.usps.gov/openseason)) provides more information, resources, and tools to help you evaluate your options and select the right benefits plan. **To participate, you must meet eligibility criteria.**

	<b>New hires can enroll...</b>	<b>Make changes during Open Season...</b>	<b>To enroll or make changes, go to...</b>	<b>For more information visit...</b>
<b>Federal Employees Health Benefits (FEHB) Program</b>	Within 60 days from new hire date.	November 14 through December 12 (11:59 P.M. CST)	<i>PostalEASE</i> at <a href="http://ewss.usps.gov">ewss.usps.gov</a> or via one of the following options: <ul style="list-style-type: none"> <li>■ <i>LiteBlue</i> or <i>Blue</i>: Employee Self-Service Kiosk (available at some facilities);</li> <li>■ Call 877-477-3273, Option 1 (Federal Relay Service: 800-877-8339); or</li> <li>■ Mail the <i>PostalEASE</i> FEHB Worksheet to the HR Shared Service Center.</li> </ul>	<i>LiteBlue</i> FEHB page <a href="http://liteblue.usps.gov/fehb">liteblue.usps.gov/fehb</a>
<b>USPS Health Benefits (USPS HB) Plan (non-career employees only)</b>	Within 60 days from new hire date.	November 14 through December 12 (11:59 P.M. CST)	<i>PostalEASE</i> at <a href="http://ewss.usps.gov">ewss.usps.gov</a> or via one of the following options: <ul style="list-style-type: none"> <li>■ <i>LiteBlue</i> or <i>Blue</i>: Employee Self-Service Kiosk (available at some facilities);</li> <li>■ Call 877-477-3273, Option 1 (Federal Relay Service: 800-877-8339); or</li> <li>■ Mail the <i>PostalEASE</i> USPS HB Plan Worksheet to the HR Shared Service Center.</li> </ul>	<i>LiteBlue</i> USPS HB page <a href="http://liteblue.usps.gov/uspshbp">liteblue.usps.gov/uspshbp</a>
<b>Federal Employees Dental and Vision Insurance Program (FEDVIP)</b>	Within 60 days from new hire date.	November 14 through December 12 (11:59 P.M. EST)	<ul style="list-style-type: none"> <li>■ BENEFEDS website at <a href="http://benefeds.com">benefeds.com</a> or</li> <li>■ Call FEDVIP at 877-888-3337 (TTY: 877-899-5680).</li> </ul>	<i>LiteBlue</i> FEDVIP page <a href="http://liteblue.usps.gov/fedvip">liteblue.usps.gov/fedvip</a>
<b>Flexible Spending Accounts (FSAs)</b>	Within 60 days from new hire date.	November 14 through December 12 (11:59 P.M. EST)	<ul style="list-style-type: none"> <li>■ FSAFEDS website at <a href="http://fsafeds.com">fsafeds.com</a>; or</li> <li>■ Call FSAFEDS at 877-372-3337 (TTY: 800-952-0450).</li> </ul>	<i>LiteBlue</i> FSA page <a href="http://liteblue.usps.gov/fsa">liteblue.usps.gov/fsa</a>
<b>Annual Leave Exchange (ALE)</b>	N/A	November 14 through December 12 (11:59 P.M. CST)	<i>PostalEASE</i> at <a href="http://ewss.usps.gov">ewss.usps.gov</a> or via one of the following options: <ul style="list-style-type: none"> <li>■ <i>LiteBlue</i> or <i>Blue</i>; Employee Self-Service Kiosk (available at some facilities); or</li> <li>■ Call 877-477-3273, Option 1 (Federal Relay Service: 800-877-8339).</li> </ul>	<i>LiteBlue</i> ALE page <a href="http://liteblue.usps.gov/leave">liteblue.usps.gov/leave</a>
<b>Thrift Savings Plan (TSP)</b>	Automatically enrolled with a 5 percent contribution.	Make changes at any time.	<i>PostalEASE</i> at <a href="http://ewss.usps.gov">ewss.usps.gov</a> or via one of the following options: <ul style="list-style-type: none"> <li>■ <i>LiteBlue</i> or <i>Blue</i>;</li> <li>■ Call TSP at 877-968-3778 (TTY: 877-847-4385).</li> </ul>	<i>LiteBlue</i> TSP page <a href="http://liteblue.usps.gov/tsp">liteblue.usps.gov/tsp</a>
<b>Commuter Benefits Program</b>	At any time.	Make changes at any time.	<ul style="list-style-type: none"> <li>■ <a href="http://login.commuterbenefits.com">login.commuterbenefits.com</a>; or</li> <li>■ Call 888-235-9223.</li> </ul>	<i>LiteBlue</i> Commuter page <a href="http://liteblue.usps.gov/commuter">liteblue.usps.gov/commuter</a>

## CIRCLE 'ROUND

*Your* **Benefits**

## HOW THEY FIT TOGETHER



© 2022 USPS®. All Rights Reserved.



# USPS Open Season Virtual Benefits Fair

Please mark your calendars for the Open Season Virtual Benefits Fair. The fair provides an opportunity to visit health care provider booths, attend webinars and download informative materials on your personal computer or mobile device.



## The Open Season Virtual Benefits Fair will have information on the following:

- Federal Employee Health Benefits Carriers
- USPS Health Benefit Plan for Pre-Career Employees
- Retirement (Programs) Planning
- CHECKBOOK's Guide to Health Plans for Federal Employees
- Thrift Savings Plan (TSP)
- Flexible Spending Accounts
- Federal Employees Dental and Vision Insurance Program
- Medicare
- Social Security
- Employee Assistance Program (EAP)
- University School Partnerships
- Employee Deals
- Benefits and Wellness representatives

There will be live and on-demand presentations, live chats, and Q&A sessions with experts. Visit <https://2022uspsopenseasonbenefits.vfairs.com> to register. Participation is voluntary. Non-exempt employees may only participate off the clock or during authorized breaks.

You can access the website 24/7.

<b>November 6<sup>th</sup></b>	10:00 a.m. – 2:00 p.m. EST	<b>Employee Webinar</b> at 10:00 a.m. EST <b>Retiree Webinar</b> at 12:00 p.m. EST
<b>November 14<sup>th</sup></b>	9:00 a.m. – 5:00 p.m. EST	<b>Live Event Day with Vendors and Subject Matter Experts</b>
<b>November 22<sup>nd</sup></b>	10:00 a.m. – 6:00 p.m. EST	<b>Live Event Day with Vendors and Subject Matter Experts</b>
<b>November 30<sup>th</sup></b>	1:00 p.m. – 9:00 p.m. EST	<b>Live Event Day with Vendors and Subject Matter Experts</b>
<b>December 6<sup>th</sup></b>	3:00 p.m. – 11:00 p.m. EST	<b>Live Event Day with Vendors and Subject Matter Experts</b>
<b>December 10<sup>th</sup></b>	10:00 a.m. – 2:00 p.m. EST	<b>Employee Webinar</b> at 10:00 a.m. EST <b>Retiree Webinar</b> at 12:00 p.m. EST
<b>December 12<sup>th</sup></b>	12:00 p.m. – 2:00 p.m. EST	<b>Live Question and Answer Session with Benefits Specialist</b>



# CHECKBOOK'S 2023 ONLINE GUIDE to Health Plans for Federal Employees and Retirees

CHECKBOOK's online *Guide to Health Plans for Federal Employees and Annuitants* is available to all Postal Service® employees and retirees at no cost.

The online guide provides:

- **Real Cost Comparisons**

- See plans ranked by estimates of actual out-of-pocket costs.

- **Layering of Information**

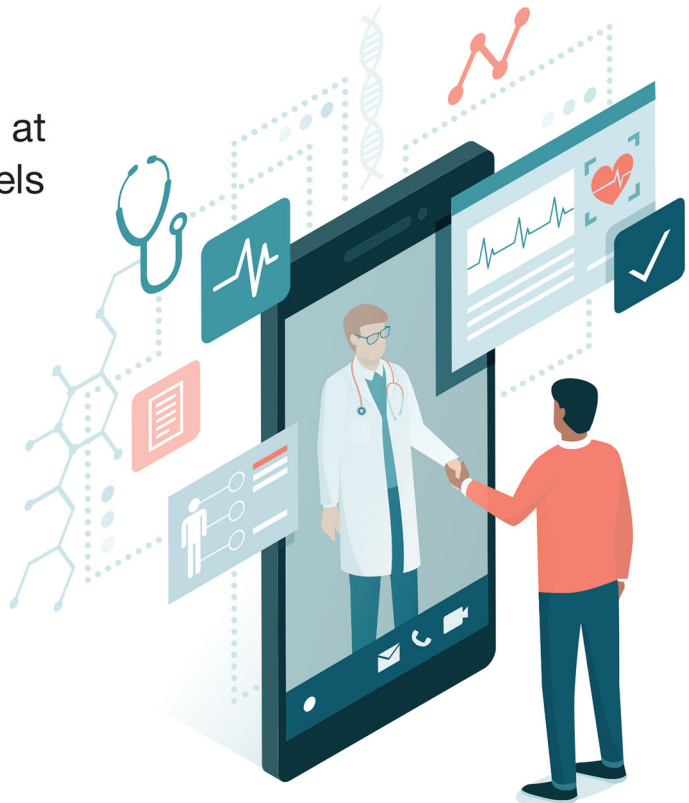
- Find answers by looking at a comparison of basic levels of plans or get more, detailed plan information using CHECKBOOK.

- **Dental and Vision Plans**

- Evaluate FEDVIP plans available to you.

- **Medicare Integration**

- See how participating in Medicare as a retiree might affect your health plan decisions.





## FINDING THE RIGHT HEALTH PLAN

1. Go to [liteblue.usps.gov/planselection](https://liteblue.usps.gov/planselection) and click the link for CHECKBOOK's Guide to Health Plans.
2. On the Let's Get Started page, select:
  - The ZIP Code™ where you will primarily be receiving health care services.
    - For the 2023 coverage year, the following categories will be used as enrollment options in CHECKBOOK:
      - Career Employees (Includes all bargaining and non-bargaining employees)
      - Pre-Career Employee
      - Retiree or Annuitant
    - The number of people in your family you want to cover with your health insurance for 2023.
    - Your age as of Jan. 1, 2023.
    - Whether you consider your health care costs to be low, average or high. If you aren't sure, select *average*.
  - 3. Health care plans available to you are sorted:
    - Automatically based on the Yearly Cost Estimate (for families like yours).
    - By *Most You Could Pay in a Year or the Annual Published Premium* (the amount you pay out of your paycheck to be in the plan).

Compare up to four plans by checking the box next to each plan and clicking **Compare**.

4. Identify the plan that's best for you and your family. Write down the Plan Name and Plan Code in the blanks below. You will need this to make your Open Season election.

Plan name: \_\_\_\_\_

Plan code: \_\_\_\_\_

## CHANGING YOUR HEALTH PLAN DURING OPEN SEASON

You can make changes to your health plan in *PostalEASE*® as follows:

- Visit *LiteBlue*® Open Season page or Blue homepage under Essential Links.
- Use employee self-service kiosks.
- Call the Employee Service Line toll-free at 1-877-477-3273, select option 1.
- Complete and submit a *PostalEASE* FEHB worksheet to HR Shared Service Center:
  - By Fax: 1-651-456-6610
  - By Mail: USPS/HRSSC  
FEHB/USPS HB Open Season  
PO Box 970402  
Greensboro, NC 27497-0402

The *PostalEASE*® worksheet is available at <https://liteblue.usps.gov/openseason/>.

For more information, contact the HR Shared Service Center at 1-877-477-3273, select option 5 (Federal Relay Service 1-800-877-8339).

# Flexible Spending Accounts



**Use Pre-tax dollars to cover eligible health and dependent care expenses**

## Health Care FSA

Covers health care expenses (for you and/or your family) that are not paid by your (or your spouse's) medical, dental, or vision plans, or by insurance.

Dependent Care FSA – Covers dependent care expenses for children under age 13, such as preschool, daycare, babysitting, before or after school programs, and summer day camp, as well as for a spouse or relative who is physically or mentally incapable of self-care.

## Enrollment

Current employees can sign up for an FSA at [www.FSAFEDS.com](http://www.FSAFEDS.com) during Open Season.

New employees may enroll up to 60 days from their enter-on-duty date, but before October 1, or wait for Open Season. You must re-enroll every year to continue the benefits.

## Reimbursement Options

Pay Me Back (Direct Deposit) – Your reimbursement will be deposited directly into your bank account.

Pay Me Back (Check) – A check will be mailed after a claim has been processed.

Pay My Provider – Payment is sent directly to your provider.

## Did You Know...

The money you contribute to FSA is not subject to payroll taxes, so you pay less in taxes and take home more of your paycheck. FSAFEDS offers online tools to help calculate how much money you can save each year. For a list of eligible expenses, visit: [www.fsafeds.com/support/eligibleexpense](http://www.fsafeds.com/support/eligibleexpense)

## Contact Information

To enroll or contact FSAFEDS: [www.FSAFEDS.com](http://www.FSAFEDS.com)

1-877-FSAFEDS (1-877-372-3337) TTY Line: 866-353-8058

OPEN SEASON 2022

Your Health  
Your Plan  
Your Savings

IT'S ALL ABOUT THE BENEFITS!

# Understanding Healthcare Terms



**Premium** - The amount that must be paid for your health plan. USPS and you contribute biweekly for employees and monthly for retirees.

**Provider** - A physician, health care professional, or health care facility licensed, certified, or accredited as required by state law.

**Network** - The facilities, providers, and suppliers that your health plan contracts with to provide services.

**Co-payment** - A fixed amount you pay for a covered health care service usually when you receive the service.

**Deductible** - The amount you owe for healthcare services before your plan begins to pay.

**Co-Insurance** - You pay a percentage of the allowed amount for your healthcare service.

**Allowed Amount** - The maximum amount on which payment is based for covered healthcare services.

**Out-of-Pocket Limit** - The most you pay during a policy period before your health plan begins to pay 100% of the allowed amount.

**Balance Billing** - Provider bills you for the difference between the provider's charge and the allowed amount.

Source: Centers for Medicaid and Medicare Services

© 2022 USPS®. All Rights Reserved.

OPEN SEASON 2022

Your Health  
Your Plan  
Your Savings

IT'S ALL ABOUT THE BENEFITS!



# Understanding Types of Healthcare Plans



## Consumer-Driven Health Plans (CDHPs)

- Lower premiums.
- Higher deductibles.
- Most plans come with a pre-tax health reimbursement arrangement (HRA) to assist with costs.
- Ideal if you are healthy most of the time and rarely need health care services.
- Not ideal if you are managing a lot of healthcare expenses.

## High Deductible Health Plans (HDHPs)

- Lower premiums.
- Higher deductibles.
- Most plans come with a pre-tax health savings account (HSA) to assist with costs.
- Consumers can choose physicians and providers.
- If you rarely go to the doctor, you can save more on your annual health care costs.

## Health Maintenance Organizations (HMOs)

- In-network benefits only.
- Must use doctors that contract with health maintenance organizations.
- Visits to providers outside of network are typically not covered by insurance.
- Must have a primary care physician (PCP).
- Usually limited to a specific geographical area.
- Need a referral to see any other health care provider except in an emergency.

## Preferred Provider Organizations (PPOs)

- Inside and outside of network benefits.
- In-network is paid at a higher benefit, which means the patient responsibility is lower.
- Out-of-network is paid at a lower benefit, which means the patient responsibility is higher.
- Flexible, as referrals and primary care physicians are not required.

Source: Centers for Medicaid and Medicare Services

© 2022 USPS®. All Rights Reserved.

OPEN SEASON 2022

Your Health  
Your Plan  
Your Savings

IT'S ALL ABOUT THE BENEFITS!



# USPS Health Benefits Plan for Pre-Career Employees



The United States Postal Service is committed to providing quality healthcare options for pre-career employees. CareFirst BlueCross BlueShield is the administrator of the USPS Health Benefits Plan.

## Eligibility

The USPS Health Benefits Plan is available to eligible pre-career employees. If you are an assistant rural carrier or a holiday-term employee, you are not eligible for the plan.

## Cost

Employees receive a Postal Service contribution. Each pay period, employees receive a Postal Service contribution toward their premiums. This reduces the cost that employees pay for their health coverage. You are eligible for the plan if you are a pre-career employee. Visit <https://liteblue.usps.gov/humanresources/benefits/insurance/benefits-noncareer.htm> for rate information.

## When to Enroll

- During Open Season (November 14, 2022, through December 12, 2022)
- Within 60 days of hire
- When you have a qualifying life event, such as marriage; divorce; death of a spouse or dependent; birth, adoption, or fostering of a child; etc.

## How to Enroll

To sign up for the USPS Health Benefits Plan: Use *PostalEASE*® ([ewss.usps.gov](http://ewss.usps.gov)) or call the HR Shared Service Center (HRSSC) at 1-877-477-3273, Option 1. You may also contact the HRSSC for eligibility and other benefits questions.

Explore other health insurance options as a pre-career employee. Visit CHECKBOOK's Guide to Health Plans for Federal Employees through *LiteBlue*®. You can compare plans and cost side by side for a full view of your health insurance options.

For more information, visit: <https://liteblue.usps.gov/uspshbp>

For plan information regarding benefits, participating providers, and other resources, visit: [www.carefirst.com/usps](http://www.carefirst.com/usps)

© 2022 USPS®. All Rights Reserved.

OPEN SEASON 2022

Your Health  
Your Plan  
Your Savings

IT'S ALL ABOUT THE BENEFITS!



# Annual Leave Carryover



**Do you know the annual leave carryover limits for 2023? They are as follows:**

- Career non-bargaining employees 640 hours
- Career bargaining employees 520 hours

## Annual Leave Exchange

### What is Annual Leave Exchange?

The ALE program provides an option for eligible career employees to receive a lump sum payment in exchange for a portion of the annual leave that would otherwise be advanced at the beginning of the leave year.

### Payout

You will see your ALE payout in your February 2023 paycheck.

Note: ALE payments are considered as supplemental wages by the IRS, taxes are withheld at a 22 percent rate.

### Eligibility and Notification

If you are eligible, you will receive an ALE eligibility notification letter in the mail. To receive a lump sum payment for Leave Year 2023, you must go into "PostalEASE" during Open Season 2022 and make a request.

Please read your eligibility letter in its entirety. You may meet eligibility requirements when the letters are generated and lose eligibility if you do not continue to meet all requirements through the last day of the leave year.

If you do not receive an eligibility letter and believe that you may be eligible, you can make an ALE request via "PostalEASE". Employees that make elections and do not meet ALE eligibility requirements as of the last day of the leave year will receive a notification that the payment will not be made.

**OPEN SEASON 2022**

Your Health  
Your Plan  
Your Savings

**IT'S ALL ABOUT THE BENEFITS!**



# Pull-Out Information

## Elimination of Corporate Accounts

The United States Postal Service® (USPS®) is discontinuing the United States Postal Service Corporate Accounts (USPSCA®) method of payment. USPSCA includes Express Mail Corporate Accounts (EMCA) and Priority Mail Express Manifest Accounts (PMEM). In January 2023, USPS will begin to close inactive USPSCA accounts and **will close all accounts by July 1, 2023.**

Customers who use USPSCA are encouraged to switch to an available alternative payment method. Alternative payment methods may include Click-N-Ship® (CNS), USPS Ship, Electronic Verification System (eVS®), ePostage®, PC Postage®, or Meter.

For information on how to migrate, customers should contact their Sales Account/Business Service Network (BSN) Representative or their local Post Office™, or they

can send an email to the Mailing and Shipping Solutions Center at [MSSC@usps.gov](mailto:MSSC@usps.gov).

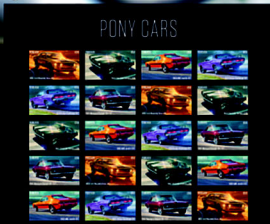
Any account with a balance can make payments or request a refund by contacting [MSSC@usps.gov](mailto:MSSC@usps.gov):

- Refund requests must include a signed authorization on letterhead, the EMCA number, business name, and location.
- Accounts with a negative balance after July 1, 2023, will be sent to Accounts Receivable for collection.

For questions about the elimination of Corporate Accounts, send an email to [ShippingServices@usps.gov](mailto:ShippingServices@usps.gov).

— *Shipping and Commerce Product Management,  
Business Solutions, 11-3-22*

# Enjoy the Thrill of Iconic **Pony Cars** Forever® Stamps



**ON SALE NATIONWIDE: AUGUST 25, 2022**  
Sold as a full pane.



## Fraud

### Invalid USPS Corporate Account Numbers

Provide this listing to Contract Postal Units and acceptance clerks in non-POS locations without intranet access to validate a USPS Corporate Account (USPSCA) number online. For all other locations, online USPSCA validation is preferred. This list supersedes all previous notices, which you must recycle.

Acceptance clerks must not accept Priority Mail Express® shipments bearing an invalid USPSCA number in the “Payment by Account” or “Agreement Number” section of the label or form.

**Note:** The first 6 digits of a 9-digit Custom Designed Service and Next Day Pickup Agreement make up the Corporate Account Number.

<b>006086</b>	008746	041149	097923	109148	198160	336079	551163	553232	730897	857003	934015	980824
006130	008862	041311	098607	109149	<b>200799</b>	337394	551200	553471	731406	900111	937653	980893
006161	009142	052004	<b>100050</b>	109871	232180	340640	551251	553737	731466	<b>902348</b>	937866	981750
006810	014048	054106	100083	117095	232403	344058	551257	553860	731967	911225	937873	981831
006994	014682	061249	100084	120281	254016	349198	551266	554690	740331	914028	940601	981864
007201	020148	064585	100993	121285	276273	386061	551326	554960	741557	915590	948507	981882
007353	021002	075004	105033	122433	<b>301583</b>	<b>400063</b>	551390	557002	741571	920111	951048	982427
007362	021048	077255	105322	124015	326644	423075	551461	558095	741612	921429	951188	983045
008107	021647	077415	105341	125068	326667	436405	551511	559030	741615	921613	968466	988022
008195	022028	080217	105402	125338	327084	452094	551714	581184	741668	921619	976012	989051
008257	022935	080254	105453	126052	327271	452180	551904	<b>605166</b>	741782	921730	977051	992082
008289	023196	080287	105631	127018	331013	460169	551953	<b>723085</b>	741872	921747	980232	992377
008403	027330	080436	106001	127053	331238	470031	551986	730034	745019	921855	980352	992705
008415	030233	080529	107324	132194	332691	<b>532542</b>	551991	730134	748020	927885	980418	
008469	033016	080632	108020	152555	333585	537365	553012	730217	775015	931726	980461	
008535	038214	080682	108892	159117	334055	544084	553013	730452	784414	932748	980491	
008582	040001	092102	108951	191087	334195	551020	553042	730504	785494	933154	980623	
008656	041024	093099	108958	191396	334466	551045	553209	730875	<b>801600</b>	933428	980769	

## Missing, Lost, or Stolen U.S. Money Order Forms

### Do Not Cash — Upon Receipt, Notify Local Postal Inspectors

Provide this listing to all Postal Service™ employees responsible for accepting and cashing postal money orders. Destroy all interim notices when the numbers listed appear in the *Postal Bulletin*. The new money order serial

numbers consist of the first 10 digits. The eleventh digit is a check digit only.

Do not cash outdated money orders **104 151 601 to 692 600 000**. Advise holders to send invalid money orders to Canada Post Corporation, Ottawa, Canada K1A 0B1. Check for altered dollar amounts by holding money orders to the light.

<b>010 001 0200</b>	to	<b>0299</b>	044 087 3457	to	3499	084 478 3920	to	3999	176 281 7963	to	7999
010 504 1932	to	1999	044 087 4000	to	4099	086 000 8271	to	8299	176 731 6586	to	6599
011 582 1889	to	1899	044 226 2487	to	2512	086 798 3840	to	3849	178 254 5000	to	9999
011 588 2900	to	3099	044 306 4200	to	4299	088 404 4472	to	4499	178 881 9900	to	9999
012 441 0784	to	0799	044 306 4370	to	4599	088 404 5584	to	5699	<b>180 031 2089</b>	to	<b>2098</b>
012 579 5675	to	5699	045 524 4121	to	4298	088 757 8688	to	8699	180 403 7723	to	7741
013 289 6176	to	6199	046 800 9870	to	9899	088 757 9400	to	9499	180 428 4580	to	0599
013 610 0014	to	0099	047 352 4000	to	4099	089 358 2248	to	2257	182 368 7544	to	0599
014 932 1000	to	1099	048 383 7650	to	7659	<b>090 663 9678</b>	to	<b>9684</b>	182 475 3229	to	3258
014 972 0800	to	0899	048 396 3647	to	3699	091 818 0071	to	0099	182 475 3904	to	3933
015 363 0065	to	0099	<b>051 142 0755</b>	to	<b>0799</b>	093 106 9346	to	9355	182 631 0031	to	0099
017 028 3200	to	3299	051 774 8857	to	8899	093 203 0500	to	0599	182 911 6539	to	6600
018 569 5333	to	5399	051 781 2875	to	2885	093 684 3630	to	3699	184 218 2760	to	2799
018 986 5264	to	5299	051 977 7010	to	7023	094 081 5074	to	5099	185 828 1474	to	1499
019 518 2814	to	2899	052 058 7115	to	7199	094 216 2555	to	2599	186 132 7583	to	0599
020 698 5159	to	5199	054 450 1130	to	1167	094 580 7062	to	7099	186 629 0589	to	0599
<b>020 844 7307</b>	to	<b>7399</b>	057 670 0563	to	0599	094 639 4200	to	4299	187 184 6177	to	0199
020 972 8948	to	8999	058 187 3836	to	3899	095 070 7186	to	7199	187 323 8200	to	8299
022 021 9110	to	9181	058 523 3003	to	3099	095 076 8300	to	8399	187 441 6080	to	6099
022 037 1411	to	1499	058 591 1153	to	1299	095 354 6864	to	6899	188 831 6774	to	6799
022 527 9201	to	9210	058 895 3746	to	3799	097 224 1350	to	1599	188 835 6370	to	6399
022 529 1882	to	1899	059 986 0814	to	0899	<b>100 160 3800</b>	to	<b>3899</b>	189 083 1064	to	1099
023 637 7169	to	7199	<b>060 406 7650</b>	to	<b>7699</b>	104 667 6400	to	6499	189 660 9583	to	9599
024 380 4100	to	4199	063 491 8122	to	8199	104 876 8937	to	8999	<b>191 179 0377</b>	to	<b>0399</b>
024 496 6870	to	6896	063 916 9968	to	9999	112 049 4413	to	4499	192 050 5762	to	5781
025 092 0987	to	0999	064 091 4500	to	4599	112 870 9765	to	9799	194 456 8600	to	0699
025 369 5535	to	5599	065 170 0471	to	0499	113 319 2000	to	2099	195 194 6881	to	6899
025 729 1151	to	1199	065 255 7909	to	7999	114 402 3850	to	3899	195 874 1112	to	1199
025 729 1643	to	1799	065 392 6345	to	6399	114 866 5368	to	5397	196 979 0524	to	0599
026 492 3180	to	3199	066 099 2014	to	2099	116 154 2800	to	2899	197 244 6100	to	6199
027 361 0430	to	0499	066 648 2880	to	2899	116 986 4400	to	4499	197 244 6300	to	6399
027 369 4482	to	4495	066 787 3639	to	3699	117 175 1647	to	5169	197 244 6400	to	6499
027 671 8762	to	8776	066 845 7500	to	9999	117 951 4687	to	4699	197 244 6500	to	6599
027 787 9886	to	9899	067 093 3869	to	3899	117 951 5200	to	5299	197 244 6600	to	6699
027 965 9487	to	9499	068 895 0334	to	0399	119 786 3051	to	3064	197 244 6700	to	6799
028 100 8069	to	8099	<b>070 724 4488</b>	to	<b>4499</b>	119 815 8961	to	6199	197 244 6800	to	8999
028 191 1852	to	1999	070 841 9181	to	9199	119 850 7400	to	7499	198 285 2556	to	2566
028 850 3000	to	3199	070 844 2546	to	2599	119 850 7700	to	7999	199 105 0778	to	0799
029 510 1500	to	1599	070 916 1340	to	1399	<b>121 634 0460</b>	to	<b>0499</b>	199 678 2968	to	2999
<b>030 687 0903</b>	to	<b>0999</b>	071 047 5768	to	5799	122 451 9879	to	9899	<b>202 748 5133</b>	to	<b>5199</b>
030 701 3442	to	3499	071 179 9800	to	9899	122 714 6805	to	6900	202 748 5245	to	5299
031 077 4507	to	4799	071 386 3682	to	3699	124 916 0304	to	0499	202 748 5300	to	5399
032 295 7500	to	9999	071 507 6840	to	6899	126 423 0136	to	0169	202 748 5400	to	5499
034 394 1000	to	1099	072 045 9641	to	9699	127 500 2328	to	2399	203 256 1240	to	1299
034 943 0400	to	0799	072 675 8287	to	8299	<b>160 901 2254</b>	to	<b>2299</b>	204 230 3577	to	3595
035 035 4337	to	4399	073 763 0867	to	0876	161 103 6581	to	6599	205 019 0174	to	0199
037 312 7500	to	7599	073 763 0878	to	0887	161 194 2857	to	0899	206 936 3184	to	3199
037 706 9578	to	9599	073 763 0889	to	0898	162 032 4447	to	4499	207 196 9900	to	9999
037 805 3677	to	3699	077 617 5481	to	5499	163 257 1085	to	1099	207 204 0700	to	0799
037 909 5490	to	5499	077 999 4001	to	4090	164 359 2406	to	2499	207 204 0800	to	0899
037 931 4660	to	4699	078 174 4475	to	4499	166 101 1433	to	1499	207 514 3857	to	3899
039 145 6521	to	6595	078 219 4931	to	4999	167 555 5201	to	5212	208 556 4707	to	4799
<b>040 024 3901</b>	to	<b>3999</b>	078 250 4756	to	4799	167 555 5214	to	5299	<b>210 057 4038</b>	to	<b>4047</b>
040 674 7100	to	7199	078 823 8312	to	8399	169 618 6274	to	6299	210 221 0548	to	0599
040 688 8816	to	8899	079 374 0300	to	2499	<b>171 806 6878</b>	to	<b>6893</b>	214 061 4711	to	4724
041 299 6752	to	6799	079 807 2342	to	2399	173 639 4685	to	4699	214 303 6311	to	6325
041 623 8889	to	8899	<b>082 721 0228</b>	to	<b>0254</b>	174 238 2779	to	2799	214 303 6239	to	6258
041 803 6565	to	6599	083 140 5000	to	7499	174 281 9347	to	9399	214 877 4251	to	4273
043 129 1968	to	1997	083 784 8886	to	8899	175 251 2600	to	0699	215 252 3918	to	3992
043 205 5922	to	5999	083 913 6915	to	6999	176 281 7937	to	7950	<b>217 585 1400</b>	to	<b>1499</b>

218 698 2157 to 2199	254 252 2900 to 2999	258 405 7300 to 7399	262 337 5200 to 5299
218 746 0800 to 0899	254 252 3000 to 3099	258 405 7400 to 7499	262 337 5300 to 5399
219 095 0100 to 0399	254 252 3100 to 3199	258 405 7800 to 7899	262 337 5400 to 5499
219 389 1885 to 1899	254 252 3200 to 3299	258 405 7900 to 7999	262 337 5500 to 5599
219 568 7435 to 7456	254 252 3300 to 3399	258 405 8000 to 8099	262 337 5600 to 5699
219 568 7469 to 7487	254 252 3400 to 3499	258 405 8100 to 8199	262 337 5700 to 5799
<b>221 316 5757 to 5799</b>	254 252 3500 to 3599	258 405 8200 to 8299	262 337 5800 to 5899
223 476 3914 to 3999	254 252 3600 to 3699	258 405 8300 to 8399	262 337 5900 to 5999
223 565 4921 to 4957	254 252 3700 to 3799	258 405 8400 to 8499	262 337 6000 to 6099
223 565 4979 to 4999	254 252 3800 to 3899	258 405 8500 to 8599	262 337 6100 to 6199
224 636 4745 to 4765	254 252 3900 to 3999	258 405 8600 to 8699	262 337 6200 to 6299
224 636 4776 to 4799	254 252 4000 to 4099	258 405 8700 to 8799	262 337 6300 to 6399
224 636 4855 to 4885	254 252 4100 to 4199	258 405 8800 to 8899	262 337 6400 to 6499
224 636 4932 to 4948	254 252 4200 to 4299	258 405 8900 to 8999	262 337 6500 to 6599
224 636 4950 to 4962	254 252 4300 to 4399	258 405 9600 to 9699	262 337 6600 to 6699
224 636 4985 to 4999	254 252 4400 to 4499	258 405 9700 to 9799	262 337 6700 to 6799
224 723 0757 to 0799	254 252 4500 to 4599	258 405 9800 to 9899	262 337 6800 to 6899
224 730 2207 to 2299	254 252 4600 to 4699	258 405 9900 to 9999	262 337 6900 to 6999
225 970 0500 to 0599	254 252 4700 to 4799	259 014 9989 to 9999	262 337 7000 to 7099
225 970 0600 to 0699	254 252 4800 to 4899	259 062 4788 to 4798	262 337 7100 to 7199
225 970 0700 to 0799	254 252 4900 to 4999	259 218 1400 to 1499	262 337 7200 to 7299
227 033 8679 to 8699	254 565 7607 to 7700	259 218 1500 to 1599	262 337 7300 to 7399
227 275 9400 to 9999	254 907 1203 to 1299	259 218 1600 to 1699	262 337 7400 to 7499
228 463 2456 to 2499	255 185 9527 to 9599	259 590 5654 to 5699	262 337 7500 to 7599
228 510 4852 to 4899	255 397 1557 to 1576	259 670 8268 to 8299	262 337 7600 to 7699
229 462 8451 to 8475	255 425 2989 to 2998	259 835 6238 to 6399	262 337 7700 to 7799
229 668 5977 to 5999	255 728 6412 to 6499	259 835 6701 to 6799	262 337 7800 to 7899
229 923 9176 to 9199	255 728 9842 to 9899	<b>260 224 4600 to 4699</b>	262 337 7900 to 7999
229 924 6696 to 6699	256 134 9833 to 9839	260 224 5941 to 5999	262 337 8000 to 8099
<b>230 051 9500 to 9999</b>	256 134 9840 to 9849	260 310 2821 to 2899	262 337 8100 to 8199
236 366 2431 to 2499	256 134 9850 to 9859	260 452 0010 to 0022	262 337 8200 to 8299
236 607 6882 to 6899	256 134 9860 to 9869	260 452 0049 to 4299	262 337 8300 to 8399
236 660 5853 to 5872	256 134 9870 to 9879	260 553 8200 to 8299	262 337 8400 to 8499
239 322 5200 to 5299	256 134 9880 to 9889	260 553 8600 to 8699	262 337 8500 to 8599
239 322 5400 to 5499	256 134 9890 to 9899	260 553 9600 to 9799	262 337 8600 to 8699
239 322 5600 to 5699	256 247 6900 to 6999	260 553 9800 to 9899	262 337 8700 to 8799
239 322 5800 to 5899	256 550 5536 to 5545	260 553 9900 to 9999	262 337 8800 to 8899
239 322 5900 to 5999	256 799 2257 to 2299	260 761 1603 to 1662	262 337 8900 to 8999
239 607 4783 to 4799	257 154 8763 to 8799	261 183 2100 to 2299	262 337 9000 to 9099
<b>240 593 1879 to 1899</b>	257 154 8800 to 8899	261 426 0408 to 0499	262 337 9100 to 9199
242 591 2048 to 2099	257 765 4567 to 4599	262 082 8000 to 8099	262 337 9200 to 9299
242 735 0388 to 0398	257 765 4610 to 4696	262 082 8100 to 8199	262 337 9300 to 9399
242 951 7276 to 7299	257 765 4737 to 4799	262 082 8200 to 8299	262 337 9400 to 9499
243 535 6370 to 6399	257 792 7800 to 7889	262 082 8300 to 8399	262 337 9500 to 9599
244 004 9985 to 9999	257 792 7900 to 7999	262 082 8400 to 8499	262 337 9600 to 9699
244 004 9985 to 9999	257 792 8000 to 8099	262 288 7302 to 7399	262 337 9700 to 9799
244 268 9765 to 9799	257 856 9863 to 9899	262 288 7400 to 7499	262 337 9800 to 9899
244 347 4471 to 4499	258 103 1773 to 1782	262 288 9900 to 9999	262 337 9900 to 9999
249 056 1551 to 1599	258 405 1800 to 1899	262 337 2600 to 2699	262 472 3188 to 3199
249 336 9438 to 9499	258 405 1900 to 1999	262 337 2700 to 2700	262 472 3200 to 3299
249 399 4000 to 4099	258 405 3300 to 3399	262 337 2800 to 2800	262 546 3100 to 3199
249 399 4100 to 4199	258 405 3400 to 3499	262 337 2900 to 2900	262 546 3200 to 3299
249 399 4200 to 4299	258 405 3500 to 3599	262 337 3000 to 3099	262 546 3300 to 3399
249 399 4300 to 4399	258 405 3700 to 3799	262 337 3100 to 3199	262 546 3400 to 3499
249 399 4400 to 4499	258 405 3800 to 3899	262 337 3200 to 3299	262 546 3500 to 3599
249 399 4500 to 4599	258 405 3900 to 3999	262 337 3300 to 3399	262 546 3600 to 3699
249 399 4600 to 4699	258 405 4000 to 4099	262 337 3400 to 3499	262 546 3900 to 3999
249 399 4700 to 4799	258 405 4100 to 4199	262 337 3500 to 3599	262 546 4300 to 4399
249 399 4800 to 4899	258 405 4200 to 4299	262 337 3600 to 3699	262 546 4400 to 4499
249 399 4900 to 4999	258 405 4600 to 4699	262 337 3700 to 3799	262 546 4500 to 4599
<b>250 159 7502 to 7599</b>	258 405 5600 to 5699	262 337 3800 to 3899	262 546 4600 to 4699
250 566 9644 to 9699	258 405 5700 to 5799	262 337 3900 to 3999	262 546 4700 to 4799
250 661 8425 to 8499	258 405 5800 to 5899	262 337 4000 to 4099	262 546 4800 to 4899
251 335 5731 to 5799	258 405 5900 to 5999	262 337 4100 to 4199	262 546 4900 to 4999
251 379 2380 to 2399	258 405 6000 to 6099	262 337 4200 to 4299	262 546 7100 to 7199
252 005 7626 to 7699	258 405 6100 to 6199	262 337 4300 to 4399	262 546 7200 to 7299
252 421 8401 to 8499	258 405 6200 to 6299	262 337 4400 to 4499	262 546 7300 to 7399
252 464 2810 to 2899	258 405 6300 to 6399	262 337 4500 to 4599	262 546 7400 to 7499
252 612 3683 to 3699	258 405 6400 to 6499	262 337 4600 to 4699	262 546 9800 to 9899
252 469 2125 to 2199	258 405 6800 to 6899	262 337 4700 to 4799	262 546 9900 to 9999
252 833 3286 to 3297	258 405 6900 to 6999	262 337 4800 to 4899	262 567 1788 to 1799
253 470 3948 to 3999	258 405 7000 to 7099	262 337 4900 to 4999	263 254 2500 to 2500
253 565 7400 to 7499	258 405 7100 to 7199	262 337 5000 to 5099	263 340 0000 to 0099
254 252 2800 to 2899	258 405 7200 to 7299	262 337 5100 to 5199	263 340 0100 to 0199

263 340 0500 to 0599	391 104 6146 to 6199	414 193 3608 to 3674	440 858 6300 to 6399
263 340 0600 to 0699	391 574 1466 to 1499	414 193 3677 to 3699	440 858 6420 to 7299
263 340 2700 to 2799	391 783 3020 to 3599	414 411 7348 to 7399	441 199 1655 to 1699
263 340 2800 to 2899	391 792 6100 to 6199	414 640 0757 to 0799	443 127 3648 to 3699
263 340 3000 to 3099	392 668 2956 to 2999	414 965 1727 to 1799	443 127 4000 to 4099
264 341 2360 to 2399	392 854 8500 to 8899	417 302 8104 to 8199	443 673 7900 to 7999
264 380 4000 to 4099	393 584 7566 to 7699	417 387 6532 to 6599	443 800 9335 to 9399
264 380 4100 to 4199	393 650 0074 to 0099	417 496 6800 to 6999	444 382 8822 to 8899
264 799 6049 to 6099	393 838 8316 to 8499	417 871 9250 to 9299	444 390 1667 to 1699
264 860 7832 to 7868	393 893 6007 to 6099	417 930 9533 to 9599	444 457 3854 to 3899
265 127 3658 to 3699	394 126 6907 to 6999	418 164 6500 to 6799	<b>450 048 4173 to 4199</b>
265 380 7111 to 7137	394 189 0405 to 0599	418 423 9863 to 9899	450 048 4442 to 4699
265 444 4762 to 4799	394 822 3243 to 3278	418 633 5922 to 5999	450 560 5173 to 5199
265 548 7074 to 7099	394 990 1810 to 1899	418 719 8520 to 8599	450 620 3077 to 3099
266 106 0000 to 2499	395 343 3264 to 3299	418 744 2235 to 2299	450 620 3135 to 3199
266 129 5809 to 5899	395 373 3035 to 3099	418 962 2848 to 2899	450 780 2716 to 2799
266 673 0000 to 2499	395 396 9649 to 9799	419 543 0286 to 0299	450 801 2700 to 2799
266 749 7900 to 7999	395 970 3240 to 3299	419 730 0300 to 0399	451 109 2967 to 2984
266 868 0952 to 0999	397 622 4054 to 4099	<b>420 277 0015 to 0049</b>	451 115 4110 to 4125
266 868 1028 to 1099	397 819 8902 to 8999	420 599 0734 to 0798	451 115 4127 to 4199
266 868 1100 to 1199	398 149 7200 to 7699	420 661 4115 to 4199	451 746 0700 to 0799
266 868 1200 to 1299	399 070 0872 to 0899	420 758 9500 to 9699	452 265 0074 to 0099
267 296 1237 to 1299	399 156 7119 to 7199	420 969 3951 to 3971	452 265 0246 to 0299
267 324 8946 to 8998	399 203 5064 to 5099	420 969 3973 to 3999	452 265 0335 to 0999
268 072 1203 to 1299	399 296 9910 to 9999	421 116 3565 to 3599	452 509 1169 to 1199
<b>271 660 4333 to 4400</b>	399 396 8935 to 8999	421 130 9300 to 9399	452 855 6471 to 6499
273 520 0000 to 9999	399 792 7775 to 7799	421 313 4500 to 4999	452 890 4679 to 4799
273 520 6000 to 8999	399 792 8300 to 8399	421 364 5537 to 5599	452 900 8215 to 8238
273 775 7700 to 7899	<b>400 427 1051 to 1999</b>	421 656 2609 to 2699	453 117 9146 to 9199
273 882 1913 to 1998	401 045 1505 to 1549	421 988 9700 to 9799	453 334 3631 to 3699
274 750 0300 to 0400	401 045 1571 to 1599	422 172 4667 to 4699	453 603 7841 to 7891
274 782 0549 to 0599	401 294 2700 to 2799	422 484 4212 to 4299	453 650 1140 to 1199
<b>302 000 0000 to 9999</b>	401 310 9505 to 9599	422 556 1270 to 1299	453 741 1300 to 1399
<b>349 746 2056 to 2099</b>	401 382 5312 to 5399	422 587 7024 to 7099	454 013 2919 to 2999
<b>350 518 7350 to 7374</b>	402 578 7876 to 7899	422 819 7533 to 7599	454 186 2411 to 2499
<b>360 011 1690 to 1699</b>	403 125 6744 to 6799	422 842 5073 to 5087	454 268 4883 to 4899
360 168 6008 to 6099	403 260 7000 to 7499	422 907 7563 to 7599	454 302 5400 to 5499
360 173 8800 to 8899	403 280 6470 to 6499	424 500 6050 to 6099	454 490 8300 to 8399
360 324 2326 to 2399	403 685 8600 to 8699	424 641 8500 to 8599	454 547 7434 to 7499
362 861 3064 to 3099	404 003 0300 to 0399	424 871 6600 to 6699	454 922 4867 to 4895
<b>373 006 2176 to 2199</b>	404 041 8838 to 8899	425 298 2352 to 2399	455 221 1348 to 1499
374 768 2600 to 2699	404 071 4268 to 4299	425 418 4269 to 4299	455 364 2147 to 2199
375 169 4400 to 4599	404 347 5356 to 5399	425 418 4405 to 4499	455 399 5400 to 5499
375 829 3400 to 3499	404 347 5548 to 5599	426 547 4566 to 4599	455 476 0676 to 0699
375 851 9100 to 9199	404 726 4500 to 4599	427 412 6337 to 6499	455 543 0618 to 0699
376 196 0911 to 0999	404 961 5001 to 5199	427 481 0900 to 0999	456 410 9006 to 9099
378 085 3679 to 3699	405 325 0188 to 0198	428 027 2742 to 2752	456 470 4146 to 4299
378 351 1063 to 1099	406 009 4587 to 4599	429 474 4172 to 4199	456 619 4460 to 4499
379 843 5100 to 5199	406 260 6830 to 6899	429 889 2900 to 2999	457 333 2686 to 2699
<b>380 093 9600 to 9699</b>	406 459 6641 to 6999	<b>430 150 4401 to 4599</b>	457 729 1767 to 1777
380 165 1165 to 1199	406 733 3000 to 3999	430 172 9800 to 9899	457 937 8615 to 8699
381 325 4500 to 4599	407 545 1557 to 1599	430 177 1900 to 2099	458 028 9810 to 9899
381 604 2510 to 2699	407 594 0412 to 0599	430 444 9500 to 9699	458 057 2712 to 2999
381 645 9525 to 9599	407 692 9100 to 9299	430 664 4070 to 4099	458 069 9537 to 9599
383 314 3968 to 3999	407 959 2190 to 2199	432 168 8419 to 8499	458 069 9665 to 9699
383 892 1000 to 1344	408 265 2275 to 2288	432 708 6800 to 6999	458 337 5222 to 5299
383 892 1382 to 1399	408 499 7700 to 7799	432 744 1544 to 1599	458 354 7653 to 7999
384 925 3641 to 3654	408 499 7900 to 7999	432 995 9775 to 9799	458 671 8678 to 8699
385 568 2331 to 2399	408 682 8484 to 8599	433 003 5800 to 5899	458 671 8721 to 8798
385 599 7554 to 7575	408 698 7015 to 7099	433 757 3047 to 3099	458 847 5044 to 5999
385 774 2024 to 2099	409 072 3941 to 3999	433 765 4003 to 4099	459 274 7624 to 7699
386 624 1412 to 1599	<b>410 491 2311 to 2399</b>	434 482 7060 to 7199	459 365 5432 to 5499
386 883 8936 to 8999	410 694 8400 to 8599	434 513 2386 to 2399	459 378 5764 to 5799
387 314 5574 to 5599	410 775 1500 to 1599	434 968 3076 to 3092	459 472 4816 to 4999
387 837 6300 to 6399	410 795 7927 to 7999	435 303 1831 to 1842	<b>460 349 6878 to 6899</b>
388 828 0656 to 0699	410 867 0917 to 0966	435 303 1986 to 1999	460 550 1909 to 1999
389 696 2400 to 2799	410 867 0970 to 0999	435 666 6092 to 6399	460 997 5234 to 5299
389 846 3104 to 3135	411 868 1023 to 1199	436 082 6400 to 6899	461 973 6443 to 6499
389 846 3145 to 3195	411 922 2322 to 2399	436 160 6441 to 6499	462 152 0107 to 0299
389 887 9211 to 9230	412 193 0900 to 0999	437 316 7115 to 7199	462 274 1072 to 1099
389 887 9234 to 9299	412 395 8599 to 8699	437 427 0500 to 3499	462 277 8373 to 8399
<b>390 001 3182 to 3199</b>	412 485 6500 to 6599	439 179 2300 to 2399	462 554 6051 to 6099
390 001 3500 to 3699	412 485 6610 to 6699	439 310 0458 to 0499	463 011 5529 to 5540
390 545 5974 to 5999	412 885 5953 to 5999	<b>440 698 1947 to 1999</b>	463 176 4115 to 4199

463 176 4229 to 4299	483 632 1521 to 1599	506 165 7027 to 0099	612 291 8013 to 8099
463 185 2600 to 2799	483 632 2600 to 2799	506 502 5209 to 5299	612 751 5171 to 5199
463 227 7711 to 7799	483 849 1615 to 1699	506 756 1682 to 1699	612 751 5226 to 5299
463 414 4869 to 4899	484 174 4803 to 5299	506 756 1700 to 1799	612 751 6083 to 6099
463 808 3484 to 3499	484 323 8900 to 9199	506 756 1800 to 1899	612 751 6268 to 6299
463 945 7400 to 7899	484 680 5000 to 5038	506 836 5326 to 5399	612 751 6572 to 6599
464 629 9000 to 9399	484 680 5040 to 5074	508 488 6226 to 6299	612 774 2111 to 2199
464 711 4332 to 4399	484 680 5077 to 5099	508 789 8332 to 8399	612 774 2254 to 2299
465 692 3963 to 3999	485 029 4913 to 4999	508 789 8400 to 8499	612 774 2500 to 2599
465 698 8300 to 8599	486 176 0600 to 0699	509 909 0425 to 0435	614 469 0979 to 0999
465 743 7745 to 7799	486 559 7555 to 7599	<b>510 150 2400 to 2499</b>	614 474 3000 to 3099
466 798 6056 to 6067	486 696 3023 to 3199	510 381 3200 to 3299	614 521 3490 to 3499
467 147 4300 to 4399	488 173 7900 to 7999	510 587 9500 to 9599	614 645 1800 to 1899
468 079 5782 to 5799	488 206 4100 to 4199	510 587 9659 to 9699	614 832 1100 to 2099
469 067 2817 to 2899	488 226 0200 to 0299	510 269 9770 to 9999	615 017 7505 to 7599
469 127 8000 to 8199	488 709 3906 to 3999	511 021 5042 to 5099	617 711 6609 to 6699
469 213 0359 to 0399	488 855 8359 to 8399	511 021 5100 to 5199	617 760 5266 to 5299
469 213 0500 to 0599	489 181 8963 to 8999	511 468 1747 to 1799	617 813 3601 to 3699
469 561 8011 to 8099	489 223 2000 to 2099	511 844 0100 to 0199	618 840 9200 to 9299
469 658 1961 to 1999	489 311 1930 to 1999	511 844 0340 to 0399	619 551 7229 to 7299
469 666 9900 to 9999	489 318 6200 to 6300	512 805 3913 to 3919	619 859 3000 to 3099
469 678 1900 to 1999	489 384 0027 to 0099	513 046 0700 to 0726	<b>620 073 9400 to 9499</b>
469 781 4900 to 4999	489 427 0658 to 0899	513 149 0600 to 0699	621 614 7907 to 7930
469 947 6960 to 6999	489 997 5252 to 5299	513 445 3000 to 3199	621 614 7932 to 7999
<b>470 755 5800 to 5818</b>	<b>490 669 5850 to 6099</b>	513 466 2034 to 2044	621 648 8021 to 8199
471 918 0300 to 0999	490 717 7080 to 7099	513 539 9052 to 9099	621 648 8500 to 8599
471 985 2408 to 2419	490 721 6000 to 6099	513 539 9267 to 9299	621 904 8351 to 8599
472 191 6700 to 6799	490 793 1500 to 2099	513 539 9800 to 9899	621 916 1978 to 1989
472 270 2555 to 2599	490 886 8171 to 8199	513 539 9985 to 9999	622 989 8032 to 8099
472 987 0213 to 0241	490 977 9221 to 9240	513 606 5459 to 5490	623 076 9300 to 9399
472 987 0290 to 0299	491 258 8100 to 9099	513 812 1751 to 1799	623 819 5006 to 5099
473 151 2069 to 2199	491 567 1376 to 1399	514 103 3600 to 3699	623 895 8200 to 8399
473 666 9138 to 9199	492 254 4800 to 4899	514 103 3700 to 3799	623 917 0000 to 0099
473 952 3429 to 3499	492 283 5100 to 5199	514 103 3800 to 3899	623 917 0200 to 0299
474 108 5402 to 5499	492 610 6813 to 6899	<b>600 645 3223 to 3299</b>	624 468 5288 to 5299
474 356 5193 to 5299	493 394 5568 to 5599	601 339 1200 to 1399	624 665 3162 to 3198
474 949 3366 to 3399	493 470 2562 to 2599	601 653 5884 to 5899	625 088 6735 to 6799
475 134 9362 to 9399	493 473 7700 to 7799	601 661 7700 to 7799	625 916 9500 to 9799
475 167 9667 to 9699	493 716 2153 to 2199	601 682 5343 to 5399	625 968 8956 to 8999
475 319 3415 to 3499	494 206 2972 to 2999	601 928 1600 to 1699	627 005 3938 to 3999
475 319 3649 to 3799	494 217 3446 to 3999	602 512 2972 to 2999	627 384 3907 to 4099
475 340 6400 to 6599	494 224 0500 to 0599	602 555 2400 to 2799	627 496 7549 to 7599
475 424 8410 to 8499	495 145 0600 to 0699	602 829 7061 to 7099	627 708 3605 to 3699
475 629 9156 to 9199	496 209 7425 to 7499	603 483 9572 to 9599	627 776 2500 to 2599
475 850 6101 to 6199	496 213 8728 to 8799	603 490 7200 to 7299	628 226 3100 to 3199
475 875 2500 to 2599	496 474 5226 to 5248	603 678 7100 to 7199	628 814 4702 to 4799
476 169 8264 to 8299	497 053 8517 to 8699	603 678 7662 to 7699	628 851 9689 to 9699
476 189 3000 to 3499	497 854 8673 to 8699	603 678 7902 to 7999	629 510 7200 to 7299
476 331 2480 to 2499	498 449 8888 to 8899	603 678 8418 to 8499	629 964 4200 to 4294
477 289 8601 to 8699	498 929 8285 to 8499	603 678 8700 to 9999	<b>630 389 3056 to 3071</b>
477 681 5206 to 5299	498 936 5310 to 5399	604 086 0880 to 0899	630 463 0588 to 0599
478 010 4243 to 4268	499 016 5425 to 5499	604 349 1414 to 1499	631 459 9117 to 9199
478 010 4270 to 4291	499 440 8575 to 8899	604 503 7776 to 7799	631 762 9325 to 9399
478 450 5071 to 5099	499 731 6717 to 6799	605 520 9037 to 9099	632 217 4933 to 4999
478 469 7838 to 7858	<b>500 064 1858 to 1869</b>	605 685 4010 to 4099	632 500 0000 to 640 3999
478 469 7883 to 7899	500 070 5725 to 7799	605 988 6467 to 6499	633 110 4165 to 4199
479 280 9800 to 9899	501 058 0016 to 0026	607 689 7951 to 7960	633 110 4303 to 4499
479 365 9116 to 9176	501 331 0300 to 0399	607 728 1276 to 1299	633 438 6429 to 6599
479 412 9900 to 9999	501 460 0977 to 0999	608 727 7100 to 7199	633 588 7173 to 7182
479 667 6190 to 6199	502 227 7645 to 7699	608 727 7273 to 7599	634 725 0700 to 0799
479 748 9680 to 9699	502 424 0200 to 0499	608 813 9950 to 9999	634 803 3239 to 3299
479 860 7000 to 7199	502 424 0600 to 0699	609 067 5325 to 5399	634 807 2474 to 2499
<b>480 526 2000 to 2099</b>	502 496 6923 to 6999	609 067 5488 to 5499	634 827 5900 to 5999
480 640 6330 to 6399	503 003 2700 to 2899	609 067 5600 to 5699	634 886 3428 to 3499
480 658 0568 to 0599	503 194 5144 to 5153	609 289 6123 to 6199	635 559 3449 to 3499
480 689 5100 to 5199	503 790 9922 to 9948	609 438 4400 to 4499	636 289 6214 to 6299
481 072 9463 to 9499	504 045 4030 to 4099	609 493 1100 to 1199	636 634 8007 to 8042
481 673 0074 to 0095	504 166 0200 to 0599	609 766 8091 to 8999	637 150 1200 to 1299
482 527 1500 to 1599	504 240 1062 to 1399	609 825 4100 to 4115	637 562 5828 to 5899
482 541 5255 to 5299	504 805 3300 to 3499	609 884 2981 to 2999	638 042 1647 to 1699
482 729 6800 to 6899	505 096 0662 to 0699	609 893 1000 to 1099	638 049 4984 to 4999
483 363 7207 to 7299	505 893 7739 to 7799	<b>610 092 3200 to 3299</b>	638 318 1115 to 1199
483 402 2356 to 2399	505 893 7800 to 7999	610 582 4200 to 4299	638 318 1453 to 1499
483 486 5100 to 5199	506 124 0800 to 0999	611 879 6939 to 6999	638 885 0000 to 0299



833 159 1884	to 1899	859 063 8200	to 8699	904 892 0648	to 1299	919 536 0770	to 0799
833 456 2567	to 2599	859 190 0600	to 0644	905 056 2216	to 2299	919 814 3095	to 3199
833 566 3015	to 3071	859 437 5538	to 5599	905 510 6647	to 6799	919 889 5110	to 5134
834 130 5200	to 5299	859 811 2888	to 2899	905 510 6900	to 7099	919 889 5137	to 5176
834 316 5444	to 5499	859 855 8873	to 8999	905 794 0000	to 0199	919 889 5178	to 5199
834 354 8747	to 8766	<b>860 240 8520</b>	<b>to 8599</b>	905 794 0288	to 0299	919 889 5030	to 5070
834 354 8824	to 8838	860 275 3900	to 3999	905 873 6900	to 6999	919 889 5090	to 5099
835 269 5700	to 5799	860 518 9629	to 9699	905 873 7100	to 7299	919 915 2774	to 2787
835 496 7303	to 7399	860 600 0021	to 0999	905 880 8900	to 8999	<b>920 155 4662</b>	<b>to 4687</b>
835 539 5200	to 5999	861 158 2350	to 2599	905 889 7100	to 7199	920 309 9039	to 9199
835 813 3015	to 3099	861 367 5400	to 5499	906 158 1508	to 1599	920 771 5321	to 5399
837 672 8967	to 8999	861 637 6010	to 6099	906 558 8812	to 8899	920 857 5500	to 5899
837 784 3282	to 3299	861 979 7292	to 7499	906 982 2214	to 2299	920 864 3480	to 3499
838 176 8377	to 8399	862 216 6100	to 6199	907 725 8500	to 8599	920 963 4567	to 4599
838 518 1257	to 1299	862 263 9213	to 9299	907 815 0216	to 0257	921 333 7400	to 7499
839 718 8257	to 8299	862 271 0800	to 0999	908 622 4225	to 4235	921 477 3762	to 3799
<b>840 323 0600</b>	<b>to 0699</b>	862 271 5000	to 5099	908 936 9254	to 9299	922 278 1048	to 1399
840 875 6235	to 6299	863 871 5138	to 5199	909 066 4494	to 7499	922 280 2019	to 2099
840 910 0900	to 0999	863 949 5300	to 5399	909 067 7400	to 7499	922 280 2233	to 2299
841 349 5000	to 5099	864 088 8200	to 8299	909 100 1787	to 1799	922 773 0459	to 0499
841 805 7747	to 7899	864 426 3972	to 3999	909 100 1900	to 2099	923 032 7000	to 7399
841 805 7944	to 8099	864 520 6117	to 6136	909 355 0422	to 0499	923 045 3630	to 3699
842 226 0685	to 0695	865 151 0526	to 0599	909 568 8900	to 9099	923 484 3600	to 3699
842 685 4600	to 4699	865 500 4034	to 4099	909 568 9300	to 9499	923 493 9403	to 9599
842 685 4742	to 4999	865 883 6082	to 6099	909 725 7307	to 7399	923 493 9681	to 9699
842 860 0300	to 0399	866 004 3000	to 3999	909 833 0947	to 0999	923 604 4424	to 4499
842 898 5582	to 5599	866 442 4100	to 4899	<b>910 219 8631</b>	<b>to 8699</b>	923 810 7800	to 8299
843 062 7100	to 7199	867 366 9108	to 9118	910 265 1100	to 1199	924 252 1200	to 1299
843 077 6288	to 6299	867 633 7403	to 7499	910 471 7273	to 7299	924 252 1400	to 1499
843 077 6378	to 6399	867 737 5623	to 5699	910 536 2505	to 2599	924 533 0711	to 0799
843 758 5769	to 5778	868 169 4529	to 4599	910 958 7499	to 7599	924 533 2343	to 2399
843 786 2554	to 2699	868 173 8400	to 8599	911 140 1000	to 2199	924 533 2428	to 2499
845 656 8165	to 8199	868 514 9000	to 9099	911 245 2545	to 2599	924 685 1957	to 1999
845 727 2100	to 2199	868 566 9200	to 9299	911 268 9077	to 9099	924 946 6300	to 6699
845 746 2618	to 2635	869 200 0000	to 9999	911 400 8948	to 8999	925 333 5900	to 6099
846 390 7531	to 7599	869 387 1150	to 1199	911 508 1620	to 1799	925 336 2300	to 2399
846 918 0572	to 0599	869 505 3500	to 3599	911 509 9310	to 9399	926 432 5907	to 5999
847 237 7690	to 7699	869 523 7033	to 7099	911 523 3000	to 3999	926 436 3600	to 3699
847 284 2481	to 2499	869 566 6150	to 6167	912 057 9922	to 9999	927 765 6257	to 6299
847 374 7055	to 7065	869 776 8785	to 8786	912 882 0563	to 0899	928 197 8100	to 8199
847 374 7055	to 7065	869 800 0000	to 999 9999	913 605 2218	to 2299	928 197 8283	to 8299
847 636 5304	to 5399	<b>870 054 4814</b>	<b>to 4899</b>	913 709 2429	to 2499	928 856 2059	to 2068
847 700 5447	to 5499	870 491 4812	to 4849	913 818 3501	to 3999	<b>930 078 5800</b>	<b>to 5899</b>
847 723 7500	to 7599	870 536 5820	to 5829	914 063 4300	to 4399	930 219 1722	to 1799
849 485 3427	to 3499	870 541 7167	to 7239	914 346 7621	to 7644	930 335 7810	to 7819
849 520 9850	to 9899	870 575 8155	to 8999	914 453 1366	to 1399	931 097 9259	to 9299
849 608 1357	to 1399	870 589 0485	to 0494	914 529 6185	to 6299	931 156 1502	to 1579
849 792 2600	to 2699	870 691 7060	to 7099	914 896 4658	to 4699	931 156 1600	to 1625
<b>850 546 1862</b>	<b>to 1899</b>	872 028 4850	to 4899	915 187 8774	to 8779	931 156 1671	to 1699
851 143 6826	to 6844	872 029 9306	to 9399	915 300 2783	to 2799	932 506 6400	to 6599
851 209 9880	to 9899	872 078 3709	to 3799	915 546 6822	to 6999	932 732 1796	to 1799
851 928 9221	to 9299	872 100 0445	to 0459	915 646 5183	to 5199	932 827 9026	to 9099
852 589 6560	to 6599	<b>900 556 4178</b>	<b>to 4199</b>	915 671 3963	to 3980	932 957 2300	to 2399
853 049 3646	to 3699	900 845 0044	to 0099	915 671 3982	to 3999	933 060 6160	to 6189
854 304 4089	to 4999	900 936 0217	to 0299	915 675 2217	to 2299	933 387 2541	to 2561
854 529 2200	to 2299	900 936 0435	to 0499	916 440 3377	to 3399	933 760 3609	to 4199
854 532 0000	to 2999	901 058 5255	to 5280	916 670 6352	to 6399	933 894 0928	to 0999
855 001 6204	to 6249	901 273 1082	to 1099	916 682 5300	to 5399	934 018 2729	to 2741
855 319 9364	to 9399	901 287 5143	to 5199	916 694 1414	to 1499	934 180 0300	to 0399
855 361 3390	to 3399	901 291 2789	to 2799	916 703 0802	to 0821	934 236 3954	to 3999
856 226 0490	to 0499	901 525 7122	to 7199	917 089 0709	to 0799	934 622 8717	to 8999
856 656 5800	to 5999	902 089 1253	to 1299	917 089 0842	to 0899	935 216 0312	to 0399
856 752 0200	to 0299	902 198 9769	to 9799	917 216 2928	to 2999	935 843 2202	to 2247
857 111 1352	to 1399	902 948 1269	to 1299	917 370 6300	to 6499	936 024 8889	to 8899
857 279 3450	to 3499	902 985 0833	to 0899	917 486 4900	to 4999	936 339 4455	to 4499
857 843 4000	to 4099	903 370 6934	to 6999	918 460 0602	to 0699		
858 124 7644	to 7699	904 600 6523	to 6599	918 951 7231	to 7299		
858 756 3111	to 3299	904 892 0378	to 0399	919 519 2786	to 2799		

## Missing, Lost, or Stolen Canadian Money Order Forms

### Do Not Cash — Upon Receipt, Notify Local Postal Inspectors

Provide this listing to all Postal Service™ employees responsible for accepting and cashing postal money orders. Destroy all interim notices when the numbers listed appear in the *Postal Bulletin*. The new money order serial

numbers consist of the first 9 digits. The tenth digit is a check digit only.

Do not cash outdated money orders **104 151 601 to 692 600 000**. Advise holders to send invalid money orders to Canada Post Corporation, Ottawa, Canada K1A 0B1. Check for altered dollar amounts by holding money orders to the light.

719 869 731	to	9 760	728 382 331	to	2 480	734 797 201	to	7 320	741 764 431	to	4 520
<b>720 227 871</b>	<b>to</b>	<b>7 930</b>	728 702 338	to	2 400	734 939 611	to	9 640	742 178 834	to	8 880
720 227 949	to	7 960	728 915 371	to	5 850	734 950 111	to	0 170	742 325 500	to	5 520
720 368 543	to	8 570	728 953 141	to	3 410	735 120 331	to	0 840	742 325 668	to	5 700
720 392 151	to	2 570	728 954 280	to	4 310	735 283 008	to	3 020	742 408 771	to	8 830
720 556 491	to	6 640	729 169 081	to	9 140	735 293 131	to	3 220	742 512 120	to	2 150
720 558 621	to	8 650	729 363 841	to	3 870	735 635 010	to	5 040	742 684 849	to	4 890
720 575 361	to	5 570	729 682 891	to	3 190	735 783 961	to	3 990	742 839 553	to	9 630
720 590 152	to	0 179	729 838 940	to	9 070	735 803 401	to	3 430	742 913 668	to	3 700
721 638 331	to	9 170	729 839 101	to	9 130	736 005 420	to	5 440	742 917 287	to	7 296
721 815 391	to	5 420	<b>730 077 683</b>	<b>to</b>	<b>7 840</b>	736 366 021	to	6 110	742 921 891	to	1 980
721 969 713	to	9 740	730 109 847	to	9 880	736 624 456	to	4 500	742 983 631	to	3 810
722 072 137	to	2 160	730 373 761	to	3 850	736 670 851	to	1 060	743 020 021	to	0 170
722 378 265	to	8 280	730 501 951	to	2 130	736 767 061	to	7 090	743 206 491	to	6 500
722 413 990	to	4 004	730 519 379	to	9 470	736 767 093	to	7 120	743 235 992	to	6 050
722 764 948	to	4 980	730 569 278	to	9 360	736 982 191	to	2 370	743 940 631	to	0 900
722 825 840	to	5 889	730 711 711	to	1 740	736 982 551	to	2 730	743 978 011	to	8 070
723 153 841	to	3 850	730 722 991	to	3 230	737 110 141	to	0 170	744 234 751	to	4 780
723 237 616	to	7 630	730 845 970	to	5 990	737 185 501	to	5 710	744 499 591	to	9 680
723 331 081	to	1 110	730 888 291	to	8 320	737 317 321	to	7 350	744 626 901	to	6 910
723 496 443	to	6 470	730 927 591	to	7 680	737 517 781	to	7 840	745 388 794	to	8 910
723 967 291	to	7 320	731 307 914	to	7 930	737 628 181	to	8 210	746 446 806	to	6 820
724 655 196	to	5 340	731 402 431	to	2 460	737 634 258	to	4 270	746 818 351	to	8 410
724 711 441	to	1 500	731 407 232	to	7 320	738 361 971	to	1 980	747 245 266	to	5 280
724 711 538	to	1 560	731 588 301	to	8 340	738 447 601	to	7 660	747 364 813	to	4 830
724 793 221	to	3 250	731 767 273	to	7 320	738 648 355	to	8 450	747 501 434	to	1 450
724 908 109	to	8 120	731 781 061	to	1 120	738 849 811	to	9 900	747 739 891	to	0 070
724 937 461	to	7 670	731 837 821	to	7 910	738 892 270	to	2 290	748 148 649	to	8 760
725 163 118	to	3 151	731 841 377	to	1 450	738 997 259	to	7 380	748 259 960	to	9 970
725 202 735	to	2 750	732 018 481	to	8 600	739 161 451	to	1 540	748 565 162	to	5 280
725 398 591	to	8 800	732 067 972	to	8 370	739 219 381	to	9 440	748 874 988	to	5 030
725 464 591	to	4 920	732 188 649	to	8 670	739 740 151	to	0 180	749 137 381	to	7 410
725 475 321	to	5 330	732 193 460	to	3 470	739 793 491	to	3 520	749 190 192	to	0 210
725 711 057	to	1 070	732 201 241	to	1 390	739 793 527	to	3 550	749 685 421	to	5 450
725 738 581	to	8 730	732 220 431	to	0 440	739 942 621	to	2 650	749 846 791	to	6 850
725 981 311	to	1 430	732 355 201	to	5 380	739 999 231	to	9 320	749 993 131	to	3 580
725 987 835	to	7 880	732 472 320	to	2 560	<b>740 011 517</b>	<b>to</b>	<b>1 530</b>	<b>750 071 587</b>	<b>to</b>	<b>1 610</b>
726 060 811	to	0 900	732 541 605	to	1 620	740 030 701	to	0 970	750 408 167	to	8 183
726 391 970	to	2 520	732 572 221	to	2 490	740 261 740	to	1 820	750 438 421	to	8 501
726 484 771	to	4 800	732 586 479	to	6 710	740 265 811	to	6 290	750 743 911	to	4 030
726 493 351	to	5 300	732 994 037	to	4 080	740 299 111	to	9 170	750 779 118	to	9 400
726 504 031	to	4 063	733 163 449	to	3 460	740 299 231	to	9 260	750 910 981	to	1 010
726 504 070	to	4 090	733 297 171	to	7 290	740 329 266	to	9 320	750 960 841	to	0 900
726 504 331	to	4 390	733 446 631	to	7 110	740 889 081	to	9 090	751 296 211	to	6 240
726 563 701	to	4 060	733 474 665	to	4 770	741 010 421	to	0 530	751 539 121	to	9 180
726 599 371	to	9 460	733 704 482	to	4 570	741 113 041	to	3 370	751 541 311	to	1 790
726 626 356	to	6 370	733 751 041	to	1 130	741 373 891	to	4 340	751 757 641	to	7 700
727 182 271	to	2 510	734 009 101	to	9 130	741 452 369	to	2 490	751 936 951	to	7 010
727 416 181	to	6 240	734 290 759	to	0 770	741 492 991	to	3 140	751 951 861	to	1 890
727 481 431	to	1 460	734 389 273	to	9 290	741 553 460	to	3 470	751 999 021	to	9 110
727 749 241	to	9 780	734 440 031	to	0 111	741 764 431	to	4 520	752 139 516	to	9 570



752 182 892	to	2 950	762 324 931	to	4 960	773 112 031	to	2 060	799 177 626	to	7 650
752 206 861	to	7 100	762 439 261	to	9 290	773 125 387	to	5 410	799 854 751	to	5 200
752 295 241	to	5 600	762 524 158	to	4 220	773 179 320	to	9 410	<b>800 044 320</b>	<b>to</b>	<b>4 410</b>
752 731 351	to	1 410	762 584 872	to	4 970	773 202 989	to	3 140	800 211 901	to	2 440
752 767 441	to	7 470	762 593 431	to	3 460	773 208 991	to	9 290	800 427 530	to	7 540
753 008 941	to	9 030	763 155 160	to	5 180	773 231 311	to	1 340	800 872 741	to	2 830
753 194 311	to	4 370	763 178 631	to	8 660	773 348 739	to	8 940	801 349 801	to	9 830
753 620 378	to	0 400	763 506 001	to	6 060	773 348 739	to	8 940	801 676 681	to	7 100
754 013 917	to	3 940	763 522 141	to	2 470	773 575 891	to	5 950	802 967 821	to	7 940
754 161 061	to	1 120	763 717 694	to	7 800	773 852 971	to	3 030	803 217 601	to	7 780
754 358 445	to	8 610	763 826 461	to	6 520	775 373 449	to	3 460	803 729 731	to	9 850
754 410 451	to	0 660	763 900 460	to	0 471	<b>789 257 191</b>	<b>to</b>	<b>7 250</b>	803 747 402	to	7 520
754 438 393	to	8 410	763 900 479	to	0 530	<b>790 448 020</b>	<b>to</b>	<b>8 460</b>	804 138 181	to	8 420
754 493 109	to	3 130	763 917 271	to	7 750	790 597 485	to	7 530	804 428 224	to	8 250
754 664 182	to	4 220	764 125 801	to	5 860	790 911 883	to	1 900	804 682 411	to	2 710
754 816 377	to	6 470	764 284 525	to	4 560	791 057 441	to	7 550	805 272 525	to	2 540
755 487 421	to	7 600	764 526 241	to	6 330	791 239 081	to	9 290	805 523 445	to	3 460
755 592 901	to	3 140	764 601 421	to	1 600	791 374 483	to	4 500	805 745 704	to	5 730
755 790 020	to	0 030	764 650 231	to	0 470	791 387 971	to	8 030	806 452 907	to	2 980
755 791 730	to	1 800	764 984 371	to	4 850	791 447 521	to	7 850	806 744 781	to	4 850
755 926 951	to	7 070	765 003 667	to	3 680	791 451 151	to	1 240	806 982 181	to	2 300
755 934 332	to	4 510	765 042 517	to	2 540	791 500 009	to	0 470	807 764 791	to	4 910
755 957 701	to	8 000	765 194 728	to	4 970	791 771 431	to	1 490	808 089 931	to	9 960
755 962 981	to	3 280	765 387 365	to	7 450	792 004 293	to	4 320	808 656 423	to	6 450
756 035 371	to	5 490	765 541 801	to	2 100	792 018 379	to	8 420	808 753 771	to	3 800
756 301 257	to	1 290	765 638 461	to	8 970	792 070 621	to	0 740	809 189 001	to	9 010
756 371 565	to	1 580	765 647 101	to	7 190	792 145 211	to	5 230	809 886 879	to	6 930
756 876 031	to	6 120	765 813 781	to	4 029	792 391 381	to	1 620	809 890 489	to	0 500
756 876 151	to	6 240	765 879 314	to	9 390	792 452 779	to	2 790	<b>810 323 734</b>	<b>to</b>	<b>3 760</b>
756 970 129	to	0 140	765 954 001	to	4 030	792 772 728	to	2 770	810 367 116	to	7 140
757 059 613	to	9 630	766 120 286	to	0 320	792 903 511	to	3 990	810 526 351	to	6 500
757 078 540	to	8 560	766 125 716	to	5 750	793 282 518	to	2 533	810 806 911	to	6 940
757 086 209	to	6 240	766 158 824	to	8 840	794 041 831	to	2 040	810 807 211	to	7 240
757 240 591	to	0 650	766 388 433	to	8 460	794 397 709	to	7 780	811 423 021	to	3 110
757 277 371	to	7 700	766 509 421	to	9 660	794 581 741	to	2 040	811 517 221	to	7 239
757 291 591	to	2 730	766 572 901	to	3 020	794 592 122	to	2 150	811 721 101	to	1 130
757 964 251	to	4 280	766 748 500	to	8 521	795 032 251	to	2 340	812 025 721	to	5 900
758 067 001	to	7 090	767 024 341	to	4 370	795 796 291	to	6 350	812 093 073	to	3 130
758 105 221	to	5 250	767 326 471	to	6 590	796 070 139	to	0 160	812 100 821	to	0 840
758 324 941	to	5 000	767 332 561	to	2 950	796 143 151	to	3 630	812 465 251	to	5 610
758 593 628	to	3 650	768 009 841	to	9 960	796 159 725	to	9 740	812 918 341	to	8 670
758 709 038	to	9 060	768 011 489	to	1 520	796 169 306	to	9 340	812 918 701	to	8 760
758 744 101	to	4 160	768 177 980	to	7 990	796 373 406	to	3 430	813 050 491	to	0 520
758 850 883	to	0 900	768 391 081	to	1 170	796 602 961	to	3 050	813 073 171	to	3 200
758 860 951	to	1 550	768 661 569	to	1 650	796 708 441	to	8 500	813 398 476	to	8 550
759 152 851	to	2 880	769 000 051	to	0 080	796 886 281	to	6 430	813 713 971	to	4 000
759 740 941	to	1 090	769 050 841	to	0 900	796 901 701	to	2 000	813 858 121	to	8 150
<b>760 004 596</b>	<b>to</b>	<b>4 610</b>	769 159 081	to	9 178	796 975 466	to	5 590	814 789 330	to	9 349
760 118 191	to	8 250	769 737 496	to	7 510	797 272 917	to	2 950	814 984 656	to	4 680
760 155 001	to	5 090	769 778 491	to	8 730	797 519 441	to	9 460	815 016 020	to	6 030
760 378 002	to	8 020	769 827 331	to	7 450	797 519 731	to	0 240	815 199 410	to	9 420
760 692 722	to	2 749	<b>770 216 071</b>	<b>to</b>	<b>6 100</b>	797 535 181	to	5 330	815 240 491	to	0 520
761 055 460	to	5 480	770 723 281	to	3 400	797 646 151	to	6 180	815 755 591	to	5 620
761 169 781	to	9 810	770 790 451	to	0 480	798 040 053	to	0 080	815 755 622	to	5 650
761 504 941	to	5 120	770 915 150	to	5 490	798 055 813	to	5 830	815 806 381	to	6 680
761 516 836	to	6 910	771 455 551	to	5 610	798 055 891	to	5 950	816 126 834	to	6 870
761 613 588	to	3 600	771 609 661	to	9 690	798 326 371	to	6 520	816 156 721	to	6 780
761 688 631	to	8 690	771 932 551	to	2 580	798 339 167	to	9 210	816 580 903	to	0 920
761 805 199	to	5 240	772 057 224	to	7 440	798 562 411	to	2 440	816 945 571	to	5 600
761 826 106	to	6 120	772 162 660	to	3 070	798 632 461	to	2 490	817 253 011	to	3 280
761 881 171	to	1 560	772 718 615	to	8 640	798 807 151	to	7 510	817 763 881	to	4 060
761 975 641	to	5 670	772 940 140	to	0 160	798 944 761	to	5 030	818 330 562	to	0 610
761 975 886	to	5 895	772 970 886	to	0 940	799 118 616	to	8 640	818 459 641	to	9 670
762 304 144	to	4 170	773 009 419	to	9 430	799 133 191	to	3 220	818 926 273	to	6 320

818 950 351	to	0 380	821 903 731	to	3 910	825 472 171	to	2 200	828 539 316	to	9 340
818 962 492	to	2 530	821 927 841	to	7 850	826 042 898	to	2 920	828 539 341	to	9 370
819 032 341	to	2 730	822 505 801	to	5 830	826 226 644	to	6 670	828 732 331	to	2 390
819 127 054	to	7 080	822 703 442	to	3 470	826 582 951	to	3 430	828 807 781	to	7 840
819 278 540	to	8 670	822 900 991	to	1 020	826 720 201	to	0 230	828 830 952	to	0 963
819 544 681	to	4 740	822 925 951	to	6 100	827 005 671	to	5 830	828 939 781	to	0 050
819 928 441	to	8 650	823 284 931	to	4 990	827 287 861	to	7 950	829 002 721	to	2 870
<b>820 034 406</b>	<b>to</b>	<b>4 430</b>	823 293 031	to	3 210	827 291 502	to	1 520	829 005 301	to	5 540
820 070 761	to	1 540	823 556 011	to	6 100	827 575 381	to	5 470	829 080 241	to	0 330
820 191 342	to	1 360	824 078 341	to	8 370	827 609 085	to	9 100	829 160 986	to	1 000
820 274 856	to	4 880	824 156 325	to	6 340	827 619 811	to	9 840	829 176 841	to	6 930
820 600 171	to	0 230	824 511 252	to	1 270	827 883 511	to	3 600	829 471 561	to	1 590
821 172 241	to	2 360	824 588 281	to	8 370	828 160 441	to	0 530	829 561 065	to	1 080
821 229 661	to	9 720	825 140 397	to	0 460	828 376 201	to	6 260	829 566 481	to	6 510
821 229 743	to	9 780	825 409 651	to	9 680	828 441 602	to	1 630	829 569 931	to	9 960

— Criminal Investigations Group, U.S. Postal Inspection Service, 11-3-22

## Verifying U.S. Postal Service Money Orders

Follow these steps to cash a Postal Service™ money order:

1. Check that the amount does not exceed the legal limit: \$1,000 for domestic, and \$700 for international Postal Service money orders.
2. Check that the proper security features are present:
  - When held to the light, a watermark of Benjamin Franklin is repeated from top to bottom on the left side.
  - When held to the light, a dark line (security thread) runs from top to bottom with the word “USPS” repeated.
  - When there is discoloration around the dollar amounts, this might indicate the amounts were changed.

These appear in Postal Service Notice 299, *U.S. Postal Money Order Reference Card*, or online at [usps.com/shop/money-orders.htm](https://usps.com/shop/money-orders.htm).

3. If the money order seems suspicious, call the U.S. Postal Service Money Order Verification System at 866-459-7822.

Provide this information to local banks and retailers, as they also receive Postal Service money orders for cashing.

— *Delivery and Retail Customer Service Operations, 11-3-22*

## Counterfeit Canadian Money Order Forms

### Do Not Cash

To be posted and used by retail window employees. As directed, destroy previous notices. Destroy all interim notices when the numbers listed appear in the *Postal Bulletin*.

671,819,086	683,594,542	687,262,503
676,612,640	684,683,610	687,262,525
677,891,039	686,619,878	687,262,526
678,282,493	686,619,886	687,287,578
678,916,031	686,619,887	687,287,581
679,552,215	686,794,382	687,287,582
679,694,334	686,794,426	694,063,898
679,751,983	686,794,427	694,063,899
679,800,207	686,794,431	694,063,980
681,130,536	687,262,502	701,321,725
681,844,376		

— *Criminal Investigations Group, U.S. Postal Inspection Service, 11-3-22*

## Toll-Free Number Available to Verify Canadian Money Orders

The Canada Post Corporation has a toll-free number that cashing agents can call to verify the validity of Canadian Postal Money Orders. The number is 800-563-0444.

This toll-free number is printed on the back of the Canadian Postal Money Orders.

— *Criminal Investigations Group, U.S. Postal Inspection Service, 11-3-22*

## Other Information

### Overseas Military/Diplomatic Mail

Mail addressed to military and diplomatic post offices overseas is subject to certain conditions or restrictions of mailing regarding content, preparation, and handling. The APO/FPO/DPO table outlines these conditions by APO/FPO/DPO ZIP Codes™ through the use of footnoted mailing restrictions codes (see the [Restrictions](#) page following the table).

Acceptance clerks must use the table with the Retail System Software terminal to determine which APO/FPO/DPO ZIP Codes are active and which conditions of mailing apply.

The entries under “Changes” appear in bold in the following APO/FPO/DPO table:

### Changes

APO/FPO/DPO	Action	Effective Date	See Restrictions
DPO AE 09174	Remove I3, Z	10/19/2022	B-C-C2-F-F1-F3-L-N-R-R1-S-T-V-X-Z1
APO AE 09205	Open	11/01/2022	A-B-C-C2-E2-F-F3-M-N-R-S-T-V-X
DPO AE 09288	Open	10/13/2022	A-B-C-C1-C2-E2-F1-F3-H-H1-J-L-M-N-R-R1-S-T-V-X-Z1
DPO AE 09295	Open	10/27/2022	B-C-C1-C2-E2-F1-F3-H1-J-L-M-N-R-R1-S-T-V-X-Z1
FPO AP 96351	Add C, R1, T and remove W	10/13/2022	B-C-C2-F-F1-F2-F3-H-M-R-R1-S-T-Z1

We have eliminated “Not Active” entries from the table below to save space and paper.

### APO/FPO/DPO Table

APO/FPO/DPO	See Restrictions	APO/FPO/DPO	See Restrictions	APO/FPO/DPO	See Restrictions	APO/FPO/DPO	See Restrictions
09002	A-B-C2-F-F3-H-N-Q-R-S-V-Z-Z1	09018	A-B-C-C2-F-F3-H-N-Q-R-S-V-Z-Z1	09096	B-C-C2-D-E-F-F3-H-M-R-S-U	09138	B-C-C2-D-F-F3-H-M-R-S-U
09003	B-C-C2-D-E-F-F3-H-M-P-R-S-U	09020	B-C-C2-D-E-F-F3-H-M-R-S-U	09101	A-B-C2-F-F3-H-N-Q-R-S-V-Z-Z1	09140	B-C-C2-D-E-F-F3-H-M-R-S-U
09004	B-C-C2-D-E-F-F3-H-M-R-S-U	09021	B-C-C2-D-E-F-F3-H-M-R-S-U-Z1	09103	A-B-C-C2-F3-H-N-Q-R-S-V-Z-Z1	09142	B-C-C2-D-E-F-F3-H-M-R-S-U
09005	B-C-C2-D-E-F-F3-H-M-P-R-S	09034	B-C-C2-D-E-F-F3-H-M-R-S-U	09104	B-C-C2-D-F3-H-M-R-S-U-Z1	09154	B-C-C2-D-E-F-F3-H-M-R-S-U
09006	B-C-C2-D-E-F-F3-H-M-R-S-U	09044	B-C-C2-D-F-F3-H-R-S-U	09107	B-C-C2-D-E-F-F3-H-M-R-S-U	09160	B-C-C2-D-F-F1-F3-H-J-L-M-N-R-R1-T-U-V-Z1
09008	A-B-C2-F-F3-H-N-Q-R-S-V-Z-Z1	09046	B-C-C2-D-E-F-F3-H-M-R-S-U	09112	B-C-C2-D-E-F-F3-H-M-R-S-U	09170	A-B-C2-F-F1-F3-J-L-M-N-R-R1-S-T-V-X-Z1
09009	B-C-C2-D-E-F-F3-H-M-R-S-U-Z1	09049	B-C-C2-D-E-F-F3-H-M-R-S-U	09114	B-C-C2-D-E-F-F3-H-M-R-S-U	09171	A-B-C1-C2-E3-F-F1-F3-J-L-M-N-R-R1-S-T-V-X-Z1
09010	B-C-C2-D-E-F-F3-H-M-R-S-U2	09053	B-C-C2-D-E-F-F3-H-M-R-S-U	09115	A-B-C2-F-F3-H-N-R-S-V-Z1	09172	B-C-C2-D-E-F-F3-H-M-R-S-U
09011	B-C-C2-D-E-F-F3-H-M-R-S	09060	B-C-C2-D-E-F1-F3-H-M-N-R-S-U-Z1	09116	A-B-C2-F-F3-H-N-R-S-V-Z1	09173	B-C-C2-D-E-F-F3-H-M-R-S-U
09012	B-C-C2-D-E-F-F3-H-M-R-S-U-Z1	09067	B-C-C2-D-E-F-F3-H-M-R-S-U	09123	B-C-C2-D-E-F-F3-H-M-R-S-U-Z1	<b>09174</b>	<b>B-C-C2-F-F1-F3-L-N-R-R1-S-T-V-X-Z1</b>
09013	B-C-C2-D-E-F-F1-F3-H-M-R-S-U-Z1	09068	B-C-C2-D-E-F-F3-H-R-S-U-Z1	09126	B-C-C2-F3-H-M-P-R-S-Z1	09175	A-B-C1-C2-E2-F-F1-F3-H1-J-L-M-N-R-R1-S-T-V-W-X-Z1
09014	B-C-C2-D-E-F-F3-H-M-P-R-S-U	09069	A-B-C-C2-D-E-F-F3-H-N-R-S-U-V	09128	B-C-C2-D-E-F-F3-H-M-R-S-U	09176	A-B-C2-F-F1-F3-J-L-M-N-R-R1-S-T-V-X-Z1
09015	A-B-C-C1-C2-F-F1-F3-J-L-M-N-R-R1-S-V-Z1	09079	B-C-C2-D-E-F-F3-H-M-R-S-U	09131	B-C-C2-D-E-F-F3-H-M-R-S-U	09177	B-C-C2-D-E-F-F3-H-M-R-S-U
09016	B-C-C2-D-E-F1-F3-H-M-R-S-U	09094	B-C-C2-D-F3-H-M-P-R-S-Z1	09135	A-B-C2-F-F3-H-N-R-S-U-V-Z1		
09017	A-B-C2-F-F3-H-N-Q-R-S-V-Z-Z1	09095	B-C-C2-D-E-F-F3-H-M-R-S-U	09136	B-C-C2-D-E-F-F3-H-M-P-R-S-U		

APO/ FPO/ DPO	See Restrictions	APO/ FPO/ DPO	See Restrictions	APO/ FPO/ DPO	See Restrictions	APO/ FPO/ DPO	See Restrictions
09178	B-C1-C2-E2-F1-F3-I3-L-M-N-R-S-T-V-X-Z-Z1	09281	A-B-C1-C2-E2-E3-F1-F3-H-H1-J-L-M-N-R-R1-S-T-V-X-Z1	09312	A-B-C1-C2-E2-F-F1-F3-H1-I3-L-M-N-R-R1-S-T-U-U4-V-Z-Z1	09487	A-B-C-C1-C2-E2-F1-F3-I3-L-M-N-R-R1-S-T-V-W-X-Z-Z1
09179	A-B-C-C1-C2-F-F1-F3-J-L-M-N-R-R1-S-T-V-X-Z1	09282	A-B-C1-C2-E2-E3-F1-F3-H-H1-J-L-M-N-R-R1-S-T-V-X-Z1	09315	A-B-C1-E2-F-F3-N-R-R1-S-V-Z1	09488	A-B-C-C1-C2-E2-F3-J-L-M-N-S-T-V-W-X-Z1
09180	B-C-C2-D-E-F-F3-H-M-R-S-U	09283	A-B-E-E1-F-F3-L-M-N-R-S-T-V-X-Z1	09316	A-B-C1-E2-F-F1-F3-H1-I3-M-N-R-R1-S-T-V-Z-Z1	09489	A-B-C-C1-C2-E2-F1-F3-L-M-N-R-R1-S-T-V-W-X-Z1
09186	B-C-C2-D-E-F-F3-H-M-P-R-S-U	09284	A-B-C-C2-F-F3-I3-L-M-N-R-S-T-V-X-Z-Z1	09321	A-B-C1-C2-E2-F-F3-H1-M-N-R-R1-S-V-Z1	09490	A-B-C1-C2-E2-F-F1-F3-H1-J-L-M-N-R-R1-S-T-V-X-Z1
09203	A-B-C-C1-C2-F-F1-F3-I3-J-L-M-N-R-R1-T-V-Z-Z1	09285	A-B-C-E-E-1-F1-F3-H-I3-L-M-N-R-S-T-V-X-Z1	09330	A-B-C1-C2-D-E-E2-F-F1-F3-H-H1-M-R-R1-S-V-Z1	09491	A-B-C1-C2-E2-F1-F3-H1-J-L-M-N-R-R1-S-T-V-Z1
09204	B-C-F3-M-N-R-S-V-Z1	09287	B-C2-E1-F1-F3-J-L-N-R-S-T-V-X-Z1	09333	A-B-C-C1-C2-E2-F-F1-F3-H1-I3-M-N-R-R1-S-V-V1-Z-Z1	09494	B-C-C1-C2-F3-M-R-S-U-Z1
<b>09205</b>	<b>A-B-C-C2-E2-F-F3-M-N-R-S-T-V-X</b>	<b>09288</b>	<b>A-B-C-C1-C2-E2-F1-F3-H-H1-J-L-M-N-R-R1-S-T-V-X-Z1</b>	09343	A-B-C1-C2-F-F3-M-N-R-R1-S-V-Z1	09498	B-C1-C2-F-F1-F3-J-L-N-R-R1-T-V-Z1
09211	B-C-C2-D-E-F-F3-H-M-P-R-S-U	09289	B-E2-F1-F3-H1-J-L-M-N-R-R1-S-T-U2-V-X-Z1	09348	A-B-C1-E2-F-F1-F3-H1-I3-M-N-R-R1-S-T-V-Z-Z1	09501	B-V
09213	B-C2-F-F1-F3-H-J-L-M-N-R-R1-T-U-V-Z1	09290	A-B-F1-F3-J-L-M-N-R-S-T-U2-V-X-Z1	09357	A-B-C1-E2-F-F3-H1-M-R-V-Z1	09502	B-V
09214	B-C-C2-D-E-F-F3-H-M-R-S-U-Z1	09291	B-C-C1-C2-E2-F1-F3-H1-L-N-R-R1-S-T-V-X-Z1	09365	A-B-C-C1-E2-F-F3-H1-M-N-R-V-Z1	09503	B-F-F1-R-R1-V
09216	B,C,F1,F3,M,N,R,S,V,Z1	09292	A-B-C-C2-E-E2-E3-F1-F3-H-H1-J-L-M-N-R-R1-S-T-V-X-Z1	09366	A-B-C-C1-E2-F-F1-F3-H-H1-M-R-R1-S-V-Z1	09504	B-V
09227	B-C-C2-D-E-F-F3-H-M-R-S-U	09293	A-B-C-C1-C2-E-E2-F1-F3-I3-L-M-N-R-S-T-V-X-Z-Z1	09401	B-C-C1-C2-F3-M-R-S-U-Z1	09505	B-V
09240	A-B-C1-C2-F-F3-H-N-R-S-V	09294	B-C-C1-C2-E2-F1-F3-H1-L-N-R-R1-S-T-V-X-Z1	09403	B-C-C1-C2-F3-M-R-S-U-Z1	09506	B-V
09241	A-B-C-C2-F3-N-R-S-U-Z1	<b>09295</b>	<b>B-C-C1-C2-E2-F1-F3-H1-J-L-M-N-R-R1-S-T-V-X-Z1</b>	09410	C-C2-F-F1-F3-N-R-S-U2	09507	B-V
09242	A-B-C1-C2-F-F3-H-N-R-S-V	09301	A-B-C1-C2-E2-F-F1-F3-H1-I3-L-M-N-R-R1-S-T-U4-V-Z-Z1	09421	B-C-C1-C2-F3-M-R-S-U-Z1	09508	B-C-C2-F-F3-R-R1-S-V
09250	B-C-C2-D-E-F-F3-H-M-R-S-U	09304	A-C1-C2-F-F1-F3-H-M-N-R-S-V-Z-Z1	09447	B-C-C1-C2-F3-M-R-S-U-V-Z1	09509	B-C-C2-F-F3-R-R1-S-V
09261	B-C-C2-D-E-F-F3-H-M-N-R-S-U-V-Z1	09305	A-B-C1-E2-F-F1-F3-H1-I3-M-N-R-R1-S-T-V-Z-Z1	09454	B-C-C1-C2-F3-M-R-S-U-V-Z1	09510	B-C-C2-F-F3-R-R1-S-V
09263	B-C-C2-D-E-F-F3-H-M-R-S-U	09306	A-B-C1-E2-F-F1-F3-H1-R-R1-S-U2-V-Z1	09456	B-C-C1-C2-F3-M-N-R-S-U-V-Z1	09511	B-C-C2-F-F3-R-R1-S-V
09264	B-C-C2-D-E-F-F3-H-M-R-S-U	09307	B-C-C2-F-F3-N-R-R1-S-Z1	09459	B-C-C1-C2-F3-M-R-S-U-Z1	09512	B-C-C2-F-F1-F3-R-R1-S-V
09265	B-C-D-F-F1-H-J-L-M-N-R-S-T-U-V-Z1	09309	A-B-C-C1-C2-E2-F-F1-F3-H1-M-N-R-R1-S-V-Z1	09461	B-C-C1-C2-F3-M-P-R-S-U-Z1	09513	B-C-C2-F-F1-F3-R-R1-S-V
09266	A-B-C2-F3-S-U-R-V-Z1	09310	A-B-C1-C2-E2-F-F1-F3-H1-I3-L-M-N-R-R1-S-T-U4-V-Z-Z1	09463	B-C-C1-C2-F3-M-R-S-U-Z1	09514	B-C-C2-F-F1-F3-R-R1-V
09276	A-B-F-F3-I3-L-M-N-R-S-T-V-X-Z-Z1	09311	A-B-C1-C2-E2-F-F1-F3-H1-I3-L-M-N-R-R1-S-T-U4-V-Z-Z1	09464	B-C-C1-C2-F3-R-S-U-Z1	09516	B-C-C2-F-V-F3-R-R1-S-F1
09277	A-B-E-E1-E2-F1-F3-I3-L-N-R-S-T-V-X-Z-Z1			09467	B-E-E1-F-F3-J-L-M-N-R-S-T-V-X-Z1	09517	B-C-C2-F-F1-F3-R-R1-S-V
09278	A-B-F-F3-I3-L-M-N-R-S-T-V-X-Z-Z1			09468	B-C-C1-C2-F3-M-R-S-U-Z1	09520	B-F-F1-F3-R-R1-S-V
09279	A-B-E-E1-F-F3-I3-L-M-N-R-S-T-V-X-Z-Z1			09469	B-C-C1-C2-F3-R-S-U-Z1	09522	B-F-F1-F3-R-S-V
09280	A-B-B2-C-C1-C2-E-E2-F1-F3-H-I3-L-M-N-R-S-T-V-W-X-Z-Z1			09470	B-C-C1-C2-F3-M-R-S-U-Z1	09523	B-C-C2-F-F1-F3-R-R1-S-V
						09524	B-C-C2-F-F1-F3-R-R1-S-V
						09532	B-C-C2-F-F1-F3-R-R1-S-V
						09533	B-V
						09534	B-F-F1-F3-R-R1-S-V
						09541	A-B-C-F-F3-M-N-S-V-Z1

APO/ FPO/ DPO	See Restrictions	APO/ FPO/ DPO	See Restrictions	APO/ FPO/ DPO	See Restrictions	APO/ FPO/ DPO	See Restrictions
09542	A-B-C-F-F3-M-N-S-V-Z1	09592	B-C-C2-F-F1-F3-R-R1-S-V	09643	B-C-C2-F3-M-R-S-U-V-Z1	09728	A-B-C-C1-C2-F-F1-F3-J-L-N-R-R1-T-V-Z1
09543	A-B-C-F-F3-M-N-S-V-Z1	09593	B-F-F1-F3-R-S-V	09645	B-C-C1-E1-E2-F-F1-F3-M-R-S-U-X-Z1	09729	B-C-C2-F-F3-N-R-R1-S-U-V-Z1
09544	A-B-C-F-F3-M-N-S-V-Z1	09594	B-C-C1-C2-F-F1-F3-R-R1-S-V	09647	B-C2-F1-F3-M-N-R-S-U-Z1	09730	A-B-C1-C2-F-F1-F3-J-L-M-N-R-R1-T-V-Z1
09545	A-B-C-F-F3-M-N-S-V-Z1	09595	B-C-C2-F-F1-F3-I3-J-R-R1-S-V-V1-Z1	09648	B-C2-F3-N-R-S-U-V-Z1	09731	A-B-C1-C2-F-F1-F3-J-L-M-N-R-R1-T-V-Z1
09550	B-C-C2-F-F1-F3-R-R1-S-V	09596	B-F-F1-R-R1-V	09649	B-C2-F3-N-R-S-U-Z1	09732	B-F-F3-N-S-V-Z-Z1
09554	B-C-C2-F-F1-F3-R-R1-S-V	09599	B-F-F1-R-R1-V	09701	A-B-C1-C2-F-F1-F3-J-L-M-N-R-R1-T-V-Z1	09733	B-F-F3-N-R-S-V-Z
09556	B-F-F1-R-R1-V	09600	B-C-C2-F-F1-F3-R-S-U-Z1	09702	B-C-C2-F-F1-M-R-R1-S-U	09734	A-B-C-C1-C2-F-F1-F3-I3-J-L-M-N-R-R1-T-V-Z-Z1
09564	B-C-C2-F-F1-F3-R-R1-S-V	09602	B-C-C2-F-F1-F3-N-R-S-U-V	09704	B-C-F-F1-F3-R-R1-S-U2-V	09735	B-F3-N-R-S-V-Z-Z1
09565	B-C-C2-F-F1-F3-R-R1-S-V	09603	B-C-C2-F-F1-F3-R-S-U-V-Z1	09705	B-C-C1-C2-F1-F3-M-R-R1-S-U	09736	A-B-C1-F-F1-F3-J-L-M-N-R-R1-T-V-Z1
09566	B-C-C2-E2-E3-F-F1-F3-R-R1-S-V	09604	B-C-C2-F-F1-F3-P-R-S-U-V-Z1	09706	B-C-C2-F3-M-N-R-S-U-V-Z1	09737	A-B-C1-C2-F-F1-F3-I3-J-L-M-N-R-R1-T-V-W-Y-Z-Z1
09567	B-C-C2-E2-E3-F-F1-F3-R-R1-S-V	09605	B-C-C2-D-F-F3-H-M-R-S-U-V	09707	B-C2-F-F1-F3-J-L-M-N-R-R1-T-V-Z1	09738	A-B-C1-C2-F-F1-F3-J-L-M-N-R-R1-T-V-Z1
09568	B-C-C2-F-F1-F3-R-R1-S-V	09606	B-C-C2-D-F-F3-H-M-R-S-U-V	09708	B-C-C1-C2-F-F3-M-R-R1-S-U	09739	A-B-C1-C2-F-F1-F3-J-L-M-N-R-R1-T-V-Z1
09569	B-C-C2-E2-E3-F-F1-F3-R-R1-S-V-Z1	09608	B-C-F-F3-N-R-S-U-V-Z1	09709	B-C1-C2-E2-F-F1-F3-H-H1-J-L-N-R-R1-T-V-Z1	09741	A-B-C1-C2-E2-F-F1-F3-H1-J-L-M-N-R-R1-T-V-W-Y-Z1
09570	B-C-C2-F-F1-F3-R-R1-S-V	09609	B-C-C2-F-F3-N-R-S-U-V-Z1	09710	B-C-C1-F-F1-J-L-M-N-R-R1-T-U-V-Z1	09742	A-B-C2-F-F1-F3-J-L-M-N-R-S-T-V-Z1
09573	B-C-C2-E2-E3-F-F1-F3-R-R1-S-V-Z1	09610	B-C-C2-F-F1-F3-M-R-S-U-V-Z1	09711	A-B-C-C2-E2-F-F1-F3-M-N-R-S-T-V-X	09743	A-B-C2-F-F3-H-N-Q-R-S-V-Z-Z1
09574	B-F-F1-R-R1-V	09613	B-C-C2-F-F3-N-R-S-U-V	09712	A-B-C2-F-F3-H-R-S-U-V-Z1	09744	A-B-C1-C2-F-F1-F3-J-L-M-N-R-R1-T-V-Z1
09575	B-C-C2-F-F1-F3-R-R1-S-V	09614	A-B-C1-C2-E2-F-F1-F3-H1-J-L-M-N-R-R1-T-V-W-Z1	09714	B-C-C1-C2-F-F3-M-R-R1-S-U	09745	A-B-C2-F-F1-F3-M-N-R-R1-S-V-Z1
09576	B-C-C2-F-F1-F3-R-R1-S-V	09618	B-C-C2-F-F3-R-S-U-Z1	09715	B-F-F1-J-L-M-N-R-T-V-Z1	09748	A-B-C1-C2-F-F1-F3-J-L-M-N-R-R1-T-V-Z1
09577	B-C-C2-F-F1-F3-R-R1-S-V	09620	B-C-C2-F-F3-R-S-U-V-Z1	09716	B-C-C2-F-F1-F3-J-L-M-N-R-R1-T-V-Z1	09749	A-B-C2-F-F3-H-N-R-S-U-V-Z1
09578	B-C-C2-F-F1-F3-R-R1-S-V	09621	B-C-F-F3-R-U-Z1	09717	A-B-C-C2-F3-M-R-S-V-W-Z1	09750	A-B-C1-C2-F-F1-F3-J-L-M-N-R-R1-T-V-Z1
09579	B-C-C2-F-F1-F3-R-R1-S-V	09622	B-C-C2-F-F3-R-S-U-Z1	09718	B-F-F1-J-L-M-N-R-T-U-V-Z1	09751	B-C-C2-D-E-F-F3-H-M-R-S-U
09581	B-C-C2-F-F1-F3-R-R1-S-V	09623	B-C-C2-F-F3-R-S-U-V-Z1	09719	B-C-C2-D-F3-M-R-S-U-V-Z1	09752	B-C-C2-D-F-F3-H-R-S-U
09582	B-C-C2-F-F1-F3-R-R1-S-V	09624	B-C-C2-F-F1-F3-I3-L-N-R-R1-T-U-V-Z-Z1	09720	B-C2-F3-M-R-S-U-V-Z1	09753	A-B-C-C1-C2-D-E-F1-F3-H-M-N-R-S-V-W-Z1
09583	B-C-C2-F-F1-F3-R-R1-S-V	09625	B-C-C2-F-F3-N-R-S-U-Z1	09722	A-B-C2-F-F3-H-N-Q-R-S-V-Z-Z1	09754	A-B-C2-F-F3-H-L-N-Q-R-S-V-Z-Z1
09586	B-C-C2-F-F1-F3-R-R1-S-V	09627	B-C-C2-F-F3-R-S-U-V-Z1	09723	B-C2-F-F1-F3-J-L-M-N-R-R1-T-V-Z1	09755	A-B-C-C1-C2-D-F-F1-F3-J-L-M-N-Q-R-R1-S-T-V-Z1
09587	B-C-C2-F-F1-F3-R-R1-S-V	09630	B-C-C2-F-F3-R-S-U-V	09724	B-C-C1-C2-F-F3-M-R-R1-S-U	09759	A-B-C-C1-C2-E2-F-F1-F3-J-L-N-R-R1-T-V-Z1
09588	B-C-C2-F-F1-F3-R-R1-S-V	09633	B-C-C2-D-F-F3-M-R-S-U-U1-U2-U3-V-Z1	09725	A-B-C2-F-F3-H-N-Q-R-S-V-V1-Z-Z1	09761	B-C2-F-F1-F3-M-R-R1-S-V-Z-Z1
09589	B-F-F1-F3-R-S-V	09634	A-B-C2-F-F3-M-N-R-S-V	09726	B-F-F1-J-L-M-N-R-T-U-V-Z1		
09590	B-C-C2-F-F1-F3-R-R1-S-V	09636	B-C-C2-F-F3-R-S-U-V-Z1	09727	A-B-C1-C2-F-F1-F3-J-L-M-N-R-R1-T-V-Z1		
09591	B-C-C2-F-F1-F3-R-R1-S-V	09642	B-C2-F-F1-F3-J-L-M-N-R-T-U-V				

APO/ FPO/ DPO	See Restrictions	APO/ FPO/ DPO	See Restrictions	APO/ FPO/ DPO	See Restrictions	APO/ FPO/ DPO	See Restrictions
09762	A-B-C2-E3-F-F1-F3-J-L-N-R-R1-T-V-Z1	09820	A-B-C2-F-F1-F3-H1-J-L-M-N-R-R1-T-V-Z1	09857	A-B-C2-E2-F-F1-F3-13-L-M-N-R-R1-S-T-V-Z-Z1	09909	A-B-C2-F-F1-F3-N-R-R1-S-V-V1-Z1
09769	A-B-C-C1-C2-F-F1-F3-J-L-M-N-R-R1-T-V-Z1	09821	A-B-C-C2-F-F3-N-R-S-V-Z1	09858	A-B-C-C1-C2-E2-E3-F1-F3-H-H1-J-M-N-R-R1-S-U-V-Z1	09974	B-F1-F3-J-L-M-N-R-S-T-U2-V-X-Z1
09777	A-B-C-C1-C2-E1-F-F1-F3-J-L-M-N-R-R1-T-V-Z1	09822	A-B-C-C2-F-F3-M-R-S-V-Z1	09859	B-C-C1-C2-E2-E3-F-F1-F3-H1-R-R1-S-U-Z1	09975	B-F1-F3-I3-L-M-N-R-S-T-U2-V-X-Z-Z1
09780	A-B-C2-F-F3-H-N-R-S-V	09823	A-B-C1-C2-F-F1-F3-J-L-M-N-R-R1-T-V-Z1	09860	A-B-C2-F-F1-F3-J-L-M-N-R-R1-S-T-V-Z1	09976	B-F1-F3-J-L-M-N-R-S-T-U2-V-X-Z1
09801	A-B-C1-E2-F-F3-H1-M-N-R-R1-S-V-Z1	09824	A-B-C-C2-F-F3-M-R-S-V-Z1	09862	A-B-C-C2-F-F1-F3-I3-L-M-N-R-R1-S-T-V-X-Z-Z1	09977	B-F1-F3-J-L-M-N-R-S-T-U2-V-X-Z1
09802	A-B-C-C2-D-F-F1-F3-H-H1-I3-L-M-N-R-R1-S-T-V-W-Z-Z1	09825	A-B-C1-C2-F-F1-F3-J-L-M-N-R-R1-T-V-Z1	09862	A-B-C-C2-F-F1-F3-I3-L-M-N-R-R1-S-T-V-X-Z-Z1	09978	B-C-C2-D-E1-F-F1-F3-H-H1-M-N-R-R1-S-T-X-Z1
09803	A-B-C-C2-E-E2-E3-F1-F3-H-H1-J-M-N-R-R1-S-U-V-Z1	09826	A-B-C1-C2-E1-E2-E3-F-F1-F3-J-L-M-N-R-R1-T-V-W-Z1	09864	A-B-C-C1-C2-E2-F1-F3-L-M-N-R-R1-S-T-V-W-Z1	09980	B-C-C1-C2-F1-F3-J-L-M-N-R-R1-S-T-V-X-Z1
09804	A-B-C-C2-F-F1-F3-M-N-R-S-V-Z1	09827	A-B-F-F1-J-L-M-N-R-T-V-Z1	09867	A-B-C-C1-C2-E2-F1-F3-L-M-N-R-R1-S-T-V-W-Z1	09981	B-C-C1-C2-F1-F3-J-L-M-N-R-R1-S-T-V-X-Z1
09805	B-C-C2-E2-E3-F-F1-F3-R-R1-S-Z1	09828	A-B-C1-C2-F-F1-F3-I3-L-N-R-R1-T-V-Z-Z1	09869	A-B-C1-C2-E2-F1-F3-L-M-N-R-R1-S-T-V-W-Z1	09982	B-C-C1-C2-F1-F3-J-L-M-N-R-R1-S-T-V-X-Z1
09807	A-B-C1-C2-E2-F-F1-F3-H1-I3-M-N-R-R1-S-T-V-Z-Z1	09829	B-C-N-R-V-Z1	09870	A-B-C1-C2-E2-F-F1-F3-H1-I3-L-M-N-R-R1-S-T-U4-V-Z-Z1	09983	B-C-C1-C2-F1-F3-J-L-M-N-R-R1-S-T-V-X-Z1
09808	A-B-C1-C2-E2-F-F1-F3-H-H1-J-L-N-R-R1-T-V-Z1	09830	B-C-F-F1-F3-J-L-M-N-R-R1-S-T-V-Z1	09870	A-B-C1-C2-E2-F-F1-F3-H1-I3-L-M-N-R-R1-S-T-U4-V-Z-Z1	09984	B-C-C1-C2-F1-F3-J-L-M-N-R-R1-S-T-V-X-Z1
09809	B-C1-C2-E3-F-F1-F3-J-L-N-T-V-Z1	09831	B-C1-C2-F-F1-F3-J-L-N-R-R1-T-V-Z1	09873	A-B-C1-C2-E2-F-F1-F3-H1-I3-L-M-N-R-R1-S-T-U4-V-Z-Z1	34001	A-B-C1-C2-F-F1-F3-J-L-M-N-R-R1-S-T-V-Z1
09810	A-B-C2-F-F1-F3-N-R-S-V-Z1	09832	A-B-C-C1-C2-E2-E3-F1-F3-H-H1-J-M-N-R-R1-S-V-Z1	09874	A-B-C1-C2-E2-F-F1-F3-H1-I3-L-M-N-R-R1-S-T-U4-V-Z-Z1	34002	B-C1-C2-F-F1-F3-J-L-M-N-R-R1-T-V-Z1
09811	A-B-C-C2-E-E2-E3-F1-F3-H-H1-J-M-N-R-R1-S-U-V-Z1	09833	B-C-C2-E2-E3-F-F1-F3-R-R1-S-U-Z1	09875	A-B-C1-C2-E2-F-F1-F3-H1-I3-L-M-N-R-R1-S-T-U4-V-Z-Z1	34004	B-C1-C2-F-F1-F3-J-L-M-N-R-R1-T-V-Z1
09812	B-E2-E3-F-F1-I-J-L-N-R-T-U-V-Z-Z1	09834	B-C-C2-E2-E3-F-F1-F3-R-R1-S-U-Z1	09877	A-B-C-C2-E-E2-E3-F1-F3-H-H1-J-M-N-R-R1-S-U-V-Z1	34007	B-F-F1-H-J-M-N-R-R1-V-Z1
09813	A-B-C1-C2-E2-E3-F-F1-F3-J-L-N-R-R1-T-V-Z1	09836	A-B-C1-C2-F-F1-F3-J-L-M-N-R-R1-V-Z1	09880	A-B-C1-C2-E2-F-F1-F3-H1J-L--N-R-R1-S-T-U-V-Z1	34008	B-C1-C2-D-E1-F-F1-H-H1-J-L-M-N-R-R1-T-V-Z1
09814	B-C2-E2-E3-F-F1-F3-I3-J-L-N-R-R1-T-V-Z-Z1	09837	B-E2-E3-F1-F3-R-S-V-Z1	09889	B-E2-F-H1-N-R-R1-U2-V-Z1	34009	B-C2-F-F1-F3-R-S-V
09815	A-B-C-C2-E-E2-E3-F1-F3-H-H1-J-M-N-R-R1-S-U-V-Z1	09838	B-C-C2-E2-E3-F-F1-F3-R-S-U-Z1	09892	A-B-C1-C2-E2-F-F1-F3-J-L-M-N-R-R1-T-V-Z1	34010	B-C2-F-F1-F3-R-S-V
09816	A-B-C1-C2-E2-E3-F-F1-F3-J-L-N-R-R1-T-V-Z1	09842	A-B-C1-C2-F-F1-F3-J-L-N-R-R1-T-V-Z1	09895	A-B-C1-C2-E2-F-F1-F3-J-L-M-N-R-T-V-W-Z1	34011	B-C1-C2-E2-F-F1-F3-J-L-M-N-R-R1-T-V-Z1
09817	A-B-C1-C2-E2-E3-F-F1-F3-H-H1-J-L-M-N-R-R1-T-V-Z1	09844	A-B-C1-C2-F-F1-F3-J-L-M-N-R-R1-T-V-Z1	09898	B-C-C1-C2-E2-F-F1-F2-H1-N-R-R1-S-U2-V-Z1	34020	B-C1-C2-F-F1-F3-J-L-M-N-R-R1-T-V-Z1
09818	A-B-C-C2-F-F3-M-R-S-V-Z1	09845	A-B-C1-C2-E3-F-F1-F3-J-L-M-N-R-R1-T-V-Z1	09898	B-C-C1-C2-E2-F-F1-F2-H1-N-R-R1-S-U2-V-Z1	34021	B-C1-C2-F-F1-F3-J-L-M-N-R-R1-T-V-Z1
09819	A-B-C-C1-C2-E2-F-F1-F3-H-H1-M-R-R1-S-V-Z1	09846	A-B-C1-C2-F-F1-F3-J-L-N-R-R1-T-V-Z1	09902	A-B-C1-C2-E2-F-F3-H1-M-R-R1-S-V-Z1	34022	B-C1-C2-F-F1-F3-J-L-M-N-R-R1-T-V-Z1
		09847	B-C-C2-F-F1-F3-J-L-M-N-R-R1-S-T-V-Z1	09903	B-C1-E2-F1-F3-S-V-Z1	34023	B-C1-C2-F-F1-F3-J-L-M-N-R-R1-T-V-Z1
		09848	A-B-C2-F-F3-M-R-S-V-Z1	09904	B-C1-E2-F1-F3-S-V-Z1	34024	B-C1-C2-F-F1-F3-J-L-M-N-R-R1-T-V-Z1
		09853	B-C1-C2-E2-F-F1-F3-H1-N-R-R1-S-U2-V-Z1	09908	A-B-C2-F-F1-F3-N-R-R1-S-V-Z1	34025	B-F-F1-F3-J-L-M-N-R-R1-T-V-Z1
		09854	A-B-C1-C2-F-F1-F3-J-L-N-R-R1-S-T-V-Z1			34030	B-C1-C2-F-F1-F3-J-L-M-N-R-R1-T-V-Z1
		09855	A-B-C-C1-C2-E2-F-F1-F3-H1-M-R-R1-S-U2-V-Z1				

APO/ FPO/ DPO	See Restrictions	APO/ FPO/ DPO	See Restrictions	APO/ FPO/ DPO	See Restrictions	APO/ FPO/ DPO	See Restrictions
34031	B-C1-C2-F-F1-F3-J-L-M-N-R-R1-T-V-Z1	34086	B-C-C1-C2-E2-E3-F-F1-F3-H1-J-R-R1-S-T-V-V1	96264	A-B-C-C2-F1-F3-R-S-U	96350	B-F-F1-F2-F3-H-M-R-S-W-Z1
34032	B-C1-C2-F-F1-F3-J-L-M-N-R-R1-T-V-Z1	34087	B-C-C2-E2-F-F1-F3-R-R1-S-V	96266	A-B-C-C2-F1-F3-R-S-U	<b>96351</b>	<b>B-C-C2-F-F1-F2-F3-H-M-R-R1-S-T-Z1</b>
34033	B-C1-C2-F-F1-F3-I3-L-M-N-R-T-V-Z1	34088	B-C-C2-F-F1-F3-R-R1-S-V	96269	A-B-C-C2-F1-F2-F3-R-S-U-Z1	96362	B-C2-F-F1-F2-F3-H-M-R-S-W-Z1
34034	B-C1-C2-F-F1-F3-I3-L-M-N-R-R1-T-V-Z1	34089	B-C-C2-F-F1-F3-R-R1-S-V	96271	A-F-F3-M-P-R-S-U	96365	B-C-C2-F3-M-R-S-W-V
34035	B-C1-C2-F-F1-F3-H-J-L-M-N-R-R1-T-V-Z1	34090	B-C-C2-F-F1-F3-R-R1-S-V	96273	A-B-C2-F-F1-F3-M-R-S-U	96367	B-C-C2-F3-L-M-R-S-W
34036	B-C1-C2-F-F1-F3-J-L-M-N-R-R1-T-V-Z1	34091	B-C-C2-E2-E3-F-F1-F3-R-R1-S-V-Z1	96275	A-B-F-F1-F3-M-R-S-U	96368	B-C-C2-F3-M-R-S-W
34037	B-C-C1-C2-F-F1-F3-H-J-L-M-N-R-R1-T-V-Z1	34092	B-C-C2-F-F1-F3-R-R1-S-V-Z1	96276	A-B-C-C2-F1-F3-R-S	96370	B-F-F1-F2-H-M-W-Z1
34039	B-C1-C2-F-F1-J-L-M-N-T-V-Z1	34093	B-C-C2-F-F1-F3-R-R1-S-V	96278	A-B-C-C2-F1-F3-R-S-U	96371	B-F-F3-M-R-S-W
34041	B-C1-C2-F-F1-F3-J-L-M-N-R-R1-T-V-Z1	34094	B-F-F1-F3-R-R1-S-V	96283	A-B-F-F1-F3-S-U	96372	B-M-W
34042	A-B-C-F-F1-F3-M-N-R-S-U-V-W-Z1	34095	B-F-F1-R-R1-V	96284	A-B-C2-F-F1-F3-M-R-S-U	96373	B-M-W
34050	B-V	96201	A-B-F-F1-F3-M-R-S-U	96297	A-B-F-F1-F3-R-S-U	96374	B-M-W
34051	B-V	96202	A-B-C2-F-F1-F3-M-R-S-U	96300	A-B-F3-M-R-S-V-Z1	96375	B-F3-M-R-S-W
34052	B-V	96203	A-B-F-F1-F3-M-R-S-U	96301	A-B-C-C2-F-F3-M-N-R-S-U2-W	96376	B-F3-M-R-S-W
34053	B-V	96204	A-B-F-F1-F3-M-R-S-U	96303	B-C1-C2-F-F1-H-J-L-M-N-T-V-W-Z1	96377	B-C-C2-F-F3-M-R-S-W
34054	B-V	96205	A-B-C-C2-F-F1-F3-M-R-S-U	96306	B-F-F1-F2-F3-H-M-R-S-W-Z1	96378	B-M-W
34055	B-C1-C2-F-F1-F3-J-L-M-N-R-R1-T-V-Z1	96206	A-B-C-C2-F-F1-F3-M-R-S-U	96309	B-C-C2-F-F1-F3-M-N-R-S-V-W	96379	B-C2-F3-M-R-S-W
34058	B-C2-F-F1-F2-F3-R-R1-S-V-Z1	96207	A-B-F-F1-F3-M-R-S-U-V	96310	B-F3-M-R-S-W	96380	B-F3-M-R-S-W
34060	B-C1-C2-E2-F-F1-F3-J-L-M-N-R-R1-T-V-Z1	96208	A-B-F-F1-F3-M-R-S-U	96311	B-F3-M-R-S-W	96382	B-F-F3-M-R-S-W
34066	B-C1-C2-F-F1-F3-I3-J-L-M-N-R-R1-S-T-V-X-Z1	96209	A-B-C1-C2-F-F1-J-L-M-N-T-U-V-Z1	96315	B-F-F1-F3-H-M-R-S-W	96384	B-F-F3-M-R-S-W
34067	B-C1-C2-F-F1-F3-J-L-M-N-R-R1-S-T-V-X-Z1	96210	A-B-C1-C2-F-F1-F3-I3-L-M-N-R-R1-T-V-Z1	96319	B-C-C2-F3-M-R-S-W	96385	B-F-F3-M-R-S-W
34068	B-C1-C2-F-F1-F3-J-L-M-N-R-R1-S-T-V-X-Z1	96212	B-F-F1-F2-H-M-W-Z1	96321	B-F-F1-F2-F3-H-M-R-S-W-Z1	96386	B-F3-M-S-W
34069	B-C1-C2-F-F1-F3-I3-J-L-M-N-R-R1-S-T-V-X-Z1	96213	A-B-C-C2-F1-F3-N-R-S	96322	B-F-F1-F2-F3-H-M-R-S-W-Z1	96387	B-F3-M-R-S-W
34072	B-C-C2-F1-F3-J-L-M-N-R-S-T-V-X-Z1	96214	A-B-C-C2-F1-F3-R-S-U	96326	B-C-C2-F-F3-M-R-S-W	96388	B-F3-M-R-S-W
34078	B-F1-F3-N-R-S-V-Z1	96218	A-B-F-F1-F3-M-R-S-U	96328	B-C-C2-F3-M-R-S-W	96389	B-M-W
34080	B-F-F1-R-R1-V	96224	A-B-F-F1-F3-M-R-S-U	96331	A-B-C-C2-F-F1-F3-J-L-M-N-R-S-U2-W	96401	B-C-F-F3-N-R-S-V-V1-Z1
34081	B-F-F1-R-R1-V	96251	A-B-F-F1-F3-M-R-S-U	96332	B-C-C2-F3-M-R-S-V-W	96502	A-C-C1-C2-F-F1-F3-J-M-N-R-R1-S-T-U-V
34082	B-F-F1-R-R1-V	96257	A-B-F-F1-F3-S-U	96333	B-C2-F-F1-F3-M-R-R1-S-W	96504	A-B-C-C1-C2-F-F1-F3-I3-L-M-N-R-R1-T-V-W-Z1
34083	B-F-F1-R-R1-V	96258	A-F-F3-M-P-R-S-U	96336	A-B-C-C2-F-F3-M-R-S-U2-W	96505	A-B-C-C1-C2-F-F1-F3-I3-L-M-N-R-R1-S-T-V-W-Z1
34084	B-F-F1-R-R1-V	96260	A-B-F-F1-F3-M-R-S-U	96337	B-C-C2-F3-M-R-S-V-W	96507	A-B-C1-C2-F-F1-H-J-L-M-N-T-V-Z1
34085	B-C-C1-C2-E2-E3-F-F1-F3-H1-J-R-R1-S-T-V-V1	96262	A-B-C2-F-F1-F3-R-S-U-V-Z1	96338	B-C2-F-F1-F3-M-R-R1-S-W	96510	B-I3-N-V
				96339	A-B-C-C2-F-F3-M-R-S-U2-W	96511	B-I3-N-V
				96343	A-B-F-F3-M-R-S-U2-W	96515	B-C-D-E1-F-F1-F3-H-H1-M-N-R-S-T-Z1
				96346	A-F-F3-M-P-R-S-U2	96516	B-C-C2-D-E1-E2-F-F1-F3-H-H1-M-N-R-S-T-Z1
				96347	B-F-F1-F2-F3-H-M-R-S-W-Z1	96517	B-C-C2-D-E1-E2-F-F1-F3-H-H1-M-N-R-S-T-Z1
				96349	B-C2-F-F1-F2-F3-H-M-R-S-W-Z1	96520	B-F-N-U3-V
					B-C-C2-F-F1-F2-F3-H-M-R-S-Z1	96521	B-C1-C2-F-F1-J-L-M-N-R-R1-S-T-V-Z1

APO/ FPO/ DPO	See Restrictions	APO/ FPO/ DPO	See Restrictions	APO/ FPO/ DPO	See Restrictions	APO/ FPO/ DPO	See Restrictions
96530	A-B-C1-C2-F-F1-H-H1-J-L-M-N-R-R1-S-T-V-Z1	96578	B-F1-F3-H-J-N-R-S	96632	B-C-C2-F-F1-F3-R-R1-S-V	96671	B-C-C2-F-F1-F3-R-R1-S-V
96531	A-B-C-C2-F-F1-F3-H-M-N-R-S-U-V	96595	B-F-F3-R-S-V-Z1	96633	B-V	96672	B-C-C2-F-F1-F3-R-R1-S-V
96532	A-B-C1-C2-F-F1-H-J-L-M-N-R-R1-S-T-V-Z1	96598	B-C2-F3-I3-N-R-S-V-V1	96641	B-V	96673	B-C-C2-F-F1-F3-R-R1-S-V
96534	A-B-C-C2-F-F1-F2-F3-R-R1-S-U-V-Z1	96599	B-C2-F3-N-R-S-V	96642	B-V	96674	B-C-C2-F-F1-F3-R-R1-S-V
96535	A-B-C1-C2-F-F1-J-L-M-N-R-R1-S-T-V-Z1	96601	B-V	96643	B-F-F1-F3-R-R1-S-V	96675	B-C-C2-F-F1-F3-R-R1-S-V
96537	B-V-Z1	96602	B-V	96644	B-V	96677	B-C-C2-F-F1-F3-R-R1-S-V
96540	B-F1-F2-F3-S-V-Z1	96603	B-V	96645	B-V	96678	B-C-C2-F-F1-F3-R-R1-S-V
96542	B-F-F1-F2-F3-S-V-Z1	96604	B-V	96649	B-C-C2-F-F1-F3-R-R1-S-V	96679	B-C-C2-F-F1-F3-R-R1-S-V
96543	B-F-F1-F2-F3-P-S-V-Z1	96605	B-V+B559	96650	B-F-F1-R-R1-V	96681	B-V
96548	A-B-C2-F-F1-F3-H-M-R-S-U	96606	B-F3-R-S-V	96657	B-C-C2-F-F1-F3-R-R1-S-V	96682	B-C-C2-F-F1-F3-R-R1-S-V
96549	A-B-C1-C2-F-F1-H-J-L-M-N-R-R1-S-T-V-Z1	96607	B-V	96660	B-C-C2-F-F1-F3-R-R1-S-V	96683	B-C-C2-F-F1-F3-R-R1-S-V
96550	A-B-H-M-N-U-V-Z1	96608	B-E2-F-H1-R1-U2-V-Z1	96661	B-C-C2-F-F1-F3-R-R1-S-V	96686	B-C-C2-F-F1-F3-R-R1-S-V
96551	A-B-C1-C2-F-F1-H-J-L-M-N-R-R1-S-T-V-Z1	96609	B-E2-F-H1-R1-U2-V-Z1	96662	B-C-C2-F-F1-F3-R-R1-S-V	96691	B-C-C2-F-F1-F3-R-R1-S-V
96552	B-Z1	96610	B-C-C2-F-F3-H1-R-R1-S-U2-V-Z1	96663	B-C-C2-F-F1-F3-R-R1-S-V	96692	B-C-C2-F-F1-F3-R-R1-S-V
96553	A-B-C2-F-F1-F3-H-M-N-R-S-U	96611	B-C-C2-F-F3-H1-R-R1-S-U2-V-Z1	96664	B-C-C2-F-F1-F3-R-R1-S-V	96693	B-C-C2-F-F1-F3-R-R1-S-V
96554	A-B-C1-C2-F-F1-H-J-L-M-N-R-R1-S-T-V-Z1	96612	B-C-C2-F-F3-H1-R-R1-S-U2-V-Z1	96665	B-C-C2-F-F1-F3-R-R1-S-V	96694	B-C-C2-F-F1-F3-I3-J-R-R1-S-V-Z
96555	A-B-F-F3-M-R-S-V	96613	B-C-C2-F-F3-H1-R-R1-S-U2-V-Z1	96666	B-C-C2-F-F1-F3-R-R1-S-V	96695	B-C-C2-F-F1-F3-R-R1-S-V
96557	A-B-F-F3-M-R-S-V	96615	B-F-F1-R-R1-V	96667	B-C-C2-F-F1-F3-R-R1-S-V	96696	B-F-F1-R-R1-V
96562	A-B-C1-C2-D-E2-E3-F-F1-H-H1-I3-L-M-N-R-R1-S-T-V-Z-Z1	96616	B-C2-F-F1-F3-R-R1-S-V	96668	B-C-C2-F-F1-F3-R-R1-S-V	96698	B-C-C2-F-F1-F3-R-R1-S-V
96577	A-B-C2-F-F3-H-M-N-R-S-U	96619	B-F1-F3-R-S-V	96669	B-C-C2-F-F1-F3-R-R1-S-V		
		96620	B-C-C2-F-F1-F3-R-R1-S-V	96670	B-C-C2-F-F1-F3-R-R1-S-V		
		96628	B-C-C2-F-F1-F3-R-R1-S-V				
		96629	B-C-C2-F-F1-F3-R-R1-S-V				



## RESTRICTIONS

## LEGEND

PS Form 2976, *Customs — CN 22 (Old C 1) and Sender's Declaration* (green label)

PS Form 2976-A, *Customs Declaration and Dispatch Note*

PS Form 2976-B, *Priority Mail Express International Shipping Label and Customs Form*

ATF	= Bureau of Alcohol, Tobacco, Firearms, and Explosives
Box C	= Department of State (DOS) contractor personnel
Box R	= Retired military personnel
DPO	= Diplomatic Post Office
MPO	= Military Post Office
PACT	= Prevent All Cigarette Trafficking Act
PAL	= Parcel Airlift
PMEMS	= Priority Mail Express Military Service
PUB 52	= Publication 52, <i>Hazardous, Restricted, and Perishable Mail</i>
SAM	= Space Available Mail
USDA	= United States Department of Agriculture

**Note:** Mail order catalogs are prohibited as SAM or PAL mail.

**A.** Securities, currency, or precious metals, including in their raw, unmanufactured state, are prohibited. Official Mail shipments are exempt from this restriction.

**A1.** Reserved for future use.

**A2.** Reserved for future use.

**B.** Other than for PMEMS and the exceptions listed below, a customs declaration PS Form 2976 or PS Form 2976-A is required for all items weighing 16 ounces or more, and for all items (regardless of weight) containing potentially dutiable mail contents (e.g., merchandise or goods) addressed to or from this ZIP Code. Other than the exceptions listed below, all PMEMS mailpieces (regardless of mail contents or weight) addressed to or from this ZIP Code must bear a properly completed PS Form 2976-B. The surface area of the address side of the mailpiece must be large enough to contain the applicable customs declaration. The following exceptions apply to known mailers, who for this purpose are defined as follows:

- Business mailers who enter volume mailings through business mail entry units or other bulk mail acceptance locations, pay postage through advance deposit accounts, use permit imprints for postage payment, and submit completed postage statements at the time of entry that certify that the mailpieces contain no dangerous materials that are prohibited by postal regulations. Such business mailers are exempt from providing customs documentation on non-dutiable letters and printed matter.
- All federal, state, and local government agencies whose mailings are regarded as "Official Mail." Such agencies are exempt from providing customs documentation, except for any items addressed to an MPO or DPO to which restriction "B2" applies.

**B2.** All federal, state, and local government agencies must complete customs documentation when sending potentially dutiable mail addressed to or from this MPO or DPO.

**C.** Cigarettes and other tobacco products, including tobacco leaves, chewing and pipe tobacco, snuff, and cigars are prohibited, including those that are authorized in Publication 52 under PACT.

**C1.** Obscene and horror articles, images, prints, paintings, cards, films, videotapes, comic books, etc., are prohibited.

**C2.** E-cigarettes and related products (e.g., nicotine liquids, e-liquids, parts, or supplies) are prohibited.

**D.** Coffee is prohibited.

**E.** Medicines (prescription, over-the-counter, vitamins, and supplements) are prohibited when mailed to individuals for human or animal use. This prohibition does not apply when medicines are sent as Official Mail only between specifically designated agencies such as pharmaceutical distributors, hospitals, clinics, and pharmacies.

**E1.** Mailers are responsible to ensure that all medicines and vaccines conform to host nation laws.

**E2.** Any matter depicting nude or seminude persons, pornographic, or sexual items are prohibited. Non-authorized political materials are prohibited. Religious materials contrary to the Islamic faith are prohibited in bulk quantities, but individual items for the personal use of the addressee are permissible.

**E3.** Radio transceivers, cordless/cellular telephones, global positioning systems, scanners, base stations, and handheld transmitters are prohibited.

**F.** Firearms of any type are prohibited, except firearms mailed to or by official U.S. government agencies. This restriction does not apply to firearms mailed from this MPO ZIP Code, provided ATF and USPS regulations are met. Antique firearms do not require an ATF form.

**F1.** Weapons of any type are prohibited.

**F2.** Mailing firearms to or from this MPO ZIP Code is restricted to one shotgun and one single shot .22 caliber rifle per individual.

**F3.** Replica weapons and inert explosive devices (such as grenades) and weapons parts are prohibited.

**G.** Parcels of any class are prohibited.

**H.** Meats, including preserved meats, bones, skin, hair, feathers, horns or hoofs of hoofed animals, and wool samples whether hermetically sealed or not, are prohibited.

**H1.** Pork or pork by-products are prohibited.

**I.** Reserved for future use.

**I1.** Reserved for future use.

**I2.** Reserved for future use.

**I3.** Mail of all classes must fit in a mail sack. Mail may not exceed the following dimensions:

- Maximum length 27 inches.
- Maximum width 14 inches.
- Maximum height 14 inches.

**J.** Standard Post and Parcel Select parcels may not exceed 108 inches in length and girth combined.

**K.** Reserved for future use.

**L.** All Official Mail is prohibited.

**M.** Fruits, vegetables, live animals, and live plants are prohibited.

**N.** Registered Mail service is prohibited.

**O.** Reserved for future use.

**P.** Official Mail only.

**Q.** Mail may not exceed 66 pounds, and size is limited to 42 inches maximum length and 72 inches maximum length and girth combined.

**R.** All alcoholic beverages, including those mailable under Publication 52, Part 421, are prohibited.

**R1.** Materials used in the production of alcoholic beverages (i.e., distilling material, hops, malts, yeast, etc.) are prohibited.

**S.** Synthetic cannabinoids used to stimulate the central nervous system commonly known as "synthetic marijuana," "K2," or "Spice" are prohibited.

**T.** Mailings of household shipments and case lots of food to or from an MPO require military transportation office approval prior to mailing. Mailings to or from a DPO require pre-approval from the Diplomatic Pouch and Mail Director.

**U.** Mail addressed to Retirees (Box R) is limited to 16 ounces and up to a 90-day supply of TRICARE medications. This restriction does not apply to mail endorsed "Free Matter for the Blind or Handicapped."

**U1.** Mail is limited to First-Class Mail items, including audio and video media, weighing 13 ounces or less. This limitation does not apply to Official Mail.

**U2.** Retirees (Box R) are not authorized mail service.

**U3.** Reserved for future use.

**U4.** Mail addressed to Box C is limited to 2 lbs.

**V.** PMEMS is not available.

**V1.** Electronic Delivery status information for Extra Services is not available on *USPS.com*. Manual record of delivery may be available upon request.

**W.** Hermetically sealed packages of meat products bearing USDA certification, such as dried beef, salami, and sausage, may be mailed. 200 grams of tobacco per parcel are permitted duty free.

**X.** Cremated remains are prohibited.

**Y.** Mail is limited to First-Class Mail and Priority Mail items only. This restriction also applies to Official Mail.

**Z.** No outside pieces (OSPs).

**Z1.** The following restriction is applicable only to International Service Centers (ISC)/Exchange Offices. An Anti-Pilferage Seal (Item No O817E or O818A) is required on all pouches and sacks.

— *International Network Operations,  
Global Business, 11-3-22*

## Freely Associated States Restrictions

We list the mailing restrictions for Freely Associated States (FAS) in the Pull-Out section of the *Postal Bulletin*. All FAS Restrictions will be updated periodically.

### Freely Associated States

Mail addressed to freely associated states is subject to certain conditions or restrictions of mailing regarding content, preparation, and handling. The following FAS Restrictions table outlines these conditions as listed by each affected FAS ZIP Code™ through the use of footnoted mailing restrictions codes (see the [Restrictions](#) following the table). For more information on available extra services for FAS destinations, see *Mailing Standards of the United States Postal Service, Domestic Mail Manual (DMM®)*, part 503.

Acceptance clerks must use the table with the Retail System Software terminal to determine which FAS ZIP Codes are active and which conditions of mailing apply.

### FAS Restrictions Table

FAS Table	See Restrictions
96939	A, B
96940	A, B
96941	A, B
96942	A, B
96943	A, B
96944	A, B
96960	A, B
96970	A, B, D
Marshall Islands	C
Federated States of Micronesia	C

### RESTRICTIONS LEGEND

PS Form 2976, *Customs Declaration CN 22 – Sender's Declaration*

PS Form 2976-A, *Customs Declaration and Dispatch Note*

FAS = Freely Associated State

- A.** Bank currency (coin and paper) is prohibited.
- B.** Signature Confirmation, Signature Confirmation Restricted Delivery, Adult Signature Requested, Adult Signature Restricted Delivery, Certified Mail Adult Signature Required, and Certified Mail Adult Signature Restricted Delivery not available.
- C.** Collect on Delivery is prohibited.
- D.** Betel nut (Areca catechu) is prohibited.

— *Asia-Pacific Relations,  
Global Business, 11-3-22*

Open Season 2022 (continued)

# LET'S STAY CONNECTED



## SIGN UP

### Sign up for the Short Message Service (SMS) text messaging today.

Text messages will include important information that you need as an employee related to benefits, wellness, financial education and more.

To sign up, text **BENEFITS** to **39369**

*If you opt in, you will incur the cost of using SMS text messaging (normal rates will apply).*

475 L'Enfant Plaza SW Room 9670  
Washington, DC 20260-0004

## OPEN SEASON 2022

Your **Health**  
Your **Plan**  
Your **Savings**

IT'S ALL ABOUT THE BENEFITS!



**November 14, 2022 – December 12, 2022**

Scan the code for  
more information  
about Open Season



# Policies, Procedures, and Forms Updates

## Manuals

### IMM Revision: Individual Country Listing for Rwanda

Effective November 3, 2022, the Postal Service™ is revising the Individual Country Listing for Rwanda in *Mailing Standards of the United States Postal Service, International Mail Manual (IMM®)* to reflect changes to the Observations section.

In a formal request made through the Universal Postal Union via *International Bureau Circular* 31, dated March 20, 2020, National Post Office (Iposita) — the designated operator of Rwanda — requests that the mailer include the addressee’s mobile telephone number on each parcel or registered mail item destined to Rwanda. This contact information enables Iposita to notify the addressee via short message service (SMS) before delivery.

***Mailing Standards of the United States Postal Service, International Mail Manual (IMM)***

\* \* \* \* \*

**Individual Country Listings**

\* \* \* \* \*

**Rwanda**

**Country Conditions for Mailing**

\* \* \* \* \*

**Observations**

\* \* \* \* \*

*[Revise the text to read as follows:]*

On each parcel or registered mail item destined to Rwanda, National Post Office (Iposita) requests that the mailer include the addressee’s mobile telephone number on the customs declaration form, address label, or wherever possible. This contact information enables Iposita to notify the addressee via short message service (SMS) before delivery.

\* \* \* \* \*

Although effective November 3, 2022, the Postal Service will incorporate this revision into a later edition of the online IMM (after the edition published November 7, 2022). The online IMM is available via Postal Explorer® at [pe.usps.com](https://pe.usps.com).

— Product Classification,  
Product Solutions, 11-3-22

## Publications

### Publication 431 Revision: Changes to Post Office Box Service and Caller Service Fee Groups

Effective November 3, 2022, Publication 431, *Post Office Box Service and Caller Service Fee Groups*, is revised to include the following changes.

**Publication 431, Post Office Box Service and Caller Service Fee Groups**

\* \* \* \* \*

*[Delete the following entries:]*

ZIP Code	Fee Group
48870	7
65735	6
94207	34

\* \* \* \* \*

The online version of Publication 431 is dated July 2013. Publication 431 is currently available on the Postal Service™ PolicyNet website ([blue.usps.gov/cpim](https://blue.usps.gov/cpim)):

- Go to [blue.usps.gov](https://blue.usps.gov).
- In the left-hand column, click *Essential Links*, and then click *PolicyNet*.
- Go to the right-hand side under “Published Forms and Directives.”
- Click *Publications*.

Offices with WebBATS Manager/Supervisor access can view current Publication 431 information by going to the WebBATS Edit Facility Information page, as follows:

1. Go to the WebBATS main menu, and select Utility> Facility>Edit Facility option.
2. View the Fee Group field on the Edit Facility Information page.

— Post Office Operations,  
Retail and Post Office Operations, 11-3-22

# Organization Information

## Environmental Management

### Monthly Inspections for Aboveground Storage Tanks

Aboveground Storage Tanks (ASTs) must be inspected at least once a month to comply with regulatory requirements and Postal Service™ policy outlined in *Administrative Support Manual*, Chapter 69, “Environmental Management and Compliance.” The monthly inspection requirement applies to ASTs of any size that contain hazardous materials, such as:

- New and used oil or heating oil.
- Gasoline or diesel fuel.
- New and used antifreeze.
- Windshield washer fluid.
- Diesel exhaust fluid.

These inspections help prevent the release of oil or other hazardous materials into the environment.

Under the policy, the site installation head or their designee must:

- Conduct and document a monthly visual inspection of each AST.
- Ensure each AST has a label that identifies the contents and volume.
- Address any issues identified during the inspection.
- Promptly address spills and take appropriate response actions.

Sites that store oil volume greater than 1,320 gallons have a dedicated Spill Prevention, Control, and Countermeasure (SPCC) Plan. Sites with SPCC Plans must use the inspection log in the site-specific SPCC Plan.

Additionally, for all sites with ASTs, the installation head is responsible for:

- Obtaining access to the Environmental Tool Kit (ETK) or directing an EAS designee to gain access for the facility. **Note:** EAS employees may request access to ETK through eAccess for environmental information on their site.

- Uploading required environmental records to ETK (including the SPCC Plan with the current installation head signature pages) and maintaining a hard copy of the monthly SPCC inspection log provided in the plan in the on-site environmental files.
- Signing and certifying the SPCC Plan, if required for the site. The SPCC Plan signature/certification pages must contain the current installation head’s name and signature. In the event of a management change, the new installation head must take the SPCC Plan Training in HERO and update the signature/certification pages with their signature.

For more information, use the following resources:

- The ETK website at [blue.usps.gov/sustainability/environmental/etk-information.htm](https://blue.usps.gov/sustainability/environmental/etk-information.htm) provides detailed instructions on requesting access to ETK and uploading a document.
- The AST Management Environmental Compliance Bulletin at [blue.usps.gov/sustainability/environmental/\\_pdf/ecb-ast.pdf](https://blue.usps.gov/sustainability/environmental/_pdf/ecb-ast.pdf).
- The SPCC Plans Environmental Compliance Bulletin at [blue.usps.gov/sustainability/environmental/\\_pdf/ecb-spcc.pdf](https://blue.usps.gov/sustainability/environmental/_pdf/ecb-spcc.pdf).
- The AST Inspection video (available for credit in HERO) provides basic instruction on how to inspect ASTs at [blue.usps.gov/sustainability/videos/aboveground-storage-tank-inspections.htm](https://blue.usps.gov/sustainability/videos/aboveground-storage-tank-inspections.htm).
- The “Environmental Spill Prevention Control and Countermeasures (SPCC) Plan” training course in HERO is required for the installation head and employees on-site with AST responsibilities.
- For questions, speak to your designated environmental contact at [blue.usps.gov/sustainability/contact.htm](https://blue.usps.gov/sustainability/contact.htm).

— Environmental Affairs and Corporate Sustainability,  
Corporate Affairs, 11-3-22

## Information Security

### Telework Refresh

Postal Service™ employees who want to telework must have a telework agreement in place.

On September 26, 2022, a new online application — the Telework Program Application (TPA) — became available for eligible non-bargaining and Postal Career Executive Service employees to refresh and resubmit telework agreements.

Eligible employees who wish to continue participation in the USPS® telework program must submit a new request through TPA, which replaces the Flexible Work Arrangement Application. The TPA can be found in the Employee Self-Service portal found in HERO and on the “My Life” portion of *Blue*.

With the new TPA in place, both employees and contractors are encouraged to take extra security precautions when using USPS-issued computers to telework from remote locations.

CyberSafe at USPS® advises employees and contractors to follow these guidelines to ensure the USPS network remains secure:

- Never loan your USPS-provided computer or mobile device to family or friends.

- Plug only USPS-approved devices (see [blue.usps.gov/cyber/utilize-encryption.htm](https://blue.usps.gov/cyber/utilize-encryption.htm)) into Postal Service equipment. The only exceptions are keyboards, monitors, wired headphones, and mice (see [blue.usps.gov/cpim/ftp/manage/as800226/welcome.htm](https://blue.usps.gov/cpim/ftp/manage/as800226/welcome.htm)).
- Only use wall outlets or portable chargers to power personal devices.
- Do not share files between your home and work computers.
- Don't leave your USPS-provided devices unlocked while unattended. Set a password-protected screensaver by pressing the “Control,” “Alt,” and “Delete” keys, and selecting “Lock.”
- Always connect using your USPS virtual private network (VPN) or virtual desktop infrastructure (VDI) method. For assistance with the USPS VPN or VDI, please contact the USPS Service Desk at 800-877-7435.

For more information about cybersecurity best practices, visit the CyberSafe at USPS web pages on *Blue* ([blue.usps.gov/cyber](https://blue.usps.gov/cyber)) and *LiteBlue* ([liteblue.usps.gov/cyber](https://liteblue.usps.gov/cyber)).

— Corporate Information Security Office,  
Chief Information Security Officer, 11-3-22

### Watch Out for Phishing Emails

Although Postal Service™ employees already have many duties, USPS® email account security must be a top priority. Roughly 94 percent of all malware is delivered through email. That's why users must stay vigilant; any suspicious communications or suspected threats must be reported to the Corporate Information Security Office (CISO).

The average office employee receives nearly 100 emails each day. With so much daily volume, Postal Service employees must follow these procedures to keep USPS networks safe:

- **Slow down:** Pause and evaluate messages before acting. Be wary of “urgent” requests.
- **Verify the sender:** If the email is from an “[EXTERNAL]” address, proceed with caution.
- **Hover, don't click:** Ensure all hyperlinked descriptions match their destination by hovering your mouse over the link.

- **Beware of attachments:** Don't open or click on anything attached to a suspicious email.
- **Spell check:** Spelling and grammar mistakes often indicate a phishing attempt.

If you think you've received a suspicious email, report it to CISO. Select the suspicious email in your inbox — multiple messages can be selected, if necessary — and click the “Report to CyberSafe” button on the Outlook toolbar. If the email is already open, the button will appear in the email toolbar as well.

If you do not see the “Report to CyberSafe” button in your Outlook toolbar, you can install the add-on here: [usps.servicenowservices.com/kb\\_view.do?sysparm\\_article=KB0046151](https://usps.servicenowservices.com/kb_view.do?sysparm_article=KB0046151).

— Corporate Information Security Office,  
Chief Information Security Officer, 11-3-22

## Stamp Services

### Pictorial Postmarks Announcement

As a community service, the Postal Service™ offers pictorial postmarks to commemorate local events celebrated in communities throughout the nation. A list of events for which pictorial postmarks are authorized appears on the following pages. The sponsor of the pictorial postmark appears in italics under the date. Also provided are illustrations of these postmarks.

People attending these local events may obtain the postmark in person at the temporary Post Office™ station established there. Those who cannot attend the event but who wish to obtain the postmark may submit a mail order request. Pictorial postmarks are available only for the dates indicated, and *requests must be postmarked no later than 30 days following the requested pictorial postmark date.*

All requests must include a stamped envelope or postcard bearing at least the minimum First-Class Mail® postage. Items submitted for postmark may not include

postage issued after the date of the requested postmark. Such items will be returned unserved.

Customers wishing to obtain a postmark must affix stamps to any envelope or postcard of their choice, address the envelope or postcard to themselves or others, insert a card of postcard thickness in envelopes for sturdiness, and tuck in the flap. Place the envelope or postcard in a larger envelope and address it to: Pictorial Postmarks, followed by the Name of the Station, Address, City, State, ZIP+4® Code, as listed next to the postmark.

Customers can also send stamped envelopes and postcards without addresses for postmark, as long as they supply a larger envelope with adequate postage and their return address. After applying the pictorial postmark, the Postal Service returns the items (with or without addresses) under addressed protective cover.

The following pictorial postmark has been extended for 30 days:



October 28–30, 2022

*SESCAL Stamp Show*

Armenian Philatelic Association Station

Postmaster

313 East Broadway

Glendale, CA 91205-9998

**Pittpex Station**

**75<sup>th</sup> Anniversary  
of the U.S. Air Force  
1947-2022**

Cuddy, PA 10531  
November 5, 2022



November 5–6, 2022

*The Philatelic Society of  
Pittsburgh*

Pittpex Station

Postmaster

514 Millers Run Road

Morgan, PA 15064-9998



November 9, 2022

*Plymouth 400, Inc. Legacy*

First Thanksgiving Station

Postmaster

100 Long Pond Road

Plymouth, MA 02360-9998



November 9, 2022

*Plymouth 400, Inc. Legacy*

First Thanksgiving Station

Postmaster

100 Long Pond Road

Plymouth, MA 02360-9998

— Stamp Services,  
Marketing, 11-3-22



## How to Order the First-Day-of-Issue Digital Color or Traditional Postmarks

Customers have 120 days to obtain the first-day-of-issue postmarks by mail. Each cover must have sufficient postage to meet First-Class Mail® requirements. Customers may purchase new stamps at their local Post Office™, by phone at 844-737-7826, or on The Postal Store® website at [usps.com/shop](https://usps.com/shop).

### Digital Color Postmarks

Only select stamp issues offer a digital color postmark. Customers may submit #6 or #10 envelopes constructed of paper rated as “laser safe.” The Postal Service™ recommends envelopes of 80-pound Accent Opaque, acid-free, 9/16-inch side seams with no glue on the flap. The maximum size of all digital color postmarks is 2 inches (vertically) by 4 inches (horizontally). Allow sufficient space on the envelope to accommodate the postmark. Do not use self-adhesive labels for addresses on the envelope. Two test envelopes must be included. There is a minimum of 10 envelopes at 50 cents per postmark required at the time of servicing. Customers must submit a check, money order, or credit card for payment.

The Postal Service reserves the right to not accept hand-painted and other cachet envelopes that are not compatible with our digital color postmark equipment. The Postal Service also reserves the right to substitute traditional black rubber postmarks if use of nonspecified envelopes results in poor image quality or damage to equipment.

Customers must affix the stamps to the envelopes and address them to themselves or others for return through the mail. Or, they may include an additional self-addressed return envelope, large enough to accommodate their canceled items, with sufficient postage affixed for return of

their postmarked items. Address customer requests for digital color postmarks to:

FDOI – (Name of Stamp Issue)  
 USPS Stamp Fulfillment Services  
 8300 NE Underground Drive, Suite 300  
 Kansas City, MO 64144-9900

After applying the first-day-of-issue postmark, the Postal Service will return the envelopes to the customer by U.S. Mail®.

### Traditional Postmarks

Customers must affix the stamps to the envelopes and address them to themselves or others for return through the mail. Or, they may include an additional self-addressed return envelope, large enough to accommodate their canceled items, with sufficient postage affixed for return of their postmarked items. Address customer requests for traditional postmarks to:

FDOI – (Name of Stamp Issue)  
 USPS Stamp Fulfillment Services  
 8300 NE Underground Drive, Suite 300  
 Kansas City, MO 64144-9900

After applying the first-day-of-issue postmark, the Postal Service will return the envelopes to the customer by U.S. Mail. There is no charge for the first 50 postmarks. There is a 5-cent charge for each additional postmark over 50. Customers must submit a check, money order, or credit card for payment.

Locally produced items are not authorized. Only merchandise that has been approved and assigned an item number by Headquarters Retail Marketing may be produced and sold.

FIRST DAY OF ISSUE

**NANCY  
 REAGAN**

JULY 6, 2022 – SIMI VALLEY, CA 93065

**Digital Color Pictorial**

**FDOI – Nancy Reagan Stamp**

USPS Stamp Fulfillment Services  
 8300 NE Underground Drive, Suite 300  
 Kansas City, MO 64144-9900

November 6, 2022

FIRST DAY OF ISSUE

**NANCY  
 REAGAN**

JULY 6, 2022 • SIMI VALLEY, CA 93065

**Black and White Pictorial**

**FDOI – Nancy Reagan Stamp**

USPS Stamp Fulfillment Services  
 8300 NE Underground Drive, Suite 300  
 Kansas City, MO 64144-9900

November 6, 2022



Digital Color Pictorial

**FDOI – Mariachi Stamps**

USPS Stamp Fulfillment Services  
8300 NE Underground Drive, Suite 300  
Kansas City, MO 64144-9900

November 15, 2022



Black and White Pictorial

**FDOI – Mariachi Stamps**

USPS Stamp Fulfillment Services  
8300 NE Underground Drive, Suite 300  
Kansas City, MO 64144-9900

November 15, 2022



Digital Color Pictorial

**FDOI – Pete Seeger Stamp**

USPS Stamp Fulfillment Services  
8300 NE Underground Drive, Suite 300  
Kansas City, MO 64144-9900

November 21, 2022



Black and White Pictorial

**FDOI – Pete Seeger Stamp**

USPS Stamp Fulfillment Services  
8300 NE Underground Drive, Suite 300  
Kansas City, MO 64144-9900

November 21, 2022



Digital Color Pictorial

**FDOI – Go Beyond Stamps**

USPS Stamp Fulfillment Services  
8300 NE Underground Drive, Suite 300  
Kansas City, MO 64144-9900

December 3, 2022



Black and White Pictorial

**FDOI – Go Beyond Stamps**

USPS Stamp Fulfillment Services  
8300 NE Underground Drive, Suite 300  
Kansas City, MO 64144-9900

December 3, 2022



Digital Color Pictorial

**FDOI – National Marine Sanctuaries Stamps**

USPS Stamp Fulfillment Services  
8300 NE Underground Drive, Suite 300  
Kansas City, MO 64144-9900

December 5, 2022



Black and White Pictorial

**FDOI – National Marine Sanctuaries Stamps**

USPS Stamp Fulfillment Services  
8300 NE Underground Drive, Suite 300  
Kansas City, MO 64144-9900

December 5, 2022

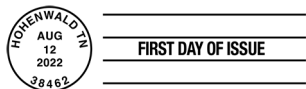


Digital Color Pictorial

**FDOI – Elephants Stamp**

USPS Stamp Fulfillment Services  
8300 NE Underground Drive, Suite 300  
Kansas City, MO 64144-9900

December 12, 2022



Black and White Pictorial

**FDOI – Elephants Stamp**

USPS Stamp Fulfillment Services  
8300 NE Underground Drive, Suite 300  
Kansas City, MO 64144-9900

December 12, 2022



Digital Color Pictorial

**FDOI – Pony Cars Stamps**

USPS Stamp Fulfillment Services  
8300 NE Underground Drive, Suite 300  
Kansas City, MO 64144-9900

December 25, 2022



Black and White Pictorial

**FDOI – Pony Cars Stamps**

USPS Stamp Fulfillment Services  
8300 NE Underground Drive, Suite 300  
Kansas City, MO 64144-9900

December 25, 2022



Digital Color Pictorial

**FDOI – James Webb Space Telescope Stamp**

USPS Stamp Fulfillment Services  
8300 NE Underground Drive, Suite 300  
Kansas City, MO 64144-9900

January 8, 2023

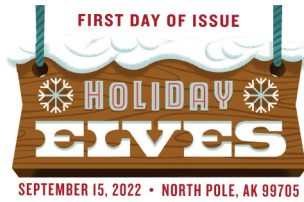


Black and White Pictorial

**FDOI – James Webb Space Telescope Stamp**

USPS Stamp Fulfillment Services  
8300 NE Underground Drive, Suite 300  
Kansas City, MO 64144-9900

January 8, 2023



Digital Color Pictorial

**FDOI – Holiday Elves Stamps**

USPS Stamp Fulfillment Services  
8300 NE Underground Drive, Suite 300  
Kansas City, MO 64144-9900

January 15, 2023



Black and White Pictorial

**FDOI – Holiday Elves Stamps**

USPS Stamp Fulfillment Services  
8300 NE Underground Drive, Suite 300  
Kansas City, MO 64144-9900

January 15, 2023



Digital Color Pictorial

**FDOI – Virgin and Child Stamp**

USPS Stamp Fulfillment Services  
8300 NE Underground Drive, Suite 300  
Kansas City, MO 64144-9900

January 22, 2023



Black and White Pictorial

**FDOI – Virgin and Child Stamp**

USPS Stamp Fulfillment Services  
8300 NE Underground Drive, Suite 300  
Kansas City, MO 64144-9900

January 22, 2023

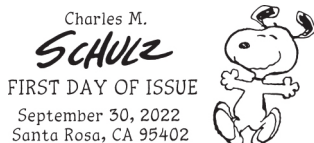


Digital Color Pictorial

**FDOI – Charles M. Schulz Stamps**

USPS Stamp Fulfillment Services  
8300 NE Underground Drive, Suite 300  
Kansas City, MO 64144-9900

January 30, 2023



Black and White Pictorial

**FDOI – Charles M. Schulz Stamps**

USPS Stamp Fulfillment Services  
8300 NE Underground Drive, Suite 300  
Kansas City, MO 64144-9900

January 30, 2023

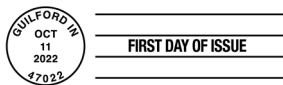


Digital Color Pictorial

**FDOI – Snowy Beauty Stamps**

USPS Stamp Fulfillment Services  
8300 NE Underground Drive, Suite 300  
Kansas City, MO 64144-9900

February 11, 2023



**FDI – Snowy Beauty Stamps**  
 USPS Stamp Fulfillment Services  
 8300 NE Underground Drive, Suite 300  
 Kansas City, MO 64144-9900  
 February 11, 2023

**Black and White Pictorial**



**FDI – Kwanzaa 2022 Stamp**  
 USPS Stamp Fulfillment Services  
 8300 NE Underground Drive, Suite 300  
 Kansas City, MO 64144-9900  
 February 13, 2023

**Digital Color Pictorial**



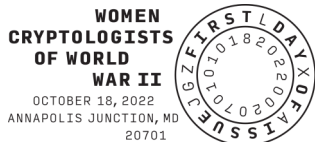
**FDI – Kwanzaa 2022 Stamp**  
 USPS Stamp Fulfillment Services  
 8300 NE Underground Drive, Suite 300  
 Kansas City, MO 64144-9900  
 February 13, 2023

**Black and White Pictorial**



**FDI – Women Cryptologists of World War II Stamp**  
 USPS Stamp Fulfillment Services  
 8300 NE Underground Drive, Suite 300  
 Kansas City, MO 64144-9900  
 February 18, 2023

**Digital Color Pictorial**



**FDI – Women Cryptologists of World War II Stamp**  
 USPS Stamp Fulfillment Services  
 8300 NE Underground Drive, Suite 300  
 Kansas City, MO 64144-9900  
 February 18, 2023

**Black and White Pictorial**



**FDI – Hanukkah 2022 Stamp**  
 USPS Stamp Fulfillment Services  
 8300 NE Underground Drive, Suite 300  
 Kansas City, MO 64144-9900  
 February 20, 2023

**Digital Color Pictorial**



**FDI – Hanukkah 2022 Stamp**  
 USPS Stamp Fulfillment Services  
 8300 NE Underground Drive, Suite 300  
 Kansas City, MO 64144-9900  
 February 20, 2023

**Black and White Pictorial**

## Transportation Strategies

### Peak Season: Buy the Lowest Cost Fuel and Use the Preferred Fueling Network

Fuel consumption is a major talking point in today's environment. The United States Postal Service® is always looking for ways to incorporate best practices in our day-to-day activities. As such, we are emphasizing the need for all employees to purchase regular, non-premium fuel and strongly encourage postal-owned vehicle drivers and site managers to use stations in our preferred network. Another way to improve fuel consumption is by limiting harsh starts and stops. Taking steps like these will help reduce the overall fleet spend.

The Postal Service™ routinely updates Preferred Fueling Network (PFN) agreements, so locations may change. The PFN has 24 brands with over 10,000 locations that provide discounts to the Postal Service fleet. The most current PFN brand locations are listed in the Freedom of Information Act (FOIA) Library. To find the nearest location, visit the FOIA website at [about.usps.com/who/legal/foia/documents/pfn-locations.xlsx](https://about.usps.com/who/legal/foia/documents/pfn-locations.xlsx).

If you have questions about the PFN or need more information about local fuel retailers, send an email to [USPSPreferredFuelingNetwork@usps.gov](mailto:USPSPreferredFuelingNetwork@usps.gov).

— *Transportation Services,  
Transportation Strategies, 11-3-22*

## United States Postal Inspection Service

### Protect Yourself from Work-from-Home Scams

Since the pandemic began in 2020, the United States Postal Inspection Service® (USPIS®) has been focused on work-from-home scams. These work-from-home opportunities have become more attractive to jobseekers. But is that job posting legitimate?

Many of these opportunities to earn money by working at home are often nothing more than fraudulent schemes and, at best, rarely result in meaningful earnings. Before you apply for that ideal work-from-home job, here are a few things to keep in mind:

1. Many of these postings or ads use common phrases that are meant to get your attention. Beware of any job posting that sounds too good to be true:
  - Be your own boss.
  - Guaranteed jobs.
  - High paying positions that don't require special training. "No experience needed."
  - Instant job offers without an interview

2. Scammers use variations of job descriptions like these for fake job postings:

- Shipping Specialist.
- Mystery or Secret Shopper.
- Medical Billing.
- Envelope Stuffing.

3. Protect yourself with these tips:

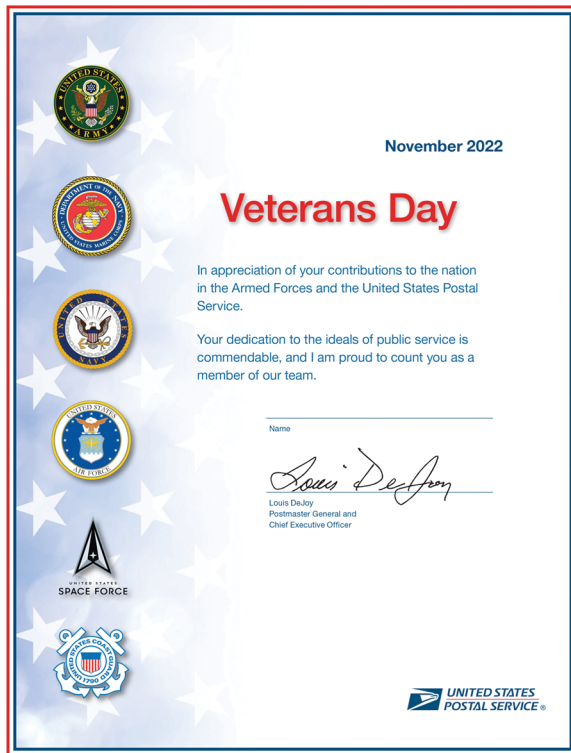
- Check directly with the company to verify its legitimacy.
- Get any job offer in writing.
- Verify a potential employer by checking the Better Business Bureau, your state's Attorney General's office, and your state's consumer affairs office.
- Verify any unexpected compensation to determine whether a check or money order is valid.

Lastly, if you are the victim of a work-from-home scam or suspect fraud, report it. Submit an online report to USPIS at [uspis.gov/report](https://uspis.gov/report) or call 877-876-2455.

— *Communications, Governance, and Strategy,  
U.S. Postal Inspection Service, 11-3-22*

## Veterans Affairs

### Debt of Gratitude: USPS to Honor Military Veterans



USPS® will send certificates of appreciation to employees who have served in the military.

The Postal Service™ will honor employees who have served in the military with a special certificate of appreciation to mark Veterans Day, November 11, 2022. The certificates are signed by Postmaster General Louis DeJoy and will be mailed to employees' homes.

Additionally, the organization will release a video on November 8 that features remarks from DeJoy and military veterans. The video also includes a photo montage celebrating Postal Service employees who have served in any branch or component of the military. The video will be available on *Blue* and *LiteBlue* for the remainder of November.

Veterans Day holds special significance for the Postal Service. The organization is one of the largest employers of veterans, with approximately 100,000 employees having served in the military.

— Diversity, Equity, and Inclusion,  
Organization Development, 11-3-22



# Bring Smiles to the Holidays with ***Holiday Elves*** Forever® Stamps



**ON SALE NATIONWIDE: SEPTEMBER 15, 2022**

