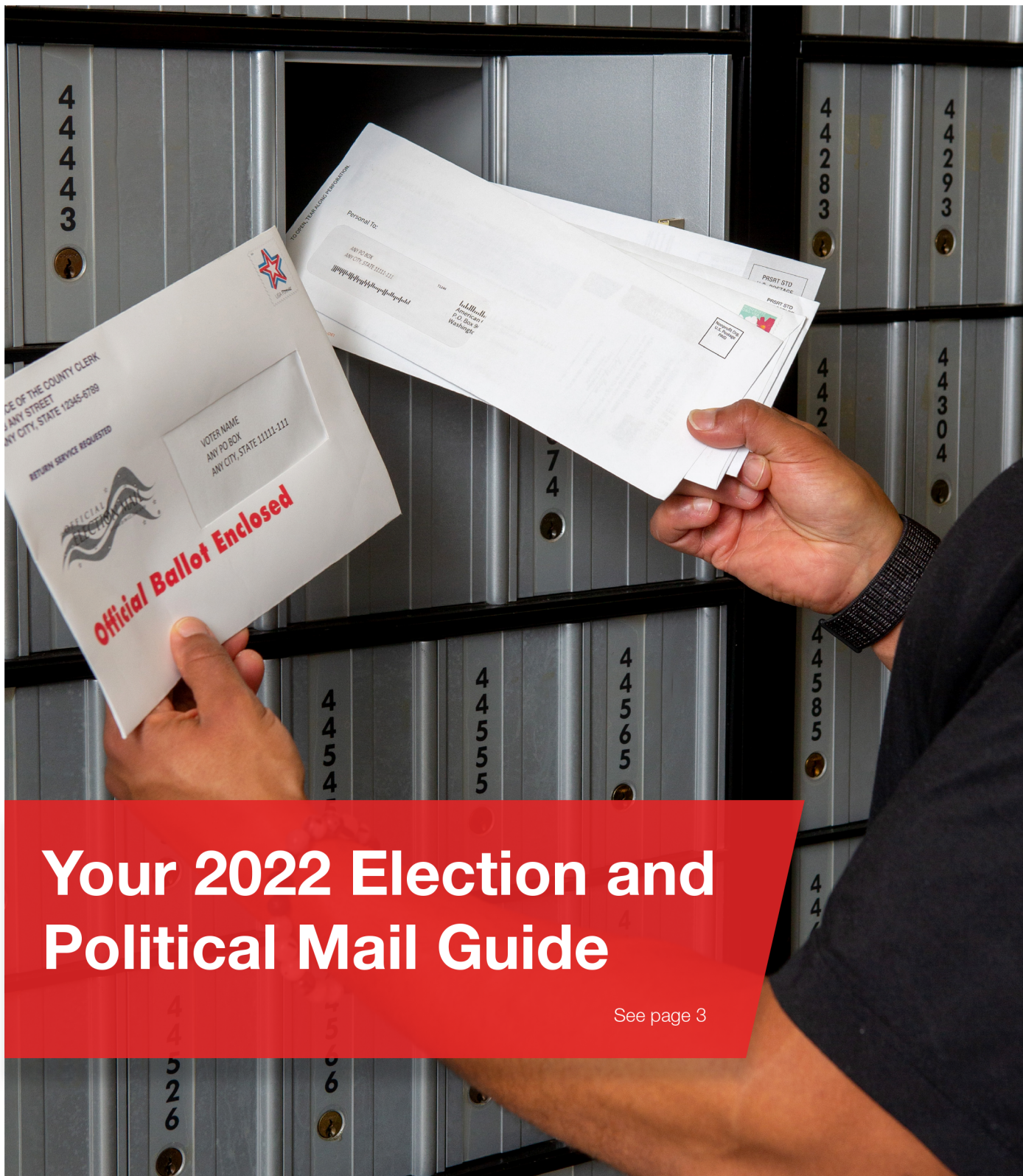


Postal Bulletin

Published Since March 4, 1880

October 6, 2022

PB 22608



Your 2022 Election and Political Mail Guide

See page 3

Contents

COVER STORY

Your 2022 Election and Political Mail Guide	3
---	---

POLICIES, PROCEDURES, AND FORMS UPDATES

Manuals

DMM Revision: Flat Trays Alternative	14
--	----

Publications

Publication 223 Revision: Directives and Forms Update.	14
--	----

ORGANIZATION INFORMATION

Address Management

Post Office Changes	17
-------------------------------	----

Domestic Mail

Labeling List Changes	18
---------------------------------	----

Environmental Management

Integrated Pest Management: Pesticide Management, Storage, and Disposal.	39
--	----

Finance

Equipment Maintenance Allowance Schedule for Rural Routes	40
Telework-Eligible Employees May Update State Tax Withholding	40

Human Resources

October is Breast Cancer Awareness Month	43
--	----

Information Security

500,000 Strong: Stay CyberSafe and Deliver for America.	45
---	----

Mailing and Shipping Services

Expedited Packaging Supplies Orders to be Processed and Shipped Within 1 Business Day of Receipt	45
--	----

Stamp Services

Pictorial Postmarks Announcement	46
How to Order the First-Day-of-Issue Digital Color or Traditional Postmarks	49
Postmark America	55

PULL-OUT INFORMATION

Fraud

Invalid USPS Corporate Account Numbers.	21
Missing, Lost, or Stolen U.S. Money Order Forms	22
Missing, Lost, or Stolen Canadian Money Order Forms	28
Verifying U.S. Postal Service Money Orders	30
Counterfeit Canadian Money Order Forms	30
Toll-Free Number Available to Verify Canadian Money Orders	30

Other Information

Overseas Military/Diplomatic Mail	31
Freely Associated States Restrictions	36

POSTAL BULLETIN 2022 SEMI-ANNUAL INDEX

2022 Semi-Annual Index	PB 22604 (8-11-22)
----------------------------------	--------------------

Find the latest in mail and delivery information and services offered by U.S. Postal® in the *Postal Bulletin* at about.usps.com/postal-bulletin

Mail Moment®

Cover Story

Your 2022 Election and Political Mail Guide



Contents

Background	4	Serialized Intelligent Mail Barcodes	8
Key Dates	4	Tag 191	8
Key Elections	4	Mailpiece Design Analysts	9
Election Mail and Political Mail Overview	4	Mail Class	9
Election Mail	6	Business Reply Mail and Qualified Business	
Ballots	6	Reply Mail	9
Military — APO/FPO/DPO	6	Informed Delivery	9
APO/FPO/DPO Outbound Absentee Ballots	6	Political Mail	9
APO/FPO/DPO Returning Absentee Ballots	7	Tag 57	10
Ballot Mail Service Type Identifiers	7	Political Mail Service Type Identifiers	10
Official Election Mail Logo	7	FAQs	10
Election Mail Checkbox	7	Contacts and Resources	12

Background

The 2022 election season is upon us and the Postal Service™ is gearing up for those elections, including numerous congressional, gubernatorial, state, and local races. Thus, proper handling of Election Mail and Political Mail is critical, especially as more voters turn to the mail to participate in the electoral process.

The Postal Service's plans are in place to ensure the timely receipt, processing, and delivery of Election Mail and Political Mail.

Key Dates

- The 2022 primary and caucus season began March 1 and continued through mid-September.
- The general elections will be held on November 8, 2022.

Key Elections

General Election – November 8

- A total of 469 seats in the U.S. Congress are up for election:
 - 34 U.S. Senate seats — AK, AL, AR, AZ, CA, CO, CT, FL, GA, HI, IA, ID, IL, IN, KS, KY, LA, MD, MO, NC, ND, NH, NV, NY, OK, OH, OR, PA, SC, SD, UT, VT, WA, and WI.
 - All 435 U.S. House of Representatives seats representing American territories and the District of Columbia.
- Additional elections are held throughout the year:
 - 36 Gubernatorial seats — AK, AL, AR, AZ, CA, CO, CT, FL, GA, HI, IA, ID, IL, KS, MA, MD, ME, MI, MN, NE, NH, NM, NV, NY, OK, OH, OR, PA, RI, SC, SD, TN, TX, VT, WI, and WY.
 - Numerous state and local elections.

Election Mail and Political Mail Overview

What is Election Mail?

Election Mail is any item mailed to or from authorized election officials that enables citizens to participate in the voting process, such as balloting materials, voter registration cards, absentee ballot applications, and polling place notifications.

What is Political Mail?

Political Mail is any material mailed for campaign purposes by a registered political candidate, campaign committee, or committee of a political party, as well as any material mailed by a political action committee or organization engaging in issues advocacy or voter mobilization.

2022 Election and Political Mail Plan

The Postal Service 2022 Election and Political Mail Plan coordinates strategy with key organizational priorities. The plan objectives are to:

- Educate and inform the public on proper mail handling, key dates, and operational guidelines for Election Mail and Political Mail.
- Reinforce the message that the Postal Service is deeply committed to its job of delivering Election Mail, including ballots.
- Ensure the correct use of the Official Election Mail logo. It may be used on all Election Mail, including ballots created for federal, state, and local government elections.
- Inform election officials that ballots will be handled correctly. Educate the officials on what to expect when using the mail so they can ensure ballots are mailed and returned by the deadline.
- Ensure Postal Service employees know that they must always promptly and efficiently handle Election Mail with equal care and attention.
- Ensure the correct use of Tag 191, *Domestic and International Ballots*. Postal Service employees must correctly identify and promptly process this mail. Tag 191 may not be used for sample ballots.
- Ensure the correct use of Tag 57, *Political Campaign Mailing*. Political Message Mail (mailings from certain groups, including issue advocacy or voter mobilization) and Political Campaign Mail (mailings from certain groups or individuals related to a candidate, campaign, or referendum) may both use Tag 57.

Key Messages

Mail is an increasingly important part of U.S. elections. Throughout the 2022 election cycle, it's important to keep the following in mind:

- The Postal Service is committed to fulfilling its role in the electoral process for those public policy makers who choose to use the mail as part of their election system. The Postal Service will ensure the dependable and timely delivery of Election Mail and Political Mail.
- The Postal Service takes pride in the U.S. Mail® as an efficient and effective means for citizens to participate in the electoral process.
- Voters can trust the Postal Service to deliver their mailed ballots in a timely manner.
- The Postal Service offers a state-by-state outreach program to ensure election boards, political candidates, and mailers are aware of the appropriate

procedures and important deadlines to help ensure the proper processing and delivery of Election Mail and Political Mail.

- The Postal Service expects to handle millions of ballots this election cycle — proof that mail is a dependable and protected way to cast a vote.
- In addition to any state or local rules, requirements, and recommendations, the Postal Service recommends that election officials consider providing applicable Postal Service mailing recommendations in their voter communications to ensure that individuals who wish to use the mail to vote know how to do so successfully.
- Individuals who opt to vote through the U.S. Mail should understand their local jurisdiction's requirements, deadlines, and recommendations for submission of mail-in ballots.
- Military personnel serving overseas, such as Army Post Office/Fleet Post Office (APO/FPO) voters, must follow the return by mail date for their location (see fvap.gov/eo/overview).
- To ensure that mailpieces meet the Postal Service's mailing standards and can be processed on our automated equipment, a mailpiece design analyst (MDA) has been assigned to assist each locality. We strongly recommend that state and local election officials work with the Postal Service before designing and printing any mailpieces for use in elections.
- To enhance visibility, we recommend use of the Election Mail checkbox and Official Election Mail logo for all Election Mail; and use of Tag 191, *Domestic and International Ballots*, for outbound ballots.
- We also strongly encourage election officials to use serialized Intelligent Mail® barcodes (IMb®), so that they will be able track their Election Mail. The IMb is a 65-bar Postal Service barcode used to sort and track letters and flats. It allows mailers, in this case, election officials, to use a barcode to participate in multiple Postal Service programs simultaneously, expand the mailers' ability to track individual mailpieces, and see where ballots are within the mailstream.
- The U.S. Mail remains a secure, efficient, and effective means for citizens and campaigns to participate in the electoral process, and the Postal Service is proud of our role as an important component of the nation's democratic process.
- All U.S. Mail is protected by more than 200 federal laws enforced by the United States Postal Inspection Service® (USPIS®), one of the nation's oldest law enforcement agencies. The Postal Service employs a robust and proven process to ensure the proper acceptance, processing, and delivery of Election Mail.

- The USPIS monitors election-related mail from the time it is placed into the hands of the Postal Service, and the entire time it is in our network up to delivery to prevent, identify, and mitigate any issues that might interfere with its secure and timely delivery.

Key Voter Message — Mailed Return Ballots

Individuals who opt to vote through U.S. Mail service must understand their local jurisdiction's rules and requirements for participating in an election, including rules and deadlines concerning the timely submission of ballots. Voters must contact their local election officials for questions about local deadlines.

The Postal Service's mailing recommendations for voters include:

- In jurisdictions that require eligible voters to request a ballot in order to receive one through the mail, we recommend that domestic, nonmilitary voters request their ballot as early as their jurisdiction allows. Some jurisdictions, including Vote by Mail states, generally do not require eligible voters to request a ballot in order to receive one.
- For domestic, non-military voters who choose to use the mail to return their completed ballot, the Postal Service recommends that they mail their completed ballot before Election Day, and at least 1 week before the deadline by which their completed ballot must be received by their local election official. Some states may recommend allowing even more time for mailing completed ballots.
- Voters should keep in mind the time required for both legs of mail delivery — to the voter and back to election officials — when deciding how to participate in an election.
- Postal Service policy is for every completed ballot mailed by voters to receive a postmark, and we instruct our employees throughout the country to adhere to that policy. However, we acknowledge that there will always be rare occurrences where a mailpiece does not receive a legible postmark. Election officials are advised that the use of automation-compatible, letter-sized envelopes increases the likelihood that a mailpiece will receive a legible postmark.
- Voters in states that require ballots to be postmarked by a specific date must be aware of the collection times posted on collection boxes and at the Postal Service's retail facilities. Voters must also be mindful of when mail is delivered and picked up at their residential mailbox. Ballots deposited after the last posted collection time will not be picked up, or postmarked, until the following business day. Voters must also be aware of mail collection times and practices if ballots are deposited in an office or residential mailroom.

Key Election Official Message — Outbound Ballot

Election officials are encouraged to work closely with area and district Customer Relations managers to determine delivery times for mailings. The Postal Service recommends the use of First-Class Mail for all outbound Election Mail, especially ballots.

For Customer Relations manager contact information, use the interactive map on the Resources tab at about.usps.com/what/government-services/election-mail/welcome.htm.

Key Election Official Message — National Paper Shortage

The Postal Service recognizes that there are supply issues in the paper industry that may affect the ability of election officials to source Election Mail materials. The Postal Service does not supply paper for mailers, but election officials should be aware that there is a nationwide paper shortage. We encourage election officials to keep potential paper shortages in mind when planning for the 2022 general election.

If a mailer, mail owner, or printer is experiencing an issue with acquiring the proper paper for machinability standards as listed in *Mailing Standards of the United States Postal Service*, Domestic Mail Manual (DMM[®]), they can reach out to the Pricing and Classification Service Center (PCSC) via email at PCSC@usps.gov. Election officials may be eligible to request an exception.

A mailer may request a paper and design exception only after the paper passes a USPS[®] engineering test. The test helps ensure that the paper is machinable and that it can be processed without causing damage.

Our engineering department requires a minimum of 100 completed samples (addressed, barcoded, indicia) and 20 8-1/2" x 11" sheet samples. The test may take several weeks to complete, so election officials are encouraged to plan ahead.

Paper will not pass if it causes any damage to the mailpieces being tested, or other mailpieces, or if it causes issues for the Postal Service.

Election Mail

Ballots

Each election cycle presents a different set of parameters for ballot creation and for the size and weight of the return mailpiece. As a result, many voters do not know the correct amount of postage required to return their ballots by mail. Election officials must consult with a Postal Service business mail entry manager, MDA, or Area Customer Relations Director and District Customer Relations Manager to determine the proper postage required for mailing ballots to voters and for voters mailing ballots back to election officials.

Election officials are required to indicate in a prominent location the proper amount of First-Class Mail postage that must be applied to balloting materials for any election, whether sent in hard copy or electronic formats. An exception may apply in certain circumstances for balloting materials for military and overseas voters or where postage is prepaid. See DMM 703.8.3 to learn more about the postage marking requirements.

Military — APO/FPO/DPO

Key Messages

Even in times of war, the Postal Service has delivered the most fundamental symbol of democracy — a ballot — to those who serve in the U.S. Armed Forces. As the election season progresses, emphasize the following key messages:

- The Postal Service is honored to provide the brave men and women serving abroad in the military with the opportunity to vote.
- Any American voter living overseas can mail his or her completed ballot back to the United States free of charge at the nearest American embassy, consulate, or Diplomatic Post Office (DPO) under the Uniformed and Overseas Citizens Absentee Voting Act (UOCAVA). UOCAVA is a federal law that provides uniformed and overseas citizens the ability to register and vote absentee in elections for federal offices.
- If an overseas voter has authorized access to a military base, he or she can mail a ballot free of charge at the nearest APO or FPO.
- For the 2022 general election, special procedures for APO/FPO/DPO absentee ballots are in effect between September 1 and November 30. During this time, the Postal Service will provide special handling for dispatch via the International Service Centers (ISCs).
- The Postal Service recommends military voters visit fvap.gov/eo/overview for return ballot mailing dates.

APO/FPO/DPO Outbound Absentee Ballots

The Postal Service and the Military Postal Service Agency collaborate to provide special handling of absentee ballots to absent uniformed services voters with UOCAVA-authorized APO/FPO/DPO addresses. The Postal Service is committed to ensuring that everyone who votes by mail experiences an efficient process.

Here is a summary of special procedures for APO/FPO/DPO absentee ballots only:

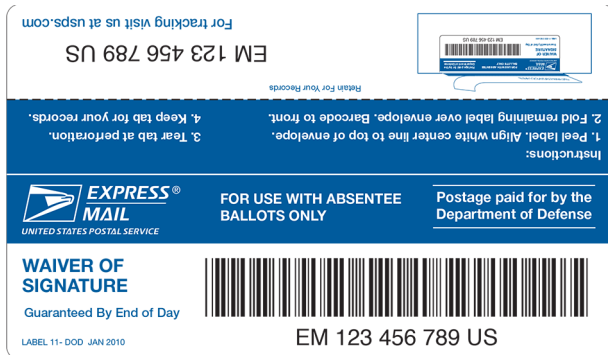
- Election officials must mail absentee ballots at least 45 days before the November 8 election.
- Local election offices must segregate military absentee ballots to the Chicago ISC and the Miami ISC gateways. At ISCs, absentee ballots receive special handling, including accelerated sortation, special tray identification, and priority transportation.

- APO/FPO absentee ballots will be sent from local Post Office™ locations to the nearest Processing and Distribution Center for further handling. Postal Service employees will identify trays or containers of absentee ballot mail using Tag 191, *Domestic and International Ballots*, and present them to the Post Office facility.

APO/FPO/DPO Returning Absentee Ballots

Absent overseas uniformed services voters with UOCAVA-authorized APO/FPO/DPO addresses can return absentee ballots via Priority Mail Express® using Label 11-DOD, *DOD Express Mail Label Absentee Ballot*. The label includes “Waiver of Signature” and “Guaranteed by End of Day” endorsements, so ballots can be delivered the day they arrive at the destination Post Office.

Label 11-DOD



Familiarize yourself with the following operational guidelines for Label 11-DOD:

- The Military Postal Service Agency distributes Label 11-DOD overseas.
- The Priority Mail Express ballot label is only for voted absentee ballots from overseas U.S. military and authorized UOCAVA civilian citizens.
- The label may only be used by eligible voters when the return ballot is mailed from a Military Post Office (MPO) or DPO overseas.
- Overseas U.S. military and authorized UOCAVA civilian citizens must return their absentee ballots via APO, FPO, or DPO locations.
- Eligible voters may use the label on any size ballot envelope and must always affix it in the upper right corner.
- Voters keep part of the label in order to use the tracking number to track their ballots.
- At ISCs, absentee ballots receive special handling, including accelerated sortation, special tray identification, and priority transportation.
- The ballots arrive by international transportation at one of the Postal Service gateway offices for Customs clearance and initial processing at select designated offices.

- At these facilities, the mail is processed by postal automation equipment in an initial domestic sort for distribution throughout the United States.

Ballot Mail Service Type Identifiers

Based on industry feedback, the Postal Service has updated the Service Type Identifier (STID) table for Ballot Mail in 2022. The Postal Service provides customized STIDs specifically for ballots to allow for Informed Visibility® Mail Tracking and Reporting (IV®-MTR) to identify mailpieces, with all expected service combinations, during mail processing.

Note that these new STIDs are not for all Election Mail. For Election Mail that is not a ballot (e.g., voter registration applications, polling place locations, ballot applications, and sample ballots), use the appropriate STID for the mail class, as well as Address Correction Service (ACS™) and IV-MTR services desired that are identified for First-Class Mail or USPS Marketing Mail in the STID Table.

As part of an IMb, STIDs offer mailers near-real-time tracking visibility on both outbound and return mailpieces. STIDs also provide the Postal Service with enhanced tracking capabilities that allow us to quickly identify and process on-hand ballots throughout the mail network. To learn more about STIDs and view the updated STID Table, see postalpro.usps.com/mailing/service-type-identifiers.

Official Election Mail Logo

The Official Election Mail logo is a unique registered trademark designed exclusively for inclusion in the design of Official Election Mail.

The Official Election Mail logo may be used on any mailpiece created by or on behalf of, an election official that is mailed to or from a citizen of the United States for the purpose of participating in the voting process. This includes balloting materials, voter registration cards, absentee applications, polling place notifications, and voter reply mail. The logo may be used on qualifying mailpieces in all classes of mail and all processing categories; however, it is not intended to substitute for postage.

When the Official Election Mail logo appears on a mailpiece, voters recognize the mail as important and distinct from partisan political mailings. Additionally, the logo serves to identify Official Election Mail for Postal Service workers and distinguishes it from the millions of other mailpieces that are processed daily.

Election Mail Checkbox

The Postal Service is committed to providing a secure, efficient, and effective way for citizens to participate when policymakers decide to use mail as part of their elections. In furtherance of that commitment, the Postal Service created the Election Mail Checkbox in *PostalOne!* processing and our Postage Statement forms (e.g., PS Form 3600-FCM, PS Form 3600-PM, PS Form 3602-N, and PS Form 3602-R) to get increased visibility of Election Mail in the mailstream.

Please check the “This is Official Election Mail” box for each mailing presented for acceptance. This provides the Postal Service with important insight into Election Mail volume by entry point that may help with future Postal Service capacity planning.

Serialized Intelligent Mail Barcodes

A serialized IMb is a 65-bar Postal Service barcode used to sort and track letters and flats. The barcode simplifies data-gathering by consolidating information for multiple Postal Service identifiers into one comprehensive location. Using a serialized IMb also expands mailers’ ability to track individual mailpieces and gain greater mailstream visibility.

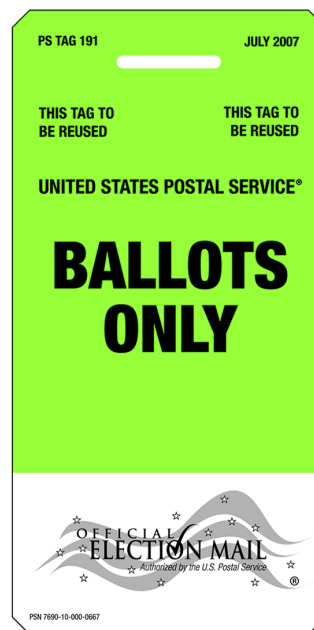
Uniquely serialized IMbs facilitate the tracking of individual ballots to and from individual voters. A serialized IMb can be applied to most Election Mail and is critical for using IV-MTR service. The IV-MTR application provides information about when and where the Postal Service sorts a mailpiece on mail-processing equipment. A serialized IMb can also be used for address correction services: manual address correction notices, ACS, OneCode ACS®, and Intelligent Mail Full-Service ACS™.

Tag 191

Tag 191, *Domestic and International Ballots*, may be used by election officials to identify trays and sacks of ballot mail destined for either domestic or international addresses. The green tag (shown here) provides greater visibility to containers of ballot mail as they enter USPS processing and distribution operations. Tags are available at your local Post Office or Business Mail Entry Unit (BMEU) at postalpro.usps.com/node/1623. To order online, use the order form on the Election Officials tab at about.usps.com/gov-services/election-mail.

The tag cannot be used to identify containers of other types of Election Mail, such as sample ballots, polling place notices, voter registration notices, or other election-related materials. Tag 191 also may not be used for Political Mail.

Tag 191



Mailpiece Design Analysts

The Postal Service strongly recommends an MDA review all Election Mail envelopes before printing. We recommend that election officials consult an MDA each year to review new and previously approved envelope designs. MDAs are experts on Postal Service mailpiece design standards and can provide guidance on envelopes that meet the Postal Service's requirements, answer questions about mailpiece design, give advice on evaluating mailpieces for automation discounts, and provide technical assistance on the Postal Service's envelope standards.

For assistance, customers can connect with an MDA by contacting the Mailing and Shipping Solutions Center (MSSC) via email at MSSCAdmin@usps.gov or toll-free at 877-672-0007 (select option 2 for mailing and shipping, then option 2 for MDA). Hours of operation are Monday through Friday, 7 A.M. to 7 P.M. Central Time (closed federal holidays). Also, mailpiece design information is available online at postalpro.usps.com/mailing/mailpiece-design-analyst-mda-customer-service-help-desk.

Mail Class

The Postal Service continues to recommend that election officials use First-Class Mail for their outbound ballot mailings to voters. Using First-Class Mail allows for faster service while maintaining high visibility as the ballot moves through the mailstream (when used with USPS visibility tools, like serialized Intelligent Mail barcodes). Nevertheless, the Postal Service has long engaged in several practices to prioritize ballots that are entered as Marketing Mail, regardless of the paid class, when capacity permits and when the mailpiece is identifiable as ballots by the Official Election Mail logo or other Postal Service visibility indicia.

Business Reply Mail and Qualified Business Reply Mail

Business Reply Mail® (BRM) and Qualified Business Reply Mail™ (QBRM™) are First-Class Mail services that enable election officials to pay the return postage (including a per piece fee) for ballots returned by the voter to election offices through the mail.

The mailpieces that election officials distribute must conform to a specific format, including use of a unique ZIP+4® code assigned by the Postal Service. QBRM proofs must be approved by the Postal Service and bear an IMb. QBRM applies only to automation-compatible cards and letter-size mail weighing up to and including 2 ounces. For more information on BRM and QBRM, see DMM 505.1.1 and 1.6 as well as Quick Service Guide 505 on Postal Explorer® at pe.usps.com.

Informed Delivery

Informed Delivery is a secure, free, and optional feature that can help election officials connect with voters by providing eligible residential and personal PO Box consumers with a digital preview of their household's incoming mail and the ability to manage their packages all from one location. Users can view grayscale images of the exterior (addressed side) of automation-processed, letter-sized mailpieces via email, USPS Mobile® App, or an online dashboard. Nearly, 48 million users are already signed up, with an average email open rate exceeding 68 percent. The Postal Service's Informed Delivery feature continues to deliver on its value proposition to election boards by providing the opportunity to reach more voters, target and increase interaction with users, encourage responses to voter engagement campaigns, reach customers digitally from their physical address, and gain more returns on Election Mail campaigns.

A digital preview of the exterior of Election Mail offers benefits to both election officials and voters. Election officials are able to increase voter interaction with their mail and generate faster response rates. At the same time, voters have a more convenient and secure "vote at home" experience because they can see when their Election Mail will arrive. Learn more about Informed Delivery at usps.com/business/informed-delivery.htm.

Political Mail



In preparation for the election cycle this year, the following actions must take place at every postal facility:

- Ensure the correct use of Tag 57, *Political Campaign Mailing*, for all Political Mail.
- Ensure Postal Service employees know that they must always promptly and efficiently process and deliver Political Mail. Mail entry personnel must ensure that all qualifying mail is documented as Political Mail.

Key Messages

Millions of Americans will use the mail to campaign and vote for their chosen issue or candidates this year. It's also important to note:

- The U.S. Mail remains a secure, efficient, and effective means for citizens and campaigns to participate in the electoral process. The Postal Service considers the dependable and timely delivery of Political Mail promoting candidates and social causes to be essential to the success of the political mailing season.
- The best campaign is a multi-channel campaign. For candidates, Political Mail can help them reach constituents directly. Mail prompts action, often through other channels.
- Mail can reach 100 percent of targeted voters.
- Mail has been tested and is proven effective.
- Mail prompts action, often through other channels.

For more information, visit usps.com/business/political-mail.htm.

Political Mail Tools

The Postal Service developed mail tools and technologies that help cut through the political noise and ensure that your campaign message is reaching voters at the right time and in the right place. You can use these resources to prepare for continued growth in 2022.

- The Political Mail website (see deliverthewin.com) provides information on key contacts and other valuable resources, and serves as an online platform to promote direct mail through the following materials:
 - Educational articles.
 - White papers.
 - Case studies.
 - Videos.
- Connections to digital content, such as augmented reality, emphasize the link between digital and hard copy content as a means to extend and increase the effectiveness of political messaging. Augmented reality mailpieces promote campaign messages in a way that engages voters.
- Postal Service webinars highlight key political industry topics.
- The Postal Service has sponsorship agreements with the American Association of Political Consultants to help promote the use of mail early and often in the political arena. Activities include:
 - Attending events and co-sponsored webinars.
 - Advertising and white paper development and placement.
 - Direct meetings with political operatives.

Tag 57

Tag 57, *Political Campaign Mailing*, is a red container tag used to identify Political Mail upon entry to the mailstream. Tag 57 can be used to identify:

- Political Campaign Mailing by a registered political candidate, campaign committee, and committee of a political party.
- Political Message Mailing by a PAC, super-PAC, or other organization engaging in issue advocacy or voter mobilization.

According to the *Postal Operations Manual*, a registered political candidate or party is defined as an individual or organization recognized by the appropriate government election control authority (national, state, or local).

Tag 57



Political Mail Service Type Identifiers

Based on industry feedback, the Postal Service has updated the STID table for Political Mail in 2022. The Postal Service provides customized STIDs specifically for Political Mail to improve visibility. These STIDs are proven instrumental in identifying and tracking Political Mail on hand and in the mailstream. In addition, STIDs increase the visibility of Political Mail within the automation environment and can enhance passive identification and tracking of Political Mail.

When Political Mail STIDs are used as part of an IMb, the associated Political Mailpiece scan data is available via Informed Visibility (IV) reports. To learn more about Political Mail STIDs and view the updated STID Table, see postal-pro.usps.com/mailing/service-type-identifiers.

FAQs

1. What is Election Mail?

Election Mail is any item mailed to or from authorized election officials that enables citizens to participate in the voting process, such as ballots, balloting materials, voter registration cards, absentee ballot applications, and polling place notifications.

To enhance visibility, we recommend use of the Election Mail checkbox and Official Election Mail logo for all Election Mail, as well as the use of Tag 191, *Domestic and International Ballots*, and serialized IMb for outbound ballots.

2. What is Political Mail?

Political Mail is any material mailed for campaign purposes by a registered political candidate, campaign committee, or committee of a political party, as well as any material mailed by a political action committee or organization engaging in issues advocacy or voter mobilization.

Political Mail may be sent for any public election — partisan or nonpartisan — for which there is a ballot. Political Mail is identified using red Tag 57, *Political Campaign Mailing*.

3. How many ballots were sent through the mail for the 2020 general election?

According to the 2020 Election Administration and Voting Survey (EAVS), states reported transmitting a total of 90.7 million mailed ballots to voters (not including ballots sent to and from UOCAVA voters) for the November 2020 general election. Approximately 77.8 percent of these ballots were returned by voters.

4. In the 2020 general election, how many ballots were voted by troops around the world?

The Military Postal Service Agency postmarked and dispatched 59,862 voted absentee ballots from military voters to election offices using Priority Mail Express Military Service with Label 11-DoD between September 1, 2020, and January 7, 2021 (the end of the runoff election). The average transit time of ballots to election offices was 6 business days. Of the ballots received by APOs and FPOs, 4.5 percent were Undeliverable as Addressed (UAA) from election offices, and were either redirected to the voter's current address or returned to sender.

5. Is the Postal Service ready for the increased mail volume of Election Mail and Political Mail?

Yes. The Postal Service is confident in its ability to offer dependable and timely delivery of Election Mail and Political Mail.

6. What is the Hatch Act?

The Hatch Act (5 U.S.C. §§ 7321–7326) limits certain political activities for most executive branch employees. For example, the law prohibits employees from engaging in political activity while on duty or in the federal workplace. The Hatch Act also prohibits executive branch employees from soliciting or receiving political contributions. Employees who violate the Hatch Act are subject to a range of disciplinary actions, including the following:

- Removal from federal service.
- Reduction in grade.

- Debarment from federal employment for a period not to exceed 5 years.
- Suspension, reprimand, or a civil penalty not to exceed \$1,000.

7. How does the Hatch Act affect the Postal Service and its employees?

The Postal Service is non-political, which means the organization cannot and does not support any political party or affiliation over another. The continued effectiveness of this organization depends on delivering all political mailings without giving the perception that the views of one candidate, political party, or political viewpoint are endorsed over another.

It is the responsibility of all Postal Service employees to know and obey Hatch Act restrictions. This means that employees may not display political buttons while on Postal Service property or place bumper stickers on a Postal Service vehicle that indicate a preference for a specific candidate, party, or political position. Employees are also urged not to participate in any political discussions where customers are present.

This brief summary does not address all of the Hatch Act prohibitions. For more information about the Hatch Act:

- Visit the Ethics page on *Blue* at blue.usps.gov/uspslaw/Ethics.htm,
- Contact the HQ Ethics helpline at 202-268-6346, or
- Send an email message to “Ethics Help” (internal email) or ethics.help@usps.gov.

8. Do return ballots need to be postmarked by a certain date?

Ballot acceptance rules vary on a state-by-state basis. Some states will accept a ballot that is delivered after Election Day if it has been mailed by Election Day (or some other specified date) in certain circumstances. Other states focus on the date by which the ballot is received (typically by Election Day) rather than when it is mailed. Visit your state's election website for specific information.

9. Do return ballots need to be postmarked even if there is a meter?

In recognition of the importance that the election laws in some states place on postmarks, it has been the long-standing policy of the Postal Service to try to ensure that every return ballot mailed by voters receives a postmark, whether the return ballot is pre-paid by election officials or mailed with a stamp affixed by the voter. We instruct our employees throughout the country about our ballot postmarking processes

and procedures, and review standard operating procedures for ballot postmarking. Consistent with our policy, ballots are postmarked in every state, which helps to ensure that return ballots are postmarked for states that require it.

Contacts and Resources

Election Mail and Political Mail Area and District Contacts

A list of contact information for each area director and district manager of Customer Relations is available for election officials on the Resources tab at about.usps.com/what/government-services/election-mail/welcome.htm.

Area Customer Relations

Area	Customer Relations Contact Numbers
Atlantic	202-268-4753
Central	414-287-2538
Southern	972-665-4415
WestPac	415-819-6972

Election Mail Security and Postal Inspection Service

The United States Postal Inspection Service® (USPIS®) is the federal law enforcement organization assigned to protect the mail, including ballots mailed to and from voters domestically and abroad. Postal inspectors nationwide secure the Postal Service network on which the nation's critical election infrastructure depends. As the law enforcement experts on mail security, postal inspectors are a primary point of contact for Election Mail security. USPIS serves as a member of the Department of Justice Election Threats Task Force. Postal inspectors respond to any reported criminal incidents involving Election Mail, including mail theft, mail fraud, and incidents involving threatening, suspicious, or dangerous mail.

To report suspicious mail and Election Mail-related security or criminal incidents, call the USPIS 24-hour law enforcement communications center at 877-876-2455 (select option 4 for Election Mail issues) or visit uspis.gov. Postal inspectors also coordinate with the USPS Office of Inspector General when allegations of Postal Service employee misconduct arise.

USPIS Election Crimes Coordinators

USPIS Election Crimes Coordinators (ECCs) are designated postal inspectors that address Election Mail and other election-related issues, as described above, that require law enforcement attention. ECCs coordinate closely with the Department of Justice, Federal Bureau of Investigation, USPS Office of the Inspector General, and local and state law enforcement, when appropriate. Additionally, ECCs are located throughout the United States and coordinate with local and state election officials in instances where Election Mail is recovered as part of a criminal or security incident.

Election Mail and Political Mail Sites

Please refer to the following resources for guidance during the election cycle:

- For external information and resources on Election Mail, visit about.usps.com/what/government-services/election-mail.
- For Political Mail guidance and tips, visit deliverthewin.com.

Tracking and Reporting Election Mail Issues

- Report Election Mail issues to the Postal Service via the ElectionMail.org web form.
- Report Political Mail issues to the Postal Service at tools.usps.com/political-mail-issue.htm.
- Notify USPS in advance of your political mailing by providing a copy of your mailpiece and PS Form 3600 or 3602 to help us plan for receiving your mail. Create the notice at tools.usps.com/political-mail-alert.htm.

Official Election Mail Program Kit

- To download the 2022 Official Election Mail Kit (Kit 600), visit about.usps.com/kits/kit600.pdf.

PostalPro Resources

- For information on how to set up an account for election ballots, visit postalpro.usps.com/mailing/election-political-mail.
- For Information on permit-based solutions for Election Mail, visit postalpro.usps.com/mailing/election-political-mail/permit-solutions.

Mailpiece Design Analysts

The Postal Service recommends that every Election Mail envelope design be reviewed by an MDA before it is used in the 2022 election cycle. For design assistance, contact an MDA:

- By calling the Mailing and Shipping Solutions Center (MSSC) at 877-672-0007 (select option 2 for mailing and shipping, then option 2 for MDA);
- By emailing MDA@usps.gov; or
- By visiting postalpro.usps.com/mailing/mailpiece-design-analyst-mda-customer-service-help-desk.

Special Procedures APO/FPO/DPO and Overseas Citizens Absentee Ballots Fact Sheet

- For tips to ensure absentee ballots reach military personnel and U.S. citizens who are currently overseas, visit about.usps.com/kits/kit600.pdf#page=18.

Service Type Identifier for Ballot Mail

- To determine the right STID for your mailing, visit about.usps.com/kits/kit600.pdf#page=10.

Service Type Identifier for Political Mail

- To determine the right STID for your mailing, visit postalpro.usps.com/service-type-identifiers/stdtable.

Business Reply Mail and Qualified Business Reply Mail

- For directions on how to get started with BRM/QBRM, visit about.usps.com/kits/kit600.pdf#page=16.

Informed Delivery

- For instructions on setting up an Informed Delivery mailing campaign, visit about.usps.com/kits/kit600.pdf#page=20.

Green Tag 191, Domestic and International Ballots

- For information and guidelines to help your ballot mail get higher visibility during processing, visit about.usps.com/kits/kit600.pdf#page=14.

Red Tag 57, Political Campaign Mailing

- To learn about the proper use of Tag 57, visit usps.com/political-mail/tag-57.pdf.

Publication 631 — Official Election Mail — Graphic Guidelines and Logos

- To learn about the proper use of the Official Election Mail logo for mailpieces, visit about.usps.com/publications/pub631.pdf.

Publication 632 — State and Local Election Mail User's Guide

- For information that election officials must consider before mailing, visit about.usps.com/publications/pub632.pdf.

Mailing Standards of the United States Postal Service, Domestic Mail Manual (DMM®)

- See part 703, Non-profit USPS Marketing Mail and Other Unique Eligibility: pe.usps.com/text/dmm300/703.htm.

— Public Relations,
Corporate Communications, 10-6-22

Policies, Procedures, and Forms Updates

Manuals

DMM Revision: Flat Trays Alternative

Effective November 7, 2022, the Postal Service™ will revise *Mailing Standards of the United States Postal Service, Domestic Mail Manual (DMM®)*, in various sections, to add flat trays as an alternative handling unit to sacks and bundles for USPS Marketing Mail® and Periodicals flats.

The Postal Service will also update Quick Service Guides (QSG) to add flat trays as an alternative handling unit. The QSG sections that will be revised include:

- 207d, “Periodicals Nonbarcoded Flats”;
- 207f, “Periodicals Barcoded (Automation) Flats”;
- 240e, “Commercial — USPS Marketing Mail Nonautomation Flats”;

- 240f, “Commercial — USPS Marketing Mail Automation Flats”;
- 240g, “Commercial — USPS Marketing Mail Carrier Route Flats”;
- 705a, “Pallets.”

For questions or support, contact the local Business Mail Entry Unit or the Postal Service Mailing and Shipping Solutions Center at 877-672-0007 or MSSC@usps.gov.

The standards become effective immediately after they have been published.

The Postal Service will incorporate these revisions into the November 7, 2022, edition of the online DMM, which is available via Postal Explorer® at pe.usps.com.

— Product Classification,
Product Solutions, 10-6-22

Publications

Publication 223 Revision: Directives and Forms Update

Effective September 30, 2022, Publication 223, *Directives and Forms Catalog*, is revised to include current information for the items noted in this article. See Chapter 1 of Publication 223 for information on how to order directives and forms. Publication 223 is available online at about.usps.com/publications/pub223.pdf.

New

- KIT 46, *Prevent All Cigarette Trafficking (PACT) Act of 2009*.
- MI AS-800-2022-6, *Use of External Computer Peripherals in Telework Environment*.
- MI AS-800-2022-7, *Authorization to Operate*.
- MI AS-800-2022-10, *Password Requirements*.
- MI EL-860-2022-8, *Fitness-for-Duty Examinations*.
- MI FM-130-2022-1, *Closing the Financial Accountability of a Discontinued Post Office, Station, or Branch*.
- MOP PG-06-17-2022, *Individual HQ Organizations' Continuity of Operations (COOP) Planning*.

Revised

- MAN DMM, *Mailing Standards of the United States Postal Service, Domestic Mail Manual*.
- MAN IMM, *Mailing Standards of the United States Postal Service, International Mail Manual*.

- NOT 123, *Price List*.
- PUB 52, *Hazardous, Restricted, and Perishable Mail*.
- PUB 223, *Directives and Forms Catalog*.
- PS 17-G, *Federal Agency Stamp Requisition*.
- PS 971, *Certificate of Transfer*.
- PS 2025, *Contract Personnel Questionnaire*.
- PS 2492, *Request for Fitness-for-Duty Examination*.
- PS 3227-R, *Rural or Highway Contract Route Carrier Stamp Purchase Order Form*.
- PS 3533, *Application for Refund of Fees, Products and Withdrawal of Customer Accounts*.
- PS 3541-1, *Postage Statement — Periodicals — One Issue or One Edition*.
- PS 3541-3, *Postage Statement — Periodicals — One Issue or One Edition — Outside County*.
- PS 3541-5, *Postage Statement — Periodicals — One Issue or One Edition — Outside County*.

- PS 3541-7, *Postage Statement — Periodicals — One Issue or One Edition — Outside County.*
- PS 3541-9, *Postage Statement — Periodicals — One Issue or One Edition — Periodicals Pending Authorization.*
- PS 3600-FCM1, *Postage Statement — First-Class Mail and First-Class Package Service.*
- PS 3600-FCM3, *Postage Statement — First-Class Mail and First-Class Package Service — Nonautomation Prices.*
- PS 3600-FCM5, *Postage Statement — First-Class Mail and First-Class Package Service — Roundtrip DVD, CD, or Other Disc Mail.*
- PS 3600-PM1, *Postage Statement — Priority Mail — Permit Imprint.*
- PS 3600-PM3, *Postage Statement — Priority Mail — Permit Imprint — Com. Base/Com. Plus — Regional Rate Box.*
- PS 3600-PM5, *Postage Statement — Priority Mail — Permit Imprint — Negotiated Service Agreement (NSA).*
- PS 3600-PM7, *Postage Statement — Priority Mail — Permit Imprint — Negotiated Service Agreement (NSA).*
- PS 3600-PM9, *Postage Statement — Priority Mail — Open and Distribute — Negotiated Service Agreement (NSA).*
- PS 3600-PM11, *Postage Statement — Priority Mail — Open and Distribute — Commercial Plus.*
- PS 3602-EZ, *Postage Statement — USPS Marketing Mail — Easy Nonautomation Letters or Flats.*
- PS 3602-N1, *Postage Statement — Nonprofit USPS Marketing Mail.*
- PS 3602-N3, *Postage Statement — Nonprofit USPS Marketing Mail — Nonautomation Letters.*
- PS 3602-N5, *Postage Statement — Nonprofit USPS Marketing Mail — Carrier Route Letters.*
- PS 3602-N7, *Postage Statement — Nonprofit USPS Marketing Mail — Nonautomation Flats.*
- PS 3602-N9, *Postage Statement — Nonprofit USPS Marketing Mail — Carrier Route Flats.*
- PS 3602-N11, *Postage Statement — Nonprofit USPS Marketing Mail — Marketing Parcels.*
- PS 3602-N13, *Postage Statement — Nonprofit USPS Marketing Mail — Extra Services and Fees.*
- PS 3602-NZ, *Postage Statement — Nonprofit USPS Marketing Mail — Easy Nonautomation Letters or Flats.*
- PS 3602-R1, *Postage Statement — USPS Marketing Mail.*
- PS 3602-R3, *Postage Statement — USPS Marketing Mail — Nonautomation Letters.*
- PS 3602-R5, *Postage Statement — USPS Marketing Mail — Carrier Route Letters.*
- PS 3602-R7, *Postage Statement — USPS Marketing Mail — Nonautomation Flats.*
- PS 3602-R9, *Postage Statement — USPS Marketing Mail — Carrier Route Flats.*
- PS 3602-R11, *Postage Statement — USPS Marketing Mail — Marketing Parcels.*
- PS 3605-R1, *Postage Statement — Package Services and Parcel Select.*
- PS 3605-R3, *Postage Statement — Package Services — Bound Printer Matter.*
- PS 3605-R5, *Postage Statement — Package Services — Library Mail and Media Mail.*
- PS 3605-R7, *Postage Statement — Parcel Select — Ground.*
- PS 3605-R9, *Postage Statement — Parcel Select — Ground — Cubic.*
- PS 3605-R11, *Postage Statement — Package Services and Parcel Select — Extra Services and Fees.*
- PS 3621-A, *Renewal Notice for Annual Fee(s).*
- PS 3700-1, *Postage Statement — International Mail.*
- PS 3700-3, *Postage Statement — International Mail — FCPIS — Permit Imprint.*
- PS 3700-5, *Postage Statement — International Mail — ISAL — Permit Imprint.*
- PS 3700-7, *Postage Statement — International Mail — ISAL — Permit Imprint.*
- PS 3700-9, *Postage Statement — International Mail — IPA — Permit Imprint.*
- PS 3700-11, *Postage Statement — International Mail — IPA — Permit Imprint.*
- PS 3700-13, *Postage Statement — International Mail — PMI — Permit Imprint.*
- PS 3700-15, *Postage Statement — International Mail — PMI — PMI — Permit Imprint.*
- PS 3700-17, *Postage Statement — International Mail — PMEI — Permit Imprint.*
- PS 3700-19, *Postage Statement — International Mail — Commercial ePacket — Permit Imprint.*
- PS 3700-21, *Postage Statement — International Mail — Extra Services and Fees.*

- PS 3982, *Changes of Address (card)*.
- PS 5111, *Address Information System (AIS) Viewer Order Form*.
- PS 5957, *Requirement-by-Applicant Matrix*.
- PS 6805, *BRM/QBRM Application for ZIP+4 Code Assignment/Validation and QBRM Approval*.
- PS 8184, *National and International Service Center (ISC) Zone Charts Matrix & Labeling Lists Product Order Form*.

Obsolete

PSIN	Ed. Date	Title	Replaced By
HBK AS-703	9/90	<i>Field Customer Guide to Purchasing and Requisitioning</i>	N/A
HBK AS-707-H	1/91	<i>Contracting for Food Services</i>	N/A
HBK AS-712	8/95	<i>Contracting for the Sale of Recyclable Commodities</i>	N/A
HC 73-37	11/73	<i>Responsibilities for Printing and Duplicating Matters</i>	N/A
HC 75-9	2/75	<i>Stocking and Distributing Headquarters Forms</i>	N/A
HC 76-19	6/76	<i>Reporting of Serious Accidents</i>	N/A
HC 78-28	11/78	<i>Guides for Requisitioning and Estimating Printing and Related Services</i>	N/A
HC 81-8	5/81	<i>Business Calling Cards</i>	N/A
MI AS-340-2004-1	2/04	<i>How to Communicate with Headquarters Employees</i>	N/A
MI AS-710-89-3	2/89	<i>USPS Small, Minority, and Woman-Owned Business Enterprise Program</i>	N/A
MI AS-720-93-2	11/93	<i>Management of Supply Item Inventory</i>	N/A
MI EL-670-2009-7	9/09	<i>Inclusiveness and Diversity Advisory Committees</i>	N/A
MI EL-730-85-3	5/85	<i>Standard Mail Classification Training Program</i>	N/A
MI EL-860-2000-7	9/00	<i>Fitness for Duty Examinations</i>	MI EL-860-2022-8
MI FM-130-2011-2	6/11	<i>Closing the Financial Accountability of a Discontinued Post Office, Station, Branch, or Community Post Office</i>	MI FM-130-2022-1
MOP CSO-05-11-2015	5/15	<i>Required Procedures for Environmental Regulatory Agency Site Visits and Notices of Violations</i>	N/A
MOP CSO-06-16-2016	6/16	<i>Postal Service–Required Environmental Policies</i>	N/A
MOP CSO-06-01-2018	6/18	<i>Postal Service–Required Environmental Policies (Supplement)</i>	N/A
MOP CSO-09-12-2018	9/18	<i>Required Procedures for Environmental Regulatory Agency Site Visits and Notices of Violation (Update)</i>	N/A
MOP EP-09-09-2015	9/15	<i>Chemical, Biological, Radiological, Nuclear and Explosive (CBRNE) Threat Assessment Maintenance Policy</i>	N/A
MOP HR-05-11-1995	5/95	<i>Assessing Asbestos – Containing Materials and Air Monitoring</i>	N/A
MOP PG-07-23-2019	7/19	<i>Individual HQ Organizations’ Continuity of Operations (COOP) Planning</i>	MOP PG-06-17-2022
PUB 42	11/03	<i>Manager’s Guide to Retaining Career Employees</i>	N/A
PUB 554	12/97	<i>Supplier Diversity Terms</i>	N/A

— Brand and Policy,
Corporate Communications, 10-6-22

Organization Information

Address Management

Post Office Changes

Old/ New	Finance No.	ZIP Code	State	P. O. Name	County	Station/ Branch/Unit	Unit Type	Effective Date	Comments
Old	23-4230	20635	MD	Helen	Saint Marys	Main Office	Post Office	10/31/2012	
New	23-6012	20659	MD	Mechanicsville	Saint Marys	Main Office	Post Office	08/15/2022	Post Office™ and ZIP Code™ discontinued. Use Mechanicsville, MD 20659 as the last line of address.
Old	35-0270	10910	NY	Arden	Orange	Main Office	Post Office	07/18/2009	
New	35-7815	10910	NY	Sloatsburg	Orange	Arden	Place Name	08/15/2022	Post Office discontinued. Retain ZIP Code. Establish a Place Name. Continue to use Arden, NY 10910 as the last line of address.
Old	35-0625	10912	NY	Bellvale	Orange	Main Office	Post Office	08/25/2010	
New	35-3425	10912	NY	Greenwood Lake	Orange	Bellvale	Place Name	08/15/2022	Post Office discontinued. Retain ZIP Code. Establish a Place Name. Continue to use Bellvale, NY 10912 as the last line of address.
Old	35-2200	13633	NY	De Peyster	Saint Lawrence	Main Office	Post Office	11/30/2015	
New	35-3765	13633	NY	Heuvelton	Saint Lawrence	De Peyster	Place Name	08/15/2022	Post Office discontinued. Retain ZIP Code. Establish a Place Name. Continue to use De Peyster, NY 13633 as the last line of address.
Old	35-8380	12424	NY	Tannersville	Greene	East Jewett	Classified Branch	09/30/2013	
New	35-8380	12424	NY	Tannersville	Greene	East Jewett	Place Name	08/15/2022	Classified Branch discontinued. Retain ZIP Code. Establish a Place Name. Continue to use East Jewett, NY 12424 as the last line of address.
Old	35-2995	13341	NY	Franklin Springs	Oneida	Main Office	Post Office	01/25/2013	
New	35-1660	13341	NY	Clinton	Oneida	Franklin Springs	Place Name	08/15/2022	Post Office discontinued. Retain ZIP Code. Establish a Place Name. Continue to use Franklin Springs, NY 13341 as the last line of address.
Old	35-3930	12089	NY	Hoosick	Rensselaer	Main Office	Post Office	06/27/2014	
New	35-3935	12089	NY	Hoosick Falls	Rensselaer	Hoosick	Place Name	08/15/2022	Post Office discontinued. Retain ZIP Code. Establish a Place Name. Continue to use Hoosick, NY 12089 as the last line of address.

Old/ New	Finance No.	ZIP Code	State	P. O. Name	County	Station/ Branch/Unit	Unit Type	Effective Date	Comments
Old	35-6885	13677	NY	Pyrites	Saint Lawrence	Main Office	Post Office	10/01/2015	
New	35-1205	13677	NY	Canton	Saint Lawrence	Pyrites	Place Name	08/15/2022	Post Office discontinued. Retain ZIP Code. Establish a Place Name. Continue to use Pyrites, NY 13677 as the last line of address.
Old	35-8205	10979	NY	Sterling Forest	Orange	Main Office	Post Office	07/01/2001	
New	35-3425	10979	NY	Greenwood Lake	Orange	Sterling Forest	Place Name	08/15/2022	Post Office discontinued. Retain ZIP Code. Establish a Place Name. Continue to use Sterling Forest, NY 10979 as the last line of address.

— Address Management, Addressing and Geospatial Technology, 10-6-22

Domestic Mail

Labeling List Changes

Effective November 1, 2022, the Postal Service™ will revise Labeling List(s) L007, L012, L201, and L606 to reflect changes in mail processing operations. Mailers are expected to label according to these revised lists for mailings inducted on or after the November 1, 2022, effective date through the December 31, 2022, expiration date.

Labeling Lists

* * * * *

L007 5-Digit Scheme — Periodicals, Standard Mail, and Package Services Flats in Bundles

Changes

Column A Destination ZIP Codes	Column B Label Container To (Change From)	Column B Label Container To (Change To)
01220	PITTSFIELD MA 01201	ADAMS MA 01220
01230	PITTSFIELD MA 01201	ADAMS MA 01220
01238	PITTSFIELD MA 01201	ADAMS MA 01220
01247	PITTSFIELD MA 01201	ADAMS MA 01220
01267	PITTSFIELD MA 01201	ADAMS MA 01220
06082	BROAD BROOK CT 06016	ENFIELD CT 06082
06083	BROAD BROOK CT 06016	ENFIELD CT 06082
06088	BROAD BROOK CT 06016	ENFIELD CT 06082
06092	BROAD BROOK CT 06016	ENFIELD CT 06082
06096	BROAD BROOK CT 06016	ENFIELD CT 06082
06107	BRISTOL CT 06010	WEST HARTFORD CT 06107
06117	BRISTOL CT 06010	WEST HARTFORD CT 06107
06450	ANSONIA CT 06401	MERIDEN CT 06450

Column A Destination ZIP Codes	Column B Label Container To (Change From)	Column B Label Container To (Change To)
06451	ANSONIA CT 06401	MERIDEN CT 06450
06478	ANSONIA CT 06401	MERIDEN CT 06450
06483	ANSONIA CT 06401	MERIDEN CT 06450
06513	SALEM CT 06420	NEW HAVEN CT 06513
06519	SALEM CT 06420	NEW HAVEN CT 06513

Newly Added

Column A Destination ZIP Codes	Column B Label Container To (Added To)
06111	WEST HARTFORD CT 06107

* * * * *

L012 5-Digit ZIP Scheme Combination

Changes

Column A Destination ZIP Codes	Column B Label Container To (Change From)	Column B Label Container To (Change To)
12508	WAPPINGERS FALLS NY 12590	LAGRANGEVILLE NY 12540
12533	POUGHQUAG NY 12570	LAGRANGEVILLE NY 12540
12540	POUGHQUAG NY 12570	LAGRANGEVILLE NY 12540
12543	WALDEN NY 12586	NEW PALTZ NY 12561
12549	WALDEN NY 12586	NEW PALTZ NY 12561
12566	WALDEN NY 12586	NEW PALTZ NY 12561
12570	POUGHQUAG NY 12570	LAGRANGEVILLE NY 12540
12575	WALDEN NY 12586	NEW PALTZ NY 12561
12577	WALDEN NY 12586	NEW PALTZ NY 12561
12582	POUGHQUAG NY 12570	LAGRANGEVILLE NY 12540
12586	WALDEN NY 12586	NEW PALTZ NY 12561
12589	WALDEN NY 12586	NEW PALTZ NY 12561
12590	WAPPINGERS FALLS NY 12590	LAGRANGEVILLE NY 12540
56207	ALBERTA MN 56207	APPLETON MN 56208
56208	ALBERTA MN 56207	APPLETON MN 56208
56209	NEW LONDON MN 56273	ATWATER MN 56209
56211	ALBERTA MN 56207	APPLETON MN 56208
56212	ALBERTA MN 56207	APPLETON MN 56208
56214	NEW LONDON MN 56273	ATWATER MN 56209
56215	ALBERTA MN 56207	APPLETON MN 56208
56216	NEW LONDON MN 56273	ATWATER MN 56209
56218	NEW LONDON MN 56273	ATWATER MN 56209
56219	ALBERTA MN 56207	APPLETON MN 56208
56220	CANBY MN 56220	ATWATER MN 56209
56221	ALBERTA MN 56207	APPLETON MN 56208
56222	NEW LONDON MN 56273	ATWATER MN 56209
56223	NEW LONDON MN 56273	ATWATER MN 56209
56224	NEW LONDON MN 56273	ATWATER MN 56209
56225	ALBERTA MN 56207	APPLETON MN 56208
56226	ALBERTA MN 56207	APPLETON MN 56208
56227	ALBERTA MN 56207	APPLETON MN 56208
56228	NEW LONDON MN 56273	ATWATER MN 56209
56229	NEW LONDON MN 56273	ATWATER MN 56209
56230	CANBY MN 56220	ATWATER MN 56209
56231	ALBERTA MN 56207	APPLETON MN 56208
56232	NEW LONDON MN 56273	ATWATER MN 56209
56235	ALBERTA MN 56207	APPLETON MN 56208
56236	ALBERTA MN 56207	APPLETON MN 56208
56237	NEW LONDON MN 56273	ATWATER MN 56209
56239	NEW LONDON MN 56273	ATWATER MN 56209
56240	ALBERTA MN 56207	APPLETON MN 56208
56241	CANBY MN 56220	ATWATER MN 56209

Column A Destination ZIP Codes	Column B Label Container To (Change From)	Column B Label Container To (Change To)
56243	NEW LONDON MN 56273	ATWATER MN 56209
56244	ALBERTA MN 56207	APPLETON MN 56208
56245	NEW LONDON MN 56273	ATWATER MN 56209
56248	ALBERTA MN 56207	APPLETON MN 56208
56249	ALBERTA MN 56207	APPLETON MN 56208
56251	CANBY MN 56220	ATWATER MN 56209
56252	CANBY MN 56220	ATWATER MN 56209
56253	NEW LONDON MN 56273	ATWATER MN 56209
56255	NEW LONDON MN 56273	ATWATER MN 56209
56256	ALBERTA MN 56207	APPLETON MN 56208
56257	ALBERTA MN 56207	APPLETON MN 56208
56258	CANBY MN 56220	APPLETON MN 56208
56260	NEW LONDON MN 56273	ATWATER MN 56209
56262	ALBERTA MN 56207	APPLETON MN 56208
56263	NEW LONDON MN 56273	ATWATER MN 56209
56264	NEW LONDON MN 56273	ATWATER MN 56209
56265	ALBERTA MN 56207	APPLETON MN 56208
56266	NEW LONDON MN 56273	ATWATER MN 56209
56267	ALBERTA MN 56207	APPLETON MN 56208
56271	CANBY MN 56220	ATWATER MN 56209
56273	NEW LONDON MN 56273	ATWATER MN 56209
56274	ALBERTA MN 56207	APPLETON MN 56208
56276	ALBERTA MN 56207	APPLETON MN 56208
56277	CANBY MN 56220	ATWATER MN 56209
56278	ALBERTA MN 56207	APPLETON MN 56208
56279	CANBY MN 56220	ATWATER MN 56209
56280	CANBY MN 56220	ATWATER MN 56209
56281	ALBERTA MN 56207	APPLETON MN 56208
56283	CANBY MN 56220	APPLETON MN 56208
56288	NEW LONDON MN 56273	ATWATER MN 56209
56289	CANBY MN 56220	ATWATER MN 56209
56295	ALBERTA MN 56207	APPLETON MN 56208
56296	ALBERTA MN 56207	APPLETON MN 56208
56302	SAINT CLOUD MN 56302	SAINT CLOUD MN 56304
56304	SAINT CLOUD MN 56302	SAINT CLOUD MN 56304
56307	ALBANY MN 56307	BOWLUS MN 56314
56308	ASHBY MN 56309	ALEXANDRIA MN 56308
56309	ASHBY MN 56309	ALEXANDRIA MN 56308
56310	AVON MN 56310	ALEXANDRIA MN 56308
56311	BARRETT MN 56311	BELGRADE MN 56312
56312	BARRETT MN 56311	BELGRADE MN 56312
56314	ALBANY MN 56307	BOWLUS MN 56314
56315	ASHBY MN 56309	ALEXANDRIA MN 56308
56316	BARRETT MN 56311	BELGRADE MN 56312
56319	BARRETT MN 56311	BELGRADE MN 56312

Column A Destination ZIP Codes	Column B Label Container To (Change From)	Column B Label Container To (Change To)
56320	AVON MN 56310	ALEXANDRIA MN 56308
56321	AVON MN 56310	ALEXANDRIA MN 56308
56323	BARRETT MN 56311	BELGRADE MN 56312
56324	ASHBY MN 56309	ALEXANDRIA MN 56308
56326	ASHBY MN 56309	ALEXANDRIA MN 56308
56327	BARRETT MN 56311	BELGRADE MN 56312
56329	ALBANY MN 56307	BOWLUS MN 56314
56330	ASHBY MN 56309	ALEXANDRIA MN 56308
56331	ALBANY MN 56307	BOWLUS MN 56314
56332	ASHBY MN 56309	ALEXANDRIA MN 56308
56334	BARRETT MN 56311	BELGRADE MN 56312
56336	ALBANY MN 56307	BOWLUS MN 56314
56338	AVON MN 56310	ALEXANDRIA MN 56308
56339	BARRETT MN 56311	BELGRADE MN 56312
56340	ALBANY MN 56307	BOWLUS MN 56314
56342	ALBANY MN 56307	BOWLUS MN 56314
56343	BARRETT MN 56311	BELGRADE MN 56312
56347	ALBANY MN 56307	BOWLUS MN 56314
56349	BARRETT MN 56311	BELGRADE MN 56312
56350	ALBANY MN 56307	BOWLUS MN 56314
56352	ALBANY MN 56307	BOWLUS MN 56314
56353	ASHBY MN 56309	ALEXANDRIA MN 56308
56354	BARRETT MN 56311	BELGRADE MN 56312
56355	BARRETT MN 56311	BELGRADE MN 56312
56357	ALBANY MN 56307	BOWLUS MN 56314
56358	ASHBY MN 56309	ALEXANDRIA MN 56308
56359	ALBANY MN 56307	BOWLUS MN 56314
56360	BARRETT MN 56311	BELGRADE MN 56312
56361	BARRETT MN 56311	BELGRADE MN 56312
56362	BARRETT MN 56311	BELGRADE MN 56312
56364	AVON MN 56310	ALEXANDRIA MN 56308
56367	AVON MN 56310	ALEXANDRIA MN 56308
56368	AVON MN 56310	ALEXANDRIA MN 56308
56373	AVON MN 56310	ALEXANDRIA MN 56308
56374	ALBANY MN 56307	BOWLUS MN 56314
56375	ALBANY MN 56307	BOWLUS MN 56314
56377	AVON MN 56310	SARTELL MN 56377
56378	BARRETT MN 56311	BELGRADE MN 56312
56379	SAINT CLOUD MN 56302	SAINT CLOUD MN 56304
56381	BARRETT MN 56311	BELGRADE MN 56312
56382	ALBANY MN 56307	BOWLUS MN 56314
56384	ALBANY MN 56307	BOWLUS MN 56314
56385	BARRETT MN 56311	BELGRADE MN 56312
56386	ALBANY MN 56307	BOWLUS MN 56314
56387	SAINT CLOUD MN 56302	SAINT CLOUD MN 56304
56401	BRAINERD MN 56401	CROSBY MN 56441
56425	BRAINERD MN 56401	CROSBY MN 56441

Column A Destination ZIP Codes	Column B Label Container To (Change From)	Column B Label Container To (Change To)
56431	AITKIN MN 56431	CROSBY MN 56441
56433	AKELEY MN 56433	ALDRICH MN 56434
56435	BACKUS MN 56435	ALDRICH MN 56434
56437	BACKUS MN 56435	ALDRICH MN 56434
56438	BACKUS MN 56435	ALDRICH MN 56434
56440	BACKUS MN 56435	ALDRICH MN 56434
56441	AITKIN MN 56431	CROSBY MN 56441
56442	AKELEY MN 56433	ALDRICH MN 56434
56443	BACKUS MN 56435	ALDRICH MN 56434
56444	BACKUS MN 56435	ALDRICH MN 56434
56446	BACKUS MN 56435	ALDRICH MN 56434
56447	BACKUS MN 56435	ALDRICH MN 56434
56448	BACKUS MN 56435	ALDRICH MN 56434
56449	BRAINERD MN 56401	CROSBY MN 56441
56450	BACKUS MN 56435	ALDRICH MN 56434
56452	AITKIN MN 56431	CROSBY MN 56441
56453	BACKUS MN 56435	ALDRICH MN 56434
56455	BACKUS MN 56435	ALDRICH MN 56434
56458	BACKUS MN 56435	ALDRICH MN 56434
56461	BACKUS MN 56435	ALDRICH MN 56434
56464	AKELEY MN 56433	ALDRICH MN 56434
56465	AKELEY MN 56433	ALDRICH MN 56434
56466	AKELEY MN 56433	ALDRICH MN 56434
56467	AKELEY MN 56433	ALDRICH MN 56434
56468	BACKUS MN 56435	ALDRICH MN 56434
56469	BACKUS MN 56435	ALDRICH MN 56434
56470	BRAINERD MN 56401	CROSBY MN 56441
56472	BACKUS MN 56435	ALDRICH MN 56434
56473	AKELEY MN 56433	ALDRICH MN 56434
56474	BACKUS MN 56435	ALDRICH MN 56434
56475	BACKUS MN 56435	ALDRICH MN 56434
56477	AKELEY MN 56433	ALDRICH MN 56434
56479	AITKIN MN 56431	CROSBY MN 56441
56481	AKELEY MN 56433	ALDRICH MN 56434
56482	AITKIN MN 56431	CROSBY MN 56441
56484	AITKIN MN 56431	CROSBY MN 56441

Newly Added

Column A Destination ZIP Codes	Column B Label Container To (Added To)
56201	BELGRADE MN 56312
56270	ATWATER MN 56209
56282	ATWATER MN 56209
56284	ATWATER MN 56209
56285	ATWATER MN 56209
56287	ATWATER MN 56209
56291	ATWATER MN 56209
56292	ATWATER MN 56209
56293	ATWATER MN 56209
56297	ATWATER MN 56209
56301	SARTELL MN 56377
56303	SARTELL MN 56377
56345	BOWLUS MN 56314
56363	ALEXANDRIA MN 56308
56371	ALEXANDRIA MN 56308
56434	ALDRICH MN 56434

* * * * *

Article continues on page [37](#).

Pull-Out Information

Fraud

Invalid USPS Corporate Account Numbers

Provide this listing to Contract Postal Units and acceptance clerks in non-POS locations without intranet access to validate a USPS Corporate Account (USPSCA) number online. For all other locations, online USPSCA validation is preferred. This list supersedes all previous notices, which you must recycle.

Acceptance clerks must not accept Priority Mail Express® shipments bearing an invalid USPSCA number in the “Payment by Account” or “Agreement Number” section of the label or form.

Note: The first 6 digits of a 9-digit Custom Designed Service and Next Day Pickup Agreement make up the Corporate Account Number.

006086	009142	052004	100050	159117	331013	480966	551511	554935	730134	750049	931726	980623
006130	009282	054106	100083	165333	332179	482601	551714	554960	730217	750379	932748	980824
006161	014048	061249	100084	191087	334055	485140	551761	557002	730452	752059	933154	980893
006810	014682	061637	100493	200241	334466	494170	551842	558095	730504	752207	934015	980963
006994	019913	064585	102669	220284	336079	532542	551904	559030	730875	775015	937653	981750
007201	020148	066142	105322	220381	337149	537365	551953	581184	730897	784414	937866	981831
007353	021002	070191	105395	221522	340563	544084	551986	585254	731042	784611	937873	981882
007362	021048	075081	105402	232403	344058	551020	553012	601125	731406	785494	940601	982039
008107	021647	077255	108892	254016	356072	551045	553013	601194	731466	801600	945293	982435
008195	022028	077415	108958	276020	381569	551163	553042	601295	731967	852227	948507	982693
008257	022935	080217	109148	301325	400036	551200	553046	601711	740331	857003	951048	984005
008289	023196	080254	117095	301429	402277	551251	553209	601872	741557	871030	951188	989051
008403	025391	080287	120281	301583	402315	551257	553232	601886	741571	902348	958789	990829
008415	027330	080436	121285	320013	423075	551266	553471	602032	741612	902627	967199	992705
008469	033016	080529	122433	322366	432754	551326	553737	605166	741615	914028	968466	
008535	038214	080682	132194	322617	436405	551360	553740	607008	741668	915559	970324	
008582	040001	091505	152218	326644	452094	551379	553860	722090	741782	915590	980234	
008656	041024	093099	152555	326667	452180	551390	554022	723085	741872	921433	980352	
008746	041149	097923	154019	327084	460169	551461	554308	724024	745019	921792	980405	
008862	041311	098607	159061	327271	470031	551477	554690	730034	748020	927885	980491	

— Product Information Requirements, Mail Entry and Payment Technology, 10-6-22

Missing, Lost, or Stolen U.S. Money Order Forms

Do Not Cash — Upon Receipt, Notify Local Postal Inspectors

Provide this listing to all Postal Service™ employees responsible for accepting and cashing postal money orders. Destroy all interim notices when the numbers listed appear in the *Postal Bulletin*. The new money order serial

numbers consist of the first 10 digits. The eleventh digit is a check digit only.

Do not cash outdated money orders **104 151 601 to 692 600 000**. Advise holders to send invalid money orders to Canada Post Corporation, Ottawa, Canada K1A 0B1. Check for altered dollar amounts by holding money orders to the light.

010 001 0200	to	0299	043 205 5922	to	5999	083 784 8886	to	8899	174 281 9347	to	9399
010 504 1932	to	1999	044 087 3457	to	3499	083 913 6915	to	6999	175 251 2600	to	0699
011 582 1889	to	1899	044 087 4000	to	4099	084 478 3920	to	3999	176 281 7937	to	7950
011 588 2900	to	3099	044 226 2487	to	2512	086 000 8271	to	8299	176 281 7963	to	7999
012 441 0784	to	0799	044 306 4200	to	4299	086 798 3840	to	3849	176 731 6586	to	6599
012 579 5675	to	5699	044 306 4370	to	4599	088 404 4472	to	4499	178 254 5000	to	9999
013 289 6176	to	6199	045 524 4121	to	4298	088 404 5584	to	5699	178 881 9900	to	9999
013 610 0014	to	0099	046 800 9870	to	9899	088 757 8688	to	8699	180 031 2089	to	2098
014 932 1000	to	1099	047 352 4000	to	4099	088 757 9400	to	9499	180 403 7723	to	7741
014 972 0800	to	0899	048 383 7650	to	7659	089 358 2248	to	2257	180 428 4580	to	0599
015 363 0065	to	0099	048 396 3647	to	3699	090 663 9678	to	9684	182 368 7544	to	0599
017 028 3200	to	3299	051 142 0755	to	0799	091 818 0071	to	0099	182 475 3229	to	3258
018 569 5333	to	5399	051 774 8857	to	8899	093 106 9346	to	9355	182 475 3904	to	3933
018 986 5264	to	5299	051 781 2875	to	2885	093 203 0500	to	0599	182 631 0031	to	0099
019 518 2814	to	2899	051 977 7010	to	7023	093 684 3630	to	3699	182 911 6539	to	6600
020 698 5159	to	5199	052 058 7115	to	7199	094 081 5074	to	5099	184 218 2760	to	2799
020 844 7307	to	7399	054 450 1130	to	1167	094 216 2555	to	2599	185 828 1474	to	1499
020 972 8948	to	8999	057 670 0563	to	0599	094 580 7062	to	7099	186 132 7583	to	0599
022 021 9110	to	9181	058 187 3836	to	3899	094 639 4200	to	4299	186 629 0589	to	0599
022 037 1411	to	1499	058 523 3003	to	3099	095 070 7186	to	7199	187 184 6177	to	0199
022 527 9201	to	9210	058 591 1153	to	1299	095 076 8300	to	8399	187 323 8200	to	8299
022 529 1882	to	1899	058 895 3746	to	3799	095 354 6864	to	6899	187 441 6080	to	6099
023 637 7169	to	7199	059 986 0814	to	0899	097 224 1350	to	1599	188 831 6774	to	6799
024 380 4100	to	4199	060 406 7650	to	7699	100 160 3800	to	3899	188 835 6370	to	6399
024 496 6870	to	6896	063 491 8122	to	8199	104 667 6400	to	6499	189 083 1064	to	1099
025 092 0987	to	0999	063 916 9968	to	9999	104 876 8937	to	8999	189 660 9583	to	9599
025 369 5535	to	5599	064 091 4500	to	4599	112 049 4413	to	4499	191 179 0377	to	0399
025 729 1151	to	1199	065 170 0471	to	0499	112 870 9765	to	9799	192 050 5762	to	5781
025 729 1643	to	1799	065 255 7909	to	7999	113 319 2000	to	2099	194 456 8600	to	0699
026 492 3180	to	3199	065 392 6345	to	6399	114 402 3850	to	3899	195 194 6881	to	6899
027 361 0430	to	0499	066 099 2014	to	2099	114 866 5368	to	5397	195 874 1112	to	1199
027 369 4482	to	4495	066 648 2880	to	2899	116 154 2800	to	2899	196 979 0524	to	0599
027 671 8762	to	8776	066 787 3639	to	3699	116 986 4400	to	4499	197 244 6100	to	6199
027 787 9886	to	9899	066 845 7500	to	9999	117 175 1647	to	5169	197 244 6300	to	6399
027 965 9487	to	9499	067 093 3869	to	3899	117 951 4687	to	4699	197 244 6400	to	6499
028 100 8069	to	8099	068 895 0334	to	0399	117 951 5200	to	5299	197 244 6500	to	6599
028 191 1852	to	1999	070 724 4488	to	4499	119 786 3051	to	3064	197 244 6600	to	6699
028 850 3000	to	3199	070 841 9181	to	9199	119 815 8961	to	6199	197 244 6700	to	6799
029 510 1500	to	1599	070 844 2546	to	2599	119 850 7400	to	7499	197 244 6800	to	8999
030 687 0903	to	0999	070 916 1340	to	1399	119 850 7700	to	7999	198 285 2556	to	2566
030 701 3442	to	3499	071 047 5768	to	5799	121 634 0460	to	0499	199 105 0778	to	0799
031 077 4507	to	4799	071 179 9800	to	9899	122 451 9879	to	9899	199 678 2968	to	2999
032 295 7500	to	9999	071 386 3682	to	3699	122 714 6805	to	6900	202 748 5133	to	5199
034 394 1000	to	1099	071 507 6840	to	6899	124 916 0304	to	0499	202 748 5245	to	5299
034 943 0400	to	0799	072 045 9641	to	9699	126 423 0136	to	0169	202 748 5300	to	5399
035 035 4337	to	4399	072 675 8287	to	8299	127 500 2328	to	2399	202 748 5400	to	5499
037 312 7500	to	7599	073 763 0867	to	0876	160 901 2254	to	2299	203 256 1240	to	1299
037 706 9578	to	9599	073 763 0878	to	0887	161 103 6581	to	6599	204 230 3577	to	3595
037 805 3677	to	3699	073 763 0889	to	0898	161 194 2857	to	0899	205 019 0174	to	0199
037 909 5490	to	5499	077 617 5481	to	5499	162 032 4447	to	4499	206 936 3184	to	3199
037 931 4660	to	4699	077 999 4001	to	4090	163 257 1085	to	1099	207 196 9900	to	9999
039 145 6521	to	6595	078 174 4475	to	4499	164 359 2406	to	2499	207 204 0700	to	0799
040 024 3901	to	3999	078 219 4931	to	4999	166 101 1433	to	1499	207 204 0800	to	0899
040 674 7100	to	7199	078 250 4756	to	4799	167 555 5201	to	5212	207 514 3857	to	3899
040 688 8816	to	8899	078 823 8312	to	8399	167 555 5214	to	5299	208 556 4707	to	4799
041 299 6752	to	6799	079 374 0300	to	2499	169 618 6274	to	6299	210 057 4038	to	4047
041 623 8889	to	8899	079 807 2342	to	2399	171 806 6878	to	6893	210 221 0548	to	0599
041 803 6565	to	6599	082 721 0228	to	0254	173 639 4685	to	4699	214 061 4711	to	4724
043 129 1968	to	1997	083 140 5000	to	7499	174 238 2779	to	2799	214 303 6311	to	6325

214 303 6239	to	6258	252 833 3286	to	3297	258 405 6900	to	6999	262 337 4800	to	4899
214 877 4251	to	4273	253 470 3948	to	3999	258 405 7000	to	7099	262 337 4900	to	4999
215 252 3918	to	3992	253 565 7400	to	7499	258 405 7100	to	7199	262 337 5000	to	5099
217 585 1400	to	1499	254 252 2800	to	2899	258 405 7200	to	7299	262 337 5100	to	5199
218 698 2157	to	2199	254 252 2900	to	2999	258 405 7300	to	7399	262 337 5200	to	5299
218 746 0800	to	0899	254 252 3000	to	3099	258 405 7400	to	7499	262 337 5300	to	5399
219 095 0100	to	0399	254 252 3100	to	3199	258 405 7800	to	7899	262 337 5400	to	5499
219 389 1885	to	1899	254 252 3200	to	3299	258 405 7900	to	7999	262 337 5500	to	5599
219 568 7435	to	7456	254 252 3300	to	3399	258 405 8000	to	8099	262 337 5600	to	5699
219 568 7469	to	7487	254 252 3400	to	3499	258 405 8100	to	8199	262 337 5700	to	5799
221 316 5757	to	5799	254 252 3500	to	3599	258 405 8200	to	8299	262 337 5800	to	5899
223 476 3914	to	3999	254 252 3600	to	3699	258 405 8300	to	8399	262 337 5900	to	5999
223 565 4921	to	4957	254 252 3700	to	3799	258 405 8400	to	8499	262 337 6000	to	6099
223 565 4979	to	4999	254 252 3800	to	3899	258 405 8500	to	8599	262 337 6100	to	6199
224 636 4745	to	4765	254 252 3900	to	3999	258 405 8600	to	8699	262 337 6200	to	6299
224 636 4776	to	4799	254 252 4000	to	4099	258 405 8700	to	8799	262 337 6300	to	6399
224 636 4855	to	4885	254 252 4100	to	4199	258 405 8800	to	8899	262 337 6400	to	6499
224 636 4932	to	4948	254 252 4200	to	4299	258 405 8900	to	8999	262 337 6500	to	6599
224 636 4950	to	4962	254 252 4300	to	4399	258 405 9600	to	9699	262 337 6600	to	6699
224 636 4985	to	4999	254 252 4400	to	4499	258 405 9700	to	9799	262 337 6700	to	6799
224 723 0757	to	0799	254 252 4500	to	4599	258 405 9800	to	9899	262 337 6800	to	6899
224 730 2207	to	2299	254 252 4600	to	4699	258 405 9900	to	9999	262 337 6900	to	6999
225 970 0500	to	0599	254 252 4700	to	4799	259 014 9989	to	9999	262 337 7000	to	7099
225 970 0600	to	0699	254 252 4800	to	4899	259 062 4788	to	4798	262 337 7100	to	7199
225 970 0700	to	0799	254 252 4900	to	4999	259 218 1400	to	1499	262 337 7200	to	7299
227 033 8679	to	8699	254 565 7607	to	7700	259 218 1500	to	1599	262 337 7300	to	7399
227 275 9400	to	9999	254 907 1203	to	1299	259 218 1600	to	1699	262 337 7400	to	7499
228 463 2456	to	2499	255 185 9527	to	9599	259 590 5654	to	5699	262 337 7500	to	7599
228 510 4852	to	4899	255 397 1557	to	1576	259 670 8268	to	8299	262 337 7600	to	7699
229 462 8451	to	8475	255 425 2989	to	2998	259 835 6238	to	6399	262 337 7700	to	7799
229 668 5977	to	5999	255 728 6412	to	6499	259 835 6701	to	6799	262 337 7800	to	7899
229 923 9176	to	9199	255 728 9842	to	9899	260 224 4600	to	4699	262 337 7900	to	7999
229 924 6696	to	6699	256 134 9833	to	9839	260 224 5941	to	5999	262 337 8000	to	8099
230 051 9500	to	9999	256 134 9840	to	9849	260 310 2821	to	2899	262 337 8100	to	8199
236 366 2431	to	2499	256 134 9850	to	9859	260 452 0010	to	0022	262 337 8200	to	8299
236 607 6882	to	6899	256 134 9860	to	9869	260 452 0049	to	4299	262 337 8300	to	8399
236 660 5853	to	5872	256 134 9870	to	9879	260 553 8200	to	8299	262 337 8400	to	8499
239 322 5200	to	5299	256 134 9880	to	9889	260 553 8600	to	8699	262 337 8500	to	8599
239 322 5400	to	5499	256 134 9890	to	9899	260 553 9600	to	9799	262 337 8600	to	8699
239 322 5600	to	5699	256 247 6900	to	6999	260 553 9800	to	9899	262 337 8700	to	8799
239 322 5800	to	5899	256 550 5536	to	5545	260 553 9900	to	9999	262 337 8800	to	8899
239 322 5900	to	5999	256 799 2257	to	2299	260 761 1603	to	1662	262 337 8900	to	8999
239 607 4783	to	4799	257 154 8763	to	8799	261 183 2100	to	2299	262 337 9000	to	9099
240 593 1879	to	1899	257 154 8800	to	8899	261 426 0408	to	0499	262 337 9100	to	9199
242 591 2048	to	2099	257 765 4567	to	4599	262 082 8000	to	8099	262 337 9200	to	9299
242 735 0388	to	0398	257 765 4610	to	4696	262 082 8100	to	8199	262 337 9300	to	9399
242 951 7276	to	7299	257 765 4737	to	4799	262 082 8200	to	8299	262 337 9400	to	9499
243 535 6370	to	6399	257 792 7800	to	7889	262 082 8300	to	8399	262 337 9500	to	9599
244 004 9985	to	9999	257 792 7900	to	7999	262 082 8400	to	8499	262 337 9600	to	9699
244 004 9985	to	9999	257 792 8000	to	8099	262 288 7302	to	7399	262 337 9700	to	9799
244 268 9765	to	9799	257 856 9863	to	9899	262 288 7400	to	7499	262 337 9800	to	9899
244 347 4471	to	4499	258 103 1773	to	1782	262 288 9900	to	9999	262 337 9900	to	9999
249 056 1551	to	1599	258 405 1800	to	1899	262 337 2600	to	2699	262 472 3188	to	3199
249 336 9438	to	9499	258 405 1900	to	1999	262 337 2700	to	2700	262 472 3200	to	3299
249 399 4000	to	4099	258 405 3300	to	3399	262 337 2800	to	2800	262 546 3100	to	3199
249 399 4100	to	4199	258 405 3400	to	3499	262 337 2900	to	2900	262 546 3200	to	3299
249 399 4200	to	4299	258 405 3500	to	3599	262 337 3000	to	3099	262 546 3300	to	3399
249 399 4300	to	4399	258 405 3700	to	3799	262 337 3100	to	3199	262 546 3400	to	3499
249 399 4400	to	4499	258 405 3800	to	3899	262 337 3200	to	3299	262 546 3500	to	3599
249 399 4500	to	4599	258 405 3900	to	3999	262 337 3300	to	3399	262 546 3600	to	3699
249 399 4600	to	4699	258 405 4000	to	4099	262 337 3400	to	3499	262 546 3900	to	3999
249 399 4700	to	4799	258 405 4100	to	4199	262 337 3500	to	3599	262 546 4300	to	4399
249 399 4800	to	4899	258 405 4200	to	4299	262 337 3600	to	3699	262 546 4400	to	4499
249 399 4900	to	4999	258 405 4600	to	4699	262 337 3700	to	3799	262 546 4500	to	4599
250 159 7502	to	7599	258 405 5600	to	5699	262 337 3800	to	3899	262 546 4600	to	4699
250 566 9644	to	9699	258 405 5700	to	5799	262 337 3900	to	3999	262 546 4700	to	4799
250 661 8425	to	8499	258 405 5800	to	5899	262 337 4000	to	4099	262 546 4800	to	4899
251 335 5731	to	5799	258 405 5900	to	5999	262 337 4100	to	4199	262 546 4900	to	4999
251 379 2380	to	2399	258 405 6000	to	6099	262 337 4200	to	4299	262 546 7100	to	7199
252 005 7626	to	7699	258 405 6100	to	6199	262 337 4300	to	4399	262 546 7200	to	7299
252 421 8401	to	8499	258 405 6200	to	6299	262 337 4400	to	4499	262 546 7300	to	7399
252 464 2810	to	2899	258 405 6300	to	6399	262 337 4500	to	4599	262 546 7400	to	7499
252 612 3683	to	3699	258 405 6400	to	6499	262 337 4600	to	4699	262 546 9800	to	9899
252 469 2125	to	2199	258 405 6800	to	6899	262 337 4700	to	4799	262 546 9900	to	9999

262 567 1788	to	1799
263 254 2500	to	2500
263 340 0000	to	0099
263 340 0100	to	0199
263 340 0500	to	0599
263 340 0600	to	0699
263 340 2700	to	2799
263 340 2800	to	2899
263 340 3000	to	3099
264 341 2360	to	2399
264 380 4000	to	4099
264 380 4100	to	4199
264 799 6049	to	6099
264 860 7832	to	7868
265 127 3658	to	3699
265 380 7111	to	7137
265 444 4762	to	4799
265 548 7074	to	7099
266 106 0000	to	2499
266 129 5809	to	5899
266 673 0000	to	2499
266 749 7900	to	7999
266 868 0952	to	0999
266 868 1028	to	1099
266 868 1100	to	1199
266 868 1200	to	1299
267 296 1237	to	1299
267 324 8946	to	8998
268 072 1203	to	1299
271 660 4333	to	4400
273 520 0000	to	9999
273 520 6000	to	8999
273 775 7700	to	7899
273 882 1913	to	1998
274 750 0300	to	0400
274 782 0549	to	0599
302 000 0000	to	9999
349 746 2056	to	2099
350 518 7350	to	3734
360 011 1690	to	1699
360 168 6008	to	6099
360 173 8800	to	8899
360 324 2326	to	2399
362 861 3064	to	3099
373 006 2176	to	2199
374 768 2600	to	2699
375 169 4400	to	4599
375 829 3400	to	3499
375 851 9100	to	9199
376 196 0911	to	0999
378 085 3679	to	3699
378 351 1063	to	1099
379 843 5100	to	5199
380 093 9600	to	9699
380 165 1165	to	1199
381 325 4500	to	4599
381 604 2510	to	2699
381 645 9525	to	9599
383 314 3968	to	3999
383 892 1000	to	1344
383 892 1382	to	1399
384 925 3641	to	3654
385 568 2331	to	2399
385 599 7554	to	7575
385 774 2024	to	2099
386 624 1412	to	1599
386 883 8936	to	8999
387 314 5574	to	5599
387 837 6300	to	6399
388 828 0656	to	0699
389 696 2400	to	2799
389 846 3104	to	3135
389 846 3145	to	3195
389 887 9211	to	9230
389 887 9234	to	9299
390 001 3182	to	3199
390 001 3500	to	3699
390 545 5974	to	5999
391 104 6146	to	6199
391 574 1466	to	1499
391 783 3020	to	3599
391 792 6100	to	6199
392 668 2956	to	2999
392 854 8500	to	8899
393 584 7566	to	7699
393 650 0074	to	0099
393 838 8316	to	8499
393 893 6007	to	6099
394 126 6907	to	6999
394 189 0405	to	0599
394 822 3243	to	3278
394 990 1810	to	1899
395 343 3264	to	3299
395 373 3035	to	3099
395 396 9649	to	9799
395 970 3240	to	3299
397 622 4054	to	4099
397 819 8902	to	8999
398 149 7200	to	7699
399 070 0872	to	0899
399 156 7119	to	7199
399 203 5064	to	5099
399 296 9910	to	9999
399 396 8935	to	8999
399 792 7775	to	7799
399 792 8300	to	8399
400 427 1051	to	1999
401 045 1505	to	1549
401 045 1571	to	1599
401 294 2700	to	2799
401 310 9505	to	9599
401 382 5312	to	5399
402 578 7876	to	7899
403 125 6744	to	6799
403 260 7000	to	7499
403 280 6470	to	6499
403 685 8600	to	8699
404 003 0300	to	0399
404 041 8838	to	8899
404 071 4268	to	4299
404 347 5356	to	5399
404 347 5548	to	5599
404 726 4500	to	4599
404 961 5001	to	5199
405 325 0188	to	0198
406 009 4587	to	4599
406 260 6830	to	6899
406 459 6641	to	6999
406 733 3000	to	3999
407 545 1557	to	1599
407 594 0412	to	0599
407 692 9100	to	9299
407 959 2190	to	2199
408 265 2275	to	2288
408 499 7700	to	7799
408 499 7900	to	7999
408 682 8484	to	8599
408 698 7015	to	7099
409 072 3941	to	3999
410 491 2311	to	2399
410 694 8400	to	8599
410 775 1500	to	1599
410 795 7927	to	7999
410 867 0917	to	0966
410 867 0970	to	0999
411 868 1023	to	1199
411 922 2322	to	2399
412 193 0900	to	0999
412 395 8599	to	8699
412 485 6500	to	6599
412 485 6610	to	6699
412 885 5953	to	5999
414 193 3608	to	3674
414 193 3677	to	3699
414 411 7348	to	7399
414 640 0757	to	0799
414 965 1727	to	1799
417 302 8104	to	8199
417 387 6532	to	6599
417 496 6800	to	6999
417 871 9250	to	9299
417 930 9533	to	9599
418 164 6500	to	6799
418 423 9863	to	9899
418 633 5922	to	5999
418 719 8520	to	8599
418 744 2235	to	2299
418 962 2848	to	2899
419 543 0286	to	0299
419 730 0300	to	0399
420 277 0015	to	0049
420 599 0734	to	0798
420 661 4115	to	4199
420 758 9500	to	9699
420 969 3951	to	3971
420 969 3973	to	3999
421 116 3565	to	3599
421 130 9300	to	9399
421 313 4500	to	4999
421 364 5537	to	5599
421 656 2609	to	2699
421 988 9700	to	9799
422 172 4667	to	4699
422 484 4212	to	4299
422 556 1270	to	1299
422 587 7024	to	7099
422 819 7533	to	7599
422 842 5073	to	5087
422 907 7563	to	7599
424 500 6050	to	6099
424 641 8500	to	8599
424 871 6600	to	6699
425 298 2352	to	2399
425 418 4269	to	4299
425 418 4405	to	4499
426 547 4566	to	4599
427 412 6337	to	6499
427 481 0900	to	0999
428 027 2742	to	2752
429 474 4172	to	4199
429 889 2900	to	2999
430 150 4401	to	4599
430 172 9800	to	9899
430 177 1900	to	2099
430 444 9500	to	9699
430 664 4070	to	4099
432 168 8419	to	8499
432 708 6800	to	6999
432 744 1544	to	1599
432 995 9775	to	9799
433 003 5800	to	5899
433 757 3047	to	3099
433 765 4003	to	4099
434 482 7060	to	7199
434 513 2386	to	2399
434 968 3076	to	3092
435 303 1831	to	1842
435 303 1986	to	1999
435 666 6092	to	6399
436 082 6400	to	6899
436 160 6441	to	6499
437 316 7115	to	7199
437 427 0500	to	3499
439 179 2300	to	2399
439 310 0458	to	0499
440 698 1947	to	1999
440 858 6300	to	6399
440 858 6420	to	7299
441 199 1655	to	1699
443 127 3648	to	3699
443 127 4000	to	4099
443 673 7900	to	7999
443 800 9335	to	9399
444 382 8822	to	8899
444 390 1667	to	1699
444 457 3854	to	3899
450 048 4173	to	4199
450 048 4442	to	4699
450 560 5173	to	5199
450 620 3077	to	3099
450 620 3135	to	3199
450 780 2716	to	2799
450 801 2700	to	2799
451 109 2967	to	2984
451 115 4110	to	4125
451 115 4127	to	4199
451 746 0700	to	0799
452 265 0074	to	0099
452 265 0246	to	0299
452 265 0335	to	0999
452 509 1169	to	1199
452 855 6471	to	6499
452 890 4679	to	4799
452 900 8215	to	8238
453 117 9146	to	9199
453 334 3631	to	3699
453 603 7841	to	7891
453 650 1140	to	1199
453 741 1300	to	1399
454 013 2919	to	2999
454 186 2411	to	2499
454 268 4883	to	4899
454 302 5400	to	5499
454 490 8300	to	8399
454 547 7434	to	7499
454 922 4867	to	4895
455 221 1348	to	1499
455 364 2147	to	2199
455 399 5400	to	5499
455 476 0676	to	0699
455 543 0618	to	0699
456 410 9006	to	9099
456 470 4146	to	4299
456 619 4460	to	4499
457 333 2686	to	2699
457 729 1767	to	1777
457 937 8615	to	8699
458 028 9810	to	9899
458 057 2712	to	2999
458 069 9537	to	9599
458 069 9665	to	9699
458 337 5222	to	5299
458 354 7653	to	7999
458 671 8678	to	8699
458 671 8721	to	8798
458 847 5044	to	5999
459 274 7624	to	7699
459 365 5432	to	5499
459 378 5764	to	5799
459 472 4816	to	4999
460 349 6878	to	6899
460 550 1909	to	1999
460 997 5234	to	5299
461 973 6443	to	6499
462 152 0107	to	0299
462 274 1072	to	1099

462 277 8373 to 8399	482 729 6800 to 6899	505 096 0662 to 0699	609 893 1000 to 1099
462 554 6051 to 6099	483 363 7207 to 7299	505 893 7739 to 7799	610 092 3200 to 3299
463 011 5529 to 5540	483 402 2356 to 2399	505 893 7800 to 7999	610 582 4200 to 4299
463 176 4115 to 4199	483 486 5100 to 5199	506 124 0800 to 0999	611 879 6939 to 6999
463 176 4229 to 4299	483 632 1521 to 1599	506 165 7027 to 0099	612 291 8013 to 8099
463 185 2600 to 2799	483 632 2600 to 2799	506 502 5209 to 5299	612 751 5171 to 5199
463 227 7711 to 7799	483 849 1615 to 1699	506 756 1682 to 1699	612 751 5226 to 5299
463 414 4869 to 4899	484 174 4803 to 5299	506 756 1700 to 1799	612 751 6083 to 6099
463 808 3484 to 3499	484 323 8900 to 9199	506 756 1800 to 1899	612 751 6268 to 6299
463 945 7400 to 7899	484 680 5000 to 5038	506 836 5326 to 5399	612 751 6572 to 6599
464 629 9000 to 9399	484 680 5040 to 5074	508 488 6226 to 6299	612 774 2111 to 2199
464 711 4332 to 4399	484 680 5077 to 5099	508 789 8332 to 8399	612 774 2254 to 2299
465 692 3963 to 3999	485 029 4913 to 4999	508 789 8400 to 8499	612 774 2500 to 2599
465 698 8300 to 8599	486 176 0600 to 0699	509 909 0425 to 0435	614 469 0979 to 0999
465 743 7745 to 7799	486 559 7555 to 7599	510 150 2400 to 2499	614 474 3000 to 3099
466 798 6056 to 6067	486 696 3023 to 3199	510 381 3200 to 3299	614 521 3490 to 3499
467 147 4300 to 4399	488 173 7900 to 7999	510 587 9500 to 9599	614 645 1800 to 1899
468 079 5782 to 5799	488 206 4100 to 4199	510 587 9659 to 9699	614 832 1100 to 2099
469 067 2817 to 2899	488 226 0200 to 0299	510 269 9770 to 9999	615 017 7505 to 7599
469 127 8000 to 8199	488 709 3906 to 3999	511 021 5042 to 5099	617 711 6609 to 6699
469 213 0359 to 0399	488 855 8359 to 8399	511 021 5100 to 5199	617 760 5266 to 5299
469 213 0500 to 0599	489 181 8963 to 8999	511 468 1747 to 1799	617 813 3601 to 3699
469 561 8011 to 8099	489 223 2000 to 2099	511 844 0100 to 0199	618 840 9200 to 9299
469 658 1961 to 1999	489 311 1930 to 1999	511 844 0340 to 0399	619 551 7229 to 7299
469 666 9900 to 9999	489 318 6200 to 6300	512 805 3913 to 3919	619 859 3000 to 3099
469 678 1900 to 1999	489 384 0027 to 0099	513 046 0700 to 0726	620 073 9400 to 9499
469 781 4900 to 4999	489 427 0658 to 0899	513 149 0600 to 0699	621 614 7907 to 7930
469 947 6960 to 6999	489 997 5252 to 5299	513 445 3000 to 3199	621 614 7932 to 7999
470 755 5800 to 5818	490 669 5850 to 6099	513 466 2034 to 2044	621 648 8021 to 8199
471 918 0300 to 0999	490 717 7080 to 7099	513 539 9052 to 9099	621 648 8500 to 8599
471 985 2408 to 2419	490 721 6000 to 6099	513 539 9267 to 9299	621 904 8351 to 8599
472 191 6700 to 6799	490 793 1500 to 2099	513 539 9800 to 9899	621 916 1978 to 1989
472 270 2555 to 2599	490 886 8171 to 8199	513 539 9985 to 9999	622 989 8032 to 8099
472 987 0213 to 0241	490 977 9221 to 9240	513 606 5459 to 5490	623 076 9300 to 9399
472 987 0290 to 0299	491 258 8100 to 9099	513 812 1751 to 1799	623 819 5006 to 5099
473 151 2069 to 2199	491 567 1376 to 1399	514 103 3600 to 3699	623 895 8200 to 8399
473 666 9138 to 9199	492 254 4800 to 4899	514 103 3700 to 3799	623 917 0000 to 0099
473 952 3429 to 3499	492 283 5100 to 5199	514 103 3800 to 3899	623 917 0200 to 0299
474 108 5402 to 5499	492 610 6813 to 6899	600 645 3223 to 3299	624 468 5288 to 5299
474 356 5193 to 5299	493 394 5568 to 5599	601 339 1200 to 1399	624 665 3162 to 3198
474 949 3366 to 3399	493 470 2562 to 2599	601 653 5884 to 5899	625 088 6735 to 6799
475 134 9362 to 9399	493 473 7700 to 7799	601 661 7700 to 7799	625 916 9500 to 9799
475 167 9667 to 9699	493 716 2153 to 2199	601 682 5343 to 5399	625 968 8956 to 8999
475 319 3415 to 3499	494 206 2972 to 2999	601 928 1600 to 1699	627 005 3938 to 3999
475 319 3649 to 3799	494 217 3446 to 3999	602 512 2972 to 2999	627 384 3907 to 4099
475 340 6400 to 6599	494 224 0500 to 0599	602 555 2400 to 2799	627 496 7549 to 7599
475 424 8410 to 8499	495 145 0600 to 0699	602 829 7061 to 7099	627 708 3605 to 3699
475 629 9156 to 9199	496 209 7425 to 7499	603 483 9572 to 9599	627 776 2500 to 2599
475 850 6101 to 6199	496 213 8728 to 8799	603 490 7200 to 7299	628 226 3100 to 3199
475 875 2500 to 2599	496 474 5226 to 5248	603 678 7100 to 7199	628 814 4702 to 4799
476 169 8264 to 8299	497 053 8517 to 8699	603 678 7662 to 7699	628 851 9689 to 9699
476 189 3000 to 3499	497 854 8673 to 8699	603 678 7902 to 7999	629 510 7200 to 7299
476 331 2480 to 2499	498 449 8888 to 8899	603 678 8418 to 8499	629 964 4200 to 4294
477 289 8601 to 8699	498 929 8285 to 8499	603 678 8700 to 9999	630 389 3056 to 3071
477 681 5206 to 5299	498 936 5310 to 5399	604 086 0880 to 0899	630 463 0588 to 0599
478 010 4243 to 4268	499 016 5425 to 5499	604 349 1414 to 1499	631 459 9117 to 9199
478 010 4270 to 4291	499 440 8575 to 8899	604 503 7776 to 7799	631 762 9325 to 9399
478 450 5071 to 5099	499 731 6717 to 6799	605 520 9037 to 9099	632 217 4933 to 4999
478 469 7838 to 7858	500 064 1858 to 1869	605 685 4010 to 4099	632 500 0000 to 640 3999
478 469 7883 to 7899	500 070 5725 to 7799	605 988 6467 to 6499	633 110 4165 to 4199
479 280 9800 to 9899	501 058 0016 to 0026	607 689 7951 to 7960	633 110 4303 to 4499
479 365 9116 to 9176	501 331 0300 to 0399	607 728 1276 to 1299	633 438 6429 to 6599
479 412 9900 to 9999	501 460 0977 to 0999	608 727 7100 to 7199	633 588 7173 to 7182
479 667 6190 to 6199	502 227 7645 to 7699	608 727 7273 to 7599	634 725 0700 to 0799
479 748 9680 to 9699	502 424 0200 to 0499	608 813 9950 to 9999	634 803 3239 to 3299
479 860 7000 to 7199	502 424 0600 to 0699	609 067 5325 to 5399	634 807 2474 to 2499
480 526 2000 to 2099	502 496 6923 to 6999	609 067 5488 to 5499	634 827 5900 to 5999
480 640 6330 to 6399	503 003 2700 to 2899	609 067 5600 to 5699	634 886 3428 to 3499
480 658 0568 to 0599	503 194 5144 to 5153	609 289 6123 to 6199	635 559 3449 to 3499
480 689 5100 to 5199	503 790 9922 to 9948	609 438 4400 to 4499	636 289 6214 to 6299
481 072 9463 to 9499	504 045 4030 to 4099	609 493 1100 to 1199	636 634 8007 to 8042
481 673 0074 to 0095	504 166 0200 to 0599	609 766 8091 to 8999	637 150 1200 to 1299
482 527 1500 to 1599	504 240 1062 to 1399	609 825 4100 to 4115	637 562 5828 to 5899
482 541 5255 to 5299	504 805 3300 to 3499	609 884 2981 to 2999	638 042 1647 to 1699

638 049 4984	to	4999	653 455 4874	to	4899	683 444 8159	to	8199	702 254 9300	to	9399
638 318 1115	to	1199	654 238 0000	to	0399	685 154 7780	to	7789	702 264 7569	to	7599
638 318 1453	to	1499	654 404 3065	to	3092	685 297 7645	to	7699	702 519 0513	to	0524
638 885 0000	to	0299	654 962 2900	to	3199	685 623 5264	to	5299	702 713 1800	to	1809
638 903 4362	to	4373	655 103 5081	to	5199	685 650 9487	to	9499	702 821 5730	to	5799
639 415 1929	to	1999	655 523 2600	to	2999	685 669 4200	to	4299	702 821 5805	to	5899
639 415 2019	to	2099	656 305 2448	to	2499	685 757 8452	to	8499	702 844 6975	to	6994
639 420 6200	to	6299	657 347 4438	to	4999	686 071 2694	to	2799	702 846 6331	to	6399
639 469 3517	to	3799	657 710 8100	to	8999	686 176 3333	to	3354	702 848 3900	to	3999
639 605 2143	to	2199	657 780 0985	to	0999	686 372 3200	to	3299	702 857 7302	to	7499
639 657 8600	to	8799	658 586 1400	to	1499	686 644 5879	to	5899	702 878 0114	to	0199
640 289 7500	to	7599	658 877 8000	to	8199	686 899 1371	to	1399	703 364 1707	to	1799
640 289 7700	to	7999	658 880 8000	to	8199	686 931 7636	to	7699	740 002 7710	to	7719
641 170 4420	to	4499	659 398 7300	to	7399	687 601 0973	to	0999	740 037 6730	to	6800
641 318 3133	to	3199	659 706 8113	to	8199	687 614 6774	to	6799	740 119 2275	to	2284
641 378 6500	to	6999	659 846 7837	to	7899	688 120 9000	to	9999	740 130 6688	to	6698
641 383 8739	to	8799	660 510 4100	to	4199	688 314 3107	to	3191	740 144 2780	to	2795
641 877 3187	to	3299	660 673 0400	to	0599	690 291 1361	to	1371	740 241 9049	to	9099
641 877 3310	to	3399	661 488 5000	to	5099	690 788 2877	to	2899	740 252 9265	to	9294
642 355 8094	to	8199	661 609 9100	to	9199	690 893 5344	to	5399	740 255 1718	to	1799
642 355 8308	to	8999	661 716 9420	to	9499	690 893 5512	to	5599	740 274 2602	to	2619
642 900 0018	to	0099	661 906 6522	to	6599	690 904 1300	to	1599	740 277 0366	to	0392
643 030 6254	to	6299	662 021 8332	to	8399	690 941 6000	to	6199	740 332 7658	to	7671
644 066 0882	to	0899	662 068 0700	to	0899	691 313 6383	to	6399	740 348 6641	to	6658
644 069 0600	to	0699	662 553 0774	to	0799	691 313 6600	to	6699	740 351 4790	to	4799
644 077 7506	to	7699	663 078 7034	to	7099	691 582 8003	to	8099	740 374 7416	to	7499
644 085 8157	to	8199	663 763 5300	to	5399	691 664 1800	to	1999	740 470 2420	to	2443
644 112 9839	to	9899	663 883 7039	to	7499	691 664 2400	to	2499	740 514 0300	to	0499
644 373 9083	to	9099	663 938 9200	to	9299	692 727 9362	to	9399	740 523 7432	to	7449
644 380 1460	to	1499	664 253 8000	to	8499	692 798 1800	to	1899	740 535 1555	to	1580
644 733 4715	to	4799	664 656 3055	to	3099	693 249 0779	to	0799	740 557 3570	to	3579
644 900 9712	to	9799	665 174 6400	to	6499	693 249 0877	to	1699	740 650 4104	to	4140
644 901 0109	to	1299	665 274 8208	to	8299	693 445 0566	to	0999	740 684 0620	to	0800
644 901 1325	to	1399	665 669 5400	to	5499	693 448 8500	to	8999	740 701 6105	to	6114
644 923 6800	to	7799	666 132 8226	to	8299	693 645 9583	to	9599	740 705 9790	to	9799
644 932 4655	to	4699	666 696 2209	to	2299	693 965 4200	to	4299	740 726 6400	to	6500
645 318 7240	to	7499	666 696 2309	to	2399	695 741 2906	to	2999	740 748 8319	to	8329
645 333 1766	to	1799	667 032 9300	to	9399	695 947 8518	to	8599	740 765 3306	to	3399
645 790 8632	to	8699	667 729 5529	to	5599	696 662 8247	to	8299	740 774 8434	to	8499
645 821 0657	to	0699	668 383 8400	to	8699	697 447 8285	to	8296	740 779 4259	to	4299
645 930 7948	to	7999	670 368 3400	to	3499	698 042 4816	to	4899	740 786 1885	to	1899
645 975 0737	to	0762	670 369 7336	to	7399	698 131 2138	to	2157	740 790 5989	to	5999
646 242 6200	to	6299	670 750 7169	to	7199	698 227 0000	to	0099	740 803 4870	to	4879
646 270 7639	to	7799	671 046 6200	to	6399	700 065 2570	to	2599	740 820 4854	to	7836
646 798 4000	to	4999	671 251 5448	to	5499	700 065 4800	to	4899	740 827 7578	to	7594
647 048 7035	to	7099	671 926 5600	to	5799	700 190 3350	to	3359	740 917 7490	to	7499
647 049 2900	to	2999	672 444 2000	to	2999	700 228 6048	to	6099	740 918 5531	to	5549
647 398 8300	to	8399	672 828 3410	to	3499	700 650 0452	to	0499	741 037 8528	to	8551
647 398 8481	to	8499	673 167 5776	to	5799	700 666 1323	to	1349	742 030 6135	to	6149
647 437 3000	to	4999	675 464 3700	to	3799	700 786 9106	to	9142	742 033 2663	to	2674
647 811 2188	to	2199	675 464 4000	to	4199	700 859 0744	to	0758	742 040 3300	to	3309
648 009 6057	to	6099	676 365 5958	to	5999	701 028 6780	to	6899	742 112 8155	to	8199
648 163 5300	to	5499	676 669 1024	to	1099	701 213 3900	to	3999	742 151 5000	to	5014
648 722 5283	to	5299	677 126 6734	to	6799	701 267 2000	to	3999	742 191 4640	to	4649
648 892 3164	to	3199	677 333 9979	to	9999	701 335 7312	to	7399	742 192 5210	to	5224
649 100 3989	to	3999	677 466 1088	to	1099	701 369 2005	to	2050	742 222 9200	to	9210
649 647 0370	to	0399	678 071 4500	to	4799	701 499 2260	to	2299	742 228 9660	to	9669
649 647 0522	to	0599	678 096 7531	to	7599	701 503 2247	to	2299	742 247 6980	to	6989
649 647 5237	to	5399	679 909 2578	to	2599	701 541 2271	to	2299	742 290 0936	to	0950
649 647 9100	to	9299	680 112 9565	to	9599	701 553 6557	to	6599	742 302 7600	to	7699
649 666 7800	to	8299	680 244 0903	to	0999	701 578 7460	to	7469	742 305 3711	to	3799
650 114 7707	to	7719	680 412 6046	to	6099	701 578 7475	to	7499	742 305 3800	to	3899
650 130 3400	to	3599	680 761 6800	to	6899	701 601 3457	to	3499	742 305 3900	to	3999
650 213 0406	to	0499	681 677 0540	to	0699	701 605 5913	to	5999	742 305 4000	to	4099
650 555 1749	to	1799	682 070 1029	to	1099	701 695 3982	to	3999	742 305 4100	to	4199
650 564 1900	to	1999	682 956 6280	to	6299	701 695 4148	to	4199	805 885 8411	to	8499
650 627 4212	to	4299	682 956 6490	to	6599	701 695 4227	to	4299	806 087 1100	to	1499
650 736 2043	to	2099	682 956 6700	to	6799	701 708 1741	to	1799	806 268 9275	to	9299
650 739 1540	to	1699	682 965 1178	to	1199	701 736 3966	to	3999	806 534 3400	to	3477
651 741 4415	to	4499	682 965 1201	to	1299	701 772 0870	to	0899	807 342 3283	to	3399
651 882 2800	to	2899	683 118 2389	to	2399	701 838 2800	to	2899	808 086 7100	to	7199
652 754 6317	to	6399	683 378 2000	to	2099	701 941 0600	to	0699	808 090 3440	to	3499
653 131 4945	to	4999	683 378 2117	to	2299	702 171 1603	to	1699	808 325 5161	to	5699
653 426 3300	to	3399	683 415 1200	to	1499	702 195 5109	to	5199	808 784 8000	to	8299

830 125 0672 to 0699	856 752 0200 to 0299	902 985 0833 to 0899	918 951 7231 to 7299
830 602 5800 to 5999	857 111 1352 to 1399	903 370 6934 to 6999	919 519 2786 to 2799
830 610 3700 to 3799	857 279 3450 to 3499	904 600 6523 to 6599	919 536 0770 to 0799
830 983 3500 to 3599	857 843 4000 to 4099	904 892 0378 to 0399	919 814 3095 to 3199
830 983 3635 to 3699	858 124 7644 to 7699	904 892 0648 to 1299	919 889 5110 to 5134
831 354 1387 to 1399	858 756 3111 to 3299	905 056 2216 to 2299	919 889 5137 to 5176
831 815 8240 to 8299	859 063 8200 to 8699	905 510 6647 to 6799	919 889 5178 to 5199
832 525 3810 to 3899	859 190 0600 to 0644	905 510 6900 to 7099	919 889 5030 to 5070
833 159 1884 to 1899	859 437 5538 to 5599	905 794 0000 to 0199	919 889 5090 to 5099
833 456 2567 to 2599	859 811 2888 to 2899	905 794 0288 to 0299	919 915 2774 to 2787
833 566 3015 to 3071	859 855 8873 to 8999	905 873 6900 to 6999	920 155 4662 to 4687
834 130 5200 to 5299	860 240 8520 to 8599	905 873 7100 to 7299	920 309 9039 to 9199
834 316 5444 to 5499	860 275 3900 to 3999	905 880 8900 to 8999	920 771 5321 to 5399
834 354 8747 to 8766	860 518 9629 to 9699	905 889 7100 to 7199	920 857 5500 to 5899
834 354 8824 to 8838	860 600 0021 to 0999	906 158 1508 to 1599	920 864 3480 to 3499
835 269 5700 to 5799	861 158 2350 to 2599	906 558 8812 to 8899	920 963 4567 to 4599
835 496 7303 to 7399	861 367 5400 to 5499	906 982 2214 to 2299	921 333 7400 to 7499
835 539 5200 to 5999	861 637 6010 to 6099	907 725 8500 to 8599	921 477 3762 to 3799
835 813 3015 to 3099	861 979 7292 to 7499	907 815 0216 to 0257	922 278 1048 to 1399
837 672 8967 to 8999	862 216 6100 to 6199	908 622 4225 to 4235	922 280 2019 to 2099
837 784 3282 to 3299	862 263 9213 to 9299	908 936 9254 to 9299	922 280 2233 to 2299
838 176 8377 to 8399	862 271 0800 to 0999	909 066 4494 to 7499	922 773 0459 to 0499
838 518 1257 to 1299	862 271 5000 to 5099	909 067 7400 to 7499	923 032 7000 to 7399
839 718 8257 to 8299	863 871 5138 to 5199	909 100 1787 to 1799	923 045 3630 to 3699
840 323 0600 to 0699	863 949 5300 to 5399	909 100 1900 to 2099	923 484 3600 to 3699
840 875 6235 to 6299	864 088 8200 to 8299	909 355 0422 to 0499	923 493 9403 to 9599
840 910 0900 to 0999	864 426 3972 to 3999	909 568 8900 to 9099	923 493 9681 to 9699
841 349 5000 to 5099	864 520 6117 to 6136	909 568 9300 to 9499	923 604 4424 to 4499
841 805 7747 to 7899	865 151 0526 to 0599	909 725 7307 to 7399	923 810 7800 to 8299
841 805 7944 to 8099	865 500 4034 to 4099	909 833 0947 to 0999	924 252 1200 to 1299
842 226 0685 to 0695	865 883 6082 to 6099	910 219 8631 to 8699	924 252 1400 to 1499
842 685 4600 to 4699	866 004 3000 to 3999	910 265 1100 to 1199	924 533 0711 to 0799
842 685 4742 to 4999	866 442 4100 to 4899	910 471 7273 to 7299	924 533 2343 to 2399
842 860 0300 to 0399	867 366 9108 to 9118	910 536 2505 to 2599	924 533 2428 to 2499
842 898 5582 to 5599	867 633 7403 to 7499	910 958 7499 to 7599	924 685 1957 to 1999
843 062 7100 to 7199	867 737 5623 to 5699	911 140 1000 to 2199	924 946 6300 to 6699
843 077 6288 to 6299	868 169 4529 to 4599	911 245 2545 to 2599	925 333 5900 to 6099
843 077 6378 to 6399	868 173 8400 to 8599	911 268 9077 to 9099	925 336 2300 to 2399
843 758 5769 to 5778	868 514 9000 to 9099	911 400 8948 to 8999	926 432 5907 to 5999
843 786 2554 to 2699	868 566 9200 to 9299	911 508 1620 to 1799	926 436 3600 to 3699
845 656 8165 to 8199	869 200 0000 to 9999	911 509 9310 to 9399	927 765 6257 to 6299
845 727 2100 to 2199	869 387 1150 to 1199	911 523 3000 to 3999	928 197 8100 to 8199
845 746 2618 to 2635	869 505 3500 to 3599	912 057 9922 to 9999	928 197 8283 to 8299
846 390 7531 to 7599	869 523 7033 to 7099	912 882 0563 to 0899	928 856 2059 to 2068
846 918 0572 to 0599	869 566 6150 to 6167	913 605 2218 to 2299	930 078 5800 to 5899
847 237 7690 to 7699	869 776 8785 to 8786	913 709 2429 to 2499	930 219 1722 to 1799
847 284 2481 to 2499	869 800 0000 to 9999 9999	913 818 3501 to 3999	930 335 7810 to 7819
847 374 7055 to 7065	870 054 4814 to 4899	914 063 4300 to 4399	931 097 9259 to 9299
847 374 7055 to 7065	870 491 4812 to 4849	914 346 7621 to 7644	931 156 1502 to 1579
847 636 5304 to 5399	870 536 5820 to 5829	914 453 1366 to 1399	931 156 1600 to 1625
847 700 5447 to 5499	870 541 7167 to 7239	914 529 6185 to 6299	931 156 1671 to 1699
847 723 7500 to 7599	870 575 8155 to 8999	914 896 4658 to 4699	932 506 6400 to 6599
849 485 3427 to 3499	870 589 0485 to 0494	915 187 8774 to 8779	932 732 1796 to 1799
849 520 9850 to 9899	870 691 7060 to 7099	915 300 2783 to 2799	932 827 9026 to 9099
849 608 1357 to 1399	872 028 4850 to 4899	915 546 6822 to 6999	932 957 2300 to 2399
849 792 2600 to 2699	872 029 9306 to 9399	915 646 5183 to 5199	933 060 6160 to 6189
850 546 1862 to 1899	872 078 3709 to 3799	915 671 3963 to 3980	933 387 2541 to 2561
851 143 6826 to 6844	872 100 0445 to 0459	915 671 3982 to 3999	933 760 3609 to 4199
851 209 9880 to 9899	900 556 4178 to 4199	915 675 2217 to 2299	933 894 0928 to 0999
851 928 9221 to 9299	900 845 0044 to 0099	916 440 3377 to 3399	934 018 2729 to 2741
852 589 6560 to 6599	900 936 0217 to 0299	916 670 6352 to 6399	934 180 0300 to 0399
853 049 3646 to 3699	900 936 0435 to 0499	916 682 5300 to 5399	934 236 3954 to 3999
854 304 4089 to 4999	901 058 5255 to 5280	916 694 1414 to 1499	934 622 8717 to 8999
854 529 2200 to 2299	901 273 1082 to 1099	916 703 0802 to 0821	935 216 0312 to 0399
854 532 0000 to 2999	901 287 5143 to 5199	917 089 0709 to 0799	935 843 2202 to 2247
855 001 6204 to 6249	901 291 2789 to 2799	917 089 0842 to 0899	936 024 8889 to 8899
855 319 9364 to 9399	901 525 7122 to 7199	917 216 2928 to 2999	936 339 4455 to 4499
855 361 3390 to 3399	902 089 1253 to 1299	917 370 6300 to 6499	
856 226 0490 to 0499	902 198 9769 to 9799	917 486 4900 to 4999	
856 656 5800 to 5999	902 948 1269 to 1299	918 460 0602 to 0699	

Missing, Lost, or Stolen Canadian Money Order Forms

Do Not Cash — Upon Receipt, Notify Local Postal Inspectors

Provide this listing to all Postal Service™ employees responsible for accepting and cashing postal money orders. Destroy all interim notices when the numbers listed appear in the *Postal Bulletin*. The new money order serial

numbers consist of the first 9 digits. The tenth digit is a check digit only.

Do not cash outdated money orders **104 151 601 to 692 600 000**. Advise holders to send invalid money orders to Canada Post Corporation, Ottawa, Canada K1A 0B1. Check for altered dollar amounts by holding money orders to the light.

719 869 731	to	9 760	728 382 331	to	2 480	734 797 201	to	7 320	741 764 431	to	4 520
720 227 871	to	7 930	728 702 338	to	2 400	734 939 611	to	9 640	742 178 834	to	8 880
720 227 949	to	7 960	728 915 371	to	5 850	734 950 111	to	0 170	742 325 500	to	5 520
720 368 543	to	8 570	728 953 141	to	3 410	735 120 331	to	0 840	742 325 668	to	5 700
720 392 151	to	2 570	728 954 280	to	4 310	735 283 008	to	3 020	742 408 771	to	8 830
720 556 491	to	6 640	729 169 081	to	9 140	735 293 131	to	3 220	742 512 120	to	2 150
720 558 621	to	8 650	729 363 841	to	3 870	735 635 010	to	5 040	742 684 849	to	4 890
720 575 361	to	5 570	729 682 891	to	3 190	735 783 961	to	3 990	742 839 553	to	9 630
720 590 152	to	0 179	729 838 940	to	9 070	735 803 401	to	3 430	742 913 668	to	3 700
721 638 331	to	9 170	729 839 101	to	9 130	736 005 420	to	5 440	742 917 287	to	7 296
721 815 391	to	5 420	730 077 683	to	7 840	736 366 021	to	6 110	742 921 891	to	1 980
721 969 713	to	9 740	730 109 847	to	9 880	736 624 456	to	4 500	742 983 631	to	3 810
722 072 137	to	2 160	730 373 761	to	3 850	736 670 851	to	1 060	743 020 021	to	0 170
722 378 265	to	8 280	730 501 951	to	2 130	736 767 061	to	7 090	743 206 491	to	6 500
722 413 990	to	4 004	730 519 379	to	9 470	736 767 093	to	7 120	743 235 992	to	6 050
722 764 948	to	4 980	730 569 278	to	9 360	736 982 191	to	2 370	743 940 631	to	0 900
722 825 840	to	5 889	730 711 711	to	1 740	736 982 551	to	2 730	743 978 011	to	8 070
723 153 841	to	3 850	730 722 991	to	3 230	737 110 141	to	0 170	744 234 751	to	4 780
723 237 616	to	7 630	730 845 970	to	5 990	737 185 501	to	5 710	744 499 591	to	9 680
723 331 081	to	1 110	730 888 291	to	8 320	737 317 321	to	7 350	744 626 901	to	6 910
723 496 443	to	6 470	730 927 591	to	7 680	737 517 781	to	7 840	745 388 794	to	8 910
723 967 291	to	7 320	731 307 914	to	7 930	737 628 181	to	8 210	746 446 806	to	6 820
724 655 196	to	5 340	731 402 431	to	2 460	737 634 258	to	4 270	746 818 351	to	8 410
724 711 441	to	1 500	731 407 232	to	7 320	738 361 971	to	1 980	747 245 266	to	5 280
724 711 538	to	1 560	731 588 301	to	8 340	738 447 601	to	7 660	747 364 813	to	4 830
724 793 221	to	3 250	731 767 273	to	7 320	738 648 355	to	8 450	747 501 434	to	1 450
724 908 109	to	8 120	731 781 061	to	1 120	738 849 811	to	9 900	747 739 891	to	0 070
724 937 461	to	7 670	731 837 821	to	7 910	738 892 270	to	2 290	748 148 649	to	8 760
725 163 118	to	3 151	731 841 377	to	1 450	738 997 259	to	7 380	748 259 960	to	9 970
725 202 735	to	2 750	732 018 481	to	8 600	739 161 451	to	1 540	748 565 162	to	5 280
725 398 591	to	8 800	732 067 972	to	8 370	739 219 381	to	9 440	748 874 988	to	5 030
725 464 591	to	4 920	732 188 649	to	8 670	739 740 151	to	0 180	749 137 381	to	7 410
725 475 321	to	5 330	732 193 460	to	3 470	739 793 491	to	3 520	749 190 192	to	0 210
725 711 057	to	1 070	732 201 241	to	1 390	739 793 527	to	3 550	749 685 421	to	5 450
725 738 581	to	8 730	732 220 431	to	0 440	739 942 621	to	2 650	749 846 791	to	6 850
725 981 311	to	1 430	732 355 201	to	5 380	739 999 231	to	9 320	749 993 131	to	3 580
725 987 835	to	7 880	732 472 320	to	2 560	740 011 517	to	1 530	750 071 587	to	1 610
726 060 811	to	0 900	732 541 605	to	1 620	740 030 701	to	0 970	750 408 167	to	8 183
726 391 970	to	2 520	732 572 221	to	2 490	740 261 740	to	1 820	750 438 421	to	8 501
726 484 771	to	4 800	732 586 479	to	6 710	740 265 811	to	6 290	750 743 911	to	4 030
726 493 351	to	5 300	732 994 037	to	4 080	740 299 111	to	9 170	750 779 118	to	9 400
726 504 031	to	4 063	733 163 449	to	3 460	740 299 231	to	9 260	750 910 981	to	1 010
726 504 070	to	4 090	733 297 171	to	7 290	740 329 266	to	9 320	750 960 841	to	0 900
726 504 331	to	4 390	733 446 631	to	7 110	740 889 081	to	9 090	751 296 211	to	6 240
726 563 701	to	4 060	733 474 665	to	4 770	741 010 421	to	0 530	751 539 121	to	9 180
726 599 371	to	9 460	733 704 482	to	4 570	741 113 041	to	3 370	751 541 311	to	1 790
726 626 356	to	6 370	733 751 041	to	1 130	741 373 891	to	4 340	751 757 641	to	7 700
727 182 271	to	2 510	734 009 101	to	9 130	741 452 369	to	2 490	751 936 951	to	7 010
727 416 181	to	6 240	734 290 759	to	0 770	741 492 991	to	3 140	751 951 861	to	1 890
727 481 431	to	1 460	734 389 273	to	9 290	741 553 460	to	3 470	751 999 021	to	9 110
727 749 241	to	9 780	734 440 031	to	0 111	741 764 431	to	4 520	752 139 516	to	9 570

752 182 892	to	2 950	762 324 931	to	4 960	773 112 031	to	2 060	799 177 626	to	7 650
752 206 861	to	7 100	762 439 261	to	9 290	773 125 387	to	5 410	799 854 751	to	5 200
752 295 241	to	5 600	762 524 158	to	4 220	773 179 320	to	9 410	800 044 320	to	4 410
752 731 351	to	1 410	762 584 872	to	4 970	773 202 989	to	3 140	800 211 901	to	2 440
752 767 441	to	7 470	762 593 431	to	3 460	773 208 991	to	9 290	800 427 530	to	7 540
753 008 941	to	9 030	763 155 160	to	5 180	773 231 311	to	1 340	800 872 741	to	2 830
753 194 311	to	4 370	763 178 631	to	8 660	773 348 739	to	8 940	801 349 801	to	9 830
753 620 378	to	0 400	763 506 001	to	6 060	773 348 739	to	8 940	801 676 681	to	7 100
754 013 917	to	3 940	763 522 141	to	2 470	773 575 891	to	5 950	802 967 821	to	7 940
754 161 061	to	1 120	763 717 694	to	7 800	773 852 971	to	3 030	803 217 601	to	7 780
754 358 445	to	8 610	763 826 461	to	6 520	775 373 449	to	3 460	803 729 731	to	9 850
754 410 451	to	0 660	763 900 460	to	0 471	789 257 191	to	7 250	803 747 402	to	7 520
754 438 393	to	8 410	763 900 479	to	0 530	790 448 020	to	8 460	804 138 181	to	8 420
754 493 109	to	3 130	763 917 271	to	7 750	790 597 485	to	7 530	804 428 224	to	8 250
754 664 182	to	4 220	764 125 801	to	5 860	790 911 883	to	1 900	804 682 411	to	2 710
754 816 377	to	6 470	764 284 525	to	4 560	791 057 441	to	7 550	805 272 525	to	2 540
755 487 421	to	7 600	764 526 241	to	6 330	791 239 081	to	9 290	805 523 445	to	3 460
755 592 901	to	3 140	764 601 421	to	1 600	791 374 483	to	4 500	805 745 704	to	5 730
755 790 020	to	0 030	764 650 231	to	0 470	791 387 971	to	8 030	806 452 907	to	2 980
755 791 730	to	1 800	764 984 371	to	4 850	791 447 521	to	7 850	806 744 781	to	4 850
755 926 951	to	7 070	765 003 667	to	3 680	791 451 151	to	1 240	806 982 181	to	2 300
755 934 332	to	4 510	765 042 517	to	2 540	791 500 009	to	0 470	807 764 791	to	4 910
755 957 701	to	8 000	765 194 728	to	4 970	791 771 431	to	1 490	808 089 931	to	9 960
755 962 981	to	3 280	765 387 365	to	7 450	792 004 293	to	4 320	808 656 423	to	6 450
756 035 371	to	5 490	765 541 801	to	2 100	792 018 379	to	8 420	808 753 771	to	3 800
756 301 257	to	1 290	765 638 461	to	8 970	792 070 621	to	0 740	809 189 001	to	9 010
756 371 565	to	1 580	765 647 101	to	7 190	792 145 211	to	5 230	809 886 879	to	6 930
756 876 031	to	6 120	765 813 781	to	4 029	792 391 381	to	1 620	809 890 489	to	0 500
756 876 151	to	6 240	765 879 314	to	9 390	792 452 779	to	2 790	810 323 734	to	3 760
756 970 129	to	0 140	765 954 001	to	4 030	792 772 728	to	2 770	810 367 116	to	7 140
757 059 613	to	9 630	766 120 286	to	0 320	792 903 511	to	3 990	810 526 351	to	6 500
757 078 540	to	8 560	766 125 716	to	5 750	793 282 518	to	2 533	810 806 911	to	6 940
757 086 209	to	6 240	766 158 824	to	8 840	794 041 831	to	2 040	810 807 211	to	7 240
757 240 591	to	0 650	766 388 433	to	8 460	794 397 709	to	7 780	811 423 021	to	3 110
757 277 371	to	7 700	766 509 421	to	9 660	794 581 741	to	2 040	811 517 221	to	7 239
757 291 591	to	2 730	766 572 901	to	3 020	794 592 122	to	2 150	811 721 101	to	1 130
757 964 251	to	4 280	766 748 500	to	8 521	795 032 251	to	2 340	812 025 721	to	5 900
758 067 001	to	7 090	767 024 341	to	4 370	795 796 291	to	6 350	812 093 073	to	3 130
758 105 221	to	5 250	767 326 471	to	6 590	796 070 139	to	0 160	812 100 821	to	0 840
758 324 941	to	5 000	767 332 561	to	2 950	796 143 151	to	3 630	812 465 251	to	5 610
758 593 628	to	3 650	768 009 841	to	9 960	796 159 725	to	9 740	812 918 341	to	8 670
758 709 038	to	9 060	768 011 489	to	1 520	796 169 306	to	9 340	812 918 701	to	8 760
758 744 101	to	4 160	768 177 980	to	7 990	796 373 406	to	3 430	813 050 491	to	0 520
758 850 883	to	0 900	768 391 081	to	1 170	796 602 961	to	3 050	813 073 171	to	3 200
758 860 951	to	1 550	768 661 569	to	1 650	796 708 441	to	8 500	813 398 476	to	8 550
759 152 851	to	2 880	769 000 051	to	0 080	796 886 281	to	6 430	813 713 971	to	4 000
759 740 941	to	1 090	769 050 841	to	0 900	796 901 701	to	2 000	813 858 121	to	8 150
760 004 596	to	4 610	769 159 081	to	9 178	796 975 466	to	5 590	814 789 330	to	9 349
760 118 191	to	8 250	769 737 496	to	7 510	797 272 917	to	2 950	814 984 656	to	4 680
760 155 001	to	5 090	769 778 491	to	8 730	797 519 441	to	9 460	815 016 020	to	6 030
760 378 002	to	8 020	769 827 331	to	7 450	797 519 731	to	0 240	815 199 410	to	9 420
760 692 722	to	2 749	770 216 071	to	6 100	797 535 181	to	5 330	815 240 491	to	0 520
761 055 460	to	5 480	770 723 281	to	3 400	797 646 151	to	6 180	815 755 591	to	5 620
761 169 781	to	9 810	770 790 451	to	0 480	798 040 053	to	0 080	815 755 622	to	5 650
761 504 941	to	5 120	770 915 150	to	5 490	798 055 813	to	5 830	815 806 381	to	6 680
761 516 836	to	6 910	771 455 551	to	5 610	798 055 891	to	5 950	816 126 834	to	6 870
761 613 588	to	3 600	771 609 661	to	9 690	798 326 371	to	6 520	816 156 721	to	6 780
761 688 631	to	8 690	771 932 551	to	2 580	798 339 167	to	9 210	816 580 903	to	0 920
761 805 199	to	5 240	772 057 224	to	7 440	798 562 411	to	2 440	816 945 571	to	5 600
761 826 106	to	6 120	772 162 660	to	3 070	798 632 461	to	2 490	817 253 011	to	3 280
761 881 171	to	1 560	772 718 615	to	8 640	798 807 151	to	7 510	817 763 881	to	4 060
761 975 641	to	5 670	772 940 140	to	0 160	798 944 761	to	5 030	818 330 562	to	0 610
761 975 886	to	5 895	772 970 886	to	0 940	799 118 616	to	8 640	818 459 641	to	9 670
762 304 144	to	4 170	773 009 419	to	9 430	799 133 191	to	3 220	818 926 273	to	6 320

818 950 351	to	0 380	821 903 731	to	3 910	825 472 171	to	2 200	828 539 316	to	9 340
818 962 492	to	2 530	821 927 841	to	7 850	826 042 898	to	2 920	828 539 341	to	9 370
819 032 341	to	2 730	822 505 801	to	5 830	826 226 644	to	6 670	828 732 331	to	2 390
819 127 054	to	7 080	822 703 442	to	3 470	826 582 951	to	3 430	828 807 781	to	7 840
819 278 540	to	8 670	822 900 991	to	1 020	826 720 201	to	0 230	828 830 952	to	0 963
819 544 681	to	4 740	822 925 951	to	6 100	827 005 671	to	5 830	828 939 781	to	0 050
819 928 441	to	8 650	823 284 931	to	4 990	827 287 861	to	7 950	829 002 721	to	2 870
820 034 406	to	4 430	823 293 031	to	3 210	827 291 502	to	1 520	829 005 301	to	5 540
820 070 761	to	1 540	823 556 011	to	6 100	827 575 381	to	5 470	829 080 241	to	0 330
820 191 342	to	1 360	824 078 341	to	8 370	827 609 085	to	9 100	829 160 986	to	1 000
820 274 856	to	4 880	824 156 325	to	6 340	827 619 811	to	9 840	829 176 841	to	6 930
820 600 171	to	0 230	824 511 252	to	1 270	827 883 511	to	3 600	829 471 561	to	1 590
821 172 241	to	2 360	824 588 281	to	8 370	828 160 441	to	0 530	829 561 065	to	1 080
821 229 661	to	9 720	825 140 397	to	0 460	828 376 201	to	6 260	829 566 481	to	6 510
821 229 743	to	9 780	825 409 651	to	9 680	828 441 602	to	1 630	829 569 931	to	9 960

— Criminal Investigations Group, U.S. Postal Inspection Service, 10-6-22

Verifying U.S. Postal Service Money Orders

Follow these steps to cash a Postal Service™ money order:

1. Check that the amount does not exceed the legal limit: \$1,000 for domestic, and \$700 for international Postal Service money orders.
2. Check that the proper security features are present:
 - When held to the light, a watermark of Benjamin Franklin is repeated from top to bottom on the left side.
 - When held to the light, a dark line (security thread) runs from top to bottom with the word “USPS” repeated.
 - When there is discoloration around the dollar amounts, this might indicate the amounts were changed.

These appear in Postal Service Notice 299, *U.S. Postal Money Order Reference Card*, or online at usps.com/shop/money-orders.htm.

3. If the money order seems suspicious, call the U.S. Postal Service Money Ordxxxer Verification System at 866-459-7822.

Provide this information to local banks and retailers, as they also receive Postal Service money orders for cashing.

— Delivery and Retail
Customer Service Operations, 10-6-22

Counterfeit Canadian Money Order Forms

Do Not Cash

To be posted and used by retail window employees. As directed, destroy previous notices. Destroy all interim notices when the numbers listed appear in the *Postal Bulletin*.

671,819,086	683,594,542	687,262,503
676,612,640	684,683,610	687,262,525
677,891,039	686,619,878	687,262,526
678,282,493	686,619,886	687,287,578
678,916,031	686,619,887	687,287,581
679,552,215	686,794,382	687,287,582
679,694,334	686,794,426	694,063,898
679,751,983	686,794,427	694,063,899
679,800,207	686,794,431	694,063,980
681,130,536	687,262,502	701,321,725
681,844,376		

— Criminal Investigations Group,
U.S. Postal Inspection Service, 10-6-22

Toll-Free Number Available to Verify Canadian Money Orders

The Canada Post Corporation has a toll-free number that cashing agents can call to verify the validity of Canadian Postal Money Orders. The number is 800-563-0444.

This toll-free number is printed on the back of the Canadian Postal Money Orders.

— Criminal Investigations Group,
U.S. Postal Inspection Service, 10-6-22

Other Information

Overseas Military/Diplomatic Mail

Mail addressed to military and diplomatic post offices overseas is subject to certain conditions or restrictions of mailing regarding content, preparation, and handling. The APO/FPO/DPO table outlines these conditions by APO/FPO/DPO ZIP Codes™ through the use of footnoted mailing restrictions codes (see the [Restrictions](#) page following the table).

Acceptance clerks must use the table with the Retail System Software terminal to determine which APO/FPO/DPO ZIP Codes are active and which conditions of mailing apply.

The entries under “Changes” appear in bold in the following APO/FPO/DPO table:

Changes

APO/FPO/DPO	Action	Effective Date	See Restrictions
APO AE 09018	Add C	09/15/2022	A-B-C-C2-F-F3-H-N-Q-R-S-V-Z-Z1
DPO AE 09293	Open	09/23/2022	A-B-C-C1-C2-E-E2-F1-F3-I3-L-M-N-R-S-T-V-X-Z-Z1
DPO AE 09294	Open	09/23/2022	B-C-C1-C2-E2-F1-F3-H1-L-N-R-R1-S-T-V-X-Z1
DPO AE 09980	Open	09/23/2022	B-C-C1-C2-F1-F3-J-L-M-N-R-R1-S-T-V-X-Z1
DPO AE 09981	Open	09/23/2022	B-C-C1-C2-F1-F3-J-L-M-N-R-R1-S-T-V-X-Z1
DPO AE 09982	Open	09/23/2022	B-C-C1-C2-F1-F3-J-L-M-N-R-R1-S-T-V-X-Z1
DPO AE 09983	Open	09/23/2022	B-C-C1-C2-F1-F3-J-L-M-N-R-R1-S-T-V-X-Z1
DPO AE 09984	Open	09/23/2022	B-C-C1-C2-F1-F3-J-L-M-N-R-R1-S-T-V-X-Z1
DPO AA 34072	Open	09/23/2022	B-C-C2-F1-F3-J-L-M-N-R-S-T-V-X-Z1
APO AP 96309	Open	10/03/2022	B-C-C2-F-F1-F3-M-N-R-S-V-W

We have eliminated “Not Active” entries from the table below to save space and paper.

APO/FPO/DPO	See Restrictions	APO/FPO/DPO	See Restrictions	APO/FPO/DPO	See Restrictions	APO/FPO/DPO	See Restrictions
09002	A-B-C2-F-F3-H-N-Q-R-S-V-Z-Z1	09053	B-C-C2-D-E-F-F3-H-M-R-S-U	09136	B-C-C2-D-E-F-F3-H-M-P-R-S-U	09211	B-C-C2-D-E-F-F3-H-M-P-R-S-U
09003	B-C-C2-D-E-F-F3-H-M-P-R-S-U	09060	B-C-C2-D-E-F1-F3-H-M-N-R-S-U-Z1	09138	B-C-C2-D-F-F3-H-M-R-S-U	09213	B-C2-F-F1-F3-H-J-L-M-N-R-R1-T-U-V-Z1
09004	B-C-C2-D-E-F3-H-M-R-S-U	09067	B-C-C2-D-E-F-F3-H-M-R-S-U	09140	B-C-C2-D-E-F-F3-H-M-R-S-U	09214	B-C-C2-D-E-F3-H-M-R-S-U-Z1
09005	B-C-C2-D-E-F-F3-H-M-P-R-S	09068	B-C-C2-D-E-F3-H-R-S-U-Z1	09142	B-C-C2-D-E-F-F3-H-M-R-S-U	09216	B,C,F1,F3,M,N,R,S,V,Z1
09006	B-C-C2-D-E-F-F3-H-M-R-S-U	09069	A-B-C-C2-D-E-F3-H-N-R-S-U-V	09154	B-C-C2-D-E-F-F3-H-M-R-S-U	09227	B-C-C2-D-E-F-F3-H-M-R-S-U
09008	A-B-C2-F-F3-H-N-Q-R-S-V-Z-Z1	09079	B-C-C2-D-E-F-F3-H-M-R-S-U	09160	B-C-C2-D-F-F1-F3-H-J-L-M-N-R-R1-T-U-V-Z1	09240	A-B-C1-C2-F-F3-H-N-R-S-V
09009	B-C-C2-D-E-F3-H-M-R-S-U-Z1	09094	B-C-C2-D-F3-H-M-P-R-S-Z1	09170	A-B-C2-F-F1-F3-J-L-M-N-R-R1-S-T-V-X-Z1	09241	A-B-C-C2-F3-N-R-S-U-Z1
09010	B-C-C2-D-E-F-F3-H-M-R-S-U2	09095	B-C-C2-D-E-F-F3-H-M-R-S-U	09171	A-B-C1-C2-E3-F-F1-F3-J-L-M-N-R-R1-S-T-V-X-Z1	09242	A-B-C1-C2-F-F3-H-N-R-S-V
09011	B-C-C2-D-E-F3-H-M-R-S	09096	B-C-C2-D-E-F-F3-H-M-R-S-U	09172	B-C-C2-D-E-F-F3-H-M-R-S-U	09250	B-C-C2-D-E-F-F3-H-M-R-S-U
09012	B-C-C2-D-E-F3-H-M-R-S-U-Z1	09101	A-B-C2-F-F3-H-N-Q-R-S-V-Z-Z1	09173	B-C-C2-D-E-F-F3-H-M-R-S-U	09261	B-C-C2-D-E-F3-H-M-N-R-S-U-V-Z1
09013	B-C-C2-D-E-F-F1-F3-H-M-R-S-U-Z1	09103	A-B-C-C2-F3-H-N-Q-R-S-V-Z-Z1	09174	B-C-C2-D-E-F-F3-H-M-R-S-U	09263	B-C-C2-D-E-F3-H-M-R-S-U
09014	B-C-C2-D-E-F3-H-M-P-R-S-U	09104	B-C-C2-D-F3-H-M-R-S-U-Z1	09175	A-B-C1-C2-E2-F-F1-F3-H1-J-L-M-N-R-R1-S-T-V-W-X-Z1	09264	B-C-C2-D-E-F-F3-H-M-R-S-U
09015	A-B-C-C1-C2-F-F1-F3-J-L-M-N-R-R1-S-V-Z1	09107	B-C-C2-D-E-F-F3-H-M-R-S-U	09177	A-B-C2-F-F1-F3-J-L-M-N-R-R1-S-T-V-X-Z1	09265	B-C-D-F-F1-H-J-L-M-N-R-S-T-U-V-Z1
09016	B-C-C2-D-E-F1-F3-H-M-R-S-U	09112	B-C-C2-D-E-F-F3-H-M-R-S-U	09178	B-C-C2-D-E-F-F3-H-M-R-S-U	09266	A-B-C2-F3-S-U-R-V-Z1
09017	A-B-C2-F-F3-H-N-Q-R-S-V-Z-Z1	09114	B-C-C2-D-E-F-F3-H-M-R-S-U	09179	A-B-C1-C2-E2-F-F1-F3-J-L-M-N-R-R1-S-T-V-X-Z1	09276	A-B-F-F3-I3-L-M-N-R-S-T-V-X-Z-Z1
09018	A-B-C-C2-F-F3-H-N-Q-R-S-V-Z-Z1	09115	A-B-C2-F-F3-H-N-R-S-V-Z1	09180	B-C-C2-D-E-F-F3-H-M-R-S-U	09277	A-B-E-E1-E2-F1-F3-I3-L-N-R-S-T-V-X-Z-Z1
09020	B-C-C2-D-E-F-F3-H-M-R-S-U	09116	A-B-C2-F-F3-H-N-R-S-V-Z1	09186	B-C-C2-D-E-F-F3-H-M-P-R-S-U	09278	A-B-F-F3-I3-L-M-N-R-S-T-V-X-Z-Z1
09021	B-C-C2-D-E-F3-H-M-R-S-U-Z1	09123	B-C-C2-D-E-F3-H-M-R-S-U-Z1	09203	A-B-C-C1-C2-F-F1-F3-I3-J-L-M-N-R-R1-T-V-Z-Z1	09279	A-B-E-E1-F-F3-I3-L-M-N-R-S-T-V-X-Z-Z1
09034	B-C-C2-D-E-F-F3-H-M-R-S-U	09126	B-C-C2-F3-H-M-P-R-S-Z1	09204	B-C-F3-M-N-R-S-V-Z1	09280	A-B-B2-C-C1-C2-E-E2-F1-F3-H-I3-L-M-N-R-S-T-V-W-X-Z-Z1
09044	B-C-C2-D-F-F3-H-R-S-U	09128	B-C-C2-D-E-F-F3-H-M-R-S-U			09281	A-B-C1-C2-E2-E3-F-F1-F3-H-H1-J-L-M-N-R-R1-S-T-V-X-Z1
09046	B-C-C2-D-E-F-F3-H-M-R-S-U	09131	B-C-C2-D-E-F-F3-H-M-R-S-U			09282	A-B-C1-C2-E2-E3-F-F1-F3-H-H1-J-L-M-N-R-R1-S-T-V-X-Z1
09049	B-C-C2-D-E-F-F3-H-M-R-S-U	09135	A-B-C2-F-F3-H-N-R-S-U-V-Z1				

APO/ FPO/ DPO	See Restrictions	APO/ FPO/ DPO	See Restrictions	APO/ FPO/ DPO	See Restrictions	APO/ FPO/ DPO	See Restrictions
09283	A-B-E-E1-F-F3-L-M-N-R-S-T-V-X-Z1	09447	B-C-C1-C2-F3-M-R-S-U-V-Z1	09545	A-B-C-F-F3-M-N-S-V-Z1	09614	A-B-C1-C2-E2-F-F1-F3-H1-J-L-M-N-R-R1-T-V-W-Z1
09284	A-B-C-C2-F-F3-I3-L-M-N-R-S-T-V-X-Z1	09454	B-C-C1-C2-F3-M-R-S-U-V-Z1	09550	B-C-C2-F-F1-F3-R-R1-S-V	09618	B-C-C2-F-F3-R-S-U-Z1
09285	A-B-C-E-E-1-F1-F3-H-I3-L-M-N-R-S-T-V-X-Z1	09456	B-C-C1-C2-F3-M-N-R-S-U-V-Z1	09554	B-C-C2-F-F1-F3-R-R1-S-V	09620	B-C-C2-F-F3-R-S-U-V-Z1
09287	B-C2-E1-F1-F3-J-L-N-R-S-T-V-X-Z1	09459	B-C-C1-C2-F3-M-R-S-U-Z1	09556	B-F-F1-R-R1-V	09621	B-C-F-F3-R-U-Z1
09289	B-E2-F1-F3-H1-J-L-M-N-R-R1-S-T-U2-V-X-Z1	09461	B-C-C1-C2-F3-M-P-R-S-U-Z1	09564	B-C-C2-F-F1-F3-R-R1-S-V	09622	B-C-C2-F-F3-R-S-U-Z1
09290	A-B-F1-F3-J-L-M-N-R-S-T-U2-V-X-Z1	09463	B-C-C1-C2-F3-M-R-S-U-Z1	09565	B-C-C2-F-F1-F3-R-R1-S-V	09623	B-C-C2-F-F3-R-S-U-V-Z1
09291	B-C-C1-C2-E2-F1-F3-H1-L-N-R-R1-S-T-V-X-Z1	09464	B-C-C1-C2-F3-R-S-U-Z1	09566	B-C-C2-E2-E3-F-F1-F3-R-R1-S-V	09624	B-C-C2-F-F1-F3-I3-L-N-R-R1-T-U-V-Z1
09292	A-B-C-C2-E-E2-E3-F1-F3-H-H1-J-L-M-N-R-R1-S-T-V-X-Z1	09467	B-E-E1-F-F3-J-L-M-N-R-S-T-V-X-Z1	09567	B-C-C2-E2-E3-F-F1-F3-R-R1-S-V	09625	B-C-C2-F-F3-N-R-S-U-Z1
09293	A-B-C-C1-C2-E-E2-F1-F3-I3-L-M-N-R-S-T-V-X-Z1	09468	B-C-C1-C2-F3-M-R-S-U-Z1	09568	B-C-C2-F-F1-F3-R-R1-S-V	09627	B-C-C2-F-F3-R-S-U-V-Z1
09294	B-C-C1-C2-E2-F1-F3-H1-L-N-R-R1-S-T-V-X-Z1	09469	B-C-C1-C2-F3-R-S-U-Z1	09569	B-C-C2-E2-E3-F-F1-F3-R-R1-S-V-Z1	09630	B-C-C2-F-F3-R-S-U-V
09301	A-B-C1-C2-E2-F-F1-F3-H1-I3-L-M-N-R-R1-S-T-U4-V-Z1	09470	B-C-C1-C2-F3-M-R-S-U-Z1	09570	B-C-C2-F-F1-F3-R-R1-S-V	09633	B-C-C2-D-F-F3-M-R-S-U-U1-U2-U3-V-Z1
09304	A-C1-C2-F-F1-F3-H-M-N-R-S-V-Z1	09487	A-B-C-C1-C2-E2-F1-F3-I3-L-M-N-R-R1-S-T-V-W-X-Z1	09573	B-C-C2-E2-E3-F-F1-F3-R-R1-S-V-Z1	09634	A-B-C2-F-F3-M-N-R-S-V
09305	A-B-C1-E2-F-F1-F3-H1-I3-M-N-R-R1-S-T-V-Z1	09488	A-B-C-C1-C2-E2-F3-J-L-M-N-S-T-V-W-X-Z1	09574	B-F-F1-R-R1-V	09636	B-C-C2-F-F3-R-S-U-V-Z1
09306	A-B-C1-E2-F-F1-F3-H1-R-R1-S-U2-V-Z1	09489	A-B-C-C1-C2-E2-F1-F3-L-M-N-R-R1-S-T-V-W-X-Z1	09575	B-C-C2-F-F1-F3-R-R1-S-V	09642	B-C2-F-F1-F3-J-L-M-N-R-T-U-V
09307	B-C-C2-F-F3-N-R-R1-S-Z1	09490	A-B-C1-C2-E2-F-F1-F3-H1-J-L-M-N-R-R1-S-T-V-X-Z1	09576	B-C-C2-F-F1-F3-R-R1-S-V	09643	B-C-C2-F3-M-R-S-U-V-Z1
09309	A-B-C-C1-C2-E2-F-F1-F3-H1-M-N-R-R1-S-V-Z1	09491	A-B-C1-C2-E2-F1-F3-H1-J-L-M-N-R-R1-S-T-V-Z1	09577	B-C-C2-F-F1-F3-R-R1-S-V	09645	B-C-C1-E1-E2-F-F1-F3-M-R-S-U-X-Z1
09310	A-B-C1-C2-E2-F-F1-F3-H1-I3-L-M-N-R-R1-S-T-U4-V-Z1	09494	B-C-C1-C2-F3-M-R-S-U-Z1	09578	B-C-C2-F-F1-F3-R-R1-S-V	09647	B-C2-F1-F3-M-N-R-S-U-Z1
09311	A-B-C1-C2-E2-F-F1-F3-H1-I3-L-M-N-R-R1-S-T-U4-V-Z1	09498	B-C1-C2-F-F1-F3-J-L-N-R-R1-T-V-Z1	09579	B-C-C2-F-F1-F3-R-R1-S-V	09648	B-C2-F3-N-R-S-U-V-Z1
09312	A-B-C1-C2-E2-F-F1-F3-H1-I3-L-M-N-R-R1-S-T-U4-V-Z1	09501	B-V	09581	B-C-C2-F-F1-F3-R-R1-S-V	09649	B-C2-F3-N-R-S-U-Z1
09315	A-B-C1-E2-F-F3-N-R-R1-S-V-Z1	09502	B-V	09582	B-C-C2-F-F1-F3-R-R1-S-V	09701	A-B-C1-C2-F-F1-F3-J-L-M-N-R-R1-T-V-Z1
09316	A-B-C1-E2-F-F1-F3-H1-I3-M-N-R-R1-S-T-V-Z1	09503	B-F-F1-R-R1-V	09583	B-C-C2-F-F1-F3-R-R1-S-V	09702	B-C-C2-F-F1-M-R-R1-S-U
09321	A-B-C1-C2-E2-F-F3-H1-M-N-R-R1-S-V-Z1	09504	B-V	09586	B-C-C2-F-F1-F3-R-R1-S-V	09704	B-C-F-F1-F3-R-R1-S-U2-V
09330	A-B-C1-C2-D-E-E2-F-F1-F3-H-H1-M-R-R1-S-V-Z1	09505	B-V	09587	B-C-C2-F-F1-F3-R-R1-S-V	09705	B-C-C1-C2-F1-F3-M-R-R1-S-U
09333	A-B-C-C1-C2-E2-F-F1-F3-H1-I3-M-N-R-R1-S-V-V1-Z1	09506	B-V	09588	B-C-C2-F-F1-F3-R-R1-S-V	09706	B-C-C2-F3-M-N-R-S-U-V-Z1
09343	A-B-C1-C2-F-F3-M-N-R-R1-S-V-Z1	09507	B-V	09589	B-F-F1-F3-R-S-V	09707	B-C2-F-F1-F3-J-L-M-N-R-R1-T-V-Z1
09348	A-B-C1-E2-F-F1-F3-H1-I3-M-N-R-R1-S-T-V-Z1	09508	B-C-C2-F-F3-R-R1-S-V	09590	B-C-C2-F-F1-F3-R-R1-S-V	09708	B-C-C1-C2-F-F3-M-R-R1-S-U
09357	A-B-C1-E2-F-F3-H1-M-R-V-Z1	09509	B-C-C2-F-F3-R-R1-S-V	09591	B-C-C2-F-F1-F3-R-R1-S-V	09709	B-C1-C2-E2-F-F1-F3-H-H1-J-L-N-R-R1-T-V-Z1
09365	A-B-C-C1-E2-F-F3-H1-M-N-R-V-Z1	09510	B-C-C2-F-F3-R-R1-S-V	09592	B-C-C2-F-F1-F3-R-R1-S-V	09710	B-C-C1-F-F1-J-L-M-N-R-R1-T-U-V-Z1
09366	A-B-C-C1-E2-F-F1-F3-H-H1-M-R-R1-S-V-Z1	09511	B-C-C2-F-F3-R-R1-S-V	09593	B-F-F1-F3-R-S-V	09711	A-B-C-C2-E2-F-F1-F3-M-N-R-S-T-V-X
09401	B-C-C1-C2-F3-M-R-S-U-Z1	09512	B-C-C2-F-F1-F3-R-R1-S-V	09594	B-C-C1-C2-F-F1-F3-R-R1-S-V	09712	A-B-C2-F-F3-H-R-S-U-V-Z1
09403	B-C-C1-C2-F3-M-R-S-U-Z1	09513	B-C-C2-F-F1-F3-R-R1-S-V	09595	B-C-C2-F-F1-F3-I3-J-R-R1-S-V-V1-Z1	09714	B-C-C1-C2-F-F3-M-R-R1-S-U
09410	C-C2-F-F1-F3-N-R-S-U2	09514	B-C-C2-F-F1-F3-R-R1-S-V	09596	B-F-F1-R-R1-V	09715	B-F-F1-J-L-M-N-R-T-V-Z1
09421	B-C-C1-C2-F3-M-R-S-U-Z1	09516	B-C-C2-F-F1-F3-R-R1-S-V	09599	B-F-F1-R-R1-V	09716	B-C-C2-F-F1-F3-J-L-M-N-R-R1-T-V-Z1
		09517	B-C-C2-F-F1-F3-R-R1-S-V	09600	B-C-C2-F-F1-F3-R-S-U-Z1	09717	A-B-C-C2-F3-M-R-S-V-W-Z1
		09520	B-F-F1-F3-R-R1-S-V	09602	B-C-C2-F-F1-F3-N-R-S-U-V	09718	B-F-F1-J-L-M-N-R-T-U-V-Z1
		09522	B-F-F1-F3-R-S-V	09603	B-C-C2-F-F1-F3-R-S-U-V-Z1	09719	B-C-C2-D-F3-M-R-S-U-V-Z1
		09523	B-C-C2-F-F1-F3-R-R1-S-V	09604	B-C-C2-F-F1-F3-P-R-S-U-V-Z1	09720	B-C2-F3-M-R-S-U-V-Z1
		09524	B-C-C2-F-F1-F3-R-R1-S-V	09605	B-C-C2-D-F-F3-H-M-R-S-U-V	09722	A-B-C2-F-F3-H-N-Q-R-S-V-Z1
		09532	B-C-C2-F-F1-F3-R-R1-S-V	09606	B-C-C2-D-F-F3-H-M-R-S-U-V	09723	B-C2-F-F1-F3-J-L-M-N-R-R1-T-V-Z1
		09533	B-V	09608	B-C-F-F3-N-R-S-U-V-Z1	09724	B-C-C1-C2-F-F3-M-R-R1-S-U
		09534	B-F-F1-F3-R-R1-S-V	09609	B-C-C2-F-F3-N-R-S-U-V-Z1	09725	A-B-C2-F-F3-H-N-Q-R-S-V-V1-Z1
		09541	A-B-C-F-F3-M-N-S-V-Z1	09610	B-C-C2-F-F1-F3-M-R-S-U-V-Z1		
		09542	A-B-C-F-F3-M-N-S-V-Z1	09613	B-C-C2-F-F3-N-R-S-U-V		
		09543	A-B-C-F-F3-M-N-S-V-Z1				
		09544	A-B-C-F-F3-M-N-S-V-Z1				

APO/ FPO/ DPO	See Restrictions	APO/ FPO/ DPO	See Restrictions	APO/ FPO/ DPO	See Restrictions	APO/ FPO/ DPO	See Restrictions
09726	B-F-F1-J-L-M-N-R-T-U-V-Z1	09807	A-B-C1-C2-E2-F-F1-F3-H1-I3-M-N-R-R1-S-T-V-Z-Z1	09853	B-C1-C2-E2-F-F1-F3-H1-N-R-R1-S-U2-V-Z1	09981	B-C-C1-C2-F1-F3-J-L-M-N-R-R1-S-T-V-X-Z1
09727	A-B-C1-C2-F-F1-F3-J-L-M-N-R-R1-T-V-Z1	09808	A-B-C1-C2-E2-F-F1-F3-H-H1-J-L-N-R-R1-T-V-Z1	09854	A-B-C1-C2-F-F1-F3-J-L-N-R-R1-S-T-V-Z1	09982	B-C-C1-C2-F1-F3-J-L-M-N-R-R1-S-T-V-X-Z1
09728	A-B-C-C1-C2-F-F1-F3-J-L-N-R-R1-T-V-Z1	09809	B-C1-C2-E3-F-F1-F3-J-L-N-T-V-Z1	09855	A-B-C-C1-C2-E2-F-F1-F3-H1-M-R-R1-S-U2-V-Z1	09983	B-C-C1-C2-F1-F3-J-L-M-N-R-R1-S-T-V-X-Z1
09729	B-C-C2-F-F3-N-R-R1-S-U-V-Z1	09810	A-B-C2-F-F1-F3-N-R-S-V-Z1	09857	A-B-C2-E2-F-F1-F3-I3-L-M-N-R-R1-S-T-V-Z1	09984	B-C-C1-C2-F1-F3-J-L-M-N-R-R1-S-T-V-X-Z1
09730	A-B-C1-C2-F-F1-F3-J-L-M-N-R-R1-T-V-Z1	09811	A-B-C-C2-E-E2-E3-F1-F3-H-H1-J-M-N-R-R1-S-U-V-Z1	09858	A-B-C-C1-C2-E2-E3-F1-F3-H-H1-J-M-N-R-R1-S-U-V-Z1	34001	A-B-C1-C2-F-F1-F3-J-L-M-N-R-R1-S-T-V-Z1
09731	A-B-C1-C2-F-F1-F3-J-L-M-N-R-R1-T-V-Z1	09812	B-E2-E3-F-F1-I-J-L-N-R-T-U-V-Z-Z1	09859	B-C-C1-C2-E2-E3-F-F1-F3-H1-R-R1-S-U-Z1	34002	B-C1-C2-F-F1-F3-J-L-M-N-R-R1-T-V-Z1
09732	B-F-F3-N-S-V-Z-Z1	09813	A-B-C1-C2-E2-E3-F-F1-F3-J-L-N-R-R1-T-V-Z1	09860	A-B-C2-F-F1-F3-J-L-M-N-R-R1-S-T-V-Z1	34004	B-C1-C2-E2-F1-F3-J-L-M-N-R-R1-T-V-Z1
09733	B-F-F3-N-R-S-V-Z	09814	B-C-E2-E3-F-F1-F3-I3-J-L-N-R-R1-T-V-Z-Z1	09862	A-B-C-C2-F-F1-F3-I3-L-M-N-R-R1-S-T-V-X-Z-Z1	34007	B-F-F1-H-J-M-N-R-R1-V-Z1
09734	A-B-C-C1-C2-F-F1-F3-I3-J-L-M-N-R-R1-T-V-Z-Z1	09815	A-B-C-C2-E-E2-E3-F1-F3-H-H1-J-M-N-R-R1-S-U-V-Z1	09864	A-B-C-C1-C2-E2-F1-F3-L-M-N-R-R1-S-T-V-W-Z1	34008	B-C1-C2-D-E1-F-F1-H-H1-J-L-M-N-R-R1-T-V-Z1
09735	B-F3-N-R-S-V-Z-Z1	09816	A-B-C1-C2-E2-E3-F-F1-F3-J-L-N-R-R1-T-V-Z1	09867	A-B-C-C1-C2-E2-F1-F3-L-M-N-R-R1-S-T-V-W-Z1	34009	B-C2-F-F1-F3-R-S-V
09736	A-B-C1-F-F1-F3-J-L-M-N-R-R1-T-V-Z1	09817	A-B-C1-C2-E2-E3-F-F1-F3-H-H1-J-L-M-N-R-R1-T-V-Z1	09869	A-B-C1-C2-E2-F1-F3-L-M-N-R-R1-S-T-V-W-Z1	34010	B-C2-F-F1-F3-R-S-V
09737	A-B-C1-C2-F-F1-F3-I3-J-L-M-N-R-R1-T-V-W-Y-Z-Z1	09818	A-B-C-C2-F-F3-M-R-S-V-Z1	09870	A-B-C1-C2-E2-F-F1-F3-H1-I3-L-M-N-R-R1-S-T-U4-V-Z-Z1	34011	B-C1-C2-E2-F1-F3-J-L-M-N-R-R1-T-V-Z1
09738	A-B-C1-C2-F-F1-F3-J-L-M-N-R-R1-T-V-Z1	09819	A-B-C-C1-C2-E2-F-F1-F3-H-H1-M-R-R1-S-V-Z1	09873	A-B-C1-C2-E2-F-F1-F3-H1-I3-L-M-N-R-R1-S-T-U4-V-Z-Z1	34020	B-C1-C2-F-F1-F3-J-L-M-N-R-R1-T-V-Z1
09739	A-B-C1-C2-F-F1-F3-J-L-M-N-R-R1-T-V-Z1	09820	A-B-C2-F-F1-F3-H-H1-J-L-M-N-R-R1-T-V-Z1	09874	A-B-C1-C2-E2-F-F1-F3-H1-I3-L-M-N-R-R1-S-T-U4-V-Z-Z1	34021	B-C1-C2-F-F1-F3-J-L-M-N-R-R1-T-V-Z1
09741	A-B-C1-C2-E2-F-F1-F3-H1-J-L-M-N-R-R1-T-V-W-Y-Z1	09821	A-B-C-C2-F-F3-N-R-S-V-Z1	09875	A-B-C1-C2-E2-F-F1-F3-H1-I3-L-M-N-R-R1-S-T-U4-V-Z-Z1	34022	B-C1-C2-F-F1-F3-J-L-M-N-R-R1-T-V-Z1
09742	A-B-C2-F-F1-F3-J-L-M-N-R-S-T-V-Z1	09822	A-B-C-C2-F-F3-M-R-S-V-Z1	09877	A-B-C-C2-E-E2-E3-F1-F3-H-H1-J-M-N-R-R1-S-U-V-Z1	34023	B-C1-C2-F-F1-F3-J-L-M-N-R-R1-T-V-Z1
09743	A-B-C2-F-F3-H-N-Q-R-S-V-Z-Z1	09823	A-B-C1-C2-F-F1-F3-J-L-M-N-R-R1-T-V-Z1	09880	A-B-C1-C2-E2-F-F1-F3-H1-I3-L-M-N-R-R1-S-T-U4-V-Z-Z1	34024	B-C1-C2-F-F1-F3-J-L-M-N-R-R1-T-V-Z1
09744	A-B-C1-C2-F-F1-F3-J-L-M-N-R-R1-T-V-Z1	09824	A-B-C-C2-F-F3-M-R-S-V-Z1	09882	A-B-C1-C2-E2-F-F1-F3-H1-I3-L-M-N-R-R1-S-T-U4-V-Z-Z1	34025	B-F-F1-F3-J-L-M-N-R-R1-T-V-Z1
09745	A-B-C2-F-F1-F3-M-N-R-R1-S-V-Z1	09825	A-B-C1-C2-F-F1-F3-J-L-M-N-R-R1-T-V-Z1	09889	B-E2-F-H1-N-R-R1-U2-V-Z1	34030	B-C1-C2-F-F1-F3-J-L-M-N-R-R1-T-V-Z1
09748	A-B-C1-C2-F-F1-F3-J-L-M-N-R-R1-T-V-Z1	09826	A-B-C1-C2-E1-E2-E3-F-F1-F3-J-L-M-N-R-R1-T-V-W-Z1	09892	A-B-C1-C2-E2-F-F1-F3-J-L-M-N-R-R1-T-V-Z1	34031	B-C1-C2-F-F1-F3-J-L-M-N-R-R1-T-V-Z1
09749	A-B-C2-F-F3-H-N-R-S-U-V-Z1	09827	A-B-C1-C2-E1-E2-E3-F-F1-F3-J-L-M-N-R-R1-T-V-Z1	09898	B-C-C1-C2-E2-F-F1-F2-H1-N-R-R1-S-U2-V-Z1	34032	B-C1-C2-F-F1-F3-J-L-M-N-R-R1-T-V-Z1
09750	A-B-C1-C2-F-F1-F3-J-L-M-N-R-R1-T-V-Z1	09828	A-B-C1-C2-F-F1-F3-J-L-N-R-R1-T-V-Z-Z1	09902	A-B-C1-C2-E2-F-F3-H1-M-R-R1-S-V-Z1	34033	B-C1-C2-F-F1-F3-I3-L-M-N-R-T-V-Z1
09751	B-C-C2-D-E-F-F3-H-M-R-S-U	09829	B-C-N-R-V-Z1	09903	B-C1-E2-F1-F3-S-V-Z1	34034	B-C1-C2-F-F1-F3-I3-L-M-N-R-T-V-Z1
09752	B-C-C2-D-F-F3-H-R-S-U	09830	B-C-F-F1-F3-J-L-M-N-R-R1-S-T-V-Z1	09904	B-C1-E2-F1-F3-S-V-Z1	34035	B-C1-C2-F-F1-F3-H-J-L-M-N-R-R1-T-V-Z1
09753	A-B-C-C1-C2-D-E-F1-F3-H-M-N-R-S-V-W-Z1	09831	B-C1-C2-F-F1-F3-J-L-N-R-R1-T-V-Z1	09908	A-B-C2-F-F1-F3-N-R-R1-S-V-Z1	34036	B-C1-C2-F-F1-F3-J-L-M-N-R-R1-T-V-Z1
09754	A-B-C2-F-F3-H-L-N-Q-R-S-V-Z-Z1	09833	B-C-C2-E2-E3-F-F1-F3-R-R1-S-U-Z1	09909	A-B-C2-F-F1-F3-N-R-R1-S-V-V1-Z1	34037	B-C-C1-C2-F-F1-F3-H-J-L-M-N-R-R1-T-V-Z1
09755	A-B-C-C1-C2-D-F-F1-F3-J-L-M-N-Q-R-R1-S-T-V-Z1	09834	A-B-C1-C2-F-F1-F3-J-L-M-N-R-R1-S-U-Z1	09974	B-F1-F3-J-L-M-N-R-S-T-U2-V-X-Z1	34039	B-C1-C2-F-F1-F3-J-L-M-N-R-R1-T-V-Z1
09759	A-B-C-C1-C2-E2-F-F1-F3-J-L-N-R-R1-T-V-Z1	09836	A-B-C1-C2-F-F1-F3-J-L-M-N-R-R1-V-Z1	09975	B-F1-F3-I3-L-M-N-R-S-T-U2-V-X-Z1	34041	B-C1-C2-F-F1-F3-J-L-M-N-R-R1-T-V-Z1
09761	B-C2-F-F1-F3-M-R-R1-S-V-Z-Z1	09837	B-E2-E3-F1-F3-R-S-V-Z1	09976	B-F1-F3-J-L-M-N-R-S-T-U2-V-X-Z1	34042	A-B-C-F-F1-F3-M-N-R-S-U-V-W-Z1
09762	A-B-C2-E3-F-F1-F3-J-L-N-R-R1-T-V-Z1	09838	B-C-C2-E2-E3-F-F1-F3-R-S-U-Z1	09977	B-F1-F3-J-L-M-N-R-S-T-U2-V-X-Z1	34050	B-V
09769	A-B-C-C1-C2-F-F1-F3-J-L-M-N-R-R1-T-V-Z1	09842	A-B-C1-C2-F-F1-F3-J-L-N-R-R1-T-V-Z1	09978	B-C-C2-D-E1-F-F1-F3-H-H1-M-N-R-R1-S-T-X-Z1	34051	B-V
09777	A-B-C-C1-C2-E1-F-F1-F3-J-L-M-N-R-R1-T-V-Z1	09844	A-B-C1-C2-F-F1-F3-J-L-M-N-R-R1-T-V-Z1	09980	B-C-C1-C2-F1-F3-J-L-M-N-R-R1-S-T-V-X-Z1	34052	B-V
09780	A-B-C2-F-F3-H-N-R-S-V	09845	A-B-C1-C2-E3-F-F1-F3-J-L-M-N-R-R1-T-V-Z1			34053	B-V
09801	A-B-C1-E2-F-F3-H1-M-N-R-R1-S-V-Z1	09846	A-B-C1-C2-F-F1-F3-J-L-N-R-R1-T-V-Z1			34054	B-V
09802	A-B-C-C2-D-F-F1-F3-H-H1-I3-L-M-N-R-R1-S-T-V-W-Z-Z1	09847	B-C-C2-F-F1-F3-J-L-M-N-R-R1-S-T-V-Z1			34055	B-C1-C2-F-F1-F3-J-L-M-N-R-R1-T-V-Z1
09803	A-B-C-C2-E-E2-E3-F1-F3-H-H1-J-M-N-R-R1-S-U-V-Z1	09848	A-B-C2-F-F3-M-R-S-V-Z1			34058	B-C2-F-F1-F2-F3-R-R1-S-V-Z1
09804	A-B-C-C2-F-F1-F3-M-N-R-S-V-Z1					34060	B-C1-C2-E2-F-F1-F3-J-L-M-N-R-R1-T-V-Z1
09805	B-C-C2-E2-E3-F-F1-F3-R-R1-S-Z1					34066	B-C1-C2-F-F1-F3-I3-L-M-N-R-R1-S-T-V-X-Z1

APO/ FPO/ DPO	See Restrictions	APO/ FPO/ DPO	See Restrictions	APO/ FPO/ DPO	See Restrictions	APO/ FPO/ DPO	See Restrictions
34069	B-C1-C2-F-F1-F3-I3-J-L-M-N-R-R1-S-T-V-X-Z-Z1	96284	A-B-C2-F-F1-F3-M-R-S-U	96510	B-I3-N-V	96628	B-C-C2-F-F1-F3-R-R1-S-V
34072	B-C-C2-F1-F3-J-L-M-N-R-S-T-V-X-Z1	96297	A-B-F-F1-F3-R-S-U	96511	B-I3-N-V	96629	B-C-C2-F-F1-F3-R-R1-S-V
34078	B-F1-F3-N-R-S-V-Z1	96300	A-B-F3-M-R-S-V-Z1	96515	B-C-D-E1-F-F1-F3-H1-M-N-R-S-T-Z1	96632	B-C-C2-F-F1-F3-R-R1-S-V
34080	B-F-F1-R-R1-V	96301	A-B-C-C2-F-F3-M-N-R-S-U2-W	96516	B-C-C2-D-E1-E2-F-F1-F3-H-H1-M-N-R-S-T-Z1	96633	B-V
34081	B-F-F1-R-R1-V	96303	B-C1-C2-F-F1-H-J-L-M-N-T-V-W-Z1	96517	B-C-D-E1-E2-F-F1-F3-H-H1-M-N-R-T-U-V-Z1	96641	B-V
34082	B-F-F1-R-R1-V	96306	B-F-F1-F2-F3-H-M-R-S-W-Z1	96520	B-F-N-U3-V	96642	B-V
34083	B-F-F1-R-R1-V	96309	B-C-C2-F-F1-F3-M-N-R-S-V-W	96521	B-C1-C2-F-F1-J-L-M-N-R-R1-S-T-V-Z1	96643	B-F-F1-F3-R-R1-S-V
34084	B-F-F1-R-R1-V	96310	B-F3-M-R-S-W	96530	A-B-C1-C2-F-F1-H-H1-J-L-M-N-R-R1-S-T-V-Z1	96644	B-V
34085	B-C-C1-C2-E2-E3-F-F1-F3-H1-J-R-R1-S-T-V-V1	96311	B-F3-M-R-S-W	96531	A-B-C-C2-F-F1-F3-H-M-N-R-S-U-V	96645	B-V
34086	B-C-C1-C2-E2-E3-F-F1-F3-H1-J-R-R1-S-T-V-V1	96315	B-F-F1-F3-H-M-R-S-W	96532	A-B-C1-C2-F-F1-H-J-L-M-N-R-R1-S-T-V-Z1	96649	B-C-C2-F-F1-F3-R-R1-S-V
34087	B-C-C2-E2-F-F1-F3-R-R1-S-V	96319	B-C-C2-F3-M-R-S-W	96534	A-B-F-F1-F2-F3-S-U-Z1	96650	B-F-F1-R-R1-V
34088	B-C-C2-F-F1-F3-R-R1-S-V	96321	B-F-F1-F2-F3-H-M-R-S-W-Z1	96535	A-B-C1-C2-F-F1-J-L-M-N-R-R1-S-T-V-Z1	96657	B-C-C2-F-F1-F3-R-R1-S-V
34089	B-C-C2-F-F1-F3-R-R1-S-V	96322	B-F-F1-F2-F3-H-M-R-S-W-Z1	96537	B-V-Z1	96660	B-C-C2-F-F1-F3-R-R1-S-V
34090	B-C-C2-F-F1-F3-R-R1-S-V	96326	B-C-C2-F-F3-M-R-S-W	96540	B-F1-F2-F3-S-V-Z1	96661	B-C-C2-F-F1-F3-R-R1-S-V
34091	B-C-C2-E2-E3-F-F1-F3-R-R1-S-V-Z1	96328	B-C-C2-F3-M-R-S-W	96542	B-F-F1-F2-F3-S-V-Z1	96662	B-C-C2-F-F1-F3-R-R1-S-V
34092	B-C-C2-F-F1-F3-R-R1-S-V-Z1	96331	A-B-C-C2-F-F1-F3-J-L-M-N-R-S-U2-W	96543	B-F-F1-F2-F3-P-S-V-Z1	96663	B-C-C2-F-F1-F3-R-R1-S-V
34093	B-C-C2-F-F1-F3-R-R1-S-V	96336	B-C-C2-F3-M-R-S-V-W	96548	A-B-C2-F-F1-F3-H-M-R-S-U	96664	B-C-C2-F-F1-F3-R-R1-S-V
34094	B-F-F1-F3-R-R1-S-V	96337	B-C2-F-F1-F3-M-R-R1-S-W	96549	A-B-C1-C2-F-F1-H-J-L-M-N-R-R1-S-T-V-Z1	96666	B-C-C2-F-F1-F3-R-R1-S-V
34095	B-F-F1-R-R1-V	96338	A-B-C-C2-F-F3-M-R-S-U2-W	96550	A-B-H-M-N-U-V-Z1	96667	B-C-C2-F-F1-F3-R-R1-S-V
96201	A-B-F-F1-F3-M-R-S-U	96339	A-B-F-F3-M-R-S-U2-W	96551	A-B-C1-C2-F-F1-H-J-L-M-N-R-R1-S-T-V-Z1	96668	B-C-C2-F-F1-F3-R-R1-S-V
96202	A-B-C2-F-F1-F3-M-R-S-U	96343	A-F-F3-M-P-R-S-U2	96552	B-Z1	96669	B-C-C2-F-F1-F3-R-R1-S-V
96203	A-B-F-F1-F3-M-R-S-U	96344	B-F-F1-F2-F3-H-M-R-S-W-Z1	96553	A-B-C2-F-F1-F3-H-M-N-R-S-U	96670	B-C-C2-F-F1-F3-R-R1-S-V
96204	A-B-F-F1-F3-M-R-S-U	96347	B-C2-F-F1-F2-F3-H-M-R-S-W-Z1	96554	A-B-C1-C2-F-F1-H-J-L-M-N-R-R1-S-T-V-Z1	96671	B-C-C2-F-F1-F3-R-R1-S-V
96205	A-B-C-C2-F-F1-F3-M-R-S-U	96349	B-C2-F-F1-F2-F3-H-M-R-S-Z1	96555	A-B-F-F3-M-R-S-V	96672	B-C-C2-F-F1-F3-R-R1-S-V
96206	A-B-C-C2-F-F1-F3-M-R-S-U	96350	B-F-F1-F2-F3-H-M-R-S-W-Z1	96557	A-B-F-F3-M-R-S-V	96673	B-C-C2-F-F1-F3-R-R1-S-V
96207	A-B-F-F1-F3-M-R-S-U-V	96351	B-C2-F-F1-F2-F3-H-M-R-S-W-Z1	96562	A-B-C1-C2-D-E2-E3-F-F1-H-H1-I3-L-M-N-R-R1-S-T-V-Z1	96674	B-C-C2-F-F1-F3-R-R1-S-V
96208	A-B-F-F1-F3-M-R-S-U	96362	B-C2-F-F1-F2-F3-H-M-R-S-W-Z1	96577	A-B-C2-F-F3-H-M-N-R-R1-S-U	96675	B-C-C2-F-F1-F3-R-R1-S-V
96209	A-B-C1-C2-F-F1-J-L-M-N-T-U-V-Z1	96365	B-C-C2-F3-M-R-S-W-V	96578	B-F1-F3-H-J-N-R-S	96677	B-C-C2-F-F1-F3-R-R1-S-V
96210	A-B-C1-C2-F-F1-F3-I3-L-M-N-R-R1-T-V-Z-Z1	96367	B-C-C2-F3-L-M-R-S-W	96595	B-F-F3-R-S-V-Z1	96678	B-C-C2-F-F1-F3-R-R1-S-V
96212	B-F-F1-F2-H-M-W-Z1	96368	B-C-C2-F3-M-R-S-W	96598	B-C2-F3-I3-N-R-S-V-V1	96679	B-C-C2-F-F1-F3-R-R1-S-V
96213	A-B-C-C2-F1-F3-N-R-S	96370	B-F-F1-F2-H-M-W-Z1	96599	B-C2-F3-N-R-S-V	96681	B-V
96214	A-B-C-C2-F1-F3-R-S-U	96371	B-F-F3-M-R-S-W	96601	B-V	96682	B-C-C2-F-F1-F3-R-R1-S-V
96218	A-B-F-F1-F3-M-R-S-U	96372	B-M-W	96602	B-V	96683	B-C-C2-F-F1-F3-R-R1-S-V
96224	A-B-F-F1-F3-M-R-S-U	96373	B-M-W	96603	B-V	96686	B-C-C2-F-F1-F3-R-R1-S-V
96251	A-B-F-F1-F3-M-R-S-U	96374	B-M-W	96604	B-V	96691	B-C-C2-F-F1-F3-R-R1-S-V
96257	A-B-F-F1-F3-S-U	96375	B-F3-M-R-S-W	96605	B-V+B559	96692	B-C-C2-F-F1-F3-R-R1-S-V
96258	A-F-F3-M-P-R-S-U	96376	B-F3-M-R-S-W	96606	B-F3-R-S-V	96693	B-C-C2-F-F1-F3-R-R1-S-V
96260	A-B-F-F1-F3-M-R-S-U	96377	B-C-C2-F-F3-M-R-S-W	96607	B-V	96694	B-C-C2-F-F1-F3-I3-J-R-R1-S-V-Z
96262	A-B-C2-F-F1-F3-R-S-U-V-Z1	96378	B-M-W	96608	B-E2-F-H1-R1-U2-V-Z1	96695	B-C-C2-F-F1-F3-R-R1-S-V
96264	A-B-C-C2-F1-F3-R-S-U	96379	B-C2-F3-M-R-S-W	96609	B-E2-F-H1-R1-U2-V-Z1	96696	B-F-F1-R-R1-V
96266	A-B-C-C2-F1-F3-R-S-U	96380	B-F3-M-R-S-W	96610	B-C-C2-F-F3-H1-R-R1-S-U2-V-Z1	96698	B-C-C2-F-F1-F3-R-R1-S-V
96269	A-B-C-C2-F1-F2-F3-R-S-U-Z1	96382	B-F-F3-M-R-S-W	96611	B-C-C2-F-F3-H1-R-R1-S-U2-V-Z1		
96271	A-F-F3-M-P-R-S-U	96384	B-F-F3-M-R-S-W	96612	B-C-C2-F-F3-H1-R-R1-S-U2-V-Z1		
96273	A-B-C2-F-F1-F3-M-R-S-U	96385	B-F-F3-M-R-S-W	96613	B-C-C2-F-F3-H1-R-R1-S-U2-V-Z1		
96275	A-B-F-F1-F3-M-R-S-U	96386	B-F3-M-S-W	96615	B-F-F1-R-R1-V		
96276	A-B-C-C2-F1-F3-R-S-U	96387	B-F3-M-R-S-W	96616	B-C2-F-F1-F3-R-R1-S-V		
96278	A-B-C-C2-F1-F3-R-S-U	96388	B-F3-M-R-S-W	96619	B-F1-F3-R-S-V		
96283	A-B-F-F1-F3-S-U	96389	B-M-W	96620	B-C-C2-F-F1-F3-R-R1-S-V		
		96401	B-C-F-F3-N-R-S-V-V1-Z1				
		96502	A-C-C1-C2-F-F1-F3-J-M-N-R-R1-S-T-U-V				
		96504	A-B-C-C1-C2-F-F1-F3-I3-L-M-N-R-R1-T-V-W-Z-Z1				
		96505	A-B-C-C1-C2-F-F1-F3-I3-L-M-N-R-R1-S-T-V-W-Z-Z1				
		96507	A-B-C1-C2-F-F1-H-J-L-M-N-T-V-Z1				

RESTRICTIONS

LEGEND

PS Form 2976, *Customs — CN 22 (Old C 1) and Sender's Declaration* (green label)

PS Form 2976-A, *Customs Declaration and Dispatch Note*

PS Form 2976-B, *Priority Mail Express International Shipping Label and Customs Form*

ATF	= Bureau of Alcohol, Tobacco, Firearms, and Explosives
Box C	= Department of State (DOS) contractor personnel
Box R	= Retired military personnel
DPO	= Diplomatic Post Office
MPO	= Military Post Office
PACT	= Prevent All Cigarette Trafficking Act
PAL	= Parcel Airlift
PMEMS	= Priority Mail Express Military Service
PUB 52	= Publication 52, <i>Hazardous, Restricted, and Perishable Mail</i>
SAM	= Space Available Mail
USDA	= United States Department of Agriculture

Note: Mail order catalogs are prohibited as SAM or PAL mail.

A. Securities, currency, or precious metals, including in their raw, unmanufactured state, are prohibited. Official Mail shipments are exempt from this restriction.

A1. Reserved for future use.

A2. Reserved for future use.

B. Other than for PMEMS and the exceptions listed below, a customs declaration PS Form 2976 or PS Form 2976-A is required for all items weighing 16 ounces or more, and for all items (regardless of weight) containing potentially dutiable mail contents (e.g., merchandise or goods) addressed to or from this ZIP Code. Other than the exceptions listed below, all PMEMS mailpieces (regardless of mail contents or weight) addressed to or from this ZIP Code must bear a properly completed PS Form 2976-B. The surface area of the address side of the mailpiece must be large enough to contain the applicable customs declaration. The following exceptions apply to known mailers, who for this purpose are defined as follows:

- Business mailers who enter volume mailings through business mail entry units or other bulk mail acceptance locations, pay postage through advance deposit accounts, use permit imprints for postage payment, and submit completed postage statements at the time of entry that certify that the mailpieces contain no dangerous materials that are prohibited by postal regulations. Such business mailers are exempt from providing customs documentation on non-dutiable letters and printed matter.
- All federal, state, and local government agencies whose mailings are regarded as "Official Mail." Such agencies are exempt from providing customs documentation, except for any items addressed to an MPO or DPO to which restriction "B2" applies.

B2. All federal, state, and local government agencies must complete customs documentation when sending potentially dutiable mail addressed to or from this MPO or DPO.

C. Cigarettes and other tobacco products, including tobacco leaves, chewing and pipe tobacco, snuff, and cigars are prohibited, including those that are authorized in Publication 52 under PACT.

C1. Obscene and horror articles, images, prints, paintings, cards, films, videotapes, comic books, etc., are prohibited.

C2. E-cigarettes and related products (e.g., nicotine liquids, e-liquids, parts, or supplies) are prohibited.

D. Coffee is prohibited.

E. Medicines (prescription, over-the-counter, vitamins, and supplements) are prohibited when mailed to individuals for human or animal use. This prohibition does not apply when medicines are sent as Official Mail only between specifically designated agencies such as pharmaceutical distributors, hospitals, clinics, and pharmacies.

E1. Mailers are responsible to ensure that all medicines and vaccines conform to host nation laws.

E2. Any matter depicting nude or seminude persons, pornographic, or sexual items are prohibited. Non-authorized political materials are prohibited. Religious materials contrary to the Islamic faith are prohibited in bulk quantities, but individual items for the personal use of the addressee are permissible.

E3. Radio transceivers, cordless/cellular telephones, global positioning systems, scanners, base stations, and handheld transmitters are prohibited.

F. Firearms of any type are prohibited, except firearms mailed to or by official U.S. government agencies. This restriction does not apply to firearms mailed from this MPO ZIP Code, provided ATF and USPS regulations are met. Antique firearms do not require an ATF form.

F1. Weapons of any type are prohibited.

F2. Mailing firearms to or from this MPO ZIP Code is restricted to one shotgun and one single shot .22 caliber rifle per individual.

F3. Replica weapons and inert explosive devices (such as grenades) and weapons parts are prohibited.

G. Parcels of any class are prohibited.

H. Meats, including preserved meats, bones, skin, hair, feathers, horns or hoofs of hoofed animals, and wool samples whether hermetically sealed or not, are prohibited.

H1. Pork or pork by-products are prohibited.

I. Reserved for future use.

I1. Reserved for future use.

I2. Reserved for future use.

I3. Mail of all classes must fit in a mail sack. Mail may not exceed the following dimensions:

- Maximum length 27 inches.
- Maximum width 14 inches.
- Maximum height 14 inches.

J. Standard Post and Parcel Select parcels may not exceed 108 inches in length and girth combined.

K. Reserved for future use.

L. All Official Mail is prohibited.

M. Fruits, vegetables, live animals, and live plants are prohibited.

N. Registered Mail service is prohibited.

O. Reserved for future use.

P. Official Mail only.

Q. Mail may not exceed 66 pounds, and size is limited to 42 inches maximum length and 72 inches maximum length and girth combined.

R. All alcoholic beverages, including those mailable under Publication 52, Part 421, are prohibited.

R1. Materials used in the production of alcoholic beverages (i.e., distilling material, hops, malts, yeast, etc.) are prohibited.

S. Synthetic cannabinoids used to stimulate the central nervous system commonly known as "synthetic marijuana," "K2," or "Spice" are prohibited.

T. Mailings of household shipments and case lots of food to or from an MPO require military transportation office approval prior to mailing. Mailings to or from a DPO require pre-approval from the Diplomatic Pouch and Mail Director.

U. Mail addressed to Retirees (Box R) is limited to 16 ounces and up to a 90-day supply of TRICARE medications. This restriction does not apply to mail endorsed "Free Matter for the Blind or Handicapped."

U1. Mail is limited to First-Class Mail items, including audio and video media, weighing 13 ounces or less. This limitation does not apply to Official Mail.

U2. Retirees (Box R) are not authorized mail service.

U3. Reserved for future use.

U4. Mail addressed to Box C is limited to 2 lbs.

V. PMEMS is not available.

V1. Electronic Delivery status information for Extra Services is not available on *USPS.com*. Manual record of delivery may be available upon request.

W. Hermetically sealed packages of meat products bearing USDA certification, such as dried beef, salami, and sausage, may be mailed. 200 grams of tobacco per parcel are permitted duty free.

X. Cremated remains are prohibited.

Y. Mail is limited to First-Class Mail and Priority Mail items only. This restriction also applies to Official Mail.

Z. No outside pieces (OSPs).

Z1. The following restriction is applicable only to International Service Centers (ISC)/Exchange Offices. An Anti-Pilferage Seal (Item No O817E or O818A) is required on all pouches and sacks.

— *International Network Operations,
Global Business, 10-6-22*

Freely Associated States Restrictions

We list the mailing restrictions for Freely Associated States (FAS) in the Pull-Out section of the *Postal Bulletin*. All FAS Restrictions will be updated periodically.

Freely Associated States

Mail addressed to freely associated states is subject to certain conditions or restrictions of mailing regarding content, preparation, and handling. The following FAS Restrictions table outlines these conditions as listed by each affected FAS ZIP Code™ through the use of footnoted mailing restrictions codes (see the [Restrictions](#) following the table). For more information on available extra services for FAS destinations, see *Mailing Standards of the United States Postal Service, Domestic Mail Manual (DMM®)*, part 503.

Acceptance clerks must use the table with the Retail System Software terminal to determine which FAS ZIP Codes are active and which conditions of mailing apply.

FAS Restrictions Table

FAS Table	See Restrictions
96939	A, B
96940	A, B
96941	A, B
96942	A, B
96943	A, B
96944	A, B
96960	A, B
96970	A, B, D
Marshall Islands	C
Federated States of Micronesia	C

RESTRICTIONS LEGEND

PS Form 2976, *Customs Declaration CN 22 – Sender's Declaration*

PS Form 2976-A, *Customs Declaration and Dispatch Note*

FAS = Freely Associated State

- A.** Bank currency (coin and paper) is prohibited.
- B.** Signature Confirmation, Signature Confirmation Restricted Delivery, Adult Signature Requested, Adult Signature Restricted Delivery, Certified Mail Adult Signature Required, and Certified Mail Adult Signature Restricted Delivery not available.
- C.** Collect on Delivery is prohibited.
- D.** Betel nut (Areca catechu) is prohibited.

— *Asia-Pacific Relations,
Global Business, 10-6-22*

Labeling List Changes (continued)

L201 Periodicals Origin Split and First-Class Mail Mixed ADC/AADC

Column A Originating ZIP Codes (Change From)	Column A Originating ZIP Codes (Change To)	Column B Label To (Change From)	Column B Label To (Change To)	Column C Label Container To (Change From)	Column C Label Container To (Change To)
808-812	808-812	005, 010-043, 045, 048, 067, 077, 080-087, 103, 110-119, 130-139, 150-166, 168-212, 214-241, 243-245, 254, 260, 265, 267-268, 270-282, 286-306, 308-342, 344, 346-347, 349-352, 354-372, 375, 380-406, 410, 413-414, 421-422, 427, 434-436, 439, 450-452, 459-474, 478-516, 530-532, 534-535, 537-551, 553-564, 566, 570-575, 577, 590-620, 622-631, 633-641, 644-658, 660-662, 664-681, 683-693, 700-701, 703-708, 710-714, 716-731, 733-741, 743-770, 772-784, 786-816, 820-838, 840-847, 850-853, 855-857, 859-860, 863-865, 870-871, 873-885, 888-891, 893-895, 897-898, 900-908, 910-928, 930-938, 940-944, 949, 952-961, 970-979, 986, 988, 990-994	005, 010-043, 045, 048, 067, 077, 080-087, 103, 110-119, 130-139, 150-166, 168-212, 214-241, 243-245, 254, 260, 265, 267-268, 270-282, 286-306, 308-342, 344, 346-347, 349-352, 354-372, 375, 380-406, 410, 413-414, 421-422, 427, 434-436, 439, 450-452, 459-474, 478-516, 530-532, 534-535, 537-551, 553-564, 566, 570-575, 577, 590-620, 622-631, 633-641, 644-658, 660-662, 664-681, 683-693, 700-701, 703-708, 710-714, 716-731, 733-741, 743-770, 772-784, 786-816, 820-838, 840-847, 850-853, 855-857, 859-860, 863-865, 870-871, 873-885, 888-891, 893-895, 897-898, 900-908, 910-928, 930-938, 940-944, 949, 952-961, 970-979, 986, 988, 990-994	COLORADO SPRINGS CO 808 CO 80801	COLORADO SPRINGS CO 808

Column A: No change.
 Column B: No change.
 Column C now reads: COLORADO SPRINGS CO 808.

* * * * *

L606 5-Digit Scheme – Standard Mail, First-Class Mail, and Package Services Parcels

Changes

Column A Destination ZIP Codes	Column B Label Container To (Change From)	Column B Label Container To (Change To)
01843	LAWRENCE MA 01840	LAWRENCE MA 01843
21804	SALISBURY MD 21801	EDEN MD 21822
33991	CAPE CORAL FL 33909	CAPE CORAL FL 33993
33993	CAPE CORAL FL 33909	CAPE CORAL FL 33993

Newly Added

Column A Destination ZIP Codes	Column B Label Container To (Added To)
01844	LAWRENCE MA 01843
01845	LAWRENCE MA 01840

Deleted

Column A Destination ZIP Codes	Column B Label Container To (Deleted From)
33896	DAVENPORT FL 33837
33909	CAPE CORAL FL 33909
34758	KISSIMMEE FL 34758
34759	KISSIMMEE FL 34758
55802	DULUTH MN 55802
55805	DULUTH MN 55802
55806	DULUTH MN 55806
55807	DULUTH MN 55806
55808	DULUTH MN 55806
55812	DULUTH MN 55802
56372	ST CLOUD MN 56372
56393	ST CLOUD MN 56372
56395	ST CLOUD MN 56372
56396	ST CLOUD MN 56372
56398	ST CLOUD MN 56372
56399	ST CLOUD MN 56372
56401	BRAINERD MN 56401
56425	BRAINERD MN 56401
56449	BRAINERD MN 56401
58502	BISMARCK ND 58502
58505	BISMARCK ND 58505
58506	BISMARCK ND 58505
58507	BISMARCK ND 58502
58703	MINOT ND 58703
58707	MINOT ND 58703
58768	MINOT ND 58703

Experience the Competitive Spirit of
Women's Rowing
Forever® Stamps



ON SALE NATIONWIDE: MAY 13, 2022
Sold as a full pane.

Environmental Management

Integrated Pest Management: Pesticide Management, Storage, and Disposal

The Postal Service™ uses integrated pest management (IPM) practices and techniques to control pests. IPM emphasizes using safer, more environmentally sound pest procedures without eliminating the use of pesticides entirely.

Pesticides include insecticides, herbicides, fungicides, and rodenticides, which are all regulated because of the chemicals they contain that can be hazardous to human health, the environment, and water quality. The Postal Service currently has national IPM contracts in place through the Facility Services CMC, which is the preferred method for pest management at all USPS® sites.

When considering pesticide treatments, USPS employees must:

- Use chemical pesticides only as a last resort (using a USPS IPM national contractor for chemical pesticide application). *Only contracted, licensed pesticide applicators may apply chemical pesticides.*
- Use non-concentrated or pre-mixed pesticides suitable for household use for minor spot treatments. Apply with precision and restraint.
- Never purchase or apply restricted use pesticides or concentrated pesticides that require mixing. USPS personnel are prohibited from applying restricted use pesticides and from mixing or using concentrated pesticides. Check the label to see if a product contains a restricted use pesticide.
- Never apply pesticides (or any chemicals) to storm-water retention or detention basins or ponds and exercise caution when applying pesticides around these areas.

For pesticide storage and disposal, USPS employees must:

- Maintain only limited quantities of pest control products. Do not stockpile.

- Store pesticides in their original containers, keep pesticide containers closed, and follow the storage instructions on the label. If possible, keep all pesticides in a locked cabinet in a well-ventilated utility area.
- Never store pesticides in cabinets near food or medical supplies. Do not store pesticides in places where they might spill or leak into wells, drains, groundwater, or surface water.
- Never pour leftover pesticides down the sink, into the toilet, or down a sewer or street drain. Arrange for off-site disposal using the USPS National Hazardous Waste Management Service contractor available on eBuy+. Maintain shipment and disposal records on-site.
- Never reuse empty pesticide containers. If containers are empty (i.e., all the liquid product has been removed and used), place the container in the trash unless the label specifies a different disposal procedure.

Contractors who apply pesticides must remove all devices and excess products after completion. If USPS-purchased pesticides cannot be properly used, employees must contact the vendor to inquire if the manufacturer will take back the unused product.

For more information:

- Review the following guidance for Integrated Pest Management at blue.usps.gov/sustainability/environmental/_pdf/waste/ecb-pestmanagement.pdf.
- Consult your designated USPS environmental contact at blue.usps.gov/sustainability/contact.htm.

— *Environmental Affairs and Corporate Sustainability, Corporate Affairs, 10-6-22*

Finance

Equipment Maintenance Allowance Schedule for Rural Routes

Rural Carriers

In accordance with the provisions of Article 9, Section 2.J.3 of Handbook EL-902, *Agreement Between the United States Postal Service and the National Rural Letter Carriers' Association*, effective October 8, 2022 (pay period 22-22), the equipment maintenance allowance (EMA) will decrease to 96.0 cents per mile. The EMA is 96.0 cents per mile, or a minimum of \$38.40 per day, whichever is greater.

Auxiliary Rural Carriers, Rural Carrier Reliefs, Rural Carrier Associates, Rural Carrier Part-Time Flexibles, and Auxiliary Assistance

Employees providing auxiliary assistance or serving auxiliary routes under the provisions of Article 9, Section 2.J.5, receive an EMA of 96.0 cents per mile or \$10.20 per hour, whichever is greater. This EMA must not exceed the amount provided in the special equipment maintenance allowance for the route stops and miles.

EMA Rate Schedule

The EMA rate schedule on pages [41](#) and [42](#) supersedes all previously published EMA schedules for employees receiving EMA.

— *Collective Bargaining and Arbitration, Labor Relations, 10-6-22*

Telework-Eligible Employees May Update State Tax Withholding

Management Instruction EL-310-2021-2, *Telework Program for Eligible Nonbargaining Employees and PCES*, was recently published to address changes to USPS® telework policy. Eligible employees are now allowed to telework up to 3 days per week from an alternate work location.

Since this location could be in a different state or locality than the employee's assigned duty station, employees working in an approved telework-eligible occupation code may access the State Tax Payroll module in *PostalEASE* (liteblue.usps.gov) and elect state tax withholding according to their remote work location. If a telework-eligible employee splits work hours between locations in two different states, this individual may elect to have tax withheld from one state for part of the year and the other state for the rest of the year.

How to Update State Tax Withholdings

- Go to the *LiteBlue* home page (liteblue.usps.gov) to access the *PostalEASE* App.
- Update your State Tax Payroll module.

- If you do not have access to a computer or the Internet, you can call *PostalEASE* toll-free at 877-477-3273, option 1, and follow the instructions.

Note: It is to your advantage to complete the paper form before your *PostalEASE* update, as the paper form comes with helpful instructions for complex state withholding selections.

If you need assistance, contact the HR Shared Service Center at 877-477-3273, option 5. Employees with hearing disabilities can call the Federal Relay Service at 800-877-8339.

Employees in affected occupation codes will now be solely responsible for appropriately assigning their state tax withholding. Employees moving to and from telework-eligible positions (due to reassignment, promotion, relocation, etc.) will no longer have their state tax withholding automatically updated to match their duty station.

The Postal Service™ is prohibited from providing any tax advice to employees. Direct any questions about your tax liability/responsibility to the Internal Revenue Service or a qualified tax attorney or accountant.

— *Payroll, Controller, 10-6-22*

EMA Rate Schedule (page 2 of 2)

MILES	STOPS =	*0640**0660**0680**0700**0720**0740**0760**0780**0800**0820**0840**0860**0880**0900**0920**0940**0960**0980**1000	R A T E S C H E D U L E	DATE 09-21-22
			EFFECTIVE PP-YR 22-22	PAGE 2
8		39.90 40.00 40.10 40.20 40.30 40.40 40.50 40.60 40.70 40.80 40.90 41.00 41.10 41.20 41.30 41.40 41.50 41.60 41.70 41.80 41.90 42.00 42.10 42.20 42.30 42.40 42.50 42.60 42.70 42.80 42.90 43.00 43.10 43.20 43.30 43.40		
9		40.00 40.10 40.20 40.30 40.40 40.50 40.60 40.70 40.80 40.90 41.00 41.10 41.20 41.30 41.40 41.50 41.60 41.70 41.80 41.90 42.00 42.10 42.20 42.30 42.40 42.50 42.60 42.70 42.80 42.90 43.00 43.10 43.20 43.30 43.40		
10		40.10 40.20 40.30 40.40 40.50 40.60 40.70 40.80 40.90 41.00 41.10 41.20 41.30 41.40 41.50 41.60 41.70 41.80 41.90 42.00 42.10 42.20 42.30 42.40 42.50 42.60 42.70 42.80 42.90 43.00 43.10 43.20 43.30 43.40		
11		40.20 40.30 40.40 40.50 40.60 40.70 40.80 40.90 41.00 41.10 41.20 41.30 41.40 41.50 41.60 41.70 41.80 41.90 42.00 42.10 42.20 42.30 42.40 42.50 42.60 42.70 42.80 42.90 43.00 43.10 43.20 43.30 43.40		
12		40.30 40.40 40.50 40.60 40.70 40.80 40.90 41.00 41.10 41.20 41.30 41.40 41.50 41.60 41.70 41.80 41.90 42.00 42.10 42.20 42.30 42.40 42.50 42.60 42.70 42.80 42.90 43.00 43.10 43.20 43.30 43.40		
13		40.40 40.50 40.60 40.70 40.80 40.90 41.00 41.10 41.20 41.30 41.40 41.50 41.60 41.70 41.80 41.90 42.00 42.10 42.20 42.30 42.40 42.50 42.60 42.70 42.80 42.90 43.00 43.10 43.20 43.30 43.40		
14		40.50 40.60 40.70 40.80 40.90 41.00 41.10 41.20 41.30 41.40 41.50 41.60 41.70 41.80 41.90 42.00 42.10 42.20 42.30 42.40 42.50 42.60 42.70 42.80 42.90 43.00 43.10 43.20 43.30 43.40		
15		40.60 40.70 40.80 40.90 41.00 41.10 41.20 41.30 41.40 41.50 41.60 41.70 41.80 41.90 42.00 42.10 42.20 42.30 42.40 42.50 42.60 42.70 42.80 42.90 43.00 43.10 43.20 43.30 43.40		
16		40.70 40.80 40.90 41.00 41.10 41.20 41.30 41.40 41.50 41.60 41.70 41.80 41.90 42.00 42.10 42.20 42.30 42.40 42.50 42.60 42.70 42.80 42.90 43.00 43.10 43.20 43.30 43.40		
17		40.80 40.90 41.00 41.10 41.20 41.30 41.40 41.50 41.60 41.70 41.80 41.90 42.00 42.10 42.20 42.30 42.40 42.50 42.60 42.70 42.80 42.90 43.00 43.10 43.20 43.30 43.40		
18		40.90 41.00 41.10 41.20 41.30 41.40 41.50 41.60 41.70 41.80 41.90 42.00 42.10 42.20 42.30 42.40 42.50 42.60 42.70 42.80 42.90 43.00 43.10 43.20 43.30 43.40		
19		41.00 41.10 41.20 41.30 41.40 41.50 41.60 41.70 41.80 41.90 42.00 42.10 42.20 42.30 42.40 42.50 42.60 42.70 42.80 42.90 43.00 43.10 43.20 43.30 43.40		
20		41.10 41.20 41.30 41.40 41.50 41.60 41.70 41.80 41.90 42.00 42.10 42.20 42.30 42.40 42.50 42.60 42.70 42.80 42.90 43.00 43.10 43.20 43.30 43.40		
21		41.20 41.30 41.40 41.50 41.60 41.70 41.80 41.90 42.00 42.10 42.20 42.30 42.40 42.50 42.60 42.70 42.80 42.90 43.00 43.10 43.20 43.30 43.40		
22		41.30 41.40 41.50 41.60 41.70 41.80 41.90 42.00 42.10 42.20 42.30 42.40 42.50 42.60 42.70 42.80 42.90 43.00 43.10 43.20 43.30 43.40		
23		41.40 41.50 41.60 41.70 41.80 41.90 42.00 42.10 42.20 42.30 42.40 42.50 42.60 42.70 42.80 42.90 43.00 43.10 43.20 43.30 43.40		
24		41.50 41.60 41.70 41.80 41.90 42.00 42.10 42.20 42.30 42.40 42.50 42.60 42.70 42.80 42.90 43.00 43.10 43.20 43.30 43.40		
25		41.60 41.70 41.80 41.90 42.00 42.10 42.20 42.30 42.40 42.50 42.60 42.70 42.80 42.90 43.00 43.10 43.20 43.30 43.40		
26		41.70 41.80 41.90 42.00 42.10 42.20 42.30 42.40 42.50 42.60 42.70 42.80 42.90 43.00 43.10 43.20 43.30 43.40		
27		41.80 41.90 42.00 42.10 42.20 42.30 42.40 42.50 42.60 42.70 42.80 42.90 43.00 43.10 43.20 43.30 43.40		
28		41.90 42.00 42.10 42.20 42.30 42.40 42.50 42.60 42.70 42.80 42.90 43.00 43.10 43.20 43.30 43.40		
29		42.00 42.10 42.20 42.30 42.40 42.50 42.60 42.70 42.80 42.90 43.00 43.10 43.20 43.30 43.40		
30		42.10 42.20 42.30 42.40 42.50 42.60 42.70 42.80 42.90 43.00 43.10 43.20 43.30 43.40		
31		42.20 42.30 42.40 42.50 42.60 42.70 42.80 42.90 43.00 43.10 43.20 43.30 43.40		
32		42.30 42.40 42.50 42.60 42.70 42.80 42.90 43.00 43.10 43.20 43.30 43.40		
33		42.40 42.50 42.60 42.70 42.80 42.90 43.00 43.10 43.20 43.30 43.40		
34		42.50 42.60 42.70 42.80 42.90 43.00 43.10 43.20 43.30 43.40		
35		42.60 42.70 42.80 42.90 43.00 43.10 43.20 43.30 43.40		
36		42.70 42.80 42.90 43.00 43.10 43.20 43.30 43.40		
37		42.80 42.90 43.00 43.10 43.20 43.30 43.40		
38		42.90 43.00 43.10 43.20 43.30 43.40		
39		43.00 43.10 43.20 43.30 43.40		
40		43.10 43.20 43.30 43.40		
41		43.20 43.30 43.40		
42		43.30 43.40		
43		43.40		

USPS 26-9902
 MINNEAPOLIS ISC
 REPORT AAQ530P1

RURAL EQUIPMENT MAINTENANCE
 BASED ON \$0.960 PER MILE
 EFFECTIVE PP-YR 22-22

Human Resources

October is Breast Cancer Awareness Month

Breast cancer is the second most common type of cancer for women in the United States. Men can get breast cancer as well, though it is rare. Breast cancer begins in the breast tissue when the cells in the breast change, grow out of control, and form a tumor. According to the National Institutes of Health, the types of breast cancer include:

- **Ductal carcinoma.** The most common type of breast cancer — begins in the cells of the ducts.
- **Lobular carcinoma.** Cancer begins in the lobules and is more often found in both breasts than other types of breast cancer.
- **Inflammatory breast cancer.** Cancer cells block lymph vessels in the skin of the breast. The breast becomes warm, red, and swollen.
- **Paget's disease of the breast.** This rare cancer involves the skin of the nipple and usually the darker skin around the nipple.

The causes can be genetic or environmental. Higher risk factors for breast cancer include:

- Being older or obese.
- Having dense breast tissue.

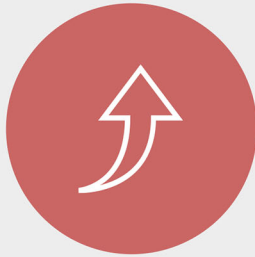
- Giving birth at an older age.
- Drinking alcohol.
- Taking hormone therapy.
- Having an inherited risk of breast cancer (including BRCA1 and BRCA2 gene changes).

Signs and symptoms include breast pain, change in size or shape of the breast, or a lump in or near the breast or armpit. If you notice any of these signs or symptoms, contact your physician immediately. Your physician will conduct diagnostic tests, such as a mammogram, ultrasound, biopsy, blood test, or a physical exam to check for lumps.

Performing self-examinations regularly, as well as getting regular mammograms (frequency recommended by your physician), can help; early detection of breast cancer is key. If you are overdue for a mammogram, schedule it today.

This information does not constitute medical advice, and individuals should consult their own health care professionals.

— *Benefits and Wellness,*
Human Resources, 10-6-22



Age

The risk for breast cancer increases with age. Most women diagnosed are over age 50.



Genetics

Women who have inherited mutations to certain genes such as BRCA1 and BRCA2 are at a higher risk.



Radiation

Women who had radiation therapy to the chest before age 30 are at an increased risk.

Breast Cancer Facts



Alcohol

Studies show that a woman's risk for breast cancer increases with the more alcohol she drinks.



Hormones

Some forms of hormone replacement therapy taken during menopause can raise the risk for breast cancer when taken for more than five years.



More Risks

Research suggests that factors such as smoking, exposure to cancer-causing chemicals and hormone changes brought on by working night shifts also may increase breast cancer risk..

Source: https://www.cdc.gov/cancer/breast/basic_info/risk_factors.htm



Information Security

500,000 Strong: Stay CyberSafe and Deliver for America

The United States Postal Service® is among the largest organizations in the country. With a workforce of more than half a million employees, ranging from letter carriers to the Postmaster General, securing the USPS® network may seem like an impossible task. But while adversaries may see 500,000 potential targets, CyberSafe at USPS® sees 500,000 of the best guardians of the network: our employees.

During October's Cybersecurity Awareness Month, themed "Stay CyberSafe and Deliver for America," we encourage you to expand your working knowledge of cybersecurity by visiting the CyberSafe page on *Blue* at blue.usps.gov/cyber. From interactive virtual cyber activities to informative videos, CyberSafe is an invaluable resource for spreading cybersecurity best practices.

Here are a few of the many programs CyberSafe has to offer:

- **Monthly awareness campaigns.** These important campaigns highlight materials, such as posters, infographics, newsletters, and other resources that provide cybersecurity best practices for both work and home.

- **CyberSafe Guardians.** A resource hub for the volunteers serving as points of contact at facilities across the country who spread cybersecurity awareness best practices to their networks.
- **Virtual awareness activities.** This resource provides pre-packaged, engaging awareness activities you can tailor to individual teams across the organization to help instill best practices and USPS policy awareness.
- **CyberSafe Studio.** A collection of short and entertaining videos made by the USPS Training and Awareness team that put cyberthreats into real-life scenarios to show the impact of making the wrong decisions.
- **Incident reporting.** This reporting tool promotes USPS's phishing initiative — Report to CyberSafe — and provides steps to take if you think you've been a target.

This October, watch for more Cybersecurity Awareness Month materials and help USPS "Stay CyberSafe and Deliver for America."

— Corporate Information Security Office,
Chief Information Security Officer, 10-6-22

Mailing and Shipping Services

Expedited Packaging Supplies Orders to be Processed and Shipped Within 1 Business Day of Receipt

On October 1, 2022, Victory Packaging Supplies committed to processing Expedited Packaging Supplies (EPS) orders and shipping the supplies to customers and Post Offices within 1 business day of the order receipt. Previously, processing expedited packaging supplies could take up to 72 hours.

This change applies to all standard EPS available on The Postal Store® website at usps.com. This update ensures faster turnaround of expedited packaging supplies, so customers and Post Offices receive their supplies more quickly.

Once orders are processed, shipments are sent via:

- Parcel Select® service (within 2–5 business days) at no cost to customers or Post Offices; or
- Priority Mail® service (within 1–3 business days) for a fee.

The Shipping Info section on the EPS product pages of The Postal Store website was updated to reflect this change.

For questions about expedited packaging supplies, send an email to expeditedpackaging@usps.gov.

— Shipping and Commerce Product Management,
Business Solutions, 10-6-22

Stamp Services

Pictorial Postmarks Announcement

As a community service, the Postal Service™ offers pictorial postmarks to commemorate local events celebrated in communities throughout the nation. A list of events for which pictorial postmarks are authorized appears on the following pages. The sponsor of the pictorial postmark appears in italics under the date. Also provided are illustrations of these postmarks.

People attending these local events may obtain the postmark in person at the temporary Post Office™ station established there. Those who cannot attend the event but who wish to obtain the postmark may submit a mail order request. Pictorial postmarks are available only for the dates indicated, and *requests must be postmarked no later than 30 days following the requested pictorial postmark date.*

All requests must include a stamped envelope or postcard bearing at least the minimum First-Class Mail® postage. Items submitted for postmark may not include

postage issued after the date of the requested postmark. Such items will be returned unserved.

Customers wishing to obtain a postmark must affix stamps to any envelope or postcard of their choice, address the envelope or postcard to themselves or others, insert a card of postcard thickness in envelopes for sturdiness, and tuck in the flap. Place the envelope or postcard in a larger envelope and address it to: Pictorial Postmarks, followed by the Name of the Station, Address, City, State, ZIP+4® Code, as listed next to the postmark.

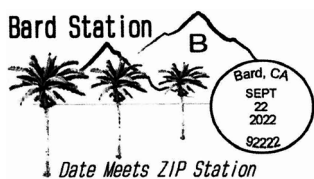
Customers can also send stamped envelopes and postcards without addresses for postmark, as long as they supply a larger envelope with adequate postage and their return address. After applying the pictorial postmark, the Postal Service returns the items (with or without addresses) under addressed protective cover.

The following pictorial postmarks have been extended for 30 days:



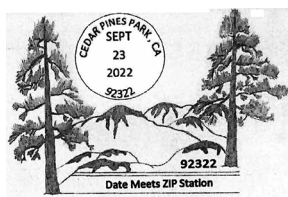
September 21, 2022

United States Postal Service
Date Meets ZIP Station
Postmaster
3298 Governor Drive
San Diego, CA 92122-9996



September 22, 2022

United States Postal Service
Date Meets ZIP Station
Postmaster
1280 Bard Road
Bard, CA 92222-9800



September 23, 2022

United States Postal Service
Date Meets ZIP Station
Postmaster
201 Nardy Lane
Cedar Pines Park, CA 92322-0001



September 24, 2022

Tuscora Stamp Club
 TUSCOPEX Station
 Postmaster
 210 North Broadway Street
 New Philadelphia, OH 44663-9998



September 29, 2022

Juniata River Valley Visitors Bureau
 Lewistown Station, PA 17044
 Postmaster
 100 West Market Street
 Lewistown, PA 17044-9998



Charles M. Schulz

October 1, 2022

United States Postal Service
 Hadley, MA Station
 Postmaster
 186 Russell Street
 Hadley, MA 01035-0035



Charles M. Schulz

October 1, 2022

United States Postal Service
 Newport, KY Station
 Postmaster
 420 Columbia Street
 Newport, KY 41071-9998



October 1-9, 2022

United States Postal Service
 Albuquerque International Balloon Fiesta Station
 Postmaster
 1135 Broadway Northeast, Room 213
 Albuquerque, NM 87101-9998

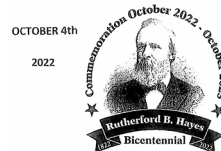
Centennial Anniversary of First Day Issue Ceremonies



October 4, 2022

Rutherford B. Hayes Presidential Library and Museums

Spiegel Grove Station
 Postmaster
 2120 Enterprise Street
 Fremont, OH 43420-9998



October 4, 2022

Rutherford B. Hayes Presidential Library and Museums

Spiegel Grove
 Station
 Fremont
 Ohio 43420

Spiegel Grove Station
 Postmaster
 2120 Enterprise Street
 Fremont, OH 43420-9998



October 5, 2022

United States Postal Service
 Oktoberfest Station
 Postmaster
 100 West Commerce Street
 Loretto, TN 38469-9998



October 14, 2022

Bob Evans Farm Festival
 Farm Festival Station
 Postmaster
 15070 Street, Route 554
 Bidwell, OH 45614-9998



October 7-9, 2022

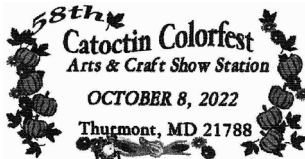
Indiana Stamp Club
 INDYPEX Station
 Postmaster
 125 West South Street
 Indianapolis, IN 46206-9998

Apple Scrapple 30th Anniversary
 Station
 October 14, 2022
 Bridgeville, Delaware 19933



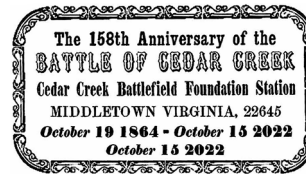
October 14-15, 2022

Apple Scrapple Festival
 Apple Scrapple 30th
 Anniversary Station
 Postmaster
 300 Walnut Street
 Bridgeville, DE 19933-9998



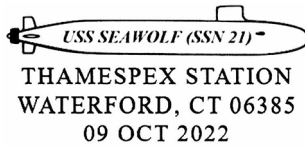
October 8-9, 2022

Catoctin Colorfest
 Arts & Crafts Show Station
 Postmaster
 110 Water Street
 Thurmont, MD 21788-9998



October 15, 2022

Cedar Creek Battlefield Foundation
 Cedar Creek Battlefield
 Foundation Station
 Postmaster
 7922 Main Street
 Middletown, VA 22645-9998



October 9, 2022

Thames Stamp Club
 THAMESPEX Station
 Postmaster
 222 Boston Post Road
 Waterford, CT 06385-9998

— Stamp Services,
 Marketing, 10-6-22

How to Order the First-Day-of-Issue Digital Color or Traditional Postmarks

Customers have 120 days to obtain the first-day-of-issue postmarks by mail. Each cover must have sufficient postage to meet First-Class Mail® requirements. Customers may purchase new stamps at their local Post Office™, by phone at 844-737-7826, or on The Postal Store® website at usps.com/shop.

Digital Color Postmarks

Only select stamp issues offer a digital color postmark. Customers may submit #6 or #10 envelopes constructed of paper rated as "laser safe." The Postal Service™ recommends envelopes of 80-pound Accent Opaque, acid-free, 9/16-inch side seams with no glue on the flap. The maximum size of all digital color postmarks is 2 inches (vertically) by 4 inches (horizontally). Allow sufficient space on the envelope to accommodate the postmark. Do not use self-adhesive labels for addresses on the envelope. Two test envelopes must be included. There is a minimum of 10 envelopes at 50 cents per postmark required at the time of servicing. Customers must submit a check, money order, or credit card for payment.

The Postal Service reserves the right to not accept hand-painted and other cachet envelopes that are not compatible with our digital color postmark equipment. The Postal Service also reserves the right to substitute traditional black rubber postmarks if use of nonspecified envelopes results in poor image quality or damage to equipment.

Customers must affix the stamps to the envelopes and address them to themselves or others for return through the mail. Or, they may include an additional self-addressed return envelope, large enough to accommodate their can-

celed items, with sufficient postage affixed for return of their postmarked items. Address customer requests for digital color postmarks to:

FDOI – (Name of Stamp Issue)
USPS Stamp Fulfillment Services
8300 NE Underground Drive, Suite 300
Kansas City, MO 64144-9900

After applying the first-day-of-issue postmark, the Postal Service will return the envelopes to the customer by U.S. Mail®.

Traditional Postmarks

Customers must affix the stamps to the envelopes and address them to themselves or others for return through the mail. Or, they may include an additional self-addressed return envelope, large enough to accommodate their canceled items, with sufficient postage affixed for return of their postmarked items. Address customer requests for traditional postmarks to:

FDOI – (Name of Stamp Issue)
USPS Stamp Fulfillment Services
8300 NE Underground Drive, Suite 300
Kansas City, MO 64144-9900

After applying the first-day-of-issue postmark, the Postal Service will return the envelopes to the customer by U.S. Mail. There is no charge for the first 50 postmarks. There is a 5-cent charge for each additional postmark over 50. Customers must submit a check, money order, or credit card for payment.

Locally produced items are not authorized. Only merchandise that has been approved and assigned an item number by Headquarters Retail Marketing may be produced and sold.

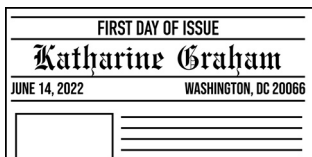


Digital Color Pictorial

FDOI – Katharine Graham Stamp

USPS Stamp Fulfillment Services
8300 NE Underground Drive, Suite 300
Kansas City, MO 64144-9900

October 14, 2022



Black and White Pictorial

FDOI – Katharine Graham Stamp

USPS Stamp Fulfillment Services
8300 NE Underground Drive, Suite 300
Kansas City, MO 64144-9900

October 14, 2022



Digital Color Pictorial

FD01 – \$2 Floral Geometry Stamp

USPS Stamp Fulfillment Services
8300 NE Underground Drive, Suite 300
Kansas City, MO 64144-9900

October 20, 2022

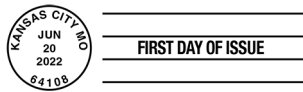


Digital Color Pictorial

FD01 – \$5 Floral Geometry Stamp

USPS Stamp Fulfillment Services
8300 NE Underground Drive, Suite 300
Kansas City, MO 64144-9900

October 20, 2022



Black and White Pictorial

FD01 – Floral Geometry Stamps

USPS Stamp Fulfillment Services
8300 NE Underground Drive, Suite 300
Kansas City, MO 64144-9900

October 20, 2022

FIRST DAY OF ISSUE



JULY 6, 2022 – SIMI VALLEY, CA 93065

Digital Color Pictorial

FD01 – Nancy Reagan Stamp

USPS Stamp Fulfillment Services
8300 NE Underground Drive, Suite 300
Kansas City, MO 64144-9900

November 6, 2022

FIRST DAY OF ISSUE



JULY 6, 2022 • SIMI VALLEY, CA 93065

Black and White Pictorial

FD01 – Nancy Reagan Stamp

USPS Stamp Fulfillment Services
8300 NE Underground Drive, Suite 300
Kansas City, MO 64144-9900

November 6, 2022



Digital Color Pictorial

FD01 – Mariachi Stamps

USPS Stamp Fulfillment Services
8300 NE Underground Drive, Suite 300
Kansas City, MO 64144-9900

November 15, 2022



Black and White Pictorial

FD01 – Mariachi Stamps

USPS Stamp Fulfillment Services
8300 NE Underground Drive, Suite 300
Kansas City, MO 64144-9900

November 15, 2022



Digital Color Pictorial

FDOI – Pete Seeger Stamp

USPS Stamp Fulfillment Services
8300 NE Underground Drive, Suite 300
Kansas City, MO 64144-9900

November 21, 2022



Black and White Pictorial

FDOI – Pete Seeger Stamp

USPS Stamp Fulfillment Services
8300 NE Underground Drive, Suite 300
Kansas City, MO 64144-9900

November 21, 2022



Digital Color Pictorial

FDOI – Go Beyond Stamps

USPS Stamp Fulfillment Services
8300 NE Underground Drive, Suite 300
Kansas City, MO 64144-9900

December 3, 2022



Black and White Pictorial

FDOI – Go Beyond Stamps

USPS Stamp Fulfillment Services
8300 NE Underground Drive, Suite 300
Kansas City, MO 64144-9900

December 3, 2022



Digital Color Pictorial

FDOI – National Marine Sanctuaries Stamps

USPS Stamp Fulfillment Services
8300 NE Underground Drive, Suite 300
Kansas City, MO 64144-9900

December 5, 2022



Black and White Pictorial

FDOI – National Marine Sanctuaries Stamps

USPS Stamp Fulfillment Services
8300 NE Underground Drive, Suite 300
Kansas City, MO 64144-9900

December 5, 2022



Digital Color Pictorial

FDOI – Elephants Stamp

USPS Stamp Fulfillment Services
8300 NE Underground Drive, Suite 300
Kansas City, MO 64144-9900

December 12, 2022



FIRST DAY OF ISSUE

FDI – Elephants Stamp

USPS Stamp Fulfillment Services
8300 NE Underground Drive, Suite 300
Kansas City, MO 64144-9900

December 12, 2022

Black and White Pictorial

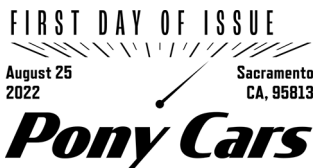


Digital Color Pictorial

FDI – Pony Cars Stamps

USPS Stamp Fulfillment Services
8300 NE Underground Drive, Suite 300
Kansas City, MO 64144-9900

December 25, 2022



Black and White Pictorial

FDI – Pony Cars Stamps

USPS Stamp Fulfillment Services
8300 NE Underground Drive, Suite 300
Kansas City, MO 64144-9900

December 25, 2022



Digital Color Pictorial

FDI – James Webb Space Telescope Stamp

USPS Stamp Fulfillment Services
8300 NE Underground Drive, Suite 300
Kansas City, MO 64144-9900

January 8, 2023



Black and White Pictorial

FDI – James Webb Space Telescope Stamp

USPS Stamp Fulfillment Services
8300 NE Underground Drive, Suite 300
Kansas City, MO 64144-9900

January 8, 2023



Digital Color Pictorial

FDI – Holiday Elves Stamps

USPS Stamp Fulfillment Services
8300 NE Underground Drive, Suite 300
Kansas City, MO 64144-9900

January 15, 2023



Black and White Pictorial

FDI – Holiday Elves Stamps

USPS Stamp Fulfillment Services
8300 NE Underground Drive, Suite 300
Kansas City, MO 64144-9900

January 15, 2023



FDI – Virgin and Child Stamp
 USPS Stamp Fulfillment Services
 8300 NE Underground Drive, Suite 300
 Kansas City, MO 64144-9900

January 22, 2023

Digital Color Pictorial



FDI – Virgin and Child Stamp
 USPS Stamp Fulfillment Services
 8300 NE Underground Drive, Suite 300
 Kansas City, MO 64144-9900

January 22, 2023

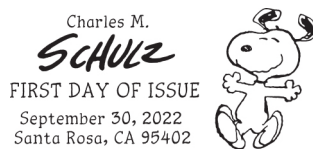
Black and White Pictorial



FDI – Charles M. Schulz Stamps
 USPS Stamp Fulfillment Services
 8300 NE Underground Drive, Suite 300
 Kansas City, MO 64144-9900

January 30, 2023

Digital Color Pictorial



FDI – Charles M. Schulz Stamps
 USPS Stamp Fulfillment Services
 8300 NE Underground Drive, Suite 300
 Kansas City, MO 64144-9900

January 30, 2023

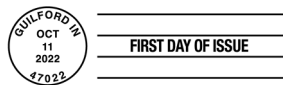
Black and White Pictorial



FDI – Snowy Beauty Stamps
 USPS Stamp Fulfillment Services
 8300 NE Underground Drive, Suite 300
 Kansas City, MO 64144-9900

February 11, 2023

Digital Color Pictorial



FDI – Snowy Beauty Stamps
 USPS Stamp Fulfillment Services
 8300 NE Underground Drive, Suite 300
 Kansas City, MO 64144-9900

February 11, 2023

Black and White Pictorial



FDI – Kwanzaa 2022 Stamp
 USPS Stamp Fulfillment Services
 8300 NE Underground Drive, Suite 300
 Kansas City, MO 64144-9900

February 13, 2023

Digital Color Pictorial


Black and White Pictorial
FDOI – Kwanzaa 2022 Stamp

USPS Stamp Fulfillment Services
8300 NE Underground Drive, Suite 300
Kansas City, MO 64144-9900

February 13, 2023


Digital Color Pictorial
FDOI – Women Cryptologists of World War II Stamp

USPS Stamp Fulfillment Services
8300 NE Underground Drive, Suite 300
Kansas City, MO 64144-9900

February 18, 2023


Black and White Pictorial
FDOI – Women Cryptologists of World War II Stamp

USPS Stamp Fulfillment Services
8300 NE Underground Drive, Suite 300
Kansas City, MO 64144-9900

February 18, 2023


Digital Color Pictorial
FDOI – Hanukkah 2022 Stamp

USPS Stamp Fulfillment Services
8300 NE Underground Drive, Suite 300
Kansas City, MO 64144-9900

February 20, 2023

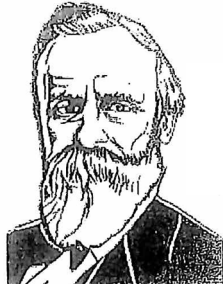

Black and White Pictorial
FDOI – Hanukkah 2022 Stamp

USPS Stamp Fulfillment Services
8300 NE Underground Drive, Suite 300
Kansas City, MO 64144-9900

February 20, 2023

Postmark America

19th President Rutherford B Hayes 10-4-1822



Rutherford B. Hayes Postmark
Postmaster
2120 Enterprise Street
Fremont, OH 43420

As a community service, the U. S. Postal Service® offers collectible postmarks. The Postmark America® program is designed to feature graphics related to a theme or image that pertains to a specific tourist location, town, or region. The postmark is applied upon request to both outgoing mail and on hand-back philatelic collectibles. These postmarks will be available any day a participating Post Office™ is open. All requests must bear at least minimum First-Class Mail® postage. Customers must present their items for post-marking on or before the official postmark date requested at the address listed in this article.

— Stamp Services,
Marketing, 10-6-22

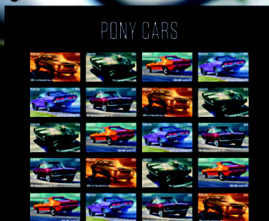


UNITED STATES
POSTAL SERVICE

475 L'ENFANT PLAZA SW
WASHINGTON DC 20260-5540

First-Class Mail
Postage & Fees Paid
USPS
Permit No. G-10

Enjoy the Thrill of Iconic **Pony Cars** Forever® Stamps



ON SALE NATIONWIDE: AUGUST 25, 2022
Sold as a full pane.

