

## October is Energy Action Month

Choosing the Right Path

See page 3



# Contents

## COVER STORY

October is Energy Action Month: Choosing the Right Path.....	3
--	---

## POLICIES, PROCEDURES, AND FORMS UPDATES

### Manuals

DMM Revision: FSS Scheme Preparation Discontinued....	5
---	---

## ORGANIZATION INFORMATION

### Address Management

Post Office Changes .....	12
---------------------------	----

### Corporate Communications

Post Offices to Get New HAZMAT Labels, Posters.....	12
---	----

### Energy Initiatives

Postal Service Flex-Fuel Vehicle Usage .....	14
--	----

### Environmental Management

Refrigerant Management Compliance Reminder .....	35
--	----

### Human Resources

Fibromyalgia Awareness .....	36
------------------------------	----

Notice to All Post Offices with Rural Delivery Service: Rural Carrier Guarantee Period.....	36
--	----

### Information Security

Robotexts: Nuisance or Something More Dangerous?.....	38
---	----

### Small Business Engagement

Employee Engagement Lead Generation Programs Get an Upgrade .....	39
---	----

### Stamp Services

Pictorial Postmarks Announcement .....	40
--	----

How to Order the First-Day-of-Issue Digital Color or Traditional Postmarks .....	42
--	----

## PULL-OUT INFORMATION

### Fraud

Invalid USPS Corporate Account Numbers.....	15
---	----

Missing, Lost, or Stolen U.S. Money Order Forms .....	17
---	----

Missing, Lost, or Stolen Canadian Money Order Forms .....	23
---	----

Verifying U.S. Postal Service Money Orders .....	25
--	----

Counterfeit Canadian Money Order Forms .....	25
--	----

Toll-Free Number Available to Verify Canadian Money Orders .....	25
--	----

### Other Information

Overseas Military/Diplomatic Mail .....	26
---	----

Thrift Savings Plan Fact Sheet .....	32
--------------------------------------	----

Freely Associated States Restrictions .....	34
---	----

Find the latest in mail and delivery information and services offered by U.S. Postal® in the *Postal Bulletin* at [about.usps.com/postal-bulletin](https://about.usps.com/postal-bulletin)

**Mail Moment®**

# Cover Story

## October is Energy Action Month: Choosing the Right Path



We go everywhere...more efficiently (see [link.usps.com/video/we-go-everywhere](https://link.usps.com/video/we-go-everywhere)).

USPS® goes everywhere — and routes optimization helps us get there more efficiently. As part of the Delivering for America plan, USPS announced a new strategy to optimize carrier routes for the changing delivery environment (see [about.usps.com/what/strategic-plans/delivering-for-america](https://about.usps.com/what/strategic-plans/delivering-for-america)). This redesigned surface transportation network will extend service reach, create more efficient surface routes, and increase capacity usage to achieve our operating plans.

One key component of this plan is the adoption of performance-based highway contracting. Our current mail transport network uses a redundant surface network and routes; USPS is now shifting towards a consolidated surface network that optimizes surface trips.

Additionally, USPS is deploying a state-of-the-art logistics platform that will manage inbound and outbound trips, as well as the integration of supplier and carrier collaboration tools. This platform will ensure that highway contract

route vehicles maximize mail volume capacity, which allows USPS to remove redundant routes. This allows us to better coordinate with our carriers so they can deliver more packages, collect more returns, and help us develop solutions to drive commerce and connect our communities.

This not only makes ground transportation more efficient, but also allows USPS to reduce reliance on our air transportation network. The result of this shift is lower costs, more efficiency, and a reliable surface transportation network that reduces emissions along the way.

In 2022, The Surface Logistics Transportation Team was recognized with the Chief Technology Officer Sustainability Excellence Award, as well as the top award, the Postmaster General Sustainability Excellence Award, for their highway contract routes optimization solution (see [link.usps.com/2022/06/14/bright-green](https://link.usps.com/2022/06/14/bright-green)). The team worked with Enterprise Analytics to identify existing highway contract routes that would benefit from consolidation.

The team identified three daily trips between Pittsburgh and Washington, DC, that could be eliminated by consolidating mail volume. This route optimization effort removed 221,000 miles from the USPS network, which saved 34,000 gallons of diesel fuel and approximately \$530,000 in contracted transportation costs, while maintaining the same service targets.

The success of this pilot effort led the Surface Logistics Transportation Team to conduct similar analyses across other routes nationwide. In FY 2021, due to highway contract routes optimization, USPS achieved the following benefits:

- Reduced routes mileage by 20.9 million miles (or 501 trips).
- Reduced diesel fuel consumption by 2.6 million gallons.
- Saved approximately \$57.6 million in contracted transportation costs.

Due to the success of this program, future routes optimization work is ongoing.

In 2022, USPS quantified the environmental benefits of our route optimization project by calculating the carbon dioxide emission equivalent (CO<sub>2</sub>e) of a mile driven by a diesel mail carrier. The Environmental Affairs and Corporate Sustainability Energy Initiatives Team then created a greenhouse gas (GHG) calculator to determine the emissions avoided by various routes optimization projects. To accomplish this, USPS converted the miles of highway

contracting routes eliminated to pounds of CO<sub>2</sub>e emissions avoided using USPS data and nationally recognized methodologies.

In total, the FY 2021 routes optimization projects avoided the equivalent of over 58.8 million pounds of CO<sub>2</sub>e emissions. Every route optimization effort adds up and helps us meet our sustainability goals.

Innovative projects like these demonstrate how the Postal Service™ is Delivering for America — we provide prompt, reliable, and efficient mail and package shipping services to all Americans, regardless of where they live, and at affordable rates.

For more information about how USPS environmental leadership drives our social, economic, and environmental bottom line, visit [usps.com/green](https://usps.com/green).

— *Environmental Affairs and Corporate Sustainability,  
Corporate Affairs, 9-22-22*

# Policies, Procedures, and Forms Updates

## Manuals

### DMM Revision: FSS Scheme Preparation Discontinued

Effective November 7, 2022, the Postal Service™ will revise *Mailing Standards of the United States Postal Service*, Domestic Mail Manual (DMM®), in various sections, to remove Flat Sequencing System (FSS) scheme preparation standards.

In the article titled “DMM Correction: Labeling List L051 for Parcel Select and Parcel Select Lightweight Parcels,” in *Postal Bulletin 22602* (7-14-22, page 5), the Postal Service announced extensive changes to several labeling lists, including Labeling List L006. As a result of these changes the Postal Service is discontinuing the FSS scheme preparation.

The Postal Service will also update Quick Service Guide (QSG) 203, “Optional Information Lines”; 240f, “Commercial — USPS Marketing Mail Automation Flats,” and 260a, “Commercial — Bound Printed Matter Flats,” to remove FSS scheme preparation references.

For questions or support, contact the local USPS® Business Mail Entry Unit, or the Postal Service Mailing and Shipping Solutions Center at 877-672-0007 or [MSSC@usps.gov](mailto:MSSC@usps.gov).

Although the Postal Service will not publish these revisions in the DMM until November 7, 2022, the standards are effective immediately.

#### ***Mailing Standards of the United States Postal Service, Domestic Mail Manual (DMM)***

*	*	*	*	*
<b>200</b>	<b>Commercial Mail Letters, Cards, Flats, and Parcels</b>			
	*	*	*	*
<b>203</b>	<b>Basic Postage Statement, Documentation, and Preparation Standards</b>			
	*	*	*	*
<b>3.0</b>	<b>Standardized Documentation for First-Class Mail, Periodicals, USPS Marketing Mail, and Flat-Size Bound Printed Matter</b>			
	*	*	*	*

### **3.2 Format and Content**

\* \* \* \* \*

*[Delete the second sentence of 203.3.2c(4).]*

\* \* \* \* \*

### **7.0 Optional Endorsement Lines (OELs)**

#### **7.1 OEL Use**

##### **7.1.1 Basic Standards**

*[Revise the first sentence of 7.1.1 to read as follows:]*

An optional endorsement line (OEL) may be used to label bundles instead of applying pressure-sensitive bundle labels or facing slips to the top piece of bundles including the correct ZIP Code listed in Column B of L006, as described in Exhibit 7.1.1.\*\*\*

##### **Exhibit 7.1.1 OEL Formats**

\* \* \* \* \*

*[Delete the following line items from Exhibit 7.1.1:]*

Carrier Route — Basic FSS	*****	SCH 5-DIGIT 12345 FSSC
*	*	*
Carrier Route — High Density FSS	*****	SCH 5-DIGIT 12345 FSSB
*	*	*
Carrier Route — Periodicals Saturation FSS	*****	SCH 5-DIGIT 12345 FSSH
ECR — High Density Plus FSS	*****	SCH 5-DIGIT 12345 FSSA
*	*	*
Carrier Route FSS — Bound Printed Matter	*****	SCH 5-DIGIT 12345 FSSC
*	*	*
5-Digit (Nonautomation FSS flats)	*****	SCH 5-DIGIT 12345 FSSE
*	*	*
5-Digit Scheme (Automation FSS flats)	*****	SCH 5-DIGIT 12345 FSSD
*	*	*

3-Digit (Nonautomation FSS flats) \* \* \* \* \* SCH 5-DIGIT 12345 FSSG

3-Digit Scheme (Automation FSS flats) \* \* \* \* \* SCH 5-Digit 12345 FSSF

**Additional required human-readable text for use with combined mailings of USPS Marketing Mail and Periodical flats:**

\* \* \* \* \*

[Delete the following line items from Exhibit 7.1.1 under "Additional required human-readable text...":]

5-Digit Scheme (Automation FSS flats) \* \* \* \* \* SCH 5-DIGIT 12345 FSSD COMAIL

5-Digit (Nonautomation FSS flats) \* \* \* \* \* SCH 5-DIGIT 12345 FSSE COMAIL

3-Digit (Automation FSS flats) \* \* \* \* \* SCH 5-DIGIT 12345 FSSF COMAIL

3-Digit (Nonautomation FSS flats) \* \* \* \* \* SCH 5-DIGIT 12345 FSSG COMAIL

Carrier Route High Density Plus (FSS flats) \* \* \* \* \* SCH 5-DIGIT 12345 FSSA COMAIL

Carrier Route High Density (FSS flats) \* \* \* \* \* SCH 5-DIGIT 12345 FSSB COMAIL

\* \* \* \* \*

**204 Barcode Standards**

\* \* \* \* \*

**3.0 Standards for Barcoded Tray Labels, Sack Labels, and Container Labels**

\* \* \* \* \*

**3.2 Specifications for Barcoded Tray and Sack Labels**

\* \* \* \* \*

**3.2.4 3-Digit Content Identifier Numbers**

\* \* \* \* \*

**Exhibit 3.2.4 3-Digit Content Identifier Numbers**

\* \* \* \* \*

**PERIODICALS (PER)**

\* \* \* \* \*

**PER Flats —**

**Merged Carrier Route, Barcoded, and Nonbarcoded**

[Delete the "FSS scheme" and "FSS facility" line items.]

\* \* \* \* \*

**PERIODICALS (NEWS)**

\* \* \* \* \*

**NEWS Flats —**

**Merged Carrier Route, Barcoded, and Nonbarcoded**

[Delete the "FSS scheme" and "FSS facility" line items.]

\* \* \* \* \*

**USPS MARKETING MAIL**

\* \* \* \* \*

**MKT Flats —**

**Merged Carrier Route, Automation, and Presorted**

[Delete the "FSS scheme" and "FSS facility" line items.]

\* \* \* \* \*

**PACKAGE SERVICES**

\* \* \* \* \*

**BPM Flats — Co-sacked Barcoded and Presorted**

[Delete the "FSS scheme" and "FSS facility" line items.]

\* \* \* \* \*

**207 Periodicals**

\* \* \* \* \*

**12.0 Nonbarcoded (Presorted) Eligibility**

\* \* \* \* \*

**12.2 Prices — Outside-County**

\* \* \* \* \*

[Revise the last sentence of item a. to read as follows:]

- a. \*\*\*The presort level of the piece is based primarily on the bundle level of the piece, except the presort level of pieces loose in trays, which is based on the tray level.

[Revise the text of items b. and c. to read as follows:]

- b. Bundle prices are based on the bundle and container sortation level.
- c. Container prices are based on the type of container (tray, sack, or pallet), the level of sortation of the container and where the container is entered.

**12.3 Prices – In-County**

**12.3.1 5-Digit Prices**

\* \* \* \* \*

*[Delete item c. in its entirety.]*

**12.3.2 3-Digit Prices**

\* \* \* \* \*

*[Delete item c. in its entirety.]*

\* \* \* \* \*

**13.0 Carrier Route Eligibility**

\* \* \* \* \*

**13.2 Sorting**

**13.2.1 Basic Standards**

\* \* \* \* \*

*[Delete 207.13.2.1b(4) in its entirety.]*

**13.2.2 Sequencing Requirements**

*[Revise the text of 13.2.2 to read as follows:]*

Basic carrier route mail must be prepared in carrier walk sequence or in line-of-travel (LOT) sequence according to USPS LOT schemes (23.8). For High Density and Saturation pieces, see 13.3.1.

**13.3 Walk-Sequence Prices**

**13.3.1 Eligibility**

*[Revise the last sentence of 13.3.1 to read as follows:]*

\*\*\*High Density and Saturation mailings must be prepared in carrier walk sequence according to USPS schemes (see 23.8).

\* \* \* \* \*

**14.0 Barcoded (Automation) Eligibility**

\* \* \* \* \*

**14.4 Prices – In-County**

**14.4.1 5-Digit Prices**

\* \* \* \* \*

*[Delete item c. in its entirety.]*

**14.4.2 3-Digit Prices**

\* \* \* \* \*

*[Delete item c. in its entirety.]*

\* \* \* \* \*

**17.0 Documentation**

\* \* \* \* \*

**17.4 Detailed Zone Listing for Periodicals**

\* \* \* \* \*

**17.4.3 Zone Abbreviations**

\* \* \* \* \*

*[Delete the FSS line item under 17.4.3.]*

\* \* \* \* \*

**18.0 General Mail Preparation**

\* \* \* \* \*

**18.3 Presort Terms**

\* \* \* \* \*

*[Delete item c. in its entirety, and renumber current items d. through u. as items c. through t.]*

\* \* \* \* \*

**18.5 FSS Preparation**

*[Delete 18.5, "FSS Preparation," in its entirety.]*

\* \* \* \* \*

**29.0 Destination Entry**

\* \* \* \* \*

**29.5 Destination Flat Sequencing System (DFSS) Facility Entry**

*[Delete 29.5, "Destination Flat Sequencing System (DFSS) Facility Entry," in its entirety and renumber current 29.6 as 29.5 throughout section.]*

\* \* \* \* \*

**240 Commercial Mail USPS Marketing Mail**

**243 Prices and Eligibility**

\* \* \* \* \*

**5.0 Additional Eligibility Standards for Nonautomation USPS Marketing Mail Letters, Flats, and Presorted USPS Marketing Mail Parcels**

\* \* \* \* \*

**5.6 Nonautomation Price Application – Flats**

**5.6.1 5-Digit Prices for Flats**

\* \* \* \* \*

*[Delete item d. in its entirety.]*

**5.6.2 3-Digit Prices for Flats**

\* \* \* \* \*

*[Delete item c. in its entirety.]*

\* \* \* \* \*

**6.0 Additional Eligibility Standards for Enhanced Carrier Route USPS Marketing Mail Letters and Flats**

\* \* \* \* \*

**6.3 Basic Price Enhanced Carrier Route Standards**

**6.3.1 Sequencing**

*[Revise the text of 6.3.1 to read as follows:]*

All pieces mailed at basic prices must be prepared in walk sequence or in line-of-travel (LOT) sequence according to LOT schemes prescribed by USPS (see 245.9.9 and 245.9.10).

\* \* \* \* \*

**6.3.3 Basic Price Eligibility – Flats**

\* \* \* \* \*

*[Revise the text of item a. to read as follows:]*

- a. Palletized under 705.8.0, 705.10.0, 705.12.0, or 705.13.0.

\* \* \* \* \*

**6.3.4 Basic Carrier Route Bundles on a 5-Digit/Direct Container (Basic-CR Bundles/Container) Price Eligibility – Flats**

*[Revise the text of 6.3.4 to read as follows:]*

The Basic-CR Bundles/Container discount applies to each piece in a carrier route bundle of 10 or more pieces that are palletized under 705.8.0 on a 5-digit carrier route or 5-digit scheme carrier route pallet entered at an Origin (None), DNDC, DSCF, or DDU entry, or in a carrier route sack or tub under 245.9.3 and entered at an Origin (None), DNDC, DSCF, or DDU.

\* \* \* \* \*

**6.5 High Density and High Density Plus (Enhanced Carrier Route) Standards – Flats**

**6.5.1 Basic Eligibility Standards for High Density and High Density Plus Prices**

\* \* \* \* \*

*[Revise the text of item a. to read as follows:]*

- a. Be prepared in walk sequence according to schemes prescribed by USPS (see 245.9.9).

\* \* \* \* \*

**6.5.2 High Density and High Density Plus Prices for Flats**

\* \* \* \* \*

*[Revise the text of item a. to read as follows:]*

- a. Palletized under 705.8.0, 705.10.0, 705.12.0, or 705.13.0.

\* \* \* \* \*

*[Delete item e. in its entirety.]*

**6.5.3 High Density Carrier Route Bundles on a 5-Digit/Direct Container (High Density-CR Bundles/Container Discount Eligibility) – Flats**

*[Revise the text of 6.5.3 to read as follows:]*

The High Density-CR Bundles/Container discount applies to 125 or more High Density-eligible pieces that are palletized under 705.8.0 on a 5-digit carrier route, 5-digit carrier routes, or 5-digit scheme carrier route pallet entered at an Origin (None), DNDC, DSCF, or DDU entry, or in a carrier route sack or tub under 245.9.3 and entered at an Origin (None), DNDC, DSCF, or DDU.

**6.5.4 High Density Plus Carrier Route Bundles on a 5-Digit/Direct Container (High Density Plus-CR Bundles/Container Discount Eligibility) – Flats**

*[Revise the text of 6.5.4 to read as follows:]*

The High Density Plus-CR Bundles/Container discount applies to 300 or more High Density Plus-eligible pieces that are palletized under 705.8.0 on a 5-digit carrier route, 5-digit carrier routes, or 5-digit scheme carrier route pallet entered at an Origin (None), DNDC, DSCF, or DDU entry, or in a carrier route sack or tub under 245.9.3 and entered at an Origin (None), DNDC, DSCF, or DDU.

\* \* \* \* \*

**6.7 Saturation Enhanced Carrier Route Standards – Flats**

\* \* \* \* \*

**6.7.3 Saturation (including EDDM) Carrier Route Bundles on a 5-Digit/Direct Container (Saturation-CR Bundles/Container Discount Eligibility) – Flats**

*[Revise the text of 6.7.3 to read as follows:]*

The Saturation-CR Bundles/Container discount applies to at least 90 percent or more of the active residential addresses or 75 percent or more of the total number of active possible delivery addresses on each carrier route that are palletized under 705.8.0 on a 5-digit carrier route, 5-digit carrier routes, or 5-digit scheme carrier route pallet entered at the origin (None), DNDC, DSCF, or DDU entry, or



in a carrier route sack or tub under 245.9.3 and entered at an Origin (None), DNDC, DSCF, or DDU.

\* \* \* \* \*

**7.0 Eligibility Standards for Automation USPS Marketing Mail**

\* \* \* \* \*

**7.4 Price Application for Automation Flats**

\* \* \* \* \*

[Revise the text of items a. and b. to read as follows:]

a. The 5-digit price applies to flat-size pieces in a 5-digit/scheme bundle or 15 or more pieces, as applicable.

b. The 3-digit price applies to flat-size pieces in a 3-digit/scheme bundle.

\* \* \* \* \*

**245 Mail Preparation**

**1.0 General Information for Mail Preparation**

\* \* \* \* \*

**1.6 FSS Preparation**

[Delete 1.6, "FSS Preparation," in its entirety.]

\* \* \* \* \*

**8.0 Preparing Nonautomation Flats**

**8.1 Basic Standards**

\* \* \* \* \*

[Revise the text of item d. to read as follows:]

d. Sortation determines price eligibility as specified in 243.5.0.

\* \* \* \* \*

**9.0 Preparing Enhanced Carrier Route Flats**

**9.1 Basic Standards**

\* \* \* \* \*

[Revise the first sentence of item d. to read as follows:]

d. All pieces in the mailing must meet the specific sortation and preparation standards in 9.0 or the palletization standards in 705.8.0.\*\*\*

[Revise item e. to read as follows:]

e. Sortation determines price eligibility as specified in 243.5.0.

\* \* \* \* \*

**246 Enter and Deposit**

\* \* \* \* \*

**4.0 Destination Sectional Center Facility (DSCF) Entry**

\* \* \* \* \*

**4.2 Eligibility**

\* \* \* \* \*

**4.2.2 Flats**

\* \* \* \* \*

[Delete items c. and d. in their entirety.]

\* \* \* \* \*

**6.0 Destination Flat Sequencing System (DFSS) Facility Entry**

[Delete 6.0, "Destination Flat Sequencing System (DFSS) Facility Entry," in its entirety.]

\* \* \* \* \*

**260 Commercial Mail Bound Printed Matter**

\* \* \* \* \*

**265 Mail Preparation**

**1.0 General Information for Mail Preparation**

\* \* \* \* \*

**1.6 FSS Preparation**

[Delete 1.6, "FSS Preparation," in its entirety.]

\* \* \* \* \*

**266 Enter and Deposit**

\* \* \* \* \*

**5.0 Destination Sectional Center Facility (DSCF) Entry**

**5.1 Eligibility**

\* \* \* \* \*

[Revise the text of item b. to read as follows:]

b. Are deposited at a DSCF listed in L005 or a USPS-designated facility and are addressed for delivery within the DSCF's service area.

\* \* \* \* \*

**5.2 Presorted Flats**

[Revise the first sentence of 5.2 to read as follows:]

Presorted flats and automation flats in sacks for the 5-digit, 3-digit, and SCF sort levels or on pallets at the 5-digit

scheme, 5-digit, 3-digit, SCF, and ASF sort levels may have DSCF prices.\*\*\*

\* \* \* \* \*

#### 7.0 Destination Flat Sequencing System (DFSS) Facility Entry

*[Delete 7.0, "Destination Flat Sequencing System (DFSS) Facility Entry," in its entirety.]*

\* \* \* \* \*

#### 700 Special Standards

\* \* \* \* \*

#### 705 Advanced Preparation and Special Postage Payment Systems

\* \* \* \* \*

*[Delete the text of 14.0, "FSS Scheme Preparation," in its entirety and revise the title of 14.0 to read as follows:]*

#### 14.0 RESERVED

\* \* \* \* \*

#### 15.0 Combining USPS Marketing Mail Flats, Bound Printed Matter Flats, and Periodicals Flats

##### 15.1 Basic Standards

\* \* \* \* \*

##### 15.1.6 Piece Prices

*[Revise the first sentence of 15.1.6 to read as follows:]*

Apply piece prices based on the bundle level.\*\*\*

\* \* \* \* \*

##### 5.1.11 Preparation for FSS Zones

*[Delete 15.1.11, "Preparation for FSS Zones," in its entirety.]*

\* \* \* \* \*

The Postal Service will incorporate these revisions into the next edition of the online DMM, which is available via Postal Explorer® at [pe.usps.com](https://pe.usps.com).

— Product Classification,  
Product Solutions, 9-22-22

# Celebrate Vibrant Music and Culture with *Mariachi* Forever® Stamps



# Organization Information

## Address Management

### Post Office Changes

#### Discontinued Post Offices

Due to the extensive number of offices on the Discontinuance List, the changes will not be published in this *Postal Bulletin*. Instead, the link at the end of this article will take you to a document which includes the Post Offices that have been suspended for years.

Customers in these communities are being served by nearby offices. The listings in this document represent the administrative action of the Postal Service™ officially closing these offices. To access the list of affected Post Offices, visit [postalpro.usps.com/POB\\_22607](https://postalpro.usps.com/POB_22607).

— Address Management,  
Addressing and Geospatial Technology, 9-22-22

## Corporate Communications

### Post Offices to Get New HAZMAT Labels, Posters

Post Offices will soon receive kits with tools and information designed to better identify hazardous items in the mail.

The kits contain the new Label 876, *HAZMAT Surface Only*, which is for internal use and must not be distributed to customers. The new labels will help improve visibility into which customers are shipping ground-eligible, hazardous materials and the number of pieces originating from retail units.

Post Offices should start using the labels immediately. Post Office managers also must maintain enough labels in stock to ensure they are always available.

The kits also contain:

- Label 876 standard operating procedures.
- An updated version of Poster 298, *Domestic Hazardous Materials Warning Labels and Markings* (see page [13](#)).
- A letter detailing Label 876 and the updated Poster 298.

Post Offices should place the posters at retail counters and in dispatch areas visible to all employees involved in the acceptance, delivery, or dispatch of mail. Previous versions of Poster 298 must be discarded.

The kits are part of the Postal Service's effort to improve processes for proper identification and handling of potentially hazardous items. For more information, send an email to [BV6DB0@usps.gov](mailto:BV6DB0@usps.gov).

— Public Relations,  
Corporate Communications, 9-22-22

# Domestic Hazardous Materials Warning Labels and Markings

## ▶ ALWAYS PROHIBITED IN USPS® NETWORKS



## ▶ PERMITTED FOR LIMITED QUANTITY MAILINGS

Must be used in conjunction with a Limited Quantity air mark (except dry ice), the proper shipping name, and identification number.



## ▶ PERMITTED IN USPS NETWORKS

Additional requirements in Publication 52 must also be met. For quick access to Publication 52, scan the QR code.\*



## ▶ EXAMPLES OF PROPERLY PREPARED MAILPIECES



\*To access Publication 52, scan the QR code.



PSN 208, January 2021 | PSN 7801 00-000-4027



## Energy Initiatives

### Postal Service Flex-Fuel Vehicle Usage

Section 701 of the Energy Policy Act of 2005 requires all Postal Service™ dual-fuel vehicles to operate on alternative fuel rather than conventional petroleum, unless granted a waiver by the Department of Energy (DOE).

This mandate applies to anyone with access to a Postal Service vehicle, including drivers, fleet managers, and facility managers. This also includes Postal Service employees and contractors who may not have an assigned vehicle, but who may operate a vehicle as a minor portion of their responsibilities.

Dual-fuel vehicles are vehicles that can operate on two different types of fuel — an alternative fuel and petroleum fuel. They are also referred to as flex-fuel vehicles (FFVs).

Almost all dual-fuel vehicles in the postal fleet are E85 FFVs, which operate on either gasoline or E85. Take the following steps to determine if you are driving an E85 FFV:

- Check your gas cap. Most manufacturers began placing yellow gas caps on FFVs as of model year 2008.
- Check the fuel door. Some FFVs have labels on the fuel door indicating the fuel type.
- Look for badges or labels on your vehicle's body. Most FFVs have the terms "FFV," "E85 FFV," or "Flex Fuel" on badges attached to the rear or side of the vehicles.
- Check with your local fleet manager to determine if the vehicle is an E85 FFV.

Each time you drive a different Postal Service vehicle, first determine if it is an E85 FFV to ensure that you are refueling the vehicle with the correct fuel.

Conditions for the DOE waiver mentioned above are outlined in section 701 of the law. Vehicles may qualify for a DOE waiver if:

- Alternative fuel is not reasonably available, which means that alternative fuel cannot be obtained within 3 miles (one way) from the vehicle's:
  - Refueling location, if using the Voyager credit card; or
  - Vehicle domiciled location, if the refueling location is not displayed using the Voyager credit card.

- Alternative fuel is unreasonably expensive, which means that the standard marketed price for alternative fuel is more than gasoline at the same station. For the liquid fuels E85, liquid petroleum gas, and liquid natural gas, the marketed price is expressed in gallons. For compressed natural gas, the marketed price is gasoline gallon equivalent.

To find the nearest alternative fuel stations, use the DOE's Alternative Fueling Station Locator at [afdc.energy.gov/locator/stations](https://afdc.energy.gov/locator/stations).

To find an alternative fuel station along your driving route or outside of your normal operating area, use the Plan a Route tool on the Alternative Fueling Station Locator at [afdc.energy.gov/locator/stations](https://afdc.energy.gov/locator/stations).

There is also a mobile version of the Alternative Fueling Station Locator that can help identify the nearest alternative fuel stations. Simply search for and visit the Alternative Fueling Station Locator from your smartphone or other mobile device at [afdc.energy.gov/stations/#/find/nearest](https://afdc.energy.gov/stations/#/find/nearest). Drivers must be stopped, with the vehicle in park, before using any mobile tool while operating a federal vehicle.

E85 or ethanol fuel pumps may look different from conventional fuel pumps at fueling stations. In most cases, the E85 fuel pump will have a separate, yellow-colored nozzle handle or hose to distinguish it from conventional fuel pumps. The pump will also have a label stating that the fuel is E85 and for flex-fuel vehicles only.

The E85 pump itself may be located at a stand-alone site or under a separate canopy from the conventional fuels at the fueling station. Regardless of the pump's location at the station, please note that the fueling process for E85 is the same as for a standard gas or diesel fuel pump.

Since 2009, federal agencies have been required to inventory and reduce their greenhouse gas emissions. Increasing the use of alternative fuel as a substitute for petroleum is the most effective way that fleets can meet these greenhouse gas and petroleum reduction requirements.

— *Environmental Affairs and Corporate Sustainability,  
Corporate Affairs, 9-22-22*

# Pull-Out Information

## Fraud

### Invalid USPS Corporate Account Numbers

Provide this listing to Contract Postal Units and acceptance clerks in non-POS locations without intranet access to validate a USPS Corporate Account (USPSCA) number online. For all other locations, online USPSCA validation is preferred. This list supersedes all previous notices, which you must recycle.

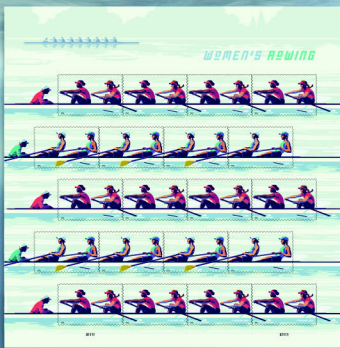
Acceptance clerks must not accept Priority Mail Express® shipments bearing an invalid USPSCA number in the “Payment by Account” or “Agreement Number” section of the label or form.

**Note:** The first 6 digits of a 9-digit Custom Designed Service and Next Day Pickup Agreement make up the Corporate Account Number.

<b>006086</b>	025391	093099	159117	331013	452180	551390	554022	641641	741668	902627	946492	980405
006130	027330	097923	165333	331629	460169	551461	554308	<b>722090</b>	741782	914028	946502	980491
006161	041024	098607	191087	332179	480966	551477	554690	723085	741872	915559	946557	980893
007201	041149	<b>100050</b>	<b>200241</b>	333039	482601	551511	554935	724024	745019	921433	946573	980963
007362	041311	100083	200537	334055	485140	551714	554960	730034	748020	921792	946576	981882
008289	061249	100084	209294	334466	494170	551761	557002	730134	750049	927885	946603	982039
008403	061637	100493	220002	336079	<b>532542</b>	551842	558095	730217	750379	931726	947029	982435
008469	064585	102669	220284	337149	537365	551904	559030	730452	752059	934015	947116	982693
008535	066142	105395	221522	340563	544084	551953	581184	730504	752207	937465	948360	984005
008656	067139	105402	232403	356072	551020	551986	585254	730875	770212	937653	951048	990829
008746	070191	108892	254016	381569	551045	553012	<b>601125</b>	730897	770791	937873	951188	998185
008862	075081	108958	276020	<b>400036</b>	551086	553013	601194	731042	775063	945293	958789	
014048	077255	115024	<b>301325</b>	402277	551163	553042	601295	731406	784414	945762	967199	
019913	077415	115110	301429	402315	551200	553046	601711	731466	784611	945895	967428	
020148	080217	121285	301583	423075	551251	553209	601872	731967	<b>801600</b>	946124	968253	
021002	080254	152218	320013	432754	551257	553232	601886	740331	841259	946232	968466	
021052	080287	152555	322366	436175	551266	553471	602032	741557	852227	946330	968715	
022446	080529	152726	322617	436405	551326	553737	605166	741571	857003	946331	968942	
023067	080682	154019	327084	441733	551360	553740	607008	741612	871030	946377	970324	
023196	091505	159061	328424	452094	551379	553860	607687	741615	<b>902348</b>	946479	980234	

— Product Information Requirements, Mail Entry and Payment Technology, 9-22-22

# Experience the Competitive Spirit of **Women's Rowing** Forever® Stamps



**ON SALE NATIONWIDE: MAY 13, 2022**  
Sold as a full pane.



## Missing, Lost, or Stolen U.S. Money Order Forms

**Do Not Cash — Upon Receipt, Notify Local Postal Inspectors**

Provide this listing to all Postal Service™ employees responsible for accepting and cashing postal money orders. Destroy all interim notices when the numbers listed appear in the *Postal Bulletin*. The new money order serial

numbers consist of the first 10 digits. The eleventh digit is a check digit only.

Do not cash outdated money orders **104 151 601 to 692 600 000**. Advise holders to send invalid money orders to Canada Post Corporation, Ottawa, Canada K1A 0B1. Check for altered dollar amounts by holding money orders to the light.

010 001 0200	to	0299	043 205 5922	to	5999	083 784 8886	to	8899	174 281 9347	to	9399
010 504 1932	to	1999	044 087 3457	to	3499	083 913 6915	to	6999	175 251 2600	to	0699
011 582 1889	to	1899	044 087 4000	to	4099	084 478 3920	to	3999	176 281 7937	to	7950
011 588 2900	to	3099	044 226 2487	to	2512	086 000 8271	to	8299	176 281 7963	to	7999
012 441 0784	to	0799	044 306 4200	to	4299	086 798 3840	to	3849	176 731 6586	to	6599
012 579 5675	to	5699	044 306 4370	to	4599	088 404 4472	to	4499	178 254 5000	to	9999
013 289 6176	to	6199	045 524 4121	to	4298	088 404 5584	to	5699	178 881 9900	to	9999
013 610 0014	to	0099	046 800 9870	to	9899	088 757 8688	to	8699	<b>180 031 2089</b>	<b>to</b>	<b>2098</b>
014 932 1000	to	1099	047 352 4000	to	4099	088 757 9400	to	9499	180 403 7723	to	7741
014 972 0800	to	0899	048 383 7650	to	7659	089 358 2248	to	2257	180 428 4580	to	0599
015 363 0065	to	0099	048 396 3647	to	3699	<b>090 663 9678</b>	<b>to</b>	<b>9684</b>	182 368 7544	to	0599
017 028 3200	to	3299	<b>051 142 0755</b>	<b>to</b>	<b>0799</b>	091 818 0071	to	0099	182 475 3229	to	3258
018 569 5333	to	5399	051 774 8857	to	8899	093 106 9346	to	9355	182 475 3904	to	7741
018 986 5264	to	5299	051 781 2875	to	2885	093 203 0500	to	0599	182 631 0031	to	0099
019 518 2814	to	2899	051 977 7010	to	7023	093 684 3630	to	3699	182 911 6539	to	6600
020 698 5159	to	5199	052 058 7115	to	7199	094 081 5074	to	5099	184 218 2760	to	2799
<b>020 844 7307</b>	<b>to</b>	<b>7399</b>	054 450 1130	to	1167	094 216 2555	to	2599	185 828 1474	to	1499
020 972 8948	to	8999	057 670 0563	to	0599	094 580 7062	to	7099	186 132 7583	to	0599
022 021 9110	to	9181	058 187 3836	to	3899	094 639 4200	to	4299	186 629 0589	to	0599
022 037 1411	to	1499	058 523 3003	to	3099	095 070 7186	to	7199	187 184 6177	to	0199
022 527 9201	to	9210	058 591 1153	to	1299	095 076 8300	to	8399	187 323 8200	to	8299
022 529 1882	to	1899	058 895 3746	to	3799	095 354 6864	to	6899	187 441 6080	to	6099
023 637 7169	to	7199	059 986 0814	to	0899	097 224 1350	to	1599	188 831 6774	to	6799
024 380 4100	to	4199	<b>060 406 7650</b>	<b>to</b>	<b>7699</b>	<b>100 160 3800</b>	<b>to</b>	<b>3899</b>	188 835 6370	to	6399
024 496 6870	to	6896	063 491 8122	to	8199	104 667 6400	to	6499	189 083 1064	to	1099
025 092 0987	to	0999	063 916 9968	to	9999	104 876 8937	to	8999	189 660 9583	to	9599
025 369 5535	to	5599	064 091 4500	to	4599	112 049 4413	to	4499	<b>191 179 0377</b>	<b>to</b>	<b>0399</b>
025 729 1151	to	1199	065 170 0471	to	0499	112 870 9765	to	9799	192 050 5762	to	5781
025 729 1643	to	1799	065 255 7909	to	7999	113 319 2000	to	2099	194 456 8600	to	0699
026 492 3180	to	3199	065 392 6345	to	6399	114 402 3850	to	3899	195 194 6881	to	6899
027 361 0430	to	0499	066 099 2014	to	2099	114 866 5368	to	5397	195 874 1112	to	1199
027 369 4482	to	4495	066 648 2880	to	2899	116 154 2800	to	2899	196 979 0524	to	0599
027 671 8762	to	8776	066 787 3639	to	3699	116 986 4400	to	4499	197 244 6100	to	6199
027 787 9886	to	9899	066 845 7500	to	9999	117 175 1647	to	5169	197 244 6300	to	6399
027 965 9487	to	9499	067 093 3869	to	3899	117 951 4687	to	4699	197 244 6400	to	6499
028 100 8069	to	8099	068 895 0334	to	0399	117 951 5200	to	5299	197 244 6500	to	6599
028 191 1852	to	1999	<b>070 724 4488</b>	<b>to</b>	<b>4499</b>	119 786 3051	to	3064	197 244 6600	to	6699
028 850 3000	to	3199	070 841 9181	to	9199	119 815 8961	to	6199	197 244 6700	to	6799
029 510 1500	to	1599	070 844 2546	to	2599	119 850 7400	to	7499	197 244 6800	to	8999
<b>030 687 0903</b>	<b>to</b>	<b>0999</b>	070 916 1340	to	1399	119 850 7700	to	7999	198 285 2556	to	2566
030 701 3442	to	3499	071 047 5768	to	5799	<b>121 634 0460</b>	<b>to</b>	<b>0499</b>	199 105 0778	to	0799
031 077 4507	to	4799	071 179 9800	to	9899	122 451 9879	to	9899	199 678 2968	to	2999
032 295 7500	to	9999	071 386 3682	to	3699	122 714 6805	to	6900	<b>202 748 5133</b>	<b>to</b>	<b>5199</b>
034 394 1000	to	1099	071 507 6840	to	6899	124 916 0304	to	0499	202 748 5245	to	5299
034 943 0400	to	0799	072 045 9641	to	9699	126 423 0136	to	0169	202 748 5300	to	5399
035 035 4337	to	4399	072 675 8287	to	8299	127 500 2328	to	2399	202 748 5400	to	5499
037 312 7500	to	7599	073 763 0867	to	0876	<b>160 901 2254</b>	<b>to</b>	<b>2299</b>	203 256 1240	to	1299
037 706 9578	to	9599	073 763 0878	to	0887	161 103 6581	to	6599	204 230 3577	to	3595
037 805 3677	to	3699	073 763 0889	to	0898	161 194 2857	to	0899	205 019 0174	to	0199
037 909 5490	to	5499	077 617 5481	to	5499	162 032 4447	to	4499	206 936 3184	to	3199
037 931 4660	to	4699	077 999 4001	to	4090	163 257 1085	to	1099	207 196 9900	to	9999
039 145 6521	to	6595	078 174 4475	to	4499	164 359 2406	to	2499	207 204 0700	to	0799
<b>040 024 3901</b>	<b>to</b>	<b>3999</b>	078 219 4931	to	4999	166 101 1433	to	1499	207 204 0800	to	0899
040 674 7100	to	7199	078 250 4756	to	4799	167 555 5201	to	5212	207 514 3857	to	3899
040 688 8816	to	8899	078 823 8312	to	8399	167 555 5214	to	5299	208 556 4707	to	4799
041 299 6752	to	6799	079 374 0300	to	2499	169 618 6274	to	6299	<b>210 057 4038</b>	<b>to</b>	<b>4047</b>
041 623 8889	to	8899	079 807 2342	to	2399	<b>171 806 6878</b>	<b>to</b>	<b>6893</b>	210 221 0548	to	0599
041 803 6565	to	6599	<b>082 721 0228</b>	<b>to</b>	<b>0254</b>	173 639 4685	to	4699	214 061 4711	to	4724
043 129 1968	to	1997	083 140 5000	to	7499	174 238 2779	to	2799	214 303 6311	to	6325



262 546 7300 to 7399  
 262 546 7400 to 7499  
 262 546 9800 to 9899  
 262 546 9900 to 9999  
 262 567 1788 to 1799  
 263 254 2500 to 2500  
 263 340 0000 to 0099  
 263 340 0100 to 0199  
 263 340 0500 to 0599  
 263 340 0600 to 0699  
 263 340 2700 to 2799  
 263 340 2800 to 2899  
 263 340 3000 to 3099  
 264 341 2360 to 2399  
 264 380 4000 to 4099  
 264 380 4100 to 4199  
 264 799 6049 to 6099  
 264 860 7832 to 7868  
 265 127 3658 to 3699  
 265 380 7111 to 7137  
 265 444 4762 to 4799  
 265 548 7074 to 7099  
 266 106 0000 to 2499  
 266 129 5809 to 5899  
 266 673 0000 to 2499  
 266 749 7900 to 7999  
 266 868 0952 to 0999  
 266 868 1028 to 1099  
 266 868 1100 to 1199  
 266 868 1200 to 1299  
 267 296 1237 to 1299  
 267 324 8946 to 8998  
 268 072 1203 to 1299  
**271 660 4333 to 4400**  
 273 520 0000 to 9999  
 273 520 6000 to 8999  
 273 775 7700 to 7899  
 273 882 1913 to 1998  
 274 750 0300 to 0400  
 274 782 0549 to 0599  
**302 000 0000 to 9999**  
**349 746 2056 to 2099**  
**350 518 7350 to 7374**  
**360 011 1690 to 1699**  
 360 168 6008 to 6099  
 360 173 8800 to 8899  
 360 324 2326 to 2399  
 362 861 3064 to 3099  
**373 006 2176 to 2199**  
 374 768 2600 to 2699  
 375 169 4400 to 4599  
 375 829 3400 to 3499  
 375 851 9100 to 9199  
 376 196 0911 to 0999  
 378 085 3679 to 3699  
 378 351 1063 to 1099  
 379 843 5100 to 5199  
**380 093 9600 to 9699**  
 380 165 1165 to 1199  
 381 325 4500 to 4599  
 381 604 2510 to 2699  
 381 645 9525 to 9599  
 383 314 3968 to 3999  
 383 892 1000 to 1344  
 383 892 1382 to 1399  
 384 925 3641 to 3654  
 385 568 2331 to 2399  
 385 599 7554 to 7575  
 385 774 2024 to 2099  
 386 624 1412 to 1599  
 386 883 8936 to 8999  
 387 314 5574 to 5599  
 387 837 6300 to 6399

388 828 0656 to 0699  
 389 696 2400 to 2799  
 389 846 3104 to 3135  
 389 846 3145 to 3195  
 389 887 9211 to 9230  
 389 887 9234 to 9299  
**390 001 3182 to 3199**  
 390 001 3500 to 3699  
 390 545 5974 to 5999  
 391 104 6146 to 6199  
 391 574 1466 to 1499  
 391 783 3020 to 3599  
 391 792 6100 to 6199  
 392 668 2956 to 2999  
 392 854 8500 to 8899  
 393 584 7566 to 7699  
 393 650 0074 to 0099  
 393 838 8316 to 8499  
 393 893 6007 to 6099  
 394 126 6907 to 6999  
 394 189 0405 to 0599  
 394 822 3243 to 3278  
 394 990 1810 to 1899  
 395 343 3264 to 3299  
 395 373 3035 to 3099  
 395 396 9649 to 9799  
 395 970 3240 to 3299  
 397 622 4054 to 4099  
 397 819 8902 to 8999  
 398 149 7200 to 7699  
 399 070 0872 to 0899  
 399 156 7119 to 7199  
 399 203 5064 to 5099  
 399 296 9910 to 9999  
 399 396 8935 to 8999  
 399 792 7775 to 7799  
 399 792 8300 to 8399  
**400 427 1051 to 1999**  
 401 045 1505 to 1549  
 401 045 1571 to 1599  
 401 294 2700 to 2799  
 401 310 9505 to 9599  
 401 382 5312 to 5399  
 402 578 7876 to 7899  
 403 125 6744 to 6799  
 403 260 7000 to 7499  
 403 280 6470 to 6499  
 403 685 8600 to 8699  
 404 003 0300 to 0399  
 404 041 8838 to 8899  
 404 071 4268 to 4299  
 404 347 5356 to 5399  
 404 347 5548 to 5599  
 404 726 4500 to 4599  
 404 961 5001 to 5199  
 405 325 0188 to 0198  
 406 009 4587 to 4599  
 406 260 6830 to 6899  
 406 459 6641 to 6999  
 406 733 3000 to 3999  
 407 545 1557 to 1599  
 407 594 0412 to 0599  
 407 692 9100 to 9299  
 407 959 2190 to 2199  
 408 265 2275 to 2288  
 408 499 7700 to 7799  
 408 499 7900 to 7999  
 408 682 8484 to 8599  
 408 698 7015 to 7099  
 409 072 3941 to 3999  
**410 491 2311 to 2399**  
 410 694 8400 to 8599  
 410 775 1500 to 1599

410 795 7927 to 7999  
 410 867 0917 to 0966  
 410 867 0970 to 0999  
 411 868 1023 to 1199  
 411 922 2322 to 2399  
 412 193 0900 to 0999  
 412 395 8599 to 8699  
 412 485 6500 to 6599  
 412 485 6610 to 6699  
 412 885 5953 to 5999  
 414 193 3608 to 3674  
 414 193 3677 to 3699  
 414 411 7348 to 7399  
 414 640 0757 to 0799  
 414 965 1727 to 1799  
 417 302 8104 to 8199  
 417 387 6532 to 6599  
 417 496 6800 to 6999  
 417 871 9250 to 9299  
 417 930 9533 to 9599  
 418 164 6500 to 6799  
 418 423 9863 to 9899  
 418 633 5922 to 5999  
 418 719 8520 to 8599  
 418 744 2235 to 2299  
 418 962 2848 to 2899  
 419 543 0286 to 0299  
 419 730 0300 to 0399  
**420 277 0015 to 0049**  
 420 599 0734 to 0798  
 420 661 4115 to 4199  
 420 758 9500 to 9699  
 420 969 3951 to 3971  
 420 969 3973 to 3999  
 421 116 3565 to 3599  
 421 130 9300 to 9399  
 421 313 4500 to 4999  
 421 364 5537 to 5599  
 421 656 2609 to 2699  
 421 988 9700 to 9799  
 422 172 4667 to 4699  
 422 484 4212 to 4299  
 422 556 1270 to 1299  
 422 587 7024 to 7099  
 422 819 7533 to 7599  
 422 842 5073 to 5087  
 422 907 7563 to 7599  
 424 500 6050 to 6099  
 424 641 8500 to 8599  
 424 871 6600 to 6699  
 425 298 2352 to 2399  
 425 418 4269 to 4299  
 425 418 4405 to 4499  
 426 547 4566 to 4599  
 427 412 6337 to 6499  
 427 481 0900 to 0999  
 428 027 2742 to 2752  
 429 474 4172 to 4199  
 429 889 2900 to 2999  
**430 150 4401 to 4599**  
 430 172 9800 to 9899  
 430 177 1900 to 2099  
 430 444 9500 to 9699  
 430 664 4070 to 4099  
 432 168 8419 to 8499  
 432 708 6800 to 6999  
 432 744 1544 to 1599  
 432 995 9775 to 9799  
 433 003 5800 to 5899  
 433 757 3047 to 3099  
 433 765 4003 to 4099  
 434 482 7060 to 7199  
 434 513 2386 to 2399

434 968 3076 to 3092  
 435 303 1831 to 1842  
 435 303 1986 to 1999  
 435 666 6092 to 6399  
 436 082 6400 to 6899  
 436 160 6441 to 6499  
 437 316 7115 to 7199  
 437 427 0500 to 3499  
 439 179 2300 to 2399  
 439 310 0458 to 0499  
**440 698 1947 to 1999**  
 440 858 6300 to 6399  
 440 858 6420 to 7299  
 441 199 1655 to 1699  
 443 127 3648 to 3699  
 443 127 4000 to 4099  
 443 673 7900 to 7999  
 443 800 9335 to 9399  
 444 382 8822 to 8899  
 444 390 1667 to 1699  
 444 457 3854 to 3899  
**450 048 4173 to 4199**  
 450 048 4442 to 4699  
 450 560 5173 to 5199  
 450 620 3077 to 3099  
 450 620 3135 to 3199  
 450 780 2716 to 2799  
 450 801 2700 to 2799  
 451 109 2967 to 2984  
 451 115 4110 to 4125  
 451 115 4127 to 4199  
 451 746 0700 to 0799  
 452 265 0074 to 0099  
 452 265 0246 to 0299  
 452 265 0335 to 0999  
 452 509 1169 to 1199  
 452 855 6471 to 6499  
 452 890 4679 to 4799  
 452 900 8215 to 8238  
 453 117 9146 to 9199  
 453 334 3631 to 3699  
 453 603 7841 to 7891  
 453 650 1140 to 1199  
 453 741 1300 to 1399  
 454 013 2919 to 2999  
 454 186 2411 to 2499  
 454 268 4883 to 4899  
 454 302 5400 to 5499  
 454 490 8300 to 8399  
 454 547 7434 to 7499  
 454 922 4867 to 4895  
 455 221 1348 to 1499  
 455 364 2147 to 2199  
 455 399 5400 to 5499  
 455 476 0676 to 0699  
 455 543 0618 to 0699  
 456 410 9006 to 9099  
 456 470 4146 to 4299  
 456 619 4460 to 4499  
 457 333 2686 to 2699  
 457 729 1767 to 1777  
 457 937 8615 to 8699  
 458 028 9810 to 9899  
 458 057 2712 to 2999  
 458 069 9537 to 9599  
 458 069 9665 to 9699  
 458 337 5222 to 5299  
 458 354 7653 to 7999  
 458 671 8678 to 8699  
 458 671 8721 to 8798  
 458 847 5044 to 5999  
 459 274 7624 to 7699  
 459 365 5432 to 5499

459 378 5764 to 5799	479 860 7000 to 7199	502 424 0200 to 0499	608 727 7273 to 7599
459 472 4816 to 4999	<b>480 526 2000 to 2099</b>	502 424 0600 to 0699	608 813 9950 to 9999
<b>460 349 6878 to 6899</b>	480 640 6330 to 6399	502 496 6923 to 6999	609 067 5325 to 5399
460 550 1909 to 1999	480 658 0568 to 0599	503 003 2700 to 2899	609 067 5488 to 5499
460 997 5234 to 5299	480 689 5100 to 5199	503 194 5144 to 5153	609 067 5600 to 5699
461 973 6443 to 6499	481 072 9463 to 9499	503 790 9922 to 9948	609 289 6123 to 6199
462 152 0107 to 0299	481 673 0074 to 0095	504 045 4030 to 4099	609 438 4400 to 4499
462 274 1072 to 1099	482 527 1500 to 1599	504 166 0200 to 0599	609 493 1100 to 1199
462 277 8373 to 8399	482 541 5255 to 5299	504 240 1062 to 1399	609 766 8091 to 8999
462 554 6051 to 6099	482 729 6800 to 6899	504 805 3300 to 3499	609 825 4100 to 4115
463 011 5529 to 5540	483 363 7207 to 7299	505 096 0662 to 0699	609 884 2981 to 2999
463 176 4115 to 4199	483 402 2356 to 2399	505 893 7739 to 7799	609 893 1000 to 1099
463 176 4229 to 4299	483 486 5100 to 5199	505 893 7800 to 7999	<b>610 092 3200 to 3299</b>
463 185 2600 to 2799	483 632 1521 to 1599	506 124 0800 to 0999	610 582 4200 to 4299
463 227 7711 to 7799	483 632 2600 to 2799	506 165 7027 to 0099	611 879 6939 to 6999
463 414 4869 to 4899	483 849 1615 to 1699	506 502 5209 to 5299	612 291 8013 to 8099
463 808 3484 to 3499	484 174 4803 to 5299	506 756 1682 to 1699	612 751 5171 to 5199
463 945 7400 to 7899	484 323 8900 to 9199	506 756 1700 to 1799	612 751 5226 to 5299
464 629 9000 to 9399	484 680 5000 to 5038	506 756 1800 to 1899	612 751 6083 to 6099
464 711 4332 to 4399	484 680 5040 to 5074	506 836 5326 to 5399	612 751 6268 to 6299
465 692 3963 to 3999	484 680 5077 to 5099	508 488 6226 to 6299	612 751 6572 to 6599
465 698 8300 to 8599	485 029 4913 to 4999	508 789 8332 to 8399	612 774 2111 to 2199
465 743 7745 to 7799	486 176 0600 to 0699	508 789 8400 to 8499	612 774 2254 to 2299
466 798 6056 to 6067	486 559 7555 to 7599	509 909 0425 to 0435	612 774 2500 to 2599
467 147 4300 to 4399	486 696 3023 to 3199	<b>510 150 2400 to 2499</b>	614 469 0979 to 0999
468 079 5782 to 5799	488 173 7900 to 7999	510 381 3200 to 3299	614 474 3000 to 3099
469 067 2817 to 2899	488 206 4100 to 4199	510 587 9500 to 9599	614 521 3490 to 3499
469 127 8000 to 8199	488 226 0200 to 0299	510 587 9659 to 9699	614 645 1800 to 1899
469 213 0359 to 0399	488 709 3906 to 3999	510 269 9770 to 9999	614 832 1100 to 2099
469 213 0500 to 0599	488 855 8359 to 8399	511 021 5042 to 5099	615 017 7505 to 7599
469 561 8011 to 8099	489 181 8963 to 8999	511 021 5100 to 5199	617 711 6609 to 6699
469 658 1961 to 1999	489 223 2000 to 2099	511 468 1747 to 1799	617 760 5266 to 5299
469 666 9900 to 9999	489 311 1930 to 1999	511 844 0100 to 0199	617 813 3601 to 3699
469 678 1900 to 1999	489 318 6200 to 6300	511 844 0340 to 0399	618 840 9200 to 9299
469 781 4900 to 4999	489 384 0027 to 0099	512 805 3913 to 3919	619 551 7229 to 7299
469 947 6960 to 6999	489 427 0658 to 0899	513 046 0700 to 0726	619 859 3000 to 3099
<b>470 755 5800 to 5818</b>	489 997 5252 to 5299	513 149 0600 to 0699	<b>620 073 9400 to 9499</b>
471 918 0300 to 0999	<b>490 669 5850 to 6099</b>	513 445 3000 to 3199	621 614 7907 to 7930
471 985 2408 to 2419	490 717 7080 to 7099	513 466 2034 to 2044	621 614 7932 to 7999
472 191 6700 to 6799	490 721 6000 to 6099	513 539 9052 to 9099	621 648 8021 to 8199
472 270 2555 to 2599	490 793 1500 to 2099	513 539 9267 to 9299	621 648 8500 to 8599
472 987 0213 to 0241	490 886 8171 to 8199	513 539 9800 to 9899	621 904 8351 to 8599
472 987 0290 to 0299	490 977 9221 to 9240	513 539 9985 to 9999	621 916 1978 to 1989
473 151 2069 to 2199	491 258 8100 to 9099	513 606 5459 to 5490	622 989 8032 to 8099
473 666 9138 to 9199	491 567 1376 to 1399	513 812 1751 to 1799	623 076 9300 to 9399
473 952 3429 to 3499	492 254 4800 to 4899	514 103 3600 to 3699	623 819 5006 to 5099
474 108 5402 to 5499	492 283 5100 to 5199	514 103 3700 to 3799	623 895 8200 to 8399
474 356 5193 to 5299	492 610 6813 to 6899	514 103 3800 to 3899	623 917 0000 to 0099
474 949 3366 to 3399	493 394 5568 to 5599	<b>600 645 3223 to 3299</b>	623 917 0200 to 0299
475 134 9362 to 9399	493 470 2562 to 2599	601 339 1200 to 1399	624 468 5288 to 5299
475 167 9667 to 9699	493 473 7700 to 7799	601 653 5884 to 5899	624 665 3162 to 3198
475 319 3415 to 3499	493 716 2153 to 2199	601 661 7700 to 7799	625 088 6735 to 6799
475 319 3649 to 3799	494 206 2972 to 2999	601 682 5343 to 5399	625 916 9500 to 9799
475 340 6400 to 6599	494 217 3446 to 3999	601 928 1600 to 1699	625 968 8956 to 8999
475 424 8410 to 8499	494 224 0500 to 0599	602 512 2972 to 2999	627 005 3938 to 3999
475 629 9156 to 9199	495 145 0600 to 0699	602 555 2400 to 2799	627 384 3907 to 4099
475 850 6101 to 6199	496 209 7425 to 7499	602 829 7061 to 7099	627 496 7549 to 7599
475 875 2500 to 2599	496 213 8728 to 8799	603 483 9572 to 9599	627 708 3605 to 3699
476 169 8264 to 8299	496 474 5226 to 5248	603 490 7200 to 7299	627 776 2500 to 2599
476 189 3000 to 3499	497 053 8517 to 8699	603 678 7100 to 7199	628 226 3100 to 3199
476 331 2480 to 2499	497 854 8673 to 8699	603 678 7662 to 7699	628 814 4702 to 4799
477 289 8601 to 8699	498 449 8888 to 8899	603 678 7902 to 7999	628 851 9689 to 9699
477 681 5206 to 5299	498 929 8285 to 8499	603 678 8418 to 8499	629 510 7200 to 7299
478 010 4243 to 4268	498 936 5310 to 5399	603 678 8700 to 9999	629 964 4200 to 4294
478 010 4270 to 4291	499 016 5425 to 5499	604 086 0880 to 0899	<b>630 389 3056 to 3071</b>
478 450 5071 to 5099	499 440 8575 to 8899	604 349 1414 to 1499	630 463 0588 to 0599
478 469 7838 to 7858	499 731 6717 to 6799	604 503 7776 to 7799	631 459 9117 to 9199
478 469 7883 to 7899	<b>500 064 1858 to 1869</b>	605 520 9037 to 9099	631 762 9325 to 9399
479 280 9800 to 9899	500 070 5725 to 7799	605 685 4010 to 4099	632 217 4933 to 4999
479 365 9116 to 9176	501 058 0016 to 0026	605 988 6467 to 6499	632 500 0000 to 640 3999
479 412 9900 to 9999	501 331 0300 to 0399	607 689 7951 to 7960	633 110 4165 to 4199
479 667 6190 to 6199	501 460 0977 to 0999	607 728 1276 to 1299	633 110 4303 to 4499
479 748 9680 to 9699	502 227 7645 to 7699	608 727 7100 to 7199	633 438 6429 to 6599

633 588 7173 to 7182	650 213 0406 to 0499	682 070 1029 to 1099	701 695 4148 to 4199
634 725 0700 to 0799	650 555 1749 to 1799	682 956 6280 to 6299	701 695 4227 to 4299
634 803 3239 to 3299	650 564 1900 to 1999	682 956 6490 to 6599	701 708 1741 to 1799
634 807 2474 to 2499	650 627 4212 to 4299	682 956 6700 to 6799	701 736 3966 to 3999
634 827 5900 to 5999	650 736 2043 to 2099	682 965 1178 to 1199	701 772 0870 to 0899
634 886 3428 to 3499	650 739 1540 to 1699	682 965 1201 to 1299	701 838 2800 to 2899
635 559 3449 to 3499	651 741 4415 to 4499	683 118 2389 to 2399	701 941 0600 to 0699
636 289 6214 to 6299	651 882 2800 to 2899	683 378 2000 to 2099	702 171 1603 to 1699
636 634 8007 to 8042	652 754 6317 to 6399	683 378 2117 to 2299	702 195 5109 to 5199
637 150 1200 to 1299	653 131 4945 to 4999	683 415 1200 to 1499	702 254 9300 to 9399
637 562 5828 to 5899	653 426 3300 to 3399	683 444 8159 to 8199	702 264 7569 to 7599
638 042 1647 to 1699	653 455 4874 to 4899	685 154 7780 to 7789	702 519 0513 to 0524
638 049 4984 to 4999	654 238 0000 to 0399	685 297 7645 to 7699	702 713 1800 to 1809
638 318 1115 to 1199	654 404 3065 to 3092	685 623 5264 to 5299	702 821 5730 to 5799
638 318 1453 to 1499	654 962 2900 to 3199	685 650 9487 to 9499	702 821 5805 to 5899
638 885 0000 to 0299	655 103 5081 to 5199	685 669 4200 to 4299	702 844 6975 to 6994
638 903 4362 to 4373	655 523 2600 to 2999	685 757 8452 to 8499	702 846 6331 to 6399
639 415 1929 to 1999	656 305 2448 to 2499	686 071 2694 to 2799	702 848 3900 to 3999
639 415 2019 to 2099	657 347 4438 to 4999	686 176 3333 to 3354	702 857 7302 to 7499
639 420 6200 to 6299	657 710 8100 to 8999	686 372 3200 to 3299	702 878 0114 to 0199
639 469 3517 to 3799	657 780 0985 to 0999	686 644 5879 to 5899	703 364 1707 to 1799
639 605 2143 to 2199	658 586 1400 to 1499	686 899 1371 to 1399	<b>740 002 7710 to 7719</b>
639 657 8600 to 8799	658 877 8000 to 8199	686 931 7636 to 7699	740 037 6730 to 6800
<b>640 289 7500 to 7599</b>	658 880 8000 to 8199	687 601 0973 to 0999	740 119 2275 to 2284
640 289 7700 to 7999	659 398 7300 to 7399	687 614 6774 to 6799	740 130 6688 to 6698
641 170 4420 to 4499	659 706 8113 to 8199	688 120 9000 to 9999	740 144 2780 to 2795
641 318 3133 to 3199	659 846 7837 to 7899	688 314 3107 to 3191	740 241 9049 to 9099
641 378 6500 to 6999	<b>660 510 4100 to 4199</b>	<b>690 291 1361 to 1371</b>	740 252 9265 to 9294
641 383 8739 to 8799	660 673 0400 to 0599	690 788 2877 to 2899	740 255 1718 to 1799
641 877 3187 to 3299	661 488 5000 to 5099	690 893 5344 to 5399	740 274 2602 to 2619
641 877 3310 to 3399	661 609 9100 to 9199	690 893 5512 to 5599	740 277 0366 to 0392
642 355 8094 to 8199	661 716 9420 to 9499	690 904 1300 to 1599	740 332 7658 to 7671
642 355 8308 to 8999	661 906 6522 to 6599	690 941 6000 to 6199	740 348 6641 to 6658
642 900 0018 to 0099	662 021 8332 to 8399	691 313 6383 to 6399	740 351 4790 to 4799
643 030 6254 to 6299	662 068 0700 to 0899	691 313 6600 to 6699	740 374 7416 to 7499
644 066 0882 to 0899	662 553 0774 to 0799	691 582 8003 to 8099	740 470 2420 to 2443
644 069 0600 to 0699	663 078 7034 to 7099	691 664 1800 to 1999	740 514 0300 to 0499
644 077 7506 to 7699	663 763 5300 to 5399	691 664 2400 to 2499	740 523 7432 to 7449
644 085 8157 to 8199	663 883 7039 to 7499	692 727 9362 to 9399	740 535 1555 to 1580
644 112 9839 to 9899	663 938 9200 to 9299	692 798 1800 to 1899	740 557 3570 to 3579
644 373 9083 to 9099	664 253 8000 to 8499	693 249 0779 to 0799	740 650 4104 to 4140
644 380 1460 to 1499	664 656 3055 to 3099	693 249 0877 to 1699	740 684 0620 to 0800
644 733 4715 to 4799	665 174 6400 to 6499	693 445 0566 to 0999	740 701 6105 to 6114
644 900 9712 to 9799	665 274 8208 to 8299	693 448 8500 to 8999	740 705 9790 to 9799
644 901 0109 to 1299	665 669 5400 to 5499	693 645 9583 to 9599	740 726 6400 to 6500
644 901 1325 to 1399	666 132 8226 to 8299	693 965 4200 to 4299	740 748 8319 to 8329
644 923 6800 to 7799	666 696 2209 to 2299	695 741 2906 to 2999	740 765 3306 to 3399
644 932 4655 to 4699	666 696 2309 to 2399	695 947 8518 to 8599	740 774 8434 to 8499
645 318 7240 to 7499	667 032 9300 to 9399	696 662 8247 to 8299	740 779 4259 to 4299
645 333 1766 to 1799	667 729 5529 to 5599	697 447 8285 to 8296	740 786 1885 to 1899
645 790 8632 to 8699	668 383 8400 to 8699	698 042 4816 to 4899	740 790 5989 to 5999
645 821 0657 to 0699	<b>670 368 3400 to 3499</b>	698 131 2138 to 2157	740 803 4870 to 4879
645 930 7948 to 7999	670 369 7336 to 7399	698 227 0000 to 0099	740 820 4854 to 7836
645 975 0737 to 0762	670 750 7169 to 7199	<b>700 065 2570 to 2599</b>	740 827 7578 to 7594
646 242 6200 to 6299	671 046 6200 to 6399	700 065 4800 to 4899	740 917 7490 to 7499
646 270 7639 to 7799	671 251 5448 to 5499	700 190 3350 to 3359	740 918 5531 to 5549
646 798 4000 to 4999	671 926 5600 to 5799	700 228 6048 to 6099	741 037 8528 to 8551
647 048 7035 to 7099	672 444 2000 to 2999	700 650 0452 to 0499	742 030 6135 to 6149
647 049 2900 to 2999	672 828 3410 to 3499	700 666 1323 to 1349	742 033 2663 to 2674
647 398 8300 to 8399	673 167 5776 to 5799	700 786 9106 to 9142	742 040 3300 to 3309
647 398 8481 to 8499	675 464 3700 to 3799	700 859 0744 to 0758	742 112 8155 to 8199
647 437 3000 to 4999	675 464 4000 to 4199	701 028 6780 to 6899	742 151 5000 to 5014
647 811 2188 to 2199	676 365 5958 to 5999	701 213 3900 to 3999	742 191 4640 to 4649
648 009 6057 to 6099	676 669 1024 to 1099	701 267 2000 to 3999	742 192 5210 to 5224
648 163 5300 to 5499	677 126 6734 to 6799	701 335 7312 to 7399	742 222 9200 to 9210
648 722 5283 to 5299	677 333 9979 to 9999	701 369 2005 to 2050	742 228 9660 to 9669
648 892 3164 to 3199	677 466 1088 to 1099	701 499 2260 to 2299	742 247 6980 to 6989
649 100 3989 to 3999	678 071 4500 to 4799	701 503 2247 to 2299	742 290 0936 to 0950
649 647 0370 to 0399	678 096 7531 to 7599	701 541 2271 to 2299	742 302 7600 to 7699
649 647 0522 to 0599	679 909 2578 to 2599	701 553 6557 to 6599	742 305 3711 to 3799
649 647 5237 to 5399	<b>680 112 9565 to 9599</b>	701 578 7460 to 7469	742 305 3800 to 3899
649 647 9100 to 9299	680 244 0903 to 0999	701 578 7475 to 7499	742 305 3900 to 3999
649 666 7800 to 8299	680 412 6046 to 6099	701 601 3457 to 3499	742 305 4000 to 4099
<b>650 114 7707 to 7719</b>	680 761 6800 to 6899	701 605 5913 to 5999	742 305 4100 to 4199
650 130 3400 to 3599	681 677 0540 to 0699	701 695 3982 to 3999	<b>805 885 8411 to 8499</b>



## Missing, Lost, or Stolen Canadian Money Order Forms

**Do Not Cash — Upon Receipt, Notify Local Postal Inspectors**

Provide this listing to all Postal Service™ employees responsible for accepting and cashing postal money orders. Destroy all interim notices when the numbers listed appear in the *Postal Bulletin*. The new money order serial

numbers consist of the first 9 digits. The tenth digit is a check digit only.

Do not cash outdated money orders **104 151 601 to 692 600 000**. Advise holders to send invalid money orders to Canada Post Corporation, Ottawa, Canada K1A 0B1. Check for altered dollar amounts by holding money orders to the light.

719 869 731	to	9 760	728 702 338	to	2 400	734 950 111	to	0 170	742 325 668	to	5 700
<b>720 227 871</b>	<b>to</b>	<b>7 930</b>	728 915 371	to	5 850	735 120 331	to	0 840	742 408 771	to	8 830
720 227 949	to	7 960	728 953 141	to	3 410	735 283 008	to	3 020	742 512 120	to	2 150
720 368 543	to	8 570	728 954 280	to	4 310	735 293 131	to	3 220	742 684 849	to	4 890
720 392 151	to	2 570	729 169 081	to	9 140	735 635 010	to	5 040	742 839 553	to	9 630
720 556 491	to	6 640	729 363 841	to	3 870	735 783 961	to	3 990	742 913 668	to	3 700
720 558 621	to	8 650	729 682 891	to	3 190	735 803 401	to	3 430	742 917 287	to	7 296
720 575 361	to	5 570	729 838 940	to	9 070	736 005 420	to	5 440	742 921 891	to	1 980
720 590 152	to	0 179	729 839 101	to	9 130	736 366 021	to	6 110	742 983 631	to	3 810
721 638 331	to	9 170	<b>730 077 683</b>	<b>to</b>	<b>7 840</b>	736 624 456	to	4 500	743 020 021	to	0 170
721 815 391	to	5 420	730 109 847	to	9 880	736 670 851	to	1 060	743 206 491	to	6 500
721 969 713	to	9 740	730 373 761	to	3 850	736 767 061	to	7 090	743 235 992	to	6 050
722 072 137	to	2 160	730 501 951	to	2 130	736 767 093	to	7 120	743 940 631	to	0 900
722 378 265	to	8 280	730 519 379	to	9 470	736 982 191	to	2 370	743 978 011	to	8 070
722 413 990	to	4 004	730 569 278	to	9 360	736 982 551	to	2 730	744 234 751	to	4 780
722 764 948	to	4 980	730 711 711	to	1 740	737 110 141	to	0 170	744 499 591	to	9 680
722 825 840	to	5 889	730 722 991	to	3 230	737 185 501	to	5 710	744 626 901	to	6 910
723 153 841	to	3 850	730 845 970	to	5 990	737 317 321	to	7 350	745 388 794	to	8 910
723 237 616	to	7 630	730 888 291	to	8 320	737 517 781	to	7 840	746 446 806	to	6 820
723 331 081	to	1 110	730 927 591	to	7 680	737 628 181	to	8 210	746 818 351	to	8 410
723 496 443	to	6 470	731 307 914	to	7 930	737 634 258	to	4 270	747 245 266	to	5 280
723 967 291	to	7 320	731 402 431	to	2 460	738 361 971	to	1 980	747 364 813	to	4 830
724 655 196	to	5 340	731 407 232	to	7 320	738 447 601	to	7 660	747 501 434	to	1 450
724 711 441	to	1 500	731 588 301	to	8 340	738 648 355	to	8 450	747 739 891	to	0 070
724 711 538	to	1 560	731 767 273	to	7 320	738 849 811	to	9 900	748 148 649	to	8 760
724 793 221	to	3 250	731 781 061	to	1 120	738 892 270	to	2 290	748 259 960	to	9 970
724 908 109	to	8 120	731 837 821	to	7 910	738 997 259	to	7 380	748 565 162	to	5 280
724 937 461	to	7 670	731 841 377	to	1 450	739 161 451	to	1 540	748 874 988	to	5 030
725 163 118	to	3 151	732 018 481	to	8 600	739 219 381	to	9 440	749 137 381	to	7 410
725 202 735	to	2 750	732 067 972	to	8 370	739 740 151	to	0 180	749 190 192	to	0 210
725 398 591	to	8 800	732 188 649	to	8 670	739 793 491	to	3 520	749 685 421	to	5 450
725 464 591	to	4 920	732 193 460	to	3 470	739 793 527	to	3 550	749 846 791	to	6 850
725 475 321	to	5 330	732 201 241	to	1 390	739 942 621	to	2 650	749 993 131	to	3 580
725 711 057	to	1 070	732 220 431	to	0 440	739 999 231	to	9 320	<b>750 071 587</b>	<b>to</b>	<b>1 610</b>
725 738 581	to	8 730	732 355 201	to	5 380	<b>740 011 517</b>	<b>to</b>	<b>1 530</b>	750 408 167	to	8 183
725 981 311	to	1 430	732 472 320	to	2 560	740 030 701	to	0 970	750 438 421	to	8 501
725 987 835	to	7 880	732 541 605	to	1 620	740 261 740	to	1 820	750 743 911	to	4 030
726 060 811	to	0 900	732 572 221	to	2 490	740 265 811	to	6 290	750 779 118	to	9 400
726 391 970	to	2 520	732 586 479	to	6 710	740 299 111	to	9 170	750 910 981	to	1 010
726 484 771	to	4 800	732 994 037	to	4 080	740 299 231	to	9 260	750 960 841	to	0 900
726 493 351	to	5 300	733 163 449	to	3 460	740 329 266	to	9 320	751 296 211	to	6 240
726 504 031	to	4 063	733 297 171	to	7 290	740 889 081	to	9 090	751 539 121	to	9 180
726 504 070	to	4 090	733 446 631	to	7 110	741 010 421	to	0 530	751 541 311	to	1 790
726 504 331	to	4 390	733 474 665	to	4 770	741 113 041	to	3 370	751 757 641	to	7 700
726 563 701	to	4 060	733 704 482	to	4 570	741 373 891	to	4 340	751 936 951	to	7 010
726 599 371	to	9 460	733 751 041	to	1 130	741 452 369	to	2 490	751 951 861	to	1 890
726 626 356	to	6 370	734 009 101	to	9 130	741 492 991	to	3 140	751 999 021	to	9 110
727 182 271	to	2 510	734 290 759	to	0 770	741 553 460	to	3 470	752 139 516	to	9 570
727 416 181	to	6 240	734 389 273	to	9 290	741 764 431	to	4 520	752 182 892	to	2 950
727 481 431	to	1 460	734 440 031	to	0 111	741 764 431	to	4 520	752 206 861	to	7 100
727 749 241	to	9 780	734 797 201	to	7 320	742 178 834	to	8 880	752 295 241	to	5 600
728 382 331	to	2 480	734 939 611	to	9 640	742 325 500	to	5 520	752 731 351	to	1 410

752 767 441	to	7 470	762 593 431	to	3 460	773 208 991	to	9 290	800 427 530	to	7 540
753 008 941	to	9 030	763 155 160	to	5 180	773 231 311	to	1 340	800 872 741	to	2 830
753 194 311	to	4 370	763 178 631	to	8 660	773 348 739	to	8 940	801 349 801	to	9 830
753 620 378	to	0 400	763 506 001	to	6 060	773 348 739	to	8 940	801 676 681	to	7 100
754 013 917	to	3 940	763 522 141	to	2 470	773 575 891	to	5 950	802 967 821	to	7 940
754 161 061	to	1 120	763 717 694	to	7 800	773 852 971	to	3 030	803 217 601	to	7 780
754 358 445	to	8 610	763 826 461	to	6 520	775 373 449	to	3 460	803 729 731	to	9 850
754 410 451	to	0 660	763 900 460	to	0 471	<b>789 257 191</b>	<b>to</b>	<b>7 250</b>	803 747 402	to	7 520
754 438 393	to	8 410	763 900 479	to	0 530	<b>790 448 020</b>	<b>to</b>	<b>8 460</b>	804 138 181	to	8 420
754 493 109	to	3 130	763 917 271	to	7 750	790 597 485	to	7 530	804 428 224	to	8 250
754 664 182	to	4 220	764 125 801	to	5 860	790 911 883	to	1 900	804 682 411	to	2 710
754 816 377	to	6 470	764 284 525	to	4 560	791 057 441	to	7 550	805 272 525	to	2 540
755 487 421	to	7 600	764 526 241	to	6 330	791 239 081	to	9 290	805 523 445	to	3 460
755 592 901	to	3 140	764 601 421	to	1 600	791 374 483	to	4 500	805 745 704	to	5 730
755 790 020	to	0 030	764 650 231	to	0 470	791 387 971	to	8 030	806 452 907	to	2 980
755 791 730	to	1 800	764 984 371	to	4 850	791 447 521	to	7 850	806 744 781	to	4 850
755 926 951	to	7 070	765 003 667	to	3 680	791 451 151	to	1 240	806 982 181	to	2 300
755 934 332	to	4 510	765 042 517	to	2 540	791 500 009	to	0 470	807 764 791	to	4 910
755 957 701	to	8 000	765 194 728	to	4 970	791 771 431	to	1 490	808 089 931	to	9 960
755 962 981	to	3 280	765 387 365	to	7 450	792 004 293	to	4 320	808 656 423	to	6 450
756 035 371	to	5 490	765 541 801	to	2 100	792 018 379	to	8 420	808 753 771	to	3 800
756 301 257	to	1 290	765 638 461	to	8 970	792 070 621	to	0 740	809 189 001	to	9 010
756 371 565	to	1 580	765 647 101	to	7 190	792 145 211	to	5 230	809 886 879	to	6 930
756 876 031	to	6 120	765 813 781	to	4 029	792 391 381	to	1 620	809 890 489	to	0 500
756 876 151	to	6 240	765 879 314	to	9 390	792 452 779	to	2 790	<b>810 323 734</b>	<b>to</b>	<b>3 760</b>
756 970 129	to	0 140	765 954 001	to	4 030	792 772 728	to	2 770	810 367 116	to	7 140
757 059 613	to	9 630	766 120 286	to	0 320	792 903 511	to	3 990	810 526 351	to	6 500
757 078 540	to	8 560	766 125 716	to	5 750	793 282 518	to	2 533	810 806 911	to	6 940
757 086 209	to	6 240	766 158 824	to	8 840	794 041 831	to	2 040	810 807 211	to	7 240
757 240 591	to	0 650	766 388 433	to	8 460	794 397 709	to	7 780	811 423 021	to	3 110
757 277 371	to	7 700	766 509 421	to	9 660	794 581 741	to	2 040	811 517 221	to	7 239
757 291 591	to	2 730	766 572 901	to	3 020	794 592 122	to	2 150	811 721 101	to	1 130
757 964 251	to	4 280	766 748 500	to	8 521	795 032 251	to	2 340	812 025 721	to	5 900
758 067 001	to	7 090	767 024 341	to	4 370	795 796 291	to	6 350	812 093 073	to	3 130
758 105 221	to	5 250	767 326 471	to	6 590	796 070 139	to	0 160	812 100 821	to	0 840
758 324 941	to	5 000	767 332 561	to	2 950	796 143 151	to	3 630	812 465 251	to	5 610
758 593 628	to	3 650	768 009 841	to	9 960	796 159 725	to	9 740	812 918 341	to	8 670
758 709 038	to	9 060	768 011 489	to	1 520	796 169 306	to	9 340	812 918 701	to	8 760
758 744 101	to	4 160	768 177 980	to	7 990	796 373 406	to	3 430	813 050 491	to	0 520
758 850 883	to	0 900	768 391 081	to	1 170	796 602 961	to	3 050	813 073 171	to	3 200
758 860 951	to	1 550	768 661 569	to	1 650	796 708 441	to	8 500	813 398 476	to	8 550
759 152 851	to	2 880	769 000 051	to	0 080	796 886 281	to	6 430	813 713 971	to	4 000
759 740 941	to	1 090	769 050 841	to	0 900	796 901 701	to	2 000	813 858 121	to	8 150
<b>760 004 596</b>	<b>to</b>	<b>4 610</b>	769 159 081	to	9 178	796 975 466	to	5 590	814 789 330	to	9 349
760 118 191	to	8 250	769 737 496	to	7 510	797 272 917	to	2 950	814 984 656	to	4 680
760 155 001	to	5 090	769 778 491	to	8 730	797 519 441	to	9 460	815 016 020	to	6 030
760 378 002	to	8 020	769 827 331	to	7 450	797 519 731	to	0 240	815 199 410	to	9 420
760 692 722	to	2 749	<b>770 216 071</b>	<b>to</b>	<b>6 100</b>	797 535 181	to	5 330	815 240 491	to	0 520
761 055 460	to	5 480	770 723 281	to	3 400	797 646 151	to	6 180	815 755 591	to	5 620
761 169 781	to	9 810	770 790 451	to	0 480	798 040 053	to	0 080	815 755 622	to	5 650
761 504 941	to	5 120	770 915 150	to	5 490	798 055 813	to	5 830	815 806 381	to	6 680
761 516 836	to	6 910	771 455 551	to	5 610	798 055 891	to	5 950	816 126 834	to	6 870
761 613 588	to	3 600	771 609 661	to	9 690	798 326 371	to	6 520	816 156 721	to	6 780
761 688 631	to	8 690	771 932 551	to	2 580	798 339 167	to	9 210	816 580 903	to	0 920
761 805 199	to	5 240	772 057 224	to	7 440	798 562 411	to	2 440	816 945 571	to	5 600
761 826 106	to	6 120	772 162 660	to	3 070	798 632 461	to	2 490	817 253 011	to	3 280
761 881 171	to	1 560	772 718 615	to	8 640	798 807 151	to	7 510	817 763 881	to	4 060
761 975 641	to	5 670	772 940 140	to	0 160	798 944 761	to	5 030	818 330 562	to	0 610
761 975 886	to	5 895	772 970 886	to	0 940	799 118 616	to	8 640	818 459 641	to	9 670
762 304 144	to	4 170	773 009 419	to	9 430	799 133 191	to	3 220	818 926 273	to	6 320
762 324 931	to	4 960	773 112 031	to	2 060	799 177 626	to	7 650	818 950 351	to	0 380
762 439 261	to	9 290	773 125 387	to	5 410	799 854 751	to	5 200	818 962 492	to	2 530
762 524 158	to	4 220	773 179 320	to	9 410	<b>800 044 320</b>	<b>to</b>	<b>4 410</b>	819 032 341	to	2 730
762 584 872	to	4 970	773 202 989	to	3 140	800 211 901	to	2 440	819 127 054	to	7 080



819 278 540	to 8 670	822 703 442	to 3 470	826 226 644	to 6 670	828 539 341	to 9 370
819 544 681	to 4 740	822 900 991	to 1 020	826 582 951	to 3 430	828 732 331	to 2 390
819 928 441	to 8 650	822 925 951	to 6 100	826 720 201	to 0 230	828 807 781	to 7 840
<b>820 034 406</b>	<b>to 4 430</b>	823 284 931	to 4 990	827 005 671	to 5 830	828 830 952	to 0 963
820 070 761	to 1 540	823 293 031	to 3 210	827 287 861	to 7 950	828 939 781	to 0 050
820 191 342	to 1 360	823 556 011	to 6 100	827 291 502	to 1 520	829 002 721	to 2 870
820 274 856	to 4 880	824 078 341	to 8 370	827 575 381	to 5 470	829 005 301	to 5 540
820 600 171	to 0 230	824 156 325	to 6 340	827 609 085	to 9 100	829 080 241	to 0 330
821 172 241	to 2 360	824 511 252	to 1 270	827 619 811	to 9 840	829 160 986	to 1 000
821 229 661	to 9 720	824 588 281	to 8 370	827 883 511	to 3 600	829 176 841	to 6 930
821 229 743	to 9 780	825 140 397	to 0 460	828 160 441	to 0 530	829 471 561	to 1 590
821 903 731	to 3 910	825 409 651	to 9 680	828 376 201	to 6 260	829 561 065	to 1 080
821 927 841	to 7 850	825 472 171	to 2 200	828 441 602	to 1 630	829 566 481	to 6 510
822 505 801	to 5 830	826 042 898	to 2 920	828 539 316	to 9 340	829 569 931	to 9 960

— Criminal Investigations Group, U.S. Postal Inspection Service, 9-22-22

### Verifying U.S. Postal Service Money Orders

Follow these steps to cash a Postal Service™ money order:

1. Check that the amount does not exceed the legal limit: \$1,000 for domestic, and \$700 for international Postal Service money orders.
2. Check that the proper security features are present:
  - When held to the light, a watermark of Benjamin Franklin is repeated from top to bottom on the left side.
  - When held to the light, a dark line (security thread) runs from top to bottom with the word “USPS” repeated.
  - When there is discoloration around the dollar amounts, this might indicate the amounts were changed.

These appear in Postal Service Notice 299, *U.S. Postal Money Order Reference Card*, or online at [usps.com/shop/money-orders.htm](https://usps.com/shop/money-orders.htm).

3. If the money order seems suspicious, call the U.S. Postal Service Money Orderxxr Verification System at 866-459-7822.

Provide this information to local banks and retailers, as they also receive Postal Service money orders for cashing.

— Delivery and Retail Customer Service Operations, 9-22-22

### Counterfeit Canadian Money Order Forms

#### Do Not Cash

To be posted and used by retail window employees. As directed, destroy previous notices. Destroy all interim notices when the numbers listed appear in the *Postal Bulletin*.

671,819,086	683,594,542	687,262,503
676,612,640	684,683,610	687,262,525
677,891,039	686,619,878	687,262,526
678,282,493	686,619,886	687,287,578
678,916,031	686,619,887	687,287,581
679,552,215	686,794,382	687,287,582
679,694,334	686,794,426	694,063,898
679,751,983	686,794,427	694,063,899
679,800,207	686,794,431	694,063,980
681,130,536	687,262,502	701,321,725
681,844,376		

— Criminal Investigations Group, U.S. Postal Inspection Service, 9-22-22

### Toll-Free Number Available to Verify Canadian Money Orders

The Canada Post Corporation has a toll-free number that cashing agents can call to verify the validity of Canadian Postal Money Orders. The number is 800-563-0444.

This toll-free number is printed on the back of the Canadian Postal Money Orders.

— Criminal Investigations Group, U.S. Postal Inspection Service, 9-22-22

## Other Information

### Overseas Military/Diplomatic Mail

Mail addressed to military and diplomatic post offices overseas is subject to certain conditions or restrictions of mailing regarding content, preparation, and handling. The APO/FPO/DPO table outlines these conditions by APO/FPO/DPO ZIP Codes™ through the use of footnoted mailing restrictions codes (see the [Restrictions](#) page following the table).

Acceptance clerks must use the table with the Retail System Software terminal to determine which APO/FPO/DPO ZIP Codes are active and which conditions of mailing apply.

The entries under “Changes” appear in bold in the following APO/FPO/DPO table:

### Changes

APO/FPO/DPO	Action	Effective Date	See Restrictions
DPO AE 09179	Open	09/16/2022	A-B-C-C1-C2-F-F1-F3-J-L-M-N-R-R1-S-T-V-X-Z1
FPO AE 09241	Add C	09/08/2022	A-B-C-C2-F3-N-R-S-U-Z1
DPO AE 09284	Open	09/16/2022	A-B-C-C2-F-F3-I3-L-M-N-R-S-T-V-X-Z-Z1

We have eliminated “Not Active” entries from the table below to save space and paper.

### APO/FPO/DPO Table

APO/FPO/DPO	See Restrictions	APO/FPO/DPO	See Restrictions	APO/FPO/DPO	See Restrictions	APO/FPO/DPO	See Restrictions
09002	A-B-C2-F-F3-H-N-Q-R-S-V-Z-Z1	09044	B-C-C2-D-F-F3-H-R-S-U	09116	A-B-C2-F-F3-H-N-R-S-V-Z1	09175	A-B-C1-C2-E2-F-F1-F3-H1-J-L-M-N-R-R1-S-T-V-W-X-Z1
09003	B-C-C2-D-E-F-F3-H-M-P-R-S-U	09046	B-C-C2-D-E-F-F3-H-M-R-S-U	09123	B-C-C2-D-E-F-F3-H-M-R-S-U-Z1	09176	A-B-C2-F-F1-F3-J-L-M-N-R-R1-S-T-V-X-Z1
09004	B-C-C2-D-E-F-F3-H-M-R-S-U	09049	B-C-C2-D-E-F-F3-H-M-R-S-U	09126	B-C-C2-F3-H-M-P-R-S-Z1	09177	B-C-C2-D-E-F-F3-H-M-R-S-U
09005	B-C-C2-D-E-F-F3-H-M-P-R-S	09053	B-C-C2-D-E-F-F3-H-M-R-S-U	09128	B-C-C2-D-E-F-F3-H-M-R-S-U	09178	B-C1-C2-E2-F1-F3-I3-L-M-N-R-S-T-V-X-Z-Z1
09006	B-C-C2-D-E-F-F3-H-M-R-S-U	09060	B-C-C2-D-E-F1-F3-H-M-N-R-S-U-Z1	09131	B-C-C2-D-E-F-F3-H-M-R-S-U	<b>09179</b>	<b>A-B-C-C1-C2-F-F1-F3-J-L-M-N-R-R1-S-T-V-X-Z1</b>
09008	A-B-C2-F-F3-H-N-Q-R-S-V-Z-Z1	09067	B-C-C2-D-E-F-F3-H-M-R-S-U	09135	A-B-C2-F-F3-H-N-R-S-U-V-Z1	09180	B-C-C2-D-E-F-F3-H-M-R-S-U
09009	B-C-C2-D-E-F-F3-H-M-R-S-U-Z1	09068	B-C-C2-D-E-F-F3-H-R-S-U-Z1	09136	B-C-C2-D-E-F-F3-H-M-P-R-S-U	09186	B-C-C2-D-E-F-F3-H-M-P-R-S-U
09010	B-C-C2-D-E-F-F3-H-M-R-S-U2	09069	A-B-C-C2-D-E-F-F3-H-N-R-S-U-V	09138	B-C-C2-D-F-F3-H-M-R-S-U	09203	A-B-C-C1-C2-F-F1-F3-I3-J-L-M-N-R-R1-T-V-Z-Z1
09011	B-C-C2-D-E-F-F3-H-M-R-S	09079	B-C-C2-D-E-F-F3-H-M-R-S-U	09140	B-C-C2-D-E-F-F3-H-M-R-S-U	09204	B-C-F3-M-N-R-S-V-Z1
09012	B-C-C2-D-E-F-F3-H-M-R-S-U-Z1	09094	B-C-C2-D-F3-H-M-P-R-S-Z1	09142	B-C-C2-D-E-F-F3-H-M-R-S-U	09211	B-C-C2-D-E-F-F3-H-M-P-R-S-U
09013	B-C-C2-D-E-F-F1-F3-H-M-R-S-U-Z1	09095	B-C-C2-D-E-F-F3-H-M-R-S-U	09154	B-C-C2-D-E-F-F3-H-M-R-S-U	09213	B-C2-F-F1-F3-H-J-L-M-N-R-R1-T-U-V-Z1
09014	B-C-C2-D-E-F-F3-H-M-P-R-S-U	09096	B-C-C2-D-E-F-F3-H-M-R-S-U	09160	B-C-C2-D-F-F1-F3-H-J-L-M-N-R-R1-T-U-V-Z1	09214	B-C-C2-D-E-F-F3-H-M-R-S-U-Z1
09015	A-B-C-C1-C2-F-F1-F3-J-L-M-N-R-R1-S-V-Z1	09101	A-B-C2-F-F3-H-N-Q-R-S-V-Z-Z1	09170	A-B-C2-F-F1-F3-J-L-M-N-R-R1-S-T-V-X-Z1	09216	B,C,F1,F3,M,N,R,S,V,Z1
09016	B-C-C2-D-E-F1-F3-H-M-R-S-U	09103	A-B-C-C2-F3-H-N-Q-R-S-V-Z-Z1	09171	A-B-C1-C2-E3-F-F1-F3-J-L-M-N-R-R1-S-T-V-X-Z1	09227	B-C-C2-D-E-F-F3-H-M-R-S-U
09017	A-B-C2-F-F3-H-N-Q-R-S-V-Z-Z1	09104	B-C-C2-D-F3-H-M-R-S-U-Z1	09172	B-C-C2-D-E-F-F3-H-M-R-S-U	09240	A-B-C1-C2-F-F3-H-N-R-S-V
09018	A-B-C2-F-F3-H-N-Q-R-S-V-Z-Z1	09107	B-C-C2-D-E-F-F3-H-M-R-S-U	09173	B-C-C2-D-E-F-F3-H-M-R-S-U	<b>09241</b>	<b>A-B-C-C2-F3-N-R-S-U-Z1</b>
09020	B-C-C2-D-E-F-F3-H-M-R-S-U	09112	B-C-C2-D-E-F-F3-H-M-R-S-U	09174	B-C-C2-F-F1-F3-I3-L-M-N-R-R1-S-T-V-X-Z-Z1	09242	A-B-C1-C2-F-F3-H-N-R-S-V
09021	B-C-C2-D-E-F-F3-H-M-R-S-U-Z1	09114	B-C-C2-D-E-F-F3-H-M-R-S-U				
09034	B-C-C2-D-E-F-F3-H-M-R-S-U	09115	A-B-C2-F-F3-H-N-R-S-V-Z1				

APO/ FPO/ DPO	See Restrictions	APO/ FPO/ DPO	See Restrictions	APO/ FPO/ DPO	See Restrictions	APO/ FPO/ DPO	See Restrictions
09250	B-C-C2-D-E-F-F3-H-M-R-S-U	09310	A-B-C1-C2-E2-F-F1-F3-H1-I3-L-M-N-R-R1-S-T-U4-V-Z-Z1	09487	A-B-C-C1-C2-E2-F1-F3-I3-L-M-N-R-R1-S-T-V-W-X-Z-Z1	09550	B-C-C2-F-F1-F3-R-R1-S-V
09261	B-C-C2-D-E-F3-H-M-N-R-S-U-V-Z1	09311	A-B-C1-C2-E2-F-F1-F3-H1-I3-L-M-N-R-R1-S-T-U4-V-Z-Z1	09488	A-B-C-C1-C2-E2-F3-J-L-M-N-S-T-V-W-X-Z1	09554	B-C-C2-F-F1-F3-R-R1-S-V
09263	B-C-C2-D-E-F3-H-M-R-S-U	09312	A-B-C1-C2-E2-F-F1-F3-H1-I3-L-M-N-R-R1-S-T-U4-V-Z-Z1	09489	A-B-C-C1-C2-E2-F1-F3-L-M-N-R-R1-S-T-V-W-X-Z1	09556	B-F-F1-R-R1-V
09264	B-C-C2-D-E-F-F3-H-M-R-S-U	09315	A-B-C1-E2-F-F3-N-R-R1-S-V-Z1	09490	A-B-C1-C2-E2-F-F1-F3-H1-J-L-M-N-R-R1-S-T-V-X-Z1	09564	B-C-C2-F-F1-F3-R-R1-S-V
09265	B-C-D-F-F1-H-J-L-M-N-R-S-T-U-V-Z1	09316	A-B-C1-E2-F-F1-F3-H1-I3-M-N-R-R1-S-T-V-Z-Z1	09491	A-B-C1-C2-E2-F1-F3-H1-J-L-M-N-R-R1-S-T-V-Z1	09565	B-C-C2-F-F1-F3-R-R1-S-V
09266	A-B-C2-F3-S-U-R-V-Z1	09321	A-B-C1-C2-E2-F-F3-H1-M-N-R-R1-S-V-Z1	09494	B-C-C1-C2-F3-M-R-S-U-Z1	09566	B-C-C2-E2-E3-F-F1-F3-R-R1-S-V
09276	A-B-F-F3-I3-L-M-N-R-S-T-V-X-Z-Z1	09330	A-B-C1-C2-D-E-E2-F-F1-F3-H-H1-M-R-R1-S-V-Z1	09498	B-C1-C2-F-F1-F3-J-L-N-R-R1-T-V-Z1	09567	B-C-C2-E2-E3-F-F1-F3-R-R1-S-V
09277	A-B-E-E1-E2-F1-F3-I3-L-N-R-S-T-V-X-Z-Z1	09333	A-B-C-C1-C2-E2-F-F1-F3-H1-I3-M-N-R-R1-S-V-V1-Z-Z1	09501	B-V	09568	B-C-C2-F-F1-F3-R-R1-S-V
09278	A-B-F-F3-I3-L-M-N-R-S-T-V-X-Z-Z1	09343	A-B-C1-C2-F-F3-M-N-R-R1-S-V-Z1	09502	B-V	09569	B-C-C2-E2-E3-F-F1-F3-R-R1-S-V-Z1
09279	A-B-E-E1-F-F3-I3-L-M-N-R-S-T-V-X-Z-Z1	09348	A-B-C1-E2-F-F1-F3-H1-I3-M-N-R-R1-S-T-V-Z-Z1	09503	B-F-F1-R-R1-V	09570	B-C-C2-F-F1-F3-R-R1-S-V
09280	A-B-B2-C-C1-C2-E-E2-F1-F3-H-I3-L-M-N-R-S-T-V-W-X-Z-Z1	09357	A-B-C1-E2-F-F3-H1-M-R-V-Z1	09504	B-V	09573	B-C-C2-E2-E3-F-F1-F3-R-R1-S-V-Z1
09281	A-B-C1-C2-E2-E3-F-F1-F3-H-H1-J-L-M-N-R-R1-S-T-V-X-Z1	09365	A-B-C-C1-E2-F-F3-H1-M-N-R-V-Z1	09505	B-V	09574	B-F-F1-R-R1-V
09282	A-B-C1-C2-E2-E3-F-F1-F3-H-H1-J-L-M-N-R-R1-S-T-V-X-Z1	09366	A-B-C-C1-E2-F-F1-F3-H-H1-M-R-R1-S-V-Z1	09506	B-V	09575	B-C-C2-F-F1-F3-R-R1-S-V
09283	A-B-E-E1-F-F3-L-M-N-R-S-T-V-X-Z1	09401	B-C-C1-C2-F3-M-R-S-U-Z1	09507	B-V	09576	B-C-C2-F-F1-F3-R-R1-S-V
<b>09284</b>	<b>A-B-C-C2-F-F3-I3-L-M-N-R-S-T-V-X-Z-Z1</b>	09403	B-C-C1-C2-F3-M-R-S-U-Z1	09508	B-C-C2-F-F3-R-R1-S-V	09577	B-C-C2-F-F1-F3-R-R1-S-V
09285	A-B-C-E-E-1-F1-F3-H-I3-L-M-N-R-S-T-V-X-Z-Z1	09410	C-C2-F-F1-F3-N-R-S-U2	09509	B-C-C2-F-F3-R-R1-S-V	09578	B-C-C2-F-F1-F3-R-R1-S-V
09287	B-C2-E1-F1-F3-J-L-N-R-S-T-V-X-Z1	09421	B-C-C1-C2-F3-M-R-S-U-Z1	09510	B-C-C2-F-F3-R-R1-S-V	09579	B-C-C2-F-F1-F3-R-R1-S-V
09289	B-E2-F1-F3-H1-J-L-M-N-R-R1-S-T-U2-V-X-Z1	09447	B-C-C1-C2-F3-M-R-S-U-V-Z1	09511	B-C-C2-F-F3-R-R1-S-V	09581	B-C-C2-F-F1-F3-R-R1-S-V
09290	A-B-F1-F3-J-L-M-N-R-S-T-U2-V-X-Z1	09454	B-C-C1-C2-F3-M-R-S-U-V-Z1	09512	B-C-C2-F-F1-F3-R-R1-S-V	09582	B-C-C2-F-F1-F3-R-R1-S-V
09291	B-C-C1-C2-E2-F1-F3-H1-L-N-R-R1-S-T-V-X-Z1	09456	B-C-C1-C2-F3-M-N-R-S-U-V-Z1	09513	B-C-C2-F-F1-F3-R-R1-S-V	09583	B-C-C2-F-F1-F3-R-R1-S-V
09292	A-B-C-C2-E-E2-E3-F1-F3-H-H1-J-L-M-N-R-R1-S-T-V-X-Z1	09459	B-C-C1-C2-F3-M-R-S-U-Z1	09514	B-C-C2-F-F1-F3-R-R1-V	09586	B-C-C2-F-F1-F3-R-R1-S-V
09301	A-B-C1-C2-E2-F-F1-F3-H1-I3-L-M-N-R-R1-S-T-U4-V-Z-Z1	09461	B-C-C1-C2-F3-M-P-R-S-U-Z1	09516	B-C-C2-F-V-F3-R-R1-S-F1	09587	B-C-C2-F-F1-F3-R-R1-S-V
09304	A-C1-C2-F-F1-F3-H-M-N-R-S-V-Z-Z1	09463	B-C-C1-C2-F3-M-R-S-U-Z1	09517	B-C-C2-F-F1-F3-R-R1-S-V	09588	B-C-C2-F-F1-F3-R-R1-S-V
09305	A-B-C1-E2-F-F1-F3-H1-I3-M-N-R-R1-S-T-V-Z-Z1	09464	B-C-C1-C2-F3-R-S-U-Z1	09520	B-F-F1-F3-R-R1-S-V	09589	B-F-F1-F3-R-S-V
09306	A-B-C1-E2-F-F1-F3-H1-R-R1-S-U2-V-Z1	09467	B-E-E1-F-F3-J-L-M-N-R-S-T-V-X-Z1	09522	B-F-F1-F3-R-S-V	09590	B-C-C2-F-F1-F3-R-R1-S-V
09307	B-C-C2-F-F3-N-R-R1-S-Z1	09468	B-C-C1-C2-F3-M-R-S-U-Z1	09523	B-C-C2-F-F1-F3-R-R1-S-V	09591	B-C-C2-F-F1-F3-R-R1-S-V
09309	A-B-C-C1-C2-E2-F-F1-F3-H1-M-N-R-R1-S-V-Z1	09469	B-C-C1-C2-F3-R-S-U-Z1	09524	B-C-C2-F-F1-F3-R-R1-S-V	09592	B-C-C2-F-F1-F3-R-R1-S-V
		09470	B-C-C1-C2-F3-M-R-S-U-Z1	09532	B-C-C2-F-F1-F3-R-R1-S-V	09593	B-F-F1-F3-R-S-V
				09533	B-V	09594	B-C-C1-C2-F-F1-F3-R-R1-S-V
				09534	B-F-F1-F3-R-R1-S-V	09595	B-C-C2-F-F1-F3-I3-J-R-R1-S-V-V1-Z1
				09541	A-B-C-F-F3-M-N-S-V-Z1	09596	B-F-F1-R-R1-V
				09542	A-B-C-F-F3-M-N-S-V-Z1	09599	B-F-F1-R-R1-V
				09543	A-B-C-F-F3-M-N-S-V-Z1	09600	B-C-C2-F-F1-F3-R-S-U-Z1
				09544	A-B-C-F-F3-M-N-S-V-Z1	09602	B-C-C2-F-F1-F3-N-R-S-U-V
				09545	A-B-C-F-F3-M-N-S-V-Z1	09603	B-C-C2-F-F1-F3-R-S-U-V-Z1

APO/ FPO/ DPO	See Restrictions	APO/ FPO/ DPO	See Restrictions	APO/ FPO/ DPO	See Restrictions	APO/ FPO/ DPO	See Restrictions
09604	B-C-C2-F-F1-F3-P-R-S-U-V-Z1	09709	B-C1-C2-E2-F-F1-F3-H-H1-J-L-N-R-R1-T-V-Z1	09743	A-B-C2-F-F3-H-N-Q-R-S-V-Z-Z1	09813	A-B-C1-C2-E2-E3-F-F1-F3-J-L-N-R-R1-T-V-Z1
09605	B-C-C2-D-F-F3-H-M-R-S-U-V	09710	B-C-C1-F-F1-J-L-M-N-R-R1-T-U-V-Z1	09744	A-B-C1-C2-F-F1-F3-J-L-M-N-R-R1-T-V-Z1	09814	B-C2-E2-E3-F-F1-F3-I3-J-L-N-R-R1-T-V-Z-Z1
09606	B-C-C2-D-F-F3-H-M-R-S-U-V	09711	A-B-C-C2-E2-F-F1-F3-M-N-R-S-T-V-X	09745	A-B-C2-F-F1-F3-M-N-R-R1-S-V-Z1	09815	A-B-C-C2-E-E2-E3-F1-F3-H-H1-J-M-N-R-R1-S-U-V-Z1
09608	B-C-F-F3-N-R-S-U-V-Z1	09712	A-B-C2-F-F3-H-R-S-U-V-Z1	09748	A-B-C1-C2-F-F1-F3-J-L-M-N-R-R1-T-V-Z1	09816	A-B-C1-C2-E2-E3-F-F1-F3-J-L-N-R-R1-T-V-Z1
09609	B-C-C2-F-F3-N-R-S-U-V-Z1	09714	B-C-C1-C2-F-F3-M-R-R1-S-U	09749	A-B-C2-F-F3-H-N-R-S-U-V-Z1	09817	A-B-C1-C2-E2-E3-F-F1-F3-H-H1-J-L-M-N-R-R1-T-V-Z1
09610	B-C-C2-F-F1-F3-M-R-S-U-V-Z1	09715	B-F-F1-J-L-M-N-R-T-V-Z1	09750	A-B-C1-C2-F-F1-F3-J-L-M-N-R-R1-T-V-Z1	09818	A-B-C-C2-F-F3-M-R-S-V-Z1
09613	B-C-C2-F-F3-N-R-S-U-V	09716	B-C-C2-F-F1-F3-J-L-M-N-R-R1-T-V-Z1	09751	B-C-C2-D-E-F-F3-H-M-R-S-U	09819	A-B-C-C1-C2-E2-F-F1-F3-H-H1-M-R-R1-S-V-Z1
09614	A-B-C1-C2-E2-F-F1-F3-H1-J-L-M-N-R-R1-T-V-W-Z1	09717	A-B-C-C2-F3-M-R-S-V-W-Z1	09752	B-C-C2-D-F-F3-H-R-S-U	09820	A-B-C2-F-F1-F3-H-H1-J-L-M-N-R-R1-T-V-Z1
09618	B-C-C2-F-F3-R-S-U-Z1	09718	B-F-F1-J-L-M-N-R-T-U-V-Z1	09753	A-B-C-C1-C2-D-E-F1-F3-H-M-N-R-S-V-W-Z1	09821	A-B-C-C2-F-F3-N-R-S-V-Z1
09620	B-C-C2-F-F3-R-S-U-V-Z1	09719	B-C-C2-D-F3-M-R-S-U-V-Z1	09754	A-B-C2-F-F3-H-L-N-Q-R-S-V-Z-Z1	09822	A-B-C-C2-F-F3-M-R-S-V-Z1
09621	B-C-F-F3-R-U-Z1	09720	B-C2-F3-M-R-S-U-V-Z1	09755	A-B-C-C1-C2-D-F-F1-F3-J-L-M-N-Q-R-R1-S-T-V-Z1	09823	A-B-C1-C2-F-F1-F3-J-L-M-N-R-R1-T-V-Z1
09622	B-C-C2-F-F3-R-S-U-Z1	09722	A-B-C2-F-F3-H-N-Q-R-S-V-Z-Z1	09759	A-B-C-C1-C2-E2-F-F1-F3-J-L-N-R-R1-T-V-Z1	09824	A-B-C-C2-F-F3-M-R-S-V-Z1
09623	B-C-C2-F-F3-R-S-U-V-Z1	09723	B-C2-F-F1-F3-J-L-M-N-R-R1-T-V-Z1	09761	B-C2-F-F1-F3-M-R-R1-S-V-Z-Z1	09825	A-B-C1-C2-F-F1-F3-J-L-M-N-R-R1-T-V-Z1
09624	B-C-C2-F-F1-F3-I3-L-N-R-R1-T-U-V-Z-Z1	09724	B-C-C1-C2-F-F3-M-R-R1-S-U	09762	A-B-C2-E3-F-F1-F3-J-L-N-R-R1-T-V-Z1	09826	A-B-C1-C2-E1-E2-E3-F-F1-F3-J-L-M-N-R-R1-T-V-W-Z1
09625	B-C-C2-F-F3-N-R-S-U-Z1	09725	A-B-C2-F-F3-H-N-Q-R-S-V-V1-Z-Z1	09769	A-B-C-C1-C2-F-F1-F3-J-L-M-N-R-R1-T-V-Z1	09827	A-B-F-F1-J-L-M-N-R-T-V-Z1
09627	B-C-C2-F-F3-R-S-U-V-Z1	09726	B-F-F1-J-L-M-N-R-T-U-V-Z1	09777	A-B-C-C1-C2-E1-F-F1-F3-J-L-M-N-R-R1-T-V-Z1	09828	A-B-C1-C2-F-F1-F3-I3-L-N-R-R1-T-V-Z-Z1
09630	B-C-C2-F-F3-R-S-U-V	09727	A-B-C1-C2-F-F1-F3-J-L-M-N-R-R1-T-V-Z1	09780	A-B-C2-F-F3-H-N-R-S-V	09829	B-C-N-R-V-Z1
09633	B-C-C2-D-F-F3-M-R-S-U-U1-U2-U3-V-Z1	09728	A-B-C-C1-C2-F-F1-F3-J-L-N-R-R1-T-V-Z1	09801	A-B-C1-E2-F-F3-H1-M-N-R-R1-S-V-Z1	09830	B-C-F-F1-F3-J-L-M-N-R-R1-S-T-V-Z1
09634	A-B-C2-F-F3-M-N-R-S-V	09729	B-C-C2-F-F3-N-R-R1-S-U-V-Z1	09802	A-B-C2-D-F-F1-F3-H-H1-I3-L-M-N-R-R1-S-T-V-W-Z-Z1	09831	B-C1-C2-F-F1-F3-J-L-N-R-R1-T-V-Z1
09636	B-C-C2-F-F3-R-S-U-V-Z1	09730	A-B-C1-C2-F-F1-F3-J-L-M-N-R-R1-T-V-Z1	09803	A-B-C-C2-E-E2-E3-F1-F3-H-H1-J-M-N-R-R1-S-U-V-Z1	09833	B-C-C2-E2-E3-F-F1-F3-R-R1-S-U-Z1
09642	B-C2-F-F1-F3-J-L-M-N-R-T-U-V	09731	A-B-C1-C2-F-F1-F3-J-L-M-N-R-R1-T-V-Z1	09804	A-B-C-C2-F-F1-F3-M-N-R-S-V-Z1	09836	A-B-C1-C2-F-F1-F3-J-L-M-N-R-R1-V-Z1
09643	B-C-C2-F3-M-R-S-U-V-Z1	09732	B-F-F3-N-S-V-Z-Z1	09805	B-C-C2-E2-E3-F-F1-F3-R-R1-S-Z1	09837	B-E2-E3-F1-F3-R-S-V-Z1
09645	B-C-C1-E1-E2-F-F1-F3-M-R-S-U-X-Z1	09733	B-F-F3-N-R-S-V-Z	09807	A-B-C1-C2-E2-F-F1-F3-H1-I3-M-N-R-R1-S-T-V-Z-Z1	09838	B-C-C2-E2-E3-F-F1-F3-R-S-U-Z1
09647	B-C2-F1-F3-M-N-R-S-U-Z1	09734	A-B-C-C1-C2-F-F1-F3-I3-J-L-M-N-R-R1-T-V-Z-Z1	09808	A-B-C1-C2-E2-F-F1-F3-H-H1-J-L-N-R-R1-T-V-Z1	09842	A-B-C1-C2-F-F1-F3-J-L-N-R-R1-T-V-Z1
09648	B-C2-F3-N-R-S-U-V-Z1	09735	B-F3-N-R-S-V-Z-Z1	09809	B-C1-C2-E3-F-F1-F3-J-L-N-T-V-Z1	09844	A-B-C1-C2-F-F1-F3-J-L-M-N-R-R1-T-V-Z1
09649	B-C2-F3-N-R-S-U-Z1	09736	A-B-C1-F-F1-F3-J-L-M-N-R-R1-T-V-Z1	09810	A-B-C2-F-F1-F3-N-R-S-V-Z1	09845	A-B-C1-C2-E3-F-F1-F3-J-L-M-N-R-R1-T-V-Z1
09701	A-B-C1-C2-F-F1-F3-J-L-M-N-R-R1-T-V-Z1	09737	A-B-C1-C2-F-F1-F3-I3-J-L-M-N-R-R1-T-V-W-Y-Z-Z1	09811	A-B-C-C2-E-E2-E3-F1-F3-H-H1-J-M-N-R-R1-S-U-V-Z1	09846	A-B-C1-C2-F-F1-F3-J-L-N-R-R1-T-V-Z1
09702	B-C-C2-F-F1-M-R-R1-S-U	09738	A-B-C1-C2-F-F1-F3-J-L-M-N-R-R1-T-V-Z1	09812	B-E2-E3-F-F1-I-J-L-N-R-T-U-V-Z-Z1	09847	B-C-C2-F-F1-F3-J-L-M-N-R-R1-S-T-V-Z1
09704	B-C-F-F1-F3-R-R1-S-U2-V	09739	A-B-C1-C2-F-F1-F3-J-L-M-N-R-R1-T-V-Z1				
09705	B-C-C1-C2-F1-F3-M-R-R1-S-U	09741	A-B-C1-C2-E2-F-F1-F3-H1-J-L-M-N-R-R1-T-V-W-Y-Z1				
09706	B-C-C2-F3-M-N-R-S-U-V-Z1	09742	A-B-C2-F-F1-F3-J-L-M-N-R-S-T-V-Z1				
09707	B-C2-F-F1-F3-J-L-M-N-R-R1-T-V-Z1						
09708	B-C-C1-C2-F-F3-M-R-R1-S-U						

APO/ FPO/ DPO	See Restrictions	APO/ FPO/ DPO	See Restrictions	APO/ FPO/ DPO	See Restrictions	APO/ FPO/ DPO	See Restrictions
09848	A-B-C2-F-F3-M-R-S-V-Z1	09904	B-C1-E2-F1-F3-S-V-Z1	34041	B-C1-C2-F-F1-F3-J-L-M-N-R-R1-T-V-Z1	96205	A-B-C-C2-F-F1-F3-M-R-S-U
09853	B-C1-C2-E2-F-F1-F3-H1-N-R-R1-S-U2-V-Z1	09908	A-B-C2-F-F1-F3-N-R-R1-S-V-Z1	34042	A-B-C-F-F1-F3-M-N-R-S-U-V-W-Z1	96206	A-B-C-C2-F-F1-F3-M-R-S-U
09854	A-B-C1-C2-F-F1-F3-J-L-N-R-R1-S-T-V-Z1	09909	A-B-C2-F-F1-F3-N-R-R1-S-V-V1-Z1	34050	B-V	96207	A-B-F-F1-F3-M-R-S-U-V
09855	A-B-C-C1-C2-E2-F-F1-F3-H1-M-R-R1-S-U2-V-Z1	09974	B-F1-F3-J-L-M-N-R-S-T-U2-V-X-Z1	34051	B-V	96208	A-B-F-F1-F3-M-R-S-U
09857	A-B-C2-E2-F-F1-F3-13-L-M-N-R-R1-S-T-V-Z-Z1	09975	B-F1-F3-I3-L-M-N-R-S-T-U2-V-X-Z1	34052	B-V	96209	A-B-C1-C2-F-F1-J-L-M-N-T-U-V-Z1
09858	A-B-C-C1-C2-E2-E3-F1-F3-H-H1-J-M-N-R-R1-S-U-V-Z1	09976	B-F1-F3-J-L-M-N-R-S-T-U2-V-X-Z1	34053	B-V	96210	A-B-C1-C2-F-F1-F3-I3-L-M-N-R-R1-T-V-Z1
09859	B-C-C1-C2-E2-E3-F-F1-F3-H1-R-R1-S-U-Z1	09977	B-F1-F3-J-L-M-N-R-S-T-U2-V-X-Z1	34054	B-V	96212	B-F-F1-F2-H-M-W-Z1
09860	A-B-C2-F-F1-F3-J-L-M-N-R-R1-S-T-V-Z1	09978	B-C-C2-D-E1-F-F1-F3-H-H1-M-N-R-R1-S-T-X-Z1	34055	B-C1-C2-F-F1-F3-J-L-M-N-R-R1-T-V-Z1	96213	A-B-C-C2-F1-F3-N-R-S
09862	A-B-C-C2-F-F1-F3-I3-L-M-N-R-R1-S-T-V-X-Z-Z1	34001	A-B-C1-C2-F-F1-F3-J-L-M-N-R-R1-S-T-V-Z1	34060	B-C1-C2-E2-F-F1-F3-J-L-M-N-R-R1-T-V-Z1	96214	A-B-C-C2-F1-F3-R-S-U
09864	A-B-C-C1-C2-E2-F1-F3-L-M-N-R-R1-S-T-V-W-Z1	34002	B-C1-C2-F-F1-F3-J-L-M-N-R-R1-T-V-Z1	34066	B-C1-C2-F-F1-F3-I3-J-L-M-N-R-R1-S-T-V-X-Z-Z1	96218	A-B-F-F1-F3-M-R-S-U
09867	A-B-C-C1-C2-E2-F1-F3-L-M-N-R-R1-S-T-V-W-Z1	34004	B-C1-C2-F-F1-F3-J-L-M-N-R-R1-T-V-Z1	34067	B-C1-C2-F-F1-F3-J-L-M-N-R-R1-S-T-V-X-Z1	96224	A-B-F-F1-F3-M-R-S-U
09869	A-B-C1-C2-E2-F1-F3-L-M-N-R-R1-S-T-V-W-Z1	34007	B-F-F1-H-J-M-N-R-R1-V-Z1	34068	B-C1-C2-F-F1-F3-J-L-M-N-R-R1-S-T-V-X-Z1	96251	A-B-F-F1-F3-M-R-S-U
09870	A-B-C1-C2-E2-F-F1-F3-H1-I3-L-M-N-R-R1-S-T-U4-V-Z-Z1	34008	B-C1-C2-D-E1-F-F1-H-H1-J-L-M-N-R-R1-T-V-Z1	34069	B-C1-C2-F-F1-F3-I3-J-L-M-N-R-R1-S-T-V-X-Z-Z1	96257	A-B-F-F1-F3-S-U
09873	A-B-C1-C2-E2-F-F1-F3-H1-I3-L-M-N-R-R1-S-T-U4-V-Z-Z1	34009	B-C2-F-F1-F3-R-S-V	34078	B-F1-F3-N-R-S-V-Z1	96258	A-F-F3-M-P-R-S-U
09874	A-B-C1-C2-E2-F-F1-F3-H1-I3-L-M-N-R-R1-S-T-U4-V-Z-Z1	34010	B-C2-F-F1-F3-R-S-V	34080	B-F-F1-R-R1-V	96260	A-B-F-F1-F3-M-R-S-U
09875	A-B-C1-C2-E2-F-F1-F3-H1-I3-L-M-N-R-R1-S-T-U4-V-Z-Z1	34011	B-C1-C2-E2-F-F1-F3-J-L-M-N-R-R1-T-V-Z1	34081	B-F-F1-R-R1-V	96262	A-B-C2-F-F1-F3-R-S-U-V-Z1
09877	A-B-C-C2-E-E2-E3-F1-F3-H-H1-J-M-N-R-R1-S-U-V-Z1	34020	B-C1-C2-F-F1-F3-J-L-M-N-R-R1-T-V-Z1	34082	B-F-F1-R-R1-V	96264	A-B-C-C2-F1-F3-R-S-U
09880	A-B-C1-C2-E2-F-F1-F3-H1J-L--N-R-R1-S-T-U-V-Z1	34021	B-C1-C2-F-F1-F3-J-L-M-N-R-R1-T-V-Z1	34083	B-F-F1-R-R1-V	96266	A-B-C-C2-F1-F3-R-S-U
09890	B-E2-F-H1-N-R-R1-U2-V-Z1	34022	B-C1-C2-F-F1-F3-J-L-M-N-R-R1-T-V-Z1	34084	B-F-F1-R-R1-V	96269	A-B-C-C2-F1-F2-F3-R-S-U-Z1
09892	A-B-C1-C2-E2-F-F1-F3-J-L-M-N-R-R1-T-V-Z1	34023	B-C1-C2-F-F1-F3-J-L-M-N-R-R1-T-V-Z1	34085	B-C-C1-C2-E2-E3-F-F1-F3-H1-J-R-R1-S-T-V-V1	96271	A-F-F3-M-P-R-S-U
09895	A-B-C1-C2-E2-F-F1-F3-J-L-M-N-R-T-V-W-Z1	34024	B-C1-C2-F-F1-F3-J-L-M-N-R-R1-T-V-Z1	34086	B-C-C1-C2-E2-E3-F-F1-F3-H1-J-R-R1-S-T-V-V1	96273	A-B-C2-F-F1-F3-M-R-S-U
09898	B-C-C1-C2-E2-F-F1-F2-H1-N-R-R1-S-U2-V-Z1	34025	B-F-F1-F3-J-L-M-N-R-R1-T-V-Z1	34087	B-C-C2-E2-F-F1-F3-R-R1-S-V	96275	A-B-F-F1-F3-M-R-S-U
09902	A-B-C1-C2-E2-F-F3-H1-M-R-R1-S-V-Z1	34030	B-C1-C2-F-F1-F3-J-L-M-N-R-R1-T-V-Z1	34088	B-C-C2-F-F1-F3-R-R1-S-V	96276	A-B-C-C2-F1-F3-R-S
09903	B-C1-E2-F1-F3-S-V-Z1	34031	B-C1-C2-F-F1-F3-J-L-M-N-R-R1-T-V-Z1	34089	B-C-C2-F-F1-F3-R-R1-S-V	96278	A-B-C-C2-F1-F3-R-S-U
		34032	B-C1-C2-F-F1-F3-J-L-M-N-R-R1-T-V-Z1	34090	B-C-C2-F-F1-F3-R-R1-S-V	96283	A-B-F-F1-F3-S-U
		34033	B-C1-C2-F-F1-F3-I3-L-M-N-R-T-V-Z-Z1	34091	B-C-C2-F-F1-F3-R-R1-S-V	96284	A-B-C2-F-F1-F3-M-R-S-U
		34034	B-C1-C2-F-F1-F3-I3-L-M-N-R-R1-T-V-Z-Z1	34092	B-C-C2-E2-E3-F-F1-F3-R-R1-S-V-Z1	96297	A-B-F-F1-F3-R-S-U
		34035	B-C1-C2-F-F1-F3-H-J-L-M-N-R-R1-T-V-Z1	34093	B-C-C2-F-F1-F3-R-R1-S-V	96300	A-B-F3-M-R-S-V-Z1
		34036	B-C1-C2-F-F1-F3-J-L-M-N-R-R1-T-V-Z1	34094	B-F-F1-F3-R-R1-S-V	96301	A-B-C-C2-F-F3-M-N-R-S-U2-W
		34037	B-C-C1-C2-F-F1-F3-H-J-L-M-N-R-R1-T-V-Z1	34095	B-F-F1-R-R1-V	96303	B-C1-C2-F-F1-H-J-L-M-N-T-V-W-Z1
		34039	B-C1-C2-F-F1-J-L-M-N-T-V-Z1	96201	A-B-F-F1-F3-M-R-S-U	96306	B-F-F1-F2-F3-H-M-R-S-W-Z1
				96202	A-B-C2-F-F1-F3-M-R-S-U	96310	B-F3-M-R-S-W
				96203	A-B-F-F1-F3-M-R-S-U	96311	B-F3-M-R-S-W
				96204	A-B-F-F1-F3-M-R-S-U	96315	B-F-F1-F3-H-M-R-S-W
						96319	B-C-C2-F3-M-R-S-W
						96321	B-F-F1-F2-F3-H-M-R-S-W-Z1
						96322	B-F-F1-F2-F3-H-M-R-S-W-Z1

<b>APO/ FPO/ DPO</b>	<b>See Restrictions</b>	<b>APO/ FPO/ DPO</b>	<b>See Restrictions</b>	<b>APO/ FPO/ DPO</b>	<b>See Restrictions</b>	<b>APO/ FPO/ DPO</b>	<b>See Restrictions</b>
96326	B-C-C2-F-F3-M-R-S-W	96504	A-B-C-C1-C2-F-F1-F3-I3-L-M-N-R-R1-T-V-W-Z-Z1	96577	A-B-C2-F-F3-H-M-N-R-S-U	96662	B-C-C2-F-F1-F3-R-R1-S-V
96328	B-C-C2-F3-M-R-S-W	96505	A-B-C-C1-C2-F-F1-F3-I3-L-M-N-R-R1-S-T-V-W-Z-Z1	96578	B-F1-F3-H-J-N-R-S	96663	B-C-C2-F-F1-F3-R-R1-S-V
96331	A-B-C-C2-F-F1-F3-J-L-M-N-R-S-U2-W	96507	A-B-C1-C2-F-F1-H-J-L-M-N-T-V-Z1	96595	B-F-F3-R-S-V-Z1	96664	B-C-C2-F-F1-F3-R-R1-S-V
96336	B-C-C2-F3-M-R-S-V-W	96510	B-I3-N-V	96598	B-C2-F3-I3-N-R-S-V-V1	96665	B-C-C2-F-F1-F3-R-R1-S-V
96337	B-C2-F-F1-F3-M-R-R1-S-W	96511	B-I3-N-V	96599	B-C2-F3-N-R-S-V	96666	B-C-C2-F-F1-F3-R-R1-S-V
96338	A-B-C-C2-F-F3-M-R-S-U2-W	96515	B-C-D-E1-F-F1-F3-H-H1-M-N-R-S-T-Z1	96601	B-V	96667	B-C-C2-F-F1-F3-R-R1-S-V
96339	A-B-F-F3-M-R-S-U2-W	96516	B-C-C2-D-E1-E2-F-F1-F3-H-H1-M-N-R-S-T-Z1	96602	B-V	96668	B-C-C2-F-F1-F3-R-R1-S-V
96343	A-F-F3-M-P-R-S-U2	96517	B-C-D-E1-E2-F-F1-F3-H-H1-M-N-R-T-U-V-Z1	96603	B-V	96669	B-C-C2-F-F1-F3-R-R1-S-V
96346	B-F-F1-F2-F3-H-M-R-S-W-Z1	96520	B-F-N-U3-V	96604	B-V	96670	B-C-C2-F-F1-F3-R-R1-S-V
96347	B-C2-F-F1-F2-F3-H-M-R-S-W-Z1	96521	B-C1-C2-F-F1-J-L-M-N-R-R1-S-T-V-Z1	96605	B-V+B559	96671	B-C-C2-F-F1-F3-R-R1-S-V
96349	B-C-C2-F-F1-F2-F3-H-M-R-S-Z1	96530	A-B-C1-C2-F-F1-H-H1-J-L-M-N-R-R1-S-T-V-Z1	96606	B-F3-R-S-V	96672	B-C-C2-F-F1-F3-R-R1-S-V
96350	B-F-F1-F2-F3-H-M-R-S-W-Z1	96531	A-B-C-C2-F-F1-F3-H-M-N-R-S-U-V	96607	B-V	96673	B-C-C2-F-F1-F3-R-R1-S-V
96351	B-C2-F-F1-F2-F3-H-M-R-S-W-Z1	96532	A-B-C1-C2-F-F1-H-J-L-M-N-R-R1-S-T-V-Z1	96608	B-E2-F-H1-R1-U2-V-Z1	96674	B-C-C2-F-F1-F3-R-R1-S-V
96362	B-C2-F-F1-F2-F3-H-M-R-S-W-Z1	96534	A-B-F-F1-F2-F3-S-U-Z1	96609	B-E2-F-H1-R1-U2-V-Z1	96675	B-C-C2-F-F1-F3-R-R1-S-V
96365	B-C-C2-F3-M-R-S-W-V	96535	A-B-C1-C2-F-F1-J-L-M-N-R-R1-S-T-V-Z1	96610	B-C-C2-F-F3-H1-R-R1-S-U2-V-Z1	96677	B-C-C2-F-F1-F3-R-R1-S-V
96367	B-C-C2-F3-L-M-R-S-W	96537	B-V-Z1	96611	B-C-C2-F-F3-H1-R-R1-S-U2-V-Z1	96678	B-C-C2-F-F1-F3-R-R1-S-V
96368	B-C-C2-F3-M-R-S-W	96540	B-F1-F2-F3-S-V-Z1	96612	B-C-C2-F-F3-H1-R-R1-S-U2-V-Z1	96679	B-C-C2-F-F1-F3-R-R1-S-V
96370	B-F-F1-F2-H-M-W-Z1	96542	B-F-F1-F2-F3-S-V-Z1	96613	B-C-C2-F-F3-H1-R-R1-S-U2-V-Z1	96681	B-V
96371	B-F-F3-M-R-S-W	96543	B-F-F1-F2-F3-P-S-V-Z1	96615	B-F-F1-R-R1-V	96682	B-C-C2-F-F1-F3-R-R1-S-V
96372	B-M-W	96548	A-B-C2-F-F1-F3-H-M-R-S-U	96616	B-C2-F-F1-F3-R-R1-S-V	96683	B-C-C2-F-F1-F3-R-R1-S-V
96373	B-M-W	96549	A-B-C1-C2-F-F1-H-J-L-M-N-R-R1-S-T-V-Z1	96619	B-F1-F3-R-S-V	96686	B-C-C2-F-F1-F3-R-R1-S-V
96374	B-M-W	96550	A-B-H-M-N-U-V-Z1	96620	B-C-C2-F-F1-F3-R-R1-S-V	96688	B-C-C2-F-F1-F3-R-R1-S-V
96375	B-F3-M-R-S-W	96551	A-B-C1-C2-F-F1-H-J-L-M-N-R-R1-S-T-V-Z1	96628	B-C-C2-F-F1-F3-R-R1-S-V	96689	B-C-C2-F-F1-F3-R-R1-S-V
96376	B-F3-M-R-S-W	96552	B-Z1	96629	B-C-C2-F-F1-F3-R-R1-S-V	96691	B-C-C2-F-F1-F3-R-R1-S-V
96377	B-C-C2-F-F3-M-R-S-W	96553	A-B-C2-F-F1-F3-H-M-N-R-S-U	96632	B-C-C2-F-F1-F3-R-R1-S-V	96692	B-C-C2-F-F1-F3-R-R1-S-V
96378	B-M-W	96554	A-B-C1-C2-F-F1-H-J-L-M-N-R-R1-S-T-V-Z1	96633	B-V	96693	B-C-C2-F-F1-F3-R-R1-S-V
96379	B-C2-F3-M-R-S-W	96555	A-B-F-F3-M-R-S-V	96641	B-V	96694	B-C-C2-F-F1-F3-I3-J-R-R1-S-V-Z
96380	B-F3-M-R-S-W	96557	A-B-F-F3-M-R-S-V	96642	B-V	96695	B-C-C2-F-F1-F3-R-R1-S-V
96382	B-F-F3-M-R-S-W	96562	A-B-C1-C2-D-E2-E3-F-F1-H-H1-I3-L-M-N-R-R1-S-T-V-Z1	96643	B-F-F1-F3-R-R1-S-V	96696	B-F-F1-R-R1-V
96384	B-F-F3-M-R-S-W			96644	B-V	96698	B-C-C2-F-F1-F3-R-R1-S-V
96385	B-F-F3-M-R-S-W			96645	B-V		
96386	B-F3-M-S-W			96649	B-C-C2-F-F1-F3-R-R1-S-V		
96387	B-F3-M-R-S-W			96650	B-F-F1-R-R1-V		
96388	B-F3-M-R-S-W			96657	B-C-C2-F-F1-F3-R-R1-S-V		
96389	B-M-W			96660	B-C-C2-F-F1-F3-R-R1-S-V		
96401	B-C-F-F3-N-R-S-V-V1-Z1			96661	B-C-C2-F-F1-F3-R-R1-S-V		
96502	A-C-C1-C2-F-F1-F3-J-M-N-R-R1-S-T-U-V						

## RESTRICTIONS

## LEGEND

PS Form 2976, *Customs — CN 22 (Old C 1) and Sender's Declaration* (green label)

PS Form 2976-A, *Customs Declaration and Dispatch Note*

PS Form 2976-B, *Priority Mail Express International Shipping Label and Customs Form*

ATF	= Bureau of Alcohol, Tobacco, Firearms, and Explosives
Box C	= Department of State (DOS) contractor personnel
Box R	= Retired military personnel
DPO	= Diplomatic Post Office
MPO	= Military Post Office
PACT	= Prevent All Cigarette Trafficking Act
PAL	= Parcel Airlift
PMEMS	= Priority Mail Express Military Service
PUB 52	= Publication 52, <i>Hazardous, Restricted, and Perishable Mail</i>
SAM	= Space Available Mail
USDA	= United States Department of Agriculture

**Note:** Mail order catalogs are prohibited as SAM or PAL mail.

**A.** Securities, currency, or precious metals, including in their raw, unmanufactured state, are prohibited. Official Mail shipments are exempt from this restriction.

**A1.** Reserved for future use.

**A2.** Reserved for future use.

**B.** Other than for PMEMS and the exceptions listed below, a customs declaration PS Form 2976 or PS Form 2976-A is required for all items weighing 16 ounces or more, and for all items (regardless of weight) containing potentially dutiable mail contents (e.g., merchandise or goods) addressed to or from this ZIP Code. Other than the exceptions listed below, all PMEMS mailpieces (regardless of mail contents or weight) addressed to or from this ZIP Code must bear a properly completed PS Form 2976-B. The surface area of the address side of the mailpiece must be large enough to contain the applicable customs declaration. The following exceptions apply to known mailers, who for this purpose are defined as follows:

- Business mailers who enter volume mailings through business mail entry units or other bulk mail acceptance locations, pay postage through advance deposit accounts, use permit imprints for postage payment, and submit completed postage statements at the time of entry that certify that the mailpieces contain no dangerous materials that are prohibited by postal regulations. Such business mailers are exempt from providing customs documentation on non-dutiable letters and printed matter.
- All federal, state, and local government agencies whose mailings are regarded as "Official Mail." Such agencies are exempt from providing customs documentation, except for any items addressed to an MPO or DPO to which restriction "B2" applies.

**B2.** All federal, state, and local government agencies must complete customs documentation when sending potentially dutiable mail addressed to or from this MPO or DPO.

**C.** Cigarettes and other tobacco products, including tobacco leaves, chewing and pipe tobacco, snuff, and cigars are prohibited, including those that are authorized in Publication 52 under PACT.

**C1.** Obscene and horror articles, images, prints, paintings, cards, films, videotapes, comic books, etc., are prohibited.

**C2.** E-cigarettes and related products (e.g., nicotine liquids, e-liquids, parts, or supplies) are prohibited.

**D.** Coffee is prohibited.

**E.** Medicines (prescription, over-the-counter, vitamins, and supplements) are prohibited when mailed to individuals for human or animal use. This prohibition does not apply when medicines are sent as Official Mail only between specifically designated agencies such as pharmaceutical distributors, hospitals, clinics, and pharmacies.

**E1.** Mailers are responsible to ensure that all medicines and vaccines conform to host nation laws.

**E2.** Any matter depicting nude or seminude persons, pornographic, or sexual items are prohibited. Non-authorized political materials are prohibited. Religious materials contrary to the Islamic faith are prohibited in bulk quantities, but individual items for the personal use of the addressee are permissible.

**E3.** Radio transceivers, cordless/cellular telephones, global positioning systems, scanners, base stations, and handheld transmitters are prohibited.

**F.** Firearms of any type are prohibited, except firearms mailed to or by official U.S. government agencies. This restriction does not apply to firearms mailed from this MPO ZIP Code, provided ATF and USPS regulations are met. Antique firearms do not require an ATF form.

**F1.** Weapons of any type are prohibited.

**F2.** Mailing firearms to or from this MPO ZIP Code is restricted to one shotgun and one single shot .22 caliber rifle per individual.

**F3.** Replica weapons and inert explosive devices (such as grenades) and weapons parts are prohibited.

**G.** Parcels of any class are prohibited.

**H.** Meats, including preserved meats, bones, skin, hair, feathers, horns or hoofs of hoofed animals, and wool samples whether hermetically sealed or not, are prohibited.

**H1.** Pork or pork by-products are prohibited.

**I.** Reserved for future use.

**I1.** Reserved for future use.

**I2.** Reserved for future use.

**I3.** Mail of all classes must fit in a mail sack. Mail may not exceed the following dimensions:

- Maximum length 27 inches.
- Maximum width 14 inches.
- Maximum height 14 inches.

**J.** Standard Post and Parcel Select parcels may not exceed 108 inches in length and girth combined.

**K.** Reserved for future use.

**L.** All Official Mail is prohibited.

**M.** Fruits, vegetables, live animals, and live plants are prohibited.

**N.** Registered Mail service is prohibited.

**O.** Reserved for future use.

**P.** Official Mail only.

**Q.** Mail may not exceed 66 pounds, and size is limited to 42 inches maximum length and 72 inches maximum length and girth combined.

**R.** All alcoholic beverages, including those mailable under Publication 52, Part 421, are prohibited.

**R1.** Materials used in the production of alcoholic beverages (i.e., distilling material, hops, malts, yeast, etc.) are prohibited.

**S.** Synthetic cannabinoids used to stimulate the central nervous system commonly known as "synthetic marijuana," "K2," or "Spice" are prohibited.

**T.** Mailings of household shipments and case lots of food to or from an MPO require military transportation office approval prior to mailing. Mailings to or from a DPO require pre-approval from the Diplomatic Pouch and Mail Director.

**U.** Mail addressed to Retirees (Box R) is limited to 16 ounces and up to a 90-day supply of TRICARE medications. This restriction does not apply to mail endorsed "Free Matter for the Blind or Handicapped."

**U1.** Mail is limited to First-Class Mail items, including audio and video media, weighing 13 ounces or less. This limitation does not apply to Official Mail.

**U2.** Retirees (Box R) are not authorized mail service.

**U3.** Reserved for future use.

**U4.** Mail addressed to Box C is limited to 2 lbs.

**V.** PMEMS is not available.

**V1.** Electronic Delivery status information for Extra Services is not available on *USPS.com*. Manual record of delivery may be available upon request.

**W.** Hermetically sealed packages of meat products bearing USDA certification, such as dried beef, salami, and sausage, may be mailed. 200 grams of tobacco per parcel are permitted duty free.

**X.** Cremated remains are prohibited.

**Y.** Mail is limited to First-Class Mail and Priority Mail items only. This restriction also applies to Official Mail.

**Z.** No outside pieces (OSPs).

**Z1.** The following restriction is applicable only to International Service Centers (ISC)/Exchange Offices. An Anti-Pilferage Seal (Item No O817E or O818A) is required on all pouches and sacks.

## Thrift Savings Plan Fact Sheet

ANNUAL RETURNS	G Fund	F Fund	U.S. Aggregate Index	C Fund	S&P 500 Stock Index	S Fund	Dow Jones U.S. Completion TSM Index	I Fund	EAFE Stock Index
2015	2.04	0.91	0.55	1.46	1.38	-2.92	-3.42	-0.51	-0.81
2016	1.82	2.91	2.65	12.01	11.96	16.35	15.75	2.10	1.00
2017	2.33	3.82	3.54	21.82	21.83	18.22	18.12	25.42	25.03
2018	2.91	0.15	0.01	-4.41	-4.38	-9.26	-9.57	-13.43	-13.79
2019	2.24	8.68	8.72	31.45	31.49	27.97	27.94	22.47	22.01
2020	0.97	7.50	7.51	18.31	18.40	31.85	32.17	8.17	7.82
2021	1.38	-1.46	-1.54	28.68	28.71	12.45	12.35	11.45	11.26

The G Fund is managed internally by the Federal Retirement Thrift

MONTHLY RETURNS	G Fund	F Fund	U.S. Aggregate Index	C Fund	S&P 500 Stock Index	S * Fund	Dow Jones U.S. Completion TSM Index	I * Fund	EAFE Stock Index
<b>2021</b>									
Sept	0.11	-0.86	-0.87	-4.65	-4.65	-4.00	-4.01	-2.81	-2.90
Oct	0.13	-0.04	-0.03	7.00	7.01	5.43	5.42	2.46	2.46
Nov	0.13	0.30	0.30	-0.69	-0.69	-5.03	-5.03	-4.66	-4.65
Dec	0.12	-0.32	-0.26	4.48	4.48	0.58	0.55	5.10	5.12
<b>2022</b>									
Jan	0.13	-2.09	-2.15	-5.18	-5.17	-10.07	-10.09	-3.96	-4.83
Feb	0.14	-1.08	-1.12	-2.99	-2.99	0.03	-0.02	-2.61	-1.77
Mar	0.17	-2.73	-2.78	3.72	3.71	0.90	0.86	-0.33	0.64
Apr	0.20	-3.75	-3.79	-8.72	-8.72	-10.57	-10.58	-6.39	-6.47
May	0.21	1.13	0.64	-1.65	0.18	-3.53	-2.24	1.19	0.75
June	0.29	-1.94	-1.57	-6.55	-8.25	-7.95	-9.26	-8.21	-9.28
July	0.26	2.47	2.44	9.22	9.22	10.32	10.26	5.15	4.98
Aug	0.25	-2.80	-2.83	-4.08	-4.08	-2.08	-2.11	-5.79	-4.75
<b>YTD</b>	<b>1.66</b>	<b>-10.45</b>	<b>-10.75</b>	<b>-16.15</b>	<b>-16.14</b>	<b>-22.14</b>	<b>-22.38</b>	<b>-19.71</b>	<b>-19.57</b>

Investment Board. Assets of the F, C, S, and I Funds are managed externally. The Board currently has contracts with BlackRock Institutional Trust Company, N.A., to manage the F, C, S, and I Fund assets. The F, C, S, and I Funds invest in commingled trust funds, in which the assets of tax-deferred employee benefit plans are combined and invested together. The F, C, S, and I Funds and the BlackRock funds are passively managed index funds.

Future performance of the funds will vary and may be significantly different from the returns shown above. See the *Summary of the Thrift Savings Plan* for detailed information about the funds and

their investment risks. The monthly returns of the TSP Funds represent net earnings for the month after deduction of accrued administrative expenses and, except for the G Fund, after deduction of trading costs and accrued investment management fees as well. The returns for the four indexes shown do not include any of these deductions.

\* Implemented May 2001.

**See next page for L Funds.**



**L Funds**

Annual Returns	L Income	L 2020	L 2030	L 2040	L 2050
2015	1.85	1.35	1.04	0.73	0.45
2016	3.58	5.47	7.07	7.90	8.65
2017	6.19	9.86	14.54	16.77	18.81
2018	0.71	-0.36	-3.58	-4.89	-6.02
2019	7.60	9.38	17.60	20.69	23.33
2020	5.15		11.26	13.16	14.79

Annual Returns	L Income	L 2025	L 2030	L 2035	L 2040	L 2045	L 2050	L 2055	L 2060	L 2065
2021	5.42	9.75	12.37	13.43	14.51	15.40	16.34	19.90	19.90	19.90

Monthly Returns	L Income	L 2025	L 2030	L 2035	L 2040	L 2045	L 2050	L 2055	L 2060	L 2065
<b>2021</b>										
Sept	-0.87	-1.78	-2.37	-2.61	-2.85	-3.05	-3.25	-3.87	-3.87	-3.87
Oct	1.28	2.33	3.14	3.43	3.72	3.97	4.22	5.12	5.11	5.11
Nov	-0.50	-1.09	-1.55	-1.72	-1.89	-2.04	-2.20	-2.71	-2.71	-2.71
Dec	1.06	1.90	2.54	2.76	2.99	3.17	3.37	4.08	4.08	4.08
<b>2022</b>										
Jan	-1.28	-2.37	-3.33	-3.68	-4.01	-4.32	-4.60	-5.41	-5.42	-5.42
Feb	-0.51	-1.01	-1.45	-1.61	-1.76	-1.89	-2.01	-2.38	-2.38	-2.38
Mar	0.49	0.85	1.14	1.21	1.29	1.34	1.42	1.88	1.88	1.87
Apr	-2.04	-3.59	-5.12	-5.63	-6.12	-6.56	-6.97	-8.11	-8.11	-8.11
May	0.04	-0.15	-0.35	-0.41	-0.48	-0.54	-0.61	-0.89	-0.89	-0.89
June	-1.60	-2.98	-4.37	-4.84	-5.29	-5.69	-6.07	-7.25	-7.25	-7.25
July	2.21	3.50	5.00	5.47	5.92	6.33	6.71	7.89	7.90	7.90
Aug	-1.04	-1.83	-2.74	-3.03	-3.30	-3.55	-3.77	-4.36	-4.36	-4.36
<b>YTD</b>	<b>-3.75</b>	<b>-7.52</b>	<b>-11.04</b>	<b>-12.27</b>	<b>-13.44</b>	<b>-14.48</b>	<b>-15.44</b>	<b>-18.00</b>	<b>-18.01</b>	<b>-18.02</b>

The TSP also added six new L Funds that have 5-year increments rather than the previous 10-year increments.

## Freely Associated States Restrictions

We list the mailing restrictions for Freely Associated States (FAS) in the Pull-Out section of the *Postal Bulletin*. All FAS Restrictions will be updated periodically.

### Freely Associated States

Mail addressed to freely associated states is subject to certain conditions or restrictions of mailing regarding content, preparation, and handling. The following FAS Restrictions table outlines these conditions as listed by each affected FAS ZIP Code™ through the use of footnoted mailing restrictions codes (see the [Restrictions](#) following the table). For more information on available extra services for FAS destinations, see *Mailing Standards of the United States Postal Service, Domestic Mail Manual (DMM®)*, part 503.

Acceptance clerks must use the table with the Retail System Software terminal to determine which FAS ZIP Codes are active and which conditions of mailing apply.

### FAS Restrictions Table

FAS Table	See Restrictions
96939	A, B
96940	A, B
96941	A, B
96942	A, B
96943	A, B
96944	A, B
96960	A, B
96970	A, B, D
Marshall Islands	C
Federated States of Micronesia	C

### RESTRICTIONS LEGEND

PS Form 2976, *Customs Declaration CN 22 – Sender's Declaration*

PS Form 2976-A, *Customs Declaration and Dispatch Note*

FAS = Freely Associated State

- A.** Bank currency (coin and paper) is prohibited.
- B.** Signature Confirmation, Signature Confirmation Restricted Delivery, Adult Signature Requested, Adult Signature Restricted Delivery, Certified Mail Adult Signature Required, and Certified Mail Adult Signature Restricted Delivery not available.
- C.** Collect on Delivery is prohibited.
- D.** Betel nut (Areca catechu) is prohibited.

— *Asia-Pacific Relations,  
Global Business, 9-22-22*

# Environmental Management

## Refrigerant Management Compliance Reminder

When released, refrigerants can harm the environment. That is why refrigerant-containing equipment (i.e., chillers, air conditioners, fire suppression systems, drinking fountains, refrigerators, and freezers) at Postal Service™ sites must be managed in accordance with USPS® and regulatory requirements. This includes requirements for training, handling, recordkeeping, and disposal, which apply to both Postal Service employees and contractors performing maintenance on USPS equipment.

Follow these requirements for safe refrigerant management:

- Never vent or otherwise release refrigerants into the atmosphere for any reason.
- Maintain required documentation:
  - Records of system maintenance, service, and repair, particularly those documenting refrigerant addition or removal. **Note:** Sites must obtain and maintain records from contractors who service refrigerant-containing equipment. The contractor records need to show the work that was done, including any refrigerant removals and additions, not just contractor hours onsite.
  - Individual service logs and leak rate calculations whenever refrigerant is added for systems containing more than 50 pounds of refrigerants.
  - Training records.
- Investigate refrigerant leaks and repair leaking equipment as quickly as possible.
- Complete required training, as well as Environmental Protection Agency (EPA) Technician Certification, as applicable:
  - Employees who maintain, service, or repair refrigerant-containing equipment must be certified, including employees who service motor vehicle air conditioning systems.
  - Employees who purchase refrigerants may also require certification.
- Manage refrigerant storage cylinders properly:
  - Store in a centralized, secure location that is restricted to authorized employees.
  - Purchase and use cylinders that are certified by the Air-Conditioning, Heating, and Refrigeration Institute (AHRI) and Underwriters Laboratories (UL).
  - Clearly label refrigerant cylinders to identify their contents.
  - Document each cylinder purchase and refrigerant use.
  - Only use recovery cylinders that are within 5 years of their last certification.
- Dispose of refrigerants, refrigerant-containing equipment, and cylinders properly:
  - For refrigerant equipment, evacuate refrigerants and tag equipment as “Empty.” For disposal, use a local waste management/scrap vendor. Keep accurate disposal records.
  - For refrigerants/refrigerant-containing cylinders, recycle waste refrigerants using an EPA-approved reclaiming. Keep records of off-site shipments. Never send refrigerants for disposal and never mix refrigerant types in the same cylinder.
  - For empty refrigerant cylinders, label them as “Empty” and recycle with other steel recyclables at the local steel recycling center. Never reuse non-refillable cylinders.

For more information, review the following guidance documents or consult your designated USPS environmental contact ([blue.usps.gov/sustainability/contact.htm](https://blue.usps.gov/sustainability/contact.htm)):

- *Refrigerant Management Environmental Compliance Bulletin* at [blue.usps.gov/sustainability/environmental/\\_pdf/ecb-refrigerant-management.pdf](https://blue.usps.gov/sustainability/environmental/_pdf/ecb-refrigerant-management.pdf).
- *National Refrigerant Management Policies and Procedures Maintenance Management Order* (MMO-056-20) at [mtsc.usps.gov/pdf/MMO/2020/MMO05620.pdf](https://mtsc.usps.gov/pdf/MMO/2020/MMO05620.pdf).

— Environmental Affairs and Corporate Sustainability,  
Corporate Affairs, 9-22-22

## Human Resources

### Fibromyalgia Awareness

Fibromyalgia is a chronic condition that causes pain, fatigue, and other symptoms throughout the body. The exact cause is unknown; however, researchers believe that trauma, viral infections, and injury can contribute to developing the disorder.

Sleep problems, headaches, issues with memory or concentration, pain and stiffness throughout the body are all common symptoms. Others are tingling or numbness in the hands and feet, digestive ailments, and jaw pain, such as temporal mandibular joint syndrome. Doctors typically will consult X-rays, review a patient's medical history, conduct a physical exam, and do blood work to diagnose the condition.

Although fibromyalgia can affect people of all ages, most people are diagnosed during middle age. People with lupus or rheumatoid arthritis are more likely to develop the

condition. Women are twice as likely to have fibromyalgia as men. Obesity and family history also contribute to the risk.

There is no present cure for the disorder. Treatment may include the use of over-the-counter pain medication and prescription drugs. Lifestyle changes, such as increasing physical activity or seeing a physical therapist who can create a personalized wellness strategy, might be helpful. Yoga, cognitive behavioral therapy, and muscle strengthening exercises have also been known to provide some relief.

This information does not constitute medical advice for fibromyalgia, and individuals should consult their own health care professionals.

For more information about symptoms and management strategies for fibromyalgia, visit [cdc.gov/arthritis/basics/fibromyalgia.htm](https://www.cdc.gov/arthritis/basics/fibromyalgia.htm).

— *Benefits and Wellness,*  
*Human Resources, 9-22-22*

### Notice to All Post Offices with Rural Delivery Service: Rural Carrier Guarantee Period

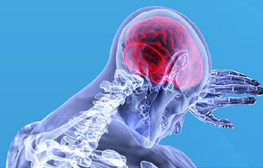
Postal Service™ managers must effectively manage rural carriers who work under the provisions of the Fair Labor Standards Act (FLSA), section 7(b)(2). Those carriers are paid overtime for all hours actually worked in excess of 2,080, up to 2,240, within the 52-consecutive-week guarantee period.

If a carrier works more than 2,240 hours within the guarantee period, the agreement under FLSA section 7(b)(2) is considered void, and the carrier must be compensated for all hours worked during the guarantee period in accordance with FLSA, section 7(a).

Postal Service managers must make a concerted effort to minimize the number of hours carriers work over 2,080, and strictly monitor these carriers to ensure that no carrier works in excess of 2,240 actual work hours.

The 2022–2023 guarantee period will begin on Saturday, October 8, 2022, and continue through Friday, October 6, 2023.

— *Rural Strategy and Transformation,*  
*Delivery Operations, 9-22-22*



# FIBROMYALGIA AWARENESS

**Fibromyalgia affects about 4 million U.S. adults, or about 2% of the adult population. The cause of fibromyalgia is not known, but it can be effectively treated and managed.**



## **Get Physically Active**

Regular physical activity can reduce the risk of developing chronic diseases. Experts recommend that adults be moderately physically active for 150 minutes per week.

## **Signs and Symptoms**

- Pain and stiffness all over body
- Fatigue and tiredness
- Depression and anxiety
- Sleep problems
- Problems with memory and concentration
- Headaches
- Tingling or numbness in hands and feet

## **Fibromyalgia Risk Factors**



### **Age**

Fibromyalgia can affect people of all ages. However, middle-aged and older people account for more diagnoses.



### **Lupus or Rheumatoid Arthritis**

If you have lupus or rheumatoid arthritis, you are more likely to develop fibromyalgia.



### **Gender**

Women are twice as likely to have fibromyalgia than men.



### **Stress**

Car accidents and traumatic events increase risk.



### **Injuries**

Injury from repetitive stress on joints, such as knee bending, could increase risk.

Source: <https://www.cdc.gov/arthritis/basics/fibromyalgia.htm>

## Information Security

### Robotexts: Nuisance or Something More Dangerous?

You may have received something like this statement via text message: “USPS: the scheduled delivery for parcel XXXX has changed. Please confirm here [link].”

If so, you are one of the many individuals across the country hit with robotext messages purporting to be from the United States Postal Service®.

These robotexts, part of the smishing family of cyber-threats, use the fraudulent practice of sending text messages pretending to be from reputable companies to get individuals to reveal their personal information.

In July 2022, according to spam-blocking app Robo-Killer, consumers received more than 12 billion robotexts — that’s 44 text messages for every individual in the United States (see [robokiller.com/spam-text-insights](https://robokiller.com/spam-text-insights)).

If you’ve been getting these types of scam messages more often lately, it’s likely because of the Federal Communications Commission’s mandate that voice providers implement call verification software. This mandate pushed a lot of scammers away from robocalls and into robotexts (see [fcc.gov/call-authentication](https://fcc.gov/call-authentication)).

The rise of robotexts is not a good thing for consumers because, in general, we trust text messages more than we do phone calls, even when they are from a number that we may not recognize.

“I would argue that, in a way, robotexts are actually more dangerous,” said Teresa Murray at Public Interest Research Group, a consumer watchdog group. “Maybe not more annoying, but more dangerous because it’s more difficult for consumers to determine whether a robotext is legitimate or not.”

According to an article by *CyberScoop*, this is because “common lures for smishing campaigns include posing as delivery services — such as USPS® and Amazon — or tech support for a work email account (see [cyberscoop.com/robotext-scam-fcc-malware-smishing-phishing](https://cyberscoop.com/robotext-scam-fcc-malware-smishing-phishing)). The sense of urgency the text messages spark can be enough to make even the savviest consumer let their guard down.”

With the holidays around the corner, many of us will begin using delivery services like USPS and Amazon much more, which could leave you wondering if that text is about an actual package coming your way or something more malicious.

Follow these tips to keep you safe from robotexts:

- **Don’t click on suspicious links.** If you do not recognize a number, you should not click on the link in the text.
- **Don’t respond to a suspicious text.** Delete all suspicious text messages or send the message to SPAM (7726), a centralized spam-reporting service used by wireless carriers (or [spam@usps.gov](mailto:spam@usps.gov)).
- **Call the source of the text.** Most companies will not reach out via text message. Call the company directly to confirm whether they sent a legit text request.
- **Look for misspelled words.** Often the messages will have spelling or grammatical errors.
- **Block or filter the number.** Depending on what type of cell phone you have, there are options to block the sender’s number or filter messages by known and unknown senders.

For more information about package tracking text scams, visit the U.S. Postal Inspection Service website at [uspis.gov/news/scam-article/smishing-package-tracking-text-scams](https://uspis.gov/news/scam-article/smishing-package-tracking-text-scams).

— Corporate Information Security Office,  
Chief Information Security Officer, 9-22-22

## Small Business Engagement

### Employee Engagement Lead Generation Programs Get an Upgrade

Effective October 1, 2022, all employees will have the ability to enter their own leads and receive feedback on their submitted leads by accessing their own individual lead status report. Employees will now have more insight into the progress of their leads as they move through the sales process.

Use your 8-digit Employee Identification Number (EIN) to access the employee lead entry site. By using your EIN, the system will prepopulate many of the mandatory fields, while reducing the need to supply your program, duty station, and employee information.

Employees can access their individual lead status report through the following options:

- ACE users can enter a lead by clicking the “Submit a Lead” link on the main *Blue* page under “Featured Topics,” by clicking the “Submit a Lead” link in the Frontline Supervisor’s Toolkit, or by using the “Enter a Lead” option on the “Connecting with Customers” *Blue* page.
  - Employees can also access the “Submit a Lead” link through the USPS® *LiteBlue* page under the Resources tab.
  - C360 users can enter a lead by using the “Submit a Lead” link on the platform.
- City carriers with access to a Mobile Delivery Device (MDD) can enter leads while on street mode under option U.
  - Employees will still have the option to submit a paper lead card to their postmasters and managers or supervisors, Customer Services, for input into the lead entry site available in the Business Connect (BC) portal or on the “Connecting with Customers” *Blue* page.
  - Managers can also pull the office or individual lead status reports when requested through the BC portal.

BC users will still enter individual and group activities; however, when an activity requires sales assistance or results in a sold customer activity on USPS services, BC users must now enter leads through the lead entry site.

In these cases, BC users must also select the “High Priority” button during the lead entry process and provide the products discussed and the current customer outcome in the comments field, so that Sales can follow up and verify the revenue. This ensures that 100 percent of Employee Engagement Program revenue is recorded by Sales.

Additionally, BC users can receive credit for leads entered outside their ZIP Code™, which provides offices with more flexibility for locating new revenue.

— *Small Business Market Strategy, Small Business Engagement, 9-22-22*

## Stamp Services

### Pictorial Postmarks Announcement

As a community service, the Postal Service™ offers pictorial postmarks to commemorate local events celebrated in communities throughout the nation. A list of events for which pictorial postmarks are authorized appears on the following pages. The sponsor of the pictorial postmark appears in italics under the date. Also provided are illustrations of these postmarks.

People attending these local events may obtain the postmark in person at the temporary Post Office™ station established there. Those who cannot attend the event but who wish to obtain the postmark may submit a mail order request. Pictorial postmarks are available only for the dates indicated, and requests must be postmarked no later than 30 days following the requested pictorial postmark date.

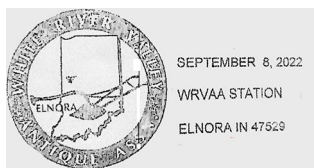
All requests must include a stamped envelope or postcard bearing at least the minimum First-Class Mail® postage. Items submitted for postmark may not include

postage issued after the date of the requested postmark. Such items will be returned unserved.

Customers wishing to obtain a postmark must affix stamps to any envelope or postcard of their choice, address the envelope or postcard to themselves or others, insert a card of postcard thickness in envelopes for sturdiness, and tuck in the flap. Place the envelope or postcard in a larger envelope and address it to: Pictorial Postmarks, followed by the Name of the Station, Address, City, State, ZIP+4® Code, as listed next to the postmark.

Customers can also send stamped envelopes and postcards without addresses for postmark, as long as they supply a larger envelope with adequate postage and their return address. After applying the pictorial postmark, the Postal Service returns the items (with or without addresses) under addressed protective cover.

The following pictorial postmarks have been extended for 30 days:



September 8–10, 2022

*White River Valley Antique Association*  
WRVAA Station  
Postmaster  
118 North Odon Street  
El Nora, IN 47529-9998



September 17, 2022

*Sequoia Stamp Club*  
Sequoia Stamp Club Station  
Postmaster  
851 Ironwood Drive  
San Jose, CA 95125-9998



September 17, 2022

*Pope County Historical Society*  
Butterfield Station  
Postmaster  
5580 U.S. Highway 64 East  
Pottsville, AR 72858-9998





Rush County Indiana  
1822 - 2022  
Bicentennial Station  
Rushville, Indiana 46173  
September 17, 2022



September 17, 2022

*Rush County Historical Society*  
Bicentennial Station  
Postmaster  
230 West 3rd Street  
Rushville, IN 46173-9998

Charles M. Schulz



October 1, 2022

*United States Postal Service*  
Hadley, MA Station  
Postmaster  
186 Russell Street  
Hadley, MA 01035-0035

— *Stamp Services,  
Marketing, 9-22-22*

## How to Order the First-Day-of-Issue Digital Color or Traditional Postmarks

Customers have 120 days to obtain the first-day-of-issue postmarks by mail. Each cover must have sufficient postage to meet First-Class Mail® requirements. Customers may purchase new stamps at their local Post Office™, by phone at 844-737-7826, or on The Postal Store® website at [usps.com/shop](https://usps.com/shop).

### Digital Color Postmarks

Only select stamp issues offer a digital color postmark. Customers may submit #6 or #10 envelopes constructed of paper rated as “laser safe.” The Postal Service™ recommends envelopes of 80-pound Accent Opaque, acid-free, 9/16-inch side seams with no glue on the flap. The maximum size of all digital color postmarks is 2 inches (vertically) by 4 inches (horizontally). Allow sufficient space on the envelope to accommodate the postmark. Do not use self-adhesive labels for addresses on the envelope. Two test envelopes must be included. There is a minimum of 10 envelopes at 50 cents per postmark required at the time of servicing. Customers must submit a check, money order, or credit card for payment.

The Postal Service reserves the right to not accept hand-painted and other cachet envelopes that are not compatible with our digital color postmark equipment. The Postal Service also reserves the right to substitute traditional black rubber postmarks if use of nonspecified envelopes results in poor image quality or damage to equipment.

Customers must affix the stamps to the envelopes and address them to themselves or others for return through the mail. Or, they may include an additional self-addressed return envelope, large enough to accommodate their canceled items, with sufficient postage affixed for return of

their postmarked items. Address customer requests for digital color postmarks to:

FDOI – (Name of Stamp Issue)  
USPS Stamp Fulfillment Services  
8300 NE Underground Drive, Suite 300  
Kansas City, MO 64144-9900

After applying the first-day-of-issue postmark, the Postal Service will return the envelopes to the customer by U.S. Mail®.

### Traditional Postmarks

Customers must affix the stamps to the envelopes and address them to themselves or others for return through the mail. Or, they may include an additional self-addressed return envelope, large enough to accommodate their canceled items, with sufficient postage affixed for return of their postmarked items. Address customer requests for traditional postmarks to:

FDOI – (Name of Stamp Issue)  
USPS Stamp Fulfillment Services  
8300 NE Underground Drive, Suite 300  
Kansas City, MO 64144-9900

After applying the first-day-of-issue postmark, the Postal Service will return the envelopes to the customer by U.S. Mail. There is no charge for the first 50 postmarks. There is a 5-cent charge for each additional postmark over 50. Customers must submit a check, money order, or credit card for payment.

Locally produced items are not authorized. Only merchandise that has been approved and assigned an item number by Headquarters Retail Marketing may be produced and sold.



Digital Color Pictorial

#### FDOI – Mighty Mississippi Stamps

USPS Stamp Fulfillment Services  
8300 NE Underground Drive, Suite 300  
Kansas City, MO 64144-9900

September 23, 2022



Black and White Pictorial

#### FDOI – Mighty Mississippi Stamps

USPS Stamp Fulfillment Services  
8300 NE Underground Drive, Suite 300  
Kansas City, MO 64144-9900

September 23, 2022

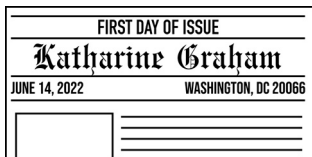


Digital Color Pictorial

**FDI – Katharine Graham Stamp**

USPS Stamp Fulfillment Services  
8300 NE Underground Drive, Suite 300  
Kansas City, MO 64144-9900

October 14, 2022



Black and White Pictorial

**FDI – Katharine Graham Stamp**

USPS Stamp Fulfillment Services  
8300 NE Underground Drive, Suite 300  
Kansas City, MO 64144-9900

October 14, 2022



Digital Color Pictorial

**FDI – \$2 Floral Geometry Stamp**

USPS Stamp Fulfillment Services  
8300 NE Underground Drive, Suite 300  
Kansas City, MO 64144-9900

October 20, 2022

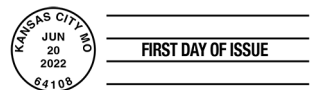


Digital Color Pictorial

**FDI – \$5 Floral Geometry Stamp**

USPS Stamp Fulfillment Services  
8300 NE Underground Drive, Suite 300  
Kansas City, MO 64144-9900

October 20, 2022



Black and White Pictorial

**FDI – Floral Geometry Stamps**

USPS Stamp Fulfillment Services  
8300 NE Underground Drive, Suite 300  
Kansas City, MO 64144-9900

October 20, 2022



Digital Color Pictorial

**FDI – Nancy Reagan Stamp**

USPS Stamp Fulfillment Services  
8300 NE Underground Drive, Suite 300  
Kansas City, MO 64144-9900

November 6, 2022



Black and White Pictorial

**FDI – Nancy Reagan Stamp**

USPS Stamp Fulfillment Services  
8300 NE Underground Drive, Suite 300  
Kansas City, MO 64144-9900

November 6, 2022



Digital Color Pictorial

**FDOI – Mariachi Stamps**

USPS Stamp Fulfillment Services  
8300 NE Underground Drive, Suite 300  
Kansas City, MO 64144-9900

November 15, 2022



Black and White Pictorial

**FDOI – Mariachi Stamps**

USPS Stamp Fulfillment Services  
8300 NE Underground Drive, Suite 300  
Kansas City, MO 64144-9900

November 15, 2022



Digital Color Pictorial

**FDOI – Pete Seeger Stamp**

USPS Stamp Fulfillment Services  
8300 NE Underground Drive, Suite 300  
Kansas City, MO 64144-9900

November 21, 2022



Black and White Pictorial

**FDOI – Pete Seeger Stamp**

USPS Stamp Fulfillment Services  
8300 NE Underground Drive, Suite 300  
Kansas City, MO 64144-9900

November 21, 2022



Digital Color Pictorial

**FDOI – Go Beyond Stamps**

USPS Stamp Fulfillment Services  
8300 NE Underground Drive, Suite 300  
Kansas City, MO 64144-9900

December 3, 2022



Black and White Pictorial

**FDOI – Go Beyond Stamps**

USPS Stamp Fulfillment Services  
8300 NE Underground Drive, Suite 300  
Kansas City, MO 64144-9900

December 3, 2022



Digital Color Pictorial

**FDOI – National Marine Sanctuaries Stamps**

USPS Stamp Fulfillment Services  
8300 NE Underground Drive, Suite 300  
Kansas City, MO 64144-9900

December 5, 2022



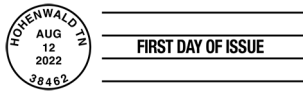
**FDOI – National Marine Sanctuaries Stamps**  
 USPS Stamp Fulfillment Services  
 8300 NE Underground Drive, Suite 300  
 Kansas City, MO 64144-9900

December 5, 2022



**FDOI – Elephants Stamp**  
 USPS Stamp Fulfillment Services  
 8300 NE Underground Drive, Suite 300  
 Kansas City, MO 64144-9900

December 12, 2022



**FDOI – Elephants Stamp**  
 USPS Stamp Fulfillment Services  
 8300 NE Underground Drive, Suite 300  
 Kansas City, MO 64144-9900

December 12, 2022



**FDOI – Pony Cars Stamps**  
 USPS Stamp Fulfillment Services  
 8300 NE Underground Drive, Suite 300  
 Kansas City, MO 64144-9900

December 25, 2022



**FDOI – Pony Cars Stamps**  
 USPS Stamp Fulfillment Services  
 8300 NE Underground Drive, Suite 300  
 Kansas City, MO 64144-9900

December 25, 2022



**FDOI – James Webb Space Telescope Stamp**  
 USPS Stamp Fulfillment Services  
 8300 NE Underground Drive, Suite 300  
 Kansas City, MO 64144-9900

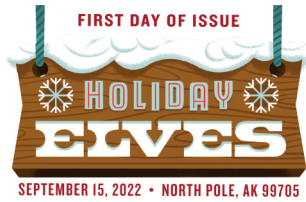
January 8, 2023



**FDOI – James Webb Space Telescope Stamp**  
 USPS Stamp Fulfillment Services  
 8300 NE Underground Drive, Suite 300  
 Kansas City, MO 64144-9900

January 8, 2023

Black and White Pictorial

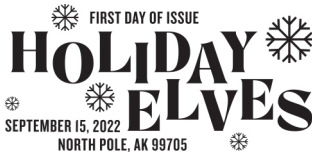


Digital Color Pictorial

**FDOI – Holiday Elves Stamps**

USPS Stamp Fulfillment Services  
8300 NE Underground Drive, Suite 300  
Kansas City, MO 64144-9900

January 15, 2023



Black and White Pictorial

**FDOI – Holiday Elves Stamps**

USPS Stamp Fulfillment Services  
8300 NE Underground Drive, Suite 300  
Kansas City, MO 64144-9900

January 15, 2023



Digital Color Pictorial

**FDOI – Virgin and Child Stamp**

USPS Stamp Fulfillment Services  
8300 NE Underground Drive, Suite 300  
Kansas City, MO 64144-9900

January 22, 2023



Black and White Pictorial

**FDOI – Virgin and Child Stamp**

USPS Stamp Fulfillment Services  
8300 NE Underground Drive, Suite 300  
Kansas City, MO 64144-9900

January 22, 2023

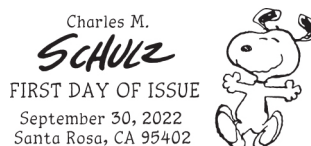


Digital Color Pictorial

**FDOI – Charles M. Schulz Stamps**

USPS Stamp Fulfillment Services  
8300 NE Underground Drive, Suite 300  
Kansas City, MO 64144-9900

January 30, 2023



Black and White Pictorial

**FDOI – Charles M. Schulz Stamps**

USPS Stamp Fulfillment Services  
8300 NE Underground Drive, Suite 300  
Kansas City, MO 64144-9900

January 30, 2023



Digital Color Pictorial

**FDOI – Snowy Beauty Stamps**

USPS Stamp Fulfillment Services  
8300 NE Underground Drive, Suite 300  
Kansas City, MO 64144-9900

February 11, 2023



FIRST DAY OF ISSUE

**FDI – Snowy Beauty Stamps**

USPS Stamp Fulfillment Services  
8300 NE Underground Drive, Suite 300  
Kansas City, MO 64144-9900

February 11, 2023

**Black and White Pictorial**



**FDI – Kwanzaa 2022 Stamp**

USPS Stamp Fulfillment Services  
8300 NE Underground Drive, Suite 300  
Kansas City, MO 64144-9900

February 13, 2023

**Digital Color Pictorial**



**FDI – Kwanzaa 2022 Stamp**

USPS Stamp Fulfillment Services  
8300 NE Underground Drive, Suite 300  
Kansas City, MO 64144-9900

February 13, 2023

**Black and White Pictorial**

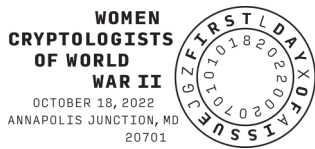


**FDI – Women Cryptologists of World War II Stamp**

USPS Stamp Fulfillment Services  
8300 NE Underground Drive, Suite 300  
Kansas City, MO 64144-9900

February 18, 2023

**Digital Color Pictorial**



**FDI – Women Cryptologists of World War II Stamp**

USPS Stamp Fulfillment Services  
8300 NE Underground Drive, Suite 300  
Kansas City, MO 64144-9900

February 18, 2023

**Black and White Pictorial**



**FDI – Hanukkah 2022 Stamp**

USPS Stamp Fulfillment Services  
8300 NE Underground Drive, Suite 300  
Kansas City, MO 64144-9900

February 20, 2023

**Digital Color Pictorial**



**FDI – Hanukkah 2022 Stamp**

USPS Stamp Fulfillment Services  
8300 NE Underground Drive, Suite 300  
Kansas City, MO 64144-9900

February 20, 2023

**Black and White Pictorial**

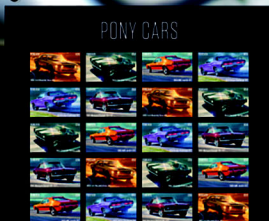


UNITED STATES  
POSTAL SERVICE

475 L'ENFANT PLAZA SW  
WASHINGTON DC 20260-5540

First-Class Mail  
Postage & Fees Paid  
USPS  
Permit No. G-10

# Enjoy the Thrill of Iconic **Pony Cars** Forever® Stamps



**ON SALE NATIONWIDE: AUGUST 25, 2022**  
Sold as a full pane.

