



## September is National Preparedness Month

Be Ready for an Emergency

See page 3

# Contents

## COVER STORY

Be Ready for an Emergency . . . . . 3

## POLICIES, PROCEDURES, AND FORMS UPDATES

### Manuals

IMM Revision: Individual Country Listing for Australia . . . . . 5

IMM Revision: Individual Country Listing for Ukraine . . . . . 6

IMM Revision: IPA and ISAL Mail Preparation and Labeling Changes . . . . . 6

### Handbooks

Handbook EL-802 Revision: Executives' and Managers' Safety and Health Program and Compliance Guide . . . . . 9

## ORGANIZATION INFORMATION

### Address Management

Post Office Changes . . . . . 10

### Domestic Mail

Labeling List Changes . . . . . 10

### Information Security

Always Have a Backup for Your Password . . . . . 14

Creating a Culture of Cybersecurity . . . . . 14

### Stamp Services

Stamp Announcement 22-34: Snowy Beauty Stamps . . . . . 15

Stamp Announcement 22-35: Kwanzaa 2022 Stamp . . . . . 33

Stamp Announcement 22-36: Women Cryptologists of World War II Stamp . . . . . 35

Stamp Announcement 22-37: Hanukkah 2022 Stamp . . . . . 37

Pictorial Postmarks Announcement . . . . . 39

How to Order the First-Day-of-Issue Digital Color or Traditional Postmarks . . . . . 41

## PULL-OUT INFORMATION

### Fraud

Invalid USPS Corporate Account Numbers . . . . . 17

Missing, Lost, or Stolen U.S. Money Order Forms . . . . . 18

Missing, Lost, or Stolen Canadian Money Order Forms . . . . . 24

Verifying U.S. Postal Service Money Orders . . . . . 26

Counterfeit Canadian Money Order Forms . . . . . 26

Toll-Free Number Available to Verify Canadian Money Orders . . . . . 26

### Other Information

Overseas Military/Diplomatic Mail . . . . . 27

Freely Associated States Restrictions . . . . . 32

Find the latest in mail and delivery information  
and services offered by U.S. Postal®  
in the *Postal Bulletin* at  
[about.usps.com/postal-bulletin](https://about.usps.com/postal-bulletin)

**Mail Moment®**

# Cover Story

## Be Ready for an Emergency

Natural disasters are inevitable and experienced globally. They can occur at any moment, at any place, and at any time. They can injure people, damage property, and sometimes, take lives. Prepared individuals are known to be the most resilient in the face of a natural disaster.

While some disasters, such as hurricanes, have early warning information, other disasters, such as earthquakes, are more unpredictable and unavoidable. The month of September reminds us to do our part to foster a culture of preparedness for ourselves, our families, our workplaces, and the community.

How can we foster a culture of preparedness?

- Create a plan.
- Understand the types of emergencies likely to occur in your geographic area.
- Participate in awareness drills, if possible.
- Stock up on emergency supplies.
- Heed early warning information.
- Ensure personal documents such as passports, identification cards, and birth certificates are kept in a sealed, secure, and waterproof container.

- Familiarize yourself with your surroundings and know where to find the nearest evacuation routes, emergency exits, and emergency shelters.
- Develop contingencies for charging mobile devices, fueling vehicles, and accessing emergency funds in the event of a widespread power outage.
- Practice continuous risk assessment.
- Make preparedness a priority.

These and other precautionary measures can form the framework of your preparedness plan and help you and your loved ones to be ready for an emergency.

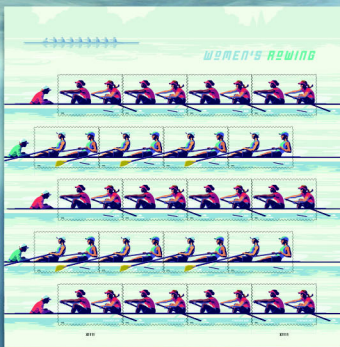
September is set aside each year to heighten awareness of the importance of being prepared. Use the following resources to help develop or augment your plans:

- USPS® National Preparedness page at [blue.usps.gov/nationalpreparedness](https://blue.usps.gov/nationalpreparedness).
- Department of Homeland Security at [ready.gov](https://ready.gov).
- Centers for Disease Control and Prevention at [cdc.gov/disasters/index.html](https://cdc.gov/disasters/index.html).

Why is it essential that USPS cultivates and fosters a culture of preparedness? Because it makes all of us less vulnerable when disaster strikes.

— *National Preparedness,  
Corporate Affairs, 9-8-22*

# Experience the Competitive Spirit of **Women's Rowing** Forever® Stamps



**ON SALE NATIONWIDE: MAY 13, 2022**  
Sold as a full pane.

# Policies, Procedures, and Forms Updates

## Manuals

### IMM Revision: Individual Country Listing for Australia

Effective September 8, 2022, the Postal Service™ is revising the Individual Country Listing for Australia in *Mailing Standards of the United States Postal Service, International Mail Manual (IMM®)* to consolidate the information provided in two articles both titled “IMM Revision: Individual Country Listing for Australia” in *Postal Bulletin 22566 (2-25-21, page 6)* and in *Postal Bulletin 22600 (6-16-22, page 8)*.

This consolidation streamlines the prohibitions and restrictions associated with safeguarding against the entry and spread of the Khapra beetle (*Trogoderma granarium*) in Australia.

#### ***Mailing Standards of the United States Postal Service, International Mail Manual (IMM)***

\* \* \* \* \*

#### **Individual Country Listings**

\* \* \* \* \*

#### **Australia**

#### **Country Conditions for Mailing**

\* \* \* \* \*

#### **Restrictions**

\* \* \* \* \*

*[Delete the entry beginning with “Other-risk plant products...,” and revise the entry beginning with “Raw forms of beans...” to read as follows:]*

Raw forms of beans, grains, nuts, rice, and seeds are temporarily banned by the government of Australia.

**Note:** Exceptions include the following: Goods that are thermally or chemically processed and preserved; fresh vegetables; oils derived from vegetables or seed; and plant-based raw materials, such as starch, sugar, and pigment. Seeds that may be imported — including flower or food seeds and plant products and seeds for sowing — must comply with importation conditions or be covered by a valid import permit (i.e., a phytosanitary certificate) from the Australian Department of Agriculture, Water and the Environment (AWE) before arriving in Australia. The Australian customs and border authority requires that the phytosanitary certificate must include the following additional declaration: “Representative samples were inspected and found free from evidence of any species of *Trogoderma* (whether live, dead, or exuviae) in Australia’s list of *Trogoderma* species of biosecurity concern.” This requirement applies to items arriving via all mail classes, including EMS. For more information, see Australia’s Biosecurity Import Conditions system at [agriculture.gov.au/biosecurity-trade/import/online-services/bicon](http://agriculture.gov.au/biosecurity-trade/import/online-services/bicon) and [awe.gov.au/biosecurity-trade/pests-diseases-weeds/plant/khapra-beetle/urgent-actions](http://awe.gov.au/biosecurity-trade/pests-diseases-weeds/plant/khapra-beetle/urgent-actions).

\* \* \* \* \*

Although effective September 8, 2022, the Postal Service will incorporate this revision into a later edition of the online IMM (after the edition published September 12, 2022). The online IMM is available via Postal Explorer® at [pe.usps.com](http://pe.usps.com).

— *Product Classification, Product Solutions, 9-8-22*

## IMM Revision: Individual Country Listing for Ukraine

Effective September 8, 2022, the Postal Service™ is revising the Individual Country Listing for Ukraine in *Mailing Standards of the United States Postal Service*, International Mail Manual (IMM®) to revise the observation related to customs charges.

This revision is based on a formal request that Ukrposhta (the designated operator of Ukraine) made through the Universal Postal Union via *International Bureau Circular 92*, dated June 13, 2022.

### **Mailing Standards of the United States Postal Service, International Mail Manual (IMM)**

\* \* \* \* \*

#### Individual Country Listings

\* \* \* \* \*

#### Ukraine

#### Country Conditions for Mailing

\* \* \* \* \*

#### Observations

[Revise item 1 to read as follows:]

1. Goods that are mailed in one dispatch from one sender to a private individual or to a legal entity and that have a total value of 150 EUR or less are not subject to customs charges. A shipment that exceeds this limit is subject to customs duty and other taxes according to the customs and tax legislation of Ukraine.

\* \* \* \* \*

Although effective September 8, 2022, the Postal Service will incorporate this revision into a later edition of the online IMM (after the edition published September 12, 2022). The online IMM is available via Postal Explorer® at [pe.usps.com](https://pe.usps.com).

— Product Classification,  
Product Solutions, 9-8-22

## IMM Revision: IPA and ISAL Mail Preparation and Labeling Changes

Effective September 8, 2022, the Postal Service™ is revising several exhibits in parts 292 and 293 of *Mailing Standards of the United States Postal Service*, International Mail Manual (IMM®) to reflect mail preparation and labeling revisions for International Priority Airmail® (IPA®) and International Surface Air Lift® (ISAL®).

These revisions are associated with the recent closure of the International Service Center (ISC) in San Francisco, CA. The 3-digit ZIP Code™ designations that were previously provided for the ISC in San Francisco are now combined with the 3-digit ZIP Code designations provided for the ISC in Los Angeles.

### **Mailing Standards of the United States Postal Service, International Mail Manual (IMM)**

\* \* \* \* \*

#### 2 Conditions for Mailing

\* \* \* \* \*

#### 290 Commercial Services

\* \* \* \* \*

#### 292 International Priority Airmail (IPA) Service

\* \* \* \* \*

#### 292.4 Mail Preparation

\* \* \* \* \*

#### 292.45 IPA Foreign Office of Exchange Codes and Price Groups

\* \* \* \* \*

Exhibit 292.45b

**Canadian Mail Container Labeling Information (Full-service Only)**

*[Move all the 3-digit ZIP Code entries for the ISC noted as "SFO" to the row for the ISC noted as "LAX," re-order all those 3-digit ZIP Code entries in numeric order, and then delete the row for the ISC noted as "SFO"; the row for the ISC noted as "LAX" reads as follows (note that the previously separate 3-digit ZIP Code entries of 930–936 and 937–961 are now combined as 930–961):]*

3-Digit ZIP Code of Entry Post Office*	Canadian Destination	U.S. Exchange Office Code	U.S. Exchange Office (or ISC)	Foreign Office of Exchange Code
* * * *	*			
590–599, 820–821, 832–838, 850–853, 855–857, 859–860, 863–865, 889–891, 894–895, 900–908, 910–928, 930–961, 970–986, 988–999	VANCOUVER BC FWD	90899	LAX	YVR
* * * *	*			

**292.46 Presort Mailings: Direct Country – Price Groups 1, 2, and 7–20**

\* \* \* \*

**292.462 Preparation**

\* \* \* \*

Exhibit 292.462

**Labeling of IPA Mail to Postal Service Exchange Offices (Full-service Only)**

\* \* \* \*

*[Move all the 3-digit ZIP Code entries for "ISC SAN FRANCISCO CA 94013" to the row for "ISC LOS ANGELES CA 900," re-order all those 3-digit ZIP Code entries in numeric order, and then delete the row for "ISC SAN FRANCISCO CA 94013"; the row for "ISC LOS ANGELES CA 900" reads as follows (note that the previously separate 3-digit ZIP*

*Code entries of 930–936 and 937–961 are now combined as 930–961):]*

IPA Acceptance Office 3-Digit ZIP Code	U.S. Exchange Office and Routing Code for Line 1
* * * *	*
590–599, 800–816, 820–838, 840–847, 850–853, 855–857, 859–860, 863–865, 870–875, 877–884, 889–891, 893–895, 897–898, 900–908, 910–928, 930–961, 970–986, 988–999	ISC LOS ANGELES CA 900
* * * *	*

\* \* \* \*

**292.48 Presort Mailings – Price Groups 3–6**

\* \* \* \*

**292.483 Direct Country and Mixed Country – Optional Sack Preparation**

\* \* \* \*

Exhibit 292.483

**Labeling of IPA Mail to Postal Service Exchange Offices (Full-service Only)**

*[Move all the 3-digit ZIP Code entries for "ISC SAN FRANCISCO CA 94013" to the row for "ISC LOS ANGELES CA 900," re-order all those 3-digit ZIP Code entries in numeric order, and then delete the row for "ISC SAN FRANCISCO CA 94013"; the row for "ISC LOS ANGELES CA 900" reads as follows (note that the previously separate 3-digit ZIP Code entries of 930–936 and 937–961 are now combined as 930–961):]*

IPA Acceptance Office 3-Digit ZIP Code	U.S. Exchange Office and Routing Code for Line 1
* * * *	*
590–599, 800–816, 820–838, 840–847, 850–853, 855–857, 859–860, 863–865, 870–875, 877–884, 889–891, 893–895, 897–898, 900–908, 910–928, 930–961, 970–986, 988–999	ISC LOS ANGELES CA 900
* * * *	*
* * * *	*

**293 International Surface Air Lift (ISAL) Service**

\* \* \* \*

**293.4 Mail Preparation**

\* \* \* \*

**293.45 ISAL Foreign Office of Exchange Codes and Price Groups**

\* \* \* \*

Exhibit 293.45b

**Canadian Mail Container Labeling Information (Full-service Only)**

[Move all the 3-digit ZIP Code entries for the ISC noted as "SFO" to the row for the ISC noted as "LAX," re-order all those 3-digit ZIP Code entries in numeric order, and then delete the row for the ISC noted as "SFO"; the row for the ISC noted as "LAX" reads as follows (note that the previously separate 3-digit ZIP Code entries of 930–936 and 937–961 are now combined as 930–961):]

3-Digit ZIP Code of Entry Post Office*	Canadian Destination	U.S. Exchange Office Code	U.S. Exchange Office (or ISC)	Foreign Office of Exchange Code
* * * *	*			
590–599, 820–821, 832–838, 850–853, 855–857, 859–860, 863–865, 889–891, 894–895, 900–908, 910–928, 930–961, 970–986, 988–999	VANCOUVER BC FWD	90899	LAX	YVR
* * * *	*			

**293.46 Presort Mailings: Direct Country – Price Groups 1, 2, and 7–20**

\* \* \* \*

**293.462 Preparation**

\* \* \* \*

Exhibit 293.462

**Labeling of ISAL Mail to Postal Service Exchange Offices (Full-service Only)**

[Move all the 3-digit ZIP Code entries for "ISC SAN FRANCISCO CA 94013" to the row for "ISC LOS ANGELES CA 900," re-order all those 3-digit ZIP Code entries in numeric order, and then delete the row for "ISC SAN FRANCISCO CA 94013"; the row for "ISC LOS ANGELES CA 900" reads as follows (note that the previously separate 3-digit ZIP

Code entries of 930–936 and 937–961 are now combined as 930–961):]

IPA Acceptance Office 3-Digit ZIP Code	U.S. Exchange Office and Routing Code for Line 1
* * * *	*
590–599, 800–816, 820–838, 840–847, 850–853, 855–857, 859–860, 863–865, 870–875, 877–884, 889–891, 893–895, 897–898, 900–908, 910–928, 930–961, 970–986, 988–999	ISC LOS ANGELES CA 900
* * * *	*

\* \* \* \*

**293.48 Presort Mailings – Price Groups 3–6**

\* \* \* \*

**293.483 Direct Country and Mixed Country – Optional Sack Preparation**

\* \* \* \*

Exhibit 293.483

**Labeling of ISAL Mail to Postal Service Exchange Offices (Full-service Only)**

[Move all the 3-digit ZIP Code entries for "ISC SAN FRANCISCO CA 94013" to the row for "ISC LOS ANGELES CA 900," re-order all those 3-digit ZIP Code entries in numeric order, and then delete the row for "ISC SAN FRANCISCO CA 94013"; the row for "ISC LOS ANGELES CA 900" reads as follows (note that the previously separate 3-digit ZIP Code entries of 930–936 and 937–961 are now combined as 930–961):]

IPA Acceptance Office 3-Digit ZIP Code	U.S. Exchange Office and Routing Code for Line 1
* * * *	*
590–599, 800–816, 820–838, 840–847, 850–853, 855–857, 859–860, 863–865, 870–875, 877–884, 889–891, 893–895, 897–898, 900–908, 910–928, 930–961, 970–986, 988–999	ISC LOS ANGELES CA 900
* * * *	*

\* \* \* \*

Although effective September 8, 2022, the Postal Service will incorporate these revisions into a later edition of the online IMM (after the edition published September 12, 2022). The online IMM is available via Postal Explorer<sup>®</sup> at [pe.usps.com](https://pe.usps.com).

– Product Classification,  
Product Solutions, 9-8-22



## Handbooks

### Handbook EL-802 Revision: Executives' and Managers' Safety and Health Program and Compliance Guide

Effective September 8, 2022, the Postal Service™ is revising Handbook EL-802, *Executives' and Managers' Safety and Health Program and Compliance Guide*, to reflect changes and updates in Occupational Safety and Health Administration and Postal Service Occupational Safety and Health programs.

The Postal Service will incorporate these revisions into the next edition of online Handbook EL-802, which will post later this year. Standards in the revisions will not be effective until they have been published.

Handbook EL-802 is available on the Postal Service PolicyNet website:

- Go to [blue.usps.gov](https://blue.usps.gov).
- In the left-hand column, click *Essential Links*, and then click *PolicyNet*.
- Go to the right-hand side under “Published Forms and Directives.”
- Click *Handbooks*.

The direct URL for the Postal Service PolicyNet website is [blue.usps.gov/cpim](https://blue.usps.gov/cpim).

— *Occupational Safety and Health,  
Human Resources, 9-8-22*

# Organization Information

## Address Management

### Post Office Changes

#### Discontinued Post Offices

Due to the extensive number of offices on the Discontinuance List, the changes will not be published in this *Postal Bulletin*. Instead, the link at the end of this article will take you to a document which includes the Post Offices which have been suspended for years.

Customers in these communities are being served by nearby offices. The listings in this document represent the administrative action of the Postal Service™ officially closing these offices. To access the list of affected Post Offices, visit [postapro.usps.com/POB\\_22606](https://postapro.usps.com/POB_22606).

— Address Management,  
Addressing and Geospatial Technology, 9-8-22

## Domestic Mail

### Labeling List Changes

Effective October 1, 2022, the Postal Service™ will revise Labeling List(s) L001, L007, L012, L014, L015, L201, and L606 to reflect changes in mail processing operations. Mailers are expected to label according to these revised lists for mailings inducted on or after the October 1, 2022, effective date through the November 30, 2022, expiration date.

#### Labeling Lists

\* \* \* \* \*

#### L001 5-Digit Scheme — Periodicals, Standard Mail, and Package Services Flats and Irregular Parcels

\* \* \* \* \*

#### Deleted

Column A Destination ZIP Codes	Column B Label Container To (Deleted From)
18612	DALLAS PA 18612
18690	DALLAS PA 18612

\* \* \* \* \*

#### L007 5-Digit Scheme — Periodicals, Standard Mail, and Package Services Flats in Bundles

#### Changes

Column A Destination ZIP Codes	Column B Label Container To (Change From)	Column B Label Container To (Change To)
44070	CHAGRIN FALLS OH 44022	NORTH OLMSTED OH 44070
44087	MACEDONIA OH 44056	TWINSBURG OH 44087
44116	AVON LAKE OH 44012	ROCKY RIVER OH 44116
44118	CHESTERLAND OH 44026	CLEVELAND OH 44118
44124	GATES MILLS OH 44040	CLEVELAND OH 44124
44133	CHAGRIN FALLS OH 44023	NORTH ROYALTON OH 44133
44136	OBERLIN OH 44074	STRONGSVILLE OH 44136
44138	AVON LAKE OH 44012	OLMSTED FALLS OH 44138
44140	BEACHWOOD OH 44122	BAY VILLAGE OH 44140
44141	INDEPENDENCE OH 44131	BRECKSVILLE OH 44141

Column A Destination ZIP Codes	Column B Label Container To (Change From)	Column B Label Container To (Change To)
44143	OLON OH 44139	CLEVELAND OH 44143
44145	AVON OH 44011	WESTLAKE OH 44145
44147	INDEPENDENCE OH 44131	BRECKSVILLE OH 44141
44149	OBERLIN OH 44074	STRONGSVILLE OH 44136
46074	CARMEL IN 46032	WESTFIELD IN 46074
46184	GREENWOOD IN 46142	WHITELAND IN 46184
46237	INDIANAPOLIS IN 46237	INDIANAPOLIS IN 46239
46239	INDIANAPOLIS IN 46237	INDIANAPOLIS IN 46239
46259	INDIANAPOLIS IN 46237	INDIANAPOLIS IN 46239
92255	PALM DESERT CA 92255	PALM DESERT CA 92260
92261	PALM DESERT CA 92261	PALM DESERT CA 92260
92331	FONTANA CA 92334	FONTANA CA 92337
92334	FONTANA CA 92334	FONTANA CA 92336
92335	FONTANA CA 92334	FONTANA CA 92336
92336	FONTANA CA 92334	FONTANA CA 92336
92337	FONTANA CA 92334	FONTANA CA 92337
92505	RIVERSIDE CA 92513	RIVERSIDE CA 92505
92518	RIVERSIDE CA 92506	MARCH AIR RESERVE BASE CA 92518

**Newly Added**

Column A Destination ZIP Codes	Column B Label Container To (Added To)
46011	ANDERSON IN 46011
46012	ANDERSON IN 46011
46013	ANDERSON IN 46011
46014	ANDERSON IN 46011
46015	ANDERSON IN 46011
46016	ANDERSON IN 46011
46017	ANDERSON IN 46011
46018	ANDERSON IN 46011
46140	GREENFIELD IN 46140
46147	BROWNSBURG IN 46112
46149	BROWNSBURG IN 46112
46167	BROWNSBURG IN 46112
46168	PLAINFIELD IN 46168
46202	INDIANAPOLIS IN 46202
46204	INDIANAPOLIS IN 46202
46205	INDIANAPOLIS IN 46205
46206	INDIANAPOLIS IN 46206
46208	INDIANAPOLIS IN 46208
46214	INDIANAPOLIS IN 46214
46216	INDIANAPOLIS IN 46216
46217	INDIANAPOLIS IN 46227

Column A Destination ZIP Codes	Column B Label Container To (Added To)
46220	INDIANAPOLIS IN 46205
46221	INDIANAPOLIS IN 46221
46225	INDIANAPOLIS IN 46202
46227	INDIANAPOLIS IN 46227
46228	INDIANAPOLIS IN 46208
46231	INDIANAPOLIS IN 46221
46235	INDIANAPOLIS IN 46216
46236	INDIANAPOLIS IN 46216
46241	INDIANAPOLIS IN 46221
46244	INDIANAPOLIS IN 46202
46253	INDIANAPOLIS IN 46214
46254	INDIANAPOLIS IN 46214
46282	INDIANAPOLIS IN 46202
92260	PALM DESERT CA 92260

**Deleted**

Column A Destination ZIP Codes	Column B Label Container To (Deleted From)
18690	DALLAS PA 18612

\* \* \* \* \*

**L012 5-Digit ZIP Scheme Combination**

**Changes**

Column A Destination ZIP Codes	Column B Label Container To (Change From)	Column B Label Container To (Change To)
14039	ARCADE NY 14009	AKRON NY 14001
20695	LA PLATA MD 20646	WALDORF MD 20603
37846	LENOIR CITY TN 37772	HARRIMAN TN 37748

**Newly Added**

Column A Destination ZIP Codes	Column B Label Container To (Added To)
63601	PARK HILLS MO 63601
63620	POPLAR BLUFF MO 63901
63621	POTOSI MO 63664
63622	POTOSI MO 63664
63623	POTOSI MO 63664

Column A Destination ZIP Codes	Column B Label Container To (Added To)
63624	PARK HILLS MO 63601
63625	POTOSI MO 63664
63626	POTOSI MO 63664
63627	POTOSI MO 63664
63628	PARK HILLS MO 63601
63629	POTOSI MO 63664
63630	POTOSI MO 63664
63631	POTOSI MO 63664
63633	POTOSI MO 63664
63636	POPLAR BLUFF MO 63901
63637	PARK HILLS MO 63601
63638	POTOSI MO 63664
63640	PARK HILLS MO 63601
63645	POTOSI MO 63664
63648	PARK HILLS MO 63601
63650	POTOSI MO 63664
63651	PARK HILLS MO 63601
63653	PARK HILLS MO 63601
63654	POTOSI MO 63664
63655	POTOSI MO 63664
63656	POTOSI MO 63664
63660	POTOSI MO 63664
63662	POTOSI MO 63664
63663	POTOSI MO 63664
63664	POTOSI MO 63664
63665	POTOSI MO 63664
63666	POTOSI MO 63664
63670	POTOSI MO 63664
63673	POTOSI MO 63664
63674	POTOSI MO 63664
63675	POPLAR BLUFF MO 63901
63732	JACKSON MO 63755
63735	JACKSON MO 63755
63736	CAPE GIRARDEAU MO 63703
63737	JACKSON MO 63755
63738	CAPE GIRARDEAU MO 63703
63739	JACKSON MO 63755
63742	JACKSON MO 63755
63743	JACKSON MO 63755
63744	JACKSON MO 63755
63745	JACKSON MO 63755
63746	JACKSON MO 63755
63747	JACKSON MO 63755
63748	JACKSON MO 63755
63750	CAPE GIRARDEAU MO 63703
63751	JACKSON MO 63755
63752	JACKSON MO 63755
63758	CAPE GIRARDEAU MO 63703
63760	JACKSON MO 63755
63763	CAPE GIRARDEAU MO 63703
63767	CHAFFEE MO 63740
63769	JACKSON MO 63755
63770	JACKSON MO 63755
63774	CAPE GIRARDEAU MO 63703
63776	JACKSON MO 63755
63781	JACKSON MO 63755
63782	CHAFFEE MO 63740
63783	JACKSON MO 63755
63784	JACKSON MO 63755
63787	CHAFFEE MO 63740
63820	SIKESTON MO 63801

Column A Destination ZIP Codes	Column B Label Container To (Added To)
63822	CHAFFEE MO 63740
63823	SIKESTON MO 63801
63824	JACKSON MO 63755
63825	SIKESTON MO 63801
63826	KENNETT MO 63857
63827	KENNETT MO 63857
63828	SIKESTON MO 63801
63829	KENNETT MO 63857
63833	KENNETT MO 63857
63837	KENNETT MO 63857
63839	KENNETT MO 63857
63840	KENNETT MO 63857
63841	SIKESTON MO 63801
63846	SIKESTON MO 63801
63847	KENNETT MO 63857
63849	KENNETT MO 63857
63850	SIKESTON MO 63801
63852	KENNETT MO 63857
63853	KENNETT MO 63857
63855	KENNETT MO 63857
63860	KENNETT MO 63857
63863	CHAFFEE MO 63740
63866	KENNETT MO 63857
63867	SIKESTON MO 63801
63868	SIKESTON MO 63801
63870	CHAFFEE MO 63740
63874	SIKESTON MO 63801
63875	KENNETT MO 63857
63878	SIKESTON MO 63801
63880	KENNETT MO 63857
63881	SIKESTON MO 63801
63882	SIKESTON MO 63801
63931	POPLAR BLUFF MO 63901
63932	POPLAR BLUFF MO 63901
63933	CHAFFEE MO 63740
63934	CHAFFEE MO 63740
63936	SIKESTON MO 63801
63937	CHAFFEE MO 63740
63939	POPLAR BLUFF MO 63901
63940	POPLAR BLUFF MO 63901
63941	CHAFFEE MO 63740
63942	POPLAR BLUFF MO 63901
63943	CHAFFEE MO 63740
63944	POPLAR BLUFF MO 63901
63945	POPLAR BLUFF MO 63901
63950	CHAFFEE MO 63740
63951	POPLAR BLUFF MO 63901
63952	POPLAR BLUFF MO 63901
63953	CHAFFEE MO 63740
63954	CHAFFEE MO 63740
63955	POPLAR BLUFF MO 63901
63956	CHAFFEE MO 63740
63960	CHAFFEE MO 63740
63961	POPLAR BLUFF MO 63901
63962	POPLAR BLUFF MO 63901
63964	CHAFFEE MO 63740
63965	CHAFFEE MO 63740
63966	CHAFFEE MO 63740
63967	CHAFFEE MO 63740

\* \* \* \* \*

**L014 5-Digit ZIP Scheme Combinations for Hubs**

\* \* \* \* \*

**Deleted**

Column A Destination ZIP Codes	Column B Label Container To (Deleted From)	Column C HUB (Deleted From)
18690	DALLAS PA 18612	SCRANTON PA 185

**L015 3-Digit ZIP Code Prefix Groups – ADC Package Services Optional Sortation**

**Changes**

Column A 3-Digit ZIP Code Prefix Group	Column B Label To (Change From)	Column B Label To (Change To)
107	ADC WESTCHESTER NY 105	ADC ROCKLAND NY 109
108	ADC WESTCHESTER NY 105	ADC ROCKLAND NY 109
109	ADC WESTCHESTER NY 105	ADC ROCKLAND NY 109
807	ADC DENVER CO 800	ADC DENVER CO 807
814	ADC DENVER CO 800	ADC DENVER CO 807
815	ADC DENVER CO 800	ADC DENVER CO 807
816	ADC DENVER CO 800	ADC DENVER CO 807
820	ADC CHEYENNE WY 820	ADC DENVER CO 807
822	ADC CHEYENNE WY 820	ADC DENVER CO 807

Column A 3-Digit ZIP Code Prefix Group	Column B Label To (Change From)	Column B Label To (Change To)
823	ADC CHEYENNE WY 820	ADC DENVER CO 807
824	ADC CHEYENNE WY 820	ADC DENVER CO 807
825	ADC CHEYENNE WY 820	ADC DENVER CO 807
826	ADC CHEYENNE WY 820	ADC DENVER CO 807
827	ADC CHEYENNE WY 820	ADC DENVER CO 807
828	ADC CHEYENNE WY 820	ADC DENVER CO 807
926	ADC SANTA ANNA CA 927	ADC ANAHEIM CA 928
927	ADC SANTA ANNA CA 927	ADC ANAHEIM CA 928

\* \* \* \* \*

**L201 Periodicals Origin Split and First-Class Mail Mixed ADC/AADC**

Due to the extensive number of changes to the L201 Labeling List, the changes will not be published in this *Postal Bulletin*.

To access the L201 Labeling List changes, as well as a complete listing of EELs changes in Postal Pro (effective October 1, 2022), visit [postalpro.usps.com/operations/labeling-lists/changes-oct-2022](https://postalpro.usps.com/operations/labeling-lists/changes-oct-2022).

\* \* \* \* \*

**L606 5-Digit Scheme – Standard Mail, First-Class Mail, and Package Services Parcels**

**Changes**

Column A Destination ZIP Codes	Column B Label Container To (Change From)	Column B Label Container To (Change To)
17702	WILLIAMSPORT PA 17701	WILLIAMSPORT PA 17702
17703	WILLIAMSPORT PA 17701	WILLIAMSPORT PA 17702
17728	WILLIAMSPORT PA 17701	WILLIAMSPORT PA 17702

**Newly Added**

Column A Destination ZIP Codes	Column B Label Container To (Added To)
53186	WAUKESHA WI 53186
53187	WAUKESHA WI 53186
78560	LA JOYA TX 78560
78573	MISSION TX 78573
78574	MISSION TX 78573
78576	LA JOYA TX 78560
78595	LA JOYA TX 78560

**Deleted**

Column A Destination ZIP Codes	Column B Label Container To (Deleted From)
04848	LINCOLNVILLE ME 04849
04849	LINCOLNVILLE ME 04849
11236	BROOKLYN NY 11236
11239	BROOKLYN NY 11236
17701	WILLIAMSPORT PA 17701
18612	DALLAS PA 18612
18690	DALLAS PA 18612
30529	COMMERCE GA 30529
30530	COMMERCE GA 30529
30599	COMMERCE GA 30529
34953	PORT SAINT LUCIE FL 34986
75022	FLOWER MOUND TX 75028
75027	FLOWER MOUND TX 75028
75028	FLOWER MOUND TX 75028

– Logistics, Network Development, and Support,  
Network Operations, 9-8-22

## Information Security

### Always Have a Backup for Your Password

Passwords are the front line of protection for Postal Service™ users and systems; however, many of us have multiple passwords for various systems and accounts. With so many passwords, it is easy to forget one or two.

For this reason, all ACE users are encouraged to set up their eAccess password recovery settings today. Setting up your questions and responses will help you reset your ACE password without having to call the Information Technology (IT) Service Desk.

Setting up your password recovery settings is quick and easy:

- Log into eAccess at [eaccess.usps.gov/ords/eaccessnp/sso\\_std.sso\\_welcome](https://eaccess.usps.gov/ords/eaccessnp/sso_std.sso_welcome) with your ACE ID and password.

- Click the “My Profile” tab.
- Click the “Password Recovery Settings” button and select your questions and responses. Be sure to select responses you will remember.

If you don't set up your password recovery settings in eAccess, you will not be able to reset your ACE password without your manager's approval. Your only option will be to call 1-800-USPS-HELP and follow prompts on the Interactive Voice Response system to submit a password reset request for your manager's approval.

For more information about setting up your password recovery settings, visit IT Self Help at [usps.servicenowservices.com/sp?id=index](https://usps.servicenowservices.com/sp?id=index).

— Corporate Information Security Office,  
Chief Information Security Officer, 9-8-22

### Creating a Culture of Cybersecurity

An organization's ideas, customs, and social behaviors greatly influence its security culture. As the most important element in an organization's security strategy, security culture sets the standard for an organization's ability to protect networks and information, as well as employee and customer privacy.

The stronger an organization's security culture is, the more likely the workforce will exhibit secure behaviors when handling sensitive data. The human element is a risk every organization needs to actively manage, and a strong security culture creates a safe environment for that to happen.

Contribute to USPS® security culture through these CyberSafe programs:

- **Become a CyberSafe Guardian.** Serve as an ambassador and share CyberSafe tips and tools with

your team. Guardians stay in touch with the USPS Corporate Information Security Office's CyberSafe team for current initiatives and cybersecurity awareness trends. Learn more at [blue.usps.gov/cyber/guardian/welcome.htm](https://blue.usps.gov/cyber/guardian/welcome.htm).

- **Participate in virtual awareness activities.** Stay on top of cybersecurity best practices with fun virtual activities that help improve your CyberSafe skills. Feel free to tailor these activities to the needs of your network or team. Learn more at [blue.usps.gov/cyber/awareness-activities.htm](https://blue.usps.gov/cyber/awareness-activities.htm).

For more information about cybersecurity, visit the CyberSafe at USPS® pages on *Blue* ([blue.usps.gov/cyber](https://blue.usps.gov/cyber)) and *LiteBlue* ([liteblue.usps.gov/cyber](https://liteblue.usps.gov/cyber)).

— Corporate Information Security Office,  
Chief Information Security Officer, 9-8-22

# Stamp Services

## Stamp Announcement 22-34: Snowy Beauty Stamps



For more stamps and collectibles, visit [usps.com/stamps](https://usps.com/stamps)

©2022 USPS

On October 11, 2022, in Guilford, IN, the United States Postal Service® will issue the *Snowy Beauty* stamps (Forever® priced at the First-Class Mail® rate) in 10 designs, in a pressure-sensitive adhesive (PSA) double-sided booklet (Item 684000). These stamps will go on sale nationwide October 11, 2022, and must not be sold or canceled before the first-day-of-issue.

*Snowy Beauty* celebrates the unexpected beauty of flowers in snow. The stamp designs, painted in oils on panel, feature 10 different plants:

- Camellia,
- Crocus,
- Hellebore,
- Winterberry,
- Pansy,
- Plum blossom,
- Grape hyacinth,
- Daffodil,
- Ranunculus, and
- Winter aconite.

Winter aconite is also shown on the cover of this booklet of 20 stamps. Art director Derry Noyes designed the stamps with original art by Gregory Manchess.

**Availability to Post Offices: Item 684000, Snowy Beauty (Forever Priced at the First-Class Mail Rate) PSA Double-sided Booklet of 20 Stamps**

Stamp Fulfillment Services will not make an automatic push distribution to Post Offices. Post Offices may begin ordering stamps before the first-day-of-issue through SFS Web at [sfsweb.usps.gov/sfsweb](https://sfsweb.usps.gov/sfsweb).

**How to Order the First-Day-of-Issue Postmark**

Customers have 120 days to obtain the first-day-of-issue postmark by mail. They may purchase new stamps at their local Post Office™ or at The Postal Store® website at [store.usps.com/store/home](https://store.usps.com/store/home). They must affix the stamps to envelopes of their choice, address the envelopes (to themselves or others), and place them in a larger envelope addressed to:

FDOI – Snowy Beauty Stamps  
 USPS Stamp Fulfillment Services  
 8300 NE Underground Drive, Suite 300  
 Kansas City, MO 64144-9900

After applying the first-day-of-issue postmark, the Postal Service™ will return the envelopes through the mail. There is no charge for the postmark up to a quantity of 50. There is a 5-cent charge for each additional postmark over 50. All orders must be postmarked by February 11, 2023.

**How to Order First-Day Covers**

The Postal Service also offers first-day covers for new stamp issues and Postal Service stationery items post-marked with the official first-day-of-issue cancellation.

Each item has an individual catalog number and is offered in the *USA Philatelic* catalog and online at [store.usps.com/store/home](https://store.usps.com/store/home). Customers may register to receive a free *USA Philatelic* catalog online at [usps.com/philatelic](https://usps.com/philatelic).

**Locally produced items are not authorized. Only merchandise that has been approved and assigned an item number by Headquarters Retail Marketing may be produced and sold.**

Issue:	<i>Snowy Beauty</i> Stamps
Item Number:	684000
Denomination & Type of Issue:	First-Class Mail Forever
Format:	Double-sided Booklet of 20 (10 designs)
Series:	N/A
Issue Date & City:	October 11, 2022, Guilford, IN 47022
Art Director:	Derry Noyes, Washington, DC
Designer:	Derry Noyes, Washington, DC
Artist:	Gregory Manchess, Fort Thomas, KY
Modeler:	Joseph Sheeran
Manufacturing Process:	Offset
Printer:	Ashton Potter (USA) Ltd (APU)
Press Type:	Muller A76
Stamps per Booklet:	20
Print Quantity:	300,000,000 stamps
Paper Type:	Nonphosphored Type III, Block Tag
Adhesive Type:	Pressure-sensitive
Colors:	Black, Cyan, Magenta, Yellow
Stamp Orientation:	Horizontal
Image Area (w x h):	1.05 x 0.77 in/26.67 x 19.558 mm
Overall Size (w x h):	1.19 x 0.91 in/30.226 x 23.114 mm
Full Pane Size (w x h):	2.38 x 5.76 in/60.452 x 146.304 mm
Plate Size:	880 stamps per revolution
Plate Number:	"P" followed by four (4) single digits
Marginal Markings:	Header: <i>Snowy Beauty</i> , Twenty First-Class Forever Stamps • USPS logo • Barcode • ©2022 USPS in peel strip area • Plate number in peel strip area • Promotional text in peel strip area

— Stamp Services,  
Marketing, 9-8-22



# Pull-Out Information

## Fraud

### Invalid USPS Corporate Account Numbers

Provide this listing to Contract Postal Units and acceptance clerks in non-POS locations without intranet access to validate a USPS Corporate Account (USPSCA) number online. For all other locations, online USPSCA validation is preferred. This list supersedes all previous notices, which you must recycle.

Acceptance clerks must not accept Priority Mail Express® shipments bearing an invalid USPSCA number in the “Payment by Account” or “Agreement Number” section of the label or form.

**Note:** The first 6 digits of a 9-digit Custom Designed Service and Next Day Pickup Agreement make up the Corporate Account Number.

005575	061249	100493	154019	322366	436175	551163	553209	641641	852227	946124	948694	982435
006086	061637	102669	159061	322617	436405	551200	553232	662152	871030	946232	958477	982693
006130	064585	105395	159277	328424	441020	551257	553471	<b>722090</b>	<b>900171</b>	946277	958789	984005
006161	066142	105402	165333	331013	441733	551266	553740	723085	902484	946330	967199	984066
007201	067139	108892	<b>200241</b>	331629	443113	551326	553860	724024	902627	946331	967428	989083
008289	070191	108958	200537	332179	452094	551360	554022	730134	902645	946377	968253	990829
008862	075081	115024	209294	333039	452180	551379	554308	731042	906604	946408	968466	992538
014048	075264	115110	220002	334055	480966	551390	554690	731406	915559	946479	968715	992773
019913	077255	117080	220284	334466	482601	551461	554935	750049	921433	946492	968942	998185
021052	077415	117709	220427	337149	485140	551477	554960	750379	921792	946502	970324	
022446	080167	117979	221522	340563	489459	551511	557002	752207	927885	946524	970561	
023067	080217	119452	254016	352833	494170	551761	558095	770212	930052	946557	970807	
023196	080287	119466	255045	356072	<b>527037</b>	551842	559030	770791	931643	946568	980234	
025391	080529	121260	276020	381569	532542	551904	581184	784414	934015	946573	980405	
031255	080682	121285	<b>301325</b>	<b>400036</b>	537365	551953	585254	784611	937465	946576	980538	
041149	091505	132060	301429	402277	544084	551986	<b>600069</b>	<b>801600</b>	945016	946603	980925	
041311	097923	152218	301583	402315	551020	553013	601125	807032	945293	947029	980963	
044085	<b>100083</b>	152555	320013	423075	551045	553042	602697	841259	945762	947116	982039	
050085	100084	152726	322063	432754	551086	553046	609351	841419	945895	948145	982404	

— Product Information Requirements, Mail Entry and Payment Technology, 9-8-22

## Missing, Lost, or Stolen U.S. Money Order Forms

### Do Not Cash — Upon Receipt, Notify Local Postal Inspectors

Provide this listing to all Postal Service™ employees responsible for accepting and cashing postal money orders. Destroy all interim notices when the numbers listed appear in the *Postal Bulletin*. The new money order serial

numbers consist of the first 10 digits. The eleventh digit is a check digit only.

Do not cash outdated money orders **104 151 601 to 692 600 000**. Advise holders to send invalid money orders to Canada Post Corporation, Ottawa, Canada K1A 0B1. Check for altered dollar amounts by holding money orders to the light.

<b>010 001 0200 to 0299</b>	044 087 3457 to 3499	084 478 3920 to 3999	176 281 7963 to 7999
010 504 1932 to 1999	044 087 4000 to 4099	086 000 8271 to 8299	176 731 6586 to 6599
011 582 1889 to 1899	044 226 2487 to 2512	086 798 3840 to 3849	178 254 5000 to 9999
011 588 2900 to 3099	044 306 4200 to 4299	088 404 4472 to 4499	178 881 9900 to 9999
012 441 0784 to 0799	044 306 4370 to 4599	088 404 5584 to 5699	<b>180 031 2089 to 2098</b>
012 579 5675 to 5699	045 524 4121 to 4298	088 757 8688 to 8699	180 403 7723 to 7741
013 289 6176 to 6199	046 800 9870 to 9899	088 757 9400 to 9499	180 428 4580 to 0599
013 610 0014 to 0099	047 352 4000 to 4099	089 358 2248 to 2257	182 368 7544 to 0599
014 932 1000 to 1099	048 383 7650 to 7659	<b>090 663 9678 to 9684</b>	182 475 3229 to 3258
014 972 0800 to 0899	048 396 3647 to 3699	091 818 0071 to 0099	182 475 3904 to 3933
015 363 0065 to 0099	<b>051 142 0755 to 0799</b>	093 106 9346 to 9355	182 631 0031 to 0099
017 028 3200 to 3299	051 774 8857 to 8899	093 203 0500 to 0599	182 911 6539 to 6600
018 569 5333 to 5399	051 781 2875 to 2885	093 684 3630 to 3699	184 218 2760 to 2799
018 986 5264 to 5299	051 977 7010 to 7023	094 081 5074 to 5099	185 828 1474 to 1499
019 518 2814 to 2899	052 058 7115 to 7199	094 216 2555 to 2599	186 132 7583 to 0599
020 698 5159 to 5199	054 450 1130 to 1167	094 580 7062 to 7099	186 629 0589 to 0599
<b>020 844 7307 to 7399</b>	057 670 0563 to 0599	094 639 4200 to 4299	187 184 6177 to 0199
020 972 8948 to 8999	058 187 3836 to 3899	095 070 7186 to 7199	187 323 8200 to 8299
022 021 9110 to 9181	058 523 3003 to 3099	095 076 8300 to 8399	187 441 6080 to 6099
022 037 1411 to 1499	058 591 1153 to 1299	095 354 6864 to 6899	188 831 6774 to 6799
022 527 9201 to 9210	058 895 3746 to 3799	097 224 1350 to 1599	188 835 6370 to 6399
022 529 1882 to 1899	059 986 0814 to 0899	<b>100 160 3800 to 3899</b>	189 083 1064 to 1099
023 637 7169 to 7199	<b>060 406 7650 to 7699</b>	104 667 6400 to 6499	189 660 9583 to 9599
024 380 4100 to 4199	063 491 8122 to 8199	104 876 8937 to 8999	<b>191 179 0377 to 0399</b>
024 496 6870 to 6896	063 916 9968 to 9999	112 049 4413 to 4499	192 050 5762 to 5781
025 092 0987 to 0999	064 091 4500 to 4599	112 870 9765 to 9799	194 456 8600 to 6699
025 369 5535 to 5599	065 170 0471 to 0499	113 319 2000 to 2099	195 194 6881 to 6899
025 729 1151 to 1199	065 255 7909 to 7999	114 402 3850 to 3899	195 874 1112 to 1199
025 729 1643 to 1799	065 392 6345 to 6399	114 866 5368 to 5397	196 979 0524 to 0599
026 492 3180 to 3199	066 099 2014 to 2099	116 154 2800 to 2899	197 244 6100 to 6199
027 361 0430 to 0499	066 648 2880 to 2899	116 986 4400 to 4499	197 244 6300 to 6399
027 369 4482 to 4495	066 787 3639 to 3699	117 175 1647 to 5169	197 244 6400 to 6499
027 671 8762 to 8776	066 845 7500 to 9999	117 951 4687 to 4699	197 244 6500 to 6599
027 787 9886 to 9899	067 093 3869 to 3899	117 951 5200 to 5299	197 244 6600 to 6699
027 965 9487 to 9499	068 895 0334 to 0399	119 786 3051 to 3064	197 244 6700 to 6799
028 100 8069 to 8099	<b>070 724 4488 to 4499</b>	119 815 8961 to 6199	197 244 6800 to 8999
028 191 1852 to 1999	070 841 9181 to 9199	119 850 7400 to 7499	198 285 2556 to 2566
028 850 3000 to 3199	070 844 2546 to 2599	119 850 7700 to 7999	199 105 0778 to 0799
029 510 1500 to 1599	070 916 1340 to 1399	<b>121 634 0460 to 0499</b>	199 678 2968 to 2999
<b>030 687 0903 to 0999</b>	071 047 5768 to 5799	122 451 9879 to 9899	<b>202 748 5133 to 5199</b>
030 701 3442 to 3499	071 179 9800 to 9899	122 714 6805 to 6900	202 748 5245 to 5299
031 077 4507 to 4799	071 386 3682 to 3699	124 916 0304 to 0499	202 748 5300 to 5399
032 295 7500 to 9999	071 507 6840 to 6899	126 423 0136 to 0169	202 748 5400 to 5499
034 394 1000 to 1099	072 045 9641 to 9699	127 500 2328 to 2399	203 256 1240 to 1299
034 943 0400 to 0799	072 675 8287 to 8299	<b>160 901 2254 to 2299</b>	204 230 3577 to 3595
035 035 4337 to 4399	073 763 0867 to 0876	161 103 6581 to 6599	205 019 0174 to 0199
037 312 7500 to 7599	073 763 0878 to 0887	161 194 2857 to 0899	206 936 3184 to 3199
037 706 9578 to 9599	073 763 0889 to 0898	162 032 4447 to 4499	207 196 9900 to 9999
037 805 3677 to 3699	077 617 5481 to 5499	163 257 1085 to 1099	207 204 0700 to 0799
037 909 5490 to 5499	077 999 4001 to 4090	164 359 2406 to 2499	207 204 0800 to 0899
037 931 4660 to 4699	078 174 4475 to 4499	166 101 1433 to 1499	207 514 3857 to 3899
039 145 6521 to 6595	078 219 4931 to 4999	167 555 5201 to 5212	208 556 4707 to 4799
<b>040 024 3901 to 3999</b>	078 250 4756 to 4799	167 555 5214 to 5299	<b>210 057 4038 to 4047</b>
040 674 7100 to 7199	078 823 8312 to 8399	169 618 6274 to 6299	210 221 0548 to 0599
040 688 8816 to 8899	079 374 0300 to 2499	<b>171 806 6878 to 6893</b>	214 061 4711 to 4724
041 299 6752 to 6799	079 807 2342 to 2399	173 639 4685 to 4699	214 303 6311 to 6325
041 623 8889 to 8899	<b>082 721 0228 to 0254</b>	174 238 2779 to 2799	214 303 6239 to 6258
041 803 6565 to 6599	083 140 5000 to 7499	174 281 9347 to 9399	214 877 4251 to 4273
043 129 1968 to 1997	083 784 8886 to 8899	175 251 2600 to 0699	215 252 3918 to 3992
043 205 5922 to 5999	083 913 6915 to 6999	176 281 7937 to 7950	<b>217 585 1400 to 1499</b>

218 698 2157	to	2199	254 252 2800	to	2899	258 405 7100	to	7199	262 337 4900	to	4999
218 746 0800	to	0899	254 252 2900	to	2999	258 405 7200	to	7299	262 337 5000	to	5099
219 095 0100	to	0399	254 252 3000	to	3099	258 405 7300	to	7399	262 337 5100	to	5199
219 389 1885	to	1899	254 252 3100	to	3199	258 405 7400	to	7499	262 337 5200	to	5299
219 568 7435	to	7456	254 252 3200	to	3299	258 405 7800	to	7899	262 337 5300	to	5399
219 568 7469	to	7487	254 252 3300	to	3399	258 405 7900	to	7999	262 337 5400	to	5499
<b>221 316 5757</b>	<b>to</b>	<b>5799</b>	254 252 3400	to	3499	258 405 8000	to	8099	262 337 5500	to	5599
223 476 3914	to	3999	254 252 3500	to	3599	258 405 8100	to	8199	262 337 5600	to	5699
223 565 4921	to	4957	254 252 3600	to	3699	258 405 8200	to	8299	262 337 5700	to	5799
223 565 4979	to	4999	254 252 3700	to	3799	258 405 8300	to	8399	262 337 5800	to	5899
224 636 4745	to	4765	254 252 3800	to	3899	258 405 8400	to	8499	262 337 5900	to	5999
224 636 4776	to	4799	254 252 3900	to	3999	258 405 8500	to	8599	262 337 6000	to	6099
224 636 4855	to	4885	254 252 4000	to	4099	258 405 8600	to	8699	262 337 6100	to	6199
224 636 4932	to	4948	254 252 4100	to	4199	258 405 8700	to	8799	262 337 6200	to	6299
224 636 4950	to	4962	254 252 4200	to	4299	258 405 8800	to	8899	262 337 6300	to	6399
224 636 4985	to	4999	254 252 4300	to	4399	258 405 8900	to	8999	262 337 6400	to	6499
224 723 0757	to	0799	254 252 4400	to	4499	258 405 9600	to	9699	262 337 6500	to	6599
224 730 2207	to	2299	254 252 4500	to	4599	258 405 9700	to	9799	262 337 6600	to	6699
225 970 0500	to	0599	254 252 4600	to	4699	258 405 9800	to	9899	262 337 6700	to	6799
225 970 0600	to	0699	254 252 4700	to	4799	258 405 9900	to	9999	262 337 6800	to	6899
225 970 0700	to	0799	254 252 4800	to	4899	259 014 9989	to	9999	262 337 6900	to	6999
227 033 8679	to	8699	254 252 4900	to	4999	259 062 4788	to	4798	262 337 7000	to	7099
227 275 9400	to	9999	254 565 7607	to	7700	259 218 1400	to	1499	262 337 7100	to	7199
228 463 2456	to	2499	254 907 1203	to	1299	259 218 1500	to	1599	262 337 7200	to	7299
228 510 4852	to	4899	255 185 9527	to	9599	259 218 1600	to	1699	262 337 7300	to	7399
229 462 8451	to	8475	255 397 1557	to	1576	259 590 5654	to	5699	262 337 7400	to	7499
229 668 5977	to	5999	255 425 2989	to	2998	259 670 8268	to	8299	262 337 7500	to	7599
229 923 9176	to	9199	255 728 6412	to	6499	259 835 6238	to	6399	262 337 7600	to	7699
229 924 6696	to	6699	255 728 9842	to	9899	259 835 6701	to	6799	262 337 7700	to	7799
<b>230 051 9500</b>	<b>to</b>	<b>9999</b>	256 134 9833	to	9839	<b>260 224 4600</b>	<b>to</b>	<b>4699</b>	262 337 7800	to	7899
236 366 2431	to	2499	256 134 9840	to	9849	260 224 5941	to	5999	262 337 7900	to	7999
236 607 6882	to	6899	256 134 9850	to	9859	260 310 2821	to	2899	262 337 8000	to	8099
236 660 5853	to	5872	256 134 9860	to	9869	260 452 0010	to	0022	262 337 8100	to	8199
239 322 5200	to	5299	256 134 9870	to	9879	260 452 0049	to	4299	262 337 8200	to	8299
239 322 5400	to	5499	256 134 9880	to	9889	260 553 8200	to	8299	262 337 8300	to	8399
239 322 5600	to	5699	256 134 9890	to	9899	260 553 8600	to	8699	262 337 8400	to	8499
239 322 5800	to	5899	256 247 6900	to	6999	260 553 9600	to	9799	262 337 8500	to	8599
239 322 5900	to	5999	256 550 5536	to	5545	260 553 9800	to	9899	262 337 8600	to	8699
239 607 4783	to	4799	256 799 2257	to	2299	260 553 9900	to	9999	262 337 8700	to	8799
<b>240 593 1879</b>	<b>to</b>	<b>1899</b>	257 154 8763	to	8799	260 761 1603	to	1662	262 337 8800	to	8899
242 591 2048	to	2099	257 154 8800	to	8899	261 183 2100	to	2299	262 337 8900	to	8999
242 735 0388	to	0398	257 765 4567	to	4599	261 426 0408	to	0499	262 337 9000	to	9099
242 951 7276	to	7299	257 765 4610	to	4696	262 082 8000	to	8099	262 337 9100	to	9199
243 535 6370	to	6399	257 765 4737	to	4799	262 082 8100	to	8199	262 337 9200	to	9299
244 004 9985	to	9999	257 792 7800	to	7889	262 082 8200	to	8299	262 337 9300	to	9399
244 004 9985	to	9999	257 792 7900	to	7999	262 082 8300	to	8399	262 337 9400	to	9499
244 268 9765	to	9799	257 792 8000	to	8099	262 082 8400	to	8499	262 337 9500	to	9599
244 347 4471	to	4499	257 856 9863	to	9899	262 288 7302	to	7399	262 337 9600	to	9699
249 056 1551	to	1599	258 103 1773	to	1782	262 288 7400	to	7499	262 337 9700	to	9799
249 336 9438	to	9499	258 405 1800	to	1899	262 288 9900	to	9999	262 337 9800	to	9899
249 399 4000	to	4099	258 405 1900	to	1999	262 337 2600	to	2699	262 337 9900	to	9999
249 399 4100	to	4199	258 405 3300	to	3399	262 337 2700	to	2700	262 472 3188	to	3199
249 399 4200	to	4299	258 405 3400	to	3499	262 337 2800	to	2800	262 472 3200	to	3299
249 399 4300	to	4399	258 405 3500	to	3599	262 337 2900	to	2900	262 546 3100	to	3199
249 399 4400	to	4499	258 405 3700	to	3799	262 337 3000	to	3099	262 546 3200	to	3299
249 399 4500	to	4599	258 405 3800	to	3899	262 337 3100	to	3199	262 546 3300	to	3399
249 399 4600	to	4699	258 405 3900	to	3999	262 337 3200	to	3299	262 546 3400	to	3499
249 399 4700	to	4799	258 405 4000	to	4099	262 337 3300	to	3399	262 546 3500	to	3599
249 399 4800	to	4899	258 405 4100	to	4199	262 337 3400	to	3499	262 546 3600	to	3699
249 399 4900	to	4999	258 405 4200	to	4299	262 337 3500	to	3599	262 546 3900	to	3999
<b>250 159 7502</b>	<b>to</b>	<b>7599</b>	258 405 4600	to	4699	262 337 3600	to	3699	262 546 4300	to	4399
250 566 9644	to	9699	258 405 5600	to	5699	262 337 3700	to	3799	262 546 4400	to	4499
250 661 8425	to	8499	258 405 5700	to	5799	262 337 3800	to	3899	262 546 4500	to	4599
251 335 5731	to	5799	258 405 5800	to	5899	262 337 3900	to	3999	262 546 4600	to	4699
251 379 2380	to	2399	258 405 5900	to	5999	262 337 4000	to	4099	262 546 4700	to	4799
252 005 7626	to	7699	258 405 6000	to	6099	262 337 4100	to	4199	262 546 4800	to	4899
252 421 8401	to	8499	258 405 6100	to	6199	262 337 4200	to	4299	262 546 4900	to	4999
252 464 2810	to	2899	258 405 6200	to	6299	262 337 4300	to	4399	262 546 7100	to	7199
252 612 3683	to	3699	258 405 6300	to	6399	262 337 4400	to	4499	262 546 7200	to	7299
252 469 2125	to	2199	258 405 6400	to	6499	262 337 4500	to	4599	262 546 7300	to	7399
252 833 3286	to	3297	258 405 6800	to	6899	262 337 4600	to	4699	262 546 7400	to	7499
253 470 3948	to	3999	258 405 6900	to	6999	262 337 4700	to	4799	262 546 9800	to	9899
253 565 7400	to	7499	258 405 7000	to	7099	262 337 4800	to	4899	262 546 9900	to	9999

262 567 1788	to	1799	389 887 9234	to	9299	412 395 8599	to	8699	437 427 0500	to	3499
263 254 2500	to	2500	<b>390 001 3182</b>	<b>to</b>	<b>3199</b>	412 485 6500	to	6599	439 179 2300	to	2399
263 340 0000	to	0099	390 001 3500	to	3699	412 485 6610	to	6699	439 310 0458	to	0499
263 340 0100	to	0199	390 545 5974	to	5999	412 885 5953	to	5999	<b>440 698 1947</b>	<b>to</b>	<b>1999</b>
263 340 0500	to	0599	391 104 6146	to	6199	414 193 3608	to	3674	440 858 6300	to	6399
263 340 0600	to	0699	391 574 1466	to	1499	414 193 3677	to	3699	440 858 6420	to	7299
263 340 2700	to	2799	391 783 3020	to	3599	414 411 7348	to	7399	441 199 1655	to	1699
263 340 2800	to	2899	391 792 6100	to	6199	414 640 0757	to	0799	443 127 3648	to	3699
263 340 3000	to	3099	392 668 2956	to	2999	414 965 1727	to	1799	443 127 4000	to	4099
264 341 2360	to	2399	392 854 8500	to	8899	417 302 8104	to	8199	443 673 7900	to	7999
264 380 4000	to	4099	393 584 7566	to	7699	417 387 6532	to	6599	443 800 9335	to	9399
264 380 4100	to	4199	393 650 0074	to	0099	417 496 6800	to	6999	444 382 8822	to	8899
264 799 6049	to	6099	393 838 8316	to	8499	417 871 9250	to	9299	444 390 1667	to	1699
264 860 7832	to	7868	393 893 6007	to	6099	417 930 9533	to	9599	444 457 3854	to	3899
265 127 3658	to	3699	394 126 6907	to	6999	418 164 6500	to	6799	<b>450 048 4173</b>	<b>to</b>	<b>4199</b>
265 380 7111	to	7137	394 189 0405	to	0599	418 423 9863	to	9899	450 048 4442	to	4699
265 444 4762	to	4799	394 822 3243	to	3278	418 633 5922	to	5999	450 560 5173	to	5199
265 548 7074	to	7099	394 990 1810	to	1899	418 719 8520	to	8599	450 620 3077	to	3099
266 106 0000	to	2499	395 343 3264	to	3299	418 744 2235	to	2299	450 620 3135	to	3199
266 129 5809	to	5899	395 373 3035	to	3099	418 962 2848	to	2899	450 780 2716	to	2799
266 673 0000	to	2499	395 396 9649	to	9799	419 543 0286	to	0299	450 801 2700	to	2799
266 749 7900	to	7999	395 970 3240	to	3299	419 730 0300	to	0399	451 109 2967	to	2984
266 868 0952	to	0999	397 622 4054	to	4099	<b>420 277 0015</b>	<b>to</b>	<b>0049</b>	451 115 4110	to	4125
266 868 1028	to	1099	397 819 8902	to	8999	420 599 0734	to	0798	451 115 4127	to	4199
266 868 1100	to	1199	398 149 7200	to	7699	420 661 4115	to	4199	451 746 0700	to	0799
266 868 1200	to	1299	399 070 0872	to	0899	420 758 9500	to	9699	452 265 0074	to	0099
267 296 1237	to	1299	399 156 7119	to	7199	420 969 3951	to	3971	452 265 0246	to	0299
267 324 8946	to	8998	399 203 5064	to	5099	420 969 3973	to	3999	452 265 0335	to	0999
268 072 1203	to	1299	399 296 9910	to	9999	421 116 3565	to	3599	452 509 1169	to	1199
<b>271 660 4333</b>	<b>to</b>	<b>4400</b>	399 396 8935	to	8999	421 130 9300	to	9399	452 855 6471	to	6499
273 520 0000	to	9999	399 792 7775	to	7799	421 313 4500	to	4999	452 890 4679	to	4799
273 520 6000	to	8999	399 792 8300	to	8399	421 364 5537	to	5599	452 900 8215	to	8238
273 775 7700	to	7899	<b>400 427 1051</b>	<b>to</b>	<b>1999</b>	421 656 2609	to	2699	453 117 9146	to	9199
273 882 1913	to	1998	401 045 1505	to	1549	421 988 9700	to	9799	453 334 3631	to	3699
274 750 0300	to	0400	401 045 1571	to	1599	422 172 4667	to	4699	453 603 7841	to	7891
274 782 0549	to	0599	401 294 2700	to	2799	422 484 4212	to	4299	453 650 1140	to	1199
<b>302 000 0000</b>	<b>to</b>	<b>9999</b>	401 310 9505	to	9599	422 556 1270	to	1299	453 741 1300	to	1399
<b>349 746 2056</b>	<b>to</b>	<b>2099</b>	401 382 5312	to	5399	422 587 7024	to	7099	454 013 2919	to	2999
<b>350 518 7350</b>	<b>to</b>	<b>3774</b>	402 578 7876	to	7899	422 819 7533	to	7599	454 186 2411	to	2499
<b>360 011 1690</b>	<b>to</b>	<b>1699</b>	403 125 6744	to	6799	422 842 5073	to	5087	454 268 4883	to	4899
360 168 6008	to	6099	403 260 7000	to	7499	422 907 7563	to	7599	454 302 5400	to	5499
360 173 8800	to	8899	403 280 6470	to	6499	424 500 6050	to	6099	454 490 8300	to	8399
360 324 2326	to	2399	403 685 8600	to	8699	424 641 8500	to	8599	454 547 7434	to	7499
362 861 3064	to	3099	404 003 0300	to	0399	424 871 6600	to	6699	454 922 4867	to	4895
<b>373 006 2176</b>	<b>to</b>	<b>2199</b>	404 041 8838	to	8899	425 298 2352	to	2399	455 221 1348	to	1499
374 768 2600	to	2699	404 071 4268	to	4299	425 418 4269	to	4299	455 364 2147	to	2199
375 169 4400	to	4599	404 347 5356	to	5399	425 418 4405	to	4499	455 399 5400	to	5499
375 829 3400	to	3499	404 347 5548	to	5599	426 547 4566	to	4599	455 476 0676	to	0699
375 851 9100	to	9199	404 726 4500	to	4599	427 412 6337	to	6499	455 543 0618	to	0699
376 196 0911	to	0999	404 961 5001	to	5199	427 481 0900	to	0999	456 410 9006	to	9099
378 085 3679	to	3699	405 325 0188	to	0198	428 027 2742	to	2752	456 470 4146	to	4299
378 351 1063	to	1099	406 009 4587	to	4599	429 474 4172	to	4199	456 619 4460	to	4499
379 843 5100	to	5199	406 260 6830	to	6899	429 889 2900	to	2999	457 333 2686	to	2699
<b>380 093 9600</b>	<b>to</b>	<b>9699</b>	406 459 6641	to	6999	<b>430 150 4401</b>	<b>to</b>	<b>4599</b>	457 729 1767	to	1777
380 165 1165	to	1199	406 733 3000	to	3999	430 172 9800	to	9899	457 937 8615	to	8699
381 325 4500	to	4599	407 545 1557	to	1599	430 177 1900	to	2099	458 028 9810	to	9899
381 604 2510	to	2699	407 594 0412	to	0599	430 444 9500	to	9699	458 057 2712	to	2999
381 645 9525	to	9599	407 692 9100	to	9299	430 664 4070	to	4099	458 069 9537	to	9599
383 314 3968	to	3999	407 959 2190	to	2199	432 168 8419	to	8499	458 069 9665	to	9699
383 892 1000	to	1344	408 265 2275	to	2288	432 708 6800	to	6999	458 337 5222	to	5299
383 892 1382	to	1399	408 499 7700	to	7799	432 744 1544	to	1599	458 354 7653	to	7999
384 925 3641	to	3654	408 499 7900	to	7999	432 995 9775	to	9799	458 671 8678	to	8699
385 568 2331	to	2399	408 682 8484	to	8599	433 003 5800	to	5899	458 671 8721	to	8798
385 599 7554	to	7575	408 698 7015	to	7099	433 757 3047	to	3099	458 847 5044	to	5999
385 774 2024	to	2099	409 072 3941	to	3999	433 765 4003	to	4099	459 274 7624	to	7699
386 624 1412	to	1599	<b>410 491 2311</b>	<b>to</b>	<b>2399</b>	434 482 7060	to	7199	459 365 5432	to	5499
386 883 8936	to	8999	410 694 8400	to	8599	434 513 2386	to	2399	459 378 5764	to	5799
387 314 5574	to	5599	410 775 1500	to	1599	434 968 3076	to	3092	459 472 4816	to	4999
387 837 6300	to	6399	410 795 7927	to	7999	435 303 1831	to	1842	<b>460 349 6878</b>	<b>to</b>	<b>6899</b>
388 828 0656	to	0699	410 867 0917	to	0966	435 303 1986	to	1999	460 550 1909	to	1999
389 696 2400	to	2799	410 867 0970	to	0999	435 666 6092	to	6399	460 997 5234	to	5299
389 846 3104	to	3135	411 868 1023	to	1199	436 082 6400	to	6899	461 973 6443	to	6499
389 846 3145	to	3195	411 922 2322	to	2399	436 160 6441	to	6499	462 152 0107	to	0299
389 887 9211	to	9230	412 193 0900	to	0999	437 316 7115	to	7199	462 274 1072	to	1099

462 277 8373	to	8399	482 729 6800	to	6899	505 096 0662	to	0699	609 893 1000	to	1099
462 554 6051	to	6099	483 363 7207	to	7299	505 893 7739	to	7799	<b>610 092 3200</b>	<b>to</b>	<b>3299</b>
463 011 5529	to	5540	483 402 2356	to	2399	505 893 7800	to	7999	610 582 4200	to	4299
463 176 4115	to	4199	483 486 5100	to	5199	506 124 0800	to	0999	611 879 6939	to	6999
463 176 4229	to	4299	483 632 1521	to	1599	506 165 7027	to	0099	612 291 8013	to	8099
463 185 2600	to	2799	483 632 2600	to	2799	506 502 5209	to	5299	612 751 5171	to	5199
463 227 7711	to	7799	483 849 1615	to	1699	506 756 1682	to	1699	612 751 5226	to	5299
463 414 4869	to	4899	484 174 4803	to	5299	506 756 1700	to	1799	612 751 6083	to	6099
463 808 3484	to	3499	484 323 8900	to	9199	506 756 1800	to	1899	612 751 6268	to	6299
463 945 7400	to	7899	484 680 5000	to	5038	506 836 5326	to	5399	612 751 6572	to	6599
464 629 9000	to	9399	484 680 5040	to	5074	508 488 6226	to	6299	612 774 2111	to	2199
464 711 4332	to	4399	484 680 5077	to	5099	508 789 8332	to	8399	612 774 2254	to	2299
465 692 3963	to	3999	485 029 4913	to	4999	508 789 8400	to	8499	612 774 2500	to	2599
465 698 8300	to	8599	486 176 0600	to	0699	509 909 0425	to	0435	614 469 0979	to	0999
465 743 7745	to	7799	486 559 7555	to	7599	<b>510 150 2400</b>	<b>to</b>	<b>2499</b>	614 474 3000	to	3099
466 798 6056	to	6067	486 696 3023	to	3199	510 381 3200	to	3299	614 521 3490	to	3499
467 147 4300	to	4399	488 173 7900	to	7999	510 587 9500	to	9599	614 645 1800	to	1899
468 079 5782	to	5799	488 206 4100	to	4199	510 587 9659	to	9699	614 832 1100	to	2099
469 067 2817	to	2899	488 226 0200	to	0299	510 269 9770	to	9999	615 017 7505	to	7599
469 127 8000	to	8199	488 709 3906	to	3999	511 021 5042	to	5099	617 711 6609	to	6699
469 213 0359	to	0399	488 855 8359	to	8399	511 021 5100	to	5199	617 760 5266	to	5299
469 213 0500	to	0599	489 181 8963	to	8999	511 468 1747	to	1799	617 813 3601	to	3699
469 561 8011	to	8099	489 223 2000	to	2099	511 844 0100	to	0199	618 840 9200	to	9299
469 658 1961	to	1999	489 311 1930	to	1999	511 844 0340	to	0399	619 551 7229	to	7299
469 666 9900	to	9999	489 318 6200	to	6300	512 805 3913	to	3919	619 859 3000	to	3099
469 678 1900	to	1999	489 384 0027	to	0099	513 046 0700	to	0726	<b>620 073 9400</b>	<b>to</b>	<b>9499</b>
469 781 4900	to	4999	489 427 0658	to	0899	513 149 0600	to	0699	621 614 7907	to	7930
469 947 6960	to	6999	489 997 5252	to	5299	513 445 3000	to	3199	621 614 7932	to	7999
<b>470 755 5800</b>	<b>to</b>	<b>5818</b>	<b>490 669 5850</b>	<b>to</b>	<b>6099</b>	513 466 2034	to	2044	621 648 8021	to	8199
471 918 0300	to	0999	490 717 7080	to	7099	513 539 9052	to	9099	621 648 8500	to	8599
471 985 2408	to	2419	490 721 6000	to	6099	513 539 9267	to	9299	621 904 8351	to	8599
472 191 6700	to	6799	490 793 1500	to	2099	513 539 9800	to	9899	621 916 1978	to	1989
472 270 2555	to	2599	490 886 8171	to	8199	513 539 9985	to	9999	622 989 8032	to	8099
472 987 0213	to	0241	490 977 9221	to	9240	513 606 5459	to	5490	623 076 9300	to	9399
472 987 0290	to	0299	491 258 8100	to	9099	513 812 1751	to	1799	623 819 5006	to	5099
473 151 2069	to	2199	491 567 1376	to	1399	514 103 3600	to	3699	623 895 8200	to	8399
473 666 9138	to	9199	492 254 4800	to	4899	514 103 3700	to	3799	623 917 0000	to	0099
473 952 3429	to	3499	492 283 5100	to	5199	514 103 3800	to	3899	623 917 0200	to	0299
474 108 5402	to	5499	492 610 6813	to	6899	<b>600 645 3223</b>	<b>to</b>	<b>3299</b>	624 468 5288	to	5299
474 356 5193	to	5299	493 394 5568	to	5599	601 339 1200	to	1399	624 665 3162	to	3198
474 949 3366	to	3399	493 470 2562	to	2599	601 653 5884	to	5899	625 088 6735	to	6799
475 134 9362	to	9399	493 473 7700	to	7799	601 661 7700	to	7799	625 916 9500	to	9799
475 167 9667	to	9699	493 716 2153	to	2199	601 682 5343	to	5399	625 968 8956	to	8999
475 319 3415	to	3499	494 206 2972	to	2999	601 928 1600	to	1699	627 005 3938	to	3999
475 319 3649	to	3799	494 217 3446	to	3999	602 512 2972	to	2999	627 384 3907	to	4099
475 340 6400	to	6599	494 224 0500	to	0599	602 555 2400	to	2799	627 496 7549	to	7599
475 424 8410	to	8499	495 145 0600	to	0699	602 829 7061	to	7099	627 708 3605	to	3699
475 629 9156	to	9199	496 209 7425	to	7499	603 483 9572	to	9599	627 776 2500	to	2599
475 850 6101	to	6199	496 213 8728	to	8799	603 490 7200	to	7299	628 226 3100	to	3199
475 875 2500	to	2599	496 474 5226	to	5248	603 678 7100	to	7199	628 814 4702	to	4799
476 169 8264	to	8299	497 053 8517	to	8699	603 678 7662	to	7699	628 851 9689	to	9699
476 189 3000	to	3499	497 854 8673	to	8699	603 678 7902	to	7999	629 510 7200	to	7299
476 331 2480	to	2499	498 449 8888	to	8899	603 678 8418	to	8499	629 964 4200	to	4294
477 289 8601	to	8699	498 929 8285	to	8499	603 678 8700	to	9999	<b>630 389 3056</b>	<b>to</b>	<b>3071</b>
477 681 5206	to	5299	498 936 5310	to	5399	604 086 0880	to	0899	630 463 0588	to	0599
478 010 4243	to	4268	499 016 5425	to	5499	604 349 1414	to	1499	631 459 9117	to	9199
478 010 4270	to	4291	499 440 8575	to	8899	604 503 7776	to	7799	631 762 9325	to	9399
478 450 5071	to	5099	499 731 6717	to	6799	605 520 9037	to	9099	632 217 4933	to	4999
478 469 7838	to	7858	<b>500 064 1858</b>	<b>to</b>	<b>1869</b>	605 685 4010	to	4099	632 500 0000	to	640 3999
478 469 7883	to	7899	500 070 5725	to	7799	605 988 6467	to	6499	633 110 4165	to	4199
479 280 9800	to	9899	501 058 0016	to	0026	607 689 7951	to	7960	633 110 4303	to	4499
479 365 9116	to	9176	501 331 0300	to	0399	607 728 1276	to	1299	633 438 6429	to	6599
479 412 9900	to	9999	501 460 0977	to	0999	608 727 7100	to	7199	633 588 7173	to	7182
479 667 6190	to	6199	502 227 7645	to	7699	608 727 7273	to	7599	634 725 0700	to	0799
479 748 9680	to	9699	502 424 0200	to	0499	608 813 9950	to	9999	634 803 3239	to	3299
479 860 7000	to	7199	502 424 0600	to	0699	609 067 5325	to	5399	634 807 2474	to	2499
<b>480 526 2000</b>	<b>to</b>	<b>2099</b>	502 496 6923	to	6999	609 067 5488	to	5499	634 827 5900	to	5999
480 640 6330	to	6399	503 003 2700	to	2899	609 067 5600	to	5699	634 886 3428	to	3499
480 658 0568	to	0599	503 194 5144	to	5153	609 289 6123	to	6199	635 559 3449	to	3499
480 689 5100	to	5199	503 790 9922	to	9948	609 438 4400	to	4499	636 289 6214	to	6299
481 072 9463	to	9499	504 045 4030	to	4099	609 493 1100	to	1199	636 634 8007	to	8042
481 673 0074	to	0095	504 166 0200	to	0599	609 766 8091	to	8999	637 150 1200	to	1299
482 527 1500	to	1599	504 240 1062	to	1399	609 825 4100	to	4115	637 562 5828	to	5899
482 541 5255	to	5299	504 805 3300	to	3499	609 884 2981	to	2999	638 042 1647	to	1699

638 049 4984	to	4999	653 426 3300	to	3399	683 378 2117	to	2299	701 941 0600	to	0699
638 318 1115	to	1199	653 455 4874	to	4899	683 415 1200	to	1499	702 171 1603	to	1699
638 318 1453	to	1499	654 238 0000	to	0399	683 444 8159	to	8199	702 195 5109	to	5199
638 885 0000	to	0299	654 404 3065	to	3092	685 154 7780	to	7789	702 254 9300	to	9399
638 903 4362	to	4373	654 962 2900	to	3199	685 297 7645	to	7699	702 264 7569	to	7599
639 415 1929	to	1999	655 103 5081	to	5199	685 623 5264	to	5299	702 519 0513	to	0524
639 415 2019	to	2099	655 523 2600	to	2999	685 650 9487	to	9499	702 713 1800	to	1809
639 420 6200	to	6299	656 305 2448	to	2499	685 669 4200	to	4299	702 821 5730	to	5799
639 469 3517	to	3799	657 347 4438	to	4999	685 757 8452	to	8499	702 821 5805	to	5899
639 605 2143	to	2199	657 710 8100	to	8999	686 071 2694	to	2799	702 844 6975	to	6994
639 657 8600	to	8799	657 780 0985	to	0999	686 176 3333	to	3354	702 846 6331	to	6399
<b>640 289 7500</b>	<b>to</b>	<b>7599</b>	658 586 1400	to	1499	686 372 3200	to	3299	702 848 3900	to	3999
640 289 7700	to	7999	658 877 8000	to	8199	686 644 5879	to	5899	702 857 7302	to	7499
641 170 4420	to	4499	658 880 8000	to	8199	686 899 1371	to	1399	702 878 0114	to	0199
641 318 3133	to	3199	659 398 7300	to	7399	686 931 7636	to	7699	703 364 1707	to	1799
641 378 6500	to	6999	659 706 8113	to	8199	687 601 0973	to	0999	<b>740 002 7710</b>	<b>to</b>	<b>7719</b>
641 383 8739	to	8799	659 846 7837	to	7899	687 614 6774	to	6799	740 037 6730	to	6800
641 877 3187	to	3299	<b>660 510 4100</b>	<b>to</b>	<b>4199</b>	688 120 9000	to	9999	740 119 2275	to	2284
641 877 3310	to	3399	660 673 0400	to	0599	688 314 3107	to	3191	740 130 6688	to	6698
642 355 8094	to	8199	661 488 5000	to	5099	<b>690 291 1361</b>	<b>to</b>	<b>1371</b>	740 144 2780	to	2795
642 355 8308	to	8999	661 609 9100	to	9199	690 788 2877	to	2899	740 241 9049	to	9099
642 900 0018	to	0099	661 716 9420	to	9499	690 893 5344	to	5399	740 252 9265	to	9294
643 030 6254	to	6299	661 906 6522	to	6599	690 893 5512	to	5599	740 255 1718	to	1799
644 066 0882	to	0899	662 021 8332	to	8399	690 904 1300	to	1599	740 274 2602	to	2619
644 069 0600	to	0699	662 068 0700	to	0899	690 941 6000	to	6199	740 277 0366	to	0392
644 077 7506	to	7699	662 553 0774	to	0799	691 313 6383	to	6399	740 332 7658	to	7671
644 085 8157	to	8199	663 078 7034	to	7099	691 313 6600	to	6699	740 348 6641	to	6658
644 112 9839	to	9899	663 763 5300	to	5399	691 582 8003	to	8099	740 351 4790	to	4799
644 373 9083	to	9099	663 883 7039	to	7499	691 664 1800	to	1999	740 374 7416	to	7499
644 380 1460	to	1499	663 938 9200	to	9299	691 664 2400	to	2499	740 470 2420	to	2443
644 733 4715	to	4799	664 253 8000	to	8499	692 727 9362	to	9399	740 514 0300	to	0396
644 900 9712	to	9799	664 656 3055	to	3099	692 798 1800	to	1899	740 523 7432	to	7449
644 901 0109	to	1299	665 174 6400	to	6499	693 249 0779	to	0799	740 535 1555	to	1580
644 901 1325	to	1399	665 274 8208	to	8299	693 249 0877	to	1699	740 557 3570	to	3579
644 923 6800	to	7799	665 669 5400	to	5499	693 445 0566	to	0999	740 650 4104	to	4140
644 932 4655	to	4699	666 132 8226	to	8299	693 448 8500	to	8999	740 684 0620	to	0800
645 318 7240	to	7499	666 696 2209	to	2299	693 645 9583	to	9599	740 701 6105	to	6114
645 333 1766	to	1799	666 696 2309	to	2399	693 965 4200	to	4299	740 705 9790	to	9799
645 790 8632	to	8699	667 032 9300	to	9399	695 741 2906	to	2999	740 726 6400	to	6500
645 821 0657	to	0699	667 729 5529	to	5599	695 947 8518	to	8599	740 748 8319	to	8329
645 930 7948	to	7999	668 383 8400	to	8699	696 662 8247	to	8299	740 765 3306	to	3399
645 975 0737	to	0762	<b>670 368 3400</b>	<b>to</b>	<b>3499</b>	697 447 8285	to	8296	740 774 8434	to	8499
646 242 6200	to	6299	670 369 7336	to	7399	698 042 4816	to	4899	740 779 4259	to	4299
646 270 7639	to	7799	670 750 7169	to	7199	698 131 2138	to	2157	740 786 1885	to	1899
646 798 4000	to	4999	671 046 6200	to	6399	698 227 0000	to	0099	740 790 5989	to	5999
647 048 7035	to	7099	671 251 5448	to	5499	<b>700 065 2570</b>	<b>to</b>	<b>2599</b>	740 803 4870	to	4879
647 049 2900	to	2999	671 926 5600	to	5799	700 065 4800	to	4899	740 820 4854	to	7836
647 398 8300	to	8399	672 444 2000	to	2999	700 190 3350	to	3359	740 827 7578	to	7594
647 398 8481	to	8499	672 828 3410	to	3499	700 228 6048	to	6099	740 917 7490	to	7499
647 437 3000	to	4999	673 167 5776	to	5799	700 650 0452	to	0499	740 918 5531	to	5549
647 811 2188	to	2199	675 464 3700	to	3799	700 666 1323	to	1349	741 037 8528	to	8551
648 009 6057	to	6099	675 464 4000	to	4199	700 786 9106	to	9142	742 030 6135	to	6149
648 163 5300	to	5499	676 365 5958	to	5999	700 859 0744	to	0758	742 033 2663	to	2674
648 722 5283	to	5299	676 669 1024	to	1099	701 028 6780	to	6899	742 040 3300	to	3309
648 892 3164	to	3199	677 126 6734	to	6799	701 213 3900	to	3999	742 112 8155	to	8199
649 100 3989	to	3999	677 333 9979	to	9999	701 267 2000	to	3999	742 151 5000	to	5014
649 647 0370	to	0399	677 466 1088	to	1099	701 335 7312	to	7399	742 191 4640	to	4649
649 647 0522	to	0599	678 071 4500	to	4799	701 369 2005	to	2050	742 192 5210	to	5224
649 647 5237	to	5399	678 096 7531	to	7599	701 499 2260	to	2299	742 222 9200	to	9210
649 647 9100	to	9299	679 909 2578	to	2599	701 503 2247	to	2299	742 228 9660	to	9669
649 666 7800	to	8299	<b>680 112 9565</b>	<b>to</b>	<b>9599</b>	701 541 2271	to	2299	742 247 6980	to	6989
<b>650 114 7707</b>	<b>to</b>	<b>7719</b>	680 244 0903	to	0999	701 553 6557	to	6599	742 290 0936	to	0950
650 130 3400	to	3599	680 412 6046	to	6099	701 578 7460	to	7469	742 302 7600	to	7699
650 213 0406	to	0499	680 761 6800	to	6899	701 578 7475	to	7499	742 305 3711	to	3799
650 555 1749	to	1799	681 677 0540	to	0699	701 601 3457	to	3499	742 305 3800	to	3899
650 564 1900	to	1999	682 070 1029	to	1099	701 605 5913	to	5999	742 305 3900	to	3999
650 627 4212	to	4299	682 956 6280	to	6299	701 695 3982	to	3999	742 305 4000	to	4099
650 736 2043	to	2099	682 956 6490	to	6599	701 695 4148	to	4199	742 305 4100	to	4199
650 739 1540	to	1699	682 956 6700	to	6799	701 695 4227	to	4299	<b>805 885 8411</b>	<b>to</b>	<b>8499</b>
651 741 4415	to	4499	682 965 1178	to	1199	701 708 1741	to	1799	806 087 1100	to	1499
651 882 2800	to	2899	682 965 1201	to	1299	701 736 3966	to	3999	806 268 9275	to	9299
652 754 6317	to	6399	683 118 2389	to	2399	701 772 0870	to	0899	806 534 3400	to	3477
653 131 4945	to	4999	683 378 2000	to	2099	701 838 2800	to	2899	807 342 3283	to	3399

808 086 7100	to	7199	855 361 3390	to	3399	902 198 9769	to	9799	918 460 0602	to	0699
808 090 3440	to	3499	856 226 0490	to	0499	902 948 1269	to	1299	918 951 7231	to	7299
808 325 5161	to	5699	856 656 5800	to	5999	902 985 0833	to	0899	919 519 2786	to	2799
808 784 8000	to	8299	856 752 0200	to	0299	903 370 6934	to	6999	919 536 0770	to	0799
<b>830 125 0672</b>	<b>to</b>	<b>0699</b>	857 111 1352	to	1399	904 600 6523	to	6599	919 814 3095	to	3199
830 602 5800	to	5999	857 279 3450	to	3499	904 892 0378	to	0399	919 889 5110	to	5134
830 610 3700	to	3799	857 843 4000	to	4099	904 892 0648	to	1299	919 889 5137	to	5176
830 983 3500	to	3599	858 124 7644	to	7699	905 056 2216	to	2299	919 889 5178	to	5199
830 983 3635	to	3699	858 756 3111	to	3299	905 510 6647	to	6799	919 889 5030	to	5070
831 354 1387	to	1399	859 063 8200	to	8699	905 510 6900	to	7099	919 889 5090	to	5099
831 815 8240	to	8299	859 190 0600	to	0644	905 794 0000	to	0199	919 915 2774	to	2787
832 525 3810	to	3899	859 437 5538	to	5599	905 794 0288	to	0299	<b>920 155 4662</b>	<b>to</b>	<b>4687</b>
833 159 1884	to	1899	859 811 2888	to	2899	905 873 6900	to	6999	920 309 9039	to	9199
833 456 2567	to	2599	859 855 8873	to	8999	905 873 7100	to	7299	920 771 5321	to	5399
833 566 3015	to	3071	<b>860 240 8520</b>	<b>to</b>	<b>8599</b>	905 882 8900	to	8999	920 857 5500	to	8899
834 130 5200	to	5299	860 275 3900	to	3999	905 889 7100	to	7199	920 864 3480	to	3499
834 316 5444	to	5499	860 518 9629	to	9699	906 158 1508	to	1599	920 963 4567	to	4599
834 354 8747	to	8766	860 600 0021	to	0999	906 558 8812	to	8899	921 333 7400	to	7499
834 354 8824	to	8838	861 158 2350	to	2599	906 882 2214	to	2299	921 477 3762	to	3799
835 269 5700	to	5799	861 367 5400	to	5499	907 725 8500	to	8599	922 278 1048	to	1399
835 496 7303	to	7399	861 637 6010	to	6099	907 815 0216	to	0257	922 280 2019	to	2099
835 539 5200	to	5999	861 979 7292	to	7499	908 622 4225	to	4235	922 280 2233	to	2299
835 813 3015	to	3099	862 216 6100	to	6199	908 936 9254	to	9299	922 773 0459	to	0499
837 672 8967	to	8999	862 263 9213	to	9299	909 066 4494	to	7499	923 032 7000	to	7399
837 784 3282	to	3299	862 271 0800	to	0999	909 067 7400	to	7499	923 045 3630	to	3699
838 176 8377	to	8399	862 271 5000	to	5099	909 100 1787	to	1799	923 484 3600	to	3699
838 518 1257	to	1299	863 871 5138	to	5199	909 100 1900	to	2099	923 493 9403	to	9599
839 718 8257	to	8299	863 949 5300	to	5399	909 355 0422	to	0499	923 493 9681	to	9699
<b>840 323 0600</b>	<b>to</b>	<b>0699</b>	864 088 8200	to	8299	909 568 8900	to	9099	923 604 4424	to	4499
840 875 6235	to	6299	864 426 3972	to	3999	909 568 9300	to	9499	923 810 7800	to	8299
840 910 0900	to	0999	864 520 6117	to	6136	909 725 7307	to	7399	924 252 1200	to	1299
841 349 5000	to	5099	865 151 0526	to	0599	909 833 0947	to	0999	924 252 1400	to	1499
841 805 7747	to	7899	865 500 4034	to	4099	<b>910 219 8631</b>	<b>to</b>	<b>8699</b>	924 533 0711	to	0799
841 805 7944	to	8099	865 883 6082	to	6099	910 265 1100	to	1199	924 533 2343	to	2399
842 226 0685	to	0695	866 004 3000	to	3999	910 471 7273	to	7299	924 533 2428	to	2499
842 685 4600	to	4699	866 442 4100	to	4899	910 536 2505	to	2599	924 685 1957	to	1999
842 685 4742	to	4999	867 366 9108	to	9118	910 958 7499	to	7599	924 946 6300	to	6699
842 860 0300	to	0399	867 633 7403	to	7499	911 140 1000	to	2199	925 333 5900	to	6099
842 898 5582	to	5599	867 737 5623	to	5699	911 245 2545	to	2599	925 336 2300	to	2399
843 062 7100	to	7199	868 169 4529	to	4599	911 268 9077	to	9099	926 432 5907	to	5999
843 077 6288	to	6299	868 173 8400	to	8599	911 400 8948	to	8999	926 436 3600	to	3699
843 077 6378	to	6399	868 514 9000	to	9099	911 508 1620	to	1799	927 765 6257	to	6299
843 758 5769	to	5778	868 566 9200	to	9299	911 509 9310	to	9399	928 197 8100	to	8199
843 786 2554	to	2699	869 200 0000	to	9999	911 523 3000	to	3999	928 197 8283	to	8299
845 656 8165	to	8199	869 387 1150	to	1199	912 057 9922	to	9999	928 856 2059	to	2068
845 727 2100	to	2199	869 505 3500	to	3599	912 882 0563	to	0899	<b>930 078 5800</b>	<b>to</b>	<b>5899</b>
845 746 2618	to	2635	869 523 7033	to	7099	913 605 2218	to	2299	930 219 1722	to	1799
846 390 7531	to	7599	869 566 6150	to	6167	913 709 2429	to	2499	930 335 7810	to	7819
846 918 0572	to	0599	869 776 8785	to	8786	913 818 3501	to	3999	931 097 9259	to	9299
847 237 7690	to	7699	869 800 0000	to	9999	914 063 4300	to	4399	931 156 1502	to	1579
847 284 2481	to	2499	<b>870 054 4814</b>	<b>to</b>	<b>4899</b>	914 346 7621	to	7644	931 156 1600	to	1625
847 374 7055	to	7065	870 491 4812	to	4849	914 453 1366	to	1399	931 156 1671	to	1699
847 374 7055	to	7065	870 536 5820	to	5829	914 529 6185	to	6299	932 506 6400	to	6599
847 636 5304	to	5399	870 541 7167	to	7239	914 896 4658	to	4699	932 732 1796	to	1799
847 700 5447	to	5499	870 575 8155	to	8999	915 187 8774	to	8779	932 827 9026	to	9099
847 723 7500	to	7599	870 589 0485	to	0494	915 300 2783	to	2799	932 957 2300	to	2399
849 485 3427	to	3499	870 691 7060	to	7099	915 546 6822	to	6999	933 060 6160	to	6189
849 520 9850	to	9899	872 028 4850	to	4899	915 646 5183	to	5199	933 387 2541	to	2561
849 608 1357	to	1399	872 029 9306	to	9399	915 671 3963	to	3980	933 760 3609	to	4199
849 792 2600	to	2699	872 078 3709	to	3799	915 671 3982	to	3999	933 894 0928	to	0999
<b>850 546 1862</b>	<b>to</b>	<b>1899</b>	872 100 0445	to	0459	915 675 2217	to	2299	934 018 2729	to	2741
851 143 6826	to	6844	<b>900 556 4178</b>	<b>to</b>	<b>4199</b>	916 440 3377	to	3399	934 180 0300	to	0399
851 209 9880	to	9899	900 845 0044	to	0099	916 670 6352	to	6399	934 236 3954	to	3999
851 928 9221	to	9299	900 936 0217	to	0299	916 682 5300	to	5399	934 622 8717	to	8999
852 589 6560	to	6599	900 936 0435	to	0499	916 694 1414	to	1499	935 216 0312	to	0399
853 049 3646	to	3699	901 058 5255	to	5280	916 703 0802	to	0821	935 843 2202	to	2247
854 304 4089	to	4999	901 273 1082	to	1099	917 089 0709	to	0799	936 024 8889	to	8899
854 529 2200	to	2299	901 287 5143	to	5199	917 089 0842	to	0899	936 339 4455	to	4499
854 532 0000	to	2999	901 291 2789	to	2799	917 216 2928	to	2999			
855 001 6204	to	6249	901 525 7122	to	7199	917 370 6300	to	6499			
855 319 9364	to	9399	902 089 1253	to	1299	917 486 4900	to	4999			

## Missing, Lost, or Stolen Canadian Money Order Forms

### Do Not Cash — Upon Receipt, Notify Local Postal Inspectors

Provide this listing to all Postal Service™ employees responsible for accepting and cashing postal money orders. Destroy all interim notices when the numbers listed appear in the *Postal Bulletin*. The new money order serial

numbers consist of the first 9 digits. The tenth digit is a check digit only.

Do not cash outdated money orders **104 151 601 to 692 600 000**. Advise holders to send invalid money orders to Canada Post Corporation, Ottawa, Canada K1A 0B1. Check for altered dollar amounts by holding money orders to the light.

719 869 731	to	9 760	728 702 338	to	2 400	734 950 111	to	0 170	742 325 668	to	5 700
<b>720 227 871</b>	<b>to</b>	<b>7 930</b>	728 915 371	to	5 850	735 120 331	to	0 840	742 408 771	to	8 830
720 227 949	to	7 960	728 953 141	to	3 410	735 283 008	to	3 020	742 512 120	to	2 150
720 368 543	to	8 570	728 954 280	to	4 310	735 293 131	to	3 220	742 684 849	to	4 890
720 392 151	to	2 570	729 169 081	to	9 140	735 635 010	to	5 040	742 839 553	to	9 630
720 556 491	to	6 640	729 363 841	to	3 870	735 783 961	to	3 990	742 913 668	to	3 700
720 558 621	to	8 650	729 682 891	to	3 190	735 803 401	to	3 430	742 917 287	to	7 296
720 575 361	to	5 570	729 838 940	to	9 070	736 005 420	to	5 440	742 921 891	to	1 980
720 590 152	to	0 179	729 839 101	to	9 130	736 366 021	to	6 110	742 983 631	to	3 810
721 638 331	to	9 170	<b>730 077 683</b>	<b>to</b>	<b>7 840</b>	736 624 456	to	4 500	743 020 021	to	0 170
721 815 391	to	5 420	730 109 847	to	9 880	736 670 851	to	1 060	743 206 491	to	6 500
721 969 713	to	9 740	730 373 761	to	3 850	736 767 061	to	7 090	743 235 992	to	6 050
722 072 137	to	2 160	730 501 951	to	2 130	736 767 093	to	7 120	743 940 631	to	0 900
722 378 265	to	8 280	730 519 379	to	9 470	736 982 191	to	2 370	743 978 011	to	8 070
722 413 990	to	4 004	730 569 278	to	9 360	736 982 551	to	2 730	744 234 751	to	4 780
722 764 948	to	4 980	730 711 711	to	1 740	737 110 141	to	0 170	744 499 591	to	9 680
722 825 840	to	5 889	730 722 991	to	3 230	737 185 501	to	5 710	744 626 901	to	6 910
723 153 841	to	3 850	730 845 970	to	5 990	737 317 321	to	7 350	745 388 794	to	8 910
723 237 616	to	7 630	730 888 291	to	8 320	737 517 781	to	7 840	746 446 806	to	6 820
723 331 081	to	1 110	730 927 591	to	7 680	737 628 181	to	8 210	746 818 351	to	8 410
723 496 443	to	6 470	731 307 914	to	7 930	737 634 258	to	4 270	747 245 266	to	5 280
723 967 291	to	7 320	731 402 431	to	2 460	738 361 971	to	1 980	747 364 813	to	4 830
724 655 196	to	5 340	731 407 232	to	7 320	738 447 601	to	7 660	747 501 434	to	1 450
724 711 441	to	1 500	731 588 301	to	8 340	738 648 355	to	8 450	747 739 891	to	0 070
724 711 538	to	1 560	731 767 273	to	7 320	738 849 811	to	9 900	748 148 649	to	8 760
724 793 221	to	3 250	731 781 061	to	1 120	738 892 270	to	2 290	748 259 960	to	9 970
724 908 109	to	8 120	731 837 821	to	7 910	738 997 259	to	7 380	748 565 162	to	5 280
724 937 461	to	7 670	731 841 377	to	1 450	739 161 451	to	1 540	748 874 988	to	5 030
725 163 118	to	3 151	732 018 481	to	8 600	739 219 381	to	9 440	749 137 381	to	7 410
725 202 735	to	2 750	732 067 972	to	8 370	739 740 151	to	0 180	749 190 192	to	0 210
725 398 591	to	8 800	732 188 649	to	8 670	739 793 491	to	3 520	749 685 421	to	5 450
725 464 591	to	4 920	732 193 460	to	3 470	739 793 527	to	3 550	749 846 791	to	6 850
725 475 321	to	5 330	732 201 241	to	1 390	739 942 621	to	2 650	749 993 131	to	3 580
725 711 057	to	1 070	732 220 431	to	0 440	739 999 231	to	9 320	<b>750 071 587</b>	<b>to</b>	<b>1 610</b>
725 738 581	to	8 730	732 355 201	to	5 380	<b>740 011 517</b>	<b>to</b>	<b>1 530</b>	750 408 167	to	8 183
725 981 311	to	1 430	732 472 320	to	2 560	740 030 701	to	0 970	750 438 421	to	8 501
725 987 835	to	7 880	732 541 605	to	1 620	740 261 740	to	1 820	750 743 911	to	4 030
726 060 811	to	0 900	732 572 221	to	2 490	740 265 811	to	6 290	750 779 118	to	9 400
726 391 970	to	2 520	732 586 479	to	6 710	740 299 111	to	9 170	750 910 981	to	1 010
726 484 771	to	4 800	732 994 037	to	4 080	740 299 231	to	9 260	750 960 841	to	0 900
726 493 351	to	5 300	733 163 449	to	3 460	740 329 266	to	9 320	751 296 211	to	6 240
726 504 031	to	4 063	733 297 171	to	7 290	740 889 081	to	9 090	751 539 121	to	9 180
726 504 070	to	4 090	733 446 631	to	7 110	741 010 421	to	0 530	751 541 311	to	1 790
726 504 331	to	4 390	733 474 665	to	4 770	741 113 041	to	3 370	751 757 641	to	7 700
726 563 701	to	4 060	733 704 482	to	4 570	741 373 891	to	4 340	751 936 951	to	7 010
726 599 371	to	9 460	733 751 041	to	1 130	741 452 369	to	2 490	751 951 861	to	1 890
726 626 356	to	6 370	734 009 101	to	9 130	741 492 991	to	3 140	751 999 021	to	9 110
727 182 271	to	2 510	734 290 759	to	0 770	741 553 460	to	3 470	752 139 516	to	9 570
727 416 181	to	6 240	734 389 273	to	9 290	741 764 431	to	4 520	752 182 892	to	2 950
727 481 431	to	1 460	734 440 031	to	0 111	741 764 431	to	4 520	752 206 861	to	7 100
727 749 241	to	9 780	734 797 201	to	7 320	742 178 834	to	8 880	752 295 241	to	5 600
728 382 331	to	2 480	734 939 611	to	9 640	742 325 500	to	5 520	752 731 351	to	1 410



752 767 441	to	7 470	762 593 431	to	3 460	773 208 991	to	9 290	800 427 530	to	7 540
753 008 941	to	9 030	763 155 160	to	5 180	773 231 311	to	1 340	800 872 741	to	2 830
753 194 311	to	4 370	763 178 631	to	8 660	773 348 739	to	8 940	801 349 801	to	9 830
753 620 378	to	0 400	763 506 001	to	6 060	773 348 739	to	8 940	801 676 681	to	7 100
754 013 917	to	3 940	763 522 141	to	2 470	773 575 891	to	5 950	802 967 821	to	7 940
754 161 061	to	1 120	763 717 694	to	7 800	773 852 971	to	3 030	803 217 601	to	7 780
754 358 445	to	8 610	763 826 461	to	6 520	775 373 449	to	3 460	803 729 731	to	9 850
754 410 451	to	0 660	763 900 460	to	0 471	<b>789 257 191</b>	<b>to</b>	<b>7 250</b>	803 747 402	to	7 520
754 438 393	to	8 410	763 900 479	to	0 530	<b>790 448 020</b>	<b>to</b>	<b>8 460</b>	804 138 181	to	8 420
754 493 109	to	3 130	763 917 271	to	7 750	790 597 485	to	7 530	804 428 224	to	8 250
754 664 182	to	4 220	764 125 801	to	5 860	790 911 883	to	1 900	804 682 411	to	2 710
754 816 377	to	6 470	764 284 525	to	4 560	791 057 441	to	7 550	805 272 525	to	2 540
755 487 421	to	7 600	764 526 241	to	6 330	791 239 081	to	9 290	805 523 445	to	3 460
755 592 901	to	3 140	764 601 421	to	1 600	791 374 483	to	4 500	805 745 704	to	5 730
755 791 730	to	1 800	764 650 231	to	0 470	791 387 971	to	8 030	806 452 907	to	2 980
755 926 951	to	7 070	764 984 371	to	4 850	791 447 521	to	7 850	806 744 781	to	4 850
755 934 332	to	4 510	765 003 667	to	3 680	791 451 151	to	1 240	806 982 181	to	2 300
755 957 701	to	8 000	765 042 517	to	2 540	791 500 009	to	0 470	807 764 791	to	4 910
755 962 981	to	3 280	765 194 728	to	4 970	791 771 431	to	1 490	808 089 931	to	9 960
756 035 371	to	5 490	765 387 365	to	7 450	792 004 293	to	4 320	808 656 423	to	6 450
756 301 257	to	1 290	765 541 801	to	2 100	792 018 379	to	8 420	808 753 771	to	3 800
756 371 565	to	1 580	765 638 461	to	8 970	792 070 621	to	0 740	809 189 001	to	9 010
756 876 031	to	6 120	765 647 101	to	7 190	792 145 211	to	5 230	809 886 879	to	6 930
756 876 151	to	6 240	765 813 781	to	4 029	792 391 381	to	1 620	809 890 489	to	0 500
756 970 129	to	0 140	765 879 314	to	9 390	792 452 779	to	2 790	<b>810 323 734</b>	<b>to</b>	<b>3 760</b>
757 059 613	to	9 630	765 954 001	to	4 030	792 772 728	to	2 770	810 367 116	to	7 140
757 078 540	to	8 560	766 120 286	to	0 320	792 903 511	to	3 990	810 526 351	to	6 500
757 086 209	to	6 240	766 125 716	to	5 750	793 282 518	to	2 533	810 806 911	to	6 940
757 240 591	to	0 650	766 158 824	to	8 840	794 041 831	to	2 040	810 807 211	to	7 240
757 277 371	to	7 700	766 388 433	to	8 460	794 397 709	to	7 780	811 423 021	to	3 110
757 291 591	to	2 730	766 509 421	to	9 660	794 581 741	to	2 040	811 517 221	to	7 239
757 964 251	to	4 280	766 572 901	to	3 020	794 592 122	to	2 150	811 721 101	to	1 130
758 067 001	to	7 090	766 748 500	to	8 521	795 032 251	to	2 340	812 025 721	to	5 900
758 105 221	to	5 250	767 024 341	to	4 370	795 796 291	to	6 350	812 093 073	to	3 130
758 324 941	to	5 000	767 326 471	to	6 590	796 070 139	to	0 160	812 100 821	to	0 840
758 593 628	to	3 650	767 332 561	to	2 950	796 143 151	to	3 630	812 465 251	to	5 610
758 709 038	to	9 060	768 009 841	to	9 960	796 159 725	to	9 740	812 918 341	to	8 670
758 744 101	to	4 160	768 011 489	to	1 520	796 169 306	to	9 340	812 918 701	to	8 760
758 850 883	to	0 900	768 177 980	to	7 990	796 373 406	to	3 430	813 050 491	to	0 520
758 860 951	to	1 550	768 391 081	to	1 170	796 602 961	to	3 050	813 073 171	to	3 200
759 152 851	to	2 880	768 661 569	to	1 650	796 708 441	to	8 500	813 398 476	to	8 550
759 740 941	to	1 090	769 000 051	to	0 080	796 886 281	to	6 430	813 713 971	to	4 000
<b>760 004 596</b>	<b>to</b>	<b>4 610</b>	769 050 841	to	0 900	796 901 701	to	2 000	813 858 121	to	8 150
760 118 191	to	8 250	769 159 081	to	9 178	796 975 466	to	5 590	814 789 330	to	9 349
760 155 001	to	5 090	769 737 496	to	7 510	797 272 917	to	2 950	814 984 656	to	4 680
760 378 002	to	8 020	769 778 491	to	8 730	797 519 441	to	9 460	815 016 020	to	6 030
760 692 722	to	2 749	769 827 331	to	7 450	797 519 731	to	0 240	815 199 410	to	9 420
761 055 460	to	5 480	<b>770 216 071</b>	<b>to</b>	<b>6 100</b>	797 535 181	to	5 330	815 240 491	to	0 520
761 169 781	to	9 810	770 723 281	to	3 400	797 646 151	to	6 180	815 755 591	to	5 620
761 504 941	to	5 120	770 790 451	to	0 480	798 040 053	to	0 080	815 755 622	to	5 650
761 516 836	to	6 910	770 915 150	to	5 490	798 055 813	to	5 830	815 806 381	to	6 680
761 613 588	to	3 600	771 455 551	to	5 610	798 055 891	to	5 950	816 126 834	to	6 870
761 688 631	to	8 690	771 609 661	to	9 690	798 326 371	to	6 520	816 156 721	to	6 780
761 805 199	to	5 240	771 932 551	to	2 580	798 339 167	to	9 210	816 580 903	to	0 920
761 826 106	to	6 120	772 057 224	to	7 440	798 562 411	to	2 440	816 945 571	to	5 600
761 881 171	to	1 560	772 162 660	to	3 070	798 632 461	to	2 490	817 253 011	to	3 280
761 975 641	to	5 670	772 718 615	to	8 640	798 807 151	to	7 510	817 763 881	to	4 060
761 975 886	to	5 895	772 940 140	to	0 160	798 944 761	to	5 030	818 330 562	to	0 610
762 304 144	to	4 170	772 970 886	to	0 940	799 118 616	to	8 640	818 459 641	to	9 670
762 324 931	to	4 960	773 009 419	to	9 430	799 133 191	to	3 220	818 926 273	to	6 320
762 439 261	to	9 290	773 112 031	to	2 060	799 177 626	to	7 650	818 950 351	to	0 380
762 524 158	to	4 220	773 125 387	to	5 410	799 854 751	to	5 200	818 962 492	to	2 530
762 584 872	to	4 970	773 179 320	to	9 410	<b>800 044 320</b>	<b>to</b>	<b>4 410</b>	819 032 341	to	2 730
			773 202 989	to	3 140	800 211 901	to	2 440	819 127 054	to	7 080

819 278 540	to	8 670	822 703 442	to	3 470	826 226 644	to	6 670	828 539 341	to	9 370
819 544 681	to	4 740	822 900 991	to	1 020	826 582 951	to	3 430	828 732 331	to	2 390
819 928 441	to	8 650	822 925 951	to	6 100	826 720 201	to	0 230	828 807 781	to	7 840
<b>820 034 406</b>	<b>to</b>	<b>4 430</b>	823 284 931	to	4 990	827 005 671	to	5 830	828 830 952	to	0 963
820 070 761	to	1 540	823 293 031	to	3 210	827 287 861	to	7 950	828 939 781	to	0 050
820 191 342	to	1 360	823 556 011	to	6 100	827 291 502	to	1 520	829 002 721	to	2 870
820 274 856	to	4 880	824 078 341	to	8 370	827 575 381	to	5 470	829 005 301	to	5 540
820 600 171	to	0 230	824 156 325	to	6 340	827 609 085	to	9 100	829 080 241	to	0 330
821 172 241	to	2 360	824 511 252	to	1 270	827 619 811	to	9 840	829 160 986	to	1 000
821 229 661	to	9 720	824 588 281	to	8 370	827 883 511	to	3 600	829 176 841	to	6 930
821 229 743	to	9 780	825 140 397	to	0 460	828 160 441	to	0 530	829 471 561	to	1 590
821 903 731	to	3 910	825 409 651	to	9 680	828 376 201	to	6 260	829 561 065	to	1 080
821 927 841	to	7 850	825 472 171	to	2 200	828 441 602	to	1 630	829 566 481	to	6 510
822 505 801	to	5 830	826 042 898	to	2 920	828 539 316	to	9 340	829 569 931	to	9 960

— *Criminal Investigations Group, U.S. Postal Inspection Service, 9-8-22*

## Verifying U.S. Postal Service Money Orders

Follow these steps to cash a Postal Service™ money order:

1. Check that the amount does not exceed the legal limit: \$1,000 for domestic, and \$700 for international Postal Service money orders.
2. Check that the proper security features are present:
  - When held to the light, a watermark of Benjamin Franklin is repeated from top to bottom on the left side.
  - When held to the light, a dark line (security thread) runs from top to bottom with the word “USPS” repeated.
  - When there is discoloration around the dollar amounts, this might indicate the amounts were changed.

These appear in Postal Service Notice 299, *U.S. Postal Money Order Reference Card*, or online at [usps.com/shop/money-orders.htm](https://usps.com/shop/money-orders.htm).

3. If the money order seems suspicious, call the U.S. Postal Service Money Orderxxer Verification System at 866-459-7822.

Provide this information to local banks and retailers, as they also receive Postal Service money orders for cashing.

— *Delivery and Retail Customer Service Operations, 9-8-22*

## Counterfeit Canadian Money Order Forms

### Do Not Cash

To be posted and used by retail window employees. As directed, destroy previous notices. Destroy all interim notices when the numbers listed appear in the *Postal Bulletin*.

671,819,086	683,594,542	687,262,503
676,612,640	684,683,610	687,262,525
677,891,039	686,619,878	687,262,526
678,282,493	686,619,886	687,287,578
678,916,031	686,619,887	687,287,581
679,552,215	686,794,382	687,287,582
679,694,334	686,794,426	694,063,898
679,751,983	686,794,427	694,063,899
679,800,207	686,794,431	694,063,980
681,130,536	687,262,502	701,321,725
681,844,376		

— *Criminal Investigations Group, U.S. Postal Inspection Service, 9-8-22*

## Toll-Free Number Available to Verify Canadian Money Orders

The Canada Post Corporation has a toll-free number that cashing agents can call to verify the validity of Canadian Postal Money Orders. The number is 800-563-0444.

This toll-free number is printed on the back of the Canadian Postal Money Orders.

— *Criminal Investigations Group, U.S. Postal Inspection Service, 9-8-22*

## Other Information

### Overseas Military/Diplomatic Mail

Mail addressed to military and diplomatic post offices overseas is subject to certain conditions or restrictions of mailing regarding content, preparation, and handling. The APO/FPO/DPO table outlines these conditions by APO/FPO/DPO ZIP Codes™ through the use of footnoted mailing restrictions codes (see the [Restrictions](#) page following the table).

Acceptance clerks must use the table with the Retail System Software terminal to determine which APO/FPO/DPO ZIP Codes are active and which conditions of mailing apply.

The entries under “Changes” appear in bold in the following APO/FPO/DPO table:

### Changes

APO/FPO/DPO	Action	Effective Date	See Restrictions
APO AE 09125	Close	08/12/2022	
APO AP 96206	Add C, C2	08/17/2022	A-B-C-C2-F-F1-F3-M-R-S-U
FPO AP 96516	Add C2	08/22/2022	B-C-C2-D-E1-E2-F-F1-F3-H-H1-M-N-R-S-T-Z1

We have eliminated “Not Active” entries from the table below to save space and paper.

### APO/FPO/DPO Table

APO/FPO/DPO	See Restrictions	APO/FPO/DPO	See Restrictions	APO/FPO/DPO	See Restrictions	APO/FPO/DPO	See Restrictions
09002	A-B-C2-F-F3-H-N-Q-R-S-V-Z-Z1	09060	B-C-C2-D-E-F1-F3-H-M-N-R-S-U-Z1	09140	B-C-C2-D-E-F-F3-H-M-R-S-U	09240	A-B-C1-C2-F-F3-H-N-R-S-V
09003	B-C-C2-D-E-F-F3-H-M-P-R-S-U	09067	B-C-C2-D-E-F-F3-H-M-R-S-U	09142	B-C-C2-D-E-F-F3-H-M-R-S-U	09241	A-B-C2-F3-N-R-S-U-Z1
09004	B-C-C2-D-E-F3-H-M-R-S-U	09068	B-C-C2-D-E-F3-H-R-S-U-Z1	09154	B-C-C2-D-E-F-F3-H-M-R-S-U	09242	A-B-C1-C2-F-F3-H-N-R-S-V
09005	B-C-C2-D-E-F-F3-H-M-P-R-S	09069	A-B-C-C2-D-E-F3-H-N-R-S-U-V	09160	B-C-C2-D-F-F1-F3-H-J-L-M-N-R-R1-T-U-V-Z1	09250	B-C-C2-D-E-F-F3-H-M-R-S-U
09006	B-C-C2-D-E-F-F3-H-M-R-S-U	09079	B-C-C2-D-E-F-F3-H-M-R-S-U	09170	A-B-C2-F-F1-F3-J-L-M-N-R-R1-S-T-V-X-Z1	09261	B-C-C2-D-E-F3-H-M-N-R-S-U-V-Z1
09008	A-B-C2-F-F3-H-N-Q-R-S-V-Z-Z1	09094	B-C-C2-D-F3-H-M-P-R-S-Z1	09171	A-B-C1-C2-E3-F-F1-F3-J-L-M-N-R-R1-S-T-V-X-Z1	09263	B-C-C2-D-E-F3-H-M-R-S-U
09009	B-C-C2-D-E-F3-H-M-R-S-U-Z1	09095	B-C-C2-D-E-F-F3-H-M-R-S-U	09172	B-C-C2-D-E-F-F3-H-M-R-S-U	09264	B-C-C2-D-E-F-F3-H-M-R-S-U
09010	B-C-C2-D-E-F-F3-H-M-R-S-U2	09096	B-C-C2-D-E-F-F3-H-M-R-S-U	09173	B-C-C2-D-E-F-F3-H-M-R-S-U	09265	B-C-D-F-F1-H-J-L-M-N-R-S-T-U-V-Z1
09011	B-C-C2-D-E-F3-H-M-R-S	09101	A-B-C2-F-F3-H-N-Q-R-S-V-Z-Z1	09174	B-C-C2-F-F1-F3-I3-L-N-R-R1-S-T-V-X-Z-Z1	09266	A-B-C2-F3-S-U-R-V-Z1
09012	B-C-C2-D-E-F3-H-M-R-S-U-Z1	09103	A-B-C-C2-F3-H-N-Q-R-S-V-Z-Z1	09175	A-B-C1-C2-E2-F-F1-F3-H1-J-L-M-N-R-R1-S-T-V-W-X-Z1	09276	A-B-F-F3-I3-L-M-N-R-S-T-V-X-Z-Z1
09013	B-C-C2-D-E-F-F1-F3-H-M-R-S-U-Z1	09104	B-C-C2-D-F3-H-M-R-S-U-Z1	09176	A-B-C2-F-F1-F3-J-L-M-N-R-R1-S-T-V-X-Z-Z1	09277	A-B-E-E1-E2-F1-F3-I3-L-N-R-S-T-V-X-Z-Z1
09014	B-C-C2-D-E-F3-H-M-P-R-S-U	09107	B-C-C2-D-E-F-F3-H-M-R-S-U	09177	B-C-C2-D-E-F-F3-H-M-R-S-U	09278	A-B-F-F3-I3-L-M-N-R-S-T-V-X-Z-Z1
09015	A-B-C-C1-C2-F-F1-F3-J-L-M-N-R-R1-S-V-Z1	09112	B-C-C2-D-E-F-F3-H-M-R-S-U	09178	B-C1-C2-E2-F1-F3-I3-L-M-N-R-S-T-V-X-Z-Z1	09279	A-B-E-E1-F-F3-I3-L-M-N-R-S-T-V-X-Z-Z1
09016	B-C-C2-D-E-F1-F3-H-M-R-S-U	09114	B-C-C2-D-E-F-F3-H-M-R-S-U	09180	B-C-C2-D-E-F-F3-H-M-R-S-U	09280	A-B-B2-C-C1-C2-E-E2-F1-F3-H-I3-L-M-N-R-S-T-V-W-X-Z-Z1
09017	A-B-C2-F-F3-H-N-Q-R-S-V-Z-Z1	09115	A-B-C2-F-F3-H-N-R-S-V-Z1	09186	B-C-C2-D-E-F-F3-H-M-P-R-S-U	09281	A-B-C1-C2-E2-E3-F-F1-F3-H-H1-J-L-M-N-R-R1-S-T-V-X-Z1
09018	A-B-C2-F-F3-H-N-Q-R-S-V-Z-Z1	09116	A-B-C2-F-F3-H-N-R-S-V-Z1	09203	A-B-C-C1-C2-F-F1-F3-I3-J-L-M-N-R-R1-T-V-Z1	09282	A-B-C1-C2-E2-E3-F-F1-F3-H-H1-J-L-M-N-R-R1-S-T-V-X-Z1
09020	B-C-C2-D-E-F-F3-H-M-R-S-U	09123	B-C-C2-D-E-F3-H-M-R-S-U-Z1	09204	B-C-F3-M-N-R-S-V-Z1	09283	A-B-E-E1-F-F3-L-M-N-R-S-T-V-X-Z1
09021	B-C-C2-D-E-F3-H-M-R-S-U-Z1	09126	B-C-C2-F3-H-M-P-R-S-Z1	09211	B-C-C2-D-E-F-F3-H-M-P-R-S-U	09285	A-B-C-E-E-1-F1-F3-H-I3-L-M-N-R-S-T-V-X-Z-Z1
09034	B-C-C2-D-E-F-F3-H-M-R-S-U	09128	B-C-C2-D-E-F-F3-H-M-R-S-U	09213	B-C2-F-F1-F3-H-J-L-M-N-R-R1-T-U-V-Z1	09287	B-C2-E1-F1-F3-J-L-N-R-S-T-V-X-Z1
09044	B-C-C2-D-F-F3-H-R-S-U	09131	B-C-C2-D-E-F-F3-H-M-R-S-U	09214	B-C-C2-D-E-F3-H-M-R-S-U-Z1	09289	B-E2-F1-F3-H1-J-L-M-N-R-R1-S-T-U2-V-X-Z1
09046	B-C-C2-D-E-F-F3-H-M-R-S-U	09135	A-B-C2-F-F3-H-N-R-S-U-V-Z1	09216	B,C,F1,F3,M,N,R,S,V,Z1	09290	A-B-F1-F3-J-L-M-N-R-S-T-U2-V-X-Z1
09049	B-C-C2-D-E-F-F3-H-M-R-S-U	09136	B-C-C2-D-E-F-F3-H-M-P-R-S-U	09227	B-C-C2-D-E-F-F3-H-M-R-S-U	09291	B-C-C1-C2-E2-F1-F3-H1-L-N-R-R1-S-T-V-X-Z1
09053	B-C-C2-D-E-F-F3-H-M-R-S-U	09138	B-C-C2-D-F-F3-H-M-R-S-U				

APO/ FPO/ DPO	See Restrictions	APO/ FPO/ DPO	See Restrictions	APO/ FPO/ DPO	See Restrictions	APO/ FPO/ DPO	See Restrictions
09292	A-B-C-C2-E-E2-E3-F1-F3-H-H1-J-L-M-N-R-R1-S-T-V-X-Z1	09487	A-B-C-C1-C2-E2-F1-F3-I3-L-M-N-R-R1-S-T-V-W-X-Z1	09573	B-C-C2-E2-E3-F-F1-F3-R-R1-S-V-Z1	09630	B-C-C2-F-F3-R-S-U-V
09301	A-B-C1-C2-E2-F-F1-F3-H1-I3-L-M-N-R-R1-S-T-U4-V-Z1	09488	A-B-C-C1-C2-E2-F3-J-L-M-N-S-T-V-W-X-Z1	09574	B-F-F1-R-R1-V	09633	B-C-C2-D-F-F3-M-R-S-U-U1-U2-U3-V-Z1
09304	A-C1-C2-F-F1-F3-H-M-N-R-S-V-Z1	09489	A-B-C-C1-C2-E2-F1-F3-L-M-N-R-R1-S-T-V-W-X-Z1	09575	B-C-C2-F-F1-F3-R-R1-S-V	09634	A-B-C2-F-F3-M-N-R-S-V
09305	A-B-C1-E2-F-F1-F3-H1-I3-M-N-R-R1-S-T-V-Z1	09490	A-B-C1-C2-E2-F-F1-F3-H1-J-L-M-N-R-R1-S-T-V-X-Z1	09576	B-C-C2-F-F1-F3-R-R1-S-V	09636	B-C-C2-F-F3-R-S-U-V-Z1
09306	A-B-C1-E2-F-F1-F3-H1-R-R1-S-U2-V-Z1	09491	A-B-C1-C2-E2-F1-F3-H1-J-L-M-N-R-R1-S-T-V-Z1	09577	B-C-C2-F-F1-F3-R-R1-S-V	09642	B-C2-F-F1-F3-J-L-M-N-R-T-U-V
09307	B-C-C2-F-F3-N-R-R1-S-Z1	09494	B-C-C1-C2-F3-M-R-S-U-Z1	09578	B-C-C2-F-F1-F3-R-R1-S-V	09643	B-C-C2-F3-M-R-S-U-V-Z1
09309	A-B-C-C1-C2-E2-F-F1-F3-H1-M-N-R-R1-S-V-Z1	09498	B-C1-C2-F-F1-F3-J-L-N-R-R1-T-V-Z1	09579	B-C-C2-F-F1-F3-R-R1-S-V	09645	B-C-C1-E1-E2-F-F1-F3-M-R-S-U-X-Z1
09310	A-B-C1-C2-E2-F-F1-F3-H1-I3-L-M-N-R-R1-S-T-U4-V-Z1	09501	B-V	09581	B-C-C2-F-F1-F3-R-R1-S-V	09647	B-C2-F1-F3-M-N-R-S-U-Z1
09311	A-B-C1-C2-E2-F-F1-F3-H1-I3-L-M-N-R-R1-S-T-U4-V-Z1	09502	B-V	09582	B-C-C2-F-F1-F3-R-R1-S-V	09648	B-C2-F3-N-R-S-U-V-Z1
09312	A-B-C1-C2-E2-F-F1-F3-H1-I3-L-M-N-R-R1-S-T-U-U4-V-Z1	09503	B-F-F1-R-R1-V	09583	B-C-C2-F-F1-F3-R-R1-S-V	09649	B-C2-F3-N-R-S-U-Z1
09315	A-B-C1-E2-F-F3-N-R-R1-S-V-Z1	09504	B-V	09586	B-C-C2-F-F1-F3-R-R1-S-V	09701	A-B-C1-C2-F-F1-F3-J-L-M-N-R-R1-T-V-Z1
09316	A-B-C1-E2-F-F1-F3-H1-I3-M-N-R-R1-S-T-V-Z1	09505	B-V	09587	B-C-C2-F-F1-F3-R-R1-S-V	09702	B-C-C2-F-F1-M-R-R1-S-U
09321	A-B-C1-C2-E2-F-F3-H1-M-N-R-R1-S-V-Z1	09506	B-V	09588	B-C-C2-F-F1-F3-R-R1-S-V	09704	B-C-F-F1-F3-R-R1-S-U2-V
09330	A-B-C1-C2-D-E-E2-F-F1-F3-H-H1-M-R-R1-S-V-Z1	09507	B-V	09589	B-F-F1-F3-R-S-V	09705	B-C-C1-C2-F1-F3-M-R-R1-S-U
09333	A-B-C-C1-C2-E2-F-F1-F3-H1-I3-M-N-R-R1-S-V-V1-Z1	09508	B-C-C2-F-F3-R-R1-S-V	09590	B-C-C2-F-F1-F3-R-R1-S-V	09706	B-C-C2-F3-M-N-R-S-U-V-Z1
09343	A-B-C1-C2-F-F3-M-N-R-R1-S-V-Z1	09509	B-C-C2-F-F3-R-R1-S-V	09591	B-C-C2-F-F1-F3-R-R1-S-V	09707	B-C2-F-F1-F3-J-L-M-N-R-R1-T-V-Z1
09348	A-B-C1-E2-F-F1-F3-H1-I3-M-N-R-R1-S-T-V-Z1	09510	B-C-C2-F-F3-R-R1-S-V	09592	B-C-C2-F-F1-F3-R-R1-S-V	09708	B-C-C1-C2-F-F3-M-R-R1-S-U
09357	A-B-C1-E2-F-F3-H1-M-R-V-Z1	09511	B-C-C2-F-F3-R-R1-S-V	09593	B-F-F1-F3-R-S-V	09709	B-C1-C2-E2-F-F1-F3-H-H1-J-L-N-R-R1-T-V-Z1
09365	A-B-C-C1-E2-F-F3-H1-M-N-R-V-Z1	09512	B-C-C2-F-F1-F3-R-R1-S-V	09594	B-C-C1-C2-F-F1-F3-R-R1-S-V	09710	B-C-C1-F-F1-J-L-M-N-R-R1-T-U-V-Z1
09366	A-B-C-C1-E2-F-F1-F3-H-H1-M-R-R1-S-V-Z1	09513	B-C-C2-F-F1-F3-R-R1-S-V	09595	B-C-C2-F-F1-F3-I3-J-R-R1-S-V-V1-Z1	09711	A-B-C-C2-E2-F-F1-F3-M-N-R-S-T-V-X
09401	B-C-C1-C2-F3-M-R-S-U-Z1	09514	B-C-C2-F-F1-F3-R-R1-V	09596	B-F-F1-R-R1-V	09712	A-B-C2-F-F3-H-R-S-U-V-Z1
09403	B-C-C1-C2-F3-M-R-S-U-Z1	09516	B-C-C2-F-V-F3-R-R1-S-F1	09599	B-F-F1-R-R1-V	09714	B-C-C1-C2-F-F3-M-R-R1-S-U
09410	C-C2-F-F1-F3-N-R-S-U2	09517	B-C-C2-F-F1-F3-R-R1-S-V	09600	B-C-C2-F-F1-F3-R-S-U-Z1	09715	B-F-F1-J-L-M-N-R-T-V-Z1
09421	B-C-C1-C2-F3-M-R-S-U-Z1	09520	B-F-F1-F3-R-R1-S-V	09602	B-C-C2-F-F1-F3-N-R-S-U-V	09716	B-C-C2-F-F1-F3-J-L-M-N-R-R1-T-V-Z1
09447	B-C-C1-C2-F3-M-R-S-U-V-Z1	09522	B-F-F1-F3-R-S-V	09603	B-C-C2-F-F1-F3-R-S-U-V-Z1	09717	A-B-C-C2-F3-M-R-S-V-W-Z1
09454	B-C-C1-C2-F3-M-R-S-U-V-Z1	09523	B-C-C2-F-F1-F3-R-R1-S-V	09604	B-C-C2-F-F1-F3-P-R-S-U-V-Z1	09718	B-F-F1-J-L-M-N-R-T-U-V-Z1
09456	B-C-C1-C2-F3-M-N-R-S-U-V-Z1	09524	B-C-C2-F-F1-F3-R-R1-S-V	09606	B-C-C2-D-F-F3-H-M-R-S-U-V	09719	B-C-C2-D-F3-M-R-S-U-V-Z1
09459	B-C-C1-C2-F3-M-R-S-U-Z1	09532	B-C-C2-F-F1-F3-R-R1-S-V	09608	B-C-F-F3-N-R-S-U-V-Z1	09720	B-C2-F3-M-R-S-U-V-Z1
09461	B-C-C1-C2-F3-M-P-R-S-U-Z1	09533	B-V	09609	B-C-C2-F-F3-N-R-S-U-V-Z1	09722	A-B-C2-F-F3-H-N-Q-R-S-V-Z1
09463	B-C-C1-C2-F3-M-R-S-U-Z1	09534	B-F-F1-F3-R-R1-S-V	09610	B-C-C2-F-F1-F3-M-R-S-U-V-Z1	09723	B-C2-F-F1-F3-J-L-M-N-R-R1-T-V-Z1
09464	B-C-C1-C2-F3-R-S-U-Z1	09541	A-B-C-F-F3-M-N-S-V-Z1	09613	B-C-C2-F-F3-N-R-S-U-V	09724	B-C-C1-C2-F-F3-M-R-R1-S-U
09467	B-E-E1-F-F3-J-L-M-N-R-S-T-V-X-Z1	09542	A-B-C-F-F3-M-N-S-V-Z1	09614	A-B-C1-C2-E2-F-F1-F3-H1-J-L-M-N-R-R1-T-V-W-Z1	09725	A-B-C2-F-F3-H-N-Q-R-S-V-V1-Z1
09468	B-C-C1-C2-F3-M-R-S-U-Z1	09543	A-B-C-F-F3-M-N-S-V-Z1	09618	B-C-C2-F-F3-R-S-U-Z1	09726	B-F-F1-J-L-M-N-R-T-U-V-Z1
09469	B-C-C1-C2-F3-R-S-U-Z1	09544	A-B-C-F-F3-M-N-S-V-Z1	09620	B-C-C2-F-F3-R-S-U-V-Z1	09727	A-B-C1-C2-F-F1-F3-J-L-M-N-R-R1-T-V-Z1
09470	B-C-C1-C2-F3-M-R-S-U-Z1	09545	A-B-C-F-F3-M-N-S-V-Z1	09621	B-C-F-F3-R-U-Z1	09728	A-B-C-C1-C2-F-F1-F3-J-L-N-R-R1-T-V-Z1
		09550	B-C-C2-F-F1-F3-R-R1-S-V	09622	B-C-C2-F-F3-R-S-U-Z1	09729	B-C-C2-F-F3-N-R-R1-S-U-V-Z1
		09554	B-C-C2-F-F1-F3-R-R1-S-V	09623	B-C-C2-F-F3-R-S-U-V-Z1	09730	A-B-C1-C2-F-F1-F3-J-L-M-N-R-R1-T-V-Z1
		09555	B-F-F1-R-R1-V	09624	B-C-C2-F-F1-F3-I3-L-N-R-R1-T-U-V-Z1	09731	A-B-C1-C2-F-F1-F3-J-L-M-N-R-R1-T-V-Z1
		09564	B-C-C2-F-F1-F3-R-R1-S-V	09625	B-C-C2-F-F3-N-R-S-U-Z1	09732	B-F-F3-N-S-V-Z1
		09565	B-C-C2-F-F1-F3-R-R1-S-V	09627	B-C-C2-F-F3-R-S-U-V-Z1	09733	B-F-F3-N-R-S-V-Z1
		09566	B-C-C2-E2-E3-F-F1-F3-R-R1-S-V				
		09567	B-C-C2-E2-E3-F-F1-F3-R-R1-S-V				
		09568	B-C-C2-F-F1-F3-R-R1-S-V				
		09569	B-C-C2-E2-E3-F-F1-F3-R-R1-S-V-Z1				
		09570	B-C-C2-F-F1-F3-R-R1-S-V				

APO/ FPO/ DPO	See Restrictions	APO/ FPO/ DPO	See Restrictions	APO/ FPO/ DPO	See Restrictions	APO/ FPO/ DPO	See Restrictions
09734	A-B-C-C1-C2-F-F1-F3-I3-J-L-M-N-R-R1-T-V-Z1	09811	A-B-C-C2-E-E2-E3-F1-F3-H-H1-J-M-N-R-R1-S-U-V-Z1	09858	A-B-C-C1-C2-E2-E3-F1-F3-H-H1-J-M-N-R-R1-S-U-V-Z1	34011	B-C1-C2-E2-F-F1-F3-J-L-M-N-R-R1-T-V-Z1
09735	B-F3-N-R-S-V-Z1	09812	B-E2-E3-F-F1-I-J-L-N-R-T-U-V-Z1	09859	B-C-C1-C2-E2-E3-F-F1-F3-H1-R-R1-S-U-Z1	34020	B-C1-C2-F-F1-F3-J-L-M-N-R-R1-T-V-Z1
09736	A-B-C1-F-F1-F3-J-L-M-N-R-R1-T-V-Z1	09813	A-B-C1-C2-E2-E3-F-F1-F3-J-L-N-R-R1-T-V-Z1	09860	A-B-C2-F-F1-F3-J-L-M-N-R-R1-S-T-V-Z1	34021	B-C1-C2-F-F1-F3-J-L-M-N-R-R1-T-V-Z1
09737	A-B-C1-C2-F-F1-F3-I3-J-L-M-N-R-R1-T-V-W-Y-Z1	09814	B-C2-E2-E3-F-F1-F3-I3-J-L-N-R-R1-T-V-Z1	09862	A-B-C-C2-F-F1-F3-I3-L-M-N-R-R1-S-T-V-X-Z1	34022	B-C1-C2-F-F1-F3-J-L-M-N-R-R1-T-V-Z1
09738	A-B-C1-C2-F-F1-F3-J-L-M-N-R-R1-T-V-Z1	09815	A-B-C-C2-E-E2-E3-F1-F3-H-H1-J-M-N-R-R1-S-U-V-Z1	09864	A-B-C-C1-C2-E2-F1-F3-L-M-N-R-R1-S-T-V-W-Z1	34023	B-C1-C2-F-F1-F3-J-L-M-N-R-R1-T-V-Z1
09739	A-B-C1-C2-F-F1-F3-J-L-M-N-R-R1-T-V-Z1	09816	A-B-C1-C2-E2-E3-F-F1-F3-J-L-N-R-R1-T-V-Z1	09867	A-B-C-C1-C2-E2-F1-F3-L-M-N-R-R1-S-T-V-W-Z1	34024	B-C1-C2-F-F1-F3-J-L-M-N-R-R1-T-V-Z1
09741	A-B-C1-C2-E2-F-F1-F3-H1-J-L-M-N-R-R1-T-V-W-Y-Z1	09817	A-B-C1-C2-E2-E3-F-F1-F3-H-H1-J-L-M-N-R-R1-T-V-Z1	09869	A-B-C1-C2-E2-F1-F3-L-M-N-R-R1-S-T-V-W-Z1	34030	B-C1-C2-F-F1-F3-J-L-M-N-R-R1-T-V-Z1
09742	A-B-C2-F-F1-F3-J-L-M-N-R-S-T-V-Z1	09818	A-B-C-C2-F-F3-M-R-S-V-Z1	09870	A-B-C1-C2-E2-F-F1-F3-H1-I3-L-M-N-R-R1-S-T-U4-V-Z1	34031	B-C1-C2-F-F1-F3-J-L-M-N-R-R1-T-V-Z1
09743	A-B-C2-F-F3-H-N-Q-R-S-V-Z1	09819	A-B-C-C1-C2-E2-F-F1-F3-H-H1-M-R-R1-S-V-Z1	09873	A-B-C1-C2-E2-F-F1-F3-H1-I3-L-M-N-R-R1-S-T-U-U4-V-Z1	34032	B-C1-C2-F-F1-F3-J-L-M-N-R-R1-T-V-Z1
09744	A-B-C1-C2-F-F1-F3-J-L-M-N-R-R1-T-V-Z1	09820	A-B-C2-F-F1-F3-H-H1-J-L-M-N-R-R1-T-V-Z1	09874	A-B-C1-C2-E2-F-F1-F3-H1-I3-L-M-N-R-R1-S-T-U-U4-V-Z1	34033	B-C1-C2-F-F1-F3-I3-L-M-N-R-T-V-Z1
09745	A-B-C2-F-F1-F3-M-N-R-R1-S-V-Z1	09821	A-B-C-C2-F-F3-N-R-S-V-Z1	09875	A-B-C1-C2-E2-F-F1-F3-H1-I3-L-M-N-R-R1-S-T-U-U4-V-Z1	34034	B-C1-C2-F-F1-F3-I3-L-M-N-R-R1-T-V-Z1
09748	A-B-C1-C2-F-F1-F3-J-L-M-N-R-R1-T-V-Z1	09822	A-B-C-C2-F-F3-M-R-S-V-Z1	09877	A-B-C-C2-E-E2-E3-F1-F3-H-H1-J-M-N-R-R1-S-U-V-Z1	34035	B-C1-C2-F-F1-F3-H-J-L-M-N-R-R1-T-V-Z1
09749	A-B-C2-F-F3-H-N-R-S-U-V-Z1	09823	A-B-C1-C2-F-F1-F3-J-L-M-N-R-R1-T-V-Z1	09880	A-B-C1-C2-E2-F-F1-F3-H1-J-L-M-N-R-R1-S-T-U-V-Z1	34036	B-C1-C2-F-F1-F3-J-L-M-N-R-R1-T-V-Z1
09750	A-B-C1-C2-F-F1-F3-J-L-M-N-R-R1-T-V-Z1	09824	A-B-C-C2-F-F3-M-R-S-V-Z1	09882	A-B-C1-C2-F-F1-F3-J-L-M-N-R-R1-T-V-Z1	34037	B-C-C1-C2-F-F1-F3-H-J-L-M-N-R-R1-T-V-Z1
09751	B-C-C2-D-E-F-F3-H-M-R-S-U	09825	A-B-C1-C2-F-F1-F3-J-L-M-N-R-R1-T-V-Z1	09886	A-B-C1-C2-E2-F-F1-F3-H1-J-L-M-N-R-R1-S-T-U-V-Z1	34039	B-C1-C2-F-F1-J-L-M-N-T-V-Z1
09752	B-C-C2-D-F-F3-H-R-S-U	09826	A-B-C1-C2-E1-E2-E3-F1-F3-J-L-M-N-R-R1-T-V-W-Z1	09890	B-E2-F-H1-N-R-R1-U2-V-Z1	34041	B-C1-C2-F-F1-F3-J-L-M-N-R-R1-T-V-Z1
09753	A-B-C-C1-C2-D-E-F1-F3-H-M-N-R-S-V-W-Z1	09827	A-B-F-F1-J-L-M-N-R-T-V-Z1	09892	A-B-C1-C2-E2-F-F1-F3-J-L-M-N-R-R1-T-V-Z1	34042	A-B-C-F-F1-F3-M-N-R-S-U-V-W-Z1
09754	A-B-C2-F-F3-H-L-N-Q-R-S-V-Z1	09828	A-B-C1-C2-F-F1-F3-I3-L-N-R-R1-T-V-Z1	09895	A-B-C1-C2-E2-F-F1-F3-J-L-M-N-R-T-V-W-Z1	34050	B-V
09755	A-B-C-C1-C2-D-F-F1-F3-J-L-M-N-Q-R-R1-S-T-V-Z1	09829	B-C-N-R-V-Z1	09898	B-C-C1-C2-E2-F-F1-F2-H1-N-R-R1-S-U2-V-Z1	34051	B-V
09759	A-B-C-C1-C2-E2-F-F1-F3-J-L-N-R-R1-T-V-Z1	09830	B-C-F-F1-F3-J-L-M-N-R-R1-S-T-V-Z1	09902	A-B-C1-C2-E2-F-F3-H1-M-R-R1-S-V-Z1	34052	B-V
09761	B-C2-F-F1-F3-M-R-R1-S-V-Z1	09831	B-C1-C2-F-F1-F3-J-L-N-R-R1-T-V-Z1	09904	B-C1-E2-F1-F3-S-V-Z1	34053	B-V
09762	A-B-C2-E3-F-F1-F3-J-L-N-R-R1-T-V-Z1	09834	B-C-C2-E2-E3-F-F1-F3-R-R1-S-U-Z1	09908	A-B-C2-F-F1-F3-N-R-R1-S-U-Z1	34054	B-V
09769	A-B-C-C1-C2-F-F1-F3-J-L-M-N-R-R1-T-V-Z1	09836	A-B-C1-C2-F-F1-F3-J-L-M-N-R-R1-V-Z1	09909	A-B-C2-F-F1-F3-N-R-R1-S-V-V1-Z1	34055	B-C1-C2-F-F1-F3-J-L-M-N-R-R1-T-V-Z1
09777	A-B-C-C1-C2-E1-F-F1-F3-J-L-M-N-R-R1-T-V-Z1	09837	B-E2-E3-F1-F3-R-S-V-Z1	09974	B-F1-F3-J-L-M-N-R-S-T-U2-V-X-Z1	34058	B-C2-F-F1-F2-F3-R-R1-S-V-Z1
09780	A-B-C2-F-F3-H-N-R-S-V	09838	B-C-C2-E2-E3-F-F1-F3-R-S-U-Z1	09975	B-F1-F3-I3-L-M-N-R-S-T-U2-V-X-Z1	34060	B-C1-C2-E2-F-F1-F3-J-L-M-N-R-R1-T-V-Z1
09801	A-B-C1-E2-F-F3-H1-M-N-R-R1-S-V-Z1	09842	A-B-C1-C2-F-F1-F3-J-L-N-R-R1-T-V-Z1	09976	B-F1-F3-J-L-M-N-R-S-T-U2-V-X-Z1	34066	B-C1-C2-F-F1-F3-I3-J-L-M-N-R-R1-S-T-V-X-Z1
09802	A-B-C-C2-D-F-F1-F3-H-H1-I3-L-M-N-R-R1-S-T-V-W-Z1	09844	A-B-C1-C2-F-F1-F3-J-L-M-N-R-R1-T-V-Z1	09977	B-F1-F3-J-L-M-N-R-S-T-U2-V-X-Z1	34067	B-C1-C2-F-F1-F3-J-L-M-N-R-R1-S-T-V-X-Z1
09803	A-B-C-C2-E-E2-E3-F1-F3-H-H1-J-M-N-R-R1-S-U-V-Z1	09845	A-B-C1-C2-E3-F-F1-F3-J-L-M-N-R-R1-T-V-Z1	09978	B-C-C2-D-E1-F-F1-F3-H-H1-M-N-R-R1-S-T-X-Z1	34068	B-C1-C2-F-F1-F3-J-L-M-N-R-R1-S-T-V-X-Z1
09804	A-B-C-C2-F-F1-F3-M-N-R-S-V-Z1	09846	A-B-C1-C2-F-F1-F3-J-L-N-R-R1-T-V-Z1	34001	A-B-C1-C2-F-F1-F3-J-L-M-N-R-R1-S-T-V-Z1	34078	B-F1-F3-N-R-S-V-Z1
09805	B-C-C2-E2-E3-F-F1-F3-R-R1-S-Z1	09847	B-C-C2-F-F1-F3-J-L-M-N-R-R1-S-T-V-Z1	34002	B-C1-C2-F-F1-F3-J-L-M-N-R-R1-T-V-Z1	34080	B-F-F1-R-R1-V
09807	A-B-C1-C2-E2-F-F1-F3-H1-I3-M-N-R-R1-S-T-V-Z1	09848	A-B-C2-F-F3-M-R-S-V-Z1	34004	B-C1-C2-F-F1-F3-J-L-M-N-R-R1-T-V-Z1	34081	B-F-F1-R-R1-V
09808	A-B-C1-C2-E2-F-F1-F3-H-H1-J-L-N-R-R1-T-V-Z1	09853	B-C1-C2-E2-F-F1-F3-H1-N-R-R1-S-U2-V-Z1	34007	B-F-F1-H-J-M-N-R-R1-V-Z1	34082	B-F-F1-R-R1-V
09809	B-C1-C2-E3-F-F1-F3-J-L-N-T-V-Z1	09854	A-B-C1-C2-F-F1-F3-J-L-N-R-R1-S-T-V-Z1	34008	B-C1-C2-D-E1-F-F1-H-H1-J-L-M-N-R-R1-T-V-Z1	34083	B-F-F1-R-R1-V
09810	A-B-C2-F-F1-F3-N-R-S-V-Z1	09855	A-B-C-C1-C2-E2-F-F1-F3-H1-M-R-R1-S-U2-V-Z1	34009	B-C2-F-F1-F3-R-S-V	34084	B-F-F1-R-R1-V
		09857	A-B-C2-E2-F-F1-F3-I3-L-M-N-R-R1-S-T-V-Z1	34010	B-C2-F-F1-F3-R-S-V	34085	B-C-C1-C2-E2-E3-F-F1-F3-H1-J-R-R1-S-T-V-V1
						34086	B-C-C1-C2-E2-E3-F-F1-F3-H1-J-R-R1-S-T-V-V1
						34087	B-C-C2-E2-F-F1-F3-R-R1-S-V
						34088	B-C-C2-F-F1-F3-R-R1-S-V
						34089	B-C-C2-F-F1-F3-R-R1-S-V
						34090	B-C-C2-F-F1-F3-R-R1-S-V

APO/ FPO/ DPO	See Restrictions	APO/ FPO/ DPO	See Restrictions	APO/ FPO/ DPO	See Restrictions	APO/ FPO/ DPO	See Restrictions
34091	B-C-C2-E2-E3-F-F1-F3-R-R1-S-V-Z1	96331	A-B-C-C2-F-F1-F3-J-L-M-N-R-S-U2-W	96530	A-B-C1-C2-F-F1-H-H1-J-L-M-N-R-R1-S-T-V-Z1	96642	B-V
34092	B-C-C2-F-F1-F3-R-R1-S-V-Z1	96336	B-C-C2-F3-M-R-S-V-W	96531	A-B-C-C2-F-F1-F3-H-M-N-R-S-U-V	96643	B-F-F1-F3-R-R1-S-V
34093	B-C-C2-F-F1-F3-R-R1-S-V	96337	B-C2-F-F1-F3-M-R-R1-S-W	96532	A-B-C1-C2-F-F1-H-J-L-M-N-R-R1-S-T-V-Z1	96644	B-V
34094	B-F-F1-F3-R-R1-S-V	96338	A-B-C-C2-F-F3-M-R-S-U2-W	96534	A-B-F-F1-F2-F3-S-U-Z1	96645	B-V
34095	B-F-F1-R-R1-V	96339	A-B-F-F3-M-R-S-U2-W	96535	A-B-C1-C2-F-F1-J-L-M-N-R-R1-S-T-V-Z1	96649	B-C-C2-F-F1-F3-R-R1-S-V
96201	A-B-F-F1-F3-M-R-S-U	96343	A-F-F3-M-P-R-S-U2	96537	B-V-Z1	96650	B-F-F1-R-R1-V
96202	A-B-C2-F-F1-F3-M-R-S-U	96346	B-F-F1-F2-F3-H-M-R-S-W-Z1	96540	B-F1-F2-F3-S-V-Z1	96657	B-C-C2-F-F1-F3-R-R1-S-V
96203	A-B-F-F1-F3-M-R-S-U	96347	B-C2-F-F1-F2-F3-H-M-R-S-W-Z1	96542	B-F-F1-F2-F3-S-V-Z1	96660	B-C-C2-F-F1-F3-R-R1-S-V
96204	A-B-F-F1-F3-M-R-S-U	96349	B-C-C2-F-F1-F2-F3-H-M-R-S-Z1	96543	B-F-F1-F2-F3-P-S-V-Z1	96661	B-C-C2-F-F1-F3-R-R1-S-V
96205	A-B-C-C2-F-F1-F3-M-R-S-U	96350	B-F-F1-F2-F3-H-M-R-S-W-Z1	96548	A-B-C2-F-F1-F3-H-M-R-S-U	96662	B-C-C2-F-F1-F3-R-R1-S-V
<b>96206</b>	<b>A-B-C-C2-F-F1-F3-M-R-S-U</b>	96351	B-C2-F-F1-F2-F3-H-M-R-S-W-Z1	96549	A-B-C1-C2-F-F1-H-J-L-M-N-R-R1-S-T-V-Z1	96663	B-C-C2-F-F1-F3-R-R1-S-V
96207	A-B-F-F1-F3-M-R-S-U-V	96362	B-C2-F-F1-F2-F3-H-M-R-S-W-Z1	96550	A-B-H-M-N-U-V-Z1	96664	B-C-C2-F-F1-F3-R-R1-S-V
96208	A-B-F-F1-F3-M-R-S-U	96362	B-C2-F-F1-F2-F3-H-M-R-S-W-Z1	96551	A-B-C1-C2-F-F1-H-J-L-M-N-R-R1-S-T-V-Z1	96665	B-C-C2-F-F1-F3-R-R1-S-V
96209	A-B-C1-C2-F-F1-J-L-M-N-T-U-V-Z1	96365	B-C-C2-F3-M-R-S-W-V	96552	B-Z1	96666	B-C-C2-F-F1-F3-R-R1-S-V
96210	A-B-C1-C2-F-F1-F3-I3-L-M-N-R-R1-T-V-Z1	96367	B-C-C2-F3-L-M-R-S-W	96553	A-B-C2-F-F1-F3-H-M-N-R-S-U	96667	B-C-C2-F-F1-F3-R-R1-S-V
96212	B-F-F1-F2-H-M-W-Z1	96368	B-C-C2-F3-M-R-S-W	96554	A-B-C1-C2-F-F1-H-J-L-M-N-R-R1-S-T-V-Z1	96668	B-C-C2-F-F1-F3-R-R1-S-V
96213	A-B-C-C2-F1-F3-N-R-S	96370	B-F-F1-F2-H-M-W-Z1	96555	A-B-F-F3-M-R-S-V	96669	B-C-C2-F-F1-F3-R-R1-S-V
96214	A-B-C-C2-F1-F3-R-S-U	96371	B-F-F3-M-R-S-W	96557	A-B-F-F3-M-R-S-V	96670	B-C-C2-F-F1-F3-R-R1-S-V
96218	A-B-F-F1-F3-M-R-S-U	96372	B-M-W	96562	A-B-C1-C2-D-E2-E3-F-F1-H-H1-I3-L-M-N-R-R1-S-T-V-Z1	96671	B-C-C2-F-F1-F3-R-R1-S-V
96224	A-B-F-F1-F3-M-R-S-U	96373	B-M-W	96577	A-B-C2-F-F3-H-M-N-R-S-U	96672	B-C-C2-F-F1-F3-R-R1-S-V
96251	A-B-F-F1-F3-M-R-S-U	96374	B-M-W	96578	B-F1-F3-H-J-N-R-S	96673	B-C-C2-F-F1-F3-R-R1-S-V
96257	A-B-F-F1-F3-S-U	96375	B-F3-M-R-S-W	96595	B-F-F3-R-S-V-Z1	96674	B-C-C2-F-F1-F3-R-R1-S-V
96258	A-F-F3-M-P-R-S-U	96376	B-F3-M-R-S-W	96598	B-C2-F3-I3-N-R-S-V-V1	96675	B-C-C2-F-F1-F3-R-R1-S-V
96260	A-B-F-F1-F3-M-R-S-U	96377	B-C-C2-F-F3-M-R-S-W	96599	B-C2-F3-N-R-S-V	96677	B-C-C2-F-F1-F3-R-R1-S-V
96262	A-B-C2-F-F1-F3-R-S-U-V-Z1	96378	B-M-W	96601	B-V	96678	B-C-C2-F-F1-F3-R-R1-S-V
96264	A-B-C-C2-F1-F3-R-S-U	96379	B-C2-F3-M-R-S-W	96602	B-V	96679	B-C-C2-F-F1-F3-R-R1-S-V
96266	A-B-C-C2-F1-F3-R-S-U	96380	B-F3-M-R-S-W	96603	B-V	96681	B-V
96269	A-B-C-C2-F1-F2-F3-R-S-U-Z1	96382	B-F-F3-M-R-S-W	96604	B-V	96682	B-C-C2-F-F1-F3-R-R1-S-V
96271	A-F-F3-M-P-R-S-U	96384	B-F-F3-M-R-S-W	96605	B-V+B559	96683	B-C-C2-F-F1-F3-R-R1-S-V
96273	A-B-C2-F-F1-F3-M-R-S-U	96385	B-F-F3-M-R-S-W	96606	B-F3-R-S-V	96686	B-C-C2-F-F1-F3-R-R1-S-V
96275	A-B-F-F1-F3-M-R-S-U	96386	B-F3-M-S-W	96607	B-V	96688	B-C-C2-F-F1-F3-R-R1-S-V
96276	A-B-C-C2-F1-F3-R-S	96387	B-F3-M-R-S-W	96608	B-E2-F-H1-R1-U2-V-Z1	96689	B-C-C2-F-F1-F3-R-R1-S-V
96278	A-B-C-C2-F1-F3-R-S-U	96388	B-F3-M-R-S-W	96609	B-E2-F-H1-R1-U2-V-Z1	96692	B-C-C2-F-F1-F3-R-R1-S-V
96283	A-B-F-F1-F3-S-U	96389	B-M-W	96610	B-C-C2-F-F3-H1-R-R1-S-U2-V-Z1	96693	B-C-C2-F-F1-F3-R-R1-S-V
96284	A-B-C2-F-F1-F3-M-R-S-U	96401	B-C-F-F3-N-R-S-V-V1-Z1	96611	B-C-C2-F-F3-H1-R-R1-S-U2-V-Z1	96694	B-C-C2-F-F1-F3-I3-J-R1-S-V-Z
96297	A-B-F-F1-F3-R-S-U	96502	A-C-C1-C2-F-F1-F3-J-M-N-R-R1-S-T-U-V	96612	B-C-C2-F-F3-H1-R-R1-S-U2-V-Z1	96695	B-C-C2-F-F1-F3-R-R1-S-V
96300	A-B-F3-M-R-S-V-Z1	96504	A-B-C-C1-C2-F-F1-F3-I3-L-M-N-R-R1-T-V-W-Z1	96613	B-C-C2-F-F3-H1-R-R1-S-U2-V-Z1	96696	B-F-F1-R-R1-V
96301	A-B-C-C2-F-F3-M-N-R-S-U2-W	96505	A-B-C-C1-C2-F-F1-F3-I3-L-M-N-R-R1-S-T-V-W-Z1	96615	B-F-F1-R-R1-V	96698	B-C-C2-F-F1-F3-R-R1-S-V
96303	B-C1-C2-F-F1-H-J-L-M-N-T-V-W-Z1	96507	A-B-C1-C2-F-F1-H-J-L-M-N-T-V-Z1	96616	B-C2-F-F1-F3-R-R1-S-V		
96306	B-F-F1-F2-F3-H-M-R-S-W-Z1	96510	B-I3-N-V	96619	B-F1-F3-R-S-V		
96310	B-F3-M-R-S-W	96511	B-I3-N-V	96620	B-C-C2-F-F1-F3-R-R1-S-V		
96311	B-F3-M-R-S-W	96515	B-C-D-E1-F-F1-F3-H1-M-N-R-S-T-Z1	96628	B-C-C2-F-F1-F3-R-R1-S-V		
96315	B-F-F1-F3-H-M-R-S-W	<b>96516</b>	<b>B-C-C2-D-E1-E2-F-F1-F3-H-H1-M-N-R-S-T-Z1</b>	96629	B-C-C2-F-F1-F3-R-R1-S-V		
96319	B-C-C2-F3-M-R-S-W	96517	B-C-D-E1-E2-F-F1-F3-H-H1-M-N-R-T-U-V-Z1	96632	B-C-C2-F-F1-F3-R-R1-S-V		
96321	B-F-F1-F2-F3-H-M-R-S-W-Z1	96520	B-F-N-U3-V	96633	B-V		
96322	B-F-F1-F2-F3-H-M-R-S-W-Z1	96521	B-C1-C2-F-F1-J-L-M-N-R-R1-S-T-V-Z1	96641	B-V		
96326	B-C-C2-F-F3-M-R-S-W						
96328	B-C-C2-F3-M-R-S-W						

## RESTRICTIONS

## LEGEND

PS Form 2976, *Customs — CN 22 (Old C 1) and Sender's Declaration* (green label)

PS Form 2976-A, *Customs Declaration and Dispatch Note*

PS Form 2976-B, *Priority Mail Express International Shipping Label and Customs Form*

ATF	= Bureau of Alcohol, Tobacco, Firearms, and Explosives
Box C	= Department of State (DOS) contractor personnel
Box R	= Retired military personnel
DPO	= Diplomatic Post Office
MPO	= Military Post Office
PACT	= Prevent All Cigarette Trafficking Act
PAL	= Parcel Airlift
PMEMS	= Priority Mail Express Military Service
PUB 52	= Publication 52, <i>Hazardous, Restricted, and Perishable Mail</i>
SAM	= Space Available Mail
USDA	= United States Department of Agriculture

**Note:** Mail order catalogs are prohibited as SAM or PAL mail.

**A.** Securities, currency, or precious metals, including in their raw, unmanufactured state, are prohibited. Official Mail shipments are exempt from this restriction.

**A1.** Reserved for future use.

**A2.** Reserved for future use.

**B.** Other than for PMEMS and the exceptions listed below, a customs declaration PS Form 2976 or PS Form 2976-A is required for all items weighing 16 ounces or more, and for all items (regardless of weight) containing potentially dutiable mail contents (e.g., merchandise or goods) addressed to or from this ZIP Code. Other than the exceptions listed below, all PMEMS mailpieces (regardless of mail contents or weight) addressed to or from this ZIP Code must bear a properly completed PS Form 2976-B. The surface area of the address side of the mailpiece must be large enough to contain the applicable customs declaration. The following exceptions apply to known mailers, who for this purpose are defined as follows:

- Business mailers who enter volume mailings through business mail entry units or other bulk mail acceptance locations, pay postage through advance deposit accounts, use permit imprints for postage payment, and submit completed postage statements at the time of entry that certify that the mailpieces contain no dangerous materials that are prohibited by postal regulations. Such business mailers are exempt from providing customs documentation on non-dutiable letters and printed matter.
- All federal, state, and local government agencies whose mailings are regarded as "Official Mail." Such agencies are exempt from providing customs documentation, except for any items addressed to an MPO or DPO to which restriction "B2" applies.

**B2.** All federal, state, and local government agencies must complete customs documentation when sending potentially dutiable mail addressed to or from this MPO or DPO.

**C.** Cigarettes and other tobacco products, including tobacco leaves, chewing and pipe tobacco, snuff, and cigars are prohibited, including those that are authorized in Publication 52 under PACT.

**C1.** Obscene and horror articles, images, prints, paintings, cards, films, videotapes, comic books, etc., are prohibited.

**C2.** E-cigarettes and related products (e.g., nicotine liquids, e-liquids, parts, or supplies) are prohibited.

**D.** Coffee is prohibited.

**E.** Medicines (prescription, over-the-counter, vitamins, and supplements) are prohibited when mailed to individuals for human or animal use. This prohibition does not apply when medicines are sent as Official Mail only between specifically designated agencies such as pharmaceutical distributors, hospitals, clinics, and pharmacies.

**E1.** Mailers are responsible to ensure that all medicines and vaccines conform to host nation laws.

**E2.** Any matter depicting nude or seminude persons, pornographic, or sexual items are prohibited. Non-authorized political materials are prohibited. Religious materials contrary to the Islamic faith are prohibited in bulk quantities, but individual items for the personal use of the addressee are permissible.

**E3.** Radio transceivers, cordless/cellular telephones, global positioning systems, scanners, base stations, and handheld transmitters are prohibited.

**F.** Firearms of any type are prohibited, except firearms mailed to or by official U.S. government agencies. This restriction does not apply to firearms mailed from this MPO ZIP Code, provided ATF and USPS regulations are met. Antique firearms do not require an ATF form.

**F1.** Weapons of any type are prohibited.

**F2.** Mailing firearms to or from this MPO ZIP Code is restricted to one shotgun and one single shot .22 caliber rifle per individual.

**F3.** Replica weapons and inert explosive devices (such as grenades) and weapons parts are prohibited.

**G.** Parcels of any class are prohibited.

**H.** Meats, including preserved meats, bones, skin, hair, feathers, horns or hoofs of hoofed animals, and wool samples whether hermetically sealed or not, are prohibited.

**H1.** Pork or pork by-products are prohibited.

**I.** Reserved for future use.

**I1.** Reserved for future use.

**I2.** Reserved for future use.

**I3.** Mail of all classes must fit in a mail sack. Mail may not exceed the following dimensions:

- Maximum length 27 inches.
- Maximum width 14 inches.
- Maximum height 14 inches.

**J.** Standard Post and Parcel Select parcels may not exceed 108 inches in length and girth combined.

**K.** Reserved for future use.

**L.** All Official Mail is prohibited.

**M.** Fruits, vegetables, live animals, and live plants are prohibited.

**N.** Registered Mail service is prohibited.

**O.** Reserved for future use.

**P.** Official Mail only.

**Q.** Mail may not exceed 66 pounds, and size is limited to 42 inches maximum length and 72 inches maximum length and girth combined.

**R.** All alcoholic beverages, including those mailable under Publication 52, Part 421, are prohibited.

**R1.** Materials used in the production of alcoholic beverages (i.e., distilling material, hops, malts, yeast, etc.) are prohibited.

**S.** Synthetic cannabinoids used to stimulate the central nervous system commonly known as "synthetic marijuana," "K2," or "Spice" are prohibited.

**T.** Mailings of household shipments and case lots of food to or from an MPO require military transportation office approval prior to mailing. Mailings to or from a DPO require pre-approval from the Diplomatic Pouch and Mail Director.

**U.** Mail addressed to Retirees (Box R) is limited to 16 ounces and up to a 90-day supply of TRICARE medications. This restriction does not apply to mail endorsed "Free Matter for the Blind or Handicapped."

**U1.** Mail is limited to First-Class Mail items, including audio and video media, weighing 13 ounces or less. This limitation does not apply to Official Mail.

**U2.** Retirees (Box R) are not authorized mail service.

**U3.** Reserved for future use.

**U4.** Mail addressed to Box C is limited to 2 lbs.

**V.** PMEMS is not available.

**V1.** Electronic Delivery status information for Extra Services is not available on *USPS.com*. Manual record of delivery may be available upon request.

**W.** Hermetically sealed packages of meat products bearing USDA certification, such as dried beef, salami, and sausage, may be mailed. 200 grams of tobacco per parcel are permitted duty free.

**X.** Cremated remains are prohibited.

**Y.** Mail is limited to First-Class Mail and Priority Mail items only. This restriction also applies to Official Mail.

**Z.** No outside pieces (OSPs).

**Z1.** The following restriction is applicable only to International Service Centers (ISC)/Exchange Offices. An Anti-Pilferage Seal (Item No O817E or O818A) is required on all pouches and sacks.

## Freely Associated States Restrictions

We list the mailing restrictions for Freely Associated States (FAS) in the Pull-Out section of the *Postal Bulletin*. All FAS Restrictions will be updated periodically.

### Freely Associated States

Mail addressed to freely associated states is subject to certain conditions or restrictions of mailing regarding content, preparation, and handling. The following FAS Restrictions table outlines these conditions as listed by each affected FAS ZIP Code™ through the use of footnoted mailing restrictions codes (see the [Restrictions](#) following the table). For more information on available extra services for FAS destinations, see *Mailing Standards of the United States Postal Service, Domestic Mail Manual (DMM®)*, part 503.

Acceptance clerks must use the table with the Retail System Software terminal to determine which FAS ZIP Codes are active and which conditions of mailing apply.

### FAS Restrictions Table

FAS Table	See Restrictions
96939	A, B
96940	A, B
96941	A, B
96942	A, B
96943	A, B
96944	A, B
96960	A, B
96970	A, B, D
Marshall Islands	C
Federated States of Micronesia	C

### RESTRICTIONS LEGEND

PS Form 2976, *Customs Declaration CN 22 – Sender's Declaration*

PS Form 2976-A, *Customs Declaration and Dispatch Note*

FAS = Freely Associated State

- A.** Bank currency (coin and paper) is prohibited.
- B.** Signature Confirmation, Signature Confirmation Restricted Delivery, Adult Signature Requested, Adult Signature Restricted Delivery, Certified Mail Adult Signature Required, and Certified Mail Adult Signature Restricted Delivery not available.
- C.** Collect on Delivery is prohibited.
- D.** Betel nut (Areca catechu) is prohibited.

— *Asia-Pacific Relations,  
Global Business, 9-8-22*



## Stamp Announcement 22-35: Kwanzaa 2022 Stamp



©2022 USPS

On October 13, 2022, in St. Louis, MO, the United States Postal Service® will issue the *Kwanzaa 2022* stamp (Forever® priced at the First-Class Mail® rate) in one design, in a pressure-sensitive adhesive (PSA) pane of 20 stamps (Item 580600). This stamp will go on sale nationwide October 13, 2022, and must not be sold or canceled before the first-day-of-issue.

The Postal Service™ issues its ninth stamp in celebration of Kwanzaa, the non-religious holiday that brings family, community, and culture together for many African Americans over 7 days from December 26 to January 1 each year. The stamp design features a girl and a boy dressed in colorful robes akin to spiritual garments. A kinara (candleholder) and its seven lit candles are in the foreground. A light-blue circle behind the children's heads

represents wholeness and unifies the figures, and a mosaic motif frames the background. Art director Antonio Alcalá designed the stamp with original artwork by Erin Robinson.

**Availability to Post Offices: Item 580600, Kwanzaa 2022 (Forever Priced at the First-Class Mail Rate) Pane of 20 Stamps**

Stamp Fulfillment Services will not make an automatic push distribution to Post Offices. Post Offices may begin ordering stamps before the first-day-of-issue through SFS Web at [sfsweb.usps.gov/sfsweb](https://sfsweb.usps.gov/sfsweb).

**How to Order the First-Day-of-Issue Postmark**

Customers have 120 days to obtain the first-day-of-issue postmark by mail. They may purchase new stamps at their local Post Office™ or at The Postal Store® website at [store.usps.com/store/home](https://store.usps.com/store/home). They must affix the stamps to envelopes of their choice, address the envelopes (to themselves or others), and place them in a larger envelope addressed to:

FDI – Kwanzaa 2022 Stamp  
USPS Stamp Fulfillment Services  
8300 NE Underground Drive, Suite 300  
Kansas City, MO 64144-9900

After applying the first-day-of-issue postmark, the Postal Service will return the envelopes through the mail. There is no charge for the postmark up to a quantity of 50. There is a 5-cent charge for each additional postmark over 50. All orders must be postmarked by February 13, 2023.

**How to Order First-Day Covers**

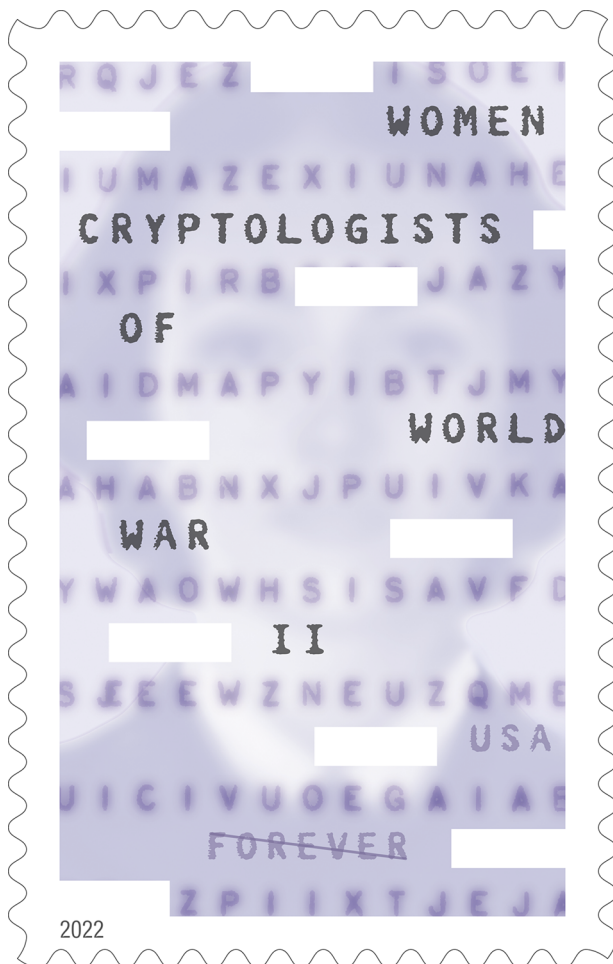
The Postal Service also offers first-day covers for new stamp issues and Postal Service stationery items postmarked with the official first-day-of-issue cancellation. Each item has an individual catalog number and is offered in the *USA Philatelic* catalog and online at [store.usps.com/store/home](https://store.usps.com/store/home). Customers may register to receive a free *USA Philatelic* catalog online at [usps.com/philatelic](https://usps.com/philatelic).

**Locally produced items are not authorized. Only merchandise that has been approved and assigned an item number by Headquarters Retail Marketing may be produced and sold.**

Issue:	<i>Kwanzaa 2022 Stamp</i>
Item Number:	580600
Denomination & Type of Issue:	First-Class Mail Forever
Format:	Pane of 20
Series:	N/A
Issue Date & City:	October 13, 2022, St. Louis, MO 63155
Art Director:	Antonio Alcalá, Alexandria, VA
Designer:	Antonio Alcalá, Alexandria, VA
Artist:	Erin Robinson
Modeler:	Sandra Lane/Michelle Finn
Manufacturing Process:	Offset, Microprint
Printer:	Banknote Corporation of America
Press Type:	Gallus RCS
Stamps per Pane:	20
Print Quantity:	12,000,000 stamps
Paper Type:	Phosphor, Block Tag
Adhesive Type:	Pressure-sensitive
Colors:	Cyan, Magenta, Yellow, Black
Stamp Orientation:	Vertical
Image Area (w x h):	0.77 x 1.05 in/19.558 x 26.67 mm
Overall Size (w x h):	0.91 x 1.19 in/23.114 x 30.226 mm
Full Pane Size (w x h):	5.55 x 5.76 in/140.97 x 146.304 mm
Plate Size:	160 stamps per revolution
Plate Number:	"B" followed by four (4) single digits
Marginal Markings:	
Front:	Plate number in four corners
Back:	©2022 USPS • USPS logo • Two barcodes (580600) • Promotional text • Plate position diagram (8)

— *Stamp Services,  
Marketing, 9-8-22*

## Stamp Announcement 22-36: Women Cryptologists of World War II Stamp



©2021 USPS

On October 18, 2022, in Annapolis Junction, MD, the United States Postal Service® will issue the *Women Cryptologists of World War II* stamp (Forever® priced at the First-Class Mail® rate) in one design, in a pressure-sensitive adhesive (PSA) pane of 20 stamps (Item 482200). This stamp will go on sale nationwide October 18, 2022, and must not be sold or canceled before the first-day-of-issue.

With this stamp, the Postal Service™ honors all of the women cryptologists of World War II. The stamp art features an image from a World War II-era WAVES recruitment poster with an overlay of characters from the “Purple” code, used by the Japanese government to encrypt diplomatic messages.

Established in July 1942, the WAVES (Women Accepted for Volunteer Emergency Service) were part of the U.S. Naval Reserve. The key to the Purple code was discovered by a female cryptologist with the U.S. Army's Signal Intelligence Service. In the pane selvage, seemingly random letters (ZRPB QF UB SWRORJLVVV RIZRUOGZDULL, FLSKHU, DQDOBCH, and VHFUHW) can be deciphered to reveal some key words. The reverse side of the pane discloses the cipher needed to read the words. Antonio Alcalá designed the stamp and served as art director.

### Availability to Post Offices: Item 482200, Women Cryptologists of World War II (Forever Priced at the First-Class Mail Rate) Pane of 20 Stamps

Stamp Fulfillment Services will not make an automatic push distribution to Post Offices. Post Offices may begin ordering stamps before the first-day-of-issue through SFS Web at [sfsweb.usps.gov/sfsweb](https://sfsweb.usps.gov/sfsweb).

### How to Order the First-Day-of-Issue Postmark

Customers have 120 days to obtain the first-day-of-issue postmark by mail. They may purchase new stamps at their local Post Office™ or at The Postal Store® website at [store.usps.com/store/home](https://store.usps.com/store/home). They must affix the stamps to envelopes of their choice, address the envelopes (to themselves or others), and place them in a larger envelope addressed to:

FD0I – Women Cryptologists of World War II Stamp  
USPS Stamp Fulfillment Services  
8300 NE Underground Drive, Suite 300  
Kansas City, MO 64144-9900

After applying the first-day-of-issue postmark, the Postal Service will return the envelopes through the mail. There is no charge for the postmark up to a quantity of 50. There is a 5-cent charge for each additional postmark over 50. All orders must be postmarked by February 18, 2023.

### How to Order First-Day Covers

The Postal Service also offers first-day covers for new stamp issues and Postal Service stationery items postmarked with the official first-day-of-issue cancellation. Each item has an individual catalog number and is offered in the *USA Philatelic* catalog and online at [store.usps.com/store/home](https://store.usps.com/store/home). Customers may register to receive a free *USA Philatelic* catalog online at [usps.com/philatelic](https://usps.com/philatelic).

**Locally produced items are not authorized. Only merchandise that has been approved and assigned an item number by Headquarters Retail Marketing may be produced and sold.**

Issue:	<i>Women Cryptologists of World War II Stamp</i>
Item Number:	482200
Denomination & Type of Issue:	First-Class Mail Forever
Format:	Pane of 20
Series:	N/A
Issue Date & City:	October 18, 2022, Annapolis Junction, MD 20701
Art Director:	Antonio Alcalá, Alexandria, VA
Designer:	Antonio Alcalá, Alexandria, VA
Modeler:	Joseph Sheeran
Manufacturing Process:	Offset
Printer:	Ashton Potter (USA) Ltd (APU)
Press Type:	Muller A76
Stamps per Pane:	20
Print Quantity:	18,000,000 stamps
Paper Type:	Nonphosphored Type III, Block Tag
Adhesive Type:	Pressure-sensitive
Colors:	Black, Cyan, Magenta, Yellow
Stamp Orientation:	Vertical
Image Area (w x h):	0.84 x 1.42 in/21.336 x 36.068 mm
Overall Size (w x h):	0.98 x 1.56 in/24.892 x 39.624 mm
Full Pane Size (w x h):	5.92 x 7.50 in/150.368 x 190.50 mm
Press Sheet Size (w x h):	12.62 x 22.75 in/330.548 x 577.85 mm
Plate Size:	240 stamps per revolution
Plate Number:	"P" followed by four (4) single digits
Marginal Markings:	
Front:	Header "ZRPB QF UB WOMEN CRYPTOLOGISTS OF WORLD WAR II SWRORJLVVW RIZRUOGZDULL" <ul style="list-style-type: none"> <li>• Left side: "DQ DOB CH" • Right side: "FL SKH U"</li> <li>• Bottom: "VHFUHW"</li> <li>• Plate number in bottom two corners</li> </ul>
Back:	Encryption Cipher • ©2021 USPS <ul style="list-style-type: none"> <li>• USPS logo • Two barcodes (482200)</li> <li>• Promotional text • Plate position diagram (6)</li> </ul>

— Stamp Services,  
Marketing, 9-8-22

## Stamp Announcement 22-37: Hanukkah 2022 Stamp



© 2022 USPS

On October 20, 2022, in Chagrin Falls, OH, the United States Postal Service® will issue the *Hanukkah 2022* stamp (Forever® priced at the First-Class Mail® rate) in one design, in a pressure-sensitive adhesive (PSA) pane of 20 stamps (Item 580700). This stamp will go on sale nationwide October 20, 2022, and must not be sold or canceled before the first-day-of-issue.

In 2022, the Postal Service™ celebrates the joyous Jewish holiday of Hanukkah with a new stamp featuring an original wall-hanging. The fiber art was hand-dyed, appliquéd, and quilted to form a colorful, abstract image of a *hanukiah*, the nine-branch candelabra used only at Hanukkah. Jeanette Kuvin Oren was the stamp designer and artist. Ethel Kessler was the art director.

### Availability to Post Offices: Item 580700, Hanukkah 2022 (Forever Priced at the First-Class Mail Rate) Pane of 20 Stamps

Stamp Fulfillment Services will not make an automatic push distribution to Post Offices. Post Offices may begin ordering stamps before the first-day-of-issue through SFS Web at [sfsweb.usps.gov/sfsweb](https://sfsweb.usps.gov/sfsweb).

### How to Order the First-Day-of-Issue Postmark

Customers have 120 days to obtain the first-day-of-issue postmark by mail. They may purchase new stamps at their local Post Office™ or at The Postal Store® website at [store.usps.com/store/home](https://store.usps.com/store/home). They must affix the stamps to envelopes of their choice, address the envelopes (to themselves or others), and place them in a larger envelope addressed to:

FDOI – Hanukkah 2022 Stamp  
 USPS Stamp Fulfillment Services  
 8300 NE Underground Drive, Suite 300  
 Kansas City, MO 64144-9900

After applying the first-day-of-issue postmark, the Postal Service will return the envelopes through the mail. There is no charge for the postmark up to a quantity of 50. There is a 5-cent charge for each additional postmark over 50. All orders must be postmarked by February 20, 2023.

### How to Order First-Day Covers

The Postal Service also offers first-day covers for new stamp issues and Postal Service stationery items postmarked with the official first-day-of-issue cancellation. Each item has an individual catalog number and is offered in the *USA Philatelic* catalog and online at [store.usps.com/store/home](https://store.usps.com/store/home). Customers may register to receive a free *USA Philatelic* catalog online at [usps.com/philatelic](https://usps.com/philatelic).

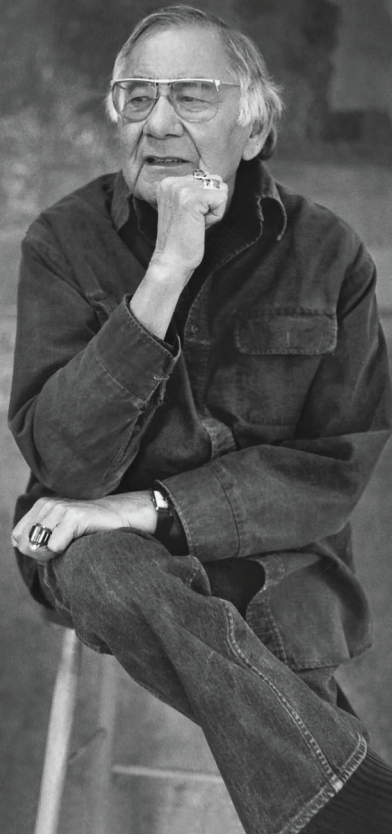
**Locally produced items are not authorized. Only merchandise that has been approved and assigned an item number by Headquarters Retail Marketing may be produced and sold.**

Issue:	<i>Hanukkah 2022</i> Stamp
Item Number:	580700
Denomination & Type of Issue:	First-Class Mail Forever
Format:	Pane of 20
Series:	N/A
Issue Date & City:	October 20, 2022, Chagrin Falls, OH 44022
Art Director:	Ethel Kessler, Bethesda, MD
Designer:	Jeanette Kuvin Oren, Woodbridge, CT
Artist:	Jeanette Kuvin Oren, Woodbridge, CT
Modeler:	Sandra Lane/Michelle Finn
Manufacturing Process:	Offset, Microprint
Printer:	Banknote Corporation of America
Press Type:	Gallus RCS
Stamps per Pane:	20
Print Quantity:	12,000,000 stamps
Paper Type:	Phosphor, Block Tag
Adhesive Type:	Pressure-sensitive
Colors:	Cyan, Magenta, Yellow, Black
Stamp Orientation:	Horizontal
Image Area (w x h):	1.05 x 0.77 in/26.67 x 19.558 mm
Overall Size (w x h):	1.19 x 0.91 in/30.226 x 23.114 mm
Full Pane Size (w x h):	5.76 x 5.55 in/146.304 x 140.97 mm
Plate Size:	160 stamps per revolution
Plate Number:	“B” followed by four (4) single digits
Marginal Markings:	
Front:	Plate number in four corners
Back:	©2022 USPS • USPS logo • Two barcodes (580700) • Promotional text • Plate position diagram (8)

— Stamp Services,  
 Marketing, 9-8-22

# GEORGE MORRISON

1919–2000  
American Landscape Painter  
and Sculptor



X1111

X1111

### Pictorial Postmarks Announcement

As a community service, the Postal Service™ offers pictorial postmarks to commemorate local events celebrated in communities throughout the nation. A list of events for which pictorial postmarks are authorized appears on the following pages. The sponsor of the pictorial postmark appears in italics under the date. Also provided are illustrations of these postmarks.

People attending these local events may obtain the postmark in person at the temporary Post Office™ station established there. Those who cannot attend the event but who wish to obtain the postmark may submit a mail order request. Pictorial postmarks are available only for the dates indicated, and requests must be postmarked no later than 30 days following the requested pictorial postmark date.

All requests must include a stamped envelope or postcard bearing at least the minimum First-Class Mail® postage. Items submitted for postmark may not include

postage issued after the date of the requested postmark. Such items will be returned unserved.

Customers wishing to obtain a postmark must affix stamps to any envelope or postcard of their choice, address the envelope or postcard to themselves or others, insert a card of postcard thickness in envelopes for sturdiness, and tuck in the flap. Place the envelope or postcard in a larger envelope and address it to: Pictorial Postmarks, followed by the Name of the Station, Address, City, State, ZIP+4® Code, as listed next to the postmark.

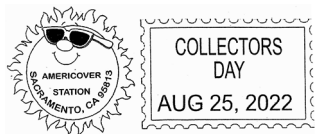
Customers can also send stamped envelopes and postcards without addresses for postmark, as long as they supply a larger envelope with adequate postage and their return address. After applying the pictorial postmark, the Postal Service returns the items (with or without addresses) under addressed protective cover.

The following pictorial postmarks have been extended for 30 days:



August 25, 2022

*American First Day Cover Society*  
 Boston 2026 Station  
 Cancellation Services/Pictorial Postmarks  
 8300 NE Underground Drive, Pillar 210  
 Kansas City, MO 64144-9998



August 25, 2022

*American First Day Cover Society*  
 Americover Station Collectors Day  
 Cancellation Services/Pictorial Postmarks  
 8300 NE Underground Drive, Pillar 210  
 Kansas City, MO 64144-9998



August 26, 2022

*American First Day Cover Society*  
 Americover Station Exhibitors Day  
 Cancellation Services/Pictorial Postmarks  
 8300 NE Underground Drive, Pillar 210  
 Kansas City, MO 64144-9998



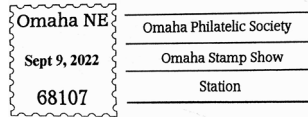
August 27, 2022

*American First Day Cover Society*  
 Americover Station Cachetmaker Day  
 Cancellation Services/Pictorial Postmarks  
 8300 NE Underground Drive, Pillar 210  
 Kansas City, MO 64144-9998

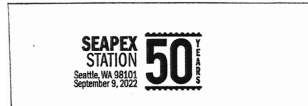


August 28, 2022

*American First Day Cover Society*  
 Americover Station Dealers Day  
 Cancellation Services/Pictorial Postmarks  
 8300 NE Underground Drive, Pillar 210  
 Kansas City, MO 64144-9998



September 9–11, 2022  
*Omaha Philatelic Society*  
 Omaha Stamp Show  
 Station  
 Postmaster  
 6005 Lockheed Court  
 Omaha, NE 68119-9998



September 9–11, 2022  
*Seattle Philatelic Exhibition (SEAPEX)*  
 SEAPEX Station  
 Station Manager  
 225 Andover Park West  
 Seattle, WA 98188-9997



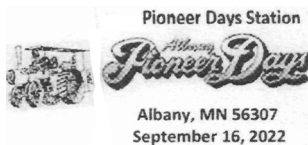
September 10, 2022  
*Town of Wilmington*  
 Bicentennial Station  
 Postmaster  
 5720 NYS Route 86  
 Wilmington, NY 12997-9998



September 11, 2022  
*Windmill Weekend*  
 Eastham Windmill Station  
 Postmaster  
 2365 State Highway  
 Eastham, MA 02642-9998



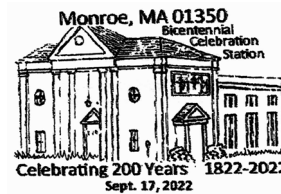
September 15–18, 2022  
*Union Agricultural Society*  
 Agricultural Fair Station  
 Postmaster  
 292 VT Route 110  
 Tunbridge, VT 05077-9998



September 16, 2022  
*Albany Pioneer Days*  
 Pioneer Days Station  
 Postmaster  
 141 Railroad Avenue  
 Albany, MN 56307-9998



September 17, 2022  
*United States Postal Service*  
 Pony Express Run Station  
 Postmaster  
 8988 North Main Street  
 Canaan, IN 47224-9998



September 17, 2022  
*Monroe Historical Society*  
 Bicentennial Celebration  
 Station  
 Postmaster  
 90-3 Main Street  
 Charlemont, MA 01339-9998



September 17, 2022  
*United States Postal Service*  
 Moline Sesquicentennial  
 Community Station  
 Postmaster  
 PO Box 9998  
 Moline, MI 49335-9998



September 17–18, 2022  
*White Covered Bridge Association*  
 White Bridge Station  
 Postmaster  
 PO Box 9998  
 Garards Fort, PA 15334-9998



September 21, 2022  
*Surry Arts Council*  
 Mayberry Days Station  
 Postmaster  
 PO Box 9998  
 Mount Airy, NC 27030-9998



September 21, 2022  
*Uniformed Services University of the Health Sciences*  
 Uniformed Services  
 University Station  
 Postmaster  
 10421 Motor City Drive  
 Bethesda, MD 20817-9998

— Stamp Services,  
 Marketing, 9-8-22



## How to Order the First-Day-of-Issue Digital Color or Traditional Postmarks

Customers have 120 days to obtain the first-day-of-issue postmarks by mail. Each cover must have sufficient postage to meet First-Class Mail® requirements. Customers may purchase new stamps at their local Post Office™, by phone at 844-737-7826, or on The Postal Store® website at [usps.com/shop](https://usps.com/shop).

### Digital Color Postmarks

Only select stamp issues offer a digital color postmark. Customers may submit #6 or #10 envelopes constructed of paper rated as “laser safe.” The Postal Service™ recommends envelopes of 80-pound Accent Opaque, acid-free, 9/16-inch side seams with no glue on the flap. The maximum size of all digital color postmarks is 2 inches (vertically) by 4 inches (horizontally). Allow sufficient space on the envelope to accommodate the postmark. Do not use self-adhesive labels for addresses on the envelope. Two test envelopes must be included. There is a minimum of 10 envelopes at 50 cents per postmark required at the time of servicing. Customers must submit a check, money order, or credit card for payment.

The Postal Service reserves the right to not accept hand-painted and other cachet envelopes that are not compatible with our digital color postmark equipment. The Postal Service also reserves the right to substitute traditional black rubber postmarks if use of nonspecified envelopes results in poor image quality or damage to equipment.

Customers must affix the stamps to the envelopes and address them to themselves or others for return through the mail. Or, they may include an additional self-addressed return envelope, large enough to accommodate their canceled items, with sufficient postage affixed for return of

their postmarked items. Address customer requests for digital color postmarks to:

FDOI – (Name of Stamp Issue)  
 USPS Stamp Fulfillment Services  
 8300 NE Underground Drive, Suite 300  
 Kansas City, MO 64144-9900

After applying the first-day-of-issue postmark, the Postal Service will return the envelopes to the customer by U.S. Mail®.

### Traditional Postmarks

Customers must affix the stamps to the envelopes and address them to themselves or others for return through the mail. Or, they may include an additional self-addressed return envelope, large enough to accommodate their canceled items, with sufficient postage affixed for return of their postmarked items. Address customer requests for traditional postmarks to:

FDOI – (Name of Stamp Issue)  
 USPS Stamp Fulfillment Services  
 8300 NE Underground Drive, Suite 300  
 Kansas City, MO 64144-9900

After applying the first-day-of-issue postmark, the Postal Service will return the envelopes to the customer by U.S. Mail. There is no charge for the first 50 postmarks. There is a 5-cent charge for each additional postmark over 50. Customers must submit a check, money order, or credit card for payment.

Locally produced items are not authorized. Only merchandise that has been approved and assigned an item number by Headquarters Retail Marketing may be produced and sold.



Digital Color Pictorial

### FDOI – Women’s Rowing Stamps

USPS Stamp Fulfillment Services  
 8300 NE Underground Drive, Suite 300  
 Kansas City, MO 64144-9900

September 13, 2022



Black and White Pictorial

### FDOI – Women’s Rowing Stamps

USPS Stamp Fulfillment Services  
 8300 NE Underground Drive, Suite 300  
 Kansas City, MO 64144-9900

September 13, 2022



Digital Color Pictorial

**FDOI – Mighty Mississippi Stamps**

USPS Stamp Fulfillment Services  
8300 NE Underground Drive, Suite 300  
Kansas City, MO 64144-9900

September 23, 2022



Black and White Pictorial

**FDOI – Mighty Mississippi Stamps**

USPS Stamp Fulfillment Services  
8300 NE Underground Drive, Suite 300  
Kansas City, MO 64144-9900

September 23, 2022

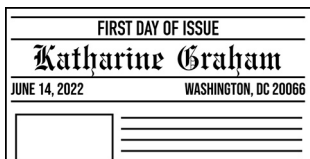


Digital Color Pictorial

**FDOI – Katharine Graham Stamp**

USPS Stamp Fulfillment Services  
8300 NE Underground Drive, Suite 300  
Kansas City, MO 64144-9900

October 14, 2022



Black and White Pictorial

**FDOI – Katharine Graham Stamp**

USPS Stamp Fulfillment Services  
8300 NE Underground Drive, Suite 300  
Kansas City, MO 64144-9900

October 14, 2022



Digital Color Pictorial

**FDOI – \$2 Floral Geometry Stamp**

USPS Stamp Fulfillment Services  
8300 NE Underground Drive, Suite 300  
Kansas City, MO 64144-9900

October 20, 2022

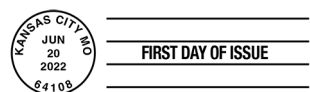


Digital Color Pictorial

**FDOI – \$5 Floral Geometry Stamp**

USPS Stamp Fulfillment Services  
8300 NE Underground Drive, Suite 300  
Kansas City, MO 64144-9900

October 20, 2022



Black and White Pictorial

**FDOI – Floral Geometry Stamps**

USPS Stamp Fulfillment Services  
8300 NE Underground Drive, Suite 300  
Kansas City, MO 64144-9900

October 20, 2022

FIRST DAY OF ISSUE

**NANCY REAGAN**

JULY 6, 2022 — SIMI VALLEY, CA 93065

**Digital Color Pictorial**

**FDOI – Nancy Reagan Stamp**

USPS Stamp Fulfillment Services  
8300 NE Underground Drive, Suite 300  
Kansas City, MO 64144-9900

November 6, 2022

FIRST DAY OF ISSUE

**NANCY REAGAN**

JULY 6, 2022 • SIMI VALLEY, CA 93065

**Black and White Pictorial**

**FDOI – Nancy Reagan Stamp**

USPS Stamp Fulfillment Services  
8300 NE Underground Drive, Suite 300  
Kansas City, MO 64144-9900

November 6, 2022



**Digital Color Pictorial**

**FDOI – Mariachi Stamps**

USPS Stamp Fulfillment Services  
8300 NE Underground Drive, Suite 300  
Kansas City, MO 64144-9900

November 15, 2022



**Black and White Pictorial**

**FDOI – Mariachi Stamps**

USPS Stamp Fulfillment Services  
8300 NE Underground Drive, Suite 300  
Kansas City, MO 64144-9900

November 15, 2022



**Digital Color Pictorial**

**FDOI – Pete Seeger Stamp**

USPS Stamp Fulfillment Services  
8300 NE Underground Drive, Suite 300  
Kansas City, MO 64144-9900

November 21, 2022



**Black and White Pictorial**

**FDOI – Pete Seeger Stamp**

USPS Stamp Fulfillment Services  
8300 NE Underground Drive, Suite 300  
Kansas City, MO 64144-9900

November 21, 2022



**Digital Color Pictorial**

**FDOI – Go Beyond Stamps**

USPS Stamp Fulfillment Services  
8300 NE Underground Drive, Suite 300  
Kansas City, MO 64144-9900

December 3, 2022

**FDI – Go Beyond Stamps**

USPS Stamp Fulfillment Services  
8300 NE Underground Drive, Suite 300  
Kansas City, MO 64144-9900

December 3, 2022

**Black and White Pictorial****FDI – National Marine Sanctuaries Stamps**

USPS Stamp Fulfillment Services  
8300 NE Underground Drive, Suite 300  
Kansas City, MO 64144-9900

December 5, 2022

**Digital Color Pictorial****FDI – National Marine Sanctuaries Stamps**

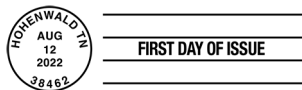
USPS Stamp Fulfillment Services  
8300 NE Underground Drive, Suite 300  
Kansas City, MO 64144-9900

December 5, 2022

**Black and White Pictorial****FDI – Elephants Stamp**

USPS Stamp Fulfillment Services  
8300 NE Underground Drive, Suite 300  
Kansas City, MO 64144-9900

December 12, 2022

**Digital Color Pictorial****FDI – Elephants Stamp**

USPS Stamp Fulfillment Services  
8300 NE Underground Drive, Suite 300  
Kansas City, MO 64144-9900

December 12, 2022

**Black and White Pictorial****FDI – Pony Cars Stamps**

USPS Stamp Fulfillment Services  
8300 NE Underground Drive, Suite 300  
Kansas City, MO 64144-9900

December 25, 2022

**Digital Color Pictorial****FDI – Pony Cars Stamps**

USPS Stamp Fulfillment Services  
8300 NE Underground Drive, Suite 300  
Kansas City, MO 64144-9900

December 25, 2022

**Black and White Pictorial**



**FD0I – James Webb Space Telescope Stamp**  
 USPS Stamp Fulfillment Services  
 8300 NE Underground Drive, Suite 300  
 Kansas City, MO 64144-9900

January 8, 2023

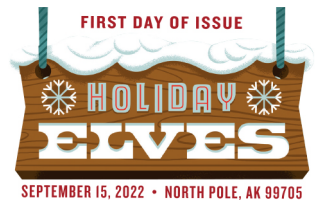
**Digital Color Pictorial**



**FD0I – James Webb Space Telescope Stamp**  
 USPS Stamp Fulfillment Services  
 8300 NE Underground Drive, Suite 300  
 Kansas City, MO 64144-9900

January 8, 2023

**Black and White Pictorial**



**FD0I – Holiday Elves Stamps**  
 USPS Stamp Fulfillment Services  
 8300 NE Underground Drive, Suite 300  
 Kansas City, MO 64144-9900

January 15, 2023

**Digital Color Pictorial**



**FD0I – Holiday Elves Stamps**  
 USPS Stamp Fulfillment Services  
 8300 NE Underground Drive, Suite 300  
 Kansas City, MO 64144-9900

January 15, 2023

**Black and White Pictorial**



**FD0I – Virgin and Child Stamp**  
 USPS Stamp Fulfillment Services  
 8300 NE Underground Drive, Suite 300  
 Kansas City, MO 64144-9900

January 22, 2023

**Digital Color Pictorial**



**FD0I – Virgin and Child Stamp**  
 USPS Stamp Fulfillment Services  
 8300 NE Underground Drive, Suite 300  
 Kansas City, MO 64144-9900

January 22, 2023

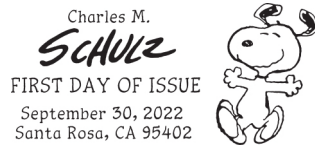
**Black and White Pictorial**



**FD0I – Charles M. Schulz Stamps**  
 USPS Stamp Fulfillment Services  
 8300 NE Underground Drive, Suite 300  
 Kansas City, MO 64144-9900

January 30, 2023

**Digital Color Pictorial**



**FDOI – Charles M. Schulz Stamps**  
USPS Stamp Fulfillment Services  
8300 NE Underground Drive, Suite 300  
Kansas City, MO 64144-9900

January 30, 2023

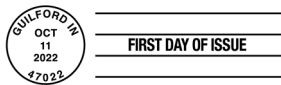
**Black and White Pictorial**



**FDOI – Snowy Beauty Stamps**  
USPS Stamp Fulfillment Services  
8300 NE Underground Drive, Suite 300  
Kansas City, MO 64144-9900

February 11, 2023

**Digital Color Pictorial**



**FDOI – Snowy Beauty Stamps**  
USPS Stamp Fulfillment Services  
8300 NE Underground Drive, Suite 300  
Kansas City, MO 64144-9900

February 11, 2023

**Black and White Pictorial**



**FDOI – Kwanzaa 2022 Stamp**  
USPS Stamp Fulfillment Services  
8300 NE Underground Drive, Suite 300  
Kansas City, MO 64144-9900

February 13, 2023

**Digital Color Pictorial**



**FDOI – Kwanzaa 2022 Stamp**  
USPS Stamp Fulfillment Services  
8300 NE Underground Drive, Suite 300  
Kansas City, MO 64144-9900

February 13, 2023

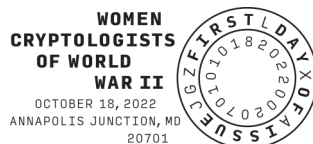
**Black and White Pictorial**



**FDOI – Women Cryptologists of World War II Stamp**  
USPS Stamp Fulfillment Services  
8300 NE Underground Drive, Suite 300  
Kansas City, MO 64144-9900

February 18, 2023

**Digital Color Pictorial**



**FDOI – Women Cryptologists of World War II Stamp**  
USPS Stamp Fulfillment Services  
8300 NE Underground Drive, Suite 300  
Kansas City, MO 64144-9900

February 18, 2023

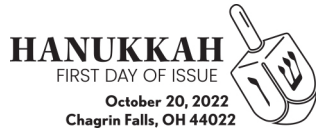
**Black and White Pictorial**



**FDOI – Hanukkah 2022 Stamp**  
USPS Stamp Fulfillment Services  
8300 NE Underground Drive, Suite 300  
Kansas City, MO 64144-9900

February 20, 2023

**Digital Color Pictorial**



**FDOI – Hanukkah 2022 Stamp**  
USPS Stamp Fulfillment Services  
8300 NE Underground Drive, Suite 300  
Kansas City, MO 64144-9900

February 20, 2023

**Black and White Pictorial**

– Stamp Services, Marketing, 9-8-22

475 L'ENFANT PLAZA SW  
WASHINGTON DC 20260-5540

First-Class Mail  
Postage & Fees Paid  
USPS  
Permit No. G-10

# Celebrate Vibrant Music and Culture with *Mariachi* Forever® Stamps



**ON SALE NATIONWIDE:**  
**JULY 15, 2022**  
Sold as a full pane.

