

Postal Bulletin

Published Since March 4, 1880

April 21, 2022

PB 22596

Your 2022 Election and Political Mail Guide

See page 3



Contents

COVER STORY

Your 2022 Election and Political Mail Guide	3
---	---

POLICIES, PROCEDURES, AND FORMS UPDATES

Manuals

IMM Revision: Availability of Electronic USPS Delivery Confirmation International Service	13
IMM Revision: First-Class Mail International Service	13
IMM Revision: Individual Country Listing for Austria	14
IMM Revision: Individual Country Listing for Egypt	14

ORGANIZATION INFORMATION

Environmental Management

Postal Service Flex-Fuel Vehicle Usage	35
USPS Stormwater Policy Reminder: Vehicle Washing	36

Information Security

Become a Cyber Guardian	36
-------------------------------	----

Stamp Services

Stamp Announcement 22-18: Women's Rowing Stamps	37
Stamp Announcement 22-19: Mighty Mississippi Stamps	38
Pictorial Postmarks Announcement	40
How to Order the First-Day-of-Issue Digital Color or Traditional Postmarks	42

PULL-OUT INFORMATION

Fraud

Invalid USPS Corporate Account Numbers	15
Missing, Lost, or Stolen U.S. Money Order Forms	17
Missing, Lost, or Stolen Canadian Money Order Forms	23
Verifying U.S. Postal Service Money Orders	25
Counterfeit Canadian Money Order Forms	25
Toll-Free Number Available to Verify Canadian Money Orders	25

Other Information

Overseas Military/Diplomatic Mail	26
Thrift Savings Plan Fact Sheet	32
Freely Associated States Restrictions	34

POSTAL BULLETIN 2021 ANNUAL INDEX

2021 Annual Index	PB 22589 (1-13-22)
-------------------------	--------------------

Find the latest in mail and delivery information
and services offered by U.S. Postal®
in the *Postal Bulletin* at
about.usps.com/postal-bulletin

Mail Moment®

Cover Story

Your 2022 Election and Political Mail Guide



Contents

Background	4	Serialized Intelligent Mail Barcodes	7
Key Dates	4	Tag 191	8
Key Elections	4	Mailpiece Design Analysts	8
Election Mail and Political Mail Overview	4	Mail Class	8
Election Mail	6	Business Reply Mail and Qualified Business	
Ballots	6	Reply Mail	8
Military — APO/FPO/DPO	6	Informed Delivery	9
APO/FPO/DPO Outbound Absentee Ballots	6	Political Mail	9
APO/FPO/DPO Returning Absentee Ballots	6	Tag 57	10
New Ballot Mail Service Type Identifiers	7	New Political Mail Service Type Identifiers	10
Official Election Mail Logo	7	FAQs	10
Election Mail Checkbox	7	Contacts and Resources	11

Background

The 2022 primaries and mid-terms are upon us and the Postal Service™ is gearing up for those elections, including numerous congressional, gubernatorial, state, and local races. Thus, proper handling of Election Mail and Political Mail is critical, especially as more voters turn to the mail to participate in the electoral process.

The Postal Service's plans are in place to ensure the timely receipt, processing, and delivery of Election Mail and Political Mail.

Key Dates

- The 2022 primary and caucus season begins March 1 and will continue through mid-September.
- The general elections will be held on November 8, 2022.

Key Elections

General Election – November 8

- A total of 469 seats in the U.S. Congress are up for election:
 - 34 Senate seats — AK, AL, AR, AZ, CA, CO, CT, FL, GA, HI, IA, ID, IL, IN, KS, KY, LA, MD, MO, NC, ND, NH, NV, NY, OK, OH, OR, PA, SC, SD, UT, VT, WA, and WI.
 - All 435 House seats representing American territories and the District of Columbia.
- Also, additional special elections may be held throughout the year:
 - 36 Gubernatorial seats — AK, AL, AR, AZ, CA, CO, CT, FL, GA, HI, IA, ID, IL, KS, MA, MD, ME, MI, MN, NE, NH, NM, NV, NY, OK, OH, OR, PA, RI, SC, SD, TN, TX, VT, WI, and WY.
- Numerous state and local elections.

Election Mail and Political Mail Overview

What is Election Mail?

Election Mail is any item mailed to or from authorized election officials that enables citizens to participate in the voting process, such as balloting materials, voter registration cards, absentee ballot applications, and polling place notifications.

What is Political Mail?

Political Mail is any material mailed for campaign purposes by a registered political candidate, campaign committee, or committee of a political party, as well as any material mailed by a political action committee or organization engaging in issues advocacy or voter mobilization.

2022 Election and Political Mail Plan

The Postal Service 2022 Election and Political Mail Plan coordinates strategy with key organizational priorities. The plan objectives are to:

- Educate and inform the public on proper mail handling, key dates, and operational guidelines for Election Mail and Political Mail.
- Reinforce the message that the Postal Service is deeply committed to its job of delivering Election Mail, including ballots.
- Ensure the correct use of Tag 191, *Domestic and International Ballots*. Postal Service employees must correctly identify and promptly process this mail. Tag 191 may not be used for sample ballots.
- Ensure the correct use of the Official Election Mail logo. It may be used on all Election Mail, including ballots created for federal, state, and local government elections.
- Inform election officials that ballots will be handled correctly. Educate the officials on what to expect when using the mail so they can ensure ballots are mailed and returned by the deadline.
- Ensure Postal Service employees know that they must always promptly and efficiently handle Election Mail with equal care and attention.
- Ensure the correct use of Tag 57, *Political Campaign Mailing*. Political Message Mail (mailings from certain groups, including issue advocacy or voter mobilization) and Political Campaign Mail (mailings from certain groups or individuals related to a candidate, campaign, or referendum) may both use Tag 57.

Key Messages

Mail is an increasingly important part of U.S. elections. Throughout the 2022 election cycle, it's important to keep the following in mind:

- The Postal Service is committed to fulfilling its role in the electoral process for those public policy makers who chose to use our organization as a part of their election system. The Postal Service will ensure the dependable and timely delivery of Election Mail and Political Mail.
- The Postal Service takes pride in the U.S. Mail as an efficient and effective means for citizens to participate in the electoral process.
- Customers can trust the Postal Service to deliver their mailed ballots in a timely manner.
- The Postal Service offers a state-by-state outreach program to ensure election boards, political candidates, and mailers are aware of the appropriate

procedures and important deadlines to help ensure the proper processing and delivery of Election Mail and Political Mail.

- The Postal Service expects to handle millions of ballots this election cycle — proof that mail is a dependable and protected way to cast a vote.
- In addition to any state or local rules, requirements, and recommendations, the Postal Service recommends that election officials consider providing applicable Postal Service mailing recommendations in their voter communications to ensure that individuals who wish to use the mail to vote know how to do so successfully.
- Customers who opt to vote through the U.S. Mail should understand their local jurisdiction's requirements, deadlines, and recommendations for submission of mail-in ballots.
- Military personnel serving overseas, such as Army Post Office/Fleet Post Office (APO/FPO) voters, must follow the return by mail date for their location (see fvap.gov/eo/overview).
- To ensure that mailpieces meet the Postal Service's mailing standards and can be processed on our automated equipment, a mailpiece design analyst (MDA) has been assigned to assist each locality. We strongly recommend that state and local election officials work with the Postal Service before designing and printing any mailpieces for use in elections.
- To enhance visibility, we recommend use of the Election Mail checkbox and Official Election Mail logo for all Election Mail; and use of Tag 191, *Domestic and International Ballots*, for outbound ballots.
- We also strongly encourage election officials to use serialized Intelligent Mail® barcodes (IMb®), so that they will be able track their Election Mail. The IMb is a 65-bar Postal Service barcode used to sort and track letters and flats. It allows mailers, in this case, election officials, to use a barcode to participate in multiple Postal Service programs simultaneously, expand the mailers' ability to track individual mailpieces, and see where ballots are within the mailstream.
- Postal Service policy is for every completed ballot mailed by voters to receive a postmark, and we instruct our employees throughout the country to adhere to that policy. However, we acknowledge that there will always be rare occurrences where a mailpiece does not receive a legible postmark. Election officials are advised that the use of automation-compatible, letter-sized envelopes increases the likelihood that a mailpiece will receive a legible postmark.
- The U.S. Mail remains a secure, efficient, and effective means for citizens and campaigns to participate

in the electoral process, and the Postal Service is proud of our role as an important component of the nation's democratic process.

- All U.S. Mail is protected by more than 200 federal laws enforced by the United States Postal Inspection Service® (USPIS®), one of the nation's oldest law enforcement agencies. The Postal Service employs a robust and proven process to ensure the proper acceptance, processing, and delivery of Election Mail.
- The USPIS monitors election-related mail from the time it is placed into the hands of the Postal Service, and the entire time it is in our network up to delivery to prevent, identify, and mitigate any issues that might interfere with its secure and timely delivery.

Key Voter Message — Mailed Return Ballots

Customers who opt to vote through U.S. Mail service must understand their local jurisdiction's rules and requirements for participating in an election, including rules and deadlines concerning the timely submission of ballots. Voters must contact their local election officials for questions about local deadlines.

The Postal Service's mailing recommendations for voters include:

- In jurisdictions that require eligible voters to request a ballot in order to receive one through the mail, we recommend that domestic, nonmilitary voters request their ballot as early as their jurisdiction allows. Some jurisdictions, including Vote by Mail states, generally do not require eligible voters to request a ballot in order to receive one.
- For domestic, non-military voters who choose to use the mail to return their completed ballot, the Postal Service recommends that they mail their completed ballot before Election Day, and at least 1 week before the deadline by which their completed ballot must be received by their local election official. Some states may recommend allowing even more time for mailing completed ballots.
- Voters should keep in mind the time required for both legs of mail delivery — to the voter and back to election officials — when deciding how to participate in an election.

Voters in states that require ballots to be postmarked by a specific date must be aware of the collection times posted on collection boxes and at the Postal Service's retail facilities. Voters must also be mindful of when mail is delivered and picked up at their residential mailbox. Ballots deposited after the last posted collection time will not be picked up, or postmarked, until the following business day. Voters must also be aware of mail collection times and practices if ballots are deposited in an office or residential mailroom.

Key Election Official Message — Outbound Ballot

Customers are encouraged to work closely with area and district Customer Relations managers to determine delivery times for mailings. The Postal Service recommends the use of First-Class Mail for all outbound Election Mail, especially ballots.

For Customer Relations manager contact information, use the interactive map on the Resource tab at about.usps.com/what/government-services/election-mail/welcome.htm.

Election Mail

Ballots

Each election cycle presents a different set of parameters for ballot creation and for the size and weight of the return mailpiece. As a result, many voters do not know the correct amount of postage required to return their ballots by mail. Election officials must consult with a Postal Service business mail entry manager, MDA, or area and district Customer Relations manager to determine the proper postage required for mailing ballots to voters and for voters mailing ballots back to election officials.

Election officials are required to indicate in a prominent location the proper amount of First-Class Mail postage that must be applied to balloting materials for any election, whether sent in hard copy or electronic formats. An exception may apply in certain circumstances for balloting materials for military and overseas voters or where postage is prepaid. See *Mailing Standards of the United States Postal Service*, Domestic Mail Manual (DMM®), section 703.8.1, to learn more about the postage marking requirements.

Military — APO/FPO/DPO

Key Messages

Even in times of war, the Postal Service has delivered the most fundamental symbol of democracy — a ballot — to those who serve in the U.S. Armed Forces. As the election season progresses, emphasize the following key messages:

- The Postal Service is honored to provide the brave men and women serving abroad in the military with the opportunity to vote.
- Any American voter living overseas can mail his or her completed ballot back to the United States free of charge at the nearest American embassy, consulate, or Diplomatic Post Office (DPO). Under the Uniformed and Overseas Citizens Absentee Voting Act (UOCAVA). UOCAVA is a federal law that provides uniformed and overseas citizens the ability to register and vote absentee in elections for federal offices.
- If an overseas voter has authorized access to a military base, he or she can mail a ballot free of charge at the nearest APO or FPO.
- For the 2022 general election, special procedures for APO/FPO/DPO absentee ballots are in effect between

September 1 and November 30. During this time, the Postal Service will provide special handling for dispatch via the International Service Centers (ISCs).

- The Postal Service recommends military voters visit fvap.gov/eo/overview for return ballot mailing dates.

APO/FPO/DPO Outbound Absentee Ballots

The Postal Service and the Military Postal Service Agency collaborate to provide special handling of absentee ballots to absent uniformed services voters with UOCAVA-authorized APO/FPO/DPO addresses. The Postal Service is committed to ensuring that everyone who votes by mail experiences an efficient process.

Here is a summary of special procedures for APO/FPO/DPO absentee ballots only:

- Election officials must mail absentee ballots at least 45 days before the November 8 election.
- Local election offices must segregate military absentee ballots to the Chicago ISC and the Miami ISC gateways. At ISCs, absentee ballots receive special handling, including accelerated sortation, special tray identification, and priority transportation.
- APO/FPO absentee ballots will be sent from local Post Office™ locations to the nearest Processing and Distribution Center for further handling. Postal Service employees will identify trays or containers of absentee ballot mail using Tag 191, *Domestic and International Ballots*, and present them to the Post Office facility.

APO/FPO/DPO Returning Absentee Ballots

Absent overseas uniformed services voters with UOCAVA-authorized APO/FPO/DPO addresses can return absentee ballots via Priority Mail Express® using Label 11-DOD, *DOD Express Mail Label Absentee Ballot*. The label includes “Waiver of Signature” and “Guaranteed by End of Day” endorsements, so ballots can be delivered the day they arrive at the destination Post Office.

Label 11-DOD

For tracking visit us at usps.com

EM 123 456 789 US

Instructions:

1. Peel label. Align white center line to top of envelope.
2. Fold remaining label over envelope. Barcode to front.
3. Tear tab at perforation.
4. Keep tab for your records.

EXPRESS® MAIL
UNITED STATES POSTAL SERVICE

FOR USE WITH ABSENTEE BALLOTS ONLY

Postage paid for by the Department of Defense

WAIVER OF SIGNATURE
Guaranteed By End of Day

LABEL 11- DOD JAN 2010

EM 123 456 789 US

Familiarize yourself with the following operational guidelines for Label 11-DOD:

- The Military Postal Service Agency distributes Label 11-DOD overseas.

- The Priority Mail Express ballot label is only for voted absentee ballots from overseas U.S. military and authorized UOCAVA civilian citizens.
- The label may only be used by eligible voters when the return ballot is mailed from a Military Post Office (MPO) or DPO overseas.
- Overseas U.S. military and authorized UOCAVA civilian citizens must return their absentee ballots via APO, FPO, or DPO locations.
- Eligible voters may use the label on any size ballot envelope and must always affix it in the upper right corner.
- Voters keep part of the label in order to use the tracking number to track their ballots.
- At ISCs, absentee ballots receive special handling, including accelerated sortation, special tray identification, and priority transportation.
- The ballots arrive by international transportation at one of the Postal Service gateway offices for Customs clearance and initial processing at select designated offices.
- At these facilities, the mail is processed by postal automation equipment in an initial domestic sort for distribution throughout the United States.

New Ballot Mail Service Type Identifiers

Based on industry feedback, the Postal Service has updated the Service Type Identifier (STID) table for Ballot Mail in 2022. The Postal Service provides customized STIDs specifically for ballots to allow for Informed Visibility[®] Mail Tracking and Reporting (IV[®]-MTR) to identify mailpieces, with all expected service combinations, during mail processing.

Note that these new STIDs are not for all Election Mail. For Election Mail that is not a ballot (e.g., voter registration applications, polling place locations, ballot applications, and sample ballots), use the appropriate STID for the mail class as well as Address Correction Service (ACS[™]) and IV-MTR services desired that are identified for First-Class Mail or USPS Marketing Mail in the STID Table.

As part of an IMb, STIDs offer mailers near-real-time tracking visibility on both outbound and return mailpieces. STIDs also provide the Postal Service with enhanced tracking capabilities that allow us to quickly identify and process on-hand ballots throughout the mail network. To learn more about STIDs and view the updated STID Table, see postalpro.usps.com/mailing/service-type-identifiers.

Official Election Mail Logo

The Official Election Mail logo is a unique registered trademark designed exclusively for inclusion in the design of Official Election Mail.

The Official Election Mail logo must be used on any mailpiece created by or on behalf of, an election official that is mailed to or from a citizen of the United States for the purpose of participating in the voting process. This includes balloting materials, voter registration cards, absentee applications, polling place notifications, and voter reply mail. The logo must be used on qualifying mailpieces in all classes of mail and all processing categories; however, it is not intended to substitute for postage.

When the Official Election Mail logo appears on a mailpiece, voters recognize the mail as important and distinct from partisan political mailings. Additionally, the logo serves to identify Official Election Mail for Postal Service workers and distinguishes it from the millions of other mailpieces that are processed daily.

Election Mail Checkbox

The Postal Service is committed to providing a secure, efficient, and effective way for citizens to participate when policymakers decide to use mail as part of their elections. In furtherance of that commitment, the Postal Service created the Election Mail Checkbox in PostalOne! processing and our Postage Statement forms (e.g., PS Form 3600-FCM, PS Form 3600-PM, PS Form 3602-N, and PS Form 3602-R) to get increased visibility of Election Mail in the mailstream.

Please check the “This is Official Election Mail” box for each mailing presented for acceptance. This provides the Postal Service with important insight into Election Mail volume by entry point that may help with future Postal Service capacity planning.

Serialized Intelligent Mail Barcodes

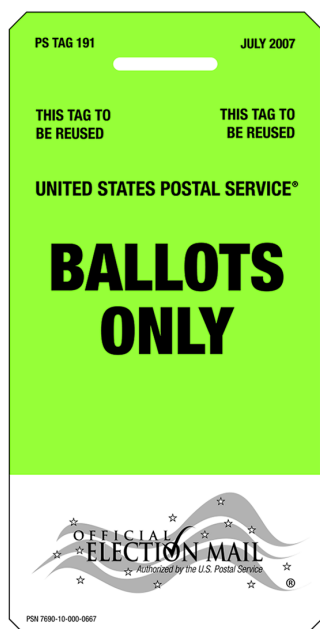
A serialized IMb is a 65-bar Postal Service barcode used to sort and track letters and flats. The barcode simplifies data-gathering by consolidating information for multiple Postal Service identifiers into one comprehensive location. Using a serialized IMb also expands mailers’ ability to track individual mailpieces and gain greater mailstream visibility.

Uniquely serialized IMbs facilitate the tracking of individual ballots to and from individual voters. A serialized IMb can be applied to most Election Mail and is critical for using IV-MTR service. The IV-MTR application provides information about when and where the Postal Service sorts a mailpiece on mail-processing equipment. A serialized IMb can also be used for address correction services: manual address correction notices, ACS, OneCode ACS[®], and Intelligent Mail Full-Service ACS[™].

Tag 191

Tag 191, *Domestic and International Ballots*, is used by election officials to identify trays and sacks of ballot mail destined for either domestic or international addresses. The tag (shown here) provides greater visibility to containers of ballot mail as they enter USPS processing and distribution operations. Tags are available at your local Post Office or Business Mail Entry Unit (BMEU) at postalpro.usps.com/node/1623. To order online, use the order form on the Election Officials tab at about.usps.com/gov-services/election-mail.

Tag 191



The tag cannot be used to identify containers of other types of Election Mail, such as sample ballots, polling place notices, voter registration notices, or other election-related materials. Tag 191 also may not be used for Political Mail.

Mailpiece Design Analysts

The Postal Service strongly recommends an MDA review all Election Mail envelopes before printing. We recommend that election officials consult an MDA each year to review new and previously approved envelope designs. MDAs are experts on Postal Service mailpiece design standards and can provide guidance on envelopes that meet the Postal Service's requirements, answer questions about mailpiece design, give advice on evaluating mailpieces for automation discounts, and provide technical assistance on the Postal Service's envelope standards.

For assistance, customers can connect with an MDA by contacting the Mailing and Shipping Solutions Center (MSSC) via email at MSSCAdmin@usps.gov or toll-free at 877-672-0007 (select option 2 for mailing and shipping, then option 2 for MDA). Hours of operation are Monday through Friday, 7 A.M. to 7 P.M. Central Time (closed federal holidays). Also, mailpiece design information is available online at postalpro.usps.com/mailing/mailpiece-design-analyst-mda-customer-service-help-desk.

Mail Class

The Postal Service continues to recommend that election officials use First-Class Mail for their outbound ballot mailings to voters. Using First-Class Mail allows for faster service while maintaining high visibility as the ballot moves through the mailstream (when used with USPS visibility tools, like serialized Intelligent Mail barcodes). Nevertheless, the Postal Service has long engaged in several practices to prioritize ballots that are entered as Marketing Mail, regardless of the paid class, when capacity permits and when the mailpiece is identifiable as ballots by the Official Election Mail logo or other Postal Service visibility indicia.

Business Reply Mail and Qualified Business Reply Mail

Business Reply Mail® (BRM) and Qualified Business Reply Mail™ (QBRM™) are First-Class Mail services that enable election officials to pay the return postage (including a per piece fee) for ballots returned by the voter to election offices through the mail.

The mailpieces that election officials distribute must conform to a specific format, including use of a unique ZIP+4® code assigned by the Postal Service. QBRM proofs must be approved by the Postal Service and bear an IMb. QBRM applies only to automation-compatible cards and letter-size mail weighing up to and including 2 ounces. For more information on BRM and QBRM, see DMM 505.1.1 and 1.6 as well as Quick Service Guide 505 on Postal Explorer® at pe.usps.com.

Informed Delivery

Informed Delivery is a secure, free, and optional feature that can help election officials connect with voters by providing eligible residential and personal PO Box consumers with a digital preview of their household's incoming mail and the ability to manage their packages all from one location. Users can view grayscale images of the exterior (addressed side) of automation-processed, letter-sized mailpieces via email, USPS Mobile® App, or an online dashboard. Nearly, 43.5 million users are already signed up, with an average email open rate exceeding 64 percent. The Postal Service's Informed Delivery feature continues to deliver on its value proposition to election boards by providing the opportunity to reach more voters, target and increase interaction with users, encourage responses to voter engagement campaigns, reach customers digitally from their physical address, and gain more returns on Election Mail campaigns.

A digital preview of the exterior of Election Mail offers benefits to both election officials and voters. Election officials are able to increase voter interaction with their mail and generate faster response rates. At the same time, voters have a more convenient and secure "vote at home" experience because they can see when their Election Mail will arrive. Learn more about Informed Delivery at usps.com/business/informed-delivery.htm.

Political Mail



The Postal Service recommends marking Political Mail with red Tag 57, *Political Campaign Mailing*.

Objectives

In preparation for the election cycle this year, the following actions must take place at every postal facility:

- Ensure the correct use of Tag 57, *Political Campaign Mailing*, for all Political Mail.
- Ensure Postal Service employees know that they must always promptly and efficiently process and deliver Political Mail. Mail entry personnel must ensure that all qualifying mail is documented as Political Mail.

Key Messages

Millions of Americans will use the mail to campaign and vote for their chosen issue or candidates this year. It's also important to note:

- The U.S. Mail remains a secure, efficient, and effective means for citizens and campaigns to participate in the electoral process. The Postal Service considers the dependable and timely delivery of Political Mail promoting candidates and social causes to be essential to the success of the political mailing season.
- The best campaign is a multi-channel campaign. For candidates, Political Mail can help them reach constituents directly.
- Mail can reach 100 percent of targeted voters.
- Mail has been tested and is proven effective.
- Mail prompts action, often through other channels.

For more information, visit usps.com/business/political-mail.htm.

Political Mail Tools

The Postal Service developed mail tools and technologies that help cut through the political noise and ensure that your campaign message is reaching voters at the right time and in the right place. You can use these resources to prepare for continued growth in 2022.

- The Political Mail website (see delivertthewin.com) provides information on key contacts and other valuable resources, and serves as an online platform to promote direct mail through the following materials:
 - Educational articles.
 - White papers.
 - Case studies.
 - Videos.
- Connections to digital content, such as augmented reality, emphasize the link between digital and hard copy content as a means to extend and increase the effectiveness of political messaging. Augmented reality mailpieces promote campaign messages in a way that engages voters.
- Postal Service webinars highlight key political industry topics.
- The Postal Service has sponsorship agreements with the American Association of Political Consultants to help promote the use of mail early and often in the political arena. Activities include:
 - Attending events and co-sponsored webinars.
 - Advertising and white paper development and placement.
 - Direct meetings with political operatives.

Tag 57

Tag 57, *Political Campaign Mailing*, is a red container tag used to identify Political Mail upon entry to the mailstream. Tag 57 can be used to identify:

- Political Campaign Mailing by a registered political candidate, campaign committee, and committee of a political party.
- Political Message Mailing by a PAC, super-PAC, or other organization engaging in issue advocacy or voter mobilization.

According to the *Postal Operations Manual*, a *registered political candidate or party* is defined as an individual or organization recognized by the appropriate government election control authority (national, state, or local).

Tag 57



New Political Mail Service Type Identifiers

Based on industry feedback, the Postal Service has updated the STID table for Political Mail in 2022. The Postal Service provides customized STIDs specifically for Political Mail to improve visibility. These STIDs are proven instrumental in identifying and tracking Political Mail on hand and in the mailstream. In addition, STIDs increase the visibility of Political Mail within the automation environment and can enhance passive identification and tracking of Political Mail.

When Political Mail STIDs are used as part of an IMb, the associated Political Mailpiece scan data is available via Informed Visibility (IV) reports. To learn more about Political Mail STIDs and view the updated STID Table, see postal-pro.usps.com/mailing/service-type-identifiers.

FAQs

1. What is Election Mail?

Election Mail is any item mailed to or from authorized election officials that enables citizens to participate in the voting process, such as ballots, balloting materials, voter registration cards, absentee ballot applications, and polling place notifications.

2. What is Political Mail?

Political Mail is any material mailed for campaign purposes by a registered political candidate, campaign committee, or committee of a political party, as well as any material mailed by a political action committee or organization engaging in issues advocacy or voter mobilization.

Political Mail may be sent for any public election — partisan or nonpartisan — for which there is a ballot. Political Mail is identified using red Tag 57, *Political Campaign Mailing*.

3. How many ballots were sent through the mail for the 2020 general election?

According to the 2020 Election Administration and Voting Survey (EAVS), states reported transmitting a total of 90.7 million mailed ballots to voters (not including ballots sent to and from UOCAVA voters) for the November 2020 general election. Approximately 77.8 percent of these ballots were returned by voters.

4. In the 2020 general election, how many ballots were voted by troops around the world?

The Military Postal Service Agency postmarked and dispatched 59,862 voted absentee ballots from military voters to election offices using Priority Mail Express Military Service with Label 11-DoD between September 1, 2020, and January 7, 2021 (the end of the runoff election). The average transit time of ballots to election offices was 6 business days. Of the ballots received by APOs and FPOs, 4.5 percent were Undeliverable as Addressed (UAA) from election offices, and were either redirected to the voter's current address or returned to sender.

5. Is the Postal Service ready for the increased mail volume of Election Mail and Political Mail?

Yes. The Postal Service is confident in its ability to offer dependable and timely delivery of Election Mail and Political Mail.

6. What is the Hatch Act?

The Hatch Act (5 U.S.C. §§ 7321–7326) limits certain political activities for most executive branch employees. For example, the law prohibits employees from engaging in political activity while on duty or in the federal workplace. The Hatch Act also prohibits executive branch employees from soliciting or receiving political contributions. Employees who violate the Hatch Act are subject to a range of disciplinary actions, including the following:

- Removal from federal service.
- Reduction in grade.

- Debarment from federal employment for a period not to exceed 5 years.
- Suspension, reprimand, or a civil penalty not to exceed \$1,000.

7. How does the Hatch Act affect the Postal Service and its employees?

The Postal Service is non-political, which means the organization cannot and does not support any political party or affiliation over another. The continued effectiveness of this organization depends on delivering all political mailings without giving the perception that the views of one candidate, political party, or political viewpoint are endorsed over another.

It is the responsibility of all Postal Service employees to know and obey Hatch Act restrictions. This means that employees may not display political buttons while on Postal Service property or place bumper stickers on a Postal Service vehicle that indicate a preference for a specific candidate, party, or political position. Employees are also urged not to participate in any political discussions where customers are present.

This brief summary does not address all of the Hatch Act prohibitions. For more information about the Hatch Act:

- Visit the Ethics page on *Blue* at blue.usps.gov/uspslaw/Ethics.htm,
- Contact the HQ Ethics helpline at 202-268-6346, or
- Send an email message to “Ethics Help” (internal email) or ethics.help@usps.gov.

8. Do return ballots need to be postmarked by a certain date?

Ballot acceptance rules vary on a state-by-state basis. Some states will accept a ballot that is delivered after Election Day if it has been mailed by Election Day (or some other specified date) in certain circumstances. Other states specifically require such ballots to have a valid postmark for the ballot to be counted. Other states focus on the date by which the ballot is received (typically by Election Day) rather than when it is mailed. Visit your state’s election website for specific information.

9. Do return ballots need to be postmarked even if there is a meter?

In recognition of the importance that the election laws in some states place on postmarks, it has been the long-standing policy of the Postal Service to try to ensure that every return ballot mailed by voters receives a postmark, whether the return ballot is prepaid by election officials or mailed with a stamp affixed by the voter. We instruct our employees throughout the country about our ballot postmarking

processes and procedures, and review standard operating procedures for ballot postmarking. Consistent with our policy, ballots are postmarked in every state, which helps to ensure that return ballots are postmarked for states that require it.

Contacts and Resources

Election Mail and Political Mail Area and District Map

The interactive Election Mail and Political Mail Area and District map provides election officials with contact information for their area and district Customer Relations managers. The interactive map also includes BMEU addresses and phone numbers, and a ZIP Code™ lookup feature to streamline the resource identification process. To view the map, click on the resource tab at about.usps.com/what/government-services/election-mail/welcome.htm.

Area Customer Relations

Area	Customer Relations Contact Numbers
Atlantic	202-268-4753
Central	414-287-2538
Southern	972-665-4415
WestPac	415-819-6972

Election Mail and Political Mail Sites

Please refer to the following resources for guidance during the election cycle:

- For external information and resources on Election Mail, visit about.usps.com/what/government-services/election-mail.
- For Political Mail guidance and tips, visit deliverthewin.com.

Tracking and Reporting Election Mail Issues

- Report Election Mail issues to the Postal Service via the ElectionMail.org web form.
- Report Political Mail issues to the Postal Service at tools.usps.com/political-mail-issue.htm.
- Notify USPS in advance of your political mailing by providing a copy of your mailpiece and PS Form 3600 or 3602 to help us plan for receiving your mail. Create the notice at tools.usps.com/political-mail-alert.htm.
- Report any Election Mail or Political Mail matters requiring federal law enforcement attention to the U.S. Postal Inspection Service at 877-876-2455 or at uspis.gov.

Official Election Mail Program Kit

- To download the 2022 Official Election Mail Kit (Kit 600), visit about.usps.com/kits/kit600.pdf.

PostalPro Resources

- For information on how to set up an account for election ballots, visit postalpro.usps.com/mailing/election-political-mail.

- For Information on permit-based solutions for Election Mail, visit postalpro.usps.com/mailing/election-political-mail/permit-solutions.

Mailpiece Design Analysts

The Postal Service recommends that every Election Mail envelope design be reviewed by an MDA before it is used in the 2022 election cycle. For design assistance, contact the Mailing and Shipping Solutions Center (MSSC):

- By calling 877-672-0007 (select option 2 for mailing and shipping, then option 2 for MDA),
- By emailing MSSCAdmin@usps.gov, or
- By visiting postalpro.usps.com/mailing/mailpiece-design-analyst-mda-customer-service-help-desk.

Special Procedures APO/FPO/DPO and Overseas Citizens Absentee Ballots Fact Sheet

- For tips to ensure absentee ballots reach military personnel and U.S. citizens who are currently overseas, visit about.usps.com/kits/kit600.pdf#page=18.

Service Type Identifier for Ballot Mail

- To determine the right STID for your mailing, visit about.usps.com/kits/kit600.pdf#page=10.

Service Type Identifier for Political Mail

- To determine the right STID for your mailing, visit postalpro.usps.com/service-type-identifiers/stidtable.

Business Reply Mail and Qualified Business Reply Mail

- For directions on how to get started with BRM/QBRM, visit about.usps.com/kits/kit600.pdf#page=16.

Informed Delivery

- For instructions on setting up an Informed Delivery mailing campaign, visit about.usps.com/kits/kit600.pdf#page=20.

Green Tag 191, Domestic and International Ballots

- For information and guidelines to help your ballot mail get higher visibility during processing, visit about.usps.com/kits/kit600.pdf#page=14.

Red Tag 57, Political Campaign Mailing

- To learn about the proper use of Tag 57, visit usps.com/political-mail/tag-57.pdf.

Publication 631 — Official Election Mail — Graphic Guidelines and Logos

- To learn about the proper use of the Official Election Mail logo for mailpieces, visit about.usps.com/publications/pub631.pdf.

Publication 632 — State and Local Election Mail User's Guide

- For information that election officials must consider before mailing, visit about.usps.com/publications/pub632.pdf.

Mailing Standards of the United States Postal Service, Domestic Mail Manual (DMM®)

- See part 703, Non-profit USPS Marketing Mail and Other Unique Eligibility: pe.usps.com/text/dmm300/703.htm.

— Public Relations,
Corporate Communications, 4-21-22

Policies, Procedures, and Forms Updates

Manuals

IMM Revision: Availability of Electronic USPS Delivery Confirmation International Service

Effective April 21, 2022, the Postal Service™ is revising *Mailing Standards of the United States Postal Service*, International Mail Manual (IMM®), Exhibit 252.22, to reflect that Electronic USPS Delivery Confirmation International service (E-USPS DELCON INTL®) is available to the Republic of Korea (South Korea).

Mailing Standards of the United States Postal Service, International Mail Manual (IMM)

	*	*	*	*	*
2	Conditions for Mailing				
	*	*	*	*	*
250	First-Class Package International Service				
	*	*	*	*	*
252	Eligibility				
	*	*	*	*	*

252.2 Electronic USPS Delivery Confirmation International Service (E-USPS DELCON INTL)

* * * * *

252.22 Availability

* * * * *

Exhibit 252.22

Countries Accepting Electronic USPS Delivery Confirmation International Service (E-USPS DELCON INTL)

[Revise the list by adding the following entry in alphabetical order:]

Korea, Republic of (South Korea)

* * * * *

Although effective April 21, 2022, the Postal Service will incorporate this revision into the next edition of the online IMM, which is available via Postal Explorer® at pe.usps.com.

— Product Classification,
Product Solutions, 4-21-22

IMM Revision: First-Class Mail International Service

Effective April 21, 2022, the Postal Service™ is revising *Mailing Standards of the United States Postal Service*, International Mail Manual (IMM®), section 241.217d, to reflect that the nonmachinable surcharge for First-Class Mail International® letters applies to correspondence and nondutiable documents that cause the mailpiece to be uneven.

This revision — removing the reference to pens, pencils, loose keys, or coins as eligible contents for a First-Class Mail International letter — aligns the text with the standards in section 242.1, which lists the content eligibility for items that can be mailed at the First-Class Mail International letter price. Items such as those removed in this revision of 241.217d may be mailed using the other services listed in section 242.2, as long as they are eligible for those services. For further details, review IMM 134, the eligibility sections for the other services, and the individual country listings.

Mailing Standards of the United States Postal Service, International Mail Manual (IMM)

	*	*	*	*	*
2	Conditions for Mailing				
	*	*	*	*	*

240 First-Class Mail International

241 Description and Physical Characteristics

* * * * *

241.2 Physical Characteristics

241.21 Physical Standards — Letters

* * * * *

241.217 Nonmachinable Surcharge

* * * * *

[Revise item d. to read as follows:]

- d. Contains correspondence or nondutiable documents that cause the thickness of the mailpiece to be uneven.

* * * * *

Although effective April 21, 2022, the Postal Service will incorporate this revision into the next edition of the online IMM, which is available via Postal Explorer® at pe.usps.com.

— Product Classification,
Product Solutions, 4-21-22

IMM Revision: Individual Country Listing for Austria

Effective April 21, 2022, the Postal Service™ is revising the Individual Country Listing for Austria in *Mailing Standards of the United States Postal Service*, International Mail Manual (IMM®) as follows:

- Add a restriction regarding cigars.
- Add an observation on value-added tax (VAT) requirements on imported goods.
- Revise the observation on gift shipments.

These revisions are based on a consultation with Österreichische Post AG (the designated operator of Austria) on March 18, 2022.

Mailing Standards of the United States Postal Service, International Mail Manual (IMM)

* * * * *

Individual Country Listings

* * * * *

Austria

Country Conditions for Mailing

* * * * *

Restrictions

* * * * *

[Add the following entry in alphabetical order:]

Cigars may be imported only by a business that holds a permit issued by the Austrian government.

* * * * *

Observations

* * * * *

[Add a new observation as entry 3 to read as follows:]

3. As of July 1, 2021, the value-added tax (VAT) exemption is abolished on all imported goods, with the exception noted in entry 4 below. For more information regarding the European Union's VAT rules, visit ec.europa.eu/taxation_customs/business/vat/vat-e-commerce_en.

[Revise current entry 3 as entry 4 to read as follows:]

4. Gift shipments valued at less than 45 EUR sent from a consumer to a consumer (C2C) and marked "Geschenksendung" or "Gift" are exempt from taxes and duties.

* * * * *

Although effective April 21, 2022, the Postal Service will incorporate these revisions into the next edition of the online IMM, which is available via Postal Explorer® at pe.usps.com.

— Product Classification,
Product Solutions, 4-21-22

IMM Revision: Individual Country Listing for Egypt

Effective April 21, 2022, the Postal Service™ is revising the Individual Country Listing for Egypt in *Mailing Standards of the United States Postal Service*, International Mail Manual (IMM®) to reflect an additional prohibition.

This revision is based on a formal request that Egypt Post (the designated operator of Egypt) made through the Universal Postal Union via *International Bureau Circular* 37, dated March 7, 2022.

Mailing Standards of the United States Postal Service, International Mail Manual (IMM)

* * * * *

Individual Country Listings

* * * * *

Egypt

Country Conditions for Mailing

Prohibitions

* * * * *

[Add the following entry in alphabetical order:]

Military clothes and military equipment.

* * * * *

Although effective April 21, 2022, the Postal Service will incorporate this revision into the next edition of the online IMM, which is available via Postal Explorer® at pe.usps.com.

— Product Classification,
Product Solutions, 4-21-22

Pull-Out Information

Fraud

Invalid USPS Corporate Account Numbers

Provide this listing to Contract Postal Units and acceptance clerks in non-POS locations without intranet access to validate a USPS Corporate Account (USPSCA) number online. For all other locations, online USPSCA validation is preferred. This list supersedes all previous notices, which you must recycle.

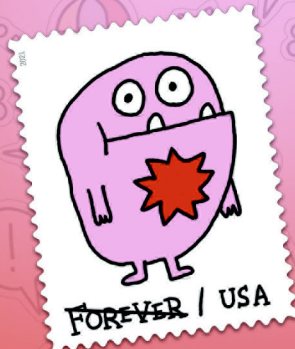
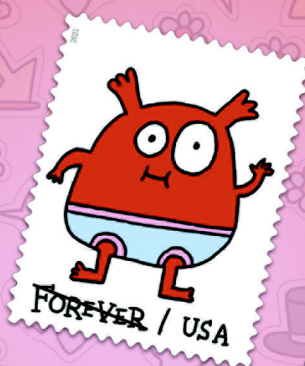
Acceptance clerks must not accept Priority Mail Express® shipments bearing an invalid USPSCA number in the “Payment by Account” or “Agreement Number” section of the label or form.

Note: The first 6 digits of a 9-digit Custom Designed Service and Next Day Pickup Agreement make up the Corporate Account Number.

008915	056022	105412	198020	235434	329001	402274	490713	600114	731462	762032	921465	981602
009555	060406	107195	200587	235435	330718	402472	491114	600993	731574	770108	921711	981985
018008	066110	108789	200892	235516	330825	441425	492125	662587	738004	782161	924276	982515
019246	071065	115846	201001	257111	331683	443068	551100	666370	740497	840623	926488	997115
019667	077014	148371	207851	282667	332132	452221	553056	672409	741387	847067	927890	998012
027122	078203	152048	208093	282821	333467	452387	553634	681002	741576	853282	931682	
031070	080117	152918	212410	295198	333831	452522	553933	701069	741623	900544	940191	
037114	093458	153034	220056	305003	337154	480019	554074	730128	741737	914017	941813	
038477	098680	174072	221275	306424	372215	483990	570109	731379	744092	915603	968541	
044009	103028	185061	232350	311691	381555	489434	571018	731410	747016	920001	980666	

— Product Information Requirements, Mail Entry and Payment Technology, 4-21-22

Set Your Imagination Free with
**Message Monsters
Forever[®] Stamps**



ON SALE NATIONWIDE:
SEPTEMBER 24, 2021

Sold as a full pane.

Missing, Lost, or Stolen U.S. Money Order Forms

Do Not Cash — Upon Receipt, Notify Local Postal Inspectors

Provide this listing to all Postal Service™ employees responsible for accepting and cashing postal money orders. Destroy all interim notices when the numbers listed appear in the *Postal Bulletin*. The new money order serial

numbers consist of the first 10 digits. The eleventh digit is a check digit only.

Do not cash outdated money orders **104 151 601 to 692 600 000**. Advise holders to send invalid money orders to Canada Post Corporation, Ottawa, Canada K1A 0B1. Check for altered dollar amounts by holding money orders to the light.

010 001 0200 to 0299	043 205 5922 to 5999	083 784 8886 to 8899	174 281 9347 to 9399
010 504 1932 to 1999	044 087 3457 to 3499	083 913 6915 to 6999	175 251 2600 to 0699
011 582 1889 to 1899	044 087 4000 to 4099	084 478 3920 to 3999	176 281 7937 to 7950
011 588 2900 to 3099	044 226 2487 to 2512	086 000 8271 to 8299	176 281 7963 to 7999
012 441 0784 to 0799	044 306 4200 to 4299	086 798 3840 to 3849	176 731 6586 to 6599
012 579 5675 to 5699	044 306 4370 to 4599	088 404 4472 to 4499	178 254 5000 to 9999
013 289 6176 to 6199	045 524 4121 to 4298	088 404 5584 to 5699	178 881 9900 to 9999
013 610 0014 to 0099	046 800 9870 to 9899	088 757 8688 to 8699	180 031 2089 to 2098
014 932 1000 to 1099	047 352 4000 to 4099	088 757 9400 to 9499	180 403 7723 to 7741
014 972 0800 to 0899	048 383 7650 to 7659	089 358 2248 to 2257	180 428 4580 to 0599
015 363 0065 to 0099	048 396 3647 to 3699	090 663 9678 to 9684	182 368 7544 to 0599
017 028 3200 to 3299	051 142 0755 to 0799	091 818 0071 to 0099	182 475 3229 to 3258
018 569 5333 to 5399	051 774 8857 to 8899	093 106 9346 to 9355	182 475 3904 to 3933
018 986 5264 to 5299	051 781 2875 to 2885	093 203 0500 to 0599	182 631 0031 to 0099
019 518 2814 to 2899	051 977 7010 to 7023	093 684 3630 to 3699	182 911 6539 to 6600
020 698 5159 to 5199	052 058 7115 to 7199	094 081 5074 to 5099	184 218 2760 to 2799
020 844 7307 to 7399	054 450 1130 to 1167	094 216 2555 to 2599	185 828 1474 to 1499
020 972 8948 to 8999	057 670 0563 to 0599	094 580 7062 to 7099	186 132 7583 to 0599
022 021 9110 to 9181	058 187 3836 to 3899	094 639 4200 to 4299	186 629 0589 to 0599
022 037 1411 to 1499	058 523 3003 to 3099	095 070 7186 to 7199	187 184 6177 to 0199
022 527 9201 to 9210	058 591 1153 to 1299	095 076 8300 to 8399	187 323 8200 to 8299
022 529 1882 to 1899	058 895 3746 to 3799	095 354 6864 to 6899	187 441 6080 to 6099
023 637 7169 to 7199	059 986 0814 to 0899	097 224 1350 to 1599	188 831 6774 to 6799
024 380 4100 to 4199	060 406 7650 to 7699	100 160 3800 to 3899	188 835 6370 to 6399
024 496 6870 to 6899	063 491 8122 to 8199	104 667 6400 to 6499	189 083 1064 to 1099
025 092 0987 to 0999	063 916 9968 to 9999	104 876 8937 to 8999	189 660 9583 to 9599
025 369 5535 to 5599	064 091 4500 to 4599	112 049 4413 to 4499	191 179 0377 to 0399
025 729 1151 to 1199	065 170 0471 to 0499	112 870 9765 to 9799	192 050 5762 to 5781
025 729 1643 to 1799	065 255 7909 to 7999	113 319 2000 to 2099	194 456 8600 to 0699
026 492 3180 to 3199	065 392 6345 to 6399	114 402 3850 to 3899	195 194 8881 to 6899
027 361 0430 to 0499	066 099 2014 to 2099	114 866 5368 to 5397	195 874 1112 to 1199
027 369 4482 to 4495	066 648 2880 to 2899	116 154 2800 to 2899	196 979 0524 to 0599
027 671 8762 to 8776	066 787 3639 to 3699	116 986 4400 to 4499	197 244 6100 to 6199
027 787 9886 to 9899	066 845 7500 to 9999	117 175 1647 to 5169	197 244 6300 to 6399
027 965 9487 to 9499	067 093 3869 to 3899	117 951 4687 to 4699	197 244 6400 to 6499
028 100 8069 to 8099	068 895 0334 to 0399	117 951 5200 to 5299	197 244 6500 to 6599
028 191 1852 to 1999	070 724 4488 to 4499	119 786 3051 to 3064	197 244 6600 to 6699
028 850 3000 to 3199	070 841 9181 to 9199	119 815 9861 to 6199	197 244 6700 to 6799
029 510 1500 to 1599	070 844 2546 to 2599	119 850 7400 to 7499	197 244 6800 to 8999
030 687 0903 to 0999	070 916 1340 to 1399	119 850 7700 to 7999	198 285 2556 to 2566
030 701 3442 to 3499	071 047 5768 to 5799	121 634 0460 to 0499	199 105 0778 to 0799
031 077 4507 to 4799	071 179 9800 to 9899	122 451 9879 to 9899	199 678 2968 to 2999
032 295 7500 to 9999	071 386 3682 to 3699	122 714 6805 to 6900	202 748 5133 to 5199
034 394 1000 to 1099	071 507 6840 to 6899	124 916 0304 to 0499	202 748 5245 to 5299
034 943 0400 to 0799	072 045 9641 to 9699	126 423 0136 to 0169	202 748 5300 to 5399
035 035 4337 to 4399	072 675 8287 to 8299	127 500 2328 to 2399	202 748 5400 to 5499
037 312 7500 to 7599	073 763 0867 to 0876	160 901 2254 to 2299	203 256 1240 to 1299
037 706 9578 to 9599	073 763 0878 to 0887	161 103 6581 to 6599	204 230 3577 to 3595
037 805 3677 to 3699	073 763 0889 to 0898	161 194 2857 to 0899	205 019 0174 to 0199
037 909 5490 to 5499	077 617 5481 to 5499	162 032 4447 to 4499	206 936 3184 to 3199
037 931 4660 to 4699	077 999 4001 to 4090	163 257 1085 to 1099	207 196 9900 to 9999
039 145 6521 to 6595	078 174 4475 to 4499	164 359 2406 to 2499	207 204 0700 to 0799
040 024 3901 to 3999	078 219 4931 to 4999	166 101 1433 to 1499	207 204 0800 to 0899
040 674 7100 to 7199	078 250 4756 to 4799	167 555 5201 to 5212	207 514 3857 to 3899
040 688 8816 to 8899	078 823 8312 to 8399	167 555 5214 to 5299	208 556 4707 to 4799
041 299 6752 to 6799	079 374 0300 to 2499	169 618 6274 to 6299	210 057 4038 to 4047
041 623 8889 to 8899	079 807 2342 to 2399	171 806 6878 to 6893	210 221 0548 to 0599
041 803 6565 to 6599	082 721 0228 to 0254	173 639 4685 to 4699	214 061 4711 to 4724
043 129 1968 to 1997	083 140 5000 to 7499	174 238 2779 to 2799	214 303 6311 to 6325

214 303 6239	to	6258	252 469 2125	to	2199	258 405 6400	to	6499	262 337 4500	to	4599
214 877 4251	to	4273	252 833 3286	to	3297	258 405 6800	to	6899	262 337 4600	to	4699
215 252 3918	to	3992	253 470 3948	to	3999	258 405 6900	to	6999	262 337 4700	to	4799
217 585 1400	to	1499	253 565 7400	to	7499	258 405 7000	to	7099	262 337 4800	to	4899
218 698 2157	to	2199	254 252 2800	to	2899	258 405 7100	to	7199	262 337 4900	to	4999
218 746 0800	to	0899	254 252 2900	to	2999	258 405 7200	to	7299	262 337 5000	to	5099
219 095 0100	to	0399	254 252 3000	to	3099	258 405 7300	to	7399	262 337 5100	to	5199
219 389 1885	to	1899	254 252 3100	to	3199	258 405 7400	to	7499	262 337 5200	to	5299
219 568 7435	to	7456	254 252 3200	to	3299	258 405 7800	to	7899	262 337 5300	to	5399
219 568 7469	to	7487	254 252 3300	to	3399	258 405 7900	to	7999	262 337 5400	to	5499
221 316 5757	to	5799	254 252 3400	to	3499	258 405 8000	to	8099	262 337 5500	to	5599
223 476 3914	to	3999	254 252 3500	to	3599	258 405 8100	to	8199	262 337 5600	to	5699
223 565 4921	to	4957	254 252 3600	to	3699	258 405 8200	to	8299	262 337 5700	to	5799
223 565 4979	to	4999	254 252 3700	to	3799	258 405 8300	to	8399	262 337 5800	to	5899
224 636 4745	to	4765	254 252 3800	to	3899	258 405 8400	to	8499	262 337 5900	to	5999
224 636 4776	to	4799	254 252 3900	to	3999	258 405 8500	to	8599	262 337 6000	to	6099
224 636 4855	to	4885	254 252 4000	to	4099	258 405 8600	to	8699	262 337 6100	to	6199
224 636 4932	to	4948	254 252 4100	to	4199	258 405 8700	to	8799	262 337 6200	to	6299
224 636 4950	to	4962	254 252 4200	to	4299	258 405 8800	to	8899	262 337 6300	to	6399
224 636 4985	to	4999	254 252 4300	to	4399	258 405 8900	to	8999	262 337 6400	to	6499
224 723 0757	to	0799	254 252 4400	to	4499	258 405 9600	to	9699	262 337 6500	to	6599
224 730 2207	to	2299	254 252 4500	to	4599	258 405 9700	to	9799	262 337 6600	to	6699
225 970 0500	to	0599	254 252 4600	to	4699	258 405 9800	to	9899	262 337 6700	to	6799
225 970 0600	to	0699	254 252 4700	to	4799	258 405 9900	to	9999	262 337 6800	to	6899
225 970 0700	to	0799	254 252 4800	to	4899	259 014 9989	to	9999	262 337 6900	to	6999
227 033 8679	to	8699	254 252 4900	to	4999	259 062 4788	to	4798	262 337 7000	to	7099
227 275 9400	to	9999	254 565 7607	to	7700	259 218 1400	to	1499	262 337 7100	to	7199
228 463 2456	to	2499	254 907 1203	to	1299	259 218 1500	to	1599	262 337 7200	to	7299
228 510 4852	to	4899	255 185 9527	to	9599	259 218 1600	to	1699	262 337 7300	to	7399
229 462 8451	to	8475	255 397 1557	to	1576	259 590 5654	to	5699	262 337 7400	to	7499
229 668 5977	to	5999	255 425 2989	to	2998	259 670 8268	to	8299	262 337 7500	to	7599
229 923 9176	to	9199	255 728 6412	to	6499	259 835 6238	to	6399	262 337 7600	to	7699
229 924 6696	to	6699	255 728 9842	to	9899	259 835 6701	to	6799	262 337 7700	to	7799
230 051 9500	to	9999	256 134 9833	to	9839	260 224 4600	to	4699	262 337 7800	to	7899
236 366 2431	to	2499	256 134 9840	to	9849	260 224 5941	to	5999	262 337 7900	to	7999
236 607 6882	to	6899	256 134 9850	to	9859	260 310 2821	to	2899	262 337 8000	to	8099
236 660 5853	to	5872	256 134 9860	to	9869	260 452 0010	to	0022	262 337 8100	to	8199
239 322 5200	to	5299	256 134 9870	to	9879	260 452 0049	to	4299	262 337 8200	to	8299
239 322 5400	to	5499	256 134 9880	to	9889	260 553 8200	to	8299	262 337 8300	to	8399
239 322 5600	to	5699	256 134 9890	to	9899	260 553 8600	to	8699	262 337 8400	to	8499
239 322 5800	to	5899	256 247 6900	to	6999	260 553 9600	to	9799	262 337 8500	to	8599
239 322 5900	to	5999	256 550 5536	to	5545	260 553 9800	to	9899	262 337 8600	to	8699
239 607 4783	to	4799	256 799 2257	to	2299	260 553 9900	to	9999	262 337 8700	to	8799
240 593 1879	to	1899	257 154 8763	to	8799	260 761 1603	to	1662	262 337 8800	to	8899
242 591 2048	to	2099	257 154 8800	to	8899	261 183 2100	to	2299	262 337 8900	to	8999
242 735 0388	to	0398	257 765 4567	to	4599	261 426 0408	to	0499	262 337 9000	to	9099
242 951 7276	to	7299	257 765 4610	to	4696	262 082 8000	to	8099	262 337 9100	to	9199
243 535 6370	to	6399	257 765 4737	to	4799	262 082 8100	to	8199	262 337 9200	to	9299
244 004 9985	to	9999	257 792 7800	to	7889	262 082 8200	to	8299	262 337 9300	to	9399
244 004 9985	to	9999	257 792 7900	to	7999	262 082 8300	to	8399	262 337 9400	to	9499
244 268 9765	to	9799	257 792 8000	to	8099	262 082 8400	to	8499	262 337 9500	to	9599
244 347 4471	to	4499	257 856 9863	to	9899	262 288 7302	to	7399	262 337 9600	to	9699
249 056 1551	to	1599	258 103 1773	to	1782	262 288 7400	to	7499	262 337 9700	to	9799
249 336 9438	to	9499	258 405 1800	to	1899	262 288 9900	to	9999	262 337 9800	to	9899
249 399 4000	to	4099	258 405 1900	to	1999	262 337 2600	to	2699	262 337 9900	to	9999
249 399 4100	to	4199	258 405 3300	to	3399	262 337 2700	to	2700	262 472 3188	to	3199
249 399 4200	to	4299	258 405 3400	to	3499	262 337 2800	to	2800	262 472 3200	to	3299
249 399 4300	to	4399	258 405 3500	to	3599	262 337 2900	to	2900	262 546 3100	to	3199
249 399 4400	to	4499	258 405 3700	to	3799	262 337 3000	to	3099	262 546 3200	to	3299
249 399 4500	to	4599	258 405 3800	to	3899	262 337 3100	to	3199	262 546 3300	to	3399
249 399 4600	to	4699	258 405 3900	to	3999	262 337 3200	to	3299	262 546 3400	to	3499
249 399 4700	to	4799	258 405 4000	to	4099	262 337 3300	to	3399	262 546 3500	to	3599
249 399 4800	to	4899	258 405 4100	to	4199	262 337 3400	to	3499	262 546 3600	to	3699
249 399 4900	to	4999	258 405 4200	to	4299	262 337 3500	to	3599	262 546 3900	to	3999
250 159 7502	to	7599	258 405 4600	to	4699	262 337 3600	to	3699	262 546 4300	to	4399
250 566 9644	to	9699	258 405 5600	to	5699	262 337 3700	to	3799	262 546 4400	to	4499
250 661 8425	to	8499	258 405 5700	to	5799	262 337 3800	to	3899	262 546 4500	to	4599
251 335 5731	to	5799	258 405 5800	to	5899	262 337 3900	to	3999	262 546 4600	to	4699
251 379 2380	to	2399	258 405 5900	to	5999	262 337 4000	to	4099	262 546 4700	to	4799
252 005 7626	to	7699	258 405 6000	to	6099	262 337 4100	to	4199	262 546 4800	to	4899
252 421 8401	to	8499	258 405 6100	to	6199	262 337 4200	to	4299	262 546 4900	to	4999
252 464 2810	to	2899	258 405 6200	to	6299	262 337 4300	to	4399	262 546 7100	to	7199
252 612 3683	to	3699	258 405 6300	to	6399	262 337 4400	to	4499	262 546 7200	to	7299

262 546 7300 to 7399	389 696 2400 to 2799	410 867 0970 to 0999	435 666 6092 to 6399
262 546 7400 to 7499	389 846 3104 to 3135	411 868 1023 to 1199	436 082 6400 to 6899
262 546 9800 to 9899	389 846 3145 to 3195	411 922 2322 to 2399	436 160 6441 to 6499
262 546 9900 to 9999	389 887 9211 to 9230	412 193 0900 to 0999	437 316 7115 to 7199
262 567 1788 to 1799	389 887 9234 to 9299	412 395 8599 to 8699	437 427 0500 to 3499
263 254 2500 to 2500	390 001 3182 to 3199	412 485 6500 to 6599	439 179 2300 to 2399
263 340 0000 to 0099	390 001 3500 to 3699	412 485 6610 to 6699	439 310 0458 to 0499
263 340 0100 to 0199	390 545 5974 to 5999	412 885 5953 to 5999	440 698 1947 to 1999
263 340 0500 to 0599	391 104 6146 to 6199	414 193 3608 to 3674	440 858 6300 to 6399
263 340 0600 to 0699	391 574 1466 to 1499	414 193 3677 to 3699	440 858 6420 to 7299
263 340 2700 to 2799	391 783 3020 to 3599	414 411 7348 to 7399	441 199 1655 to 1699
263 340 2800 to 2899	391 792 6100 to 6199	414 640 0757 to 0799	443 127 3648 to 3699
263 340 3000 to 3099	392 668 2956 to 2999	414 965 1727 to 1799	443 127 4000 to 4099
264 341 2360 to 2399	392 854 8500 to 8899	417 302 8104 to 8199	443 673 7900 to 7999
264 380 4000 to 4099	393 584 7566 to 7699	417 387 6532 to 6599	443 800 9335 to 9399
264 380 4100 to 4199	393 650 0074 to 0099	417 496 6800 to 6999	444 382 8822 to 8899
264 799 6049 to 6099	393 838 8316 to 8499	417 871 9250 to 9299	444 390 1667 to 1699
264 860 7832 to 7868	393 893 6007 to 6099	417 930 9533 to 9599	444 457 3854 to 3899
265 127 3658 to 3699	394 126 6907 to 6999	418 164 6500 to 6799	450 048 4173 to 4199
265 380 7111 to 7137	394 189 0405 to 0599	418 423 9863 to 9899	450 048 4442 to 4699
265 444 4762 to 4799	394 822 3243 to 3278	418 633 5922 to 5999	450 560 5173 to 5199
265 548 7074 to 7099	394 990 1810 to 1899	418 719 8520 to 8599	450 620 3077 to 3099
266 106 0000 to 2499	395 343 3264 to 3299	418 744 2235 to 2299	450 620 3135 to 3199
266 129 5809 to 5899	395 373 3035 to 3099	418 962 2848 to 2899	450 780 2716 to 2799
266 673 0000 to 2499	395 396 9649 to 9799	419 543 0286 to 0299	450 801 2700 to 2799
266 749 7900 to 7999	395 970 3240 to 3299	419 730 0300 to 0399	451 109 2967 to 2984
266 868 0952 to 0999	397 622 4054 to 4099	420 277 0015 to 0049	451 115 4110 to 4125
266 868 1028 to 1099	397 819 8902 to 8999	420 599 0734 to 0798	451 115 4127 to 4199
266 868 1100 to 1199	398 149 7200 to 7699	420 661 4115 to 4199	451 746 0700 to 0799
266 868 1200 to 1299	399 070 0872 to 0899	420 758 9500 to 9699	452 265 0074 to 0099
267 296 1237 to 1299	399 156 7119 to 7199	420 969 3951 to 3971	452 265 0246 to 0299
267 324 8946 to 8998	399 203 5064 to 5099	420 969 3973 to 3999	452 265 0335 to 0999
268 072 1203 to 1299	399 296 9910 to 9999	421 116 3565 to 3599	452 509 1169 to 1199
271 660 4333 to 4400	399 396 8935 to 8999	421 130 9300 to 9399	452 855 6471 to 6499
273 520 0000 to 9999	399 792 7775 to 7799	421 313 4500 to 4999	452 890 4679 to 4799
273 520 6000 to 8999	399 792 8300 to 8399	421 364 5537 to 5599	452 900 8215 to 8238
273 775 7700 to 7899	400 427 1051 to 1999	421 656 2609 to 2699	453 117 9146 to 9199
273 882 1913 to 1998	401 045 1505 to 1549	421 988 9700 to 9799	453 334 3631 to 3699
274 750 0300 to 0400	401 045 1571 to 1599	422 172 4667 to 4699	453 603 7841 to 7891
274 782 0549 to 0599	401 294 2700 to 2799	422 484 4212 to 4299	453 650 1140 to 1199
302 000 0000 to 9999	401 310 9505 to 9599	422 556 1270 to 1299	453 741 1300 to 1399
349 746 2056 to 2099	401 382 5312 to 5399	422 587 7024 to 7099	454 013 2919 to 2999
350 518 7350 to 7374	402 578 7876 to 7899	422 819 7533 to 7599	454 186 2411 to 2499
360 011 1690 to 1699	403 125 6744 to 6799	422 842 5073 to 5087	454 268 4883 to 4899
360 168 6008 to 6099	403 260 7000 to 7499	422 907 7563 to 7599	454 302 5400 to 5499
360 173 8800 to 8899	403 280 6470 to 6499	424 500 6050 to 6099	454 490 8300 to 8399
360 324 2326 to 2399	403 685 8600 to 8699	424 641 8500 to 8599	454 547 7434 to 7499
362 861 3064 to 3099	404 003 0300 to 0399	424 871 6600 to 6699	454 922 4867 to 4895
373 006 2176 to 2199	404 041 8838 to 8899	425 298 2352 to 2399	455 221 1348 to 1499
374 768 2600 to 2699	404 071 4268 to 4299	425 418 4269 to 4299	455 364 2147 to 2199
375 169 4400 to 4599	404 347 5356 to 5399	425 418 4405 to 4499	455 399 5400 to 5499
375 829 3400 to 3499	404 347 5548 to 5599	426 547 4566 to 4599	455 476 0676 to 0699
375 851 9100 to 9199	404 726 4500 to 4599	427 412 6337 to 6499	455 543 0618 to 0699
376 196 0911 to 0999	404 961 5001 to 5199	427 481 0900 to 0999	456 410 9006 to 9099
378 085 3679 to 3699	405 325 0188 to 0198	428 027 2742 to 2752	456 470 4146 to 4299
378 351 1063 to 1099	406 009 4587 to 4599	429 474 4172 to 4199	456 619 4460 to 4499
379 843 5100 to 5199	406 260 6830 to 6899	429 889 2900 to 2999	457 333 2686 to 2699
380 093 9600 to 9699	406 459 6641 to 6999	430 150 4401 to 4599	457 729 1767 to 1777
380 165 1165 to 1199	406 733 3000 to 3999	430 172 9800 to 9899	457 937 8615 to 8699
381 325 4500 to 4599	407 545 1557 to 1599	430 177 1900 to 2099	458 028 9810 to 9899
381 604 2510 to 2699	407 594 0412 to 0599	430 444 9500 to 9699	458 057 2712 to 2999
381 645 9525 to 9599	407 692 9100 to 9299	430 664 4070 to 4099	458 069 9537 to 9599
383 314 3968 to 3999	407 959 2190 to 2199	432 168 8419 to 8499	458 069 9665 to 9699
383 892 1000 to 1344	408 265 2275 to 2288	432 708 6800 to 6999	458 337 5222 to 5299
383 892 1382 to 1399	408 499 7700 to 7799	432 744 1544 to 1599	458 354 7653 to 7999
384 925 3641 to 3654	408 499 7900 to 7999	432 995 9775 to 9799	458 671 8678 to 8699
385 568 2331 to 2399	408 682 8484 to 8599	433 003 5800 to 5899	458 671 8721 to 8798
385 599 7554 to 7575	408 698 7015 to 7099	433 757 3047 to 3099	458 847 5044 to 5999
385 774 2024 to 2099	409 072 3941 to 3999	433 765 4003 to 4099	459 274 7624 to 7699
386 624 1412 to 1599	410 491 2311 to 2399	434 482 7060 to 7199	459 365 5432 to 5499
386 883 8936 to 8999	410 694 8400 to 8599	434 513 2386 to 2399	459 378 5764 to 5799
387 314 5574 to 5599	410 775 1500 to 1599	434 968 3076 to 3092	459 472 4816 to 4999
387 837 6300 to 6399	410 795 7927 to 7999	435 303 1831 to 1842	460 349 6878 to 6899
388 828 0656 to 0699	410 867 0917 to 0966	435 303 1986 to 1999	460 550 1909 to 1999

460 997 5234	to 5299	481 072 9463	to 9499	504 045 4030	to 4099	609 493 1100	to 1199
461 973 6443	to 6499	481 673 0074	to 0095	504 166 0200	to 0599	609 766 8091	to 8999
462 152 0107	to 0299	482 527 1500	to 1599	504 240 1062	to 1399	609 825 4100	to 4115
462 274 1072	to 1099	482 541 5255	to 5299	504 805 3300	to 3499	609 884 2981	to 2999
462 277 8373	to 8399	482 729 6800	to 6899	505 096 0662	to 0699	609 893 1000	to 1099
462 554 6051	to 6099	483 363 7207	to 7299	505 893 7739	to 7799	610 092 3200 to 3299	
463 011 5529	to 5540	483 402 2356	to 2399	505 893 7800	to 7999	610 582 4200	to 4299
463 176 4115	to 4199	483 486 5100	to 5199	506 124 0800	to 0999	611 879 6939	to 6999
463 176 4229	to 4299	483 632 1521	to 1599	506 165 7027	to 0099	612 291 8013	to 8099
463 185 2600	to 2799	483 632 2600	to 2799	506 502 5209	to 5299	612 751 5171	to 5199
463 227 7711	to 7799	483 849 1615	to 1699	506 756 1682	to 1699	612 751 5226	to 5299
463 414 4869	to 4899	484 174 4803	to 5299	506 756 1700	to 1799	612 751 6083	to 6099
463 808 3484	to 3499	484 323 8900	to 9199	506 756 1800	to 1899	612 751 6268	to 6299
463 945 7400	to 7899	484 680 5000	to 5038	506 836 5326	to 5399	612 751 6572	to 6599
464 629 9000	to 9399	484 680 5040	to 5074	508 489 6226	to 6299	612 774 2111	to 2199
464 711 4332	to 4399	484 680 5077	to 5099	508 789 8332	to 8399	612 774 2254	to 2299
465 692 3963	to 3999	485 029 4913	to 4999	508 789 8400	to 8499	612 774 2500	to 2599
465 698 8300	to 8599	486 176 0600	to 0699	509 909 0425	to 0435	614 469 0979	to 0999
465 743 7745	to 7799	486 559 7555	to 7599	510 150 2400 to 2499		614 474 3000	to 3099
466 798 6056	to 6067	486 696 3023	to 3199	510 381 3200	to 3299	614 521 3490	to 3499
467 147 4300	to 4399	488 173 7900	to 7999	510 587 9500	to 9599	614 645 1800	to 1899
468 079 5782	to 5799	488 206 4100	to 4199	510 587 9659	to 9699	614 832 1100	to 2099
469 067 2817	to 2899	488 226 0200	to 0299	510 269 9770	to 9999	615 017 7505	to 7599
469 127 8000	to 8199	488 709 3906	to 3999	511 021 5042	to 5099	617 711 6609	to 6699
469 213 0359	to 0399	488 855 8359	to 8399	511 021 5100	to 5199	617 760 5266	to 5299
469 213 0500	to 0599	489 181 8963	to 8999	511 468 1747	to 1799	617 813 3601	to 3699
469 561 8011	to 8099	489 223 2000	to 2099	511 844 0100	to 0199	618 840 9200	to 9299
469 658 1961	to 1999	489 311 1930	to 1999	511 844 0340	to 0399	619 551 7229	to 7299
469 666 9900	to 9999	489 318 6200	to 6300	512 805 3913	to 3919	619 859 3000	to 3099
469 678 1900	to 1999	489 384 0027	to 0099	513 046 0700	to 0726	620 073 9400 to 9499	
469 781 4900	to 4999	489 427 0658	to 0899	513 149 0600	to 0699	621 614 7907	to 7930
469 947 6960	to 6999	489 997 5252	to 5299	513 445 3000	to 3199	621 614 7932	to 7999
470 755 5800 to 5818		490 669 5850 to 6099		513 466 2034	to 2044	621 648 8021	to 8199
471 918 0300	to 0999	490 717 7080	to 7099	513 539 9052	to 9099	621 648 8500	to 8599
471 985 2408	to 2419	490 721 6000	to 6099	513 539 9267	to 9299	621 904 8351	to 8599
472 191 6700	to 6799	490 793 1500	to 2099	513 539 9800	to 9899	621 916 1978	to 1989
472 270 2555	to 2599	490 886 8171	to 8199	513 539 9985	to 9999	622 989 8032	to 8099
472 987 0213	to 0241	490 977 9221	to 9240	513 606 5459	to 5490	623 076 9300	to 9399
472 987 0290	to 0299	491 258 8100	to 9099	513 812 1751	to 1799	623 819 5006	to 5099
473 151 2069	to 2199	491 567 1376	to 1399	514 103 3600	to 3699	623 895 8200	to 8399
473 666 9138	to 9199	492 254 4800	to 4899	514 103 3700	to 3799	623 917 0000	to 0099
473 952 3429	to 3499	492 283 5100	to 5199	514 103 3800	to 3899	623 917 0200	to 0299
474 108 5402	to 5499	492 610 6813	to 6899	600 645 3223 to 3299		624 468 5288	to 5299
474 356 5193	to 5299	493 394 5568	to 5599	601 339 1200	to 1399	624 665 3162	to 3198
474 949 3366	to 3399	493 470 2562	to 2599	601 653 5884	to 5899	625 088 6735	to 6799
475 134 9362	to 9399	493 473 7700	to 7799	601 661 7700	to 7799	625 916 9500	to 9799
475 167 9667	to 9699	493 716 2153	to 2199	601 682 5343	to 5399	625 968 8956	to 8999
475 319 3415	to 3499	494 206 2972	to 2999	601 928 1600	to 1699	627 005 3938	to 3999
475 319 3649	to 3799	494 217 3446	to 3999	602 512 2972	to 2999	627 384 3907	to 4099
475 340 6400	to 6599	494 224 0500	to 0599	602 555 2400	to 2799	627 496 7549	to 7599
475 424 8410	to 8499	495 145 0600	to 0699	602 829 7061	to 7099	627 708 3605	to 3699
475 629 9156	to 9199	496 209 7425	to 7499	603 483 9572	to 9599	627 776 2500	to 2599
475 850 6101	to 6199	496 213 8728	to 8799	603 490 7200	to 7299	628 226 3100	to 3199
475 875 2500	to 2599	496 474 5226	to 5248	603 678 7100	to 7199	628 814 4702	to 4799
476 169 8264	to 8299	497 053 8517	to 8699	603 678 7662	to 7699	628 851 9689	to 9699
476 189 3000	to 3499	497 854 8673	to 8699	603 678 7902	to 7999	629 510 7200	to 7299
476 331 2480	to 2499	498 449 8888	to 8899	603 678 8418	to 8499	629 964 4200	to 4294
477 289 8601	to 8699	498 929 8285	to 8499	603 678 8700	to 9999	630 389 3056 to 3071	
477 681 5206	to 5299	498 936 5310	to 5399	604 086 0880	to 0899	630 463 0588	to 0599
478 010 4243	to 4268	499 016 5425	to 5499	604 349 1414	to 1499	631 459 9117	to 9199
478 010 4270	to 4291	499 440 8575	to 8899	604 503 7776	to 7799	631 762 9325	to 9399
478 450 5071	to 5099	499 731 6717	to 6799	605 520 9037	to 9099	632 217 4933	to 4999
478 469 7838	to 7858	500 064 1858 to 1869		605 685 4010	to 4099	632 500 0000	to 640 3999
478 469 7883	to 7899	500 070 5725	to 7799	605 988 6467	to 6499	633 110 4165	to 4199
479 280 9800	to 9899	501 058 0016	to 0026	607 689 7951	to 7960	633 110 4303	to 4499
479 365 9116	to 9176	501 331 0300	to 0399	607 728 1276	to 1299	633 438 6429	to 6599
479 412 9900	to 9999	501 460 0977	to 0999	608 727 7100	to 7199	633 588 7173	to 7182
479 667 6190	to 6199	502 227 7645	to 7699	608 727 7273	to 7599	634 725 0700	to 0799
479 748 9680	to 9699	502 424 0200	to 0499	608 813 9950	to 9999	634 803 3239	to 3299
479 860 7000	to 7199	502 424 0600	to 0699	609 067 5325	to 5399	634 807 2474	to 2499
480 526 2000 to 2099		502 496 6923	to 6999	609 067 5488	to 5499	634 827 5900	to 5999
480 640 6330	to 6399	503 003 2700	to 2899	609 067 5600	to 5699	634 886 3428	to 3499
480 658 0568	to 0599	503 194 5144	to 5153	609 289 6123	to 6199	635 559 3449	to 3499
480 689 5100	to 5199	503 790 9922	to 9948	609 438 4400	to 4499	636 289 6214	to 6299

636 634 8007	to	8042	651 882 2800	to	2899	683 118 2389	to	2399	701 838 2800	to	2899
637 150 1200	to	1299	652 754 6317	to	6399	683 378 2000	to	2099	701 941 0600	to	0699
637 562 5828	to	5899	653 131 4945	to	4999	683 378 2117	to	2299	702 171 1603	to	1699
638 042 1647	to	1699	653 426 3300	to	3399	683 415 1200	to	1499	702 195 5109	to	5199
638 049 4984	to	4999	653 455 4874	to	4899	683 444 8159	to	8199	702 254 9300	to	9399
638 318 1115	to	1199	654 238 0000	to	0399	685 154 7780	to	7789	702 264 7569	to	7599
638 318 1453	to	1499	654 404 3065	to	3092	685 297 7645	to	7699	702 519 0513	to	0524
638 885 0000	to	0299	654 962 2900	to	3199	685 623 5264	to	5299	702 713 1800	to	1809
638 903 4362	to	4373	655 103 5081	to	5199	685 650 9487	to	9499	702 821 5730	to	5799
639 415 1929	to	1999	655 523 2600	to	2999	685 669 4200	to	4299	702 821 5805	to	5899
639 415 2019	to	2099	656 305 2448	to	2499	685 757 8452	to	8499	702 844 6975	to	6994
639 420 6200	to	6299	657 347 4438	to	4999	686 071 2694	to	2799	702 846 6331	to	6399
639 469 3517	to	3799	657 710 8100	to	8999	686 176 3333	to	3354	702 848 3900	to	3999
639 605 2143	to	2199	657 780 0985	to	0999	686 372 3200	to	3299	702 857 7302	to	7499
639 657 8600	to	8799	658 586 1400	to	1499	686 644 5879	to	5899	702 878 0114	to	0199
640 289 7500 to 7599			658 877 8000	to	8199	686 899 1371	to	1399	703 364 1707	to	1799
640 289 7700	to	7999	658 880 8000	to	8199	686 931 7636	to	7699	740 002 7710 to 7719		
641 170 4420	to	4499	659 398 7300	to	7399	687 601 0973	to	0999	740 037 6730	to	6800
641 318 3133	to	3199	659 706 8113	to	8199	687 614 6774	to	6799	740 119 2275	to	2284
641 378 6500	to	6999	659 846 7837	to	7899	688 120 9000	to	9999	740 130 6688	to	6698
641 383 8739	to	8799	660 510 4100 to 4199			688 314 3107	to	3191	740 144 2780	to	2795
641 877 3187	to	3299	660 673 0400	to	0599	690 291 1361 to 1371			740 241 9049	to	9099
641 877 3310	to	3399	661 488 5000	to	5099	690 788 2877	to	2899	740 252 9265	to	9294
642 355 8094	to	8199	661 609 9100	to	9199	690 893 5344	to	5399	740 255 1718	to	1799
642 355 8308	to	8999	661 716 9420	to	9499	690 893 5512	to	5599	740 274 2602	to	2619
642 900 0018	to	0099	661 906 6522	to	6599	690 904 1300	to	1599	740 277 0366	to	0392
643 030 6254	to	6299	662 021 8332	to	8399	690 941 6000	to	6199	740 332 7658	to	7671
644 066 0882	to	0899	662 068 0700	to	0899	691 313 6383	to	6399	740 348 6641	to	6658
644 069 0600	to	0699	662 553 0774	to	0799	691 313 6600	to	6699	740 351 4790	to	4799
644 077 7506	to	7699	663 078 7034	to	7099	691 582 8003	to	8099	740 374 7416	to	7499
644 085 8157	to	8199	663 763 5300	to	5399	691 664 1800	to	1999	740 470 2420	to	2443
644 112 9839	to	9899	663 883 7039	to	7499	691 664 2400	to	2499	740 514 0300	to	0499
644 373 9083	to	9099	663 938 9200	to	9299	692 727 9362	to	9399	740 523 7432	to	7449
644 380 1460	to	1499	664 253 8000	to	8499	692 798 1800	to	1899	740 535 1555	to	1580
644 733 4715	to	4799	664 656 3055	to	3099	693 249 0779	to	0799	740 557 3570	to	3579
644 900 9712	to	9799	665 174 6400	to	6499	693 249 0877	to	1699	740 650 4104	to	4140
644 901 0109	to	1299	665 274 8208	to	8299	693 445 0566	to	0999	740 684 0620	to	0800
644 901 1325	to	1399	665 669 5400	to	5499	693 448 8500	to	8999	740 701 6105	to	6114
644 923 6800	to	7799	666 132 8226	to	8299	693 645 9583	to	9599	740 705 9790	to	9799
644 932 4655	to	4699	666 696 2209	to	2299	693 965 4200	to	4299	740 726 6400	to	6500
645 318 7240	to	7499	666 696 2309	to	2399	695 741 2906	to	2999	740 748 8319	to	8329
645 333 1766	to	1799	667 032 9300	to	9399	695 947 8518	to	8599	740 765 3306	to	3399
645 790 8632	to	8699	667 729 5529	to	5599	696 662 8247	to	8299	740 774 8434	to	8499
645 821 0657	to	0699	668 383 8400	to	8699	697 447 8285	to	8296	740 779 4259	to	4299
645 930 7948	to	7999	670 368 3400 to 3499			698 042 4816	to	4899	740 786 1885	to	1899
645 975 0737	to	0762	670 369 7336	to	7399	698 131 2138	to	2157	740 790 5989	to	5999
646 242 6200	to	6299	670 750 7169	to	7199	698 227 0000	to	0099	740 803 4870	to	4879
646 270 7639	to	7799	671 046 6200	to	6399	700 065 2570 to 2599			740 820 4854	to	7836
646 798 4000	to	4999	671 251 5448	to	5499	700 065 4800	to	4899	740 827 7578	to	7594
647 048 7035	to	7099	671 926 5600	to	5799	700 190 3350	to	3359	740 917 7490	to	7499
647 049 2900	to	2999	672 444 2000	to	2999	700 228 6048	to	6099	740 918 5531	to	5549
647 398 8300	to	8399	672 828 3410	to	3499	700 650 0452	to	0499	741 037 8528	to	8551
647 398 8481	to	8499	673 167 5776	to	5799	700 666 1323	to	1349	742 030 6135	to	6149
647 437 3000	to	4999	675 464 3700	to	3799	700 786 9106	to	9142	742 033 2663	to	2674
647 811 2188	to	2199	675 464 4000	to	4199	700 859 0744	to	0758	742 040 3300	to	3309
648 009 6057	to	6099	676 365 5958	to	5999	701 028 6780	to	6899	742 112 8155	to	8199
648 163 5300	to	5499	676 669 1024	to	1099	701 213 3900	to	3999	742 151 5000	to	5014
648 722 5283	to	5299	677 126 6734	to	6799	701 267 2000	to	3999	742 191 4640	to	4649
648 892 3164	to	3199	677 333 9979	to	9999	701 335 7312	to	7399	742 192 5210	to	5224
649 100 3989	to	3999	677 466 1088	to	1099	701 369 2005	to	2050	742 222 9200	to	9210
649 647 0370	to	0399	678 071 4500	to	4799	701 499 2260	to	2299	742 228 9660	to	9669
649 647 0522	to	0599	678 096 7531	to	7599	701 503 2247	to	2299	742 247 6980	to	6989
649 647 5237	to	5399	679 909 2578	to	2599	701 541 2271	to	2299	742 290 0936	to	0950
649 647 9100	to	9299	680 112 9565 to 9599			701 553 6557	to	6599	742 302 7600	to	7699
649 666 7800	to	8299	680 244 0903	to	0999	701 578 7460	to	7469	742 305 3711	to	3799
650 114 7707 to 7719			680 412 6046	to	6099	701 578 7475	to	7499	742 305 3800	to	3899
650 130 3400	to	3599	680 761 6800	to	6899	701 601 3457	to	3499	742 305 3900	to	3999
650 213 0406	to	0499	681 677 0540	to	0699	701 605 5913	to	5999	742 305 4000	to	4099
650 555 1749	to	1799	682 070 1029	to	1099	701 695 3982	to	3999	742 305 4100	to	4199
650 564 1900	to	1999	682 956 6280	to	6299	701 695 4148	to	4199	805 885 8411 to 8499		
650 627 4212	to	4299	682 956 6490	to	6599	701 695 4227	to	4299	806 087 1100	to	1499
650 736 2043	to	2099	682 956 6700	to	6799	701 708 1741	to	1799	806 268 9275	to	9299
650 739 1540	to	1699	682 965 1178	to	1199	701 736 3966	to	3999	806 534 3400	to	3477
651 741 4415	to	4499	682 965 1201	to	1299	701 772 0870	to	0899	807 342 3283	to	3399

808 086 7100	to 7199	855 361 3390	to 3399	902 198 9769	to 9799	918 460 0602	to 0699
808 090 3440	to 3499	856 226 0490	to 0499	902 948 1269	to 1299	918 951 7231	to 7299
808 325 5161	to 5699	856 656 5800	to 5999	902 985 0833	to 0899	919 519 2786	to 2799
808 784 8000	to 8299	856 752 0200	to 0299	903 370 6934	to 6999	919 536 0770	to 0799
830 125 0672	to 0699	857 111 1352	to 1399	904 600 6523	to 6599	919 814 3095	to 3199
830 602 5800	to 5999	857 279 3450	to 3499	904 892 0378	to 0399	919 889 5110	to 5134
830 610 3700	to 3799	857 843 4000	to 4099	904 892 0648	to 1299	919 889 5137	to 5176
830 983 3500	to 3599	858 124 7644	to 7699	905 056 2216	to 2299	919 889 5178	to 5199
830 983 3635	to 3699	858 756 3111	to 3299	905 510 6647	to 6799	919 889 5030	to 5070
831 354 1387	to 1399	859 063 8200	to 8699	905 510 6900	to 7099	919 889 5090	to 5099
831 815 8240	to 8299	859 190 0600	to 0644	905 794 0000	to 0199	919 915 2774	to 2787
832 525 3810	to 3899	859 437 5538	to 5599	905 794 0288	to 0299	920 155 4662	to 4687
833 159 1884	to 1899	859 811 2888	to 2899	905 873 6900	to 6999	920 309 9039	to 9199
833 456 2567	to 2599	859 855 8873	to 8999	905 873 7100	to 7299	920 771 5321	to 5399
833 566 3015	to 3071	860 240 8520	to 8599	905 889 8900	to 8999	920 857 5500	to 5899
834 130 5200	to 5299	860 275 3900	to 3999	905 889 7100	to 7199	920 864 3480	to 3499
834 316 5444	to 5499	860 518 9629	to 9699	906 158 1508	to 1599	920 963 4567	to 4599
834 354 8747	to 8766	860 600 0021	to 0999	906 558 8812	to 8899	921 333 7400	to 7499
834 354 8824	to 8838	861 158 2350	to 2599	906 882 2214	to 2299	921 477 3762	to 3799
835 269 5700	to 5799	861 367 5400	to 5499	907 725 8500	to 8599	922 278 1048	to 1399
835 496 7303	to 7399	861 637 6010	to 6099	907 815 0216	to 0257	922 280 2019	to 2099
835 539 5200	to 5999	861 979 7292	to 7499	908 622 4225	to 4235	922 280 2233	to 2299
835 813 3015	to 3099	862 216 6100	to 6199	908 936 9254	to 9299	922 773 0459	to 0499
837 672 8967	to 8999	862 263 9213	to 9299	909 066 4494	to 7499	923 032 7000	to 7399
837 784 3282	to 3299	862 271 0800	to 0999	909 067 7400	to 7499	923 045 3630	to 3699
838 176 8377	to 8399	862 271 5000	to 5099	909 100 1787	to 1799	923 484 3600	to 3699
838 518 1257	to 1299	863 871 5138	to 5199	909 100 1900	to 2099	923 493 9403	to 9599
839 718 8257	to 8299	863 949 5300	to 5399	909 355 0422	to 0499	923 493 9681	to 9699
840 323 0600	to 0699	864 088 8200	to 8299	909 568 8900	to 9099	923 604 4424	to 4499
840 875 6235	to 6299	864 426 3972	to 3999	909 568 9300	to 9499	923 810 7800	to 8299
840 910 0900	to 0999	864 520 6117	to 6136	909 725 7307	to 7399	924 252 1200	to 1299
841 349 5000	to 5099	865 151 0526	to 0599	909 833 0947	to 0999	924 252 1400	to 1499
841 805 7747	to 7899	865 500 4034	to 4099	910 219 8631	to 8699	924 533 0711	to 0799
841 805 7944	to 8099	865 883 6082	to 6099	910 265 1100	to 1199	924 533 2343	to 2399
842 226 0685	to 0695	866 004 3000	to 3999	910 471 7273	to 7299	924 533 2428	to 2499
842 685 4600	to 4699	866 442 4100	to 4899	910 536 2505	to 2599	924 685 1957	to 1999
842 685 4742	to 4999	867 366 9108	to 9118	910 958 7499	to 7599	924 946 6300	to 6699
842 860 0300	to 0399	867 633 7403	to 7499	911 140 1000	to 2199	925 333 5900	to 6099
842 898 5582	to 5599	867 737 5623	to 5699	911 245 2545	to 2599	925 336 2300	to 2399
843 062 7100	to 7199	868 169 4529	to 4599	911 268 9077	to 9099	926 432 5907	to 5999
843 077 6288	to 6299	868 173 8400	to 8599	911 400 8948	to 8999	926 436 3600	to 3699
843 077 6378	to 6399	868 514 9000	to 9099	911 508 1620	to 1799	927 765 6257	to 6299
843 758 5769	to 5778	868 566 9200	to 9299	911 509 9310	to 9399	928 197 8100	to 8199
843 786 2554	to 2699	869 200 0000	to 9999	911 523 3000	to 3999	928 197 8283	to 8299
845 656 8165	to 8199	869 387 1150	to 1199	912 057 9922	to 9999	928 856 2059	to 2068
845 727 2100	to 2199	869 505 3500	to 3599	912 882 0563	to 0899	930 078 5800	to 5899
845 746 2618	to 2635	869 523 7033	to 7099	913 605 2218	to 2299	930 219 1722	to 1799
846 390 7531	to 7599	869 566 6150	to 6167	913 709 2429	to 2499	930 335 7810	to 7819
846 918 0572	to 0599	869 776 8785	to 8786	913 818 3501	to 3999	931 097 9259	to 9299
847 237 7690	to 7699	869 800 0000	to 999 9999	914 063 4300	to 4399	931 156 1502	to 1579
847 284 2481	to 2499	870 054 4814	to 4899	914 346 7621	to 7644	931 156 1600	to 1625
847 374 7055	to 7065	870 491 4812	to 4849	914 453 1366	to 1399	931 156 1671	to 1699
847 374 7055	to 7065	870 536 5820	to 5829	914 529 6185	to 6299	932 506 6400	to 6599
847 636 5304	to 5399	870 541 7167	to 7239	914 896 4658	to 4699	932 732 1796	to 1799
847 700 5447	to 5499	870 575 8155	to 8999	915 187 8774	to 8779	932 827 9026	to 9099
847 723 7500	to 7599	870 589 0485	to 0494	915 300 2783	to 2799	932 957 2300	to 2399
849 485 3427	to 3499	870 691 7060	to 7099	915 546 6822	to 6999	933 060 6160	to 6189
849 520 9850	to 9899	872 028 4850	to 4899	915 646 5183	to 5199	933 387 2541	to 2561
849 608 1357	to 1399	872 029 9306	to 9399	915 671 3963	to 3980	933 760 3609	to 4199
849 792 2600	to 2699	872 078 3709	to 3799	915 671 3982	to 3999	933 894 0928	to 0999
850 546 1862	to 1899	872 100 0445	to 0459	915 675 2217	to 2299	934 018 2729	to 2741
851 143 6826	to 6844	900 556 4178	to 4199	916 440 3377	to 3399	934 180 0300	to 0399
851 209 9880	to 9899	900 845 0044	to 0099	916 670 6352	to 6399	934 236 3954	to 3999
851 928 9221	to 9299	900 936 0217	to 0299	916 682 5300	to 5399	934 622 8717	to 8999
852 589 6560	to 6599	900 936 0435	to 0499	916 694 1414	to 1499	935 216 0312	to 0399
853 049 3646	to 3699	901 058 5255	to 5280	916 703 0802	to 0821	935 843 2202	to 2247
854 304 4089	to 4999	901 273 1082	to 1099	917 089 0709	to 0799	936 024 8889	to 8899
854 529 2200	to 2299	901 287 5143	to 5199	917 089 0842	to 0899	936 339 4455	to 4499
854 532 0000	to 2999	901 291 2789	to 2799	917 216 2928	to 2999		
855 001 6204	to 6249	901 525 7122	to 7199	917 370 6300	to 6499		
855 319 9364	to 9399	902 089 1253	to 1299	917 486 4900	to 4999		

Missing, Lost, or Stolen Canadian Money Order Forms

Do Not Cash — Upon Receipt, Notify Local Postal Inspectors

Provide this listing to all Postal Service™ employees responsible for accepting and cashing postal money orders. Destroy all interim notices when the numbers listed appear in the *Postal Bulletin*. The new money order serial

numbers consist of the first 9 digits. The tenth digit is a check digit only.

Do not cash outdated money orders **104 151 601 to 692 600 000**. Advise holders to send invalid money orders to Canada Post Corporation, Ottawa, Canada K1A 0B1. Check for altered dollar amounts by holding money orders to the light.

719 869 731	to	9 760	728 702 338	to	2 400	734 950 111	to	0 170	742 325 668	to	5 700
720 227 871	to	7 930	728 915 371	to	5 850	735 120 331	to	0 840	742 408 771	to	8 830
720 227 949	to	7 960	728 953 141	to	3 410	735 283 008	to	3 020	742 512 120	to	2 150
720 368 543	to	8 570	728 954 280	to	4 310	735 293 131	to	3 220	742 684 849	to	4 890
720 392 151	to	2 570	729 169 081	to	9 140	735 635 010	to	5 040	742 839 553	to	9 630
720 556 491	to	6 640	729 363 841	to	3 870	735 783 961	to	3 990	742 913 668	to	3 700
720 558 621	to	8 650	729 682 891	to	3 190	735 803 401	to	3 430	742 917 287	to	7 296
720 575 361	to	5 570	729 838 940	to	9 070	736 005 420	to	5 440	742 921 891	to	1 980
720 590 152	to	0 179	729 839 101	to	9 130	736 366 021	to	6 110	742 983 631	to	3 810
721 638 331	to	9 170	730 077 683	to	7 840	736 624 456	to	4 500	743 020 021	to	0 170
721 815 391	to	5 420	730 109 847	to	9 880	736 670 851	to	1 060	743 206 491	to	6 500
721 969 713	to	9 740	730 373 761	to	3 850	736 767 061	to	7 090	743 235 992	to	6 050
722 072 137	to	2 160	730 501 951	to	2 130	736 767 093	to	7 120	743 940 631	to	0 900
722 378 265	to	8 280	730 519 379	to	9 470	736 982 191	to	2 370	743 978 011	to	8 070
722 413 990	to	4 004	730 569 278	to	9 360	736 982 551	to	2 730	744 234 751	to	4 780
722 764 948	to	4 980	730 711 711	to	1 740	737 110 141	to	0 170	744 499 591	to	9 680
722 825 840	to	5 889	730 722 991	to	3 230	737 185 501	to	5 710	744 626 901	to	6 910
723 153 841	to	3 850	730 845 970	to	5 990	737 317 321	to	7 350	745 388 794	to	8 910
723 237 616	to	7 630	730 888 291	to	8 320	737 517 781	to	7 840	746 446 806	to	6 820
723 331 081	to	1 110	730 927 591	to	7 680	737 628 181	to	8 210	746 818 351	to	8 410
723 496 443	to	6 470	731 307 914	to	7 930	737 634 258	to	4 270	747 245 266	to	5 280
723 967 291	to	7 320	731 402 431	to	2 460	738 361 971	to	1 980	747 364 813	to	4 830
724 655 196	to	5 340	731 407 232	to	7 320	738 447 601	to	7 660	747 501 434	to	1 450
724 711 441	to	1 500	731 588 301	to	8 340	738 648 355	to	8 450	747 739 891	to	0 070
724 711 538	to	1 560	731 767 273	to	7 320	738 849 811	to	9 900	748 148 649	to	8 760
724 793 221	to	3 250	731 781 061	to	1 120	738 892 270	to	2 290	748 259 960	to	9 970
724 908 109	to	8 120	731 837 821	to	7 910	738 997 259	to	7 380	748 565 162	to	5 280
724 937 461	to	7 670	731 841 377	to	1 450	739 161 451	to	1 540	748 874 988	to	5 030
725 163 118	to	3 151	732 018 481	to	8 600	739 219 381	to	9 440	749 137 381	to	7 410
725 202 735	to	2 750	732 067 972	to	8 370	739 740 151	to	0 180	749 190 192	to	0 210
725 398 591	to	8 800	732 188 649	to	8 670	739 793 491	to	3 520	749 685 421	to	5 450
725 464 591	to	4 920	732 193 460	to	3 470	739 793 527	to	3 550	749 846 791	to	6 850
725 475 321	to	5 330	732 201 241	to	1 390	739 942 621	to	2 650	749 993 131	to	3 580
725 711 057	to	1 070	732 220 431	to	0 440	739 999 231	to	9 320	750 071 587	to	1 610
725 738 581	to	8 730	732 355 201	to	5 380	740 011 517	to	1 530	750 408 167	to	8 183
725 981 311	to	1 430	732 472 320	to	2 560	740 030 701	to	0 970	750 438 421	to	8 501
725 987 835	to	7 880	732 541 605	to	1 620	740 261 740	to	1 820	750 743 911	to	4 030
726 060 811	to	0 900	732 572 221	to	2 490	740 265 811	to	6 290	750 779 118	to	9 400
726 391 970	to	2 520	732 586 479	to	6 710	740 299 111	to	9 170	750 910 981	to	1 010
726 484 771	to	4 800	732 994 037	to	4 080	740 299 231	to	9 260	750 960 841	to	0 900
726 493 351	to	5 300	733 163 449	to	3 460	740 329 266	to	9 320	751 296 211	to	6 240
726 504 031	to	4 063	733 297 171	to	7 290	740 889 081	to	9 090	751 539 121	to	9 180
726 504 070	to	4 090	733 446 631	to	7 110	741 010 421	to	0 530	751 541 311	to	1 790
726 504 331	to	4 390	733 474 665	to	4 770	741 113 041	to	3 370	751 757 641	to	7 700
726 563 701	to	4 060	733 704 482	to	4 570	741 373 891	to	4 340	751 936 951	to	7 010
726 599 371	to	9 460	733 751 041	to	1 130	741 452 369	to	2 490	751 951 861	to	1 890
726 626 356	to	6 370	734 009 101	to	9 130	741 492 991	to	3 140	751 999 021	to	9 110
727 182 271	to	2 510	734 290 759	to	0 770	741 553 460	to	3 470	752 139 516	to	9 570
727 416 181	to	6 240	734 389 273	to	9 290	741 764 431	to	4 520	752 182 892	to	2 950
727 481 431	to	1 460	734 440 031	to	0 111	741 764 431	to	4 520	752 206 861	to	7 100
727 749 241	to	9 780	734 797 201	to	7 320	742 178 834	to	8 880	752 295 241	to	5 600
728 382 331	to	2 480	734 939 611	to	9 640	742 325 500	to	5 520	752 731 351	to	1 410

752 767 441	to 7 470	762 593 431	to 3 460	773 208 991	to 9 290	800 427 530	to 7 540
753 008 941	to 9 030	763 155 160	to 5 180	773 231 311	to 1 340	800 872 741	to 2 830
753 194 311	to 4 370	763 178 631	to 8 660	773 348 739	to 8 940	801 349 801	to 9 830
753 620 378	to 0 400	763 506 001	to 6 060	773 348 739	to 8 940	801 676 681	to 7 100
754 013 917	to 3 940	763 522 141	to 2 470	773 575 891	to 5 950	802 967 821	to 7 940
754 161 061	to 1 120	763 717 694	to 7 800	773 852 971	to 3 030	803 217 601	to 7 780
754 358 445	to 8 610	763 826 461	to 6 520	775 373 449	to 3 460	803 729 731	to 9 850
754 410 451	to 0 660	763 900 460	to 0 471	789 257 191	to 7 250	803 747 402	to 7 520
754 438 393	to 8 410	763 900 479	to 0 530	790 448 020	to 8 460	804 138 181	to 8 420
754 493 109	to 3 130	763 917 271	to 7 750	790 597 485	to 7 530	804 428 224	to 8 250
754 664 182	to 4 220	764 125 801	to 5 860	790 911 883	to 1 900	804 682 411	to 2 710
754 816 377	to 6 470	764 284 525	to 4 560	791 057 441	to 7 550	805 272 525	to 2 540
755 487 421	to 7 600	764 526 241	to 6 330	791 239 081	to 9 290	805 523 445	to 3 460
755 592 901	to 3 140	764 601 421	to 1 600	791 374 483	to 4 500	805 745 704	to 5 730
755 790 020	to 0 030	764 650 231	to 0 470	791 387 971	to 8 030	806 452 907	to 2 980
755 791 730	to 1 800	764 984 371	to 4 850	791 447 521	to 7 850	806 744 781	to 4 850
755 926 951	to 7 070	765 003 667	to 3 680	791 451 151	to 1 240	806 982 181	to 2 300
755 934 332	to 4 510	765 042 517	to 2 540	791 500 009	to 0 470	807 764 791	to 4 910
755 957 701	to 8 000	765 194 728	to 4 970	791 771 431	to 1 490	808 089 931	to 9 960
755 962 981	to 3 280	765 387 365	to 7 450	792 004 293	to 4 320	808 656 423	to 6 450
756 035 371	to 5 490	765 541 801	to 2 100	792 018 379	to 8 420	808 753 771	to 3 800
756 301 257	to 1 290	765 638 461	to 8 970	792 070 621	to 0 740	809 189 001	to 9 010
756 371 565	to 1 580	765 647 101	to 7 190	792 145 211	to 5 230	809 886 879	to 6 930
756 876 031	to 6 120	765 813 781	to 4 029	792 391 381	to 1 620	809 890 489	to 0 500
756 876 151	to 6 240	765 879 314	to 9 390	792 452 779	to 2 790	810 323 734	to 3 760
756 970 129	to 0 140	765 954 001	to 4 030	792 772 728	to 2 770	810 367 116	to 7 140
757 059 613	to 9 630	766 120 286	to 0 320	792 903 511	to 3 990	810 526 351	to 6 500
757 078 540	to 8 560	766 125 716	to 5 750	793 282 518	to 2 533	810 806 911	to 6 940
757 086 209	to 6 240	766 158 824	to 8 840	794 041 831	to 2 040	810 807 211	to 7 240
757 240 591	to 0 650	766 388 433	to 8 460	794 397 709	to 7 780	811 423 021	to 3 110
757 277 371	to 7 700	766 509 421	to 9 660	794 581 741	to 2 040	811 517 221	to 7 239
757 291 591	to 2 730	766 572 901	to 3 020	794 592 122	to 2 150	811 721 101	to 1 130
757 964 251	to 4 280	766 748 500	to 8 521	795 032 251	to 2 340	812 025 721	to 5 900
758 067 001	to 7 090	767 024 341	to 4 370	795 796 291	to 6 350	812 093 073	to 3 130
758 105 221	to 5 250	767 326 471	to 6 590	796 070 139	to 0 160	812 100 821	to 0 840
758 324 941	to 5 000	767 332 561	to 2 950	796 143 151	to 3 630	812 465 251	to 5 610
758 593 628	to 3 650	768 009 841	to 9 960	796 159 725	to 9 740	812 918 341	to 8 670
758 709 038	to 9 060	768 011 489	to 1 520	796 169 306	to 9 340	812 918 701	to 8 760
758 744 101	to 4 160	768 177 980	to 7 990	796 373 406	to 3 430	813 050 491	to 0 520
758 850 883	to 0 900	768 391 081	to 1 170	796 602 961	to 3 050	813 073 171	to 3 200
758 860 951	to 1 550	768 661 569	to 1 650	796 708 441	to 8 500	813 398 476	to 8 550
759 152 851	to 2 880	769 000 051	to 0 080	796 886 281	to 6 430	813 713 971	to 4 000
759 740 941	to 1 090	769 050 841	to 0 900	796 901 701	to 2 000	813 858 121	to 8 150
760 004 596	to 4 610	769 159 081	to 9 178	796 975 466	to 5 590	814 789 330	to 9 349
760 118 191	to 8 250	769 737 496	to 7 510	797 272 917	to 2 950	814 984 656	to 4 680
760 155 001	to 5 090	769 778 491	to 8 730	797 519 441	to 9 460	815 016 020	to 6 030
760 378 002	to 8 020	769 827 331	to 7 450	797 519 731	to 0 240	815 199 410	to 9 420
760 692 722	to 2 749	770 216 071	to 6 100	797 535 181	to 5 330	815 240 491	to 0 520
761 055 460	to 5 480	770 723 281	to 3 400	797 646 151	to 6 180	815 755 591	to 5 620
761 169 781	to 9 810	770 790 451	to 0 480	798 040 053	to 0 080	815 755 622	to 5 650
761 504 941	to 5 120	770 915 150	to 5 490	798 055 813	to 5 830	815 806 381	to 6 680
761 516 836	to 6 910	771 455 551	to 5 610	798 055 891	to 5 950	816 126 834	to 6 870
761 613 588	to 3 600	771 609 661	to 9 690	798 326 371	to 6 520	816 156 721	to 6 780
761 688 631	to 8 690	771 932 551	to 2 580	798 339 167	to 9 210	816 580 903	to 0 920
761 805 199	to 5 240	772 057 224	to 7 440	798 562 411	to 2 440	816 945 571	to 5 600
761 826 106	to 6 120	772 162 660	to 3 070	798 632 461	to 2 490	817 253 011	to 3 280
761 881 171	to 1 560	772 718 615	to 8 640	798 807 151	to 7 510	817 763 881	to 4 060
761 975 641	to 5 670	772 940 140	to 0 160	798 944 761	to 5 030	818 330 562	to 0 610
761 975 886	to 5 895	772 970 886	to 0 940	799 118 616	to 8 640	818 459 641	to 9 670
762 304 144	to 4 170	773 009 419	to 9 430	799 133 191	to 3 220	818 926 273	to 6 320
762 324 931	to 4 960	773 112 031	to 2 060	799 177 626	to 7 650	818 950 351	to 0 380
762 439 261	to 9 290	773 125 387	to 5 410	799 854 751	to 5 200	818 962 492	to 2 530
762 524 158	to 4 220	773 179 320	to 9 410	800 044 320	to 4 410	819 032 341	to 2 730
762 584 872	to 4 970	773 202 989	to 3 140	800 211 901	to 2 440	819 127 054	to 7 080

819 278 540	to 8 670	822 703 442	to 3 470	826 226 644	to 6 670	828 539 341	to 9 370
819 544 681	to 4 740	822 900 991	to 1 020	826 582 951	to 3 430	828 732 331	to 2 390
819 928 441	to 8 650	822 925 951	to 6 100	826 720 201	to 0 230	828 807 781	to 7 840
820 034 406	to 4 430	823 284 931	to 4 990	827 005 671	to 5 830	828 830 952	to 0 963
820 070 761	to 1 540	823 293 031	to 3 210	827 287 861	to 7 950	828 939 781	to 0 050
820 191 342	to 1 360	823 556 011	to 6 100	827 291 502	to 1 520	829 002 721	to 2 870
820 274 856	to 4 880	824 078 341	to 8 370	827 575 381	to 5 470	829 005 301	to 5 540
820 600 171	to 0 230	824 156 325	to 6 340	827 609 085	to 9 100	829 080 241	to 0 330
821 172 241	to 2 360	824 511 252	to 1 270	827 619 811	to 9 840	829 160 986	to 1 000
821 229 661	to 9 720	824 588 281	to 8 370	827 883 511	to 3 600	829 176 841	to 6 930
821 229 743	to 9 780	825 140 397	to 0 460	828 160 441	to 0 530	829 471 561	to 1 590
821 903 731	to 3 910	825 409 651	to 9 680	828 376 201	to 6 260	829 561 065	to 1 080
821 927 841	to 7 850	825 472 171	to 2 200	828 441 602	to 1 630	829 566 481	to 6 510
822 505 801	to 5 830	826 042 898	to 2 920	828 539 316	to 9 340	829 569 931	to 9 960

— Criminal Investigations Group, U.S. Postal Inspection Service, 4-21-22

Verifying U.S. Postal Service Money Orders

Follow these steps to cash a Postal Service™ money order:

1. Check that the amount does not exceed the legal limit: \$1,000 for domestic, and \$700 for international Postal Service money orders.
2. Check that the proper security features are present:
 - When held to the light, a watermark of Benjamin Franklin is repeated from top to bottom on the left side.
 - When held to the light, a dark line (security thread) runs from top to bottom with the word “USPS” repeated.
 - When there is discoloration around the dollar amounts, this might indicate the amounts were changed.

These appear in Postal Service Notice 299, *U.S. Postal Money Order Reference Card*, or online at usps.com/shop/money-orders.htm.

3. If the money order seems suspicious, call the U.S. Postal Service Money Order Verification System at 866-459-7822.

Provide this information to local banks and retailers, as they also receive Postal Service money orders for cashing.

— Delivery and Retail
Customer Service Operations, 4-21-22

Counterfeit Canadian Money Order Forms

Do Not Cash

To be posted and used by retail window employees. As directed, destroy previous notices. Destroy all interim notices when the numbers listed appear in the *Postal Bulletin*.

671,819,086	683,594,542	687,262,503
676,612,640	684,683,610	687,262,525
677,891,039	686,619,878	687,262,526
678,282,493	686,619,886	687,287,578
678,916,031	686,619,887	687,287,581
679,552,215	686,794,382	687,287,582
679,694,334	686,794,426	694,063,898
679,751,983	686,794,427	694,063,899
679,800,207	686,794,431	694,063,980
681,130,536	687,262,502	701,321,725
681,844,376		

— Criminal Investigations Group,
U.S. Postal Inspection Service, 4-21-22

Toll-Free Number Available to Verify Canadian Money Orders

The Canada Post Corporation has a toll-free number that cashing agents can call to verify the validity of Canadian Postal Money Orders. The number is 800-563-0444.

This toll-free number is printed on the back of the Canadian Postal Money Orders.

— Criminal Investigations Group,
U.S. Postal Inspection Service, 4-21-22

Other Information

Overseas Military/Diplomatic Mail

Mail addressed to military and diplomatic post offices overseas is subject to certain conditions or restrictions of mailing regarding content, preparation, and handling. The APO/FPO/DPO table outlines these conditions by APO/FPO/DPO ZIP Codes™ through the use of footnoted mailing restrictions codes (see the [Restrictions](#) page following the table).

Acceptance clerks must use the table with the Retail System Software terminal to determine which APO/FPO/DPO ZIP Codes are active and which conditions of mailing apply.

The entries under “Changes” appear in bold in the following APO/FPO/DPO table:

Changes

APO/FPO/DPO	Action	Effective Date	See Restrictions
DPO AE 09856	Close	04/06/2022	
FPO AA 34009	Open	04/07/2022	B-C2-F-F1-F3-R-S-V
FPO AA 34010	Open	04/07/2022	B-C2-F-F1-F3-R-S-V
APO AP 96205	Add C2	04/05/2022	A-B-C2-F-F1-F3-M-R-S-U

We have eliminated “Not Active” entries from the table below to save space and paper.

APO/FPO/DPO Table

APO/ FPO/ DPO	See Restrictions	APO/ FPO/ DPO	See Restrictions	APO/ FPO/ DPO	See Restrictions	APO/ FPO/ DPO	See Restrictions
09002	A-B-C2-F-F3-H-N-Q-R-S-V-Z-Z1	09021	B-C-C2-D-E-F3-H-M-R-S-U-Z1	09114	B-C-D-E-F3-H-M-R-S-U	09173	B-C-D-E-F3-H-M-R-S-U
09002	A-B-C2-F-F3-H-N-Q-R-S-V-Z-Z1	09034	B-C-D-E-F3-H-M-R-S-U	09115	A-B-C2-F-F3-H-N-R-S-V-Z1	09174	B-C-C2-F-F1-F3-I3-L-N-R-R1-S-T-V-X-Z-Z1
09003	B-C-D-E-F3-H-M-P-R-S-U	09044	B-C-D-F1-F3-H-R-S-U	09116	A-B-C2-F-F3-H-N-R-S-V-Z1	09175	A-B-C1-C2-E2-F-F1-F3-H1-J-L-M-N-R-R1-S-T-V-W-X-Z1
09004	B-C-D-E-F3-H-M-R-S-U	09046	B-C-D-E-F3-H-M-R-S-U	09123	B-C-C2-D-E-F3-H-M-R-S-U-Z1	09176	A-B-C2-F-F1-F3-J-L-M-N-R-R1-S-T-V-X-Z1
09005	B-C-D-E-F3-H-M-P-R-S-U	09049	B-C-D-E-F3-H-M-R-S-U	09125	A-B-C-C2-F-F1-F3-H-N-R-R1-S-V-V1	09177	B-C-D-E-F3-H-M-R-S-U
09006	B-C-D-E-F3-H-M-R-S-U	09053	B-C-D-E-F3-H-M-R-S-U	09126	B-C-C2-F3-H-M-P-R-S-Z1	09178	B-C1-C2-E2-F1-F3-I3-L-M-N-R-S-T-V-X-Z-Z1
09008	A-B-C2-F-F3-H-N-Q-R-S-V-Z-Z1	09060	B-C-C2-D-E-F1-F3-H-M-N-R-S-U-Z1	09128	B-C-D-E-F3-H-M-R-S-U	09180	B-C-D-E-F3-H-M-R-S-U
09009	B-C-C2-D-E-F3-H-M-R-S-U-Z1	09067	B-C-D-E-F3-H-M-R-S-U	09131	B-C-D-E-F3-H-M-R-S-U	09186	B-C-D-E-F3-H-M-P-R-S-U
09010	B-C-D-E-F3-H-M-R-S-U2	09068	B-C-C2-D-E-F3-H-R-S-U-Z1	09135	A-B-C2-F-F3-H-N-R-S-U-V-Z1	09203	A-B-C-C1-C2-F-F1-F3-I3-J-L-M-N-R-R1-T-V-Z-Z1
09011	B-C-D-E-F3-H-M-R-S-U	09069	A-B-C-C2-D-E-F3-H-N-R-S-U-V	09136	B-C-D-E-F1-F3-H-M-P-R-S-U	09204	B-C-F3-M-N-R-S-V-Z1
09012	B-C-C2-D-E-F3-H-M-R-S-U-Z1	09079	B-C-D-E-F3-H-M-R-S-U	09138	B-C-D-F3-H-M-R-S-U	09211	B-C-D-E-F3-H-M-P-R-S-U
09013	B-C-D-E-F-F1-F3-H-M-R-S-U-Z1	09094	B-C-C2-D-F3-H-M-P-R-S-Z1	09140	B-C-D-E-F3-H-M-R-S-U	09213	B-C2-F-F1-F3-H-J-L-M-N-R-R1-T-U-V-Z1
09014	B-C-D-E-F3-H-M-P-R-S-U	09095	B-C-D-E-H-M-R-U	09142	B-C-D-E-F3-H-M-R-S-U	09214	B-C-C2-D-E-F3-H-M-R-S-U-Z1
09015	A-B-C-C1-C2-F-F1-F3-J-L-M-N-R-R1-S-V-Z1	09096	B-C-D-E-F3-H-M-R-S-U	09154	B-C-D-E-F3-H-M-R-S-U	09216	B,C,F1,F3,M,N,R,S,V,Z1
09016	B-C-D-E-F1-F3-H-M-R-S-U	09103	A-B-C2-F-F3-H-N-Q-R-S-V-Z-Z1	09160	B-C-C2-D-F-F1-F3-H-J-L-M-N-R-R1-T-U-V-Z1	09227	B-C-D-E-F3-H-M-R-S-U
09017	A-B-C2-F-F3-H-N-Q-R-S-V-Z-Z1	09104	B-C-C2-D-F3-H-M-R-S-U-Z1	09170	A-B-C2-F-F1-F3-J-L-M-N-R-R1-S-T-V-X-Z1	09240	A-B-C1-C2-F-F3-H-N-R-S-V
09018	A-B-C2-F-F3-H-N-Q-R-S-V-Z-Z1	09107	B-C-D-E-F3-H-M-R-S-U	09171	A-B-C1-C2-E3-F-F1-F3-J-L-M-N-R-R1-S-T-V-X-Z1	09241	A-B-C2-F3-N-R-S-U-Z1
09020	B-C-D-E-F3-H-M-R-S-U	09112	B-C-D-E-F3-H-M-R-S-U	09172	B-C-D-E-F3-H-M-R-S-U		
		09113	A-B-C2-F-F3-H-N-Q-R-S-V-Z-Z1				

APO/ FPO/ DPO	See Restrictions	APO/ FPO/ DPO	See Restrictions	APO/ FPO/ DPO	See Restrictions	APO/ FPO/ DPO	See Restrictions
09242	A-B-C1-C2-F-F3-H-N-R-S-V	09312	A-B-C1-C2-E2-F-F1-F3-H1-I3-L-M-N-R-R1-S-T-U-U4-V-Z-Z1	09488	A-B-C-C1-C2-E2-F3-J-L-M-N-S-T-V-W-X-Z1	09569	B-C2-E2-E3-F-F1-F3-R-R1-V-Z1
09250	B-C-D-E-F3-H-M-R-S-U	09313	A-B-C-C1-E2-F-F1-F2-F3-H1-R-R1-S-V-Z1	09489	A-B-C-C1-C2-E2-F1-F3-L-M-N-R-R1-S-T-V-W-X-Z1	09570	A-B-F-F1-F3-R-R1-S-V
09261	B-C-C2-D-E-F3-H-M-N-R-S-U-V-Z1	09315	A-B-C1-E2-F-F3-N-R-R1-S-V-Z1	09490	A-B-C1-C2-E2-F-F1-F3-H1-J-L-M-N-R-R1-S-T-V-X-Z1	09573	B-C2-E2-E3-F-F1-F3-R-R1-S-V-Z1
09263	B-C-C2-D-E-F3-H-M-R-S-U	09316	A-B-C1-E2-F-F1-F3-H1-I3-M-N-R-R1-S-T-V-Z-Z1	09491	A-B-C1-C2-E2-F1-F3-H1-J-L-M-N-R-R1-S-T-V-Z1	09574	B-F-F1-R-R1-V
09264	B-C-E-F3-H-M-R-S-U	09321	A-B-C1-C2-E2-F-F3-H1-M-N-R-R1-S-V-Z1	09494	B-C-C1-C2-F3-M-R-S-U-Z1	09575	B-F-F1-R-R1-V
09265	B-C-D-F-F1-H-J-L-M-N-R-S-T-U-V-Z1	09330	A-B-C1-C2-D-E-E2-F-F1-F3-H-H1-M-R-R1-S-V-Z1	09498	B-C1-C2-F-F1-F3-J-L-N-R-R1-T-V-Z1	09576	B-F-F1-R-R1-V
09266	A-B-F3-R-S-U-V-Z1	09333	A-B-C-C1-C2-E2-F-F1-F3-H1-I3-M-N-R-R1-S-V-V1-Z-Z1	09501	B-V	09577	B-F3-S-V
09276	A-B-F-F3-I3-L-M-N-R-S-T-V-X-Z-Z1	09343	A-B-C1-C2-F-F3-M-N-R-R1-S-V-Z1	09502	B-V	09578	B-F-F1-F3-R-R1-S-V-Z1
09277	A-B-E-E1-E2-F1-F3-I3-L-N-R-S-T-V-X-Z-Z1	09348	A-B-C1-E2-F-F1-F3-H1-I3-M-N-R-R1-S-T-V-Z-Z1	09503	B-F-F1-R-R1-V	09579	B-F-F1-R-R1-V
09278	A-B-F-F3-I3-L-M-N-R-S-T-V-X-Z-Z1	09357	A-B-C1-E2-F-F3-H1-M-R-V-Z1	09504	B-V	09581	B-F-F1-F3-R-R1-S-V
09279	A-B-E-E1-F-F3-I3-L-M-N-R-S-T-V-X-Z-Z1	09365	A-B-C-C1-E2-F-F3-H1-M-N-R-V-Z1	09505	B-V	09582	B-C2-F-F1-F3-R-R1-S-V
09280	A-B-B2-C-C1-C2-E-E2-F1-F3-H-I3-L-M-N-R-S-T-V-W-X-Z-Z1	09366	A-B-C-C1-E2-F-F1-F3-H-H1-M-R-R1-S-V-Z1	09506	B-V	09583	B-F-F1-F3-I3-J-R-R1-S-V-V1
09283	A-B-E-E1-F-F3-L-M-N-R-S-T-V-X-Z1	09401	B-C-C1-C2-F3-M-R-S-U-Z1	09507	B-V	09586	B-C2-F-F1-F3-R-R1-S-V
09285	A-B-C-E-E-1-F1-F3-H-I3-L-M-N-R-S-T-V-X-Z-Z1	09403	B-C-C1-C2-F3-M-R-S-U-Z1	09508	B-F-F1-R-R1-V	09587	B-C2-E2-E3-F-F1-F3-R-R1-S-V-Z1
09287	B-C2-E1-F1-F3-J-L-N-R-S-T-V-X-Z1	09410	C2-F-F1-F3-N-R-S-U2	09509	B-F-F1-R-R1-V	09588	B-F-F1-F3-R-R1-S-V
09289	B-E2-F1-F3-H1-J-L-M-N-R-R1-S-T-U2-V-X-Z1	09421	B-C-C1-C2-F3-M-R-S-U-Z1	09510	A-B-C1-E2-F-H1-M-R-R1-V-Z1	09589	B-F-F1-F3-R-S-V
09290	A-B-F1-F3-J-L-M-N-R-S-T-U2-V-X-Z1	09447	B-C-C1-C2-F3-M-R-S-U-V-Z1	09511	B-F-F1-R-R1-V	09590	B-V
09291	B-C-C1-C2-E2-F1-F3-H1-L-N-R-R1-S-T-V-X-Z1	09454	B-C-C1-C2-F3-M-R-S-U-V-Z1	09512	B-F-F1-F3-R-R1-S-V	09591	B-C2-E2-E3-F-F1-F3-R-R1-S-V-Z1
09292	A-B-C-C2-E-E2-E3-F1-F3-H-H1-J-L-M-N-R-R1-S-T-V-X-Z1	09456	B-C-C1-C2-F3-M-N-R-S-U-V-Z1	09513	B-F-F1-F3-R-R1-S-V-V1	09592	B-F-F1-F3-R-R1-S-V
09301	A-B-C1-C2-E2-F-F1-F3-H1-I3-L-M-N-R-R1-S-T-U4-V-Z-Z1	09459	B-C-C1-C2-F3-M-R-S-U-Z1	09514	B-F-F1-F3-R-R1-S-V-V1	09593	B-F-F1-F3-R-S-V
09302	A-B-C1-C2-F-F1-F3-H-M-N-R-S-V-Z-Z1	09461	B-C-C1-C2-F3-M-P-R-S-U-Z1	09517	B-F-F1-F3-R-R1-S-V	09594	B-C1-E2-F-F1-F3-R-R1-S-V
09305	A-B-C1-E2-F-F1-F3-H1-I3-M-N-R-R1-S-T-V-Z-Z1	09463	B-C-C1-C2-F3-M-R-S-U-Z1	09520	B-F-F1-F3-R-R1-S-V	09595	B-F-F1-F3-I3-J-R-R1-S-V-V1-Z1
09306	A-B-C1-E2-F-F1-F3-H1-R-R1-S-U2-V-Z1	09464	B-C-C1-C2-F3-R-S-U-Z1	09522	B-F-F1-F3-R-S-V	09596	B-F-F1-R-R1-V
09307	B-C-C2-F-F3-N-R-R1-S-Z1	09467	B-E-E1-F-F3-J-L-M-N-R-S-T-V-X-Z1	09523	B-F-F1-F3-R-R1-S-V	09599	B-F-F1-R-R1-V
09309	A-B-C-C1-C2-E2-F-F1-F3-H1-M-N-R-R1-S-V-Z1	09468	B-C-C1-C2-F3-M-R-S-U-Z1	09524	B-F-F1-R-R1-V	09600	B-C-C2-F-F1-F3-R-S-U-Z1
09310	A-B-C1-C2-E2-F-F1-F3-H1-I3-L-M-N-R-R1-S-T-U4-V-Z-Z1	09469	B-C-C1-C2-F3-R-S-U-Z1	09532	B-F-F1-F3-R-R1-S-V	09602	B-C-C2-F-F1-F3-N-R-S-U-V
09311	A-B-C1-C2-E2-F-F1-F3-H1-I3-L-M-N-R-R1-S-T-U4-V-Z-Z1	09470	B-C-C1-C2-F3-M-R-S-U-Z1	09533	B-V	09603	B-C-C2-F-F1-F3-R-S-U-V-Z1
		09487	A-B-C-C1-C2-E2-F1-F3-I3-L-M-N-R-R1-S-T-V-W-X-Z-Z1	09534	B-F-F1-F3-R-R1-S-V	09604	B-C-C2-F-F1-F3-P-R-S-U-V-Z1
				09541	A-B-C-F-F3-M-N-S-V-Z1	09605	B-C-D-F3-H-M-R-S-U-V
				09542	A-B-C-F-F3-M-N-S-V-Z1	09606	B-C-D-F3-H-M-R-S-U-V
				09543	A-B-C-F-F3-M-N-S-V-Z1	09608	B-C-F-F3-N-R-S-U-V-Z1
				09544	A-B-C-F-F3-M-N-S-V-Z1	09609	B-C-C2-F-F3-N-R-S-U-V-Z1
				09545	A-B-C-F-F3-M-N-S-V-Z1	09610	B-C-C2-F-F1-F3-M-R-S-U-V-Z1
				09550	B-F-F1-R-R1-V	09613	B-C-F-F3-N-R-S-U-V
				09554	B-F-F1-R-R1-V	09614	A-B-C1-C2-E2-F-F1-F3-H1-J-L-M-N-R-R1-T-V-W-Z1
				09556	B-F-F1-R-R1-V	09618	B-C-C2-F-F3-R-S-U-Z1
				09564	B-F-F1-R-R1-V	09620	B-C-C2-F-F3-R-S-U-V-Z1
				09565	B-F-F1-F3-R-R1-S-V	09621	B-C-F-F3-R-U-Z1
				09566	B-C2-E2-E3-F-F1-F3-R-R1-S-V-Z1		
				09567	B-C2-E2-E3-F-F1-F3-R-R1-V-Z1		
				09568	B-V		

APO/ FPO/ DPO	See Restrictions	APO/ FPO/ DPO	See Restrictions	APO/ FPO/ DPO	See Restrictions	APO/ FPO/ DPO	See Restrictions
09622	B-C-C2-F-F3-R-S-U-Z1	09720	B-C2-F3-M-R-S-U-V-Z1	09754	A-B-C2-F-F3-H-L-N-Q-R-S-V-Z-Z1	09818	A-B-C-C2-F-F3-M-R-S-V-Z1
09623	B-C-C2-F-F3-R-S-U-V-Z1	09722	A-B-C2-F-F3-H-N-Q-R-S-V-Z-Z1	09755	A-B-C-C1-C2-D-F-F1-F3-J-L-M-N-Q-R-R1-S-T-V-Z1	09819	A-B-C-C1-C2-E2-F-F1-F3-H-H1-M-R-R1-S-V-Z1
09624	B-C-C2-F-F1-F3-I3-L-N-R-R1-T-U-V-Z-Z1	09723	B-C2-F-F1-F3-J-L-M-N-R-R1-T-V-Z1	09759	A-B-C-C1-C2-E2-F-F1-F3-J-L-N-R-R1-T-V-Z1	09820	A-B-C2-F-F1-F3-H-H1-J-L-M-N-R-R1-T-V-Z1
09625	B-C-C2-F-F3-N-R-S-U-Z1	09724	B-C-C1-F1-F3-M-R-R1-S-U	09761	B-C2-F-F1-F3-M-R-R1-S-V-Z-Z1	09821	A-B-C-C2-F-F3-N-R-S-V-Z1
09627	B-C-C2-F-F3-R-S-U-V-Z1	09725	A-B-C2-F-F3-H-N-Q-R-S-V-V1-Z-Z1	09762	A-B-C2-E3-F-F1-F3-J-L-N-R-R1-T-V-Z1	09822	A-B-C-C2-F-F3-M-R-S-V-Z1
09630	B-C-F-F3-R-S-U-V	09726	B-F-F1-J-L-M-N-R-T-U-V-Z1	09769	A-B-C-C1-C2-F-F1-F3-J-L-M-N-R-R1-T-V-Z1	09823	A-B-C1-C2-F-F1-F3-J-L-M-N-R-R1-T-V-Z1
09633	B-C-D-F-F1-F3-M-R-S-U-U1-U2-U3-V-Z1	09727	A-B-C1-C2-F-F1-F3-J-L-M-N-R-R1-T-V-Z1	09777	A-B-C-C1-C2-E1-F-F1-F3-J-L-M-N-R-R1-T-V-Z1	09824	A-B-C-C2-F-F3-M-R-S-V-Z1
09634	A-B-C2-F-F3-M-N-R-S-V	09728	A-B-C-C1-C2-F-F1-F3-J-L-N-R-R1-T-V-Z1	09780	A-B-C2-F-F3-H-N-R-S-V	09825	A-B-C1-C2-F-F1-F3-J-L-M-N-R-R1-T-V-Z1
09636	B-C-C2-F-F3-R-S-U-V-Z1	09729	B-C-C2-F-F3-N-R-R1-S-U-V-Z1	09801	A-B-C1-E2-F-F3-H1-M-N-R-R1-S-V-Z1	09826	A-B-C1-C2-E1-E2-E3-F-F1-F3-J-L-M-N-R-R1-T-V-W-Z1
09642	B-C2-F-F1-F3-J-L-M-N-R-T-U-V	09730	A-B-C1-C2-F-F1-F3-J-L-M-N-R-R1-T-V-Z1	09802	A-B-C-C2-D-F-F1-F3-H-H1-I3-L-M-N-R-R1-S-T-V-W-Z-Z1	09827	A-B-F-F1-J-L-M-N-R-T-V-Z1
09643	B-C-C2-F3-M-R-S-U-V-Z1	09731	A-B-C1-C2-F-F1-F3-J-L-M-N-R-R1-T-V-Z1	09803	A-B-C-C2-E-E2-E3-F1-F3-H-H1-J-M-N-R-R1-S-U-V-Z1	09828	A-B-C1-C2-F-F1-F3-I3-L-N-R-R1-T-V-Z-Z1
09645	B-C-C1-E1-E2-F-F1-F3-M-R-S-U-X-Z1	09732	B-F-F3-N-S-V-Z-Z1	09804	A-B-C2-F-F1-F3-M-N-R-S-V-Z1	09829	B-C-N-R-V-Z1
09647	B-C2-F1-F3-M-N-R-S-U-Z1	09733	B-F-F3-N-R-S-V-Z	09805	B-C-C2-E2-E3-F-F1-F3-R-R1-S-Z1	09830	B-C-F-F1-F3-J-L-M-N-R-R1-S-T-V-Z1
09648	B-C2-F3-N-R-S-U-V-Z1	09734	A-B-C-C1-C2-F-F1-F3-I3-J-L-M-N-R-R1-T-V-Z-Z1	09807	A-B-C1-E2-F-F1-F3-H1-I3-M-N-R-R1-S-T-V-Z-Z1	09831	B-C1-C2-F-F1-F3-J-L-N-R-R1-T-V-Z1
09649	B-C2-F3-N-R-S-U-Z1	09735	B-F3-N-R-S-V-Z-Z1	09808	A-B-C1-C2-E2-F-F1-F3-H-H1-J-L-N-R-R1-T-V-Z1	09833	B-C-C2-E2-E3-F-F1-F3-R-R1-S-U-Z1
09701	A-B-C1-C2-F-F1-F3-J-L-M-N-R-R1-T-V-Z1	09736	A-B-C1-F-F1-F3-J-L-M-N-R-R1-T-V-Z1	09809	B-C1-C2-E3-F-F1-F3-J-L-N-T-V-Z1	09836	A-B-C1-C2-F-F1-F3-J-L-M-N-R-R1-V-Z1
09702	B-C-C1-F1-F3-M-R-R1-S-U	09737	A-B-C1-C2-F-F1-F3-I3-J-L-M-N-R-R1-T-V-W-Y-Z-Z1	09810	A-B-C2-F-F1-F3-N-R-S-V-Z1	09837	B-E2-E3-F1-F3-R-S-V-Z1
09704	B-C-F-F1-F3-R-R1-S-U2-V	09738	A-B-C1-C2-F-F1-F3-J-L-M-N-R-R1-T-V-Z1	09811	A-B-C-C2-E-E2-E3-F1-F3-H-H1-J-M-N-R-R1-S-U-V-Z1	09838	B-C-C2-E2-E3-F-F1-F3-R-S-U-Z1
09705	B-C-C1-F1-F3-M-R-R1-S-U	09739	A-B-C1-C2-F-F1-F3-J-L-M-N-R-R1-T-V-Z1	09812	B-E2-E3-F-F1-I-J-L-N-R-T-U-V-Z-Z1	09842	A-B-C1-C2-F-F1-F3-J-L-N-R-R1-T-V-Z1
09706	B-C-C2-F3-M-N-R-S-U-V-Z1	09741	A-B-C1-C2-E2-F-F1-F3-H1-J-L-M-N-R-R1-T-V-W-Y-Z1	09813	A-B-C1-C2-E2-E3-F-F1-F3-J-L-N-R-R1-T-V-Z1	09844	A-B-C1-C2-F-F1-F3-J-L-M-N-R-R1-T-V-Z1
09707	B-C2-F-F1-F3-J-L-M-N-R-R1-T-V-Z1	09742	A-B-C2-F-F1-F3-J-L-M-N-R-S-T-V-Z1	09814	B-C2-E2-E3-F-F1-F3-I3-J-L-N-R-R1-T-V-Z-Z1	09845	A-B-C1-C2-E3-F-F1-F3-J-L-M-N-R-R1-T-V-Z1
09708	B-C-C1-F1-F3-M-R-R1-S-U	09743	A-B-C2-F-F3-H-N-Q-R-S-V-Z-Z1	09815	A-B-C-C2-E-E2-E3-F1-F3-H-H1-J-M-N-R-R1-S-U-V-Z1	09846	A-B-C1-C2-F-F1-F3-J-L-N-R-R1-T-V-Z1
09709	B-C1-C2-E2-F-F1-F3-H-H1-J-L-N-R-R1-T-V-Z1	09744	A-B-C1-C2-F-F1-F3-J-L-M-N-R-R1-T-V-Z1	09816	A-B-C1-C2-E2-E3-F-F1-F3-J-L-N-R-R1-T-V-Z1	09847	B-C-C2-F-F1-F3-J-L-M-N-R-R1-S-T-V-Z1
09710	B-C-C1-F-F1-J-L-M-N-R-R1-T-U-V-Z1	09745	A-B-C2-F-F1-F3-M-N-R-R1-S-V-Z1	09817	A-B-C1-C2-E2-E3-F-F1-F3-H-H1-J-L-M-N-R-R1-T-V-Z1	09848	A-B-C2-F-F3-M-R-S-V-Z1
09712	A-B-C2-F-F3-H-R-S-U-V-Z1	09748	A-B-C1-C2-F-F1-F3-J-L-M-N-R-R1-T-V-Z1			09853	B-C1-C2-E2-F-F1-F3-H1-N-R-R1-S-U2-V-Z1
09714	B-C-C1-F1-F3-M-R-R1-S-U	09749	A-B-F-F3-H-N-R-S-U-V-Z1			09854	A-B-C1-C2-F-F1-F3-J-L-N-R-R1-S-T-V-Z1
09715	B-F-F1-J-L-M-N-R-T-V-Z1	09750	A-B-C1-C2-F-F1-F3-J-L-M-N-R-R1-T-V-Z1			09855	A-B-C-C1-C2-E2-F-F1-F3-H1-M-R-R1-S-U2-V-Z1
09716	B-C-C2-F-F1-F3-J-L-M-N-R-R1-T-V-Z1	09751	B-C-D-E-F3-H-M-R-S-U			09857	A-B-C2-E2-F-F1-F3-I3-L-M-N-R-R1-S-T-V-Z-Z1
09717	A-B-C2-F3-M-R-S-V-W-Z1	09752	B-C-D-F1-F3-H-R-S-U				
09718	B-F-F1-J-L-M-N-R-T-U-V-Z1	09753	A-B-C-C1-C2-D-E-F-F3-H-M-N-R-S-V-W-Z1				
09719	B-C-C2-D-F3-M-R-S-U-V-Z1						

APO/ FPO/ DPO	See Restrictions	APO/ FPO/ DPO	See Restrictions	APO/ FPO/ DPO	See Restrictions	APO/ FPO/ DPO	See Restrictions
09858	A-B-C-C1-C2-E2-E3-F1-F3-H-H1-J-M-N-R-R1-S-U-V-Z1	09976	B-F1-F3-J-L-M-N-R-S-T-U2-V-X-Z1	34058	B-C2-F-F1-F2-F3-R-R1-S-V-Z1	96213	A-B-C-F1-F3-R-S-U
09859	B-C-C1-C2-E2-E3-F1-F3-H1-R-R1-S-U-Z1	09977	B-F1-F3-J-L-M-N-R-S-T-U2-V-X-Z1	34060	B-C1-C2-E2-F-F1-F3-J-L-M-N-R-R1-T-V-Z1	96214	A-B-C-F1-F3-R-S-U
09860	A-B-C2-F-F1-F3-J-L-M-N-R-R1-S-T-V-Z1	34001	A-B-C1-C2-F-F1-F3-J-L-M-N-R-R1-S-T-V-Z1	34066	B-C1-C2-F-F1-F3-I3-J-L-M-N-R-R1-S-T-V-X-Z1	96218	A-B-F-F1-F3-M-R-S-U
09862	A-B-C-C2-F-F1-F3-I3-L-M-N-R-R1-S-T-V-X-Z1	34002	B-C1-C2-F-F1-F3-J-L-M-N-R-R1-T-V-Z1	34067	B-C1-C2-F-F1-F3-J-L-M-N-R-R1-S-T-V-X-Z1	96224	A-B-F-F1-F3-M-R-S-U
09864	A-B-C-C1-C2-E2-F1-F3-L-M-N-R-R1-S-T-V-W-Z1	34004	B-C1-C2-F-F1-F3-J-L-M-N-R-R1-T-V-Z1	34068	B-C1-C2-F-F1-F3-J-L-M-N-R-R1-S-T-V-X-Z1	96251	A-B-F-F1-F3-M-R-S-U
09867	A-B-C-C1-C2-E2-F1-F3-L-M-N-R-R1-S-T-V-W-Z1	34007	B-F-F1-H-J-M-N-R-R1-V-Z1	34069	B-C1-C2-F-F1-F3-I3-J-L-M-N-R-R1-S-T-V-X-Z1	96257	A-B-F-F1-F3-S-U
09869	A-B-C1-C2-E2-F1-F3-L-M-N-R-R1-S-T-V-W-Z1	34008	B-C1-C2-D-E1-F-F1-H-H1-J-L-M-N-R-R1-T-V-Z1	34078	B-F1-F3-N-R-S-V-Z1	96258	A-F-F3-M-P-R-S-U
09870	A-B-C1-C2-E2-F-F1-F3-H1-I3-L-M-N-R-R1-S-T-U4-V-Z1	34009 B-C2-F-F1-F3-R-S-V		34080	B-F-F1-R-R1-V	96260	A-B-F-F1-F3-M-R-S-U
09873	A-B-C1-C2-E2-F-F1-F3-H1-I3-L-M-N-R-R1-S-T-U4-V-Z1	34010 B-C2-F-F1-F3-R-S-V		34081	B-F-F1-R-R1-V	96262	A-B-F-F1-F3-R-S-U-V-Z1
09874	A-B-C1-C2-E2-F-F1-F3-H1-I3-L-M-N-R-R1-S-T-U4-V-Z1	34011	B-C1-C2-E2-F-F1-F3-J-L-M-N-R-R1-T-V-Z1	34082	B-F-F1-R-R1-V	96264	A-B-C-F1-F3-R-S-U
09875	A-B-C1-C2-E2-F-F1-F3-H1-I3-L-M-N-R-R1-S-T-U4-V-Z1	34020	B-C1-C2-F-F1-F3-J-L-M-N-R-R1-T-V-Z1	34083	B-F-F1-R-R1-V	96266	A-B-C-F1-F3-R-S-U
09877	A-B-C-C2-E-E2-E3-F1-F3-H-H1-J-M-N-R-R1-S-U-V-Z1	34021	B-C1-C2-F-F1-F3-J-L-M-N-R-R1-T-V-Z1	34084	B-F-F1-R-R1-V	96269	A-B-F1-F2-F3-R-S-U-Z1
09880	A-B-C1-C2-E2-F-F1-F3-H1-J-L-N-R-R1-S-T-U-V-Z1	34022	B-C1-C2-F-F1-F3-J-L-M-N-R-R1-T-V-Z1	34085	B-C-C1-C2-E2-E3-F-F1-F3-H1-J-R-R1-S-T-V-V1	96271	A-F-F3-M-P-R-S-U
09890	B-E2-F-H1-N-R-R1-U2-V-Z1	34023	B-C1-C2-F-F1-F3-J-L-M-N-R-R1-T-V-Z1	34086	B-C-C1-C2-E2-E3-F-F1-F3-H1-J-R-R1-S-T-V-V1	96273	A-B-F-F1-F3-M-R-S-U
09892	A-B-C1-C2-E2-F-F1-F3-J-L-M-N-R-R1-T-V-Z1	34024	B-C1-C2-F-F1-F3-J-L-M-N-R-R1-T-V-Z1	34087	B-E2-F-F1-F3-R-R1-S-V	96275	A-B-F-F1-F3-M-R-S-U
09895	A-B-C1-C2-E2-F-F1-F3-J-L-M-N-R-T-V-W-Z1	34025	B-F-F1-F3-J-L-M-N-R-R1-T-V-Z1	34088	B-F-F1-R-R1-V	96276	A-B-C-F1-R
09898	B-C-C1-C2-E2-F-F1-F2-H1-N-R-R1-S-U2-V-Z1	34030	B-C1-C2-F-F1-F3-J-L-M-N-R-R1-T-V-Z1	34089	B-F-F1-R-R1-S-V	96278	A-B-C-F1-F3-R-S-U
09902	A-B-C1-C2-E2-F-F3-H1-M-R-R1-S-V-Z1	34031	B-C1-C2-F-F1-F3-J-L-M-N-R-R1-T-V-Z1	34090	B-F-F1-R-R1-V	96283	A-B-F-F1-F3-S-U
09903	B-C1-E2-F1-F3-S-V-Z1	34032	B-C1-C2-F-F1-F3-J-L-M-N-R-R1-T-V-Z1	34091	B-E2-E3-F-F1-F3-R-R1-S-V-Z1	96284	A-B-F-F1-F3-R-S-U
09904	B-C1-E2-F1-F3-S-V-Z1	34033	B-C1-C2-F-F1-F3-I3-L-M-N-R-T-V-Z1	34092	B-F-F1-F3-R-R1-S-V	96297	A-B-F-F1-F3-R-S-U
09908	A-B-C2-F-F1-F3-N-R-R1-S-V-Z1	34034	B-C1-C2-F-F1-F3-I3-L-M-N-R-R1-T-V-Z1	34093	B-F-F1-F3-R-R1-S-V	96300	A-B-F3-M-R-S-V-Z1
09909	A-B-C2-F-F1-F3-N-R-R1-S-V-V1-Z1	34035	B-C1-C2-F-F1-F3-H-J-L-M-N-R-R1-T-V-Z1	34094	B-F-F1-F3-R-R1-S-V	96301	A-B-F-F3-M-N-R-S-U2-W
09974	B-F1-F3-J-L-M-N-R-S-T-U2-V-X-Z1	34036	B-C1-C2-F-F1-F3-J-L-M-N-R-R1-T-V-Z1	34095	B-F-F1-R-R1-V	96303	B-C1-C2-F-F1-H-J-L-M-N-T-V-W-Z1
09975	B-F1-F3-I3-L-M-N-R-S-T-U2-V-X-Z1	34037	B-C-C1-C2-F-F1-F3-H-J-L-M-N-R-R1-T-V-Z1	96201	A-B-F-F1-F3-M-R-S-U	96306	B-F-F1-F2-F3-H-M-R-S-W-Z1
		34039	B-C1-C2-F-F1-J-L-M-N-T-V-Z1	96202	A-B-F-F1-F3-M-R-S-U	96310	B-F3-M-R-S-W
		34041	B-C1-C2-F-F1-F3-J-L-M-N-R-R1-T-V-Z1	96203	A-B-F-F1-F3-M-R-S-U	96311	B-F3-M-R-S-W
		34042	A-B-C-F-F1-F3-M-N-R-S-U-V-W-Z1	96204	A-B-F-F1-F3-M-R-S-U	96315	B-F-F1-F3-H-M-R-S-W
		34050	B-V	96205 A-B-C2-F-F1-F3-M-R-S-U		96319	B-C-C2-F3-M-R-S-V-W
		34051	B-V	96206	A-B-F-F1-F3-M-R-S-U	96321	B-F-F1-F2-F3-H-M-R-S-W-Z1
		34052	B-V	96207	A-B-F-F1-F3-M-R-S-U-V	96322	B-F-F1-F2-F3-H-M-R-S-W-Z1
		34053	B-V	96208	A-B-F-F1-F3-M-R-S-U	96326	B-C-F-F3-M-R-S-W
		34054	B-V	96209	A-B-C1-C2-F-F1-J-L-M-N-T-U-V-Z1	96328	B-C-F3-M-R-S-W
		34055	B-C1-C2-F-F1-F3-J-L-M-N-R-R1-T-V-Z1	96210	A-B-C1-C2-F-F1-F3-I3-L-M-N-R-R1-T-V-Z1	96331	A-B-F-F1-F3-J-L-M-N-R-S-U2-W
				96212	B-F-F1-F2-H-M-W-Z1	96336	B-C-F3-M-R-S-V-W
						96337	B-F-F1-F3-M-R-R1-S-W
						96338	A-B-F-F3-M-R-S-U2-W
						96339	A-B-F-F3-M-R-S-U2-W
						96343	A-F-F3-M-P-R-S-U2
						96346	B-F-F1-F2-F3-H-M-R-S-W-Z1

APO/ FPO/ DPO	See Restrictions	APO/ FPO/ DPO	See Restrictions	APO/ FPO/ DPO	See Restrictions	APO/ FPO/ DPO	See Restrictions
96347	B-C2-F-F1-F2-F3-H-M-R-S-W-Z1	96507	A-B-C1-C2-F-F1-H-J-L-M-N-T-V-Z1	96555	A-B-F-F3-M-R-S-V	96645	B-V
96349	B-C2-F-F1-F2-F3-H-M-R-S-W-Z1	96510	B-I3-N-V	96557	A-B-F-F3-M-R-S-V	96649	B-F-F1-F3-R-R1-S-V
96350	B-F-F1-F2-F3-H-M-R-S-W-Z1	96511	B-I3-N-V	96562	A-B-C1-C2-D-E2-E3-F-F1-H-H1-I3-L-M-N-R-R1-S-T-V-Z-Z1	96650	B-F-F1-R-R1-V
96351	B-C2-F-F1-F2-F3-H-M-R-S-W-Z1	96515	B-C-D-E1-F-F1-F3-H-H1-M-N-R-S-T-Z1	96577	A-B-F-F3-H-M-N-R-S-U	96657	B-F-F1-F3-R-R1-S-V
96362	B-F-F1-F2-M-W-Z1	96516	B-C-D-E1-E2-F-F1-F3-H-H1-M-N-R-S-T-Z1	96578	B-F1-F3-H-J-N-R-S	96660	B-F-F1-F3-R-R1-S-V
96365	B-C-F3-M-R-S-V-W	96517	B-C-D-E1-E2-F-F1-F3-H-H1-M-N-R-T-U-V-Z1	96595	B-F-F3-R-S-V-Z1	96661	B-F-F1-F3-R-R1-S-V
96367	B-C-F3-L-M-R-S-W			96598	B-F3-I3-N-R-S-V-V1	96662	B-F-F1-F3-R-R1-S-V
96368	B-C-F3-M-R-S-W			96599	B-F3-N-R-S-V	96663	B-F-F1-F3-R-R1-S-V-V1
96370	B-F-F1-F2-H-M-W-Z1	96520	B-F-N-U3-V	96601	B-V	96664	B-V
96371	B-F-F3-M-R-S-W	96521	B-C1-C2-F-F1-J-L-M-N-R-R1-S-T-V-Z1	96602	B-V	96665	B-V
96372	B-M-W			96603	B-V	96666	B-F3-R-S-V
96373	B-M-W	96530	A-B-C1-C2-F-F1-H-H1-J-L-M-N-R-R1-S-T-V-Z1	96604	B-V	96667	B-F-F1-F3-R-R1-S-V
96374	B-M-W			96605	B-V+B559	96668	B-F-F1-R-R1-V
96375	B-F3-M-R-S-W	96531	A-B-C-F-F1-F3-H-M-N-R-S-U-V	96606	B-F3-R-S-V	96669	B-F-F3-R-R1-S-V
96376	B-F3-M-R-S-W			96607	B-V	96670	B-V
96377	B-F-F3-M-R-S-W	96532	A-B-C1-C2-F-F1-H-J-L-M-N-R-R1-S-T-V-Z1	96608	B-E2-F-H1-R1-U2-V-Z1	96671	B-F-F1-F3-R-R1-S-V
96378	B-M-W					96672	B-C2-F-F1-F3-R-R1-S-V
96379	B-F3-M-R-S-W	96534	A-B-F-F1-F2-F3-S-U-Z1	96609	B-E2-F-H1-R1-U2-V-Z1	96673	B-F3-S-V
96380	B-F3-M-R-S-W			96610	B-E2-F-H1-R1-U2-V-Z1	96674	B-F-F1-F3-R-R1-S-V
96382	B-F-F3-M-R-S-W	96535	A-B-C1-C2-F-F1-J-L-M-N-R-R1-S-T-V-Z1			96675	B-F-F1-F3-R-R1-S-V
96384	B-F-F3-M-R-S-W	96537	B-V-Z1	96611	B-E2-F-H1-R1-U2-V-Z1	96677	B-F-F1-F3-R-R1-S-V
96385	B-F-F3-M-R-S-W	96540	B-F1-F2-F3-S-V-Z1	96612	B-V	96678	B-F-F1-F3-R-R1-S-V
96386	B-F3-M-S-W	96542	B-F-F1-F2-F3-S-V-Z1	96613	B-V	96679	B-F-F1-R-R1-V
96387	B-F3-M-R-S-W	96543	B-F-F1-F2-F3-P-S-V-Z1	96615	B-F-F1-R-R1-V	96681	B-V
96388	B-F3-M-R-S-W			96616	B-C2-F-F1-F3-R-R1-S-V	96682	B-V
96389	B-M-W	96548	A-B-F-F1-F3-H-M-R-S-U			96683	B-F-F1-F3-R-R1-S-V
96401	B-C-F-F3-N-R-S-V-V1-Z1	96549	A-B-C1-C2-F-F1-H-J-L-M-N-R-R1-S-T-V-Z1	96619	B-F1-F3-R-S-V	96686	B-V
96502	A-C1-C2-F-F1-F3-J-M-N-R-R1-S-T-U-V			96620	B-F-F1-F3-R-R1-S-V	96691	B-F-F1-F3-R-R1-S-V
96504	A-B-C-C1-C2-F-F1-F3-I3-L-M-N-R-R1-T-V-W-Z-Z1	96550	A-B-H-M-N-U-V-Z1	96628	B-F-F1-F3-R-R1-S-V	96692	B-F-F1-F3-R-R1-S-V
96505	A-B-C-C1-C2-F-F1-F3-I3-L-M-N-R-R1-S-T-V-W-Z-Z1	96551	A-B-C1-C2-F-F1-H-J-L-M-N-R-R1-S-T-V-Z1	96629	B-F-F1-F3-R-R1-S-V	96693	E2-F-F3-R-R1-S-V
		96552	B-Z1	96632	B-F-F1-F3-R-R1-S-V	96694	B-E2-F-F1-F3-I3-J-R-R1-S-V-V1-Z
		96553	A-B-F-F1-H-M-N-R-U	96633	B-V	96695	B-F-F1-R-R1-V
		96554	A-B-C1-C2-F-F1-H-J-L-M-N-R-R1-S-T-V-Z1	96641	B-V	96696	B-F-F1-R-R1-V
				96642	B-V	96698	B-V
				96643	B-F-F1-F3-R-R1-S-V		
				96644	B-V		

RESTRICTIONS

LEGEND

PS Form 2976, *Customs — CN 22 (Old C 1) and Sender's Declaration* (green label)

PS Form 2976-A, *Customs Declaration and Dispatch Note*

PS Form 2976-B, *Priority Mail Express International Shipping Label and Customs Form*

ATF	= Bureau of Alcohol, Tobacco, Firearms, and Explosives
Box C	= Department of State (DOS) contractor personnel
Box R	= Retired military personnel
DPO	= Diplomatic Post Office
MPO	= Military Post Office
PACT	= Prevent All Cigarette Trafficking Act
PAL	= Parcel Airlift
PMEMS	= Priority Mail Express Military Service
PUB 52	= Publication 52, <i>Hazardous, Restricted, and Perishable Mail</i>
SAM	= Space Available Mail
USDA	= United States Department of Agriculture

Note: Mail order catalogs are prohibited as SAM or PAL mail.

A. Securities, currency, or precious metals, including in their raw, unmanufactured state, are prohibited. Official Mail shipments are exempt from this restriction.

A1. Reserved for future use.

A2. Reserved for future use.

B. Other than for PMEMS and the exceptions listed below, a customs declaration PS Form 2976 or PS Form 2976-A is required for all items weighing 16 ounces or more, and for all items (regardless of weight) containing potentially dutiable mail contents (e.g., merchandise or goods) addressed to or from this ZIP Code. Other than the exceptions listed below, all PMEMS mailpieces (regardless of mail contents or weight) addressed to or from this ZIP Code must bear a properly completed PS Form 2976-B. The surface area of the address side of the mailpiece must be large enough to contain the applicable customs declaration. The following exceptions apply to known mailers, who for this purpose are defined as follows:

- Business mailers who enter volume mailings through business mail entry units or other bulk mail acceptance locations, pay postage through advance deposit accounts, use permit imprints for postage payment, and submit completed postage statements at the time of entry that certify that the mailpieces contain no dangerous materials that are prohibited by postal regulations. Such business mailers are exempt from providing customs documentation on non-dutiable letters and printed matter.
- All federal, state, and local government agencies whose mailings are regarded as "Official Mail." Such agencies are exempt from providing customs documentation, except for any items addressed to an MPO or DPO to which restriction "B2" applies.

B2. All federal, state, and local government agencies must complete customs documentation when sending potentially dutiable mail addressed to or from this MPO or DPO.

C. Cigarettes and other tobacco products, including tobacco leaves, chewing and pipe tobacco, snuff, and cigars are prohibited, including those that are authorized in Publication 52 under PACT.

C1. Obscene and horror articles, images, prints, paintings, cards, films, videotapes, comic books, etc., are prohibited.

C2. E-cigarettes and related products (e.g., nicotine liquids, e-liquids, parts, or supplies) are prohibited.

D. Coffee is prohibited.

E. Medicines (prescription, over-the-counter, vitamins, and supplements) are prohibited when mailed to individuals for human or animal use. This prohibition does not apply when medicines are sent as Official Mail only between specifically designated agencies such as pharmaceutical distributors, hospitals, clinics, and pharmacies.

E1. Mailers are responsible to ensure that all medicines and vaccines conform to host nation laws.

E2. Any matter depicting nude or seminude persons, pornographic, or sexual items are prohibited. Non-authorized political materials are prohibited. Religious materials contrary to the Islamic faith are prohibited in bulk quantities, but individual items for the personal use of the addressee are permissible.

E3. Radio transceivers, cordless/cellular telephones, global positioning systems, scanners, base stations, and handheld transmitters are prohibited.

F. Firearms of any type are prohibited, except firearms mailed to or by official U.S. government agencies. This restriction does not apply to firearms mailed from this MPO ZIP Code, provided ATF and USPS regulations are met. Antique firearms do not require an ATF form.

F1. Weapons of any type are prohibited.

F2. Mailing firearms to or from this MPO ZIP Code is restricted to one shotgun and one single shot .22 caliber rifle per individual.

F3. Replica weapons and inert explosive devices (such as grenades) and weapons parts are prohibited.

G. Parcels of any class are prohibited.

H. Meats, including preserved meats, bones, skin, hair, feathers, horns or hoofs of hoofed animals, and wool samples whether hermetically sealed or not, are prohibited.

H1. Pork or pork by-products are prohibited.

I. Reserved for future use.

I1. Reserved for future use.

I2. Reserved for future use.

I3. Mail of all classes must fit in a mail sack. Mail may not exceed the following dimensions:

- Maximum length 27 inches.
- Maximum width 14 inches.
- Maximum height 14 inches.

J. Standard Post and Parcel Select parcels may not exceed 108 inches in length and girth combined.

K. Reserved for future use.

L. All Official Mail is prohibited.

M. Fruits, vegetables, live animals, and live plants are prohibited.

N. Registered Mail service is prohibited.

O. Reserved for future use.

P. Official Mail only.

Q. Mail may not exceed 66 pounds, and size is limited to 42 inches maximum length and 72 inches maximum length and girth combined.

R. All alcoholic beverages, including those available under Publication 52, Part 421, are prohibited.

R1. Materials used in the production of alcoholic beverages (i.e., distilling material, hops, malts, yeast, etc.) are prohibited.

S. Synthetic cannabinoids used to stimulate the central nervous system commonly known as "synthetic marijuana," "K2," or "Spice" are prohibited.

T. Mailings of household shipments and case lots of food to or from an MPO require military transportation office approval prior to mailing. Mailings to or from a DPO require pre-approval from the Diplomatic Pouch and Mail Director.

U. Mail addressed to Retirees (Box R) is limited to 16 ounces and up to a 90-day supply of TRICARE medications. This restriction does not apply to mail endorsed "Free Matter for the Blind or Handicapped."

U1. Mail is limited to First-Class Mail items, including audio and video media, weighing 13 ounces or less. This limitation does not apply to Official Mail.

U2. Retirees (Box R) are not authorized mail service.

U3. Reserved for future use.

U4. Mail addressed to Box C is limited to 2 lbs.

V. PMEMS is not available.

V1. Electronic Delivery status information for Extra Services is not available on *USPS.com*. Manual record of delivery may be available upon request.

W. Hermetically sealed packages of meat products bearing USDA certification, such as dried beef, salami, and sausage, may be mailed. 200 grams of tobacco per parcel are permitted duty free.

X. Cremated remains are prohibited.

Y. Mail is limited to First-Class Mail and Priority Mail items only. This restriction also applies to Official Mail.

Z. No outside pieces (OSPs).

Z1. The following restriction is applicable only to International Service Centers (ISC)/Exchange Offices. An Anti-Pilferage Seal (Item No 0817E or 0818A) is required on all pouches and sacks.

— *International Network Operations,
Global Business, 4-21-22*

Thrift Savings Plan Fact Sheet

ANNUAL RETURNS	G Fund	F Fund	U.S. Aggregate Index	C Fund	S&P 500 Stock Index	S Fund	Dow Jones U.S. Completion TSM Index	I Fund	EAFE Stock Index
2015	2.04	0.91	0.55	1.46	1.38	-2.92	-3.42	-0.51	-0.81
2016	1.82	2.91	2.65	12.01	11.96	16.35	15.75	2.10	1.00
2017	2.33	3.82	3.54	21.82	21.83	18.22	18.12	25.42	25.03
2018	2.91	0.15	0.01	-4.41	-4.38	-9.26	-9.57	-13.43	-13.79
2019	2.24	8.68	8.72	31.45	31.49	27.97	27.94	22.47	22.01
2020	0.97	7.50	7.51	18.31	18.40	31.85	32.17	8.17	7.82
2021	1.38	-1.46	-1.54	28.68	28.71	12.45	12.35	11.45	11.26

MONTHLY RETURNS	G Fund	F Fund	U.S. Aggregate Index	C Fund	S&P 500 Stock Index	S * Fund	Dow Jones U.S. Completion TSM Index	I * Fund	EAFE Stock Index
2021									
Apr	0.13	0.82	0.79	5.33	5.34	4.23	4.22	3.09	3.01
May	0.13	0.34	0.33	0.69	0.70	-0.66	-0.66	3.61	3.26
June	0.12	0.74	0.70	2.33	2.33	3.46	3.46	-1.44	-1.13
July	0.13	1.15	1.12	2.37	2.38	-1.24	-1.23	0.72	0.75
Aug	0.11	-0.18	-0.19	3.03	3.04	2.00	2.00	1.76	1.76
Sept	0.11	-0.86	-0.87	-4.65	-4.65	-4.00	-4.01	-2.81	-2.90
Oct	0.13	-0.04	-0.03	7.00	7.01	5.43	5.42	2.46	2.46
Nov	0.13	0.30	0.30	-0.69	-0.69	-5.03	-5.03	-4.66	-4.65
Dec	0.12	-0.32	-0.26	4.48	4.48	0.58	0.55	5.10	5.12
2022									
Jan	0.13	-2.09	-2.15	-5.18	-5.17	-10.07	-10.09	-3.96	-4.83
Feb	0.14	-1.08	-1.12	-2.99	-2.99	0.03	-0.02	-2.61	-1.77
Mar	0.17	-2.73	-2.78	3.72	3.71	0.90	0.86	-0.33	0.64
YTD	0.44	-5.79	-5.93	-4.59	-4.60	-9.24	-9.34	-6.77	-5.91

The G Fund is managed internally by the Federal Retirement Thrift Investment Board. Assets of the F, C, S, and I Funds are managed externally. The Board currently has contracts with BlackRock Institutional Trust Company, N.A., to manage the F, C, S, and I Fund assets. The F, C, S, and I Funds invest in commingled trust funds, in which the assets of tax-deferred employee benefit plans are combined and invested together. The F, C, S, and I Funds and the BlackRock funds are passively managed index funds.

Future performance of the funds will vary and may be significantly different from the returns shown above. See the *Summary of the Thrift Savings Plan* for detailed information about the funds and

their investment risks. The monthly returns of the TSP Funds represent net earnings for the month after deduction of accrued administrative expenses and, except for the G Fund, after deduction of trading costs and accrued investment management fees as well. The returns for the four indexes shown do not include any of these deductions.

* Implemented May 2001.

See next page for L Funds.

L Funds

Annual Returns	L Income	L 2020	L 2030	L 2040	L 2050
2015	1.85	1.35	1.04	0.73	0.45
2016	3.58	5.47	7.07	7.90	8.65
2017	6.19	9.86	14.54	16.77	18.81
2018	0.71	-0.36	-3.58	-4.89	-6.02
2019	7.60	9.38	17.60	20.69	23.33
2020	5.15		11.26	13.16	14.79

Annual Returns	L Income	L 2025	L 2030	L 2035	L 2040	L 2045	L 2050	L 2055	L 2060	L 2065
2021	5.42	9.75	12.37	13.43	14.51	15.40	16.34	19.90	19.90	19.90

Monthly Returns	L Income	L 2025	L 2030	L 2035	L 2040	L 2045	L 2050	L 2055	L 2060	L 2065
2021										
Apr	1.14	2.15	2.74	2.99	3.24	3.45	3.66	4.35	4.35	4.35
May	0.47	0.81	1.00	1.08	1.16	1.22	1.28	1.50	1.50	1.50
June	0.39	0.64	0.79	0.86	0.92	0.98	1.03	1.17	1.17	1.17
July	0.47	0.75	0.92	0.99	1.05	1.10	1.15	1.26	1.26	1.26
Aug	0.63	1.16	1.50	1.63	1.77	1.88	1.99	2.42	2.42	2.41
Sept	-0.87	-1.78	-2.37	-2.61	-2.85	-3.05	-3.25	-3.87	-3.87	-3.87
Oct	1.28	2.33	3.14	3.43	3.72	3.97	4.22	5.12	5.11	5.11
Nov	-0.50	-1.09	-1.55	-1.72	-1.89	-2.04	-2.20	-2.71	-2.71	-2.71
Dec	1.06	1.90	2.54	2.76	2.99	3.17	3.37	4.08	4.08	4.08
2022										
Jan	-1.28	-2.37	-3.33	-3.68	-4.01	-4.32	-4.60	-5.41	-5.42	-5.42
Feb	-0.51	-1.01	-1.45	-1.61	-1.76	-1.89	-2.01	-2.38	-2.38	-2.38
Mar	0.49	0.85	1.14	1.21	1.29	1.34	1.42	1.88	1.88	1.87
YTD	-1.30	-2.54	-3.65	-4.08	-4.49	-4.86	-5.19	-5.93	-5.93	-5.94

The TSP added six new L Funds that have 5-year increments rather than the previous 10-year increments.

Freely Associated States Restrictions

We list the mailing restrictions for Freely Associated States (FAS) in the Pull-Out section of the *Postal Bulletin*. All FAS Restrictions will be updated periodically.

Freely Associated States

Mail addressed to freely associated states is subject to certain conditions or restrictions of mailing regarding content, preparation, and handling. The following FAS Restrictions table outlines these conditions as listed by each affected FAS ZIP Code™ through the use of footnoted mailing restrictions codes (see the [Restrictions](#) following the table). For more information on available extra services for FAS destinations, see *Mailing Standards of the United States Postal Service, Domestic Mail Manual (DMM®)*, part 503.

Acceptance clerks must use the table with the Retail System Software terminal to determine which FAS ZIP Codes are active and which conditions of mailing apply.

FAS Restrictions Table

FAS Table	See Restrictions
96939	A, B
96940	A, B
96941	A, B
96942	A, B
96943	A, B
96944	A, B
96960	A, B
96970	A, B, D
Marshall Islands	C
Federated States of Micronesia	C

RESTRICTIONS LEGEND

PS Form 2976, *Customs Declaration CN 22* — *Sender's Declaration*

PS Form 2976-A, *Customs Declaration and Dispatch Note*

FAS = Freely Associated State

- A.** Bank currency (coin and paper) is prohibited.
- B.** Signature Confirmation, Signature Confirmation Restricted Delivery, Adult Signature Requested, Adult Signature Restricted Delivery, Certified Mail Adult Signature Required, and Certified Mail Adult Signature Restricted Delivery not available.
- C.** Collect on Delivery is prohibited.
- D.** Betel nut (Areca catechu) is prohibited.

— *Asia-Pacific Relations,
Global Business, 4-21-22*

Organization Information

Environmental Management

Postal Service Flex-Fuel Vehicle Usage

Section 701 of the Energy Policy Act of 2005 requires all Postal Service™ dual-fuel vehicles to operate on alternative fuel rather than conventional petroleum, unless granted a waiver by the Department of Energy (DOE).

This mandate applies to anyone with access to a Postal Service vehicle, including drivers, fleet managers, and facility managers. This also includes Postal Service employees and contractors who may not have an assigned vehicle, but who may operate a vehicle as a minor portion of their responsibilities.

Dual-fuel vehicles are vehicles that can operate on two different types of fuel — an alternative fuel and petroleum fuel. They are also referred to as flex-fuel vehicles (FFVs).

Almost all dual-fuel vehicles in the postal fleet are E85 FFVs, which operate on either gasoline or E85. Take the following steps to determine if you are driving an E85 FFV:

- Check your gas cap. Most manufacturers began placing yellow gas caps on FFVs as of model year 2008.
- Check the fuel door. Some FFVs have labels on the fuel door indicating the fuel type.
- Look for badges or labels on your vehicle's body. Most FFVs have the terms "FFV," "E85 FFV," or "Flex Fuel" on badges attached to the rear or side of the vehicles.
- Check with your local fleet manager to determine if the vehicle is an E85 FFV.

Each time you drive a different Postal Service vehicle, first determine if it is an E85 FFV to ensure that you are refueling the vehicle with the correct fuel.

Conditions for the DOE waiver mentioned above are outlined in section 701 of the law. Vehicles may qualify for a DOE waiver if:

- Alternative fuel is not reasonably available, which means that alternative fuel cannot be obtained within 3 miles (one way) from the vehicle's:
 - Refueling location, if using the Voyager credit card; or
 - Vehicle domiciled location, if the refueling location is not displayed using the Voyager credit card.

- Alternative fuel is unreasonably expensive, which means that the standard marketed price for alternative fuel is more than gasoline at the same station. For the liquid fuels E85, liquid petroleum gas, and liquid natural gas, the marketed price is expressed in gallons. For compressed natural gas, the marketed price is gasoline gallon equivalent.

To find the nearest alternative fuel stations, use the DOE's Alternative Fueling Station Locator at afdc.energy.gov/locator/stations.

To find an alternative fuel station along your driving route or outside of your normal operating area, use the Plan a Route tool on the Alternative Fueling Station Locator at afdc.energy.gov/locator/stations.

There is also a mobile version of the Alternative Fueling Station Locator that can help identify the nearest alternative fuel stations. Simply search for and visit the Alternative Fueling Station Locator from your smartphone or other mobile device at afdc.energy.gov/stations/#/find/nearest. Drivers must be stopped, with the vehicle in park, before using any mobile tool while operating a federal vehicle.

E85 or ethanol fuel pumps may look different from conventional fuel pumps at fueling stations. In most cases, the E85 fuel pump will have a separate, yellow-colored nozzle handle or hose to distinguish it from conventional fuel pumps. The pump will also have a label stating that the fuel is E85 and for flex-fuel vehicles only.

The E85 pump itself may be located at a stand-alone site or under a separate canopy from the conventional fuels at the fueling station. Regardless of the pump's location at the station, please note that the fueling process for E85 is the same as for a standard gas or diesel fuel pump.

Since 2009, federal agencies have been required to inventory and reduce their greenhouse gas emissions. Increasing the use of alternative fuel as a substitute for petroleum is the most effective way that fleets can meet these greenhouse gas and petroleum reduction requirements.

— Environmental Affairs and Corporate Sustainability,
Environmental Affairs, 4-21-22

USPS Stormwater Policy Reminder: Vehicle Washing

The United States Postal Service® (USPS®) has established a “Zero Discharge” policy for stormwater to reduce pollution from stormwater and snowmelt, which can cause hazardous chemicals and pollutants to enter the environment and harm rivers, streams, lakes, and coastal waters. Under this policy, employees and suppliers must take specific actions to minimize pollution to protect water quality.

Vehicle Washing Requirements

USPS employees and USPS third-party contractors must follow the “Zero Discharge” policy for stormwater:

- Do *not* allow vehicle or equipment wash water or pollutants (i.e., oil and grease, metals, acids/bases, and other chemicals) to enter stormwater systems, such as storm drains, outdoor drains, or other conveyances.
- Do *not* wash vehicles outdoors in an uncovered area when it is raining.
- Only wash official vehicles on USPS property using one of the following acceptable methods:
 - Wet wash in interior bays (when washing is performed by USPS employees).
 - Wet wash with water recovery in exterior lots (when washing is performed by third-party contractors).

- Dry wash or dry vapor steam cleaning in exterior lots (when washing is performed by third-party contractors; may be performed by USPS employees).
- Only use vehicle wash products that do *not* contain any USPS Targeted Chemicals or exhibit hazardous waste characteristics.
- Establish vehicle washing contracts through the Vehicles, Delivery, and Industrial Equipment Category Management Center using the nationally approved statement of work for vehicle washing. Monitor vehicle washing contracts and activities for compliance.

To establish a vehicle washing contract for your location, contact Carla Van Istendal by email at carla.vanistendal@usps.gov or by phone at 215-863-5397.

For more information about vehicle washing guidelines, consult your designated environmental contact at blue.usps.gov/sustainability/contact.htm or review the following resources:

- *Vehicle Washing Requirements Environmental Compliance Bulletin* at blue.usps.gov/sustainability/environmental/_pdf/ecb-vehiclewashing.pdf.
- The Environmental Affairs website at blue.usps.gov/sustainability.

— *Environmental Affairs and Corporate Sustainability,
Environmental Affairs, 4-21-22*

Information Security

Become a Cyber Guardian

The Postal Service™ is seeking employees interested in joining the CyberSafe Guardian program, which helps protect the organization’s computer network.

CyberSafe Guardian volunteers work closely with the Corporate Information Security Office to raise awareness of online security issues and provide feedback from the field, while promoting the organization’s CyberSafe at USPS® initiatives at postal facilities.

The program is open to all Executive and Administrative Schedule (EAS) employees. To join, EAS employees must fill out and submit the registration form at blue.usps.gov/cyber/guardian.

For more information about joining the CyberSafe Guardian program, send an email to the Cybersecurity Awareness Team at CyberSafeComms@usps.gov.

— *Corporate Information Security Office,
Chief Information Security Officer
and Digital Solutions, 4-21-22*

Stamp Services

Stamp Announcement 22-18: Women's Rowing Stamps



©2021 USPS

On May 13, 2022, in Philadelphia, PA, the United States Postal Service® will issue the *Women's Rowing* stamps (Forever® priced at the First-Class Mail® rate) in four designs, in a pressure-sensitive adhesive (PSA) pane of 20 stamps (Item 482100). These stamps will go on sale nationwide May 13, 2022, and must not be sold or canceled before the first-day-of-issue. **The *Women's Rowing* commemorative pane of 20 stamps may not be split and the stamps may not be sold individually.**

This issuance celebrates women's rowing, a graceful but demanding sport in which American women have excelled. Four different stamp designs are featured in a pane of 20 stamps arranged as five staggered rows of four. The artwork, which covers the entire pane, is a stylized illustration of five 8-person crews on the water, apparently practicing or possibly racing. The eight rowers, featured in the four stamps, face left. The ninth person in each shell, the coxswain, shown in the selvage, faces the direction the shell is moving, as her job is to steer. Nancy Stahl designed and illustrated the stamps and pane. Ethel Kessler was the project art director.

Availability to Post Offices: Item 482100, Women's Rowing (Forever Priced at the First-Class Mail Rate) Pane of 20 Stamps

Stamp Fulfillment Services will not make an automatic push distribution to Post Offices. Post Offices may begin ordering stamps before the first-day-of-issue through SFS Web at sfsweb.usps.gov/sfsweb.

How to Order the First-Day-of-Issue Postmark

Customers have 120 days to obtain the first-day-of-issue postmark by mail. They may purchase new stamps at their local Post Office™ or at The Postal Store® website at store.usps.com/shop. They must affix the stamps to envelopes

of their choice, address the envelopes (to themselves or others), and place them in a larger envelope addressed to:

FDOI – Women's Rowing Stamps
USPS Stamp Fulfillment Services
8300 NE Underground Drive, Suite 300
Kansas City, MO 64144-9900

After applying the first-day-of-issue postmark, the Postal Service™ will return the envelopes through the mail. There is no charge for the postmark up to a quantity of 50. There is a 5-cent charge for each additional postmark over 50. All orders must be postmarked by September 13, 2022.

How to Order First-Day Covers

The Postal Service also offers first-day covers for new stamp issues and Postal Service stationery items postmarked with the official first-day-of-issue cancellation. Each item has an individual catalog number and is offered in the *USA Philatelic* catalog and online at store.usps.com/shop. Customers may register to receive a free *USA Philatelic* catalog online at usps.com/philatelic.

Locally produced items are not authorized. Only merchandise that has been approved and assigned an item number by Headquarters Retail Marketing may be produced and sold.

Issue:	<i>Women's Rowing</i> Stamps
Item Number:	482100
Denomination & Type of Issue:	First-Class Mail Forever
Format:	Pane of 20
Series:	N/A
Issue Date & City:	May 13, 2022, Philadelphia, PA 19104
Art Director:	Ethel Kessler, Bethesda, MD
Designer:	Nancy Stahl, New York, NY
Illustrator:	Nancy Stahl, New York, NY
Manufacturing Process:	Offset
Printer:	Ashton Potter (USA) Ltd (APU)
Press Type:	Muller A76
Stamps per Pane:	20
Print Quantity:	18,000,000 stamps
Paper Type:	Nonphosphored Type III, Block Tag
Adhesive Type:	Pressure-sensitive
Colors:	Black, Cyan, Magenta, Yellow
Stamp Orientation:	Horizontal
Image Area (w x h):	1.42 x 0.84 in/36.068 x 21.336 mm
Overall Size (w x h):	1.56 x 0.98 in/39.624 x 24.892 mm
Full Pane Size (w x h):	8.0 x 8.0 in/203.20 x 203.20 mm
Press Sheet Size (w x h):	25.00 x 27.00 in/635.0 x 685.8 mm
Plate Size:	180 stamps per revolution
Plate Number:	"P" followed by four (4) single digits
Marginal Markings:	
Front:	Header: "Women's Rowing" • Plate number in 2 corners
Back:	©2021 USPS • USPS logo • Two barcodes (482100) • Plate position diagram (9) • Promotional text

Stamp Announcement 22-19: Mighty Mississippi Stamps



©2021 USPS

On May 23, 2022, in Memphis, TN, the United States Postal Service® will issue the *Mighty Mississippi* stamps (Forever® priced at the First-Class Mail® rate) in 10 designs, in a pressure-sensitive adhesive (PSA) pane of 10 stamps (Item 580300). These stamps will go on sale nationwide May 23, 2022, and must not be sold or canceled before the first-day-of-issue. **The *Mighty Mississippi* commemorative pane of 10 stamps may not be split and the stamps may not be sold individually.**

This stamp issuance honors the Mighty Mississippi with a portfolio of ten different photographic images. Arranged on the pane in five rows of two stamps each, the images correspond to the states' north-south and west-east sequence along the Mississippi River. Small type on the margin of each stamp indicates its location:

- Top row: Minnesota and Wisconsin;
- Second row: Iowa and Illinois;
- Third row: Missouri and Kentucky;

- Fourth row: Arkansas and Tennessee; and
- Bottom row: Louisiana and Mississippi.

In the selvage, three photographic riverscapes frame the stamps. From top to bottom: the Julien Dubuque Bridge, Illinois/Iowa; St. Louis, Missouri; and a Mississippi bayou. The verso features a map of the central United States detailing the river's course and its major tributaries. It is superimposed on a blue monochromatic version of the selvage images. Art director Ethel Kessler designed the stamp pane with existing photographs.

Availability to Post Offices: Item 580300, *Mighty Mississippi* (Forever Priced at the First-Class Mail Rate) Pane of 10 Stamps

Stamp Fulfillment Services will not make an automatic push distribution to Post Offices. Post Offices may begin ordering stamps before the first-day-of-issue through SFS Web at sfsweb.usps.gov/sfsweb.

How to Order the First-Day-of-Issue Postmark

Customers have 120 days to obtain the first-day-of-issue postmark by mail. They may purchase new stamps at their local Post Office™ or at The Postal Store® website at store.usps.com/shop. They must affix the stamps to envelopes of their choice, address the envelopes (to themselves or others), and place them in a larger envelope addressed to:

FDI – Mighty Mississippi Stamps
USPS Stamp Fulfillment Services
8300 NE Underground Drive, Suite 300
Kansas City, MO 64144-9900

After applying the first-day-of-issue postmark, the Postal Service™ will return the envelopes through the mail. There is no charge for the postmark up to a quantity of 50. There is a 5-cent charge for each additional postmark over 50. All orders must be postmarked by September 23, 2022.

How to Order First-Day Covers

The Postal Service also offers first-day covers for new stamp issues and Postal Service stationery items postmarked with the official first-day-of-issue cancellation. Each item has an individual catalog number and is offered in the *USA Philatelic* catalog and online at store.usps.com/shop. Customers may register to receive a free *USA Philatelic* catalog online at usps.com/philatelic.

Locally produced items are not authorized. Only merchandise that has been approved and assigned an item number by Headquarters Retail Marketing may be produced and sold.

Issue:	<i>Mighty Mississippi</i> Stamps
Item Number:	580300
Denomination & Type of Issue:	First-Class Mail Forever
Format:	Pane of 10
Series:	N/A
Issue Date & City:	May 23, 2022, Memphis, TN 38101
Art Director:	Ethel Kessler, Bethesda, MD
Designer:	Ethel Kessler, Bethesda, MD
Existing Photo:	Evan Spiler
Existing Photo:	Dana Holm
Existing Photo:	Sean Pavone
Existing Photo:	Ron Levine
Existing Photo:	Jay Olson-Goude
Existing Photo:	Mississippi River Parkway Commission
Existing Photo:	David Sebben
Existing Photo:	Walter Blackledge
Existing Photo:	M.J. Scanlon
Existing Photo:	Larry Braun
Existing Photo:	Don McLaughlin
Selva Existing Photo:	Jeffrey Smith
Selva Existing Photo:	Tom Wolf
Manufacturing Process:	Offset
Printer:	Ashton Potter (USA) Ltd (APU)
Press Type:	Muller A76
Stamps per Pane:	10
Print Quantity:	40,000,000 stamps
Paper Type:	Nonphosphored Type III, Block Tag
Adhesive Type:	Pressure-sensitive
Colors:	Black, Cyan, Magenta, Yellow, Pantone Cool Grey 7C
Stamp Orientation:	Horizontal
Image Area (w x h):	1.42 x 0.84 in/36.068 x 21.336 mm
Overall Size (w x h):	1.56 x 0.98 in/39.624 x 24.892 mm
Full Pane Size (w x h):	5.4 x 8.0 in/137.16 x 203.20 mm
Press Sheet Size (w x h):	10.925 x 24.25 in/277.495 x 615.95 mm
Plate Size:	120 stamps per revolution
Plate Number:	"P" followed by five (5) single digits
Marginal Markings:	
Front:	Header: "Mighty Mississippi" • Plate number in 2 corners
Back:	©2021 USPS • USPS logo • Two barcodes (580300) • Plate position diagram (6) • Promotional text • Mighty Mississippi map

— Stamp Services, Marketing, 4-21-22

Pictorial Postmarks Announcement

As a community service, the Postal Service™ offers pictorial postmarks to commemorate local events celebrated in communities throughout the nation. A list of events for which pictorial postmarks are authorized appears on the following pages. The sponsor of the pictorial postmark appears in italics under the date. Also provided are illustrations of these postmarks.

People attending these local events may obtain the postmark in person at the temporary Post Office™ station established there. Those who cannot attend the event but who wish to obtain the postmark may submit a mail order request. Pictorial postmarks are available only for the dates indicated, and *requests must be postmarked no later than 30 days following the requested pictorial postmark date.*

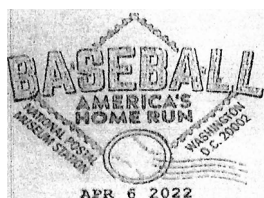
All requests must include a stamped envelope or postcard bearing at least the minimum First-Class Mail® postage. Items submitted for postmark may not include

postage issued after the date of the requested postmark. Such items will be returned unserved.

Customers wishing to obtain a postmark must affix stamps to any envelope or postcard of their choice, address the envelope or postcard to themselves or others, insert a card of postcard thickness in envelopes for sturdiness, and tuck in the flap. Place the envelope or postcard in a larger envelope and address it to: Pictorial Postmarks, followed by the Name of the Station, Address, City, State, ZIP+4® Code, as listed next to the postmark.

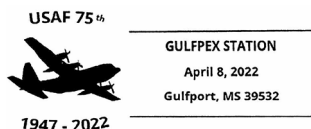
Customers can also send stamped envelopes and postcards without addresses for postmark, as long as they supply a larger envelope with adequate postage and their return address. After applying the pictorial postmark, the Postal Service returns the items (with or without addresses) under addressed protective cover.

The following pictorial postmarks have been extended for 30 days:



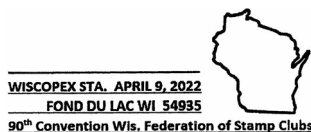
April 6, 2022–April 6, 2023

United States Postal Service
National Postal Museum Station
Philatelic Sales & Service Associate
2 Massachusetts Avenue NE
Washington, DC 20013-9998



April 8–9, 2022

Gulf Coast Stamp Club
GULFPEX Station
Postmaster
11110 Highway 49
Gulfport, MS 39503-9998



April 9–10, 2022

Fond du Lac Stamp Club
WISCOPEX Station
Postmaster
99 West 2nd Street
Fond du Lac, WI 54935-9998



April 19, 2022
Cheyenne-Arapaho Old Settlers Reunion
 Cheyenne-Arapaho Old Settlers Reunion Station
 Postmaster
 PO Box 9998
 Cheyenne, OK 73628-9998



April 23, 2022
United States Postal Service
 KAZOOPEX Station
 Postmaster
 PO Box 9998
 Comstock, MI 49041-9998



Home Avenue Adult Day Health Care
 20th Anniversary Station
 April 22, 2022
 Downey, California 90240

April 22, 2022
Home Ave Adult Day Health Care Center
 20th Anniversary Station
 Postmaster
 7001 South Central Avenue,
 Room 335
 Los Angeles, CA 90052-9601



April 29, 2022
PIPEX 2022
 PIPEX Station
 Postmaster
 7007 Northeast Cornfoot Drive
 Portland, OR 97218-9998



April 22-23, 2022
Wilksburg Stamp Club
 Exhibition Station
 Postmaster
 514 Millers Run Road
 Morgan, PA 15064-9998



Thunderbase Station
Chillicothe, Ohio 45601
April 30, 2022

April 30, 2022
Boy Scouts of America
 Thunderbase Station
 Postmaster
 PO Box 9998
 Chillicothe, OH 45601-9998



Portsmouth Island Homecoming
Portsmouth Village Station
April 23, 2022
Ocracoke NC 27960

April 23, 2022
Portsmouth Island Homecoming
 Portsmouth Village Station
 Postmaster
 PO Box 9998
 Ocracoke, NC 27960-9997

— *Stamp Services, Marketing, 4-21-22*

How to Order the First-Day-of-Issue Digital Color or Traditional Postmarks

Customers have 120 days to obtain the first-day-of-issue postmarks by mail. Each cover must have sufficient postage to meet First-Class Mail® requirements. Customers may purchase new stamps at their local Post Office™, by phone at 844-737-7826, or on The Postal Store® website at usps.com/shop.

Digital Color Postmarks

Only select stamp issues offer a digital color postmark. Customers may submit #6 or #10 envelopes constructed of paper rated as "laser safe." The Postal Service™ recommends envelopes of 80-pound Accent Opaque, acid-free, 9/16-inch side seams with no glue on the flap. The maximum size of all digital color postmarks is 2 inches (vertically) by 4 inches (horizontally). Allow sufficient space on the envelope to accommodate the postmark. Do not use self-adhesive labels for addresses on the envelope. Two test envelopes must be included. There is a minimum of 10 envelopes at 50 cents per postmark required at the time of servicing. Customers must submit a check, money order, or credit card for payment.

The Postal Service reserves the right to not accept hand-painted and other cachet envelopes that are not compatible with our digital color postmark equipment. The Postal Service also reserves the right to substitute traditional black rubber postmarks if use of nonspecified envelopes results in poor image quality or damage to equipment.

Customers must affix the stamps to the envelopes and address them to themselves or others for return through the mail. Or, they may include an additional self-addressed return envelope, large enough to accommodate their canceled items, with sufficient postage affixed for return of

their postmarked items. Address customer requests for digital color postmarks to:

FDOI – (Name of Stamp Issue)
USPS Stamp Fulfillment Services
8300 NE Underground Drive, Suite 300
Kansas City, MO 64144-9900

After applying the first-day-of-issue postmark, the Postal Service will return the envelopes to the customer by U.S. Mail®.

Traditional Postmarks

Customers must affix the stamps to the envelopes and address them to themselves or others for return through the mail. Or, they may include an additional self-addressed return envelope, large enough to accommodate their canceled items, with sufficient postage affixed for return of their postmarked items. Address customer requests for traditional postmarks to:

FDOI – (Name of Stamp Issue)
USPS Stamp Fulfillment Services
8300 NE Underground Drive, Suite 300
Kansas City, MO 64144-9900

After applying the first-day-of-issue postmark, the Postal Service will return the envelopes to the customer by U.S. Mail™. There is no charge for the first 50 postmarks. There is a 5-cent charge for each additional postmark over 50. Customers must submit a check, money order, or credit card for payment.

Locally produced items are not authorized. Only merchandise that has been approved and assigned an item number by Headquarters Retail Marketing may be produced and sold.



FIRST DAY OF ISSUE

FDOI – Blueberries Stamp

USPS Stamp Fulfillment Services
8300 NE Underground Drive, Suite 300
Kansas City, MO 64144-9900

May 9, 2022

Black and White Pictorial



FDOI – U.S. Flags 2022 Stamp

USPS Stamp Fulfillment Services
8300 NE Underground Drive, Suite 300
Kansas City, MO 64144-9900

May 9, 2022

Digital Color Pictorial



FIRST DAY OF ISSUE

FDOI – U.S. Flags 2022 StampUSPS Stamp Fulfillment Services
8300 NE Underground Drive, Suite 300
Kansas City, MO 64144-9900

May 9, 2022

Black and White Pictorial**FDOI – Love 2022 Stamps**USPS Stamp Fulfillment Services
8300 NE Underground Drive, Suite 300
Kansas City, MO 64144-9900

May 14, 2022

Digital Color Pictorial**FDOI – Love 2022 Stamps**USPS Stamp Fulfillment Services
8300 NE Underground Drive, Suite 300
Kansas City, MO 64144-9900

May 14, 2022

Black and White Pictorial**FDOI – Lunar New Year — Year of the Tiger Stamp**USPS Stamp Fulfillment Services
8300 NE Underground Drive, Suite 300
Kansas City, MO 64144-9900

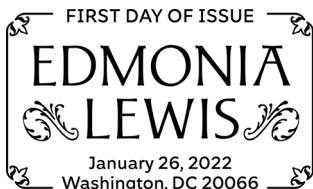
May 20, 2022

Digital Color Pictorial**FDOI – Lunar New Year — Year of the Tiger Stamp**USPS Stamp Fulfillment Services
8300 NE Underground Drive, Suite 300
Kansas City, MO 64144-9900

May 20, 2022

Black and White Pictorial**FDOI – Edmonia Lewis Stamp**USPS Stamp Fulfillment Services
8300 NE Underground Drive, Suite 300
Kansas City, MO 64144-9900

May 26, 2022

Digital Color Pictorial**FDOI – Edmonia Lewis Stamp**USPS Stamp Fulfillment Services
8300 NE Underground Drive, Suite 300
Kansas City, MO 64144-9900

May 26, 2022

Black and White Pictorial



FIRST DAY OF ISSUE

**FDOL – Butterfly Garden Flowers
Stamps**

 USPS Stamp Fulfillment Services
 8300 NE Underground Drive, Suite 300
 Kansas City, MO 64144-9900

June 1, 2022

Black and White Pictorial

FDOL – Monument Valley Stamp

 USPS Stamp Fulfillment Services
 8300 NE Underground Drive, Suite 300
 Kansas City, MO 64144-9900

June 14, 2022

Digital Color Pictorial


FIRST DAY OF ISSUE

FDOL – Monument Valley Stamp

 USPS Stamp Fulfillment Services
 8300 NE Underground Drive, Suite 300
 Kansas City, MO 64144-9900

June 14, 2022

Black and White Pictorial


FEBRUARY 14, 2022 • SAN FRANCISCO, CA 94188

FDOL – Palace of Fine Arts Stamp

 USPS Stamp Fulfillment Services
 8300 NE Underground Drive, Suite 300
 Kansas City, MO 64144-9900

June 14, 2022

Digital Color Pictorial


FIRST DAY OF ISSUE

FDOL – Palace of Fine Arts Stamp

 USPS Stamp Fulfillment Services
 8300 NE Underground Drive, Suite 300
 Kansas City, MO 64144-9900

June 14, 2022

Black and White Pictorial


FIRST DAY OF ISSUE

FDOL – Title IX Stamps

 USPS Stamp Fulfillment Services
 8300 NE Underground Drive, Suite 300
 Kansas City, MO 64144-9900

July 3, 2022

Digital Color Pictorial

 TITLE
 Washington, DC 20066
 March 3, 2022

First Day of Issue

FDOL – Title IX Stamps

 USPS Stamp Fulfillment Services
 8300 NE Underground Drive, Suite 300
 Kansas City, MO 64144-9900

July 3, 2022

Black and White Pictorial



Digital Color Pictorial

FDOL – Mountain Flora Stamps

USPS Stamp Fulfillment Services
8300 NE Underground Drive, Suite 300
Kansas City, MO 64144-9900

July 14, 2022



Black and White Pictorial

FDOL – Mountain Flora Stamps

USPS Stamp Fulfillment Services
8300 NE Underground Drive, Suite 300
Kansas City, MO 64144-9900

July 14, 2022



Digital Color Pictorial

FDOL – African Daisy Stamp

USPS Stamp Fulfillment Services
8300 NE Underground Drive, Suite 300
Kansas City, MO 64144-9900

July 14, 2022



Black and White Pictorial

FDOL – African Daisy Stamp

USPS Stamp Fulfillment Services
8300 NE Underground Drive, Suite 300
Kansas City, MO 64144-9900

July 14, 2022



Digital Color Pictorial

FDOL – Sunflower Bouquet Stamp

USPS Stamp Fulfillment Services
8300 NE Underground Drive, Suite 300
Kansas City, MO 64144-9900

July 24, 2022



Black and White Pictorial

FDOL – Sunflower Bouquet Stamp

USPS Stamp Fulfillment Services
8300 NE Underground Drive, Suite 300
Kansas City, MO 64144-9900

July 24, 2022



Digital Color Pictorial

FDOL – Tulips Stamp

USPS Stamp Fulfillment Services
8300 NE Underground Drive, Suite 300
Kansas City, MO 64144-9900

July 24, 2022

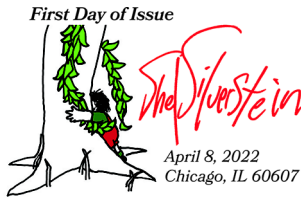


Black and White Pictorial

FDOL – Tulips Stamp

USPS Stamp Fulfillment Services
8300 NE Underground Drive, Suite 300
Kansas City, MO 64144-9900

July 24, 2022



Digital Color Pictorial

FDOL – Shel Silverstein Stamp

USPS Stamp Fulfillment Services
8300 NE Underground Drive, Suite 300
Kansas City, MO 64144-9900

August 8, 2022

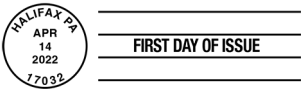


Black and White Pictorial

FDOL – Shel Silverstein Stamp

USPS Stamp Fulfillment Services
8300 NE Underground Drive, Suite 300
Kansas City, MO 64144-9900

August 8, 2022



Black and White Pictorial

FDOL – Flags on Barns Stamps

USPS Stamp Fulfillment Services
8300 NE Underground Drive, Suite 300
Kansas City, MO 64144-9900

August 14, 2022



Digital Color Pictorial

FDOL – George Morrison Stamps

USPS Stamp Fulfillment Services
8300 NE Underground Drive, Suite 300
Kansas City, MO 64144-9900

August 22, 2022



Black and White Pictorial

FDOL – George Morrison Stamps

USPS Stamp Fulfillment Services
8300 NE Underground Drive, Suite 300
Kansas City, MO 64144-9900

August 22, 2022



Digital Color Pictorial

FDOL – Eugenie Clark Stamp

USPS Stamp Fulfillment Services
8300 NE Underground Drive, Suite 300
Kansas City, MO 64144-9900

September 4, 2022



Black and White Pictorial

FDOL – Eugenie Clark Stamp

USPS Stamp Fulfillment Services
8300 NE Underground Drive, Suite 300
Kansas City, MO 64144-9900

September 4, 2022

**FDOI – Women's Rowing Stamps**

USPS Stamp Fulfillment Services
8300 NE Underground Drive, Suite 300
Kansas City, MO 64144-9900

September 13, 2022

Digital Color Pictorial

**FDOI – Women's Rowing Stamps**

USPS Stamp Fulfillment Services
8300 NE Underground Drive, Suite 300
Kansas City, MO 64144-9900

September 13, 2022

Black and White Pictorial

**FDOI – Mighty Mississippi Stamps**

USPS Stamp Fulfillment Services
8300 NE Underground Drive, Suite 300
Kansas City, MO 64144-9900

September 23, 2022

Digital Color Pictorial

**FDOI – Mighty Mississippi Stamps**

USPS Stamp Fulfillment Services
8300 NE Underground Drive, Suite 300
Kansas City, MO 64144-9900

September 23, 2022

Black and White Pictorial



475 L'ENFANT PLAZA SW
WASHINGTON DC 20260-5540

First-Class Mail
Postage & Fees Paid
USPS
Permit No. G-10

Celebrate the 50th Anniversary of

Title IX

Civil Rights
legislation
with
USPS
Forever[®]
Stamps



On Sale
Nationwide:
March 3, 2022

