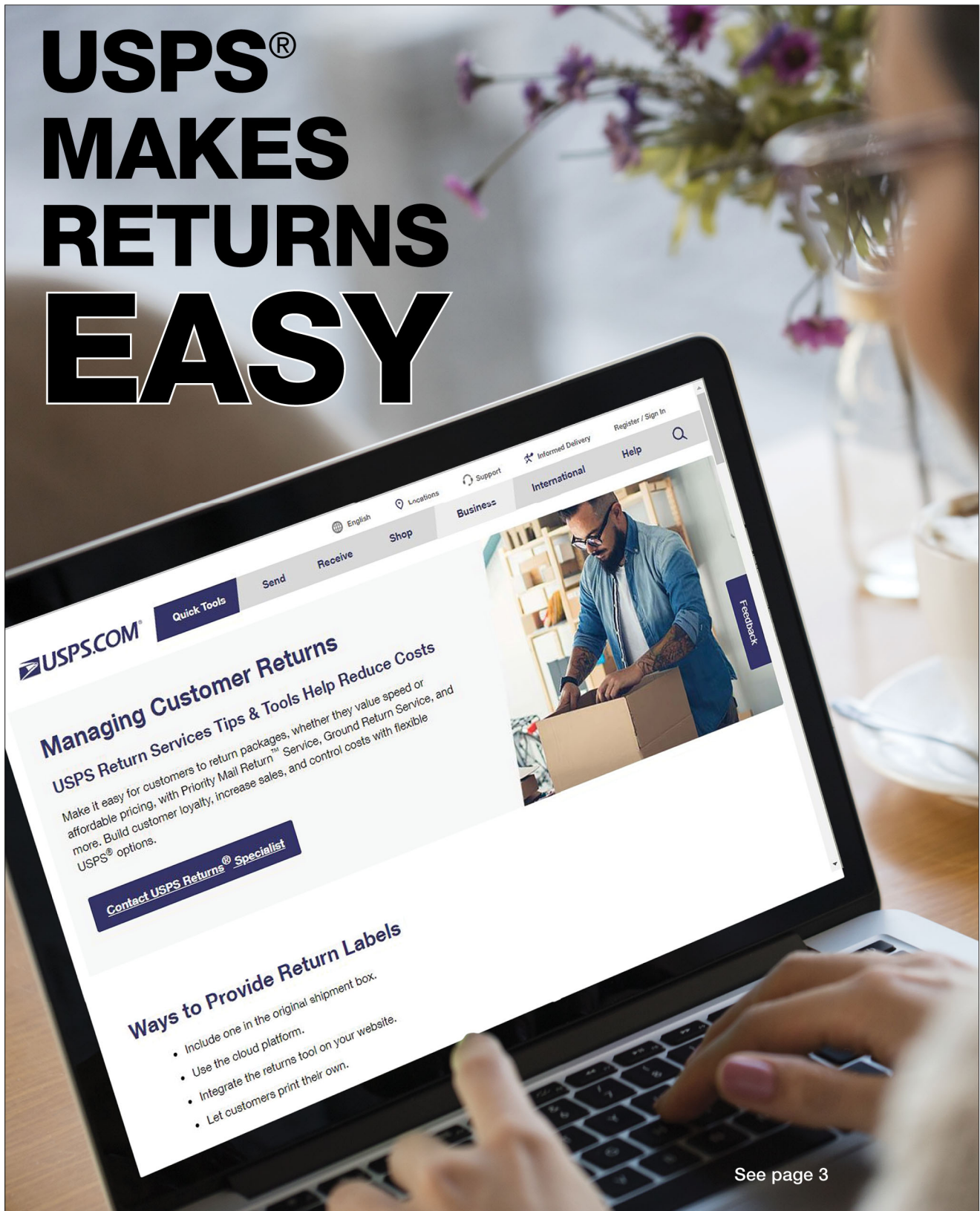


# postal|bulletin

PUBLISHED SINCE MARCH 4, 1880

# USPS® MAKES RETURNS EASY



See page 3



# Contents

## COVER STORY

USPS Makes Returns Easy . . . . . 3

## POLICIES, PROCEDURES, AND FORMS UPDATES

### Manuals

DMM Revision: Calculating Postage for Periodicals  
Pending Authorization . . . . . 5  
IMM Revision: Certificate of Mailing . . . . . 6  
IMM Revision: IPA Service to Sudan . . . . . 6

### Management Instructions

Management Instruction EL-670-2021-4: Providing  
Communication Accommodations to Employees and  
Applicants Who Are Deaf or Hard of Hearing . . . . . 7

### Publications

Publication 223 Revision: Directives and Forms Update. . . . . 7  
Publication 530 Revision: Combined Federal Campaign  
Operational Guidelines . . . . . 8

### Forms

PS Form 1750 Revision: Employee Evaluation and/or  
Probationary Report . . . . . 8  
PS Form 5659 Revision: Daily Passport Application  
(DS-11) Transmittal. . . . . 8

## ORGANIZATION INFORMATION

### Finance

Reminder: International Reply Coupons (Return Dates:  
January 1 – 31, 2022) . . . . . 9  
Equipment Maintenance Allowance Schedule for  
Rural Routes . . . . . 31

### Mailing and Shipping Services

Mail Alert . . . . . 31

### Stamp Services

Stamp Announcement 22-6: Butterfly Garden Flowers. . . . . 34

Pictorial Postmarks Announcement . . . . . 35  
How to Order the First-Day-of-Issue Digital Color or  
Traditional Postmarks . . . . . 36

## PULL-OUT INFORMATION

### Fraud

Invalid USPS Corporate Account Numbers. . . . . 11  
Missing, Lost, or Stolen U.S. Money Order Forms . . . . . 13  
Missing, Lost, or Stolen Canadian Money Order Forms . . . . . 19  
Verifying U.S. Postal Service Money Orders . . . . . 21  
Counterfeit Canadian Money Order Forms . . . . . 21  
Toll-Free Number Available to Verify Canadian  
Money Orders . . . . . 21

### Other Information

Overseas Military/Diplomatic Mail . . . . . 22  
Thrift Savings Plan Fact Sheet. . . . . 28  
Freely Associated States Restrictions . . . . . 30

## POSTAL BULLETIN 2021 SEMI-ANNUAL INDEX

2021 Semi-Annual Index . . . . . PB 22578 (8-12-21)

Find the latest in mail and delivery information  
and services offered by U.S. Postal®  
in the *Postal Bulletin* at  
[about.usps.com/postal-bulletin](https://about.usps.com/postal-bulletin)

**Mail Moment®**

# Cover Story

## USPS Makes Returns Easy

The United States Postal Service® continues to make improvements to its returns infrastructure to prepare for the annual season of holiday returns.

This shopping season is likely to be even more hectic than last year — with the major shift to online retail in 2020, retail eCommerce sales will continue to grow by double-digits. As the number of items ordered online and shipped to consumers grows, so will the demand for easy, convenient return methods that attract repeat business.

The Postal Service™ is ready for returns in the following ways:

- **Continued expansion of our returns processing capabilities.** A total of 12,654 active Parcel Return Service Return Delivery Units and 167 Return Sectional Center Facilities across the country are available for picking up packages. This helps USPS® handle the volume and better positions us as the preferred returns shipping provider in a crowded market estimated to be worth about \$6.1 billion.
- **It's easier for businesses to insure returns with USPS.** Insurance is available for up to \$5,000.
- **Offering one universal shipping permit.** We have one universal shipping permit that covers Parcel Return Service, USPS Returns®, and outbound products.
- **Significant enhancement for USPS Returns.** USPS Returns applies to three mail classes: First-Class Package Service®, Priority Mail®, and Ground Return Service.

### How to Obtain Return Labels

Return labels can either be included in the customer's original order or requested through a merchant's call center. Consumers then affix the return label to their package and mail it using one of the following options:

- Take it to one of the 31,000 plus Post Offices nationwide;
- Drop it in one of 140,000 plus collection boxes (packages must meet aviation mail security guidelines); or
- Go to [usps.com](https://usps.com) to schedule a Package Pickup, which is available at 44,422 ZIP Codes.

The Postal Service also offers a number of options that help businesses create and deliver return labels to customers. Businesses that use First-Class Package Return® Service, Priority Mail Returns® Service, Ground Return Service, or Parcel Return Service can choose the easy-to-use label

generation tool, Merchant Returns Application for customers. Either on their own or with the help of call center agents, customers can:

- Generate a ready-to-use return label.
- Print the return label or have the label emailed to them for printing later.
- Schedule a Package Pickup directly on the Merchant Returns web page or by scanning a QR code at the bottom of the label with their iOS or Android mobile device.
- Locate the nearest Post Office™ using the PO Locator on [usps.com](https://usps.com) or by scanning a QR code at the bottom of the label with their iOS or Android mobile device.

The USPS Web Tools Returns Label Application Programming Interface (API) helps customers receive USPS Returns service labels, which are processed using the new automated returns process via Package Platform. USPS Returns service account holders are responsible for paying the postage and fees through an Enterprise Payment System account so that items can be returned by their customers (at no charge to their customers) using merchant-provided USPS Returns service labels.

The API allows users to request USPS Returns service labels for items that can be mailed using First-Class Package Return Service, Priority Mail Return Service, and Ground Return Service. For more information, use the following resources:

- Main returns web page at [usps.com/business/return-services.htm](https://usps.com/business/return-services.htm).
- For USPS Returns service information, visit [federal-register.gov/documents/2020/02/25/2020-03170/usps-returns-service](https://federal-register.gov/documents/2020/02/25/2020-03170/usps-returns-service).
- For details about USPS Web Tools Returns Label API onboarding, technical documentation, and features, visit [usps.com/business/web-tools-apis](https://usps.com/business/web-tools-apis).

Customers can also access and use the Merchant Returns Application:

- A link on the merchant website directs consumers to the USPS Returns customer-facing page to create labels.
- The merchant call center agents use the USPS Returns call center-facing page to generate and send labels to customers.
- Merchants use the USPS Merchant Returns API to generate labels.

A customer using the customer self-service page or the call center will be asked to provide their address, shipping information, and choice in label delivery (printable PDF pop-up window or email message). Customers using the USPS Merchant Returns API will have the same easy-to-use label generation experience with the merchant's custom look, specifically tailored to fit the merchant's needs and products.

For more information about getting the Merchant Returns API, access the User's Guide at [postalpro.usps.com/node/2722?\\_gl=1\\*1if-35cm\\*\\_ga\\*ZmFsc2U.\\*\\_ga\\_3NXP3C8S9V\\*MTYzNzAw-MzE5Mi43OC4xLjE2MzcxMzgwMDM4NzguMA](https://postalpro.usps.com/node/2722?_gl=1*1if-35cm*_ga*ZmFsc2U.*_ga_3NXP3C8S9V*MTYzNzAw-MzE5Mi43OC4xLjE2MzcxMzgwMDM4NzguMA).

Businesses that create their own return labels may also distribute them to customers via the Label Broker™. Designed for customers without a printer, the Label Broker allows merchants to store labels in a secure USPS repository; customers may then print labels at their local Post Office or at [usps.com](https://usps.com). For more information about Label Broker, visit [usps.com/business/label-broker.htm](https://usps.com/business/label-broker.htm).

Stay tuned for new returns enhancements in 2022!

— *Shipping and Commerce Product Management,  
Business Solutions, 12-30-21*

# Policies, Procedures, and Forms Updates

## Manuals

### DMM Revision: Calculating Postage for Periodicals Pending Authorization

Effective January 9, 2022, the Postal Service™ will revise *Mailing Standards of the United States Postal Service, Domestic Mail Manual (DMM®)*, section 207.5.2, to reflect a change in the process for calculating the price of postage on a Periodicals publication pending authorization.

Currently, postage for Periodicals pending authorization is calculated by completing a PS Form 3541, *Postage Statement – Periodicals*, and then using that information to determine the price for the applicable class of mail based on the eligibility of the mailpiece. This process is labor intensive and does not provide exact pricing, based on the numerous pricing differences for Periodicals and other classes of mail.

Therefore, the Postal Service is simplifying the calculation process by assigning applicable class of mail prices based upon mailpiece common characteristics of shape and weight. Each applicable class of mail price will be expressed as a percentage from the corresponding Periodicals price.

This new process will be more efficient and easier for customers. It will also simplify the refund process when a Periodicals publication is approved. PS Form 3541 will be revised to reflect this new process.

This new standard will become effective January 9, 2022.

#### ***Mailing Standards of the United States Postal Service, Domestic Mail Manual (DMM)***

*	*	*	*	*
<b>200</b>	<b>Commercial Mail Letters, Cards, Flats, and Parcels</b>			
	*	*	*	*
<b>207</b>	<b>Periodicals</b>			
	*	*	*	*

#### **5.0 Applying for Periodicals Authorization**

\* \* \* \* \*

#### **5.2 Mailing While Application Pending**

\* \* \* \* \*

*[Add new 5.2.3 to read as follows and renumber current 5.2.3 through 5.2.5 as 5.2.4 through 5.2.6:]*

#### **5.2.3 Pending Postage**

The price of postage for a Periodicals publication pending authorization is calculated by applying the applicable percent in Exhibit 5.2.3 to PS Form 3541, Part P, Line P-1.

#### **Exhibit 5.2.3 Pending Postage**

<b>PENDING CLASS OF MAIL</b>	<b>PCT.</b>
USPS Marketing Mail Letters	0%*
USPS Marketing Mail Flats	63%
Nonprofit USPS Marketing Mail Letters	0%*
Nonprofit USPS Marketing Mail Flats	40%
Nonprofit USPS Marketing Mail Parcels	136%
Bound Printed Matter Flats	146%
Bound Printed Matter Parcels	0%*
Parcel Select Parcels	585%
First-Class Mail Letters	95%
First-Class Mail Flats	427%
First-Class Package Service-R	311%
Priority Mail	545%

*\*Use Periodicals prices.*

\* \* \* \* \*

The Postal Service will incorporate this revision into the next edition of the online DMM, which is available via Postal Explorer® at [pe.usps.com](https://pe.usps.com).

*— Product Classification,  
Product Solutions, 12-30-21*

## IMM Revision: Certificate of Mailing

Effective December 30, 2021, the Postal Service™ is revising *Mailing Standards of the United States Postal Service, International Mail Manual (IMM®)*, sections 311.21 and 312.21, to reflect that a certificate of mailing is *not* available for purchase for an item mailed as Free Matter for the Blind. These revisions align the policy with IMM 272.6.

### *Mailing Standards of the United States Postal Service, International Mail Manual (IMM)*

\* \* \* \* \*

#### 3 Extra Services

##### 310 Certificate of Mailing

##### 311 Individual Pieces

\* \* \* \* \*

##### 311.2 Availability

##### 311.21 At Time of Purchase

\* \* \* \* \*

*[Delete item d. (Free Matter for the Blind) and redesignate current item e. as item d. Revise the last paragraph to read as follows:]*

A certificate of mailing (individual pieces) cannot be obtained in combination with Registered Mail items,

insured parcels, Free Matter for the Blind, or items paid with a permit imprint.

\* \* \* \* \*

#### 312 Bulk Quantities — Certificate of Mailing

\* \* \* \* \*

##### 312.2 Availability

##### 312.21 At Time of Entry

\* \* \* \* \*

*[Delete item d. (Free Matter for the Blind) and redesignate current item e. as item d. Revise the last paragraph to read as follows:]*

A certificate of bulk mailing cannot be obtained in combination with Registered Mail items, insured parcels, or Free Matter for the Blind.

\* \* \* \* \*

Although effective December 30, 2021, the Postal Service will incorporate these revisions into the January 9, 2022, edition of the online IMM, which is available via Postal Explorer® at [pe.usps.com](https://pe.usps.com).

— Product Classification,  
Product Solutions, 12-30-21

## IMM Revision: IPA Service to Sudan

Effective January 9, 2022, the Postal Service™ will revise *Mailing Standards of the United States Postal Service, International Mail Manual (IMM®)*, Exhibit 292.45a, to reflect that International Priority Airmail® (IPA®) service is available to Sudan.

### *Mailing Standards of the United States Postal Service, International Mail Manual (IMM)*

\* \* \* \* \*

#### 2 Conditions for Mailing

\* \* \* \* \*

##### 290 Commercial Services

\* \* \* \* \*

##### 292 International Priority Airmail (IPA) Service

\* \* \* \* \*

##### 292.4 Mail Preparation

\* \* \* \* \*

#### 292.45 IPA Foreign Office of Exchange Codes and Price Groups

\* \* \* \* \*

Exhibit 292.45a

##### IPA Foreign Office of Exchange Codes and Price Groups

*[In alphabetical order, add an entry for Sudan to read as follows:]*

Country Labeling Name	Foreign Office of Exchange Code	Price Group
Sudan	KRT	5

\* \* \* \* \*

The Postal Service will incorporate this revision into the January 9, 2022, edition of the online IMM, which is available via Postal Explorer® at [pe.usps.com](https://pe.usps.com).

— Product Classification,  
Product Solutions, 12-30-21

## Management Instructions

### Management Instruction EL-670-2021-4: Providing Communication Accommodations to Employees and Applicants Who Are Deaf or Hard of Hearing

Effective October 2021, the Postal Service™ published Management Instruction (MI) EL-670-2021-4, *Providing Communication Accommodations to Employees and Applicants Who Are Deaf or Hard of Hearing*, to include updates on the provision of sign language interpreters and management structure and processes. These updates ensure alignment with policies in the revised Handbook EL-307, *Reasonable Accommodation, An Interactive Process*. The guidance in MI EL-670-2021-4 supersedes the previous management instruction, MI EL-670-2013-6.

MI EL-670-2021-4 is available on the PolicyNet website:

- Go to [blue.usps.gov](https://blue.usps.gov).
- In the left-hand column, click *Essential Links*, and then click *PolicyNet*.
- Go to the right-hand side under “Published Forms and Directives.”
- Click *Management Instructions*.

The direct URL for the Postal Service PolicyNet website is [blue.usps.gov/cpim](https://blue.usps.gov/cpim).

— National EEO Compliance and Appeals,  
Labor Relations, 12-30-21

## Publications

### Publication 223 Revision: Directives and Forms Update

Effective December 30, 2021, Publication 223, *Directives and Forms Catalog*, is revised to include current information for the items noted in this article. See Chapter 1 of Publication 223 for information on how to order directives and forms. Publication 223 is available online at [about.usps.com/publications/pub223.pdf](https://about.usps.com/publications/pub223.pdf).

#### New

- MI AS-800-2021-4, *Hardware Security Internet of Things (IoT)*.
- MI EL-810-2021-3, *Hearing Conservation Programs*.
- MI EL-810-2021-5, *Personal Protective Equipment and Respiratory Protection Programs*.
- MI PO-130-2021-2, *Responding to Matter Nonmailable Under the PACT Act and POSECCA*.
- MI PO-570-2021-1, *Internal Use and Transport of Pallets and Pallet Boxes*.
- POS 900, *USPS Shoe Policy*.

#### Revised

- LAB 6183, *USPS Commercial Invoice for OCPI*.
- MAN DMM, *Mailing Standards of the United States Postal Service, Domestic Mail Manual*.
- MAN ELM, *Employee and Labor Relations Manual*.
- MAN IMM, *Mailing Standards of the United States Postal Service, International Mail Manual*.
- MAN POM, *Postal Operations Manual*.
- MAN SPP, *Supplying Principles and Practices*.
- PUB 223, *Directives and Forms Catalog*.
- PS 3621-A, *Renewal Notice for Annual Fee(s)*.
- PS 3972, *Leave Year 2022 Absence Analysis*.
- PS 6183, *USPS Commercial Invoice for OCPI*.
- PS 8020, *Report of Installation (Postmaster or Officer-In-Charge)*.

#### Obsolete

PSIN	Ed. Date	Title	Replaced By
MI EL-810-2000-1	1/00	<i>Hearing Conservation Programs</i>	MI EL-810-2021-3
MI EL-810-2009-4	6/09	<i>Personal Protective Equipment and Respiratory Protection Programs</i>	MI EL-810-2021-5
MI PO-570-2006-1	3/06	<i>Internal Use and Transport of Pallets</i>	MI PO-570-2021-1
MOP COO-06-28-2010	6/10	<i>Prevent All Cigarette Trafficking (PACT) Act Implementation</i>	MI PO-130-2021-2
MOP PG-03-11-1999	3/99	<i>Use of Consulting Services</i>	N/A
PS 571	2/16	<i>Discrepancy of \$100 or More in Financial Responsibility</i>	N/A

— Brand and Policy,  
Corporate Communications, 12-30-21

## Publication 530 Revision: Combined Federal Campaign Operational Guidelines

Effective November 2021, the Postal Service™ revised Publication 530, *Combined Federal Campaign Operational Guidelines*, to reflect changes the Office of Personnel Management (OPM) made to regulations and ethics rules governing the Combined Federal Campaign (CFC).

The update addresses significant changes to the CFC structure, including methods of collecting and mailing pledges; procedures that campaign workers must follow when managing, coordinating, and canvassing the campaign; and strategies for running a campaign under the new ethics rules and OPM regulations. The updated guidelines are effective immediately.

The revised edition of Publication 530 is available on the PolicyNet website:

- Go to [blue.usps.gov](https://blue.usps.gov).
- In the left-hand column, click *Essential Links*, and then click *PolicyNet*.
- Go to the right-hand side under “Published Forms and Directives.”
- Click *Publications*.

The direct URL for the Postal Service PolicyNet website is [blue.usps.gov/cpim](https://blue.usps.gov/cpim).

— National Human Resources,  
Human Resources, 12-30-21

## Forms

### PS Form 1750 Revision: Employee Evaluation and/or Probationary Report

Effective November 2021, the Postal Service™ revised PS Form 1750, *Employee Evaluation and/or Probationary Report*, to include the replacement of “social security number (SSN)” to “employee identification number (EIN),” as well as updates to reflect the different probationary periods found within the various Collective Bargaining Agreements. The updated form is effective immediately.

The revised edition of PS Form 1750 is available on the PolicyNet website:

- Go to [blue.usps.gov](https://blue.usps.gov).
- In the left-hand column, click *Essential Links*, and then click *PolicyNet*.
- Go to the right-hand side under “Published Forms and Directives,” click *Forms*, and then click on the range 1000–1999.
- Scroll down to the form entry and click the PDF icon.

The direct URL for the Postal Service PolicyNet website is [blue.usps.gov/cpim](https://blue.usps.gov/cpim).

— National Human Resources,  
Human Resources, 12-30-21

### PS Form 5659 Revision: Daily Passport Application (DS–11) Transmittal

Effective December 27, 2021, the Postal Service™ revised PS Form 5659, *Daily Passport Application (DS–11) Transmittal*, to reflect updated information regarding Department of State fees for the adult and minor passport books.

**Note:** The Postal Service will again revise PS Form 5659 effective January 9, 2022, to reflect an updated price for Overnight Service for delivery of the passport from the Passport Agency Office.

The December 2021 edition of PS Form 5659 (which replaces the January 2021 edition) is available on the PolicyNet website:

- Go to [blue.usps.gov](https://blue.usps.gov).
- In the left-hand column, click *Essential Links*, and then click *PolicyNet*.
- Go to the right-hand side under “Published Forms and Directives,” click *Forms*, and then click on the range 5000–5999.
- Scroll down to the form entry and click the PDF icon.

The direct URL for the Postal Service PolicyNet website is [blue.usps.gov/cpim](https://blue.usps.gov/cpim).

— Retail Operations,  
Retail and Post Office Operations, 12-30-21



# Organization Information

## Finance

Reminder: International Reply Coupons (Return Dates: January 1 – 31, 2022)

### Retail Unit Instructions

All Postal Retail Units (PRUs) must submit foreign-issued (exchanged) International Reply Coupons (IRCs) accepted through December 31, 2021, to the Kansas City Stamp Fulfillment Service (SFS) center.

Foreign-issued (exchanged) IRCs (shown here) with expiration dates of December 31, 2021, are the only versions of IRCs that SFS will accept.

SFS will accept exchanged IRCs beginning January 1, 2022. The due date for submission by PRUs is January 31, 2022.

This version of IRC expires December 2021 and must be returned to SFS in January. If these IRCs are not returned this January, Accounting Services will not be able to collect the funds owed to the USPS®.

### Expires December 2021



Redemption rates for all foreign-issued (exchanged) IRCs with an expiration date of December 31, 2021, are based on the **round date stamp** (on the right-hand side of the coupon), and are acceptable for return to SFS.

Date	Redemption Rate
01/01/2018–12/31/2019	1.15
01/01/2020–08/28/2021	1.20
08/29/2021–12/31/2021	1.30

Expiration dates are printed on the back of the IRCs. Do **NOT** send in IRCs with an expiration date of December 31, 2017, or earlier to SFS for any reason. Follow the procedures below:

- IRCs with an expiration date on or before December 31, 2017, that have not been returned (as advised in past *Postal Bulletin* articles), must be removed from the unit inventory, destroyed locally (no value), and posted as a shortage (AIC 767) to the unit reserve stock inventory. Retail System Software units must enter a count in the “Count Inventory and Cash”

workflow; select “Close Credit/Transfer to Another Employee.” Single Drawer Accountability (SDA) sites will use AIC 622 to post the shortage.

- Unit reserve custodians may submit a claim for loss to the district finance manager by following the procedures in Handbook F-101, *Field Accounting Procedures*, subchapter 8-7, Claim for Loss. Upon receipt of an approved claim for loss, clear the stamp credit shortage AIC 367 (SDA sites will use AIC 222) and offset to AIC 633, Claim for Loss; use Reason Code 10, Uncollectible Employee Items.

### Submission Instructions

- Bind foreign-issued (exchanged) IRCs in bundles of 100 or less.
- Prepare PS Form 17, *Stamp Requisition/Stamp Return* (May 2007), in triplicate and annotate “IRC Return.”
- Include a shipment number or the shipment will be returned to the originating unit. Include the destruction SFS finance number (receiving unit location ID).
- Submit the original and copy 1 of PS Form 17 with the stock. File copy 2 locally with all supporting documentation.
- Use only one PS Form 17 for all your IRCs. You do not need to attach PS Form 17 on the outside of the return. The office must write “IRC” on the outside of the return package.
- Ship Priority Signature confirmation to:  
 Kansas City SFS (289995-0000)  
 KANSAS CITY SFS  
 STAMP FULFILLMENT SERVICES  
 IRC RETURN  
 8300 NE UNDERGROUND DRIVE, PILLAR 225  
 KANSAS CITY, MO 64162-9998

The Stamp Distribution Offices (SDOs) listed here will **NOT** accept redeemed or exchanged IRCs:

- San Juan SDO (428460-0000)  
Caribbean
- Honolulu SDO (142400-0000)  
Honolulu

**Note:** SFS will not accept *Migratory Bird* stamps or any other stock at this time; you must submit these items only during your regular destruction schedule. You must send IRCs in separately.

### Stamp Fulfillment Services Instructions

SFS will be responsible for the consolidation and batching of IRCs from the PRUs. SFS will send an email notice of the IRCs to be exchanged to the St. Louis Accounting Service Center (ASC) International Accounting Branch (IAB) by February 28 of each calendar year.

SFS will send the IRC notice to the International Accounting Management team at the following email address: [IAMgmt@usps.gov](mailto:IAMgmt@usps.gov). The notice will provide the quantity of IRCs to be exchanged and the number of boxes to be returned to the Universal Postal Union (UPU) International Bureau. SFS will be responsible for the shipment of exchanged IRCs to the UPU International Bureau.

Once SFS receives the completed IRC cover letter, CN 03 form, and the shipping information packing list from the St. Louis ASC IAB, SFS will prepare the IRCs for shipment.

SFS will ship the IRCs via Priority Mail Express International<sup>®</sup> with the Customs Declaration, PS Form 2976-B, *Priority Mail Express International Shipping*, and PS Form 2865, *Return Receipt for International Mail*.

SFS will return the IRCs in accordance with the *Letter Post Manual*, International Reply Coupons (currently Article RL 146 of the 2014–2017 *Letter Post Manual*).

SFS will ship the IRCs to the following address (addressee's information):

UPU INTERNATIONAL BUREAU  
INTERNATIONAL REPLY COUPONS  
PO BOX 312  
CH 3000 BERNE 15  
SWITZERLAND

SFS will include the Cover Letter, CN 03 in duplicate, and the shipping information packing list in the box labeled as Box 1 of X.

The return address for this shipment will be the following (sender's information):

INTERNATIONAL ACCOUNTING BRANCH  
UNITED STATES POSTAL SERVICE  
PO BOX 80408  
SAINT LOUIS, MO 63180-0408  
USA

SFS must use their USPS Corporate Account Number as the method of payment.

### St. Louis ASC IAB Instructions

The St. Louis ASC IAB will send an email to SFS at [SFS\\_OPERATIONS@usps.gov](mailto:SFS_OPERATIONS@usps.gov) that includes the following forms:

1. The IRC cover letter, signed by the manager, International Accounting Branch.
2. A completed CN 03 form (with the quantity of IRCs to be returned), signed by the manager, International Accounting Branch. Reply coupon values are provided in the *Letter Post Manual*, International Reply Coupons (currently Article RL 146 of the 2014–2017 *Letter Post Manual*).
3. A completed shipping information packing list that provides the IRC quantity and the number of boxes to be returned.

When the St. Louis ASC IAB receives the returned CN 03 form from the UPU International Bureau, the document is then given to the settlement group leader. The settlement group leader will check that the payment was reported as received as international funds from Switzerland on the Cash Position Report from Corporate Treasury. Once the funds have been identified, the St. Louis ASC IAB will create a manual invoice.

After the St. Louis ASC IAB creates the manual invoice (in accordance with IAB procedures), the settlement group leader will clear the receipt.

For more information, see Handbook F-101, *Field Accounting Procedures*, which is available on the Postal Service<sup>™</sup> PolicyNet website:

- Go to [blue.usps.gov](http://blue.usps.gov).
- In the left-hand column, click *Essential Links*, and then click *PolicyNet*.
- Go to the right-hand side under “Published Forms and Directives.”
- Click *Handbooks*.

The direct URL for Handbook F-101 is [blue.usps.gov/cpim/ftp/hand/f101.pdf](http://blue.usps.gov/cpim/ftp/hand/f101.pdf).

— Revenue and Field Accounting,  
Controller, 12-30-21

# Pull-Out Information

## Fraud

### Invalid USPS Corporate Account Numbers

Provide this listing to Contract Postal Units and acceptance clerks in non-POS locations without intranet access to validate a USPS Corporate Account (USPSCA) number online. For all other locations, online USPSCA validation is preferred. This list supersedes all previous notices, which you must recycle.

Acceptance clerks must not accept Priority Mail Express® shipments bearing an invalid USPSCA number in the “Payment by Account” or “Agreement Number” section of the label or form.

**Note:** The first 6 digits of a 9-digit Custom Designed Service and Next Day Pickup Agreement make up the Corporate Account Number.

---

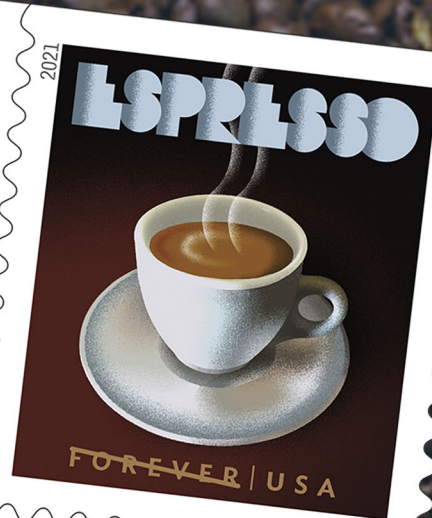
<b>005846</b>	016846	070043	105209	<b>208428</b>	210430	314281	470016	551250	755007	933001	971072
008028	021909	091934	108956	208562	274160	338017	480082	<b>601101</b>	<b>801401</b>	941444	980381
008590	034640	097527	112148	208623	<b>301418</b>	372505	486328	641814	895130	950700	980742
009413	044002	<b>100226</b>	124078	208679	303101	<b>445158</b>	<b>503007</b>	<b>740441</b>	<b>924478</b>	958113	995374
009555	067197	100863	127102	210272	305003	460161	537199	743090	928260	958952	

— Product Information Requirements, Mail Entry and Payment Technology, 12-30-21

# USPS® Serves Up *Espresso Drinks*

Forever®  
Stamps

On Sale  
Nationwide:  
April 9, 2021



## Missing, Lost, or Stolen U.S. Money Order Forms

**Do Not Cash — Upon Receipt, Notify Local Postal Inspectors**

Provide this listing to all Postal Service™ employees responsible for accepting and cashing postal money orders. Destroy all interim notices when the numbers listed appear in the *Postal Bulletin*. The new money order serial

numbers consist of the first 10 digits. The eleventh digit is a check digit only.

Do not cash outdated money orders **104 151 601 to 692 600 000**. Advise holders to send invalid money orders to Canada Post Corporation, Ottawa, Canada K1A 0B1. Check for altered dollar amounts by holding money orders to the light.

<b>010 001 0200</b>	to	<b>0299</b>	044 087 3457	to	3499	084 478 3920	to	3999	176 281 7963	to	7999
010 504 1932	to	1999	044 087 4000	to	4099	086 000 8271	to	8299	176 731 6586	to	6599
011 582 1889	to	1899	044 226 2487	to	2512	086 798 3840	to	3849	178 254 5000	to	9999
011 588 2900	to	3099	044 306 4200	to	4299	088 404 4472	to	4499	178 881 9900	to	9999
012 441 0784	to	0799	044 306 4370	to	4599	088 404 5584	to	5699	<b>180 031 2089 to 2098</b>		
012 579 5675	to	5699	045 524 4121	to	4298	088 757 8688	to	8699	180 403 7723	to	7741
013 289 6176	to	6199	046 800 9870	to	9899	088 757 9400	to	9499	180 428 4580	to	0599
013 610 0014	to	0099	047 352 4000	to	4099	089 358 2248	to	2257	182 368 7544	to	0599
014 932 1000	to	1099	048 383 7650	to	7659	<b>090 663 9678 to 9684</b>			182 475 3229	to	3258
014 972 0800	to	0899	048 396 3647	to	3699	091 818 0071	to	0099	182 475 3904	to	3933
015 363 0065	to	0099	<b>051 142 0755 to 0799</b>			093 106 9346	to	9355	182 631 0031	to	0099
017 028 3200	to	3299	051 774 8857	to	8899	093 203 0500	to	0599	182 911 6539	to	6600
018 569 5333	to	5399	051 781 2875	to	2885	093 684 3630	to	3699	184 218 2760	to	2799
018 986 5264	to	5299	051 977 7010	to	7023	094 081 5074	to	5099	185 828 1474	to	1499
019 518 2814	to	2899	052 058 7115	to	7199	094 216 2555	to	2599	186 132 7583	to	0599
020 698 5159	to	5199	054 450 1130	to	1167	094 580 7062	to	7099	186 629 0589	to	0599
<b>020 844 7307 to 7399</b>			057 670 0563	to	0599	094 639 4200	to	4299	187 184 6177	to	0199
020 972 8948	to	8999	058 187 3836	to	3899	095 070 7186	to	7199	187 323 8200	to	8299
022 021 9110	to	9181	058 523 3003	to	3099	095 076 8300	to	8399	187 441 6080	to	6099
022 037 1411	to	1499	058 591 1153	to	1299	095 354 6864	to	6899	188 831 6774	to	6799
022 527 9201	to	9210	058 895 3746	to	3799	097 224 1350	to	1599	188 835 6370	to	6399
022 529 1882	to	1899	059 986 0814	to	0899	<b>100 160 3800 to 3899</b>			189 083 1064	to	1099
023 637 7169	to	7199	<b>060 406 7650 to 7699</b>			104 667 6400	to	6499	189 660 9583	to	9599
024 380 4100	to	4199	063 491 8122	to	8199	104 876 8937	to	8999	<b>191 179 0377 to 0399</b>		
024 496 6870	to	6896	063 916 9968	to	9999	112 049 4413	to	4499	192 050 5762	to	5781
025 092 0987	to	0999	064 091 4500	to	4599	112 870 9765	to	9799	194 456 8600	to	0699
025 369 5535	to	5599	065 170 0471	to	0499	113 319 2000	to	2099	195 194 6881	to	6899
025 729 1151	to	1199	065 255 7909	to	7999	114 402 3850	to	3899	195 874 1112	to	1199
025 729 1643	to	1799	065 392 6345	to	6399	114 866 5368	to	5397	196 979 0524	to	0599
026 492 3180	to	3199	066 099 2014	to	2099	116 154 2800	to	2899	197 244 6100	to	6199
027 361 0430	to	0499	066 648 2880	to	2899	116 986 4400	to	4499	197 244 6300	to	6399
027 369 4482	to	4495	066 787 3639	to	3699	117 175 1647	to	5169	197 244 6400	to	6499
027 671 8762	to	8776	066 845 7500	to	9999	117 951 4687	to	4699	197 244 6500	to	6599
027 787 9886	to	9899	067 093 3869	to	3899	117 951 5200	to	5299	197 244 6600	to	6699
027 965 9487	to	9499	068 895 0334	to	0399	119 786 3051	to	3064	197 244 6700	to	6799
028 100 8069	to	8099	<b>070 724 4488 to 4499</b>			119 815 8961	to	6199	197 244 6800	to	8999
028 191 1852	to	1999	070 841 9181	to	9199	119 850 7400	to	7499	198 285 2556	to	2566
028 850 3000	to	3199	070 844 2546	to	2599	119 850 7700	to	7999	199 105 0778	to	0799
029 510 1500	to	1599	070 916 1340	to	1399	<b>121 634 0460 to 0499</b>			199 678 2968	to	2999
<b>030 687 0903 to 0999</b>			071 047 5768	to	5799	122 451 9879	to	9899	<b>202 748 5133 to 5199</b>		
030 701 3442	to	3499	071 179 9800	to	9899	122 714 6805	to	6900	202 748 5245	to	5299
031 077 4507	to	4799	071 386 3682	to	3699	124 916 0304	to	0499	202 748 5300	to	5399
032 295 7500	to	9999	071 507 6840	to	6899	126 423 0136	to	0169	202 748 5400	to	5499
034 394 1000	to	1099	072 045 9641	to	9699	127 500 2328	to	2399	203 256 1240	to	1299
034 943 0400	to	0799	072 675 8287	to	8299	<b>160 901 2254 to 2299</b>			204 230 3577	to	3595
035 035 4337	to	4399	073 763 0867	to	0876	161 103 6581	to	6599	205 019 0174	to	0199
037 312 7500	to	7599	073 763 0878	to	0887	161 194 2857	to	0899	206 936 3184	to	3199
037 706 9578	to	9599	073 763 0889	to	0898	162 032 4447	to	4499	207 196 9900	to	9999
037 805 3677	to	3699	077 617 5481	to	5499	163 257 1085	to	1099	207 204 0700	to	0799
037 909 5490	to	5499	077 999 4001	to	4090	164 359 2406	to	2499	207 204 0800	to	0899
037 931 4660	to	4699	078 174 4475	to	4499	166 101 1433	to	1499	207 514 3857	to	3899
039 145 6521	to	6595	078 219 4931	to	4999	167 555 5201	to	5212	208 556 4707	to	4799
<b>040 024 3901 to 3999</b>			078 250 4756	to	4799	167 555 5214	to	5299	<b>210 057 4038 to 4047</b>		
040 674 7100	to	7199	078 823 8312	to	8399	169 618 6274	to	6299	210 221 0548	to	0599
040 688 8816	to	8899	079 374 0300	to	2499	<b>171 806 6878 to 6893</b>			214 061 4711	to	4724
041 299 6752	to	6799	079 807 2342	to	2399	173 639 4685	to	4699	214 303 6311	to	6325
041 623 8889	to	8899	<b>082 721 0228 to 0254</b>			174 238 2779	to	2799	214 303 6239	to	6258
041 803 6565	to	6599	083 140 5000	to	7499	174 281 9347	to	9399	214 877 4251	to	4273
043 129 1968	to	1997	083 784 8886	to	8899	175 251 2600	to	0699	215 252 3918	to	3992
043 205 5922	to	5999	083 913 6915	to	6999	176 281 7937	to	7950	<b>217 585 1400 to 1499</b>		

218 698 2157	to	2199	254 252 2800	to	2899	258 405 7100	to	7199	262 337 4900	to	4999
218 746 0800	to	0899	254 252 2900	to	2999	258 405 7200	to	7299	262 337 5000	to	5099
219 095 0100	to	0399	254 252 3000	to	3099	258 405 7300	to	7399	262 337 5100	to	5199
219 389 1885	to	1899	254 252 3100	to	3199	258 405 7400	to	7499	262 337 5200	to	5299
219 568 7435	to	7456	254 252 3200	to	3299	258 405 7800	to	7899	262 337 5300	to	5399
219 568 7469	to	7487	254 252 3300	to	3399	258 405 7900	to	7999	262 337 5400	to	5499
<b>221 316 5757</b>	<b>to</b>	<b>5799</b>	254 252 3400	to	3499	258 405 8000	to	8099	262 337 5500	to	5599
223 476 3914	to	3999	254 252 3500	to	3599	258 405 8100	to	8199	262 337 5600	to	5699
223 565 4921	to	4957	254 252 3600	to	3699	258 405 8200	to	8299	262 337 5700	to	5799
223 565 4979	to	4999	254 252 3700	to	3799	258 405 8300	to	8399	262 337 5800	to	5899
224 636 4745	to	4765	254 252 3800	to	3899	258 405 8400	to	8499	262 337 5900	to	5999
224 636 4776	to	4799	254 252 3900	to	3999	258 405 8500	to	8599	262 337 6000	to	6099
224 636 4855	to	4885	254 252 4000	to	4099	258 405 8600	to	8699	262 337 6100	to	6199
224 636 4932	to	4948	254 252 4100	to	4199	258 405 8700	to	8799	262 337 6200	to	6299
224 636 4950	to	4962	254 252 4200	to	4299	258 405 8800	to	8899	262 337 6300	to	6399
224 636 4985	to	4999	254 252 4300	to	4399	258 405 8900	to	8999	262 337 6400	to	6499
224 723 0757	to	0799	254 252 4400	to	4499	258 405 9600	to	9699	262 337 6500	to	6599
224 730 2207	to	2299	254 252 4500	to	4599	258 405 9700	to	9799	262 337 6600	to	6699
225 970 0500	to	0599	254 252 4600	to	4699	258 405 9800	to	9899	262 337 6700	to	6799
225 970 0600	to	0699	254 252 4700	to	4799	258 405 9900	to	9999	262 337 6800	to	6899
225 970 0700	to	0799	254 252 4800	to	4899	259 014 9989	to	9999	262 337 6900	to	6999
227 033 8679	to	8699	254 252 4900	to	4999	259 062 4788	to	4798	262 337 7000	to	7099
227 275 9400	to	9999	254 565 7607	to	7700	259 218 1400	to	1499	262 337 7100	to	7199
228 463 2456	to	2499	254 907 1203	to	1299	259 218 1500	to	1599	262 337 7200	to	7299
228 510 4852	to	4899	255 185 9527	to	9599	259 218 1600	to	1699	262 337 7300	to	7399
229 462 8451	to	8475	255 397 1557	to	1576	259 590 5654	to	5699	262 337 7400	to	7499
229 668 5977	to	5999	255 425 2989	to	2998	259 670 8268	to	8299	262 337 7500	to	7599
229 923 9176	to	9199	255 728 6412	to	6499	259 835 6238	to	6399	262 337 7600	to	7699
229 924 6696	to	6699	255 728 9842	to	9899	259 835 6701	to	6799	262 337 7700	to	7799
<b>230 051 9500</b>	<b>to</b>	<b>9999</b>	256 134 9833	to	9839	<b>260 224 4600</b>	<b>to</b>	<b>4699</b>	262 337 7800	to	7899
236 366 2431	to	2499	256 134 9840	to	9849	260 224 5941	to	5999	262 337 7900	to	7999
236 607 6882	to	6899	256 134 9850	to	9859	260 310 2821	to	2899	262 337 8000	to	8099
236 660 5853	to	5872	256 134 9860	to	9869	260 452 0010	to	0022	262 337 8100	to	8199
239 322 5200	to	5299	256 134 9870	to	9879	260 452 0049	to	4299	262 337 8200	to	8299
239 322 5400	to	5499	256 134 9880	to	9889	260 553 8200	to	8299	262 337 8300	to	8399
239 322 5600	to	5699	256 134 9890	to	9899	260 553 8600	to	8699	262 337 8400	to	8499
239 322 5800	to	5899	256 247 6900	to	6999	260 553 9600	to	9799	262 337 8500	to	8599
239 322 5900	to	5999	256 550 5536	to	5545	260 553 9800	to	9899	262 337 8600	to	8699
239 607 4783	to	4799	256 799 2257	to	2299	260 553 9900	to	9999	262 337 8700	to	8799
<b>240 593 1879</b>	<b>to</b>	<b>1899</b>	257 154 8763	to	8799	260 761 1603	to	1662	262 337 8800	to	8899
242 591 2048	to	2099	257 154 8800	to	8899	261 183 2100	to	2299	262 337 8900	to	8999
242 735 0388	to	0398	257 765 4567	to	4599	261 426 0408	to	0499	262 337 9000	to	9099
242 951 7276	to	7299	257 765 4610	to	4696	262 082 8000	to	8099	262 337 9100	to	9199
243 535 6370	to	6399	257 765 4737	to	4799	262 082 8100	to	8199	262 337 9200	to	9299
244 004 9985	to	9999	257 792 7800	to	7889	262 082 8200	to	8299	262 337 9300	to	9399
244 004 9985	to	9999	257 792 7900	to	7999	262 082 8300	to	8399	262 337 9400	to	9499
244 268 9765	to	9799	257 792 8000	to	8099	262 082 8400	to	8499	262 337 9500	to	9599
244 347 4471	to	4499	257 856 9863	to	9899	262 288 7302	to	7399	262 337 9600	to	9699
249 056 1551	to	1599	258 103 1773	to	1782	262 288 7400	to	7499	262 337 9700	to	9799
249 336 9438	to	9499	258 405 1800	to	1899	262 288 9900	to	9999	262 337 9800	to	9899
249 399 4000	to	4099	258 405 1900	to	1999	262 337 2600	to	2699	262 337 9900	to	9999
249 399 4100	to	4199	258 405 3300	to	3399	262 337 2700	to	2700	262 472 3188	to	3199
249 399 4200	to	4299	258 405 3400	to	3499	262 337 2800	to	2800	262 472 3200	to	3299
249 399 4300	to	4399	258 405 3500	to	3599	262 337 2900	to	2900	262 546 3100	to	3199
249 399 4400	to	4499	258 405 3700	to	3799	262 337 3000	to	3099	262 546 3200	to	3299
249 399 4500	to	4599	258 405 3800	to	3899	262 337 3100	to	3199	262 546 3300	to	3399
249 399 4600	to	4699	258 405 3900	to	3999	262 337 3200	to	3299	262 546 3400	to	3499
249 399 4700	to	4799	258 405 4000	to	4099	262 337 3300	to	3399	262 546 3500	to	3599
249 399 4800	to	4899	258 405 4100	to	4199	262 337 3400	to	3499	262 546 3600	to	3699
249 399 4900	to	4999	258 405 4200	to	4299	262 337 3500	to	3599	262 546 3900	to	3999
<b>250 159 7502</b>	<b>to</b>	<b>7599</b>	258 405 4600	to	4699	262 337 3600	to	3699	262 546 4300	to	4399
250 566 9644	to	9699	258 405 5600	to	5699	262 337 3700	to	3799	262 546 4400	to	4499
250 661 8425	to	8499	258 405 5700	to	5799	262 337 3800	to	3899	262 546 4500	to	4599
251 335 5731	to	5799	258 405 5800	to	5899	262 337 3900	to	3999	262 546 4600	to	4699
251 379 2380	to	2399	258 405 5900	to	5999	262 337 4000	to	4099	262 546 4700	to	4799
252 005 7626	to	7699	258 405 6000	to	6099	262 337 4100	to	4199	262 546 4800	to	4899
252 421 8401	to	8499	258 405 6100	to	6199	262 337 4200	to	4299	262 546 4900	to	4999
252 464 2810	to	2899	258 405 6200	to	6299	262 337 4300	to	4399	262 546 7100	to	7199
252 612 3683	to	3699	258 405 6300	to	6399	262 337 4400	to	4499	262 546 7200	to	7299
252 469 2125	to	2199	258 405 6400	to	6499	262 337 4500	to	4599	262 546 7300	to	7399
252 833 3286	to	3297	258 405 6800	to	6899	262 337 4600	to	4699	262 546 7400	to	7499
253 470 3948	to	3999	258 405 6900	to	6999	262 337 4700	to	4799	262 546 9800	to	9899
253 565 7400	to	7499	258 405 7000	to	7099	262 337 4800	to	4899	262 546 9900	to	9999

262 567 1788	to	1799	389 887 9211	to	9230	411 922 2322	to	2399	436 082 6400	to	6899
263 254 2500	to	2500	389 887 9234	to	9299	412 193 0900	to	0999	436 160 6441	to	6499
263 340 0000	to	0099	<b>390 001 3182</b>	<b>to</b>	<b>3199</b>	412 395 8599	to	8699	437 316 7115	to	7199
263 340 0100	to	0199	390 001 3500	to	3699	412 485 6500	to	6599	437 427 0500	to	3499
263 340 0500	to	0599	390 545 5974	to	5999	412 485 6610	to	6699	439 179 2300	to	2399
263 340 0600	to	0699	391 104 6146	to	6199	412 885 5953	to	5999	439 310 0458	to	0499
263 340 2700	to	2799	391 574 1466	to	1499	414 193 3608	to	3674	<b>440 698 1947</b>	<b>to</b>	<b>1999</b>
263 340 2800	to	2899	391 783 3020	to	3599	414 193 3677	to	3699	440 858 6300	to	6399
263 340 3000	to	3099	391 792 6100	to	6199	414 411 7348	to	7399	440 858 6420	to	7299
264 341 2360	to	2399	392 668 2956	to	2999	414 640 0757	to	0799	441 199 1655	to	1699
264 380 4000	to	4099	392 854 8500	to	8899	414 965 1727	to	1799	443 127 3648	to	3699
264 380 4100	to	4199	393 584 7566	to	7699	417 302 8104	to	8199	443 127 4000	to	4099
264 799 6049	to	6099	393 650 0074	to	0099	417 387 6532	to	6599	443 673 7900	to	7999
264 860 7832	to	7868	393 838 8316	to	8499	417 496 6800	to	6999	443 800 9335	to	9399
265 127 3658	to	3699	393 893 6007	to	6099	417 871 9250	to	9299	444 382 8822	to	8899
265 380 7111	to	7137	394 126 6907	to	6999	417 930 9533	to	9599	444 390 1667	to	1699
265 444 4762	to	4799	394 189 0405	to	0599	418 164 6500	to	6799	444 457 3854	to	3899
265 548 7074	to	7099	394 822 3243	to	3278	418 423 9863	to	9899	<b>450 048 4173</b>	<b>to</b>	<b>4199</b>
266 106 0000	to	2499	394 990 1810	to	1899	418 633 9522	to	5999	450 048 4442	to	4699
266 129 5809	to	5899	395 343 3264	to	3299	418 719 8520	to	8599	450 560 5173	to	5199
266 673 0000	to	2499	395 373 3035	to	3099	418 744 2235	to	2299	450 620 3077	to	3099
266 749 7900	to	7999	395 396 9649	to	9799	418 962 2848	to	2899	450 620 3135	to	3199
266 868 0952	to	0999	395 970 3240	to	3299	419 543 0286	to	0299	450 780 2716	to	2799
266 868 1028	to	1099	397 622 4054	to	4099	419 730 0300	to	0399	450 801 2700	to	2799
266 868 1100	to	1199	397 819 8902	to	8999	<b>420 277 0015</b>	<b>to</b>	<b>0049</b>	451 109 2967	to	2984
266 868 1200	to	1299	398 149 7200	to	7699	420 599 0734	to	0798	451 115 4110	to	4125
267 296 1237	to	1299	399 070 0872	to	0899	420 661 4115	to	4199	451 115 4127	to	4199
267 324 8946	to	8998	399 156 7119	to	7199	420 758 9500	to	9699	451 746 0700	to	0799
268 072 1203	to	1299	399 203 5064	to	5099	420 969 3951	to	3971	452 265 0074	to	0099
<b>271 660 4333</b>	<b>to</b>	<b>4400</b>	399 296 9910	to	9999	420 969 3973	to	3999	452 265 0246	to	0299
273 520 0000	to	9999	399 396 8935	to	8999	421 116 3565	to	3599	452 265 0335	to	0999
273 520 6000	to	8999	399 792 7775	to	7799	421 130 9300	to	9399	452 509 1169	to	1199
273 775 7700	to	7899	399 792 8300	to	8399	421 313 4500	to	4999	452 855 6471	to	6499
273 882 1913	to	1998	<b>400 427 1051</b>	<b>to</b>	<b>1999</b>	421 364 5537	to	5599	452 890 4679	to	4799
274 750 0300	to	0400	401 045 1505	to	1549	421 656 2609	to	2699	452 900 8215	to	8238
274 782 0549	to	0599	401 045 1571	to	1599	421 988 9700	to	9799	453 117 9146	to	9199
<b>302 000 0000</b>	<b>to</b>	<b>9999</b>	401 294 2700	to	2799	422 172 4667	to	4699	453 334 3631	to	3699
<b>349 746 2056</b>	<b>to</b>	<b>2099</b>	401 310 9505	to	9599	422 484 4212	to	4299	453 603 7841	to	7891
<b>350 518 7350</b>	<b>to</b>	<b>7374</b>	401 382 5312	to	5399	422 556 1270	to	1299	453 650 1140	to	1199
<b>360 011 1690</b>	<b>to</b>	<b>1699</b>	402 578 7876	to	7899	422 587 7024	to	7099	453 741 1300	to	1399
360 168 6008	to	6099	403 125 6744	to	6799	422 819 7533	to	7599	454 013 2919	to	2999
360 173 8800	to	8899	403 260 7000	to	7499	422 842 5073	to	5087	454 186 2411	to	2499
360 324 2326	to	2399	403 280 6470	to	6499	422 907 7563	to	7599	454 268 4883	to	4899
362 861 3064	to	3099	403 685 8600	to	8699	424 500 6050	to	6099	454 302 5400	to	5499
<b>373 006 2176</b>	<b>to</b>	<b>2199</b>	404 003 0300	to	0399	424 641 8500	to	8599	454 490 8300	to	8399
374 768 2600	to	2699	404 041 8838	to	8899	424 871 6600	to	6699	454 547 7434	to	7499
375 169 4400	to	4599	404 071 4268	to	4299	425 298 2352	to	2399	454 922 4867	to	4895
375 829 3400	to	3499	404 347 5356	to	5399	425 418 4269	to	4299	455 221 1348	to	1499
375 851 9100	to	9199	404 347 5548	to	5599	425 418 4405	to	4499	455 364 2147	to	2199
376 196 0911	to	0999	404 726 4500	to	4599	426 547 4566	to	4599	455 399 5400	to	5499
378 085 3679	to	3699	404 961 5001	to	5199	427 412 6337	to	6499	455 476 0676	to	0699
378 351 1063	to	1099	405 325 0188	to	0198	427 481 0900	to	0999	455 543 0618	to	0699
379 843 5100	to	5199	406 009 4587	to	4599	428 027 2742	to	2752	456 410 9006	to	9099
<b>380 093 9600</b>	<b>to</b>	<b>9699</b>	406 260 6830	to	6899	429 474 4172	to	4199	456 470 4146	to	4299
380 165 1165	to	1199	406 459 6641	to	6999	429 889 2900	to	2999	456 619 4460	to	4499
381 325 4500	to	4599	406 733 3000	to	3999	<b>430 150 4401</b>	<b>to</b>	<b>4599</b>	457 333 2686	to	2699
381 604 2510	to	2699	407 545 1557	to	1599	430 172 9800	to	9899	457 729 1767	to	1777
381 645 9525	to	9599	407 594 0412	to	0599	430 177 1900	to	2099	457 937 8615	to	8699
383 314 3968	to	3999	407 692 9100	to	9299	430 444 9500	to	9699	458 028 9810	to	9899
383 892 1000	to	1344	407 959 2190	to	2199	430 664 4070	to	4099	458 057 2712	to	2999
383 892 1382	to	1399	408 265 2275	to	2288	432 168 8419	to	8499	458 069 9537	to	9599
384 925 3641	to	3654	408 499 7700	to	7799	432 708 6800	to	6999	458 069 9665	to	9699
385 568 2331	to	2399	408 499 7900	to	7999	432 744 1544	to	1599	458 337 5222	to	5299
385 599 7554	to	7575	408 682 8484	to	8599	432 995 9775	to	9799	458 354 7653	to	7999
385 774 2024	to	2099	408 698 7015	to	7099	433 003 5800	to	5899	458 671 8678	to	8699
386 624 1412	to	1599	409 072 3941	to	3999	433 757 3047	to	3099	458 671 8721	to	8798
386 883 8936	to	8999	<b>410 491 2311</b>	<b>to</b>	<b>2399</b>	433 765 4003	to	4099	458 847 5044	to	5999
387 314 5574	to	5599	410 694 8400	to	8599	434 482 7060	to	7199	459 274 7624	to	7699
387 837 6300	to	6399	410 775 1500	to	1599	434 513 2386	to	2399	459 365 5432	to	5499
388 828 0656	to	0699	410 795 7927	to	7999	434 968 3076	to	3092	459 378 5764	to	5799
389 696 2400	to	2799	410 867 0917	to	0966	435 303 1831	to	1842	459 472 4816	to	4999
389 846 3104	to	3135	410 867 0970	to	0999	435 303 1986	to	1999	<b>460 349 6878</b>	<b>to</b>	<b>6899</b>
389 846 3145	to	3195	411 868 1023	to	1199	435 666 6092	to	6399	460 550 1909	to	1999

460 997 5234	to	5299	481 673 0074	to	0095	504 240 1062	to	1399	609 884 2981	to	2999
461 973 6443	to	6499	482 527 1500	to	1599	504 805 3300	to	3499	609 893 1000	to	1099
462 152 0107	to	0299	482 541 5255	to	5299	505 096 0662	to	0699	<b>610 092 3200</b>	<b>to</b>	<b>3299</b>
462 274 1072	to	1099	482 729 6800	to	6899	505 893 7739	to	7799	610 582 4200	to	4299
462 277 8373	to	8399	483 363 7207	to	7299	505 893 7800	to	7999	611 879 6939	to	6999
462 554 6051	to	6099	483 402 2356	to	2399	506 124 0800	to	0999	612 291 8013	to	8099
463 011 5529	to	5540	483 486 5100	to	5199	506 165 7027	to	0099	612 751 5171	to	5199
463 176 4115	to	4199	483 632 1521	to	1599	506 502 5209	to	5299	612 751 5226	to	5299
463 176 4229	to	4299	483 632 2600	to	2799	506 756 1682	to	1699	612 751 6083	to	6099
463 185 2600	to	2799	483 849 1615	to	1699	506 756 1700	to	1799	612 751 6268	to	6299
463 227 7711	to	7799	484 174 4803	to	5299	506 756 1800	to	1899	612 751 6572	to	6599
463 414 4869	to	4899	484 323 8900	to	9199	506 836 5326	to	5399	612 774 2111	to	2199
463 808 3484	to	3499	484 680 5000	to	5038	508 488 6226	to	6299	612 774 2254	to	2299
463 945 7400	to	7899	484 680 5040	to	5074	508 789 8332	to	8399	612 774 2500	to	2599
464 629 9000	to	9399	484 680 5077	to	5099	508 789 8400	to	8499	614 469 0979	to	0999
464 711 4332	to	4399	485 029 4913	to	4999	509 909 0425	to	0435	614 474 3000	to	3099
465 692 3963	to	3999	486 176 0600	to	0699	<b>510 150 2400</b>	<b>to</b>	<b>2499</b>	614 521 3490	to	3499
465 698 8300	to	8599	486 559 7555	to	7599	510 381 3200	to	3299	614 645 1800	to	1899
465 743 7745	to	7799	486 696 3023	to	3199	510 887 9500	to	9599	614 832 1100	to	2099
466 798 6056	to	6067	488 173 7900	to	7999	510 587 9659	to	9699	615 017 7505	to	7599
467 147 4300	to	4399	488 206 4100	to	4199	510 269 9770	to	9999	617 711 6609	to	6699
468 079 5782	to	5799	488 226 0200	to	0299	511 021 5042	to	5099	617 760 5266	to	5299
469 067 2817	to	2899	488 709 3906	to	3999	511 021 5100	to	5199	617 813 3601	to	3699
469 127 8000	to	8199	488 855 8359	to	8399	511 468 1747	to	1799	618 840 9200	to	9299
469 213 0359	to	0399	489 181 8963	to	8999	511 844 0100	to	0199	619 551 7229	to	7299
469 213 0500	to	0599	489 223 2000	to	2099	511 844 0340	to	0399	619 859 3000	to	3099
469 561 8011	to	8099	489 311 1930	to	1999	512 805 3913	to	3919	<b>620 073 9400</b>	<b>to</b>	<b>9499</b>
469 658 1961	to	1999	489 318 6200	to	6300	513 046 0700	to	0726	621 614 7907	to	7930
469 666 9900	to	9999	489 384 0027	to	0099	513 149 0600	to	0699	621 614 7932	to	7999
469 678 1900	to	1999	489 427 0658	to	0899	513 445 3000	to	3199	621 648 8021	to	8199
469 781 4900	to	4999	489 997 5252	to	5299	513 466 2034	to	2044	621 648 8500	to	8599
469 947 6960	to	6999	<b>490 669 5850</b>	<b>to</b>	<b>6099</b>	513 539 9052	to	9099	621 904 8351	to	8599
<b>470 755 5800</b>	<b>to</b>	<b>5818</b>	490 717 7080	to	7099	513 539 9267	to	9299	621 916 1978	to	1989
471 918 0300	to	0999	490 721 6000	to	6099	513 539 9800	to	9899	622 989 8032	to	8099
471 985 2408	to	2419	490 793 1500	to	2099	513 539 9985	to	9999	623 076 9300	to	9399
472 191 6700	to	6799	490 886 8171	to	8199	513 606 5459	to	5490	623 819 5006	to	5099
472 270 2555	to	2599	490 977 9221	to	9240	513 812 1751	to	1799	623 895 8200	to	8399
472 987 0213	to	0241	491 258 8100	to	9099	514 103 3600	to	3699	623 917 0000	to	0099
472 987 0290	to	0299	491 567 1376	to	1399	514 103 3700	to	3799	623 917 0200	to	0299
473 151 2069	to	2199	492 254 4800	to	4899	514 103 3800	to	3899	624 468 5288	to	5299
473 666 9138	to	9199	492 283 5100	to	5199	<b>600 645 3223</b>	<b>to</b>	<b>3299</b>	624 665 3162	to	3198
473 952 3429	to	3499	492 610 6813	to	6899	601 339 1200	to	1399	625 088 6735	to	6799
474 108 5402	to	5499	493 394 5568	to	5599	601 653 5884	to	5899	625 916 9500	to	9799
474 356 5193	to	5299	493 470 2562	to	2599	601 661 7700	to	7799	625 968 8956	to	8999
474 949 3366	to	3399	493 473 7700	to	7799	601 682 5343	to	5399	627 005 3938	to	3999
475 134 9362	to	9399	493 716 2153	to	2199	601 928 1600	to	1699	627 384 3907	to	4099
475 167 9667	to	9699	494 206 2972	to	2999	602 512 2972	to	2999	627 496 7549	to	7599
475 319 3415	to	3499	494 217 3446	to	3999	602 555 2400	to	2799	627 708 3605	to	3699
475 319 3649	to	3799	494 224 0500	to	0599	602 829 7061	to	7099	627 776 2500	to	2599
475 340 6400	to	6599	495 145 0600	to	0699	603 483 9572	to	9599	628 226 3100	to	3199
475 424 8410	to	8499	496 209 7425	to	7499	603 490 7200	to	7299	628 814 4702	to	4799
475 629 9156	to	9199	496 213 8728	to	8799	603 678 7100	to	7199	628 851 9689	to	9699
475 850 6101	to	6199	496 474 5226	to	5248	603 678 7662	to	7699	629 510 7200	to	7299
475 875 2500	to	2599	497 053 8517	to	8699	603 678 7902	to	7999	629 964 4200	to	4294
476 169 8264	to	8299	497 854 8673	to	8699	603 678 8418	to	8499	<b>630 389 3056</b>	<b>to</b>	<b>3071</b>
476 189 3000	to	3499	498 449 8888	to	8899	603 678 8700	to	9999	630 463 0588	to	0599
476 331 2480	to	2499	498 929 8285	to	8499	604 086 0880	to	0899	631 459 9117	to	9199
477 289 8601	to	8699	498 936 5310	to	5399	604 349 1414	to	1499	631 762 9325	to	9399
477 681 5206	to	5299	499 016 5425	to	5499	604 503 7776	to	7799	632 217 4933	to	4999
478 010 4243	to	4268	499 440 8575	to	8899	605 520 9037	to	9099	632 500 0000	to	640 3999
478 010 4270	to	4291	499 731 6717	to	6799	605 685 4010	to	4099	633 110 4165	to	4199
478 450 5071	to	5099	<b>500 064 1858</b>	<b>to</b>	<b>1869</b>	605 988 6467	to	6499	633 110 4303	to	4499
478 469 7838	to	7858	500 070 5725	to	7799	607 689 7951	to	7960	633 438 6429	to	6599
478 469 7883	to	7899	501 058 0016	to	0026	607 728 1276	to	1299	633 588 7173	to	7182
479 280 9800	to	9899	501 331 0300	to	0399	608 727 7100	to	7199	634 725 0700	to	0799
479 365 9116	to	9176	501 460 0977	to	0999	608 727 7273	to	7599	634 803 3239	to	3299
479 412 9900	to	9999	502 227 7645	to	7699	608 813 9950	to	9999	634 807 2474	to	2499
479 667 6190	to	6199	502 424 0200	to	0499	609 067 5325	to	5399	634 827 5900	to	5999
479 748 9680	to	9699	502 424 0600	to	0699	609 067 5488	to	5499	634 886 3428	to	3499
479 860 7000	to	7199	502 496 6923	to	6999	609 067 5600	to	5699	635 559 3449	to	3499
<b>480 526 2000</b>	<b>to</b>	<b>2099</b>	503 003 2700	to	2899	609 289 6123	to	6199	636 289 6214	to	6299
480 640 6330	to	6399	503 194 5144	to	5153	609 438 4400	to	4499	636 634 8007	to	8042
480 658 0568	to	0599	503 790 9922	to	9948	609 493 1100	to	1199	637 150 1200	to	1299
480 689 5100	to	5199	504 045 4030	to	4099	609 766 8091	to	8999	637 562 5828	to	5899
481 072 9463	to	9499	504 166 0200	to	0599	609 825 4100	to	4115	638 042 1647	to	1699



638 049 4984	to	4999	653 455 4874	to	4899	683 444 8159	to	8199	702 254 9300	to	9399
638 318 1115	to	1199	654 238 0000	to	0399	685 154 7780	to	7789	702 264 7569	to	7599
638 318 1453	to	1499	654 404 3065	to	3092	685 297 7645	to	7699	702 519 0513	to	0524
638 885 0000	to	0299	654 962 2900	to	3199	685 623 5264	to	5299	702 713 1800	to	1809
638 903 4362	to	4373	655 103 5081	to	5199	685 650 9487	to	9499	702 821 5730	to	5799
639 415 1929	to	1999	655 523 2600	to	2999	685 669 4200	to	4299	702 821 5805	to	5899
639 415 2019	to	2099	656 305 2448	to	2499	685 757 8452	to	8499	702 844 6975	to	6994
639 420 6200	to	6299	657 347 4438	to	4999	686 071 2694	to	2799	702 846 6331	to	6399
639 469 3517	to	3799	657 710 8100	to	8999	686 176 3333	to	3354	702 848 3900	to	3999
639 605 2143	to	2199	657 780 0985	to	0999	686 372 3200	to	3299	702 857 7302	to	7499
639 657 8600	to	8799	658 586 1400	to	1499	686 644 5879	to	5899	702 878 0114	to	0199
<b>640 289 7500</b>	<b>to</b>	<b>7599</b>	658 877 8000	to	8199	686 899 1371	to	1399	703 364 1707	to	1799
640 289 7700	to	7999	658 880 8000	to	8199	686 931 7636	to	7699	<b>740 002 7710</b>	<b>to</b>	<b>7719</b>
641 170 4420	to	4499	659 398 7300	to	7399	687 601 0973	to	0999	740 037 6730	to	6800
641 318 3133	to	3199	659 706 8113	to	8199	687 614 6774	to	6799	740 119 2275	to	2284
641 378 6500	to	6999	659 846 7837	to	7899	688 120 9000	to	9999	740 130 6688	to	6698
641 383 8739	to	8799	<b>660 510 4100</b>	<b>to</b>	<b>4199</b>	688 314 3107	to	3191	740 144 2780	to	2795
641 877 3187	to	3299	660 673 0400	to	0599	<b>690 291 1361</b>	<b>to</b>	<b>1371</b>	740 241 9049	to	9099
641 877 3310	to	3399	661 488 5000	to	5099	690 788 2877	to	2899	740 252 9265	to	9294
642 355 8094	to	8199	661 609 9100	to	9199	690 893 5344	to	5399	740 255 1718	to	1799
642 355 8308	to	8999	661 716 9420	to	9499	690 893 5512	to	5599	740 274 2602	to	2619
642 900 0018	to	0099	661 906 6522	to	6599	690 904 1300	to	1599	740 277 0366	to	0392
643 030 6254	to	6299	662 021 8332	to	8399	690 941 6000	to	6199	740 332 7658	to	7671
644 066 0882	to	0899	662 068 0700	to	0899	691 313 6383	to	6399	740 348 6641	to	6658
644 069 0600	to	0699	662 553 0774	to	0799	691 313 6600	to	6699	740 351 4790	to	4799
644 077 7506	to	7699	663 078 7034	to	7099	691 582 8003	to	8099	740 374 7416	to	7499
644 085 8157	to	8199	663 763 5300	to	5399	691 664 1800	to	1999	740 470 2420	to	2443
644 112 9839	to	9899	663 883 7039	to	7499	691 664 2400	to	2499	740 514 0300	to	0499
644 373 9083	to	9099	663 938 9200	to	9299	692 727 9362	to	9399	740 523 7432	to	7449
644 380 1460	to	1499	664 253 8000	to	8499	692 798 1800	to	1899	740 535 1555	to	1580
644 733 4715	to	4799	664 656 3055	to	3099	693 249 0779	to	0799	740 557 3570	to	3579
644 900 9712	to	9799	665 174 6400	to	6499	693 249 0877	to	1699	740 650 4104	to	4140
644 901 0109	to	1299	665 274 8208	to	8299	693 445 0566	to	0999	740 684 0620	to	0800
644 901 1325	to	1399	665 669 5400	to	5499	693 448 8500	to	8999	740 701 6105	to	6114
644 923 6800	to	7799	666 132 8226	to	8299	693 645 9583	to	9599	740 705 9790	to	9799
644 932 4655	to	4699	666 696 2209	to	2299	693 965 4200	to	4299	740 726 6400	to	6500
645 318 7240	to	7499	666 696 2309	to	2399	695 741 2906	to	2999	740 748 8319	to	8329
645 333 1766	to	1799	667 032 9300	to	9399	695 947 8518	to	8599	740 765 3306	to	3399
645 790 8632	to	8699	667 729 5529	to	5599	696 662 8247	to	8299	740 774 8434	to	8499
645 821 0657	to	0699	668 383 8400	to	8699	697 447 8285	to	8296	740 779 4259	to	4299
645 930 7948	to	7999	<b>670 368 3400</b>	<b>to</b>	<b>3499</b>	698 042 4816	to	4899	740 786 1885	to	1899
645 975 0737	to	0762	670 369 7336	to	7399	698 131 2138	to	2157	740 790 5989	to	5999
646 242 6200	to	6299	670 750 7169	to	7199	698 227 0000	to	0099	740 803 4870	to	4879
646 270 7639	to	7799	671 046 6200	to	6399	<b>700 065 2570</b>	<b>to</b>	<b>2599</b>	740 820 4854	to	7836
646 798 4000	to	4999	671 251 5448	to	5499	700 065 4800	to	4899	740 827 7578	to	7594
647 048 7035	to	7099	671 926 5600	to	5799	700 190 3350	to	3359	740 917 7490	to	7499
647 049 2900	to	2999	672 444 2000	to	2999	700 228 6048	to	6099	740 918 5531	to	5549
647 398 8300	to	8399	672 828 3410	to	3499	700 650 0452	to	0499	741 037 8528	to	8551
647 398 8481	to	8499	673 167 5776	to	5799	700 666 1323	to	1349	742 030 6135	to	6149
647 437 3000	to	4999	675 464 3700	to	3799	700 786 9106	to	9142	742 033 2663	to	2674
647 811 2188	to	2199	675 464 4000	to	4199	700 859 0744	to	0758	742 040 3300	to	3309
648 009 6057	to	6099	676 365 5958	to	5999	701 028 6780	to	6899	742 112 8155	to	8199
648 163 5300	to	5499	676 669 1024	to	1099	701 213 3900	to	3999	742 151 5000	to	5014
648 722 5283	to	5299	677 126 6734	to	6799	701 267 2000	to	3999	742 191 4640	to	4649
648 892 3164	to	3199	677 333 9979	to	9999	701 335 7312	to	7399	742 192 5210	to	5224
649 100 3989	to	3999	677 466 1088	to	1099	701 369 2005	to	2050	742 222 9200	to	9210
649 647 0370	to	0399	678 071 4500	to	4799	701 499 2260	to	2299	742 228 9660	to	9669
649 647 0522	to	0599	678 096 7531	to	7599	701 503 2247	to	2299	742 247 6980	to	6989
649 647 5237	to	5399	679 909 2578	to	2599	701 541 2271	to	2299	742 290 0936	to	0950
649 647 9100	to	9299	<b>680 112 9565</b>	<b>to</b>	<b>9599</b>	701 553 6557	to	6599	742 302 7600	to	7699
649 666 7800	to	8299	680 244 0903	to	0999	701 578 7460	to	7469	742 305 3711	to	3799
<b>650 114 7707</b>	<b>to</b>	<b>7719</b>	680 412 6046	to	6099	701 578 7475	to	7499	742 305 3800	to	3899
650 130 3400	to	3599	680 761 6800	to	6899	701 601 3457	to	3499	742 305 3900	to	3999
650 213 0406	to	0499	681 677 0540	to	0699	701 605 5913	to	5999	742 305 4000	to	4099
650 555 1749	to	1799	682 070 1029	to	1099	701 695 3982	to	3999	742 305 4100	to	4199
650 564 1900	to	1999	682 956 6280	to	6299	701 695 4148	to	4199	<b>805 885 8411</b>	<b>to</b>	<b>8499</b>
650 627 4212	to	4299	682 956 6490	to	6599	701 695 4227	to	4299	806 087 1100	to	1499
650 736 2043	to	2099	682 956 6700	to	6799	701 708 1741	to	1799	806 268 9275	to	9299
650 739 1540	to	1699	682 965 1178	to	1199	701 736 3966	to	3999	806 534 3400	to	3477
651 741 4415	to	4499	682 965 1201	to	1299	701 772 0870	to	0899	807 342 3283	to	3399
651 882 2800	to	2899	683 118 2389	to	2399	701 838 2800	to	2899	808 086 7100	to	7199
652 754 6317	to	6399	683 378 2000	to	2099	701 941 0600	to	0699	808 090 3440	to	3499
653 131 4945	to	4999	683 378 2117	to	2299	702 171 1603	to	1699	808 325 5161	to	5699
653 426 3300	to	3399	683 415 1200	to	1499	702 195 5109	to	5199	808 784 8000	to	8299

830 125 0672 to 0699	856 752 0200 to 0299	902 985 0833 to 0899	918 951 7231 to 7299
830 602 5800 to 5999	857 111 1352 to 1399	903 370 6934 to 6999	919 519 2786 to 2799
830 610 3700 to 3799	857 279 3450 to 3499	904 600 6523 to 6599	919 536 0770 to 0799
830 983 3500 to 3599	857 843 4000 to 4099	904 892 0378 to 0399	919 814 3095 to 3199
830 983 3635 to 3699	858 124 7644 to 7699	904 892 0648 to 1299	919 889 5110 to 5134
831 354 1387 to 1399	858 756 3111 to 3299	905 056 2216 to 2299	919 889 5137 to 5176
831 815 8240 to 8299	859 063 8200 to 8699	905 510 6647 to 6799	919 889 5178 to 5199
832 525 3810 to 3899	859 190 0600 to 0644	905 510 6900 to 7099	919 889 5030 to 5070
833 159 1884 to 1899	859 437 5538 to 5599	905 794 0000 to 0199	919 889 5090 to 5099
833 456 2567 to 2599	859 811 2888 to 2899	905 794 0288 to 0299	919 915 2774 to 2787
833 566 3015 to 3071	859 855 8873 to 8999	905 873 6900 to 6999	<b>920 155 4662 to 4687</b>
834 130 5200 to 5299	<b>860 240 8520 to 8599</b>	905 873 7100 to 7299	920 309 9039 to 9199
834 316 5444 to 5499	860 275 3900 to 3999	905 880 8900 to 8999	920 771 5321 to 5399
834 354 8747 to 8766	860 518 9629 to 9699	905 889 7100 to 7199	920 857 5500 to 5899
834 354 8824 to 8838	860 600 0021 to 0999	906 158 1508 to 1599	920 864 3480 to 3499
835 269 5700 to 5799	861 158 2350 to 2599	906 558 8812 to 8899	920 963 4567 to 4599
835 496 7303 to 7399	861 367 5400 to 5499	906 982 2214 to 2299	921 333 7400 to 7499
835 539 5200 to 5999	861 637 6010 to 6099	907 725 8500 to 8599	921 477 3762 to 3799
835 813 3015 to 3099	861 979 7292 to 7499	907 815 0216 to 0257	922 278 1048 to 1399
837 672 8967 to 8999	862 216 6100 to 6199	908 622 4225 to 4235	922 280 2019 to 2099
837 784 3282 to 3299	862 263 9213 to 9299	908 936 9254 to 9299	922 280 2233 to 2299
838 176 8377 to 8399	862 271 0800 to 0999	909 066 4494 to 7499	922 773 0459 to 0499
838 518 1257 to 1299	862 271 5000 to 5099	909 067 7400 to 7499	923 032 7000 to 7399
839 718 8257 to 8299	863 871 5138 to 5199	909 100 1787 to 1799	923 045 3630 to 3699
<b>840 323 0600 to 0699</b>	863 949 5300 to 5399	909 100 1900 to 2099	923 484 3600 to 3699
840 875 6235 to 6299	864 088 8200 to 8299	909 355 0422 to 0499	923 493 9403 to 9599
840 910 0900 to 0999	864 426 3972 to 3999	909 568 8900 to 9099	923 493 9681 to 9699
841 349 5000 to 5099	864 520 6117 to 6136	909 568 9300 to 9499	923 604 4424 to 4499
841 805 7747 to 7899	865 151 0526 to 0599	909 725 7307 to 7399	923 810 7800 to 8299
841 805 7944 to 8099	865 500 4034 to 4099	909 833 0947 to 0999	924 252 1200 to 1299
842 226 0685 to 0695	865 883 6082 to 6099	<b>910 219 8631 to 8699</b>	924 252 1400 to 1499
842 685 4600 to 4699	866 004 3000 to 3999	910 265 1100 to 1199	924 533 0711 to 0799
842 685 4742 to 4999	866 442 4100 to 4899	910 471 7273 to 7299	924 533 2343 to 2399
842 860 0300 to 0399	867 366 9108 to 9118	910 536 2505 to 2599	924 533 2428 to 2499
842 898 5582 to 5599	867 633 7403 to 7499	910 958 7499 to 7599	924 685 1957 to 1999
843 062 7100 to 7199	867 737 5623 to 5699	911 140 1000 to 2199	924 946 6300 to 6699
843 077 6288 to 6299	868 169 4529 to 4599	911 245 2545 to 2599	925 333 5900 to 6099
843 077 6378 to 6399	868 173 8400 to 8599	911 268 9077 to 9099	925 336 2300 to 2399
843 758 5769 to 5778	868 514 9000 to 9099	911 400 8948 to 8999	926 432 5907 to 5999
843 786 2554 to 2699	868 566 9200 to 9299	911 508 1620 to 1799	926 436 3600 to 3699
845 656 8165 to 8199	869 200 0000 to 9999	911 509 9310 to 9399	927 765 6257 to 6299
845 727 2100 to 2199	869 387 1150 to 1199	911 523 3000 to 3999	928 197 8100 to 8199
845 746 2618 to 2635	869 505 3500 to 3599	912 057 9922 to 9999	928 197 8283 to 8299
846 390 7531 to 7599	869 523 7033 to 7099	912 882 0563 to 0899	928 856 2059 to 2068
846 918 0572 to 0599	869 566 6150 to 6167	913 605 2218 to 2299	<b>930 078 5800 to 5899</b>
847 237 7690 to 7699	869 776 8785 to 8786	913 709 2429 to 2499	930 219 1722 to 1799
847 284 2481 to 2499	869 800 0000 to 9999	913 818 3501 to 3999	930 335 7810 to 7819
847 374 7055 to 7065	<b>870 054 4814 to 4899</b>	914 063 4300 to 4399	931 097 9259 to 9299
847 374 7055 to 7065	870 491 4812 to 4849	914 346 7621 to 7644	931 156 1502 to 1579
847 636 5304 to 5399	870 536 5820 to 5829	914 453 1366 to 1399	931 156 1600 to 1625
847 700 5447 to 5499	870 541 7167 to 7239	914 529 6185 to 6299	931 156 1671 to 1699
847 723 7500 to 7599	870 575 8155 to 8999	914 896 4658 to 4699	932 506 6400 to 6599
849 485 3427 to 3499	870 589 0485 to 0494	915 187 8774 to 8779	932 732 1796 to 1799
849 520 9850 to 9899	870 691 7060 to 7099	915 300 2783 to 2799	932 827 9026 to 9099
849 608 1357 to 1399	872 028 4850 to 4899	915 546 6822 to 6999	932 957 2300 to 2399
849 792 2600 to 2699	872 029 9306 to 9399	915 646 5183 to 5199	933 060 6160 to 6189
<b>850 546 1862 to 1899</b>	872 078 3709 to 3799	915 671 3963 to 3980	933 387 2541 to 2561
851 143 6826 to 6844	872 100 0445 to 0459	915 671 3982 to 3999	933 760 3609 to 4199
851 209 9880 to 9899	<b>900 556 4178 to 4199</b>	915 675 2217 to 2299	933 894 0928 to 0999
851 928 9221 to 9299	900 845 0044 to 0099	916 440 3377 to 3399	934 018 2729 to 2741
852 589 6560 to 6599	900 936 0217 to 0299	916 670 6352 to 6399	934 180 0300 to 0399
853 049 3646 to 3699	900 936 0435 to 0499	916 682 5300 to 5399	934 236 3954 to 3999
854 304 4089 to 4999	901 058 5255 to 5280	916 694 1414 to 1499	934 622 8717 to 8999
854 529 2200 to 2299	901 273 1082 to 1099	916 703 0802 to 0821	935 216 0312 to 0399
854 532 0000 to 2999	901 287 5143 to 5199	917 089 0709 to 0799	935 843 2202 to 2247
855 001 6204 to 6249	901 291 2789 to 2799	917 089 0842 to 0899	936 024 8889 to 8899
855 319 9364 to 9399	901 525 7122 to 7199	917 216 2928 to 2999	936 339 4455 to 4499
855 361 3390 to 3399	902 089 1253 to 1299	917 370 6300 to 6499	
856 226 0490 to 0499	902 198 9769 to 9799	917 486 4900 to 4999	
856 656 5800 to 5999	902 948 1269 to 1299	918 460 0602 to 0699	

## Missing, Lost, or Stolen Canadian Money Order Forms

### Do Not Cash — Upon Receipt, Notify Local Postal Inspectors

Provide this listing to all Postal Service™ employees responsible for accepting and cashing postal money orders. Destroy all interim notices when the numbers listed appear in the *Postal Bulletin*. The new money order serial

numbers consist of the first 9 digits. The tenth digit is a check digit only.

Do not cash outdated money orders **104 151 601 to 692 600 000**. Advise holders to send invalid money orders to Canada Post Corporation, Ottawa, Canada K1A 0B1. Check for altered dollar amounts by holding money orders to the light.

719 869 731	to	9 760	728 915 371	to	5 850	735 283 008	to	3 020	742 684 849	to	4 890
<b>720 227 871</b>	<b>to</b>	<b>7 930</b>	728 953 141	to	3 410	735 293 131	to	3 220	742 839 553	to	9 630
720 227 949	to	7 960	728 954 280	to	4 310	735 635 010	to	5 040	742 913 668	to	3 700
720 368 543	to	8 570	729 169 081	to	9 140	735 783 961	to	3 990	742 917 287	to	7 296
720 392 151	to	2 570	729 363 841	to	3 870	735 803 401	to	3 430	742 921 891	to	1 980
720 556 491	to	6 640	729 682 891	to	3 190	736 005 420	to	5 440	742 983 631	to	3 810
720 558 621	to	8 650	729 838 940	to	9 070	736 366 021	to	6 110	743 020 021	to	0 170
720 575 361	to	5 570	729 839 101	to	9 130	736 624 456	to	4 500	743 206 491	to	6 500
720 590 152	to	0 179	<b>730 077 683</b>	<b>to</b>	<b>7 840</b>	736 670 851	to	1 060	743 235 992	to	6 050
721 638 331	to	9 170	730 109 847	to	9 880	736 767 061	to	7 090	743 940 631	to	0 900
721 815 391	to	5 420	730 373 761	to	3 850	736 767 093	to	7 120	743 978 011	to	8 070
721 969 713	to	9 740	730 501 951	to	2 130	736 982 191	to	2 370	744 234 751	to	4 780
722 072 137	to	2 160	730 519 379	to	9 470	736 982 551	to	2 730	744 499 591	to	9 680
722 378 265	to	8 280	730 569 278	to	9 360	737 110 141	to	0 170	744 626 901	to	6 910
722 413 990	to	4 004	730 711 711	to	1 740	737 185 501	to	5 710	745 388 794	to	8 910
722 764 948	to	4 980	730 722 991	to	3 230	737 317 321	to	7 350	746 446 806	to	6 820
722 825 840	to	5 889	730 845 970	to	5 990	737 517 781	to	7 840	746 818 351	to	8 410
723 153 841	to	3 850	730 888 291	to	8 320	737 628 181	to	8 210	747 245 266	to	5 280
723 237 616	to	7 630	730 927 591	to	7 680	737 634 258	to	4 270	747 364 813	to	4 830
723 331 081	to	1 110	731 307 914	to	7 930	738 361 971	to	1 980	747 501 434	to	1 450
723 496 443	to	6 470	731 402 431	to	2 460	738 447 601	to	7 660	747 739 891	to	0 070
723 967 291	to	7 320	731 407 232	to	7 320	738 648 355	to	8 450	748 148 649	to	8 760
724 655 196	to	5 340	731 588 301	to	8 340	738 849 811	to	9 900	748 259 960	to	9 970
724 711 441	to	1 500	731 767 273	to	7 320	738 892 270	to	2 290	748 565 162	to	5 280
724 711 538	to	1 560	731 781 061	to	1 120	738 997 259	to	7 380	748 874 988	to	5 030
724 793 221	to	3 250	731 837 821	to	7 910	739 161 451	to	1 540	749 137 381	to	7 410
724 908 109	to	8 120	731 841 377	to	1 450	739 219 381	to	9 440	749 190 192	to	0 210
724 937 461	to	7 670	732 018 481	to	8 600	739 740 151	to	0 180	749 685 421	to	5 450
725 163 118	to	3 151	732 067 972	to	8 370	739 793 491	to	3 520	749 846 791	to	6 850
725 202 735	to	2 750	732 188 649	to	8 670	739 793 527	to	3 550	749 993 131	to	3 580
725 398 591	to	8 800	732 193 460	to	3 470	739 942 621	to	2 650	<b>750 071 587</b>	<b>to</b>	<b>1 610</b>
725 464 591	to	4 920	732 201 241	to	1 390	739 999 231	to	9 320	750 408 167	to	8 183
725 475 321	to	5 330	732 220 431	to	0 440	<b>740 011 517</b>	<b>to</b>	<b>1 530</b>	750 438 421	to	8 501
725 711 057	to	1 070	732 355 201	to	5 380	740 030 701	to	0 970	750 743 911	to	4 030
725 738 581	to	8 730	732 472 320	to	2 560	740 261 740	to	1 820	750 779 118	to	9 400
725 981 311	to	1 430	732 541 605	to	1 620	740 265 811	to	6 290	750 910 981	to	1 010
725 987 835	to	7 880	732 572 221	to	2 490	740 299 111	to	9 170	750 960 841	to	0 900
726 060 811	to	0 900	732 586 479	to	6 710	740 299 231	to	9 260	751 296 211	to	6 240
726 391 970	to	2 520	732 994 037	to	4 080	740 329 266	to	9 320	751 539 121	to	9 180
726 484 771	to	4 800	733 163 449	to	3 460	740 889 081	to	9 090	751 541 311	to	1 790
726 493 351	to	5 300	733 297 171	to	7 290	741 010 421	to	0 530	751 757 641	to	7 700
726 504 031	to	4 063	733 446 631	to	7 110	741 113 041	to	3 370	751 936 951	to	7 010
726 504 070	to	4 090	733 474 665	to	4 770	741 373 891	to	4 340	751 951 861	to	1 890
726 504 331	to	4 390	733 704 482	to	4 570	741 452 369	to	2 490	751 999 021	to	9 110
726 563 701	to	4 060	733 751 041	to	1 130	741 492 991	to	3 140	752 139 516	to	9 570
726 599 371	to	9 460	734 009 101	to	9 130	741 553 460	to	3 470	752 182 892	to	2 950
726 626 356	to	6 370	734 290 759	to	0 770	741 764 431	to	4 520	752 206 861	to	7 100
727 182 271	to	2 510	734 389 273	to	9 290	741 764 431	to	4 520	752 295 241	to	5 600
727 416 181	to	6 240	734 440 031	to	0 111	742 178 834	to	8 880	752 731 351	to	1 410
727 481 431	to	1 460	734 797 201	to	7 320	742 325 500	to	5 520	752 767 441	to	7 470
727 749 241	to	9 780	734 939 611	to	9 640	742 325 668	to	5 700	753 008 941	to	9 030
728 382 331	to	2 480	734 950 111	to	0 170	742 408 771	to	8 830	753 194 311	to	4 370
728 702 338	to	2 400	735 120 331	to	0 840	742 512 120	to	2 150	753 620 378	to	0 400

754 013 917	to	3 940	763 522 141	to	2 470	773 575 891	to	5 950	802 967 821	to	7 940
754 161 061	to	1 120	763 717 694	to	7 800	773 852 971	to	3 030	803 217 601	to	7 780
754 358 445	to	8 610	763 826 461	to	6 520	775 373 449	to	3 460	803 729 731	to	9 850
754 410 451	to	0 660	763 900 460	to	0 471	<b>789 257 191</b>	<b>to</b>	<b>7 250</b>	803 747 402	to	7 520
754 438 393	to	8 410	763 900 479	to	0 530	<b>790 448 020</b>	<b>to</b>	<b>8 460</b>	804 138 181	to	8 420
754 493 109	to	3 130	763 917 271	to	7 750	790 597 485	to	7 530	804 428 224	to	8 250
754 664 182	to	4 220	764 125 801	to	5 860	790 911 883	to	1 900	804 682 411	to	2 710
754 816 377	to	6 470	764 284 525	to	4 560	791 057 441	to	7 550	805 272 525	to	2 540
755 487 421	to	7 600	764 526 241	to	6 330	791 239 081	to	9 290	805 523 445	to	3 460
755 592 901	to	3 140	764 601 421	to	1 600	791 374 483	to	4 500	805 745 704	to	5 730
755 790 020	to	0 030	764 650 231	to	0 470	791 387 971	to	8 030	806 452 907	to	2 980
755 791 730	to	1 800	764 984 371	to	4 850	791 447 521	to	7 850	806 744 781	to	4 850
755 926 951	to	7 070	765 003 667	to	3 680	791 451 151	to	1 240	806 982 181	to	2 300
755 934 332	to	4 510	765 042 517	to	2 540	791 500 009	to	0 470	807 764 791	to	4 910
755 957 701	to	8 000	765 194 728	to	4 970	791 771 431	to	1 490	808 089 931	to	9 960
755 962 981	to	3 280	765 387 365	to	7 450	792 004 293	to	4 320	808 656 423	to	6 450
756 035 371	to	5 490	765 541 801	to	2 100	792 018 379	to	8 420	808 753 771	to	3 800
756 301 257	to	1 290	765 638 461	to	8 970	792 070 621	to	0 740	809 189 001	to	9 010
756 371 565	to	1 580	765 647 101	to	7 190	792 145 211	to	5 230	809 886 879	to	6 930
756 876 031	to	6 120	765 813 781	to	4 029	792 391 381	to	1 620	809 890 489	to	0 500
756 876 151	to	6 240	765 879 314	to	9 390	792 452 779	to	2 790	<b>810 323 734</b>	<b>to</b>	<b>3 760</b>
756 970 129	to	0 140	765 954 001	to	4 030	792 772 728	to	2 770	810 367 116	to	7 140
757 059 613	to	9 630	766 120 286	to	0 320	792 903 511	to	3 990	810 526 351	to	6 500
757 078 540	to	8 560	766 125 716	to	5 750	793 282 518	to	2 533	810 806 911	to	6 940
757 086 209	to	6 240	766 158 824	to	8 840	794 041 831	to	2 040	810 807 211	to	7 240
757 240 591	to	0 650	766 388 433	to	8 460	794 397 709	to	7 780	811 423 021	to	3 110
757 277 371	to	7 700	766 509 421	to	9 660	794 581 741	to	2 040	811 517 221	to	7 239
757 291 591	to	2 730	766 572 901	to	3 020	794 592 122	to	2 150	811 721 101	to	1 130
757 964 251	to	4 280	766 748 500	to	8 521	795 032 251	to	2 340	812 025 721	to	5 900
758 067 001	to	7 090	767 024 341	to	4 370	795 796 291	to	6 350	812 093 073	to	3 130
758 105 221	to	5 250	767 326 471	to	6 590	796 070 139	to	0 160	812 100 821	to	0 840
758 324 941	to	5 000	767 332 561	to	2 950	796 143 151	to	3 630	812 465 251	to	5 610
758 593 628	to	3 650	768 009 841	to	9 960	796 159 725	to	9 740	812 918 341	to	8 670
758 709 038	to	9 060	768 011 489	to	1 520	796 169 306	to	9 340	812 918 701	to	8 760
758 744 101	to	4 160	768 177 980	to	7 990	796 373 406	to	3 430	813 050 491	to	0 520
758 850 883	to	0 900	768 391 081	to	1 170	796 602 961	to	3 050	813 073 171	to	3 200
758 860 951	to	1 550	768 661 569	to	1 650	796 708 441	to	8 500	813 398 476	to	8 550
759 152 851	to	2 880	769 000 051	to	0 080	796 886 281	to	6 430	813 713 971	to	4 000
759 740 941	to	1 090	769 050 841	to	0 900	796 901 701	to	2 000	813 858 121	to	8 150
<b>760 004 596</b>	<b>to</b>	<b>4 610</b>	769 159 081	to	9 178	796 975 466	to	5 590	814 789 330	to	9 349
760 118 191	to	8 250	769 737 496	to	7 510	797 272 917	to	2 950	814 984 656	to	4 680
760 155 001	to	5 090	769 778 491	to	8 730	797 519 441	to	9 460	815 016 020	to	6 030
760 378 002	to	8 020	769 827 331	to	7 450	797 519 731	to	0 240	815 199 410	to	9 420
760 692 722	to	2 749	<b>770 216 071</b>	<b>to</b>	<b>6 100</b>	797 535 181	to	5 330	815 240 491	to	0 520
761 055 460	to	5 480	770 723 281	to	3 400	797 646 151	to	6 180	815 755 591	to	5 620
761 169 781	to	9 810	770 790 451	to	0 480	798 040 053	to	0 080	815 755 622	to	5 650
761 504 941	to	5 120	770 915 150	to	5 490	798 055 813	to	5 830	815 806 381	to	6 680
761 516 836	to	6 910	771 455 551	to	5 610	798 055 891	to	5 950	816 126 834	to	6 870
761 613 588	to	3 600	771 609 661	to	9 690	798 326 371	to	6 520	816 156 721	to	6 780
761 688 631	to	8 690	771 932 551	to	2 580	798 339 167	to	9 210	816 580 903	to	0 920
761 805 199	to	5 240	772 057 224	to	7 440	798 562 411	to	2 440	816 945 571	to	5 600
761 826 106	to	6 120	772 162 660	to	3 070	798 632 461	to	2 490	817 253 011	to	3 280
761 881 171	to	1 560	772 718 615	to	8 640	798 807 151	to	7 510	817 763 881	to	4 060
761 975 641	to	5 670	772 940 140	to	0 160	798 944 761	to	5 030	818 330 562	to	0 610
761 975 886	to	5 895	772 970 886	to	0 940	799 118 616	to	8 640	818 459 641	to	9 670
762 304 144	to	4 170	773 009 419	to	9 430	799 133 191	to	3 220	818 926 273	to	6 320
762 324 931	to	4 960	773 112 031	to	2 060	799 177 626	to	7 650	818 950 351	to	0 380
762 439 261	to	9 290	773 125 387	to	5 410	799 854 751	to	5 200	818 962 492	to	2 530
762 524 158	to	4 220	773 179 320	to	9 410	<b>800 044 320</b>	<b>to</b>	<b>4 410</b>	819 032 341	to	2 730
762 584 872	to	4 970	773 202 989	to	3 140	800 211 901	to	2 440	819 127 054	to	7 080
762 593 431	to	3 460	773 208 991	to	9 290	800 427 530	to	7 540	819 278 540	to	8 670
763 155 160	to	5 180	773 231 311	to	1 340	800 872 741	to	2 830	819 544 681	to	4 740
763 178 631	to	8 660	773 348 739	to	8 940	801 349 801	to	9 830	819 928 441	to	8 650
763 506 001	to	6 060	773 348 739	to	8 940	801 676 681	to	7 100	<b>820 034 406</b>	<b>to</b>	<b>4 430</b>

820 070 761	to 1 540	823 284 931	to 4 990	826 720 201	to 0 230	828 732 331	to 2 390
820 191 342	to 1 360	823 293 031	to 3 210	827 005 671	to 5 830	828 807 781	to 7 840
820 274 856	to 4 880	823 556 011	to 6 100	827 287 861	to 7 950	828 830 952	to 0 963
820 600 171	to 0 230	824 078 341	to 8 370	827 291 502	to 1 520	828 939 781	to 0 050
821 172 241	to 2 360	824 156 325	to 6 340	827 575 381	to 5 470	829 002 721	to 2 870
821 229 661	to 9 720	824 511 252	to 1 270	827 609 085	to 9 100	829 005 301	to 5 540
821 229 743	to 9 780	824 588 281	to 8 370	827 619 811	to 9 840	829 080 241	to 0 330
821 903 731	to 3 910	825 140 397	to 0 460	827 883 511	to 3 600	829 160 986	to 1 000
821 927 841	to 7 850	825 409 651	to 9 680	828 160 441	to 0 530	829 176 841	to 6 930
822 505 801	to 5 830	825 472 171	to 2 200	828 376 201	to 6 260	829 471 561	to 1 590
822 703 442	to 3 470	826 042 898	to 2 920	828 441 602	to 1 630	829 561 065	to 1 080
822 900 991	to 1 020	826 226 644	to 6 670	828 539 316	to 9 340	829 566 481	to 6 510
822 925 951	to 6 100	826 582 951	to 3 430	828 539 341	to 9 370	829 569 931	to 9 960

— Criminal Investigations Group, U.S. Postal Inspection Service, 12-30-21

### Verifying U.S. Postal Service Money Orders

Follow these steps to cash a Postal Service™ money order:

1. Check that the amount does not exceed the legal limit: \$1,000 for domestic, and \$700 for international Postal Service money orders.
2. Check that the proper security features are present:
  - When held to the light, a watermark of Benjamin Franklin is repeated from top to bottom on the left side.
  - When held to the light, a dark line (security thread) runs from top to bottom with the word “USPS” repeated.
  - When there is discoloration around the dollar amounts, this might indicate the amounts were changed.

These appear in Postal Service Notice 299, *U.S. Postal Money Order Reference Card*, or online at [usps.com/shop/money-orders.htm](https://usps.com/shop/money-orders.htm).

3. If the money order seems suspicious, call the U.S. Postal Service Money Ordxxer Verification System at 866-459-7822.

Provide this information to local banks and retailers, as they also receive Postal Service money orders for cashing.

— Delivery and Retail Customer Service Operations, 12-30-21

### Counterfeit Canadian Money Order Forms

#### Do Not Cash

To be posted and used by retail window employees. As directed, destroy previous notices. Destroy all interim notices when the numbers listed appear in the *Postal Bulletin*.

671,819,086	683,594,542	687,262,503
676,612,640	684,683,610	687,262,525
677,891,039	686,619,878	687,262,526
678,282,493	686,619,886	687,287,578
678,916,031	686,619,887	687,287,581
679,552,215	686,794,382	687,287,582
679,694,334	686,794,426	694,063,898
679,751,983	686,794,427	694,063,899
679,800,207	686,794,431	694,063,980
681,130,536	687,262,502	701,321,725
681,844,376		

— Criminal Investigations Group, U.S. Postal Inspection Service, 12-30-21

### Toll-Free Number Available to Verify Canadian Money Orders

The Canada Post Corporation has a toll-free number that cashing agents can call to verify the validity of Canadian Postal Money Orders. The number is 800-563-0444.

This toll-free number is printed on the back of the Canadian Postal Money Orders.

— Criminal Investigations Group, U.S. Postal Inspection Service, 12-30-21

## Other Information

### Overseas Military/Diplomatic Mail

Mail addressed to military and diplomatic post offices overseas is subject to certain conditions or restrictions of mailing regarding content, preparation, and handling. The APO/FPO/DPO table outlines these conditions by APO/FPO/DPO ZIP Codes™ through the use of footnoted mailing restrictions codes (see the [Restrictions](#) page following the table).

Acceptance clerks must use the table with the Retail System Software terminal to determine which APO/FPO/DPO ZIP Codes are active and which conditions of mailing apply.

The entries under “Changes” appear in bold in the following APO/FPO/DPO table:

### Changes

APO/FPO/DPO	Action	Effective Date	See Restrictions
APO AE 09069	Add C2	12/09/2021	A-B-C-C2-D-E-F3-H-N-R-S-U-V
APO AE 09103	Add C2	12/09/2021	A-B-C2-F-F3-H-N-Q-R-S-V-Z-Z1
APO AE 09113	Add C2	12/09/2021	A-B-C2-F-F3-H-N-Q-R-S-V-Z-Z1
APO AE 09116	Add C2	12/09/2021	A-B-C2-F-F3-H-N-Q-R-S-V-Z-Z1
APO AE 09780	Add C2	12/08/2021	A-B-C2-F-F3-H-N-R-S-V
FPO AA 34085	Add C, C1, C2, E2, E3, H1, J, T, V1	12/03/2021	B-C-C1-C2-E2-E3-F-F1-F3-H1-J-R-R1-S-T-V-V1
FPO AA 34086	Add C, C1, C2, E2, E3, H1, J, T, V1	12/03/2021	B-C-C1-C2-E2-E3-F-F1-F3-H1-J-R-R1-S-T-V-V1

We have eliminated “Not Active” entries from the table below to save space and paper.

### APO/FPO/DPO Table

APO/ FPO/ DPO	See Restrictions	APO/ FPO/ DPO	See Restrictions	APO/ FPO/ DPO	See Restrictions	APO/ FPO/ DPO	See Restrictions
09002	A-B-F-F3-H-N-Q-R-S-V-Z-Z1	09020	B-C-D-E-F3-H-M-R-S-U	09107	B-C-D-E-F3-H-M-R-S-U	09160	B-C-C2-D-F-F1-F3-H-J-L-M-N-R-R1-T-U-V-Z1
09003	B-C-D-E-F3-H-M-P-R-S-U	09021	B-C-C2-D-E-F3-H-M-R-S-U-Z1	09112	B-C-D-E-F3-H-M-R-S-U	09170	A-B-C2-F-F1-F3-J-L-M-N-R-R1-S-T-V-X-Z1
09004	B-C-D-E-F3-H-M-R-S-U	09034	B-C-D-E-F3-H-M-R-S-U	<b>09113</b>	<b>A-B-C2-F-F3-H-N-Q-R-S-V-Z-Z1</b>	09171	A-B-C1-C2-E3-F-F1-F3-J-L-M-N-R-R1-S-T-V-X-Z1
09005	B-C-D-E-F3-H-M-P-R-S-U	09044	B-C-D-F1-F3-H-R-S-U	09114	B-C-D-E-F3-H-M-R-S-U	09172	B-C-D-E-F3-H-M-R-S-U
09006	B-C-D-E-F3-H-M-R-S-U	09046	B-C-D-E-F3-H-M-R-S-U	09115	A-B-F-F3-H-N-Q-R-S-V-Z-Z1	09173	B-C-D-E-F3-H-M-R-S-U
09008	A-B-F-F3-H-N-Q-R-S-V-Z-Z1	09049	B-C-D-E-F3-H-M-R-S-U	<b>09116</b>	<b>A-B-C2-F-F3-H-N-Q-R-S-V-Z-Z1</b>	09174	B-C-C2-F-F1-F3-I3-L-N-R-R1-S-T-V-X-Z-Z1
09009	B-C-C2-D-E-F3-H-M-R-S-U-Z1	09053	B-C-D-E-F3-H-M-R-S-U	09123	B-C-C2-D-E-F3-H-M-R-S-U-Z1	09175	A-B-C1-C2-E2-F-F1-F3-H1-J-L-M-N-R-R1-S-T-V-W-X-Z1
09010	B-C-D-E-F3-H-M-R-S-U2	09060	B-C-C2-D-E-F1-F3-H-M-N-R-S-U-Z1	09125	A-B-C-C2-F-F1-F3-H-N-R-R1-S-V-V1	09176	A-B-C2-F-F1-F3-J-L-M-N-R-R1-S-T-V-X-Z1
09011	B-C-D-E-F3-H-M-R-S-U	09067	B-C-D-E-F3-H-M-R-S-U	09126	B-C-C2-F3-H-M-P-R-S-Z1	09177	B-C-D-E-F3-H-M-R-S-U
09012	B-C-C2-D-E-F3-H-M-R-S-U-Z1	09068	B-C-D-E-F3-H-R-S-U-Z1	09128	B-C-D-E-F3-H-M-R-S-U	09178	B-C1-C2-E2-F1-F3-I3-L-M-N-R-S-T-V-X-Z-Z1
09013	B-C-D-E-F-F1-F3-H-M-R-S-U-Z1	<b>09069</b>	<b>A-B-C-C2-D-E-F3-H-N-R-S-U-V</b>	09131	B-C-D-E-F3-H-M-R-S-U	09180	B-C-D-E-F3-H-M-R-S-U
09014	B-C-D-E-F3-H-M-P-R-S-U	09079	B-C-D-E-F3-H-M-R-S-U	09135	A-B-C2-F-F3-H-N-R-S-U-V-Z1	09186	B-C-D-E-F3-H-M-P-R-S-U
09015	A-B-C-C1-C2-F-F1-F3-J-L-M-N-R-R1-S-V-Z1	09094	B-C-C2-D-F3-H-M-P-R-S-Z1	09136	B-C-D-E-F1-F3-H-M-P-R-S-U	09203	A-B-C-C1-C2-F-F1-F3-I3-J-L-M-N-R-R1-T-V-Z-Z1
09016	B-C-D-E-F1-F3-H-M-R-S-U	09095	B-C-D-E-H-M-R-U	09138	B-C-D-F3-H-M-R-S-U		
09017	A-B-F-F3-H-N-Q-R-S-V-Z-Z1	09096	B-C-D-E-F3-H-M-R-S-U	09140	B-C-D-E-F3-H-M-R-S-U		
09018	A-B-F-F3-H-N-Q-R-S-V-Z-Z1	<b>09103</b>	<b>A-B-C2-F-F3-H-N-Q-R-S-V-Z-Z1</b>	09142	B-C-D-E-F3-H-M-R-S-U		
		09104	B-C-C2-D-F3-H-M-R-S-U-Z1	09154	B-C-D-E-F3-H-M-R-S-U		

APO/ FPO/ DPO	See Restrictions	APO/ FPO/ DPO	See Restrictions	APO/ FPO/ DPO	See Restrictions	APO/ FPO/ DPO	See Restrictions
09204	B-C-F3-M-N-R-S-V-Z1	09305	A-B-C1-E2-F-F1-F3-H1-I3-M-N-R-R1-S-T-V-Z-Z1	09459	B-C-C1-C2-F3-M-R-S-U-Z1	09541	A-B-C-F-F3-M-N-S-V-Z1
09211	B-C-D-E-F3-H-M-P-R-S-U	09306	A-B-C1-E2-F-F1-F3-H1-R-R1-S-U2-V-Z1	09461	B-C-C1-C2-F3-M-P-R-S-U-Z1	09542	A-B-C-F-F3-M-N-S-V-Z1
09213	B-C2-F-F1-F3-H-J-L-M-N-R-R1-T-U-V-Z1	09307	B-C-C2-F-F3-N-R-R1-S-Z1	09463	B-C-C1-C2-F3-M-R-S-U-Z1	09543	A-B-C-F-F3-M-N-S-V-Z1
09214	B-C-C2-D-E-F3-H-M-R-S-U-Z1	09309	A-B-C-C1-C2-E2-F-F1-F3-H1-M-N-R-R1-S-V-Z1	09464	B-C-C1-C2-F3-R-S-U-Z1	09544	A-B-C-F-F3-M-N-S-V-Z1
09216	B,C,F1,F3,M,N,R,S,V,Z1	09310	A-B-C1-C2-E2-F-F1-F3-H1-I3-L-M-N-R-R1-S-T-U4-V-Z-Z1	09467	B-E-E1-F-F3-J-L-M-N-R-S-T-V-X-Z1	09545	A-B-C-F-F3-M-N-S-V-Z1
09227	B-C-D-E-F3-H-M-R-S-U	09311	A-B-C1-C2-E2-F-F1-F3-H1-I3-L-M-N-R-R1-S-T-U4-V-Z-Z1	09468	B-C-C1-C2-F3-M-R-S-U-Z1	09550	B-F-F1-R-R1-V
09240	A-B-C1-F-F3-H-N-R-S-V	09312	A-B-C1-C2-E2-F-F1-F3-H1-I3-L-M-N-R-R1-S-T-U-U4-V-Z-Z1	09469	B-C-C1-C2-F3-R-S-U-Z1	09554	B-F-F1-R-R1-V
09241	A-B-C2-F3-N-R-S-U-Z1	09313	A-B-C-C1-E2-F-F1-F2-F3-H1-R-R1-S-V-Z1	09470	B-C-C1-C2-F3-M-R-S-U-Z1	09556	B-F-F1-R-R1-V
09242	A-B-C1-F-F3-H-N-R-S-V	09315	A-B-C1-E2-F-F3-N-R-R1-S-V-Z1	09477	A-B-C-C1-C2-E2-F1-F3-I3-L-M-N-R-R1-S-T-V-W-X-Z-Z1	09564	B-F-F1-R-R1-V
09250	B-C-D-E-F3-H-M-R-S-U	09316	A-B-C1-E2-F-F1-F3-H1-I3-M-N-R-R1-S-T-V-Z-Z1	09487	A-B-C-C1-C2-E2-F1-F3-I3-L-M-N-R-R1-S-T-V-W-X-Z-Z1	09565	B-F-F1-F3-R-R1-S-V
09261	B-C-C2-D-E-F3-H-M-N-R-S-U-V-Z1	09321	A-B-C1-C2-E2-F-F3-H1-M-N-R-R1-S-V-Z1	09488	A-B-C-C1-C2-E2-F3-J-L-M-N-S-T-V-W-X-Z1	09566	B-C2-E2-E3-F-F1-F3-R-R1-S-V-Z1
09263	B-C-D-E-F3-H-M-R-S-U	09330	A-B-C1-C2-D-E-E2-F-F1-F3-H-H1-M-R-R1-S-V-Z1	09489	A-B-C-C1-C2-E2-F1-F3-L-M-N-R-R1-S-T-V-W-X-Z1	09567	B-C2-E2-E3-F-F1-F3-R-R1-V-Z1
09264	B-C-E-F3-H-M-R-S-U	09333	A-B-C-C1-E2-F-F1-F3-H1-I3-M-N-R-R1-S-V-V1-Z-Z1	09490	A-B-C1-C2-E2-F-F1-F3-H1-J-L-M-N-R-R1-S-T-V-X-Z1	09568	B-V
09265	B-C-D-F-F1-H-J-L-M-N-R-S-T-U-V-Z1	09343	A-B-C1-F-F3-M-N-R-R1-S-V-Z1	09491	A-B-C1-C2-E2-F-F1-F3-H1-J-L-M-N-R-R1-S-T-V-Z1	09569	B-C2-E2-E3-F-F1-F3-R-R1-V-Z1
09266	A-B-F3-R-S-U-V-Z1	09348	A-B-C1-E2-F-F1-F3-H1-I3-M-N-R-R1-S-T-V-Z-Z1	09494	B-C-C1-C2-F3-M-R-S-U-Z1	09570	A-B-F-F1-F3-R-R1-S-V
09276	A-B-F-F3-I3-L-M-N-R-S-T-V-X-Z-Z1	09357	A-B-C1-E2-F-F3-H1-M-R-V-Z1	09498	B-C1-C2-F-F1-F3-J-L-N-R-R1-T-V-Z1	09573	B-C2-E2-E3-F-F1-F3-R-R1-S-V-Z1
09277	A-B-E-E1-E2-F1-F3-I3-L-N-R-S-T-V-X-Z-Z1	09363	A-B-C1-E2-F-F3-H1-M-R-R1-S-V-Z1	09501	B-V	09574	B-F-F1-R-R1-V
09278	A-B-F-F3-I3-L-M-N-R-S-T-V-X-Z-Z1	09365	A-B-C-C1-E2-F-F3-H1-M-N-R-V-Z1	09502	B-V	09575	B-F-F1-R-R1-V
09279	A-B-E-E1-F-F3-I3-L-M-N-R-S-T-V-X-Z-Z1	09366	A-B-C-C1-E2-F-F1-F3-H-H1-M-R-R1-S-V-Z1	09503	B-F-F1-R-R1-V	09576	B-F-F1-R-R1-V
09283	A-B-E-E1-F-F3-L-M-N-R-S-T-V-X-Z1	09401	B-C-C1-C2-F3-M-R-S-U-Z1	09504	B-V	09577	B-F3-S-V
09285	A-B-C-E-E-1-F1-F3-H-I3-L-M-N-R-S-T-V-X-Z-Z1	09403	B-C-C1-C2-F3-M-R-S-U-Z1	09505	B-V	09578	B-F-F1-F3-R-R1-S-V-Z1
09287	B-C2-E1-F1-F3-J-L-N-R-S-T-V-X-Z1	09410	C2-F-F1-F3-N-R-S-U2	09506	B-V	09579	B-F-F1-R-R1-V
09289	B-E2-F1-F3-H1-J-L-M-N-R-R1-S-T-U2-V-X-Z1	09421	B-C-C1-C2-F3-M-R-S-U-Z1	09507	B-V	09581	B-F-F1-F3-R-R1-S-V
09290	A-B-F1-F3-J-L-M-N-R-S-T-U2-V-X-Z1	09447	B-C-C1-C2-F3-M-R-S-U-V-Z1	09508	B-F-F1-R-R1-V	09582	B-C2-F-F1-F3-R-R1-S-V
09291	B-C-C1-C2-E2-F1-F3-H1-L-N-R-R1-S-T-V-X-Z1	09454	B-C-C1-C2-F3-M-R-S-U-V-Z1	09509	B-F-F1-R-R1-V	09583	B-F-F1-F3-I3-J-R-R1-S-V-V1
09292	A-B-C-C2-E-E2-E3-F1-F3-H-H1-J-L-M-N-R-R1-S-T-V-X-Z1	09456	B-C-C1-C2-F3-M-N-R-S-U-V-Z1	09510	A-B-C1-E2-F-H1-M-R-R1-V-Z1	09586	B-C2-F-F1-F3-R-R1-S-V
09301	A-B-C1-C2-E2-F-F1-F3-H1-I3-L-M-N-R-R1-S-T-U4-V-Z-Z1			09511	B-F-F1-R-R1-V	09587	B-C2-E2-E3-F-F1-F3-R-R1-S-V-Z1
09302	A-B-C1-F-F1-F3-H-M-N-R-S-V-Z-Z1			09512	B-F-F1-F3-R-R1-S-V	09588	B-F-F1-R-R1-S-V
				09513	B-F-F1-F3-R-R1-S-V-V1	09589	B-F-F1-F3-R-S-V
				09514	B-F-F1-F3-R-R1-S-V-V1	09590	B-V
				09517	B-F-F1-F3-R-R1-S-V	09591	B-C2-E2-E3-F-F1-F3-R-R1-S-V-Z1
				09520	B-F-F1-F3-R-R1-S-V	09592	B-F-F1-F3-R-R1-S-V
				09522	B-F-F1-F3-R-S-V	09593	B-F-F1-F3-R-S-V
				09523	B-F-F1-F3-R-R1-S-V	09594	B-C1-E2-F-F1-F3-R-R1-S-V
				09524	B-F-F1-R-R1-V	09595	B-F-F1-F3-I3-J-R-R1-S-V-V1-Z1
				09532	B-F-F1-F3-R-R1-S-V	09596	B-F-F1-R-R1-V
				09533	B-V	09599	B-F-F1-R-R1-V
				09534	B-F-F1-F3-R-R1-S-V	09600	B-C-C2-F-F1-F3-R-S-U-Z1
						09602	B-C-F-F1-N-R-U-V

APO/ FPO/ DPO	See Restrictions	APO/ FPO/ DPO	See Restrictions	APO/ FPO/ DPO	See Restrictions	APO/ FPO/ DPO	See Restrictions
09603	B-C-C2-F-F1-F3-R-S-U-V-Z1	09707	B-C2-F-F1-F3-J-L-M-N-R-R1-T-V-Z1	09741	A-B-C1-C2-E2-F-F1-F3-H1-J-L-M-N-R-R1-T-V-W-Y-Z1	09808	A-B-C1-C2-E2-F-F1-F3-H-H1-J-L-N-R-R1-T-V-Z1
09604	B-C-C2-F-F1-F3-P-R-S-U-V-Z1	09708	B-C-C1-F1-F3-M-R-R1-S-U	09742	A-B-C2-F-F1-F3-J-L-M-N-R-S-T-V-Z1	09809	B-C1-C2-E3-F-F1-F3-J-L-N-T-V-Z1
09605	B-C-D-F3-H-M-R-S-U-V	09709	B-C1-C2-E2-F-F1-F3-H-H1-J-L-N-R-R1-T-V-Z1	09743	A-B-F-F3-H-N-Q-R-S-V-Z-Z1	09810	A-B-C2-F-F1-F3-N-R-S-V-Z1
09606	B-C-D-F3-H-M-R-S-U-V	09710	B-C-C1-F-F1-J-L-M-N-R-R1-T-U-V-Z1	09744	A-B-C1-C2-F-F1-F3-J-L-M-N-R-R1-T-V-Z1	09811	A-B-C-C2-E-E2-E3-F1-F3-H-H1-J-M-N-R-R1-S-U-V-Z1
09608	B-C-F-F3-N-R-S-U-V-Z1	09712	A-B-C2-F-F3-H-R-S-U-V-Z1	09745	A-B-C2-F-F1-F3-M-N-R-R1-S-V-Z1	09812	B-E2-E3-F-F1-I-J-L-N-R-T-U-V-Z-Z1
09609	B-C-C2-F-F3-N-R-S-U-V-Z1	09714	B-C-C1-F1-F3-M-R-R1-S-U	09748	A-B-C1-C2-F-F1-F3-J-L-M-N-R-R1-T-V-Z1	09813	A-B-C1-C2-E2-E3-F-F1-F3-J-L-N-R-R1-T-V-Z1
09610	B-C-C2-F-F1-F3-M-R-S-U-V-Z1	09715	B-F-F1-J-L-M-N-R-T-V-Z1	09749	A-B-F-F3-H-N-R-S-U-V-Z1	09814	B-C2-E2-E3-F-F1-F3-I3-J-L-N-R-R1-T-V-Z-Z1
09613	B-C-F-F3-N-R-S-U-V	09716	B-C-C2-F-F1-F3-J-L-M-N-R-R1-T-V-Z1	09750	A-B-C1-C2-F-F1-F3-J-L-M-N-R-R1-T-V-Z1	09815	A-B-C-C2-E-E2-E3-F1-F3-H-H1-J-M-N-R-R1-S-U-V-Z1
09614	A-B-C1-C2-E2-F-F1-F3-H1-J-L-M-N-R-R1-T-V-W-Z1	09717	A-B-C2-F3-M-R-S-V-W-Z1	09751	B-C-D-E-F3-H-M-R-S-U	09816	A-B-C1-C2-E2-E3-F-F1-F3-J-L-N-R-R1-T-V-Z1
09618	B-C-C2-F-F3-R-S-U-Z1	09718	B-F-F1-J-L-M-N-R-T-U-V-Z1	09752	B-C-D-F1-F3-H-R-S-U	09817	A-B-C1-C2-E2-E3-F-F1-F3-H-H1-J-L-M-N-R-R1-T-V-Z1
09620	B-C-C2-F-F3-R-S-U-V-Z1	09719	B-C-C2-D-F3-M-R-S-U-V-Z1	09753	A-B-F-F3-N-R-S-V-Z1	09818	A-B-C-C2-F-F3-M-R-S-V-Z1
09621	B-C-F-F3-R-U-Z1	09720	B-C2-F3-M-R-S-U-V-Z1	09754	A-B-F-F3-H-L-N-Q-R-S-V-Z-Z1	09819	A-B-C-C1-C2-E2-F-F1-F3-H-H1-M-R-R1-S-V-Z1
09622	B-C-C2-F-F3-R-S-U-Z1	09722	A-B-F-F3-H-N-Q-S-V-Z-Z1	09755	A-B-C-C1-D-F-F1-F3-J-L-M-N-Q-R-R1-S-T-V-Z1	09820	A-B-C2-F-F1-F3-H-H1-J-L-M-N-R-R1-T-V-Z1
09623	B-C-C2-F-F3-R-S-U-V-Z1	09723	B-C2-F-F1-F3-J-L-M-N-R-R1-T-V-Z1	09758	A-B-F-F1-F3-M-N-R-R1-S-V-Z1	09821	A-B-C-C2-F-F3-N-R-S-V-Z1
09624	B-C-C2-F-F1-F3-I3-L-N-R-R1-T-U-V-Z-Z1	09724	B-C-C1-F1-F3-M-R-R1-S-U	09759	A-B-C-C1-C2-E2-F-F1-F3-J-L-N-R-R1-T-V-Z1	09822	A-B-C-C2-F-F3-M-R-S-V-Z1
09625	B-C-C2-F-F3-N-R-S-U-Z1	09725	A-B-C2-F-F3-H-N-Q-R-S-V-V1-Z-Z1	09761	B-C2-F-F1-F3-M-R-R1-S-V-Z-Z1	09823	A-B-C1-C2-F-F1-F3-J-L-M-N-R-R1-T-V-Z1
09627	B-C-C2-F-F3-R-S-U-V-Z1	09726	B-F-F1-J-L-M-N-R-T-U-V-Z1	09762	A-B-C2-E3-F-F1-F3-J-L-N-R-R1-T-V-Z1	09824	A-B-C-C2-F-F3-M-R-S-V-Z1
09630	B-C-F-F3-R-S-U-V	09727	A-B-C1-C2-F-F1-F3-J-L-M-N-R-R1-T-V-Z1	09769	A-B-C-C1-C2-F-F1-F3-J-L-M-N-R-R1-T-V-Z1	09825	A-B-C1-C2-F-F1-F3-J-L-M-N-R-R1-T-V-Z1
09633	B-C-D-F-F1-F3-M-R-S-U-U1-U2-U3-V-Z1	09728	A-B-C-C1-C2-F-F1-F3-J-L-N-R-R1-T-V-Z1	09777	A-B-C-C1-C2-E1-F-F1-F3-J-L-M-N-R-R1-T-V-Z1	09826	A-B-C1-C2-E1-E2-E3-F-F1-F3-J-L-M-N-R-R1-T-V-W-Z1
09634	A-B-F-F3-M-N-R-S-V	09729	B-C-C2-F-F3-N-R-R1-S-U-V-Z1	09780	<b>A-B-C2-F-F3-H-N-R-S-V</b>	09827	A-B-F-F1-J-L-M-N-R-T-V-Z1
09636	B-C-C2-F-F3-R-S-U-V-Z1	09730	A-B-C1-C2-F-F1-F3-J-L-M-N-R-R1-T-V-Z1	09789	A-B-C2-F-F3-N-R-S-V-Z1	09828	A-B-C1-C2-F-F1-F3-I3-L-N-R-R1-T-V-Z-Z1
09642	B-C2-F-F1-F3-J-L-M-N-R-T-U-V	09731	A-B-C1-C2-F-F1-F3-J-L-M-N-R-R1-T-V-Z1	09801	A-B-C1-E2-F-F3-H1-M-N-R-R1-S-V-Z1	09829	B-C-N-R-V-Z1
09643	B-C-C2-F3-M-R-S-U-V-Z1	09732	B-F-F3-N-S-V-Z-Z1	09802	A-B-C-C2-D-F-F1-F3-H-H1-I3-L-M-N-R-R1-S-T-V-W-Z-Z1	09830	B-C-F-F1-F3-J-L-M-N-R-R1-S-T-V-Z1
09645	B-C-C1-E1-E2-F-F1-F3-M-R-S-U-X-Z1	09733	B-F-F3-N-R-S-V-Z1	09803	A-B-C-C2-E-E2-E3-F1-F3-H-H1-J-M-N-R-R1-S-U-V-Z1	09831	B-C1-C2-F-F1-F3-J-L-N-R-R1-T-V-Z1
09647	B-C2-F1-F3-M-N-R-S-U-Z1	09734	A-B-C-C1-C2-F-F1-F3-I3-J-L-M-N-R-R1-T-V-Z-Z1	09804	A-B-C2-F-F1-F3-M-N-R-S-V-Z1	09832	B-C1-E2-F1-F3-N-R-S-V-Z1
09648	B-C2-F3-N-R-S-U-V-Z1	09735	B-F3-N-R-S-V-Z-Z1	09805	B-C-C2-E2-E3-F-F1-F3-R-R1-S-Z1	09833	B-C1-E2-F1-F3-N-R-S-V-Z1
09649	B-C2-F3-N-R-S-U-Z1	09736	A-B-C1-F-F1-F3-J-L-M-N-R-R1-T-V-Z1	09807	A-B-C1-E2-F-F1-F3-H1-I3-M-N-R-R1-S-T-V-Z-Z1		
09701	A-B-C1-C2-F-F1-F3-J-L-M-N-R-R1-T-V-Z1	09737	A-B-C1-C2-F-F1-F3-I3-J-L-M-N-R-R1-T-V-W-Y-Z-Z1				
09702	B-C-C1-F1-F3-M-R-R1-S-U	09738	A-B-C1-C2-F-F1-F3-J-L-M-N-R-R1-T-V-Z1				
09704	B-C-F-F1-F3-R-R1-S-U2-V	09739	A-B-C1-C2-F-F1-F3-J-L-M-N-R-R1-T-V-Z1				
09705	B-C-C1-F1-F3-M-R-R1-S-U						
09706	B-C-C2-F3-M-N-R-S-U-V-Z1						



APO/ FPO/ DPO	See Restrictions	APO/ FPO/ DPO	See Restrictions	APO/ FPO/ DPO	See Restrictions	APO/ FPO/ DPO	See Restrictions
09834	B-C-C2-E2-E3-F-F1-F3-R-R1-S-U-Z1	09873	A-B-C1-C2-E2-F-F1-F3-H1-I3-L-M-N-R-R1-S-T-U-U4-V-Z-Z1	34022	B-C1-C2-F-F1-F3-J-L-M-N-R-R1-T-V-Z1	<b>34085</b>	<b>B-C-C1-C2-E2-E3-F-F1-F3-H1-J-R-R1-S-T-V-V1</b>
09836	A-B-C1-C2-F-F1-F3-J-L-M-N-R-R1-V-Z1	09874	A-B-C1-C2-E2-F-F1-F3-H1-I3-L-M-N-R-R1-S-T-U-U4-V-Z-Z1	34023	B-C1-C2-F-F1-F3-J-L-M-N-R-R1-T-V-Z1	<b>34086</b>	<b>B-C-C1-C2-E2-E3-F-F1-F3-H1-J-R-R1-S-T-V-V1</b>
09837	B-E2-E3-F1-F3-R-S-V-Z1	09875	A-B-C1-C2-E2-F-F1-F3-H1-I3-L-M-N-R-R1-S-T-U-U4-V-Z-Z1	34024	B-C1-C2-F-F1-F3-J-L-M-N-R-R1-T-V-Z1	34087	B-E2-F-F1-F3-R-R1-S-V
09838	B-C-C2-E2-E3-F-F1-F3-R-S-U-Z1	09877	A-B-C-C2-E-E2-E3-F1-F3-H-H1-J-M-N-R-R1-S-U-V-Z1	34025	B-F-F1-F3-J-L-M-N-R-R1-T-V-Z1	34088	B-F-F1-R-R1-V
09841	A-B-F3-N-R-S-U-Z1	09880	A-B-C1-C2-E2-F-F1-F3-H1J-L-N-R-R1-S-T-U-V-Z1	34030	B-C1-C2-F-F1-F3-J-L-M-N-R-R1-T-V-Z1	34089	B-F-F1-R-R1-S-V
09842	A-B-C1-C2-F-F1-F3-J-L-N-R-R1-T-V-Z1	09889	B-E2-F-H1-N-R-R1-U2-V-Z1	34031	B-C1-C2-F-F1-F3-J-L-M-N-R-R1-T-V-Z1	34090	B-F-F1-R-R1-V
09844	A-B-C1-C2-F-F1-F3-J-L-M-N-R-R1-T-V-Z1	09892	A-B-C1-C2-E2-F-F1-F3-J-L-M-N-R-R1-T-V-Z1	34032	B-C1-C2-F-F1-F3-J-L-M-N-R-R1-T-V-Z1	34091	B-E2-E3-F-F1-F3-R-R1-S-V-Z1
09845	A-B-C1-C2-E3-F-F1-F3-J-L-M-N-R-R1-T-V-Z1	09895	A-B-C1-C2-E2-F-F1-F3-J-L-M-N-R-T-V-W-Z1	34033	B-C1-C2-F-F1-F3-I3-L-M-N-R-T-V-Z-Z1	34092	B-F-F1-F3-R-R1-S-V
09846	A-B-C1-C2-F-F1-F3-J-L-N-R-R1-T-V-Z1	09898	B-C-C1-C2-E2-F-F1-F2-H1-N-R-R1-S-U2-V-Z1	34034	B-C1-C2-F-F1-F3-I3-L-M-N-R-R1-T-V-Z-Z1	34093	B-F-F1-F3-R-R1-S-V
09847	B-C-C2-F-F1-F3-J-L-M-N-R-R1-S-T-V-Z1	09902	A-B-C1-C2-E2-F-F3-H1-M-R-R1-S-V-Z1	34035	B-C1-C2-F-F1-F3-H-J-L-M-N-R-R1-T-V-Z1	34094	B-F-F1-F3-R-R1-S-V
09848	A-B-F-F3-M-R-S-V-Z1	09903	B-C1-E2-F1-F3-S-V-Z1	34036	B-C1-C2-F-F1-F3-J-L-M-N-R-R1-T-V-Z1	34095	B-F-F1-R-R1-V
09853	B-C1-C2-E2-F-F1-F3-H1-N-R-R1-S-U2-V-Z1	09904	B-C1-E2-F1-F3-S-V-Z1	34037	B-C-C1-C2-F-F1-F3-H-J-L-M-N-R-R1-T-V-Z1	96201	A-B-F-F1-F3-M-R-S-U
09854	A-B-C1-C2-F-F1-F3-J-L-N-R-R1-S-T-V-Z1	09908	A-B-C2-F-F1-F3-N-R-R1-S-V-Z1	34039	B-C1-C2-F-F1-J-L-M-N-T-V-Z1	96202	A-B-F-F1-F3-M-R-S-U
09855	A-B-C-C1-C2-E2-F-F1-F3-H1-M-R-R1-S-U2-V-Z1	09909	A-B-C2-F-F1-F3-N-R-R1-S-V-V1-Z1	34041	B-C1-C2-F-F1-F3-J-L-M-N-R-R1-T-V-Z1	96203	A-B-F-F1-F3-M-R-S-U
09856	B-C-C1-C2-F-F1-F3-H-H1-J-L-M-N-S-T-V-Z1	09974	B-F1-F3-J-L-M-N-R-S-T-U2-V-X-Z1	34042	A-B-C-F-F1-F3-M-N-R-S-U-V-W-Z1	96204	A-B-F-F1-F3-M-R-S-U
09857	A-B-C2-E2-F-F1-F3-13-L-M-N-R-R1-S-T-V-Z-Z1	09975	B-F1-F3-J-L-M-N-R-S-T-U2-V-X-Z-Z1	34050	B-V	96205	A-B-F-F1-F3-M-R-S-U
09858	A-B-C-C1-C2-E2-E3-F1-F3-H-H1-J-M-N-R-R1-S-U-V-Z1	09976	B-F1-F3-J-L-M-N-R-S-T-U2-V-X-Z1	34051	B-V	96206	A-B-F-F1-F3-M-R-S-U
09859	B-C-C1-C2-E2-E3-F-F1-F3-H1-R-R1-S-U-Z1	09977	B-F1-F3-J-L-M-N-R-S-T-U2-V-X-Z1	34052	B-V	96207	A-B-F-F1-F3-M-R-S-U-V
09860	A-B-C2-F-F1-F3-J-L-M-N-R-R1-S-T-V-Z1	34001	A-B-C1-C2-F-F1-F3-J-L-M-N-R-R1-S-T-V-Z1	34053	B-V	96208	A-B-F-F1-F3-M-R-S-U
09862	A-B-C-C2-F-F1-F3-I3-L-M-N-R-R1-S-T-V-X-Z-Z1	34002	B-C1-C2-F-F1-F3-J-L-M-N-R-R1-T-V-Z1	34054	B-V	96209	A-B-C1-C2-F-F1-J-L-M-N-T-U-V-Z1
09864	A-B-C-C1-C2-E2-F1-F3-L-M-N-R-R1-S-T-V-W-Z1	34004	B-C1-C2-F-F1-F3-J-L-M-N-R-R1-T-V-Z1	34055	B-C1-C2-F-F1-F3-J-L-M-N-R-R1-T-V-Z1	96210	A-B-C1-C2-F-F1-F3-I3-L-M-N-R-R1-T-V-Z-Z1
09865	A-B-F3-R-S-U-V-Z1	34007	B-F-F1-H-J-M-N-R-R1-V-Z1	34058	B-F-F1-F3-R-R1-S-V-Z1	96212	B-F-F1-F2-H-M-W-Z1
09867	A-B-C-C1-C2-E2-F1-F3-L-M-N-R-R1-S-T-V-W-Z1	34008	B-C1-C2-D-E1-F-F1-H-H1-J-L-M-N-R-R1-T-V-Z1	34060	B-C1-C2-E2-F-F1-F3-J-L-M-N-R-R1-T-V-Z1	96213	A-B-C-F1-F3-R-S-U
09868	A-B-E1-E2-E3-F1-F3-M-N-R-S-U-V-Z1	34011	B-C1-C2-E2-F-F1-F3-J-L-M-N-R-R1-T-V-Z1	34066	B-C1-C2-F-F1-F3-I3-J-L-M-N-R-R1-S-T-V-X-Z-Z1	96214	A-B-C-F1-F3-R-S-U
09869	A-B-C1-C2-E2-F1-F3-L-M-N-R-R1-S-T-V-W-Z1	34020	B-C1-C2-F-F1-F3-J-L-M-N-R-R1-T-V-Z1	34067	B-C1-C2-F-F1-F3-J-L-M-N-R-R1-S-T-V-X-Z1	96218	A-B-F-F1-F3-M-R-S-U
09870	A-B-C1-C2-E2-F-F1-F3-H1-I3-L-M-N-R-R1-S-T-U4-V-Z-Z1	34021	B-C1-C2-F-F1-F3-J-L-M-N-R-R1-T-V-Z1	34068	B-C1-C2-F-F1-F3-J-L-M-N-R-R1-S-T-V-X-Z1	96224	A-B-F-F1-F3-M-R-S-U
				34078	B-F1-F3-N-R-S-V-Z1	96251	A-B-F-F1-F3-M-R-S-U
				34080	B-F-F1-R-R1-V	96257	A-B-F-F1-F3-S-U
				34081	B-F-F1-R-R1-V	96258	A-F-F3-M-P-R-S-U
				34082	B-F-F1-R-R1-V	96260	A-B-F-F1-F3-M-R-S-U
				34083	B-F-F1-R-R1-V	96262	A-B-F-F1-F3-R-S-U-V-Z1
				34084	B-F-F1-R-R1-V	96264	A-B-C-F1-F3-R-S-U
						96266	A-B-C-F1-F3-R-S-U
						96269	A-B-F1-F2-F3-R-S-U-Z1
						96271	A-F-F3-M-P-R-S-U
						96273	A-B-F-F1-F3-M-R-S-U

APO/ FPO/ DPO	See Restrictions	APO/ FPO/ DPO	See Restrictions	APO/ FPO/ DPO	See Restrictions	APO/ FPO/ DPO	See Restrictions
96275	A-B-F-F1-F3-M-R-S-U	96371	B-F-F3-M-R-S-W	96535	A-B-C1-C2-F-F1-J-L-M-N-R-R1-S-T-V-Z1	96620	B-F-F1-F3-R-R1-S-V
96276	A-B-C-F1-R	96372	B-M-W	96537	B-V-Z1	96628	B-F-F1-F3-R-R1-S-V
96278	A-B-C-F1-F3-R-S-U	96373	B-M-W	96540	B-F1-F2-F3-S-V-Z1	96629	B-F-F1-F3-R-R1-S-V
96283	A-B-F-F1-F3-S-U	96374	B-M-W	96542	B-F-F1-F2-F3-S-V-Z1	96632	B-F-F1-F3-R-R1-S-V
96284	A-B-F-F1-F3-R-S-U	96375	B-F3-M-R-S-W	96543	B-F-F1-F2-F3-P-S-V-Z1	96633	B-V
96297	A-B-F-F1-F3-R-S-U	96376	B-F3-M-R-S-W	96548	A-B-F-F1-F3-H-M-R-S-U	96641	B-V
96300	A-B-F3-M-R-S-V-Z1	96377	B-F-F3-M-R-S-W	96549	A-B-C1-C2-F-F1-H-J-L-M-N-R-R1-S-T-V-Z1	96642	B-V
96301	A-B-F-F3-M-N-R-S-U2-W	96378	B-M-W	96550	A-B-H-M-N-U-V-Z1	96643	B-F-F1-F3-R-R1-S-V
96303	B-C1-C2-F-F1-H-J-L-M-N-T-V-W-Z1	96379	B-F3-M-R-S-W	96551	A-B-C1-C2-F-F1-H-J-L-M-N-R-R1-S-T-V-Z1	96644	B-V
96306	B-F-F1-F2-F3-H-M-R-S-W-Z1	96380	B-F3-M-R-S-W	96552	B-Z1	96645	B-V
96310	B-F3-M-R-S-W	96382	B-F-F3-M-R-S-W	96553	A-B-F-F1-H-M-N-R-U	96649	B-F-F1-F3-R-R1-S-V
96311	B-F3-M-R-S-W	96384	B-F-F3-M-R-S-W	96554	A-B-C1-C2-F-F1-H-J-L-M-N-R-R1-S-T-V-Z1	96650	B-F-F1-R-R1-V
96315	B-F-F1-F3-H-M-R-S-W	96385	B-F-F3-M-R-S-W	96555	A-B-F-F3-M-R-S-V	96657	B-F-F1-F3-R-R1-S-V
96319	B-C-F3-M-R-S-V-W	96386	B-F3-M-S-W	96557	A-B-F-F3-M-R-S-V	96660	B-F-F1-F3-R-R1-S-V
96321	B-F-F1-F2-F3-H-M-R-S-W-Z1	96387	B-F3-M-R-S-W	96562	A-B-C1-C2-D-E2-E3-F-F1-H-H1-I3-L-M-N-R-R1-S-T-V-Z1	96661	B-F-F1-F3-R-R1-S-V
96322	B-F-F1-F2-F3-H-M-R-S-W-Z1	96388	B-F3-M-R-S-W	96567	A-B-F-F3-H-M-N-R-S-U	96662	B-F-F1-F3-R-R1-S-V
96326	B-C-F-F3-M-R-S-W	96389	B-M-W	96577	B-F1-F3-H-J-N-R-S	96663	B-F-F1-F3-R-R1-S-V-V1
96328	B-C-F3-M-R-S-W	96401	B-C-F-F3-N-R-S-V-V1-Z1	96578	B-F-F3-R-S-V-Z1	96664	B-V
96331	A-B-F-F1-F3-J-L-M-N-R-S-U2-W	96502	A-C1-F-F1-F3-M-N-Q-R-R1-S-T-U2-V	96595	B-F3-I3-N-R-S-V-V1	96665	B-V
96336	B-C-F3-M-R-S-V-W	96504	A-B-C-C1-C2-F-F1-F3-I3-L-M-N-R-R1-T-V-W-Z1	96598	B-F3-N-R-S-V	96666	B-F3-R-S-V
96337	B-F-F1-F3-M-R-R1-S-W	96505	A-B-C-C1-C2-F-F1-F3-I3-L-M-N-R-R1-S-T-V-W-Z1	96599	B-V	96667	B-F-F1-F3-R-R1-S-V
96338	A-B-F-F3-M-R-S-U2-W	96507	A-B-C1-C2-F-F1-H-J-L-M-N-T-V-Z1	96601	B-V	96668	B-F-F1-R-R1-V
96339	A-B-F-F3-M-R-S-U2-W	96510	B-I3-N-V	96602	B-V	96669	B-F-F3-R-R1-S-V
96343	A-F-F3-M-P-R-S-U2	96511	B-I3-N-V	96603	B-V	96670	B-V
96346	B-F-F1-F2-F3-H-M-R-S-W-Z1	96515	B-C-D-E1-F-F1-F3-H-H1-M-N-R-S-T-Z1	96604	B-V	96671	B-F-F1-F3-R-R1-S-V
96347	B-C2-F-F1-F2-F3-H-M-R-S-W-Z1	96516	B-C-D-E1-E2-F-F1-F3-H-H1-M-N-R-S-T-Z1	96605	B-V+B559	96672	B-F-F1-F3-R-R1-S-V
96349	B-C2-F-F1-F2-F3-H-M-R-S-W-Z1	96517	B-C-D-E1-E2-F-F1-F3-H-H1-M-N-R-T-U-V-Z1	96606	B-F3-R-S-V	96673	B-F3-S-V
96350	B-F-F1-F2-F3-H-M-R-S-W-Z1	96520	B-F-N-U3-V	96607	B-V	96674	B-F-F1-F3-R-R1-S-V
96351	B-C2-F-F1-F2-F3-H-M-R-S-W-Z1	96521	B-C1-C2-F-F1-J-L-M-N-R-R1-S-T-V-Z1	96608	B-E2-F-H1-R1-U2-V-Z1	96675	B-F-F1-F3-R-R1-S-V
96362	B-F-F1-F2-M-W-Z1	96530	A-B-C1-C2-F-F1-H-H1-J-L-M-N-R-R1-S-T-V-Z1	96609	B-E2-F-H1-R1-U2-V-Z1	96677	B-F-F1-F3-R-R1-S-V
96365	B-C-F3-M-R-S-V-W	96531	A-B-C-F-F1-F3-H-M-N-R-S-U-V	96610	B-E2-F-H1-R1-U2-V-Z1	96678	B-F-F1-F3-R-R1-S-V
96367	B-C-F3-L-M-R-S-W	96532	A-B-C1-C2-F-F1-H-J-L-M-N-R-R1-S-T-V-Z1	96611	B-E2-F-H1-R1-U2-V-Z1	96679	B-F-F1-R-R1-V
96368	B-C-F3-M-R-S-W	96533	A-B-F-F1-F2-F3-S-U-Z1	96612	B-V	96681	B-V
96370	B-F-F1-F2-H-M-W-Z1	96534	A-B-F-F1-F2-F3-S-U-Z1	96613	B-V	96682	B-V
				96615	B-F-F1-R-R1-V	96683	B-F-F1-F3-R-R1-S-V
				96616	B-C2-F-F1-F3-R-R1-S-V	96686	B-V
				96619	B-F1-F3-R-S-V	96691	B-F-F1-F3-R-R1-S-V
						96692	B-F-F1-F3-R-R1-S-V
						96693	E2-F-F3-R-R1-S-V
						96694	B-E2-F-F1-F3-I3-J-R-R1-S-V-V1-Z
						96695	B-F-F1-R-R1-V
						96696	B-F-F1-R-R1-V
						96698	B-V

## RESTRICTIONS

## LEGEND

PS Form 2976, *Customs — CN 22 (Old C 1) and Sender's Declaration* (green label)

PS Form 2976-A, *Customs Declaration and Dispatch Note*

PS Form 2976-B, *Priority Mail Express International Shipping Label and Customs Form*

ATF	= Bureau of Alcohol, Tobacco, Firearms, and Explosives
Box C	= Department of State (DOS) contractor personnel
Box R	= Retired military personnel
DPO	= Diplomatic Post Office
MPO	= Military Post Office
PACT	= Prevent All Cigarette Trafficking Act
PAL	= Parcel Airlift
PMEMS	= Priority Mail Express Military Service
PUB 52	= Publication 52, <i>Hazardous, Restricted, and Perishable Mail</i>
SAM	= Space Available Mail
USDA	= United States Department of Agriculture

**Note:** Mail order catalogs are prohibited as SAM or PAL mail.

**A.** Securities, currency, or precious metals, including in their raw, unmanufactured state, are prohibited. Official Mail shipments are exempt from this restriction.

**A1.** Reserved for future use.

**A2.** Reserved for future use.

**B.** Other than for PMEMS and the exceptions listed below, a customs declaration PS Form 2976 or PS Form 2976-A is required for all items weighing 16 ounces or more, and for all items (regardless of weight) containing potentially dutiable mail contents (e.g., merchandise or goods) addressed to or from this ZIP Code. Other than the exceptions listed below, all PMEMS mailpieces (regardless of mail contents or weight) addressed to or from this ZIP Code must bear a properly completed PS Form 2976-B. The surface area of the address side of the mailpiece must be large enough to contain the applicable customs declaration. The following exceptions apply to known mailers, who for this purpose are defined as follows:

- Business mailers who enter volume mailings through business mail entry units or other bulk mail acceptance locations, pay postage through advance deposit accounts, use permit imprints for postage payment, and submit completed postage statements at the time of entry that certify that the mailpieces contain no dangerous materials that are prohibited by postal regulations. Such business mailers are exempt from providing customs documentation on non-dutiable letters and printed matter.
- All federal, state, and local government agencies whose mailings are regarded as "Official Mail." Such agencies are exempt from providing customs documentation, except for any items addressed to an MPO or DPO to which restriction "B2" applies.

**B2.** All federal, state, and local government agencies must complete customs documentation when sending potentially dutiable mail addressed to or from this MPO or DPO.

**C.** Cigarettes and other tobacco products, including tobacco leaves, chewing and pipe tobacco, snuff, and cigars are prohibited, including those that are authorized in Publication 52 under PACT.

**C1.** Obscene and horror articles, images, prints, paintings, cards, films, videotapes, comic books, etc., are prohibited.

**C2.** E-cigarettes and related products (e.g., nicotine liquids, e-liquids, parts, or supplies) are prohibited.

**D.** Coffee is prohibited.

**E.** Medicines (prescription, over-the-counter, vitamins, and supplements) are prohibited when mailed to individuals for human or animal use. This prohibition does not apply when medicines are sent as Official Mail only between specifically designated agencies such as pharmaceutical distributors, hospitals, clinics, and pharmacies.

**E1.** Mailers are responsible to ensure that all medicines and vaccines conform to host nation laws.

**E2.** Any matter depicting nude or seminude persons, pornographic, or sexual items are prohibited. Non-authorized political materials are prohibited. Religious materials contrary to the Islamic faith are prohibited in bulk quantities, but individual items for the personal use of the addressee are permissible.

**E3.** Radio transceivers, cordless/cellular telephones, global positioning systems, scanners, base stations, and handheld transmitters are prohibited.

**F.** Firearms of any type are prohibited, except firearms mailed to or by official U.S. government agencies. This restriction does not apply to firearms mailed from this MPO ZIP Code, provided ATF and USPS regulations are met. Antique firearms do not require an ATF form.

**F1.** Weapons of any type are prohibited.

**F2.** Mailing firearms to or from this MPO ZIP Code is restricted to one shotgun and one single shot .22 caliber rifle per individual.

**F3.** Replica weapons and inert explosive devices (such as grenades) and weapons parts are prohibited.

**G.** Parcels of any class are prohibited.

**H.** Meats, including preserved meats, bones, skin, hair, feathers, horns or hoofs of hoofed animals, and wool samples whether hermetically sealed or not, are prohibited.

**H1.** Pork or pork by-products are prohibited.

**I.** Reserved for future use.

**I1.** Reserved for future use.

**I2.** Reserved for future use.

**I3.** Mail of all classes must fit in a mail sack. Mail may not exceed the following dimensions:

- Maximum length 27 inches.
- Maximum width 14 inches.
- Maximum height 14 inches.

**J.** Standard Post and Parcel Select parcels may not exceed 108 inches in length and girth combined.

**K.** Reserved for future use.

**L.** All Official Mail is prohibited.

**M.** Fruits, vegetables, live animals, and live plants are prohibited.

**N.** Registered Mail service is prohibited.

**O.** Reserved for future use.

**P.** Official Mail only.

**Q.** Mail may not exceed 66 pounds, and size is limited to 42 inches maximum length and 72 inches maximum length and girth combined.

**R.** All alcoholic beverages, including those mailable under Publication 52, Part 421, are prohibited.

**R1.** Materials used in the production of alcoholic beverages (i.e., distilling material, hops, malts, yeast, etc.) are prohibited.

**S.** Synthetic cannabinoids used to stimulate the central nervous system commonly known as "synthetic marijuana," "K2," or "Spice" are prohibited.

**T.** Mailings of household shipments and case lots of food to or from an MPO require military transportation office approval prior to mailing. Mailings to or from a DPO require pre-approval from the Diplomatic Pouch and Mail Director.

**U.** Mail addressed to Retirees (Box R) is limited to 16 ounces and up to a 90-day supply of TRICARE medications. This restriction does not apply to mail endorsed "Free Matter for the Blind or Handicapped."

**U1.** Mail is limited to First-Class Mail items, including audio and video media, weighing 13 ounces or less. This limitation does not apply to Official Mail.

**U2.** Retirees (Box R) are not authorized mail service.

**U3.** Reserved for future use.

**U4.** Mail addressed to Box C is limited to 2 lbs.

**V.** PMEMS is not available.

**V1.** Electronic Delivery status information for Extra Services is not available on *USPS.com*. Manual record of delivery may be available upon request.

**W.** Hermetically sealed packages of meat products bearing USDA certification, such as dried beef, salami, and sausage, may be mailed. 200 grams of tobacco per parcel are permitted duty free.

**X.** Cremated remains are prohibited.

**Y.** Mail is limited to First-Class Mail and Priority Mail items only. This restriction also applies to Official Mail.

**Z.** No outside pieces (OSPs).

**Z1.** The following restriction is applicable only to International Service Centers (ISC)/Exchange Offices. An Anti-Pilferage Seal (Item No O817E or O818A) is required on all pouches and sacks.

— *International Network Operations,  
Global Business, 12-30-21*

## Thrift Savings Plan Fact Sheet

ANNUAL RETURNS	G Fund	F Fund	U.S. Aggregate Index	C Fund	S&P 500 Stock Index	S Fund	Dow Jones U.S. Completion TSM Index	I Fund	EAFE Stock Index
2006	4.93	4.40	4.33	15.79	15.79	15.30	15.28	26.32	26.34
2007	4.87	7.09	6.97	5.54	5.49	5.49	5.39	11.43	11.17
2008	3.75	5.45	5.24	-36.99	-37.00	-38.32	-39.03	-42.43	-43.38
2009	2.97	5.99	5.93	26.68	26.46	34.85	37.43	30.04	31.78
2010	2.81	6.71	6.54	15.06	15.06	29.06	28.62	7.94	7.75
2011	2.45	7.89	7.84	2.11	2.11	-3.38	-3.76	-11.81	-12.14
2012	1.47	4.29	4.22	16.07	16.00	18.57	17.89	18.62	17.32
2013	1.89	-1.68	-2.02	32.45	32.39	38.35	38.05	22.13	22.78
2014	2.31	6.73	5.97	13.78	13.69	7.80	7.63	-5.27	-4.90
2015	2.04	0.91	0.55	1.46	1.38	-2.92	-3.42	-0.51	-0.81
2016	1.82	2.91	2.65	12.01	11.96	16.35	15.75	2.10	1.00
2017	2.33	3.82	3.54	21.82	21.83	18.22	18.12	25.42	25.03
2018	2.91	0.15	0.01	-4.41	-4.38	-9.26	-9.57	-13.43	-13.79
2019	2.24	8.68	8.72	31.45	31.49	27.97	27.94	22.47	22.01
2020	0.87	4.73	4.72	17.16	17.25	36.45	36.67	9.99	8.94

MONTHLY RETURNS	G Fund	F Fund	U.S. Aggregate Index	C Fund	S&P 500 Stock Index	S * Fund	Dow Jones U.S. Completion TSM Index	I * Fund	EAFE Stock Index
<b>2020</b>									
Dec	0.07	0.14	0.14	3.84	3.84	7.24	7.24	4.64	4.65
<b>2021</b>									
Jan	0.07	-0.71	-0.72	-1.01	-1.01	2.85	2.84	-1.09	-1.07
Feb	0.08	-1.45	-1.44	2.76	2.76	5.21	5.19	2.26	2.24
Mar	0.11	-1.23	-1.25	4.38	4.38	-0.39	-0.40	2.35	2.30
Apr	0.13	0.82	0.79	5.33	5.34	4.23	4.22	3.09	3.01
May	0.13	0.34	0.33	0.69	0.70	-0.66	-0.66	3.61	3.26
June	0.12	0.74	0.70	2.33	2.33	3.46	3.46	-1.44	-1.13
July	0.13	1.15	1.12	2.37	2.38	-1.24	-1.23	0.72	0.75
Aug	0.11	-0.18	-0.19	3.03	3.04	2.00	2.00	1.76	1.76
Sept	0.11	-0.86	-0.87	-4.65	-4.65	-4.00	-4.01	-2.81	-2.90
Oct	0.13	-0.04	-0.03	7.00	7.01	5.43	5.42	2.46	2.46
Nov	0.13	0.30	0.30	-0.69	-0.69	-5.03	-5.03	-4.66	-4.65
<b>YTD</b>	<b>1.26</b>	<b>-1.14</b>	<b>-1.29</b>	<b>23.16</b>	<b>23.18</b>	<b>11.80</b>	<b>11.74</b>	<b>6.04</b>	<b>5.84</b>

The G Fund is managed internally by the Federal Retirement Thrift Investment Board. Assets of the F, C, S, and I Funds are managed externally. The Board currently has contracts with BlackRock Institutional Trust Company, N.A., to manage the F, C, S, and I Fund assets. The F, C, S, and I Funds invest in commingled trust funds, in which the assets of tax-deferred employee benefit plans are combined and invested together. The F, C, S, and I Funds and the BlackRock funds are passively managed index funds.

Future performance of the funds will vary and may be significantly different from the returns shown above. See the *Summary of the*

*Thrift Savings Plan* for detailed information about the funds and their investment risks. The monthly returns of the TSP Funds represent net earnings for the month after deduction of accrued administrative expenses and, except for the G Fund, after deduction of trading costs and accrued investment management fees as well. The returns for the four indexes shown do not include any of these deductions.

\* Implemented May 2001.

**See next page for L Funds.**

**L Funds**

<b>Annual Returns</b>	<b>L Income</b>	<b>L 2020</b>	<b>L 2030</b>	<b>L 2040</b>	<b>L 2050</b>
2006	7.59	13.72	15.00	16.53	
2007	5.56	6.87	7.14	7.36	
2008	-5.09	-22.77	-27.50	-31.53	
2009	8.57	19.14	22.48	25.19	
2010	5.74	10.59	12.48	13.89	
2011	2.23	0.41	-0.31	-0.96	
2012	4.77	10.42	12.61	14.27	15.85
2013	6.97	16.03	20.16	23.23	26.20
2014	3.77	5.06	5.74	6.22	6.37
2015	1.85	1.35	1.04	0.73	0.45
2016	3.58	5.47	7.07	7.90	8.65
2017	6.19	9.86	14.54	16.77	18.81
2018	0.71	-0.36	-3.58	-4.89	-6.02
2019	7.60	9.38	17.60	20.69	23.33
2020	5.04		11.41	13.41	15.14

<b>Monthly Returns</b>	<b>L Income</b>	<b>L 2025</b>	<b>L 2030</b>	<b>L 2035</b>	<b>L 2040</b>	<b>L 2045</b>	<b>L 2050</b>	<b>L 2055</b>	<b>L 2060</b>	<b>L 2065</b>
<b>2020</b>										
Dec	1.07	2.27	2.79	3.06	3.34	3.59	3.83	4.63	4.63	4.63
<b>2021</b>										
Jan	-0.10	-0.24	-0.32	-0.35	-0.37	-0.39	-0.41	-0.44	-0.44	-0.44
Feb	0.63	1.35	1.70	1.86	2.03	2.17	2.32	2.93	2.93	2.93
Mar	0.71	1.44	1.78	1.93	2.08	2.20	2.33	2.92	2.92	2.91
Apr	1.14	2.15	2.74	2.99	3.24	3.45	3.66	4.35	4.35	4.35
May	0.47	0.81	1.00	1.08	1.16	1.22	1.28	1.50	1.50	1.50
June	0.39	0.64	0.79	0.86	0.92	0.98	1.03	1.17	1.17	1.17
July	0.47	0.75	0.92	0.99	1.05	1.10	1.15	1.26	1.26	1.26
Aug	0.63	1.16	1.50	1.63	1.77	1.88	1.99	2.42	2.42	2.41
Sept	-0.87	-1.78	-2.37	-2.61	-2.85	-3.05	-3.25	-3.87	-3.87	-3.87
Oct	1.28	2.33	3.14	3.43	3.72	3.97	4.22	5.12	5.11	5.11
Nov	-0.50	-1.09	-1.55	-1.72	-1.89	-2.04	-2.20	-2.71	-2.71	-2.71
<b>YTD</b>	<b>4.32</b>	<b>7.70</b>	<b>9.58</b>	<b>10.38</b>	<b>11.19</b>	<b>11.85</b>	<b>12.55</b>	<b>15.21</b>	<b>15.21</b>	<b>15.20</b>

The TSP added six new L Funds that have 5-year increments rather than the previous 10-year increments.

## Freely Associated States Restrictions

We list the mailing restrictions for Freely Associated States (FAS) in the Pull-Out section of the *Postal Bulletin*. All FAS Restrictions will be updated periodically.

### Freely Associated States

Mail addressed to freely associated states is subject to certain conditions or restrictions of mailing regarding content, preparation, and handling. The following FAS Restrictions table outlines these conditions as listed by each affected FAS ZIP Code™ through the use of footnoted mailing restrictions codes (see the [Restrictions](#) following the table). For more information on available extra services for FAS destinations, see *Mailing Standards of the United States Postal Service, Domestic Mail Manual (DMM®)*, part 503.

Acceptance clerks must use the table with the Retail System Software terminal to determine which FAS ZIP Codes are active and which conditions of mailing apply.

### FAS Restrictions Table

FAS Table	See Restrictions
96939	A, B
96940	A, B
96941	A, B
96942	A, B
96943	A, B
96944	A, B
96960	A, B
96970	A, B, D
Marshall Islands	C
Federated States of Micronesia	C

### RESTRICTIONS LEGEND

PS Form 2976, *Customs Declaration CN 22 – Sender's Declaration*

PS Form 2976-A, *Customs Declaration and Dispatch Note*

FAS = Freely Associated State

- A.** Bank currency (coin and paper) is prohibited.
- B.** Signature Confirmation, Signature Confirmation Restricted Delivery, Adult Signature Requested, Adult Signature Restricted Delivery, Certified Mail Adult Signature Required, and Certified Mail Adult Signature Restricted Delivery not available.
- C.** Collect on Delivery is prohibited.
- D.** Betel nut (Areca catechu) is prohibited.

— *Asia-Pacific Relations,  
Global Business, 12-30-21*

## Equipment Maintenance Allowance Schedule for Rural Routes

### Rural Carriers

In accordance with the provisions of Article 9, Section 2.J.3 of Handbook EL-902, *Agreement Between the United States Postal Service and the National Rural Letter Carriers' Association*, effective January 1, 2022 (pay period 02-22), the equipment maintenance allowance (EMA) will increase to 87.5 cents per mile. The EMA is 87.5 cents per mile, or a minimum of \$35.00 per day, whichever is greater.

### Auxiliary Rural Carriers, Rural Carrier Reliefs, Rural Carrier Associates, Rural Carrier Part-Time Flexibles, and Auxiliary Assistance

Employees providing auxiliary assistance or serving auxiliary routes under the provisions of Article 9, Section 2.J.5, receive an EMA of 87.5 cents per mile or \$9.35 per hour, whichever is greater. This EMA must not exceed the amount provided in the special equipment maintenance allowance for the route stops and miles.

### EMA Rate Schedule

The EMA rate schedule on pages [32](#) and [33](#) supersedes all previously published EMA schedules for employees receiving EMA.

— *Collective Bargaining and Arbitration, Labor Relations, 12-30-21*

## Mailing and Shipping Services

### Mail Alert

The mailings below will be deposited in the near future. Offices must process this mail according to applicable service standards with the in-home dates in mind. Mailers wishing to participate in these alerts, for mailings of 1 mil-

lion pieces or more, must contact Business Service Network Integration at 202-268-3258 at least 1 month before the requested delivery dates.

Requested Delivery Dates	Title of Mailing	Class and Type of Mail	Number of Pieces (Millions)	Distribution	Presort Level	Comments
01/12/22–01/15/22	Montgomery Ward	Standard Catalog	2.0	Nationwide	3/5 Digit	Quad Graphics
01/12/22–01/15/22	Seventh Avenue	Standard Catalog	2.0	Nationwide	3/5 Digit	Quad Graphics

— *Business Customer Support and Services, Sales and Customer Relations, 12-30-21*



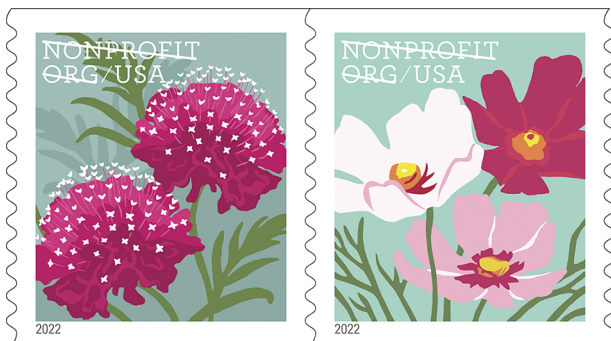


EMA Rate Schedule (page 2 of 2)

MILES	STOPS =	*0640**0660**0680**0700**0720**0740**0760**0780**0800**0820**0840**0860**0880**0900**0920**0940**0960**0980**1000	RURAL EQUIPMENT MAINTENANCE	RATE SCHEDULE	DATE 12-13-21															
			BASED ON \$0.875 PER MILE	EFFECTIVE PP-YR 02-22	PAGE 2															
8	36.50	36.60	36.70	36.80	36.90	37.00	37.10	37.20	37.30	37.40	37.50	37.60	37.70	37.80	37.90	38.00	38.10	38.20	38.30	
9	36.60	36.70	36.80	36.90	37.00	37.10	37.20	37.30	37.40	37.50	37.60	37.70	37.80	37.90	38.00	38.10	38.20	38.30	38.40	38.50
10	36.70	36.80	36.90	37.00	37.10	37.20	37.30	37.40	37.50	37.60	37.70	37.80	37.90	38.00	38.10	38.20	38.30	38.40	38.50	38.60
11	36.80	36.90	37.00	37.10	37.20	37.30	37.40	37.50	37.60	37.70	37.80	37.90	38.00	38.10	38.20	38.30	38.40	38.50	38.60	38.70
12	36.90	37.00	37.10	37.20	37.30	37.40	37.50	37.60	37.70	37.80	37.90	38.00	38.10	38.20	38.30	38.40	38.50	38.60	38.70	38.80
13	37.00	37.10	37.20	37.30	37.40	37.50	37.60	37.70	37.80	37.90	38.00	38.10	38.20	38.30	38.40	38.50	38.60	38.70	38.80	38.90
14	37.10	37.20	37.30	37.40	37.50	37.60	37.70	37.80	37.90	38.00	38.10	38.20	38.30	38.40	38.50	38.60	38.70	38.80	38.90	39.00
15	37.20	37.30	37.40	37.50	37.60	37.70	37.80	37.90	38.00	38.10	38.20	38.30	38.40	38.50	38.60	38.70	38.80	38.90	39.00	39.10
16	37.30	37.40	37.50	37.60	37.70	37.80	37.90	38.00	38.10	38.20	38.30	38.40	38.50	38.60	38.70	38.80	38.90	39.00	39.10	39.20
17	37.40	37.50	37.60	37.70	37.80	37.90	38.00	38.10	38.20	38.30	38.40	38.50	38.60	38.70	38.80	38.90	39.00	39.10	39.20	39.30
18	37.50	37.60	37.70	37.80	37.90	38.00	38.10	38.20	38.30	38.40	38.50	38.60	38.70	38.80	38.90	39.00	39.10	39.20	39.30	39.40
19	37.60	37.70	37.80	37.90	38.00	38.10	38.20	38.30	38.40	38.50	38.60	38.70	38.80	38.90	39.00	39.10	39.20	39.30	39.40	39.50
20	37.70	37.80	37.90	38.00	38.10	38.20	38.30	38.40	38.50	38.60	38.70	38.80	38.90	39.00	39.10	39.20	39.30	39.40	39.50	39.60
21	37.80	37.90	38.00	38.10	38.20	38.30	38.40	38.50	38.60	38.70	38.80	38.90	39.00	39.10	39.20	39.30	39.40	39.50	39.60	39.70
22	37.90	38.00	38.10	38.20	38.30	38.40	38.50	38.60	38.70	38.80	38.90	39.00	39.10	39.20	39.30	39.40	39.50	39.60	39.70	39.80
23	38.00	38.10	38.20	38.30	38.40	38.50	38.60	38.70	38.80	38.90	39.00	39.10	39.20	39.30	39.40	39.50	39.60	39.70	39.80	39.90
24	38.10	38.20	38.30	38.40	38.50	38.60	38.70	38.80	38.90	39.00	39.10	39.20	39.30	39.40	39.50	39.60	39.70	39.80	39.90	40.00
25	38.20	38.30	38.40	38.50	38.60	38.70	38.80	38.90	39.00	39.10	39.20	39.30	39.40	39.50	39.60	39.70	39.80	39.90	40.00	40.10
26	38.30	38.40	38.50	38.60	38.70	38.80	38.90	39.00	39.10	39.20	39.30	39.40	39.50	39.60	39.70	39.80	39.90	40.00	40.10	40.20
27	38.40	38.50	38.60	38.70	38.80	38.90	39.00	39.10	39.20	39.30	39.40	39.50	39.60	39.70	39.80	39.90	40.00	40.10	40.20	40.30
28	38.50	38.60	38.70	38.80	38.90	39.00	39.10	39.20	39.30	39.40	39.50	39.60	39.70	39.80	39.90	40.00	40.10	40.20	40.30	40.40
29	38.60	38.70	38.80	38.90	39.00	39.10	39.20	39.30	39.40	39.50	39.60	39.70	39.80	39.90	40.00	40.10	40.20	40.30	40.40	40.50
30	38.70	38.80	38.90	39.00	39.10	39.20	39.30	39.40	39.50	39.60	39.70	39.80	39.90	40.00	40.10	40.20	40.30	40.40	40.50	40.60
31	38.80	38.90	39.00	39.10	39.20	39.30	39.40	39.50	39.60	39.70	39.80	39.90	40.00	40.10	40.20	40.30	40.40	40.50	40.60	40.70
32	38.90	39.00	39.10	39.20	39.30	39.40	39.50	39.60	39.70	39.80	39.90	40.00	40.10	40.20	40.30	40.40	40.50	40.60	40.70	40.80
33	39.00	39.10	39.20	39.30	39.40	39.50	39.60	39.70	39.80	39.90	40.00	40.10	40.20	40.30	40.40	40.50	40.60	40.70	40.80	40.90
34	39.10	39.20	39.30	39.40	39.50	39.60	39.70	39.80	39.90	40.00	40.10	40.20	40.30	40.40	40.50	40.60	40.70	40.80	40.90	41.00
35	39.20	39.30	39.40	39.50	39.60	39.70	39.80	39.90	40.00	40.10	40.20	40.30	40.40	40.50	40.60	40.70	40.80	40.90	41.00	41.10
36	39.30	39.40	39.50	39.60	39.70	39.80	39.90	40.00	40.10	40.20	40.30	40.40	40.50	40.60	40.70	40.80	40.90	41.00	41.10	41.20
37	39.40	39.50	39.60	39.70	39.80	39.90	40.00	40.10	40.20	40.30	40.40	40.50	40.60	40.70	40.80	40.90	41.00	41.10	41.20	41.30
38	39.50	39.60	39.70	39.80	39.90	40.00	40.10	40.20	40.30	40.40	40.50	40.60	40.70	40.80	40.90	41.00	41.10	41.20	41.30	41.40
39	39.60	39.70	39.80	39.90	40.00	40.10	40.20	40.30	40.40	40.50	40.60	40.70	40.80	40.90	41.00	41.10	41.20	41.30	41.40	41.50
40	39.70	39.80	39.90	40.00	40.10	40.20	40.30	40.40	40.50	40.60	40.70	40.80	40.90	41.00	41.10	41.20	41.30	41.40	41.50	41.60
41	39.80	39.90	40.00	40.10	40.20	40.30	40.40	40.50	40.60	40.70	40.80	40.90	41.00	41.10	41.20	41.30	41.40	41.50	41.60	41.70
42	39.90	40.00	40.10	40.20	40.30	40.40	40.50	40.60	40.70	40.80	40.90	41.00	41.10	41.20	41.30	41.40	41.50	41.60	41.70	41.80
43	40.00	40.10	40.20	40.30	40.40	40.50	40.60	40.70	40.80	40.90	41.00	41.10	41.20	41.30	41.40	41.50	41.60	41.70	41.80	41.90

## Stamp Services

### Stamp Announcement 22-6: Butterfly Garden Flowers



©2021 USPS

On February 1, 2022, in Pine Mountain, GA, the United States Postal Service® will issue the *Butterfly Garden Flowers* nondenominated, nonprofit organization stamps (5-cent value) in two designs, in a pressure-sensitive adhesive (PSA) coil of 3,000 stamps (Item 750800) and a PSA coil of 10,000 stamps (Item 761000). These stamps will go on sale nationwide February 1, 2022, and must not be sold or canceled before the first-day-of-issue.

The 2022 *Butterfly Garden Flowers* issuance features two nondenominated, nonprofit-price stamps intended for bulk mailings by authorized nonprofit organizations. Inspired by block-printed textile and pattern design, the artist hand-carved the images into linoleum blocks. After inking the blocks, she pressed them onto paper, scanned the images into the computer, and added color digitally. Each stamp features an illustration of one of two flowers — scabiosas or cosmos — that butterflies love to visit. Art director Antonio Alcalá designed the stamps with original art by Rigel Stuhmiller.

#### **Availability to Post Offices: Item 750800, Butterfly Garden Flowers (Nonprofit, 5-cent), Coil of 3,000 Stamps**

Stamp Fulfillment Services will not make an automatic push distribution to Post Offices. Post Offices may begin ordering stamps before the first-day-of-issue through SFS Web at [sfsweb.usps.gov](https://sfsweb.usps.gov).

#### **Availability to Post Offices: Item 761000, Butterfly Garden Flowers (Nonprofit, 5-cent), Coil of 10,000 Stamps**

Stamp Fulfillment Services will not make an automatic push distribution to Post Offices. Post Offices may begin ordering stamps before the first-day-of-issue through SFS Web at [sfsweb.usps.gov](https://sfsweb.usps.gov).

#### **How to Order the First-Day-of-Issue Postmark**

Customers have 120 days to obtain the first-day-of-issue postmark by mail. Each cover must have sufficient postage to meet First-Class Mail® requirements. They may purchase new stamps at their local Post Office™ or at The Postal Store® website at [usps.com/shop](https://usps.com/shop). They must affix the stamps to envelopes of their choice, address the envelopes (to themselves or others), and place them in a larger envelope addressed to:

FDOI – Butterfly Garden Flowers Stamps  
USPS Stamp Fulfillment Services  
8300 NE Underground Drive, Suite 300  
Kansas City, MO 64144-9900

After applying the first-day-of-issue postmark, the Postal Service™ will return the envelopes through the mail. There is no charge for the postmark up to a quantity of 50. There is a 5-cent charge for each additional postmark over 50. All orders must be postmarked by June 1, 2022.

#### **How to Order First-Day Covers**

The Postal Service also offers first-day covers for new stamp issues and Postal Service stationery items postmarked with the official first-day-of-issue cancellation. Each item has an individual catalog number and is offered in the *USA Philatelic* catalog and online at [usps.com/shop](https://usps.com/shop). Customers may register to receive a free *USA Philatelic* catalog online at [usps.com/philatelic](https://usps.com/philatelic).

**Locally produced items are not authorized. Only merchandise that has been approved and assigned an item number by Headquarters Retail Marketing may be produced and sold.**

Issue:	<i>Butterfly Garden Flowers Stamps</i>
Item Number:	750800
Denomination & Type of Issue:	Nondenominated Nonprofit (5-cent value)
Format:	Coil of 3,000 (2 designs)
Series:	N/A
Issue Date & City:	February 1, 2022, Pine Mountain, GA 31822
Art Director:	Antonio Alcalá, Alexandria, VA
Designer:	Antonio Alcalá, Alexandria, VA
Artist:	Rigel Stuhmiller, Berkeley, CA
Modeler:	Sandra Lane/Michelle Finn
Manufacturing Process:	Offset
Printer:	Banknote Corporation of America
Press Type:	Alprinta 74
Stamps per Coil:	3,000
Print Quantity:	60,000,000 stamps
Paper Type:	Nonphosphored Type III
Adhesive Type:	Pressure-sensitive
Colors:	Cyan, Magenta, Yellow, Black
Stamp Orientation:	Vertical
Image Area (w x h):	0.73 x 0.84 in./ 18.542 x 21.336 mm
Stamp Size (w x h):	0.87 x 0.98 in./22.098 x 24.892 mm
Plate Size:	480 stamps per revolution
Plate Number:	"B" followed by four (4) single digits
Coil Number Frequency:	Plate number every 24th stamp below stamp image

Issue:	<i>Butterfly Garden Flowers Stamps</i>
Item Number:	761000
Denomination & Type of Issue:	Nondenominated Nonprofit (5-cent value)
Format:	Coil of 10,000 (2 designs)
Series:	N/A
Issue Date & City:	February 1, 2022, Pine Mountain, GA 31822
Art Director:	Antonio Alcalá, Alexandria, VA
Designer:	Antonio Alcalá, Alexandria, VA
Artist:	Rigel Stuhmiller, Berkeley, CA
Modeler:	Sandra Lane/Michelle Finn
Manufacturing Process:	Offset
Printer:	Banknote Corporation of America
Press Type:	Alprinta 74
Stamps per Coil:	10,000
Print Quantity:	2,250,000,000 stamps
Paper Type:	Nonphosphored Type III
Adhesive Type:	Pressure-sensitive
Colors:	Cyan, Magenta, Yellow, Black
Stamp Orientation:	Vertical
Image Area (w x h):	0.73 x 0.84 in./ 18.542 x 21.336 mm
Stamp Size (w x h):	0.87 x 0.98 in./22.098 x 24.892 mm
Plate Size:	480 stamps per revolution
Plate Number:	"B" followed by four (4) single digits
Coil Number Frequency:	Plate numbers every 24th stamp below stamp image

— Stamp Services, Marketing, 12-30-21

### Pictorial Postmarks Announcement

As a community service, the Postal Service™ offers pictorial postmarks to commemorate local events celebrated in communities throughout the nation. A list of events for which pictorial postmarks are authorized appears on the following pages. The sponsor of the pictorial postmark appears in italics under the date. Also provided are illustrations of these postmarks.

People attending these local events may obtain the postmark in person at the temporary Post Office™ station established there. Those who cannot attend the event but who wish to obtain the postmark may submit a mail order request. Pictorial postmarks are available only for the dates indicated, and *requests must be postmarked no later than 30 days following the requested pictorial postmark date.*

All requests must include a stamped envelope or postcard bearing at least the minimum First-Class Mail® postage. Items submitted for postmark may not include

postage issued after the date of the requested postmark. Such items will be returned unserved.

Customers wishing to obtain a postmark must affix stamps to any envelope or postcard of their choice, address the envelope or postcard to themselves or others, insert a card of postcard thickness in envelopes for sturdiness, and tuck in the flap. Place the envelope or postcard in a larger envelope and address it to: Pictorial Postmarks, followed by the Name of the Station, Address, City, State, ZIP+4® Code, as listed next to the postmark.

Customers can also send stamped envelopes and postcards without addresses for postmark, as long as they supply a larger envelope with adequate postage and their return address. After applying the pictorial postmark, the Postal Service returns the items (with or without addresses) under addressed protective cover.

The following pictorial postmark has been extended for 30 days:



December 25, 2021  
*Wilmington Philatelic Society*  
 Semper Fi Station  
 Postmaster  
 152 North Front Street  
 Wilmington, NC 28401-9998

## How to Order the First-Day-of-Issue Digital Color or Traditional Postmarks

Customers have 120 days to obtain the first-day-of-issue postmarks by mail. Each cover must have sufficient postage to meet First-Class Mail® requirements. Customers may purchase new stamps at their local Post Office™, by phone at 844-737-7826, or on The Postal Store® website at [usps.com/shop](https://usps.com/shop).

### Digital Color Postmarks

Only select stamp issues offer a digital color postmark. Customers may submit #6 or #10 envelopes constructed of paper rated as “laser safe.” The Postal Service™ recommends envelopes of 80-pound Accent Opaque, acid-free, 9/16-inch side seams with no glue on the flap. The maximum size of all digital color postmarks is 2 inches (vertically) by 4 inches (horizontally). Allow sufficient space on the envelope to accommodate the postmark. Do not use self-adhesive labels for addresses on the envelope. Two test envelopes must be included. There is a minimum of 10 envelopes at 50 cents per postmark required at the time of servicing. Customers must submit a check, money order, or credit card for payment.

The Postal Service reserves the right to not accept hand-painted and other cachet envelopes that are not compatible with our digital color postmark equipment. The Postal Service also reserves the right to substitute traditional black rubber postmarks if use of nonspecified envelopes results in poor image quality or damage to equipment.

Customers must affix the stamps to the envelopes and address them to themselves or others for return through the mail. Or, they may include an additional self-addressed return envelope, large enough to accommodate their canceled items, with sufficient postage affixed for return of

their postmarked items. Address customer requests for digital color postmarks to:

FDOI – (Name of Stamp Issue)  
USPS Stamp Fulfillment Services  
8300 NE Underground Drive, Suite 300  
Kansas City, MO 64144-9900

After applying the first-day-of-issue postmark, the Postal Service will return the envelopes to the customer by U.S. Mail®.

### Traditional Postmarks

Customers must affix the stamps to the envelopes and address them to themselves or others for return through the mail. Or, they may include an additional self-addressed return envelope, large enough to accommodate their canceled items, with sufficient postage affixed for return of their postmarked items. Address customer requests for traditional postmarks to:

FDOI – (Name of Stamp Issue)  
USPS Stamp Fulfillment Services  
8300 NE Underground Drive, Suite 300  
Kansas City, MO 64144-9900

After applying the first-day-of-issue postmark, the Postal Service will return the envelopes to the customer by U.S. Mail™. There is no charge for the first 50 postmarks. There is a 5-cent charge for each additional postmark over 50. Customers must submit a check, money order, or credit card for payment.

Locally produced items are not authorized. Only merchandise that has been approved and assigned an item number by Headquarters Retail Marketing may be produced and sold.



Digital Color Pictorial

#### FDOI – Happy Birthday Stamp

USPS Stamp Fulfillment Services  
8300 NE Underground Drive, Suite 300  
Kansas City, MO 64144-9900

January 9, 2022



Black and White Pictorial

#### FDOI – Happy Birthday Stamp

USPS Stamp Fulfillment Services  
8300 NE Underground Drive, Suite 300  
Kansas City, MO 64144-9900

January 9, 2022

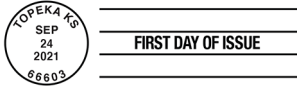


Digital Color Pictorial

**FDI – Message Monsters Stamps**

USPS Stamp Fulfillment Services  
8300 NE Underground Drive, Suite 300  
Kansas City, MO 64144-9900

January 24, 2022

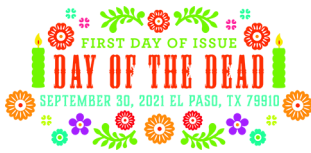


Black and White Pictorial

**FDI – Message Monsters Stamps**

USPS Stamp Fulfillment Services  
8300 NE Underground Drive, Suite 300  
Kansas City, MO 64144-9900

January 24, 2022

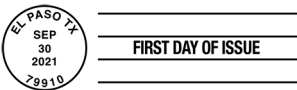


Digital Color Pictorial

**FDI – Day of the Dead Stamps**

USPS Stamp Fulfillment Services  
8300 NE Underground Drive, Suite 300  
Kansas City, MO 64144-9900

January 30, 2022



Black and White Pictorial

**FDI – Day of the Dead Stamps**

USPS Stamp Fulfillment Services  
8300 NE Underground Drive, Suite 300  
Kansas City, MO 64144-9900

January 30, 2022



Digital Color Pictorial

**FDI – A Visit from St. Nick Stamps**

USPS Stamp Fulfillment Services  
8300 NE Underground Drive, Suite 300  
Kansas City, MO 64144-9900

February 7, 2022



Black and White Pictorial

**FDI – A Visit from St. Nick Stamps**

USPS Stamp Fulfillment Services  
8300 NE Underground Drive, Suite 300  
Kansas City, MO 64144-9900

February 7, 2022



Digital Color Pictorial

**FDI – Otters in Snow Stamps**

USPS Stamp Fulfillment Services  
8300 NE Underground Drive, Suite 300  
Kansas City, MO 64144-9900

February 12, 2022



FIRST DAY OF ISSUE

#### FDI – Otters in Snow Stamps

USPS Stamp Fulfillment Services  
8300 NE Underground Drive, Suite 300  
Kansas City, MO 64144-9900

February 12, 2022

Black and White Pictorial



FIRST DAY OF ISSUE

#### FDI – Blueberries Stamp

USPS Stamp Fulfillment Services  
8300 NE Underground Drive, Suite 300  
Kansas City, MO 64144-9900

May 9, 2022

Black and White Pictorial



#### FDI – U.S. Flags 2022 Stamp

USPS Stamp Fulfillment Services  
8300 NE Underground Drive, Suite 300  
Kansas City, MO 64144-9900

May 9, 2022

Digital Color Pictorial



FIRST DAY OF ISSUE

#### FDI – U.S. Flags 2022 Stamp

USPS Stamp Fulfillment Services  
8300 NE Underground Drive, Suite 300  
Kansas City, MO 64144-9900

May 9, 2022

Black and White Pictorial



#### FDI – Love 2022 Stamps

USPS Stamp Fulfillment Services  
8300 NE Underground Drive, Suite 300  
Kansas City, MO 64144-9900

May 14, 2022

Digital Color Pictorial



#### FDI – Love 2022 Stamps

USPS Stamp Fulfillment Services  
8300 NE Underground Drive, Suite 300  
Kansas City, MO 64144-9900

May 14, 2022

Black and White Pictorial



#### FDI – Lunar New Year – Year of the Tiger Stamp

USPS Stamp Fulfillment Services  
8300 NE Underground Drive, Suite 300  
Kansas City, MO 64144-9900

May 20, 2022

Digital Color Pictorial

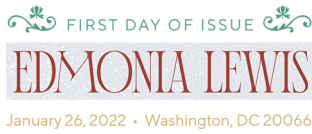


#### FDI – Lunar New Year – Year of the Tiger Stamp

USPS Stamp Fulfillment Services  
8300 NE Underground Drive, Suite 300  
Kansas City, MO 64144-9900

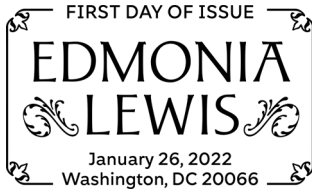
May 20, 2022

Black and White Pictorial



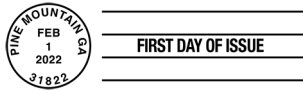
**FDI – Edmonia Lewis Stamp**  
USPS Stamp Fulfillment Services  
8300 NE Underground Drive, Suite 300  
Kansas City, MO 64144-9900  
May 26, 2022

**Digital Color Pictorial**



**FDI – Edmonia Lewis Stamp**  
USPS Stamp Fulfillment Services  
8300 NE Underground Drive, Suite 300  
Kansas City, MO 64144-9900  
May 26, 2022

**Black and White Pictorial**



**FDI – Butterfly Garden Flowers  
Stamps**  
USPS Stamp Fulfillment Services  
8300 NE Underground Drive, Suite 300  
Kansas City, MO 64144-9900  
June 1, 2022

**Black and White Pictorial**

*Add a Touch of Whimsy to Holiday  
Mailings with* **Otters in Snow**

*Forever*<sup>®</sup>  
*Stamps*

*On Sale  
Nationwide:  
October 12, 2021*

