

postal|bulletin

PUBLISHED SINCE MARCH 4, 1880



'Tis the
Season
for
SAFETY

**SAFETY
DEPENDS
ON ME!**

UNITED STATES
POSTAL SERVICE

See page 3



Contents

COVER STORY

'Tis the Season for Safety 3

POLICIES, PROCEDURES, AND FORMS UPDATES

Manuals

DMM Revision: First-Class Package Service —
Commercial Enter and Deposit 5

DMM Revision: Products Mailable at Nonprofit
USPS Marketing Mail Prices 6

Publications

Publication 431 Revision: Changes to Post Office Box
Service and Caller Service Fee Groups 7

Forms

PS Form 3972 Revision: Leave Absence Analysis 7

ORGANIZATION INFORMATION

Domestic Mail

Labeling List Changes 8

Finance

2022 Pay Dates and Leave Year 9

Information Security

Watch Out for Holiday Scams 10

Mailing and Shipping Services

Priority Mail Express Holiday Refund Eligibility 10

Discontinuance of the Priority Mail Pre-Paid Flat Rate
Stamped Envelope 31

Mail Alert 31

Stamp Services

Stamp Announcement 22-4: Lunar New Year —
Year of the Tiger Stamp 32

Stamp Announcement 22-5: Edmonia Lewis Stamp 34

Update: Stamp Announcement 22-1: Blueberries
Stamp 35

Update: Stamp Announcement 22-3: Love 2022

Stamps 35

Pictorial Postmarks Announcement 36

How to Order the First-Day-of-Issue Digital Color or
Traditional Postmarks 37

PULL-OUT INFORMATION

Fraud

Invalid USPS Corporate Account Numbers 11

Missing, Lost, or Stolen U.S. Money Order Forms 13

Missing, Lost, or Stolen Canadian Money Order Forms 19

Verifying U.S. Postal Service Money Orders 21

Counterfeit Canadian Money Order Forms 21

Toll-Free Number Available to Verify Canadian
Money Orders 21

Other Information

Overseas Military/Diplomatic Mail 23

Freely Associated States Restrictions 30

POSTAL BULLETIN 2021 SEMI-ANNUAL INDEX

2021 Semi-Annual Index PB 22578 (8-12-21)

Find the latest in mail and delivery information
and services offered by U.S. Postal®
in the *Postal Bulletin* at
about.usps.com/postal-bulletin

Mail Moment®

Cover Story

'Tis the Season for Safety

Hazards associated with winter weather include exposure to cold temperatures and wet, icy, or snow-covered sidewalks and streets. Adverse weather conditions in winter lead to more vehicle collisions — according to reports from the National Highway Traffic Safety Administration, the months of November, December, and January consistently show at least 25 percent more traffic fatalities than the other months of the year. For those working outdoors, injuries from winter weather conditions include slip-and-fall accidents and stress from exposure to cold temperatures and difficult conditions. During winter, the secret to preventing injuries and staying safe is preparation for and awareness of potential dangers.

Dress appropriately for cold weather by wearing three light layers:

- An inner layer for wicking moisture away from your body.
- A middle layer to insulate you from the cold.
- An outer layer that repels wind, snow, and rain that you can remove, as needed.

Also, protect your hands, neck, and face with appropriate clothing, and wear warm, waterproof shoes or boots. Prolonged exposure to cold temperatures can cause your body to lose heat, which puts you at risk for hypothermia or frostbite. Frostbite occurs when skin is exposed to extreme cold for long periods, and the skin and underlying tissue freeze. The fingers, toes, and feet are most affected, but other extremities such as the nose, ears, and cheeks can also develop frostbite.

At the first sign of frostbite, get out of the cold. Unless necessary, do not walk on frostbitten feet or toes. Do not rub the frostbitten area because it will cause more damage. Warm the affected area using body heat or by immersing it in warm water; avoid using a heating pad, heat lamp, or the heat of a stove, fireplace, or radiator for warming because direct heat can burn damaged tissue. Drink warm beverages to replace lost fluids. In case of severe frostbite, seek medical attention.

Snowy and icy conditions increase the likelihood of slips, trips, and falls, which result in pain, injury, and lost productivity. Proper footwear with good tread is essential to walk safely on slippery surfaces. Prevent slips, trips, and falls with the following tips:

- Wear grippers (ice cleats).
- Walk with care and take short steps.
- Finger mail only when it is safe to do so.

- Take extra precautions when entering and exiting your vehicle.
- Use handrails on steps.
- Wait for vehicles to stop completely on snow- or ice-covered roadways before crossing the street.

Wet and icy road surfaces, longer periods of darkness, and poor visibility from snow, rain, and fog create driving hazards during the winter months. Prepare for driving in bad weather with the following tips:

- Maintain your vehicle and tune up the engine for winter.
- Keep good treads on your tires.
- Make sure your lights function properly.
- Add anti-freeze and windshield wiper fluid, if necessary.
- Replace worn wipers.
- Clear ice and snow from windows, headlights, and the hood and roof of your car before starting out, and repeat as needed.

Keep an emergency kit in your car with the following supplies:

- Cat litter or sand.
- An ice scraper or snow brush.
- A small shovel.
- Extra clothes and blankets.
- Non-perishable food.

If you plan to travel in bad weather, monitor road and weather conditions by checking local news, traffic, and weather stations or websites. Winter driving can be challenging — practice safe driving techniques with these tips:

- Leave a few minutes early so you have plenty of time to reach your destination.
- Wear your seat belt.
- Avoid distractions while driving.
- Stay alert and calm. Keep an eye on traffic farther ahead so you have extra time to react to sudden changes in traffic flow.
- Maintain a safe speed for road conditions. Keep a safe distance between you and other vehicles.
- Do not use cruise control. Touching your brakes to deactivate it can cause you to skid.
- Avoid making abrupt lane changes. Use turn signals well before you turn.

- Make room for maintenance vehicles and snowplows.
- Watch for black ice on slippery overpasses and bridges.
- Do not use alcohol or drugs while driving.

If you get stuck in the snow or skid off the road, stay in your car and wait for help, but first make sure your car is safely out of harm's way. Turn on the car heater to stay warm, but make sure your exhaust pipe is clear of snow.

Winter safety throughout the season also includes the following tasks:

- Winterize your home by replacing the weatherstripping on windows and doors, and cleaning leaves out of gutters.
- Service your home's heating system so that it works properly.
- Install carbon monoxide detectors to pick up on any CO that makes its way into your home through your garage or your heating system.

- Get chimneys inspected.
- Stock up on food, water, batteries, and other supplies in case you ever lose power during a bad storm and can't get out.

For more winter safety tips, see the following resources:

- Safety Depends on Me videos at blue.usps.gov/corpcomm/uspstv/safety-and-health.
- HERO Safety Talks.
- Center for Disease Control and Prevention (CDC) at cdc.gov/disasters/winter/index.html.
- Occupational Safety and Health Administration (OSHA) at osha.gov/winter-weather.
- National Safety Council at nsc.org/home-safety/tools-resources/seasonal-safety/winter.
- National Weather Service at weather.gov/safety/winter.

Always remember: "Safety Depends on Me."

— Occupational Safety and Health,
Human Resources, 12-16-21

Policies, Procedures, and Forms Updates

Manuals

DMM Revision: First-Class Package Service — Commercial Enter and Deposit

Effective January 9, 2022, the Postal Service™ will revise *Mailing Standards of the United States Postal Service*, Domestic Mail Manual (DMM®), sections 286.1.1 and 604.4.6.3, to clarify the First-Class Package Service — Commercial (FCPS-C) standards for enter and deposit.

FCPS-C was originally a presorted priced product and was later redefined as a single-piece priced product. These revisions will update the standards for enter and deposit to better reflect FCPS-C as a single-piece priced product. In addition, the Postal Service will update the “Enter and Deposit” section of Quick Service Guide (QSG) 280.

Although these revisions will not be published in the DMM until January 9, 2022, the standards are effective immediately.

Mailing Standards of the United States Postal Service, Domestic Mail Manual (DMM)

	*	*	*	*	*
200					
	*	*	*	*	*
280					
	*	*	*	*	*
286					
1.0					
1.1					

[Revise the text of 1.1 to read as follows:]

Mailers may deposit First-Class Package Service — Commercial parcels with postage evidencing indicia at any Postal Service facility, preferably near the customer’s local

Post Office. First-Class Package Service — Commercial parcels bearing a permit imprint must be deposited under 604.5.0 and 705.

	*	*	*	*	*
600					
	*	*	*	*	*
604					
	*	*	*	*	*
4.0					
	*	*	*	*	*
4.6					
	*	*	*	*	*
4.6.3					
	*	*	*	*	*

[Revise the first sentence of item a. to read as follows:]

- a. Mailers may deposit Priority Mail Express (including Flat Rate), Priority Mail (including Flat Rate), retail First-Class Mail, First-Class Package Service — Retail, First-Class Package Service — Commercial, retail Media Mail and Library Mail, and USPS Retail Ground with a postage evidencing indicia at any Postal Service facility, preferably near the customer’s local Post Office.***

* * * * *

The Postal Service will incorporate this revision into the next edition of the online DMM, which is available via Postal Explorer® at pe.usps.com.

DMM Revision: Products Mailable at Nonprofit USPS Marketing Mail Prices

Effective January 9, 2022, the Postal Service™ will revise *Mailing Standards of the United States Postal Service*, Domestic Mail Manual (DMM®), section 703.1.6.11, to reflect a change in the maximum allowed value of low-cost items for that type of product to be mailable at Nonprofit USPS Marketing Mail® prices, as long as all other required conditions are met.

Under section 703.1.6.11, which is based on statutory restrictions, three types of products or items are mailable at Nonprofit USPS Marketing Mail prices. A *low-cost item* (as defined in the Internal Revenue Code) is one of those products.

Each year, the Internal Revenue Service determines the allowed value of a low-cost item and adjusts it for cost of living. For 2022, the allowed value of a low-cost item is \$11.70 or less. The value of a low-cost item is the item's cost to the authorized nonprofit organization mailing the item or on whose behalf the item is mailed.

Although the Postal Service will not publish this revision in the DMM until January 9, 2022, the standard is effective January 1, 2022.

Mailing Standards of the United States Postal Service, Domestic Mail Manual (DMM)

* * * * *

700 Special Standards

703 Nonprofit USPS Marketing Mail and Other Unique Eligibility

1.0 Nonprofit USPS Marketing Mail

* * * * *

1.6 Eligible and Ineligible Matter

* * * * *

1.6.11 Products Mailable at Nonprofit USPS Marketing Mail Prices

* * * * *

[Revise the text of item a. to read as follows:]

- a. Low-cost items within the meaning of 26 USC 513(h)(2), Internal Revenue Code. At the beginning of each calendar year, the allowed value of low-cost items is adjusted for cost of living. Effective January 1, 2022, the cost of such items must not exceed \$11.70. This cost is the cost to the authorized organization that mails the items or on whose behalf the items are mailed.

* * * * *

The Postal Service will incorporate this revision into the next edition of the online DMM, which is available via Postal Explorer® at pe.usps.com.

— *Product Classification,
Product Solutions, 12-16-21*

Publications

Publication 431 Revision: Changes to Post Office Box Service and Caller Service Fee Groups

Effective December 16, 2021, Publication 431, *Post Office Box Service and Caller Service Fee Groups*, is revised to include the following changes.

Publication 431, *Post Office Box Service and Caller Service Fee Groups*

* * * *

[Revise the following entries:]

ZIP Code	Fee Group
50145	5

* * * *

The online version of Publication 431 is dated July 2013. Publication 431 is currently available on the Postal Service™ PolicyNet website (blue.usps.gov/cpim):

- Go to blue.usps.gov.

- In the left-hand column under “Essential Links,” click *PolicyNet*.
- Go to the right-hand side under “Published Forms and Directives.”
- Click *Publications*.

Offices with WebBATS Manager/Supervisor access can view current Publication 431 information by going to the WebBATS Edit Facility Information page, as follows:

1. Go to the WebBATS main menu, and select Utility> Facility>Edit Facility option.
2. View the Fee Group field on the Edit Facility Information page.

— *Post Office Operations, Retail and Post Office Operations, 12-16-21*

Forms

PS Form 3972 Revision: Leave Absence Analysis

Effective December 2021, the Postal Service™ revised PS Form 3972, *Leave Year 2022 Absence Analysis*, to update the form information for the upcoming year.

This December edition replaces the previously released November 2021 edition, which required a correction to include a row for the 2-week pay period of December 31, 2022, to January 13, 2023. (Each leave year begins with the first day of the first complete pay period within a calendar year, which in 2023 is January 14, 2023.)

USPS® facilities can use the following information to order PS Form 3972 through eBuy+:

PSIN:	PS 3972
PSN:	7530-02-000-9137
Unit of Measure:	EA
Minimum Order Quantity:	1
Bulk Pack Quantity:	1600
Quick Pick Number:	228
Price:	\$0.0376 *
Edition Date:	12/21

* The price is current as of this date and is subject to change. Any change in price will be reflected in eBuy+.

USPS facilities that have ordered and received the hard copy versions of the November edition of PS Form 3972 can still use those copies until they receive the December 2021 edition.

The December 2021 edition of PS Form 3972 is available on the PolicyNet website (as is the edition dated 2020 for Leave Year 2021):

- Go to blue.usps.gov.
- In the left-hand column, click *Essential Links*, and then click *PolicyNet*.
- Go to the right-hand side under “Published Forms and Directives,” click *Forms*, and then click on the range 3000–3999.
- Scroll down to the form entry and click the PDF icon.

The direct URL for the Postal Service PolicyNet website is blue.usps.gov/cpim.

The eRMS system has an electronic version of the December 2021 edition currently available.

— *Policies and Programs, Labor Relations, 12-16-21*

Organization Information

Domestic Mail

Labeling List Changes

Effective January 1, 2022, the Postal Service™ will revise Labeling List(s) L009, L011, L012, L014, L015, L051, L201, L601, and L605 to reflect changes in mail processing operations. Mailers are expected to label according to these revised lists for mailings inducted on or after the January 1, 2022, effective date through the February 28, 2022, expiration date.

Labeling Lists

* * * * *

L009 Mixed ADCs — Periodicals, Package Services Flats, and Irregular Parcels and Standard Mail Flats

* * * * *

Newly Added

Column A Originating 3-Digit ZIP Code	Column B Label To (Added To)
394	(PER, PKG SVCS, STD) MXD ATLANTA GA 303

Deleted

Column A Originating 3-Digit ZIP Code	Column B Label To (Deleted From)
394	MXD MEMPHIS TN 380

* * * * *

L011 Non-NDC/ASF Entry — Periodicals and Standard Mail Letters

Changes

Column A Originating ZIP Codes	Column A Originating ZIP Codes	Column B Label To (Change To)
394	MXD MEMPHIS TN 380	MXD ATLANTA GA 300

* * * * *

L012 5-Digit ZIP Scheme Combination

Changes

Column A Destination ZIP Codes	Column B Label Container To (Change From)	Column B Label Container To (Change To)
31419	SAVANNAH GA 31404	SAVANNAH GA 31419
31420	SAVANNAH GA 31404	SAVANNAH GA 31419
32009	FERNANDINA BEACH FL 32034	CALLAHAN FL 32011
32011	FERNANDINA BEACH FL 32034	CALLAHAN FL 32011
32046	FERNANDINA BEACH FL 32034	CALLAHAN FL 32011
34428	CRYSTAL RIVER FL 34428	CRYSTAL RIVER FL 34429
34429	CRYSTAL RIVER FL 34428	CRYSTAL RIVER FL 34429
34436	INVERNESS FL 34450	CRYSTAL RIVER FL 34429
34446	CRYSTAL RIVER FL 34428	CRYSTAL RIVER FL 34429
34448	CRYSTAL RIVER FL 34428	CRYSTAL RIVER FL 34429

* * * * *

L014 5-Digit ZIP Scheme Combinations for Hubs

Due to the extensive number of changes to the L014 Labeling List, the changes will not be published in this *Postal Bulletin*.

To access the L014 Labeling List changes, as well as a complete listing of EELs changes in Postal Pro (effective January 1, 2022), visit postalpro.usps.com/operations/labeling-lists/dec-2021-change-doc.

L015 3-Digit ZIP Code Prefix Groups — ADC Package Services Optional Sortation

Changes

Column A 3-Digit ZIP Code Prefix Group	Column B Label To (Change From)	Column B Label To (Change To)
184	ADC LEHIGH VALLEY PA 180	SCF SCRANTON PA 184
185	ADC LEHIGH VALLEY PA 180	SCF SCRANTON PA 184
186	ADC LEHIGH VALLEY PA 180	SCF SCRANTON PA 184
187	ADC LEHIGH VALLEY PA 180	SCF SCRANTON PA 184
188	ADC LEHIGH VALLEY PA 180	SCF SCRANTON PA 184
189	ADC PHILADELPHIA PA 189	ADC PHILADELPHIA PA 190
194	ADC PHILADELPHIA PA 189	ADC PHILADELPHIA PA 190

* * * * *

L051 DSCF for Parcel Select

Due to the extensive number of changes to the L051 Labeling List, the changes will not be published in this *Postal Bulletin*.

To access the L051 Labeling List changes, as well as a complete listing of EELs changes in Postal Pro (effective January 1, 2022), visit postalpro.usps.com/operations/labeling-lists/dec-2021-change-doc.

* * * * *

L201 Periodicals Origin Split and First-Class Mail Mixed ADC/AADC

Due to the extensive number of changes to the L201 Labeling List, the changes will not be published in this *Postal Bulletin*.

To access the L201 Labeling List changes, as well as a complete listing of EELs changes in Postal Pro (effective January 1, 2022), visit postalpro.usps.com/operations/labeling-lists/dec-2021-change-doc.

* * * * *

L601 Network Distribution Centers (NDCs)

Changes

Column A Destination ZIP Codes	Column B Label To (Change From)	Column B Label To (Change To)
394	NDC MEMPHIS TN 38999	NDC ATLANTA GA 31195

* * * * *

L605 NDCs/ASFs – Nonmachinable Parcel Select

Changes

Column A Destination ZIP Codes	Column B Label To (Change From)	Column B Label To (Change To)
394	NDC MEMPHIS TN 38999	NDC ATLANTA GA 31195

– Logistics, Network Development, and Support,
Network Operations, 12-16-21

Finance

2022 Pay Dates and Leave Year

The following chart lists the 2022 pay periods. For the convenience of timekeepers, each biweekly pay period appears as two separate weeks, with the beginning and ending dates indicated for each week.

The leave year always begins the first day of the first full pay period in the calendar year. The 2022 leave year begins January 1, 2022 (Pay Period 02-2022), extends for 27 full pay periods, and ends January 13, 2023 (Pay Period 02-2023).

2022 Pay Period Inclusive Dates

Pay Period	Week One	Week Two	Pay Date	Holidays
01	12-18 to 12-24	12-25 to 12-31	01-07	12-25
02	01-01 to 01-07	01-08 to 01-14	01-21	01-01
03	01-15 to 01-21	01-22 to 01-28	02-04	01-17
04	01-29 to 02-04	02-05 to 02-11	02-18	
05	02-12 to 02-18	02-19 to 02-25	03-04	02-21
06	02-26 to 03-04	03-05 to 03-11	03-18	
07	03-12 to 03-18	03-19 to 03-25	04-01	
08	03-26 to 04-01	04-02 to 04-08	04-15	
09	04-09 to 04-15	04-16 to 04-22	04-29	
10	04-23 to 04-29	04-30 to 05-06	05-13	
11	05-07 to 05-13	05-14 to 05-20	05-27	
12	05-21 to 05-27	05-28 to 06-03	06-10	05-30
13	06-04 to 06-10	06-11 to 06-17	06-24	
14	06-18 to 06-24	06-25 to 07-01	07-08	06-19
15	07-02 to 07-08	07-09 to 07-15	07-22	07-04
16	07-16 to 07-22	07-23 to 07-29	08-05	
17	07-30 to 08-05	08-06 to 08-12	08-19	
18	08-13 to 08-19	08-20 to 08-26	09-02	
19	08-27 to 09-02	09-03 to 09-09	09-16	09-05
20	09-10 to 09-16	09-17 to 09-23	09-30	
21	09-24 to 09-30	10-01 to 10-07	10-14	
22	10-08 to 10-14	10-15 to 10-21	10-28	10-10
23	10-22 to 10-28	10-29 to 11-04	11-11	
24	11-05 to 11-11	11-12 to 11-18	11-25	11-11
25	11-19 to 11-25	11-26 to 12-02	12-09	11-24
26	12-03 to 12-09	12-10 to 12-16	12-23	

2023 Pay Periods Begin

Pay Period	Week One	Week Two	Pay Date	Holidays
01	12-17 to 12-23	12-24 to 12-30	01-06	12-25
02	12-31 to 01-06	01-07 to 01-13	01-20	01-01

— Payroll, Controller, 12-16-21

Information Security

Watch Out for Holiday Scams

This holiday season, more than \$800 billion dollars will be spent on gifts, deliveries, and donations. Additionally, due to COVID-19, online purchases are likely to account for most national holiday shopping. As massive amounts of money will be transferred over the Internet, scammers will attempt to tap into the cash flow.

With cyber criminals constantly devising new tactics to steal money and compromise sensitive information — especially during the holiday season — knowing about some trending scams will help you avoid them:

- **Package delivery scams.** Posing as a delivery company, scammers will send a fake delivery notification to a person via text message or email. They will claim that the person has missed the delivery of a package or must pay a delivery fee to get the package. These

notifications could contain a phishing link that the scammers want the person to click on.

- **Charity scams.** Criminals will try to capitalize on the holiday spirit of giving with falsified, heartwarming stories to trick or guilt readers into donating money to fraudulent charities. When considering a donation, research the charity and its specific cause to find out exactly how your contribution will be used.

As always, practice caution while shopping online, buy only from reputable sources, and donate only to reputable charities. For more information about holiday scams, visit the FBI Scam and Safety page at [fbi.gov/scams-and-safety/common-scams-and-crimes/holiday-scams](https://www.fbi.gov/scams-and-safety/common-scams-and-crimes/holiday-scams).

— Corporate Information Security Office,
Chief Information Security Officer
and Digital Solutions, 12-16-21

Mailing and Shipping Services

Priority Mail Express Holiday Refund Eligibility

During the holidays, increased volume and weather conditions might affect the ability of the Postal Service™ to transport all Priority Mail Express® (PME) 1-day shipments. Similar to our competitors, the Postal Service has adjusted its postage refund policy for PME items sent from December 22–25.

Although the Postal Service fully expects PME service to meet 1-day delivery requirements where available, the Postal Service will not refund postage unless the first delivery attempt or delivery occurs more than 2 delivery days after the Acceptance scan event.

For questions regarding this policy, please email ShippingServices@usps.gov.

— Shipping and Commerce Product Management,
Business Solutions, 12-16-21

Pull-Out Information

Fraud

Invalid USPS Corporate Account Numbers

Provide this listing to Contract Postal Units and acceptance clerks in non-POS locations without intranet access to validate a USPS Corporate Account (USPSCA) number online. For all other locations, online USPSCA validation is preferred. This list supersedes all previous notices, which you must recycle.

Acceptance clerks must not accept Priority Mail Express[®] shipments bearing an invalid USPSCA number in the “Payment by Account” or “Agreement Number” section of the label or form.

Note: The first 6 digits of a 9-digit Custom Designed Service and Next Day Pickup Agreement make up the Corporate Account Number.

005846	021909	097527	124078	208623	240050	314281	480082	600177	928260	950700	980381
008028	039005	100226	127102	208679	274160	372505	486328	601101	932533	958113	995374
008590	044002	100863	152089	210272	301418	445158	503007	740441	933001	958952	
009555	067197	105209	208428	210430	303101	460161	537199	743090	941444	971072	
012400	091934	108956	208562	210490	305003	470016	551250	755007	941756	980259	

— Product Information Requirements, Mail Entry and Payment Technology, 12-16-21

USPS® Celebrates Outdoor Recreation with

Backyard Games Forever® Stamps



ON SALE
NATIONWIDE:
AUGUST 12, 2021

Sold as a full pane.

Missing, Lost, or Stolen U.S. Money Order Forms

Do Not Cash — Upon Receipt, Notify Local Postal Inspectors

Provide this listing to all Postal Service™ employees responsible for accepting and cashing postal money orders. Destroy all interim notices when the numbers listed appear in the *Postal Bulletin*. The new money order serial

numbers consist of the first 10 digits. The eleventh digit is a check digit only.

Do not cash outdated money orders **104 151 601 to 692 600 000**. Advise holders to send invalid money orders to Canada Post Corporation, Ottawa, Canada K1A 0B1. Check for altered dollar amounts by holding money orders to the light.

010 001 0200 to 0299	044 087 3457 to 3499	084 478 3920 to 3999	176 281 7963 to 7999
010 504 1932 to 1999	044 087 4000 to 4099	086 000 8271 to 8299	176 731 6586 to 6599
011 582 1889 to 1899	044 226 2487 to 2512	086 798 3840 to 3849	178 254 5000 to 9999
011 588 2900 to 3099	044 306 4200 to 4299	088 404 4472 to 4499	178 881 9900 to 9999
012 441 0784 to 0799	044 306 4370 to 4599	088 404 5584 to 5699	180 031 2089 to 2098
012 579 5675 to 5699	045 524 4121 to 4298	088 757 8688 to 8699	180 403 7723 to 7741
013 289 6176 to 6199	046 800 9870 to 9899	088 757 9400 to 9499	180 428 4580 to 0599
013 610 0014 to 0099	047 352 4000 to 4099	089 358 2248 to 2257	182 368 7544 to 0599
014 932 1000 to 1099	048 383 7650 to 7659	090 663 9678 to 9684	182 475 3229 to 3258
014 972 0800 to 0899	048 396 3647 to 3699	091 818 0071 to 0099	182 475 3904 to 3933
015 363 0065 to 0099	051 142 0755 to 0799	093 106 9346 to 9355	182 631 0031 to 0099
017 028 3200 to 3299	051 774 8857 to 8899	093 203 0500 to 0599	182 911 6539 to 6600
018 569 5333 to 5399	051 781 2875 to 2885	093 684 3630 to 3699	184 218 2760 to 2799
018 986 5264 to 5299	051 977 7010 to 7023	094 081 5074 to 5099	185 828 1474 to 1499
019 518 2814 to 2899	052 058 7115 to 7199	094 216 2555 to 2599	186 132 7583 to 0599
020 698 5159 to 5199	054 450 1130 to 1167	094 580 7062 to 7099	186 629 0589 to 0599
020 844 7307 to 7399	057 670 0563 to 0599	094 639 4200 to 4299	187 184 6177 to 0199
020 972 8948 to 8999	058 187 3836 to 3899	095 070 7186 to 7199	187 323 8200 to 8299
022 021 9110 to 9181	058 523 3003 to 3099	095 076 8300 to 8399	187 441 6080 to 6099
022 037 1411 to 1499	058 591 1153 to 1299	095 354 6864 to 6899	188 831 6774 to 6799
022 527 9201 to 9210	058 895 3746 to 3799	097 224 1350 to 1599	188 835 6370 to 6399
022 529 1882 to 1899	059 986 0814 to 0899	100 160 3800 to 3899	189 083 1064 to 1099
023 637 7169 to 7199	060 406 7650 to 7699	104 667 6400 to 6499	189 660 9583 to 9599
024 380 4100 to 4199	063 491 8122 to 8199	104 876 8937 to 8999	191 179 0377 to 0399
024 496 6870 to 6896	063 916 9968 to 9999	112 049 4413 to 4499	192 050 5762 to 5781
025 092 0987 to 0999	064 091 4500 to 4599	112 870 9765 to 9799	194 456 8600 to 0699
025 369 5535 to 5599	065 170 0471 to 0499	113 319 2000 to 2099	195 194 6881 to 6899
025 729 1151 to 1199	065 255 7909 to 7999	114 402 3850 to 3899	195 874 1112 to 1199
025 729 1643 to 1799	065 392 6345 to 6399	114 866 5368 to 5397	196 979 0524 to 0599
026 492 3180 to 3199	066 099 2014 to 2099	116 154 2800 to 2899	197 244 6100 to 6199
027 361 0430 to 0499	066 648 2880 to 2899	116 986 4400 to 4499	197 244 6300 to 6399
027 369 4482 to 4495	066 787 3639 to 3699	117 175 1647 to 5169	197 244 6400 to 6499
027 671 8762 to 8776	066 845 7500 to 9999	117 951 4687 to 4699	197 244 6500 to 6599
027 787 9886 to 9899	067 093 3869 to 3899	117 951 5200 to 5299	197 244 6600 to 6699
027 965 9487 to 9499	068 895 0334 to 0399	119 786 3051 to 3064	197 244 6700 to 6799
028 100 8069 to 8099	070 724 4488 to 4499	119 815 8961 to 6199	197 244 6800 to 8999
028 191 1852 to 1999	070 841 9181 to 9199	119 850 7400 to 7499	198 285 2556 to 2566
028 850 3000 to 3199	070 844 2546 to 2599	119 850 7700 to 7999	199 105 0778 to 0799
029 510 1500 to 1599	070 916 1340 to 1399	121 634 0460 to 0499	199 678 2968 to 2999
030 687 0903 to 0999	071 047 5768 to 5799	122 451 9879 to 9899	202 748 5133 to 5199
030 701 3442 to 3499	071 179 9800 to 9899	122 714 6805 to 6900	202 748 5245 to 5299
031 077 4507 to 4799	071 386 3682 to 3699	124 916 0304 to 0499	202 748 5300 to 5399
032 295 7500 to 9999	071 507 6840 to 6899	126 423 0136 to 0169	202 748 5400 to 5499
034 394 1000 to 1099	072 045 9641 to 9699	127 500 2328 to 2399	203 256 1240 to 1299
034 943 0400 to 0799	072 675 8287 to 8299	160 901 2254 to 2299	204 230 3577 to 3595
035 035 4337 to 4399	073 763 0867 to 0876	161 103 6581 to 6599	205 019 0174 to 0199
037 312 7500 to 7599	073 763 0878 to 0887	161 194 2857 to 0899	206 936 3184 to 3199
037 706 9578 to 9599	073 763 0889 to 0898	162 032 4447 to 4499	207 196 9900 to 9999
037 805 3677 to 3699	077 617 5481 to 5499	163 257 1085 to 1099	207 204 0700 to 0799
037 909 5490 to 5499	077 999 4001 to 4099	164 359 2406 to 2499	207 204 0800 to 0899
037 931 4660 to 4699	078 174 4475 to 4499	166 101 1433 to 1499	207 514 3857 to 3899
039 145 6521 to 6595	078 219 4931 to 4999	167 555 5201 to 5212	208 556 4707 to 4799
040 024 3901 to 3999	078 250 4756 to 4799	167 555 5214 to 5299	210 057 4038 to 4047
040 674 7100 to 7199	078 823 8312 to 8399	169 618 6274 to 6299	210 221 0548 to 0599
040 688 8816 to 8899	079 374 0300 to 2499	171 806 6878 to 6893	214 061 4711 to 4724
041 299 6752 to 6799	079 807 2342 to 2399	173 639 4685 to 4699	214 303 6311 to 6325
041 623 8889 to 8899	082 721 0228 to 0254	174 238 2779 to 2799	214 303 6239 to 6258
041 803 6565 to 6599	083 140 5000 to 7499	174 281 9347 to 9399	214 877 4251 to 4273
043 129 1968 to 1997	083 784 8886 to 8899	175 251 2600 to 0699	215 252 3918 to 3992
043 205 5922 to 5999	083 913 6915 to 6999	176 281 7937 to 7950	217 585 1400 to 1499

820 070 761 to 1 540	823 284 931 to 4 990	826 720 201 to 0 230	828 732 331 to 2 390
820 191 342 to 1 360	823 293 031 to 3 210	827 005 671 to 5 830	828 807 781 to 7 840
820 274 856 to 4 880	823 556 011 to 6 100	827 287 861 to 7 950	828 830 952 to 0 963
820 600 171 to 0 230	824 078 341 to 8 370	827 291 502 to 1 520	828 939 781 to 0 050
821 172 241 to 2 360	824 156 325 to 6 340	827 575 381 to 5 470	829 002 721 to 2 870
821 229 661 to 9 720	824 511 252 to 1 270	827 609 085 to 9 100	829 005 301 to 5 540
821 229 743 to 9 780	824 588 281 to 8 370	827 619 811 to 9 840	829 080 241 to 0 330
821 903 731 to 3 910	825 140 397 to 0 460	827 883 511 to 3 600	829 160 986 to 1 000
821 927 841 to 7 850	825 409 651 to 9 680	828 160 441 to 0 530	829 176 841 to 6 930
822 505 801 to 5 830	825 472 171 to 2 200	828 376 201 to 6 260	829 471 561 to 1 590
822 703 442 to 3 470	826 042 898 to 2 920	828 441 602 to 1 630	829 561 065 to 1 080
822 900 991 to 1 020	826 226 644 to 6 670	828 539 316 to 9 340	829 566 481 to 6 510
822 925 951 to 6 100	826 582 951 to 3 430	828 539 341 to 9 370	829 569 931 to 9 960

— Criminal Investigations Group, U.S. Postal Inspection Service, 12-16-21

Verifying U.S. Postal Service Money Orders

Follow these steps to cash a Postal Service™ money order:

1. Check that the amount does not exceed the legal limit: \$1,000 for domestic, and \$700 for international Postal Service money orders.
2. Check that the proper security features are present:
 - When held to the light, a watermark of Benjamin Franklin is repeated from top to bottom on the left side.
 - When held to the light, a dark line (security thread) runs from top to bottom with the word “USPS” repeated.
 - When there is discoloration around the dollar amounts, this might indicate the amounts were changed.

These appear in Postal Service Notice 299, *U.S. Postal Money Order Reference Card*, or online at usps.com/shop/money-orders.htm.

3. If the money order seems suspicious, call the U.S. Postal Service Money Ordxxer Verification System at 866-459-7822.

Provide this information to local banks and retailers, as they also receive Postal Service money orders for cashing.

— Delivery and Retail Customer Service Operations, 12-16-21

Counterfeit Canadian Money Order Forms

Do Not Cash

To be posted and used by retail window employees. As directed, destroy previous notices. Destroy all interim notices when the numbers listed appear in the *Postal Bulletin*.

671,819,086	683,594,542	687,262,503
676,612,640	684,683,610	687,262,525
677,891,039	686,619,878	687,262,526
678,282,493	686,619,886	687,287,578
678,916,031	686,619,887	687,287,581
679,552,215	686,794,382	687,287,582
679,694,334	686,794,426	694,063,898
679,751,983	686,794,427	694,063,899
679,800,207	686,794,431	694,063,980
681,130,536	687,262,502	701,321,725
681,844,376		

— Criminal Investigations Group, U.S. Postal Inspection Service, 12-16-21

Toll-Free Number Available to Verify Canadian Money Orders

The Canada Post Corporation has a toll-free number that cashing agents can call to verify the validity of Canadian Postal Money Orders. The number is 800-563-0444.

This toll-free number is printed on the back of the Canadian Postal Money Orders.

— Criminal Investigations Group, U.S. Postal Inspection Service, 12-16-21

USPS® Serves Up *Espresso Drinks*

Forever®
Stamps

On Sale
Nationwide:
April 9, 2021



Other Information

Overseas Military/Diplomatic Mail

Mail addressed to military and diplomatic post offices overseas is subject to certain conditions or restrictions of mailing regarding content, preparation, and handling. The APO/FPO/DPO table outlines these conditions by APO/FPO/DPO ZIP Codes™ through the use of footnoted mailing restrictions codes (see the [Restrictions](#) page following the table).

Acceptance clerks must use the table with the Retail System Software terminal to determine which APO/FPO/DPO ZIP Codes are active and which conditions of mailing apply.

The entries under “Changes” appear in bold in the following APO/FPO/DPO table:

Changes

APO/FPO/DPO	Action	Effective Date	See Restrictions
APO AE 09009	Add C2	11/16/2021	B-C-C2-D-E-F3-H-M-R-S-U-Z1
APO AE 09012	Add C2	11/16/2021	B-C-C2-D-E-F3-H-M-R-S-U-Z1
APO AE 09021	Add C2	11/16/2021	B-C-C2-D-E-F3-H-M-R-S-U-Z1
APO AE 09060	Add C2	11/16/2021	B-C-C2-D-E-F1-F3-H-M-N-R-S-U-Z1
APO AE 09094	Add C2	11/16/2021	B-C-C2-D-F3-H-M-P-R-S-Z1
APO AE 09104	Add C2	11/16/2021	B-C-C2-D-F3-H-M-R-S-U-Z1
APO AE 09123	Add C2	11/16/2021	B-C-C2-D-E-F3-H-M-R-S-U-Z1
APO AE 09125	Add C2	11/16/2021	A-B-C-C2-F-F1-F3-H-N-R-R1-S-V-V1
APO AE 09126	Add C2; Remove D	11/16/2021	B-C-C2-F3-H-M-P-R-S-Z1
APO AE 09135	Add C2	11/16/2021	A-B-C2-F-F3-H-N-R-S-U-V-Z1
APO AE 09214	Add C2	11/16/2021	B-C-C2-D-E-F3-H-M-R-S-U-Z1
APO AE 09261	Add C2	11/16/2021	B-C-C2-D-E-F3-H-M-N-R-S-U-V-Z1
APO AE 09319	Close	12/02/2021	
APO AE 09320	Close	11/15/2021	
APO AE 09401	Add C2	11/16/2021	B-C-C1-C2-F3-M-R-S-U-Z1
APO AE 09403	Add C2	11/16/2021	B-C-C1-C2-F3-M-R-S-U-Z1
APO AE 09421	Add C2	11/16/2021	B-C-C1-C2-F3-M-R-S-U-Z1
APO AE 09447	Add C2	11/16/2021	B-C-C1-C2-F3-M-R-S-U-V-Z1
APO AE 09454	Add C2	11/16/2021	B-C-C1-C2-F3-M-R-S-U-V-Z1
APO AE 09456	Add C2	11/16/2021	B-C-C1-C2-F3-M-N-R-S-U-V-Z1
APO AE 09459	Add C2	11/16/2021	B-C-C1-C2-F3-M-R-S-U-Z1
APO AE 09461	Add C2	11/16/2021	B-C-C1-C2-F3-M-P-R-S-U-Z1
APO AE 09463	Add C2	11/16/2021	B-C-C1-C2-F3-M-R-S-U-Z1
APO AE 09464	Add C2	11/16/2021	B-C-C1-C2-F3-R-S-U-Z1
APO AE 09468	Add C2	11/16/2021	B-C-C1-C2-F3-M-R-S-U-Z1
APO AE 09469	Add C2	11/16/2021	B-C-C1-C2-F3-R-S-U-Z1
APO AE 09470	Add C2	11/16/2021	B-C-C1-C2-F3-M-R-S-U-Z1
APO AE 09494	Add C2	11/16/2021	B-C-C1-C2-F3-M-R-S-U-Z1
APO AE 09603	Add C2	11/16/2021	B-C-C2-F-F1-F3-R-S-U-V-Z1
APO AE 09604	Add C2	11/16/2021	B-C-C2-F-F1-F3-P-R-S-U-V-Z1
FPO AE 09609	Add V	11/17/2021	B-C-C2-F-F3-N-R-S-U-V-Z1
APO AE 09610	Add C2	11/16/2021	B-C-C2-F-F1-F3-M-R-S-U-V-Z1
APO AE 09643	Add C2	11/16/2021	B-C-C2-F3-M-R-S-U-V-Z1
APO AE 09706	Add C2	11/16/2021	B-C-C2-F3-M-N-R-S-U-V-Z1
APO AE 09717	Add C2	11/16/2021	A-B-C2-F3-M-R-S-V-W-Z1
APO AE 09719	Add C2	11/16/2021	B-C-C2-D-F3-M-R-S-U-V-Z1
APO AE 09720	Add C2	11/16/2021	B-C2-F3-M-R-S-U-V-Z1
APO AE 09725	Add C2	11/16/2021	A-B-C2-F-F3-H-N-Q-R-S-V-V1-Z-Z1
APO AE 09745	Add C2	11/16/2021	A-B-C2-F-F1-F3-M-N-R-R1-S-V-Z1
APO AE 09804	Add C2	11/16/2021	A-B-C2-F-F1-F3-M-N-R-S-V-Z1
APO AE 09810	Add C2	11/16/2021	A-B-C2-F-F1-F3-N-R-S-V-Z1
APO AE 09815	Open	12/02/2021	A-B-C-C2-E-E2-E3-F1-F3-H-H1-J-M-N-R-R1-S-U-V-Z1
APO AE 09818	Add C2, R	11/16/2021	A-B-C-C2-F-F3-M-R-S-V-Z1
APO AE 09819	Open	12/02/2021	A-B-C-C1-C2-E2-F-F1-F3-H-H1-M-R-R1-S-V-Z1
APO AE 09821	Add C2	11/16/2021	A-B-C-C2-F-F3-N-R-S-V-Z1
APO AE 09822	Add C2	11/16/2021	A-B-C-C2-F-F3-M-R-S-V-Z1
APO AE 09824	Add C2	11/16/2021	A-B-C-C2-F-F3-M-R-S-V-Z1
APO AE 09853	Add C2	11/17/2021	B-C1-C2-E2-F-F1-F3-H1-N-R-R1-S-U2-V-Z1
APO AE 09908	Add C2	11/16/2021	A-B-C2-F-F1-F3-N-R-R1-S-V-Z1
APO AE 09909	Add C2	11/16/2021	A-B-C2-F-F1-F3-N-R-R1-S-V-V1-Z1

We have eliminated "Not Active" entries from the table below to save space and paper.

APO/FPO/DPO Table

APO/ FPO/ DPO	See Restrictions	APO/ FPO/ DPO	See Restrictions	APO/ FPO/ DPO	See Restrictions	APO/ FPO/ DPO	See Restrictions
09002	A-B-F-F3-H-N-Q-R-S-V-Z-Z1	09095	B-C-D-E-H-M-R-U	09176	A-B-C2-F-F1-F3-J-L-M-N-R-R1-S-T-V-X-Z1	09289	B-E2-F1-F3-H1-J-L-M-N-R-R1-S-T-U2-V-X-Z1
09003	B-C-D-E-F3-H-M-P-R-S-U	09096	B-C-D-E-F3-H-M-R-S-U	09177	B-C-D-E-F3-H-M-R-S-U	09290	A-B-F1-F3-J-L-M-N-R-S-T-U2-V-X-Z1
09004	B-C-D-E-F3-H-M-R-S-U	09103	A-B-F-F3-H-N-Q-R-S-V-Z-Z1	09178	B-C1-C2-E2-F1-F3-I3-L-M-N-R-S-T-V-X-Z-Z1	09291	B-C-C1-C2-E2-F1-F3-H1-L-N-R-R1-S-T-V-X-Z1
09005	B-C-D-E-F3-H-M-P-R-S-U	09104	B-C-C2-D-F3-H-M-R-S-U-Z1	09180	B-C-D-E-F3-H-M-R-S-U	09292	A-B-C-C2-E-E2-E3-F1-F3-H-H1-J-L-M-N-R-R1-S-T-V-X-Z1
09006	B-C-D-E-F3-H-M-R-S-U	09107	B-C-D-E-F3-H-M-R-S-U	09186	B-C-D-E-F3-H-M-P-R-S-U	09301	A-B-C1-C2-E2-F-F1-F3-H1-I3-L-M-N-R-R1-S-T-U4-V-Z-Z1
09008	A-B-F-F3-H-N-Q-R-S-V-Z-Z1	09112	B-C-D-E-F3-H-M-R-S-U	09203	A-B-C-C1-C2-F-F1-F3-I3-J-L-M-N-R-R1-T-V-Z-Z1	09302	A-B-C1-F-F1-F3-H-M-N-R-S-V-Z-Z1
09009	B-C-C2-D-E-F3-H-M-R-S-U-Z1	09113	A-B-F-F3-H-N-Q-R-S-V-Z-Z1	09204	B-C-F3-M-N-R-S-V-Z1	09305	A-B-C1-E2-F-F1-F3-H1-I3-M-N-R-R1-S-T-V-Z-Z1
09010	B-C-D-E-F3-H-M-R-S-U2	09114	B-C-D-E-F3-H-M-R-S-U	09211	B-C-D-E-F3-H-M-P-R-S-U	09306	A-B-C1-E2-F-F1-F3-H1-R-R1-S-U2-V-Z1
09011	B-C-D-E-F3-H-M-R-S-U	09115	A-B-F-F3-H-N-Q-R-S-V-Z-Z1	09213	B-C2-F-F1-F3-H-J-L-M-N-R-R1-T-U-V-Z1	09307	B-C-C2-F-F3-N-R-R1-S-Z1
09012	B-C-C2-D-E-F3-H-M-R-S-U-Z1	09116	A-B-F-F3-H-N-Q-R-S-V-Z-Z1	09214	B-C-C2-D-E-F3-H-M-R-S-U-Z1	09309	A-B-C-C1-C2-E2-F-F1-F3-H1-M-N-R-R1-S-V-Z1
09013	B-C-D-E-F-F1-F3-H-M-R-S-U-Z1	09123	B-C-C2-D-E-F3-H-M-R-S-U-Z1	09216	B,C,F1,F3,M,N,R,S,V,Z1	09310	A-B-C1-C2-E2-F-F1-F3-H1-I3-L-M-N-R-R1-S-T-U4-V-Z-Z1
09014	B-C-D-E-F3-H-M-P-R-S-U	09125	A-B-C-C2-F-F1-F3-H-N-R-R1-S-V-V1	09227	B-C-D-E-F3-H-M-R-S-U	09311	A-B-C1-C2-E2-F-F1-F3-H1-I3-L-M-N-R-R1-S-T-U4-V-Z-Z1
09015	A-B-C-C1-C2-F-F1-F3-J-L-M-N-R-R1-S-V-Z1	09126	B-C-C2-F3-H-M-P-R-S-Z1	09240	A-B-C1-F-F3-H-N-R-S-V	09312	A-B-C1-C2-E2-F-F1-F3-H1-I3-L-M-N-R-R1-S-T-U4-V-Z-Z1
09016	B-C-D-E-F1-F3-H-M-R-S-U	09128	B-C-D-E-F3-H-M-R-S-U	09241	A-B-C2-F3-N-R-S-U-Z1	09313	A-B-C-C1-E2-F-F1-F2-F3-H1-R-R1-S-V-Z1
09017	A-B-F-F3-H-N-Q-R-S-V-Z-Z1	09131	B-C-D-E-F3-H-M-R-S-U	09242	A-B-C1-F-F3-H-N-R-S-V	09315	A-B-C1-E2-F-F3-N-R-R1-S-V-Z1
09018	A-B-F-F3-H-N-Q-R-S-V-Z-Z1	09135	A-B-C2-F-F3-H-N-R-S-U-V-Z1	09250	B-C-D-E-F3-H-M-R-S-U	09316	A-B-C1-E2-F-F1-F3-H1-I3-M-N-R-R1-S-T-V-Z-Z1
09020	B-C-D-E-F3-H-M-R-S-U	09136	B-C-D-E-F1-F3-H-M-P-R-S-U	09266	A-B-F3-R-S-U-V-Z1	09321	A-B-C1-C2-E2-F-F3-H1-M-N-R-R1-S-V-Z1
09021	B-C-C2-D-E-F3-H-M-R-S-U-Z1	09138	B-C-D-F3-H-M-R-S-U	09276	A-B-F-F3-I3-L-M-N-R-S-T-V-X-Z-Z1	09330	A-B-C1-C2-D-E-E2-F-F1-F3-H-H1-M-R-R1-S-V-Z1
09034	B-C-D-E-F3-H-M-R-S-U	09140	B-C-D-E-F3-H-M-R-S-U	09277	B-C-C2-D-E-F3-H-M-N-R-S-U-V-Z1	09333	A-B-C-C1-E2-F-F1-F3-H1-I3-M-N-R-R1-S-V-V1-Z-Z1
09044	B-C-D-F1-F3-H-R-S-U	09142	B-C-D-E-F3-H-M-R-S-U	09283	A-B-E-E1-F-F3-L-M-N-R-S-T-V-X-Z1	09343	A-B-C1-F-F3-M-N-R-R1-S-V-Z1
09046	B-C-D-E-F3-H-M-R-S-U	09154	B-C-D-E-F3-H-M-R-S-U	09285	A-B-C-E-E-1-F1-F3-H-I3-L-M-N-R-S-T-V-X-Z1	09348	A-B-C1-E2-F-F1-F3-H1-I3-M-N-R-R1-S-T-V-Z-Z1
09049	B-C-D-E-F3-H-M-R-S-U	09160	B-C-C2-D-F-F1-F3-H-J-L-M-N-R-R1-T-U-V-Z1	09287	B-C2-E1-F1-F3-J-L-N-R-S-T-V-X-Z1	09357	A-B-C1-E2-F-F3-H1-M-R-V-Z1
09053	B-C-D-E-F3-H-M-R-S-U	09170	A-B-C2-F-F1-F3-J-L-M-N-R-R1-S-T-V-X-Z1			09363	A-B-C1-E2-F-F3-H1-M-R-R1-S-V-Z1
09060	B-C-C2-D-E-F1-F3-H-M-N-R-S-U-Z1	09171	A-B-C1-C2-E3-F-F1-F3-J-L-M-N-R-R1-S-T-V-X-Z1				
09067	B-C-D-E-F3-H-M-R-S-U	09172	B-C-D-E-F3-H-M-R-S-U				
09068	B-C-D-E-F3-H-R-S-U-Z1	09173	B-C-D-E-F3-H-M-R-S-U				
09069	A-B-C-D-E-F3-H-N-R-S-U-V	09174	B-C-C2-F-F1-F3-I3-L-M-N-R-R1-S-T-V-X-Z-Z1				
09079	B-C-D-E-F3-H-M-R-S-U	09175	A-B-C1-C2-E2-F-F1-F3-H1-J-L-M-N-R-R1-S-T-V-W-X-Z1				
09094	B-C-C2-D-F3-H-M-P-R-S-Z1						

APO/ FPO/ DPO	See Restrictions	APO/ FPO/ DPO	See Restrictions	APO/ FPO/ DPO	See Restrictions	APO/ FPO/ DPO	See Restrictions
09365	A-B-C-C1-E2-F-F3-H1-M-N-R-V-Z1	09510	A-B-C1-E2-F-H1-M-R-R1-V-Z1	09590	B-V	09648	B-C2-F3-N-R-S-U-V-Z1
09366	A-B-C-C1-E2-F-F1-F3-H-H1-M-R-R1-S-V-Z1	09511	B-F-F1-R-R1-V	09591	B-C2-E2-E3-F-F1-F3-R-R1-S-V-Z1	09649	B-C2-F3-N-R-S-U-Z1
09401	B-C-C1-C2-F3-M-R-S-U-Z1	09512	B-F-F1-F3-R-R1-S-V	09592	B-F-F1-F3-R-R1-S-V	09701	A-B-C1-C2-F-F1-F3-J-L-M-N-R-R1-T-V-Z1
09403	B-C-C1-C2-F3-M-R-S-U-Z1	09513	B-F-F1-F3-R-R1-S-V-V1	09593	B-F-F1-F3-R-S-V	09702	B-C-C1-F1-F3-M-R-R1-S-U
09410	C2-F-F1-F3-N-R-S-U2	09514	B-F-F1-F3-R-R1-S-V-V1	09594	B-C1-E2-F-F1-F3-R-R1-S-V	09704	B-C-F-F1-F3-R-R1-S-U2-V
09421	B-C-C1-C2-F3-M-R-S-U-Z1	09517	B-F-F1-F3-R-R1-S-V	09595	B-F-F1-F3-I3-J-R-R1-S-V-V1-Z1	09705	B-C-C1-F1-F3-M-R-R1-S-U
09447	B-C-C1-C2-F3-M-R-S-U-V-Z1	09520	B-F-F1-F3-R-R1-S-V	09596	B-F-F1-R-R1-V	09706	B-C-C2-F3-M-N-R-S-U-V-Z1
09454	B-C-C1-C2-F3-M-R-S-U-V-Z1	09522	B-F-F1-F3-R-S-V	09599	B-F-F1-R-R1-V	09707	B-C2-F-F1-F3-J-L-M-N-R-R1-T-V-Z1
09456	B-C-C1-C2-F3-M-N-R-S-U-V-Z1	09523	B-F-F1-F3-R-R1-S-V	09600	B-C-C2-F-F1-F3-R-S-U-Z1	09708	B-C-C1-F1-F3-M-R-R1-S-U
09459	B-C-C1-C2-F3-M-R-S-U-Z1	09524	B-F-F1-R-R1-V	09602	B-C-F-F1-N-R-U-V	09709	B-C1-C2-E2-F-F1-F3-H-H1-J-L-N-R-R1-T-V-Z1
09461	B-C-C1-C2-F3-M-P-R-S-U-Z1	09532	B-F-F1-F3-R-R1-S-V	09603	B-C-C2-F-F1-F3-R-S-U-V-Z1	09710	B-C-C1-F-F1-J-L-M-N-R-R1-T-U-V-Z1
09463	B-C-C1-C2-F3-M-R-S-U-Z1	09533	B-V	09604	B-C-C2-F-F1-F3-P-R-S-U-V-Z1	09712	A-B-C2-F-F3-H-R-S-U-V-Z1
09464	B-C-C1-C2-F3-R-S-U-Z1	09534	B-F-F1-F3-R-R1-S-V	09605	B-C-D-F3-H-M-R-S-U-V	09714	B-C-C1-F1-F3-M-R-R1-S-U
09467	B-E-E1-F-F3-J-L-M-N-R-S-T-V-X-Z1	09541	A-B-C-F-F3-M-N-S-V-Z1	09606	B-C-D-F3-H-M-R-S-U-V	09715	B-F-F1-J-L-M-N-R-T-V-Z1
09468	B-C-C1-C2-F3-M-R-S-U-Z1	09542	A-B-C-F-F3-M-N-S-V-Z1	09608	B-C-F-F3-N-R-S-U-V-Z1	09716	B-C-C2-F-F1-F3-J-L-M-N-R-R1-T-V-Z1
09469	B-C-C1-C2-F3-R-S-U-Z1	09543	A-B-C-F-F3-M-N-S-V-Z1	09609	B-C-C2-F-F3-N-R-S-U-V-Z1	09717	A-B-C2-F3-M-R-S-V-W-Z1
09470	B-C-C1-C2-F3-M-R-S-U-Z1	09544	A-B-C-F-F3-M-N-S-V-Z1	09610	B-C-C2-F-F1-F3-M-R-S-U-V-Z1	09718	B-F-F1-J-L-M-N-R-T-U-V-Z1
09487	A-B-C-C1-C2-E2-F1-F3-I3-L-M-N-R-R1-S-T-V-W-X-Z1	09545	A-B-C-F-F3-M-N-S-V-Z1	09613	B-C-F-F3-N-R-S-U-V	09719	B-C-C2-D-F3-M-R-S-U-V-Z1
09488	A-B-C-C1-C2-E2-F3-J-L-M-N-S-T-V-W-X-Z1	09550	B-F-F1-R-R1-V	09614	A-B-C1-C2-E2-F-F1-F3-H1-J-L-M-N-R-R1-T-V-W-Z1	09720	B-C2-F3-M-R-S-U-V-Z1
09489	A-B-C-C1-C2-E2-F1-F3-L-M-N-R-R1-S-T-V-W-X-Z1	09554	B-F-F1-R-R1-V	09618	B-C-C2-F-F3-R-S-U-Z1	09722	A-B-F-F3-H-N-Q-S-V-Z1
09490	A-B-C1-C2-E2-F-F1-F3-H1-J-L-M-N-R-R1-S-T-V-X-Z1	09556	B-F-F1-R-R1-V	09620	B-C-C2-F-F3-R-S-U-V-Z1	09723	B-C2-F-F1-F3-J-L-M-N-R-R1-T-V-Z1
09491	A-B-C1-C2-E2-F1-F3-H1-J-L-M-N-R-R1-S-T-V-Z1	09564	B-F-F1-R-R1-V	09621	B-C-F-F3-R-U-Z1	09724	B-C-C1-F1-F3-M-R-R1-S-U
09494	B-C-C1-C2-F3-M-R-S-U-Z1	09565	B-F-F1-F3-R-R1-S-V	09622	B-C-C2-F-F3-R-S-U-Z1	09725	A-B-C2-F-F3-H-N-Q-R-S-V-V1-Z-Z1
09498	B-C1-C2-F-F1-F3-J-L-N-R-R1-T-V-Z1	09566	B-C2-E2-E3-F-F1-F3-R-R1-S-V-Z1	09623	B-C-C2-F-F3-R-S-U-V-Z1	09726	B-F-F1-J-L-M-N-R-T-U-V-Z1
09501	B-V	09567	B-C2-E2-E3-F-F1-F3-R-R1-V-Z1	09624	B-C-C2-F-F1-F3-I3-L-N-R-R1-T-U-V-Z1	09727	A-B-C1-C2-F-F1-F3-J-L-M-N-R-R1-T-V-Z1
09502	B-V	09568	B-V	09625	B-C-C2-F-F3-N-R-S-U-Z1	09728	A-B-C-C1-C2-F-F1-F3-J-L-N-R-R1-T-V-Z1
09503	B-F-F1-R-R1-V	09569	B-C2-E2-E3-F-F1-F3-R-R1-V-Z1	09627	B-C-C2-F-F3-R-S-U-V-Z1	09729	B-C-C2-F-F3-N-R-R1-S-U-V-Z1
09504	B-V	09570	A-B-F-F1-F3-R-R1-S-V	09630	B-C-F-F3-R-S-U-V	09730	A-B-C1-C2-F-F1-F3-J-L-M-N-R-R1-T-V-Z1
09505	B-V	09573	B-C2-E2-E3-F-F1-F3-R-R1-S-V-Z1	09633	B-C-D-F-F1-F3-M-R-S-U-U1-U2-U3-V-Z1	09731	A-B-C1-C2-F-F1-F3-J-L-M-N-R-R1-T-V-Z1
09506	B-V	09574	B-F-F1-R-R1-V	09634	A-B-F-F3-M-N-R-S-V	09732	B-F-F3-N-S-V-Z1
09507	B-V	09575	B-F-F1-R-R1-V	09636	B-C-C2-F-F3-R-S-U-V-Z1	09733	B-F-F3-N-R-S-V-Z
09508	B-F-F1-R-R1-V	09576	B-F-F1-R-R1-V	09642	B-C2-F-F1-F3-J-L-M-N-R-T-U-V		
09509	B-F-F1-R-R1-V	09577	B-F3-S-V	09643	B-C-C2-F3-M-R-S-U-V-Z1		
		09578	B-F-F1-F3-R-R1-S-V-Z1	09645	B-C-C1-E1-E2-F-F1-F3-M-R-S-U-X-Z1		
		09579	B-F-F1-R-R1-V	09647	B-C2-F1-F3-M-N-R-S-U-Z1		
		09581	B-F-F1-F3-R-R1-S-V				
		09582	B-C2-F-F1-F3-R-R1-S-V				
		09583	B-F-F1-F3-I3-J-R-R1-S-V-V1				
		09586	B-C2-F-F1-F3-R-R1-S-V				
		09587	B-C2-E2-E3-F-F1-F3-R-R1-S-V-Z1				
		09588	B-F-F1-F3-R-R1-S-V				
		09589	B-F-F1-F3-R-S-V				

APO/ FPO/ DPO	See Restrictions	APO/ FPO/ DPO	See Restrictions	APO/ FPO/ DPO	See Restrictions	APO/ FPO/ DPO	See Restrictions
09734	A-B-C-C1-C2-F-F1-F3-I3-J-L-M-N-R-R1-T-V-Z-Z1	09803	A-B-C-C2-E-E2-E3-F1-F3-H-H1-J-M-N-R-R1-S-U-V-Z1	09830	B-C-F-F1-F3-J-L-M-N-R-R1-S-T-V-Z1	09868	A-B-E1-E2-E3-F1-F3-M-N-R-S-U-V-Z1
09735	B-F3-N-R-S-V-Z-Z1	09804	A-B-C2-F-F1-F3-M-N-R-S-V-Z1	09831	B-C1-C2-F-F1-F3-J-L-N-R-R1-T-V-Z1	09869	A-B-C1-C2-E2-F1-F3-L-M-N-R-R1-S-T-V-W-Z1
09736	A-B-C1-F-F1-F3-J-L-M-N-R-R1-T-V-Z1	09805	B-C-C2-E2-E3-F-F1-F3-R-R1-S-Z1	09832	B-C1-E2-F1-F3-N-R-S-V-Z1	09870	A-B-C1-C2-E2-F-F1-F3-H1-I3-L-M-N-R-R1-S-T-U4-V-Z-Z1
09737	A-B-C1-C2-F-F1-F3-I3-J-L-M-N-R-R1-T-V-W-Y-Z-Z1	09807	A-B-C1-E2-F-F1-F3-H1-I3-M-N-R-R1-S-T-V-Z-Z1	09833	B-C1-E2-F1-F3-N-R-S-V-Z1	09873	A-B-C1-C2-E2-F-F1-F3-H1-I3-L-M-N-R-R1-S-T-U-U4-V-Z-Z1
09738	A-B-C1-C2-F-F1-F3-J-L-M-N-R-R1-T-V-Z1	09808	A-B-C1-C2-E2-F-F1-F3-H-H1-J-L-N-R-R1-T-V-Z1	09834	B-C-C2-E2-E3-F-F1-F3-R-R1-S-U-Z1	09874	A-B-C1-C2-E2-F-F1-F3-H1-I3-L-M-N-R-R1-S-T-U-U4-V-Z-Z1
09739	A-B-C1-C2-F-F1-F3-J-L-M-N-R-R1-T-V-Z1	09809	B-C1-C2-E3-F-F1-F3-J-L-N-T-V-Z1	09836	A-B-C1-C2-F-F1-F3-J-L-M-N-R-R1-V-Z1	09875	A-B-C1-C2-E2-F-F1-F3-H1-I3-L-M-N-R-R1-S-T-U-U4-V-Z-Z1
09741	A-B-C1-C2-E2-F-F1-F3-H1-J-L-M-N-R-R1-T-V-W-Y-Z1	09810	A-B-C2-F-F1-F3-N-R-S-V-Z1	09837	B-E2-E3-F1-F3-R-S-V-Z1	09877	A-B-C-C2-E-E2-E3-F1-F3-H-H1-J-M-N-R-R1-S-U-V-Z1
09742	A-B-C2-F-F1-F3-J-L-M-N-R-S-T-V-Z1	09811	A-B-C-C2-E-E2-E3-F1-F3-H-H1-J-M-N-R-R1-S-U-V-Z1	09841	A-B-F3-N-R-S-U-Z1	09880	A-B-C1-C2-E2-F-F1-F3-H1J-L--N-R-R1-S-T-U-V-Z1
09743	A-B-F-F3-H-N-Q-R-S-V-Z-Z1	09812	B-E2-E3-F-F1-I-J-L-N-R-T-U-V-Z-Z1	09842	A-B-C1-C2-F-F1-F3-J-L-N-R-R1-T-V-Z1	09889	B-E2-F-H1-N-R-R1-U2-V-Z1
09744	A-B-C1-C2-F-F1-F3-J-L-M-N-R-R1-T-V-Z1	09813	A-B-C1-C2-E2-E3-F-F1-F3-J-L-N-R-R1-T-V-Z1	09844	A-B-C1-C2-F-F1-F3-J-L-M-N-R-R1-T-V-Z1	09892	A-B-C1-C2-E2-F-F1-F3-J-L-M-N-R-R1-T-V-Z1
09745	A-B-C2-F-F1-F3-M-N-R-R1-S-V-Z1	09814	B-C2-E2-E3-F-F1-F3-I3-J-L-N-R-R1-T-V-Z-Z1	09845	A-B-C1-C2-E3-F-F1-F3-J-L-M-N-R-R1-T-V-Z1	09895	A-B-C1-C2-E2-F-F1-F3-J-L-M-N-R-T-V-W-Z1
09748	A-B-C1-C2-F-F1-F3-J-L-M-N-R-R1-T-V-Z1	09815	A-B-C-C2-E-E2-E3-F1-F3-H-H1-J-M-N-R-R1-S-U-V-Z1	09846	A-B-C1-C2-F-F1-F3-J-L-N-R-R1-T-V-Z1	09898	B-C-C1-C2-E2-F-F1-F2-H1-N-R-R1-S-U2-V-Z1
09749	A-B-F-F3-H-N-R-S-U-V-Z1	09816	A-B-C1-C2-E2-E3-F-F1-F3-J-L-N-R-R1-T-V-Z1	09847	B-C-C2-F-F1-F3-J-L-M-N-R-R1-S-T-V-Z1	09902	A-B-C1-C2-E2-F-F3-H1-M-R-R1-S-V-Z1
09750	A-B-C1-C2-F-F1-F3-J-L-M-N-R-R1-T-V-Z1	09817	A-B-C1-C2-E2-E3-F-F1-F3-H-H1-J-L-M-N-R-R1-T-V-Z1	09848	A-B-F-F3-M-R-S-V-Z1	09903	B-C1-E2-F1-F3-S-V-Z1
09751	B-C-D-E-F3-H-M-R-S-U	09818	A-B-C-C2-F-F3-M-R-S-V-Z1	09853	B-C1-C2-E2-F-F1-F3-H1-N-R-R1-S-U2-V-Z1	09904	B-C1-E2-F1-F3-S-V-Z1
09752	B-C-D-F1-F3-H-R-S-U	09819	A-B-C-C1-C2-E2-F-F1-F3-H-H1-M-R-R1-S-V-Z1	09854	A-B-C1-C2-F-F1-F3-J-L-N-R-R1-S-T-V-Z1	09908	A-B-C2-F-F1-F3-N-R-R1-S-V-Z1
09753	A-B-F-F3-N-R-S-V-Z1	09820	A-B-C2-F-F1-F3-H-H1-J-L-M-N-R-R1-T-V-Z1	09855	A-B-C-C1-C2-E2-F-F1-F3-H1-M-R-R1-S-U2-V-Z1	09909	A-B-C2-F-F1-F3-N-R-R1-S-V-V1-Z1
09754	A-B-F-F3-H-L-N-Q-R-S-V-Z-Z1	09821	A-B-C-C2-F-F3-N-R-S-V-Z1	09856	B-C-C1-C2-F-F1-F3-H-H1-J-L-M-N-S-T-V-Z1	09974	B-F1-F3-J-L-M-N-R-S-T-U2-V-X-Z1
09755	A-B-C-C1-D-F-F1-F3-J-L-M-N-Q-R-R1-S-T-V-Z1	09822	A-B-C-C2-F-F3-M-R-S-V-Z1	09857	A-B-C2-E2-F-F1-F3-13-L-M-N-R-R1-S-T-V-Z-Z1	09975	B-F1-F3-I3-L-M-N-R-S-T-U2-V-X-Z-Z1
09758	A-B-F-F1-F3-M-N-R-R1-S-V-Z1	09823	A-B-C1-C2-F-F1-F3-J-L-M-N-R-R1-T-V-Z1	09858	A-B-C-C1-C2-E2-E3-F1-F3-H-H1-J-M-N-R-R1-S-U-V-Z1	09976	B-F1-F3-J-L-M-N-R-S-T-U2-V-X-Z1
09759	A-B-C-C1-C2-E2-F-F1-F3-J-L-N-R-R1-T-V-Z1	09824	A-B-C-C2-F-F3-M-R-S-V-Z1	09859	B-C-C1-C2-E2-E3-F-F1-F3-H1-R-R1-S-U-Z1	09977	B-F1-F3-J-L-M-N-R-S-T-U2-V-X-Z1
09761	B-C2-F-F1-F3-M-R-R1-S-V-Z-Z1	09825	A-B-C1-C2-F-F1-F3-J-L-M-N-R-R1-T-V-Z1	09860	A-B-C2-F-F1-F3-J-L-M-N-R-R1-S-T-V-Z1	34001	A-B-C1-C2-F-F1-F3-J-L-M-N-R-R1-S-T-V-Z1
09762	A-B-C2-E3-F-F1-F3-J-L-N-R-R1-T-V-Z1	09826	A-B-C1-C2-E1-E2-E3-F-F1-F3-J-L-M-N-R-R1-T-V-W-Z1	09862	A-B-C-C2-F-F1-F3-I3-L-M-N-R-R1-S-T-V-X-Z-Z1	34002	B-C1-C2-F-F1-F3-J-L-M-N-R-R1-T-V-Z1
09769	A-B-C-C1-C2-F-F1-F3-J-L-M-N-R-R1-T-V-Z1	09827	A-B-F-F1-J-L-M-N-R-T-V-Z1	09864	A-B-C-C1-C2-E2-F1-F3-L-M-N-R-R1-S-T-V-W-Z1	34004	B-C1-C2-F-F1-F3-J-L-M-N-R-R1-T-V-Z1
09777	A-B-C-C1-C2-E1-F-F1-F3-J-L-M-N-R-R1-T-V-Z1	09828	A-B-C1-C2-F-F1-F3-I3-L-N-R-R1-T-V-Z-Z1	09865	A-B-F3-R-S-U-V-Z1	34007	B-F-F1-H-J-M-N-R-R1-V-Z1
09780	A-B-F-F3-H-N-R-S-V	09829	B-C-N-R-V-Z1	09867	A-B-C-C1-C2-E2-F1-F3-L-M-N-R-R1-S-T-V-W-Z1	34008	B-C1-C2-D-E1-F-F1-H-H1-J-L-M-N-R-R1-T-V-Z1
09789	A-B-C2-F-F3-N-R-S-V-Z1						

APO/ FPO/ DPO	See Restrictions	APO/ FPO/ DPO	See Restrictions	APO/ FPO/ DPO	See Restrictions	APO/ FPO/ DPO	See Restrictions
34011	B-C1-C2-E2-F-F1-F3-J-L-M-N-R-R1-T-V-Z1	34080	B-F-F1-R-R1-V	96273	A-B-F-F1-F3-M-R-S-U	96378	B-M-W
34020	B-C1-C2-F-F1-F3-J-L-M-N-R-R1-T-V-Z1	34081	B-F-F1-R-R1-V	96275	A-B-F-F1-F3-M-R-S-U	96379	B-F3-M-R-S-W
34021	B-C1-C2-F-F1-F3-J-L-M-N-R-R1-T-V-Z1	34082	B-F-F1-R-R1-V	96276	A-B-C-F1-R	96380	B-F3-M-R-S-W
34022	B-C1-C2-F-F1-F3-J-L-M-N-R-R1-T-V-Z1	34083	B-F-F1-R-R1-V	96278	A-B-C-F1-F3-R-S-U	96382	B-F-F3-M-R-S-W
34023	B-C1-C2-F-F1-F3-J-L-M-N-R-R1-T-V-Z1	34084	B-F-F1-R-R1-V	96283	A-B-F-F1-F3-S-U	96384	B-F-F3-M-R-S-W
34024	B-C1-C2-F-F1-F3-J-L-M-N-R-R1-T-V-Z1	34085	B-F-F1-F3-R-R1-S-V	96284	A-B-F-F1-F3-R-S-U	96385	B-F-F3-M-R-S-W
34025	B-F-F1-F3-J-L-M-N-R-R1-T-V-Z1	34086	B-F-F1-F3-R-R1-S-V	96297	A-B-F-F1-F3-R-S-U	96386	B-F3-M-S-W
34030	B-C1-C2-F-F1-F3-J-L-M-N-R-R1-T-V-Z1	34087	B-E2-F-F1-F3-R-R1-S-V	96300	A-B-F3-M-R-S-V-Z1	96387	B-F3-M-R-S-W
34031	B-C1-C2-F-F1-F3-J-L-M-N-R-R1-T-V-Z1	34088	B-F-F1-R-R1-V	96301	A-B-F-F3-M-N-R-S-U2-W	96388	B-F3-M-R-S-W
34032	B-C1-C2-F-F1-F3-J-L-M-N-R-R1-T-V-Z1	34089	B-F-F1-R-R1-S-V	96303	B-C1-C2-F-F1-H-J-L-M-N-T-V-W-Z1	96389	B-M-W
34033	B-C1-C2-F-F1-F3-I3-L-M-N-R-T-V-Z1	34090	B-F-F1-R-R1-V	96306	B-F-F1-F2-F3-H-M-R-S-W-Z1	96401	B-C-F-F3-N-R-S-V-V1-Z1
34034	B-C1-C2-F-F1-F3-I3-L-M-N-R-R1-T-V-Z1	34091	B-E2-E3-F-F1-F3-R-R1-S-V-Z1	96310	B-F3-M-R-S-W	96502	A-C1-F-F1-F3-M-N-Q-R-R1-S-T-U2-V
34035	B-C1-C2-F-F1-F3-H-J-L-M-N-R-R1-T-V-Z1	34092	B-F-F1-F3-R-R1-S-V	96311	B-F3-M-R-S-W	96504	A-B-C-C1-C2-F-F1-F3-I3-L-M-N-R-R1-T-V-W-Z1
34036	B-C1-C2-F-F1-F3-J-L-M-N-R-R1-T-V-Z1	34093	B-F-F1-F3-R-R1-S-V	96315	B-F-F1-F3-H-M-R-S-W	96505	A-B-C-C1-C2-F-F1-F3-I3-L-M-N-R-R1-S-T-V-W-Z1
34037	B-C-C1-C2-F-F1-F3-H-J-L-M-N-R-R1-T-V-Z1	34094	B-F-F1-F3-R-R1-S-V	96319	B-C-F3-M-R-S-V-W	96507	A-B-C1-C2-F-F1-H-J-L-M-N-T-V-Z1
34039	B-C1-C2-F-F1-J-L-M-N-T-V-Z1	34095	B-F-F1-R-R1-V	96321	B-F-F1-F2-F3-H-M-R-S-W-Z1	96510	B-I3-N-V
34041	B-C1-C2-F-F1-F3-J-L-M-N-R-R1-T-V-Z1	96201	A-B-F-F1-F3-M-R-S-U	96322	B-F-F1-F2-F3-H-M-R-S-W-Z1	96511	B-I3-N-V
34042	A-B-C-F-F1-F3-M-N-R-S-U-V-W-Z1	96202	A-B-F-F1-F3-M-R-S-U	96326	B-C-F-F3-M-R-S-W	96515	B-C-D-E1-F-F1-F3-H-H1-M-N-R-S-T-Z1
34050	B-V	96203	A-B-F-F1-F3-M-R-S-U	96328	B-C-F3-M-R-S-W	96516	B-C-D-E1-E2-F-F1-F3-H-H1-M-N-R-S-T-Z1
34051	B-V	96204	A-B-F-F1-F3-M-R-S-U	96331	A-B-F-F1-F3-J-L-M-N-R-S-U2-W	96517	B-C-D-E1-E2-F-F1-F3-H-H1-M-N-R-T-U-V-Z1
34052	B-V	96205	A-B-F-F1-F3-M-R-S-U	96336	B-C-F3-M-R-S-V-W	96520	B-F-N-U3-V
34053	B-V	96206	A-B-F-F1-F3-M-R-S-U	96337	B-F-F1-F3-M-R-R1-S-W	96521	B-C1-C2-F-F1-J-L-M-N-R-R1-S-T-V-Z1
34054	B-V	96207	A-B-F-F1-F3-M-R-S-U	96338	A-B-F-F3-M-R-S-U2-W	96530	A-B-C1-C2-F-F1-H-H1-J-L-M-N-R-R1-S-T-V-Z1
34055	B-C1-C2-F-F1-F3-J-L-M-N-R-R1-T-V-Z1	96208	A-B-F-F1-F3-M-R-S-U	96339	A-B-F-F3-M-R-S-U2-W	96531	A-B-C-F-F1-F3-H-M-N-R-S-U-V
34058	B-F-F1-F3-R-R1-S-V-Z1	96209	A-B-C1-C2-F-F1-J-L-M-N-T-U-V-Z1	96343	A-F-F3-M-P-R-S-U2	96532	A-B-C1-C2-F-F1-H-J-L-M-N-R-R1-S-T-V-Z1
34060	B-C1-C2-E2-F-F1-F3-J-L-M-N-R-R1-T-V-Z1	96210	A-B-C1-C2-F-F1-F3-I3-L-M-N-R-R1-T-V-Z1	96346	B-F-F1-F2-F3-H-M-R-S-W-Z1	96533	A-B-F-F1-F2-F3-S-U-Z1
34066	B-C1-C2-F-F1-F3-I3-J-L-M-N-R-R1-S-T-V-X-Z1	96212	B-F-F1-F2-H-M-W-Z1	96347	B-C2-F-F1-F2-F3-H-M-R-S-W-Z1	96535	A-B-C1-C2-F-F1-J-L-M-N-R-R1-S-T-V-Z1
34067	B-C1-C2-F-F1-F3-J-L-M-N-R-R1-S-T-V-X-Z1	96213	A-B-C-F1-F3-R-S-U	96349	B-C2-F-F1-F2-F3-H-M-R-S-W-Z1	96537	B-V-Z1
34068	B-C1-C2-F-F1-F3-J-L-M-N-R-R1-S-T-V-X-Z1	96214	A-B-C-F1-F3-R-S-U	96350	B-F-F1-F2-F3-H-M-R-S-W-Z1	96540	B-F1-F2-F3-S-V-Z1
34069	B-C1-C2-F-F1-F3-I3-J-L-M-N-R-R1-S-T-V-X-Z1	96218	A-B-F-F1-F3-M-R-S-U	96351	B-C2-F-F1-F2-F3-H-M-R-S-W-Z1	96542	B-F-F1-F2-F3-S-V-Z1
34078	B-F1-F3-N-R-S-V-Z1	96224	A-B-F-F1-F3-M-R-S-U	96362	B-F-F1-F2-M-W-Z1	96543	B-F-F1-F2-F3-P-S-V-Z1
		96251	A-B-F-F1-F3-M-R-S-U	96365	B-C-F3-M-R-S-V-W	96548	A-B-F-F1-F3-H-M-R-S-U
		96257	A-B-F-F1-F3-S-U	96367	B-C-F3-L-M-R-S-W	96549	A-B-C1-C2-F-F1-H-J-L-M-N-R-R1-S-T-V-Z1
		96258	A-F-F3-M-P-R-S-U	96368	B-C-F3-M-R-S-W	96550	A-B-H-M-N-U-V-Z1
		96260	A-B-F-F1-F3-M-R-S-U	96370	B-F-F1-F2-H-M-W-Z1	96551	A-B-C1-C2-F-F1-H-J-L-M-N-R-R1-S-T-V-Z1
		96262	A-B-F-F1-F3-R-S-U-V-Z1	96371	B-F-F3-M-R-S-W	96552	B-Z1
		96264	A-B-C-F1-F3-R-S-U	96372	B-M-W	96553	A-B-F-F1-H-M-N-R-U
		96266	A-B-C-F1-F3-R-S-U	96373	B-M-W		
		96269	A-B-F1-F2-F3-R-S-U-Z1	96374	B-M-W		
		96271	A-F-F3-M-P-R-S-U	96375	B-F3-M-R-S-W		
				96376	B-F3-M-R-S-W		
				96377	B-F-F3-M-R-S-W		

APO/ FPO/ DPO	See Restrictions	APO/ FPO/ DPO	See Restrictions	APO/ FPO/ DPO	See Restrictions	APO/ FPO/ DPO	See Restrictions
96554	A-B-C1-C2-F-F1-H-J-L-M-N-R-R1-S-T-V-Z1	96608	B-E2-F-H1-R1-U2-V-Z1	96642	B-V	96672	B-F-F1-F3-R-R1-S-V
96555	A-B-F-F3-M-R-S-V	96609	B-E2-F-H1-R1-U2-V-Z1	96643	B-F-F1-F3-R-R1-S-V	96673	B-F3-S-V
96557	A-B-F-F3-M-R-S-V	96610	B-E2-F-H1-R1-U2-V-Z1	96644	B-V	96674	B-F-F1-F3-R-R1-S-V
96562	A-B-C1-C2-D-E2-E3-F-F1-H-H1-I3-L-M-N-R-R1-S-T-V-Z1	96611	B-E2-F-H1-R1-U2-V-Z1	96645	B-V	96675	B-F-F1-F3-R-R1-S-V
96577	A-B-F-F3-H-M-N-R-S-U	96612	B-V	96649	B-F-F1-F3-R-R1-S-V	96677	B-F-F1-F3-R-R1-S-V
96578	B-F1-F3-H-J-N-R-S	96613	B-V	96650	B-F-F1-R-R1-V	96678	B-F-F1-F3-R-R1-S-V
96595	B-F-F3-R-S-V-Z1	96615	B-F-F1-R-R1-V	96657	B-F-F1-F3-R-R1-S-V	96679	B-F-F1-R-R1-V
96598	B-F3-I3-N-R-S-V-V1	96616	B-C2-F-F1-F3-R-R1-S-V	96660	B-F-F1-F3-R-R1-S-V	96681	B-V
96599	B-F3-N-R-S-V	96619	B-F1-F3-R-S-V	96661	B-F-F1-F3-R-R1-S-V	96682	B-V
96601	B-V	96620	B-F-F1-F3-R-R1-S-V	96662	B-F-F1-F3-R-R1-S-V	96683	B-F-F1-F3-R-R1-S-V
96602	B-V	96628	B-F-F1-F3-R-R1-S-V	96663	B-F-F1-F3-R-R1-S-V-V1	96686	B-V
96603	B-V	96629	B-F-F1-F3-R-R1-S-V	96664	B-V	96691	B-F-F1-F3-R-R1-S-V
96604	B-V	96632	B-F-F1-F3-R-R1-S-V	96665	B-V	96692	B-F-F1-F3-R-R1-S-V
96605	B-V+B559	96633	B-V	96666	B-F3-R-S-V	96693	E2-F-F3-R-R1-S-V
96606	B-F3-R-S-V	96641	B-V	96667	B-F-F1-F3-R-R1-S-V	96694	B-E2-F-F1-F3-I3-J-R-R1-S-V-V1-Z
96607	B-V			96668	B-F-F1-R-R1-V	96695	B-F-F1-R-R1-V
				96669	B-F-F3-R-R1-S-V	96696	B-F-F1-R-R1-V
				96670	B-V	96698	B-V
				96671	B-F-F1-F3-R-R1-S-V		

RESTRICTIONS

LEGEND

PS Form 2976, *Customs — CN 22 (Old C 1) and Sender's Declaration* (green label)

PS Form 2976-A, *Customs Declaration and Dispatch Note*

PS Form 2976-B, *Priority Mail Express International Shipping Label and Customs Form*

ATF	= Bureau of Alcohol, Tobacco, Firearms, and Explosives
Box C	= Department of State (DOS) contractor personnel
Box R	= Retired military personnel
DPO	= Diplomatic Post Office
MPO	= Military Post Office
PACT	= Prevent All Cigarette Trafficking Act
PAL	= Parcel Airlift
PMEMS	= Priority Mail Express Military Service
PUB 52	= Publication 52, <i>Hazardous, Restricted, and Perishable Mail</i>
SAM	= Space Available Mail
USDA	= United States Department of Agriculture

Note: Mail order catalogs are prohibited as SAM or PAL mail.

A. Securities, currency, or precious metals, including in their raw, unmanufactured state, are prohibited. Official Mail shipments are exempt from this restriction.

A1. Reserved for future use.

A2. Reserved for future use.

B. Other than for PMEMS and the exceptions listed below, a customs declaration PS Form 2976 or PS Form 2976-A is required for all items weighing 16 ounces or more, and for all items (regardless of weight) containing potentially dutiable mail contents (e.g., merchandise or goods) addressed to or from this ZIP Code. Other than the exceptions listed below, all PMEMS mailpieces (regardless of mail contents or weight) addressed to or from this ZIP Code must bear a properly completed PS Form 2976-B. The surface area of the address side of the mailpiece must be large enough to contain the applicable customs declaration. The following exceptions apply to known mailers, who for this purpose are defined as follows:

- Business mailers who enter volume mailings through business mail entry units or other bulk mail acceptance locations, pay postage through advance deposit accounts, use permit imprints for postage payment, and submit completed postage statements at the time of entry that certify that the mailpieces contain no dangerous materials that are prohibited by postal regulations. Such business mailers are exempt from providing customs documentation on non-dutiable letters and printed matter.
- All federal, state, and local government agencies whose mailings are regarded as "Official Mail." Such agencies are exempt from providing customs documentation, except for any items addressed to an MPO or DPO to which restriction "B2" applies.

B2. All federal, state, and local government agencies must complete customs documentation when sending potentially dutiable mail addressed to or from this MPO or DPO.

C. Cigarettes and other tobacco products, including tobacco leaves, chewing and pipe tobacco, snuff, and cigars are prohibited, including those that are authorized in Publication 52 under PACT.

C1. Obscene and horror articles, images, prints, paintings, cards, films, videotapes, comic books, etc., are prohibited.

C2. E-cigarettes and related products (e.g., nicotine liquids, e-liquids, parts, or supplies) are prohibited.

D. Coffee is prohibited.

E. Medicines (prescription, over-the-counter, vitamins, and supplements) are prohibited when mailed to individuals for human or animal use. This prohibition does not apply when medicines are sent as Official Mail only between specifically designated agencies such as pharmaceutical distributors, hospitals, clinics, and pharmacies.

E1. Mailers are responsible to ensure that all medicines and vaccines conform to host nation laws.

E2. Any matter depicting nude or seminude persons, pornographic, or sexual items are prohibited. Non-authorized political materials are prohibited. Religious materials contrary to the Islamic faith are prohibited in bulk quantities, but individual items for the personal use of the addressee are permissible.

E3. Radio transceivers, cordless/cellular telephones, global positioning systems, scanners, base stations, and handheld transmitters are prohibited.

F. Firearms of any type are prohibited, except firearms mailed to or by official U.S. government agencies. This restriction does not apply to firearms mailed from this MPO ZIP Code, provided ATF and USPS regulations are met. Antique firearms do not require an ATF form.

F1. Weapons of any type are prohibited.

F2. Mailing firearms to or from this MPO ZIP Code is restricted to one shotgun and one single shot .22 caliber rifle per individual.

F3. Replica weapons and inert explosive devices (such as grenades) and weapons parts are prohibited.

G. Parcels of any class are prohibited.

H. Meats, including preserved meats, bones, skin, hair, feathers, horns or hoofs of hoofed animals, and wool samples whether hermetically sealed or not, are prohibited.

H1. Pork or pork by-products are prohibited.

I. Reserved for future use.

I1. Reserved for future use.

I2. Reserved for future use.

I3. Mail of all classes must fit in a mail sack. Mail may not exceed the following dimensions:

- Maximum length 27 inches.
- Maximum width 14 inches.
- Maximum height 14 inches.

J. Standard Post and Parcel Select parcels may not exceed 108 inches in length and girth combined.

K. Reserved for future use.

L. All Official Mail is prohibited.

M. Fruits, vegetables, live animals, and live plants are prohibited.

N. Registered Mail service is prohibited.

O. Reserved for future use.

P. Official Mail only.

Q. Mail may not exceed 66 pounds, and size is limited to 42 inches maximum length and 72 inches maximum length and girth combined.

R. All alcoholic beverages, including those mailable under Publication 52, Part 421, are prohibited.

R1. Materials used in the production of alcoholic beverages (i.e., distilling material, hops, malts, yeast, etc.) are prohibited.

S. Synthetic cannabinoids used to stimulate the central nervous system commonly known as "synthetic marijuana," "K2," or "Spice" are prohibited.

T. Mailings of household shipments and case lots of food to or from an MPO require military transportation office approval prior to mailing. Mailings to or from a DPO require pre-approval from the Diplomatic Pouch and Mail Director.

U. Mail addressed to Retirees (Box R) is limited to 16 ounces and up to a 90-day supply of TRICARE medications. This restriction does not apply to mail endorsed "Free Matter for the Blind or Handicapped."

U1. Mail is limited to First-Class Mail items, including audio and video media, weighing 13 ounces or less. This limitation does not apply to Official Mail.

U2. Retirees (Box R) are not authorized mail service.

U3. Reserved for future use.

U4. Mail addressed to Box C is limited to 2 lbs.

V. PMEMS is not available.

V1. Electronic Delivery status information for Extra Services is not available on *USPS.com*. Manual record of delivery may be available upon request.

W. Hermetically sealed packages of meat products bearing USDA certification, such as dried beef, salami, and sausage, may be mailed. 200 grams of tobacco per parcel are permitted duty free.

X. Cremated remains are prohibited.

Y. Mail is limited to First-Class Mail and Priority Mail items only. This restriction also applies to Official Mail.

Z. No outside pieces (OSPs).

Z1. The following restriction is applicable only to International Service Centers (ISC)/Exchange Offices. An Anti-Pilferage Seal (Item No O817E or O818A) is required on all pouches and sacks.

Freely Associated States Restrictions

We list the mailing restrictions for Freely Associated States (FAS) in the Pull-Out section of the *Postal Bulletin*. All FAS Restrictions will be updated periodically.

Freely Associated States

Mail addressed to freely associated states is subject to certain conditions or restrictions of mailing regarding content, preparation, and handling. The following FAS Restrictions table outlines these conditions as listed by each affected FAS ZIP Code™ through the use of footnoted mailing restrictions codes (see the [Restrictions](#) following the table). For more information on available extra services for FAS destinations, see *Mailing Standards of the United States Postal Service, Domestic Mail Manual (DMM®)*, part 503.

Acceptance clerks must use the table with the Retail System Software terminal to determine which FAS ZIP Codes are active and which conditions of mailing apply.

FAS Restrictions Table

FAS Table	See Restrictions
96939	A, B
96940	A, B
96941	A, B
96942	A, B
96943	A, B
96944	A, B
96960	A, B
96970	A, B, D
Marshall Islands	C
Federated States of Micronesia	C

RESTRICTIONS LEGEND

PS Form 2976, *Customs Declaration CN 22 – Sender's Declaration*

PS Form 2976-A, *Customs Declaration and Dispatch Note*

FAS = Freely Associated State

- A.** Bank currency (coin and paper) is prohibited.
- B.** Signature Confirmation, Signature Confirmation Restricted Delivery, Adult Signature Requested, Adult Signature Restricted Delivery, Certified Mail Adult Signature Required, and Certified Mail Adult Signature Restricted Delivery not available.
- C.** Collect on Delivery is prohibited.
- D.** Betel nut (Areca catechu) is prohibited.

— *Asia-Pacific Relations,
Global Business, 12-16-21*

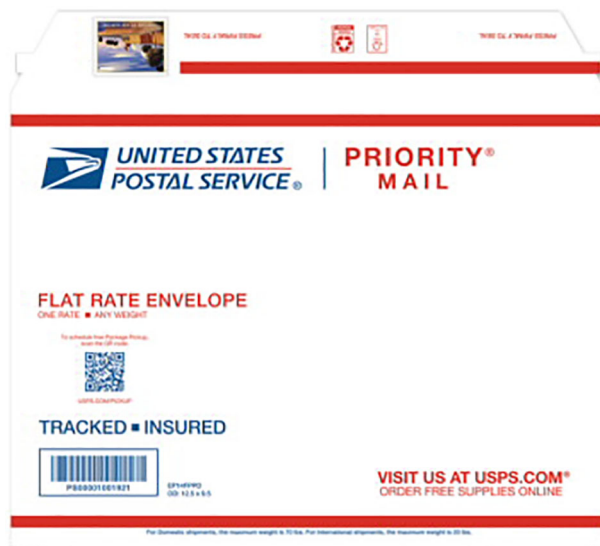
Discontinuance of the Priority Mail Pre-Paid Flat Rate Stamped Envelope

Since 2003, the United States Postal Service® has produced the Pre-Paid Flat Rate Stamped Envelope. This is a Priority Mail® Flat Rate envelope that features the *Castillo de San Marcos* Priority Mail stamp image (issued on January 24, 2021, St. Augustine, FL 32084) and is available only through The Postal Store® at store.usps.com/store/home.

Orders and usage of the envelope have steadily declined over the past several years while production and fulfillment costs have continued to rise. The Postal Service™ plans to discontinue further production of the Priority Mail Pre-Paid Flat Rate Stamped Envelope.

The Priority Mail Flat Rate Stamped Envelope will remain available at store.usps.com/store/home until January 2022. Customers who currently use these envelopes are encouraged to place any desired orders before supplies are depleted. For future orders, customers who order the Priority Mail Pre-Paid Flat Rate Stamped Envelope will be redirected to the Priority Mail Forever® Pre-Paid Flat Rate Envelope at store.usps.com/store/home.

The Priority Mail Forever Pre-Paid Flat Rate Envelope has Forever postage applied to the envelope. The customer’s return address is printed in the upper left corner of the shipping label and includes USPS Tracking®.



Castillo de San Marcos Pre-Paid Flat Rate Stamped Envelope



Priority Mail Forever Pre-Paid Flat Rate Envelope

For questions about the discontinuance of the *Castillo de San Marcos* Pre-Paid Flat Rate Stamped Envelope, send an email to Expeditedpackaging@usps.gov.

– Shipping and Commerce Product Management, Business Solutions, 12-16-21

Mail Alert

The mailings below will be deposited in the near future. Offices must process this mail according to applicable service standards with the in-home dates in mind. Mailers wishing to participate in these alerts, for mailings of 1 mil-

lion pieces or more, must contact Business Service Network Integration at 202-268-3258 at least 1 month before the requested delivery dates.

Requested Delivery Dates	Title of Mailing	Class and Type of Mail	Number of Pieces (Millions)	Distribution	Presort Level	Comments
01/05/22–01/10/22	Ginny's	Standard Catalog	1.0	Nationwide	3/5 Digit	Quad Graphics

– Business Customer Support and Services, Sales and Customer Relations, 12-16-21

Stamp Services

Stamp Announcement 22-4: Lunar New Year — Year of the Tiger Stamp



©2021 USPS

On January 20, 2022, in New York, NY, the United States Postal Service® will issue the *Lunar New Year — Year of the Tiger* stamp (Forever® priced at the First-Class Mail® rate) in one design, in a pressure-sensitive adhesive (PSA) pane of 20 stamps (Item 481500). This stamp will go on sale nationwide January 20, 2022, and must not be sold or canceled before the first-day-of-issue. **The *Lunar New Year — Year of the Tiger* commemorative pane of 20 stamps may not be split and the stamps may not be sold individually.**

In 2022, the Postal Service™ will issue the third of 12 stamps in its third *Lunar New Year* series. The Year of the Tiger begins February 1, 2022, and ends on January 21, 2023. Calling to mind the elaborately decorated masks used in the dragon or lion dances often performed in Lunar New Year parades, this 3-dimensional mask depicting a tiger is a contemporary take on the long tradition of paper-cut folk art crafts created during this auspicious time of year. Simplified illustrations of the 12 zodiac animals form vertical lines on the left and right sides of the stamp pane. Art director Antonio Alcalá designed this stamp issuance with original artwork by Camille Chew.

Availability to Post Offices: Item 481500, Lunar New Year — Year of the Tiger (Forever Priced at the First-Class Mail Rate) PSA Pane of 10 Stamps

Stamp Fulfillment Services will not make an automatic push distribution to Post Offices. Post Offices may begin ordering stamps before the first-day-of-issue through SFS Web at sfsweb.usps.gov.

How to Order the First-Day-of-Issue Postmark

Customers have 120 days to obtain the first-day-of-issue postmark by mail. They may purchase new stamps at their local Post Office™ or at The Postal Store® website at usps.com/shop. They must affix the stamps to envelopes of their choice, address the envelopes (to themselves or others), and place them in a larger envelope addressed to:

FD01 – Lunar New Year — Year of the Tiger Stamp
USPS Stamp Fulfillment Services
8300 NE Underground Drive, Suite 300
Kansas City, MO 64144-9900

After applying the first-day-of-issue postmark, the Postal Service will return the envelopes through the mail. There is no charge for the postmark up to a quantity of 50. There is a 5-cent charge for each additional postmark over 50. All orders must be postmarked by May 20, 2022.

How to Order First-Day Covers

The Postal Service also offers first-day covers for new stamp issues and Postal Service stationery items postmarked with the official first-day-of-issue cancellation. Each item has an individual catalog number and is offered in the *USA Philatelic* catalog and online at usps.com/shop. Customers may register to receive a free *USA Philatelic* catalog online at usps.com/philatelic.

Locally produced items are not authorized. Only merchandise that has been approved and assigned an item number by Headquarters Retail Marketing may be produced and sold.

Issue:	<i>Lunar New Year — Year of the Tiger Stamp</i>
Item Number:	481500
Denomination & Type of Issue:	First-Class Mail Forever
Format:	Pane of 20 (1 design)
Series:	<i>Lunar New Year</i>
Issue Date & City:	January 20, 2022, New York, NY 10199
Art Director:	Antonio Alcalá, Alexandria, VA
Designer:	Antonio Alcalá, Alexandria, VA
Artist:	Camille Chew, Providence, RI
Modeler:	Sandra Lane/Michelle Finn
Manufacturing Process:	Offset, Foil Stamping, Flexographic, Microprint
Printer:	Banknote Corporation of America
Press Type:	Gallus RCS
Stamps per Pane:	20
Print Quantity:	24,000,000 stamps
Paper Type:	Phosphor, Block Tag
Adhesive Type:	Pressure-sensitive
Colors:	Cyan, Magenta, Yellow, Black, Pantone 7579 C Orange, Pantone 7563 C Light Brown, Gold Foil Luxor MTS 413, Purple Foil Luxor MTS 323
Stamp Orientation:	Vertical
Image Area (w x h):	0.84 x 1.42 in./21.336 x 36.068 mm
Overall Size (w x h):	0.98 x 1.56 in./24.892 x 39.624 mm
Full Pane Size (w x h):	7.25 x 8.5 in./184.15 x 215.9 mm
Press Sheets Size (w x h):	14.5 x 19.5 in./368.3 x 495.3 mm
Plate Size:	80 stamps per revolution
Plate Numbers:	“B” followed by six (6) single digits in two corners
Marginal Markings:	
Front:	Header: Lunar New Year — Year of the Tiger • Plate number in bottom two corners
Back:	©2021 USPS • USPS logo • Two barcodes (481500) • Plate position diagram (4) • Promotional text

— Stamp Services,
Marketing, 12-16-21

Stamp Announcement 22-5: Edmonia Lewis Stamp



©2021 USPS

On January 26, 2022, in Washington, DC, the United States Postal Service® will issue the *Edmonia Lewis* stamp (Forever® priced at the First-Class Mail® rate) in one design, in a pressure-sensitive adhesive (PSA) pane of 20 stamps (Item 481600). This stamp will go on sale nationwide January 26, 2022, and must not be sold or canceled before the first-day-of-issue.

The 45th stamp in the *Black Heritage* series honors sculptor Edmonia Lewis (c.1844–1907). As the first African American and Native American sculptor to earn international recognition, Lewis challenged social barriers and assumptions about artists in mid-19th century America. The stamp features a casein-paint portrait of Lewis based on a photograph made between 1864 and 1871. Art director Antonio Alcalá designed the stamp with art by Alex Bostic.

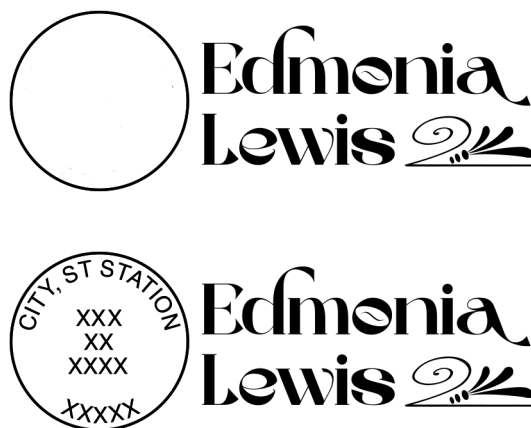
Availability to Post Offices: Item 481600, Edmonia Lewis (Forever Priced at the First-Class Mail Rate) PSA Pane of 20 Stamps

Stamp Fulfillment Services will make an automatic push distribution to Post Offices of a quantity to cover approximately 30 days of sales. Distribution quantities for the automatic push distribution are available by logging on to SFS Web at sfsweb.usps.gov. Post Offices may begin ordering stamps on the first-day-of-issue through SFS Web; offices must also check the amount they will receive on their automatic push distribution.

Special Dedication Postmarks

Only the following pictorial postmark is permitted for the *Edmonia Lewis* stamp. The word “Station” or the abbreviation “STA” is required somewhere in the design because it will be a temporary station. Use of any image other than the following special pictorial image is prohibited.

Guidelines for Finalizing Edmonia Lewis Stamp Pictorial Postmark Art



To finalize the *Edmonia Lewis* stamp pictorial postmark art, insert the date, city, state, and ZIP Code™ of the physical location of your event adjacent to the stamp image. Overall dimensions of the pictorial postmark must not exceed 4 inches (horizontally) by 2 inches (vertically). Collectors prefer the dimensions 3-1/2 inches by 1 inch.

The Postal Service™ must make all special postmarks known to collectors through advance publicity in the *Postal Bulletin*. Therefore, all special dedication cancellations must be reported to Stamp Services 4 weeks before the event using PS Form 413, Pictorial Postmark Announcement/Report. To get a copy of the form, go to How to Order the First-Day-of-Issue Postmark.

Customers have 120 days to obtain the first-day-of-issue postmark by mail. They may purchase new stamps at their local Post Office™ or at The Postal Store® website at usps.com/shop. They must affix the stamps to envelopes of their choice, address the envelopes (to themselves or others), and place them in a larger envelope addressed to:

FDI – Edmonia Lewis Stamp
 USPS Stamp Fulfillment Services
 8300 NE Underground Drive, Suite 300
 Kansas City, MO 64144-9900

After applying the first-day-of-issue postmark, the Postal Service will return the envelopes through the mail. There is no charge for the postmark up to a quantity of 50. There is a 5-cent charge for each additional postmark over 50. All orders must be postmarked by May 26, 2022.

How to Order First-Day Covers

The Postal Service also offers first-day covers for new stamp issues and Postal Service stationery items post-marked with the official first-day-of-issue cancellation. Each item has an individual catalog number and is offered in the *USA Philatelic* catalog and online at usps.com/shop. Customers may register to receive a free *USA Philatelic* catalog online at usps.com/philatelic.

Locally produced items are not authorized. Only merchandise that has been approved and assigned an item number by Headquarters Retail Marketing may be produced and sold.

Technical details for the *Edmonia Lewis* stamp will appear in a future edition of the *Postal Bulletin*.

– Stamp Services,
 Marketing, 12-16-21

Update: Stamp Announcement 22-1: Blueberries Stamp

In the article entitled “Stamp Announcement 22-1: Blueberries Stamp,” in *Postal Bulletin* 22586 (12-2-21, page 13), the paper type in the technical details tables was listed incorrectly for all three formats.

The correct paper type for the *Blueberries* stamp pane of 20, coil of 3,000, and coil of 10,000 is shown here:

Paper Type:	Nonphosphored Type III
-------------	------------------------

– Stamp Services,
 Marketing, 12-16-21

Update: Stamp Announcement 22-3: Love 2022 Stamps

In the article entitled “Stamp Announcement 22-3: Love 2022 Stamps,” in *Postal Bulletin* 22586 (12-2-21, page 34), the Issue Date in the technical details table was listed incorrectly.

The correct Issue Date for the *Love 2022* stamp is shown here:

Issue Date & City:	January 14, 2022, Romeo, MI 48065
--------------------	-----------------------------------

– Stamp Services,
 Marketing, 12-16-21

Pictorial Postmarks Announcement

As a community service, the Postal Service™ offers pictorial postmarks to commemorate local events celebrated in communities throughout the nation. A list of events for which pictorial postmarks are authorized appears on the following pages. The sponsor of the pictorial postmark appears in italics under the date. Also provided are illustrations of these postmarks.

People attending these local events may obtain the postmark in person at the temporary Post Office™ station established there. Those who cannot attend the event but who wish to obtain the postmark may submit a mail order request. Pictorial postmarks are available only for the dates indicated, and *requests must be postmarked no later than 30 days following the requested pictorial postmark date.*

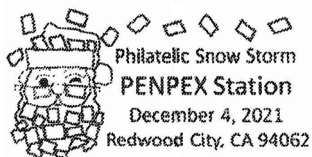
All requests must include a stamped envelope or postcard bearing at least the minimum First-Class Mail® postage. Items submitted for postmark may not include

postage issued after the date of the requested postmark. Such items will be returned unserved.

Customers wishing to obtain a postmark must affix stamps to any envelope or postcard of their choice, address the envelope or postcard to themselves or others, insert a card of postcard thickness in envelopes for sturdiness, and tuck in the flap. Place the envelope or postcard in a larger envelope and address it to: Pictorial Postmarks, followed by the Name of the Station, Address, City, State, ZIP+4® Code, as listed next to the postmark.

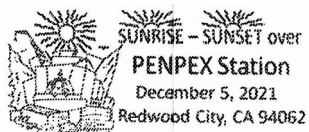
Customers can also send stamped envelopes and postcards without addresses for postmark, as long as they supply a larger envelope with adequate postage and their return address. After applying the pictorial postmark, the Postal Service returns the items (with or without addresses) under addressed protective cover.

The following pictorial postmarks have been extended for 30 days:



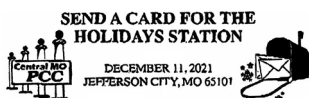
December 4, 2021

PENPEX
PENPEX Station
Postmaster
PO Box 7838
San Francisco, CA 94120-7838



December 5, 2021

PENPEX
PENPEX Station
Postmaster
PO Box 7838
San Francisco, CA 94120-7838



December 11, 2021

United States Postal Service
Send A Card for The Holidays Station
Postmaster
511 East Walnut Street
Columbia, MO 65201-9998

— Stamp Services,
Marketing, 12-16-21

How to Order the First-Day-of-Issue Digital Color or Traditional Postmarks

Customers have 120 days to obtain the first-day-of-issue postmarks by mail. Each cover must have sufficient postage to meet First-Class Mail® requirements. Customers may purchase new stamps at their local Post Office™, by phone at 844-737-7826, or on The Postal Store® website at usps.com/shop.

Digital Color Postmarks

Only select stamp issues offer a digital color postmark. Customers may submit #6 or #10 envelopes constructed of paper rated as “laser safe.” The Postal Service™ recommends envelopes of 80-pound Accent Opaque, acid-free, 9/16-inch side seams with no glue on the flap. The maximum size of all digital color postmarks is 2 inches (vertically) by 4 inches (horizontally). Allow sufficient space on the envelope to accommodate the postmark. Do not use self-adhesive labels for addresses on the envelope. Two test envelopes must be included. There is a minimum of 10 envelopes at 50 cents per postmark required at the time of servicing. Customers must submit a check, money order, or credit card for payment.

The Postal Service reserves the right to not accept hand-painted and other cachet envelopes that are not compatible with our digital color postmark equipment. The Postal Service also reserves the right to substitute traditional black rubber postmarks if use of nonspecified envelopes results in poor image quality or damage to equipment.

Customers must affix the stamps to the envelopes and address them to themselves or others for return through the mail. Or, they may include an additional self-addressed return envelope, large enough to accommodate their can-

celed items, with sufficient postage affixed for return of their postmarked items. Address customer requests for digital color postmarks to:

FDOI – (Name of Stamp Issue)
 USPS Stamp Fulfillment Services
 8300 NE Underground Drive, Suite 300
 Kansas City, MO 64144-9900

After applying the first-day-of-issue postmark, the Postal Service will return the envelopes to the customer by U.S. Mail®.

Traditional Postmarks

Customers must affix the stamps to the envelopes and address them to themselves or others for return through the mail. Or, they may include an additional self-addressed return envelope, large enough to accommodate their canceled items, with sufficient postage affixed for return of their postmarked items. Address customer requests for traditional postmarks to:

FDOI – (Name of Stamp Issue)
 USPS Stamp Fulfillment Services
 8300 NE Underground Drive, Suite 300
 Kansas City, MO 64144-9900

After applying the first-day-of-issue postmark, the Postal Service will return the envelopes to the customer by U.S. Mail™. There is no charge for the first 50 postmarks. There is a 5-cent charge for each additional postmark over 50. Customers must submit a check, money order, or credit card for payment.

Locally produced items are not authorized. Only merchandise that has been approved and assigned an item number by Headquarters Retail Marketing may be produced and sold.



Digital Color Pictorial

FDOI – Happy Birthday Stamp
 USPS Stamp Fulfillment Services
 8300 NE Underground Drive, Suite 300
 Kansas City, MO 64144-9900

January 9, 2022



Black and White Pictorial

FDOI – Happy Birthday Stamp
 USPS Stamp Fulfillment Services
 8300 NE Underground Drive, Suite 300
 Kansas City, MO 64144-9900

January 9, 2022



Digital Color Pictorial

FDOI – Message Monsters Stamps
 USPS Stamp Fulfillment Services
 8300 NE Underground Drive, Suite 300
 Kansas City, MO 64144-9900

January 24, 2022



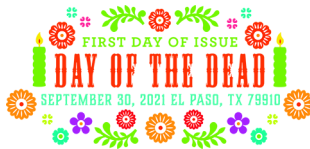
FIRST DAY OF ISSUE

FD0I – Message Monsters Stamps

USPS Stamp Fulfillment Services
8300 NE Underground Drive, Suite 300
Kansas City, MO 64144-9900

January 24, 2022

Black and White Pictorial



Digital Color Pictorial

FD0I – Day of the Dead Stamps

USPS Stamp Fulfillment Services
8300 NE Underground Drive, Suite 300
Kansas City, MO 64144-9900

January 30, 2022



FIRST DAY OF ISSUE

FD0I – Day of the Dead Stamps

USPS Stamp Fulfillment Services
8300 NE Underground Drive, Suite 300
Kansas City, MO 64144-9900

January 30, 2022

Black and White Pictorial



Digital Color Pictorial

FD0I – A Visit from St. Nick Stamps

USPS Stamp Fulfillment Services
8300 NE Underground Drive, Suite 300
Kansas City, MO 64144-9900

February 7, 2022



Black and White Pictorial

FD0I – A Visit from St. Nick Stamps

USPS Stamp Fulfillment Services
8300 NE Underground Drive, Suite 300
Kansas City, MO 64144-9900

February 7, 2022



Digital Color Pictorial

FD0I – Otters in Snow Stamps

USPS Stamp Fulfillment Services
8300 NE Underground Drive, Suite 300
Kansas City, MO 64144-9900

February 12, 2022



FIRST DAY OF ISSUE

FD0I – Otters in Snow Stamps

USPS Stamp Fulfillment Services
8300 NE Underground Drive, Suite 300
Kansas City, MO 64144-9900

February 12, 2022

Black and White Pictorial



FIRST DAY OF ISSUE

FD0I – Blueberries Stamp

USPS Stamp Fulfillment Services
8300 NE Underground Drive, Suite 300
Kansas City, MO 64144-9900

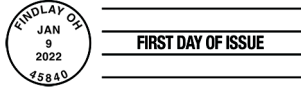
May 9, 2022

Black and White Pictorial



Digital Color Pictorial

FD0I – U.S. Flags 2022 Stamp
 USPS Stamp Fulfillment Services
 8300 NE Underground Drive, Suite 300
 Kansas City, MO 64144-9900
 May 9, 2022



Black and White Pictorial

FD0I – U.S. Flags 2022 Stamp
 USPS Stamp Fulfillment Services
 8300 NE Underground Drive, Suite 300
 Kansas City, MO 64144-9900
 May 9, 2022



Digital Color Pictorial

FD0I – Love 2022 Stamps
 USPS Stamp Fulfillment Services
 8300 NE Underground Drive, Suite 300
 Kansas City, MO 64144-9900
 May 14, 2022



Black and White Pictorial

FD0I – Love 2022 Stamps
 USPS Stamp Fulfillment Services
 8300 NE Underground Drive, Suite 300
 Kansas City, MO 64144-9900
 May 14, 2022



Digital Color Pictorial

FD0I – Lunar New Year – Year of the Tiger Stamp
 USPS Stamp Fulfillment Services
 8300 NE Underground Drive, Suite 300
 Kansas City, MO 64144-9900
 May 20, 2022



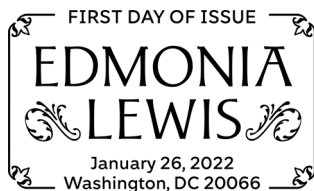
Black and White Pictorial

FD0I – Lunar New Year – Year of the Tiger Stamp
 USPS Stamp Fulfillment Services
 8300 NE Underground Drive, Suite 300
 Kansas City, MO 64144-9900
 May 20, 2022



Digital Color Pictorial

FD0I – Edmonia Lewis Stamp
 USPS Stamp Fulfillment Services
 8300 NE Underground Drive, Suite 300
 Kansas City, MO 64144-9900
 May 26, 2022



Black and White Pictorial

FD0I – Edmonia Lewis Stamp
 USPS Stamp Fulfillment Services
 8300 NE Underground Drive, Suite 300
 Kansas City, MO 64144-9900
 May 26, 2022

Add a Touch of Whimsy to Holiday Mailings with **Otters in Snow**

Forever[®]
Stamps

On Sale
Nationwide:
October 12, 2021

