

postal|bulletin

PUBLISHED SINCE MARCH 4, 1880

Hazards May Appear –
**Ensure
Your
Path Is
Clear.**

**SAFETY
DEPENDS
ON ME!**

UNITED STATES
POSTAL SERVICE

See page 3.



Contents

COVER STORY

December is USPS Motor Vehicle Safety Month. 3

POLICIES, PROCEDURES, AND FORMS UPDATES

Manuals

IMM Revision: Indemnity Limit for International Registered Mail Service 5
 IMM Revision: Individual Country Listing for Canada 6
 IMM Revision: Individual Country Listing for Hong Kong 6

ORGANIZATION INFORMATION

Finance

Local Tax Code Information 7
 IRS Reporting Requirements of Attorney Fees, Back Pay, or Wages 8
 Tax Obligations of USPS Employees 9
 Wage Overpayment Indebtedness — Tax Treatment 10

Human Resources

Good Health is Essential During the Holidays 10

Information Security

Emerging Mobile Threats: Smishing and Vishing 12

Stamp Services

Stamp Announcement 22-1: Blueberries Stamp 13
 Stamp Announcement 22-2: U.S. Flags 2022 Stamp 31
 Stamp Announcement 22-3: Love 2022 Stamps 34
 Pictorial Postmarks Announcement 37
 How to Order the First-Day-of-Issue Digital Color or Traditional Postmarks 40

PULL-OUT INFORMATION

Fraud

Invalid USPS Corporate Account Numbers 15
 Missing, Lost, or Stolen U.S. Money Order Forms 16
 Missing, Lost, or Stolen Canadian Money Order Forms 22
 Verifying U.S. Postal Service Money Orders 24
 Counterfeit Canadian Money Order Forms 24
 Toll-Free Number Available to Verify Canadian Money Orders 24

Other Information

Overseas Military/Diplomatic Mail 25
 Freely Associated States Restrictions 30

POSTAL BULLETIN 2021 SEMI-ANNUAL INDEX

2021 Semi-Annual Index PB 22578 (8-12-21)

Find the latest in mail and delivery information and services offered by U.S. Postal[®] in the *Postal Bulletin* at about.usps.com/postal-bulletin

Mail Moment[®]

Cover Story

December is USPS Motor Vehicle Safety Month

According to the U.S. Department of Transportation's National Highway Traffic Safety Administration, more than 38,600 people died in motor vehicle crashes in the United States in 2020. Even as the U.S. imposed tight restrictions and Americans drove less, deaths from traffic accidents increased. The three most common causes of fatalities on the road were impaired driving, speeding, and not wearing seat belts. Employers directly or indirectly bear the cost of these accidents, whether they occur on or off the job.

Accidents have far-reaching financial and psychological effects on employees and their families, as well as their coworkers and employers. Similarly, when USPS® employees are involved in motor vehicle accidents, the United States Postal Service® absorbs those costs. Employees' lives and finances are often adversely affected.

To highlight the importance of driving safely, the Postal Service™ has designated December as "Motor Vehicle Safety Month," and the theme this year is "Hazards may appear — ensure your path is clear."

Historically, during December, the Postal Service experiences an increase in accident activity. A rise in accidents is primarily due to:

- Inclement weather.
- New hires' inexperience with driving postal vehicles.
- A workload associated with increased parcel volumes.

Whether you manage a fleet of vehicles and drivers, or drive yourself, basic safe driving practices can greatly reduce the risks associated with a motor vehicle accident. Focusing on motor vehicle safety provides the following benefits:

- Saves lives and reduces the risk of life-altering injuries.
- Protects both human and financial resources.
- Guards against potential financial liabilities associated with employee accidents.

Many accidents are caused by distraction or haste when inexperienced employees drive unfamiliar vehicles in unfamiliar territory or when experienced employees fail to follow established safe driving procedures. Today's technology tempts us to make phone calls, send texts or emails, and update social media while driving — all actions that contribute to distracted driving.

By reviewing accident data and analyzing the results of driver observations, Postal Service management identifies and addresses unsafe driving practices and provides

training to help Postal Service drivers avoid tragedy. Data for Fiscal Year (FY) 2020 showed:

- Postal Service employees had more than 26,000 motor vehicle accidents in FY 2020. More than half of all motor vehicle accidents involved employees with little USPS driving experience.
- More than 11,000 USPS motor vehicle accidents occurred when the vehicle's line of travel was straight.
- Almost two-thirds of USPS motor vehicle accident fatalities involved employees not wearing seatbelts.

The data indicates that the Postal Service can prevent motor vehicle accidents by addressing the following issues:

- Driving in inclement weather.
- Avoiding collisions caused by distraction or inattention.
- Wearing seatbelts.

During December, the Postal Service will send employees stand-up talks focused on:

- Defensive driving.
- Seatbelts.
- Distracted driving.
- Winter driving.
- Postal industrial truck (PIT) safety.

Motor Vehicle Safety Includes Forklift Operation

The ability to drive a car or truck does not qualify you to operate a forklift. A forklift operates differently from other motor vehicles. It cannot stop as quickly, can tip over more easily, and has a different turning radius. Unsafe operation of a forklift can cause it to tip over, the load to collapse, or could result in bystanders being struck by the machine, the forks, or the load. PIT operators must be properly trained and licensed for the type of vehicle that they will be driving. The vehicle must be maintained in a safe operating condition and must be inspected by the operator before each operational tour.

Here are some reminders about safe forklift operation:

- Use your inspection checklist before operating the forklift to determine if it is in good working order and safe to operate. If it is not, remove the forklift from service until it can be repaired.
- To lift the load, put the forks all the way in. After slowly lifting the load, tilt it back so it will remain on the forks. Keep the forks low so you can see where

you are going and to prevent tipping accidents. When the forklift is empty, the forks must be pointed downhill.

- Observe the speed limits and slow down for corners, rough or sloping surfaces, and large loads. Honk the horn at intersections.
- Use extreme caution around the edges of loading docks. The bridge plate must be secure before driving onto the truck you are loading or unloading.
- When driving with a load, go forward up a slope, but back down the slope.
- When backing up, look in the direction the forklift is moving. Constantly scan the area for pedestrians or objects and proceed very slowly.
- Stay inside the operator's cage: keep your head, arms, and legs inside and never reach through the mast. Always wear a seatbelt.
- Do not pick up passengers because they can easily fall and be crushed by the forklift.

Always stay within marked forklift travel lanes and aisles, and slow down and use the horn to alert pedestrians when you travel across any marked or customary pedestrian traffic lanes.

Be Part of the Solution

The Postal Service can reduce motor vehicle and PIT accidents with training and by emphasizing the importance of basic safe driving practices. By doing so, we not only reduce our accident counts, but also ensure that our employees feel prepared for their jobs. Employees are our

most valuable assets. Workplace driver safety programs not only make good business sense, but also engage and empower employees.

The goal of Motor Vehicle Safety Month is to keep our drivers and those with whom they share the road safe. By changing attitudes about driving behavior and improving driving skills, the Postal Service can create and sustain a safety culture where everyone understands that "Safety Depends on Me."

For more information, see the following driver safety-related resources:

- Safety Depends on Me videos: blue.usps.gov/corp-comm/uspstv/safety-and-health/welcome.htm.
- Handbook EL-804, Safe Driver Program: blue.usps.gov/cpim/ftp/hand/el804.pdf.
- Handbook EL-814, *Postal Employee's Guide to Safety*: blue.usps.gov/cpim/ftp/hand/el814.pdf.
- Handbook EL-801, *Supervisor's Safety*: blue.usps.gov/cpim/ftp/hand/el801.pdf.
- Informed Mobility Safety Observation Tool (IMSOT).
- National Traffic Highway Safety Administration: nhtsa.gov/press-releases/2019-fatality-data-traffic-deaths-2020-q2-projections.
- PS Form 4584, *Observation of Driving Practices*: blue.usps.gov/formmgmt/forms/ps4584.pdf.
- Delivery Management System (DMS): dms.usps.gov/delivery/driverexceptions.
- National Safety Council: nsc.org/road-safety.

— Occupational Safety and Health,
Human Resources, 12-2-21

Policies, Procedures, and Forms Updates

Manuals

IMM Revision: Indemnity Limit for International Registered Mail Service

Effective January 1, 2022, the Postal Service™ will revise the following sections in *Mailing Standards of the United States Postal Service*, International Mail Manual (IMM®) to reflect the annual change to the indemnity limit for international Registered Mail™ items:

- Section 333.2.
- Section 934.2.
- The Individual Country Listing for each country that offers Registered Mail service.

Mailing Standards of the United States Postal Service, International Mail Manual (IMM)

* * * * *

3 Extra Services

* * * * *

330 Registered Mail

* * * * *

333 Fees and Indemnity Limits

* * * * *

333.2 Indemnity Limit

[Revise 333.2 to read as follows, reflecting a change in the indemnity limit to \$42.87:]

Regardless of the declared value of a registered item, the maximum amount of indemnity payable for loss, damage, or missing contents is \$42.87.

* * * * *

9 Inquiries, Indemnities, and Refunds

* * * * *

930 Indemnity Payments

* * * * *

934 Payments for Registered Mail

* * * * *

934.2 Special Provisions

[Revise 934.2 to read as follows, reflecting a change in the indemnity limit to \$42.87:]

Regardless of the declared value of a registered item, the maximum amount of indemnity payable for loss, damage, or missing contents is \$42.87.

* * * * *

Individual Country Listings

* * * * *

Extra Services

* * * * *

Registered Mail (330)

* * * * *

[For every country that offers Registered Mail service in the “Extra Services” section, revise the maximum indemnity limit to \$42.87, to read as follows:]

Maximum Indemnity: \$42.87

* * * * *

Although effective January 1, 2022, the Postal Service will incorporate these revisions into the next edition of the online IMM, which is available via Postal Explorer® at pe.usps.com.

IMM Revision: Individual Country Listing for Canada

Effective December 2, 2021, the Postal Service™ is revising the International Country Listing for Canada in *Mailing Standards of the United States Postal Service, International Mail Manual (IMM®)* to note revisions to the listing of restrictions.

These revisions are based on a formal request that Canada Post (the designated postal operator of Canada) made through email consultation dated October 1, 2021.

Mailing Standards of the United States Postal Service, International Mail Manual (IMM)

* * * * *

Individual Country Listings

* * * * *

Canada

Country Conditions for Mailing

* * * * *

Restrictions

[Revise the entry that begins with “Coins” to read as follows (also removing the note about “Exceptions”):]

Coins; banknotes; currency notes; securities payable to bearer; traveler’s checks; gold, silver, platinum, manufactured or not; precious stones; jewelry; and other valuable articles may be sent only in insured parcels.

* * * * *

[Delete the entry that begins with “Precious stones.”]

* * * * *

Although effective December 2, 2021, the Postal Service will incorporate these revisions into the next edition of the online IMM, which is available via Postal Explorer® at pe.usps.com.

— Product Classification,
Product Solutions, 12-2-21

IMM Revision: Individual Country Listing for Hong Kong

Effective December 2, 2021, the Postal Service™ is revising the Individual Country Listing for Hong Kong in *Mailing Standards of the United States Postal Service, International Mail Manual (IMM®)* to note a new short message service (SMS) process for items with Express Mail Service® (EMS) — i.e., items with USPS’s Priority Mail Express International® service.

This revision is based on a formal request that Hongkong Post (the designated postal operator of Hong Kong) made through the Universal Postal Union via *International Bureau Circular 148*, dated September 27, 2021.

Mailing Standards of the United States Postal Service, International Mail Manual (IMM)

* * * * *

Individual Country Listings

* * * * *

Hong Kong

Country Conditions for Mailing

* * * * *

Observations

* * * * *

[Add a new entry to read as follows:]

- On each Priority Mail Express International item destined to Hong Kong, Hongkong Post requests that the mailer include the addressee’s mobile telephone number on the customs declaration form. This contact information enables Hongkong Post to notify the addressee via short message service (SMS) before delivery. An addressee who is registered on the Hongkong Post website or mobile application may redirect the item to a postal locker or post office for collection, or may reschedule the date of home delivery, when applicable.

* * * * *

Although effective December 2, 2021, the Postal Service will incorporate this revision into the next edition of the online IMM, which is available via Postal Explorer® at pe.usps.com.

— Product Classification,
Product Solutions, 12-2-21

Organization Information

Finance

Local Tax Code Information

The United States Postal Service® collects appropriate federal, state, and in some cases, local taxes directly from the pay of its employees who are subject to these deductions. Based on agreements between individual local taxing authorities and the U.S. Department of the Treasury, the Postal Service™ collects a number of city and county income taxes, occupational taxes, mental health taxes, residence taxes, local service taxes, and in some locations, more than one of these taxes.

The local taxes listed in the following table are the taxes for which there are agreements between the taxing authorities and the U.S. Department of the Treasury. Some of these taxes are automatically deducted from the salaries of Postal Service employees who work within the geographic boundaries of the specific taxing authorities. However, most of these taxes are not automatic deductions. If you are subject to any of these local taxes, you must be proactive and submit a completed PS Form 4, *Employee's City or County Withholding Certificate*, to the HR Shared Service Center (HRSSC). As a Postal Service employee, you are personally responsible for ensuring correct local taxes are deducted from your pay. If you have any questions regarding your tax liability or responsibility, contact your local taxing authority.

In addition to the taxes listed in the following table, there are other local taxes for which there are no agreements between the individual local taxing authorities and the U.S. Department of the Treasury. Employees must make their own payments to these taxing authorities. The Postal Service will not collect local taxes for a taxing entity that has not established an agreement with the U.S. Department of the Treasury.

We remind all Postal Service employees that they are bound by the materials contained within the *Code of Ethics, Principles of Ethical Conduct for Government Officers and Employees*. This includes Principle 12, which states: "Employees shall satisfy in good faith their obligations as citizens, including all just financial obligations, especially those — such as federal, state, and local taxes — that are imposed by law."

If you live or work in a locality that is subject to one or more of the taxes listed in the table and the correct deduction(s) is not being withheld from your pay, you can immediately complete a PS Form 4, *Employee's City or County Withholding Certificate*. After completing this form, mail it to the following address:

HR Shared Services Center
PO Box 970400
Greensboro, NC 27497-0400

Direct all questions concerning these local taxes to the HRSSC by phone at 877-477-3273, option 5 (Federal Relay Service: 800-877-8339).

State and City or County	Type of Tax	Local Tax Code
Alabama		
Bessemer	Occupational Tax	081
Birmingham	Occupational Tax	084
Gadsden	Occupational Tax	094
Macon County	Occupational Tax	096
Colorado		
Aurora	Occupational Tax	495
Denver	Occupational Tax	294
Delaware		
Wilmington	City Income Tax	903
Kentucky		
Boone County	1. Ordinance Tax 2. Mental Health Tax	015 016
Bowling Green	Occupational Tax	215
Covington	City Income Tax	252
Florence	Occupational Tax	836
Frankfort	Occupational Tax	292
Kenton County	Occupational Tax	435
Lexington-Fayette Urban County Gov	Occupational Tax	525
Louisville Metro Area/ Jefferson County	Occupational Tax	546
Madison County	County Income Tax	547
Owensboro	Occupational Tax	201
Richmond	Occupational Tax	735
Michigan		
Battle Creek	City Income Tax	063
Detroit	City Income Tax	315
Flint	City Income Tax	357
Grand Rapids	City Income Tax	378
Lansing	City Income Tax	483
Pontiac	City Income Tax	693
Saginaw	City Income Tax	756
Missouri		
Kansas City	City Income Tax	420
St. Louis	City Income Tax	819
New York		
New York City	City Income Tax	588
Ohio		
Akron	City Income Tax	021
Brecksville	City Income Tax	105
Brook Park	City Income Tax	106
Canton	City Income Tax	126
Cincinnati	City Income Tax	168
Cleveland	City Income Tax	189
Columbus	City Income Tax	231
Dayton	City Income Tax	273
Fairview Park	City Income Tax	274
Heath	City Income Tax	399
Kettering	City Income Tax	441

State and City or County	Type of Tax	Local Tax Code
Mansfield	City Income Tax	567
Newark	City Income Tax	698
Oberlin	City Income Tax	609
Sharonville	City Income Tax	785
Springfield	City Income Tax	798
Toledo	City Income Tax	840
Whitehall	City Income Tax	861
Youngstown	City Income Tax	924
Pennsylvania		
Bethlehem Township	City Income Tax	335
Erie	1. City Income Tax 2. Local Services Tax	336 337
Greene Township	City Income Tax	375
Hanover Township	1. City Income Tax 2. Local Services Tax	343 342
Harrisburg	1. City Income Tax 2. Local Services Tax	385 386
Horsham Township	1. City Income Tax 2. Local Services Tax	354 352
Lancaster	1. City Income Tax 2. Local Services Tax	462 465
Marshall Township	Local Services Tax	555
Middletown	City Income Tax	388
Philadelphia	City Income Tax	651

State and City or County	Type of Tax	Local Tax Code
Pittsburgh	1. City Income Tax 2. Local Services Tax	672 673
Reading	1. City Income Tax 2. Local Services Tax	714 715
Scranton	1. City Income Tax 2. Local Services Tax	777 778
South Park Township	1. City Income Tax 2. Local Services Tax	775 776
Sunbury/Gregg Township (includes Allenwood)	City Income Tax	320
Susquehanna Township	Local Services Tax	395
Tredyffrin Township	Local Services Tax	360
Tinicum Township	1. City Income Tax 2. Local Services Tax	779 780
Warminster Township	1. City Income Tax 2. Local Services Tax	856 855
Wilkes-Barre	1. City Income Tax 2. Local Services Tax	882 883
York	City Income Tax	492
West Virginia		
Charleston	City Service Tax	899
Huntington	City Service Tax	900
Parkersburg	City Service Tax	901

— Payroll, Controller, 12-2-21

IRS Reporting Requirements of Attorney Fees, Back Pay, or Wages

The purpose of this notice is to ensure that employees are aware of the Internal Revenue Service (IRS) income reporting requirements when attorney fees are awarded.

In 2005, the IRS issued regulations that changed how attorney fee awards are to be treated for tax reporting purposes, based upon the Supreme Court's decision in *Commissioner v. Banks*, 125 S. Ct. 826 (2005). Previously, when payment of attorney fees was made directly to the attorney, the payment to the attorney was only reported on the attorney's Form 1099-MISC, *Miscellaneous Income*. In *Commissioner v. Banks*, the Supreme Court held that when a litigant's recovery constitutes income, the litigant's income includes the portion of the recovery paid to the attorney as a contingent fee. Thus, pursuant to Internal Revenue Code (IRC) section 6041(a) and 6045(f), these fees cannot be excluded from the plaintiff's gross income for tax reporting purposes.

The following situations require variations in the reporting requirements:

- *Attorney Fees Paid Directly to an Attorney* — These fees will be reported in Box 3 (Other Income) on the employee's Form 1099-MISC. These fees will also be reported on the attorney's Form 1099-MISC.
- *Settlement (no back pay or wages) is Paid Directly to Employee and Attorney Fees are Identified* — The entire amount of the settlement (including attorney

fees) will be reported in Box 3 (Other Income) on the employee's Form 1099-MISC. The employee's attorney will not be issued a Form 1099-MISC.

- *Settlement (back pay or wages) is Paid Directly to Employee and Attorney Fees are Identified* — The back pay or wages portion of the settlement is subject to income and Federal Insurance Contributions Act (FICA) tax withholdings. The back pay or wages portion will be reported on the employee's Form W-2. The identified attorney fees will be reported in Box 3 (Other Income) on the employee's Form 1099-MISC. The employee's attorney will not be issued a Form 1099-MISC.
- *Settlement (back pay or wages) is Paid Directly to Employee and Attorney Fees are not Identified* — The entire amount of the settlement (including attorney fees) is subject to income and FICA tax withholdings. The entire amount will be reported on the employee's Form W-2. The employee's attorney will not be issued a Form 1099-MISC.
- *Settlement Check (no back pay or wages) is Issued Jointly to Employee and Attorney* — The entire amount of the settlement will be reported in Box 3 (Other Income) on the employee's Form 1099-MISC and will also be reported on the attorney's Form 1099-MISC.

- *Settlement Check (back pay or wages) is Issued Jointly to Employee and Attorney* — The entire amount of the settlement (including attorney fees) is subject to income and FICA tax withholdings. The entire amount will be reported on the employee's Form W-2. The net amount of the settlement (the actual amount of the check) will be reported on the attorney's Form 1099-MISC.
- *Settlement Check (back pay or wages) is Split between Employee and Attorney* — The entire amount of the settlement (including attorney fees) is subject to income and FICA tax withholdings. The settlement check is issued to the employee, but before disbursement, the check is pulled and the net of the settlement (the actual amount of the check) is

split between the employee and his or her attorney. The entire amount of the settlement will be reported on the employee's Form W-2. The actual amount of the check paid to the attorney will be reported on the attorney's Form 1099-MISC.

The United States Postal Service® makes no representation regarding the taxability of these payments. Potential tax liability resulting from any of these payments is the employee's responsibility. The IRS makes the determination on whether taxes must be paid. The Postal Service does not provide tax advice, and employees must direct any tax reporting questions to the IRS or a qualified tax attorney or accountant.

— Payroll, Controller, 12-2-21

Tax Obligations of USPS Employees

As employees of the United States Postal Service®, we have a legal, moral, and fiduciary obligation to obey the tax laws of our country. As both citizens and public servants who are obligated to uphold the public trust, we are ethically mandated to complete and file all required tax forms for our federal, state, and where applicable, local taxes. We are required by appropriate taxation laws to pay all of our required taxes in a timely and accurate manner.

We remind all Postal Service™ employees that they are bound by the materials contained within the *Code of Ethics, Principles of Ethical Conduct for Government Officers and Employees*. This includes Principle 12, which states: "Employees shall satisfy in good faith their obligations as citizens, including all just financial obligations, especially those — such as federal, state, and local taxes — that are imposed by law." All Postal Service employees must adhere to the highest possible ethical standards concerning the payment of their taxes and other debts.

As a Postal Service employee, you are personally responsible for ensuring correct federal, state, and local taxes are deducted from your pay. If you are subject to federal, state, or local taxes, and the correct deductions are not being withheld from your pay, you must take immediate action to ensure appropriate tax withholdings.

To Update Federal and State Tax Withholdings:

- Complete the federal Form W-4, *Employee's Withholding Certificate*, or the state equivalent of the federal Form W-4. For example, to update Minnesota tax withholdings, complete Form W-4MN, *Minnesota Withholding Allowance/Exemption Certificate*. Complete the federal Form W-4 if your state does not have its own state equivalent of the federal Form W-4. Make sure you write "(Name of State)" and "State Copy" on the top of the form. Go to the *LiteBlue* home page (liteblue.usps.gov) to access the *PostalEASE* App.

- Update your "Federal W-4" Payroll Module and your "State Tax" Payroll Modules.
- If you do not have access to a computer or the Internet, mail your completed form(s) to:
HR Shared Service Center (HRSSC)
PO Box 970400
Greensboro, NC 27497-0400

Note: It is to your advantage to complete the paper form before your *PostalEASE* update as the paper form comes with instructions, which can be particularly helpful if your state has complex withholding selections.

To Update Local Tax Withholdings:

- Complete PS Form 4, *Employee's City or County Withholding Certificate*.
- Mail your completed PS Form 4 to:
HR Shared Service Center (HRSSC)
PO Box 970400
Greensboro, NC 27497-0400

Direct all questions concerning these taxes to the HRSSC at 877-477-3273, option 5 (Federal Relay Service: 800-877-8339).

The Postal Service does not provide tax advice. Direct any questions about your tax liability or responsibility to the Internal Revenue Service (IRS) or a qualified tax attorney or accountant.

Adherence to these requirements will help all USPS® employees avoid costly penalties and potential tax enforcement action by the IRS. The IRS provides free tax information and services to inform and assist taxpayers concerning tax laws and individual responsibilities. You can research federal tax information at irs.gov or contact an IRS representative toll-free at 800-829-1040 (TDD 800-829-4059) for assistance.

— Payroll, Controller, 12-2-21

Wage Overpayment Indebtedness — Tax Treatment

When a Postal Service™ employee is overpaid, the United States Postal Service® establishes an account receivable for the overpayment and initiates the collection of the debt from the employee through the process described in the *Employee and Labor Relations Manual* (ELM), in either ELM 450, Collection of Postal Debts From Non-bargaining Unit Employees by Salary Offset, or ELM 460, Collection of Postal Debts From Bargaining Unit Employees by Salary Offset.

If the overpayment occurred in a prior year, the Postal Service bills the employee for the gross amount of the overpayment. The gross amount includes the net amount of the check or direct deposit plus all payroll-related taxes withheld and other miscellaneous deductions or allotments. The wages paid in error in the prior year remain W-2 reportable and taxable to the employee for that year. This is because the employee received and had use of those funds during that year. If repayment is made within 3 years of the issuance of the W-2 that includes the overpayment, the employee is entitled to a refund of Social Security (if applicable) and Medicare taxes from the Postal Service. The employee is not entitled to file an amended return (Form 1040X) to recover the federal income tax paid on

these wages. Instead, the employee may be entitled to a deduction (or credit in some cases) for the repaid wages on his or her income tax return for the year of repayment (Internal Revenue Service Publication 15). Employees are encouraged to seek the services of a qualified tax preparer if they have questions.

If the overpayment occurred in the current year, the Postal Service *initially* bills the employee for *only* the net value of the overpayment; thus, federal, state, local, Social Security (if applicable), and Medicare taxes are not part of the bill. However, if an employee has not fully repaid the overpayment by the end of the tax year (December 31, 2021), the Postal Service must report the unreturned value of the overpayment as taxable income on the employee's Form W-2. Additionally, the employee must now pay appropriate federal, state, local, and FICA/Medicare taxes on the remaining value of the unpaid debt. The Postal Service establishes a second account receivable at the close of the tax year for the value of the taxes the employee owes related to the unpaid debt. The Postal Service uses the debt collection processes in ELM 450 and ELM 460 to collect the additional debt.

— Payroll, Controller, 12-2-21

Human Resources

Good Health is Essential During the Holidays

The Postal Service™ Wellness Team wants to help employees have a safe and healthy holiday season. Here are some tips:

- **Follow the coronavirus pandemic safety protocols.** Wash your hands with soap and water for at least 20 seconds to prevent the spread of germs. Continue adhering to social distancing guidelines and wearing face masks.
- **Stay safe outdoors and on the road.** During cold weather, dress warmly with appropriate outdoor clothing and layers. Do not drink and drive or let others drink and drive. Fasten seat belts while driving or riding in a vehicle.
- **Mind your physical and mental health.** Avoid smoking and secondhand smoke. Stay updated with vaccinations, screenings, and medical exams. Manage stress by giving yourself a break, getting rest, and finding ways to connect socially.

- **Practice fire safety.** Most fires occur during the winter, so don't leave fireplaces, space heaters, food cooking on stoves, or candles unattended. Create an emergency plan and practice it regularly.
- **Prepare food safely.** Wash hands and surfaces often, avoid cross-contamination, cook foods to proper temperatures, and refrigerate foods quickly.
- **Eat healthy.** Load up on fruits and vegetables and limit portion sizes and foods high in fat, salt, and sugar.
- **Stay active.** Adults need at least 2.5 hours of physical activity a week, and children and teenagers need at least 60 minutes of physical activity every day.

For more helpful holiday tips and other resources, visit:

- The Centers for Disease Control and Prevention at [cdc.gov/healthequity/features/holidayseason](https://www.cdc.gov/healthequity/features/holidayseason).
- The Wellness page at [liteblue.usps.gov/humanresources/benefits/health-wellness/wellness-vid-eos.shtml](https://www.usps.gov/liteblue/usps.gov/humanresources/benefits/health-wellness/wellness-vid-eos.shtml).

— Benefits and Wellness,
Human Resources, 12-2-21

DECEMBER is

HEALTHY HOLIDAYS

Brighten the holidays by making your health and safety a priority. Take steps to keep you and your loved ones safe and healthy — and ready to enjoy the holidays.



Wash hands often to help prevent the spread of germs. It's flu season. Wash your hands with soap and clean running water for at least 20 seconds.



Manage stress. Give yourself a break if you feel stressed out, overwhelmed, and out of control. Some of the best ways to manage stress are to find support, connect socially, and get plenty of sleep.



Don't drink and drive and don't let others drink and drive. Whenever anyone drives drunk, they put everyone on the road in danger. Choose not to drink and drive and help others do the same.



Be smoke-free. Avoid smoking and secondhand smoke. Smokers have greater health risks because of their tobacco use, but *nonsmokers also are at risk* when exposed to tobacco smoke.

Eat healthy, stay active.

Eat fruits and vegetables, which pack nutrients and help lower the risk for certain diseases. Limit your portion sizes and foods high in fat, salt, and sugar. Also, be active for at least 2½ hours a week and help kids and teens be active for at least one hour a day.



Source: Centers for Disease Control and Prevention
 Visit <https://l1teblue.usps.gov/wellness> for additional information.
 The information provided here is for informational purposes only and is not a substitute for professional medical advice. Please see a qualified health care provider for specific health or wellness issues.



Information Security

Emerging Mobile Threats: Smishing and Vishing

Smishing and vishing are new forms of cyberattack, and they threaten millions of Americans daily. In 2020, according to the Federal Bureau of Investigations, these attacks cost Americans more than \$50 million, and those costs are expected to rise significantly.

Both smishing and vishing are forms of phishing; however, smishing scams are conducted via text messaging. Crafty phishers send texts appearing to be from trusted senders, such as banks and online retailers. These messages typically contain URLs or links that trick recipients into visiting websites that download viruses and other forms of malware onto the victim's mobile device.

Vishing — a combination of the parts of the words “voice” and “phishing” — is the telephone version of phishing. This technique uses a spoofed caller ID to make attacks look like the call originates from a known number or perhaps an 800-number that might compel you to answer the phone.

Avoid smishing and vishing scams and keep the USPS® network secure with these tips:

- **Do not click.** Do not open any link or attachment from a telephone number you do not have saved in your contacts list or from a sender you cannot verify.
- **Filter messages.** Filtering unknown senders will block notifications from unsaved phone numbers, which decreases the likelihood of falling for a smishing scam. To filter unknown numbers, follow these steps:
 - **Apple users:** Go to Settings > Messages and toggle on the “Filter Unknown Senders” option. This will create a new tab in your Messages app called “Unknown Senders.”
 - **Android users:** Go to Settings > Spam Message Settings and select the “Block Unknown Senders” option.

For more information about smishing and vishing, visit the CyberSafe at USPS® pages on *Blue* (blue.usps.gov/cyber) and *LiteBlue* (liteblue.usps.gov/cyber).

— Corporate Information Security Office,
Chief Information Security Officer
and Digital Solutions, 12-2-21

Stamp Services

Stamp Announcement 22-1: Blueberries Stamp



©2021 USPS

On January 9, 2022, in Blue Hill, ME, the United States Postal Service® will issue the 4-cent denominated *Blueberries* stamp in one design, in a pressure-sensitive adhesive (PSA) pane of 20 stamps (Item 121600), a PSA Coil of 3,000 stamps (Item 750600), and a PSA Coil of 10,000 stamps (Item 760800). This stamp will go on sale nationwide January 9, 2022, and must not be sold or canceled before the first-day-of-issue.

Blueberries, a new 4-cent definitive stamp, will be available for sale in panes of 20 and coils of 3,000 and 10,000. The stamp features a pen, ink, and watercolor illustration of a cluster of blueberries and leaves. Art director Derry Noyes designed this stamp using an existing illustration by John Burgoyne.

Availability to Post Offices: Item 121600, Blueberries, 4 Cents, Pane of 20 Stamps

Stamp Fulfillment Services will not make an automatic push distribution to Post Offices. Post Offices may begin ordering stamps before the first-day-of-issue through SFS Web at sfsweb.usps.gov.

Availability to Post Offices: Item 750600, Blueberries, 4 Cents, Coil of 3,000 Stamps

Stamp Fulfillment Services will not make an automatic push distribution to Post Offices. Post Offices may begin ordering stamps before the first-day-of-issue through SFS Web at sfsweb.usps.gov.

Availability to Post Offices: Item 760800, Blueberries, 4 Cents, Coil of 10,000 Stamps

Stamp Fulfillment Services will not make an automatic push distribution to Post Offices. Post Offices may begin ordering stamps before the first-day-of-issue through SFS Web at sfsweb.usps.gov.

How to Order the First-Day-of-Issue Postmark

Customers have 120 days to obtain the first-day-of-issue postmark by mail. Each cover must have sufficient postage to meet First-Class Mail® requirements. They may purchase new stamps at their local Post Office™ or at The Postal Store® website at usps.com/shop. They must affix the stamps to envelopes of their choice, address the envelopes (to themselves or others), and place them in a larger envelope addressed to:

FDOI – Blueberries Stamp
USPS Stamp Fulfillment Services
8300 NE Underground Drive, Suite 300
Kansas City, MO 64144-9900

After applying the first-day-of-issue postmark, the Postal Service™ will return the envelopes through the mail. There is no charge for the postmark up to a quantity of 50. There is a 5-cent charge for each additional postmark over 50. All orders must be postmarked by May 9, 2022.

How to Order First-Day Covers

The Postal Service also offers first-day covers for new stamp issues and Postal Service stationery items postmarked with the official first-day-of-issue cancellation. Each item has an individual catalog number and is offered in the *USA Philatelic* catalog and online at usps.com/shop. Customers may register to receive a free *USA Philatelic* catalog online at usps.com/philatelic.

Locally produced items are not authorized. Only merchandise that has been approved and assigned an item number by Headquarters Retail Marketing may be produced and sold.

Issue:	<i>Blueberries</i> Stamp
Item Number:	121600
Denomination & Type of Issue:	4-cent Denominated, Mail-use
Format:	Pane of 20 (1 design)
Series:	N/A
Issue Date & City:	January 9, 2022, Blue Hill, ME 04614
Art Director:	Derry Noyes, Washington, DC
Designer:	Derry Noyes, Washington, DC
Illustrator:	John Burgoyne, West Barnstable, MA
Modeler:	Sandra Lane/Michelle Finn
Manufacturing Process:	Offset, Microprint
Printer:	Banknote Corporation of America
Press Type:	Gallus RCS
Stamps per Pane:	20
Print Quantity:	20,000,000
Paper Type:	Phosphor Tagged Paper, Block Tagged
Adhesive Type:	Pressure-sensitive
Stamp Orientation:	Vertical
Image Area (w x h):	0.73 x 0.84 in./18.542 x 21.336 mm
Stamp Size (w x h):	0.87 x 0.98 in./22.098 x 24.892 mm
Pane Size (w x h):	5.30 x 4.88 in./134.62 x 123.952 mm
Colors:	Cyan, Magenta, Yellow, Black, Pantone 535, Pantone 5415
Plate Size:	120 stamps per revolution
Plate Number:	"B" followed by six (6) single digits
Marginal Markings:	
Front:	Plate number in four corners
Back:	©2021 USPS • Barcode • USPS Logo • 2 barcodes (121600) • Plate position diagram (6) • Promotional text

Issue:	<i>Blueberries</i> Stamp
Item Number:	750600
Denomination & Type of Issue:	4-cent Denominated, Mail-use
Format:	Coil of 3,000 (1 design)
Series:	N/A
Issue Date & City:	January 9, 2022, Blue Hill, ME 04614
Art Director:	Derry Noyes, Washington, DC
Designer:	Derry Noyes, Washington, DC
Existing Art:	John Burgoyne, West Barnstable, MA
Modeler:	Sandra Lane/Michelle Finn
Manufacturing Process:	Offset, Microprint
Printer:	Banknote Corporation of America
Press Type:	Alprinta 74
Stamps per Coil:	3,000
Print Quantity:	9,000,000 stamps
Paper Type:	N/A
Adhesive Type:	Pressure-sensitive
Colors:	Cyan, Magenta, Yellow, Black, Pantone 535, Pantone 5415
Stamp Orientation:	Vertical
Image Area (w x h):	0.73 x 0.84 in./18.542 x 21.336 mm
Stamp Size (w x h):	0.87 x 0.98 in./22.098 x 24.892 mm
Plate Size:	540 stamps per revolution
Plate Number:	"B" followed by six (6) single digits
Coil Number Frequency:	Plate number every 27th stamp below stamp image

Issue:	<i>Blueberries</i> Stamp
Item Number:	760800
Denomination & Type of Issue:	4-cent Denominated, Mail-use
Format:	Coil of 10,000 (1 design)
Series:	N/A
Issue Date & City:	January 9, 2022, Blue Hill, ME 04614
Art Director:	Derry Noyes, Washington, DC
Designer:	Derry Noyes, Washington, DC
Existing Art:	John Burgoyne, West Barnstable, MA
Modeler:	Sandra Lane/Michelle Finn
Manufacturing Process:	Offset, Microprint
Printer:	Banknote Corporation of America
Press Type:	Alprinta 74
Stamps per Coil:	10,000
Print Quantity:	200,000,000 stamps
Paper Type:	N/A
Adhesive Type:	Pressure-sensitive
Colors:	Cyan, Magenta, Yellow, Black, Pantone 535, Pantone 5415
Stamp Orientation:	Vertical
Image Area (w x h):	0.73 x 0.84 in./18.542 x 21.336 mm
Stamp Size (w x h):	0.87 x 0.98 in./22.098 x 24.892 mm
Plate Size:	540 stamps per revolution
Plate Number:	"B" followed by six (6) single digits
Coil Number Frequency:	Plate number every 27th stamp below stamp image

— Stamp Services,
Marketing, 12-2-21

Pull-Out Information

Fraud

Invalid USPS Corporate Account Numbers

Provide this listing to Contract Postal Units and acceptance clerks in non-POS locations without intranet access to validate a USPS Corporate Account (USPSCA) number online. For all other locations, online USPSCA validation is preferred. This list supersedes all previous notices, which you must recycle.

Acceptance clerks must not accept Priority Mail Express® shipments bearing an invalid USPSCA number in the "Payment by Account" or "Agreement Number" section of the label or form.

Note: The first 6 digits of a 9-digit Custom Designed Service and Next Day Pickup Agreement make up the Corporate Account Number.

005846	067197	152089	471010	600964	601151	601322	601566	601731	602066	603141	853059	958113
006376	068597	171353	480082	601000	601174	601331	601575	601767	602752	603152	911127	958135
007032	077013	193571	486328	601013	601176	601363	601580	601768	602789	603176	915708	971016
007379	091934	207842	495065	601027	601177	601384	601581	601773	602984	603177	917689	971072
008028	094518	208428	495361	601047	601199	601385	601594	601788	603027	603184	922031	971125
008436	097527	208623	503007	601071	601221	601428	601619	601803	603043	603193	925083	971139
008439	100226	210272	514006	601073	601231	601433	601624	601854	603047	603200	928260	972982
008590	100863	210430	548003	601074	601247	601449	601668	601857	603060	603205	928334	980225
008718	105209	240050	551250	601078	601249	601460	601670	601858	603062	603234	932533	980259
009644	105699	301418	553486	601092	601251	601478	601671	601862	603067	611102	933001	982004
012400	105968	303101	570177	601101	601253	601485	601674	601870	603077	740441	933007	982685
019495	108956	305003	571127	601114	601256	601487	601676	601900	603080	741228	941444	983114
021909	117369	314281	597544	601124	601261	601488	601681	601903	603082	751008	941756	989046
030469	124078	334900	600023	601129	601280	601499	601685	601916	603097	761636	948799	992697
039005	127102	441629	600162	601131	601296	601523	601692	601928	603106	771007	950700	995374
041175	130334	445158	600177	601135	601303	601530	601719	601945	603116	771629	950995	995581
047213	133024	460161	600247	601137	601313	601545	601721	601985	603117	826012	951133	997128
064973	146570	470016	600586	601147	601314	601564	601727	601989	603118	851023	951371	998008

— Product Information Requirements, Mail Entry and Payment Technology, 12-2-21

Missing, Lost, or Stolen U.S. Money Order Forms

Do Not Cash — Upon Receipt, Notify Local Postal Inspectors

Provide this listing to all Postal Service™ employees responsible for accepting and cashing postal money orders. Destroy all interim notices when the numbers listed appear in the *Postal Bulletin*. The new money order serial

numbers consist of the first 10 digits. The eleventh digit is a check digit only.

Do not cash outdated money orders **104 151 601 to 692 600 000**. Advise holders to send invalid money orders to Canada Post Corporation, Ottawa, Canada K1A 0B1. Check for altered dollar amounts by holding money orders to the light.

010 001 0200	to	0299	044 087 3457	to	3499	084 478 3920	to	3999	176 281 7963	to	7999
010 504 1932	to	1999	044 087 4000	to	4099	086 000 8271	to	8299	176 731 6586	to	6599
011 582 1889	to	1899	044 226 2487	to	2512	086 798 3840	to	3849	178 254 5000	to	9999
011 588 2900	to	3099	044 306 4200	to	4299	088 404 4472	to	4499	178 881 9900	to	9999
012 441 0784	to	0799	044 306 4370	to	4599	088 404 5584	to	5699	180 031 2089 to 2098		
012 579 5675	to	5699	045 524 4121	to	4298	088 757 8688	to	8699	180 403 7723	to	7741
013 289 6176	to	6199	046 800 9870	to	9899	088 757 9400	to	9499	180 428 4580	to	0599
013 610 0014	to	0099	047 352 4000	to	4099	089 358 2248	to	2257	182 368 7544	to	0599
014 932 1000	to	1099	048 383 7650	to	7659	090 663 9678 to 9684			182 475 3229	to	3258
014 972 0800	to	0899	048 396 3647	to	3699	091 818 0071	to	0099	182 475 3904	to	3933
015 363 0065	to	0099	051 142 0755 to 0799			093 106 9346	to	9355	182 631 0031	to	0099
017 028 3200	to	3299	051 774 8857	to	8899	093 203 0500	to	0599	182 911 6539	to	6600
018 569 5333	to	5399	051 781 2875	to	2885	093 684 3630	to	3699	184 218 2760	to	2799
018 986 5264	to	5299	051 977 7010	to	7023	094 081 5074	to	5099	185 828 1474	to	1499
019 518 2814	to	2899	052 058 7115	to	7199	094 216 2555	to	2599	186 132 7583	to	0599
020 698 5159	to	5199	054 450 1130	to	1167	094 580 7062	to	7099	186 629 0589	to	0599
020 844 7307 to 7399			057 670 0563	to	0599	094 639 4200	to	4299	187 184 6177	to	0199
020 972 8948	to	8999	058 187 3836	to	3899	095 070 7186	to	7199	187 323 8200	to	8299
022 021 9110	to	9181	058 523 3003	to	3099	095 076 8300	to	8399	187 441 6080	to	6099
022 037 1411	to	1499	058 591 1153	to	1299	095 354 6864	to	6899	188 831 6774	to	6799
022 527 9201	to	9210	058 895 3746	to	3799	097 224 1350	to	1599	188 835 6370	to	6399
022 529 1882	to	1899	059 986 0814	to	0899	100 160 3800 to 3899			189 083 1064	to	1099
023 637 7169	to	7199	060 406 7650 to 7699			104 667 6400	to	6499	189 660 9583	to	9599
024 380 4100	to	4199	063 491 8122	to	8199	104 876 8937	to	8999	191 179 0377 to 0399		
024 496 6870	to	6896	063 916 9968	to	9999	112 049 4413	to	4499	192 050 5762	to	5781
025 092 0987	to	0999	064 091 4500	to	4599	112 870 9765	to	9799	194 456 8600	to	0699
025 369 5535	to	5599	065 170 0471	to	0499	113 319 2000	to	2099	195 194 6881	to	6899
025 729 1151	to	1199	065 255 7909	to	7999	114 402 3850	to	3899	195 874 1112	to	1199
025 729 1643	to	1799	065 392 6345	to	6399	114 866 5368	to	5397	196 979 0524	to	0599
026 492 3180	to	3199	066 099 2014	to	2099	116 154 2800	to	2899	197 244 6100	to	6199
027 361 0430	to	0499	066 648 2880	to	2899	116 986 4400	to	4499	197 244 6300	to	6399
027 369 4482	to	4495	066 787 3639	to	3699	117 175 1647	to	5169	197 244 6400	to	6499
027 671 8762	to	8776	066 845 7500	to	9999	117 951 4687	to	4699	197 244 6500	to	6599
027 787 9886	to	9899	067 093 3869	to	3899	117 951 5200	to	5299	197 244 6600	to	6699
027 965 9487	to	9499	068 895 0334	to	0399	119 786 3051	to	3064	197 244 6700	to	6799
028 100 8069	to	8099	070 724 4488 to 4499			119 815 8961	to	6199	197 244 6800	to	8999
028 191 1852	to	1999	070 841 9181	to	9199	119 850 7400	to	7499	198 285 2556	to	2566
028 850 3000	to	3199	070 844 2546	to	2599	119 850 7700	to	7999	199 105 0778	to	0799
029 510 1500	to	1599	070 916 1340	to	1399	121 634 0460 to 0499			199 678 2968	to	2999
030 687 0903 to 0999			071 047 5768	to	5799	122 451 9879	to	9899	202 748 5133 to 5199		
030 701 3442	to	3499	071 179 9800	to	9899	122 714 6805	to	6900	202 748 5245	to	5299
031 077 4507	to	4799	071 386 3682	to	3699	124 916 0304	to	0499	202 748 5300	to	5399
032 295 7500	to	9999	071 507 6840	to	6899	126 423 0136	to	0169	202 748 5400	to	5499
034 394 1000	to	1099	072 045 9641	to	9699	127 500 2328	to	2399	203 256 1240	to	1299
034 943 0400	to	0799	072 675 8287	to	8299	160 901 2254 to 2299			204 230 3577	to	3595
035 035 4337	to	4399	073 763 0867	to	0876	161 103 6581	to	6599	205 019 0174	to	0199
037 312 7500	to	7599	073 763 0878	to	0887	161 194 2857	to	0899	206 936 3184	to	3199
037 706 9578	to	9599	073 763 0889	to	0898	162 032 4447	to	4499	207 196 9900	to	9999
037 805 3677	to	3699	077 617 5481	to	5499	163 257 1085	to	1099	207 204 0700	to	0799
037 909 5490	to	5499	077 999 4001	to	4090	164 359 2406	to	2499	207 204 0800	to	0899
037 931 4660	to	4699	078 174 4475	to	4499	166 101 1433	to	1499	207 514 3857	to	3899
039 145 6521	to	6595	078 219 4931	to	4999	167 555 5201	to	5212	208 556 4707	to	4799
040 024 3901 to 3999			078 250 4756	to	4799	167 555 5214	to	5299	210 057 4038 to 4047		
040 674 7100	to	7199	078 823 8312	to	8399	169 618 6274	to	6299	210 221 0548	to	0599
040 688 8816	to	8899	079 374 0300	to	2499	171 806 6878 to 6893			214 061 4711	to	4724
041 299 6752	to	6799	079 807 2342	to	2399	173 639 4685	to	4699	214 303 6311	to	6325
041 623 8889	to	8899	082 721 0228 to 0254			174 238 2779	to	2799	214 303 6239	to	6258
041 803 6565	to	6599	083 140 5000	to	7499	174 281 9347	to	9399	214 877 4251	to	4273
043 129 1968	to	1997	083 784 8886	to	8899	175 251 2600	to	0699	215 252 3918	to	3992
043 205 5922	to	5999	083 913 6915	to	6999	176 281 7937	to	7950	217 585 1400 to 1499		

218 698 2157	to	2199	254 252 2900	to	2999	258 405 7300	to	7399	262 337 5200	to	5299
218 746 0800	to	0899	254 252 3000	to	3099	258 405 7400	to	7499	262 337 5300	to	5399
219 095 0100	to	0399	254 252 3100	to	3199	258 405 7800	to	7899	262 337 5400	to	5499
219 389 1885	to	1899	254 252 3200	to	3299	258 405 7900	to	7999	262 337 5500	to	5599
219 568 7435	to	7456	254 252 3300	to	3399	258 405 8000	to	8099	262 337 5600	to	5699
219 568 7469	to	7487	254 252 3400	to	3499	258 405 8100	to	8199	262 337 5700	to	5799
221 316 5757	to	5799	254 252 3500	to	3599	258 405 8200	to	8299	262 337 5800	to	5899
223 476 3914	to	3999	254 252 3600	to	3699	258 405 8300	to	8399	262 337 5900	to	5999
223 565 4921	to	4957	254 252 3700	to	3799	258 405 8400	to	8499	262 337 6000	to	6099
223 565 4979	to	4999	254 252 3800	to	3899	258 405 8500	to	8599	262 337 6100	to	6199
224 636 4745	to	4765	254 252 3900	to	3999	258 405 8600	to	8699	262 337 6200	to	6299
224 636 4776	to	4799	254 252 4000	to	4099	258 405 8700	to	8799	262 337 6300	to	6399
224 636 4855	to	4885	254 252 4100	to	4199	258 405 8800	to	8899	262 337 6400	to	6499
224 636 4932	to	4948	254 252 4200	to	4299	258 405 8900	to	8999	262 337 6500	to	6599
224 636 4950	to	4962	254 252 4300	to	4399	258 405 9600	to	9699	262 337 6600	to	6699
224 636 4985	to	4999	254 252 4400	to	4499	258 405 9700	to	9799	262 337 6700	to	6799
224 723 0757	to	0799	254 252 4500	to	4599	258 405 9800	to	9899	262 337 6800	to	6899
224 730 2207	to	2299	254 252 4600	to	4699	258 405 9900	to	9999	262 337 6900	to	6999
225 970 0500	to	0599	254 252 4700	to	4799	259 014 9989	to	9999	262 337 7000	to	7099
225 970 0600	to	0699	254 252 4800	to	4899	259 062 4788	to	4798	262 337 7100	to	7199
225 970 0700	to	0799	254 252 4900	to	4999	259 218 1400	to	1499	262 337 7200	to	7299
227 033 8679	to	8699	254 565 7607	to	7700	259 218 1500	to	1599	262 337 7300	to	7399
227 275 9400	to	9999	254 907 1203	to	1299	259 218 1600	to	1699	262 337 7400	to	7499
228 463 2456	to	2499	255 185 9527	to	9599	259 590 5654	to	5699	262 337 7500	to	7599
228 510 4852	to	4899	255 397 1557	to	1576	259 670 8268	to	8299	262 337 7600	to	7699
229 462 8451	to	8475	255 425 2989	to	2998	259 835 6238	to	6399	262 337 7700	to	7799
229 668 5977	to	5999	255 728 6412	to	6499	259 835 6701	to	6799	262 337 7800	to	7899
229 923 9176	to	9199	255 728 9842	to	9899	260 224 4600	to	4699	262 337 7900	to	7999
229 924 6696	to	6699	256 134 9833	to	9839	260 224 5941	to	5999	262 337 8000	to	8099
230 051 9500	to	9999	256 134 9840	to	9849	260 310 2821	to	2899	262 337 8100	to	8199
236 366 2431	to	2499	256 134 9850	to	9859	260 452 0010	to	0022	262 337 8200	to	8299
236 607 6882	to	6899	256 134 9860	to	9869	260 452 0049	to	4299	262 337 8300	to	8399
236 660 5853	to	5872	256 134 9870	to	9879	260 553 8200	to	8299	262 337 8400	to	8499
239 322 5200	to	5299	256 134 9880	to	9889	260 553 8600	to	8699	262 337 8500	to	8599
239 322 5400	to	5499	256 134 9890	to	9899	260 553 9600	to	9799	262 337 8600	to	8699
239 322 5600	to	5699	256 247 6900	to	6999	260 553 9800	to	9899	262 337 8700	to	8799
239 322 5800	to	5899	256 550 5536	to	5545	260 553 9900	to	9999	262 337 8800	to	8899
239 322 5900	to	5999	256 799 2257	to	2299	260 761 1603	to	1662	262 337 8900	to	8999
239 607 4783	to	4799	257 154 8763	to	8799	261 183 2100	to	2299	262 337 9000	to	9099
240 593 1879	to	1899	257 154 8800	to	8899	261 426 0408	to	0499	262 337 9100	to	9199
242 591 2048	to	2099	257 765 4567	to	4599	262 082 8000	to	8099	262 337 9200	to	9299
242 735 0388	to	0398	257 765 4610	to	4696	262 082 8100	to	8199	262 337 9300	to	9399
242 951 7276	to	7299	257 765 4737	to	4799	262 082 8200	to	8299	262 337 9400	to	9499
243 535 6370	to	6399	257 792 7800	to	7889	262 082 8300	to	8399	262 337 9500	to	9599
244 004 9985	to	9999	257 792 7900	to	7999	262 082 8400	to	8499	262 337 9600	to	9699
244 004 9985	to	9999	257 792 8000	to	8099	262 288 7302	to	7399	262 337 9700	to	9799
244 268 9765	to	9799	257 856 9863	to	9899	262 288 7400	to	7499	262 337 9800	to	9899
244 347 4471	to	4499	258 103 1773	to	1782	262 288 9900	to	9999	262 337 9900	to	9999
249 056 1551	to	1599	258 405 1800	to	1899	262 337 2600	to	2699	262 472 3188	to	3199
249 336 9438	to	9499	258 405 1900	to	1999	262 337 2700	to	2700	262 472 3200	to	3299
249 399 4000	to	4099	258 405 3300	to	3399	262 337 2800	to	2800	262 546 3100	to	3199
249 399 4100	to	4199	258 405 3400	to	3499	262 337 2900	to	2900	262 546 3200	to	3299
249 399 4200	to	4299	258 405 3500	to	3599	262 337 3000	to	3099	262 546 3300	to	3399
249 399 4300	to	4399	258 405 3700	to	3799	262 337 3100	to	3199	262 546 3400	to	3499
249 399 4400	to	4499	258 405 3800	to	3899	262 337 3200	to	3299	262 546 3500	to	3599
249 399 4500	to	4599	258 405 3900	to	3999	262 337 3300	to	3399	262 546 3600	to	3699
249 399 4600	to	4699	258 405 4000	to	4099	262 337 3400	to	3499	262 546 3900	to	3999
249 399 4700	to	4799	258 405 4100	to	4199	262 337 3500	to	3599	262 546 4300	to	4399
249 399 4800	to	4899	258 405 4200	to	4299	262 337 3600	to	3699	262 546 4400	to	4499
249 399 4900	to	4999	258 405 4600	to	4699	262 337 3700	to	3799	262 546 4500	to	4599
250 159 7502	to	7599	258 405 5600	to	5699	262 337 3800	to	3899	262 546 4600	to	4699
250 566 9644	to	9699	258 405 5700	to	5799	262 337 3900	to	3999	262 546 4700	to	4799
250 661 8425	to	8499	258 405 5800	to	5899	262 337 4000	to	4099	262 546 4800	to	4899
251 335 5731	to	5799	258 405 5900	to	5999	262 337 4100	to	4199	262 546 4900	to	4999
251 379 2380	to	2399	258 405 6000	to	6099	262 337 4200	to	4299	262 546 7100	to	7199
252 005 7626	to	7699	258 405 6100	to	6199	262 337 4300	to	4399	262 546 7200	to	7299
252 421 8401	to	8499	258 405 6200	to	6299	262 337 4400	to	4499	262 546 7300	to	7399
252 464 2810	to	2899	258 405 6300	to	6399	262 337 4500	to	4599	262 546 7400	to	7499
252 612 3683	to	3699	258 405 6400	to	6499	262 337 4600	to	4699	262 546 9800	to	9899
252 469 2125	to	2199	258 405 6800	to	6899	262 337 4700	to	4799	262 546 9900	to	9999
252 833 3286	to	3297	258 405 6900	to	6999	262 337 4800	to	4899	262 567 1788	to	1799
253 470 3948	to	3999	258 405 7000	to	7099	262 337 4900	to	4999	263 254 2500	to	2500
253 565 7400	to	7499	258 405 7100	to	7199	262 337 5000	to	5099	263 340 0000	to	0099
254 252 2800	to	2899	258 405 7200	to	7299	262 337 5100	to	5199	263 340 0100	to	0199

263 340 0500	to	0599	390 545 5974	to	5999	412 485 6610	to	6699	439 179 2300	to	2399
263 340 0600	to	0699	391 104 6146	to	6199	412 885 5953	to	5999	439 310 0458	to	0499
263 340 2700	to	2799	391 574 1466	to	1499	414 193 3608	to	3674	440 698 1947	to	1999
263 340 2800	to	2899	391 783 3020	to	3599	414 193 3677	to	3699	440 858 6300	to	6399
263 340 3000	to	3099	391 792 6100	to	6199	414 411 7348	to	7399	440 858 6420	to	7299
264 341 2360	to	2399	392 668 2956	to	2999	414 640 0757	to	0799	441 199 1655	to	1699
264 380 4000	to	4099	392 854 8500	to	8899	414 965 1727	to	1799	443 127 3648	to	3699
264 380 4100	to	4199	393 584 7566	to	7699	417 302 8104	to	8199	443 127 4000	to	4099
264 799 6049	to	6099	393 650 0074	to	0099	417 387 6532	to	6599	443 673 7900	to	7999
264 860 7832	to	7868	393 838 8316	to	8499	417 496 6800	to	6999	443 800 9335	to	9399
265 127 3658	to	3699	393 893 6007	to	6099	417 871 9250	to	9299	444 382 8822	to	8899
265 380 7111	to	7137	394 126 6907	to	6999	417 930 9533	to	9599	444 390 1667	to	1699
265 444 4762	to	4799	394 189 0405	to	0599	418 164 6500	to	6799	444 457 3854	to	3899
265 548 7074	to	7099	394 822 3243	to	3278	418 423 9863	to	9899	450 048 4173	to	4199
266 106 0000	to	2499	394 990 1810	to	1899	418 633 5922	to	5999	450 048 4442	to	4699
266 129 5809	to	5899	395 343 3264	to	3299	418 719 8520	to	8599	450 560 5173	to	5199
266 673 0000	to	2499	395 373 3035	to	3099	418 744 2235	to	2299	450 620 3077	to	3099
266 749 7900	to	7999	395 396 9649	to	9799	418 962 2848	to	2899	450 620 3135	to	3199
266 868 0952	to	0999	395 970 3240	to	3299	419 543 0286	to	0299	450 780 2716	to	2799
266 868 1028	to	1099	397 622 4054	to	4099	419 730 0300	to	0399	450 801 2700	to	2799
266 868 1100	to	1199	397 819 8902	to	8999	420 277 0015	to	0049	451 109 2967	to	2984
266 868 1200	to	1299	398 149 7200	to	7699	420 599 0734	to	0798	451 115 4110	to	4125
267 296 1237	to	1299	399 070 0872	to	0899	420 661 4115	to	4199	451 115 4127	to	4199
267 324 8946	to	8998	399 156 7119	to	7199	420 758 9500	to	9699	451 746 0700	to	0799
268 072 1203	to	1299	399 203 5064	to	5099	420 969 3951	to	3971	452 265 0074	to	0099
271 660 4333	to	4400	399 296 9910	to	9999	420 969 3973	to	3999	452 265 0246	to	0299
273 520 0000	to	9999	399 396 8935	to	8999	421 116 3565	to	3599	452 265 0335	to	0399
273 520 6000	to	8999	399 792 7775	to	7799	421 130 9300	to	9399	452 509 1169	to	1199
273 775 7700	to	7899	399 792 8300	to	8399	421 313 4500	to	4999	452 855 6471	to	6499
273 882 1913	to	1998	400 427 1051	to	1999	421 364 5537	to	5599	452 890 4679	to	4799
274 750 0300	to	0400	401 045 1505	to	1549	421 656 2609	to	2699	452 900 8215	to	8238
274 782 0549	to	0599	401 045 1571	to	1599	421 988 9700	to	9799	453 117 9146	to	9199
302 000 0000	to	9999	401 294 2700	to	2799	422 172 4667	to	4699	453 334 3631	to	3699
349 746 2056	to	2099	401 310 9505	to	9599	422 484 4212	to	4299	453 603 7841	to	7891
350 518 7350	to	7374	401 382 5312	to	5399	422 556 1270	to	1299	453 650 1140	to	1199
360 011 1690	to	1699	402 578 7876	to	7899	422 587 7024	to	7099	453 741 1300	to	1399
360 168 6008	to	6099	403 125 6744	to	6799	422 819 7533	to	7599	454 013 2919	to	2999
360 173 8800	to	8899	403 260 7000	to	7499	422 842 5073	to	5087	454 186 2411	to	2499
360 324 2326	to	2399	403 280 6470	to	6499	422 907 7563	to	7599	454 268 4883	to	4899
362 861 3064	to	3099	403 685 8600	to	8699	424 500 6050	to	6099	454 302 5400	to	5499
373 006 2176	to	2199	404 003 0300	to	0399	424 641 8500	to	8599	454 490 8300	to	8399
374 768 2600	to	2699	404 041 8838	to	8899	424 871 6600	to	6699	454 547 7434	to	7499
375 169 4400	to	4599	404 071 4268	to	4299	425 298 2352	to	2399	454 928 4867	to	4895
375 829 3400	to	3499	404 347 5356	to	5399	425 418 4269	to	4299	455 221 1348	to	1499
375 851 9100	to	9199	404 347 5548	to	5599	425 418 4405	to	4499	455 364 2147	to	2199
376 196 0911	to	0999	404 726 4500	to	4599	426 547 4566	to	4599	455 399 5400	to	5499
378 085 3679	to	3699	404 961 5001	to	5199	427 412 6337	to	6499	455 476 0676	to	0699
378 351 1063	to	1099	405 325 0188	to	0198	427 481 0900	to	0999	455 543 0618	to	0699
379 843 5100	to	5199	406 009 4587	to	4599	428 027 2742	to	2752	456 410 9006	to	9099
380 093 9600	to	9699	406 260 6830	to	6899	429 474 4172	to	4199	456 470 4146	to	4299
380 165 1165	to	1199	406 459 6641	to	6999	429 889 2900	to	2999	456 619 4460	to	4499
381 325 4500	to	4599	406 733 3000	to	3999	430 150 4401	to	4599	457 333 2686	to	2699
381 604 2510	to	2699	407 545 1557	to	1599	430 172 9800	to	9899	457 729 1767	to	1777
381 645 9525	to	9599	407 594 0412	to	0599	430 177 1900	to	2099	457 937 8615	to	8699
383 314 3968	to	3999	407 692 9100	to	9299	430 444 9500	to	9699	458 028 9810	to	9899
383 892 1000	to	1344	407 959 2190	to	2199	430 664 4070	to	4099	458 057 2712	to	2999
383 892 1382	to	1399	408 265 2275	to	2288	432 168 8419	to	8499	458 069 9537	to	9599
384 925 3641	to	3654	408 499 7700	to	7799	432 708 6800	to	6999	458 069 9665	to	9699
385 568 2331	to	2399	408 499 7900	to	7999	432 744 1544	to	1599	458 337 5222	to	5299
385 599 7554	to	7575	408 682 8484	to	8599	432 995 9775	to	9799	458 354 7653	to	7999
385 774 2024	to	2099	408 698 7015	to	7099	433 003 5800	to	5899	458 671 8678	to	8699
386 624 1412	to	1599	409 072 3941	to	3999	433 757 3047	to	3099	458 671 8721	to	8798
386 883 8936	to	8999	410 491 2311	to	2399	433 765 4003	to	4099	458 847 5044	to	5999
387 314 5574	to	5599	410 694 8400	to	8599	434 482 7060	to	7199	459 274 7624	to	7699
387 837 6300	to	6399	410 775 1500	to	1599	434 513 2386	to	2399	459 365 5432	to	5499
388 828 0656	to	0699	410 795 7927	to	7999	434 968 3076	to	3092	459 378 5764	to	5799
389 696 2400	to	2799	410 867 0917	to	0966	435 303 1831	to	1842	459 472 4816	to	4999
389 846 3104	to	3135	410 867 0970	to	0999	435 303 1986	to	1999	460 349 6878	to	6899
389 846 3145	to	3195	411 868 1023	to	1199	435 666 6092	to	6399	460 550 1909	to	1999
389 887 9211	to	9230	411 922 2322	to	2399	436 082 6400	to	6899	460 997 5234	to	5299
389 887 9234	to	9299	412 193 0900	to	0999	436 160 6441	to	6499	461 973 6443	to	6499
390 001 3182	to	3199	412 395 8599	to	8699	437 316 7115	to	7199	462 152 0107	to	0299
390 001 3500	to	3699	412 485 6500	to	6599	437 427 0500	to	3499	462 274 1072	to	1099

462 277 8373 to 8399
 462 554 6051 to 6099
 463 011 5529 to 5540
 463 176 4115 to 4199
 463 176 4229 to 4299
 463 185 2600 to 2799
 463 227 7711 to 7799
 463 414 4869 to 4899
 463 808 3484 to 3499
 463 945 7400 to 7899
 464 629 9000 to 9399
 464 711 4332 to 4399
 465 692 3963 to 3999
 465 698 8300 to 8599
 465 743 7745 to 7799
 466 798 6056 to 6067
 467 147 4300 to 4399
 468 079 5782 to 5799
 469 067 2817 to 2899
 469 127 8000 to 8199
 469 213 0359 to 0399
 469 213 0500 to 0599
 469 561 8011 to 8099
 469 658 1961 to 1999
 469 666 9900 to 9999
 469 678 1900 to 1999
 469 781 4900 to 4999
 469 947 6960 to 6999
470 755 5800 to 5818
 471 918 0300 to 0999
 471 985 2408 to 2419
 472 191 6700 to 6799
 472 270 2555 to 2599
 472 987 0213 to 0241
 472 987 0290 to 0299
 473 151 2069 to 2199
 473 666 9138 to 9199
 473 952 3429 to 3499
 474 108 5402 to 5499
 474 356 5193 to 5299
 474 949 3366 to 3399
 475 134 9362 to 9399
 475 167 9667 to 9699
 475 319 3415 to 3499
 475 319 3649 to 3799
 475 340 6400 to 6599
 475 424 8410 to 8499
 475 629 9156 to 9199
 475 850 6101 to 6199
 475 875 2500 to 2599
 476 169 8264 to 8299
 476 189 3000 to 3499
 476 331 2480 to 2499
 477 289 8601 to 8699
 477 681 5206 to 5299
 478 010 4243 to 4268
 478 010 4270 to 4291
 478 450 5071 to 5099
 478 469 7838 to 7858
 478 469 7883 to 7899
 479 280 9800 to 9899
 479 365 9116 to 9176
 479 412 9900 to 9999
 479 667 6190 to 6199
 479 748 9680 to 9699
 479 860 7000 to 7199
480 526 2000 to 2099
 480 640 6330 to 6399
 480 658 0568 to 0599
 480 689 5100 to 5199
 481 072 9463 to 9499
 481 673 0074 to 0095
 482 527 1500 to 1599

482 541 5255 to 5299
 482 729 6800 to 6899
 483 363 7207 to 7299
 483 402 2356 to 2399
 483 486 5100 to 5199
 483 632 1521 to 1599
 483 632 2600 to 2799
 483 849 1615 to 1699
 484 174 4803 to 5299
 484 323 8900 to 9199
 484 680 5000 to 5038
 484 680 5040 to 5074
 484 680 5077 to 5099
 484 680 5000 to 5038
 484 680 5040 to 5074
 484 680 5077 to 5099
 485 029 4913 to 4999
 486 176 0600 to 0699
 486 559 7555 to 7599
 486 696 3023 to 3199
 488 173 7900 to 7999
 488 206 4100 to 4199
 488 226 0200 to 0299
 488 709 3906 to 3999
 488 855 8359 to 8399
 489 181 8963 to 8999
 489 223 2000 to 2099
 489 311 1930 to 1999
 489 318 6200 to 6300
 489 384 0027 to 0099
 489 427 0658 to 0899
 489 997 5252 to 5299
490 669 5850 to 6099
 490 717 7080 to 7099
 490 721 6000 to 6099
 490 793 1500 to 2099
 490 886 8171 to 8199
 490 977 9221 to 9240
 491 258 8100 to 9099
 491 567 1376 to 1399
 492 254 4800 to 4899
 492 283 5100 to 5199
 492 610 6813 to 6899
 493 394 5568 to 5599
 493 470 2562 to 2599
 493 473 7700 to 7799
 493 716 2153 to 2199
 494 206 2972 to 2999
 494 217 3446 to 3999
 494 224 0500 to 0599
 495 145 0600 to 0699
 496 209 7425 to 7499
 496 213 8728 to 8799
 496 474 5226 to 5248
 497 053 8517 to 8699
 497 854 8673 to 8699
 498 449 8888 to 8899
 498 929 8285 to 8499
 498 936 5310 to 5399
 499 016 5425 to 5499
 499 440 8575 to 8899
 499 731 6717 to 6799
500 064 1858 to 1869
 500 070 5725 to 7799
 501 058 0016 to 0026
 501 331 0300 to 0399
 501 460 0977 to 0999
 502 227 7645 to 7699
 502 424 0200 to 0499
 502 424 0600 to 0699
 502 496 6923 to 6999
 503 003 2700 to 2899
 503 194 5144 to 5153
 503 790 9922 to 9948
 504 045 4030 to 4099
 504 166 0200 to 0599

504 240 1062 to 1399
 504 805 3300 to 3499
 505 096 0662 to 0699
 505 893 7739 to 7799
 505 893 7800 to 7999
 506 124 0800 to 0999
 506 165 7027 to 0099
 506 502 5209 to 5299
 506 756 1682 to 1699
 506 756 1700 to 1799
 506 756 1800 to 1899
 506 836 5326 to 5399
 508 488 6226 to 6299
 508 789 8332 to 8399
 508 789 8400 to 8499
 509 909 0425 to 0435
510 150 2400 to 2499
 510 381 3200 to 3299
 510 587 9500 to 9599
 510 587 9659 to 9699
 510 269 9770 to 9999
 511 021 5042 to 5099
 511 021 5100 to 5199
 511 468 1747 to 1799
 511 844 0100 to 0199
 511 844 0340 to 0399
 512 805 3913 to 3919
 513 046 0700 to 0726
 513 149 0600 to 0699
 513 445 3000 to 3199
 513 466 2034 to 2044
 513 539 9052 to 9099
 513 539 9267 to 9299
 513 539 9800 to 9899
 513 539 9985 to 9999
 513 606 5459 to 5490
 513 812 1751 to 1799
 514 103 3600 to 3699
 514 103 3700 to 3799
 514 103 3800 to 3899
600 645 3223 to 3299
 601 339 1200 to 1399
 601 653 5884 to 5899
 601 661 7700 to 7799
 601 682 5343 to 5399
 601 928 1600 to 1699
 602 512 2972 to 2999
 602 555 2400 to 2799
 602 829 7061 to 7099
 603 483 9572 to 9599
 603 490 7200 to 7299
 603 678 7100 to 7199
 603 678 7662 to 7699
 603 678 7902 to 7999
 603 678 8418 to 8499
 603 678 8700 to 9999
 604 086 0880 to 0899
 604 349 1414 to 1499
 604 503 7776 to 7799
 605 520 9037 to 9099
 605 685 4010 to 4099
 605 988 6467 to 6499
 607 689 7951 to 7960
 607 728 1276 to 1299
 608 727 7100 to 7199
 608 727 7273 to 7599
 608 813 9950 to 9999
 609 067 5325 to 5399
 609 067 5488 to 5499
 609 067 5600 to 5699
 609 289 6123 to 6199
 609 438 4400 to 4499
 609 493 1100 to 1199

609 766 8091 to 8999
 609 825 4100 to 4115
 609 884 2981 to 2999
 609 893 1000 to 1099
610 092 3200 to 3299
 610 582 4200 to 4299
 611 879 6939 to 6999
 612 291 8013 to 8099
 612 751 5171 to 5199
 612 751 5226 to 5299
 612 751 6083 to 6099
 612 751 6268 to 6299
 612 751 6572 to 6599
 612 774 2111 to 2199
 612 774 2254 to 2299
 612 774 2500 to 2599
 614 469 0979 to 0999
 614 474 3000 to 3099
 614 521 3490 to 3499
 614 645 1800 to 1899
 614 832 1100 to 2099
 615 017 7505 to 7599
 617 711 6609 to 6699
 617 760 5266 to 5299
 617 813 3601 to 3699
 618 840 9200 to 9299
 619 551 7229 to 7299
 619 859 3000 to 3099
620 073 9400 to 9499
 621 614 7907 to 7930
 621 614 7932 to 7999
 621 648 8021 to 8199
 621 648 8500 to 8599
 621 904 8351 to 8599
 621 916 1978 to 1989
 622 989 8032 to 8099
 623 076 9300 to 9399
 623 819 5006 to 5099
 623 895 8200 to 8399
 623 917 0000 to 0099
 623 917 0200 to 0299
 624 468 5288 to 5299
 624 665 3162 to 3198
 625 088 6735 to 6799
 625 916 9500 to 9799
 625 968 8956 to 8999
 627 005 3938 to 3999
 627 384 3907 to 4099
 627 496 7549 to 7599
 627 708 3605 to 3699
 627 776 2500 to 2599
 628 226 3100 to 3199
 628 814 4702 to 4799
 628 851 9689 to 9699
 629 510 7200 to 7299
 629 964 4200 to 4294
630 389 3056 to 3071
 630 463 0588 to 0599
 631 459 9117 to 9199
 631 762 9325 to 9399
 632 217 4933 to 4999
 632 500 0000 to 640 3999
 633 110 4165 to 4199
 633 110 4303 to 4499
 633 438 6429 to 6599
 633 588 7173 to 7182
 634 725 0700 to 9999
 634 803 3239 to 3299
 634 807 2474 to 2499
 634 827 5900 to 5999
 634 886 3428 to 3499
 635 559 3449 to 3499
 636 289 6214 to 6299

636 634 8007	to 8042	652 754 6317	to 6399	683 378 2117	to 2299	702 195 5109	to 5199
637 150 1200	to 1299	653 131 4945	to 4999	683 415 1200	to 1499	702 254 9300	to 9399
637 562 5828	to 5899	653 426 3300	to 3399	683 444 8159	to 8199	702 264 7569	to 7599
638 042 1647	to 1699	653 455 4874	to 4899	685 154 7780	to 7789	702 519 0513	to 0524
638 049 4984	to 4999	654 238 0000	to 0399	685 297 7645	to 7699	702 713 1800	to 1809
638 318 1115	to 1199	654 404 3065	to 3092	685 623 5264	to 5299	702 821 5730	to 5799
638 318 1453	to 1499	654 962 2900	to 3199	685 650 9487	to 9499	702 821 5805	to 5899
638 885 0000	to 0299	655 103 5081	to 5199	685 669 4200	to 4299	702 844 6975	to 6994
638 903 4362	to 4373	655 523 2600	to 2999	685 757 8452	to 8499	702 846 6331	to 6399
639 415 1929	to 1999	656 305 2448	to 2499	686 071 2694	to 2799	702 848 3900	to 3999
639 415 2019	to 2099	657 347 4438	to 4999	686 176 3333	to 3354	702 857 7302	to 7499
639 420 6200	to 6299	657 710 8100	to 8999	686 372 3200	to 3299	702 878 0114	to 0199
639 469 3517	to 3799	657 780 0985	to 0999	686 644 5879	to 5899	703 364 1707	to 1799
639 605 2143	to 2199	658 586 1400	to 1499	686 899 1371	to 1399	740 002 7710	to 7719
639 657 8600	to 8799	658 877 8000	to 8199	686 931 7636	to 7699	740 021 6730	to 6800
640 289 7500	to 7599	658 880 8000	to 8199	687 601 0973	to 0999	740 119 2275	to 2284
640 289 7700	to 7999	659 398 7300	to 7399	687 614 6774	to 6799	740 130 6688	to 6698
641 170 4420	to 4499	659 706 8113	to 8199	688 120 9000	to 9999	740 144 2780	to 2795
641 318 3133	to 3199	659 846 7837	to 7899	688 314 3107	to 3191	740 241 9049	to 9099
641 378 6500	to 6999	660 510 4100	to 4199	690 291 1361	to 1371	740 252 9265	to 9294
641 383 8739	to 8799	660 673 0400	to 0599	690 788 2877	to 2899	740 255 1718	to 1799
641 877 3187	to 3299	661 488 5000	to 5099	690 893 5344	to 5399	740 274 2602	to 2619
641 877 3310	to 3399	661 609 9100	to 9199	690 893 5512	to 5599	740 277 0366	to 0392
642 355 8094	to 8199	661 716 9420	to 9499	690 904 1300	to 1599	740 332 7658	to 7671
642 355 8308	to 8999	661 906 6522	to 6599	690 941 6000	to 6199	740 348 6641	to 6658
642 900 0018	to 0099	662 021 8332	to 8399	691 313 6383	to 6399	740 351 4790	to 4799
643 030 6254	to 6299	662 068 0700	to 0899	691 313 6600	to 6699	740 374 7416	to 7499
644 066 0882	to 0899	662 553 0774	to 0799	691 582 8003	to 8099	740 470 2420	to 2443
644 069 0600	to 0699	663 078 7034	to 7099	691 664 1800	to 1999	740 514 0300	to 0499
644 077 7506	to 7699	663 763 5300	to 5399	691 664 2400	to 2499	740 523 7432	to 7449
644 085 8157	to 8199	663 883 7039	to 7499	692 727 9362	to 9399	740 535 1555	to 1580
644 112 9839	to 9899	663 938 9200	to 9299	692 798 1800	to 1899	740 557 3570	to 3579
644 373 9083	to 9099	664 253 8000	to 8499	693 249 0779	to 0799	740 650 4104	to 4140
644 380 1460	to 1499	664 656 3055	to 3099	693 249 0877	to 1699	740 684 0620	to 0800
644 733 4715	to 4799	665 174 6400	to 6499	693 445 0566	to 0999	740 701 6105	to 6114
644 900 9712	to 9799	665 274 8208	to 8299	693 448 8500	to 8999	740 705 9790	to 9799
644 901 0109	to 1299	665 669 5400	to 5499	693 645 9583	to 9599	740 726 6400	to 6500
644 901 1325	to 1399	666 132 8226	to 8299	693 965 4200	to 4299	740 748 8319	to 8329
644 923 6800	to 7799	666 696 2209	to 2299	695 741 2906	to 2999	740 765 3306	to 3399
644 932 4655	to 4699	666 696 2309	to 2399	695 947 8518	to 8599	740 774 8434	to 8499
645 318 7240	to 7499	667 032 9300	to 9399	696 662 8247	to 8299	740 779 4259	to 4299
645 333 1766	to 1799	667 729 5529	to 5599	697 447 8285	to 8296	740 786 1885	to 1899
645 790 8632	to 8699	668 383 8400	to 8699	698 042 4816	to 4899	740 790 5989	to 5999
645 821 0657	to 0699	670 368 3400	to 3499	698 131 2138	to 2157	740 803 4870	to 4879
645 930 7948	to 7999	670 369 7336	to 7399	698 227 0000	to 0099	740 820 4854	to 7836
645 975 0737	to 0762	670 750 7169	to 7199	700 065 2570	to 2599	740 827 7578	to 7594
646 242 6200	to 6299	671 046 6200	to 6399	700 065 4800	to 4899	740 917 7490	to 7499
646 270 7639	to 7799	671 251 5448	to 5499	700 190 3350	to 3359	740 918 5531	to 5549
646 798 4000	to 4999	671 926 5600	to 5799	700 228 6048	to 6099	741 037 8528	to 8551
647 048 7035	to 7099	672 444 2000	to 2999	700 650 0452	to 0499	742 030 6135	to 6149
647 049 2900	to 2999	672 828 3410	to 3499	700 666 1323	to 1349	742 033 2663	to 2674
647 398 8300	to 8399	673 167 5776	to 5799	700 786 9106	to 9142	742 040 3300	to 3309
647 398 8481	to 8499	675 464 3700	to 3799	700 859 0744	to 0758	742 112 8155	to 8199
647 437 3000	to 4999	675 464 4000	to 4199	701 028 6780	to 6899	742 151 5000	to 5014
647 811 2188	to 2199	676 365 5958	to 5999	701 213 3900	to 3999	742 191 4640	to 4649
648 009 6057	to 6099	676 669 1024	to 1099	701 267 2000	to 3999	742 192 5210	to 5224
648 163 5300	to 5499	677 126 6734	to 6799	701 335 7312	to 7399	742 222 9200	to 9210
648 722 5283	to 5299	677 333 9979	to 9999	701 369 2005	to 2050	742 228 9660	to 9669
648 892 3164	to 3199	677 466 1088	to 1099	701 499 2260	to 2299	742 247 6980	to 6989
649 100 3989	to 3999	678 071 4500	to 4799	701 503 2247	to 2299	742 290 0936	to 0950
649 647 0370	to 0399	678 096 7531	to 7599	701 541 2271	to 2299	742 302 7600	to 7699
649 647 0522	to 0599	679 909 2578	to 2599	701 553 6557	to 6599	742 305 3711	to 3799
649 647 5237	to 5399	680 112 9565	to 9599	701 578 7460	to 7469	742 305 3800	to 3899
649 647 9100	to 9299	680 244 0903	to 0999	701 578 7475	to 7499	742 305 3900	to 3999
649 666 7800	to 8299	680 412 6046	to 6099	701 601 3457	to 3499	742 305 4000	to 4099
650 114 7707	to 7719	680 761 6800	to 6899	701 605 5913	to 5999	742 305 4100	to 4199
650 130 3400	to 3599	681 677 0540	to 0699	701 695 3982	to 3999	805 885 8411	to 8499
650 213 0406	to 0499	682 070 1029	to 1099	701 695 4148	to 4199	806 087 1100	to 1499
650 555 1749	to 1799	682 956 6280	to 6299	701 695 4227	to 4299	806 268 9275	to 9299
650 564 1900	to 1999	682 956 6490	to 6599	701 708 1741	to 1799	806 534 3400	to 3477
650 627 4212	to 4299	682 956 6700	to 6799	701 736 3966	to 3999	807 342 3283	to 3399
650 736 2043	to 2099	682 965 1178	to 1199	701 772 0870	to 0899	808 086 7100	to 7199
650 739 1540	to 1699	682 965 1201	to 1299	701 838 2800	to 2899	808 090 3440	to 3499
651 741 4415	to 4499	683 118 2389	to 2399	701 941 0600	to 0699	808 325 5161	to 5699
651 882 2800	to 2899	683 378 2000	to 2099	702 171 1603	to 1699	808 784 8000	to 8299

830 125 0672	to	0699	856 752 0200	to	0299	902 985 0833	to	0899	918 951 7231	to	7299
830 602 5800	to	5999	857 111 1352	to	1399	903 370 6934	to	6999	919 519 2786	to	2799
830 610 3700	to	3799	857 279 3450	to	3499	904 600 6523	to	6599	919 536 0770	to	0799
830 983 3500	to	3599	857 843 4000	to	4099	904 892 0378	to	0399	919 814 3095	to	3199
830 983 3635	to	3699	858 124 7644	to	7699	904 892 0648	to	1299	919 889 5110	to	5134
831 354 1387	to	1399	858 756 3111	to	3299	905 056 2216	to	2299	919 889 5137	to	5176
831 815 8240	to	8299	859 063 8200	to	8699	905 510 6647	to	6799	919 889 5178	to	5199
832 525 3810	to	3899	859 190 0600	to	0644	905 510 6900	to	7099	919 889 5030	to	5070
833 159 1884	to	1899	859 437 5538	to	5599	905 794 0000	to	0199	919 889 5090	to	5099
833 456 2567	to	2599	859 811 2888	to	2899	905 794 0288	to	0299	919 915 2774	to	2787
833 566 3015	to	3071	859 855 8873	to	8999	905 873 6900	to	6999	920 155 4662	to	4687
834 130 5200	to	5299	860 240 8520	to	8599	905 873 7100	to	7299	920 309 9039	to	9199
834 316 5444	to	5499	860 275 3900	to	3999	905 880 8900	to	8999	920 771 5321	to	5399
834 354 8747	to	8766	860 518 9629	to	9699	905 889 7100	to	7199	920 857 5500	to	5899
834 354 8824	to	8838	860 600 0021	to	0099	906 158 1508	to	1599	920 864 3480	to	3499
835 269 5700	to	5799	861 158 2350	to	2599	906 558 8812	to	8899	920 963 4567	to	4599
835 496 7303	to	7399	861 367 5400	to	5499	906 982 2214	to	2299	921 333 7400	to	7499
835 539 5200	to	5999	861 637 6010	to	6099	907 725 8500	to	8599	921 477 3762	to	3799
835 813 3015	to	3099	861 979 7292	to	7499	907 815 0216	to	0257	922 278 1048	to	1399
837 672 8967	to	8999	862 216 6100	to	6199	908 622 4225	to	4235	922 280 2019	to	2099
837 784 3282	to	3299	862 263 9213	to	9299	908 936 9254	to	9299	922 280 2233	to	2299
838 176 8377	to	8399	862 271 0800	to	0999	909 066 4494	to	7499	922 773 0459	to	0499
838 518 1257	to	1299	862 271 5000	to	5099	909 067 7400	to	7499	923 032 7000	to	7399
839 718 8257	to	8299	863 871 5138	to	5199	909 100 1787	to	1799	923 045 3630	to	3699
840 323 0600	to	0699	863 949 5300	to	5399	909 100 1900	to	2099	923 484 3600	to	3699
840 875 6235	to	6299	864 088 8200	to	8299	909 355 0422	to	0499	923 493 9403	to	9599
840 910 0900	to	0999	864 426 3972	to	3999	909 568 8900	to	9099	923 493 9681	to	9699
841 349 5000	to	5099	864 520 6117	to	6136	909 568 9300	to	9499	923 604 4424	to	4499
841 805 7747	to	7899	865 151 0526	to	0599	909 725 7307	to	7399	923 810 7800	to	8299
841 805 7944	to	8099	865 500 4034	to	4099	909 833 0947	to	0999	924 252 1200	to	1299
842 226 0685	to	0695	865 883 6082	to	6099	910 219 8631	to	8699	924 252 1400	to	1499
842 685 4600	to	4699	866 004 3000	to	3999	910 265 1100	to	1199	924 533 0711	to	0799
842 685 4742	to	4999	866 442 4100	to	4899	910 471 7273	to	7299	924 533 2343	to	2399
842 860 0300	to	0399	867 366 9108	to	9118	910 536 2505	to	2599	924 533 2428	to	2499
842 898 5582	to	5599	867 633 7403	to	7499	910 958 7499	to	7599	924 685 1957	to	1999
843 062 7100	to	7199	867 737 5623	to	5699	911 140 1000	to	2199	924 946 6300	to	6699
843 077 6288	to	6299	868 169 4529	to	4599	911 245 2545	to	2599	925 333 5900	to	6099
843 077 6378	to	6399	868 173 8400	to	8599	911 268 9077	to	9099	925 336 2300	to	2399
843 758 5769	to	5778	868 514 9000	to	9099	911 400 8948	to	8999	926 432 5907	to	5999
843 786 2554	to	2699	868 566 9200	to	9299	911 508 1620	to	1799	926 436 3600	to	3699
845 656 8165	to	8199	869 200 0000	to	9999	911 509 9310	to	9399	927 765 6257	to	6299
845 727 2100	to	2199	869 387 1150	to	1199	911 523 3000	to	3999	928 197 8100	to	8199
845 746 2618	to	2635	869 505 3500	to	3599	912 057 9922	to	9999	928 197 8283	to	8299
846 390 7531	to	7599	869 523 7033	to	7099	912 882 0563	to	0899	928 856 2059	to	2068
846 918 0572	to	0599	869 566 6150	to	6167	913 605 2218	to	2299	930 078 5800	to	5899
847 237 7690	to	7699	869 776 8785	to	8786	913 709 2429	to	2499	930 219 1722	to	1799
847 284 2481	to	2499	869 800 0000	to	9999 9999	913 818 3501	to	3999	930 335 7810	to	7819
847 374 7055	to	7065	870 054 4814	to	4899	914 063 4300	to	4399	931 097 9259	to	9299
847 374 7055	to	7065	870 491 4812	to	4849	914 346 7621	to	7644	931 156 1502	to	1579
847 636 5304	to	5399	870 536 5820	to	5829	914 453 1366	to	1399	931 156 1600	to	1625
847 700 5447	to	5499	870 541 7167	to	7239	914 529 6185	to	6299	931 156 1671	to	1699
847 723 7500	to	7599	870 575 8155	to	8999	914 896 4658	to	4699	932 506 6400	to	6599
849 485 3427	to	3499	870 589 0485	to	0494	915 187 8774	to	8779	932 732 1796	to	1799
849 520 9850	to	9899	870 691 7060	to	7099	915 300 2783	to	2799	932 827 9026	to	9099
849 608 1357	to	1399	872 028 4850	to	4899	915 546 6822	to	6999	932 957 2300	to	2399
849 792 2600	to	2699	872 029 9306	to	9399	915 646 5183	to	5199	933 060 6160	to	6189
850 546 1862	to	1899	872 078 3709	to	3799	915 671 3963	to	3980	933 387 2541	to	2561
851 143 6826	to	6844	872 100 0445	to	0459	915 671 3982	to	3999	933 760 3609	to	4199
851 209 9880	to	9899	900 556 4178	to	4199	915 675 2217	to	2299	933 894 0928	to	0999
851 928 9221	to	9299	900 845 0044	to	0099	916 440 3377	to	3399	934 018 2729	to	2741
852 589 6560	to	6599	900 936 0217	to	0299	916 670 6352	to	6399	934 180 0300	to	0399
853 049 3646	to	3699	900 936 0435	to	0499	916 682 5300	to	5399	934 236 3954	to	3999
854 304 4089	to	4999	901 058 5255	to	5280	916 694 1414	to	1499	934 622 8717	to	8999
854 529 2200	to	2299	901 273 1082	to	1099	916 703 0802	to	0821	935 216 0312	to	0399
854 532 0000	to	2999	901 287 5143	to	5199	917 089 0709	to	0799	935 843 2202	to	2247
855 001 6204	to	6249	901 291 2789	to	2799	917 089 0842	to	0899	936 024 8889	to	8899
855 319 9364	to	9399	901 525 7122	to	7199	917 216 2928	to	2999	936 339 4455	to	4499
855 361 3390	to	3399	902 089 1253	to	1299	917 370 6300	to	6499			
856 226 0490	to	0499	902 198 9769	to	9799	917 486 4900	to	4999			
856 656 5800	to	5999	902 948 1269	to	1299	918 460 0602	to	0699			

Missing, Lost, or Stolen Canadian Money Order Forms

Do Not Cash — Upon Receipt, Notify Local Postal Inspectors

Provide this listing to all Postal Service™ employees responsible for accepting and cashing postal money orders. Destroy all interim notices when the numbers listed appear in the *Postal Bulletin*. The new money order serial

numbers consist of the first 9 digits. The tenth digit is a check digit only.

Do not cash outdated money orders **104 151 601 to 692 600 000**. Advise holders to send invalid money orders to Canada Post Corporation, Ottawa, Canada K1A 0B1. Check for altered dollar amounts by holding money orders to the light.

719 869 731	to	9 760	728 702 338	to	2 400	734 950 111	to	0 170	742 325 668	to	5 700
720 227 871	to	7 930	728 915 371	to	5 850	735 120 331	to	0 840	742 408 771	to	8 830
720 227 949	to	7 960	728 953 141	to	3 410	735 283 008	to	3 020	742 512 120	to	2 150
720 368 543	to	8 570	728 954 280	to	4 310	735 293 131	to	3 220	742 684 849	to	4 890
720 392 151	to	2 570	729 169 081	to	9 140	735 635 010	to	5 040	742 839 553	to	9 630
720 556 491	to	6 640	729 363 841	to	3 870	735 783 961	to	3 990	742 913 668	to	3 700
720 558 621	to	8 650	729 682 891	to	3 190	735 803 401	to	3 430	742 917 287	to	7 296
720 575 361	to	5 570	729 838 940	to	9 070	736 005 420	to	5 440	742 921 891	to	1 980
720 590 152	to	0 179	729 839 101	to	9 130	736 366 021	to	6 110	742 983 631	to	3 810
721 638 331	to	9 170	730 077 683	to	7 840	736 624 456	to	4 500	743 020 021	to	0 170
721 815 391	to	5 420	730 109 847	to	9 880	736 670 851	to	1 060	743 206 491	to	6 500
721 969 713	to	9 740	730 373 761	to	3 850	736 767 061	to	7 090	743 235 992	to	6 050
722 072 137	to	2 160	730 501 951	to	2 130	736 767 093	to	7 120	743 940 631	to	0 900
722 378 265	to	8 280	730 519 379	to	9 470	736 982 191	to	2 370	743 978 011	to	8 070
722 413 990	to	4 004	730 569 278	to	9 360	736 982 551	to	2 730	744 234 751	to	4 780
722 764 948	to	4 980	730 711 711	to	1 740	737 110 141	to	0 170	744 499 591	to	9 680
722 825 840	to	5 889	730 722 991	to	3 230	737 185 501	to	5 710	744 626 901	to	6 910
723 153 841	to	3 850	730 845 970	to	5 990	737 317 321	to	7 350	745 388 794	to	8 910
723 237 616	to	7 630	730 888 291	to	8 320	737 517 781	to	7 840	746 446 806	to	6 820
723 331 081	to	1 110	730 927 591	to	7 680	737 628 181	to	8 210	746 818 351	to	8 410
723 496 443	to	6 470	731 307 914	to	7 930	737 634 258	to	4 270	747 245 266	to	5 280
723 967 291	to	7 320	731 402 431	to	2 460	738 361 971	to	1 980	747 364 813	to	4 830
724 655 196	to	5 340	731 407 232	to	7 320	738 447 601	to	7 660	747 501 434	to	1 450
724 711 441	to	1 500	731 588 301	to	8 340	738 648 355	to	8 450	747 739 891	to	0 070
724 711 538	to	1 560	731 767 273	to	7 320	738 849 811	to	9 900	748 148 649	to	8 760
724 793 221	to	3 250	731 781 061	to	1 120	738 892 270	to	2 290	748 259 960	to	9 970
724 908 109	to	8 120	731 837 821	to	7 910	738 997 259	to	7 380	748 565 162	to	5 280
724 937 461	to	7 670	731 841 377	to	1 450	739 161 451	to	1 540	748 874 988	to	5 030
725 163 118	to	3 151	732 018 481	to	8 600	739 219 381	to	9 440	749 137 381	to	7 410
725 202 735	to	2 750	732 067 972	to	8 370	739 740 151	to	0 180	749 190 192	to	0 210
725 398 591	to	8 800	732 188 649	to	8 670	739 793 491	to	3 520	749 685 421	to	5 450
725 464 591	to	4 920	732 193 460	to	3 470	739 793 527	to	3 550	749 846 791	to	6 850
725 475 321	to	5 330	732 201 241	to	1 390	739 942 621	to	2 650	749 993 131	to	3 580
725 711 057	to	1 070	732 220 431	to	0 440	739 999 231	to	9 320	750 071 587	to	1 610
725 738 581	to	8 730	732 355 201	to	5 380	740 011 517	to	1 530	750 408 167	to	8 183
725 981 311	to	1 430	732 472 320	to	2 560	740 030 701	to	0 970	750 438 421	to	8 501
725 987 835	to	7 880	732 541 605	to	1 620	740 261 740	to	1 820	750 743 911	to	4 030
726 060 811	to	0 900	732 572 221	to	2 490	740 265 811	to	6 290	750 779 118	to	9 400
726 391 970	to	2 520	732 586 479	to	6 710	740 299 111	to	9 170	750 910 981	to	1 010
726 484 771	to	4 800	732 994 037	to	4 080	740 299 231	to	9 260	750 960 841	to	0 900
726 493 351	to	5 300	733 163 449	to	3 460	740 329 266	to	9 320	751 296 211	to	6 240
726 504 031	to	4 063	733 297 171	to	7 290	740 889 081	to	9 090	751 539 121	to	9 180
726 504 070	to	4 090	733 446 631	to	7 110	741 010 421	to	0 530	751 541 311	to	1 790
726 504 331	to	4 390	733 474 665	to	4 770	741 113 041	to	3 370	751 757 641	to	7 700
726 563 701	to	4 060	733 704 482	to	4 570	741 373 891	to	4 340	751 936 951	to	7 010
726 599 371	to	9 460	733 751 041	to	1 130	741 452 369	to	2 490	751 951 861	to	1 890
726 626 356	to	6 370	734 009 101	to	9 130	741 492 991	to	3 140	751 999 021	to	9 110
727 182 271	to	2 510	734 290 759	to	0 770	741 553 460	to	3 470	752 139 516	to	9 570
727 416 181	to	6 240	734 389 273	to	9 290	741 764 431	to	4 520	752 182 892	to	2 950
727 481 431	to	1 460	734 440 031	to	0 111	741 764 431	to	4 520	752 206 861	to	7 100
727 749 241	to	9 780	734 797 201	to	7 320	742 178 834	to	8 880	752 295 241	to	5 600
728 382 331	to	2 480	734 939 611	to	9 640	742 325 500	to	5 520	752 731 351	to	1 410

752 767 441	to	7 470	762 593 431	to	3 460	773 208 991	to	9 290	800 427 530	to	7 540
753 008 941	to	9 030	763 155 160	to	5 180	773 231 311	to	1 340	800 872 741	to	2 830
753 194 311	to	4 370	763 178 631	to	8 660	773 348 739	to	8 940	801 349 801	to	9 830
753 620 378	to	0 400	763 506 001	to	6 060	773 348 739	to	8 940	801 676 681	to	7 100
754 013 917	to	3 940	763 522 141	to	2 470	773 575 891	to	5 950	802 967 821	to	7 940
754 161 061	to	1 120	763 717 694	to	7 800	773 852 971	to	3 030	803 217 601	to	7 780
754 358 445	to	8 610	763 826 461	to	6 520	775 373 449	to	3 460	803 729 731	to	9 850
754 410 451	to	0 660	763 900 460	to	0 471	789 257 191	to	7 250	803 747 402	to	7 520
754 438 393	to	8 410	763 900 479	to	0 530	790 448 020	to	8 460	804 138 181	to	8 420
754 493 109	to	3 130	763 917 271	to	7 750	790 597 485	to	7 530	804 428 224	to	8 250
754 664 182	to	4 220	764 125 801	to	5 860	790 911 883	to	1 900	804 682 411	to	2 710
754 816 377	to	6 470	764 284 525	to	4 560	791 057 441	to	7 550	805 272 525	to	2 540
755 487 421	to	7 600	764 526 241	to	6 330	791 239 081	to	9 290	805 523 445	to	3 460
755 592 901	to	3 140	764 601 421	to	1 600	791 374 483	to	4 500	805 745 704	to	5 730
755 791 730	to	1 800	764 650 231	to	0 470	791 387 971	to	8 030	806 452 907	to	2 980
755 926 951	to	7 070	764 984 371	to	4 850	791 447 521	to	7 850	806 744 781	to	4 850
755 934 332	to	4 510	765 003 667	to	3 680	791 451 151	to	1 240	806 982 181	to	2 300
755 957 701	to	8 000	765 042 517	to	2 540	791 500 009	to	0 470	807 764 791	to	4 910
755 962 981	to	3 280	765 194 728	to	4 970	791 771 431	to	1 490	808 089 931	to	9 960
756 035 371	to	5 490	765 387 365	to	7 450	792 004 293	to	4 320	808 656 423	to	6 450
756 301 257	to	1 290	765 541 801	to	2 100	792 018 379	to	8 420	808 753 771	to	3 800
756 371 565	to	1 580	765 638 461	to	8 970	792 070 621	to	0 740	809 189 001	to	9 010
756 876 031	to	6 120	765 647 101	to	7 190	792 145 211	to	5 230	809 886 879	to	6 930
756 876 151	to	6 240	765 813 781	to	4 029	792 391 381	to	1 620	809 890 489	to	0 500
756 970 129	to	0 140	765 879 314	to	9 390	792 452 779	to	2 790	810 323 734	to	3 760
757 059 613	to	9 630	765 954 001	to	4 030	792 772 728	to	2 770	810 367 116	to	7 140
757 078 540	to	8 560	766 120 286	to	0 320	792 903 511	to	3 990	810 526 351	to	6 500
757 086 209	to	6 240	766 125 716	to	5 750	793 282 518	to	2 533	810 806 911	to	6 940
757 240 591	to	0 650	766 158 824	to	8 840	794 041 831	to	2 040	810 807 211	to	7 240
757 277 371	to	7 700	766 388 433	to	8 460	794 397 709	to	7 780	811 423 021	to	3 110
757 291 591	to	2 730	766 509 421	to	9 660	794 581 741	to	2 040	811 517 221	to	7 239
757 964 251	to	4 280	766 572 901	to	3 020	794 592 122	to	2 150	811 721 101	to	1 130
758 067 001	to	7 090	766 748 500	to	8 521	795 032 251	to	2 340	812 025 721	to	5 900
758 105 221	to	5 250	767 024 341	to	4 370	795 796 291	to	6 350	812 093 073	to	3 130
758 324 941	to	5 000	767 326 471	to	6 590	796 070 139	to	0 160	812 100 821	to	0 840
758 593 628	to	3 650	767 332 561	to	2 950	796 143 151	to	3 630	812 465 251	to	5 610
758 709 038	to	9 060	768 009 841	to	9 960	796 159 725	to	9 740	812 918 341	to	8 670
758 744 101	to	4 160	768 011 489	to	1 520	796 169 306	to	9 340	812 918 701	to	8 760
758 850 883	to	0 900	768 177 980	to	7 990	796 373 406	to	3 430	813 050 491	to	0 520
758 860 951	to	1 550	768 391 081	to	1 170	796 602 961	to	3 050	813 073 171	to	3 200
759 152 851	to	2 880	768 661 569	to	1 650	796 708 441	to	8 500	813 398 476	to	8 550
759 740 941	to	1 090	769 000 051	to	0 080	796 886 281	to	6 430	813 713 971	to	4 000
760 004 596	to	4 610	769 050 841	to	0 900	796 901 701	to	2 000	813 858 121	to	8 150
760 118 191	to	8 250	769 159 081	to	9 178	796 975 466	to	5 590	814 789 330	to	9 349
760 155 001	to	5 090	769 737 496	to	7 510	797 272 917	to	2 950	814 984 656	to	4 680
760 378 002	to	8 020	769 778 491	to	8 730	797 519 441	to	9 460	815 016 020	to	6 030
760 692 722	to	2 749	769 827 331	to	7 450	797 519 731	to	0 240	815 199 410	to	9 420
761 055 460	to	5 480	770 216 071	to	6 100	797 535 181	to	5 330	815 240 491	to	0 520
761 169 781	to	9 810	770 723 281	to	3 400	797 646 151	to	6 180	815 755 591	to	5 620
761 504 941	to	5 120	770 790 451	to	0 480	798 040 053	to	0 080	815 755 622	to	5 650
761 516 836	to	6 910	770 915 150	to	5 490	798 055 813	to	5 830	815 806 381	to	6 680
761 613 588	to	3 600	771 455 551	to	5 610	798 055 891	to	5 950	816 126 834	to	6 870
761 688 631	to	8 690	771 609 661	to	9 690	798 326 371	to	6 520	816 156 721	to	6 780
761 805 199	to	5 240	771 932 551	to	2 580	798 339 167	to	9 210	816 580 903	to	0 920
761 826 106	to	6 120	772 057 224	to	7 440	798 562 411	to	2 440	816 945 571	to	5 600
761 881 171	to	1 560	772 162 660	to	3 070	798 632 461	to	2 490	817 253 011	to	3 280
761 975 641	to	5 670	772 718 615	to	8 640	798 807 151	to	7 510	817 763 881	to	4 060
761 975 886	to	5 895	772 940 140	to	0 160	798 944 761	to	5 030	818 330 562	to	0 610
762 304 144	to	4 170	772 970 886	to	0 940	799 118 616	to	8 640	818 459 641	to	9 670
762 324 931	to	4 960	773 009 419	to	9 430	799 133 191	to	3 220	818 926 273	to	6 320
762 439 261	to	9 290	773 112 031	to	2 060	799 177 626	to	7 650	818 950 351	to	0 380
762 524 158	to	4 220	773 125 387	to	5 410	799 854 751	to	5 200	818 962 492	to	2 530
762 584 872	to	4 970	773 179 320	to	9 410	800 044 320	to	4 410	819 032 341	to	2 730
			773 202 989	to	3 140	800 211 901	to	2 440	819 127 054	to	7 080

819 278 540	to	8 670	822 703 442	to	3 470	826 226 644	to	6 670	828 539 341	to	9 370
819 544 681	to	4 740	822 900 991	to	1 020	826 582 951	to	3 430	828 732 331	to	2 390
819 928 441	to	8 650	822 925 951	to	6 100	826 720 201	to	0 230	828 807 781	to	7 840
820 034 406	to	4 430	823 284 931	to	4 990	827 005 671	to	5 830	828 830 952	to	0 963
820 070 761	to	1 540	823 293 031	to	3 210	827 287 861	to	7 950	828 939 781	to	0 050
820 191 342	to	1 360	823 556 011	to	6 100	827 291 502	to	1 520	829 002 721	to	2 870
820 274 856	to	4 880	824 078 341	to	8 370	827 575 381	to	5 470	829 005 301	to	5 540
820 600 171	to	0 230	824 156 325	to	6 340	827 609 085	to	9 100	829 080 241	to	0 330
821 172 241	to	2 360	824 511 252	to	1 270	827 619 811	to	9 840	829 160 986	to	1 000
821 229 661	to	9 720	824 588 281	to	8 370	827 883 511	to	3 600	829 176 841	to	6 930
821 229 743	to	9 780	825 140 397	to	0 460	828 160 441	to	0 530	829 471 561	to	1 590
821 903 731	to	3 910	825 409 651	to	9 680	828 376 201	to	6 260	829 561 065	to	1 080
821 927 841	to	7 850	825 472 171	to	2 200	828 441 602	to	1 630	829 566 481	to	6 510
822 505 801	to	5 830	826 042 898	to	2 920	828 539 316	to	9 340	829 569 931	to	9 960

— Criminal Investigations Group, U.S. Postal Inspection Service, 12-2-21

Verifying U.S. Postal Service Money Orders

Follow these steps to cash a Postal Service™ money order:

1. Check that the amount does not exceed the legal limit: \$1,000 for domestic, and \$700 for international Postal Service money orders.
2. Check that the proper security features are present:
 - When held to the light, a watermark of Benjamin Franklin is repeated from top to bottom on the left side.
 - When held to the light, a dark line (security thread) runs from top to bottom with the word “USPS” repeated.
 - When there is discoloration around the dollar amounts, this might indicate the amounts were changed.

These appear in Postal Service Notice 299, *U.S. Postal Money Order Reference Card*, or online at usps.com/shop/money-orders.htm.

3. If the money order seems suspicious, call the U.S. Postal Service Money Ordxxxer Verification System at 866-459-7822.

Provide this information to local banks and retailers, as they also receive Postal Service money orders for cashing.

— Delivery and Retail
Customer Service Operations, 12-2-21

Counterfeit Canadian Money Order Forms

Do Not Cash

To be posted and used by retail window employees. As directed, destroy previous notices. Destroy all interim notices when the numbers listed appear in the *Postal Bulletin*.

671,819,086	683,594,542	687,262,503
676,612,640	684,683,610	687,262,525
677,891,039	686,619,878	687,262,526
678,282,493	686,619,886	687,287,578
678,916,031	686,619,887	687,287,581
679,552,215	686,794,382	687,287,582
679,694,334	686,794,426	694,063,898
679,751,983	686,794,427	694,063,899
679,800,207	686,794,431	694,063,980
681,130,536	687,262,502	701,321,725
681,844,376		

— Criminal Investigations Group,
U.S. Postal Inspection Service, 12-2-21

Toll-Free Number Available to Verify Canadian Money Orders

The Canada Post Corporation has a toll-free number that cashing agents can call to verify the validity of Canadian Postal Money Orders. The number is 800-563-0444.

This toll-free number is printed on the back of the Canadian Postal Money Orders.

— Criminal Investigations Group,
U.S. Postal Inspection Service, 12-2-21

Other Information

Overseas Military/Diplomatic Mail

Mail addressed to military and diplomatic post offices overseas is subject to certain conditions or restrictions of mailing regarding content, preparation, and handling. The APO/FPO/DPO table outlines these conditions by APO/FPO/DPO ZIP Codes™ through the use of footnoted mail-

ing restrictions codes (see the [Restrictions](#) page following the table).

Acceptance clerks must use the table with the Retail System Software terminal to determine which APO/FPO/DPO ZIP Codes are active and which conditions of mailing apply.

We have eliminated “Not Active” entries from the table below to save space and paper.

APO/FPO/DPO Table

APO/ FPO/ DPO	See Restrictions	APO/ FPO/ DPO	See Restrictions	APO/ FPO/ DPO	See Restrictions	APO/ FPO/ DPO	See Restrictions
09002	A-B-F-F3-H-N-Q-R-S-V-Z1	09079	B-C-D-E-F3-H-M-R-S-U	09173	B-C-D-E-F3-H-M-R-S-U	09279	A-B-E-E1-F-F3-I3-L-M-N-R-S-T-V-X-Z1
09003	B-C-D-E-F3-H-M-P-R-S-U	09094	B-C-D-F3-H-M-P-R-S-Z1	09174	B-C-C2-F-F1-F3-I3-L-N-R-R1-S-T-V-X-Z1	09283	A-B-E-E1-F-F3-L-M-N-R-S-T-V-X-Z1
09004	B-C-D-E-F3-H-M-R-S-U	09095	B-C-D-E-H-M-R-U	09175	A-B-C1-C2-E2-F-F1-F3-H1-J-L-M-N-R-R1-S-T-V-W-X-Z1	09285	A-B-C-E-E-1-F1-F3-H-I3-L-M-N-R-S-T-V-X-Z1
09005	B-C-D-E-F3-H-M-P-R-S-U	09096	B-C-D-E-F3-H-M-R-S-U	09176	A-B-C2-F-F1-F3-J-L-M-N-R-R1-S-T-V-X-Z1	09287	B-C2-E1-F1-F3-J-L-N-R-S-T-V-X-Z1
09006	B-C-D-E-F3-H-M-R-S-U	09103	A-B-F-F3-H-N-Q-R-S-V-Z1	09177	B-C-D-E-F3-H-M-R-S-U	09289	B-E2-F1-F3-H1-J-L-M-N-R-R1-S-T-U2-V-X-Z1
09008	A-B-F-F3-H-N-Q-R-S-V-Z1	09104	B-C-D-F3-H-M-R-S-U-Z1	09178	B-C1-C2-E2-F1-F3-I3-L-M-N-R-S-T-V-X-Z1	09290	A-B-F1-F3-J-L-M-N-R-S-T-U2-V-X-Z1
09009	B-C-D-E-F3-H-M-R-S-U-Z1	09107	B-C-D-E-F3-H-M-R-S-U	09180	B-C-D-E-F3-H-M-R-S-U	09291	B-C-C1-C2-E2-F1-F3-H1-L-N-R-R1-S-T-V-X-Z1
09010	B-C-D-E-F3-H-M-R-S-U2	09112	B-C-D-E-F3-H-M-R-S-U	09186	B-C-D-E-F3-H-M-P-R-S-U	09292	A-B-C-C2-E-E2-E3-F1-F3-H-H1-J-L-M-N-R-R1-S-T-V-X-Z1
09011	B-C-D-E-F3-H-M-R-S-U	09113	A-B-F-F3-H-N-Q-R-S-V-Z1	09203	A-B-C-C1-C2-F-F1-F3-I3-J-L-M-N-R-R1-T-V-Z1	09301	A-B-C1-C2-E2-F-F1-F3-H1-I3-L-M-N-R-R1-S-T-U4-V-Z1
09012	B-C-D-E-F3-H-M-R-S-U-Z1	09114	B-C-D-E-F3-H-M-R-S-U	09204	B-C-F3-M-N-R-S-V-Z1	09302	A-B-C1-F-F1-F3-H-M-N-R-S-V-Z1
09013	B-C-D-E-F-F1-F3-H-M-R-S-U-Z1	09115	A-B-F-F3-H-N-Q-R-S-V-Z1	09211	B-C-D-E-F3-H-M-P-R-S-U	09305	A-B-C1-E2-F-F1-F3-H1-I3-M-N-R-R1-S-T-V-Z1
09014	B-C-D-E-F3-H-M-P-R-S-U	09116	A-B-F-F3-H-N-Q-R-S-V-Z1	09213	B-C2-F-F1-F3-H-J-L-M-N-R-R1-T-U-V-Z1	09306	A-B-C1-E2-F-F1-F3-H1-R-R1-S-U2-V-Z1
09015	A-B-C-C1-C2-F-F1-F3-J-L-M-N-R-R1-S-V-Z1	09123	B-C-D-E-F3-H-M-R-S-U-Z1	09214	B-C-D-E-F3-H-M-R-S-U-Z1	09307	B-C-C2-F-F3-N-R-R1-S-Z1
09016	B-C-D-E-F1-F3-H-M-R-S-U	09125	A-B-C-F-F1-F3-H-N-R-R1-S-V-V1	09216	B,C,F1,F3,M,N,R,S,V,Z1	09309	A-B-C-C1-C2-E2-F-F1-F3-H1-M-N-R-R1-S-V-Z1
09017	A-B-F-F3-H-N-Q-R-S-V-Z1	09126	B-C-D-F3-H-M-P-R-S-Z1	09227	B-C-D-E-F3-H-M-R-S-U	09310	A-B-C1-C2-E2-F-F1-F3-H1-I3-L-M-N-R-R1-S-T-U4-V-Z1
09018	A-B-F-F3-H-N-Q-R-S-V-Z1	09128	B-C-D-E-F3-H-M-R-S-U	09240	A-B-C1-F-F3-H-N-R-S-V	09311	A-B-C1-C2-E2-F-F1-F3-H1-I3-L-M-N-R-R1-S-T-U4-V-Z1
09020	B-C-D-E-F3-H-M-R-S-U	09131	B-C-D-E-F3-H-M-R-S-U	09241	A-B-C2-F3-N-R-S-U-Z1	09312	A-B-C1-C2-E2-F-F1-F3-H1-I3-L-M-N-R-R1-S-T-U4-V-Z1
09021	B-C-D-E-F3-H-M-R-S-U-Z1	09135	A-B-F-F3-H-N-R-S-U-V-Z1	09242	A-B-C1-F-F3-H-N-R-S-V	09313	A-B-C1-E2-F-F1-F3-H1-I3-L-M-N-R-R1-S-T-U4-V-Z1
09034	B-C-D-E-F3-H-M-R-S-U	09136	B-C-D-E-F1-F3-H-M-P-R-S-U	09250	B-C-D-E-F3-H-M-R-S-U	09315	A-B-C1-E2-F-F3-N-R-R1-S-V-Z1
09044	B-C-D-F1-F3-H-R-S-U	09138	B-C-D-F3-H-M-R-S-U	09261	B-C-D-E-F3-H-M-N-R-S-U-V-Z1	09316	A-B-C1-E2-F-F1-F3-H1-I3-M-N-R-R1-S-T-V-Z1
09046	B-C-D-E-F3-H-M-R-S-U	09140	B-C-D-E-F3-H-M-R-S-U	09263	B-C-D-E-F3-H-M-R-S-U	09319	A-B-C-C1-C2-E2-F-F1-F2-F3-H1-R-R1-S-U2-V-Z1
09049	B-C-D-E-F3-H-M-R-S-U	09142	B-C-D-E-F3-H-M-R-S-U	09264	B-C-E-F3-H-M-R-S-U	09321	A-B-C1-C2-E2-F-F3-H1-M-N-R-R1-S-V-Z1
09053	B-C-D-E-F3-H-M-R-S-U	09154	B-C-D-E-F3-H-M-R-S-U	09265	B-C-D-F-F1-H-J-L-M-N-R-S-T-U-V-Z1		
09060	B-C-D-E-F1-F3-H-M-N-R-S-U-Z1	09160	B-C-C2-D-F-F1-F3-H-J-L-M-N-R-R1-T-U-V-Z1	09266	A-B-F3-R-S-U-V-Z1		
09067	B-C-D-E-F3-H-M-R-S-U	09170	A-B-C2-F-F1-F3-J-L-M-N-R-R1-S-T-V-X-Z1	09276	A-B-F-F3-I3-L-M-N-R-S-T-V-X-Z1		
09068	B-C-D-E-F3-H-R-S-U-Z1	09171	A-B-C1-C2-E3-F-F1-F3-J-L-M-N-R-R1-S-T-V-X-Z1	09277	A-B-E-E1-E2-F1-F3-I3-L-N-R-S-T-V-X-Z1		
09069	A-B-C-D-E-F3-H-N-R-S-U-V	09172	B-C-D-E-F3-H-M-R-S-U	09278	A-B-F-F3-I3-L-M-N-R-S-T-V-X-Z1		

APO/ FPO/ DPO	See Restrictions	APO/ FPO/ DPO	See Restrictions	APO/ FPO/ DPO	See Restrictions	APO/ FPO/ DPO	See Restrictions
09330	A-B-C1-C2-D-E-E2-F-F1-F3-H-H1-M-R-R1-S-V-Z1	09510	A-B-C1-E2-F-H1-M-R-R1-V-Z1	09600	B-C-C2-F-F1-F3-R-S-U-Z1	09714	B-C-C1-F1-F3-M-R-R1-S-U
09333	A-B-C-C1-E2-F-F1-F3-H1-I3-M-N-R-R1-S-V-V1-Z-Z1	09511	B-F-F1-R-R1-V	09602	B-C-F-F1-N-R-U-V	09715	B-F-F1-J-L-M-N-R-T-V-Z1
09343	A-B-C1-F-F3-M-N-R-R1-S-V-Z1	09512	B-F-F1-F3-R-R1-S-V	09603	B-C-F-F1-F3-R-S-U-V-Z1	09716	B-C-C2-F-F1-F3-J-L-M-N-R-R1-T-V-Z1
09348	A-B-C1-E2-F-F1-F3-H1-I3-M-N-R-R1-S-T-V-Z-Z1	09513	B-F-F1-F3-R-R1-S-V-V1	09604	B-C-F-F1-F3-P-R-S-U-V-Z1	09717	A-B-F3-M-R-S-V-W-Z1
09357	A-B-C1-E2-F-F3-H1-M-R-V-Z1	09514	B-F-F1-F3-R-R1-S-V-V1	09605	B-C-D-F3-H-M-R-S-U-V	09718	B-F-F1-J-L-M-N-R-T-U-V-Z1
09363	A-B-C1-E2-F-F3-H1-M-R-R1-S-V-Z1	09517	B-F-F1-F3-R-R1-S-V	09606	B-C-D-F3-H-M-R-S-U-V	09719	B-C-D-F3-M-R-S-U-V-Z1
09365	A-B-C-C1-E2-F-F3-H1-M-N-R-V-Z1	09520	B-F-F1-F3-R-R1-S-V	09608	B-C-F-F3-N-R-S-U-V-Z1	09720	B-F3-M-R-S-U-V-Z1
09366	A-B-C-C1-E2-F-F1-F3-H-H1-M-R-R1-S-V-Z1	09522	B-F-F1-F3-R-S-V	09609	B-C-C2-F-F3-N-R-S-U-Z1	09722	A-B-F-F3-H-N-Q-S-V-Z-Z1
09401	B-C-C1-F3-M-R-S-U-Z1	09523	B-F-F1-F3-R-R1-S-V	09610	B-C-F-F1-F3-M-R-S-U-V-Z1	09723	B-C2-F-F1-F3-J-L-M-N-R-R1-T-V-Z1
09403	B-C-C1-F3-M-R-S-U-Z1	09524	B-F-F1-R-R1-V	09613	B-C-F-F3-N-R-S-U-V	09724	B-C-C1-F1-F3-M-R-R1-S-U
09410	C2-F-F1-F3-N-R-S-U2	09532	B-F-F1-F3-R-R1-S-V	09614	A-B-C1-C2-E2-F-F1-F3-H1-J-L-M-N-R-R1-T-V-W-Z1	09725	A-B-F-F3-H-N-Q-R-S-V-V1-Z-Z1
09421	B-C-C1-F3-M-R-S-U-Z1	09533	B-V	09618	B-C-C2-F-F3-R-S-U-Z1	09726	B-F-F1-J-L-M-N-R-T-U-V-Z1
09447	B-C-C1-F3-M-R-S-U-V-Z1	09534	B-F-F1-F3-R-R1-S-V	09620	B-C-C2-F-F3-R-S-U-V-Z1	09727	A-B-C1-C2-F-F1-F3-J-L-M-N-R-R1-T-V-Z1
09454	B-C-C1-F3-M-R-S-U-V-Z1	09541	A-B-C-F-F3-M-N-S-V-Z1	09621	B-C-F-F3-R-U-Z1	09728	A-B-C-C1-C2-F-F1-F3-J-L-N-R-R1-T-V-Z1
09456	B-C-C1-F3-M-N-R-S-U-V-Z1	09542	A-B-C-F-F3-M-N-S-V-Z1	09622	B-C-C2-F-F3-R-S-U-Z1	09729	B-C-C2-F-F3-N-R-R1-S-U-V-Z1
09459	B-C-C1-F3-M-R-S-U-Z1	09543	A-B-C-F-F3-M-N-S-V-Z1	09623	B-C-C2-F-F3-R-S-U-V-Z1	09730	A-B-C1-C2-F-F1-F3-J-L-M-N-R-R1-T-V-Z1
09461	B-C-C1-F3-M-P-R-S-U-Z1	09544	A-B-C-F-F3-M-N-S-V-Z1	09624	B-C-C2-F-F1-F3-I3-L-N-R-R1-T-U-V-Z-Z1	09731	A-B-C1-C2-F-F1-F3-J-L-M-N-R-R1-T-V-Z1
09463	B-C-C1-F3-M-R-S-U-Z1	09545	A-B-C-F-F3-M-N-S-V-Z1	09625	B-C-C2-F-F3-N-R-S-U-Z1	09732	B-F-F3-N-S-V-Z-Z1
09464	B-C-C1-F3-R-S-U-Z1	09550	B-F-F1-R-R1-V	09627	B-C-C2-F-F3-R-S-U-V-Z1	09733	B-F-F3-N-R-S-V-Z
09467	B-E-E1-F-F3-J-L-M-N-R-S-T-V-X-Z1	09554	B-F-F1-R-R1-V	09630	B-C-F-F3-R-S-U-V	09734	A-B-C-C1-C2-F-F1-F3-I3-J-L-M-N-R-R1-T-V-Z-Z1
09468	B-C-C1-F3-M-R-S-U-Z1	09556	B-F-F1-R-R1-V	09633	B-C-D-F-F1-F3-M-R-S-U-U1-U2-U3-V-Z1	09735	B-F3-N-R-S-V-Z-Z1
09469	B-C-C1-F3-R-S-U-Z1	09564	B-F-F1-R-R1-V	09634	A-B-F-F3-M-N-R-S-V	09736	A-B-C1-F-F1-F3-J-L-M-N-R-R1-T-V-Z1
09470	B-C-C1-F3-M-R-S-U-Z1	09566	B-F-F1-F3-R-R1-S-V	09636	B-C-C2-F-F3-R-S-U-V-Z1	09737	A-B-C1-C2-F-F1-F3-I3-J-L-M-N-R-R1-T-V-W-Y-Z-Z1
09487	A-B-C-C1-C2-E2-F1-F3-I3-L-M-N-R-R1-S-T-V-W-X-Z-Z1	09567	B-C2-E2-E3-F-F1-F3-R-R1-V-Z1	09642	B-C2-F-F1-F3-J-L-M-N-R-T-U-V	09738	A-B-C1-C2-F-F1-F3-J-L-M-N-R-R1-T-V-Z1
09488	A-B-C-C1-C2-E2-F3-J-L-M-N-S-T-V-W-X-Z1	09568	B-V	09643	B-C-F3-M-R-S-U-V-Z1	09739	A-B-C1-C2-F-F1-F3-J-L-M-N-R-R1-T-V-Z1
09489	A-B-C-C1-C2-E2-F1-F3-L-M-N-R-R1-S-T-V-W-X-Z1	09569	B-C2-E2-E3-F-F1-F3-R-R1-V-Z1	09645	B-C-C1-E1-E2-F-F1-F3-M-R-S-U-X-Z1	09741	A-B-C1-C2-E2-F-F1-F3-H1-J-L-M-N-R-R1-T-V-W-Y-Z1
09490	A-B-C1-C2-E2-F-F1-F3-H1-J-L-M-N-R-R1-S-T-V-X-Z1	09570	A-B-F-F1-F3-R-R1-S-V	09647	B-C2-F1-F3-M-N-R-S-U-Z1	09742	A-B-C2-F-F1-F3-J-L-M-N-R-S-T-V-Z1
09491	A-B-C1-C2-E2-F1-F3-H1-J-L-M-N-R-R1-S-T-V-Z1	09573	B-C2-E2-E3-F-F1-F3-R-R1-S-V-Z1	09648	B-C2-F3-N-R-S-U-V-Z1	09743	A-B-F-F3-H-N-Q-R-S-V-Z-Z1
09494	B-C-C1-F3-M-R-S-U-Z1	09574	B-F-F1-R-R1-V	09649	B-C2-F3-N-R-S-U-Z1	09744	A-B-C1-C2-F-F1-F3-J-L-M-N-R-R1-T-V-Z1
09498	B-C1-C2-F-F1-F3-J-L-N-R-R1-T-V-Z1	09575	B-F-F1-R-R1-V	09701	A-B-C1-C2-F-F1-F3-J-L-M-N-R-R1-T-V-Z1	09745	A-B-F-F1-F3-M-N-R-R1-S-V-Z1
09501	B-V	09576	B-F-F1-R-R1-V	09702	B-C-C1-F1-F3-M-R-R1-S-U	09748	A-B-C1-C2-F-F1-F3-J-L-M-N-R-R1-T-V-Z1
09502	B-V	09577	B-F3-S-V	09704	B-C-F-F1-F3-R-R1-S-U2-V	09749	A-B-F-F3-H-N-R-S-U-V-Z1
09503	B-F-F1-R-R1-V	09578	B-F-F1-F3-R-R1-S-V-Z1	09705	B-C-C1-F1-F3-M-R-R1-S-U	09750	A-B-C1-C2-F-F1-F3-J-L-M-N-R-R1-T-V-Z1
09504	B-V	09579	B-F-F1-R-R1-V	09706	B-C-F3-M-N-R-S-U-V-Z1	09751	B-C-D-E-F3-H-M-R-S-U
09505	B-V	09581	B-F-F1-F3-R-R1-S-V	09707	B-C2-F-F1-F3-J-L-M-N-R-R1-T-V-Z1	09752	B-C-D-F1-F3-H-R-S-U
09506	B-V	09582	B-C2-F-F1-F3-R-R1-S-V	09708	B-C-C1-F1-F3-M-R-R1-S-U	09753	A-B-F-F3-N-R-S-V-Z1
09507	B-V	09583	B-F-F1-F3-I3-J-R-R1-S-V-V1	09709	B-C1-C2-E2-F-F1-F3-H-H1-J-L-N-R-R1-T-V-Z1	09754	A-B-F-F3-H-L-N-Q-R-S-V-Z-Z1
09508	B-F-F1-R-R1-V	09586	B-C2-F-F1-F3-R-R1-S-V	09710	B-C-C1-F-F1-J-L-M-N-R-R1-T-U-V-Z1	09755	A-B-C-C1-D-F-F1-F3-J-L-M-N-Q-R-R1-S-T-V-Z1
09509	B-F-F1-R-R1-V	09587	B-C2-E2-E3-F-F1-F3-R-R1-S-V-Z1	09712	A-B-C2-F-F3-H-R-S-U-V-Z1		

APO/ FPO/ DPO	See Restrictions	APO/ FPO/ DPO	See Restrictions	APO/ FPO/ DPO	See Restrictions	APO/ FPO/ DPO	See Restrictions
09758	A-B-F-F1-F3-M-N-R-R1-S-V-Z1	09828	A-B-C1-C2-F-F1-F3-I3-L-N-R-R1-T-V-Z1	09874	A-B-C1-C2-E2-F-F1-F3-H1-I3-L-M-N-R-R1-S-T-U-U4-V-Z1	34034	B-C1-C2-F-F1-F3-I3-L-M-N-R-R1-T-V-Z1
09759	A-B-C-C1-C2-E2-F-F1-F3-J-L-N-R-R1-T-V-Z1	09829	B-C-N-R-V-Z1	09875	A-B-C1-C2-E2-F-F1-F3-H1-I3-L-M-N-R-R1-S-T-U-U4-V-Z1	34035	B-C1-C2-F-F1-F3-H-J-L-M-N-R-R1-T-V-Z1
09761	B-C2-F-F1-F3-M-R-R1-S-V-Z1	09830	B-C-F-F1-F3-J-L-M-N-R-R1-S-T-V-Z1	09877	A-B-C-C2-E-E2-E3-F1-F3-H-H1-J-M-N-R-R1-S-U-V-Z1	34036	B-C1-C2-F-F1-F3-J-L-M-N-R-R1-T-V-Z1
09762	A-B-C2-E3-F-F1-F3-J-L-N-R-R1-T-V-Z1	09831	B-C1-C2-F-F1-F3-J-L-N-R-R1-T-V-Z1	09880	A-B-C1-C2-E2-F-F1-F3-H1-J-L-N-R-R1-S-T-U-V-Z1	34037	B-C-C1-C2-F-F1-F3-H-J-L-M-N-R-R1-T-V-Z1
09769	A-B-C-C1-C2-F-F1-F3-J-L-M-N-R-R1-T-V-Z1	09832	B-C1-E2-F1-F3-N-R-S-V-Z1	09883	B-C1-E2-F1-F3-N-R-S-V-Z1	34039	B-C1-C2-F-F1-J-L-M-N-T-V-Z1
09777	A-B-C-C1-C2-E1-F-F1-F3-J-L-M-N-R-R1-T-V-Z1	09833	B-C-C2-E2-E3-F-F1-F3-R-R1-S-U-Z1	09884	A-B-C1-C2-E2-F-F1-F3-J-L-M-N-R-R1-T-V-Z1	34041	B-C1-C2-F-F1-F3-J-L-M-N-R-R1-T-V-Z1
09780	A-B-F-F3-H-N-R-S-V	09834	A-B-C1-C2-F-F1-F3-J-L-M-N-R-R1-V-Z1	09889	B-E2-F-H1-N-R-R1-U2-V-Z1	34042	A-B-C-F-F1-F3-M-N-R-S-U-V-W-Z1
09789	A-B-C2-F-F3-N-R-S-V-Z1	09836	B-E2-E3-F1-F3-R-S-V-Z1	09892	A-B-C1-C2-E2-F-F1-F3-J-L-M-N-R-R1-T-V-Z1	34050	B-V
09801	A-B-C1-E2-F-F3-H1-M-N-R-R1-S-V-Z1	09837	B-C-C2-E2-E3-F-F1-F3-R-S-U-Z1	09895	A-B-C1-C2-E2-F-F1-F3-J-L-M-N-R-T-V-W-Z1	34051	B-V
09802	A-B-C-C2-D-F-F1-F3-H-H1-I3-L-M-N-R-R1-S-T-V-W-Z1	09838	A-B-F3-N-R-S-U-Z1	09898	B-C-C1-C2-E2-F-F1-F2-H1-N-R-R1-S-U2-V-Z1	34052	B-V
09803	A-B-C-C2-E-E2-E3-F1-F3-H-H1-J-M-N-R-R1-S-U-V-Z1	09841	A-B-C1-C2-F-F1-F3-J-L-N-R-R1-T-V-Z1	09902	A-B-C1-C2-E2-F-F3-H1-M-R-R1-S-V-Z1	34053	B-V
09804	A-B-F-F1-F3-M-N-R-S-V-Z1	09842	A-B-C1-C2-E3-F-F1-F3-J-L-M-N-R-R1-T-V-Z1	09903	B-C1-E2-F1-F3-S-V-Z1	34054	B-V
09805	B-C-C2-E2-E3-F-F1-F3-R-R1-S-Z1	09844	A-B-C1-C2-F-F1-F3-J-L-M-N-R-R1-T-V-Z1	09904	A-B-F-F1-F3-N-R-R1-S-V-Z1	34055	B-C1-C2-F-F1-F3-J-L-M-N-R-R1-T-V-Z1
09807	A-B-C1-E2-F-F1-F3-H1-I3-M-N-R-R1-S-T-V-Z1	09845	A-B-C1-C2-F-F1-F3-J-L-M-N-R-R1-T-V-Z1	09908	A-B-F-F1-F3-N-R-R1-S-V-Z1	34058	B-F-F1-F3-R-R1-S-V-Z1
09808	A-B-C1-C2-E2-F-F1-F3-H-H1-J-L-N-R-R1-T-V-Z1	09846	B-C-C2-E2-E3-F-F1-F3-H1-J-L-M-N-S-T-V-Z1	09909	B-F1-F3-J-L-M-N-R-S-T-U2-V-X-Z1	34060	B-C1-C2-E2-F-F1-F3-J-L-M-N-R-R1-T-V-Z1
09809	B-C1-C2-E3-F-F1-F3-J-L-N-T-V-Z1	09847	A-B-F-F3-M-R-S-V-Z1	09974	B-F1-F3-J-L-M-N-R-S-T-U2-V-X-Z1	34066	B-C1-C2-F-F1-F3-I3-J-L-M-N-R-R1-S-T-V-X-Z1
09810	A-B-F-F1-F3-N-R-S-V-Z1	09848	B-C1-E2-F-F1-F3-H1-N-R-R1-S-U2-V-Z1	09975	B-F1-F3-I3-L-M-N-R-S-T-U2-V-X-Z1	34067	B-C1-C2-F-F1-F3-J-L-M-N-R-R1-S-T-V-X-Z1
09811	A-B-C-C2-E-E2-E3-F1-F3-H-H1-J-M-N-R-R1-S-U-V-Z1	09853	A-B-C1-C2-F-F1-F3-J-L-N-R-R1-S-T-V-Z1	09976	B-F1-F3-I3-L-M-N-R-S-T-U2-V-X-Z1	34068	B-C1-C2-F-F1-F3-I3-J-L-M-N-R-R1-S-T-V-X-Z1
09812	B-E2-E3-F-F1-I-J-L-N-R-T-U-V-Z1	09854	A-B-C1-C2-E2-E3-F-F1-F3-H-H1-J-M-N-R-R1-S-U-V-Z1	09977	B-F1-F3-J-L-M-N-R-S-T-U2-V-X-Z1	34069	B-C1-C2-F-F1-F3-I3-J-L-M-N-R-R1-S-T-V-X-Z1
09813	A-B-C1-C2-E2-E3-F-F1-F3-J-L-N-R-R1-T-V-Z1	09855	B-C-C1-C2-F-F1-F3-H1-J-L-M-N-S-T-V-Z1	34001	A-B-C1-C2-F-F1-F3-J-L-M-N-R-R1-S-T-V-Z1	34078	B-F1-F3-N-R-S-V-Z1
09814	B-C2-E2-E3-F-F1-F3-I3-J-L-N-R-R1-T-V-Z1	09856	A-B-C2-E2-F-F1-F3-J-L-M-N-R-R1-S-T-V-Z1	34002	B-C1-C2-F-F1-F3-J-L-M-N-R-R1-T-V-Z1	34080	B-F-F1-R-R1-V
09816	A-B-C1-C2-E2-E3-F-F1-F3-J-L-N-R-R1-T-V-Z1	09857	A-B-C-C1-C2-E2-E3-F-F1-F3-H1-R-R1-S-U-Z1	34004	B-C1-C2-F-F1-F3-J-L-M-N-R-R1-T-V-Z1	34081	B-F-F1-R-R1-V
09817	A-B-C1-C2-E2-E3-F-F1-F3-H-H1-J-L-M-N-R-R1-T-V-Z1	09858	A-B-C1-C2-E2-E3-F-F1-F3-H1-R-R1-S-U-Z1	34007	B-F-F1-H-J-M-N-R-R1-V-Z1	34082	B-F-F1-R-R1-V
09818	A-B-C-F-F3-M-S-V-Z1	09859	A-B-C2-F-F1-F3-J-L-M-N-R-R1-S-T-V-Z1	34008	B-C1-C2-D-E1-F-F1-H1-J-L-M-N-R-R1-T-V-Z1	34083	B-F-F1-R-R1-V
09820	A-B-C2-F-F1-F3-H-H1-J-L-M-N-R-R1-T-V-Z1	09860	A-B-C1-C2-E2-E3-F-F1-F3-H1-R-R1-S-U-Z1	34011	B-C1-C2-E2-F-F1-F3-J-L-M-N-R-R1-T-V-Z1	34084	B-F-F1-R-R1-V
09821	A-B-C-F-F3-N-R-S-V-Z1	09862	A-B-C-C1-C2-E2-E3-F-F1-F3-H1-R-R1-S-U-Z1	34020	B-C1-C2-F-F1-F3-J-L-M-N-R-R1-T-V-Z1	34085	B-F-F1-F3-R-R1-S-V
09822	A-B-C-F-F3-M-R-S-V-Z1	09864	A-B-C1-C2-E2-E3-F-F1-F3-H1-R-R1-S-U-Z1	34021	B-C1-C2-F-F1-F3-J-L-M-N-R-R1-T-V-Z1	34086	B-F-F1-F3-R-R1-S-V
09823	A-B-C1-C2-F-F1-F3-J-L-M-N-R-R1-T-V-Z1	09865	A-B-C1-C2-E2-E3-F-F1-F3-H1-R-R1-S-U-Z1	34022	B-C1-C2-F-F1-F3-J-L-M-N-R-R1-T-V-Z1	34087	B-E2-F-F1-F3-R-R1-S-V
09824	A-B-C-F-F3-M-R-S-V-Z1	09867	A-B-C1-C2-E2-E3-F-F1-F3-H1-R-R1-S-U-Z1	34023	B-C1-C2-F-F1-F3-J-L-M-N-R-R1-T-V-Z1	34088	B-F-F1-R-R1-V
09825	A-B-C1-C2-F-F1-F3-J-L-M-N-R-R1-T-V-Z1	09868	A-B-C1-C2-E2-E3-F-F1-F3-H1-R-R1-S-U-Z1	34024	B-C1-C2-F-F1-F3-J-L-M-N-R-R1-T-V-Z1	34089	B-F-F1-R-R1-S-V
09826	A-B-C1-C2-E1-E2-E3-F-F1-F3-J-L-M-N-R-R1-T-V-W-Z1	09869	A-B-C1-C2-E2-E3-F-F1-F3-H1-R-R1-S-U-Z1	34025	B-C1-C2-F-F1-F3-J-L-M-N-R-R1-T-V-Z1	34090	B-F-F1-R-R1-V
09827	A-B-F-F1-J-L-M-N-R-T-V-Z1	09870	A-B-C1-C2-E2-E3-F-F1-F3-H1-I3-L-M-N-R-R1-S-T-U4-V-Z1	34030	B-C1-C2-F-F1-F3-J-L-M-N-R-R1-T-V-Z1	34091	B-E2-E3-F-F1-F3-R-R1-S-V-Z1
		09873	A-B-C1-C2-E2-F-F1-F3-H1-I3-L-M-N-R-R1-S-T-U-U4-V-Z1	34031	B-C1-C2-F-F1-F3-J-L-M-N-R-R1-T-V-Z1	34092	B-F-F1-F3-R-R1-S-V
				34032	B-C1-C2-F-F1-F3-J-L-M-N-R-R1-T-V-Z1	34093	B-F-F1-F3-R-R1-S-V
				34033	B-C1-C2-F-F1-F3-I3-L-M-N-R-T-V-Z1	34094	B-F-F1-F3-R-R1-S-V
						34095	B-F-F1-R-R1-V
						96201	A-B-F-F1-F3-M-R-S-U
						96202	A-B-F-F1-F3-M-R-S-U
						96203	A-B-F-F1-F3-M-R-S-U
						96204	A-B-F-F1-F3-M-R-S-U
						96205	A-B-F-F1-F3-M-R-S-U
						96206	A-B-F-F1-F3-M-R-S-U
						96207	A-B-F-F1-F3-M-R-S-U-V
						96208	A-B-F-F1-F3-M-R-S-U
						96209	A-B-C1-C2-F-F1-J-L-M-N-T-U-V-Z1
						96210	A-B-C1-C2-F-F1-F3-I3-L-M-N-R-R1-T-V-Z1
						96212	B-F-F1-F2-H-M-W-Z1
						96213	A-B-C-F1-F3-R-S-U

APO/ FPO/ DPO	See Restrictions	APO/ FPO/ DPO	See Restrictions	APO/ FPO/ DPO	See Restrictions	APO/ FPO/ DPO	See Restrictions
96214	A-B-C-F1-F3-R-S-U	96349	B-C2-F-F1-F2-F3-H-M-R-S-W-Z1	96530	A-B-C1-C2-F-F1-H-H1-J-L-M-N-R-R1-S-T-V-Z1	96615	B-F-F1-R-R1-V
96218	A-B-F-F1-F3-M-R-S-U	96350	B-F-F1-F2-F3-H-M-R-S-W-Z1	96531	A-B-C-F-F1-F3-H-M-N-R-S-U-V	96616	B-C2-F-F1-F3-R-R1-S-V
96224	A-B-F-F1-F3-M-R-S-U	96351	B-C2-F-F1-F2-F3-H-M-R-S-W-Z1	96532	A-B-C1-C2-F-F1-H-J-L-M-N-R-R1-S-T-V-Z1	96619	B-F1-F3-R-S-V
96251	A-B-F-F1-F3-M-R-S-U	96362	B-F-F1-F2-M-W-Z1	96534	A-B-F-F1-F2-F3-S-U-Z1	96620	B-F-F1-F3-R-R1-S-V
96257	A-B-F-F1-F3-S-U	96365	B-C-F3-M-R-S-V-W	96535	A-B-C1-C2-F-F1-J-L-M-N-R-R1-S-T-V-Z1	96628	B-F-F1-F3-R-R1-S-V
96258	A-F-F3-M-P-R-S-U	96367	B-C-F3-L-M-R-S-W	96537	B-V-Z1	96629	B-F-F1-F3-R-R1-S-V
96260	A-B-F-F1-F3-M-R-S-U	96368	B-C-F3-M-R-S-W	96540	B-F1-F2-F3-S-V-Z1	96632	B-F-F1-F3-R-R1-S-V
96262	A-B-F-F1-F3-R-S-U-V-Z1	96370	B-F-F1-F2-H-M-W-Z1	96542	B-F-F1-F2-F3-S-V-Z1	96633	B-V
96264	A-B-C-F1-F3-R-S-U	96371	B-F-F3-M-R-S-W	96543	B-F-F1-F2-F3-P-S-V-Z1	96641	B-V
96266	A-B-C-F1-F3-R-S-U	96372	B-M-W	96548	A-B-F-F1-F3-H-M-R-S-U	96642	B-V
96269	A-B-F1-F2-F3-R-S-U-Z1	96373	B-M-W	96549	A-B-C1-C2-F-F1-H-J-L-M-N-R-R1-S-T-V-Z1	96643	B-F-F1-F3-R-R1-S-V
96271	A-F-F3-M-P-R-S-U	96374	B-M-W	96550	A-B-H-M-N-U-V-Z1	96644	B-V
96273	A-B-F-F1-F3-M-R-S-U	96375	B-F3-M-R-S-W	96551	A-B-C1-C2-F-F1-H-J-L-M-N-R-R1-S-T-V-Z1	96645	B-V
96275	A-B-F-F1-F3-M-R-S-U	96376	B-F3-M-R-S-W	96552	B-Z1	96649	B-F-F1-F3-R-R1-S-V
96276	A-B-C-F1-R	96377	B-F-F3-M-R-S-W	96553	A-B-F-F1-H-M-N-R-U	96650	B-F-F1-R-R1-V
96278	A-B-C-F1-F3-R-S-U	96378	B-M-W	96554	A-B-C1-C2-F-F1-H-J-L-M-N-R-R1-S-T-V-Z1	96657	B-F-F1-F3-R-R1-S-V
96283	A-B-F-F1-F3-S-U	96379	B-F3-M-R-S-W	96555	A-B-F-F3-M-R-S-V	96660	B-F-F1-F3-R-R1-S-V
96284	A-B-F-F1-F3-R-S-U	96380	B-F3-M-R-S-W	96557	A-B-F-F3-M-R-S-V	96661	B-F-F1-F3-R-R1-S-V
96297	A-B-F-F1-F3-R-S-U	96382	B-F-F3-M-R-S-W	96562	A-B-C1-C2-D-E2-E3-F1-H-H1-I3-L-M-N-R-R1-S-T-V-Z1	96662	B-F-F1-F3-R-R1-S-V
96300	A-B-F3-M-R-S-V-Z1	96384	B-F-F3-M-R-S-W	96577	A-B-F-F3-H-M-N-R-S-U	96663	B-F-F1-F3-R-R1-S-V-V1
96301	A-B-F-F3-M-N-R-S-U2-W	96385	B-F-F3-M-R-S-W	96578	B-F1-F3-H-J-N-R-S	96664	B-V
96303	B-C1-C2-F-F1-H-J-L-M-N-T-V-W-Z1	96386	B-F3-M-S-W	96595	B-F-F3-R-S-V-Z1	96665	B-V
96306	B-F-F1-F2-F3-H-M-R-S-W-Z1	96387	B-F3-M-R-S-W	96598	B-F3-I3-N-R-S-V-V1	96666	B-F3-R-S-V
96310	B-F3-M-R-S-W	96388	B-F3-M-R-S-W	96599	B-F3-N-R-S-V	96667	B-F-F1-F3-R-R1-S-V
96311	B-F3-M-R-S-W	96389	B-M-W	96601	B-V	96677	B-F-F1-F3-R-R1-S-V
96315	B-F-F1-F3-H-M-R-S-W	96401	B-C-F-F3-N-R-S-V-V1-Z1	96602	B-V	96678	B-F-F1-F3-R-R1-S-V
96319	B-C-F3-M-R-S-V-W	96502	A-C1-F-F1-F3-M-N-Q-R-R1-S-T-U2-V	96604	B-V	96679	B-F-F1-R-R1-V
96321	B-F-F1-F2-F3-H-M-R-S-W-Z1	96504	A-B-C-C1-C2-F-F1-F3-I3-L-M-N-R-R1-T-V-W-Z1	96605	B-V+B559	96681	B-V
96322	B-F-F1-F2-F3-H-M-R-S-W-Z1	96505	A-B-C-C1-C2-F-F1-F3-I3-L-M-N-R-R1-S-T-V-W-Z1	96606	B-F3-R-S-V	96682	B-V
96326	B-C-F-F3-M-R-S-W	96507	A-B-C1-C2-F-F1-H-J-L-M-N-T-V-Z1	96607	B-V	96683	B-F-F1-F3-R-R1-S-V
96328	B-C-F3-M-R-S-W	96510	B-I3-N-V	96608	B-E2-F-H1-R1-U2-V-Z1	96686	B-V
96331	A-B-F-F1-F3-J-L-M-N-R-S-U2-W	96511	B-I3-N-V	96609	B-E2-F-H1-R1-U2-V-Z1	96691	B-F-F1-F3-R-R1-S-V
96336	B-C-F3-M-R-S-V-W	96515	B-C-D-E1-F-F1-F3-H1-M-N-R-S-T-Z1	96610	B-E2-F-H1-R1-U2-V-Z1	96692	B-F-F1-F3-R-R1-S-V
96337	B-F-F1-F3-M-R-R1-S-W	96516	B-C-D-E1-E2-F-F1-F3-H-H1-M-N-R-S-T-Z1	96611	B-E2-F-H1-R1-U2-V-Z1	96693	E2-F-F3-R-R1-S-V
96338	A-B-F-F3-M-R-S-U2-W	96517	B-C-D-E1-E2-F-F1-F3-H-H1-M-N-R-T-U-V-Z1	96612	B-V	96694	B-E2-F-F1-F3-I3-J-R-R1-S-V-V1-Z
96339	A-B-F-F3-M-R-S-U2-W	96520	B-F-N-U3-V	96613	B-V	96695	B-F-F1-R-R1-V
96343	A-F-F3-M-P-R-S-U2	96521	B-C1-C2-F-F1-J-L-M-N-R-R1-S-T-V-Z1	96614	B-V	96696	B-F-F1-R-R1-V
96346	B-F-F1-F2-F3-H-M-R-S-W-Z1					96698	B-V

RESTRICTIONS

LEGEND

PS Form 2976, *Customs — CN 22 (Old C 1) and Sender's Declaration* (green label)

PS Form 2976-A, *Customs Declaration and Dispatch Note*

PS Form 2976-B, *Priority Mail Express International Shipping Label and Customs Form*

ATF	= Bureau of Alcohol, Tobacco, Firearms, and Explosives
Box C	= Department of State (DOS) contractor personnel
Box R	= Retired military personnel
DPO	= Diplomatic Post Office
MPO	= Military Post Office
PACT	= Prevent All Cigarette Trafficking Act
PAL	= Parcel Airlift
PMEMS	= Priority Mail Express Military Service
PUB 52	= Publication 52, <i>Hazardous, Restricted, and Perishable Mail</i>
SAM	= Space Available Mail
USDA	= United States Department of Agriculture

Note: Mail order catalogs are prohibited as SAM or PAL mail.

A. Securities, currency, or precious metals, including in their raw, unmanufactured state, are prohibited. Official Mail shipments are exempt from this restriction.

A1. Reserved for future use.

A2. Reserved for future use.

B. Other than for PMEMS and the exceptions listed below, a customs declaration PS Form 2976 or PS Form 2976-A is required for all items weighing 16 ounces or more, and for all items (regardless of weight) containing potentially dutiable mail contents (e.g., merchandise or goods) addressed to or from this ZIP Code. Other than the exceptions listed below, all PMEMS mailpieces (regardless of mail contents or weight) addressed to or from this ZIP Code must bear a properly completed PS Form 2976-B. The surface area of the address side of the mailpiece must be large enough to contain the applicable customs declaration. The following exceptions apply to known mailers, who for this purpose are defined as follows:

- Business mailers who enter volume mailings through business mail entry units or other bulk mail acceptance locations, pay postage through advance deposit accounts, use permit imprints for postage payment, and submit completed postage statements at the time of entry that certify that the mailpieces contain no dangerous materials that are prohibited by postal regulations. Such business mailers are exempt from providing customs documentation on non-dutiable letters and printed matter.
- All federal, state, and local government agencies whose mailings are regarded as "Official Mail." Such agencies are exempt from providing customs documentation, except for any items addressed to an MPO or DPO to which restriction "B2" applies.

B2. All federal, state, and local government agencies must complete customs documentation when sending potentially dutiable mail addressed to or from this MPO or DPO.

C. Cigarettes and other tobacco products, including tobacco leaves, chewing and pipe tobacco, snuff, and cigars are prohibited, including those that are authorized in Publication 52 under PACT.

C1. Obscene and horror articles, images, prints, paintings, cards, films, videotapes, comic books, etc., are prohibited.

C2. E-cigarettes and related products (e.g., nicotine liquids, e-liquids, parts, or supplies) are prohibited.

D. Coffee is prohibited.

E. Medicines (prescription, over-the-counter, vitamins, and supplements) are prohibited when mailed to individuals for human or animal use. This prohibition does not apply when medicines are sent as Official Mail only between specifically designated agencies such as pharmaceutical distributors, hospitals, clinics, and pharmacies.

E1. Mailers are responsible to ensure that all medicines and vaccines conform to host nation laws.

E2. Any matter depicting nude or seminude persons, pornographic, or sexual items are prohibited. Non-authorized political materials are prohibited. Religious materials contrary to the Islamic faith are prohibited in bulk quantities, but individual items for the personal use of the addressee are permissible.

E3. Radio transceivers, cordless/cellular telephones, global positioning systems, scanners, base stations, and handheld transmitters are prohibited.

F. Firearms of any type are prohibited, except firearms mailed to or by official U.S. government agencies. This restriction does not apply to firearms mailed from this MPO ZIP Code, provided ATF and USPS regulations are met. Antique firearms do not require an ATF form.

F1. Weapons of any type are prohibited.

F2. Mailing firearms to or from this MPO ZIP Code is restricted to one shotgun and one single shot .22 caliber rifle per individual.

F3. Replica weapons and inert explosive devices (such as grenades) and weapons parts are prohibited.

G. Parcels of any class are prohibited.

H. Meats, including preserved meats, bones, skin, hair, feathers, horns or hoofs of hoofed animals, and wool samples whether hermetically sealed or not, are prohibited.

H1. Pork or pork by-products are prohibited.

I. Reserved for future use.

I1. Reserved for future use.

I2. Reserved for future use.

I3. Mail of all classes must fit in a mail sack. Mail may not exceed the following dimensions:

- Maximum length 27 inches.
- Maximum width 14 inches.
- Maximum height 14 inches.

J. Standard Post and Parcel Select parcels may not exceed 108 inches in length and girth combined.

K. Reserved for future use.

L. All Official Mail is prohibited.

M. Fruits, vegetables, live animals, and live plants are prohibited.

N. Registered Mail service is prohibited.

O. Reserved for future use.

P. Official Mail only.

Q. Mail may not exceed 66 pounds, and size is limited to 42 inches maximum length and 72 inches maximum length and girth combined.

R. All alcoholic beverages, including those mailable under Publication 52, Part 421, are prohibited.

R1. Materials used in the production of alcoholic beverages (i.e., distilling material, hops, malts, yeast, etc.) are prohibited.

S. Synthetic cannabinoids used to stimulate the central nervous system commonly known as "synthetic marijuana," "K2," or "Spice" are prohibited.

T. Mailings of household shipments and case lots of food to or from an MPO require military transportation office approval prior to mailing. Mailings to or from a DPO require pre-approval from the Diplomatic Pouch and Mail Director.

U. Mail addressed to Retirees (Box R) is limited to 16 ounces and up to a 90-day supply of TRICARE medications. This restriction does not apply to mail endorsed "Free Matter for the Blind or Handicapped."

U1. Mail is limited to First-Class Mail items, including audio and video media, weighing 13 ounces or less. This limitation does not apply to Official Mail.

U2. Retirees (Box R) are not authorized mail service.

U3. Reserved for future use.

U4. Mail addressed to Box C is limited to 2 lbs.

V. PMEMS is not available.

V1. Electronic Delivery status information for Extra Services is not available on *USPS.com*. Manual record of delivery may be available upon request.

W. Hermetically sealed packages of meat products bearing USDA certification, such as dried beef, salami, and sausage, may be mailed. 200 grams of tobacco per parcel are permitted duty free.

X. Cremated remains are prohibited.

Y. Mail is limited to First-Class Mail and Priority Mail items only. This restriction also applies to Official Mail.

Z. No outside pieces (OSPs).

Z1. The following restriction is applicable only to International Service Centers (ISC)/Exchange Offices. An Anti-Pilferage Seal (Item No O817E or O818A) is required on all pouches and sacks.

— *International Network Operations,
Global Business, 12-2-21*

Freely Associated States Restrictions

We list the mailing restrictions for Freely Associated States (FAS) in the Pull-Out section of the *Postal Bulletin*. All FAS Restrictions will be updated periodically.

Freely Associated States

Mail addressed to freely associated states is subject to certain conditions or restrictions of mailing regarding content, preparation, and handling. The following FAS Restrictions table outlines these conditions as listed by each affected FAS ZIP Code™ through the use of footnoted mailing restrictions codes (see the [Restrictions](#) following the table). For more information on available extra services for FAS destinations, see *Mailing Standards of the United States Postal Service, Domestic Mail Manual (DMM®)*, part 503.

Acceptance clerks must use the table with the Retail System Software terminal to determine which FAS ZIP Codes are active and which conditions of mailing apply.

FAS Restrictions Table

FAS Table	See Restrictions
96939	A, B
96940	A, B
96941	A, B
96942	A, B
96943	A, B
96944	A, B
96960	A, B
96970	A, B, D
Marshall Islands	C
Federated States of Micronesia	C

RESTRICTIONS LEGEND

PS Form 2976, *Customs Declaration CN 22 – Sender's Declaration*

PS Form 2976-A, *Customs Declaration and Dispatch Note*

FAS = Freely Associated State

- A.** Bank currency (coin and paper) is prohibited.
- B.** Signature Confirmation, Signature Confirmation Restricted Delivery, Adult Signature Requested, Adult Signature Restricted Delivery, Certified Mail Adult Signature Required, and Certified Mail Adult Signature Restricted Delivery not available.
- C.** Collect on Delivery is prohibited.
- D.** Betel nut (Areca catechu) is prohibited.

— *Asia-Pacific Relations,
Global Business, 12-2-21*

Stamp Announcement 22-2: U.S. Flags 2022 Stamp



©2021 USPS

On January 9, 2022, in Findlay, OH, the United States Postal Service® will issue the *U.S. Flags 2022* stamp (Forever® priced at the First-Class Mail® rate) in one design, in a pressure-sensitive adhesive (PSA) pane of 20 stamps (Item 121700), a PSA Double-sided Booklet of 20 stamps (Item 683600), a PSA Coil of 100 stamps (Item 740400), a PSA Coil of 3,000 stamps (Item 750700), and a PSA Coil of 10,000 stamps (Item 760900). This stamp will go on sale nationwide January 9, 2022, and must not be sold or canceled before the first-day-of-issue.

The Postal Service™ continues its tradition of celebrating the U.S. flag with this new stamp in panes of 20, booklets of 20, and coils of 100, 3,000, and 10,000. The stamp art is a painting of three flags in a circular formation, reminiscent of the 50 flags encircling the Washington Monument. The artist used three separate photographs of the same flag taken seconds apart as reference and stitched together the images into a single composition. Laura Stutzman was the stamp designer and illustrator. Ethel Kessler was the art director.

Availability to Post Offices: Item 121700, U.S. Flags 2022 (Forever Priced at the First-Class Mail rate), Pane of 20 Stamps

Stamp Fulfillment Services will not make an automatic push distribution to Post Offices. Post Offices may begin ordering stamps before the first-day-of-issue through SFS Web at sfsweb.usps.gov.

Availability to Post Offices: Item 683600, U.S. Flags 2022 (Forever Priced at the First-Class Mail rate), Booklet of 20 Stamps

Stamp Fulfillment Services will not make an automatic push distribution to Post Offices. Post Offices may begin ordering stamps before the first-day-of-issue through SFS Web at sfsweb.usps.gov.

Availability to Post Offices: Item 740400, U.S. Flags 2022 (Forever Priced at the First-Class Mail rate), Coil of 100 Stamps

Stamp Fulfillment Services will not make an automatic push distribution to Post Offices. Post Offices may begin ordering stamps before the first-day-of-issue through SFS Web at sfsweb.usps.gov.

Availability to Post Offices: Item 750700, U.S. Flags 2022 (Forever Priced at the First-Class Mail rate), Coil of 3,000 Stamps

Stamp Fulfillment Services will not make an automatic push distribution to Post Offices. Post Offices may begin ordering stamps before the first-day-of-issue through SFS Web at sfsweb.usps.gov.

Availability to Post Offices: Item 760900, U.S. Flags 2022 (Forever Priced at the First-Class Mail rate), Coil of 10,000 Stamps

Stamp Fulfillment Services will not make an automatic push distribution to Post Offices. Post Offices may begin ordering stamps before the first-day-of-issue through SFS Web at sfsweb.usps.gov.

How to Order the First-Day-of-Issue Postmark

Customers have 120 days to obtain the first-day-of-issue postmark by mail. They may purchase new stamps at their local Post Office™ or at The Postal Store® website at usps.com/shop. They must affix the stamps to envelopes of their choice, address the envelopes (to themselves or others), and place them in a larger envelope addressed to:

FDOI – U.S. Flags 2022 Stamp
 USPS Stamp Fulfillment Services
 8300 NE Underground Drive, Suite 300
 Kansas City, MO 64144-9900

After applying the first-day-of-issue postmark, the Postal Service will return the envelopes through the mail. There is no charge for the postmark up to a quantity of 50. There is a 5-cent charge for each additional postmark over 50. All orders must be postmarked by May 9, 2022.

How to Order First-Day Covers

The Postal Service also offers first-day covers for new stamp issues and Postal Service stationery items postmarked with the official first-day-of-issue cancellation. Each item has an individual catalog number and is offered in the *USA Philatelic* catalog and online at usps.com/shop. Customers may register to receive a free *USA Philatelic* catalog online at usps.com/philatelic.

Locally produced items are not authorized. Only merchandise that has been approved and assigned an item number by Headquarters Retail Marketing may be produced and sold.

Issue:	<i>U.S. Flags 2022 Stamp</i>
Item Number:	121700
Denomination & Type of Issue:	First-Class Mail Forever
Format:	Pane of 20 (1 design)
Series:	N/A
Issue Date & City:	January 9, 2022, Findlay, OH 45840
Art Director:	Ethel Kessler, Bethesda, MD
Designer:	Laura Stutzman, Mountain Lake Park, MD
Illustrator:	Laura Stutzman, Mountain Lake Park, MD
Modeler:	Sandra Lane/Michelle Finn
Manufacturing Process:	Offset, Microprint
Printer:	Banknote Corporation of America
Press Type:	Gallus RCS
Stamps per Pane:	20
Print Quantity:	50,000,000
Paper Type:	Phosphor Tagged Paper, Block Tagged
Adhesive Type:	Pressure-sensitive
Stamp Orientation:	Vertical
Image Area (w x h):	0.73 x 0.84 in./18.542 x 21.336 mm
Stamp Size (w x h):	0.87 x 0.98 in./22.098 x 24.892 mm
Pane Size (w x h):	5.35 x 4.93 in./135.89 x 125.222 mm
Colors:	Cyan, Magenta, Yellow, Black
Plate Size:	120 stamps per revolution
Plate Number:	"B" followed by four (4) single digits
Marginal Markings:	
Front:	Plate number in four corners
Back:	©2021 USPS • Barcode • USPS Logo • 2 barcodes (121700) • Plate position diagram (6) • Promotional text

Issue:	<i>U.S. Flags 2022 Stamp</i>
Item Number:	683600
Denomination & Type of Issue:	First-Class Mail Forever
Format:	Double-sided Booklet of 20 (1 design)
Series:	N/A
Issue Date & City:	January 9, 2022, Findlay, OH 45840
Art Director:	Ethel Kessler, Bethesda, MD
Designer:	Laura Stutzman, Mountain Lake Park, MD
Illustrator:	Laura Stutzman, Mountain Lake Park, MD
Modeler:	Joseph Sheeran
Manufacturing Process:	Offset, Microprint
Printer:	Ashton Potter (USA) Ltd. (APU)
Press Type:	Muller A76
Stamps per Booklet:	20
Print Quantity:	1,000,000,000 stamps
Paper Type:	Nonphosphored Type III, Block Tagged
Adhesive Type:	Pressure-sensitive
Stamp Orientation:	Vertical
Image Area (w x h):	0.73 x 0.84 in./18.542 x 21.336 mm
Stamp Size (w x h):	0.87 x 0.98 in./22.098 x 24.892 mm
Full Booklet Size (w x h):	5.52 x 1.96 in./140.208 x 49.784 mm
Colors:	Black, Cyan, Magenta, Yellow
Plate Size:	1040 stamps per revolution
Plate Number:	"P" followed by four (4) single digits
Marginal Markings:	Header: "U.S. FLAGS", 20 First-Class Forever Stamps • ©2021 USPS in peel strip area • Barcode • USPS Logo • Promotional text • Plate number in peel strip area

Issue:	<i>U.S. Flags 2022 Stamp</i>
Item Number:	683600
Denomination & Type of Issue:	First-Class Mail Forever
Format:	Double-sided Booklet of 20 (1 design)
Series:	N/A
Issue Date & City:	January 9, 2022, Findlay, OH 45840
Art Director:	Ethel Kessler, Bethesda, MD
Designer:	Laura Stutzman, Mountain Lake Park, MD
Illustrator:	Laura Stutzman, Mountain Lake Park, MD
Modeler:	Sandra Lane/Michelle Finn
Manufacturing Process:	Offset, Microprint
Printer:	Banknote Corporation of America
Press Type:	Alprinta 74
Stamps per Booklet:	20
Print Quantity:	1,000,000,000
Paper Type:	Phosphor Tagged Paper, Block Tagged
Adhesive Type:	Pressure-sensitive
Stamp Orientation:	Vertical
Image Area (w x h):	0.73 x 0.84 in./18.542 x 21.336 mm
Stamp Size (w x h):	0.87 x 0.98 in./22.098 x 24.892 mm
Full Booklet Size (w x h):	5.52 x 1.96 in./140.208 x 49.784 mm
Colors:	Cyan, Magenta, Yellow, Black
Plate Size:	960 stamps per revolution
Plate Number:	"B" followed by four (4) single digits
Marginal Markings:	Header: "U.S. FLAGS", 20 First-Class Forever Stamps • ©2021 USPS in peel strip area • Barcode • USPS Logo • Promotional text • Plate number in peel strip area

Issue:	<i>U.S. Flags 2022 Stamp</i>
Item Number:	740400
Denomination & Type of Issue:	First-Class Mail Forever
Format:	Coil of 100 (1 design)
Series:	N/A
Issue Date & City:	January 9, 2022, Findlay, OH 45840
Art Director:	Ethel Kessler, Bethesda, MD
Designer:	Laura Stutzman, Mountain Lake Park, MD
Illustrator:	Laura Stutzman, Mountain Lake Park, MD
Modeler:	Joseph Sheeran
Manufacturing Process:	Offset, Microprint
Printer:	Ashton Potter (USA) Ltd. (APU)
Press Type:	Muller A76
Stamps per Coil:	100
Print Quantity:	1,625,000,000 stamps
Paper Type:	Nonphosphored Type III, Block Tag
Adhesive Type:	Pressure-sensitive
Colors:	Black, Cyan, Magenta, Yellow
Stamp Orientation:	Vertical
Image Area (w x h):	0.84 x 0.73 in./21.336 x 18.542 mm
Stamp Size (w x h):	0.98 x 0.87096 in./24.892 x 22.122 mm
Plate Size:	744 stamps per revolution
Plate Number:	"P" followed by four (4) single digits
Coil Number Frequency:	Plate number every 31st stamp below stamp image

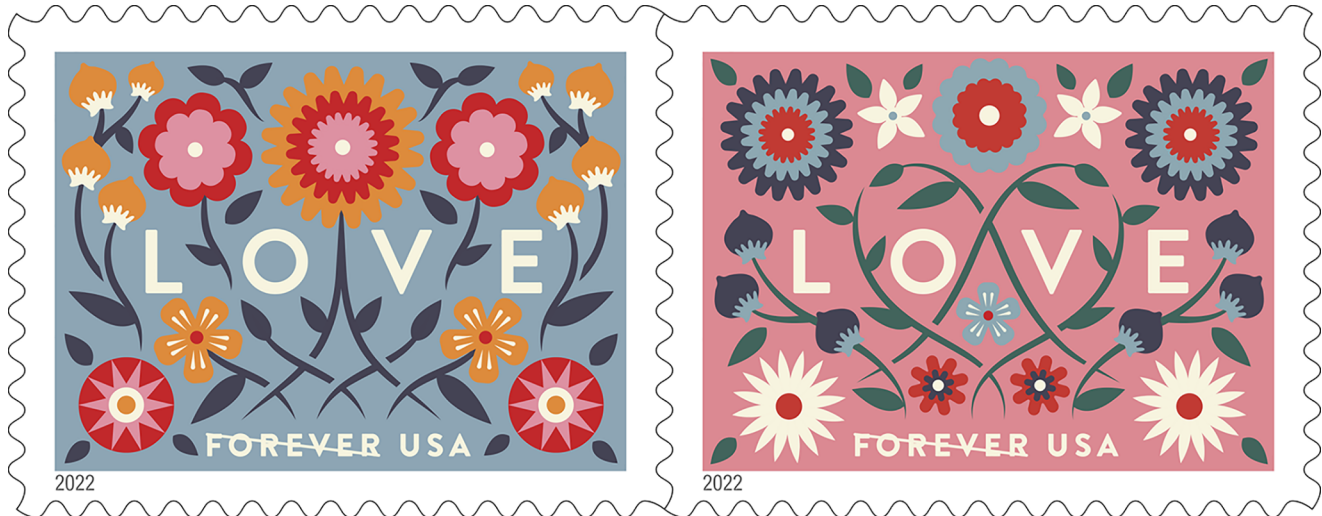
Issue:	<i>U.S. Flags 2022 Stamp</i>
Item Number:	740400
Denomination & Type of Issue:	First-Class Mail Forever
Format:	Coil of 100 (1 design)
Series:	N/A
Issue Date & City:	January 9, 2022, Findlay, OH 45840
Art Director:	Ethel Kessler, Bethesda, MD
Designer:	Laura Stutzman, Mountain Lake Park, MD
Illustrator:	Laura Stutzman, Mountain Lake Park, MD
Modeler:	Sandra Lane/Michelle Finn
Manufacturing Process:	Offset, Microprint
Printer:	Banknote Corporation of America
Press Type:	Alprinta 74
Stamps per Coil:	100
Print Quantity:	1,625,000,000 stamps
Paper Type:	Phosphor Tagged Paper, Block Tag
Adhesive Type:	Pressure-sensitive
Colors:	Cyan, Magenta, Yellow, Black
Stamp Orientation:	Vertical
Image Area (w x h):	0.73 x 0.84 in./18.542 x 21.336 mm
Stamp Size (w x h):	0.87 x 0.98 in./22.098 x 24.892 mm
Plate Size:	744 stamps per revolution
Plate Number:	"B" followed by four (4) single digits
Coil Number Frequency:	Plate number every 31st stamp below stamp image

Issue:	<i>U.S. Flags 2022 Stamp</i>
Item Number:	760900
Denomination & Type of Issue:	First-Class Mail Forever
Format:	Coil of 10,000 (1 design)
Series:	N/A
Issue Date & City:	January 9, 2022, Findlay, OH 45840
Art Director:	Ethel Kessler, Bethesda, MD
Designer:	Laura Stutzman, Mountain Lake Park, MD
Illustrator:	Laura Stutzman, Mountain Lake Park, MD
Modeler:	Sandra Lane/Michelle Finn
Manufacturing Process:	Offset, Microprint
Printer:	Banknote Corporation of America
Press Type:	Alprinta 74
Stamps per Coil:	10,000
Print Quantity:	100,000,000 stamps
Paper Type:	Phosphor Tagged Paper, Overall
Adhesive Type:	Pressure-sensitive
Colors:	Cyan, Magenta, Yellow, Black
Stamp Orientation:	Vertical
Image Area (w x h):	0.73 x 0.84 in./18.542 x 21.336 mm
Stamp Size (w x h):	0.87 x 0.98 in./22.098 x 24.892 mm
Plate Size:	540 stamps per revolution
Plate Number:	"B" followed by four (4) single digits
Coil Number Frequency:	Plate number every 27th stamp below stamp image

Issue:	<i>U.S. Flags 2022 Stamp</i>
Item Number:	750700
Denomination & Type of Issue:	First-Class Mail Forever
Format:	Coil of 3,000 (1 design)
Series:	N/A
Issue Date & City:	January 9, 2022, Findlay, OH 45840
Art Director:	Ethel Kessler, Bethesda, MD
Designer:	Laura Stutzman, Mountain Lake Park, MD
Illustrator:	Laura Stutzman, Mountain Lake Park, MD
Modeler:	Sandra Lane/Michelle Finn
Manufacturing Process:	Offset, Microprint
Printer:	Banknote Corporation of America
Press Type:	Alprinta 74
Stamps per Coil:	3,000
Print Quantity:	15,000,000 stamps
Paper Type:	Phosphor Tagged Paper, Overall
Adhesive Type:	Pressure-sensitive
Colors:	Cyan, Magenta, Yellow, Black
Stamp Orientation:	Vertical
Image Area (w x h):	0.73 x 0.84 in./18.542 x 21.336 mm
Stamp Size (w x h):	0.87 x 0.98 in./22.098 x 24.892 mm
Plate Size:	540 stamps per revolution
Plate Number:	"B" followed by four (4) single digits
Coil Number Frequency:	Plate number every 27th stamp below stamp image

– Stamp Services,
Marketing, 12-2-21

Stamp Announcement 22-3: Love 2022 Stamps



©2021 USPS

On January 14, 2022, in Romeo, MI, the United States Postal Service® will issue the *Love 2022* stamps (Forever® priced at the First-Class Mail® rate) in two designs, in a pressure-sensitive adhesive (PSA) pane of 20 stamps (Item 578200). These stamps will go on sale nationwide January 14, 2022, and must not be sold or canceled before the first-day-of-issue.

The two new *Love 2022* stamps with similar designs feature graphic illustrations of flowers inspired by old European folk art. Twisting vines, which hold small petaled flowers form abstract heart shapes. The word “Love” is interspersed among the decorative vines. The background of one stamp is powder blue, the other stamp is coral. Greg Breeding was art director; Bailey Sullivan created the original art and designed the stamps.

Availability to Post Offices: Item 578200, Love 2022 (Forever Priced at the First-Class Mail Rate), Pane of 20 Stamps

Stamp Fulfillment Services will not make an automatic push distribution to Post Offices. Post Offices may begin ordering stamps before the first-day-of-issue through SFS Web at sfsweb.usps.gov.

How to Order the First-Day-of-Issue Postmark

Customers have 120 days to obtain the first-day-of-issue postmark by mail. They may purchase new stamps at their local Post Office™ or at The Postal Store® website at usps.com/shop. They must affix the stamps to envelopes of their choice, address the envelopes (to themselves or others), and place them in a larger envelope addressed to:

FD0I – Love 2022 Stamps
USPS Stamp Fulfillment Services
8300 NE Underground Drive, Suite 300
Kansas City, MO 64144-9900

After applying the first-day-of-issue postmark, the Postal Service™ will return the envelopes through the mail. There is no charge for the postmark up to a quantity of 50. There is a 5-cent charge for each additional postmark over 50. All orders must be postmarked by May 14, 2022.

How to Order First-Day Covers

The Postal Service also offers first-day covers for new stamp issues and Postal Service stationery items postmarked with the official first-day-of-issue cancellation. Each item has an individual catalog number and is offered in the *USA Philatelic* catalog and online at usps.com/shop. Customers may register to receive a free *USA Philatelic* catalog online at usps.com/philatelic.

Locally produced items are not authorized. Only merchandise that has been approved and assigned an item number by Headquarters Retail Marketing may be produced and sold.

Issue:	<i>Love 2022 Stamps</i>
Item Number:	578200
Denomination & Type of Issue:	First-Class Mail Forever
Format:	Pane of 20 (2 designs)
Series:	<i>Love</i>
Issue Date & City:	January 9, 2022, Romeo, MI 48065
Art Director:	Greg Breeding, Charlottesville, VA
Designer:	Bailey Sullivan, Brooklyn, NY
Illustrator:	Bailey Sullivan, Brooklyn, NY
Modeler:	Sandra Lane/Michelle Finn
Manufacturing Process:	Offset
Printer:	Banknote Corporation of America
Press Type:	Alprinta 74
Stamps per Pane:	20
Print Quantity:	150,000,000 stamps
Paper Type:	Phosphor Tagged Paper, Block Tag
Adhesive Type:	Pressure-sensitive
Colors:	Cyan, Magenta, Yellow, Black
Stamp Orientation:	Horizontal
Image Area (w x h):	1.05 x 0.77 in./26.67 x 19.558 mm
Overall Size (w x h):	1.19 x 0.91 in./30.226 x 23.114 mm
Full Pane Size (w x h):	5.76 x 5.55 in./146.304 x 140.97 mm
Press Sheet Size (w x h):	23.040 x 11.1 in./585.216 x 281.94 mm
Plate Size:	320 stamps per revolution
Plate Number:	"B" followed by four (4) single digits in four corners
Marginal Markings:	
Front:	Plate number in 4 corners
Back:	©2021 USPS • USPS Logo • Two barcodes (578200) • Plate position diagram (8) • Promotional text

— *Stamp Services,
Marketing, 12-2-21*

USPS® Celebrates Outdoor Recreation with

Backyard Games Forever® Stamps



ON SALE
NATIONWIDE:
AUGUST 12, 2021

Sold as a full pane.

Pictorial Postmarks Announcement

As a community service, the Postal Service™ offers pictorial postmarks to commemorate local events celebrated in communities throughout the nation. A list of events for which pictorial postmarks are authorized appears on the following pages. The sponsor of the pictorial postmark appears in italics under the date. Also provided are illustrations of these postmarks.

People attending these local events may obtain the postmark in person at the temporary Post Office™ station established there. Those who cannot attend the event but who wish to obtain the postmark may submit a mail order request. Pictorial postmarks are available only for the dates indicated, and *requests must be postmarked no later than 30 days following the requested pictorial postmark date.*

All requests must include a stamped envelope or postcard bearing at least the minimum First-Class Mail® postage. Items submitted for postmark may not include

postage issued after the date of the requested postmark. Such items will be returned unserved.

Customers wishing to obtain a postmark must affix stamps to any envelope or postcard of their choice, address the envelope or postcard to themselves or others, insert a card of postcard thickness in envelopes for sturdiness, and tuck in the flap. Place the envelope or postcard in a larger envelope and address it to: Pictorial Postmarks, followed by the Name of the Station, Address, City, State, ZIP+4® Code, as listed next to the postmark.

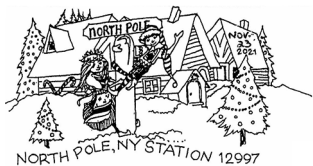
Customers can also send stamped envelopes and postcards without addresses for postmark, as long as they supply a larger envelope with adequate postage and their return address. After applying the pictorial postmark, the Postal Service returns the items (with or without addresses) under addressed protective cover.

The following pictorial postmarks have been extended for 30 days:



November 20, 2021

Black River Stamp Club
 Black River Stamp Club Station
 Customer Relations Coordinator
 2200 Orange Avenue, #234
 Cleveland, OH 44101-9998



November 23–December 31, 2021

Santa's Workshop
 North Pole, NY Station 12997
 Postmaster
 324 Whiteface Memorial Highway
 Wilmington, NY 12997-9998



December 1, 2021

United States Postal Service
 Santa's Christmas Station
 Postmaster
 120 Seaboard Street
 Vass, NC 28394-9998



December 1–24, 2021

United States Postal Service
 Hadley, MA Station 01035
 Postmaster
 186 Russell Street
 Hadley, MA 01035-0035

THIRD ANNUAL
CHRISTMAS STAMP STATION



WAUPACA, WI 54981
THE CHRISTMAS STAMP TOWN
DEC 1 2021

December 1–31, 2021

United States Postal Service
Christmas Stamp Station
Postmaster
PO Box 9998
Waupaca, WI 54981-9998



DEC 1 2021 NAZARETH MI 49074

December 1–31, 2021

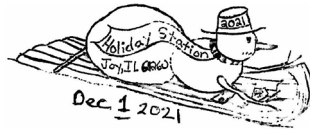
United States Postal Service
Christmas Star Station
Postmaster
PO Box 9998
Nazareth, MI 49074-9998



Star NC DEC 1 2021
Star Station 27356

December 1–31, 2021

United States Postal Service
Star Station
Postmaster
PO Box 9998
Star, NC 27356-9998



Dec 1 2021

December 1–31, 2021

United States Postal Service
Holiday Station
Postmaster
202 West Main Street
Joy, IL 61260-9998



Prattsburgh Station
Prattsburgh, NY 14873
December 3, 2021

December 3–4, 2021

Prattsburgh Free Library
Prattsburgh Station
Postmaster
10 Main Street
Prattsburgh, NY 14873-9998



CELEBRATION STATION
LYNCHBURG, TN 37352
DECEMBER 4, 2021
1871 2021
1821 2021
LYNCHBURG, TN BICENTENNIAL
SNOW PLACE LIKE LYNCHBURG

December 4, 2021

Metro Lynchburg/Moore County Chamber of Commerce
Celebration Station
Postmaster
13 Hiles Street
Lynchburg, TN 37352-9998



DECEMBER 3, 2021
SPENCER
NORTH CAROLINA
28159
STATION

December 3–4, 2021

Town of Spencer
Spencer North Carolina
28159 Station
Postmaster
110 4th Street
Spencer, NC 28159-9998



42ND ANNUAL
CHRISTMAS PARADE STATION
SHIP BOTTOM, NJ 08008
DECEMBER 4, 2021
COMFORT AND JOYFUL CHRISTMAS

December 4, 2021

Borough of Ship Bottom, Department of Parks and Recreation
Christmas Parade Station
Postmaster
6401 Long Beach Boulevard
Ship Bottom, NJ 08008-9998

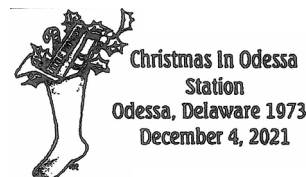


December 3, 2021

Angel Station
Angelica, New York 14709

December 3–24, 2021

Angelica Booster Citizens, Inc.
Angel Station
Postmaster
1 West Main Street
Angelica, NY 14709-9998



Christmas in Odessa
Station
Odessa, Delaware 19730
December 4, 2021

December 4, 2021

Women's Club of Odessa
Christmas in Odessa
Station
Postmaster
312 Main Street
Odessa, DE 19730-9998



Christmas in Warrensburgh
Believe
Holiday Station
Warrensburg, NY 12885
December 4, 2021

December 4, 2021
Warrensburgh
Beautification, Inc.
Holiday Station
Postmaster
3930 Main Street
Warrensburg, NY 12885-
9998



December 10-11, 2021
Town of Spencer
Spencer North Carolina
28159 Station
Postmaster
110 4th Street
Spencer, NC 28159-9998



December 5, 2021
Allaire Village Auxiliary
Allaire Village Station
Postmaster
66 Main Street
Farmingdale, NJ 07727-
9998



December 10-12, 2021
Christkindl Markt of
Mifflinburg, Inc.
Mifflinburg Station
Postmaster
10 North 4th Street
Mifflinburg, PA 17844-9998



December 5, 2021
Downtown Saratoga
Saratoga Business
Association
Saratoga Springs Station
Postmaster
475 Broadway
Saratoga Springs, NY
12866-9998



December 11, 2021
Rudolph Progress
Committee
Country Christmas Station
Postmaster
PO Box 9998
Rudolph, WI 54475-9998



December 10, 2021
Springfield Area Nativity
Theatre Association
Pageant Station
Postmaster
PO Box 9998
Springfield, MN 56087-
9998



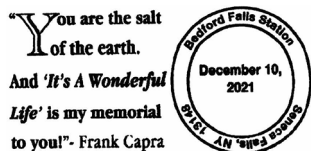
December 12, 2021
Allaire Village Auxiliary
Allaire Village Station
Postmaster
66 Main Street
Farmingdale, NJ 07727-
9998



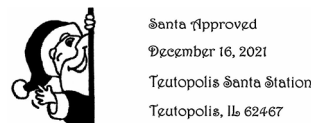
December 10, 2021
United States Postal Service
College March Station
Postmaster
10628 Queens Boulevard
Queens, NY 11375-9998



December 13, 2021
Miners Hall Museum
Miners Hall Museum Station
Postmaster
702 North Locust Street
Pittsburg, KS 66762-9998



December 10-11, 2021
Seneca Falls It's A
Wonderful Life Museum
Bedford Falls Station
Postmaster
38 State Street
Seneca Falls, NY 13148-
9998



December 16, 2021
Teutopolis State Bank
Teutopolis Santa Station
Postmaster
100 West Main Street
Teutopolis, IL 62467-9998

How to Order the First-Day-of-Issue Digital Color or Traditional Postmarks

Customers have 120 days to obtain the first-day-of-issue postmarks by mail. Each cover must have sufficient postage to meet First-Class Mail® requirements. Customers may purchase new stamps at their local Post Office™, by phone at 844-737-7826, or on The Postal Store® website at usps.com/shop.

Digital Color Postmarks

Only select stamp issues offer a digital color postmark. Customers may submit #6 or #10 envelopes constructed of paper rated as “laser safe.” The Postal Service™ recommends envelopes of 80-pound Accent Opaque, acid-free, 9/16-inch side seams with no glue on the flap. The maximum size of all digital color postmarks is 2 inches (vertically) by 4 inches (horizontally). Allow sufficient space on the envelope to accommodate the postmark. Do not use self-adhesive labels for addresses on the envelope. Two test envelopes must be included. There is a minimum of 10 envelopes at 50 cents per postmark required at the time of servicing. Customers must submit a check, money order, or credit card for payment.

The Postal Service reserves the right to not accept hand-painted and other cachet envelopes that are not compatible with our digital color postmark equipment. The Postal Service also reserves the right to substitute traditional black rubber postmarks if use of nonspecified envelopes results in poor image quality or damage to equipment.

Customers must affix the stamps to the envelopes and address them to themselves or others for return through the mail. Or, they may include an additional self-addressed return envelope, large enough to accommodate their canceled items, with sufficient postage affixed for return of

their postmarked items. Address customer requests for digital color postmarks to:

FDOI – (Name of Stamp Issue)
USPS Stamp Fulfillment Services
8300 NE Underground Drive, Suite 300
Kansas City, MO 64144-9900

After applying the first-day-of-issue postmark, the Postal Service will return the envelopes to the customer by U.S. Mail®.

Traditional Postmarks

Customers must affix the stamps to the envelopes and address them to themselves or others for return through the mail. Or, they may include an additional self-addressed return envelope, large enough to accommodate their canceled items, with sufficient postage affixed for return of their postmarked items. Address customer requests for traditional postmarks to:

FDOI – (Name of Stamp Issue)
USPS Stamp Fulfillment Services
8300 NE Underground Drive, Suite 300
Kansas City, MO 64144-9900

After applying the first-day-of-issue postmark, the Postal Service will return the envelopes to the customer by U.S. Mail™. There is no charge for the first 50 postmarks. There is a 5-cent charge for each additional postmark over 50. Customers must submit a check, money order, or credit card for payment.

Locally produced items are not authorized. Only merchandise that has been approved and assigned an item number by Headquarters Retail Marketing may be produced and sold.



Digital Color Pictorial

FDOI – Mid-Atlantic Lighthouses

Stamps

USPS Stamp Fulfillment Services
8300 NE Underground Drive, Suite 300
Kansas City, MO 64144-9900

December 6, 2021



Black and White Pictorial

FDOI – Mid-Atlantic Lighthouses

Stamps

USPS Stamp Fulfillment Services
8300 NE Underground Drive, Suite 300
Kansas City, MO 64144-9900

December 6, 2021



Digital Color Pictorial

FDI – Missouri Statehood Stamp

USPS Stamp Fulfillment Services
8300 NE Underground Drive, Suite 300
Kansas City, MO 64144-9900

December 10, 2021



Black and White Pictorial

FDI – Missouri Statehood Stamp

USPS Stamp Fulfillment Services
8300 NE Underground Drive, Suite 300
Kansas City, MO 64144-9900

December 10, 2021



Digital Color Pictorial

FDI – Backyard Games Stamps

USPS Stamp Fulfillment Services
8300 NE Underground Drive, Suite 300
Kansas City, MO 64144-9900

December 12, 2021



Black and White Pictorial

FDI – Backyard Games Stamps

USPS Stamp Fulfillment Services
8300 NE Underground Drive, Suite 300
Kansas City, MO 64144-9900

December 12, 2021



Digital Color Pictorial

FDI – Happy Birthday Stamp

USPS Stamp Fulfillment Services
8300 NE Underground Drive, Suite 300
Kansas City, MO 64144-9900

January 9, 2022



Black and White Pictorial

FDI – Happy Birthday Stamp

USPS Stamp Fulfillment Services
8300 NE Underground Drive, Suite 300
Kansas City, MO 64144-9900

January 9, 2022

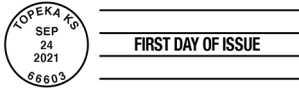


Digital Color Pictorial

FDI – Message Monsters Stamps

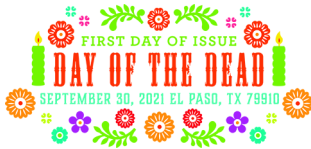
USPS Stamp Fulfillment Services
8300 NE Underground Drive, Suite 300
Kansas City, MO 64144-9900

January 24, 2022

**FDOI – Message Monsters Stamps**

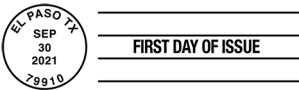
USPS Stamp Fulfillment Services
8300 NE Underground Drive, Suite 300
Kansas City, MO 64144-9900

January 24, 2022

Black and White Pictorial**FDOI – Day of the Dead Stamps**

USPS Stamp Fulfillment Services
8300 NE Underground Drive, Suite 300
Kansas City, MO 64144-9900

January 30, 2022

Digital Color Pictorial**FDOI – Day of the Dead Stamps**

USPS Stamp Fulfillment Services
8300 NE Underground Drive, Suite 300
Kansas City, MO 64144-9900

January 30, 2022

Black and White Pictorial**FDOI – A Visit from St. Nick Stamps**

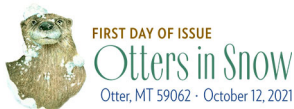
USPS Stamp Fulfillment Services
8300 NE Underground Drive, Suite 300
Kansas City, MO 64144-9900

February 7, 2022

Digital Color Pictorial**FDOI – A Visit from St. Nick Stamps**

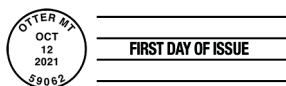
USPS Stamp Fulfillment Services
8300 NE Underground Drive, Suite 300
Kansas City, MO 64144-9900

February 7, 2022

Black and White Pictorial**FDOI – Otters in Snow Stamps**

USPS Stamp Fulfillment Services
8300 NE Underground Drive, Suite 300
Kansas City, MO 64144-9900

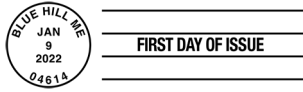
February 12, 2022

Digital Color Pictorial**FDOI – Otters in Snow Stamps**

USPS Stamp Fulfillment Services
8300 NE Underground Drive, Suite 300
Kansas City, MO 64144-9900

February 12, 2022

Black and White Pictorial



FDI – Blueberries Stamp

USPS Stamp Fulfillment Services
8300 NE Underground Drive, Suite 300
Kansas City, MO 64144-9900

May 9, 2022

Black and White Pictorial

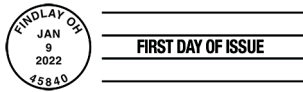


FDI – U.S. Flags 2022 Stamp

USPS Stamp Fulfillment Services
8300 NE Underground Drive, Suite 300
Kansas City, MO 64144-9900

May 9, 2022

Digital Color Pictorial



FDI – U.S. Flags 2022 Stamp

USPS Stamp Fulfillment Services
8300 NE Underground Drive, Suite 300
Kansas City, MO 64144-9900

May 9, 2022

Black and White Pictorial



FDI – Love 2022 Stamps

USPS Stamp Fulfillment Services
8300 NE Underground Drive, Suite 300
Kansas City, MO 64144-9900

May 14, 2022

Digital Color Pictorial



FDI – Love 2022 Stamps

USPS Stamp Fulfillment Services
8300 NE Underground Drive, Suite 300
Kansas City, MO 64144-9900

May 14, 2022

Black and White Pictorial

Add a Touch of Whimsy to Holiday Mailings with **Otters in Snow**

Forever[®]
Stamps

On Sale
Nationwide:
October 12, 2021

