

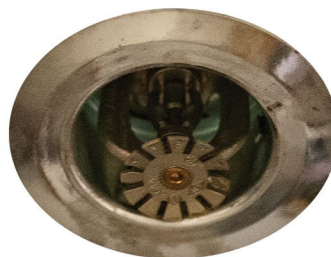
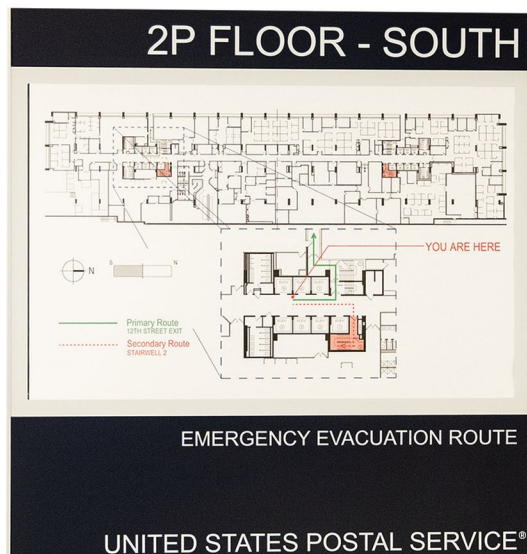
postal|bulletin

PUBLISHED SINCE MARCH 4, 1880

FIRE PREVENTION WEEK October 6-12, 2019

DO YOU HAVE A PLAN?

See page 3.



Contents

COVER STORY

Fire Prevention Week is October 6–12, 2019 3

POLICIES, PROCEDURES, AND FORMS UPDATES

Manuals

DMM Revision: Parcel Return Service 4

Publications

Publication 431 Revision: Changes to Post Office Box Service and Caller Service Fee Groups 5

Publication 550 Revision: For the Record, An Employee's Guide to The Freedom of Information Act and The Privacy Act of 1974 5

ORGANIZATION INFORMATION

Delivery Operations

Keeping the U.S. Mail Safe 6

Finance

Equipment Maintenance Allowance Schedule for Rural Routes 10

Human Resources

Notice to All Post Offices with Rural Delivery Service: Rural Carrier Guarantee Period 13

September is World Alzheimer's Month 13

Information Security

Conference Call Security: Do You Know Who is Listening? 35

FY 2020 CyberSafe Training Courses for Contractors are Now Open 35

Mailing and Shipping Services

Participation Opportunity for United States Postal Service Approved Shipping and Returns Consolidator's Webpage 36

New Shipping Process for Cremated Remains 37

Stamp Services

Update: Stamp Announcement 19-30: Purple Heart Medal 2019 Stamp 38

Update: Stamp Announcement 19-32: Spooky Silhouettes Stamps 38

Pictorial Postmarks Announcement 39

How to Order the First-Day-of-Issue Digital Color or Traditional Postmarks 42

Sustainability

Update: Smoke Detector Disposal 47

PULL-OUT INFORMATION

Fraud

Invalid USPS Corporate Account Numbers 15

Missing, Lost, or Stolen U.S. Money Order Forms 16

Missing, Lost, or Stolen Canadian Money Order Forms 23

Verifying U.S. Postal Service Money Orders 25

Counterfeit Canadian Money Order Forms 25

Toll-Free Number Available to Verify Canadian Money Orders 25

Other Information

Overseas Military/Diplomatic Mail 26

Thrift Savings Plan Fact Sheet 32

Freely Associated States Restrictions 34

POSTAL BULLETIN 2019 SEMI-ANNUAL INDEX

2019 Semi-Annual Index PB 22524 (7-18-19)

Find the latest in mail and delivery information and services offered by U.S. Postal® in the *Postal Bulletin* at about.usps.com/postal-bulletin

Mail Moment®

Cover Story

Fire Prevention Week is October 6–12, 2019

Fire can spread quickly through your home or facility, leaving you little time to safely escape. Fire evacuation plans, smoke detectors, sprinklers, and properly-maintained fire extinguishers can help save lives.

Evacuation Plans

Evacuation plans must include a map of your facility or home showing two exits (windows or doors) and a path to the outside from each exit. Practice fire drills twice a year, at different times and using different exits. At home, teach children how to escape on their own in the event an adult is unable to help them. When evacuating a burning building, close doors behind you when you leave as this may slow the spread of smoke, heat, and fire. Once you get outside, stay outside. Never go back inside a burning building.

Smoke Detectors

Nearly 2,500 people die in home fires every year in the United States. Most of these people live in homes that do not have working smoke detectors. Approximately 60 percent of home fire deaths result from fires in which smoke detectors were not present or didn't work. To find out how old your smoke detector is, remove it from the wall or ceiling and look at the manufacture date on the back of the alarm. Smoke detectors must be replaced every 10 years.

Place smoke detectors on every level of your home, outside each sleeping area, and inside every bedroom. There are many brands of smoke detectors on the market, including alarms for people who are deaf or blind. These alarms may have strobe lights that flash or vibrate to alert those who are unable to hear standard smoke detectors when they sound. For the best protection, make sure all smoke detectors are interconnected. When one sounds, they all sound.

Have you checked your smoke detector to make sure it's still working? A smoke detector with a dead or missing battery is the same as having no smoke detector at all. Test the alarm monthly and replace the batteries at least once a year. A smoke detector only works when you properly install and regularly test it. Some fire departments will install battery-operated smoke detectors in your home for free. Contact your local fire department's non-emergency number for more information.

Sprinkler Requirements

Don't forget to check sprinkler systems to ensure compliance. The Occupational Safety and Health Administration (OSHA) and the National Fire Protection Association require a minimum distance of 18 inches between shelves, furniture, and stacked materials located directly under a sprinkler head.

Fire Extinguishers

Fire extinguishers must be easy to identify and mounted so that they are readily accessible. There are four types of fire extinguishers — select the proper one for the type of fire you may have to put out. Portable fire extinguishers must be fully charged and kept in designated locations at all times. OSHA requires employers to inspect, maintain, and test all portable extinguishers in the workplace. Every fire extinguisher must receive:

- A monthly visual inspection,
- An annual inspection, and
- Maintenance conducted by trained professionals.

Record monthly fire extinguisher inspections by dating and initialing PS Form 4705, *Fire Inspection Tag*. You must record annual maintenance on a separate tag provided by service professionals.

— *Safety and OSHA Compliance Programs, Employee Resource Management, 9-26-19*

Policies, Procedures, and Forms Updates

Manuals

DMM Revision: Parcel Return Service

Effective January 26, 2020, the Postal Service™ will revise *Mailing Standards of the United States Postal Service*, Domestic Mail Manual (DMM®), section 505.4.2, to clarify customers' options to request a change or cancellation of Parcel Return Service retrieval locations.

The Postal Service will add a new section: 505.4.2.10, "Change or Cancel Retrieval Locations." This new section clarifies the options that customers may use to change or cancel Parcel Return Service retrieval locations (delivery units and sectional center facilities).

Although the Postal Service will not publish these revisions in the DMM until January 26, 2020, the standards are effective immediately.

Mailing Standards of the United States Postal Service, Domestic Mail Manual (DMM)

	*	*	*	*	*
500	Additional Mailing Services				
	*	*	*	*	*
505	Return Services				
	*	*	*	*	*

4.0 Parcel Return Service

* * * * *

4.2 Basic Standards

* * * * *

[Add new 4.2.10 to read as follows and renumber current 4.2.10 and 4.2.11 as 4.2.11 and 4.2.12.]

4.2.10 Change or Cancel Retrieval Locations

Customers may change or cancel retrieval locations (delivery units and sectional center facilities) as follows:

- a. *Online.* Customers may change or cancel retrieval locations online at the USPS Business Customer Gateway (BCG) at gateway.usps.com.
- b. *Letter.* Customers may change or cancel retrieval locations by sending a request on company letterhead to the director, Business Acceptance Solutions (see 608.8.0 for address).

* * * * *

The Postal Service will incorporate these revisions into the January 26, 2020, update of the online DMM, which is available via Postal Explorer® at pe.usps.com.

Publications

Publication 431 Revision: Changes to Post Office Box Service and Caller Service Fee Groups

Effective September 26, 2019, Publication 431, *Post Office Box Service and Caller Service Fee Groups*, is revised to include the following changes.

Publication 431, *Post Office Box Service and Caller Service Fee Groups*

[Delete the following entries:]

ZIP Code	Fee Group
24834	5

The online version of Publication 431 is dated July 2013. Publication 431 is currently available on the Postal Service™ PolicyNet website (blue.usps.gov/cpim):

- Go to blue.usps.gov.
- In the left-hand column, click *Essential Links*, and then click *PolicyNet*.
- Go to the right-hand side under “Published Forms and Directives.”
- Click *Publications*.

Offices with WebBATS Manager/Supervisor access can view current Publication 431 information by going to the WebBATS Edit Facility Information page, as follows:

1. Go to the WebBATS main menu, and select Utility> Facility>Edit Facility option.
2. View the Fee Group field on the Edit Facility Information page.

— Retail Operations,
Retail and Customer Service Operations, 9-26-19

Publication 550 Revision: For the Record, An Employee's Guide to The Freedom of Information Act and The Privacy Act of 1974

Effective February 2019, the Postal Service™ revised Publication 550, *For the Record, An Employee's Guide to The Freedom of Information Act and The Privacy Act of 1974*, to include updated policy regarding two federal laws:

- The Freedom of Information Act (FOIA), and
- The Privacy Act of 1974.

The pamphlet provides information about the rights and responsibilities of Postal Service employees under the two statutes. The February 2019 edition of Publication 550 supersedes all previous editions.

Use the following information to order Publication 550 through the Material Distribution Center eBuy2 catalog:

PSIN:	PUB550
PSN:	7610-03-000-5910
Item Description:	PUB550, FOR THE RECORD
Unit of Measure:	EA
Minimum Order	
Quantity:	1
Price:	\$0.1000
Edition Date:	02/19

Revised Publication 550 is also available on the Postal Service PolicyNet website:

- Go to blue.usps.gov.
- In the left-hand column, click *Essential Links*, and then click *PolicyNet*.
- Go to the right-hand side under “Published Forms and Directives.”
- Click *Publications*.

The direct URL for the Postal Service PolicyNet website is blue.usps.gov/cpim.

— Privacy and Records Management Office,
General Counsel and Executive Vice President, 9-26-19

Organization Information

Delivery Operations

Keeping the U.S. Mail Safe

Reacting to growing concerns about the safety of U.S. Mail[®], the United States Postal Service[®] enacted the Aviation Mail Security program in 1996, which prohibited customers from depositing any stamped mailpieces weighing 16 ounces or more in its collection boxes.

On August 16, 1996, all mailpieces weighing 16 ounces or more had to be presented in person to a retail clerk or letter carrier. The action was taken to enhance security measures and to protect the traveling public, as well as Postal Service[™] employees and contractors, who transport U.S. Mail.

In 2007, the Postal Service modified the Aviation Mail Security rule by decreasing the weight allowance to 13 ounces. In October of that year, mailpieces weighing 13 ounces or more, bearing only stamps as postage, and not accepted by a Postal Service employee at a retail counter were prohibited from entering the mail stream via collection boxes and Post Office[™] mail slots. The policy was enacted to promote the safety of Postal Service employees, customers, transportation networks, and the U.S. Mail.

Working to Improve Safety Standards

Once again, the Postal Service is modifying the weight restriction and adding a size restriction for mailpieces dropped into collection boxes bearing stamps.

Effective October 1, 2019, mailpieces bearing stamps for postage that are more than one-half inch thick or weigh more than 10 ounces will be prohibited from entering the mail stream through collection boxes, building mail chutes, and Post Office mail slots.

This modification was made out of an abundance of caution and to provide optimal security for Postal Service employees, customers, transportation networks, facilities, and the U.S. Mail.

Safety Talking Points

- The Postal Service is modifying its Aviation Mail Security initiative, which was first enacted in 1996.
 - Effective October 1, 2019, mailpieces bearing stamps for postage that are more than one-half inch thick or weigh more than 10 ounces will be prohibited from entering the mail stream through collection boxes, building mail chutes, and Post Office mail slots.
 - Customers who need to mail packages with postage stamps that are larger than one-half inch thick or heavier than 10 ounces must conduct the transaction at a Post Office retail counter.
- This modification increases the safety and security of Postal Service employees, customers, transportation networks, facilities, and the U.S. Mail.

Safety FAQs

1. What is happening?

- The Postal Service is once again modifying the Aviation Mail Security initiative.
- Beginning October 1, 2019, mailpieces bearing stamps for postage that are more than one-half inch thick or weigh more than 10 ounces will be prohibited from entering the mail stream through collection boxes, building mail chutes, and Post Office mail slots.
- This modification increases the safety and security of Postal Service employees, customers, transportation networks, facilities, and the U.S. Mail.

2. How long has the Postal Service had an Aviation Mail Security program?

The Aviation Mail Security program began in 1996 with a 16-ounce restriction on stamped mailpieces. The rule was modified in 2007 when the weight restriction decreased to 13 ounces.

3. How will the change affect employees?

- Postal Service letter carriers will be required to more closely scan the mail collected from residences and collection boxes.
- Carriers have been instructed not to accept packages that fit the restricted criteria, even in face-to-face transactions. See Poster 84 on page [9](#).
- Carriers will instruct customers to take these items to the Post Office and conduct a transaction at the retail service counter.
- Items that cannot be returned immediately are to be isolated and returned to sender via surface transportation only.
- Mail that is returned to sender will have a Customer Return Label (DDD2) attached explaining the restrictions and reason for return.

4. How disruptive will this change be for customers?

This change will primarily affect customers who ship heavier mailpieces using postage stamps and deposit them in their neighborhood collection box or Post Office lobby drop. These customers can use Click-N-Ship[®] on usps.com to print shipping labels

from their computer. The mail carrier will pick up the boxes while delivering mail that day, or they can ship boxes from their neighborhood Post Office.

5. How many packages are dropped in collection boxes, mail chutes, and Post Office mail slots each year?

A recent study showed approximately 169,000 stamped packages per week are dropped into collection boxes for mailing.

6. How many collection boxes, mail chutes, and lobby mail slots are there?

The Postal Service currently has more than 142,000 collection boxes nationwide and 65,000 lobby mail slots.

7. Can customers still use self-service kiosks to purchase postage?

Yes, customers can generate postage using the kiosks, and those packages with postage labels can be dropped into the package slots at the Post Office. Customers cannot drop packages with postage stamps generated from a kiosk into package slots at the Post Office. Customers who need to ship a package using postage stamps must go to the retail counter and hand the package to the clerk.

8. Will the labels on the collection boxes and Post Office mail slots reflect this change?

Yes.

9. When will the labels be changed?

The labels will be changed by October 1.

10. What will the new labels look like and say?



Due to federal security regulations and U.S. export laws, DO NOT DEPOSIT the following items in this collection box:

- Any mailpiece over one-half inch thick that uses POSTAGE STAMPS.
- Any mailpiece that weighs more than 10 oz. and uses POSTAGE STAMPS.
- Any mailpiece with a customs declaration form that was not completed and submitted online.
- Any mailpiece that requires a customs declaration form and uses POSTAGE STAMPS.

You must present these items for shipment to a USPS employee at a retail service counter at a Post Office location.

11. What happens to stamped mailpieces weighing more than 10 ounces or more than one-half inch thick that are dropped in collection boxes after October 1?

Mailpieces bearing stamps for postage and exceeding the weight or size restrictions that are deposited in collection boxes, mail chutes, or lobby mail slots after October 1 will be returned to the sender.

Packages will be returned with this label attached to the mailpiece:

Attention Mailing Customer

We regret to inform you that your mail was not collected or is being returned to you due to heightened security concerns.

The following must be presented by the customer to a retail service associate at a Post Office™ location for shipment:

- Any mailpiece over one-half inch thick that uses POSTAGE STAMPS
- Any mailpiece that weighs more than 10 oz and uses POSTAGE STAMPS
- Any mailpiece with a customs declaration form that was not completed and submitted online
- Any mailpiece that requires a customs declaration form and uses POSTAGE STAMPS

United States Postal Service®
DDD2 September 2019

12. What if there is no return address shown?

The supervisor, manager, or postmaster will contact the addressee by phone and describe the mailpiece to the addressee, providing the city and state of the postmark, if possible. The addressee should be asked:

- a. Are you expecting the package?
- b. If yes, does this mailpiece contain anything liquid, fragile, perishable, or potentially hazardous such as lithium batteries or perfume?

If the addressee is expecting the mailpiece and confirms that it does not contain anything liquid, fragile, perishable, or potentially hazardous, the supervisor, manager, or postmaster must:

- Identify the mailpiece via a \$0.00 PVI, meter strip, or AVSEC stamp.
- Cancel the postage (if not already canceled).
- Apply Label 127, *Surface Transportation Only*, and transport the mailpiece via surface transportation only.

The supervisor, manager, or postmaster must contact the Inspection Service if the addressee:

- Has no phone number that can be identified by using directory assistance, the phone book, or Internet;
- Is not expecting the package; or
- Cannot confirm that the mailpiece does not contain anything liquid, fragile, perishable, or potentially hazardous.

— *City Delivery, Delivery Operations, 9-26-19*

Poster 84

SUSPICIOUS MAIL OR PACKAGES

Protect yourself, your business, and your mailroom.

If you receive a suspicious letter or package:

- Stop. Don't handle.
- Isolate it immediately.
- Don't open, smell, or taste.
- Activate your emergency plan. Notify a supervisor.

PERSONAL!
CHIEF EXECUTIVE OFFICER
222 N. HARVIE ST.
PHILADELPHIA

Operations Manager
122 M st.
Saville, MO

DO NOT X RAY TAPE ENCLOSED

Operations Manager
5032 D 1ST
Anapolis, MD

If you suspect the mail or package contains a bomb (explosive), or radiological, biological, or chemical threat:

- Isolate area immediately
- Call 911
- Wash your hands with soap and water

To order this poster, call 1-800-332-0317. Poster 84
September 2006
PSN 7690-07-000-7097

Finance

Equipment Maintenance Allowance Schedule for Rural Routes

Rural Carriers

In accordance with the provisions of Article 9, section 2.J.3 of Handbook EL-902, *Agreement Between the United States Postal Service and the National Rural Letter Carriers' Association*, effective September 28, 2019 (pay period 21-19), the equipment maintenance allowance (EMA) will decrease to 73.0 cents per mile. The EMA is 73.0 cents per mile, or a minimum of \$29.20 per day, whichever is greater.

Auxiliary Rural Carriers, Rural Carrier Reliefs, Rural Carrier Associates, Rural Carrier Part-Time Flexibles, and Auxiliary Assistance

Employees providing auxiliary assistance or serving auxiliary routes under the provisions of Article 9, section 2.J.5, receive an EMA of 73.0 cents per mile or \$7.90 per hour, whichever is greater. This EMA must not exceed the amount provided in the special equipment maintenance allowance for the route stops and miles.

EMA Rate Schedule

The EMA rate schedule on pages [11](#) and [12](#) supersedes all previously published EMA schedules for employees receiving EMA.

— *Collective Bargaining and Arbitration,
Labor Relations, 9-26-19*

EMA Rate Schedule (page 1 of 2)

USPS 26-9902 MINNEAPOLIS ISC REPORT AAQ30PI	RURAL EQUIPMENT MAINTENANCE	RATE SCHEDULE	DATE 09-12-19
MILES STOPS = *0260**0280**0300**0320**0340**0360**0380**0400**0420**0440**0460**0480**0500**0520**0540**0560**0580**0600**0620**	BASED ON \$0.730 PER MILE	EFFECTIVE PP-YR 21-19	PAGE 1
8	29.20	29.20	30.60
9	29.20	29.20	30.60
10	29.20	29.20	30.60
11	29.20	29.20	30.60
12	29.20	29.20	30.60
13	29.20	29.20	30.60
14	29.20	29.20	30.60
15	29.20	29.20	30.60
16	29.20	29.20	30.60
17	29.20	29.20	30.60
18	29.20	29.20	30.60
19	29.20	29.20	30.60
20	29.20	29.20	30.60
21	29.20	29.20	30.60
22	29.20	29.20	30.60
23	29.20	29.20	30.60
24	29.20	29.20	30.60
25	29.20	29.20	30.60
26	29.20	29.20	30.60
27	29.20	29.20	30.60
28	29.20	29.20	30.60
29	29.20	29.20	30.60
30	29.20	29.20	30.60
31	29.20	29.20	30.60
32	29.20	29.20	30.60
33	29.20	29.20	30.60
34	29.20	29.20	30.60
35	29.20	29.20	30.60
36	29.20	29.20	30.60
37	29.20	29.20	30.60
38	29.20	29.20	30.60
39	29.20	29.20	30.60
40	29.20	29.20	30.60
41	29.20	29.20	30.60
42	29.20	29.20	30.60
43	29.20	29.20	30.60
44	29.20	29.20	30.60
45	29.20	29.20	30.60
46	29.20	29.20	30.60
47	29.20	29.20	30.60
48	29.20	29.20	30.60
49	29.20	29.20	30.60
50	29.20	29.20	30.60
51	29.20	29.20	30.60
52	29.20	29.20	30.60
53	29.20	29.20	30.60
54	29.20	29.20	30.60
55	29.20	29.20	30.60
56	29.20	29.20	30.60
57	29.20	29.20	30.60
58	29.20	29.20	30.60

EMA Rate Schedule (page 2 of 2)

USPS 26-9902 MINNEAPOLIS ISC REPORT AAQ530P1	RURAL EQUIPMENT MAINTENANCE	R A T E S C H E D U L E	DATE 09-12-19
MILES	BASED ON \$0.730 PER MILE	EFFECTIVE PP-YR 21-19	PAGE 2
8	*0640**0660**0680**0700**0720**0740**0760**0780**0800**0820**0840**0860**0880**0900**0920**0940**0960**0980**1000	30.70 30.80 30.90 31.00 31.10 31.20 31.30 31.40 31.50 31.60 31.70 31.80 31.90 32.00 32.10 32.20 32.30 32.40 32.50	32.30 32.40 32.50
9		30.80 30.90 31.00 31.10 31.20 31.30 31.40 31.50 31.60 31.70 31.80 31.90 32.00 32.10 32.20 32.30 32.40 32.50	32.30 32.40 32.50 32.60
10		30.90 31.00 31.10 31.20 31.30 31.40 31.50 31.60 31.70 31.80 31.90 32.00 32.10 32.20 32.30 32.40 32.50	32.40 32.50 32.60 32.70
11		31.00 31.10 31.20 31.30 31.40 31.50 31.60 31.70 31.80 31.90 32.00 32.10 32.20 32.30 32.40 32.50	32.50 32.60 32.70 32.80
12		31.10 31.20 31.30 31.40 31.50 31.60 31.70 31.80 31.90 32.00 32.10 32.20 32.30 32.40 32.50	32.60 32.70 32.80 32.90
13		31.20 31.30 31.40 31.50 31.60 31.70 31.80 31.90 32.00 32.10 32.20 32.30 32.40 32.50	32.70 32.80 32.90 33.00
14		31.30 31.40 31.50 31.60 31.70 31.80 31.90 32.00 32.10 32.20 32.30 32.40 32.50	32.80 32.90 33.00 33.10
15		31.40 31.50 31.60 31.70 31.80 31.90 32.00 32.10 32.20 32.30 32.40 32.50	32.90 33.00 33.10 33.20
16		31.50 31.60 31.70 31.80 31.90 32.00 32.10 32.20 32.30 32.40 32.50	33.00 33.10 33.20 33.30
17		31.60 31.70 31.80 31.90 32.00 32.10 32.20 32.30 32.40 32.50	33.10 33.20 33.30 33.40
18		31.70 31.80 31.90 32.00 32.10 32.20 32.30 32.40 32.50	33.20 33.30 33.40 33.50
19		31.80 31.90 32.00 32.10 32.20 32.30 32.40 32.50	33.30 33.40 33.50 33.60
20		31.90 32.00 32.10 32.20 32.30 32.40 32.50	33.40 33.50 33.60 33.70
21		32.00 32.10 32.20 32.30 32.40 32.50	33.50 33.60 33.70 33.80
22		32.10 32.20 32.30 32.40 32.50	33.60 33.70 33.80 33.90
23		32.20 32.30 32.40 32.50	33.70 33.80 33.90 34.00
24		32.30 32.40 32.50	33.80 33.90 34.00 34.10
25		32.40 32.50	33.90 34.00 34.10 34.20
26		32.50	34.00 34.10 34.20
27			34.10 34.20
28			34.20
29			
30			
31			
32			
33			
34			
35			
36			
37			
38			
39			
40			
41			
42			
43			

Human Resources

Notice to All Post Offices with Rural Delivery Service: Rural Carrier Guarantee Period

Postal Service™ managers must effectively manage rural carriers who work under the provisions of the Fair Labor Standards Act (FLSA), section 7(b)(2). Those carriers are paid overtime for all hours actually worked in excess of 2,080, up to 2,240, within the 52-consecutive-week guarantee period.

If a carrier works more than 2,240 hours within the guarantee period, the agreement under FLSA section 7(b)(2) is considered void, and the carrier must be compensated for all hours worked during the guarantee period in accordance with FLSA, section 7(a).

Postal Service managers must make a concerted effort to minimize the number of hours carriers work over 2,080, and strictly monitor these carriers to ensure that no carrier works in excess of 2,240 actual work hours.

The 2019–2020 guarantee period will begin on Saturday, October 12, 2019, and continue through Friday, October 9, 2020.

— *Rural Delivery,
Rural Delivery Operations, 9-26-19*

September is World Alzheimer's Month

Although the brain changes naturally as people age, it's important to recognize that Alzheimer's disease is not a normal part of aging. Medical intervention and supervision can improve the quality of life for individuals living with Alzheimer's disease and their caregivers, but there is currently no cure for Alzheimer's disease.

Here are a few facts about Alzheimer's disease¹ and its effects:

- Alzheimer's disease is the most common form of dementia. Dementia is a brain condition that affects parts of the brain that control thought, memory, and language.
- Alzheimer's disease and related dementias can impair a person's ability to carry out daily activities.
- The risk of developing Alzheimer's disease increases with age; however, Alzheimer's disease is not a normal part of aging.
- Most people living with Alzheimer's disease are older than 65 years. People younger than age 65 can also develop Alzheimer's disease, but it is less common.

- Scientists do not know what causes Alzheimer's disease. Like other chronic conditions, it is likely the result of multiple factors.
- To reduce the risk of developing Alzheimer's disease:
 - Control high blood pressure,
 - Exercise regularly, and
 - Quit smoking.

To learn more about Alzheimer's disease, visit the Alzheimer's page on the CDC website at cdc.gov/aging/aging-info/alzheimers.htm.

For more information about health and wellness topics, visit the Wellness *LiteBlue* page at liteblue.usps.gov/humanresources/benefits/health-wellness/welcome.shtml.

— *Benefits and Compensation,
Human Resources, 9-26-19*

1. Source: cdc.gov/features/worldalzheimersday/index.html.

ALZHEIMER'S AWARENESS

Currently
5.5 million Americans
are living with Alzheimer's.

ALZHEIMER'S DISEASE
IS THE
**6TH
LEADING
CAUSE
OF
DEATH**
IN THE UNITED STATES.

Visit
EAP4YOU.com
for more resources
on Alzheimer's and
caregiving.

Alzheimer's is a
**DEGENERATIVE BRAIN
DISEASE** that slowly
destroys memory and
thinking skills.

If you are a caregiver for a
loved one with dementia
or Alzheimer's, it is
extremely important
that you take time
for yourself.

Symptoms
may appear around
60 YEARS OLD
as forgetfulness
or cognition
problems,
like not being able
to find the
right word.

If you can't care for yourself,
how can you care for
anyone else?

Keeping a healthy brain requires the same things
as keeping your physical body healthy:

Eat a healthy diet full of whole grains, green leafy
veggies, fruits and healthy fats.

Exercise at least four times a week at 30 minutes per
workout.

Practice stress reduction techniques. Find time for you.

SEPTEMBER



Pull-Out Information

Fraud

Invalid USPS Corporate Account Numbers

Provide this listing to Contract Postal Units and acceptance clerks in non-POS locations without intranet access to validate a USPS Corporate Account (USPSCA) number online. For all other locations, online USPSCA validation is preferred. This list supersedes all previous notices, which you must recycle.

Acceptance clerks must not accept Priority Mail Express® shipments bearing an invalid USPSCA number in the “Payment by Account” or “Agreement Number” section of the label or form.

Note: The first 6 digits of a 9-digit Custom Designed Service and Next Day Pickup Agreement make up the Corporate Account Number.

005534	021046	028210	045006	076867	096032	104392	274222	402280	770131	921195	925081	968225
005607	025084	028236	046017	077421	096728	104630	275015	405009	771072	921209	925088	968230
005699	026326	028305	047151	077700	096803	107028	276022	441391	772476	921218	925122	968274
008121	026577	028355	060525	077820	097101	108837	278073	441746	775256	921227	925190	968325
008164	026637	028550	061251	078096	098064	109187	295146	445152	782169	921232	926658	968449
008196	027011	028605	063203	080068	098108	109382	300182	451008	802442	921247	928586	968484
008341	027023	028746	064825	080233	098312	109685	301938	451065	810039	921391	931186	968589
008364	027113	028776	064844	080379	098633	109934	302821	452206	814222	921438	931816	968618
008450	027177	028842	065204	089205	098810	110899	303107	462748	823236	921451	932737	968662
008544	027179	028844	065405	090494	100084	115549	319128	481325	853649	921631	933003	968798
008790	027180	028853	065881	091227	100130	117677	321072	483206	891616	921832	933386	968821
008805	027181	028910	066144	091456	100242	119086	327008	487278	891617	921949	943013	968980
008811	027258	029046	068062	091602	100579	119443	327341	495355	891618	922063	946575	969117
009079	027429	029079	068071	091630	100592	122440	327373	553103	891621	922200	948771	980131
009269	027538	029105	068921	091703	100791	124182	328005	554094	895896	922226	950921	980783
009297	027646	029150	069242	091737	100831	138017	328120	601493	898061	922310	953103	982093
009377	027690	029292	069311	091748	100891	146457	328594	616049	900468	924103	954492	982586
009551	027739	029336	070943	091978	100918	159040	329626	641816	902513	924105	958237	985066
009839	027743	029394	070976	092006	100968	181004	333333	681150	907599	924177	967074	989082
009973	027913	029506	071512	092400	100970	197015	335291	681292	920153	924395	967168	995010
010148	027981	029507	071675	093246	100976	208721	339678	723047	920255	924430	967286	995434
012393	028061	029646	071784	093419	101441	232423	352839	730911	920262	924680	967365	995582
013251	028105	029914	075323	094183	102438	232425	361141	741474	921004	925031	968186	995743
015005	028143	031262	076077	095527	102508	235263	393049	752912	921065	925047	968207	997059
018120	028151	042322	076776	095782	102541	244010	402079	770130	921179	925078	968220	

— Product Information Requirements, Mail Entry and Payment Technology, 9-26-19

Missing, Lost, or Stolen U.S. Money Order Forms

Do Not Cash — Upon Receipt, Notify Local Postal Inspectors

Provide this listing to all Postal Service™ employees responsible for accepting and cashing postal money orders. Destroy all interim notices when the numbers listed appear in the *Postal Bulletin*. The new money order serial

numbers consist of the first 9 digits. The tenth digit is a check digit only.

Do not cash outdated money orders **104 151 601 to 692 600 000**. Advise holders to send invalid money orders to Canada Post Corporation, Ottawa, Canada K1A 0B1. Check for altered dollar amounts by holding money orders to the light.

013 289 6176	to	6199	041 299 6752	to	6799	072 675 8287	to	8299	117 951 5200	to	5299
013 610 0014	to	0099	041 623 8889	to	8899	073 763 0867	to	0876	119 786 3051	to	3064
014 932 1000	to	1099	041 803 6565	to	6599	073 763 0878	to	0887	119 815 8961	to	6199
014 972 0800	to	0899	043 129 1968	to	1997	073 763 0889	to	0898	119 850 7400	to	7499
015 363 0065	to	0099	043 205 5922	to	5999	077 617 5481	to	5499	119 850 7700	to	7999
017 028 3200	to	3299	044 087 3457	to	3499	077 999 4001	to	4090	121 634 0460	to	0499
018 569 5333	to	5399	044 087 4000	to	4099	078 174 4475	to	4499	122 451 9879	to	9899
018 986 5264	to	5299	044 226 2487	to	2512	078 219 4931	to	4999	122 714 6805	to	6900
019 518 2814	to	2899	044 306 4200	to	4299	078 250 4756	to	4799	124 916 0304	to	0499
020 698 5159	to	5199	044 306 4370	to	4599	078 823 8312	to	8399	126 423 0136	to	0169
020 844 7307	to	7399	045 524 4121	to	4298	079 374 0300	to	2499	127 500 2328	to	2399
020 972 8948	to	8999	046 800 9870	to	9899	079 807 2342	to	2399	160 901 2254	to	2299
022 021 9110	to	9181	047 352 4000	to	4099	082 721 0228	to	0254	161 103 6581	to	6599
022 037 1411	to	1499	048 383 7650	to	7659	083 140 5000	to	7499	161 194 2857	to	0899
022 527 9201	to	9210	048 396 3647	to	3699	083 784 8886	to	8899	162 032 4447	to	4499
022 529 1882	to	1899	051 142 0755	to	0799	083 913 6915	to	6999	163 257 1085	to	1099
023 637 7169	to	7199	051 774 8857	to	8899	084 478 3920	to	3999	164 359 2406	to	2499
024 380 4100	to	4199	051 781 2875	to	2885	086 000 8271	to	8299	166 101 1433	to	1499
024 496 6870	to	6896	051 977 7010	to	7023	086 798 3840	to	3849	167 555 5201	to	5212
025 092 0987	to	0999	052 058 7115	to	7199	088 404 4472	to	4499	167 555 5214	to	5299
025 369 5535	to	5599	054 450 1130	to	1167	088 404 5584	to	5699	169 618 6274	to	6299
025 729 1151	to	1199	057 670 0563	to	0599	088 757 8688	to	8699	171 806 6878	to	6893
025 729 1643	to	1799	058 187 3836	to	3899	088 757 9400	to	9499	173 639 4685	to	4699
026 492 3180	to	3199	058 523 3003	to	3099	089 358 2248	to	2257	174 238 2779	to	2799
027 361 0430	to	0499	058 591 1153	to	1299	090 663 9678	to	9684	174 281 9347	to	9399
027 369 4482	to	4495	058 895 3746	to	3799	091 818 0071	to	0099	175 251 2600	to	0699
027 671 8762	to	8776	059 986 0814	to	0899	093 106 9346	to	9355	176 281 7937	to	7950
027 787 9886	to	9899	060 406 7650	to	7699	093 203 0500	to	0599	176 281 7963	to	7999
027 965 9487	to	9499	063 491 8122	to	8199	093 684 3630	to	3699	176 731 6586	to	6599
028 100 8069	to	8099	063 916 9968	to	9999	094 081 5074	to	5099	178 254 5000	to	9999
028 191 1852	to	1999	064 091 4500	to	4599	094 216 2555	to	2599	178 881 9900	to	9999
028 850 3000	to	3199	065 170 0471	to	0499	094 580 7062	to	7099	180 031 2089	to	2098
029 510 1500	to	1599	065 255 7909	to	7999	094 639 4200	to	4299	180 403 7723	to	7741
030 687 0903	to	0999	065 392 6345	to	6399	095 070 7186	to	7199	180 428 4580	to	0599
030 701 3442	to	3499	066 099 2014	to	2099	095 076 8300	to	8399	182 368 7544	to	0599
031 077 4507	to	4799	066 648 2880	to	2899	095 354 6864	to	6899	182 475 3229	to	3258
032 295 7500	to	9999	066 787 3639	to	3699	097 224 1350	to	1599	182 475 3904	to	3933
034 394 1000	to	1099	066 845 7500	to	9999	100 160 3800	to	3899	182 631 0031	to	0099
034 943 0400	to	0799	067 093 3869	to	3899	104 667 6400	to	6499	182 911 6539	to	6600
035 035 4337	to	4399	068 895 0334	to	0399	104 876 8937	to	8999	184 218 2760	to	2799
037 312 7500	to	7599	070 724 4488	to	4499	112 049 4413	to	4499	185 828 1474	to	1499
037 706 9578	to	9599	070 841 9181	to	9199	112 870 9765	to	9799	186 132 7583	to	0599
037 805 3677	to	3699	070 844 2546	to	2599	113 319 2000	to	2099	186 629 0589	to	0599
037 909 5490	to	5499	070 916 1340	to	1399	114 402 3850	to	3899	187 184 6177	to	0199
037 931 4660	to	4699	071 047 5768	to	5799	114 866 5368	to	5397	187 323 8200	to	8299
039 145 6521	to	6595	071 179 9800	to	9899	116 154 2800	to	2899	187 441 6080	to	6099
040 024 3901	to	3999	071 386 3682	to	3699	116 986 4400	to	4499	188 831 6774	to	6799
040 674 7100	to	7199	071 507 6840	to	6899	117 175 1647	to	5169	188 835 6370	to	6399
040 688 8816	to	8899	072 045 9641	to	9699	117 951 4687	to	4699	189 083 1064	to	1099

189 660 9583 to 9599	229 462 8451 to 8475	258 405 1900 to 1999	378 085 3679 to 3699
191 179 0377 to 0399	229 668 5977 to 5999	258 405 3300 to 3399	378 351 1063 to 1099
192 050 5762 to 5781	229 923 9176 to 9199	258 405 3400 to 3499	379 843 5100 to 5199
194 456 8600 to 0699	229 924 6696 to 6699	258 405 3500 to 3599	380 093 9600 to 9699
195 194 6881 to 6899	230 051 9500 to 9999	258 405 3700 to 3799	380 165 1165 to 1199
195 874 1112 to 1199	236 366 2431 to 2499	258 405 3800 to 3899	381 325 4500 to 4599
196 979 0524 to 0599	236 607 6882 to 6899	258 405 3900 to 3999	381 604 2510 to 2699
197 244 6100 to 6199	236 660 5853 to 5872	258 405 4000 to 4099	381 645 9525 to 9599
197 244 6300 to 6399	239 322 5200 to 5299	258 405 4100 to 4199	383 314 3968 to 3999
197 244 6400 to 6499	239 322 5400 to 5499	258 405 4200 to 4299	383 892 1000 to 1344
197 244 6500 to 6599	239 322 5600 to 5699	258 405 4600 to 4699	383 892 1382 to 1399
197 244 6600 to 6699	239 322 5800 to 5899	258 405 5600 to 5699	384 925 3641 to 3654
197 244 6700 to 6799	239 322 5900 to 5999	258 405 5700 to 5799	385 568 2331 to 2399
197 244 6800 to 8999	239 607 4783 to 4799	258 405 5800 to 5899	385 599 7554 to 7575
198 285 2556 to 2566	240 593 1879 to 1899	258 405 5900 to 5999	385 774 2024 to 2099
199 105 0778 to 0799	242 591 2048 to 2099	258 405 6000 to 6099	386 624 1412 to 1599
199 678 2968 to 2999	242 735 0388 to 0398	258 405 6100 to 6199	386 883 8936 to 8999
202 748 5133 to 5199	242 951 7276 to 7299	258 405 6200 to 6299	387 314 5574 to 5599
202 748 5245 to 5299	243 535 6370 to 6399	258 405 6300 to 6399	387 837 6300 to 6399
202 748 5300 to 5399	244 004 9985 to 9999	258 405 6400 to 6499	388 828 0656 to 0699
202 748 5400 to 5499	244 004 9985 to 9999	258 405 6800 to 6899	389 696 2400 to 2799
203 256 1240 to 1299	244 268 9765 to 9799	258 405 6900 to 6999	389 846 3104 to 3135
204 230 3577 to 3595	244 347 4471 to 4499	258 405 7000 to 7099	389 846 3145 to 3195
205 019 0174 to 0199	249 056 1551 to 1599	258 405 7100 to 7199	389 887 9211 to 9230
207 196 9900 to 9999	249 336 9438 to 9499	258 405 7200 to 7299	389 887 9234 to 9299
207 204 0700 to 0799	249 399 4000 to 4099	258 405 7300 to 7399	390 001 3182 to 3199
207 204 0800 to 0899	249 399 4100 to 4199	258 405 7400 to 7499	390 001 3500 to 3699
207 514 3857 to 3899	249 399 4200 to 4299	258 405 7800 to 7899	390 545 5974 to 5999
208 556 4707 to 4799	249 399 4300 to 4399	258 405 7900 to 7999	391 104 6146 to 6199
210 057 4038 to 4047	249 399 4400 to 4499	258 405 8000 to 8099	391 574 1466 to 1499
210 221 0548 to 0599	249 399 4500 to 4599	258 405 8100 to 8199	391 783 3020 to 3599
214 061 4711 to 4724	249 399 4600 to 4699	258 405 8200 to 8299	391 792 6100 to 6199
214 303 6311 to 6325	249 399 4700 to 4799	258 405 8300 to 8399	392 668 2956 to 2999
214 303 6239 to 6258	249 399 4800 to 4899	258 405 8400 to 8499	392 854 8500 to 8899
214 877 4251 to 4273	249 399 4900 to 4999	258 405 8500 to 8599	393 584 7566 to 7699
215 252 3918 to 3992	250 159 7502 to 7599	258 405 8600 to 8699	393 650 0074 to 0099
217 585 1400 to 1499	250 566 9644 to 9699	258 405 8700 to 8799	393 838 8316 to 8499
218 698 2157 to 2199	250 661 8425 to 8499	258 405 8800 to 8899	393 893 6007 to 6099
218 746 0800 to 0899	251 335 5731 to 5799	258 405 8900 to 8999	394 126 6907 to 6999
219 095 0100 to 0399	252 005 7626 to 7699	258 405 9600 to 9699	394 189 0405 to 0599
219 389 1885 to 1899	252 464 2810 to 2899	258 405 9700 to 9799	394 822 3243 to 3278
219 568 7435 to 7456	252 469 2125 to 2199	258 405 9800 to 9899	394 990 1810 to 1899
219 568 7469 to 7487	252 833 3286 to 3297	258 405 9900 to 9999	395 343 3264 to 3299
221 316 5757 to 5799	253 565 7400 to 7499	259 218 1400 to 1499	395 373 3035 to 3099
223 476 3914 to 3999	254 565 7607 to 7700	259 218 1500 to 1599	395 396 9649 to 9799
223 565 4921 to 4957	254 907 1203 to 1299	259 218 1600 to 1699	395 970 3240 to 3299
223 565 4979 to 4999	255 728 6412 to 6499	273 775 7700 to 7899	397 622 4054 to 4099
224 636 4745 to 4765	256 134 9833 to 9839	302 000 0000 to 9999	397 819 8902 to 8999
224 636 4776 to 4799	256 134 9840 to 9849	349 746 2056 to 2099	398 149 7200 to 7699
224 636 4855 to 4885	256 134 9850 to 9859	350 518 7350 to 7374	399 070 0872 to 0899
224 636 4932 to 4948	256 134 9860 to 9869	360 011 1690 to 1699	399 156 7119 to 7199
224 636 4950 to 4962	256 134 9870 to 9879	360 168 6008 to 6099	399 203 5064 to 5099
224 636 4985 to 4999	256 134 9880 to 9889	360 173 8800 to 8899	399 296 9910 to 9999
224 730 2207 to 2299	256 134 9890 to 9899	360 324 2326 to 2399	399 396 8935 to 8999
225 970 0500 to 0599	256 247 6900 to 6999	362 861 3064 to 3099	399 792 7775 to 7799
225 970 0600 to 0699	257 154 8763 to 8799	373 006 2176 to 2199	399 792 8300 to 8399
225 970 0700 to 0799	257 154 8800 to 8899	374 768 2600 to 2699	400 427 1051 to 1999
227 033 8679 to 8699	257 765 4567 to 4599	375 169 4400 to 4599	401 045 1505 to 1549
227 275 9400 to 9999	257 765 4610 to 4696	375 829 3400 to 3499	401 045 1571 to 1599
228 463 2456 to 2499	257 765 4737 to 4799	375 851 9100 to 9199	401 294 2700 to 2799
228 510 4852 to 4899	258 405 1800 to 1899	376 196 0911 to 0999	401 310 9505 to 9599

401 382 5312	to	5399	420 661 4115	to	4199	444 382 8822	to	8899	462 152 0107	to	0299
402 578 7876	to	7899	420 758 9500	to	9699	444 390 1667	to	1699	462 274 1072	to	1099
403 125 6744	to	6799	420 969 3951	to	3971	444 457 3854	to	3899	462 277 8373	to	8399
403 260 7000	to	7499	420 969 3973	to	3999	450 048 4173	to	4199	462 554 6051	to	6099
403 280 6470	to	6499	421 116 3565	to	3599	450 048 4442	to	4699	463 011 5529	to	5540
403 685 8600	to	8699	421 130 9300	to	9399	450 560 5173	to	5199	463 176 4115	to	4199
404 003 0300	to	0399	421 313 4500	to	4999	450 620 3077	to	3099	463 176 4229	to	4299
404 041 8838	to	8899	421 364 5537	to	5599	450 620 3135	to	3199	463 185 2600	to	2799
404 071 4268	to	4299	421 656 2609	to	2699	450 780 2716	to	2799	463 227 7711	to	7799
404 347 5356	to	5399	421 988 9700	to	9799	450 801 2700	to	2799	463 414 4869	to	4899
404 347 5548	to	5599	422 172 4667	to	4699	451 109 2967	to	2984	463 808 3484	to	3499
404 726 4500	to	4599	422 484 4212	to	4299	451 115 4110	to	4125	463 945 7400	to	7899
404 961 5001	to	5199	422 556 1270	to	1299	451 115 4127	to	4199	464 629 9000	to	9399
405 325 0188	to	0198	422 587 7024	to	7099	451 746 0700	to	0799	464 711 4332	to	4399
406 009 4587	to	4599	422 819 7533	to	7599	452 265 0074	to	0099	465 692 3963	to	3999
406 260 6830	to	6899	422 842 5073	to	5087	452 265 0246	to	0299	465 698 8300	to	8599
406 459 6641	to	6999	422 907 7563	to	7599	452 265 0335	to	0999	465 743 7745	to	7799
406 733 3000	to	3999	424 500 6050	to	6099	452 509 1169	to	1199	466 798 6056	to	6067
407 545 1557	to	1599	424 641 8500	to	8599	452 855 6471	to	6499	467 147 4300	to	4399
407 594 0412	to	0599	424 871 6600	to	6699	452 890 4679	to	4799	468 079 5782	to	5799
407 692 9100	to	9299	425 298 2352	to	2399	452 900 8215	to	8238	469 067 2817	to	2899
407 959 2190	to	2199	425 418 4269	to	4299	453 117 9146	to	9199	469 127 8000	to	8199
408 265 2275	to	2288	425 418 4405	to	4499	453 334 3631	to	3699	469 213 0359	to	0399
408 499 7700	to	7799	426 547 4566	to	4599	453 603 7841	to	7891	469 213 0500	to	0599
408 499 7900	to	7999	427 412 6337	to	6499	453 650 1140	to	1199	469 561 8011	to	8099
408 682 8484	to	8599	427 481 0900	to	0999	453 741 1300	to	1399	469 658 1961	to	1999
408 698 7015	to	7099	428 027 2742	to	2752	454 013 2919	to	2999	469 666 9900	to	9999
409 072 3941	to	3999	429 474 4172	to	4199	454 186 2411	to	2499	469 678 1900	to	1999
410 491 2311	to	2399	429 889 2900	to	2999	454 268 4883	to	4899	469 781 4900	to	4999
410 694 8400	to	8599	430 150 4401	to	4599	454 302 5400	to	5499	469 947 6960	to	6999
410 775 1500	to	1599	430 172 9800	to	9899	454 490 8300	to	8399	470 755 5800	to	5818
410 795 7927	to	7999	430 177 1900	to	2099	454 547 7434	to	7499	471 918 0300	to	0999
410 867 0917	to	0966	430 444 9500	to	9699	454 922 4867	to	4895	471 985 2408	to	2419
410 867 0970	to	0999	430 664 4070	to	4099	455 221 1348	to	1499	472 191 6700	to	6799
411 868 1023	to	1199	432 168 8419	to	8499	455 364 2147	to	2199	472 270 2555	to	2599
411 922 2322	to	2399	432 708 6800	to	6999	455 399 5400	to	5499	472 987 0213	to	0241
412 193 0900	to	0999	432 744 1544	to	1599	455 476 0676	to	0699	472 987 0290	to	0299
412 395 8599	to	8699	432 995 9775	to	9799	455 543 0618	to	0699	473 151 2069	to	2199
412 485 6500	to	6599	433 003 5800	to	5899	456 410 9006	to	9099	473 666 9138	to	9199
412 485 6610	to	6699	433 757 3047	to	3099	456 470 4146	to	4299	473 952 3429	to	3499
412 885 5953	to	5999	433 765 4003	to	4099	456 619 4460	to	4499	474 108 5402	to	5499
414 193 3608	to	3674	434 482 7060	to	7199	457 333 2686	to	2699	474 356 5193	to	5299
414 193 3677	to	3699	434 513 2386	to	2399	457 729 1767	to	1777	474 949 3366	to	3399
414 411 7348	to	7399	434 968 3076	to	3092	457 937 8615	to	8699	475 134 9362	to	9399
414 640 0757	to	0799	435 303 1831	to	1842	458 028 9810	to	9899	475 167 9667	to	9699
414 965 1727	to	1799	435 303 1986	to	1999	458 057 2712	to	2999	475 319 3415	to	3499
417 302 8104	to	8199	435 666 6092	to	6399	458 069 9537	to	9599	475 319 3649	to	3799
417 387 6532	to	6599	436 082 6400	to	6899	458 069 9665	to	9699	475 340 6400	to	6599
417 496 6800	to	6999	436 160 6441	to	6499	458 337 5222	to	5299	475 424 8410	to	8499
417 871 9250	to	9299	437 316 7115	to	7199	458 354 7653	to	7999	475 629 9156	to	9199
417 930 9533	to	9599	437 427 0500	to	3499	458 671 8678	to	8699	475 850 6101	to	6199
418 164 6500	to	6799	439 179 2300	to	2399	458 671 8721	to	8798	475 875 2500	to	2599
418 423 9863	to	9899	439 310 0458	to	0499	458 847 5044	to	5999	476 169 8264	to	8299
418 633 5922	to	5999	440 698 1947	to	1999	459 274 7624	to	7699	476 189 3000	to	3499
418 719 8520	to	8599	440 858 6300	to	6399	459 365 5432	to	5499	476 331 2480	to	2499
418 744 2235	to	2299	440 858 6420	to	7299	459 378 5764	to	5799	477 289 8601	to	8699
418 962 2848	to	2899	441 199 1655	to	1699	459 472 4816	to	4999	477 681 5206	to	5299
419 543 0286	to	0299	443 127 3648	to	3699	460 349 6878	to	6899	478 010 4243	to	4268
419 730 0300	to	0399	443 127 4000	to	4099	460 550 1909	to	1999	478 010 4270	to	4291
420 277 0015	to	0049	443 673 7900	to	7999	460 997 5234	to	5299	478 450 5071	to	5099
420 599 0734	to	0798	443 800 9335	to	9399	461 973 6443	to	6499	478 469 7838	to	7858

478 469 7883	to	7899	495 145 0600	to	0699	601 339 1200	to	1399	621 614 7907	to	7930
479 280 9800	to	9899	496 209 7425	to	7499	601 653 5884	to	5899	621 614 7932	to	7999
479 365 9116	to	9176	496 213 8728	to	8799	601 661 7700	to	7799	621 648 8021	to	8199
479 412 9900	to	9999	496 474 5226	to	5248	601 682 5343	to	5399	621 648 8500	to	8599
479 667 6190	to	6199	497 053 8517	to	8699	601 928 1600	to	1699	621 904 8351	to	8599
479 748 9680	to	9699	497 854 8673	to	8699	602 512 2972	to	2999	621 916 1978	to	1989
479 860 7000	to	7199	498 449 8888	to	8899	602 555 2400	to	2799	622 989 8032	to	8099
480 526 2000	to	2099	498 929 8285	to	8499	602 829 7061	to	7099	623 076 9300	to	9399
480 640 6330	to	6399	498 936 5310	to	5399	603 483 9572	to	9599	623 819 5006	to	5099
480 658 0568	to	0599	499 016 5425	to	5499	603 490 7200	to	7299	623 895 8200	to	8399
480 689 5100	to	5199	499 440 8575	to	8899	603 678 7100	to	7199	623 917 0000	to	0099
481 072 9463	to	9499	499 731 6717	to	6799	603 678 7662	to	7699	623 917 0200	to	0299
481 673 0074	to	0095	500 064 1858	to	1869	603 678 7902	to	7999	624 468 5288	to	5299
482 527 1500	to	1599	500 070 5725	to	7799	603 678 8418	to	8499	624 665 3162	to	3198
482 541 5255	to	5299	501 058 0016	to	0026	603 678 8700	to	9999	625 088 6735	to	6799
482 729 6800	to	6899	501 331 0300	to	0399	604 086 0880	to	0899	625 916 9500	to	9799
483 363 7207	to	7299	501 460 0977	to	0999	604 349 1414	to	1499	625 968 8956	to	8999
483 402 2356	to	2399	502 227 7645	to	7699	604 503 7776	to	7799	627 005 3938	to	3999
483 486 5100	to	5199	502 424 0200	to	0499	605 520 9037	to	9099	627 384 3907	to	4099
483 632 1521	to	1599	502 424 0600	to	0699	605 685 4010	to	4099	627 496 7549	to	7599
483 632 2600	to	2799	502 496 6923	to	6999	605 988 6467	to	6499	627 708 3605	to	3699
483 849 1615	to	1699	503 003 2700	to	2899	607 689 7951	to	7960	627 776 2500	to	2599
484 174 4803	to	5299	503 194 5144	to	5153	607 728 1276	to	1299	628 226 3100	to	3199
484 323 8900	to	9199	503 790 9922	to	9948	608 727 7100	to	7199	628 814 4702	to	4799
484 680 5000	to	5038	504 045 4030	to	4099	608 727 7273	to	7599	628 851 9689	to	9699
484 680 5040	to	5074	504 166 0200	to	0599	608 813 9950	to	9999	629 510 7200	to	7299
484 680 5077	to	5099	504 240 1062	to	1399	609 067 5325	to	5399	629 964 4200	to	4294
485 029 4913	to	4999	504 805 3300	to	3499	609 067 5488	to	5499	630 389 3056	to	3071
486 176 0600	to	0699	505 096 0662	to	0699	609 067 5600	to	5699	630 463 0588	to	0599
486 559 7555	to	7599	505 893 7739	to	7799	609 289 6123	to	6199	631 459 9117	to	9199
486 696 3023	to	3199	505 893 7800	to	7999	609 438 4400	to	4499	631 762 9325	to	9399
488 173 7900	to	7999	506 124 0800	to	0999	609 493 1100	to	1199	632 217 4933	to	4999
488 206 4100	to	4199	506 165 7027	to	0099	609 766 8091	to	8999	632 500 0000	to	640 3999
488 226 0200	to	0299	506 502 5209	to	5299	609 825 4100	to	4115	633 110 4165	to	4199
488 709 3906	to	3999	506 756 1682	to	1699	609 884 2981	to	2999	633 110 4303	to	4499
488 855 8359	to	8399	506 756 1700	to	1799	609 893 1000	to	1099	633 438 6429	to	6599
489 181 8963	to	8999	506 756 1800	to	1899	610 092 3200	to	3299	633 588 7173	to	7182
489 223 2000	to	2099	506 836 5326	to	5399	610 582 4200	to	4299	634 725 0700	to	0799
489 311 1930	to	1999	508 488 6226	to	6299	611 879 6939	to	6999	634 803 3239	to	3299
489 318 6200	to	6300	508 789 8332	to	8399	612 291 8013	to	8099	634 807 2474	to	2499
489 384 0027	to	0099	508 789 8400	to	8499	612 751 5171	to	5199	634 827 5900	to	5999
489 427 0658	to	0899	509 909 0425	to	0435	612 751 5226	to	5299	634 886 3428	to	3499
489 997 5252	to	5299	510 150 2400	to	2499	612 751 6083	to	6099	635 559 3449	to	3499
490 669 5850	to	6099	510 381 3200	to	3299	612 751 6268	to	6299	636 289 6214	to	6299
490 717 7080	to	7099	510 587 9500	to	9599	612 751 6572	to	6599	636 634 8007	to	8042
490 721 6000	to	6099	510 587 9659	to	9699	612 774 2111	to	2199	637 150 1200	to	1299
490 793 1500	to	2099	510 269 9770	to	9999	612 774 2254	to	2299	637 562 5828	to	5899
490 886 8171	to	8199	511 021 5042	to	5099	612 774 2500	to	2599	638 042 1647	to	1699
490 977 9221	to	9240	511 021 5100	to	5199	614 469 0979	to	0999	638 049 4984	to	4999
491 258 8100	to	9099	511 468 1747	to	1799	614 474 3000	to	3099	638 318 1115	to	1199
491 567 1376	to	1399	511 844 0100	to	0199	614 521 3490	to	3499	638 318 1453	to	1499
492 254 4800	to	4899	511 844 0340	to	0399	614 645 1800	to	1899	638 885 0000	to	0299
492 283 5100	to	5199	513 046 0700	to	0726	614 832 1100	to	2099	638 903 4362	to	4373
492 610 6813	to	6899	513 445 3000	to	3199	615 017 7505	to	7599	639 415 1929	to	1999
493 394 5568	to	5599	513 466 2034	to	2044	617 711 6609	to	6699	639 415 2019	to	2099
493 470 2562	to	2599	513 539 9052	to	9099	617 760 5266	to	5299	639 420 6200	to	6299
493 473 7700	to	7799	513 539 9267	to	9299	617 813 3601	to	3699	639 469 3517	to	3799
493 716 2153	to	2199	513 539 9800	to	9899	618 840 9200	to	9299	639 605 2143	to	2199
494 206 2972	to	2999	513 539 9985	to	9999	619 551 7229	to	7299	639 657 8600	to	8799
494 217 3446	to	3999	513 606 5459	to	5490	619 859 3000	to	3099	640 289 7500	to	7599
494 224 0500	to	0599	600 645 3223	to	3299	620 073 9400	to	9499	640 289 7700	to	7999

641 170 4420	to	4499	653 455 4874	to	4899	680 412 6046	to	6099	700 666 1323	to	1349
641 318 3133	to	3199	654 238 0000	to	0399	680 761 6800	to	6899	700 786 9106	to	9142
641 378 6500	to	6999	654 404 3065	to	3092	681 677 0540	to	0699	700 859 0744	to	0758
641 383 8739	to	8799	654 962 2900	to	3199	682 070 1029	to	1099	701 028 6780	to	6899
641 877 3187	to	3299	655 103 5081	to	5199	682 956 6280	to	6299	701 213 3900	to	3999
641 877 3310	to	3399	655 523 2600	to	2999	682 956 6490	to	6599	701 267 2000	to	3999
642 355 8094	to	8199	656 305 2448	to	2499	682 956 6700	to	6799	701 335 7312	to	7399
642 355 8308	to	8999	657 347 4438	to	4999	682 965 1178	to	1199	701 369 2005	to	2050
642 900 0018	to	0099	657 710 8100	to	8999	682 965 1201	to	1299	701 499 2260	to	2299
643 030 6254	to	6299	657 780 0985	to	0999	683 118 2389	to	2399	701 503 2247	to	2299
644 066 0882	to	0899	658 586 1400	to	1499	683 378 2000	to	2099	701 541 2271	to	2299
644 069 0600	to	0699	658 877 8000	to	8199	683 378 2117	to	2299	701 553 6557	to	6599
644 077 7506	to	7699	658 880 8000	to	8199	683 415 1200	to	1499	701 578 7460	to	7469
644 085 8157	to	8199	659 398 7300	to	7399	683 444 8159	to	8199	701 578 7475	to	7499
644 112 9839	to	9899	659 706 8113	to	8199	685 154 7780	to	7789	701 601 3457	to	3499
644 373 9083	to	9099	659 846 7837	to	7899	685 297 7645	to	7699	701 605 5913	to	5999
644 380 1460	to	1499	660 510 4100	to	4199	685 623 5264	to	5299	701 695 3982	to	3999
644 733 4715	to	4799	660 673 0400	to	0599	685 650 9487	to	9499	701 695 4148	to	4199
644 900 9712	to	9799	661 488 5000	to	5099	685 669 4200	to	4299	701 695 4227	to	4299
644 901 0109	to	1299	661 609 9100	to	9199	685 757 8452	to	8499	701 708 1741	to	1799
644 901 1325	to	1399	661 716 9420	to	9499	686 071 2694	to	2799	701 736 3966	to	3999
644 923 6800	to	7799	661 906 6522	to	6599	686 176 3333	to	3354	701 772 0870	to	0899
644 932 4655	to	4699	662 021 8332	to	8399	686 372 3200	to	3299	701 838 2800	to	2899
645 318 7240	to	7499	662 068 0700	to	0899	686 644 5879	to	5899	701 941 0600	to	0699
645 333 1766	to	1799	662 553 0774	to	0799	686 899 1371	to	1399	702 171 1603	to	1699
645 790 8632	to	8699	663 078 7034	to	7099	686 931 7636	to	7699	702 195 5109	to	5199
645 821 0657	to	0699	663 763 5300	to	5399	687 601 0973	to	0999	702 254 9300	to	9399
645 930 7948	to	7999	663 883 7039	to	7499	687 614 6774	to	6799	702 264 7569	to	7599
645 975 0737	to	0762	663 938 9200	to	9299	688 120 9000	to	9999	702 519 0513	to	0524
646 242 6200	to	6299	664 253 8000	to	8499	688 314 3107	to	3191	702 713 1800	to	1809
646 270 7639	to	7799	664 656 3055	to	3099	690 291 1361	to	1371	702 821 5730	to	5799
646 798 4000	to	4999	665 174 6400	to	6499	690 788 2877	to	2899	702 821 5805	to	5899
647 048 7035	to	7099	665 274 8208	to	8299	690 893 5344	to	5399	702 844 6975	to	6994
647 049 2900	to	2999	665 669 5400	to	5499	690 893 5512	to	5599	702 846 6331	to	6399
647 398 8300	to	8399	666 132 8226	to	8299	690 904 1300	to	1599	702 848 3900	to	3999
647 398 8481	to	8499	666 696 2209	to	2299	690 941 6000	to	6199	702 857 7302	to	7499
647 437 3000	to	4999	666 696 2309	to	2399	691 313 6383	to	6399	702 878 0114	to	0199
647 811 2188	to	2199	667 032 9300	to	9399	691 313 6600	to	6699	703 364 1707	to	1799
648 009 6057	to	6099	667 729 5529	to	5599	691 582 8003	to	8099	740 002 7710	to	7719
648 163 5300	to	5499	668 383 8400	to	8699	691 664 1800	to	1999	740 037 6730	to	6800
648 722 5283	to	5299	670 368 3400	to	3499	691 664 2400	to	2499	740 119 2275	to	2284
648 892 3164	to	3199	670 369 7336	to	7399	692 727 9362	to	9399	740 130 6688	to	6698
649 100 3989	to	3999	670 750 7169	to	7199	692 798 1800	to	1899	740 144 2780	to	2795
649 647 0370	to	0399	671 046 6200	to	6399	693 249 0779	to	0799	740 241 9049	to	9099
649 647 0522	to	0599	671 251 5448	to	5499	693 249 0877	to	1699	740 252 9265	to	9294
649 647 5237	to	5399	671 926 5600	to	5799	693 445 0566	to	0999	740 255 1718	to	1799
649 647 9100	to	9299	672 444 2000	to	2999	693 448 8500	to	8999	740 274 2602	to	2619
649 666 7800	to	8299	672 828 3410	to	3499	693 645 9583	to	9599	740 277 0366	to	0392
650 114 7707	to	7719	673 167 5776	to	5799	693 965 4200	to	4299	740 332 7658	to	7671
650 130 3400	to	3599	675 464 3700	to	3799	695 741 2906	to	2999	740 348 6641	to	6658
650 213 0406	to	0499	675 464 4000	to	4199	695 947 8518	to	8599	740 351 4790	to	4799
650 555 1749	to	1799	676 365 5958	to	5999	696 662 8247	to	8299	740 374 7416	to	7499
650 564 1900	to	1999	676 669 1024	to	1099	697 447 8285	to	8296	740 470 2420	to	2443
650 627 4212	to	4299	677 126 6734	to	6799	698 042 4816	to	4899	740 514 0300	to	0499
650 736 2043	to	2099	677 333 9979	to	9999	698 131 2138	to	2157	740 523 7432	to	7449
650 739 1540	to	1699	677 466 1088	to	1099	698 227 0000	to	0099	740 535 1555	to	1580
651 741 4415	to	4499	678 071 4500	to	4799	700 065 2570	to	2599	740 557 3570	to	3579
651 882 2800	to	2899	678 096 7531	to	7599	700 065 4800	to	4899	740 650 4104	to	4140
652 754 6317	to	6399	679 909 2578	to	2599	700 190 3350	to	3359	740 684 0620	to	0800
653 131 4945	to	4999	680 112 9565	to	9599	700 228 6048	to	6099	740 701 6105	to	6114
653 426 3300	to	3399	680 244 0903	to	0999	700 650 0452	to	0499	740 705 9790	to	9799

740 726 6400	to	6500	841 805 7747	to	7899	862 216 6100	to	6199	905 873 7100	to	7299
740 748 8319	to	8329	841 805 7944	to	8099	862 263 9213	to	9299	905 880 8900	to	8999
740 765 3306	to	3399	842 226 0685	to	0695	862 271 0800	to	0999	905 889 7100	to	7199
740 774 8434	to	8499	842 685 4600	to	4699	862 271 5000	to	5099	906 158 1508	to	1599
740 779 4259	to	4299	842 685 4742	to	4999	863 871 5138	to	5199	906 558 8812	to	8899
740 786 1885	to	1899	842 860 0300	to	0399	863 949 5300	to	5399	906 982 2214	to	2299
740 790 5989	to	5999	842 898 5582	to	5599	864 088 8200	to	8299	907 725 8500	to	8599
740 803 4870	to	4879	843 062 7100	to	7199	864 426 3972	to	3999	907 815 0216	to	0257
740 820 4854	to	7836	843 077 6288	to	6299	864 520 6117	to	6136	908 622 4225	to	4235
740 827 7578	to	7594	843 077 6378	to	6399	865 151 0526	to	0599	908 936 9254	to	9299
740 917 7490	to	7499	843 758 5769	to	5778	865 500 4034	to	4099	909 066 4494	to	7499
740 918 5531	to	5549	843 786 2554	to	2699	865 883 6082	to	6099	909 067 7400	to	7499
741 037 8528	to	8551	845 656 8165	to	8199	866 004 3000	to	3999	909 100 1787	to	1799
742 030 6135	to	6149	845 727 2100	to	2199	866 442 4100	to	4899	909 100 1900	to	2099
742 033 2663	to	2674	845 746 2618	to	2635	867 366 9108	to	9118	909 355 0422	to	0499
742 040 3300	to	3309	846 390 7531	to	7599	867 633 7403	to	7499	909 568 8900	to	9099
742 151 5000	to	5014	846 918 0572	to	0599	867 737 5623	to	5699	909 568 9300	to	9499
742 191 4640	to	4649	847 237 7690	to	7699	868 169 4529	to	4599	909 725 7307	to	7399
742 192 5210	to	5224	847 284 2481	to	2499	868 173 8400	to	8599	909 833 0947	to	0999
742 222 9200	to	9210	847 374 7055	to	7065	868 514 9000	to	9099	910 219 8631 to 8699		
742 228 9660	to	9669	847 374 7055	to	7065	868 566 9200	to	9299	910 265 1100	to	1199
742 247 6980	to	6989	847 636 5304	to	5399	869 200 0000	to	9999	910 471 7273	to	7299
742 290 0936	to	0950	847 700 5447	to	5499	869 387 1150	to	1199	910 536 2505	to	2599
742 302 7600	to	7699	847 723 7500	to	7599	869 505 3500	to	3599	910 958 7499	to	7599
805 885 8411 to 8499			849 485 3427	to	3499	869 523 7033	to	7099	911 140 1000	to	2199
806 087 1100	to	1499	849 520 9850	to	9899	869 566 6150	to	6167	911 245 2545	to	2599
806 268 9275	to	9299	849 608 1357	to	1399	869 800 0000	to	999 9999	911 268 9077	to	9099
806 534 3400	to	3477	849 792 2600	to	2699	870 054 4814 to 4899			911 400 8948	to	8999
807 342 3283	to	3399	850 546 1862 to 1899			870 491 4812	to	4849	911 508 1620	to	1799
808 086 7100	to	7199	851 143 6826	to	6844	870 536 5820	to	5829	911 509 9310	to	9399
808 090 3440	to	3499	851 209 9880	to	9899	870 541 7167	to	7239	911 523 3000	to	3999
808 325 5161	to	5699	851 928 9221	to	9299	870 575 8155	to	8999	912 057 9922	to	9999
808 784 8000	to	8299	852 589 6560	to	6599	870 589 0485	to	0494	912 882 0563	to	0899
830 125 0672 to 0699			853 049 3646	to	3699	870 691 7060	to	7099	913 605 2218	to	2299
830 602 5800	to	5999	854 304 4089	to	4999	872 028 4850	to	4899	913 709 2429	to	2499
830 610 3700	to	3799	854 529 2200	to	2299	872 029 9306	to	9399	913 818 3501	to	3999
830 983 3500	to	3599	854 532 0000	to	2999	872 078 3709	to	3799	914 063 4300	to	4399
830 983 3635	to	3699	855 001 6204	to	6249	872 100 0445	to	0459	914 346 7621	to	7644
831 354 1387	to	1399	855 319 9364	to	9399	900 556 4178 to 4199			914 453 1366	to	1399
831 815 8240	to	8299	855 361 3390	to	3399	900 845 0044	to	0099	914 529 6185	to	6299
832 525 3810	to	3899	856 226 0490	to	0499	900 936 0217	to	0299	914 896 4658	to	4699
833 159 1884	to	1899	856 656 5800	to	5999	900 936 0435	to	0499	915 187 8774	to	8779
833 456 2567	to	2599	856 752 0200	to	0299	901 058 5255	to	5280	915 300 2783	to	2799
833 566 3015	to	3071	857 111 1352	to	1399	901 273 1082	to	1099	915 546 6822	to	6999
834 130 5200	to	5299	857 279 3450	to	3499	901 287 5143	to	5199	915 646 5183	to	5199
834 316 5444	to	5499	857 843 4000	to	4099	901 291 2789	to	2799	915 671 3963	to	3980
834 354 8747	to	8766	858 124 7644	to	7699	901 525 7122	to	7199	915 671 3982	to	3999
834 354 8824	to	8838	858 756 3111	to	3299	902 089 1253	to	1299	915 675 2217	to	2299
835 269 5700	to	5799	859 063 8200	to	8699	902 198 9769	to	9799	916 440 3377	to	3399
835 496 7303	to	7399	859 190 0600	to	0644	902 948 1269	to	1299	916 670 6352	to	6399
835 539 5200	to	5999	859 437 5538	to	5599	902 985 0833	to	0899	916 682 5300	to	5399
835 813 3015	to	3099	859 811 2888	to	2899	903 370 6934	to	6999	916 694 1414	to	1499
837 672 8967	to	8999	859 855 8873	to	8999	904 600 6523	to	6599	916 703 0802	to	0821
837 784 3282	to	3299	860 240 8520 to 8599			904 892 0378	to	0399	917 089 0709	to	0799
838 176 8377	to	8399	860 275 3900	to	3999	904 892 0648	to	1299	917 089 0842	to	0899
838 518 1257	to	1299	860 518 9629	to	9699	905 056 2216	to	2299	917 216 2928	to	2999
839 718 8257	to	8299	860 600 0021	to	0999	905 510 6647	to	6799	917 370 6300	to	6499
840 323 0600 to 0699			861 158 2350	to	2599	905 510 6900	to	7099	917 486 4900	to	4999
840 875 6235	to	6299	861 367 5400	to	5499	905 794 0000	to	0199	918 460 0602	to	0699
840 910 0900	to	0999	861 637 6010	to	6099	905 794 0288	to	0299	918 951 7231	to	7299
841 349 5000	to	5099	861 979 7292	to	7499	905 873 6900	to	6999	919 519 2786	to	2799

919 536 0770 to 0799	922 280 2019 to 2099	925 333 5900 to 6099	932 827 9026 to 9099
919 814 3095 to 3199	922 280 2233 to 2299	925 336 2300 to 2399	932 957 2300 to 2399
919 889 5110 to 5134	922 773 0459 to 0499	926 432 5907 to 5999	933 060 6160 to 6189
919 889 5137 to 5176	923 032 7000 to 7399	926 436 3600 to 3699	933 387 2541 to 2561
919 889 5178 to 5199	923 045 3630 to 3699	927 765 6257 to 6299	933 760 3609 to 4199
919 889 5030 to 5070	923 484 3600 to 3699	928 197 8100 to 8199	933 894 0928 to 0999
919 889 5090 to 5099	923 493 9403 to 9599	928 197 8283 to 8299	934 018 2729 to 2741
919 915 2774 to 2787	923 493 9681 to 9699	928 856 2059 to 2068	934 180 0300 to 0399
920 155 4662 to 4687	923 604 4424 to 4499	930 078 5800 to 5899	934 236 3954 to 3999
920 309 9039 to 9199	923 810 7800 to 8299	930 219 1722 to 1799	934 622 8717 to 8999
920 771 5321 to 5399	924 252 1200 to 1299	930 335 7810 to 7819	935 216 0312 to 0399
920 857 5500 to 5899	924 252 1400 to 1499	931 097 9259 to 9299	935 843 2202 to 2247
920 864 3480 to 3499	924 533 0711 to 0799	931 156 1502 to 1579	936 024 8889 to 8899
920 963 4567 to 4599	924 533 2343 to 2399	931 156 1600 to 1625	936 339 4455 to 4499
921 333 7400 to 7499	924 533 2428 to 2499	931 156 1671 to 1699	
921 477 3762 to 3799	924 685 1957 to 1999	932 506 6400 to 6599	
922 278 1048 to 1399	924 946 6300 to 6699	932 732 1796 to 1799	

— Criminal Investigations Group, U.S. Postal Inspection Service, 9-26-19

Missing, Lost, or Stolen Canadian Money Order Forms

Do Not Cash — Upon Receipt, Notify Local Postal Inspectors

Provide this listing to all Postal Service™ employees responsible for accepting and cashing postal money orders. Destroy all interim notices when the numbers listed appear in the *Postal Bulletin*. The new money order serial

numbers consist of the first 9 digits. The tenth digit is a check digit only.

Do not cash outdated money orders **104 151 601 to 692 600 000**. Advise holders to send invalid money orders to Canada Post Corporation, Ottawa, Canada K1A 0B1. Check for altered dollar amounts by holding money orders to the light.

719 869 731	to	9 760	727 481 431	to	1 460	734 009 101	to	9 130	741 113 041	to	3 370
720 227 871	to	7 930	727 749 241	to	9 780	734 290 759	to	0 770	741 373 891	to	4 340
720 227 949	to	7 960	728 382 331	to	2 480	734 389 273	to	9 290	741 452 369	to	2 490
720 368 543	to	8 570	728 702 338	to	2 400	734 440 031	to	0 111	741 492 991	to	3 140
720 392 151	to	2 570	728 915 371	to	5 850	734 797 201	to	7 320	741 553 460	to	3 470
720 556 491	to	6 640	728 953 141	to	3 410	734 939 611	to	9 640	741 764 431	to	4 520
720 558 621	to	8 650	728 954 280	to	4 310	734 950 111	to	0 170	741 764 431	to	4 520
720 575 361	to	5 570	729 169 081	to	9 140	735 120 331	to	0 840	742 178 834	to	8 880
720 590 152	to	0 179	729 363 841	to	3 870	735 283 008	to	3 020	742 325 500	to	5 520
721 638 331	to	9 170	729 682 891	to	3 190	735 293 131	to	3 220	742 325 668	to	5 700
721 815 391	to	5 420	729 838 940	to	9 070	735 635 010	to	5 040	742 408 771	to	8 830
721 969 713	to	9 740	729 839 101	to	9 130	735 783 961	to	3 990	742 512 120	to	2 150
722 072 137	to	2 160	730 077 683	to	7 840	735 803 401	to	3 430	742 684 849	to	4 890
722 378 265	to	8 280	730 109 847	to	9 880	736 005 420	to	5 440	742 839 553	to	9 630
722 413 990	to	4 004	730 373 761	to	3 850	736 366 021	to	6 110	742 913 668	to	3 700
722 764 948	to	4 980	730 501 951	to	2 130	736 624 456	to	4 500	742 917 287	to	7 296
722 825 840	to	5 889	730 519 379	to	9 470	736 670 851	to	1 060	742 921 891	to	1 980
723 153 841	to	3 850	730 569 278	to	9 360	736 767 061	to	7 090	742 983 631	to	3 810
723 237 616	to	7 630	730 711 711	to	1 740	736 767 093	to	7 120	743 020 021	to	0 170
723 331 081	to	1 110	730 722 991	to	3 230	736 982 191	to	2 370	743 206 491	to	6 500
723 496 443	to	6 470	730 845 970	to	5 990	736 982 551	to	2 730	743 235 992	to	6 050
723 967 291	to	7 320	730 888 291	to	8 320	737 110 141	to	0 170	743 940 631	to	0 900
724 655 196	to	5 340	730 927 591	to	7 680	737 185 501	to	5 710	743 978 011	to	8 070
724 711 441	to	1 500	731 307 914	to	7 930	737 317 321	to	7 350	744 234 751	to	4 780
724 711 538	to	1 560	731 402 431	to	2 460	737 517 781	to	7 840	744 499 591	to	9 680
724 793 221	to	3 250	731 407 232	to	7 320	737 628 181	to	8 210	744 626 901	to	6 910
724 908 109	to	8 120	731 588 301	to	8 340	737 634 258	to	4 270	745 388 794	to	8 910
724 937 461	to	7 670	731 767 273	to	7 320	738 361 971	to	1 980	746 446 806	to	6 820
725 163 118	to	3 151	731 781 061	to	1 120	738 447 601	to	7 660	746 818 351	to	8 410
725 202 735	to	2 750	731 837 821	to	7 910	738 648 355	to	8 450	747 245 266	to	5 280
725 398 591	to	8 800	731 841 377	to	1 450	738 849 811	to	9 900	747 364 813	to	4 830
725 464 591	to	4 920	732 018 481	to	8 600	738 892 270	to	2 290	747 501 434	to	1 450
725 475 321	to	5 330	732 067 972	to	8 370	738 997 259	to	7 380	747 739 891	to	0 070
725 711 057	to	1 070	732 188 649	to	8 670	739 161 451	to	1 540	748 148 649	to	8 760
725 738 581	to	8 730	732 193 460	to	3 470	739 219 381	to	9 440	748 259 960	to	9 970
725 981 311	to	1 430	732 201 241	to	1 390	739 740 151	to	0 180	748 565 162	to	5 280
725 987 835	to	7 880	732 220 431	to	0 440	739 793 491	to	3 520	748 874 988	to	5 030
726 060 811	to	0 900	732 355 201	to	5 380	739 793 527	to	3 550	749 137 381	to	7 410
726 391 970	to	2 520	732 472 320	to	2 560	739 942 621	to	2 650	749 190 192	to	0 210
726 484 771	to	4 800	732 541 605	to	1 620	739 999 231	to	9 320	749 685 421	to	5 450
726 493 351	to	5 300	732 572 221	to	2 490	740 011 517	to	1 530	749 846 791	to	6 850
726 504 031	to	4 063	732 586 479	to	6 710	740 030 701	to	0 970	749 993 131	to	3 580
726 504 070	to	4 090	732 994 037	to	4 080	740 261 740	to	1 820	750 071 587	to	1 610
726 504 331	to	4 390	733 163 449	to	3 460	740 265 811	to	6 290	750 408 167	to	8 183
726 563 701	to	4 060	733 297 171	to	7 290	740 299 111	to	9 170	750 438 421	to	8 501
726 599 371	to	9 460	733 446 631	to	7 110	740 299 231	to	9 260	750 743 911	to	4 030
726 626 356	to	6 370	733 474 665	to	4 770	740 329 266	to	9 320	750 779 118	to	9 400
727 182 271	to	2 510	733 704 482	to	4 570	740 889 081	to	9 090	750 910 981	to	1 010
727 416 181	to	6 240	733 751 041	to	1 130	741 010 421	to	0 530	750 960 841	to	0 900

751 296 211	to	6 240	761 169 781	to	9 810	769 827 331	to	7 450	796 975 466	to	5 590
751 539 121	to	9 180	761 504 941	to	5 120	770 216 071	to	6 100	797 272 917	to	2 950
751 541 311	to	1 790	761 516 836	to	6 910	770 723 281	to	3 400	797 519 441	to	9 460
751 757 641	to	7 700	761 613 588	to	3 600	770 790 451	to	0 480	797 519 731	to	0 240
751 936 951	to	7 010	761 688 631	to	8 690	770 915 150	to	5 490	797 535 181	to	5 330
751 951 861	to	1 890	761 805 199	to	5 240	771 455 551	to	5 610	797 646 151	to	6 180
751 999 021	to	9 110	761 826 106	to	6 120	771 609 661	to	9 690	798 040 053	to	0 080
752 139 516	to	9 570	761 881 171	to	1 560	771 932 551	to	2 580	798 055 813	to	5 830
752 182 892	to	2 950	761 975 641	to	5 670	772 057 224	to	7 440	798 055 891	to	5 950
752 206 861	to	7 100	761 975 886	to	5 895	772 162 660	to	3 070	798 326 371	to	6 520
752 295 241	to	5 600	762 304 144	to	4 170	772 718 615	to	8 640	798 339 167	to	9 210
752 731 351	to	1 410	762 324 931	to	4 960	772 940 140	to	0 160	798 562 411	to	2 440
752 767 441	to	7 470	762 439 261	to	9 290	772 970 886	to	0 940	798 632 461	to	2 490
753 008 941	to	9 030	762 524 158	to	4 220	773 009 419	to	9 430	798 807 151	to	7 510
753 194 311	to	4 370	762 584 872	to	4 970	773 112 031	to	2 060	798 944 761	to	5 030
753 620 378	to	0 400	762 593 431	to	3 460	773 125 387	to	5 410	799 118 616	to	8 640
754 013 917	to	3 940	763 155 160	to	5 180	773 179 320	to	9 410	799 133 191	to	3 220
754 161 061	to	1 120	763 178 631	to	8 660	773 202 989	to	3 140	799 177 626	to	7 650
754 358 445	to	8 610	763 506 001	to	6 060	773 208 991	to	9 290	799 854 751	to	5 200
754 410 451	to	0 660	763 522 141	to	2 470	773 231 311	to	1 340	800 044 320	to	4 410
754 438 393	to	8 410	763 717 694	to	7 800	773 348 739	to	8 940	800 211 901	to	2 440
754 493 109	to	3 130	763 826 461	to	6 520	773 348 739	to	8 940	800 427 530	to	7 540
754 664 182	to	4 220	763 900 460	to	0 471	773 575 891	to	5 950	800 872 741	to	2 830
754 816 377	to	6 470	763 900 479	to	0 530	773 852 971	to	3 030	801 349 801	to	9 830
755 487 421	to	7 600	763 917 271	to	7 750	775 373 449	to	3 460	801 676 681	to	7 100
755 592 901	to	3 140	764 125 801	to	5 860	789 257 191	to	7 250	802 967 821	to	7 940
755 790 020	to	0 030	764 284 525	to	4 560	790 448 020	to	8 460	803 217 601	to	7 780
755 791 730	to	1 800	764 526 241	to	6 330	790 597 485	to	7 530	803 729 731	to	9 850
755 926 951	to	7 070	764 601 421	to	1 600	790 911 883	to	1 900	803 747 402	to	7 520
755 934 332	to	4 510	764 650 231	to	0 470	791 057 441	to	7 550	804 138 181	to	8 420
755 957 701	to	8 000	764 984 371	to	4 850	791 239 081	to	9 290	804 428 224	to	8 250
755 962 981	to	3 280	765 003 667	to	3 680	791 374 483	to	4 500	804 682 411	to	2 710
756 035 371	to	5 490	765 042 517	to	2 540	791 387 971	to	8 030	805 272 525	to	2 540
756 301 257	to	1 290	765 194 728	to	4 970	791 447 521	to	7 850	805 523 445	to	3 460
756 371 565	to	1 580	765 387 365	to	7 450	791 451 151	to	1 240	805 745 704	to	5 730
756 876 031	to	6 120	765 541 801	to	2 100	791 500 009	to	0 470	806 452 907	to	2 980
756 876 151	to	6 240	765 638 461	to	8 970	791 771 431	to	1 490	806 744 781	to	4 850
756 970 129	to	0 140	765 647 101	to	7 190	792 004 293	to	4 320	806 982 181	to	2 300
757 059 613	to	9 630	765 813 781	to	4 029	792 018 379	to	8 420	807 764 791	to	4 910
757 078 540	to	8 560	765 879 314	to	9 390	792 070 621	to	0 740	808 089 931	to	9 960
757 086 209	to	6 240	765 954 001	to	4 030	792 145 211	to	5 230	808 656 423	to	6 450
757 240 591	to	0 650	766 120 286	to	0 320	792 391 381	to	1 620	808 753 771	to	3 800
757 277 371	to	7 700	766 125 716	to	5 750	792 452 779	to	2 790	809 189 001	to	9 010
757 291 591	to	2 730	766 158 824	to	8 840	792 772 728	to	2 770	809 886 879	to	6 930
757 964 251	to	4 280	766 388 433	to	8 460	792 903 511	to	3 990	809 890 489	to	0 500
758 067 001	to	7 090	766 509 421	to	9 660	793 282 518	to	2 533	810 323 734	to	3 760
758 105 221	to	5 250	766 572 901	to	3 020	794 041 831	to	2 040	810 367 116	to	7 140
758 324 941	to	5 000	766 748 500	to	8 521	794 397 709	to	7 780	810 526 351	to	6 500
758 593 628	to	3 650	767 024 341	to	4 370	794 581 741	to	2 040	810 806 911	to	6 940
758 709 038	to	9 060	767 326 471	to	6 590	794 592 122	to	2 150	810 807 211	to	7 240
758 744 101	to	4 160	767 332 561	to	2 950	795 032 251	to	2 340	811 423 021	to	3 110
758 850 883	to	0 900	768 009 841	to	9 960	795 796 291	to	6 350	811 517 221	to	7 239
758 860 951	to	1 550	768 011 489	to	1 520	796 070 139	to	0 160	811 721 101	to	1 130
759 152 851	to	2 880	768 177 980	to	7 990	796 143 151	to	3 630	812 025 721	to	5 900
759 740 941	to	1 090	768 391 081	to	1 170	796 159 725	to	9 740	812 093 073	to	3 130
760 004 596	to	4 610	768 661 569	to	1 650	796 169 306	to	9 340	812 100 821	to	0 840
760 118 191	to	8 250	769 000 051	to	0 080	796 373 406	to	3 430	812 465 251	to	5 610
760 155 001	to	5 090	769 050 841	to	0 900	796 602 961	to	3 050	812 918 341	to	8 670
760 378 002	to	8 020	769 159 081	to	9 178	796 708 441	to	8 500	812 918 701	to	8 760
760 692 722	to	2 749	769 737 496	to	7 510	796 886 281	to	6 430	813 050 491	to	0 520
761 055 460	to	5 480	769 778 491	to	8 730	796 901 701	to	2 000	813 073 171	to	3 200

813 398 476	to	8 550	818 950 351	to	0 380	822 925 951	to	6 100	827 619 811	to	9 840
813 713 971	to	4 000	818 962 492	to	2 530	823 284 931	to	4 990	827 883 511	to	3 600
813 858 121	to	8 150	819 032 341	to	2 730	823 293 031	to	3 210	828 160 441	to	0 530
814 789 330	to	9 349	819 127 054	to	7 080	823 556 011	to	6 100	828 376 201	to	6 260
814 984 656	to	4 680	819 278 540	to	8 670	824 078 341	to	8 370	828 441 602	to	1 630
815 016 020	to	6 030	819 544 681	to	4 740	824 156 325	to	6 340	828 539 316	to	9 340
815 199 410	to	9 420	819 928 441	to	8 650	824 511 252	to	1 270	828 539 341	to	9 370
815 240 491	to	0 520	820 034 406	to	4 430	824 588 281	to	8 370	828 732 331	to	2 390
815 755 591	to	5 620	820 070 761	to	1 540	825 140 397	to	0 460	828 807 781	to	7 840
815 755 622	to	5 650	820 191 342	to	1 360	825 409 651	to	9 680	828 830 952	to	0 963
815 806 381	to	6 680	820 274 856	to	4 880	825 472 171	to	2 200	828 939 781	to	0 050
816 126 834	to	6 870	820 600 171	to	0 230	826 042 898	to	2 920	829 002 721	to	2 870
816 156 721	to	6 780	821 172 241	to	2 360	826 226 644	to	6 670	829 005 301	to	5 540
816 580 903	to	0 920	821 229 661	to	9 720	826 582 951	to	3 430	829 080 241	to	0 330
816 945 571	to	5 600	821 229 743	to	9 780	826 720 201	to	0 230	829 160 986	to	1 000
817 253 011	to	3 280	821 903 731	to	3 910	827 005 671	to	5 830	829 176 841	to	6 930
817 763 881	to	4 060	821 927 841	to	7 850	827 287 861	to	7 950	829 471 561	to	1 590
818 330 562	to	0 610	822 505 801	to	5 830	827 291 502	to	1 520	829 561 065	to	1 080
818 459 641	to	9 670	822 703 442	to	3 470	827 575 381	to	5 470	829 566 481	to	6 510
818 926 273	to	6 320	822 900 991	to	1 020	827 609 085	to	9 100	829 569 931	to	9 960

— Criminal Investigations Group, U.S. Postal Inspection Service, 9-26-19

Verifying U.S. Postal Service Money Orders

Follow these steps to cash a Postal Service™ money order:

1. Check that the amount does not exceed the legal limit: \$1,000 for domestic, and \$700 for international Postal Service money orders.
2. Check that the proper security features are present:
 - When held to the light, a watermark of Benjamin Franklin is repeated from top to bottom on the left side.
 - When held to the light, a dark line (security thread) runs from top to bottom with the word “USPS” repeated.
 - When there is discoloration around the dollar amounts, this might indicate the amounts were changed.

These appear in Postal Service Notice 299, *U.S. Postal Money Order Reference Card*, or online at usps.com/shop/money-orders.htm.

3. If the money order seems suspicious, call the U.S. Postal Service Money Order Verification System at 866-459-7822.

Provide this information to local banks and retailers, as they also receive Postal Service money orders for cashing.

— Delivery and Retail Customer Service Operations, 9-26-19

Counterfeit Canadian Money Order Forms

Do Not Cash

To be posted and used by retail window employees. As directed, destroy previous notices. Destroy all interim notices when the numbers listed appear in the *Postal Bulletin*.

671,819,086	683,594,542	687,262,503
676,612,640	684,683,610	687,262,525
677,891,039	686,619,878	687,262,526
678,282,493	686,619,886	687,287,578
678,916,031	686,619,887	687,287,581
679,552,215	686,794,382	687,287,582
679,694,334	686,794,426	694,063,898
679,751,983	686,794,427	694,063,899
679,800,207	686,794,431	694,063,980
681,130,536	687,262,502	701,321,725
681,844,376		

— Criminal Investigations Group, U.S. Postal Inspection Service, 9-26-19

Toll-Free Number Available to Verify Canadian Money Orders

The Canada Post Corporation has a toll-free number that cashing agents can call to verify the validity of Canadian Postal Money Orders. The number is 800-563-0444.

This toll-free number is printed on the back of the Canadian Postal Money Orders.

— Criminal Investigations Group, U.S. Postal Inspection Service, 9-26-19

Other Information

Overseas Military/Diplomatic Mail

Mail addressed to military and diplomatic post offices overseas is subject to certain conditions or restrictions of mailing regarding content, preparation, and handling. The APO/FPO/DPO table outlines these conditions by APO/FPO/DPO ZIP Codes™ through the use of footnoted mailing restrictions codes (see the [Restrictions](#) page following the table).

Acceptance clerks must use the table with the Retail System Software terminal to determine which APO/FPO/DPO ZIP Codes are active and which conditions of mailing apply. Send inquiries to the Military Postal Service Agency at amps.usps.gov/jy2/frm.htm.

The entries under “Changes” appear in bold in the following APO/FPO/DPO table:

Changes

APO/FPO/DPO	Action	Effective Date	See Restrictions
APO AE 09101	Open	09/26/2019	A-B-F-F3-H-N-Q-S-V-V1-Z-Z1
APO AE 09401	Open	09/26/2019	B-C-C1-F3-M-R-S-U-Z1
FPO AE 09534	Add F3, S	09/26/2019	B-F-F1-F3-R-R1-S-V
FPO AE 09645	Add S	09/26/2019	B-C-F-F1-F3-R-S-U-Z1
APO AE 09877	Open	09/26/2019	A-B-C-C2-E-E2-E3-F1-F3-H-H1-J-M-N-R-R1-S-U-V-Z1
FPO AP 96269	Add F2, F3, S	09/26/2019	A-B-F1-F2-F3-S-U-Z1
FPO AP 96534	Add F1, F2, F3, S	09/26/2019	A-B-F-F1-F2-F3-S-U-Z1
FPO AP 96540	Add F1, F2, F3, S; Remove V	09/26/2019	B-F1-F2-F3-S-Z1
FPO AP 96542	Add F, F1, F2, F3, S; Remove V	09/26/2019	B-F-F1-F2-F3-S-Z1
FPO AP 96543	Add F, F1, F2, F3, S	09/26/2019	B-F-F1-F2-F3-P-S-V-Z1
APO AP 96555	Add F3, S	09/26/2019	B-F-F3-M-S-V
APO AP 96557	Add F3, S	09/26/2019	B-F-F3-M-S-V

We have eliminated “Not Active” entries from the table below to save space and paper.

APO/FPO/DPO Table

APO/ FPO/ DPO	See Restrictions	APO/ FPO/ DPO	See Restrictions	APO/ FPO/ DPO	See Restrictions	APO/ FPO/ DPO	See Restrictions
09002	A-B-F-H-N-Q-S-V-Z-Z1	09044	B-C-D-F1-F3-H-R-S-U	09125	A-B-C-F-F1-F3-H-N-R-R1-S-V-V1	09177	B-C-D-E-F3-H-M-R-S-U
09003	B-C-D-E-F3-H-M-P-R-S-U	09046	B-C-D-E-F3-H-M-R-S-U	09126	B-C-D-F3-H-M-P-R-S-Z1	09180	B-C-D-E-F3-H-M-R-S-U
09004	B-C-D-E-F3-H-M-R-S-U	09049	B-C-D-E-F3-H-M-R-S-U	09128	B-C-D-E-F3-H-M-R-S-U	09186	B-C-D-E-F3-H-M-P-R-S-U
09005	B-C-D-E-F3-H-M-P-R-S-U	09053	B-C-D-E-F3-H-M-R-S-U	09131	B-C-D-E-F3-H-M-R-S-U	09203	A-B-C-C1-C2-F-F1-F3-I3-J-L-M-N-R-R1-T-V-Z-Z1
09006	B-C-D-E-F3-H-M-R-S-U	09060	B-C-D-E-F1-F3-H-M-R-S-U-Z1	09136	B-C-D-E-F1-F3-H-M-P-R-S-U	09204	B-C-F3-M-N-R-S-V-Z1
09008	A-B-F-F3-H-N-Q-S-V-Z-Z1	09067	B-C-D-E-F3-H-M-R-S-U	09138	B-C-D-F3-H-M-R-S-U	09211	B-C-D-E-F3-H-M-P-R-S-U
09009	B-C-D-E-F3-H-M-R-S-U-Z1	09068	B-C-D-E-H-U-Z1	09140	B-C-D-E-F3-H-M-R-S-U	09213	B-C2-F-F1-F3-H-J-L-M-N-R-R1-T-U-V-Z1
09010	B-C-D-E-F3-H-M-R-S-U2	09069	A-B-C-D-E-F3-H-N-S-U-V	09142	B-C-D-E-F3-H-M-R-S-U	09214	B-C-D-E-F3-H-M-R-S-U-Z1
09011	B-C-D-E-F3-H-M-R-S-U	09079	B-C-D-E-F3-H-M-R-S-U	09154	B-C-D-E-F3-H-M-R-S-U	09227	B-C-D-E-F3-H-M-R-S-U
09012	B-C-D-E-F3-H-M-R-S-U-Z1	09090	B-C-D-E-F3-H-M-R-S-U	09160	B-C-C2-D-F-F1-F3-H-J-L-M-N-R-R1-T-U-V-Z1	09240	A-B-C1-F-F3-H-N-R-S-V
09013	B-C-D-E-F-F1-H-M-R-S-U-Z1	09094	B-C-D-F3-H-M-P-R-S-Z1	09170	A-B-C2-F-F1-F3-J-L-M-N-R-R1-S-T-V-X-Z1	09241	A-B-F3-N-R-S-U-Z1
09014	B-C-D-E-F3-H-M-P-R-S-U	09095	B-C-D-E-H-M-R-U	09171	A-B-C1-C2-E3-F-F1-F3-J-L-M-N-R-R1-S-T-V-X-Z1	09242	A-B-C1-F-F3-H-N-R-S-V
09016	B-C-D-E-F1-H-M-R-S-U	09096	B-C-D-E-F3-H-M-R-S-U	09172	B-C-D-E-F3-H-M-R-S-U	09250	B-C-D-E-F3-H-M-R-S-U
09017	A-B-F-H-N-Q-S-V-Z-Z1	09101	A-B-F-F3-H-N-Q-S-V-V1-Z-Z1	09173	B-C-D-E-F3-H-M-R-S-U	09261	B-C-D-E-F3-H-M-N-R-S-U-V-Z1
09018	A-B-F-H-N-Q-S-V-Z-Z1	09104	B-C-D-F3-H-M-R-S-U-Z1	09174	B-C-C2-F-F1-F3-I3-L-N-R-R1-S-T-V-X-Z-Z1	09263	B-C-D-E-F3-H-M-R-S-U
09020	B-C-D-E-F3-H-M-R-S-U	09107	B-C-D-E-F3-H-M-R-S-U	09175	A-B-C1-C2-E2-F-F1-F3-H1-J-L-M-N-R-R1-S-T-V-W-X-Z1	09264	B-C-E-F3-H-M-R-S-U
09021	B-C-D-E-F3-H-M-R-S-U-Z1	09112	B-C-D-E-F3-H-M-R-S-U	09176	A-B-C2-F-F1-F3-J-L-M-N-R-R1-S-T-V-X-Z1	09265	B-C-D-F-F1-H-J-L-M-N-R-S-T-U-V-Z1
09028	B-C-D-E-F1-H-M-R-S-U	09114	B-C-D-E-F3-H-M-R-S-U			09266	A-B-F3-R-S-U-V-Z1
09034	B-C-D-E-F3-H-M-R-S-U	09123	B-C-D-E-F3-H-M-R-S-U-Z1				

APO/ FPO/ DPO	See Restrictions	APO/ FPO/ DPO	See Restrictions	APO/ FPO/ DPO	See Restrictions	APO/ FPO/ DPO	See Restrictions
09276	A-B-F-F3-I3-L-M-N-R-S-T-V-X-Z-Z1	09330	A-B-C1-C2-D-E-E2-F-F1-F3-H-H1-M-R-R1-S-V-Z1	09487	A-B-C-C1-C2-E2-F1-F3-I3-L-M-N-R-R1-S-T-V-W-X-Z-Z1	09577	B-F3-S-V
09277	A-B-E-E1-E2-F1-F3-I3-L-N-R-S-T-V-X-Z-Z1	09333	A-B-C-C1-E2-F-F1-F3-H1-I3-M-N-R-R1-S-V-V1-Z-Z1	09488	A-B-C-C1-C2-E2-F3-J-L-M-N-S-T-V-W-X-Z1	09578	B-F-F1-F3-R-R1-S-V-Z1
09278	A-B-F-F3-I3-L-M-N-R-S-T-V-X-Z-Z1	09337	A-B-C1-E2-F-F1-F3-H1-M-R-R1-V-Z1	09489	A-B-C-C1-C2-E2-F1-F3-L-M-N-R-R1-S-T-V-W-X-Z1	09579	B-F-F1-R-R1-V
09289	B-E2-F1-F3-H1-J-L-M-N-R-R1-S-T-U2-V-X-Z1	09340	A-B-C1-F-F3-H-N-R-S-V	09470	B-C-C1-M-R-U-Z1	09581	B-F-F1-R-R1-V
09290	A-B-F1-F3-J-L-M-N-R-S-T-U2-V-X-Z1	09343	A-B-C1-F-M-N-V-Z1	09494	B-C-C1-F3-M-R-S-U-Z1	09582	B-E2-E3-F-F1-F3-R-R1-V-Z1
09301	A-B-C1-C2-E2-F-F1-F3-H1-I3-L-M-N-R-R1-S-T-U4-V-Z-Z1	09347	A-B-C1-E2-F-F3-H1-M-R-R1-S-V-Z1	09497	A-B-C1-E2-F3-H1-M-N-R-R1-V-Z1	09583	B-F-F1-F3-I3-J-R-R1-S-V-V1
09302	A-B-C1-F-F1-H-M-N-V-Z-Z1	09348	A-B-C1-E2-F-F1-F3-H1-I3-M-N-R-R1-S-T-V-Z-Z1	09498	B-C1-C2-F-F1-F3-J-L-N-R-R1-T-V-Z1	09586	B-C2-F-F1-F3-R-R1-S-V
09304	A-B-C-C1-D-E2-F-F1-F3-H1-J-L-M-N-R-R1-S-T-V-Z1	09351	A-B-C1-E2-E3-F-F1-F3-H-H1-I3-M-N-R-R1-S-T-V-X-Z-Z1	09501	B-V	09587	B-C2-E2-E3-F-F1-F3-R-R1-V-Z1
09305	A-B-C1-E2-F-F1-F3-H1-I3-M-N-R-R1-S-T-V-Z-Z1	09352	A-B-C1-E2-F-F3-H1-M-R-R1-V-Z1	09502	B-V	09588	B-C2-E2-E3-F-F1-F3-R-R1-V-Z1
09306	A-B-C1-E2-F-F1-F3-H1-R-R1-U2-V-Z1	09354	A-B-C1-E2-F-F3-H1-M-R-R1-V-Z1	09503	B-F-F1-R-R1-V	09589	B-F-F1-F3-R-S-V
09307	B-N-V-Z1	09355	A-B-C1-E2-F-F3-H1-M-R-R1-S-V-Z1	09504	B-V	09590	B-V
09308	A-B-C1-E2-F-F1-F3-H1-I3-M-N-R-R1-S-T-V-Z-Z1	09356	A-B-C1-E2-F-F3-H1-M-N-R-V-Z1	09505	B-V	09591	B-C2-E2-E3-F-F1-F3-R-R1-S-V-Z1
09309	A-B-C-C1-C2-E2-F-F1-F3-H1-M-N-R-R1-S-V-Z1	09357	A-B-C1-E2-F-F3-H1-M-R-V-Z1	09506	B-V	09592	B-F-F1-R-R1-V
09310	A-B-C1-C2-E2-F-F1-F3-H1-I3-L-M-N-R-R1-S-T-U4-V-Z-Z1	09363	A-B-C1-E2-F-F3-H1-M-R-R1-S-V-Z1	09507	B-V	09593	B-F-F1-F3-R-S-V
09311	A-B-C1-C2-E2-F-F1-F3-H1-I3-L-M-N-R-R1-S-T-U4-V-Z-Z1	09365	A-B-C-C1-E2-F-F3-H1-M-N-R-V-Z1	09508	B-F-F1-R-R1-V	09594	B-F-F1-F3-I3-R-R1-S-V-V1
09312	A-B-C1-C2-E2-F-F1-F3-H1-I3-L-M-N-R-R1-S-T-U4-V-Z-Z1	09366	A-B-C1-E2-F-F1-F3-H1-M-R-R1-V-Z1	09509	B-F-F1-R-R1-V	09595	B-F-F1-F3-I3-J-R-R1-S-V-V1-Z1
09313	A-B-C-C1-E2-F-F1-F2-H1-R-R1-V-Z1	09378	A-B-C1-E2-F-F1-F3-H1-I3-M-N-R-R1-S-T-V-Z-Z1	09510	A-B-C1-E2-F-H1-M-R-R1-V-Z1	09596	B-F-F1-R-R1-V
09314	A-B-C1-E2-F-F1-F3-H1-M-N-R-R1-S-V-Z1	09381	A-B-C1-E2-F-F1-F3-H1-I3-M-N-R-R1-S-T-V-Z-Z1	09511	B-F-F1-R-R1-V	09599	B-F-F1-R-R1-V
09315	A-B-C1-E2-F-F3-N-R-R1-V-Z1	09401	B-C-C1-F3-M-R-S-U-Z1	09512	B-F-F1-R-R1-S-V	09600	B-C-C2-F-F1-F3-R-U-Z1
09316	A-B-C1-E2-F-F1-F3-H1-I3-M-N-R-R1-S-T-V-Z-Z1	09403	B-C-C1-F3-M-R-S-U-Z1	09513	B-F-F1-R-R1-V-V1	09602	B-C-F-F1-N-R-U-V
09318	A-B-C1-E2-F-F3-H1-M-N-R-R1-S-V-Z1	09421	B-C-C1-F3-M-R-S-U-Z1	09517	B-F-F1-R-R1-V	09603	B-C-F-F1-F3-R-S-U-V-Z1
09319	A-B-C-C1-E2-F-F1-F2-H1-R-R1-U2-V-Z1	09447	B-C-C1-F3-M-R-S-U-V-Z1	09520	B-F-F1-R-R1-V	09604	B-C-F-F1-F3-P-R-S-U-V-Z1
09320	A-B-C1-E2-F-F3-H1-M-N-R-R1-V-Z1	09454	B-C-C1-F3-M-R-S-U-V-Z1	09522	B-F-F1-R-R1-V	09605	B-C-D-F3-H-M-R-S-U-V
09321	A-B-C1-E2-F-H1-M-N-R-R1-V-Z1	09456	B-C-C1-F3-M-R-S-U-V-Z1	09524	B-F-F1-R-R1-V	09606	B-C-D-F3-H-M-R-S-U-V
09322	A-B-C1-E2-F-F3-H1-M-R-R1-S-V-Z1	09459	B-C-C1-F3-M-R-S-U-Z1	09532	B-F-F1-F3-R-R1-S-V	09608	B-C-F-F3-N-R-S-U-V-Z1
09323	A-B-C1-E2-F3-H1-M-N-R-R1-V-Z1	09461	B-C-C1-F3-M-P-R-S-U-Z1	09533	B-V	09609	B-C-F-F3-R-S-U-Z1
		09463	B-C-C1-F3-M-R-S-U-Z1	09534	B-F-F1-F3-R-R1-S-V	09610	B-C-F-F1-F3-M-R-S-U-V-Z1
		09464	B-C-C1-F3-R-S-U-Z1	09541	B-V	09613	B-C-F-N-U-V
		09467	B-E-E1-F-F3-I3-L-M-N-R-S-T-V-X-Z-Z1	09542	B-V	09614	A-B-C1-C2-E2-F-F1-F3-H1-J-L-M-N-R-R1-T-V-W-Z1
		09468	B-C-C1-F3-M-R-S-U-Z1	09544	B-V	09616	B-C-F3-M-R-S-U-V-Z1
		09469	B-C-C1-R-U-Z1	09545	B-V	09617	B-C-F-F3-R-U-Z1
				09550	B-F-F1-R-R1-V	09618	B-C-F-F3-R-S-U-Z1
				09554	B-F-F1-R-R1-V	09620	B-C-F-F3-R-S-U-Z1
				09556	B-F-F1-R-R1-V	09621	B-C-F-F3-R-U-Z1
				09564	B-F-F1-R-R1-V	09622	B-C-F-F3-R-S-U-Z1
				09565	B-F-F1-R-R1-V	09623	B-C-F-F3-R-U-V-Z1
				09566	B-C2-E2-E3-F-F1-F3-R-R1-S-V-Z1	09624	B-C-C2-F-F1-F3-I3-L-N-R-R1-T-U-V-Z1
				09567	B-C2-E2-E3-F-F1-F3-R-R1-V-Z1	09625	B-C-F-F3-N-R-S-U-Z1
				09568	B-V	09626	B-C-F-F3-R-U-Z1
				09569	B-C2-E2-E3-F-F1-F3-R-R1-V-Z1	09627	B-C-F-F3-R-S-U-V-Z1
				09570	B-F-F1-F3-R-R1-S-V	09630	B-C-F-U-V
				09573	B-C2-E2-E3-F-F1-F3-R-R1-V-Z1	09631	B-C-F-F3-R-S-U-V-Z1
				09574	B-F-F1-R-R1-V	09633	B-C-D-F-F1-M-R-S-U-U1-U2-U3-V-Z1
				09575	B-F-F1-R-R1-V		
				09576	B-F-F1-R-R1-V		

APO/ FPO/ DPO	See Restrictions	APO/ FPO/ DPO	See Restrictions	APO/ FPO/ DPO	See Restrictions	APO/ FPO/ DPO	See Restrictions
09635	A-B-F1-F3-H-M-N-R-R1-S-U2-V	09733	B-I3-L-N-V	09804	A-B-F-F1-F3-M-N-R-S-V-Z1	09838	B-E2-E3-F-F1-F3-S-U-Z1
09636	B-C-F-F3-R-U-V-Z1	09734	A-B-C-C1-C2-F-F1-F3-I3-J-L-M-N-R-R1-T-V-Z1	09805	B-E2-E3-F-F1-F3-R-R1-S-Z1	09841	A-B-F3-N-R-S-U-Z1
09642	B-C2-F-F1-F3-J-L-M-N-R-T-U-V	09735	B-N-V-Z1	09806	A-B-C1-C2-E2-F-F1-F3-H1-J-L-M-N-R-R1-T-V-Z1	09842	A-B-C1-C2-F-F1-F3-J-L-N-R-R1-T-V-Z1
09643	B-C-F3-M-R-S-U-V-Z1	09736	A-B-C1-F-F1-F3-J-L-M-N-R-R1-T-V-Z1	09808	A-B-C1-C2-E2-F-F1-F3-H-H1-J-L-N-R-R1-T-V-Z1	09844	A-B-C1-C2-F-F1-F3-J-L-M-N-R-R1-T-V-Z1
09645	B-C-F-F1-F3-R-S-U-Z1	09737	A-B-C1-C2-F-F1-F3-I3-J-L-M-N-R-R1-T-V-W-Y-Z1	09809	B-C1-C2-F-F1-F3-J-L-N-T-V-Z1	09845	A-B-C1-C2-E3-F-F1-F3-J-L-M-N-R-R1-T-V-Z1
09647	B-F3-M-N-R-S-U-Z1	09738	A-B-C1-C2-F-F1-F3-J-L-M-N-R-R1-T-V-Z1	09810	A-B-F-F1-F3-N-R-S-V-Z1	09846	A-B-C1-C2-F-F1-F3-J-L-N-R-R1-T-V-Z1
09648	B-F3-N-R-S-U-V-Z1	09739	A-B-C1-C2-F-F1-F3-J-L-M-N-R-R1-T-V-Z1	09811	A-B-C2-E-E2-E3-F1-F3-H-H1-J-M-N-R-R1-S-U-V-Z1	09847	B-C-C2-F-F1-F3-J-L-M-N-R-R1-S-T-V-Z1
09649	B-F3-N-R-S-U-Z1	09741	A-B-C1-C2-E2-F-F1-F3-H1-J-L-M-N-R-R1-T-V-W-Y-Z1	09812	B-E2-E3-F-F1-I-J-L-N-R-T-U-V-Z1	09848	A-B-F-F3-M-R-S-V-Z1
09701	A-B-C1-C2-F-F1-F3-J-L-M-N-R-R1-T-V-Z1	09742	A-B-C2-F-F1-F3-J-L-M-N-R-S-T-V-Z1	09813	A-B-C1-C2-E2-E3-F-F1-F3-J-L-N-R-R1-T-V-Z1	09852	B-E2-E3-F-F1-F3-H1-N-R-R1-S-U-V-Z1
09702	B-C-C1-F1-M-R-R1-U	09743	A-B-F-H-N-Q-V-Z1	09814	B-C2-E2-E3-F-F1-F3-I3-J-L-N-R-R1-T-V-Z1	09853	B-C1-E2-F-F1-F3-H1-N-R-R1-S-U2-V-Z1
09703	B-C-D-F1-H-U	09744	A-B-C1-C2-F-F1-F3-J-L-M-N-R-R1-T-V-Z1	09816	A-B-C1-C2-E2-E3-F-F1-F3-J-L-N-R-R1-T-V-Z1	09854	A-B-C1-C2-F-F1-F3-J-L-N-R-R1-S-T-V-Z1
09704	B-C-V-V1	09745	A-B-F-F1-F3-M-N-R-R1-S-V-Z1	09817	A-B-C1-C2-E2-E3-F-F1-F3-H-H1-J-L-M-N-R-R1-T-V-Z1	09855	A-B-C1-E2-F-F1-F3-H1-M-R-R1-S-U2-V-Z1
09705	B-C-C1-F1-M-R-R1-U	09748	A-B-C1-C2-F-F1-F3-J-L-M-N-R-R1-T-V-Z1	09818	A-B-C-F-F3-M-S-V-Z1	09856	B-C-C1-C2-F-F1-F3-H-H1-J-L-M-N-S-T-V-Z1
09706	B-C-F3-M-N-R-S-U-V-Z1	09749	A-B-F-H-N-U-V-Z1	09820	A-B-C2-F-F1-F3-H-H1-J-L-M-N-R-R1-T-V-Z1	09857	A-B-C2-E2-F-F1-F3-13-L-M-N-R-R1-S-T-V-Z1
09707	B-C2-F-F1-F3-J-L-M-N-R-R1-T-V-Z1	09750	A-B-C1-C2-F-F1-F3-J-L-M-N-R-R1-T-V-Z1	09821	A-B-C-F-F3-N-R-S-V-Z1	09858	A-B-C-C1-C2-E2-E3-F1-F3-H-H1-J-M-N-R-R1-S-U-V-Z1
09708	B-C-C1-F1-M-R-R1-U	09751	B-C-D-E-F3-H-M-R-S-U	09822	A-B-C-F-F3-M-R-S-V-Z1	09859	B-C1-E2-E3-F-F1-F3-H1-R1-S-U-Z1
09709	B-C1-C2-E2-F-F1-F3-H-H1-J-L-N-R-R1-T-V-Z1	09752	B-C-D-F1-H-U	09823	A-B-C1-C2-F-F1-F3-J-L-M-N-R-R1-T-V-Z1	09860	A-B-C2-F-F1-F3-J-L-M-N-R-R1-S-T-V-Z1
09710	B-C-C1-F-F1-J-L-M-N-R-R1-T-U-V-Z1	09753	A-B-F-N-V-Z1	09824	A-B-C-F-F3-M-R-S-V-Z1	09861	A-B-F-F1-F3-N-R-R1-S-V-Z1
09711	A-B-F-F1-F3-N-R-R1-S-V-Z1	09754	A-B-F-H-L-N-Q-S-V-Z1	09825	A-B-C1-C2-F-F1-F3-J-L-M-N-R-R1-T-V-Z1	09862	A-B-C-C2-F-F1-F3-L-M-N-R-R1-S-T-V-Z1
09712	A-B-F-F3-H-R-S-U-V-Z1	09755	A-B-C-C1-D-F-F1-J-L-M-N-Q-R-R1-S-T-V-Z1	09826	A-B-C1-C2-E1-E2-E3-F1-F3-J-L-M-N-R-R1-T-V-W-Z1	09863	A-B-F-F1-F3-N-R-R1-S-V-V1-Z1
09714	B-C-C1-F1-F3-M-R-R1-S-U	09756	A-B-E3-F-F1-J-L-N-Q-R-R1-S-T-V-Z1	09827	A-B-F-F1-J-L-M-N-R-T-V-Z1	09864	A-B-C-C1-C2-E2-F1-F3-L-M-N-R-R1-S-T-V-W-Z1
09715	B-F-F1-J-L-M-N-R-T-V-Z1	09758	A-B-F-F1-F3-M-N-R-R1-S-V-Z1	09828	A-B-C1-C2-F-F1-F3-I3-L-N-R-R1-T-V-Z1	09865	A-B-F3-R-S-U-V-Z1
09716	B-C-C2-F-F1-F3-J-L-M-N-R-R1-T-V-Z1	09759	A-B-C-C1-C2-E2-F-F1-F3-J-L-N-R-R1-T-V-Z1	09829	B-C-N-R-V-Z1	09867	A-B-C-C1-C2-E2-F1-F3-L-M-N-R-R1-S-T-V-W-Z1
09717	A-B-F3-M-R-S-V-W-Z1	09761	B-F-F1-F3-M-N-R-R1-V-Z1	09830	B-C-F-F1-F3-J-L-M-N-R-R1-S-T-V-Z1	09870	A-B-C1-C2-E2-F-F1-F3-H1-I3-L-M-N-R-R1-S-T-U4-V-Z1
09718	B-F-F1-J-L-M-N-R-T-U-V-Z1	09762	A-B-C2-E3-F-F1-F3-J-L-N-R-R1-T-V-Z1	09831	B-C1-C2-F-F1-F3-J-L-N-R-R1-T-V-Z1	09873	A-B-C1-C2-E2-F-F1-F3-H1-I3-L-M-N-R-R1-S-T-U4-V-Z1
09719	B-C-D-F3-M-R-S-U-V-Z1	09769	A-B-B2-C1-C2-F-F1-F3-J-L-M-N-R-R1-T-V-Z1	09832	B-C1-E2-F1-F3-N-R-S-V-Z1	09874	A-B-C1-C2-E2-F-F1-F3-H1-I3-L-M-N-R-R1-S-T-U4-V-Z1
09720	B-M-R-S-U-V-Z1	09777	A-B-C-C1-C2-E1-F-F1-F3-J-L-M-N-R-R1-T-V-Z1	09833	B-C1-E2-F1-F3-N-R-S-V-Z1	09875	A-B-C1-C2-E2-F-F1-F3-H1-I3-L-M-N-R-R1-S-T-U4-V-Z1
09722	A-B-F-F3-H-N-Q-S-V-Z1	09780	A-B-F-F3-H-N-R-S-V	09834	B-E2-E3-F-F1-F3-R-R1-S-U-Z1		
09723	B-C2-F-F1-F3-J-L-M-N-R-R1-T-V-Z1	09789	A-B-C2-F-F3-N-R-S-V-Z1	09836	A-B-C1-C2-F-F1-F3-J-L-M-N-R-R1-V-Z1		
09724	B-C-C1-F1-M-R-R1-U	09801	A-B-C1-E2-F-F3-H1-M-N-R-R1-S-V-Z1	09837	B-E2-E3-F1-F3-S-V-Z1		
09725	A-B-F-F3-H-N-Q-S-V-V1-Z1	09802	A-B-C-C2-D-F-F1-F3-H-H1-I3-L-M-N-R-R1-S-T-V-W-Z1				
09726	B-F-F1-J-L-M-N-R-T-U-V-Z1	09803	A-B-C2-E-E2-E3-F1-F3-H-H1-J-M-N-R-R1-S-U-V-Z1				
09727	A-B-C1-C2-F-F1-F3-J-L-M-N-R-R1-T-V-Z1						
09728	A-B-C-C1-C2-F-F1-F3-J-L-N-R-R1-T-V-Z1						
09729	B-C-F-F3-N-R-R1-S-U-V-Z1						
09730	A-B-C1-C2-F-F1-F3-J-L-M-N-R-R1-T-V-Z1						
09731	A-B-C1-C2-F-F1-F3-J-L-M-N-R-R1-T-V-Z1						
09732	B-N-V-Z1						

APO/ FPO/ DPO	See Restrictions	APO/ FPO/ DPO	See Restrictions	APO/ FPO/ DPO	See Restrictions	APO/ FPO/ DPO	See Restrictions
09876	A-B-F-F3-M-R-S-V-Z	34031	B-C1-C2-F-F1-F3-J-L-M-N-R-R1-T-V-Z1	96202	A-B-F-F1-F3-S-U	96347	B-F-F1-F2-H-M-W-Z1
09877	A-B-C-C2-E-E2-E3-F1-F3-H-H1-J-M-N-R-R1-S-U-V-Z1	34032	B-C1-C2-F-F1-F3-J-L-M-N-R-R1-T-V-Z1	96203	A-B-F-F1-F3-S-U	96349	B-F-F1-F2-H-M-W-Z1
09880	A-B-C1-E2-F-F1-H1-N-R-R1-U-V-Z1	34033	B-C1-C2-F-F1-F3-I3-J-L-M-N-R-R1-T-V-Z1	96204	A-B-F-F1-F3-S-U	96350	B-F-F1-F2-F3-H-M-R-S-W-Z1
09890	B-E2-F-H1-N-R-R1-U2-V-Z1	34034	B-C1-C2-F-F1-F3-I3-L-M-N-R-R1-T-V-Z1	96205	A-B-F-F1-F3-S-U	96351	B-F-F1-F2-F3-H-M-S-W-Z1
09892	A-B-C1-C2-E2-F-F1-F3-J-L-M-N-R-R1-T-V-Z1	34035	B-C1-C2-F-F1-F3-H-J-L-M-N-R-R1-T-V-Z1	96206	A-B-F-F1-F3-S-U	96362	B-F-F1-F2-M-W-Z1
09895	A-B-C1-C2-E2-F-F1-F3-J-L-M-N-R-T-V-W-Z1	34036	B-C1-C2-F-F1-F3-J-L-M-N-R-R1-T-V-Z1	96207	A-B-F-F1-F3-S-U-V	96365	B-C-F3-M-R-S-V-W
09898	B-C-C1-C2-E2-F-F1-F3-H1-N-R-R1-S-U2-V-Z1	34037	B-C-C1-C2-F-F1-F3-H-J-L-M-N-R-R1-T-V-Z1	96208	A-B-E-F1-F3-R-S-U	96367	B-C-F3-L-M-R-S-W
09901	A-B-C2-F-F3-N-R-S-V-Z1	34039	B-C1-C2-F-F1-J-L-M-N-T-V-Z1	96209	A-B-C1-C2-F-F1-J-L-M-N-T-U-V-Z1	96368	B-C-F3-M-R-S-W
09902	A-B-C1-E2-F-F3-H1-M-R-R1-S-V-Z1	34041	B-C1-C2-F-F1-F3-J-L-M-N-R-R1-T-V-Z1	96210	A-B-C1-C2-F-F1-F3-I3-L-M-N-R-R1-T-V-Z1	96370	B-F-F1-F2-H-M-W-Z1
09903	B-C1-E2-F1-F3-S-V-Z1	34042	A-B-C-F-F1-M-N-R-S-U-V-W-Z1	96212	B-F-F1-F2-H-M-W-Z1	96371	B-F-F3-M-S-W
09904	B-C1-E2-F1-F3-S-V-Z1	34050	B-V	96213	A-B-C-F1-R-U	96372	B-M-W
09908	A-B-F-F1-F3-N-R-R1-S-V-Z1	34051	B-V	96214	A-B-C-F1-R-U	96373	B-M-W
09909	A-B-F-F1-F3-N-R-R1-S-V-V1-Z1	34052	B-V	96218	A-B-F-F1-F3-S-U	96374	B-M-W
09910	A-B-F-F1-F3-N-R-R1-S-V-Z1	34053	B-V	96224	A-B-F-F1-F3-S-U	96375	B-F3-M-S-W
09974	B-F1-F3-J-L-M-N-R-S-T-U2-V-X-Z1	34054	B-V	96251	A-B-F-F1-F3-S-U	96376	B-M-W
09975	B-F1-F3-J-L-M-N-R-S-T-U2-V-X-Z1	34055	B-C1-C2-F-F1-F3-J-L-M-N-R-R1-T-V-Z1	96257	A-B-F-F1-F3-S-U	96377	B-F3-M-S-W
09976	B-F1-F3-J-L-M-N-R-S-T-U2-V-X-Z1	34058	B-F-F1-F3-R-R1-S-V-Z1	96258	A-B-F-F1-F3-S-U	96378	B-M-W
09977	B-F1-F3-J-L-M-N-R-S-T-U2-V-X-Z1	34060	B-C1-C2-E2-F-F1-F3-J-L-M-N-R-R1-T-V-Z1	96260	A-B-F-F1-F3-S-U	96379	B-F3-M-S-W
34001	A-B-C1-C2-F-F1-F3-J-L-M-N-R-R1-S-T-V-Z1	34066	B-C1-C2-F-F1-F3-I3-J-L-M-N-R-R1-S-T-V-X-Z1	96262	A-B-F-F1-F3-R-S-U-V-Z1	96380	B-M-W
34002	B-C1-C2-F-F1-F3-J-L-M-N-R-R1-T-V-Z1	34067	B-C1-C2-F-F1-F3-J-L-M-N-R-R1-S-T-V-X-Z1	96264	A-B-C-F1-R-U	96382	B-M-W
34004	B-C1-C2-F-F1-F3-J-L-M-N-R-R1-T-V-Z1	34068	B-C1-C2-F-F1-F3-J-L-M-N-R-R1-S-T-V-X-Z1	96266	A-B-C-F1-R-U	96384	B-F3-M-S-W
34007	B-F-F1-H-J-M-N-R-R1-V-Z1	34069	B-C1-C2-F-F1-F3-I3-J-L-M-N-R-R1-S-T-V-X-Z1	96267	A-B-C-F1-R-U-V	96385	B-M-W
34008	B-C1-C2-D-E1-F-F1-H1-J-L-M-N-R-R1-T-V-Z1	34078	B-F1-N-V	96269	A-B-F1-F2-F3-S-U-Z1	96386	B-F3-M-S-W
34011	B-C1-C2-E2-F-F1-F3-J-L-M-N-R-R1-T-V-Z1	34080	B-F-F1-R-R1-V	96271	A-B-F-F1-F3-S-U	96387	B-F3-M-S-W
34020	B-C1-C2-F-F1-F3-J-L-M-N-R-R1-T-V-Z1	34081	B-F-F1-R-R1-V	96273	A-B-F-F1-F3-S-U	96388	B-F3-M-S-W
34021	B-C1-C2-F-F1-F3-J-L-M-N-R-R1-T-V-Z1	34082	B-F-F1-R-R1-V	96275	A-B-E-F1-F3-S-U	96389	B-M-W
34022	B-C1-C2-F-F1-F3-J-L-M-N-R-R1-T-V-Z1	34083	B-F-F1-R-R1-V	96276	A-B-C-F1-R	96401	B-C-F-N-O-R-V-V1-Z1
34023	B-C1-C2-F-F1-F3-J-L-M-N-R-R1-T-V-Z1	34084	B-F-F1-R-R1-V	96278	A-B-C-F1-R-U	96501	A-B-N-V
34024	B-C1-C2-F-F1-F3-J-L-M-N-R-R1-T-V-Z1	34085	B-F-F1-R-R1-V	96283	A-B-F-F1-F3-S-U	96504	A-B-C-C1-C2-F-F1-F3-I3-L-M-N-R-R1-T-V-W-Z1
34025	B-F-F1-F3-J-L-M-N-R-R1-T-V-Z1	34086	B-F-F1-F3-R-R1-S-V	96284	A-B-F-F1-F3-S-U	96505	A-B-C-C1-C2-F-F1-F3-I3-L-M-N-R-R1-S-T-V-W-Z1
34030	B-C1-C2-F-F1-F3-J-L-M-N-R-R1-T-V-Z1	34087	B-F-F1-F3-R-R1-S-V	96297	A-B-F-F1-F3-S-U	96507	A-B-C-C1-C2-F-F1-H-J-L-M-N-T-V-Z1
		34088	B-F-F1-R-R1-V	96301	A-B-F3-M-R-S-W	96510	B-I3-N-V
		34089	B-F-F1-R-R1-S-V	96303	B-C1-C2-F-F1-H-J-L-M-N-T-V-W-Z1	96511	B-I3-N-V
		34090	B-F-F1-R-R1-V	96306	B-F-F1-F2-F3-H-M-S-W-Z1	96515	B-C-D-E1-F-F1-F3-H1-M-R-S-T-Z1
		34091	B-E2-E3-F-F1-F3-R-R1-V-Z1	96310	B-M-W	96516	B-C-D-E1-E2-F-F1-F3-H1-M-R-S-T-Z1
		34092	B-F-F1-R-R1-V	96311	B-F3-M-S-W	96517	B-C-D-E1-E2-F-F1-F3-H1-M-N-R-T-U-V-Z1
		34093	B-F-F1-R-R1-V	96319	B-C-M-R-W	96520	B-F-N-U3-V
		34094	B-F-F1-R-R1-V	96321	B-F-F1-F2-F3-H-M-S-W-Z1	96521	B-C1-C2-F-F1-J-L-M-N-R-R1-S-T-V-Z1
		34095	B-F-F1-R-R1-V	96322	B-F-F1-F2-F3-H-M-S-W-Z1	96530	A-B-C1-C2-F-F1-H-H1-J-L-M-N-R-R1-S-T-V-Z1
		96201	A-B-F-F1-F3-S-U	96323	B-C-M-R-V-W	96531	A-B-C-F-F1-H-M-N-R-U-V
				96326	B-C-F-M-R-W	96532	A-B-C1-C2-F-F1-H-J-L-M-N-R-R1-S-T-V-Z1
				96328	B-C-F3-M-R-S-W	96534	A-B-F-F1-F2-F3-S-U-Z1
				96330	B-C-M-R-W	96535	A-B-C1-C2-F-F1-J-L-M-N-R-R1-S-T-V-Z1
				96331	A-B-F1-J-L-M-N-S-W		
				96336	B-C-M-R-V-W		
				96337	B-M-W		
				96338	A-B-F3-M-R-S-W		
				96339	A-B-F3-M-R-S-W		
				96343	P		
				96346	B-F-F1-F2-H-M-W-Z1		

APO/ FPO/ DPO	See Restrictions	APO/ FPO/ DPO	See Restrictions	APO/ FPO/ DPO	See Restrictions	APO/ FPO/ DPO	See Restrictions
96537	B-V-Z1	96562	A-B-C1-C2-D-E2-E3-F- F1-H-H1-I3-L-M-N-R- R1-S-T-V-Z-Z1	96617	B-F-F1-F3-R-R1-S-V	96668	B-F-F1-R-R1-V
96538	A-B-F-F1-F3-H-M-N-R- S-U	96577	A-B-F-H-M-N-R-U	96619	B-V	96669	B-F3-S-V
96539	C1-F-F3-M-N-R-R1-S-T- U2-V	96578	B-F1-H-J-N-R-S	96620	B-F-F1-R-R1-V	96670	B-V
96540	B-F1-F2-F3-S-Z1	96595	B-F-F3-S-V-Z1	96628	B-F-F1-R-R1-V	96671	B-F-F1-F3-R-R1-S-V
96542	B-F-F1-F2-F3-S-Z1	96598	B-N-V-V1	96629	B-F-F1-R-R1-V	96672	B-F-F1-R-R1-V
96543	B-F-F1-F2-F3-P-S-V-Z1	96599	B-N-V	96632	B-F-F1-R-R1-V	96673	B-V
96546	B-F-N-R-U3	96601	B-V	96633	B-V	96674	B-F-F1-F3-R-R1-S-V
96548	A-B-F-F1-F3-H-M-R-S- U	96602	B-V	96641	B-V	96675	B-F-F1-F3-R-R1-S-V
96549	A-B-C1-C2-F-F1-H-J-L- M-N-R-R1-S-T-V-Z1	96603	B-V	96642	B-V	96677	B-F-F1-F3-R-R1-S-V
96550	A-B-H-M-N-U-V-Z1	96604	B-V	96643	B-F-F1-R-R1-V	96678	B-F-F1-F3-R-R1-S-V
96551	A-B-C1-C2-F-F1-H-J-L- M-N-R-R1-S-T-V-Z1	96605	B-V	96644	B-V	96679	B-F-F1-R-R1-V
96552	B-Z1	96606	B-V	96645	B-V	96681	B-V
96553	A-B-F-F1-H-M-N-R-U	96607	B-V	96649	B-F-F1-R-R1-V	96682	B-V
96554	A-B-C1-C2-F-F1-H-J-L- M-N-R-R1-S-T-V-Z1	96608	B-E2-F-H1-R1-U2-V-Z1	96650	B-F-F1-R-R1-V	96683	B-V
96555	B-F-F3-M-S-V	96609	B-E2-F-H1-R1-U2-V-Z1	96657	B-F-F1-R-R1-V	96686	B-V
96557	B-F-F3-M-S-V	96610	B-E2-F-H1-R1-U2-V-Z1	96660	B-F-F1-R-R1-V	96691	B-F-F1-F3-R-R1-S-V
		96611	B-E2-F-H1-R1-U2-V-Z1	96661	B-F-F1-R-R1-V	96692	B-F-F1-R-R1-V
		96612	B-V	96662	B-F-F1-F3-R-R1-S-V	96693	E2-F-F3-R-R1-S-V
		96613	B-V	96663	B-F-F1-R-R1-V	96694	B-F-F1-I3-J-R-R1-V-V1- Z
		96615	B-F-F1-R-R1-V	96664	B-V	96695	B-F-F1-R-R1-V
		96616	B-C2F-F1-R-R1-S-V	96665	B-V	96696	B-F-F1-R-R1-V
				96666	B-V	96698	B-V
				96667	B-F-F1-F3-R-R1-S-V		

RESTRICTIONS

LEGEND

PS Form 2976, *Customs — CN 22 (Old C 1) and Sender's Declaration* (green label)

PS Form 2976-A, *Customs Declaration and Dispatch Note*

PS Form 2976-B, *Priority Mail Express International Shipping Label and Customs Form*

ATF	= Bureau of Alcohol, Tobacco, Firearms, and Explosives
Box C	= Department of State (DOS) contractor personnel
Box R	= Retired military personnel
DPO	= Diplomatic Post Office
MPO	= Military Post Office
PACT	= Prevent All Cigarette Trafficking Act
PAL	= Parcel Airlift
PMEMS	= Priority Mail Express Military Service
PUB 52	= Publication 52, <i>Hazardous, Restricted, and Perishable Mail</i>
SAM	= Space Available Mail
USDA	= United States Department of Agriculture

Note: Mail order catalogs are prohibited as SAM or PAL mail.

A. Securities, currency, or precious metals, including in their raw, unmanufactured state, are prohibited. Official Mail shipments are exempt from this restriction.

A1. Reserved for future use.

A2. Reserved for future use.

B. Other than for PMEMS and the exceptions listed below, a customs declaration PS Form 2976 or PS Form 2976-A is required for all items weighing 16 ounces or more, and for all items (regardless of weight) containing potentially dutiable mail contents (e.g., merchandise or goods) addressed to or from this ZIP Code. Other than the exceptions listed below, all PMEMS mailpieces (regardless of mail contents or weight) addressed to or from this ZIP Code must bear a properly completed PS Form 2976-B. The surface area of the address side of the mailpiece must be large enough to contain the applicable customs declaration. The following exceptions apply to known mailers, who for this purpose are defined as follows:

- Business mailers who enter volume mailings through business mail entry units or other bulk mail acceptance locations, pay postage through advance deposit accounts, use permit imprints for postage payment, and submit completed postage statements at the time of entry that certify that the mailpieces contain no dangerous materials that are prohibited by postal regulations. Such business mailers are exempt from providing customs documentation on non-dutiable letters and printed matter.
- All federal, state, and local government agencies whose mailings are regarded as "Official Mail." Such agencies are exempt from providing customs documentation, except for any items addressed to an MPO or DPO to which restriction "B2" applies.

B2. All federal, state, and local government agencies must complete customs documentation when sending potentially dutiable mail addressed to or from this MPO or DPO.

C. Cigarettes and other tobacco products, including tobacco leaves, chewing and pipe tobacco, snuff, and cigars are prohibited, including those that are authorized in Publication 52 under PACT.

C1. Obscene and horror articles, images, prints, paintings, cards, films, videotapes, comic books, etc., are prohibited.

C2. E-cigarettes and related products (e.g., nicotine liquids, e-liquids, parts, or supplies) are prohibited.

D. Coffee is prohibited.

E. Medicines (prescription, over-the-counter, vitamins, and supplements) are prohibited when mailed to individuals for human or animal use. This prohibition does not apply when medicines are sent as Official Mail only between specifically designated agencies such as pharmaceutical distributors, hospitals, clinics, and pharmacies.

E1. Mailers are responsible to ensure that all medicines and vaccines conform to host nation laws.

E2. Any matter depicting nude or seminude persons, pornographic, or sexual items are prohibited. Non-authorized political materials are prohibited. Religious materials contrary to the Islamic faith are prohibited in bulk quantities, but individual items for the personal use of the addressee are permissible.

E3. Radio transceivers, cordless/cellular telephones, global positioning systems, scanners, base stations, and handheld transmitters are prohibited.

F. Firearms of any type are prohibited, except firearms mailed to or by official U.S. government agencies. This restriction does not apply to firearms mailed from this MPO ZIP Code, provided ATF and USPS regulations are met. Antique firearms do not require an ATF form.

F1. Weapons of any type are prohibited.

F2. Mailing firearms to or from this MPO ZIP Code is restricted to one shotgun and one single shot .22 caliber rifle per individual.

F3. Replica weapons and inert explosive devices (such as grenades) and weapons parts are prohibited.

G. Parcels of any class are prohibited.

H. Meats, including preserved meats, bones, skin, hair, feathers, horns or hoofs of hoofed animals, and wool samples whether hermetically sealed or not, are prohibited.

H1. Pork or pork by-products are prohibited.

I. Reserved for future use.

I1. Reserved for future use.

I2. Reserved for future use.

I3. Mail of all classes must fit in a mail sack. Mail may not exceed the following dimensions:

- Maximum length 27 inches.
- Maximum width 14 inches.
- Maximum height 14 inches.

J. Standard Post and Parcel Select parcels may not exceed 108 inches in length and girth combined.

K. Reserved for future use.

L. All Official Mail is prohibited.

M. Fruits, vegetables, live animals, and live plants are prohibited.

N. Registered Mail service is prohibited.

O. Reserved for future use.

P. Official Mail only.

Q. Mail may not exceed 66 pounds, and size is limited to 42 inches maximum length and 72 inches maximum length and girth combined.

R. All alcoholic beverages, including those mailable under Publication 52, Part 421, are prohibited.

R1. Materials used in the production of alcoholic beverages (i.e., distilling material, hops, malts, yeast, etc.) are prohibited.

S. Synthetic cannabinoids used to stimulate the central nervous system commonly known as "synthetic marijuana," "K2," or "Spice" are prohibited.

T. Mailings of household shipments and case lots of food to or from an MPO require military transportation office approval prior to mailing. Mailings to or from a DPO require pre-approval from the Diplomatic Pouch and Mail Director.

U. Mail addressed to Retirees (Box R) is limited to 16 ounces and up to a 90-day supply of TRICARE medications. This restriction does not apply to mail endorsed "Free Matter for the Blind or Handicapped."

U1. Mail is limited to First-Class Mail items, including audio and video media, weighing 13 ounces or less. This limitation does not apply to Official Mail.

U2. Retirees (Box R) are not authorized mail service.

U3. Reserved for future use.

U4. Mail addressed to Box C is limited to 2 lbs.

V. PMEMS is not available.

V1. Electronic Delivery status information for Extra Services is not available on *USPS.com*. Manual record of delivery may be available upon request.

W. Hermetically sealed packages of meat products bearing USDA certification, such as dried beef, salami, and sausage, may be mailed. 200 grams of tobacco per parcel are permitted duty free.

X. Cremated remains are prohibited.

Y. Mail is limited to First-Class Mail and Priority Mail items only. This restriction also applies to Official Mail.

Z. No outside pieces (OSPs).

Z1. The following restriction is applicable only to International Service Centers (ISC)/Exchange Offices. An Anti-Pilferage Seal (Item No O817E or O818A) is required on all pouches and sacks.

Thrift Savings Plan Fact Sheet

ANNUAL RETURNS	G Fund	F Fund	U.S. Aggregate Index	C Fund	S&P 500 Stock Index	S Fund	Dow Jones U.S. Completion TSM Index	I Fund	EAFE Stock Index
2006	4.93	4.40	4.33	15.79	15.79	15.30	15.28	26.32	26.34
2007	4.87	7.09	6.97	5.54	5.49	5.49	5.39	11.43	11.17
2008	3.75	5.45	5.24	-36.99	-37.00	-38.32	-39.03	-42.43	-43.38
2009	2.97	5.99	5.93	26.68	26.46	34.85	37.43	30.04	31.78
2010	2.81	6.71	6.54	15.06	15.06	29.06	28.62	7.94	7.75
2011	2.45	7.89	7.84	2.11	2.11	-3.38	-3.76	-11.81	-12.14
2012	1.47	4.29	4.22	16.07	16.00	18.57	17.89	18.62	17.32
2013	1.89	-1.68	-2.02	32.45	32.39	38.35	38.05	22.13	22.78
2014	2.31	6.73	5.97	13.78	13.69	7.80	7.63	-5.27	-4.90
2015	2.04	0.91	0.55	1.46	1.38	-2.92	-3.42	-0.51	-0.81
2016	1.82	2.91	2.65	12.01	11.96	16.35	15.75	2.10	1.00
2017	2.33	3.82	3.54	21.82	21.83	18.22	18.12	25.42	25.03
2018	2.91	0.15	0.01	-4.41	-4.38	-9.26	-9.57	-13.43	-13.79

MONTHLY RETURNS	G Fund	F Fund	U.S. Aggregate Index	C Fund	S&P 500 Stock Index	S * Fund	Dow Jones U.S. Completion TSM Index	I * Fund	EAFE Stock Index
2018									
Sept	0.24	-0.62	-0.64	0.57	0.57	-1.76	-1.75	0.91	0.87
Oct	0.26	-0.78	-0.79	-6.84	-6.84	-10.06	-10.07	-7.94	-7.96
Nov	0.26	0.62	0.60	2.04	2.04	1.92	1.84	-0.13	-0.13
Dec	0.26	1.84	1.84	-9.03	-9.03	-10.70	-10.78	-4.82	-4.85
2019									
Jan	0.23	1.07	1.06	8.01	8.01	11.64	11.60	6.60	6.57
Feb	0.20	-0.06	-0.06	3.21	3.21	4.98	4.97	2.55	2.55
Mar	0.23	1.93	1.92	1.95	1.94	-1.03	-0.99	0.71	0.63
Apr	0.21	0.02	0.03	4.05	4.05	3.69	3.66	2.92	2.81
May	0.21	1.77	1.78	-6.36	-6.35	-6.99	-6.95	-4.69	-4.80
June	0.19	1.26	1.26	7.04	7.05	6.80	6.81	5.94	5.93
July	0.18	0.21	0.22	1.44	1.44	1.64	1.63	-2.09	-1.27
Aug	0.18	2.60	2.59	-1.59	-1.59	-4.19	-4.18	-1.77	-2.59
LAST 12 MONTHS	2.67	10.23	10.17	2.91	2.92	-6.45	-6.58	-2.83	-3.26

The G Fund is managed internally by the Federal Retirement Thrift Investment Board. Assets of the F, C, S, and I Funds are managed externally. The Board currently has contracts with BlackRock Institutional Trust Company, N.A., to manage the F, C, S, and I Fund assets. The F, C, S, and I Funds invest in commingled trust funds, in which the assets of tax-deferred employee benefit plans are combined and invested together. The F, C, S, and I Funds and the BlackRock funds are passively managed index funds.

Future performance of the funds will vary and may be significantly different from the returns shown above. See the *Summary of the Thrift Savings Plan* for detailed information about the funds and their investment risks. The monthly returns of the TSP Funds represent net earnings for the month after deduction of accrued administrative expenses and, except for the G Fund, after deduction of trading costs and accrued investment management fees as well. The returns for the four indexes shown do not include any of these deductions.

* Implemented May 2001.

See next page for L Funds.

L Funds

Annual Returns	L Income	L 2020	L 2030	L 2040	L 2050
2006	7.59	13.72	15.00	16.53	
2007	5.56	6.87	7.14	7.36	
2008	-5.09	-22.77	-27.50	-31.53	
2009	8.57	19.14	22.48	25.19	
2010	5.74	10.59	12.48	13.89	
2011	2.23	0.41	-0.31	-0.96	
2012	4.77	10.42	12.61	14.27	15.85
2013	6.97	16.03	20.16	23.23	26.20
2014	3.77	5.06	5.74	6.22	6.37
2015	1.85	1.35	1.04	0.73	0.45
2016	3.58	5.47	7.07	7.90	8.65
2017	6.19	9.86	14.54	16.77	18.81
2018	0.71	-0.36	-3.58	-4.89	-6.02

Monthly Returns	L Income	L 2020	L 2030	L 2040	L 2050
2018					
Sept	0.21	0.22	0.23	0.22	0.21
Oct	-1.40	-2.24	-4.60	-5.54	-6.35
Nov	0.53	0.65	0.99	1.12	1.22
Dec	-1.31	-2.18	-4.64	-5.61	-6.45
2019					
Jan	1.83	2.53	4.92	5.86	6.67
Feb	0.80	1.06	2.00	2.36	2.68
Mar	0.52	0.61	0.87	0.96	1.02
Apr	0.89	1.16	2.23	2.62	2.96
May	-0.98	-1.42	-3.36	-4.06	-4.67
June	1.57	2.04	4.11	4.87	5.52
July	0.19	0.21	0.21	0.22	0.22
Aug	-0.12	-0.24	-0.96	-1.22	-1.46
LAST 12 MONTHS	2.71	2.29	1.48	1.04	0.57

Freely Associated States Restrictions

We list the mailing restrictions for Freely Associated States (FAS) in the Pull-Out section of the *Postal Bulletin*. All FAS Restrictions will be updated periodically.

Freely Associated States

Mail addressed to freely associated states is subject to certain conditions or restrictions of mailing regarding content, preparation, and handling. The following FAS Restrictions table outlines these conditions as listed by each affected FAS ZIP Code™ through the use of footnoted mailing restrictions codes (see the [Restrictions](#) following the table). For more information on available extra services for FAS destinations, see *Mailing Standards of the United States Postal Service, Domestic Mail Manual (DMM®)*, part 503.

Acceptance clerks must use the table with the Retail System Software terminal to determine which FAS ZIP Codes are active and which conditions of mailing apply. Send inquiries to Randall Sobol at randall.f.sobol@usps.gov.

FAS Restrictions Table

FAS Table	See Restrictions
96939	A, B
96940	A, B
96941	A, B
96942	A, B
96943	A, B
96944	A, B
96960	A, B
96970	A, B, D
Marshall Islands	C
Federated States of Micronesia	C

RESTRICTIONS LEGEND

PS Form 2976, *Customs Declaration CN 22 – Sender's Declaration*

PS Form 2976-A, *Customs Declaration and Dispatch Note*

FAS = Freely Associated State

- A.** Bank currency (coin and paper) is prohibited.
- B.** Signature Confirmation, Signature Confirmation Restricted Delivery, Adult Signature Requested, Adult Signature Restricted Delivery, Certified Mail Adult Signature Required, and Certified Mail Adult Signature Restricted Delivery not available.
- C.** Collect on Delivery is prohibited.
- D.** Betel nut (Areca catechu) is prohibited.

— *Asia-Pacific Relations,
Global Business, 9-26-19*

Information Security

Conference Call Security: Do You Know Who is Listening?

Our professional lives are filled with an abundance of technology that allow us to share information and collaborate in ways we never have before. As a USPS® employee or contractor, you have a responsibility to protect sensitive information so that it doesn't fall into the wrong hands.

Throughout the past year, the Corporate Information Security Office has shared various ways to keep email and USPS-issued smart phones and laptops cyber safe. But, did you know that virtual meetings like WebEx calls can also put you at risk? Unannounced listeners could use inside information to harm the Postal Service™. Do you know who is on the other end of your call?

Here are some tips to protect virtual meeting calls from uninvited attendees:

- **Keep your conference code to yourself.** Never share conference codes. Refer to section 2-2.33 of Handbook AS-805, *Information Security*, for security guidelines. (See about.usps.com/handbooks/as805/as805c2_034.htm).
- **Ask first.** Ask the meeting organizer to add an individual you would like to attend. Don't forward an invite without permission from the meeting organizer.
- **Start with roll call.** Before your meeting starts, make sure you know who has dialed in. Never share sensitive information until you remove any unidentified callers.

- **Target your audience.** Restrict the list of attendees based on the confidentiality of the information being presented.
- **Disconnect it.** End WebEx sessions via the "End Meeting" button to ensure everyone has disconnected.
- **Maintain careful records.** If you must record the meeting, add passwords before sharing information. Delete meeting records when they are no longer needed.

For more information about protecting WebEx calls, visit cisco.com/c/dam/en/us/td/docs/collaboration/webex-centers/esp/WebEx_b_cisco-webex-best-practices-admin.pdf.

To report a cybersecurity incident, contact the CyberSafe at USPS® team by calling 866-877-7247 or sending an email to CyberSafe@usps.gov. For general cybersecurity information, visit the CyberSafe at USPS websites on *Blue* (blue.usps.gov/cyber/) and *LiteBlue* (liteblue.usps.gov/cyber/).

— Corporate Information Security Office,
Chief Information Security Officer
and Digital Solutions, 9-26-19

FY 2020 CyberSafe Training Courses for Contractors are Now Open

Protecting employee, customer, and supplier data is a priority for the United States Postal Service®. By taking these assigned courses, USPS® contractors will learn how to safeguard critical data and prevent cyber threats to the Postal Service™.

All three mandatory CyberSafe training courses are now available on HERO:

- **CyberSafe Fundamentals, Parts I and II:** Provides the fundamental skills and knowledge to adhere to cybersecurity policy for the protection of USPS electronic information.
- **CyberSafe 201: Data Protection:** Provides best practices for handling sensitive and sensitive-

enhanced information to keep USPS electronic data secure.

The deadline for completing the courses is **November 5, 2019**. Contractors who do not meet the **November 5** deadline are subject to limited ACE system access until all the courses are completed.

Visit HERO now to complete each course: usps.csod.com/LMS/catalog/Welcome.aspx?tab_page_id=-67&tab_id=-1.

For more information about these courses, visit the CyberSafe training page on *Blue* (blue.usps.gov/cyber/training.htm) or contact CyberSafeComms@usps.gov.

— Training, Chief Information Security Officer
and Digital Solutions, 9-26-19

Mailing and Shipping Services

Participation Opportunity for United States Postal Service Approved Shipping and Returns Consolidator's Webpage

Effective September 30, 2019, the United States Postal Service® (USPS®) will introduce a new webpage, which offers shipping and returns providers an opportunity to be included on the usps.com webpage.

There is no cost or fee associated with being designated a USPS Approved Shipping and Returns Consolidator; however, participating companies must meet the criteria listed below and enter into a consolidator linking agreement and trademark licensing agreement with the USPS. In addition, companies approved for participation will be required to follow the style guidelines to use any USPS trademark or logo, and will need to furnish specific information and a company logo that meets specific standards for publication on usps.com.

The Postal Service™ may, in its sole discretion, promote the companies approved for the webpage(s) with some potential marketing initiatives.

For USPS Approved Shipping and Returns Consolidator consideration, companies must:

- Ship using USPS outbound or returns products.
- Provide payment through:
 - Electronic Verification System (eVS®),
 - Enterprise Payment Account (EPA),
 - Enterprise Payment System (EPS), and
 - Centralized Accounting Processing System (CAPS).

- Establish a Business Customer Gateway account.
- Use Intelligent Mail® package barcodes that meet or exceed the quality threshold.
- Be able to send Shipping Partner events.
- Meet an annual volume threshold of 150K each for shipping or returns products.
- Not divert to other delivery companies.
- Sign a non-disclosure agreement.
- Enter into a consolidator linking agreement and trademark licensing agreement.
- Follow all Postal Service style guidelines when using any USPS trademark or logo.

To obtain participation information and complete the USPS Approved Shipping and Returns Consolidator Webpage Registration Application, visit postalpro.usps.com/approved_shipping_and_returns_consolidators.

Send questions about the new web page to Business Alliances at uspsasrc@usps.gov. For information about our privacy policies, visit usps.com/privacypolicy.

— *Shipping Products and Services,
Product Innovation, 9-26-19*

New Shipping Process for Cremated Remains

The United States Postal Service® has improved the process for shipping cremated remains to enhance visibility in the mailstream. Customers shipping cremated remains (human and animal ashes), either Domestic or International, must use only Priority Mail Express® (PME) service. Packages containing cremated remains are limited to four PME shipping options:

- Signature Required,
- Signature Waived,
- Return Receipt, or
- Additional Insurance.

Customers are required to use the new orange Label 139, *Cremated Remains*, or the new Priority Mail Express Cremated Remains box (BOX-CRE). The label has been updated but existing labels can be used until their supply is depleted.

Customers or sales and service associates are **required to affix the label to all four sides of the shipping container, including the top and bottom.** If the customer chooses to use their own box, they must follow the same labeling guidelines.

Effective September 30, 2019, PME Cremated Remains shipping materials can be purchased from The Postal Store® at usps.com/shop:

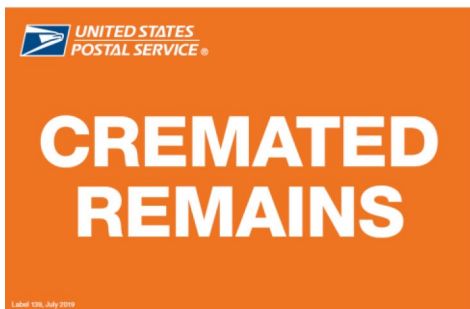
Current Label 139, *Cremated Remains**



Dimensions: 3" x 1.857"

*Use existing label until stock is depleted.

NEW Label 139, *Cremated Remains*



Dimensions: 4" x 6"

PME Cremated Remains Kit 1



Contains PME Cremated Remains Box and a roll of PME tape.

PME Cremated Remains Kit 2



Contains:

- PME Cremated Remains Box;
- A roll of PME tape;
- A self-sealing plastic bag;
- Bubble cushioning; and
- A copy of Publication 139, *How to Package and Ship Cremated Remains*.

Retail offices will automatically receive rolls of labels to provide to customers. The number of labels supplied will depend on the size of the office. To get more labels, search for "Label 139" when ordering through eBuy2.

If a customer requests more information about shipping cremated remains, refer them to Publication 139, *How to Package and Ship Cremated Remains*. Publication 139 can be found at USPS® retail locations or online at about.usps.com/publications/pub139.pdf.

When delivering packages containing cremated remains, carriers must follow the prompts on their Mobile Delivery Device screen.

Stamp Services

Update: Stamp Announcement 19-31: Purple Heart Medal 2019 Stamp

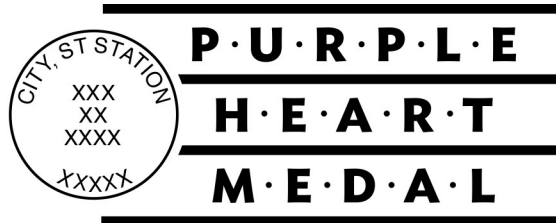
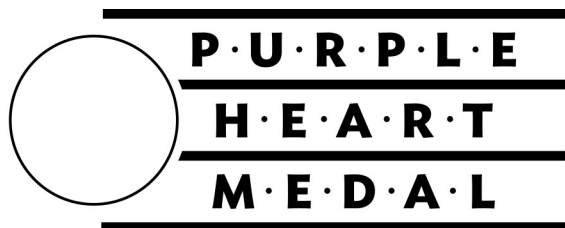
In the article titled “Stamp Announcement 19-31: Purple Heart Medal 2019 Stamp,” in *Postal Bulletin* 22527 (8-29-19, pages 9–10), specific information about this stamp issue as well as the special dedication postmarks were left unannounced. This update article provides that information.

The first-day-of-issue was listed as October 2019. The Purple Heart Medal 2019 stamp will go on sale nationwide **October 4, 2019**, and must not be sold or canceled before the first-day-of-issue.

Special Dedication Postmarks

Only the following pictorial postmark is permitted for the Purple Heart Medal 2019 stamp. The word “Station” or the abbreviation “STA” is required somewhere in the design, because it will be a temporary station. **Use of any image other than the following special pictorial image is prohibited.**

Guidelines for Finalizing the Purple Heart Medal 2019 Stamp Pictorial Postmark Art



To finalize the *Purple Heart Medal* 2019 stamp pictorial postmark art, insert the date, city, state, and ZIP Code™ of the physical location of your event adjacent to the stamp image. Overall dimensions of the pictorial postmark must not exceed 4 inches (horizontally) by 2 inches (vertically). Collectors prefer the dimensions 3-1/2 inches by 1 inch.

The Postal Service™ must make all special postmarks known to collectors through advance publicity in the *Postal Bulletin*. Therefore, all special dedication cancellations must be reported to Stamp Services 4 weeks before the event using PS Form 413, Pictorial Postmark Announcement/Report. To get a copy of the form, go to blue.usps.gov/formmgmt/forms/ps413.pdf.

In the “How to Order the First-Day-of-Issue Postmark” section, the deadline for submitting first-day covers was omitted. The deadline for submitting first-day covers will be February 4, 2020.

In the technical details table, the Issue ZIP Code was unavailable. The correct information is shown here:

Issue Date & City:	October 4, 2019, Noblesville, IN 46060
-------------------------------	--

– Stamp Services, Marketing, 9-26-19

Update: Stamp Announcement 19-32: Spooky Silhouettes Stamps

In the article titled “Stamp Announcement 19-32: Spooky Silhouettes Stamps,” in *Postal Bulletin* 22528 (9-12-19, pages 43–44), specific information about this stamp issue was left unannounced. This update article provides that information.

The first-day-of-issue was listed as October 2019. The *Spooky Silhouettes* stamps will go on sale nationwide **October 11, 2019**, and must not be sold or canceled before the first-day-of-issue. **The Spooky Silhouettes pane of 20 stamps may not be split and the stamps may not be sold individually.**

In the “How to Order the First-day-of-issue Postmark” section, the deadline for submitting first-day covers was omitted. The deadline for submitting first-day covers will be February 11, 2020.

In the technical details table, the Issue ZIP Code™ was unavailable. The correct information is shown here:

Issue Date & City:	October 11, 2019, Milford, NH 03055
-------------------------------	-------------------------------------

– Stamp Services, Marketing, 9-26-19

Pictorial Postmarks Announcement

As a community service, the Postal Service™ offers pictorial postmarks to commemorate local events celebrated in communities throughout the nation. A list of events for which pictorial postmarks are authorized appears on the following pages. The sponsor of the pictorial postmark appears in italics under the date. Also provided are illustrations of these postmarks.

People attending these local events may obtain the postmark in person at the temporary Post Office™ station established there. Those who cannot attend the event but who wish to obtain the postmark may submit a mail order request. Pictorial postmarks are available only for the dates indicated, and *requests must be postmarked no later than 30 days following the requested pictorial postmark date.*

All requests must include a stamped envelope or postcard bearing at least the minimum First-Class Mail® postage. Items submitted for postmark may not include

postage issued after the date of the requested postmark. Such items will be returned unserved.

Customers wishing to obtain a postmark must affix stamps to any envelope or postcard of their choice, address the envelope or postcard to themselves or others, insert a card of postcard thickness in envelopes for sturdiness, and tuck in the flap. Place the envelope or postcard in a larger envelope and address it to: Pictorial Postmarks, followed by the Name of the Station, Address, City, State, ZIP+4® Code, as listed next to the postmark.

Customers can also send stamped envelopes and postcards without addresses for postmark, as long as they supply a larger envelope with adequate postage and their return address. After applying the pictorial postmark, the Postal Service returns the items (with or without addresses) under addressed protective cover.

The following pictorial postmarks have been extended for 30 days:



September 6, 2019
Sino-American Philatelic
 Sino-American Station
 Postmaster
 380 West 33rd Street
 New York, NY 10199-9998



September 6, 2019
Sino-American Philatelic
 Celebration Station
 Postmaster
 380 West 33rd Street
 New York, NY 10199-9998



September 7, 2019
United States Postal Service
 Libbey Park Station
 Customer Relations Coordinator
 28201 Franklin Parkway
 Santa Clarita, CA 91383-9998



September 14, 2019
United States Postal Service
 Pony Express Run Station
 Postmaster
 8988 North Main Street
 Canaan, IN 47224-9998



Museum of the Rockies Station
Bozeman MT 59718
September 21, 2019

September 21, 2019

United States Postal Service
Museum of the Rockies Station
Postmaster
96 North Weaver Street
Belgrade, MT 59714-9998



BILLIE JEAN KING
MAIN LIBRARY

Originated 1896 New Beginnings 2019

September 21, 2019

Joshua Coulter
Billie Jean King Library Station
Postmaster
300 Long Beach Boulevard, 4th Floor
Long Beach, CA 90802-9998



1979 2019
Sidney, OH Station 45365
September 24, 2019

September 24, 2019

Philatelic Society
Sidney, OH Station
Postmaster
135 North Ohio Avenue
Sidney, OH 45365-9998



Commemorando el mes del cáncer de seno
SUSAN G. KOMEN PR STATION
SAN JUAN PR 00907
Sept. 25, 2019
Actúa. Dona. Involúcrate.

September 25, 2019

University of Puerto Rico
Susan G. Komen PR Station
Business Development Specialist
585 Ave FD Roosevelt, Suite 223
San Juan, PR 00936-9681



Mt Airy NC 27030
Mayberry Day Station
September 25, 2019

September 25-27, 2019

Mt. Airy Chamber of Commerce
Mayberry Days Station
Postmaster
11 South Main Street
Mt Airy, NC 27030-9998



September 27, 2019

United States Postal Service
T-Rex Station
Postmaster
1323 Bridge Barrier Road
Carolina Beach, NC 28428-9998



100th Fair
Dedication Station
September 26, 2019
Durham, CT 06422

September 26, 2019

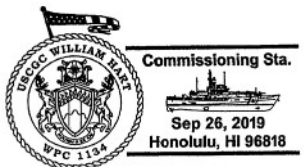
Durham Agricultural Fair Association
100th Fair Dedication Station
Postmaster
103 Main Street
Durham, CT 06422-9998



27 September 2019
WARRENS, WI 54666

September 27, 2019

Warrens Cranberry Festival
Warrens Cranberry Festival Station
Postmaster
302 Main Street
Warrens, WI 54666-9998



Commissioning Sta.
Sep 26, 2019
Honolulu, HI 96818

September 26, 2019

Stephen Decatur Chapter #4, Universal Ship Cancellation Society
Commissioning Station
Marketing Office
3600 Aolele Street, Room 106
Honolulu, HI 96820-9998



SEPTEMBER 27 2019
WHITE LAKE STATION, NY 12786

September 27, 2019

The Posse
White Lake Station
Postmaster
1447 State Route 17B
White Lake, NY 12786-9998

World Figure & Fancy Skating Championships



September 27–28, 2019
World Figure Sport Society
 Fancy Skating Station
 Postmaster
 1300 North Frontage Road
 West
 Vail, CO 81657-9998



October 4–6, 2019
Indiana Stamp Club
 INDYPEX Station
 Postmaster
 125 West South Street
 Indianapolis, IN 46206-9998



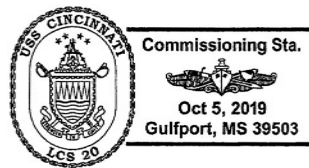
September 28, 2019
KAZOOPEX 2019
 Fall KAZOOPEX Halloween
 Station
 Postmaster
 PO Box 9998
 Comstock, MI 49041-9998



October 5, 2019
Cultural Heritage and Recreation Org.
 Salmon Festival Station
 Postmaster
 205 Bridge Street
 Richmond, VT 05477-9998



September 28–29, 2019
Apple Umpkin Festival
 Apple Umpkin Festival
 Station
 Postmaster
 2 South Academy Street
 Wyoming, NY 14591-9998



October 5, 2019
Stephen Decatur Chapter #4, Universal Ship Cancellation Society
 Commissioning Station
 Postmaster
 11110 Highway 49
 Gulfport, MS 39503-9998



October 4, 2019
INDYPEX
 INDYPEX Station
 Postmaster
 125 West South Street
 Indianapolis, IN 46206-9998

— Stamp Services,
 Marketing, 9-26-19

How to Order the First-Day-of-Issue Digital Color or Traditional Postmarks

Customers have 120 days to obtain the first-day-of-issue postmarks by mail. Each cover must have sufficient postage to meet First-Class Mail® requirements. Customers may purchase new stamps at their local Post Office™, by phone at 800-782-6724, or on The Postal Store® website at usps.com/shop.

Digital Color Postmarks

Only select stamp issues offer a digital color postmark. Customers may submit #6 or #10 envelopes constructed of paper rated as “laser safe.” The Postal Service™ recommends envelopes of 80-pound Accent Opaque, acid-free, 9/16-inch side seams with no glue on the flap. The maximum size of all digital color postmarks is 2 inches (vertically) by 4 inches (horizontally). Allow sufficient space on the envelope to accommodate the postmark. Do not use self-adhesive labels for addresses on the envelope. Two test envelopes must be included. There is a minimum of 10 envelopes at 50 cents per postmark required at the time of servicing. Customers must submit a check, money order, or credit card for payment.

The Postal Service reserves the right to not accept hand-painted and other cachet envelopes that are not compatible with our digital color postmark equipment. The Postal Service also reserves the right to substitute traditional black rubber postmarks if use of nonspecified envelopes results in poor image quality or damage to equipment.

Customers must affix the stamps to the envelopes and address them to themselves or others for return through the mail. Or, they may include an additional self-addressed return envelope, large enough to accommodate their canceled items, with sufficient postage affixed for return of

their postmarked items. Address customer requests for digital color postmarks to:

FDOI – (Name of Stamp Issue)
USPS Stamp Fulfillment Services
8300 NE Underground Drive, Suite 300
Kansas City, MO 64144-9900

After applying the first-day-of-issue postmark, the Postal Service will return the envelopes to the customer by U.S. Mail®.

Traditional Postmarks

Customers must affix the stamps to the envelopes and address them to themselves or others for return through the mail. Or, they may include an additional self-addressed return envelope, large enough to accommodate their canceled items, with sufficient postage affixed for return of their postmarked items. Address customer requests for traditional postmarks to:

FDOI – (Name of Stamp Issue)
USPS Stamp Fulfillment Services
8300 NE Underground Drive, Suite 300
Kansas City, MO 64144-9900

After applying the first-day-of-issue postmark, the Postal Service will return the envelopes to the customer by U.S. Mail™. There is no charge for the first 50 postmarks. There is a 5-cent charge for each additional postmark over 50. Customers must submit a check, money order, or credit card for payment.

Locally produced items are not authorized. Only merchandise that has been approved and assigned an item number by Headquarters Retail Marketing may be produced and sold.



Digital Color Pictorial

FDOI – Ellsworth Kelly Stamps

USPS Stamp Fulfillment Services
8300 NE Underground Drive, Suite 300
Kansas City, MO 64144-9900

September 30, 2019



Black and White Pictorial

FDOI – Ellsworth Kelly Stamps

USPS Stamp Fulfillment Services
8300 NE Underground Drive, Suite 300
Kansas City, MO 64144-9900

September 30, 2019



Digital Color Pictorial

FDOI – USS Missouri Stamp

USPS Stamp Fulfillment Services
8300 NE Underground Drive, Suite 300
Kansas City, MO 64144-9900

October 11, 2019



Black and White Pictorial

FDOI – USS Missouri Stamp

USPS Stamp Fulfillment Services
8300 NE Underground Drive, Suite 300
Kansas City, MO 64144-9900

October 11, 2019



Digital Color Pictorial

FDOI – George H.W. Bush Stamp

USPS Stamp Fulfillment Services
8300 NE Underground Drive, Suite 300
Kansas City, MO 64144-9900

October 12, 2019



Black and White Pictorial

FDOI – George H.W. Bush Stamp

USPS Stamp Fulfillment Services
8300 NE Underground Drive, Suite 300
Kansas City, MO 64144-9900

October 12, 2019



Digital Color Pictorial

FDOI – Sesame Street Stamps

USPS Stamp Fulfillment Services
8300 NE Underground Drive, Suite 300
Kansas City, MO 64144-9900

October 22, 2019



Black and White Pictorial

FDOI – Sesame Street Stamps

USPS Stamp Fulfillment Services
8300 NE Underground Drive, Suite 300
Kansas City, MO 64144-9900

October 22, 2019



Digital Color Pictorial

FDOI – Frogs Stamps

USPS Stamp Fulfillment Services
8300 NE Underground Drive, Suite 300
Kansas City, MO 64144-9900

November 9, 2019



Black and White Pictorial

FDOI – Frogs Stamps

USPS Stamp Fulfillment Services
8300 NE Underground Drive, Suite 300
Kansas City, MO 64144-9900

November 9, 2019



Digital Color Pictorial

FDOI – 1969: First Moon Landing Stamps

USPS Stamp Fulfillment Services
8300 NE Underground Drive, Suite 300
Kansas City, MO 64144-9900

November 19, 2019



Black and White Pictorial

FDOI – 1969: First Moon Landing Stamps

USPS Stamp Fulfillment Services
8300 NE Underground Drive, Suite 300
Kansas City, MO 64144-9900

November 19, 2019



Digital Color Pictorial

FDOI – State and County Fairs Stamps

USPS Stamp Fulfillment Services
8300 NE Underground Drive, Suite 300
Kansas City, MO 64144-9900

November 25, 2019



Black and White Pictorial

FDOI – State and County Fairs Stamps

USPS Stamp Fulfillment Services
8300 NE Underground Drive, Suite 300
Kansas City, MO 64144-9900

November 25, 2019



Digital Color Pictorial

FDOI – Military Working Dogs Stamps

USPS Stamp Fulfillment Services
8300 NE Underground Drive, Suite 300
Kansas City, MO 64144-9900

December 1, 2019



Black and White Pictorial

FDOI – Military Working Dogs Stamps

USPS Stamp Fulfillment Services
8300 NE Underground Drive, Suite 300
Kansas City, MO 64144-9900

December 1, 2019



FD0I – Woodstock Stamp
 USPS Stamp Fulfillment Services
 8300 NE Underground Drive, Suite 300
 Kansas City, MO 64144-9900
 December 8, 2019

Digital Color Pictorial



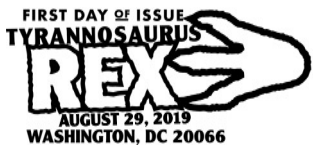
FD0I – Woodstock Stamp
 USPS Stamp Fulfillment Services
 8300 NE Underground Drive, Suite 300
 Kansas City, MO 64144-9900
 December 8, 2019

Black and White Pictorial



FD0I – Tyrannosaurus Rex Stamps
 USPS Stamp Fulfillment Services
 8300 NE Underground Drive, Suite 300
 Kansas City, MO 64144-9900
 December 29, 2019

Digital Color Pictorial



FD0I – Tyrannosaurus Rex Stamps
 USPS Stamp Fulfillment Services
 8300 NE Underground Drive, Suite 300
 Kansas City, MO 64144-9900
 December 29, 2019

Black and White Pictorial



FD0I – Walt Whitman Stamp
 USPS Stamp Fulfillment Services
 8300 NE Underground Drive, Suite 300
 Kansas City, MO 64144-9900
 January 12, 2020

Digital Color Pictorial



FD0I – Walt Whitman Stamp
 USPS Stamp Fulfillment Services
 8300 NE Underground Drive, Suite 300
 Kansas City, MO 64144-9900
 January 12, 2020

Black and White Pictorial



FD0I – Winter Berries Stamps
 USPS Stamp Fulfillment Services
 8300 NE Underground Drive, Suite 300
 Kansas City, MO 64144-9900
 January 17, 2020

Digital Color Pictorial



FD0I – Winter Berries Stamps
 USPS Stamp Fulfillment Services
 8300 NE Underground Drive, Suite 300
 Kansas City, MO 64144-9900
 January 17, 2020

Black and White Pictorial

FIRST DAY OF ISSUE

P·U·R·P·L·E

H·E·A·R·T

M·E·D·A·L

OCTOBER 4, 2019 • NOBLESVILLE, IN 46060

Black and White Pictorial

FDOI – Purple Heart Medal 2019 StampUSPS Stamp Fulfillment Services
8300 NE Underground Drive, Suite 300
Kansas City, MO 64144-9900

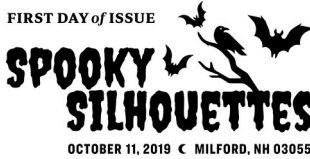
February 4, 2020



Digital Color Pictorial

FDOI – Spooky Silhouettes StampsUSPS Stamp Fulfillment Services
8300 NE Underground Drive, Suite 300
Kansas City, MO 64144-9900

February 11, 2020



Black and White Pictorial

FDOI – Spooky Silhouettes StampsUSPS Stamp Fulfillment Services
8300 NE Underground Drive, Suite 300
Kansas City, MO 64144-9900

February 11, 2020

Sustainability

Update: Smoke Detector Disposal

As a result of frequent changes in manufacturer ownership, contact information, return instructions, and return fees, it is not practical for the United States Postal Service® to issue specific instructions on how to recycle particular brands of smoke detectors. For this reason, the article titled “Smoke Detector Disposal,” which appeared in *Postal Bulletin* 22426 (10-15-15, page 47) has been updated. Instead, Postal Service™ facilities must follow the steps below to identify smoke detector disposal options.

Three common types of smoke detectors may be present at postal facilities: ionization, photoelectric, and dual-sensor detectors. Ionization and dual-sensor smoke detectors contain a very small amount of radioactive material known as Americium 241. Photoelectric smoke detectors do not contain any radioactive material.

The amount of radioactive material contained in ionization and dual-sensor smoke detectors is so small that it does not pose a risk to human health. If the detector contains radioactive material, it is required by law to have a warning label on the body of the detector. Look for the label on the back of the detector facing the mounting base. The label may have the international symbol for radiation (shown here):



All ionization and dual-sensor smoke detectors, regardless of brand, should be recycled whenever possible. Recycling is typically available through either the manufacturer or through a community or state recycling program.

Take the following steps to investigate whether a manufacturer offers a recycling program for its smoke detectors:

1. Locate the manufacturer's telephone number or website on the back of the smoke detector.
2. Call the number provided or visit the website to confirm whether a recycling program is available, as well as the details of the return process. Some manufacturers offer returns via a mail-back program.

If the manufacturer will not take back the ionization or dual-sensor smoke detector, contact the local or state environmental agency to identify whether a local recycling program exists and, if so, request the program details. Local recycling programs may include drop-off locations for used smoke detectors. If recycling is unavailable, the regulatory agency can also confirm whether any local restrictions exist on disposal of smoke detectors in the trash.

If you have more questions or concerns about the proper recycling or disposal of smoke detectors, check with your local or state environmental agency, or contact your regional designated environmental contact at blue.usps.gov/sustainability/contact.htm.

— Office of Sustainability,
Deputy Postmaster General, 9-26-19



UNITED STATES
POSTAL SERVICE

475 L'ENFANT PLAZA SW
WASHINGTON DC 20260-5540

First-Class Mail
Postage & Fees Paid
USPS
Permit No. G-10

KEEP THE MAIL SAFE



ATTENTION

Mail Collection Policy

Due to federal security regulations and U.S. export laws,
DO NOT DEPOSIT the following items in this collection box:

- Any mailpiece over one-half inch thick that uses **POSTAGE STAMPS**
- Any mailpiece that weighs more than 10 oz and uses **POSTAGE STAMPS**
- Any mailpiece with a customs declaration form that was not completed and submitted online
- Any mailpiece that requires a customs declaration form and uses **POSTAGE STAMPS**

You must present these items for shipment to a USPS® employee at a retail service counter at a Post Office™ location.

Failure to comply may result in the return of your mailpiece.

Keep the Mail Safe!

Do not mail prohibited dangerous goods or hazardous materials.

DECDDD1 October 2019



The Postal Bulletin is printed on paper that contains 30% post-consumer waste. Please recycle.