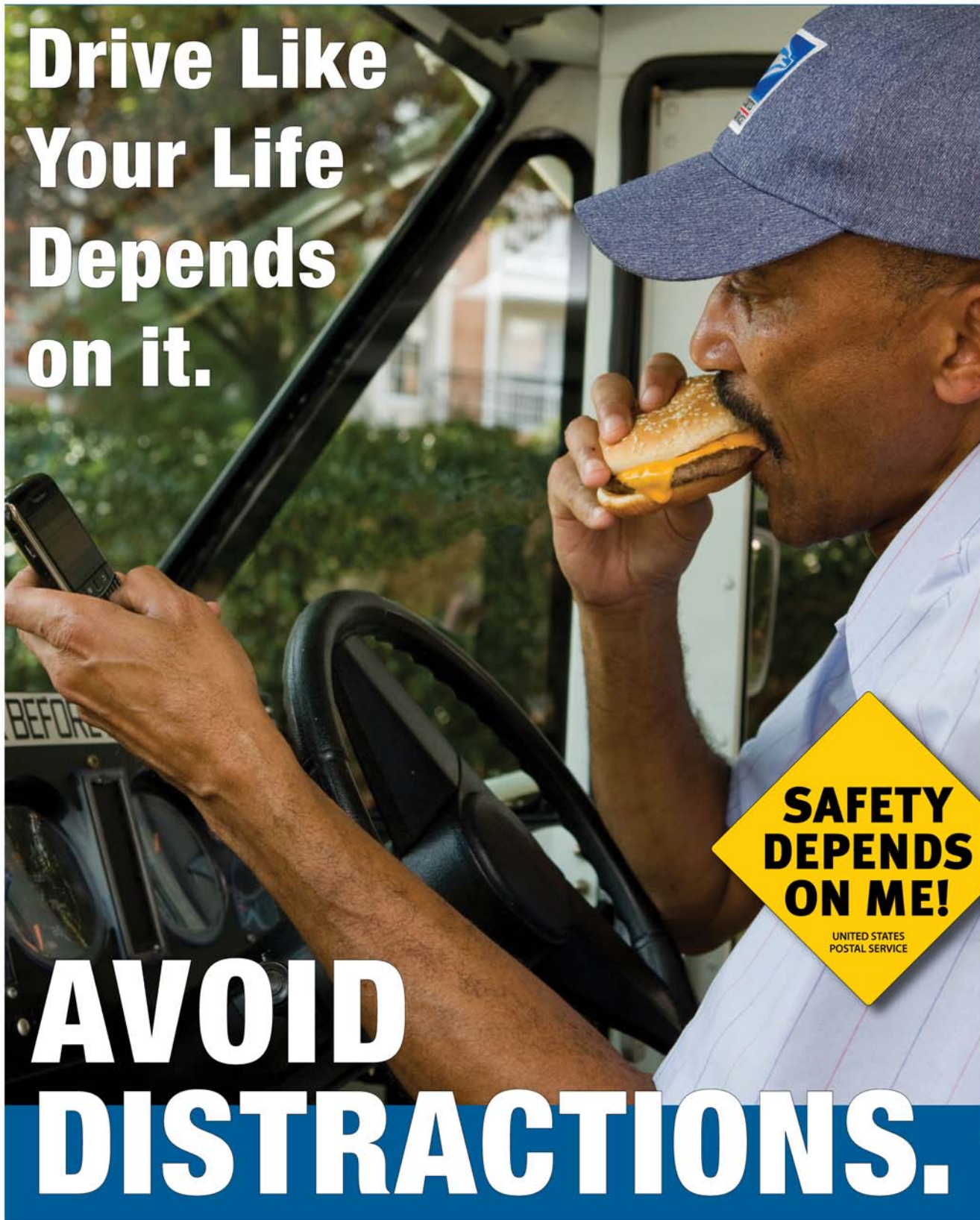


postal|bulletin

PUBLISHED SINCE MARCH 4, 1880

**Drive Like
Your Life
Depends
on it.**



**SAFETY
DEPENDS
ON ME!**

UNITED STATES
POSTAL SERVICE

**AVOID
DISTRACTIONS.**



Contents

COVER STORY

December is USPS Motor Vehicle Accident Prevention Month 3

POLICIES, PROCEDURES, AND FORMS UPDATES

Manuals

DMM Revision: International Inbound Mail Entry 5
 DMM Revision: Domestic Competitive Products Pricing and Mailing Standards Changes 5
 DMM Revision: New Mailing Standards for Domestic Mailing Services Products 6
 DMM Revision: Products Mailable at Nonprofit Marketing Mail Prices 12
 IMM Revision: Changes to Pricing and Mailing Standards for International Shipping Services 13
 IMM Revision: Changes to Pricing and Products for International Mailing Services 16
 IMM Revision: International Inbound Mail Entry 44
 IMM Revision: Lifting Certain Sanctions on Sudan and Updating Sanctions Information to Various Countries 45

Forms

PS Form 3971 Revision: Notification of Absence 48
 PS Form 3972 Revision: Leave Absence Analysis 48

ORGANIZATION INFORMATION

Address Management

Mover's Guides and Internet Change of Address Message Cards 50

Finance

Correction: Social Security and Medicare Tax Withholding Rates and Limits 51

Retail

Mailing Standards for Hazardous Materials 52

Stamp Services

Stamp Stock Items Withdrawn From Regular Sale and From Sale at Philatelic Centers 53
 Update: Pictorial Postmarks 53
 Pictorial Postmarks Announcement 54
 How to Order the First-Day-of-Issue Digital Color or Traditional Postmarks 57

PULL-OUT INFORMATION

Fraud

Invalid USPS Corporate Account Numbers 21
 Missing, Lost, or Stolen U.S. Money Order Forms 23
 Missing, Lost, or Stolen Canadian Money Order Forms 29
 Verifying U.S. Postal Service Money Orders 32
 Counterfeit Canadian Money Order Forms 32
 Toll-Free Number Available to Verify Canadian Money Orders 32

Other Information

Overseas Military/Diplomatic Mail 34
 Freely Associated States Restrictions 40

POSTAL BULLETIN INDEX

2017 Semi-Annual Index PB 22472 (7-20-17)

Find the latest in mail and delivery information and services offered by U.S. Postal® in the *Postal Bulletin* at about.usps.com/postal-bulletin

Cover Story

December is USPS Motor Vehicle Accident Prevention Month

According to the National Safety Council, almost 40,000 people died in motor vehicle crashes in the United States in 2016. That marks a 6 percent increase over 2015 and a 14 percent increase over 2014, which is the most dramatic 2-year increase in 53 years (see nsc.org/learn/NSC-Initiatives/Pages/Fatality-Estimates.aspx). The three biggest causes of fatalities on the road were alcohol, speeding, and distracted driving.

To highlight the importance of driving safety, the U.S. Postal Service® has designated December as “Motor Vehicle Accident Prevention Month.” Historically, December is when the Postal Service™ experiences an uptick in accident activity. Winter weather, temporary workers, increased workloads, and the holiday season all contribute to this increase.

Accidents have far-reaching financial and psychological effects on employees, their coworkers and families, and employers. When Postal Service employees are involved in motor vehicle accidents on or off the job, the USPS directly or indirectly bears the cost of these accidents. Motor vehicle accidents may also affect employees’ personal lives and finances.

Whether you manage a fleet of vehicles and drivers or drive yourself, basic safe driving practices can greatly reduce the risks associated with a motor vehicle accident. Focusing on motor vehicle safety:

- Saves lives and reduces the risk of life-altering injuries.
- Protects our human and financial resources.
- Guards against potential liabilities associated with employee accidents.

Many accidents are caused by distraction or haste when inexperienced employees drive unfamiliar vehicles in unfamiliar territory or when experienced employees fail to follow established safe driving procedures (see the poster on page 4). Today’s technology allows us to make phone calls, send texts or emails, and update social media while driving — all actions that contribute to distracted driving. Although hands-free technology lets us use mobile devices without taking our hands off the wheel, these devices still take our minds off the road.

By reviewing our accident data, we can easily identify basic safe driving practices that can help drivers avoid tragedy. For example, in fiscal year (FY) 2017, nearly half of the 29,000 motor vehicle accidents reported by the USPS involved newer employees. The data also indicated that we need to address the following:

- Roll away and run away accidents,
- Collisions with stationary objects, and
- Collisions with other vehicles.

The Postal Service can continue to reduce motor vehicle accidents with training and consistent messaging on the importance of basic safe driving practices. By doing so, we not only reduce our accident counts, but also ensure that our employees feel prepared for their jobs. Employees are our most valuable assets; workplace driver safety programs not only make good business sense, but also engage and empower our employees. During the month of December, employees will receive stand-up talks focused on the following:

- Defensive driving,
- Seatbelts,
- Distracted driving, and
- Winter driving.

Other available driver safety-related resources include:

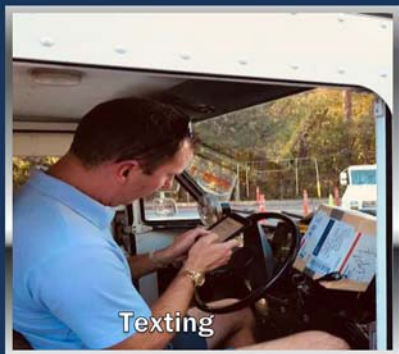
- Safety Talk module from the Safety Toolkit: safety-toolkit.usps.gov/SafetyTalks/TalkTemplates.aspx.
- Safety Depends on Me videos: blue.usps.gov/corp-comm/uspstv/safety-and-health/welcome.htm.
- Safety Toolkit resources: safetytoolkit.usps.gov/Home/Home.aspx.
- PS Form 4584, *Observation of Driving Practices*: blue.usps.gov/formmgmt/forms/ps4584.pdf.
- National Safety Council resources: nsc.org/learn/pages/nsc-on-the-road.aspx.

The goal of Motor Vehicle Accident Prevention Month is to keep our drivers, and those with whom they share the road, safe. By changing attitudes about driving behavior and improving driving skills, we can create and sustain a safety culture where everyone understands that “Safety Depends on Me.”

— *Safety and OSHA Compliance Programs, Employee Resource Management, 12-7-17*

Avoid Distracted Driving Poster

Avoid Distracted Driving!



Drive Like Your Life Depends on It!



Policies, Procedures, and Forms Updates

Manuals

DMM Revision: International Inbound Mail Entry

Effective December 7, 2017, the Postal Service™ is revising *Mailing Standards of the United States Postal Service, Domestic Mail Manual (DMM®)*, subsection 608.2.3, International Mail, to add information regarding international inbound mail entry at domestic offshore locations.

For more information on international inbound mail entry at domestic offshore locations, see “IMM Revision: International Inbound Mail Entry” on page 44 in this issue of the *Postal Bulletin*.

Although effective immediately, we will not publish this revision in the online DMM until the next update.

Mailing Standards of the United States Postal Service, Domestic Mail Manual (DMM)

	*	*	*	*	*
600	Basic Standards for All Mailing Services				
	*	*	*	*	*
608	Postal Information and Resources				
	*	*	*	*	*
2.0	Domestic Mail				
	*	*	*	*	*

2.3 International Mail

[Revise 2.3 to read as follows (adding new title 2.3.1 before the current text and adding new section 2.3.2):]

2.3.1 General

International mail is mail addressed to or received from foreign countries, except under 2.2. Provisions for international mail are published in the International Mail Manual (IMM).

2.3.2 International Inbound Mail Entry at Domestic Offshore Locations

Incoming mail from foreign mail consolidators or foreign posts must be entered through one of the five international service centers located in the 48 contiguous states. Mailers must arrange exceptions in advance for entry anywhere else, including into domestic offshore locations, through contracts or bilateral agreements with the Postal Service.

* * * * *

Although effective December 7, 2017, we will incorporate these revisions into the next update of the online DMM, which is available via Postal Explorer® at pe.usps.com.

— Product Classification, Marketing, 12-7-17

DMM Revision: Domestic Competitive Products Pricing and Mailing Standards Changes

Effective January 21, 2018, the Postal Service™ will revise *Mailing Standards of the United States Postal Service, Domestic Mail Manual (DMM®)*, to reflect changes to prices for the following competitive products:

- Priority Mail Express®.
- Priority Mail®.
- First-Class Package Service — Retail™.
- First-Class Package Service®.
- Parcel Select®.
- USPS Retail Ground®.
- Extra Services.
- Return Services.
- Mailer Services.
- Recipient Services.

This article provides new prices for the competitive products shown in the previous list that were established by the Governors of the United States Postal Service®. New prices are available on the Postal Explorer® website at pe.usps.com.

There are no product changes scheduled for competitive products in the January 21, 2018, competitive price change.

Zone Charts Revision: Priority Mail to APO/FPO/DPO Processing at Chicago International Service Center

The Postal Service will revise all zone charts to reflect that only the Chicago International Service Center (ISC) will process Priority Mail to APO/FPO/DPO destinations. You can find more information in the “DMM Revision: New Mailing Standards for Domestic Mailing Services Products,” article on page 6 in this issue of the *Postal Bulletin*.

Resources

The Postal Service provides additional resources to help customers with this price change for competitive products, such as price lists, downloadable price files, and *Federal Register* Notices, which customers may find on the Postal Explorer® website at pe.usps.com.

Mailing Standards of the United States Postal Service, Domestic Mail Manual (DMM)

* * * * *

Notice 123 (Price List)

[Revise prices as applicable.]

* * * * *

We will incorporate these revisions into the next update of the online DMM on Postal Explorer at pe.usps.com.

— Product Classification, Marketing, 12-7-17

DMM Revision: New Mailing Standards for Domestic Mailing Services Products

Effective January 21, 2018, the Postal Service™ will revise *Mailing Standards of the United States Postal Service, Domestic Mail Manual (DMM)*® in various sections to implement the changes coincident with the price adjustments and other minor DMM changes. Prices are available under Docket Number R2018-1 on the Postal Regulatory Commission's website at www.prc.gov.

In addition to the price adjustments, the Postal Service will implement the following:

- A change to the pallet preparation for Carrier Route (CR) pallets in Non-Flats Sequencing Systems (FSS) zones,
- The addition of Bound Printed Matter Flats up to 24 ounces to comail with USPS Marketing Mail® and Periodicals [destination sectional center facility (DSCF) or a destination delivery unit (DDU) only], and
- A zone chart revision for Priority Mail® to APO/FPO/DPO processing at the Chicago International Service Center (ISC).

Mailing Standards of the United States Postal Service, Domestic Mail Manual (DMM)

* * * * *

200 Commercial Mail Letters, Cards, Flats, and Parcels

201 Physical Standards

* * * * *

5.0 Physical Standards for Nonautomation Flats

* * * * *

5.3 Bound Printed Matter

* * * * *

[Revise the text of item b. to read as follows:]

- b. Bound Printed Matter may not weigh more than 20 ounces (except under 705.15).

* * * * *

6.0 Physical Standards for Automation Flats

* * * * *

6.2 Additional Criteria for Automation Flats

* * * * *

6.2.2 Maximum Weight

* * * * *

[Revise the text of item d. to read as follows:]

- d. For Bound Printed Matter, 20 ounces (except under 705.15).

* * * * *

600 Basic Standards For All Mailing Services

* * * * *

608 Postal Information and Resources

* * * * *

9.0 Postal Zones

* * * * *

9.2 Application

* * * * *

[Revise the table listed in item a. by adding asterisks to the ZIP Code groups listed under the "3-DIGIT ZIP CODE PREFIX GROUP" column and adding a new footnote to read as follows:]

3-DIGIT ZIP CODE PREFIX GROUP

090-098*

340

962-966*

*Priority Mail service destinating to these ZIP Codes is served by SCF Chicago IL 606.

[Revise the text of item b. to read as follows:]

- b. The postage prices for zoned mail transported between the United States, the Canal Zone, Puerto Rico, or U.S. territories or possessions, including the

Freely Associated States on the one hand, and MPOs on the other, or, among the MPOs, are the applicable zone prices for mail between the place of mailing or delivery and the city of the Postmaster serving the MPO concerned.

* * * * *

700 Special Standards

* * * * *

705 Advanced Preparation and Special Postage Payment Systems

* * * * *

10.0 Merging Bundles of Flats Using the City State Product

10.1 Periodicals

* * * * *

10.1.5 Pallet Preparation and Labeling

[Revise the second sentence in the introductory text of 10.1.5 to read as follows:]

When sortation under this option is performed, after completing required or optional carrier route pallets (if any), mailers must prepare all merged 5-digit scheme and merged 5-digit pallets that are possible in the mailing based on the volume of mail to the destination using L001 and/or the City State Product.

[Reverse the order of items a. and b.; revise the text of reordered items a. and b. to read as follows:]

- a. *5-digit scheme carrier routes*, required; optional with no minimum. May contain only carrier route bundles for carrier routes for 5-digit ZIP Codes identified in the L001 5-digit scheme listing. Labeling:
 1. Line 1: use L001, Column B.
 2. Line 2: "PER" or "NEWS" as applicable; followed by "FLTS;" followed by "CR-RTS SCHEME."
- b. *Merged 5-digit scheme*, required and permitted only when there is at least one 5-digit ZIP Code in the scheme that has an "A" or "C" indicator in the City State Product. May contain carrier route bundles for any 5-digit ZIP Code(s) in a single scheme listed in L001 as well as machinable barcoded price 5-digit bundles and machinable nonbarcoded price 5-digit bundles for those 5-digit ZIP Codes in the scheme that have an "A" or "C" indicator in the City State Product. Labeling:
 1. Line 1: use L001, Column B.
 2. Line 2: "PER" or "NEWS" as applicable; followed by "FLTS;" followed by "CR/5D SCHEME."

[Reverse the order of items c. and d.; revise the text of reordered item c. to read as follows:]

- c. *5-digit carrier routes*, required; optional with no minimum. May contain only carrier route price bundles for the same 5-digit ZIP Code for those 5-digit ZIP Codes that are not part of a scheme. Labeling:
 1. Line 1: use city, state, and 5-digit ZIP Code destination (see 8.6.4 for military mail).
 2. Line 2: "PER" or "NEWS" as applicable; followed by "FLTS;" followed by "CARRIER ROUTES" or "CR-RTS."

* * * * *

10.2 USPS Marketing Mail

* * * * *

10.2.5 Pallet Preparation and Labeling

[Revise the first two sentences of the introductory text of 10.2.5 to read as follows:]

Mailers must prepare pallets of bundles in the manner and sequence listed in items a. through i. below and under 8.0. When sortation under this option is performed, after completing required or optional carrier route pallets (if any), mailers must prepare all merged 5-digit scheme and merged 5-digit pallets that are possible in the mailing based on the volume of mail to the destination using L001 and/or the City State Product.***

[Reverse the order of items a. and b.; revise the text in reordered items a. and b. to read as follows:]

- a. *5-digit scheme carrier routes*, required; optional with no minimum. May contain only carrier route bundles for carrier routes for 5-digit ZIP Codes identified in the L001 5-digit scheme listing. Labeling:
 1. Line 1: use L001, Column B.
 2. Line 2: "MKT FLTS CR-RTS SCHEME."
- b. *Merged 5-digit scheme*, required and permitted only when there is at least one 5-digit ZIP Code in the scheme that has an "A" or "C" indicator in the City State Product. May contain carrier route bundles for any 5-digit ZIP Code(s) in a single scheme listed in L001 as well as automation price 5-digit bundles and Presorted price 5-digit bundles for those 5-digit ZIP Codes in the scheme that have an "A" or "C" indicator in the City State Product. Labeling:
 1. Line 1: use L001, Column B.
 2. Line 2: "MKT FLTS CR/5D SCHEME."

[Reverse the order of items c. and d.; revise the text of reordered item c. to read as follows:]

- c. *5-digit carrier routes*, required; optional with no minimum. May contain only carrier route price bundles

for the same 5-digit ZIP Code for those 5-digit ZIP Codes that are not part of a scheme. Labeling:

1. Line 1: use city, state, and 5-digit ZIP Code destination (see 8.6.4 for military mail).
2. Line 2: "MKT FLTS," followed by "CARRIER ROUTES" or "CR-RTS."

* * * * *

12.0 Merging Bundles of Flats on Pallets Using a 5% Threshold

12.1 Periodicals

* * * * *

12.1.5 Pallet Preparation and Labeling

[Revise the second sentence in the introductory text of 12.1.5 to read as follows:]

When sortation under this option is performed, after completing required or optional carrier route pallets (if any), mailers must prepare all merged 5-digit scheme, 5-digit scheme, and merged 5-digit pallets that are possible in the mailing based on the volume of mail to the destination using L001 and the 5% threshold, as applicable.

[Reverse the order of items a. and b.; revise the text of reordered item a. to read as follows:]

- a. 5-digit scheme carrier routes, required; optional with no minimum. May contain only carrier route bundles for all carrier routes for 5-digit ZIP Codes identified in the L001 5-digit scheme listing. Labeling:
 1. Line 1: use L001, Column B.
 2. Line 2: "PER" or "NEWS" as applicable; followed by "FLTS" or "IRREG" as applicable; followed by "CR-RTS SCHEME."

[Revise the second sentence of reordered item b. to read as follows:]

- b. ***For 5-digit ZIP Codes not included in a scheme, begin preparing pallets under 12.1.5e (merged 5-digit pallet).***

* * * * *

[Reverse the order of items d. and e.; revise the text of reordered item d. to read as follows:]

- d. 5-digit carrier routes, required; optional with no minimum. May contain only carrier route price bundles for the same 5-digit ZIP Code for those 5-digit ZIP Codes that are not part of a scheme. Labeling:
 1. Line 1: use city, state, and 5-digit ZIP Code destination (see 8.6.4 for military mail).

2. Line 2: "PER" or "NEWS" as applicable; followed by "FLTS" or "IRREG" as applicable; followed by "CARRIER ROUTES" or "CR-RTS."

* * * * *

[Add new section title 12.2, USPS Marketing Mail, and renumber current 12.1.6 through 12.1.8 as new 12.2.1 through 12.2.3.]

12.2 USPS Marketing Mail

* * * * *

12.2.3 Pallet Preparation and Labeling

[Revise the second sentence in the introductory text of renumbered 12.2.3 to read as follows:]

When sortation under this option is performed after completing required or optional carrier route pallets (if any), mailers must prepare all merged 5-digit scheme and merged 5-digit pallets that are possible in the mailing based on the volume of mail to the destination using L001 and the 5% threshold.

[Reverse the order of items a. and b.; revise the text in reordered item a. to read as follows:]

- a. 5-digit scheme carrier routes, required, optional with no minimum. May contain only carrier route bundles for carrier routes for 5-digit ZIP Codes identified in the L001 5-digit scheme listing. Labeling:
 1. Line 1: use L001, Column B.
 2. Line 2: "MKT FLTS CR-RTS SCHEME."

[Revise the second sentence of reordered item b. to read as follows:]

- b. ***For 5-digit ZIP Codes not included in a scheme, begin preparing pallets under 12.2.3d (merged 5-digit pallet).***

* * * * *

[Reverse the order of items c. and d.; revise the text of reordered item c. to read as follows:]

- c. 5-digit carrier routes, required, optional with no minimum. May contain only carrier route price bundles for the same 5-digit ZIP Code for those 5-digit ZIP codes that are not part of a scheme. Labeling:
 1. Line 1: use city, state, and 5-digit ZIP Code destination (see 8.6.4 for military mail).
 2. Line 2: "MKT FLTS," followed by "CARRIER ROUTES" or "CR-RTS."

* * * * *

13.0 Merging Bundles of Flats on Pallets Using the City State Product and a 5% Threshold

13.1 Periodicals

13.1.1 Basic Standards

* * * * *

[Revise the text of item e. to read as follows:]

- e. After completing all possible required or optional carrier route pallets (if any), mailers must prepare all merged 5-digit scheme and 5-digit scheme pallets according to the standards in 13.1.5.

* * * * *

13.1.5 Pallet Preparation and Labeling

[Revise the second sentence in the introductory text of 13.1.5 to read as follows:]

When sortation under this option is performed, after completing required or optional carrier route pallets (if any), mailers must prepare all merged 5-digit scheme, 5-digit scheme, and merged 5-digit pallets that are possible in the mailing based on the volume of mail to the destination (8.0) using L001, the City State Product, and the 5% threshold (13.1.4), as applicable.

* * * * *

[Reverse the order of items a. and b.; revise the text of reordered item a. to read as follows:]

- a. 5-digit scheme carrier routes, required, optional with no minimum. May contain only carrier route bundles for carrier routes for 5-digit ZIP Codes identified in the L001 5-digit scheme listing. Labeling:
 1. Line 1: use L001, Column B.
 2. Line 2: "PER" or "NEWS" as applicable; followed by "FLTS" or "IRREG" as applicable; and followed by "CR-RTS SCHEME."

[Revise the second sentence of reordered item b. to read as follows:]

- b. ***For schemes in which all 5-digit ZIP Codes have "B" or "D" indicators and for which there are no 5-digit ZIP Codes for which 5-digit bundles may be placed on the pallet under the 5% limit, do not prepare a merged 5-digit scheme pallet (sort bundles to pallets under 13.1.5c through 13.1.5h).***

* * * * *

[Reverse the order of items d. and e.; revise the text of reordered item d. to read as follows:]

- d. 5-digit carrier routes, required; optional with no minimum. May contain only carrier route price bundles for the same 5-digit ZIP Code for those 5-digit ZIP Codes that are not part of a scheme. Labeling:
 1. Line 1: use city, state, and 5-digit ZIP Code destination (see 8.6.4 for military mail).

- 2. Line 2: "PER" or "NEWS" as applicable; followed by "FLTS" or "IRREG" as applicable; and followed by "CARRIER ROUTES" or "CR-RTS."

[Revise the second sentence of reordered item e. to read as follows:]

- e. ***However, if no 5-digit bundles for ZIP Codes with "B" or "D" indicators can be placed on this level pallet under the 5% limit, do not prepare a merged 5-digit pallet (sort bundles under 13.1.5f through 13.1.5h).***

* * * * *

13.2 USPS Marketing Mail

* * * * *

13.2.4 Pallet Preparation and Labeling

[Revise the second sentence of the introductory text of 13.2.4 to read as follows:]

When sortation under this option is performed after completing required or optional carrier route pallets (if any), mailers must prepare all merged 5-digit scheme and merged 5-digit pallets that are possible in the mailing based on the volume of mail to the destination using L001, the City State Product, and the 5% threshold.

[Reverse the order of items a. and b.; revise the text of reordered item a. to read as follows:]

- a. 5-digit scheme carrier routes, required, optional with no minimum. May contain only carrier route bundles for carrier routes for 5-digit ZIP Codes identified in the L001 5-digit scheme listing. Labeling:
 1. Line 1: use L001, Column B.
 2. Line 2: "MKT FLTS CR-RTS SCHEME."

[Revise the second sentence of reordered item b. to read as follows:]

- b. ***For schemes in which all 5-digit ZIP Codes have "B" or "D" indicators and for which there are no 5-digit ZIP Codes for which 5-digit bundles may be placed on the pallet under the 5% limit, do not prepare a merged 5-digit scheme pallet (sort bundles to pallets under 13.2.4c through 13.2.4i).***

* * * * *

[Reverse the order of items c. and d.; revise the text of reordered item c. to read as follows:]

- c. 5-digit carrier routes, required, optional with no minimum. May contain only carrier route price bundles for the same 5-digit ZIP Code for those 5-digit ZIP Codes that are not part of a scheme. Labeling:
 1. Line 1: use city, state, and 5-digit ZIP Code destination (see 8.6.4 for military mail).
 2. Line 2: "MKT FLTS," followed by "CARRIER ROUTES" or "CR-RTS."

[Revise the title of 15.0 to read as follows:]

15.0 Combining USPS Marketing Mail Flats, Bound Printed Matter Flats, and Periodicals Flats

15.1 Basic Standards

[Revise the introductory text of 15.1 to read as follows:]

Authorized mailers may combine USPS Marketing Mail flats, Bound Printed Matter flats, and Periodicals flats in a single mailing as follows:

[Revise the text of item a. to read as follows:]

- a. Each mailpiece must meet the standards in 240 for USPS Marketing Mail, 260 for Bound Printed Matter, and 207 for Periodicals. Periodicals publications must be authorized or pending original or additional entry at the office of mailing.

[Revise the text of item b. by adding a new last sentence to read as follows:]

- b. ***For exceptions to bundling, contact the Pricing and Classification Service Center (see 608.8.0).

* * * * *

[Revise the text of item e. to read as follows:]

- e. Each mailing must include at least 200 pieces or 50 pounds of USPS Marketing Mail and/or at least 300 pieces of Bound Printed Matter mail, when USPS Marketing Mail and/or Bound Printed Matter are combined within a mailing.

* * * * *

[Add new item h. to read as follows:]

- h. Each comailing containing Bound Printed Matter flats must:
 1. Be entered at a destination sectional center facility (DSCF) or a destination delivery unit (DDU) (Presorted DDU prices are not available for flats that weigh 1 pound or less).
 - a. When prepared and entered at a DSCF at 5-digit, 3-digit/SCF level pallets, BPM pieces should weigh no more than 20 ounces.
 - b. Heavier BPM pieces (pieces greater than 20 ounces and less than 24 ounces) in comail can only be placed in CR level bundles on a pallet included in no less than SCF/3D sortation entered at an SCF.
 2. Not exceed the maximum weight of 24 ounces per piece within the same bundle, when comailed with Periodicals pieces.
 - a. The maximum number of heavier pieces would be no more than half of each bundle (half of the bundle can have BPM pieces that weigh 20 – 24 ounces).
 - b. The maximum bundle weight is 20 pounds.

15.1.1 Service Objectives

[Revise the text of 15.1.1 to read as follows:]

The Postal Service processes combined mailings of USPS Marketing Mail, Bound Printed Matter, and Periodicals flats to the service standards of USPS Marketing Mail.

15.1.2 Postage Payment

[Revise the first sentence of 15.1.2 to read as follows:]

Postage for all USPS Marketing Mail and Bound Printed Matter pieces must be paid with permit imprint using a special postage payment system in 2.0 through 4.0 at the Post Office location serving the mailer's plant.***

15.1.3 Documentation

* * * * *

[Delete current item f. and renumber current item g. as new item f. to read as follows:]

- f. Any additional documentation to support postage payment system records, if requested.

15.1.4 Authorization

[Revise the first sentence of 15.1.4 to read as follows:]

A mailer must submit a written request to the manager, Business Mailer Support (see 608.8.1 for address) to combine mailings of USPS Marketing Mail flats, Bound Printed Matter flats, and Periodicals flats.***

[Add a new fourth sentence to 15.1.4 to read as follows:]

When requested, a mailer must submit a copy of a notification document signed and dated by the Periodicals publisher, acknowledging the mailer's participation in a combined mailing of USPS Marketing Mail and Periodicals and the potential for the mailpieces to receive deferred USPS handling.

15.1.5 Price Eligibility

[Revise the first sentence of 15.1.5 to read as follows:]

Apply prices based on the standards in 240 for USPS Marketing Mail and 260 for Bound Printed Matter flats.***

* * * * *

[Revise the title of 15.2 to read as follows:]

15.2 Combining USPS Marketing Mail Flats, Bound Printed Matter Flats, and Periodicals Flats in the Same Bundle

* * * * *

15.2.2 Mailpiece and Bundle Identification

[Revise the text of 15.2.2 to read as follows:]

Each USPS Marketing Mail, Bound Printed Matter, and Periodicals mailpiece prepared under a combined mailing of USPS Marketing Mail flats, Bound Printed Matter flats, and Periodicals flats must be identified as being part of a

mixed class mailing through the use of an optional endorsement line (OEL) in accordance with the standards in 203.7.1.8. Post-print consolidators who have mailings of USPS Marketing Mail and Bound Printed Matter, using Permit Imprint may include a "Co-Class" marking.

* * * * *

[Revise the title of 15.3 to read as follows:]

15.3 Combining Bundles of USPS Marketing Mail Flats, Bound Printed Matter Flats, and Periodicals Flats on the Same Pallet

* * * * *

15.3.2 Mailpiece and Bundle Identification

[Revise the text of 15.3.2 to read as follows:]

Each USPS Marketing Mail, Bound Printer Matter, and Periodicals mailpiece prepared under a combined mailing of USPS Marketing Mail flats, Bound Printed Matter flats, and Periodicals flats must be identified as being part of a mixed class mailing through the use of an optional endorsement line (OEL) in accordance with standards in 203.7.1.8. Post-print consolidators who have mailings of USPS Marketing Mail and Bound Printed Matter using Permit Imprint may include a "Co-Class" marking.

* * * * *

15.4 Pallet Preparation

15.4.1 Pallet Preparation, Sequence and Labeling

[Revise the introductory text of 15.4.1 to read as follows:]

When combining USPS Marketing Mail, Bound Printed Matter, and Periodicals flats within the same bundle or combining bundles of USPS Marketing Mail flats, Bound Printed Matter flats, and bundles of Periodicals flats on pallets, bundles must be placed on pallets. For labeling, "MKT/BPM/PER FLTS," as applicable' means to label each individual pallet based on the classes of mailpieces on that individual pallet. For example, in a combined mailing of USPS Marketing Mail, Bound Printed Matter, and Periodicals flats, some pallets may be labeled "MKT/BPM/PER" while others might properly be labeled "MKT/BPM," "MKT/PER," "BPM/PER," or even "MKT," "BPM," or "PER." Preparation, sequence and labeling:

* * * * *

[Revise the text of item a2 to read as follows:]

- 2. Line 2: "MKT/BPM/PER FLTS," as applicable; followed by "CARRIER ROUTES" (or "CR-RTS"); followed by "SCHEME" (or "SCH"); followed by "MIX COMAIL."

* * * * *

[Revise the text of item b2 to read as follows:]

- 2. Line 2: "MKT/BPM/PER FLTS CR/5D," as applicable; followed by "SCHEME" (or "SCH"); followed by "MIX COMAIL."

* * * * *

[Revise the text of item c2 to read as follows:]

- 2. Line 2: "MKT/BPM/PER FLTS," as applicable; followed by "CR/5D;" followed by "MIX COMAIL."

* * * * *

[Revise the text of item d2 to read as follows:]

- 2. Line 2: "MKT/BPM/PER FLTS," as applicable; followed by "CR/5D;" followed by "MIX COMAIL."

* * * * *

[Revise the text of item e2 to read as follows:]

- 2. Line 2: "MKT/BPM/PER FLTS," as applicable; followed by "BARCODED" (or "BC"); "NONBARCODED" (or "NBC") for Presorted mail, or "BARCODED/NONBARCODED" (or "BC/NBC") for pallets including both barcoded and Presorted pieces; followed by "MIX COMAIL."

* * * * *

[Revise the text of item f2 to read as follows:]

- 2. Line 2: "MKT/BPM/PER FLTS," as applicable; followed by "BARCODED" (or "BC"); "NONBARCODED" (or "NBC") for Presorted mail, or "BARCODED/NONBARCODED" (or "BC/NBC") for pallets including both barcoded and Presorted pieces; followed by "MIX COMAIL."

* * * * *

[Revise the text of item g2 to read as follows:]

- 2. Line 2: "MKT/BPM/PER FLTS," as applicable; followed by "BARCODED" (or "BC"); "NONBARCODED" (or "NBC") for Presorted mail, or "BARCODED/NONBARCODED" (or "BC/NBC") for mixed pallets; followed by "MIX COMAIL."

* * * * *

[Revise the text of item h2 to read as follows:]

- 2. Line 2: "MKT/BPM/PER FLTS NDC," as applicable; followed by "BARCODED" (or "BC"); "NONBARCODED" (or "NBC") for Presorted mail, or "BARCODED/NONBARCODED" (or "BC/NBC") for mixed pallets; followed by "MIX COMAIL."

* * * * *

[Revise the first and second sentences in item i. to read as follows:]

- i. *NDC, required.* Pallet may contain carrier route, automation, or presorted mail for the 3-digit ZIP Code groups in L601.***

* * * * *

[Revise the text of item i2 to read as follows:]

- 2. Line 2: “MKT/BPM/PER FLTS NDC,” as applicable; followed by “BARCODED” (or “BC”); “NONBARCODED” (or “NBC”) for Presorted mail, or “BARCODED/NONBARCODED” (or “BC/NBC”) for mixed pallets; followed by “MIX COMAIL.”

* * * * *

[Revise the first and second sentences in item j. to read as follows:]

- j. *Mixed NDC, required, 100 pound minimum.* Pallet may contain carrier route, automation, or presorted mail.***

* * * * *

[Revise the text of item j2 to read as follows:]

- 2. Line 2: “MKT/BPM/PER FLTS,” as applicable; followed by “BARCODED” (or “BC”); “NONBARCODED” (or “NBC”) for Presorted mail, or “BARCODED/NONBARCODED” (or “BC/NBC”) for mixed pallets; followed by “WKG;” followed by “MIX COMAIL.”

* * * * *

We will incorporate these revisions into the next update of the online DMM, which is available via Postal Explorer® at pe.usps.com.

— Product Classification, Marketing, 12-7-17

DMM Revision: Products Mailable at Nonprofit Marketing Mail Prices

Under statutory restrictions in *Mailing Standards of the United States Postal Service*, Domestic Mail Manual (DMM®), subsection 703.1.6.11, products that are mailed at the Nonprofit USPS Marketing Mail® prices must meet at least one of three exceptions. A low-cost item is one of the exceptions referenced in the Internal Revenue Code. Each year, the Internal Revenue Service determines the value of a low-cost item — the actual cost to the authorized nonprofit organization — and adjusts the value for the cost of living. For 2018, the value of a low-cost item is \$10.90 or less.

Mailing Standards of the United States Postal Service, Domestic Mail Manual (DMM)

* * * * *

- 700 **Special Standards**
 - 703 **Nonprofit USPS Marketing Mail and Other Unique Eligibility**
 - 1.0 **Nonprofit USPS Marketing Mail**
- * * * * *

1.6 Eligible and Ineligible Matter

* * * * *

1.6.11 Products Mailable at Nonprofit USPS Marketing Mail Prices

* * * * *

[Revise item a. to read as follows:]

- a. Low-cost items within the meaning of 26 USC 513(h)(2), Internal Revenue Code. At the beginning of each calendar year, the value of low-cost items is adjusted for cost of living. Effective January 1, 2018, the cost of such items cannot exceed \$10.90. This cost is the cost to the authorized organization that mails the items or on whose behalf the items are mailed.

* * * * *

We will incorporate this revision into the January 21, 2018, update of the online DMM, which is available via Postal Explorer® at pe.usps.com.

— Product Classification, Marketing, 12-7-17

IMM Revision: Changes to Pricing and Mailing Standards for International Shipping Services

Effective January 21, 2018, the Postal Service™ will revise *Mailing Standards of the United States Postal Service*, International Mail Manual (IMM®) to reflect changes to prices, product features, and standards for the international shipping services noted below.

Global Express Guaranteed Service

Global Express Guaranteed® (GXG®) service provides fast international shipping and date-certain delivery with a money-back guarantee, with international transportation and delivery provided through an alliance with FedEx Express®. The price increase for GXG service averages 3.9 percent.

The Postal Service provides Commercial Base™ pricing to online customers who prepare and pay for GXG shipments via USPS®-approved payment methods (other than Click-N-Ship® service), with a 5 percent discount off the published retail prices for GXG service. Customers who prepare GXG shipments via Click-N-Ship service will continue to pay retail prices. Commercial Plus™ prices are set to match Commercial Base prices.

Priority Mail Express International

Priority Mail Express International® service provides fast service from many major U.S. markets to approximately 180 countries in 3–5 business days, although the actual number of days may vary based upon origin, destination, and customs delays. Priority Mail Express International with Money-Back Guarantee service is available for certain destinations. The price increase for Priority Mail Express International service averages 3.9 percent. The Commercial Base price for customers who prepare and pay for Priority Mail Express International shipments via permit imprint, online at usps.com, or as registered end-users using an authorized PC Postage® vendor (with the exception of Click-N-Ship service) will be 5 percent below the retail price. Customers who prepare Priority Mail Express International shipments via Click-N-Ship service pay retail prices. Commercial Plus prices are set to match Commercial Base prices.

The Postal Service will also continue to include Priority Mail Express International service in customized Global Expedited Package Services (GEPS) contracts offered to customers who meet certain revenue thresholds and are willing to commit a larger amount of revenue to the Postal Service for Priority Mail Express International service and Priority Mail International® service.

Priority Mail International

Priority Mail International service is an economical way to send merchandise and documents from many major U.S. markets to approximately 180 countries in 6–10 business days, although the actual number of days may vary

based upon origin, destination, and customs delays. The price increase for Priority Mail International service averages 3.9 percent. The Commercial Base price for customers who prepare and pay for Priority Mail International items via permit imprint, online at usps.com, or as registered end-users using an authorized PC Postage vendor (with the exception of Click-N-Ship service) will be 5 percent below the retail price. Customers who prepare Priority Mail International shipments via Click-N-Ship service pay retail prices. Commercial Plus prices are set to match Commercial Base prices.

The Postal Service will continue to include Priority Mail International service in customized GEPS contracts offered to customers who meet certain revenue thresholds and are willing to commit to a larger amount of revenue to the Postal Service for Priority Mail Express International service and Priority Mail International service.

Priority Mail International flat rate pricing continues to be available for the following:

- Flat Rate Envelopes,
- Small Flat Rate Priced Boxes, and
- Medium and Large Flat Rate Boxes.

First-Class Package International Service

First-Class Package International Service® (FCPIS®) is an economical international service for small packages weighing less than 4 pounds and not exceeding \$400 in value. The price increase for FCPIS averages 3.9 percent. The Commercial Base price for customers who prepare and pay for FCPIS items via permit imprint or by USPS-approved online payment methods will be 5 percent below the retail price. Customers who prepare FCPIS shipments via Click-N-Ship service pay retail prices. Commercial Plus prices are set to match Commercial Base prices.

Electronic USPS Delivery Confirmation International service — abbreviated E-USPS DELCON INTL® — is available for FCPIS items to select destination countries at no charge.

International Priority Airmail and International Surface Air Lift

International Priority Airmail® (IPA®) service, including IPA M-bag® service, is an economical commercial service designed for volume mailings of all First-Class Mail International® postcards, letters, and large envelopes (flats), and for volume mailings of FCPIS packages (small packets) weighing up to a maximum of 4.4 pounds. IPA shipments are typically flown to foreign destinations (exceptions apply to Canada and Mexico) and are then entered into that country's air or surface priority mail system for delivery. The price increase for IPA and IPA M-bags is 3.9 percent.

International Surface Airlift® (ISAL®) service is similar to IPA service except that, once flown to the foreign destination, it is entered into that country’s air or surface nonpriority mail system for delivery. The price increase for ISAL and ISAL M-bags is 3.9 percent.

In this price change, conforming to the requirements of the Universal Postal Convention, we are limiting the contents of First-Class Mail International postcard, letter, and large envelope (flats) mail to documents. Because IPA service (including IPA M-bags) and ISAL service (including ISAL M-bags) are commercial services designed for volume mailings of all First-Class Mail International postcards, letters, large envelopes (flats) and for FCPIS packages (small packets), limiting the contents of First-Class Mail International postcard, letter, and large envelope (flats) mail as discussed above will also apply to postcards, letters, and large envelope (flats) mail for both IPA and ISAL services. (See “IMM Revision: Changes to Pricing and Products for International Mailing Services” on page 16 in this issue of the *Postal Bulletin*.)

Direct Sacks of Printed Matter to One Addressee (Airmail M-bags)

An airmail M-bag is a direct sack of printed matter sent to a single foreign addressee at a single address. Prices are based on the weight of the sack. The price increase for Airmail M-bag service averages 3.9 percent.

International Extra Services and Fees

Depending on country destination and mail type, customers may add a variety of extra services to their outbound shipments and pay a variety of fees. The price increase for these fees and services averages 3.9 percent.

These IMM revisions are based on our international Shipping Services final rule published in the *Federal Register* (82 FR 48933-48936) on October 23, 2017. The entire notice is available for review on Postal Explorer® at pe.usps.com.

Mailing Standards of the United States Postal Service, International Mail Manual (IMM)

	*	*	*	*	*
1					
	*	*	*	*	*
120					
	*	*	*	*	*
123					
	*	*	*	*	*
123.6					
123.61					
	*	*	*	*	*

Exhibit 123.61

Customs Declaration Form Usage by Mail Category

* * * * *

[Revise the title and text for the First-Class Package International Service section to read as follows:]

Type of Item	Declared Value, Weight, or Physical Characteristic	Required PS Form	Comment (if applicable)
First-Class Package International Service Packages (Small Packets), as well as IPA Packages (Small Packets) and ISAL Packages (Small Packets)			
All First-Class Package International Service packages (small packets), as defined in 251.2, regardless of contents, and, for commercial mailers, IPA packages (small packets) and ISAL packages (small packets), regardless of contents.	\$400 or less	2976	Merchandise is permitted unless prohibited by the destination country.
	Over \$400	Prohibited	Items over \$400 must be mailed using Global Express Guaranteed service, Priority Mail Express International service, or Priority Mail International service.
All package-size items, as defined in 251.2, that are entered by a known mailer as defined in 123.62 and items that qualify under 123.63.	\$400 or less	None	Not applicable.

123.62 Known Mailers

123.621 Overview

[Revise the first sentence of 123.621 to read as follows (indicating that the known mailer exemption applies only to package-size mailpieces):]

A “known mailer” may be exempt from the customs form requirement that would otherwise apply to package-size mailpieces as defined in 251.2.***

123.622 Definition

* * * * *

[Revise item c(1) to read as follows:]

(1) First-Class Package International Service.

* * * * *

123.623 Conditions

* * * * *

[Replace the first sentence of item b. with two new sentences to read as follows:]

b. Merchandise may only be mailed as First-Class Package International Service packages (small packets) — or for commercial mailers, as IPA packages (small packets) and ISAL packages (small packets). The mailpieces may contain hard copy printed matter or recorded media (e.g., CDs, DVDs, flash drives, video, and cassette tapes), for which no customs form is required in the destination country.***

[Revise the first sentence of item c. to read as follows:]

c. First-Class Package International Service packages — or for commercial mailers, IPA packages (small packets) and ISAL packages (small packets) — may contain goods of nominal value (less than \$1.00) in conjunction with communications or informational materials for which no customs form is required in the destination country.***

* * * * *

2 Conditions for Mailing

* * * * *

290 Commercial Services

* * * * *

292 International Priority Airmail (IPA) Service

292.1 Description

292.11 General

[Revise the second sentence of 292.11 to read as follows (including content-based requirements):]

***The sender must prepare mailpieces in accordance with the requirements of this subchapter and with the content-based and shape-based requirements of the applicable

service — see 240 for First-Class Mail International items, and see 250 for First-Class Package International Service items.***

* * * * *

292.2 Eligibility

* * * * *

292.25 Dutiable Items

[Revise the text of 292.25 to read as follows (referring only to First-Class Package International Service and removing an outdated reference to ordinary or insured Priority Mail International items):]

Dutiable items may be sent in accordance with the applicable rules in this subchapter for First-Class Package International Service only. Priority Mail International items may not be mailed with IPA service.

* * * * *

293 International Surface Air Lift (ISAL) Service

293.1 Description

293.11 General

[Revise the second sentence of 293.11 to read as follows (including content-based requirements):]

The sender must prepare mailpieces in accordance with the requirements of this subchapter and with the content-based and shape-based requirements of the applicable service — see 240 for First-Class Mail International items, and see 250 for First-Class Package International Service items.

* * * * *

293.2 Eligibility

* * * * *

293.25 Dutiable Items

[Revise the text of 293.25 to read as follows (referring only to First-Class Package International Service and removing an outdated reference to ordinary or insured Priority Mail International items):]

Dutiable items may be sent in accordance with the applicable rules in this subchapter for First-Class Package International Service only. Priority Mail International items may not be mailed with ISAL service.

* * * * *

We will incorporate these changes into the next update of the online IMM, which is available via Postal Explorer at pe.usps.com.

IMM Revision: Changes to Pricing and Products for International Mailing Services

Effective January 21, 2018, the Postal Service™ will revise *Mailing Standards of the United States Postal Service*, International Mail Manual (IMM®) to reflect changes to prices, product features, and standards for the international mailing services noted below.

The following pricing and IMM revisions are based on the Postal Regulatory Commission's (PRC) Order No. 4215, issued on November 9, 2017, in Docket No. R2018-1. In that order, the PRC determined that the First-Class Mail® (including First-Class Mail International®), USPS Marketing Mail®, Periodicals, Package Services, and Special Services Products pricing proposals, as well as the related classification changes in the Postal Service's request, will go into effect on January 21, 2018.

First-Class Mail International Service

We will not increase prices for single-piece First-Class Mail International letters, postcards, and flats. The price of a single-piece 1-ounce letter will continue to be \$1.15. The First-Class Mail International letter nonmachinable surcharge remains \$0.21.

In this price change, conforming to the requirements of the Universal Postal Convention, we are limiting the contents of First-Class Mail International postcard, letter, and large envelope (flats) mail to personal correspondence and nondutiable documents. Merchandise that was formerly carried in First-Class Mail International service will instead be eligible to be enclosed in First-Class Package International Service® (FCPIS®) pieces or another available service. Because International Priority Airmail® (IPA®) service (including IPA M-bags®) and International Surface Airlift® (ISAL®) service (including ISAL M-bags) are commercial services designed for volume mailings of all First-Class Mail International postcards, letters, large envelopes (flats) and for FCPIS packages (small packets), limiting the contents of First-Class Mail International postcard, letter, and large envelope (flats) mail as discussed above will also apply to postcards, letters, and large envelope (flats) mail for both IPA and ISAL services. (See "IMM Revision: Changes to Pricing and Mailing Standards for International Shipping Services" on page 13 in this issue of the *Postal Bulletin*.)

International Extra Services and Fees

On January 21, 2018, the Postal Service will increase prices for certain market-dominant international extra services, including the following:

- Certificate of mailing service: Prices for certificate of mailing service are increasing — the overall price increase is 3.335 percent.
- Registered Mail™ service: The fee for international Registered Mail service is increasing to \$15.50.
- Return receipt service: The fee for international return receipt service is increasing to \$4.00.
- Customs clearance and delivery fee: The customs clearance and delivery fee is increasing to \$6.25.
- International Business Reply™ service (IBRS): The price for IBRS cards is increasing to \$1.40, and the price for IBRS envelopes is increasing to \$1.90.

We will incorporate these revisions into the January 2018 edition of Notice 123, *Price List*, which is available via Postal Explorer® at pe.usps.com.

These IMM revisions are based on our international Mailing Services proposed rule published in the *Federal Register* (82 FR 49160-49166) on October 24, 2017. The entire notice is available for review on Postal Explorer at pe.usps.com.

Mailing Standards of the United States Postal Service, International Mail Manual (IMM)

	*	*	*	*	*
1	International Mail Services				
	*	*	*	*	*
120	Preparation for Mailing				
	*	*	*	*	*
123	Customs Forms and Online Shipping Labels				
	*	*	*	*	*
123.6	Required Usage				
123.61	Conditions				
	*	*	*	*	*

Exhibit 123.61

Customs Declaration Form Usage by Mail Category

* * * * *

[Revise the title and text for the First-Class Mail International section to read as follows:]

Type of Item	Declared Value, Weight, or Physical Characteristic	Required PS Form	Comment (if applicable)
*	*	*	*
First-Class Mail International Letters and Large Envelopes (Flats), as well as International Priority Airmail (IPA) Letters and Large Envelopes (Flats) and International Surface Air Lift (ISAL) Letters and Large Envelopes			
All letter-size and flat-size items, as defined in 241.2, containing only nondutiable documents.	Under 16 ounces	None	See 123.63 for additional information concerning “documents.” Items containing merchandise must be mailed using Global Express Guaranteed service, Priority Mail Express International service, Priority Mail International service, or First-Class Package International Service; commercial mailers may also use IPA packages (small packets) and ISAL packages (small packets) to mail merchandise. Certain documents controlled by export regulatory agencies may also require customs documentation. See 510–590 and Publication 699 for additional information.
	16 ounces or more	2976	
All items containing any goods, regardless of weight.	Prohibited	Prohibited	See 123.63 for additional information concerning “documents” and merchandise. Items containing merchandise must be mailed using Global Express Guaranteed service, Priority Mail Express International service, Priority Mail International service, or First-Class Package International Service; commercial mailers may also use IPA packages (small packets) and ISAL packages (small packets) to mail merchandise.
*	*	*	*

[Delete the footnote.]

* * * * *

[Revise the title of 123.63 to read as follows (indicating a separation of documents and merchandise):]

123.63 Separation of Documents and Merchandise

[Revise the text to read as follows (dividing the section into subsections, with 123.631 containing new text that explains the separation between documents and merchandise, 123.632 based on the first part of the previous 123.63, and 123.633 based on the second part of the previous 123.63):]

123.631 Explanation of Separation

Letter-post mail (First-Class Mail International, IPA and ISAL items, and First-Class Package International Service) must be separated based on contents into Documents and Merchandise categories. Merchandise consists of items other than documents that are considered potentially dutiable, as well as documents that may be subject to customs duties. The mailer must declare a value and place a customs form on each merchandise item. If any item (merchandise or document) weighs more than 16 ounces, the mailer must place a customs form on it, regardless of the content.

123.632 Documents

In Exhibit 123.61, the “Type of Item” column has several references to “documents.” For this purpose, “documents” refers only to any piece of written, drawn, or printed infor-

mation, excluding objects of merchandise. Documents do not include digital and electronic storage media or devices such as CDs, DVDs, or flash drives. Examples of documents include the following:

- a. Audit and business records.
- b. Personal correspondence.
- c. Circulars.
- d. Pamphlets.
- e. Advertisements.
- f. Written instruments not intended to be resold.
- g. Money orders, checks, and similar items that cannot be negotiated or converted into cash without forgery.

123.633 Customs Forms Required

The following are examples of items that are required to bear a customs declaration form and for which the mailer must declare a value:

- a. CDs, DVDs, flash drives, video and cassette tapes, and other digital and electronic storage media — regardless of whether they are blank or contain electronic documents or other prerecorded media.
- b. Artwork.
- c. Collector or antique document items.

- d. Books.
- e. Periodicals.
- f. Printed music.
- g. Printed educational or test material.
- h. Player piano rolls.
- i. Commercial engineering drawings.
- j. Commercial blueprints.
- k. Film.
- l. Negatives.
- m. X-rays.
- n. Separation negatives.
- o. Commercial photographs.

* * * * *

141.5 First-Class Mail International

[Revise the first two sentences of 141.5 to read as follows:]

First-Class Mail International is a generic term for mailpieces that are postcard-size, letter-size, or flat-size and weigh 4 pounds or less. First-Class Mail International items may contain any letter-size or flat-size mailable correspondence or nondutiable documents that are not prohibited by the destination country.***

* * * * *

141.6 First-Class Package International Service

[Revise the last sentence of 141.6 to replace “registry” with “Registered Mail” to read as follows:]

***At the sender’s option, extra services, such as Registered Mail and return receipt, may be added on a country-specific basis.

* * * * *

240 First-Class Mail International

* * * * *

242 Eligibility

242.1 Content Eligibility

[Revise the text of 242.1 to read as follows (indicating that only correspondence and nondutiable documents may be sent by First-Class Mail International service):]

Subject to applicable weight and size limits, only correspondence and nondutiable documents that are otherwise acceptable and not prohibited by the Postal Service or the country of destination may be mailed at the First-Class Mail International price.

[Revise the title of 242.2 to read as follows:]

242.2 Merchandise

[Replace subsections 242.21 and 242.22 with text to read as follows (because no merchandise, neither dutiable as in the previous 242.21 nor nondutiable as in the previous 242.22, may be mailed with First-Class Mail International service):]

No merchandise, whether dutiable or nondutiable, may be mailed using First-Class Mail International service. Items containing merchandise may be sent by Global Express Guaranteed service, Priority Mail Express International service, Priority Mail International service, or First-Class Package International Service; commercial mailers may also use IPA packages (small packets) and ISAL packages (small packets).

243 Prices and Postage Payment Methods

* * * * *

243.3 Permit Imprint — General

[Revise the fourth sentence of 243.3 to read as follows (specifying that the only First-Class Mail International items that require customs forms are letters and flats that weigh more than 16 ounces):]

For items requiring a customs form (First-Class Mail International letter-size and flat-size mailpieces weighing more than 16 ounces), mailers must also meet the following requirements.

* * * * *

Individual Country Listings

* * * * *

[For every country that accepts Free Matter for the Blind service, revise the first paragraph of the “Free Matter for the Blind” text to read as follows (noting that First-Class Mail International service is limited to documents only):]

Free Matter for the Blind (270)

Free when sent as First-Class Mail International (documents only), First-Class Package International Service, Priority Mail International Flat Rate Envelopes, or Priority Mail International Small Flat Rate Priced Boxes. Weight limit: 4 pounds.

* * * * *

[For the following countries, revise the applicable text as noted:]

Afghanistan

* * * * *

Restrictions

[Revise the entry to read as follows:]

Traveler’s checks, precious stones, jewelry, and other valuable articles are admitted only in First-Class Package International Service with Registered Mail service shipments.

* * * * *

Aruba

Prohibitions

[Revise the first entry to read as follows:]

Coins; banknotes; currency; securities of any kind payable to bearer; traveler’s checks; platinum, gold, and silver (manufactured or not); precious stones; jewelry; and other valuable articles, **unless they are sent by First-Class Package International Service with Registered Mail service.**

* * * * *

Benin

* * * * *

Observations

[Revise the first entry to read as follows:]

1. First-Class Package International Service items containing dutiable articles must be sent with Registered Mail service.

* * * * *

Bonaire, Sint Eustatius, and Saba

Prohibitions

[Revise the first entry to read as follows:]

Coins; banknotes; currency; securities of any kind payable to bearer; traveler’s checks; platinum, gold, and silver (manufactured or not); precious stones; jewelry; and other valuable articles, **unless they are sent by First-Class Package International Service with Registered Mail service.**

* * * * *

Brazil

* * * * *

Restrictions

[Revise the second entry to read as follows:]

Postage stamps are admitted only in First-Class Package International Service with Registered Mail service shipments.

* * * * *

Burkina Faso

* * * * *

Observations

[Revise the entry to read as follows:]

First-Class Package International Service items containing dutiable articles must be sent with Registered Mail service.

* * * * *

Burma (Myanmar)

* * * * *

Observations

[Revise the first entry to read as follows:]

1. The following may not be sent as merchandise with First-Class Package International Service if they are liable to customs duty: Works of art (including photographs), printed forms, account books, manuscript books, labels, advertising matter (except trade catalogs and circulars), picture books, almanacs, maps, old paper, and old newspapers serving as packing paper.

* * * * *

Cameroon

* * * * *

Restrictions

[Revise the entry to read as follows:]

Banknotes; currency notes; and securities payable to bearer may be sent only as First-Class Package International Service with Registered Mail service.

* * * * *

Canada

* * * * *

[Revise the first entry to read as follows:]

Coins; banknotes; currency notes; securities payable to bearer; traveler’s checks; gold, silver, platinum, manufactured or not; jewelry; and other valuable articles may be sent only by First-Class Package International Service with Registered Mail service.

Exceptions:

Coins sent to or from collectors or dealers may be mailed in ordinary (uninsured) parcels.

* * * * *

Cote d’Ivoire (Ivory Coast)

* * * * *

Observations

[Revise the first entry to read as follows:]

1. First-Class Package International Service items containing dutiable articles must be sent with Registered Mail service.

* * * * *

Curacao**Prohibitions**

[Revise the first entry to read as follows:]

Coins; banknotes; currency; securities of any kind payable to bearer; traveler's checks; platinum, gold, and silver (manufactured or not); precious stones; jewelry; and other valuable articles, **unless they are sent by First-Class Package International Service with Registered Mail service.**

* * * * *

Faroe Islands

* * * * *

Restrictions

[Revise the first entry to read as follows:]

Coins; banknotes; currency notes (paper money); securities payable to bearer; traveler's checks; manufactured and unmanufactured platinum, gold, and silver; precious stones; jewelry; and other valuable articles may only be sent in First-Class Package International Service with Registered Mail service items or insured parcels.

* * * * *

French Guiana

* * * * *

Restrictions

[Revise the first entry to read as follows:]

Coins; banknotes; currency notes (paper money); securities payable to bearer; traveler's checks; manufactured and unmanufactured platinum, gold, and silver; precious stones; jewelry; and other valuable articles may only be sent in First-Class Package International Service with Registered Mail service shipments.

* * * * *

French Polynesia (Includes Tahiti)

* * * * *

Restrictions

[Revise the entry to read as follows:]

Banknotes admitted only in First-Class Package International Service with Registered Mail service items.

* * * * *

Gambia

* * * * *

Restrictions

[Revise the entry to read as follows:]

Banknotes; currency notes; securities payable to bearer; traveler's checks; manufactured and unmanufactured platinum, gold, and silver; precious stones; jewelry; and other valuable articles may be sent only in First-Class Package International Service with Registered Mail service shipments.

* * * * *

Ghana

* * * * *

Restrictions

[Revise the first entry to read as follows:]

Banknotes, treasury notes, currency notes, and coins may only be sent in First-Class Package International Service with Registered Mail service shipments from one bank to another.

* * * * *

Greece**Prohibitions**

* * * * *

[Revise the third entry to read as follows:]

Coins; traveler's checks; platinum, gold, or silver, manufactured or not; precious stones; jewelry; and other valuable articles, except banknotes, currency notes (paper money), and securities payable to bearer may be sent in First-Class Package International Service with Registered Mail service shipments.

* * * * *

Restrictions

[Revise the first entry to read as follows:]

Banknotes, currency notes, and securities payable to bearer may only be sent in First-Class Package International Service with Registered Mail service shipments.

* * * * *

Article continues on page [41](#).

Pull-Out Information

Fraud

Invalid USPS Corporate Account Numbers

Please provide this listing to Contract Postal Units and acceptance clerks in non-POS locations without intranet access to validate a USPS Corporate Account (USPSCA) number online. For all other locations, online USPSCA validation is preferred. This list supersedes all previous notices, which must be recycled.

Acceptance clerks must not accept Priority Mail Express® shipments bearing an invalid USPSCA number in the “Payment by Account” or “Agreement Number” section of the label or form.

Note: The first 6 digits of a 9-digit Custom Designed Service and Next Day Pickup Agreement make up the Corporate Account Number.

008191	037146	071044	112128	210611	361361	503217	612015	741361	904387	951709	968445	969209
008496	038575	071984	113789	212503	361362	503255	612064	741673	904658	958301	968471	970415
008738	039304	075660	116011	220205	379555	507002	619056	750044	904736	967073	968567	970549
009090	041303	076338	117004	220324	381795	511001	619380	750155	906190	967124	968583	970695
009587	043044	077025	117919	221046	410045	511830	622002	750750	906341	967197	968606	971140
009775	048073	077257	118102	222001	432052	524003	622003	752030	906929	967249	968613	972315
011076	055118	080160	119449	235112	432381	524008	625115	752156	907769	967261	968617	973273
012203	060033	080647	119608	282810	436481	524077	630025	752177	913137	967262	968641	982697
012226	060086	085656	120185	296432	441501	525002	631001	752681	917703	967267	968655	983123
013259	060096	085917	120257	299002	441572	527003	631050	770043	920108	967290	968667	992336
015693	060584	090704	120344	300311	445110	530008	631070	773083	921150	967299	968679	992755
015816	062094	094159	120362	301407	451134	531790	631381	774320	921152	967326	968691	995014
016849	064991	097465	121182	301415	452187	531880	631416	809016	921901	967335	968692	995426
018002	067088	100143	132240	301686	452301	551361	631565	816809	926072	967342	968698	997285
018087	067202	100223	142474	310002	462025	551612	631850	836730	927721	967348	968789	998342
018142	067218	100299	159065	311306	482435	553005	631873	837030	927789	967395	968838	999203
018440	067219	100491	171250	321381	484003	570037	641376	837973	931102	968004	968847	
018583	067299	100700	191806	322022	488304	600223	651150	840075	931610	968252	968902	
018833	067314	100981	192540	322057	490737	601759	653401	851021	932699	968255	969031	
018902	067344	100993	198252	323520	495134	604115	666040	856524	933181	968287	969104	
018915	068064	104616	200143	326756	495146	604172	672015	891213	934222	968299	969109	
021685	068492	105081	200190	330043	495583	604652	672029	891619	935022	968335	969115	
022928	069037	105813	206091	330320	495584	605260	705001	900012	939002	968338	969136	
025476	069600	108952	207171	331204	503009	605513	705911	900013	940558	968345	969168	
027134	069920	109014	209107	334723	503034	607102	730071	900433	946369	968359	969170	
029177	070733	109235	210078	338105	503138	607985	731045	900517	950914	968391	969173	
029825	070949	109711	210483	349157	503159	608195	731349	900550	951079	968403	969175	
037049	070998	109953	210599	352006	503173	611200	731404	901382	951332	968421	969208	



21.1million

**Average number of mailpieces processed
each hour by the Postal Service**

Missing, Lost, or Stolen U.S. Money Order Forms

Do Not Cash — Upon Receipt, Notify Local Postal Inspectors

Provide this listing to all Postal Service™ employees responsible for accepting and cashing Postal Service money orders. Destroy all interim notices when the

numbers listed appear in the *Postal Bulletin*. The actual serial numbers consist of the first 10 digits on the money orders. Check for altered dollar amounts by holding money orders to the light.

010 001 0200 to 0299	039 145 6521 to 6595	071 507 6840 to 6899	117 951 5200 to 5299
010 504 1932 to 1999	040 024 3901 to 3999	072 045 9641 to 9699	119 786 3051 to 3064
011 582 1889 to 1899	040 674 7100 to 7199	072 675 8287 to 8299	119 815 8961 to 6199
011 588 2900 to 3099	040 688 8816 to 8899	073 763 0867 to 0876	119 850 7400 to 7499
012 441 0784 to 0799	041 299 6752 to 6799	073 763 0878 to 0887	119 850 7700 to 7999
012 579 5675 to 5699	041 623 8889 to 8899	073 763 0889 to 0898	121 634 0460 to 0499
013 289 6176 to 6199	041 803 6565 to 6599	077 617 5481 to 5499	122 451 9879 to 9899
013 610 0014 to 0099	043 129 1968 to 1997	077 999 4001 to 4090	122 714 6805 to 6900
014 932 1000 to 1099	043 205 5922 to 5999	078 174 4475 to 4499	124 916 0304 to 0499
014 972 0800 to 0899	044 087 3457 to 3499	078 219 4931 to 4999	126 423 0136 to 0169
015 363 0065 to 0099	044 087 4000 to 4099	078 250 4756 to 4799	127 500 2328 to 2399
017 028 3200 to 3299	044 226 2487 to 2512	078 823 8312 to 8399	160 901 2254 to 2299
018 569 5333 to 5399	044 306 4200 to 4299	079 374 0300 to 2499	161 103 6581 to 6599
018 986 5264 to 5299	044 306 4370 to 4599	079 807 2342 to 2399	161 194 2857 to 0899
019 518 2814 to 2899	045 524 4121 to 4298	082 721 0228 to 0254	162 032 4447 to 4499
020 698 5159 to 5199	046 800 9870 to 9899	083 140 5000 to 7499	163 257 1085 to 1099
020 844 7307 to 7399	047 352 4000 to 4099	083 784 8886 to 8899	164 359 2406 to 2499
020 972 8948 to 8999	048 383 7650 to 7659	083 913 6915 to 6999	166 101 1433 to 1499
022 021 9110 to 9181	048 396 3647 to 3699	084 478 3920 to 3999	167 555 5201 to 5212
022 037 1411 to 1499	051 142 0755 to 0799	086 000 8271 to 8299	167 555 5214 to 5299
022 527 9201 to 9210	051 774 8857 to 8899	086 798 3840 to 3849	169 618 6274 to 6299
022 529 1882 to 1899	051 781 2875 to 2885	088 404 4472 to 4499	171 806 6878 to 6893
023 637 7169 to 7199	051 977 7010 to 7023	088 404 5584 to 5699	173 639 4685 to 4699
024 380 4100 to 4199	052 058 7115 to 7199	088 757 8688 to 8699	174 238 2779 to 2799
024 496 6870 to 6896	054 450 1130 to 1167	088 757 9400 to 9499	174 281 9347 to 9399
025 092 0987 to 0999	057 670 0563 to 0599	089 358 2248 to 2257	175 251 2600 to 0699
025 369 5535 to 5599	058 187 3836 to 3899	090 663 9678 to 9684	176 281 7937 to 7950
025 729 1151 to 1199	058 523 3003 to 3099	091 818 0071 to 0099	176 281 7963 to 7999
025 729 1643 to 1799	058 591 1153 to 1299	093 106 9346 to 9355	176 731 6586 to 6599
026 492 3180 to 3199	058 895 3746 to 3799	093 203 0500 to 0599	178 254 5000 to 9999
027 361 0430 to 0499	059 986 0814 to 0899	093 684 3630 to 3699	178 881 9900 to 9999
027 369 4482 to 4495	060 406 7650 to 7699	094 081 5074 to 5099	180 031 2089 to 2088
027 671 8762 to 8776	063 491 8122 to 8199	094 216 2555 to 2599	180 403 7723 to 7741
027 787 9886 to 9899	063 916 9968 to 9999	094 580 7062 to 7099	180 428 4580 to 0599
027 965 9487 to 9499	064 091 4500 to 4599	094 639 4200 to 4299	182 368 7544 to 0599
028 100 8069 to 8099	065 170 0471 to 0499	095 070 7186 to 7199	182 475 3229 to 3258
028 191 1852 to 1999	065 255 7909 to 7999	095 076 8300 to 8399	182 475 3904 to 3933
028 850 3000 to 3199	065 392 6345 to 6399	095 354 6864 to 6899	182 631 0031 to 0099
029 510 1500 to 1599	066 099 2014 to 2099	097 224 1350 to 1599	182 911 6539 to 6600
030 687 0903 to 0999	066 648 2880 to 2899	100 160 3800 to 3899	184 218 2760 to 2799
030 701 3442 to 3499	066 787 3639 to 3699	104 667 6400 to 6499	185 828 1474 to 1499
031 077 4507 to 4799	066 845 7500 to 9999	104 876 8937 to 8999	186 132 7583 to 0599
032 295 7500 to 9999	067 093 3869 to 3899	112 049 4413 to 4499	186 629 0589 to 0599
034 394 1000 to 1099	068 895 0334 to 0399	112 870 9765 to 9799	187 184 6177 to 0199
034 943 0400 to 0799	070 724 4488 to 4499	113 319 2000 to 2099	187 323 8200 to 8299
035 035 4337 to 4399	070 841 9181 to 9199	114 402 3850 to 3899	187 441 6080 to 6099
037 312 7500 to 7599	070 844 2546 to 2599	114 866 5368 to 5397	188 831 6774 to 6799
037 706 9578 to 9599	070 916 1340 to 1399	116 154 2800 to 2899	188 835 6370 to 6399
037 805 3677 to 3699	071 047 5768 to 5799	116 986 4400 to 4499	189 083 1064 to 1099
037 909 5490 to 5499	071 179 9800 to 9899	117 175 1647 to 5169	189 660 9583 to 9599
037 931 4660 to 4699	071 386 3682 to 3699	117 951 4687 to 4699	191 179 0377 to 0399

192 050 5762	to	5781	229 924 6696	to	6699	391 104 6146	to	6199	410 491 2311	to	2399
194 456 8600	to	0699	230 051 9500	to	9999	391 574 1466	to	1499	410 694 8400	to	8599
195 194 6881	to	6899	236 366 2431	to	2499	391 783 3020	to	3599	410 775 1500	to	1599
195 874 1112	to	1199	236 607 6882	to	6899	391 792 6100	to	6199	410 795 7927	to	7999
196 979 0524	to	0599	236 660 5853	to	5872	392 668 2956	to	2999	410 867 0917	to	0966
197 244 6100	to	6199	239 322 5200	to	5299	392 854 8500	to	8899	410 867 0970	to	0999
197 244 6300	to	6399	239 322 5400	to	5499	393 584 7566	to	7699	411 868 1023	to	1199
197 244 6400	to	6499	239 322 5600	to	5699	393 650 0074	to	0099	411 922 2322	to	2399
197 244 6500	to	6599	239 322 5800	to	5899	393 838 8316	to	8499	412 193 0900	to	0999
197 244 6600	to	6699	239 322 5900	to	5999	393 893 6007	to	6099	412 395 8599	to	8699
197 244 6700	to	6799	239 607 4783	to	4799	394 126 6907	to	6999	412 485 6500	to	6599
197 244 6800	to	8999	240 593 1879	to	1899	394 189 0405	to	0599	412 485 6610	to	6699
198 285 2556	to	2566	242 591 2048	to	2099	394 822 3243	to	3278	412 885 5953	to	5999
199 105 0778	to	0799	242 735 0388	to	0398	394 990 1810	to	1899	414 193 3608	to	3674
199 678 2968	to	2999	242 951 7276	to	7299	395 343 3264	to	3299	414 193 3677	to	3699
202 748 5133	to	5199	243 535 6370	to	6399	395 373 3035	to	3099	414 411 7348	to	7399
202 748 5245	to	5299	244 004 9985	to	9999	395 396 9649	to	9799	414 640 0757	to	0799
202 748 5300	to	5399	273 070 8059	to	8099	395 970 3240	to	3299	414 965 1727	to	1799
202 748 5400	to	5499	273 775 7700	to	7899	397 622 4054	to	4099	417 302 8104	to	8199
203 256 1240	to	1299	302 000 0000	to	9999	397 819 8902	to	8999	417 387 6532	to	6599
204 230 3577	to	3595	349 746 2056	to	2099	398 149 7200	to	7699	417 496 6800	to	6999
205 019 0174	to	0199	350 518 7350	to	7374	399 070 0872	to	0899	417 871 9250	to	9299
207 196 9900	to	9999	360 011 1690	to	1699	399 156 7119	to	7199	417 930 9533	to	9599
207 204 0700	to	0799	360 168 6008	to	6099	399 203 5064	to	5099	418 164 6500	to	6799
207 204 0800	to	0899	360 173 8800	to	8899	399 296 9910	to	9999	418 423 9863	to	9899
207 514 3857	to	3899	360 324 2326	to	2399	399 396 8935	to	8999	418 633 5922	to	5999
208 556 4707	to	4799	362 861 3064	to	3099	399 792 7775	to	7799	418 719 8520	to	8599
210 057 4038	to	4047	373 006 2176	to	2199	399 792 8300	to	8399	418 744 2235	to	2299
210 221 0548	to	0599	374 768 2600	to	2699	400 427 1051	to	1999	418 962 2848	to	2899
214 061 4711	to	4724	375 169 4400	to	4599	401 045 1505	to	1549	419 543 0286	to	0299
214 303 6311	to	6325	375 829 3400	to	3499	401 045 1571	to	1599	419 730 0300	to	0399
214 303 6239	to	6258	375 851 9100	to	9199	401 294 2700	to	2799	420 277 0015	to	0049
214 877 4251	to	4273	376 196 0911	to	0999	401 310 9505	to	9599	420 599 0734	to	0798
215 252 3918	to	3992	378 085 3679	to	3699	401 382 5312	to	5399	420 661 4115	to	4199
218 698 2157	to	2199	378 351 1063	to	1099	402 578 7876	to	7899	420 758 9500	to	9699
218 746 0800	to	0899	379 843 5100	to	5199	403 125 6744	to	6799	420 969 3951	to	3971
219 095 0100	to	0399	380 093 9600	to	9699	403 260 7000	to	7499	420 969 3973	to	3999
219 389 1885	to	1899	380 165 1165	to	1199	403 280 6470	to	6499	421 116 3565	to	3599
219 568 7435	to	7456	381 325 4500	to	4599	403 685 8600	to	8699	421 130 9300	to	9399
219 568 7469	to	7487	381 604 2510	to	2699	404 003 0300	to	0399	421 313 4500	to	4999
221 316 5757	to	5799	381 645 9525	to	9599	404 041 8838	to	8899	421 364 5537	to	5599
223 476 3914	to	3999	383 314 3968	to	3999	404 071 4268	to	4299	421 656 2609	to	2699
223 565 4921	to	4957	383 892 1000	to	1344	404 347 5356	to	5399	421 988 9700	to	9799
223 565 4979	to	4999	383 892 1382	to	1399	404 347 5548	to	5599	422 172 4667	to	4699
224 636 4745	to	4765	384 925 3641	to	3654	404 726 4500	to	4599	422 484 4212	to	4299
224 636 4776	to	4799	385 568 2331	to	2399	404 961 5001	to	5199	422 556 1270	to	1299
224 636 4855	to	4885	385 599 7554	to	7575	405 325 0188	to	0198	422 587 7024	to	7099
224 636 4932	to	4948	385 774 2024	to	2099	406 009 4587	to	4599	422 819 7533	to	7599
224 636 4950	to	4962	386 624 1412	to	1599	406 260 6830	to	6899	422 842 5073	to	5087
224 636 4985	to	4999	386 883 8936	to	8999	406 459 6641	to	6999	422 907 7563	to	7599
224 730 2207	to	2299	387 314 5574	to	5599	406 733 3000	to	3999	424 500 6050	to	6099
225 970 0500	to	0599	387 837 6300	to	6399	407 545 1557	to	1599	424 641 8500	to	8599
225 970 0600	to	0699	388 828 0656	to	0699	407 594 0412	to	0599	424 871 6600	to	6699
225 970 0700	to	0799	389 696 2400	to	2799	407 692 9100	to	9299	425 298 2352	to	2399
227 033 8679	to	8699	389 846 3104	to	3135	407 959 2190	to	2199	425 418 4269	to	4299
227 275 9400	to	9999	389 846 3145	to	3195	408 265 2275	to	2288	425 418 4405	to	4499
228 463 2456	to	2499	389 887 9211	to	9230	408 499 7700	to	7799	426 547 4566	to	4599
228 510 4852	to	4899	389 887 9234	to	9299	408 499 7900	to	7999	427 412 6337	to	6499
229 462 8451	to	8475	390 001 3182	to	3199	408 682 8484	to	8599	427 481 0900	to	0999
229 668 5977	to	5999	390 001 3500	to	3699	408 698 7015	to	7099	428 027 2742	to	2752
229 923 9176	to	9199	390 545 5974	to	5999	409 072 3941	to	3999	429 474 4172	to	4199

429 889 2900	to	2999	454 268 4883	to	4899	469 781 4900	to	4999	486 176 0600	to	0699
430 150 4401	to	4599	454 302 5400	to	5499	469 947 6960	to	6999	486 559 7555	to	7599
430 172 9800	to	9899	454 490 8300	to	8399	470 755 5800	to	5818	486 696 3023	to	3199
430 177 1900	to	2099	454 547 7434	to	7499	471 918 0300	to	0999	488 173 7900	to	7999
430 444 9500	to	9699	454 922 4867	to	4895	471 985 2408	to	2419	488 206 4100	to	4199
430 664 4070	to	4099	455 221 1348	to	1499	472 191 6700	to	6799	488 226 0200	to	0299
432 168 8419	to	8499	455 364 2147	to	2199	472 270 2555	to	2599	488 709 3906	to	3999
432 708 6800	to	6999	455 399 5400	to	5499	472 987 0213	to	0241	488 855 8359	to	8399
432 744 1544	to	1599	455 476 0676	to	0699	472 987 0290	to	0299	489 181 8963	to	8999
432 995 9775	to	9799	455 543 0618	to	0699	473 151 2069	to	2199	489 223 2000	to	2099
433 003 5800	to	5899	456 410 9006	to	9099	473 666 9138	to	9199	489 311 1930	to	1999
433 757 3047	to	3099	456 470 4146	to	4299	473 952 3429	to	3499	489 318 6200	to	6300
433 765 4003	to	4099	456 619 4460	to	4499	474 108 5402	to	5499	489 384 0027	to	0099
434 482 7060	to	7199	457 333 2686	to	2699	474 356 5193	to	5299	489 427 0658	to	0899
434 513 2386	to	2399	457 729 1767	to	1777	474 949 3366	to	3399	489 997 5252	to	5299
434 968 3076	to	3092	457 937 8615	to	8699	475 134 9362	to	9399	490 669 5850	to	6099
435 303 1831	to	1842	458 028 9810	to	9899	475 167 9667	to	9699	490 717 7080	to	7099
435 303 1986	to	1999	458 057 2712	to	2999	475 319 3415	to	3499	490 721 6000	to	6099
435 666 6092	to	6399	458 069 9537	to	9599	475 319 3649	to	3799	490 793 1500	to	2099
436 082 6400	to	6899	458 069 9665	to	9699	475 340 6400	to	6599	490 886 8171	to	8199
436 160 6441	to	6499	458 337 5222	to	5299	475 424 8410	to	8499	490 977 9221	to	9240
437 316 7115	to	7199	458 354 7653	to	7999	475 629 9156	to	9199	491 258 8100	to	9099
437 427 0500	to	3499	458 671 8678	to	8699	475 850 6101	to	6199	491 567 1376	to	1399
439 179 2300	to	2399	458 671 8721	to	8798	475 875 2500	to	2599	492 254 4800	to	4899
439 310 0458	to	0499	458 847 5044	to	5999	476 169 8264	to	8299	492 283 5100	to	5199
440 698 1947	to	1999	459 274 7624	to	7699	476 189 3000	to	3499	492 610 6813	to	6899
440 858 6300	to	6399	459 365 5432	to	5499	476 331 2480	to	2499	493 394 5568	to	5599
440 858 6420	to	7299	459 378 5764	to	5799	477 289 8601	to	8699	493 470 2562	to	2599
441 199 1655	to	1699	459 472 4816	to	4999	477 681 5206	to	5299	493 473 7700	to	7799
443 127 3648	to	3699	460 349 6878	to	6899	478 010 4243	to	4268	493 716 2153	to	2199
443 127 4000	to	4099	460 550 1909	to	1999	478 010 4270	to	4291	494 206 2972	to	2999
443 673 7900	to	7999	460 997 5234	to	5299	478 450 5071	to	5099	494 217 3446	to	3999
443 800 9335	to	9399	461 973 6443	to	6499	478 469 7838	to	7858	494 224 0500	to	0599
444 382 8822	to	8899	462 152 0107	to	0299	478 469 7883	to	7899	495 145 0600	to	0699
444 390 1667	to	1699	462 274 1072	to	1099	479 280 9800	to	9899	496 209 7425	to	7499
444 457 3854	to	3899	462 277 8373	to	8399	479 365 9116	to	9176	496 213 8728	to	8799
450 048 4173	to	4199	462 554 6051	to	6099	479 412 9900	to	9999	496 474 5226	to	5248
450 048 4442	to	4699	463 011 5529	to	5540	479 667 6190	to	6199	497 053 8517	to	8699
450 560 5173	to	5199	463 176 4115	to	4199	479 748 9680	to	9699	497 854 8673	to	8699
450 620 3077	to	3099	463 176 4229	to	4299	479 860 7000	to	7199	498 449 8888	to	8899
450 620 3135	to	3199	463 185 2600	to	2799	480 526 2000	to	2099	498 929 8285	to	8499
450 780 2716	to	2799	463 227 7711	to	7799	480 640 6330	to	6399	498 936 5310	to	5399
450 801 2700	to	2799	463 414 4869	to	4899	480 658 0568	to	0599	499 016 5425	to	5499
451 109 2967	to	2984	463 808 3484	to	3499	480 689 5100	to	5199	499 440 8575	to	8899
451 115 4110	to	4125	463 945 7400	to	7899	481 072 9463	to	9499	499 731 6717	to	6799
451 115 4127	to	4199	464 629 9000	to	9399	481 673 0074	to	0095	500 064 1858	to	1869
451 746 0700	to	0799	464 711 4332	to	4399	482 527 1500	to	1599	500 070 5725	to	7799
452 265 0074	to	0099	465 692 3963	to	3999	482 541 5255	to	5299	501 058 0016	to	0026
452 265 0246	to	0299	465 698 8300	to	8599	482 729 6800	to	6899	501 331 0300	to	0399
452 265 0335	to	0999	465 743 7745	to	7799	483 363 7207	to	7299	501 460 0977	to	0999
452 509 1169	to	1199	466 798 6056	to	6067	483 402 2356	to	2399	502 227 7645	to	7699
452 855 6471	to	6499	467 147 4300	to	4399	483 486 5100	to	5199	502 424 0200	to	0499
452 890 4679	to	4799	468 079 5782	to	5799	483 632 1521	to	1599	502 424 0600	to	0699
452 900 8215	to	8238	469 067 2817	to	2899	483 632 2600	to	2799	502 496 6923	to	6999
453 117 9146	to	9199	469 127 8000	to	8199	483 849 1615	to	1699	503 003 2700	to	2899
453 334 3631	to	3699	469 213 0359	to	0399	484 174 4803	to	5299	503 194 5144	to	5153
453 603 7841	to	7891	469 213 0500	to	0599	484 323 8900	to	9199	503 790 9922	to	9948
453 650 1140	to	1199	469 561 8011	to	8099	484 680 5000	to	5038	504 045 4030	to	4099
453 741 1300	to	1399	469 658 1961	to	1999	484 680 5040	to	5074	504 166 0200	to	0599
454 013 2919	to	2999	469 666 9900	to	9999	484 680 5077	to	5099	504 240 1062	to	1399
454 186 2411	to	2499	469 678 1900	to	1999	485 029 4913	to	4999	504 805 3300	to	3499

505 096 0662	to	0699	610 092 3200	to	3299	633 588 7173	to	7182	647 437 3000	to	4999
505 893 7739	to	7799	610 582 4200	to	4299	634 725 0700	to	0799	647 811 2188	to	2199
505 893 7800	to	7999	611 879 6939	to	6999	634 803 3239	to	3299	648 009 6057	to	6099
506 124 0800	to	0999	612 291 8013	to	8099	634 807 2474	to	2499	648 163 5300	to	5499
506 165 7027	to	0099	612 751 5171	to	5199	634 827 5900	to	5999	648 722 5283	to	5299
506 502 5209	to	5299	612 751 5226	to	5299	634 886 3428	to	3499	648 892 3164	to	3199
506 756 1682	to	1699	612 751 6083	to	6099	635 559 3449	to	3499	649 100 3989	to	3999
506 756 1700	to	1799	612 751 6268	to	6299	636 289 6214	to	6299	649 647 0370	to	0399
506 756 1800	to	1899	612 751 6572	to	6599	636 634 8007	to	8042	649 647 0522	to	0599
506 836 5326	to	5399	612 774 2111	to	2199	637 150 1200	to	1299	649 647 5237	to	5399
508 488 6226	to	6299	612 774 2254	to	2299	637 562 5828	to	5899	649 647 9100	to	9299
508 789 8332	to	8399	612 774 2500	to	2599	638 042 1647	to	1699	649 666 7800	to	8299
508 789 8400	to	8499	614 469 0979	to	0999	638 049 4984	to	4999	650 114 7707	to	7719
509 909 0425	to	0435	614 474 3000	to	3099	638 318 1115	to	1199	650 130 3400	to	3599
510 150 2400	to	2499	614 521 3490	to	3499	638 318 1453	to	1499	650 213 0406	to	0499
510 381 3200	to	3299	614 645 1800	to	1899	638 885 0000	to	0299	650 555 1749	to	1799
510 587 9500	to	9599	614 832 1100	to	2099	638 903 4362	to	4373	650 564 1900	to	1999
510 587 9659	to	9699	615 017 7505	to	7599	639 415 1929	to	1999	650 627 4212	to	4299
510 269 9770	to	9999	617 711 6609	to	6699	639 415 2019	to	2099	650 736 2043	to	2099
511 021 5042	to	5099	617 760 5266	to	5299	639 420 6200	to	6299	650 739 1540	to	1699
511 021 5100	to	5199	617 813 3601	to	3699	639 469 3517	to	3799	651 741 4415	to	4499
511 468 1747	to	1799	618 840 9200	to	9299	639 605 2143	to	2199	651 882 2800	to	2899
511 844 0100	to	0199	619 551 7229	to	7299	639 657 8600	to	8799	652 754 6317	to	6399
511 844 0340	to	0399	619 859 3000	to	3099	640 289 7500	to	7599	653 131 4945	to	4999
600 645 3223	to	3299	620 073 9400	to	9499	640 289 7700	to	7999	653 426 3300	to	3399
601 339 1200	to	1399	621 614 7907	to	7930	641 170 4420	to	4499	653 455 4874	to	4899
601 653 5884	to	5899	621 614 7932	to	7999	641 318 3133	to	3199	654 238 0000	to	0399
601 661 7700	to	7799	621 648 8021	to	8199	641 378 6500	to	6999	654 404 3065	to	3092
601 682 5343	to	5399	621 648 8500	to	8599	641 383 8739	to	8799	654 962 2900	to	3199
601 928 1600	to	1699	621 904 8351	to	8599	641 877 3187	to	3299	655 103 5081	to	5199
602 512 2972	to	2999	621 916 1978	to	1989	641 877 3310	to	3399	655 523 2600	to	2999
602 555 2400	to	2799	622 989 8032	to	8099	642 355 8094	to	8199	656 305 2448	to	2499
602 829 7061	to	7099	623 076 9300	to	9399	642 355 8308	to	8999	657 347 4438	to	4999
603 483 9572	to	9599	623 819 5006	to	5099	642 900 0018	to	0099	657 710 8100	to	8999
603 490 7200	to	7299	623 895 8200	to	8399	643 030 6254	to	6299	657 780 0985	to	0999
603 678 7100	to	7199	623 917 0000	to	0099	644 066 0882	to	0899	658 586 1400	to	1499
603 678 7662	to	7699	623 917 0200	to	0299	644 069 0600	to	0699	658 877 8000	to	8199
603 678 7902	to	7999	624 468 5288	to	5299	644 077 7506	to	7699	658 880 8000	to	8199
603 678 8418	to	8499	624 665 3162	to	3198	644 085 8157	to	8199	659 398 7300	to	7399
603 678 8700	to	9999	625 088 6735	to	6799	644 112 9839	to	9899	659 706 8113	to	8199
604 086 0880	to	0899	625 916 9500	to	9799	644 373 9083	to	9099	659 846 7837	to	7899
604 349 1414	to	1499	625 968 8956	to	8999	644 380 1460	to	1499	660 510 4100	to	4199
604 503 7776	to	7799	627 005 3938	to	3999	644 733 4715	to	4799	660 673 0400	to	0599
605 520 9037	to	9099	627 384 3907	to	4099	644 900 9712	to	9799	661 488 5000	to	5099
605 685 4010	to	4099	627 496 7549	to	7599	644 901 0109	to	1299	661 609 9100	to	9199
605 988 6467	to	6499	627 708 3605	to	3699	644 901 1325	to	1399	661 716 9420	to	9499
607 689 7951	to	7960	627 776 2500	to	2599	644 923 6800	to	7799	661 906 6522	to	6599
607 728 1276	to	1299	628 226 3100	to	3199	644 932 4655	to	4699	662 021 8332	to	8399
608 727 7100	to	7199	628 814 4702	to	4799	645 318 7240	to	7499	662 068 0700	to	0899
608 727 7273	to	7599	628 851 9689	to	9699	645 333 1766	to	1799	662 553 0774	to	0799
608 813 9950	to	9999	629 510 7200	to	7299	645 790 8632	to	8699	663 078 7034	to	7099
609 067 5325	to	5399	629 964 4200	to	4294	645 821 0657	to	0699	663 763 5300	to	5399
609 067 5488	to	5499	630 389 3056	to	3071	645 930 7948	to	7999	663 883 7039	to	7499
609 067 5600	to	5699	630 463 0588	to	0599	645 975 0737	to	0762	663 938 9200	to	9299
609 289 6123	to	6199	631 459 9117	to	9199	646 242 6200	to	6299	664 253 8000	to	8499
609 438 4400	to	4499	631 762 9325	to	9399	646 270 7639	to	7799	664 656 3055	to	3099
609 493 1100	to	1199	632 217 4933	to	4999	646 798 4000	to	4999	665 174 6400	to	6499
609 766 8091	to	8999	632 500 0000	to	640 3999	647 048 7035	to	7099	665 274 8208	to	8299
609 825 4100	to	4115	633 110 4165	to	4199	647 049 2900	to	2999	665 669 5400	to	5499
609 884 2981	to	2999	633 110 4303	to	4499	647 398 8300	to	8399	666 132 8226	to	8299
609 893 1000	to	1099	633 438 6429	to	6599	647 398 8481	to	8499	666 696 2209	to	2299

666 696 2309	to	2399	691 313 6383	to	6399	702 878 0114	to	0199	830 983 3500	to	3599
667 032 9300	to	9399	691 313 6600	to	6699	703 364 1707	to	1799	830 983 3635	to	3699
667 729 5529	to	5599	691 582 8003	to	8099	740 002 7710	to	7719	831 354 1387	to	1399
668 383 8400	to	8699	691 664 1800	to	1999	740 037 6730	to	6800	831 815 8240	to	8299
670 368 3400	to	3499	691 664 2400	to	2499	740 119 2275	to	2284	832 525 3810	to	3899
670 369 7336	to	7399	692 727 9362	to	9399	740 130 6688	to	6698	833 159 1884	to	1899
670 750 7169	to	7199	692 798 1800	to	1899	740 144 2780	to	2795	833 456 2567	to	2599
671 046 6200	to	6399	693 249 0779	to	0799	740 241 9049	to	9099	833 566 3015	to	3071
671 251 5448	to	5499	693 249 0877	to	1699	740 252 9265	to	9294	834 130 5200	to	5299
671 926 5600	to	5799	693 445 0566	to	0999	740 255 1718	to	1799	834 316 5444	to	5499
672 444 2000	to	2999	693 448 8500	to	8999	740 274 2602	to	2619	834 354 8747	to	8766
672 828 3410	to	3499	693 645 9583	to	9599	740 277 0366	to	0392	834 354 8824	to	8838
673 167 5776	to	5799	693 965 4200	to	4299	740 332 7658	to	7671	835 269 5700	to	5799
675 464 3700	to	3799	695 741 2906	to	2999	740 348 6641	to	6658	835 496 7303	to	7399
675 464 4000	to	4199	695 947 8518	to	8599	740 351 4790	to	4799	835 539 5200	to	5999
676 365 5958	to	5999	696 662 8247	to	8299	740 374 7416	to	7499	835 813 3015	to	3099
676 669 1024	to	1099	697 447 8285	to	8296	740 470 2420	to	2443	837 672 8967	to	8999
677 126 6734	to	6799	698 042 4816	to	4899	740 514 0300	to	0499	837 784 3282	to	3299
677 333 9979	to	9999	698 131 2138	to	2157	740 523 7432	to	7449	838 176 8377	to	8399
677 466 1088	to	1099	698 227 0000	to	0099	740 535 1555	to	1580	838 518 1257	to	1299
678 071 4500	to	4799	700 065 2570	to	2599	740 557 3570	to	3579	839 718 8257	to	8299
678 096 7531	to	7599	700 065 4800	to	4899	740 650 4104	to	4140	840 323 0600	to	0699
679 909 2578	to	2599	700 190 3350	to	3359	740 684 0620	to	0800	840 875 6235	to	6299
680 112 9565	to	9599	700 228 6048	to	6099	740 701 6105	to	6114	840 910 0900	to	0999
680 244 0903	to	0999	700 650 0452	to	0499	740 705 9790	to	9799	841 349 5000	to	5099
680 412 6046	to	6099	700 666 1323	to	1349	740 726 6400	to	6500	841 805 7747	to	7899
680 761 6800	to	6899	700 786 9106	to	9142	740 748 8319	to	8329	841 805 7944	to	8099
681 677 0540	to	0699	700 859 0744	to	0758	740 765 3306	to	3399	842 226 0685	to	0695
682 070 1029	to	1099	701 028 6780	to	6899	740 774 8434	to	8499	842 685 4600	to	4699
682 956 6280	to	6299	701 213 3900	to	3999	740 779 4259	to	4299	842 685 4742	to	4999
682 956 6490	to	6599	701 267 2000	to	3999	740 786 1885	to	1899	842 860 0300	to	0399
682 956 6700	to	6799	701 335 7312	to	7399	740 790 5989	to	5999	842 898 5582	to	5599
682 965 1178	to	1199	701 369 2005	to	2050	740 803 4870	to	4879	843 062 7100	to	7199
682 965 1201	to	1299	701 499 2260	to	2299	740 820 4854	to	7836	843 077 6288	to	6299
683 118 2389	to	2399	701 503 2247	to	2299	740 827 7578	to	7594	843 077 6378	to	6399
683 378 2000	to	2099	701 541 2271	to	2299	740 917 7490	to	7499	843 758 5769	to	5778
683 378 2117	to	2299	701 553 6557	to	6599	740 918 5531	to	5549	843 786 2554	to	2699
683 415 1200	to	1499	701 578 7460	to	7469	741 037 8528	to	8551	845 656 8165	to	8199
683 444 8159	to	8199	701 578 7475	to	7499	742 030 6135	to	6149	845 727 2100	to	2199
685 154 7780	to	7789	701 601 3457	to	3499	742 033 2663	to	2674	845 746 2618	to	2635
685 297 7645	to	7699	701 605 5913	to	5999	742 040 3300	to	3309	846 390 7531	to	7599
685 623 5264	to	5299	701 695 3982	to	3999	742 151 5000	to	5014	846 918 0572	to	0599
685 650 9487	to	9499	701 695 4148	to	4199	742 191 4640	to	4649	847 237 7690	to	7699
685 669 4200	to	4299	701 695 4227	to	4299	742 192 5210	to	5224	847 284 2481	to	2499
685 757 8452	to	8499	701 708 1741	to	1799	742 222 9200	to	9210	847 374 7055	to	7065
686 071 2694	to	2799	701 736 3966	to	3999	742 228 9660	to	9669	847 374 7055	to	7065
686 176 3333	to	3354	701 772 0870	to	0899	742 247 6980	to	6989	847 636 5304	to	5399
686 372 3200	to	3299	701 838 2800	to	2899	742 290 0936	to	0950	847 700 5447	to	5499
686 644 5879	to	5899	701 941 0600	to	0699	742 302 7600	to	7699	847 723 7500	to	7599
686 899 1371	to	1399	702 171 1603	to	1699	805 885 8411	to	8499	849 485 3427	to	3499
686 931 7636	to	7699	702 195 5109	to	5199	806 087 1100	to	1499	849 520 9850	to	9899
687 601 0973	to	0999	702 254 9300	to	9399	806 268 9275	to	9299	849 608 1357	to	1399
687 614 6774	to	6799	702 264 7569	to	7599	806 534 3400	to	3477	849 792 2600	to	2699
688 120 9000	to	9999	702 519 0513	to	0524	807 342 3283	to	3399	850 546 1862	to	1899
688 314 3107	to	3191	702 713 1800	to	1809	808 086 7100	to	7199	851 143 6826	to	6844
690 291 1361	to	1371	702 821 5730	to	5799	808 090 3440	to	3499	851 209 9880	to	9899
690 788 2877	to	2899	702 821 5805	to	5899	808 325 5161	to	5699	851 928 9221	to	9299
690 893 5344	to	5399	702 844 6975	to	6994	808 784 8000	to	8299	852 589 6560	to	6599
690 893 5512	to	5599	702 846 6331	to	6399	830 125 0672	to	0699	853 049 3646	to	3699
690 904 1300	to	1599	702 848 3900	to	3999	830 602 5800	to	5999	854 304 4089	to	4999
690 941 6000	to	6199	702 857 7302	to	7499	830 610 3700	to	3799	854 529 2200	to	2299

854 532 0000	to	2999	870 491 4812	to	4849	910 265 1100	to	1199	920 864 3480	to	3499
855 001 6204	to	6249	870 536 5820	to	5829	910 471 7273	to	7299	920 963 4567	to	4599
855 319 9364	to	9399	870 541 7167	to	7239	910 536 2505	to	2599	921 333 7400	to	7499
855 361 3390	to	3399	870 575 8155	to	8999	910 958 7499	to	7599	921 477 3762	to	3799
856 226 0490	to	0499	870 589 0485	to	0494	911 140 1000	to	2199	922 278 1048	to	1399
856 656 5800	to	5999	870 691 7060	to	7099	911 245 2545	to	2599	922 280 2019	to	2099
856 752 0200	to	0299	872 028 4850	to	4899	911 268 9077	to	9099	922 280 2233	to	2299
857 111 1352	to	1399	872 029 9306	to	9399	911 400 8948	to	8999	922 773 0459	to	0499
857 279 3450	to	3499	872 078 3709	to	3799	911 508 1620	to	1799	923 032 7000	to	7399
857 843 4000	to	4099	872 100 0445	to	0459	911 509 9310	to	9399	923 045 3630	to	3699
858 124 7644	to	7699	900 556 4178	to	4199	911 523 3000	to	3999	923 484 3600	to	3699
858 756 3111	to	3299	900 845 0044	to	0099	912 057 9922	to	9999	923 493 9403	to	9599
859 063 8200	to	8699	900 936 0217	to	0299	912 882 0563	to	0899	923 493 9681	to	9699
859 190 0600	to	0644	900 936 0435	to	0499	913 605 2218	to	2299	923 604 4424	to	4499
859 437 5538	to	5599	901 058 5255	to	5280	913 709 2429	to	2499	923 810 7800	to	8299
859 811 2888	to	2899	901 273 1082	to	1099	913 818 3501	to	3999	924 252 1200	to	1299
859 855 8873	to	8999	901 287 5143	to	5199	914 063 4300	to	4399	924 252 1400	to	1499
860 240 8520	to	8599	901 291 2789	to	2799	914 346 7621	to	7644	924 533 0711	to	0799
860 275 3900	to	3999	901 525 7122	to	7199	914 453 1366	to	1399	924 533 2343	to	2399
860 518 9629	to	9699	902 089 1253	to	1299	914 529 6185	to	6299	924 533 2428	to	2499
860 600 0021	to	0999	902 198 9769	to	9799	914 896 4658	to	4699	924 685 1957	to	1999
861 158 2350	to	2599	902 948 1269	to	1299	915 187 8774	to	8779	924 946 6300	to	6699
861 367 5400	to	5499	902 985 0833	to	0899	915 300 2783	to	2799	925 333 5900	to	6099
861 637 6010	to	6099	903 370 6934	to	6999	915 546 6822	to	6999	925 336 2300	to	2399
861 979 7292	to	7499	904 600 6523	to	6599	915 646 5183	to	5199	926 432 5907	to	5999
862 216 6100	to	6199	904 892 0378	to	0399	915 671 3963	to	3980	926 436 3600	to	3699
862 263 9213	to	9299	904 892 0648	to	1299	915 671 3982	to	3999	927 765 6257	to	6299
862 271 0800	to	0999	905 056 2216	to	2299	915 675 2217	to	2299	928 197 8100	to	8199
862 271 5000	to	5099	905 510 6647	to	6799	916 440 3377	to	3399	928 197 8283	to	8299
863 871 5138	to	5199	905 510 6900	to	7099	916 670 6352	to	6399	928 856 2059	to	2068
863 949 5300	to	5399	905 794 0000	to	0199	916 682 5300	to	5399	930 078 5800	to	5899
864 088 8200	to	8299	905 794 0288	to	0299	916 694 1414	to	1499	930 219 1722	to	1799
864 426 3972	to	3999	905 873 6900	to	6999	916 703 0802	to	0821	930 335 7810	to	7819
864 520 6117	to	6136	905 873 7100	to	7299	917 089 0709	to	0799	931 097 9259	to	9299
865 151 0526	to	0599	905 880 8900	to	8999	917 089 0842	to	0899	931 156 1502	to	1579
865 500 4034	to	4099	905 889 7100	to	7199	917 216 2928	to	2999	931 156 1600	to	1625
865 883 6082	to	6099	906 158 1508	to	1599	917 370 6300	to	6499	931 156 1671	to	1699
866 004 3000	to	3999	906 558 8812	to	8899	917 486 4900	to	4999	932 506 6400	to	6599
866 442 4100	to	4899	906 982 2214	to	2299	918 460 0602	to	0699	932 732 1796	to	1799
867 366 9108	to	9118	907 725 8500	to	8599	918 951 7231	to	7299	932 827 9026	to	9099
867 633 7403	to	7499	907 815 0216	to	0257	919 519 2786	to	2799	932 957 2300	to	2399
867 737 5623	to	5699	908 622 4225	to	4235	919 536 0770	to	0799	933 060 6160	to	6189
868 169 4529	to	4599	908 936 9254	to	9299	919 814 3095	to	3199	933 387 2541	to	2561
868 173 8400	to	8599	909 066 4494	to	7499	919 889 5110	to	5134	933 760 3609	to	4199
868 514 9000	to	9099	909 067 7400	to	7499	919 889 5137	to	5176	933 894 0928	to	0999
868 566 9200	to	9299	909 100 1787	to	1799	919 889 5178	to	5199	934 018 2729	to	2741
869 200 0000	to	9999	909 100 1900	to	2099	919 889 5030	to	5070	934 180 0300	to	0399
869 387 1150	to	1199	909 355 0422	to	0499	919 889 5090	to	5099	934 236 3954	to	3999
869 505 3500	to	3599	909 568 8900	to	9099	919 915 2774	to	2787	934 622 8717	to	8999
869 523 7033	to	7099	909 568 9300	to	9499	920 155 4662	to	4687	935 216 0312	to	0399
869 566 6150	to	6167	909 725 7307	to	7399	920 309 9039	to	9199	935 843 2202	to	2247
869 800 0000	to	999 9999	909 833 0947	to	0999	920 771 5321	to	5399	936 024 8889	to	8899
870 054 4814	to	4899	910 219 8631	to	8699	920 857 5500	to	5899	936 339 4455	to	4499

Missing, Lost, or Stolen Canadian Money Order Forms

Do Not Cash — Upon Receipt, Notify Local Postal Inspectors

Provide this listing to all Postal Service™ employees responsible for accepting and cashing postal money orders. Destroy all interim notices when the numbers listed appear in the *Postal Bulletin*. The new money order serial

numbers consist of the first 9 digits. The 10th digit is a check digit only.

Do not cash outdated money orders **104 151 601 to 692 600 000**. Advise holders to send invalid money orders to Canada Post Corporation, Ottawa, Canada K1A 0B1. Check for altered dollar amounts by holding money orders to the light.

719 869 731	to	9 760	727 182 271	to	2 510	733 446 631	to	7 110	740 265 811	to	6 290
720 227 871	to	7 930	727 416 181	to	6 240	733 474 665	to	4 770	740 299 111	to	9 170
720 227 949	to	7 960	727 481 431	to	1 460	733 704 482	to	4 570	740 299 231	to	9 260
720 368 543	to	8 570	727 749 241	to	9 780	733 751 041	to	1 130	740 329 266	to	9 320
720 392 151	to	2 570	728 382 331	to	2 480	734 009 101	to	9 130	740 889 081	to	9 090
720 556 491	to	6 640	728 702 338	to	2 400	734 290 759	to	0 770	741 010 421	to	0 530
720 558 621	to	8 650	728 915 371	to	5 850	734 389 273	to	9 290	741 113 041	to	3 370
720 575 361	to	5 570	728 953 141	to	3 410	734 440 031	to	0 111	741 373 891	to	4 340
720 590 152	to	0 179	728 954 280	to	4 310	734 797 201	to	7 320	741 452 369	to	2 490
721 638 331	to	9 170	729 169 081	to	9 140	734 939 611	to	9 640	741 492 991	to	3 140
721 815 391	to	5 420	729 363 841	to	3 870	734 950 111	to	0 170	741 553 460	to	3 470
721 969 713	to	9 740	729 682 891	to	3 190	735 120 331	to	0 840	741 764 431	to	4 520
722 072 137	to	2 160	729 838 940	to	9 070	735 283 008	to	3 020	741 764 431	to	4 520
722 378 265	to	8 280	729 839 101	to	9 130	735 293 131	to	3 220	742 178 834	to	8 880
722 413 990	to	4 004	730 077 683	to	7 840	735 635 010	to	5 040	742 325 500	to	5 520
722 764 948	to	4 980	730 109 847	to	9 880	735 783 961	to	3 990	742 325 668	to	5 700
722 825 840	to	5 889	730 373 761	to	3 850	735 803 401	to	3 430	742 408 771	to	8 830
723 153 841	to	3 850	730 501 951	to	2 130	736 005 420	to	5 440	742 512 120	to	2 150
723 237 616	to	7 630	730 519 379	to	9 470	736 366 021	to	6 110	742 684 849	to	4 890
723 331 081	to	1 110	730 569 278	to	9 360	736 624 456	to	4 500	742 839 553	to	9 630
723 496 443	to	6 470	730 711 711	to	1 740	736 670 851	to	1 060	742 913 668	to	3 700
723 967 291	to	7 320	730 722 991	to	3 230	736 767 061	to	7 090	742 917 287	to	7 296
724 655 196	to	5 340	730 845 970	to	5 990	736 767 093	to	7 120	742 921 891	to	1 980
724 711 441	to	1 500	730 888 291	to	8 320	736 982 191	to	2 370	742 983 631	to	3 810
724 711 538	to	1 560	730 927 591	to	7 680	736 982 551	to	2 730	743 020 021	to	0 170
724 793 221	to	3 250	731 307 914	to	7 930	737 110 141	to	0 170	743 206 491	to	6 500
724 908 109	to	8 120	731 402 431	to	2 460	737 185 501	to	5 710	743 235 992	to	6 050
724 937 461	to	7 670	731 407 232	to	7 320	737 317 321	to	7 350	743 940 631	to	0 900
725 163 118	to	3 151	731 588 301	to	8 340	737 517 781	to	7 840	743 978 011	to	8 070
725 202 735	to	2 750	731 767 273	to	7 320	737 628 181	to	8 210	744 234 751	to	4 780
725 398 591	to	8 800	731 781 061	to	1 120	737 634 258	to	4 270	744 499 591	to	9 680
725 464 591	to	4 920	731 837 821	to	7 910	738 361 971	to	1 980	744 626 901	to	6 910
725 475 321	to	5 330	731 841 377	to	1 450	738 447 601	to	7 660	745 388 794	to	8 910
725 711 057	to	1 070	732 018 481	to	8 600	738 648 355	to	8 450	746 446 806	to	6 820
725 738 581	to	8 730	732 067 972	to	8 370	738 849 811	to	9 900	746 818 351	to	8 410
725 981 311	to	1 430	732 188 649	to	8 670	738 892 270	to	2 290	747 245 266	to	5 280
725 987 835	to	7 880	732 193 460	to	3 470	738 997 259	to	7 380	747 364 813	to	4 830
726 060 811	to	0 900	732 201 241	to	1 390	739 161 451	to	1 540	747 501 434	to	1 450
726 391 970	to	2 520	732 220 431	to	0 440	739 219 381	to	9 440	747 739 891	to	0 070
726 484 771	to	4 800	732 355 201	to	5 380	739 740 151	to	0 180	748 148 649	to	8 760
726 493 351	to	5 300	732 472 320	to	2 560	739 793 491	to	3 520	748 259 960	to	9 970
726 504 031	to	4 063	732 541 605	to	1 620	739 793 527	to	3 550	748 565 162	to	5 280
726 504 070	to	4 090	732 572 221	to	2 490	739 942 621	to	2 650	748 874 988	to	5 030
726 504 331	to	4 390	732 586 479	to	6 710	739 999 231	to	9 320	749 137 381	to	7 410
726 563 701	to	4 060	732 994 037	to	4 080	740 011 517	to	1 530	749 190 192	to	0 210
726 599 371	to	9 460	733 163 449	to	3 460	740 030 701	to	0 970	749 685 421	to	5 450
726 626 356	to	6 370	733 297 171	to	7 290	740 261 740	to	1 820	749 846 791	to	6 850

749 993 131	to	3 580	758 744 101	to	4 160	766 748 500	to	8 521	792 903 511	to	3 990
750 071 587	to	1 610	758 850 883	to	0 900	767 024 341	to	4 370	793 282 518	to	2 533
750 408 167	to	8 183	758 860 951	to	1 550	767 326 471	to	6 590	794 041 831	to	2 040
750 438 421	to	8 501	759 152 851	to	2 880	767 332 561	to	2 950	794 397 709	to	7 780
750 743 911	to	4 030	759 740 941	to	1 090	768 009 841	to	9 960	794 581 741	to	2 040
750 779 118	to	9 400	760 004 596	to	4 610	768 011 489	to	1 520	794 592 122	to	2 150
750 910 981	to	1 010	760 118 191	to	8 250	768 177 980	to	7 990	795 032 251	to	2 340
750 960 841	to	0 900	760 155 001	to	5 090	768 391 081	to	1 170	795 796 291	to	6 350
751 296 211	to	6 240	760 378 002	to	8 020	768 661 569	to	1 650	796 070 139	to	0 160
751 539 121	to	9 180	760 692 722	to	2 749	769 000 051	to	0 080	796 143 151	to	3 630
751 541 311	to	1 790	761 055 460	to	5 480	769 050 841	to	0 900	796 159 725	to	9 740
751 757 641	to	7 700	761 169 781	to	9 810	769 159 081	to	9 178	796 169 306	to	9 340
751 936 951	to	7 010	761 504 941	to	5 120	769 737 496	to	7 510	796 373 406	to	3 430
751 951 861	to	1 890	761 516 836	to	6 910	769 778 491	to	8 730	796 602 961	to	3 050
751 999 021	to	9 110	761 613 588	to	3 600	769 827 331	to	7 450	796 708 441	to	8 500
752 139 516	to	9 570	761 688 631	to	8 690	770 216 071	to	6 100	796 886 281	to	6 430
752 182 892	to	2 950	761 805 199	to	5 240	770 723 281	to	3 400	796 901 701	to	2 000
752 206 861	to	7 100	761 826 106	to	6 120	770 910 451	to	0 480	796 975 466	to	5 590
752 295 241	to	5 600	761 881 171	to	1 560	770 915 150	to	5 490	797 272 917	to	2 950
752 731 351	to	1 410	761 975 641	to	5 670	771 455 551	to	5 610	797 519 441	to	9 460
752 767 441	to	7 470	761 975 886	to	5 895	771 609 661	to	9 690	797 519 731	to	0 240
753 008 941	to	9 030	762 304 144	to	4 170	771 932 551	to	2 580	797 535 181	to	5 330
753 194 311	to	4 370	762 324 931	to	4 960	772 057 224	to	7 440	797 646 151	to	6 180
753 620 378	to	0 400	762 439 261	to	9 290	772 162 660	to	3 070	798 040 053	to	0 080
754 013 917	to	3 940	762 524 158	to	4 220	772 718 615	to	8 640	798 055 813	to	5 830
754 161 061	to	1 120	762 584 872	to	4 970	772 940 140	to	0 160	798 055 891	to	5 950
754 358 445	to	8 610	762 593 431	to	3 460	772 970 886	to	0 940	798 326 371	to	6 520
754 410 451	to	0 660	763 155 160	to	5 180	773 009 419	to	9 430	798 339 167	to	9 210
754 438 393	to	8 410	763 178 631	to	8 660	773 112 031	to	2 060	798 562 411	to	2 440
754 493 109	to	3 130	763 506 001	to	6 060	773 125 387	to	5 410	798 632 461	to	2 490
754 664 182	to	4 220	763 522 141	to	2 470	773 179 320	to	9 410	798 807 151	to	7 510
754 816 377	to	6 470	763 717 694	to	7 800	773 202 989	to	3 140	798 944 761	to	5 030
755 487 421	to	7 600	763 826 461	to	6 520	773 208 991	to	9 290	799 118 616	to	8 640
755 592 901	to	3 140	763 900 460	to	0 471	773 231 311	to	1 340	799 133 191	to	3 220
755 790 020	to	0 030	763 900 479	to	0 530	773 348 739	to	8 940	799 177 626	to	7 650
755 791 730	to	1 800	763 917 271	to	7 750	773 348 739	to	8 940	799 854 751	to	5 200
755 926 951	to	7 070	764 125 801	to	5 860	773 575 891	to	5 950	800 044 320	to	4 410
755 934 332	to	4 510	764 284 525	to	4 560	773 852 971	to	3 030	800 211 901	to	2 440
755 957 701	to	8 000	764 526 241	to	6 330	775 373 449	to	3 460	800 427 530	to	7 540
755 962 981	to	3 280	764 601 421	to	1 600	789 257 191	to	7 250	800 872 741	to	2 830
756 035 371	to	5 490	764 650 231	to	0 470	790 448 020	to	8 460	801 349 801	to	9 830
756 301 257	to	1 290	764 984 371	to	4 850	790 597 485	to	7 530	801 676 681	to	7 100
756 371 565	to	1 580	765 003 667	to	3 680	790 911 883	to	1 900	802 967 821	to	7 940
756 876 031	to	6 120	765 042 517	to	2 540	791 057 441	to	7 550	803 217 601	to	7 780
756 876 151	to	6 240	765 194 728	to	4 970	791 239 081	to	9 290	803 729 731	to	9 850
756 970 129	to	0 140	765 387 365	to	7 450	791 374 483	to	4 500	803 747 402	to	7 520
757 059 613	to	9 630	765 541 801	to	2 100	791 387 971	to	8 030	804 138 181	to	8 420
757 078 540	to	8 560	765 638 461	to	8 970	791 447 521	to	7 850	804 428 224	to	8 250
757 086 209	to	6 240	765 647 101	to	7 190	791 451 151	to	1 240	804 682 411	to	2 710
757 240 591	to	0 650	765 813 781	to	4 029	791 500 009	to	0 470	805 272 525	to	2 540
757 277 371	to	7 700	765 879 314	to	9 390	791 771 431	to	1 490	805 523 445	to	3 460
757 291 591	to	2 730	765 954 001	to	4 030	792 004 293	to	4 320	805 745 704	to	5 730
757 964 251	to	4 280	766 120 286	to	0 320	792 018 379	to	8 420	806 452 907	to	2 980
758 067 001	to	7 090	766 125 716	to	5 750	792 070 621	to	0 740	806 744 781	to	4 850
758 105 221	to	5 250	766 158 824	to	8 840	792 145 211	to	5 230	806 982 181	to	2 300
758 324 941	to	5 000	766 388 433	to	8 460	792 391 381	to	1 620	807 764 791	to	4 910
758 593 628	to	3 650	766 509 421	to	9 660	792 452 779	to	2 790	808 089 931	to	9 960
758 709 038	to	9 060	766 572 901	to	3 020	792 772 728	to	2 770	808 656 423	to	6 450

808 753 771	to	3 800	815 016 020	to	6 030	820 274 856	to	4 880	827 005 671	to	5 830
809 189 001	to	9 010	815 199 410	to	9 420	820 600 171	to	0 230	827 287 861	to	7 950
809 886 879	to	6 930	815 240 491	to	0 520	821 172 241	to	2 360	827 291 502	to	1 520
809 890 489	to	0 500	815 755 591	to	5 620	821 229 661	to	9 720	827 575 381	to	5 470
810 323 734	to	3 760	815 755 622	to	5 650	821 229 743	to	9 780	827 609 085	to	9 100
810 367 116	to	7 140	815 806 381	to	6 680	821 903 731	to	3 910	827 619 811	to	9 840
810 526 351	to	6 500	816 126 834	to	6 870	821 927 841	to	7 850	827 883 511	to	3 600
810 806 911	to	6 940	816 156 721	to	6 780	822 505 801	to	5 830	828 160 441	to	0 530
810 807 211	to	7 240	816 580 903	to	0 920	822 703 442	to	3 470	828 376 201	to	6 260
811 423 021	to	3 110	816 945 571	to	5 600	822 900 991	to	1 020	828 441 602	to	1 630
811 517 221	to	7 239	817 253 011	to	3 280	822 925 951	to	6 100	828 539 316	to	9 340
811 721 101	to	1 130	817 763 881	to	4 060	823 284 931	to	4 990	828 539 341	to	9 370
812 025 721	to	5 900	818 330 562	to	0 610	823 293 031	to	3 210	828 732 331	to	2 390
812 093 073	to	3 130	818 459 641	to	9 670	823 556 011	to	6 100	828 807 781	to	7 840
812 100 821	to	0 840	818 926 273	to	6 320	824 078 341	to	8 370	828 830 952	to	0 963
812 465 251	to	5 610	818 950 351	to	0 380	824 156 325	to	6 340	828 939 781	to	0 050
812 918 341	to	8 670	818 962 492	to	2 530	824 511 252	to	1 270	829 002 721	to	2 870
812 918 701	to	8 760	819 032 341	to	2 730	824 588 281	to	8 370	829 005 301	to	5 540
813 050 491	to	0 520	819 127 054	to	7 080	825 140 397	to	0 460	829 080 241	to	0 330
813 073 171	to	3 200	819 278 540	to	8 670	825 409 651	to	9 680	829 160 986	to	1 000
813 398 476	to	8 550	819 544 681	to	4 740	825 472 171	to	2 200	829 176 841	to	6 930
813 713 971	to	4 000	819 928 441	to	8 650	826 042 898	to	2 920	829 471 561	to	1 590
813 858 121	to	8 150	820 034 406	to	4 430	826 226 644	to	6 670	829 561 065	to	1 080
814 789 330	to	9 349	820 070 761	to	1 540	826 582 951	to	3 430	829 566 481	to	6 510
814 984 656	to	4 680	820 191 342	to	1 360	826 720 201	to	0 230	829 569 931	to	9 960

Verifying U.S. Postal Service Money Orders

Follow these steps to cash a Postal Service™ money order:

1. Check that the amount does not exceed the legal limit: \$1,000 for domestic, and \$700 for international Postal Service money orders.
2. Check that the proper security features are present:
 - When held to the light, a watermark of Benjamin Franklin is repeated from top to bottom on the left side.
 - When held to the light, a dark line (security thread) runs from top to bottom with the word “USPS” repeated.
 - There should be no discoloration around the dollar amounts, which might indicate the amounts were changed.

These appear in Postal Service Notice 299, *U.S. Postal Money Order Reference Card*, or online at usps.com/shop/money-orders.htm.

3. If the money order seems suspicious, call the U.S. Postal Service Money Order Verification System at 866-459-7822.

Please provide this information to local banks and retailers, as they also receive Postal Service money orders for cashing.

— *Retail and Customer Service Operations, 12-7-17*

Counterfeit Canadian Money Order Forms

Do Not Cash

To be posted and used by retail window employees. As directed, destroy previous notices. Destroy all interim notices when the numbers listed appear in the *Postal Bulletin*.

671,819,086	683,594,542	687,262,503
676,612,640	684,683,610	687,262,525
677,891,039	686,619,878	687,262,526
678,282,493	686,619,886	687,287,578
678,916,031	686,619,887	687,287,581
679,552,215	686,794,382	687,287,582
679,694,334	686,794,426	694,063,898
679,751,983	686,794,427	694,063,899
679,800,207	686,794,431	694,063,980
681,130,536	687,262,502	701,321,725
681,844,376		

— *Criminal Investigations Group,
Postal Inspection Service, 12-7-17*

Toll-Free Number Available to Verify Canadian Money Orders

The Canada Post Corporation has a toll-free number that cashing agents can call to verify the validity of Canadian Postal Money Orders. The number is 800-563-0444.

This toll-free number is printed on the back of the Canadian Postal Money Orders.

— *Criminal Investigations Group,
Postal Inspection Service, 12-7-17*



214,000

Number of Postal Service
email accounts nationwide

Other Information

Overseas Military/Diplomatic Mail

Mail addressed to military and diplomatic post offices overseas is subject to certain conditions or restrictions of mailing regarding content, preparation, and handling. The APO/FPO/DPO table outlines these conditions by APO/FPO/DPO ZIP Codes™ through the use of footnoted mailing restrictions codes (see the [Restrictions](#) page following the table).

Acceptance clerks must use the table with the RSS terminal to determine which APO/FPO/DPO ZIP Codes are active and which conditions of mailing apply. Send inquiries to the Military Postal Service Agency at amps.usps.gov/jy2/frm.htm.

The entries under “Changes” appear in bold in the following APO/FPO/DPO table:

Changes

APO/FPO/DPO	Action	Effective Date	See Restrictions
APO AE 09002	Open	11/09/2017	A-B-F-H-N-Q-S-V-Z-Z1

We have eliminated “Not Active” entries from the table below to save space and paper.

APO/FPO/DPO Table

APO/ FPO/ DPO	See Restrictions	APO/ FPO/ DPO	See Restrictions	APO/ FPO/ DPO	See Restrictions	APO/ FPO/ DPO	See Restrictions
09001	B-C-D-E3-F1-F3-H-H1-I3-J-L-M-R-R1-S-T-V-X-Z-Z1	09060	B-C-D-E-F1-F3-H-M-R-S-U-Z1	09172	B-C-D-E-F3-H-M-R-S-U	09308	A-B-C1-E2-F-F1-F3-H1-I3-M-N-R-R1-T-V-Z-Z1
09002	A-B-F-H-N-Q-S-V-Z-Z1	09067	B-C-D-E-F3-H-M-R-S-U	09173	B-C-D-E-F3-H-M-R-S-U	09309	A-B-C-C1-C2-E2-F-H1-M-N-R-V-Z1
09003	B-C-D-E-F3-H-M-P-R-S-U	09068	B-C-D-E-H-U-Z1	09177	B-C-D-E-F3-H-M-R-S-U	09310	A-B-C1-C2-E2-F-F1-F3-H1-I3-L-M-N-R-R1-S-T-U4-V-Z-Z1
09004	B-C-D-E-F3-H-M-R-S-U	09069	A-B-C-D-E-H-N-U-V	09180	B-C-D-F3-H-M-R-S-U	09311	A-B-C1-C2-E2-F-F1-F3-H1-I3-L-M-N-R-R1-S-T-U4-V-Z-Z1
09005	B-C-D-E-F3-H-M-P-R-S-U	09079	B-C-D-E-F3-H-M-R-S-U	09186	B-C-D-E-F3-H-M-P-R-S-U	09312	A-B-C1-C2-E2-F-F1-F3-H1-I3-L-M-N-R-R1-S-T-U4-V-Z-Z1
09006	B-C-D-E-F3-H-M-R-S-U	09090	B-C-D-E-F3-H-M-R-S-U	09203	A-B-C-C1-C2-F-F1-F3-I3-J-L-M-N-R-R1-T-V-X-Z-Z1	09313	A-B-C-C1-E2-F-F1-F2-H1-R-R1-V-Z1
09008	A-B-F-H-N-Q-V-Z-Z1	09094	B-C-D-F3-H-M-P-R-S-Z1	09204	B-C-F3-M-N-R-S-V-Z1	09314	A-B-C1-E2-F-F1-F3-H1-M-N-R-R1-S-V-Z1
09009	B-C-D-E-F3-H-M-R-S-U-Z1	09095	B-C-D-E-H-M-R-U	09211	B-C-D-E-F3-H-M-P-R-S-U	09315	A-B-C1-E2-F-F3-N-R-R1-V-Z1
09011	B-C-D-E-F3-H-M-R-S-U	09096	B-C-D-E-F3-H-M-R-S-U	09213	B-C2-F-F1-F3-H-J-L-M-N-R-R1-T-U-V-Z1	09316	A-B-C1-E2-F-F1-F3-H1-I3-M-N-R-R1-T-V-Z-Z1
09012	B-C-D-E-F3-H-M-R-S-U-Z1	09103	B-C-D-E-H-U	09214	B-C-D-E-F3-H-M-R-S-U-Z1	09317	A-B-C1-E2-F-F1-F3-H1-I3-M-N-R-R1-T-V-X-Z-Z1
09013	B-C-D-E-F-F1-H-M-R-U-Z1	09104	B-C-D-F3-H-M-R-S-U-Z1	09227	B-C-D-E-F3-H-M-R-S-U	09319	A-B-C-C1-E2-F-F1-F2-H1-R-R1-U2-V-Z1
09014	B-C-D-E-F3-H-M-P-R-S-U	09107	B-C-D-E-F3-H-M-R-S-U	09250	B-C-D-E-F3-H-M-R-S-U	09320	A-B-C1-E2-F-F3-H1-M-N-R-R1-V-Z1
09016	B-C-D-E-F1-H-M-R-S-U	09112	B-C-D-E-F3-H-M-R-S-U	09261	B-C-D-E-F3-H-M-R-S-U-V-Z1	09321	A-B-C1-E2-F-H1-M-N-R-R1-V-Z1
09017	A-B-F-H-N-Q-V-Z-Z1	09114	B-C-D-E-F3-H-M-R-S-U	09263	B-C-D-E-F3-H-M-R-S-U	09330	A-B-C1-E2-F-F1-F3-H1-M-R-R1-V-Z1
09018	A-B-F-H-N-Q-V-Z-Z1	09123	B-C-D-E-F3-H-M-R-S-U-Z1	09264	B-C-D-E-F3-H-M-R-S-U	09333	A-B-C1-E2-F-F1-F3-H1-I3-M-N-R-R1-V-Z-Z1
09020	B-C-D-E-F3-H-M-R-S-U	09125	A-B-C-F-F1-F3-H-N-O-R-R1-S-V-V1	09265	B-C-D-F-F1-H-J-L-M-N-R-T-U-V-Z1	09337	A-B-C1-E2-F-F1-F3-H1-M-R-R1-V-Z1
09021	B-C-D-E-F3-H-M-R-S-U-Z1	09126	B-C-D-F3-H-M-P-R-S-Z1	09301	A-B-C1-C2-E2-F-F1-F3-H1-I3-L-M-N-R-R1-S-T-U4-V-Z-Z1	09340	A-B-C1-F-H-N-R-V
09028	B-C-D-E-F1-H-M-R-S-U	09128	B-C-D-E-F3-H-M-R-S-U	09302	A-B-C1-F-F1-H-M-N-V-Z-Z1	09343	A-B-C1-F-M-N-V-Z1
09034	B-C-D-E-F3-H-M-R-S-U	09131	B-C-D-E-F3-H-M-R-S-U	09304	A-B-C-C1-D-E2-F-F1-F3-H1-J-L-M-N-R-R1-T-V-Z1	09347	A-B-C1-E2-F-H1-M-R-R1-V-Z1
09044	B-C-D-F1-H-U	09136	B-C-D-E-F1-F3-H-M-P-R-S-U	09305	A-B-C1-E2-F-F1-H1-I3-M-N-R-R1-T-V-Z-Z1	09348	A-B-C1-E2-F-F1-F3-H1-I3-M-N-R-R1-T-V-Z-Z1
09046	B-C-D-E-F3-H-M-R-S-U	09138	B-C-D-F3-H-M-R-S-U	09306	A-B-C1-E2-F-F1-F3-H1-R-R1-U2-V-Z1		
09049	B-C-D-E-F3-H-M-R-S-U	09140	B-C-D-E-F3-H-M-R-S-U	09307	B-N-V-Z1		
09053	B-C-D-E-F3-H-M-R-S-U	09142	B-C-D-E-F3-H-M-R-S-U				
09054	B-C-D-E-F3-H-M-R-S-U	09154	B-C-D-E-F3-H-M-R-S-U				
		09160	B-C-C2-D-F-F1-F3-H-J-L-M-N-R-R1-T-U-V-Z1				

APO/ FPO/ DPO	See Restrictions	APO/ FPO/ DPO	See Restrictions	APO/ FPO/ DPO	See Restrictions	APO/ FPO/ DPO	See Restrictions
09351	A-B-C1-E2-E3-F-F1-F3-H-H1-I3-M-N-R-R1-S-T-V-X-Z-Z1	09520	B-F-F1-R-R1-V	09604	B-C-F-F1-F3-P-R-S-U-V-Z1	09711	A-B-F-F1-F3-N-R-R1-S-V-Z1
		09522	B-F-F1-F3-R-S-V	09605	B-C-D-H-M-R-U-V	09712	A-B-F-F3-H-R-U-V-Z1
09352	A-B-C1-E2-F-F3-H1-M-R-R1-V-Z1	09523	B-F-F1-R-R1-V	09606	B-C-D-H-M-R-U-V	09714	B-C-C1-F1-M-R-R1-U
09354	A-B-C1-E2-F-F3-H1-M-R-R1-V-Z1	09524	B-F-F1-R-R1-V	09607	A-B-C-F-F1-F3-M-N-R-R1-U-U3-V-W-Z1	09715	B-F-F1-J-L-M-N-R-T-V-Z1
09355	A-B-C1-E2-F-F3-H1-M-R-R1-V-Z1	09532	B-F-F1-R-R1-V	09608	B-C-F-F3-N-R-U-V-Z1	09716	B-C-C2-F-F1-F3-J-L-M-N-R-R1-T-V-Z1
09356	A-B-C1-E2-F-F3-H1-M-N-R-V-Z1	09550	B-F-F1-R-R1-V	09609	B-C-F-F3-R-U-Z1	09717	A-B-F3-M-R-S-V-W-Z1
09357	A-B-C1-E2-F-F3-H1-M-R-V-Z1	09554	B-F-F1-R-R1-V	09610	B-C-F-F1-F3-M-R-S-U-V-Z1	09718	B-F-F1-J-L-M-N-R-T-U-V-Z1
09363	A-B-C1-E2-F-F3-H1-M-R-V-Z1	09556	B-F-F1-R-R1-V	09613	B-C-F-N-U-V	09719	B-C-D-F3-M-R-S-U-V-Z1
09365	A-B-C-C1-E2-F-F3-H1-M-N-R-V-Z1	09564	B-F-F1-R-R1-V	09614	A-B-C1-C2-E2-F-F1-F3-H1-J-L-M-N-R-R1-T-V-W-Z1	09720	B-M-R-S-U-V-Z1
09366	A-B-C1-E2-F-F1-F3-H1-M-R-R1-V-Z1	09565	B-F-F1-R-R1-V	09617	B-C-F-F3-R-U-Z1	09722	A-B-F-H-N-Q-V-Z-Z1
09378	A-B-C1-E2-F-F1-F3-H1-I3-M-N-R-R1-T-V-Z-Z1	09566	B-C2-E2-E3-F-F1-F3-R-R1-V-Z1	09618	B-C-F-F3-R-U-Z1	09723	B-C2-F-F1-F3-J-L-M-N-R-R1-T-V-Z1
09381	A-B-C1-E2-F-F1-F3-H1-I3-M-N-R-R1-T-V-Z-Z1	09567	B-C2-E2-E3-F-F1-F3-R-R1-V-Z1	09620	B-C-F-R-U-Z1	09724	B-C-C1-F1-M-R-R1-U
09403	B-C-C1-F3-M-R-S-U-Z1	09568	B-V	09621	B-C-F-F3-R-U-Z1	09725	A-B-F-F3-H-N-O-Q-S-V-V1-Z-Z1
09421	B-C-C1-F3-M-R-S-U-Z1	09569	B-C2-E2-E3-F-F1-F3-R-R1-V-Z1	09622	B-C-F-F3-R-U-Z1	09726	B-F-F1-J-L-M-N-R-T-U-V-Z1
09447	B-C-C1-F3-M-R-S-U-V-Z1	09570	B-F-F1-R-R1-V	09623	B-C-F-F3-R-U-V-Z1	09727	A-B-C1-C2-F-F1-F3-J-L-M-N-R-R1-T-V-Z1
09454	B-C-C1-F3-M-R-S-U-V-Z1	09573	B-C2-E2-E3-F-F1-F3-R-R1-V-Z1	09624	B-C-C2-F-F1-F3-I3-J-L-N-R-R1-T-U-V-Z-Z1	09728	A-B-C-C1-C2-F-F1-F3-J-L-N-R-R1-T-V-Z1
09459	B-C-C1-F3-M-R-S-U-Z1	09574	B-F-F1-R-R1-V	09625	B-C-F-F3-N-R-U-Z1	09729	B-C-F-F3-N-R-R1-U-V-Z1
09461	B-C-C1-F3-M-P-R-S-U-Z1	09575	B-F-F1-R-R1-V	09626	B-C-F-F3-R-U-Z1	09730	A-B-C1-C2-F-F1-F3-J-L-M-N-R-R1-T-V-Z1
09463	B-C-C1-F3-M-R-S-U-Z1	09576	B-F-F1-R-R1-V	09627	B-C-F-F3-R-U-V-Z1	09731	A-B-C1-C2-F-F1-F3-J-L-M-N-R-R1-T-V-Z1
09464	B-C-C1-F3-R-S-U-Z1	09577	B-V	09630	B-C-F-U-V	09732	B-N-V-Z1
09468	B-C-C1-F3-M-R-S-U-Z1	09578	B-C2-E2-E3-F-F1-F3-R-R1-V-Z1	09631	B-C-F-F3-R-U-V-Z1	09733	B-I3-L-N-V
09469	B-C-C1-R-U-Z1	09579	B-F-F1-R-R1-V	09633	B-B2-C-D-F-F1-M-R-U-U1-U2-U3-V-Z1	09734	A-B-C-C1-C2-F-F1-F3-I3-J-L-M-N-R-R1-T-V-Z-Z1
09470	B-C-C1-M-R-U-Z1	09581	B-F-F1-R-R1-V	09636	B-C-F-F3-R-U-V-Z1	09735	B-N-V-Z1
09494	B-C-C1-F3-M-R-S-U-Z1	09582	B-E2-E3-F-F1-F3-R-R1-V-Z1	09642	B-C2-F-F1-F3-J-L-M-N-R-T-U-V	09736	A-B-C1-F-F1-F3-J-L-M-N-R-R1-T-V-Z1
09497	A-B-C1-E2-F3-H1-M-N-R-R1-V-Z1	09583	B-F-F1-R-R1-V	09643	B-C-F3-M-R-S-U-V-Z1	09737	A-B-C1-C2-F-F1-F3-I3-J-L-M-N-R-R1-T-V-W-Y-Z-Z1
09498	B-C1-C2-F-F1-F3-J-L-N-R-R1-T-V-Z1	09586	B-F-F1-R-R1-V	09645	B-C-F-F1-F3-R-U-Z1	09738	A-B-C1-C2-F-F1-F3-J-L-M-N-R-R1-T-V-Z1
09501	B-V	09587	B-C2-E2-E3-F-F1-F3-R-R1-V-Z1	09647	B-F3-M-N-R-U-Z1	09739	A-B-C1-C2-F-F1-F3-J-L-M-N-R-R1-T-V-Z1
09502	B-V	09588	B-C2-E2-E3-F-F1-F3-R-R1-V-Z1	09648	B-F3-N-R-U-V-Z1	09741	A-B-C1-C2-E2-F-F1-F3-H1-J-L-M-N-R-R1-T-V-W-Y-Z1
09503	B-F-F1-R-R1-V	09589	B-F-F1-F3-R-S-V	09649	B-F3-N-R-U-Z1	09742	A-B-C2-F-F1-F3-J-L-M-N-R-R1-T-V-Z1
09504	B-V	09590	B-V	09701	A-B-B2-C1-C2-F-F1-F3-J-L-M-N-R-R1-T-V-Z1	09743	A-B-F-H-N-Q-V-Z-Z1
09505	B-V	09591	B-C2-E2-E3-F-F1-F3-R-R1-V-Z1	09702	B-C-C1-F1-M-R-R1-U	09744	A-B-C1-C2-F-F1-F3-J-L-M-N-R-R1-T-V-Z1
09506	B-V	09592	B-F-F1-R-R1-V	09703	B-C-D-F1-H-U	09745	A-B-F-F1-F3-M-N-R-R1-S-V-Z1
09507	B-V	09593	B-F-F1-F3-R-S-V	09704	B-C-O-V-V1	09748	A-B-C1-C2-F-F1-F3-J-L-M-N-R-R1-T-V-Z1
09508	B-F-F1-R-R1-V	09594	B-F-F1-R-R1-V	09705	B-C-C1-F1-M-R-R1-U	09749	A-B-F-H-N-U-V-Z1
09509	B-F-F1-R-R1-V	09595	B-F-F1-R-R1-V	09706	B-C-F3-M-N-R-S-U-V-Z1		
09510	A-B-C1-E2-F-H1-M-R-R1-V-Z1	09596	B-F-F1-R-R1-V	09707	B-C2-F-F1-F3-J-L-M-N-R-R1-T-V-Z1		
09511	B-F-F1-R-R1-V	09599	B-F-F1-R-R1-V	09708	B-C-C1-F1-M-R-R1-U		
09513	B-F-F1-R-R1-V	09600	B-C-C2-F-F1-F3-R-U-Z1	09709	B-B2-C1-C2-E2-F-F1-F3-H-H1-J-L-N-R-R1-T-V-Z1		
09517	B-F-F1-R-R1-V	09602	B-C-F-F1-N-R-U-V	09710	B-C-C1-F-F1-J-L-M-N-R-R1-T-U-V-Z1		
		09603	B-C-F-F1-F3-R-S-U-V-Z1				

APO/ FPO/ DPO	See Restrictions	APO/ FPO/ DPO	See Restrictions	APO/ FPO/ DPO	See Restrictions	APO/ FPO/ DPO	See Restrictions
09750	A-B-C1-C2-F-F1-F3-J-L-M-N-R-R1-T-V-Z1	09816	A-B-C1-C2-E2-E3-F-F1-F3-J-L-N-R-R1-T-V-Z1	09855	A-B-C1-E2-F-F1-H1-M-R-R1-U2-V-Z1	34024	B-C1-C2-F-F1-F3-J-L-M-N-R-R1-T-V-Z1
09751	B-C-D-E-F3-H-M-R-S-U	09817	A-B-C1-C2-E2-E3-F-F1-F3-H-H1-J-L-M-N-R-R1-T-V-Z1	09856	A-B-C1-C2-E3-F-F1-F3-J-L-M-N-R-R1-T-V	34025	B-F-F1-F3-J-L-M-N-R-R1-T-V-Z1
09752	B-C-D-F1-H-U	09818	A-B-C-F-F3-M-S-V-Z1	09857	A-B-C2-E2-F-F1-F3-13-L-M-N-R-R1-S-T-V-Z1	34030	B-C1-C2-F-F1-F3-J-L-M-N-R-R1-T-V-Z1
09753	A-B-F-N-V-Z1	09820	A-B-C2-F-F1-F3-H-H1-J-L-M-N-R-R1-T-V-Z1	09858	B-C1-E2-E3-F-F1-F3-H1-N-R-R1-U-V-Z1	34031	B-C1-C2-F-F1-F3-J-L-M-N-R-R1-T-V-Z1
09754	A-B-F-H-N-Q-V-Z-Z1	09821	A-B-C-F-F3-N-R-S-V-Z1	09859	B-C1-E2-E3-F-F1-F3-H1-R-R1-U-V-Z1	34032	B-C1-C2-F-F1-F3-J-L-M-N-R-R1-T-V-Z1
09755	A-B-B2-C-C1-D-F-F1-J-L-M-N-Q-R-R1-T-V-Z1	09822	A-B-C-F-F3-M-R-S-V-Z1	09860	A-B-C2-F-F1-F3-I3-L-M-N-R-R1-S-T-V-Z1	34033	B-C1-C2-F-F1-F3-J-L-M-N-R-R1-T-V-Z1
09756	A-B-B2-E3-F-F1-J-L-N-Q-R-R1-T-V-Z1	09823	A-B-C1-C2-F-F1-F3-J-L-M-N-R-R1-T-V-Z1	09861	A-B-F-F1-F3-N-R-R1-S-V-Z1	34034	B-C1-C2-F-F1-F3-I3-J-L-M-N-R-R1-T-V-Z1
09758	A-B-F-F1-M-N-R-R1-V-Z1	09824	A-B-C-F-F3-M-R-S-V-Z1	09862	A-B-C-C2-F-F1-F3-I3-L-M-N-R-R1-S-T-V-Z1	34035	B-C1-C2-F-F1-F3-H-J-L-M-N-R-R1-T-V-Z1
09759	A-B-C-C1-C2-E2-F-F1-F3-J-L-N-R-R1-T-V-Z1	09825	A-B-C1-C2-F-F1-F3-J-L-M-N-R-R1-T-V-Z1	09863	A-B-F-F1-F3-N-O-R-R1-S-V-Z1	34036	B-C1-C2-F-F1-F3-J-L-M-N-R-R1-T-V-Z1
09760	A-B-B2-C-C1-D-F-F1-J-L-M-N-Q-R-R1-S-T-V-Z1	09826	A-B-C1-C2-E1-E2-E3-F-F1-F3-J-L-M-N-R-R1-T-V-W-Z1	09865	A-B-F3-R-U-V-Z1	34037	B-C-C1-C2-F-F1-F3-H-J-L-M-N-R-R1-T-V-Z1
09761	B-F-F1-F3-M-N-R-R1-V-Z-Z1	09827	A-B-F-F1-J-L-M-N-R-T-V-Z1	09868	A-B-E2-F-N-U-V-Z1	34038	B-L-M-N-U-V-Z1
09762	A-B-C2-E3-F-F1-F3-J-L-N-R-R1-T-V-Z1	09828	A-B-C1-C2-F-F1-F3-I3-J-L-N-R-R1-T-V-Z1	09870	A-B-C1-C2-E2-F-F1-F3-H1-I3-L-M-N-R-R1-S-T-U4-V-Z1	34039	B-C1-C2-F-F1-J-L-M-N-T-V-Z1
09769	A-B-B2-C1-C2-F-F1-F3-J-L-M-N-R-R1-T-V-Z1	09829	B-C-N-R-V-Z1	09873	A-B-C1-C2-E2-F-F1-F3-H1-I3-L-M-N-R-R1-S-T-U4-V-Z1	34041	B-C1-C2-F-F1-F3-J-L-M-N-R-R1-T-V-Z1
09777	A-B-C-C1-C2-E1-F-F1-F3-J-L-M-N-R-R1-T-V-Z1	09830	B-C-F-F1-F3-J-L-M-N-R-R1-S-T-V-Z1	09874	A-B-C1-C2-E2-F-F1-F3-H1-I3-L-M-N-R-R1-S-T-U4-V-Z1	34042	A-B-C-F-F1-M-N-R-U-V-W-Z1
09780	A-B-F-H-N-R-V	09831	B-C1-C2-F-F1-F3-J-L-N-R-R1-T-V-Z1	09875	A-B-C1-C2-E2-F-F1-F3-H1-I3-L-M-N-R-R1-S-T-U4-V-Z1	34044	A-B-D-F-M-N-O-R-R1-V-V1-Z1
09789	A-B-C2-F-F3-N-R-S-V-Z1	09832	B-C1-E2-F1-F3-S-V-Z1	09878	A-B-C1-C2-E2-F-F1-F3-H1-I3-L-M-N-R-R1-S-T-U4-V-Z1	34055	B-C1-C2-F-F1-F3-J-L-M-N-R-R1-T-V-Z1
09800	A-B-E2-F-F1-F3-N-R-R1-S-V-Z1	09833	B-C1-E2-F1-F3-S-V-Z1	09880	A-B-C1-E2-F-F1-H1-N-R-R1-U-V-Z1	34058	B-F-F1-R-R1-V-Z1
09801	A-B-C1-E2-F-H1-M-N-R-R1-V-Z1	09834	B-E2-E3-F-F1-F3-R-R1-U-Z1	09890	B-E2-F-H1-N-R-R1-U2-V-Z1	34060	B-C1-C2-E2-F-F1-F3-J-L-M-N-R-R1-T-V-Z1
09802	A-B-C-C2-D-E3-F-F1-F3-H-H1-I3-L-M-N-R-R1-S-T-V-W-X-Z1	09835	A-B-C1-F1-F3-N-V-Z1	09892	A-B-C1-C2-E2-F-F1-F3-J-L-M-N-R-R1-T-V-Z1	34078	B-F1-N-V
09803	B-E2-E3-F-F1-F3-H1-N-R-R1-U-V-Z1	09836	A-B-C1-C2-F-F1-F3-J-L-M-N-R-R1-V-Z1	09895	A-B-C1-C2-E2-F-F1-F3-J-L-M-N-R-T-V-W-Z1	34080	B-F-F1-R-R1-V
09804	A-B-F-F1-F3-M-N-R-S-V-Z1	09837	B-E2-E3-F1-F3-V-Z1	09898	B-C-C1-E2-F-F1-F3-H1-N-R-R1-U2-V-Z1	34081	B-F-F1-R-R1-V
09805	B-E2-E3-F-F1-F3-R-R1-Z1	09838	B-E2-E3-F-F1-F3-U-Z1	09899	B-C-C1-E2-F-F1-F3-H1-N-R-R1-U2-V-Z1	34082	B-F-F1-R-R1-V
09806	A-B-C1-C2-E2-F-F1-F3-H1-J-L-M-N-R-R1-T-V-Z1	09839	A-B-U-V-Z1	34001	A-B-C1-C2-F-F1-F3-J-L-M-N-R-R1-S-T-V-Z1	34083	B-F-F1-R-R1-V
09808	A-B-C1-C2-E2-F-F1-F3-H-H1-J-L-N-R-R1-T-V-Z1	09841	A-B-F3-N-R-U-Z1	34002	B-C1-C2-F-F1-F3-J-L-M-N-R-R1-T-V-Z1	34084	B-F-F1-R-R1-V
09809	B-C1-C2-F-F1-F3-J-L-N-T-V-Z1	09842	A-B-C1-C2-F-F1-F3-J-L-N-R-R1-T-V-Z1	34004	B-C1-C2-F-F1-F3-J-L-M-N-R-R1-T-V-Z1	34085	B-F-F1-R-R1-V
09810	A-B-F-F1-F3-N-R-S-V-Z1	09844	A-B-C1-C2-F-F1-F3-J-L-M-N-R-R1-T-V-Z1	34007	B-F-F1-H-J-M-N-R-R1-V-Z1	34086	B-F-F1-R-R1-V
09811	B-E2-E3-F-F1-F3-H1-N-R-R1-U-V-Z1	09845	A-B-C1-C2-E3-F-F1-F3-J-L-M-N-R-R1-T-V-Z1	34008	B-B2-C1-C2-D-E1-F-F1-H-H1-J-L-M-N-R-R1-T-V-Z1	34087	B-F-F1-R-R1-V
09812	B-E2-E3-F-F1-I-J-L-N-R-R1-T-U-V-Z1	09846	A-B-C1-C2-F-F1-F3-J-L-N-R-R1-T-V-Z1	34011	B-C1-C2-E2-F-F1-F3-J-L-M-N-R-R1-T-V-Z1	34088	B-F-F1-R-R1-V
09813	A-B-C1-C2-E2-E3-F-F1-F3-J-L-N-R-R1-T-V-Z1	09847	B-C-C2-F-F1-F3-J-L-M-N-R-R1-S-T-V-Z1	34020	B-C1-C2-F-F1-F3-J-L-M-N-R-R1-T-V-Z1	34089	B-F-F1-R-R1-V
09814	B-C2-E2-E3-F-F1-F3-I3-J-L-N-R-R1-T-V-Z1	09848	A-B-F-M-R-V-Z1	34021	B-C1-C2-F-F1-F3-J-L-M-N-R-R1-T-V-Z1	34090	B-F-F1-R-R1-V
09815	A-B-F-F3-N-R-S-V-Z1	09851	A-B-C-F-F3-N-R-S-V-Z1	34022	B-C1-C2-F-F1-F3-J-L-M-N-R-R1-T-V-Z1	34091	B-E2-E3-F-F1-F3-R-R1-V-Z1
		09852	B-E2-E3-F-F1-F3-H1-N-R-R1-U-V-Z1	34023	B-C1-C2-F-F1-F3-J-L-M-N-R-R1-T-V-Z1	34092	B-F-F1-R-R1-V
		09853	B-E2-F-H1-R-R1-U2-V-Z1			34093	B-F-F1-R-R1-V
		09854	A-B-C1-C2-F-F1-F3-J-L-N-R-R1-S-T-V-Z1			34094	B-F-F1-R-R1-V
						34095	B-F-F1-R-R1-V
						96201	A-B-F-F1-F3-S-U
						96202	A-B-F-F1-F3-S-U
						96203	A-B-F-F1-F3-S-U

APO/ FPO/ DPO	See Restrictions	APO/ FPO/ DPO	See Restrictions	APO/ FPO/ DPO	See Restrictions	APO/ FPO/ DPO	See Restrictions
96204	A-B-F-F1-F3-S-U	96338	A-B-F3-M-R-S-W	96530	A-B-C1-C2-F-F1-H-H1- J-L-M-N-R-R1-S-T-V-Z1	96617	B-F-F1-R-R1-V
96205	A-B-F-F1-F3-S-U	96339	B-M-V-W	96531	A-B-C-F-F1-H-M-N-R- U-V	96619	B-V
96206	A-B-F-F1-F3-S-U	96343	B-M-W	96532	A-B-C1-C2-F-F1-H-J-L- M-N-R-R1-S-T-V-Z1	96620	B-F-F1-R-R1-V
96207	A-B-F-F1-F3-S-U-V	96346	B-F-F1-F2-H-M-V-W-Z1	96534	A-B-F-U-Z1	96628	B-F-F1-R-R1-V
96208	A-B-E-F1-F3-R-S-U	96347	B-F-F1-F2-H-M-W-Z1	96535	A-B-C1-C2-F-F1-J-L-M- N-R-R1-S-T-V-Z1	96629	B-F-F1-R-R1-V
96209	A-B-C1-C2-F-F1-J-L-M- N-T-U-V-Z1	96349	B-F-F1-F2-H-M-W-Z1	96537	B-V-Z1	96632	B-F-F1-R-R1-V
96210	A-B-C1-C2-F-F1-F3-I3- L-M-N-R-R1-T-V-Z-Z1	96350	B-F-F1-F2-H-M-W-Z1	96540	B-V-Z1	96643	B-F-F1-R-R1-V
96212	B-F-F1-F2-H-M-W-Z1	96351	B-F-F1-F2-H-M-W-Z1	96542	B-V-Z1	96649	B-F-F1-R-R1-V
96213	A-B-C-F1-R-U	96362	B-F-F1-F2-M-W-Z1	96543	B-P-V-Z1	96650	B-F-F1-R-R1-V
96214	A-B-C-F1-R-U	96365	B-C-M-R-V-W	96546	B-F-N-R-U3	96657	B-F-F1-R-R1-V
96218	A-B-F-F1-F3-S-U	96367	B-C-L-M-R-W	96548	A-B-H-M-R-U	96660	B-F-F1-R-R1-V
96224	A-B-F-F1-F3-S-U	96368	B-C-M-R-W	96549	A-B-C1-C2-F-F1-H-J-L- M-N-R-R1-S-T-V-Z1	96661	B-F-F1-R-R1-V
96251	A-B-F-F1-F3-S-U	96370	B-F-F1-F2-H-M-W-Z1	96550	A-B-H-M-N-U-V-Z1	96662	B-F-F1-R-R1-V
96257	A-B-F-F1-F3-S-U	96372	B-M-W	96551	A-B-C1-C2-F-F1-H-J-L- M-N-R-R1-S-T-V-Z1	96663	B-F-F1-R-R1-V
96258	A-B-F-F1-F3-S-U	96373	B-M-W	96552	B-Z1	96664	B-V
96260	A-B-F-F1-F3-S-U	96374	B-M-W	96553	A-B-F-F1-H-M-N-R-U	96665	B-V
96264	A-B-C-F1-R-U	96375	B-M-W	96554	A-B-C1-C2-F-F1-H-J-L- M-N-R-R1-S-T-V-Z1	96666	B-V
96266	A-B-C-F1-R-U	96376	B-M-W	96555	B-F-M-V	96667	B-F-F1-R-R1-V
96267	A-B-C-F1-R-U-V	96377	B-M-W	96557	B-F-M-V	96668	B-F-F1-R-R1-V
96269	A-B-F1-U-Z1	96378	B-M-W	96562	A-B-C1-C2-D-E2-E3-F- F1-H-H1-I3-L-M-N-R- R1-S-T-V-Z-Z1	96669	B-F-F1-R-R1-V
96271	A-B-F-F1-F3-S-U	96379	B-M-W	96577	A-B-F-H-M-N-R-U	96670	B-V
96273	A-B-F-F1-F3-S-U	96380	B-M-W	96578	B-B2-F1-H-J-N-R	96671	B-F-F1-R-R1-V
96275	A-B-E-F1-F3-S-U	96382	B-M-W	96595	B-F-S-V-Z1	96672	B-F-F1-R-R1-V
96276	A-B-C-F1-R	96384	B-M-W	96598	B-N-O-V-V1	96673	B-V
96278	A-B-C-F1-R-U	96385	B-M-W	96599	B-N-V	96674	B-F-F1-R-R1-V
96283	A-B-F-F1-F3-S-U	96386	B-M-W	96601	B-V	96675	B-F-F1-R-R1-V
96284	A-B-F-F1-F3-S-U	96387	B-M-W	96602	B-V	96677	B-F-F1-R-R1-V
96297	A-B-F-F1-F3-S-U	96388	B-M-W	96603	B-V	96678	B-F-F1-R-R1-V
96301	A-B-F3-M-R-S-W	96389	B-M-W	96604	B-V	96679	B-F-F1-R-R1-V
96303	B-C1-C2-F-F1-H-J-L-M- N-T-V-W-Z1	96401	B-C-F-N-O-R-V-V1-Z1	96605	B-V	96681	B-V
96306	B-F-F1-F2-H-M-W-Z1	96501	A-B-N-V	96606	B-V	96682	B-V
96309	B-C-M-R-V-W	96504	A-B-C-C1-C2-F-F1-F3- I3-L-M-N-R-R1-T-V-W- Z-Z1	96607	B-V	96683	B-V
96310	B-M-W	96505	A-B-C-C1-C2-F-F1-F3- I3-L-M-N-R-R1-T-V-W- Z-Z1	96608	B-E2-F-H1-R1-U2-V-Z1	96686	B-V
96319	B-C-M-R-W	96507	A-B-C1-C2-F-F1-H-J-L- M-N-T-V-Z1	96609	B-E2-F-H1-R1-U2-V-Z1	96691	B-F-F1-R-R1-V
96321	B-F-F1-F2-H-M-W-Z1	96510	B-I3-N-V	96610	B-E2-F-H1-R1-U2-V-Z1	96692	B-F-F1-R-R1-V
96322	B-F-F1-F2-H-M-W-Z1	96511	B-I3-N-V	96611	B-E2-F-H1-R1-U2-V-Z1	96693	B-F-F1-R-R1-V
96323	B-C-M-R-V-W	96515	B-D-F-U3	96612	B-V	96694	B-F-F1-R-R1-V
96326	B-C-F-M-R-W	96516	B-D-F-Z1	96613	B-V	96695	B-F-F1-R-R1-V
96328	B-C-M-R-W	96517	B-F-U3-V-Z1	96615	B-F-F1-R-R1-V	96696	B-F-F1-R-R1-V
96330	B-C-M-R-W	96520	B-F-N-U3-V	96616	B-C2F-F1-R-R1-V	96698	B-V
96331	A-B-F1-J-L-M-N-S-W	96521	B-C1-C2-F-F1-J-L-M-N- R-R1-S-T-V-Z1				
96336	B-C-M-R-V-W						
96337	B-M-W						

RESTRICTIONS

LEGEND

PS Form 2976, *Customs — CN 22 (Old C 1) and Sender's Declaration* (green label)

PS Form 2976-A, *Customs Declaration and Dispatch Note*

PS Form 2976-B, *Priority Mail Express International Shipping Label and Customs Form*

ATF	= Bureau of Alcohol, Tobacco, Firearms, and Explosives
Box C	= Department of State (DOS) contractor personnel
Box R	= Retired military personnel
DPO	= Diplomatic Post Office
MPO	= Military Post Office
PACT	= Prevent All Cigarette Trafficking Act
PAL	= Parcel Airlift
PMEMS	= Priority Mail Express Military Service
PUB 52	= Publication 52, <i>Hazardous, Restricted, and Perishable Mail</i>
SAM	= Space Available Mail
USDA	= United States Department of Agriculture

Note: Mail order catalogs are prohibited as SAM or PAL mail.

A. Securities, currency, or precious metals, including in their raw, unmanufactured state, are prohibited. Official Mail shipments are exempt from this restriction.

A1. Reserved for future use.

A2. Reserved for future use.

B. Regardless of mail class, a customs declaration (PS Form 2976, PS Form 2976-A, or PS Form 2976-B) is required for all items weighing 16 ounces or more or any item (regardless of weight) containing potentially dutiable mail contents (e.g., merchandise or goods) addressed to or from this ZIP Code. All PMEMS mailpieces (regardless of mail contents or weight) addressed to or from this ZIP Code must bear a properly completed PS Form 2976-B. The surface area of the address side of the mailpiece must be large enough to contain the applicable customs declaration. The following exceptions apply:

- Known mailers are exempt from providing customs documentation on non-dutiable letters or printed matter, except for Priority Mail Express, which requires a customs form for all contents and weights. (A known mailer is a business mailer who enters volume mailings through a business mail entry unit (BMEU) or other bulk mail acceptance location, pays postage through an advance deposit account, uses a permit imprint for postage payment, and submits a completed postage statement at the time of entry that certifies that the mailpieces contain no dangerous materials that are prohibited by postal regulations.)
- All federal, state, and local government agencies whose mailings are regarded as "Official Mail" are exempt from providing customs documentation on any item addressed to an MPO except for those MPOs to which restriction "B2" applies and except for Priority Mail Express, which requires a customs form from all mailers.
- If mailpiece is endorsed "Contents for Official Use — Exempt from Customs Requirements."

B2. All federal, state, and local government agencies must complete customs documentation when sending potentially dutiable mail addressed to or from this MPO or DPO.

C. Cigarettes and other tobacco products, including tobacco leaves, chewing and pipe tobacco, snuff, and cigars are prohibited, including those that are authorized in Publication 52 under PACT.

C1. Obscene and horror articles, images, prints, paintings, cards, films, videotapes, comic books, etc., are prohibited.

C2. E-cigarettes and related products (e.g., nicotine liquids, e-liquids, parts, or supplies) are prohibited.

D. Coffee is prohibited.

E. Medicines (prescription, over-the-counter, vitamins, and supplements) are prohibited when mailed to individuals for human or animal use. This prohibition does not apply when medicines are sent as Official Mail only between specifically designated agencies such as pharmaceutical distributors, hospitals, clinics, and pharmacies.

E1. Mailers are responsible to ensure that all medicines and vaccines conform to host nation laws.

E2. Any matter depicting nude or seminude persons, pornographic, or sexual items are prohibited. Non-authorized political materials are prohibited. Religious materials contrary to the Islamic faith are prohibited in bulk quantities, but individual items for the personal use of the addressee are permissible.

E3. Radio transceivers, cordless/cellular telephones, global positioning systems, scanners, base stations, and handheld transmitters are prohibited.

F. Firearms of any type are prohibited, except firearms mailed to or by official U.S. government agencies. This restriction does not apply to firearms mailed from this MPO ZIP Code, provided ATF and USPS regulations are met. Antique firearms do not require an ATF form.

F1. Weapons of any type are prohibited.

F2. Mailing firearms to or from this MPO ZIP Code is restricted to one shotgun and one single shot .22 caliber rifle per individual.

F3. Replica weapons and inert explosive devices (such as grenades) and weapons parts are prohibited.

G. Parcels of any class are prohibited.

H. Meats, including preserved meats, bones, skin, hair, feathers, horns or hoofs of hoofed animals, and wool samples whether hermetically sealed or not, are prohibited.

H1. Pork or pork by-products are prohibited.

I. Reserved for future use.

I1. Reserved for future use.

I2. Reserved for future use.

I3. Mail of all classes must fit in a mail sack. Mail may not exceed the following dimensions:

- Maximum length 27 inches.
- Maximum width 14 inches.
- Maximum height 14 inches.

J. Standard Post and Parcel Select parcels may not exceed 108 inches in length and girth combined.

K. Reserved for future use.

L. All Official Mail is prohibited.

M. Fruits, vegetables, live animals, and live plants are prohibited.

N. Registered Mail service is prohibited.

O. Reserved for future use.

P. Official Mail only.

Q. Mail may not exceed 66 pounds, and size is limited to 42 inches maximum length and 72 inches maximum length and girth combined.

R. All alcoholic beverages, including those mailable under Publication 52, Part 421, are prohibited.

R1. Materials used in the production of alcoholic beverages (i.e., distilling material, hops, malts, yeast, etc.) are prohibited.

S. Synthetic cannabinoids used to stimulate the central nervous system commonly known as "synthetic marijuana," "K2," or "Spice" are prohibited.

T. Mailings of household shipments and case lots of food to or from an MPO require military transportation office approval prior to mailing. Mailings to or from a DPO require pre-approval from the Diplomatic Pouch and Mail Director.

U. Mail addressed to Retirees (Box R) is limited to 16 ounces and up to a 90-day supply of TRICARE medications. This restriction does not apply to mail endorsed "Free Matter for the Blind or Handicapped."

U1. Mail is limited to First-Class Mail items, including audio and video media, weighing 13 ounces or less. This limitation does not apply to Official Mail.

U2. Retirees (Box R) are not authorized mail service.

U3. Reserved for future use.

U4. Mail addressed to Box C is limited to 2 lbs.

V. PMEMS is not available.

V1. Electronic Delivery status information for Extra Services is not available on *USPS.com*. Manual record of delivery may be available upon request.

W. Hermetically sealed packages of meat products bearing USDA certification, such as dried beef, salami, and sausage, may be mailed. 200 grams of tobacco per parcel are permitted duty free.

X. Cremated remains are prohibited.

Y. Mail is limited to First-Class Mail and Priority Mail items only. This restriction also applies to Official Mail.

Z. No outside pieces (OSPs).

Z1. The following restriction is applicable only to International Service Centers (ISC)/Exchange Offices. An Anti-Pilferage Seal (Item No O817E or O818A) is required on all pouches and sacks.

— *International Network Operations,
Global Business, 12-7-17*



4,000

Average weight of USPS daily deliveries, in pounds, to the Grand Canyon's bottom

Freely Associated States Restrictions

We list the mailing restrictions for Freely Associated States (FAS) in the Pull-Out section of the *Postal Bulletin*. All FAS Restrictions will be updated periodically.

Freely Associated States

Mail addressed to freely associated states is subject to certain conditions or restrictions of mailing regarding content, preparation, and handling. The following FAS Restrictions table outlines these conditions as listed by each affected FAS ZIP Code™ through the use of footnoted mailing restrictions codes (see the [Restrictions](#) following the table). For more information on available extra services for FAS destinations, see *Mailing Standards of the United States Postal Service, Domestic Mail Manual (DMM®)*, part 503.

Acceptance clerks must use the table with the RSS terminal to determine which FAS ZIP Codes are active and which conditions of mailing apply. Send inquiries to Randall Sobol at randall.f.sobol@usps.gov.

FAS Restrictions Table

FAS Table	See Restrictions
96939	A, B
96940	A, B
96941	A, B
96942	A, B
96943	A, B
96944	A, B
96960	A, B
96970	A, B, D
Marshall Islands	C
Federated States of Micronesia	C

RESTRICTIONS LEGEND

PS Form 2976, *Customs Declaration CN 22 – Sender's Declaration*

PS Form 2976-A, *Customs Declaration and Dispatch Note*

FAS = Freely Associated State

- A.** Bank currency (coin and paper) is prohibited.
- B.** Signature Confirmation, Signature Confirmation Restricted Delivery, Adult Signature Requested, Adult Signature Restricted Delivery, Certified Mail Adult Signature Required, and Certified Mail Adult Signature Restricted Delivery not available.
- C.** COD is prohibited.
- D.** Betel nut (*Areca catechu*) is prohibited.

— *Asia-Pacific Relations,
Global Business, 12-7-17*

IMM Revision: Changes to Pricing and Products for International Mailing Services (continued)

Guadeloupe (Includes Saint Bartholomew and Saint Martin)

* * * * *

Restrictions

[Revise the first entry to read as follows:]

Coins; banknotes; currency notes; securities payable to bearer; traveler’s checks; manufactured and unmanufactured platinum, gold, and silver; precious stones; jewels; expensive jewelry; and other valuable articles may only be sent in First-Class Package International Service with Registered Mail service shipments.

* * * * *

Israel

* * * * *

Restrictions

[Revise the first entry to read as follows:]

Coins; banknotes; currency notes (paper money); securities payable to bearer; traveler’s checks; platinum, gold, or silver, manufactured or not; precious stones; jewelry; and other valuable articles may only be sent in First-Class Package International Service with Registered Mail service shipments.

* * * * *

[Revise the fifth entry to read as follows:]

Records, films, recording wire, computer cards, QSL cards, and magnetic film are admitted only if sent in First-Class Package International Service shipments.

* * * * *

Italy

* * * * *

Restrictions

* * * * *

[Revise the second entry to read as follows:]

Postage stamps for philatelic purposes are admitted in First-Class Package International Service with Registered Mail service shipments on condition that the package bears a completed PS Form 2976 and the addressee complies with the Italian financial regulations.

* * * * *

Japan

* * * * *

Restrictions

* * * * *

[Revise the second entry to read as follows:]

Coins; banknotes; currency notes (paper money); securities payable to bearer; traveler’s checks; platinum, gold, or silver, manufactured or not; precious stones; jewelry; and other valuable articles may only be sent in First-Class Package International Service with Registered Mail service shipments or insured Priority Mail International parcels.

* * * * *

Korea, Republic of (South Korea)

* * * * *

Restrictions

[Revise the first entry to read as follows:]

Coins; paper currency; banknotes; currency notes; securities payable to bearer; jewelry; manufactured and unmanufactured platinum, gold, and silver; precious stones; and other valuable articles are admitted only if sent in First-Class Package International Service with Registered Mail service shipments.

* * * * *

Libya

* * * * *

Observations

* * * * *

[Revise the third entry to read as follows:]

3. In accordance with Executive Order 12543 of January 7, 1986, merchandise is limited to donations of articles of food, clothing, medicines, and medical supplies that are intended strictly for medical purposes. First-Class Package International Service items and International Priority Airmail (IPA) items are subject to the content restriction. ISAL service is suspended because transportation is not available.

* * * * *

Macao

* * * * *

Restrictions

[Revise the entry to read as follows:]

Coins; banknotes; currency notes; traveler’s checks; securities payable to bearer; platinum, gold, or silver, manufactured or not; precious stones; jewelry; and other valuable

articles may only be sent in First-Class Package International Service with Registered Mail service shipments.

* * * * *

Mali

* * * * *

Observations

[Revise the first entry to read as follows:]

1. First-Class Package International Service items containing dutiable articles must be sent with Registered Mail service.

* * * * *

Namibia

Prohibitions

* * * * *

[Revise the fourth entry to read as follows:]

Diamonds or precious stones except in First-Class Package International Service with Registered Mail service shipments.

* * * * *

Niger

* * * * *

Observations

[Revise the entry to read as follows:]

First-Class Package International Service items containing dutiable articles must be sent with Registered Mail service.

* * * * *

Oman

* * * * *

Observations

[Revise the entry to read as follows:]

First-Class Package International Service items containing dutiable articles must be sent with Registered Mail service.

* * * * *

Reunion

* * * * *

Restrictions

[Revise the first entry to read as follows:]

Banknotes, currency notes, and securities payable to bearer may only be sent in First-Class Package International Service with Registered Mail service shipments.

* * * * *

Rwanda

Prohibitions

[Revise the first entry to read as follows:]

Coins, banknotes, currency notes (paper money), traveler's checks, and securities payable to bearer except in First-Class Package International Service with Registered Mail service shipments.

* * * * *

San Marino

* * * * *

Restrictions

[Revise the entry to read as follows:]

Postage stamps for philatelic purposes are admitted in First-Class Package International Service with Registered Mail service shipments on condition that the package bears a completed PS Form 2976 and the addressee complies with the Italian financial regulations.

* * * * *

Senegal

* * * * *

Observations

[Revise the entry to read as follows:]

First-Class Package International Service items containing dutiable articles must be sent with Registered Mail service.

* * * * *

Sierra Leone

Prohibitions

[Revise the fourth entry to read as follows:]

Postage stamps, whether used or not, except in First-Class Package International Service with Registered Mail service shipments.

* * * * *

Restrictions

* * * * *

[Revise the second entry to read as follows:]

Coins or precious metal sent in First-Class Package International Service with Registered Mail service shipments may not exceed L5 in value.

* * * * *

Singapore

Prohibitions

* * * * *

[Revise the fifth entry to read as follows:]

Coins except coins for purposes of ornament; banknotes; currency notes; traveler’s checks; securities payable to bearer; precious stones; jewelry; and other valuable articles. However, unmounted precious stones may be sent in First-Class Package International Service with Registered Mail service shipments if authorization is obtained from the Postmaster General of Singapore.

* * * * *

Sint Maarten

Prohibitions

[Revise the first entry to read as follows:]

Coins; banknotes; currency; securities of any kind payable to bearer; traveler’s checks; platinum, gold, and silver (manufactured or not); precious stones; jewelry; and other valuable articles, **unless they are sent in First-Class Package International Service with Registered Mail service.**

* * * * *

Somalia

Prohibitions

* * * * *

[Revise the second entry to read as follows:]

Coins; banknotes; currency; securities of any kind payable to bearer; traveler’s checks; platinum, gold, and silver (manufactured or not); precious stones; jewelry; and other valuable articles.

* * * * *

South Africa

Prohibitions

* * * * *

[Revise the fourth entry to read as follows:]

Diamonds or precious stones except in First-Class Package International Service shipments with Registered Mail service.

* * * * *

Observations

* * * * *

[Revise the third entry to read as follows (specifying that only First-Class Package International Service with Registered Mail service may be used):]

3. Coins; banknotes; currency notes (paper money); traveler’s checks; platinum, gold, and silver (manufactured or not); precious stones; jewelry; and other valuable articles are admitted only in First-Class Package International Service with Registered Mail service shipments.

* * * * *

Sudan

* * * * *

Restrictions

[Revise the entry to read as follows:]

Banknotes greater than 2 Sudanese pounds in value are admitted **ONLY** in First-Class Package International Service with Registered Mail service shipments.

* * * * *

Taiwan

* * * * *

Observations

[Revise the first entry to read as follows:]

1. First-Class Package International Service items containing dutiable articles must be sent with Registered Mail service.

* * * * *

Tanzania

* * * * *

Restrictions

[Revise the entry to read as follows:]

Coins must not exceed 100 shillings in value and must be sent in First-Class Package International Service with Registered Mail service shipments.

* * * * *

Togo

Prohibitions

* * * * *

[Revise the third entry to read as follows:]

Banknotes, currency notes, securities payable to bearer, and traveler’s checks may only be sent in First-Class Package International Service with Registered Mail service shipments.

* * * * *

Uganda

* * * * *

Restrictions

[Revise the first entry to read as follows:]

Coins; banknotes; currency notes (paper money); securities payable to bearer; traveler’s checks; platinum, gold, or silver, manufactured or not; precious stones; jewelry; and other valuable articles may only be sent in First-Class Package International Service with Registered Mail service shipments.

* * * * *

Ukraine

* * * * *

Restrictions

[In the first entry, revise item e. to read as follows:]

1. In order to be admissible, the food items listed below must*** (e) be shipped in quantities not to exceed 2 kilograms (4 pounds) when enclosed in a First-Class Package International Service shipment.***

* * * * *

Yemen

* * * * *

Restrictions

* * * * *

[Revise the second entry to read as follows:]

Coins, banknotes, currency notes, securities payable to bearer, and traveler’s checks may only be sent in First-Class Package International Service with Registered Mail service shipments.

* * * * *

Zambia

* * * * *

Restrictions

[Revise the first entry to read as follows:]

Coins; paper currency; banknotes; currency notes; securities payable to bearer; jewelry; manufactured and unmanufactured platinum, gold, and silver; precious stones; and other valuable articles are admitted only if sent in First-Class Package International Service with Registered Mail service shipments.

* * * * *

We will incorporate these revisions into the next update of the online IMM, which is available via Postal Explorer at pe.usps.com.

— Product Classification, Marketing, 12-7-17

IMM Revision: International Inbound Mail Entry

Effective December 7, 2017, the Postal Service™ is revising *Mailing Standards of the United States Postal Service, International Mail Manual (IMM®)* to add a new subchapter 790 titled “International Inbound Mail Entry.”

Recently, shipments of foreign inbound items to the 48 contiguous states have been entered in isolated locations that are not capable of the following:

- Processing the items timely.
- Airlifting the items due to lack of adequate air cargo space.

This has affected the timeliness of delivery and added cost to the processing streams. Therefore, we are limiting the inbound drop locations to the five international service centers unless the Postal Service and the mailer have a contract or bilateral agreement designating an alternate location.

Simultaneously, we are also revising *Mailing Standards of the United States Postal Service, Domestic Mail Manual (DMM®)* to include this information (see “DMM Revision: International Inbound Mail Entry” on page 5 in this issue of the *Postal Bulletin*).

Although effective immediately, we will not publish this revision in the online IMM until the next update.

Mailing Standards of the United States Postal Service, International Mail Manual (IMM)

* * * * *

7 Treatment of Inbound Mail

* * * * *

[Add a new subchapter 790 to read as follows:]

790 International Inbound Mail Entry

Incoming mail from foreign mail consolidators or foreign posts must be entered through one of the five international service centers located in the 48 contiguous states. Mailers must arrange exceptions in advance for entry anywhere else, including into domestic offshore locations, through contracts or bilateral agreements with the Postal Service.

* * * * *

Although effective December 7, 2017, we will incorporate this revision into the next update of the online IMM, which is available via Postal Explorer® at pe.usps.com.

— Product Classification, Marketing, 12-7-17

IMM Revision: Lifting Certain Sanctions on Sudan and Updating Sanctions Information to Various Countries

Effective December 7, 2017, the Postal Service™ is revising *Mailing Standards of the United States Postal Service*, International Mail Manual (IMM®) to reflect changes to Chapter 5 and the Individual Country Listing for Sudan by removing the information about Sudan as an embargoed destination, and also updating other sanctions information to various countries.

Effective October 12, 2017, the U.S. government lifted certain economic sanctions on Sudan, including the export ban, the import ban, the prohibition on transactions with the Sudanese government, and the prohibition on dealing with certain persons and organizations. With some caveats, these transactions will no longer require a license from the U.S. Department of the Treasury’s Office of Foreign Assets Control (OFAC). However, because the U.S. government still designates Sudan as a “State Sponsor of Terrorism,” the U.S. Census Bureau’s export information filing requirements remain in place.

In addition, the Postal Service is revising for accuracy IMM references to the Census Bureau’s exemption for certain informational materials to foreign libraries or similar institutions in many countries, as well as other references to Internet addresses and agency regulations.

Mailing Standards of the United States Postal Service, International Mail Manual (IMM)

* * * * *

5 Nonpostal Export Regulations

510 Office of Foreign Assets Control (OFAC) Regulations – U.S. Department of the Treasury

* * * * *

512 Prohibited Destinations, Specially Designated Nationals, and Blocked Persons

[Revise the first and third sentences of the first paragraph to read as follows (removing the reference to Sudan in the first sentence and updating the link for the SDN list in the third sentence):]

Mailers may not send items to certain countries or regions (Cuba, Iran, North Korea, and the Crimea region of Ukraine) or to a “blocked person” unless authorized by OFAC (see 514). *** The SDN list is available online at [treasury.gov/resource-center/sanctions/SDN-List/Pages/default.aspx](https://www.treasury.gov/resource-center/sanctions/SDN-List/Pages/default.aspx).

* * * * *

520 Foreign Trade Regulations – U.S. Census Bureau

* * * * *

524 Internal Transaction Number (ITN)

* * * * *

524.2 Filing Requirements

524.21 Mandatory Filing

* * * * *

[Revise items b. and c. to read as follows (revising language referring to the informational materials exemption, which is now the foreign libraries exemption):]

- b. The shipment is destined to Iran, Sudan, or Syria and does not qualify for the “foreign libraries” exemption described in 526.2d (for example, the shipment contains goods other than exempt items, or the shipment contains exempt items but is not being sent to a library or similar institution).
- c. The shipment contains goods, is destined to Cuba or North Korea, and does not qualify for the exemption for shipments to foreign libraries (see 526.2d) or the exemption for gift parcels and humanitarian donations as defined by 15 CFR § 740.12.

* * * * *

[Revise the Note after item g. to read as follows (removing the reference to Crimea and adding Country Group E:2):]

Note: The countries in 524.21b and c are those identified in Country Groups E:1 and E:2 in the Export Administration Regulations, 15 CFR Part 740, Supplement No. 1.

* * * * *

526 AES Exemption

* * * * *

526.2 When Applicable

* * * * *

[Revise item d. (just the main portion but not the Note, which remains the same) to read as follows (providing more explanation of the foreign libraries exemption):]

- d. “NOEEI 30.37(y)” for shipments of published books, software, maps, charts, pamphlets, or any other similar media available for general distribution that are eligible to be sent to a library or similar institution in Cuba, Iran, North Korea, Sudan, or Syria.

* * * * *

[Revise the Note at the end of 526.2 (not the Note that is part of item d.) to read as follows:]

Note: For more information and a complete listing of these and other AES Exemptions, see Subpart D of the Foreign Trade Regulations, 15 CFR Part 30.

527 Placement of ITN, AES Downtime Citation, or AES Exemption

* * * * *

[Revise item d. to read as follows (providing more explanation of the foreign libraries exemption):]

- d. On PS Form 2976, *Customs Declaration CN 22 – Sender’s Declaration*, if the customer is sending items to Cuba, Iran, North Korea, Sudan, or Syria under the “foreign libraries” exemption described in 526.2d, the customer must enter “NOEEI § 30.37(y).”

[Delete the “Note regarding Cuba” that is part of item d.]

* * * * *

530 Commodities and Technical Data

* * * * *

532 Export Licenses

532.1 General

[Revise the second sentence to read as follows (removing Sudan and the “as of” date):]

For example, BIS maintains comprehensive controls against certain countries and regions (Cuba, Iran, North Korea, Syria, and the Crimea region of Ukraine).

* * * * *

533 Additional Standards

[Delete 533.1; renumber current 533.2 as new 533.1, and revise the renumbered title to read as follows:]

* * * * *

533.1 Shipper’s Electronic Export Information Filing Requirement

* * * * *

[Renumber current 533.3 as new 533.2 and renumber the subsections accordingly.]

* * * * *

540 Munitions (Defense Articles) and Related Technical Data

541 Licensing Requirements

541.1 Individual Licenses

* * * * *

541.12 Exporting Technical Data

[Revise the text of 541.12 to read as follows (including deleting 541.121 and 541.122):]

The exportation of “technical data” as defined in 22 CFR §120.10 requires a license issued by the Department of State, Directorate of Defense Trade Controls (DDTC). Information related to DDTC is available on its Web site at pmd-dtc.state.gov.

Information concerning licenses for the export of technical data is available online in 22 CFR Part 125 of the ITAR.

Technical data that has been published or that is otherwise exempt from licensing under 22 CFR Part 125 of the ITAR does not require a Department of State license for exportation. However, the sender must mark the outside of the mailpiece, identifying the specific subsection under which the exemption is claimed (for example, “22 CFR 125.4...APPLICABLE,” if 22 CFR § 125.4 is the citation for the relevant exemption).

541.2 Prohibited Countries

[Revise the text of 541.2 to read as follows (including reducing the number of countries listed):]

Neither export licenses nor license exemptions are available for items to certain prohibited countries. These countries are listed in 22 CFR § 126.1 of the ITAR. As of November 2017, these countries include the following:

- a. Belarus.
- b. Burma.
- c. China.
- d. Cuba.
- e. Iran.
- f. Korea, Democratic People’s Republic of (North Korea).
- g. Syria.
- h. Venezuela.

Note: Mailers are advised to check the current version of 22 CFR § 126.1 of the ITAR for an updated list before mailing, as the list is subject to change.

[Add a new 541.3 to read as follows, and renumber current 541.3 and 541.4 as new 541.4 and 541.5.]

541.3 Restricted Countries

License exemptions are not available to certain restricted countries, although export licenses may be approved in certain circumstances that vary by country. These countries and the license conditions for each country are listed in 22 CFR § 126.1 of the ITAR. As of November 2017, these countries include the following:

- a. Afghanistan.
- b. Central African Republic.

- c. Congo, Democratic Republic of the.
- d. Cyprus.
- e. Eritrea.
- f. Haiti.
- g. Iraq.
- h. Lebanon.
- i. Libya.
- j. Somalia.
- k. Sudan.
- l. Zimbabwe.

Note: Mailers are advised to check the current version of 22 CFR § 126.1 of the ITAR for an updated list before mailing, as the list is subject to change.

* * * * *

Individual Country Listings

* * * * *

Sudan

Country Conditions for Mailing

[Revise the introductory text to read as follows:]

Many shipments to Sudan require the filing of information with the U.S. Census Bureau. In addition, the Bureau of Industry and Security (BIS) of the U.S. Department of Commerce restricts the mailing of certain items to Sudan. Before mailing any items to Sudan, mailers should refer to IMM 520, 530, and 540, and to Publication 699, *Special Requirements for Shipping Internationally*, for additional information.

* * * * *

Although effective December 7, 2017, we will incorporate these revisions into the next update of the online IMM, which is available via Postal Explorer® at pe.usps.com.

— Product Classification, Marketing, 12-7-17

Forms

PS Form 3971 Revision: Notification of Absence

Effective November 1, 2017, the Postal Service™ revised PS Form 3971, *Request for or Notification of Absence*, with the following changes:

- Added the new Hatch Act information:
“LWOP — Union Official (Required Certification)
 By signing this form, I certify that this request is not for the purpose of engaging in partisan political activity as defined by the Hatch Act and its implementing regulations.”
- Updated the Privacy Act statement:
 “Your information will be used to administer leave. Collection is authorized by 39 USC 401, 404, 1001, 1003, and 1005; and 29 USC 2601 et seq. Providing the information is voluntary, but if not provided, we may not process your request. Your information may be disclosed as follows: in relevant legal proceedings; to law enforcement when the USPS or requesting agency becomes aware of a violation of law; to a congressional office at your request; to entities under contract with USPS and/or authorized to perform audits; to labor organizations as required by law; to government agencies regarding personnel matters; to the EEOC; and to the MSPB or Office of Special Counsel. For more information regarding our privacy policies, visit usps.com/privacypolicy.”

Use only the revised version (October 2017) of PS Form 3971; all previous versions of PS Form 3971 are obsolete and you must recycle them. Revised

PS Form 3971 is now available from the Material Distribution Center (MDC) in Topeka, KS. You can order the revised PS Form 3971 through the MDC eBuy2 catalog.

Note: For some military sites without eBuy2 access, you can order through the Touch Tone Order Entry (TTOE) system by calling 800-273-1509.

Use the following information to order PS Form 3971:

PSIN:	PS 3971
PSN:	7530-02-000-9136
Unit of Issue:	PD (Each pad has 100 forms)
Minimum Order Quantity:	5 pads
Quick Pick Number:	227
Price:	\$0.6380
Edition Date:	10/17

Revised PS Form 3971 is now available on the Postal Service PolicyNet website:

- Go to blue.usps.gov.
- In the left-hand column under “Essential Links,” click *PolicyNet*.
- Click *Forms*.

The direct URL for the PolicyNet website is blue.usps.gov/cpim.

— Payroll, Controller, 12-7-17

PS Form 3972 Revision: Leave Absence Analysis

Effective November 1, 2017, the Postal Service™ revised PS Form 3972, *Leave Year 2018 Absence Analysis*, to update information for the upcoming year. You can order the revised PS Form 3972 through the Material Distribution Center (MDC) eBuy2 catalog.

Note: For some military sites without eBuy2 access, you can order through the Touch Tone Order Entry (TTOE) system by calling 800-273-1509.

Use the following information to order PS Form 3972:

PSIN:	PS 3972
PSN:	7530-02-000-9137
Unit of Measure:	EA
Minimum Order Quantity:	1
Bulk Pack Quantity:	1800
Quick Pick Number:	228
Price:	\$0.0376
Edition Date:	11/17

Revised PS Form 3972 is now available on the Postal Service PolicyNet website:

- Go to blue.usps.gov.
- In the left-hand column under “Essential Links,” click *PolicyNet*.
- Click *Forms*.

The direct URL for the PolicyNet website is blue.usps.gov/cpim.

— Policies and Programs,
 Labor Relations, 12-7-17



8,500

**Number of automated processing
equipment pieces used by USPS
to sort mail**

Organization Information

Address Management

Mover's Guides and Internet Change of Address Message Cards

On January 1, 2018, recycle any old copies of Publication 75, *Mover's Guide*. All Post Offices™ will receive the new January – March 2018 issue of Publication 75 by December 31, 2017. *Mover's Guides* ship quarterly to each Post Office; usage predetermines shipment amounts, with each Post Office receiving an adequate supply for each quarter. Post Offices receive replenishment supplies at the end of March, June, September, and December — once received, you must recycle the previous quarter's material. To determine if the material is outdated, refer to the down date on the outside of the box.

Note: Offices receiving over 250 *Mover's Guides* for the quarter will also receive a second shipment about 3 to 5 weeks after the initial shipment. If you need more *Mover's Guides*, reorder through the eBuy2 website.

For further clarification, here is an example of the *Mover's Guide* shipment and reorder process:

1. The North Pole branch in North Pole, AK, will receive 750 *Mover's Guides* for Q1, 2018.
2. Upon receipt of the new *Mover's Guides*, the North Pole branch must recycle all material with a down date of December 31, 2017.
3. Around February 1, 2018, the North Pole branch will receive 500 additional *Mover's Guides*.
4. If the North Pole branch runs out of *Mover's Guides* before March 15, they must reorder through the eBuy2 website.

To track your office's shipment, go to blue.usps.gov/purchase/operations/ops_downloads.htm and click *Mover's Guide* (Pub 75) Distribution for January – March 2018. To search for your office, *highlight* the "Fedstrip" column and press *Ctrl + F*.

Internet Change of Address Message Card Information

As of October 2017, we no longer mail Internet Change of Address (ICOA) message cards directly to Post Offices. If any Post Office runs out of ICOA message cards, please reorder through the eBuy2 website.

Please remember the following:

- We print and distribute *Mover's Guide* four times each year.
- Keep copies of *Mover's Guide* behind the counter *only*, not in inner or outer lobbies, clerk counters, or in delivery trucks.
- Give customers who are unwilling or unable to submit their change of address at usps.com a complete, unopened copy of *Mover's Guide*.
- Limit of one *Mover's Guide* per customer. Upon request, you may provide up to three copies.

— Address Management,
Addressing and Geospatial Technology, 12-7-17

Finance

Correction: Social Security and Medicare Tax Withholding Rates and Limits

On November 27, 2017, the Social Security Administration revised the 2018 Social Security tax withholding limits they originally published in October. The original rates were published in the article “Social Security and Medicare Tax Withholding Rates and Limits,” in *Postal Bulletin* 22481, (11-23-17, page 67).

This article includes the corrected 2018 tax withholding rates and limits.

For 2018, the maximum limit on earnings for withholding of Social Security (old-age, survivors, and disability insurance) tax is \$128,400.00. The Social Security tax rate remains at 6.2 percent. The resulting maximum Social Security tax for 2018 is \$7,960.80.

There is no limit on the amount of earnings subject to Medicare (hospital insurance) tax. The Medicare tax rate applies to all taxable wages and remains at 1.45 percent with the exception of an “additional Medicare tax” assessed against all taxable wages paid in excess of the applicable threshold (see Note). The FICA tax rate, which is the combined Social Security rate of 6.2 percent and the Medicare rate of 1.45 percent, remains 7.65 percent for 2018 (or 8.55 percent for taxable wages paid in excess of the applicable threshold).

The information in the following table shows the changes in Social Security withholding limits from 2017 to 2018. There are no changes in Medicare limits.

Tax	2017 Limit	2018 Limit
Social Security gross	\$127,200.00	\$128,400.00
Social Security liability	\$7,886.40	\$7,960.80
Medicare gross	No limit	No limit
Medicare liability	No limit	No limit

Note: The Patient Protection and Affordable Care Act signed into law March 23, 2010, created the “additional Medicare tax” that changed Medicare withholding computations effective January 1, 2013. All wages, self-employment income, and other compensation that are subject to regular Medicare tax and are paid in excess of the applicable threshold are subject to the additional Medicare tax. Employers are required to withhold the additional Medicare tax at a 0.9 percent rate on wages and other compensation paid to an employee in excess of \$200,000 in a calendar year. There is no employer match for the additional Medicare tax.

— Payroll,
Controller, 12-7-17

Retail

Mailing Standards for Hazardous Materials

Many types of consumer goods are considered hazardous materials (HAZMAT) when mailed. Some of the most common examples include the following:

- Toys and electronics containing lithium batteries,
- Perfume or hairspray,
- Shaving gel, and
- Some cleaning agents.

For up-to-date mailing standards for hazardous materials, visit Postal Explorer® (pe.usps.com) to access Publication 52, *Hazardous, Restricted, and Perishable Mail*. Publication 52 provides important information mailers need to determine which of these items they can mail and how they must package them to keep the mail safe. As a critical source of information for Postal Service™ acceptance personnel, Publication 52 also features:

- Fly-out menus,
- Cross-reference links, and
- An extensive subject index.

New Mailing Standards for Lithium Batteries

Currently, the most common hazardous material in the mail is lithium batteries. Effective August 17, 2017, the Postal Service revised various sections of Publication 52 to provide new mailing standards for mailpieces containing lithium batteries. The new changes become mandatory January 1, 2018; however, mailers may use the new standards immediately. You can find a complete list of these changes in *Postal Bulletin 22474* (about.usps.com/postal-bulletin/2017/pb22474/pb22474.pdf).

USPS HAZMAT Team Tips

Not all batteries are considered hazardous materials. Some types of non-hazardous batteries include single-use alkaline and “dry cell” batteries. Check the battery and the package to determine if your batteries contain lithium.

Lithium batteries come in many shapes and sizes, and pose different levels of danger during transportation. Mailers must provide basic information about their batteries to determine if they are mailable. Manufacturers usually print this information on the packaging or directly onto the battery. In other cases, you may find this information online by searching for the battery specification or safety data sheet. To determine mailability for lithium batteries, look for the following information:

1. Is the lithium battery rechargeable?
 - a. If the answer is yes, it is a lithium-ion (polymer) battery and you must:
 - (1) Refer to UN3480 for lithium-ion batteries packaged without equipment.

- (2) Refer to UN3481 for lithium-ion batteries packaged with or in equipment.

- b. If the answer is no, it is a lithium metal (alloy) battery and you must:

- (1) Refer to UN3090 for lithium metal batteries packaged without equipment.

- (2) Refer to UN3091 for lithium metal batteries packaged with or in equipment.

2. How is the battery packaged?

- a. Separate — the battery is shipped by itself.

- b. With equipment — the battery is packaged with the equipment it is intended to operate, but not installed.

- c. In equipment — the battery is installed in the equipment it is intended to operate.

3. What is the battery type and size?

- a. Button cell or “very small” — maximum 0.3 grams of lithium or 2.7 Wh capacity.

- b. Cell (single cell battery) — maximum 1 gram of lithium or 20 Wh capacity (at 3.7 volts or less).

- c. Battery (multi-cell battery) — maximum 2 grams of lithium or 100 Wh capacity.

Once you can answer these three questions, use the information in Publication 52, Appendix C, Packaging Instruction 9D (domestic) or Packaging Instruction 9E (international and APO/FPO/DPO) to determine the following:

- Quantity limits,
- Packaging requirements,
- Marking requirements, and
- Labeling requirements.

Note: The Postal Service prohibits mailing batteries with more than 2 grams of lithium or 100 Wh capacity.

If you need assistance, USPS® HAZMAT specialists are here to help. Please email any questions to postalexplorer@usps.gov.

— Retail and Customer Service Operations, 12-7-17

Stamp Services

Stamp Stock Items Withdrawn From Regular Sale and From Sale at Philatelic Centers

Effective close-of-business December 31, 2017, all Post Offices™, stations, branches, postal stores, vending outlets, and authorized philatelic centers must:

1. Completely withdraw the stamp stock items and all associated products listed in the table and their related vending and store-prepared stamp items from sale, and
2. Prepare them for destruction.

Submit items to destruction sites according to local established procedures, under the guidelines in Handbook F-101, *Field Accounting Procedures*, and subchapter 11-6, Returning Stock to the Stamp Distribution Office or Stamp Distribution Center.

Do not permit sales of the stamp stock items, products, and their related vending and store-prepared stamp items listed in the table at retail counters and outlets after December 31, 2017.

Stamp Items and All Associated Products to be Completely Withdrawn From Sale

Item	Description
227900	Tree stamped card
233000	Tree double reply stamped card
234000	Tree uncut sheet of 40 stamped cards
680600	Botanical Art double-sided booklet

— Stamp Services, Marketing, 12-7-17

Update: Pictorial Postmarks

In the article titled “Pictorial Postmarks” in *Postal Bulletin 22474* (8-17-17, page 76), the Postal Service™ listed a Total Eclipse of the Sun cancellation for Sainte

Genevieve, MO. **This pictorial postmark has been canceled.**

— Stamp Services, Marketing, 12-7-17

Pictorial Postmarks Announcement

As a community service, the Postal Service™ offers pictorial postmarks to commemorate local events celebrated in communities throughout the nation. A list of events for which pictorial postmarks are authorized appears on the following pages. The sponsor of the pictorial postmark appears in italics under the date. Also provided are illustrations of these postmarks.

People attending these local events may obtain the postmark in person at the temporary Post Office™ station established there. Those who cannot attend the event but who wish to obtain the postmark may submit a mail order request. Pictorial postmarks are available only for the dates indicated, and *requests must be postmarked no later than 30 days following the requested pictorial postmark date.*

All requests must include a stamped envelope or postcard bearing at least the minimum First-Class Mail® postage. Items submitted for postmark may not include

postage issued after the date of the requested postmark. Such items will be returned unserved.

Customers wishing to obtain a postmark must affix stamps to any envelope or postcard of their choice, address the envelope or postcard to themselves or others, insert a card of postcard thickness in envelopes for sturdiness, and tuck in the flap. Place the envelope or postcard in a larger envelope and address it to: Pictorial Postmarks, followed by the Name of the Station, Address, City, State, ZIP+4® Code, as listed next to the postmark.

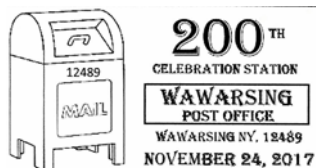
Customers can also send stamped envelopes and postcards without addresses for postmark, as long as they supply a larger envelope with adequate postage and their return address. After applying the pictorial postmark, the Postal Service returns the items (with or without addresses) under addressed protective cover.

The following pictorial postmarks have been extended for 30 days:



November 19, 2017

United States Postal Service
Museum Station
Postmaster
7001 South Central Avenue, Room 307
Los Angeles, CA 90052-4200



November 24, 2017

United States Postal Service
200th Celebration Station
Postmaster
7199 Route 209
Wawarsing, NY 12489-9998



November 25, 2017

United States Postal Service
Chicago Children's Museum Station
Postmaster
433 West Harrison Street
4th Floor Special Cancellations
Chicago, IL 60699-9611

November 24 – December 31, 2017

United States Postal Service
 Holiday Star – Christmas City Station
 Postmaster
 535 Wood Street
 Bethlehem, PA 18016-9998

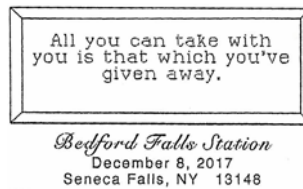


December 2 – January 2, 2018

Outpost Grill
 Jadwin, MO Station
 Postmaster
 9326 Highway K
 Jadwin, MO 65501-9998

November 24 – December 31, 2017

United States Postal Service
 Holiday Wise Men – Christmas City Station
 Postmaster
 535 Wood Street
 Bethlehem, PA 18016-9998



December 8 – 9, 2017
The Seneca Falls It's A Wonderful Life Museum and Archives
 Bedford Falls Station
 Postmaster "Postmark Request"
 38 State Street
 Seneca Falls, NY 13148-9998

December 1–23, 2017

United States Postal Service
 Angels Camp Station
 Postmaster
 1216 South Main Street
 Angels Camp, CA 95222-9998



December 8 – 25, 2017
Angelica Booster Citizens, Inc.
 Angel Station
 Postmaster
 1 West Main Street
 Angelica, NY 14709-9998

December 1–31, 2017

United States Postal Service
 Holly Snow Station
 Postmaster
 108 West Maple
 Holly, MI 48442-9998



December 8, 2017
Springfield Area Nativity Theatre Association
 Pageant Station
 Postmaster
 PO Box 9998
 Springfield, MN 56087-9998

December 1–31, 2017

United States Postal Service
 Winter Wonderland Station
 Postmaster
 50 Railroad Avenue
 Winters, CA 95694-9900



December 8, 2017
United States Postal Service
 Opelika Station
 Postmaster
 500 South 7th Street
 Opelika, AL 36801-9998



December 8, 2017
 United States Postal Service
 Happy Holiday Station
 Postmaster
 7976 South Main Street
 Helen, GA 30545-9998



December 13, 2017
 United States Postal Service
 Santa's Station
 Postmaster
 321 3rd Street
 Savannah, IL 61074-9998



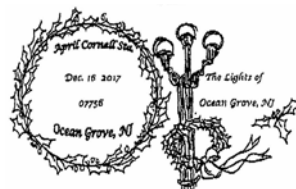
December 9, 2017
 Rudolph Country Christmas Festival
 Country Christmas Station
 Postmaster
 PO Box 9998
 Rudolph, WI 54475-9998



December 15 – 18, 2017
 Christkindl Market
 Mifflinburg Station
 Postmaster
 10 North 4th Street
 Mifflinburg, PA 17844-9998



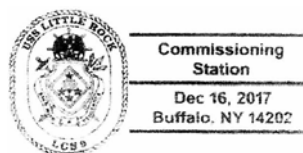
December 9, 2017
 Central Missouri PCC
 Send a Card for the Holidays Station
 Retail Department
 1720 Market Street, Room 2033
 St Louis, MO 63155-9998



December 16, 2017
 United States Postal Service
 April Cornell Station
 Postmaster
 59 Main Avenue
 Ocean Grove, NJ 07756-9998



December 9, 2017
 United States Postal Service
 Pony Express Christmas Card Delivery Station
 Postmaster
 2000 Royal Oaks Drive
 Sacramento, CA 95813-9998



December 16, 2017
 Stephen Decatur Chapter #4, Universal Ship Cancellation Society
 Commissioning Station
 Postmaster
 229 West Genesee Street
 Buffalo, NY 14202-9998



December 10, 2017
 Allaire Village Auxiliary
 Allaire Village Station
 Postmaster
 66 Main Street
 Farmingdale, NJ 07727-9998



December 18, 2017
 The Angola Horror Remembered Sesquicentennial Committee
 Big Sister Creek Station
 Postmaster
 80 North Main Street
 Angola, NY 14006-9998



December 11, 2017
 Lake Spring Community
 Lake Spring Station
 Postmaster
 PO Box 9998
 Lake Spring, MO 65532-9998

— Stamp Services,
 Marketing, 12-7-17

How to Order the First-Day-of-Issue Digital Color or Traditional Postmarks

Customers have 60 days to obtain the first-day-of-issue postmarks by mail. Each cover must have sufficient postage to meet First-Class Mail® requirements. Customers may purchase new stamps at their local Post Office™, by telephone at 800-782-6724, or at The Postal Store® website at usps.com/shop.

Digital Color Postmarks

Only select stamp issues offer a digital color postmark. Customers may submit #6 or #10 envelopes constructed of paper rated as “laser safe.” The Postal Service™ recommends envelopes of 80-pound Accent Opaque, acid-free, 9/16-inch side seams with no glue on the flap. The maximum size of all digital color postmarks is 2 inches high by 4 inches long. Allow sufficient space on the envelope to accommodate the postmark. Do not use self-adhesive labels for addresses on the envelope. Two test envelopes must be included. There is a minimum of 10 envelopes at 50 cents per postmark required at the time of servicing. Customers must submit a check, money order, or credit card for payment.

The Postal Service reserves the right to not accept hand-painted and other cachet envelopes that are not compatible with our digital color postmark equipment. The Postal Service also reserves the right to substitute traditional black rubber postmarks if use of nonspecified envelopes results in poor image quality or damage to equipment.

Customers must affix the stamps to the envelopes and address them to themselves or others for return through

the mail. Or, they may include an additional self-addressed return envelope, large enough to accommodate their canceled items, with sufficient postage affixed for return of their postmarked items. Address customer requests for digital color postmarks to:

FDOI – (Name of Stamp Issue)
 USPS Stamp Fulfillment Services
 8300 NE Underground Drive, Suite 300
 Kansas City, MO 64144-9900

After applying the first-day-of-issue postmark, the Postal Service will return the envelopes to the customer by U.S. Mail®.

Traditional Postmarks

Customers must affix the stamps to the envelopes and address them to themselves or others for return through the mail. Or, they may include an additional self-addressed return envelope, large enough to accommodate their canceled items, with sufficient postage affixed for return of their postmarked items. Address customer requests for traditional postmarks to:

FDOI – (Name of Stamp Issue)
 USPS Stamp Fulfillment Services
 8300 NE Underground Drive, Suite 300
 Kansas City, MO 64144-9900

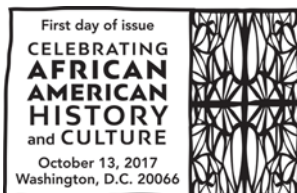
After applying the first-day-of-issue postmark, the Postal Service will return the envelopes to the customer by U.S. Mail. There is no charge for the first 50 postmarks. There is a 5-cent charge for each additional postmark over 50. Customers must submit a check, money order, or credit card for payment.



Digital Color Pictorial

FDOI – Celebrating African American History and Culture Stamp
 USPS Stamp Fulfillment Services
 8300 NE Underground Drive, Suite 300
 Kansas City, MO 64144-9900

December 13, 2017



Black and White Pictorial

FDOI – Celebrating African American History and Culture Stamp
 USPS Stamp Fulfillment Services
 8300 NE Underground Drive, Suite 300
 Kansas City, MO 64144-9900

December 13, 2017



Digital Color Pictorial

FDOI – The History of Hockey Stamps

USPS Stamp Fulfillment Services
8300 NE Underground Drive, Suite 300
Kansas City, MO 64144-9900

December 20, 2017



Black and White Pictorial

FDOI – The History of Hockey Stamps

USPS Stamp Fulfillment Services
8300 NE Underground Drive, Suite 300
Kansas City, MO 64144-9900

December 20, 2017



Black and White Pictorial

FDOI – Alzheimer's Semipostal Stamp

USPS Stamp Fulfillment Services
8300 NE Underground Drive, Suite 300
Kansas City, MO 64144-9900

January 30, 2018

USPS® Features

The Snowy Day



Forever®
Stamps
for the
Winter
Season

Celebrate the Season with USPS® Holiday Stamps

