

# postal|bulletin

PUBLISHED SINCE MARCH 4, 1880

## 2017 BENEFITS OPEN SEASON

NOVEMBER 13 - DECEMBER 11



**Find the Right Health  
Plan that Meets Your  
Needs**

With free access to  
**Checkbook's Guide to  
Health Plans.**

**Put More Money  
In Your Pocket**

Using a  
**Flexible Spending Account  
(FSA).**



To learn more, visit: [liteblue.usps.gov/openseason17](http://liteblue.usps.gov/openseason17)



# Contents

## COVER STORY

Open Season is Coming — Here's What You Need to Know . . . . .	3
Benefits Programs and Key Dates . . . . .	4
Benefits Open Season Poster . . . . .	5
Save Money with Flexible Spending Accounts . . . . .	6
Flexible Spending Accounts Poster . . . . .	7
Annual Leave Exchange Option Poster . . . . .	8

## POLICIES, PROCEDURES, AND FORMS UPDATES

### Manuals

DMM Revision: Domestic Mail Manual Simplification . . . . .	9
DMM Revision: Extra Services Forms . . . . .	10

## ORGANIZATION INFORMATION

### Domestic Mail

Labeling List Changes . . . . .	12
---------------------------------	----

### Finance

Form W-2, Wage and Tax Statement — Changing Your Current Mailing Address . . . . .	35
IRS Reporting Requirements of Attorney Fees, Back Pay, or Wages . . . . .	35
Local Tax Code Information . . . . .	36
Tax Obligations of USPS Employees . . . . .	38
Wage Overpayment Indebtedness — Tax Treatment . . . . .	39

### Stamp Services

Pictorial Postmarks Announcement . . . . .	40
How to Order the First-Day-of-Issue Digital Color or Traditional Postmarks . . . . .	42

## PULL-OUT INFORMATION

### Fraud

Invalid USPS Corporate Account Numbers . . . . .	15
Missing, Lost, or Stolen U.S. Money Order Forms . . . . .	16
Missing, Lost, or Stolen Canadian Money Order Forms . . . . .	22
Verifying U.S. Postal Service Money Orders . . . . .	24
Counterfeit Canadian Money Order Forms . . . . .	24
Toll-Free Number Available to Verify Canadian Money Orders . . . . .	24

### Other Information

Overseas Military/Diplomatic Mail . . . . .	25
Freely Associated States Restrictions . . . . .	30

## POSTAL BULLETIN INDEX

2017 Semi-Annual Index . . . . .	PB 22472 (7-20-17)
----------------------------------	--------------------

Find the latest in mail and delivery information and services offered by U.S. Postal® in the *Postal Bulletin* at [about.usps.com/postal-bulletin](http://about.usps.com/postal-bulletin)

# Cover Story

## Open Season is Coming — Here's What You Need to Know

Is your health coverage keeping up with your life?

Your health needs, dependent situation, plan coverage, and premium rates can change year-over-year. During the Open Season period, you can enroll, or if already enrolled, make changes to your benefits enrollment. Unless you have a Qualifying Life Event (QLE) during the remainder of the year, this is your once-a-year opportunity to make any changes to your health benefits. Don't miss out on the chance to make any necessary changes.

To prepare for Open Season, go to [liteblue.usps.gov/openseason26/](https://liteblue.usps.gov/openseason26/). It's a one-stop-shop for everything you need to know, including information on plan and enrollment types, and free access to Checkbook's Guide to Health Plans, which takes you through a few simple steps to find the best health plan for you and your family. Find every plan available to you ranked by plan cost, estimated out-of-pocket costs, and more. Through *LiteBlue*, you can also access videos, FAQs, and a link to *PostalEASE* (where you can make your health plan elections).

For more information about the Federal Employees Health Benefits (FEHB) Program, Federal Employees Dental and Vision Insurance Program (FEDVIP), Flexible Spending Accounts (FSAs), and Federal Long Term Care Insurance Program (FLTCIP), visit the Virtual Benefits Fair. You can register at the FLTCIP site ([lfcfeds.com/](https://lfcfeds.com/)).

Participation is voluntary and off-the-clock; log into the fair at any time during Open Season or participate in live chats on the following dates:

- Monday, November 13, 10 A.M. – 5 P.M. EST
- Tuesday, December 5, 10 A.M. – 5 P.M. EST

When you are ready, you can do the following:

- Make your FEHB selection online at *PostalEASE* from the *LiteBlue* Open Season page ([liteblue.usps.gov/openseason26/](https://liteblue.usps.gov/openseason26/)), through an Employee Self-Service Kiosk (available at some facilities), or on *Blue* under the Human Resources tab by clicking "Benefits, Payroll Elections."
- If you need more enrollment information or help using *PostalEASE*, you can contact the HR Shared Services Center (HRSSC) at 877-477-3273, option 1 (TTY 866-260-7507).
- To enroll in or make changes to your FEDVIP plan, go to [benefeds.com](https://benefeds.com) or call 877-888-3337; TTY 877-889-5680.
- To enroll in an FSA, go to [safeds.com](https://safeds.com) or call 877-372-3337; TTY 866-353-8058.

By taking time as you select your plan, you can be confident that you have the right coverage at the right price. Open Season starts on November 13 and ends on December 11 at 11:59 P.M. EST — remember to take action regarding your benefits.

— *Compensation and Benefits,  
Human Resources, 11-9-17*

## Benefits Programs and Key Dates

During Open Season, you have the opportunity to enroll, cancel, or change your enrollment in a number of benefits programs. **To participate, you must meet eligibility criteria.**

	New hires can enroll...	Make changes during Open Season...	To enroll or make changes, go to...	For more information visit...
<b>Federal Employees Health Benefits (FEHB) Program</b>	Within 60 days from new hire date.	November 13 through December 11 (11:59 P.M. EST)	<p><i>PostalEASE</i> at <a href="http://ewss.usps.gov/">ewss.usps.gov/</a> or via one of the following options:</p> <ul style="list-style-type: none"> <li>■ <i>LiteBlue</i> or <i>Blue</i>;</li> <li>■ Employee Self-Service Kiosk (available at some facilities);</li> <li>■ Call 877-477-3273, option 1 (TTY: 866-260-7507); or</li> <li>■ Mail the <i>PostalEASE</i> FEHB Worksheet to the HR Shared Services Center.</li> </ul>	<i>LiteBlue</i> FEHB page <a href="http://liteblue.usps.gov/fehb">liteblue.usps.gov/fehb</a>
<b>USPS Health Benefits (USPS HB) Plan</b> <i>non-career employees only</i>	Within 60 days from new hire date.	November 13 through December 11 (11:59 P.M. EST)	<p><i>PostalEASE</i> at <a href="http://ewss.usps.gov/">ewss.usps.gov/</a> or via one of the following options:</p> <ul style="list-style-type: none"> <li>■ <i>LiteBlue</i> or <i>Blue</i>;</li> <li>■ Employee Self-Service Kiosk (available at some facilities);</li> <li>■ Call 877-477-3273, option 1 (TTY: 866-260-7507); or</li> <li>■ Mail the <i>PostalEASE</i> USPS HB Plan Worksheet to the HR Shared Services Center.</li> </ul>	<i>LiteBlue</i> USPS HB page <a href="http://liteblue.usps.gov/uspshbp">liteblue.usps.gov/uspshbp</a>
<b>Federal Employees Dental and Vision Insurance Program (FEDVIP)</b>	Within 60 days from new hire date.	November 13 through December 11 (11:59 P.M. EST)	<ul style="list-style-type: none"> <li>■ BENEFEDS website at <a href="http://benefeds.com/">benefeds.com/</a>; or</li> <li>■ Call FEDVIP at 877-888-3337 (TTY: 877-889-5680).</li> </ul>	<i>LiteBlue</i> FEDVIP page <a href="http://liteblue.usps.gov/fedvip">liteblue.usps.gov/fedvip</a>
<b>Flexible Spending Accounts (FSAs)</b>	Within 60 days from new hire date.	November 13 through December 11 (11:59 P.M. EST)	<ul style="list-style-type: none"> <li>■ FSAFEDS website at <a href="http://fsafeds.com/">fsafeds.com/</a>; or</li> <li>■ Call FSAFEDS at 877-372-3337 (TTY: 800-952-0450).</li> </ul>	<i>LiteBlue</i> FSA page <a href="http://liteblue.usps.gov/fsa">liteblue.usps.gov/fsa</a>
<b>Annual Leave Exchange (ALE)</b>	N/A	November 13 through December 11 (11:59 P.M. EST)	<p><i>PostalEASE</i> at <a href="http://ewss.usps.gov/">ewss.usps.gov/</a> or via one of the following options:</p> <ul style="list-style-type: none"> <li>■ <i>LiteBlue</i> or <i>Blue</i>;</li> <li>■ Employee Self-Service Kiosk (available at some facilities); or</li> <li>■ Call 877-477-3273, option 1 (TTY: 866-260-7507).</li> </ul>	<i>LiteBlue</i> ALE page <a href="http://liteblue.usps.gov/leave">liteblue.usps.gov/leave</a>
<b>Thrift Savings Plan (TSP)</b>	New employees automatically enrolled with a 3 percent contribution.	Make changes at any time during the year.	<p><i>PostalEASE</i> at <a href="http://ewss.usps.gov/">ewss.usps.gov/</a> or via one of the following options:</p> <ul style="list-style-type: none"> <li>■ <i>LiteBlue</i> or <i>Blue</i>;</li> <li>■ Employee Self-Service Kiosk (available at some facilities); or</li> <li>■ Call TSP at 877-968-3778 (TTY: 877-847-4385).</li> </ul>	<i>LiteBlue</i> TSP page <a href="http://liteblue.usps.gov/tsp">liteblue.usps.gov/tsp</a>
<b>Commuter Benefits Program</b>	At any time.	Make changes at any time during the year.	<p><i>PostalEASE</i> at <a href="http://ewss.usps.gov/">ewss.usps.gov/</a> or via one of the following options:</p> <ul style="list-style-type: none"> <li>■ <a href="http://commutercheckdirect.com/">commutercheckdirect.com/</a>; or</li> <li>■ Call 888-235-9223.</li> </ul>	<i>LiteBlue</i> Commuter page <a href="http://liteblue.usps.gov/commuter">liteblue.usps.gov/commuter</a>

# Benefits Open Season Poster

## November 13 to December 11, 2017

The 2017 Open Season runs from November 13 to December 11, 2017. During the Open Season period, you can enroll in or make changes to your medical, dental, or vision coverage. You may also enroll in healthcare and dependent care Flexible Spending Accounts (FSAs). Unless you have a Qualifying Life Event (QLE) during the remainder of the year, this is your once-a-year opportunity to make any changes to these benefits. By taking time as you select your plan, you can be confident that you have the right coverage at the right price.

To help you select the right health plan, the Postal Service™ provides all employees and retirees with free access to Checkbook's Guide to Health Plans for Federal Employees ([liteblue.usps.gov/planselection/](http://liteblue.usps.gov/planselection/)). This online tool takes you through a few simple steps to find the best health plan for you and your family. Find every plan available to you ranked by estimated costs and more.

Employees are also invited to attend a Virtual Benefits Fair, hosted by Long Term Care Partners, from November 13 through December 11, 2017. As part of the virtual fair, you can:

- Visit individual health, dental, and vision provider booths,
- Watch instructional videos,
- Register for educational webinars, and
- Review and save 2018 health plan brochures.

### Participation is Voluntary and Off-the-Clock

From November 13 to December 11, 2017, you can register to attend the Virtual Benefits Fair on [ltcfeds.com](http://ltcfeds.com). For live answers to your questions, visit the Virtual Benefits Fair during one of two live carrier chat days:

Monday, November 13, 2017  
10 A.M. – 5 A.M. EST

Tuesday, December 5, 2017  
10 A.M. – 5 P.M. EST

To access Checkbook's Guide to Health Plans and learn more about the Virtual Benefits Fair, visit the *LiteBlue* Open Season page at [liteblue.usps.gov/openseason26](http://liteblue.usps.gov/openseason26). You'll also find a variety of resources to help you make the most of Open Season.

Once you are ready, make your selection online at *PostalEASE* from the *LiteBlue* Open Season page ([liteblue.usps.gov/openseason26](http://liteblue.usps.gov/openseason26)), through an Employee Self-Service Kiosk (available at some facilities), or on *Blue* under the Human Resources tab by clicking "Benefits, Payroll Elections."

If you need more enrollment information or help using *PostalEASE*, you can contact the HR Shared Services Center (HRSSC) at 877-477-3273, option 1 (TTY 866-260-7507).

This Open Season, take action regarding your health benefits.

**Please Post on All Bulletin Boards Through December 11, 2017.**

## Save Money with Flexible Spending Accounts

Put more money in your pocket! With a Flexible Spending Account (FSA), you can save on a wide variety of everyday medical, dental, vision, and day care expenses. It's a tax break that's simple to use and works for all employees eligible for Federal Employees Health Benefits (FEHB) whether or not you participate in FEHB. You're likely to have out-of-pocket medical or dependent care expenses. Why pay more in taxes than you have to?

Your contributions to an FSA are deducted from your salary BEFORE taxes. That's how you save — you don't pay taxes on your FSA contributions and end up with more money in your pocket as a result.

Start by figuring out how much money you'd like to set aside for the year. If you need help in determining that amount, use the FSA calculator at [fsafeds.com](https://fsafeds.com) (scroll down to "Savings Calculators" on the home page).

The average person will save about 30 percent each year — that's like receiving a 30 percent discount. With that type of savings, a Postal Service™ employee contributing \$2,000 to an FSA account will save about \$600.

You can contribute up to \$2,650 into a healthcare FSA to cover out-of-pocket health, dental, and vision costs. If you don't use it all, you can carry over up to \$500 of unused elections into the next year. You can also contribute up to \$5,000 to a dependent care FSA to cover day care expenses for your dependent children under age 13 and eligible adult-care expenses.

To learn more about FSAs, visit [liteblue.usps.gov/fsa](https://liteblue.usps.gov/fsa) or check out our provider site at [fsafeds.com](https://fsafeds.com).

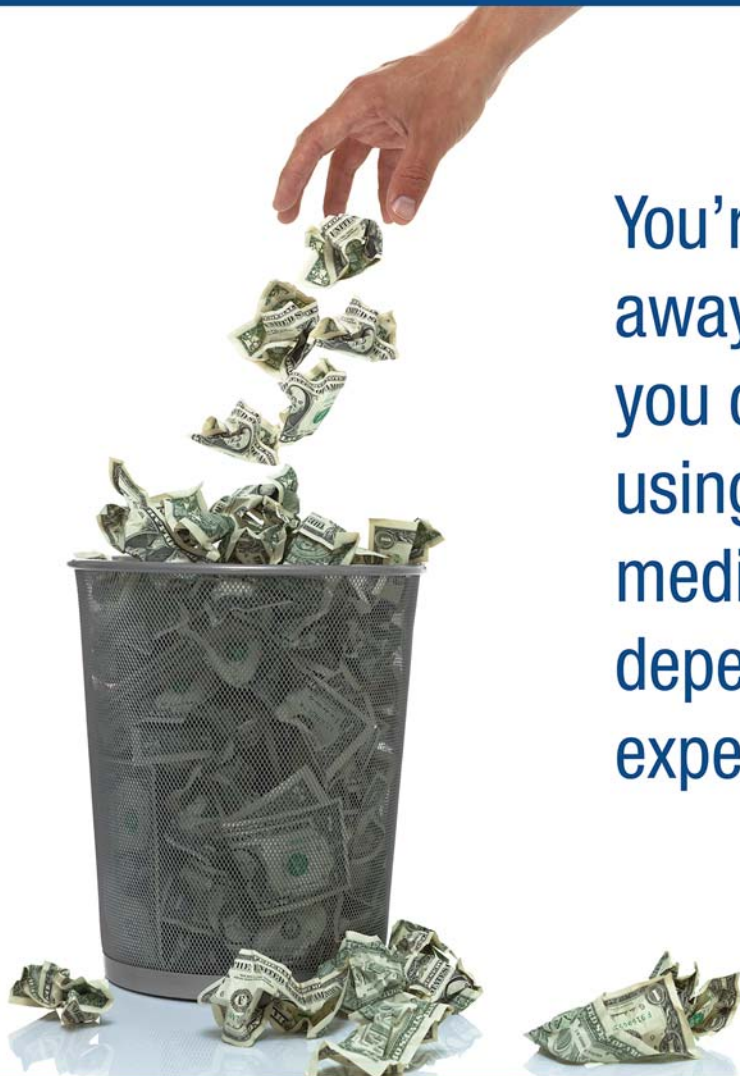
— *Compensation and Benefits,  
Human Resources, 11-9-17*



# Flexible Spending Accounts Poster

November 13 to December 11, 2017

**Don't have a Flexible Spending Account?**



You're throwing away money that you could be using to cover medical and dependent care expenses.

**Enroll in FSA during Open Season (Nov.13-Dec.11) and use pre-tax dollars to cover eligible health care and dependent care expenses. For more information, go to [liteblue.usps.gov/fsa](http://liteblue.usps.gov/fsa).**



2017 BENEFITS  
**OPEN SEASON**

NOVEMBER 13 - DECEMBER 11



**Please Post on All Bulletin Boards Through December 11, 2017.**

# Annual Leave Exchange Option Poster

**November 13 to December 11, 2017**

The Annual Leave Exchange (ALE) Program provides an option for eligible career employees to receive a lump sum payment in exchange for a portion of the annual leave that would otherwise be advanced at the beginning of the 2018 leave year. **Annual leave that has been earned and accumulated during the 2017 leave year, which ends January 5, 2018, cannot be exchanged for cash.** Exchanging next year's annual leave for cash is strictly a voluntary action. The exchange option is not intended to discourage an employee's use of annual leave. Any leave exchanged will not be available for use in the 2018 leave year.

## Eligible Employees

Employees eligible for the ALE Program include the following:

- Career non-bargaining unit employees from rate schedule codes (RSCs) D (levels 1–8), E, F, S, U, V, W, X, and Z (levels 1–12) who have an annual leave balance of at least 160 hours at the end of the 2017 leave year.
- Career bargaining unit employees — full-time employees, part-time regular employees, and APWU-represented part-time flexible employees — from the following RSCs who have an annual leave balance of at least 440 hours at the end of the 2017 leave year and have used less than 75 hours of sick leave during the 2017 leave year:
  - American Postal Workers Union (APWU), AFL-CIO — RSC P.
  - Operating Services Division, Headquarters and Facility Services Section, Merrifield VA/APWU — RSC K.
  - Mail Equipment Shops and Material Distribution Centers/APWU — RSC C.
  - The National Postal Mail Handlers Union — RSC M.
  - National Postal Professional Nurses/APWU — RSC G.
  - Information Technology/Accounting Service Centers/APWU — RSC N.
  - Postal Police Officers' Association — RSC Y.

## PostalEASE Elections

Employees who meet the eligibility criteria and want to exercise this option must use *PostalEASE* to make elections. For the election to be considered timely, employees must complete their entries in *PostalEASE* by 11:59 P.M. EST, December 11, 2017.

An employee may contact the Human Resources Shared Services Center (HRSSC) for assistance if any of the following conditions apply:

- The employee is deaf or hard of hearing.
- The employee cannot use the telephone, Internet, an Employee Self-Service Kiosk, or intranet for a medical reason.
- The employee receives a message in *PostalEASE* directing him or her to contact the HRSSC when attempting to make an election.

To contact the HRSSC, do the following:

- Call the Employee Service line at 877-477-3273 (TTY 866-260-7507).
- When prompted, select 5 for the HRSSC.
- Select "Benefits" to speak with a representative who will help you.

**Please Post on All Bulletin Boards Through December 11, 2017.**



# Policies, Procedures, and Forms Updates

## Manuals

### DMM Revision: Domestic Mail Manual Simplification

Effective January 21, 2018, the Postal Service™ will revise *Mailing Standards of the United States Postal Service, Domestic Mail Manual (DMM®)* in various chapters as we continue our DMM simplification initiative, without changes to standards, to make it quicker, easier, and more convenient to use.

The Postal Service will relocate two sections from part 503, Extra and Additional Services, to part 507, Mailer Services, and part 509, Other Services. Specifically, section 503.11.0, Intelligent Mail Barcode Tracing, will be renumbered as section 507.10.0, and section 503.12.0, Money Orders, will be renumbered as section 509.3.0. Relocation of these services will align each service with the correct part; part 503 will only contain Extra Services.

#### ***Mailing Standards of the United States Postal Service, Domestic Mail Manual (DMM)***

\* \* \* \* \*

#### **500 Additional Mailing Services**

*[Revise the title of 503 to read as follows:]*

#### **503 Extra Services**

\* \* \* \* \*

*[Relocate current section 11.0 to part 507 and renumber the section as new 507.10.0, Intelligent Mail Barcode Tracing.]*

*[Relocate current section 12.0 to part 509 and renumber the section as new 509.3.0, Money Orders.]*

*[Renumber current section 503.13.0 as new section 503.11.0, Return Receipt for Merchandise.]*

\* \* \* \* \*

#### **507 Mailer Services**

\* \* \* \* \*

*[Add relocated section 507.10.0, Intelligent Mail Barcode Tracing, and renumber all subsections within 507.10.0 to reflect the relocation.]*

\* \* \* \* \*

#### **509 Other Services**

\* \* \* \* \*

*[Add relocated section 509.3.0, Money Orders, and renumber all subsections within 509.3.0 to reflect the relocation.]*

\* \* \* \* \*

#### **Index**

\* \* \* \* \*

#### **I**

\* \* \* \* \*

#### **Intelligent Mail**

\* \* \* \* \*

*[Revise the DMM reference number to read as follows:]*

IMb Tracing, 507.10.0

\* \* \* \* \*

#### **M**

\* \* \* \* \*

*[Revise the DMM reference numbers to read as follows:]*

**money orders**, 509.3.0

how to cash, 509.3.3

payable to another party, 509.3.3.6

where to purchase, 509.3.2.1

\* \* \* \* \*

#### **R**

\* \* \* \* \*

*[Revise the DMM reference numbers to read as follows:]*

**return receipt for merchandise**, 503.11.0

\* \* \* \* \*

how to mail, 503.11.2.1

\* \* \* \* \*

required label, 503.11.2.1

what may be mailed, 503.11.2.1

\* \* \* \* \*

We will incorporate these revisions into the next online update of the DMM, which is available via Postal Explorer® at [pe.usps.com](http://pe.usps.com).

## DMM Revision: Extra Services Forms

Effective January 21, 2018, the Postal Service™ will revise *Mailing Standards of the United States Postal Service*, Domestic Mail Manual (DMM®), part 503, to reflect the elimination of four extra service forms at certain retail offices.

On September 25, 2017, the Postal Service announced that it will leverage its existing technological capabilities at all Retail Systems Software (RSS) offices, to print certain extra service labels and receipts at the retail counter. The labels printed at the retail counter will have an Intelligent Mail® package barcode (IMpb®) that contains the appropriate service type code for the product and extra service purchased. Printing labels and receipts at the retail counter eliminates the need for pre-printed labels and receipts. As a result, the Postal Service will eliminate the following forms from all RSS offices and RSS business partner (BP)-equipped Contract Postal Units:

- PS Form 3813, *Insured Mail Receipt — \$500 and Under*;
- PS Form 3813-P, *Insured Mail Receipt — Over \$500*;
- PS Form 3804, *Return Receipt for Merchandise*; and
- PS Form 153, *Signature Confirmation Receipt*.

PS Forms 3813, 3813-P, 3804, and 153 will still be available for use at Non-RSS offices.

Additionally, the Postal Service will update Quick Service Guide (QSG) 503 to include these revisions and correct the insurance amounts in the DMM Forms Glossary for PS Forms 3813 and 3813-P.

Although we will not publish these revisions in the DMM until January 21, 2018, the standards are effective immediately.

### ***Mailing Standards of the United States Postal Service, Domestic Mail Manual (DMM)***

*	*	*	*	*
<b>500</b>	<b>Additional Services</b>			
<b>503</b>	<b>Extra and Additional Services</b>			
		*	*	*
<b>4.0</b>	<b>Insured Mail</b>			
		*	*	*
<b>4.3</b>	<b>Basic Standards</b>			
		*	*	*

### **4.3.4 Markings and Forms**

\* \* \* \* \*

*[Revise the text of items a. and b. to read as follows:]*

- a. Retail Systems Software (RSS) sites: A label and a receipt will be provided at the retail counter. The label printed at the retail counter will include postage and an Intelligent Mail package barcode (IMpb) that contains the appropriate service type code for the product and extra service purchased.
- b. Non-RSS sites:
  1. For retail pieces insured for \$500.00 or less, the mailer must affix a barcoded PS Form 3813 to each piece above the delivery address and to the right of the return address.
  2. For retail pieces insured for more than \$500.00, the mailer must affix a barcoded PS Form 3813-P to each piece above the delivery address and to the right of the return address.

\* \* \* \* \*

## **8.0 USPS Signature Services**

### **8.1 Basic Standards**

\* \* \* \* \*

#### **8.1.2 Standards for Signature Confirmation**

\* \* \* \* \*

- d. Mailers must use one of the following labels:

*[Add new item d1 and renumber current items d1 through d3 as new items d2 through d4.]*

1. Retail Systems Software (RSS) sites: A label and a receipt will be provided at the retail counter. The label printed at the retail counter will include postage and an Intelligent Mail package barcode (IMpb) that contains the appropriate service type code for the product and extra service purchased.

*[Revise the text of renumbered item d2 to read as follows:]*

2. Non-RSS sites: PS Form 153, obtained from the Post Office at no charge, may be used only with the retail option.

\* \* \* \* \*

*[Revise the last sentence of renumbered item d4 to read as follows:]*

4. \*\*\*See Parcel Labeling Guide or Publication 97 available on PostalPro.

13.0 Return Receipt for Merchandise

13.1 Basic Standards

13.1.1 Description

[Revise the second sentence of 13.1.1 to read as follows:]

\*\*\*Return receipt for merchandise is a form of return receipt service that provides the sender with a mailing receipt (separately printed at RSS offices or PS Form 3804 at Non-RSS offices) and a return receipt (PS Form 3811).\*\*\*

\* \* \* \* \*

13.2 Mailing

13.2.1 How to Mail

[Revise the text of 13.2.1 to read as follows:]

Return receipt for merchandise mail must observe these procedures:

- a. Retail Systems Software (RSS) sites: A label and a receipt will be provided at the retail counter. The label printed at the retail counter will include postage and an Intelligent Mail package barcode (IMpb) that contains the appropriate service type code for the product and extra service purchased. Mailer must affix PS Form 3811 to the piece.
- b. Non-RSS sites: Return receipt for merchandise mail must bear PS Forms 3804 and 3811.
  - 1. Enter, on the receipt part of the PS Form 3804, the name and complete address of the person or firm to whom the mail is addressed.
  - 2. Affix the numbered, barcoded label part of the PS Form 3804 to the address side of the mailpiece. The label part of the form and the endorsement "Return Receipt Requested" must be placed above the delivery address and to the right of the return address, or to the left of the delivery address on parcels. Give the completed receipt part of the PS Form 3804 to a USPS employee. If asked to do so, the USPS employee must show

on the receipt the time the article is accepted for mailing. If given to a rural carrier, the carrier returns the postmarked receipt to the mailer.

- 3. To request waiver of signature, detach both parts of the gummed label sections of PS Form 3804 and attach them to the mailpiece. By signing the waiver on PS Form 3804, the mailer authorizes the USPS delivery employee to sign the return receipt in lieu of obtaining the signature of the addressee or the addressee agent. The item is then delivered to the addressee's mail receptacle or other secure location.
- 4. Affix the correct amount of postage and fees to the article.
- c. Place the correct endorsement on the address side of the mailpiece. Enter the return receipt for merchandise number on PS Form 3811 and address it to yourself on the reverse of the return receipt. Attach it to the front of the mailpiece (or the back) so the card does not cover the address. The name of the person to whom the return receipt is to be returned must be the same as that of the sender.

\* \* \* \* \*

Forms Glossary

\* \* \* \* \*

ID Title

\* \* \* \* \*

[Revise the text under the Title column for IDs 3813 and 3813-P to read as follows:]

- 3813 Insured Mail Receipt \$500.00 and Under
- 3813-P Insured Mail Receipt Over \$500.00

\* \* \* \* \*

We will incorporate these revisions into the next online update of the DMM, which is available via Postal Explorer® at [pe.usps.com](http://pe.usps.com).

# Organization Information

## Domestic Mail

### Labeling List Changes

The following Labeling List changes are for August and September 2017. These changes have not been issued in any previous edition of the *Postal Bulletin*. Labeling List changes for October, November, and December will be published in subsequent editions of the *Postal Bulletin*.

#### Labeling List Changes for August 2017

Effective August 1, 2017, we are revising Labeling List(s) L006, L007, L012, and L606 to reflect changes in mail processing operations. Mailers are expected to label according to these revised lists for mailings that are inducted on or after the August 1, 2017, effective date through the September 30, 2017, expiration date.

#### Labeling Lists L000

##### General Use

\* \* \* \* \*

#### L006 5-Digit FSS Scheme — Periodical, Standard Mail, and Package Services Flats in Bundles

##### Changes

Column A Destination ZIP Codes	Column B Scheme Bundle/Container Placard (Change From)	Column C Facility Container Placard (Change From)	Column B Scheme Bundle/Container Placard (Change To)	Column C Facility Container Placard (Change To)	Column B Change To Status
07860	NEWTON NJ 07860	FSS NDC NEW JERSEY NJ 001	HARRINGTON PARK NJ 07640	FSS NDC NEW JERSEY NJ 001	Existing

##### Newly Added

Column A Destination ZIP Codes	Column B Scheme Bundle/Container Placard (Added To)	Column C Facility Container Placard (Added To)	Column B Status
07446	MAHWAH NJ 07430	FSS NDC NEW JERSEY NJ 001	Existing
07458	MAHWAH NJ 07430	FSS NDC NEW JERSEY NJ 001	Existing
08884	PISCATAWAY NJ 08854	FSS NDC NEW JERSEY NJ 001	Existing
44202	AURORA OH 44202	FSS AKRON OH 442	New
44212	BRUNSWICK OH 44212	FSS AKRON OH 442	New
44221	CUYAHOGA FALLS OH 44221	FSS AKRON OH 442	New
44223	CUYAHOGA FALLS OH 44223	FSS AKRON OH 442	New
44224	STOW OH 44224	FSS AKRON OH 442	New
44230	DOYLESTOWN OH 44230	FSS AKRON OH 442	New
44233	HINCKLEY OH 44233	FSS AKRON OH 442	New
44236	HUDSON OH 44236	FSS AKRON OH 442	New
44241	STREETSBORO OH 44241	FSS AKRON OH 442	New
44260	MOGADORE OH 44260	FSS AKRON OH 442	New
44262	MUNROE FALLS OH 44262	FSS AKRON OH 442	New
44266	RAVENNA OH 44266	FSS AKRON OH 442	New
44278	TALLMADGE OH 44278	FSS AKRON OH 442	New
44281	WADSWORTH OH 44281	FSS AKRON OH 442	New
44301	AKRON OH 44301	FSS AKRON OH 442	New
44313	AKRON OH 44313	FSS AKRON OH 442	New
44319	AKRON OH 44319	FSS AKRON OH 442	New
44321	AKRON OH 44321	FSS AKRON OH 442	New
44333	AKRON OH 44333	FSS AKRON OH 442	New
44601	ALLIANCE OH 44601	FSS AKRON OH 442	New
44614	CANAL FULTON OH 44614	FSS AKRON OH 442	New
44663	NEW PHILADELPHIA OH 44663	FSS AKRON OH 442	New
44691	WOOSTER OH 44691	FSS AKRON OH 442	New
44708	CANTON OH 44708	FSS AKRON OH 442	New
44718	CANTON OH 44718	FSS AKRON OH 442	New

\* \* \* \* \*

**L007 5-Digit Scheme — Periodical, Standard Mail, and Package Services Flats in Bundles**

\* \* \* \* \*

**Newly Added**

Column A Destination ZIP Codes	Column B Label Container To (Added To)	Column B Status
07444	HACKETTSTOWN NJ 07840	Existing
07626	HACKETTSTOWN NJ 07840	Existing
07856	HACKETTSTOWN NJ 07840	Existing

**Deleted**

Column A Destination ZIP Codes	Column B Label (Deleted From)
07838	HACKETTSTOWN NJ 07840
07860	SPARTA NJ 07871
07865	HACKETTSTOWN NJ 07840
07871	SPARTA NJ 07871

\* \* \* \* \*

**L012 5-Digit ZIP Scheme Combination**

**Changes**

Column A Destination ZIP Codes	Column B Label Container To (Change From)	Column B Label Container To (Change To)	Column B Change To Status
93041	CARPINTERIA CA 93013	PORT HUENEME CA 93041	New
93044	CARPINTERIA CA 93013	PORT HUENEME CA 93041	New
93950	SALINAS CA 93905	PACIFIC GROVE CA 93950	New
93953	SALINAS CA 93915	MARINA CA 93933	New
93955	SALINAS CA 93905	PACIFIC GROVE CA 93950	New
95001	CAPITOLA CA 95010	APTOS CA 95001	New
95003	CAPITOLA CA 95010	APTOS CA 95001	New
95004	FREEDOM CA 95019	AROMAS CA 95004	New
95019	FREEDOM CA 95019	AROMAS CA 95004	New
95076	FREEDOM CA 95019	WATSONVILLE CA 95076	New
95077	FREEDOM CA 95019	WATSONVILLE CA 95076	New

**Newly Added**

Column A Destination ZIP Codes	Column B Label Container To (Added To)	Column B Status
93933	MARINA CA 93933	New

**Deleted**

Column A Destination ZIP Codes	Column B Label (Deleted From)
93905	SALINAS CA 93905
93915	SALINAS CA 93915
95013	GILROY CA 95020
95039	FREEDOM CA 95019
95043	HOLLISTER CA 95023
95046	GILROY CA 95020

\* \* \* \* \*

**L606 5-Digit Scheme – Standard Mail, First-Class Mail, and Package Services Parcels****Changes**

<b>Column A Destination ZIP Codes</b>	<b>Column B Label Container To (Change From)</b>	<b>Column B Label Container To (Change To)</b>	<b>Column B Change To Status</b>
16503	ERIE PA 16501	ERIE PA 16503	New
16510	ERIE PA 16515	ERIE PA 16510	New
16511	ERIE PA 16515	ERIE PA 16510	New
16514	ERIE PA 16501	ERIE PA 16512	Existing
16515	ERIE PA 16515	ERIE PA 16512	Existing
29403	CHARLESTON SC 29401	CHARLESTON SC 29403	New
29413	CHARLESTON SC 29401	CHARLESTON SC 29403	New
38193	MEMPHIS TN 38181	HICKORY HILL TN 38125	Existing
42103	BOWLING GREEN KY 42101	BOWLING GREEN KY 42103	New
42104	BOWLING GREEN KY 42101	BOWLING GREEN KY 42103	New
55903	ROCHESTER MN 55902	ROCHESTER MN 55903	New
55905	ROCHESTER MN 55902	ROCHESTER MN 55903	New
57271	WILLOW LAKE SD 57278	HAZEL SD 57242	New
67055	WICHITA KS 67207	WICHITA KS 67228	New
67206	WICHITA KS 67207	WICHITA KS 67206	New
67226	WICHITA KS 67207	WICHITA KS 67206	New
67228	WICHITA KS 67207	WICHITA KS 67228	New

**Newly Added**

<b>Column A Destination ZIP Codes</b>	<b>Column B Label Container To (Added To)</b>	<b>Column B Status</b>
16504	ERIE PA 16503	New
42274	BOWLING GREEN KY 42103	New
57242	HAZEL SD 57242	New
67230	WICHITA KS 67228	New
67275	WICHITA KS 67209	Existing
92564	MURRIETA CA 92562	Existing

**Deleted**

<b>Column A Destination ZIP Codes</b>	<b>Column B Label (Deleted From)</b>
27511	CARY NC 27511
27512	CARY NC 27511
27513	CARY NC 27511
27518	CARY NC 27511
27519	CARY NC 27511
29401	CHARLESTON SC 29401
29409	CHARLESTON SC 29418
29424	CHARLESTON SC 29418
29425	CHARLESTON SC 29418
38115	HICKORY HILL TN 38125
38181	MEMPHIS TN 38181
55436	MINNEAPOLIS MN 55439
55439	MINNEAPOLIS MN 55439
57278	WILLOW LAKE SD 57278
67207	WICHITA KS 67207
67212	WICHITA KS 67209
67235	WICHITA KS 67205
92563	MURRIETA CA 92562



# Pull-Out Information

## Fraud

### Invalid USPS Corporate Account Numbers

Please provide this listing to Contract Postal Units and acceptance clerks in non-POS locations without intranet access to validate a USPS Corporate Account (USPSCA) number online. For all other locations, online USPSCA validation is preferred. This list supersedes all previous notices, which must be recycled.

Acceptance clerks must not accept Priority Mail Express® shipments bearing an invalid USPSCA number in the “Payment by Account” or “Agreement Number” section of the label or form.

**Note:** The first 6 digits of a 9-digit Custom Designed Service and Next Day Pickup Agreement make up the Corporate Account Number.

006052	060332	093247	122281	210584	330352	495583	604211	773083	906341	950642	968445	970363
008346	060584	095302	131270	210598	331204	495584	604652	774320	906929	950946	968471	970415
009587	062094	097465	132240	210599	334723	<b>503009</b>	607102	<b>801427</b>	907769	951332	968567	970549
010272	064991	097571	142474	210608	338105	503034	607985	809016	911123	958301	968583	970557
011076	067088	097774	159065	210611	349157	503138	608195	809105	913200	967073	968606	970695
012203	067299	097779	171250	210642	352006	503159	611200	816809	917014	967124	968613	971002
015816	067344	<b>100143</b>	192540	210833	361361	503173	612064	826110	917703	967197	968617	971140
016112	068064	100223	195088	212503	361362	503217	613149	837030	921150	967249	968641	972315
016849	069037	100299	198252	212565	374161	503255	631075	841366	921152	967261	968655	973273
018002	069600	100444	<b>200143</b>	212847	379555	507002	672015	841376	926072	967262	968667	983123
018142	069920	100491	200190	212976	381164	511001	672029	851041	926522	967267	968679	992336
018440	070496	100700	207171	220205	381795	511830	<b>705001</b>	852231	926661	967290	968691	995014
018583	070747	100884	207873	220324	385002	524003	705911	852929	927629	967299	968692	995426
018833	071044	104184	209107	222001	<b>410045</b>	524008	730071	853159	927721	967326	968698	995548
018902	071104	104616	210059	235112	432052	524077	730132	856524	927789	967335	968789	998342
018915	075660	104648	210078	292535	436481	525002	731045	871036	931102	967342	968838	999203
021685	075803	108952	210095	296432	441501	527003	731416	891213	931131	967348	968847	
023001	076696	109235	210162	299002	441572	531790	731974	891540	932699	967395	968902	
025476	077392	109953	210315	<b>300001</b>	445110	531880	741145	891619	933511	968004	969031	
027134	079107	112128	210324	301407	451134	537268	741361	898026	934222	968252	969104	
029825	080160	117919	210352	301415	452187	544036	741673	<b>900012</b>	935022	968255	969109	
037146	080647	118102	210354	301686	452301	551073	750044	900013	935023	968287	969115	
039304	085917	118919	210413	311306	462025	553005	750081	900260	939002	968299	969136	
041303	090704	119449	210483	320102	480095	570037	750750	900517	940558	968335	969168	
043044	092158	119608	210487	322003	481358	585210	752030	900550	940621	968338	969170	
054292	092377	120185	210543	322802	482435	<b>600223</b>	752156	901382	945973	968345	969173	
055118	092387	120344	210546	323010	488304	601099	752177	901675	946369	968359	969175	
060033	092784	120362	210565	323520	490737	601759	752681	904658	946566	968391	969208	
060096	093135	121182	210574	330320	495134	604172	770043	906190	950540	968421	969209	

— Product Information Requirements, Mail Entry and Payment Technology, 11-9-17

## Missing, Lost, or Stolen U.S. Money Order Forms

**Do Not Cash — Upon Receipt, Notify Local Postal Inspectors**

Provide this listing to all Postal Service™ employees responsible for accepting and cashing postal money orders. Destroy all interim notices when the numbers listed

appear in the *Postal Bulletin*. The actual serial numbers consist of the first 10 digits on the money orders. Check for altered dollar amounts by holding money orders to the light.

<b>010 001 0200 to 0299</b>	039 145 6521 to 6595	071 507 6840 to 6899	117 951 5200 to 5299
010 504 1932 to 1999	<b>040 024 3901 to 3999</b>	072 045 9641 to 9699	119 786 3051 to 3064
011 582 1889 to 1899	040 674 7100 to 7199	072 675 8287 to 8299	119 815 8961 to 6199
011 588 2900 to 3099	040 688 8816 to 8899	073 763 0867 to 0876	119 850 7400 to 7499
012 441 0784 to 0799	041 299 6752 to 6799	073 763 0878 to 0887	119 850 7700 to 7999
012 579 5675 to 5699	041 623 8889 to 8899	073 763 0889 to 0898	<b>121 634 0460 to 0499</b>
013 289 6176 to 6199	041 803 6565 to 6599	077 617 5481 to 5499	122 451 9879 to 9899
013 610 0014 to 0099	043 129 1968 to 1997	077 999 4001 to 4090	122 714 6805 to 6900
014 932 1000 to 1099	043 205 5922 to 5999	078 174 4475 to 4499	124 916 0304 to 0499
014 972 0800 to 0899	044 087 3457 to 3499	078 219 4931 to 4999	126 423 0136 to 0169
015 363 0065 to 0099	044 087 4000 to 4099	078 250 4756 to 4799	127 500 2328 to 2399
017 028 3200 to 3299	044 226 2487 to 2512	078 823 8312 to 8399	<b>160 901 2254 to 2299</b>
018 569 5333 to 5399	044 306 4200 to 4299	079 374 0300 to 2499	161 103 6581 to 6599
018 986 5264 to 5299	044 306 4370 to 4599	079 807 2342 to 2399	161 194 2857 to 0899
019 518 2814 to 2899	045 524 4121 to 4298	<b>082 721 0228 to 0254</b>	162 032 4447 to 4499
<b>020 698 5159 to 5199</b>	046 800 9870 to 9899	083 140 5000 to 7499	163 257 1085 to 1099
020 844 7307 to 7399	047 352 4000 to 4099	083 784 8886 to 8899	164 359 2406 to 2499
020 972 8948 to 8999	048 383 7650 to 7659	083 913 6915 to 6999	166 101 1433 to 1499
022 021 9110 to 9181	048 396 3647 to 3699	084 478 3920 to 3999	167 555 5201 to 5212
022 037 1411 to 1499	<b>051 142 0755 to 0799</b>	086 000 8271 to 8299	167 555 5214 to 5299
022 527 9201 to 9210	051 774 8857 to 8899	086 798 3840 to 3849	169 618 6274 to 6299
022 529 1882 to 1899	051 781 2875 to 2885	088 404 4472 to 4499	<b>171 806 6878 to 6893</b>
023 637 7169 to 7199	051 977 7010 to 7023	088 404 5584 to 5699	173 639 4685 to 4699
024 380 4100 to 4199	052 058 7115 to 7199	088 757 8688 to 8699	174 238 2779 to 2799
024 496 6870 to 6896	054 450 1130 to 1167	088 757 9400 to 9499	174 281 9347 to 9399
025 092 0987 to 0999	057 670 0563 to 0599	089 358 2248 to 2257	175 251 2600 to 0699
025 369 5535 to 5599	058 187 3836 to 3899	<b>090 663 9678 to 9684</b>	176 281 7937 to 7950
025 729 1151 to 1199	058 523 3003 to 3099	091 818 0071 to 0099	176 281 7963 to 7999
025 729 1643 to 1799	058 591 1153 to 1299	093 106 9346 to 9355	176 731 6586 to 6599
026 492 3180 to 3199	058 895 3746 to 3799	093 203 0500 to 0599	178 254 5000 to 9999
027 361 0430 to 0499	059 986 0814 to 0899	093 684 3630 to 3699	178 881 9900 to 9999
027 369 4482 to 4495	<b>060 406 7650 to 7699</b>	094 081 5074 to 5099	<b>180 031 2089 to 2088</b>
027 671 8762 to 8776	063 491 8122 to 8199	094 216 2555 to 2599	180 403 7723 to 7741
027 787 9886 to 9899	063 916 9968 to 9999	094 580 7062 to 7099	180 428 4580 to 0599
027 965 9487 to 9499	064 091 4500 to 4599	094 639 4200 to 4299	182 368 7544 to 0599
028 100 8069 to 8099	065 170 0471 to 0499	095 070 7186 to 7199	182 475 3229 to 3258
028 191 1852 to 1999	065 255 7909 to 7999	095 076 8300 to 8399	182 475 3904 to 3933
028 850 3000 to 3199	065 392 6345 to 6399	095 354 6864 to 6899	182 631 0031 to 0099
029 510 1500 to 1599	066 099 2014 to 2099	097 224 1350 to 1599	182 911 6539 to 6600
<b>030 687 0903 to 0999</b>	066 648 2880 to 2899	<b>100 160 3800 to 3899</b>	184 218 2760 to 2799
030 701 3442 to 3499	066 787 3639 to 3699	104 667 6400 to 6499	185 828 1474 to 1499
031 077 4507 to 4799	066 845 7500 to 9999	104 876 8937 to 8999	186 132 7583 to 0599
032 295 7500 to 9999	067 093 3869 to 3899	<b>112 049 4413 to 4499</b>	186 629 0589 to 0599
034 394 1000 to 1099	068 895 0334 to 0399	112 870 9765 to 9799	187 184 6177 to 0199
034 943 0400 to 0799	<b>070 724 4488 to 4499</b>	113 319 2000 to 2099	187 323 8200 to 8299
035 035 4337 to 4399	070 841 9181 to 9199	114 402 3850 to 3899	187 441 6080 to 6099
037 312 7500 to 7599	070 844 2546 to 2599	114 866 5368 to 5397	188 831 6774 to 6799
037 706 9578 to 9599	070 916 1340 to 1399	116 154 2800 to 2899	188 835 6370 to 6399
037 805 3677 to 3699	071 047 5768 to 5799	116 986 4400 to 4499	189 083 1064 to 1099
037 909 5490 to 5499	071 179 9800 to 9899	117 175 1647 to 5169	189 660 9583 to 9599
037 931 4660 to 4699	071 386 3682 to 3699	117 951 4687 to 4699	<b>191 179 0377 to 0399</b>

192 050 5762	to	5781	229 924 6696	to	6699	391 574 1466	to	1499	410 694 8400	to	8599
194 456 8600	to	0699	<b>230 051 9500</b>	<b>to</b>	<b>9999</b>	391 783 3020	to	3599	410 775 1500	to	1599
195 194 6881	to	6899	236 366 2431	to	2499	391 792 6100	to	6199	410 795 7927	to	7999
195 874 1112	to	1199	236 607 6882	to	6899	392 668 2956	to	2999	410 867 0917	to	0966
196 979 0524	to	0599	236 660 5853	to	5872	392 854 8500	to	8899	410 867 0970	to	0999
197 244 6100	to	6199	239 322 5200	to	5299	393 584 7566	to	7699	411 868 1023	to	1199
197 244 6300	to	6399	239 322 5400	to	5499	393 650 0074	to	0099	411 922 2322	to	2399
197 244 6400	to	6499	239 322 5600	to	5699	393 838 8316	to	8499	412 193 0900	to	0999
197 244 6500	to	6599	239 322 5800	to	5899	393 893 6007	to	6099	412 395 8599	to	8699
197 244 6600	to	6699	239 322 5900	to	5999	394 126 6907	to	6999	412 485 6500	to	6599
197 244 6700	to	6799	<b>240 593 1879</b>	<b>to</b>	<b>1899</b>	394 189 0405	to	0599	412 485 6610	to	6699
197 244 6800	to	8999	<b>242 591 2048</b>	<b>to</b>	<b>2099</b>	394 822 3243	to	3278	412 885 5953	to	5999
198 285 2556	to	2566	242 735 0388	to	0388	394 990 1810	to	1899	414 193 3608	to	3674
199 105 0778	to	0799	242 951 7276	to	7299	395 343 3264	to	3299	414 193 3677	to	3699
199 678 2968	to	2999	<b>243 535 6370</b>	<b>to</b>	<b>6399</b>	395 373 3035	to	3099	414 411 7348	to	7399
<b>202 748 5133</b>	<b>to</b>	<b>5199</b>	<b>244 004 9985</b>	<b>to</b>	<b>9999</b>	395 396 9649	to	9799	414 640 0757	to	0799
202 748 5245	to	5299	<b>273 070 8059</b>	<b>to</b>	<b>8099</b>	395 970 3240	to	3299	414 965 1727	to	1799
202 748 5300	to	5399	273 775 7700	to	7899	397 622 4054	to	4099	417 302 8104	to	8199
202 748 5400	to	5499	<b>302 000 0000</b>	<b>to</b>	<b>9999</b>	397 819 8902	to	8999	417 387 6532	to	6599
203 256 1240	to	1299	<b>349 746 2056</b>	<b>to</b>	<b>2099</b>	398 149 7200	to	7699	417 496 6800	to	6999
204 230 3577	to	3595	<b>350 518 7350</b>	<b>to</b>	<b>7374</b>	399 070 0872	to	0899	417 871 9250	to	9299
205 019 0174	to	0199	<b>360 011 1690</b>	<b>to</b>	<b>1699</b>	399 156 7119	to	7199	417 930 9533	to	9599
207 196 9900	to	9999	360 168 6008	to	6099	399 203 5064	to	5099	418 164 6500	to	6799
207 204 0700	to	0799	360 173 8800	to	8899	399 296 9910	to	9999	418 423 9863	to	9899
207 204 0800	to	0899	360 324 2326	to	2399	399 396 8935	to	8999	418 633 5922	to	5999
207 514 3857	to	3899	362 861 3064	to	3099	399 792 7775	to	7799	418 719 8520	to	8599
208 556 4707	to	4799	<b>373 006 2176</b>	<b>to</b>	<b>2199</b>	399 792 8300	to	8399	418 744 2235	to	2299
<b>210 057 4038</b>	<b>to</b>	<b>4047</b>	374 768 2600	to	2699	<b>400 427 1051</b>	<b>to</b>	<b>1999</b>	418 962 2848	to	2899
210 221 0548	to	0599	375 169 4400	to	4599	401 045 1505	to	1549	419 543 0286	to	0299
214 061 4711	to	4724	375 829 3400	to	3499	401 045 1571	to	1599	419 730 0300	to	0399
214 303 6311	to	6325	375 851 9100	to	9199	401 294 2700	to	2799	<b>420 277 0015</b>	<b>to</b>	<b>0049</b>
214 303 6239	to	6258	376 196 0911	to	0999	401 310 9505	to	9599	420 599 0734	to	0798
214 877 4251	to	4273	378 085 3679	to	3699	401 382 5312	to	5399	420 661 4115	to	4199
215 252 3918	to	3992	378 351 1063	to	1099	402 578 7876	to	7899	420 758 9500	to	9699
218 698 2157	to	2199	379 843 5100	to	5199	403 125 6744	to	6799	420 969 3951	to	3971
218 746 0800	to	0899	<b>380 093 9600</b>	<b>to</b>	<b>9699</b>	403 260 7000	to	7499	420 969 3973	to	3999
219 095 0100	to	0399	380 165 1165	to	1199	403 280 6470	to	6499	421 116 3565	to	3599
219 389 1885	to	1899	381 325 4500	to	4599	403 685 8600	to	8699	421 130 9300	to	9399
219 568 7435	to	7456	381 604 2510	to	2699	404 003 0300	to	0399	421 313 4500	to	4999
219 568 7469	to	7487	381 645 9525	to	9599	404 041 8838	to	8899	421 364 5537	to	5599
<b>221 316 5757</b>	<b>to</b>	<b>5799</b>	383 314 3968	to	3999	404 071 4268	to	4299	421 656 2609	to	2699
223 476 3914	to	3999	383 892 1000	to	1344	404 347 5356	to	5399	421 988 9700	to	9799
223 565 4921	to	4957	383 892 1382	to	1399	404 347 5548	to	5599	422 172 4667	to	4699
223 565 4979	to	4999	384 925 3641	to	3654	404 726 4500	to	4599	422 484 4212	to	4299
224 636 4745	to	4765	385 568 2331	to	2399	404 961 5001	to	5199	422 556 1270	to	1299
224 636 4776	to	4799	385 599 7554	to	7575	405 325 0188	to	0198	422 587 7024	to	7099
224 636 4855	to	4885	385 774 2024	to	2099	406 009 4587	to	4599	422 819 7533	to	7599
224 636 4932	to	4948	386 624 1412	to	1599	406 260 6830	to	6899	422 842 5073	to	5087
224 636 4950	to	4962	386 883 8936	to	8999	406 459 6641	to	6999	422 907 7563	to	7599
224 636 4985	to	4999	387 314 5574	to	5599	406 733 3000	to	3999	424 500 6050	to	6099
224 730 2207	to	2299	387 837 6300	to	6399	407 545 1557	to	1599	424 641 8500	to	8599
225 970 0500	to	0599	388 828 0656	to	0699	407 594 0412	to	0599	424 871 6600	to	6699
225 970 0600	to	0699	389 696 2400	to	2799	407 692 9100	to	9299	425 298 2352	to	2399
225 970 0700	to	0799	389 846 3104	to	3135	407 959 2190	to	2199	425 418 4269	to	4299
227 033 8679	to	8699	389 846 3145	to	3195	408 265 2275	to	2288	425 418 4405	to	4499
227 275 9400	to	9999	389 887 9211	to	9230	408 499 7700	to	7799	426 547 4566	to	4599
228 463 2456	to	2499	389 887 9234	to	9299	408 499 7900	to	7999	427 412 6337	to	6499
228 510 4852	to	4899	<b>390 001 3182</b>	<b>to</b>	<b>3199</b>	408 682 8484	to	8599	427 481 0900	to	0999
229 462 8451	to	8475	390 001 3500	to	3699	408 698 7015	to	7099	428 027 2742	to	2752
229 668 5977	to	5999	390 545 5974	to	5999	409 072 3941	to	3999	429 474 4172	to	4199
229 923 9176	to	9199	391 104 6146	to	6199	<b>410 491 2311</b>	<b>to</b>	<b>2399</b>	429 889 2900	to	2999

<b>430 150 4401 to 4599</b>	454 302 5400 to 5499	469 947 6960 to 6999	486 559 7555 to 7599
430 172 9800 to 9899	454 490 8300 to 8399	<b>470 755 5800 to 5818</b>	486 696 3023 to 3199
430 177 1900 to 2099	454 547 7434 to 7499	471 918 0300 to 0999	488 173 7900 to 7999
430 444 9500 to 9699	454 922 4867 to 4895	471 985 2408 to 2419	488 206 4100 to 4199
430 664 4070 to 4099	455 221 1348 to 1499	472 191 6700 to 6799	488 226 0200 to 0299
432 168 8419 to 8499	455 364 2147 to 2199	472 270 2555 to 2599	488 709 3906 to 3999
432 708 6800 to 6999	455 399 5400 to 5499	472 987 0213 to 0241	488 855 8359 to 8399
432 744 1544 to 1599	455 476 0676 to 0699	472 987 0290 to 0299	489 181 8963 to 8999
432 995 9775 to 9799	455 543 0618 to 0699	473 151 2069 to 2199	489 223 2000 to 2099
433 003 5800 to 5899	456 410 9006 to 9099	473 666 9138 to 9199	489 311 1930 to 1999
433 757 3047 to 3099	456 470 4146 to 4299	473 952 3429 to 3499	489 318 6200 to 6300
433 765 4003 to 4099	456 619 4460 to 4499	474 108 5402 to 5499	489 384 0027 to 0099
434 482 7060 to 7199	457 333 2686 to 2699	474 356 5193 to 5299	489 427 0658 to 0899
434 513 2386 to 2399	457 729 1767 to 1777	474 949 3366 to 3399	489 997 5252 to 5299
434 968 3076 to 3092	457 937 8615 to 8699	475 134 9362 to 9399	<b>490 669 5850 to 6099</b>
435 303 1831 to 1842	458 028 9810 to 9899	475 167 9667 to 9699	490 717 7080 to 7099
435 303 1986 to 1999	458 057 2712 to 2999	475 319 3415 to 3499	490 721 6000 to 6099
435 666 6092 to 6399	458 069 9537 to 9599	475 319 3649 to 3799	490 793 1500 to 2099
436 082 6400 to 6899	458 069 9665 to 9699	475 340 6400 to 6599	490 886 8171 to 8199
436 160 6441 to 6499	458 337 5222 to 5299	475 424 8410 to 8499	490 977 9221 to 9240
437 316 7115 to 7199	458 354 7653 to 7999	475 629 9156 to 9199	491 258 8100 to 9099
437 427 0500 to 3499	458 671 8678 to 8699	475 850 6101 to 6199	491 567 1376 to 1399
439 179 2300 to 2399	458 671 8721 to 8798	475 875 2500 to 2599	492 254 4800 to 4899
439 310 0458 to 0499	458 847 5044 to 5999	476 169 8264 to 8299	492 283 5100 to 5199
<b>440 698 1947 to 1999</b>	459 274 7624 to 7699	476 189 3000 to 3499	492 610 6813 to 6899
440 858 6300 to 6399	459 365 5432 to 5499	476 331 2480 to 2499	493 394 5568 to 5599
440 858 6420 to 7299	459 378 5764 to 5799	477 289 8601 to 8699	493 470 2562 to 2599
441 199 1655 to 1699	459 472 4816 to 4999	477 681 5206 to 5299	493 473 7700 to 7799
443 127 3648 to 3699	<b>460 349 6878 to 6899</b>	478 010 4243 to 4268	493 716 2153 to 2199
443 127 4000 to 4099	460 550 1909 to 1999	478 010 4270 to 4291	494 206 2972 to 2999
443 673 7900 to 7999	460 997 5234 to 5299	478 450 5071 to 5099	494 217 3446 to 3999
443 800 9335 to 9399	461 973 6443 to 6499	478 469 7838 to 7858	494 224 0500 to 0599
444 382 8822 to 8899	462 152 0107 to 0299	478 469 7883 to 7899	495 145 0600 to 0699
444 390 1667 to 1699	462 274 1072 to 1099	479 280 9800 to 9899	496 209 7425 to 7499
444 457 3854 to 3899	462 277 8373 to 8399	479 365 9116 to 9176	496 213 8728 to 8799
<b>450 048 4173 to 4199</b>	462 554 6051 to 6099	479 412 9900 to 9999	496 474 5226 to 5248
450 048 4442 to 4699	463 011 5529 to 5540	479 667 6190 to 6199	497 053 8517 to 8699
450 560 5173 to 5199	463 176 4115 to 4199	479 748 9680 to 9699	497 854 8673 to 8699
450 620 3077 to 3099	463 176 4229 to 4299	479 860 7000 to 7199	498 449 8888 to 8899
450 620 3135 to 3199	463 185 2600 to 2799	<b>480 526 2000 to 2099</b>	498 929 8285 to 8499
450 780 2716 to 2799	463 227 7711 to 7799	480 640 6330 to 6399	498 936 5310 to 5399
450 801 2700 to 2799	463 414 4869 to 4899	480 658 0568 to 0599	499 016 5425 to 5499
451 109 2967 to 2984	463 808 3484 to 3499	480 689 5100 to 5199	499 440 8575 to 8899
451 115 4110 to 4125	463 945 7400 to 7899	481 072 9463 to 9499	499 731 6717 to 6799
451 115 4127 to 4199	464 629 9000 to 9399	481 673 0074 to 0095	<b>500 064 1858 to 1869</b>
451 746 0700 to 0799	464 711 4332 to 4399	482 527 1500 to 1599	500 070 5725 to 7799
452 265 0074 to 0099	465 692 3963 to 3999	482 541 5255 to 5299	501 058 0016 to 0026
452 265 0246 to 0299	465 698 8300 to 8599	482 729 6800 to 6899	501 331 0300 to 0399
452 265 0335 to 0999	465 743 7745 to 7799	483 363 7207 to 7299	501 460 0977 to 0999
452 509 1169 to 1199	466 798 6056 to 6067	483 402 2356 to 2399	502 227 7645 to 7699
452 855 6471 to 6499	467 147 4300 to 4399	483 486 5100 to 5199	502 424 0200 to 0499
452 890 4679 to 4799	468 079 5782 to 5799	483 632 1521 to 1599	502 424 0600 to 0699
452 900 8215 to 8238	469 067 2817 to 2899	483 632 2600 to 2799	502 496 6923 to 6999
453 117 9146 to 9199	469 127 8000 to 8199	483 849 1615 to 1699	503 003 2700 to 2899
453 334 3631 to 3699	469 213 0359 to 0399	484 174 4803 to 5299	503 194 5144 to 5153
453 603 7841 to 7891	469 213 0500 to 0599	484 323 8900 to 9199	503 790 9922 to 9948
453 650 1140 to 1199	469 561 8011 to 8099	484 680 5000 to 5038	504 045 4030 to 4099
453 741 1300 to 1399	469 658 1961 to 1999	484 680 5040 to 5074	504 166 0200 to 0599
454 013 2919 to 2999	469 666 9900 to 9999	484 680 5077 to 5099	504 240 1062 to 1399
454 186 2411 to 2499	469 678 1900 to 1999	485 029 4913 to 4999	504 805 3300 to 3499
454 268 4883 to 4899	469 781 4900 to 4999	486 176 0600 to 0699	505 096 0662 to 0699

505 893 7739	to	7799	610 582 4200	to	4299	634 725 0700	to	0799	647 811 2188	to	2199
505 893 7800	to	7999	611 879 6939	to	6999	634 803 3239	to	3299	648 009 6057	to	6099
506 124 0800	to	0999	612 291 8013	to	8099	634 807 2474	to	2499	648 163 5300	to	5499
506 165 7027	to	0099	612 751 5171	to	5199	634 827 5900	to	5999	648 722 5283	to	5299
506 502 5209	to	5299	612 751 5226	to	5299	634 886 3428	to	3499	648 892 3164	to	3199
506 756 1682	to	1699	612 751 6083	to	6099	635 559 3449	to	3499	649 100 3989	to	3999
506 756 1700	to	1799	612 751 6268	to	6299	636 289 6214	to	6299	649 647 0370	to	0399
506 756 1800	to	1899	612 751 6572	to	6599	636 634 8007	to	8042	649 647 0522	to	0599
506 836 5326	to	5399	612 774 2111	to	2199	637 150 1200	to	1299	649 647 5237	to	5399
508 488 6226	to	6299	612 774 2254	to	2299	637 562 5828	to	5899	649 647 9100	to	9299
508 789 8332	to	8399	612 774 2500	to	2599	638 042 1647	to	1699	649 666 7800	to	8299
508 789 8400	to	8499	614 469 0979	to	0999	638 049 4984	to	4999	<b>650 114 7707 to 7719</b>		
509 909 0425	to	0435	614 474 3000	to	3099	638 318 1115	to	1199	650 130 3400	to	3599
<b>510 150 2400 to 2499</b>			614 521 3490	to	3499	638 318 1453	to	1499	650 213 0406	to	0499
510 381 3200	to	3299	614 645 1800	to	1899	638 885 0000	to	0299	650 555 1749	to	1799
510 587 9500	to	9599	614 832 1100	to	2099	638 903 4362	to	4373	650 564 1900	to	1999
510 587 9659	to	9699	615 017 7505	to	7599	639 415 1929	to	1999	650 627 4212	to	4299
510 269 9770	to	9999	617 711 6609	to	6699	639 415 2019	to	2099	650 736 2043	to	2099
511 021 5042	to	5099	617 760 5266	to	5299	639 420 6200	to	6299	650 739 1540	to	1699
511 021 5100	to	5199	617 813 3601	to	3699	639 469 3517	to	3799	651 741 4415	to	4499
511 468 1747	to	1799	618 840 9200	to	9299	639 605 2143	to	2199	651 882 2800	to	2899
511 844 0100	to	0199	619 551 7229	to	7299	639 657 8600	to	8799	652 754 6317	to	6399
511 844 0340	to	0399	619 859 3000	to	3099	<b>640 289 7500 to 7599</b>			653 131 4945	to	4999
<b>600 645 3223 to 3299</b>			<b>620 073 9400 to 9499</b>			640 289 7700	to	7999	653 426 3300	to	3399
601 339 1200	to	1399	621 614 7907	to	7930	641 170 4420	to	4499	653 455 4874	to	4899
601 653 5884	to	5899	621 614 7932	to	7999	641 318 3133	to	3199	654 238 0000	to	0399
601 661 7700	to	7799	621 648 8021	to	8199	641 378 6500	to	6999	654 404 3065	to	3092
601 682 5343	to	5399	621 648 8500	to	8599	641 383 8739	to	8799	654 962 2900	to	3199
601 928 1600	to	1699	621 904 8351	to	8599	641 877 3187	to	3299	655 103 5081	to	5199
602 512 2972	to	2999	621 916 1978	to	1989	641 877 3310	to	3399	655 523 2600	to	2999
602 555 2400	to	2799	622 989 8032	to	8099	642 355 8094	to	8199	656 305 2448	to	2499
602 829 7061	to	7099	623 076 9300	to	9399	642 355 8308	to	8999	657 347 4438	to	4999
603 483 9572	to	9599	623 819 5006	to	5099	642 900 0018	to	0099	657 710 8100	to	8999
603 490 7200	to	7299	623 895 8200	to	8399	643 030 6254	to	6299	657 780 0985	to	0999
603 678 7100	to	7199	623 917 0000	to	0099	644 066 0882	to	0899	658 586 1400	to	1499
603 678 7662	to	7699	623 917 0200	to	0299	644 069 0600	to	0699	658 877 8000	to	8199
603 678 7902	to	7999	624 468 5288	to	5299	644 077 7506	to	7699	658 880 8000	to	8199
603 678 8418	to	8499	624 665 3162	to	3198	644 085 8157	to	8199	659 398 7300	to	7399
603 678 8700	to	9999	625 088 6735	to	6799	644 112 9839	to	9899	659 706 8113	to	8199
604 086 0880	to	0899	625 916 9500	to	9799	644 373 9083	to	9099	659 846 7837	to	7899
604 349 1414	to	1499	625 968 8956	to	8999	644 380 1460	to	1499	<b>660 510 4100 to 4199</b>		
604 503 7776	to	7799	627 005 3938	to	3999	644 733 4715	to	4799	660 673 0400	to	0599
605 520 9037	to	9099	627 384 3907	to	4099	644 900 9712	to	9799	661 488 5000	to	5099
605 685 4010	to	4099	627 496 7549	to	7599	644 901 0109	to	1299	661 609 9100	to	9199
605 988 6467	to	6499	627 708 3605	to	3699	644 901 1325	to	1399	661 716 9420	to	9499
607 689 7951	to	7960	627 776 2500	to	2599	644 923 6800	to	7799	661 906 6522	to	6599
607 728 1276	to	1299	628 226 3100	to	3199	644 932 4655	to	4699	662 021 8332	to	8399
608 727 7100	to	7199	628 814 4702	to	4799	645 318 7240	to	7499	662 068 0700	to	0899
608 727 7273	to	7599	628 851 9689	to	9699	645 333 1766	to	1799	662 553 0774	to	0799
608 813 9950	to	9999	629 510 7200	to	7299	645 790 8632	to	8699	663 078 7034	to	7099
609 067 5325	to	5399	629 964 4200	to	4294	645 821 0657	to	0699	663 763 5300	to	5399
609 067 5488	to	5499	<b>630 389 3056 to 3071</b>			645 930 7948	to	7999	663 883 7039	to	7499
609 067 5600	to	5699	630 463 0588	to	0599	645 975 0737	to	0762	663 938 9200	to	9299
609 289 6123	to	6199	631 459 9117	to	9199	646 242 6200	to	6299	664 253 8000	to	8499
609 438 4400	to	4499	631 762 9325	to	9399	646 270 7639	to	7799	664 656 3055	to	3099
609 493 1100	to	1199	632 217 4933	to	4999	646 798 4000	to	4999	665 174 6400	to	6499
609 766 8091	to	8999	632 500 0000	to	640 3999	647 048 7035	to	7099	665 274 8208	to	8299
609 825 4100	to	4115	633 110 4165	to	4199	647 049 2900	to	2999	665 669 5400	to	5499
609 884 2981	to	2999	633 110 4303	to	4499	647 398 8300	to	8399	666 132 8226	to	8299
609 893 1000	to	1099	633 438 6429	to	6599	647 398 8481	to	8499	666 696 2209	to	2299
<b>610 092 3200 to 3299</b>			633 588 7173	to	7182	647 437 3000	to	4999	666 696 2309	to	2399

667 032 9300	to	9399	691 313 6600	to	6699	703 364 1707	to	1799	830 983 3635	to	3699
667 729 5529	to	5599	691 582 8003	to	8099	<b>740 002 7710</b>	<b>to</b>	<b>7719</b>	831 354 1387	to	1399
668 383 8400	to	8699	691 664 1800	to	1999	740 037 6730	to	6800	831 815 8240	to	8299
<b>670 368 3400</b>	<b>to</b>	<b>3499</b>	691 664 2400	to	2499	740 119 2275	to	2284	832 525 3810	to	3899
670 369 7336	to	7399	692 727 9362	to	9399	740 130 6688	to	6698	833 159 1884	to	1899
670 750 7169	to	7199	692 798 1800	to	1899	740 144 2780	to	2795	833 456 2567	to	2599
671 046 6200	to	6399	693 249 0779	to	0799	740 241 9049	to	9099	833 566 3015	to	3071
671 251 5448	to	5499	693 249 0877	to	1699	740 252 9265	to	9294	834 130 5200	to	5299
671 926 5600	to	5799	693 445 0566	to	0999	740 255 1718	to	1799	834 316 5444	to	5499
672 444 2000	to	2999	693 448 8500	to	8999	740 274 2602	to	2619	834 354 8747	to	8766
672 828 3410	to	3499	693 645 9583	to	9599	740 277 0366	to	0392	834 354 8824	to	8838
673 167 5776	to	5799	693 965 4200	to	4299	740 332 7658	to	7671	835 269 5700	to	5799
675 464 3700	to	3799	695 741 2906	to	2999	740 348 6641	to	6658	835 496 7303	to	7399
675 464 4000	to	4199	695 947 8518	to	8599	740 351 4790	to	4799	835 539 5200	to	5999
676 365 5958	to	5999	696 662 8247	to	8299	740 374 7416	to	7499	835 813 3015	to	3099
676 669 1024	to	1099	697 447 8285	to	8296	740 470 2420	to	2443	837 672 8967	to	8999
677 126 6734	to	6799	698 042 4816	to	4899	740 514 0300	to	0499	837 784 3282	to	3299
677 333 9979	to	9999	698 131 2138	to	2157	740 523 7432	to	7449	838 176 8377	to	8399
677 466 1088	to	1099	698 227 0000	to	0099	740 535 1555	to	1580	838 518 1257	to	1299
678 071 4500	to	4799	<b>700 065 2570</b>	<b>to</b>	<b>2599</b>	740 557 3570	to	3579	839 718 8257	to	8299
678 096 7531	to	7599	700 065 4800	to	4899	740 650 4104	to	4140	<b>840 323 0600</b>	<b>to</b>	<b>0699</b>
679 909 2578	to	2599	700 190 3350	to	3359	740 684 0620	to	0800	840 875 6235	to	6299
<b>680 112 9565</b>	<b>to</b>	<b>9599</b>	700 228 6048	to	6099	740 701 6105	to	6114	840 910 0900	to	0999
680 244 0903	to	0999	700 650 0452	to	0499	740 705 9790	to	9799	841 349 5000	to	5099
680 412 6046	to	6099	700 666 1323	to	1349	740 726 6400	to	6500	841 805 7747	to	7899
680 761 6800	to	6899	700 786 9106	to	9142	740 748 8319	to	8329	841 805 7944	to	8099
681 677 0540	to	0699	700 859 0744	to	0758	740 765 3306	to	3399	842 226 0685	to	0695
682 070 1029	to	1099	701 028 6780	to	6899	740 774 8434	to	8499	842 685 4600	to	4699
682 956 6280	to	6299	701 213 3900	to	3999	740 779 4259	to	4299	842 685 4742	to	4999
682 956 6490	to	6599	701 267 2000	to	3999	740 786 1885	to	1899	842 860 0300	to	0399
682 956 6700	to	6799	701 335 7312	to	7399	740 790 5989	to	5999	842 898 5582	to	5599
682 965 1178	to	1199	701 369 2005	to	2050	740 803 4870	to	4879	843 062 7100	to	7199
682 965 1201	to	1299	701 499 2260	to	2299	740 820 4854	to	7836	843 077 6288	to	6299
683 118 2389	to	2399	701 503 2247	to	2299	740 827 7578	to	7594	843 077 6378	to	6399
683 378 2000	to	2099	701 541 2271	to	2299	740 917 7490	to	7499	843 758 5769	to	5778
683 378 2117	to	2299	701 553 6557	to	6599	740 918 5531	to	5549	843 786 2554	to	2699
683 415 1200	to	1499	701 578 7460	to	7469	741 037 8528	to	8551	845 656 8165	to	8199
683 444 8159	to	8199	701 578 7475	to	7499	742 030 6135	to	6149	845 727 2100	to	2199
685 154 7780	to	7789	701 601 3457	to	3499	742 033 2663	to	2674	845 746 2618	to	2635
685 297 7645	to	7699	701 605 5913	to	5999	742 040 3300	to	3309	846 390 7531	to	7599
685 623 5264	to	5299	701 695 3982	to	3999	742 151 5000	to	5014	846 918 0572	to	0599
685 650 9487	to	9499	701 695 4148	to	4199	742 191 4640	to	4649	847 237 7690	to	7699
685 669 4200	to	4299	701 695 4227	to	4299	742 192 5210	to	5224	847 284 2481	to	2499
685 757 8452	to	8499	701 708 1741	to	1799	742 222 9200	to	9210	847 374 7055	to	7065
686 071 2694	to	2799	701 736 3966	to	3999	742 228 9660	to	9669	847 374 7055	to	7065
686 176 3333	to	3354	701 772 0870	to	0899	742 247 6980	to	6989	847 636 5304	to	5399
686 372 3200	to	3299	701 838 2800	to	2899	742 290 0936	to	0950	847 700 5447	to	5499
686 644 5879	to	5899	701 941 0600	to	0699	742 302 7600	to	7699	847 723 7500	to	7599
686 899 1371	to	1399	702 171 1603	to	1699	<b>805 885 8411</b>	<b>to</b>	<b>8499</b>	849 485 3427	to	3499
686 931 7636	to	7699	702 195 5109	to	5199	806 087 1100	to	1499	849 520 9850	to	9899
687 601 0973	to	0999	702 254 9300	to	9399	806 268 9275	to	9299	849 608 1357	to	1399
687 614 6774	to	6799	702 264 7569	to	7599	806 534 3400	to	3477	849 792 2600	to	2699
688 120 9000	to	9999	702 519 0513	to	0524	807 342 3283	to	3399	<b>850 546 1862</b>	<b>to</b>	<b>1899</b>
688 314 3107	to	3191	702 713 1800	to	1809	808 086 7100	to	7199	851 143 6826	to	6844
<b>690 291 1361</b>	<b>to</b>	<b>1371</b>	702 821 5730	to	5799	808 090 3440	to	3499	851 209 9880	to	9899
690 788 2877	to	2899	702 821 5805	to	5899	808 325 5161	to	5699	851 928 9221	to	9299
690 893 5344	to	5399	702 844 6975	to	6994	808 784 8000	to	8299	852 589 6560	to	6599
690 893 5512	to	5599	702 846 6331	to	6399	<b>830 125 0672</b>	<b>to</b>	<b>0699</b>	853 049 3646	to	3699
690 904 1300	to	1599	702 848 3900	to	3999	830 602 5800	to	5999	854 304 4089	to	4999
690 941 6000	to	6199	702 857 7302	to	7499	830 610 3700	to	3799	854 529 2200	to	2299
691 313 6383	to	6399	702 878 0114	to	0199	830 983 3500	to	3599	854 532 0000	to	2999



855 001 6204	to	6249	870 536 5820	to	5829	910 471 7273	to	7299	920 963 4567	to	4599
855 319 9364	to	9399	870 541 7167	to	7239	910 536 2505	to	2599	921 333 7400	to	7499
855 361 3390	to	3399	870 575 8155	to	8999	910 958 7499	to	7599	921 477 3762	to	3799
856 226 0490	to	0499	870 589 0485	to	0494	911 140 1000	to	2199	922 278 1048	to	1399
856 656 5800	to	5999	870 691 7060	to	7099	911 245 2545	to	2599	922 280 2019	to	2099
856 752 0200	to	0299	872 028 4850	to	4899	911 268 9077	to	9099	922 280 2233	to	2299
857 111 1352	to	1399	872 029 9306	to	9399	911 400 8948	to	8999	922 773 0459	to	0499
857 279 3450	to	3499	872 078 3709	to	3799	911 508 1620	to	1799	923 032 7000	to	7399
857 843 4000	to	4099	872 100 0445	to	0459	911 509 9310	to	9399	923 045 3630	to	3699
858 124 7644	to	7699	<b>900 556 4178</b>	<b>to</b>	<b>4199</b>	911 523 3000	to	3999	923 484 3600	to	3699
858 756 3111	to	3299	900 845 0044	to	0099	912 057 9922	to	9999	923 493 9403	to	9599
859 063 8200	to	8699	900 936 0217	to	0299	912 882 0563	to	0899	923 493 9681	to	9699
859 190 0600	to	0644	900 936 0435	to	0499	913 605 2218	to	2299	923 604 4424	to	4499
859 437 5538	to	5599	901 058 5255	to	5280	913 709 2429	to	2499	923 810 7800	to	8299
859 811 2888	to	2899	901 273 1082	to	1099	913 818 3501	to	3999	924 252 1200	to	1299
859 855 8873	to	8999	901 287 5143	to	5199	914 063 4300	to	4399	924 252 1400	to	1499
<b>860 240 8520</b>	<b>to</b>	<b>8599</b>	901 291 2789	to	2799	914 346 7621	to	7644	924 533 0711	to	0799
860 275 3900	to	3999	901 525 7122	to	7199	914 453 1366	to	1399	924 533 2343	to	2399
860 518 9629	to	9699	902 089 1253	to	1299	914 529 6185	to	6299	924 533 2428	to	2499
860 600 0021	to	0999	902 198 9769	to	9799	914 896 4658	to	4699	924 685 1957	to	1999
861 158 2350	to	2599	902 948 1269	to	1299	915 187 8774	to	8779	924 946 6300	to	6699
861 367 5400	to	5499	902 985 0833	to	0899	915 300 2783	to	2799	925 333 5900	to	6099
861 637 6010	to	6099	903 370 6934	to	6999	915 546 6822	to	6999	925 336 2300	to	2399
861 979 7292	to	7499	904 600 6523	to	6599	915 646 5183	to	5199	926 432 5907	to	5999
862 216 6100	to	6199	904 892 0378	to	0399	915 671 3963	to	3980	926 436 3600	to	3699
862 263 9213	to	9299	904 892 0648	to	1299	915 671 3982	to	3999	927 765 6257	to	6299
862 271 0800	to	0999	905 056 2216	to	2299	915 675 2217	to	2299	928 197 8100	to	8199
862 271 5000	to	5099	905 510 6647	to	6799	916 440 3377	to	3399	928 197 8283	to	8299
863 871 5138	to	5199	905 510 6900	to	7099	916 680 6352	to	6399	928 856 2059	to	2068
863 949 5300	to	5399	905 794 0000	to	0199	916 682 5300	to	5399	<b>930 078 5800</b>	<b>to</b>	<b>5899</b>
864 088 8200	to	8299	905 794 0288	to	0299	916 694 1414	to	1499	930 219 1722	to	1799
864 426 3972	to	3999	905 873 6900	to	6999	916 703 0802	to	0821	930 335 7810	to	7819
864 520 6117	to	6136	905 873 7100	to	7299	917 089 0709	to	0799	931 097 9259	to	9299
865 151 0526	to	0599	905 880 8900	to	8999	917 089 0842	to	0899	931 156 1502	to	1579
865 500 4034	to	4099	905 889 7100	to	7199	917 216 2928	to	2999	931 156 1600	to	1625
865 883 6082	to	6099	906 158 1508	to	1599	917 370 6300	to	6499	931 156 1671	to	1699
866 004 3000	to	3999	906 558 8812	to	8899	917 486 4900	to	4999	932 506 6400	to	6599
866 442 4100	to	4899	906 982 2214	to	2299	918 460 0602	to	0699	932 732 1796	to	1799
867 366 9108	to	9118	907 725 8500	to	8599	918 951 7231	to	7299	932 827 9026	to	9099
867 633 7403	to	7499	907 815 0216	to	0257	919 519 2786	to	2799	932 957 2300	to	2399
867 737 5623	to	5699	908 622 4225	to	4235	919 536 0770	to	0799	933 060 6160	to	6189
868 169 4529	to	4599	908 936 9254	to	9299	919 814 3095	to	3199	933 387 2541	to	2561
868 173 8400	to	8599	909 066 4494	to	7499	919 889 5110	to	5134	933 760 3609	to	4199
868 514 9000	to	9099	909 067 7400	to	7499	919 889 5137	to	5176	933 894 0928	to	0999
868 566 9200	to	9299	909 100 1787	to	1799	919 889 5178	to	5199	934 018 2729	to	2741
869 200 0000	to	9999	909 100 1900	to	2099	919 889 5030	to	5070	934 180 0300	to	0399
869 387 1150	to	1199	909 355 0422	to	0499	919 889 5090	to	5099	934 236 3954	to	3999
869 505 3500	to	3599	909 568 8900	to	9099	919 915 2774	to	2787	934 622 8717	to	8999
869 523 7033	to	7099	909 568 9300	to	9499	<b>920 155 4662</b>	<b>to</b>	<b>4687</b>	935 216 0312	to	0399
869 566 6150	to	6167	909 725 7307	to	7399	920 309 9039	to	9199	935 843 2202	to	2247
869 800 0000	to	999 9999	909 833 0947	to	0999	920 771 5321	to	5399	936 024 8889	to	8899
<b>870 054 4814</b>	<b>to</b>	<b>4899</b>	<b>910 219 8631</b>	<b>to</b>	<b>8699</b>	920 857 5500	to	5899	936 339 4455	to	4499
870 491 4812	to	4849	910 265 1100	to	1199	920 864 3480	to	3499			

## Missing, Lost, or Stolen Canadian Money Order Forms

### Do Not Cash — Upon Receipt, Notify Local Postal Inspectors

Provide this listing to all Postal Service™ employees responsible for accepting and cashing postal money orders. Destroy all interim notices when the numbers listed appear in the *Postal Bulletin*. The new money order serial

numbers consist of the first 9 digits. The 10th digit is a check digit only.

Do not cash outdated money orders **104 151 601 to 692 600 000**. Advise holders to send invalid money orders to Canada Post Corporation, Ottawa, Canada K1A 0B1. Check for altered dollar amounts by holding money orders to the light.

719 869 731	to	9 760	727 481 431	to	1 460	734 009 101	to	9 130	741 113 041	to	3 370
<b>720 227 871</b>	<b>to</b>	<b>7 930</b>	727 749 241	to	9 780	734 290 759	to	0 770	741 373 891	to	4 340
720 227 949	to	7 960	728 382 331	to	2 480	734 389 273	to	9 290	741 452 369	to	2 490
720 368 543	to	8 570	728 702 338	to	2 400	734 440 031	to	0 111	741 492 991	to	3 140
720 392 151	to	2 570	728 915 371	to	5 850	734 797 201	to	7 320	741 553 460	to	3 470
720 556 491	to	6 640	728 953 141	to	3 410	734 939 611	to	9 640	741 764 431	to	4 520
720 558 621	to	8 650	728 954 280	to	4 310	734 950 111	to	0 170	741 764 431	to	4 520
720 575 361	to	5 570	729 169 081	to	9 140	735 120 331	to	0 840	742 178 834	to	8 880
720 590 152	to	0 179	729 363 841	to	3 870	735 283 008	to	3 020	742 325 500	to	5 520
721 638 331	to	9 170	729 682 891	to	3 190	735 293 131	to	3 220	742 325 668	to	5 700
721 815 391	to	5 420	729 838 940	to	9 070	735 635 010	to	5 040	742 408 771	to	8 830
721 969 713	to	9 740	729 839 101	to	9 130	735 783 961	to	3 990	742 512 120	to	2 150
722 072 137	to	2 160	<b>730 077 683</b>	<b>to</b>	<b>7 840</b>	735 803 401	to	3 430	742 684 849	to	4 890
722 378 265	to	8 280	730 109 847	to	9 880	736 005 420	to	5 440	742 839 553	to	9 630
722 413 990	to	4 004	730 373 761	to	3 850	736 366 021	to	6 110	742 913 668	to	3 700
722 764 948	to	4 980	730 501 951	to	2 130	736 624 456	to	4 500	742 917 287	to	7 296
722 825 840	to	5 889	730 519 379	to	9 470	736 670 851	to	1 060	742 921 891	to	1 980
723 153 841	to	3 850	730 569 278	to	9 360	736 767 061	to	7 090	742 983 631	to	3 810
723 237 616	to	7 630	730 711 711	to	1 740	736 767 093	to	7 120	743 020 021	to	0 170
723 331 081	to	1 110	730 722 991	to	3 230	736 982 191	to	2 370	743 206 491	to	6 500
723 496 443	to	6 470	730 845 970	to	5 990	736 982 551	to	2 730	743 235 992	to	6 050
723 967 291	to	7 320	730 888 291	to	8 320	737 110 141	to	0 170	743 940 631	to	0 900
724 655 196	to	5 340	730 927 591	to	7 680	737 185 501	to	5 710	743 978 011	to	8 070
724 711 441	to	1 500	731 307 914	to	7 930	737 317 321	to	7 350	744 234 751	to	4 780
724 711 538	to	1 560	731 402 431	to	2 460	737 517 781	to	7 840	744 499 591	to	9 680
724 793 221	to	3 250	731 407 232	to	7 320	737 628 181	to	8 210	744 626 901	to	6 910
724 908 109	to	8 120	731 588 301	to	8 340	737 634 258	to	4 270	745 388 794	to	8 910
724 937 461	to	7 670	731 767 273	to	7 320	738 361 971	to	1 980	746 446 806	to	6 820
725 163 118	to	3 151	731 781 061	to	1 120	738 447 601	to	7 660	746 818 351	to	8 410
725 202 735	to	2 750	731 837 821	to	7 910	738 648 355	to	8 450	747 245 266	to	5 280
725 398 591	to	8 800	731 841 377	to	1 450	738 849 811	to	9 900	747 364 813	to	4 830
725 464 591	to	4 920	732 018 481	to	8 600	738 892 270	to	2 290	747 501 434	to	1 450
725 475 321	to	5 330	732 067 972	to	8 370	738 997 259	to	7 380	747 739 891	to	0 070
725 711 057	to	1 070	732 188 649	to	8 670	739 161 451	to	1 540	748 148 649	to	8 760
725 738 581	to	8 730	732 193 460	to	3 470	739 219 381	to	9 440	748 259 960	to	9 970
725 981 311	to	1 430	732 201 241	to	1 390	739 740 151	to	0 180	748 565 162	to	5 280
725 987 835	to	7 880	732 220 431	to	0 440	739 793 491	to	3 520	748 874 988	to	5 030
726 060 811	to	0 900	732 355 201	to	5 380	739 793 527	to	3 550	749 137 381	to	7 410
726 391 970	to	2 520	732 472 320	to	2 560	739 942 621	to	2 650	749 190 192	to	0 210
726 484 771	to	4 800	732 541 605	to	1 620	739 999 231	to	9 320	749 685 421	to	5 450
726 493 351	to	5 300	732 572 221	to	2 490	<b>740 011 517</b>	<b>to</b>	<b>1 530</b>	749 846 791	to	6 850
726 504 031	to	4 063	732 586 479	to	6 710	740 030 701	to	0 970	749 993 131	to	3 580
726 504 070	to	4 090	732 994 037	to	4 080	740 261 740	to	1 820	<b>750 071 587</b>	<b>to</b>	<b>1 610</b>
726 504 331	to	4 390	733 163 449	to	3 460	740 265 811	to	6 290	750 408 167	to	8 183
726 563 701	to	4 060	733 297 171	to	7 290	740 299 111	to	9 170	750 438 421	to	8 501
726 599 371	to	9 460	733 446 631	to	7 110	740 299 231	to	9 260	750 743 911	to	4 030
726 626 356	to	6 370	733 474 665	to	4 770	740 329 266	to	9 320	750 779 118	to	9 400
727 182 271	to	2 510	733 704 482	to	4 570	740 889 081	to	9 090	750 910 981	to	1 010
727 416 181	to	6 240	733 751 041	to	1 130	741 010 421	to	0 530	750 960 841	to	0 900

751 296 211	to	6 240	761 169 781	to	9 810	769 827 331	to	7 450	796 975 466	to	5 590
751 539 121	to	9 180	761 504 941	to	5 120	<b>770 216 071</b>	<b>to</b>	<b>6 100</b>	797 272 917	to	2 950
751 541 311	to	1 790	761 516 836	to	6 910	770 723 281	to	3 400	797 519 441	to	9 460
751 757 641	to	7 700	761 613 588	to	3 600	770 790 451	to	0 480	797 519 731	to	0 240
751 936 951	to	7 010	761 688 631	to	8 690	770 915 150	to	5 490	797 535 181	to	5 330
751 951 861	to	1 890	761 805 199	to	5 240	771 455 551	to	5 610	797 646 151	to	6 180
751 999 021	to	9 110	761 826 106	to	6 120	771 609 661	to	9 690	798 040 053	to	0 080
752 139 516	to	9 570	761 881 171	to	1 560	771 932 551	to	2 580	798 055 813	to	5 830
752 182 892	to	2 950	761 975 641	to	5 670	772 057 224	to	7 440	798 055 891	to	5 950
752 206 861	to	7 100	761 975 886	to	5 895	772 162 660	to	3 070	798 326 371	to	6 520
752 295 241	to	5 600	762 304 144	to	4 170	772 718 615	to	8 640	798 339 167	to	9 210
752 731 351	to	1 410	762 324 931	to	4 960	772 940 140	to	0 160	798 562 411	to	2 440
752 767 441	to	7 470	762 439 261	to	9 290	772 970 886	to	0 940	798 632 461	to	2 490
753 008 941	to	9 030	762 524 158	to	4 220	773 009 419	to	9 430	798 807 151	to	7 510
753 194 311	to	4 370	762 584 872	to	4 970	773 112 031	to	2 060	798 944 761	to	5 030
753 620 378	to	0 400	762 593 431	to	3 460	773 125 387	to	5 410	799 118 616	to	8 640
754 013 917	to	3 940	763 155 160	to	5 180	773 179 320	to	9 410	799 133 191	to	3 220
754 161 061	to	1 120	763 178 631	to	8 660	773 202 989	to	3 140	799 177 626	to	7 650
754 358 445	to	8 610	763 506 001	to	6 060	773 208 991	to	9 290	799 854 751	to	5 200
754 410 451	to	0 660	763 522 141	to	2 470	773 231 311	to	1 340	<b>800 044 320</b>	<b>to</b>	<b>4 410</b>
754 438 393	to	8 410	763 717 694	to	7 800	773 348 739	to	8 940	800 211 901	to	2 440
754 493 109	to	3 130	763 826 461	to	6 520	773 348 739	to	8 940	800 427 530	to	7 540
754 664 182	to	4 220	763 900 460	to	0 471	773 575 891	to	5 950	800 872 741	to	2 830
754 816 377	to	6 470	763 900 479	to	0 530	773 852 971	to	3 030	801 349 801	to	9 830
755 487 421	to	7 600	763 917 271	to	7 750	775 373 449	to	3 460	801 676 681	to	7 100
755 592 901	to	3 140	764 125 801	to	5 860	<b>789 257 191</b>	<b>to</b>	<b>7 250</b>	802 967 821	to	7 940
755 790 020	to	0 030	764 284 525	to	4 560	<b>790 448 020</b>	<b>to</b>	<b>8 460</b>	803 217 601	to	7 780
755 791 730	to	1 800	764 526 241	to	6 330	790 597 485	to	7 530	803 729 731	to	9 850
755 926 951	to	7 070	764 601 421	to	1 600	790 911 883	to	1 900	803 747 402	to	7 520
755 934 332	to	4 510	764 650 231	to	0 470	791 057 441	to	7 550	804 138 181	to	8 420
755 957 701	to	8 000	764 984 371	to	4 850	791 239 081	to	9 290	804 428 224	to	8 250
755 962 981	to	3 280	765 003 667	to	3 680	791 374 483	to	4 500	804 682 411	to	2 710
756 035 371	to	5 490	765 042 517	to	2 540	791 387 971	to	8 030	805 272 525	to	2 540
756 301 257	to	1 290	765 194 728	to	4 970	791 447 521	to	7 850	805 523 445	to	3 460
756 371 565	to	1 580	765 387 365	to	7 450	791 451 151	to	1 240	805 745 704	to	5 730
756 876 031	to	6 120	765 541 801	to	2 100	791 500 009	to	0 470	806 452 907	to	2 980
756 876 151	to	6 240	765 638 461	to	8 970	791 771 431	to	1 490	806 744 781	to	4 850
756 970 129	to	0 140	765 647 101	to	7 190	792 004 293	to	4 320	806 982 181	to	2 300
757 059 613	to	9 630	765 813 781	to	4 029	792 018 379	to	8 420	807 764 791	to	4 910
757 078 540	to	8 560	765 879 314	to	9 390	792 070 621	to	0 740	808 089 931	to	9 960
757 086 209	to	6 240	765 954 001	to	4 030	792 145 211	to	5 230	808 656 423	to	6 450
757 240 591	to	0 650	766 120 286	to	0 320	792 391 381	to	1 620	808 753 771	to	3 800
757 277 371	to	7 700	766 125 716	to	5 750	792 452 779	to	2 790	809 189 001	to	9 010
757 291 591	to	2 730	766 158 824	to	8 840	792 772 728	to	2 770	809 886 879	to	6 930
757 964 251	to	4 280	766 388 433	to	8 460	792 903 511	to	3 990	809 890 489	to	0 500
758 067 001	to	7 090	766 509 421	to	9 660	793 282 518	to	2 533	<b>810 323 734</b>	<b>to</b>	<b>3 760</b>
758 105 221	to	5 250	766 572 901	to	3 020	794 041 831	to	2 040	810 367 116	to	7 140
758 324 941	to	5 000	766 748 500	to	8 521	794 397 709	to	7 780	810 526 351	to	6 500
758 593 628	to	3 650	767 024 341	to	4 370	794 581 741	to	2 040	810 806 911	to	6 940
758 709 038	to	9 060	767 326 471	to	6 590	794 592 122	to	2 150	810 807 211	to	7 240
758 744 101	to	4 160	767 332 561	to	2 950	795 032 251	to	2 340	811 423 021	to	3 110
758 850 883	to	0 900	768 009 841	to	9 960	795 796 291	to	6 350	811 517 221	to	7 239
758 860 951	to	1 550	768 011 489	to	1 520	796 070 139	to	0 160	811 721 101	to	1 130
759 152 851	to	2 880	768 177 980	to	7 990	796 143 151	to	3 630	812 025 721	to	5 900
759 740 941	to	1 090	768 391 081	to	1 170	796 159 725	to	9 740	812 093 073	to	3 130
<b>760 004 596</b>	<b>to</b>	<b>4 610</b>	768 661 569	to	1 650	796 169 306	to	9 340	812 100 821	to	0 840
760 118 191	to	8 250	769 000 051	to	0 080	796 373 406	to	3 430	812 465 251	to	5 610
760 155 001	to	5 090	769 050 841	to	0 900	796 602 961	to	3 050	812 918 341	to	8 670
760 378 002	to	8 020	769 159 081	to	9 178	796 708 441	to	8 500	812 918 701	to	8 760
760 692 722	to	2 749	769 737 496	to	7 510	796 886 281	to	6 430	813 050 491	to	0 520
761 055 460	to	5 480	769 778 491	to	8 730	796 901 701	to	2 000	813 073 171	to	3 200

813 398 476	to	8 550	818 950 351	to	0 380	822 925 951	to	6 100	827 619 811	to	9 840
813 713 971	to	4 000	818 962 492	to	2 530	823 284 931	to	4 990	827 883 511	to	3 600
813 858 121	to	8 150	819 032 341	to	2 730	823 293 031	to	3 210	828 160 441	to	0 530
814 789 330	to	9 349	819 127 054	to	7 080	823 556 011	to	6 100	828 376 201	to	6 260
814 984 656	to	4 680	819 278 540	to	8 670	824 078 341	to	8 370	828 441 602	to	1 630
815 016 020	to	6 030	819 544 681	to	4 740	824 156 325	to	6 340	828 539 316	to	9 340
815 199 410	to	9 420	819 928 441	to	8 650	824 511 252	to	1 270	828 539 341	to	9 370
815 240 491	to	0 520	<b>820 034 406</b>	<b>to</b>	<b>4 430</b>	824 588 281	to	8 370	828 732 331	to	2 390
815 755 591	to	5 620	820 070 761	to	1 540	825 140 397	to	0 460	828 807 781	to	7 840
815 755 622	to	5 650	820 191 342	to	1 360	825 409 651	to	9 680	828 830 952	to	0 963
815 806 381	to	6 680	820 274 856	to	4 880	825 472 171	to	2 200	828 939 781	to	0 050
816 126 834	to	6 870	820 600 171	to	0 230	826 042 898	to	2 920	829 002 721	to	2 870
816 156 721	to	6 780	821 172 241	to	2 360	826 226 644	to	6 670	829 005 301	to	5 540
816 580 903	to	0 920	821 229 661	to	9 720	826 582 951	to	3 430	829 080 241	to	0 330
816 945 571	to	5 600	821 229 743	to	9 780	826 720 201	to	0 230	829 160 986	to	1 000
817 253 011	to	3 280	821 903 731	to	3 910	827 005 671	to	5 830	829 176 841	to	6 930
817 763 881	to	4 060	821 927 841	to	7 850	827 287 861	to	7 950	829 471 561	to	1 590
818 330 562	to	0 610	822 505 801	to	5 830	827 291 502	to	1 520	829 561 065	to	1 080
818 459 641	to	9 670	822 703 442	to	3 470	827 575 381	to	5 470	829 566 481	to	6 510
818 926 273	to	6 320	822 900 991	to	1 020	827 609 085	to	9 100	829 569 931	to	9 960

— Criminal Investigations Group, Postal Inspection Service, 11-9-17

## Verifying U.S. Postal Service Money Orders

Follow these steps to cash a Postal Service™ money order:

1. Check that the amount does not exceed the legal limit: \$1,000 for domestic, and \$700 for international Postal Service money orders.
2. Check that the proper security features are present:
  - When held to the light, a watermark of Benjamin Franklin is repeated from top to bottom on the left side.
  - When held to the light, a dark line (security thread) runs from top to bottom with the word “USPS” repeated.
  - There should be no discoloration around the dollar amounts, which might indicate the amounts were changed.

These appear in Postal Service Notice 299, *U.S. Postal Money Order Reference Card*, or online at [usps.com/shop/money-orders.htm](https://usps.com/shop/money-orders.htm).

3. If the money order seems suspicious, call the U.S. Postal Service Money Order Verification System at 866-459-7822.

Please provide this information to local banks and retailers, as they also receive Postal Service money orders for cashing.

— Retail and Customer Service Operations, 11-9-17

## Counterfeit Canadian Money Order Forms

### Do Not Cash

To be posted and used by retail window employees. As directed, destroy previous notices. Destroy all interim notices when the numbers listed appear in the *Postal Bulletin*.

671,819,086	683,594,542	687,262,503
676,612,640	684,683,610	687,262,525
677,891,039	686,619,878	687,262,526
678,282,493	686,619,886	687,287,578
678,916,031	686,619,887	687,287,581
679,552,215	686,794,382	687,287,582
679,694,334	686,794,426	694,063,898
679,751,983	686,794,427	694,063,899
679,800,207	686,794,431	694,063,980
681,130,536	687,262,502	701,321,725
681,844,376		

— Criminal Investigations Group,  
Postal Inspection Service, 11-9-17

## Toll-Free Number Available to Verify Canadian Money Orders

The Canada Post Corporation has a toll-free number that cashing agents can call to verify the validity of Canadian Postal Money Orders. The number is 800-563-0444.

This toll-free number is printed on the back of the Canadian Postal Money Orders.

— Criminal Investigations Group,  
Postal Inspection Service, 11-9-17

## Other Information

### Overseas Military/Diplomatic Mail

Mail addressed to military and diplomatic post offices overseas is subject to certain conditions or restrictions of mailing regarding content, preparation, and handling. The APO/FPO/DPO table outlines these conditions by APO/FPO/DPO ZIP Codes™ through the use of footnoted mailing restrictions codes (see the [Restrictions](#) page following the table).

Acceptance clerks must use the table with the RSS terminal to determine which APO/FPO/DPO ZIP Codes are active and which conditions of mailing apply. Send inquiries to the Military Postal Service Agency at [amps.usps.gov/jy2/frm.htm](https://amps.usps.gov/jy2/frm.htm).

The entries under “Changes” appear in bold in the APO/FPO/DPO table starting below.

### Changes

APO/FPO/DPO	Action	Effective Date	See Restrictions
DPO AE 09802	Open	11/09/2017	A-B-C-C2-D-E3-F-F1-F3-H-H1-I3-L-M-N-R-R1-S-T-V-W-X-Z-Z1
DPO AE 09847	Open	11/09/2017	B-C-C2-F-F1-F3-J-L-M-N-R-R1-S-T-V-Z1
DPO AE 09854	Add J, S; Remove I3, Z.	11/09/2017	A-B-C1-C2-F-F1-F3-J-L-N-R-R1-S-T-V-Z1
DPO AE 09856	Open	11/09/2017	A-B-C1-C2-E3-F-F1-F3-J-L-M-N-R-R1-T-V-Z1
DPO AE 09857	Open	11/09/2017	A-B-C2-E2-F-F1-F3-I3-L-M-N-R-R1-S-T-V-Z-Z1
DPO AE 09860	Open	11/09/2017	A-B-C2-F-F1-F3-I3-L-M-N-R-R1-S-T-V-Z-Z1
DPO AE 09862	Open	11/09/2017	A-B-C-C2-F-F1-F3-I3-L-M-N-R-R1-S-T-V-Z-Z1
DPO AA 34001	Add S; Remove I3, Z.	11/09/2017	A-B-C1-C2-F-F1-F3-J-L-M-N-R-R1-S-T-V-Z1

We have eliminated “Not Active” entries from the table below to save space and paper.

### APO/FPO/DPO Table

APO/FPO/DPO	See Restrictions	APO/FPO/DPO	See Restrictions	APO/FPO/DPO	See Restrictions	APO/FPO/DPO	See Restrictions
09001	B-C-D-E3-F1-F3-H-H1-I3-J-L-M-R-R1-S-T-V-X-Z-Z1	09046	B-C-D-E-F3-H-M-R-S-U	09128	B-C-D-E-F3-H-M-R-S-U	09261	B-C-D-E-F3-H-M-R-S-U-V-Z1
09003	B-C-D-E-F3-H-M-P-R-S-U	09049	B-C-D-E-F3-H-M-R-S-U	09131	B-C-D-E-F3-H-M-R-S-U	09263	B-C-D-E-F3-H-M-R-S-U
09004	B-C-D-E-F3-H-M-R-S-U	09053	B-C-D-E-F3-H-M-R-S-U	09136	B-C-D-E-F1-F3-H-M-P-R-S-U	09264	B-C-D-E-F3-H-M-R-S-U
09005	B-C-D-E-F3-H-M-P-R-S-U	09054	B-C-D-E-F3-H-M-R-S-U	09138	B-C-D-F3-H-M-R-S-U	09265	B-C-D-F-F1-H-J-L-M-N-R-T-U-V-Z1
09006	B-C-D-E-F3-H-M-R-S-U	09060	B-C-D-E-F1-F3-H-M-R-S-U-Z1	09140	B-C-D-E-F3-H-M-R-S-U	09301	A-B-C1-C2-E2-F-F1-F3-H1-I3-L-M-N-R-R1-S-T-U4-V-Z-Z1
09008	A-B-F-H-N-Q-V-Z-Z1	09067	B-C-D-E-F3-H-M-R-S-U	09142	B-C-D-E-F3-H-M-R-S-U	09302	A-B-C1-F-F1-H-M-N-V-Z-Z1
09009	B-C-D-E-F3-H-M-R-S-U-Z1	09068	B-C-D-E-H-U-Z1	09154	B-C-D-E-F3-H-M-R-S-U	09304	A-B-C-C1-D-E2-F-F1-F3-H1-J-L-M-N-R-R1-T-V-Z1
09011	B-C-D-E-F3-H-M-R-S-U	09069	A-B-C-D-E-H-N-U-V	09160	B-C-C2-D-F-F1-F3-H-J-L-M-N-R-R1-T-U-V-Z1	09305	A-B-C1-E2-F-F1-H1-I3-M-N-R-R1-T-V-Z-Z1
09012	B-C-D-E-F3-H-M-R-S-U-Z1	09079	B-C-D-E-F3-H-M-R-S-U	09172	B-C-D-E-F3-H-M-R-S-U	09306	A-B-C1-E2-F-F1-F3-H1-R-R1-U2-V-Z1
09013	B-C-D-E-F-F1-H-M-R-U-Z1	09090	B-C-D-E-F3-H-M-R-S-U	09173	B-C-D-E-F3-H-M-R-S-U	09307	B-N-V-Z1
09014	B-C-D-E-F3-H-M-P-R-S-U	09094	B-C-D-F3-H-M-P-R-S-Z1	09177	B-C-D-E-F3-H-M-R-S-U	09308	A-B-C1-E2-F-F1-F3-H1-I3-M-N-R-R1-T-V-Z-Z1
09016	B-C-D-E-F1-H-M-R-S-U	09095	B-C-D-E-H-M-R-U	09180	B-C-D-F3-H-M-R-S-U	09309	A-B-C-C1-C2-E2-F-H1-M-N-R-V-Z1
09017	A-B-F-H-N-Q-V-Z-Z1	09096	B-C-D-E-F3-H-M-R-S-U	09186	B-C-D-E-F3-H-M-P-R-S-U	09310	A-B-C1-C2-E2-F-F1-F3-H1-I3-L-M-N-R-R1-S-T-U4-V-Z-Z1
09018	A-B-F-H-N-Q-V-Z-Z1	09103	B-C-D-E-H-U	09203	A-B-C-C1-C2-F-F1-F3-I3-J-L-M-N-R-R1-T-V-X-Z-Z1	09311	A-B-C1-C2-E2-F-F1-F3-H1-I3-L-M-N-R-R1-S-T-U4-V-Z-Z1
09020	B-C-D-E-F3-H-M-R-S-U	09104	B-C-D-F3-H-M-R-S-U-Z1	09204	B-C-F3-M-N-R-S-V-Z1		
09021	B-C-D-E-F3-H-M-R-S-U-Z1	09107	B-C-D-E-F3-H-M-R-S-U	09211	B-C-D-E-F3-H-M-P-R-S-U		
09028	B-C-D-E-F1-H-M-R-S-U	09112	B-C-D-E-F3-H-M-R-S-U	09213	B-C2-F-F1-F3-H-J-L-M-N-R-R1-T-U-V-Z1		
09034	B-C-D-E-F3-H-M-R-S-U	09114	B-C-D-E-F3-H-M-R-S-U	09214	B-C-D-E-F3-H-M-R-S-U-Z1		
09044	B-C-D-F1-H-U	09123	B-C-D-E-F3-H-M-R-S-U-Z1	09227	B-C-D-E-F3-H-M-R-S-U		
		09125	A-B-C-F-F1-F3-H-N-O-R-R1-S-V-V1	09250	B-C-D-E-F3-H-M-R-S-U		
		09126	B-C-D-F3-H-M-P-R-S-Z1				

APO/ FPO/ DPO	See Restrictions	APO/ FPO/ DPO	See Restrictions	APO/ FPO/ DPO	See Restrictions	APO/ FPO/ DPO	See Restrictions
09312	A-B-C1-C2-E2-F-F1-F3-H1-I3-L-M-N-R-R1-S-T-U-U4-V-Z-Z1	09459	B-C-C1-F3-M-R-S-U-Z1	09583	B-F-F1-R-R1-V	09701	A-B-B2-C1-C2-F-F1-F3-J-L-M-N-R-R1-T-V-Z1
09313	A-B-C-C1-E2-F-F1-F2-H1-R-R1-V-Z1	09461	B-C-C1-F3-M-P-R-S-U-Z1	09586	B-F-F1-R-R1-V	09702	B-C-C1-F1-M-R-R1-U
09314	A-B-C1-E2-F-F1-F3-H1-M-N-R-R1-S-V-Z1	09463	B-C-C1-F3-M-R-S-U-Z1	09587	B-C2-E2-E3-F-F1-F3-R-R1-V-Z1	09703	B-C-D-F1-H-U
09315	A-B-C1-E2-F-F3-N-R-R1-V-Z1	09464	B-C-C1-F3-R-S-U-Z1	09588	B-C2-E2-E3-F-F1-F3-R-R1-V-Z1	09704	B-C-O-V-V1
09316	A-B-C1-E2-F-F1-F3-H1-I3-M-N-R-R1-T-V-Z-Z1	09468	B-C-C1-F3-M-R-S-U-Z1	09589	B-F-F1-F3-R-S-V	09705	B-C-C1-F1-M-R-R1-U
09317	A-B-C1-E2-F-F1-F3-H1-I3-M-N-R-R1-T-V-X-Z-Z1	09469	B-C-C1-R-U-Z1	09590	B-V	09706	B-C-F3-M-N-R-S-U-V-Z1
09319	A-B-C-C1-E2-F-F1-F2-H1-R-R1-U2-V-Z1	09470	B-C-C1-M-R-U-Z1	09591	B-C2-E2-E3-F-F1-F3-R-R1-V-Z1	09707	B-C2-F-F1-F3-J-L-M-N-R-R1-T-V-Z1
09320	A-B-C1-E2-F-F3-H1-M-N-R-R1-V-Z1	09494	B-C-C1-F3-M-R-S-U-Z1	09592	B-F-F1-R-R1-V	09708	B-C-C1-F1-M-R-R1-U
09321	A-B-C1-E2-F-H1-M-N-R-R1-V-Z1	09497	A-B-C1-E2-F3-H1-M-N-R-R1-V-Z1	09593	B-F-F1-F3-R-S-V	09709	B-B2-C1-C2-E2-F-F1-F3-H-H1-J-L-N-R-R1-T-V-Z1
09321	A-B-C1-E2-F-H1-M-N-R-R1-V-Z1	09498	B-C1-C2-F-F1-F3-J-L-N-R-R1-T-V-Z1	09594	B-F-F1-R-R1-V	09710	B-C-C1-F-F1-J-L-M-N-R-R1-T-U-V-Z1
09330	A-B-C1-E2-F-F1-F3-H1-M-R-R1-V-Z1	09501	B-V	09595	B-F-F1-R-R1-V	09711	A-B-F-F1-F3-N-R-R1-S-V-Z1
09333	A-B-C1-E2-F-F1-F3-H1-I3-M-N-R-R1-S-T-V-X-Z-Z1	09502	B-V	09596	B-F-F1-R-R1-V	09712	A-B-F-F3-H-R-U-V-Z1
09337	A-B-C1-E2-F-F1-F3-H1-M-R-R1-V-Z1	09503	B-F-F1-R-R1-V	09599	B-F-F1-R-R1-V	09714	B-C-C1-F1-M-R-R1-U
09340	A-B-C1-F-H-N-R-V	09504	B-V	09600	B-C-C2-F-F1-F3-R-U-Z1	09715	B-F-F1-J-L-M-N-R-T-V-Z1
09343	A-B-C1-F-M-N-V-Z1	09505	B-V	09602	B-C-F-F1-N-R-U-V	09716	B-C-C2-F-F1-F3-J-L-M-N-R-R1-T-V-Z1
09347	A-B-C1-E2-F-H1-M-R-R1-V-Z1	09506	B-V	09603	B-C-F-F1-F3-R-S-U-V-Z1	09717	A-B-F3-M-R-S-V-W-Z1
09348	A-B-C1-E2-F-F1-F3-H1-I3-M-N-R-R1-T-V-Z-Z1	09507	B-V	09604	B-C-F-F1-F3-P-R-S-U-V-Z1	09718	B-F-F1-J-L-M-N-R-T-U-V-Z1
09351	A-B-C1-E2-E3-F-F1-F3-H-H1-I3-M-N-R-R1-S-T-V-X-Z-Z1	09508	B-F-F1-R-R1-V	09605	B-C-D-H-M-R-U-V	09719	B-C-D-F3-M-R-S-U-V-Z1
09352	A-B-C1-E2-F-F3-H1-M-R-R1-V-Z1	09509	B-F-F1-R-R1-V	09606	B-C-D-H-M-R-U-V	09720	B-M-R-S-U-V-Z1
09354	A-B-C1-E2-F-F3-H1-M-R-R1-V-Z1	09510	A-B-C1-E2-F-H1-M-R-R1-V-Z1	09607	A-B-C-F-F1-F3-M-N-R-R1-U-U3-V-W-Z1	09722	A-B-F-H-N-Q-V-Z-Z1
09355	A-B-C1-E2-F-F3-H1-M-R-R1-V-Z1	09511	B-F-F1-R-R1-V	09608	B-C-F-F3-N-R-U-V-Z1	09723	B-C2-F-F1-F3-J-L-M-N-R-R1-T-V-Z1
09356	A-B-C1-E2-F-F3-H1-M-N-R-V-Z1	09513	B-F-F1-R-R1-V	09609	B-C-F-F3-R-U-Z1	09724	B-C-C1-F1-M-R-R1-U
09357	A-B-C1-E2-F-F3-H1-M-R-V-Z1	09517	B-F-F1-R-R1-V	09610	B-C-F-F1-F3-M-R-S-U-V-Z1	09725	A-B-F-F3-H-N-O-Q-S-V-V1-Z-Z1
09363	A-B-C1-E2-F-F3-H1-M-R-V-Z1	09522	B-F-F1-F3-R-S-V	09613	B-C-F-N-U-V	09726	B-F-F1-J-L-M-N-R-T-U-V-Z1
09365	A-B-C-C1-E2-F-F3-H1-M-N-R-V-Z1	09523	B-F-F1-R-R1-V	09614	A-B-C1-C2-E2-F-F1-F3-H1-J-L-M-N-R-R1-T-V-W-Z1	09727	A-B-C1-C2-F-F1-F3-J-L-M-N-R-R1-T-V-Z1
09366	A-B-C1-E2-F-F1-F3-H1-M-R-R1-V-Z1	09524	B-F-F1-R-R1-V	09617	B-C-F-F3-R-U-Z1	09728	A-B-C-C1-C2-F-F1-F3-J-L-N-R-R1-T-V-Z1
09378	A-B-C1-E2-F-F1-F3-H1-I3-M-N-R-R1-T-V-Z-Z1	09532	B-F-F1-R-R1-V	09618	B-C-F-F3-R-U-Z1	09729	B-C-F-F3-N-R-R1-U-V-Z1
09381	A-B-C1-E2-F-F1-F3-H1-I3-M-N-R-R1-T-V-Z-Z1	09533	B-F-F1-R-R1-V	09620	B-C-F-R-U-Z1	09730	A-B-C1-C2-F-F1-F3-J-L-M-N-R-R1-T-V-Z1
09403	B-C-C1-F3-M-R-S-U-Z1	09534	B-F-F1-R-R1-V	09621	B-C-F-F3-R-U-Z1	09731	A-B-C1-C2-F-F1-F3-J-L-M-N-R-R1-T-V-Z1
09421	B-C-C1-F3-M-R-S-U-Z1	09550	B-F-F1-R-R1-V	09622	B-C-F-F3-R-U-Z1	09732	B-N-V-Z1
09447	B-C-C1-F3-M-R-S-U-V-Z1	09554	B-F-F1-R-R1-V	09623	B-C-F-F3-R-U-V-Z1	09733	B-I3-L-N-V
09454	B-C-C1-F3-M-R-S-U-V-Z1	09556	B-F-F1-R-R1-V	09624	B-C-C2-F-F1-F3-I3-J-L-N-R-R1-T-U-V-Z-Z1	09734	A-B-C-C1-C2-F-F1-F3-I3-J-L-M-N-R-R1-T-V-Z-Z1
		09564	B-F-F1-R-R1-V	09625	B-C-F-F3-N-R-U-Z1	09735	B-N-V-Z1
		09565	B-F-F1-R-R1-V	09626	B-C-F-F3-R-U-Z1	09736	A-B-C1-F-F1-F3-J-L-M-N-R-R1-T-V-Z1
		09566	B-C2-E2-E3-F-F1-F3-R-R1-V-Z1	09627	B-C-F-F3-R-U-V-Z1	09737	A-B-C1-C2-F-F1-F3-I3-J-L-M-N-R-R1-T-V-W-Y-Z-Z1
		09567	B-C2-E2-E3-F-F1-F3-R-R1-V-Z1	09630	B-C-F-U-V		
		09568	B-V	09631	B-C-F-F3-R-U-V-Z1		
		09569	B-C2-E2-E3-F-F1-F3-R-R1-V-Z1	09633	B-B2-C-D-F-F1-M-R-U-U1-U2-U3-V-Z1		
		09570	B-F-F1-R-R1-V	09636	B-C-F-F3-R-U-V-Z1		
		09573	B-C2-E2-E3-F-F1-F3-R-R1-V-Z1	09642	B-C2-F-F1-F3-J-L-M-N-R-T-U-V		
		09574	B-F-F1-R-R1-V	09643	B-C-F3-M-R-S-U-V-Z1		
		09575	B-F-F1-R-R1-V	09644	B-C-F-F1-F3-R-U-Z1		
		09576	B-F-F1-R-R1-V	09645	B-F3-M-N-R-U-Z1		
		09577	B-V	09648	B-F3-N-R-U-V-Z1		
		09578	B-C2-E2-E3-F-F1-F3-R-R1-V-Z1	09649	B-F3-N-R-U-Z1		
		09579	B-F-F1-R-R1-V				
		09581	B-F-F1-R-R1-V				
		09582	B-E2-E3-F-F1-F3-R-R1-V-Z1				



APO/ FPO/ DPO	See Restrictions	APO/ FPO/ DPO	See Restrictions	APO/ FPO/ DPO	See Restrictions	APO/ FPO/ DPO	See Restrictions
09738	A-B-C1-C2-F-F1-F3-J-L-M-N-R-R1-T-V-Z1	09806	A-B-C1-C2-E2-F-F1-F3-H1-J-L-M-N-R-R1-T-V-Z1	09844	A-B-C1-C2-F-F1-F3-J-L-M-N-R-R1-T-V-Z1	<b>34001</b>	<b>A-B-C1-C2-F-F1-F3-J-L-M-N-R-R1-S-T-V-Z1</b>
09739	A-B-C1-C2-F-F1-F3-J-L-M-N-R-R1-T-V-Z1	09808	A-B-C1-C2-E2-F-F1-F3-H-H1-J-L-N-R-R1-T-V-Z1	09845	A-B-C1-C2-E3-F-F1-F3-J-L-M-N-R-R1-T-V-Z1	34002	B-C1-C2-F-F1-F3-J-L-M-N-R-R1-T-V-Z1
09741	A-B-C1-C2-E2-F-F1-F3-H1-J-L-M-N-R-R1-T-V-W-Y-Z1	09809	B-C1-C2-F-F1-F3-J-L-N-T-V-Z1	09846	A-B-C1-C2-F-F1-F3-J-L-N-R-R1-T-V-Z1	34004	B-C1-C2-F-F1-F3-J-L-M-N-R-R1-T-V-Z1
09742	A-B-C2-F-F1-F3-J-L-M-N-R-R1-T-V-Z1	09810	A-B-F-F1-F3-N-R-S-V-Z1	<b>09847</b>	<b>B-C-C2-F-F1-F3-J-L-M-N-R-R1-S-T-V-Z1</b>	34007	B-F-F1-H-J-M-N-R-R1-V-Z1
09743	A-B-F-H-N-Q-V-Z-Z1	09811	B-E2-E3-F-F1-F3-H1-N-R-R1-U-V-Z1	09848	A-B-F-M-R-V-Z1	34008	B-B2-C1-C2-D-E1-F-F1-H-H1-J-L-M-N-R-R1-T-V-Z1
09744	A-B-C1-C2-F-F1-F3-J-L-M-N-R-R1-T-V-Z1	09812	B-E2-E3-F-F1-I-J-L-N-R-T-U-V-Z-Z1	09851	A-B-C-F-F3-N-R-S-V-Z1	34011	B-C1-C2-E2-F-F1-F3-J-L-M-N-R-R1-T-V-Z1
09745	A-B-F-F1-F3-M-N-R-R1-S-V-Z1	09813	A-B-C1-C2-E2-E3-F-F1-F3-J-L-N-R-R1-T-V-Z1	09852	B-E2-E3-F-F1-F3-H1-N-R-R1-U-V-Z1	34020	B-C1-C2-F-F1-F3-J-L-M-N-R-R1-T-V-Z1
09748	A-B-C1-C2-F-F1-F3-J-L-M-N-R-R1-T-V-Z1	09814	B-C2-E2-E3-F-F1-F3-I3-J-L-N-R-R1-T-V-Z-Z1	09853	B-E2-F-H1-R-R1-U2-V-Z1	34021	B-C1-C2-F-F1-F3-J-L-M-N-R-R1-T-V-Z1
09749	A-B-F-H-N-U-V-Z1	09815	A-B-F-F3-N-R-S-V-Z1	<b>09854</b>	<b>A-B-C1-C2-F-F1-F3-J-L-N-R-R1-S-T-V-Z1</b>	34022	B-C1-C2-F-F1-F3-J-L-M-N-R-R1-T-V-Z1
09750	A-B-C1-C2-F-F1-F3-J-L-M-N-R-R1-T-V-Z1	09816	A-B-C1-C2-E2-E3-F-F1-F3-J-L-N-R-R1-T-V-Z1	09855	A-B-C1-E2-F-F1-H1-M-R-R1-U2-V-Z1	34023	B-C1-C2-F-F1-F3-J-L-M-N-R-R1-T-V-Z1
09751	B-C-D-E-F3-H-M-R-S-U	09817	A-B-C1-C2-E2-E3-F-F1-F3-H-H1-J-L-M-N-R-R1-T-V-Z1	<b>09856</b>	<b>A-B-C1-C2-E3-F-F1-F3-J-L-M-N-R-R1-T-V-Z1</b>	34024	B-C1-C2-F-F1-F3-J-L-M-N-R-R1-T-V-Z1
09752	B-C-D-F1-H-U	09818	A-B-C-F-F3-M-S-V-Z1	<b>09857</b>	<b>A-B-C2-E2-F-F1-F3-I3-L-M-N-R-R1-S-T-V-Z-Z1</b>	34025	B-F-F1-F3-J-L-M-N-R-R1-T-V-Z1
09753	A-B-F-N-V-Z1	09820	A-B-C2-F-F1-F3-H-H1-J-L-M-N-R-R1-T-V-Z1	09858	B-C1-E2-E3-F-F1-F3-H1-N-R-R1-U-V-Z1	34030	B-C1-C2-F-F1-F3-J-L-M-N-R-R1-T-V-Z1
09754	A-B-F-H-N-Q-V-Z-Z1	09821	A-B-C-F-F3-N-R-S-V-Z1	09859	B-C1-E2-E3-F-F1-F3-H1-R-R1-U-V-Z1	34031	B-C1-C2-F-F1-F3-J-L-M-N-R-R1-T-V-Z1
09755	A-B-B2-C-C1-D-F-F1-J-L-M-N-Q-R-R1-T-V-Z1	09822	A-B-C-F-F3-M-R-S-V-Z1	<b>09860</b>	<b>A-B-C2-F-F1-F3-I3-L-M-N-R-R1-S-T-V-Z-Z1</b>	34032	B-C1-C2-F-F1-F3-J-L-M-N-R-R1-T-V-Z1
09756	A-B-B2-E3-F-F1-J-L-N-Q-R-R1-T-V-Z1	09823	A-B-C1-C2-F-F1-F3-J-L-M-N-R-R1-T-V-Z1	09861	A-B-F-F1-F3-N-R-R1-S-V-Z1	34033	B-C1-C2-F-F1-F3-J-L-M-N-R-R1-T-V-Z1
09758	A-B-F-F1-M-N-R-R1-V-Z1	09824	A-B-C-F-F3-M-R-S-V-Z1	<b>09862</b>	<b>A-B-C-C2-F-F1-F3-I3-L-M-N-R-R1-S-T-V-Z-Z1</b>	34034	B-C1-C2-F-F1-F3-I3-J-L-M-N-R-R1-T-V-Z-Z1
09759	A-B-C-C1-C2-E2-F-F1-F3-J-L-N-R-R1-T-V-Z1	09825	A-B-C1-C2-F-F1-F3-J-L-M-N-R-R1-T-V-Z1	09863	A-B-F-F1-F3-N-O-R-R1-S-V-Z1	34035	B-C1-C2-F-F1-F3-H-J-L-M-N-R-R1-T-V-Z1
09760	A-B-B2-C-C1-D-F-F1-J-L-M-N-Q-R-R1-S-T-V-Z1	09826	A-B-C1-C2-E1-E2-E3-F-F1-F3-J-L-M-N-R-R1-T-V-W-Z1	09865	A-B-F3-R-U-V-Z1	34036	B-C1-C2-F-F1-F3-J-L-M-N-R-R1-T-V-Z1
09761	B-F-F1-F3-M-N-R-R1-V-Z-Z1	09827	A-B-F-F1-J-L-M-N-R-T-V-Z1	09868	A-B-E2-F-N-U-V-Z1	34037	B-C-C1-C2-F-F1-F3-H-J-L-M-N-R-R1-T-V-Z1
09762	A-B-C2-E3-F-F1-F3-J-L-N-R-R1-T-V-Z1	09828	A-B-C1-C2-F-F1-F3-I3-J-L-N-R-R1-T-V-Z-Z1	09870	A-B-C1-C2-E2-F-F1-F3-H1-I3-L-M-N-R-R1-S-T-U4-V-Z-Z1	34038	B-L-M-N-U-V-Z1
09769	A-B-B2-C1-C2-F-F1-F3-J-L-M-N-R-R1-T-V-Z1	09829	B-C-N-R-V-Z1	09873	A-B-C1-C2-E2-F-F1-F3-H1-I3-L-M-N-R-R1-S-T-U-U4-V-Z-Z1	34039	B-C1-C2-F-F1-J-L-M-N-T-V-Z1
09777	A-B-C-C1-C2-E1-F-F1-F3-J-L-M-N-R-R1-T-V-Z1	09830	B-C-F-F1-F3-J-L-M-N-R-R1-S-T-V-Z1	09874	A-B-C1-C2-E2-F-F1-F3-H1-I3-L-M-N-R-R1-S-T-U-U4-V-Z-Z1	34041	B-C1-C2-F-F1-F3-J-L-M-N-R-R1-T-V-Z1
09780	A-B-F-H-N-R-V	09831	B-C1-C2-F-F1-F3-J-L-N-R-R1-T-V-Z1	09875	A-B-C1-C2-E2-F-F1-F3-H1-I3-L-M-N-R-R1-S-T-U-U4-V-Z-Z1	34042	A-B-C-F-F1-M-N-R-U-V-W-Z1
09789	A-B-C2-F-F3-N-R-S-V-Z1	09832	B-C1-E2-F1-F3-S-V-Z1	09880	A-B-C1-E2-F-F1-H1-N-R-R1-U-V-Z1	34044	A-B-D-F-M-N-O-R-R1-V-V1-Z-Z1
09800	A-B-E2-F-F1-F3-N-R-R1-S-V-Z1	09833	B-C1-E2-F1-F3-S-V-Z1	09888	A-B-C1-E2-F-F1-H1-N-R-R1-U-V-Z1	34055	B-C1-C2-F-F1-F3-J-L-M-N-R-R1-T-V-Z1
09801	A-B-C1-E2-F-H1-M-N-R-R1-V-Z1	09834	B-E2-E3-F-F1-F3-R-R1-U-Z1	09890	B-E2-F-H1-N-R-R1-U2-V-Z1	34058	B-F-F1-R-R1-V-Z1
<b>09802</b>	<b>A-B-C-C2-D-E3-F-F1-F3-H-H1-I3-L-M-N-R-R1-S-T-V-W-X-Z-Z1</b>	09835	A-B-C1-F1-F3-N-V-Z1	09892	A-B-C1-C2-E2-F-F1-F3-J-L-M-N-R-R1-T-V-Z1	34060	B-C1-C2-E2-F-F1-F3-J-L-M-N-R-R1-T-V-Z1
09803	B-E2-E3-F-F1-F3-H1-N-R-R1-U-V-Z1	09836	A-B-C1-C2-F-F1-F3-J-L-M-N-R-R1-V-Z1	09895	A-B-C1-C2-E2-F-F1-F3-J-L-M-N-R-T-V-W-Z1	34078	B-F1-N-V
09804	A-B-F-F1-F3-M-N-R-S-V-Z1	09837	B-E2-E3-F1-F3-V-Z1	09898	B-C-C1-E2-F-F1-F3-H1-N-R-R1-U2-V-Z1	34080	B-F-F1-R-R1-V
09805	B-E2-E3-F-F1-F3-R-R1-Z1	09838	B-E2-E3-F-F1-F3-U-Z1			34081	B-F-F1-R-R1-V
		09839	A-B-U-V-Z1			34082	B-F-F1-R-R1-V
		09841	A-B-F3-N-R-U-Z1			34083	B-F-F1-R-R1-V
		09842	A-B-C1-C2-F-F1-F3-J-L-N-R-R1-T-V-Z1			34084	B-F-F1-R-R1-V

APO/ FPO/ DPO	See Restrictions	APO/ FPO/ DPO	See Restrictions	APO/ FPO/ DPO	See Restrictions	APO/ FPO/ DPO	See Restrictions
34085	B-F-F1-R-R1-V	96310	B-M-W	96510	B-I3-N-V	96610	B-E2-F-H1-R1-U2-V-Z1
34086	B-F-F1-R-R1-V	96319	B-C-M-R-W	96511	B-I3-N-V	96611	B-E2-F-H1-R1-U2-V-Z1
34087	B-F-F1-R-R1-V	96321	B-F-F1-F2-H-M-W-Z1	96515	B-D-F-U3	96612	B-V
34088	B-F-F1-R-R1-V	96322	B-F-F1-F2-H-M-W-Z1	96516	B-D-F-Z1	96613	B-V
34089	B-F-F1-R-R1-V	96323	B-C-M-R-V-W	96517	B-F-U3-V-Z1	96615	B-F-F1-R-R1-V
34090	B-F-F1-R-R1-V	96326	B-C-F-M-R-W	96520	B-F-N-U3-V	96616	B-C2F-F1-R-R1-V
34091	B-E2-E3-F-F1-F3-R-R1-V-Z1	96328	B-C-M-R-W	96521	B-C1-C2-F-F1-J-L-M-N-R-R1-S-T-V-Z1	96617	B-F-F1-R-R1-V
34092	B-F-F1-R-R1-V	96330	B-C-M-R-W	96521	B-C1-C2-F-F1-J-L-M-N-R-R1-S-T-V-Z1	96619	B-V
34093	B-F-F1-R-R1-V	96331	A-B-F1-J-L-M-N-S-W	96530	A-B-C1-C2-F-F1-H-H1-J-L-M-N-R-R1-S-T-V-Z1	96620	B-F-F1-R-R1-V
34094	B-F-F1-R-R1-V	96336	B-C-M-R-V-W	96531	A-B-C-F-F1-H-M-N-R-U-V	96628	B-F-F1-R-R1-V
34095	B-F-F1-R-R1-V	96337	B-M-W	96531	A-B-C-F-F1-H-M-N-R-U-V	96629	B-F-F1-R-R1-V
96201	A-B-F-F1-F3-S-U	96338	A-B-F3-M-R-S-W	96532	A-B-C1-C2-F-F1-H-J-L-M-N-R-R1-S-T-V-Z1	96632	B-F-F1-R-R1-V
96202	A-B-F-F1-F3-S-U	96339	B-M-V-W	96532	A-B-C1-C2-F-F1-H-J-L-M-N-R-R1-S-T-V-Z1	96643	B-F-F1-R-R1-V
96203	A-B-F-F1-F3-S-U	96343	B-M-W	96533	A-B-F-U-Z1	96649	B-F-F1-R-R1-V
96204	A-B-F-F1-F3-S-U	96346	B-F-F1-F2-H-M-V-W-Z1	96534	A-B-F-U-Z1	96650	B-F-F1-R-R1-V
96205	A-B-F-F1-F3-S-U	96347	B-F-F1-F2-H-M-W-Z1	96535	A-B-C1-C2-F-F1-J-L-M-N-R-R1-S-T-V-Z1	96657	B-F-F1-R-R1-V
96206	A-B-F-F1-F3-S-U	96349	B-F-F1-F2-H-M-W-Z1	96537	B-V-Z1	96660	B-F-F1-R-R1-V
96207	A-B-F-F1-F3-S-U-V	96350	B-F-F1-F2-H-M-W-Z1	96540	B-V-Z1	96661	B-F-F1-R-R1-V
96208	A-B-E-F1-F3-R-S-U	96351	B-F-F1-F2-H-M-W-Z1	96542	B-V-Z1	96662	B-F-F1-R-R1-V
96209	A-B-C1-C2-F-F1-J-L-M-N-T-U-V-Z1	96362	B-F-F1-F2-M-W-Z1	96543	B-P-V-Z1	96663	B-F-F1-R-R1-V
96210	A-B-C1-C2-F-F1-F3-I3-L-M-N-R-R1-T-V-Z1	96365	B-C-M-R-V-W	96546	B-F-N-R-U3	96664	B-V
96212	B-F-F1-F2-H-M-W-Z1	96367	B-C-L-M-R-W	96548	A-B-H-M-R-U	96665	B-V
96213	A-B-C-F1-R-U	96368	B-C-M-R-W	96549	A-B-C1-C2-F-F1-H-J-L-M-N-R-R1-S-T-V-Z1	96666	B-V
96214	A-B-C-F1-R-U	96370	B-F-F1-F2-H-M-W-Z1	96550	A-B-H-M-N-U-V-Z1	96667	B-F-F1-R-R1-V
96218	A-B-F-F1-F3-S-U	96372	B-M-W	96551	A-B-C1-C2-F-F1-H-J-L-M-N-R-R1-S-T-V-Z1	96668	B-F-F1-R-R1-V
96224	A-B-F-F1-F3-S-U	96373	B-M-W	96552	B-Z1	96669	B-F-F1-R-R1-V
96251	A-B-F-F1-F3-S-U	96374	B-M-W	96553	A-B-F-F1-H-M-N-R-U	96670	B-V
96257	A-B-F-F1-F3-S-U	96375	B-M-W	96554	A-B-C1-C2-F-F1-H-J-L-M-N-R-R1-S-T-V-Z1	96671	B-F-F1-R-R1-V
96258	A-B-F-F1-F3-S-U	96376	B-M-W	96555	A-B-F-M-V	96672	B-F-F1-R-R1-V
96260	A-B-F-F1-F3-S-U	96377	B-M-W	96557	B-F-M-V	96673	B-V
96264	A-B-C-F1-R-U	96378	B-M-W	96562	A-B-C1-C2-D-E2-E3-F-F1-H-H1-I3-L-M-N-R-R1-S-T-V-Z1	96674	B-F-F1-R-R1-V
96266	A-B-C-F1-R-U	96379	B-M-W	96562	A-B-C1-C2-D-E2-E3-F-F1-H-H1-I3-L-M-N-R-R1-S-T-V-Z1	96675	B-F-F1-R-R1-V
96267	A-B-C-F1-R-U-V	96380	B-M-W	96577	A-B-F-H-M-N-R-U	96677	B-F-F1-R-R1-V
96269	A-B-F1-U-Z1	96382	B-M-W	96578	B-B2-F1-H-J-N-R	96678	B-F-F1-R-R1-V
96271	A-B-F-F1-F3-S-U	96384	B-M-W	96595	B-F-S-V-Z1	96679	B-F-F1-R-R1-V
96273	A-B-F-F1-F3-S-U	96385	B-M-W	96598	B-N-O-V-V1	96681	B-V
96275	A-B-E-F1-F3-S-U	96386	B-M-W	96599	B-N-V	96682	B-V
96276	A-B-C-F1-R	96387	B-M-W	96601	B-V	96683	B-V
96278	A-B-C-F1-R-U	96388	B-M-W	96602	B-V	96686	B-V
96283	A-B-F-F1-F3-S-U	96389	B-M-W	96603	B-V	96691	B-F-F1-R-R1-V
96284	A-B-F-F1-F3-S-U	96401	B-C-F-N-O-R-V-V1-Z1	96604	B-V	96692	B-F-F1-R-R1-V
96297	A-B-F-F1-F3-S-U	96501	A-B-N-V	96605	B-V	96693	B-F-F1-R-R1-V
96301	A-B-F3-M-R-S-W	96504	A-B-C-C1-C2-F-F1-F3-I3-L-M-N-R-R1-T-V-W-Z1	96606	B-V	96694	B-F-F1-R-R1-V
96303	B-C1-C2-F-F1-H-J-L-M-N-T-V-W-Z1	96505	A-B-C-C1-C2-F-F1-F3-I3-L-M-N-R-R1-T-V-W-Z1	96607	B-V	96695	B-F-F1-R-R1-V
96306	B-F-F1-F2-H-M-W-Z1	96507	A-B-C1-C2-F-F1-H-J-L-M-N-T-V-Z1	96608	B-E2-F-H1-R1-U2-V-Z1	96696	B-F-F1-R-R1-V
96309	B-C-M-R-V-W			96609	B-E2-F-H1-R1-U2-V-Z1	96698	B-V

## RESTRICTIONS

## LEGEND

PS Form 2976, *Customs — CN 22 (Old C 1) and Sender's Declaration* (green label)

PS Form 2976-A, *Customs Declaration and Dispatch Note*

PS Form 2976-B, *Priority Mail Express International Shipping Label and Customs Form*

ATF	= Bureau of Alcohol, Tobacco, Firearms, and Explosives
Box C	= Department of State (DOS) contractor personnel
Box R	= Retired military personnel
DPO	= Diplomatic Post Office
MPO	= Military Post Office
PACT	= Prevent All Cigarette Trafficking Act
PAL	= Parcel Airlift
PMEMS	= Priority Mail Express Military Service
PUB 52	= Publication 52, <i>Hazardous, Restricted, and Perishable Mail</i>
SAM	= Space Available Mail
USDA	= United States Department of Agriculture

**Note:** Mail order catalogs are prohibited as SAM or PAL mail.

**A.** Securities, currency, or precious metals, including in their raw, unmanufactured state, are prohibited. Official Mail shipments are exempt from this restriction.

**A1.** Reserved for future use.

**A2.** Reserved for future use.

**B.** Regardless of mail class, a customs declaration (PS Form 2976, PS Form 2976-A, or PS Form 2976-B) is required for all items weighing 16 ounces or more or any item (regardless of weight) containing potentially dutiable mail contents (e.g., merchandise or goods) addressed to or from this ZIP Code. All PMEMS mailpieces (regardless of mail contents or weight) addressed to or from this ZIP Code must bear a properly completed PS Form 2976-B. The surface area of the address side of the mailpiece must be large enough to contain the applicable customs declaration. The following exceptions apply:

- Known mailers are exempt from providing customs documentation on non-dutiable letters or printed matter, except for Priority Mail Express, which requires a customs form for all contents and weights. (A known mailer is a business mailer who enters volume mailings through a business mail entry unit (BMEU) or other bulk mail acceptance location, pays postage through an advance deposit account, uses a permit imprint for postage payment, and submits a completed postage statement at the time of entry that certifies that the mailpieces contain no dangerous materials that are prohibited by postal regulations.)
- All federal, state, and local government agencies whose mailings are regarded as "Official Mail" are exempt from providing customs documentation on any item addressed to an MPO except for those MPOs to which restriction "B2" applies and except for Priority Mail Express, which requires a customs form from all mailers.
- If mailpiece is endorsed "Contents for Official Use — Exempt from Customs Requirements."

**B2.** All federal, state, and local government agencies must complete customs documentation when sending potentially dutiable mail addressed to or from this MPO or DPO.

**C.** Cigarettes and other tobacco products, including tobacco leaves, chewing and pipe tobacco, snuff, and cigars are prohibited, including those that are authorized in Publication 52 under PACT.

**C1.** Obscene and horror articles, images, prints, paintings, cards, films, videotapes, comic books, etc., are prohibited.

**C2.** E-cigarettes and related products (e.g., nicotine liquids, e-liquids, parts, or supplies) are prohibited.

**D.** Coffee is prohibited.

**E.** Medicines (prescription, over-the-counter, vitamins, and supplements) are prohibited when mailed to individuals for human or animal use. This prohibition does not apply when medicines are sent as Official Mail only between specifically designated agencies such as pharmaceutical distributors, hospitals, clinics, and pharmacies.

**E1.** Mailers are responsible to ensure that all medicines and vaccines conform to host nation laws.

**E2.** Any matter depicting nude or seminude persons, pornographic, or sexual items are prohibited. Non-authorized political materials are prohibited. Religious materials contrary to the Islamic faith are prohibited in bulk quantities, but individual items for the personal use of the addressee are permissible.

**E3.** Radio transceivers, cordless/cellular telephones, global positioning systems, scanners, base stations, and handheld transmitters are prohibited.

**F.** Firearms of any type are prohibited, except firearms mailed to or by official U.S. government agencies. This restriction does not apply to firearms mailed from this MPO ZIP Code, provided ATF and USPS regulations are met. Antique firearms do not require an ATF form.

**F1.** Weapons of any type are prohibited.

**F2.** Mailing firearms to or from this MPO ZIP Code is restricted to one shotgun and one single shot .22 caliber rifle per individual.

**F3.** Replica weapons and inert explosive devices (such as grenades) and weapons parts are prohibited.

**G.** Parcels of any class are prohibited.

**H.** Meats, including preserved meats, bones, skin, hair, feathers, horns or hoofs of hoofed animals, and wool samples whether hermetically sealed or not, are prohibited.

**H1.** Pork or pork by-products are prohibited.

**I.** Reserved for future use.

**I1.** Reserved for future use.

**I2.** Reserved for future use.

**I3.** Mail of all classes must fit in a mail sack. Mail may not exceed the following dimensions:

- Maximum length 27 inches.
- Maximum width 14 inches.
- Maximum height 14 inches.

**J.** Standard Post and Parcel Select parcels may not exceed 108 inches in length and girth combined.

**K.** Reserved for future use.

**L.** All Official Mail is prohibited.

**M.** Fruits, vegetables, live animals, and live plants are prohibited.

**N.** Registered Mail service is prohibited.

**O.** Reserved for future use.

**P.** Official Mail only.

**Q.** Mail may not exceed 66 pounds, and size is limited to 42 inches maximum length and 72 inches maximum length and girth combined.

**R.** All alcoholic beverages, including those mailable under Publication 52, Part 421, are prohibited.

**R1.** Materials used in the production of alcoholic beverages (i.e., distilling material, hops, malts, yeast, etc.) are prohibited.

**S.** Synthetic cannabinoids used to stimulate the central nervous system commonly known as "synthetic marijuana," "K2," or "Spice" are prohibited.

**T.** Mailings of household shipments and case lots of food to or from an MPO require military transportation office approval prior to mailing. Mailings to or from a DPO require pre-approval from the Diplomatic Pouch and Mail Director.

**U.** Mail addressed to Retirees (Box R) is limited to 16 ounces and up to a 90-day supply of TRICARE medications. This restriction does not apply to mail endorsed "Free Matter for the Blind or Handicapped."

**U1.** Mail is limited to First-Class Mail items, including audio and video media, weighing 13 ounces or less. This limitation does not apply to Official Mail.

**U2.** Retirees (Box R) are not authorized mail service.

**U3.** Reserved for future use.

**U4.** Mail addressed to Box C is limited to 2 lbs.

**V.** PMEMS is not available.

**V1.** Electronic Delivery status information for Extra Services is not available on *USPS.com*. Manual record of delivery may be available upon request.

**W.** Hermetically sealed packages of meat products bearing USDA certification, such as dried beef, salami, and sausage, may be mailed. 200 grams of tobacco per parcel are permitted duty free.

**X.** Cremated remains are prohibited.

**Y.** Mail is limited to First-Class Mail and Priority Mail items only. This restriction also applies to Official Mail.

**Z.** No outside pieces (OSPs).

**Z1.** The following restriction is applicable only to International Service Centers (ISC)/Exchange Offices. An Anti-Pilferage Seal (Item No O817E or O818A) is required on all pouches and sacks.

— *International Network Operations,  
Global Business, 11-9-17*

## Freely Associated States Restrictions

We list the mailing restrictions for Freely Associated States (FAS) in the Pull-Out section of the *Postal Bulletin*. All FAS Restrictions will be updated periodically.

### Freely Associated States

Mail addressed to freely associated states is subject to certain conditions or restrictions of mailing regarding content, preparation, and handling. The following FAS Restrictions table outlines these conditions as listed by each affected FAS ZIP Code™ through the use of footnoted mailing restrictions codes (see the [Restrictions](#) following the table). For more information on available extra services for FAS destinations, see *Mailing Standards of the United States Postal Service, Domestic Mail Manual (DMM®)*, part 503.

Acceptance clerks must use the table with the RSS terminal to determine which FAS ZIP Codes are active and which conditions of mailing apply. Send inquiries to Randall Sobol at [randall.f.sobol@usps.gov](mailto:randall.f.sobol@usps.gov).

### FAS Restrictions Table

FAS Table	See Restrictions
96939	A, B
96940	A, B
96941	A, B
96942	A, B
96943	A, B
96944	A, B
96960	A, B
96970	A, B, D
Marshall Islands	C
Federated States of Micronesia	C

### RESTRICTIONS LEGEND

PS Form 2976, *Customs Declaration CN 22 – Sender's Declaration*

PS Form 2976-A, *Customs Declaration and Dispatch Note*

FAS = Freely Associated State

- A.** Bank currency (coin and paper) is prohibited.
- B.** Signature Confirmation, Signature Confirmation Restricted Delivery, Adult Signature Requested, Adult Signature Restricted Delivery, Certified Mail Adult Signature Required, and Certified Mail Adult Signature Restricted Delivery not available.
- C.** COD is prohibited.
- D.** Betel nut (*Areca catechu*) is prohibited.

— *Asia-Pacific Relations,  
Global Business, 11-9-17*

Labeling List Changes (continued)

**Labeling List Changes for September 2017**

Effective September 1, 2017, we are revising Labeling List(s) L001, L006, L007, L012, L014, and L606 to reflect changes in mail processing operations. Mailers are expected to label according to these revised lists for mailings that are inducted on or after the September 1, 2017, effective date through the October 31, 2017, expiration date.

**Labeling Lists L000**

**General Use**

\* \* \* \* \*

**L001 5-Digit Scheme — Periodicals, Standard Mail, and Package Services Flats and Irregular Parcels**

\* \* \* \* \*

**Deleted**

Column A Destination ZIP Codes	Column B Label Container To (Deleted From)
15263	PITTSBURGH PA 15290
15285	PITTSBURGH PA 15290
17325	GETTYSBURG PA 17325
17326	GETTYSBURG PA 17325
17747	LOGANTON PA 17747
17751	MILL HALL PA 17751
17767	MILL HALL PA 17751
17773	LOGANTON PA 17747
17815	BLOOMSBURG PA 17815
17839	BLOOMSBURG PA 17815
18010	BANGOR PA 18013
18013	BANGOR PA 18013
18050	BANGOR PA 18013
21055	OWINGS MILLS MD 21117
21080	WOODSTOCK MD 21163
21085	JOPPA MD 21085
21101	JOPPA MD 21085
21107	MANCHESTER MD 21102
21117	OWINGS MILLS MD 21117
21163	WOODSTOCK MD 21163
21406	ANNAPOLIS CR ANNEX MD 21401
21407	ANNAPOLIS CR ANNEX MD 21401
21408	ANNAPOLIS CR ANNEX MD 21401
21635	GALENA MD 21635
21637	GALENA MD 21635
21646	WORTON MD 21678
21678	WORTON MD 21678
21735	SYKESVILLE MD 21784
21736	ROHERSVILLE MD 21779
21779	ROHERSVILLE MD 21779
21820	PRINCESS ANNE MD 21853
21824	EWELL MD 21824
21858	EWELL MD 21824

Column A Destination ZIP Codes	Column B Label Container To (Deleted From)
24044	ROANOKE VA 24022
24045	ROANOKE VA 24022
24048	ROANOKE VA 24022
27321	REIDSVILLE NC 27320
27322	REIDSVILLE NC 27320
29318	SPARTANBURG SC 29304
33438	CANAL POINT FL 33438
33439	CANAL POINT FL 33438
37990	KNOXVILLE TN 37950
38142	MEMPHIS TN 38101
38147	MEMPHIS TN 38101
38165	MEMPHIS TN 38103
43150	RUSHVILLE OH 43150
43163	RUSHVILLE OH 43150
44320	AKRON OH 44320
44322	AKRON OH 44320
45025	HAMILTON OH 45011
45026	HAMILTON OH 45011
45043	MIDDLETOWN OH 45042
45228	CINCINNATI OH 45230
45230	CINCINNATI OH 45230
47727	EVANSVILLE IN 47701
47739	EVANSVILLE IN 47701
47741	EVANSVILLE IN 47701
47744	EVANSVILLE IN 47701
48391	WALLED LAKE MI 48390
70140	NEW ORLEANS LA 70113
71768	EL DORADO AR 71730
71844	PRESCOTT AR 71857
71857	PRESCOTT AR 71857
72101	MC CRORY AR 72101
72189	MC CRORY AR 72101
72439	WALNUT RIDGE AR 72476
72476	WALNUT RIDGE AR 72476

\* \* \* \* \*

**L006 5-Digit FSS Scheme – Periodicals, Standard Mail, and Package Services Flats in Bundles****Changes**

Column A Destination ZIP Codes	Column B Scheme Bundle/Container Placard (Change From)	Column C Facility Container Placard (Change From)	Column B Scheme Bundle/Container Placard (Change To)	Column C Facility Container Placard (Change To)
61030	FSS PECATONICA IL 61063	FSS PALATINE IL 600	FSS CALEDONIA IL 61011	FSS PALATINE IL 600
61075	FSS ASHTON IL 61006	FSS PALATINE IL 600	FSS LEAF RIVER IL 61047	FSS PALATINE IL 600

**Newly Added**

Column A Destination ZIP Codes	Column B Scheme Bundle/Container Placard (Added To)	Column C Facility Container Placard (Added To)
61011	FSS CALEDONIA IL 61011	FSS PALATINE IL 600
61012	FSS CALEDONIA IL 61011	FSS PALATINE IL 600
61016	FSS CALEDONIA IL 61011	FSS PALATINE IL 600
61038	FSS CALEDONIA IL 61011	FSS PALATINE IL 600
61065	FSS CALEDONIA IL 61011	FSS PALATINE IL 600
61073	FSS CALEDONIA IL 61011	FSS PALATINE IL 600
61088	FSS CALEDONIA IL 61011	FSS PALATINE IL 600

**L007 5-Digit Scheme – Periodicals, Standard Mail, and Package Services Flats in Bundles****Changes**

Column A Destination ZIP Codes	Column B Label Container To (Change From)	Column B Label Container To (Change To)
61001	EAST DUBUQUE IL 61025	APPLE RIVER IL 61001
61008	BELVIDERE IL 61008	EAST DUBUQUE IL 61025
61011	BELVIDERE IL 61008	GARDEN PRAIRIE IL 61038
61012	BELVIDERE IL 61008	GARDEN PRAIRIE IL 61038
61016	BELVIDERE IL 61008	GARDEN PRAIRIE IL 61038
61030	BYRON IL 61010	GARDEN PRAIRIE IL 61038
61031	DIXON IL 61021	FRANKLIN GROVE IL 61031
61038	BELVIDERE IL 61008	GARDEN PRAIRIE IL 61038
61041	EAST DUBUQUE IL 61025	APPLE RIVER IL 61001
61047	DURAND IL 61024	FRANKLIN GROVE IL 61031
61062	EAST DUBUQUE IL 61025	APPLE RIVER IL 61001
61065	BELVIDERE IL 61008	GARDEN PRAIRIE IL 61038
61073	BELVIDERE IL 61008	GARDEN PRAIRIE IL 61038
61075	EAST DUBUQUE IL 61025	FRANKLIN GROVE IL 61031
61087	EAST DUBUQUE IL 61025	APPLE RIVER IL 61001
61088	BELVIDERE IL 61008	GARDEN PRAIRIE IL 61038
61089	DURAND IL 61024	FRANKLIN GROVE IL 61031
61109	BELVIDERE IL 61008	DURAND IL 61024
61112	BELVIDERE IL 61008	DURAND IL 61024

**Newly Added**

Column A Destination ZIP Codes	Column B Label Container To (Added To)
61006	APPLE RIVER IL 61001
61014	APPLE RIVER IL 61001
61015	APPLE RIVER IL 61001
61018	APPLE RIVER IL 61001
61028	APPLE RIVER IL 61001
61042	BYRON IL 61010
61049	BYRON IL 61010
61052	FRANKLIN GROVE IL 61031
61053	DURAND IL 61024
61060	FRANKLIN GROVE IL 61031
61064	DURAND IL 61024
61067	FRANKLIN GROVE IL 61031
61078	FRANKLIN GROVE IL 61031

\* \* \* \* \*

**L012 5-Digit ZIP Scheme Combination**

**Changes**

Column A Destination ZIP Codes	Column B Label Container To (Change From)	Column B Label Container To (Change To)
01340	ATHOL MA 01331	GREENFIELD MA 01301
	* * * * *	

**Deleted**

Column A Destination ZIP Codes	Column B Label Container To (Deleted From)
18050	BANGOR PA 18013
19485	KING OF PRUSSIA PA 19406
30376	ATLANTA GA 30324
32215	JACKSONVILLE FL 32205
33737	SAINT PETERSBURG FL 33707
42084	MARION KY 42064
48390	WALLED LAKE MI 48390
48391	WALLED LAKE MI 48390
52725	BENNETT IA 52721
60570	HINSDALE IL 60521
65842	JOPLIN MO 64802
72198	MAUMELLE AR 72113
91947	NATIONAL CITY CA 91950
92104	SAN DIEGO CA 92104
92164	SAN DIEGO CA 92104

**L014 5-Digit ZIP Scheme Combinations for Hubs**

**Changes**

Column A Destination ZIP Codes	Column B Label Container To (Changed From)	Column C HUB (Changed From)	Column B Label Container To (Changed To)	Column C HUB (Changed To)
98201	EVERETT WA 98201	EVERETT WA	EVERETT WA 98201	EVERETT WA 982
98221	ANACORTES WA 98221	EVERETT WA	ANACORTES WA 98221	EVERETT WA 982
98223	ARLINGTON WA 98223	EVERETT WA	ARLINGTON WA 98223	EVERETT WA 982
98224	BARING WA 98224	EVERETT WA	BARING WA 98224	EVERETT WA 982
98225	BELLINGHAM WA 98225	EVERETT WA	BELLINGHAM WA 98225	EVERETT WA 982
98226	BELLINGHAM WA 98226	EVERETT WA	BELLINGHAM WA 98226	EVERETT WA 982
98230	BLAINE WA 98230	EVERETT WA	BLAINE WA 98230	EVERETT WA 982
98232	BOW WA 98232	EVERETT WA	BOW WA 98232	EVERETT WA 982
98233	BURLINGTON WA 98233	EVERETT WA	BURLINGTON WA 98233	EVERETT WA 982
98235	CLEARLAKE WA 98235	EVERETT WA	CLEARLAKE WA 98235	EVERETT WA 982
98236	CLINTON WA 98236	EVERETT WA	CLINTON WA 98236	EVERETT WA 982
98237	CONCRETE WA 98237	EVERETT WA	CONCRETE WA 98237	EVERETT WA 982
98238	CONWAY WA 98238	EVERETT WA	CONWAY WA 98238	EVERETT WA 982
98239	COUPEVILLE WA 98239	EVERETT WA	COUPEVILLE WA 98239	EVERETT WA 982
98240	BLAINE WA 98230	EVERETT WA	BLAINE WA 98230	EVERETT WA 982
98243	DEER HARBOR WA 98243	EVERETT WA	DEER HARBOR WA 98243	EVERETT WA 982
98245	EASTSOUND WA 98245	EVERETT WA	EASTSOUND WA 98245	EVERETT WA 982
98247	EVERSON WA 98247	EVERETT WA	EVERSON WA 98247	EVERETT WA 982
98248	FERNDALE WA 98248	EVERETT WA	FERNDALE WA 98248	EVERETT WA 982
98249	FREELAND WA 98249	EVERETT WA	FREELAND WA 98249	EVERETT WA 982
98250	FRIDAY HARBOR WA 98250	EVERETT WA	FRIDAY HARBOR WA 98250	EVERETT WA 982
98251	GOLD BAR WA 98251	EVERETT WA	GOLD BAR WA 98251	EVERETT WA 982
98252	GRANITE FALLS WA 98252	EVERETT WA	GRANITE FALLS WA 98252	EVERETT WA 982
98253	GREENBANK WA 98253	EVERETT WA	GREENBANK WA 98253	EVERETT WA 982
98255	HAMILTON WA 98255	EVERETT WA	HAMILTON WA 98255	EVERETT WA 982
98256	INDEX WA 98256	EVERETT WA	INDEX WA 98256	EVERETT WA 982
98257	LA CONNER WA 98257	EVERETT WA	LA CONNER WA 98257	EVERETT WA 982
98258	LAKE STEVENS WA 98258	EVERETT WA	LAKE STEVENS WA 98258	EVERETT WA 982
98259	NORTH LAKEWOOD WA 98259	EVERETT WA	NORTH LAKEWOOD WA 98259	EVERETT WA 982

Column A Destination ZIP Codes	Column B Label Container To (Changed From)	Column C HUB (Changed From)	Column B Label Container To (Changed To)	Column C HUB (Changed To)
98260	LANGLEY WA 98260	EVERETT WA	LANGLEY WA 98260	EVERETT WA 982
98263	LYMAN WA 98263	EVERETT WA	LYMAN WA 98263	EVERETT WA 982
98264	LYNDEN WA 98264	EVERETT WA	LYNDEN WA 98264	EVERETT WA 982
98267	MARBLEMOUNT WA 98267	EVERETT WA	MARBLEMOUNT WA 98267	EVERETT WA 982
98270	MARYSVILLE WA 98270	EVERETT WA	MARYSVILLE WA 98270	EVERETT WA 982
98271	MARYSVILLE WA 98271	EVERETT WA	MARYSVILLE WA 98271	EVERETT WA 982
98272	MONROE WA 98272	EVERETT WA	MONROE WA 98272	EVERETT WA 982
98273	MOUNT VERNON WA 98273	EVERETT WA	MOUNT VERNON WA 98273	EVERETT WA 982
98275	MUKILTEO WA 98275	EVERETT WA	MUKILTEO WA 98275	EVERETT WA 982
98277	OAK HARBOR WA 98277	EVERETT WA	OAK HARBOR WA 98277	EVERETT WA 982
98280	ORCAS WA 98280	EVERETT WA	ORCAS WA 98280	EVERETT WA 982
98283	ROCKPORT WA 98283	EVERETT WA	ROCKPORT WA 98283	EVERETT WA 982
98284	SEDRO WOOLLEY WA 98284	EVERETT WA	SEDRO WOOLLEY WA 98284	EVERETT WA 982
98288	SKYKOMISH WA 98288	EVERETT WA	SKYKOMISH WA 98288	EVERETT WA 982
98290	SNOHOMISH WA 98290	EVERETT WA	SNOHOMISH WA 98290	EVERETT WA 982
98292	STANWOOD WA 98292	EVERETT WA	STANWOOD WA 98292	EVERETT WA 982
98293	STARTUP WA 98293	EVERETT WA	STARTUP WA 98293	EVERETT WA 982
98294	SULTAN WA 98294	EVERETT WA	SULTAN WA 98294	EVERETT WA 982

\* \* \* \* \*

**L606 5-Digit Scheme — Standard Mail, First-Class Mail, and Package Services Parcels****Changes**

Column A Destination ZIP Codes	Column B Label Container To (Change From)	Column B Label Container To (Change To)
21647	WITTMAN MD 21676	NEWCOMB MD 21653
55808	DULUTH MN 55810	DULUTH MN 55806
56001	MANKATO MN 56001	MANKATO MN 56002
56002	MANKATO MN 56001	MANKATO MN 56002
56003	MANKATO MN 56001	MANKATO MN 56002
65212	COLUMBIA MO 65201	COLUMBIA MO 65203
65215	COLUMBIA MO 65201	COLUMBIA MO 65203
65216	COLUMBIA MO 65201	COLUMBIA MO 65203

**Newly Added**

Column A Destination ZIP Codes	Column B Label Container To (Added To)
21607	CHURCH HILL MD 21623
21610	WORTON MD 21678
21613	CAMBRIDGE MD 21613
21619	STEVENSVILLE MD 21666
21623	CHURCH HILL MD 21623
21636	GOLDSBORO MD 21636
21640	GOLDSBORO MD 21636
21644	CHURCH HILL MD 21623
21653	NEWCOMB MD 21653
21665	WITTMAN MD 21676
21666	STEVENSVILLE MD 21666
21667	WORTON MD 21678
21673	CAMBRIDGE MD 21613
21678	WORTON MD 21678

Column A Destination ZIP Codes	Column B Label Container To (Added To)
21822	EDEN MD 21822
21826	EDEN MD 21822
21829	SNOW HILL MD 21863
21830	EDEN MD 21822
21841	SNOW HILL MD 21863
21842	OCEAN CITY MD 21842
21843	OCEAN CITY MD 21842
21856	EDEN MD 21822
21863	SNOW HILL MD 21863
21865	EDEN MD 21822
33990	CAPE CORAL FL 33904
55811	DULUTH MN 55810
55812	DULUTH MN 55802
65211	COLUMBIA MO 65201



**Deleted**

Column A Destination ZIP Codes	Column B Label Container To (Deleted From)
02863	PAWTUCKET RI 02860
11741	HOLBROOK NY 11741
11742	HOLBROOK NY 11741
11747	HUNTINGTON STATION NY 11746
33570	RUSKIN FL 33570
33571	RUSKIN FL 33570
33572	RUSKIN FL 33570

Column A Destination ZIP Codes	Column B Label Container To (Deleted From)
33573	RUSKIN FL 33570
91761	ONTARIO CA 91758
91764	ONTARIO CA 91758
98204	EVERETT WA 98204
98208	EVERETT WA 98204
98296	SNOHOMISH WA 98290

– Logistics, Network Development, and Support,  
Network Operations, 11-9-17

## Finance

### Form W-2, Wage and Tax Statement — Changing Your Current Mailing Address

All employees must have a current mailing address on file before December 20, 2017, to ensure correct and timely receipt of a 2017 Form W-2, *Wage and Tax Statement*. Employees may use the following options to update their mailing address on record:

**1. LiteBlue for Employees with PC Access**

- Go to the *LiteBlue* home page at [lite-blue.usps.gov](http://lite-blue.usps.gov).
- Enter your Employee Identification Number (EID) and USPS® password.
- Click the *Log On* button.
- Click the *My HR* tab at the top of the page.
- Click *Change My Address* (top left of page, within the “I want to:” section).
- Click *Edit*.
- Change any necessary mailing address information.
- Click *Review*.
- Click *Save*.

**2. Employee Self-Service Computer Kiosk**

All Postal Service™ employees can change their mailing and residential addresses using an employee self-service computer kiosk. Employee self-service computer kiosks are located in large processing and distribution centers and in some Post Offices™. On the kiosk’s main web page, click the *Employee Change of Address* tab.

**3. Mail**

Send a completed PS Form 1216, *Employee’s Current Mailing Address*, to:

HR Shared Services Center (HRSSC)  
Benefits/Compensation  
PO Box 970400  
Greensboro, NC 27497-0400

**4. Telephone**

Call the HRSSC at 877-477-3273, option 5 (TTY 866-260-7507), and follow the prompts to speak to a representative who will help you.

– Payroll, Controller, 11-9-17

### IRS Reporting Requirements of Attorney Fees, Back Pay, or Wages

The purpose of this notice is to ensure that employees are aware of the Internal Revenue Service (IRS) income reporting requirements when attorney fees are awarded.

In 2005, the IRS issued regulations that changed how attorney fee awards are to be treated for tax reporting purposes, based upon the Supreme Court’s decision in *Commissioner v. Banks*, 125 S. Ct. 826 (2005). Previously, when payment of attorney fees was made directly to the attorney, the payment to the attorney was only reported on the attorney’s Form 1099-MISC, *Miscellaneous Income*. In *Commissioner v. Banks*, the Supreme Court held that when a litigant’s recovery constitutes income, the litigant’s income

includes the portion of the recovery paid to the attorney as a contingent fee. Thus, pursuant to Internal Revenue Code (IRC) Section 6041(a) and 6045(f), these fees cannot be excluded from the plaintiff’s gross income for tax reporting purposes.

The following situations require variations in the reporting requirements:

- *Attorney Fees Paid Directly to an Attorney* — These fees will be reported in Box 3 (Other Income) on the employee’s Form 1099-MISC. These fees will also be reported on the attorney’s Form 1099-MISC.

- *Settlement (no back pay or wages) is Paid Directly to Employee and Attorney Fees are Identified* — The entire amount of the settlement (including attorney fees) will be reported in Box 3 (Other Income) on the employee's Form 1099-MISC. The employee's attorney will not be issued a Form 1099-MISC.
- *Settlement (back pay or wages) is Paid Directly to Employee and Attorney Fees are Identified* — The back pay or wages portion of the settlement is subject to income and Federal Insurance Contributions Act (FICA) tax withholdings. The back pay or wages portion will be reported on the employee's Form W-2. The identified attorney fees will be reported in Box 3 (Other Income) on the employee's Form 1099-MISC. The employee's attorney will not be issued a Form 1099-MISC.
- *Settlement (back pay or wages) is Paid Directly to Employee and Attorney Fees are not Identified* — The entire amount of the settlement (including attorney fees) is subject to income and FICA tax withholdings. The entire amount will be reported on the employee's Form W-2. The employee's attorney will not be issued a Form 1099-MISC.
- *Settlement Check (no back pay or wages) is Issued Jointly to Employee and Attorney* — The entire amount of the settlement will be reported in Box 3 (Other Income) on the employee's Form 1099-MISC and will also be reported on the attorney's Form 1099-MISC.
- *Settlement Check (back pay or wages) is Issued Jointly to Employee and Attorney* — The entire amount of the settlement (including attorney fees) is subject to income and FICA tax withholdings. The entire amount will be reported on the employee's Form W-2. The net amount of the settlement (the actual amount of the settlement check) will be reported on the attorney's Form 1099-MISC.
- *Settlement Check (back pay or wages) is Split between Employee and Attorney* — The entire amount of the settlement (including attorney fees) is subject to income and FICA tax withholdings. The settlement check is issued to the employee, but before disbursement the check is pulled and the net of the settlement (the actual amount of the check) is split between the employee and his or her attorney. The entire amount of the settlement will be reported on the employee's Form W-2. The actual amount of the check paid to the attorney will be reported on the attorney's Form 1099-MISC.

The Postal Service™ makes no representation regarding the taxability of these payments. Potential tax liability resulting from any of these payments is the employee's responsibility. The IRS makes the determination on whether taxes must be paid. The Postal Service does not provide tax advice, and employees must direct any tax reporting questions to the IRS or a qualified tax attorney or accountant.

— Payroll,  
Controller, 11-9-17

## Local Tax Code Information

The Postal Service™ collects appropriate federal, state, and, in some cases, local taxes directly from the pay of its employees who are subject to these deductions. Based on agreements between individual local taxing authorities and the U.S. Treasury Department, the Postal Service collects a number of city and county income taxes, occupational taxes, mental health taxes, residence taxes, local service taxes, and in some locations, more than one of these taxes.

The local taxes listed in the table are the taxes for which there are agreements between the taxing authorities and the U.S. Treasury Department. Some of these taxes are automatically deducted from the salaries of Postal Service employees who work within the geographic boundaries of the specific taxing authorities. However, most of these taxes are not automatic deductions. If you are subject to any of these local taxes, you must be proactive and submit a completed PS Form 4, *Employee's City or County With-*

*holding Certificate*, to the HR Shared Services Center (HRSSC). As a Postal Service employee, you are personally responsible for ensuring correct local taxes are deducted from your pay. If you have any questions regarding your tax liability or responsibility, contact your local taxing authority.

In addition to the taxes listed in the table, there are other local taxes for which there are no agreements between the individual local taxing authorities and the U.S. Treasury Department. Employees must make their own payments to these taxing authorities. The Postal Service will not collect local taxes for a taxing entity that has not established an agreement with the U.S. Treasury Department.

We remind all Postal Service employees that they are bound by the materials contained within the *Code of Ethics, Principles of Ethical Conduct for Government Officers and Employees*. This includes Principle 12, which states: "Employees shall satisfy in good faith their obligations as

citizens, including all just financial obligations, especially those — such as federal, state, and local taxes — that are imposed by law.”

If you live or work in a locality that is subject to one or more of the taxes listed in the table and the correct deduction(s) is not being withheld from your pay, you can immediately complete a PS Form 4, *Employee’s City or County*

*Withholding Certificate*. After completing this form, mail it to the following address:

HR Shared Services Center  
 PO Box 970400  
 Greensboro, NC 27497-0400

Direct all questions concerning these local taxes to the HRSSC by phone at 877-477-3273, option 5, or at (TDD/TTY) 866-260-7507.

State and City or County	Type of Tax	Local Tax Code
<b>Alabama</b>		
Bessemer	Occupational Tax	081
Birmingham	Occupational Tax	084
Gadsden	Occupational Tax	094
Macon County	Occupational Tax	096
<b>Colorado</b>		
Denver	Occupational Tax	294
<b>Delaware</b>		
Wilmington	City Income Tax	903
<b>Kentucky</b>		
Bowling Green	Occupational Tax	215
Boone County	1. Ordinance Tax 2. Mental Health Tax	015 016
Covington	City Income Tax	252
Florence	Occupational Tax	836
Frankfort	Occupational Tax	292
Kenton County	Occupational Tax	435
Lexington-Fayette Urban County Gov	Occupational Tax	525
Louisville Metro Area/ Jefferson County	Occupational Tax	546
Madison County	County Income Tax	547
Owensboro	Occupational Tax	201
Richmond	Occupational Tax	735
<b>Michigan</b>		
Battle Creek	City Income Tax	063
Detroit	City Income Tax	315
Flint	City Income Tax	357
Grand Rapids	City Income Tax	378
Lansing	City Income Tax	483
Pontiac	City Income Tax	693
Saginaw	City Income Tax	756
<b>Missouri</b>		
Kansas City	City Income Tax	420
St. Louis	City Income Tax	819
<b>New York</b>		
New York City	City Income Tax	588
<b>Ohio</b>		
Akron	City Income Tax	021
Brecksville	City Income Tax	105
Brook Park	City Income Tax	106
Canton	City Income Tax	126
Cincinnati	City Income Tax	168
Cleveland	City Income Tax	189
Columbus	City Income Tax	231
Dayton	City Income Tax	273
Fairview Park	City Income Tax	274
Heath	City Income Tax	399

State and City or County	Type of Tax	Local Tax Code
Kettering	City Income Tax	441
Mansfield	City Income Tax	567
Newark	City Income Tax	698
Oberlin	City Income Tax	609
Sharonville	City Income Tax	785
Springfield	City Income Tax	798
Toledo	City Income Tax	840
Whitehall	City Income Tax	861
Youngstown	City Income Tax	924
<b>Pennsylvania</b>		
Bethlehem Township	City Income Tax	335
Erie	1. City Income Tax 2. Local Services Tax	336 337
Greene Township	City Income Tax	375
Hanover Township	1. City Income Tax 2. Local Services Tax	343 342
Harrisburg	1. City Income Tax 2. Local Services Tax	385 386
Horsham Township	1. City Income Tax 2. Local Services Tax	354 352
Lancaster	1. City Income Tax 2. Local Services Tax	462 465
Marshall Township	Local Services Tax	555
Middletown	City Income Tax	388
Philadelphia	City Income Tax	651
Pittsburgh	1. City Income Tax 2. Local Services Tax	672 673
Reading	1. City Income Tax 2. Local Services Tax	714 715
Scranton	1. City Income Tax 2. Local Services Tax	777 778
South Park Township	1. City Income Tax 2. Local Services Tax	775 776
Sunbury/Gregg Township (includes Allenwood)	City Income Tax	320
Susquehanna Township	Local Services Tax	395
Tredyffrin Township	Local Services Tax	360
Tinicum Township	1. City Income Tax 2. Local Services Tax	779 780
Warminster Township	1. City Income Tax 2. Local Services Tax	856 855
Wilkes-Barre	1. City Income Tax 2. Local Services Tax	882 883
York	City Income Tax	492
<b>West Virginia</b>		
Charleston	City Service Tax	899
Huntington	City Service Tax	900
Parkersburg	City Service Tax	901

## Tax Obligations of USPS Employees

As employees of the U.S. Postal Service<sup>®</sup>, we have a legal, moral, and fiduciary obligation to obey the tax laws of our country. As both citizens and public servants who are obligated to uphold the public trust, we are ethically mandated to complete and file all required tax forms for our federal, state, and where applicable, local taxes. We are required by appropriate taxation laws to pay all of our required taxes in a timely and accurate manner.

We remind all Postal Service<sup>™</sup> employees that they are bound by the materials contained within the *Code of Ethics, Principles of Ethical Conduct for Government Officers and Employees*. This includes Principle 12, which states: “Employees shall satisfy in good faith their obligations as citizens, including all just financial obligations, especially those — such as federal, state, and local taxes — that are imposed by law.” All Postal Service employees must adhere to the highest possible ethical standards concerning the payment of their taxes and other debts.

As a Postal Service employee, you are personally responsible for ensuring correct federal, state, and local taxes are deducted from your pay. If you are subject to federal, state, and local taxes, and the correct deductions are not being withheld from your pay, you must take immediate action to ensure appropriate tax withholdings.

### To Update Federal and State Tax Withholdings:

- Complete the federal Form W-4, *Employee’s Withholding Allowance Certificate*, or the state equivalent of the federal Form W-4. For example, to update Minnesota tax withholdings, complete Form W-4MN, *Minnesota Withholding Allowance/Exemption Certificate*. Complete the federal Form W-4 if your state does not have its own state equivalent of the federal Form W-4. Make sure you write “Name of State” and “State Copy” on the top of the form. Go to the *LiteBlue* home page ([liteblue.usps.gov](http://liteblue.usps.gov)) to access the *PostalEASE* App.

- Update your “Federal W-4” Payroll Module and your “State Tax” Payroll Module.
- If you do not have access to a computer or the Internet, mail your completed form(s) to:  
HR Shared Services Center (HRSSC)  
PO Box 970400  
Greensboro, NC 27497-0400

**Note:** It is to your advantage to complete the paper form before your *PostalEASE* update as the paper form comes with instructions, which can be particularly helpful if your state has complex withholding selections.

### To Update Local Tax Withholdings:

- Complete PS Form 4, *Employee’s City or County Withholding Certificate*.
- Mail your completed PS Form 4 to:  
HR Shared Services Center  
PO Box 970400  
Greensboro, NC 27497-0400

Direct all questions concerning these taxes to the HRSSC at 877-477-3273, option 5 (TDD/TTY 866-260-7507).

The Postal Service does not provide tax advice. Direct any questions about your tax liability or responsibility to the Internal Revenue Service (IRS) or a qualified tax attorney or accountant.

Adherence to these requirements will help USPS<sup>®</sup> employees avoid costly penalties and potential tax enforcement action by the IRS. The IRS provides free tax information and services to inform and assist taxpayers concerning tax laws and individual responsibilities. You can research federal tax information at [irs.gov](http://irs.gov) or you can contact an IRS representative toll-free at 800-829-1040 (TDD 800-829-4059) for assistance.

— Payroll,  
Controller, 11-9-17

## Wage Overpayment Indebtedness – Tax Treatment

When a Postal Service™ employee is overpaid, the Postal Service establishes an account receivable for the overpayment and initiates the collection of the debt from the employee through the process described in the *Employee and Labor Relations Manual* (ELM), in either ELM 450, Collection of Postal Debts From Non-bargaining Unit Employees by Salary Offset, or ELM 460, Collection of Postal Debts From Bargaining Unit Employees by Salary Offset.

If the overpayment occurred in a prior year, the Postal Service bills the employee for the gross amount of the overpayment. The gross amount includes the net amount of the check or direct deposit plus all payroll-related taxes withheld and other miscellaneous deductions or allotments. The wages paid in error in the prior year remain W-2 reportable and taxable to the employee for that year. This is because the employee received and had use of those funds during that year. If repayment is made within 3 years of the issuance of the Form W-2 that includes the overpayment, the employee is entitled to a refund of Social Security (if applicable) and Medicare taxes from the Postal Service. The employee is not entitled to file an amended return (Form 1040X) to recover the income tax paid on these

wages. Instead, the employee is entitled to a deduction (or credit in some cases) for the repaid wages on his or her income tax return for the year of repayment (Internal Revenue Service Publication 15). Employees are encouraged to seek the services of a qualified tax preparer if they have questions.

If the overpayment occurred in the current year, the Postal Service *initially* bills the employee for *only* the net value of the overpayment; thus, federal, state, local, Social Security (if applicable), and Medicare taxes are not part of the bill. However, if an employee has not fully repaid the overpayment by the end of the tax year (December 31, 2017), the Postal Service must report the unreturned value of the overpayment as taxable income on the employee's Form W-2. Additionally, the employee must now pay appropriate federal, state, local, Social Security (if applicable), and Medicare taxes on the remaining value of the unpaid debt. The Postal Service establishes a second account receivable at the close of the tax year for the value of the taxes the employee owes related to the unpaid debt. The Postal Service uses the debt collection processes in ELM 450 and ELM 460 to collect the additional debt.

– Payroll,  
Controller, 11-9-17

## Stamp Services

### Pictorial Postmarks Announcement

As a community service, the Postal Service™ offers pictorial postmarks to commemorate local events celebrated in communities throughout the nation. A list of events for which pictorial postmarks are authorized appears on the following pages. The sponsor of the pictorial postmark appears in italics under the date. Also provided are illustrations of these postmarks.

People attending these local events may obtain the postmark in person at the temporary Post Office™ station established there. Those who cannot attend the event but who wish to obtain the postmark may submit a mail order request. Pictorial postmarks are available only for the dates indicated, and *requests must be postmarked no later than 30 days following the requested pictorial postmark date.*

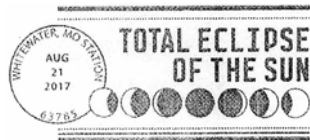
All requests must include a stamped envelope or postcard bearing at least the minimum First-Class Mail® postage. Items submitted for postmark may not include

postage issued after the date of the requested postmark. Such items will be returned unserved.

Customers wishing to obtain a postmark must affix stamps to any envelope or postcard of their choice, address the envelope or postcard to themselves or others, insert a card of postcard thickness in envelopes for sturdiness, and tuck in the flap. Place the envelope or postcard in a larger envelope and address it to: Pictorial Postmarks, followed by the Name of the Station, Address, City, State, ZIP+4® Code, as listed next to the postmark.

Customers can also send stamped envelopes and postcards without addresses for postmark, as long as they supply a larger envelope with adequate postage and their return address. After applying the pictorial postmark, the Postal Service returns the items (with or without addresses) under addressed protective cover.

The following pictorial postmark has been extended for 90 days:



August 21, 2017

*United States Postal Service*  
Whitewater, MO Station  
Postmaster  
8742 State Highway A  
Whitewater, MO 63785-9998

The following pictorial postmarks have been extended for 30 days:



October 19, 2017

*United States Postal Service*  
Smithsonian National Postal Museum Station  
Special Cancellations  
2 Massachusetts Avenue NE  
Washington, DC 20002-9998



October 20, 2017

*Sigma Gamma Rho*  
Tulsa Proud Station  
Postmaster  
333 West 4th Street  
Tulsa, OK 74103-9998



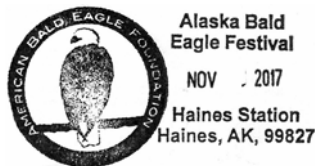
October 21, 2017

*Glacier Stamp Club of Kalispell, MT*  
GLAPEX Station XXXIII  
Postmaster  
350 North Meridan Road  
Kalispell, MT 59901-9998



October 27, 2017

*Grand Central Market Centennial*  
 Centennial Station  
 Postmaster  
 7001 South Central Avenue, Room 307  
 Los Angeles, CA 90052-4200



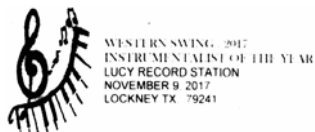
November 6–11, 2017

*American Bald Eagle Foundation*  
 Haines Station  
 Postmaster  
 PO Box 9998  
 Haines, AK 99827-9998



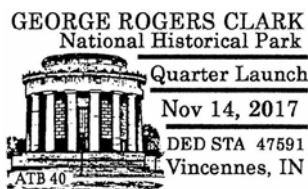
November 8, 2017

*Los Angeles Regional Food Bank*  
 Season for Sharing Station  
 Postmaster  
 7001 South Central Avenue, Room 307  
 Los Angeles, CA 90052-4200



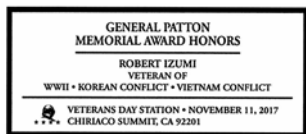
November 9, 2017

*United States Postal Service*  
 Lucy Record Station  
 Postmaster  
 107 North Main Street  
 Lockney, TX 79241-9998



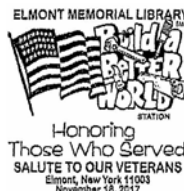
November 14, 2017

*United States Postal Service*  
 Dedication Station  
 Postmaster  
 420 Broadway Street  
 Vincennes, IN 47591-9998



November 11, 2017

*General Patton Memorial Museum*  
 Veterans Day Station  
 Clerk in Charge  
 62-450 Chiriaco Road  
 Chiriaco Summit, CA 92201-9998



November 18, 2017

*Elmont Public Library*  
 Build a Better World Station  
 Postmaster  
 260 Elmont Road  
 Elmont, NY 11003-9998



November 11, 2017

*United States Postal Service*  
 Veterans Day Station  
 Postmaster  
 PO Box 7838  
 San Francisco, CA 94120-7838

— Stamp Services,  
 Marketing, 11-9-17



## How to Order the First-Day-of-Issue Digital Color or Traditional Postmarks

Customers have 60 days to obtain the first-day-of-issue postmarks by mail. Each cover must have sufficient postage to meet First-Class Mail® requirements. Customers may purchase new stamps at their local Post Office™, by telephone at 800-782-6724, or at The Postal Store® website at [usps.com/shop](https://usps.com/shop).

### Digital Color Postmarks

Only select stamp issues offer a digital color postmark. Customers may submit #6 or #10 envelopes constructed of paper rated as “laser safe.” The Postal Service™ recommends envelopes of 80-pound Accent Opaque, acid-free, 9/16-inch side seams with no glue on the flap. The maximum size of all digital color postmarks is 2 inches high by 4 inches long. Allow sufficient space on the envelope to accommodate the postmark. Do not use self-adhesive labels for addresses on the envelope. Two test envelopes must be included. There is a minimum of 10 envelopes at 50 cents per postmark required at the time of servicing. Customers must submit a check, money order, or credit card for payment.

The Postal Service reserves the right to not accept hand-painted and other cachet envelopes that are not compatible with our digital color postmark equipment. The Postal Service also reserves the right to substitute traditional black rubber postmarks if use of nonspecified envelopes results in poor image quality or damage to equipment.

Customers must affix the stamps to the envelopes and address them to themselves or others for return through

the mail. Or, they may include an additional self-addressed return envelope, large enough to accommodate their canceled items, with sufficient postage affixed for return of their postmarked items. Address customer requests for digital color postmarks to:

FDOI – (Name of Stamp Issue)  
USPS Stamp Fulfillment Services  
8300 NE Underground Drive, Suite 300  
Kansas City, MO 64144-9900

After applying the first-day-of-issue postmark, the Postal Service will return the envelopes to the customer by U.S. Mail®.

### Traditional Postmarks

Customers must affix the stamps to the envelopes and address them to themselves or others for return through the mail. Or, they may include an additional self-addressed return envelope, large enough to accommodate their canceled items, with sufficient postage affixed for return of their postmarked items. Address customer requests for traditional postmarks to:

FDOI – (Name of Stamp Issue)  
USPS Stamp Fulfillment Services  
8300 NE Underground Drive, Suite 300  
Kansas City, MO 64144-9900

After applying the first-day-of-issue postmark, the Postal Service will return the envelopes to the customer by U.S. Mail. There is no charge for the first 50 postmarks. There is a 5-cent charge for each additional postmark over 50. Customers must submit a check, money order, or credit card for payment.



#### FDOI – The Snowy Day Stamps

USPS Stamp Fulfillment Services  
8300 NE Underground Drive, Suite 300  
Kansas City, MO 64144-9900

December 4, 2017

#### Digital Color Pictorial



#### FDOI – The Snowy Day Stamps

USPS Stamp Fulfillment Services  
8300 NE Underground Drive, Suite 300  
Kansas City, MO 64144-9900

December 4, 2017

#### Black and White Pictorial





**FDOI – Christmas Carols Stamps**  
 USPS Stamp Fulfillment Services  
 8300 NE Underground Drive, Suite 300  
 Kansas City, MO 64144-9900

December 5, 2017

**Digital Color Pictorial**



**FDOI – Christmas Carols Stamps**  
 USPS Stamp Fulfillment Services  
 8300 NE Underground Drive, Suite 300  
 Kansas City, MO 64144-9900

December 5, 2017

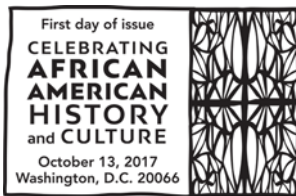
**Black and White Pictorial**



**FDOI – Celebrating African American History and Culture Stamp**  
 USPS Stamp Fulfillment Services  
 8300 NE Underground Drive, Suite 300  
 Kansas City, MO 64144-9900

December 13, 2017

**Digital Color Pictorial**



**FDOI – Celebrating African American History and Culture Stamp**  
 USPS Stamp Fulfillment Services  
 8300 NE Underground Drive, Suite 300  
 Kansas City, MO 64144-9900

December 13, 2017

**Black and White Pictorial**



**FDOI – The History of Hockey Stamps**  
 USPS Stamp Fulfillment Services  
 8300 NE Underground Drive, Suite 300  
 Kansas City, MO 64144-9900

December 20, 2017

**Digital Color Pictorial**



**FDOI – The History of Hockey Stamps**  
 USPS Stamp Fulfillment Services  
 8300 NE Underground Drive, Suite 300  
 Kansas City, MO 64144-9900

December 20, 2017

**Black and White Pictorial**

# Celebrate the Season with USPS® Holiday Stamps

