

# postal|bulletin

PUBLISHED SINCE MARCH 4, 1880

## Prevent Heat Stress



- Drink plenty of water
- Rest during breaks
- Dress appropriately

**SAFETY  
DEPENDS  
ON ME!**

UNITED STATES  
POSTAL SERVICE



# Contents

## COVER STORY

Beat the Heat, Stay Cool . . . . . 3

## POLICIES, PROCEDURES, AND FORMS UPDATES

### Manuals

DMM Revision: Extra Service and Refund Clarifications . . . . . 5  
 DMM Revision: Merchandise Return Service . . . . . 6  
 DMM Revision: Pallet Label . . . . . 7  
 DMM Revision: Return Receipt Service . . . . . 10  
 IMM Revision: IPA and ISAL Price Groups . . . . . 12

### Forms

Revised PS Form 999, Application for Reinstatement List . . . . . 13

## ORGANIZATION INFORMATION

### Mailing and Shipping Services

Mail Alert . . . . . 14  
 USPS Caution Heavy and Special Handling – Fragile Labels . . . . . 15

### Retail

Order 2017 Stamps by Mail Holiday Brochures Now . . . . . 16

### Stamp Services

Stamp Announcement 17-35: Father Theodore Hesburgh Stamp . . . . . 33  
 Stamp Announcement 17-36: Celebrating African American History and Culture Stamp . . . . . 36  
 Pictorial Postmarks Announcement . . . . . 38  
 How to Order the First-Day-of-Issue Digital Color or Traditional Postmarks . . . . . 42

## PULL-OUT INFORMATION

### Fraud

Invalid USPS Corporate Account Numbers . . . . . 17  
 Missing, Lost, or Stolen U.S. Money Order Forms . . . . . 18  
 Missing, Lost, or Stolen Canadian Money Order Forms . . . . . 24  
 Verifying U.S. Postal Service Money Orders . . . . . 26  
 Counterfeit Canadian Money Order Forms . . . . . 26  
 Toll-Free Number Available to Verify Canadian Money Orders . . . . . 26

### Other Information

Overseas Military/Diplomatic Mail . . . . . 27  
 Freely Associated States Restrictions . . . . . 32

## POSTAL BULLETIN INDEX

2017 Semi-Annual Index . . . . . PB 22472 (7-20-17)

Find the latest in mail and delivery information and services offered by U.S. Postal® in the *Postal Bulletin* at [about.usps.com/postal-bulletin](http://about.usps.com/postal-bulletin)



# Cover Story

## Beat the Heat, Stay Cool

It's that time of year again when the temperature rises, and the potential for heat-related illness becomes a factor in your daily work routine.

Beat the heat with these quick tips:

1. **Hydrate before, during, and after work.** Prevention is important; maintain good hydration by drinking at least 8 ounces of water every 20 minutes.
2. **Dress appropriately for the weather.** On warm days, wear light-colored, loose-fitting, and breathable clothing to keep your body temperature down.
3. **Use the shade to stay cool.** When possible, use shaded areas to stay out of direct sunlight.

4. **Know the signs of heat stress.** Understand what heat stress is, and how it can affect your health and safety. Watch out for:

- Hot, dry skin or profuse sweating;
- Headaches;
- Confusion or dizziness;
- Nausea;
- Muscle cramps;
- Weakness or fatigue; and
- Rashes.

Finally, notify your supervisor or call 911 if you experience signs of heat-related illness. This not only ensures your safety, but can also save your life.

— *Safety and OSHA Compliance Programs,  
Employee Resource Management, 8-3-17*



# 214,000

Number of Postal Service  
email accounts nationwide

# Policies, Procedures, and Forms Updates

## Manuals

### DMM Revision: Extra Service and Refund Clarifications

Effective September 11, 2017, the Postal Service™ will revise *Mailing Standards of the United States Postal Service, Domestic Mail Manual (DMM®)*, section 503.3.0, Certified Mail, and subsections 604.9.2, Postage and Fee Refunds, and 604.9.5, Priority Mail Express Postage and Fees Refunds, to clarify refund standards and delete redundant text.

The Postal Service will revise section 503.3.0 to clarify the services available under Certified Mail®. We will also revise subsection 604.9.2.3 for clarity and to specify the refund information in reference to Certified Mail, Adult Signature, and Signature Confirmation™. The reference to Certified Mail must include the restricted delivery options listed under Certified Mail in DMM 503.3, and the reference to Adult Signature and Signature Confirmation must also include the restricted delivery options for both services as listed under the USPS Signature® services umbrella in section 503.8.0. We will revise item 604.9.2.3g to clarify that the reference to restricted delivery includes all extra service restricted delivery options. Additionally, the Postal Service will revise subsection 604.9.5.1 to clarify the refund criteria, and will revise subsection 604.9.5.4 to delete redundant text.

Although we will not publish these revisions in the DMM until September 11, 2017, the standards are effective immediately.

#### ***Mailing Standards of the United States Postal Service, Domestic Mail Manual (DMM)***

\* \* \* \* \*

#### **500 Additional Mailing Services**

#### **503 Extra and Additional Services**

\* \* \* \* \*

*[Revise the title of 3.0 to read as follows:]*

#### **3.0 Certified Mail Services**

#### **3.1 Basic Standards**

#### **3.1.1 Description**

*[Revise the last sentence of 3.1.1 to read as follows:]*

\*\*\*Customers may direct delivery of Certified Mail only to the addressee (or addressee’s authorized agent) using Certified Mail Restricted Delivery (3.2.2); or to an adult using Certified Mail Adult Signature Required or Certified Mail

Adult Signature Restricted Delivery when meeting the applicable standards for Adult Signature under 8.1.3.

\* \* \* \* \*

#### **600 Basic Standards For All Mailing Services**

\* \* \* \* \*

#### **604 Postage Payment Methods and Refunds**

\* \* \* \* \*

#### **9.0 Exchanges and Refunds**

\* \* \* \* \*

#### **9.2 Postage and Fee Refunds**

\* \* \* \* \*

#### **9.2.3 Full Refund**

\* \* \* \* \*

*[Revise the text of item e. to read as follows:]*

- e. Fees are paid for special handling, Certified Mail services, USPS Tracking, or USPS Signature Services, and the article fails to receive the extra service for which the fee is paid.

\* \* \* \* \*

*[Revise the text of item g. to read as follows:]*

- g. Fees are paid for return receipt or for any extra service restricted delivery option, and the USPS (through fault or negligence) fails to furnish the return receipt or its equivalent, or makes erroneous delivery or nondelivery.

\* \* \* \* \*

#### **9.5 Priority Mail Express Postage and Fees Refunds**

#### **9.5.1 Priority Mail Express 1-Day and 2-Day Delivery**

*[Revise the text of 9.5.1 to read as follows:]*

For Priority Mail Express 1-Day and 2-Day Delivery, the USPS refunds the postage and Sunday or holiday premium fee and/or the 10:30 A.M. delivery fee for an item not delivered, for an item for which delivery was not attempted, or if the item was not made available for claim by the delivery date and time specified at the time of mailing, subject to the

standards for this service, unless the delay was caused by one of the situations in 9.5.5.

\* \* \* \* \*

#### 9.5.4 Conditions for Refund

[Revise the text of 9.5.4 by deleting the second sentence in its entirety.]

\* \* \* \* \*

We will incorporate these revisions into the next online update of the DMM, which is available via Postal Explorer<sup>®</sup> at [pe.usps.com](http://pe.usps.com).

— Product Classification,  
Marketing, 8-3-17

## DMM Revision: Merchandise Return Service

Effective September 11, 2017, the Postal Service<sup>™</sup> will revise *Mailing Standards of the United States Postal Service*, Domestic Mail Manual (DMM<sup>®</sup>), sections 505.3.1.5 and 505.3.7.3, for clarity and consistency.

The Postal Service will revise section 505.3.1.5 for consistency and to update the account volume required for Priority Mail<sup>®</sup> Commercial Plus<sup>®</sup> prices. We will also revise section 505.3.7.3 for clarity and to update the account volume required for Priority Mail Commercial Plus cubic prices.

Although we will not publish these revisions in the DMM until September 11, 2017, the standards are effective immediately.

### ***Mailing Standards of the United States Postal Service, Domestic Mail Manual (DMM)***

\* \* \* \* \*

#### 500 Additional Mailing Services

\* \* \* \* \*

#### 505 Return Services

\* \* \* \* \*

#### 3.0 Merchandise Return Service (MRS)

##### 3.1 Prices and Fees

\* \* \* \* \*

##### 3.1.5 Priority Mail Commercial Base and Commercial Plus Prices

\* \* \* \* \*

[Revise the text of items a. and b. to read as follows:]

- a. Commercial Base prices (223.1.2) are available for permit holders using MRS for Priority Mail items when all MRS requirements for Priority Mail are met.

- b. Commercial Plus prices (223.1.3) are available for permit holders using MRS for Priority Mail items who qualify for Commercial Base prices and whose account volume exceeds 50,000 pieces in the previous calendar year or who have a customer commitment agreement with the USPS (223.1.3.2).

\* \* \* \* \*

#### 3.7 Additional Standards for USPS Return Services

\* \* \* \* \*

##### 3.7.3 Prices

[Revise the introductory text of 3.7.3 to read as follows:]

Commercial prices are available for permit holders receiving Priority Mail Return Service, First-Class Package Return Service, and Ground Service (Parcel Select Ground) mailpieces under 3.7. Eligibility for Commercial Plus prices are available for permit holders receiving Priority Mail Return Service items and who qualify for Commercial Base prices, and at least one of the following:

\* \* \* \* \*

[Revise the text of item b. to read as follows:]

- b. Have cumulative returns Commercial Plus cubic (see 223.1.4) volume exceeding a combined total of 50,000 pieces returned in approved packaging in the previous calendar year.

\* \* \* \* \*

We will incorporate these revisions into the next online update of the DMM, which is available via Postal Explorer<sup>®</sup> at [pe.usps.com](http://pe.usps.com).

— Product Classification,  
Marketing, 8-3-17

### DMM Revision: Pallet Label

Effective September 11, 2017, the Postal Service™ will revise *Mailing Standards of the United States Postal Service*, Domestic Mail Manual (DMM®) in various sections to standardize terminology for pallet labels.

Currently, we refer to pallet labels as both labels and placards. For consistency with the terminology used for sacks and trays, the Postal Service will revise the DMM to use the term “label” exclusively and remove all references to “placard.” This revision is for consistency only and does not change any pallet standards.

Additionally, we will revise Quick Service Guide 705a, *Pallets, Pallet Boxes, and Trays on Pallets*, to reflect this change.

Although we will not publish these revisions in the DMM until September 11, 2017, the standards are effective immediately.

### **Mailing Standards of the United States Postal Service, Domestic Mail Manual (DMM)**

\* \* \* \* \*

#### **200 Commercial Mail Letters, Cards, Flats, and Parcels**

\* \* \* \* \*

#### **204 Barcode Standards**

\* \* \* \* \*

*[Revise the title of 3.0 to read as follows:]*

#### **3.0 Standards for Barcoded Tray Labels, Sack Labels, and Container Labels**

##### **3.1 General**

\* \* \* \* \*

*[Revise the title and text of 3.1.2 to read as follows:]*

##### **3.1.2 Container Labels**

Mailer-generated container labels bearing Intelligent Mail container barcodes identify the mail owner or agent and uniquely identify the unit (pallet, container, or rolling stock). Intelligent Mail container labels are designed for use with Intelligent Mail barcoded mail and Intelligent Mail tray labels.

- a. Intelligent Mail container labels are not required for small mailings of USPS Marketing Mail, Periodicals, and Bound Printed Matter letters and flats when entered at a BMEU, if the mailing is less than 500 pounds of bundles or sacks and fewer than 72 linear feet of trays.

- b. Intelligent Mail container labels are not required when entering mail at a co-located BMEU within the service area where mail is entered, if the mailing consists of 100 – 250 pounds of bundles or sacks and 12 – 35 linear feet of trays.

\* \* \* \* \*

*[Revise the title of 3.4 to read as follows:]*

#### **3.4 Intelligent Mail Container Labels**

##### **3.4.1 Definition**

*[Revise the text of 3.4.1 to read as follows:]*

Mailer-generated container labels bearing Intelligent Mail container barcodes identify pallets and other rolling stock, such as all-purpose containers. Intelligent Mail container barcodes uniquely identify each container and may be scanned at induction points. Detailed specifications for Intelligent Mail container barcodes and labels are available at [postalpro.usps.com/](http://postalpro.usps.com/).

*[Revise the title and text of 3.4.2 to read as follows:]*

##### **3.4.2 Intelligent Mail Container Label Configurations**

Intelligent Mail container labels must be affixed on the outside of any shrinkwrap or plastic by self-adhesive or other adhesive means. Labels may be produced in two configurations:

- a. Affixed label measuring at least 8 inches by 11 inches. See 3.4.3 for label specifications and 3.4.5 for label placement.
- b. Optional affixed label measuring at least 4 inches by 7 inches. See 3.4.6 for label specifications and 3.4.5 for label placement.

*[Revise the title and introductory text of 3.4.3 to read as follows:]*

##### **3.4.3 Intelligent Mail Container Label Format**

In addition to the requirements for pallet labels in 705.8.6, Intelligent Mail container labels (see Exhibit 3.4.3) must retain the top half of the labels for USPS-required elements, except as allowed under 705.8.6.6. The USPS banner, identification bars, and human-readable text are required elements related to the Intelligent Mail container barcode and will serve as a guide to distinguish the barcode from the other information on the container label. Required elements include:

\* \* \* \* \*

*[Revise the text of items d. and e. to read as follows:]*

- d. Barcode Location. The barcode, along with the corresponding USPS banner and identification bars, must be printed on the front side of the pallet label.

When the identification bars extend beyond the length of the barcode, the barcode must be horizontally centered.

- e. Minimum Size. The minimum size of this label is 8 inches high by 11 inches long. See additional specifications at [postalpro.usps.com/](http://postalpro.usps.com/). Mailers using larger labels must ensure the barcode conforms to the published specification and the human-readable content is provided as illustrated in Exhibit 3.4.3 and as published on the *PostalPro* website.

*[Revise the title of Exhibit 3.4.3 to read as follows:]*

#### **Exhibit 3.4.3 Intelligent Mail Container Label**

\* \* \* \* \*

*[Revise the title and text of 3.4.5 to read as follows:]*

#### **3.4.5 Label Requirements**

Mailers may use labels bearing Intelligent Mail container barcodes only under the following conditions:

- a. Two labels must be placed on each pallet, one on each adjacent side. Labels must be affixed by self-adhesive or other adhesive means that will not obscure any required element of the label and remain secure throughout USPS processing.
- b. One label must be placed in the designated area on other USPS containers.
- c. Labels affixed to pallets containing Periodicals mail must be pink, except under 3.4.5d or 3.4.5e.
- d. Labels prepared in the optional smaller format under 6.6 may be white, but must include a vertical pink, 1/2-inch-wide identification bar along the left-hand side of the label, unless prepared under 3.4.5e.
- e. Labels containing Periodicals may be all white when used in conjunction with a pink designator label meeting the following criteria:

\* \* \* \* \*

*[Revise items e3, e4, and e5 to read as follows:]*

3. Designator labels must meet or exceed both the horizontal and vertical dimensions of the accompanying Intelligent Mail container label and must bear only a "PERIODICALS" or "NEWS" marking at least 1/2-inch high (or at least 48-point type).
4. Designator labels may be affixed on the outside of, or be placed beneath, any shrinkwrap or plastic, but must be immediately adjacent to the Intelligent Mail container label.
5. When using this option, each Intelligent Mail container label must be accompanied by an adjacent designator label.

*[Revise the title and text of 3.4.6 to read as follows:]*

#### **3.4.6 Optional Smaller Label Format**

Mailers may prepare labels bearing Intelligent Mail container barcodes (see Exhibit 3.4.6) in a smaller alternate format as follows:

- a. Labels must include the required elements described in 705.8.6.
- b. Labels must measure no less than 4 inches high by 7 inches long.
- c. Labels prepared in the minimum size of 4 inches high by 7 inches long may include a restricted mailer/acceptance unit area that cannot exceed one line of text or contain larger than 12-point type. Text in the restricted mailer/acceptance unit area must be restricted to the bottom line of the label (below the lower barcode identification bar).
- d. Intelligent Mail container labels prepared in the optional smaller format, but measuring more than 4 inches high by 7 inches long in both (or either) dimensions, must preserve the top 3.75 inches of the label, or the area including and above the lower barcode identification bar (whichever is greater), for USPS-required elements. The remainder of the label is available for restricted mailer/acceptance unit use. Text in the restricted mailer/acceptance unit area, when used, cannot contain larger than 12-point type.
- e. All text placed in the mailer/acceptance unit area must be approved by the business mail entry unit (BMEU) servicing the mailer for acceptance and verification, except as allowed under 705.8.6.6a or 705.8.6.6b for optional placement of required origin office/MAILER location information. Mailers wishing to include information other than that approved or allowed for use in this area must use the larger size label specified in 3.4.3.
- f. Labels must be securely affixed on two adjacent sides on the outside of the shrinkwrap or plastic of pallets.
- g. Labels containing Intelligent Mail container barcodes must meet the specifications for labels posted at [postalpro.usps.com/](http://postalpro.usps.com/).

*[Revise the title of Exhibit 3.4.6 to read as follows:]*

#### **Exhibit 3.4.6 Intelligent Mail Container Label – Optional Format with Restricted Mailer Area**

\* \* \* \* \*

#### **3.4.8 Quality Assurance Provisions**

*[Revise the text of 3.4.8 to read as follows:]*

Mailers printing Intelligent Mail container labels are responsible for the inspection and testing of the labels prior to



submission to the USPS and for maintaining the overall quality of the labels they produce. Inspection and testing of Intelligent Mail container labels should be performed periodically. Mailers are encouraged to work with their local mailpiece design analyst to validate the accuracy and quality of their labels.

\* \* \* \* \*

**207 Periodicals**

\* \* \* \* \*

**27.0 Combining Multiple Editions or Publications**

\* \* \* \* \*

**27.6 Additional Standards**

\* \* \* \* \*

[Revise the text of item a. to read as follows:]

- a. Use Intelligent Mail tray labels on trays and sacks and Intelligent Mail container labels, under 204.3.3 and 204.3.4, on pallets or similar containers.

\* \* \* \* \*

**700 Special Standards**

\* \* \* \* \*

**705 Advanced Preparation and Special Postage Payment Systems**

\* \* \* \* \*

**8.0 Preparing Pallets**

\* \* \* \* \*

[Revise the title of 8.6 to read as follows:]

**8.6 Pallet Labels**

**8.6.1 Placement**

[Revise the second sentence of 8.6.1 to read as follows:]

\*\*\*Pallets prepared through plant-load or drop-shipment agreements must be placed on transportation so that a pallet label on each pallet faces toward the rear of the vehicle.

**8.6.2 Specifications**

[Revise the text of 8.6.2 to read as follows:]

Pallet labels must be pink for Periodicals and white for First-Class Mail, USPS Marketing Mail, Package Services, and Parcel Select. Pallet labels must measure at least 8 inches by 11 inches, except that pallet or other USPS container labels bearing Intelligent Mail container barcodes may measure no less than 4 inches by 7 inches when prepared under 204.3.4.6. Labels, affixed to pallets containing Periodicals, bearing an Intelligent Mail container barcode

and prepared in the optional smaller format under 204.3.4.6, may be white instead of pink when a vertical pink, 1/2-inch-wide identification bar is included along the left-hand side of the label, or may be white when used in conjunction with an adjacent pink designator label, under 204.3.4.5.

\* \* \* \* \*

**8.6.6 Line 3**

[Revise the third and fourth sentence of the introductory text of 8.6.6 to read as follows:]

\*\*\*Labels on containers of parcels prepared using eVS under 2.9 must show "eVS" either to the left of required line 3 information or directly below line 3 using the same size and lettering used for line 3. At the mailer's option, pallet labels prepared for destination entry may have the correct destination entry office information printed left-justified on line 3 only under these conditions:

\* \* \* \* \*

**8.6.8 Extraneous Information**

\* \* \* \* \*

[Revise the text of item a. to read as follows:]

- a. The type size is smaller than a 1/2 inch with a maximum 12-point font on the optional smaller labels under 204.3.4.6.

\* \* \* \* \*

**8.7 Copalletized, Combined, or Mixed-Price Level Palletized Mailings**

\* \* \* \* \*

[Revise the text of item b. to read as follows:]

- b. In accordance with 204.3.1.1 and 204.3.1.2, Intelligent Mail tray labels must be used on trays and sacks and Intelligent Mail container labels must be used on pallets or similar containers.

\* \* \* \* \*

**8.16 Copalletized Letter-size and Flat-size Pieces – Periodicals or USPS Marketing Mail**

**8.16.1 Basic Standards**

\* \* \* \* \*

[Revise the text of item b. to read as follows:]

- b. In accordance with 204.3.3 and 204.3.4, use Intelligent Mail tray labels on trays and sacks, and Intelligent Mail container labels on pallets or similar containers.

\* \* \* \* \*

**14.0 FSS Scheme Preparation****14.1 General**

\* \* \* \* \*

*[Revise the text of item d. to read as follows:]*

- d. Pallets must be prepared under 8.0 and labeled under 8.6, with a pallet label bearing an Intelligent Mail container barcode, as described in 204.3.4.

\* \* \* \* \*

**15.0 Combining USPS Marketing Mail Flats and Periodicals Flats**

\* \* \* \* \*

**15.2 Combining USPS Marketing Mail Flats and Periodicals Flats in the Same Bundle**

\* \* \* \* \*

**15.2.3 Pallet Presort and Labeling***[Revise the fourth sentence of 15.2.3 to read as follows:]*

\*\*\*Pallet labels must be white and measure at least 8 inches by 11 inches, unless prepared under 204.3.4.6.\*\*\*

**15.3 Combining Bundles of USPS Marketing Mail Flats and Periodicals Flats on the Same Pallet**

\* \* \* \* \*

**15.3.3 Pallet Presort and Labeling***[Revise the fifth sentence of 15.3.3 to read as follows:]*

\*\*\*Pallet labels must be white and measure at least 8 inches by 11 inches, unless prepared under 204.3.4.6.\*\*\*

\* \* \* \* \*

**20.0 eInduction Option**

\* \* \* \* \*

**20.3 General Eligibility Standards**

\* \* \* \* \*

*[Revise the first and second sentence of item a. to read as follows:]*

- a. Be labeled with a USPS label and a unique Intelligent Mail container barcode. All required pallets and similar containers (such as all-purpose containers, hampers, and gaylords) and all containers prepared under 8.0, must display container labels that include accurately encoded Intelligent Mail container barcodes (IMcb), as described in 204.3.4.4.\*\*\*

\* \* \* \* \*

We will incorporate these revisions into the next online update of the DMM, which is available via Postal Explorer® at [pe.usps.com](http://pe.usps.com).

— Product Classification,  
Marketing, 8-3-17

**DMM Revision: Return Receipt Service**

Effective September 11, 2017, the Postal Service™ will revise *Mailing Standards of the United States Postal Service, Domestic Mail Manual (DMM®)*, section 503.1.4, Exhibit 1.4.1, to clarify the prerequisites for when a mailer requests to use return receipt service.

In the May 4, 2015, *Federal Register* (80 FR 25527-25569), the Postal Service introduced the USPS Signature® service umbrella which encompassed various extra services that provided electronic signature data. The *Federal Register* article expanded the return receipt service prerequisites; however, this change was not reflected in the DMM. We wish to clarify that Signature Confirmation™ Restricted Delivery, Adult Signature Required, and Adult Signature Restricted Delivery services qualify as prerequisites when adding a hard copy return receipt to certain eligible mail. These services will now align with the available service type codes used with Intelligent Mail® package barcodes.

Although we will not publish these revisions in the DMM until September 11, 2017, the standards are effective immediately.

**Mailing Standards of the United States Postal Service, Domestic Mail Manual (DMM)**

\* \* \* \* \*

**500 Additional Services****503 Extra and Additional Services**

\* \* \* \* \*

**1.0 Basic Standards for All Extra Services**

\* \* \* \* \*

**1.4 Eligibility for Extra Services**

\* \* \* \* \*

**1.4.1 Eligibility – Domestic Mail**

\* \* \* \* \*

**Exhibit 1.4.1 Eligibility – Domestic Mail**

\* \* \* \* \*

**Return Receipt**

\* \* \* \* \*

*[Revise the “ELIGIBLE MAIL” column for “Return Receipt” to read as follows:]*

**Priority Mail Express**

(Form 3811 only)

**Priority Mail**<sup>3</sup>

**First-Class Mail**<sup>3</sup>

**First-Class Package Service**<sup>1, 3</sup>

**USPS Marketing Mail**<sup>1, 4, 7</sup>

**Parcel Select**<sup>1, 8</sup>

**Parcel Select Lightweight**<sup>1, 9</sup>

**USPS Retail Ground**<sup>5</sup>

**Bound Printed Matter**<sup>1, 5</sup>

**Library Mail**<sup>5</sup>

**Media Mail**<sup>5</sup>

\* \* \* \* \*

*[Revise the “ADDITIONAL COMBINED EXTRA SERVICES” column for “Signature Confirmation Restricted Delivery” by deleting footnote #6 following “Return Receipt.”]*

\* \* \* \* \*

*[Revise the footnotes under Exhibit 1.4.1 to read as follows:]*

1. Not at retail.
2. Parcels only.
3. If also purchased with Adult Signature services, Certified Mail services, COD services, insurance over \$500.00, Signature Confirmation Restricted Delivery, or Registered Mail services.
4. If also purchased with bulk insurance over \$500.00.
5. If also purchased with COD services, insurance over \$500.00, or Signature Confirmation Restricted Delivery.
6. If also purchased with insurance over \$500.00, COD services, or Registered Mail services.
7. USPS Marketing Mail Nonprofit, USPS Marketing Mail Parcels (Machinable, Irregular) only.
8. If also purchased with Adult Signature services, COD services, insurance over \$500.00, or Signature Confirmation Restricted Delivery.
9. If also purchased with Adult Signature services, bulk insurance over \$500.00, or Signature Confirmation Restricted Delivery.

\* \* \* \* \*

We will incorporate these revisions into the next online update of the DMM, which is available via Postal Explorer<sup>®</sup> at [pe.usps.com](http://pe.usps.com).

– Product Classification,  
Marketing, 8-3-17

## IMM Revision: IPA and ISAL Price Groups

Effective August 3, 2017, the Postal Service™ is revising *Mailing Standards of the United States Postal Service*, International Mail Manual (IMM®), sections 292.233 and 293.233, to correct a reference to price groups for international service center (ISC) drop shipments for International Priority Airmail® (IPA®) service and for International Surface Air Lift® (ISAL®) service. The IMM inadvertently referred to price groups “10–15” when the actual groups are “15–19.”

### *Mailing Standards of the United States Postal Service*, International Mail Manual (IMM)

	*	*	*	*	*
<b>2</b>	<b>Conditions for Mailing</b>				
	*	*	*	*	*
<b>290</b>	<b>Commercial Services</b>				
	*	*	*	*	*
<b>292</b>	<b>International Priority Airmail (IPA) Service</b>				
	*	*	*	*	*
<b>292.2</b>	<b>Eligibility</b>				
	*	*	*	*	*
<b>292.23</b>	<b>Minimum Quantity Requirements</b>				
	*	*	*	*	*
<b>292.233</b>	<b>Presort Eligibility — ISC Drop Shipment</b>				
	*	*	*	*	*

[Revise item b. to read as follows (changing “price groups 10–15” to “price groups 15–19” — in bold here just for emphasis):]

- b. *Mixed country price*. For price groups 9–14, a minimum of 5 pounds for each *price group*; for **price groups 15–19**, a minimum of 5 pounds for each *price group* prepared under 292.482a, or a minimum of 5 pounds for each *sack* prepared under 292.482b.

\* \* \* \* \*

### **293 International Surface Air Lift (ISAL) Service**

\* \* \* \* \*

#### **293.2 Eligibility**

\* \* \* \* \*

#### **293.23 Minimum Quantity Requirements**

\* \* \* \* \*

#### **293.233 Presort Eligibility — ISC Drop Shipment**

\* \* \* \* \*

[Revise item b. to read as follows (changing “price groups 10–15” to “price groups 15–19” — in bold here just for emphasis):]

- b. *Mixed country price*. For price groups 9–14, a minimum of 5 pounds for each *price group*; for **price groups 15–19**, a minimum of 5 pounds for each *price group* prepared under 293.482a, or a minimum of 5 pounds for each *sack* prepared under 293.482b.

\* \* \* \* \*

Although effective August 3, 2017, we will incorporate these revisions into a later edition of the online IMM (scheduled for September 11, 2017). The online IMM is available via Postal Explorer® at [pe.usps.com](http://pe.usps.com).

— Product Classification,  
Marketing, 8-3-17

## Forms

### Revised PS Form 999, Application for Reinstatement List

Effective July 2017, the Postal Service™ revised PS Form 999, *Application for Reinstatement List*, to update the directions and submission information to ensure employees have clear, accurate application instructions.

Revised PS Form 999, *Application for Reinstatement List*, is now available on the Postal Service PolicyNet website:

- Go to [blue.usps.gov](http://blue.usps.gov).
- In the left-hand column under “Essential Links,” click *PolicyNet*.
- Click *Forms*.

The direct URL for PS Form 999 is [blue.usps.gov/form-mgmt/forms/ps999.pdf](http://blue.usps.gov/form-mgmt/forms/ps999.pdf).

— *Organization Design,  
Employee Resource Management, 8-3-17*

# Organization Information

## Mailing and Shipping Services

### Mail Alert

The mailings below will be deposited in the near future. Offices must process this mail according to applicable service standards with the in-home dates in mind. Mailers wishing to participate in these alerts, for mailings of 1 mil-

lion pieces or more, must contact Business Service Network Integration, at 202-268-3258, at least 1 month preceding the requested delivery dates.

<b>Requested Delivery Dates</b>	<b>Title of Mailing</b>	<b>Class and Type of Mail</b>	<b>Number of Pieces (Millions)</b>	<b>Distribution</b>	<b>Presort Level</b>	<b>Comments</b>
08/07/17–08/10/17	Ginny's	Standard Catalog	2.00	Nationwide	3/5 Digit	Quad Graphics
08/07/17–08/10/17	Seventh Avenue	Standard Catalog	2.00	Nationwide	3/5 Digit	Quad Graphics
08/14/17–08/17/17	Midnight Velvet	Standard Catalog	4.00	Nationwide	3/5 Digit	Quad Graphics
08/14/17–08/17/17	Montgomery Ward	Standard Catalog	5.00	Nationwide	3/5 Digit	Quad Graphics
08/16/17–08/19/17	Ashro	Standard Catalog	2.00	Nationwide	3/5 Digit	RR Donnelly
08/21/17–08/24/17	Through the Country Door	Standard Catalog	3.00	Nationwide	3/5 Digit	Quad Graphics

– Business Customer Support and Services, Sales and Customer Relations, 8-3-17

## USPS Caution Heavy and Special Handling — Fragile Labels

USPS® created the *Caution Heavy* and *Special Handling — Fragile* labels to ensure that mailpieces bearing either label are separated from the mailstream and given special handling during dispatch, processing, and transportation.



Label 035CH, *Caution Heavy*, is a visual alert for packages that weigh 35 lbs. and over. This universal label captures the employee's and customer's attention before lifting to help make a safer work environment.

Sales and Services Associates (SSAs) at the Retail counter will affix Label 035CH to qualifying packages.



Label 875, *Special Handling — Fragile*, is a domestic extra service offered to our customers for a fee to enhance their shipping options. This service provides preferential handling for packages with the fragile designation, to the extent practicable in dispatch and processing, but does not insure the item against loss or damage.

SSAs who accept Priority Mail Express® mailpieces labeled *Special Handling — Fragile* at the Retail counter will identify Label 875 or the markings "Special Handling — Fragile" or "S.H.—Fragile," and place the mailpiece into Mail Transport Equipment with a placard that identifies the contents as "Special Handling — Fragile."

Business mailers can order the *Caution Heavy* label on The Postal Store® website at [store.usps.com/store/](https://store.usps.com/store/).

— Shipping Products and Services,  
Product Innovation, 8-3-17

## Retail

### Order 2017 Stamps by Mail Holiday Brochures Now

Stamps by Mail® (SBM) Holiday brochures are an excellent way to increase retail revenue and reduce wait time in line during our busiest season at the Postal Service™. Locations that wish to increase revenue are encouraged to order the Stamps by Mail Holiday brochures. There is no additional charge to customers for this service or for shipping and handling when making a purchase using the Stamps by Mail Holiday brochure.

In early October 2017, we will be pleased to offer two new holiday stamp booklets: *The Snowy Day* and *Christmas Carols*.

Here is the product information offered to customers inside the brochure:

The Snowy Day (Forever® Stamp)
Christmas Carols (Forever Stamp)
Florentine Madonna & Child (Forever Stamp)
Hanukkah; Kwanzaa; Nativity
Forever Stamp Roll
Forever Stamp Booklet
Global Forever Stamp Sheet

### Stamps by Mail – Brochure Ordering Information

The FY 2017 Holiday ordering and print cycle cut-off dates are as follows:

Brochure Version	eBuy2 Cut-off Date	Print Run Cut-off Date	Estimated Delivery
Holiday	8/7/2017	8/21/2017	September/October
Holiday	9/18/2017	10/2/2017	November

The cost per unit of 500 is \$12.50. This cost includes overprinting the address of the fulfillment office placing the order. Cyril-Scott Company must receive orders placed by mail by close of business the day of the print run cut-off date listed here. Orders received after the cut-off date will be processed for the next print run date.

Use eBuy2 to order Stamps by Mail brochures. Supply Management must receive these approved eBuy2 orders by the eBuy2 cut-off date and approve them in eBuy2 prior to a published print run cut-off date.

### SBM Brochure Ordering Instructions Through eBuy2

- Login to eBuy2 System.
- Enter application.
- Click the search button (binoculars).
- Browse by supplier:
  - Cyril-Scott or item number #SBM-Year.
- Add quantity.
- Add item:
  - Pop-up will require all fields, except address line 2.
  - Do **NOT** include PO Box™ numbers in the address lines — all orders with PO Box numbers will be rejected.
- Save custom information.
- Card will display all information entered.
- Finish request.
- Complete requisition and justification.
- Verify “Ship to” and “Bill to” information.
- Finish order request.
- Verify “Approver.”
- Submit request for approval.

— Stamp Services,  
Marketing, 8-3-17



# Pull-Out Information

## Fraud

### Invalid USPS Corporate Account Numbers

Please provide this listing to Contract Postal Units and acceptance clerks in non-POS locations without intranet access to validate a USPS Corporate Account (USPSCA) number online. For all other locations, online USPSCA validation is preferred. The online validation process is outlined in the USPSCA Validation SOP on the Retail webpage. This list supersedes all previous notices, which must be recycled.

Acceptance clerks must not accept Priority Mail Express® shipments bearing an invalid USPSCA number in the “Payment by Account” or “Agreement Number” section of the label or form.

**Note:** The first 6 digits of a 9-digit Custom Designed Service and Next Day Pickup Agreement make up the Corporate Account Number.

005129	022374	080174	119027	200016	298027	436485	488024	741455	856009	914827	931568	982572
005984	022535	080734	119144	200101	300543	441016	490097	741692	891261	915374	931899	982665
006052	022660	088761	119531	200103	301431	441889	490726	741700	891614	915617	933019	982668
006382	023002	089421	120245	200170	301511	443570	494274	744143	891615	916020	933510	982687
008030	023167	090226	120336	200295	301523	451050	496139	747018	895199	917099	933552	982712
008130	023547	090738	124138	200406	301565	452022	501003	750350	900024	917414	941003	983092
008264	023631	091220	134022	200483	301769	452027	531439	752122	900033	917485	941334	985217
008927	025110	091975	142317	200529	303523	453066	532009	752131	900117	917557	941472	989093
009532	025397	093506	142431	200603	306987	464186	551068	752132	900162	917594	943006	989099
009813	026019	094324	146818	200800	309009	464224	551204	752235	900179	918184	946249	992203
010509	026085	094412	152036	200874	322118	466594	553141	752948	900228	918563	946478	992269
010733	026237	094621	154020	200924	322380	468550	553720	756008	900233	918619	948721	992784
010762	026646	095195	165328	200983	322645	472029	553824	757582	900255	920087	954003	992788
010797	026653	095239	170227	208563	322870	472043	554020	761010	900258	920257	967274	995420
011110	029757	095814	173040	208648	322906	472076	600032	771571	900259	921358	969074	995470
011379	054301	096229	173312	208858	322999	472080	604184	773416	900341	924120	970716	995532
012395	060084	097393	173391	210499	324443	473066	604304	801329	900382	924125	972347	995575
012413	060723	097731	175010	210864	325612	473068	605005	801410	900390	926045	972375	995687
014809	061127	098111	175062	220264	326225	473081	605066	801502	900808	926054	972932	995696
018192	061622	098844	175072	221079	326315	473094	605143	802163	900974	926061	973291	995749
018217	065366	100359	191115	221337	326406	474055	606397	802362	901041	926065	980035	995872
020133	066010	100679	191268	222274	326525	474062	607043	802648	901338	926192	980394	997095
020562	067103	100696	191424	232192	329061	474065	612004	804050	901940	926221	980694	997250
021071	067159	100939	192144	232406	331421	474080	613155	813280	902626	926465	980809	
021287	067219	100947	192345	232601	331970	475110	641188	815026	904648	926466	980928	
021306	070449	100985	192406	235192	332036	478115	672016	841268	906031	926584	981620	
021480	071176	105611	192485	235199	333627	478116	674002	841436	906049	927148	981925	
021791	077027	106194	192636	245217	334334	478827	721072	841834	906138	927359	982023	
021822	077543	112005	192684	270003	335118	479049	730447	844064	906185	927435	982216	
021945	077874	115475	192768	272306	336610	479077	731576	853496	906270	927468	982294	
022017	078024	115816	192786	275096	344085	479130	735055	853588	906402	927845	982328	
022132	079033	117146	193617	280172	391171	479131	735069	853739	906808	928311	982372	
022215	079459	117782	196077	281148	392533	479136	737023	853871	907005	928324	982423	
022221	079756	118131	196088	293306	410221	479140	740016	853920	913098	928615	982444	
022229	079952	118904	197119	296561	432693	487280	740899	853984	914450	930320	982543	

## Missing, Lost, or Stolen U.S. Money Order Forms

**Do Not Cash — Upon Receipt, Notify Local Postal Inspectors**

Provide this listing to all Postal Service™ employees responsible for accepting and cashing postal money orders. Destroy all interim notices when the numbers listed

appear in the *Postal Bulletin*. The actual serial numbers consist of the first 10 digits on the money orders. Check for altered dollar amounts by holding money orders to the light.

<b>010 001 0200 to 0299</b>	040 688 8816 to 8899	077 617 5481 to 5499	126 423 0136 to 0169
010 504 1932 to 1999	041 299 6752 to 6799	077 999 4001 to 4090	127 500 2328 to 2399
011 582 1889 to 1899	041 623 8889 to 8899	078 174 4475 to 4499	<b>160 901 2254 to 2299</b>
011 588 2900 to 3099	041 803 6565 to 6599	078 219 4931 to 4999	161 103 6581 to 6599
012 441 0784 to 0799	043 129 1968 to 1997	078 250 4756 to 4799	161 194 2857 to 0899
012 579 5675 to 5699	043 205 5922 to 5999	078 823 8312 to 8399	162 032 4447 to 4499
013 289 6176 to 6199	044 087 3457 to 3499	079 374 0300 to 2499	163 257 1085 to 1099
013 610 0014 to 0099	044 087 4000 to 4099	079 807 2342 to 2399	164 359 2406 to 2499
014 932 1000 to 1099	044 226 2487 to 2512	<b>082 721 0228 to 0254</b>	166 101 1433 to 1499
014 972 0800 to 0899	044 306 4200 to 4299	083 140 5000 to 7499	167 555 5201 to 5212
015 363 0065 to 0099	044 306 4370 to 4599	083 784 8886 to 8899	167 555 5214 to 5299
017 028 3200 to 3299	045 524 4121 to 4298	083 913 6915 to 6999	169 618 6274 to 6299
018 569 5333 to 5399	046 800 9870 to 9899	084 478 3920 to 3999	<b>171 806 6878 to 6893</b>
018 986 5264 to 5299	047 352 4000 to 4099	086 000 8271 to 8299	173 639 4685 to 4699
019 518 2814 to 2899	048 383 7650 to 7659	086 798 3840 to 3849	174 238 2779 to 2799
<b>020 698 5159 to 5199</b>	048 396 3647 to 3699	088 404 4472 to 4499	174 281 9347 to 9399
020 844 7307 to 7399	<b>051 142 0755 to 0799</b>	088 404 5584 to 5699	175 251 2600 to 0699
020 972 8948 to 8999	051 774 8857 to 8899	088 757 8688 to 8699	176 281 7937 to 7950
022 021 9110 to 9181	051 781 2875 to 2885	088 757 9400 to 9499	176 281 7963 to 7999
022 037 1411 to 1499	051 977 7010 to 7023	089 358 2248 to 2257	176 731 6586 to 6599
022 527 9201 to 9210	052 058 7115 to 7199	<b>090 663 9678 to 9684</b>	178 254 5000 to 9999
022 529 1882 to 1899	054 450 1130 to 1167	091 818 0071 to 0099	178 881 9900 to 9999
023 637 7169 to 7199	057 670 0563 to 0599	093 106 9346 to 9355	<b>180 031 2089 to 2098</b>
024 380 4100 to 4199	058 187 3836 to 3899	093 203 0500 to 0599	180 403 7723 to 7741
024 496 6870 to 6896	058 523 3003 to 3099	093 684 3630 to 3699	180 428 4580 to 0599
025 092 0987 to 0999	058 591 1153 to 1299	094 081 5074 to 5099	182 368 7544 to 0599
025 369 5535 to 5599	058 895 3746 to 3799	094 216 2555 to 2599	182 475 3229 to 3258
025 729 1151 to 1199	059 986 0814 to 0899	094 580 7062 to 7099	182 475 3904 to 3933
025 729 1643 to 1799	<b>060 406 7650 to 7699</b>	094 639 4200 to 4299	182 631 0031 to 0099
026 492 3180 to 3199	063 491 8122 to 8199	095 070 7186 to 7199	182 911 6539 to 6600
027 361 0430 to 0499	063 916 9968 to 9999	095 076 8300 to 8399	184 218 2760 to 2799
027 369 4482 to 4495	064 091 4500 to 4599	095 354 6864 to 6899	185 828 1474 to 1499
027 671 8762 to 8776	065 170 0471 to 0499	097 224 1350 to 1599	186 132 7583 to 0599
027 787 9886 to 9899	065 255 7909 to 7999	<b>100 160 3800 to 3899</b>	186 629 0589 to 0599
027 965 9487 to 9499	065 392 6345 to 6399	104 667 6400 to 6499	187 184 6177 to 0199
028 100 8069 to 8099	066 099 2014 to 2099	104 876 8937 to 8999	187 323 8200 to 8299
028 191 1852 to 1999	066 648 2880 to 2899	<b>112 049 4413 to 4499</b>	187 441 6080 to 6099
028 850 3000 to 3199	066 787 3639 to 3699	112 870 9765 to 9799	188 831 6774 to 6799
029 510 1500 to 1599	066 845 7500 to 9999	113 319 2000 to 2099	188 835 6370 to 6399
<b>030 687 0903 to 0999</b>	067 093 3869 to 3899	114 402 3850 to 3899	189 083 1064 to 1099
030 701 3442 to 3499	068 895 0334 to 0399	114 866 5368 to 5397	189 660 9583 to 9599
031 077 4507 to 4799	<b>070 724 4488 to 4499</b>	116 154 2800 to 2899	<b>191 179 0377 to 0399</b>
032 295 7500 to 9999	070 841 9181 to 9199	116 986 4400 to 4499	192 050 5762 to 5781
034 394 1000 to 1099	070 844 2546 to 2599	117 175 1647 to 5169	194 456 8600 to 0699
034 943 0400 to 0799	070 916 1340 to 1399	117 951 4687 to 4699	195 194 6881 to 6899
035 035 4337 to 4399	071 047 5768 to 5799	117 951 5200 to 5299	195 874 1112 to 1199
037 312 7500 to 7599	071 179 9800 to 9899	119 786 3051 to 3064	196 979 0524 to 0599
037 706 9578 to 9599	071 386 3682 to 3699	119 815 8961 to 6199	197 244 6100 to 6199
037 805 3677 to 3699	071 507 6840 to 6899	119 850 7400 to 7499	197 244 6300 to 6399
037 909 5490 to 5499	072 045 9641 to 9699	119 850 7700 to 7999	197 244 6400 to 6499
037 931 4660 to 4699	072 675 8287 to 8299	<b>121 634 0460 to 0499</b>	197 244 6500 to 6599
039 145 6521 to 6595	073 763 0867 to 0876	122 451 9879 to 9899	197 244 6600 to 6699
<b>040 024 3901 to 3999</b>	073 763 0878 to 0887	122 714 6805 to 6900	197 244 6700 to 6799
040 674 7100 to 7199	073 763 0889 to 0898	124 916 0304 to 0499	197 244 6800 to 8999

198 285 2556	to	2566	<b>273 070 8059</b>	<b>to</b>	<b>8099</b>	398 149 7200	to	7699	418 164 6500	to	6799
199 105 0778	to	0799	273 775 7700	to	7899	399 070 0872	to	0899	418 423 9863	to	9899
199 678 2968	to	2999	<b>302 000 0000</b>	<b>to</b>	<b>9999</b>	399 156 7119	to	7199	418 633 5922	to	5999
<b>202 748 5133</b>	<b>to</b>	<b>5199</b>	<b>349 746 2056</b>	<b>to</b>	<b>2099</b>	399 203 5064	to	5099	418 719 8520	to	8599
202 748 5245	to	5299	<b>350 518 7350</b>	<b>to</b>	<b>7374</b>	399 296 9910	to	9999	418 744 2235	to	2299
202 748 5300	to	5399	<b>360 011 1690</b>	<b>to</b>	<b>1699</b>	399 396 8935	to	8999	418 962 2848	to	2899
202 748 5400	to	5499	360 168 6008	to	6099	399 792 7775	to	7799	419 543 0286	to	0299
203 256 1240	to	1299	360 173 8800	to	8899	399 792 8300	to	8399	419 730 0300	to	0399
204 230 3577	to	3595	360 324 2326	to	2399	<b>400 427 1051</b>	<b>to</b>	<b>1999</b>	<b>420 277 0015</b>	<b>to</b>	<b>0049</b>
205 019 0174	to	0199	362 861 3064	to	3099	401 045 1505	to	1549	420 599 0734	to	0798
207 196 9900	to	9999	<b>373 006 2176</b>	<b>to</b>	<b>2199</b>	401 045 1571	to	1599	420 661 4115	to	4199
207 204 0700	to	0799	374 768 2600	to	2699	401 294 2700	to	2799	420 758 9500	to	9699
207 204 0800	to	0899	375 169 4400	to	4599	401 310 9505	to	9599	420 969 3951	to	3971
207 514 3857	to	3899	375 829 3400	to	3499	401 382 5312	to	5399	420 969 3973	to	3999
208 556 4707	to	4799	375 851 9100	to	9199	402 578 7876	to	7899	421 116 3565	to	3599
<b>210 057 4038</b>	<b>to</b>	<b>4047</b>	376 196 0911	to	0999	403 125 6744	to	6799	421 130 9300	to	9399
210 221 0548	to	0599	378 085 3679	to	3699	403 260 7000	to	7499	421 313 4500	to	4999
214 061 4711	to	4724	378 351 1063	to	1099	403 280 6470	to	6499	421 364 5537	to	5599
214 303 6311	to	6325	379 843 5100	to	5199	403 685 8600	to	8699	421 656 2609	to	2699
214 303 6239	to	6258	<b>380 093 9600</b>	<b>to</b>	<b>9699</b>	404 003 0300	to	0399	421 988 9700	to	9799
214 877 4251	to	4273	380 165 1165	to	1199	404 041 8838	to	8899	422 172 4667	to	4699
215 252 3918	to	3992	381 325 4500	to	4599	404 071 4268	to	4299	422 484 4212	to	4299
218 698 2157	to	2199	381 604 2510	to	2699	404 347 5356	to	5399	422 556 1270	to	1299
218 746 0800	to	0899	381 645 9525	to	9599	404 347 5548	to	5599	422 587 7024	to	7099
219 095 0100	to	0399	383 314 3968	to	3999	404 726 4500	to	4599	422 819 7533	to	7599
219 389 1885	to	1899	383 892 1000	to	1344	404 961 5001	to	5199	422 842 5073	to	5087
219 568 7435	to	7456	383 892 1382	to	1399	405 325 0188	to	0198	422 907 7563	to	7599
219 568 7469	to	7487	384 925 3641	to	3654	406 009 4587	to	4599	424 500 6050	to	6099
<b>221 316 5757</b>	<b>to</b>	<b>5799</b>	385 568 2331	to	2399	406 260 6830	to	6899	424 641 8500	to	8599
223 476 3914	to	3999	385 599 7554	to	7575	406 459 6641	to	6999	424 871 6600	to	6699
223 565 4921	to	4957	385 774 2024	to	2099	406 733 3000	to	3999	425 298 2352	to	2399
223 565 4979	to	4999	386 624 1412	to	1599	407 545 1557	to	1599	425 418 4269	to	4299
224 636 4745	to	4765	386 883 8936	to	8999	407 594 0412	to	0599	425 418 4405	to	4499
224 636 4776	to	4799	387 314 5574	to	5599	407 692 9100	to	9299	426 547 4566	to	4599
224 636 4855	to	4885	387 837 6300	to	6399	407 959 2190	to	2199	427 412 6337	to	6499
224 636 4932	to	4948	388 828 0656	to	0699	408 265 2275	to	2288	427 481 0900	to	0999
224 636 4950	to	4962	389 696 2400	to	2799	408 499 7700	to	7799	428 027 2742	to	2752
224 636 4985	to	4999	389 846 3104	to	3135	408 499 7900	to	7999	429 474 4172	to	4199
224 730 2207	to	2299	389 846 3145	to	3195	408 682 8484	to	8599	429 889 2900	to	2999
225 970 0500	to	0599	389 887 9211	to	9230	408 698 7015	to	7099	<b>430 150 4401</b>	<b>to</b>	<b>4599</b>
225 970 0600	to	0699	389 887 9234	to	9299	409 072 3941	to	3999	430 172 9800	to	9899
225 970 0700	to	0799	<b>390 001 3182</b>	<b>to</b>	<b>3199</b>	<b>410 491 2311</b>	<b>to</b>	<b>2399</b>	430 177 1900	to	2099
227 033 8679	to	8699	390 001 3500	to	3699	410 694 8400	to	8599	430 444 9500	to	9699
227 275 9400	to	9999	390 545 5974	to	5999	410 775 1500	to	1599	430 664 4070	to	4099
228 463 2456	to	2499	391 104 6146	to	6199	410 795 7927	to	7999	432 168 8419	to	8499
228 510 4852	to	4899	391 574 1466	to	1499	410 867 0917	to	0966	432 708 6800	to	6999
229 462 8451	to	8475	391 783 3020	to	3599	410 867 0970	to	0999	432 744 1544	to	1599
229 668 5977	to	5999	391 792 6100	to	6199	411 868 1023	to	1199	432 995 9775	to	9799
229 923 9176	to	9199	392 668 2956	to	2999	411 922 2322	to	2399	433 003 5800	to	5899
229 924 6696	to	6699	392 854 8500	to	8899	412 193 0900	to	0999	433 757 3047	to	3099
<b>230 051 9500</b>	<b>to</b>	<b>9999</b>	393 584 7566	to	7699	412 395 8599	to	8699	433 765 4003	to	4099
236 366 2431	to	2499	393 650 0074	to	0099	412 485 6500	to	6599	434 482 7060	to	7199
236 607 6882	to	6899	393 838 8316	to	8499	412 485 6610	to	6699	434 513 2386	to	2399
236 660 5853	to	5872	393 893 6007	to	6099	412 885 5953	to	5999	434 968 3076	to	3092
239 322 5200	to	5299	394 126 6907	to	6999	414 193 3608	to	3674	435 303 1831	to	1842
239 322 5400	to	5499	394 189 0405	to	0599	414 193 3677	to	3699	435 303 1986	to	1999
239 322 5600	to	5699	394 822 3243	to	3278	414 411 7348	to	7399	435 666 6092	to	6399
239 322 5800	to	5899	394 990 1810	to	1899	414 640 0757	to	0799	436 082 6400	to	6899
239 322 5900	to	5999	395 343 3264	to	3299	414 965 1727	to	1799	436 160 6441	to	6499
<b>240 593 1879</b>	<b>to</b>	<b>1899</b>	395 373 3035	to	3099	417 302 8104	to	8199	437 316 7115	to	7199
<b>242 591 2048</b>	<b>to</b>	<b>2099</b>	395 396 9649	to	9799	417 387 6532	to	6599	437 427 0500	to	3499
242 735 0388	to	0398	395 970 3240	to	3299	417 496 6800	to	6999	439 179 2300	to	2399
242 951 7276	to	7299	397 622 4054	to	4099	417 871 9250	to	9299	439 310 0458	to	0499
<b>244 004 9985</b>	<b>to</b>	<b>9999</b>	397 819 8902	to	8999	417 930 9533	to	9599	<b>440 698 1947</b>	<b>to</b>	<b>1999</b>

440 858 6300	to	6399	<b>460 349 6878</b>	<b>to</b>	<b>6899</b>	478 469 7838	to	7858	496 213 8728	to	8799
440 858 6420	to	7299	460 550 1909	to	1999	478 469 7883	to	7899	496 474 5226	to	5248
441 199 1655	to	1699	460 997 5234	to	5299	479 280 9800	to	9899	497 053 8517	to	8699
443 127 3648	to	3699	461 973 6443	to	6499	479 365 9116	to	9176	497 854 8673	to	8699
443 127 4000	to	4099	462 152 0107	to	0299	479 412 9900	to	9999	498 449 8888	to	8899
443 673 7900	to	7999	462 274 1072	to	1099	479 667 6190	to	6199	498 929 8285	to	8499
443 800 9335	to	9399	462 277 8373	to	8399	479 748 9680	to	9699	498 936 5310	to	5399
444 382 8822	to	8899	462 554 6051	to	6099	479 860 7000	to	7199	499 016 5425	to	5499
444 390 1667	to	1699	463 011 5529	to	5540	<b>480 526 2000</b>	<b>to</b>	<b>2099</b>	499 440 8575	to	8899
444 457 3854	to	3899	463 176 4115	to	4199	480 640 6330	to	6399	499 731 6717	to	6799
<b>450 048 4173</b>	<b>to</b>	<b>4199</b>	463 176 4229	to	4299	480 658 0568	to	0599	<b>500 064 1858</b>	<b>to</b>	<b>1869</b>
450 048 4442	to	4699	463 185 2600	to	2799	480 689 5100	to	5199	500 070 5725	to	7799
450 560 5173	to	5199	463 227 7711	to	7799	481 072 9463	to	9499	501 058 0016	to	0026
450 620 3077	to	3099	463 414 4869	to	4899	481 673 0074	to	0095	501 331 0300	to	0399
450 620 3135	to	3199	463 808 3484	to	3499	482 527 1500	to	1599	501 460 0977	to	0999
450 780 2716	to	2799	463 945 7400	to	7899	482 541 5255	to	5299	502 227 7645	to	7699
450 801 2700	to	2799	464 629 9000	to	9399	482 729 6800	to	6899	502 424 0200	to	0499
451 109 2967	to	2984	464 711 4332	to	4399	483 363 7207	to	7299	502 424 0600	to	0699
451 115 4110	to	4125	465 692 3963	to	3999	483 402 2356	to	2399	502 496 6923	to	6999
451 115 4127	to	4199	465 698 8300	to	8599	483 486 5100	to	5199	503 003 2700	to	2899
451 746 0700	to	0799	465 743 7745	to	7799	483 632 1521	to	1599	503 194 5144	to	5153
452 265 0074	to	0099	466 798 6056	to	6067	483 632 2600	to	2799	503 790 9922	to	9948
452 265 0246	to	0299	467 147 4300	to	4399	483 849 1615	to	1699	504 045 4030	to	4099
452 265 0335	to	0999	468 079 5782	to	5799	484 174 4803	to	5299	504 166 0200	to	0599
452 509 1169	to	1199	469 067 2817	to	2899	484 323 8900	to	9199	504 240 1062	to	1399
452 855 6471	to	6499	469 127 8000	to	8199	484 680 5000	to	5038	504 805 3300	to	3499
452 890 4679	to	4799	469 213 0359	to	0399	484 680 5040	to	5074	505 096 0662	to	0699
452 900 8215	to	8238	469 213 0500	to	0599	484 680 5077	to	5099	505 893 7739	to	7799
453 117 9146	to	9199	469 561 8011	to	8099	485 029 4913	to	4999	505 893 7800	to	7999
453 334 3631	to	3699	469 658 1961	to	1999	486 176 0600	to	0699	506 124 0800	to	0999
453 603 7841	to	7891	469 666 9900	to	9999	486 559 7555	to	7599	506 165 7027	to	0099
453 650 1140	to	1199	469 678 1900	to	1999	486 696 3023	to	3199	506 502 5209	to	5299
453 741 1300	to	1399	469 781 4900	to	4999	488 173 7900	to	7999	506 756 1682	to	1699
454 013 2919	to	2999	469 947 6960	to	6999	488 206 4100	to	4199	506 756 1700	to	1799
454 186 2411	to	2499	<b>470 755 5800</b>	<b>to</b>	<b>5818</b>	488 226 0200	to	0299	506 756 1800	to	1899
454 268 4883	to	4899	471 918 0300	to	0999	488 709 3906	to	3999	506 836 5326	to	5399
454 302 5400	to	5499	471 985 2408	to	2419	488 855 8359	to	8399	508 488 6226	to	6299
454 490 8300	to	8399	472 191 6700	to	6799	489 181 8963	to	8999	508 789 8332	to	8399
454 547 7434	to	7499	472 270 2555	to	2599	489 223 2000	to	2099	508 789 8400	to	8499
454 922 4867	to	4895	472 987 0213	to	0241	489 311 1930	to	1999	509 909 0425	to	0435
455 221 1348	to	1499	472 987 0290	to	0299	489 318 6200	to	6300	<b>510 150 2400</b>	<b>to</b>	<b>2499</b>
455 364 2147	to	2199	473 151 2069	to	2199	489 384 0027	to	0099	510 381 3200	to	3299
455 399 5400	to	5499	473 666 9138	to	9199	489 427 0658	to	0899	510 587 9500	to	9599
455 476 0676	to	0699	473 952 3429	to	3499	489 997 5252	to	5299	510 587 9659	to	9699
455 543 0618	to	0699	474 108 5402	to	5499	<b>490 669 5850</b>	<b>to</b>	<b>6099</b>	510 269 9770	to	9999
456 410 9006	to	9099	474 356 5193	to	5299	490 717 7080	to	7099	511 021 5042	to	5099
456 470 4146	to	4299	474 949 3366	to	3399	490 721 6000	to	6099	511 021 5100	to	5199
456 619 4460	to	4499	475 134 9362	to	9399	490 793 1500	to	2099	511 468 1747	to	1799
457 333 2686	to	2699	475 167 9667	to	9699	490 886 8171	to	8199	511 844 0100	to	0199
457 729 1767	to	1777	475 319 3415	to	3499	490 977 9221	to	9240	511 844 0340	to	0399
457 937 8615	to	8699	475 319 3649	to	3799	491 258 8100	to	9099	<b>600 645 3223</b>	<b>to</b>	<b>3299</b>
458 028 9810	to	9899	475 340 6400	to	6599	491 567 1376	to	1399	601 339 1200	to	1399
458 057 2712	to	2999	475 424 8410	to	8499	492 254 4800	to	4899	601 653 5884	to	5899
458 069 9537	to	9599	475 629 9156	to	9199	492 283 5100	to	5199	601 661 7700	to	7799
458 069 9665	to	9699	475 850 6101	to	6199	492 610 6813	to	6899	601 682 5343	to	5399
458 337 5222	to	5299	475 875 2500	to	2599	493 394 5568	to	5599	601 928 1600	to	1699
458 354 7653	to	7999	476 169 8264	to	8299	493 470 2562	to	2599	602 512 2972	to	2999
458 671 8678	to	8699	476 189 3000	to	3499	493 473 7700	to	7799	602 555 2400	to	2799
458 671 8721	to	8798	476 331 2480	to	2499	493 716 2153	to	2199	602 829 7061	to	7099
458 847 5044	to	5999	477 289 8601	to	8699	494 206 2972	to	2999	603 483 9572	to	9599
459 274 7624	to	7699	477 681 5206	to	5299	494 217 3446	to	3999	603 490 7200	to	7299
459 365 5432	to	5499	478 010 4243	to	4268	494 224 0500	to	0599	603 678 7100	to	7199
459 378 5764	to	5799	478 010 4270	to	4291	495 145 0600	to	0699	603 678 7662	to	7699
459 472 4816	to	4999	478 450 5071	to	5099	496 209 7425	to	7499	603 678 7902	to	7999

603 678 8418 to 8499  
 603 678 8700 to 9999  
 604 086 0880 to 0899  
 604 349 1414 to 1499  
 604 503 7776 to 7799  
 605 520 9037 to 9099  
 605 685 4010 to 4099  
 605 988 6467 to 6499  
 607 689 7951 to 7960  
 607 728 1276 to 1299  
 608 727 7100 to 7199  
 608 727 7273 to 7599  
 608 813 9950 to 9999  
 609 067 5325 to 5399  
 609 067 5488 to 5499  
 609 067 5600 to 5699  
 609 289 6123 to 6199  
 609 438 4400 to 4499  
 609 493 1100 to 1199  
 609 766 8091 to 8999  
 609 825 4100 to 4115  
 609 884 2981 to 2999  
 609 893 1000 to 1099  
**610 092 3200 to 3299**  
 610 582 4200 to 4299  
 611 879 6939 to 6999  
 612 291 8013 to 8099  
 612 751 5171 to 5199  
 612 751 5226 to 5299  
 612 751 6083 to 6099  
 612 751 6268 to 6299  
 612 751 6572 to 6599  
 612 774 2111 to 2199  
 612 774 2254 to 2299  
 612 774 2500 to 2599  
 614 469 0979 to 0999  
 614 474 3000 to 3099  
 614 521 3490 to 3499  
 614 645 1800 to 1899  
 614 832 1100 to 2099  
 615 017 7505 to 7599  
 617 711 6609 to 6699  
 617 760 5266 to 5299  
 617 813 3601 to 3699  
 618 840 9200 to 9299  
 619 551 7229 to 7299  
 619 859 3000 to 3099  
**620 073 9400 to 9499**  
 621 614 7907 to 7930  
 621 614 7932 to 7999  
 621 648 8021 to 8199  
 621 648 8500 to 8599  
 621 904 8351 to 8599  
 621 916 1978 to 1989  
 622 989 8032 to 8099  
 623 076 9300 to 9399  
 623 819 5006 to 5099  
 623 895 8200 to 8399  
 623 917 0000 to 0099  
 623 917 0200 to 0299  
 624 468 5288 to 5299  
 624 665 3162 to 3198  
 625 088 6735 to 6799  
 625 916 9500 to 9799

625 968 8956 to 8999  
 627 005 3938 to 3999  
 627 384 3907 to 4099  
 627 496 7549 to 7599  
 627 708 3605 to 3699  
 627 776 2500 to 2599  
 628 226 3100 to 3199  
 628 814 4702 to 4799  
 628 851 9689 to 9699  
 629 510 7200 to 7299  
 629 964 4200 to 4294  
**630 389 3056 to 3071**  
 630 463 0588 to 0599  
 631 459 9117 to 9199  
 631 762 9325 to 9399  
 632 217 4933 to 4999  
 632 500 0000 to 640 3999  
 633 110 4165 to 4199  
 633 110 4303 to 4499  
 633 438 6429 to 6599  
 633 588 7173 to 7182  
 634 725 0700 to 0799  
 634 803 3239 to 3299  
 634 807 2474 to 2499  
 634 827 5900 to 5999  
 634 886 3428 to 3499  
 635 559 3449 to 3499  
 636 289 6214 to 6299  
 636 634 8007 to 8042  
 637 150 1200 to 1299  
 637 562 5828 to 5899  
 638 042 1647 to 1699  
 638 049 4984 to 4999  
 638 318 1115 to 1199  
 638 318 1453 to 1499  
 638 885 0000 to 0299  
 638 903 4362 to 4373  
 639 415 1929 to 1999  
 639 415 2019 to 2099  
 639 420 6200 to 6299  
 639 469 3517 to 3799  
 639 605 2143 to 2199  
 639 657 8600 to 8799  
**640 289 7500 to 7599**  
 640 289 7700 to 7999  
 641 170 4420 to 4499  
 641 318 3133 to 3199  
 641 378 6500 to 6999  
 641 383 8739 to 8799  
 641 877 3187 to 3299  
 641 877 3310 to 3399  
 642 355 8094 to 8199  
 642 355 8308 to 8999  
 642 900 0018 to 0099  
 643 030 6254 to 6299  
 644 066 0882 to 0899  
 644 069 0600 to 0699  
 644 077 7506 to 7699  
 644 085 8157 to 8199  
 644 112 9839 to 9899  
 644 373 9083 to 9099  
 644 380 1460 to 1499  
 644 733 4715 to 4799  
 644 900 9712 to 9799

644 901 0109 to 1299  
 644 901 1325 to 1399  
 644 923 6800 to 7799  
 644 932 4655 to 4699  
 645 318 7240 to 7499  
 645 333 1766 to 1799  
 645 790 8632 to 8699  
 645 821 0657 to 0699  
 645 930 7948 to 7999  
 645 975 0737 to 0762  
 646 242 6200 to 6299  
 646 270 7639 to 7799  
 646 798 4000 to 4999  
 647 048 7035 to 7099  
 647 049 2900 to 2999  
 647 398 8300 to 8399  
 647 398 8481 to 8499  
 647 437 3000 to 4999  
 647 811 2188 to 2199  
 648 009 6057 to 6099  
 648 163 5300 to 5499  
 648 722 5283 to 5299  
 648 892 3164 to 3199  
 649 100 3989 to 3999  
 649 647 0370 to 0399  
 649 647 0522 to 0599  
 649 647 5237 to 5399  
 649 647 9100 to 9299  
 649 666 7800 to 8299  
**650 114 7707 to 7719**  
 650 130 3400 to 3599  
 650 213 0406 to 0499  
 650 555 1749 to 1799  
 650 564 1900 to 1999  
 650 627 4212 to 4299  
 650 736 2043 to 2099  
 650 739 1540 to 1699  
 651 741 4415 to 4499  
 651 882 2800 to 2899  
 652 754 6317 to 6399  
 653 131 4945 to 4999  
 653 426 3300 to 3399  
 653 455 4874 to 4899  
 654 238 0000 to 0399  
 654 404 3065 to 3092  
 654 962 2900 to 3199  
 655 103 5081 to 5199  
 655 523 2600 to 2999  
 656 305 2448 to 2499  
 657 347 4438 to 4999  
 657 710 8100 to 8999  
 657 780 0985 to 0999  
 658 586 1400 to 1499  
 658 877 8000 to 8199  
 658 880 8000 to 8199  
 659 398 7300 to 7399  
 659 706 8113 to 8199  
 659 846 7837 to 7899  
**660 510 4100 to 4199**  
 660 673 0400 to 0599  
 661 488 5000 to 5099  
 661 609 9100 to 9199  
 661 716 9420 to 9499  
 661 906 6522 to 6599

662 021 8332 to 8399  
 662 068 0700 to 0899  
 662 553 0774 to 0799  
 663 078 7034 to 7099  
 663 763 5300 to 5399  
 663 883 7039 to 7499  
 663 938 9200 to 9299  
 664 253 8000 to 8499  
 664 656 3055 to 3099  
 665 174 6400 to 6499  
 665 274 8208 to 8299  
 665 669 5400 to 5499  
 666 132 8226 to 8299  
 666 696 2209 to 2299  
 666 696 2309 to 2399  
 667 032 9300 to 9399  
 667 729 5529 to 5599  
 668 383 8400 to 8699  
**670 368 3400 to 3499**  
 670 369 7336 to 7399  
 670 750 7169 to 7199  
 671 046 6200 to 6399  
 671 251 5448 to 5499  
 671 926 5600 to 5799  
 672 444 2000 to 2999  
 672 828 3410 to 3499  
 673 167 5776 to 5799  
 675 464 3700 to 3799  
 675 464 4000 to 4199  
 676 365 5958 to 5999  
 676 669 1024 to 1099  
 677 126 6734 to 6799  
 677 333 9979 to 9999  
 677 466 1088 to 1099  
 678 071 4500 to 4799  
 678 096 7531 to 7599  
 679 909 2578 to 2599  
**680 112 9565 to 9599**  
 680 244 0903 to 0999  
 680 412 6046 to 6099  
 680 761 6800 to 6899  
 681 677 0540 to 0699  
 682 070 1029 to 1099  
 682 956 6280 to 6299  
 682 956 6490 to 6599  
 682 956 6700 to 6799  
 682 965 1178 to 1199  
 682 965 1201 to 1299  
 683 118 2389 to 2399  
 683 378 2000 to 2099  
 683 378 2117 to 2299  
 683 415 1200 to 1499  
 683 444 8159 to 8199  
 685 154 7780 to 7789  
 685 297 7645 to 7699  
 685 623 5264 to 5299  
 685 650 9487 to 9499  
 685 669 4200 to 4299  
 685 757 8452 to 8499  
 686 071 2694 to 2799  
 686 176 3333 to 3354  
 686 372 3200 to 3299  
 686 644 5879 to 5899  
 686 899 1371 to 1399

686 931 7636	to	7699	702 519 0513	to	0524	808 325 5161	to	5699	854 304 4089	to	4999
687 601 0973	to	0999	702 713 1800	to	1809	808 784 8000	to	8299	854 529 2200	to	2299
687 614 6774	to	6799	702 821 5730	to	5799	<b>830 125 0672</b>	<b>to</b>	<b>0699</b>	854 532 0000	to	2999
688 120 9000	to	9999	702 821 5805	to	5899	830 602 5800	to	5999	855 001 6204	to	6249
688 314 3107	to	3191	702 844 6975	to	6994	830 610 3700	to	3799	855 319 9364	to	9399
<b>690 291 1361</b>	<b>to</b>	<b>1371</b>	702 846 6331	to	6399	830 983 3500	to	3599	855 361 3390	to	3399
690 788 2877	to	2899	702 848 3900	to	3999	830 983 3635	to	3699	856 226 0490	to	0499
690 893 5344	to	5399	702 857 7302	to	7499	831 354 1387	to	1399	856 656 5800	to	5999
690 893 5512	to	5599	702 878 0114	to	0199	831 815 8240	to	8299	856 752 0200	to	0299
690 904 1300	to	1599	703 364 1707	to	1799	832 525 3810	to	3899	857 111 1352	to	1399
690 941 6000	to	6199	<b>740 002 7710</b>	<b>to</b>	<b>7719</b>	833 159 1884	to	1899	857 279 3450	to	3499
691 313 6383	to	6399	740 037 6730	to	6800	833 456 2567	to	2599	857 843 4000	to	4099
691 313 6600	to	6699	740 119 2275	to	2284	833 566 3015	to	3071	858 124 7644	to	7699
691 582 8003	to	8099	740 130 6688	to	6698	834 130 5200	to	5299	858 756 3111	to	3299
691 664 1800	to	1999	740 144 2780	to	2795	834 316 5444	to	5499	859 063 8200	to	8699
691 664 2400	to	2499	740 241 9049	to	9099	834 354 8747	to	8766	859 190 0600	to	0644
692 727 9362	to	9399	740 252 9265	to	9294	834 354 8824	to	8838	859 437 5538	to	5599
692 798 1800	to	1899	740 255 1718	to	1799	835 269 5700	to	5799	859 811 2888	to	2899
693 249 0779	to	0799	740 274 2602	to	2619	835 496 7303	to	7399	859 855 8873	to	8999
693 249 0877	to	1699	740 277 0366	to	0392	835 539 5200	to	5999	<b>860 240 8520</b>	<b>to</b>	<b>8599</b>
693 445 0566	to	0999	740 332 7658	to	7671	835 813 3015	to	3099	860 275 3900	to	3999
693 448 8500	to	8999	740 348 6641	to	6658	837 672 8967	to	8999	860 518 9629	to	9699
693 645 9583	to	9599	740 351 4790	to	4799	837 784 3282	to	3299	860 600 0021	to	0999
693 965 4200	to	4299	740 374 7416	to	7499	838 176 8377	to	8399	861 158 2350	to	2599
695 741 2906	to	2999	740 470 2420	to	2443	838 518 1257	to	1299	861 367 5400	to	5499
695 947 8518	to	8599	740 514 0300	to	0499	839 718 8257	to	8299	861 637 6010	to	6099
696 662 8247	to	8299	740 523 7432	to	7449	<b>840 323 0600</b>	<b>to</b>	<b>0699</b>	861 979 7292	to	7499
697 447 8285	to	8296	740 535 1555	to	1580	840 875 6235	to	6299	862 216 6100	to	6199
698 042 4816	to	4899	740 557 3570	to	3579	840 910 0900	to	0999	862 263 9213	to	9299
698 131 2138	to	2157	740 650 4104	to	4140	841 349 5000	to	5099	862 271 0800	to	0999
698 227 0000	to	0099	740 684 0620	to	0800	841 805 7747	to	7899	862 271 5000	to	5099
<b>700 065 2570</b>	<b>to</b>	<b>2599</b>	740 701 6105	to	6114	841 805 7944	to	8099	863 871 5138	to	5199
700 065 4800	to	4899	740 705 9790	to	9799	842 226 0685	to	0695	863 949 5300	to	5399
700 190 3350	to	3359	740 726 6400	to	6500	842 685 4600	to	4699	864 088 8200	to	8299
700 228 6048	to	6099	740 748 8319	to	8329	842 685 4742	to	4999	864 426 3972	to	3999
700 650 0452	to	0499	740 765 3306	to	3399	842 860 0300	to	0399	864 520 6117	to	6136
700 666 1323	to	1349	740 774 8434	to	8499	842 898 5582	to	5599	865 151 0526	to	0599
700 786 9106	to	9142	740 779 4259	to	4299	843 062 7100	to	7199	865 500 4034	to	4099
700 859 0744	to	0758	740 786 1885	to	1899	843 077 6288	to	6299	865 883 6082	to	6099
701 028 6780	to	6899	740 790 5989	to	5999	843 077 6378	to	6399	866 004 3000	to	3999
701 213 3900	to	3999	740 803 4870	to	4879	843 758 5769	to	5778	866 442 4100	to	4899
701 267 2000	to	3999	740 820 4854	to	7836	843 786 2554	to	2699	867 366 9108	to	9118
701 335 7312	to	7399	740 827 7578	to	7594	845 656 8165	to	8199	867 633 7403	to	7499
701 369 2005	to	2050	740 917 7490	to	7499	845 727 2100	to	2199	867 737 5623	to	5699
701 499 2260	to	2299	740 918 5531	to	5549	845 746 2618	to	2635	868 169 4529	to	4599
701 503 2247	to	2299	741 037 8528	to	8551	846 390 7531	to	7599	868 173 8400	to	8599
701 541 2271	to	2299	742 030 6135	to	6149	846 918 0572	to	0599	868 514 9000	to	9099
701 553 6557	to	6599	742 033 2663	to	2674	847 237 7690	to	7699	868 566 9200	to	9299
701 578 7460	to	7469	742 040 3300	to	3309	847 284 2481	to	2499	869 200 0000	to	9999
701 578 7475	to	7499	742 151 5000	to	5014	847 374 7055	to	7065	869 387 1150	to	1199
701 601 3457	to	3499	742 191 4640	to	4649	847 374 7055	to	7065	869 505 3500	to	3599
701 605 5913	to	5999	742 192 5210	to	5224	847 636 5304	to	5399	869 523 7033	to	7099
701 695 3982	to	3999	742 222 9200	to	9210	847 700 5447	to	5499	869 566 6150	to	6167
701 695 4148	to	4199	742 228 9660	to	9669	847 723 7500	to	7599	869 800 0000	to	999 9999
701 695 4227	to	4299	742 247 6980	to	6989	849 485 3427	to	3499	<b>870 054 4814</b>	<b>to</b>	<b>4899</b>
701 708 1741	to	1799	742 290 0936	to	0950	849 520 9850	to	9899	870 491 4812	to	4849
701 736 3966	to	3999	742 302 7600	to	7699	849 608 1357	to	1399	870 536 5820	to	5829
701 772 0870	to	0899	<b>805 885 8411</b>	<b>to</b>	<b>8499</b>	849 792 2600	to	2699	870 541 7167	to	7239
701 838 2800	to	2899	806 087 1100	to	1499	<b>850 546 1862</b>	<b>to</b>	<b>1899</b>	870 575 8155	to	8999
701 941 0600	to	0699	806 268 9275	to	9299	851 143 6826	to	6844	870 589 0485	to	0494
702 171 1603	to	1699	806 534 3400	to	3477	851 209 9880	to	9899	870 691 7060	to	7099
702 195 5109	to	5199	807 342 3283	to	3399	851 928 9221	to	9299	872 028 4850	to	4899
702 254 9300	to	9399	808 086 7100	to	7199	852 589 6560	to	6599	872 029 9306	to	9399
702 264 7569	to	7599	808 090 3440	to	3499	853 049 3646	to	3699	872 078 3709	to	3799

872 100 0445	to	0459	909 355 0422	to	0499	916 703 0802	to	0821	924 533 0711	to	0799
<b>900 556 4178</b>	<b>to</b>	<b>4199</b>	909 568 8900	to	9099	917 089 0709	to	0799	924 533 2343	to	2399
900 845 0044	to	0099	909 568 9300	to	9499	917 089 0842	to	0899	924 533 2428	to	2499
900 936 0217	to	0299	909 725 7307	to	7399	917 216 2928	to	2999	924 685 1957	to	1999
900 936 0435	to	0499	909 833 0947	to	0999	917 370 6300	to	6499	924 946 6300	to	6699
901 058 5255	to	5280	<b>910 219 8631</b>	<b>to</b>	<b>8699</b>	917 486 4900	to	4999	925 333 5900	to	6099
901 273 1082	to	1099	910 265 1100	to	1199	918 460 0602	to	0699	925 336 2300	to	2399
901 287 5143	to	5199	910 471 7273	to	7299	918 951 7231	to	7299	926 432 5907	to	5999
901 291 2789	to	2799	910 536 2505	to	2599	919 519 2786	to	2799	926 436 3600	to	3699
901 525 7122	to	7199	910 958 7499	to	7599	919 536 0770	to	0799	927 765 6257	to	6299
902 089 1253	to	1299	911 140 1000	to	2199	919 814 3095	to	3199	928 197 8100	to	8199
902 198 9769	to	9799	911 245 2545	to	2599	919 889 5110	to	5134	928 197 8283	to	8299
902 948 1269	to	1299	911 268 9077	to	9099	919 889 5137	to	5176	928 856 2059	to	2068
902 985 0833	to	0899	911 400 8948	to	8999	919 889 5178	to	5199	<b>930 078 5800</b>	<b>to</b>	<b>5899</b>
903 370 6934	to	6999	911 508 1620	to	1799	919 889 5030	to	5070	930 219 1722	to	1799
904 600 6523	to	6599	911 509 9310	to	9399	919 889 5090	to	5099	930 335 7810	to	7819
904 892 0378	to	0399	911 523 3000	to	3999	919 915 2774	to	2787	931 097 9259	to	9299
904 892 0648	to	1299	912 057 9922	to	9999	<b>920 155 4662</b>	<b>to</b>	<b>4687</b>	931 156 1502	to	1579
905 056 2216	to	2299	912 882 0563	to	0899	920 309 9039	to	9199	931 156 1600	to	1625
905 510 6647	to	6799	913 605 2218	to	2299	920 771 5321	to	5399	931 156 1671	to	1699
905 510 6900	to	7099	913 709 2429	to	2499	920 857 5500	to	5899	932 506 6400	to	6599
905 794 0000	to	0199	913 818 3501	to	3999	920 864 3480	to	3499	932 732 1796	to	1799
905 794 0288	to	0299	914 063 4300	to	4399	920 963 4567	to	4599	932 827 9026	to	9099
905 873 6900	to	6999	914 346 7621	to	7644	921 333 7400	to	7499	932 957 2300	to	2399
905 873 7100	to	7299	914 453 1366	to	1399	921 477 3762	to	3799	933 060 6160	to	6189
905 880 8900	to	8999	914 529 6185	to	6299	922 278 1048	to	1399	933 387 2541	to	2561
905 889 7100	to	7199	914 896 4658	to	4699	922 280 2019	to	2099	933 760 3609	to	4199
906 158 1508	to	1599	915 187 8774	to	8779	922 280 2233	to	2299	933 894 0928	to	0999
906 558 8812	to	8899	915 300 2783	to	2799	922 773 0459	to	0499	934 018 2729	to	2741
906 982 2214	to	2299	915 546 6822	to	6999	923 032 7000	to	7399	934 180 0300	to	0399
907 725 8500	to	8599	915 646 5183	to	5199	923 045 3630	to	3699	934 236 3954	to	3999
907 815 0216	to	0257	915 671 3963	to	3980	923 484 3600	to	3699	934 622 8717	to	8999
908 622 4225	to	4235	915 671 3982	to	3999	923 493 9403	to	9599	935 216 0312	to	0399
908 936 9254	to	9299	915 675 2217	to	2299	923 493 9681	to	9699	935 843 2202	to	2247
909 066 4494	to	7499	916 440 3377	to	3399	923 604 4424	to	4499	936 024 8889	to	8899
909 067 7400	to	7499	916 670 6352	to	6399	923 810 7800	to	8299	936 339 4455	to	4499
909 100 1787	to	1799	916 682 5300	to	5399	924 252 1200	to	1299			
909 100 1900	to	2099	916 694 1414	to	1499	924 252 1400	to	1499			

## Missing, Lost, or Stolen Canadian Money Order Forms

### Do Not Cash — Upon Receipt, Notify Local Postal Inspectors

Provide this listing to all Postal Service™ employees responsible for accepting and cashing postal money orders. Destroy all interim notices when the numbers listed appear in the *Postal Bulletin*. The new money order serial

numbers consist of the first 9 digits. The 10th digit is a check digit only.

Do not cash outdated money orders **104 151 601 to 692 600 000**. Advise holders to send invalid money orders to Canada Post Corporation, Ottawa, Canada K1A 0B1. Check for altered dollar amounts by holding money orders to the light.

719 869 731	to	9 760	728 382 331	to	2 480	734 797 201	to	7 320	741 764 431	to	4 520
<b>720 227 871</b>	<b>to</b>	<b>7 930</b>	728 702 338	to	2 400	734 939 611	to	9 640	742 178 834	to	8 880
720 227 949	to	7 960	728 915 371	to	5 850	734 950 111	to	0 170	742 325 500	to	5 520
720 368 543	to	8 570	728 953 141	to	3 410	735 120 331	to	0 840	742 325 668	to	5 700
720 392 151	to	2 570	728 954 280	to	4 310	735 283 008	to	3 020	742 408 771	to	8 830
720 556 491	to	6 640	729 169 081	to	9 140	735 293 131	to	3 220	742 512 120	to	2 150
720 558 621	to	8 650	729 363 841	to	3 870	735 635 010	to	5 040	742 684 849	to	4 890
720 575 361	to	5 570	729 682 891	to	3 190	735 783 961	to	3 990	742 839 553	to	9 630
720 590 152	to	0 179	729 838 940	to	9 070	735 803 401	to	3 430	742 913 668	to	3 700
721 638 331	to	9 170	729 839 101	to	9 130	736 005 420	to	5 440	742 917 287	to	7 296
721 815 391	to	5 420	<b>730 077 683</b>	<b>to</b>	<b>7 840</b>	736 366 021	to	6 110	742 921 891	to	1 980
721 969 713	to	9 740	730 109 847	to	9 880	736 624 456	to	4 500	742 983 631	to	3 810
722 072 137	to	2 160	730 373 761	to	3 850	736 670 851	to	1 060	743 020 021	to	0 170
722 378 265	to	8 280	730 501 951	to	2 130	736 767 061	to	7 090	743 206 491	to	6 500
722 413 990	to	4 004	730 519 379	to	9 470	736 767 093	to	7 120	743 235 992	to	6 050
722 764 948	to	4 980	730 569 278	to	9 360	736 982 191	to	2 370	743 940 631	to	0 900
722 825 840	to	5 889	730 711 711	to	1 740	736 982 551	to	2 730	743 978 011	to	8 070
723 153 841	to	3 850	730 722 991	to	3 230	737 110 141	to	0 170	744 234 751	to	4 780
723 237 616	to	7 630	730 845 970	to	5 990	737 185 501	to	5 710	744 499 591	to	9 680
723 331 081	to	1 110	730 888 291	to	8 320	737 317 321	to	7 350	744 626 901	to	6 910
723 496 443	to	6 470	730 927 591	to	7 680	737 517 781	to	7 840	745 388 794	to	8 910
723 967 291	to	7 320	731 307 914	to	7 930	737 628 181	to	8 210	746 446 806	to	6 820
724 655 196	to	5 340	731 402 431	to	2 460	737 634 258	to	4 270	746 818 351	to	8 410
724 711 441	to	1 500	731 407 232	to	7 320	738 361 971	to	1 980	747 245 266	to	5 280
724 711 538	to	1 560	731 588 301	to	8 340	738 447 601	to	7 660	747 364 813	to	4 830
724 793 221	to	3 250	731 767 273	to	7 320	738 648 355	to	8 450	747 501 434	to	1 450
724 908 109	to	8 120	731 781 061	to	1 120	738 849 811	to	9 900	747 739 891	to	0 070
724 937 461	to	7 670	731 837 821	to	7 910	738 892 270	to	2 290	748 148 649	to	8 760
725 163 118	to	3 151	731 841 377	to	1 450	738 997 259	to	7 380	748 259 960	to	9 970
725 202 735	to	2 750	732 018 481	to	8 600	739 161 451	to	1 540	748 565 162	to	5 280
725 398 591	to	8 800	732 067 972	to	8 370	739 219 381	to	9 440	748 874 988	to	5 030
725 464 591	to	4 920	732 188 649	to	8 670	739 740 151	to	0 180	749 137 381	to	7 410
725 475 321	to	5 330	732 193 460	to	3 470	739 793 491	to	3 520	749 190 192	to	0 210
725 711 057	to	1 070	732 201 241	to	1 390	739 793 527	to	3 550	749 685 421	to	5 450
725 738 581	to	8 730	732 220 431	to	0 440	739 942 621	to	2 650	749 846 791	to	6 850
725 981 311	to	1 430	732 355 201	to	5 380	739 999 231	to	9 320	749 993 131	to	3 580
725 987 835	to	7 880	732 472 320	to	2 560	<b>740 011 517</b>	<b>to</b>	<b>1 530</b>	<b>750 071 587</b>	<b>to</b>	<b>1 610</b>
726 060 811	to	0 900	732 541 605	to	1 620	740 030 701	to	0 970	750 408 167	to	8 183
726 391 970	to	2 520	732 572 221	to	2 490	740 261 740	to	1 820	750 438 421	to	8 501
726 484 771	to	4 800	732 586 479	to	6 710	740 265 811	to	6 290	750 743 911	to	4 030
726 493 351	to	5 300	732 994 037	to	4 080	740 299 111	to	9 170	750 779 118	to	9 400
726 504 031	to	4 063	733 163 449	to	3 460	740 299 231	to	9 260	750 910 981	to	1 010
726 504 070	to	4 090	733 297 171	to	7 290	740 329 266	to	9 320	750 960 841	to	0 900
726 504 331	to	4 390	733 446 631	to	7 110	740 889 081	to	9 090	751 296 211	to	6 240
726 563 701	to	4 060	733 474 665	to	4 770	741 010 421	to	0 530	751 539 121	to	9 180
726 599 371	to	9 460	733 704 482	to	4 570	741 113 041	to	3 370	751 541 311	to	1 790
726 626 356	to	6 370	733 751 041	to	1 130	741 373 891	to	4 340	751 757 641	to	7 700
727 182 271	to	2 510	734 009 101	to	9 130	741 452 369	to	2 490	751 936 951	to	7 010
727 416 181	to	6 240	734 290 759	to	0 770	741 492 991	to	3 140	751 951 861	to	1 890
727 481 431	to	1 460	734 389 273	to	9 290	741 553 460	to	3 470	751 999 021	to	9 110
727 749 241	to	9 780	734 440 031	to	0 111	741 764 431	to	4 520	752 139 516	to	9 570



752 182 892	to	2 950	762 324 931	to	4 960	773 112 031	to	2 060	799 177 626	to	7 650
752 206 861	to	7 100	762 439 261	to	9 290	773 125 387	to	5 410	799 854 751	to	5 200
752 295 241	to	5 600	762 524 158	to	4 220	773 179 320	to	9 410	<b>800 044 320</b>	<b>to</b>	<b>4 410</b>
752 731 351	to	1 410	762 584 872	to	4 970	773 202 989	to	3 140	800 211 901	to	2 440
752 767 441	to	7 470	762 593 431	to	3 460	773 208 991	to	9 290	800 427 530	to	7 540
753 008 941	to	9 030	763 155 160	to	5 180	773 231 311	to	1 340	800 872 741	to	2 830
753 194 311	to	4 370	763 178 631	to	8 660	773 348 739	to	8 940	801 349 801	to	9 830
753 620 378	to	0 400	763 506 001	to	6 060	773 348 739	to	8 940	801 676 681	to	7 100
754 013 917	to	3 940	763 522 141	to	2 470	773 575 891	to	5 950	802 967 821	to	7 940
754 161 061	to	1 120	763 717 694	to	7 800	773 852 971	to	3 030	803 217 601	to	7 780
754 358 445	to	8 610	763 826 461	to	6 520	775 373 449	to	3 460	803 729 731	to	9 850
754 410 451	to	0 660	763 900 460	to	0 471	<b>789 257 191</b>	<b>to</b>	<b>7 250</b>	803 747 402	to	7 520
754 438 393	to	8 410	763 900 479	to	0 530	<b>790 448 020</b>	<b>to</b>	<b>8 460</b>	804 138 181	to	8 420
754 493 109	to	3 130	763 917 271	to	7 750	790 597 485	to	7 530	804 428 224	to	8 250
754 664 182	to	4 220	764 125 801	to	5 860	790 911 883	to	1 900	804 682 411	to	2 710
754 816 377	to	6 470	764 284 525	to	4 560	791 057 441	to	7 550	805 272 525	to	2 540
755 487 421	to	7 600	764 526 241	to	6 330	791 239 081	to	9 290	805 523 445	to	3 460
755 592 901	to	3 140	764 601 421	to	1 600	791 374 483	to	4 500	805 745 704	to	5 730
755 790 020	to	0 030	764 650 231	to	0 470	791 387 971	to	8 030	806 452 907	to	2 980
755 791 730	to	1 800	764 984 371	to	4 850	791 447 521	to	7 850	806 744 781	to	4 850
755 926 951	to	7 070	765 003 667	to	3 680	791 451 151	to	1 240	806 982 181	to	2 300
755 934 332	to	4 510	765 042 517	to	2 540	791 500 009	to	0 470	807 764 791	to	4 910
755 957 701	to	8 000	765 194 728	to	4 970	791 771 431	to	1 490	808 089 931	to	9 960
755 962 981	to	3 280	765 387 365	to	7 450	792 004 293	to	4 320	808 656 423	to	6 450
756 035 371	to	5 490	765 541 801	to	2 100	792 018 379	to	8 420	808 753 771	to	3 800
756 301 257	to	1 290	765 638 461	to	8 970	792 070 621	to	0 740	809 189 001	to	9 010
756 371 565	to	1 580	765 647 101	to	7 190	792 145 211	to	5 230	809 886 879	to	6 930
756 876 031	to	6 120	765 813 781	to	4 029	792 391 381	to	1 620	809 890 489	to	0 500
756 876 151	to	6 240	765 879 314	to	9 390	792 452 779	to	2 790	<b>810 323 734</b>	<b>to</b>	<b>3 760</b>
756 970 129	to	0 140	765 954 001	to	4 030	792 772 728	to	2 770	810 367 116	to	7 140
757 059 613	to	9 630	766 120 286	to	0 320	792 903 511	to	3 990	810 526 351	to	6 500
757 078 540	to	8 560	766 125 716	to	5 750	793 282 518	to	2 533	810 806 911	to	6 940
757 086 209	to	6 240	766 158 824	to	8 840	794 041 831	to	2 040	810 807 211	to	7 240
757 240 591	to	0 650	766 388 433	to	8 460	794 397 709	to	7 780	811 423 021	to	3 110
757 277 371	to	7 700	766 509 421	to	9 660	794 581 741	to	2 040	811 517 221	to	7 239
757 291 591	to	2 730	766 572 901	to	3 020	794 592 122	to	2 150	811 721 101	to	1 130
757 964 251	to	4 280	766 748 500	to	8 521	795 032 251	to	2 340	812 025 721	to	5 900
758 067 001	to	7 090	767 024 341	to	4 370	795 796 291	to	6 350	812 093 073	to	3 130
758 105 221	to	5 250	767 326 471	to	6 590	796 070 139	to	0 160	812 100 821	to	0 840
758 324 941	to	5 000	767 332 561	to	2 950	796 143 151	to	3 630	812 465 251	to	5 610
758 593 628	to	3 650	768 009 841	to	9 960	796 159 725	to	9 740	812 918 341	to	8 670
758 709 038	to	9 060	768 011 489	to	1 520	796 169 306	to	9 340	812 918 701	to	8 760
758 744 101	to	4 160	768 177 980	to	7 990	796 373 406	to	3 430	813 050 491	to	0 520
758 850 883	to	0 900	768 391 081	to	1 170	796 602 961	to	3 050	813 073 171	to	3 200
758 860 951	to	1 550	768 661 569	to	1 650	796 708 441	to	8 500	813 398 476	to	8 550
759 152 851	to	2 880	769 000 051	to	0 080	796 886 281	to	6 430	813 713 971	to	4 000
759 740 941	to	1 090	769 050 841	to	0 900	796 901 701	to	2 000	813 858 121	to	8 150
<b>760 004 596</b>	<b>to</b>	<b>4 610</b>	769 159 081	to	9 178	796 975 466	to	5 590	814 789 330	to	9 349
760 118 191	to	8 250	769 737 496	to	7 510	797 272 917	to	2 950	814 984 656	to	4 680
760 155 001	to	5 090	769 778 491	to	8 730	797 519 441	to	9 460	815 016 020	to	6 030
760 378 002	to	8 020	769 827 331	to	7 450	797 519 731	to	0 240	815 199 410	to	9 420
760 692 722	to	2 749	<b>770 216 071</b>	<b>to</b>	<b>6 100</b>	797 535 181	to	5 330	815 240 491	to	0 520
761 055 460	to	5 480	770 723 281	to	3 400	797 646 151	to	6 180	815 755 591	to	5 620
761 169 781	to	9 810	770 790 451	to	0 480	798 040 053	to	0 080	815 755 622	to	5 650
761 504 941	to	5 120	770 915 150	to	5 490	798 055 813	to	5 830	815 806 381	to	6 680
761 516 836	to	6 910	771 455 551	to	5 610	798 055 891	to	5 950	816 126 834	to	6 870
761 613 588	to	3 600	771 609 661	to	9 690	798 326 371	to	6 520	816 156 721	to	6 780
761 688 631	to	8 690	771 932 551	to	2 580	798 339 167	to	9 210	816 580 903	to	0 920
761 805 199	to	5 240	772 057 224	to	7 440	798 562 411	to	2 440	816 945 571	to	5 600
761 826 106	to	6 120	772 162 660	to	3 070	798 632 461	to	2 490	817 253 011	to	3 280
761 881 171	to	1 560	772 718 615	to	8 640	798 807 151	to	7 510	817 763 881	to	4 060
761 975 641	to	5 670	772 940 140	to	0 160	798 944 761	to	5 030	818 330 562	to	0 610
761 975 886	to	5 895	772 970 886	to	0 940	799 118 616	to	8 640	818 459 641	to	9 670
762 304 144	to	4 170	773 009 419	to	9 430	799 133 191	to	3 220	818 926 273	to	6 320

818 950 351	to	0 380	821 903 731	to	3 910	825 472 171	to	2 200	828 539 316	to	9 340
818 962 492	to	2 530	821 927 841	to	7 850	826 042 898	to	2 920	828 539 341	to	9 370
819 032 341	to	2 730	822 505 801	to	5 830	826 226 644	to	6 670	828 732 331	to	2 390
819 127 054	to	7 080	822 703 442	to	3 470	826 582 951	to	3 430	828 807 781	to	7 840
819 278 540	to	8 670	822 900 991	to	1 020	826 720 201	to	0 230	828 830 952	to	0 963
819 544 681	to	4 740	822 925 951	to	6 100	827 005 671	to	5 830	828 939 781	to	0 050
819 928 441	to	8 650	823 284 931	to	4 990	827 287 861	to	7 950	829 002 721	to	2 870
<b>820 034 406</b>	<b>to</b>	<b>4 430</b>	823 293 031	to	3 210	827 291 502	to	1 520	829 005 301	to	5 540
820 070 761	to	1 540	823 556 011	to	6 100	827 575 381	to	5 470	829 080 241	to	0 330
820 191 342	to	1 360	824 078 341	to	8 370	827 609 085	to	9 100	829 160 986	to	1 000
820 274 856	to	4 880	824 156 325	to	6 340	827 619 811	to	9 840	829 176 841	to	6 930
820 600 171	to	0 230	824 511 252	to	1 270	827 883 511	to	3 600	829 471 561	to	1 590
821 172 241	to	2 360	824 588 281	to	8 370	828 160 441	to	0 530	829 561 065	to	1 080
821 229 661	to	9 720	825 140 397	to	0 460	828 376 201	to	6 260	829 566 481	to	6 510
821 229 743	to	9 780	825 409 651	to	9 680	828 441 602	to	1 630	829 569 931	to	9 960

— Criminal Investigations Group, Postal Inspection Service, 8-3-17

## Verifying U.S. Postal Service Money Orders

Follow these steps to cash a Postal Service™ money order:

1. Check that the amount does not exceed the legal limit: \$1,000 for domestic, and \$700 for international postal money orders.
2. Check that the proper security features are present:
  - When held to the light, a watermark of Benjamin Franklin is repeated from top to bottom on the left side.
  - When held to the light, a dark line (security thread) runs from top to bottom with the word “USPS” repeated.
  - There should be no discoloration around the dollar amounts, which might indicate the amounts were changed.

These appear in Postal Service Notice 299, *U.S. Postal Money Order Reference Card*, or online at [usps.com/shop/money-orders.htm](https://usps.com/shop/money-orders.htm).

3. If the money order seems suspicious, call the U.S. Postal Service Money Order Verification System at 866-459-7822.

Please provide this information to local banks and retailers, as they also receive Postal Service money orders for cashing.

— Retail and Customer Service Operations, 8-3-17

## Counterfeit Canadian Money Order Forms

### Do Not Cash

To be posted and used by retail window employees. As directed, destroy previous notices. Destroy all interim notices when the numbers listed appear in the Postal Bulletin.

671,819,086	683,594,542	687,262,503
676,612,640	684,683,610	687,262,525
677,891,039	686,619,878	687,262,526
678,282,493	686,619,886	687,287,578
678,916,031	686,619,887	687,287,581
679,552,215	686,794,382	687,287,582
679,694,334	686,794,426	694,063,898
679,751,983	686,794,427	694,063,899
679,800,207	686,794,431	694,063,980
681,130,536	687,262,502	701,321,725
681,844,376		

— Criminal Investigations Group,  
Postal Inspection Service, 8-3-17

## Toll-Free Number Available to Verify Canadian Money Orders

The Canada Post Corporation has a toll-free number that cashing agents can call to verify the validity of Canadian Postal Money Orders. The number is 800-563-0444.

This toll-free number is printed on the back of the Canadian Postal Money Orders.

— Criminal Investigations Group,  
Postal Inspection Service, 8-3-17

## Other Information

### Overseas Military/Diplomatic Mail

Mail addressed to military and diplomatic post offices overseas is subject to certain conditions or restrictions of mailing regarding content, preparation, and handling. The APO/FPO/DPO table outlines these conditions by APO/FPO/DPO ZIP Codes™ through the use of footnoted mailing restrictions codes (see the [Restrictions](#) page following the table).

Acceptance clerks must use the table with the RSS terminal to determine which APO/FPO/DPO ZIP Codes are active and which conditions of mailing apply. Send inquiries to the Military Postal Service Agency at [amps.usps.gov/jy2/frm.htm](https://amps.usps.gov/jy2/frm.htm).

The entries under “Changes” appear in bold in the APO/FPO/DPO table starting below.

### Changes

APO/FPO/DPO	Action	Effective Date	See Restrictions
APO AE 09832	Add G, Z	08/03/2017	B-C1-E2-F1-F3-G-U1-Z-Z1
APO AE 09833	Add G, Z	08/03/2017	B-C1-E2-F1-F3-G-U1-Z-Z1
APO AP 96224	Add C, F3, R	08/03/2017	A-B-C-F1-F3-R-U
APO AP 96257	Add C, F3, R	08/03/2017	A-B-C-F1-F3-R-U

We have eliminated “Not Active” entries from the table below to save space and paper.

### APO/FPO/DPO Table

APO/FPO/DPO	See Restrictions	APO/FPO/DPO	See Restrictions	APO/FPO/DPO	See Restrictions	APO/FPO/DPO	See Restrictions
09001	B-C-D-E3-F1-F3-H-H1-I3-J-L-M-R-R1-S-T-V-X-Z-Z1	09067	B-C-D-E-F3-H-M-R-S-U	09177	B-C-D-E-F3-H-M-R-S-U	09308	A-B-C1-E2-F-F1-F3-H1-I3-M-N-R-R1-T-V-Z-Z1
09003	B-C-D-E-F3-H-M-P-R-S-U	09068	B-C-D-E-H-U-Z1	09180	B-C-D-F3-H-M-R-S-U	09309	A-B-C-C1-E2-F-H1-M-N-R-V-Z1
09004	B-C-D-E-F3-H-M-R-S-U	09069	A-B-C-D-E-H-N-U-V	09186	B-C-D-E-F3-H-M-P-R-S-U	09310	A-B-C1-E2-F-F1-F3-H1-I3-J-L-M-N-R-R1-T-U4-V-Z-Z1
09005	B-C-D-E-F3-H-M-P-R-S-U	09079	B-C-D-E-F3-H-M-R-S-U	09203	A-B-C-C1-F-F1-F3-I3-J-L-M-N-R-R1-T-V-X-Z-Z1	09311	A-B-C1-E2-F-F1-F3-H1-I3-J-L-M-N-R-R1-T-U4-V-Z-Z1
09006	B-C-D-E-F3-H-M-R-S-U	09090	B-C-D-E-F3-H-M-R-S-U	09204	B-C-F3-M-N-R-S-V-Z1	09312	A-B-C1-E2-F-F1-F3-H1-I3-J-L-M-N-R-R1-T-U4-V-Z-Z1
09008	A-B-F-H-N-Q-V-Z-Z1	09094	B-C-D-F3-H-M-P-R-S-Z1	09211	B-C-D-E-F3-H-M-P-R-S-U	09313	A-B-C-C1-E2-F-F1-F2-H1-R-R1-V-Z1
09009	B-C-D-E-F3-H-M-R-S-U-Z1	09095	B-C-D-E-H-M-R-U	09213	B-C-D-F-F1-F3-H-J-L-M-N-R-R1-T-U-V-Z1	09314	A-B-C1-E2-F-F1-F3-H1-I3-J-L-M-N-R-R1-S-V-Z1
09011	B-C-D-E-F3-H-M-R-S-U	09096	B-C-D-E-F3-H-M-R-S-U	09214	B-C-D-E-F3-H-M-R-S-U-Z1	09315	A-B-C1-E2-F-F3-N-R-R1-V-Z1
09012	B-C-D-E-F3-H-M-R-S-U-Z1	09103	B-C-D-E-H-U	09227	B-C-D-E-F3-H-M-R-S-U	09316	A-B-C1-E2-F-F1-F3-H1-I3-M-N-R-R1-T-V-Z-Z1
09013	B-C-D-E-F-F1-H-M-R-U-Z1	09104	B-C-D-F3-H-M-R-S-U-Z1	09250	B-C-D-E-F3-H-M-R-S-U	09317	A-B-C1-E2-F-F1-F3-H1-I3-M-N-R-R1-T-V-X-Z-Z1
09014	B-C-D-E-F3-H-M-P-R-S-U	09107	B-C-D-E-F3-H-M-R-S-U	09261	B-C-D-E-F3-H-M-R-S-U-V-Z1	09319	A-B-C-C1-E2-F-F1-F2-H1-R-R1-U2-V-Z1
09016	B-C-D-E-F1-H-M-R-S-U	09112	B-C-D-E-F3-H-M-R-S-U	09263	B-C-D-E-F3-H-M-R-S-U	09320	A-B-C1-E2-F-F3-H1-M-N-R-R1-V-Z1
09017	A-B-F-H-N-Q-V-Z-Z1	09114	B-C-D-E-F3-H-M-R-S-U	09264	B-C-D-E-F3-H-M-R-S-U	09321	A-B-C1-E2-F-H1-M-N-R-R1-V-Z1
09018	A-B-F-H-N-Q-V-Z-Z1	09123	B-C-D-E-F3-H-M-R-S-U-Z1	09265	B-C-D-F-F1-H-J-L-M-N-R-T-U-V-Z1	09330	A-B-C1-E2-F-F1-F3-H1-M-R-R1-V-Z1
09020	B-C-D-E-F3-H-M-R-S-U	09125	A-B-C-F-F1-F3-H-N-O-R-R1-S-V-V1	09301	A-B-C1-E2-F-F1-F3-H1-I3-J-L-M-N-R-R1-T-U4-V-Z-Z1	09333	A-B-C1-E2-F-F1-F3-H1-I3-M-N-R-R1-V-Z-Z1
09021	B-C-D-E-F3-H-M-R-S-U-Z1	09126	B-C-D-F3-H-M-P-R-S-Z1	09302	A-B-C1-F-F1-H-M-N-V-Z-Z1	09337	A-B-C1-E2-F-F1-F3-H1-M-R-R1-V-Z1
09028	B-C-D-E-F1-H-M-R-S-U	09128	B-C-D-E-F3-H-M-R-S-U	09304	A-B-C-C1-D-E2-F-F1-F3-H1-J-L-M-N-R-R1-T-V-Z1		
09034	B-C-D-E-F3-H-M-R-S-U	09131	B-C-D-E-F3-H-M-R-S-U	09305	A-B-C1-E2-F-F1-H1-I3-M-N-R-R1-T-V-Z-Z1		
09044	B-C-D-F1-H-U	09136	B-C-D-E-F1-F3-H-M-P-R-S-U	09306	A-B-C1-E2-F-F1-F3-H1-R-R1-U2-V-Z1		
09046	B-C-D-E-F3-H-M-R-S-U	09138	B-C-D-F3-H-M-R-S-U	09307	B-N-V-Z1		
09049	B-C-D-E-F3-H-M-R-S-U	09140	B-C-D-E-F3-H-M-R-S-U				
09053	B-C-D-E-F3-H-M-R-S-U	09142	B-C-D-E-F3-H-M-R-S-U				
09054	B-C-D-E-F3-H-M-R-S-U	09154	B-C-D-E-F3-H-M-R-S-U				
09060	B-C-D-E-F1-F3-H-M-R-S-U-Z1	09160	B-C-D-F-F1-F3-H-J-L-M-N-R-R1-T-U-V-Z1				
		09172	B-C-D-E-F3-H-M-R-S-U				
		09173	B-C-D-E-F3-H-M-R-S-U				

APO/ FPO/ DPO	See Restrictions	APO/ FPO/ DPO	See Restrictions	APO/ FPO/ DPO	See Restrictions	APO/ FPO/ DPO	See Restrictions
09340	A-B-C1-F-H-N-R-V	09511	B-F-F1-R-R1-V	09607	A-B-C-F-F1-F3-M-N-R-R1-U-U3-V-W-Z1	09719	B-C-D-F3-M-R-S-U-V-Z1
09343	A-B-C1-F-M-N-V-Z1	09513	B-F-F1-R-R1-V	09608	B-C-F-F3-N-R-U-V-Z1	09720	B-M-R-S-U-V-Z1
09347	A-B-C1-E2-F-H1-M-R-R1-V-Z1	09517	B-F-F1-R-R1-V	09609	B-C-F-F3-R-U-Z1	09722	A-B-F-H-N-Q-V-Z-Z1
09348	A-B-C1-E2-F-F1-F3-H1-I3-M-N-R-R1-T-V-Z-Z1	09520	B-F-F1-R-R1-V	09610	B-C-F-F1-F3-M-R-S-U-V-Z1	09723	B-F-F1-F3-J-L-M-N-R-R1-T-V-Z1
09351	A-B-C1-E2-E3-F-F1-F3-H-H1-I3-M-N-R-R1-S-T-V-X-Z-Z1	09522	B-F-F1-F3-R-S-V	09613	B-C-F-N-U-V	09724	B-C-C1-F1-M-R-R1-U
09352	A-B-C1-E2-F-F3-H1-M-R-R1-V-Z1	09523	B-F-F1-R-R1-V	09614	A-B-C1-E2-F-F1-F3-H1-I3-J-L-M-N-R-R1-T-V-W-Z-Z1	09725	A-B-F-F3-H-N-O-Q-S-V-V1-Z-Z1
09354	A-B-C1-E2-F-F3-H1-M-R-R1-V-Z1	09524	B-F-F1-R-R1-V	09617	B-C-F-F3-R-U-Z1	09726	B-F-F1-J-L-M-N-R-T-U-V-Z1
09355	A-B-C1-E2-F-F3-H1-M-R-R1-V-Z1	09554	B-F-F1-R-R1-V	09618	B-C-F-F3-R-U-Z1	09727	A-B-B2-C-C1-D-F-F1-F3-J-L-M-N-R-R1-T-V-Z1
09356	A-B-C1-E2-F-F3-H1-M-N-R-V-Z1	09556	B-F-F1-R-R1-V	09620	B-C-F-R-U-Z1	09728	A-B-B2-C-C1-F-F1-F3-J-L-N-R-R1-T-V-Z1
09357	A-B-C1-E2-F-F3-H1-M-R-V-Z1	09564	B-F-F1-R-R1-V	09621	B-C-F-F3-R-U-Z1	09729	B-C-F-F3-N-R-R1-U-V-Z1
09363	A-B-C1-E2-F-F3-H1-M-R-V-Z1	09565	B-F-F1-R-R1-V	09622	B-C-F-F3-R-U-Z1	09730	A-B-B2-C-C1-F-F1-F3-J-L-M-N-R-R1-T-V-Z1
09365	A-B-C-C1-E2-F-F3-H1-M-N-R-V-Z1	09566	B-E2-E3-F-F1-F3-R-R1-V-Z1	09623	B-C-F-F3-R-U-V-Z1	09731	A-B-B2-C-C1-F-F1-F3-J-L-M-N-R-R1-T-V-Z1
09366	A-B-C1-E2-F-F1-F3-H1-M-R-R1-V-Z1	09567	B-E2-E3-F-F1-F3-R-R1-V-Z1	09624	B-C-F-F1-F3-I3-J-L-N-R-R1-T-U-V-Z-Z1	09732	B-N-V-Z1
09378	A-B-C1-E2-F-F1-F3-H1-I3-M-N-R-R1-T-V-Z-Z1	09568	B-V	09625	B-C-F-F3-N-R-U-Z1	09733	B-I3-L-N-V
09381	A-B-C1-E2-F-F1-F3-H1-I3-M-N-R-R1-T-V-Z-Z1	09569	B-E2-E3-F-F1-F3-R-R1-V-Z1	09626	B-C-F-F3-R-U-Z1	09734	A-B-C-C1-F-F1-F3-I3-J-L-M-N-R-R1-T-V-Z-Z1
09403	B-C-C1-F3-M-R-S-U-Z1	09570	B-F-F1-R-R1-V	09627	B-C-F-F3-R-U-V-Z1	09735	B-N-V-Z1
09421	B-C-C1-F3-M-R-S-U-Z1	09573	B-E2-E3-F-F1-F3-R-R1-V-Z1	09630	B-C-F-U-V	09736	A-B-B2-C-C1-D-F-F1-F3-J-L-M-N-R-R1-T-V-Z1
09447	B-C-C1-F3-M-R-S-U-V-Z1	09574	B-F-F1-R-R1-V	09631	B-C-F-F3-R-U-V-Z1	09737	A-B-B2-C-C1-F-F1-F3-I3-J-L-M-N-R-R1-T-V-W-Y-Z-Z1
09454	B-C-C1-F3-M-R-S-U-V-Z1	09575	B-F-F1-R-R1-V	09633	B-B2-C-D-F-F1-M-R-U-U1-U2-U3-V-Z1	09738	A-B-B2-C-C1-D-F-F1-F3-J-L-M-N-R-R1-T-V-Z1
09459	B-C-C1-F3-M-R-S-U-Z1	09576	B-F-F1-R-R1-V	09636	B-C-F-F3-R-U-V-Z1	09739	A-B-B2-C-C1-D-F-F1-F3-J-L-M-N-R-R1-T-V-Z1
09461	B-C-C1-F3-M-P-R-S-U-Z1	09577	B-V	09642	B-F-F1-F3-J-L-M-N-R-T-U-V	09741	A-B-C1-E2-F-F1-F3-H1-J-L-M-N-R-R1-T-V-W-Y-Z1
09463	B-C-C1-F3-M-R-S-U-Z1	09578	B-E2-E3-F-F1-F3-R-R1-V-Z1	09643	B-C-F3-M-R-S-U-V-Z1	09742	A-B-B2-F-F1-F3-J-L-M-N-R-R1-T-V-Z1
09464	B-C-C1-F3-R-S-U-Z1	09579	B-F-F1-R-R1-V	09645	B-C-F-F1-F3-R-U-Z1	09743	A-B-F-H-N-Q-V-Z-Z1
09468	B-C-C1-F3-M-R-S-U-Z1	09581	B-F-F1-R-R1-V	09647	B-F3-M-N-R-U-Z1	09744	A-B-B2-C-C1-F-F1-F3-J-L-M-N-R-R1-T-V-Z1
09469	B-C-C1-R-U-Z1	09582	B-E2-E3-F-F1-F3-R-R1-V-Z1	09648	B-F3-N-R-U-V-Z1	09745	A-B-F-F1-F3-M-N-R-R1-S-V-Z1
09470	B-C-C1-M-R-U-Z1	09583	B-F-F1-R-R1-V	09649	B-F3-N-R-U-Z1	09748	A-B-B2-C-C1-D-F-F1-F3-J-L-M-N-R-R1-T-V-Z1
09494	B-C-C1-F3-M-R-S-U-Z1	09586	B-F-F1-R-R1-V	09701	A-B-B2-C1-F-F1-F3-J-L-M-N-R-R1-T-V-Z1	09749	A-B-F-H-N-U-V-Z1
09497	A-B-C1-E2-F3-H1-M-N-R-R1-V-Z1	09587	B-E2-E3-F-F1-F3-R-R1-S-V-Z1	09702	B-C-C1-F1-M-R-R1-U	09750	A-B-B2-C-C1-F-F1-F3-J-L-M-N-R-R1-T-V-Z1
09498	B-C-C1-F-F1-F3-J-L-N-R-R1-T-V-Z1	09588	B-C-E2-E3-F-F1-F3-H-R-R1-S-V-Z1	09703	B-C-D-F1-H-U	09751	B-C-D-E-F3-H-M-R-S-U
09501	B-V	09589	B-F-F1-F3-R-S-V	09704	B-C-O-V-V1	09752	B-C-D-F1-H-U
09502	B-V	09590	B-V	09705	B-C-C1-F1-M-R-R1-U	09753	A-B-F-N-V-Z1
09503	B-F-F1-R-R1-V	09591	B-E2-E3-F-F1-F2-F3-R-R1-V-Z1	09706	B-C-F3-M-N-R-S-U-V-Z1	09754	A-B-F-H-N-Q-V-Z-Z1
09504	B-V	09592	B-F-F1-R-R1-V	09707	B-C-F-F1-F3-J-L-M-N-R-R1-T-V-Z1	09755	A-B-B2-C-C1-D-F-F1-J-L-M-N-Q-R-R1-T-V-Z1
09505	B-V	09593	B-F-F1-F3-R-S-V	09708	B-C-C1-F1-M-R-R1-U		
09506	B-V	09594	B-F-F1-R-R1-V	09709	B-B2-C1-E2-F-F1-F3-H1-J-L-N-R-R1-T-V-Z1		
09507	B-V	09595	B-F-F1-R-R1-V	09710	B-C-C1-F-F1-J-L-M-N-R-R1-T-U-V-Z1		
09508	B-F-F1-R-R1-V	09596	B-F-F1-R-R1-V	09711	A-B-F-F1-F3-N-R-R1-S-V-Z1		
09509	B-F-F1-R-R1-V	09599	B-F-F1-R-R1-V	09712	A-B-F-F3-H-R-U-V-Z1		
09510	A-B-C1-E2-F-H1-M-R-R1-V-Z1	09600	B-C-F-F1-F3-R-U-Z1	09714	B-C-C1-F1-M-R-R1-U		
		09602	B-C-F-F1-N-R-U-V	09715	B-F-F1-J-L-M-N-R-T-V-Z1		
		09603	B-C-F-F1-F3-R-S-U-V-Z1	09716	B-C-F-F1-F3-J-L-M-N-R-R1-T-V-Z1		
		09604	B-C-F-F1-F3-P-R-S-U-V-Z1	09717	A-B-F3-M-R-S-V-W-Z1		
		09605	B-C-D-H-M-R-U-V	09718	B-F-F1-J-L-M-N-R-T-U-V-Z1		
		09606	B-C-D-H-M-R-U-V				

APO/ FPO/ DPO	See Restrictions	APO/ FPO/ DPO	See Restrictions	APO/ FPO/ DPO	See Restrictions	APO/ FPO/ DPO	See Restrictions
09756	A-B-B2-E3-F-F1-J-L-N-Q-R-R1-T-V-Z1	09823	A-B-F-F1-F3-J-L-N-R-R1-T-V-Z1	09870	A-B-C1-E2-F-F1-F3-H1-I3-J-L-M-N-R-R1-T-U4-V-Z-Z1	34038	B-L-M-N-U-V-Z1
09758	A-B-F-F1-M-N-R-R1-V-Z1	09824	A-B-C-F-F3-M-R-S-V-Z1			34039	B-F-F1-J-L-M-N-T-V-Z1
09759	A-B-B2-C-C1-E2-F-F1-F3-J-L-N-R-R1-T-V-Z1	09825	A-B-C1-F-F1-F3-J-L-M-N-R-R1-T-V-Z1	09873	A-B-C1-E2-F-F1-F3-H1-I3-J-L-M-N-R-R1-T-U4-V-Z-Z1	34041	B-F-F1-F3-J-L-M-N-R-R1-T-V-Z1
09760	A-B-B2-C-C1-D-F-F1-J-L-M-N-Q-R-R1-S-T-V-Z1	09826	A-B-B2-C1-E1-E2-E3-F-F1-F3-J-L-M-N-R-R1-T-V-W-Z1	09874	A-B-C1-E2-F-F1-F3-H1-I3-J-L-M-N-R-R1-T-U4-V-Z-Z1	34042	A-B-C-F-F1-M-N-R-U-V-W-Z1
09761	B-F-F1-F3-M-N-R-R1-V-Z-Z1	09827	A-B-F-F1-J-L-M-N-R-T-V-Z1	09875	A-B-C1-E2-F-F1-F3-H1-I3-J-L-M-N-R-R1-T-U4-V-Z-Z1	34044	A-B-D-F-M-N-O-R-R1-V-V1-Z-Z1
09762	A-B-B2-E3-F-F1-F3-J-L-N-R-R1-T-V-Z1	09828	A-B-F-F1-F3-I3-J-L-N-R-R1-T-V-Z-Z1	09880	A-B-C1-E2-F-F1-H1-N-R-R1-U-V-Z1	34055	B-F-F1-F3-J-L-M-N-R-R1-T-V-Z1
09769	A-B-B2-C-C1-D-F-F1-F3-J-L-M-N-R-R1-T-V-Z1	09829	B-C-N-R-V-Z1	09890	B-E2-F-H1-N-R-R1-U2-V-Z1	34058	B-F-F1-R-R1-V-Z1
09777	A-B-C-E1-F-F1-F3-L-M-N-R-R1-T	09830	B-C-F-F1-F3-J-L-M-N-R-R1-S-T-V-Z1	09892	A-B-E2-F-F1-F3-J-L-N-R-R1-T-V-Z1	34060	B-B2-C1-E2-F-F1-F3-J-L-N-R-R1-T-V-Z1
09780	A-B-F-H-N-R-V	09831	B-F-F1-F3-J-L-N-R-R1-T-V-Z1	09895	A-B-B2-C1-E2-F-F1-F3-J-L-N-R-T-V-W-Z1	34078	B-F1-N-V
09789	A-B-E2-F-F1-F3-N-R-S-V-Z1	<b>09832</b>	<b>B-C1-E2-F1-F3-G-U1-Z-Z1</b>	09898	B-C-C1-E2-F-F1-F3-H1-N-R-R1-U2-V-Z1	34080	B-F-F1-R-R1-V
09800	A-B-E2-F-F1-F3-N-R-R1-S-V-Z1	<b>09833</b>	<b>B-C1-E2-F1-F3-G-U1-Z-Z1</b>	34001	A-B-F-F1-F3-I3-J-L-N-R-R1-T-V-Z1	34081	B-F-F1-R-R1-V
09801	A-B-C1-E2-F-H1-M-N-R-R1-V-Z1	09834	B-E2-E3-F-F1-F3-R-R1-U-Z1	34002	B-F-F1-F3-J-L-N-R-R1-T-V-Z1	34082	B-F-F1-R-R1-V
09803	B-E2-E3-F-F1-F3-H1-N-R-R1-U-V-Z1	09835	A-B-C1-F1-F3-N-V-Z1	34004	B-F-F1-F3-J-L-N-R-R1-T-V-Z1	34083	B-F-F1-R-R1-V
09804	A-B-F-F1-F3-M-N-R-S-V-Z1	09836	A-B-C-F-F1-F3-J-L-M-N-R-R1-V-Z1	34007	B-F-F1-H-J-M-N-R-R1-V-Z1	34084	B-F-F1-R-R1-V
09805	B-E2-E3-F-F1-F3-R-R1-Z1	09837	B-E2-E3-F1-F3-V-Z1	34008	B-B2-D-E1-F-F1-H-H1-J-L-M-N-R-R1-T-V-Z1	34085	B-F-F1-R-R1-V
09806	A-B-C1-E2-F-F1-F3-H1-J-L-M-N-R-R1-T-V-Z1	09838	B-E2-E3-F-F1-F3-U-Z1	34011	B-B2-C1-E2-F-F1-F3-J-L-M-N-R-R1-T-V-Z1	34086	B-F-F1-R-R1-V
09808	A-B-B2-C1-E2-F-F1-F3-H-H1-J-L-N-R-R1-T-V-Z1	09839	A-B-U-V-Z1	34020	B-F-F1-F3-J-L-M-N-R-R1-T-V-Z1	34087	B-F-F1-R-R1-V
09809	B-F-F1-F3-J-L-N-T-V-Z1	09841	A-B-F3-N-R-U-Z1	34021	B-F-F1-F3-T-J-L-M-N-R-R1-V-Z1	34088	B-F-F1-R-R1-V
09810	A-B-F-F1-F3-N-R-S-V-Z1	09842	A-B-F-F1-F3-J-L-N-R-R1-T-V-Z1	34022	B-F-F1-F3-J-L-M-N-R-R1-T-V-Z1	34089	B-F-F1-R-R1-V
09811	B-E2-E3-F-F1-F3-H1-N-R-R1-U-V-Z1	09844	A-B-C1-F-F1-F3-J-L-M-N-R-R1-T-V-Z1	34023	B-F-F1-F3-J-L-M-N-R-R1-T-V-Z1	34090	B-F-F1-R-R1-V
09812	B-E2-E3-F-F1-I-J-L-N-R-T-U-V-Z-Z1	09845	A-B-B2-E3-F-F1-F3-J-L-M-N-R-R1-T-V-Z1	34024	B-F-F1-F3-J-L-M-N-R-R1-T-V-Z1	34091	B-E2-E3-F-F1-F3-R-R1-V-Z1
09813	B-E2-E3-F-F1-F3-I3-J-L-N-R-T-U-V-Z-Z1	09846	A-B-B2-C1-F-F1-F3-J-L-N-R-R1-T-V-Z1	34025	B-F-F1-F3-J-L-M-N-R-R1-T-V-Z1	34092	B-F-F1-R-R1-V
09814	B-E2-E3-F-F1-F3-I3-J-L-N-R-R1-T-V-Z-Z1	09848	A-B-F-M-R-V-Z1	34030	B-F-F1-F3-J-L-M-N-R-R1-T-V-Z1	34093	B-F-F1-R-R1-V
09815	A-B-F-F3-N-R-S-V-Z1	09851	A-B-C-F-F3-N-R-S-V-Z1	34031	B-F-F1-F3-J-L-M-N-R-R1-T-V-Z1	34094	B-F-F1-R-R1-V
09816	A-B-B2-C-C1-E2-E3-F-F1-F3-J-L-N-R-R1-T-V-Z1	09852	B-E2-E3-F-F1-F3-H1-N-R-R1-U-V-Z1	34032	B-F-F1-F3-J-L-M-N-R-R1-T-V-Z1	34095	B-F-F1-R-R1-V
09817	A-B-B2-C1-E2-E3-F-F1-F3-H-H1-J-L-M-N-R-R1-T-V-Z1	09853	B-E2-F-H1-R-R1-U2-V-Z1	34033	B-C-F-F1-F3-J-L-M-N-R-R1-T-V-Z1	96201	A-B-F1
09818	A-B-C-F-F3-M-S-V-Z1	09854	A-B-B2-C1-F-F1-F3-I3-L-N-R-R1-T-V-Z-Z1	34034	B-F-F1-F3-I3-J-L-M-N-R-R1-T-V-Z-Z1	96202	A-B-F1-U
09820	A-B-B2-F-F1-F3-H-H1-J-L-M-N-R-R1-T-V-Z1	09855	A-B-C1-E2-F-F1-H1-M-R-R1-U2-V-Z1	34035	B-F-F1-F3-H-J-L-M-N-R-R1-T-V-Z1	96203	A-B-F1
09821	A-B-C-F-F3-N-R-S-V-Z1	09858	B-C1-E2-E3-F-F1-F3-H1-N-R-R1-U-V-Z1	34036	B-F-F1-F3-J-L-M-N-R-R1-T-V-Z1	96204	A-B-F1
09822	A-B-C-F-F3-M-R-S-V-Z1	09859	B-C1-E2-E3-F-F1-F3-H1-R-R1-U-V-Z1	34037	B-C-F-F1-F3-H-J-L-M-N-R-R1-T-V-Z1	96205	A-B-F1-U
		09861	A-B-F-F1-F3-N-R-R1-S-V-Z1			96206	A-B-F1-U
		09863	A-B-F-F1-F3-N-O-R-R1-S-V-Z1			96207	A-B-F1-V
		09865	A-B-F3-R-U-V-Z1			96208	A-B-F1-U
		09868	A-B-E2-F-N-U-V-Z1			96209	A-B-F-F1-J-L-N-T-U-V-Z1
						96210	A-B-B2-C1-F-F1-F3-I3-L-N-R-R1-T-V-Z-Z1
						96212	B-F-F1-F2-H-M-W-Z1
						96213	A-B-C-F1-R-U
						96214	A-B-C-F1-R-U
						96218	A-B-F1-U
						<b>96224</b>	<b>A-B-C-F1-F3-R-U</b>
						96251	A-B-F1-U
						<b>96257</b>	<b>A-B-C-F1-F3-R-U</b>
						96258	A-B-F1-U
						96260	A-B-F1-U
						96264	A-B-C-F1-R-U
						96266	A-B-C-F1-R-U
						96267	A-B-C-F1-R-U-V
						96269	A-B-F1-U-Z1
						96271	A-B-F1-F3-S-U

APO/ FPO/ DPO	See Restrictions	APO/ FPO/ DPO	See Restrictions	APO/ FPO/ DPO	See Restrictions	APO/ FPO/ DPO	See Restrictions
96273	A-B-F1-U	96375	B-M-W	96543	B-P-V-Z1	96620	B-F-F1-R-R1-V
96275	A-B-F1-U	96376	B-M-W	96546	B-F-N-R-U3	96628	B-F-F1-R-R1-V
96276	A-B-C-F1-R	96377	B-M-W	96548	A-B-H-M-R-U	96629	B-F-F1-R-R1-V
96278	A-B-C-F1-R-U	96378	B-M-W	96549	A-B-F-F1-H-J-L-M-N-T- U-V-Z1	96632	B-F-F1-R-R1-V
96283	A-B-F1-U	96379	B-M-W	96550	A-B-H-M-N-U-V-Z1	96643	B-F-F1-R-R1-V
96284	A-B-F1-U	96380	B-M-W	96551	A-B-F-F1-H-J-L-M-N-T- U-V-Z1	96649	B-F-F1-R-R1-V
96297	A-B-F1-U	96382	B-M-W	96552	B-Z1	96650	B-F-F1-R-R1-V
96301	A-B-F3-M-R-S-W	96384	B-M-W	96553	A-B-F-F1-H-M-N-R-U	96657	B-F-F1-R-R1-V
96303	B-F-F1-H-J-L-M-N-T-V- W-Z1	96385	B-M-W	96554	A-B-F-F1-H-J-L-M-N-T- U-V-Z1	96660	B-F-F1-R-R1-V
96306	B-F-F1-F2-H-M-W-Z1	96386	B-M-W	96555	B-F-M-V	96661	B-F-F1-R-R1-V
96309	B-C-M-R-V-W	96387	B-M-W	96557	B-F-M-V	96662	B-F-F1-R-R1-V
96310	B-M-W	96388	B-M-W	96562	A-B-B2-C-C1-D-E2-E3- F-F1-H-H1-I3-L-M-N-R- T-V-Z-Z1	96664	B-V
96319	B-C-M-R-W	96389	B-M-W	96577	A-B-F-H-M-N-R-U	96665	B-V
96321	B-F-F1-F2-H-M-W-Z1	96401	B-C-F-N-O-R-V-V1-Z1	96578	B-B2-F1-H-J-N-R	96666	B-V
96322	B-F-F1-F2-H-M-W-Z1	96501	A-B-N-V	96595	B-F-S-V-Z1	96667	B-F-F1-R-R1-V
96323	B-C-M-R-V-W	96504	A-B-C-C1-F-F1-F3-I3-L- N-R-R1-T-V-W-Z-Z1	96598	B-N-O-V-V1	96668	B-F-F1-R-R1-V
96326	B-C-F-M-R-W	96505	A-B-C-C1-F-F1-F3-I3-L- N-R-R1-T-V-W-Z-Z1	96599	B-N-V	96669	B-F-F1-R-R1-V
96328	B-C-M-R-W	96507	A-B-F-F1-H-J-L-N-T-V- Z1	96601	B-V	96670	B-V
96330	B-C-M-R-W	96510	B-I3-N-V	96602	B-V	96671	B-F-F1-R-R1-V
96331	A-B-F1-J-L-M-N-S-W	96511	B-I3-N-V	96603	B-V	96672	B-F-F1-R-R1-V
96336	B-C-M-R-V-W	96515	B-D-F-U3	96604	B-V	96673	B-V
96337	B-M-W	96516	B-D-F-Z1	96605	B-V	96674	B-F-F1-R-R1-V
96338	A-B-F3-M-R-S-W	96517	B-F-U3-V-Z1	96606	B-V	96675	B-F-F1-R-R1-V
96339	B-M-V-W	96520	B-F-N-U3-V	96607	B-V	96677	B-F-F1-R-R1-V
96343	B-M-W	96521	B-F-F1-J-L-N-T-U3-V- Z1	96608	B-E2-F-H1-R1-U2-V-Z1	96678	B-F-F1-R-R1-V
96346	B-F-F1-F2-H-M-V-W-Z1	96530	A-B-F-F1-H-H1-J-L-M- N-T-U-V-Z1	96609	B-E2-F-H1-R1-U2-V-Z1	96679	B-F-F1-R-R1-V
96347	B-F-F1-F2-H-M-W-Z1	96531	A-B-C-F-F1-H-M-N-R- U-V	96610	B-E2-F-H1-R1-U2-V-Z1	96681	B-V
96349	B-F-F1-F2-H-M-W-Z1	96532	A-B-F-F1-H-J-L-M-N-T- U-V-Z1	96611	B-E2-F-H1-R1-U2-V-Z1	96682	B-V
96350	B-F-F1-F2-H-M-W-Z1	96534	A-B-F-U-Z1	96612	B-V	96683	B-V
96351	B-F-F1-F2-H-M-W-Z1	96535	A-B-F-F1-J-L-N-T-V-Z1	96613	B-V	96686	B-V
96362	B-F-F1-F2-M-W-Z1	96537	B-V-Z1	96615	B-F-F1-R-R1-V	96691	B-F-F1-R-R1-V
96365	B-C-M-R-V-W	96540	B-V-Z1	96616	B-F-F1-R-R1-V	96692	B-F-F1-R-R1-V
96367	B-C-L-M-R-W	96542	B-V-Z1	96617	B-F-F1-R-R1-V	96693	B-F-F1-R-R1-V
96368	B-C-M-R-W			96619	B-V	96694	B-F-F1-R-R1-V
96370	B-F-F1-F2-H-M-W-Z1					96695	B-F-F1-R-R1-V
96372	B-M-W					96696	B-F-F1-R-R1-V
96373	B-M-W					96698	B-V
96374	B-M-W						

## RESTRICTIONS

## LEGEND

PS Form 2976, *Customs — CN 22 (Old C 1) and Sender's Declaration* (green label)

PS Form 2976-A, *Customs Declaration and Dispatch Note*

PS Form 2976-B, *Priority Mail Express International Shipping Label and Customs Form*

ATF	= Bureau of Alcohol, Tobacco, Firearms, and Explosives
Box C	= Department of State (DOS) contractor personnel
Box R	= Retired military personnel
DPO	= Diplomatic Post Office
MPO	= Military Post Office
PACT	= Prevent All Cigarette Trafficking Act
PAL	= Parcel Airlift
PMEMS	= Priority Mail Express Military Service
PUB 52	= Publication 52, <i>Hazardous, Restricted, and Perishable Mail</i>
SAM	= Space Available Mail
USDA	= United States Department of Agriculture

**Note:** Mail order catalogs are prohibited as SAM or PAL mail.

**A.** Securities, currency, or precious metals, including in their raw, unmanufactured state, are prohibited. Official Mail shipments are exempt from this restriction.

**A1.** Reserved for future use.

**A2.** Reserved for future use.

**B.** Regardless of mail class, a customs declaration (PS Form 2976, PS Form 2976-A, or PS Form 2976-B) is required for all items weighing 16 ounces or more or any item (regardless of weight) containing potentially dutiable mail contents (e.g., merchandise or goods) addressed to or from this ZIP Code. All PMEMS mailpieces (regardless of mail contents or weight) addressed to or from this ZIP Code must bear a properly completed PS Form 2976-B. The surface area of the address side of the mailpiece must be large enough to contain the applicable customs declaration. The following exceptions apply:

- Known mailers are exempt from providing customs documentation on non-dutiable letters or printed matter, except for Priority Mail Express, which requires a customs form for all contents and weights. (A known mailer is a business mailer who enters volume mailings through a business mail entry unit (BMEU) or other bulk mail acceptance location, pays postage through an advance deposit account, uses a permit imprint for postage payment, and submits a completed postage statement at the time of entry that certifies that the mailpieces contain no dangerous materials that are prohibited by postal regulations.)
- All federal, state, and local government agencies whose mailings are regarded as "Official Mail" are exempt from providing customs documentation on any item addressed to an MPO except for those MPOs to which restriction "B2" applies and except for Priority Mail Express, which requires a customs form from all mailers.
- If mailpiece is endorsed "Contents for Official Use — Exempt from Customs Requirements."

**B2.** All federal, state, and local government agencies must complete customs documentation when sending potentially dutiable mail addressed to or from this MPO or DPO.

**C.** Cigarettes and other tobacco products, including tobacco leaves, chewing and pipe tobacco, snuff, and cigars are prohibited, including those that are authorized in Publication 52 under PACT.

**C1.** Obscene and horror articles, images, prints, paintings, cards, films, videotapes, comic books, etc., are prohibited.

**C2.** E-cigarettes and related products (e.g., nicotine liquids, e-liquids, parts, or supplies) are prohibited.

**D.** Coffee is prohibited.

**E.** Medicines (prescription, over-the-counter, vitamins, and supplements) are prohibited when mailed to individuals for human or animal use. This prohibition does not apply when medicines are sent as Official Mail only between specifically designated agencies such as pharmaceutical distributors, hospitals, clinics, and pharmacies.

**E1.** Mailers are responsible to ensure that all medicines and vaccines conform to host nation laws.

**E2.** Any matter depicting nude or seminude persons, pornographic, or sexual items are prohibited. Non-authorized political materials are prohibited. Religious materials contrary to the Islamic faith are prohibited in bulk quantities, but individual items for the personal use of the addressee are permissible.

**E3.** Radio transceivers, cordless/cellular telephones, global positioning systems, scanners, base stations, and handheld transmitters are prohibited.

**F.** Firearms of any type are prohibited, except firearms mailed to or by official U.S. government agencies. This restriction does not apply to firearms mailed from this MPO ZIP Code, provided ATF and USPS regulations are met. Antique firearms do not require an ATF form.

**F1.** Weapons of any type are prohibited.

**F2.** Mailing firearms to or from this MPO ZIP Code is restricted to one shotgun and one single shot .22 caliber rifle per individual.

**F3.** Replica weapons and inert explosive devices (such as grenades) and weapons parts are prohibited.

**G.** Parcels of any class are prohibited.

**H.** Meats, including preserved meats, bones, skin, hair, feathers, horns or hoofs of hoofed animals, and wool samples whether hermetically sealed or not, are prohibited.

**H1.** Pork or pork by-products are prohibited.

**I.** Reserved for future use.

**I1.** Reserved for future use.

**I2.** Reserved for future use.

**I3.** Mail of all classes must fit in a mail sack. Mail may not exceed the following dimensions:

- Maximum length 27 inches.
- Maximum width 14 inches.
- Maximum height 14 inches.

**J.** Standard Post and Parcel Select parcels may not exceed 108 inches in length and girth combined.

**K.** Reserved for future use.

**L.** All Official Mail is prohibited.

**M.** Fruits, vegetables, live animals, and live plants are prohibited.

**N.** Registered Mail service is prohibited.

**O.** Reserved for future use.

**P.** Official Mail only.

**Q.** Mail may not exceed 66 pounds, and size is limited to 42 inches maximum length and 72 inches maximum length and girth combined.

**R.** All alcoholic beverages, including those mailable under Publication 52, Part 421, are prohibited.

**R1.** Materials used in the production of alcoholic beverages (i.e., distilling material, hops, malts, yeast, etc.) are prohibited.

**S.** Synthetic cannabinoids used to stimulate the central nervous system commonly known as "synthetic marijuana," "K2," or "Spice" are prohibited.

**T.** Mailings of household shipments and case lots of food to or from an MPO require military transportation office approval prior to mailing. Mailings to or from a DPO require pre-approval from the Diplomatic Pouch and Mail Director.

**U.** Mail addressed to Retirees (Box R) is limited to 16 ounces and up to a 90-day supply of TRICARE medications. This restriction does not apply to mail endorsed "Free Matter for the Blind or Handicapped."

**U1.** Mail is limited to First-Class Mail items, including audio and video media, weighing 13 ounces or less. This limitation does not apply to Official Mail.

**U2.** Retirees (Box R) are not authorized mail service.

**U3.** Reserved for future use.

**U4.** Mail addressed to Box C is limited to 2 lbs.

**V.** PMEMS is not available.

**V1.** Electronic Delivery status information for Extra Services is not available on *USPS.com*. Manual record of delivery may be available upon request.

**W.** Hermetically sealed packages of meat products bearing USDA certification, such as dried beef, salami, and sausage, may be mailed. 200 grams of tobacco per parcel are permitted duty free.

**X.** Cremated remains are prohibited.

**Y.** Mail is limited to First-Class Mail and Priority Mail items only. This restriction also applies to Official Mail.

**Z.** No outside pieces (OSPs).

**Z1.** The following restriction is applicable only to International Service Centers (ISC)/Exchange Offices. An Anti-Pilferage Seal (Item No O817E or O818A) is required on all pouches and sacks.

— *International Network Operations,  
Global Business, 8-3-17*

## Freely Associated States Restrictions

We list the mailing restrictions for Freely Associated States (FAS) in the Pull-Out section of the *Postal Bulletin*. All FAS Restrictions will be updated periodically.

### Freely Associated States

Mail addressed to freely associated states is subject to certain conditions or restrictions of mailing regarding content, preparation, and handling. The following FAS Restrictions table outlines these conditions as listed by each affected FAS ZIP Code™ through the use of footnoted mailing restrictions codes (see the [Restrictions](#) following the table). For additional information on available extra services for FAS destinations, see *Mailing Standards of the United States Postal Service, Domestic Mail Manual (DMM®)*, part 503.

Acceptance clerks must use the table with the POS ONE terminal to determine which FAS ZIP Codes are active and which conditions of mailing apply. Send inquiries to Randall Sobol at [randall.f.sobol@usps.gov](mailto:randall.f.sobol@usps.gov).

### FAS Restrictions Table

FAS Table	See Restrictions
96939	A, B
96940	A, B
96941	A, B
96942	A, B
96943	A, B
96944	A, B
96960	A, B
96970	A, B
Marshall Islands	C
Federated States of Micronesia	C

### RESTRICTIONS LEGEND

PS Form 2976, *Customs* — CN 22 (Old C 1) and *Sender's Declaration* (green label)

PS Form 2976-A, *Customs Declaration and Dispatch Note*

FAS = Freely Associated State

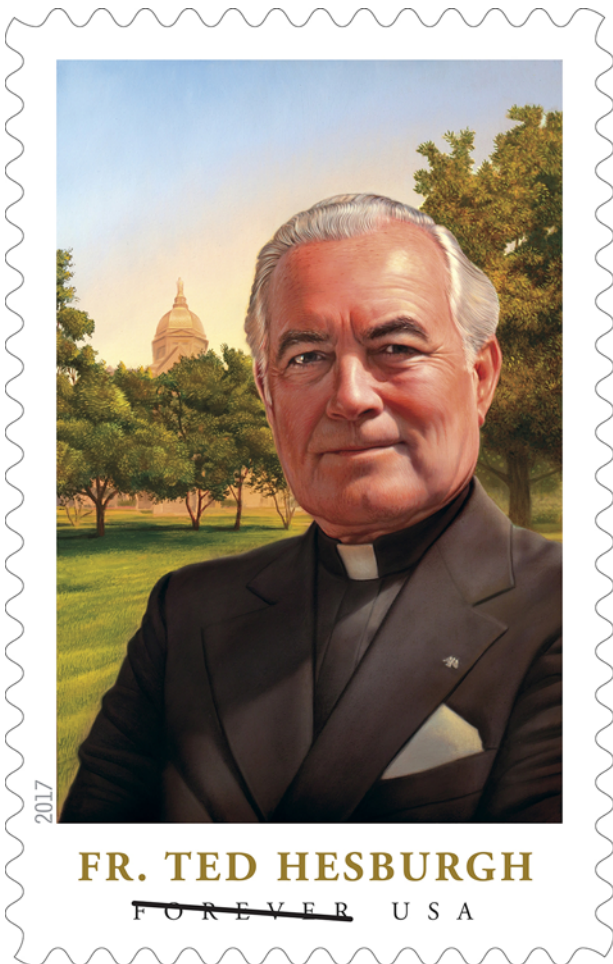
- A.** Bank currency (coin and paper) is prohibited.
- B.** Signature Confirmation, Signature Confirmation Restricted Delivery, Adult Signature Requested, Adult Signature Restricted Delivery, Certified Mail Adult Signature Required, and Certified Mail Adult Signature Restricted Delivery not available.
- C.** COD is prohibited.

— *Asia-Pacific Relations, Global Business, 8-3-17*



# Stamp Services

## Stamp Announcement 17-35: Father Theodore Hesburgh Stamp



© 2016 USPS

On September 1, 2017, in Notre Dame, IN, the U.S. Postal Service® will issue the *Father Theodore Hesburgh* stamp (Forever® priced at 49 cents), in one design, in a pressure-sensitive adhesive (PSA) pane of 20 stamps (Item 474700) and a PSA coil of 50 stamps (Item 799400). The stamp will go on sale nationwide September 1, 2017.

The Reverend Father Theodore M. Hesburgh, C.S.C. (1917–2015) is considered one of the most important educational, religious, and civic leaders of the 20th century. The stamp art features an oil-on-panel painting (based on a 1980 photograph) of Father Hesburgh standing on the campus of the University of Notre Dame, where he served as president for 35 years. Father Hesburgh was awarded the Presidential Medal of Freedom in 1964 and the Congressional Gold Medal in 2000. Art director Ethel Kessler designed the stamp with original art by Tim O'Brien.

**Available to Post Offices: Item 474700, Father Theodore Hesburgh (Forever priced at 49 cents) Commemorative PSA Pane of 20 Stamps**

Stamp Fulfillment Services will make an automatic push distribution to Post Offices™ of a quantity to cover approximately 30 days of sales. Distribution quantities for the automatic push distribution will be available by logging on to SFS Web at [sfsweb.usps.gov](http://sfsweb.usps.gov). Post Offices may begin ordering stamps on the first-day-of-issue through SFS Web; offices must also check the amount they will receive on their automatic push distribution.

**Not Available to Post Offices: Item 799400, \$24.50 Father Theodore Hesburgh (Forever priced at 49 cents) Commemorative PSA Coil of 50 Stamps**

Stamp Fulfillment Services will not make an automatic push distribution to Post Offices. These stamp coils will only be available through The Postal Store® website at [usps.com/shop](http://usps.com/shop) or by calling our toll-free number at 800-782-6724.

### Special Dedication Postmarks

Only the following pictorial postmark is permitted for the *Father Theodore Hesburgh* stamp. The word “Station” or the abbreviation “STA” is required somewhere in the design, because it will be a temporary station.

**Guidelines for Finalizing the Father Theodore Hesburgh Stamp Pictorial Postmark Art**



To finalize the *Father Theodore Hesburgh* stamp pictorial postmark art, insert the date, city, state, and ZIP Code™ of the physical location of your event adjacent to the stamp image. Overall dimensions of the pictorial postmark must not exceed 4 inches horizontally by 2 inches vertically. Collectors prefer the dimensions 3-1/2 inches by 1.

The Postal Service™ must make all special postmarks known to collectors through advance publicity in the *Postal Bulletin*. Therefore, all special dedication cancellations must be reported to Stamp Services 4 weeks before the event using PS Form 413, *Pictorial Postmark Announcement/Report*. To get a copy of the form, go to [blue.usps.gov/formmgmt/forms/ps413.pdf](http://blue.usps.gov/formmgmt/forms/ps413.pdf).

### How to Order the First-Day-of-Issue Postmark

Customers have 60 days to obtain the first-day-of-issue postmark by mail. They may purchase new stamps at their local Post Office, at The Postal Store website at [usps.com/shop](http://usps.com/shop), or by calling 800-782-6724. They must affix the stamps to envelopes of their choice, address the envelopes (to themselves or others), and place them in a larger envelope addressed to:

FDOI – Father Theodore Hesburgh Stamp  
USPS Stamp Fulfillment Services  
8300 NE Underground Drive, Suite 300  
Kansas City, MO 64144-9900

After applying the first-day-of-issue postmark, the Postal Service will return the envelopes through the mail. There is no charge for the postmark up to a quantity of 50. There is a 5-cent charge for each additional postmark over 50. All orders must be postmarked by November 1, 2017.

### How to Order First-Day Covers

The Postal Service also offers first-day covers for new stamp issues and Postal Service stationery items postmarked with the official first-day-of-issue cancellation. Each item has an individual catalog number and is offered in the quarterly *USA Philatelic*, online at [usps.com/shop](http://usps.com/shop), or by calling 800-782-6724. Customers may request a free issue of *USA Philatelic* at [usps.com/philatelic](http://usps.com/philatelic), by calling 800-782-6724, or by writing to:

U.S. Postal Service  
USA Philatelic Request  
PO Box 219014  
Kansas City, MO 64121-9014

## Philatelic Products

Philatelic products for this stamp issue are as follows:

### Pane of 20

- 474706, Press Sheet with Die-cut, \$58.80.
- 474710\*, Digital Color Postmark Keepsake, \$11.95.
- 474716\*, First-Day Cover, \$0.93.
- 474721\*, Digital Color Postmark, \$1.64.
- 474724\*, Framed Art, \$39.95.
- 474730\*, Ceremony Program, \$6.95.
- 474733\*, Panel, \$10.95.

### Coil of 50

- 799416\*, First-Day Cover, \$0.93.
- 799421\*, Digital Color Postmark, \$1.64.

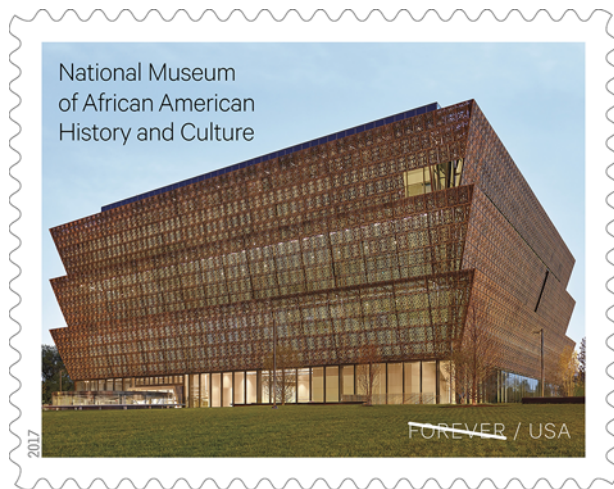
Items with an asterisk (\*) will use the 128 barcode from Stamp Fulfillment Services. All other philatelic products will continue to use barcode series A, with the exception of the Yearbook and the Guide Book.

Issue:	<i>Father Theodore Hesburgh</i> Stamp
Item Number:	474700
Denomination & Type of Issue:	First-Class Mail® Forever
Format:	Pane of 20 (1 design)
Series:	N/A
Issue Date & City:	September 1, 2017, Notre Dame, IN 46556
Art Director:	Ethel Kessler, Bethesda, MD
Designer:	Ethel Kessler, Bethesda, MD
Typographer:	Ethel Kessler, Bethesda, MD
Artist:	Tim O'Brien, Brooklyn, NY
Modeler:	Joseph Sheeran
Manufacturing Process:	Offset, Microprint
Printer:	Ashton Potter (USA) Ltd. (APU)
Printed at:	Williamsville, NY
Press Type:	Muller A76
Stamps per Pane:	20
Print Quantity:	15,000,000 stamps
Paper Type:	Nonphosphored Type III, Block Tag applied
Adhesive Type:	Pressure-sensitive
Processed at:	Ashton Potter (USA) Ltd. (APU)
Colors:	Black, Cyan, Magenta, Yellow, PMS 7557c Brown
Stamp Orientation:	Vertical
Image Area (w x h):	0.84 x 1.42 in/21.34 x 36.07 mm
Overall Size (w x h):	0.98 x 1.56 in/24.89 x 39.62 mm
Full Pane Size (w x h):	5.92 x 7.50 in/150.37 x 190.50 mm
Press Sheet Size (w x h):	11.84 x 22.75 in/300.74 x 577.85 mm
Plate Size:	240 stamps per revolution
Plate Numbers:	"P" followed by five (5) digits
Marginal Markings:	
Front:	Header: FATHER THEODORE HESBURGH • Plate numbers in two corners of pane
Back:	©2016 USPS • USPS Logo • two barcodes (474700) • Plate Position Diagram • Promotional Text

Issue:	<i>Father Theodore Hesburgh Stamp</i>
Item Number:	799400
Denomination & Type of Issue:	First-Class Mail Forever
Format:	Coil of 50 (1 design)
Series:	N/A
Issue Date & City:	September 1, 2017, Notre Dame, IN 46556
Art Director:	Ethel Kessler, Bethesda, MD
Designer:	Ethel Kessler, Bethesda, MD
Typographer:	Ethel Kessler, Bethesda, MD
Artist:	Tim O'Brien, Brooklyn, NY
Modeler:	Joseph Sheeran
Manufacturing Process:	Offset, Microprint
Printer:	Ashton Potter (USA) Ltd. (APU)
Printed at:	Williamsville, NY
Press Type:	Muller A76
Stamps per Coil:	50
Print Quantity:	2,000,000 stamps
Paper Type:	Nonphosphored Type III, Block Tag Applied
Adhesive Type:	Pressure-sensitive
Processed at:	Ashton Potter (USA) Ltd. (APU)
Colors:	Black, Cyan, Magenta, Yellow, PMS 7557c Brown
Stamp Orientation:	Vertical
Image Area (w x h):	0.84 x 1.4482 in/21.34 X 36.78 mm
Stamp Size (w x h):	0.98 x 1.5882 in/24.89 x 40.34 mm
Plate Size:	408 stamps per revolution
Plate Numbers:	"P" followed by five (5) single digits
Coil Number Frequency:	Plate numbers every 17th stamp below stamp image

— *Stamp Services,  
Marketing, 8-3-17*

## Stamp Announcement 17-36: Celebrating African American History and Culture Stamp



© 2016 USPS

On September 24, 2017, in Washington, DC, the U.S. Postal Service® will issue the *Celebrating African American History and Culture* stamp (Forever® priced at 49 cents) in one design, in a pressure-sensitive adhesive (PSA) pane of 20 stamps (Item 474200). The stamp will go on sale nationwide September 24, 2017.

This issuance recognizes the richness of the black experience by celebrating the National Museum of African American History and Culture. Occupying a 5-acre site on the National Mall in Washington, D.C., the museum is the 19th Smithsonian museum and the only national museum devoted exclusively to African American life, art, history, and culture. The stamp art is based on a photograph of the museum by Alan Karchmer showing a view of the north-west corner of the building. Text in the upper left corner of the stamp reads “National Museum of African American History and Culture.” Art director Antonio Alcalá designed the stamp.

### **Availability to Post Offices: Item 474200, Celebrating African American History and Culture (Forever priced at 49 cents) Commemorative PSA Pane of 20 Stamps**

Stamp Fulfillment Services will make an automatic push distribution to Post Offices™ of a quantity to cover approximately 30 days of sales. Distribution quantities for the automatic push distribution will be available by logging on to SFS Web at [sfsweb.usps.gov](http://sfsweb.usps.gov). Post Offices may begin ordering stamps on the first-day-of-issue through SFS Web; offices must also check the amount they will receive on their automatic push distribution.

### **How to Order the First-Day-of-Issue Postmark**

Customers have 60 days to obtain the first-day-of-issue postmark by mail. They may purchase new stamps at their local Post Office, at The Postal Store® website at [usps.com/shop](http://usps.com/shop), or by calling 800-782-6724. They must affix the stamps to envelopes of their choice, address the envelopes (to themselves or others), and place them in a larger envelope addressed to:

FD0I – Celebrating African American History and Culture Stamp  
USPS Stamp Fulfillment Services  
8300 NE Underground Drive, Suite 300  
Kansas City, MO 64144-9900

After applying the first-day-of-issue postmark, the Postal Service™ will return the envelopes through the mail. There is no charge for the postmark up to a quantity of 50. There is a 5-cent charge for each additional postmark over 50. All orders must be postmarked by November 24, 2017.

### **How to Order First-Day Covers**

The Postal Service also offers first-day covers for new stamp issues and Postal Service stationery items postmarked with the official first-day-of-issue cancellation. Each item has an individual catalog number and is offered in the quarterly *USA Philatelic*, online at [usps.com/shop](http://usps.com/shop), or by calling 800-782-6724. Customers may request a free issue of *USA Philatelic* at [usps.com/philatelic](http://usps.com/philatelic), by calling 800-782-6724, or by writing to:

U.S. Postal Service  
USA Philatelic Request  
PO Box 219014  
Kansas City, MO 64121-9014

### **Philatelic Products**

Philatelic products for this stamp issue are as follows:

- 474206, Press Sheet with Die-cut, \$88.20.
- 474210\*, Digital Color Postmark Keepsake, \$11.95.
- 474216\*, First-Day Cover, \$0.93.
- 474221\*, Digital Color Postmark, \$1.64.
- 474224\*, Framed Art, \$29.95.
- 474230\*, Ceremony Program, \$6.95.
- 474233\*, Panel, \$10.95.

Items with an asterisk (\*) will use the 128 barcode from Stamp Fulfillment Services. All other philatelic products will continue to use barcode series A, with the exception of the Yearbook and the Guide Book.

Issue:	<i>Celebrating African American History and Culture Stamp</i>
Item Number:	474200
Denomination & Type of Issue:	First-Class Mail® Forever
Format:	Pane of 20 (1 design)
Series:	N/A
Issue Date & City:	September 24, 2017, Washington, DC 20066
Designer:	Antonio Alcalà, Alexandria, VA
Art Director:	Antonio Alcalà, Alexandria, VA
Typographer:	Antonio Alcalà, Alexandria, VA
Existing Photo:	Alan Karchmer
Modeler:	Sandra Lane/Michelle Finn
Manufacturing Process:	Offset, Microprint
Printer:	Banknote Corporation of America
Printed at:	Browns Summit, NC
Press Type:	Alprinta 74
Stamps per Pane:	20
Print Quantity:	15,000,000 stamps
Paper Type:	Phosphor Tagged Paper, Block Tag
Adhesive Type:	Pressure-sensitive
Processed at:	Banknote Corporation of America, Browns Summit NC
Colors:	Cyan, Magenta, Yellow, Black
Stamp Orientation:	Horizontal
Image Area (w x h):	1.42 x 1.085 in/36.07 x 27.56 mm
Overall Size (w x h):	1.56 x 1.225 in/39.62 x 31.12 mm
Full Pane Size (w x h):	7.24 x 7.50 in/183.90 x 190.5 mm
Press Sheets Size (w x h):	21.72 x 22.50 in/551.69 x 571.5 mm
Plate Size:	180 stamps per revolution
Plate Numbers:	"B" followed by four (4) single digits
Marginal Markings:	
Front:	Header: Celebrating African American History and Culture • Plate numbers in two corners of pane
Back:	© 2016 USPS • USPS logo • Plate position diagram • Barcode (474200) in upper right and lower left corners of pane • Promotional text

— Stamp Services,  
Marketing, 8-3-17

## Pictorial Postmarks Announcement

As a community service, the Postal Service™ offers pictorial postmarks to commemorate local events celebrated in communities throughout the nation. A list of events for which pictorial postmarks are authorized appears on the following pages. The sponsor of the pictorial postmark appears in italics under the date. Also provided are illustrations of these postmarks.

People attending these local events may obtain the postmark in person at the temporary Post Office™ station established there. Those who cannot attend the event but who wish to obtain the postmark may submit a mail order request. Pictorial postmarks are available only for the dates indicated, and *requests must be postmarked no later than 30 days following the requested pictorial postmark date.*

All requests must include a stamped envelope or postcard bearing at least the minimum First-Class Mail® postage. Items submitted for postmark may not include

postage issued after the date of the requested postmark. Such items will be returned unserved.

Customers wishing to obtain a postmark must affix stamps to any envelope or postcard of their choice, address the envelope or postcard to themselves or others, insert a card of postcard thickness in envelopes for sturdiness, and tuck in the flap. Place the envelope or postcard in a larger envelope and address it to: Pictorial Postmarks, followed by the Name of the Station, Address, City, State, ZIP+4® Code, as listed next to the postmark.

Customers can also send stamped envelopes and postcards without addresses for postmark, as long as they supply a larger envelope with adequate postage and their return address. After applying the pictorial postmark, the Postal Service returns the items (with or without addresses) under addressed protective cover.

The following pictorial postmark has been extended for 60 days:



June 16–17, 2017

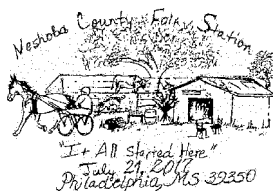
*OKPEX Stamp Club*  
Celebrate 75 Station  
Postmaster  
4025 West Reno Avenue  
Oklahoma City, OK 73125-9998

The following pictorial postmarks have been extended for 30 days:



June 9–10, 2017

*United States Postal Service*  
Sesquicentennial Station  
Postmaster  
15 North 4th Street  
Chatsworth, IL 60921-9998



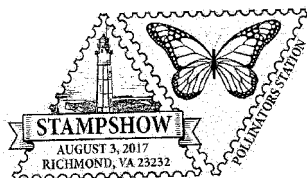
July 21–28, 2017

*United States Postal Service*  
Neshoba County Fair Station  
Postmaster  
1 Government Street  
Philadelphia, MS 39350-9998



July 28–30, 2017

*Pocono Raceway*  
Pocono Raceway Station  
Postmaster  
2657 Route 940  
Pocono Summit, PA 18346-9980



August 3, 2017  
 American Philatelic Society  
 Pollinator Station  
 Stamp Fulfillment Services,  
 Cancellation Services  
 8300 NE Underground Drive,  
 Pillar 210  
 Kansas City, MO 64144-9998



August 5, 2017  
 Merchantville Stamp Club  
 Merpex Station  
 Postmaster  
 123 East Main Street  
 Marilton, NJ 08053-9998



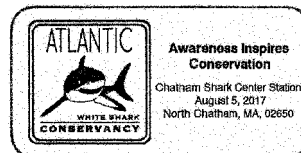
August 4, 2017  
 American Philatelic Society  
 Canada 150 Station  
 Stamp Fulfillment Services,  
 Cancellation Services  
 8300 NE Underground Drive,  
 Pillar 210  
 Kansas City, MO 64144-9998



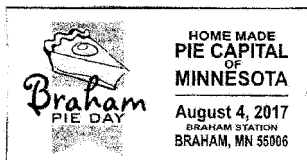
August 5, 2017  
 United States Postal Service  
 Forefathers Monument  
 Station  
 Retail Manager  
 25 Dorchester Avenue,  
 Room 4009  
 Boston, MA 02205-9998



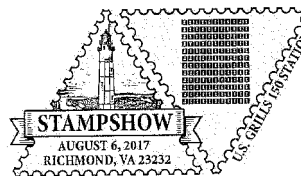
August 4, 2017  
 Merchantville Stamp Club  
 Merpex Station  
 Postmaster  
 PO Box 2913  
 Cherry Hill, NJ 08034-9998



August 5, 2017  
 Atlantic White Shark  
 Conservancy  
 Chatham Shark Center  
 Station  
 Retail Manager  
 25 Dorchester Avenue,  
 Room 4009  
 Boston, MA 02205-9998



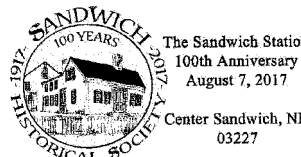
August 4, 2017  
 Braham Pie Days  
 Braham Station  
 Postmaster  
 PO Box 9998  
 Braham, MN 55006-3074



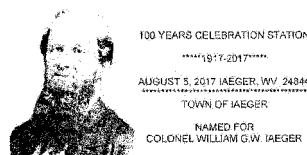
August 6, 2017  
 American Philatelic Society  
 U.S. Grills 150 Station  
 Stamp Fulfillment Services,  
 Cancellation Services  
 8300 NE Underground Drive,  
 Pillar 210  
 Kansas City, MO 64144-9998



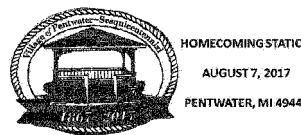
August 5, 2017  
 American Philatelic Society  
 Confederate Station  
 Stamp Fulfillment Services,  
 Cancellation Services  
 8300 NE Underground Drive,  
 Pillar 210  
 Kansas City, MO 64144-9998



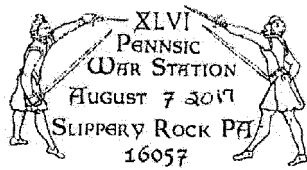
August 7, 2017  
 Sandwich Historical Society  
 The Sandwich Station  
 Postmaster  
 31 Main Street  
 Center Sandwich, NJ  
 03227-9998



August 5, 2017  
 Town of Iaeger  
 100 Years Celebration  
 Station  
 Postmaster  
 5265 Coal Heritage Road  
 Iaeger, WV 24844-9998

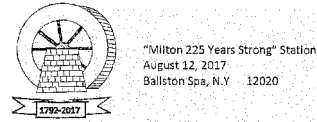


August 7, 2017  
 United States Postal Service  
 Homecoming Station  
 Postmaster  
 PO Box 9998  
 Pentwater, MI 49449-9998



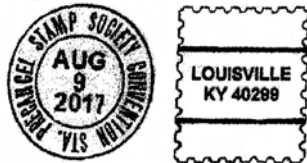
August 7, 2017

*Spalding Abby Philatelic Society*  
Pennsic War Station  
Retail Manager  
1001 California Avenue,  
Room 2036  
Pittsburgh, PA 15290-9681



August 12, 2017

*Town of Milton*  
"Milton 225 Years Strong"  
Station  
Postmaster  
1 Front Street  
Ballston Spa, NY  
12020-9998



August 9, 2017

*Precancel Stamp Society*  
Precancel Stamp Society  
Convention Station  
Postmaster  
3801 Billtown Road  
Louisville, KY 40299-9998



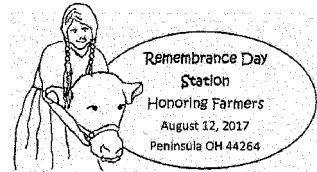
August 12, 2017

*Americover (American First Day Cover Society)*  
Aviation Hall of Fame Station  
Customer Relations  
Coordinator  
2200 Orange Avenue, #234  
Cleveland, OH 44101-9998



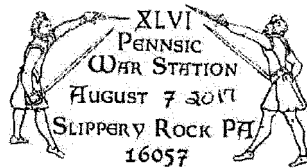
August 10, 2017

*United States Postal Service*  
Shark Station  
Postmaster  
7001 South Central Avenue,  
Room 337  
Los Angeles, CA 90052-9998



August 12, 2017

*Remembrance Day*  
Remembrance Day Station  
Postmaster  
1921 Bronson Street  
Peninsula, OH 44264-9998



August 11, 2017

*Spalding Abby Philatelic Society*  
Pennsic War Station  
Retail Manager  
1001 California Avenue,  
Room 2036  
Pittsburgh, PA 15290-9681



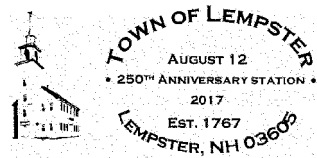
August 12, 2017

*United States Postal Service*  
Centennial Anniversary  
Station  
Postmaster  
PO Box 9998  
Boyne City, MI 49712-9998



August 11, 2017

*Americover (American First Day Cover Society)*  
Rock & Roll Hall of Fame  
Station  
Customer Relations  
Coordinator  
2200 Orange Avenue, #234  
Cleveland, OH 44101-9998



August 12, 2017

*Lempster Historical Society*  
250th Anniversary Station  
Postmaster  
767 US Route 10  
Lempster, NH 03605-9998



August 11, 2017

*United States Postal Service*  
Wonder Woman Station  
Postmaster  
1251 William D. Tate Avenue  
Grapevine, TX 76051-9998



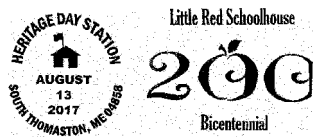
August 13, 2017

*Erie County Fair*  
Erie County Fair Station  
Postmaster  
5501 Camp Road  
Hamburg, NY 14075-9998



August 13, 2017

*Wessaweskeog Historical Society in cooperation with South Thomaston Public Library*



Heritage Day Station  
Postmaster  
PO Box 9998  
South Thomaston, ME  
04858-9998

August 15, 2017

*National Rural Letter Carriers' Association*



National Rural Letter Carriers' Association Station  
Stamp Fulfillment Services, Cancellation Services  
8300 NE Underground Drive, Pillar 210  
Kansas City, MO 64144-9998

August 13, 2017

*Americover (American First Day Cover Society)*



Pro Football Hall of Fame Station  
Customer Relations Coordinator  
2200 Orange Avenue, #234  
Cleveland, OH 44101-9998

August 16, 2017

*United States Postal Service*



Alden Post Office Station  
Postmaster  
13127 Broadway  
Alden, NY 14004-9998

— Stamp Services,  
Marketing, 8-3-17

## How to Order the First-Day-of-Issue Digital Color or Traditional Postmarks

Customers have 60 days to obtain the first-day-of-issue postmarks by mail. Each cover must have sufficient postage to meet First-Class Mail® requirements. Customers may purchase new stamps at their local Post Office™, by telephone at 800-782-6724, or at The Postal Store® website at [usps.com/shop](http://usps.com/shop).

### Digital Color Postmarks

Only select stamp issues offer a digital color postmark. Customers may submit #6 or #10 envelopes constructed of paper rated as “laser safe.” The Postal Service™ recommends envelopes of 80-pound Accent Opaque, acid-free, 9/16-inch side seams with no glue on the flap. The maximum size of all digital color postmarks is 2 inches high by 4 inches long. Allow sufficient space on the envelope to accommodate the postmark. Do not use self-adhesive labels for addresses on the envelope. Two test envelopes must be included. There is a minimum of 10 envelopes at 50 cents per postmark required at the time of servicing. Customers must submit a check, money order, or credit card for payment.

The Postal Service reserves the right to not accept hand-painted and other cachet envelopes that are not compatible with our digital color postmark equipment. The Postal Service also reserves the right to substitute traditional black rubber postmarks if use of nonspecified envelopes results in poor image quality or damage to equipment.

Customers must affix the stamps to the envelopes and address them to themselves or others for return through the mail. Or, they may include an additional self-addressed

return envelope, large enough to accommodate their canceled items, with sufficient postage affixed for return of their postmarked items. Address customer requests for digital color postmarks to:

FDOI – (Name of Stamp Issue)  
USPS Stamp Fulfillment Services  
8300 NE Underground Drive, Suite 300  
Kansas City, MO 64144-9900

After applying the first-day-of-issue postmark, the Postal Service will return the envelopes to the customer by U.S. Mail®.

### Traditional Postmarks

Customers must affix the stamps to the envelopes and address them to themselves or others for return through the mail. Or, they may include an additional self-addressed return envelope, large enough to accommodate their canceled items, with sufficient postage affixed for return of their postmarked items. Address customer requests for traditional postmarks to:

FDOI – (Name of Stamp Issue)  
USPS Stamp Fulfillment Services  
8300 NE Underground Drive, Suite 300  
Kansas City, MO 64144-9900

After applying the first-day-of-issue postmark, the Postal Service will return the envelopes to the customer by U.S. Mail. There is no charge for the first 50 postmarks. There is a 5-cent charge for each additional postmark over 50. Customers must submit a check, money order, or credit card for payment.



Digital Color Pictorial

#### FDOI – Have a Ball! Stamps

USPS Stamp Fulfillment Services  
8300 NE Underground Drive, Suite 300  
Kansas City, MO 64144-9900

August 14, 2017



Digital Color Pictorial

#### FDOI – Total Eclipse of the Sun Stamp

USPS Stamp Fulfillment Services  
8300 NE Underground Drive, Suite 300  
Kansas City, MO 64144-9900

August 20, 2017



**FDOI – Total Eclipse of the Sun Stamp**  
 USPS Stamp Fulfillment Services  
 8300 NE Underground Drive, Suite 300  
 Kansas City, MO 64144-9900

August 20, 2017

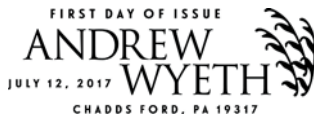
**Black and White Pictorial**



**FDOI – Andrew Wyeth Stamps**  
 USPS Stamp Fulfillment Services  
 8300 NE Underground Drive, Suite 300  
 Kansas City, MO 64144-9900

September 12, 2017

**Digital Color Pictorial**



**FDOI – Andrew Wyeth Stamps**  
 USPS Stamp Fulfillment Services  
 8300 NE Underground Drive, Suite 300  
 Kansas City, MO 64144-9900

September 12, 2017

**Black and White Pictorial**



**FDOI – Disney Villains Stamps**  
 USPS Stamp Fulfillment Services  
 8300 NE Underground Drive, Suite 300  
 Kansas City, MO 64144-9900

September 15, 2017

**Digital Color Pictorial**



**FDOI – Disney Villains Stamps**  
 USPS Stamp Fulfillment Services  
 8300 NE Underground Drive, Suite 300  
 Kansas City, MO 64144-9900

September 15, 2017

**Digital Color Pictorial**



**FDOI – Disney Villains Stamps**  
 USPS Stamp Fulfillment Services  
 8300 NE Underground Drive, Suite 300  
 Kansas City, MO 64144-9900

September 15, 2017

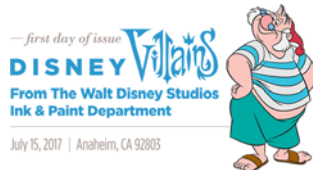
**Digital Color Pictorial**



**FDOI – Disney Villains Stamps**  
USPS Stamp Fulfillment Services  
8300 NE Underground Drive, Suite 300  
Kansas City, MO 64144-9900

September 15, 2017

**Digital Color Pictorial**



**FDOI – Disney Villains Stamps**  
USPS Stamp Fulfillment Services  
8300 NE Underground Drive, Suite 300  
Kansas City, MO 64144-9900

September 15, 2017

**Digital Color Pictorial**



**FDOI – Disney Villains Stamps**  
USPS Stamp Fulfillment Services  
8300 NE Underground Drive, Suite 300  
Kansas City, MO 64144-9900

September 15, 2017

**Digital Color Pictorial**



**FDOI – Disney Villains Stamps**  
USPS Stamp Fulfillment Services  
8300 NE Underground Drive, Suite 300  
Kansas City, MO 64144-9900

September 15, 2017

**Digital Color Pictorial**



**FDOI – Disney Villains Stamps**  
USPS Stamp Fulfillment Services  
8300 NE Underground Drive, Suite 300  
Kansas City, MO 64144-9900

September 15, 2017

**Digital Color Pictorial**



**FDOI – Disney Villains Stamps**  
USPS Stamp Fulfillment Services  
8300 NE Underground Drive, Suite 300  
Kansas City, MO 64144-9900

September 15, 2017

**Digital Color Pictorial**



**FDOI – Disney Villains Stamps**  
 USPS Stamp Fulfillment Services  
 8300 NE Underground Drive, Suite 300  
 Kansas City, MO 64144-9900

September 15, 2017

Digital Color Pictorial



**FDOI – Disney Villains Stamps**  
 USPS Stamp Fulfillment Services  
 8300 NE Underground Drive, Suite 300  
 Kansas City, MO 64144-9900

September 15, 2017

Black and White Pictorial



**FDOI – Sharks Stamps**  
 USPS Stamp Fulfillment Services  
 8300 NE Underground Drive, Suite 300  
 Kansas City, MO 64144-9900

September 26, 2017

Digital Color Pictorial



**FDOI – Sharks Stamps**  
 USPS Stamp Fulfillment Services  
 8300 NE Underground Drive, Suite 300  
 Kansas City, MO 64144-9900

September 26, 2017

Black and White Pictorial



**FDOI – Protect Pollinators Stamps**  
 USPS Stamp Fulfillment Services  
 8300 NE Underground Drive, Suite 300  
 Kansas City, MO 64144-9900

October 3, 2017

Digital Color Pictorial



**FDOI – Azulillo Stamped Card**  
 USPS Stamp Fulfillment Services  
 8300 NE Underground Drive, Suite 300  
 Kansas City, MO 64144-9900

October 11, 2017

Black and White Pictorial

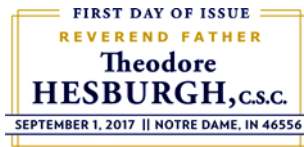


**FDOI – Flowers From the Garden  
Stamps**

USPS Stamp Fulfillment Services  
8300 NE Underground Drive, Suite 300  
Kansas City, MO 64144-9900

October 16, 2017

Digital Color Pictorial

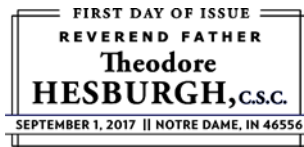


**FDOI – Father Theodore Hesburgh  
Stamp**

USPS Stamp Fulfillment Services  
8300 NE Underground Drive, Suite 300  
Kansas City, MO 64144-9900

November 1, 2017

Digital Color Pictorial



**FDOI – Father Theodore Hesburgh  
Stamp**

USPS Stamp Fulfillment Services  
8300 NE Underground Drive, Suite 300  
Kansas City, MO 64144-9900

November 1, 2017

Black and White Pictorial

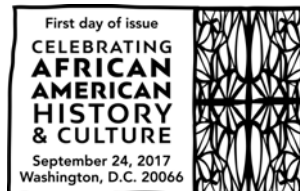


**FDOI – Celebrating African American  
History and Culture Stamp**

USPS Stamp Fulfillment Services  
8300 NE Underground Drive, Suite 300  
Kansas City, MO 64144-9900

November 24, 2017

Digital Color Pictorial



**FDOI – Celebrating African American  
History and Culture Stamp**

USPS Stamp Fulfillment Services  
8300 NE Underground Drive, Suite 300  
Kansas City, MO 64144-9900

November 24, 2017

Black and White Pictorial



75,000

Approximate number of letter carriers who drive to neighborhoods and then deliver mail on foot

**USA FOREVER**  
2017  
**HAMMERHEAD SHARK**

**USA FOREVER**  
2017  
**GREAT WHITE SHARK**

**USA FOREVER**  
2017  
**MAKO SHARK**

**USA FOREVER**  
2017  
**WHALE SHARK**

**USA FOREVER**  
2017  
**THRESHER SHARK**

**USPS® Releases  
Sharks  
Forever® Stamps**

On Sale Nationwide: July 26, 2017.