

postal|bulletin

PUBLISHED SINCE MARCH 4, 1880

NEED A PASSPORT?



Get the
paperwork
and locate
a facility
online @
usps.com[®].

See page 3

Contents

COVER STORY

A U.S. Passport is Your Key to International Travel 3

POLICIES, PROCEDURES, AND FORMS UPDATES

Manuals

DMM Revision: Retail First-Class Mail Postage
 Payment Methods 4
 DMM Revision: Domestic and International Permit
 Imprint Application Fees 5
 ELM Revision: Reinstatement List Updates 5
 IMM Revision: International and Domestic Permit
 Imprint Application Fees 7

Publications

Publication 431 Revision: Changes to Post Office Box
 Service and Caller Service Fee Groups 8

ORGANIZATION INFORMATION

Finance

Equipment Maintenance Allowance Schedule for Rural
 Routes 9

Information Security

Malware Strains 9

Military Mail

Military Mail Restrictions Change 10

Stamp Services

Stamp Announcement 17-32: Disney Villains Stamps 13
 Stamp Announcement 17-33: Azulillo Stamped Cards 32
 Stamp Announcement 17-34: Flowers From the Garden
 Stamps 34
 Pictorial Postmarks Announcement 36
 How to Order the First-Day-of-Issue Digital Color or
 Traditional Postmarks 39

Supply Management

Interest Rate on Contract Claims 43

PULL-OUT INFORMATION

Fraud

Invalid USPS Corporate Account Numbers 15
 Missing, Lost, or Stolen U.S. Money Order Forms 16
 Missing, Lost, or Stolen Canadian Money Order Forms 22
 Verifying U.S. Postal Service Money Orders 24
 Counterfeit Canadian Money Order Forms 24
 Toll-Free Number Available to Verify Canadian Money
 Orders 24

Other Information

Overseas Military/Diplomatic Mail 25
 Freely Associated States Restrictions 30

POSTAL BULLETIN INDEX

2016 Semi-Annual Index PB 22458 (1-5-17)

Find the latest in mail and delivery information
 and services offered by U.S. Postal®
 in the *Postal Bulletin* at
about.usps.com/postal-bulletin



Cover Story

A U.S. Passport is Your Key to International Travel

The Department of State's Passport Services Directorate issues U.S. passports to traveling Americans. Passports are a request to foreign governments to permit you to travel, and also allow you to re-enter the United States. They provide proof of U.S. citizenship at home and around the world.

What is a U.S. Passport Book or Card?

A passport book or card is proof of identity and U.S. citizenship. U.S. citizens can use the passport book for all international travel: air, land, or sea. U.S. citizens can use the passport card to enter the United States from Canada; Mexico; the Caribbean; and Bermuda; and at land border crossings or sea ports-of-entry. However, U.S. citizens cannot use the passport card for international air travel; the wallet-size passport card is convenient and less expensive than the passport book.

How do I Apply for a Passport Book or Card?

Whether you plan to apply for a first-time passport book, passport card, or both, submitting your passport application is easy. The U.S. Postal Service® makes it convenient to apply for your passport:

- Visit travel.state.gov or contact the National Passport Information Center (NPIC) at 877-487-2778 or TDD/TTY 888-874-7793 for more information on how to apply for a passport.
- Visit usps.com/passport to locate a Post Office™ near you that offers passport services.

Passport and International Travel Tips:

- Apply as early as possible before a trip.
- Check the expiration date of your passport well in advance of your departure date. Some countries may not permit you to enter if your passport will expire in 6 months or less.
- Check the Department of State website, travel.state.gov, for current processing times for routine service and expedited service. Processing times are subject to change due to volume.
- U.S. passports are issued to adults for 10 years and children under the age of 16 for 5 years.
- You can fill out and print passport forms online from travel.state.gov or obtain them at your local Passport Application Acceptance Facility.
- Before traveling abroad, copy the identification page in case your passport is lost or stolen. If your passport is lost or stolen abroad, report the loss immediately to local police authorities and the nearest U.S. embassy or consulate.
- Visit the Country Information pages on travel.state.gov to learn about the countries in which you are traveling.
- Register for the Smart Traveler Enrollment Program (STEP) at step.state.gov. When you sign up, you will automatically receive the most current information we compile about the country where you will be traveling or living. You will also receive updates, including travel warnings and travel alerts (where appropriate).

— Retail Services,
Retail and Customer Service Operations, 7-6-17

Policies, Procedures, and Forms Updates

Manuals

DMM Revision: Retail First-Class Mail Postage Payment Methods

Effective August 7, 2017, the Postal Service™ will revise *Mailing Standards of the United States Postal Service, Domestic Mail Manual (DMM®)*, sections 134.1.1, 134.2.0, and 604.5.1.2, to clarify the payment methods for retail customers mailing First-Class Mail®.

The Postal Service will revise section 134.1.0, Postage Payment Methods for First-Class Mail, by removing permit imprint as a retail First-Class Mail payment option. Commercial customers may use retail First-Class Mail prices for mailings paid by permit imprint under certain circumstances; however, permit imprint is not an eligible payment method option for First-Class Mail entered by a retail customer. As a result of this revision, we will delete section 134.2.0, Postage Paid With Permit Imprint, in its entirety. The Postal Service will also revise subsection 604.5.1.2, Minimum Volume, to remove First-Class Mail parcels as an eligible product when qualifying to meet the 50 pieces or 50 pounds of nonpresorted single-piece domestic mail parcels submitted under the terms of an approved Manifest Mailing System (including eVS) agreement. This revision clarifies that permit imprint is not an eligible postage payment method for retail customers mailing First-Class Mail pieces.

Although we will not publish these revisions in the DMM until August 7, 2017, the standards are effective immediately.

Mailing Standards of the United States Postal Service, Domestic Mail Manual (DMM)

	*	*	*	*	*
100	Retail Mail Letters, Cards, Flats, and Parcels				
	*	*	*	*	*
130	First-Class Mail				
	*	*	*	*	*

134 Postage Payment Methods

1.0 Postage Payment Methods for First-Class Mail

1.1 Payment Method

[Revise the text in 1.1 to read as follows:]

Postage for single-piece First-Class Mail must be paid with affixed postage stamps (604.1.0), postage evidencing system postage (604.4.0), or precanceled stamps (604.3.0).

* * * * *

[Delete 2.0 in its entirety.]

* * * * *

600 Basic Standards For All Mailing Services

* * * * *

604 Postage Payment Methods and Refunds

* * * * *

5.0 Permit Imprint (Indicia)

5.1 General Standards

* * * * *

5.1.2 Minimum Volume

* * * * *

[Revise the second sentence of item g. to read as follows:]

- g. ***Mailers may include any combination of the following products under this provision: Priority Mail Express (eVS only), Priority Mail, First-Class Package Service parcels, nonpresorted Bound Printed Matter parcels, Parcel Select Ground parcels, and single-piece Media Mail and Library Mail parcels.***

* * * * *

We will incorporate these revisions into the next online update of the DMM, which is available via Postal Explorer® at pe.usps.com.

DMM Revision: Domestic and International Permit Imprint Application Fees

Effective July 6, 2017, the Postal Service™ is revising *Mailing Standards of the United States Postal Service*, Domestic Mail Manual (DMM®), section 604.5, to clarify that when a customer pays a permit imprint application fee, the Postal Service accepts that fee for domestic and/or international outbound mailings.

Effective with the price change of January 22, 2017, the Postal Service eliminated the permit application fee for many products. The article that discussed the fees, titled “DMM Revision: Elimination of Fees” in *Postal Bulletin* 22462 (3-2-17, pages 4–9), mentioned that the fee would continue to be required for several products, including international mail. This revision inadvertently caused mailers and Postal Service employees some confusion as to whether mailers had to pay separate permit imprint application fees for domestic mail and for international mail.

For similar revisions to *Mailing Standards of the United States Postal Service*, International Mail Manual (IMM®), see the article titled “IMM Revision: International and Domestic Permit Imprint Application Fees” on page 7 of this *Postal Bulletin*.

Mailing Standards of the United States Postal Service, Domestic Mail Manual (DMM)

* * * * *

600 Basic Standards for All Mailing Services

* * * * *

604 Postage Payment Methods and Refunds

* * * * *

5.0 Permit Imprint (Indicia)

5.1 General Standards

* * * * *

5.1.5 Application Fee

[Revise 5.1.5 to read as follows (inserting a new second sentence — bold here just for emphasis):]

An application fee is required only when a permit imprint is used as the payment method for First-Class Mail, USPS Marketing Mail, Bound Printed Matter Flats and international mail, and the mailer does not use the Electronic Verification System (eVS). **When a customer pays a permit imprint application fee, the Postal Service accepts that fee for domestic and/or international outbound mailings.**

* * * * *

Although effective July 6, 2017, we will incorporate this revision into a later edition of the online DMM (scheduled for August 7, 2017). The online DMM is available via Postal Explorer® at pe.usps.com.

— Product Classification, Marketing, 7-6-17

ELM Revision: Reinstatement List Updates

Effective July 6, 2017, the Postal Service™ is revising the *Employee and Labor Relations Manual* (ELM), section 354.27, to update policy for establishing a reinstatement list. This includes updating eligibility for reinstatement to career employees who are preference eligible for reduction-in-force purposes as defined by the Office of Personnel Management’s reduction-in-force regulations, 5 C.F.R., part 351.

Employee and Labor Relations Manual (ELM)

* * * * *

3 Employment and Placement

* * * * *

350 Assignment, Reassignment, and Promotion

* * * * *

354 Assignment of Unassigned Employees

* * * * *

[Revise the text of 354.27 to read as follows:]

354.27 Establishing a Reinstatement List

354.271 Providing Priority Consideration to Employees

A reinstatement list (RL) identifies career preference-eligible employees who are eligible for priority consideration for reinstatement to the Postal Service because they have been separated as a result of a reduction-in-force (RIF).

An RL is established the day after the RIF effective date if one or more employees have been found eligible for placement on the RL. The RL remains in effect for 2 years following its establishment or until no eligible employees remain on the RL, whichever is earlier.

Note: Acceptance of an employee's PS Form 999, *Application for Reinstatement List*, and placement on the RL does not guarantee the employee's reinstatement to the Postal Service.

354.272 Determining Employee Eligibility

A career employee is eligible to be placed on an RL if all conditions listed below occur:

- a. The employee is preference eligible for RIF purposes, as defined in section 354.215.
- b. The employee received a specific RIF notice indicating that he or she will be separated from the Postal Service, and that notice has not been canceled or rescinded. An employee who retires on or before the RIF effective date is eligible for placement on the RL, provided he or she meets all other eligibility requirements.
- c. The employee does not refuse an offer of a position under 5 C.F.R. part 351, subpart G, with the same type of work schedule and with a representative rate at least as high as that of the position from which the employee was or will be separated.
- d. The employee's last merit performance rating of record before separation was better than a non-contributor for RIF purposes or its equivalent.
- e. The employee submits an Application for Reinstatement List no later than the RIF effective date.
- f. The employee is at least *minimally qualified* for one or more of the positions identified on the Application for Reinstatement List.

354.273 Considering Employees on a Reinstatement List

Provisions for reinstatement list consideration are as follows:

- a. Eligible RL applicants are provided initial consideration before external advertisement of a vacant position within their competitive area and all other competitive areas within commuting distance not undergoing an organizational change/RIF action. Consideration is limited to those applicants who are at least *minimally qualified* for the vacant position.

Note: A vacant position does not include positions that are filled through other special programs, such as the restoration of individuals who served in the uniformed services and the reemployment or reassignment of employees injured on duty who recover within one year.

- b. Human Resources maintains the RL and checks the list before publishing external job postings.

- c. Positions identified by eligible RL applicants on their *Application for Reinstatement List* form for which they are at least *minimally qualified* must be:

- (1) Authorized positions.
 - (2) At the same or lower grade level (or representative rate) as the position held before separation due to a RIF action.
- d. If an otherwise eligible RL applicant is found to be at least minimally qualified for a position identified on his or her Application for Reinstatement List, he or she must be offered the position before external applicants are considered.

354.274 Removing Employees From a Reinstatement List

An employee's name is removed from the RL in the following situations:

- a. The employee accepts a career appointment with the Postal Service or another federal agency;
- b. The employee voluntarily requests, in writing to Human Resources, to have his or her name removed from the RL;
- c. The employee fails to provide Human Resources with any changes in his or her address or telephone number, thereby preventing Human Resources from contacting the employee about potential employment opportunities; or
- d. Human Resources tries to contact the employee about a position with a representative rate at least as high as the representative rate of the position from which the employee was separated, and the employee declines the position, fails to respond, or fails to appear for an interview without having taken reasonable steps to reschedule the interview.

* * * * *

We will incorporate these revisions into the next online update of the ELM, which is available on the Postal Service PolicyNet website:

- Go to blue.usps.gov.
- In the left-hand column under "Essential Links," click *PolicyNet*.
- Click *Manuals*.

The direct URL for the Postal Service PolicyNet website is blue.usps.gov/cpim.

— Organization Design,
Employee Resource Management, 7-6-17

IMM Revision: International and Domestic Permit Imprint Application Fees

Effective July 6, 2017, the Postal Service™ is revising *Mailing Standards of the United States Postal Service, International Mail Manual (IMM®)*, section 152.61, to clarify that when a customer pays a permit imprint application fee, the Postal Service accepts that fee for international out-bound and/or domestic mailings.

Effective with the price change of January 22, 2017, the Postal Service eliminated the permit application fee for many products. The article that discussed the fees, titled “DMM Revision: Elimination of Fees” in *Postal Bulletin* 22462 (3-2-17, pages 4–9), mentioned that the fee would continue to be required for several products, including international mail. This revision inadvertently caused mailers and Postal Service employees some confusion as to whether mailers had to pay separate permit imprint application fees for domestic mail and for international mail.

For similar revisions to *Mailing Standards of the United States Postal Service, Domestic Mail Manual (DMM®)*, see the article titled “DMM Revision: Domestic and International Permit Imprint Application Fees” on page 5 of this *Postal Bulletin*.

Mailing Standards of the United States Postal Service, International Mail Manual (IMM)

* * * * *

1	International Mail Services	*	*	*	*	*
150	Postage	*	*	*	*	*
152	Payment Methods	*	*	*	*	*

152.6 Permit Imprint

152.61 Conditions of Use

[Revise the introductory paragraph to read as follows (inserting a new second sentence — in bold here just for emphasis):]

Postage may be paid by permit imprint, subject to the standards in DMM 124, 604, and 705. **When a customer pays a permit imprint application fee, the Postal Service accepts that fee for international outbound and/or domestic mailings.** Postage charges are computed on PS Form 3700. This postage payment method may be used for postage and extra service fees for the following services:***

* * * * *

Although effective July 6, 2017, we will incorporate this revision into a later edition of the online IMM (scheduled for August 7, 2017). The online IMM is available via Postal Explorer® at pe.usps.com.

Publications

Publication 431 Revision: Changes to Post Office Box Service and Caller Service Fee Groups

Effective July 6, 2017, Publication 431, *Post Office Box Service and Caller Service Fee Groups*, is revised to include the following changes.

Publication 431, *Post Office Box Service and Caller Service Fee Groups*

* * * * *

[Revise the following entry:]

ZIP Code	Fee Group
23222	35

* * * * *

[Delete the following entries:]

ZIP Code	Fee Group
10025	1
36083A	4
36346	5
51648	6
55392	3
57470	5
94507B	31
98412	2
99371	5
99737A	5

* * * * *

The online version of Publication 431 is dated July 2013. Publication 431 is currently available on the Postal Service™ PolicyNet website (blue.usps.gov/cpim):

- Go to blue.usps.gov.
- In the left-hand column under “Essential Links,” click *PolicyNet*.
- Click *PUBs*.

Offices with WebBATS Manager/Supervisor access can view current Publication 431 information by going to the WebBATS Edit Facility Information page, as follows:

1. Go to the WebBATS main menu, and select Utility> Facility>Edit Facility option.
2. View the Fee Group field on the Edit Facility Information page.

— Retail Operations,
Retail and Customer Service Operations, 7-6-17

Organization Information

Finance

Equipment Maintenance Allowance Schedule for Rural Routes

Rural Carriers

In accordance with the provisions of Article 9, Section 2.J.3 of Handbook EL-902, *Agreement between the United States Postal Service and the National Rural Letter Carriers' Association*, effective July 8, 2017 (pay period 15-17), the equipment maintenance allowance (EMA) will increase to 68.0 cents per mile. The EMA is 68.0 cents per mile, or a minimum of \$27.20 per day, whichever is greater.

Auxiliary Rural Carriers, Rural Carrier Reliefs, Rural Carrier Associates, Rural Carrier Part-Time Flexibles, and Auxiliary Assistance

Employees providing auxiliary assistance or serving auxiliary routes under the provisions of Article 9, Section 2.J.5, receive an EMA of 68.0 cents per mile or \$7.40 per hour, whichever is greater. This EMA should not exceed the amount provided in the special equipment maintenance allowance for the route stops and miles.

EMA Rate Schedule

The EMA rate schedule on pages [11](#) and [12](#) supersedes all previously published EMA schedules for employees receiving EMA.

— *Collective Bargaining and Arbitration, Labor Relations, 7-6-17*

Information Security

Malware Strains

Is your computer running slowly? Are files suddenly missing? You may have malware. Malware is malicious software that can compromise computer functions, steal data, access private networks, and cause harm.

Protect yourself and the Postal Service™ from these types of malware:

- **Adware.** Adware looks like an advertisement (typically a pop-up window) that can download malware to your device without your knowledge.¹ Also, beware of “freeware” that claims to remove adware from your computer. Hackers can mimic legitimate software to trick users.² USPS® policy prohibits employees from downloading freeware on USPS equipment (see Handbook AS-805, *Information Security*, section 10-3.4.3, Prohibited Software, for additional guidance).

- **Ransomware.** Ransomware has become the number one security concern for organizations.³ Ransomware holds your device “captive” by restricting access to files, folders, or systems until a ransom is paid. Just last week, over 64 countries across the world, including the U.S., were targeted by the Petya ransomware attack. This attack impacted a range of industries, including banking, law, pharmaceutical, and energy companies.⁴ Similarly, in May 2017, the WannaCry ransomware attack reached over 300,000 computers in 150 countries in a matter of days. Victims were required to pay \$300 to decrypt or unscramble their files.⁵ To date, the Postal Service has not been impacted by these attacks.

1. Data sourced from StaySafeOnline.org: staysafeonline.org/stay-safe-online/keep-a-clean-machine/malware-and-botnets.

2. Data sourced from CNET: [cnet.com/forums/discussions/beware-fake-version-of-adwcleaner-636182/](https://www.cnet.com/forums/discussions/beware-fake-version-of-adwcleaner-636182/).

3. Data sourced from Barkly: blog.barkly.com/ransomware-statistics-2016.

4. Data sourced from The New York Times: [nytimes.com/2017/06/27/technology/global-ransomware-hack-what-we-know-and-dont-know.html](https://www.nytimes.com/2017/06/27/technology/global-ransomware-hack-what-we-know-and-dont-know.html).

5. Data sourced from CNET: [cnet.com/news/seven-things-we-learned-about-wannacry-microsoft-windows-ransomware-nsa](https://www.cnet.com/news/seven-things-we-learned-about-wannacry-microsoft-windows-ransomware-nsa).

- **Spyware.** Spyware monitors internet activity and allows hackers to capture passwords, login credentials, credit card numbers, physical locations, and more. Spyware is often distributed through free software or applications (apps).¹ Earlier this year, Google removed an Android app called “System Update” that used spyware to track users’ physical locations.²
- **Trojans.** Trojans disguise themselves as legitimate files or software, but can execute hidden programs, commands, and scripts without your knowledge. In 2015, security researchers identified over 17,000 Android devices sold through Amazon that had a pre-installed trojan called “Cloudsota.” This trojan potentially allowed hackers to gain remote access to the device and remove anti-virus software.³
- **Worms.** Worms spread over networks and cause harm by consuming bandwidth and overloading web servers. In the early years of social media, the worm

known as “Koobface” attacked Facebook and stole users’ login credentials to communicate with their contacts and lure them to malicious websites.⁴

As a rule of thumb, always think carefully before clicking on suspicious links, emails, attachments, or web pages. Additionally, never download unapproved programs or software to USPS equipment.

If you suspect your USPS device may have malware, report it to the CyberSecurity Operations Center (CSOC) by emailing cybersafe@usps.gov. For more information about how to stay cybersafe, check out the *CyberSafe at USPS*® websites on *Blue* and *Lite Blue*, or the public-facing website at uspscybersafe.com.

— *Corporate Information Security Office,
Chief Information Security Officer
and Digital Solutions, 7-6-17*

Military Mail

Military Mail Restrictions Change

Effective July 20, 2017, the Postal Service™ will add Restriction C2 to the “Restrictions” page for “Overseas Military/Diplomatic Mail” to indicate that E-cigarettes and related products (e.g., nicotine liquids, e-liquids, parts, or supplies) are prohibited in the mail addressed to specified military and diplomatic ZIP Codes™ overseas.

We will publish Restriction C2 on the “Restrictions” page in *Postal Bulletin 22472 (7-20-17)* for “Overseas Military/Diplomatic Mail.”

— *Military Mail Operations,
Network Operations Management, 7-6-17*

1. Data sourced from BBC: bbc.co.uk/webwise/guides/about-spyware.

2. Data sourced from Threat Post: threatpost.com/smsvova-spyware-hiding-in-system-update-app-ejected-from-google-play-store/125143/.

3. Data sourced from Digital Trends: digitaltrends.com/mobile/cloudsota-trojan-malware-on-cheap-tablets-amazon/.

4. Data sourced from ZDNet: zdnet.com/article/koobface-facebook-worm-still-spreading/.

EMA Rate Schedule (page 2 of 2)

USPS 26-9902
MINNEAPOLIS ISC
REPORT AAQ530F1

RURAL EQUIPMENT MAINTENANCE
R A T E S C H E D U L E

DATE 06-21-17
PAGE 2

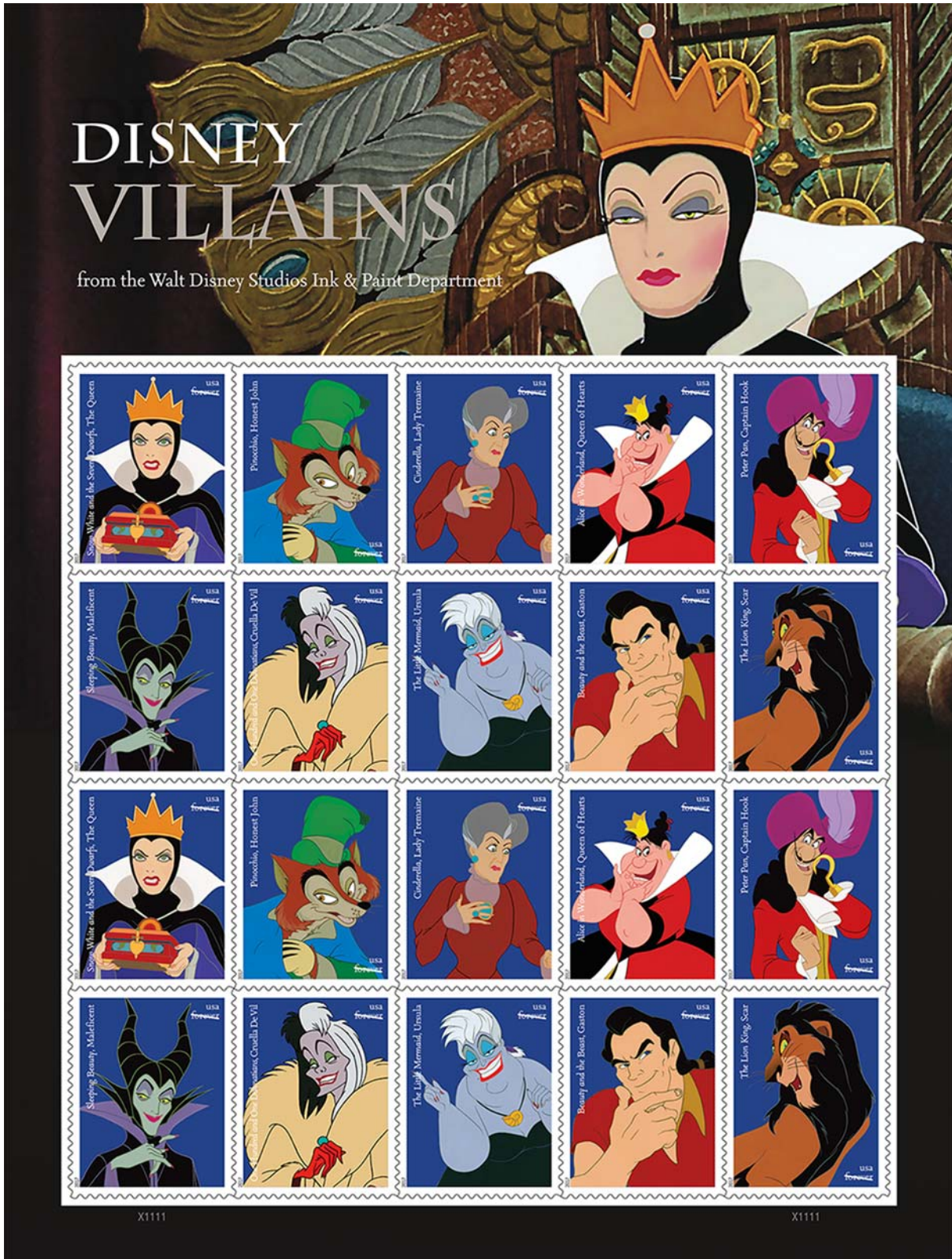
BASED ON \$0.680 PER MILE EFFECTIVE PP-YR 15-17

MILES STOPS = *0540**0660**0680**0700**0720**0740**0760**0780**0800**0820**0840**0860**0880**0900**0920**0940**0960**0980**1000

8	28.70	28.80	28.90	29.00	29.10	29.20	29.30	29.40	29.50	29.60	29.70	29.80	29.90	30.00	30.10	30.20	30.30	30.40	30.50
9	28.80	28.90	29.00	29.10	29.20	29.30	29.40	29.50	29.60	29.70	29.80	29.90	30.00	30.10	30.20	30.30	30.40	30.50	30.60
10	28.90	29.00	29.10	29.20	29.30	29.40	29.50	29.60	29.70	29.80	29.90	30.00	30.10	30.20	30.30	30.40	30.50	30.60	30.70
11	29.00	29.10	29.20	29.30	29.40	29.50	29.60	29.70	29.80	29.90	30.00	30.10	30.20	30.30	30.40	30.50	30.60	30.70	30.80
12	29.10	29.20	29.30	29.40	29.50	29.60	29.70	29.80	29.90	30.00	30.10	30.20	30.30	30.40	30.50	30.60	30.70	30.80	30.90
13	29.20	29.30	29.40	29.50	29.60	29.70	29.80	29.90	30.00	30.10	30.20	30.30	30.40	30.50	30.60	30.70	30.80	30.90	31.00
14	29.30	29.40	29.50	29.60	29.70	29.80	29.90	30.00	30.10	30.20	30.30	30.40	30.50	30.60	30.70	30.80	30.90	31.00	31.10
15	29.40	29.50	29.60	29.70	29.80	29.90	30.00	30.10	30.20	30.30	30.40	30.50	30.60	30.70	30.80	30.90	31.00	31.10	31.20
16	29.50	29.60	29.70	29.80	29.90	30.00	30.10	30.20	30.30	30.40	30.50	30.60	30.70	30.80	30.90	31.00	31.10	31.20	31.30
17	29.60	29.70	29.80	29.90	30.00	30.10	30.20	30.30	30.40	30.50	30.60	30.70	30.80	30.90	31.00	31.10	31.20	31.30	31.40
18	29.70	29.80	29.90	30.00	30.10	30.20	30.30	30.40	30.50	30.60	30.70	30.80	30.90	31.00	31.10	31.20	31.30	31.40	31.50
19	29.80	29.90	30.00	30.10	30.20	30.30	30.40	30.50	30.60	30.70	30.80	30.90	31.00	31.10	31.20	31.30	31.40	31.50	31.60
20	29.90	30.00	30.10	30.20	30.30	30.40	30.50	30.60	30.70	30.80	30.90	31.00	31.10	31.20	31.30	31.40	31.50	31.60	31.70
21	30.00	30.10	30.20	30.30	30.40	30.50	30.60	30.70	30.80	30.90	31.00	31.10	31.20	31.30	31.40	31.50	31.60	31.70	31.80
22	30.10	30.20	30.30	30.40	30.50	30.60	30.70	30.80	30.90	31.00	31.10	31.20	31.30	31.40	31.50	31.60	31.70	31.80	31.90
23	30.20	30.30	30.40	30.50	30.60	30.70	30.80	30.90	31.00	31.10	31.20	31.30	31.40	31.50	31.60	31.70	31.80	31.90	32.00
24	30.30	30.40	30.50	30.60	30.70	30.80	30.90	31.00	31.10	31.20	31.30	31.40	31.50	31.60	31.70	31.80	31.90	32.00	32.10
25	30.40	30.50	30.60	30.70	30.80	30.90	31.00	31.10	31.20	31.30	31.40	31.50	31.60	31.70	31.80	31.90	32.00	32.10	32.20
26	30.50	30.60	30.70	30.80	30.90	31.00	31.10	31.20	31.30	31.40	31.50	31.60	31.70	31.80	31.90	32.00	32.10	32.20	32.30
27	30.60	30.70	30.80	30.90	31.00	31.10	31.20	31.30	31.40	31.50	31.60	31.70	31.80	31.90	32.00	32.10	32.20	32.30	32.40
28	30.70	30.80	30.90	31.00	31.10	31.20	31.30	31.40	31.50	31.60	31.70	31.80	31.90	32.00	32.10	32.20	32.30	32.40	32.50
29	30.80	30.90	31.00	31.10	31.20	31.30	31.40	31.50	31.60	31.70	31.80	31.90	32.00	32.10	32.20	32.30	32.40	32.50	32.60
30	30.90	31.00	31.10	31.20	31.30	31.40	31.50	31.60	31.70	31.80	31.90	32.00	32.10	32.20	32.30	32.40	32.50	32.60	32.70
31	31.00	31.10	31.20	31.30	31.40	31.50	31.60	31.70	31.80	31.90	32.00	32.10	32.20	32.30	32.40	32.50	32.60	32.70	32.80
32	31.10	31.20	31.30	31.40	31.50	31.60	31.70	31.80	31.90	32.00	32.10	32.20	32.30	32.40	32.50	32.60	32.70	32.80	32.90
33	31.20	31.30	31.40	31.50	31.60	31.70	31.80	31.90	32.00	32.10	32.20	32.30	32.40	32.50	32.60	32.70	32.80	32.90	33.00
34	31.30	31.40	31.50	31.60	31.70	31.80	31.90	32.00	32.10	32.20	32.30	32.40	32.50	32.60	32.70	32.80	32.90	33.00	33.10
35	31.40	31.50	31.60	31.70	31.80	31.90	32.00	32.10	32.20	32.30	32.40	32.50	32.60	32.70	32.80	32.90	33.00	33.10	33.20
36	31.50	31.60	31.70	31.80	31.90	32.00	32.10	32.20	32.30	32.40	32.50	32.60	32.70	32.80	32.90	33.00	33.10	33.20	33.30
37	31.60	31.70	31.80	31.90	32.00	32.10	32.20	32.30	32.40	32.50	32.60	32.70	32.80	32.90	33.00	33.10	33.20	33.30	33.40
38	31.70	31.80	31.90	32.00	32.10	32.20	32.30	32.40	32.50	32.60	32.70	32.80	32.90	33.00	33.10	33.20	33.30	33.40	33.50
39	31.80	31.90	32.00	32.10	32.20	32.30	32.40	32.50	32.60	32.70	32.80	32.90	33.00	33.10	33.20	33.30	33.40	33.50	33.60
40	31.90	32.00	32.10	32.20	32.30	32.40	32.50	32.60	32.70	32.80	32.90	33.00	33.10	33.20	33.30	33.40	33.50	33.60	33.70
41	32.00	32.10	32.20	32.30	32.40	32.50	32.60	32.70	32.80	32.90	33.00	33.10	33.20	33.30	33.40	33.50	33.60	33.70	33.80
42	32.10	32.20	32.30	32.40	32.50	32.60	32.70	32.80	32.90	33.00	33.10	33.20	33.30	33.40	33.50	33.60	33.70	33.80	33.90
43	32.20	32.30	32.40	32.50	32.60	32.70	32.80	32.90	33.00	33.10	33.20	33.30	33.40	33.50	33.60	33.70	33.80	33.90	34.00

Stamp Services

Stamp Announcement 17-32: Disney Villains Stamps



On July 15, 2017, in Anaheim, CA, the U.S. Postal Service® will issue the *Disney Villains* stamps (Forever® priced at 49 cents), in ten designs, in a pressure-sensitive adhesive (PSA) pane of 20 stamps (Item 475400). **The *Disney Villains* \$9.80 pane of 20 stamps may not be split, and the stamps may not be sold individually.** The stamps will go on sale nationwide July 15, 2017.

This issuance celebrates the rich legacy of the Walt Disney Studios Ink & Paint Department with a pane of 20 stamps showcasing 10 classic Disney villains: Maleficent (*Sleeping Beauty*), Honest John (*Pinocchio*), Cruella De Vil (*One Hundred and One Dalmatians*), Captain Hook (*Peter Pan*), the Queen of Hearts (*Alice in Wonderland*), Lady Tremaine (*Cinderella*), Ursula (*The Little Mermaid*), the Queen (*Snow White and the Seven Dwarfs*), Gaston (*Beauty and the Beast*), and Scar (*The Lion King*). The selvage area features the Queen from *Snow White* standing in front of an ornate background. The reverse side of the pane includes drawings of the 10 characters and a quote by each one. Art Director Derry Noyes of Washington, DC, working closely with Disney Creative Director David Pacheco and the team at the Walt Disney Studios Ink & Paint Department, designed these stamps using new art created for the issuance.

**Availability to Post Offices: Item 475400, \$9.80
Disney Villains (Forever priced at 49 cents)
Commemorative PSA Pane of 20 Stamps**

Stamp Fulfillment Services has completed an automatic push distribution to Post Offices™ of a quantity to cover approximately 30 days of sales. Distribution quantities for the automatic push distribution are available by logging on to SFS Web at sfsweb.usps.gov. Post Offices may begin ordering stamps on the first-day-of-issue through SFS Web; offices must also check the amount they received on their automatic push distribution.

Special Dedication Postmarks

Only the following pictorial postmark is permitted for *Disney Villains* stamps. The word "Station" or the abbreviation "STA" is required somewhere in the design, because it will be a temporary station.

**Guidelines for Finalizing Disney Villains Stamps
Pictorial Postmark Art**



To finalize the *Disney Villains* stamps pictorial postmark art, insert the date, city, state, and ZIP Code™ of the physical location of your event adjacent to the stamp image. Overall dimensions of the pictorial postmark must not exceed 4 inches horizontally by 2 inches vertically. Collectors prefer the dimensions 3-1/2 inches by 1 inch.

The Postal Service™ must make all special postmarks known to collectors through advance publicity in the *Postal Bulletin*. Therefore, all special dedication cancellations must be reported to Stamp Services 4 weeks before the event using PS Form 413, *Pictorial Postmark Announcement/Report*. To get a copy of the form, go to blue.usps.gov/formmgmt/forms/ps413.pdf.

How to Order the First-Day-of-Issue Postmark

Customers have 60 days to obtain the first-day-of-issue postmark by mail. They may purchase new stamps at their local Post Office, at The Postal Store® website at usps.com/shop, or by calling 800-782-6724. They must affix the stamps to envelopes of their choice, address the envelopes (to themselves or others), and place them in a larger envelope addressed to:

FDI – Disney Villains Stamps
USPS Stamp Fulfillment Services
8300 NE Underground Drive, Suite 300
Kansas City, MO 64144-9900

After applying the first-day-of-issue postmark, the Postal Service will return the envelopes through the mail. There is no charge for the postmark up to a quantity of 50. There is a 5-cent charge for each additional postmark over 50. All orders must be postmarked by September 15, 2017.

How to Order First-Day Covers

The Postal Service also offers first-day covers for new stamp issues and Postal Service stationery items postmarked with the official first-day-of-issue cancellation. Each item has an individual catalog number and is offered in the quarterly *USA Philatelic*, online at usps.com/shop, or by calling 800-782-6724. Customers may request a free issue of *USA Philatelic* at usps.com/philatelic, by calling 800-782-6724 or writing to:

U.S. Postal Service
USA Philatelic Request
PO Box 219014
Kansas City, MO 64121-9014

Pull-Out Information

Fraud

Invalid USPS Corporate Account Numbers

Please provide this listing to Contract Postal Units and acceptance clerks in non-POS locations without intranet access to validate a USPS Corporate Account (USPSCA) number online. For all other locations, online USPSCA validation is preferred. The online validation process is outlined in the USPSCA Validation SOP on the Retail webpage. This list supersedes all previous notices, which must be recycled.

Acceptance clerks must not accept Priority Mail Express™ shipments bearing an invalid USPSCA number in the “Payment by Account” or “Agreement Number” section of the label or form.

Note: The first 6 digits of a 9-digit Custom Designed Service and Next Day Pickup Agreement make up the Corporate Account Number.

005129	022215	090738	109074	200924	333623	468580	598863	771571	900341	924125	927557	980035
005856	022221	091220	109117	208563	333627	469176	598865	773416	900382	925062	927691	980394
006069	022229	091691	117146	208858	333682	469204	601404	801329	900390	926040	927758	980694
006382	022252	091975	118131	210499	336677	469206	605066	802163	900548	926041	927823	980809
008005	022374	092068	118904	210645	338024	472029	605858	802362	900808	926056	927845	980928
008030	022459	092951	119027	221079	340546	472043	606411	802387	900974	926061	928239	980975
008064	022535	093181	119531	221337	344085	472076	606964	802842	901041	926066	928275	981620
008264	022617	093312	120336	227102	349328	472080	606973	802952	901257	926089	928311	981883
008717	022648	094073	123001	232192	349498	473066	607062	804050	901940	926099	928324	981925
009616	022660	094412	123009	235192	370007	473068	607583	806079	902206	926109	928404	982023
009813	023002	094636	124138	270003	372110	473081	608014	810005	902453	926164	928426	982216
010509	023659	094682	134022	272306	392533	473094	608134	832018	904648	926248	928447	982294
010733	025484	095195	136023	272371	410221	474055	608228	840082	906049	926306	928549	982328
010762	026019	095239	142317	274142	432693	474062	612004	840289	906138	926352	928576	982372
010765	026085	095572	146818	280172	436485	474065	641367	840397	906185	926360	928587	982423
011110	029149	095814	154020	293306	441016	474080	652235	841436	906808	926369	928615	982573
011416	029757	096229	156243	296561	441688	475110	674002	844064	906898	926394	928750	985217
012413	038644	096753	173001	298027	441889	478115	681141	847021	906919	926405	928772	992203
014809	054004	097407	173040	300543	443570	478116	719027	853496	906967	926413	928782	992269
015749	060723	097731	173312	301431	452027	478827	724020	853588	911036	926421	930285	992416
020001	061622	098213	174006	301511	464186	479049	730447	853739	911176	926458	930320	995284
020003	064096	098656	175010	301523	464224	479077	731576	853788	913098	926465	931899	995312
020395	065366	098757	175062	301796	466500	479130	740016	853914	914827	926466	933019	995420
020500	065484	098979	175191	303004	466537	479131	741003	853934	915617	926572	933510	995442
020562	067103	100241	176145	305567	466590	479136	741162	853967	916020	926584	937724	995532
020644	068019	100258	180421	309009	466594	479140	741455	890200	917475	926586	937810	995587
021011	071176	100359	191424	320076	467095	485225	741692	891725	917557	926609	941003	995627
021014	075025	100382	192144	320722	467101	490097	744143	891820	917567	926621	941334	995781
021022	077027	100402	195069	320978	467107	490726	747018	900002	917572	926630	945845	995872
021039	077040	100408	196077	322118	467115	501003	750024	900024	917657	926753	945959	997095
021071	077385	100650	196088	322269	468213	530019	750350	900033	917673	926896	946416	997250
021224	077451	100674	196110	322380	468379	551068	750420	900117	917680	926904	946577	997298
021271	077543	100679	197119	322645	468383	551204	752122	900162	917696	926949	947226	998506
021287	079459	100696	200016	322906	468403	553141	752131	900179	918151	927062	947265	
021306	079756	100835	200101	322999	468426	553408	752132	900228	918159	927074	948193	
021397	079952	100881	200170	324443	468433	553720	752162	900230	918184	927168	948721	
021456	080050	100921	200295	326225	468438	554020	752204	900233	918360	927251	950022	
021480	080174	100940	200406	329061	468441	554523	752235	900247	918377	927359	951063	
021822	080734	100985	200483	329489	468443	577100	752948	900255	918408	927408	954003	
021825	088196	101102	200529	330235	468446	581223	753028	900258	918563	927437	958412	
021922	089241	104224	200603	331694	468550	591230	761010	900259	918980	927438	967118	
021945	089421	104308	200800	331970	468565	591275	770084	900261	920087	927468	972375	
022132	090380	106194	200874	332164	468575	591998	770369	900298	921245	927548	973291	

Missing, Lost, or Stolen U.S. Money Order Forms

Do Not Cash — Upon Receipt, Notify Local Postal Inspectors

Provide this listing to all Postal Service™ employees responsible for accepting and cashing postal money orders. Destroy all interim notices when the numbers listed

appear in the *Postal Bulletin*. The actual serial numbers consist of the first 10 digits on the money orders. Check for altered dollar amounts by holding money orders to the light.

010 001 0200 to 0299	039 145 6521 to 6595	071 507 6840 to 6899	117 951 5200 to 5299
010 504 1932 to 1999	040 024 3901 to 3999	072 045 9641 to 9699	119 786 3051 to 3064
011 582 1889 to 1899	040 674 7100 to 7199	072 675 8287 to 8299	119 815 8961 to 6199
011 588 2900 to 3099	040 688 8816 to 8899	073 763 0867 to 0876	119 850 7400 to 7499
012 441 0784 to 0799	041 299 6752 to 6799	073 763 0878 to 0887	119 850 7700 to 7999
012 579 5675 to 5699	041 623 8889 to 8899	073 763 0889 to 0898	121 634 0460 to 0499
013 289 6176 to 6199	041 803 6565 to 6599	077 617 5481 to 5499	122 451 9879 to 9899
013 610 0014 to 0099	043 129 1968 to 1997	077 999 4001 to 4090	122 714 6805 to 6900
014 932 1000 to 1099	043 205 5922 to 5999	078 174 4475 to 4499	124 916 0304 to 0499
014 972 0800 to 0899	044 087 3457 to 3499	078 219 4931 to 4999	126 423 0136 to 0169
015 363 0065 to 0099	044 087 4000 to 4099	078 250 4756 to 4799	127 500 2328 to 2399
017 028 3200 to 3299	044 226 2487 to 2512	078 823 8312 to 8399	160 901 2254 to 2299
018 569 5333 to 5399	044 306 4200 to 4299	079 374 0300 to 2499	161 103 6581 to 6599
018 986 5264 to 5299	044 306 4370 to 4599	079 807 2342 to 2399	161 194 2857 to 0899
019 518 2814 to 2899	045 524 4121 to 4298	082 721 0228 to 0254	162 032 4447 to 4499
020 698 5159 to 5199	046 800 9870 to 9899	083 140 5000 to 7499	163 257 1085 to 1099
020 844 7307 to 7399	047 352 4000 to 4099	083 784 8886 to 8899	164 359 2406 to 2499
020 972 8948 to 8999	048 383 7650 to 7659	083 913 6915 to 6999	166 101 1433 to 1499
022 021 9110 to 9181	048 396 3647 to 3699	084 478 3920 to 3999	167 555 5201 to 5212
022 037 1411 to 1499	051 142 0755 to 0799	086 000 8271 to 8299	167 555 5214 to 5299
022 527 9201 to 9210	051 774 8857 to 8899	086 798 3840 to 3849	169 618 6274 to 6299
022 529 1882 to 1899	051 781 2875 to 2885	088 404 4472 to 4499	171 806 6878 to 6893
023 637 7169 to 7199	051 977 7010 to 7023	088 404 5584 to 5699	173 639 4685 to 4699
024 380 4100 to 4199	052 058 7115 to 7199	088 757 8688 to 8699	174 238 2779 to 2799
024 496 6870 to 6896	054 450 1130 to 1167	088 757 9400 to 9499	174 281 9347 to 9399
025 092 0987 to 0999	057 670 0563 to 0599	089 358 2248 to 2257	175 251 2600 to 0699
025 369 5535 to 5599	058 187 3836 to 3899	090 663 9678 to 9684	176 281 7937 to 7950
025 729 1151 to 1199	058 523 3003 to 3099	091 818 0071 to 0099	176 281 7963 to 7999
025 729 1643 to 1799	058 591 1153 to 1299	093 106 9346 to 9355	176 731 6586 to 6599
026 492 3180 to 3199	058 895 3746 to 3799	093 203 0500 to 0599	178 254 5000 to 9999
027 361 0430 to 0499	059 986 0814 to 0899	093 684 3630 to 3699	178 881 9900 to 9999
027 369 4482 to 4495	060 406 7650 to 7699	094 081 5074 to 5099	180 031 2089 to 2088
027 671 8762 to 8776	063 491 8122 to 8199	094 216 2555 to 2599	180 403 7723 to 7741
027 787 9886 to 9899	063 916 9968 to 9999	094 580 7062 to 7099	180 428 4580 to 0599
027 965 9487 to 9499	064 091 4500 to 4599	094 639 4200 to 4299	182 368 7544 to 0599
028 100 8069 to 8099	065 170 0471 to 0499	095 070 7186 to 7199	182 475 3229 to 3258
028 191 1852 to 1999	065 255 7909 to 7999	095 076 8300 to 8399	182 475 3904 to 3933
028 850 3000 to 3199	065 392 6345 to 6399	095 354 6864 to 6899	182 631 0031 to 0099
029 510 1500 to 1599	066 099 2014 to 2099	097 224 1350 to 1599	182 911 6539 to 6600
030 687 0903 to 0999	066 648 2880 to 2899	100 160 3800 to 3899	184 218 2760 to 2799
030 701 3442 to 3499	066 787 3639 to 3699	104 667 6400 to 6499	185 828 1474 to 1499
031 077 4507 to 4799	066 845 7500 to 9999	104 876 8937 to 8999	186 132 7583 to 0599
032 295 7500 to 9999	067 093 3869 to 3899	112 049 4413 to 4499	186 629 0589 to 0599
034 394 1000 to 1099	068 895 0334 to 0399	112 870 9765 to 9799	187 184 6177 to 0199
034 943 0400 to 0799	070 724 4488 to 4499	113 319 2000 to 2099	187 323 8200 to 8299
035 035 4337 to 4399	070 841 9181 to 9199	114 402 3850 to 3899	187 441 6080 to 6099
037 312 7500 to 7599	070 844 2546 to 2599	114 866 5368 to 5397	188 831 6774 to 6799
037 706 9578 to 9599	070 916 1340 to 1399	116 154 2800 to 2899	188 835 6370 to 6399
037 805 3677 to 3699	071 047 5768 to 5799	116 986 4400 to 4499	189 083 1064 to 1099
037 909 5490 to 5499	071 179 9800 to 9899	117 175 1647 to 5169	189 660 9583 to 9599
037 931 4660 to 4699	071 386 3682 to 3699	117 951 4687 to 4699	191 179 0377 to 0399

192 050 5762	to	5781	229 924 6696	to	6699	391 792 6100	to	6199	410 795 7927	to	7999
194 456 8600	to	0699	230 051 9500	to	9999	392 668 2956	to	2999	410 867 0917	to	0966
195 194 6881	to	6899	236 366 2431	to	2499	392 854 8500	to	8899	410 867 0970	to	0999
195 874 1112	to	1199	236 607 6882	to	6899	393 584 7566	to	7699	411 868 1023	to	1199
196 979 0524	to	0599	236 660 5853	to	5872	393 650 0074	to	0099	411 922 2322	to	2399
197 244 6100	to	6199	239 322 5200	to	5299	393 838 8316	to	8499	412 193 0900	to	0999
197 244 6300	to	6399	239 322 5400	to	5499	393 893 6007	to	6099	412 395 8599	to	8699
197 244 6400	to	6499	239 322 5600	to	5699	394 126 6907	to	6999	412 485 6500	to	6599
197 244 6500	to	6599	239 322 5800	to	5899	394 189 0405	to	0599	412 485 6610	to	6699
197 244 6600	to	6699	239 322 5900	to	5999	394 822 3243	to	3278	412 885 5953	to	5999
197 244 6700	to	6799	240 593 1879	to	1899	394 990 1810	to	1899	414 193 3608	to	3674
197 244 6800	to	8999	242 735 0388	to	0398	395 343 3264	to	3299	414 193 3677	to	3699
198 285 2556	to	2566	242 951 7276	to	7299	395 373 3035	to	3099	414 411 7348	to	7399
199 105 0778	to	0799	244 004 9985	to	9999	395 396 9649	to	9799	414 640 0757	to	0799
199 678 2968	to	2999	273 070 8059	to	8099	395 970 3240	to	3299	414 965 1727	to	1799
202 748 5133	to	5199	273 775 7700	to	7899	397 622 4054	to	4099	417 302 8104	to	8199
202 748 5245	to	5299	302 000 0000	to	9999	397 819 8902	to	8999	417 387 6532	to	6599
202 748 5300	to	5399	349 746 2056	to	2099	398 149 7200	to	7699	417 496 6800	to	6999
202 748 5400	to	5499	350 518 7350	to	7374	399 070 0872	to	0899	417 871 9250	to	9299
203 256 1240	to	1299	360 011 1690	to	1699	399 156 7119	to	7199	417 930 9533	to	9599
204 230 3577	to	3595	360 168 6008	to	6099	399 203 5064	to	5099	418 164 6500	to	6799
205 019 0174	to	0199	360 173 8800	to	8899	399 296 9910	to	9999	418 423 9863	to	9899
207 196 9900	to	9999	360 324 2326	to	2399	399 396 8935	to	8999	418 633 5922	to	5999
207 204 0700	to	0799	362 861 3064	to	3099	399 792 7775	to	7799	418 719 8520	to	8599
207 204 0800	to	0899	373 006 2176	to	2199	399 792 8300	to	8399	418 744 2235	to	2299
207 514 3857	to	3899	374 768 2600	to	2699	400 427 1051	to	1999	418 962 2848	to	2899
208 556 4707	to	4799	375 169 4400	to	4599	401 045 1505	to	1549	419 543 0286	to	0299
210 057 4038	to	4047	375 829 3400	to	3499	401 045 1571	to	1599	419 730 0300	to	0399
210 221 0548	to	0599	375 851 9100	to	9199	401 294 2700	to	2799	420 277 0015	to	0049
214 061 4711	to	4724	376 196 0911	to	0999	401 310 9505	to	9599	420 599 0734	to	0798
214 303 6311	to	6325	378 085 3679	to	3699	401 382 5312	to	5399	420 661 4115	to	4199
214 303 6239	to	6258	378 351 1063	to	1099	402 578 7876	to	7899	420 758 9500	to	9699
214 877 4251	to	4273	379 843 5100	to	5199	403 125 6744	to	6799	420 969 3951	to	3971
215 252 3918	to	3992	380 093 9600	to	9699	403 260 7000	to	7499	420 969 3973	to	3999
218 698 2157	to	2199	380 165 1165	to	1199	403 280 6470	to	6499	421 116 3565	to	3599
218 746 0800	to	0899	381 325 4500	to	4599	403 685 8600	to	8699	421 130 9300	to	9399
219 095 0100	to	0399	381 604 2510	to	2699	404 003 0300	to	0399	421 313 4500	to	4999
219 389 1885	to	1899	381 645 9525	to	9599	404 041 8838	to	8899	421 364 5537	to	5599
219 568 7435	to	7456	383 314 3968	to	3999	404 071 4268	to	4299	421 656 2609	to	2699
219 568 7469	to	7487	383 892 1000	to	1344	404 347 5356	to	5399	421 988 9700	to	9799
221 316 5757	to	5799	383 892 1382	to	1399	404 347 5548	to	5599	422 172 4667	to	4699
223 476 3914	to	3999	384 925 3641	to	3654	404 726 4500	to	4599	422 484 4212	to	4299
223 565 4921	to	4957	385 568 2331	to	2399	404 961 5001	to	5199	422 556 1270	to	1299
223 565 4979	to	4999	385 599 7554	to	7575	405 325 0188	to	0198	422 587 7024	to	7099
224 636 4745	to	4765	385 774 2024	to	2099	406 009 4587	to	4599	422 819 7533	to	7599
224 636 4776	to	4799	386 624 1412	to	1599	406 260 6830	to	6899	422 842 5073	to	5087
224 636 4855	to	4885	386 883 8936	to	8999	406 459 6641	to	6999	422 907 7563	to	7599
224 636 4932	to	4948	387 314 5574	to	5599	406 733 3000	to	3999	424 500 6050	to	6099
224 636 4950	to	4962	387 837 6300	to	6399	407 545 1557	to	1599	424 641 8500	to	8599
224 636 4985	to	4999	388 828 0656	to	0699	407 594 0412	to	0599	424 871 6600	to	6699
224 730 2207	to	2299	389 696 2400	to	2799	407 692 9100	to	9299	425 298 2352	to	2399
225 970 0500	to	0599	389 846 3104	to	3135	407 959 2190	to	2199	425 418 4269	to	4299
225 970 0600	to	0699	389 846 3145	to	3195	408 265 2275	to	2288	425 418 4405	to	4499
225 970 0700	to	0799	389 887 9211	to	9230	408 499 7700	to	7799	426 547 4566	to	4599
227 033 8679	to	8699	389 887 9234	to	9299	408 499 7900	to	7999	427 412 6337	to	6499
227 275 9400	to	9999	390 001 3182	to	3199	408 682 8484	to	8599	427 481 0900	to	0999
228 463 2456	to	2499	390 001 3500	to	3699	408 698 7015	to	7099	428 027 2742	to	2752
228 510 4852	to	4899	390 545 5974	to	5999	409 072 3941	to	3999	429 474 4172	to	4199
229 462 8451	to	8475	391 104 6146	to	6199	410 491 2311	to	2399	429 889 2900	to	2999
229 668 5977	to	5999	391 574 1466	to	1499	410 694 8400	to	8599	430 150 4401	to	4599
229 923 9176	to	9199	391 783 3020	to	3599	410 775 1500	to	1599	430 172 9800	to	9899

430 177 1900	to	2099	454 547 7434	to	7499	471 918 0300	to	0999	488 173 7900	to	7999
430 444 9500	to	9699	454 922 4867	to	4895	471 985 2408	to	2419	488 206 4100	to	4199
430 664 4070	to	4099	455 221 1348	to	1499	472 191 6700	to	6799	488 226 0200	to	0299
432 168 8419	to	8499	455 364 2147	to	2199	472 270 2555	to	2599	488 709 3906	to	3999
432 708 6800	to	6999	455 399 5400	to	5499	472 987 0213	to	0241	488 855 8359	to	8399
432 744 1544	to	1599	455 476 0676	to	0699	472 987 0290	to	0299	489 181 8963	to	8999
432 995 9775	to	9799	455 543 0618	to	0699	473 151 2069	to	2199	489 223 2000	to	2099
433 003 5800	to	5899	456 410 9006	to	9099	473 666 9138	to	9199	489 311 1930	to	1999
433 757 3047	to	3099	456 470 4146	to	4299	473 952 3429	to	3499	489 318 6200	to	6300
433 765 4003	to	4099	456 619 4460	to	4499	474 108 5402	to	5499	489 384 0027	to	0099
434 482 7060	to	7199	457 333 2686	to	2699	474 356 5193	to	5299	489 427 0658	to	0899
434 513 2386	to	2399	457 729 1767	to	1777	474 949 3366	to	3399	489 997 5252	to	5299
434 968 3076	to	3092	457 937 8615	to	8699	475 134 9362	to	9399	490 669 5850	to	6099
435 303 1831	to	1842	458 028 9810	to	9899	475 167 9667	to	9699	490 717 7080	to	7099
435 303 1986	to	1999	458 057 2712	to	2999	475 319 3415	to	3499	490 721 6000	to	6099
435 666 6092	to	6399	458 069 9537	to	9599	475 319 3649	to	3799	490 793 1500	to	2099
436 082 6400	to	6899	458 069 9665	to	9699	475 340 6400	to	6599	490 886 8171	to	8199
436 160 6441	to	6499	458 337 5222	to	5299	475 424 8410	to	8499	490 977 9221	to	9240
437 316 7115	to	7199	458 354 7653	to	7999	475 629 9156	to	9199	491 258 8100	to	9099
437 427 0500	to	3499	458 671 8678	to	8699	475 850 6101	to	6199	491 567 1376	to	1399
439 179 2300	to	2399	458 671 8721	to	8798	475 875 2500	to	2599	492 254 4800	to	4899
439 310 0458	to	0499	458 847 5044	to	5999	476 169 8264	to	8299	492 283 5100	to	5199
440 698 1947	to	1999	459 274 7624	to	7699	476 189 3000	to	3499	492 610 6813	to	6899
440 858 6300	to	6399	459 365 5432	to	5499	476 331 2480	to	2499	493 394 5568	to	5599
440 858 6420	to	7299	459 378 5764	to	5799	477 289 8601	to	8699	493 470 2562	to	2599
441 199 1655	to	1699	459 472 4816	to	4999	477 681 5206	to	5299	493 473 7700	to	7799
443 127 3648	to	3699	460 349 6878	to	6899	478 010 4243	to	4268	493 716 2153	to	2199
443 127 4000	to	4099	460 550 1909	to	1999	478 010 4270	to	4291	494 206 2972	to	2999
443 673 7900	to	7999	460 997 5234	to	5299	478 450 5071	to	5099	494 217 3446	to	3999
443 800 9335	to	9399	461 973 6443	to	6499	478 469 7838	to	7858	494 224 0500	to	0599
444 382 8822	to	8899	462 152 0107	to	0299	478 469 7883	to	7899	495 145 0600	to	0699
444 390 1667	to	1699	462 274 1072	to	1099	479 280 9800	to	9899	496 209 7425	to	7499
444 457 3854	to	3899	462 277 8373	to	8399	479 365 9116	to	9176	496 213 8728	to	8799
450 048 4173	to	4199	462 554 6051	to	6099	479 412 9900	to	9999	496 474 5226	to	5248
450 048 4442	to	4699	463 011 5529	to	5540	479 667 6190	to	6199	497 053 8517	to	8699
450 560 5173	to	5199	463 176 4115	to	4199	479 748 9680	to	9699	497 854 8673	to	8699
450 620 3077	to	3099	463 176 4229	to	4299	479 860 7000	to	7199	498 449 8888	to	8899
450 620 3135	to	3199	463 185 2600	to	2799	480 526 2000	to	2099	498 929 8285	to	8499
450 780 2716	to	2799	463 227 7711	to	7799	480 640 6330	to	6399	498 936 5310	to	5399
450 801 2700	to	2799	463 414 4869	to	4899	480 658 0568	to	0599	499 016 5425	to	5499
451 109 2967	to	2984	463 808 3484	to	3499	480 689 5100	to	5199	499 440 8575	to	8899
451 115 4110	to	4125	463 945 7400	to	7899	481 072 9463	to	9499	499 731 6717	to	6799
451 115 4127	to	4199	464 629 9000	to	9399	481 673 0074	to	0095	500 064 1858	to	1869
451 746 0700	to	0799	464 711 4332	to	4399	482 527 1500	to	1599	500 070 5725	to	7799
452 265 0074	to	0099	465 692 3963	to	3999	482 541 5255	to	5299	501 058 0016	to	0026
452 265 0246	to	0299	465 698 8300	to	8599	482 729 6800	to	6899	501 331 0300	to	0399
452 265 0335	to	0999	465 743 7745	to	7799	483 363 7207	to	7299	501 460 0977	to	0999
452 509 1169	to	1199	466 798 6056	to	6067	483 402 2356	to	2399	502 227 7645	to	7699
452 855 6471	to	6499	467 147 4300	to	4399	483 486 5100	to	5199	502 424 0200	to	0499
452 890 4679	to	4799	468 079 5782	to	5799	483 632 1521	to	1599	502 424 0600	to	0699
452 900 8215	to	8238	469 067 2817	to	2899	483 632 2600	to	2799	502 496 6923	to	6999
453 117 9146	to	9199	469 127 8000	to	8199	483 849 1615	to	1699	503 003 2700	to	2899
453 334 3631	to	3699	469 213 0359	to	0399	484 174 4803	to	5299	503 194 5144	to	5153
453 603 7841	to	7891	469 213 0500	to	0599	484 323 8900	to	9199	503 790 9922	to	9948
453 650 1140	to	1199	469 561 8011	to	8099	484 680 5000	to	5038	504 045 4030	to	4099
453 741 1300	to	1399	469 658 1961	to	1999	484 680 5040	to	5074	504 166 0200	to	0599
454 013 2919	to	2999	469 666 9900	to	9999	484 680 5077	to	5099	504 240 1062	to	1399
454 186 2411	to	2499	469 678 1900	to	1999	485 029 4913	to	4999	504 805 3300	to	3499
454 268 4883	to	4899	469 781 4900	to	4999	486 176 0600	to	0699	505 096 0662	to	0699
454 302 5400	to	5499	469 947 6960	to	6999	486 559 7555	to	7599	505 893 7739	to	7799
454 490 8300	to	8399	470 755 5800	to	5818	486 696 3023	to	3199	505 893 7800	to	7999

506 124 0800	to	0999	612 291 8013	to	8099	634 807 2474	to	2499	648 163 5300	to	5499
506 165 7027	to	0099	612 751 5171	to	5199	634 827 5900	to	5999	648 722 5283	to	5299
506 502 5209	to	5299	612 751 5226	to	5299	634 886 3428	to	3499	648 892 3164	to	3199
506 756 1682	to	1699	612 751 6083	to	6099	635 559 3449	to	3499	649 100 3989	to	3999
506 756 1700	to	1799	612 751 6268	to	6299	636 289 6214	to	6299	649 647 0370	to	0399
506 756 1800	to	1899	612 751 6572	to	6599	636 634 8007	to	8042	649 647 0522	to	0599
506 836 5326	to	5399	612 774 2111	to	2199	637 150 1200	to	1299	649 647 5237	to	5399
508 488 6226	to	6299	612 774 2254	to	2299	637 562 5828	to	5899	649 647 9100	to	9299
508 789 8332	to	8399	612 774 2500	to	2599	638 042 1647	to	1699	649 666 7800	to	8299
508 789 8400	to	8499	614 469 0979	to	0999	638 049 4984	to	4999	650 114 7707 to 7719		
509 909 0425	to	0435	614 474 3000	to	3099	638 318 1115	to	1199	650 130 3400	to	3599
510 150 2400 to 2499			614 521 3490	to	3499	638 318 1453	to	1499	650 213 0406	to	0499
510 381 3200	to	3299	614 645 1800	to	1899	638 885 0000	to	0299	650 555 1749	to	1799
510 587 9500	to	9599	614 832 1100	to	2099	638 903 4362	to	4373	650 564 1900	to	1999
510 587 9659	to	9699	615 017 7505	to	7599	639 415 1929	to	1999	650 627 4212	to	4299
510 269 9770	to	9999	617 711 6609	to	6699	639 415 2019	to	2099	650 736 2043	to	2099
511 021 5042	to	5099	617 760 5266	to	5299	639 420 6200	to	6299	650 739 1540	to	1699
511 021 5100	to	5199	617 813 3601	to	3699	639 469 3517	to	3799	651 741 4415	to	4499
511 468 1747	to	1799	618 840 9200	to	9299	639 605 2143	to	2199	651 882 2800	to	2899
511 844 0100	to	0199	619 551 7229	to	7299	639 657 8600	to	8799	652 754 6317	to	6399
511 844 0340	to	0399	619 859 3000	to	3099	640 289 7500 to 7599			653 131 4945	to	4999
600 645 3223 to 3299			620 073 9400 to 9499			640 289 7700	to	7999	653 426 3300	to	3399
601 339 1200	to	1399	621 614 7907	to	7930	641 170 4420	to	4499	653 455 4874	to	4899
601 653 5884	to	5899	621 614 7932	to	7999	641 318 3133	to	3199	654 238 0000	to	0399
601 661 7700	to	7799	621 648 8021	to	8199	641 378 6500	to	6999	654 404 3065	to	3092
601 682 5343	to	5399	621 648 8500	to	8599	641 383 8739	to	8799	654 962 2900	to	3199
601 928 1600	to	1699	621 904 8351	to	8599	641 877 3187	to	3299	655 103 5081	to	5199
602 512 2972	to	2999	621 916 1978	to	1989	641 877 3310	to	3399	655 523 2600	to	2999
602 555 2400	to	2799	622 989 8032	to	8099	642 355 8094	to	8199	656 305 2448	to	2499
602 829 7061	to	7099	623 076 9300	to	9399	642 355 8308	to	8999	657 347 4438	to	4999
603 483 9572	to	9599	623 819 5006	to	5099	642 900 0018	to	0099	657 710 8100	to	8999
603 490 7200	to	7299	623 895 8200	to	8399	643 030 6254	to	6299	657 780 0985	to	0999
603 678 7100	to	7199	623 917 0000	to	0099	644 066 0882	to	0899	658 586 1400	to	1499
603 678 7662	to	7699	623 917 0200	to	0299	644 069 0600	to	0699	658 877 8000	to	8199
603 678 7902	to	7999	624 468 5288	to	5299	644 077 7506	to	7699	658 880 8000	to	8199
603 678 8418	to	8499	624 665 3162	to	3198	644 085 8157	to	8199	659 398 7300	to	7399
603 678 8700	to	9999	625 088 6735	to	6799	644 112 9839	to	9899	659 706 8113	to	8199
604 086 0880	to	0899	625 916 9500	to	9799	644 373 9083	to	9099	659 846 7837	to	7899
604 349 1414	to	1499	625 968 8956	to	8999	644 380 1460	to	1499	660 510 4100 to 4199		
604 503 7776	to	7799	627 005 3938	to	3999	644 733 4715	to	4799	660 673 0400	to	0599
605 520 9037	to	9099	627 384 3907	to	4099	644 900 9712	to	9799	661 488 5000	to	5099
605 685 4010	to	4099	627 496 7549	to	7599	644 901 0109	to	1299	661 609 9100	to	9199
605 988 6467	to	6499	627 708 3605	to	3699	644 901 1325	to	1399	661 716 9420	to	9499
607 689 7951	to	7960	627 776 2500	to	2599	644 923 6800	to	7799	661 906 6522	to	6599
607 728 1276	to	1299	628 226 3100	to	3199	644 932 4655	to	4699	662 021 8332	to	8399
608 727 7100	to	7199	628 814 4702	to	4799	645 318 7240	to	7499	662 068 0700	to	0899
608 727 7273	to	7599	628 851 9689	to	9699	645 333 1766	to	1799	662 553 0774	to	0799
608 813 9950	to	9999	629 510 7200	to	7299	645 790 8632	to	8699	663 078 7034	to	7099
609 067 5325	to	5399	629 964 4200	to	4294	645 821 0657	to	0699	663 763 5300	to	5399
609 067 5488	to	5499	630 389 3056 to 3071			645 930 7948	to	7999	663 883 7039	to	7499
609 067 5600	to	5699	630 463 0588	to	0599	645 975 0737	to	0762	663 938 9200	to	9299
609 289 6123	to	6199	631 459 9117	to	9199	646 242 6200	to	6299	664 253 8000	to	8499
609 438 4400	to	4499	631 762 9325	to	9399	646 270 7639	to	7799	664 656 3055	to	3099
609 493 1100	to	1199	632 217 4933	to	4999	646 798 4000	to	4999	665 174 6400	to	6499
609 766 8091	to	8999	632 500 0000	to	640 3999	647 048 7035	to	7099	665 274 8208	to	8299
609 825 4100	to	4115	633 110 4165	to	4199	647 049 2900	to	2999	665 669 5400	to	5499
609 884 2981	to	2999	633 110 4303	to	4499	647 398 8300	to	8399	666 132 8226	to	8299
609 893 1000	to	1099	633 438 6429	to	6599	647 398 8481	to	8499	666 696 2209	to	2299
610 092 3200 to 3299			633 588 7173	to	7182	647 437 3000	to	4999	666 696 2309	to	2399
610 582 4200	to	4299	634 725 0700	to	0799	647 811 2188	to	2199	667 032 9300	to	9399
611 879 6939	to	6999	634 803 3239	to	3299	648 009 6057	to	6099	667 729 5529	to	5599

668 383 8400	to	8699	691 664 1800	to	1999	740 037 6730	to	6800	831 815 8240	to	8299
670 368 3400	to	3499	691 664 2400	to	2499	740 119 2275	to	2284	832 525 3810	to	3899
670 369 7336	to	7399	692 727 9362	to	9399	740 130 6688	to	6698	833 159 1884	to	1899
670 750 7169	to	7199	692 798 1800	to	1899	740 144 2780	to	2795	833 456 2567	to	2599
671 046 6200	to	6399	693 249 0779	to	0799	740 241 9049	to	9099	833 566 3015	to	3071
671 251 5448	to	5499	693 249 0877	to	1699	740 252 9265	to	9294	834 130 5200	to	5299
671 926 5600	to	5799	693 445 0566	to	0999	740 255 1718	to	1799	834 316 5444	to	5499
672 444 2000	to	2999	693 448 8500	to	8999	740 274 2602	to	2619	834 354 8747	to	8766
672 828 3410	to	3499	693 645 9583	to	9599	740 277 0366	to	0392	834 354 8824	to	8838
673 167 5776	to	5799	693 965 4200	to	4299	740 332 7658	to	7671	835 269 5700	to	5799
675 464 3700	to	3799	695 741 2906	to	2999	740 348 6641	to	6658	835 496 7303	to	7399
675 464 4000	to	4199	695 947 8518	to	8599	740 351 4790	to	4799	835 539 5200	to	5999
676 365 5958	to	5999	696 662 8247	to	8299	740 374 7416	to	7499	835 813 3015	to	3099
676 669 1024	to	1099	697 447 8285	to	8296	740 470 2420	to	2443	837 672 8967	to	8999
677 126 6734	to	6799	698 042 4816	to	4899	740 514 0300	to	0499	837 784 3282	to	3299
677 333 9979	to	9999	698 131 2138	to	2157	740 523 7432	to	7449	838 176 8377	to	8399
677 466 1088	to	1099	698 227 0000	to	0099	740 535 1555	to	1580	838 518 1257	to	1299
678 071 4500	to	4799	700 065 2570	to	2599	740 557 3570	to	3579	839 718 8257	to	8299
678 096 7531	to	7599	700 065 4800	to	4899	740 650 4104	to	4140	840 323 0600	to	0699
679 909 2578	to	2599	700 190 3350	to	3359	740 684 0620	to	0800	840 875 6235	to	6299
680 112 9565	to	9599	700 228 6048	to	6099	740 701 6105	to	6114	840 910 0900	to	0999
680 244 0903	to	0999	700 650 0452	to	0499	740 705 9790	to	9799	841 349 5000	to	5099
680 412 6046	to	6099	700 666 1323	to	1349	740 726 6400	to	6500	841 805 7747	to	7899
680 761 6800	to	6899	700 786 9106	to	9142	740 748 8319	to	8329	841 805 7944	to	8099
681 677 0540	to	0699	700 859 0744	to	0758	740 765 3306	to	3399	842 226 0685	to	0695
682 070 1029	to	1099	701 028 6780	to	6899	740 774 8434	to	8499	842 685 4600	to	4699
682 956 6280	to	6299	701 213 3900	to	3999	740 779 4259	to	4299	842 685 4742	to	4999
682 956 6490	to	6599	701 267 2000	to	3999	740 786 1885	to	1899	842 860 0300	to	0399
682 956 6700	to	6799	701 335 7312	to	7399	740 790 5989	to	5999	842 898 5582	to	5599
682 965 1178	to	1199	701 369 2005	to	2050	740 803 4870	to	4879	843 062 7100	to	7199
682 965 1201	to	1299	701 499 2260	to	2299	740 820 4854	to	7836	843 077 6288	to	6299
683 118 2389	to	2399	701 503 2247	to	2299	740 827 7578	to	7594	843 077 6378	to	6399
683 378 2000	to	2099	701 541 2271	to	2299	740 917 7490	to	7499	843 758 5769	to	5778
683 378 2117	to	2299	701 553 6557	to	6599	740 918 5531	to	5549	843 786 2554	to	2699
683 415 1200	to	1499	701 578 7460	to	7469	741 037 8528	to	8551	845 656 8165	to	8199
683 444 8159	to	8199	701 578 7475	to	7499	742 030 6135	to	6149	845 727 2100	to	2199
685 154 7780	to	7789	701 601 3457	to	3499	742 033 2663	to	2674	845 746 2618	to	2635
685 297 7645	to	7699	701 605 5913	to	5999	742 040 3300	to	3309	846 390 7531	to	7599
685 623 5264	to	5299	701 695 3982	to	3999	742 151 5000	to	5014	846 918 0572	to	0599
685 650 9487	to	9499	701 695 4148	to	4199	742 191 4640	to	4649	847 237 7690	to	7699
685 669 4200	to	4299	701 695 4227	to	4299	742 192 5210	to	5224	847 284 2481	to	2499
685 757 8452	to	8499	701 708 1741	to	1799	742 222 9200	to	9210	847 374 7055	to	7065
686 071 2694	to	2799	701 736 3966	to	3999	742 228 9660	to	9669	847 374 7055	to	7065
686 176 3333	to	3354	701 772 0870	to	0899	742 247 6980	to	6989	847 636 5304	to	5399
686 372 3200	to	3299	701 838 2800	to	2899	742 290 0936	to	0950	847 700 5447	to	5499
686 644 5879	to	5899	701 941 0600	to	0699	742 302 7600	to	7699	847 723 7500	to	7599
686 899 1371	to	1399	702 171 1603	to	1699	805 885 8411	to	8499	849 485 3427	to	3499
686 931 7636	to	7699	702 195 5109	to	5199	806 087 1100	to	1499	849 520 9850	to	9899
687 601 0973	to	0999	702 254 9300	to	9399	806 268 9275	to	9299	849 608 1357	to	1399
687 614 6774	to	6799	702 264 7569	to	7599	806 534 3400	to	3477	849 792 2600	to	2699
688 120 9000	to	9999	702 519 0513	to	0524	807 342 3283	to	3399	850 546 1862	to	1899
688 314 3107	to	3191	702 713 1800	to	1809	808 086 7100	to	7199	851 143 6826	to	6844
690 291 1361	to	1371	702 821 5730	to	5799	808 090 3440	to	3499	851 209 9880	to	9899
690 788 2877	to	2899	702 821 5805	to	5899	808 325 5161	to	5699	851 928 9221	to	9299
690 893 5344	to	5399	702 844 6975	to	6994	808 784 8000	to	8299	852 589 6560	to	6599
690 893 5512	to	5599	702 846 6331	to	6399	830 125 0672	to	0699	853 049 3646	to	3699
690 904 1300	to	1599	702 848 3900	to	3999	830 602 5800	to	5999	854 304 4089	to	4999
690 941 6000	to	6199	702 857 7302	to	7499	830 610 3700	to	3799	854 529 2200	to	2299
691 313 6383	to	6399	702 878 0114	to	0199	830 983 3500	to	3599	854 532 0000	to	2999
691 313 6600	to	6699	703 364 1707	to	1799	830 983 3635	to	3699	855 001 6204	to	6249
691 582 8003	to	8099	740 002 7710	to	7719	831 354 1387	to	1399	855 319 9364	to	9399

855 361 3390	to	3399	870 575 8155	to	8999	910 958 7499	to	7599	921 477 3762	to	3799
856 226 0490	to	0499	870 589 0485	to	0494	911 140 1000	to	2199	922 278 1048	to	1399
856 656 5800	to	5999	870 691 7060	to	7099	911 245 2545	to	2599	922 280 2019	to	2099
856 752 0200	to	0299	872 028 4850	to	4899	911 268 9077	to	9099	922 280 2233	to	2299
857 111 1352	to	1399	872 029 9306	to	9399	911 400 8948	to	8999	922 773 0459	to	0499
857 279 3450	to	3499	872 078 3709	to	3799	911 508 1620	to	1799	923 032 7000	to	7399
857 843 4000	to	4099	872 100 0445	to	0459	911 509 9310	to	9399	923 045 3630	to	3699
858 124 7644	to	7699	900 556 4178	to	4199	911 523 3000	to	3999	923 484 3600	to	3699
858 756 3111	to	3299	900 845 0044	to	0099	912 057 9922	to	9999	923 493 9403	to	9599
859 063 8200	to	8699	900 936 0217	to	0299	912 882 0563	to	0899	923 493 9681	to	9699
859 190 0600	to	0644	900 936 0435	to	0499	913 605 2218	to	2299	923 604 4424	to	4499
859 437 5538	to	5599	901 058 5255	to	5280	913 709 2429	to	2499	923 810 7800	to	8299
859 811 2888	to	2899	901 273 1082	to	1099	913 818 3501	to	3999	924 252 1200	to	1299
859 855 8873	to	8999	901 287 5143	to	5199	914 063 4300	to	4399	924 252 1400	to	1499
860 240 8520	to	8599	901 291 2789	to	2799	914 346 7621	to	7644	924 533 0711	to	0799
860 275 3900	to	3999	901 525 7122	to	7199	914 453 1366	to	1399	924 533 2343	to	2399
860 518 9629	to	9699	902 089 1253	to	1299	914 529 6185	to	6299	924 533 2428	to	2499
860 600 0021	to	0999	902 198 9769	to	9799	914 896 4658	to	4699	924 685 1957	to	1999
861 158 2350	to	2599	902 948 1269	to	1299	915 187 8774	to	8779	924 946 6300	to	6699
861 367 5400	to	5499	902 985 0833	to	0899	915 300 2783	to	2799	925 333 5900	to	6099
861 637 6010	to	6099	903 370 6934	to	6999	915 546 6822	to	6999	925 336 2300	to	2399
861 979 7292	to	7499	904 600 6523	to	6599	915 646 5183	to	5199	926 432 5907	to	5999
862 216 6100	to	6199	904 892 0378	to	0399	915 671 3963	to	3980	926 436 3600	to	3699
862 263 9213	to	9299	904 892 0648	to	1299	915 671 3982	to	3999	927 765 6257	to	6299
862 271 0800	to	0999	905 056 2216	to	2299	915 675 2217	to	2299	928 197 8100	to	8199
862 271 5000	to	5099	905 510 6647	to	6799	916 440 3377	to	3399	928 197 8283	to	8299
863 871 5138	to	5199	905 510 6900	to	7099	916 670 6352	to	6399	928 856 2059	to	2068
863 949 5300	to	5399	905 794 0000	to	0199	916 682 5300	to	5399	930 078 5800	to	5899
864 088 8200	to	8299	905 794 0288	to	0299	916 694 1414	to	1499	930 219 1722	to	1799
864 426 3972	to	3999	905 873 6900	to	6999	916 703 0802	to	0821	930 335 7810	to	7819
864 520 6117	to	6136	905 873 7100	to	7299	917 089 0709	to	0799	931 097 9259	to	9299
865 151 0526	to	0599	905 880 8900	to	8999	917 089 0842	to	0899	931 156 1502	to	1579
865 500 4034	to	4099	905 889 7100	to	7199	917 216 2928	to	2999	931 156 1600	to	1625
865 883 6082	to	6099	906 158 1508	to	1599	917 370 6300	to	6499	931 156 1671	to	1699
866 004 3000	to	3999	906 558 8812	to	8899	917 486 4900	to	4999	932 506 6400	to	6599
866 442 4100	to	4899	906 982 2214	to	2299	918 460 0602	to	0699	932 732 1796	to	1799
867 366 9108	to	9118	907 725 8500	to	8599	918 951 7231	to	7299	932 827 9026	to	9099
867 633 7403	to	7499	907 815 0216	to	0257	919 519 2786	to	2799	932 957 2300	to	2399
867 737 5623	to	5699	908 622 4225	to	4235	919 536 0770	to	0799	933 060 6160	to	6189
868 169 4529	to	4599	908 936 9254	to	9299	919 814 3095	to	3199	933 387 2541	to	2561
868 173 8400	to	8599	909 066 4494	to	7499	919 889 5110	to	5134	933 760 3609	to	4199
868 514 9000	to	9099	909 067 7400	to	7499	919 889 5137	to	5176	933 894 0928	to	0999
868 566 9200	to	9299	909 100 1787	to	1799	919 889 5178	to	5199	934 018 2729	to	2741
869 200 0000	to	9999	909 100 1900	to	2099	919 889 5030	to	5070	934 180 0300	to	0399
869 387 1150	to	1199	909 355 0422	to	0499	919 889 5090	to	5099	934 236 3954	to	3999
869 505 3500	to	3599	909 568 8900	to	9099	919 915 2774	to	2787	934 622 8717	to	8999
869 523 7033	to	7099	909 568 9300	to	9499	920 155 4662	to	4687	935 216 0312	to	0399
869 566 6150	to	6167	909 725 7307	to	7399	920 309 9039	to	9199	935 843 2202	to	2247
869 800 0000	to	999 9999	909 833 0947	to	0999	920 771 5321	to	5399	936 024 8889	to	8899
870 054 4814	to	4899	910 219 8631	to	8699	920 857 5500	to	5899	936 339 4455	to	4499
870 491 4812	to	4849	910 265 1100	to	1199	920 864 3480	to	3499			
870 536 5820	to	5829	910 471 7273	to	7299	920 963 4567	to	4599			
870 541 7167	to	7239	910 536 2505	to	2599	921 333 7400	to	7499			

Missing, Lost, or Stolen Canadian Money Order Forms

Do Not Cash — Upon Receipt, Notify Local Postal Inspectors

Provide this listing to all Postal Service™ employees responsible for accepting and cashing postal money orders. Destroy all interim notices when the numbers listed appear in the *Postal Bulletin*. The new money order serial

numbers consist of the first 9 digits. The 10th digit is a check digit only.

Do not cash outdated money orders **104 151 601 to 692 600 000**. Advise holders to send invalid money orders to Canada Post Corporation, Ottawa, Canada K1A 0B1. Check for altered dollar amounts by holding money orders to the light.

719 869 731	to	9 760	728 382 331	to	2 480	734 797 201	to	7 320	741 764 431	to	4 520
720 227 871	to	7 930	728 702 338	to	2 400	734 939 611	to	9 640	742 178 834	to	8 880
720 227 949	to	7 960	728 915 371	to	5 850	734 950 111	to	0 170	742 325 500	to	5 520
720 368 543	to	8 570	728 953 141	to	3 410	735 120 331	to	0 840	742 325 668	to	5 700
720 392 151	to	2 570	728 954 280	to	4 310	735 283 008	to	3 020	742 408 771	to	8 830
720 556 491	to	6 640	729 169 081	to	9 140	735 293 131	to	3 220	742 512 120	to	2 150
720 558 621	to	8 650	729 363 841	to	3 870	735 635 010	to	5 040	742 684 849	to	4 890
720 575 361	to	5 570	729 682 891	to	3 190	735 783 961	to	3 990	742 839 553	to	9 630
720 590 152	to	0 179	729 838 940	to	9 070	735 803 401	to	3 430	742 913 668	to	3 700
721 638 331	to	9 170	729 839 101	to	9 130	736 005 420	to	5 440	742 917 287	to	7 296
721 815 391	to	5 420	730 077 683	to	7 840	736 366 021	to	6 110	742 921 891	to	1 980
721 969 713	to	9 740	730 109 847	to	9 880	736 624 456	to	4 500	742 983 631	to	3 810
722 072 137	to	2 160	730 373 761	to	3 850	736 670 851	to	1 060	743 020 021	to	0 170
722 378 265	to	8 280	730 501 951	to	2 130	736 767 061	to	7 090	743 206 491	to	6 500
722 413 990	to	4 004	730 519 379	to	9 470	736 767 093	to	7 120	743 235 992	to	6 050
722 764 948	to	4 980	730 569 278	to	9 360	736 982 191	to	2 370	743 940 631	to	0 900
722 825 840	to	5 889	730 711 711	to	1 740	736 982 551	to	2 730	743 978 011	to	8 070
723 153 841	to	3 850	730 722 991	to	3 230	737 110 141	to	0 170	744 234 751	to	4 780
723 237 616	to	7 630	730 845 970	to	5 990	737 185 501	to	5 710	744 499 591	to	9 680
723 331 081	to	1 110	730 888 291	to	8 320	737 317 321	to	7 350	744 626 901	to	6 910
723 496 443	to	6 470	730 927 591	to	7 680	737 517 781	to	7 840	745 388 794	to	8 910
723 967 291	to	7 320	731 307 914	to	7 930	737 628 181	to	8 210	746 446 806	to	6 820
724 655 196	to	5 340	731 402 431	to	2 460	737 634 258	to	4 270	746 818 351	to	8 410
724 711 441	to	1 500	731 407 232	to	7 320	738 361 971	to	1 980	747 245 266	to	5 280
724 711 538	to	1 560	731 588 301	to	8 340	738 447 601	to	7 660	747 364 813	to	4 830
724 793 221	to	3 250	731 767 273	to	7 320	738 648 355	to	8 450	747 501 434	to	1 450
724 908 109	to	8 120	731 781 061	to	1 120	738 849 811	to	9 900	747 739 891	to	0 070
724 937 461	to	7 670	731 837 821	to	7 910	738 892 270	to	2 290	748 148 649	to	8 760
725 163 118	to	3 151	731 841 377	to	1 450	738 997 259	to	7 380	748 259 960	to	9 970
725 202 735	to	2 750	732 018 481	to	8 600	739 161 451	to	1 540	748 565 162	to	5 280
725 398 591	to	8 800	732 067 972	to	8 370	739 219 381	to	9 440	748 874 988	to	5 030
725 464 591	to	4 920	732 188 649	to	8 670	739 740 151	to	0 180	749 137 381	to	7 410
725 475 321	to	5 330	732 193 460	to	3 470	739 793 491	to	3 520	749 190 192	to	0 210
725 711 057	to	1 070	732 201 241	to	1 390	739 793 527	to	3 550	749 685 421	to	5 450
725 738 581	to	8 730	732 220 431	to	0 440	739 942 621	to	2 650	749 846 791	to	6 850
725 981 311	to	1 430	732 355 201	to	5 380	739 999 231	to	9 320	749 993 131	to	3 580
725 987 835	to	7 880	732 472 320	to	2 560	740 011 517	to	1 530	750 071 587	to	1 610
726 060 811	to	0 900	732 541 605	to	1 620	740 030 701	to	0 970	750 408 167	to	8 183
726 391 970	to	2 520	732 572 221	to	2 490	740 261 740	to	1 820	750 438 421	to	8 501
726 484 771	to	4 800	732 586 479	to	6 710	740 265 811	to	6 290	750 743 911	to	4 030
726 493 351	to	5 300	732 994 037	to	4 080	740 299 111	to	9 170	750 779 118	to	9 400
726 504 031	to	4 063	733 163 449	to	3 460	740 299 231	to	9 260	750 910 981	to	1 010
726 504 070	to	4 090	733 297 171	to	7 290	740 329 266	to	9 320	750 960 841	to	0 900
726 504 331	to	4 390	733 446 631	to	7 110	740 889 081	to	9 090	751 296 211	to	6 240
726 563 701	to	4 060	733 474 665	to	4 770	741 010 421	to	0 530	751 539 121	to	9 180
726 599 371	to	9 460	733 704 482	to	4 570	741 113 041	to	3 370	751 541 311	to	1 790
726 626 356	to	6 370	733 751 041	to	1 130	741 373 891	to	4 340	751 757 641	to	7 700
727 182 271	to	2 510	734 009 101	to	9 130	741 452 369	to	2 490	751 936 951	to	7 010
727 416 181	to	6 240	734 290 759	to	0 770	741 492 991	to	3 140	751 951 861	to	1 890
727 481 431	to	1 460	734 389 273	to	9 290	741 553 460	to	3 470	751 999 021	to	9 110
727 749 241	to	9 780	734 440 031	to	0 111	741 764 431	to	4 520	752 139 516	to	9 570

752 182 892	to	2 950	762 304 144	to	4 170	772 970 886	to	0 940	798 944 761	to	5 030
752 206 861	to	7 100	762 324 931	to	4 960	773 009 419	to	9 430	799 118 616	to	8 640
752 295 241	to	5 600	762 439 261	to	9 290	773 112 031	to	2 060	799 133 191	to	3 220
752 731 351	to	1 410	762 524 158	to	4 220	773 125 387	to	5 410	799 177 626	to	7 650
752 767 441	to	7 470	762 584 872	to	4 970	773 179 320	to	9 410	799 854 751	to	5 200
753 008 941	to	9 030	762 593 431	to	3 460	773 202 989	to	3 140	800 044 320	to	4 410
753 194 311	to	4 370	763 155 160	to	5 180	773 208 991	to	9 290	800 211 901	to	2 440
753 620 378	to	0 400	763 178 631	to	8 660	773 231 311	to	1 340	800 427 530	to	7 540
754 013 917	to	3 940	763 506 001	to	6 060	773 348 739	to	8 940	800 872 741	to	2 830
754 161 061	to	1 120	763 522 141	to	2 470	773 348 739	to	8 940	801 349 801	to	9 830
754 358 445	to	8 610	763 717 694	to	7 800	773 575 891	to	5 950	801 676 681	to	7 100
754 410 451	to	0 660	763 826 461	to	6 520	773 852 971	to	3 030	802 967 821	to	7 940
754 438 393	to	8 410	763 900 460	to	0 471	775 373 449	to	3 460	803 217 601	to	7 780
754 493 109	to	3 130	763 900 479	to	0 530	789 257 191	to	7 250	803 729 731	to	9 850
754 664 182	to	4 220	763 917 271	to	7 750	790 448 020	to	8 460	803 747 402	to	7 520
754 816 377	to	6 470	764 125 801	to	5 860	790 597 485	to	7 530	804 138 181	to	8 420
755 487 421	to	7 600	764 284 525	to	4 560	790 911 883	to	1 900	804 428 224	to	8 250
755 592 901	to	3 140	764 526 241	to	6 330	791 057 441	to	7 550	804 682 411	to	2 710
755 790 020	to	0 030	764 601 421	to	1 600	791 239 081	to	9 290	805 272 525	to	2 540
755 791 730	to	1 800	764 650 231	to	0 470	791 374 483	to	4 500	805 523 445	to	3 460
755 926 951	to	7 070	764 984 371	to	4 850	791 387 971	to	8 030	805 745 704	to	5 730
755 934 332	to	4 510	765 003 667	to	3 680	791 447 521	to	7 850	806 452 907	to	2 980
755 957 701	to	8 000	765 042 517	to	2 540	791 451 151	to	1 240	806 744 781	to	4 850
755 962 981	to	3 280	765 194 728	to	4 970	791 500 009	to	0 470	806 982 181	to	2 300
756 035 371	to	5 490	765 387 365	to	7 450	791 771 431	to	1 490	807 764 791	to	4 910
756 301 257	to	1 290	765 541 801	to	2 100	792 004 293	to	4 320	808 089 931	to	9 960
756 371 565	to	1 580	765 638 461	to	8 970	792 018 379	to	8 420	808 656 423	to	6 450
756 876 031	to	6 120	765 647 101	to	7 190	792 070 621	to	0 740	808 753 771	to	3 800
756 876 151	to	6 240	765 813 781	to	4 029	792 145 211	to	5 230	809 189 001	to	9 010
756 970 129	to	0 140	765 879 314	to	9 390	792 391 381	to	1 620	809 886 879	to	6 930
757 059 613	to	9 630	765 954 001	to	4 030	792 452 779	to	2 790	809 890 489	to	0 500
757 078 540	to	8 560	766 120 286	to	0 320	792 772 728	to	2 770	810 323 734	to	3 760
757 086 209	to	6 240	766 125 716	to	5 750	792 903 511	to	3 990	810 367 116	to	7 140
757 240 591	to	0 650	766 158 824	to	8 840	793 282 518	to	2 533	810 526 351	to	6 500
757 277 371	to	7 700	766 388 433	to	8 460	794 041 831	to	2 040	810 806 911	to	6 940
757 291 591	to	2 730	766 509 421	to	9 660	794 397 709	to	7 780	810 807 211	to	7 240
757 964 251	to	4 280	766 572 901	to	3 020	794 581 741	to	2 040	811 423 021	to	3 110
758 067 001	to	7 090	766 748 500	to	8 521	794 592 122	to	2 150	811 517 221	to	7 239
758 105 221	to	5 250	767 024 341	to	4 370	795 032 251	to	2 340	811 721 101	to	1 130
758 324 941	to	5 000	767 326 471	to	6 590	795 796 291	to	6 350	812 025 721	to	5 900
758 593 628	to	3 650	767 332 561	to	2 950	796 070 139	to	0 160	812 093 073	to	3 130
758 709 038	to	9 060	768 009 841	to	9 960	796 143 151	to	3 630	812 100 821	to	0 840
758 744 101	to	4 160	768 011 489	to	1 520	796 159 725	to	9 740	812 465 251	to	5 610
758 850 883	to	0 900	768 177 980	to	7 990	796 169 306	to	9 340	812 918 341	to	8 670
758 860 951	to	1 550	768 391 081	to	1 170	796 373 406	to	3 430	812 918 701	to	8 760
759 152 851	to	2 880	768 661 569	to	1 650	796 602 961	to	3 050	813 050 491	to	0 520
759 740 941	to	1 090	769 000 051	to	0 080	796 708 441	to	8 500	813 073 171	to	3 200
760 004 596	to	4 610	769 050 841	to	0 900	796 886 281	to	6 430	813 398 476	to	8 550
760 118 191	to	8 250	769 159 081	to	9 178	796 901 701	to	2 000	813 713 971	to	4 000
760 155 001	to	5 090	769 737 496	to	7 510	796 975 466	to	5 590	813 858 121	to	8 150
760 378 002	to	8 020	769 778 491	to	8 730	797 272 917	to	2 950	814 789 330	to	9 349
760 692 722	to	2 749	769 827 331	to	7 450	797 519 441	to	9 460	814 984 656	to	4 680
761 055 460	to	5 480	770 216 071	to	6 100	797 519 731	to	0 240	815 016 020	to	6 030
761 169 781	to	9 810	770 723 281	to	3 400	797 535 181	to	5 330	815 199 410	to	9 420
761 504 941	to	5 120	770 790 451	to	0 480	797 646 151	to	6 180	815 240 491	to	0 520
761 516 836	to	6 910	770 915 150	to	5 490	798 040 053	to	0 080	815 755 591	to	5 620
761 613 588	to	3 600	771 455 551	to	5 610	798 055 813	to	5 830	815 755 622	to	5 650
761 688 631	to	8 690	771 609 661	to	9 690	798 055 891	to	5 950	815 806 381	to	6 680
761 805 199	to	5 240	771 932 551	to	2 580	798 326 371	to	6 520	816 126 834	to	6 870
761 826 106	to	6 120	772 057 224	to	7 440	798 339 167	to	9 210	816 156 721	to	6 780
761 881 171	to	1 560	772 162 660	to	3 070	798 562 411	to	2 440	816 580 903	to	0 920
761 975 641	to	5 670	772 718 615	to	8 640	798 632 461	to	2 490	816 945 571	to	5 600
761 975 886	to	5 895	772 940 140	to	0 160	798 807 151	to	7 510	817 253 011	to	3 280

817 763 881	to	4 060	821 172 241	to	2 360	825 140 397	to	0 460	828 441 602	to	1 630
818 330 562	to	0 610	821 229 661	to	9 720	825 409 651	to	9 680	828 539 316	to	9 340
818 459 641	to	9 670	821 229 743	to	9 780	825 472 171	to	2 200	828 539 341	to	9 370
818 926 273	to	6 320	821 903 731	to	3 910	826 042 898	to	2 920	828 732 331	to	2 390
818 950 351	to	0 380	821 927 841	to	7 850	826 226 644	to	6 670	828 807 781	to	7 840
818 962 492	to	2 530	822 505 801	to	5 830	826 582 951	to	3 430	828 830 952	to	0 963
819 032 341	to	2 730	822 703 442	to	3 470	826 720 201	to	0 230	828 939 781	to	0 050
819 127 054	to	7 080	822 900 991	to	1 020	827 005 671	to	5 830	829 002 721	to	2 870
819 278 540	to	8 670	822 925 951	to	6 100	827 287 861	to	7 950	829 005 301	to	5 540
819 544 681	to	4 740	823 284 931	to	4 990	827 291 502	to	1 520	829 080 241	to	0 330
819 928 441	to	8 650	823 293 031	to	3 210	827 575 381	to	5 470	829 160 986	to	1 000
820 034 406	to	4 430	823 556 011	to	6 100	827 609 085	to	9 100	829 176 841	to	6 930
820 070 761	to	1 540	824 078 341	to	8 370	827 619 811	to	9 840	829 471 561	to	1 590
820 191 342	to	1 360	824 156 325	to	6 340	827 883 511	to	3 600	829 561 065	to	1 080
820 274 856	to	4 880	824 511 252	to	1 270	828 160 441	to	0 530	829 566 481	to	6 510
820 600 171	to	0 230	824 588 281	to	8 370	828 376 201	to	6 260	829 569 931	to	9 960

— Criminal Investigations Group, Postal Inspection Service, 7-6-17

Verifying U.S. Postal Service Money Orders

Follow these steps to cash a Postal Service™ money order:

1. Check that the amount does not exceed the legal limit: \$1,000 for domestic, and \$700 for international postal money orders.
2. Check that the proper security features are present:
 - When held to the light, a watermark of Benjamin Franklin is repeated from top to bottom on the left side.
 - When held to the light, a dark line (security thread) runs from top to bottom with the word “USPS®” repeated.
 - There should be no discoloration around the dollar amounts, which might indicate the amounts were changed.

These appear in Postal Service Notice 299, *U.S. Postal Money Order Reference Card*, or online at usps.com/shop/money-orders.htm.

3. If the money order seems suspicious, call the U.S. Postal Service® Money Order Verification System at 866-459-7822.

Please provide this information to local banks and retailers, as they also receive Postal Service money orders for cashing.

— Retail and Customer Service Operations, 7-6-17

Counterfeit Canadian Money Order Forms

Do Not Cash

To be posted and used by retail window employees. As directed, destroy previous notices. Destroy all interim notices when the numbers listed appear in the *Postal Bulletin*.

671,819,086	683,594,542	687,262,503
676,612,640	684,683,610	687,262,525
677,891,039	686,619,878	687,262,526
678,282,493	686,619,886	687,287,578
678,916,031	686,619,887	687,287,581
679,552,215	686,794,382	687,287,582
679,694,334	686,794,426	694,063,898
679,751,983	686,794,427	694,063,899
679,800,207	686,794,431	694,063,980
681,130,536	687,262,502	701,321,725
681,844,376		

— Criminal Investigations Group, Postal Inspection Service, 7-6-17

Toll-Free Number Available to Verify Canadian Money Orders

The Canada Post Corporation has a toll-free number that cashing agents can call to verify the validity of Canadian Postal Money Orders. The number is 800-563-0444.

This toll-free number is printed on the back of the Canadian Postal Money Orders.

— Criminal Investigations Group, Postal Inspection Service, 7-6-17

Other Information

Overseas Military/Diplomatic Mail

Mail addressed to military and diplomatic post offices overseas is subject to certain conditions or restrictions of mailing regarding content, preparation, and handling. The APO/FPO/DPO table below outlines these conditions by APO/FPO/DPO ZIP Codes™ through the use of footnoted mailing restrictions codes (see the [Restrictions](#) page following the table).

Acceptance clerks must use the table with the RSS terminal to determine which APO/FPO/DPO ZIP Codes are active and which conditions of mailing apply. Send inquiries to the Military Postal Service Agency at amps.usps.gov/jy2/frm.htm.

The entries under “Changes” appear in bold in the APO/FPO/DPO table starting below.

We have eliminated “Not Active” entries from the table below to save space and paper.

APO/FPO/DPO Table

APO/ FPO/ DPO	See Restrictions	APO/ FPO/ DPO	See Restrictions	APO/ FPO/ DPO	See Restrictions	APO/ FPO/ DPO	See Restrictions
09001	B-C-D-E3-F1-F3-H-H1-I3-J-L-M-R-R1-S-T-V-X-Z-Z1	09094	B-C-D-F3-H-M-P-R-S-Z1	09250	B-C-D-E-F3-H-M-R-S-U	09319	A-B-C-C1-E2-F-F1-F2-H1-R-R1-U2-V-Z1
09003	B-C-D-E-F3-H-M-P-R-S-U	09095	B-C-D-E-H-M-R-U	09261	B-C-D-E-F3-H-M-R-S-U-V-Z1	09320	A-B-C1-E2-F-F3-H1-M-N-R-R1-V-Z1
09004	B-C-D-E-F3-H-M-R-S-U	09096	B-C-D-E-F3-H-M-R-S-U	09263	B-C-D-E-F3-H-M-R-S-U	09321	A-B-C1-E2-F-H1-M-N-R-R1-V-Z1
09005	B-C-D-E-F3-H-M-P-R-S-U	09103	B-C-D-E-H-U	09264	B-C-D-E-F3-H-M-R-S-U	09330	A-B-C1-E2-F-F1-F3-H1-M-R-R1-V-Z1
09006	B-C-D-E-F3-H-M-R-S-U	09104	B-C-D-F3-H-M-R-S-U-Z1	09265	B-C-D-F-F1-H-J-L-M-N-R-T-U-V-Z1	09333	A-B-C1-E2-F-F1-F3-H1-I3-M-N-R-R1-V-Z1
09008	A-B-F-H-N-Q-V-Z-Z1	09107	B-C-D-E-F3-H-M-R-S-U	09301	A-B-C1-E2-F-F1-F3-H1-I3-J-L-M-N-R-R1-T-U4-V-Z-Z1	09337	A-B-C1-E2-F-F1-F3-H1-M-R-R1-V-Z1
09009	B-C-D-E-F3-H-M-R-S-U-Z1	09112	B-C-D-E-F3-H-M-R-S-U	09302	A-B-C1-F-F1-H-M-N-V-Z-Z1	09340	A-B-C1-F-H-N-R-V
09011	B-C-D-E-F3-H-M-R-S-U	09114	B-C-D-E-F3-H-M-R-S-U	09304	A-B-C-C1-D-E2-F-F1-F3-H1-J-L-M-N-R-R1-T-V-Z1	09343	A-B-C1-F-M-N-V-Z1
09012	B-C-D-E-F3-H-M-R-S-U-Z1	09123	B-C-D-E-F3-H-M-R-S-U-Z1	09305	A-B-C1-E2-F-F1-H1-I3-M-N-R-R1-T-V-Z-Z1	09347	A-B-C1-E2-F-H1-M-R-R1-V-Z1
09013	B-C-D-E-F-F1-H-M-R-U-Z1	09125	A-B-C-F-F1-F3-H-N-O-R-R1-S-V-V1	09306	A-B-C1-E2-F-F1-F3-H1-R-R1-U2-V-Z1	09348	A-B-C1-E2-F-F1-F3-H1-I3-M-N-R-R1-T-V-Z-Z1
09014	B-C-D-E-F3-H-M-P-R-S-U	09126	B-C-D-F3-H-M-P-R-S-Z1	09307	B-N-V-Z1	09351	A-B-C1-E2-E3-F-F1-F3-H1-I3-M-N-R-R1-S-T-V-X-Z-Z1
09016	B-C-D-E-F1-H-M-R-S-U	09128	B-C-D-E-F3-H-M-R-S-U	09308	A-B-C1-E2-F-F1-F3-H1-I3-M-N-R-R1-T-V-Z-Z1	09352	A-B-C1-E2-F-F3-H1-M-R-R1-V-Z1
09017	A-B-F-H-N-Q-V-Z-Z1	09131	B-C-D-E-F3-H-M-R-S-U	09309	A-B-C-C1-E2-F-H1-M-N-R-V-Z1	09354	A-B-C1-E2-F-F3-H1-M-R-R1-V-Z1
09018	A-B-F-H-N-Q-V-Z-Z1	09136	B-C-D-E-F1-F3-H-M-P-R-S-U	09310	A-B-C1-E2-F-F1-F3-H1-I3-J-L-M-N-R-R1-T-U4-V-Z-Z1	09355	A-B-C1-E2-F-F3-H1-M-R-R1-V-Z1
09020	B-C-D-E-F3-H-M-R-S-U	09138	B-C-D-F3-H-M-R-S-U	09311	A-B-C1-E2-F-F1-F3-H1-I3-J-L-M-N-R-R1-T-U4-V-Z-Z1	09356	A-B-C1-E2-F-F3-H1-M-N-R-V-Z1
09021	B-C-D-E-F3-H-M-R-S-U-Z1	09140	B-C-D-E-F3-H-M-R-S-U	09312	A-B-C1-E2-F-F1-F3-H1-I3-J-L-M-N-R-R1-T-U4-V-Z-Z1	09357	A-B-C1-E2-F-F3-H1-M-R-V-Z1
09022	B-C-D-E-F1-H-M-R-S-U	09142	B-C-D-E-F3-H-M-R-S-U	09313	A-B-C-C1-E2-F-F1-F2-H1-R-R1-V-Z1	09363	A-B-C1-E2-F-F3-H1-M-R-V-Z1
09034	B-C-D-E-F3-H-M-R-S-U	09154	B-C-D-E-F3-H-M-R-S-U	09314	A-B-C1-E2-F-F1-F3-H1-H1-M-N-R-R1-S-V-Z1	09365	A-B-C-C1-E2-F-F3-H1-M-N-R-V-Z1
09044	B-C-D-F1-H-U	09160	B-C-D-F-F1-F3-H-J-L-M-N-R-R1-T-U-V-Z1	09315	A-B-C1-E2-F-F3-N-R-R1-V-Z1	09366	A-B-C1-E2-F-F1-F3-H1-H1-M-R-R1-V-Z1
09046	B-C-D-E-F3-H-M-R-S-U	09172	B-C-D-E-F3-H-M-R-S-U	09316	A-B-C1-E2-F-F1-F3-H1-I3-M-N-R-R1-T-V-Z-Z1	09378	A-B-C1-E2-F-F1-F3-H1-I3-M-N-R-R1-T-V-Z-Z1
09049	B-C-D-E-F3-H-M-R-S-U	09173	B-C-D-E-F3-H-M-R-S-U	09317	A-B-C1-E2-F-F1-F3-H1-I3-M-N-R-R1-T-V-Z-Z1	09403	B-C-C1-F3-M-R-S-U-Z1
09053	B-C-D-E-F3-H-M-R-S-U	09177	B-C-D-E-F3-H-M-R-S-U			09421	B-C-C1-F3-M-R-S-U-Z1
09054	B-C-D-E-F3-H-M-R-S-U	09180	B-C-D-F3-H-M-R-S-U				
09055	B-C-D-E-F-H-M-R-R1-U-V	09186	B-C-D-E-F3-H-M-P-R-S-U				
09060	B-C-D-E-F1-F3-H-M-R-S-U-Z1	09203	A-B-C-C1-F-F1-F3-I3-J-L-M-N-R-R1-T-V-X-Z-Z1				
09067	B-C-D-E-F3-H-M-R-S-U	09204	B-C-F3-M-N-R-S-V-Z1				
09068	B-C-D-E-H-U-Z1	09211	B-C-D-E-F3-H-M-P-R-S-U				
09069	A-B-C-D-E-H-N-U-V	09213	B-C-D-F-F1-F3-H-J-L-M-N-R-R1-T-U-V-Z1				
09079	B-C-D-E-F3-H-M-R-S-U	09214	B-C-D-E-F3-H-M-R-S-U-Z1				
09090	B-C-D-E-F3-H-M-R-S-U	09227	B-C-D-E-F3-H-M-R-S-U				

APO/ FPO/ DPO	See Restrictions	APO/ FPO/ DPO	See Restrictions	APO/ FPO/ DPO	See Restrictions	APO/ FPO/ DPO	See Restrictions
09447	B-C-C1-F3-M-R-S-U-V-Z1	09579	B-F-F1-R-R1-V	09648	B-F3-N-R-U-V-Z1	09737	A-B-B2-C-C1-F-F1-F3-I3-J-L-M-N-R-R1-T-V-W-Y-Z-Z1
09454	B-C-C1-F3-M-R-S-U-V-Z1	09581	B-F-F1-R-R1-V	09649	B-F3-N-R-U-Z1	09738	A-B-B2-C-C1-D-F-F1-F3-J-L-M-N-R-R1-T-V-Z1
09459	B-C-C1-F3-M-R-S-U-Z1	09582	B-E2-E3-F-F1-F3-R-R1-V-Z1	09701	A-B-B2-C1-F-F1-F3-J-L-M-N-R-R1-T-V-Z1	09739	A-B-B2-C-C1-D-F-F1-F3-J-L-M-N-R-R1-T-V-Z1
09461	B-C-C1-F3-M-P-R-S-U-Z1	09583	B-F-F1-R-R1-V	09702	B-C-C1-F1-M-R-R1-U	09741	A-B-C1-E2-F-F1-F3-H1-J-L-M-N-R-R1-T-V-W-Y-Z1
09463	B-C-C1-F3-M-R-S-U-Z1	09586	B-F-F1-R-R1-V	09703	B-C-D-F1-H-U	09742	A-B-B2-F-F1-F3-J-L-M-N-R-R1-T-V-Z1
09464	B-C-C1-F3-R-S-U-Z1	09587	B-E2-E3-F-F1-F3-R-R1-S-V-Z1	09704	B-C-O-V-V1	09743	A-B-F-H-N-Q-V-Z-Z1
09468	B-C-C1-F3-M-R-S-U-Z1	09588	B-C-E2-E3-F-F1-F3-H-R-R1-S-V-Z1	09705	B-C-C1-F1-M-R-R1-U	09744	A-B-B2-C-C1-F-F1-F3-J-L-M-N-R-R1-T-V-Z1
09469	B-C-C1-R-U-Z1	09589	B-F-F1-F3-R-S-V	09706	B-C-F3-M-N-R-S-U-V-Z1	09745	A-B-F-F1-F3-M-N-R-R1-S-V-Z1
09470	B-C-C1-M-R-U-Z1	09590	B-V	09707	B-C-F-F1-F3-J-L-M-N-R-R1-T-V-Z1	09748	A-B-B2-C-C1-D-F-F1-F3-J-L-M-N-R-R1-T-V-Z1
09494	B-C-C1-F3-M-R-S-U-Z1	09591	B-E2-E3-F-F1-F2-F3-R-R1-V-Z1	09708	B-C-C1-F1-M-R-R1-U	09749	A-B-F-H-N-U-V-Z1
09497	A-B-C1-E2-F3-H1-M-N-R-R1-V-Z1	09592	B-F-F1-R-R1-V	09709	B-B2-C1-E2-F-F1-F3-H1-J-L-N-R-R1-T-V-Z1	09750	A-B-B2-C-C1-F-F1-F3-J-L-M-N-R-R1-T-V-Z1
09498	B-C-C1-F-F1-F3-J-L-N-R-R1-T-V-Z1	09593	B-F-F1-F3-R-S-V	09710	B-C-C1-F-F1-J-L-M-N-R-R1-T-U-V-Z1	09751	B-C-D-E-F3-H-M-R-S-U
09501	B-V	09594	B-F-F1-R-R1-V	09711	A-B-F-F1-F3-N-R-R1-S-V-Z1	09752	B-C-D-F1-H-U
09502	B-V	09595	B-F-F1-R-R1-V	09712	A-B-F-F3-H-R-U-V-Z1	09753	A-B-F-N-V-Z1
09503	B-F-F1-R-R1-V	09596	B-F-F1-R-R1-V	09714	B-C-C1-F1-M-R-R1-U	09754	A-B-F-H-N-Q-V-Z-Z1
09504	B-V	09599	B-F-F1-R-R1-V	09715	B-F-F1-J-L-M-N-R-T-V-Z1	09755	A-B-B2-C-C1-D-F-F1-J-L-M-N-Q-R-R1-T-V-Z1
09505	B-V	09600	B-C-F-F1-F3-R-U-Z1	09716	B-C-F-F1-F3-J-L-M-N-R-R1-T-V-Z1	09756	A-B-B2-E3-F-F1-F3-J-L-N-Q-R-R1-T-V-Z1
09506	B-V	09602	B-C-F-F1-N-R-U-V	09717	A-B-F3-M-R-S-V-W-Z1	09758	A-B-F-F1-M-N-R-R1-V-Z1
09507	B-V	09603	B-C-F-F1-F3-R-S-U-V-Z1	09718	B-F-F1-J-L-M-N-R-T-U-V-Z1	09759	A-B-B2-C-C1-E2-F-F1-F3-J-L-N-R-R1-T-V-Z1
09508	B-F-F1-R-R1-V	09604	B-C-F-F1-F3-P-R-S-U-V-Z1	09719	B-C-D-F3-M-R-S-U-V-Z1	09760	A-B-B2-C-C1-D-F-F1-J-L-M-N-Q-R-R1-T-V-Z1
09509	B-F-F1-R-R1-V	09605	B-C-D-H-M-R-U-V	09720	B-M-R-S-U-V-Z1	09761	B-F-F1-F3-M-N-R-R1-V-Z1
09510	A-B-C1-E2-F-H1-M-R-R1-V-Z1	09606	B-C-D-H-M-R-U-V	09722	A-B-F-H-N-Q-V-Z-Z1	09762	A-B-B2-E3-F-F1-F3-J-L-N-R-R1-T-V-Z1
09511	B-F-F1-R-R1-V	09607	A-B-C-F-F1-F3-M-N-R-R1-U-U3-V-W-Z1	09723	B-F-F1-F3-J-L-M-N-R-R1-T-V-Z1	09769	A-B-B2-C-C1-D-F-F1-F3-J-L-M-N-R-R1-T-V-Z1
09513	B-F-F1-R-R1-V	09608	B-C-F-F3-N-R-U-V-Z1	09724	B-C-C1-F1-M-R-R1-U	09777	A-B-C-E1-F-F1-F3-L-M-N-R-R1-T
09517	B-F-F1-R-R1-V	09609	B-C-F-F3-R-U-Z1	09725	A-B-F-F3-H-N-O-Q-S-V1-Z-Z1	09780	A-B-F-H-N-R-V
09520	B-F-F1-R-R1-V	09610	B-C-F-F1-F3-M-R-S-U-V-Z1	09726	B-F-F1-J-L-M-N-R-T-U-V-Z1	09789	A-B-E2-F-F1-F3-N-R-S-V-Z1
09522	B-F-F1-F3-R-S-V	09613	B-C-F-N-U-V	09727	A-B-B2-C-C1-D-F-F1-F3-J-L-M-N-R-R1-T-V-Z1	09800	A-B-E2-F-F1-F3-N-R-R1-S-V-Z1
09523	B-F-F1-R-R1-V	09614	A-B-C1-E2-F-F1-F3-H1-J-L-M-N-R-R1-T-V-W-Y	09728	A-B-B2-C-C1-F-F1-F3-J-L-N-R-R1-T-V-Z1	09801	A-B-C1-E2-F-H1-M-N-R-R1-V-Z1
09524	B-F-F1-R-R1-V	09617	B-C-F-F3-R-U-Z1	09729	B-C-F-F3-N-R-R1-U-V-Z1	09803	B-E2-E3-F-F1-F3-H1-N-R-R1-U-V-Z1
09532	B-F-F1-R-R1-V	09618	B-C-F-F3-R-U-Z1	09730	A-B-B2-C-C1-F-F1-F3-J-L-M-N-R-R1-T-V-Z1	09804	A-B-F-F1-F3-M-N-R-S-V-Z1
09534	B-F-F1-R-R1-V	09620	B-C-F-R-U-Z1	09731	A-B-B2-C-C1-F-F1-F3-J-L-M-N-R-R1-T-V-Z1		
09550	B-F-F1-R-R1-V	09621	B-C-F-F3-R-U-Z1	09732	B-N-V-Z1		
09554	B-F-F1-R-R1-V	09622	B-C-F-F3-R-U-Z1	09733	B-I3-L-N-V		
09556	B-F-F1-R-R1-V	09623	B-C-F-F3-R-U-V-Z1	09734	A-B-C-C1-F-F1-F3-I3-J-L-M-N-R-R1-T-V-Z-Z1		
09565	B-F-F1-R-R1-V	09624	B-C-F-F1-F3-I3-J-L-N-R-R1-T-U-V-Z-Z1	09735	B-N-V-Z1		
09566	B-E2-E3-F-F1-F3-R-R1-V-Z1	09625	B-C-F-F3-N-R-U-Z1	09736	A-B-B2-C-C1-D-F-F1-F3-J-L-M-N-R-R1-T-V-Z1		
09567	B-E2-E3-F-F1-F3-R-R1-V-Z1	09626	B-C-F-F3-R-U-Z1				
09568	B-V	09627	B-C-F-F3-R-U-V-Z1				
09569	B-E2-E3-F-F1-F3-R-R1-V-Z1	09630	B-C-F-U-V				
09570	B-F-F1-R-R1-V	09631	B-C-F-F3-R-U-V-Z1				
09573	B-E2-E3-F-F1-F3-R-R1-V-Z1	09633	B-B2-C-D-F-F1-M-R-U-U1-U2-U3-V-Z1				
09574	B-F-F1-R-R1-V	09636	B-C-F-F3-R-U-V-Z1				
09575	B-F-F1-R-R1-V	09642	B-F-F1-F3-J-L-M-N-R-T-U-V				
09576	B-F-F1-R-R1-V	09643	B-C-F3-M-R-S-U-V-Z1				
09577	B-V	09645	B-C-F-F1-F3-R-U-Z1				
09578	B-E2-E3-F-F1-F3-R-R1-V-Z1	09647	B-F3-M-N-R-U-Z1				

APO/ FPO/ DPO	See Restrictions	APO/ FPO/ DPO	See Restrictions	APO/ FPO/ DPO	See Restrictions	APO/ FPO/ DPO	See Restrictions
09805	B-E2-E3-F-F1-F3-R-R1-Z1	09842	A-B-F-F1-F3-J-L-N-R-R1-T-V-Z1	34011	B-B2-C1-E2-F-F1-F3-J-L-M-N-R-R1-T-V-Z1	34095	B-F-F1-R-R1-V
09806	A-B-C1-E2-F-F1-F3-H1-J-L-M-N-R-R1-T-V-Z1	09844	A-B-C1-F-F1-F3-J-L-M-N-R-R1-T-V-Z1	34020	B-F-F1-F3-J-L-M-N-R-R1-T-V-Z1	96201	A-B-F1
09808	A-B-B2-C1-E2-F-F1-F3-H1-J-L-N-R-R1-T-V-Z1	09845	A-B-B2-E3-F-F1-F3-J-L-M-N-R-R1-T-V-Z1	34021	B-F-F1-F3-T-J-L-M-N-R-R1-V-Z1	96202	A-B-F1-U
09809	B-F-F1-F3-J-L-N-T-V-Z1	09846	A-B-B2-C1-F-F1-F3-J-L-N-R-R1-T-V-Z1	34022	B-F-F1-F3-J-L-M-N-R-R1-T-V-Z1	96203	A-B-F1
09810	A-B-F-F1-F3-N-R-S-V-Z1	09848	A-B-F-M-R-V-Z1	34023	B-F-F1-F3-J-L-M-N-R-R1-T-V-Z1	96204	A-B-F1
09811	B-E2-E3-F-F1-F3-H1-N-R-R1-U-V-Z1	09851	A-B-C-F-F3-N-R-S-V-Z1	34024	B-F-F1-F3-J-L-M-N-R-R1-T-V-Z1	96205	A-B-F1-U
09812	B-E2-E3-F-F1-I-J-L-N-R-T-U-V-Z1	09852	B-E2-E3-F-F1-F3-H1-N-R-R1-U-V-Z1	34025	B-F-F1-F3-J-L-M-N-R-R1-T-V-Z1	96206	A-B-F1-U
09813	B-E2-E3-F-F1-F3-I3-J-L-N-R-T-U-V-Z1	09853	B-E2-F-H1-R-R1-U2-V-Z1	34026	B-F-F1-F3-J-L-M-N-R-R1-T-V-Z1	96207	A-B-F1-U
09814	B-E2-E3-F-F1-F3-I3-J-L-N-R-R1-T-V-Z1	09854	A-B-B2-C1-F-F1-F3-I3-L-N-R-R1-T-V-Z1	34027	B-F-F1-F3-J-L-M-N-R-R1-T-V-Z1	96208	A-B-F1-U
09815	A-B-F-F3-N-R-S-V-Z1	09855	A-B-C1-E2-F-F1-H1-M-R-R1-U2-V-Z1	34028	B-F-F1-F3-J-L-M-N-R-R1-T-V-Z1	96209	A-B-F-F1-J-L-N-T-U-V-Z1
09816	A-B-B2-C-C1-E2-E3-F-F1-F3-J-L-N-R-R1-T-V-Z1	09858	B-C1-E2-E3-F-F1-F3-H1-N-R-R1-U-V-Z1	34029	B-F-F1-F3-J-L-M-N-R-R1-T-V-Z1	96210	A-B-B2-C1-F-F1-F3-I3-L-N-R-R1-T-V-Z1
09817	A-B-B2-C1-E2-E3-F-F1-F3-H1-J-L-M-N-R-R1-T-V-Z1	09859	B-C1-E2-E3-F-F1-F3-H1-R-R1-U-V-Z1	34030	B-F-F1-F3-J-L-M-N-R-R1-T-V-Z1	96212	B-F-F1-F2-H-M-W-Z1
09818	A-B-C-F-F3-M-S-V-Z1	09861	A-B-F-F1-F3-N-R-R1-S-V-Z1	34031	B-F-F1-F3-J-L-M-N-R-R1-T-V-Z1	96213	A-B-C-F1-R-U
09820	A-B-B2-F-F1-F3-H-H1-J-L-M-N-R-R1-T-V-Z1	09863	A-B-F-F1-F3-N-O-R-R1-S-V-Z1	34032	B-F-F1-F3-J-L-M-N-R-R1-T-V-Z1	96214	A-B-C-F1-R-U
09821	A-B-C-F-F3-N-R-S-V-Z1	09865	A-B-F3-R-U-V-Z1	34033	B-C-F-F1-F3-J-L-M-N-R-R1-T-V-Z1	96218	A-B-F1-U
09822	A-B-C-F-F3-M-R-S-V-Z1	09866	A-B-E2-F-N-U-V-Z1	34034	B-F-F1-F3-I3-J-L-M-N-R-R1-T-V-Z1	96224	A-B-F1-U
09823	A-B-F-F1-F3-J-L-N-R-R1-T-V-Z1	09870	A-B-C1-E2-F-F1-F3-H1-I3-J-L-M-N-R-R1-T-U4-V-Z1	34035	B-F-F1-F3-H-J-L-M-N-R-R1-T-V-Z1	96251	A-B-F1-U
09824	A-B-C-F-F3-M-R-S-V-Z1	09873	A-B-C1-E2-F-F1-F3-H1-I3-J-L-M-N-R-R1-T-U4-V-Z1	34036	B-F-F1-F3-J-L-M-N-R-R1-T-V-Z1	96257	A-B-F1-U
09825	A-B-C1-F-F1-F3-J-L-M-N-R-R1-T-V-Z1	09874	A-B-C1-E2-F-F1-F3-H1-I3-J-L-M-N-R-R1-T-U4-V-Z1	34037	B-C-F-F1-F3-H-J-L-M-N-R-R1-T-V-Z1	96258	A-B-F1-U
09826	A-B-B2-C1-E1-E2-E3-F-F1-F3-J-L-M-N-R-R1-T-V-W-Z1	09875	A-B-C1-E2-F-F1-F3-H1-I3-J-L-M-N-R-R1-T-U4-V-Z1	34038	B-L-M-N-U-V-Z1	96260	A-B-F1-U
09827	A-B-F-F1-J-L-M-N-R-T-V-Z1	09880	A-B-C1-E2-F-F1-H1-N-R-R1-U-V-Z1	34039	B-F-F1-J-L-M-N-T-V-Z1	96264	A-B-C-F1-R-U
09828	A-B-F-F1-F3-I3-J-L-N-R-R1-T-V-Z1	09890	B-E2-F-H1-N-R-R1-U2-V-Z1	34041	B-F-F1-F3-J-L-M-N-R-R1-T-V-Z1	96266	A-B-C-F1-R-U
09829	B-C-N-R-V-Z1	09892	A-B-E2-F-F1-F3-J-L-N-R-R1-T-V-Z1	34042	A-B-C-F-F1-M-N-R-U-V-W-Z1	96267	A-B-C-F1-R-U
09830	B-C-F-F1-F3-J-L-M-N-R-R1-S-T-V-Z1	09895	A-B-B2-C1-E2-F-F1-F3-J-L-N-R-T-V-W-Z1	34044	A-B-D-F-M-N-O-R-R1-V-V1-Z1	96269	A-B-F1-U-Z1
09831	B-F-F1-F3-J-L-N-R-R1-T-V-Z1	09898	B-C-C1-E2-F-F1-F3-H1-N-R-R1-U2-V-Z1	34045	B-F-F1-F3-J-L-M-N-R-R1-T-V-Z1	96271	A-B-F1-F3-S-U
09832	B-C1-E2-F1-F3-U1-Z1	34001	A-B-F-F1-F3-I3-J-L-N-R-R1-T-V-Z1	34048	B-F-F1-R-R1-V-Z1	96273	A-B-F1-U
09833	B-C1-E2-F1-F3-U1-V-Z1	34002	B-F-F1-F3-J-L-N-R-R1-T-V-Z1	34049	B-F-F1-R-R1-V	96275	A-B-F1-U
09834	B-E2-E3-F-F1-F3-R-R1-U-Z1	34004	B-F-F1-F3-J-L-N-R-R1-T-V-Z1	34050	B-F-F1-R-R1-V	96276	A-B-C-F1-R
09835	A-B-C1-F1-F3-N-V-Z1	34007	B-F-F1-H-J-M-N-R-R1-V-Z1	34051	B-F-F1-R-R1-V	96278	A-B-C-F1-R-U
09836	A-B-C-F-F1-F3-J-L-M-N-R-R1-V-Z1	34008	B-B2-D-E1-F-F1-H-H1-J-L-M-N-R-R1-T-V-Z1	34052	B-F-F1-R-R1-V	96283	A-B-F1-U
09837	B-E2-E3-F1-F3-V-Z1			34053	B-F-F1-R-R1-V	96284	A-B-F1-U
09838	B-E2-E3-F-F1-F3-U-Z1			34054	B-F-F1-R-R1-V	96297	A-B-F1-U
09839	A-B-U-V-Z1			34055	B-F-F1-F3-J-L-M-N-R-R1-T-V-Z1	96301	A-B-F3-M-R-S-W
09841	A-B-F3-N-R-U-Z1			34056	B-F-F1-F3-J-L-M-N-R-R1-T-V-Z1	96303	B-F-F1-H-J-L-M-N-T-V-W-Z1
				34057	B-F-F1-R-R1-V-Z1	96306	B-F-F1-F2-H-M-W-Z1
				34058	B-B2-C1-E2-F-F1-F3-J-L-N-R-R1-T-V-Z1	96309	B-C-M-R-V-W
				34059	B-F1-N-V	96310	B-M-W
				34060	B-F-F1-R-R1-V	96319	B-C-M-R-W
				34078	B-F-F1-R-R1-V	96321	B-F-F1-F2-H-M-W-Z1
				34080	B-F-F1-R-R1-V	96322	B-F-F1-F2-H-M-W-Z1
				34081	B-F-F1-R-R1-V	96323	B-C-M-R-V-W
				34082	B-F-F1-R-R1-V	96326	B-C-F-M-R-W
				34083	B-F-F1-R-R1-V	96328	B-C-M-R-W
				34084	B-F-F1-R-R1-V	96330	B-C-M-R-W
				34085	B-F-F1-R-R1-V	96331	A-B-F1-J-L-M-N-S-W
				34086	B-F-F1-R-R1-V	96336	B-C-M-R-V-W
				34087	B-F-F1-R-R1-V	96337	B-M-W
				34088	B-F-F1-R-R1-V	96338	A-B-F3-M-R-S-W
				34089	B-F-F1-R-R1-V	96339	B-M-V-W
				34090	B-F-F1-R-R1-V	96343	B-M-W
				34091	B-E2-E3-F-F1-F3-R-R1-V-Z1	96346	B-F-F1-F2-H-M-V-W-Z1
				34092	B-F-F1-R-R1-V	96347	B-F-F1-F2-H-M-W-Z1
				34093	B-F-F1-R-R1-V	96349	B-F-F1-F2-H-M-W-Z1
				34094	B-F-F1-R-R1-V		

APO/ FPO/ DPO	See Restrictions	APO/ FPO/ DPO	See Restrictions	APO/ FPO/ DPO	See Restrictions	APO/ FPO/ DPO	See Restrictions
96350	B-F-F1-F2-H-M-W-Z1	96511	B-I3-N-V	96562	A-B-B2-C-C1-D-E2-E3- F-F1-H-H1-I3-L-M-N-R- T-V-Z-Z1	96657	B-F-F1-R-R1-V
96351	B-F-F1-F2-H-M-W-Z1	96515	B-D-F-U3			96660	B-F-F1-R-R1-V
96362	B-F-F1-F2-M-W-Z1	96516	B-D-F-Z1			96661	B-F-F1-R-R1-V
96365	B-C-M-R-V-W	96517	B-F-U3-V-Z1	96577	A-B-F-H-M-N-R-U	96662	B-F-F1-R-R1-V
96367	B-C-L-M-R-W	96520	B-F-N-U3-V	96578	B-B2-F1-H-J-N-R	96663	B-F-F1-R-R1-V
96368	B-C-M-R-W	96521	B-F-F1-J-L-N-T-U3-V- Z1	96595	B-F-S-V-Z1	96664	B-V
96370	B-F-F1-F2-H-M-W-Z1			96598	B-N-O-V-V1	96665	B-V
96372	B-M-W	96530	A-B-F-F1-H-H1-J-L-M- N-T-U-V-Z1	96599	B-N-V	96666	B-V
96373	B-M-W			96601	B-V	96667	B-F-F1-R-R1-V
96374	B-M-W	96531	A-B-C-F-F1-H-M-N-R- U-V	96602	B-V	96668	B-F-F1-R-R1-V
96375	B-M-W			96603	B-V	96669	B-F-F1-R-R1-V
96376	B-M-W	96532	A-B-F-F1-H-J-L-M-N-T- U-V-Z1	96604	B-V	96670	B-V
96377	B-M-W			96605	B-V	96671	B-F-F1-R-R1-V
96378	B-M-W	96534	A-B-F-U-Z1	96606	B-V	96672	B-F-F1-R-R1-V
96379	B-M-W	96535	A-B-F-F1-J-L-N-T-V-Z1	96607	B-V	96673	B-V
96380	B-M-W	96537	B-V-Z1	96608	B-E2-F-H1-R1-U2-V-Z1	96674	B-F-F1-R-R1-V
96382	B-M-W	96540	B-V-Z1	96609	B-E2-F-H1-R1-U2-V-Z1	96675	B-F-F1-R-R1-V
96384	B-M-W	96542	B-V-Z1	96610	B-E2-F-H1-R1-U2-V-Z1	96677	B-F-F1-R-R1-V
96385	B-M-W	96543	B-P-V-Z1	96611	B-E2-F-H1-R1-U2-V-Z1	96678	B-F-F1-R-R1-V
96386	B-M-W	96546	B-F-N-R-U3	96612	B-V	96679	B-F-F1-R-R1-V
96387	B-M-W	96548	A-B-H-M-R-U	96613	B-V	96681	B-V
96388	B-M-W	96549	A-B-F-F1-H-J-L-M-N-T- U-V-Z1	96615	B-F-F1-R-R1-V	96682	B-V
96389	B-M-W			96616	B-F-F1-R-R1-V	96683	B-V
96401	B-C-F-N-O-R-V-V1-Z1	96550	A-B-H-M-N-U-V-Z1	96617	B-F-F1-R-R1-V	96686	B-V
96501	A-B-N-V	96551	A-B-F-F1-H-J-L-M-N-T- U-V-Z1	96619	B-V	96691	B-F-F1-R-R1-V
96504	A-B-C-C1-F-F1-F3-I3-L- N-R-R1-T-V-W-Z-Z1	96552	B-Z1	96620	B-F-F1-R-R1-V	96692	B-F-F1-R-R1-V
96505	A-B-C-C1-F-F1-F3-I3-L- N-R-R1-T-V-W-Z-Z1	96553	A-B-F-F1-H-M-N-R-U	96628	B-F-F1-R-R1-V	96693	B-F-F1-R-R1-V
96507	A-B-F-F1-H-J-L-N-T-V- Z1	96554	A-B-F-F1-H-J-L-M-N-T- U-V-Z1	96629	B-F-F1-R-R1-V	96694	B-F-F1-R-R1-V
96510	B-I3-N-V	96555	B-F-M-V	96632	B-F-F1-R-R1-V	96695	B-F-F1-R-R1-V
		96557	B-F-M-V	96643	B-F-F1-R-R1-V	96696	B-F-F1-R-R1-V
				96649	B-F-F1-R-R1-V	96698	B-V
				96650	B-F-F1-R-R1-V		

RESTRICTIONS

LEGEND

PS Form 2976, *Customs — CN 22 (Old C 1) and Sender's Declaration* (green label)

PS Form 2976-A, *Customs Declaration and Dispatch Note*

PS Form 2976-B, *Priority Mail Express International Shipping Label and Customs Form*

ATF	= Bureau of Alcohol, Tobacco, Firearms, and Explosives
Box C	= Department of State (DOS) contractor personnel
Box R	= Retired military personnel
DPO	= Diplomatic Post Office
MPO	= Military Post Office
PACT	= Prevent All Cigarette Trafficking Act
PAL	= Parcel Airlift
PMEMS	= Priority Mail Express Military Service
PUB 52	= Publication 52, <i>Hazardous, Restricted, and Perishable Mail</i>
SAM	= Space Available Mail
USDA	= United States Department of Agriculture

Note: Mail order catalogs are prohibited as SAM or PAL mail.

A. Securities, currency, or precious metals, including in their raw, unmanufactured state, are prohibited. Official Mail shipments are exempt from this restriction.

A1. Reserved for future use.

A2. Reserved for future use.

B. Regardless of mail class, a customs declaration (PS Form 2976, PS Form 2976-A, or PS Form 2976-B) is required for all items weighing 16 ounces or more or any item (regardless of weight) containing potentially dutiable mail contents (e.g., merchandise or goods) addressed to or from this ZIP Code. All PMEMS mailpieces (regardless of mail contents or weight) addressed to or from this ZIP Code must bear a properly completed PS Form 2976-B. The surface area of the address side of the mailpiece must be large enough to contain the applicable customs declaration. The following exceptions apply:

- Known mailers are exempt from providing customs documentation on non-dutiable letters or printed matter, except for Priority Mail Express, which requires a customs form for all contents and weights. (A known mailer is a business mailer who enters volume mailings through a business mail entry unit (BMEU) or other bulk mail acceptance location, pays postage through an advance deposit account, uses a permit imprint for postage payment, and submits a completed postage statement at the time of entry that certifies that the mailpieces contain no dangerous materials that are prohibited by postal regulations.)
- All federal, state, and local government agencies whose mailings are regarded as "Official Mail" are exempt from providing customs documentation on any item addressed to an MPO except for those MPOs to which restriction "B2" applies and except for Priority Mail Express, which requires a customs form from all mailers.
- If mailpiece is endorsed "Contents for Official Use — Exempt from Customs Requirements."

B2. All federal, state, and local government agencies must complete customs documentation when sending potentially dutiable mail addressed to or from this MPO or DPO.

C. Cigarettes and other tobacco products, including tobacco leaves, chewing and pipe tobacco, snuff, and cigars are prohibited, including those that are authorized in Publication 52 under PACT.

C1. Obscene and horror articles, images, prints, paintings, cards, films, videotapes, comic books, etc., are prohibited.

D. Coffee is prohibited.

E. Medicines (prescription, over-the-counter, vitamins, and supplements) are prohibited when mailed to individuals for human or animal use. This prohibition does not apply when medicines are sent as Official Mail only between specifically designated agencies such as pharmaceutical distributors, hospitals, clinics, and pharmacies.

E1. Mailers are responsible to ensure that all medicines and vaccines conform to host nation laws.

E2. Any matter depicting nude or seminude persons, pornographic, or sexual items are prohibited. Non-authorized political materials are prohibited. Religious materials contrary to the Islamic faith are prohibited in bulk quantities, but individual items for the personal use of the addressee are permissible.

E3. Radio transceivers, cordless/cellular telephones, global positioning systems, scanners, base stations, and handheld transmitters are prohibited.

F. Firearms of any type are prohibited, except firearms mailed to or by official U.S. government agencies. This restriction does not apply to firearms mailed from this MPO ZIP Code, provided ATF and USPS regulations are met. Antique firearms do not require an ATF form.

F1. Weapons of any type are prohibited.

F2. Mailing firearms to or from this MPO ZIP Code is restricted to one shotgun and one single shot .22 caliber rifle per individual.

F3. Replica weapons and inert explosive devices (such as grenades) and weapons parts are prohibited.

G. Parcels of any class are prohibited.

H. Meats, including preserved meats, bones, skin, hair, feathers, horns or hoofs of hoofed animals, and wool samples whether hermetically sealed or not, are prohibited.

H1. Pork or pork by-products are prohibited.

I. Reserved for future use.

I1. Reserved for future use.

I2. Reserved for future use.

I3. Mail of all classes must fit in a mail sack. Mail may not exceed the following dimensions:

- Maximum length 27 inches.
- Maximum width 14 inches.
- Maximum height 14 inches.

J. Standard Post and Parcel Select parcels may not exceed 108 inches in length and girth combined.

K. Reserved for future use.

L. All Official Mail is prohibited.

M. Fruits, vegetables, live animals, and live plants are prohibited.

N. Registered Mail service is prohibited.

O. Reserved for future use.

P. Official Mail only.

Q. Mail may not exceed 66 pounds, and size is limited to 42 inches maximum length and 72 inches maximum length and girth combined.

R. All alcoholic beverages, including those available under Publication 52, Part 421, are prohibited.

R1. Materials used in the production of alcoholic beverages (i.e., distilling material, hops, malts, yeast, etc.) are prohibited.

S. Synthetic cannabinoids used to stimulate the central nervous system commonly known as "synthetic marijuana," "K2," or "Spice" are prohibited.

T. Mailings of household shipments and case lots of food to or from an MPO require military transportation office approval prior to mailing. Mailings to or from a DPO require pre-approval from the Diplomatic Pouch and Mail Director.

U. Mail addressed to Retirees (Box R) is limited to 16 ounces and up to a 90-day supply of TRICARE medications. This restriction does not apply to mail endorsed "Free Matter for the Blind or Handicapped."

U1. Mail is limited to First-Class Mail items, including audio and video media, weighing 13 ounces or less. This limitation does not apply to Official Mail.

U2. Retirees (Box R) are not authorized mail service.

U3. Reserved for future use.

U4. Mail addressed to Box C is limited to 2 lbs.

V. PMEMS is not available.

V1. Electronic Delivery status information for Extra Services is not available on *USPS.com*. Manual record of delivery may be available upon request.

W. Hermetically sealed packages of meat products bearing USDA certification, such as dried beef, salami, and sausage, may be mailed. 200 grams of tobacco per parcel are permitted duty free.

X. Cremated remains are prohibited.

Y. Mail is limited to First-Class Mail and Priority Mail items only. This restriction also applies to Official Mail.

Z. No outside pieces (OSPs).

Z1. The following restriction is applicable only to International Service Centers (ISC)/Exchange Offices. An Anti-Pilferage Seal (Item No O817E or O818A) is required on all pouches and sacks.

Freely Associated States Restrictions

We list the mailing restrictions for Freely Associated States (FAS) in the Pull-Out section of the *Postal Bulletin*. All FAS Restrictions will be updated periodically.

Freely Associated States

Mail addressed to freely associated states is subject to certain conditions or restrictions of mailing regarding content, preparation, and handling. The following FAS Restrictions table outlines these conditions as listed by each affected FAS ZIP Code™ through the use of footnoted mailing restrictions codes (see the [Restrictions](#) following the table). For additional information on available extra services for FAS destinations, see *Mailing Standards of the United States Postal Service, Domestic Mail Manual (DMM®)*, part 503.

Acceptance clerks must use the table with the POS ONE terminal to determine which FAS ZIP Codes are active and which conditions of mailing apply. Send inquiries to Randall Sobol at randall.f.sobol@usps.gov.

FAS Restrictions Table

FAS Table	See Restrictions
96939	A, B
96940	A, B
96941	A, B
96942	A, B
96943	A, B
96944	A, B
96960	A, B
96970	A, B
Marshall Islands	C
Federated States of Micronesia	C

RESTRICTIONS LEGEND

PS Form 2976, *Customs* — CN 22 (Old C 1) and *Sender's Declaration* (green label)

PS Form 2976-A, *Customs Declaration and Dispatch Note*

FAS = Freely Associated State

- A.** Bank currency (coin and paper) is prohibited.
- B.** Signature Confirmation, Signature Confirmation Restricted Delivery, Adult Signature Requested, Adult Signature Restricted Delivery, Certified Mail Adult Signature Required, and Certified Mail Adult Signature Restricted Delivery not available.
- C.** COD is prohibited.

— *Asia-Pacific Relations, Global Business, 7-6-17*

Stamp Announcement 17-32: Disney Villains Stamps (continued)

Philatelic Products

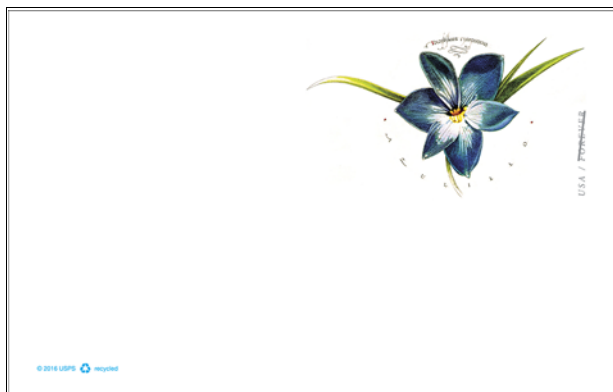
Philatelic products for this stamp issue are as follows:

- 475406, Press Sheet with Die-cut, \$58.80.
- 475410*, Digital Color Postmark Keepsake (random cover), \$11.95.
- 475416*, First-Day Cover (set of 10), \$9.30.
- 475421*, Digital Color Postmark (set of 10), \$16.40.
- 475430*, Ceremony Program, \$6.95.
- 475433*, Panel, \$17.95.
- 475466*, Notecards (set of 20), \$15.95.

Items with an asterisk (*) will use the 128 barcode from Stamp Fulfillment Services. All other philatelic products will continue to use barcode series A, with the exception of the Yearbook and the Guide Book.

Issue:	<i>Disney Villains</i> Stamps
Item Number:	475400
Denomination & Type of Issue:	First-Class Mail [®] , Forever
Format:	Pane of 20 (10 designs)
Series:	N/A
Issue Date & City:	July 15, 2017, Anaheim, CA 92803
Art Director:	Derry Noyes, Washington, DC
Designer:	Derry Noyes, Washington, DC
Typographer:	Derry Noyes, Washington, DC
Artist:	Walt Disney Studios Ink & Paint Department
Modeler:	Joseph Sheeran
Manufacturing Process:	Offset
Printer:	Ashton Potter (USA) Ltd. (APU)
Printed at:	Williamsville, NY
Press Type:	Muller A76
Stamps per Pane:	20
Print Quantity:	60,000,000 stamps
Paper Type:	Nonphosphored Type III, Gloss Block Tag
Adhesive Type:	Pressure-sensitive
Processed at:	Ashton Potter (USA) Ltd. (APU)
Colors:	Black, Cyan, Magenta, Yellow, PMS 7687C Purple
Stamp Orientation:	Vertical
Image Area (w x h):	1.085 x 1.420 in/27.56 x 36.07 mm
Overall Size (w x h):	1.225 x 1.56 in/31.12 x 39.62 mm
Full Pane Size (w x h):	7.12 x 9.45 in/180.85 x 240.03 mm
Press Sheet Size (w x h):	22.235 x 19.025/564.77 x 483.24 mm
Plate Size:	120 stamps per revolution
Plate Numbers:	"P" followed by five (5) digits
Marginal Markings:	
Front:	Header: DISNEY VILLAINS – from the Walt Disney Studios Ink & Paint Department
Back:	©2017 USPS • USPS Logo • Barcode (475400) • Plate Position Diagram • Promotional Text • Line Drawing and quote for each character • Disney Logo • Disney proprietary information

Stamp Announcement 17-33: Azulillo Stamped Cards



© 2016 USPS

On August 11, 2017, in Independence, OH, the U.S. Postal Service® will issue the *Azulillo* stamped card Forever® priced at 38 cents (34-cent postage + 4-cent surcharge) in one design.

The U.S. Postal Service issues the *Azulillo* stamped card for 2017 featuring an illustration of a Chilean blue crocus (*Tecophilaea cyanocrocus*) from pre-existing artwork by famed illustrator and designer Dugald Stermer (1936-2011). His penciled calligraphy under the flower indicates one of its common names, azulillo, which loosely translated from Spanish means “little blue thing,” with its botanical name above. Art director Ethel Kessler designed the stamped card.

The *Azulillo* stamped card will be available in the following formats:

- Single-cut cards (Item 250000).
- Double-reply cards (Item 250400).
- Sheet of 40 cards (Item 250500).

Availability to Post Offices: Item 250000, Azulillo, Single-cut Cards; Item 250400, Azulillo, Double-reply Cards; Item 250500, Azulillo, Sheet of 40 Cards

Stamp Fulfillment Services will not make an automatic push distribution to Post Offices™. Post Offices may begin ordering the stamped cards before the first-day-of-issue through SFS Web at sfsweb.usps.gov.

How to Order the First-Day-of-Issue Postmark

Customers have 60 days to obtain the first-day-of-issue postmark by mail. They may purchase new stamps at their local Post Office, at The Postal Store® website at usps.com/shop, or by calling 800-782-6724. They must affix the stamps to envelopes of their choice, address the envelopes (to themselves or others), and place them in a larger envelope addressed to:

FD0I – Azulillo Stamped Card
USPS Stamp Fulfillment Services
8300 NE Underground Drive, Suite 300
Kansas City, MO 64144-9900

After applying the first-day-of-issue postmark, the Postal Service™ will return the envelopes through the mail. There is no charge for the postmark up to a quantity of 50. There is a 5-cent charge for each additional postmark over 50. All orders must be postmarked by October 11, 2017.

How to Order First-Day Covers

The Postal Service also offers first-day covers for new stamp issues and Postal Service stationery items postmarked with the official first-day-of-issue cancellation. Each item has an individual catalog number and is offered in the quarterly *USA Philatelic*, online at usps.com/shop, or by calling 800-782-6724. Customers may request a free issue of *USA Philatelic* at usps.com/philatelic, by calling 800-782-6724, or by writing to:

U.S. Postal Service
USA Philatelic Request
PO Box 219014
Kansas City, MO 64121-9014

Philatelic Products

Philatelic products for the stamped cards are as follows:

Single-cut

- 250016*, First-Day Cover, \$0.50.

Double-reply

- 250416*, First-Day Cover, \$0.88.

Items with an asterisk (*) will use the 128 barcode from Stamp Fulfillment Services. All other philatelic products will continue to use barcode series A, with the exception of the Yearbook and the Guide Book.

Issue:	<i>Azulillo</i> Stamped Card
Item Number:	250000
Denomination & Type of Issue:	Forever Stamped Card Rate
Format:	Single-cut Card
Series:	N/A
Issue Date & City:	August 11, 2017, Independence, OH 44131
Art Director:	Ethel Kessler, Bethesda, MD
Designer:	Ethel Kessler, Bethesda, MD
Typographer:	Ethel Kessler, Bethesda, MD
Existing Art:	Dugald Stermer
Modeler:	Joseph Sheeran
Manufacturing Process:	Offset, Microprint
Printer:	Ashton Potter (USA) Ltd. (APU)
Printed at:	Williamsville, NY
Press Type:	Heidelberg, Speedmaster
Print Quantity:	3,840,000 stamped cards
Paper Type:	Nonphosphored Type III, Block Tag applied
Adhesive Type:	N/A
Processed at:	Ashton Potter (USA) Ltd. (APU)
Colors:	Black, Cyan, Magenta, Yellow
Image Orientation:	Horizontal
Card Size (w x h):	5.5 x 3.5 in/139.70 x 88.90 mm
Plate Size:	40 cards per revolution
Plate Numbers:	N/A
Marginal Markings:	©2016 USPS • Recycling Logo

Issue:	<i>Azulillo</i> Stamped Card
Item Number:	250500
Denomination & Type of Issue:	Forever Stamped Card Rate
Format:	Sheet of 40 Cards
Series:	N/A
Issue Date & City:	August 11, 2017, Independence, OH 44131
Art Director:	Ethel Kessler, Bethesda, MD
Designer:	Ethel Kessler, Bethesda, MD
Typographer:	Ethel Kessler, Bethesda, MD
Existing Art:	Dugald Stermer
Modeler:	Joseph Sheeran
Manufacturing Process:	Offset, Microprint
Printer:	Ashton Potter (USA) Ltd. (APU)
Printed at:	Williamsville, NY
Press Type:	Heidelberg, Speedmaster
Print Quantity:	4,000 sheets of 40 cards
Paper Type:	Nonphosphored Type III, Block Tag applied
Adhesive Type:	N/A
Processed at:	Ashton Potter (USA) Ltd. (APU)
Colors:	Black, Cyan, Magenta, Yellow
Image Orientation:	Horizontal
Card Size (w x h):	5.5 x 3.5 in/139.70 x 88.90 mm
Plate Size:	40 cards per revolution
Plate Numbers:	N/A
Marginal Markings:	©2016 USPS • Recycling Logo

Issue:	<i>Azulillo</i> Stamped Card
Item Number:	250400
Denomination & Type of Issue:	Forever Stamped Card Rate
Format:	Double-reply Card
Series:	N/A
Issue Date & City:	August 11, 2017, Independence, OH 44131
Art Director:	Ethel Kessler, Bethesda, MD
Designer:	Ethel Kessler, Bethesda, MD
Typographer:	Ethel Kessler, Bethesda, MD
Existing Art:	Dugald Stermer
Modeler:	Joseph Sheeran
Manufacturing Process:	Offset, Microprint
Printer:	Ashton Potter (USA) Ltd. (APU)
Printed at:	Williamsville, NY
Press Type:	Muller A76
Print Quantity:	288,000 double-cut cards
Paper Type:	Nonphosphored Type III, Block Tag applied
Adhesive Type:	N/A
Processed at:	Ashton Potter (USA) Ltd. (APU)
Colors:	Black, Cyan, Magenta, Yellow
Image Orientation:	Horizontal
Card Size (w x h):	5.5 x 7.0 in/139.70 x 177.80 mm
Plate Size:	12 cards per revolution
Plate Numbers:	N/A
Marginal Markings:	©2016 USPS • Recycling Logo

— Stamp Services, Marketing, 7-6-17

Stamp Announcement 17-34: Flowers From the Garden Stamps



©2016 USPS

On August 16, 2017, in Sioux Falls, SD, the U.S. Postal Service® will issue the *Flowers From the Garden* First-Class Mail® stamps (Forever® priced at 49 cents), in four designs, in a pressure-sensitive adhesive (PSA) booklet and coils. The stamps will go on sale nationwide August 16, 2017.

The *Flowers From the Garden* stamps will be available in the following formats:

- PSA Booklet of 20 (Item 672100).
- PSA Coil of 3,000 (Item 755000).
- PSA Coil of 10,000 (Item 760100).

Flowers From the Garden stamps feature four different paintings of flowers that come from typical American gardens, each bunch artfully arranged in a container. One stamp features red camellias and yellow forsythia in a yellow pitcher, while another features white peonies and pink tree peonies in a clear vase. An arrangement of white hydrangeas, white and pink roses, green hypericum berries, and purple lisianthus in a white vase graces another stamp, while blue hydrangeas in a blue pot appear on another. Art director Derry Noyes designed the stamps with existing art by Elizabeth Brandon.

Availability to Post Offices:

Item 672100, \$9.80 Flowers From the Garden (Forever priced at 49 cents) Double-sided Booklet of 20 Stamps

Item 755000, Flowers From the Garden (Forever priced at 49 cents) Definitive PSA Coil of 3,000

Item 760100, Flowers From the Garden (Forever priced at 49 cents) Definitive PSA Coil of 10,000

Stamp Fulfillment Services will not make an automatic push distribution to Post Offices™. Post Offices may begin ordering stamps before the first-day-of-issue through SFS Web at sfsweb.usps.gov.

How to Order the First-Day-of-Issue Postmark

Customers have 60 days to obtain the first-day-of-issue postmark by mail. They may purchase new stamps at their local Post Office, at The Postal Store® website at usps.com/shop, or by calling 800-782-6724. They must affix the stamps to envelopes of their choice, address the envelopes (to themselves or others), and place them in a larger envelope addressed to:

FDI – Flowers From the Garden Stamps
 USPS Stamp Fulfillment Services
 8300 NE Underground Drive, Suite 300
 Kansas City, MO 64144-9900

After applying the first-day-of-issue postmark, the Postal Service™ will return the envelopes through the mail. There is no charge for the postmark up to a quantity of 50. There is a 5-cent charge for each additional postmark over 50. All orders must be postmarked by October 16, 2017.

How to Order First-Day Covers

The Postal Service also offers first-day covers for new stamp issues and Postal Service stationery items postmarked with the official first-day-of-issue cancellation. Each item has an individual catalog number and is offered in the quarterly *USA Philatelic*, online at usps.com/shop, or by calling 800-782-6724. Customers may request a free issue of *USA Philatelic* at usps.com/philatelic, by calling 800-782-6724, or by writing to:

U.S. Postal Service
 Catalog Request
 PO Box 219014
 Kansas City, MO 64121-9014

Philatelic Products

Philatelic products for this stamp issue are as follows:

Booklet of 20

- 672106, Press Sheet with Die-cuts, \$78.40.
- 672110*, Digital Color Postmark Keepsake (set of 4), \$16.95.
- 672116*, First-Day Cover (set of 4), \$3.72.
- 672121*, Digital Color Postmark (set of 4), \$6.56.
- 672124*, Framed Art, \$29.95.
- 672130*, Ceremony Program, \$6.95.

Coil of 10,000

- 760116*, First-Day Cover (set of 4), \$3.72.
- 760121*, Digital Color Postmark (set of 4), \$6.56.

Items with an asterisk (*) will use the 128 barcode from Stamp Fulfillment Services. All other philatelic products will continue to use barcode series A, with the exception of the Yearbook and the Guide Book.

Issue:	<i>Flowers From the Garden</i> Stamps
Item Number:	672100
Denomination & Type of Issue:	First-Class Mail, Forever
Format:	Double-sided Booklet of 20, (4 designs)
Series:	N/A
Issue Date & City:	August 16, 2017, Sioux Falls, SD 57104
Art Director:	Derry Noyes, Washington, DC
Designer:	Derry Noyes, Washington, DC
Typographer:	Derry Noyes, Washington, DC
Existing Art:	Elizabeth Brandon
Modeler:	Sandra Lane/Michelle Finn
Manufacturing Process:	Offset, Microprint
Printer:	Banknote Corporation of America
Printed at:	Browns Summit, NC
Press Type:	Alprinta 74
Stamps per Booklet:	20
Print Quantity:	500,000,000 stamps
Paper Type:	Phosphor Tagged Paper, Block
Adhesive Type:	Pressure-sensitive
Processed at:	Banknote Corporation of America, Browns Summit, NC
Stamp Orientation:	Vertical
Image Area (w x h):	0.77 x 1.05 in./19.56 x 26.67 mm
Stamp Size (w x h):	0.91 x 1.19 in./23.11 x 30.23 mm
Full Pane Size (w x h):	5.74 x 2.38 in./145.87 x 60.33 mm
Press Sheet Size (w x h):	11.49 x 9.5 in./ 291.74 x 241.30 mm
Colors:	Cyan, Magenta, Yellow, Black
Plate Size:	800 stamps per revolution
Plate Numbers:	"B" followed by four (4) single digits
Marginal Markings:	• Plate numbers in peel strip area • © 2016 • USPS in peel strip area

Issue:	<i>Flowers From the Garden</i> Stamps
Item Number:	755000
Denomination & Type of Issue:	First-Class Mail, Forever
Format:	Coil of 3,000 (4 designs)
Series:	N/A
Issue Date & City:	August 16, 2017, Sioux Falls, SD 57104
Art Director:	Derry Noyes, Washington, DC
Designer:	Derry Noyes, Washington, DC
Typographer:	Derry Noyes, Washington, DC
Existing Art:	Elizabeth Brandon
Modeler:	Sandra Lane/Michelle Finn
Manufacturing Process:	Offset, Microprint
Printer:	Banknote Corporation of America
Printed at:	Browns Summit, NC
Press Type:	Alprinta 74
Stamps per Coil:	3,000
Print Quantity:	45,000,000 stamps
Paper Type:	Phosphor Tagged Paper, Overall
Adhesive Type:	Pressure-sensitive
Processed at:	Banknote Corporation of America, Browns Summit, NC
Colors:	Cyan, Magenta, Yellow, Black
Stamp Orientation:	Vertical
Image Area (w x h):	0.73 x 0.84 in./18.54 x 21.34 mm
Stamp Size (w x h):	0.87 x 0.98 in./22.10 x 24.89 mm
Plate Size:	560 stamps per revolution
Plate Numbers:	"B" followed by four (4) single digits
Coil Number Frequency:	Plate numbers every 28th stamp below stamp image

Issue:	<i>Flowers From the Garden</i> Stamps
Item Number:	760100
Denomination & Type of Issue:	First-Class Mail, Forever
Format:	Coil of 10,000 (4 designs)
Series:	N/A
Issue Date & City:	August 16, 2017, Sioux Falls, SD 57104
Art Director:	Derry Noyes, Washington, DC
Designer:	Derry Noyes, Washington, DC
Typographer:	Derry Noyes, Washington, DC
Existing Art:	Elizabeth Brandon
Modeler:	Sandra Lane/Michelle Finn
Manufacturing Process:	Offset, Microprint
Printer:	Banknote Corporation of America
Printed at:	Browns Summit, NC
Press Type:	Alprinta 74
Stamps per Coil:	10,000
Print Quantity:	100,000,000 stamps
Paper Type:	Phosphor Tagged Paper, Overall
Adhesive Type:	Pressure-sensitive
Processed at:	Banknote Corporation of America, Browns Summit, NC
Colors:	Cyan, Magenta, Yellow, Black
Stamp Orientation:	Vertical
Image Area (w x h):	0.73 x 0.84 in./18.54 x 21.34 mm
Stamp Size (w x h):	0.87 x 0.98 in./22.10 x 24.89 mm
Plate Size:	560 stamps per revolution
Plate Numbers:	"B" followed by four (4) single digits
Coil Number Frequency:	Plate numbers every 28th stamp below stamp image

Pictorial Postmarks Announcement

As a community service, the Postal Service™ offers pictorial postmarks to commemorate local events celebrated in communities throughout the nation. A list of events for which pictorial postmarks are authorized appears below. The sponsor of the pictorial postmark appears in italics under the date. Also provided are illustrations of these postmarks.

People attending these local events may obtain the postmark in person at the temporary Post Office™ station established there. Those who cannot attend the event but who wish to obtain the postmark may submit a mail order request. Pictorial postmarks are available only for the dates indicated, and *requests must be postmarked no later than 30 days following the requested pictorial postmark date.*

All requests must include a stamped envelope or postcard bearing at least the minimum First-Class Mail® postage. Items submitted for postmark may not include

postage issued after the date of the requested postmark. Such items will be returned unserved.

Customers wishing to obtain a postmark must affix stamps to any envelope or postcard of their choice, address the envelope or postcard to themselves or others, insert a card of postcard thickness in envelopes for sturdiness, and tuck in the flap. Place the envelope or postcard in a larger envelope and address it to: Pictorial Postmarks, followed by the Name of the Station, Address, City, State, ZIP+4® Code, as listed below.

Customers can also send stamped envelopes and postcards without addresses for postmark, as long as they supply a larger envelope with adequate postage and their return address. After applying the pictorial postmark, the Postal Service returns the items (with or without addresses) under addressed protective cover.

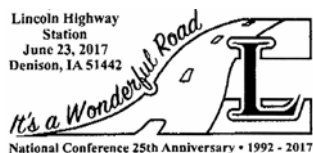
The following pictorial postmark has been extended for 90 days:



June 9–September 9, 2017

Smithsonian National Postal Museum
Smithsonian National Postal Museum Station
Special Cancellations
2 Massachusetts Avenue
Washington, DC 20002-9998

The following pictorial postmarks have been extended for 30 days:



June 23, 2017

The Lincoln Highway Association
Lincoln Highway Station
Postmaster
102 North Main
Denison, IA 51442-9998



June 30, 2017

Blooming Prairie Chamber of Commerce
Blooming Prairie Station
Postmaster
PO Box 9998
Blooming Prairie, MN 55917-9998

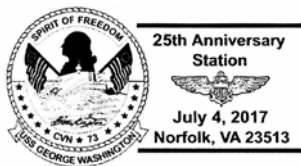


June 30, 2017

United States Postal Service
Martinsburg 1792-2017 225th Anniversary Station
Postmaster
1355 Old Courthouse Square
Martinsburg, WV 25401-9998

**New York Air Show Station
Stewart International Airport
July 1, 2017
New Windsor, NY 12553**

July 1, 2017
New York Air Show
New York Air Show Station
Postmaster
217 Liberty Street
Newburgh, NY 12550-9998



July 4, 2017
Stephan Decatur Chapter #4, Universal Ship Cancellation Society
USS George Washington 25th Anniversary Station
Postmaster
PO Box 719
Norfolk, VA 23501-9998



**DAN BLOCKER STATION
JULY 6, 2017
O'DONNELL, TX 79851**

July 6, 2017
United States Postal Service
Dan Blocker Station
Postmaster
809 Doak
O'Donnell, TX 79351-9998

128th SULLIVAN-KILRAIN FIGHT ANNIVERSARY
BARE KNUCKLE BOXING
HALL OF FAME STATION
BELFAST, NY 14711
JULY 8, 2017



July 8, 2017
Bare Knuckle Boxing Hall of Fame
Bare Knuckle Boxing Hall of Fame Station
Postmaster
PO Box 9998
Belfast, NY 14711-9998



Sesquicentennial Station
Rose Creek, MN 55970
July 7th, 2017

July 7-8, 2017
City of Rose Creek
Sesquicentennial Station
Postmaster
101 3rd Street South
Rose Creek, MN 55970-8839



July 11, 2017
Stephen Decatur Chapter #4, Universal Ship Cancellation Society
USS Helena 30th Anniversary Station
Postmaster
100 Plaza Court
Groton, CT 06430-9998



July 8, 2017
Philmont Station
Philmont Station
Postmaster
5 Maple Avenue
Philmont, NY 12565-9998



July 12, 2017
Farnsworth Art Museum
Farnsworth Art Museum Station
Postmaster
21 Limerock Street
Rockland, ME 04841-9998



**Town of Otselic
Bicentennial Station
July 8, 2017
South Otselic, NY 13155**

July 8, 2017
Otselic Valley Fishing and Heritage Association
Town of Otselic Bicentennial Station
Postmaster
1605 State Route 26
South Otselic, NY 13155-9998



July 12, 2017
Thoreau Farm / The Thoreau Society
Thoreau Farm Station
Retail Manager
25 Dorchester Avenue,
Room 4009
Boston, MA 02205-9998



July 13, 2017
 United States Postal Service
 Indianola, MS Station
 Dorothy Height
 Postmaster
 100 West Percy Street
 Indianola, MS 38751-9998



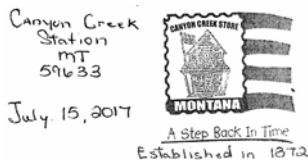
July 15, 2017
 Vans On The Run
 45 Van Nats Station
 Postmaster
 200 North Diamond Street
 Mansfield, OH 44901-9998



July 15, 2017
 Fingal Celebration
 Committee
 Fingal Station
 Postmaster
 406 3rd Street
 Fingal, ND 58031-9998



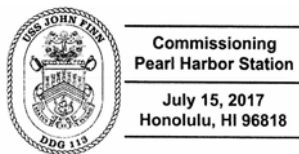
July 19, 2017
 Stephen Decatur Chapter
 #4, Universal Ship
 Cancellation Society
 USS Seawolf 20th
 Anniversary Station
 Postmaster
 100 Plaza Court
 Groton, CT 06430-9998



July 15, 2017
 Canyon Creek Store
 Canyon Creek Station
 Postmaster
 8703 Lincoln Road West
 Canyon Creek, MT 59633-9998



July 19, 2017
 Boy Scouts of America
 National Scout Jamboree
 Station
 Postmaster
 PO Box 9998
 Beckley, WV 25801-9998



July 15, 2017
 Stephen Decatur Chapter
 #4, Universal Ship
 Cancellation Society
 Commissioning Pearl
 Harbor Station
 Marketing Office
 3600 Aolele Street, #106
 Honolulu, HI 96820-9998

— Stamp Services,
 Marketing, 7-6-17

How to Order the First-Day-of-Issue Digital Color or Traditional Postmarks

Customers have 60 days to obtain the first-day-of-issue postmarks by mail. Each cover must have sufficient postage to meet First-Class Mail® requirements. Customers may purchase new stamps at their local Post Office™, by telephone at 800-782-6724, or at The Postal Store® website at usps.com/shop.

Digital Color Postmarks

Only select stamp issues offer a digital color postmark. Customers may submit #6 or #10 envelopes constructed of paper rated as “laser safe.” The Postal Service™ recommends envelopes of 80-pound Accent Opaque, acid-free, 9/16 inches side seams with no glue on the flap. The maximum size of all digital color postmarks is 2 inches high by 4 inches long. Allow sufficient space on the envelope to accommodate the postmark. Do not use self-adhesive labels for addresses on the envelope. Two test envelopes must be included. There is a minimum of 10 envelopes at 50 cents per postmark required at the time of servicing. Customers must submit a check, money order, or credit card for payment.

The Postal Service reserves the right to not accept hand-painted and other cachet envelopes that are not compatible with our digital color postmark equipment. The Postal Service also reserves the right to substitute traditional black rubber postmarks if use of nonspecified envelopes results in poor image quality or damage to equipment.

Customers must affix the stamps to the envelopes and address them to themselves or others for return through

the mail. Or, they may include an additional self-addressed return envelope, large enough to accommodate their canceled items, with sufficient postage affixed for return of their postmarked items. Address customer requests for digital color postmarks to:

FDOI – (Name of Stamp Issue)
 USPS Stamp Fulfillment Services
 8300 NE Underground Drive, Suite 300
 Kansas City, MO 64144-9900

After applying the first-day-of-issue postmark, the Postal Service will return the envelopes to the customer by U.S. Mail™.

Traditional Postmarks

Customers must affix the stamps to the envelopes and address them to themselves or others for return through the mail. Or, they may include an additional self-addressed return envelope, large enough to accommodate their canceled items, with sufficient postage affixed for return of their postmarked items. Address customer requests for traditional postmarks to:

FDOI – (Name of Stamp Issue)
 USPS Stamp Fulfillment Services
 8300 NE Underground Drive, Suite 300
 Kansas City, MO 64144-9900

After applying the first-day-of-issue postmark, the Postal Service will return the envelopes to the customer by U.S. Mail. There is no charge for the first 50 postmarks. There is a 5-cent charge for each additional postmark over 50. Customers must submit a check, money order, or credit card for payment.



Digital Color Pictorial

FDOI – Henry David Thoreau Stamp
 USPS Stamp Fulfillment Services
 8300 NE Underground Drive, Suite 300
 Kansas City, MO 64144-9900

July 23, 2017



Black and White Pictorial

FDOI – Henry David Thoreau Stamp
 USPS Stamp Fulfillment Services
 8300 NE Underground Drive, Suite 300
 Kansas City, MO 64144-9900

July 23, 2017

**FDOI – Have a Ball! Stamps**

USPS Stamp Fulfillment Services
8300 NE Underground Drive, Suite 300
Kansas City, MO 64144-9900

August 14, 2017

Digital Color Pictorial**FDOI – Total Eclipse of the Sun Stamp**

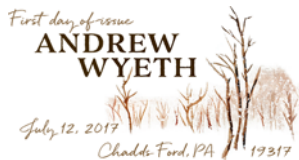
USPS Stamp Fulfillment Services
8300 NE Underground Drive, Suite 300
Kansas City, MO 64144-9900

August 20, 2017

Digital Color Pictorial**FDOI – Total Eclipse of the Sun Stamp**

USPS Stamp Fulfillment Services
8300 NE Underground Drive, Suite 300
Kansas City, MO 64144-9900

August 20, 2017

Black and White Pictorial**FDOI – Andrew Wyeth Stamps**

USPS Stamp Fulfillment Services
8300 NE Underground Drive, Suite 300
Kansas City, MO 64144-9900

September 12, 2017

Digital Color Pictorial**FDOI – Andrew Wyeth Stamps**

USPS Stamp Fulfillment Services
8300 NE Underground Drive, Suite 300
Kansas City, MO 64144-9900

September 12, 2017

Black and White Pictorial**FDOI – Disney Villains Stamps**

USPS Stamp Fulfillment Services
8300 NE Underground Drive, Suite 300
Kansas City, MO 64144-9900

September 15, 2017

Digital Color Pictorial



FDOI – Disney Villains Stamps
 USPS Stamp Fulfillment Services
 8300 NE Underground Drive, Suite 300
 Kansas City, MO 64144-9900

September 15, 2017

Digital Color Pictorial



FDOI – Disney Villains Stamps
 USPS Stamp Fulfillment Services
 8300 NE Underground Drive, Suite 300
 Kansas City, MO 64144-9900

September 15, 2017

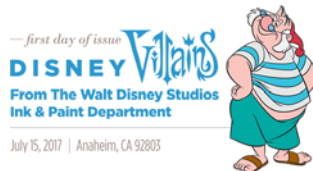
Digital Color Pictorial



FDOI – Disney Villains Stamps
 USPS Stamp Fulfillment Services
 8300 NE Underground Drive, Suite 300
 Kansas City, MO 64144-9900

September 15, 2017

Digital Color Pictorial



FDOI – Disney Villains Stamps
 USPS Stamp Fulfillment Services
 8300 NE Underground Drive, Suite 300
 Kansas City, MO 64144-9900

September 15, 2017

Digital Color Pictorial



FDOI – Disney Villains Stamps
 USPS Stamp Fulfillment Services
 8300 NE Underground Drive, Suite 300
 Kansas City, MO 64144-9900

September 15, 2017

Digital Color Pictorial



FDOI – Disney Villains Stamps
 USPS Stamp Fulfillment Services
 8300 NE Underground Drive, Suite 300
 Kansas City, MO 64144-9900

September 15, 2017

Digital Color Pictorial



FDOI – Disney Villains Stamps
 USPS Stamp Fulfillment Services
 8300 NE Underground Drive, Suite 300
 Kansas City, MO 64144-9900

September 15, 2017

Digital Color Pictorial



FDOI – Disney Villains Stamps
 USPS Stamp Fulfillment Services
 8300 NE Underground Drive, Suite 300
 Kansas City, MO 64144-9900

September 15, 2017

Digital Color Pictorial



FDOI – Disney Villains Stamps
 USPS Stamp Fulfillment Services
 8300 NE Underground Drive, Suite 300
 Kansas City, MO 64144-9900

September 15, 2017

Digital Color Pictorial



FDOI – Disney Villains Stamps
 USPS Stamp Fulfillment Services
 8300 NE Underground Drive, Suite 300
 Kansas City, MO 64144-9900

September 15, 2017

Black and White Pictorial



FDOI – Sharks Stamps
 USPS Stamp Fulfillment Services
 8300 NE Underground Drive, Suite 300
 Kansas City, MO 64144-9900

September 26, 2017

Digital Color Pictorial



FDOI – Sharks Stamps
 USPS Stamp Fulfillment Services
 8300 NE Underground Drive, Suite 300
 Kansas City, MO 64144-9900

September 26, 2017

Black and White Pictorial



FDI – Protect Pollinators Stamps

USPS Stamp Fulfillment Services
8300 NE Underground Drive, Suite 300
Kansas City, MO 64144-9900

October 3, 2017

Digital Color Pictorial



FDI – Azulillo Stamped Card

USPS Stamp Fulfillment Services
8300 NE Underground Drive, Suite 300
Kansas City, MO 64144-9900

October 11, 2017

Black and White Pictorial



FDI – Flowers From the Garden Stamps

USPS Stamp Fulfillment Services
8300 NE Underground Drive, Suite 300
Kansas City, MO 64144-9900

October 16, 2017

Digital Color Pictorial

– *Stamp Services, Marketing, 7-6-17*

Supply Management

Interest Rate on Contract Claims

The Postal Service™ periodically publishes the interest rate payable on a claim decided in a supplier's favor under the Contract Disputes Act of 1978 in the *Postal Bulletin*. This rate also applies for late payments to suppliers under the Prompt Payment Act, as amended.

The interest rate effective for the 6-month period of July 1, 2017, to December 31, 2017, is **2.375 percent**.

– *Supply Management Infrastructure, Supply Management, 7-6-17*



475 L'ENFANT PLAZA SW
WASHINGTON DC 20260-5540

First-Class Mail
Postage & Fees Paid
USPS
Permit No. G-10

Featuring the *U.S. Flag* Forever® Stamp



On Sale Nationwide: January 27, 2017.



The Postal Bulletin is printed on paper that contains 30% post-consumer waste. Please recycle.