

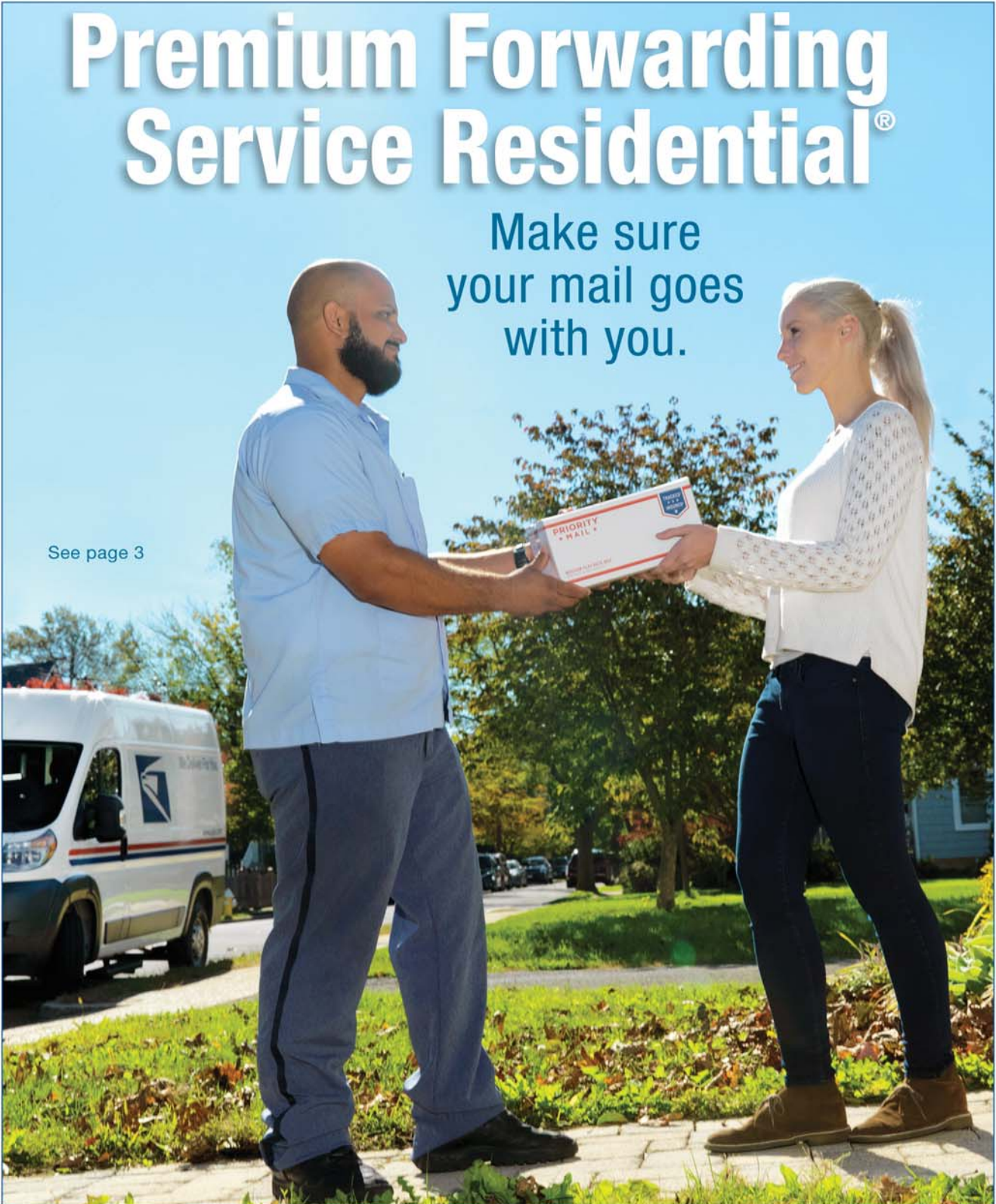
postal|bulletin

PUBLISHED SINCE MARCH 4, 1880

Premium Forwarding Service Residential[®]

Make sure
your mail goes
with you.

See page 3



Contents

COVER STORY

Premium Forwarding Service Residential: Make Sure Your Mail Goes with You	3
---	---

POLICIES, PROCEDURES, AND FORMS UPDATES

Manuals

DMM Revision: Media Mail and Library Mail	4
DMM Revision: Parcel Return Service Pickup Schedule	4
DMM Revision: USPS Marketing Mail Machinable Letters Mail Preparation	5

Publications

Publication 431 Revision: Changes to Post Office Box Service and Caller Service Fee Groups	5
--	---

ORGANIZATION INFORMATION

Information Security

Rules of the Social Media Road	6
--	---

International Mail

Temporary Suspension of Mail Service to Guatemala	7
---	---

Product Development

Postal Perceptions: Revised Customer Surveys Gather Better Information	7
--	---

Stamp Services

Pictorial Postmarks Announcement	8
How to Order the First-Day-of-Issue Digital Color or Traditional Postmarks	31

Sustainability

Required Procedures for Environmental Regulatory Agency Site Visits and Notices of Violation	35
--	----

PULL-OUT INFORMATION

Fraud

Invalid USPS Corporate Account Numbers	9
Missing, Lost, or Stolen U.S. Money Order Forms	11
Missing, Lost, or Stolen Canadian Money Order Forms	18
Verifying U.S. Postal Service Money Orders	21
Counterfeit Canadian Money Order Forms	21
Toll-Free Number Available to Verify Canadian Money Orders	21

Other Information

Overseas Military/Diplomatic Mail	23
Freely Associated States Restrictions	28

POSTAL BULLETIN INDEX

2016 Semi-Annual Index	PB 22458 (1-5-17)
----------------------------------	-------------------

USPS National Emergency Hotline
Is your facility operating? Call 888-363-7462

Find the latest in mail and delivery information
and services offered by U.S. Postal™
in the *Postal Bulletin* at
about.usps.com/postal-bulletin



Cover Story

Premium Forwarding Service Residential: Make Sure Your Mail Goes with You

The Postal Service™ offers Premium Forwarding Service Residential® (PFS-Residential®), a personalized service for reshipping mail from a primary residential address (or PO Box™, with certain restrictions) to a temporary address using Priority Mail® Service with USPS Tracking® Service. PFS-Residential is perfect for residential customers going away from home from 2 weeks up to 1 year, such as “Snowbirds,” executives on temporary assignments, students, and individuals with an extended family care situation or who are away on an extended vacation.

Benefits include:

- Customers do not miss important mail while they are away.
- A customer’s permanent address does not change, and the Postal Service never provides temporary address information to senders.
- All of the customer’s mail reaches them, most of it via Priority Mail Service with USPS Tracking. For more information about what mail must be reshipped immediately at no additional charge and not held for the weekly Priority Mail reshipments (e.g., Priority Mail Express® and Registered Mail™ items), see *Mailing Standards of the United States Postal Service*, Domestic Mail Manual (DMM®).
- Customers can depend on Post Office™ weekly mailings, which go out every Wednesday on a regular schedule.

PFS-Residential is not available for the following types of addresses:

- Business addresses.
- APO, FPO, and DPO addresses.

- Single-point delivery addresses such as RV parks, hospitals, hotels, and U.S. Department of State addresses.
- Size 3, Size 4, or Size 5 PO Box addresses (customers with a Size 1 or Size 2 PO Box listed as the primary address are eligible for PFS-Residential, but must apply at a retail location rather than online).

Customers can apply for PFS-Residential at their primary address by going to their local Post Office or by applying online at usps.com.

Retail Application/Payment

Customers must pay a nonrefundable application fee and reshipment charge per week for each week of service requested. If for any reason the customer requests early termination of a PFS-Residential order, the Postal Service can refund unused weekly reshipment charges to the customer.

Online Application/Payment

A customer who enrolls in PFS-Residential using the online application must pay the application fee by credit card. The Postal Service will use the customer’s designated credit card to process a weekly recurring reshipment charge. Customers who enroll in PFS-Residential using the online application must pay the nonrefundable application fee and weekly reshipment fee when they submit the application. Customers may stop future weekly reshipment charges by logging onto their USPS® account and canceling the PFS-Residential order.

Refer to Notice 123, *Price List*, for the application fee (sometimes referred to as the “enrollment fee”) and the weekly reshipment charge.

— Retail Operations,
Retail and Customer Service Operations, 4-27-17

Policies, Procedures, and Forms Updates

Manuals

DMM Revision: Media Mail and Library Mail

Effective May 1, 2017, the Postal Service™ will revise *Mailing Standards of the United States Postal Service, Domestic Mail Manual (DMM®)*, section 273.5.5, to remove the text that states mailpieces not meeting the Intelligent Mail® package barcode (IMpb®) requirements will be assessed a noncompliance fee.

The Postal Service added IMpb requirements for Media Mail and Library Mail parcels in the March 6, 2017, update of the DMM. Information stating that mailpieces not meeting the IMpb requirements would be assessed a noncompliance fee was inadvertently left in the revision.

Although we will not publish this clarification in the DMM until May 1, 2017, this revision is effective immediately.

Mailing Standards of the United States Postal Service, Domestic Mail Manual (DMM)

* * * * *

200 Commercial Mail Letters, Cards, Flat, and Parcels

* * * * *

270 Commercial Mail Media Mail and Library Mail

273 Prices and Eligibility

* * * * *

5.0 Basic Eligibility Standards for Media Mail and Library Mail

* * * * *

5.5 IMpb Standards

[Revise the text of 5.5 to read as follows:]

All Media Mail and Library Mail parcels, unless inducted through a retail transaction or a USPS self-service kiosk, must bear an Intelligent Mail package barcode (IMpb) prepared under 708.5.0. For details, see the *PostalPro* website at postalpro.usps.com.

* * * * *

We will incorporate this revision into the next online update of the DMM, which is available via Postal Explorer® at pe.usps.com.

— Product Classification,
Marketing, 4-27-17

DMM Revision: Parcel Return Service Pickup Schedule

Effective May 1, 2017, the Postal Service™ will revise *Mailing Standards of the United States Postal Service, Domestic Mail Manual (DMM®)*, section 505.4.2.9, to add the pickup schedule for a permit holder or his or her agent to retrieve parcels at a Parcel Return Service — Return Delivery Unit (RDU).

Parcel Return Service requires a permit holder or his or her agent to retrieve parcels on a regular schedule. The required schedule for RDU pickup will be a minimum of every 48 hours. For consistency, we will also make a minor revision to Parcel Return Service — Return Sectional Center Facility (RSCF).

Mailing Standards of the United States Postal Service, Domestic Mail Manual (DMM)

* * * * *

500 Additional Mailing Services

* * * * *

505 Return Services

* * * * *

4.0 Parcel Return Service

* * * * *

4.2 Basic Standards

* * * * *

4.2.9 Pickup Schedule and Location

* * * * *

[Revise the first sentence of item a. to read as follows:]

- a. From all listed RSCFs, at a minimum of every 24 hours, excluding Saturdays, Sundays, and USPS holidays, unless otherwise authorized.***

* * * * *

[Revise the first sentence of item b. to read as follows:]

- b. From RDUs, at a minimum of 48 hours, excluding Saturdays, Sundays, and USPS holidays, unless otherwise authorized.***

* * * * *

We will incorporate these revisions into the next online update of the DMM, which is available via Postal Explorer® at pe.usps.com.

— Product Classification,
Marketing, 4-27-17

DMM Revision: USPS Marketing Mail Machinable Letters Mail Preparation

Effective May 1, 2017, the Postal Service™ will revise *Mailing Standards of the United States Postal Service*, Domestic Mail Manual (DMM®), section 245.5.3.2, to reflect changes to the traying and labeling requirements for USPS Marketing Mail™ Machinable Letters.

This revision updates section 245.5.3.2 to eliminate 3-digit trays and establish AADC origin trays. In Order No. 3610, issued on November 15, 2016, the Postal Regulatory Commission approved the 3-digit price category elimination.

Although we will not publish this revision in the DMM until May 1, 2017, these standards are effective immediately.

Mailing Standards of the United States Postal Service, Domestic Mail Manual (DMM)

* * * * *

200 Commercial Mail Letters, Cards, Flats, and Parcels

* * * * *

240 USPS Marketing Mail

* * * * *

245 Mail Preparation

* * * * *

5.0 Preparing Nonautomation Letters

* * * * *

5.3 Machinable Preparation

* * * * *

5.3.2 Traying and Labeling

* * * * *

[Revise the text of item a. to read as follows:]

a. AADC Origin Tray (optional, no minimum); labeling:

1. Line 1: L801, Column B.
2. Line 2: "MKT LTR MACH."

* * * * *

We will incorporate this revision into the next online update of the DMM, which is available via Postal Explorer® at pe.usps.com.

— Product Classification,
Marketing, 4-27-17

Publications

Publication 431 Revision: Changes to Post Office Box Service and Caller Service Fee Groups

Effective April 27, 2017, Publication 431, *Post Office Box Service and Caller Service Fee Groups*, is revised to include the following changes.

Publication 431, Post Office Box Service and Caller Service Fee Groups

* * * * *

[Delete the following entries:]

ZIP Code	Fee Group
54880B	4
63745	5
66409A	5
67147A	4
68444	5
69151B	5
79338	5
97530A	5

* * * * *

The online version of Publication 431 is dated July 2013. Publication 431 is currently available on the Postal Service™ PolicyNet website (blue.usps.gov/cpim):

- Go to blue.usps.gov.
- In the left-hand column under "Essential Links," click *PolicyNet*.
- Click *PUBs*.

Offices with WebBATS Manager/Supervisor access can view current Publication 431 information by going to the WebBATS Edit Facility Information page, as follows:

1. Go to the WebBATS main menu, and select Utility> Facility>Edit Facility option.
2. View the Fee Group field on the Edit Facility Information page.

— Retail Operations,
Retail and Customer Service Operations, 4-27-17

Organization Information

Information Security

Rules of the Social Media Road

For many of us, checking and updating social media is part of our daily routine. Unfortunately, this makes social media platforms a prime place for cyber criminals to trick people into falling for their scams.

To avoid social media scams, you should:

1. **Create a strong password.** The first line of defense from cyber crime is a strong and secure password. The Postal Service™ requires passwords to be at least 15 characters long and include three of the following: uppercase letters, lowercase letters, numbers, and special characters.
2. **Keep personal information personal.** Don't "over-share" on social media profiles or in posts. Scammers use information like your birthday, dog's name, and address to hack your passwords and steal your identity.
3. **Delete unsolicited emails and texts.** If you receive an unsolicited message from a company or person, do not engage the sender. Report it and then delete the communication.
4. **Verify before you interact.** Always verify that social media content or emails come from a legitimate source, including those who claim to represent a company or other organization.
5. **Think before you click.** Before clicking on an advertisement or accepting a friend request, *take a moment to think*. Is the deal too good to be true?

If you fall victim to a social media scam, follow these steps¹:

- Immediately cease communication with the scammer.
- Document and save all communications between you and the scammer.
- Report the incident to the respective social media site as well as your local police department.
- Report the incident to the Federal Bureau of Investigation's Internet Crime Compliant Center via [ic3.gov](https://www.ic3.gov).
- Report the incident to the Federal Trade Commission via [consumer.ftc.gov](https://www.consumer.ftc.gov).
- For Postal Service devices, report the incident to CSOC at CyberSafe@usps.gov.

Please refer to Handbook AS-805, *Information Security*, section 5-7, for official social media guidance. As a reminder, do not:

- Create unauthorized social media accounts on behalf of the Postal Service.
- Post messages to social media platforms on behalf of the Postal Service².
- Log into personal social media accounts on any Postal Service devices.
- Link personal social media accounts with your Postal Service email address.

For more information on cybersecurity best practices, check out the new public-facing CyberSafe at USPS™ website at uspscybersafe.com or the CyberSafe at USPS page on *Blue* (blue.usps.gov/cyber/).

— Corporate Information Security Office,
Chief Information Security Officer
and Digital Solutions, 4-27-17

1. Data sourced from DHS: *Stop.Think.Connect.*: fightingidentitycrimes.com/top-social-media-scams-in-2016/.

2. Per Handbook AS-805, *Information Security*, section 5-7, employees with approved access to Postal Service social media accounts should only use those sites for fulfilling job duties, goals, and objectives.

International Mail

Temporary Suspension of Mail Service to Guatemala

On April 11, 2017, the Postal Service™ announced the suspension of most mail services to Guatemala. Until further notice, all Post Office™ facilities and other acceptance locations must not accept any mail destined to the country of Guatemala, other than Global Express Guaranteed® (GXG®) service, which is still available. The suspension affects Priority Mail Express International® (PMEI), Priority Mail International® (PMI), First-Class Mail International® (FCMI), First-Class Package International Service® (FCPIS®), International Priority Airmail® (IPA®), International Surface Air Lift® (ISAL®), and M-Bag® items.

For already-deposited items other than GXG addressed to Guatemala, Postal Service employees must endorse them “Mail Service Suspended — Return to Sender” and then place them in the mailstream for return.

For any returned item bearing a customs declarations form or any returned item shipped with Priority Mail Express International service, the Postal Service will, upon request, refund postage and fees on mail returned due to the suspension of service.

For all other returned items not bearing a customs declarations form, the Postal Service will, upon request, refund postage and fees on mail returned due to the suspension of service, or the sender may re-mail them with the existing postage once the Postal Service has restored service to Guatemala. When re-mailing under this option, customers must cross out the markings “Mail Service Suspended — Return to Sender.”

— *Product Classification, Marketing, 4-27-17*

Product Development

Postal Perceptions: Revised Customer Surveys Gather Better Information



Beginning April 2017, Postal Service™ employees will notice changes to several customer experience surveys. To identify what matters most to its customers, USPS® standardized the first three questions in the following surveys:

- Retail Point-of-Sale;
- Delivery;
- Customer Care Center;
- Business Services Network;

- Enterprise Customer Care;
- usps.com; and
- Business Mail Entry Unit.

One of the standard questions in these surveys asks: “How likely are you to recommend the USPS to a friend or colleague?”

We will use this question to calculate the Net Promoter Score, an alternative measure of customer loyalty used by more than two-thirds of Fortune 1000 companies. We will also evaluate feedback from the revised surveys to improve the overall customer experience survey program in FY 2018, which begins October 1, 2017. We believe the update will simplify the surveys and increase response rates.

The current National Performance Assessment, an online system that collects metrics across the organization, will not change at this time.

USPS encourages employees to continue promoting the importance of completed customer experience surveys. If you have a question about the survey updates, please send an email to research@usps.gov.

— *Customer and Market Insights, Product Development, 4-27-17*

Stamp Services

Pictorial Postmarks Announcement

As a community service, the Postal Service™ offers pictorial postmarks to commemorate local events celebrated in communities throughout the nation. A list of events for which pictorial postmarks are authorized appears below. The sponsor of the pictorial postmark appears in italics under the date. Also provided are illustrations of these postmarks.

People attending these local events may obtain the postmark in person at the temporary Post Office™ station established there. Those who cannot attend the event but who wish to obtain the postmark may submit a mail order request. Pictorial postmarks are available only for the dates indicated, and *requests must be postmarked no later than 30 days following the requested pictorial postmark date.*

All requests must include a stamped envelope or postcard bearing at least the minimum First-Class Mail® postage. Items submitted for postmark may not include

postage issued after the date of the requested postmark. Such items will be returned unserved.

Customers wishing to obtain a postmark must affix stamps to any envelope or postcard of their choice, address the envelope or postcard to themselves or others, insert a card of postcard thickness in envelopes for sturdiness, and tuck in the flap. Place the envelope or postcard in a larger envelope and address it to: Pictorial Postmarks, followed by the Name of the Station, Address, City, State, ZIP+4® Code, as listed below.

Customers can also send stamped envelopes and postcards without addresses for postmark, as long as they supply a larger envelope with adequate postage and their return address. After applying the pictorial postmark, the Postal Service returns the items (with or without addresses) under addressed protective cover.

The following pictorial postmark has been extended for 90 days:



April 1–July 1, 2017

United States Postal Service
Publishers Press Station
Postmaster
PO Box 9998
Lebanon Junction, KY 40150-9998

The following pictorial postmarks have been extended for 30 days:



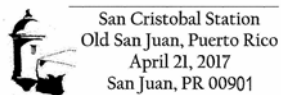
March 30, 2017

United States Postal Service
Seward's Day Station
Postmaster
3720 Barrow Street
Anchorage, AK 99599-9996



April 12, 2017

United States Postal Service
Robert Panara Station
Postmaster
3805 Bohemian Highway
Occidental, CA 95465-9998



April 21, 2017

Association of History of Old San Juan
San Cristobal Station
c/o Puerto Rico Stamps Office
585 Avenue FD Roosevelt, Suite 103
San Juan, PR 00936-9681

(Article continues on page [29](#))

Pull-Out Information

Fraud

Invalid USPS Corporate Account Numbers

Provide this listing to Contract Postal Units and acceptance clerks in non-POS locations without intranet access to validate a USPS Corporate Account (USPSCA) number online. For all other locations, online USPSCA validation is preferred. The online validation process is outlined in the USPSCA Validation SOP on the Retail webpage. This list supersedes all previous notices, which must be recycled.

Acceptance clerks must not accept Priority Mail Express™ shipments bearing an invalid USPSCA number in the “Payment by Account” or “Agreement Number” section of the label or form.

Note: The first 6 digits of a 9-digit Custom Designed Service and Next Day Pickup Agreement make up the Corporate Account Number.

005605	076850	109074	192318	402576	462744	585246	802460	900087	900501	904549	926056	937724
006069	077112	109117	192537	402616	462828	585293	802484	900093	900503	904620	926057	937754
006381	077946	109660	192940	402873	462833	591230	802488	900096	900507	904662	926066	940419
006700	080192	109664	207106	410229	463027	591275	802491	900101	900510	904673	926099	945332
008005	080322	110004	210486	430208	463085	591365	802494	900105	900511	906035	926109	945845
008254	080426	115033	220495	432050	463089	591710	803214	900113	900512	906123	926248	946547
008269	080440	115614	220731	432442	463095	591998	805374	900119	900514	906131	926282	946554
009283	085101	115855	220741	432722	463096	597534	809052	900128	900516	906554	926306	946577
009448	085239	117117	221017	432927	463101	598637	815020	900170	900520	906858	926333	947114
009480	085491	117697	221240	436001	463102	598863	840059	900172	900527	906873	926370	947226
009659	085513	118342	257150	451047	464005	598865	841222	900183	900529	906898	926394	947265
010765	085705	120343	271205	460080	464060	599568	844007	900193	900534	906905	926405	950022
011416	085778	122225	274142	460164	464073	599569	850610	900197	900546	906919	926413	951378
012168	088300	123052	301796	460165	464123	600560	851029	900203	900548	906967	926467	958361
015743	089241	125117	302003	460170	464222	601008	851032	900207	900549	907343	926518	958887
019326	090380	125207	320033	461007	464225	601688	851035	900208	900754	910014	926572	967118
019923	091691	129960	320099	461115	465110	601866	851036	900211	900971	910242	926619	967127
020003	092017	130910	320907	461127	465136	601997	851038	900217	900999	912454	926621	967239
020395	092951	130915	321261	461128	465137	605094	851039	900218	901023	913145	926732	967396
020531	094073	134070	322693	461135	465147	605858	851042	900222	901031	913162	926749	967406
020640	094636	135192	323132	461160	465150	606339	852376	900224	901144	913620	926753	968272
021733	094682	135254	326407	461170	465155	607453	852537	900230	901245	914052	926814	968341
026550	096753	136023	327319	462010	465165	622022	852809	900232	901257	914929	926878	980607
027336	098213	142049	327596	462011	465170	624064	852833	900237	901301	915519	926977	981883
028136	098656	142098	328106	462015	466110	627026	852955	900247	901479	917161	927074	982368
029149	098757	142363	328433	462016	474075	631102	853914	900257	901504	917428	927261	982686
038644	098979	142364	328647	462019	477081	631221	853934	900298	901552	917580	927274	982726
046004	100258	142537	329382	462031	480671	631249	853967	900358	901557	917927	927323	992416
052013	100382	142583	330280	462050	483297	631372	853997	900360	901843	918211	927438	995250
054004	100402	146067	330580	462061	485003	631906	860068	900367	901883	918377	927570	995454
060261	100408	146307	331292	462069	485110	641837	890200	900380	902003	918408	927641	995484
060516	100674	146439	331434	462085	491110	719027	891256	900397	902073	918492	927715	995587
060793	100835	146471	333764	462089	495135	724020	891612	900423	902082	918600	927758	995781
061368	100881	146680	335085	462100	531861	740787	891613	900426	902104	918654	927823	997127
064096	100898	152427	335116	462102	551204	741162	891725	900430	902206	918696	928114	997238
065484	100921	156243	335207	462103	551826	741467	891820	900444	902229	921245	928275	997255
067370	100940	159021	335288	462150	554523	749173	891999	900451	902255	921500	928342	997287
067397	101102	168001	340546	462249	570134	752016	898043	900458	902332	922348	928404	998506
068019	102332	173001	358053	462251	571149	752031	900002	900469	902435	924677	928447	
068051	103934	174006	370060	462382	575080	752162	900003	900472	902453	925127	928551	
068860	104224	174100	371140	462423	577100	770084	900006	900475	902502	925128	928750	
071917	104308	175055	381050	462489	581223	770369	900014	900476	902951	926031	928782	
075410	105306	175064	381271	462531	582009	770565	900023	900480	903094	926034	930039	
076183	105338	175191	381305	462584	582013	771524	900042	900495	903913	926035	931647	
076454	108236	176055	385008	462688	585204	774060	900071	900497	903951	926043	933332	
076698	109045	180056	385009	462705	585215	801572	900073	900499	904007	926050	933489	



USPS[®]

**receives no
federal tax
dollars for its
operations.**

Missing, Lost, or Stolen U.S. Money Order Forms

Do Not Cash — Upon Receipt, Notify Local Postal Inspectors

Provide this listing to all Postal Service™ employees responsible for accepting and cashing postal money orders. Destroy all interim notices when the numbers listed

appear in the *Postal Bulletin*. The actual serial numbers consist of the first 10 digits on the money orders. Check for altered dollar amounts by holding money orders to the light.

010 001 0200 to 0299	035 035 4337 to 4399	066 648 2880 to 2899	094 580 7062 to 7099
010 504 1932 to 1999	037 312 7500 to 7599	066 787 3639 to 3699	094 639 4200 to 4299
011 582 1889 to 1899	037 706 9578 to 9599	066 845 7500 to 9999	095 070 7186 to 7199
011 588 2900 to 3099	037 805 3677 to 3699	067 093 3869 to 3899	095 076 8300 to 8399
012 441 0784 to 0799	037 909 5490 to 5499	068 895 0334 to 0399	095 354 6864 to 6899
012 579 5675 to 5699	037 931 4660 to 4699	070 724 4488 to 4499	097 224 1350 to 1599
013 289 6176 to 6199	039 145 6521 to 6595	070 841 9181 to 9199	100 160 3800 to 3899
013 610 0014 to 0099	040 024 3901 to 3999	070 844 2546 to 2599	104 667 6400 to 6499
014 932 1000 to 1099	040 674 7100 to 7199	070 916 1340 to 1399	104 876 8937 to 8999
014 972 0800 to 0899	040 688 8816 to 8899	071 047 5768 to 5799	112 049 4413 to 4499
015 363 0065 to 0099	041 299 6752 to 6799	071 179 9800 to 9899	112 870 9765 to 9799
017 028 3200 to 3299	041 623 8889 to 8899	071 386 3682 to 3699	113 319 2000 to 2099
018 569 5333 to 5399	041 803 6565 to 6599	071 507 6840 to 6899	114 402 3850 to 3899
018 986 5264 to 5299	043 129 1968 to 1997	072 045 9641 to 9699	114 866 5368 to 5397
019 518 2814 to 2899	043 205 5922 to 5999	072 675 8287 to 8299	116 154 2800 to 2899
020 698 5159 to 5199	044 087 3457 to 3499	073 763 0867 to 0876	116 986 4400 to 4499
020 844 7307 to 7399	044 087 4000 to 4099	073 763 0878 to 0887	117 175 1647 to 5169
020 972 8948 to 8999	044 226 2487 to 2512	073 763 0889 to 0898	117 951 4687 to 4699
022 021 9110 to 9181	044 306 4200 to 4299	077 617 5481 to 5499	117 951 5200 to 5299
022 037 1411 to 1499	044 306 4370 to 4599	077 999 4001 to 4090	119 786 3051 to 3064
022 527 9201 to 9210	045 524 4121 to 4298	078 174 4475 to 4499	119 815 8961 to 6199
022 529 1882 to 1899	046 800 9870 to 9899	078 219 4931 to 4999	119 850 7400 to 7499
023 637 7169 to 7199	047 352 4000 to 4099	078 250 4756 to 4799	119 850 7700 to 7999
024 380 4100 to 4199	048 383 7650 to 7659	078 823 8312 to 8399	121 634 0460 to 0499
024 496 6870 to 6896	048 396 3647 to 3699	079 374 0300 to 2499	122 451 9879 to 9899
025 092 0987 to 0999	051 142 0755 to 0799	079 807 2342 to 2399	122 714 6805 to 6900
025 369 5535 to 5599	051 774 8857 to 8899	082 721 0228 to 0254	124 916 0304 to 0499
025 729 1151 to 1199	051 781 2875 to 2885	083 140 5000 to 7499	126 423 0136 to 0169
025 729 1643 to 1799	051 977 7010 to 7023	083 784 8886 to 8899	127 500 2328 to 2399
026 492 3180 to 3199	052 058 7115 to 7199	083 913 6915 to 6999	160 901 2254 to 2299
027 361 0430 to 0499	054 450 1130 to 1167	084 478 3920 to 3999	161 103 6581 to 6599
027 369 4482 to 4495	057 670 0563 to 0599	086 000 8271 to 8299	161 194 2857 to 0899
027 671 8762 to 8776	058 187 3836 to 3899	086 798 3840 to 3849	162 032 4447 to 4499
027 787 9886 to 9899	058 523 3003 to 3099	088 404 4472 to 4499	163 257 1085 to 1099
027 965 9487 to 9499	058 591 1153 to 1299	088 404 5584 to 5699	164 359 2406 to 2499
028 100 8069 to 8099	058 895 3746 to 3799	088 757 8688 to 8699	166 101 1433 to 1499
028 191 1852 to 1999	059 986 0814 to 0899	088 757 9400 to 9499	167 555 5201 to 5212
028 850 3000 to 3199	060 406 7650 to 7699	089 358 2248 to 2257	167 555 5214 to 5299
029 510 1500 to 1599	063 491 8122 to 8199	090 663 9678 to 9684	169 618 6274 to 6299
030 687 0903 to 0999	063 916 9968 to 9999	091 818 0071 to 0099	171 806 6878 to 6893
030 701 3442 to 3499	064 091 4500 to 4599	093 106 9346 to 9355	173 639 4685 to 4699
031 077 4507 to 4799	065 170 0471 to 0499	093 203 0500 to 0599	174 238 2779 to 2799
032 295 7500 to 9999	065 255 7909 to 7999	093 684 3630 to 3699	174 281 9347 to 9399
034 394 1000 to 1099	065 392 6345 to 6399	094 081 5074 to 5099	175 251 2600 to 0699
034 943 0400 to 0799	066 099 2014 to 2099	094 216 2555 to 2599	176 281 7937 to 7950

176 281 7963	to	7999	214 303 6311	to	6325	374 768 2600	to	2699	399 070 0872	to	0899
176 731 6586	to	6599	214 303 6239	to	6258	375 169 4400	to	4599	399 156 7119	to	7199
178 254 5000	to	9999	214 877 4251	to	4273	375 829 3400	to	3499	399 203 5064	to	5099
178 881 9900	to	9999	215 252 3918	to	3992	375 851 9100	to	9199	399 296 9910	to	9999
180 031 2089	to	2098	218 698 2157	to	2199	376 196 0911	to	0999	399 396 8935	to	8999
180 403 7723	to	7741	218 746 0800	to	0899	378 085 3679	to	3699	399 792 7775	to	7799
180 428 4580	to	0599	219 095 0100	to	0399	378 351 1063	to	1099	399 792 8300	to	8399
182 368 7544	to	0599	219 389 1885	to	1899	379 843 5100	to	5199	400 427 1051	to	1999
182 475 3229	to	3258	219 568 7435	to	7456	380 093 9600	to	9699	401 045 1505	to	1549
182 475 3904	to	3933	219 568 7469	to	7487	380 165 1165	to	1199	401 045 1571	to	1599
182 631 0031	to	0099	221 316 5757	to	5799	381 325 4500	to	4599	401 294 2700	to	2799
182 911 6539	to	6600	223 476 3914	to	3999	381 604 2510	to	2699	401 310 9505	to	9599
184 218 2760	to	2799	223 565 4921	to	4957	381 645 9525	to	9599	401 382 5312	to	5399
185 828 1474	to	1499	223 565 4979	to	4999	383 314 3968	to	3999	402 578 7876	to	7899
186 132 7583	to	0599	224 636 4745	to	4765	383 892 1000	to	1344	403 125 6744	to	6799
186 629 0589	to	0599	224 636 4776	to	4799	383 892 1382	to	1399	403 260 7000	to	7499
187 184 6177	to	0199	224 636 4855	to	4885	384 925 3641	to	3654	403 280 6470	to	6499
187 323 8200	to	8299	224 636 4932	to	4948	385 568 2331	to	2399	403 685 8600	to	8699
187 441 6080	to	6099	224 636 4950	to	4962	385 599 7554	to	7575	404 003 0300	to	0399
188 831 6774	to	6799	224 636 4985	to	4999	385 774 2024	to	2099	404 041 8838	to	8899
188 835 6370	to	6399	224 730 2207	to	2299	386 624 1412	to	1599	404 071 4268	to	4299
189 083 1064	to	1099	225 970 0500	to	0599	386 883 8936	to	8999	404 347 5356	to	5399
189 660 9583	to	9599	225 970 0600	to	0699	387 314 5574	to	5599	404 347 5548	to	5599
191 179 0377	to	0399	225 970 0700	to	0799	387 837 6300	to	6399	404 726 4500	to	4599
192 050 5762	to	5781	227 033 8679	to	8699	388 828 0656	to	0699	404 961 5001	to	5199
194 456 8600	to	0699	227 275 9400	to	9999	389 696 2400	to	2799	405 325 0188	to	0198
195 194 6881	to	6899	228 463 2456	to	2499	389 846 3104	to	3135	406 009 4587	to	4599
195 874 1112	to	1199	228 510 4852	to	4899	389 846 3145	to	3195	406 260 6830	to	6899
196 979 0524	to	0599	229 462 8451	to	8475	389 887 9211	to	9230	406 459 6641	to	6999
197 244 6100	to	6199	229 668 5977	to	5999	389 887 9234	to	9299	406 733 3000	to	3999
197 244 6300	to	6399	229 923 9176	to	9199	390 001 3182	to	3199	407 545 1557	to	1599
197 244 6400	to	6499	229 924 6696	to	6699	390 001 3500	to	3699	407 594 0412	to	0599
197 244 6500	to	6599	230 051 9500	to	9999	390 545 5974	to	5999	407 692 9100	to	9299
197 244 6600	to	6699	236 366 2431	to	2499	391 104 6146	to	6199	407 959 2190	to	2199
197 244 6700	to	6799	236 607 6882	to	6899	391 574 1466	to	1499	408 265 2275	to	2288
197 244 6800	to	8999	236 660 5853	to	5872	391 783 3020	to	3599	408 499 7700	to	7799
198 285 2556	to	2566	239 322 5200	to	5299	391 792 6100	to	6199	408 499 7900	to	7999
199 105 0778	to	0799	239 322 5400	to	5499	392 668 2956	to	2999	408 682 8484	to	8599
199 678 2968	to	2999	239 322 5600	to	5699	392 854 8500	to	8899	408 698 7015	to	7099
202 748 5133	to	5199	239 322 5800	to	5899	393 584 7566	to	7699	409 072 3941	to	3999
202 748 5245	to	5299	239 322 5900	to	5999	393 650 0074	to	0099	410 491 2311	to	2399
202 748 5300	to	5399	240 593 1879	to	1899	393 838 8316	to	8499	410 694 8400	to	8599
202 748 5400	to	5499	242 735 0388	to	0398	393 893 6007	to	6099	410 775 1500	to	1599
203 256 1240	to	1299	273 070 8059	to	8099	394 126 6907	to	6999	410 795 7927	to	7999
204 230 3577	to	3595	273 775 7700	to	7899	394 189 0405	to	0599	410 867 0917	to	0966
205 019 0174	to	0199	302 000 0000	to	9999	394 822 3243	to	3278	410 867 0970	to	0999
207 196 9900	to	9999	349 746 2056	to	2099	394 990 1810	to	1899	411 868 1023	to	1199
207 204 0700	to	0799	350 518 7350	to	7374	395 343 3264	to	3299	411 922 2322	to	2399
207 204 0800	to	0899	360 011 1690	to	1699	395 373 3035	to	3099	412 193 0900	to	0999
207 514 3857	to	3899	360 168 6008	to	6099	395 396 9649	to	9799	412 395 8599	to	8699
208 556 4707	to	4799	360 173 8800	to	8899	395 970 3240	to	3299	412 485 6500	to	6599
210 057 4038	to	4047	360 324 2326	to	2399	397 622 4054	to	4099	412 485 6610	to	6699
210 221 0548	to	0599	362 861 3064	to	3099	397 819 8902	to	8999	412 885 5953	to	5999
214 061 4711	to	4724	373 006 2176	to	2199	398 149 7200	to	7699	414 193 3608	to	3674

414 193 3677	to	3699	432 708 6800	to	6999	454 268 4883	to	4899	469 127 8000	to	8199
414 411 7348	to	7399	432 744 1544	to	1599	454 302 5400	to	5499	469 213 0359	to	0399
414 640 0757	to	0799	432 995 9775	to	9799	454 490 8300	to	8399	469 213 0500	to	0599
414 965 1727	to	1799	433 003 5800	to	5899	454 547 7434	to	7499	469 561 8011	to	8099
417 302 8104	to	8199	433 757 3047	to	3099	454 922 4867	to	4895	469 658 1961	to	1999
417 387 6532	to	6599	433 765 4003	to	4099	455 221 1348	to	1499	469 666 9900	to	9999
417 496 6800	to	6999	434 482 7060	to	7199	455 364 2147	to	2199	469 678 1900	to	1999
417 871 9250	to	9299	434 513 2386	to	2399	455 399 5400	to	5499	469 781 4900	to	4999
417 930 9533	to	9599	434 968 3076	to	3092	455 476 0676	to	0699	469 947 6960	to	6999
418 164 6500	to	6799	435 303 1831	to	1842	455 543 0618	to	0699	470 755 5800	to	5818
418 423 9863	to	9899	435 303 1986	to	1999	456 410 9006	to	9099	471 918 0300	to	0999
418 633 5922	to	5999	435 666 6092	to	6399	456 470 4146	to	4299	471 985 2408	to	2419
418 719 8520	to	8599	436 082 6400	to	6899	456 619 4460	to	4499	472 191 6700	to	6799
418 744 2235	to	2299	436 160 6441	to	6499	457 333 2686	to	2699	472 270 2555	to	2599
418 962 2848	to	2899	437 316 7115	to	7199	457 729 1767	to	1777	472 987 0213	to	0241
419 543 0286	to	0299	437 427 0500	to	3499	457 937 8615	to	8699	472 987 0290	to	0299
419 730 0300	to	0399	439 179 2300	to	2399	458 028 9810	to	9899	473 151 2069	to	2199
420 277 0015	to	0049	439 310 0458	to	0499	458 057 2712	to	2999	473 666 9138	to	9199
420 599 0734	to	0798	440 698 1947	to	1999	458 069 9537	to	9599	473 952 3429	to	3499
420 661 4115	to	4199	440 858 6300	to	6399	458 069 9665	to	9699	474 108 5402	to	5499
420 758 9500	to	9699	440 858 6420	to	7299	458 337 5222	to	5299	474 356 5193	to	5299
420 969 3951	to	3971	441 199 1655	to	1699	458 354 7653	to	7999	474 949 3366	to	3399
420 969 3973	to	3999	443 127 3648	to	3699	458 671 8678	to	8699	475 134 9362	to	9399
421 116 3565	to	3599	443 127 4000	to	4099	458 671 8721	to	8798	475 167 9667	to	9699
421 130 9300	to	9399	443 673 7900	to	7999	458 847 5044	to	5999	475 319 3415	to	3499
421 313 4500	to	4999	443 800 9335	to	9399	459 274 7624	to	7699	475 319 3649	to	3799
421 364 5537	to	5599	444 382 8822	to	8899	459 365 5432	to	5499	475 340 6400	to	6599
421 656 2609	to	2699	444 390 1667	to	1699	459 378 5764	to	5799	475 424 8410	to	8499
421 988 9700	to	9799	444 457 3854	to	3899	459 472 4816	to	4999	475 629 9156	to	9199
422 172 4667	to	4699	450 048 4173	to	4199	460 349 6878	to	6899	475 850 6101	to	6199
422 484 4212	to	4299	450 048 4442	to	4699	460 550 1909	to	1999	475 875 2500	to	2599
422 556 1270	to	1299	450 560 5173	to	5199	460 997 5234	to	5299	476 169 8264	to	8299
422 587 7024	to	7099	450 620 3077	to	3099	461 973 6443	to	6499	476 189 3000	to	3499
422 819 7533	to	7599	450 620 3135	to	3199	462 152 0107	to	0299	476 331 2480	to	2499
422 842 5073	to	5087	450 780 2716	to	2799	462 274 1072	to	1099	477 289 8601	to	8699
422 907 7563	to	7599	450 801 2700	to	2799	462 277 8373	to	8399	477 681 5206	to	5299
424 500 6050	to	6099	451 109 2967	to	2984	462 554 6051	to	6099	478 010 4243	to	4268
424 641 8500	to	8599	451 115 4110	to	4125	463 011 5529	to	5540	478 010 4270	to	4291
424 871 6600	to	6699	451 115 4127	to	4199	463 176 4115	to	4199	478 450 5071	to	5099
425 298 2352	to	2399	451 746 0700	to	0799	463 176 4229	to	4299	478 469 7838	to	7858
425 418 4269	to	4299	452 265 0074	to	0099	463 185 2600	to	2799	478 469 7883	to	7899
425 418 4405	to	4499	452 265 0246	to	0299	463 227 7711	to	7799	479 280 9800	to	9899
426 547 4566	to	4599	452 265 0335	to	0999	463 414 4869	to	4899	479 365 9116	to	9176
427 412 6337	to	6499	452 509 1169	to	1199	463 808 3484	to	3499	479 412 9900	to	9999
427 481 0900	to	0999	452 855 6471	to	6499	463 945 7400	to	7899	479 667 6190	to	6199
428 027 2742	to	2752	452 890 4679	to	4799	464 629 9000	to	9399	479 748 9680	to	9699
429 474 4172	to	4199	452 900 8215	to	8238	464 711 4332	to	4399	479 860 7000	to	7199
429 889 2900	to	2999	453 117 9146	to	9199	465 692 3963	to	3999	480 526 2000	to	2099
430 150 4401	to	4599	453 334 3631	to	3699	465 698 8300	to	8599	480 640 6330	to	6399
430 172 9800	to	9899	453 603 7841	to	7891	465 743 7745	to	7799	480 658 0568	to	0599
430 177 1900	to	2099	453 650 1140	to	1199	466 798 6056	to	6067	480 689 5100	to	5199
430 444 9500	to	9699	453 741 1300	to	1399	467 147 4300	to	4399	481 072 9463	to	9499
430 664 4070	to	4099	454 013 2919	to	2999	468 079 5782	to	5799	481 673 0074	to	0095
432 168 8419	to	8499	454 186 2411	to	2499	469 067 2817	to	2899	482 527 1500	to	1599

482 541 5255	to	5299	498 929 8285	to	8499	603 483 9572	to	9599	621 614 7932	to	7999
482 729 6800	to	6899	498 936 5310	to	5399	603 490 7200	to	7299	621 648 8021	to	8199
483 363 7207	to	7299	499 016 5425	to	5499	603 678 7100	to	7199	621 648 8500	to	8599
483 402 2356	to	2399	499 440 8575	to	8899	603 678 7662	to	7699	621 904 8351	to	8599
483 486 5100	to	5199	499 731 6717	to	6799	603 678 7902	to	7999	621 916 1978	to	1989
483 632 1521	to	1599	500 064 1858	to	1869	603 678 8418	to	8499	622 989 8032	to	8099
483 632 2600	to	2799	500 070 5725	to	7799	603 678 8700	to	9999	623 076 9300	to	9399
483 849 1615	to	1699	501 058 0016	to	0026	604 086 0880	to	0899	623 819 5006	to	5099
484 174 4803	to	5299	501 331 0300	to	0399	604 349 1414	to	1499	623 895 8200	to	8399
484 323 8900	to	9199	501 460 0977	to	0999	604 503 7776	to	7799	623 917 0000	to	0099
484 680 5000	to	5038	502 227 7645	to	7699	605 520 9037	to	9099	623 917 0200	to	0299
484 680 5040	to	5074	502 424 0200	to	0499	605 685 4010	to	4099	624 468 5288	to	5299
484 680 5077	to	5099	502 424 0600	to	0699	605 988 6467	to	6499	624 665 3162	to	3198
485 029 4913	to	4999	502 496 6923	to	6999	607 689 7951	to	7960	625 088 6735	to	6799
486 176 0600	to	0699	503 003 2700	to	2899	607 728 1276	to	1299	625 916 9500	to	9799
486 559 7555	to	7599	503 194 5144	to	5153	608 727 7100	to	7199	625 968 8956	to	8999
486 696 3023	to	3199	503 790 9922	to	9948	608 727 7273	to	7599	627 005 3938	to	3999
488 173 7900	to	7999	504 045 4030	to	4099	608 813 9950	to	9999	627 384 3907	to	4099
488 206 4100	to	4199	504 166 0200	to	0599	609 067 5325	to	5399	627 496 7549	to	7599
488 226 0200	to	0299	504 240 1062	to	1399	609 067 5488	to	5499	627 708 3605	to	3699
488 709 3906	to	3999	504 805 3300	to	3499	609 067 5600	to	5699	627 776 2500	to	2599
488 855 8359	to	8399	505 096 0662	to	0699	609 289 6123	to	6199	628 226 3100	to	3199
489 181 8963	to	8999	505 893 7739	to	7799	609 438 4400	to	4499	628 814 4702	to	4799
489 223 2000	to	2099	505 893 7800	to	7999	609 493 1100	to	1199	628 851 9689	to	9699
489 311 1930	to	1999	506 124 0800	to	0999	609 766 8091	to	8999	629 510 7200	to	7299
489 318 6200	to	6300	506 165 7027	to	0099	609 825 4100	to	4115	629 964 4200	to	4294
489 384 0027	to	0099	506 502 5209	to	5299	609 884 2981	to	2999	630 389 3056	to	3071
489 427 0658	to	0899	506 756 1682	to	1699	609 893 1000	to	1099	630 463 0588	to	0599
489 997 5252	to	5299	506 756 1700	to	1799	610 092 3200	to	3299	631 459 9117	to	9199
490 669 5850	to	6099	506 756 1800	to	1899	610 582 4200	to	4299	631 762 9325	to	9399
490 717 7080	to	7099	506 836 5326	to	5399	611 879 6939	to	6999	632 217 4933	to	4999
490 721 6000	to	6099	508 488 6226	to	6299	612 291 8013	to	8099	632 500 0000	to	640 3999
490 793 1500	to	2099	508 789 8332	to	8399	612 751 5171	to	5199	633 110 4165	to	4199
490 886 8171	to	8199	508 789 8400	to	8499	612 751 5226	to	5299	633 110 4303	to	4499
490 977 9221	to	9240	509 909 0425	to	0435	612 751 6083	to	6099	633 438 6429	to	6599
491 258 8100	to	9099	510 150 2400	to	2499	612 751 6268	to	6299	633 588 7173	to	7182
491 567 1376	to	1399	510 381 3200	to	3299	612 751 6572	to	6599	634 725 0700	to	0799
492 254 4800	to	4899	510 587 9500	to	9599	612 774 2111	to	2199	634 803 3239	to	3299
492 283 5100	to	5199	510 587 9659	to	9699	612 774 2254	to	2299	634 807 2474	to	2499
492 610 6813	to	6899	510 269 9770	to	9999	612 774 2500	to	2599	634 827 5900	to	5999
493 394 5568	to	5599	511 021 5042	to	5099	614 469 0979	to	0999	634 886 3428	to	3499
493 470 2562	to	2599	511 021 5100	to	5199	614 474 3000	to	3099	635 559 3449	to	3499
493 473 7700	to	7799	511 468 1747	to	1799	614 521 3490	to	3499	636 289 6214	to	6299
493 716 2153	to	2199	511 844 0100	to	0199	614 645 1800	to	1899	636 634 8007	to	8042
494 206 2972	to	2999	511 844 0340	to	0399	614 832 1100	to	2099	637 150 1200	to	1299
494 217 3446	to	3999	600 645 3223	to	3299	615 017 7505	to	7599	637 562 5828	to	5899
494 224 0500	to	0599	601 339 1200	to	1399	617 711 6609	to	6699	638 042 1647	to	1699
495 145 0600	to	0699	601 653 5884	to	5899	617 760 5266	to	5299	638 049 4984	to	4999
496 209 7425	to	7499	601 661 7700	to	7799	617 813 3601	to	3699	638 318 1115	to	1199
496 213 8728	to	8799	601 682 5343	to	5399	618 840 9200	to	9299	638 318 1453	to	1499
496 474 5226	to	5248	601 928 1600	to	1699	619 551 7229	to	7299	638 885 0000	to	0299
497 053 8517	to	8699	602 512 2972	to	2999	619 859 3000	to	3099	638 903 4362	to	4373
497 854 8673	to	8699	602 555 2400	to	2799	620 073 9400	to	9499	639 415 1929	to	1999
498 449 8888	to	8899	602 829 7061	to	7099	621 614 7907	to	7930	639 415 2019	to	2099

639 420 6200	to	6299	650 114 7707	to	7719	670 369 7336	to	7399	690 904 1300	to	1599
639 469 3517	to	3799	650 130 3400	to	3599	670 750 7169	to	7199	690 941 6000	to	6199
639 605 2143	to	2199	650 213 0406	to	0499	671 046 6200	to	6399	691 313 6383	to	6399
639 657 8600	to	8799	650 555 1749	to	1799	671 251 5448	to	5499	691 313 6600	to	6699
640 289 7500	to	7599	650 564 1900	to	1999	671 926 5600	to	5799	691 582 8003	to	8099
640 289 7700	to	7999	650 627 4212	to	4299	672 444 2000	to	2999	691 664 1800	to	1999
641 170 4420	to	4499	650 736 2043	to	2099	672 828 3410	to	3499	691 664 2400	to	2499
641 318 3133	to	3199	650 739 1540	to	1699	673 167 5776	to	5799	692 727 9362	to	9399
641 378 6500	to	6999	651 741 4415	to	4499	675 464 3700	to	3799	692 798 1800	to	1899
641 383 8739	to	8799	651 882 2800	to	2899	675 464 4000	to	4199	693 249 0779	to	0799
641 877 3187	to	3299	652 754 6317	to	6399	676 365 5958	to	5999	693 249 0877	to	1699
641 877 3310	to	3399	653 131 4945	to	4999	676 669 1024	to	1099	693 445 0566	to	0999
642 355 8094	to	8199	653 426 3300	to	3399	677 126 6734	to	6799	693 448 8500	to	8999
642 355 8308	to	8999	653 455 4874	to	4899	677 333 9979	to	9999	693 645 9583	to	9599
642 900 0018	to	0099	654 238 0000	to	0399	677 466 1088	to	1099	693 965 4200	to	4299
643 030 6254	to	6299	654 404 3065	to	3092	678 071 4500	to	4799	695 741 2906	to	2999
644 066 0882	to	0899	654 962 2900	to	3199	678 096 7531	to	7599	695 947 8518	to	8599
644 069 0600	to	0699	655 103 5081	to	5199	679 909 2578	to	2599	696 662 8247	to	8299
644 077 7506	to	7699	655 523 2600	to	2999	680 112 9565	to	9599	697 447 8285	to	8296
644 085 8157	to	8199	656 305 2448	to	2499	680 244 0903	to	0999	698 042 4816	to	4899
644 112 9839	to	9899	657 347 4438	to	4999	680 412 6046	to	6099	698 131 2138	to	2157
644 373 9083	to	9099	657 710 8100	to	8999	680 761 6800	to	6899	698 227 0000	to	0099
644 380 1460	to	1499	657 780 0985	to	0999	681 677 0540	to	0699	700 065 2570	to	2599
644 733 4715	to	4799	658 586 1400	to	1499	682 070 1029	to	1099	700 065 4800	to	4899
644 900 9712	to	9799	658 877 8000	to	8199	682 956 6280	to	6299	700 190 3350	to	3359
644 901 0109	to	1299	658 880 8000	to	8199	682 956 6490	to	6599	700 228 6048	to	6099
644 901 1325	to	1399	659 398 7300	to	7399	682 956 6700	to	6799	700 650 0452	to	0499
644 923 6800	to	7799	659 706 8113	to	8199	682 965 1178	to	1199	700 666 1323	to	1349
644 932 4655	to	4699	659 846 7837	to	7899	682 965 1201	to	1299	700 786 9106	to	9142
645 318 7240	to	7499	660 510 4100	to	4199	683 118 2389	to	2399	700 859 0744	to	0758
645 333 1766	to	1799	660 673 0400	to	0599	683 378 2000	to	2099	701 028 6780	to	6899
645 790 8632	to	8699	661 488 5000	to	5099	683 378 2117	to	2299	701 213 3900	to	3999
645 821 0657	to	0699	661 609 9100	to	9199	683 415 1200	to	1499	701 267 2000	to	3999
645 930 7948	to	7999	661 716 9420	to	9499	683 444 8159	to	8199	701 335 7312	to	7399
645 975 0737	to	0762	661 906 6522	to	6599	685 154 7780	to	7789	701 369 2005	to	2050
646 242 6200	to	6299	662 021 8332	to	8399	685 297 7645	to	7699	701 499 2260	to	2299
646 270 7639	to	7799	662 068 0700	to	0899	685 623 5264	to	5299	701 503 2247	to	2299
646 798 4000	to	4999	662 553 0774	to	0799	685 650 9487	to	9499	701 541 2271	to	2299
647 048 7035	to	7099	663 078 7034	to	7099	685 669 4200	to	4299	701 553 6557	to	6599
647 049 2900	to	2999	663 763 5300	to	5399	685 757 8452	to	8499	701 578 7460	to	7469
647 398 8300	to	8399	663 883 7039	to	7499	686 071 2694	to	2799	701 578 7475	to	7499
647 398 8481	to	8499	663 938 9200	to	9299	686 176 3333	to	3354	701 601 3457	to	3499
647 437 3000	to	4999	664 253 8000	to	8499	686 372 3200	to	3299	701 605 5913	to	5999
647 811 2188	to	2199	664 656 3055	to	3099	686 644 5879	to	5899	701 695 3982	to	3999
648 009 6057	to	6099	665 174 6400	to	6499	686 899 1371	to	1399	701 695 4148	to	4199
648 163 5300	to	5499	665 274 8208	to	8299	686 931 7636	to	7699	701 695 4227	to	4299
648 722 5283	to	5299	665 669 5400	to	5499	687 601 0973	to	0999	701 708 1741	to	1799
648 892 3164	to	3199	666 132 8226	to	8299	687 614 6774	to	6799	701 736 3966	to	3999
649 100 3989	to	3999	666 696 2209	to	2299	688 120 9000	to	9999	701 772 0870	to	0899
649 647 0370	to	0399	666 696 2309	to	2399	688 314 3107	to	3191	701 838 2800	to	2899
649 647 0522	to	0599	667 032 9300	to	9399	690 291 1361	to	1371	701 941 0600	to	0699
649 647 5237	to	5399	667 729 5529	to	5599	690 788 2877	to	2899	702 171 1603	to	1699
649 647 9100	to	9299	668 383 8400	to	8699	690 893 5344	to	5399	702 195 5109	to	5199
649 666 7800	to	8299	670 368 3400	to	3499	690 893 5512	to	5599	702 254 9300	to	9399

702 264 7569	to	7599	742 228 9660	to	9669	845 727 2100	to	2199	864 088 8200	to	8299
702 519 0513	to	0524	742 247 6980	to	6989	845 746 2618	to	2635	864 426 3972	to	3999
702 713 1800	to	1809	742 290 0936	to	0950	846 390 7531	to	7599	864 520 6117	to	6136
702 821 5730	to	5799	742 302 7600	to	7699	846 918 0572	to	0599	865 151 0526	to	0599
702 821 5805	to	5899	805 885 8411	to	8499	847 237 7690	to	7699	865 500 4034	to	4099
702 844 6975	to	6994	806 087 1100	to	1499	847 284 2481	to	2499	865 883 6082	to	6099
702 846 6331	to	6399	806 268 9275	to	9299	847 374 7055	to	7065	866 004 3000	to	3999
702 848 3900	to	3999	806 534 3400	to	3477	847 374 7055	to	7065	866 442 4100	to	4899
702 857 7302	to	7499	807 342 3283	to	3399	847 636 5304	to	5399	867 366 9108	to	9118
702 878 0114	to	0199	808 086 7100	to	7199	847 700 5447	to	5499	867 633 7403	to	7499
703 364 1707	to	1799	808 090 3440	to	3499	847 723 7500	to	7599	867 737 5623	to	5699
740 002 7710	to	7719	808 325 5161	to	5699	849 485 3427	to	3499	868 169 4529	to	4599
740 037 6730	to	6800	808 784 8000	to	8299	849 520 9850	to	9899	868 173 8400	to	8599
740 119 2275	to	2284	830 125 0672	to	0699	849 608 1357	to	1399	868 514 9000	to	9099
740 130 6688	to	6698	830 602 5800	to	5999	849 792 2600	to	2699	868 566 9200	to	9299
740 144 2780	to	2795	830 610 3700	to	3799	850 546 1862	to	1899	869 200 0000	to	9999
740 241 9049	to	9099	830 983 3500	to	3599	851 143 6826	to	6844	869 387 1150	to	1199
740 252 9265	to	9294	830 983 3635	to	3699	851 209 9880	to	9899	869 505 3500	to	3599
740 255 1718	to	1799	831 354 1387	to	1399	851 928 9221	to	9299	869 523 7033	to	7099
740 274 2602	to	2619	831 815 8240	to	8299	852 589 6560	to	6599	869 566 6150	to	6167
740 277 0366	to	0392	832 525 3810	to	3899	853 049 3646	to	3699	869 800 0000	to	999 9999
740 332 7658	to	7671	833 159 1884	to	1899	854 304 4089	to	4999	870 054 4814	to	4899
740 348 6641	to	6658	833 456 2567	to	2599	854 529 2200	to	2299	870 491 4812	to	4849
740 351 4790	to	4799	833 566 3015	to	3071	854 532 0000	to	2999	870 536 5820	to	5829
740 374 7416	to	7499	834 130 5200	to	5299	855 001 6204	to	6249	870 541 7167	to	7239
740 470 2420	to	2443	834 316 5444	to	5499	855 319 9364	to	9399	870 575 8155	to	8999
740 514 0300	to	0499	834 354 8747	to	8766	855 361 3390	to	3399	870 589 0485	to	0494
740 523 7432	to	7449	834 354 8824	to	8838	856 226 0490	to	0499	870 691 7060	to	7099
740 535 1555	to	1580	835 269 5700	to	5799	856 656 5800	to	5999	872 028 4850	to	4899
740 557 3570	to	3579	835 496 7303	to	7399	856 752 0200	to	0299	872 029 9306	to	9399
740 650 4104	to	4140	835 539 5200	to	5999	857 111 1352	to	1399	872 078 3709	to	3799
740 684 0620	to	0800	835 813 3015	to	3099	857 279 3450	to	3499	872 100 0445	to	0459
740 701 6105	to	6114	837 672 8967	to	8999	857 843 4000	to	4099	900 556 4178	to	4199
740 705 9790	to	9799	837 784 3282	to	3299	858 124 7644	to	7699	900 845 0044	to	0099
740 726 6400	to	6500	838 176 8377	to	8399	858 756 3111	to	3299	900 936 0217	to	0299
740 748 8319	to	8329	838 518 1257	to	1299	859 063 8200	to	8699	900 936 0435	to	0499
740 765 3306	to	3399	839 718 8257	to	8299	859 190 0600	to	0644	901 058 5255	to	5280
740 774 8434	to	8499	840 323 0600	to	0699	859 437 5538	to	5599	901 273 1082	to	1099
740 779 4259	to	4299	840 875 6235	to	6299	859 811 2888	to	2899	901 287 5143	to	5199
740 786 1885	to	1899	840 910 0900	to	0999	859 855 8873	to	8999	901 291 2789	to	2799
740 790 5989	to	5999	841 349 5000	to	5099	860 240 8520	to	8599	901 525 7122	to	7199
740 803 4870	to	4879	841 805 7747	to	7899	860 275 3900	to	3999	902 089 1253	to	1299
740 820 4854	to	7836	841 805 7944	to	8099	860 518 9629	to	9699	902 198 9769	to	9799
740 827 7578	to	7594	842 226 0685	to	0695	860 600 0021	to	0999	902 948 1269	to	1299
740 917 7490	to	7499	842 685 4600	to	4699	861 158 2350	to	2599	902 985 0833	to	0899
740 918 5531	to	5549	842 685 4742	to	4999	861 367 5400	to	5499	903 370 6934	to	6999
741 037 8528	to	8551	842 860 0300	to	0399	861 637 6010	to	6099	904 600 6523	to	6599
742 030 6135	to	6149	842 898 5582	to	5599	861 979 7292	to	7499	904 892 0378	to	0399
742 033 2663	to	2674	843 062 7100	to	7199	862 216 6100	to	6199	904 892 0648	to	1299
742 040 3300	to	3309	843 077 6288	to	6299	862 263 9213	to	9299	905 056 2216	to	2299
742 151 5000	to	5014	843 077 6378	to	6399	862 271 0800	to	0999	905 510 6647	to	6799
742 191 4640	to	4649	843 758 5769	to	5778	862 271 5000	to	5099	905 510 6900	to	7099
742 192 5210	to	5224	843 786 2554	to	2699	863 871 5138	to	5199	905 794 0000	to	0199
742 222 9200	to	9210	845 656 8165	to	8199	863 949 5300	to	5399	905 794 0288	to	0299

905 873 6900	to	6999	912 057 9922	to	9999	919 889 5110	to	5134	925 333 5900	to	6099
905 873 7100	to	7299	912 882 0563	to	0899	919 889 5137	to	5176	925 336 2300	to	2399
905 880 8900	to	8999	913 605 2218	to	2299	919 889 5178	to	5199	926 432 5907	to	5999
905 889 7100	to	7199	913 709 2429	to	2499	919 889 5030	to	5070	926 436 3600	to	3699
906 158 1508	to	1599	913 818 3501	to	3999	919 889 5090	to	5099	927 765 6257	to	6299
906 558 8812	to	8899	914 063 4300	to	4399	919 915 2774	to	2787	928 197 8100	to	8199
906 982 2214	to	2299	914 346 7621	to	7644	920 155 4662 to 4687			928 197 8283	to	8299
907 725 8500	to	8599	914 453 1366	to	1399	920 309 9039	to	9199	928 856 2059	to	2068
907 815 0216	to	0257	914 529 6185	to	6299	920 771 5321	to	5399	930 078 5800 to 5899		
908 622 4225	to	4235	914 896 4658	to	4699	920 857 5500	to	5899	930 219 1722	to	1799
908 936 9254	to	9299	915 187 8774	to	8779	920 864 3480	to	3499	930 335 7810	to	7819
909 066 4494	to	7499	915 300 2783	to	2799	920 963 4567	to	4599	931 097 9259	to	9299
909 067 7400	to	7499	915 546 6822	to	6999	921 333 7400	to	7499	931 156 1502	to	1579
909 100 1787	to	1799	915 646 5183	to	5199	921 477 3762	to	3799	931 156 1600	to	1625
909 100 1900	to	2099	915 671 3963	to	3980	922 278 1048	to	1399	931 156 1671	to	1699
909 355 0422	to	0499	915 671 3982	to	3999	922 280 2019	to	2099	932 506 6400	to	6599
909 568 8900	to	9099	915 675 2217	to	2299	922 280 2233	to	2299	932 732 1796	to	1799
909 568 9300	to	9499	916 440 3377	to	3399	922 773 0459	to	0499	932 827 9026	to	9099
909 725 7307	to	7399	916 670 6352	to	6399	923 032 7000	to	7399	932 957 2300	to	2399
909 833 0947	to	0999	916 682 5300	to	5399	923 045 3630	to	3699	933 060 6160	to	6189
910 219 8631 to 8699			916 694 1414	to	1499	923 484 3600	to	3699	933 387 2541	to	2561
910 265 1100	to	1199	916 703 0802	to	0821	923 493 9403	to	9599	933 760 3609	to	4199
910 471 7273	to	7299	917 089 0709	to	0799	923 493 9681	to	9699	933 894 0928	to	0999
910 536 2505	to	2599	917 089 0842	to	0899	923 604 4424	to	4499	934 018 2729	to	2741
910 958 7499	to	7599	917 216 2928	to	2999	923 810 7800	to	8299	934 180 0300	to	0399
911 140 1000	to	2199	917 370 6300	to	6499	924 252 1200	to	1299	934 236 3954	to	3999
911 245 2545	to	2599	917 486 4900	to	4999	924 252 1400	to	1499	934 622 8717	to	8999
911 268 9077	to	9099	918 460 0602	to	0699	924 533 0711	to	0799	935 216 0312	to	0399
911 400 8948	to	8999	918 951 7231	to	7299	924 533 2343	to	2399	935 843 2202	to	2247
911 508 1620	to	1799	919 519 2786	to	2799	924 533 2428	to	2499	936 024 8889	to	8899
911 509 9310	to	9399	919 536 0770	to	0799	924 685 1957	to	1999	936 339 4455	to	4499
911 523 3000	to	3999	919 814 3095	to	3199	924 946 6300	to	6699			

— Criminal Investigations Group,
Postal Inspection Service, 4-27-17

Missing, Lost, or Stolen Canadian Money Order Forms

Do Not Cash — Upon Receipt, Notify Local Postal Inspectors

Provide this listing to all Postal Service™ employees responsible for accepting and cashing postal money orders. Destroy all interim notices when the numbers listed appear in the *Postal Bulletin*. The new money order serial

numbers consist of the first 9 digits. The 10th digit is a check digit only.

Do not cash outdated money orders **104 151 601 to 692 600 000**. Advise holders to send invalid money orders To Canada Post Corporation, Ottawa, Canada K1A 0B1. Check for altered dollar amounts by holding money orders to the light.

719 869 731	to	9 760	726 563 701	to	4 060	732 541 605	to	1 620	739 219 381	to	9 440
720 227 871	to	7 930	726 599 371	to	9 460	732 572 221	to	2 490	739 740 151	to	0 180
720 227 949	to	7 960	726 626 356	to	6 370	732 586 479	to	6 710	739 793 491	to	3 520
720 368 543	to	8 570	727 182 271	to	2 510	732 994 037	to	4 080	739 793 527	to	3 550
720 392 151	to	2 570	727 416 181	to	6 240	733 163 449	to	3 460	739 942 621	to	2 650
720 556 491	to	6 640	727 481 431	to	1 460	733 297 171	to	7 290	739 999 231	to	9 320
720 558 621	to	8 650	727 749 241	to	9 780	733 446 631	to	7 110	740 011 517	to	1 530
720 575 361	to	5 570	728 382 331	to	2 480	733 474 665	to	4 770	740 030 701	to	0 970
720 590 152	to	0 179	728 702 338	to	2 400	733 704 482	to	4 570	740 261 740	to	1 820
721 638 331	to	9 170	728 915 371	to	5 850	733 751 041	to	1 130	740 265 811	to	6 290
721 815 391	to	5 420	728 953 141	to	3 410	734 009 101	to	9 130	740 299 111	to	9 170
721 969 713	to	9 740	728 954 280	to	4 310	734 290 759	to	0 770	740 299 231	to	9 260
722 072 137	to	2 160	729 169 081	to	9 140	734 389 273	to	9 290	740 329 266	to	9 320
722 378 265	to	8 280	729 363 841	to	3 870	734 440 031	to	0 111	740 889 081	to	9 090
722 413 990	to	4 004	729 682 891	to	3 190	734 797 201	to	7 320	741 010 421	to	0 530
722 764 948	to	4 980	729 838 940	to	9 070	734 939 611	to	9 640	741 113 041	to	3 370
722 825 840	to	5 889	729 839 101	to	9 130	734 950 111	to	0 170	741 373 891	to	4 340
723 153 841	to	3 850	730 077 683	to	7 840	735 120 331	to	0 840	741 452 369	to	2 490
723 237 616	to	7 630	730 109 847	to	9 880	735 283 008	to	3 020	741 492 991	to	3 140
723 331 081	to	1 110	730 373 761	to	3 850	735 293 131	to	3 220	741 553 460	to	3 470
723 496 443	to	6 470	730 501 951	to	2 130	735 635 010	to	5 040	741 764 431	to	4 520
723 967 291	to	7 320	730 519 379	to	9 470	735 783 961	to	3 990	741 764 431	to	4 520
724 655 196	to	5 340	730 569 278	to	9 360	735 803 401	to	3 430	742 178 834	to	8 880
724 711 441	to	1 500	730 711 711	to	1 740	736 005 420	to	5 440	742 325 500	to	5 520
724 711 538	to	1 560	730 722 991	to	3 230	736 366 021	to	6 110	742 325 668	to	5 700
724 793 221	to	3 250	730 845 970	to	5 990	736 624 456	to	4 500	742 408 771	to	8 830
724 908 109	to	8 120	730 888 291	to	8 320	736 670 851	to	1 060	742 512 120	to	2 150
724 937 461	to	7 670	730 927 591	to	7 680	736 767 061	to	7 090	742 684 849	to	4 890
725 163 118	to	3 151	731 307 914	to	7 930	736 767 093	to	7 120	742 839 553	to	9 630
725 202 735	to	2 750	731 402 431	to	2 460	736 982 191	to	2 370	742 913 668	to	3 700
725 398 591	to	8 800	731 407 232	to	7 320	736 982 551	to	2 730	742 917 287	to	7 296
725 464 591	to	4 920	731 588 301	to	8 340	737 110 141	to	0 170	742 921 891	to	1 980
725 475 321	to	5 330	731 767 273	to	7 320	737 185 501	to	5 710	742 983 631	to	3 810
725 711 057	to	1 070	731 781 061	to	1 120	737 317 321	to	7 350	743 020 021	to	0 170
725 738 581	to	8 730	731 837 821	to	7 910	737 517 781	to	7 840	743 206 491	to	6 500
725 981 311	to	1 430	731 841 377	to	1 450	737 628 181	to	8 210	743 235 992	to	6 050
725 987 835	to	7 880	732 018 481	to	8 600	737 634 258	to	4 270	743 940 631	to	0 900
726 060 811	to	0 900	732 067 972	to	8 370	738 361 971	to	1 980	743 978 011	to	8 070
726 391 970	to	2 520	732 188 649	to	8 670	738 447 601	to	7 660	744 234 751	to	4 780
726 484 771	to	4 800	732 193 460	to	3 470	738 648 355	to	8 450	744 499 591	to	9 680
726 493 351	to	5 300	732 201 241	to	1 390	738 849 811	to	9 900	744 626 901	to	6 910
726 504 031	to	4 063	732 220 431	to	0 440	738 892 270	to	2 290	745 388 794	to	8 910
726 504 070	to	4 090	732 355 201	to	5 380	738 997 259	to	7 380	746 446 806	to	6 820
726 504 331	to	4 390	732 472 320	to	2 560	739 161 451	to	1 540	746 818 351	to	8 410

747 245 266	to	5 280	756 371 565	to	1 580	764 526 241	to	6 330	773 348 739	to	8 940
747 364 813	to	4 830	756 876 031	to	6 120	764 601 421	to	1 600	773 348 739	to	8 940
747 501 434	to	1 450	756 876 151	to	6 240	764 650 231	to	0 470	773 575 891	to	5 950
747 739 891	to	0 070	756 970 129	to	0 140	764 984 371	to	4 850	773 852 971	to	3 030
748 148 649	to	8 760	757 059 613	to	9 630	765 003 667	to	3 680	775 373 449	to	3 460
748 259 960	to	9 970	757 078 540	to	8 560	765 042 517	to	2 540	789 257 191	to	7 250
748 565 162	to	5 280	757 086 209	to	6 240	765 194 728	to	4 970	790 448 020	to	8 460
748 874 988	to	5 030	757 240 591	to	0 650	765 387 365	to	7 450	790 597 485	to	7 530
749 137 381	to	7 410	757 277 371	to	7 700	765 541 801	to	2 100	790 911 883	to	1 900
749 190 192	to	0 210	757 291 591	to	2 730	765 638 461	to	8 970	791 057 441	to	7 550
749 685 421	to	5 450	757 964 251	to	4 280	765 647 101	to	7 190	791 239 081	to	9 290
749 846 791	to	6 850	758 067 001	to	7 090	765 813 781	to	4 029	791 374 483	to	4 500
749 993 131	to	3 580	758 105 221	to	5 250	765 879 314	to	9 390	791 387 971	to	8 030
750 071 587	to	1 610	758 324 941	to	5 000	765 954 001	to	4 030	791 447 521	to	7 850
750 408 167	to	8 183	758 593 628	to	3 650	766 120 286	to	0 320	791 451 151	to	1 240
750 438 421	to	8 501	758 709 038	to	9 060	766 125 716	to	5 750	791 500 009	to	0 470
750 743 911	to	4 030	758 744 101	to	4 160	766 158 824	to	8 840	791 771 431	to	1 490
750 779 118	to	9 400	758 850 883	to	0 900	766 388 433	to	8 460	792 004 293	to	4 320
750 910 981	to	1 010	758 860 951	to	1 550	766 509 421	to	9 660	792 018 379	to	8 420
750 960 841	to	0 900	759 152 851	to	2 880	766 572 901	to	3 020	792 070 621	to	0 740
751 296 211	to	6 240	759 740 941	to	1 090	766 748 500	to	8 521	792 145 211	to	5 230
751 539 121	to	9 180	760 004 596	to	4 610	767 024 341	to	4 370	792 391 381	to	1 620
751 541 311	to	1 790	760 118 191	to	8 250	767 326 471	to	6 590	792 452 779	to	2 790
751 757 641	to	7 700	760 155 001	to	5 090	767 332 561	to	2 950	792 772 728	to	2 770
751 936 951	to	7 010	760 378 002	to	8 020	768 009 841	to	9 960	792 903 511	to	3 990
751 951 861	to	1 890	760 692 722	to	2 749	768 011 489	to	1 520	793 282 518	to	2 533
751 999 021	to	9 110	761 055 460	to	5 480	768 177 980	to	7 990	794 041 831	to	2 040
752 139 516	to	9 570	761 169 781	to	9 810	768 391 081	to	1 170	794 397 709	to	7 780
752 182 892	to	2 950	761 504 941	to	5 120	768 661 569	to	1 650	794 581 741	to	2 040
752 206 861	to	7 100	761 516 836	to	6 910	769 000 051	to	0 080	794 592 122	to	2 150
752 295 241	to	5 600	761 613 588	to	3 600	769 050 841	to	0 900	795 032 251	to	2 340
752 731 351	to	1 410	761 688 631	to	8 690	769 159 081	to	9 178	795 796 291	to	6 350
752 767 441	to	7 470	761 805 199	to	5 240	769 737 496	to	7 510	796 070 139	to	0 160
753 008 941	to	9 030	761 826 106	to	6 120	769 778 491	to	8 730	796 143 151	to	3 630
753 194 311	to	4 370	761 881 171	to	1 560	769 827 331	to	7 450	796 159 725	to	9 740
753 620 378	to	0 400	761 975 641	to	5 670	770 216 071	to	6 100	796 169 306	to	9 340
754 013 917	to	3 940	761 975 886	to	5 895	770 723 281	to	3 400	796 373 406	to	3 430
754 161 061	to	1 120	762 304 144	to	4 170	770 790 451	to	0 480	796 602 961	to	3 050
754 358 445	to	8 610	762 324 931	to	4 960	770 915 150	to	5 490	796 708 441	to	8 500
754 410 451	to	0 660	762 439 261	to	9 290	771 455 551	to	5 610	796 886 281	to	6 430
754 438 393	to	8 410	762 524 158	to	4 220	771 609 661	to	9 690	796 901 701	to	2 000
754 493 109	to	3 130	762 584 872	to	4 970	771 932 551	to	2 580	796 975 466	to	5 590
754 664 182	to	4 220	762 593 431	to	3 460	772 057 224	to	7 440	797 272 917	to	2 950
754 816 377	to	6 470	763 155 160	to	5 180	772 162 660	to	3 070	797 519 441	to	9 460
755 487 421	to	7 600	763 178 631	to	8 660	772 718 615	to	8 640	797 519 731	to	0 240
755 592 901	to	3 140	763 506 001	to	6 060	772 940 140	to	0 160	797 535 181	to	5 330
755 790 020	to	0 030	763 522 141	to	2 470	772 970 886	to	0 940	797 646 151	to	6 180
755 791 730	to	1 800	763 717 694	to	7 800	773 009 419	to	9 430	798 040 053	to	0 080
755 926 951	to	7 070	763 826 461	to	6 520	773 112 031	to	2 060	798 055 813	to	5 830
755 934 332	to	4 510	763 900 460	to	0 471	773 125 387	to	5 410	798 055 891	to	5 950
755 957 701	to	8 000	763 900 479	to	0 530	773 179 320	to	9 410	798 326 371	to	6 520
755 962 981	to	3 280	763 917 271	to	7 750	773 202 989	to	3 140	798 339 167	to	9 210
756 035 371	to	5 490	764 125 801	to	5 860	773 208 991	to	9 290	798 562 411	to	2 440
756 301 257	to	1 290	764 284 525	to	4 560	773 231 311	to	1 340	798 632 461	to	2 490

798 807 151	to	7 510	810 323 734	to	3 760	817 763 881	to	4 060	825 140 397	to	0 460
798 944 761	to	5 030	810 367 116	to	7 140	818 330 562	to	0 610	825 409 651	to	9 680
799 118 616	to	8 640	810 526 351	to	6 500	818 459 641	to	9 670	825 472 171	to	2 200
799 133 191	to	3 220	810 806 911	to	6 940	818 926 273	to	6 320	826 042 898	to	2 920
799 177 626	to	7 650	810 807 211	to	7 240	818 950 351	to	0 380	826 226 644	to	6 670
799 854 751	to	5 200	811 423 021	to	3 110	818 962 492	to	2 530	826 582 951	to	3 430
800 044 320	to	4 410	811 517 221	to	7 239	819 032 341	to	2 730	826 720 201	to	0 230
800 211 901	to	2 440	811 721 101	to	1 130	819 127 054	to	7 080	827 005 671	to	5 830
800 427 530	to	7 540	812 025 721	to	5 900	819 278 540	to	8 670	827 287 861	to	7 950
800 872 741	to	2 830	812 093 073	to	3 130	819 544 681	to	4 740	827 291 502	to	1 520
801 349 801	to	9 830	812 100 821	to	0 840	819 928 441	to	8 650	827 575 381	to	5 470
801 676 681	to	7 100	812 465 251	to	5 610	820 034 406	to	4 430	827 609 085	to	9 100
802 967 821	to	7 940	812 918 341	to	8 670	820 070 761	to	1 540	827 619 811	to	9 840
803 217 601	to	7 780	812 918 701	to	8 760	820 191 342	to	1 360	827 883 511	to	3 600
803 729 731	to	9 850	813 050 491	to	0 520	820 274 856	to	4 880	828 160 441	to	0 530
803 747 402	to	7 520	813 073 171	to	3 200	820 600 171	to	0 230	828 376 201	to	6 260
804 138 181	to	8 420	813 398 476	to	8 550	821 172 241	to	2 360	828 441 602	to	1 630
804 428 224	to	8 250	813 713 971	to	4 000	821 229 661	to	9 720	828 539 316	to	9 340
804 682 411	to	2 710	813 858 121	to	8 150	821 229 743	to	9 780	828 539 341	to	9 370
805 272 525	to	2 540	814 789 330	to	9 349	821 903 731	to	3 910	828 732 331	to	2 390
805 523 445	to	3 460	814 984 656	to	4 680	821 927 841	to	7 850	828 807 781	to	7 840
805 745 704	to	5 730	815 016 020	to	6 030	822 505 801	to	5 830	828 830 952	to	0 963
806 452 907	to	2 980	815 199 410	to	9 420	822 703 442	to	3 470	828 939 781	to	0 050
806 744 781	to	4 850	815 240 491	to	0 520	822 900 991	to	1 020	829 002 721	to	2 870
806 982 181	to	2 300	815 755 591	to	5 620	822 925 951	to	6 100	829 005 301	to	5 540
807 764 791	to	4 910	815 755 622	to	5 650	823 284 931	to	4 990	829 080 241	to	0 330
808 089 931	to	9 960	815 806 381	to	6 680	823 293 031	to	3 210	829 160 986	to	1 000
808 656 423	to	6 450	816 126 834	to	6 870	823 556 011	to	6 100	829 176 841	to	6 930
808 753 771	to	3 800	816 156 721	to	6 780	824 078 341	to	8 370	829 471 561	to	1 590
809 189 001	to	9 010	816 580 903	to	0 920	824 156 325	to	6 340	829 561 065	to	1 080
809 886 879	to	6 930	816 945 571	to	5 600	824 511 252	to	1 270	829 566 481	to	6 510
809 890 489	to	0 500	817 253 011	to	3 280	824 588 281	to	8 370	829 569 931	to	9 960

— Criminal Investigations Group,
Postal Inspection Service, 4-27-17

Verifying U.S. Postal Service Money Orders

Follow these steps to cash a Postal Service™ money order:

1. Check that the amount does not exceed the legal limit: \$1,000 for domestic, and \$700 for international postal money orders.
2. Check that the proper security features are present:
 - When held to the light, a watermark of Benjamin Franklin is repeated from top to bottom on the left side.
 - When held to the light, a dark line (security thread) runs from top to bottom with the word “USPS” repeated.
 - There should be no discoloration around the dollar amounts, which might indicate the amounts were changed.

These appear in Postal Service Notice 299, *U.S. Postal Money Order Reference Card*, or online at usps.com/shop/money-orders.htm.

3. If the money order seems suspicious, call the U.S. Postal Service Money Order Verification System at 866-459-7822.

Please provide this information to local banks and retailers, as they also receive Postal Service money orders for cashing.

— *Retail and Customer Service Operations, 4-27-17*

Counterfeit Canadian Money Order Forms

Do Not Cash

To be posted and used by retail window employees. As directed, destroy previous notices. Destroy all interim notices when the numbers listed appear in the *Postal Bulletin*.

671,819,086	683,594,542	687,262,503
676,612,640	684,683,610	687,262,525
677,891,039	686,619,878	687,262,526
678,282,493	686,619,886	687,287,578
678,916,031	686,619,887	687,287,581
679,552,215	686,794,382	687,287,582
679,694,334	686,794,426	694,063,898
679,751,983	686,794,427	694,063,899
679,800,207	686,794,431	694,063,980
681,130,536	687,262,502	701,321,725
681,844,376		

— *Criminal Investigations Group, Postal Inspection Service, 4-27-17*

Toll-Free Number Available to Verify Canadian Money Orders

The Canada Post Corporation is now providing a toll-free number that cashing agents can call to verify the validity of Canadian Postal Money Orders. The number is 800-563-0444.

This toll-free number is printed on the back of the Canadian Postal Money Orders.

— *Criminal Investigations Group, Postal Inspection Service, 4-27-17*

USPS® Celebrates the
Love Series with the
Love Skywriting
Forever® Stamp



On Sale
Nationwide:
January 7, 2017.

Other Information

Overseas Military/Diplomatic Mail

Mail addressed to military and diplomatic post offices overseas is subject to certain conditions or restrictions of mailing regarding content, preparation, and handling. The APO/FPO/DPO table below outlines these conditions by APO/FPO/DPO ZIP Codes™ through the use of footnoted mailing restrictions codes (see the [Restrictions](#) page following the table).

Acceptance clerks must use the table with the RSS terminal to determine which APO/FPO/DPO ZIP Codes are active and which conditions of mailing apply. Send inquiries to the Military Postal Service Agency at amps.usps.gov/jy2/frm.htm.

The entries under “Changes” appear in bold in the APO/FPO/DPO table starting below.

Changes

APO/FPO/DPO	Action	Effective Date	See Restrictions
APO AE 09017	Add A, F, N, Q, V, Z, Z1; Remove C, D, E, F1, M, R, S, U	04/27/2017	A-B-F-H-N-Q-V-Z-Z1
APO AE 09143	Close	04/27/2017	
APO AE 09789	Add E2, F1	04/27/2017	A-B-E2-F-F1-F3-N-R-S-V-Z1
APO AP 09800	Open	04/27/2017	A-B-E2-F-F1-F3-N-R-R1-S-V-Z1
APO AE 96301	Add A, F3, R	04/27/2017	A-B-F3-M-R-S-W

We have eliminated “Not Active” entries from the table below to save space and paper.

APO/FPO/DPO Table

APO/ FPO/ DPO	See Restrictions	APO/ FPO/ DPO	See Restrictions	APO/ FPO/ DPO	See Restrictions	APO/ FPO/ DPO	See Restrictions
09001	B-C-D-E3-F1-F3-H-H1-I3-J-L-M-R-R1-S-T-V-X-Z-Z1	09053	B-C-D-E-F3-H-M-R-S-U	09136	B-C-D-E-F1-F3-H-M-P-R-S-U	09265	B-C-D-F-F1-H-J-L-M-N-R-T-U-V-Z1
09003	B-C-D-E-F3-H-M-P-R-S-U	09054	B-C-D-E-F3-H-M-R-S-U	09138	B-C-D-F3-H-M-R-S-U	09301	A-B-C1-E2-F-F1-F3-H1-I3-J-L-M-N-R-R1-T-U4-V-Z-Z1
09004	B-C-D-E-F3-H-M-R-S-U	09055	B-C-D-E-F-H-M-R-R1-U-V	09140	B-C-D-E-F3-H-M-R-S-U	09302	A-B-C1-F-F1-H-M-N-V-Z-Z1
09005	B-C-D-E-F3-H-M-P-R-S-U	09060	B-C-D-E-F1-F3-H-M-R-S-U-Z1	09142	B-C-D-E-F3-H-M-R-S-U	09304	A-B-C-C1-D-E2-F-F1-F3-H1-J-L-M-N-R-R1-T-V-Z1
09006	B-C-D-E-F3-H-M-R-S-U	09067	B-C-D-E-F3-H-M-R-S-U	09154	B-C-D-E-F3-H-M-R-S-U	09305	A-B-C1-E2-F-F1-H1-I3-M-N-R-R1-T-V-Z-Z1
09008	B-C-F-F3-R-U-V-Z1	09068	B-C-D-E-H-U-Z1	09160	B-C-D-F-F1-F3-H-J-L-M-N-R-R1-T-U-V-Z1	09306	A-B-C1-E2-F-F1-F3-H1-R-R1-U2-V-Z1
09009	B-C-D-E-F3-H-M-R-S-U-Z1	09069	A-B-C-D-E-H-N-U-V	09172	B-C-D-E-F3-H-M-R-S-U	09307	B-N-V-Z1
09011	B-C-D-E-F3-H-M-R-S-U	09079	B-C-D-E-F3-H-M-R-S-U	09173	B-C-D-E-F3-H-M-R-S-U	09308	A-B-C1-E2-F-F1-F3-H1-I3-M-N-R-R1-T-V-Z-Z1
09012	B-C-D-E-F3-H-M-R-S-U-Z1	09090	B-C-D-E-F3-H-M-R-S-U	09177	B-C-D-E-F3-H-M-R-S-U	09309	A-B-C-C1-E2-F-H1-M-N-R-V-Z1
09013	B-C-D-E-F-F1-H-M-R-U-Z1	09094	B-C-D-F3-H-M-P-R-S-Z1	09180	B-C-D-F3-H-M-R-S-U	09310	A-B-C1-E2-F-F1-F3-H1-I3-J-L-M-N-R-R1-T-U4-V-Z-Z1
09014	B-C-D-E-F3-H-M-P-R-S-U	09095	B-C-D-E-H-M-R-U	09186	B-C-D-E-F3-H-M-P-R-S-U	09311	A-B-C1-E2-F-F1-F3-H1-I3-J-L-M-N-R-R1-T-U4-V-Z-Z1
09016	B-C-D-E-F1-H-M-R-S-U	09096	B-C-D-E-F3-H-M-R-S-U	09203	A-B-C-C1-F-F1-F3-I3-J-L-M-N-R-R1-T-V-X-Z-Z1	09312	A-B-C1-E2-F-F1-F3-H1-I3-J-L-M-N-R-R1-T-U4-V-Z-Z1
09017	A-B-F-H-N-Q-V-Z-Z1	09103	B-C-D-E-H-U	09204	B-C-F3-M-N-R-S-V-Z1	09313	A-B-C-C1-E2-F-F1-F2-H1-R-R1-V-Z1
09018	A-B-F-H-N-Q-V-Z-Z1	09104	B-C-D-F3-H-M-R-S-U-Z1	09211	B-C-D-E-F3-H-M-P-R-S-U	09314	A-B-C1-E2-F-F1-F3-H1-H1-M-N-R-R1-S-V-Z1
09020	B-C-D-E-F3-H-M-R-S-U	09107	B-C-D-E-F3-H-M-R-S-U	09213	B-C-D-F-F1-F3-H-J-L-M-N-R-R1-T-U-V-Z1	09315	A-B-C1-E2-F-F3-N-R-R1-V-Z1
09021	B-C-D-E-F3-H-M-R-S-U-Z1	09112	B-C-D-E-F3-H-M-R-S-U	09214	B-C-D-E-F3-H-M-R-S-U-Z1	09316	A-B-C1-E2-F-F1-F3-H1-I3-M-N-R-R1-T-V-Z-Z1
09028	B-C-D-E-F1-H-M-R-S-U	09114	B-C-D-E-F3-H-M-R-S-U	09227	B-C-D-E-F3-H-M-R-S-U		
09034	B-C-D-E-F3-H-M-R-S-U	09123	B-C-D-E-F3-H-M-R-S-U-Z1	09250	B-C-D-E-F3-H-M-R-S-U		
09044	B-C-D-F1-H-U	09125	A-B-C-F-F1-F3-H-N-O-R-R1-S-V-V1	09261	B-C-D-E-F3-H-M-R-S-U-V-Z1		
09046	B-C-D-E-F3-H-M-R-S-U	09126	B-C-D-F3-H-M-P-R-S-Z1	09263	B-C-D-E-F3-H-M-R-S-U		
09049	B-C-D-E-F3-H-M-R-S-U	09128	B-C-D-E-F3-H-M-R-S-U	09264	B-C-D-E-F3-H-M-R-S-U		
		09131	B-C-D-E-F3-H-M-R-S-U				

APO/ FPO/ DPO	See Restrictions	APO/ FPO/ DPO	See Restrictions	APO/ FPO/ DPO	See Restrictions	APO/ FPO/ DPO	See Restrictions
09317	A-B-C1-E2-F-F1-F3-H1-I3-M-N-R-R1-T-V-X-Z1	09497	A-B-C1-E2-F3-H1-M-N-R-R1-V-Z1	09583	B-F-F1-R-R1-V	09647	B-F3-M-N-R-U-Z1
09319	A-B-C-C1-E2-F-F1-F2-H1-R-R1-U2-V-Z1	09498	B-C-C1-F-F1-F3-J-L-N-R-R1-T-V-Z1	09586	B-F-F1-R-R1-V	09648	B-F3-N-R-U-V-Z1
09320	A-B-C1-E2-F-F3-H1-M-N-R-R1-V-Z1	09501	B-V	09587	B-E2-E3-F-F1-F3-R-R1-S-V-Z1	09649	B-F3-N-R-U-Z1
09321	A-B-C1-E2-F-H1-M-N-R-R1-V-Z1	09502	B-V	09588	B-C-E2-E3-F-F1-F3-H-R-R1-S-V-Z1	09701	A-B-B2-C1-F-F1-F3-J-L-M-N-R-R1-T-V-Z1
09330	A-B-C1-E2-F-F1-F3-H1-M-R-R1-V-Z1	09503	B-F-F1-R-R1-V	09589	B-F-F1-F3-R-S-V	09702	B-C-C1-F1-M-R-R1-U
09333	A-B-C1-E2-F-F1-F3-H1-I3-M-N-R-R1-V-Z1	09504	B-V	09590	B-V	09703	B-C-D-F1-H-U
09337	A-B-C1-E2-F-F1-F3-H1-M-R-R1-V-Z1	09505	B-V	09591	B-E2-E3-F-F1-F2-F3-R-R1-V-Z1	09704	B-C-O-V-V1
09340	A-B-C1-F-H-N-R-V	09506	B-V	09592	B-F-F1-R-R1-V	09705	B-C-C1-F1-M-R-R1-U
09343	A-B-C1-F-M-N-V-Z1	09507	B-V	09593	B-F-F1-F3-R-S-V	09706	B-C-F3-M-N-R-S-U-V-Z1
09347	A-B-C1-E2-F-H1-M-R-R1-V-Z1	09508	B-F-F1-R-R1-V	09594	B-F-F1-R-R1-V	09707	B-C-F-F1-F3-J-L-M-N-R-R1-T-V-Z1
09348	A-B-C1-E2-F-F1-F3-H1-I3-M-N-R-R1-T-V-Z1	09509	B-F-F1-R-R1-V	09595	B-F-F1-R-R1-V	09708	B-C-C1-F1-M-R-R1-U
09351	A-B-C1-E2-E3-F-F1-F3-H1-I3-M-N-R-R1-S-T-V-X-Z1	09510	A-B-C1-E2-F-H1-M-R-R1-V-Z1	09596	B-F-F1-R-R1-V	09709	B-B2-C1-E2-F-F1-F3-H1-J-L-N-R-R1-T-V-Z1
09352	A-B-C1-E2-F-F3-H1-M-R-R1-V-Z1	09511	B-F-F1-R-R1-V	09599	B-F-F1-R-R1-V	09710	B-C-C1-F-F1-J-L-M-N-R-R1-T-U-V-Z1
09354	A-B-C1-E2-F-F3-H1-M-R-R1-V-Z1	09513	B-F-F1-R-R1-V	09600	B-C-F-F1-F3-R-U-Z1	09711	A-B-F-F1-F3-N-R-R1-S-V-Z1
09355	A-B-C1-E2-F-F3-H1-M-R-R1-V-Z1	09517	B-F-F1-R-R1-V	09602	B-C-F-F1-N-R-U-V	09712	A-B-F-F3-H-R-U-V-Z1
09356	A-B-C1-E2-F-F3-H1-M-N-R-V-Z1	09520	B-F-F1-R-R1-V	09603	B-C-F-F1-F3-R-S-U-V-Z1	09714	B-C-C1-F1-M-R-R1-U
09357	A-B-C1-E2-F-F3-H1-M-R-V-Z1	09522	B-F-F1-F3-R-S-V	09604	B-C-F-F1-F3-P-R-S-U-V-Z1	09715	B-F-F1-J-L-M-N-R-T-V-Z1
09363	A-B-C1-E2-F-F3-H1-M-R-V-Z1	09523	B-F-F1-R-R1-V	09605	B-C-D-H-M-R-U-V	09716	B-C-F-F1-F3-J-L-M-N-R-R1-T-V-Z1
09365	A-B-C-C1-E2-F-F3-H1-M-N-R-V-Z1	09524	B-F-F1-R-R1-V	09606	B-C-D-H-M-R-U-V	09717	A-B-F3-M-R-S-V-W-Z1
09366	A-B-C1-E2-F-F1-F3-H1-M-R-R1-V-Z1	09532	B-F-F1-R-R1-V	09607	A-B-C-F-F1-F3-M-N-R-R1-U-U3-V-W-Z1	09718	B-F-F1-J-L-M-N-R-T-U-V-Z1
09378	A-B-C1-E2-F-F1-F3-H1-I3-M-N-R-R1-T-V-Z1	09534	B-F-F1-R-R1-V	09608	B-C-F-F3-N-R-U-V-Z1	09719	B-C-D-F3-M-R-S-U-V-Z1
09381	A-B-C1-E2-F-F1-F3-H1-I3-M-N-R-R1-T-V-Z1	09543	B-F-F1-R-R1-V	09609	B-C-F-F3-R-U-Z1	09720	B-M-R-S-U-V-Z1
09403	B-C-C1-F3-M-R-S-U-Z1	09550	B-F-F1-R-R1-V	09610	B-C-F-F1-F3-M-R-S-U-V-Z1	09722	A-B-F-H-N-Q-V-Z1
09421	B-C-C1-F3-M-R-S-U-Z1	09554	B-F-F1-R-R1-V	09613	B-C-F-N-U-V	09723	B-F-F1-F3-J-L-M-N-R-R1-T-V-Z1
09447	B-C-C1-F3-M-R-S-U-V-Z1	09556	B-F-F1-R-R1-V	09617	B-C-F-F3-R-U-Z1	09724	B-C-C1-F1-M-R-R1-U
09454	B-C-C1-F3-M-R-S-U-V-Z1	09564	B-F-F1-R-R1-V	09618	B-C-F-F3-R-U-Z1	09725	A-B-F-F3-H-N-O-Q-S-V-V1-Z1
09459	B-C-C1-F3-M-R-S-U-Z1	09565	B-F-F1-R-R1-V	09620	B-C-F-R-U-Z1	09726	B-F-F1-J-L-M-N-R-T-U-V-Z1
09461	B-C-C1-F3-M-P-R-S-U-Z1	09566	B-E2-E3-F-F1-F3-R-R1-V-Z1	09621	B-C-F-F3-R-U-Z1	09727	A-B-B2-C-C1-D-F-F1-F3-J-L-M-N-R-R1-T-V-Z1
09463	B-C-C1-F3-M-R-S-U-Z1	09567	B-E2-E3-F-F1-F3-R-R1-V-Z1	09622	B-C-F-F3-R-U-Z1	09728	A-B-B2-C-C1-F-F1-F3-J-L-N-R-R1-T-V-Z1
09464	B-C-C1-F3-R-S-U-Z1	09568	B-V	09623	B-C-F-F3-R-U-V-Z1	09729	B-C-F-F3-N-R-R1-U-V-Z1
09468	B-C-C1-F3-M-R-S-U-Z1	09569	B-E2-E3-F-F1-F3-R-R1-V-Z1	09624	B-C-F-F1-F3-I3-J-L-N-R-R1-T-U-V-Z1	09730	A-B-B2-C-C1-F-F1-F3-J-L-M-N-R-R1-T-V-Z1
09469	B-C-C1-R-U-Z1	09570	B-F-F1-R-R1-V	09625	B-C-F-F3-N-R-U-Z1	09731	A-B-B2-C-C1-F-F1-F3-J-L-M-N-R-R1-T-V-Z1
09470	B-C-C1-M-R-U-Z1	09573	B-E2-E3-F-F1-F3-R-R1-V-Z1	09626	B-C-F-F3-R-U-Z1	09732	B-N-V-Z1
09494	B-C-C1-F3-M-R-S-U-Z1	09574	B-F-F1-R-R1-V	09627	B-C-F-F3-R-U-V-Z1	09733	B-I3-L-N-V
		09575	B-F-F1-R-R1-V	09630	B-C-F-U-V	09734	A-B-C-C1-F-F1-F3-I3-J-L-M-N-R-R1-T-V-Z1
		09576	B-F-F1-R-R1-V	09631	B-C-F-F3-R-U-V-Z1	09735	B-N-V-Z1
		09577	B-V	09633	B-B2-C-D-F-F1-M-R-U-U1-U2-U3-V-Z1		
		09578	B-E2-E3-F-F1-F3-R-R1-V-Z1	09636	B-C-F-F3-R-U-V-Z1		
		09579	B-F-F1-R-R1-V	09642	B-F-F1-F3-J-L-M-N-R-T-U-V		
		09581	B-F-F1-R-R1-V	09643	B-C-F3-M-R-S-U-V-Z1		
		09582	B-E2-E3-F-F1-F3-R-R1-V-Z1	09645	B-C-F-F1-F3-R-U-Z1		

APO/ FPO/ DPO	See Restrictions	APO/ FPO/ DPO	See Restrictions	APO/ FPO/ DPO	See Restrictions	APO/ FPO/ DPO	See Restrictions
09736	A-B-B2-C-C1-D-F-F1-F3-J-L-M-N-R-R1-T-V-Z1	09805	B-E2-E3-F-F1-F3-R-R1-Z1	09842	A-B-F-F1-F3-J-L-N-R-R1-T-V-Z1	34020	B-F-F1-F3-J-L-M-N-R-R1-T-V-Z1
09737	A-B-B2-C-C1-F-F1-F3-I3-J-L-M-N-R-R1-T-V-W-Y-Z-Z1	09806	A-B-C1-E2-F-F1-F3-H1-J-L-M-N-R-R1-T-V-Z1	09844	A-B-C1-F-F1-F3-J-L-M-N-R-R1-T-V-Z1	34021	B-F-F1-F3-T-J-L-M-N-R-R1-V-Z1
09738	A-B-B2-C-C1-D-F-F1-F3-J-L-M-N-R-R1-T-V-Z1	09808	A-B-B2-C1-E2-F-F1-F3-H-H1-J-L-N-R-R1-T-V-Z1	09845	A-B-B2-E3-F-F1-F3-J-L-M-N-R-R1-T-V-Z1	34022	B-F-F1-F3-J-L-M-N-R-R1-T-V-Z1
09739	A-B-B2-C-C1-D-F-F1-F3-J-L-M-N-R-R1-T-V-Z1	09809	B-F-F1-F3-J-L-N-T-V-Z1	09846	A-B-B2-C1-F-F1-F3-J-L-N-R-R1-T-V-Z1	34023	B-F-F1-F3-J-L-M-N-R-R1-T-V-Z1
09741	A-B-C1-E2-F-F1-F3-H1-J-L-M-N-R-R1-T-V-W-Y-Z1	09810	A-B-F-F1-F3-N-R-S-V-Z1	09848	A-B-F-M-R-V-Z1	34024	B-F-F1-F3-J-L-M-N-R-R1-T-V-Z1
09742	A-B-B2-F-F1-F3-J-L-M-N-R-R1-T-V-Z1	09811	B-E2-E3-F-F1-F3-H1-N-R-R1-U-V-Z1	09851	A-B-C-F-F3-N-R-S-V-Z1	34025	B-F-F1-F3-J-L-M-N-R-R1-T-V-Z1
09743	A-B-F-H-N-Q-V-Z-Z1	09812	B-E2-E3-F-F1-I-J-L-N-R-T-U-V-Z-Z1	09852	B-E2-E3-F-F1-F3-H1-N-R-R1-U-V-Z1	34030	B-F-F1-F3-J-L-M-N-R-R1-T-V-Z1
09744	A-B-B2-C-C1-F-F1-F3-J-L-M-N-R-R1-T-V-Z1	09813	B-E2-E3-F-F1-F3-I3-J-L-N-R-T-U-V-Z-Z1	09853	B-E2-F-H1-R-R1-U2-V-Z1	34031	B-F-F1-F3-J-L-M-N-R-R1-T-V-Z1
09745	A-B-F-F1-F3-M-N-R-R1-S-V-Z1	09814	B-E2-E3-F-F1-F3-I3-J-L-N-R-R1-T-V-Z-Z1	09854	A-B-B2-C1-F-F1-F3-I3-L-N-R-R1-T-V-Z-Z1	34032	B-F-F1-F3-J-L-M-N-R-R1-T-V-Z1
09748	A-B-B2-C-C1-D-F-F1-F3-J-L-M-N-R-R1-T-V-Z1	09815	A-B-F-F3-N-R-S-V-Z1	09855	A-B-C1-E2-F-F1-H1-M-R-R1-U2-V-Z1	34033	B-C-F-F1-F3-J-L-M-N-R-R1-T-V-Z1
09749	A-B-F-H-N-U-V-Z1	09816	A-B-B2-C-C1-E2-E3-F-F1-F3-J-L-N-R-R1-T-V-Z1	09858	B-C1-E2-E3-F-F1-F3-H1-N-R-R1-U-V-Z1	34034	B-F-F1-F3-I3-J-L-M-N-R-R1-T-V-Z-Z1
09750	A-B-B2-C-C1-F-F1-F3-J-L-M-N-R-R1-T-V-Z1	09817	A-B-B2-C1-E2-E3-F-F1-F3-H-H1-J-L-M-N-R-R1-T-V-Z1	09859	B-C1-E2-E3-F-F1-F3-H1-R-R1-U-V-Z1	34035	B-F-F1-F3-H-J-L-M-N-R-R1-T-V-Z1
09751	B-C-D-E-F3-H-M-R-S-U	09818	A-B-C-F-F3-M-S-V-Z1	09861	A-B-F-F1-F3-N-R-R1-S-V-Z1	34036	B-F-F1-F3-J-L-M-N-R-R1-T-V-Z1
09752	B-C-D-F1-H-U	09820	A-B-B2-F-F1-F3-H-H1-J-L-M-N-R-R1-T-V-Z1	09863	A-B-F-F1-F3-N-O-R-R1-S-V-Z1	34037	B-C-F-F1-F3-H-J-L-M-N-R-R1-T-V-Z1
09753	A-B-F-N-V-Z1	09821	A-B-C-F-F3-N-R-S-V-Z1	09865	A-B-F3-R-U-V-Z1	34038	B-L-M-N-U-V-Z1
09754	A-B-F-H-N-Q-V-Z-Z1	09822	A-B-C-F-F3-M-R-S-V-Z1	09866	A-B-E2-F-N-U-V-Z1	34039	B-F-F1-J-L-M-N-T-V-Z1
09755	A-B-B2-C-C1-D-F-F1-J-L-M-N-Q-R-R1-T-V-Z1	09823	A-B-F-F1-F3-J-L-N-R-R1-T-V-Z1	09870	A-B-C1-E2-F-F1-F3-H1-I3-J-L-M-N-R-R1-T-U4-V-Z-Z1	34041	B-F-F1-F3-J-L-M-N-R-R1-T-V-Z1
09756	A-B-B2-E3-F-F1-J-L-N-Q-R-R1-T-V-Z1	09824	A-B-C-F-F3-M-R-S-V-Z1	09873	A-B-C1-E2-F-F1-F3-H1-I3-J-L-M-N-R-R1-T-U4-V-Z-Z1	34042	A-B-C-F-F1-M-N-R-U-V-W-Z1
09757	A-B-F-F1-M-N-R-R1-V-Z1	09825	A-B-C1-F-F1-F3-J-L-M-N-R-R1-T-V-Z1	09874	A-B-C1-E2-F-F1-F3-H1-I3-J-L-M-N-R-R1-T-U4-V-Z-Z1	34044	A-B-D-F-M-N-O-R-R1-V-V1-Z-Z1
09759	A-B-B2-C-C1-E2-F-F1-F3-J-L-N-R-R1-T-V-Z1	09826	A-B-B2-C1-E1-E2-E3-F-F1-F3-J-L-M-N-R-R1-T-V-W-Z1	09875	A-B-C1-E2-F-F1-F3-H1-I3-J-L-M-N-R-R1-T-U4-V-Z-Z1	34055	B-F-F1-F3-J-L-M-N-R-R1-T-V-Z1
09760	A-B-B2-C-C1-D-F-F1-J-L-M-N-Q-R-R1-S-T-V-Z1	09827	A-B-F-F1-J-L-M-N-R-T-V-Z1	09880	A-B-C1-E2-F-F1-H1-N-R-R1-U-V-Z1	34058	B-F-F1-R-R1-V-Z1
09761	B-F-F1-F3-M-N-R-R1-V-Z1	09828	A-B-F-F1-F3-I3-J-L-N-R-R1-T-V-Z-Z1	09888	B-E2-F-H1-N-R-R1-U2-V-Z1	34060	B-B2-C1-E2-F-F1-F3-J-L-N-R-R1-T-V-Z1
09762	A-B-B2-E3-F-F1-F3-J-L-N-R-R1-T-V-Z1	09829	B-C-N-R-V-Z1	09890	A-B-E2-F-F1-F3-J-L-N-R-R1-T-V-Z1	34078	B-F1-N-V-Z1
09769	A-B-B2-C-C1-D-F-F1-F3-J-L-M-N-R-R1-T-V-Z1	09830	B-C-F-F1-F3-J-L-M-N-R-R1-S-T-V-Z1	09892	A-B-E2-F-F1-F3-J-L-N-R-R1-T-V-Z1	34080	B-F-F1-R-R1-V
09777	A-B-C-E1-F-F1-F3-L-M-N-R-R1-T	09831	B-F-F1-F3-J-L-N-R-R1-T-V-Z1	09895	A-B-B2-C1-E2-F-F1-F3-J-L-N-R-T-V-W-Z1	34081	B-F-F1-R-R1-V
09780	A-B-F-H-N-R-V	09832	B-C1-E2-F1-F3-U1-Z1	09898	B-C-C1-E2-F-F1-F3-H1-N-R-R1-U2-V-Z1	34082	B-F-F1-R-R1-V
09789	A-B-E2-F-F1-F3-N-R-S-V-Z1	09833	B-C1-E2-F1-F3-U1-V-Z1	34001	A-B-F-F1-F3-I3-J-L-N-R-R1-T-V-Z1	34083	B-F-F1-R-R1-V
09800	A-B-E2-F-F1-F3-N-R-R1-S-V-Z1	09834	B-E2-E3-F-F1-F3-R-R1-U-Z1	34002	B-F-F1-F3-J-L-N-R-R1-T-V-Z1	34084	B-F-F1-R-R1-V
09801	A-B-C1-E2-F-H1-M-N-R-R1-V-Z1	09835	A-B-C1-F1-F3-N-V-Z1	34004	B-F-F1-F3-J-L-N-R-R1-T-V-Z1	34085	B-F-F1-R-R1-V
09803	B-E2-E3-F-F1-F3-H1-N-R-R1-U-V-Z1	09836	A-B-C-F-F1-F3-J-L-M-N-R-R1-V-Z1	34007	B-F-F1-H-J-M-N-R-R1-V-Z1	34086	B-F-F1-R-R1-V
09804	A-B-F-F1-F3-M-N-R-S-V-Z1	09837	B-E2-E3-F1-F3-V-Z1	34008	B-B2-D-E1-F-F1-H-H1-J-L-M-N-R-R1-T-V-Z1	34087	B-F-F1-R-R1-V
		09838	B-E2-E3-F-F1-F3-U-Z1	34011	B-B2-C1-E2-F-F1-F3-J-L-M-N-R-R1-T-V-Z1	34088	B-F-F1-R-R1-V
		09839	A-B-U-V-Z1			34089	B-F-F1-R-R1-V
		09841	A-B-F3-N-R-U-Z1			34090	B-F-F1-R-R1-V
						34091	B-E2-E3-F-F1-F3-R-R1-V-Z1
						34092	B-F-F1-R-R1-V
						34093	B-F-F1-R-R1-V

APO/ FPO/ DPO	See Restrictions	APO/ FPO/ DPO	See Restrictions	APO/ FPO/ DPO	See Restrictions	APO/ FPO/ DPO	See Restrictions
34094	B-F-F1-R-R1-V	96326	B-C-F-M-R-W	96516	B-D-F-Z1	96612	B-V
34095	B-F-F1-R-R1-V	96328	B-C-M-R-W	96517	B-F-U3-V-Z1	96613	B-V
96201	A-B-F1	96330	B-C-M-R-W	96520	B-F-N-U3-V	96615	B-F-F1-R-R1-V
96202	A-B-F1-U	96331	A-B-F1-J-L-M-N-S-W	96521	B-F-F1-J-L-N-T-U3-V-Z1	96616	B-F-F1-R-R1-V
96203	A-B-F1	96336	B-C-M-R-V-W	96530	A-B-F-F1-H-H1-J-L-M-N-T-U-V-Z1	96617	B-F-F1-R-R1-V
96204	A-B-F1	96337	B-M-W	96531	A-B-C-F-F1-H-M-N-R-U-V	96619	B-V
96205	A-B-F1-U	96338	A-B-F3-M-R-S-W	96532	A-B-F-F1-H-J-L-M-N-T-U-V-Z1	96620	B-F-F1-R-R1-V
96206	A-B-F1-U	96339	B-M-V-W	96533	A-B-F-F1-H-J-L-M-N-T-U-V-Z1	96628	B-F-F1-R-R1-V
96207	A-B-F1-V	96343	B-M-W	96534	A-B-F-U-Z1	96629	B-F-F1-R-R1-V
96208	A-B-F1-U	96346	B-F-F1-F2-H-M-V-W-Z1	96535	A-B-F-F1-J-L-N-T-V-Z1	96632	B-F-F1-R-R1-V
96209	A-B-F-F1-J-L-N-T-U-V-Z1	96347	B-F-F1-F2-H-M-W-Z1	96537	B-V-Z1	96643	B-F-F1-R-R1-V
96210	A-B-B2-C1-F-F1-F3-I3-L-N-R-R1-T-V-Z-Z1	96349	B-F-F1-F2-H-M-W-Z1	96540	B-V-Z1	96649	B-F-F1-R-R1-V
96212	B-F-F1-F2-H-M-W-Z1	96350	B-F-F1-F2-H-M-W-Z1	96542	B-V-Z1	96650	B-F-F1-R-R1-V
96213	A-B-C-F1-R-U	96351	B-F-F1-F2-H-M-W-Z1	96543	B-P-V-Z1	96657	B-F-F1-R-R1-V
96214	A-B-C-F1-R-U	96362	B-F-F1-F2-M-W-Z1	96544	B-F-N-R-U3	96660	B-F-F1-R-R1-V
96218	A-B-F1-U	96365	B-C-M-R-V-W	96546	B-F-N-R-U3	96661	B-F-F1-R-R1-V
96224	A-B-F1-U	96367	B-C-L-M-R-W	96548	A-B-H-M-R-U	96662	B-F-F1-R-R1-V
96251	A-B-F1-U	96368	B-C-M-R-W	96549	A-B-F-F1-H-J-L-M-N-T-U-V-Z1	96663	B-F-F1-R-R1-V
96257	A-B-F1-U	96370	B-F-F1-F2-H-M-W-Z1	96550	A-B-H-M-N-U-V-Z1	96664	B-V
96258	A-B-F1-U	96372	B-M-W	96551	A-B-F-F1-H-J-L-M-N-T-U-V-Z1	96665	B-V
96260	A-B-F1-U	96373	B-M-W	96552	B-Z1	96666	B-V
96264	A-B-C-F1-R-U	96374	B-M-W	96553	A-B-F-F1-H-M-R-U	96667	B-F-F1-R-R1-V
96266	A-B-C-F1-R-U	96375	B-M-W	96554	A-B-F-F1-H-J-L-M-N-T-U-V-Z1	96668	B-F-F1-R-R1-V
96267	A-B-C-F1-R-U-V	96376	B-M-W	96555	B-F-M-V	96669	B-F-F1-R-R1-V
96269	A-B-F1-U-Z1	96377	B-M-W	96557	B-F-M-V	96670	B-V
96271	A-B-F1-F3-S-U	96378	B-M-W	96557	B-F-M-V	96671	B-F-F1-R-R1-V
96273	A-B-F1-U	96379	B-M-W	96562	A-B-B2-C-C1-D-E2-E3-F-F1-H-H1-I3-L-M-N-R-T-V-Z-Z1	96672	B-F-F1-R-R1-V
96275	A-B-F1-U	96380	B-M-W	96577	A-B-F-H-M-N-R-U	96673	B-V
96276	A-B-C-F1-R	96382	B-M-W	96578	B-B2-F1-H-J-N-R	96674	B-F-F1-R-R1-V
96278	A-B-C-F1-R-U	96384	B-M-W	96595	B-F-S-V-Z1	96675	B-F-F1-R-R1-V
96283	A-B-F1-U	96385	B-M-W	96598	B-N-O-V-V1	96677	B-F-F1-R-R1-V
96284	A-B-F1-U	96386	B-M-W	96599	B-N-V	96678	B-F-F1-R-R1-V
96297	A-B-F1-U	96387	B-M-W	96601	B-V	96679	B-F-F1-R-R1-V
96301	A-B-F3-M-R-S-W	96388	B-M-W	96602	B-V	96681	B-V
96303	B-F-F1-H-J-L-M-N-T-V-W-Z1	96389	B-M-W	96603	B-V	96682	B-V
96306	B-F-F1-F2-H-M-W-Z1	96401	B-C-F-N-O-R-V-V1-Z1	96604	B-V	96683	B-V
96309	B-C-M-R-V-W	96501	A-B-N-V	96605	B-V	96686	B-V
96310	B-M-W	96504	A-B-C-C1-F-F1-F3-I3-L-N-R-R1-T-V-W-Z-Z1	96606	B-V	96691	B-F-F1-R-R1-V
96319	B-C-M-R-W	96505	A-B-C-C1-F-F1-F3-I3-L-N-R-R1-T-V-W-Z-Z1	96607	B-V	96692	B-F-F1-R-R1-V
96321	B-F-F1-F2-H-M-W-Z1	96507	A-B-F-F1-H-J-L-N-T-V-Z1	96608	B-E2-F-H1-R1-U2-V-Z1	96693	B-F-F1-R-R1-V
96322	B-F-F1-F2-H-M-W-Z1	96510	B-I3-N-V	96609	B-E2-F-H1-R1-U2-V-Z1	96694	B-F-F1-R-R1-V
96323	B-C-M-R-V-W	96511	B-I3-N-V	96610	B-E2-F-H1-R1-U2-V-Z1	96695	B-F-F1-R-R1-V
		96515	B-D-F-U3	96611	B-E2-F-H1-R1-U2-V-Z1	96696	B-F-F1-R-R1-V
						96698	B-V

RESTRICTIONS

LEGEND

PS Form 2976, *Customs — CN 22 (Old C 1) and Sender's Declaration* (green label)

PS Form 2976-A, *Customs Declaration and Dispatch Note*

PS Form 2976-B, *Priority Mail Express International Shipping Label and Customs Form*

ATF	= Bureau of Alcohol, Tobacco, Firearms, and Explosives
Box C	= Department of State (DOS) contractor personnel
Box R	= Retired military personnel
DPO	= Diplomatic Post Office
MPO	= Military Post Office
PACT	= Prevent All Cigarette Trafficking Act
PAL	= Parcel Airlift
PMEMS	= Priority Mail Express Military Service
PUB 52	= Publication 52, <i>Hazardous, Restricted, and Perishable Mail</i>
SAM	= Space Available Mail
USDA	= United States Department of Agriculture

Note: Mail order catalogs are prohibited as SAM or PAL mail.

A. Securities, currency, or precious metals, including in their raw, unmanufactured state, are prohibited. Official Mail shipments are exempt from this restriction.

A1. Reserved for future use.

A2. Reserved for future use.

B. Regardless of mail class, a customs declaration (PS Form 2976, PS Form 2976-A, or PS Form 2976-B) is required for all items weighing 16 ounces or more or any item (regardless of weight) containing potentially dutiable mail contents (e.g., merchandise or goods) addressed to or from this ZIP Code. All PMEMS mailpieces (regardless of mail contents or weight) addressed to or from this ZIP Code must bear a properly completed PS Form 2976-B. The surface area of the address side of the mailpiece must be large enough to contain the applicable customs declaration. The following exceptions apply:

- Known mailers are exempt from providing customs documentation on non-dutiable letters or printed matter, except for Priority Mail Express, which requires a customs form for all contents and weights. (A known mailer is a business mailer who enters volume mailings through a business mail entry unit (BMEU) or other bulk mail acceptance location, pays postage through an advance deposit account, uses a permit imprint for postage payment, and submits a completed postage statement at the time of entry that certifies that the mailpieces contain no dangerous materials that are prohibited by postal regulations.)
- All federal, state, and local government agencies whose mailings are regarded as "Official Mail" are exempt from providing customs documentation on any item addressed to an MPO except for those MPOs to which restriction "B2" applies and except for Priority Mail Express, which requires a customs form from all mailers.
- If mailpiece is endorsed "Contents for Official Use — Exempt from Customs Requirements."

B2. All federal, state, and local government agencies must complete customs documentation when sending potentially dutiable mail addressed to or from this MPO or DPO.

C. Cigarettes and other tobacco products, including tobacco leaves, chewing and pipe tobacco, snuff, and cigars are prohibited, including those that are authorized in Publication 52 under PACT.

C1. Obscene and horror articles, images, prints, paintings, cards, films, videotapes, comic books, etc., are prohibited.

D. Coffee is prohibited.

E. Medicines (prescription, over-the-counter, vitamins, and supplements) are prohibited when mailed to individuals for human or animal use. This prohibition does not apply when medicines are sent as Official Mail only between specifically designated agencies such as pharmaceutical distributors, hospitals, clinics, and pharmacies.

E1. Mailers are responsible to ensure that all medicines and vaccines conform to host nation laws.

E2. Any matter depicting nude or seminude persons, pornographic, or sexual items are prohibited. Non-authorized political materials are prohibited. Religious materials contrary to the Islamic faith are prohibited in bulk quantities, but individual items for the personal use of the addressee are permissible.

E3. Radio transceivers, cordless/cellular telephones, global positioning systems, scanners, base stations, and handheld transmitters are prohibited.

F. Firearms of any type are prohibited, except firearms mailed to or by official U.S. government agencies. This restriction does not apply to firearms mailed from this MPO ZIP Code, provided ATF and USPS regulations are met. Antique firearms do not require an ATF form.

F1. Weapons of any type are prohibited.

F2. Mailing firearms to or from this MPO ZIP Code is restricted to one shotgun and one single shot .22 caliber rifle per individual.

F3. Replica weapons and inert explosive devices (such as grenades) and weapons parts are prohibited.

G. Parcels of any class are prohibited.

H. Meats, including preserved meats, bones, skin, hair, feathers, horns or hoofs of hoofed animals, and wool samples whether hermetically sealed or not, are prohibited.

H1. Pork or pork by-products are prohibited.

I. Reserved for future use.

I1. Reserved for future use.

I2. Reserved for future use.

I3. Mail of all classes must fit in a mail sack. Mail may not exceed the following dimensions:

- Maximum length 27 inches.
- Maximum width 14 inches.
- Maximum height 14 inches.

J. Standard Post and Parcel Select parcels may not exceed 108 inches in length and girth combined.

K. Reserved for future use.

L. All Official Mail is prohibited.

M. Fruits, vegetables, live animals, and live plants are prohibited.

N. Registered Mail service is prohibited.

O. Reserved for future use.

P. Official Mail only.

Q. Mail may not exceed 66 pounds, and size is limited to 42 inches maximum length and 72 inches maximum length and girth combined.

R. All alcoholic beverages, including those mailable under Publication 52, Part 421, are prohibited.

R1. Materials used in the production of alcoholic beverages (i.e., distilling material, hops, malts, yeast, etc.) are prohibited.

S. Synthetic cannabinoids used to stimulate the central nervous system commonly known as "synthetic marijuana," "K2," or "Spice" are prohibited.

T. Mailings of household shipments and case lots of food to or from an MPO require military transportation office approval prior to mailing. Mailings to or from a DPO require pre-approval from the Diplomatic Pouch and Mail Director.

U. Mail addressed to Retirees (Box R) is limited to 16 ounces and up to a 90-day supply of TRICARE medications. This restriction does not apply to mail endorsed "Free Matter for the Blind or Handicapped."

U1. Mail is limited to First-Class Mail items, including audio and video media, weighing 13 ounces or less. This limitation does not apply to Official Mail.

U2. Retirees (Box R) are not authorized mail service.

U3. Reserved for future use.

U4. Mail addressed to Box C is limited to 2 lbs.

V. PMEMS is not available.

V1. Electronic Delivery status information for Extra Services is not available on *USPS.com*. Manual record of delivery may be available upon request.

W. Hermetically sealed packages of meat products bearing USDA certification, such as dried beef, salami, and sausage, may be mailed. 200 grams of tobacco per parcel are permitted duty free.

X. Cremated remains are prohibited.

Y. Mail is limited to First-Class Mail and Priority Mail items only. This restriction also applies to Official Mail.

Z. No outside pieces (OSPs).

Z1. The following restriction is applicable only to International Service Centers (ISC)/Exchange Offices. An Anti-Pilferage Seal (Item No O817E or O818A) is required on all pouches and sacks.

— *International Network Operations,
Global Business, 4-27-17*

Freely Associated States Restrictions

Effective March 19, 2015, we will list the mailing restrictions for Freely Associated States (FAS) in the Pull-Out section of the *Postal Bulletin*. All FAS Restrictions will be updated periodically.

Freely Associated States

Mail addressed to freely associated states is subject to certain conditions or restrictions of mailing regarding content, preparation, and handling. The following FAS Restrictions table outlines these conditions as listed by each affected FAS ZIP Code™ through the use of footnoted mailing restrictions codes (see the [Restrictions](#) following the table). For additional information on available extra services for FAS destinations, see *Mailing Standards of the United States Postal Service, Domestic Mail Manual (DMM®)*, part 503.

Acceptance clerks must use the table with the POS ONE terminal to determine which FAS ZIP Codes are active and which conditions of mailing apply. Send inquiries to Randall Sobol at randall.f.sobol@usps.gov.

FAS Restrictions Table

FAS Table	See Restrictions
96939	A, B
96940	A, B
96941	A, B
96942	A, B
96943	A, B
96944	A, B
96960	A, B
96970	A, B
Marshall Islands	C
Federated States of Micronesia	C

RESTRICTIONS LEGEND

PS Form 2976, *Customs* — CN 22 (Old C 1) and *Sender's Declaration* (green label)


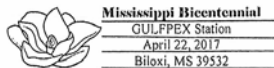
PS Form 2976-A, *Customs Declaration and Dispatch Note*

FAS = Freely Associated State

- A.** Bank currency (coin and paper) is prohibited.
- B.** Signature Confirmation, Signature Confirmation Restricted Delivery, Adult Signature Requested, Adult Signature Restricted Delivery, Certified Mail Adult Signature Required, and Certified Mail Adult Signature Restricted Delivery not available.
- C.** COD is prohibited.

— *Asia-Pacific Relations,
Global Business, 4-27-17*

Pictorial Postmarks Announcement (continued)

	<p>April 21, 2017 <i>Hammon Schools — Senior Class</i> Hammon Graduation Station Postmaster 701 East Main Street Hammon, OK 73650-9998</p>
	<p>April 22–23, 2017 <i>United States Postal Service</i> Mississippi Bicentennial Gulfpex Station Postmaster 356 Ginger Drive D'Iberville, MS 39540-9998</p>



April 27, 2017
Missouri Cherry Blossom Festival
 Cherry Blossom Tea Station
 Postmaster
 203 North Clay
 Marshfield, MO 65706-9998



May 2, 2017
The Sembrich
 The Sembrich Station
 Postmaster
 5000 Lake Shore Drive
 Bolton Landing, NY 12814-9998



April 27, 2017
New Orleans Jazz and Heritage Foundation
 Big Chief Monk Boudreaux Station
 Postmaster
 PO Box 58980
 New Orleans, LA 70158-8980



May 4–7, 2017
New Orleans Jazz and Heritage Foundation
 Jazz Fest Station
 Postmaster
 PO Box 58980
 New Orleans, LA 70158-8980



April 28–29, 2017
Missouri Cherry Blossom Festival
 Route 66 Station
 Postmaster
 203 North Clay
 Marshfield, MO 65706-9998



May 5, 2017
Northeastern Federation of Stamp Clubs
 Philatelic Show Station
 Postmaster
 7 Post Office Square
 Acton, MA 01720-9998



April 28–30, 2017
New Orleans Jazz and Heritage Foundation
 Jazz Fest Station
 Postmaster
 PO Box 58980
 New Orleans, LA 70158-8980



May 5, 2017
Stephen Decatur Chapter #4, Universal Ship Cancellation Society
 10th Anniversary Station USS Hawaii SSN 776
 Postmaster
 100 Plaza Court
 Groton, CT 06340-9998



May 1, 2017
Motorcycle Awareness
 Motorcycle Awareness Station
 Postmaster
 PO Box 9998
 Scotts, NC 28699-9998



May 6, 2017
Northeastern Federation of Stamp Clubs
 Philatelic Show Station
 Postmaster
 7 Post Office Square
 Acton, MA 01720-9998



May 6, 2017

*Michigan Association of
Railroad Passengers*Bangor Station
Postmaster
PO Box 9998
Bangor, MI 49013-9998

May 7, 2017

*Northeastern Federation of
Stamp Clubs*Philatelic Show Station
Postmaster
7 Post Office Square
Acton, MA 01720-9998

May 6, 2017

*Central Wisconsin Stamp
Club*Wiscopeex Station
Postmaster
PO Box 9998
Stevens Point, WI 54481-9998— Stamp Services,
Marketing, 4-27-17

How to Order the First-Day-of-Issue Digital Color or Traditional Postmarks

Customers have 60 days to obtain the first-day-of-issue postmarks by mail. Each cover must have sufficient postage to meet First-Class Mail[®] requirements. Customers may purchase new stamps at their local Post Office[™], by telephone at 800-782-6724, or at The Postal Store[®] website at usps.com/shop.

Digital Color Postmarks

Only select stamp issues offer a digital color postmark. Customers may submit #6 or #10 envelopes constructed of paper rated as “laser safe.” The Postal Service recommends envelopes of 80-pound Accent Opaque, acid-free, 9/16 inches side seams with no glue on the flap. The maximum size of all digital color postmarks is 2 inches high x 4 inches long. Allow sufficient space on the envelope to accommodate the postmark. Do not use self-adhesive labels for addresses on the envelope. Two test envelopes must be included. There is a minimum of 10 envelopes at 50 cents per postmark required at the time of servicing. Customers must submit a check, money order, or credit card for payment.

The Postal Service reserves the right to not accept hand-painted and other cachet envelopes that are not compatible with our digital color postmark equipment. The Postal Service also reserves the right to substitute traditional black rubber postmarks if use of nonspecified envelopes results in poor image quality or damage to equipment.

Customers must affix the stamps to the envelopes and address them to themselves or others for return through

the mail. Or, they may include an additional self-addressed return envelope, large enough to accommodate their canceled items, with sufficient postage affixed for return of their postmarked items. Address customer requests for digital color postmarks to:

FDOI – (Name of Stamp Issue)
 USPS Stamp Fulfillment Services
 8300 NE Underground Drive, Suite 300
 Kansas City, MO 64144-9900

After applying the first-day-of-issue postmark, the Postal Service will return the envelopes to the customer by U.S. Mail.

Traditional Postmarks

Customers must affix the stamps to the envelopes and address them to themselves or others for return through the mail. Or, they may include an additional self-addressed return envelope, large enough to accommodate their canceled items, with sufficient postage affixed for return of their postmarked items. Address customer requests for traditional postmarks to:

FDOI – (Name of Stamp Issue)
 USPS Stamp Fulfillment Services
 8300 NE Underground Drive, Suite 300
 Kansas City, MO 64144-9900

After applying the first-day-of-issue postmark, the Postal Service[™] will return the envelopes to the customer by U.S. Mail. There is no charge for the first 50 postmarks. There is a 5-cent charge for each additional postmark over 50. Customers must submit a check, money order, or credit card for payment.



FDOI – Nebraska Statehood Stamp
 USPS Stamp Fulfillment Services
 8300 NE Underground Drive, Suite 300
 Kansas City, MO 64144-9900

May 1, 2017

Digital Color Pictorial



FDOI – Barn Swallow Stamped Envelope
 USPS Stamp Fulfillment Services
 8300 NE Underground Drive, Suite 300
 Kansas City, MO 64144-9900

May 3, 2017

Black and White Pictorial



Digital Color Pictorial

FDOI – WPA Posters Stamps

USPS Stamp Fulfillment Services
8300 NE Underground Drive, Suite 300
Kansas City, MO 64144-9900

May 7, 2017



Black and White Pictorial

FDOI – Pears Stamp

USPS Stamp Fulfillment Services
8300 NE Underground Drive, Suite 300
Kansas City, MO 64144-9900

May 23, 2017



Digital Color Pictorial

FDOI – Mississippi Statehood Stamp

USPS Stamp Fulfillment Services
8300 NE Underground Drive, Suite 300
Kansas City, MO 64144-9900

May 31, 2017



Digital Color Pictorial

FDOI – Robert Panara Stamp

USPS Stamp Fulfillment Services
8300 NE Underground Drive, Suite 300
Kansas City, MO 64144-9900

June 11, 2017



Digital Color Pictorial

FDOI – Delicioso Stamp

USPS Stamp Fulfillment Services
8300 NE Underground Drive, Suite 300
Kansas City, MO 64144-9900

June 20, 2017



Digital Color Pictorial

FDOI – Green Succulent Stamp

USPS Stamp Fulfillment Services
8300 NE Underground Drive, Suite 300
Kansas City, MO 64144-9900

June 28, 2017



FDOI – Celebration Boutonniere Stamp
 USPS Stamp Fulfillment Services
 8300 NE Underground Drive, Suite 300
 Kansas City, MO 64144-9900

July 2, 2017

Digital Color Pictorial



FDOI – Celebration Boutonniere Stamp
 USPS Stamp Fulfillment Services
 8300 NE Underground Drive, Suite 300
 Kansas City, MO 64144-9900

July 2, 2017

Black and White Pictorial



FDOI – Celebration Corsage Stamp
 USPS Stamp Fulfillment Services
 8300 NE Underground Drive, Suite 300
 Kansas City, MO 64144-9900

July 2, 2017

Digital Color Pictorial



FDOI – Celebration Corsage Stamp
 USPS Stamp Fulfillment Services
 8300 NE Underground Drive, Suite 300
 Kansas City, MO 64144-9900

July 2, 2017

Black and White Pictorial



FDOI – Strawberries Stamp
 USPS Stamp Fulfillment Services
 8300 NE Underground Drive, Suite 300
 Kansas City, MO 64144-9900

July 5, 2017

Black and White Pictorial



FDOI – Henry David Thoreau Stamp
 USPS Stamp Fulfillment Services
 8300 NE Underground Drive, Suite 300
 Kansas City, MO 64144-9900

July 23, 2017

Digital Color Pictorial



FDOI – Henry David Thoreau Stamp
USPS Stamp Fulfillment Services
8300 NE Underground Drive, Suite 300
Kansas City, MO 64144-9900

July 23, 2017

Black and White Pictorial

– *Stamp Services, Marketing, 4-27-17*

Sustainability

Required Procedures for Environmental Regulatory Agency Site Visits and Notices of Violation

Postal Service™ policy requires compliance with all applicable local, state, and federal environmental regulations and full cooperation with environmental regulators.

Environmental Agency Inspections and Site Visits

The site installation head *must immediately report* visits and site inspections by the Environmental Protection Agency (EPA) or any state or local environmental regulatory agency to the appropriate USPS® regional manager, Environmental Compliance and Sustainability, regardless of whether the site visit is pre-scheduled or unannounced.

In addition, the site installation head or his or her designee *must follow* the Postal Service's "Standard Operating Procedure for Environmental Agency Inspections and Site Visits" to ensure appropriate authorization and facility compliance during environmental agency inspections at Postal Service facilities. The Procedure is available at blue.usps.gov/sustainability/environmental/facility-inspection.htm.

Environmental Notices of Violation and Similarly Entitled Notices

The Postal Service can be issued a notice of violation (NOV), or similarly entitled notice, such as a warning letter or a notice of non-compliance, for failure to comply with an environmental regulation. The EPA or a state or local agency may also issue notices as the result of a regulator site visit or inspection.

The site installation head or, if applicable, the Facilities Department project manager must:

- Notify the appropriate regional manager, Environmental Compliance and Sustainability, within 5 days of receiving an NOV or similarly entitled notice.
- Send an electronic copy of the notice to the appropriate regional manager within 5 days of receipt.

Reporting NOVs and similar notices ensures a timely and necessary response to critical items or anything that the regional manager must refer to the Law Department.

USPS Environmental Compliance and Sustainability Points of Contact

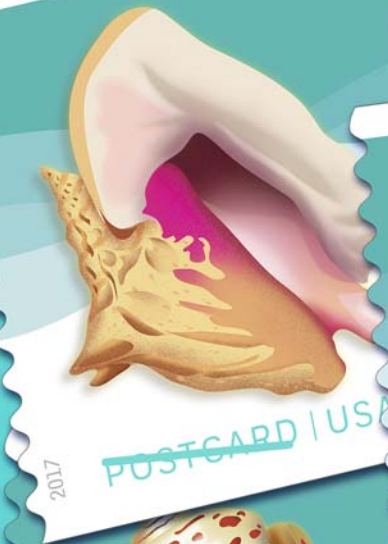
For environmental regulatory agency visits and NOVs, send an email notification and electronic copy to:

- For the Northeast, Eastern, and Capital Metro areas, and Headquarters-related facilities, contact Nicholas DeCarlo, regional manager, Environmental Compliance and Sustainability, at nicholas.decarlo@usps.gov
- For the Great Lakes, Western, Southern, and Pacific areas, contact Judy Wingo-Stalinger, regional manager, Environmental Compliance and Sustainability, at judy.wingo-stalinger@usps.gov

— Chief Sustainability Officer,
Office of Sustainability, 4-27-17

Celebrate Summer with *Seashells*

Postcard Stamps



On Sale Nationwide: January 28, 2017.



The Postal Bulletin is printed on paper that contains 30% post-consumer waste. Please recycle.