

postal|bulletin

PUBLISHED SINCE MARCH 4, 1880

Send Joy to the World

WITH OUR 2016 PHILATELIC
HOLIDAY PRODUCTS



SEE PAGE 3



Contents

COVER STORY

2016 Holiday Philatelic Products 3

POLICIES, PROCEDURES, AND FORMS UPDATES

Manuals

DMM Revision: Periodicals Identification Statement 6

IMM Revision: Updated PS Form 3665 and PS Form 3877 6

Publications

Publication 431 Revision: Changes to Post Office Box Service and Caller Service Fee Groups 7

ORGANIZATION INFORMATION

Finance

2017 Social Security and Medicare Tax Withholding Rates and Limits 8

eWS Online Forms Application Replaces the Scanning and Imaging Center (SIC) 8

General Counsel

New Freedom of Information Act Requirements 9

Human Resources

It's Time to Enroll in a Flexible Spending Account 10

Flexible Spending Account Poster 11

Annual Leave Exchange Option Poster 12

Information Security

What is the Corporate Information Security Office? 33

Mail Innovation

2017 Mailing Promotions 33

Stamp Services

Stamp Stock Items Withdrawn From Regular Sale and From Sale at Philatelic Centers 36

Pictorial Postmarks Announcement 36

Postmark America 39

How to Order the First-Day-of-Issue Digital Color or Traditional Postmarks 40

Supply Management

Investment Recovery: Do Not Send List 43

PULL-OUT INFORMATION

Fraud

Invalid USPS Corporate Account Numbers 13

Missing, Lost, or Stolen U.S. Money Order Forms 14

Missing, Lost, or Stolen Canadian Money Order Forms 20

Verifying U.S. Postal Service Money Orders 23

Counterfeit Canadian Money Order Forms 23

Toll-Free Number Available to Verify Canadian Money Orders 23

Other Information

Overseas Military/Diplomatic Mail 24

Thrift Savings Plan Fact Sheet 31

Freely Associated States (FAS) Restrictions 32

POSTAL BULLETIN INDEX

2016 Semi-Annual Index PB 22446 (7-21-16)

USPS National Emergency Hotline
Is your facility operating? Call 888-363-7462

Find the latest in mail and delivery information
and services offered by U.S. Postal™
in the *Postal Bulletin* at
<http://about.usps.com/postal-bulletin>.

Cover Story

2016 Holiday Philatelic Products

In addition to the holiday-themed stamps available that add festive luster to your envelopes, here are some timely philatelic products that can provide some additional joy and convenience:

Enjoy this assortment of Holiday Notecards. All cards are blank on the inside, which allows you to personalize your message. Each card has a unique message on the back that tells the story of the stamp art. Each of these holiday-themed 4.5 x 6.25-inch sets include 10 cards, 10 envelopes, and 20 Forever® stamps.



Nativity Notecards (Set of 10)
Item 681266



Florentine Madonna and Child Notecards (Set of 10)
Item 681366



Hanukkah Notecards (Set of 10)
Item 559966



Kwanzaa Notecards (Set of 10)
Item 556666



Diwali Notecards (Set of 10)
Item 588866

Each of these winter-themed 4.5 x 6.25-inch sets include 12 cards, 12 envelopes, and 20 Forever stamps.



Songbirds in Snow Notecards (Set of 12)
Item 661166



Holiday Windows Notecards (Set of 12)
Item 681566



The U.S. Postal Service® has new digital products that make perfect holiday gifts. This breakthrough into digital philately brings a much needed enhancement to the hobby. Of course, nothing will replace the physical nature of stamp collecting, but the eGuide to U.S. Stamps, and USPS®

StampApp provide collectors with the ability to examine their collections at shows and auctions, anytime and anywhere!



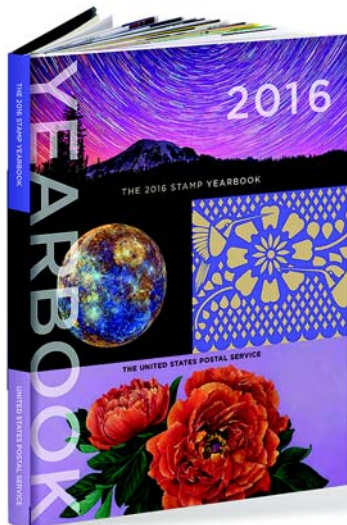
Order the World Stamp Show Portfolio for your collection or to give as the perfect gift for all ages. Available today on <http://usps.com>; \$90.75, Item 586974.

A beautiful 20-page soft cover book commemorates the World Stamp Show event, and all of the stamps issued over the course of the eight-day celebration. Each stamp's two-page spread features spectacular design and unique tactile treatments where you can actually feel the wax seals or experience an out-of-this-world soft touch of outer space on the planets page. Join the fun in the form of Augmented Reality (AR) — it's waiting to be discovered. Download the free USPS AR app at <http://uspsar.com/> onto a mobile device, launch the USPS AR app, hold the phone or tablet over the bracketed image, and watch the image spring to digital life with music, video, nature, conversation, and so much more. The World Stamp Show Portfolio features:

- 20 pages plus cover and spiral binding that enables a lay-flat format.
- Custom sleeves for each stamp pane.
- Augmented Reality experiences.
- Special tactile coatings and varnishes.

- One pane of 20 *World Stamp Show-NY 2016* Forever stamps.
- One pane of 24 *World Stamp Show-NY 2016* Forever stamps folio.
- One pane of 10 *Repeal of the Stamp Act, 1766* Forever stamps.
- One pane of 12 *The Service Cross Medals* Forever stamps.
- One Souvenir Sheet of four *Pluto-Explored!* Forever stamps.
- One pane of 16 *Views of Our Planets* Forever stamps.
- One Souvenir Sheet of six *Classics* Forever stamps.
- One pane of 16 *National Parks* Forever stamps.
- One booklet of 20 *Colorful Celebrations* stamps.
- A 2016 World Stamp Show Tote bag.

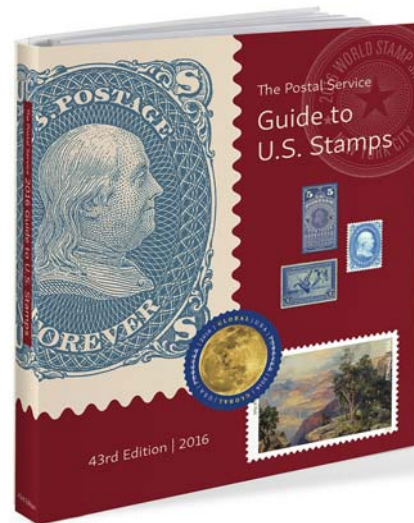
Coming Soon in December! Our most popular Holiday gifts — *The 2016 Stamp Yearbook* and *The Postal Service Guide to U.S. Stamps – 43rd Edition*.



Celebrate the year in stamps with *The 2016 Stamp Yearbook*. Legendary entertainers, historic milestones, technology advancement — the 2016 stamp program reflects those moments and people that define American life. The 64-page hardcover stamp yearbook includes:

- 53 stamps from the 2016 collectible program plus mounts.
- Lively stories and smart facts surrounding each stamp subject.
- Historic photographs and beautiful imagery related to each issue.
- Placeholders throughout the book for preserving the stamps.
- Packaged in a protective sleeve.

The 2016 Stamp Yearbook is a great gift that relives the year in stamps and celebrates our nation's culture. *The 2016 Stamp Yearbook* sells for \$64.95 (Item 991600). The Mail-Use Stamp Packet (Item 991604) contains 88 stamps plus mounts and sells for \$45.95. The High-value Stamp Packet (Item 991606) contains three stamps plus mounts and sells for \$32.95. You can order online from The Postal Store® at <http://www.usps.com> or eBay at <http://www.ebay.com/stamps>, via the *USA Philatelic* catalog, or by calling 800-782-6724 (800-STAMP-24).



The Postal Service Guide to U.S. Stamps – 43rd Edition presents 171 years of U.S. stamps, from the Postmasters' Provisionals of 1845, through the final issuance of 2016. Fresh new content, beautiful high-resolution imagery, and updated values accompany stamps and postal stationery from across the Postal archive. With pockets, areas for personal notes, sturdy construction, and a lay-flat format, the Guide is an invaluable U.S. stamp reference:

- New copy and art illustrates the Postmasters' Provisionals of 1845-47.
- A handsome new design and a highly functional format bring new clarity for each stamp listing, and a much improved user experience for collectors.
- The 2016 stamp program is included with first-day-of-issue details.
- The anecdotal narrative introduces each era of the U.S. stamp program.
- Includes colorful tabs for easy chapter references, an expanded resource section, a glossary explaining important philatelic and postal terms, and more.

The Postal Service Guide to U.S. Stamps – 43rd Edition sells for \$39.95 (Item 891600).

— Stamp Services,
Marketing and Sales, 11-24-16

Policies, Procedures, and Forms Updates

Manuals

DMM Revision: Periodicals Identification Statement

Effective January 22, 2017, the Postal Service™ will revise *Mailing Standards of the United States Postal Service*, Domestic Mail Manual (DMM®), section 207.4.11.3, to specifically allow a publisher to place the identification statement on the cover of a publication. This clarification confirms that this additional design option does not affect mail verification, processing, or delivery.

Although this clarification will not be published in the DMM until January 22, 2017, this revision is effective immediately.

Mailing Standards of the United States Postal Service, Domestic Mail Manual (DMM)

* * * * *

200 Commercial Mail Letters, Cards, Flats, and Parcels

* * * * *

207 Periodicals
* * * * *

4.0 Basic Eligibility Standards
* * * * *

4.11 Identification
* * * * *

4.11.3 Unbound Publication
* * * * *

[Add new item d. to read as follows:]

d. On the cover of the publication.

* * * * *

We will incorporate this revision into the next update of the online DMM, which is available via Postal Explorer® at <http://pe.usps.com>.

— Product Classification,
Marketing and Sales, 11-24-16

IMM Revision: Updated PS Form 3665 and PS Form 3877

Effective January 22, 2017, the Postal Service™ will revise *Mailing Standards of the United States Postal Service*, International Mail Manual (IMM®), sections 311.1, 311.32, and 311.42, and all applicable Individual Country Listings (ICLs), to indicate that mailers use only one form for both international and domestic certificate of mailing firm books. At the request of the mailing community, the Postal Service will issue a revised PS Form 3665, *Certificate of Mailing — Firm*, that mailers can use for both international and domestic certificate of mailing firm books — this revision will mirror the current PS Form 3817, *Certificate of Mailing*, which mailers may use for both international and domestic mail. Also, the Postal Service will revise PS Form 3877, *Firm Mailing Book for Accountable Mail*, to remove references to international certificate of mailing service.

The Postal Service will continue to accept the current edition of PS Form 3665 (dated January 2016) for both domestic and international items until we release the revised edition. We request that mailers separate their international items from domestic items and list interna-

tional items first when using the current edition for both domestic and international items. Mailers may also continue to use the current edition of PS Form 3877 (dated April 2015) for international certificate of mailing service until we release the revised edition. Once we release the revised PS Form 3665, mailers will no longer use PS Form 3877 for international certificate of mailing service.

We will issue additional notification when the revised editions of PS Form 3665 and PS Form 3877 are available and when we have officially revised other types of documentation.

Mailing Standards of the United States Postal Service, International Mail Manual

* * * * *

3 Extra Services
310 Certificate of Mailing

311 Individual Pieces

311.1 Description

[In the second sentence, replace “PS Form 3877” and its title with “PS Form 3665” and its title to read as follows:]

Certificate of mailing service does not provide a record of delivery, and the Postal Service does not retain copies of PS Form 3817, *Certificate of Mailing*, or PS Form 3665, *Certificate of Mailing – Firm*, or USPS-approved facsimiles.

* * * * *

311.3 Fees

* * * * *

311.32 Three or More Individual Pieces

[Throughout the text, replace “PS Form 3877” with “PS Form 3665” to read as follows:]

When mailing three or more pieces, the mailer may optionally use PS Form 3665. In addition to the correct postage, the mailer must pay the certificate of mailing fee for each article on PS Form 3665 by affixing ordinary (uncancelled) stamps, meter imprints, or PC Postage imprints to PS Form 3665. Mailers paying for the postage with a permit imprint may also pay the fee at the time of mailing using the same permit imprint account. For a separate fee, the mailer may request a duplicate copy of PS Form 3665 after mailing (see 311.22). See Notice 123, *Price List*.

311.4 Mailer Preparation

* * * * *

311.42 Three or More Individual Pieces

[In the first and third sentences, replace “PS Form 3877” with “PS Form 3665” to read as follows:]

To obtain a certificate of mailing service for three or more pieces of eligible items (see 311.21), the mailer may use PS Form 3665 or a USPS-approved facsimile.***The mailer may also use USPS-approved computer-generated firm sheets that contain the same information as PS Form 3665.***

* * * * *

Individual Country Listings

Country Conditions for Mailing

* * * * *

Extra Services

Certificate of Mailing (310)

Individual Pieces

* * * * *

[For every country for which certificate of mailing service is available, replace “PS Form 3877” with “PS Form 3665” to read as follows:]

Firm mailing books (PS Form 3665), per article listed (minimum 3).

Duplicate copy of PS Form 3817 or PS Form 3665 (per page).***

* * * * *

We will incorporate these revisions into the next update of the online IMM, which is available via Postal Explorer® at <http://pe.usps.com>.

— Product Classification, Marketing and Sales, 11-24-16

Publications

Publication 431 Revision: Changes to Post Office Box Service and Caller Service Fee Groups

Effective November 24, 2016, Publication 431, *Post Office Box Service and Caller Service Fee Groups*, is revised to include the following changes.

Publication 431, Post Office Box Service and Caller Service Fee Groups

* * * * *

[Delete the following entries:]

ZIP Code	Fee Group
63182	34

* * * * *

The online version of Publication 431 is dated July 2013. Publication 431 is currently available on the Postal Service™ PolicyNet website (<http://blue.usps.gov/cpim>):

- Go to <http://blue.usps.gov>.
- In the left-hand column, under “Essential Links,” click *PolicyNet*.
- Click *PUBs*.

Offices with WebBATS Manager/Supervisor access can view current Publication 431 information by going to the WebBATS Edit Facility Information page, as follows:

1. Go to the WebBATS main menu, and select Utility> Facility>Edit Facility option.
2. View the Fee Group field on the Edit Facility Information page.

— Retail Operations, Retail and Customer Service Operations, 11-24-16

Organization Information

Finance

2017 Social Security and Medicare Tax Withholding Rates and Limits

For 2017, the maximum limit on earnings for withholding of Social Security (Old-Age, Survivors, and Disability Insurance) Tax is \$127,200.00. The Social Security Tax Rate remains at 6.2 percent. The resulting maximum Social Security Tax for 2017 is \$7,886.40.

There is no limit on the amount of earnings subject to Medicare (Hospital Insurance) Tax. The Medicare Tax Rate applies to all taxable wages and remains at 1.45 percent with the exception of an “additional Medicare Tax” assessed against all taxable wages paid in excess of the applicable threshold (see Note). The FICA Tax Rate, which is the combined Social Security rate of 6.2 percent and the Medicare rate of 1.45 percent, remains 7.65 percent for 2017 (or 8.55 percent for taxable wages paid in excess of the applicable threshold).

The information in the following table shows the changes in Social Security (no changes in Medicare limits) withholding limits from 2016 to 2017.

Tax	2016 Limit	2017 Limit
Social Security Gross	\$118,500.00	\$127,200.00
Social Security Liability	\$7,347.00	\$7,886.40
Medicare Gross	No Limit	No Limit
Medicare Liability	No Limit	No Limit

Note: *The Patient Protection and Affordable Care Act* signed into law March 23, 2010, created the “additional Medicare Tax” that changed Medicare withholding computations effective January 1, 2013. All wages, self-employment income, and other compensation that are subject to regular Medicare Tax and are paid in excess of the applicable threshold are subject to the additional Medicare Tax. Employers are required to withhold the additional Medicare Tax at a 0.9 percent rate on wages and other compensation it pays to an employee in excess of \$200,000 in a calendar year. There is no employer match for the additional Medicare Tax.

— Payroll,
Controller, 11-24-16

eIWS Online Forms Application Replaces the Scanning and Imaging Center (SIC)

eIWS Online Forms (OLF) is a new web-based application launched to replace the manual completion and submission of certain Postal Service™ forms that are processed by Accounting Services.

The following forms must be submitted through OLF:

- PS 1011, *Travel Advance Request and Itinerary Schedule.*
- PS 1164-A, *Claim for Reimbursement for Postal Supervisors.*
- PS 1221, *Advanced Sick Leave Authorization.*
- PS 1839, *Payment Record for Carrier Drive Out Agreements.*
- PS 1902, *Justification for Billing Accounts Receivable.*
- PS 2240, *Pay Leave or Other Hours Adjustment Request.*
- PS 2240-R, *Rural Pay or Leave Adjustment Request for PS Form 1314.*
- PS 2240-RA, *Rural Pay or Leave Adjustment Request for PS Form 1314-A.*
- PS 2551, *Non-Goods and Non-Services, Payment Authorization.*

- PS 3239, *Payroll Deduction Authorization to Liquidate Postal Service Indebtedness.*
- PS 3533, *Application for Refunds of Fees, Products and Withdrawal of Customer Accounts.*
- PS 8127, *Rural Carrier Supplemental Payment.*
- PS 8231, *Vendor Payment 1099 Reporting Form.*

The forms listed above must **NOT** be mailed to:

Scanning and Imaging Center
PO Box 5212
Janesville, WI 53547-5212

The PO Box™ has been closed. All mail received at this address will be returned to the sender or forwarded to the Mail Recovery Center, as applicable.

Visit the eIWS Online Forms Toolkit to obtain information on how to request access to the application and view a complete listing of forms, training resources, job aids, and more. The toolkit is available at <http://blue.usps.gov/accounting/eiws/eiwsforms.htm>.

— Revenue and Field Accounting
Controller, 11-24-16

General Counsel

New Freedom of Information Act Requirements

On June 30, 2016, President Obama signed into law the FOIA Improvement Act of 2016. The changes apply to all Freedom of Information Act (FOIA) requests filed on or after that date. In general, the changes are designed to make more information available to the American people and to make that information more easily accessible. The Act addresses a range of procedural issues, including requirements that agencies establish a minimum of 90 days for requesters to file an administrative appeal and that they provide dispute resolution services at various times throughout the FOIA process. It also requires new language to be included in certain responses to FOIA requests and notices to requesters extending the FOIA's time limits due to "unusual circumstances."

The Privacy and Records Office has developed standard language for records custodians and their designees to use when responding to FOIA requests. Effective immediately, the new language applies to any FOIA request received after June 30, 2016.

For Non-Adverse Determinations (requests granted in full):

The Postal Service™ has fully satisfied your request. If you need further assistance or would like to discuss any aspect of your request, please contact the appropriate FOIA Public Liaison:

- USPS HQ FOIA Requester Service Center — FOIA requests for Postal Service Headquarters controlled records including contracts, building leases, and other real estate transactions or employee listings:
Privacy & Records Office (Attn: FOIA RSC)
U.S. Postal Service
475 L'Enfant Plaza SW, RM 1P830
Washington, DC 20260-1101
Phone: 202-268-2608
Fax: 202-268-5353
FOIA Public Liaison: Jane Eyre
- USPS Field FOIA Requester Service Center — FOIA requests for U.S. Postal Service® records controlled by area offices, district offices, Post Offices™, or other field operations facilities:
USPS FOIA Requester Service Center — Field
ST. Louis General Law Service Center
1720 Market Street, RM 2400
ST. Louis, MO 63155-9948
Phone: 314-345-5894
Fax: 650-578-4956
FOIA Public Liaison: Linda Crump

You may also contact this office at: [Name of agency official and/or FOIA Coordinator that processed the request] to discuss any aspect of your request.

For Adverse Determinations (including denials in full or in part; "no records" responses; denials of requests for fee waivers; and denials of requests for expedited processing):

If you are not satisfied with the response to this request, you may file an administrative appeal within 90 days of the date of this response letter by writing to:

General Counsel
U.S. Postal Service
475 L'Enfant Plaza SW
Washington, DC 20260

You may also send an email to FOIAAppeal@usps.gov. Your appeal must be postmarked or electronically transmitted within 90 days of the date of the response to your request. The letter of appeal should include, as applicable:

1. A copy of the request, of any notification of denial or other action, and of any other related correspondence;
2. The FOIA tracking number assigned to the request;
3. A statement of the action, or failure to act, from which the appeal is taken;
4. A statement identifying the specific redactions to responsive records that the requester is challenging;
5. A statement of the relief sought; and
6. A statement of the reasons why the requester believes the action or failure to act is erroneous.

For further assistance and to discuss any aspect of your request, you may contact any of the following:

- Name of agency official and/or FOIA Coordinator that processed your request (include name, title, and contact information);
- FOIA Requester Service Center (include contact information); or
- FOIA Public Liaison (include contact information).

Additionally, you may contact the Office of Government Information Services (OGIS) at the National Archives and Records Administration to inquire about the FOIA mediation services they offer:

- Mail to the Office of Government Information Services, National Archives and Records Administration, 8601 Adelphi Road-OGIS, College Park, Maryland 20740-6001;
- Email ogis@nara.gov;
- Call 202-741-5770 (toll-free: 877-684-6448); or
- Fax 202-741-5769.

For Notices Extending FOIA Time Limits Due to Unusual Circumstances (when offices encounter "unusual circumstances" and seek to extend the FOIA's time period beyond ten additional working days. Offices must explain what the "unusual circumstances" are and provide the requester with an opportunity to narrow their request or arrange an alternative time for processing).

If you have any questions or wish to discuss reformulation or an alternative timeframe for the processing of your request, you may contact:

- Name of agency official and/or FOIA Coordinator that processed your request (include name, title, and contact information);
- FOIA Requester Service Center (include contact information); or
- FOIA Public Liaison (include contact information).

Additionally, you may contact the Office of Government Information Services (OGIS) at the National Archives and Records Administration to inquire about the FOIA mediation services they offer:

- Mail to the Office of Government Information Services, National Archives and Records Administration, 8601 Adelphi Road-OGIS, College Park, Maryland 20740-6001;

- Email ogis@nara.gov;
- Call 202-741-5770 (toll-free: 877-684-6448); or
- Fax 202-741-5769.

Questions:

For questions concerning this requirement, contact the FOIA Coordinator in your headquarters, district, or area office, or the Records Office staff at 202-268-2608. You may also contact the St. Louis FOIA Requester Service Center staff at 314-345-5894.

— *Privacy and Records Office,
General Counsel, 11-24-16*

Human Resources

It's Time to Enroll in a Flexible Spending Account

For the 2017 plan year, Postal Service™ employees will participate in the Federal Flexible Spending Account Program (FSAFEDS). You will have an opportunity to enroll during Open Season, which is from November 14 to December 12, 2016.

What's New for FSAFEDS

- **Who can participate:** Eligible employees can participate in FSAFEDS if they meet Federal Employee Health Benefits (FEHB) eligibility requirements. In addition, benefits-eligible new hires can enroll in FSAFEDS during Open Season. There is no longer a one year waiting period.
- **Carryover:** This is an exciting new feature because your “use it or lose” risk is reduced with a Health Care FSA (HCFSA). If you enroll in an HCFSA for the 2017 benefit period, you can carry over up to \$500 to your 2018 account if you re-enroll during Open Season next year. Note that you will forfeit any remaining funds over \$500.

Due to IRS rules, HCFASAs cannot have both a carryover and a grace period. Under the FSAFEDS Program, any money above \$500 must be spent by December 31, 2017. If you still have 2016 money remaining in your FSA that's administered by United Healthcare, you may continue to use those funds until March 15, 2017.

You will still have a 2-1/2 month grace period for a Dependent Care FSA. Carryover limitations do not apply to this FSA because of IRS regulations.

- **Paperless Reimbursement:** If you plan to enroll in an HCFSA, you have the option of using Paperless Reimbursement, which automatically reimburses your eligible health care, retail pharmacy, dental, and vision expenses under participating FEHB and Federal Employees Dental/Vision Program (FEDVIP) plans. There is little or no paperwork involved, and in many cases, you will receive your reimbursement before your bill is due.

Or, rather than reimbursing your claims automatically, your Health Care FSA or Limited Expense FSA expenses are saved to your online FSAFEDS account so you can decide if, how, and when you receive reimbursement. This option is called Pick and Process. Just identify your participating FEHB or FEDVIP plan during enrollment.

Note: These two options for Paperless Reimbursement are not available for a Dependent Care FSA. If you have this account, you must submit your claims using the method that works best for you.

- **Claims:** If you choose not to participate in Paperless Reimbursement, or for all dependent care claims, there are several convenient claim submission options including online, mobile app, fax, and mail. Go to the FSAFEDS website to find out more about the FSAFEDS app — it's the easiest way to manage your FSA.

For more information, go to <https://www.fsafeds.com>. To find the FSA that best suits you and your family, visit the “Explore Your Options” tab on the FSAFEDS website.

— *Compensation and Benefits,
Human Resources, 11-24-16*

Don't have a Flexible Spending Account?



You're throwing away money that you could be using to cover medical and dependent care expenses.

Enroll in FSA during Open Season (Nov. 14-Dec. 12) and use pre-tax dollars to cover eligible health care and dependent care expenses. For more information, go to liteblue.usps.gov/fsa



2016 BENEFITS
OPEN SEASON

NOVEMBER 14 - DECEMBER 12



Annual Leave Exchange Option Poster

November 15, 2016, to December 15, 2016

The Annual Leave Exchange Program provides an option for eligible career employees to receive a lump sum payment in exchange for a portion of the annual leave that would otherwise be advanced at the beginning of the 2016 leave year. **Annual leave that has been earned and accumulated during the 2016 leave year, which ends January 6, 2017, cannot be exchanged for cash.** Exchanging next year's annual leave for cash is strictly a voluntary action. The exchange option is not intended to discourage an employee's use of annual leave. Any leave exchanged will not be available for use in leave year 2017.

Eligible Employees

Employees eligible for the Annual Leave Exchange Program include the following:

- Career non-bargaining unit employees from rate schedule codes (RSCs) D (levels 1–8), E, F, S, U, V, W, X, and Z (levels 1–12) who have an annual leave balance of at least 160 hours at the end of the 2016 leave year.
- Career bargaining unit employees — full-time employees, part-time regular employees, and APWU-represented, part-time flexible employees — from the following RSCs who have an annual leave balance of at least 440 hours at the end of the 2016 leave year and have used less than 75 hours of sick leave during the 2016 leave year:
 - American Postal Workers Union, AFL-CIO — Rate Schedule Code (RSC) P.
 - Operating Services Division, Headquarters and Facility Services Section, Merrifield VA/PWU — RSC K.
 - Mail Equipment Shops and Material Distribution Centers/APWU — RSC C.
 - The National Postal Mail Handlers Union — RSC M.
 - National Postal Professional Nurses/APWU — RSC G.
 - Information Technology/Accounting Service Centers/APWU — RSC N.
 - Postal Police Officers' Association — RSC Y.

PostalEASE Elections

Employees who meet the eligibility criteria and want to exercise this option must use *PostalEASE* to make elections. For the election to be considered timely, employees must complete their entries in *PostalEASE* by 11:59 P.M. CST, December 15, 2016.

An employee may contact the Human Resources Shared Services Center (HRSSC) for assistance if any of the following conditions apply:

- The employee is deaf or hard of hearing.
- The employee cannot use the telephone, Internet, employee self-service kiosk, or intranet for a medical reason.
- The employee receives a message in *PostalEASE* directing him or her to contact the HRSSC when attempting to make an election.

To contact the HRSSC, do the following:

- Call the Employee Service line at 877-477-3273 (TTY 866-260-7505).
- When prompted, select 5 for the HRSSC.
- Select "Benefits" to speak with a representative who will assist you.

Please post on all bulletin boards through December 15, 2016.

Pull-Out Information

Fraud

Invalid USPS Corporate Account Numbers

This listing should be provided to Contract Postal Units and used by acceptance clerks in non-POS locations without intranet access to validate a USPS Corporate Account (USPSCA) number online. For all other locations, online USPSCA validation is preferred. The online validation process is outlined in the USPSCA Validation SOP on the Retail webpage. This list supersedes all previous notices,

which must be recycled. Acceptance clerks must not accept Priority Mail Express™ shipments bearing an invalid USPSCA number in the “Payment by Account” or “Agreement Number” section of the label or form.

Note: The first 6 digits of a 9-digit Custom Designed Service and Next Day Pickup Agreement make up the Corporate Account Number.

005024	008947	015643	060102	093556	133055	305562	433040	598620	805563	913188	921921	968387
006011	008986	015800	060154	095132	142816	306236	441993	601062	809225	913480	922145	968469
006042	009013	015805	064194	096932	146088	306439	450173	601308	815223	915200	922336	968492
006072	009024	015819	064270	097661	146116	311614	453054	605141	820102	916028	924104	968750
006076	009031	016054	064653	098013	146122	312479	462014	605370	820813	917012	924342	968767
006095	009034	016225	065189	098228	146127	320913	462273	609334	827107	917048	924446	968850
006100	009041	016256	065394	098335	146128	321038	480099	615026	832495	917113	924590	968857
006121	009042	016930	065489	100014	146134	321061	480350	629311	840084	917417	924655	968940
006122	009048	018024	065563	100139	146646	321197	480378	631999	841101	917471	924682	968967
006167	009092	018035	069397	100157	146705	322023	481209	660025	843010	917690	924688	969027
006177	009112	018037	070037	100285	148300	322051	481271	701072	846006	920101	925129	969035
006179	009134	018062	070648	100542	148411	326016	481295	711005	846095	920102	925139	969054
006207	009149	018074	075028	100882	148415	327691	481322	730411	851006	920109	925168	969111
006215	009230	018103	076156	100895	148420	327878	481524	740538	851051	920112	925177	980754
006227	009237	018107	076715	100902	150114	327890	481689	741340	852708	920113	927325	981601
006235	009253	018128	077287	100909	150280	328040	481960	750010	853228	920114	927356	982494
006339	009302	018139	079978	100953	150287	331808	486352	751015	853732	920116	927386	982643
006656	009340	019028	080032	101164	184111	333089	490514	751062	856527	920135	927391	982666
006817	009371	019172	080134	108611	184461	333752	493020	752252	871026	920136	928329	982694
006879	009376	019191	080176	109010	191176	334151	495142	752912	891539	920140	928367	984248
007178	009386	019517	080331	109041	192296	335149	496200	754026	891598	920141	931003	992639
007262	009387	019529	080439	109062	195471	336273	498190	755003	891600	920142	933137	995354
007388	009388	019965	080517	109065	198265	336308	499050	770042	891602	920143	933534	995475
008083	009451	020459	080579	109071	208173	337147	503001	780119	891603	920156	933543	995494
008183	009456	020542	080603	115080	208780	349640	527002	782053	891605	920163	940328	995495
008281	009482	021027	080701	115203	221353	358049	551149	782116	891606	920167	941373	995522
008304	009512	022356	085403	115407	222162	370077	553040	782142	891607	920175	941608	995587
008397	009558	022434	085831	115424	240535	372509	554826	782918	891608	920176	947253	995601
008495	009578	022502	088279	115780	253306	372780	570178	785380	891609	920182	948284	995737
008526	009653	023237	088307	115918	274220	374157	570192	787173	891998	920193	948858	997234
008624	009707	025332	088702	117174	282020	377123	573022	800127	900025	920290	951590	997300
008633	009719	026383	089866	117268	300293	379546	581016	800291	900122	921012	954487	998184
008641	009732	026643	091088	117708	300310	379560	585241	801506	900332	921203	967114	998503
008693	009862	029124	091745	118940	300958	381083	591050	802062	900421	921206	967212	998514
008751	010128	029725	092354	119166	301223	381610	591350	802849	906877	921233	967275	
008862	014739	030500	092382	119544	301490	381681	591530	803132	911295	921713	967349	
008885	015006	031166	093355	128988	302100	386077	591725	804035	912014	921868	968331	
008895	015610	033020	093471	132461	303525	402481	596449	804207	913024	921889	968386	

Missing, Lost, or Stolen U.S. Money Order Forms

Do Not Cash — Upon Receipt, Notify Local Postal Inspectors

This listing will be provided to all Postal Service™ employees responsible for accepting and cashing postal money orders. Destroy all interim notices when the num-

bers listed appear in the *Postal Bulletin*. The actual serial numbers consist of the first 10 digits on the money orders. Check for altered dollar amounts by holding money orders to the light.

010 001 0200 to 0299	037 909 5490 to 5499	070 916 1340 to 1399	114 402 3850 to 3899
010 504 1932 to 1999	037 931 4660 to 4699	071 047 5768 to 5799	114 866 5368 to 5397
011 582 1889 to 1899	039 145 6521 to 6595	071 179 9800 to 9899	116 154 2800 to 2899
011 588 2900 to 3099	040 024 3901 to 3999	071 386 3682 to 3699	116 986 4400 to 4499
012 441 0784 to 0799	040 674 7100 to 7199	071 507 6840 to 6899	117 175 1647 to 5169
012 579 5675 to 5699	040 688 8816 to 8899	072 045 9641 to 9699	117 951 4687 to 4699
013 289 6176 to 6199	041 299 6752 to 6799	072 675 8287 to 8299	117 951 5200 to 5299
013 610 0014 to 0099	041 623 8889 to 8899	073 763 0867 to 0876	119 786 3051 to 3064
014 932 1000 to 1099	041 803 6565 to 6599	073 763 0878 to 0887	119 815 8961 to 6199
014 972 0800 to 0899	043 129 1968 to 1997	073 763 0889 to 0898	119 850 7400 to 7499
015 363 0065 to 0099	043 205 5922 to 5999	077 617 5481 to 5499	119 850 7700 to 7999
017 028 3200 to 3299	044 087 3457 to 3499	077 999 4001 to 4090	121 634 0460 to 0499
018 569 5333 to 5399	044 087 4000 to 4099	078 174 4475 to 4499	122 451 9879 to 9899
018 986 5264 to 5299	044 226 2487 to 2512	078 219 4931 to 4999	122 714 6805 to 6900
019 518 2814 to 2899	044 306 4200 to 4299	078 250 4756 to 4799	124 916 0304 to 0499
020 698 5159 to 5199	044 306 4370 to 4599	078 823 8312 to 8399	126 423 0136 to 0169
020 844 7307 to 7399	045 524 4121 to 4298	079 374 0300 to 2499	127 500 2328 to 2399
020 972 8948 to 8999	046 800 9870 to 9899	079 807 2342 to 2399	160 901 2254 to 2299
022 021 9110 to 9181	047 352 4000 to 4099	082 721 0228 to 0254	161 103 6581 to 6599
022 037 1411 to 1499	048 383 7650 to 7659	083 140 5000 to 7499	161 194 2857 to 0899
022 527 9201 to 9210	048 396 3647 to 3699	083 784 8886 to 8899	162 032 4447 to 4499
022 529 1882 to 1899	051 142 0755 to 0799	083 913 6915 to 6999	163 257 1085 to 1099
023 637 7169 to 7199	051 774 8857 to 8899	084 478 3920 to 3999	164 359 2406 to 2499
024 380 4100 to 4199	051 781 2875 to 2885	086 000 8271 to 8299	166 101 1433 to 1499
024 496 6870 to 6896	051 977 7010 to 7023	086 798 3840 to 3849	167 555 5201 to 5212
025 092 0987 to 0999	052 058 7115 to 7199	088 404 4472 to 4499	167 555 5214 to 5299
025 369 5535 to 5599	054 450 1130 to 1167	088 404 5584 to 5699	169 618 6274 to 6299
025 729 1151 to 1199	057 670 0563 to 0599	088 757 8688 to 8699	171 806 6878 to 6893
025 729 1643 to 1799	058 187 3836 to 3899	088 757 9400 to 9499	173 639 4685 to 4699
026 492 3180 to 3199	058 523 3003 to 3099	089 358 2248 to 2257	174 238 2779 to 2799
027 361 0430 to 0499	058 591 1153 to 1299	090 663 9678 to 9684	174 281 9347 to 9399
027 369 4482 to 4495	058 895 3746 to 3799	091 818 0071 to 0099	175 251 2600 to 0699
027 671 8762 to 8776	059 986 0814 to 0899	093 106 9346 to 9355	176 281 7937 to 7950
027 787 9886 to 9899	060 406 7650 to 7699	093 203 0500 to 0599	176 281 7963 to 7999
027 965 9487 to 9499	063 491 8122 to 8199	093 684 3630 to 3699	176 731 6586 to 6599
028 100 8069 to 8099	063 916 9968 to 9999	094 081 5074 to 5099	178 254 5000 to 9999
028 191 1852 to 1999	064 091 4500 to 4599	094 216 2555 to 2599	178 881 9900 to 9999
028 850 3000 to 3199	065 170 0471 to 0499	094 580 7062 to 7099	180 031 2089 to 2098
029 510 1500 to 1599	065 255 7909 to 7999	094 639 4200 to 4299	180 403 7723 to 7741
030 687 0903 to 0999	065 392 6345 to 6399	095 070 7186 to 7199	180 428 4580 to 0599
030 701 3442 to 3499	066 099 2014 to 2099	095 076 8300 to 8399	182 368 7544 to 0599
031 077 4507 to 4799	066 648 2880 to 2899	095 354 6864 to 6899	182 475 3229 to 3258
032 295 7500 to 9999	066 787 3639 to 3699	097 224 1350 to 1599	182 475 3904 to 3933
034 394 1000 to 1099	066 845 7500 to 9999	100 160 3800 to 3899	182 631 0031 to 0099
034 943 0400 to 0799	067 093 3869 to 3899	104 667 6400 to 6499	182 911 6539 to 6600
035 035 4337 to 4399	068 895 0334 to 0399	104 876 8937 to 8999	184 218 2760 to 2799
037 312 7500 to 7599	070 724 4488 to 4499	112 049 4413 to 4499	185 828 1474 to 1499
037 706 9578 to 9599	070 841 9181 to 9199	112 870 9765 to 9799	186 132 7583 to 0599
037 805 3677 to 3699	070 844 2546 to 2599	113 319 2000 to 2099	186 629 0589 to 0599

187 184 6177	to	0199	227 033 8679	to	8699	392 854 8500	to	8899	410 867 0917	to	0966
187 323 8200	to	8299	227 275 9400	to	9999	393 584 7566	to	7699	410 867 0970	to	0999
187 441 6080	to	6099	228 463 2456	to	2499	393 650 0074	to	0099	411 868 1023	to	1199
188 831 6774	to	6799	228 510 4852	to	4899	393 838 8316	to	8499	411 922 2322	to	2399
188 835 6370	to	6399	229 462 8451	to	8475	393 893 6007	to	6099	412 193 0900	to	0999
189 083 1064	to	1099	229 668 5977	to	5999	394 126 6907	to	6999	412 395 8599	to	8699
189 660 9583	to	9599	229 923 9176	to	9199	394 189 0405	to	0599	412 485 6500	to	6599
191 179 0377	to	0399	229 924 6696	to	6699	394 822 3243	to	3278	412 485 6610	to	6699
192 050 5762	to	5781	230 051 9500	to	9999	394 990 1810	to	1899	412 885 5953	to	5999
194 456 8600	to	0699	236 366 2431	to	2499	395 343 3264	to	3299	414 193 3608	to	3674
195 194 6881	to	6899	236 660 5853	to	5872	395 373 3035	to	3099	414 193 3677	to	3699
195 874 1112	to	1199	273 070 8059	to	8099	395 396 9649	to	9799	414 411 7348	to	7399
196 979 0524	to	0599	273 775 7700	to	7899	395 970 3240	to	3299	414 640 0757	to	0799
197 244 6300	to	6399	302 000 0000	to	9999	397 622 4054	to	4099	414 965 1727	to	1799
197 244 6400	to	6499	349 746 2056	to	2099	397 819 8902	to	8999	417 302 8104	to	8199
197 244 6600	to	6699	350 518 7350	to	7374	398 149 7200	to	7699	417 387 6532	to	6599
197 244 6700	to	6799	360 011 1690	to	1699	399 070 0872	to	0899	417 496 6800	to	6999
197 244 6800	to	8999	360 168 6008	to	6099	399 156 7119	to	7199	417 871 9250	to	9299
198 285 2556	to	2566	360 173 8800	to	8899	399 203 5064	to	5099	417 930 9533	to	9599
199 105 0778	to	0799	360 324 2326	to	2399	399 296 9910	to	9999	418 164 6500	to	6799
199 678 2968	to	2999	362 861 3064	to	3099	399 396 8935	to	8999	418 423 9863	to	9899
202 748 5133	to	5199	373 006 2176	to	2199	399 792 7775	to	7799	418 633 5922	to	5999
202 748 5245	to	5299	374 768 2600	to	2699	399 792 8300	to	8399	418 719 8520	to	8599
202 748 5300	to	5399	375 169 4400	to	4599	400 427 1051	to	1999	418 744 2235	to	2299
202 748 5400	to	5499	375 829 3400	to	3499	401 045 1505	to	1549	418 962 2848	to	2899
203 256 1240	to	1299	375 851 9100	to	9199	401 045 1571	to	1599	419 543 0286	to	0299
204 230 3577	to	3595	376 196 0911	to	0999	401 294 2700	to	2799	419 730 0300	to	0399
205 019 0174	to	0199	378 085 3679	to	3699	401 310 9505	to	9599	420 277 0015	to	0049
207 196 9900	to	9999	378 351 1063	to	1099	401 382 5312	to	5399	420 599 0734	to	0798
207 204 0700	to	0799	379 843 5100	to	5199	402 578 7876	to	7899	420 661 4115	to	4199
207 204 0800	to	0899	380 093 9600	to	9699	403 125 6744	to	6799	420 758 9500	to	9699
207 514 3857	to	3899	380 165 1165	to	1199	403 260 7000	to	7499	420 969 3951	to	3971
208 556 4707	to	4799	381 325 4500	to	4599	403 280 6470	to	6499	420 969 3973	to	3999
210 057 4038	to	4047	381 604 2510	to	2699	403 685 8600	to	8699	421 116 3565	to	3599
210 221 0548	to	0599	381 645 9525	to	9599	404 003 0300	to	0399	421 130 9300	to	9399
214 061 4711	to	4724	383 314 3968	to	3999	404 041 8838	to	8899	421 313 4500	to	4999
214 303 6311	to	6325	383 892 1000	to	1344	404 071 4268	to	4299	421 364 5537	to	5599
214 303 6239	to	6258	383 892 1382	to	1399	404 347 5356	to	5399	421 656 2609	to	2699
214 877 4251	to	4273	384 925 3641	to	3654	404 347 5548	to	5599	421 988 9700	to	9799
215 252 3918	to	3992	385 568 2331	to	2399	404 726 4500	to	4599	422 172 4667	to	4699
218 698 2157	to	2199	385 599 7554	to	7575	404 961 5001	to	5199	422 484 4212	to	4299
218 746 0800	to	0899	385 774 2024	to	2099	405 325 0188	to	0198	422 556 1270	to	1299
219 095 0100	to	0399	386 624 1412	to	1599	406 009 4587	to	4599	422 587 7024	to	7099
219 389 1885	to	1899	386 883 8936	to	8999	406 260 6830	to	6899	422 819 7533	to	7599
219 568 7435	to	7456	387 314 5574	to	5599	406 459 6641	to	6999	422 842 5073	to	5087
219 568 7469	to	7487	387 837 6300	to	6399	406 733 3000	to	3999	422 907 7563	to	7599
221 316 5757	to	5799	388 828 0656	to	0699	407 545 1557	to	1599	424 500 6050	to	6099
223 476 3914	to	3999	389 696 2400	to	2799	407 594 0412	to	0599	424 641 8500	to	8599
223 565 4921	to	4957	389 846 3104	to	3135	407 692 9100	to	9299	424 871 6600	to	6699
223 565 4979	to	4999	389 846 3145	to	3195	407 959 2190	to	2199	425 298 2352	to	2399
224 636 4745	to	4765	389 887 9211	to	9230	408 265 2275	to	2288	425 418 4269	to	4299
224 636 4776	to	4799	389 887 9234	to	9299	408 499 7700	to	7799	425 418 4405	to	4499
224 636 4855	to	4885	390 001 3182	to	3199	408 499 7900	to	7999	426 547 4566	to	4599
224 636 4932	to	4948	390 001 3500	to	3699	408 682 8484	to	8599	427 412 6337	to	6499
224 636 4950	to	4962	390 545 5974	to	5999	408 698 7015	to	7099	427 481 0900	to	0999
224 636 4985	to	4999	391 104 6146	to	6199	409 072 3941	to	3999	428 027 2742	to	2752
224 730 2207	to	2299	391 574 1466	to	1499	410 491 2311	to	2399	429 474 4172	to	4199
225 970 0500	to	0599	391 783 3020	to	3599	410 694 8400	to	8599	429 889 2900	to	2999
225 970 0600	to	0699	391 792 6100	to	6199	410 775 1500	to	1599	430 150 4401	to	4599
225 970 0700	to	0799	392 668 2956	to	2999	410 795 7927	to	7999	430 172 9800	to	9899

430 177 1900	to	2099	454 490 8300	to	8399	469 947 6960	to	6999	486 176 0600	to	0699
430 444 9500	to	9699	454 547 7434	to	7499	470 755 5800	to	5818	486 559 7555	to	7599
430 664 4070	to	4099	454 922 4867	to	4895	471 918 0300	to	0999	486 696 3023	to	3199
432 168 8419	to	8499	455 221 1348	to	1499	471 985 2408	to	2419	488 173 7900	to	7999
432 708 6800	to	6999	455 364 2147	to	2199	472 191 6700	to	6799	488 206 4100	to	4199
432 744 1544	to	1599	455 399 5400	to	5499	472 270 2555	to	2599	488 226 0200	to	0299
432 995 9775	to	9799	455 476 0676	to	0699	472 987 0213	to	0241	488 709 3906	to	3999
433 003 5800	to	5899	455 543 0618	to	0699	472 987 0290	to	0299	488 855 8359	to	8399
433 757 3047	to	3099	456 410 9006	to	9099	473 151 2069	to	2199	489 181 8963	to	8999
433 765 4003	to	4099	456 470 4146	to	4299	473 666 9138	to	9199	489 223 2000	to	2099
434 482 7060	to	7199	456 619 4460	to	4499	473 952 3429	to	3499	489 311 1930	to	1999
434 513 2386	to	2399	457 333 2686	to	2699	474 108 5402	to	5499	489 318 6200	to	6300
434 968 3076	to	3092	457 729 1767	to	1777	474 356 5193	to	5299	489 384 0027	to	0099
435 303 1831	to	1842	457 937 8615	to	8699	474 949 3366	to	3399	489 427 0658	to	0899
435 303 1986	to	1999	458 028 9810	to	9899	475 134 9362	to	9399	489 997 5252	to	5299
435 666 6092	to	6399	458 057 2712	to	2999	475 167 9667	to	9699	490 669 5850	to	6099
436 082 6400	to	6899	458 069 9537	to	9599	475 319 3415	to	3499	490 717 7080	to	7099
436 160 6441	to	6499	458 069 9665	to	9699	475 319 3649	to	3799	490 721 6000	to	6099
437 316 7115	to	7199	458 337 5222	to	5299	475 340 6400	to	6599	490 793 1500	to	2099
437 427 0500	to	3499	458 354 7653	to	7999	475 424 8410	to	8499	490 886 8171	to	8199
439 179 2300	to	2399	458 671 8678	to	8699	475 629 9156	to	9199	490 977 9221	to	9240
439 310 0458	to	0499	458 671 8721	to	8798	475 850 6101	to	6199	491 258 8100	to	9099
440 698 1947	to	1999	458 847 5044	to	5999	475 875 2500	to	2599	491 567 1376	to	1399
440 858 6300	to	6399	459 274 7624	to	7699	476 169 8264	to	8299	492 254 4800	to	4899
440 858 6420	to	7299	459 365 5432	to	5499	476 189 3000	to	3499	492 283 5100	to	5199
441 199 1655	to	1699	459 378 5764	to	5799	476 331 2480	to	2499	492 610 6813	to	6899
443 127 3648	to	3699	459 472 4816	to	4999	477 289 8601	to	8699	493 394 5568	to	5599
443 127 4000	to	4099	460 349 6878	to	6899	477 681 5206	to	5299	493 470 2562	to	2599
443 673 7900	to	7999	460 550 1909	to	1999	478 010 4243	to	4268	493 473 7700	to	7799
443 800 9335	to	9399	460 997 5234	to	5299	478 010 4270	to	4291	493 716 2153	to	2199
444 382 8822	to	8899	461 973 6443	to	6499	478 450 5071	to	5099	494 206 2972	to	2999
444 390 1667	to	1699	462 152 0107	to	0299	478 469 7838	to	7858	494 217 3446	to	3999
444 457 3854	to	3899	462 274 1072	to	1099	478 469 7883	to	7899	494 224 0500	to	0599
450 048 4173	to	4199	462 277 8373	to	8399	479 280 9800	to	9899	495 145 0600	to	0699
450 048 4442	to	4699	462 554 6051	to	6099	479 365 9116	to	9176	496 209 7425	to	7499
450 560 5173	to	5199	463 011 5529	to	5540	479 412 9900	to	9999	496 213 8728	to	8799
450 620 3077	to	3099	463 176 4115	to	4199	479 667 6190	to	6199	496 474 5226	to	5248
450 620 3135	to	3199	463 176 4229	to	4299	479 748 9680	to	9699	497 053 8517	to	8699
450 780 2716	to	2799	463 185 2600	to	2799	479 860 7000	to	7199	497 854 8673	to	8699
450 801 2700	to	2799	463 227 7711	to	7799	480 526 2000	to	2099	498 449 8888	to	8899
451 109 2967	to	2984	463 414 4869	to	4899	480 640 6330	to	6399	498 929 8285	to	8499
451 115 4110	to	4125	463 808 3484	to	3499	480 658 0568	to	0599	498 936 5310	to	5399
451 115 4127	to	4199	463 945 7400	to	7899	480 689 5100	to	5199	499 016 5425	to	5499
451 746 0700	to	0799	464 629 9000	to	9399	481 072 9463	to	9499	499 440 8575	to	8899
452 265 0074	to	0099	464 711 4332	to	4399	481 673 0074	to	0095	499 731 6717	to	6799
452 265 0246	to	0299	465 692 3963	to	3999	482 527 1500	to	1599	500 064 1858	to	1869
452 265 0335	to	0999	465 698 8300	to	8599	482 541 5255	to	5299	500 070 5725	to	7799
452 509 1169	to	1199	465 743 7745	to	7799	482 729 6800	to	6899	501 058 0016	to	0026
452 855 6471	to	6499	466 798 6056	to	6067	483 363 7207	to	7299	501 331 0300	to	0399
452 890 4679	to	4799	467 147 4300	to	4399	483 402 2356	to	2399	501 460 0977	to	0999
452 900 8215	to	8238	468 079 5782	to	5799	483 486 5100	to	5199	502 227 7645	to	7699
453 117 9146	to	9199	469 067 2817	to	2899	483 632 1521	to	1599	502 424 0200	to	0499
453 334 3631	to	3699	469 127 8000	to	8199	483 632 2600	to	2799	502 424 0600	to	0699
453 603 7841	to	7891	469 213 0359	to	0399	483 849 1615	to	1699	502 496 6923	to	6999
453 650 1140	to	1199	469 213 0500	to	0599	484 174 4803	to	5299	503 003 2700	to	2899
453 741 1300	to	1399	469 561 8011	to	8099	484 323 8900	to	9199	503 194 5144	to	5153
454 013 2919	to	2999	469 658 1961	to	1999	484 680 5000	to	5038	503 790 9922	to	9948
454 186 2411	to	2499	469 666 9900	to	9999	484 680 5040	to	5074	504 045 4030	to	4099
454 268 4883	to	4899	469 678 1900	to	1999	484 680 5077	to	5099	504 166 0200	to	0599
454 302 5400	to	5499	469 781 4900	to	4999	485 029 4913	to	4999	504 240 1062	to	1399

504 805 3300 to 3499	609 884 2981 to 2999	633 110 4165 to 4199	647 048 7035 to 7099
505 096 0662 to 0699	609 893 1000 to 1099	633 110 4303 to 4499	647 049 2900 to 2999
505 893 7739 to 7799	610 092 3200 to 3299	633 438 6429 to 6599	647 398 8300 to 8399
505 893 7800 to 7999	610 582 4200 to 4299	633 588 7173 to 7182	647 398 8481 to 8499
506 124 0800 to 0999	611 879 6939 to 6999	634 725 0700 to 0799	647 437 3000 to 4999
506 165 7027 to 0099	612 291 8013 to 8099	634 803 3239 to 3299	647 811 2188 to 2199
506 502 5209 to 5299	612 751 5171 to 5199	634 807 2474 to 2499	648 009 6057 to 6099
506 756 1682 to 1699	612 751 5226 to 5299	634 827 5900 to 5999	648 163 5300 to 5499
506 756 1700 to 1799	612 751 6083 to 6099	634 886 3428 to 3499	648 722 5283 to 5299
506 756 1800 to 1899	612 751 6268 to 6299	635 559 3449 to 3499	648 892 3164 to 3199
506 836 5326 to 5399	612 751 6572 to 6599	636 289 6214 to 6299	649 100 3989 to 3999
508 488 6226 to 6299	612 774 2111 to 2199	636 634 8007 to 8042	649 647 0370 to 0399
508 789 8332 to 8399	612 774 2254 to 2299	637 150 1200 to 1299	649 647 0522 to 0599
508 789 8400 to 8499	612 774 2500 to 2599	637 562 5828 to 5899	649 647 5237 to 5399
509 909 0425 to 0435	614 469 0979 to 0999	638 042 1647 to 1699	649 647 9100 to 9299
510 150 2400 to 2499	614 474 3000 to 3099	638 049 4984 to 4999	649 666 7800 to 8299
510 381 3200 to 3299	614 521 3490 to 3499	638 318 1115 to 1199	650 114 7707 to 7719
510 587 9500 to 9599	614 645 1800 to 1899	638 318 1453 to 1499	650 130 3400 to 3599
510 587 9659 to 9699	614 832 1100 to 2099	638 885 0000 to 0299	650 213 0406 to 0499
510 269 9770 to 9999	615 017 7505 to 7599	638 903 4362 to 4373	650 555 1749 to 1799
511 021 5042 to 5099	617 711 6609 to 6699	639 415 1929 to 1999	650 564 1900 to 1999
511 021 5100 to 5199	617 760 5266 to 5299	639 415 2019 to 2099	650 627 4212 to 4299
511 468 1747 to 1799	617 813 3601 to 3699	639 420 6200 to 6299	650 736 2043 to 2099
511 844 0100 to 0199	618 840 9200 to 9299	639 469 3517 to 3799	650 739 1540 to 1699
511 844 0340 to 0399	619 551 7229 to 7299	639 605 2143 to 2199	651 741 4415 to 4499
600 645 3223 to 3299	619 859 3000 to 3099	639 657 8600 to 8799	651 882 2800 to 2899
601 339 1200 to 1399	620 073 9400 to 9499	640 289 7500 to 7599	652 754 6317 to 6399
601 653 5884 to 5899	621 614 7907 to 7930	640 289 7700 to 7999	653 131 4945 to 4999
601 661 7700 to 7799	621 614 7932 to 7999	641 170 4420 to 4499	653 426 3300 to 3399
601 682 5343 to 5399	621 648 8021 to 8199	641 318 3133 to 3199	653 455 4874 to 4899
601 928 1600 to 1699	621 648 8500 to 8599	641 378 6500 to 6999	654 238 0000 to 0399
602 512 2972 to 2999	621 904 8351 to 8599	641 383 8739 to 8799	654 404 3065 to 3092
602 555 2400 to 2799	621 916 1978 to 1989	641 877 3187 to 3299	654 962 2900 to 3199
602 829 7061 to 7099	622 989 8032 to 8099	641 877 3310 to 3399	655 103 5081 to 5199
603 483 9572 to 9599	623 076 9300 to 9399	642 355 8094 to 8199	655 523 2600 to 2999
603 490 7200 to 7299	623 819 5006 to 5099	642 355 8308 to 8999	656 305 2448 to 2499
603 678 7100 to 7199	623 895 8200 to 8399	642 900 0018 to 0099	657 347 4438 to 4999
603 678 7662 to 7699	623 917 0000 to 0099	643 030 6254 to 6299	657 710 8100 to 8999
603 678 7902 to 7999	623 917 0200 to 0299	644 066 0882 to 0899	657 780 0985 to 0999
603 678 8418 to 8499	624 468 5288 to 5299	644 069 0600 to 0699	658 586 1400 to 1499
603 678 8700 to 9999	624 665 3162 to 3198	644 077 7506 to 7699	658 877 8000 to 8199
604 086 0880 to 0899	625 088 6735 to 6799	644 085 8157 to 8199	658 880 8000 to 8199
604 349 1414 to 1499	625 916 9500 to 9799	644 112 9839 to 9899	659 398 7300 to 7399
604 503 7776 to 7799	625 968 8956 to 8999	644 373 9083 to 9099	659 706 8113 to 8199
605 520 9037 to 9099	627 005 3938 to 3999	644 380 1460 to 1499	659 846 7837 to 7899
605 685 4010 to 4099	627 384 3907 to 4099	644 733 4715 to 4799	660 510 4100 to 4199
605 988 6467 to 6499	627 496 7549 to 7599	644 900 9712 to 9799	660 673 0400 to 0599
607 689 7951 to 7960	627 708 3605 to 3699	644 901 0109 to 1299	661 488 5000 to 5099
607 728 1276 to 1299	627 776 2500 to 2599	644 901 1325 to 1399	661 609 9100 to 9199
608 727 7100 to 7199	628 226 3100 to 3199	644 923 6800 to 7799	661 716 9420 to 9499
608 727 7273 to 7599	628 814 4702 to 4799	644 932 4655 to 4699	661 906 6522 to 6599
608 813 9950 to 9999	628 851 9689 to 9699	645 318 7240 to 7499	662 021 8332 to 8399
609 067 5325 to 5399	629 510 7200 to 7299	645 333 1766 to 1799	662 068 0700 to 0899
609 067 5488 to 5499	629 964 4200 to 4294	645 790 8632 to 8699	662 553 0774 to 0799
609 067 5600 to 5699	630 389 3056 to 3071	645 821 0657 to 0699	663 078 7034 to 7099
609 289 6123 to 6199	630 463 0588 to 0599	645 930 7948 to 7999	663 763 5300 to 5399
609 438 4400 to 4499	631 459 9117 to 9199	645 975 0737 to 0762	663 883 7039 to 7499
609 493 1100 to 1199	631 762 9325 to 9399	646 242 6200 to 6299	663 938 9200 to 9299
609 766 8091 to 8999	632 217 4933 to 4999	646 270 7639 to 7799	664 253 8000 to 8499
609 825 4100 to 4115	632 500 0000 to 640 3999	646 798 4000 to 4999	664 656 3055 to 3099

665 174 6400	to	6499	690 291 1361	to	1371	702 713 1800	to	1809	807 342 3283	to	3399
665 274 8208	to	8299	690 788 2877	to	2899	702 821 5730	to	5799	808 086 7100	to	7199
665 669 5400	to	5499	690 893 5344	to	5399	702 821 5805	to	5899	808 090 3440	to	3499
666 132 8226	to	8299	690 893 5512	to	5599	702 844 6975	to	6994	808 325 5161	to	5699
666 696 2209	to	2299	690 904 1300	to	1599	702 846 6331	to	6399	808 784 8000	to	8299
666 696 2309	to	2399	690 941 6000	to	6199	702 848 3900	to	3999	830 125 0672	to	0699
667 032 9300	to	9399	691 313 6383	to	6399	702 857 7302	to	7499	830 602 5800	to	5999
667 729 5529	to	5599	691 313 6600	to	6699	702 878 0114	to	0199	830 610 3700	to	3799
668 383 8400	to	8699	691 582 8003	to	8099	703 364 1707	to	1799	830 983 3500	to	3599
670 368 3400	to	3499	691 664 1800	to	1999	740 002 7710	to	7719	830 983 3635	to	3699
670 369 7336	to	7399	691 664 2400	to	2499	740 037 6730	to	6800	831 354 1387	to	1399
670 750 7169	to	7199	692 727 9362	to	9399	740 119 2275	to	2284	831 815 8240	to	8299
671 046 6200	to	6399	692 798 1800	to	1899	740 130 6688	to	6698	832 525 3810	to	3899
671 251 5448	to	5499	693 249 0779	to	0799	740 144 2780	to	2795	833 159 1884	to	1899
671 926 5600	to	5799	693 249 0877	to	1699	740 241 9049	to	9099	833 456 2567	to	2599
672 444 2000	to	2999	693 445 0566	to	0999	740 252 9265	to	9294	833 566 3015	to	3071
672 828 3410	to	3499	693 448 8500	to	8999	740 255 1718	to	1799	834 130 5200	to	5299
673 167 5776	to	5799	693 645 9583	to	9599	740 274 2602	to	2619	834 316 5444	to	5499
675 464 3700	to	3799	693 965 4200	to	4299	740 277 0366	to	0392	834 354 8747	to	8766
675 464 4000	to	4199	695 741 2906	to	2999	740 332 7658	to	7671	834 354 8824	to	8838
676 365 5958	to	5999	695 947 8518	to	8599	740 348 6641	to	6658	835 269 5700	to	5799
676 669 1024	to	1099	696 662 8247	to	8299	740 351 4790	to	4799	835 496 7303	to	7399
677 126 6734	to	6799	697 447 8285	to	8296	740 374 7416	to	7499	835 539 5200	to	5999
677 333 9979	to	9999	698 042 4816	to	4899	740 470 2420	to	2443	835 813 3015	to	3099
677 466 1088	to	1099	698 131 2138	to	2157	740 514 0300	to	0499	837 672 8967	to	8999
678 071 4500	to	4799	698 227 0000	to	0099	740 523 7432	to	7449	837 784 3282	to	3299
678 096 7531	to	7599	700 065 2570	to	2599	740 535 1555	to	1580	838 176 8377	to	8399
679 909 2578	to	2599	700 065 4800	to	4899	740 557 3570	to	3579	838 518 1257	to	1299
680 112 9565	to	9599	700 190 3350	to	3359	740 650 4104	to	4140	839 718 8257	to	8299
680 244 0903	to	0999	700 228 6048	to	6099	740 684 0620	to	0800	840 323 0600	to	0699
680 412 6046	to	6099	700 650 0452	to	0499	740 701 6105	to	6114	840 875 6235	to	6299
680 761 6800	to	6899	700 666 1323	to	1349	740 705 9790	to	9799	840 910 0900	to	0999
681 677 0540	to	0699	700 786 9106	to	9142	740 726 6400	to	6500	841 349 5000	to	5099
682 070 1029	to	1099	700 859 0744	to	0758	740 748 8319	to	8329	841 805 7747	to	7899
682 956 6280	to	6299	701 028 6780	to	6899	740 765 3306	to	3399	841 805 7944	to	8099
682 956 6490	to	6599	701 213 3900	to	3999	740 774 8434	to	8499	842 226 0685	to	0695
682 956 6700	to	6799	701 267 2000	to	3999	740 779 4259	to	4299	842 685 4600	to	4699
682 965 1178	to	1199	701 335 7312	to	7399	740 786 1885	to	1899	842 685 4742	to	4999
682 965 1201	to	1299	701 369 2005	to	2050	740 790 5989	to	5999	842 860 0300	to	0399
683 118 2389	to	2399	701 499 2260	to	2299	740 803 4870	to	4879	842 898 5582	to	5599
683 378 2000	to	2099	701 503 2247	to	2299	740 820 4854	to	7836	843 062 7100	to	7199
683 378 2117	to	2299	701 541 2271	to	2299	740 827 7578	to	7594	843 077 6288	to	6299
683 415 1200	to	1499	701 553 6557	to	6599	740 917 7490	to	7499	843 077 6378	to	6399
683 444 8159	to	8199	701 578 7460	to	7469	740 918 5531	to	5549	843 758 5769	to	5778
685 154 7780	to	7789	701 578 7475	to	7499	741 037 8528	to	8551	843 786 2554	to	2699
685 297 7645	to	7699	701 601 3457	to	3499	742 030 6135	to	6149	845 656 8165	to	8199
685 623 5264	to	5299	701 605 5913	to	5999	742 033 2663	to	2674	845 727 2100	to	2199
685 650 9487	to	9499	701 695 3982	to	3999	742 040 3300	to	3309	845 746 2618	to	2635
685 669 4200	to	4299	701 695 4148	to	4199	742 151 5000	to	5014	846 390 7531	to	7599
685 757 8452	to	8499	701 695 4227	to	4299	742 191 4640	to	4649	846 918 0572	to	0599
686 071 2694	to	2799	701 708 1741	to	1799	742 192 5210	to	5224	847 237 7690	to	7699
686 176 3333	to	3354	701 736 3966	to	3999	742 222 9200	to	9210	847 284 2481	to	2499
686 372 3200	to	3299	701 772 0870	to	0899	742 228 9660	to	9669	847 374 7055	to	7065
686 644 5879	to	5899	701 838 2800	to	2899	742 247 6980	to	6989	847 374 7055	to	7065
686 899 1371	to	1399	701 941 0600	to	0699	742 290 0936	to	0950	847 636 5304	to	5399
686 931 7636	to	7699	702 171 1603	to	1699	742 302 7600	to	7699	847 700 5447	to	5499
687 601 0973	to	0999	702 195 5109	to	5199	805 885 8411	to	8499	847 723 7500	to	7599
687 614 6774	to	6799	702 254 9300	to	9399	806 087 1100	to	1499	849 485 3427	to	3499
688 120 9000	to	9999	702 264 7569	to	7599	806 268 9275	to	9299	849 520 9850	to	9899
688 314 3107	to	3191	702 519 0513	to	0524	806 534 3400	to	3477	849 608 1357	to	1399

849 792 2600	to	2699	869 387 1150	to	1199	909 725 7307	to	7399	920 864 3480	to	3499
850 546 1862	to	1899	869 505 3500	to	3599	909 833 0947	to	0999	920 963 4567	to	4599
851 143 6826	to	6844	869 523 7033	to	7099	910 219 8631	to	8699	921 333 7400	to	7499
851 209 9880	to	9899	869 566 6150	to	6167	910 265 1100	to	1199	921 477 3762	to	3799
851 928 9221	to	9299	869 800 0000	to	999 9999	910 471 7273	to	7299	922 278 1048	to	1399
852 589 6560	to	6599	870 054 4814	to	4899	910 536 2505	to	2599	922 280 2019	to	2099
853 049 3646	to	3699	870 491 4812	to	4849	910 958 7499	to	7599	922 280 2233	to	2299
854 304 4089	to	4999	870 536 5820	to	5829	911 140 1000	to	2199	922 773 0459	to	0499
854 529 2200	to	2299	870 541 7167	to	7239	911 245 2545	to	2599	923 032 7000	to	7399
854 532 0000	to	2999	870 575 8155	to	8999	911 268 9077	to	9099	923 045 3630	to	3699
855 001 6204	to	6249	870 589 0485	to	0494	911 400 8948	to	8999	923 484 3600	to	3699
855 319 9364	to	9399	870 691 7060	to	7099	911 508 1620	to	1799	923 493 9403	to	9599
855 361 3390	to	3399	872 028 4850	to	4899	911 509 9310	to	9399	923 493 9681	to	9699
856 226 0490	to	0499	872 029 9306	to	9399	911 523 3000	to	3999	923 604 4424	to	4499
856 656 5800	to	5999	872 078 3709	to	3799	912 057 9922	to	9999	923 810 7800	to	8299
856 752 0200	to	0299	872 100 0445	to	0459	912 882 0563	to	0899	924 252 1200	to	1299
857 111 1352	to	1399	900 556 4178	to	4199	913 605 2218	to	2299	924 252 1400	to	1499
857 279 3450	to	3499	900 845 0044	to	0099	913 709 2429	to	2499	924 533 0711	to	0799
857 843 4000	to	4099	900 936 0217	to	0299	913 818 3501	to	3999	924 533 2343	to	2399
858 124 7644	to	7699	900 936 0435	to	0499	914 063 4300	to	4399	924 533 2428	to	2499
858 756 3111	to	3299	901 058 5255	to	5280	914 346 7621	to	7644	924 685 1957	to	1999
859 063 8200	to	8699	901 273 1082	to	1099	914 453 1366	to	1399	924 946 6300	to	6699
859 190 0600	to	0644	901 287 5143	to	5199	914 529 6185	to	6299	925 333 5900	to	6099
859 437 5538	to	5599	901 291 2789	to	2799	914 896 4658	to	4699	925 336 2300	to	2399
859 811 2888	to	2899	901 525 7122	to	7199	915 187 8774	to	8779	926 432 5907	to	5999
859 855 8873	to	8999	902 089 1253	to	1299	915 300 2783	to	2799	926 436 3600	to	3699
860 240 8520	to	8599	902 198 9769	to	9799	915 546 6822	to	6999	927 765 6257	to	6299
860 275 3900	to	3999	902 948 1269	to	1299	915 646 5183	to	5199	928 197 8100	to	8199
860 518 9629	to	9699	902 985 0833	to	0899	915 671 3963	to	3980	928 197 8283	to	8299
860 600 0021	to	0999	903 370 6934	to	6999	915 671 3982	to	3999	928 856 2059	to	2068
861 158 2350	to	2599	904 600 6523	to	6599	915 675 2217	to	2299	930 078 5800	to	5899
861 367 5400	to	5499	904 892 0378	to	0399	916 440 3377	to	3399	930 219 1722	to	1799
861 637 6010	to	6099	904 892 0648	to	1299	916 670 6352	to	6399	930 335 7810	to	7819
861 979 7292	to	7499	905 056 2216	to	2299	916 682 5300	to	5399	931 097 9259	to	9299
862 216 6100	to	6199	905 510 6647	to	6799	916 694 1414	to	1499	931 156 1502	to	1579
862 263 9213	to	9299	905 510 6900	to	7099	916 703 0802	to	0821	931 156 1600	to	1625
862 271 0800	to	0999	905 794 0000	to	0199	917 089 0709	to	0799	931 156 1671	to	1699
862 271 5000	to	5099	905 794 0288	to	0299	917 089 0842	to	0899	932 506 6400	to	6599
863 871 5138	to	5199	905 873 6900	to	6999	917 216 2928	to	2999	932 732 1796	to	1799
863 949 5300	to	5399	905 873 7100	to	7299	917 370 6300	to	6499	932 827 9026	to	9099
864 088 8200	to	8299	905 880 8900	to	8999	917 486 4900	to	4999	932 957 2300	to	2399
864 426 3972	to	3999	905 889 7100	to	7199	918 460 0602	to	0699	933 060 6160	to	6189
864 520 6117	to	6136	906 158 1508	to	1599	918 951 7231	to	7299	933 387 2541	to	2561
865 151 0526	to	0599	906 558 8812	to	8899	919 519 2786	to	2799	933 760 3609	to	4199
865 500 4034	to	4099	906 982 2214	to	2299	919 536 0770	to	0799	933 894 0928	to	0999
865 883 6082	to	6099	907 725 8500	to	8599	919 814 3095	to	3199	934 018 2729	to	2741
866 004 3000	to	3999	907 815 0216	to	0257	919 889 5110	to	5134	934 180 0300	to	0399
866 442 4100	to	4899	908 622 4225	to	4235	919 889 5137	to	5176	934 236 3954	to	3999
867 366 9108	to	9118	908 936 9254	to	9299	919 889 5178	to	5199	934 622 8717	to	8999
867 633 7403	to	7499	909 066 4494	to	7499	919 889 5030	to	5070	935 216 0312	to	0399
867 737 5623	to	5699	909 067 7400	to	7499	919 889 5090	to	5099	935 843 2202	to	2247
868 169 4529	to	4599	909 100 1787	to	1799	919 915 2774	to	2787	936 024 8889	to	8899
868 173 8400	to	8599	909 100 1900	to	2099	920 155 4662	to	4687	936 339 4455	to	4499
868 514 9000	to	9099	909 355 0422	to	0499	920 309 9039	to	9199			
868 566 9200	to	9299	909 568 8900	to	9099	920 771 5321	to	5399			
869 200 0000	to	9999	909 568 9300	to	9499	920 857 5500	to	5899			

Missing, Lost, or Stolen Canadian Money Order Forms

Do Not Cash — Upon Receipt, Notify Local Postal Inspectors

This listing will be provided to all Postal Service™ employees responsible for accepting and cashing postal money orders. Destroy all interim notices when the numbers listed appear in the *Postal Bulletin*. The new money

order serial numbers consist of the first 9 digits. The 10th digit is a check digit only.

Do not cash outdated money orders **104 151 601 to 692 600 000**. Advise holders to send invalid money orders To Canada Post Corporation, Ottawa, Canada K1A 0B1. Check for altered dollar amounts by holding money orders to the light.

719 869 731	to	9 760	726 493 351	to	5 300	732 018 481	to	8 600	737 185 501	to	5 710
720 227 871	to	7 930	726 504 031	to	4 063	732 067 972	to	8 370	737 317 321	to	7 350
720 227 949	to	7 960	726 504 070	to	4 090	732 188 649	to	8 670	737 517 781	to	7 840
720 368 543	to	8 570	726 504 331	to	4 390	732 193 460	to	3 470	737 628 181	to	8 210
720 392 151	to	2 570	726 563 701	to	4 060	732 201 241	to	1 390	737 634 258	to	4 270
720 556 491	to	6 640	726 599 371	to	9 460	732 220 431	to	0 440	738 361 971	to	1 980
720 558 621	to	8 650	726 626 356	to	6 370	732 355 201	to	5 380	738 447 601	to	7 660
720 575 361	to	5 570	727 182 271	to	2 510	732 472 320	to	2 560	738 648 355	to	8 450
720 590 152	to	0 179	727 416 181	to	6 240	732 541 605	to	1 620	738 849 811	to	9 900
721 638 331	to	9 170	727 481 431	to	1 460	732 572 221	to	2 490	738 892 270	to	2 290
721 815 391	to	5 420	727 749 241	to	9 780	732 586 479	to	6 710	738 997 259	to	7 380
721 969 713	to	9 740	728 382 331	to	2 480	732 994 037	to	4 080	739 161 451	to	1 540
722 072 137	to	2 160	728 702 338	to	2 400	733 163 449	to	3 460	739 219 381	to	9 440
722 378 265	to	8 280	728 915 371	to	5 850	733 297 171	to	7 290	739 740 151	to	0 180
722 413 990	to	4 004	728 953 141	to	3 410	733 446 631	to	7 110	739 793 491	to	3 520
722 764 948	to	4 980	728 954 280	to	4 310	733 474 665	to	4 770	739 793 527	to	3 550
722 825 840	to	5 889	729 169 081	to	9 140	733 704 482	to	4 570	739 942 621	to	2 650
723 153 841	to	3 850	729 363 841	to	3 870	733 751 041	to	1 130	739 999 231	to	9 320
723 237 616	to	7 630	729 682 891	to	3 190	734 009 101	to	9 130	740 011 517	to	1 530
723 331 081	to	1 110	729 838 940	to	9 070	734 290 759	to	0 770	740 030 701	to	0 970
723 496 443	to	6 470	729 839 101	to	9 130	734 389 273	to	9 290	740 261 740	to	1 820
723 967 291	to	7 320	730 077 683	to	7 840	734 440 031	to	0 111	740 265 811	to	6 290
724 655 196	to	5 340	730 109 847	to	9 880	734 797 201	to	7 320	740 299 111	to	9 170
724 711 441	to	1 500	730 373 761	to	3 850	734 939 611	to	9 640	740 299 231	to	9 260
724 711 538	to	1 560	730 501 951	to	2 130	734 950 111	to	0 170	740 329 266	to	9 320
724 793 221	to	3 250	730 519 379	to	9 470	735 120 331	to	0 840	740 889 081	to	9 090
724 908 109	to	8 120	730 569 278	to	9 360	735 283 008	to	3 020	741 010 421	to	0 530
724 937 461	to	7 670	730 711 711	to	1 740	735 293 131	to	3 220	741 113 041	to	3 370
725 163 118	to	3 151	730 722 991	to	3 230	735 635 010	to	5 040	741 373 891	to	4 340
725 202 735	to	2 750	730 845 970	to	5 990	735 783 961	to	3 990	741 452 369	to	2 490
725 398 591	to	8 800	730 888 291	to	8 320	735 803 401	to	3 430	741 492 991	to	3 140
725 464 591	to	4 920	730 927 591	to	7 680	736 005 420	to	5 440	741 553 460	to	3 470
725 475 321	to	5 330	731 307 914	to	7 930	736 366 021	to	6 110	741 764 431	to	4 520
725 711 057	to	1 070	731 402 431	to	2 460	736 624 456	to	4 500	742 178 834	to	8 880
725 738 581	to	8 730	731 407 232	to	7 320	736 670 851	to	1 060	742 325 500	to	5 520
725 981 311	to	1 430	731 588 301	to	8 340	736 767 061	to	7 090	742 325 668	to	5 700
725 987 835	to	7 880	731 767 273	to	7 320	736 767 093	to	7 120	742 408 771	to	8 830
726 060 811	to	0 900	731 781 061	to	1 120	736 982 191	to	2 370	742 512 120	to	2 150
726 391 970	to	2 520	731 837 821	to	7 910	736 982 551	to	2 730	742 684 849	to	4 890
726 484 771	to	4 800	731 841 377	to	1 450	737 110 141	to	0 170	742 839 553	to	9 630

742 913 668	to	3 700	753 008 941	to	9 030	761 169 781	to	9 810	767 024 341	to	4 370
742 917 287	to	7 296	753 194 311	to	4 370	761 504 941	to	5 120	767 326 471	to	6 590
742 921 891	to	1 980	753 620 378	to	0 400	761 516 836	to	6 910	767 332 561	to	2 950
742 983 631	to	3 810	754 013 917	to	3 940	761 613 588	to	3 600	768 009 841	to	9 960
743 020 021	to	0 170	754 161 061	to	1 120	761 688 631	to	8 690	768 011 489	to	1 520
743 206 491	to	6 500	754 358 445	to	8 610	761 805 199	to	5 240	768 177 980	to	7 990
743 235 992	to	6 050	754 410 451	to	0 660	761 826 106	to	6 120	768 391 081	to	1 170
743 940 631	to	0 900	754 438 393	to	8 410	761 881 171	to	1 560	768 661 569	to	1 650
743 978 011	to	8 070	754 493 109	to	3 130	761 975 641	to	5 670	769 000 051	to	0 080
744 234 751	to	4 780	754 664 182	to	4 220	761 975 886	to	5 895	769 050 841	to	0 900
744 499 591	to	9 680	754 816 377	to	6 470	762 304 144	to	4 170	769 159 081	to	9 178
744 626 901	to	6 910	755 487 421	to	7 600	762 324 931	to	4 960	769 737 496	to	7 510
745 388 794	to	8 910	755 592 901	to	3 140	762 439 261	to	9 290	769 778 491	to	8 730
746 446 806	to	6 820	755 790 020	to	0 030	762 524 158	to	4 220	769 827 331	to	7 450
746 818 351	to	8 410	755 791 730	to	1 800	762 584 872	to	4 970	770 216 071	to	6 100
747 245 266	to	5 280	755 926 951	to	7 070	762 593 431	to	3 460	770 723 281	to	3 400
747 364 813	to	4 830	755 934 332	to	4 510	763 155 160	to	5 180	770 790 451	to	0 480
747 501 434	to	1 450	755 957 701	to	8 000	763 178 631	to	8 660	770 915 150	to	5 490
747 739 891	to	0 070	755 962 981	to	3 280	763 506 001	to	6 060	771 455 551	to	5 610
748 148 649	to	8 760	756 035 371	to	5 490	763 522 141	to	2 470	771 609 661	to	9 690
748 259 960	to	9 970	756 301 257	to	1 290	763 717 694	to	7 800	771 932 551	to	2 580
748 565 162	to	5 280	756 371 565	to	1 580	763 826 461	to	6 520	772 057 224	to	7 440
748 874 988	to	5 030	756 876 031	to	6 120	763 900 460	to	0 471	772 162 660	to	3 070
749 137 381	to	7 410	756 876 151	to	6 240	763 900 479	to	0 530	772 718 615	to	8 640
749 190 192	to	0 210	756 970 129	to	0 140	763 917 271	to	7 750	772 940 140	to	0 160
749 685 421	to	5 450	757 059 613	to	9 630	764 125 801	to	5 860	772 970 886	to	0 940
749 846 791	to	6 850	757 078 540	to	8 560	764 284 525	to	4 560	773 009 419	to	9 430
749 993 131	to	3 580	757 086 209	to	6 240	764 526 241	to	6 330	773 112 031	to	2 060
750 071 587	to	1 610	757 240 591	to	0 650	764 601 421	to	1 600	773 125 387	to	5 410
750 408 167	to	8 183	757 277 371	to	7 700	764 650 231	to	0 470	773 179 320	to	9 410
750 438 421	to	8 501	757 291 591	to	2 730	764 984 371	to	4 850	773 202 989	to	3 140
750 743 911	to	4 030	757 964 251	to	4 280	765 003 667	to	3 680	773 208 991	to	9 290
750 779 118	to	9 400	758 067 001	to	7 090	765 042 517	to	2 540	773 231 311	to	1 340
750 910 981	to	1 010	758 105 221	to	5 250	765 194 728	to	4 970	773 348 739	to	8 940
750 960 841	to	0 900	758 324 941	to	5 000	765 387 365	to	7 450	773 348 739	to	8 940
751 296 211	to	6 240	758 593 628	to	3 650	765 541 801	to	2 100	773 575 891	to	5 950
751 539 121	to	9 180	758 709 038	to	9 060	765 638 461	to	8 970	773 852 971	to	3 030
751 541 311	to	1 790	758 744 101	to	4 160	765 647 101	to	7 190	775 373 449	to	3 460
751 757 641	to	7 700	758 850 883	to	0 900	765 813 781	to	4 029	789 257 191	to	7 250
751 936 951	to	7 010	758 860 951	to	1 550	765 879 314	to	9 390	790 448 020	to	8 460
751 951 861	to	1 890	759 152 851	to	2 880	765 954 001	to	4 030	790 597 485	to	7 530
751 999 021	to	9 110	759 740 941	to	1 090	766 120 286	to	0 320	790 911 883	to	1 900
752 139 516	to	9 570	760 004 596	to	4 610	766 125 716	to	5 750	791 057 441	to	7 550
752 182 892	to	2 950	760 118 191	to	8 250	766 158 824	to	8 840	791 239 081	to	9 290
752 206 861	to	7 100	760 155 001	to	5 090	766 388 433	to	8 460	791 374 483	to	4 500
752 295 241	to	5 600	760 378 002	to	8 020	766 509 421	to	9 660	791 387 971	to	8 030
752 731 351	to	1 410	760 692 722	to	2 749	766 572 901	to	3 020	791 447 521	to	7 850
752 767 441	to	7 470	761 055 460	to	5 480	766 748 500	to	8 521	791 451 151	to	1 240

791 500 009	to	0 470	799 133 191	to	3 220	812 918 701	to	8 760	822 900 991	to	1 020
791 771 431	to	1 490	799 177 626	to	7 650	813 050 491	to	0 520	822 925 951	to	6 100
792 004 293	to	4 320	799 854 751	to	5 200	813 073 171	to	3 200	823 284 931	to	4 990
792 018 379	to	8 420	800 044 320	to	4 410	813 398 476	to	8 550	823 293 031	to	3 210
792 070 621	to	0 740	800 211 901	to	2 440	813 713 971	to	4 000	823 556 011	to	6 100
792 145 211	to	5 230	800 427 530	to	7 540	813 858 121	to	8 150	824 078 341	to	8 370
792 391 381	to	1 620	800 872 741	to	2 830	814 789 330	to	9 349	824 156 325	to	6 340
792 452 779	to	2 790	801 349 801	to	9 830	814 984 656	to	4 680	824 511 252	to	1 270
792 772 728	to	2 770	801 676 681	to	7 100	815 016 020	to	6 030	824 588 281	to	8 370
792 903 511	to	3 990	802 967 821	to	7 940	815 199 410	to	9 420	825 140 397	to	0 460
793 282 518	to	2 533	803 217 601	to	7 780	815 240 491	to	0 520	825 409 651	to	9 680
794 041 831	to	2 040	803 729 731	to	9 850	815 755 591	to	5 620	825 472 171	to	2 200
794 397 709	to	7 780	803 747 402	to	7 520	815 755 622	to	5 650	826 042 898	to	2 920
794 581 741	to	2 040	804 138 181	to	8 420	815 806 381	to	6 680	826 226 644	to	6 670
794 592 122	to	2 150	804 428 224	to	8 250	816 126 834	to	6 870	826 582 951	to	3 430
795 032 251	to	2 340	804 682 411	to	2 710	816 156 721	to	6 780	826 720 201	to	0 230
795 796 291	to	6 350	805 272 525	to	2 540	816 580 903	to	0 920	827 005 671	to	5 830
796 070 139	to	0 160	805 523 445	to	3 460	816 945 571	to	5 600	827 287 861	to	7 950
796 143 151	to	3 630	805 745 704	to	5 730	817 253 011	to	3 280	827 291 502	to	1 520
796 159 725	to	9 740	806 452 907	to	2 980	817 763 881	to	4 060	827 575 381	to	5 470
796 169 306	to	9 340	806 744 781	to	4 850	818 330 562	to	0 610	827 609 085	to	9 100
796 373 406	to	3 430	806 982 181	to	2 300	818 459 641	to	9 670	827 619 811	to	9 840
796 602 961	to	3 050	807 764 791	to	4 910	818 926 273	to	6 320	827 883 511	to	3 600
796 708 441	to	8 500	808 089 931	to	9 960	818 950 351	to	0 380	828 160 441	to	0 530
796 886 281	to	6 430	808 656 423	to	6 450	818 962 492	to	2 530	828 376 201	to	6 260
796 901 701	to	2 000	808 753 771	to	3 800	819 032 341	to	2 730	828 441 602	to	1 630
796 975 466	to	5 590	809 189 001	to	9 010	819 127 054	to	7 080	828 539 316	to	9 340
797 272 917	to	2 950	809 886 879	to	6 930	819 278 540	to	8 670	828 539 341	to	9 370
797 519 441	to	9 460	809 890 489	to	0 500	819 544 681	to	4 740	828 732 331	to	2 390
797 519 731	to	0 240	810 323 734	to	3 760	819 928 441	to	8 650	828 807 781	to	7 840
797 535 181	to	5 330	810 367 116	to	7 140	820 034 406	to	4 430	828 830 952	to	0 963
797 646 151	to	6 180	810 526 351	to	6 500	820 070 761	to	1 540	828 939 781	to	0 050
798 040 053	to	0 080	810 806 911	to	6 940	820 191 342	to	1 360	829 002 721	to	2 870
798 055 813	to	5 830	810 807 211	to	7 240	820 274 856	to	4 880	829 005 301	to	5 540
798 055 891	to	5 950	811 423 021	to	3 110	820 600 171	to	0 230	829 080 241	to	0 330
798 326 371	to	6 520	811 517 221	to	7 239	821 172 241	to	2 360	829 160 986	to	1 000
798 339 167	to	9 210	811 721 101	to	1 130	821 229 661	to	9 720	829 176 841	to	6 930
798 562 411	to	2 440	812 025 721	to	5 900	821 229 743	to	9 780	829 471 561	to	1 590
798 632 461	to	2 490	812 093 073	to	3 130	821 903 731	to	3 910	829 561 065	to	1 080
798 807 151	to	7 510	812 100 821	to	0 840	821 927 841	to	7 850	829 566 481	to	6 510
798 944 761	to	5 030	812 465 251	to	5 610	822 505 801	to	5 830	829 569 931	to	9 960
799 118 616	to	8 640	812 918 341	to	8 670	822 703 442	to	3 470			

Verifying U.S. Postal Service Money Orders

Follow these steps to cash a Postal Service™ money order:

1. Check that the amount does not exceed the legal limit: \$1,000 for domestic, and \$700 for international postal money orders.
2. Check that the proper security features are present:
 - When held to the light, a watermark of Benjamin Franklin is repeated from top to bottom on the left side.
 - When held to the light, a dark line (security thread) runs from top to bottom with the word “USPS” repeated.
 - There should be no discoloration around the dollar amounts, which might indicate the amounts were changes.

These appear in Postal Service Notice 299, *U.S. Postal Money Order Reference Card*, or online at <https://www.usps.com/shop/money-orders.htm>.

3. If the money order seems suspicious, call the U.S. Postal Service Money Order Verification System at 866-459-7822.

Please provide this information to local banks and retailers, as they also receive Postal Service money orders for cashing.

— *Retail and Customer Service Operations, 11-24-16*

Counterfeit Canadian Money Order Forms

Do Not Cash

To be posted and used by retail window employees. As directed, destroy previous notices. Destroy all interim notices when the numbers listed appear in the Postal Bulletin.

671,819,086	683,594,542	687,262,503
676,612,640	684,683,610	687,262,525
677,891,039	686,619,878	687,262,526
678,282,493	686,619,886	687,287,578
678,916,031	686,619,887	687,287,581
679,552,215	686,794,382	687,287,582
679,694,334	686,794,426	694,063,898
679,751,983	686,794,427	694,063,899
679,800,207	686,794,431	694,063,980
681,130,536	687,262,502	701,321,725
681,844,376		

— *Criminal Investigations Group,
Postal Inspection Service, 11-24-16*

Toll-Free Number Available to Verify Canadian Money Orders

The Canada Post Corporation is now providing a toll-free number that cashing agents can call to verify the validity of Canadian Postal Money Orders. The number is 800-563-0444.

This toll-free number is printed on the back of the Canadian Postal Money Orders.

— *Criminal Investigations Group,
Postal Inspection Service, 11-24-16*

Other Information

Overseas Military/Diplomatic Mail

Mail addressed to military and diplomatic post offices overseas is subject to certain conditions or restrictions of mailing regarding content, preparation, and handling. The APO/FPO/DPO table below outlines these conditions by APO/FPO/DPO ZIP Codes™ through the use of footnoted mailing restrictions codes (see the [Restrictions](#) page following the table).

Acceptance clerks should use the table with the POS ONE terminal to determine which APO/FPO/DPO ZIP Codes are active and which conditions of mailing apply. Inquiries may be sent to the Military Postal Service Agency at <https://amps.usps.gov/ijy2/frm.htm>.

The entries under “Changes” appear in bold in the APO/FPO/DPO table starting below.

Changes

APO/FPO/DPO	Action	Effective Date	See Restrictions
DPO AE 09001	Open	11/24/2016	B-C-D-E3-F-F1-F3-H-H1-I3-J-L-M-R-R1-S-T-V-X-Z-Z1
DPO AE 09160	Add F3, R1	11/24/2016	B-C-D-F-F1-F3-H-J-L-M-N-R-R1-T-U-V-Z1
DPO AE 09203	Add F	11/24/2016	A-B-C-C1-F-F1-F3-I3-J-L-M-N-R-R1-T-V-X-Z-Z1
DPO AE 09213	Add F3, R1	11/24/2016	B-C-D-F-F1-F3-H-J-L-M-N-R-R1-T-U-V-Z1
DPO AE 09301	Add F3	11/24/2016	A-B-C1-E2-F-F1-F3-H1-I3-J-L-M-N-R-R1-T-U4-V-Z-Z1
DPO AE 09310	Add F3	11/24/2016	A-B-C1-E2-F-F1-F3-H1-I3-J-L-M-N-R-R1-T-U4-V-Z-Z1
DPO AE 09311	Add F3	11/24/2016	A-B-C1-E2-F-F1-F3-H1-I3-J-L-M-N-R-R1-T-U4-V-Z-Z1
DPO AE 09312	Add F3	11/24/2016	A-B-C1-E2-F-F1-F3-H1-I3-J-L-M-N-R-R1-T-U4-V-Z-Z1
APO AE 09351	Open	11/24/2016	A-B-C1-E2-E3-F-F1-F3-H-H1-I3-M-N-R-R1-S-T-V-X-Z-Z1
DPO AE 09498	Add F3; Remove F2	11/24/2016	B-C-C1-F-F1-F3-J-L-N-R-R1-T-V-Z1
DPO AE 09601	Add F1	11/24/2016	B-B2-E1-F-F1-F3-I3-J-L-N-R-R1-S-T-V-X-Z-Z1
DPO AE 09624	Add F3, R, R1	11/24/2016	B-C-F-F1-F3-J-L-N-R-R1-T-U-V-Z1
DPO AE 09642	Add F, F1, F3, J, L, T	11/24/2016	B-F-F1-F3-J-L-M-N-R-T-U-V
DPO AE 09701	Add F3	11/24/2016	A-B-B2-C-C1-D-F-F1-F3-J-L-M-N-R-R1-T-V-Z1
DPO AE 09707	Add F3, R1; Remove U	11/24/2016	B-C-F-F1-F3-J-L-M-N-R-R1-T-V-Z1
DPO AE 09709	Add F3	11/24/2016	B-B2-C1-E2-F-F1-F3-H-H1-J-L-N-R-R1-T-V-Z1
DPO AE 09716	Add F3, R1	11/24/2016	B-C-F-F1-F3-J-L-M-N-R-R1-T-V-Z1
DPO AE 09723	Add F3, R1; Remove U	11/24/2016	B-F-F1-F3-J-L-M-N-R-R1-T-V-Z1
DPO AE 09727	Add F3	11/24/2016	A-B-B2-C-C1-D-F-F1-F3-J-L-M-N-R-R1-T-V-Z1
DPO AE 09728	Add F3	11/24/2016	A-B-B2-C-C1-F-F1-F3-J-L-N-R-R1-T-V-Z1
DPO AE 09730	Add F3	11/24/2016	A-B-B2-C-C1-F-F1-F3-J-L-M-N-R-R1-T-V-Z1
DPO AE 09731	Add F3	11/24/2016	A-B-B2-C-C1-F-F1-F3-J-L-M-N-R-R1-T-V-Z1
DPO AE 09734	Add F3	11/24/2016	A-B-C-C1-F-F1-F3-I3-J-L-M-N-R-R1-T-V-Z-Z1
DPO AE 09736	Add F3	11/24/2016	A-B-B2-C-C1-D-F-F1-F3-J-L-M-N-R-R1-T-V-Z1
DPO AE 09737	Add F3	11/24/2016	A-B-B2-C-C1-F-F1-F3-I3-J-L-M-N-R-R1-T-V-W-Y-Z-Z1
DPO AE 09738	Add F3	11/24/2016	A-B-B2-C-C1-D-F-F1-F3-J-L-M-N-R-R1-T-V-Z1
DPO AE 09739	Add F3	11/24/2016	A-B-B2-C-C1-D-F-F1-F3-J-L-M-N-R-R1-T-V-Z1
DPO AE 09741	Add F3	11/24/2016	A-B-C1-E2-F-F1-F3-H1-J-L-M-N-R-R1-T-V-W-Y-Z1
DPO AE 09742	Add F3, R1	11/24/2016	A-B-B2-F-F1-F3-J-L-M-N-R-R1-T-V-Z1
DPO AE 09744	Add F3	11/24/2016	A-B-B2-C-C1-F-F1-F3-J-L-M-N-R-R1-T-V-Z1
DPO AE 09748	Add F3	11/24/2016	A-B-B2-C-C1-D-F-F1-F3-J-L-M-N-R-R1-T-V-Z1
DPO AE 09750	Add F3	11/24/2016	A-B-B2-C-C1-F-F1-F3-J-L-M-N-R-R1-T-V-Z1
APO AE 09755	Remove Z	11/24/2016	A-B-B2-C-C1-D-F-F1-J-L-M-N-Q-R-R1-T-V-Z1
APO AE 09756	Remove Z	11/24/2016	A-B-B2-E3-F-F1-J-L-N-Q-R-R1-T-V-Z1
DPO AE 09759	Add F3; Remove F2	11/24/2016	A-B-B2-C-C1-E2-F-F1-F3-J-L-N-R-R1-T-V-Z1
APO AE 09760	Add S; Remove Z	11/24/2016	A-B-B2-C-C1-D-F-F1-J-L-M-N-Q-R-R1-S-T-V-Z1
DPO AE 09762	Add F3	11/24/2016	A-B-B2-E3-F-F1-F3-J-L-N-R-R1-T-V-Z1
DPO AE 09769	Add F3	11/24/2016	A-B-B2-C-C1-D-F-F1-F3-J-L-M-N-R-R1-T-V-Z1
DPO AE 09777	Add F3, R1	11/24/2016	A-B-C-E1-F-F1-F3-J-L-M-N-R-R1-T-V-Z1
DPO AE 09806	Add F3	11/24/2016	A-B-C1-E2-F-F1-F3-H1-J-L-M-N-R-R1-T-V-Z1

APO/FPO/DPO	Action	Effective Date	See Restrictions
DPO AE 09807	Add F3, J	11/24/2016	A-B-B2-C1-E2-F-F1-F3-I3-J-L-N-R-R1-T-V-Z-Z1
DPO AE 09808	Add F3	11/24/2016	A-B-B2-C1-E2-F-F1-F3-H-H1-J-L-N-R-R1-T-V-Z1
DPO AE 09809	Add F3, J	11/24/2016	B-F-F1-F3-J-L-N-T-V-Z1
DPO AE 09813	Add F3	11/24/2016	A-B-B2-C1-E2-E3-F-F1-F3-J-L-N-R-R1-T-V-Z1
DPO AE 09814	Add F3, R1; Remove U	11/24/2016	B-E2-E3-F-F1-F3-I3-J-L-N-R-R1-T-V-Z1
DPO AE 09816	Add F3	11/24/2016	A-B-B2-C-C1-E2-E3-F-F1-F3-J-L-N-R-R1-T-V-Z1
DPO AE 09817	Add F3, R1	11/24/2016	A-B-B2-C1-E2-E3-F-F1-F3-H-H1-J-L-M-N-R-R1-T-V-Z1
DPO AE 09820	Add F3	11/24/2016	A-B-B2-F-F1-F3-H-H1-J-L-M-N-R-R1-T-V-Z1
DPO AE 09823	Add F3, R1	11/24/2016	A-B-F-F1-F3-J-L-N-R-R1-T-V-Z1
DPO AE 09825	Add F3	11/24/2016	A-B-C1-F-F1-F3-J-L-M-N-R-R1-T-V-Z1
DPO AE 09826	Add F3	11/24/2016	A-B-B2-C1-E1-E2-E3-F-F1-F3-J-L-M-N-R-R1-T-V-W-Z1
DPO AE 09828	Add F3, R, R1	11/24/2016	A-B-F-F1-F3-I3-J-L-N-R-R1-T-V-Z-Z1
DPO AE 09831	Add F3, R, R1; Remove U	11/24/2016	B-F-F1-F3-J-L-N-R-R1-T-V-Z1
DPO AE 09836	Add F3, R1	11/24/2016	A-B-C-F-F1-F3-J-L-M-N-R-R1-T-V-Z1
DPO AE 09842	Add F3, R1	11/24/2016	A-B-F-F1-F3-J-L-N-R-R1-T-V-Z1
DPO AE 09844	Add F3	11/24/2016	A-B-C1-F-F1-F3-J-L-M-N-R-R1-T-V-Z1
DPO AE 09845	Add F3, R1	11/24/2016	A-B-B2-E3-F-F1-F3-J-L-M-N-R-R1-T-V-Z1
DPO AE 09846	Add F3	11/24/2016	A-B-B2-C1-F-F1-F3-J-L-N-R-R1-T-V-Z1
DPO AE 09854	Add F3, R1	11/24/2016	A-B-B2-C1-F-F1-F3-I3-L-N-R-R1-T-V-Z-Z1
DPO AE 09870	Add F3	11/24/2016	A-B-C1-E2-F-F1-F3-H1-I3-J-L-M-N-R-R1-T-U4-V-Z-Z1
DPO AE 09873	Add F3	11/24/2016	A-B-C1-E2-F-F1-F3-H1-I3-J-L-M-N-R-R1-T-U-U4-V-Z-Z1
DPO AE 09874	Add F3	11/24/2016	A-B-C1-E2-F-F1-F3-H1-I3-J-L-M-N-R-R1-T-U-U4-V-Z-Z1
DPO AE 09875	Add F3	11/24/2016	A-B-C1-E2-F-F1-F3-H1-I3-J-L-M-N-R-R1-T-U-U4-V-Z-Z1
DPO AE 09892	Add F3	11/24/2016	A-B-E2-F-F1-F3-J-L-N-R-R1-T-V-Z1
DPO AE 09895	Add F1, F3, J	11/24/2016	A-B-B2-C1-E2-F-F1-F3-J-L-N-R-R1-T-V-W-Z1
DPO AA 34001	Add F3, R, R1	11/24/2016	A-B-F-F1-F3-I3-J-L-N-R-R1-T-V-Z-Z1
DPO AA 34002	Add F3, R, R1	11/24/2016	B-F-F1-F3-J-L-N-R-R1-T-V-Z1
DPO AA 34004	Add F3, R, R1, Z1	11/24/2016	B-F-F1-F3-J-L-N-R-R1-T-V-Z1
DPO AA 34008	Add F3	11/24/2016	B-B2-D-E1-F-F1-F3-H-H1-J-L-M-N-R-R1-T-V-Z1
DPO AA 34011	Add F3	11/24/2016	B-B2-C1-E2-F-F1-F3-J-L-M-N-R-R1-T-V-Z1
DPO AA 34020	Add F3, R, R1	11/24/2016	B-F-F1-F3-J-L-M-N-R-R1-T-V-Z1
DPO AA 34021	Add F3, R, R1	11/24/2016	B-F-F1-F3-J-L-M-N-R-R1-T-V-Z1
DPO AA 34022	Add F3, R, R1	11/24/2016	B-F-F1-F3-J-L-M-N-R-R1-T-V-Z1
DPO AA 34023	Add F3, R, R1	11/24/2016	B-F-F1-F3-J-L-M-N-R-R1-T-V-Z1
DPO AA 34024	Add F3, R, R1	11/24/2016	B-F-F1-F3-J-L-M-N-R-R1-T-V-Z1
DPO AA 34025	Add F3, R, R1	11/24/2016	B-F-F1-F3-J-L-M-N-R-R1-T-V-Z1
DPO AA 34030	Add F3, R, R1	11/24/2016	B-F-F1-F3-J-L-M-N-R-R1-T-V-Z1
DPO AA 34031	Add F3, R, R1	11/24/2016	B-F-F1-F3-J-L-M-N-R-R1-T-V-Z1
DPO AA 34032	Add F3, R, R1	11/24/2016	B-F-F1-F3-J-L-M-N-R-R1-T-V-Z1
DPO AA 34033	Add F3, R, R1	11/24/2016	B-C-F-F1-F3-J-L-M-N-R-R1-T-V-Z1
DPO AA 34034	Add F3, R, R1	11/24/2016	B-F-F1-F3-J-L-M-N-R-R1-T-V-Z1
DPO AA 34035	Add F, F3, R, R1; Remove F2	11/24/2016	B-F-F1-F3-H-J-L-M-N-R-R1-T-V-Z1
DPO AA 34036	Add F3, R, R1	11/24/2016	B-F-F1-F3-J-L-M-N-R-R1-T-V-Z1
DPO AA 34037	Add F3, R, R1	11/24/2016	B-C-F-F1-F3-H-J-L-M-N-R-R1-T-V-Z1
DPO AA 34039	Add F3, R, R1	11/24/2016	B-F-F1-F3-J-L-M-N-R-R1-T-V-Z1
DPO AA 34041	Add F3, R, R1	11/24/2016	B-F-F1-F3-J-L-M-N-R-R1-T-V-Z1
DPO AA 34055	Add F3, R, R1	11/24/2016	B-F-F1-F3-J-L-M-N-R-R1-T-V-Z1
DPO AA 34060	Add F3	11/24/2016	B-B2-C1-E2-F-F1-F3-J-L-N-R-R1-T-V-Z1
FPO AA 34085	Open	11/24/2016	B-F-F1-R-R1-V
DPO AP 96210	Add F3, R1	11/24/2016	A-B-B2-C1-F-F1-F3-I3-L-N-R-R1-T-V-Z-Z1
DPO AP 96504	Add F3	11/24/2016	A-B-C-C1-F-F1-F3-I3-L-N-R-R1-T-V-W-Z-Z1
DPO AP 96505	Add F3	11/24/2016	A-B-C-C1-F-F1-F3-I3-L-N-R-R1-T-V-W-Z-Z1

We have eliminated "Not Active" entries from the table below to save space and paper.

APO/FPO/DPO Table

APO/ FPO/ DPO	See Restrictions	APO/ FPO/ DPO	See Restrictions	APO/ FPO/ DPO	See Restrictions	APO/ FPO/ DPO	See Restrictions
09001	B-C-D-E3-F-F1-F3-H-H1-I3-J-L-M-R-R1-S-T-V-X-Z-Z1	09123	B-C-D-E-F3-H-M-R-S-U-Z1	09306	A-B-C1-E2-F-F1-F3-H1-R-R1-U2-V-Z1	09366	A-B-C1-E2-F-F1-F3-H-H1-M-R-R1-V-Z1
09003	B-C-D-E-H-M-P-R-U	09125	A-B-C-F-F1-F3-H-N-O-R-R1-S-V-V1	09307	B-N-V-Z1	09378	A-B-C1-E2-F-F1-F3-H1-I3-M-N-R-R1-T-V-Z-Z1
09004	B-C-D-E-H-M-R-U	09126	B-C-D-F3-H-M-P-R-S-Z1	09308	A-B-C1-E2-F-F1-F3-H1-I3-M-N-R-R1-T-V-Z-Z1	09381	A-B-C1-E2-F-F1-F3-H1-I3-M-N-R-R1-T-V-Z-Z1
09005	B-C-D-E-H-M-P-R-U	09128	B-C-D-E-H-M-R-U	09309	A-B-C-C1-E2-F-H1-M-N-R-V-Z1	09403	B-C-C1-F3-M-R-S-U-Z1
09006	B-C-D-E-H-M-R-U	09131	B-C-D-E-H-M-R-U	09310	A-B-C1-E2-F-F1-F3-H1-I3-J-L-M-N-R-R1-T-U4-V-Z-Z1	09421	B-C-C1-F3-M-R-S-U-Z1
09009	B-C-D-E-F3-H-M-R-S-U-Z1	09136	B-C-D-E-F1-H-M-P-R	09311	A-B-C1-E2-F-F1-F3-H1-I3-J-L-M-N-R-R1-T-U4-V-Z-Z1	09447	B-C-C1-F3-M-R-S-U-V-Z1
09011	B-C-D-E-H-M-R-U	09138	B-C-D-H-M-R-U	09312	A-B-C1-E2-F-F1-F3-H1-I3-J-L-M-N-R-R1-T-U4-V-Z-Z1	09454	B-C-C1-F3-M-R-S-U-V-Z1
09012	B-C-D-E-F3-H-M-R-S-U-Z1	09140	B-C-D-E-H-M-R-U	09313	A-B-C1-E2-F-F1-F3-H1-I3-J-L-M-N-R-R1-T-U4-V-Z-Z1	09459	B-C-C1-F3-M-R-S-U-Z1
09013	B-C-D-E-F-F1-H-M-R-U-Z1	09142	B-C-D-E-H-M-R-U	09313	A-B-C-C1-E2-F-F1-F2-H1-R-R1-V-Z1	09461	B-C-C1-F3-M-P-R-S-U-Z1
09014	B-C-D-E-H-M-R-U	09143	B-C-D-E-H-M-R-U	09315	A-B-C1-E2-F-F3-N-R-R1-V-Z1	09463	B-C-C1-F3-M-R-S-U-Z1
09016	B-C-D-E-H-M-R	09154	B-C-D-E-H-M-R-U	09316	A-B-C1-E2-F-F1-F3-H1-I3-M-N-R-R1-T-V-Z-Z1	09464	B-C-C1-F3-R-S-U-Z1
09020	B-C-D-E-H-M-R-U	09160	B-C-D-F-F1-F3-H-J-L-M-N-R-R1-T-U-V-Z1	09319	A-B-C-C1-E2-F-F1-F2-H1-R-R1-U2-V-Z1	09468	B-C-C1-F3-M-R-S-U-Z1
09021	B-C-D-E-F3-H-M-R-S-U-Z1	09161	A-B-C-E1-F-F1-M-N-R-R1-S-V	09320	A-B-C1-E2-F-F3-H1-M-N-R-R1-V-Z1	09469	B-C-C1-R-U-Z1
09028	B-C-D-E-H-M-R-U	09172	B-C-D-E-H-M-R-U	09321	A-B-C1-E2-F-H1-M-N-R-R1-V-Z1	09470	B-C-C1-M-R-U-Z1
09034	B-C-D-E-H-M-R-U	09173	B-C-D-E-H-M-R-U	09322	A-B-C1-E2-F-H1-M-N-R-R1-V-Z1	09494	B-C-C1-F3-M-R-S-U-Z1
09044	B-C-D-F1-H-U	09177	B-C-D-E-H-M-R-U	09330	A-B-C1-E2-F-F1-F3-H1-M-R-R1-V-Z1	09498	B-C-C1-F-F1-F3-J-L-N-R-R1-T-V-Z1
09046	B-C-D-E-H-M-R-U	09180	B-C-D-H-M-R-U	09333	A-B-C1-E2-F-F1-F3-H1-I3-M-N-R-R1-V-Z-Z1	09501	B-V
09049	B-C-D-E-H-M-R-U	09186	B-C-D-E-H-M-R-U	09337	A-B-C1-E2-F-F1-F3-H1-M-R-R1-V-Z1	09502	B-V
09053	B-C-D-E-H-M-R-U	09203	A-B-C-C1-F-F1-F3-I3-J-L-M-N-R-R1-T-V-X-Z-Z1	09340	A-B-C1-F-H-N-R-V	09503	B-F-F1-R-R1-V
09054	B-C-D-E-H-M-R-U	09211	B-C-D-E-H-M-P-R-U	09343	A-B-C1-F-M-N-V-Z1	09504	B-V
09055	B-C-D-E-F-H-M-R-R1-U-V	09213	B-C-D-F-F1-F3-H-J-L-M-N-R-R1-T-U-V-Z1	09347	A-B-C1-E2-F-H1-M-R-R1-V-Z1	09505	B-V
09059	B-C-D-E-H-M-R-U	09214	B-C-D-E-F3-H-M-R-S-U-Z1	09348	A-B-C1-E2-F-F1-F3-H1-I3-M-N-R-R1-T-V-Z-Z1	09506	B-V
09060	B-C-D-E-F1-F3-H-M-R-S-U-Z1	09227	B-C-D-E-H-M-R-U	09352	A-B-C1-E2-F-F3-H1-M-R-R1-V-Z1	09507	B-V
09067	B-C-D-E-H-M-R-U	09245	B-C-D-E-H-M-R-U	09354	A-B-C1-E2-F-F3-H1-M-R-R1-V-Z1	09508	B-F-F1-R-R1-V
09068	B-C-D-E-H-U-Z1	09250	B-C-D-E-H-M-R-U	09355	A-B-C1-E2-F-F3-H1-M-R-R1-V-Z1	09509	B-F-F1-R-R1-V
09069	A-B-C-D-E-H-N-U-V	09261	B-C-D-E-F3-H-M-R-S-U-V-Z1	09356	A-B-C1-E2-F-F3-H1-M-N-R-V-Z1	09510	A-B-C1-E2-F-H1-M-R-R1-V-Z1
09079	B-C-D-E-H-M-R-U	09263	B-C-D-E-H-M-R-U	09357	A-B-C1-E2-F-F3-H1-M-R-V-Z1	09511	B-F-F1-R-R1-V
09090	B-C-D-E-H-M-P-R-U	09264	B-C-D-E-H-M-R-U	09363	A-B-C1-E2-F-F3-H1-M-R-V-Z1	09513	B-F-F1-R-R1-V
09094	B-C-D-F3-H-M-P-R-S-Z1	09265	B-C-D-F-F1-H-J-L-M-N-R-T-U-V-Z1	09365	A-B-C-C1-E2-F-F3-H1-M-N-R-V-Z1	09517	B-F-F1-R-R1-V
09095	B-C-D-E-H-M-R-U	09301	A-B-C1-E2-F-F1-F3-H1-I3-J-L-M-N-R-R1-T-U4-V-Z-Z1			09520	B-F-F1-R-R1-V
09096	B-C-D-E-H-M-R-U	09302	A-B-C1-F-F1-H-M-N-V-Z-Z1			09522	B-V
09103	B-C-D-E-H-U	09304	A-B-C-C1-D-E2-F-F1-F3-H1-J-L-M-N-R-R1-T-V-Z1			09523	B-F-F1-R-R1-V
09104	B-C-D-F3-H-M-R-S-U-Z1	09305	A-B-C1-E2-F-F1-H1-I3-M-N-R-R1-T-V-Z-Z1			09524	B-F-F1-R-R1-V
09107	B-C-D-E-H-M-R-U					09532	B-F-F1-R-R1-V
09112	B-C-D-E-H-M-R-U					09534	B-F-F1-R-R1-V
09114	B-C-D-E-H-M-R-U					09543	B-F-F1-R-R1-V
						09550	B-F-F1-R-R1-V
						09554	B-F-F1-R-R1-V

APO/ FPO/ DPO	See Restrictions	APO/ FPO/ DPO	See Restrictions	APO/ FPO/ DPO	See Restrictions	APO/ FPO/ DPO	See Restrictions
09556	B-F-F1-R-R1-V	09607	A-B-C-F-F1-F3-M-N-R-R1-U-U3-V-W-Z1	09714	B-C-C1-F1-M-R-R1-U	09747	B-F-J-N-U-V-Z1
09564	B-F-F1-R-R1-V	09608	B-C-F-F3-N-R-U-V-Z1	09715	B-F-F1-J-L-M-N-R-T-V-Z1	09748	A-B-B2-C-C1-D-F-F1-F3-J-L-M-N-R-R1-T-V-Z1
09565	B-F-F1-R-R1-V	09609	B-C-F-F3-R-U-Z1	09716	B-C-F-F1-F3-J-L-M-N-R-R1-T-V-Z1	09749	A-B-F-H-N-U-V-Z1
09566	B-E2-E3-F-F1-F3-R-R1-V-Z1	09610	B-C-F-F1-F3-M-R-S-U-V-Z1	09717	A-B-F3-M-R-S-V-W-Z1	09750	A-B-B2-C-C1-F-F1-F3-J-L-M-N-R-R1-T-V-Z1
09567	B-E2-E3-F-F1-F3-R-R1-V-Z1	09613	B-C-F-N-U-V	09718	B-F-F1-J-L-M-N-R-T-U-V-Z1	09751	B-C-D-E-H-M-R-U
09568	B-V	09617	B-C-F-F3-R-U-Z1	09719	B-C-D-F3-M-R-S-U-V-Z1	09752	B-C-D-F1-H-U
09569	B-E2-E3-F-F1-F3-R-R1-V-Z1	09618	B-C-F-F3-R-U-Z1	09720	B-M-R-S-U-V-Z1	09753	A-B-F-N-V-Z1
09570	B-F-F1-R-R1-V	09620	B-C-F-R-U-Z1	09722	A-B-F-H-N-Q-V-Z-Z1	09754	A-B-F-H-N-Q-V-Z-Z1
09573	B-E2-E3-F-F1-F3-R-R1-V-Z1	09621	B-C-F-F3-R-U-Z1	09723	B-F-F1-F3-J-L-M-N-R-R1-T-V-Z1	09755	A-B-B2-C-C1-D-F-F1-J-L-M-N-Q-R-R1-T-V-Z1
09574	B-F-F1-R-R1-V	09622	B-C-F-F3-R-U-Z1	09724	B-C-C1-F1-M-R-R1-U	09756	A-B-B2-E3-F-F1-J-L-N-Q-R-R1-T-V-Z1
09575	B-F-F1-R-R1-V	09624	B-C-F-F1-F3-J-L-N-R-R1-T-U-V-Z1	09725	A-B-F-F3-H-N-O-Q-S-V1-Z-Z1	09758	A-B-F-F1-M-N-R-R1-V-Z1
09576	B-F-F1-R-R1-V	09625	B-C-F-F3-N-R-U-Z1	09726	B-F-F1-J-L-M-N-R-T-U-V-Z1	09759	A-B-B2-C-C1-E2-F-F1-F3-J-L-N-R-R1-T-V-Z1
09577	B-V	09626	B-C-F-F3-R-U-Z1	09727	A-B-B2-C-C1-D-F-F1-F3-J-L-M-N-R-R1-T-V-Z1	09760	A-B-B2-C-C1-D-F-F1-J-L-M-N-Q-R-R1-S-T-V-Z1
09578	B-E2-E3-F-F1-F3-R-R1-V-Z1	09627	B-C-F-F3-R-U-Z1	09728	A-B-B2-C-C1-F-F1-F3-J-L-N-R-R1-T-V-Z1	09761	B-F-F1-F3-M-N-R-R1-V-Z-Z1
09579	B-F-F1-R-R1-V	09630	B-C-F-U-V	09729	B-C-F-F3-N-R-R1-U-V-Z1	09762	A-B-B2-E3-F-F1-F3-J-L-N-R-R1-T-V-Z1
09581	B-F-F1-R-R1-V	09631	B-C-F-F3-R-U-Z1	09730	A-B-B2-C-C1-F-F1-F3-J-L-M-N-R-R1-T-V-Z1	09769	A-B-B2-C-C1-D-F-F1-F3-J-L-M-N-R-R1-T-V-Z1
09582	B-E2-E3-F-F1-F3-R-R1-V-Z1	09633	B-B2-C-D-F-F1-M-R-U-U1-U2-U3-V-Z1	09731	A-B-B2-C-C1-F-F1-F3-J-L-M-N-R-R1-T-V-Z1	09777	A-B-C-E1-F-F1-F3-J-L-M-N-R-R1-T-V-Z1
09583	B-F-F1-R-R1-V	09636	B-C-F-F3-R-U-Z1	09732	B-N-V-Z1	09780	A-B-F-H-N-R-V
09586	B-F-F1-R-R1-V	09642	B-F-F1-F3-J-L-M-N-R-R1-T-U-V	09733	B-I3-L-N-V	09789	A-B-F-F3-N-R-S-V-Z1
09587	B-E2-E3-F-F1-F3-R-R1-S-V-Z1	09643	B-C-F3-M-R-S-U-V-Z1	09734	A-B-C-C1-F-F1-F3-I3-J-L-M-N-R-R1-T-V-Z1	09801	A-B-C1-E2-F-H1-M-N-R-R1-V-Z1
09588	B-C-E2-E3-F-F1-F3-H-R-R1-S-V-Z1	09645	B-C-F-F1-F3-R-U-Z1	09735	B-N-V-Z1	09803	B-E2-E3-F-F1-F3-H1-N-R-R1-U-V-Z1
09589	B-F-F1-F3-R-S-V	09647	B-F3-M-N-R-U-Z1	09736	A-B-B2-C-C1-D-F-F1-F3-J-L-M-N-R-R1-T-V-Z1	09804	A-B-F-F1-F3-M-N-R-S-V-Z1
09590	B-V	09648	B-F3-N-R-U-V-Z1	09737	A-B-B2-C-C1-F-F1-F3-I3-J-L-M-N-R-R1-T-V-W-Y-Z-Z1	09805	B-E2-E3-F-F1-F3-R-R1-Z1
09591	B-E2-E3-F-F1-F2-F3-R-R1-V-Z1	09649	B-F3-N-R-U-Z1	09738	A-B-B2-C-C1-D-F-F1-F3-J-L-M-N-R-R1-T-V-Z1	09806	A-B-C1-E2-F-F1-F3-H1-J-L-M-N-R-R1-T-V-Z1
09592	B-F-F1-R-R1-V	09701	A-B-B2-C-C1-D-F-F1-F3-J-L-M-N-R-R1-T-V-Z1	09739	A-B-B2-C-C1-D-F-F1-F3-J-L-M-N-R-R1-T-V-Z1	09807	A-B-B2-C1-E2-F-F1-F3-I3-J-L-N-R-R1-T-V-Z1
09593	B-F-F1-F3-R-S-V	09702	B-C-C1-F1-M-R-R1-U	09741	A-B-C1-E2-F-F1-F3-H1-J-L-M-N-R-R1-T-V-W-Y-Z1	09808	A-B-B2-C1-E2-F-F1-F3-H-H1-J-L-N-R-R1-T-V-Z1
09594	B-F-F1-R-R1-V	09703	B-C-D-F1-H-U	09742	A-B-B2-F-F1-F3-J-L-M-N-R-R1-T-V-Z1	09809	B-F-F1-F3-J-L-N-T-V-Z1
09595	B-F-F1-R-R1-V	09704	B-C-O-V-V1	09743	A-B-F-H-N-Q-V-Z-Z1	09810	A-B-F-F1-F3-N-R-S-V-Z1
09596	B-F-F1-R-R1-V	09705	B-U	09744	A-B-B2-C-C1-F-F1-F3-J-L-M-N-R-R1-T-V-Z1	09811	B-E2-E3-F-F1-F3-H1-N-R-R1-U-V-Z1
09599	B-F-F1-R-R1-V	09706	B-C-F3-M-N-R-S-U-V-Z1	09745	A-B-F-F1-F3-M-N-R-R1-S-V-Z1	09812	B-E2-E3-F-F1-I-J-L-N-R-T-U-V-Z1
09600	B-C-F-F1-F3-R-U-Z1	09707	B-C-F-F1-F3-J-L-M-N-R-R1-T-V-Z1				
09601	B-B2-E1-F-F1-F3-I3-J-L-N-R-R1-S-T-V-X-Z-Z1	09708	B				
09602	B-C-F-F1-N-R-U-V	09709	B-B2-C1-E2-F-F1-F3-H-H1-J-L-N-R-R1-T-V-Z1				
09603	B-C-F-F1-F3-R-S-U-V-Z1	09710	B-C-C1-F-F1-J-L-M-N-R-R1-T-U-V-Z1				
09604	B-C-F-F1-F3-P-R-S-U-V-Z1	09711	A-B-F-F1-F3-N-R-R1-S-V-Z1				
09605	B-C-D-H-M-R-U-V	09712	A-B-F-F3-H-R-U-V-Z1				
09606	B-C-D-H-M-R-U-V						

APO/ FPO/ DPO	See Restrictions	APO/ FPO/ DPO	See Restrictions	APO/ FPO/ DPO	See Restrictions	APO/ FPO/ DPO	See Restrictions
09813	A-B-B2-C1-E2-E3-F-F1-F3-J-L-N-R-R1-T-V-Z1	09852	B-E2-E3-F-F1-F3-H1-N-R-R1-U-V-Z1	34024	B-F-F1-F3-J-L-M-N-R-R1-T-V-Z1	96203	A-B-F1
09814	B-E2-E3-F-F1-F3-I3-J-L-N-R-R1-T-V-Z1	09853	B-E2-F-H1-R-R1-U2-V-Z1	34025	B-F-F1-F3-J-L-M-N-R-R1-T-V-Z1	96204	A-B-F1
09815	A-B-F-F3-N-R-S-V-Z1	09854	A-B-B2-C1-F-F1-F3-I3-L-N-R-R1-T-V-Z1	34030	B-F-F1-F3-J-L-M-N-R-R1-T-V-Z1	96205	A-B-F1-U
09816	A-B-B2-C-C1-E2-E3-F-F1-F3-J-L-N-R-R1-T-V-Z1	09855	A-B-C1-E2-F-F1-H1-M-R-R1-U2-V-Z1	34031	B-F-F1-F3-J-L-M-N-R-R1-T-V-Z1	96206	A-B-F1-U
09817	A-B-B2-C1-E2-E3-F-F1-F3-H-H1-J-L-M-N-R-R1-T-V-Z1	09858	B-C1-E2-E3-F-F1-F3-H1-N-R-R1-U-V-Z1	34032	B-F-F1-F3-J-L-M-N-R-R1-T-V-Z1	96207	A-B-F1-U
09818	A-B-C-F-F3-M-S-V-Z1	09859	B-C1-E2-E3-F-F1-F3-H1-R-R1-U-V-Z1	34033	B-C-F-F1-F3-J-L-M-N-R-R1-T-V-Z1	96208	A-B-F1-U
09820	A-B-B2-F-F1-F3-H-H1-J-L-M-N-R-R1-T-V-Z1	09861	A-B-F-F1-F3-N-R-R1-S-V-Z1	34034	B-F-F1-F3-J-L-M-N-R-R1-T-V-Z1	96209	A-B-F-F1-J-L-N-T-U-V-Z1
09821	A-B-C-F-F3-N-R-S-V-Z1	09863	A-B-F-F1-F3-N-O-R-R1-S-V-Z1	34035	B-F-F1-F3-H-J-L-M-N-R-R1-T-V-Z1	96210	A-B-B2-C1-F-F1-F3-I3-L-N-R-R1-T-V-Z1
09822	A-B-C-F-F3-M-R-S-V-Z1	09865	A-B-F3-R-U-V-Z1	34036	B-F-F1-F3-J-L-M-N-R-R1-T-V-Z1	96212	B-F-F1-F2-H-M-W-Z1
09823	A-B-F-F1-F3-J-L-N-R-R1-T-V-Z1	09868	A-B-E2-F-N-U-V-Z1	34037	B-C-F-F1-F3-H-J-L-M-N-R-R1-T-V-Z1	96213	A-B-C-F1-R-U
09824	A-B-C-F-F3-M-R-S-V-Z1	09870	A-B-C1-E2-F-F1-F3-H1-I3-J-L-M-N-R-R1-T-U4-V-Z1	34038	B-L-M-N-U-V-Z1	96214	A-B-C-F1-R-U
09825	A-B-C1-F-F1-F3-J-L-M-N-R-R1-T-V-Z1	09873	A-B-C1-E2-F-F1-F3-H1-I3-J-L-M-N-R-R1-T-U4-V-Z1	34039	B-F-F1-F3-J-L-M-N-R-R1-T-V-Z1	96218	A-B-F1-U
09826	A-B-B2-C1-E1-E2-E3-F-F1-F3-J-L-M-N-R-R1-T-V-W-Z1	09874	A-B-C1-E2-F-F1-F3-H1-I3-J-L-M-N-R-R1-T-U4-V-Z1	34041	B-F-F1-F3-J-L-M-N-R-R1-T-V-Z1	96224	A-B-F1-U
09827	A-B-F-F1-J-L-M-N-R-T-V-Z1	09875	A-B-C1-E2-F-F1-F3-H1-I3-J-L-M-N-R-R1-T-U4-V-Z1	34042	A-B-C-F-F1-M-N-R-U-V-W-Z1	96251	A-B-F1-U
09828	A-B-F-F1-F3-I3-J-L-N-R-R1-T-V-Z1	09880	A-B-C1-E2-F-F1-H1-N-R-R1-U-V-Z1	34043	B-F-F1-F3-J-L-M-N-R-R1-T-V-Z1	96257	A-B-F1-U
09829	B-C-N-R-V-Z1	09889	B-E2-F-H1-N-R-R1-U2-V-Z1	34044	B-F-F1-F3-J-L-M-N-R-R1-T-V-Z1	96258	A-B-F1-U
09830	B-C-M-N-R-V-Z1	09892	A-B-E2-F-F1-F3-J-L-N-R-R1-T-V-Z1	34045	B-F-F1-F3-J-L-M-N-R-R1-T-V-Z1	96260	A-B-F1-U
09831	B-F-F1-F3-J-L-N-R-R1-T-V-Z1	09895	A-B-B2-C1-E2-F-F1-F3-J-L-N-R-R1-T-V-W-Z1	34046	B-B2-C1-E2-F-F1-F3-J-L-N-R-R1-T-V-Z1	96264	A-B-C-F1-R-U
09832	B-C1-E2-F1-F3-U1-Z1	09898	B-C-C1-E2-F-F1-F3-H1-N-R-R1-U2-V-Z1	34047	B-F1-N-V-Z1	96266	A-B-C-F1-R-U
09833	B-C1-E2-F1-F3-U1-V-Z1	34001	A-B-F-F1-F3-I3-J-L-N-R-R1-T-V-Z1	34048	B-F1-N-V-Z1	96267	A-B-C-F1-R-U
09834	B-E2-E3-F-F1-F3-R-R1-U-Z1	34002	B-F-F1-F3-J-L-N-R-R1-T-V-Z1	34049	B-F-F1-R-R1-V	96269	A-B-F1-U-Z1
09835	A-B-C1-F1-F3-N-V-Z1	34004	B-F-F1-F3-J-L-N-R-R1-T-V-Z1	34050	B-F-F1-R-R1-V	96271	A-B-F1-U
09836	A-B-C-F-F1-F3-J-L-M-N-R-R1-V-Z1	34007	B-F-F1-H-J-M-N-R-R1-V-Z1	34051	B-F-F1-R-R1-V	96275	A-B-F1-U
09837	B-E2-E3-F1-F3-V-Z1	34008	B-B2-D-E1-F-F1-F3-H1-J-L-M-N-R-R1-T-V-Z1	34052	B-F-F1-R-R1-V	96276	A-B-C-F1-R
09838	B-E2-E3-F-F1-F3-U-Z1	34011	B-B2-C1-E2-F-F1-F3-J-L-M-N-R-R1-T-V-Z1	34053	B-F-F1-R-R1-V	96278	A-B-C-F1-R-U
09839	A-B-U-V-Z1	34020	B-F-F1-F3-J-L-M-N-R-R1-T-V-Z1	34054	B-F-F1-R-R1-V	96283	A-B-F1-U
09841	A-B-F3-N-R-U-Z1	34021	B-F-F1-F3-J-L-M-N-R-R1-T-V-Z1	34055	B-F-F1-R-R1-V	96284	A-B-F1-U
09842	A-B-F-F1-F3-J-L-N-R-R1-T-V-Z1	34022	B-F-F1-F3-J-L-M-N-R-R1-T-V-Z1	34056	B-F-F1-R-R1-V	96303	B-F-F1-H-J-L-M-N-T-V-W-Z1
09844	A-B-C1-F-F1-F3-J-L-M-N-R-R1-T-V-Z1	34023	B-F-F1-F3-J-L-M-N-R-R1-T-V-Z1	34057	B-F-F1-R-R1-V	96306	B-F-F1-F2-H-M-W-Z1
09845	A-B-B2-E3-F-F1-F3-J-L-M-N-R-R1-T-V-Z1			34058	B-F-F1-R-R1-V	96309	B-C-M-R-V-W
09846	A-B-B2-C1-F-F1-F3-J-L-N-R-R1-T-V-Z1			34059	B-F-F1-R-R1-V	96310	B-M-W
09848	A-B-F-M-R-V-Z1			34060	B-F-F1-R-R1-V	96319	B-C-M-R-W
09851	A-B-C-F-F3-N-R-S-V-Z1			34061	B-F-F1-R-R1-V	96321	B-F-F1-F2-H-M-W-Z1
				34062	B-E2-E3-F-F1-F3-R-R1-V-Z1	96322	B-F-F1-F2-H-M-W-Z1
				34063	B-F-F1-R-R1-V	96323	B-C-M-R-V-W
				34064	B-F-F1-R-R1-V	96326	B-C-F-M-R-W
				34065	B-F-F1-R-R1-V	96328	B-C-M-R-W
				34066	B-F-F1-R-R1-V	96330	B-C-M-R-W
				34067	B-F-F1-R-R1-V	96331	B-M-W
				34068	B-F-F1-R-R1-V	96336	B-C-M-R-V-W
				34069	B-F-F1-R-R1-V	96337	B-M-W
				34070	A-B-F1	96338	B-M-W
				34071	A-B-F1-U		

APO/ FPO/ DPO	See Restrictions	APO/ FPO/ DPO	See Restrictions	APO/ FPO/ DPO	See Restrictions	APO/ FPO/ DPO	See Restrictions
96339	B-M-V-W	96505	A-B-C-C1-F-F1-F3-I3-L-N-R-R1-T-V-W-Z-Z1	96562	A-B-B2-C-C1-D-E2-E3-F-F1-H-H1-I3-L-M-N-R-T-V-Z-Z1	96660	B-F-F1-R-R1-V
96343	B-M-W	96507	A-B-F-F1-H-J-L-N-T-V-Z1	96577	A-B-F-H-M-N-R-U	96661	B-F-F1-R-R1-V
96346	B-F-F1-F2-H-M-V-W-Z1	96510	B-I3-N-V	96578	B-B2-F1-H-J-N-R	96662	B-F-F1-R-R1-V
96347	B-F-F1-F2-H-M-W-Z1	96511	B-I3-N-V	96595	B-F-U3-V-Z1	96663	B-F-F1-R-R1-V
96349	B-F-F1-F2-H-M-W-Z1	96515	B-D-F-U3	96598	B-N-O-V-V1	96664	B-V
96350	B-F-F1-F2-H-M-W-Z1	96516	B-D-F-Z1	96599	B-N-V	96665	B-V
96351	B-F-F1-F2-H-M-W-Z1	96517	B-F-U3-V-Z1	96601	B-V	96666	B-V
96362	B-F-F1-F2-M-W-Z1	96520	B-F-N-U3-V	96602	B-V	96667	B-F-F1-R-R1-V
96365	B-C-M-R-V-W	96521	B-F-F1-J-L-N-T-U3-V-Z1	96603	B-V	96668	B-F-F1-R-R1-V
96367	B-C-L-M-R-W	96530	A-B-F-F1-H-H1-J-L-M-N-T-U-V-Z1	96604	B-V	96669	B-F-F1-R-R1-V
96368	B-C-M-R-W	96531	A-B-C-F-F1-H-M-N-R-U-V	96605	B-V	96670	B-V
96370	B-F-F1-F2-H-M-W-Z1	96532	A-B-F-F1-H-J-L-M-N-T-U-V-Z1	96606	B-V	96671	B-F-F1-R-R1-V
96372	B-M-W	96534	A-B-F-U-Z1	96607	B-V	96672	B-F-F1-R-R1-V
96373	B-M-W	96535	A-B-F-F1-J-L-N-T-V-Z1	96608	B-E2-F-H1-R1-U2-V-Z1	96673	B-V
96374	B-M-W	96537	B-V-Z1	96609	B-E2-F-H1-R1-U2-V-Z1	96674	B-F-F1-R-R1-V
96375	B-M-W	96540	B-V-Z1	96610	B-E2-F-H1-R1-U2-V-Z1	96675	B-F-F1-R-R1-V
96376	B-M-W	96542	B-V-Z1	96611	B-E2-F-H1-R1-U2-V-Z1	96677	B-F-F1-R-R1-V
96377	B-M-W	96543	B-P-V-Z1	96612	B-V	96678	B-F-F1-R-R1-V
96378	B-M-W	96544	B-P-V-Z1	96613	B-V	96679	B-F-F1-R-R1-V
96379	B-M-W	96546	B-F-N-R-U3	96615	B-F-F1-R-R1-V	96681	B-V
96380	B-M-W	96548	A-B-H-M-R-U	96616	B-F-F1-R-R1-V	96682	B-V
96382	B-M-W	96549	A-B-F-F1-H-J-L-M-N-T-U-V-Z1	96617	B-F-F1-R-R1-V	96683	B-V
96384	B-M-W	96550	A-B-H-M-U-V-Z1	96619	B-V	96686	B-V
96385	B-M-W	96551	A-B-F-F1-H-J-L-M-N-T-U-V-Z1	96620	B-F-F1-R-R1-V	96691	B-F-F1-R-R1-V
96386	B-M-W	96552	B-Z1	96628	B-F-F1-R-R1-V	96692	B-F-F1-R-R1-V
96387	B-M-W	96553	A-B-F-F1-H-M-R-U	96629	B-F-F1-R-R1-V	96693	B-F-F1-R-R1-V
96388	B-M-W	96554	A-B-F-F1-H-J-L-M-N-T-U-V-Z1	96632	B-F-F1-R-R1-V	96694	B-F-F1-R-R1-V
96389	B-M-W	96555	B-F-M-V	96643	B-F-F1-R-R1-V	96695	B-F-F1-R-R1-V
96401	B-C-F-N-O-R-V-V1-Z1	96557	B-F-M-V	96649	B-F-F1-R-R1-V	96696	B-F-F1-R-R1-V
96501	A-B-N-V			96650	B-F-F1-R-R1-V	96698	B-V
96502	B-F-N-U3-V-Z1			96657	B-F-F1-R-R1-V		
96504	A-B-C-C1-F-F1-F3-I3-L-N-R-R1-T-V-W-Z-Z1						

RESTRICTIONS

LEGEND

PS Form 2976, *Customs — CN 22 (Old C 1) and Sender's Declaration* (green label)

PS Form 2976-A, *Customs Declaration and Dispatch Note*

PS Form 2976-B, *Priority Mail Express International Shipping Label and Customs Form*

ATF	= Bureau of Alcohol, Tobacco, Firearms, and Explosives
Box C	= Department of State (DOS) contractor personnel
Box R	= Retired military personnel
DPO	= Diplomatic Post Office
MPO	= Military Post Office
PACT	= Prevent All Cigarette Trafficking Act
PAL	= Parcel Airlift
PMEMS	= Priority Mail Express Military Service
PUB 52	= Publication 52, <i>Hazardous, Restricted, and Perishable Mail</i>
SAM	= Space Available Mail
USDA	= United States Department of Agriculture

Note: Mail order catalogs are prohibited as SAM or PAL mail.

A. Securities, currency, or precious metals, including in their raw, unmanufactured state, are prohibited. Official Mail shipments are exempt from this restriction.

A1. Reserved for future use.

A2. Reserved for future use.

B. Regardless of mail class, a customs declaration (PS Form 2976, PS Form 2976-A, or PS Form 2976-B) is required for all items weighing 16 ounces or more or any item (regardless of weight) containing potentially dutiable mail contents (e.g., merchandise or goods) addressed to or from an MPO or DPO ZIP Code. If mailed using Priority Mail Express service, mailpieces requiring a customs form that are addressed to or from an MPO or DPO location must bear a properly completed PS Form 2976-B. No customs form is required for items weighing less than 16 ounces when the contents are not potentially dutiable (e.g., nonnegotiable documents). The surface area of the address side of the mailpiece must be large enough to contain the applicable customs declaration. The following exceptions apply:

- Known mailers are exempt from providing customs documentation on non-dutiable letters or printed matter. (A known mailer is a business mailer who enters volume mailings through a business mail entry unit (BMEU) or other bulk mail acceptance location, pays postage through an advance deposit account, uses a permit imprint for postage payment, and submits a completed postage statement at the time of entry that certifies that the mailpieces contain no dangerous materials that are prohibited by postal regulations.)
 - All federal, state, and local government agencies whose mailings are regarded as "Official Mail" are exempt from providing customs documentation on any item addressed to an MPO except for those MPOs to which restriction "B2" applies.
 - If mailpiece is endorsed "Contents for Official Use — Exempt from Customs Requirements."
- B2.** All federal, state, and local government agencies must complete customs documentation when sending potentially dutiable mail addressed to or from this MPO or DPO.

C. Cigarettes and other tobacco products, including tobacco leaves, chewing and pipe tobacco, snuff, and cigars are prohibited, including those that are authorized in Publication 52 under PACT.

C1. Obscene and horror articles, images, prints, paintings, cards, films, videotapes, comic books, etc., are prohibited.

D. Coffee is prohibited.

E. Medicines (prescription, over-the-counter, vitamins, and supplements) are prohibited when mailed to individuals for human or animal use. This prohibition does not apply when medicines are sent as Official Mail only between specifically designated agencies such as pharmaceutical distributors, hospitals, clinics, and pharmacies.

E1. Mailers are responsible to ensure that all medicines and vaccines conform to host nation laws.

E2. Any matter depicting nude or seminude persons, pornographic, or sexual items are prohibited. Non-authorized political materials are prohibited. Religious materials contrary to the Islamic faith are prohibited in bulk quantities, but individual items for the personal use of the addressee are permissible.

E3. Radio transceivers, cordless/cellular telephones, global positioning systems, scanners, base stations, and handheld transmitters are prohibited.

F. Firearms of any type are prohibited, except firearms mailed to or by official U.S. government agencies. This restriction does not apply to firearms mailed from this MPO ZIP Code, provided ATF and USPS regulations are met. Antique firearms do not require an ATF form.

F1. Weapons of any type are prohibited.

F2. Mailing firearms to or from this MPO ZIP Code is restricted to one shotgun and one single shot .22 caliber rifle per individual.

F3. Replica weapons and inert explosive devices (such as grenades) and weapons parts are prohibited.

G. Parcels of any class are prohibited.

H. Meats, including preserved meats, bones, skin, hair, feathers, horns or hoofs of hoofed animals, and wool samples whether hermetically sealed or not, are prohibited.

H1. Pork or pork by-products are prohibited.

I. Reserved for future use.

I1. Reserved for future use.

I2. Reserved for future use.

I3. Mail of all classes must fit in a mail sack. Mail may not exceed the following dimensions:

- Maximum length 27 inches.
- Maximum width 14 inches.
- Maximum height 14 inches.

J. Standard Post and Parcel Select parcels may not exceed 108 inches in length and girth combined.

K. Reserved for future use.

L. All Official Mail is prohibited.

M. Fruits, vegetables, live animals, and live plants are prohibited.

N. Registered Mail service is prohibited.

O. Reserved for future use.

P. Official Mail only.

Q. Mail may not exceed 66 pounds, and size is limited to 42 inches maximum length and 72 inches maximum length and girth combined.

R. All alcoholic beverages, including those mailable under Publication 52, Part 421, are prohibited.

R1. Materials used in the production of alcoholic beverages (i.e., distilling material, hops, malts, yeast, etc.) are prohibited.

S. Synthetic cannabinoids used to stimulate the central nervous system commonly known as "synthetic marijuana," "K2," or "Spice" are prohibited.

T. Mailings of household shipments and case lots of food to or from an MPO require military transportation office approval prior to mailing. Mailings to or from a DPO require pre-approval from the Diplomatic Pouch and Mail Director.

U. Mail addressed to Retirees (Box R) is limited to 16 ounces and up to a 90-day supply of TRICARE medications. This restriction does not apply to mail endorsed "Free Matter for the Blind or Handicapped."

U1. Mail is limited to First-Class Mail items, including audio and video media, weighing 13 ounces or less. This limitation does not apply to Official Mail.

U2. Retirees (Box R) are not authorized mail service.

U3. Reserved for future use.

U4. Mail addressed to Box C is limited to 2 lbs.

V. PMEMS is not available.

V1. Electronic Delivery status information for Extra Services is not available on *USPS.com*. Manual record of delivery may be available upon request.

W. Hermetically sealed packages of meat products bearing USDA certification, such as dried beef, salami, and sausage, may be mailed. 200 grams of tobacco per parcel are permitted duty free.

X. Cremated remains are prohibited.

Y. Mail is limited to First-Class Mail and Priority Mail items only. This restriction also applies to Official Mail.

Z. No outside pieces (OSPs).

Z1. The following restriction is applicable only to International Service Centers (ISC)/Exchange Offices. An Anti-Pilferage Seal (Item No O817E or O818A) is required on all pouches and sacks.

— *International Network Operations, Global Business, 11-24-16*

Thrift Savings Plan Fact Sheet

ANNUAL RETURNS	G Fund	F Fund	U.S. Aggregate Index	C Fund	S&P 500 Stock Index	S * Fund	Dow Jones U.S. Completion TSM Index	I * Fund	EAFE Stock Index
1995	7.03	18.31	18.47	37.41	37.58	—	33.48	—	11.27
1996	6.76	3.66	3.63	22.85	22.96	18.52	17.18	6.27	6.14
1997	6.77	9.60	9.65	33.17	33.36	26.61	25.69	1.46	1.55
1998	5.74	8.70	8.69	28.44	28.58	7.51	8.63	20.46	20.09
1999	5.99	-0.85	-0.82	20.95	21.04	32.70	35.49	26.81	26.72
2000	6.42	11.67	11.63	-9.14	-9.10	-8.76	-15.77	-14.11	-14.17
2001	5.39	8.61	8.44	-11.94	-11.89	-9.04*	-2.52*	-21.94*	-14.88*
2002	5.00	10.27	10.26	-22.05	-22.10	-18.14	-17.80	-15.98	-15.94
2003	4.11	4.11	4.10	28.54	28.69	42.92	43.84	37.94	38.59
2004	4.30	4.30	4.34	10.82	10.88	18.03	18.10	20.00	20.25
2005	4.49	2.40	2.43	4.96	4.91	10.45	10.03	13.63	13.54
2006	4.93	4.40	4.33	15.79	15.79	15.30	15.28	26.32	26.34
2007	4.87	7.09	6.97	5.54	5.49	5.49	5.39	11.43	11.17
2008	3.75	5.45	5.24	-36.99	-37.00	-38.32	-39.03	-42.43	-43.38
2009	2.97	5.99	5.93	26.68	26.46	34.85	37.43	30.04	31.78
2010	2.81	6.71	6.54	15.06	15.06	29.06	28.62	7.94	7.75
2011	2.45	7.89	7.84	2.11	2.11	-3.38	-3.76	-11.81	-12.14
2012	1.47	4.29	4.22	16.07	16.00	18.57	17.89	18.62	17.32
2013	1.89	-1.68	-2.02	32.45	32.39	38.35	38.05	22.13	22.78
2014	2.31	6.73	5.97	13.78	13.69	7.80	7.63	-5.27	-4.90
2015	2.04	0.91	0.55	1.46	1.38	-2.92	-3.42	-0.51	-0.81

*Rates of return for May (inception of S and I Funds) through December 2001.

MONTHLY RETURNS	G Fund	F Fund	U.S. Aggregate Index	C Fund	S&P 500 Stock Index	S * Fund	Dow Jones U.S. Completion TSM Index	I * Fund	EAFE Stock Index
2015									
Nov	0.17	-0.24	-0.26	0.31	0.30	1.75	1.66	-0.86	-1.56
Dec	0.18	-0.30	-0.32	-1.57	-1.58	-3.91	-3.91	-2.03	-1.35
2016									
Jan	0.19	1.49	1.38	-4.96	-4.96	-8.72	-8.84	-5.62	-7.25
Feb	0.15	0.68	0.71	-0.12	-0.13	0.50	0.45	-2.82	-1.83
March	0.15	0.93	0.92	6.79	6.78	8.24	8.18	6.59	6.51
April	0.14	0.41	0.38	0.39	0.39	1.73	1.68	1.89	2.90
May	0.15	0.08	0.03	1.80	1.80	1.81	1.78	0.27	-0.91
June	0.15	1.80	1.80	0.26	0.26	-0.13	-0.15	-3.33	-3.36
July	0.13	0.64	0.63	3.69	3.69	5.40	5.38	5.07	5.07
Aug	0.13	-0.11	-0.11	0.14	0.14	0.80	0.76	0.08	0.07
Sept	0.13	-0.04	-0.06	0.02	0.02	0.90	0.89	1.24	1.23
Oct	0.14	-0.74	-0.76	-1.82	-1.82	-3.86	-3.86	-2.03	-2.05
LAST 12 MONTHS	1.82	4.66	4.37	4.56	4.51	3.50	3.00	-2.18	-3.23

The G Fund is managed internally by the Federal Retirement Thrift Investment Board. Assets of the F, C, S, and I Funds are managed externally. The Board currently has contracts with BlackRock Institutional Trust Company, N.A., to manage the F, C, S, and I Fund assets. The F, C, S, and I Funds invest in commingled trust funds, in which the assets of tax-deferred employee benefit plans are combined and invested together. The F, C, S, and I Funds and the BlackRock funds are passively managed index funds.

Future performance of the funds will vary and may be significantly different from the returns shown above. See the *Summary of the*

L Funds

Annual Returns	L Income	L 2020	L 2030	L 2040	L 2050
2006	7.59	13.72	15.00	16.53	
2007	5.56	6.87	7.14	7.36	
2008	-5.09	-22.77	-27.50	-31.53	

Thrift Savings Plan for detailed information about the funds and their investment risks. The monthly returns of the TSP Funds represent net earnings for the month after deduction of accrued administrative expenses and, except for the G Fund, after deduction of trading costs and accrued investment management fees as well. The returns for the four indexes shown do not include any of these deductions.

* Implemented May 2001.

See next page for L Funds.

L Funds

Annual Returns	L Income	L 2020	L 2030	L 2040	L 2050
2009	8.57	19.14	22.48	25.19	
2010	5.74	10.59	12.48	13.89	
2011	2.23	0.41	-0.31	-0.96	
2012	4.77	10.42	12.61	14.27	15.85
2013	6.97	16.03	20.16	23.23	26.20
2014	3.77	5.06	5.74	6.22	6.37
2015	1.85	1.35	1.04	0.73	0.45

Monthly Returns	L Income	L 2020	L 2030	L 2040	L 2050
2015					
Nov	0.17	0.17	0.20	0.24	0.24
Dec	-0.28	-0.92	-1.32	-1.61	-1.85
2016					
Jan	-0.91	-2.55	-3.58	-4.21	-4.86
Feb	0.01	-0.24	-0.41	-0.51	-0.63
Mar	1.53	3.35	4.54	5.25	5.94
Apr	0.34	0.58	0.75	0.85	0.95
May	0.38	0.69	0.91	1.03	1.15
June	0.11	-0.12	-0.31	-0.43	-0.58
July	1.00	2.01	2.85	3.31	3.74
Aug	0.13	0.16	0.18	0.20	0.21
Sept	0.20	0.30	0.38	0.43	0.48
Oct	-0.38	-0.91	-1.39	-1.66	-1.89
LAST 12 MONTHS	2.32	2.43	2.60	2.61	2.51

Freely Associated States (FAS) Restrictions

Effective March 19, 2015, the mailing restrictions for Freely Associated States will be listed in the Pull-Out section of the *Postal Bulletin* and updated periodically.

Freely Associated States

Mail addressed to freely associated states is subject to certain conditions or restrictions of mailing regarding content, preparation, and handling. The FAS table below outlines these conditions as listed by each affected FAS ZIP Code™ through the use of footnoted mailing restrictions codes (see the [Restrictions](#) following the table). For additional information on available extra services for FAS destinations, see *Mailing Standards of the United States Postal Service, Domestic Mail Manual (DMM®)*, part 503.

Acceptance clerks should use the table with the POS ONE terminal to determine which FAS ZIP Codes are active and which conditions of mailing apply. Inquiries may be sent to Randall Sobol at randall.f.sobol@usps.gov.

FAS Restrictions Table

FAS Table	See Restrictions
96939	A, B
96940	A, B
96941	A, B
96942	A, B
96943	A, B

FAS Table	See Restrictions
96944	A, B
96960	A, B
96970	A, B
Marshall Islands	C
Federated States of Micronesia	C

Restrictions

RESTRICTIONS LEGEND

PS Form 2976, *Customs* — CN 22 (Old C 1) and *Sender's Declaration* (green label)

PS Form 2976-A, *Customs Declaration and Dispatch Note*

FAS = Freely Associated State

- A.** Bank currency (coin and paper) is prohibited.
- B.** Signature Confirmation, Signature Confirmation Restricted Delivery, Adult Signature Requested, Adult Signature Restricted Delivery, Certified Mail Adult Signature Required, and Certified Mail Adult Signature Restricted Delivery not available.
- C.** COD is prohibited.

— *Asia-Pacific Relations, Global Business, 11-24-16*

Information Security

What is the Corporate Information Security Office?

In today’s digital landscape, cybersecurity threats are everywhere. For this reason, it is increasingly important for organizations to actively communicate with employees and train them to identify and report potential threats to information security. To support these efforts, USPS® created the Corporate Information Security Office (CISO), which is responsible for ensuring information resources operate in a secure and trusted environment. But just what does CISO do?

CISO, led by Acting Chief Information Security Officer and Digital Solutions Vice President Gregory Crabb, works to develop high level strategy to combat cyber threats ranging from malicious emails to monitoring sensitive information. CISO provides the Postal Service™ community with the resources and tools they need to securely and safely store, use, and share information.

Just how effective is CISO at protecting the Postal Service from cyber threats? CISO’s efforts have helped prevent the following threats* each month:

- 257+ billion unauthorized attempts to access the USPS network.

- 66,734 attempts to distribute credit card information.
- 345,342 attempts to disseminate Social Security numbers.
- 1,278 attempts to expose USPS-issued credit card transactions.

* Data sourced from https://about.usps.com/postal-bulletin/2013/pb22360/html/info_005.htm.

CISO works year round to ensure every facet of the Postal Service is resilient and ready to combat cyber attacks. Although Postal Service employees do not report cyber incidents to CISO — they report these incidents to the CyberSecurity Operations Center (CSOC) — all employees should understand the structure and importance of CISO to the Postal Service.

When the time comes to report a suspected information security threat, please alert CSOC by emailing CyberSafe@usps.gov. For additional information on CISO or to access more information on reporting suspected threats, check out the new public-facing CyberSafe at USPS™ website at www.usps.com/cybersafe or the CyberSafe at USPS pages on *Blue* (<https://blue.usps.gov/cyber/>) and *LiteBlue* (<https://liteblue.usps.gov/cyber/>).

— Corporate Information Security Office,
Chief Information Security Officer
and Digital Solutions, 11-24-16

Mail Innovation

2017 Mailing Promotions

The 2017 Mailing Promotions continue to build upon the engagement strategies of past promotions, but also provide some exciting new opportunities. The program requirements documents provide the complete detailed requirements for participation in each promotion. The latest

documents and information on all of the 2017 Mailing Promotions can be found on RIBBs at <https://ribbs.usps.gov/index.cfm?page=mailingpromotions>.

Some of the highlights and changes for 2017 are:

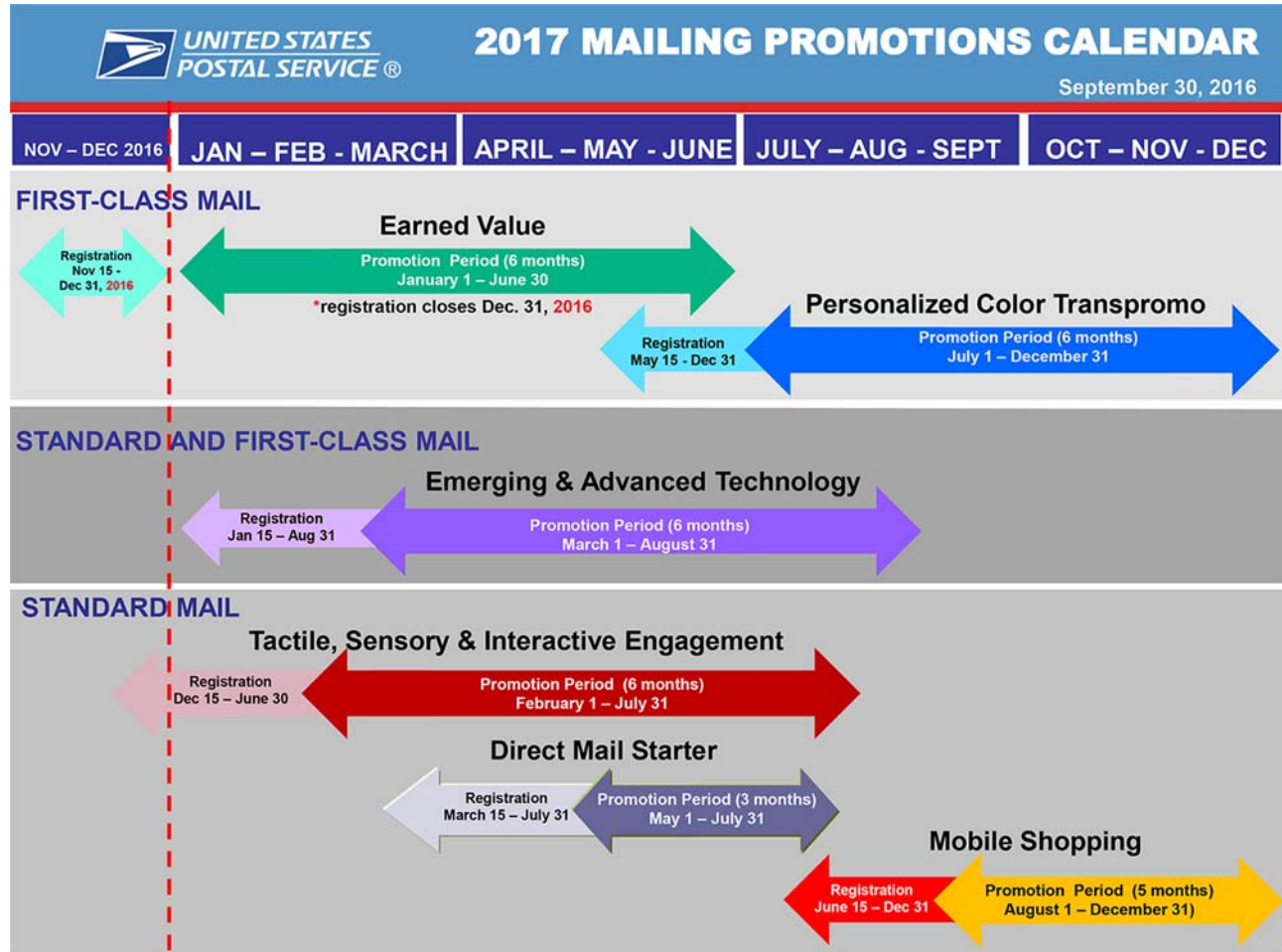
Earned Value	Tactile, Sensory & Interactive Engagement	Emerging & Advanced Technology	Color Transpromo	Direct Mail Starter	Mobile Shopping
Registration begins November 15, 2016, and ends December 31, 2016 .	Registration begins December 15, 2016, and ends June 30, 2017 (one month prior to the promotion end date).	New technology qualifier: Virtual Reality.	Separate requirements for participants: 1. Companies who have participated before must meet: a. Color requirements; and b. Personalization requirements. 2. Companies who have not participated before must meet: a. Color requirements only.	NEW Promotion for small/medium first time mailers.	Promotion Period has been reduced to 5 months.

Earned Value	Tactile, Sensory & Interactive Engagement	Emerging & Advanced Technology	Color Transpromo	Direct Mail Starter	Mobile Shopping
New eligible mail qualifier: Alternate Postage/Share Mail.	Metallic ink and clear ink (5th color) are not eligible.	New technology qualifier: Digital to Direct Mail.	All mailpieces must be submitted to the Program Office for review and approval.	Limited time offer (3 months) of an upfront 5 percent postage discount on up to 10,000 mailpieces during the length of the promotion.	Pop-ups/pop-overs may not be presented before the customer gets to the purchase website.
Promotion period extends to 6 months.	Laminated postcards and full coverage gloss treatments and spot treatments are not eligible.	All participating mailpieces must be preapproved by the Program Office.	The Program Office response time is extended to 4 business days.	To qualify, the mailpieces must either: 1. Contain print-mobile technology; or 2. Use an automated mail tracking system that places prospects who visit a company's website into an automatic follow-up system.	The Program Office response time is extended to 4 business days.
There will be 2 credit acceptance/release periods.	The Program Office response time is extended to 4 business days.	The Program Office response time is extended to 4 business days.	When submitting mailings (this includes via the Self-Service Terminal SST), the mailer must submit a mailpiece sample and postage statement to the BMEU Clerk.	All mailpieces must be submitted to the Program Office for review and approval. Upon approval, the mailer will receive an official pre-approval letter from the Program Office.	When submitting mailings (this includes via the Self-Service Terminal SST), the mailer must submit a mailpiece sample and postage statement to the BMEU Clerk.
Potential credit earned is 5¢.	All participating mailpieces must receive authorization from the TSI Promotion Office prior to presenting mail to the BMEU for acceptance.	When submitting mailings (this includes via the Self-Service Terminal SST), the mailer must submit a mailpiece sample and postage statement to the BMEU Clerk.		When submitting mailings (this includes via the Self-Service Terminal SST), the mailer must submit a mailpiece sample, official Program Office pre-approval letter, output/end of run report, and postage statement to the BMEU Clerk.	
No threshold is required to earn larger credit.	When submitting mailings (this includes via the Self-Service Terminal SST), the mailer must submit a mailpiece and postage statement to the BMEU Clerk.			The Program Office response time is up to 4 business days.	
The Program Office response time is extended to 4 business days.					

To ensure that mailpieces meet specific guidelines for the offered incentives or discounts, participants should visit <https://ribbs.usps.gov/index.cfm?page=mailingpromotions>. The site provides all the information regarding promotion requirements, Business Customer Gateway

information, Program Registration information, recorded webinars, and more.

The Mail Innovation team has also published the 2017 Mailing Promotions Calendar:



— Mailing Services,
New Products and Innovation, 11-24-16

Stamp Services

Stamp Stock Items Withdrawn From Regular Sale and From Sale at Philatelic Centers

Effective close-of-business December 31, 2016, all Post Offices™, stations, branches, postal stores, vending outlets, and authorized philatelic centers must (1) withdraw the stamp stock items and all associated products listed in the table and their related vending and store-prepared stamp items from sale, and (2) prepare them for destruction. Submit items to destruction sites according to local established procedures, under the guidelines in Handbook F-101, *Field Accounting Procedures*, and subchapter 11-6, Returning Stock to the Stamp Distribution Office or Stamp Distribution Center.

Do not permit sales of the stamp stock items, products, and their related vending and store-prepared stamp items listed in the table at retail counters and outlets after December 31, 2016. **Stamp items listed with an asterisk (*) remain on sale at Stamp Fulfillment Services via the USA Philatelic catalog.**

Stamp Items and All Associated Products to be Withdrawn from Sale

Item	Description
472600*	(Forever) Maya Angelou PSA
473300	(Forever) Ingrid Bergman PSA
582000	(Forever) Holy Family PSA 2013
588400	(Forever) Batman PSA
679600	(Forever) Holiday Baubles PSA Booklet
680200	(Forever) A Charlie Brown Christmas PSA Booklet
688400	(Forever) A Flag for All Seasons PSA Booklet/20
688700	(Forever) Gossaert Madonna and Child PSA Booklet
688800	(Forever) A Flag for All Seasons PSA Booklet/10
688900	(Forever) Gingerbread Houses PSA Booklet
689700	(Forever) Christmas Magi PSA Booklet
689800	(Forever) Winter Fun PSA Booklet
690000	(Forever) Summer Harvest PSA Booklet

— Stamp Services,
Marketing and Sales, 11-24-16

Pictorial Postmarks Announcement

As a community service, the Postal Service™ offers pictorial postmarks to commemorate local events celebrated in communities throughout the nation. A list of events for which pictorial postmarks are authorized appears below. The sponsor of the pictorial postmark appears in italics under the date. Also provided are illustrations of these postmarks.

People attending these local events may obtain the postmark in person at the temporary Post Office™ station established there. Those who cannot attend the event but who wish to obtain the postmark may submit a mail order request. Pictorial postmarks are available only for the dates indicated, and *requests must be postmarked no later than 30 days following the requested pictorial postmark date.*

All requests must include a stamped envelope or postcard bearing at least the minimum First-Class Mail® postage. Items submitted for postmark may not include

postage issued after the date of the requested postmark. Such items will be returned unserved.

Customers wishing to obtain a postmark should affix stamps to any envelope or postcard of their choice, address the envelope or postcard to themselves or others, insert a card of postcard thickness in envelopes for sturdiness, and tuck in the flap. Place the envelope or postcard in a larger envelope and address it to: Pictorial Postmarks, followed by the Name of the Station, Address, City, State, ZIP+4® Code, as listed below.

Customers can also send stamped envelopes and postcards without addresses for postmark, as long as they supply a larger envelope with adequate postage and their return address. After applying the pictorial postmark, the Postal Service returns the items (with or without addresses) under addressed protective cover.

The following pictorial postmarks have been extended for 60 days:



October 5, 2016

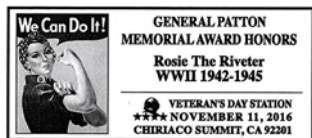
United States Postal Service
 Diwali Festival Station
 Stamp Fulfillment Services
 Cancellation Services Unit
 PO Box 449992
 Kansas City, MO 64144-9992



October 5, 2016

United States Postal Service
 Diwali Festival Station
 Stamp Fulfillment Services
 Cancellation Services Unit
 PO Box 449992
 Kansas City, MO 64144-9992

The following pictorial postmarks have been extended for 30 days:



November 11, 2016

General Patton Memorial Museum
 Veteran's Day Station
 Clerk's Office
 62-450 Chiriaco Road
 Chiriaco Summit, CA 92201-9998



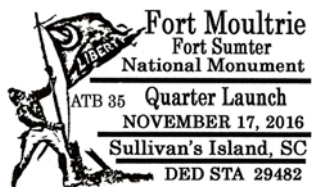
November 12, 2016

Pendleton Business Association
 Christmas In Pendleton Station
 Postmaster
 137 West State Street
 Pendleton, IN 46064-9998



November 17, 2016

Merrick Mint
 America's Beautiful National Parks Station
 Stamp Fulfillment Services
 Cancellations Services
 PO Box 449992
 Kansas City, MO 64144-9992



November 17, 2016

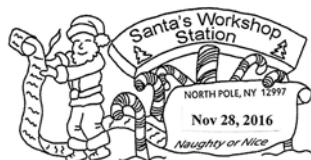
Crista Bears, Inc.
 Fort Moultrie Quarter Launch DED Station
 Stamp Fulfillment Services
 Cancellation Services
 PO Box 449992
 Kansas City, MO 64144-9992



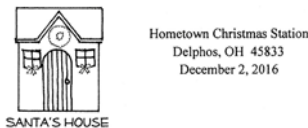
November 26, 2016
 Comfort Texas Chamber of Commerce
 31 Years of Christmas in Comfort Station
 Postmaster
 726 Front Street
 Comfort, TX 78013-9998



December 1–30, 2016
 United States Postal Service
 Christmas Tree Station
 Postmaster
 PO Box 9998
 Turnersburg, NC 28688-9998



November 28–December 31, 2016
 Santa's Workshop
 Santa's Workshop Station
 Postmaster
 PO Box 1768
 North Pole, NY 12997-1768



December 2, 2016
 The Delphos Museum of Postal History
 Hometown Christmas Station
 Postmaster
 127 North Main Street
 Delphos, OH 45833-9998



December 1, 2016
 Chamber of Commerce
 Winter Wonderland Station
 Postmaster
 761 South 1st West Street
 Snowflake, AZ 85937-5579



December 2, 2016
 Angelica Booster Citizens, Inc.
 Angel Station
 Postmaster
 PO Box 9998
 Angelica, NY 14709-9998



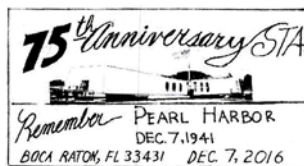
December 1, 2016
 United States Postal Service
 Floydada Station
 Postmaster
 226 West Missouri Street
 Floydada, TX 79235-9998



December 6, 2016
 Anoka County Historical Society
 The Old Post Office Station
 Postmaster
 2168 7th Avenue
 Anoka, MN 55303-9998



December 1, 2016
 Saratoga Springs Downtown Business Association
 Saratoga Springs Station
 Postmaster
 245 Washington Street
 Saratoga Springs, NY 12866-9998



December 7, 2016
 Boca Raton Stamp and Coin Club
 75th Anniversary Station
 Postmaster
 PO Box 811943
 Boca Raton, FL 33481-1943



December 1, 2016
 United States Postal Service
 Tarleton State University Station
 Postmaster
 431 North Graham Street
 Stephenville, TX 76051-9998



December 7, 2016
 Stephen Decatur Chapter #4, Universal Ship Cancellation Society
 75th Anniversary Station
 Marketing Office
 3600 Aolele Street, #106
 Honolulu, HI 96820-9998

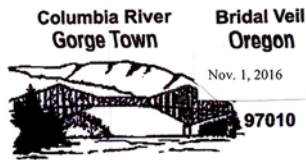


December 1–25, 2016
 Santa Claus Christmas Celebration
 Santa Claus Station
 Postmaster
 PO Box 9998
 Santa Claus, IN 47579-9998

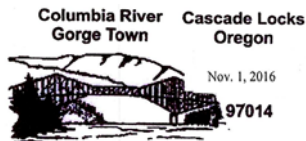
— Stamp Services, Marketing and Sales, 11-24-16

Postmark America

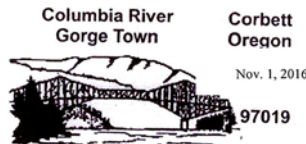
As a community service, the U. S. Postal Service® offers collectible postmarks. The Postmark America® program is designed to feature graphics related to a theme or image that pertains to a specific tourist location, town, or region. The postmark is applied upon request to both outgoing mail and on hand-back philatelic collectibles. These postmarks will be available any day a participating Post Office™ is open. All requests must bear at least minimum First-Class Mail® postage. Customers must present their items for postmarking on or before the official postmark date requested at the following addresses:



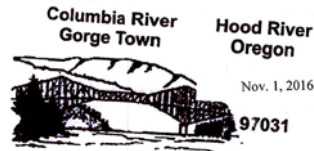
Bridal Veil Post Office
47100 West Mill Road
Bridal Veil, OR 97010-9998



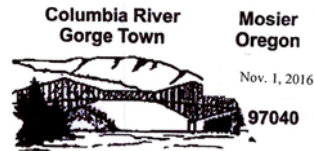
Cascade Locks Post Office
461 Northwest Wanapa
Street
Cascade Locks, OR 97014-9998



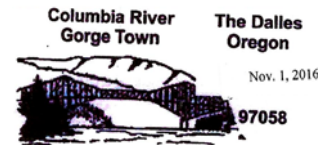
Corbett Post Office
36046 East Historic
Columbia River Highway
Corbett, OR 97019-9998



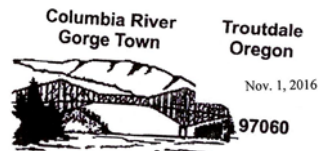
Hood River Post Office
408 Cascade Avenue
Hood River, OR 97031-9998



Mosier Post Office
1001 Third Ave
Mosier, OR 97040-9998



The Dalles Post Office
101 West Second Street
The Dalles, OR 97058-9998



Troutdale Post Office
647 Southwest Cherry Park
Road
Troutdale, OR 97060-9998

— Stamp Services,
Marketing and Sales, 11-24-16

How to Order the First-Day-of-Issue Digital Color or Traditional Postmarks

Customers have 60 days to obtain the first-day-of-issue postmarks by mail. They may purchase new stamps at their local Post Office™, by telephone at 800-STAMP-24, or at The Postal Store® website at www.usps.com/shop.

Traditional Postmarks

Customers should affix the stamps to envelopes of their choice, address them to themselves or others, or provide a self-addressed return envelope with sufficient postage large enough to accommodate the canceled item. Mail the request to the corresponding city of issuance. There is no charge for the first 50 postmarks. There is a 5-cent charge for each additional postmark over 50. Customers should submit a check, money order, or credit card for payment. After applying the first-day-of-issue postmark, the Postal Service™ will return the envelopes to the customer by U.S. Mail.

All postmark requests should go to the first-day-of-issue city. The first-day-of-issue city Post Office will then forward in bulk all postmark requests to Cancellation Services, Stamp Fulfillment Services, PO Box 449992, Kansas City, MO 64144-9992 by respective Post Offices.

Digital Color Postmarks

Only select stamp issues offer a digital color postmark. Customers may submit #6 or #10 envelopes constructed of paper rated as "laser safe." The Postal Service recommends envelopes of 80-pound Accent Opaque, acid-free, 9/16" side seams with no glue on the flap. The maximum

size of all digital color postmarks is 2" high x 4" long. Allow sufficient space on the envelope to accommodate the postmark. Do not use self-adhesive labels for addresses on the envelope. Two test envelopes must be included. There is a minimum of 10 envelopes at 50 cents per postmark required at the time of servicing. Customers should submit a check, money order, or credit card for payment.

The Postal Service reserves the right to not accept hand-painted and other cachet envelopes that are not compatible with our digital color postmark equipment. The Postal Service also reserves the right to substitute traditional black rubber postmarks if use of nonspecified envelopes results in poor image quality or damage to equipment.

Customers should affix the stamps to the envelopes and address them to themselves or others for return through the mail. Or, they may include an additional self-addressed return envelope, large enough to accommodate their canceled items, with sufficient postage affixed for return of their postmarked items. Mail the request for a first-day-of-issue digital color postmark to the corresponding city of issuance. Post Offices will then forward all customer requests for digital color postmarks to Cancellation Services, Stamp Fulfillment Services, PO Box 449992, Kansas City, MO 64144-9992.

After applying the first-day-of-issue postmark, the Postal Service will return the envelopes to the customer by U.S. Mail.



Eastern Tailed-Blue (Butterfly) Stamp

Stamp Fulfillment Services
Cancellation Services
8300 NE Underground Drive, Pillar 210
Kansas City, MO 64144-9998

November 24, 2016

Digital Color Pictorial



Jack-O'-Lanterns Stamps

Stamp Fulfillment Services
Cancellation Services
8300 NE Underground Drive, Pillar 210
Kansas City, MO 64144-9998

November 29, 2016

Digital Color Pictorial



Kwanzaa Stamp

Stamp Fulfillment Services
 Cancellation Services
 8300 NE Underground Drive, Pillar 210
 Kansas City, MO 64144-9998

December 1, 2016

Digital Color Pictorial

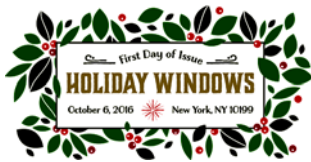


Diwali Stamp

Stamp Fulfillment Services
 Cancellation Services
 8300 NE Underground Drive, Pillar 210
 Kansas City, MO 64144-9998

December 5, 2016

Digital Color Pictorial

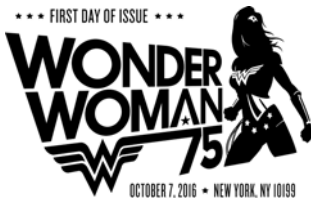


Holiday Windows Stamps

Stamp Fulfillment Services
 Cancellation Services
 8300 NE Underground Drive, Pillar 210
 Kansas City, MO 64144-9998

December 6, 2016

Digital Color Pictorial



Wonder Woman Stamps

Stamp Fulfillment Services
 Cancellation Services
 8300 NE Underground Drive, Pillar 210
 Kansas City, MO 64144-9998

December 7, 2016

Black and White Pictorial



Wonder Woman Stamps

Stamp Fulfillment Services
 Cancellation Services
 8300 NE Underground Drive, Pillar 210
 Kansas City, MO 64144-9998

December 7, 2016

Digital Color Pictorial

**Florentine Madonna and Child Stamp**

Stamp Fulfillment Services
 Cancellation Services
 8300 NE Underground Drive, Pillar 210
 Kansas City, MO 64144-9998

December 18, 2016

Digital Color Pictorial**Hanukkah Stamp**

Stamp Fulfillment Services
 Cancellation Services
 8300 NE Underground Drive, Pillar 210
 Kansas City, MO 64144-9998

January 1, 2017

Digital Color Pictorial**Nativity Stamp**

Stamp Fulfillment Services
 Cancellation Services
 8300 NE Underground Drive, Pillar 210
 Kansas City, MO 64144-9998

January 3, 2017

Digital Color Pictorial

— Stamp Services, Marketing and Sales, 11-24-16

Supply Management

Investment Recovery: Do Not Send List

Investment Recovery has created a list of items that we request you dispose of locally rather than sending to the Topeka Material Distribution Center (TMDC). The list includes but is not limited to:

Delivery and Industrial Equipment

- Batteries: For disposal, follow the Batteries — “We Recycle Every Battery!” instructions at <http://blue.usps.gov/sustainability/battery-recycling.htm>.

Furniture

- Furniture: wood based or plastic (laminated included);
- Cubicle walls or partitions;
- Any clothing;
- Desks;
- Tables; and
- Chairs.

Office Products

- VHS tapes, DVDs, CDs, and cassettes for disposal must follow the guidance for Other Recyclables at [http://supply.blueshare.usps.gov/sites/AMI/web/AM/Investment Recovery Documents/Other Recyclables.docx](http://supply.blueshare.usps.gov/sites/AMI/web/AM/Investment%20Recovery%20Documents/Other%20Recyclables.docx).
- Packaging products and shipping containers.
- Return toner cartridges (used) according to the USPS® BlueEarth instructions at <http://blueearth.usps.gov/>.
- Stationery supplies and writing instruments.
- CRT monitors.
- CRT televisions.
- Microwave ovens.
- Labels, tape, adhesive cards, pamphlets, booklets, hanging signs, and obsolete forms.

- Fluorescent light bulbs: For disposal, follow MLB-CO-14-017, *Mandatory National Fluorescent Lamp Mail Back Program*, at http://blue.usps.gov/purchase/_pdf/ops_mlb14-017.pdf.

Miscellaneous Supplies

- Foam products;
- Wood products;
- Particle board;
- Fiberglass;
- Household recyclables;
- All Rubber material;
- Indicia paper and marketing materials; and
- Plastic tubing (not to include cables).

MRO and Janitorial Items

- Any cleaning supplies.
- Paints and chemicals.
- Vacuum cleaners and filters.

If you need any assistance with the disposal of an asset (item) or any Investment Recovery service, please contact your local Asset Accountability Service Center (AASC) at http://blue.usps.gov/purchase/assetmgnt/am_aasc_home.htm or send an email to InvestmentRecovery@usps.gov.

You may also contact the Investment Recovery Team directly:

Name & Title	Phone	Email
Sammy E. Rogers, Manager, Asset Accountability	202-268-4295	sammy.e.rogers@usps.gov
Keith McLaurin, Inventory Control Specialist	202-268-6857	keith.mclaurin@usps.gov
Rhonjalyn A. Curry, Inventory Control Specialist	202-268-6201	rhonjalyn.a.curry@usps.gov

USPS® Celebrates
the Season
with
**Holiday
Windows**
Forever®
Stamps

On Sale
Nationwide:
October 6, 2016.

