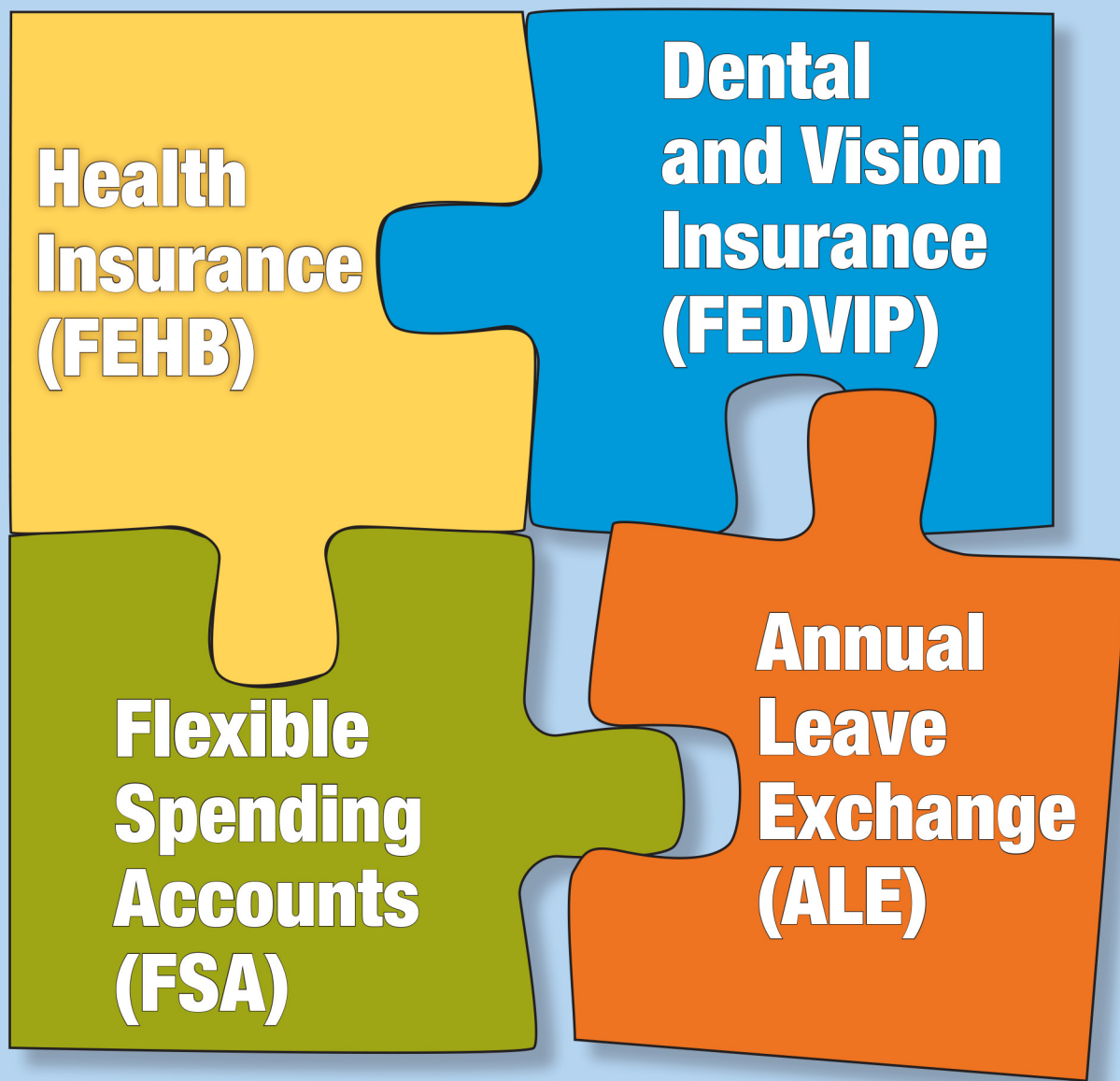


postal|bulletin

PUBLISHED SINCE MARCH 4, 1880

OPEN SEASON 2016

How Do YOUR Benefits Fit Together?



Contents

COVER STORY

Open Season Is Coming — Here's What You Need to Know	3
Save Money with Flexible Spending Accounts	4
Benefits Open Season Poster	5

POLICIES, PROCEDURES, AND FORMS UPDATES

Handbooks

Handbook EL-312 Revision: Postal Police Officers and Veterans' Preference	6
---	---

Publications

Publication 52 Revision: New Markings for Nonspillable Wet Batteries	7
Publication 431 Revision: Changes to Post Office Box Service and Caller Service Fee Groups	8

Management Instructions

Management Instruction EL-620-2016-6: Career Awareness Conference Guidelines	8
--	---

ORGANIZATION INFORMATION

Corporate Communications

2016 CFC Season is Underway	9
---------------------------------------	---

Domestic Mail

Labeling List Changes	9
---------------------------------	---

Finance

Form W-2, Wage and Tax Statement — Changing Your Current Mailing Address	12
IRS Reporting Requirements of Attorney Fees, Back Pay, or Wages	33
Local Tax Code Information	34
Tax Obligations of USPS Employees	35
Wage Overpayment Indebtedness — Tax Treatment	36

Human Resources

Wounded Warriors Leave	36
----------------------------------	----

Information Security

Understanding the CyberSecurity Operations Center (CSOC)	37
--	----

Stamp Services

Correction: Nativity Stamp	38
Pictorial Postmarks Announcement	38
How to Order the First-Day-of-Issue Digital Color or Traditional Postmarks	41

Supply Management

USPS Lock and Key Return Program Has a New Address	43
--	----

PULL-OUT INFORMATION

Fraud

Invalid USPS Corporate Account Numbers	13
Missing, Lost, or Stolen U.S. Money Order Forms	15
Missing, Lost, or Stolen Canadian Money Order Forms	21
Verifying U.S. Postal Service Money Orders	24
Counterfeit Canadian Money Order Forms	24
Toll-Free Number Available to Verify Canadian Money Orders	24

Other Information

Overseas Military/Diplomatic Mail	25
Freely Associated States (FAS) Restrictions	32

POSTAL BULLETIN INDEX

2016 Semi-Annual Index	PB 22446 (7-21-16)
----------------------------------	--------------------

USPS National Emergency Hotline
Is your facility operating? Call 888-363-7462

Find the latest in mail and delivery information and services offered by U.S. Postal™ in the *Postal Bulletin* at
<http://about.usps.com/postal-bulletin>.

Cover Story

Open Season Is Coming — Here's What You Need to Know

Is your health coverage keeping up with your life?

Your health needs, dependent situation, plan coverage, and premium rates can change year-over-year. During the Open Season period, you can enroll, or if already enrolled, make changes to your benefits enrollment. Unless you have a Qualifying Life Event (QLE) during the remainder of the year, this is your once-a-year opportunity to make any changes to your health benefits. Don't miss out on the chance to make any necessary changes.

To prepare for Open Season, go to <https://liteblue.usps.gov/openseason26/>. It's a one-stop-shop for everything you need to know, including information on plan and enrollment types and free access to Checkbook's Guide to Health Plans. The guide takes you through a few simple steps to find the best health plan for you and your family. You will find every plan available to you ranked by estimated out-of-pocket costs and more. Through *LiteBlue*, you can also access videos, FAQs, and a link to *PostalEASE* (where you can make your health plan election).

Once you're ready to make your selection, you can access *PostalEASE* from the *LiteBlue* Open Season page, on *Blue*, at Employee Self-Service Kiosks, or by calling the Employee Service Line toll-free at 877-477-3273, option 1 (TTY 866-260-7507). If you need additional enrollment information or help using *PostalEASE*, you can contact the HR Shared Service Center at 877-477-3273, option 1 (TTY 866-260-7507).

Only when you take the time to select the right plan and coverage level for you, can you be confident that you have the right coverage at the right price.

Open Season starts on November 14 and ends on December 12 at 11:59 P.M. EST. Be active and take action regarding your benefits.

Benefits Programs and Key Dates

During Open Season, you have the opportunity to enroll, cancel, or change your enrollment in a number of benefits programs. **To participate, you must meet eligibility criteria.**

	New hires can enroll...	Make changes during Open Season...	To enroll or make changes, go to...	For more information visit...
Federal Employees Health Benefits (FEHB) Program	Within 60 days from new hire date.	November 14 through December 12 (11:59 P.M. EST)	<p><i>PostalEASE</i> at https://ewss.usps.gov/esymain.htm</p> <ul style="list-style-type: none"> ■ <i>LiteBlue</i> or <i>Blue</i> ■ Employee kiosk (available at some facilities) ■ Call 877-477-3273, option 1 TTY: 866-260-7507 <p>Note: You can also mail the <i>PostalEASE FEHB Worksheet</i> to the HR Shared Service Center.</p>	<i>LiteBlue</i> FEHB page liteblue.usps.gov/fehb
USPS Health Benefits (USPS HB) Plan (non-career employees only)	Within 60 days from new hire date.	November 14 through December 12 (11:59 P.M. EST)	<p><i>PostalEASE</i> at https://ewss.usps.gov/esymain.htm</p> <ul style="list-style-type: none"> ■ <i>LiteBlue</i> or <i>Blue</i> ■ Employee kiosk (available at some facilities) ■ Call 877-477-3273, option 1 (TTY: 866-260-7507) <p>Note: You can also mail the <i>PostalEASE USPS HB Plan Worksheet</i> to the HR Shared Service Center.</p>	<i>LiteBlue</i> USPS HB page liteblue.usps.gov/uspshbp
Federal Employees Dental and Vision Insurance Program (FEDVIP)	Within 60 days from new hire date.	November 14 through December 12 (11:59 P.M. EST)	<ul style="list-style-type: none"> ■ BENEFEDS Website at https://www.benefeds.com/; or ■ Call FEDVIP at 877-888-3337 (TTY: 877-899-5680) 	<i>LiteBlue</i> FEDVIP page liteblue.usps.gov/fedvip

	New hires can enroll...	Make changes during Open Season...	To enroll or make changes, go to...	For more information visit...
Flexible Spending Accounts (FSA)	Within 60 days from new hire date.	November 14 through December 12 (11:59 P.M. EST)	FSAFEDS Website at https://www.fsafeds.com/ ; or <ul style="list-style-type: none"> Call FSAFEDS at 877-372-3337 (TTY: 800-952-0450) 	<i>LiteBlue</i> FSA page liteblue.usps.gov/fsa
Annual Leave Exchange (ALE)	N/A	November 15 through December 15 (11:59 P.M. EST)	<i>PostalEASE</i> at https://ewss.usps.gov/esymain.htm <ul style="list-style-type: none"> <i>LiteBlue</i> or <i>Blue</i> Employee kiosk (available at some facilities) Call 877-477-3273, option 1 (TTY: 866-260-7507) 	<i>LiteBlue</i> ALE page liteblue.usps.gov/leave
Thrift Savings Plan (TSP)	New employees automatically enrolled with a 3 percent contribution.	Make changes at any time during the year.	<i>PostalEASE</i> at https://ewss.usps.gov/esymain.htm <ul style="list-style-type: none"> <i>LiteBlue</i> or <i>Blue</i> Call TSP at 877-968-3778 (TTY: 877-847-4385) 	<i>LiteBlue</i> TSP page liteblue.usps.gov/tsp
Commuter Benefits Program	At any time.	Make changes at any time during the year.	<i>PostalEASE</i> at https://ewss.usps.gov/esymain.htm <ul style="list-style-type: none"> https://www.commutercheckdirect.com/ Call 888-235-9223 	<i>LiteBlue</i> Commuter page liteblue.usps.gov/commuter

— Compensation and Benefits, Human Resources, 11-10-16

Save Money with Flexible Spending Accounts

Put more money in your pocket! With a flexible spending account (FSA), you can save on a wide variety of everyday medical, dental, vision, and day care expenses. It's a tax break that's simple to use and works for all employees eligible for FEHB (whether or not you participate in FEHB). You're likely to have out-of-pocket medical and/or dependent care expenses. Why pay more in taxes than you have to?

Your contributions to an FSA are deducted from your salary BEFORE taxes. That's how you save — you don't pay taxes on your FSA contributions and end up with more money in your pocket as a result.

Start by figuring out how much money you'd like to set aside for the year. If you need help in determining that amount, use the FSA calculator at <https://www.fsafeds.com/>. (Under the Quick Links menu, click "Savings Calculator").

The average person will save about 30 percent each year — that's like receiving a 30 percent off coupon. Who can say no to that? With that type of savings, a Postal Service™ employee contributing \$2,000 to an FSA account will save approximately \$600.

You can contribute up to \$2,600 into a Health Care FSA to cover out-of-pocket health, dental, and vision costs. If you don't use it all, you can carry over up to \$500 of unused elections into the next year. You can also contribute up to \$5,000 to a Dependent Care FSA to cover day care expenses for children under age 13 and eligible adult care expenses.

Visit liteblue.usps.gov/fsa to learn more or check out our new provider site at <https://www.fsafeds.com/>.

— Compensation and Benefits, Human Resources, 11-10-16

Benefits Open Season Poster

November 14, 2016 to December 12, 2016

The 2016 Open Season will be held from November 14 to December 12, 2016. During the Open Season period, you can enroll or change your medical, dental, or vision coverage. You may also enroll in health and dependent care flexible spending accounts. Unless you have a Qualifying Life Event (QLE) during the remainder of the year, this is your once-a-year opportunity to make any changes to these benefits. Only when you take the time to select the right health plan for you, can you be confident that you have the right coverage at the right price.

To help you select the right health plan, the Postal Service now provides all employees and retirees FREE access to Checkbook's Guide to Health Plans for Federal Employees (<https://liteblue.usps.gov/planselection/>). This online tool takes you through a few simple steps to find the best health plan for you and your family. Find every plan available to you ranked by estimated out-of-pocket costs and more.

Employees are also invited to attend a Virtual Benefits Fair, hosted by Long Term Care Partners, from November 14, 2016, through December 12, 2016. As part of the virtual fair you can:

- Visit individual health, dental, and vision provider booths;
- Watch instructional videos;
- Register for educational webinars; and
- Review and save 2017 health plan brochures.

Participation is Voluntary and Off-the-Clock

Register to attend the Virtual Benefits Fair on <https://www.ltcfeds.com/> anytime during Open Season, from November 14 to December 12, 2016.

For live answers to your questions, visit the Virtual Benefits Fair during one of two live carrier chat days:

Monday, November 14, 2016
10 A.M.–5 P.M. EST

Wednesday, December 7, 2016
10 A.M.–5 P.M. EST

If you need technical assistance, please contact Tyler Willson at twillson@lhcpartners.com.

To access Checkbook's Guide to Health Plans and learn more about the Virtual Benefits Fair, visit the *LiteBlue* Open Season page (<https://liteblue.usps.gov/openseason26>). You'll also find a variety of resources to help you make the most of Open Season.

Once you're ready to make your selection, go to *PostalEASE* from the *LiteBlue* Open Season page at <https://liteblue.usps.gov/openseason26>, an Employee Self-Service Kiosk (available at some facilities), *Blue*, or by calling the HR Shared Service Center at 877-477-3273, option 1; (TTY 866-260-7507).

This Open Season, be active and take action regarding your health benefits.

Please Post on All Bulletin Boards Through December 12, 2016.

Policies, Procedures, and Forms Updates

Handbooks

Handbook EL-312 Revision: Postal Police Officers and Veterans' Preference

Effective November 10, 2016, the Postal Service™ is revising Handbook EL-312, *Employment and Placement*, section 232.52, to update policy on the sort plan that identifies postal police officer as one of the positions restricted to applicants for veterans' preference.

Handbook EL-312, *Employment and Placement*

	*	*	*	*	*
2	Recruitment				
	*	*	*	*	*
23	Sources of Recruitment				
	*	*	*	*	*
232	Policy				
	*	*	*	*	*

232.52 Positions Restricted to Applicants Eligible for Veterans' Preference

[Revise the text of 232.52 to read as follows:]

The Postal Service restricts certain positions, whether career or noncareer, to applicants eligible for veterans' preference under the Veterans' Preference Act of 1944. This rule applies only to appointments from external recruitment sources, whether competitive or noncompetitive. The Postal Service has restricted the following positions:

- Building maintenance custodian.
- Custodian laborer.
- Custodian.
- Laborer custodial.
- Postal police officer.

Appointing officials may consider applicants who are not entitled to veterans' preference *only* when preference eligibles are not available for appointment. Appointing officials must ensure that:

- They attempt to recruit preference eligibles.
- They exhaust the list of preference eligible applicants for the vacancy.

Districts have two options when recruiting externally to fill restricted positions:

Use this option...	if...
Restrict competition to preference eligibles only.	Experience has shown that normal public notice will provide enough preference eligible candidates.
Accept applications from preference eligibles and nonpreference eligibles, but refer nonpreference eligibles for employment consideration <i>only</i> when there are no preference eligibles.	Experience has shown that normal public notice will not provide enough preference eligible candidates.

Note: A public notice for a restricted position must have a statement explaining if the Postal Service will accept applications from nonpreference eligibles, and if so, that the Postal Service will not consider the applications, if preference eligibles are available.

Exception: The rule of restricting positions for applicants eligible for veterans' preference:

- Does not apply when the Postal Service fills restricted positions through internal career placements such as promotion, reassignment, or change to lower level.
- Does apply when the Postal Service fills such positions through reinstatement and transfer from another agency.

* * * * *

We will incorporate this revision into the next online update of Handbook EL-312, *Employment and Placement*, which is available on the Postal Service PolicyNet website:

- Go to <http://blue.usps.gov>.
- In the left-hand column under "Essential Links", click *PolicyNet*.
- Click *Hbks*.

The direct URL for the Postal Service PolicyNet website is <http://blue.usps.gov/cpim>.

— Human Resources (HQ),
Employee Resource Management, 11-10-16

Publications

Publication 52 Revision: New Markings for Nonspillable Wet Batteries

Effective November 10, 2016, the Postal Service™ is revising Publication 52, *Hazardous, Restricted, and Perishable Mail*, Appendix C, Packaging Instruction 8B, to provide simplified marking requirements for mailpieces containing nonspillable wet batteries. This revision will limit the marking requirements for properly prepared mailings of nonspillable wet batteries to “Nonspillable Battery” and “UN2800” only.

Nonspillable wet batteries containing liquid electrolyte are permitted to be mailed only if the battery casing is completely sealed to prevent the liquid corrosive from spilling during Postal Service handling. Nonspillable batteries categorized under UN2800 are prohibited in international mail but may be sent as domestic mail via air or surface transportation when prepared within the conditions of Packaging Instruction 8B in Appendix C of Publication 52.

With this change, the Postal Service aligns its marking requirements for nonspillable wet batteries with those specified by the Department of Transportation (DOT). Since commercial carriers are generally familiar with DOT marking regulations, this alignment should reduce potential confusion when mailpieces containing these batteries are transported via commercial carrier.

Publication 52, *Hazardous, Restricted, and Perishable Mail*

* * * * *

Appendix C USPS Packaging Instructions for Mailable Hazardous Materials

* * * * *

USPS Packaging Instruction 8B

Nonspillable Wet Battery

[Add a new last sentence to the introductory text of 8B to read as follows:]

***Nonspillable wet batteries mailed in accordance with these instructions must meet all applicable conditions in 49 CFR 173.159a.

* * * * *

Required Packaging

Primary Receptacle

[Revise the text under the Primary Receptacle subheading to read as follows:]

- The nonspillable battery must be capable of withstanding the vibration and pressure differential tests cited in 49 CFR 173.159(f) (1) and (2).

* * * * *

Marking

[Revise the text under the Marking subheading to read as follows:]

- The outer packaging must be plainly and durably marked on the address with the text “NONSPILLABLE BATTERY, UN2800.”
- Each mailpiece must include the mailer and addressee names and have a complete delivery and return address.

Note: A shipper's declaration for dangerous goods is not required for nonspillable wet batteries sent via air transportation as exempted in 49 CFR 173.159a.

* * * * *

We will incorporate this revision into the next update of online Publication 52, which is available via Postal Explorer® at <http://pe.usps.com>.

— Product Classification, Marketing and Sales, 11-10-16

Publication 431 Revision: Changes to Post Office Box Service and Caller Service Fee Groups

Effective November 10, 2016, Publication 431, *Post Office Box Service and Caller Service Fee Groups*, is revised to include the following changes.

Publication 431, *Post Office Box Service and Caller Service Fee Groups*

* * * * *

[Delete the following entries:]

ZIP Code	Fee Group
54816	5
97530A	5

* * * * *

The online version of Publication 431 is dated July 2013. Publication 431 is currently available on the Postal Service™ PolicyNet website (<http://blue.usps.gov/cpim>):

- Go to <http://blue.usps.gov>.
- In the left-hand column, under “Essential Links,” click *PolicyNet*.
- Click *PUBs*.

Offices with WebBATS Manager/Supervisor access can view current Publication 431 information by going to the WebBATS Edit Facility Information page, as follows:

1. Go to the WebBATS main menu, and select Utility> Facility>Edit Facility option.
2. View the Fee Group field on the Edit Facility Information page.

— Retail Operations,
Retail and Customer Service Operations, 11-10-16

Management Instructions

Management Instruction EL-620-2016-6: Career Awareness Conference Guidelines

Effective November 10, 2016, the Postal Service is issuing Management Instruction (MI) EL-620-2016-6, *Career Awareness Conference Guidelines*, to update policy and procedures for Career Awareness Conferences. The document outlines:

- Guidelines for conducting Career Awareness Conferences.
- Financial funds and responsibilities.
- Vendor participation.

MI EL-620-2016-6 supersedes the previous Management Instruction for Career Awareness Conference Guidelines (MI EL-620-96-1) formerly posted on PolicyNet.

MI EL-620-2016-6 is available on the Postal Service *PolicyNet* website:

- Go to <http://blue.usps.gov>.
- In the left-hand column, under “Essential Links,” click *PolicyNet*.
- Click *MIs*.

The direct URL for the Postal Service PolicyNet website is <http://blue.usps.gov/cpim>.

— Learning and Development,
Employee Resource Management, 11-10-16

Organization Information

Corporate Communications

2016 CFC Season is Underway



Employees across the nation are pledging to “Show Some Love” this Combined Federal Campaign (CFC) season as postal facilities host a variety of social events to promote charitable giving.

USPS® employees are encouraged to support the causes that matter to them by giving to one of the many participating charities. CFC campaign staff is working to ensure employees know where to find information on these charities and the different contribution options.

The CFC allows federal employees to donate to more than 18,000 nonprofit organizations through payroll deductions or one-time cash or check donations.

Employees can contribute to CFC through Dec. 15.

Contact your local campaign manager (liteblue.usps.gov/cfc/_pdf/2016-cfc-manager-list.pdf) or visit the CFC site (liteblue.usps.gov/cfc/) for additional information.

The CFC has raised more than \$8 billion since it began in 1961 — including \$177 million in 2015 alone.

— *Speechwriting and Publications, Corporate Communications, 11-10-16*

Domestic Mail

Labeling List Changes

Effective December 1, 2016, we are revising Labeling List(s) L001, L007, L012, and L606 to reflect changes in mail processing operations. Mailers are expected to label

according to these revised lists for mailings that are inducted on or after the December 1, 2016, effective date, but no later than the January 31, 2017, expiration date.

Labeling Lists

L000 General Use

* * * * *

L001 5-Digit Scheme — Periodicals, Standard Mail, and Package Services Flats and Irregular Parcels

Changes

Column A Destination ZIP Codes	Column B Label Container To (Change From)	Column B Label Container To (Change To)	Column B Change Status
48215	JEFFERSON STATION MI 48214	FOX CREEK STATION MI 48230	New
48225	FOX CREEK STATION MI 48225	PARKGROVE STATION MI 48205	New
48230	FOX CREEK STATION MI 48225	FOX CREEK STATION MI 48230	New

Newly Added

Column A Destination ZIP Codes	Column B Label Container To (Added To)	Column B Status
48205	PARKGROVE STATION MI 48205	New
48213	JEFFERSON STATION MI 48214	Existing
56529	DILWORTH MN 56529	New
56547	DILWORTH MN 56529	New

* * * * *

L007 5-Digit Scheme – Periodical, Standard Mail, and Package Services Flats in Bundles

* * * * *

Deleted

Column A Destination ZIP Codes	Column B Label (Deleted From)
60564	NAPERVILLE IL 60564
60565	NAPERVILLE IL 60564

* * * * *

L012 5-Digit ZIP Scheme Combination**Changes**

Column A Destination ZIP Codes	Column B Label Container To (Change From)	Column B Label Container To (Change To)	Column B Change To Status
04064	SACO ME 04072	BIDDEFORD ME 04005	Existing
04072	SACO ME 04072	BIDDEFORD ME 04005	Existing
68142	OMAHA NE 68134	OMAHA NE 68164	New
68164	OMAHA NE 68134	OMAHA NE 68164	New
92604	IRVINE CA 92614	IRVINE CA 92604	New
92605	HUNTINGTON BEACH CA 92615	HUNTINGTON BEACH CA 92647	New
92606	IRVINE CA 92614	IRVINE CA 92604	New
92612	IRVINE CA 92618	IRVINE CA 92612	New
92615	HUNTINGTON BEACH CA 92615	HUNTINGTON BEACH CA 92646	New
92617	IRVINE CA 92618	IRVINE CA 92612	New

Newly Added

Column A Destination ZIP Codes	Column B Label Container To (Added To)	Column B Status
04103	PORTLAND ME 04101	Existing
15333	AMITY PA 15311	Existing
15345	AMITY PA 15311	Existing
15376	BENTLEYVILLE PA 15314	Existing
15428	CONNELLSVILLE PA 15425	Existing
15445	CONNELLSVILLE PA 15425	Existing
15451	CONNELLSVILLE PA 15425	Existing
15458	CONNELLSVILLE PA 15425	Existing
15467	CONNELLSVILLE PA 15425	Existing
15468	CONNELLSVILLE PA 15425	Existing
15474	CONNELLSVILLE PA 15425	Existing
15486	CONNELLSVILLE PA 15425	Existing
26542	FAIRMONT WV 26554	Existing
26547	FAIRMONT WV 26554	Existing
92623	IRVINE CA 92614	Existing

Column A Destination ZIP Codes	Column B Label Container To (Added To)	Column B Status
92646	HUNTINGTON BEACH CA 92646	New
92647	HUNTINGTON BEACH CA 92647	New

Deleted

Column A Destination ZIP Codes	Column B Label (Deleted From)
08875	FLEMINGTON NJ 08822
92619	IRVINE CA 92618

* * * * *

L606 5-Digit Scheme – Standard Mail, First-Class Mail, and Package Services Parcels

Changes

Column A Destination ZIP Codes	Column B Label Container To (Change From)	Column B Label Container To (Change To)	Column B Change To Status
45502	SPRINGFIELD OH 45501	SPRINGFIELD OH 45502	New
45503	SPRINGFIELD OH 45501	SPRINGFIELD OH 45502	New
45504	SPRINGFIELD OH 45501	SPRINGFIELD OH 45502	New
91340	SYLMAR CA 91342	SYLMAR CA 91340	New
91341	SYLMAR CA 91342	SYLMAR CA 91340	New
92210	PALM DESERT CA 92260	PALM DESERT CA 92210	New
92211	PALM DESERT CA 92260	PALM DESERT CA 92210	New
92806	ANAHEIM CA 92806	ANAHEIM CA 92816	New
92816	ANAHEIM CA 92806	ANAHEIM CA 92816	New

Newly Added

Column A Destination ZIP Codes	Column B Label Container To (Added To)	Column B Status
56529	DILWORTH MN 56529	New
56547	DILWORTH MN 56529	New
89502	RENO NV 89510	Existing
89519	RENO NV 89509	Existing

Deleted

Column A Destination ZIP Codes	Column B Label (Deleted From)
17402	YORK PA 17406
49508	GRAND RAPIDS MI 49508
49530	GRAND RAPIDS MI 49508
49560	GRAND RAPIDS MI 49508
89595	RENO NV 89509
90094	LOS ANGELES CA 90045
92011	CARLSBAD CA 92009
92195	SAN DIEGO CA 92115

Column A Destination ZIP Codes	Column B Label (Deleted From)
92314	BIG BEAR CITY CA 92314
92344	HESPERIA CA 92345
92386	BIG BEAR CITY CA 92314
92395	VICTORVILLE CA 92392
92532	LAKE ELSINORE CA 92531
92548	SUN CITY CA 92584
93611	CLOVIS CA 93612
93612	CLOVIS CA 93612
93613	CLOVIS CA 93612

— Logistics, Network Development, and Support,
Network Operations, 11-10-16

Finance

Form W-2, Wage and Tax Statement — Changing Your Current Mailing Address

To ensure correct and timely receipt of a 2016 Form W-2, *Wage and Tax Statement*, all employees must have a current mailing address on file prior to December 21, 2016, in order to update the W-2 mailing file.

Employees may use the following options to change their mailing address on record:

1. LiteBlue for Employees with PC Access

- Go to the *LiteBlue* home page at www.lite-blue.usps.gov.
- Enter your Employee Identification Number and USPS® Password.
- Click the *Log On* button.
- Click on the *My HR* tab at the top of the page.
- Click *Change My Address* (top left of page, within the *I want to:* section).
- Click *Edit*.
- Change any necessary mailing address information.
- Click *Review*.
- Click *Save*.

2. Employee Self-Service Computer Kiosk

All Postal Service™ employees can change their mailing and residential addresses using an employee self-service computer kiosk. Employee self-service computer kiosks are located in large processing and distribution centers and in some Post Offices™. On the kiosk's main web page, click on the tab titled, *Employee Change of Address*.

3. Mail

Send a completed PS Form 1216, *Employee's Current Mailing Address*, to:

HR Shared Service Center (HRSSC)
Benefits/Compensation
PO Box 970400
Greensboro, NC 27497-0400

4. Telephone

Call the Human Resources Shared Service Center at 877-477-3273, select option 5, and follow the prompts to speak to a service representative who will assist you (TTY 866-260-7507).

— Payroll,
Controller, 11-10-16

Pull-Out Information

Fraud

Invalid USPS Corporate Account Numbers

This listing should be provided to Contract Postal Units and used by acceptance clerks in non-POS locations without intranet access to validate a USPS Corporate Account (USPSCA) number online. For all other locations, online USPSCA validation is preferred. The online validation process is outlined in the USPSCA Validation SOP on the Retail webpage. This list supersedes all previous notices,

which must be recycled. Acceptance clerks must not accept Priority Mail Express™ shipments bearing an invalid USPSCA number in the “Payment by Account” or “Agreement Number” section of the label or form.

Note: The first 6 digits of a 9-digit Custom Designed Service and Next Day Pickup Agreement make up the Corporate Account Number.

005024	015800	060154	088307	115918	210520	336221	481960	751062	840084	913480	921203	931898
006011	015805	062064	088702	119184	220493	336273	486352	752248	841101	915200	921233	933137
006042	015819	062087	089866	128988	221353	337147	490514	752252	846006	916028	921337	933543
006072	016054	064194	091088	132461	222162	349640	493020	752912	846095	917012	921713	941373
006076	016225	064270	091745	142056	240535	370077	494155	780119	850842	917048	921847	947253
006095	016256	064653	092382	142816	253306	372509	495142	782053	851006	917113	921868	948284
006100	016930	065189	093355	146088	274220	372780	495556	782085	851028	917417	921889	948361
006121	018041	065394	093471	146116	300293	374157	496200	782116	851030	917471	921921	948858
006122	019028	065489	095132	146122	300958	377123	498200	782142	851051	917530	921954	950712
006167	019191	065563	096057	146127	301223	379560	499050	782707	852708	917551	922145	971109
006177	019529	069027	097661	146128	301490	381862	503001	782918	853547	917690	924089	980926
006179	020459	069397	097873	146134	302100	386077	551149	785380	853913	920101	924104	981601
006207	020542	070037	098228	146646	302995	433040	553040	785441	856527	920102	924342	982494
006215	021027	070648	098335	146705	303525	441320	570178	787173	871026	920109	924416	982643
006227	022356	075028	100014	148300	305562	441771	581016	800112	891539	920112	924446	982666
006235	022434	076156	100157	148411	306439	441978	585241	800127	891598	920113	924590	982694
006311	022502	077287	100285	148415	311614	450173	591050	800291	891600	920114	924655	984248
006339	023237	077759	100542	148420	312479	453054	591350	801482	891602	920116	924682	992639
006656	026383	079978	100882	150114	320913	454160	591530	801506	891603	920135	924688	995354
006817	026629	080032	100902	150280	321061	462273	596449	802062	891605	920136	925085	995467
006879	026643	080134	100909	150287	321197	469115	598620	802136	891606	920140	925129	995494
007262	028471	080156	100953	152089	322023	473078	600701	802461	891607	920141	925139	995522
008183	029124	080176	108183	152729	322051	480099	601062	802849	891608	920142	925168	995599
008397	029725	080331	108611	175052	326016	480217	604302	804035	891609	920143	925177	995601
008751	030500	080413	109010	184061	327691	480350	605141	804207	891998	920156	926193	995737
008819	031166	080439	109041	184111	327878	480378	609334	805017	900025	920163	926491	997300
008895	033019	080517	109062	184461	327890	481158	615026	805563	900122	920167	927325	998184
008947	033020	080579	109065	191094	328040	481209	629311	809225	900332	920175	927356	998503
010128	034037	080603	109071	191176	331808	481271	660025	814209	902647	920176	927386	998514
014739	037043	080723	115080	192296	333089	481295	701072	820102	906877	920182	927391	
015006	057121	085403	115407	193175	335331	481524	711005	820813	912014	920193	928329	
015610	060012	085831	115708	197127	335717	481595	740538	827107	913024	920290	928334	
015643	060102	088279	115893	198265	335858	481689	740876	832495	913188	921202	930071	

USPS® Serves Up *Soda Fountain Favorites* Forever® Stamps



On Sale Nationwide: June 30, 2016.

Missing, Lost, or Stolen U.S. Money Order Forms

Do Not Cash — Upon Receipt, Notify Local Postal Inspectors

This listing will be provided to all Postal Service™ employees responsible for accepting and cashing postal money orders. Destroy all interim notices when the num-

bers listed appear in the *Postal Bulletin*. The actual serial numbers consist of the first 10 digits on the money orders. Check for altered dollar amounts by holding money orders to the light.

010 001 0200 to 0299	040 674 7100 to 7199	073 763 0878 to 0887	122 451 9879 to 9899
010 504 1932 to 1999	040 688 8816 to 8899	073 763 0889 to 0898	122 714 6805 to 6900
011 582 1889 to 1899	041 299 6752 to 6799	077 617 5481 to 5499	124 916 0304 to 0499
011 588 2900 to 3099	041 623 8889 to 8899	077 999 4001 to 4090	126 423 0136 to 0169
012 441 0784 to 0799	041 803 6565 to 6599	078 174 4475 to 4499	127 500 2328 to 2399
012 579 5675 to 5699	043 129 1968 to 1997	078 219 4931 to 4999	160 901 2254 to 2299
013 289 6176 to 6199	043 205 5922 to 5999	078 250 4756 to 4799	161 103 6581 to 6599
013 610 0014 to 0099	044 087 3457 to 3499	078 823 8312 to 8399	161 194 2857 to 0899
014 932 1000 to 1099	044 087 4000 to 4099	079 374 0300 to 2499	162 032 4447 to 4499
014 972 0800 to 0899	044 226 2487 to 2512	079 807 2342 to 2399	163 257 1085 to 1099
015 363 0065 to 0099	044 306 4200 to 4299	082 721 0228 to 0254	164 359 2406 to 2499
017 028 3200 to 3299	044 306 4370 to 4599	083 140 5000 to 7499	166 101 1433 to 1499
018 569 5333 to 5399	045 524 4121 to 4298	083 784 8886 to 8899	167 555 5201 to 5212
018 986 5264 to 5299	046 800 9870 to 9899	083 913 6915 to 6999	167 555 5214 to 5299
019 518 2814 to 2899	047 352 4000 to 4099	084 478 3920 to 3999	169 618 6274 to 6299
020 698 5159 to 5199	048 383 7650 to 7659	086 000 8271 to 8299	171 806 6878 to 6893
020 844 7307 to 7399	048 396 3647 to 3699	086 798 3840 to 3849	173 639 4685 to 4699
020 972 8948 to 8999	051 142 0755 to 0799	088 404 4472 to 4499	174 238 2779 to 2799
022 021 9110 to 9181	051 774 8857 to 8899	088 404 5584 to 5699	174 281 9347 to 9399
022 037 1411 to 1499	051 781 2875 to 2885	088 757 8688 to 8699	175 251 2600 to 0699
022 527 9201 to 9210	051 977 7010 to 7023	088 757 9400 to 9499	176 281 7937 to 7950
022 529 1882 to 1899	052 058 7115 to 7199	089 358 2248 to 2257	176 281 7963 to 7999
023 637 7169 to 7199	054 450 1130 to 1167	090 663 9678 to 9684	176 731 6586 to 6599
024 380 4100 to 4199	057 670 0563 to 0599	091 818 0071 to 0099	178 254 5000 to 9999
024 496 6870 to 6896	058 187 3836 to 3899	093 106 9346 to 9355	178 881 9900 to 9999
025 092 0987 to 0999	058 523 3003 to 3099	093 203 0500 to 0599	180 031 2089 to 2098
025 369 5535 to 5599	058 591 1153 to 1299	093 684 3630 to 3699	180 403 7723 to 7741
025 729 1151 to 1199	058 895 3746 to 3799	094 081 5074 to 5099	180 428 4580 to 0599
025 729 1643 to 1799	059 986 0814 to 0899	094 216 2555 to 2599	182 368 7544 to 0599
026 492 3180 to 3199	060 406 7650 to 7699	094 580 7062 to 7099	182 475 3229 to 3258
027 361 0430 to 0499	063 491 8122 to 8199	094 639 4200 to 4299	182 475 3904 to 3933
027 369 4482 to 4495	063 916 9968 to 9999	095 070 7186 to 7199	182 631 0031 to 0099
027 671 8762 to 8776	064 091 4500 to 4599	095 076 8300 to 8399	182 911 6539 to 6600
027 787 9886 to 9899	065 170 0471 to 0499	095 354 6864 to 6899	184 218 2760 to 2799
027 965 9487 to 9499	065 255 7909 to 7999	097 224 1350 to 1599	185 828 1474 to 1499
028 100 8069 to 8099	065 392 6345 to 6399	100 160 3800 to 3899	186 132 7583 to 0599
028 191 1852 to 1999	066 099 2014 to 2099	104 667 6400 to 6499	186 629 0589 to 0599
028 850 3000 to 3199	066 648 2880 to 2899	104 876 8937 to 8999	187 184 6177 to 0199
029 510 1500 to 1599	066 787 3639 to 3699	112 049 4413 to 4499	187 323 8200 to 8299
030 687 0903 to 0999	066 845 7500 to 9999	112 870 9765 to 9799	187 441 6080 to 6099
030 701 3442 to 3499	067 093 3869 to 3899	113 319 2000 to 2099	188 831 6774 to 6799
031 077 4507 to 4799	068 895 0334 to 0399	114 402 3850 to 3899	188 835 6370 to 6399
032 295 7500 to 9999	070 724 4488 to 4499	114 866 5368 to 5397	189 083 1064 to 1099
034 394 1000 to 1099	070 841 9181 to 9199	116 154 2800 to 2899	189 660 9583 to 9599
034 943 0400 to 0799	070 844 2546 to 2599	116 986 4400 to 4499	191 179 0377 to 0399
035 035 4337 to 4399	070 916 1340 to 1399	117 175 1647 to 5169	192 050 5762 to 5781
037 312 7500 to 7599	071 047 5768 to 5799	117 951 4687 to 4699	194 456 8600 to 0699
037 706 9578 to 9599	071 179 9800 to 9899	117 951 5200 to 5299	195 194 6881 to 6899
037 805 3677 to 3699	071 386 3682 to 3699	119 786 3051 to 3064	195 874 1112 to 1199
037 909 5490 to 5499	071 507 6840 to 6899	119 815 8961 to 6199	197 244 6300 to 6399
037 931 4660 to 4699	072 045 9641 to 9699	119 850 7400 to 7499	197 244 6600 to 6699
039 145 6521 to 6595	072 675 8287 to 8299	119 850 7700 to 7999	197 244 6700 to 6799
040 024 3901 to 3999	073 763 0867 to 0876	121 634 0460 to 0499	198 285 2556 to 2566

199 105 0778	to	0799	375 169 4400	to	4599	401 310 9505	to	9599	420 969 3951	to	3971
199 678 2968	to	2999	375 829 3400	to	3499	401 382 5312	to	5399	420 969 3973	to	3999
202 748 5133	to	5199	375 851 9100	to	9199	402 578 7876	to	7899	421 116 3565	to	3599
202 748 5245	to	5299	376 196 0911	to	0999	403 125 6744	to	6799	421 130 9300	to	9399
202 748 5300	to	5399	378 085 3679	to	3699	403 260 7000	to	7499	421 313 4500	to	4999
202 748 5400	to	5499	378 351 1063	to	1099	403 280 6470	to	6499	421 364 5537	to	5599
203 256 1240	to	1299	379 843 5100	to	5199	403 685 8600	to	8699	421 656 2609	to	2699
204 230 3577	to	3595	380 093 9600	to	9699	404 003 0300	to	0399	421 988 9700	to	9799
205 019 0174	to	0199	380 165 1165	to	1199	404 041 8838	to	8899	422 172 4667	to	4699
207 196 9900	to	9999	381 325 4500	to	4599	404 071 4268	to	4299	422 484 4212	to	4299
207 204 0700	to	0799	381 604 2510	to	2699	404 347 5356	to	5399	422 556 1270	to	1299
207 204 0800	to	0899	381 645 9525	to	9599	404 347 5548	to	5599	422 587 7024	to	7099
207 514 3857	to	3899	383 314 3968	to	3999	404 726 4500	to	4599	422 819 7533	to	7599
208 556 4707	to	4799	383 892 1000	to	1344	404 961 5001	to	5199	422 842 5073	to	5087
210 057 4038	to	4047	383 892 1382	to	1399	405 325 0188	to	0198	422 907 7563	to	7599
210 221 0548	to	0599	384 925 3641	to	3654	406 009 4587	to	4599	424 500 6050	to	6099
214 061 4711	to	4724	385 568 2331	to	2399	406 260 6830	to	6899	424 641 8500	to	8599
214 303 6311	to	6325	385 599 7554	to	7575	406 459 6641	to	6999	424 871 6600	to	6699
214 303 6239	to	6258	385 774 2024	to	2099	406 733 3000	to	3999	425 298 2352	to	2399
214 877 4251	to	4273	386 624 1412	to	1599	407 545 1557	to	1599	425 418 4269	to	4299
215 252 3918	to	3992	386 883 8936	to	8999	407 594 0412	to	0599	425 418 4405	to	4499
218 698 2157	to	2199	387 314 5574	to	5599	407 692 9100	to	9299	426 547 4566	to	4599
218 746 0800	to	0899	387 837 6300	to	6399	407 959 2190	to	2199	427 412 6337	to	6499
219 095 0100	to	0399	388 828 0656	to	0699	408 265 2275	to	2288	427 481 0900	to	0999
219 389 1885	to	1899	389 696 2400	to	2799	408 499 7700	to	7799	428 027 2742	to	2752
219 568 7435	to	7456	389 846 3104	to	3135	408 499 7900	to	7999	429 474 4172	to	4199
219 568 7469	to	7487	389 846 3145	to	3195	408 682 8484	to	8599	429 889 2900	to	2999
221 316 5757	to	5799	389 887 9211	to	9230	408 698 7015	to	7099	430 150 4401	to	4599
223 476 3914	to	3999	389 887 9234	to	9299	409 072 3941	to	3999	430 172 9800	to	9899
223 565 4921	to	4957	390 001 3182	to	3199	410 491 2311	to	2399	430 177 1900	to	2099
223 565 4979	to	4999	390 001 3500	to	3699	410 694 8400	to	8599	430 444 9500	to	9699
224 636 4745	to	4765	390 545 5974	to	5999	410 775 1500	to	1599	430 664 4070	to	4099
224 636 4776	to	4799	391 104 6146	to	6199	410 795 7927	to	7999	432 168 8419	to	8499
224 636 4855	to	4885	391 574 1466	to	1499	410 867 0917	to	0966	432 708 6800	to	6999
224 636 4932	to	4948	391 783 3020	to	3599	410 867 0970	to	0999	432 744 1544	to	1599
224 636 4950	to	4962	391 792 6100	to	6199	411 868 1023	to	1199	432 995 9775	to	9799
224 636 4985	to	4999	392 668 2956	to	2999	411 922 2322	to	2399	433 003 5800	to	5899
224 730 2207	to	2299	392 854 8500	to	8899	412 193 0900	to	0999	433 757 3047	to	3099
225 970 0500	to	0599	393 584 7566	to	7699	412 395 8599	to	8699	433 765 4003	to	4099
225 970 0600	to	0699	393 650 0074	to	0099	412 485 6500	to	6599	434 482 7060	to	7199
225 970 0700	to	0799	393 838 8316	to	8499	412 485 6610	to	6699	434 513 2386	to	2399
227 033 8679	to	8699	393 893 6007	to	6099	412 885 5953	to	5999	434 968 3076	to	3092
227 275 9400	to	9999	394 126 6907	to	6999	414 193 3608	to	3674	435 303 1831	to	1842
228 463 2456	to	2499	394 189 0405	to	0599	414 193 3677	to	3699	435 303 1986	to	1999
228 510 4852	to	4899	394 822 3243	to	3278	414 411 7348	to	7399	435 666 6092	to	6399
229 462 8451	to	8475	394 990 1810	to	1899	414 640 0757	to	0799	436 082 6400	to	6899
229 668 5977	to	5999	395 343 3264	to	3299	414 965 1727	to	1799	436 160 6441	to	6499
229 923 9176	to	9199	395 373 3035	to	3099	417 302 8104	to	8199	437 316 7115	to	7199
229 924 6696	to	6699	395 396 9649	to	9799	417 387 6532	to	6599	437 427 0500	to	3499
230 051 9500	to	9999	395 970 3240	to	3299	417 496 6800	to	6999	439 179 2300	to	2399
236 366 2431	to	2499	397 622 4054	to	4099	417 871 9250	to	9299	439 310 0458	to	0499
236 660 5853	to	5872	397 819 8902	to	8999	417 930 9533	to	9599	440 698 1947	to	1999
273 070 8059	to	8099	398 149 7200	to	7699	418 164 6500	to	6799	440 858 6300	to	6399
273 775 7700	to	7899	399 070 0872	to	0899	418 423 9863	to	9899	440 858 6420	to	7299
302 000 0000	to	9999	399 156 7119	to	7199	418 633 5922	to	5999	441 199 1655	to	1699
349 746 2056	to	2099	399 203 5064	to	5099	418 719 8520	to	8599	443 127 3648	to	3699
350 518 7350	to	7374	399 296 9910	to	9999	418 744 2235	to	2299	443 127 4000	to	4099
360 011 1690	to	1699	399 396 8935	to	8999	418 962 2848	to	2899	443 673 7900	to	7999
360 168 6008	to	6099	399 792 7775	to	7799	419 543 0286	to	0299	443 800 9335	to	9399
360 173 8800	to	8899	399 792 8300	to	8399	419 730 0300	to	0399	444 382 8822	to	8899
360 324 2326	to	2399	400 427 1051	to	1999	420 277 0015	to	0049	444 390 1667	to	1699
362 861 3064	to	3099	401 045 1505	to	1549	420 599 0734	to	0798	444 457 3854	to	3899
373 006 2176	to	2199	401 045 1571	to	1599	420 661 4115	to	4199	450 048 4173	to	4199
374 768 2600	to	2699	401 294 2700	to	2799	420 758 9500	to	9699	450 048 4442	to	4699

450 560 5173 to 5199	463 227 7711 to 7799	481 072 9463 to 9499	501 058 0016 to 0026
450 620 3077 to 3099	463 414 4869 to 4899	481 673 0074 to 0095	501 331 0300 to 0399
450 620 3135 to 3199	463 808 3484 to 3499	482 527 1500 to 1599	501 460 0977 to 0999
450 780 2716 to 2799	463 945 7400 to 7899	482 541 5255 to 5299	502 227 7645 to 7699
450 801 2700 to 2799	464 629 9000 to 9399	482 729 6800 to 6899	502 424 0200 to 0499
451 109 2967 to 2984	464 711 4332 to 4399	483 363 7207 to 7299	502 424 0600 to 0699
451 115 4110 to 4125	465 692 3963 to 3999	483 402 2356 to 2399	502 496 6923 to 6999
451 115 4127 to 4199	465 698 8300 to 8599	483 486 5100 to 5199	503 003 2700 to 2899
451 746 0700 to 0799	465 743 7745 to 7799	483 632 1521 to 1599	503 194 5144 to 5153
452 265 0074 to 0099	466 798 6056 to 6067	483 632 2600 to 2799	503 790 9922 to 9948
452 265 0246 to 0299	467 147 4300 to 4399	483 849 1615 to 1699	504 045 4030 to 4099
452 265 0335 to 0999	468 079 5782 to 5799	484 174 4803 to 5299	504 166 0200 to 0599
452 509 1169 to 1199	469 067 2817 to 2899	484 323 8900 to 9199	504 240 1062 to 1399
452 855 6471 to 6499	469 127 8000 to 8199	484 680 5000 to 5038	504 805 3300 to 3499
452 890 4679 to 4799	469 213 0359 to 0399	484 680 5040 to 5074	505 096 0662 to 0699
452 900 8215 to 8238	469 213 0500 to 0599	484 680 5077 to 5099	505 893 7739 to 7799
453 117 9146 to 9199	469 561 8011 to 8099	485 029 4913 to 4999	505 893 7800 to 7999
453 334 3631 to 3699	469 658 1961 to 1999	486 176 0600 to 0699	506 124 0800 to 0999
453 603 7841 to 7891	469 666 9900 to 9999	486 559 7555 to 7599	506 165 7027 to 0099
453 650 1140 to 1199	469 678 1900 to 1999	486 696 3023 to 3199	506 502 5209 to 5299
453 741 1300 to 1399	469 781 4900 to 4999	488 173 7900 to 7999	506 756 1682 to 1699
454 013 2919 to 2999	469 947 6960 to 6999	488 206 4100 to 4199	506 756 1700 to 1799
454 186 2411 to 2499	470 755 5800 to 5818	488 226 0200 to 0299	506 756 1800 to 1899
454 268 4883 to 4899	471 918 0300 to 0999	488 709 3906 to 3999	506 836 5326 to 5399
454 302 5400 to 5499	471 985 2408 to 2419	488 855 8359 to 8399	508 488 6226 to 6299
454 490 8300 to 8399	472 191 6700 to 6799	489 181 8963 to 8999	508 789 8332 to 8399
454 547 7434 to 7499	472 270 2555 to 2599	489 223 2000 to 2099	508 789 8400 to 8499
454 922 4867 to 4895	472 987 0213 to 0241	489 311 1930 to 1999	509 909 0425 to 0435
455 221 1348 to 1499	472 987 0290 to 0299	489 318 6200 to 6300	510 150 2400 to 2499
455 364 2147 to 2199	473 151 2069 to 2199	489 384 0027 to 0099	510 381 3200 to 3299
455 399 5400 to 5499	473 666 9138 to 9199	489 427 0658 to 0899	510 587 9500 to 9599
455 476 0676 to 0699	473 952 3429 to 3499	489 997 5252 to 5299	510 587 9659 to 9699
455 543 0618 to 0699	474 108 5402 to 5499	490 669 5850 to 6099	510 269 9770 to 9999
456 410 9006 to 9099	474 356 5193 to 5299	490 717 7080 to 7099	511 021 5042 to 5099
456 470 4146 to 4299	474 949 3366 to 3399	490 721 6000 to 6099	511 021 5100 to 5199
456 619 4460 to 4499	475 134 9362 to 9399	490 793 1500 to 2099	511 468 1747 to 1799
457 333 2686 to 2699	475 167 9667 to 9699	490 886 8171 to 8199	511 844 0100 to 0199
457 729 1767 to 1777	475 319 3415 to 3499	490 977 9221 to 9240	511 844 0340 to 0399
457 937 8615 to 8699	475 319 3649 to 3799	491 258 8100 to 9099	600 645 3223 to 3299
458 028 9810 to 9899	475 340 6400 to 6599	491 567 1376 to 1399	601 339 1200 to 1399
458 057 2712 to 2999	475 424 8410 to 8499	492 254 4800 to 4899	601 653 5884 to 5899
458 069 9537 to 9599	475 629 9156 to 9199	492 283 5100 to 5199	601 661 7700 to 7799
458 069 9665 to 9699	475 850 6101 to 6199	492 610 6813 to 6899	601 682 5343 to 5399
458 337 5222 to 5299	475 875 2500 to 2599	493 394 5568 to 5599	601 928 1600 to 1699
458 354 7653 to 7999	476 169 8264 to 8299	493 470 2562 to 2599	602 512 2972 to 2999
458 671 8678 to 8699	476 189 3000 to 3499	493 473 7700 to 7799	602 555 2400 to 2799
458 671 8721 to 8798	476 331 2480 to 2499	493 716 2153 to 2199	602 829 7061 to 7099
458 847 5044 to 5999	477 289 8601 to 8699	494 206 2972 to 2999	603 483 9572 to 9599
459 274 7624 to 7699	477 681 5206 to 5299	494 217 3446 to 3999	603 490 7200 to 7299
459 365 5432 to 5499	478 010 4243 to 4268	494 224 0500 to 0599	603 678 7100 to 7199
459 378 5764 to 5799	478 010 4270 to 4291	495 145 0600 to 0699	603 678 7662 to 7699
459 472 4816 to 4999	478 450 5071 to 5099	496 209 7425 to 7499	603 678 7902 to 7999
460 349 6878 to 6899	478 469 7838 to 7858	496 213 8728 to 8799	603 678 8418 to 8499
460 550 1909 to 1999	478 469 7883 to 7899	496 474 5226 to 5248	603 678 8700 to 9999
460 997 5234 to 5299	479 280 9800 to 9899	497 053 8517 to 8699	604 086 0880 to 0899
461 973 6443 to 6499	479 365 9116 to 9176	497 854 8673 to 8699	604 349 1414 to 1499
462 152 0107 to 0299	479 412 9900 to 9999	498 449 8888 to 8899	604 503 7776 to 7799
462 274 1072 to 1099	479 667 6190 to 6199	498 929 8285 to 8499	605 520 9037 to 9099
462 277 8373 to 8399	479 748 9680 to 9699	498 936 5310 to 5399	605 685 4010 to 4099
462 554 6051 to 6099	479 860 7000 to 7199	499 016 5425 to 5499	605 988 6467 to 6499
463 011 5529 to 5540	480 526 2000 to 2099	499 440 8575 to 8899	607 689 7951 to 7960
463 176 4115 to 4199	480 640 6330 to 6399	499 731 6717 to 6799	607 728 1276 to 1299
463 176 4229 to 4299	480 658 0568 to 0599	500 064 1858 to 1869	608 727 7100 to 7199
463 185 2600 to 2799	480 689 5100 to 5199	500 070 5725 to 7799	608 727 7273 to 7599

608 813 9950 to 9999	630 463 0588 to 0599	646 798 4000 to 4999	666 132 8226 to 8299
609 067 5325 to 5399	631 459 9117 to 9199	647 048 7035 to 7099	666 696 2209 to 2299
609 067 5488 to 5499	631 762 9325 to 9399	647 049 2900 to 2999	666 696 2309 to 2399
609 067 5600 to 5699	632 217 4933 to 4999	647 398 8300 to 8399	667 032 9300 to 9399
609 289 6123 to 6199	632 500 0000 to 640 3999	647 398 8481 to 8499	667 729 5529 to 5599
609 438 4400 to 4499	633 110 4165 to 4199	647 437 3000 to 4999	668 383 8400 to 8699
609 493 1100 to 1199	633 110 4303 to 4499	647 811 2188 to 2199	670 368 3400 to 3499
609 766 8091 to 8999	633 438 6429 to 6599	648 009 6057 to 6099	670 369 7336 to 7399
609 825 4100 to 4115	633 588 7173 to 7182	648 163 5300 to 5499	670 750 7169 to 7199
609 884 2981 to 2999	634 725 0700 to 0799	648 722 5283 to 5299	671 046 6200 to 6399
609 893 1000 to 1099	634 803 3239 to 3299	648 892 3164 to 3199	671 251 5448 to 5499
610 092 3200 to 3299	634 807 2474 to 2499	649 100 3989 to 3999	671 926 5600 to 5799
610 582 4200 to 4299	634 827 5900 to 5999	649 647 0370 to 0399	672 444 2000 to 2999
611 879 6939 to 6999	634 886 3428 to 3499	649 647 0522 to 0599	672 828 3410 to 3499
612 291 8013 to 8099	635 559 3449 to 3499	649 647 5237 to 5399	673 167 5776 to 5799
612 751 5171 to 5199	636 289 6214 to 6299	649 647 9100 to 9299	675 464 3700 to 3799
612 751 5226 to 5299	636 634 8007 to 8042	649 666 7800 to 8299	675 464 4000 to 4199
612 751 6083 to 6099	637 150 1200 to 1299	650 114 7707 to 7719	676 365 5958 to 5999
612 751 6268 to 6299	637 562 5828 to 5899	650 130 3400 to 3599	676 669 1024 to 1099
612 751 6572 to 6599	638 042 1647 to 1699	650 213 0406 to 0499	677 126 6734 to 6799
612 774 2111 to 2199	638 049 4984 to 4999	650 555 1749 to 1799	677 333 9979 to 9999
612 774 2254 to 2299	638 318 1115 to 1199	650 564 1900 to 1999	677 466 1088 to 1099
612 774 2500 to 2599	638 318 1453 to 1499	650 627 4212 to 4299	678 071 4500 to 4799
614 469 0979 to 0999	638 885 0000 to 0299	650 736 2043 to 2099	678 096 7531 to 7599
614 474 3000 to 3099	638 903 4362 to 4373	650 739 1540 to 1699	679 909 2578 to 2599
614 521 3490 to 3499	639 415 1929 to 1999	651 741 4415 to 4499	680 112 9565 to 9599
614 645 1800 to 1899	639 415 2019 to 2099	651 882 2800 to 2899	680 244 0903 to 0999
614 832 1100 to 2099	639 420 6200 to 6299	652 754 6317 to 6399	680 412 6046 to 6099
615 017 7505 to 7599	639 469 3517 to 3799	653 131 4945 to 4999	680 761 6800 to 6899
617 711 6609 to 6699	639 605 2143 to 2199	653 426 3300 to 3399	681 677 0540 to 0699
617 760 5266 to 5299	639 657 8600 to 8799	653 455 4874 to 4899	682 070 1029 to 1099
617 813 3601 to 3699	640 289 7500 to 7599	654 238 0000 to 0399	682 956 6280 to 6299
618 840 9200 to 9299	640 289 7700 to 7999	654 404 3065 to 3092	682 956 6490 to 6599
619 551 7229 to 7299	641 170 4420 to 4499	654 962 2900 to 3199	682 956 6700 to 6799
619 859 3000 to 3099	641 318 3133 to 3199	655 103 5081 to 5199	682 965 1178 to 1199
620 073 9400 to 9499	641 378 6500 to 6999	655 523 2600 to 2999	682 965 1201 to 1299
621 614 7907 to 7930	641 383 8739 to 8799	656 305 2448 to 2499	683 118 2389 to 2399
621 614 7932 to 7999	641 877 3187 to 3299	657 347 4438 to 4999	683 378 2000 to 2099
621 648 8021 to 8199	641 877 3310 to 3399	657 710 8100 to 8999	683 378 2117 to 2299
621 648 8500 to 8599	642 355 8094 to 8199	657 780 0985 to 0999	683 415 1200 to 1499
621 904 8351 to 8599	642 355 8308 to 8999	658 586 1400 to 1499	683 444 8159 to 8199
621 916 1978 to 1989	642 900 0018 to 0099	658 877 8000 to 8199	685 154 7780 to 7789
622 989 8032 to 8099	643 030 6254 to 6299	658 880 8000 to 8199	685 297 7645 to 7699
623 076 9300 to 9399	644 066 0882 to 0899	659 398 7300 to 7399	685 623 5264 to 5299
623 819 5006 to 5099	644 069 0600 to 0699	659 706 8113 to 8199	685 650 9487 to 9499
623 895 8200 to 8399	644 077 7506 to 7699	659 846 7837 to 7899	685 669 4200 to 4299
623 917 0000 to 0099	644 085 8157 to 8199	660 510 4100 to 4199	685 757 8452 to 8499
623 917 0200 to 0299	644 112 9839 to 9899	660 673 0400 to 0599	686 071 2694 to 2799
624 468 5288 to 5299	644 373 9083 to 9099	661 488 5000 to 5099	686 176 3333 to 3354
624 665 3162 to 3198	644 380 1460 to 1499	661 609 9100 to 9199	686 372 3200 to 3299
625 088 6735 to 6799	644 733 4715 to 4799	661 716 9420 to 9499	686 644 5879 to 5899
625 916 9500 to 9799	644 900 9712 to 9799	661 906 6522 to 6599	686 899 1371 to 1399
625 968 8956 to 8999	644 901 0109 to 1299	662 021 8332 to 8399	686 931 7636 to 7699
627 005 3938 to 3999	644 901 1325 to 1399	662 068 0700 to 0899	687 601 0973 to 0999
627 384 3907 to 4099	644 923 6800 to 7799	662 553 0774 to 0799	687 614 6774 to 6799
627 496 7549 to 7599	644 932 4655 to 4699	663 078 7034 to 7099	688 120 9000 to 9999
627 708 3605 to 3699	645 318 7240 to 7499	663 763 5300 to 5399	688 314 3107 to 3191
627 776 2500 to 2599	645 333 1766 to 1799	663 883 7039 to 7499	690 291 1361 to 1371
628 226 3100 to 3199	645 790 8632 to 8699	663 938 9200 to 9299	690 788 2877 to 2899
628 814 4702 to 4799	645 821 0657 to 0699	664 253 8000 to 8499	690 893 5344 to 5399
628 851 9689 to 9699	645 930 7948 to 7999	664 656 3055 to 3099	690 893 5512 to 5599
629 510 7200 to 7299	645 975 0737 to 0762	665 174 6400 to 6499	690 904 1300 to 1599
629 964 4200 to 4294	646 242 6200 to 6299	665 274 8208 to 8299	690 941 6000 to 6199
630 389 3056 to 3071	646 270 7639 to 7799	665 669 5400 to 5499	691 313 6383 to 6399

691 313 6600 to 6699	740 119 2275 to 2284	833 566 3015 to 3071	858 124 7644 to 7699
691 582 8003 to 8099	740 130 6688 to 6698	834 130 5200 to 5299	858 756 3111 to 3299
691 664 1800 to 1999	740 144 2780 to 2795	834 316 5444 to 5499	859 063 8200 to 8699
691 664 2400 to 2499	740 241 9049 to 9099	834 354 8747 to 8766	859 190 0600 to 0644
692 727 9362 to 9399	740 252 9265 to 9294	834 354 8824 to 8838	859 437 5538 to 5599
692 798 1800 to 1899	740 255 1718 to 1799	835 269 5700 to 5799	859 811 2888 to 2899
693 249 0779 to 0799	740 274 2602 to 2619	835 496 7303 to 7399	859 855 8873 to 8999
693 249 0877 to 1699	740 277 0366 to 0392	835 539 5200 to 5999	860 240 8520 to 8599
693 445 0566 to 0999	740 332 7658 to 7671	835 813 3015 to 3099	860 275 3900 to 3999
693 448 8500 to 8999	740 348 6641 to 6658	837 672 8967 to 8999	860 518 9629 to 9699
693 645 9583 to 9599	740 351 4790 to 4799	837 784 3282 to 3299	860 600 0021 to 0999
693 965 4200 to 4299	740 374 7416 to 7499	838 176 8377 to 8399	861 158 2350 to 2599
695 741 2906 to 2999	740 470 2420 to 2443	838 518 1257 to 1299	861 367 5400 to 5499
695 947 8518 to 8599	740 514 0300 to 0499	839 718 8257 to 8299	861 637 6010 to 6099
696 662 8247 to 8299	740 523 7432 to 7449	840 323 0600 to 0699	861 979 7292 to 7499
697 447 8285 to 8296	740 535 1555 to 1580	840 875 6235 to 6299	862 216 6100 to 6199
698 042 4816 to 4899	740 557 3570 to 3579	840 910 0900 to 0999	862 263 9213 to 9299
698 131 2138 to 2157	740 650 4104 to 4140	841 349 5000 to 5099	862 271 0800 to 0999
698 227 0000 to 0099	740 684 0620 to 0800	841 805 7747 to 7899	862 271 5000 to 5099
700 065 2570 to 2599	740 701 6105 to 6114	841 805 7944 to 8099	863 871 5138 to 5199
700 065 4800 to 4899	740 705 9790 to 9799	842 226 0685 to 0695	863 949 5300 to 5399
700 190 3350 to 3359	740 726 6400 to 6500	842 685 4600 to 4699	864 088 8200 to 8299
700 228 6048 to 6099	740 748 8319 to 8329	842 685 4742 to 4999	864 426 3972 to 3999
700 650 0452 to 0499	740 765 3306 to 3399	842 860 0300 to 0399	864 520 6117 to 6136
700 666 1323 to 1349	740 774 8434 to 8499	842 898 5582 to 5599	865 151 0526 to 0599
700 786 9106 to 9142	740 779 4259 to 4299	843 062 7100 to 7199	865 500 4034 to 4099
700 859 0744 to 0758	740 786 1885 to 1899	843 077 6288 to 6299	865 883 6082 to 6099
701 028 6780 to 6899	740 790 5989 to 5999	843 077 6378 to 6399	866 004 3000 to 3999
701 213 3900 to 3999	740 803 4870 to 4879	843 758 5769 to 5778	866 442 4100 to 4899
701 267 2000 to 3999	740 820 4854 to 7836	843 786 2554 to 2699	867 366 9108 to 9118
701 335 7312 to 7399	740 827 7578 to 7594	845 656 8165 to 8199	867 633 7403 to 7499
701 369 2005 to 2050	740 917 7490 to 7499	845 727 2100 to 2199	867 737 5623 to 5699
701 499 2260 to 2299	740 918 5531 to 5549	845 746 2618 to 2635	868 169 4529 to 4599
701 503 2247 to 2299	741 037 8528 to 8551	846 390 7531 to 7599	868 173 8400 to 8599
701 541 2271 to 2299	742 030 6135 to 6149	846 918 0572 to 0599	868 514 9000 to 9099
701 553 6557 to 6599	742 033 2663 to 2674	847 237 7690 to 7699	868 566 9200 to 9299
701 578 7460 to 7469	742 040 3300 to 3309	847 284 2481 to 2499	869 200 0000 to 9999
701 578 7475 to 7499	742 151 5000 to 5014	847 374 7055 to 7065	869 387 1150 to 1199
701 601 3457 to 3499	742 191 4640 to 4649	847 374 7055 to 7065	869 505 3500 to 3599
701 605 5913 to 5999	742 192 5210 to 5224	847 636 5304 to 5399	869 523 7033 to 7099
701 695 3982 to 3999	742 222 9200 to 9210	847 700 5447 to 5499	869 566 6150 to 6167
701 695 4148 to 4199	742 228 9660 to 9669	847 723 7500 to 7599	869 800 0000 to 999 9999
701 695 4227 to 4299	742 247 6980 to 6989	849 485 3427 to 3499	870 054 4814 to 4899
701 708 1741 to 1799	742 290 0936 to 0950	849 520 9850 to 9899	870 491 4812 to 4849
701 736 3966 to 3999	742 302 7600 to 7699	849 608 1357 to 1399	870 536 5820 to 5829
701 772 0870 to 0899	805 885 8411 to 8499	849 792 2600 to 2699	870 541 7167 to 7239
701 838 2800 to 2899	806 087 1100 to 1499	850 546 1862 to 1899	870 575 8155 to 8999
701 941 0600 to 0699	806 268 9275 to 9299	851 143 6826 to 6844	870 589 0485 to 0494
702 171 1603 to 1699	806 534 3400 to 3477	851 209 9880 to 9899	870 691 7060 to 7099
702 195 5109 to 5199	807 342 3283 to 3399	851 928 9221 to 9299	872 028 4850 to 4899
702 254 9300 to 9399	808 086 7100 to 7199	852 589 6560 to 6599	872 029 9306 to 9399
702 264 7569 to 7599	808 090 3440 to 3499	853 049 3646 to 3699	872 078 3709 to 3799
702 519 0513 to 0524	808 325 5161 to 5699	854 304 4089 to 4999	872 100 0445 to 0459
702 713 1800 to 1809	808 784 8000 to 8299	854 529 2200 to 2299	900 556 4178 to 4199
702 821 5730 to 5799	830 125 0672 to 0699	854 532 0000 to 2999	900 845 0044 to 0099
702 821 5805 to 5899	830 602 5800 to 5999	855 001 6204 to 6249	900 936 0217 to 0299
702 844 6975 to 6994	830 610 3700 to 3799	855 319 9364 to 9399	900 936 0435 to 0499
702 846 6331 to 6399	830 983 3500 to 3599	855 361 3390 to 3399	901 058 5255 to 5280
702 848 3900 to 3999	830 983 3635 to 3699	856 226 0490 to 0499	901 273 1082 to 1099
702 857 7302 to 7499	831 354 1387 to 1399	856 656 5800 to 5999	901 287 5143 to 5199
702 878 0114 to 0199	831 815 8240 to 8299	856 752 0200 to 0299	901 291 2789 to 2799
703 364 1707 to 1799	832 525 3810 to 3899	857 111 1352 to 1399	901 525 7122 to 7199
740 002 7710 to 7719	833 159 1884 to 1899	857 279 3450 to 3499	902 089 1253 to 1299
740 037 6730 to 6800	833 456 2567 to 2599	857 843 4000 to 4099	902 198 9769 to 9799

902 948 1269	to	1299	910 958 7499	to	7599	918 460 0602	to	0699	924 685 1957	to	1999
902 985 0833	to	0899	911 140 1000	to	2199	918 951 7231	to	7299	924 946 6300	to	6699
903 370 6934	to	6999	911 245 2545	to	2599	919 519 2786	to	2799	925 333 5900	to	6099
904 600 6523	to	6599	911 268 9077	to	9099	919 536 0770	to	0799	925 336 2300	to	2399
904 892 0378	to	0399	911 400 8948	to	8999	919 814 3095	to	3199	926 432 5907	to	5999
904 892 0648	to	1299	911 508 1620	to	1799	919 889 5110	to	5134	926 436 3600	to	3699
905 056 2216	to	2299	911 509 9310	to	9399	919 889 5137	to	5176	927 765 6257	to	6299
905 510 6647	to	6799	911 523 3000	to	3999	919 889 5178	to	5199	928 197 8100	to	8199
905 510 6900	to	7099	912 057 9922	to	9999	919 889 5030	to	5070	928 197 8283	to	8299
905 794 0000	to	0199	912 882 0563	to	0899	919 889 5090	to	5099	928 856 2059	to	2068
905 794 0288	to	0299	913 605 2218	to	2299	919 915 2774	to	2787	930 078 5800 to 5899		
905 873 6900	to	6999	913 709 2429	to	2499	920 155 4662 to 4687			930 219 1722	to	1799
905 873 7100	to	7299	913 818 3501	to	3999	920 309 9039	to	9199	930 335 7810	to	7819
905 880 8900	to	8999	914 063 4300	to	4399	920 771 5321	to	5399	931 097 9259	to	9299
905 889 7100	to	7199	914 346 7621	to	7644	920 857 5500	to	5899	931 156 1502	to	1579
906 158 1508	to	1599	914 453 1366	to	1399	920 864 3480	to	3499	931 156 1600	to	1625
906 558 8812	to	8899	914 529 6185	to	6299	920 963 4567	to	4599	931 156 1671	to	1699
906 982 2214	to	2299	914 896 4658	to	4699	921 333 7400	to	7499	932 506 6400	to	6599
907 725 8500	to	8599	915 187 8774	to	8779	921 477 3762	to	3799	932 732 1796	to	1799
907 815 0216	to	0257	915 300 2783	to	2799	922 278 1048	to	1399	932 827 9026	to	9099
908 622 4225	to	4235	915 546 6822	to	6999	922 280 2019	to	2099	932 957 2300	to	2399
908 936 9254	to	9299	915 646 5183	to	5199	922 280 2233	to	2299	933 060 6160	to	6189
909 066 4494	to	7499	915 671 3963	to	3980	922 773 0459	to	0499	933 387 2541	to	2561
909 067 7400	to	7499	915 671 3982	to	3999	923 032 7000	to	7399	933 760 3609	to	4199
909 100 1787	to	1799	915 675 2217	to	2299	923 045 3630	to	3699	933 894 0928	to	0999
909 100 1900	to	2099	916 440 3377	to	3399	923 484 3600	to	3699	934 018 2729	to	2741
909 355 0422	to	0499	916 670 6352	to	6399	923 493 9403	to	9599	934 180 0300	to	0399
909 568 8900	to	9099	916 682 5300	to	5399	923 493 9681	to	9699	934 236 3954	to	3999
909 568 9300	to	9499	916 694 1414	to	1499	923 604 4424	to	4499	934 622 8717	to	8999
909 725 7307	to	7399	916 703 0802	to	0821	923 810 7800	to	8299	935 216 0312	to	0399
909 833 0947	to	0999	917 089 0709	to	0799	924 252 1200	to	1299	935 843 2202	to	2247
910 219 8631 to 8699			917 089 0842	to	0899	924 252 1400	to	1499	936 024 8889	to	8899
910 265 1100	to	1199	917 216 2928	to	2999	924 533 0711	to	0799	936 339 4455	to	4499
910 471 7273	to	7299	917 370 6300	to	6499	924 533 2343	to	2399			
910 536 2505	to	2599	917 486 4900	to	4999	924 533 2428	to	2499			

Missing, Lost, or Stolen Canadian Money Order Forms

Do Not Cash — Upon Receipt, Notify Local Postal Inspectors

This listing will be provided to all Postal Service™ employees responsible for accepting and cashing postal money orders. Destroy all interim notices when the numbers listed appear in the *Postal Bulletin*. The new money

order serial numbers consist of the first 9 digits. The 10th digit is a check digit only.

Do not cash outdated money orders **104 151 601 to 692 600 000**. Advise holders to send invalid money orders To Canada Post Corporation, Ottawa, Canada K1A 0B1. Check for altered dollar amounts by holding money orders to the light.

719 869 731	to	9 760	727 182 271	to	2 510	733 446 631	to	7 110	740 265 811	to	6 290
720 227 871	to	7 930	727 416 181	to	6 240	733 474 665	to	4 770	740 299 111	to	9 170
720 227 949	to	7 960	727 481 431	to	1 460	733 704 482	to	4 570	740 299 231	to	9 260
720 368 543	to	8 570	727 749 241	to	9 780	733 751 041	to	1 130	740 329 266	to	9 320
720 392 151	to	2 570	728 382 331	to	2 480	734 009 101	to	9 130	740 889 081	to	9 090
720 556 491	to	6 640	728 702 338	to	2 400	734 290 759	to	0 770	741 010 421	to	0 530
720 558 621	to	8 650	728 915 371	to	5 850	734 389 273	to	9 290	741 113 041	to	3 370
720 575 361	to	5 570	728 953 141	to	3 410	734 440 031	to	0 111	741 373 891	to	4 340
720 590 152	to	0 179	728 954 280	to	4 310	734 797 201	to	7 320	741 452 369	to	2 490
721 638 331	to	9 170	729 169 081	to	9 140	734 939 611	to	9 640	741 492 991	to	3 140
721 815 391	to	5 420	729 363 841	to	3 870	734 950 111	to	0 170	741 553 460	to	3 470
721 969 713	to	9 740	729 682 891	to	3 190	735 120 331	to	0 840	741 764 431	to	4 520
722 072 137	to	2 160	729 838 940	to	9 070	735 283 008	to	3 020	742 178 834	to	8 880
722 378 265	to	8 280	729 839 101	to	9 130	735 293 131	to	3 220	742 325 500	to	5 520
722 413 990	to	4 004	730 077 683	to	7 840	735 635 010	to	5 040	742 325 668	to	5 700
722 764 948	to	4 980	730 109 847	to	9 880	735 783 961	to	3 990	742 408 771	to	8 830
722 825 840	to	5 889	730 373 761	to	3 850	735 803 401	to	3 430	742 512 120	to	2 150
723 153 841	to	3 850	730 501 951	to	2 130	736 005 420	to	5 440	742 684 849	to	4 890
723 237 616	to	7 630	730 519 379	to	9 470	736 366 021	to	6 110	742 839 553	to	9 630
723 331 081	to	1 110	730 569 278	to	9 360	736 624 456	to	4 500	742 913 668	to	3 700
723 496 443	to	6 470	730 711 711	to	1 740	736 670 851	to	1 060	742 917 287	to	7 296
723 967 291	to	7 320	730 722 991	to	3 230	736 767 061	to	7 090	742 921 891	to	1 980
724 655 196	to	5 340	730 845 970	to	5 990	736 767 093	to	7 120	742 983 631	to	3 810
724 711 441	to	1 500	730 888 291	to	8 320	736 982 191	to	2 370	743 020 021	to	0 170
724 711 538	to	1 560	730 927 591	to	7 680	736 982 551	to	2 730	743 206 491	to	6 500
724 793 221	to	3 250	731 307 914	to	7 930	737 110 141	to	0 170	743 235 992	to	6 050
724 908 109	to	8 120	731 402 431	to	2 460	737 185 501	to	5 710	743 940 631	to	0 900
724 937 461	to	7 670	731 407 232	to	7 320	737 317 321	to	7 350	743 978 011	to	8 070
725 163 118	to	3 151	731 588 301	to	8 340	737 517 781	to	7 840	744 234 751	to	4 780
725 202 735	to	2 750	731 767 273	to	7 320	737 628 181	to	8 210	744 499 591	to	9 680
725 398 591	to	8 800	731 781 061	to	1 120	737 634 258	to	4 270	744 626 901	to	6 910
725 464 591	to	4 920	731 837 821	to	7 910	738 361 971	to	1 980	745 388 794	to	8 910
725 475 321	to	5 330	731 841 377	to	1 450	738 447 601	to	7 660	746 446 806	to	6 820
725 711 057	to	1 070	732 018 481	to	8 600	738 648 355	to	8 450	746 818 351	to	8 410
725 738 581	to	8 730	732 067 972	to	8 370	738 849 811	to	9 900	747 245 266	to	5 280
725 981 311	to	1 430	732 188 649	to	8 670	738 892 270	to	2 290	747 364 813	to	4 830
725 987 835	to	7 880	732 193 460	to	3 470	738 997 259	to	7 380	747 501 434	to	1 450
726 060 811	to	0 900	732 201 241	to	1 390	739 161 451	to	1 540	747 739 891	to	0 070
726 391 970	to	2 520	732 220 431	to	0 440	739 219 381	to	9 440	748 148 649	to	8 760
726 484 771	to	4 800	732 355 201	to	5 380	739 740 151	to	0 180	748 259 960	to	9 970
726 493 351	to	5 300	732 472 320	to	2 560	739 793 491	to	3 520	748 565 162	to	5 280
726 504 031	to	4 063	732 541 605	to	1 620	739 793 527	to	3 550	748 874 988	to	5 030
726 504 070	to	4 090	732 572 221	to	2 490	739 942 621	to	2 650	749 137 381	to	7 410
726 504 331	to	4 390	732 586 479	to	6 710	739 999 231	to	9 320	749 190 192	to	0 210
726 563 701	to	4 060	732 994 037	to	4 080	740 011 517	to	1 530	749 685 421	to	5 450
726 599 371	to	9 460	733 163 449	to	3 460	740 030 701	to	0 970	749 846 791	to	6 850
726 626 356	to	6 370	733 297 171	to	7 290	740 261 740	to	1 820	749 993 131	to	3 580

750 071 587	to 1 610	758 744 101	to 4 160	766 572 901	to 3 020	792 452 779	to 2 790
750 408 167	to 8 183	758 850 883	to 0 900	766 748 500	to 8 521	792 772 728	to 2 770
750 438 421	to 8 501	758 860 951	to 1 550	767 024 341	to 4 370	792 903 511	to 3 990
750 743 911	to 4 030	759 152 851	to 2 880	767 326 471	to 6 590	793 282 518	to 2 533
750 779 118	to 9 400	759 740 941	to 1 090	767 332 561	to 2 950	794 041 831	to 2 040
750 910 981	to 1 010	760 004 596	to 4 610	768 009 841	to 9 960	794 397 709	to 7 780
750 960 841	to 0 900	760 118 191	to 8 250	768 011 489	to 1 520	794 581 741	to 2 040
751 296 211	to 6 240	760 155 001	to 5 090	768 177 980	to 7 990	794 592 122	to 2 150
751 539 121	to 9 180	760 378 002	to 8 020	768 391 081	to 1 170	795 032 251	to 2 340
751 541 311	to 1 790	760 692 722	to 2 749	768 661 569	to 1 650	795 796 291	to 6 350
751 757 641	to 7 700	761 055 460	to 5 480	769 000 051	to 0 080	796 070 139	to 0 160
751 936 951	to 7 010	761 169 781	to 9 810	769 050 841	to 0 900	796 143 151	to 3 630
751 951 861	to 1 890	761 504 941	to 5 120	769 159 081	to 9 178	796 159 725	to 9 740
751 999 021	to 9 110	761 516 836	to 6 910	769 737 496	to 7 510	796 169 306	to 9 340
752 139 516	to 9 570	761 613 588	to 3 600	769 778 491	to 8 730	796 373 406	to 3 430
752 182 892	to 2 950	761 688 631	to 8 690	769 827 331	to 7 450	796 602 961	to 3 050
752 206 861	to 7 100	761 805 199	to 5 240	770 216 071	to 6 100	796 708 441	to 8 500
752 295 241	to 5 600	761 826 106	to 6 120	770 723 281	to 3 400	796 886 281	to 6 430
752 731 351	to 1 410	761 881 171	to 1 560	770 790 451	to 0 480	796 901 701	to 2 000
752 767 441	to 7 470	761 975 641	to 5 670	770 915 150	to 5 490	796 975 466	to 5 590
753 008 941	to 9 030	761 975 886	to 5 895	771 455 551	to 5 610	797 272 917	to 2 950
753 194 311	to 4 370	762 304 144	to 4 170	771 609 661	to 9 690	797 519 441	to 9 460
753 620 378	to 0 400	762 324 931	to 4 960	771 932 551	to 2 580	797 519 731	to 0 240
754 013 917	to 3 940	762 439 261	to 9 290	772 057 224	to 7 440	797 535 181	to 5 330
754 161 061	to 1 120	762 524 158	to 4 220	772 162 660	to 3 070	797 646 151	to 6 180
754 358 445	to 8 610	762 584 872	to 4 970	772 718 615	to 8 640	798 040 053	to 0 080
754 410 451	to 0 660	762 593 431	to 3 460	772 940 140	to 0 160	798 055 813	to 5 830
754 438 393	to 8 410	763 155 160	to 5 180	772 970 886	to 0 940	798 055 891	to 5 950
754 493 109	to 3 130	763 178 631	to 8 660	773 009 419	to 9 430	798 326 371	to 6 520
754 664 182	to 4 220	763 506 001	to 6 060	773 112 031	to 2 060	798 339 167	to 9 210
754 816 377	to 6 470	763 522 141	to 2 470	773 125 387	to 5 410	798 562 411	to 2 440
755 487 421	to 7 600	763 717 694	to 7 800	773 179 320	to 9 410	798 632 461	to 2 490
755 592 901	to 3 140	763 826 461	to 6 520	773 202 989	to 3 140	798 807 151	to 7 510
755 790 020	to 0 030	763 900 460	to 0 471	773 208 991	to 9 290	798 944 761	to 5 030
755 791 730	to 1 800	763 900 479	to 0 530	773 231 311	to 1 340	799 118 616	to 8 640
755 926 951	to 7 070	763 917 271	to 7 750	773 348 739	to 8 940	799 133 191	to 3 220
755 934 332	to 4 510	764 125 801	to 5 860	773 348 739	to 8 940	799 177 626	to 7 650
755 957 701	to 8 000	764 284 525	to 4 560	773 575 891	to 5 950	799 854 751	to 5 200
755 962 981	to 3 280	764 526 241	to 6 330	773 852 971	to 3 030	800 044 320	to 4 410
756 035 371	to 5 490	764 601 421	to 1 600	775 373 449	to 3 460	800 211 901	to 2 440
756 301 257	to 1 290	764 650 231	to 0 470	789 257 191	to 7 250	800 427 530	to 7 540
756 371 565	to 1 580	764 984 371	to 4 850	790 448 020	to 8 460	800 872 741	to 2 830
756 876 031	to 6 120	765 003 667	to 3 680	790 597 485	to 7 530	801 349 801	to 9 830
756 876 151	to 6 240	765 042 517	to 2 540	790 911 883	to 1 900	801 676 681	to 7 100
756 970 129	to 0 140	765 194 728	to 4 970	791 057 441	to 7 550	802 967 821	to 7 940
757 059 613	to 9 630	765 387 365	to 7 450	791 239 081	to 9 290	803 217 601	to 7 780
757 078 540	to 8 560	765 541 801	to 2 100	791 374 483	to 4 500	803 729 731	to 9 850
757 086 209	to 6 240	765 638 461	to 8 970	791 387 971	to 8 030	803 747 402	to 7 520
757 240 591	to 0 650	765 647 101	to 7 190	791 447 521	to 7 850	804 138 181	to 8 420
757 277 371	to 7 700	765 813 781	to 4 029	791 451 151	to 1 240	804 428 224	to 8 250
757 291 591	to 2 730	765 879 314	to 9 390	791 500 009	to 0 470	804 682 411	to 2 710
757 964 251	to 4 280	765 954 001	to 4 030	791 771 431	to 1 490	805 272 525	to 2 540
758 067 001	to 7 090	766 120 286	to 0 320	792 004 293	to 4 320	805 523 445	to 3 460
758 105 221	to 5 250	766 125 716	to 5 750	792 018 379	to 8 420	805 745 704	to 5 730
758 324 941	to 5 000	766 158 824	to 8 840	792 070 621	to 0 740	806 452 907	to 2 980
758 593 628	to 3 650	766 388 433	to 8 460	792 145 211	to 5 230	806 744 781	to 4 850
758 709 038	to 9 060	766 509 421	to 9 660	792 391 381	to 1 620	806 982 181	to 2 300

807 764 791	to	4 910	814 789 330	to	9 349	820 191 342	to	1 360	827 005 671	to	5 830
808 089 931	to	9 960	814 984 656	to	4 680	820 274 856	to	4 880	827 287 861	to	7 950
808 656 423	to	6 450	815 016 020	to	6 030	820 600 171	to	0 230	827 291 502	to	1 520
808 753 771	to	3 800	815 199 410	to	9 420	821 172 241	to	2 360	827 575 381	to	5 470
809 189 001	to	9 010	815 240 491	to	0 520	821 229 661	to	9 720	827 609 085	to	9 100
809 886 879	to	6 930	815 755 591	to	5 620	821 229 743	to	9 780	827 619 811	to	9 840
809 890 489	to	0 500	815 755 622	to	5 650	821 903 731	to	3 910	827 883 511	to	3 600
810 323 734	to	3 760	815 806 381	to	6 680	821 927 841	to	7 850	828 160 441	to	0 530
810 367 116	to	7 140	816 126 834	to	6 870	822 505 801	to	5 830	828 376 201	to	6 260
810 526 351	to	6 500	816 156 721	to	6 780	822 703 442	to	3 470	828 441 602	to	1 630
810 806 911	to	6 940	816 580 903	to	0 920	822 900 991	to	1 020	828 539 316	to	9 340
810 807 211	to	7 240	816 945 571	to	5 600	822 925 951	to	6 100	828 539 341	to	9 370
811 423 021	to	3 110	817 253 011	to	3 280	823 284 931	to	4 990	828 732 331	to	2 390
811 517 221	to	7 239	817 763 881	to	4 060	823 293 031	to	3 210	828 807 781	to	7 840
811 721 101	to	1 130	818 330 562	to	0 610	823 556 011	to	6 100	828 830 952	to	0 963
812 025 721	to	5 900	818 459 641	to	9 670	824 078 341	to	8 370	828 939 781	to	0 050
812 093 073	to	3 130	818 926 273	to	6 320	824 156 325	to	6 340	829 002 721	to	2 870
812 100 821	to	0 840	818 950 351	to	0 380	824 511 252	to	1 270	829 005 301	to	5 540
812 465 251	to	5 610	818 962 492	to	2 530	824 588 281	to	8 370	829 080 241	to	0 330
812 918 341	to	8 670	819 032 341	to	2 730	825 140 397	to	0 460	829 160 986	to	1 000
812 918 701	to	8 760	819 127 054	to	7 080	825 409 651	to	9 680	829 176 841	to	6 930
813 050 491	to	0 520	819 278 540	to	8 670	825 472 171	to	2 200	829 471 561	to	1 590
813 073 171	to	3 200	819 544 681	to	4 740	826 042 898	to	2 920	829 561 065	to	1 080
813 398 476	to	8 550	819 928 441	to	8 650	826 226 644	to	6 670	829 566 481	to	6 510
813 713 971	to	4 000	820 034 406	to	4 430	826 582 951	to	3 430	829 569 931	to	9 960
813 858 121	to	8 150	820 070 761	to	1 540	826 720 201	to	0 230			

Verifying U.S. Postal Service Money Orders

Follow these steps to cash a Postal Service™ money order:

1. Check that the amount does not exceed the legal limit: \$1,000 for domestic, and \$700 for international postal money orders.
2. Check that the proper security features are present:
 - When held to the light, a watermark of Benjamin Franklin is repeated from top to bottom on the left side.
 - When held to the light, a dark line (security thread) runs from top to bottom with the word “USPS” repeated.
 - There should be no discoloration around the dollar amounts, which might indicate the amounts were changes.

These appear in Postal Service Notice 299, *U.S. Postal Money Order Reference Card*, or online at <https://www.usps.com/shop/money-orders.htm>.

3. If the money order seems suspicious, call the U.S. Postal Service Money Order Verification System at 866-459-7822.

Please provide this information to local banks and retailers, as they also receive Postal Service money orders for cashing.

— *Retail and Customer Service Operations, 11-10-16*

Counterfeit Canadian Money Order Forms

Do Not Cash

To be posted and used by retail window employees. As directed, destroy previous notices. Destroy all interim notices when the numbers listed appear in the Postal Bulletin.

671,819,086	683,594,542	687,262,503
676,612,640	684,683,610	687,262,525
677,891,039	686,619,878	687,262,526
678,282,493	686,619,886	687,287,578
678,916,031	686,619,887	687,287,581
679,552,215	686,794,382	687,287,582
679,694,334	686,794,426	694,063,898
679,751,983	686,794,427	694,063,899
679,800,207	686,794,431	694,063,980
681,130,536	687,262,502	701,321,725
681,844,376		

— *Criminal Investigations Group,
Postal Inspection Service, 11-10-16*

Toll-Free Number Available to Verify Canadian Money Orders

The Canada Post Corporation is now providing a toll-free number that cashing agents can call to verify the validity of Canadian Postal Money Orders. The number is 800-563-0444.

This toll-free number is printed on the back of the Canadian Postal Money Orders.

— *Criminal Investigations Group,
Postal Inspection Service, 11-10-16*

Other Information

Overseas Military/Diplomatic Mail

Mail addressed to military and diplomatic post offices overseas is subject to certain conditions or restrictions of mailing regarding content, preparation, and handling. The APO/FPO/DPO table below outlines these conditions by APO/FPO/DPO ZIP Codes™ through the use of footnoted mailing restrictions codes (see the [Restrictions](#) page following the table).

Acceptance clerks should use the table with the POS ONE terminal to determine which APO/FPO/DPO ZIP Codes are active and which conditions of mailing apply. Inquiries may be sent to the Military Postal Service Agency at <https://amps.usps.gov/ljy2/frm.htm>.

The entries under “Changes” appear in bold in the APO/FPO/DPO table starting below.

Changes

APO/FPO/DPO	Action	Effective Date	See Restrictions
APO AE 09304	Add F3	11/10/2016	A-B-C-C1-D-E2-F-F1-F3-H1-J-L-M-N-R-R1-T-V-Z1
APO AE 09306	Add F3	11/10/2016	A-B-C1-E2-F-F1-F3-H1-R-R1-U2-V-Z1
APO AE 09308	Add F3	11/10/2016	A-B-C1-E2-F-F1-F3-H1-I3-M-N-R-R1-T-V-Z-Z1
APO AE 09315	Add F3	11/10/2016	A-B-C1-E2-F-F3-N-R-R1-V-Z1
APO AE 09316	Add F3	11/10/2016	A-B-C1-E2-F-F1-F3-H1-I3-M-N-R-R1-T-V-Z-Z1
APO AE 09320	Add F3	11/10/2016	A-B-C1-E2-F-F3-H1-M-N-R-R1-V-Z1
APO AE 09330	Add F3	11/10/2016	A-B-C1-E2-F-F1-F3-H1-M-R-R1-V-Z1
APO AE 09333	Add F3	11/10/2016	A-B-C1-E2-F-F1-F3-H1-I3-M-N-R-R1-V-Z-Z1
APO AE 09337	Add F3	11/10/2016	A-B-C1-E2-F-F1-F3-H1-M-R-R1-V-Z1
APO AE 09348	Add F3	11/10/2016	A-B-C1-E2-F-F1-F3-H1-I3-M-N-R-R1-T-V-Z-Z1
APO AE 09352	Add F3	11/10/2016	A-B-C1-E2-F-F3-H1-M-R-R1-V-Z1
APO AE 09354	Add F3	11/10/2016	A-B-C1-E2-F-F3-H1-M-R-R1-V-Z1
APO AE 09355	Add F3	11/10/2016	A-B-C1-E2-F-F3-H1-M-R-R1-V-Z1
APO AE 09356	Add F3	11/10/2016	A-B-C1-E2-F-F3-H1-M-N-R-V-Z1
APO AE 09357	Add F3	11/10/2016	A-B-C1-E2-F-F3-H1-M-R-V-Z1
APO AE 09365	Add F3	11/10/2016	A-B-C-C1-E2-F-F3-H1-M-N-R-V-Z1
APO AE 09366	Add F3, H	11/10/2016	A-B-C1-E2-F-F1-F3-H-H1-M-R-R1-V-Z1
APO AE 09378	Add F3	11/10/2016	A-B-C1-E2-F-F1-F3-H1-I3-M-N-R-R1-T-V-Z-Z1
APO AE 09381	Add F3	11/10/2016	A-B-C1-E2-F-F1-F3-H1-I3-M-N-R-R1-T-V-Z-Z1
APO AE 09789	Add F3, S	11/10/2016	A-B-F-F3-N-R-S-V-Z1
APO AE 09803	Add F3	11/10/2016	B-E2-E3-F-F1-F3-H1-N-R-R1-U-V-Z1
APO AE 09811	Add F3	11/10/2016	B-E2-E3-F-F1-F3-H1-N-R-R1-U-V-Z1
APO AE 09832	Add C1, E2, F1, F3	11/10/2016	B-C1-E2-F1-F3-U1-Z1
APO AE 09833	Add C1, E2, F1, F3	11/10/2016	B-C1-E2-F1-F3-U1-V-Z1
APO AE 09852	Add F3	11/10/2016	B-E2-E3-F-F1-F3-H1-N-R-R1-U-V-Z1
APO AE 09858	Add C1, F3	11/10/2016	B-C1-E2-E3-F-F1-F3-H1-N-R-R1-U-V-Z1
APO AE 09898	Add C1, F1, F3	11/10/2016	B-C-C1-E2-F-F1-F3-H1-N-R-R1-U2-V-Z1
FPO AP 96621	Close	11/10/2016	
FPO AP 96622	Close	11/10/2016	
FPO AP 96623	Close	11/10/2016	
FPO AP 96625	Close	11/10/2016	
FPO AP 96626	Close	11/10/2016	
FPO AP 96627	Close	11/10/2016	
FPO AP 96630	Close	11/10/2016	
FPO AP 96631	Close	11/10/2016	
FPO AP 96699	Close	11/10/2016	

We have eliminated “Not Active” entries from the table below to save space and paper.

APO/FPO/DPO Table

APO/ FPO/ DPO	See Restrictions	APO/ FPO/ DPO	See Restrictions	APO/ FPO/ DPO	See Restrictions	APO/ FPO/ DPO	See Restrictions
09001	B-C-D-E3-F1-F3-H-H1-I3-J-L-M-R-R1-S-T-V-X-Z-Z1	09123	B-C-D-E-F3-H-M-R-S-U-Z1	09307	B-N-V-Z1	09378	A-B-C1-E2-F-F1-F3-H1-I3-M-N-R-R1-T-V-Z-Z1
09003	B-C-D-E-H-M-P-R-U	09125	A-B-C-F-F1-F3-H-N-O-R-R1-S-V-V1	09308	A-B-C1-E2-F-F1-F3-H1-I3-M-N-R-R1-T-V-Z-Z1	09381	A-B-C1-E2-F-F1-F3-H1-I3-M-N-R-R1-T-V-Z-Z1
09004	B-C-D-E-H-M-R-U	09126	B-C-D-F3-H-M-P-R-S-Z1	09309	A-B-C-C1-E2-F-H1-M-N-R-V-Z1	09403	B-C-C1-F3-M-R-S-U-Z1
09005	B-C-D-E-H-M-P-R-U	09128	B-C-D-E-H-M-R-U	09310	A-B-C1-E2-F-F1-H1-I3-J-L-M-N-R-R1-T-U4-V-Z-Z1	09421	B-C-C1-F3-M-R-S-U-Z1
09006	B-C-D-E-H-M-R-U	09131	B-C-D-E-H-M-R-U	09311	A-B-C1-E2-F-F1-H1-I3-J-L-M-N-R-R1-T-U4-V-Z-Z1	09447	B-C-C1-F3-M-R-S-U-V-Z1
09009	B-C-D-E-F3-H-M-R-S-U-Z1	09136	B-C-D-E-F1-H-M-P-R	09312	A-B-C1-E2-F-F1-H1-I3-J-L-M-N-R-R1-T-U4-V-Z-Z1	09454	B-C-C1-F3-M-R-S-U-V-Z1
09011	B-C-D-E-H-M-R-U	09138	B-C-D-H-M-R-U	09313	A-B-C1-E2-F-F1-H1-I3-J-L-M-N-R-R1-T-U4-V-Z-Z1	09459	B-C-C1-F3-M-R-S-U-Z1
09012	B-C-D-E-F3-H-M-R-S-U-Z1	09140	B-C-D-E-H-M-R-U	09315	A-B-C1-E2-F-F3-N-R-R1-V-Z1	09461	B-C-C1-F3-M-P-R-S-U-Z1
09013	B-C-D-E-F-F1-H-M-R-U-Z1	09142	B-C-D-E-H-M-R-U	09316	A-B-C1-E2-F-F1-F3-H1-I3-M-N-R-R1-T-V-Z-Z1	09463	B-C-C1-F3-M-R-S-U-Z1
09014	B-C-D-E-H-M-R-U	09143	B-C-D-E-H-M-R-U	09319	A-B-C-C1-E2-F-F1-F2-H1-R-R1-U2-V-Z1	09464	B-C-C1-F3-R-S-U-Z1
09016	B-C-D-E-H-M-R	09154	B-C-D-E-H-M-R-U	09320	A-B-C1-E2-F-F3-H1-M-N-R-R1-V-Z1	09468	B-C-C1-F3-M-R-S-U-Z1
09020	B-C-D-E-H-M-R-U	09160	B-C-D-F-F1-H-J-L-M-N-R-T-U-V-Z1	09321	A-B-C1-E2-F-H1-M-N-R-R1-V-Z1	09469	B-C-C1-R-U-Z1
09021	B-C-D-E-F3-H-M-R-S-U-Z1	09161	A-B-C-E1-F-F1-M-N-R-R1-S-V	09330	A-B-C1-E2-F-F1-F3-H1-M-R-R1-V-Z1	09470	B-C-C1-M-R-U-Z1
09028	B-C-D-E-H-M-R-U	09172	B-C-D-E-H-M-R-U	09333	A-B-C1-E2-F-F1-F3-H1-I3-M-N-R-R1-V-Z-Z1	09494	B-C-C1-F3-M-R-S-U-Z1
09034	B-C-D-E-H-M-R-U	09173	B-C-D-E-H-M-R-U	09337	A-B-C1-E2-F-F1-F3-H1-M-R-R1-V-Z1	09498	B-C-C1-F-F1-F2-J-L-N-R-R1-T-V-Z1
09044	B-C-D-F1-H-U	09177	B-C-D-E-H-M-R-U	09340	A-B-C1-F-H-N-R-V	09501	B-V
09046	B-C-D-E-H-M-R-U	09180	B-C-D-H-M-R-U	09343	A-B-C1-F-M-N-V-Z1	09502	B-V
09049	B-C-D-E-H-M-R-U	09186	B-C-D-E-H-M-R-U	09347	A-B-C1-E2-F-H1-M-R-R1-V-Z1	09503	B-F-F1-R-R1-V
09053	B-C-D-E-H-M-R-U	09211	B-C-D-E-H-M-P-R-U	09348	A-B-C1-E2-F-F1-F3-H1-I3-M-N-R-R1-T-V-Z-Z1	09504	B-V
09054	B-C-D-E-H-M-R-U	09213	B-C-D-F-F1-H-J-L-M-N-R-T-U-V-Z1	09352	A-B-C1-E2-F-F3-H1-M-R-R1-V-Z1	09505	B-V
09055	B-C-D-E-F-H-M-R-R1-U-V	09214	B-C-D-E-F3-H-M-R-S-U-Z1	09354	A-B-C1-E2-F-F3-H1-M-R-R1-V-Z1	09506	B-V
09059	B-C-D-E-H-M-R-U	09227	B-C-D-E-H-M-R-U	09355	A-B-C1-E2-F-F3-H1-M-R-R1-V-Z1	09507	B-V
09060	B-C-D-E-F1-F3-H-M-R-S-U-Z1	09245	B-C-D-E-H-M-R-U	09356	A-B-C1-E2-F-F3-H1-M-N-R-V-Z1	09508	B-F-F1-R-R1-V
09067	B-C-D-E-H-M-R-U	09250	B-C-D-E-H-M-R-U	09357	A-B-C1-E2-F-F3-H1-M-R-V-Z1	09509	B-F-F1-R-R1-V
09068	B-C-D-E-H-U-Z1	09261	B-C-D-E-F3-H-M-R-S-U-V-Z1	09363	A-B-C1-E2-F-F3-H1-M-R-V-Z1	09510	A-B-C1-E2-F-H1-M-R-R1-V-Z1
09069	A-B-C-D-E-H-N-U-V	09263	B-C-D-E-H-M-R-U	09365	A-B-C-C1-E2-F-F3-H1-M-N-R-V-Z1	09511	B-F-F1-R-R1-V
09079	B-C-D-E-H-M-R-U	09264	B-C-D-E-H-M-R-U	09366	A-B-C1-E2-F-F1-F3-H1-M-R-R1-V-Z1	09513	B-F-F1-R-R1-V
09090	B-C-D-E-H-M-P-R-U	09265	B-C-D-F-F1-H-J-L-M-N-R-T-U-V-Z1	09301	A-B-C1-E2-F-F1-H1-I3-J-L-M-N-R-R1-T-U4-V-Z-Z1	09517	B-F-F1-R-R1-V
09094	B-C-D-F3-H-M-P-R-S-Z1	09302	A-B-C1-F-F1-H-M-N-V-Z-Z1	09304	A-B-C-C1-D-E2-F-F1-F3-H1-J-L-M-N-R-R1-T-V-Z1	09520	B-F-F1-R-R1-V
09095	B-C-D-E-H-M-R-U	09305	A-B-C1-E2-F-F1-H1-I3-M-N-R-R1-T-V-Z-Z1	09305	A-B-C1-E2-F-F1-H1-I3-M-N-R-R1-T-V-Z-Z1	09523	B-F-F1-R-R1-V
09096	B-C-D-E-H-M-R-U	09306	A-B-C1-E2-F-F1-F3-H1-R-R1-U2-V-Z1	09306	A-B-C1-E2-F-F1-F3-H1-M-R-R1-V-Z1	09522	B-V
09103	B-C-D-E-H-U					09524	B-F-F1-R-R1-V
09104	B-C-D-F3-H-M-R-S-U-Z1					09532	B-F-F1-R-R1-V
09107	B-C-D-E-H-M-R-U					09534	B-F-F1-R-R1-V
09112	B-C-D-E-H-M-R-U					09543	B-F-F1-R-R1-V
09114	B-C-D-E-H-M-R-U					09550	B-F-F1-R-R1-V
						09554	B-F-F1-R-R1-V
						09556	B-F-F1-R-R1-V

APO/ FPO/ DPO	See Restrictions	APO/ FPO/ DPO	See Restrictions	APO/ FPO/ DPO	See Restrictions	APO/ FPO/ DPO	See Restrictions
09564	B-F-F1-R-R1-V	09609	B-C-F-F3-R-U-Z1	09717	A-B-F3-M-R-S-V-W-Z1	09753	A-B-F-N-V-Z1
09565	B-F-F1-R-R1-V	09610	B-C-F-F1-F3-M-R-S-U-V-Z1	09718	B-F-F1-J-L-M-N-R-T-U-V-Z1	09754	A-B-F-H-N-Q-V-Z-Z1
09566	B-E2-E3-F-F1-F3-R-R1-V-Z1	09613	B-C-F-N-U-V	09719	B-C-D-F3-M-R-S-U-V-Z1	09755	A-B-B2-C-C1-D-F-F1-J-L-M-N-Q-R-R1-T-V-Z-Z1
09567	B-E2-E3-F-F1-F3-R-R1-V-Z1	09617	B-C-F-F3-R-U-Z1	09720	B-M-R-S-U-V-Z1	09756	A-B-B2-E3-F-F1-J-L-N-Q-R-R1-T-V-Z-Z1
09568	B-V	09618	B-C-F-F3-R-U-Z1	09722	A-B-F-H-N-Q-V-Z-Z1	09758	A-B-F-F1-M-N-R-R1-V-Z1
09569	B-E2-E3-F-F1-F3-R-R1-V-Z1	09620	B-C-F-R-U-Z1	09723	B-F-F1-J-L-M-N-R-T-U-V-Z1	09759	A-B-B2-C-C1-E2-F-F1-F2-J-L-N-R-R1-T-V-Z1
09570	B-F-F1-R-R1-V	09621	B-C-F-F3-R-U-Z1	09724	B-C-C1-F1-M-R-R1-U	09760	A-B-B2-C-C1-D-F-F1-J-L-M-N-Q-R-R1-T-V-Z-Z1
09573	B-E2-E3-F-F1-F3-R-R1-V-Z1	09622	B-C-F-F3-R-U-Z1	09725	A-B-F-F3-H-N-O-Q-S-V-V1-Z-Z1	09761	B-F-F1-F3-M-N-R-R1-V-Z-Z1
09574	B-F-F1-R-R1-V	09623	B-C-F-F1-J-L-N-T-U-V-Z1	09726	B-F-F1-J-L-M-N-R-T-U-V-Z1	09762	A-B-B2-E3-F-F1-J-L-N-R-R1-T-V-Z1
09575	B-F-F1-R-R1-V	09625	B-C-F-F3-N-R-U-Z1	09727	A-B-B2-C-C1-D-F-F1-J-L-M-N-R-R1-T-V-Z1	09769	A-B-B2-C-C1-D-F-F1-J-L-M-N-R-R1-T-V-Z1
09576	B-F-F1-R-R1-V	09626	B-C-F-F3-R-U-Z1	09728	A-B-B2-C-C1-F-F1-J-L-N-R-R1-T-V-Z1	09777	A-B-C-E1-F-F1-L-M-N-R-T
09577	B-V	09627	B-C-F-F3-R-U-Z1	09729	B-C-F-F3-N-R-R1-U-V-Z1	09780	A-B-F-H-N-R-V
09578	B-E2-E3-F-F1-F3-R-R1-V-Z1	09630	B-C-F-U-V	09730	A-B-B2-C-C1-F-F1-J-L-M-N-R-R1-T-V-Z1	09789	A-B-F-F3-N-R-S-V-Z1
09579	B-F-F1-R-R1-V	09631	B-C-F-F3-R-U-Z1	09731	A-B-B2-C-C1-F-F1-J-L-M-N-R-R1-T-V-Z1	09801	A-B-C1-E2-F-H1-M-N-R-R1-V-Z1
09581	B-F-F1-R-R1-V	09633	B-B2-C-D-F-F1-M-R-U-U1-U2-U3-V-Z1	09732	B-N-V-Z1	09803	B-E2-E3-F-F1-F3-H1-N-R-R1-U-V-Z1
09582	B-E2-E3-F-F1-F3-R-R1-V-Z1	09636	B-C-F-F3-R-U-Z1	09733	B-I3-L-N-V	09804	A-B-F-F1-F3-M-N-R-S-V-Z1
09583	B-F-F1-R-R1-V	09642	B-M-N-R-U-V	09734	A-B-C-C1-F-F1-I3-J-L-M-N-R-R1-T-V-Z-Z1	09805	B-E2-E3-F-F1-F3-R-R1-Z1
09586	B-F-F1-R-R1-V	09643	B-C-F3-M-R-S-U-V-Z1	09735	B-N-V-Z1	09806	A-B-C1-E2-F-F1-H1-J-L-M-N-R-R1-T-V-Z1
09587	B-E2-E3-F-F1-F3-R-R1-S-V-Z1	09645	B-C-F-F1-F3-R-U-Z1	09736	A-B-B2-C-C1-D-F-F1-J-L-M-N-R-R1-T-V-Z1	09807	A-B-B2-C1-E2-F-F1-I3-L-N-R-R1-T-V-Z-Z1
09588	B-C-E2-E3-F-F1-F3-H-R-R1-S-V-Z1	09647	B-F3-M-N-R-U-Z1	09737	A-B-B2-C-C1-F-F1-I3-J-L-M-N-R-R1-T-V-W-Y-Z-Z1	09808	A-B-B2-C1-E2-F-F1-H-H1-J-L-N-R-R1-T-V-Z1
09589	B-F-F1-F3-R-S-V	09648	B-F3-N-R-U-V-Z1	09738	A-B-B2-C-C1-D-F-F1-J-L-M-N-R-R1-T-V-Z1	09809	B-F-F1-L-N-T-V-Z1
09590	B-V	09649	B-F3-N-R-U-Z1	09739	A-B-B2-C-C1-D-F-F1-J-L-M-N-R-R1-T-V-Z1	09810	A-B-F-F1-F3-N-R-S-V-Z1
09591	B-E2-E3-F-F1-F2-F3-R-R1-V-Z1	09701	A-B-B2-C-C1-D-F-F1-J-L-M-N-R-R1-T-V-Z1	09741	A-B-C1-E2-F-F1-H1-J-L-M-N-R-R1-T-V-W-Y-Z1	09811	B-E2-E3-F-F1-F3-H1-N-R-R1-U-V-Z1
09592	B-F-F1-R-R1-V	09702	B-C-C1-F1-M-R-R1-U	09742	A-B-B2-F-F1-J-L-M-N-R-R-T-V-Z1	09812	B-E2-E3-F-F1-I-J-L-N-R-T-U-V-Z-Z1
09593	B-F-F1-F3-R-S-V	09703	B-C-D-F1-H-U	09743	A-B-F-H-N-Q-V-Z-Z1	09813	B-E2-E3-F-F1-I3-J-L-N-R-T-U-V-Z-Z1
09594	B-F-F1-R-R1-V	09704	B-C-O-V-V1	09744	A-B-B2-C-C1-F-F1-J-L-M-N-R-R1-T-V-Z1	09814	B-E2-E3-F-F1-I3-J-L-N-R-T-U-V-Z-Z1
09595	B-F-F1-R-R1-V	09705	B-U	09745	A-B-F-F1-F3-M-N-R-R1-S-V-Z1	09815	A-B-F-F3-N-R-S-V-Z1
09596	B-F-F1-R-R1-V	09706	B-C-F3-M-N-R-S-U-V-Z1	09747	B-F-J-N-U-V-Z1	09816	A-B-B2-C-C1-E2-E3-F-F1-J-L-N-R-R1-T-V-Z1
09599	B-F-F1-R-R1-V	09707	B-C-F-F1-J-L-M-N-R-T-U-V-Z1	09748	A-B-B2-C-C1-D-F-F1-J-L-M-N-R-R1-T-V-Z1	09817	A-B-B2-C1-E2-E3-F-F1-H-H1-J-L-M-N-R-T-V-Z1
09600	B-C-F-F1-F3-R-U-Z1	09708	B	09749	A-B-F-H-N-U-V-Z1	09818	A-B-C-F-F3-M-S-V-Z1
09601	B-B2-E1-F-F3-I3-J-L-N-R-R1-S-T-V-X-Z-Z1	09709	B-B2-C1-E2-F-F1-H-H1-J-L-N-R-R1-T-V-Z1	09750	A-B-B2-C-C1-F-F1-J-L-M-N-R-R1-T-V-Z1	09820	A-B-B2-F-F1-H-H1-J-L-M-N-R-R1-T-V-Z1
09602	B-C-F-F1-N-R-U-V	09710	B-C-C1-F-F1-J-L-M-N-R-R1-T-U-V-Z1	09751	B-C-D-E-H-M-R-U	09821	A-B-C-F-F3-N-R-S-V-Z1
09603	B-C-F-F1-F3-R-S-U-V-Z1	09711	A-B-F-F1-F3-N-R-R1-S-V-Z1	09752	B-C-D-F1-H-U	09822	A-B-C-F-F3-M-R-S-V-Z1
09604	B-C-F-F1-F3-P-R-S-U-V-Z1	09712	A-B-F-F3-H-R-U-V-Z1				
09605	B-C-D-H-M-R-U-V	09714	B-C-C1-F1-M-R-R1-U				
09606	B-C-D-H-M-R-U-V	09715	B-F-F1-J-L-M-N-R-T-V-Z1				
09607	A-B-C-F-F1-F3-M-N-R-R1-U-U3-V-W-Z1	09716	B-C-F-F1-J-L-M-N-R-T-V-Z1				
09608	B-C-F-F3-N-R-U-V-Z1						

APO/ FPO/ DPO	See Restrictions	APO/ FPO/ DPO	See Restrictions	APO/ FPO/ DPO	See Restrictions	APO/ FPO/ DPO	See Restrictions
09823	A-B-F-F1-J-L-N-R-T-V-Z1	09870	A-B-C1-E2-F-F1-H1-I3-J-L-M-N-R-R1-T-U4-V-Z1	34058	B-F-F1-R-R1-V-Z1	96271	A-B-F1-U
09824	A-B-C-F-F3-M-R-S-V-Z1	09873	A-B-C1-E2-F-F1-H1-I3-J-L-M-N-R-R1-T-U-U4-V-Z1	34060	B-B2-C1-E2-F-F1-J-L-N-R-R1-T-V-Z1	96275	A-B-F1-U
09825	A-B-C1-F-F1-J-L-M-N-R-R1-T-V-Z1	09874	A-B-C1-E2-F-F1-H1-I3-J-L-M-N-R-R1-T-U-U4-V-Z1	34078	B-F1-N-V-Z1	96276	A-B-C-F1-R
09826	A-B-B2-C1-E1-E2-E3-F-F1-J-L-M-N-R-R1-T-V-W-Z1	09875	A-B-C1-E2-F-F1-H1-I3-J-L-M-N-R-R1-T-U-U4-V-Z1	34080	B-F-F1-R-R1-V	96278	A-B-C-F1-R-U
09827	A-B-F-F1-J-L-M-N-R-T-V-Z1	09877	A-B-C1-E2-F-F1-H1-I3-J-L-M-N-R-R1-T-U-U4-V-Z1	34081	B-F-F1-R-R1-V	96283	A-B-F1-U
09828	A-B-F-F1-I3-J-L-N-T-V-Z1	09878	A-B-C1-E2-F-F1-H1-I3-J-L-M-N-R-R1-T-U-U4-V-Z1	34082	B-F-F1-R-R1-V	96284	A-B-F1-U
09829	B-C-N-R-V-Z1	09879	A-B-C1-E2-F-F1-H1-N-R-R1-U-V-Z1	34083	B-F-F1-R-R1-V	96303	B-F-F1-H-J-L-M-N-T-V-W-Z1
09830	B-C-M-N-R-V-Z1	09880	B-E2-F-H1-N-R-R1-U2-V-Z1	34084	B-F-F1-R-R1-V	96306	B-F-F1-F2-H-M-W-Z1
09831	B-F-F1-J-L-N-T-U-V-Z1	09882	A-B-E2-F-F1-J-L-N-R-R1-T-V-Z1	34086	B-F-F1-R-R1-V	96309	B-C-M-R-V-W
09832 B-C1-E2-F1-F3-U1-Z1		09889	A-B-B2-C1-E2-F-L-N-R-T-V-W-Z1	34087	B-F-F1-R-R1-V	96310	B-M-W
09833 B-C1-E2-F1-F3-U1-V-Z1		09892	B-C-C1-E2-F-F1-F3-H1-N-R-R1-U2-V-Z1	34088	B-F-F1-R-R1-V	96319	B-C-M-R-W
09834	B-E2-E3-F-F1-F3-R-R1-U-Z1	09895	A-B-F-F1-I3-J-L-N-T-V-Z1	34089	B-F-F1-R-R1-V	96321	B-F-F1-F2-H-M-W-Z1
09835	A-B-C1-F1-F3-N-V-Z1	34001	B-F-F1-J-L-N-T-V-Z1	34090	B-F-F1-R-R1-V	96322	B-F-F1-F2-H-M-W-Z1
09836	A-B-C-F-F1-J-L-M-N-R-T-V-Z1	34002	B-F-F1-J-L-N-T-V-Z1	34091	B-E2-E3-F-F1-F3-R-R1-V-Z1	96323	B-C-M-R-V-W
09837	B-E2-E3-F1-F3-V-Z1	34004	B-F-F1-J-L-N-T-V	34092	B-F-F1-R-R1-V	96326	B-C-F-M-R-W
09838	B-E2-E3-F-F1-F3-U-Z1	34007	B-F-F1-H-J-M-N-R-R1-V-Z1	34093	B-F-F1-R-R1-V	96328	B-C-M-R-W
09839	A-B-U-V-Z1	34008	B-B2-D-E1-F-F1-H-H1-J-L-M-N-R-R1-T-V-Z1	34094	B-F-F1-R-R1-V	96330	B-C-M-R-W
09841	A-B-F3-N-R-U-Z1	34011	B-B2-C1-E2-F-F1-J-L-M-N-R-R1-T-V-Z1	34095	B-F-F1-R-R1-V	96331	B-M-W
09842	A-B-F-F1-J-L-N-R-T-V-Z1	34020	B-F-F1-J-L-M-N-T-V-Z1	96201	A-B-F1	96336	B-C-M-R-V-W
09844	A-B-C1-F-F1-J-L-M-N-R-R1-T-V-Z1	34021	B-F-F1-T-J-L-M-N-V-Z1	96202	A-B-F1-U	96337	B-M-W
09845	A-B-B2-E3-F-F1-J-L-M-N-R-T-V-Z1	34022	B-F-F1-J-L-M-N-T-V-Z1	96203	A-B-F1	96338	B-M-W
09846	A-B-B2-C1-F-F1-J-L-N-R-R1-T-V-Z1	34023	B-F-F1-J-L-M-N-T-V-Z1	96204	A-B-F1	96339	B-M-V-W
09848	A-B-F-M-R-V-Z1	34024	B-F-F1-J-L-M-N-T-V-Z1	96205	A-B-F1-U	96343	B-M-W
09851	A-B-C-F-F3-N-R-S-V-Z1	34025	B-F-F1-J-L-M-N-T-V-Z1	96206	A-B-F1-U	96346	B-F-F1-F2-H-M-V-W-Z1
09852 B-E2-E3-F-F1-F3-H1-N-R-R1-U-V-Z1		34030	B-F-F1-J-L-M-N-T-V-Z1	96207	A-B-F1-V	96347	B-F-F1-F2-H-M-W-Z1
09853	B-E2-F-H1-R-R1-U2-V-Z1	34031	B-F-F1-J-L-M-N-T-V-Z1	96208	A-B-F1-U	96349	B-F-F1-F2-H-M-W-Z1
09854	A-B-B2-C1-F-F1-I3-L-N-R-T-V-Z1	34032	B-F-F1-J-L-M-N-T-V-Z1	96209	A-B-F-F1-J-L-N-T-U-V-Z1	96350	B-F-F1-F2-H-M-W-Z1
09855	A-B-C1-E2-F-F1-H1-M-R-R1-U2-V-Z1	34033	B-C-F-F1-J-L-M-N-T-V-Z1	96210	A-B-B2-C1-F-F1-I3-L-N-R-T-V-Z1	96351	B-F-F1-F2-H-M-W-Z1
09858 B-C1-E2-E3-F-F1-F3-H1-N-R-R1-U-V-Z1		34034	B-F-F1-J-L-M-N-T-V-Z1	96212	B-F-F1-F2-H-M-W-Z1	96362	B-F-F1-F2-M-W-Z1
09859	B-C1-E2-E3-F-F1-F3-H1-R-R1-U-V-Z1	34035	B-F-F1-H-J-L-M-N-T-V-Z1	96213	A-B-C-F1-R-U	96365	B-C-M-R-V-W
09861	A-B-F-F1-F3-N-R-R1-S-V-Z1	34036	B-F-F1-J-L-M-N-T-V-Z1	96214	A-B-C-F1-R-U	96367	B-C-L-M-R-W
09863	A-B-F-F1-F3-N-O-R-R1-S-V-Z1	34037	B-C-F-F1-H-J-L-M-N-T-V-Z1	96218	A-B-F1-U	96368	B-C-M-R-W
09865	A-B-F3-R-U-V-Z1	34038	B-L-M-N-U-V-Z1	96224	A-B-F1-U	96370	B-F-F1-F2-H-M-W-Z1
09868	A-B-E2-F-N-U-V-Z1	34039	B-F-F1-J-L-M-N-T-V-Z1	96251	A-B-F1-U	96372	B-M-W
		34041	B-F-F1-J-L-M-N-T-V-Z1	96257	A-B-F1-U	96373	B-M-W
		34042	A-B-C-F-F1-M-N-R-U-V-W-Z1	96258	A-B-F1-U	96374	B-M-W
		34055	B-F-F1-J-L-M-N-T-V-Z1	96260	A-B-F1-U	96375	B-M-W
				96264	A-B-C-F1-R-U	96376	B-M-W
				96266	A-B-C-F1-R-U	96377	B-M-W
				96267	A-B-C-F1-R-U-V	96378	B-M-W
				96269	A-B-F1-U-Z1	96379	B-M-W
						96380	B-M-W
						96382	B-M-W

APO/ FPO/ DPO	See Restrictions	APO/ FPO/ DPO	See Restrictions	APO/ FPO/ DPO	See Restrictions	APO/ FPO/ DPO	See Restrictions
96384	B-M-W	96537	B-V-Z1	96605	B-V	96665	B-V
96385	B-M-W	96540	B-V-Z1	96606	B-V	96666	B-V
96386	B-M-W	96542	B-V-Z1	96607	B-V	96667	B-F-F1-R-R1-V
96387	B-M-W	96543	B-P-V-Z1	96608	B-E2-F-H1-R1-U2-V-Z1	96668	B-F-F1-R-R1-V
96388	B-M-W	96546	B-F-N-R-U3	96609	B-E2-F-H1-R1-U2-V-Z1	96669	B-F-F1-R-R1-V
96389	B-M-W	96548	A-B-H-M-R-U	96610	B-E2-F-H1-R1-U2-V-Z1	96670	B-V
96401	B-C-F-N-O-R-V-V1-Z1	96549	A-B-F-F1-H-J-L-M-N-T-U-V-Z1	96611	B-E2-F-H1-R1-U2-V-Z1	96671	B-F-F1-R-R1-V
96501	A-B-N-V	96550	A-B-H-M-U-V-Z1	96612	B-V	96672	B-F-F1-R-R1-V
96502	B-F-N-U3-V-Z1	96551	A-B-F-F1-H-J-L-M-N-T-U-V-Z1	96613	B-V	96673	B-V
96504	A-B-C-C1-F-F1-I3-L-N-R-R1-T-V-W-Z-Z1	96552	B-Z1	96615	B-F-F1-R-R1-V	96674	B-F-F1-R-R1-V
96505	A-B-C-C1-F-F1-I3-L-N-R-R1-T-V-W-Z-Z1	96553	A-B-F-F1-H-M-R-U	96616	B-F-F1-R-R1-V	96675	B-F-F1-R-R1-V
96507	A-B-F-F1-H-J-L-N-T-V-Z1	96554	A-B-F-F1-H-J-L-M-N-T-U-V-Z1	96617	B-F-F1-R-R1-V	96677	B-F-F1-R-R1-V
96510	B-I3-N-V	96555	B-F-M-V	96619	B-V	96678	B-F-F1-R-R1-V
96511	B-I3-N-V	96557	B-F-M-V	96620	B-F-F1-R-R1-V	96679	B-F-F1-R-R1-V
96515	B-D-F-U3	96562	A-B-B2-C-C1-D-E2-E3-F-F1-H-H1-I3-L-M-N-R-T-V-Z-Z1	96628	B-F-F1-R-R1-V	96681	B-V
96516	B-D-F-Z1			96629	B-F-F1-R-R1-V	96682	B-V
96517	B-F-U3-V-Z1	96577	A-B-F-H-M-N-R-U	96632	B-F-F1-R-R1-V	96683	B-V
96520	B-F-N-U3-V	96578	B-B2-F1-H-J-N-R	96643	B-F-F1-R-R1-V	96686	B-V
96521	B-F-F1-J-L-N-T-U3-V-Z1	96595	B-F-U3-V-Z1	96649	B-F-F1-R-R1-V	96691	B-F-F1-R-R1-V
96530	A-B-F-F1-H-H1-J-L-M-N-T-U-V-Z1	96598	B-N-O-V-V1	96650	B-F-F1-R-R1-V	96692	B-F-F1-R-R1-V
96531	A-B-C-F-F1-H-M-N-R-U-V	96599	B-N-V	96657	B-F-F1-R-R1-V	96693	B-F-F1-R-R1-V
96532	A-B-F-F1-H-J-L-M-N-T-U-V-Z1	96601	B-V	96660	B-F-F1-R-R1-V	96694	B-F-F1-R-R1-V
96534	A-B-F-U-Z1	96602	B-V	96661	B-F-F1-R-R1-V	96695	B-F-F1-R-R1-V
96535	A-B-F-F1-J-L-N-T-V-Z1	96603	B-V	96662	B-F-F1-R-R1-V	96696	B-F-F1-R-R1-V
		96604	B-V	96663	B-F-F1-R-R1-V	96698	B-V
				96664	B-V		

RESTRICTIONS

LEGEND

PS Form 2976, *Customs — CN 22 (Old C 1) and Sender's Declaration* (green label)

PS Form 2976-A, *Customs Declaration and Dispatch Note*

PS Form 2976-B, *Priority Mail Express International Shipping Label and Customs Form*

ATF	= Bureau of Alcohol, Tobacco, Firearms, and Explosives
Box C	= Department of State (DOS) contractor personnel
Box R	= Retired military personnel
DPO	= Diplomatic Post Office
MPO	= Military Post Office
PACT	= Prevent All Cigarette Trafficking Act
PAL	= Parcel Airlift
PMEMS	= Priority Mail Express Military Service
PUB 52	= Publication 52, <i>Hazardous, Restricted, and Perishable Mail</i>
SAM	= Space Available Mail
USDA	= United States Department of Agriculture

Note: Mail order catalogs are prohibited as SAM or PAL mail.

A. Securities, currency, or precious metals, including in their raw, unmanufactured state, are prohibited. Official Mail shipments are exempt from this restriction.

A1. Reserved for future use.

A2. Reserved for future use.

B. Regardless of mail class, a customs declaration (PS Form 2976, PS Form 2976-A, or PS Form 2976-B) is required for all items weighing 16 ounces or more or any item (regardless of weight) containing potentially dutiable mail contents (e.g., merchandise or goods) addressed to or from an MPO or DPO ZIP Code. If mailed using Priority Mail Express service, mailpieces requiring a customs form that are addressed to or from an MPO or DPO location must bear a properly completed PS Form 2976-B. No customs form is required for items weighing less than 16 ounces when the contents are not potentially dutiable (e.g., nonnegotiable documents). The surface area of the address side of the mailpiece must be large enough to contain the applicable customs declaration. The following exceptions apply:

- Known mailers are exempt from providing customs documentation on non-dutiable letters or printed matter. (A known mailer is a business mailer who enters volume mailings through a business mail entry unit (BMEU) or other bulk mail acceptance location, pays postage through an advance deposit account, uses a permit imprint for postage payment, and submits a completed postage statement at the time of entry that certifies that the mailpieces contain no dangerous materials that are prohibited by postal regulations.)
- All federal, state, and local government agencies whose mailings are regarded as "Official Mail" are exempt from providing customs documentation on any item addressed to an MPO except for those MPOs to which restriction "B2" applies.
- If mailpiece is endorsed "Contents for Official Use — Exempt from Customs Requirements."

B2. All federal, state, and local government agencies must complete customs documentation when sending potentially dutiable mail addressed to or from this MPO or DPO.

C. Cigarettes and other tobacco products, including tobacco leaves, chewing and pipe tobacco, snuff, and cigars are prohibited, including those that are authorized in Publication 52 under PACT.

C1. Obscene and horror articles, images, prints, paintings, cards, films, videotapes, comic books, etc., are prohibited.

D. Coffee is prohibited.

E. Medicines (prescription, over-the-counter, vitamins, and supplements) are prohibited when mailed to individuals for human or animal use. This prohibition does not apply when medicines are sent as Official Mail only between specifically designated agencies such as pharmaceutical distributors, hospitals, clinics, and pharmacies.

E1. Mailers are responsible to ensure that all medicines and vaccines conform to host nation laws.

E2. Any matter depicting nude or seminude persons, pornographic, or sexual items are prohibited. Non-authorized political materials are prohibited. Religious materials contrary to the Islamic faith are prohibited in bulk quantities, but individual items for the personal use of the addressee are permissible.

E3. Radio transceivers, cordless/cellular telephones, global positioning systems, scanners, base stations, and handheld transmitters are prohibited.

F. Firearms of any type are prohibited, except firearms mailed to or by official U.S. government agencies. This restriction does not apply to firearms mailed from this MPO ZIP Code, provided ATF and USPS regulations are met. Antique firearms do not require an ATF form.

F1. Weapons of any type are prohibited.

F2. Mailing firearms to or from this MPO ZIP Code is restricted to one shotgun and one single shot .22 caliber rifle per individual.

F3. Replica weapons and inert explosive devices (such as grenades) and weapons parts are prohibited.

G. Parcels of any class are prohibited.

H. Meats, including preserved meats, bones, skin, hair, feathers, horns or hoofs of hoofed animals, and wool samples whether hermetically sealed or not, are prohibited.

H1. Pork or pork by-products are prohibited.

I. Reserved for future use.

I1. Reserved for future use.

I2. Reserved for future use.

I3. Mail of all classes must fit in a mail sack. Mail may not exceed the following dimensions:

- Maximum length 27 inches.
- Maximum width 14 inches.
- Maximum height 14 inches.

J. Standard Post and Parcel Select parcels may not exceed 108 inches in length and girth combined.

K. Reserved for future use.

L. All Official Mail is prohibited.

M. Fruits, vegetables, live animals, and live plants are prohibited.

N. Registered Mail service is prohibited.

O. Reserved for future use.

P. Official Mail only.

Q. Mail may not exceed 66 pounds, and size is limited to 42 inches maximum length and 72 inches maximum length and girth combined.

R. All alcoholic beverages, including those mailable under Publication 52, Part 421, are prohibited.

R1. Materials used in the production of alcoholic beverages (i.e., distilling material, hops, malts, yeast, etc.) are prohibited.

S. Synthetic cannabinoids used to stimulate the central nervous system commonly known as "synthetic marijuana," "K2," or "Spice" are prohibited.

T. Mailings of household shipments and case lots of food to or from an MPO require military transportation office approval prior to mailing. Mailings to or from a DPO require pre-approval from the Diplomatic Pouch and Mail Director.

U. Mail addressed to Retirees (Box R) is limited to 16 ounces and up to a 90-day supply of TRICARE medications. This restriction does not apply to mail endorsed "Free Matter for the Blind or Handicapped."

U1. Mail is limited to First-Class Mail items, including audio and video media, weighing 13 ounces or less. This limitation does not apply to Official Mail.

U2. Retirees (Box R) are not authorized mail service.

U3. Reserved for future use.

U4. Mail addressed to Box C is limited to 2 lbs.

V. PMEMS is not available.

V1. Electronic Delivery status information for Extra Services is not available on *USPS.com*. Manual record of delivery may be available upon request.

W. Hermetically sealed packages of meat products bearing USDA certification, such as dried beef, salami, and sausage, may be mailed. 200 grams of tobacco per parcel are permitted duty free.

X. Cremated remains are prohibited.

Y. Mail is limited to First-Class Mail and Priority Mail items only. This restriction also applies to Official Mail.

Z. No outside pieces (OSPs).

Z1. The following restriction is applicable only to International Service Centers (ISC)/Exchange Offices. An Anti-Pilferage Seal (Item No O817E or O818A) is required on all pouches and sacks.

— *International Network Operations,
Global Business, 11-10-16*

USPS® Features *Songbirds in Snow* Forever® Stamps for Winter 2016/17



On Sale Nationwide: August 4, 2016.

Freely Associated States (FAS) Restrictions

Effective March 19, 2015, the mailing restrictions for Freely Associated States will be listed in the Pull-Out section of the *Postal Bulletin* and updated periodically.

Freely Associated States

Mail addressed to freely associated states is subject to certain conditions or restrictions of mailing regarding content, preparation, and handling. The FAS table below outlines these conditions as listed by each affected FAS ZIP Code™ through the use of footnoted mailing restrictions codes (see the [Restrictions](#) following the table). For additional information on available extra services for FAS destinations, see *Mailing Standards of the United States Postal Service, Domestic Mail Manual (DMM®)*, part 503.

Acceptance clerks should use the table with the POS ONE terminal to determine which FAS ZIP Codes are active and which conditions of mailing apply. Inquiries may be sent to Randall Sobol at randall.f.sobol@usps.gov.

FAS Restrictions Table

FAS Table	See Restrictions
96939	A, B
96940	A, B
96941	A, B
96942	A, B
96943	A, B
96944	A, B
96960	A, B
96970	A, B
Marshall Islands	C
Federated States of Micronesia	C

RESTRICTIONS LEGEND

PS Form 2976, *Customs* — CN 22 (Old C 1) and *Sender's Declaration* (green label)

PS Form 2976-A, *Customs Declaration and Dispatch Note*

FAS = Freely Associated State

- A.** Bank currency (coin and paper) is prohibited.
- B.** Signature Confirmation, Signature Confirmation Restricted Delivery, Adult Signature Requested, Adult Signature Restricted Delivery, Certified Mail Adult Signature Required, and Certified Mail Adult Signature Restricted Delivery not available.
- C.** COD is prohibited.

— *Asia-Pacific Relations, Global Business, 11-10-16*

Finance (continued)

IRS Reporting Requirements of Attorney Fees, Back Pay, or Wages

The purpose of this notice is to ensure that employees are aware of the Internal Revenue Service (IRS) income reporting requirements when attorney fees are awarded.

In 2005, the IRS issued regulations that changed the manner in which attorney fee awards are to be treated for tax reporting purposes, based upon the Supreme Court's decision in *Commissioner v. Banks*, 125 S. Ct. 826 (2005). Previously, when payment of attorney fees was made directly to the attorney, the payment to the attorney was only reported on the attorney's Form 1099-MISC, *Miscellaneous Income*. In *Commissioner v. Banks*, the Supreme Court held that when a litigant's recovery constitutes income, the litigant's income includes the portion of the recovery paid to the attorney as a contingent fee. Thus, pursuant to Internal Revenue Code (IRC) Section 6041(a) and 6045(f), these fees cannot be excluded from the plaintiff's gross income for tax reporting purposes.

Following are a number of different situations requiring variations in the reporting requirements:

- *Attorney Fees Paid Directly to an Attorney* — These fees will be reported in Box 3 (Other Income) on the employee's Form 1099-MISC. These fees will also be reported on the attorney's Form 1099-MISC.
- *Settlement (no back pay or wages) is Paid Directly to Employee and Attorney Fees are Identified* — The entire amount of the settlement (including attorney fees) will be reported in Box 3 (Other Income) on the employee's Form 1099-MISC. The employee's attorney will not be issued a Form 1099-MISC.
- *Settlement (back pay or wages) is Paid Directly to Employee and Attorney Fees are Identified* — The back pay or wages portion of the settlement is subject to income and FICA tax withholdings. The back pay or wages portion will be reported on the employee's Form W-2. The identified attorney fees will be reported in Box 3 (Other Income) on the employee's Form 1099-MISC. The employee's attorney will not be issued a Form 1099-MISC.
- *Settlement (back pay or wages) is Paid Directly to Employee and Attorney Fees are not Identified* — The entire amount of the settlement (including attorney fees) is subject to income and FICA tax withholdings. The entire amount will be reported on the employee's Form W-2. The employee's attorney will not be issued a Form 1099-MISC.
- *Settlement Check (no back pay or wages) is Issued Jointly to Employee and Attorney* — The entire amount of the settlement will be reported in Box 3 (Other Income) on the employee's Form 1099-MISC and will also be reported on the attorney's Form 1099-MISC.
- *Settlement Check (back pay or wages) is Issued Jointly to Employee and Attorney* — The entire amount of the settlement (including attorney fees) is subject to income and FICA tax withholdings. The entire amount will be reported on the employee's Form W-2. The net amount of the settlement (the actual amount of the settlement check) will be reported on the attorney's Form 1099-MISC.
- *Settlement Check (back pay or wages) is Split between Employee and Attorney* — The entire amount of the settlement (including attorney fees) is subject to income and FICA tax withholdings. The settlement check is issued to the employee, but prior to disbursement the check is pulled and the net of the settlement (the actual amount of the check) is split between the employee and his or her attorney. The entire amount of the settlement will be reported on the employee's Form W-2. The actual amount of the check paid to the attorney will be reported on the attorney's Form 1099-MISC.

The Postal Service™ makes no representation regarding the taxability of these payments. Potential tax liability resulting from any of these payments is the employee's responsibility. The IRS makes the determination on whether taxes must be paid. The Postal Service does not provide tax advice, and any tax reporting questions should be directed to the IRS or a qualified tax attorney or accountant.

— Payroll,
Controller, 11-10-16

Local Tax Code Information

The Postal Service™ collects appropriate federal, state, and, in some cases, local taxes directly from the pay of its employees who are subject to these deductions. Based on agreements between individual local taxing authorities and the United States Treasury Department, the Postal Service collects a number of city and/or county income taxes, occupational taxes, mental health taxes, residence taxes, local service taxes and, in some locations, more than one of these taxes.

The local taxes listed in the table are the taxes for which there are agreements between the taxing authorities and the United States Treasury Department. Some of these taxes are automatically deducted from the salaries of Postal Service employees who work within the geographic boundaries of the specific taxing authorities. However, most of these taxes are not automatic deductions. If you are subject to any of these local taxes, you must be proactive and complete and submit a PS Form 4, *Employee's City or County Withholding Certificate*, to the HR Shared Service Center (HRSSC). As a Postal Service employee, you are personally responsible for ensuring correct local taxes are deducted from your pay. Should you have any questions regarding your tax liability/responsibility, contact your local taxing authority.

In addition to the taxes listed in the table, there are other local taxes for which there are no agreements between the individual local taxing authorities and the United States Treasury Department. Employees must make their own payments to these taxing authorities. The Postal Service will not collect local taxes for a taxing entity that has not established an agreement with the Treasury Department.

All Postal Service employees are reminded that they are bound by the materials contained within the *Code of Ethics, Principles of Ethical Conduct for Government Officers and Employees*. This includes Principle 12, which states: "Employees shall satisfy in good faith their obligations as citizens, including all just financial obligations, especially those — such as federal, state, and local taxes — that are imposed by law."

If you live or work in a locality that is subject to one or more of the taxes listed below and the correct deduction(s) is not being withheld from your pay, you should immediately complete a PS Form 4, *Employee's City or County Withholding Certificate*. After completing this form, mail it to the following address:

HR Shared Service Center
PO Box 970400
Greensboro, NC 27497-0400

Direct all questions concerning these local taxes to the HRSSC:

- HRSSC 877-477-3273, option 5
- HRSSC (TDD/TTY) 866-260-7507

State and City or County	Type of Tax	Local Tax Code
Alabama		
Bessemer	Occupational Tax	081
Birmingham	Occupational Tax	084
Gadsden	Occupational Tax	094
Macon County	Occupational Tax	096
Colorado		
Denver	Occupational Tax	294
Delaware		
Wilmington	City Income Tax	903
Kentucky		
Bowling Green	Occupational Tax	215
Boone County	1. Ordinance Tax 2. Mental Health Tax	015 016
Covington	City Income Tax	252
Florence	Occupational Tax	836
Frankfort	Occupational Tax	292
Kenton County	Occupational Tax	435
Lexington-Fayette Urban County Gov	Occupational Tax	525
Louisville Metro Area/ Jefferson County	Occupational Tax	546
Madison County	County Income Tax	547
Owensboro	Occupational Tax	201
Richmond	Occupational Tax	735
Michigan		
Battle Creek	City Income Tax	063
Detroit	City Income Tax	315
Flint	City Income Tax	357
Grand Rapids	City Income Tax	378
Lansing	City Income Tax	483
Pontiac	City Income Tax	693
Saginaw	City Income Tax	756
Missouri		
Kansas City	City Income Tax	420
St. Louis	City Income Tax	819
New York		
New York City	City Income Tax	588
Ohio		
Akron	City Income Tax	021
Brecksville	City Income Tax	105
Brook Park	City Income Tax	106
Canton	City Income Tax	126
Cincinnati	City Income Tax	168
Cleveland	City Income Tax	189
Columbus	City Income Tax	231
Dayton	City Income Tax	273
Fairview Park	City Income Tax	274
Heath	City Income Tax	399
Kettering	City Income Tax	441
Mansfield	City Income Tax	567
Newark	City Income Tax	698
Oberlin	City Income Tax	609
Sharonville	City Income Tax	785
Springfield	City Income Tax	798
Toledo	City Income Tax	840
Whitehall	City Income Tax	861
Youngstown	City Income Tax	924

State and City or County	Type of Tax	Local Tax Code
Pennsylvania		
Bethlehem Township	City Income Tax	335
Erie	1. City Income Tax	336
	2. Local Services Tax	337
Greene Township	City Income Tax	375
Hanover Township	1. City Income Tax	343
	2. Local Services Tax	342
Harrisburg	1. City Income Tax	385
	2. Local Services Tax	386
Horsham Township	1. City Income Tax	354
	2. Local Services Tax	352
Lancaster	1. City Income Tax	462
	2. Local Services Tax	465
Marshall Township	Local Services Tax	555
Middletown	City Income Tax	388
Philadelphia	City Income Tax	651
Pittsburgh	1. City Income Tax	672
	2. Local Services Tax	673
Reading	1. City Income Tax	714
	2. Local Services Tax	715
Scranton	1. City Income Tax	777
	2. Local Services Tax	778

State and City or County	Type of Tax	Local Tax Code
South Park Township	1. City Income Tax	775
	2. Local Services Tax	776
Sunbury/Gregg Township (includes Allenwood)	City Income Tax	320
Susquehanna Township	Local Services Tax	395
Tredyffrin Township	Local Services Tax	360
Tincum Township	1. City Income Tax	779
	2. Local Services Tax	780
Warminster Township	1. City Income Tax	856
	2. Local Services Tax	855
Wilkes-Barre	1. City Income Tax	882
	2. Local Services Tax	883
York	City Income Tax	492
West Virginia		
Charleston	City Service Tax	899
Huntington	City Service Tax	900
Parkersburg	City Service Tax	901

— Payroll,
Controller, 11-10-16

Tax Obligations of USPS Employees

As employees of the United States Postal Service®, we have a legal, moral, and fiduciary obligation to obey the tax laws of our country. As both citizens and public servants who are obligated to uphold the public trust, we are ethically mandated to complete and file all required tax forms for our federal, state, and where applicable, local taxes. We are required by appropriate taxation laws to pay all of our required taxes in a timely and accurate manner.

All Postal Service™ employees are reminded that they are bound by the materials contained within the *Code of Ethics, Principles of Ethical Conduct for Government Officers and Employees*. This includes Principle 12, which states: “Employees shall satisfy in good faith their obligations as citizens, including all just financial obligations, especially those — such as federal, state, and local taxes — that are imposed by law.” It is vital all Postal Service employees adhere to the highest possible ethical standards concerning the payment of their taxes and other debts.

As a Postal Service employee, you are personally responsible for ensuring correct federal, state, and local taxes are deducted from your pay. If you are subject to federal, state, and/or local taxes and the correct deductions are not being withheld from your pay, you should take immediate action to ensure appropriate tax withholdings.

To Update Federal and/or State Tax Withholdings:

- Complete the federal Form W-4, *Employee’s Withholding Allowance Certificate* and/or the state equivalent of the federal Form W-4. For example, to

update Minnesota tax withholdings, complete Form W-4MN, *Minnesota Withholding Allowance/Exemption Certificate*. Complete the federal Form W-4 if your state does not have its own state equivalent of the federal Form W-4.

- Go to the *LiteBlue* home page (www.liteblue.usps.gov) to access the *PostalEASE* App.
- Update your “Federal W-4” Payroll Module and/or your “State Tax” Payroll Module.
- If you do **not** have access to a computer and/or the Internet, mail your completed form(s) to the HR Shared Service Center, PO Box 970400, Greensboro, NC 27497-0400.

Note: It is to your advantage to complete the paper form prior to your *PostalEASE* update as the paper form comes with instructions, which can be particularly helpful if your state has complex withholding selections.

To Update Local Tax Withholdings:

- Complete PS Form 4, *Employee’s City or County Withholding Certificate*.
- Forward your completed PS Form 4 to the HR Shared Service Center, PO Box 970400, Greensboro, NC 27497-0400.

Direct all questions concerning these taxes to the HRSSC at 877-477-3273, option 5 (TDD/TTY 866-260-7507).

The Postal Service does not provide tax advice. Direct any questions about your tax liability/responsibility to the IRS or a qualified tax attorney or accountant.

Adherence to these requirements will help all USPS® employees to avoid costly penalties and the potential of tax enforcement action by the IRS. The IRS provides free tax information and services to inform and assist taxpayers concerning tax laws and individual responsibilities. You

can research federal tax information at www.irs.gov, or you can call toll-free at 800-829-1040 (TDD 800-829-4059) to contact an IRS representative for further federal tax information.

— Payroll,
Controller, 11-10-16

Wage Overpayment Indebtedness — Tax Treatment

When a Postal Service™ employee is overpaid, the Postal Service establishes an account receivable for the overpayment and initiates the collection of the debt from the employee through the process described in the *Employee and Labor Relations Manual* (ELM), in either ELM 450, Collection of Postal Debts from Non-bargaining Unit Employees, or ELM 460, Collection of Postal Debts from Bargaining Unit Employees.

If the overpayment occurred in a prior year, the Postal Service bills the employee for the gross amount of the overpayment. The gross amount includes the net amount of the check/direct deposit plus all payroll-related taxes withheld and other miscellaneous deductions/allotments. The wages paid in error in the prior year remain W-2 reportable and taxable to the employee for that year. This is because the employee received and had use of those funds during that year. If repayment is made within 3 years of the issuance of the W-2 that includes the overpayment, the employee may be entitled to a refund of Social Security (if applicable) and Medicare taxes from the Postal Service. The employee is not entitled to file an amended return

(Form 1040X) to recover the income tax paid on these wages. Instead, the employee is entitled to a deduction (or credit in some case) for the repaid wages on his or her income tax return for the year of repayment (IRS Publication 15). Employees are encouraged to seek the services of a qualified tax preparer if they have questions.

If the overpayment occurred in the current year, the Postal Service *initially* bills the employee for *only* the net value of the overpayment; thus, federal, state, local, and FICA/Medicare taxes are not part of the bill. However, if an employee has not fully repaid the overpayment by the end of the tax year (December 31, 2016), the Postal Service must report the unreturned value of the overpayment as taxable income on the employee's Form W-2. Additionally, the employee and employer must now pay appropriate federal, state, local, and FICA/Medicare taxes on the remaining value of the unpaid debt. The Postal Service establishes a second account receivable at the close of the tax year for the value of the taxes the employee owes related to the unpaid debt. The debt collection processes in ELM 450 and ELM 460 are used to collect the additional debt.

— Payroll,
Controller, 11-10-16

Human Resources

Wounded Warriors Leave

The Postal Service™ supports the employment of veterans who have chosen to commence or resume a civilian career with the Postal Service following their military service. On November 5, 2015, President Obama signed the Wounded Warriors Federal Leave Act of 2015 (Pub. L. 114-75) (Act). The Act requires federal agencies to make leave immediately available to eligible disabled service members to attend medical appointments without loss or reduction of pay.

Wounded Warriors Leave (WWL), as designated, will be available to eligible veterans to attend medical appointments and receive related treatment for a service-connected disability. Eligible veterans include all Postal Service employees hired on or after November 5, 2016, that have a minimum 30 percent combined disability rating.

WWL consists of 104 hours of leave to be used in the initial 12 months of employment. In addition to being available to new hires, the WWL benefit is also available to employees who return to the Postal Service on or after November 5, 2016, from military service or leave in which they have suffered a qualifying disability.

WWL is a separate leave category, distinct from annual or sick leave. WWL is only available during the first 12 months of employment, unless an employee returns from Military Leave (without a break in service) with a new service-connected disability rated at 30 percent or more. The WWL is offered to employees as a one-time benefit. Once the leave has been exhausted an employee is not eligible to receive the benefit again. Further, any WWL not used in the 12-month eligibility period is forfeited.

It is an employee's responsibility to notify the Postal Service of his or her eligibility before requesting WWL. Employees must provide documentation from the Department of Veterans Affairs, or on any Office of Personnel Management (OPM) certification form developed for administration of WWL, certifying that the employee has a qualifying service-connected disability. Send documentation to support WWL eligibility to the HR Shared Service Center:

- Via mail at PO Box 970400, Greensboro, NC 27497-0400; or
- Via fax at 651-994-3521.

Employees must request WWL in advance, unless the leave is unforeseeable. Prior to the absence, employees must complete PS Form 3971, *Request for or Notification*

of Absence, designating the reason for the absence as "other" and writing "Wounded Warriors Leave" in the space provided. Within 15 calendar days from their return to work, employees must provide to their supervisor a completed PS Form 5980, *Treatment Verification for Wounded Warriors Leave*, signed by their medical provider.

WWL can be used in combination with other employee-accrued leave and may also be used in conjunction with the Family Medical Leave Act provided the employee meets eligibility requirements.

For additional information on the Wounded Warriors Leave program, please see MI EL-510-2016-7, *Wounded Warriors Leave*, and PS Form 5980, *Treatment Verification for Wounded Warriors Leave*, on PolicyNet at <http://blue.usps.gov/cpim/>.

— *Compensation and Benefits,
Human Resources, 11-10-16*

Information Security

Understanding the CyberSecurity Operations Center (CSOC)

Did you know there is a team within the Corporate Information Security Office (CISO) to help protect you against cyber threats? The CyberSecurity Operations Center (CSOC) is a part of CISO and is the USPS® organization responsible for identifying and mitigating such threats. As part of this process to protect USPS systems and information from cybercriminals, the CSOC conducts ongoing threat detection, threat analysis, and incident response to maintain the security of USPS networks and resources.

There are three stages to a cyber attack — the CSOC works at each stage to ensure that the U.S. Postal Service® remains "CyberSafe":

1. **Threat Detection.** The CSOC collects cyber incident reports and offers immediate, short-term triage to protect both personal and postal networks. Eighty-four percent of the CSOC's work is identified via reports from users like you. To report cybersecurity incidents to the CSOC and help combat cyber threats, email CyberSafe@usps.gov.
2. **Threat Intelligence.** The CSOC engages in an in-depth analysis and investigation to determine the root cause of a cyber attack and mitigate future attacks to postal networks. The CSOC uses advanced hunting techniques to identify signs of a cyber attack, otherwise known as Indicators of Compromise (IOC).
3. **Incident Response.** The CSOC uses forensics to analyze individual cyber incident reports, situation reporting, and after-action reporting to identify larger trends within cybersecurity. This research enables the USPS to develop targeted cybersecurity strategies to align with cybersecurity best practices.

USPS employees are asked to report suspicious incidents or suspected cyber threats directly to the CSOC to help combat cyber threats to the organization. When faced with a suspicious email or suspected phishing attempt, send the message in question as an attachment — not a forwarded email — to the CSOC so that they can review the content. To report a phishing attempt, attach the suspicious email to a new email message and address it to the CSOC at CyberSafe@usps.gov.

Alternatively, while viewing the suspicious message, press the "Control," "Alt," and "F" keys simultaneously to create a new email with the suspicious message attached (the message will automatically attach to the email using this shortcut). When the new email pops up, type CyberSafe@usps.gov into the "To" line and hit send to report the email to the CSOC.

After reporting the phishing email, delete it from your inbox. For more information on how to properly report suspicious emails to the CSOC, visit the *CyberSafe at USPS™* customer-facing website at www.usps.com/cybersafe/ and/or download "The Right Way to Report Phishing Incidents" cheat sheet on *Blue* at <http://blue.usps.gov/cyber/report-incidents.htm>.

— *Corporate Information Security Office,
Chief Information Security Officer
and Digital Solutions, 11-10-16*

Stamp Services

Correction: Nativity Stamp

In the article “Stamp Announcement 16-42: Nativity Stamp,” in *Postal Bulletin* 22451, (9-29-16, page 48), the price for Philatelic Product 681266*, Notecards (set of 10), was incorrectly listed as \$15.95.

The corrected price is shown in bold:

- 681266*, Notecards (set of 10), **\$17.95**

— Stamp Services,
Marketing and Sales, 11-10-16

Pictorial Postmarks Announcement

As a community service, the Postal Service™ offers pictorial postmarks to commemorate local events celebrated in communities throughout the nation. A list of events for which pictorial postmarks are authorized appears below. The sponsor of the pictorial postmark appears in italics under the date. Also provided are illustrations of these postmarks.

People attending these local events may obtain the postmark in person at the temporary Post Office™ station established there. Those who cannot attend the event but who wish to obtain the postmark may submit a mail order request. Pictorial postmarks are available only for the dates indicated, and *requests must be postmarked no later than 30 days following the requested pictorial postmark date.*

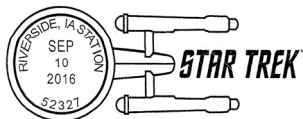
All requests must include a stamped envelope or postcard bearing at least the minimum First-Class Mail® postage. Items submitted for postmark may not include

postage issued after the date of the requested postmark. Such items will be returned unserved.

Customers wishing to obtain a postmark should affix stamps to any envelope or postcard of their choice, address the envelope or postcard to themselves or others, insert a card of postcard thickness in envelopes for sturdiness, and tuck in the flap. Place the envelope or postcard in a larger envelope and address it to: Pictorial Postmarks, followed by the Name of the Station, Address, City, State, ZIP+4® Code, as listed below.

Customers can also send stamped envelopes and postcards without addresses for postmark, as long as they supply a larger envelope with adequate postage and their return address. After applying the pictorial postmark, the Postal Service returns the items (with or without addresses) under addressed protective cover.

The following pictorial postmarks have been extended for 60 days:



September 10, 2016

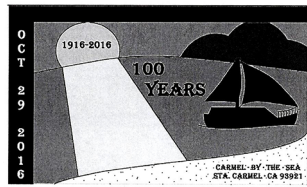
United States Postal Service
Riverside, IA Station Star Trek
Postmaster
81 Green Street
Riverside, IA 52327-9998



October 13, 2016

Newark 350th Anniversary
Pillar College Station
Postmaster
2 Federal Square
Newark, NJ 07102-9998

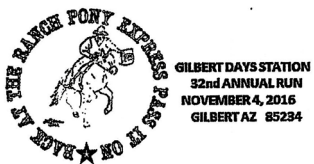
The following pictorial postmarks have been extended for 30 days:



October 29, 2016
Carmel by the Sea City Council
 Carmel by the Sea Station
 Postmaster
 56B 5th Street, Lot 1
 Carmel by the Sea, CA 93921-9905



October 29, 2016
United States Postal Service
 Slapshot Cup Hockey Tournament Station
 Postmaster
 PO Box 9998
 Johnstown, PA 15901-9998



November 4, 2016
Gilbert Days Station – Pony Express
 Gilbert Days Station
 Postmaster
 137 East Elliot Road
 Gilbert, AZ 85234-9998



November 5, 2016
Tri-State Stamp Club
 Tri-State Stamp Show Station
 Postmaster
 PO Box 9998
 Dubuque, IA 52001-9998



November 5, 2016
United States Postal Service
 Diwali Mela Station
 Postmaster
 401 Tom Landry
 Dallas, TX 75260-9998



November 10, 2016

Kauneonga Lake Station
Kauneonga Lake, NY
Station
Postmaster
3584 State Route 55
Kauneonga Lake, NY
12749-9998



November 14–20, 2016

Alaska Bald Eagle Festival
NOV 14 2016
Haines Station
Haines, AK, 99827

American Bald Eagle Foundation
Haines Station
Postmaster
PO Box 9998
Haines, AK 99827-9998



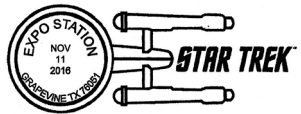
November 10, 2016

United States Postal Service
Jackson Heights Station
Postmaster
7802 37th Avenue
Flushing, NY 11372-9998



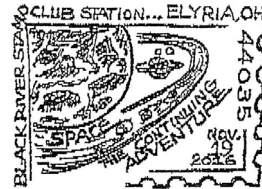
November 18, 2016

Los Angeles Regional Food Bank
Season for Sharing Station
Postmaster
7001 South Central Avenue,
Room 307
Los Angeles, CA
90052-4200



November 11–12, 2016

United States Postal Service
Expo Station Grapevine, TX
Postmaster
1251 William D. Tate Avenue
Grapevine, TX 76051-9998



November 19, 2016

Black River Stamp Club
Black River Stamp Club
Station
Customer Relations
Coordinator
2200 Orange Avenue, #234
Cleveland, OH 44101-9998

Waterfowl Festival Station
Maryland Terrapin
Easton, Maryland 21601
November 12, 2016

November 11–12, 2016

Tidewater Stamp Club
Waterfowl Festival Station
Postmaster
116 East Dover Street
Easton, MD 21601-9998

— Stamp Services,
Marketing and Sales, 11-10-16

How to Order the First-Day-of-Issue Digital Color or Traditional Postmarks

Customers have 60 days to obtain the first-day-of-issue postmarks by mail. They may purchase new stamps at their local Post Office™, by telephone at 800-STAMP-24, or at The Postal Store® website at www.usps.com/shop.

Traditional Postmarks

Customers should affix the stamps to envelopes of their choice, address them to themselves or others, or provide a self-addressed return envelope with sufficient postage large enough to accommodate the canceled item. Mail the request to the corresponding city of issuance. There is no charge for the first 50 postmarks. There is a 5-cent charge for each additional postmark over 50. Customers should submit a check, money order, or credit card for payment. After applying the first-day-of-issue postmark, the Postal Service™ will return the envelopes to the customer by U.S. Mail.

All postmark requests should go to the first-day-of-issue city. The first-day-of-issue city Post Office will then forward in bulk all postmark requests to Cancellation Services, Stamp Fulfillment Services, PO Box 449992, Kansas City, MO 64144-9992 by respective Post Offices.

Digital Color Postmarks

Only select stamp issues offer a digital color postmark. Customers may submit #6 or #10 envelopes constructed of paper rated as “laser safe.” The Postal Service recommends envelopes of 80-pound Accent Opaque, acid-free, 9/16" side seams with no glue on the flap. The maximum

size of all digital color postmarks is 2" high x 4" long. Allow sufficient space on the envelope to accommodate the postmark. Do not use self-adhesive labels for addresses on the envelope. Two test envelopes must be included. There is a minimum of 10 envelopes at 50 cents per postmark required at the time of servicing. Customers should submit a check, money order, or credit card for payment.

The Postal Service reserves the right to not accept hand-painted and other cachet envelopes that are not compatible with our digital color postmark equipment. The Postal Service also reserves the right to substitute traditional black rubber postmarks if use of nonspecified envelopes results in poor image quality or damage to equipment.

Customers should affix the stamps to the envelopes and address them to themselves or others for return through the mail. Or, they may include an additional self-addressed return envelope, large enough to accommodate their canceled items, with sufficient postage affixed for return of their postmarked items. Mail the request for a first-day-of-issue digital color postmark to the corresponding city of issuance. Post Offices will then forward all customer requests for digital color postmarks to Cancellation Services, Stamp Fulfillment Services, PO Box 449992, Kansas City, MO 64144-9992.

After applying the first-day-of-issue postmark, the Postal Service will return the envelopes to the customer by U.S. Mail.



Eastern Tailed-Blue (Butterfly) Stamp

Stamp Fulfillment Services
Cancellation Services
8300 NE Underground Drive, Pillar 210
Kansas City, MO 64144-9998

November 24, 2016

Digital Color Pictorial



Jack-O'-Lanterns Stamps

Stamp Fulfillment Services
Cancellation Services
8300 NE Underground Drive, Pillar 210
Kansas City, MO 64144-9998

November 29, 2016

Digital Color Pictorial

**Kwanzaa Stamp**

Stamp Fulfillment Services
Cancellation Services
8300 NE Underground Drive, Pillar 210
Kansas City, MO 64144-9998

December 1, 2016

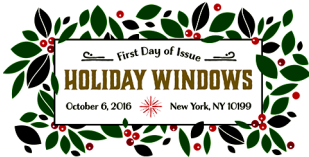
Digital Color Pictorial

**Diwali Stamp**

Stamp Fulfillment Services
Cancellation Services
8300 NE Underground Drive, Pillar 210
Kansas City, MO 64144-9998

December 5, 2016

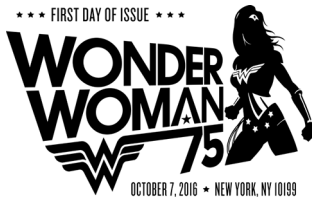
Digital Color Pictorial

**Holiday Windows Stamps**

Stamp Fulfillment Services
Cancellation Services
8300 NE Underground Drive, Pillar 210
Kansas City, MO 64144-9998

December 6, 2016

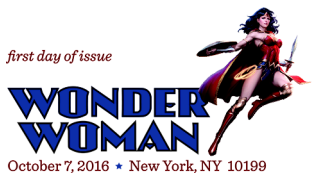
Digital Color Pictorial

**Wonder Woman Stamps**

Stamp Fulfillment Services
Cancellation Services
8300 NE Underground Drive, Pillar 210
Kansas City, MO 64144-9998

December 7, 2016

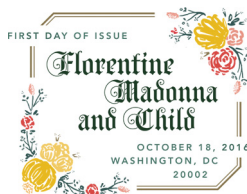
Black and White Pictorial

**Wonder Woman Stamps**

Stamp Fulfillment Services
Cancellation Services
8300 NE Underground Drive, Pillar 210
Kansas City, MO 64144-9998

December 7, 2016

Digital Color Pictorial

**Florentine Madonna and Child Stamp**

Stamp Fulfillment Services
Cancellation Services
8300 NE Underground Drive, Pillar 210
Kansas City, MO 64144-9998

December 18, 2016

Digital Color Pictorial

**Hanukkah Stamp**

Stamp Fulfillment Services
Cancellation Services
8300 NE Underground Drive, Pillar 210
Kansas City, MO 64144-9998

January 1, 2017

Digital Color Pictorial**Nativity Stamp**

Stamp Fulfillment Services
Cancellation Services
8300 NE Underground Drive, Pillar 210
Kansas City, MO 64144-9998

January 3, 2017

Digital Color Pictorial

— Stamp Services, Marketing and Sales, 11-10-16

Supply Management

USPS Lock and Key Return Program Has a New Address

Please ship all defective and obsolete locks and keys to the following new address:

USPS LOCK RETURN PROGRAM
COMPX SECURITY PRODUCTS
26 Old Mill Road
Greenville, SC 29607

As a reminder, the USPS® Lock and Key Return Program is in place with CompX Security Products and includes all non-functioning and obsolete locks and keys: PSIN O306A1, O306A2, O306B, O306D, O306P, O306P1, O308, O910A, O910B, Arrow, Medeco (MAL), Metro, and Rotary Locks and Keys.

This recycling program allows us to reduce the overall cost of manufacturing new locks while we support our overall effort to increase sustainability with the products we purchase. This program also contains a component that

allows the Postal Service™ to generate revenue for brass scrap for locks that cannot be reconditioned or where only some of the components in the lock are reused.

Use either the small or medium flat rate box to ship and reinforce with priority tape around the entire box. Boxes cannot be over 70 pounds, so confirm package weight before shipping. Use packing, if necessary, so loose keys do not shift. Overweight and oversized boxes will break open and cannot be lifted safely. Return all Arrow, Medeco (MAL), and Rotary Locks and Keys using Signature Confirmation™ service for tracking purposes.

Direct any questions about this program to National Materials Customer Service at 800-332-0317, option 4, then option 5, or via email at materials.customerservice@usps.gov.

— Asset Management Planning,
Supply Management, 11-10-16

USPS® Celebrates the Season with *Holiday Windows* Forever® Stamps

**On Sale
Nationwide:
October 6, 2016.**

