

postal|bulletin

PUBLISHED SINCE MARCH 4, 1880

Prevent Heat Stress



Stay Cool

- Rest During Breaks
- Drink Plenty of Water
- Shade Yourself From the Sun

Know the Signs

- Headache
- Confusion
- Dizziness
- Nausea
- Muscle Cramps

See page 3



Contents

COVER STORY

Beat the Heat, Stay Cool 3

POLICIES, PROCEDURES, AND FORMS UPDATES

Manuals

IMM Revision: Priority Mail Express International
Service Established with Cuba 4

Publications

Publication 431 Revision: Changes to Post Office
Box Service and Caller Service Fee Groups 5

Forms

Ordering Instructions for PS Form 2976-R,
USPS Customs Declaration Form and Dispatch Note 6

ORGANIZATION INFORMATION

Finance

Reminder: Fiscal Year 2016 Bank Secrecy Act/Anti-Money
Laundering Training 7

Fiscal Year 2016 Closing Guidance: Message
From the Controller 8

Human Resources

Make the Most of the Summer Harvest at Your
Next Gathering 11

Information Security

Don't Ignore It, Report It: How to Report Suspicious
Online Activity 11

Stamp Services

Stamp Announcement 16-30: Songbirds in Snow
Stamps 12

Correction: Henry James Stamp 14

Pictorial Postmarks Announcement 14

How to Order the First-Day-of-Issue Digital Color
or Traditional Postmarks 39

PULL-OUT INFORMATION

Fraud

Invalid USPS Corporate Account Numbers 17

Missing, Lost, or Stolen U.S. Money Order Forms 19

Missing, Lost, or Stolen Canadian Money Order
Forms 25

Verifying U.S. Postal Service Money Orders 28

Counterfeit Canadian Money Order Forms 28

Toll-Free Number Available to Verify Canadian
Money Orders 28

Other Information

Overseas Military/Diplomatic Mail 29

Freely Associated States (FAS) Restrictions 34

Thrift Savings Plan Fact Sheet 35

POSTAL BULLETIN 2016 SEMI-ANNUAL INDEX 45

USPS National Emergency Hotline
Is your facility operating? Call 888-363-7462

Find the latest in mail and delivery information
and services offered by U.S. Postal™
in the *Postal Bulletin* at
<http://about.usps.com/postal-bulletin>.

Cover Story

Beat the Heat, Stay Cool

It's that time of year again, when the temperatures begin to rise, and the potential for heat-related illnesses becomes a factor during your daily work routine.

Here are some quick tips for battling the heat:

1. Hydrate before, during, and after work. Prevention is important, so make sure to maintain good hydration by drinking at least eight ounces of water every 20 minutes.
2. Dress appropriately for the weather. On warm days, make sure to wear light colored, loose-fitting, breathable clothing to keep body temperatures down.
3. Utilize shade to stay cool. When possible, use shaded areas to stay out of direct sunlight.
4. Know the signs of heat stress. You should understand what heat stress is, and how it can affect your

health and safety. Here are some things to look out for:

- Hot, dry skin or profuse sweating.
- Headache.
- Confusion or dizziness.
- Nausea.
- Muscle cramps.
- Weakness or fatigue.
- Rash.

Finally, it's important to notify your supervisor or call 911 if you're experiencing signs of heat-related illness. This will not only ensure your safety, but can also save your life.

— *Safety and OSHA Compliance,
Employee Resource Management, 7-21-16*

Policies, Procedures, and Forms Updates

Manuals

IMM Revision: Priority Mail Express International Service Established with Cuba

Effective August 28, 2016, the Postal Service™ will revise *Mailing Standards of the United States Postal Service, International Mail Manual (IMM®)* to reflect that Priority Mail Express International® service is available to Cuba.

Cuba already receives First-Class Mail International® items, First-Class Package International Service® items, and Priority Mail International® items from the Postal Service. We are adding Cuba following its recent establishment of an Express Mail Service (EMS) operational exchange agreement with the Postal Service. As a result, Priority Mail Express International service for Flat Rate Envelopes up to 4 pounds and parcels up to 22 pounds will become available to this destination on August 28, 2016.

Mailing Standards of the United States Postal Service, International Mail Manual (IMM)

* * * * *

Country Price Groups and Weight Limits

* * * * *

[In the table, revise the entry for Cuba to read as follows:]

Country	Global Express Guaranteed		Priority Mail Express International			Priority Mail International			First-Class Mail International and First-Class Package International Service	
	Price Group	Max. Wt. (lbs.)	Price Group	Max. Wt. (lbs.)	PMI Flat Rate Envelopes Price Group ¹	Price Group	Max. Wt. (lbs.)	PMI Flat Rate Envelopes and Boxes Price Group ²	Price Group	Max. Wt. (ozs./lbs.) ³
Cuba	n/a	n/a	9	22	8	9	22	8	9	3.5 / 4

Cuba

Country Conditions for Mailing

[Delete the first paragraph.]

* * * * *

[Revise the section for Priority Mail Express International service to read as follows:]

Priority Mail Express International (220) Price Group 9

Refer to Notice 123, *Price List*, for the applicable retail, Commercial Base, or Commercial Plus price.

Weight Limit: 22 lbs.

Priority Mail Express International – Flat Rate Envelopes

Flat Rate Envelopes: The maximum weight is 4 pounds.

Refer to Notice 123, *Price List*, for the applicable retail, Commercial Base, or Commercial Plus price.

Size Limits (221.42)

Maximum length: 59 inches

Maximum length and girth combined: 108 inches

Insurance (222.7)

Note: Additional Priority Mail Express International merchandise insurance is not available to this country. Priority Mail Express International shipments containing merchandise are insured against loss, damage, or missing contents up to \$200 at no additional charge. Document reconstruction insurance coverage is provided, at no additional cost, to a maximum of \$100 per shipment. See 222.62.

Customs Forms Required (123)

Articles Admitted	Required Customs Form/Endorsement
Correspondence and business papers.	No form required. Endorse item clearly next to mailing label as BUSINESS PAPERS.
Merchandise samples without commercial value.	PS Form 2976-B placed inside PS Form 2976-E (plastic envelope).
Merchandise and all articles subject to customs duty.	PS Form 2976-B placed inside PS Form 2976-E (plastic envelope).

Note: For mailers completing PS Form 2976-B or an online combined shipping label and customs form that electronically transmits customs-related data, no additional customs form is required because customs information is incorporated into the form that the mailer must complete.

Note:

Coins; banknotes; currency notes, including paper money; securities of any kind payable to bearer; traveler's checks; platinum, gold, and silver; precious stones; jewelry; watches; and other valuable articles are prohibited in Priority Mail Express International shipments to Cuba.

Reciprocal Service Name: EMS — Cuba Post

Country Code: CU

Areas Served: All

* * * * *

We will incorporate these revisions into the next update of the online IMM, which is available via Postal Explorer® at <http://pe.usps.com>.

— Product Classification,
Marketing and Sales, 7-21-16

Publications

Publication 431 Revision: Changes to Post Office Box Service and Caller Service Fee Groups

Effective July 21, 2016, Publication 431, *Post Office Box Service and Caller Service Fee Groups*, is revised to include the following changes.

Publication 431, *Post Office Box Service and Caller Service Fee Groups*

* * * * *

[Revise the following entries:]

ZIP Code	Fee Group
91746	31

* * * * *

[Delete the following entries:]

ZIP Code	ZIP Code
66542B	68350A
67627	68542B

* * * * *

The online version of Publication 431 is dated July 2013. Publication 431 is currently available on the Postal Service™ PolicyNet website (<http://blue.usps.gov/cpim>):

- Go to <http://blue.usps.gov>.
- Under “Essential Links” in the left-hand column, click *PolicyNet*.
- Click *PUBs*.

Offices with WebBATS Manager/Supervisor access can view current Publication 431 information by going to the WebBATS Edit Facility Information page, as follows:

1. Go to the WebBATS main menu, and select Utility> Facility>Edit Facility option.
2. View the Fee Group field on the Edit Facility Information page.

— Retail Operations,
Retail and Customer Service Operations, 7-21-16

Forms

Ordering Instructions for PS Form 2976-R, USPS Customs Declaration Form and Dispatch Note

Effective July 15, 2016, the Postal Service™ has made available the new PS Form 2976-R, *USPS Customs Declaration and Dispatch Note*, that replaces the hard copy versions of the following customs declaration forms for international mail transactions: PS Form 2976, *Customs Declaration CN 22 — Sender's Declaration*, PS Form 2976-A, *Customs Declaration and Dispatch Note CP 72*, and PS Form 2976-B, *Priority Mail Express International Shipping Label and Customs Form*.

However, shipments to Army Post Offices, Fleet Post Offices, Diplomatic Post Offices, and U.S. Possessions, Territories, and Freely Associated States will continue to use PS Forms 2976, 2976-A, and 2976-B, as appropriate, when a customs declaration form is required.

Retail offices can order the new PS Form 2976-R from the Material Distribution Center (MDC) through the U.S. Postal Service® eBuy2 ordering system under the MDC eBuy2 catalog or by calling the touch-tone order entry (TTOE) system at 800-273-1509.

Note: You must be registered to use the TTOE system. To register, call 800-332-0317, option 1, extension 2925, and follow the prompts to leave a message. Once registration is complete, wait 48 hours before placing your first order.

Use the following information to order PS Form 2976-R:

PSIN:	PS2976R
PSN:	7530-17-000-7992
Unit of Measure:	EA
Minimum Order Quantity:	125
Maximum Order Quantity:	N/A
Bulk Pack Quantity:	1,500
Price:	\$0.0517
Edition Date:	04/16

— *Global Trade Compliance,
Global Business, 7-21-16*

Organization Information

Finance

Reminder: Fiscal Year 2016 Bank Secrecy Act/Anti-Money Laundering Training

The Fiscal Year (FY) 2016 Bank Secrecy Act/Anti-Money Laundering (BSA/AML) mandatory training course is available online through the Learning Management System (LMS). All postal employees who sell United States Postal Service® financial instruments (postal money orders, Sure Money, and gift cards), and those who supervise them, must complete “2016 BSA Compliance Training — What You Need to Know,” course number 10024702.

This course is approved as one of the FY 2016 mandatory strategic training initiatives. The field budget allocation included work hours for this course because it falls in the legal or compliance training category. This is a reminder that the mandatory BSA training must be completed by August 31, 2016.

Background

To combat money laundering in the United States, Congress enacted a series of laws collectively known as the Bank Secrecy Act. The Postal Service™, as a seller of money orders, is specifically named in the Act and must comply with all of the requirements of the law. One of the requirements under the Act is to report suspicious transactions involving Postal Service financial instruments.

This training focuses on the latest information regarding anti-money laundering policies, procedures, and suspicious activity trends.

Training Methods

The preferred method for taking the course is online through the LMS Learning Portal. Employees who work at offices with a very slow Internet connection may take the course via a CD.

If you are unable to complete the web-based version of the course through the Learning Portal because of a low bandwidth connection, contact your local Learning Development and Diversity staff for a copy of the CD. You can also order a training CD directly through the Topeka Material Distribution Center (MDC) or eBuy2, under the supplier Digital Impressions, using NSN # 6910170007918. Document the completion of training via the CD in the After the Fact Portal. Do not book into the web-based course described below if using the CD version.

Instructions for Training Completion: Bargaining Unit and EAS Non-Exempt Employees

All employees associated with occupational codes required to take this training will see this course automatically populate in their LMS Learning Portal screens.

To find the course, follow these basic steps:

1. Log into the LMS. Under “Essential Links” on the *Blue* home page, click *Learning Management System*. Use ACE ID and Password. Click the *Learning Portal* icon.
2. Navigate to the “Messages and Notes” section, then:
 - a. Click the *Mandatory Courses* tab. You will see the course “2016 BSA Compliance Training — What you Need to Know,” course number 10024702.
 - b. Click the course. The course information populates on the right.
3. Click *Book this Course*.
4. Once the course is booked, click *Start Now*.
5. Once the course is completed, your training history automatically lists this training as completed.

Instructions for Training Completion: EAS-Exempt Employees

1. Log into the LMS. Under “Essential Links” on the *Blue* home page, click *Learning Management System*. Use ACE ID and Password.
2. Click the *Learning Portal* icon.
3. Enter the course number, 10024702, into the Search Term box on the left. Click *Find*.
4. The course information automatically populates on the right.
5. Scroll to the bottom of the page. Click *Book This Course*.
6. Wait for a confirmation screen confirming your enrollment.
7. Click *Start Now* to begin the course.

Web-based Training

1. After completing the web-based training, click *Log Off*.
2. Wait for the Learning Portal to refresh.
3. Once the course description page refreshes, you will see a note at the top of the course information page

that reads “You have already completed and passed this course.” The course is no longer listed under “My Training Activities.”

- The course is now listed within the section “Completed Courses.”

CD Version – For Offices with Low Connectivity

Follow these steps to receive course credit *after* the course content has been completed:

- Launch the After the Fact Portal.
- In the “Course Type Name” field, enter course number “10024702” or “2016 BSA Compliance Training.” Click *Find*.
- Click the gray square on the left of the course name to ensure it is highlighted.
- Click *Add*.
- Click *Create Roster*.
- Enter “Start Date” and “End Date.”
- Click *Next*. Click *Find Participant*.

- In “Participant Search,” use the drop-down menu to choose “Personnel Number (EID).” Enter *EID*. Click *Find*.
- Click the gray box, “Add Course Participant.”
- Change the “Pass” column from *Not Rated* to *Course Passed*. Click *Submit*.
- The course is added to your training record.

LMS Issues

If you have problems with the LMS, contact your local Learning Development and Diversity (formerly Postal Employee Development Center) staff.

Access

Employees do not need access to the BSA system to take the “Suspicious Transaction” training course. Do not request access to the BSA system through eAccess to enroll in the training course.

– BSA Program Office,
Corporate Treasury, 7-21-16

Fiscal Year 2016 Closing Guidance: Message From the Controller

Thanks to all of you for your efforts to control expenses during FY 2016. It is important that we carry this effort through to the end of the fiscal year by controlling discretionary activity. This does not mean curtailing business, but it does mean making prudent choices by deferring or eliminating noncritical activity, and purchasing goods or services throughout the year, rather than at the end of the fiscal year, simply because there are available budget funds. Please encourage your contractors to bill us in a timely manner for goods received and services rendered, or inform us of any billing delays so we can recognize the expense before the end of the fiscal year.

The following instructions will assist you, when appropriate, in helping the Postal Service™ close its financial books in a timely and efficient manner.

Maura A. Mc Nerney
Vice President, Controller

I. Instructions for Fiscal Year 2016 Closing

All organizations are requested to limit their expenditures to essential spending. Accordingly, all vice presidents should review discretionary spending to ensure the Postal Service attains its financial target for this fiscal year (FY).

The instruction and reporting dates in this *Postal Bulletin* supplement procedures followed during the normal monthly or quarterly reporting schedule.

II. Fiscal Year

The Postal Service prepares its annual reports on a government FY basis, which comprises 365 days (366 in leap years), always ending on September 30.

III. End of Year Processing Activities and Timelines, Contract Actions, and Requisitions

To ensure timely processing of purchase request, expense requisitions and requests for contract awards or contract modifications for FY 2016 should be submitted to Supply Management before August 31. Requisitions for capital purchases will be accepted by Supply Management through September 9.

Also, organizations should limit capital commitments, particularly for Postal Service support equipment, to essential needs. The schedule for Supply Management processing is as follows:

For requisitions received...	Funds are processed as follows...
On or before August 31, 2016	For contracts or modifications that are issued, Accounting Services, San Mateo, will process against FY 2016 funds.
On or after September 1, 2016	For contracts or modifications that are issued, Accounting Services, San Mateo, will process against FY 2017 funds.

Requisitions for Contract Actions (Other Than IT and Telecom)

FY 2016, Expense and Capital requisitions and requests for contract actions should be submitted to Supply Management before August 31.

Requisitions for Contract Actions (IT Hardware, Services, Software, and Telecom)

For FY 2016, Expense and Capital requisition requests for contract actions should be submitted to Supply Management before August 1, 2016. Any requests received after this date will not be guaranteed for award and delivery by September 30, 2016.

Requisitions for FY 2017 Contract Actions

For FY 2017, Expense and Capital requisition requests for contract actions that require a start date before October 1, 2016, should be submitted to Supply Management before August 1, 2016. Any requests received after this date will not be guaranteed for award by September 30, 2016.

Electronic files must be transmitted to Accounting Services as follows:

Send electronic files for...	To...	No later than...
Contract Authoring and Management System (CAMS)	San Mateo	September 30, 2016
Facilities capital commitments and expense payments	St. Louis	September 30, 2016

Appropriate receiving reports or certified invoices for goods and services received by September 30 must be received by Accounting Services, San Mateo, no later than Monday, October 3.

1. Expedite processing of receiving reports and certified invoices, as these documents are used to charge expense to the proper FY.

2. Additionally, review contracts to ensure sufficient funds are available by Friday, August 26 to process invoices.

3. Supply Management will process all requisitions for the issuance of contracts against FY 2016 funds according to the following priorities:

Priority 1 – Capital commitment requisitions.

Priority 2 – Expense commitment requisitions.

IV. Accruals

Year-end closing, FY 2016:

1. Monthly accruals for HQ expenses will be processed as normal and as communicated to the Executive Leadership Team (ELT) and their budget coordinators. **Note:** Any unusual/non-monthly expense should be communicated to the ELT budget coordinators as a possible adjustment to the normal ELT accrual.

2. All HQ accruals will be accrued at the ELT or VP finance level.

3. Certified invoices for goods and services received by September 30 must be received by Accounting Services, San Mateo, no later than Monday, October 3. All invoices not received by San Mateo by October 3, 2016, will be processed in October 2016, and paid in FY 2017.

V. Submission Schedules (Appendix)

The table below describes the schedule for submitting forms by the required submission date.

Form #	Item	Submit by	Submit to	Received by Date
PS 1839	Payment Record for Carrier Drive Out Agreements	Field offices	Scanning & Imaging Ctr.	9-Sep
PS 1164-A	Claim for Reimbursement for Postal Supervisors (for Employee Business Expenses only)	Field offices	Scanning & Imaging Ctr.	9-Sep
PS 17	Stamp Requisition/Stamp Return	Field offices	SSC	9-Sep
PS 1233	Project Financial Change/Completion Report (To add site prep cost to an existing assets or CIP)	St. Louis	San Mateo	16-Sep
N/A	Email from Accounting Assistant to add inventory items to fixed assets or CIP	Topeka	San Mateo	16-Sep
Form 969	Assets & Material Recycling and Disposal (Retirement)	Field offices	San Mateo	16-Sep
Form 2880	Physical Inventory – Certification/Adjustments (Retirement or Addition)	Field offices	San Mateo	16-Sep
N/A	All Recognition and Incentive Awards	All offices	eAwards	14-Sep
N/A	Hardcopy paper commitment documents	Supply Management (HQ)	San Mateo	16-Sep
N/A	Government Printing Office	Supply Management (HQ)	San Mateo	16-Sep
Spreadsheet Capitalization	Addition, adjustment, add-on etc.	Program Managers through HQ Payable	San Mateo	16-Sep
Form 4503	Vehicle Delivery Control Sheet	VMF	Ron Rutkowski-Fleet Management	16-Sep

Form #	Item	Submit by	Submit to	Received by Date
Form 4587	Request to Repair, Replace, or Dispose of Postal Service–Owned Vehicle	VMF	San Mateo	16-Sep
SF 97	The U.S. Government Certificate of Release of a Motor Vehicle	Field offices	San Mateo	16-Sep
PS 1902	Justification for Billing Accounts Receivable (Non-Payroll)	Field offices	San Mateo	16-Sep
PS 4541	Order-Invoice for Vehicle Repair (commercial work order)	Field offices	Support VMF	16-Sep
N/A	Tort claims	All offices	Scanning & Imaging Ctr.	21-Sep
N/A	eTravel (Approving Official)	All offices	St. Louis	23-Sep
N/A	Vehicle hire payment certification reports	Field offices	Support VMF	23-Sep
PS 2551	Non-good and Non-service Payment Authorization	All offices	Scanning & Imaging Ctr.	23-Sep
PS 3533	Application for Refund of Fees, Products and Withdrawal of Customer Accounts	Field offices	Scanning & Imaging Ctr.	23-Sep
N/A	TELEL	Caleo	San Mateo	23-Sep
N/A	Inter-Agency Payment and Collection (IPAC) Certified Invoices	Field offices	San Mateo	23-Sep
N/A	National Transportation Services (NTSP)	Supply Management (HQ)	San Mateo	30-Sep
PS 1129	Cashier Reimbursement Voucher and/or Accountability Report (Imprest fund)	All offices (Imprest)	San Mateo	30-Sep
N/A	Government travel account (GTA)	St. Louis	St. Louis	23-Sep
N/A	Gasoline Credit Card (fleet card)	U.S. Bank	San Mateo	23-Sep
N/A	Project facility system	Facilities	St. Louis	23-Sep
N/A	eBuy utilities	All offices	eBuy Post/Certify Module	30-Sep
Form 2146	Employee's Claim for Personal Property	All offices	San Mateo	30-Sep
N/A	Commitments (CAMS) through APEX-CAMS electronic interface	Supply Management (HQ)	San Mateo	30-Sep
N/A	Direct Vendor Delivery (DVD) and eBuy*	Topeka MDC	San Mateo	30-Sep
N/A	Telecommunications Expense Management (TEMA)	Raleigh Network Operations	San Mateo	30-Sep
N/A	Material Distribution Management System invoices (MDIMS)	Topeka	San Mateo	30-Sep
N/A	National Customer Management System invoices (NCMS)	Stamp Fulfillment Services	San Mateo	30-Sep
N/A	Program Cost Tracking System invoices (PCTS)	PCTS Systems Administrator	San Mateo	30-Sep
N/A	UTIL – Energy Initiatives	Energy United/NISC	San Mateo	30-Sep
N/A	Solution for Enterprise Asset Management (SEAM)	Topeka	San Mateo	30-Sep
N/A	BPA cover sheets	All offices	San Mateo	3-Oct
N/A	Capital and expense receiving report	All offices	San Mateo	3-Oct
N/A	Certified Invoices – supplies and services, bulk fuel and oil purchases, motor vehicle parts, nonmetered heating fuel	All offices	San Mateo	3-Oct
N/A	National Service Agreement (NSA)–certified invoices	Mgr of Pricing Strategy	San Mateo cc: CFR	3-Oct
N/A	U.S. Bank Visa accrual	U.S. Bank	San Mateo	3-Oct
N/A	Relocation Management Firm (RMF) accruals	Accounting, (HQ)	Relocation	4-Oct
N/A	Commercial Bank Reconciliations	JP Morgan Chase and Citibank	Eagan	15-Oct

*Do not place orders for DVD or eBuy purchases from September 28 through October 1, 2016, except for critical needs.

Address questions concerning these instructions to the appropriate Accounting Services location or Finance office indicated in the table above.

– Corporate Accounting, Controller, 7-21-16

Human Resources

Make the Most of the Summer Harvest at Your Next Gathering

The summer months bring some of the freshest and most colorful foods. Head to your local farmers market or grocery store to stock up on all that summer has to offer. Some notable summer foods to take advantage of are: tomatoes, strawberries, corn, and watermelon — to only name a few!

Check out the U.S. Department of Agriculture's "What's In Season" webpage at <http://healthymeals.nal.usda.gov/features-month/whats-season> to see all the fruits and veggies that are in season. To find local farmers markets in your area, visit <https://www.ams.usda.gov/local-food-directories/farmersmarkets>.

When enjoying the summer harvest at your next cook-out, the Food and Drug Administration (FDA) recommends storing food appropriately (perishable food such as meat

and dairy products should never sit out longer than an hour) and cooking meats thoroughly. According to the FDA, meat should be cooked as follows:

- Beef, pork, lamb, and veal (steaks, roasts, and chops): 165 °F with a 3-minute rest time;
- Ground meats: 160 °F; and
- Whole poultry, poultry breasts, and ground poultry: 165 °F.

Summer is a great time to try new recipes with fresh local produce and meat. Keeping your plate colorful is an easy tip for healthier eating for you and your family!

— *Health Benefits and Wellness,
Human Resources, 7-21-16*

Information Security

Don't Ignore It, Report It: How to Report Suspicious Online Activity

Is there suspicious activity on your email account?

You may receive suspicious emails or notifications or phishing scams to your email. These messages often express urgency and contain suspicious hyperlinks or attachments, while arriving from an unknown sender. It's important to be proactive and take steps to report these messages.

CyberSafe at USPS™ is highlighting key tips and best practices to report phishing attempts. Information security starts with you, so take active measures to protect USPS® information!

Identify a Phishing Attempt

When receiving an email from an unknown sender, be cautious when messages include:

- Giveaways, sweepstakes, or special promotional offers (especially near major holidays);
- Offers for free or discounted vacations;
- Solicitations for charity donations; or
- Requests for personal information in response to natural disasters, epidemics, health scares, or major political elections.

These communications may be phishing attempts aimed at stealing your personal or USPS information. Also, check for errors in the email message. Mistakes in grammar or spelling often indicate a phishing attempt.

Report a Phishing Attempt

After identifying a phishing trap, avoid clicking on embedded links or attachments and report the message to the CyberSecurity Operations Center (CSOC). It's your

responsibility to report the message and do your part to keep USPS information safe.

To report a phishing attempt, take the following steps:

- 1. Prepare to send:** While viewing the message, press the "Control," "Alt," and "F" keys simultaneously to create a new email with the suspicious message attached.
- 2. Remember CyberSafe:** Type CyberSafe@usps.gov into the "To" line of the new email and hit send to report the email to the CyberSecurity Operations Center.
- 3. Delete:** Delete the suspicious message from your Inbox — do not respond to the sender or forward the message to anyone else.

The CyberSafe at USPS website (<https://lite-blue.usps.gov/cyber>) includes additional helpful tips to spot and report phishing scams.

For more information on staying safe online and avoiding phishing attempts, visit the Department of Homeland Security Stop. Think. Connect.™ website at <http://www.dhs.gov/stopthinkconnect-cyber-tips>.

Reporting phishing attempts is a top priority for USPS employees, suppliers, and customers. By reporting phishing emails, you help make the Internet more secure. Information security is our shared responsibility, so stay CyberSafe!

— *Corporate Information Security Office,
Chief Information Security Officer and
Digital Solutions, 7-21-16*

Stamp Services

Stamp Announcement 16-30: Songbirds in Snow Stamps



© 2016 USPS

On August 4, 2016, in Portland, OR, the U.S. Postal Service® will issue the *Songbirds in Snow* stamps (Forever® priced at 47 cents) in four designs, in a pressure-sensitive adhesive (PSA) double-sided booklet of 20 stamps (Item 681100).

The stamps will go on sale nationwide August 4, 2016.

Each of these four new stamps celebrates a different songbird that brightens cold winter days. The birds featured in the stamp art are the golden-crowned kinglet, the cedar waxwing, the northern cardinal, and the red-breasted nuthatch. The illustrations, painted in acrylic on canvas boards, depict each bird perched on a snow-covered branch. The artist was Robert Giusti. Art director Derry Noyes designed the stamps.

Initial Supply to Post Offices: Item 681100, \$9.40 Songbirds in Snow (47-cent Forever First-Class Rate) Double-sided Booklet of 20 Stamps

Stamp Fulfillment Services will not make an automatic push distribution to Post Offices™. Post Offices may begin ordering stamps prior to the FDOI through SFS Web.

How to Order the First-Day-of-Issue Postmark

Customers have 60 days to obtain the first-day-of-issue postmark by mail. They may purchase new stamps at their local Post Office, at The Postal Store® website at <http://www.usps.com/shop>, or by calling 800-782-6724. They should affix the stamps to envelopes of their choice, address the envelopes (to themselves or others), and place them in a larger envelope addressed to:

Songbirds in Snow Stamps
United States Postal Service
Attn: Ruth Traynor
PO Box 2089
Portland, OR 97208-2089

After applying the first-day-of-issue postmark, the Postal Service™ will return the envelopes through the mail. There is no charge for the postmark up to a quantity of 50. There is a 5-cent charge for each additional postmark over 50. All orders must be postmarked by October 4, 2016.

How to Order First-Day Covers

The Postal Service also offers first-day covers for new stamp issues and Postal Service stationery items postmarked with the official first-day-of-issue cancellation. Each item has an individual catalog number and is offered in the quarterly *USA Philatelic* catalog, online at <http://www.usps.com/shop>, or by calling 800-782-6724. Customers may request a free catalog by calling 800-782-6724 or writing to:

U.S. Postal Service
Catalog Request
PO Box 219014
Kansas City, MO 64121-9014

Philatelic Products

There are ten philatelic products for this stamp issue:

- 681106, Press Sheet with Die-cut, \$75.20.
- 681110*, Digital Color Postmark Keepsake (Set of 4), \$15.95.
- 681116*, First-Day Cover (Set of 4), \$3.64.
- 681121*, Digital Color Postmark (Set of 4), \$6.48.
- 681124*, Framed Art (Set of 4), \$40.00.
- 681125*, Framed Art (Golden-crowned Kinglet), \$10.00.
- 681126*, Framed Art (Northern Cardinal), \$10.00.
- 681127*, Framed Art (Cedar Waxwing), \$10.00.
- 681128*, Framed Art (Red-breasted Nuthatch), \$10.00.
- 681130*, Ceremony Program (random single), \$6.95.

Items with an asterisk (*) will use the 128 barcode from Stamp Fulfillment Services. All other philatelic products will continue to use barcode series A, with the exception of the Yearbook and the Guide Book.

Issue:	<i>Songbirds in Snow</i> Stamps
Item Number:	681100
Denomination & Type of Issue:	First-Class Mail Forever
Format:	Double-Sided Booklet of 20
Series:	N/A
Issue Date & City:	August 4, 2016, Portland, OR 97208
Art Director:	Derry Noyes, Washington, DC
Designer:	Derry Noyes, Washington, DC
Typographer:	Derry Noyes, Washington, DC
Artist:	Robert Giusti, Bridgewater, CT
Modeler:	Joseph Sheeran
Manufacturing Process:	Offset
Printer:	Ashton Potter (USA) Ltd. (APU)
Printed at:	Williamsville, NY
Press Type:	Muller A76
Stamps per Booklet:	20
Print Quantity:	600,000,000 stamps
Paper Type:	Nonphosphored Type III, Block Tag applied
Adhesive Type:	Pressure-sensitive
Processed at:	Ashton Potter (USA) Ltd. (APU)
Stamp Orientation:	Horizontal
Image Area (w x h):	1.05 x 0.77 in./26.67 x 19.56 mm
Stamp Size (w x h):	1.19 x 0.91 in./30.23 x 23.11 mm
Full Booklet Size (w x h):	2.38 x 5.76 in./60.45 x 146.30 mm
Press Sheet Size (w x h):	4.76 x 23.29 in./120.90 x 591.57 mm
Colors:	Black, Cyan, Magenta, Yellow
Plate Size:	880 stamps per revolution
Plate Numbers:	"P" followed by four (4) single digits
Marginal Markings:	Header. "Songbirds in Snow" <ul style="list-style-type: none"> • Twenty First-Class Forever Stamps • Plate numbers in peel strip area • USPS LOGO • © 2016 USPS in peel strip area • Golden-crowned Kinglet • Cedar Waxwing • Northern Cardinal • Red-breasted Nuthatch • Promotional text in peel strip area

— Stamp Services,
Marketing and Sales, 7-21-16

Correction: Henry James Stamp

In the article “Stamp Announcement 16-28: Henry James Stamp,” in *Postal Bulletin* 22444 (6-23-16, pages 37-38), the credits in the table were listed incorrectly.

The updated information is shown in bold:

- **Art Director: Antonio Alcalá**
- **Designer: Kate Sammons**

– Stamp Services, Marketing and Sales, 7-21-16

Pictorial Postmarks Announcement

As a community service, the Postal Service™ offers pictorial postmarks to commemorate local events celebrated in communities throughout the nation. A list of events for which pictorial postmarks are authorized appears below. The sponsor of the pictorial postmark appears in italics under the date. Also provided are illustrations of these postmarks.

People attending these local events may obtain the postmark in person at the temporary Post Office™ station established there. Those who cannot attend the event but who wish to obtain the postmark may submit a mail order request. Pictorial postmarks are available only for the dates indicated, and *requests must be postmarked no later than 30 days following the requested pictorial postmark date.*

All requests must include a stamped envelope or postcard bearing at least the minimum First-Class Mail® postage. Items submitted for postmark may not include

postage issued after the date of the requested postmark. Such items will be returned unserved.

Customers wishing to obtain a postmark should affix stamps to any envelope or postcard of their choice, address the envelope or postcard to themselves or others, insert a card of postcard thickness in envelopes for sturdiness, and tuck in the flap. Place the envelope or postcard in a larger envelope and address it to: Pictorial Postmarks, followed by the Name of the Station, Address, City, State, ZIP+4® Code, as listed below.

Customers can also send stamped envelopes and postcards without addresses for postmark, as long as they supply a larger envelope with adequate postage and their return address. After applying the pictorial postmark, the Postal Service returns the items (with or without addresses) under addressed protective cover.

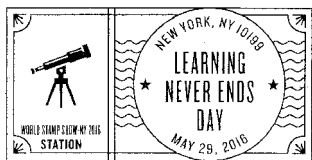
The following pictorial postmarks have been extended for 30 days:



May 28, 2016

United States Postal Service

The World of Stamps Day/World Stamp Show-NY 2016 Station
Postmaster, NY/WSS 2016
380 West 33rd Street/Special Events, Room 4032
New York, NY 10199-9998



May 29, 2016

United States Postal Service

Learning Never Ends Day/World Stamp Show-NY 2016 Station
Postmaster, NY / WSS 2016
380 West 33rd Street / Special Events, Room 4032
New York, NY 10199-9998



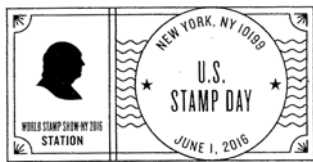
May 30, 2016

United States Postal Service
 Armed Forces Day/World Stamp Show-NY 2016 Station
 Postmaster, NY/WSS 2016
 380 West 33rd Street/Special Events, Room 4032
 New York, NY 10199-9998



May 31, 2016

United States Postal Service
 Science Meets Stamp Day/World Stamp Show-NY 2016 Station
 Postmaster, NY/WSS 2016
 380 West 33rd Street/Special Events, Room 4032
 New York, NY 10199-9998



June 1, 2016

United States Postal Service
 United States Stamp Day/World Stamp Show-NY 2016 Station
 Postmaster, NY/WSS 2016
 380 West 33rd Street/Special Events, Room 4032
 New York, NY 10199-9998



June 2, 2016

United States Postal Service
 Beautiful Americas Day and United Nations Day/World Stamp Show-NY 2016 Station
 Postmaster, NY/WSS 2016
 380 West 33rd Street/Special Events, Room 4032
 New York, NY 10199-9998



June 3, 2016

United States Postal Service
 Children of The World Day/World Stamp Show-NY 2016 Station
 Postmaster, NY/WSS 2016
 380 West 33rd Street/Special Events, Room 4032
 New York, NY 10199-9998



June 4, 2016

United States Postal Service
 Topical Collecting Day/World Stamp Show-NY 2016 Station
 Postmaster, NY/WSS 2016
 380 West 33rd Street/Special Events, Room 4032
 New York, NY 10199-9998



July 12, 2016

2016 San Diego Major League Baseball All-Star Game
 All-Star Station 2016
 Postmaster
 11251 Rancho Carmel Drive
 San Diego, CA 92199-9996



July 16, 2016

Leonard Summer Festival Committee
Strawberry Festival Station
Postmaster
22 East Elmwood
Leonard, MI 48367-9998



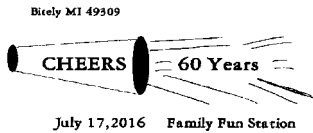
July 16, 2016

United States Postal Service
Jamie Escalante Station
Postmaster
7001 South Central Avenue, Room 307
Los Angeles, CA 90052-4200



July 17, 2016

Serendipity Ice Cream/United States Postal Service
National Ice Cream Day Station
Retail Office
1720 Market, Room 2033
St. Louis, MO 63155-9998



July 17, 2016

United States Postal Service
60th Family Fun Station
Postmaster
PO Box 9998
Bitely, MI 49309-9998



July 17, 2016

Knik Museum
Celebration Station
Postmaster
PO Box 9998
Wasilla, AK 99687-9998

Pull-Out Information

Fraud

Invalid USPS Corporate Account Numbers

This listing should be provided to Contract Postal Units and used by acceptance clerks in non-POS locations without intranet access to validate a USPS Corporate Account (USPSCA) number online. For all other locations, online USPSCA validation is preferred. The online validation process is outlined in the USPSCA Validation SOP on the Retail webpage. This list supersedes all previous notices,

which must be recycled. Acceptance clerks must not accept Priority Mail Express™ shipments bearing an invalid USPSCA number in the “Payment by Account” or “Agreement Number” section of the label or form.

Note: The first 6 digits of a 9-digit Custom Designed Service and Next Day Pickup Agreement make up the Corporate Account Number.

005008	018009	021694	060172	098763	170431	312257	380022	531854	543500	600300	602203	611149
005395	019698	021744	060315	100304	171313	314367	380214	531855	543570	600301	602207	611157
006263	020027	021874	061086	100463	172001	314817	381490	531856	543710	600302	602223	611223
006332	020068	021934	061350	100514	177025	320022	402291	531870	543760	600303	602436	611236
006893	020085	022025	061366	100558	178048	320100	402487	531871	544032	600306	602447	616161
008560	020104	022037	064313	100566	178073	320735	441171	531875	544040	600307	602465	618096
008584	020106	022041	064384	100568	180025	322044	445021	531885	544057	600308	602473	618104
008585	020241	022081	064928	100804	180050	322278	450021	531887	544065	600329	602481	625116
008906	020270	022082	066112	100826	181052	322572	452391	531892	549198	600336	602496	626015
009257	020278	022138	068929	100876	181067	322679	464181	531897	549200	600364	602514	627095
009391	020528	022191	071768	100879	191101	323487	481166	531898	570086	600369	602559	630258
010050	020546	022282	075156	100910	191256	323727	482750	531899	571010	600440	602572	631417
010161	020595	022342	075309	100913	191616	323728	494267	532015	571016	600497	602586	631422
010322	020608	022381	075746	100920	191816	325026	495140	532017	571120	600500	602602	631440
010511	020619	022396	076094	100949	192013	325030	496208	532018	573020	600515	602630	631551
011354	020620	022399	076318	100951	193451	325146	530003	532314	577101	600549	602659	631687
011387	020623	022405	078212	100952	200907	325410	530004	532317	581089	600553	602693	631746
014822	020631	022423	079394	100959	210007	326490	530005	532341	585256	600629	602706	631763
014924	020633	022427	080181	102280	210109	326777	530007	532359	585267	600652	602713	631830
014935	020641	022455	085832	102835	210250	327302	530009	532377	599560	600698	602731	641376
015088	020648	022464	088546	104366	210458	327868	530010	532382	600006	600700	602750	680075
015412	020650	022475	090030	104421	210476	329059	530014	532399	600010	600706	602811	681377
015616	020651	022481	090557	105174	210484	330031	530015	532473	600011	600723	602824	722120
015727	021005	022552	090690	106275	210488	331881	530022	532481	600015	600743	602873	722274
015736	021016	022564	091232	114001	210498	331917	531142	532588	600022	600748	602889	734005
015768	021018	022580	092216	115034	210593	333661	531191	532817	600035	600759	602942	737020
015789	021020	022589	092236	115116	210606	335014	531364	532970	600036	600771	602949	740281
015793	021024	022597	092868	115511	210804	335847	531403	532973	600049	600794	602993	740367
015817	021026	022605	093464	117230	210853	335982	531493	537168	600053	600800	604107	741109
016132	021029	022640	093714	118118	220450	336566	531702	537290	600063	600827	604122	741388
016163	021032	022642	094074	118504	220827	336809	531742	537296	600073	600831	604144	741574
016372	021035	022651	094159	119108	235231	337140	531747	537308	600088	600839	604150	741990
016537	021036	022657	094262	119488	235389	347067	531754	537330	600089	600840	604280	744166
016550	021037	022669	094828	122438	235520	349020	531795	537372	600092	600848	605128	750505
016611	021044	022687	095018	124159	236033	349362	531799	537390	600096	600850	605131	752203
016689	021045	022734	095451	127048	240142	352812	531808	537405	600110	600865	605302	752945
016791	021047	022857	095492	135111	270059	362027	531809	537413	600118	600891	605547	770051
016831	021068	022955	096067	142090	293097	363013	531822	537422	600130	600930	605999	771559
016863	021144	022966	096230	142112	295710	366014	531824	537423	600131	600933	606002	771941
016874	021167	023381	097134	142151	297020	366058	531827	541000	600176	600943	606008	778021
016878	021231	023574	097230	142280	300268	366066	531837	541044	600188	601041	607046	799305
016910	021339	025072	097341	142873	300471	372185	531838	541310	600190	601495	607401	801562
016939	021422	026595	098082	142930	300502	372219	531839	542090	600220	602000	608044	801667
016949	021449	052001	098139	150150	300975	372540	531847	543002	600242	602042	610102	801688
016956	021539	054310	098657	151064	301483	372995	531849	543140	600257	602099	610103	802135
016999	021574	060099	098658	170079	311076	373030	531850	543310	600271	602125	611112	802192

802227	815253	841276	851043	891851	906844	915475	920332	921584	927206	946295	980430	995900
802318	816027	841301	853290	891904	910414	915557	921036	921709	927683	946386	980810	997084
802346	816111	841356	853629	893004	911033	915679	921100	921761	930068	951225	982466	997093
802400	816169	841705	856186	900414	911182	916022	921103	921849	932018	951811	982593	997141
805014	816259	841791	871353	900439	913086	917539	921119	921929	932759	958408	982659	997209
805317	816275	846236	891220	901168	913153	918328	921145	921937	932816	968235	985215	997263
805580	820302	851005	891271	901927	913179	920021	921162	922194	933013	968455	995464	997266
809003	830503	851015	891286	902916	913192	920032	921272	922341	933548	968807	995523	
809152	831101	851024	891396	903435	914155	920146	921310	922358	935282	972593	995559	
815236	833410	851027	891597	906015	915016	920223	921447	925224	941012	973337	995638	
815252	834040	851031	891599	906152	915207	920300	921497	926651	945840	980148	995708	

— Product Information Requirements, Mail Entry and Payment Technology, 7-21-16

Missing, Lost, or Stolen U.S. Money Order Forms

Do Not Cash — Upon Receipt, Notify Local Postal Inspectors

This listing will be provided to all Postal Service™ employees responsible for accepting and cashing postal money orders. Destroy all interim notices when the

numbers listed appear in the *Postal Bulletin*. The actual serial numbers consist of the first 10 digits on the money orders. Check for altered dollar amounts by holding money orders to the light.

010 001 0200 to 0299	040 674 7100 to 7199	073 763 0878 to 0887	122 451 9879 to 9899
010 504 1932 to 1999	040 688 8816 to 8899	073 763 0889 to 0898	122 714 6805 to 6900
011 582 1889 to 1899	041 299 6752 to 6799	077 617 5481 to 5499	124 916 0304 to 0499
011 588 2900 to 3099	041 623 8889 to 8899	077 999 4001 to 4090	126 423 0136 to 0169
012 441 0784 to 0799	041 803 6565 to 6599	078 174 4475 to 4499	127 500 2328 to 2399
012 579 5675 to 5699	043 129 1968 to 1997	078 219 4931 to 4999	160 901 2254 to 2299
013 289 6176 to 6199	043 205 5922 to 5999	078 250 4756 to 4799	161 103 6581 to 6599
013 610 0014 to 0099	044 087 3457 to 3499	078 823 8312 to 8399	161 194 2857 to 0899
014 932 1000 to 1099	044 087 4000 to 4099	079 374 0300 to 2499	162 032 4447 to 4499
014 972 0800 to 0899	044 226 2487 to 2512	079 807 2342 to 2399	163 257 1085 to 1099
015 363 0065 to 0099	044 306 4200 to 4299	082 721 0228 to 0254	164 359 2406 to 2499
017 028 3200 to 3299	044 306 4370 to 4599	083 140 5000 to 7499	166 101 1433 to 1499
018 569 5333 to 5399	045 524 4121 to 4298	083 784 8886 to 8899	167 555 5201 to 5212
018 986 5264 to 5299	046 800 9870 to 9899	083 913 6915 to 6999	167 555 5214 to 5299
019 518 2814 to 2899	047 352 4000 to 4099	084 478 3920 to 3999	169 618 6274 to 6299
020 698 5159 to 5199	048 383 7650 to 7659	086 000 8271 to 8299	171 806 6878 to 6893
020 844 7307 to 7399	048 396 3647 to 3699	086 798 3840 to 3849	173 639 4685 to 4699
020 972 8948 to 8999	051 142 0755 to 0799	088 404 4472 to 4499	174 238 2779 to 2799
022 021 9110 to 9181	051 774 8857 to 8899	088 404 5584 to 5699	174 281 9347 to 9399
022 037 1411 to 1499	051 781 2875 to 2885	088 757 8688 to 8699	175 251 2600 to 0699
022 527 9201 to 9210	051 977 7010 to 7023	088 757 9400 to 9499	176 281 7937 to 7950
022 529 1882 to 1899	052 058 7115 to 7199	089 358 2248 to 2257	176 281 7963 to 7999
023 637 7169 to 7199	054 450 1130 to 1167	090 663 9678 to 9684	176 731 6586 to 6599
024 380 4100 to 4199	057 670 0563 to 0599	091 818 0071 to 0099	178 254 5000 to 9999
024 496 6870 to 6896	058 187 3836 to 3899	093 106 9346 to 9355	178 881 9900 to 9999
025 092 0987 to 0999	058 523 3003 to 3099	093 203 0500 to 0599	180 031 2089 to 2098
025 369 5535 to 5599	058 591 1153 to 1299	093 684 3630 to 3699	180 403 7723 to 7741
025 729 1151 to 1199	058 895 3746 to 3799	094 081 5074 to 5099	180 428 4580 to 0599
025 729 1643 to 1799	059 986 0814 to 0899	094 216 2555 to 2599	182 368 7544 to 0599
026 492 3180 to 3199	060 406 7650 to 7699	094 580 7062 to 7099	182 475 3229 to 3258
027 361 0430 to 0499	063 491 8122 to 8199	094 639 4200 to 4299	182 475 3904 to 3933
027 369 4482 to 4495	063 916 9968 to 9999	095 070 7186 to 7199	182 631 0031 to 0099
027 671 8762 to 8776	064 091 4500 to 4599	095 076 8300 to 8399	182 911 6539 to 6600
027 787 9886 to 9899	065 170 0471 to 0499	095 354 6864 to 6899	184 218 2760 to 2799
027 965 9487 to 9499	065 255 7909 to 7999	097 224 1350 to 1599	185 828 1474 to 1499
028 100 8069 to 8099	065 392 6345 to 6399	100 160 3800 to 3899	186 132 7583 to 0599
028 191 1852 to 1999	066 099 2014 to 2099	104 667 6400 to 6499	186 629 0589 to 0599
028 850 3000 to 3199	066 648 2880 to 2899	104 876 8937 to 8999	187 184 6177 to 0199
029 510 1500 to 1599	066 787 3639 to 3699	112 049 4413 to 4499	187 323 8200 to 8299
030 687 0903 to 0999	066 845 7500 to 9999	112 870 9765 to 9799	187 441 6080 to 6099
030 701 3442 to 3499	067 093 3869 to 3899	113 319 2000 to 2099	188 831 6774 to 6799
031 077 4507 to 4799	068 895 0334 to 0399	114 402 3850 to 3899	188 835 6370 to 6399
032 295 7500 to 9999	070 724 4488 to 4499	114 866 5368 to 5397	189 083 1064 to 1099
034 394 1000 to 1099	070 841 9181 to 9199	116 154 2800 to 2899	189 660 9583 to 9599
034 943 0400 to 0799	070 844 2546 to 2599	116 986 4400 to 4499	191 179 0377 to 0399
035 035 4337 to 4399	070 916 1340 to 1399	117 175 1647 to 5169	192 050 5762 to 5781
037 312 7500 to 7599	071 047 5768 to 5799	117 951 4687 to 4699	194 456 8600 to 0699
037 706 9578 to 9599	071 179 9800 to 9899	117 951 5200 to 5299	195 194 6881 to 6899
037 805 3677 to 3699	071 386 3682 to 3699	119 786 3051 to 3064	195 874 1112 to 1199
037 909 5490 to 5499	071 507 6840 to 6899	119 815 8961 to 6199	198 285 2556 to 2566
037 931 4660 to 4699	072 045 9641 to 9699	119 850 7400 to 7499	199 105 0778 to 0799
039 145 6521 to 6595	072 675 8287 to 8299	119 850 7700 to 7999	199 678 2968 to 2999
040 024 3901 to 3999	073 763 0867 to 0876	121 634 0460 to 0499	202 748 5133 to 5199

202 748 5245	to	5299	378 085 3679	to	3699	403 260 7000	to	7499	421 313 4500	to	4999
202 748 5300	to	5399	378 351 1063	to	1099	403 280 6470	to	6499	421 364 5537	to	5599
202 748 5400	to	5499	379 843 5100	to	5199	403 685 8600	to	8699	421 656 2609	to	2699
203 256 1240	to	1299	380 093 9600	to	9699	404 003 0300	to	0399	421 988 9700	to	9799
204 230 3577	to	3595	380 165 1165	to	1199	404 041 8838	to	8899	422 172 4667	to	4699
205 019 0174	to	0199	381 325 4500	to	4599	404 071 4268	to	4299	422 484 4212	to	4299
207 196 9900	to	9999	381 604 2510	to	2699	404 347 5356	to	5399	422 556 1270	to	1299
207 204 0700	to	0799	381 645 9525	to	9599	404 347 5548	to	5599	422 587 7024	to	7099
207 204 0800	to	0899	383 314 3968	to	3999	404 726 4500	to	4599	422 819 7533	to	7599
207 514 3857	to	3899	383 892 1000	to	1344	404 961 5001	to	5199	422 842 5073	to	5087
208 556 4707	to	4799	383 892 1382	to	1399	405 325 0188	to	0198	422 907 7563	to	7599
210 057 4038	to	4047	384 925 3641	to	3654	406 009 4587	to	4599	424 500 6050	to	6099
210 221 0548	to	0599	385 568 2331	to	2399	406 260 6830	to	6899	424 641 8500	to	8599
214 061 4711	to	4724	385 599 7554	to	7575	406 459 6641	to	6999	424 871 6600	to	6699
214 303 6311	to	6325	385 774 2024	to	2099	406 733 3000	to	3999	425 298 2352	to	2399
214 303 6239	to	6258	386 624 1412	to	1599	407 545 1557	to	1599	425 418 4269	to	4299
214 877 4251	to	4273	386 883 8936	to	8999	407 594 0412	to	0599	425 418 4405	to	4499
215 252 3918	to	3992	387 314 5574	to	5599	407 692 9100	to	9299	426 547 4566	to	4599
218 698 2157	to	2199	387 837 6300	to	6399	407 959 2190	to	2199	427 412 6337	to	6499
218 746 0800	to	0899	388 828 0656	to	0699	408 265 2275	to	2288	427 481 0900	to	0999
219 095 0100	to	0399	389 696 2400	to	2799	408 499 7700	to	7799	428 027 2742	to	2752
219 389 1885	to	1899	389 846 3104	to	3135	408 499 7900	to	7999	429 474 4172	to	4199
219 568 7435	to	7456	389 846 3145	to	3195	408 682 8484	to	8599	429 889 2900	to	2999
219 568 7469	to	7487	389 887 9211	to	9230	408 698 7015	to	7099	430 150 4401	to	4599
221 316 5757	to	5799	389 887 9234	to	9299	409 072 3941	to	3999	430 172 9800	to	9899
223 476 3914	to	3999	390 001 3182	to	3199	410 491 2311	to	2399	430 177 1900	to	2099
223 565 4921	to	4957	390 001 3500	to	3699	410 694 8400	to	8599	430 444 9500	to	9699
223 565 4979	to	4999	390 545 5974	to	5999	410 775 1500	to	1599	430 664 4070	to	4099
224 636 4745	to	4765	391 104 6146	to	6199	410 795 7927	to	7999	432 168 8419	to	8499
224 636 4776	to	4799	391 574 1466	to	1499	410 867 0917	to	0966	432 708 6800	to	6999
224 636 4855	to	4885	391 783 3020	to	3599	410 867 0970	to	0999	432 744 1544	to	1599
224 636 4932	to	4948	391 792 6100	to	6199	411 868 1023	to	1199	432 995 9775	to	9799
224 636 4950	to	4962	392 668 2956	to	2999	411 922 2322	to	2399	433 003 5800	to	5899
224 636 4985	to	4999	392 854 8500	to	8899	412 193 0900	to	0999	433 757 3047	to	3099
224 730 2207	to	2299	393 584 7566	to	7699	412 395 8599	to	8699	433 765 4003	to	4099
225 970 0500	to	0599	393 650 0074	to	0099	412 485 6500	to	6599	434 482 7060	to	7199
225 970 0600	to	0699	393 838 8316	to	8499	412 485 6610	to	6699	434 513 2386	to	2399
225 970 0700	to	0799	393 893 6007	to	6099	412 885 5953	to	5999	434 968 3076	to	3092
227 033 8679	to	8699	394 126 6907	to	6999	414 193 3608	to	3674	435 303 1831	to	1842
227 275 9400	to	9999	394 189 0405	to	0599	414 193 3677	to	3699	435 303 1986	to	1999
228 463 2456	to	2499	394 822 3243	to	3278	414 411 7348	to	7399	435 666 6092	to	6399
228 510 4852	to	4899	394 990 1810	to	1899	414 640 0757	to	0799	436 082 6400	to	6899
229 462 8451	to	8475	395 343 3264	to	3299	414 965 1727	to	1799	436 160 6441	to	6499
229 668 5977	to	5999	395 373 3035	to	3099	417 302 8104	to	8199	437 316 7115	to	7199
229 923 9176	to	9199	395 396 9649	to	9799	417 387 6532	to	6599	437 427 0500	to	3499
229 924 6696	to	6699	395 970 3240	to	3299	417 496 6800	to	6999	439 179 2300	to	2399
230 051 9500	to	9999	397 622 4054	to	4099	417 871 9250	to	9299	439 310 0458	to	0499
236 660 5853	to	5872	397 819 8902	to	8999	417 930 9533	to	9599	440 698 1947	to	1999
273 070 8059	to	8099	398 149 7200	to	7699	418 164 6500	to	6799	440 858 6300	to	6399
273 775 7700	to	7899	399 070 0872	to	0899	418 423 9863	to	9899	440 858 6420	to	7299
302 000 0000	to	9999	399 156 7119	to	7199	418 633 5922	to	5999	441 199 1655	to	1699
349 746 2056	to	2099	399 203 5064	to	5099	418 719 8520	to	8599	443 127 3648	to	3699
350 518 7350	to	7374	399 296 9910	to	9999	418 744 2235	to	2299	443 127 4000	to	4099
360 011 1690	to	1699	399 396 8935	to	8999	418 962 2848	to	2899	443 673 7900	to	7999
360 168 6008	to	6099	399 792 7775	to	7799	419 543 0286	to	0299	443 800 9335	to	9399
360 173 8800	to	8899	399 792 8300	to	8399	419 730 0300	to	0399	444 382 8822	to	8899
360 324 2326	to	2399	400 427 1051	to	1999	420 277 0015	to	0049	444 390 1667	to	1699
362 861 3064	to	3099	401 045 1505	to	1549	420 599 0734	to	0798	444 457 3854	to	3899
373 006 2176	to	2199	401 045 1571	to	1599	420 661 4115	to	4199	450 048 4173	to	4199
374 768 2600	to	2699	401 294 2700	to	2799	420 758 9500	to	9699	450 048 4442	to	4699
375 169 4400	to	4599	401 310 9505	to	9599	420 969 3951	to	3971	450 560 5173	to	5199
375 829 3400	to	3499	401 382 5312	to	5399	420 969 3973	to	3999	450 620 3077	to	3099
375 851 9100	to	9199	402 578 7876	to	7899	421 116 3565	to	3599	450 620 3135	to	3199
376 196 0911	to	0999	403 125 6744	to	6799	421 130 9300	to	9399	450 780 2716	to	2799

450 801 2700 to 2799	464 629 9000 to 9399	482 729 6800 to 6899	502 424 0200 to 0499
451 109 2967 to 2984	464 711 4332 to 4399	483 363 7207 to 7299	502 424 0600 to 0699
451 115 4110 to 4125	465 692 3963 to 3999	483 402 2356 to 2399	502 496 6923 to 6999
451 115 4127 to 4199	465 698 8300 to 8599	483 486 5100 to 5199	503 003 2700 to 2899
451 746 0700 to 0799	465 743 7745 to 7799	483 632 1521 to 1599	503 194 5144 to 5153
452 265 0074 to 0099	466 798 6056 to 6067	483 632 2600 to 2799	503 790 9922 to 9948
452 265 0246 to 0299	467 147 4300 to 4399	483 849 1615 to 1699	504 045 4030 to 4099
452 265 0335 to 0999	468 079 5782 to 5799	484 174 4803 to 5299	504 166 0200 to 0599
452 509 1169 to 1199	469 067 2817 to 2899	484 323 8900 to 9199	504 240 1062 to 1399
452 855 6471 to 6499	469 127 8000 to 8199	484 680 5000 to 5038	504 805 3300 to 3499
452 890 4679 to 4799	469 213 0359 to 0399	484 680 5040 to 5074	505 096 0662 to 0699
452 900 8215 to 8238	469 213 0500 to 0599	484 680 5077 to 5099	505 893 7739 to 7799
453 117 9146 to 9199	469 561 8011 to 8099	485 029 4913 to 4999	505 893 7800 to 7999
453 334 3631 to 3699	469 658 1961 to 1999	486 176 0600 to 0699	506 124 0800 to 0999
453 603 7841 to 7891	469 666 9900 to 9999	486 559 7555 to 7599	506 165 7027 to 0099
453 650 1140 to 1199	469 678 1900 to 1999	486 696 3023 to 3199	506 502 5209 to 5299
453 741 1300 to 1399	469 781 4900 to 4999	488 173 7900 to 7999	506 756 1682 to 1699
454 013 2919 to 2999	469 947 6960 to 6999	488 206 4100 to 4199	506 756 1700 to 1799
454 186 2411 to 2499	470 755 5800 to 5818	488 226 0200 to 0299	506 756 1800 to 1899
454 268 4883 to 4899	471 918 0300 to 0999	488 709 3906 to 3999	506 836 5326 to 5399
454 302 5400 to 5499	471 985 2408 to 2419	488 855 8359 to 8399	508 488 6226 to 6299
454 490 8300 to 8399	472 191 6700 to 6799	489 181 8963 to 8999	508 789 8332 to 8399
454 547 7434 to 7499	472 270 2555 to 2599	489 223 2000 to 2099	508 789 8400 to 8499
454 922 4867 to 4895	472 987 0213 to 0241	489 311 1930 to 1999	509 909 0425 to 0435
455 221 1348 to 1499	472 987 0290 to 0299	489 318 6200 to 6300	510 150 2400 to 2499
455 364 2147 to 2199	473 151 2069 to 2199	489 384 0027 to 0099	510 381 3200 to 3299
455 399 5400 to 5499	473 666 9138 to 9199	489 427 0658 to 0899	510 587 9500 to 9599
455 476 0676 to 0699	473 952 3429 to 3499	489 997 5252 to 5299	510 587 9659 to 9699
455 543 0618 to 0699	474 108 5402 to 5499	490 669 5850 to 6099	510 269 9770 to 9999
456 410 9006 to 9099	474 356 5193 to 5299	490 717 7080 to 7099	511 021 5042 to 5099
456 470 4146 to 4299	474 949 3366 to 3399	490 721 6000 to 6099	511 021 5100 to 5199
456 619 4460 to 4499	475 134 9362 to 9399	490 793 1500 to 2099	511 844 0100 to 0199
457 333 2686 to 2699	475 167 9667 to 9699	490 886 8171 to 8199	511 844 0340 to 0399
457 729 1767 to 1777	475 319 3415 to 3499	490 977 9221 to 9240	600 645 3223 to 3299
457 937 8615 to 8699	475 319 3649 to 3799	491 258 8100 to 9099	601 339 1200 to 1399
458 028 9810 to 9899	475 340 6400 to 6599	491 567 1376 to 1399	601 653 5884 to 5899
458 057 2712 to 2999	475 424 8410 to 8499	492 254 4800 to 4899	601 661 7700 to 7799
458 069 9537 to 9599	475 629 9156 to 9199	492 283 5100 to 5199	601 682 5343 to 5399
458 069 9665 to 9699	475 850 6101 to 6199	492 610 6813 to 6899	601 928 1600 to 1699
458 337 5222 to 5299	475 875 2500 to 2599	493 394 5568 to 5599	602 512 2972 to 2999
458 354 7653 to 7999	476 169 8264 to 8299	493 470 2562 to 2599	602 555 2400 to 2799
458 671 8678 to 8699	476 189 3000 to 3499	493 473 7700 to 7799	602 829 7061 to 7099
458 671 8721 to 8798	476 331 2480 to 2499	493 716 2153 to 2199	603 483 9572 to 9599
458 847 5044 to 5999	477 289 8601 to 8699	494 206 2972 to 2999	603 490 7200 to 7299
459 274 7624 to 7699	477 681 5206 to 5299	494 217 3446 to 3999	603 678 7100 to 7199
459 365 5432 to 5499	478 010 4243 to 4268	494 224 0500 to 0599	603 678 7662 to 7699
459 378 5764 to 5799	478 010 4270 to 4291	495 145 0600 to 0699	603 678 7902 to 7999
459 472 4816 to 4999	478 450 5071 to 5099	496 209 7425 to 7499	603 678 8418 to 8499
460 349 6878 to 6899	478 469 7838 to 7858	496 213 8728 to 8799	603 678 8700 to 9999
460 550 1909 to 1999	478 469 7883 to 7899	496 474 5226 to 5248	604 086 0880 to 0899
460 997 5234 to 5299	479 280 9800 to 9899	497 053 8517 to 8699	604 349 1414 to 1499
461 973 6443 to 6499	479 365 9116 to 9176	497 854 8673 to 8699	604 503 7776 to 7799
462 152 0107 to 0299	479 412 9900 to 9999	498 449 8888 to 8899	605 520 9037 to 9099
462 274 1072 to 1099	479 667 6190 to 6199	498 929 8285 to 8499	605 685 4010 to 4099
462 277 8373 to 8399	479 748 9680 to 9699	498 936 5310 to 5399	605 988 6467 to 6499
462 554 6051 to 6099	479 860 7000 to 7199	499 016 5425 to 5499	607 689 7951 to 7960
463 011 5529 to 5540	480 526 2000 to 2099	499 440 8575 to 8899	607 728 1276 to 1299
463 176 4115 to 4199	480 640 6330 to 6399	499 731 6717 to 6799	608 727 7100 to 7199
463 176 4229 to 4299	480 658 0568 to 0599	500 064 1858 to 1869	608 727 7273 to 7599
463 185 2600 to 2799	480 689 5100 to 5199	500 070 5725 to 7799	608 813 9950 to 9999
463 227 7711 to 7799	481 072 9463 to 9499	501 058 0016 to 0026	609 067 5325 to 5399
463 414 4869 to 4899	481 673 0074 to 0095	501 331 0300 to 0399	609 067 5488 to 5499
463 808 3484 to 3499	482 527 1500 to 1599	501 460 0977 to 0999	609 067 5600 to 5699
463 945 7400 to 7899	482 541 5255 to 5299	502 227 7645 to 7699	609 289 6123 to 6199

609 438 4400	to	4499	633 110 4165	to	4199	647 437 3000	to	4999	668 383 8400	to	8699
609 493 1100	to	1199	633 110 4303	to	4499	647 811 2188	to	2199	670 368 3400	to	3499
609 766 8091	to	8999	633 438 6429	to	6599	648 009 6057	to	6099	670 369 7336	to	7399
609 825 4100	to	4115	633 588 7173	to	7182	648 163 5300	to	5499	670 750 7169	to	7199
609 884 2981	to	2999	634 725 0700	to	0799	648 722 5283	to	5299	671 046 6200	to	6399
609 893 1000	to	1099	634 803 3239	to	3299	648 892 3164	to	3199	671 251 5448	to	5499
610 092 3200	to	3299	634 807 2474	to	2499	649 100 3989	to	3999	671 926 5600	to	5799
610 582 4200	to	4299	634 827 5900	to	5999	649 647 0370	to	0399	672 444 2000	to	2999
611 879 6939	to	6999	634 886 3428	to	3499	649 647 0522	to	0599	672 828 3410	to	3499
612 291 8013	to	8099	635 559 3449	to	3499	649 647 5237	to	5399	673 167 5776	to	5799
612 751 5171	to	5199	636 289 6214	to	6299	649 647 9100	to	9299	675 464 3700	to	3799
612 751 5226	to	5299	636 634 8007	to	8042	649 666 7800	to	8299	675 464 4000	to	4199
612 751 6083	to	6099	637 150 1200	to	1299	650 114 7707	to	7719	676 365 5958	to	5999
612 751 6268	to	6299	637 562 5828	to	5899	650 130 3400	to	3599	676 669 1024	to	1099
612 751 6572	to	6599	638 042 1647	to	1699	650 213 0406	to	0499	677 126 6734	to	6799
612 774 2111	to	2199	638 049 4984	to	4999	650 555 1749	to	1799	677 333 9979	to	9999
612 774 2254	to	2299	638 318 1115	to	1199	650 564 1900	to	1999	677 466 1088	to	1099
612 774 2500	to	2599	638 318 1453	to	1499	650 627 4212	to	4299	678 071 4500	to	4799
614 469 0979	to	0999	638 885 0000	to	0299	650 736 2043	to	2099	678 096 7531	to	7599
614 474 3000	to	3099	638 903 4362	to	4373	650 739 1540	to	1699	679 909 2578	to	2599
614 521 3490	to	3499	639 415 1929	to	1999	651 741 4415	to	4499	680 112 9565	to	9599
614 645 1800	to	1899	639 415 2019	to	2099	651 882 2800	to	2899	680 244 0903	to	0999
614 832 1100	to	2099	639 420 6200	to	6299	652 754 6317	to	6399	680 412 6046	to	6099
615 017 7505	to	7599	639 469 3517	to	3799	653 131 4945	to	4999	680 761 6800	to	6899
617 711 6609	to	6699	639 605 2143	to	2199	653 426 3300	to	3399	681 677 0540	to	0699
617 760 5266	to	5299	639 657 8600	to	8799	653 455 4874	to	4899	682 070 1029	to	1099
617 813 3601	to	3699	640 289 7500	to	7599	654 238 0000	to	0399	682 956 6280	to	6299
618 840 9200	to	9299	640 289 7700	to	7999	654 404 3065	to	3092	682 956 6490	to	6599
619 551 7229	to	7299	641 170 4420	to	4499	654 962 2900	to	3199	682 956 6700	to	6799
619 859 3000	to	3099	641 318 3133	to	3199	655 103 5081	to	5199	682 965 1178	to	1199
620 073 9400	to	9499	641 378 6500	to	6999	655 523 2600	to	2999	682 965 1201	to	1299
621 614 7907	to	7930	641 383 8739	to	8799	656 305 2448	to	2499	683 118 2389	to	2399
621 614 7932	to	7999	641 877 3187	to	3299	657 347 4438	to	4999	683 378 2000	to	2099
621 648 8021	to	8199	641 877 3310	to	3399	657 710 8100	to	8999	683 378 2117	to	2299
621 648 8500	to	8599	642 355 8094	to	8199	657 780 0985	to	0999	683 415 1200	to	1499
621 904 8351	to	8599	642 355 8308	to	8999	658 586 1400	to	1499	683 444 8159	to	8199
621 916 1978	to	1989	642 900 0018	to	0099	658 877 8000	to	8199	685 154 7780	to	7789
622 989 8032	to	8099	643 030 6254	to	6299	658 880 8000	to	8199	685 297 7645	to	7699
623 076 9300	to	9399	644 066 0882	to	0899	659 398 7300	to	7399	685 623 5264	to	5299
623 819 5006	to	5099	644 069 0600	to	0699	659 706 8113	to	8199	685 650 9487	to	9499
623 895 8200	to	8399	644 077 7506	to	7699	659 846 7837	to	7899	685 669 4200	to	4299
623 917 0000	to	0099	644 085 8157	to	8199	660 510 4100	to	4199	685 757 8452	to	8499
623 917 0200	to	0299	644 112 9839	to	9899	660 673 0400	to	0599	686 071 2694	to	2799
624 468 5288	to	5299	644 373 9083	to	9099	661 488 5000	to	5099	686 176 3333	to	3354
624 665 3162	to	3198	644 380 1460	to	1499	661 609 9100	to	9199	686 372 3200	to	3299
625 088 6735	to	6799	644 733 4715	to	4799	661 716 9420	to	9499	686 644 5879	to	5899
625 916 9500	to	9799	644 900 9712	to	9799	661 906 6522	to	6599	686 899 1371	to	1399
625 968 8956	to	8999	644 901 0109	to	1299	662 021 8332	to	8399	686 931 7636	to	7699
627 005 3938	to	3999	644 901 1325	to	1399	662 068 0700	to	0899	687 601 0973	to	0999
627 384 3907	to	4099	644 923 6800	to	7799	662 553 0774	to	0799	687 614 6774	to	6799
627 496 7549	to	7599	644 932 4655	to	4699	663 078 7034	to	7099	688 120 9000	to	9999
627 708 3605	to	3699	645 318 7240	to	7499	663 763 5300	to	5399	688 314 3107	to	3191
627 776 2500	to	2599	645 333 1766	to	1799	663 883 7039	to	7499	690 291 1361	to	1371
628 226 3100	to	3199	645 790 8632	to	8699	663 938 9200	to	9299	690 788 2877	to	2899
628 814 4702	to	4799	645 821 0657	to	0699	664 253 8000	to	8499	690 893 5344	to	5399
628 851 9689	to	9699	645 930 7948	to	7999	664 656 3055	to	3099	690 893 5512	to	5599
629 510 7200	to	7299	645 975 0737	to	0762	665 174 6400	to	6499	690 904 1300	to	1599
629 964 4200	to	4294	646 242 6200	to	6299	665 274 8208	to	8299	690 941 6000	to	6199
630 389 3056	to	3071	646 270 7639	to	7799	665 669 5400	to	5499	691 313 6383	to	6399
630 463 0588	to	0599	646 798 4000	to	4999	666 132 8226	to	8299	691 313 6600	to	6699
631 459 9117	to	9199	647 048 7035	to	7099	666 696 2209	to	2299	691 582 8003	to	8099
631 762 9325	to	9399	647 049 2900	to	2999	666 696 2309	to	2399	691 664 1800	to	1999
632 217 4933	to	4999	647 398 8300	to	8399	667 032 9300	to	9399	691 664 2400	to	2499
632 500 0000	to	640 3999	647 398 8481	to	8499	667 729 5529	to	5599	692 727 9362	to	9399

692 798 1800	to	1899	740 255 1718	to	1799	835 269 5700	to	5799	859 811 2888	to	2899
693 249 0779	to	0799	740 274 2602	to	2619	835 496 7303	to	7399	859 855 8873	to	8999
693 249 0877	to	1699	740 277 0366	to	0392	835 539 5200	to	5999	860 240 8520	to	8599
693 445 0566	to	0999	740 332 7658	to	7671	835 813 3015	to	3099	860 275 3900	to	3999
693 448 8500	to	8999	740 348 6641	to	6658	837 672 8967	to	8999	860 518 9629	to	9699
693 645 9583	to	9599	740 351 4790	to	4799	837 784 3282	to	3299	860 600 0021	to	0999
693 965 4200	to	4299	740 374 7416	to	7499	838 176 8377	to	8399	861 158 2350	to	2599
695 741 2906	to	2999	740 470 2420	to	2443	838 518 1257	to	1299	861 367 5400	to	5499
695 947 8518	to	8599	740 514 0300	to	0499	839 718 8257	to	8299	861 637 6010	to	6099
696 662 8247	to	8299	740 523 7432	to	7449	840 323 0600	to	0699	861 979 7292	to	7499
697 447 8285	to	8296	740 535 1555	to	1580	840 875 6235	to	6299	862 216 6100	to	6199
698 042 4816	to	4899	740 557 3570	to	3579	840 910 0900	to	0999	862 263 9213	to	9299
698 131 2138	to	2157	740 650 4104	to	4140	841 349 5000	to	5099	862 271 0800	to	0999
698 227 0000	to	0099	740 684 0620	to	0800	841 805 7747	to	7899	862 271 5000	to	5099
700 065 2570	to	2599	740 701 6105	to	6114	841 805 7944	to	8099	863 871 5138	to	5199
700 065 4800	to	4899	740 705 9790	to	9799	842 226 0685	to	0695	863 949 5300	to	5399
700 190 3350	to	3359	740 726 6400	to	6500	842 685 4600	to	4699	864 088 8200	to	8299
700 228 6048	to	6099	740 748 8319	to	8329	842 685 4742	to	4999	864 426 3972	to	3999
700 650 0452	to	0499	740 765 3306	to	3399	842 860 0300	to	0399	864 520 6117	to	6136
700 666 1323	to	1349	740 774 8434	to	8499	842 898 5582	to	5599	865 151 0526	to	0599
700 786 9106	to	9142	740 779 4259	to	4299	843 062 7100	to	7199	865 500 4034	to	4099
700 859 0744	to	0758	740 786 1885	to	1899	843 077 6288	to	6299	865 883 6082	to	6099
701 028 6780	to	6899	740 790 5989	to	5999	843 077 6378	to	6399	866 004 3000	to	3999
701 213 3900	to	3999	740 803 4870	to	4879	843 758 5769	to	5778	866 442 4100	to	4899
701 267 2000	to	3999	740 820 4854	to	7836	843 786 2554	to	2699	867 366 9108	to	9118
701 335 7312	to	7399	740 827 7578	to	7594	845 656 8165	to	8199	867 633 7403	to	7499
701 369 2005	to	2050	740 917 7490	to	7499	845 727 2100	to	2199	867 737 5623	to	5699
701 499 2260	to	2299	740 918 5531	to	5549	845 746 2618	to	2635	868 169 4529	to	4599
701 503 2247	to	2299	741 037 8528	to	8551	846 390 7531	to	7599	868 173 8400	to	8599
701 541 2271	to	2299	742 030 6135	to	6149	846 918 0572	to	0599	868 514 9000	to	9099
701 553 6557	to	6599	742 033 2663	to	2674	847 237 7690	to	7699	868 566 9200	to	9299
701 578 7460	to	7469	742 040 3300	to	3309	847 284 2481	to	2499	869 200 0000	to	9999
701 578 7475	to	7499	742 151 5000	to	5014	847 374 7055	to	7065	869 387 1150	to	1199
701 601 3457	to	3499	742 191 4640	to	4649	847 374 7055	to	7065	869 505 3500	to	3599
701 605 5913	to	5999	742 192 5210	to	5224	847 636 5304	to	5399	869 523 7033	to	7099
701 695 3982	to	3999	742 222 9200	to	9210	847 700 5447	to	5499	869 566 6150	to	6167
701 695 4148	to	4199	742 228 9660	to	9669	847 723 7500	to	7599	869 800 0000	to	999 9999
701 695 4227	to	4299	742 247 6980	to	6989	849 485 3427	to	3499	870 054 4814	to	4899
701 708 1741	to	1799	742 290 0936	to	0950	849 520 9850	to	9899	870 491 4812	to	4849
701 736 3966	to	3999	742 302 7600	to	7699	849 608 1357	to	1399	870 536 5820	to	5829
701 772 0870	to	0899	805 885 8411	to	8499	849 792 2600	to	2699	870 541 7167	to	7239
701 838 2800	to	2899	806 087 1100	to	1499	850 546 1862	to	1899	870 575 8155	to	8999
701 941 0600	to	0699	806 268 9275	to	9299	851 143 6826	to	6844	870 589 0485	to	0494
702 171 1603	to	1699	806 534 3400	to	3477	851 209 9880	to	9899	870 691 7060	to	7099
702 195 5109	to	5199	807 342 3283	to	3399	851 928 9221	to	9299	872 028 4850	to	4899
702 254 9300	to	9399	808 086 7100	to	7199	852 589 6560	to	6599	872 029 9306	to	9399
702 264 7569	to	7599	808 090 3440	to	3499	853 049 3646	to	3699	872 078 3709	to	3799
702 519 0513	to	0524	808 325 5161	to	5699	854 304 4089	to	4999	872 100 0445	to	0459
702 713 1800	to	1809	808 784 8000	to	8299	854 529 2200	to	2299	900 556 4178	to	4199
702 821 5730	to	5799	830 125 0672	to	0699	854 532 0000	to	2999	900 845 0044	to	0099
702 821 5805	to	5899	830 602 5800	to	5999	855 001 6204	to	6249	900 936 0217	to	0299
702 844 6975	to	6994	830 610 3700	to	3799	855 319 9364	to	9399	900 936 0435	to	0499
702 846 6331	to	6399	830 983 3500	to	3599	855 361 3390	to	3399	901 058 5255	to	5280
702 848 3900	to	3999	830 983 3635	to	3699	856 226 0490	to	0499	901 273 1082	to	1099
702 857 7302	to	7499	831 354 1387	to	1399	856 656 5800	to	5999	901 287 5143	to	5199
702 878 0114	to	0199	831 815 8240	to	8299	856 752 0200	to	0299	901 291 2789	to	2799
703 364 1707	to	1799	832 525 3810	to	3899	857 111 1352	to	1399	901 525 7122	to	7199
740 002 7710	to	7719	833 159 1884	to	1899	857 279 3450	to	3499	902 089 1253	to	1299
740 037 6730	to	6800	833 456 2567	to	2599	857 843 4000	to	4099	902 198 9769	to	9799
740 119 2275	to	2284	833 566 3015	to	3071	858 124 7644	to	7699	902 948 1269	to	1299
740 130 6688	to	6698	834 130 5200	to	5299	858 756 3111	to	3299	902 985 0833	to	0899
740 144 2780	to	2795	834 316 5444	to	5499	859 063 8200	to	8699	903 370 6934	to	6999
740 241 9049	to	9099	834 354 8747	to	8766	859 190 0600	to	0644	904 600 6523	to	6599
740 252 9265	to	9294	834 354 8824	to	8838	859 437 5538	to	5599	904 892 0378	to	0399

904 892 0648	to	1299	911 268 9077	to	9099	918 951 7231	to	7299	924 533 2428	to	2499
905 056 2216	to	2299	911 400 8948	to	8999	919 519 2786	to	2799	924 685 1957	to	1999
905 510 6647	to	6799	911 508 1620	to	1799	919 536 0770	to	0799	924 946 6300	to	6699
905 510 6900	to	7099	911 509 9310	to	9399	919 814 3095	to	3199	925 333 5900	to	6099
905 794 0000	to	0199	911 523 3000	to	3999	919 889 5110	to	5134	925 336 2300	to	2399
905 794 0288	to	0299	912 057 9922	to	9999	919 889 5137	to	5176	926 432 5907	to	5999
905 873 6900	to	6999	912 882 0563	to	0899	919 889 5178	to	5199	926 436 3600	to	3699
905 873 7100	to	7299	913 605 2218	to	2299	919 889 5030	to	5070	927 765 6257	to	6299
905 880 8900	to	8999	913 709 2429	to	2499	919 889 5090	to	5099	928 197 8100	to	8199
905 889 7100	to	7199	913 818 3501	to	3999	919 915 2774	to	2787	928 197 8283	to	8299
906 158 1508	to	1599	914 063 4300	to	4399	920 155 4662	to	4687	928 856 2059	to	2068
906 558 8812	to	8899	914 346 7621	to	7644	920 309 9039	to	9199	930 219 1722	to	1799
906 982 2214	to	2299	914 453 1366	to	1399	920 771 5321	to	5399	930 335 7810	to	7819
907 725 8500	to	8599	914 529 6185	to	6299	920 857 5500	to	5899	931 097 9259	to	9299
907 815 0216	to	0257	914 896 4658	to	4699	920 864 3480	to	3499	931 156 1502	to	1579
908 622 4225	to	4235	915 187 8774	to	8779	920 963 4567	to	4599	931 156 1600	to	1625
908 936 9254	to	9299	915 300 2783	to	2799	921 333 7400	to	7499	931 156 1671	to	1699
909 066 4494	to	7499	915 546 6822	to	6999	921 477 3762	to	3799	932 506 6400	to	6599
909 067 7400	to	7499	915 646 5183	to	5199	922 278 1048	to	1399	932 732 1796	to	1799
909 100 1787	to	1799	915 671 3963	to	3980	922 280 2019	to	2099	932 827 9026	to	9099
909 100 1900	to	2099	915 671 3982	to	3999	922 280 2233	to	2299	932 957 2300	to	2399
909 355 0422	to	0499	915 675 2217	to	2299	922 773 0459	to	0499	933 060 6160	to	6189
909 568 8900	to	9099	916 440 3377	to	3399	923 032 7000	to	7399	933 387 2541	to	2561
909 568 9300	to	9499	916 670 6352	to	6399	923 045 3630	to	3699	933 760 3609	to	4199
909 725 7307	to	7399	916 682 5300	to	5399	923 484 3600	to	3699	933 894 0928	to	0999
909 833 0947	to	0999	916 694 1414	to	1499	923 493 9403	to	9599	934 018 2729	to	2741
910 219 8631	to	8699	916 703 0802	to	0821	923 493 9681	to	9699	934 180 0300	to	0399
910 265 1100	to	1199	917 089 0709	to	0799	923 604 4424	to	4499	934 236 3954	to	3999
910 471 7273	to	7299	917 089 0842	to	0899	923 810 7800	to	8299	934 622 8717	to	8999
910 536 2505	to	2599	917 216 2928	to	2999	924 252 1200	to	1299	935 216 0312	to	0399
910 958 7499	to	7599	917 370 6300	to	6499	924 252 1400	to	1499	935 843 2202	to	2247
911 140 1000	to	2199	917 486 4900	to	4999	924 533 0711	to	0799	936 024 8889	to	8899
911 245 2545	to	2599	918 460 0602	to	0699	924 533 2343	to	2399	936 339 4455	to	4499

— Criminal Investigations Group, Postal Inspection Service, 7-21-16

Missing, Lost, or Stolen Canadian Money Order Forms

Do Not Cash — Upon Receipt, Notify Local Postal Inspectors

This listing will be provided to all Postal Service™ employees responsible for accepting and cashing postal money orders. Destroy all interim notices when the numbers listed appear in the *Postal Bulletin*. The new

money order serial numbers consist of the first 9 digits. The 10th digit is a check digit only.

Do not cash outdated money orders **104 151 601 to 692 600 000**. Advise holders to send invalid money orders To Canada Post Corporation, Ottawa, Canada K1A 0B1. Check for altered dollar amounts by holding money orders to the light.

719 869 731	to	9 760	728 702 338	to	2 400	734 950 111	to	0 170	742 408 771	to	8 830
720 227 871	to	7 930	728 915 371	to	5 850	735 120 331	to	0 840	742 512 120	to	2 150
720 227 949	to	7 960	728 953 141	to	3 410	735 283 008	to	3 020	742 684 849	to	4 890
720 368 543	to	8 570	728 954 280	to	4 310	735 293 131	to	3 220	742 839 553	to	9 630
720 392 151	to	2 570	729 169 081	to	9 140	735 635 010	to	5 040	742 913 668	to	3 700
720 556 491	to	6 640	729 363 841	to	3 870	735 783 961	to	3 990	742 917 287	to	7 296
720 558 621	to	8 650	729 682 891	to	3 190	735 803 401	to	3 430	742 921 891	to	1 980
720 575 361	to	5 570	729 838 940	to	9 070	736 005 420	to	5 440	742 983 631	to	3 810
720 590 152	to	0 179	729 839 101	to	9 130	736 366 021	to	6 110	743 020 021	to	0 170
721 638 331	to	9 170	730 077 683	to	7 840	736 624 456	to	4 500	743 206 491	to	6 500
721 815 391	to	5 420	730 109 847	to	9 880	736 670 851	to	1 060	743 235 992	to	6 050
721 969 713	to	9 740	730 373 761	to	3 850	736 767 061	to	7 090	743 940 631	to	0 900
722 072 137	to	2 160	730 501 951	to	2 130	736 767 093	to	7 120	743 978 011	to	8 070
722 378 265	to	8 280	730 519 379	to	9 470	736 982 191	to	2 370	744 234 751	to	4 780
722 413 990	to	4 004	730 569 278	to	9 360	736 982 551	to	2 730	744 499 591	to	9 680
722 764 948	to	4 980	730 711 711	to	1 740	737 110 141	to	0 170	744 626 901	to	6 910
722 825 840	to	5 889	730 722 991	to	3 230	737 185 501	to	5 710	745 388 794	to	8 910
723 153 841	to	3 850	730 845 970	to	5 990	737 317 321	to	7 350	746 446 806	to	6 820
723 237 616	to	7 630	730 888 291	to	8 320	737 517 781	to	7 840	746 818 351	to	8 410
723 331 081	to	1 110	730 927 591	to	7 680	737 628 181	to	8 210	747 245 266	to	5 280
723 496 443	to	6 470	731 307 914	to	7 930	737 634 258	to	4 270	747 364 813	to	4 830
723 967 291	to	7 320	731 402 431	to	2 460	738 361 971	to	1 980	747 501 434	to	1 450
724 655 196	to	5 340	731 407 232	to	7 320	738 447 601	to	7 660	747 739 891	to	0 070
724 711 441	to	1 500	731 588 301	to	8 340	738 648 355	to	8 450	748 148 649	to	8 760
724 711 538	to	1 560	731 767 273	to	7 320	738 849 811	to	9 900	748 259 960	to	9 970
724 793 221	to	3 250	731 781 061	to	1 120	738 892 270	to	2 290	748 565 162	to	5 280
724 908 109	to	8 120	731 837 821	to	7 910	738 997 259	to	7 380	748 874 988	to	5 030
724 937 461	to	7 670	731 841 377	to	1 450	739 161 451	to	1 540	749 137 381	to	7 410
725 163 118	to	3 151	732 018 481	to	8 600	739 219 381	to	9 440	749 190 192	to	0 210
725 202 735	to	2 750	732 067 972	to	8 370	739 740 151	to	0 180	749 685 421	to	5 450
725 398 591	to	8 800	732 188 649	to	8 670	739 793 491	to	3 520	749 846 791	to	6 850
725 464 591	to	4 920	732 193 460	to	3 470	739 793 527	to	3 550	749 993 131	to	3 580
725 475 321	to	5 330	732 201 241	to	1 390	739 942 621	to	2 650	750 071 587	to	1 610
725 711 057	to	1 070	732 220 431	to	0 440	739 999 231	to	9 320	750 408 167	to	8 183
725 738 581	to	8 730	732 355 201	to	5 380	740 011 517	to	1 530	750 438 421	to	8 501
725 981 311	to	1 430	732 472 320	to	2 560	740 030 701	to	0 970	750 743 911	to	4 030
725 987 835	to	7 880	732 541 605	to	1 620	740 261 740	to	1 820	750 779 118	to	9 400
726 060 811	to	0 900	732 572 221	to	2 490	740 265 811	to	6 290	750 910 981	to	1 010
726 391 970	to	2 520	732 586 479	to	6 710	740 299 111	to	9 170	750 960 841	to	0 900
726 484 771	to	4 800	732 994 037	to	4 080	740 299 231	to	9 260	751 296 211	to	6 240
726 493 351	to	5 300	733 163 449	to	3 460	740 329 266	to	9 320	751 539 121	to	9 180
726 504 031	to	4 063	733 297 171	to	7 290	740 889 081	to	9 090	751 541 311	to	1 790
726 504 070	to	4 090	733 446 631	to	7 110	741 010 421	to	0 530	751 757 641	to	7 700
726 504 331	to	4 390	733 474 665	to	4 770	741 113 041	to	3 370	751 936 951	to	7 010
726 563 701	to	4 060	733 704 482	to	4 570	741 373 891	to	4 340	751 951 861	to	1 890
726 599 371	to	9 460	733 751 041	to	1 130	741 452 369	to	2 490	751 999 021	to	9 110
726 626 356	to	6 370	734 009 101	to	9 130	741 492 991	to	3 140	752 139 516	to	9 570
727 182 271	to	2 510	734 290 759	to	0 770	741 553 460	to	3 470	752 182 892	to	2 950
727 416 181	to	6 240	734 389 273	to	9 290	741 764 431	to	4 520	752 206 861	to	7 100
727 481 431	to	1 460	734 440 031	to	0 111	742 178 834	to	8 880	752 295 241	to	5 600
727 749 241	to	9 780	734 797 201	to	7 320	742 325 500	to	5 520	752 731 351	to	1 410
728 382 331	to	2 480	734 939 611	to	9 640	742 325 668	to	5 700	752 767 441	to	7 470

753 008 941	to	9 030	763 155 160	to	5 180	773 231 311	to	1 340	800 872 741	to	2 830
753 194 311	to	4 370	763 178 631	to	8 660	773 348 739	to	8 940	801 349 801	to	9 830
753 620 378	to	0 400	763 506 001	to	6 060	773 348 739	to	8 940	801 676 681	to	7 100
754 013 917	to	3 940	763 522 141	to	2 470	773 575 891	to	5 950	802 967 821	to	7 940
754 161 061	to	1 120	763 717 694	to	7 800	773 852 971	to	3 030	803 217 601	to	7 780
754 358 445	to	8 610	763 826 461	to	6 520	775 373 449	to	3 460	803 729 731	to	9 850
754 410 451	to	0 660	763 900 460	to	0 471	789 257 191	to	7 250	803 747 402	to	7 520
754 438 393	to	8 410	763 900 479	to	0 530	790 448 020	to	8 460	804 138 181	to	8 420
754 493 109	to	3 130	763 917 271	to	7 750	790 597 485	to	7 530	804 428 224	to	8 250
754 664 182	to	4 220	764 125 801	to	5 860	790 911 883	to	1 900	804 682 411	to	2 710
754 816 377	to	6 470	764 284 525	to	4 560	791 057 441	to	7 550	805 272 525	to	2 540
755 487 421	to	7 600	764 526 241	to	6 330	791 239 081	to	9 290	805 523 445	to	3 460
755 592 901	to	3 140	764 601 421	to	1 600	791 374 483	to	4 500	805 745 704	to	5 730
755 790 020	to	0 030	764 650 231	to	0 470	791 387 971	to	8 030	806 452 907	to	2 980
755 791 730	to	1 800	764 984 371	to	4 850	791 447 521	to	7 850	806 744 781	to	4 850
755 926 951	to	7 070	765 003 667	to	3 680	791 451 151	to	1 240	806 982 181	to	2 300
755 934 332	to	4 510	765 042 517	to	2 540	791 500 009	to	0 470	807 764 791	to	4 910
755 957 701	to	8 000	765 194 728	to	4 970	791 771 431	to	1 490	808 089 931	to	9 960
755 962 981	to	3 280	765 387 365	to	7 450	792 004 293	to	4 320	808 656 423	to	6 450
756 035 371	to	5 490	765 541 801	to	2 100	792 018 379	to	8 420	808 753 771	to	3 800
756 301 257	to	1 290	765 638 461	to	8 970	792 070 621	to	0 740	809 189 001	to	9 010
756 371 565	to	1 580	765 647 101	to	7 190	792 145 211	to	5 230	809 886 879	to	6 930
756 876 031	to	6 120	765 813 781	to	4 029	792 391 381	to	1 620	809 890 489	to	0 500
756 876 151	to	6 240	765 879 314	to	9 390	792 452 779	to	2 790	810 323 734	to	3 760
756 970 129	to	0 140	765 954 001	to	4 030	792 772 728	to	2 770	810 367 116	to	7 140
757 059 613	to	9 630	766 120 286	to	0 320	792 903 511	to	3 990	810 526 351	to	6 500
757 078 540	to	8 560	766 125 716	to	5 750	793 282 518	to	2 533	810 806 911	to	6 940
757 086 209	to	6 240	766 158 824	to	8 840	794 041 831	to	2 040	810 807 211	to	7 240
757 240 591	to	0 650	766 388 433	to	8 460	794 397 709	to	7 780	811 423 021	to	3 110
757 277 371	to	7 700	766 509 421	to	9 660	794 581 741	to	2 040	811 517 221	to	7 239
757 291 591	to	2 730	766 572 901	to	3 020	794 592 122	to	2 150	811 721 101	to	1 130
757 964 251	to	4 280	766 748 500	to	8 521	795 032 251	to	2 340	812 025 721	to	5 900
758 067 001	to	7 090	767 024 341	to	4 370	795 796 291	to	6 350	812 093 073	to	3 130
758 105 221	to	5 250	767 326 471	to	6 590	796 070 139	to	0 160	812 100 821	to	0 840
758 324 941	to	5 000	767 332 561	to	2 950	796 143 151	to	3 630	812 465 251	to	5 610
758 593 628	to	3 650	768 009 841	to	9 960	796 159 725	to	9 740	812 918 341	to	8 670
758 709 038	to	9 060	768 011 489	to	1 520	796 169 306	to	9 340	812 918 701	to	8 760
758 744 101	to	4 160	768 177 980	to	7 990	796 373 406	to	3 430	813 050 491	to	0 520
758 850 883	to	0 900	768 391 081	to	1 170	796 602 961	to	3 050	813 073 171	to	3 200
758 860 951	to	1 550	768 661 569	to	1 650	796 708 441	to	8 500	813 398 476	to	8 550
759 152 851	to	2 880	769 000 051	to	0 080	796 886 281	to	6 430	813 713 971	to	4 000
759 740 941	to	1 090	769 050 841	to	0 900	796 901 701	to	2 000	813 858 121	to	8 150
760 004 596	to	4 610	769 159 081	to	9 178	796 975 466	to	5 590	814 789 330	to	9 349
760 118 191	to	8 250	769 737 496	to	7 510	797 272 917	to	2 950	814 984 656	to	4 680
760 155 001	to	5 090	769 778 491	to	8 730	797 519 441	to	9 460	815 016 020	to	6 030
760 378 002	to	8 020	769 827 331	to	7 450	797 519 731	to	0 240	815 199 410	to	9 420
760 692 722	to	2 749	770 216 071	to	6 100	797 535 181	to	5 330	815 240 491	to	0 520
761 055 460	to	5 480	770 723 281	to	3 400	797 646 151	to	6 180	815 755 591	to	5 620
761 169 781	to	9 810	770 790 451	to	0 480	798 040 053	to	0 080	815 755 622	to	5 650
761 504 941	to	5 120	770 915 150	to	5 490	798 055 813	to	5 830	815 806 381	to	6 680
761 516 836	to	6 910	771 455 551	to	5 610	798 055 891	to	5 950	816 126 834	to	6 870
761 613 588	to	3 600	771 609 661	to	9 690	798 326 371	to	6 520	816 156 721	to	6 780
761 688 631	to	8 690	771 932 551	to	2 580	798 339 167	to	9 210	816 580 903	to	0 920
761 805 199	to	5 240	772 057 224	to	7 440	798 562 411	to	2 440	816 945 571	to	5 600
761 826 106	to	6 120	772 162 660	to	3 070	798 632 461	to	2 490	817 253 011	to	3 280
761 881 171	to	1 560	772 718 615	to	8 640	798 807 151	to	7 510	817 763 881	to	4 060
761 975 641	to	5 670	772 940 140	to	0 160	798 944 761	to	5 030	818 330 562	to	0 610
761 975 886	to	5 895	772 970 886	to	0 940	799 118 616	to	8 640	818 459 641	to	9 670
762 304 144	to	4 170	773 009 419	to	9 430	799 133 191	to	3 220	818 926 273	to	6 320
762 324 931	to	4 960	773 112 031	to	2 060	799 177 626	to	7 650	818 950 351	to	0 380
762 439 261	to	9 290	773 125 387	to	5 410	799 854 751	to	5 200	818 962 492	to	2 530
762 524 158	to	4 220	773 179 320	to	9 410	800 044 320	to	4 410	819 032 341	to	2 730
762 584 872	to	4 970	773 202 989	to	3 140	800 211 901	to	2 440	819 127 054	to	7 080
762 593 431	to	3 460	773 208 991	to	9 290	800 427 530	to	7 540	819 278 540	to	8 670

819 544 681	to	4 740	822 900 991	to	1 020	826 582 951	to	3 430	828 732 331	to	2 390
819 928 441	to	8 650	822 925 951	to	6 100	826 720 201	to	0 230	828 807 781	to	7 840
820 034 406	to	4 430	823 284 931	to	4 990	827 005 671	to	5 830	828 830 952	to	0 963
820 070 761	to	1 540	823 293 031	to	3 210	827 287 861	to	7 950	828 939 781	to	0 050
820 191 342	to	1 360	823 556 011	to	6 100	827 291 502	to	1 520	829 002 721	to	2 870
820 274 856	to	4 880	824 078 341	to	8 370	827 575 381	to	5 470	829 005 301	to	5 540
820 600 171	to	0 230	824 156 325	to	6 340	827 609 085	to	9 100	829 080 241	to	0 330
821 172 241	to	2 360	824 511 252	to	1 270	827 619 811	to	9 840	829 160 986	to	1 000
821 229 661	to	9 720	824 588 281	to	8 370	827 883 511	to	3 600	829 176 841	to	6 930
821 229 743	to	9 780	825 140 397	to	0 460	828 160 441	to	0 530	829 471 561	to	1 590
821 903 731	to	3 910	825 409 651	to	9 680	828 376 201	to	6 260	829 561 065	to	1 080
821 927 841	to	7 850	825 472 171	to	2 200	828 441 602	to	1 630	829 566 481	to	6 510
822 505 801	to	5 830	826 042 898	to	2 920	828 539 316	to	9 340	829 569 931	to	9 960
822 703 442	to	3 470	826 226 644	to	6 670	828 539 341	to	9 370			

— Criminal Investigations Group, Postal Inspection Service, 7-21-16

Verifying U.S. Postal Service Money Orders

Follow these steps to cash a Postal Service™ money order:

1. Check that the amount does not exceed the legal limit: \$1,000 for domestic, and \$700 for international postal money orders.
2. Check that the proper security features are present:
 - When held to the light, a watermark of Benjamin Franklin is repeated from top to bottom on the left side.
 - When held to the light, a dark line (security thread) runs from top to bottom with the word “USPS” repeated.
 - There should be no discoloration around the dollar amounts, which might indicate the amounts were changes.

These appear in Postal Service Notice 299, *U.S. Postal Money Order Reference Card*, or online at <https://www.usps.com/shop/money-orders.htm>.

3. If the money order seems suspicious, call the U.S. Postal Service Money Order Verification System at 866-459-7822.

Please provide this information to local banks and retailers, as they also receive Postal Service money orders for cashing.

— *Retail and Customer Service Operations, 7-21-16*

Counterfeit Canadian Money Order Forms

Do Not Cash

To be posted and used by retail window employees. As directed, destroy previous notices. Destroy all interim notices when the numbers listed appear in the Postal Bulletin.

671,819,086	686,794,382
676,612,640	686,794,426
677,891,039	686,794,427
678,282,493	686,794,431
678,916,031	687,262,502
679,552,215	687,262,503
679,694,334	687,262,525
679,751,983	687,262,526
679,800,207	687,287,578
681,130,536	687,287,581
681,844,376	687,287,582
683,594,542	694,063,898
684,683,610	694,063,899
686,619,878	694,063,980
686,619,886	701,321,725
686,619,887	

— *Criminal Investigations Group,
Postal Inspection Service, 7-21-16*

Toll-Free Number Available to Verify Canadian Money Orders

The Canada Post Corporation is now providing a toll-free number that cashing agents can call to verify the validity of Canadian Postal Money Orders. The number is 800-563-0444.

This toll-free number is printed on the back of the Canadian Postal Money Orders.

— *Criminal Investigations Group,
Postal Inspection Service, 7-21-16*

Other Information

Overseas Military/Diplomatic Mail

Mail addressed to military and diplomatic post offices overseas is subject to certain conditions or restrictions of mailing regarding content, preparation, and handling. The APO/FPO/DPO table below outlines these conditions by APO/FPO/DPO ZIP Codes™ through the use of footnoted mailing restrictions codes (see the [Restrictions](#) page following the table).

Acceptance clerks should use the table with the POS ONE terminal to determine which APO/FPO/DPO ZIP Codes are active and which conditions of mailing apply.

Inquiries may be sent to the Military Postal Service Agency at <https://amps.usps.gov/ljy2/frm.htm>.

The entries under “Changes” appear in bold in the APO/FPO/DPO table starting below.

Note: Updated definitions for the restrictions will be published in the next *Postal Bulletin*. The restriction codes and their assignment to ZIP Codes™ will not change, but many of the definitions may be modified to better describe the nature of the restriction.

Changes

APO/FPO/DPO	Action	Effective Date	See Restrictions
APO AE 09320	Add N	07/21/2016	A-B-C1-E2-F-H1-M-N-R-R1-V-Z1
FPO AE 09761	Open	07/21/2016	B-F-F1-M-R-R1-V-Z1
APO AA 34044	Close	07/21/2016	
All	Remove A1-A2	07/21/2016	

We have eliminated “Not Active” entries from the table below to save space and paper.

APO/FPO/DPO Table

APO/ FPO/ DPO	See Restrictions	APO/ FPO/ DPO	See Restrictions	APO/ FPO/ DPO	See Restrictions	APO/ FPO/ DPO	See Restrictions
09003	B-C-D-E-H-M-P-R-U	09079	B-C-D-E-H-M-R-U	09186	B-C-D-E-H-M-R-U	09315	A-B-C1-E2-F-N-R-R1-V-Z1
09004	B-C-D-E-H-M-R-U	09090	B-C-D-E-H-M-P-R-U	09211	B-C-D-E-H-M-P-R-U	09316	A-B-C1-E2-F-F1-H1-I3-M-N-R-R1-T-V-Z-Z1
09005	B-C-D-E-H-M-P-R-U	09094	B-C-D-H-M-P-R-Z1	09213	B-C-D-F-F1-H-J-L-M-N-R-T-U-V-Z1	09319	A-B-C-C1-E2-F-F1-F2-H1-R-R1-U2-V-Z1
09006	B-C-D-E-H-M-R-U	09095	B-C-D-E-H-M-R-U	09214	B-C-D-E-H-M-R-U-Z1	09320	A-B-C1-E2-F-H1-M-N-R-R1-V-Z1
09009	B-C-D-E-H-M-R-U-Z1	09096	B-C-D-E-H-M-R-U	09227	B-C-D-E-H-M-R-U	09321	A-B-C1-E2-F-H1-M-N-R-R1-V-Z1
09011	B-C-D-E-H-M-R-U	09103	B-C-D-E-H-U	09245	B-C-D-E-H-M-R-U	09330	A-B-C1-E2-F-F1-H1-M-R-R1-V-Z1
09012	B-C-D-E-H-M-R-U-Z1	09104	B-C-D-H-M-R-U-Z1	09250	B-C-D-E-H-M-R-U	09333	A-B-C1-E2-F-F1-H1-I3-M-N-R-R1-T-V-Z1
09013	B-C-D-E-F-F1-H-M-R-U-Z1	09107	B-C-D-E-H-M-R-U	09261	B-C-D-E-F1-H-M-R-U-V-Z1	09337	A-B-C1-E2-F-F1-H1-M-R-R1-V-Z1
09014	B-C-D-E-H-M-R-U	09114	B-C-D-E-H-M-R-U	09263	B-C-D-E-H-M-R-U	09340	A-B-C1-F-H-N-R-V
09016	B-C-D-E-H-M-R	09123	B-C-D-E-H-M-R-U-Z1	09264	B-C-D-E-H-M-R-U	09343	A-B-C1-F-M-N-V-Z1
09020	B-C-D-E-H-M-R-U	09125	A-B-F-F1-N-O-R-R1-V-V1	09265	B-C-D-F-F1-H-J-L-M-N-R-T-U-V-Z1	09347	A-B-C1-E2-F-H1-M-R-R1-V-Z1
09021	B-C-D-E-H-M-R-U-Z1	09126	B-C-D-H-M-P-R-Z1	09302	A-B-C1-F-F1-H-M-N-V-Z-Z1	09348	A-B-C1-E2-F-F1-H1-I3-M-N-R-R1-T-V-Z-Z1
09028	B-C-D-E-H-M-R-U	09128	B-C-D-E-H-M-R-U	09304	A-B-C-C1-D-E2-F-F1-H1-J-L-M-N-R-R1-T-V-Z1	09352	A-B-C1-E2-F-H1-M-R-R1-V-Z1
09034	B-C-D-E-H-M-R-U	09131	B-C-D-E-H-M-R-U	09305	A-B-C1-E2-F-F1-H1-I3-M-N-R-R1-T-V-Z-Z1	09354	A-B-C1-E2-F-H1-M-R-R1-V-Z1
09044	B-C-D-F1-H-U	09136	B-C-D-E-F1-H-M-P-R	09306	A-B-C1-E2-F-F1-H1-R-R1-U2-V-Z1	09355	A-B-C1-E2-F-H1-M-R-R1-V-Z1
09046	B-C-D-E-H-M-R-U	09138	B-C-D-H-M-R-U	09307	B-N-V-Z1	09356	A-B-C1-E2-F-H1-M-N-R-R1-V-Z1
09049	B-C-D-E-H-M-R-U	09140	B-C-D-E-H-M-R-U	09308	A-B-C1-E2-F-F1-H1-I3-M-N-R-R1-T-V-Z-Z1	09357	A-B-C1-E2-F-H1-M-R-R1-V-Z1
09053	B-C-D-E-H-M-R-U	09142	B-C-D-E-H-M-R-U	09309	A-B-C-C1-E2-F-H1-M-N-R-V-Z1		
09054	B-C-D-E-H-M-R-U	09143	B-C-D-E-H-M-R-U	09313	A-B-C-C1-E2-F-F1-F2-H1-R-R1-V-Z1		
09055	B-C-D-E-F-H-M-R-R1-U-V	09154	B-C-D-E-H-M-R-U				
09059	B-C-D-E-H-M-R-U	09160	B-C-D-F-F1-H-J-L-M-N-R-T-U-V-Z1				
09060	B-C-D-E-F1-H-M-R-U-Z1	09161	A-B-E1-F-F1-M-N-V				
09067	B-C-D-E-H-M-R-U	09172	B-C-D-E-H-M-R-U				
09068	B-C-D-E-H-U-Z1	09173	B-C-D-E-H-M-R-U				
09069	A-B-C-D-E-H-N-U-V	09177	B-C-D-E-H-M-R-U				
09075	B-C-D-E-H-M-R-U	09180	B-C-D-H-M-R-U				

APO/ FPO/ DPO	See Restrictions	APO/ FPO/ DPO	See Restrictions	APO/ FPO/ DPO	See Restrictions	APO/ FPO/ DPO	See Restrictions
09363	A-B-C1-E2-F-H1-M-R-R1-V-Z1	09575	B-F-F1-R-R1-V	09703	B-C-D-F1-H-U	09744	A-B-B2-C-C1-F-F1-J-L-M-N-R-R1-T-V-Z1
09365	A-B-C-C1-E2-F-H1-M-N-R-V-Z1	09576	B-F-F1-R-R1-V	09704	B-C-O-V-V1	09745	A-B-F-F1-M-N-R-R1-V-Z1
09366	A-B-C1-E2-F-F1-H1-M-R-R1-V-Z1	09577	B-V	09705	B-U	09747	B-F-J-N-U-V-Z1
09378	A-B-C1-E2-F-F1-H1-I3-M-N-R-R1-T-V-Z1	09578	B-F-F1-R-R1-V	09706	B-C-N-R-U-V-Z1	09748	A-B-B2-C-C1-D-F-F1-J-L-M-N-R-R1-T-V-Z1
09381	A-B-C1-E2-F-F1-H1-I3-M-N-R-R1-T-V-Z1	09579	B-F-F1-R-R1-V	09707	B-C-F-F1-J-L-M-N-R-T-U-V-Z1	09749	A-B-F-H-N-U-V-Z1
09403	B-C-C1-M-R-U-Z1	09581	B-F-F1-R-R1-V	09708	B	09750	A-B-B2-C-C1-F-F1-J-L-M-N-R-R1-T-V-Z1
09421	B-C-C1-M-R-U-Z1	09582	B-F-F1-R-R1-V	09709	B-B2-C1-E2-F-F1-H1-J-L-N-R-R1-T-V-Z1	09751	B-C-D-E-H-M-R-U
09447	B-C-C1-R-U-V-Z1	09583	B-F-F1-R-R1-V	09710	B-C-C1-F-F1-J-L-M-N-R-R1-T-U-V-Z1	09752	B-C-D-F1-H-U
09454	B-C-C1-M-R-U-V-Z1	09586	B-F-F1-R-R1-V	09711	B-C-C1-F1-M-R-R1-U	09753	A-B-F-N-V-Z1
09459	B-C-C1-M-R-U-Z1	09587	B-F-F1-R-R1-V	09712	B-F-F1-J-L-M-N-R-T-V-Z1	09754	A-B-F-H-N-Q-V-Z1
09461	B-C-C1-M-P-R-U-Z1	09588	B-V	09714	B-C-C1-F1-M-R-R1-U	09755	A-B-B2-C-C1-D-F-F1-J-L-M-N-Q-R-R1-T-V-Z1
09463	B-C-C1-R-U-Z1	09589	B-V	09715	B-F-F1-J-L-M-N-R-T-V-Z1	09756	A-B-B2-E3-F-F1-J-L-N-Q-R-R1-T-V-Z1
09464	B-C-C1-R-U-Z1	09590	B-V	09716	B-C-F-F1-J-L-M-N-R-T-V-Z1	09758	A-B-F-F1-M-N-R-R1-V-Z1
09468	B-C-C1-M-R-U-Z1	09591	B-F-F1-R-R1-V	09717	A-B-M-R-V-W-Z1	09759	A-B-B2-C-C1-E2-F-F1-F2-J-L-N-R-R1-T-V-Z1
09469	B-C-C1-R-U-Z1	09592	B-F-F1-R-R1-V	09718	B-F-F1-J-L-M-N-R-T-U-V-Z1	09760	A-B-B2-C-C1-D-F-F1-J-L-M-N-Q-R-R1-T-V-Z1
09470	B-C-C1-M-R-U-Z1	09593	B-F-F1-R-R1-V	09719	B-C-D-M-R-U-V-Z1	09761	B-F-F1-M-R-R1-V-Z1
09494	B-C-C1-M-R-U-Z1	09594	B-F-F1-R-R1-V	09720	B-M-R-U-V-Z1	09762	A-B-B2-E3-F-F1-J-L-N-R-R1-T-V-Z1
09498	B-C-C1-F-F1-F2-J-L-N-R-R1-T-V-Z1	09595	B-F-F1-R-R1-V	09722	A-B-F-H-N-Q-V-Z1	09769	A-B-B2-C-C1-D-F-F1-J-L-M-N-R-R1-T-V-Z1
09501	B-V	09596	B-F-F1-R-R1-V	09723	B-F-F1-J-L-M-N-R-T-U-V-Z1	09777	A-B-C-E1-F-F1-L-M-N-R-T
09502	B-V	09599	B-F-F1-R-R1-V	09724	B-C-C1-F1-M-R-R1-U	09780	A-B-F-H-N-R-V
09503	B-F-F1-R-R1-V	09600	B-C-F-F1-R-U-Z1	09725	A-B-F-H-N-O-Q-V-V1-Z1	09789	A-B-F-N-R-V-Z1
09504	B-V	09602	B-C-F-F1-N-R-U-V	09726	B-F-F1-J-L-M-N-R-T-U-V-Z1	09801	A-B-C1-E2-F-H1-M-N-R-R1-V-Z1
09505	B-V	09603	B-C-F-F1-R-U-V-Z1	09727	A-B-B2-C-C1-D-F-F1-J-L-M-N-R-R1-T-V-Z1	09803	B-E2-E3-F-F1-H1-N-R-R1-U-V-Z1
09506	B-V	09604	B-C-F-F1-P-R-U-V-Z1	09728	A-B-B2-C-C1-F-F1-J-L-N-R-R1-T-V-Z1	09804	A-B-F-F1-N-R-V-Z1
09507	B-V	09605	B-C-D-H-M-R-U-V	09729	B-C-F-N-R-R1-U-V-Z1	09805	B-E2-E3-F-F1-R-R1-Z1
09508	B-F-F1-R-R1-V	09606	B-C-D-H-M-R-U-V	09730	A-B-B2-C-C1-F-F1-J-L-M-N-R-R1-T-V-Z1	09806	A-B-C1-E2-F-F1-H1-J-L-M-N-R-R1-T-V-Z1
09509	B-F-F1-R-R1-V	09607	A-B-C-F-F1-M-N-R-R1-U3-V-W-Z1	09731	A-B-B2-C-C1-F-F1-J-L-M-N-R-R1-T-V-Z1	09808	A-B-B2-C1-E2-F-F1-H1-J-L-N-R-R1-T-V-Z1
09510	A-B-C1-E2-F-H1-M-R-R1-V-Z1	09608	B-C-F-N-R-U-V-Z1	09732	B-N-V-Z1	09809	B-F-F1-L-N-T-V-Z1
09511	B-F-F1-R-R1-V	09609	B-C-F-R-U-Z1	09733	B-N-V	09810	A-B-F-F1-N-R-V-Z1
09513	B-F-F1-R-R1-V	09610	B-C-F-F1-M-R-U-V-Z1	09734	A-B-C-C1-F-F1-J-L-M-N-R-R1-T-V-Z1	09811	B-E2-E3-F-F1-H1-N-R-R1-U-V-Z1
09517	B-F-F1-R-R1-V	09613	B-C-F-N-U-V	09735	B-N-V-Z1	09812	B-E2-E3-F-F1-I-J-L-N-R-T-U-V-Z1
09520	B-F-F1-R-R1-V	09617	B-C-F-R-U-Z1	09736	A-B-B2-C-C1-D-F-F1-J-L-M-N-R-R1-T-V-Z1	09813	B-E2-E3-F-F1-I3-J-L-N-R-T-U-V-Z1
09523	B-F-F1-R-R1-V	09618	B-C-F-R-U-Z1	09737	A-B-B2-C-C1-F-F1-I-L-M-N-R-R1-T-V-W-Y-Z1	09814	B-E2-E3-F-F1-I3-J-L-N-R-T-U-V-Z1
09522	B-V	09620	B-C-F-R-U-Z1	09738	A-B-B2-C-C1-D-F-F1-J-L-M-N-R-R1-T-V-Z1	09815	A-B-F-N-R-V-Z1
09524	B-F-F1-R-R1-V	09621	B-C-F-R-U-Z1	09739	A-B-B2-C-C1-D-F-F1-J-L-M-N-R-R1-T-V-Z1	09816	A-B-B2-C-C1-E2-E3-F-F1-J-L-N-R-R1-T-V-Z1
09532	B-F-F1-R-R1-V	09622	B-C-F-R-U-Z1	09741	A-B-C1-E2-F-F1-H1-J-L-M-N-R-R1-T-V-W-Y-Z1	09817	A-B-B2-C1-E2-E3-F-F1-H1-J-L-M-N-R-T-V-Z1
09534	B-F-F1-R-R1-V	09623	B-C-F-R-U-Z1	09742	A-B-B2-F-F1-J-L-M-N-R-T-V-Z1	09818	A-B-C-F-M-V-Z1
09543	B-F-F1-R-R1-V	09624	B-C-F-F1-J-L-N-T-U-V-Z1	09743	A-B-F-H-N-Q-V-Z1		
09550	B-F-F1-R-R1-V	09625	B-C-F-R-U-Z1				
09554	B-F-F1-R-R1-V	09626	B-C-F-R-U-Z1				
09556	B-F-F1-R-R1-V	09627	B-C-F-R-U-Z1				
09564	B-F-F1-R-R1-V	09630	B-C-F-U-V				
09565	B-F-F1-R-R1-V	09631	B-C-F-R-U-Z1				
09566	B-F-F1-R-R1-V	09633	B-B2-C-D-F-F1-M-R-U-U1-U2-U3-V-Z1				
09567	B-F-F1-R-R1-V	09636	B-C-F-R-U-Z1				
09568	B-V	09642	B-M-N-R-U-V				
09569	B-F-F1-R-R1-V	09643	B-M-R-U-V-Z1				
09570	B-F-F1-R-R1-V	09645	B-C-F-F1-R-U-Z1				
09573	B-F-F1-R-R1-V	09647	B-M-N-R-U-Z1				
09574	B-F-F1-R-R1-V	09648	B-N-R-U-V-Z1				
		09649	B-N-R-U-Z1				
		09701	A-B-B2-C-C1-D-F-F1-J-L-M-N-R-R1-T-V-Z1				
		09702	B-C-C1-F1-M-R-R1-U				

APO/ FPO/ DPO	See Restrictions	APO/ FPO/ DPO	See Restrictions	APO/ FPO/ DPO	See Restrictions	APO/ FPO/ DPO	See Restrictions
09820	A-B-B2-F-F1-H-H1-J-L-M-N-R-R1-T-V-Z1	09873	A-B-C1-E2-F-F1-H1-I3-J-L-M-N-R-R1-T-U-U4-V-Z-Z1	34086	B-F-F1-R-R1-V	96346	B-F-F1-F2-H-M-V-W-Z1
09821	A-B-F-N-R-V-Z1			34087	B-F-F1-R-R1-V	96347	B-F-F1-F2-H-M-W-Z1
09822	A-B-F-R-V-Z1	09874	A-B-C1-E2-F-F1-H1-I3-J-L-M-N-R-R1-T-U-U4-V-Z-Z1	34088	B-F-F1-R-R1-V	96349	B-F-F1-F2-H-M-W-Z1
09823	A-B-F-F1-J-L-N-R-T-V-Z1			34089	B-F-F1-R-R1-V	96350	B-F-F1-F2-H-M-W-Z1
09824	A-B-F-R-V-Z1	09875	A-B-C1-E2-F-F1-H1-I3-J-L-M-N-R-R1-T-U-U4-V-Z-Z1	34090	B-F-F1-R-R1-V	96351	B-F-F1-F2-H-M-W-Z1
09825	A-B-C-C1-D-F-F1-J-L-M-N-R-R1-T-V-Z1			34091	B-F-F1-R-R1-V	96362	B-F-F1-F2-M-W-Z1
09826	A-B-B2-C1-E1-E2-E3-F-F1-J-L-M-N-R-R1-T-V-W-Z1	09880	A-B-C1-E2-F-F1-H1-N-R-R1-U-V-Z1	34092	B-F-F1-R-R1-V	96365	B-C-M-R-V-W
09827	A-B-F-F1-J-L-M-N-R-T-V-Z1			34093	B-F-F1-R-R1-V	96367	B-C-L-M-R-W
09828	A-B-F-F1-I-J-L-N-T-V-Z1	09890	B-E2-F-H1-N-R-R1-U2-V-Z1	34094	B-F-F1-R-R1-V	96368	B-C-M-R-W
09829	B-C-N-R-V-Z1			34095	B-F-F1-R-R1-V	96370	B-F-F1-F2-H-M-W-Z1
09830	B-C-M-N-R-V-Z1	09892	A-B-E2-F-F1-J-L-N-R-R1-T-V-Z1	96201	A-B-F1	96372	B-M-W
09831	B-F-F1-J-L-N-T-U-V-Z1			96202	A-B-F1-U	96373	B-M-W
09832	A-B-U1-V-Z1	09895	A-B-B2-C1-E2-F-L-N-R-T-V-W-Z1	96203	A-B-F1	96374	B-M-W
09833	B-U1-V-Z1			96204	A-B-F1	96375	B-M-W
09834	B-E2-E3-F-F1-R-R1-U-Z1	09898	B-C-E2-F-H1-N-R-R1-U2-V-Z1	96205	A-B-F1-U	96376	B-M-W
09835	A-B-N-V-Z1			96206	A-B-F1-U	96377	B-M-W
09836	A-B-C-F-F1-J-L-M-N-R-T-V-Z1	34002	B-F-F1-J-L-N-T-V-Z1	96207	A-B-F1-U	96378	B-M-W
09837	B-E2-E3-V-Z1			96208	A-B-F1-U	96379	B-M-W
09838	B-E2-E3-F-F1-U-Z1	34004	B-F-F1-J-L-N-T-V	96209	A-B-F-F1-J-L-N-T-U-V-Z1	96380	B-M-W
09839	A-B-U-V-Z1	34007	B-F-F1-H-J-M-N-R-R1-V-Z1	96213	A-B-C-F1-R-U	96382	B-M-W
09840	A-B-E2-E3-V-Z1			96214	A-B-C-F1-R-U	96384	B-M-W
09841	A-B-N-R-U-Z1	34008	B-B2-D-E1-F-F1-H-H1-J-L-M-N-R-R1-T-V-Z1	96218	A-B-F1-U	96385	B-M-W
09842	A-B-F-F1-J-L-N-R-T-V-Z1			96224	A-B-F1-U	96386	B-M-W
09844	A-B-C-C1-D-F-F1-J-L-M-N-R-R1-T-V-Z1	34011	B-B2-C1-E2-F-F1-J-L-M-N-R-R1-T-V-Z1	96251	A-B-F1-U	96388	B-M-W
09845	A-B-B2-E3-F-F1-J-L-M-N-R-T-V-Z1			96257	A-B-F1-U	96389	B-M-W
09846	A-B-B2-C1-F-F1-J-L-N-R-R1-T-V-Z1	34020	B-F-F1-J-L-M-N-T-V-Z1	96258	A-B-F1-U	96401	B-C-F-N-O-R-V-V1-Z1
09848	A-B-F-M-R-V-Z1			96260	A-B-F1-U	96427	A-B-C1-E2-F-H1-M-R-R1-V
09851	A-B-F-N-R-V-Z1	34021	B-F-F1-T-J-L-M-N-V-Z1	96264	A-B-C-F1-R-U	96447	B-C-F-N-R-U3-V-V1
09852	B-E2-E3-F-F1-H1-N-R-R1-U-V-Z1			96266	A-B-C-F1-R-U	96501	A-B-N-V
09853	B-E2-F-H1-R-R1-U2-V-Z1	34022	B-F-F1-J-L-M-N-T-V-Z1	96267	A-B-C-F1-R-U-V	96502	B-F-N-U3-V-Z1
09855	A-B-C1-E2-F-F1-H1-M-R-R1-U2-V-Z1			96269	A-B-F1-U-Z1	96504	A-B-C-C1-F-F1-I-L-N-R-R1-T-V-W-Z-Z1
09858	B-E2-E3-F-F1-H1-N-R-R1-U-V-Z1	34023	B-F-F1-J-L-M-N-T-V-Z1	96271	A-B-F1-U	96505	A-B-C-C1-F-F1-I-L-N-R-R1-T-V-W-Z-Z1
09859	B-C1-E2-E3-F-F1-H1-R-R1-U-V-Z1			96275	A-B-F1-U	96507	A-B-F-F1-H-J-L-N-T-V-Z1
09861	A-B-F-F1-N-R-R1-V-Z1	34025	B-F-F1-J-L-M-N-T-V-Z1	96276	A-B-C-F1-R	96510	B-I-N-V
09863	A-B-F-F1-N-O-R-R1-V-Z1			96278	A-B-C-F1-R-U	96511	B-I-N-V
09865	A-B-R-U-V-Z1	34030	B-F-F1-J-L-M-N-T-V-Z1	96283	A-B-F1-U	96515	B-D-F-U3
09868	A-B-E2-F-N-U-V-Z1			96284	A-B-F1-U	96516	B-D-F-Z1
09870	A-B-C1-E2-F-F1-H1-I3-J-L-M-N-R-R1-T-U4-V-Z-Z1	34031	B-F-F1-J-L-M-N-T-V-Z1	96303	B-F-F1-H-J-L-M-N-T-V-W-Z1	96517	B-F-U3-V-Z1
				96306	B-F-F1-F2-H-M-W-Z1	96520	B-F-N-U3-V
				96309	B-C-M-R-V-W	96521	B-F-F1-J-L-N-T-U3-V-Z1
				96310	B-M-W	96530	A-B-F-F1-H-H1-J-L-M-N-T-U-V-Z1
				96319	B-C-M-R-W	96531	A-B-C-F-F1-H-M-N-R-U-V
				96321	B-F-F1-F2-H-M-W-Z1	96532	A-B-F-F1-H-J-L-M-N-T-U-V-Z1
				96322	B-F-F1-F2-H-M-W-Z1	96533	A-B-F-F1-J-L-N-T-V-Z1
				96323	B-C-M-R-V-W	96537	B-V-Z1
				96326	B-C-F-M-R-W	96538	B-V-Z1
				96328	B-C-M-R-W	96540	B-V-Z1
				96330	B-C-M-R-W		
				96331	B-M-W		
				96336	B-C-M-R-V-W		
				96337	B-M-W		
				96338	B-M-W		
				96339	B-M-V-W		
				96343	B-M-W		

APO/ FPO/ DPO	See Restrictions	APO/ FPO/ DPO	See Restrictions	APO/ FPO/ DPO	See Restrictions	APO/ FPO/ DPO	See Restrictions
96541	B-V	96598	B-N-O-V-V1	96622	B-F-F1-R-R1-V	96671	B-F-F1-R-R1-V
96542	B-V-Z1	96599	B-N-V	96628	B-F-F1-R-R1-V	96672	B-F-F1-R-R1-V
96543	B-P-V-Z1	96601	B-V	96629	B-F-F1-R-R1-V	96673	B-V
96546	B-F-R-U3	96602	B-V	96631	A-B-C1-E2-F-H1-M-R-R1-V	96674	B-F-F1-R-R1-V
96548	A-B-H-M-R-U	96603	B-V	96632	B-F-F1-R-R1-V	96675	B-F-F1-R-R1-V
96549	A-B-F-F1-H-J-L-M-N-T-U-V-Z1	96604	B-V	96643	B-F-F1-R-R1-V	96677	B-F-F1-R-R1-V
96550	A-B-H-M-U-V-Z1	96605	B-V	96649	B-F-F1-R-R1-V	96678	B-F-F1-R-R1-V
96551	A-B-F-F1-H-J-L-M-N-T-U-V-Z1	96606	B-V	96650	B-F-F1-R-R1-V	96679	B-F-F1-R-R1-V
96552	B-Z1	96607	B-V	96657	B-F-F1-R-R1-V	96681	B-V
96553	A-B-F-F1-H-M-R-U	96608	B-V	96660	B-F-F1-R-R1-V	96682	B-V
96554	A-B-F-F1-H-J-L-M-N-T-U-V-Z1	96609	B-V	96661	B-F-F1-R-R1-V	96683	B-V
96555	B-F-M-V	96610	B-V	96662	B-F-F1-R-R1-V	96686	B-V
96557	B-F-M-V	96611	B-V	96663	B-F-F1-R-R1-V	96691	B-F-F1-R-R1-V
96562	A-B-B2-C-C1-D-E2-E3-F-F1-H-H1-I-L-M-N-R-T-V-Z-Z1	96612	B-V	96664	B-V	96692	B-F-F1-R-R1-V
96577	A-B-F-H-M-N-R-U	96613	B-V	96665	B-V	96693	B-F-F1-R-R1-V
96578	B-B2-F1-H-J-N-R	96615	B-F-F1-R-R1-V	96666	B-V	96694	B-F-F1-R-R1-V
96595	B-F-U3-V-Z1	96616	B-F-F1-R-R1-V	96667	B-F-F1-R-R1-V	96695	B-F-F1-R-R1-V
		96617	B-F-F1-R-R1-V	96668	B-F-F1-R-R1-V	96696	B-F-F1-R-R1-V
		96619	B-V	96669	B-F-F1-R-R1-V	96698	B-V
		96620	B-F-F1-R-R1-V	96670	B-V		
		96621	B-V				

RESTRICTIONS

LEGEND

PS Form 2976, *Customs — CN 22 (Old C 1) and Sender's Declaration* (green label)
 PS Form 2976-A, *Customs Declaration and Dispatch Note*
 PS Form 2976-B, *Priority Mail Express International Shipping Label and Customs Form*

AAFES = Army and Air Force Exchange Service
 APO = Army/Air Force Post Office
 Box R = Retired military personnel
 DMM = *Domestic Mail Manual*
 DPO = Diplomatic Post Office
 FPO = Fleet Post Office
 MOM = Military Ordinary Mail
 MPO = Military Post Office
 PAL = Parcel Airlift
 PSC = Postal Service Center
 SAM = Space Available Mail
 USDA = United States Department of Agriculture

Note: Mail order catalogs are prohibited as SAM or PAL mail.

A. Securities, currency, or precious metals in their raw, unmanufactured state are prohibited. Official shipments are exempt from this restriction.

A1. Mail addressed to "Any Servicemember," or similar wording such as "Any Soldier," "Sailor," "Airman," or "Marine"; "Military Mail"; etc., is prohibited. Mail must be addressed to an individual or job title such as "Commander," "Commanding Officer," etc.

A2. APO/FPO/DPO addresses shall not include a city and/or country name.

B. Regardless of mail class, a customs declaration (i.e., PS Form 2976, PS Form 2976-A, or PS Form 2976-B) is required for all items weighing 16 ounces or more, or any item (regardless of weight) containing potentially dutiable mail contents (e.g., merchandise or goods) addressed to or from an APO, FPO, or DPO ZIP Code. If mailed using Priority Mail Express service, mailpieces requiring a customs form that are addressed to or from an APO, FPO, or DPO location must bear a properly completed PS Form 2976-B. No customs form is required for items weighing less than 16 ounces when the contents are not potentially dutiable (e.g., documents). The surface area of the address side of the mailpiece must be large enough to contain the applicable customs declaration. The following exceptions apply:

- Known mailers are exempt from providing customs documentation on non-dutiable letters or printed matter. (A known mailer is a business mailer who enters volume mailings through a business mail entry unit (BMEU) or other bulk mail acceptance location, pays postage through an advance deposit account, uses a permit imprint for postage payment, and submits a completed postage statement at the time of entry that certifies that the mailpieces contain no dangerous materials that are prohibited by postal regulations.)
- All federal, state, and local government agencies whose mailings are regarded as "Official Mail" are exempt from providing customs documentation on any item addressed to an APO, FPO, or DPO except for those APOs/FPOs/DPOs to which restriction "B2" applies.
- Prepaid mail from military contractors is exempt, providing the mailpiece is endorsed "Contents for Official Use — Exempt from Customs Requirements."

B2. All federal, state, and local government agencies must complete customs documentation when sending potentially dutiable mail addressed to or from this APO, FPO, or DPO.

C. Cigarettes and other tobacco products are prohibited.

C1. Obscene articles, prints, paintings, cards, films, videotapes, etc., and horror comics and matrices are prohibited.

D. Coffee is prohibited.

E. Medicines (prescription, over-the-counter, vitamins, and supplements) are prohibited when mailed to individuals for human or animal use. This prohibition does not apply when medicines are sent as official mail only between specifically designated agencies such as pharmaceutical distributors, hospitals, clinics, and pharmacies.

E1. Medicines or vaccines not conforming to French laws are prohibited.

E2. Any matter depicting nude or seminude persons, pornographic or sexual items, or nonauthorized political materials is prohibited. Although religious materials contrary to the Islamic faith are prohibited in bulk quantities, items for the personal use of the addressee are permissible.

E3. Radio transceivers, cordless telephones, global positioning systems, scanners, base stations, and handheld transmitters are prohibited.

F. Firearms of any type are prohibited in all classes of mail. See definitions of firearms in PUB 52, Sec. 431. This restriction does not apply to firearms mailed to or by official U.S. government agencies. The restriction for mail to this APO/FPO/DPO ZIP Code does not apply to firearms mailed from this APO/FPO/DPO ZIP Code, provided ATF and USPS regulations are met. Antique firearms are a separate category defined in PUB 52, Sec. 431.3 and ATF regulations; they do not require an ATF form.

F1. Privately owned weapons addressed to an individual are prohibited in any class of mail.

F2. Importation of firearms is restricted to one shotgun and one single shot .22 caliber rifle per individual.

G. Only letters, flats, and Periodicals are authorized. Parcels of any class are prohibited.

H. Meats, including preserved meats, whether hermetically sealed or not, are prohibited.

H1. Pork or pork by-products are prohibited.

I. Mail of all classes must fit in a mail sack. Mail may not exceed the following dimensions:

- Maximum length 20 inches.
- Maximum width 12 inches.
- Maximum height 12 inches.

The maximum length and girth combined may not exceed 68 inches.

This restriction does not apply to registered mail and official government mail marked MOM.

I1. This restriction does not apply to registered mail.

I2. This restriction does not apply to official government mail marked MOM.

I3. Mail may not exceed the following dimensions:

- Maximum length 27 inches.
- Maximum width 14 inches.
- Maximum height 14 inches.

J. Parcels may not exceed 108 inches in length and girth combined.

K. Mail that includes in the address the words, "Dependent Mail Section," may consist only of letter mail, newspapers, magazines, and books. No parcel of any class containing any other matter may be mailed to the Dependent Mail section. This restriction does not apply if the address does not include the words "Dependent Mail Section."

L. All official mail is prohibited.

M. Fruits, vegetables, animals, and living plants are prohibited.

N. Registered mail is prohibited.

O. Delivery status information for Extra Services is not available on USPS.com.

P. APO is used for the receipt and dispatch of official mail only.

Q. Mail may not exceed 66 pounds, and size is limited to 42 inches maximum length and 72 inches maximum length and girth combined.

R. All alcoholic beverages, including those mailable under PUB 52, Sec. 421, are prohibited.

R1. Materials used in the production of alcoholic beverages (i.e., distilling material, hops, malts, yeast, etc.) are prohibited.

S. Mail of all classes must fit in a mail sack. Mail may not exceed the following dimensions and weight:

- Maximum length 12 inches.
- Maximum width 12 inches.
- Maximum height 5 1/2 inches.
- Maximum weight 25 pounds.

The maximum length and girth combined may not exceed 47 inches.

T. Mailings of case lots of food and supplemental household shipments must be approved by the sender's parent agency prior to mailing.

U. Parcels must weigh less than 16 ounces when addressed to Box R. This restriction does not apply to mail endorsed "Free Matter for the Blind or Handicapped."

U1. Mail is limited to First-Class Mail weighing 13 ounces or less when addressed to Box R. This restriction does not apply to mail endorsed "Free Matter for the Blind or Handicapped." Videotapes are prohibited when addressed to Box R, regardless of weight.

U2. Mail is limited to First-Class Mail letters only when addressed to Box R.

U3. Mail is limited to First-Class Mail correspondence (including voice and video cassettes), newspapers, magazines, photographs, not exceeding 16 ounces, when addressed to Box R.

U4. Mail addressed to Box C is limited to 2 pounds, regardless of class.

V. Priority Mail Express Military Service (PMEMS) not available from any origin.

V1. USPS Tracking is not available.

W. Meat products, such as dried beef, salami, and sausage, may be mailed, provided they remain in their original, hermetically sealed packages and bear USDA certification. Other meats, bones, skin, hair, feathers, horns or hoofs of hoofed animals, wool samples, tobacco leaves, including chewing and pipe tobacco, snuff, cigars, and cigarettes, or obscene material, including obscene drawings, photographs, films, and carvings, are prohibited. Exception: 200 grams of tobacco per parcel are permitted duty free.

X. Personal mail is limited to First-Class Mail items (to include audio cassettes and voice tapes) weighing 13 ounces or less. This limitation does not apply to official mail.

Y. Mail is limited to First-Class and Priority Mail items only. All Periodicals, Standard Mail items, and Package Services items (including SAM and PAL) are not authorized. This restriction also applies to official mail.

Z. No outside pieces (OSPs).

Z1. The following restriction is applicable only to International Service Centers (ISC)/Exchange Offices. An Anti-Pilferage Seal (Item No O817E or O818A) is required on all pouches and sacks.

Freely Associated States (FAS) Restrictions

Effective March 19, 2015, the mailing restrictions for Freely Associated States will be listed in the Pull-Out section of the *Postal Bulletin* and updated periodically.

Freely Associated States

Mail addressed to freely associated states is subject to certain conditions or restrictions of mailing regarding content, preparation, and handling. The FAS table below outlines these conditions as listed by each affected FAS ZIP Code™ through the use of footnoted mailing restrictions codes (see the [Restrictions](#) following the table). For additional information on available extra services for FAS destinations, see *Mailing Standards of the United States Postal Service, Domestic Mail Manual (DMM®)*, part 503.

Acceptance clerks should use the table with the POS ONE terminal to determine which FAS ZIP Codes are active and which conditions of mailing apply. Inquiries may be sent to Randall Sobol at randall.f.sobol@usps.gov.

FAS Restrictions Table

FAS Table	See Restrictions
96939	A, B
96940	A, B
96941	A, B
96942	A, B
96943	A, B

FAS Table	See Restrictions
96944	A, B
96960	A, B
96970	A, B
Marshall Islands	C
Federated States of Micronesia	C

RESTRICTIONS LEGEND

PS Form 2976, *Customs* — CN 22 (Old C 1) and *Sender's Declaration* (green label)

PS Form 2976-A, *Customs Declaration and Dispatch Note*

FAS = Freely Associated State

- A. Bank currency (coin and paper) is prohibited.
- B. Signature Confirmation, Signature Confirmation Restricted Delivery, Adult Signature Requested, Adult Signature Restricted Delivery, Certified Mail Adult Signature Required, and Certified Mail Adult Signature Restricted Delivery not available.
- C. COD is prohibited.

— *Asia-Pacific Relations,
Global Business, 7-21-16*

Thrift Savings Plan Fact Sheet

ANNUAL RETURNS	G Fund	F Fund	U.S. Aggregate Index	C Fund	S&P 500 Stock Index	S * Fund	Dow Jones U.S. Completion TSM Index	I * Fund	EAFE Stock Index
1995	7.03	18.31	18.47	37.41	37.58	—	33.48	—	11.27
1996	6.76	3.66	3.63	22.85	22.96	18.52	17.18	6.27	6.14
1997	6.77	9.60	9.65	33.17	33.36	26.61	25.69	1.46	1.55
1998	5.74	8.70	8.69	28.44	28.58	7.51	8.63	20.46	20.09
1999	5.99	-0.85	-0.82	20.95	21.04	32.70	35.49	26.81	26.72
2000	6.42	11.67	11.63	-9.14	-9.10	-8.76	-15.77	-14.11	-14.17
2001	5.39	8.61	8.44	-11.94	-11.89	-9.04*	-2.52*	-21.94*	-14.88*
2002	5.00	10.27	10.26	-22.05	-22.10	-18.14	-17.80	-15.98	-15.94
2003	4.11	4.11	4.10	28.54	28.69	42.92	43.84	37.94	38.59
2004	4.30	4.30	4.34	10.82	10.88	18.03	18.10	20.00	20.25
2005	4.49	2.40	2.43	4.96	4.91	10.45	10.03	13.63	13.54
2006	4.93	4.40	4.33	15.79	15.79	15.30	15.28	26.32	26.34
2007	4.87	7.09	6.97	5.54	5.49	5.49	5.39	11.43	11.17
2008	3.75	5.45	5.24	-36.99	-37.00	-38.32	-39.03	-42.43	-43.38
2009	2.97	5.99	5.93	26.68	26.46	34.85	37.43	30.04	31.78
2010	2.81	6.71	6.54	15.06	15.06	29.06	28.62	7.94	7.75
2011	2.45	7.89	7.84	2.11	2.11	-3.38	-3.76	-11.81	-12.14
2012	1.47	4.29	4.22	16.07	16.00	18.57	17.89	18.62	17.32
2013	1.89	-1.68	-2.02	32.45	32.39	38.35	38.05	22.13	22.78
2014	2.31	6.73	5.97	13.78	13.69	7.80	7.63	-5.27	-4.90
2015	2.04	0.91	0.55	1.46	1.38	-2.92	-3.42	-0.51	-0.81

*Rates of return for May (inception of S and I Funds) through December 2001.

MONTHLY RETURNS	G Fund	F Fund	U.S. Aggregate Index	C Fund	S&P 500 Stock Index	S * Fund	Dow Jones U.S. Completion TSM Index	I * Fund	EAFE Stock Index
2015									
July	0.19	0.74	0.70	2.10	2.10	-0.12	-0.12	2.08	2.08
Aug	0.18	-0.11	-0.14	-6.03	-6.03	-5.80	-5.89	-7.36	-7.36
Sept	0.18	0.75	0.68	-2.47	-2.47	-4.80	-4.84	-5.02	-5.08
Oct	0.17	0.02	0.02	8.45	8.44	5.61	5.50	7.07	7.82
Nov	0.17	-0.24	-0.26	0.31	0.30	1.75	1.66	-0.86	-1.56
Dec	0.18	-0.30	-0.32	-1.57	-1.58	-3.91	-3.91	-2.03	-1.35
2016									
Jan	0.19	1.49	1.38	-4.96	-4.96	-8.72	-8.84	-5.62	-7.25
Feb	0.15	0.68	0.71	-0.12	-0.13	0.50	0.45	-2.82	-1.83
March	0.15	0.93	0.92	6.79	6.78	8.24	8.18	6.59	6.51
April	0.14	0.41	0.38	0.39	0.39	1.73	1.68	1.89	2.90
May	0.15	0.08	0.03	1.80	1.80	1.81	1.78	0.27	-0.91
June	0.15	1.80	1.80	0.26	0.26	-0.13	-0.15	-3.33	-3.36
LAST 12 MONTHS	2.02	6.41	6.00	4.07	3.99	-5.00	-5.63	-9.81	-10.16

The G Fund is managed internally by the Federal Retirement Thrift Investment Board. Assets of the F, C, S, and I Funds are managed externally. The Board currently has contracts with BlackRock Institutional Trust Company, N.A., to manage the F, C, S, and I Fund assets. The F, C, S, and I Funds invest in commingled trust funds, in which the assets of tax-deferred employee benefit plans are combined and invested together. The F, C, S, and I Funds and the BlackRock funds are passively managed index funds.

Future performance of the funds will vary and may be significantly different from the returns shown above. See the *Summary of the Thrift Savings Plan* for detailed information about the funds and their investment risks. The monthly returns of the TSP Funds represent net earnings for the month after deduction of accrued administrative expenses and, except for the G Fund, after deduction of trading costs and accrued investment management fees as well. The returns for the four indexes shown do not include any of these deductions.

* Implemented May 2001.

See next page for L Funds.

L Funds

Annual Returns	L Income	L 2020	L 2030	L 2040	L 2050
2006	7.59	13.72	15.00	16.53	
2007	5.56	6.87	7.14	7.36	
2008	-5.09	-22.77	-27.50	-31.53	
2009	8.57	19.14	22.48	25.19	
2010	5.74	10.59	12.48	13.89	
2011	2.23	0.41	-0.31	-0.96	
2012	4.77	10.42	12.61	14.27	15.85
2013	6.97	16.03	20.16	23.23	26.20
2014	3.77	5.06	5.74	6.22	6.37
2015	1.85	1.35	1.04	0.73	0.45
Monthly Returns	L Income	L 2020	L 2030	L 2040	L 2050
2015					
July	0.55	1.03	1.22	1.33	1.46
Aug	-1.10	-3.06	-4.04	-4.69	-5.37
Sept	-0.51	-1.67	-2.26	-2.67	-3.09
Oct	1.64	3.72	4.88	5.58	6.31
Nov	0.17	0.17	0.20	0.24	0.24
Dec	-0.28	-0.92	-1.32	-1.61	-1.85
2016					
Jan	-0.91	-2.55	-3.58	-4.21	-4.86
Feb	0.01	-0.24	-0.41	-0.51	-0.63
Mar	1.53	3.35	4.54	5.25	5.94
Apr	0.34	0.58	0.75	0.85	0.95
May	0.38	0.69	0.91	1.03	1.15
June	0.11	-0.12	-0.31	-0.43	-0.58
LAST 12 MONTHS	1.92	0.74	0.16	-0.39	-1.05

Pictorial Postmarks Announcement (continued)

The following pictorial postmarks have been extended for 30 days:



June 2, 2016

United States Postal Service

Bar Harbor, ME Station National Parks
Cancellation Services
8300 Northeast Underground Drive, Pillar 210
Kansas City, MO 64144-9998

Gulf Breeze, FL Station National Parks
Cancellation Services
8300 Northeast Underground Drive, Pillar 210
Kansas City, MO 64144-9998

Makawao, HI Station National Parks
Cancellation Services
8300 Northeast Underground Drive, Pillar 210
Kansas City, MO 64144-9998

San Francisco, CA Station National Parks
Cancellation Services
8300 Northeast Underground Drive, Pillar 210
Kansas City, MO 64144-9998

Berlin, MD Station National Parks
Cancellation Services
8300 Northeast Underground Drive, Pillar 210
Kansas City, MO 64144-9998

Gustavus, AK Station National Parks
Cancellation Services
8300 Northeast Underground Drive, Pillar 210
Kansas City, MO 64144-9998

Medora, ND Station National Parks
Cancellation Services
8300 Northeast Underground Drive, Pillar 210
Kansas City, MO 64144-9998

Washington, DC Station National Parks
Cancellation Services
8300 Northeast Underground Drive, Pillar 210
Kansas City, MO 64144-9998

Carlsbad, NM Station National Parks
Cancellation Services
8300 Northeast Underground Drive, Pillar 210
Kansas City, MO 64144-9998

Homestead, FL Station National Parks
Cancellation Services
8300 Northeast Underground Drive, Pillar 210
Kansas City, MO 64144-9998

Paradise, WA Station National Parks
Cancellation Services
8300 Northeast Underground Drive, Pillar 210
Kansas City, MO 64144-9998

Woodstock, VT Station National Parks
Cancellation Services
8300 Northeast Underground Drive, Pillar 210
Kansas City, MO 64144-9998

Grand Canyon, AZ Station National Parks
Cancellation Services
8300 Northeast Underground Drive, Pillar 210
Kansas City, MO 64144-9998

Los Alamos, NM Station National Parks
Cancellation Services
8300 Northeast Underground Drive, Pillar 210
Kansas City, MO 64144-9998

Salt Lake City, UT Station National Parks
Cancellation Services
8300 Northeast Underground Drive, Pillar 210
Kansas City, MO 64144-9998

Yellowstone National Park, WY Station National Parks
Cancellation Services
8300 Northeast Underground Drive, Pillar 210
Kansas City, MO 64144-9998



July 21, 2016

Latrobe Public Relations Committee
Banana Split Station
Postmaster
PO Box 9998
Latrobe, PA 15650-9998



July 22-29, 2016

United States Postal Service
Neshoba County Fair Station
Postmaster
1 Government Street
Philadelphia, MS 39350-9998



July 22, 2016

Town of Moscow
Moscow Bicentennial Station
Postmaster
301 Main Street
Bingham, ME 04920-9998



July 23, 2016

Dodransbicentennial Commission
Oney and Richard Company, Illinois
Dodransbicentennial Station
Postmaster
330 South Whittle Avenue
Oney, IL 62450-9998



Georgetown
300th Anniversary Station
July 23, 2016
**GEORGETOWN
MAINE**
04548

July 23, 2016

*Town of Georgetown, ME
(Georgetown Tricentennial
Committee)*

Georgetown 300th
Anniversary Station
Postmaster
765 Five Islands Road
Georgetown, ME
04548-9998



July 29, 2016

*United Retailers of Puerto
Rico*

Centro Unido Station
c/o Puerto Rico Stamps
Office
585 Avenue FD Roosevelt,
Suite 223
San Juan, PR 00936-9681



**Greater Reno Stamp &
Cover Show Station**
Reno, NV 89501
July 23, 2016

*Preserve Natural and
Cultural Resources*

July 23, 2016

*Nevada Stamp Study
Society/Nevada
Department of Wildlife*

Greater Reno Stamp and
Cover Show Station
Postmaster
2000 Vassar Street
Reno, NV 89510-9998



July 30, 2016

Town of Guilford
Guilford, ME Station
Postmaster
PO Box 9998
Guilford, ME 04443-9998



July 24, 2016

*National Baseball Hall of
Fame*

Induction Day Station
Postmaster
40 Main Street
Cooperstown, NY
13326-9998



July 30, 2016

Niverville Fire Department
Station #1
Postmaster
845 Main Street
Niverville, NY 12130-9998



LAKE TWP. JUNE 29, 1816
BICENTENNIAL STATION
JULY 27 2016
UNIONTOWN OH 44685

July 27, 2016

*Lake Township Ohio
Bicentennial Committee*

Bicentennial Station
Postmaster
PO Box 1183
Hartville, OH 44632-9998



Maj Gen.
George H. Thomas
Bicentennial
Station
July 30, 2016
Troy, NY 12180

July 30, 2016

*Capital District Civil War
Round Table*

Major General George H.
Thomas Bicentennial
Station
Postmaster
400 Broadway
Troy, NY 12180-9998



July 28, 2016

*Consulate of Peru (in Puerto
Rico)*

195 Aniversario
Independencia del Peru
Station
585 Avenue FD Roosevelt,
Suite 103
San Juan, PR 00936-9681

Town of Weld
Bicentennial Station
July 30, 2016
Weld, ME 04285



July 30, 2016

Weld Bicentennial Station
Town of Weld Bicentennial
Station
Postmaster
21 Mill Street
Weld, ME 04285-9998

July 30, 2016



Water and Woods Field Service Council, Michigan Crossroads Council, Boy Scouts of America
 Northwoods Station
 Postmaster
 PO Box 9998
 Rose City, MI 48654-9998



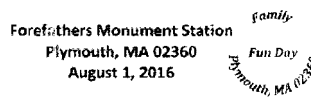
July 31, 2016

Cleveland Civil War Roundtable
 George H. Thomas Station
 Postmaster
 207 West 10th Street
 Chickamauga, GA 30707-9998

July 30, 2016



Strait Stamp Society
 Strait Stamp Show Station
 Postmaster
 240 South Sunnyside Avenue
 Sequim, WA 98382-9998



August 1, 2016

Plymouth 400th Anniversary Committee
 Forefathers Monument Station
 Postmaster
 100 Long Pond Road
 Plymouth, MA 02360-9998

July 31, 2016



Cleveland Civil War Roundtable
 George H. Thomas Station
 Postmaster
 29174 South Main Street
 Newsoms, VA 23874-9998

— Stamp Services,
 Marketing and Sales, 7-21-16

How to Order the First-Day-of-Issue Digital Color or Traditional Postmarks

Customers have 60 days to obtain the first-day-of-issue postmarks by mail. They may purchase new stamps at their local Post Office™, by telephone at 800-STAMP-24, or at The Postal Store® website at www.usps.com/shop.

Traditional Postmarks

Customers should affix the stamps to envelopes of their choice, address them to themselves or others, or provide a self-addressed return envelope with sufficient postage large enough to accommodate the canceled item. Mail the request to the corresponding city of issuance. There is no charge for the first 50 postmarks. There is a 5-cent charge for each additional postmark over 50. Customers should submit a check, money order, or credit card for payment. After applying the first-day-of-issue postmark, the Postal Service™ will return the envelopes to the customer by U.S. Mail.

All postmark requests should go to the first-day-of-issue city. The first-day-of-issue city Post Office will then forward in bulk all postmark requests to Cancellation Ser-

vices, Stamp Fulfillment Services, PO Box 449992, Kansas City, MO 64144-9992 by respective Post Offices.

Digital Color Postmarks

Only select stamp issues offer a digital color postmark. Customers may submit #6 or #10 envelopes constructed of paper rated as “laser safe.” The Postal Service recommends envelopes of 80-pound Accent Opaque, acid-free, 9/16" side seams with no glue on the flap. The maximum size of all digital color postmarks is 2" high x 4" long. Allow sufficient space on the envelope to accommodate the postmark. Do not use self-adhesive labels for addresses on the envelope. Two test envelopes must be included. There is a minimum of 10 envelopes at 50 cents per postmark required at the time of servicing. Customers should submit a check, money order, or credit card for payment.

The Postal Service reserves the right to not accept hand-painted and other cachet envelopes that are not compatible with our digital color postmark equipment. The Postal Service also reserves the right to substitute traditional black rubber postmarks if use of nonspecified enve-

lopes results in poor image quality or damage to equipment.

Customers should affix the stamps to the envelopes and address them to themselves or others for return through the mail. Or, they may include an additional self-addressed return envelope, large enough to accommodate their canceled items, with sufficient postage affixed for return of their postmarked items. Mail the request for a first-day-of-

issue digital color postmark to the corresponding city of issuance. Post Offices will then forward all customer requests for digital color postmarks to Cancellation Services, Stamp Fulfillment Services, PO Box 449992, Kansas City, MO 64144-9992.

After applying the first-day-of-issue postmark, the Postal Service will return the envelopes to the customer by U.S. Mail.



Digital Color Pictorial

World Stamp Show-NY 2016 Folio

Special Events Coordinator
380 West 33rd Street
New York, NY 10199-9998

July 28, 2016



Black and White Pictorial

World Stamp Show-NY 2016 Folio

Special Events Coordinator
380 West 33rd Street
New York, NY 10199-9998

July 28, 2016

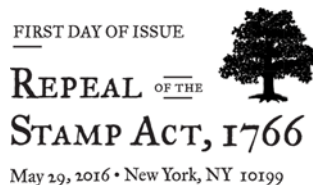


Digital Color Pictorial

Repeal of the Stamp Act Stamp

Special Events Coordinator
380 West 33rd Street
New York, NY 10199-9998

July 29, 2016



Black and White Pictorial

Repeal of the Stamp Act Stamp

Special Events Coordinator
380 West 33rd Street
New York, NY 10199-9998

July 29, 2016

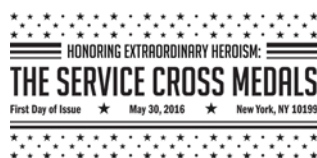


Digital Color Pictorial

Honoring Extraordinary Heroism: The Service Cross Medals Stamps

Special Events Coordinator
380 West 33rd Street
New York, NY 10199-9998

July 30, 2016



Black and White Pictorial

Honoring Extraordinary Heroism: The Service Cross Medals Stamps

Special Events Coordinator
380 West 33rd Street
New York, NY 10199-9998

July 30, 2016



Digital Color Pictorial

Pluto – Explored! Stamps
 Special Events Coordinator
 380 West 33rd Street
 New York, NY 10199-9998

July 31, 2016



Black and White Pictorial

Pluto – Explored! Stamps
 Special Events Coordinator
 380 West 33rd Street
 New York, NY 10199-9998

July 31, 2016



Digital Color Pictorial

Views of Our Planets Stamps
 Special Events Coordinator
 380 West 33rd Street
 New York, NY 10199-9998

July 31, 2016



Black and White Pictorial

Views of Our Planets Stamps
 Special Events Coordinator
 380 West 33rd Street
 New York, NY 10199-9998

July 31, 2016



Digital Color Pictorial

Classics Forever Stamps
 Special Events Coordinator
 380 West 33rd Street
 New York, NY 10199-9998

August 1, 2016



Black and White Pictorial

Classics Forever Stamps
 Special Events Coordinator
 380 West 33rd Street
 New York, NY 10199-9998

August 1, 2016



Digital Color Pictorial

National Parks Stamps
 Special Events Coordinator
 380 West 33rd Street
 New York, NY 10199-9998

August 2, 2016



Black and White Pictorial

National Parks Stamps
Special Events Coordinator
380 West 33rd Street
New York, NY 10199-9998

August 2, 2016



Digital Color Pictorial

Colorful Celebrations Stamps
Special Events Coordinator
380 West 33rd Street
New York, NY 10199-9998

August 3, 2016



Black and White Pictorial

Colorful Celebrations Stamps
Special Events Coordinator
380 West 33rd Street
New York, NY 10199-9998

August 3, 2016



Digital Color Pictorial

Indiana Statehood Stamp
Postmaster
125 West South Street
Indianapolis, IN 46206-9998

August 7, 2016



Digital Color Pictorial

EID Greetings Stamp
3800 Greenfield Road
Dearborn, MI 48120-9998

August 10, 2016



Digital Color Pictorial

Soda Fountain Favorites Stamps
Metro Station Post Office
2245 Rosa L. Parks Boulevard
Nashville, TN 37228-9998

August 30, 2016



Digital Color Pictorial

Jaime Escalante Stamp
Special Events
PO Box 92282
Washington, DC 20090-2282

September 13, 2016



Digital Color Pictorial

Pickup Trucks Stamps
Postmaster
5640 East Taft Road
Syracuse, NY 13220-9810

September 15, 2016



Henry James Stamp
 Special Events
 22403 Randolph Drive
 Dulles, VA 20103-9998

October 1, 2016

Digital Color Pictorial



Pets Stamps
 United States Postal Service
 Attn: Marilyn Wassell
 1001 East Sunset Road, #2009
 Las Vegas, NV 89199-9998

October 2, 2016

Digital Color Pictorial



Songbirds in Snow Stamps
 United States Postal Service
 Attn: Ruth Traynor
 PO Box 2089
 Portland, OR 97208-2089

October 4, 2016

Digital Color Pictorial

— Stamp Services, Marketing and Sales, 7-21-16

USPS® Issues
Pluto—Explored!
Forever® Stamp Souvenir Sheet



NASA/The Johns Hopkins
University Applied Physics
Laboratory/Southwest
Research Institute.

On Sale Nationwide: May 31, 2016.

Postal Bulletin 2016 Semi-Annual Index

January–July 2016

PB 22432–22445

The following articles are updated regularly in the *Postal Bulletin* and are not listed in the index:

- Counterfeit Canadian Money Order Forms.
- Domestic Orders.
- Freely Associated States (FAS) Restrictions
- How to Order the First-Day-of-Issue Digital Color or Traditional Postmarks.
- Invalid USPS Corporate Account Numbers.
- Mail Alert.
- Missing Children Posters.
- Missing, Lost, or Stolen Canadian Money Order Forms.
- Missing, Lost, or Stolen U.S. Money Order Forms.
- Overseas Military/Diplomatic Mail.
- Pictorial Postmarks Announcement.
- Post Office Changes.
- Stamps by Mail — Brochure Ordering Information.
- Thrift Savings Plan Fact Sheet.
- Toll-Free Number Available to Verify Canadian Money Orders.
- Verifying U.S. Postal Service Money Orders.
- What's New on USPS.com?
- Withholding of Mail Orders.

- C -

COMMUNICATIONS PLAN

2016 Election Mail/Political Mail Communications Plan	22437 (03-17-16)
2016 Election Mail/Political Mail Communications Plan	22443 (06-09-16)

CONSUMER/CUSTOMER RELATIONS

See also **Publicity Kits**.

Honoring Heroes: Thelma Johnson, Customer Services Manager	22444 (06-23-16)
Mailbox Improvement Week, May 15–21, 2016 (<i>Field Information Kit</i>)	22441 (05-12-16)
National Consumer Protection Week is March 6-12, 2016 (<i>Field Information Kit</i>)	22435 (02-18-16)
National Dog Bite Prevention Week, May 15-21, 2016 (<i>Field Information Kit</i>)	22440 (04-28-16)
New Forms Put Certificate of Mailing in Business Customers' Corner	22438 (03-31-16)
Pets Stamps (<i>Publicity Kit</i>)	22445 (07-07-16)
Pickup Trucks Stamps (<i>Publicity Kit</i>)	22445 (07-07-16)
Views of Our Planets and Pluto—Explored! Stamps (<i>Publicity Kit</i>)	22442 (05-26-16)

- D -

DELIVERY

Delivery Services (<i>POM Revision</i>)	22445 (07-07-16)
Mailbox Improvement Week, May 15–21, 2016 (<i>Field Information Kit</i>)	22441 (05-12-16)
Mail Receptacles (<i>POM Revision</i>)	22445 (07-07-16)
Package Intercept Plays Defense	22434 (02-04-16)
Package Intercept: There When and Where You Need It	22442 (05-26-16)
Revised Handbook M-41, Actual Delivery	22445 (07-07-16)
Up and Down the Block: USPS Customizes Delivery	22436 (03-03-16)
When Boxes and Envelopes Have Wings	22437 (03-17-16)

DIRECTIVES

See also **Administrative Support Manual, Domestic Mail Manual, Employee and Labor Relations Manual, Handbooks, International Mail Manual, Management Instructions, Posters, and Publications.**

DIRECTIVES AND FORMS UPDATE

Directives and Forms Update (<i>Publication 223 Revision</i>)	22435 (02-18-16)
---	------------------

DIVERSITY

Equal Employment Opportunity Policy Statement	22436 (03-03-16)
Postal Service Policy on Workplace Harassment	22436 (03-03-16)

DOMESTIC MAIL MANUAL

See also **Labeling Lists**.

Alternate Postage (<i>DMM Revision</i>)	22443 (06-09-16)
Business Reply Mail (<i>DMM Clarification</i>)	22435 (02-18-16)
Business Reply Mail — Mailer ID Based Intelligent Mail Barcode (<i>DMM Revision</i>)	22442 (05-26-16)
Destination Network Distribution Center Price Eligibility (<i>DMM Revision</i>)	22443 (06-09-16)
Extra Service Refunds (<i>DMM Revision</i>)	22442 (05-26-16)
Full-Service Automation Option (<i>DMM Revision</i>)	22442 (05-26-16)
Full-Service Automation Option — Annual Permit Fee Renewal (<i>DMM Revision</i>)	22443 (06-09-16)
Mailer Endorsements for Parcel Select Lightweight Pieces (<i>DMM Revision</i>)	22440 (04-28-16)
Military Mail Addressing and Restriction Codes (<i>DMM Revision</i>)	22432 (01-07-16)
Military Mail Addressing and Restriction Codes — Update (<i>DMM Revision</i>)	22437 (03-17-16)
Minimum Paper Basic Weight Standards (<i>DMM Revision</i>)	22440 (04-28-16)
Missing Mail (<i>DMM Revision</i>)	22441 (05-12-16)
Optional Combined Parcel Mailings (<i>DMM Revision</i>)	22442 (05-26-16)
Parcel Select (<i>DMM Revision</i>)	22437 (03-17-16)
Periodicals Bundle and Container Charges in Combined Mailings (<i>DMM Correction</i>)	22434 (02-04-16)
Periodicals Bundle and Container Charges in Combined Mailings (<i>DMM Revision</i>)	22432 (01-07-16)
Periodicals Carrier Route Pallets (<i>DMM Revision</i>)	22437 (03-17-16)
Postage Stamp Denominations (<i>DMM Revision</i>)	22435 (02-18-16)
Priority Mail Regional Rate Box Pricing (<i>DMM Revision</i>)	22435 (02-18-16)
Proper Use of Flat Rate Containers (<i>DMM Notice</i>)	22435 (02-18-16)
Return Receipt for Merchandise (<i>DMM Revision</i>)	22440 (04-28-16)

- E -**EARTH DAY**

Go Green — Celebrate Earth Day by Recycling	22438 (03-31-16)
---	------------------

ELECTION MAIL

2016 Election Mail/Political Mail Communications Plan	22437 (03-17-16)
2016 Election Mail/Political Mail Communications Plan	22443 (06-09-16)

EMPLOYEE AND LABOR RELATIONS MANUAL

Non-Postal Training Guidelines and Continued Service Agreement (<i>ELM Revision</i>)	22441 (05-12-16)
Time Limitations (<i>ELM Revision</i>)	22443 (06-09-16)

EMPLOYEES

See also **Employee and Labor Relations Manual, RIF Competitive Areas, Safety and Health, and Voice of the Employee.**

General

2015 Tax Information: Form 1095-C Employer-Provided Health Insurance Offer and Coverage	22432 (01-07-16)
2015 Tax Information: Form W-2 Wage and Tax Statement; Form 1099	22432 (01-07-16)
Amazon.com Contact Information for USPS Employees	22433 (01-21-16)
Equal Employment Opportunity Policy Statement	22436 (03-03-16)
Form W-4 Completion for Employees Claiming Exempt Status for 2016	22432 (01-07-16)
Postal Service Policy on Workplace Harassment	22436 (03-03-16)
PS Form 8190 Revision: USPS-NALC Joint Step A Grievance Form	22437 (03-17-16)
Revised Forms and New Management Instruction: Update of Back Pay Policy	22433 (01-21-16)
Revised Handbook F-21, Leave Hours	22434 (02-04-16)
Revised Handbook F-101, Update to AdjustPay Policy	22444 (06-23-16)
RIF Competitive Areas for the Postal Service	22444 (06-23-16)
Special Enrollment for Self Plus One in February 2016	22434 (02-04-16)
Statutory Requirement to Review and Post OSHA Form 300A Summary for Calendar Year 2015	22433 (01-21-16)
The First Step to Better Health	22435 (02-18-16)
Winter Safety	22433 (01-21-16)

ENVIRONMENT

See **Sustainability**.

EQUIPMENT MAINTENANCE ALLOWANCE SCHEDULE

Equipment Maintenance Allowance Schedule for Rural Routes	22432 (01-07-16)
Equipment Maintenance Allowance Schedule for Rural Routes	22438 (03-31-16)
Equipment Maintenance Allowance Schedule for Rural Routes	22445 (07-07-16)

- F -**FIELD INFORMATION KITS**

Mailbox Improvement Week, May 15–21, 2016 (<i>Field Information Kit</i>)	22441 (05-12-16)
National Consumer Protection Week is March 6-12, 2016 (<i>Field Information Kit</i>)	22435 (02-18-16)
National Dog Bite Prevention Week, May 15-21, 2016 (<i>Field Information Kit</i>)	22440 (04-28-16)

FINANCE

See also **Equipment Maintenance Allowance Schedule, Forms, Handbooks, International Reply Coupons, and Pay Dates and Leave Year.**

2015 Tax Information: Form 1095-C Employer-Provided Health Insurance Offer and Coverage	22432 (01-07-16)
2015 Tax Information: Form W-2 Wage and Tax Statement; Form 1099	22432 (01-07-16)
Forever Stamps/Nondenominated Stamps Stock Item Revaluation Instructions	22438 (03-31-16)
Forever Stamps Price Change Instructions for Stamps by Mail Orders	22438 (03-31-16)
Form W-4 Completion for Employees Claiming Exempt Status for 2016	22432 (01-07-16)
Instructions for Payments Postmarked Before the April 10, 2016 Price Change	22438 (03-31-16)
Local Refunds Increased to \$1,000	22442 (05-26-16)
Nondenominated Price Change Instructions for Stamps by Mail Orders	22438 (03-31-16)
Revised Forms and New Management Instruction: Update of Back Pay Policy	22433 (01-21-16)
Revised Handbook F-101, Seized Cash Deposits	22444 (06-23-16)
Revised Handbook F-101, Update to AdjustPay Policy	22444 (06-23-16)

FORMS

Accountable Mail Form Redesign Offers More Room Between the Lines	22438 (03-31-16)
New Forms Put Certificate of Mailing in Business Customers' Corner	22438 (03-31-16)
PS Form 571 Revision: Policy Change for Internal Postal Service Investigations	22437 (03-17-16)
PS Form 2976-ES: Small Customs Declaration Pouch	22445 (07-07-16)
PS Form 8190 Revision: USPS-NALC Joint Step A Grievance Form	22437 (03-17-16)
Revised Forms and New Management Instruction: Update of Back Pay Policy	22433 (01-21-16)

FRANKED MAIL

Reminder: Franked (Congressional) Mail, Postage Payment, and Detention of Mail Guidelines	22432 (01-07-16)
---	------------------

- H -**HANDBOOKS**

Revised Handbook AS-353, Administrative Support for USPS Health Connect	22438 (03-31-16)
Revised Handbook F-21, Leave Hours	22434 (02-04-16)
Revised Handbook F-101, Seized Cash Deposits	22444 (06-23-16)
Revised Handbook F-101, Update to AdjustPay Policy	22444 (06-23-16)
Revised Handbook M-41, Actual Delivery	22445 (07-07-16)
Revised Handbook PO-603, Data Collection Devices	22433 (01-21-16)

HEROES

Honoring Heroes: Thelma Johnson, Customer Services Manager	22444 (06-23-16)
--	------------------

HUMAN RESOURCES

See **Employees.**

- I -**INFORMATION SECURITY**

Amazon.com Contact Information for USPS Employees	22433 (01-21-16)
Avoid the Bug: Preventing and Spotting Malicious Software Computer Viruses	22435 (02-18-16)
Beware of Ransomware	22444 (06-23-16)
Cybersecurity Lockdown: Keep Your Information and Computer Equipment Safe	22437 (03-17-16)
Don't Get Caught on the Phishing Line	22445 (07-07-16)
Information Security On the Go	22433 (01-21-16)
Information Security Training: CISO Releases CyberSafe at USPS and Payment Card Industry Information Security Courses	22435 (02-18-16)
Keep You and Your Family CyberSafe	22443 (06-09-16)
Reset Your ACE Login Credentials and Create Strong Passwords	22441 (05-12-16)
Stay Secure While Sharing Personal and Postal Service Information Online	22439 (04-14-16)
Store Smart While Backing Up Personal and Postal Service Information Online	22443 (06-09-16)

INTERNATIONAL MAIL

Priority Mail International Parcel Service Planned to Cuba 22441 (05-12-16)

INTERNATIONAL MAIL MANUAL

Global Direct Entry Wholesaler Program (*IMM Revision*) 22436 (03-03-16)
 Individual Country Listing for Cuba (*IMM Revision*) 22434 (02-04-16)
 Individual Country Listing for Japan (*IMM Revision*) 22432 (01-07-16)
 International Postage Refunds (*IMM Revision*) 22442 (05-26-16)
 IPA Service to Japan (*IMM Revision*) 22432 (01-07-16)
 Priority Mail International Flat Rate Envelopes and Small Flat Rate Priced Boxes (*IMM Revision*) 22443 (06-09-16)
 Priority Mail International Parcel Service Established with Cuba (*IMM Revision*) 22442 (05-26-16)
 Priority Mail International Parcels Indemnity (*IMM Revision*) 22435 (02-18-16)

- L -**LABELING LISTS**

Correction: L006 Labeling List 22444 (06-23-16)
 Labeling List Changes 22433 (01-21-16)
 Labeling List Changes 22441 (05-12-16)
 Labeling List Changes 22443 (06-09-16)
 Labeling List Changes 22445 (07-07-16)

LETTERS

Equal Employment Opportunity Policy Statement 22436 (03-03-16)
 Postal Service Policy on Workplace Harassment 22436 (03-03-16)

- M -**MAILBOX IMPROVEMENT WEEK**

Mailbox Improvement Week, May 15–21, 2016 (*Field Information Kit*) 22441 (05-12-16)

MAIL TRANSPORT EQUIPMENT

Mail Transport Equipment: It Moves the Mail 22436 (03-03-16)

MAILING AND SHIPPING

See also **Domestic Mail Manual, International Mail Manual, Labeling Lists, and Mover's Guide.**

Accountable Mail Form Redesign Offers More Room Between the Lines 22438 (03-31-16)
 Dogs Done Digital 22442 (05-26-16)
 First-Class Mail Letter Trays 22444 (06-23-16)
 New Forms Put Certificate of Mailing in Business Customers' Corner 22438 (03-31-16)
 Package Intercept Plays Defense 22434 (02-04-16)
 Package Intercept: There When and Where You Need It 22442 (05-26-16)
 Periodicals Bundle and Container Charges in Combined Mailings (*DMM Correction*) 22434 (02-04-16)
 Periodicals Bundle and Container Charges in Combined Mailings (*DMM Revision*) 22432 (01-07-16)
 Periodicals Carrier Route Pallets (*DMM Revision*) 22437 (03-17-16)
 Premium Forwarding Service Commercial Enrollment Goes Online 22435 (02-18-16)
 Priority Mail Goes Vertical 22439 (04-14-16)
 Reminder: Franked (Congressional) Mail, Postage Payment, and Detention of Mail Guidelines 22432 (01-07-16)
 Return Scans Get New Name 22439 (04-14-16)
 Two Priority Mail Regional Rate Boxes are Back Online 22434 (02-04-16)
 Up and Down the Block: USPS Customizes Delivery 22436 (03-03-16)
 Warning: Heavy Lifting Ahead 22443 (06-09-16)
 When Boxes and Envelopes Have Wings 22437 (03-17-16)

MANAGEMENT INSTRUCTIONS

Management Instruction PO-439-2016-1: ZIP Code Boundary Review Process 22440 (04-28-16)
 Revised Forms and New Management Instruction: Update of Back Pay Policy 22433 (01-21-16)

MARKETING

Announcing the 2016 Mailing Promotions 22432 (01-07-16)
 Irresistible Technology in the 2016 Promotions 22439 (04-14-16)
 Pets Stamps (*Publicity Kit*) 22445 (07-07-16)
 Pickup Trucks Stamps (*Publicity Kit*) 22445 (07-07-16)
 Views of Our Planets and Pluto—Explored! Stamps (*Publicity Kit*) 22442 (05-26-16)

MILITARY MAIL

Military Mail Addressing and Restriction Codes (<i>DMM Revision</i>)	22432 (01-07-16)
Military Mail Addressing and Restriction Codes — Update (<i>DMM Revision</i>)	22437 (03-17-16)

- N -**NATIONAL CONSUMER PROTECTION WEEK**

National Consumer Protection Week is March 6-12, 2016 (<i>Field Information Kit</i>).	22435 (02-18-16)
---	------------------

NATIONAL DOG BITE PREVENTION WEEK

National Dog Bite Prevention Week, May 15-21, 2016 (<i>Field Information Kit</i>)	22440 (04-28-16)
---	------------------

NEW PRODUCTS AND INNOVATION

Announcing the 2016 Mailing Promotions.	22432 (01-07-16)
Dogs Done Digital	22442 (05-26-16)
Package Intercept Plays Defense	22434 (02-04-16)
Package Intercept: There When and Where You Need It	22442 (05-26-16)
Priority Mail Goes Vertical	22439 (04-14-16)
Return Scans Get New Name	22439 (04-14-16)
Two Priority Mail Regional Rate Boxes are Back Online	22434 (02-04-16)
Up and Down the Block: USPS Customizes Delivery	22436 (03-03-16)
When Boxes and Envelopes Have Wings	22437 (03-17-16)

- O -**OFFICE OF THE INSPECTOR GENERAL**

PS Form 571 Revision: Policy Change for Internal Postal Service Investigations.	22437 (03-17-16)
---	------------------

- P -**PASSPORTS**

A U.S. Passport is Your Key to International Travel	22434 (02-04-16)
A U.S. Passport is Your Key to International Travel	22445 (07-07-16)

PERIODICALS

Periodicals Bundle and Container Charges in Combined Mailings (<i>DMM Correction</i>)	22434 (02-04-16)
Periodicals Bundle and Container Charges in Combined Mailings (<i>DMM Revision</i>)	22432 (01-07-16)
Periodicals Carrier Route Pallets (<i>DMM Revision</i>)	22437 (03-17-16)

PERSONNEL

See **Employees**.

PHILATELY**General**

2016 Stamps by Mail Year Round Brochures can be Ordered Now	22436 (03-03-16)
Correction: EID Greetings Stamp	22443 (06-09-16)
Correction: Henry James Stamp	22445 (07-07-16)
Correction: Indiana Statehood Stamp	22443 (06-09-16)
Correction: Sarah Vaughan Stamp	22439 (04-14-16)
Correction: Shirley Temple Stamp	22439 (04-14-16)
Correction: Star Quilts Stamps	22444 (06-23-16)
Correction: USA Nonprofit	22439 (04-14-16)
Correction: Year of the Monkey Stamp	22435 (02-18-16)
Forever Stamps/Nondenominated Stamps Stock Item Revaluation Instructions	22438 (03-31-16)
Postage Stamp Denominations (<i>DMM Revision</i>)	22435 (02-18-16)
Update: Stamp Announcement 16-13: World Stamps Show-NY 2016.	22441 (05-12-16)
Update: Stamp Announcement 16-13: World Stamps Show-NY 2016.	22442 (05-26-16)
Update: Stamp Announcement 16-18: Classics Forever Stamps.	22441 (05-12-16)
World Stamp Show-NY 2016, May 28 through June 4, 2016	22441 (05-12-16)

New Issues

Botanical Art (<i>Stamp Announcement 16-01</i>)	22432 (01-07-16)
Classics Forever (<i>Stamp Announcement 16-18</i>)	22440 (04-28-16)
Colorful Celebrations (<i>Stamp Announcement 16-20</i>)	22440 (04-28-16)
Columbia River Gorge (<i>Stamp Announcement 16-03</i>)	22433 (01-21-16)
EID Greetings (<i>Stamp Announcement 16-22</i>)	22441 (05-12-16)
Grapes (<i>Stamp Announcement 16-08</i>)	22435 (02-18-16)

Henry James (<i>Stamp Announcement 16-28</i>)	22444 (06-23-16)
Honoring Extraordinary Heroism: The Service Cross Medals (<i>Stamp Announcement 16-15</i>)	22440 (04-28-16)
Indiana Statehood (<i>Stamp Announcement 16-21</i>)	22441 (05-12-16)
Jaime Escalante (<i>Stamp Announcement 16-26</i>)	22443 (06-09-16)
La Cueva del Indio (<i>Stamp Announcement 16-02</i>)	22433 (01-21-16)
Migratory Bird Hunting and Conservation (<i>Stamp Announcement 16-24</i>)	22442 (05-26-16)
National Parks (<i>Stamp Announcement 16-19</i>)	22440 (04-28-16)
Pears (<i>Stamp Announcement 16-04</i>)	22433 (01-21-16)
Pets (<i>Stamp Announcement 16-29</i>)	22445 (07-07-16)
Pickup Trucks (<i>Stamp Announcement 16-27</i>)	22443 (06-09-16)
Pluto—Explored! (<i>Stamp Announcement 16-16</i>)	22440 (04-28-16)
Repeal of the Stamp Act (<i>Stamp Announcement 16-14</i>)	22440 (04-28-16)
Richard Allen (<i>Stamp Announcement 16-06</i>)	22433 (01-21-16)
Sarah Vaughan (<i>Stamp Announcement 16-10</i>)	22436 (03-03-16)
Shirley Temple (<i>Stamp Announcement 16-11</i>)	22438 (03-31-16)
Soda Fountain Favorites (<i>Stamp Announcement 16-23</i>)	22442 (05-26-16)
Star Quilts (<i>Stamp Announcement 16-25</i>)	22443 (06-09-16)
The Moon (<i>Stamp Announcement 16-09</i>)	22435 (02-18-16)
U.S. Flag (<i>Stamp Announcement 16-05</i>)	22433 (01-21-16)
USA Nonprofit (<i>Stamp Announcement 16-12</i>)	22438 (03-31-16)
Views of Our Planets (<i>Stamp Announcement 16-17</i>)	22440 (04-28-16)
World Stamp Show NY-2016 (<i>Stamp Announcement 16-13</i>)	22440 (04-28-16)
Year of the Monkey (<i>Stamp Announcement 16-07</i>)	22433 (01-21-16)
Postmarks	
Correction: Pictorial Postmarks	22445 (07-07-16)
Remaining on Sale, Removed From Sale, and Approved for Sale	
Forever Stamps/Nondenominated Stamps Stock Item Revaluation Instructions	22438 (03-31-16)
Stamp Stock Items Withdrawn From Regular Sale and From Sale at Philatelic Centers	22436 (03-03-16)
Stamp Stock Items Withdrawn From Regular Sale and From Sale at Philatelic Centers	22443 (06-09-16)
POSTAL OPERATIONS MANUAL	
Delivery Services (<i>POM Revision</i>)	22445 (07-07-16)
Mail Receptacles (<i>POM Revision</i>)	22445 (07-07-16)
POSTERS	
<i>See also POW-MIA Flags.</i>	
POSTMASTER GENERAL	
Equal Employment Opportunity Policy Statement	22436 (03-03-16)
Postal Service Policy on Workplace Harassment	22436 (03-03-16)
PRICING	
Destination Network Distribution Center Price Eligibility (<i>DMM Revision</i>)	22443 (06-09-16)
Forever Stamps Price Change Instructions for Stamps by Mail Orders	22438 (03-31-16)
Instructions for Payments Postmarked Before the April 10, 2016 Price Change	22438 (03-31-16)
Nondenominated Price Change Instructions for Stamps by Mail Orders	22438 (03-31-16)
PROMOTIONS	
Announcing the 2016 Mailing Promotions	22432 (01-07-16)
Irresistible Technology in the 2016 Promotions	22439 (04-14-16)
PUBLICATIONS	
<i>See also Directives and Forms Update and Mover's Guide.</i>	
Changes to Post Office Box Service and Caller Service Fee Groups (<i>Publication 431 Revision</i>)	22433 (01-21-16)
Changes to Post Office Box Service and Caller Service Fee Groups (<i>Publication 431 Revision</i>)	22434 (02-04-16)
Changes to Post Office Box Service and Caller Service Fee Groups (<i>Publication 431 Revision</i>)	22435 (02-18-16)
Changes to Post Office Box Service and Caller Service Fee Groups (<i>Publication 431 Revision</i>)	22436 (03-03-16)
Changes to Post Office Box Service and Caller Service Fee Groups (<i>Publication 431 Revision</i>)	22437 (03-17-16)
Changes to Post Office Box Service and Caller Service Fee Groups (<i>Publication 431 Revision</i>)	22438 (03-31-16)
Changes to Post Office Box Service and Caller Service Fee Groups (<i>Publication 431 Revision</i>)	22439 (04-14-16)
Changes to Post Office Box Service and Caller Service Fee Groups (<i>Publication 431 Revision</i>)	22440 (04-28-16)
Changes to Post Office Box Service and Caller Service Fee Groups (<i>Publication 431 Revision</i>)	22442 (05-26-16)
Changes to Post Office Box Service and Caller Service Fee Groups (<i>Publication 431 Revision</i>)	22443 (06-09-16)

Changes to Post Office Box Service and Caller Service Fee Groups (<i>Publication 431 Revision</i>)	22444 (06-23-16)
Changes to Post Office Box Service and Caller Service Fee Groups (<i>Publication 431 Revision</i>)	22445 (07-07-16)
Change to Age Verification for Mailing of Cigarettes and Smokeless Tobacco Products (<i>Publication 52 Revision</i>)	22437 (03-17-16)
Updates to Mailing Standards for Hazardous, Restricted, and Perishable Materials (<i>Publication 52 Revision</i>)	22444 (06-23-16)

PUBLICITY KITS

Pets Stamps (<i>Publicity Kit</i>)	22445 (07-07-16)
Pickup Trucks Stamps (<i>Publicity Kit</i>)	22445 (07-07-16)
Views of Our Planets and Pluto—Explored! Stamps (<i>Publicity Kit</i>)	22442 (05-26-16)

- R -**REFUNDS**

Extra Service Refunds (<i>DMM Revision</i>)	22442 (05-26-16)
International Postage Refunds (<i>IMM Revision</i>)	22442 (05-26-16)
Local Refunds Increased to \$1,000	22442 (05-26-16)

RETAIL

2016 Stamps by Mail Year Round Brochures can be Ordered Now	22436 (03-03-16)
---	------------------

- S -**SAFETY AND HEALTH**

Beat the Heat, Stay Cool	22442 (05-26-16)
Dogs Done Digital	22442 (05-26-16)
National Dog Bite Prevention Week, May 15-21, 2016 (<i>Field Information Kit</i>)	22440 (04-28-16)
Revised Handbook AS-353, Administrative Support for USPS Health Connect	22438 (03-31-16)
Statutory Requirement to Review and Post OSHA Form 300A Summary for Calendar Year 2015	22433 (01-21-16)
The First Step to Better Health	22435 (02-18-16)
Warning: Heavy Lifting Ahead	22443 (06-09-16)
Winter Safety	22433 (01-21-16)

STAMPS

See Philately.

SUPPLY MANAGEMENT

Before You Call Schindler Elevator for Service	22442 (05-26-16)
Interest Rate on Contract Claims	22433 (01-21-16)
Interest Rate on Contract Claims	22445 (07-07-16)
Investment Recovery: Cathode Ray Tube Moratorium	22442 (05-26-16)
New Schindler Dashboard Mobile Phone App for Service Customers	22435 (02-18-16)
United States Postal Service Food Service and Refreshment Vending Program	22438 (03-31-16)
USPS Headquarters Managers and Field Installation Heads: February 2016 Semi-Annual Capital Property Review	22432 (01-07-16)
What is Investment Recovery?	22438 (03-31-16)

SUSTAINABILITY

Federal Reporting Requirements on Hazardous and Toxic Chemicals	22434 (02-04-16)
Go Green — Celebrate Earth Day by Recycling	22438 (03-31-16)
Updates to Mailing Standards for Hazardous, Restricted, and Perishable Materials (<i>Publication 52 Revision</i>)	22444 (06-23-16)

-U-**UPDATES**

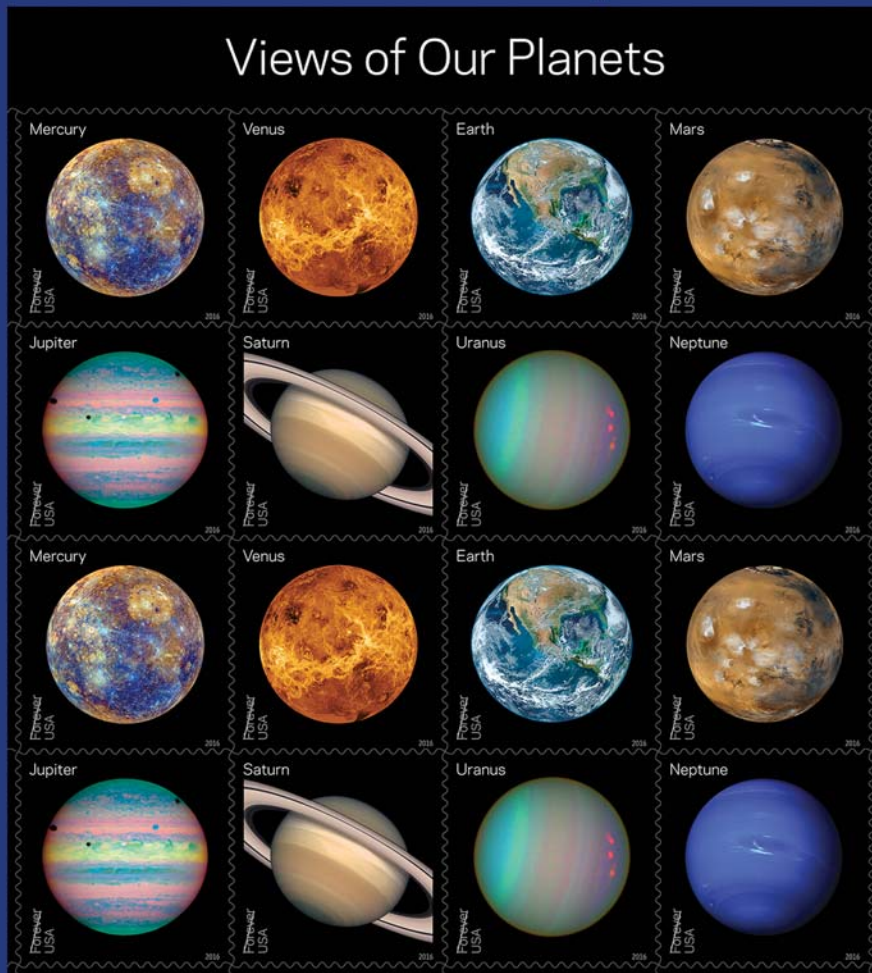
Directives and Forms Update (<i>Publication 223 Revision</i>)	22435 (02-18-16)
Military Mail Addressing and Restriction Codes — Update (<i>DMM Revision</i>)	22437 (03-17-16)
Revised Forms and New Management Instruction: Update of Back Pay Policy	22433 (01-21-16)
Revised Handbook F-101, Update to AdjustPay Policy	22444 (06-23-16)
Update: Stamp Announcement 16-13: World Stamps Show-NY 2016	22441 (05-12-16)
Update: Stamp Announcement 16-13: World Stamps Show-NY 2016	22442 (05-26-16)
Update: Stamp Announcement 16-18: Classics Forever Stamps	22441 (05-12-16)
Updates to Mailing Standards for Hazardous, Restricted, and Perishable Materials (<i>Publication 52 Revision</i>)	22444 (06-23-16)

475 L'ENFANT PLAZA SW
WASHINGTON DC 20260-5540

First-Class Mail
Postage & Fees Paid
USPS
Permit No. G-10

USPS® Issues *Views of Our Planets* Forever® Stamps

Views of Our Planets



Venus: NASA/JPL-Caltech

Earth: NASA

Mars: NASA/JPL-Caltech/MSSS

Jupiter: NASA, ESA, and
E. Karkoschka (Arizona Board of
Regents, University of Arizona)

Saturn: NASA and The Hubble
Heritage Team (STScI/AURA)

Uranus: NASA, ESA, and
E. Karkoschka (Arizona Board of
Regents, University of Arizona)

Neptune: NASA/JPL-Caltech

Mercury: NASA/The Johns Hopkins
University Applied Physics
Laboratory/Carnegie Institution
of Washington

On Sale Nationwide: May 31, 2016.

Please recycle. 