

# postal|bulletin

PUBLISHED SINCE MARCH 4, 1880

## NEED A PASSPORT?

Get the  
paperwork  
and locate  
a facility  
online @  
*[usps.com](https://usps.com)*®.

See page 3



# Contents

## COVER STORY

A U.S. Passport is Your Key to International Travel . . . . . 3

## PUBLICITY KIT: PICKUP TRUCKS

**STAMPS** . . . . . 4

**PUBLICITY KIT: PETS STAMPS** . . . . . 13

## POLICIES, PROCEDURES, AND FORMS UPDATES

### Manuals

POM Revision: Delivery Services . . . . . 42

POM Revision: Mail Receptacles . . . . . 43

### Handbooks

Handbook M-41 Revision: Actual Delivery . . . . . 43

### Publications

Publication 431 Revision: Changes to Post Office

Box Service and Caller Service Fee Groups . . . . . 44

### Forms

PS Form 2976-ES: Small Customs Declaration Pouch . . . . . 44

## ORGANIZATION INFORMATION

### Domestic Mail

Labeling List Changes . . . . . 45

### Finance

Equipment Maintenance Allowance Schedule  
for Rural Routes . . . . . 48

### Information Security

Don't Get Caught on the Phishing Line . . . . . 51

### Stamp Services

Correction: Pictorial Postmarks . . . . . 51

Stamp Announcement 16-29: Pets Stamps . . . . . 52

Correction: Henry James Stamp . . . . . 53

Pictorial Postmarks Announcement . . . . . 54

How to Order the First-Day-of-Issue Digital Color  
or Traditional Postmarks . . . . . 56

## Supply Management

Interest Rate on Contract Claims . . . . . 59

## PULL-OUT INFORMATION

### Fraud

Invalid USPS Corporate Account Numbers . . . . . 21

Missing, Lost, or Stolen U.S. Money Order Forms . . . . . 23

Missing, Lost, or Stolen Canadian Money Order

Forms . . . . . 29

Verifying U.S. Postal Service Money Orders . . . . . 32

Counterfeit Canadian Money Order Forms . . . . . 32

Toll-Free Number Available to Verify Canadian

Money Orders . . . . . 32

### Other Information

Overseas Military/Diplomatic Mail . . . . . 33

Freely Associated States (FAS) Restrictions . . . . . 39

## POSTAL BULLETIN INDEX

2015 Annual Index . . . . . PB 22432 (1-7-16)

**USPS National Emergency Hotline**  
**Is your facility operating? Call 888-363-7462**

**Find the latest in mail and delivery information  
and services offered by U.S. Postal™  
in the *Postal Bulletin* at**  
<http://about.usps.com/postal-bulletin>.

# Cover Story

## A U.S. Passport is Your Key to International Travel

The Department of State's Passport Services Directorate issues U.S. passports to traveling Americans. Passports are a request to foreign governments to permit you to travel, and also allow you to re-enter the United States. They provide proof of U.S. citizenship at home and around the world.

### What is a U.S. Passport Book and Passport Card?

A passport book or passport card is proof of identity and U.S. citizenship. The passport book can be used for all international travel: air, land, or sea. The passport card can be used to enter the United States from Canada, Mexico, the Caribbean, and Bermuda, at land border crossings or sea ports-of-entry. It cannot be used for international air travel. The wallet-size passport card is convenient and less expensive than the passport book.

Whether you plan to apply for a passport book, passport card, or both, submitting your passport application is easy. The U.S. Postal Service® makes it convenient to apply for your passport. Visit <http://travel.state.gov> or contact the National Passport Information Center (NPIC) at 877-487-2778 or TDD/TTY 888-874-7793 for more information on how to apply for a passport. Visit <http://usps.com/passport> to locate a Post Office™ near you that offers passport services.

#### Passport and International Travel Tips:

- Apply as early as possible before a trip.
- Check the expiration date of your passport well in advance of your departure date. Some countries may

not permit you to enter if your passport will expire in six months or less.

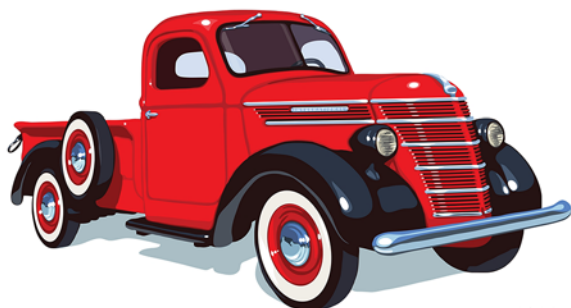
- Check the Department of State website, <http://travel.state.gov>, for current processing times for Routine Service and Expedited Service. Processing times are subject to change due to volume.
- U.S. passports are issued to adults for 10 years and children under the age of 16 for five years.
- Passport forms can be filled out online and printed from <http://travel.state.gov> or obtained at your local Passport Application Acceptance Facility.
- Before traveling abroad, copy the identification page in case your passport is lost or stolen. If your passport is lost or stolen abroad, report the loss immediately to local police authorities and the nearest U.S. embassy or consulate.
- Visit the Country Information pages on <http://travel.state.gov> to learn about the countries in which you are traveling.
- Register for the Smart Traveler Enrollment Program (STEP) at <http://step.state.gov>. When you sign up, you will automatically receive the most current information we compile about the country where you will be traveling or living. You will also receive updates, including Travel Warnings and Travel Alerts (where appropriate).

— Retail Services,  
Retail and Customer Service Operations, 7-7-16

## Publicity Kit: Pickup Trucks Stamps

**1938 International Harvester D-2**

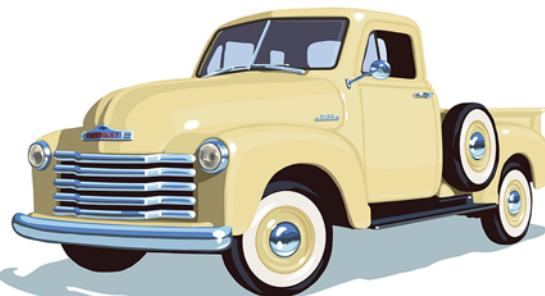
FOREVER USA



2016

**1953 Chevrolet**

FOREVER USA



2016

**1948 Ford F-1**

FOREVER USA



2016

**1965 Ford F-100**

FOREVER USA



2016

On July 15, 2016, the U.S. Postal Service® will dedicate the *Pickup Trucks Forever*® stamps in Syracuse, NY, at the Syracuse Nationals. The stamps celebrate pickup trucks, the rugged and reliable work vehicles that Americans have driven for nearly a century. The stamps feature four iconic models: the 1938 International Harvester D-2, the 1948 Ford F-1, the 1953 Chevrolet, and the 1965 Ford F-100.

Postmasters are encouraged to conduct special dedication ceremonies as soon as July 15 and throughout the year at car and truck shows, county and state fairs, and even as a stand-alone event at local Post Offices™.

This publicity kit includes:

- Sample media advisory;
- Sample news release;
- Sample speech;
- Corporate Communications contacts for assistance in publicizing ceremonies; and
- Government Relations contacts for inviting local elected officials, if deemed necessary.

Email [mark.r.saunders@usps.gov](mailto:mark.r.saunders@usps.gov) to obtain Word document versions of the sample media advisory, news release, and speech.

Please call Zachary Scott, 703-379-1121, at Colours Imaging to purchase a poster-sized blow-up of the stamps.

Here is a small sampling of google search results for automotive and truck shows. Please feel free to expand your google search to your geographic area.

- Iowa 80 Trucking Museum: [http://iowa80truckingmuseum.com/exhibits?gclid=CNOn7OHpts0CFYkkgQ-odkCIC\\_A](http://iowa80truckingmuseum.com/exhibits?gclid=CNOn7OHpts0CFYkkgQ-odkCIC_A);
- Antique Truck Club of America: <http://www.anti-quetruckclub.org/>;
- American Truck Historical Society: <http://www.aths.org/>;
- Hemmings Classic Car Event listing: <http://www.hemmings.com/calendar/>;
- Classic Cars.com 2016 events calendar: <http://classiccars.com/event-calendar/event-directory.html>;
- and
- Oldride.com events calendar: <http://www.oldride.com/events/>.



## Sample Media Advisory



Date

**POSTAL NEWS**

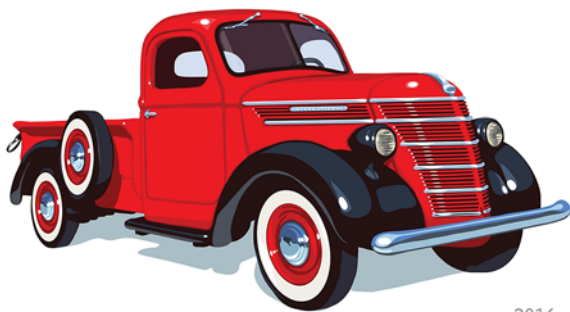
Contact: [Name]

Telephone: XXX.XXX.XXXX

Email: [xxxx.xxxx@usps.gov](mailto:xxxx.xxxx@usps.gov)[usps.com/news](http://usps.com/news)**[Name] Post Office to Dedicate Pickup Trucks Forever Stamps  
Stamps Celebrate Four Classic Vehicles**

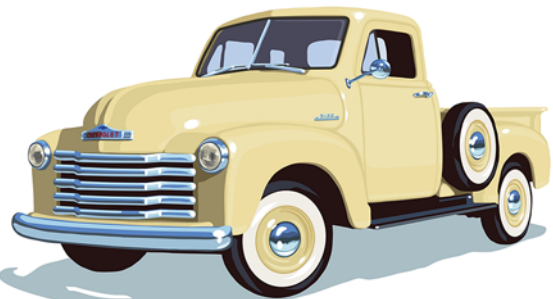
High-resolution images of the stamps are available for media use only by emailing  
[mark.r.saunders@usps.gov](mailto:mark.r.saunders@usps.gov).

**1938 International Harvester D-2**  
FOREVER USA



2016

**1953 Chevrolet**  
FOREVER USA



2016

**1948 Ford F-1**  
FOREVER USA



2016

**1965 Ford F-100**  
FOREVER USA



2016

- WHAT:** Special dedication ceremony for the *Pickup Trucks* Forever stamps.
- WHO:** Title, Name [Please list officials in order of importance to news media.]  
Title, Name [Optional]
- WHEN:** [Day, Date, Time]
- WHERE:** [Location/Building Name]  
[Location Address]  
[City, State, ZIP +4]  
[Special instructions for admittance or directions.]
- BACKGROUND:** Celebrating the rugged and reliable work vehicles that Americans have driven for nearly a century, each of these four new Forever stamps features one of the following iconic models.
- The strong, sturdy 1938 International Harvester D-2 had a distinct barrel-shaped grille and its elegant styling mirrored the look of luxury automobiles of the era.
  - The 1953 Chevrolet featured large windshields and provided drivers with excellent visibility, a distinctive curvy grille that bulged in the middle, and a six-cylinder engine.
  - The 1948 Ford F-1 included features like the roomy “Million Dollar Cab,” a sharp horizontal five-bar grille, and a six-cylinder engine.
  - The 1965 Ford F-100 had a new grille that featured 18 small rectangular openings. It also featured what Ford dubbed “Twin-I-Beam” independent front suspension.
- Illustrator Chris Lyons of Syracuse, NY, created the artwork under the direction of Antonio Alcalá of Alexandria, VA.

# # #

**Please Note:** For broadcast quality video and audio, photo stills and other media resources, visit the USPS Newsroom at <http://about.usps.com/news/welcome.htm>.

Reporters interested in speaking with a regional Postal Service public relations professional should go to <http://about.usps.com/news/media-contacts/usps-local-media-contacts.pdf>.

Follow us on <http://www.twitter.com/usps> and like us at <http://www.facebook.com/usps>. For more information about the Postal Service, go to <http://usps.com> and <http://usps.com/postalfacts>.

## Sample News Release

**POSTAL NEWS**

Contact: [Name]  
 Telephone: XXX.XXX.XXXX  
 Email: XXXXXX.XXXX@usps.gov  
[usps.com/news](http://usps.com/news)



**Pickup Trucks Get [Name] Post Office Stamp of Approval**  
***Special Dedication Ceremony Held at (Location)***



CITY, STATE — The [Name] Post Office celebrated pickup trucks, the rugged and reliable work vehicles that Americans have driven for nearly a century, by conducting a special dedication ceremony today. The *Pickup Trucks* Forever stamps feature four iconic models: the 1938 International Harvester D-2; the 1948 Ford F-1; the 1953 Chevrolet; and the 1965 Ford F-100.

The special dedication ceremony took place at [Provide details here.]

[Insert Postmaster quote here.]

[(Optional) Insert quote from Dedicating Official here.]

Artist Chris Lyons of Rochester, NY, used Adobe Illustrator to create stylized renderings of the pickup trucks. On each stamp, the name and model year of the truck are featured in the top left corner over the words “FOREVER USA.” Art

director Antonio Alcalá of Alexandria, VA, designed the stamps.

### Taking Over the Role of the Horse-Drawn Wagon

The origin of pickup trucks can be traced back to the early 20th century, when automobiles first became popular in the United States. They made personally hauling cargo, which once was the job of horse-drawn wagons, easier than ever. By the early 1900s, several manufacturers first began producing light-duty trucks in limited numbers.

International Harvester supplied and maintained trucks on stateside military bases during World War I. In 1917, Ford released the Model TT, which had a one-ton chassis. For

1918, Chevrolet introduced the Model 490 truck. But because drivers had to purchase their own cargo beds and bodies, these vehicles weren't considered true pickup trucks.

The first fully factory assembled pickup truck didn't arrive until the middle of the next decade, when the 1925 Ford Model T Runabout with Pick-Up Body made its debut. A fortified version of Ford's landmark Model T, it had a base price of \$281, featured a steel bed, and was powered by a modest 20-horsepower engine. Ford sold nearly 34,000

Model T pickups, which helped kick-start the popularity of pickup trucks.

Automaker Studebaker used the word "pickup" in an advertisement in 1913, but the exact root of the term "pickup" is unclear. By the Great Depression, it had become part of the American lexicon. U.S. Federal Regulations currently classify the pickup truck as "a non-passenger automobile which has a passenger compartment and an open cargo area (bed)."

### 1938 International Harvester D-2

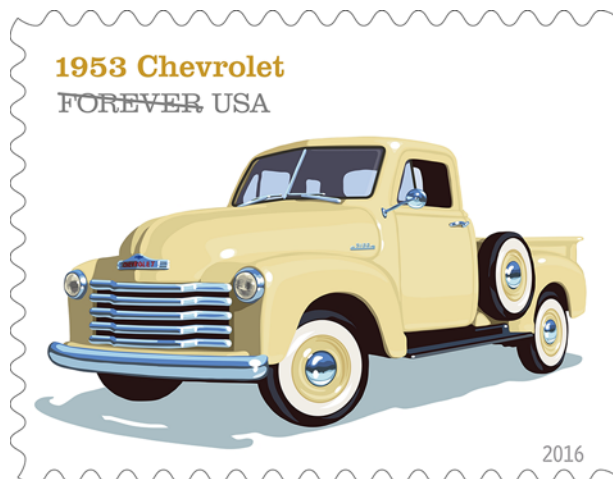


Known for its production of agricultural equipment, International Harvester also made acclaimed light-duty trucks. In the 1930s, the company introduced its D line of pickups. With its six-cylinder engine and half-ton payload capacity, the 1938 International Harvester D-2 was a strong, sturdy pickup. The model was also visually striking. It had a distinct barrel-shaped grille and its elegant styling mirrored the look of luxury automobiles of the era.

By the end of World War II, pickups had become ubiquitous, especially in rural America. The nation's major manufacturers soon began designing well-equipped trucks that no longer resembled the bare-bone models they once offered.

In the 1960s and 1970s, International Harvester's line of light trucks flourished. In addition to the pickup version of the popular Scout, the company offered the C-Series, including the C-110. Most IH pickups of the era were available in a number of different wheelbases, a variety of engines, and with a larger, "Bonus-Load" bed. These models also offered a crew cab option, a popular concept introduced by IH in 1957.

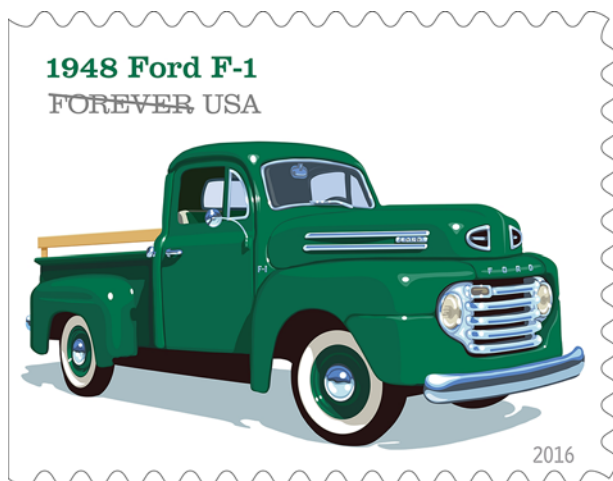
### 1953 Chevrolet



In 1947, Chevrolet rolled out the Advance-Design Series, the first all-new, post-World War II pickup truck line. The new Chevys were roomier and more powerful than ever before. Advance-Design pickups, such as the 1953 Chevrolet, featured large windshields that provided drivers with excellent visibility, a distinctive curvy grille that bulged in the middle, and a six-cylinder engine. Advance-Design trucks were America's top-selling pickups for nearly a decade.

The same year Chevy debuted its new line, International Harvester introduced its KB-Series of trucks. During World War II thousands of soldiers drove IH trucks, and once back home, welcomed the chance to own a stylish KB-1, -2, or -3 pickup.



**1948 Ford F-1**

Ford's F-Series also differed greatly from relatively sparse models previously available. Also known as the "Bonus Built" line, F-Series trucks were, in the words of Ford's famous advertising campaign, "built stronger to last longer." Ford launched the new line with the 1948 Ford F-1. It included features like the roomy "Million Dollar Cab," a sharp horizontal five-bar grille, and a six- or eight-cylinder engine. Ford sold more than 300,000 trucks in the first model year of the F-Series.

**1965 Ford F-100**

For the 1965 model year, the F-Series pickup got a facelift. The 1965 Ford F-100 had a new grille that featured 18 small rectangular openings. It also featured what Ford dubbed "Twin-I-Beam" independent front suspension, which improved the quality of the ride, and a powerful six- or eight-cylinder engine. The F-Series is still in production today and remains the country's top-selling truck line. As of 2015, there have been 13 generations of F-Series pickups.

*Pickup Trucks* is being issued as a First-Class Mail® Forever booklet of 20 stamps. These Forever stamps will always be equal in value to the current First-Class Mail one-ounce price.

**Ordering the First-Day-of-Issue Postmark**

Customers have 60 days to obtain the first-day-of-issue postmark by mail. They may purchase new stamps at their local Post Office, at the Postal Store website at <https://store.usps.com/store/>, or by calling 800-782-6724. They should affix the stamps to envelopes of their choice, address the envelopes (to themselves or others), and place them in a larger envelope addressed to:

Pickup Trucks Stamps  
Postmaster  
5640 East Taft Road  
Syracuse, NY 13220-9810

After applying the first-day-of-issue postmark, the Postal Service will return the envelopes through the mail. There is no charge for the postmark up to a quantity of 50. There is

a 5-cent charge for each additional postmark over 50. All orders must be postmarked by September 15, 2016.

**Ordering First-Day Covers**

The Postal Service also offers first-day covers for new stamp issues and Postal Service stationery items postmarked with the official first-day-of-issue cancellation. Each item has an individual catalog number and is offered in the quarterly *USA Philatelic* catalog, online at <https://store.usps.com/store/>, or by calling 800-782-6724. Customers may request a free catalog by calling 800-782-6724 or writing to:

U.S. Postal Service  
Catalog Request  
PO Box 219014  
Kansas City, MO 64121-9014

The Postal Service receives no tax dollars for operating expenses and relies on the sale of postage, products and services to fund its operations.

# # #

**Please Note:** For broadcast quality video and audio, photo stills and other media resources, visit the USPS Newsroom at <http://about.usps.com/news/welcome.htm>.

Reporters interested in speaking with a regional Postal Service public relations professional should go to <http://about.usps.com/news/media-contacts/usps-local-media-contacts.pdf>.

Follow us on <http://www.twitter.com/usps> and like us at <http://www.facebook.com/usps>. For more information about the Postal Service, go to <http://usps.com> and <http://usps.com/postalfacts>.

## Sample Speech

**[Postal Service Official's Name and Title]**

**United States Postal Service**

**Pickup Trucks Stamps**

**Special Dedication Ceremony**

**[Location]**

**[City, State]**

**[Date, Time]**

Good [morning/afternoon/evening]!

My name is [Name] and I am the [Postal Service Title] of [Location].

Thank you for joining the United States Postal Service today as we dedicate the *Pickup Trucks* stamps.

From political figures to sports legends to iconic film stars, postage stamps honor the people we admire. The things we treasure. The things that represent our values. And the events that have shaped our history.

Today, we honor the pickup truck.

These four stamps — honoring the 1938 International Harvester D-2, the 1948 Ford F-1, the 1953 Chevrolet, and the 1965 Ford F-100 — represent distinct automotive innovations of their era, as well as the shifting needs of Americans. No pun intended, for those truck fans who follow transmission developments! [Pause, if laughter.]

Starting in the early 20th century, as pickup trucks replaced horse-drawn wagons, the truck evolved from a functional machine. First adopted by farmers as tools of their trade, trucks have become the fully-loaded, sleek, and modern marvels we see on our roads today.

Perhaps no other symbol of America instills more pride than the pickup truck. For many, it symbolizes our heartlands — the center of agriculture and farming.

For others, it symbolizes ruggedness and heavy lifting — the machine you need to get a tough job done when no other vehicle will do.

And for others, the pickup truck symbolizes the hard work millions of men and women perform each day in support of this great nation.

The 1938 International Harvester D-2 was influenced by the popularity of the Art Deco (pronounced “deko”) design era of that time. This beautifully designed pickup had a unique

barrel-shaped grille and sophisticated styling to mirror the look of the era's other luxury automobiles.

The 1948 Ford F-1, the first generation of Ford's F-Series, included a new interior called the “Million Dollar Cab,” designed to provide a more comfortable driving experience. This truck had a sharp, horizontal five-bar grille, and came with a six- or eight-cylinder engine.

The 1953 Chevrolet was part of the company's Advance-Design series and featured large windshields to give drivers better visibility. Other features were a distinctive bulging grille and a six-cylinder engine. Chevrolet's Advance-Design trucks were America's top-selling pickups for nearly a decade.

The 1965 Ford F-100 had a new grille with 18 small rectangular openings. It also featured what Ford dubbed “Twin-I-Beam” independent front suspension to improve the quality of the ride, and it came with a powerful six- or eight-cylinder engine.

The F-Series is still in production today and remains the country's top-selling truck line.

There have been 13 generations of F-Series pickups. As we can see, the pickup truck remains a symbol of American agility and perseverance.

[Suggestion: You may want to add info specific to your event/location of speech.]

Today's pickup trucks are capable of extraordinary feats of strength and are revered for their endurance and reliability. They come in a variety of models to accommodate the needs of outdoorsmen and women, trade workers, farmers, and families. They also appeal to many who may not need such a powerful vehicle in the conventional sense, but remain loyal to the pickup truck, which has served the nation for generations.

For the significant contributions pickup trucks have made in molding this country's landscape and revolutionizing how we transport ourselves and our goods, we are proud to honor these four iconic trucks. They represent the best in automotive design and function for their time.

So now, on behalf of the United States Postal Service, I would like to invite our special guests to join me in dedicating these iconic symbols of the American way of life.

[Unveil *Pickup Trucks* stamps. Pose for photos.]

# # #

## Area Corporate Communications Managers

### Capital Metro

Tom Oulette  
301-548-1465  
[thomas.r.ouellette@usps.gov](mailto:thomas.r.ouellette@usps.gov)

### Eastern

Paul Smith  
215-863-5055  
[paul.f.smith@usps.gov](mailto:paul.f.smith@usps.gov)

### Great Lakes

Ed Moore  
313-225-5452  
[edward.r.moore@usps.gov](mailto:edward.r.moore@usps.gov)

### Pacific

David L. Walton (A)  
858-674-3149  
[david.walton@usps.gov](mailto:david.walton@usps.gov)

### Northeast

Maureen Marion  
860-285-7029  
[maureen.p.marion@usps.gov](mailto:maureen.p.marion@usps.gov)

### Southern

Polly Gibbs  
214-819-8704  
[polly.j.gibbs@usps.gov](mailto:polly.j.gibbs@usps.gov)

### Western

John Friess  
303-313-5130  
[john.g.friess@usps.gov](mailto:john.g.friess@usps.gov)

## Government Relations Representative Listing

Your Government Relations representatives are here to serve you. They can assist you in contacting and inviting elected officials to participate in your event — please let them know.

## Alphabetical State/Representative Listing

Area code and prefix for all extensions is 202-268-xxxx.

State	Representative	Extension
Alabama	Zahava Colicelli	3739
Alaska	David Coleman	3745
American Samoa	David Coleman	3745
Arizona	David Coleman	3745
Arkansas	Mike Porter	7217
California	Cathy Pagano	3427
Colorado	David Coleman	3745
Connecticut	Darrell Donnelly	6748
Delaware	James Cari	6029
District of Columbia	Darrell Donnelly	6748
Florida	Zahava Colicelli	3739
Georgia	Zahava Colicelli	3739
Guam	David Coleman	3745
Hawaii	David Coleman	3745
Idaho	David Coleman	3745
Illinois	Ernesto Sanabria	4387
Indiana	Ernesto Sanabria	4387
Iowa	Debra Blockinger	7505
Kansas	Debra Blockinger	7505
Kentucky	Talaya Simpson	4216
Louisiana	Mike Porter	7217
Maine	Zahava Colicelli	3739
Maryland	Darrell Donnelly	6748
Massachusetts	Zahava Colicelli	3739
Michigan	Debra Blockinger	7505
Minnesota	Debra Blockinger	7505
Mississippi	Mike Porter	7217
Missouri	Talaya Simpson	4216
Montana	David Coleman	3745
Nebraska	Debra Blockinger	7505
Nevada	David Coleman	3745
New Hampshire	Zahava Colicelli	3739
New Jersey	Darrell Donnelly	6748
New Mexico	Cathy Pagano	3427
New York	Zahava Colicelli	3739
North Carolina	Zahava Colicelli	3739
North Dakota	Talaya Simpson	4216
Northern Mariana Islands	David Coleman	3745
Ohio	Ernesto Sanabria	4387
Oklahoma	Mike Porter	7217
Oregon	David Coleman	3745
Pennsylvania	Ernesto Sanabria	4387
Puerto Rico	Zahava Colicelli	3739
Rhode Island	Darrell Donnelly	6748
South Carolina	Zahava Colicelli	3739
South Dakota	Talaya Simpson	4216
Tennessee	Talaya Simpson	4216
Texas	Mike Porter	7217
Utah	David Coleman	3745
Vermont	Zahava Colicelli	3739
Virgin Islands	Zahava Colicelli	3739
Virginia	Darrell Donnelly	6748
Washington	David Coleman	3745
West Virginia	Debra Blockinger	7505
Wisconsin	Debra Blockinger	7505
Wyoming	David Coleman	3745

— Public Relations,  
Corporate Communications, 7-7-16

# Publicity Kit: Pets Stamps



## Items in Publicity Kit

Overview . . . . .	14
About the Pets Stamps . . . . .	14
Technical Information . . . . .	14
About Past Animal-Related Stamps . . . . .	14
Philatelic Products . . . . .	16
Retail Products . . . . .	16
Pet Industry Market Size and Ownership Statistics . . . . .	18
Publicity Ideas to Promote the Stamps . . . . .	18
2016 Animal-Related Observances . . . . .	18
Pet Adoption Facts . . . . .	19
Contacts . . . . .	41



## Overview

The *Pets Forever*® stamps feature photographs of 20 favorite pets. These stamp subjects came from the Citizens' Stamp Advisory Committee (CSAC) in response to the public's love of pet-related stamps. Existing photos from photographer Eric Isselée (who specializes in photos with white backgrounds) were selected and licensed to make these beautiful stamps.

The First-Day-of-Issue ceremony will take place Tuesday, August 2, at 1 P.M. PT, at the Mandalay Bay Resort in Las Vegas, in conjunction with the SuperZoo National Pet Retailer Trade Show. Chief Marketing and Sales Officer and Executive Vice President Jim Cochrane will be the dedicating official.

- 20 million booklets have been printed (400 million total stamps).
- The stamps are from existing photos taken by photographer Eric Isselée.
- Derry Noyes is the designer and art director for the stamps.

## About the Pets Stamps

The stamp art for *Pets* features 20 existing photographs of different animals taken against white backgrounds by Eric Isselée. Each photograph represents beloved animals from these groups: puppies, betta fish, iguanas, hamsters, goldfish, parrots, guinea pigs, tortoises, rabbits, kittens, corn snakes, mice, hermit crabs, chinchillas, gerbils, dogs, parakeets, horses, cats, and geckos.

Art director Derry Noyes designed the stamps, inspired by her lifelong love of animals. "The goal was to capture the essence of each animal," she said. "There's no need for special effects. The animals speak for themselves. I love the variety of shapes, colors, textures, and facial expressions."

More than half of U.S. homes have at least one pet, with the number growing every year. The most common pets are dogs and cats. These furry, four-legged family members have long provided love, friendship, and sometimes protection for their owners.

Though cats and dogs are the more traditional choice, pets come in all shapes and sizes. Small mammals like hamsters, gerbils, and mice are popular choices for many people, especially those with limited space that might not accommodate larger animals. Slightly larger mammals like rabbits, guinea pigs, and chinchillas have also become

much more prevalent in American homes, particularly for families with older children.

For others, bigger is better when it comes to finding the right pet. Horses are the companion animal of choice for millions of American families. These noble creatures are an important part of farm and ranch life across the country, and also are used for therapeutic purposes.

For many pet owners, the ideal domesticated animal is at home in a tank or cage. Reptiles like snakes, turtles and tortoises, iguanas, and geckos, make for fascinating pets and are an alternative for those with dander allergies. Marine life such as fish and hermit crabs come in wide varieties and striking colors, making them beautiful additions to a home. Birds, with their intellect and sociability, also are very popular pets and wonderful companions.

Pets offer their human companions unconditional love and happiness as well as physical and emotional health benefits. They are more than just animals; many people consider them members of the family. Whether you prefer the silky scales of a corn snake or the warm fluff of a guinea pig, responsible pet ownership begins with familiarizing yourself with the animal possession laws and regulations in your area and finding the right pet for your life and needs.

*Pets* are being issued as Forever stamps. Forever stamps are always equal in value to the current First-Class Mail® one-ounce price.

## Technical Information

On August 2, 2016, in Las Vegas, NV, the U.S. Postal Service® will issue the *Pets* stamps (Forever® priced at 47 cents) in 20 designs, in a pressure-sensitive adhesive (PSA) double-sided booklet of 20 stamps (Item 680700). For additional technical information, see the *Pets* Stamp Announcement on page [52](#).

## About Past Animal-Related Stamps

Past stamps that have included pets:

- *Adopt a Shelter Pet* — 2010, 44 cents
- *Spay and Neuter* — 2002, 37 cents
- *Bright Eyes* — 1998, 32 cents
- *American Cats* — 1988, 22 cents (not pictured)
- *American Dogs* — 1984, 20 cents (not pictured)
- *Puppy and Kitten* — 1982, 13 cents
- *Seeing For Me* — 1979, 15 cents (not pictured)

*Adopt a Shelter Pet — 2010*  
**44 cents**



*Bright Eyes — 1998*  
**32 cents**



*Spay and Neuter — 2002*  
**37 cents**



*Puppy and Kitten — 1982*  
**13 cents**



## Philatelic Products

For an updated list of philatelic products, see the *Pets* Stamp Announcement on page [52](#).

## Retail Products

### First-Day-of-Issue Digital Color Postmark



## Ceremony Program



Celebrate our animal companions, as well as the First-Day-of-Issue of the *Pets* Forever stamp, with this new official ceremony program and cover. The full-color program features the First-Day Ceremony agenda and participants on one side with a narrative about the stamp design on the reverse.

The program is tucked inside a colorful 9" x 6" envelope bearing an affixed *Pets* Forever stamp and the official First-Day-of-Issue cancellation. Also included are the words "First-Day-of-Issue Ceremony Program" and "Celebrate the Art of Stamps" along with the official United States Postal Service® logo.

## Digital Color Postmark First Day Cover — Set of 20



Share the joy and love of our animal companions with this new set of 20 *Pets* Digital Color Postmark First-Day Covers. Each #6-3/4 envelope bears one *Pets* Forever stamp cancelled with an official First-Day-of-Issue color postmark.

The stamps feature 20 different animals — from puppies and parrots to hamsters and hermit crabs — photographed against a white background. The color postmark features the silhouettes of six beloved animals in playful hues, all positioned around the word "Pets." Also included are the date and location of stamp issuance: August 2, Las Vegas, NV 89119.

## First-Day Covers — Set of 20



Share the joy and love of our animal companions with this new set of 20 *Pets* First-Day Covers. Each #6-3/4 envelope bears one affixed *Pets* Forever stamp cancelled with an official First-Day-of-Issue black and white postmark.

The stamps feature 20 different animals — from puppies and parrots to hamsters and hermit crabs — photographed

against a white background. The standard four-bar cancellation marks the date and location of stamp issuance: August 2, Las Vegas, NV 89119.

### Keepsake — Booklet of 20 with Digital Color Postmark



Share the joy and love of our animal companions with this keepsake combination — a new booklet of 20 *Pets* Forever stamps and a randomly selected Digital Color Postmark First-Day Cover.

The stamps feature 20 different animals — from puppies and parrots to hamsters and hermit crabs — photographed against a white background. The color postmark features the silhouettes of six beloved animals in playful hues, all positioned around the word “Pets.” Also included are the date and location of stamp issuance: August 2, Las Vegas, NV 89119.

### Press Sheet (with Die-cuts)



Celebrate our animal companions with this new 4.76" x 23.29" Press Sheet with Die-cuts, containing eight booklets of 20 *Pets* Forever stamps positioned two across by four down.



## Pet Industry Market Size and Ownership Statistics

According to the 2015-2016 American Pet Products Association (APPA) National Pet Owners survey ([http://www.americanpetproducts.org/press\\_industry-trends.asp](http://www.americanpetproducts.org/press_industry-trends.asp)), 65 percent of U.S. households own a pet, equating to roughly 79.7 million homes with at least one animal. Here's a breakdown:

### Breakdown of pet ownership in the U.S. (millions)

■ Dog	54%
■ Cat	43%
■ Freshwater Fish	12%
■ Bird	6%
■ Small Animal	5%
■ Reptile	5%
■ Horse	3%
■ Saltwater Fish	1%

### Total number of pets owned in the U.S. (millions)

■ Freshwater Fish	96
■ Cat	86
■ Dog	78
■ Bird	14
■ Small Animals	12
■ Saltwater Fish	10
■ Reptile	9
■ Horse	8

## Publicity Ideas to Promote the Stamps

There are many ways to generate local media interest in the *Pets* Forever stamps.

### Stage a Kick-Off Event

- Partner with a local shelter and host an “open house.” The Postal Service unveils the stamps and the shelter has the opportunity to showcase not only pets, but its operation as well. Give tours. Provide snacks for humans and animals (a local pet supply retailer might be interested in donating something). Have animal control officers talk about their jobs. Hand out educational material to visitors — include what to expect when you adopt a cat or dog, tips for solving some common behavior problems, etc. Invite the local radio and TV stations to broadcast live.
- Get Postal Service representatives and retail clerks to attend existing events. As an example, PetCo and PetSmart locations around the country regularly host adoption fairs onsite and the stamps could be unveiled and sold there.

- Host an Information Fair. Unveil the *Pets* stamps in the parking lot of a Post Office, station, or branch. Invite local veterinarians and/or other animal services representatives to speak. Ask shelters to bring dogs, cats, and other animals/reptiles/birds to encourage adoption. These types of events allow potential adopters to interact with the animals and sign up to adopt them on location.

### Other Event Ideas

- Hold a poster or essay contest with a theme of “the best pet is...” or “responsible pet ownership” or something else creative. Hold the event at a local elementary school a week before the above-mentioned open house. Then display all posters and essays. A committee of postal employees could choose the winners.
- Sponsor an essay-writing contest with local schools (perhaps limit it to one grade such as fifth or sixth grade) on the subject of the importance of being a responsible pet owner or adopting shelter pets. Have the Postmaster, a local veterinarian, the director of the local animal shelter, and a teacher judge the contest. Award a framed sheet of stamps or a blow-up of the stamps to the winner.
- Sponsor an essay-writing and picture-drawing contest with local grade schools on “What My Pet Means to Me.” Hang some of the best essays and cutest drawings in the Post Office, local veterinarians’ offices, and local animal shelters.
- Hold a pet and owner look-alike contest.
- Hold a celebrity pet look-alike contest.
- Hold a pet costume contest.
- Have a dog wash, guinea pig race, snake slither race, hermit crab race, etc.

Implement any of these ideas, combine them, or create others. Contact your local Corporate Communications and Government Relations representatives for assistance. For contact information, see page [41](#).

## 2016 Animal-Related Observances

The list below includes related national observances that could provide additional opportunities. This information is from AVMA (<https://www.avma.org/Events/pethealth/Pages/default.aspx>) and the American Humane Association (<http://www.americanhumane.org/animals/programs/special-initiatives/>).

### August

August 26 — National Dog Day



**September**

Responsible Dog Ownership Month

September 4 — National Wildlife Day

September 8 — National Iguana Awareness Day

**October**

Adopt a Shelter Dog Month

National Service Dog Month

National Animal Safety and Protection Month

October 1–7 — National Walk Your Dog Week

October 4 — World Animal Day

October 21 — Reptile Awareness Day

October 29 — National Cat Day

**November**

ASPCA's Adopt a Senior Pet Month

National Pet Cancer Awareness Month

November 6–12 — National Animal Shelter Appreciation Week

**December**

December 2 — National Mutt Day

December 4 — World Wildlife Conservation Day

December 10 — National Day of the Horse

**Pet Adoption Facts**

*(Source: Humane Society of the United States)*

**Best Place to Find a New Best Friend**

Animal shelters are the best source when looking for a pet. Not only do they have a great selection of adult animals for adoption, but they also have kittens and puppies, even purebred animals. In fact, on average, purebreds account for about 25 to 30 percent of a shelter's dog population. Some shelters have reptiles, rodents, birds, tortoises, and rabbits to adopt as well.

**Not Just Cast-off Animals...**

While providing a safe haven for animals remains a primary mission, shelters are adding programs designed to help caregivers solve problems, thus keeping animals from losing their homes in the first place. Most animals are given up because of a lack of understanding, before the animal is acquired, as to the commitment necessary to care for them. Many shelters now offer "puppy parenting" classes to help families understand the realities of companion animal care. They also offer training classes, behavioral counseling, information on pet-friendly rental properties, and even factual information on dealing with allergies.

**If You Cannot Adopt — Volunteer**

Local shelters generally need help. Some shelters have highly organized volunteer programs complete with time cards and performance reviews while others have a loosely knit group of individuals who show up to help whenever they can. Either way, they can use help. From the standard dog walking and cat entertaining to making the shelter an inviting place to visit by planting flowers outside or painting a room, there's definitely a way to add value.

**Adoption and Pet Care**

*(Source: American Humane Association)*

As soon as you enter an animal shelter, the temptation to adopt will be great. That's why it's so important to consider whether bringing an animal into your life is right for you before any adorable faces find their way into your heart.

Far too many animals in this country are initially loved and then neglected or abandoned over time because owners decide — too late — that caring for pets is more responsibility than they actually want.

The truth is that adopting a companion animal is a big step — one that will affect your lifestyle for many years. Have you thought about how a pet will be completely dependent on you for his or her entire life? What will happen if you decide to move? And have you considered whether your lifestyle and personality would make you a better dog owner or cat owner?

With good care, most dogs can live 12 to 15 years and most cats can live 15 to 20 years, so it is critical that you consider what is likely to be happening in your own life over the next 15 to 20 years before you adopt a pet.

**Screening Animals for Adoption**

While you are deciding on your family's pet criteria, shelters are screening animals for certain qualities, too. In addition to a health exam, many shelters perform a basic temperament screening to find animals that are friendly and sociable, both with people and other animals. Many larger shelters can also test dogs for arousal, possessiveness, aggression, separation anxiety, and tolerance.

**Being Screened Yourself**

When you finally find the perfect pet, be prepared to be screened yourself. Adoption counselors at the shelter will want to determine your commitment and ability to care for an animal. Be prepared to answer questions about your home and lifestyle as well as your expectations and concerns about pet guardianship. Here's where all your preparation will really pay off — adoption counselors are always impressed with people who have thought about what they want in a pet before being asked.

**Homeward Bound**

Introducing a new pet to your home can be stressful for both you and your companion animal. This is especially true if there are children or other animals in the home. Being prepared

ahead of time, however, will go a long way toward making the homecoming experience an easy one for everyone.

Make sure to have everything your pet will need — ID tag, food, bowls, leash, collar, dog den, toys — before you bring him or her home. In addition to preventing you from having to leave an already confused animal home alone the first day, the presence of these items will help assure your new pet that everything is going to be all right.

Also, be sure to have your new companion animal examined either by the shelter veterinarian before you leave or by your own veterinarian as soon as possible. You'll want to make sure you're off to a healthy start.

### Questions to Ask Before Adopting a Pet

(Source: *American Society for the Prevention of Cruelty to Animals — ASPCA*)

#### 1. Why do you want to adopt a pet?

Are you looking for the loyal and steady companionship that an animal can offer? Are you hoping to fill the empty place left after a pet has passed? Maybe you want a companion for your child.

Knowing why you're preparing to bring a pet home will help you to determine the species and breed that will fit your lifestyle.

#### 2. Are you ready to make a long-term commitment?

When adopting, you are making a commitment to care for an animal for the rest of his or her life — that could mean 10 to 15 years for dogs and up to 20 years for cats. As you go through lifestyle changes such as moves, the birth of children, and new jobs, your animal will remain a permanent part of your life. If circumstances change, will you still be able to care for your pet?

#### 3. Do you know what kind of pet is right for you?

Your personality and lifestyle, along with challenges such as space restrictions and amount of time spent at home, should be explored to determine what pet is right for your household. Research different breeds and ask shelter staffers what animals they recommend — they're experts at making perfect matches!

#### 4. Can you afford to care for your pet's health and safety?

Owning a dog or cat costs more than the initial adoption fee. Food, veterinary care, spaying or neutering, and proper identification — that means a collar with tags and a more permanent form of ID such as micro-chipping — can add up.

#### 5. Will you be able to spend quality time together?

Dogs thrive on several hours of exercise and companionship every day, and pooches constantly left alone can develop behavioral problems. Cats are healthiest and happiest indoors and love to be treated to energetic play sessions with their human families. If your work demands that you travel often, or if you're out of the house most days and evenings, this may not be the right time to adopt.

#### 6. Are you prepared to deal with an animal's health challenges?

Fleas, allergies, and sudden medical issues are just a few of the health-related problems that potential pet owners may face. Can you care for your pet if he or she gets sick?

#### 7. Are you willing to train your animal companion?

Lack of training is one of the most common reasons that adopters return pets to shelters — are you willing to solve behavior problems? Basic training helps dogs and their owners communicate better, strengthening the relationship overall. And taking the time to understand why your cat does what he or she does, especially when it involves his or her litter box and scratching habits, will help you avoid potential problems.

#### 8. Are you prepared to pet-proof your home?

Whether it's tightly sealing your garbage cans or paying attention to dangerous decorations during the holidays, you'll need to make your home safe before adopting. That includes keeping toxic foods, pet-unfriendly plants, and dangerous household items out of paw's reach.

#### 9. Is your living space adequate for an animal companion?

Be sure to choose an animal that will thrive in your home. If you're attracted to energetic large-breed dogs, but live in a small apartment, will your pooch have enough room? If you live on a noisy street, will it disturb your cat? Also consider that many landlords don't allow pets or place restrictions on having them. Be sure to check out your "house rules" before adopting.

#### 10. Is your family ready for a pet?

If your kids are still toddlers, you might consider waiting a few years before adopting, as pet ownership ideally is a team effort. Children who are mature enough can happily share pet-care duties. You may also have another pet at home who's not yet — or may never be — ready to share his or her kingdom with another animal.

(Article continues on page [41](#)).

# Pull-Out Information

## Fraud

### Invalid USPS Corporate Account Numbers

This listing should be provided to Contract Postal Units and used by acceptance clerks in non-POS locations without intranet access to validate a USPS Corporate Account (USPSCA) number online. For all other locations, online USPSCA validation is preferred. The online validation process is outlined in the USPSCA Validation SOP on the Retail webpage. This list supersedes all previous notices,

which must be recycled. Acceptance clerks must not accept Priority Mail Express™ shipments bearing an invalid USPSCA number in the “Payment by Account” or “Agreement Number” section of the label or form.

**Note:** The first 6 digits of a 9-digit Custom Designed Service and Next Day Pickup Agreement make up the Corporate Account Number.

005006	016878	021449	026549	100524	200907	322679	402487	531871	571010	600497	602054	606002
005395	016910	021539	026587	100804	208998	323487	441757	531875	571120	600500	602099	606008
006332	016939	021574	026595	100864	210007	323727	445021	531885	573020	600515	602112	606102
006893	016949	021694	052001	100876	210053	323728	450021	531897	577101	600534	602125	606994
007340	016956	021874	060057	100969	210109	325026	452391	531898	581029	600549	602148	607046
008584	016999	022025	060085	100971	210250	325030	464181	531899	581089	600553	602203	607401
008585	018009	022041	060099	102506	210459	325146	479143	532017	585256	600615	602207	608044
008643	019698	022081	061452	106275	210476	325410	480614	532317	599560	600629	602211	610103
008866	020068	022191	064313	113789	210484	326490	481166	532341	600006	600652	602223	611149
008906	020085	022282	064513	114001	210488	327302	481989	532377	600011	600674	602336	611223
008960	020104	022342	064804	115034	210498	329059	482750	532382	600015	600675	602352	618096
009257	020241	022381	064928	115102	210593	330031	483370	532399	600022	600698	602369	625116
009391	020270	022396	064978	115116	210594	331881	488985	532473	600036	600700	602436	626015
010050	020528	022399	065405	115511	210606	331917	494267	532481	600049	600706	602447	628026
010161	020546	022405	066112	115520	210674	333661	495140	532817	600053	600723	602465	631687
010322	020595	022423	067331	117084	210678	334073	530003	532970	600063	600743	602473	631763
010511	020608	022427	068185	117230	210853	335014	530004	532973	600073	600748	602481	631830
010791	020619	022455	069972	118118	220450	336566	530005	537168	600082	600759	602496	662275
011354	020620	022464	075156	118431	220827	337140	530007	537251	600088	600761	602514	701859
011387	020623	022481	075746	118504	221382	347067	530010	537296	600089	600771	602559	722120
012398	020633	022533	076094	119488	235231	349020	531142	537308	600092	600794	602572	722274
014822	020641	022552	076318	122438	235389	352812	531191	537330	600096	600800	602586	734005
014924	020648	022564	078212	131025	236033	362027	531364	537372	600110	600803	602602	737020
014935	020650	022580	079394	135111	240142	363013	531403	537390	600118	600827	602630	740281
015088	020651	022589	080609	142090	275017	366014	531455	537405	600130	600831	602659	740367
015412	021005	022597	085832	142096	293097	366058	531493	537413	600131	600839	602693	740517
015616	021016	022605	088546	142097	295710	366066	531742	537422	600176	600840	602706	741011
015727	021018	022640	090364	142107	297020	370020	531747	537423	600188	600848	602713	741109
015736	021020	022642	091291	142112	300186	370030	531754	541310	600190	600850	602731	741574
015768	021024	022651	092236	142151	300502	372185	531795	541350	600202	600863	602750	741990
015789	021026	022657	092445	142280	300975	372219	531799	542090	600220	600865	602811	750505
015793	021029	022734	092868	142873	301483	372540	531808	543002	600242	600880	602824	750686
015817	021032	022857	094262	142930	303105	373030	531822	543310	600257	600891	602873	752124
016132	021035	022955	094385	151064	310001	373075	531824	543500	600271	600930	602889	752194
016163	021036	022966	095018	159077	311076	374260	531827	543570	600298	600933	602942	752203
016220	021037	023574	095630	170079	312257	374400	531837	543710	600300	600943	602949	752711
016372	021044	023615	097089	170431	312408	378148	531838	543760	600301	600950	602993	752945
016537	021045	025003	097230	171313	314367	380022	531839	544032	600303	600976	604107	761001
016550	021047	025072	097583	172001	314817	380214	531847	544040	600306	600988	604144	770051
016611	021068	025198	098139	177025	320022	381006	531849	544057	600308	601041	604280	770620
016689	021144	025349	098470	178048	320100	381219	531850	544065	600329	601495	605128	771559
016791	021167	025421	098657	178073	320735	381287	531854	549198	600336	602000	605131	771941
016831	021231	025495	100101	180025	322044	381490	531855	553722	600364	602010	605302	778021
016863	021339	026052	100175	191256	322278	381630	531856	554625	600369	602042	605547	782123
016874	021422	026504	100350	191616	322572	402291	531870	564007	600440	602047	605999	799305

<b>801562</b>	815253	841791	856186	907848	915475	924125	933548	968807	981766	982610	984014	995900
801688	816003	843083	871353	910414	915679	927206	935282	972593	981862	982645	985215	995998
802135	816169	846018	891599	911033	916022	927555	940603	973337	982022	982657	992241	997075
802227	816259	846236	<b>900275</b>	911182	917539	927683	940629	980020	982342	982659	992320	997093
802318	816275	851005	900414	913086	918328	930068	940637	980043	982409	982663	992329	997209
802346	833410	851015	900439	913153	920021	930329	941012	980148	982460	982671	992465	997263
805014	834040	851024	901168	913179	920032	931966	951225	980231	982466	982681	992780	997266
805317	841276	851027	902916	913192	920223	932018	951811	980332	982553	983109	995523	999316
815236	841301	851031	906015	914155	920332	932759	958408	980965	982584	983117	995559	
815238	841356	853290	906152	915016	921145	932816	968261	981551	982591	983120	995638	
815252	841705	853629	906844	915207	921937	933013	968455	981567	982593	983121	995708	

— Product Information Requirements, Mail Entry and Payment Technology, 7-7-16

## Missing, Lost, or Stolen U.S. Money Order Forms

**Do Not Cash — Upon Receipt, Notify Local Postal Inspectors**

This listing will be provided to all Postal Service™ employees responsible for accepting and cashing postal money orders. Destroy all interim notices when the

numbers listed appear in the *Postal Bulletin*. The actual serial numbers consist of the first 10 digits on the money orders. Check for altered dollar amounts by holding money orders to the light.

<b>010 001 0200 to 0299</b>	040 674 7100 to 7199	073 763 0878 to 0887	122 451 9879 to 9899
010 504 1932 to 1999	040 688 8816 to 8899	073 763 0889 to 0898	122 714 6805 to 6900
011 582 1889 to 1899	041 299 6752 to 6799	077 617 5481 to 5499	124 916 0304 to 0499
011 588 2900 to 3099	041 623 8889 to 8899	077 999 4001 to 4090	126 423 0136 to 0169
012 441 0784 to 0799	041 803 6565 to 6599	078 174 4475 to 4499	127 500 2328 to 2399
012 579 5675 to 5699	043 129 1968 to 1997	078 219 4931 to 4999	<b>160 901 2254 to 2299</b>
013 289 6176 to 6199	043 205 5922 to 5999	078 250 4756 to 4799	161 103 6581 to 6599
013 610 0014 to 0099	044 087 3457 to 3499	078 823 8312 to 8399	161 194 2857 to 0899
014 932 1000 to 1099	044 087 4000 to 4099	079 374 0300 to 2499	162 032 4447 to 4499
014 972 0800 to 0899	044 226 2487 to 2512	079 807 2342 to 2399	163 257 1085 to 1099
015 363 0065 to 0099	044 306 4200 to 4299	<b>082 721 0228 to 0254</b>	164 359 2406 to 2499
017 028 3200 to 3299	044 306 4370 to 4599	083 140 5000 to 7499	166 101 1433 to 1499
018 569 5333 to 5399	045 524 4121 to 4298	083 784 8886 to 8899	167 555 5201 to 5212
018 986 5264 to 5299	046 800 9870 to 9899	083 913 6915 to 6999	167 555 5214 to 5299
019 518 2814 to 2899	047 352 4000 to 4099	084 478 3920 to 3999	169 618 6274 to 6299
<b>020 698 5159 to 5199</b>	048 383 7650 to 7659	086 000 8271 to 8299	<b>171 806 6878 to 6893</b>
020 844 7307 to 7399	048 396 3647 to 3699	086 798 3840 to 3849	173 639 4685 to 4699
020 972 8948 to 8999	<b>051 142 0755 to 0799</b>	088 404 4472 to 4499	174 238 2779 to 2799
022 021 9110 to 9181	051 774 8857 to 8899	088 404 5584 to 5699	174 281 9347 to 9399
022 037 1411 to 1499	051 781 2875 to 2885	088 757 8688 to 8699	175 251 2600 to 0699
022 527 9201 to 9210	051 977 7010 to 7023	088 757 9400 to 9499	176 281 7937 to 7950
022 529 1882 to 1899	052 058 7115 to 7199	089 358 2248 to 2257	176 281 7963 to 7999
023 637 7169 to 7199	054 450 1130 to 1167	<b>090 663 9678 to 9684</b>	176 731 6586 to 6599
024 380 4100 to 4199	057 670 0563 to 0599	091 818 0071 to 0099	178 254 5000 to 9999
024 496 6870 to 6896	058 187 3836 to 3899	093 106 9346 to 9355	178 881 9900 to 9999
025 092 0987 to 0999	058 523 3003 to 3099	093 203 0500 to 0599	<b>180 031 2089 to 2098</b>
025 369 5535 to 5599	058 591 1153 to 1299	093 684 3630 to 3699	180 403 7723 to 7741
025 729 1151 to 1199	058 895 3746 to 3799	094 081 5074 to 5099	180 428 4580 to 0599
025 729 1643 to 1799	059 986 0814 to 0899	094 216 2555 to 2599	182 368 7544 to 0599
026 492 3180 to 3199	<b>060 406 7650 to 7699</b>	094 580 7062 to 7099	182 475 3229 to 3258
027 361 0430 to 0499	063 491 8122 to 8199	094 639 4200 to 4299	182 475 3904 to 3933
027 369 4482 to 4495	063 916 9968 to 9999	095 070 7186 to 7199	182 631 0031 to 0099
027 671 8762 to 8776	064 091 4500 to 4599	095 076 8300 to 8399	182 911 6539 to 6600
027 787 9886 to 9899	065 170 0471 to 0499	095 354 6864 to 6899	184 218 2760 to 2799
027 965 9487 to 9499	065 255 7909 to 7999	097 224 1350 to 1599	185 828 1474 to 1499
028 100 8069 to 8099	065 392 6345 to 6399	<b>100 160 3800 to 3899</b>	186 132 7583 to 0599
028 191 1852 to 1999	066 099 2014 to 2099	104 667 6400 to 6499	186 629 0589 to 0599
028 850 3000 to 3199	066 648 2880 to 2899	104 876 8937 to 8999	187 184 6177 to 0199
029 510 1500 to 1599	066 787 3639 to 3699	<b>112 049 4413 to 4499</b>	187 323 8200 to 8299
<b>030 687 0903 to 0999</b>	066 845 7500 to 9999	112 870 9765 to 9799	187 441 6080 to 6099
030 701 3442 to 3499	067 093 3869 to 3899	113 319 2000 to 2099	188 831 6774 to 6799
031 077 4507 to 4799	068 895 0334 to 0399	114 402 3850 to 3899	188 835 6370 to 6399
032 295 7500 to 9999	<b>070 724 4488 to 4499</b>	114 866 5368 to 5397	189 083 1064 to 1099
034 394 1000 to 1099	070 841 9181 to 9199	116 154 2800 to 2899	189 660 9583 to 9599
034 943 0400 to 0799	070 844 2546 to 2599	116 986 4400 to 4499	<b>191 179 0377 to 0399</b>
035 035 4337 to 4399	070 916 1340 to 1399	117 175 1647 to 5169	192 050 5762 to 5781
037 312 7500 to 7599	071 047 5768 to 5799	117 951 4687 to 4699	194 456 8600 to 0699
037 706 9578 to 9599	071 179 9800 to 9899	117 951 5200 to 5299	195 194 6881 to 6899
037 805 3677 to 3699	071 386 3682 to 3699	119 786 3051 to 3064	195 874 1112 to 1199
037 909 5490 to 5499	071 507 6840 to 6899	119 815 8961 to 6199	198 285 2556 to 2566
037 931 4660 to 4699	072 045 9641 to 9699	119 850 7400 to 7499	199 105 0778 to 0799
039 145 6521 to 6595	072 675 8287 to 8299	119 850 7700 to 7999	199 678 2968 to 2999
<b>040 024 3901 to 3999</b>	073 763 0867 to 0876	<b>121 634 0460 to 0499</b>	<b>202 748 5133 to 5199</b>



202 748 5245	to	5299	378 351 1063	to	1099	403 280 6470	to	6499	421 364 5537	to	5599
202 748 5300	to	5399	379 843 5100	to	5199	403 685 8600	to	8699	421 656 2609	to	2699
202 748 5400	to	5499	<b>380 093 9600 to 9699</b>			404 003 0300	to	0399	421 988 9700	to	9799
203 256 1240	to	1299	380 165 1165	to	1199	404 041 8838	to	8899	422 172 4667	to	4699
204 230 3577	to	3595	381 325 4500	to	4599	404 071 4268	to	4299	422 484 4212	to	4299
205 019 0174	to	0199	381 604 2510	to	2699	404 347 5356	to	5399	422 556 1270	to	1299
207 196 9900	to	9999	381 645 9525	to	9599	404 347 5548	to	5599	422 587 7024	to	7099
207 204 0700	to	0799	383 314 3968	to	3999	404 726 4500	to	4599	422 819 7533	to	7599
207 204 0800	to	0899	383 892 1000	to	1344	404 961 5001	to	5199	422 842 5073	to	5087
207 514 3857	to	3899	383 892 1382	to	1399	405 325 0188	to	0198	422 907 7563	to	7599
208 556 4707	to	4799	384 925 3641	to	3654	406 009 4587	to	4599	424 500 6050	to	6099
<b>210 057 4038 to 4047</b>			385 568 2331	to	2399	406 260 6830	to	6899	424 641 8500	to	8599
210 221 0548	to	0599	385 599 7554	to	7575	406 459 6641	to	6999	424 871 6600	to	6699
214 061 4711	to	4724	385 774 2024	to	2099	406 733 3000	to	3999	425 298 2352	to	2399
214 303 6311	to	6325	386 624 1412	to	1599	407 545 1557	to	1599	425 418 4269	to	4299
214 303 6239	to	6258	386 883 8936	to	8999	407 594 0412	to	0599	425 418 4405	to	4499
214 877 4251	to	4273	387 314 5574	to	5599	407 692 9100	to	9299	426 547 4566	to	4599
215 252 3918	to	3992	387 837 6300	to	6399	407 959 2190	to	2199	427 412 6337	to	6499
218 698 2157	to	2199	388 828 0656	to	0699	408 265 2275	to	2288	427 481 0900	to	0999
218 746 0800	to	0899	389 696 2400	to	2799	408 499 7700	to	7799	428 027 2742	to	2752
219 095 0100	to	0399	389 846 3104	to	3135	408 499 7900	to	7999	429 474 4172	to	4199
219 389 1885	to	1899	389 846 3145	to	3195	408 682 8484	to	8599	429 889 2900	to	2999
219 568 7435	to	7456	389 887 9211	to	9230	408 698 7015	to	7099	<b>430 150 4401 to 4599</b>		
219 568 7469	to	7487	389 887 9234	to	9299	409 072 3941	to	3999	430 172 9800	to	9899
<b>221 316 5757 to 5799</b>			<b>390 001 3182 to 3199</b>			<b>410 491 2311 to 2399</b>			430 177 1900	to	2099
223 476 3914	to	3999	390 001 3500	to	3699	410 694 8400	to	8599	430 444 9500	to	9699
223 565 4921	to	4957	390 545 5974	to	5999	410 775 1500	to	1599	430 664 4070	to	4099
223 565 4979	to	4999	391 104 6146	to	6199	410 795 7927	to	7999	432 168 8419	to	8499
224 636 4745	to	4765	391 574 1466	to	1499	410 867 0917	to	0966	432 708 6800	to	6999
224 636 4776	to	4799	391 783 3020	to	3599	410 867 0970	to	0999	432 744 1544	to	1599
224 636 4855	to	4885	391 792 6100	to	6199	411 868 1023	to	1199	432 995 9775	to	9799
224 636 4932	to	4948	392 668 2956	to	2999	411 922 2322	to	2399	433 003 5800	to	5899
224 636 4950	to	4962	392 854 8500	to	8899	412 193 0900	to	0999	433 757 3047	to	3099
224 636 4985	to	4999	393 584 7566	to	7699	412 395 8599	to	8699	433 765 4003	to	4099
224 730 2207	to	2299	393 650 0074	to	0099	412 485 6500	to	6599	434 482 7060	to	7199
225 970 0500	to	0599	393 838 8316	to	8499	412 485 6610	to	6699	434 513 2386	to	2399
225 970 0600	to	0699	393 893 6007	to	6099	412 885 5953	to	5999	434 968 3076	to	3092
225 970 0700	to	0799	394 126 6907	to	6999	414 193 3608	to	3674	435 303 1831	to	1842
227 033 8679	to	8699	394 189 0405	to	0599	414 193 3677	to	3699	435 303 1986	to	1999
227 275 9400	to	9999	394 822 3243	to	3278	414 411 7348	to	7399	435 666 6092	to	6399
228 463 2456	to	2499	394 990 1810	to	1899	414 640 0757	to	0799	436 082 6400	to	6899
228 510 4852	to	4899	395 343 3264	to	3299	414 965 1727	to	1799	436 160 6441	to	6499
229 462 8451	to	8475	395 373 3035	to	3099	417 302 8104	to	8199	437 316 7115	to	7199
229 668 5977	to	5999	395 396 9649	to	9799	417 387 6532	to	6599	437 427 0500	to	3499
229 923 9176	to	9199	395 970 3240	to	3299	417 496 6800	to	6999	439 179 2300	to	2399
229 924 6696	to	6699	397 622 4054	to	4099	417 871 9250	to	9299	439 310 0458	to	0499
<b>230 051 9500 to 9999</b>			397 819 8902	to	8999	417 930 9533	to	9599	<b>440 698 1947 to 1999</b>		
<b>273 070 8059 to 8099</b>			398 149 7200	to	7699	418 164 6500	to	6799	440 858 6300	to	6399
273 775 7700	to	7899	399 070 0872	to	0899	418 423 9863	to	9899	440 858 6420	to	7299
<b>302 000 0000 to 9999</b>			399 156 7119	to	7199	418 633 5922	to	5999	441 199 1655	to	1699
<b>349 746 2056 to 2099</b>			399 203 5064	to	5099	418 719 8520	to	8599	443 127 3648	to	3699
<b>350 518 7350 to 7374</b>			399 296 9910	to	9999	418 744 2235	to	2299	443 127 4000	to	4099
<b>360 011 1690 to 1699</b>			399 396 8935	to	8999	418 962 2848	to	2899	443 673 7900	to	7999
360 168 6008	to	6099	399 792 7775	to	7799	419 543 0286	to	0299	443 800 9335	to	9399
360 173 8800	to	8899	399 792 8300	to	8399	419 730 0300	to	0399	444 382 8822	to	8899
360 324 2326	to	2399	<b>400 427 1051 to 1999</b>			<b>420 277 0015 to 0049</b>			444 390 1667	to	1699
362 861 3064	to	3099	401 045 1505	to	1549	420 599 0734	to	0798	444 457 3854	to	3899
<b>373 006 2176 to 2199</b>			401 045 1571	to	1599	420 661 4115	to	4199	<b>450 048 4173 to 4199</b>		
374 768 2600	to	2699	401 294 2700	to	2799	420 758 9500	to	9699	450 048 4442	to	4699
375 169 4400	to	4599	401 310 9505	to	9599	420 969 3951	to	3971	450 560 5173	to	5199
375 829 3400	to	3499	401 382 5312	to	5399	420 969 3973	to	3999	450 620 3077	to	3099
375 851 9100	to	9199	402 578 7876	to	7899	421 116 3565	to	3599	450 620 3135	to	3199
376 196 0911	to	0999	403 125 6744	to	6799	421 130 9300	to	9399	450 780 2716	to	2799
378 085 3679	to	3699	403 260 7000	to	7499	421 313 4500	to	4999	450 801 2700	to	2799

451 109 2967	to	2984	464 711 4332	to	4399	483 363 7207	to	7299	502 424 0600	to	0699
451 115 4110	to	4125	465 692 3963	to	3999	483 402 2356	to	2399	502 496 6923	to	6999
451 115 4127	to	4199	465 698 8300	to	8599	483 486 5100	to	5199	503 003 2700	to	2899
451 746 0700	to	0799	465 743 7745	to	7799	483 632 1521	to	1599	503 194 5144	to	5153
452 265 0074	to	0099	466 798 6056	to	6067	483 632 2600	to	2799	503 790 9922	to	9948
452 265 0246	to	0299	467 147 4300	to	4399	483 849 1615	to	1699	504 045 4030	to	4099
452 265 0335	to	0999	468 079 5782	to	5799	484 174 4803	to	5299	504 166 0200	to	0599
452 509 1169	to	1199	469 067 2817	to	2899	484 323 8900	to	9199	504 240 1062	to	1399
452 855 6471	to	6499	469 127 8000	to	8199	484 680 5000	to	5038	504 805 3300	to	3499
452 890 4679	to	4799	469 213 0359	to	0399	484 680 5040	to	5074	505 096 0662	to	0699
452 900 8215	to	8238	469 213 0500	to	0599	484 680 5077	to	5099	505 893 7739	to	7799
453 117 9146	to	9199	469 561 8011	to	8099	485 029 4913	to	4999	505 893 7800	to	7999
453 334 3631	to	3699	469 658 1961	to	1999	486 176 0600	to	0699	506 124 0800	to	0999
453 603 7841	to	7891	469 666 9900	to	9999	486 559 7555	to	7599	506 165 7027	to	0099
453 650 1140	to	1199	469 678 1900	to	1999	486 696 3023	to	3199	506 502 5209	to	5299
453 741 1300	to	1399	469 781 4900	to	4999	488 173 7900	to	7999	506 756 1682	to	1699
454 013 2919	to	2999	469 947 6960	to	6999	488 206 4100	to	4199	506 756 1700	to	1799
454 186 2411	to	2499	<b>470 755 5800 to 5818</b>			488 226 0200	to	0299	506 756 1800	to	1899
454 268 4883	to	4899	471 918 0300	to	0999	488 709 3906	to	3999	506 836 5326	to	5399
454 302 5400	to	5499	471 985 2408	to	2419	488 855 8359	to	8399	508 488 6226	to	6299
454 490 8300	to	8399	472 191 6700	to	6799	489 181 8963	to	8999	508 789 8332	to	8399
454 547 7434	to	7499	472 270 2555	to	2599	489 223 2000	to	2099	508 789 8400	to	8499
454 922 4867	to	4895	472 987 0213	to	0241	489 311 1930	to	1999	509 909 0425	to	0435
455 221 1348	to	1499	472 987 0290	to	0299	489 318 6200	to	6300	<b>510 150 2400 to 2499</b>		
455 364 2147	to	2199	473 151 2069	to	2199	489 384 0027	to	0099	510 381 3200	to	3299
455 399 5400	to	5499	473 666 9138	to	9199	489 427 0658	to	0899	510 587 9500	to	9599
455 476 0676	to	0699	473 952 3429	to	3499	489 997 5252	to	5299	510 587 9659	to	9699
455 543 0618	to	0699	474 108 5402	to	5499	<b>490 669 5850 to 6099</b>			510 269 9770	to	9999
456 410 9006	to	9099	474 356 5193	to	5299	490 717 7080	to	7099	511 021 5042	to	5099
456 470 4146	to	4299	474 949 3366	to	3399	490 721 6000	to	6099	511 021 5100	to	5199
456 619 4460	to	4499	475 134 9362	to	9399	490 793 1500	to	2099	511 844 0100	to	0199
457 333 2686	to	2699	475 167 9667	to	9699	490 886 8171	to	8199	511 844 0340	to	0399
457 729 1767	to	1777	475 319 3415	to	3499	490 977 9221	to	9240	<b>600 645 3223 to 3299</b>		
457 937 8615	to	8699	475 319 3649	to	3799	491 258 8100	to	9099	601 339 1200	to	1399
458 028 9810	to	9899	475 340 6400	to	6599	491 567 1376	to	1399	601 653 5884	to	5899
458 057 2712	to	2999	475 424 8410	to	8499	492 254 4800	to	4899	601 661 7700	to	7799
458 069 9537	to	9599	475 629 9156	to	9199	492 283 5100	to	5199	601 682 5343	to	5399
458 069 9665	to	9699	475 850 6101	to	6199	492 610 6813	to	6899	601 928 1600	to	1699
458 337 5222	to	5299	475 875 2500	to	2599	493 394 5568	to	5599	602 512 2972	to	2999
458 354 7653	to	7999	476 169 8264	to	8299	493 470 2562	to	2599	602 555 2400	to	2799
458 671 8678	to	8699	476 189 3000	to	3499	493 473 7700	to	7799	602 829 7061	to	7099
458 671 8721	to	8798	476 331 2480	to	2499	493 716 2153	to	2199	603 483 9572	to	9599
458 847 5044	to	5999	477 289 8601	to	8699	494 206 2972	to	2999	603 490 7200	to	7299
459 274 7624	to	7699	477 681 5206	to	5299	494 217 3446	to	3999	603 678 7100	to	7199
459 365 5432	to	5499	478 010 4243	to	4268	494 224 0500	to	0599	603 678 7662	to	7699
459 378 5764	to	5799	478 010 4270	to	4291	495 145 0600	to	0699	603 678 7902	to	7999
459 472 4816	to	4999	478 450 5071	to	5099	496 209 7425	to	7499	603 678 8418	to	8499
<b>460 349 6878 to 6899</b>			478 469 7838	to	7858	496 213 8728	to	8799	603 678 8700	to	9999
460 550 1909	to	1999	478 469 7883	to	7899	496 474 5226	to	5248	604 086 0880	to	0899
460 997 5234	to	5299	479 280 9800	to	9899	497 053 8517	to	8699	604 349 1414	to	1499
461 973 6443	to	6499	479 365 9116	to	9176	497 854 8673	to	8699	604 503 7776	to	7799
462 152 0107	to	0299	479 412 9900	to	9999	498 449 8888	to	8899	605 520 9037	to	9099
462 274 1072	to	1099	479 667 6190	to	6199	498 929 8285	to	8499	605 685 4010	to	4099
462 277 8373	to	8399	479 748 9680	to	9699	498 936 5310	to	5399	605 988 6467	to	6499
462 554 6051	to	6099	479 860 7000	to	7199	499 016 5425	to	5499	607 689 7951	to	7960
463 011 5529	to	5540	<b>480 526 2000 to 2099</b>			499 440 8575	to	8899	607 728 1276	to	1299
463 176 4115	to	4199	480 640 6330	to	6399	499 731 6717	to	6799	608 727 7100	to	7199
463 176 4229	to	4299	480 658 0568	to	0599	<b>500 064 1858 to 1869</b>			608 727 7273	to	7599
463 185 2600	to	2799	480 689 5100	to	5199	500 070 5725	to	7799	608 813 9950	to	9999
463 227 7711	to	7799	481 072 9463	to	9499	501 058 0016	to	0026	609 067 5325	to	5399
463 414 4869	to	4899	481 673 0074	to	0095	501 331 0300	to	0399	609 067 5488	to	5499
463 808 3484	to	3499	482 527 1500	to	1599	501 460 0977	to	0999	609 067 5600	to	5699
463 945 7400	to	7899	482 541 5255	to	5299	502 227 7645	to	7699	609 289 6123	to	6199
464 629 9000	to	9399	482 729 6800	to	6899	502 424 0200	to	0499	609 438 4400	to	4499

609 493 1100 to 1199	633 110 4303 to 4499	647 811 2188 to 2199	<b>670 368 3400 to 3499</b>
609 766 8091 to 8999	633 438 6429 to 6599	648 009 6057 to 6099	670 369 7336 to 7399
609 825 4100 to 4115	633 588 7173 to 7182	648 163 5300 to 5499	670 750 7169 to 7199
609 884 2981 to 2999	634 725 0700 to 0799	648 722 5283 to 5299	671 046 6200 to 6399
609 893 1000 to 1099	634 803 3239 to 3299	648 892 3164 to 3199	671 251 5448 to 5499
<b>610 092 3200 to 3299</b>	634 807 2474 to 2499	649 100 3989 to 3999	671 926 5600 to 5799
610 582 4200 to 4299	634 827 5900 to 5999	649 647 0370 to 0399	672 444 2000 to 2999
611 879 6939 to 6999	634 886 3428 to 3499	649 647 0522 to 0599	672 828 3410 to 3499
612 291 8013 to 8099	635 559 3449 to 3499	649 647 5237 to 5399	673 167 5776 to 5799
612 751 5171 to 5199	636 289 6214 to 6299	649 647 9100 to 9299	675 464 3700 to 3799
612 751 5226 to 5299	636 634 8007 to 8042	649 666 7800 to 8299	675 464 4000 to 4199
612 751 6083 to 6099	637 150 1200 to 1299	<b>650 114 7707 to 7719</b>	676 365 5958 to 5999
612 751 6268 to 6299	637 562 5828 to 5899	650 130 3400 to 3599	676 669 1024 to 1099
612 751 6572 to 6599	638 042 1647 to 1699	650 213 0406 to 0499	677 126 6734 to 6799
612 774 2111 to 2199	638 049 4984 to 4999	650 555 1749 to 1799	677 333 9979 to 9999
612 774 2254 to 2299	638 318 1115 to 1199	650 564 1900 to 1999	677 466 1088 to 1099
612 774 2500 to 2599	638 318 1453 to 1499	650 627 4212 to 4299	678 071 4500 to 4799
614 469 0979 to 0999	638 885 0000 to 0299	650 736 2043 to 2099	678 096 7531 to 7599
614 474 3000 to 3099	638 903 4362 to 4373	650 739 1540 to 1699	679 909 2578 to 2599
614 521 3490 to 3499	639 415 1929 to 1999	651 741 4415 to 4499	<b>680 112 9565 to 9599</b>
614 645 1800 to 1899	639 415 2019 to 2099	651 882 2800 to 2899	680 244 0903 to 0999
614 832 1100 to 2099	639 420 6200 to 6299	652 754 6317 to 6399	680 412 6046 to 6099
615 017 7505 to 7599	639 469 3517 to 3799	653 131 4945 to 4999	680 761 6800 to 6899
617 711 6609 to 6699	639 605 2143 to 2199	653 426 3300 to 3399	681 677 0540 to 0699
617 760 5266 to 5299	639 657 8600 to 8799	653 455 4874 to 4899	682 070 1029 to 1099
617 813 3601 to 3699	<b>640 289 7500 to 7599</b>	654 238 0000 to 0399	682 956 6280 to 6299
618 840 9200 to 9299	640 289 7700 to 7999	654 404 3065 to 3092	682 956 6490 to 6599
619 551 7229 to 7299	641 170 4420 to 4499	654 962 2900 to 3199	682 956 6700 to 6799
619 859 3000 to 3099	641 318 3133 to 3199	655 103 5081 to 5199	682 965 1178 to 1199
<b>620 073 9400 to 9499</b>	641 378 6500 to 6999	655 523 2600 to 2999	682 965 1201 to 1299
621 614 7907 to 7930	641 383 8739 to 8799	656 305 2448 to 2499	683 118 2389 to 2399
621 614 7932 to 7999	641 877 3187 to 3299	657 347 4438 to 4999	683 378 2000 to 2099
621 648 8021 to 8199	641 877 3310 to 3399	657 710 8100 to 8999	683 378 2117 to 2299
621 648 8500 to 8599	642 355 8094 to 8199	657 780 0985 to 0999	683 415 1200 to 1499
621 904 8351 to 8599	642 355 8308 to 8999	658 586 1400 to 1499	683 444 8159 to 8199
621 916 1978 to 1989	642 900 0018 to 0099	658 877 8000 to 8199	685 154 7780 to 7789
622 989 8032 to 8099	643 030 6254 to 6299	658 880 8000 to 8199	685 297 7645 to 7699
623 076 9300 to 9399	644 066 0882 to 0899	659 398 7300 to 7399	685 623 5264 to 5299
623 819 5006 to 5099	644 069 0600 to 0699	659 706 8113 to 8199	685 650 9487 to 9499
623 895 8200 to 8399	644 077 7506 to 7699	659 846 7837 to 7899	685 669 4200 to 4299
623 917 0000 to 0099	644 085 8157 to 8199	<b>660 510 4100 to 4199</b>	685 757 8452 to 8499
623 917 0200 to 0299	644 112 9839 to 9899	660 673 0400 to 0599	686 071 2694 to 2799
624 468 5288 to 5299	644 373 9083 to 9099	661 488 5000 to 5099	686 176 3333 to 3354
624 665 3162 to 3198	644 380 1460 to 1499	661 609 9100 to 9199	686 372 3200 to 3299
625 088 6735 to 6799	644 733 4715 to 4799	661 716 9420 to 9499	686 644 5879 to 5899
625 916 9500 to 9799	644 900 9712 to 9799	661 906 6522 to 6599	686 899 1371 to 1399
625 968 8956 to 8999	644 901 0109 to 1299	662 021 8332 to 8399	686 931 7636 to 7699
627 005 3938 to 3999	644 901 1325 to 1399	662 068 0700 to 0899	687 601 0973 to 0999
627 384 3907 to 4099	644 923 6800 to 7799	662 553 0774 to 0799	687 614 6774 to 6799
627 496 7549 to 7599	644 932 4655 to 4699	663 078 7034 to 7099	688 120 9000 to 9999
627 708 3605 to 3699	645 318 7240 to 7499	663 763 5300 to 5399	688 314 3107 to 3191
627 776 2500 to 2599	645 333 1766 to 1799	663 883 7039 to 7499	<b>690 291 1361 to 1371</b>
628 226 3100 to 3199	645 790 8632 to 8699	663 938 9200 to 9299	690 788 2877 to 2899
628 814 4702 to 4799	645 821 0657 to 0699	664 253 8000 to 8499	690 893 5344 to 5399
628 851 9689 to 9699	645 930 7948 to 7999	664 656 3055 to 3099	690 893 5512 to 5599
629 510 7200 to 7299	645 975 0737 to 0762	665 174 6400 to 6499	690 904 1300 to 1599
629 964 4200 to 4294	646 242 6200 to 6299	665 274 8208 to 8299	690 941 6000 to 6199
<b>630 389 3056 to 3071</b>	646 270 7639 to 7799	665 669 5400 to 5499	691 313 6383 to 6399
630 463 0588 to 0599	646 798 4000 to 4999	666 132 8226 to 8299	691 313 6600 to 6699
631 459 9117 to 9199	647 048 7035 to 7099	666 696 2209 to 2299	691 582 8003 to 8099
631 762 9325 to 9399	647 049 2900 to 2999	666 696 2309 to 2399	691 664 1800 to 1999
632 217 4933 to 4999	647 398 8300 to 8399	667 032 9300 to 9399	691 664 2400 to 2499
632 500 0000 to 640 3999	647 398 8481 to 8499	667 729 5529 to 5599	692 727 9362 to 9399
633 110 4165 to 4199	647 437 3000 to 4999	668 383 8400 to 8699	692 798 1800 to 1899

693 249 0779	to 0799	740 274 2602	to 2619	835 496 7303	to 7399	859 855 8873	to 8999
693 249 0877	to 1699	740 277 0366	to 0392	835 539 5200	to 5999	<b>860 240 8520 to 8599</b>	
693 445 0566	to 0999	740 332 7658	to 7671	835 813 3015	to 3099	860 275 3900	to 3999
693 448 8500	to 8999	740 348 6641	to 6658	837 672 8967	to 8999	860 518 9629	to 9699
693 645 9583	to 9599	740 351 4790	to 4799	837 784 3282	to 3299	860 600 0021	to 0999
693 965 4200	to 4299	740 374 7416	to 7499	838 176 8377	to 8399	861 158 2350	to 2599
695 741 2906	to 2999	740 470 2420	to 2443	838 518 1257	to 1299	861 367 5400	to 5499
695 947 8518	to 8599	740 514 0300	to 0499	839 718 8257	to 8299	861 637 6010	to 6099
696 662 8247	to 8299	740 523 7432	to 7449	<b>840 323 0600 to 0699</b>		861 979 7292	to 7499
697 447 8285	to 8296	740 535 1555	to 1580	840 875 6235	to 6299	862 216 6100	to 6199
698 042 4816	to 4899	740 557 3570	to 3579	840 910 0900	to 0999	862 263 9213	to 9299
698 131 2138	to 2157	740 650 4104	to 4140	841 349 5000	to 5099	862 271 0800	to 0999
698 227 0000	to 0099	740 684 0620	to 0800	841 805 7747	to 7899	862 271 5000	to 5099
<b>700 065 2570 to 2599</b>		740 701 6105	to 6114	841 805 7944	to 8099	863 871 5138	to 5199
700 065 4800	to 4899	740 705 9790	to 9799	842 226 0685	to 0695	863 949 5300	to 5399
700 190 3350	to 3359	740 726 6400	to 6500	842 685 4600	to 4699	864 088 8200	to 8299
700 228 6048	to 6099	740 748 8319	to 8329	842 685 4742	to 4999	864 426 3972	to 3999
700 650 0452	to 0499	740 765 3306	to 3399	842 860 0300	to 0399	864 520 6117	to 6136
700 666 1323	to 1349	740 774 8434	to 8499	842 898 5582	to 5599	865 151 0526	to 0599
700 786 9106	to 9142	740 779 4259	to 4299	843 062 7100	to 7199	865 500 4034	to 4099
700 859 0744	to 0758	740 786 1885	to 1899	843 077 6288	to 6299	865 883 6082	to 6099
701 028 6780	to 6899	740 790 5989	to 5999	843 077 6378	to 6399	866 004 3000	to 3999
701 213 3900	to 3999	740 803 4870	to 4879	843 758 5769	to 5778	866 442 4100	to 4899
701 267 2000	to 3999	740 820 4854	to 7836	843 786 2554	to 2699	867 366 9108	to 9118
701 335 7312	to 7399	740 827 7578	to 7594	845 656 8165	to 8199	867 633 7403	to 7499
701 369 2005	to 2050	740 917 7490	to 7499	845 727 2100	to 2199	867 737 5623	to 5699
701 499 2260	to 2299	740 918 5531	to 5549	845 746 2618	to 2635	868 169 4529	to 4599
701 503 2247	to 2299	741 037 8528	to 8551	846 390 7531	to 7599	868 173 8400	to 8599
701 541 2271	to 2299	742 030 6135	to 6149	846 918 0572	to 0599	868 514 9000	to 9099
701 553 6557	to 6599	742 033 2663	to 2674	847 237 7690	to 7699	868 566 9200	to 9299
701 578 7460	to 7469	742 040 3300	to 3309	847 284 2481	to 2499	869 200 0000	to 9999
701 578 7475	to 7499	742 151 5000	to 5014	847 374 7055	to 7065	869 387 1150	to 1199
701 601 3457	to 3499	742 191 4640	to 4649	847 374 7055	to 7065	869 505 3500	to 3599
701 605 5913	to 5999	742 192 5210	to 5224	847 636 5304	to 5399	869 523 7033	to 7099
701 695 3982	to 3999	742 222 9200	to 9210	847 700 5447	to 5499	869 566 6150	to 6167
701 695 4148	to 4199	742 228 9660	to 9669	847 723 7500	to 7599	869 800 0000	to 999 9999
701 695 4227	to 4299	742 247 6980	to 6989	849 485 3427	to 3499	<b>870 054 4814 to 4899</b>	
701 708 1741	to 1799	742 290 0936	to 0950	849 520 9850	to 9899	870 491 4812	to 4849
701 736 3966	to 3999	742 302 7600	to 7699	849 608 1357	to 1399	870 536 5820	to 5829
701 772 0870	to 0899	<b>805 885 8411 to 8499</b>		849 792 2600	to 2699	870 541 7167	to 7239
701 838 2800	to 2899	806 087 1100	to 1499	<b>850 546 1862 to 1899</b>		870 575 8155	to 8999
701 941 0600	to 0699	806 268 9275	to 9299	851 143 6826	to 6844	870 589 0485	to 0494
702 171 1603	to 1699	806 534 3400	to 3477	851 209 9880	to 9899	870 691 7060	to 7099
702 195 5109	to 5199	807 342 3283	to 3399	851 928 9221	to 9299	872 028 4850	to 4899
702 254 9300	to 9399	808 086 7100	to 7199	852 589 6560	to 6599	872 029 9306	to 9399
702 264 7569	to 7599	808 090 3440	to 3499	853 049 3646	to 3699	872 078 3709	to 3799
702 519 0513	to 0524	808 325 5161	to 5699	854 304 4089	to 4999	872 100 0445	to 0459
702 713 1800	to 1809	808 784 8000	to 8299	854 529 2200	to 2299	<b>900 556 4178 to 4199</b>	
702 821 5730	to 5799	<b>830 125 0672 to 0699</b>		854 532 0000	to 2999	900 845 0044	to 0099
702 821 5805	to 5899	830 602 5800	to 5999	855 001 6204	to 6249	900 936 0217	to 0299
702 844 6975	to 6994	830 610 3700	to 3799	855 319 9364	to 9399	900 936 0435	to 0499
702 846 6331	to 6399	830 983 3500	to 3599	855 361 3390	to 3399	901 058 5255	to 5280
702 848 3900	to 3999	830 983 3635	to 3699	856 226 0490	to 0499	901 273 1082	to 1099
702 857 7302	to 7499	831 354 1387	to 1399	856 656 5800	to 5999	901 287 5143	to 5199
702 878 0114	to 0199	831 815 8240	to 8299	856 752 0200	to 0299	901 291 2789	to 2799
703 364 1707	to 1799	832 525 3810	to 3899	857 111 1352	to 1399	901 525 7122	to 7199
<b>740 002 7710 to 7719</b>		833 159 1884	to 1899	857 279 3450	to 3499	902 089 1253	to 1299
740 037 6730	to 6800	833 456 2567	to 2599	857 843 4000	to 4099	902 198 9769	to 9799
740 119 2275	to 2284	833 566 3015	to 3071	858 124 7644	to 7699	902 948 1269	to 1299
740 130 6688	to 6698	834 130 5200	to 5299	858 756 3111	to 3299	902 985 0833	to 0899
740 144 2780	to 2795	834 316 5444	to 5499	859 063 8200	to 8699	903 370 6934	to 6999
740 241 9049	to 9099	834 354 8747	to 8766	859 190 0600	to 0644	904 600 6523	to 6599
740 252 9265	to 9294	834 354 8824	to 8838	859 437 5538	to 5599	904 892 0378	to 0399
740 255 1718	to 1799	835 269 5700	to 5799	859 811 2888	to 2899	904 892 0648	to 1299

905 056 2216	to	2299	911 400 8948	to	8999	919 519 2786	to	2799	924 685 1957	to	1999
905 510 6647	to	6799	911 508 1620	to	1799	919 536 0770	to	0799	924 946 6300	to	6699
905 510 6900	to	7099	911 509 9310	to	9399	919 814 3095	to	3199	925 333 5900	to	6099
905 794 0000	to	0199	911 523 3000	to	3999	919 889 5110	to	5134	925 336 2300	to	2399
905 794 0288	to	0299	912 057 9922	to	9999	919 889 5137	to	5176	926 432 5907	to	5999
905 873 6900	to	6999	912 882 0563	to	0899	919 889 5178	to	5199	926 436 3600	to	3699
905 873 7100	to	7299	913 605 2218	to	2299	919 889 5030	to	5070	927 765 6257	to	6299
905 880 8900	to	8999	913 709 2429	to	2499	919 889 5090	to	5099	928 197 8100	to	8199
905 889 7100	to	7199	913 818 3501	to	3999	919 915 2774	to	2787	928 197 8283	to	8299
906 158 1508	to	1599	914 063 4300	to	4399	<b>920 155 4662 to 4687</b>			928 856 2059	to	2068
906 558 8812	to	8899	914 346 7621	to	7644	920 309 9039	to	9199	<b>930 219 1722 to 1799</b>		
906 982 2214	to	2299	914 453 1366	to	1399	920 771 5321	to	5399	930 335 7810	to	7819
907 725 8500	to	8599	914 529 6185	to	6299	920 857 5500	to	5899	931 097 9259	to	9299
907 815 0216	to	0257	914 896 4658	to	4699	920 864 3480	to	3499	931 156 1502	to	1579
908 622 4225	to	4235	915 187 8774	to	8779	920 963 4567	to	4599	931 156 1600	to	1625
908 936 9254	to	9299	915 300 2783	to	2799	921 333 7400	to	7499	931 156 1671	to	1699
909 066 4494	to	7499	915 546 6822	to	6999	921 477 3762	to	3799	932 506 6400	to	6599
909 067 7400	to	7499	915 646 5183	to	5199	922 278 1048	to	1399	932 732 1796	to	1799
909 100 1787	to	1799	915 671 3963	to	3980	922 280 2019	to	2099	932 827 9026	to	9099
909 100 1900	to	2099	915 671 3982	to	3999	922 280 2233	to	2299	932 957 2300	to	2399
909 355 0422	to	0499	915 675 2217	to	2299	922 773 0459	to	0499	933 060 6160	to	6189
909 568 8900	to	9099	916 440 3377	to	3399	923 032 7000	to	7399	933 387 2541	to	2561
909 568 9300	to	9499	916 670 6352	to	6399	923 045 3630	to	3699	933 760 3609	to	4199
909 725 7307	to	7399	916 682 5300	to	5399	923 484 3600	to	3699	933 894 0928	to	0999
909 833 0947	to	0999	916 694 1414	to	1499	923 493 9403	to	9599	934 018 2729	to	2741
<b>910 219 8631 to 8699</b>			916 703 0802	to	0821	923 493 9681	to	9699	934 180 0300	to	0399
910 265 1100	to	1199	917 089 0709	to	0799	923 604 4424	to	4499	934 236 3954	to	3999
910 471 7273	to	7299	917 089 0842	to	0899	923 810 7800	to	8299	934 622 8717	to	8999
910 536 2505	to	2599	917 216 2928	to	2999	924 252 1200	to	1299	935 216 0312	to	0399
910 958 7499	to	7599	917 370 6300	to	6499	924 252 1400	to	1499	935 843 2202	to	2247
911 140 1000	to	2199	917 486 4900	to	4999	924 533 0711	to	0799	936 024 8889	to	8899
911 245 2545	to	2599	918 460 0602	to	0699	924 533 2343	to	2399	936 339 4455	to	4499
911 268 9077	to	9099	918 951 7231	to	7299	924 533 2428	to	2499			

— Criminal Investigations Group, Postal Inspection Service, 7-7-16



## Missing, Lost, or Stolen Canadian Money Order Forms

**Do Not Cash — Upon Receipt, Notify Local Postal Inspectors**

This listing will be provided to all Postal Service™ employees responsible for accepting and cashing postal money orders. Destroy all interim notices when the numbers listed appear in the *Postal Bulletin*. The new

money order serial numbers consist of the first 9 digits. The 10th digit is a check digit only.

Do not cash outdated money orders **104 151 601 to 692 600 000**. Advise holders to send invalid money orders To Canada Post Corporation, Ottawa, Canada K1A 0B1. Check for altered dollar amounts by holding money orders to the light.

719 869 731	to	9 760	728 702 338	to	2 400	734 950 111	to	0 170	742 408 771	to	8 830
<b>720 227 871</b>	<b>to</b>	<b>7 930</b>	728 915 371	to	5 850	735 120 331	to	0 840	742 512 120	to	2 150
720 227 949	to	7 960	728 953 141	to	3 410	735 283 008	to	3 020	742 684 849	to	4 890
720 368 543	to	8 570	728 954 280	to	4 310	735 293 131	to	3 220	742 839 553	to	9 630
720 392 151	to	2 570	729 169 081	to	9 140	735 635 010	to	5 040	742 913 668	to	3 700
720 556 491	to	6 640	729 363 841	to	3 870	735 783 961	to	3 990	742 917 287	to	7 296
720 558 621	to	8 650	729 682 891	to	3 190	735 803 401	to	3 430	742 921 891	to	1 980
720 575 361	to	5 570	729 838 940	to	9 070	736 005 420	to	5 440	742 983 631	to	3 810
720 590 152	to	0 179	729 839 101	to	9 130	736 366 021	to	6 110	743 020 021	to	0 170
721 638 331	to	9 170	<b>730 077 683</b>	<b>to</b>	<b>7 840</b>	736 624 456	to	4 500	743 206 491	to	6 500
721 815 391	to	5 420	730 109 847	to	9 880	736 670 851	to	1 060	743 235 992	to	6 050
721 969 713	to	9 740	730 373 761	to	3 850	736 767 061	to	7 090	743 940 631	to	0 900
722 072 137	to	2 160	730 501 951	to	2 130	736 767 093	to	7 120	743 978 011	to	8 070
722 378 265	to	8 280	730 519 379	to	9 470	736 982 191	to	2 370	744 234 751	to	4 780
722 413 990	to	4 004	730 569 278	to	9 360	736 982 551	to	2 730	744 499 591	to	9 680
722 764 948	to	4 980	730 711 711	to	1 740	737 110 141	to	0 170	744 626 901	to	6 910
722 825 840	to	5 889	730 722 991	to	3 230	737 185 501	to	5 710	745 388 794	to	8 910
723 153 841	to	3 850	730 845 970	to	5 990	737 317 321	to	7 350	746 446 806	to	6 820
723 237 616	to	7 630	730 888 291	to	8 320	737 517 781	to	7 840	746 818 351	to	8 410
723 331 081	to	1 110	730 927 591	to	7 680	737 628 181	to	8 210	747 245 266	to	5 280
723 496 443	to	6 470	731 307 914	to	7 930	737 634 258	to	4 270	747 364 813	to	4 830
723 967 291	to	7 320	731 402 431	to	2 460	738 361 971	to	1 980	747 501 434	to	1 450
724 655 196	to	5 340	731 407 232	to	7 320	738 447 601	to	7 660	747 739 891	to	0 070
724 711 441	to	1 500	731 588 301	to	8 340	738 648 355	to	8 450	748 148 649	to	8 760
724 711 538	to	1 560	731 767 273	to	7 320	738 849 811	to	9 900	748 259 960	to	9 970
724 793 221	to	3 250	731 781 061	to	1 120	738 892 270	to	2 290	748 565 162	to	5 280
724 908 109	to	8 120	731 837 821	to	7 910	738 997 259	to	7 380	748 874 988	to	5 030
724 937 461	to	7 670	731 841 377	to	1 450	739 161 451	to	1 540	749 137 381	to	7 410
725 163 118	to	3 151	732 018 481	to	8 600	739 219 381	to	9 440	749 190 192	to	0 210
725 202 735	to	2 750	732 067 972	to	8 370	739 740 151	to	0 180	749 685 421	to	5 450
725 398 591	to	8 800	732 188 649	to	8 670	739 793 491	to	3 520	749 846 791	to	6 850
725 464 591	to	4 920	732 193 460	to	3 470	739 793 527	to	3 550	749 993 131	to	3 580
725 475 321	to	5 330	732 201 241	to	1 390	739 942 621	to	2 650	<b>750 071 587</b>	<b>to</b>	<b>1 610</b>
725 711 057	to	1 070	732 220 431	to	0 440	739 999 231	to	9 320	750 408 167	to	8 183
725 738 581	to	8 730	732 355 201	to	5 380	<b>740 011 517</b>	<b>to</b>	<b>1 530</b>	750 438 421	to	8 501
725 981 311	to	1 430	732 472 320	to	2 560	740 030 701	to	0 970	750 743 911	to	4 030
725 987 835	to	7 880	732 541 605	to	1 620	740 261 740	to	1 820	750 779 118	to	9 400
726 060 811	to	0 900	732 572 221	to	2 490	740 265 811	to	6 290	750 910 981	to	1 010
726 391 970	to	2 520	732 586 479	to	6 710	740 299 111	to	9 170	750 960 841	to	0 900
726 484 771	to	4 800	732 994 037	to	4 080	740 299 231	to	9 260	751 296 211	to	6 240
726 493 351	to	5 300	733 163 449	to	3 460	740 329 266	to	9 320	751 539 121	to	9 180
726 504 031	to	4 063	733 297 171	to	7 290	740 889 081	to	9 090	751 541 311	to	1 790
726 504 070	to	4 090	733 446 631	to	7 110	741 010 421	to	0 530	751 757 641	to	7 700
726 504 331	to	4 390	733 474 665	to	4 770	741 113 041	to	3 370	751 936 951	to	7 010
726 563 701	to	4 060	733 704 482	to	4 570	741 373 891	to	4 340	751 951 861	to	1 890
726 599 371	to	9 460	733 751 041	to	1 130	741 452 369	to	2 490	751 999 021	to	9 110
726 626 356	to	6 370	734 009 101	to	9 130	741 492 991	to	3 140	752 139 516	to	9 570
727 182 271	to	2 510	734 290 759	to	0 770	741 553 460	to	3 470	752 182 892	to	2 950
727 416 181	to	6 240	734 389 273	to	9 290	741 764 431	to	4 520	752 206 861	to	7 100
727 481 431	to	1 460	734 440 031	to	0 111	742 178 834	to	8 880	752 295 241	to	5 600
727 749 241	to	9 780	734 797 201	to	7 320	742 325 500	to	5 520	752 731 351	to	1 410
728 382 331	to	2 480	734 939 611	to	9 640	742 325 668	to	5 700	752 767 441	to	7 470

753 008 941	to 9 030	763 155 160	to 5 180	773 231 311	to 1 340	800 872 741	to 2 830
753 194 311	to 4 370	763 178 631	to 8 660	773 348 739	to 8 940	801 349 801	to 9 830
753 620 378	to 0 400	763 506 001	to 6 060	773 348 739	to 8 940	801 676 681	to 7 100
754 013 917	to 3 940	763 522 141	to 2 470	773 575 891	to 5 950	802 967 821	to 7 940
754 161 061	to 1 120	763 717 694	to 7 800	773 852 971	to 3 030	803 217 601	to 7 780
754 358 445	to 8 610	763 826 461	to 6 520	775 373 449	to 3 460	803 729 731	to 9 850
754 410 451	to 0 660	763 900 460	to 0 471	<b>789 257 191</b>	<b>to 7 250</b>	803 747 402	to 7 520
754 438 393	to 8 410	763 900 479	to 0 530	<b>790 448 020</b>	<b>to 8 460</b>	804 138 181	to 8 420
754 493 109	to 3 130	763 917 271	to 7 750	790 597 485	to 7 530	804 428 224	to 8 250
754 664 182	to 4 220	764 125 801	to 5 860	790 911 883	to 1 900	804 682 411	to 2 710
754 816 377	to 6 470	764 284 525	to 4 560	791 057 441	to 7 550	805 272 525	to 2 540
755 487 421	to 7 600	764 526 241	to 6 330	791 239 081	to 9 290	805 523 445	to 3 460
755 592 901	to 3 140	764 601 421	to 1 600	791 374 483	to 4 500	805 745 704	to 5 730
755 790 020	to 0 030	764 650 231	to 0 470	791 387 971	to 8 030	806 452 907	to 2 980
755 791 730	to 1 800	764 984 371	to 4 850	791 447 521	to 7 850	806 744 781	to 4 850
755 926 951	to 7 070	765 003 667	to 3 680	791 451 151	to 1 240	806 982 181	to 2 300
755 934 332	to 4 510	765 042 517	to 2 540	791 500 009	to 0 470	807 764 791	to 4 910
755 957 701	to 8 000	765 194 728	to 4 970	791 771 431	to 1 490	808 089 931	to 9 960
755 962 981	to 3 280	765 387 365	to 7 450	792 004 293	to 4 320	808 656 423	to 6 450
756 035 371	to 5 490	765 541 801	to 2 100	792 018 379	to 8 420	808 753 771	to 3 800
756 301 257	to 1 290	765 638 461	to 8 970	792 070 621	to 0 740	809 189 001	to 9 010
756 371 565	to 1 580	765 647 101	to 7 190	792 145 211	to 5 230	809 886 879	to 6 930
756 876 031	to 6 120	765 813 781	to 4 029	792 391 381	to 1 620	809 890 489	to 0 500
756 876 151	to 6 240	765 879 314	to 9 390	792 452 779	to 2 790	<b>810 323 734</b>	<b>to 3 760</b>
756 970 129	to 0 140	765 954 001	to 4 030	792 772 728	to 2 770	810 367 116	to 7 140
757 059 613	to 9 630	766 120 286	to 0 320	792 903 511	to 3 990	810 526 351	to 6 500
757 078 540	to 8 560	766 125 716	to 5 750	793 282 518	to 2 533	810 806 911	to 6 940
757 086 209	to 6 240	766 158 824	to 8 840	794 041 831	to 2 040	810 807 211	to 7 240
757 240 591	to 0 650	766 388 433	to 8 460	794 397 709	to 7 780	811 423 021	to 3 110
757 277 371	to 7 700	766 509 421	to 9 660	794 581 741	to 2 040	811 517 221	to 7 239
757 291 591	to 2 730	766 572 901	to 3 020	794 592 122	to 2 150	811 721 101	to 1 130
757 964 251	to 4 280	766 748 500	to 8 521	795 032 251	to 2 340	812 025 721	to 5 900
758 067 001	to 7 090	767 024 341	to 4 370	795 796 291	to 6 350	812 093 073	to 3 130
758 105 221	to 5 250	767 326 471	to 6 590	796 070 139	to 0 160	812 100 821	to 0 840
758 324 941	to 5 000	767 332 561	to 2 950	796 143 151	to 3 630	812 465 251	to 5 610
758 593 628	to 3 650	768 009 841	to 9 960	796 159 725	to 9 740	812 918 341	to 8 670
758 709 038	to 9 060	768 011 489	to 1 520	796 169 306	to 9 340	812 918 701	to 8 760
758 744 101	to 4 160	768 177 980	to 7 990	796 373 406	to 3 430	813 050 491	to 0 520
758 850 883	to 0 900	768 391 081	to 1 170	796 602 961	to 3 050	813 073 171	to 3 200
758 860 951	to 1 550	768 661 569	to 1 650	796 708 441	to 8 500	813 398 476	to 8 550
759 152 851	to 2 880	769 000 051	to 0 080	796 886 281	to 6 430	813 713 971	to 4 000
759 740 941	to 1 090	769 050 841	to 0 900	796 901 701	to 2 000	813 858 121	to 8 150
<b>760 004 596</b>	<b>to 4 610</b>	769 159 081	to 9 178	796 975 466	to 5 590	814 789 330	to 9 349
760 118 191	to 8 250	769 737 496	to 7 510	797 272 917	to 2 950	814 984 656	to 4 680
760 155 001	to 5 090	769 778 491	to 8 730	797 519 441	to 9 460	815 016 020	to 6 030
760 378 002	to 8 020	769 827 331	to 7 450	797 519 731	to 0 240	815 199 410	to 9 420
760 692 722	to 2 749	<b>770 216 071</b>	<b>to 6 100</b>	797 535 181	to 5 330	815 240 491	to 0 520
761 055 460	to 5 480	770 723 281	to 3 400	797 646 151	to 6 180	815 755 591	to 5 620
761 169 781	to 9 810	770 790 451	to 0 480	798 040 053	to 0 080	815 755 622	to 5 650
761 504 941	to 5 120	770 915 150	to 5 490	798 055 813	to 5 830	815 806 381	to 6 680
761 516 836	to 6 910	771 455 551	to 5 610	798 055 891	to 5 950	816 126 834	to 6 870
761 613 588	to 3 600	771 609 661	to 9 690	798 326 371	to 6 520	816 156 721	to 6 780
761 688 631	to 8 690	771 932 551	to 2 580	798 339 167	to 9 210	816 580 903	to 0 920
761 805 199	to 5 240	772 057 224	to 7 440	798 562 411	to 2 440	816 945 571	to 5 600
761 826 106	to 6 120	772 162 660	to 3 070	798 632 461	to 2 490	817 253 011	to 3 280
761 881 171	to 1 560	772 718 615	to 8 640	798 807 151	to 7 510	817 763 881	to 4 060
761 975 641	to 5 670	772 940 140	to 0 160	798 944 761	to 5 030	818 330 562	to 0 610
761 975 886	to 5 895	772 970 886	to 0 940	799 118 616	to 8 640	818 459 641	to 9 670
762 304 144	to 4 170	773 009 419	to 9 430	799 133 191	to 3 220	818 926 273	to 6 320
762 324 931	to 4 960	773 112 031	to 2 060	799 177 626	to 7 650	818 950 351	to 0 380
762 439 261	to 9 290	773 125 387	to 5 410	799 854 751	to 5 200	818 962 492	to 2 530
762 524 158	to 4 220	773 179 320	to 9 410	<b>800 044 320</b>	<b>to 4 410</b>	819 032 341	to 2 730
762 584 872	to 4 970	773 202 989	to 3 140	800 211 901	to 2 440	819 127 054	to 7 080
762 593 431	to 3 460	773 208 991	to 9 290	800 427 530	to 7 540	819 278 540	to 8 670

819 544 681	to	4 740	822 900 991	to	1 020	826 582 951	to	3 430	828 732 331	to	2 390
819 928 441	to	8 650	822 925 951	to	6 100	826 720 201	to	0 230	828 807 781	to	7 840
<b>820 034 406</b>	<b>to</b>	<b>4 430</b>	823 284 931	to	4 990	827 005 671	to	5 830	828 830 952	to	0 963
820 070 761	to	1 540	823 293 031	to	3 210	827 287 861	to	7 950	828 939 781	to	0 050
820 191 342	to	1 360	823 556 011	to	6 100	827 291 502	to	1 520	829 002 721	to	2 870
820 274 856	to	4 880	824 078 341	to	8 370	827 575 381	to	5 470	829 005 301	to	5 540
820 600 171	to	0 230	824 156 325	to	6 340	827 609 085	to	9 100	829 080 241	to	0 330
821 172 241	to	2 360	824 511 252	to	1 270	827 619 811	to	9 840	829 160 986	to	1 000
821 229 661	to	9 720	824 588 281	to	8 370	827 883 511	to	3 600	829 176 841	to	6 930
821 229 743	to	9 780	825 140 397	to	0 460	828 160 441	to	0 530	829 471 561	to	1 590
821 903 731	to	3 910	825 409 651	to	9 680	828 376 201	to	6 260	829 561 065	to	1 080
821 927 841	to	7 850	825 472 171	to	2 200	828 441 602	to	1 630	829 566 481	to	6 510
822 505 801	to	5 830	826 042 898	to	2 920	828 539 316	to	9 340	829 569 931	to	9 960
822 703 442	to	3 470	826 226 644	to	6 670	828 539 341	to	9 370			

— Criminal Investigations Group, Postal Inspection Service, 7-7-16

## Verifying U.S. Postal Service Money Orders

Follow these steps to cash a Postal Service™ money order:

1. Check that the amount does not exceed the legal limit: \$1,000 for domestic, and \$700 for international postal money orders.
2. Check that the proper security features are present:
  - When held to the light, a watermark of Benjamin Franklin is repeated from top to bottom on the left side.
  - When held to the light, a dark line (security thread) runs from top to bottom with the word “USPS” repeated.
  - There should be no discoloration around the dollar amounts, which might indicate the amounts were changes.

These appear in Postal Service Notice 299, *U.S. Postal Money Order Reference Card*, or online at <https://www.usps.com/shop/money-orders.htm>.

3. If the money order seems suspicious, call the U.S. Postal Service Money Order Verification System at 866-459-7822.

Please provide this information to local banks and retailers, as they also receive Postal Service money orders for cashing.

— Retail and Customer Service Operations, 7-7-16

## Counterfeit Canadian Money Order Forms

### Do Not Cash

To be posted and used by retail window employees. As directed, destroy previous notices. Destroy all interim notices when the numbers listed appear in the Postal Bulletin.

671,819,086	686,794,382
676,612,640	686,794,426
677,891,039	686,794,427
678,282,493	686,794,431
678,916,031	687,262,502
679,552,215	687,262,503
679,694,334	687,262,525
679,751,983	687,262,526
679,800,207	687,287,578
681,130,536	687,287,581
681,844,376	687,287,582
683,594,542	694,063,898
684,683,610	694,063,899
686,619,878	694,063,980
686,619,886	701,321,725
686,619,887	

— Criminal Investigations Group,  
Postal Inspection Service, 7-7-16

## Toll-Free Number Available to Verify Canadian Money Orders

The Canada Post Corporation is now providing a toll-free number that cashing agents can call to verify the validity of Canadian Postal Money Orders. The number is 800-563-0444.

This toll-free number is printed on the back of the Canadian Postal Money Orders.

— Criminal Investigations Group,  
Postal Inspection Service, 7-7-16

## Other Information

### Overseas Military/Diplomatic Mail

Mail addressed to military and diplomatic post offices overseas is subject to certain conditions or restrictions of mailing regarding content, preparation, and handling. The APO/FPO/DPO table below outlines these conditions by APO/FPO/DPO ZIP Codes™ through the use of footnoted mailing restrictions codes (see the [Restrictions](#) page following the table).

Acceptance clerks should use the table with the POS ONE terminal to determine which APO/FPO/DPO ZIP Codes are active and which conditions of mailing apply. Inquiries may be sent to the Military Postal Service Agency at <https://amps.usps.gov/jy2/frm.htm>.

We have eliminated “Not Active” entries from the table below to save space and paper.

### APO/FPO/DPO Table

APO/ FPO/ DPO	See Restrictions	APO/ FPO/ DPO	See Restrictions	APO/ FPO/ DPO	See Restrictions	APO/ FPO/ DPO	See Restrictions
09003	A1-A2-B-C-D-E-H-M-P-R-U	09068	A1-A2-B-C-D-E-H-U-Z1	09154	A1-A2-B-C-D-E-H-M-R-U	09306	A-A1-A2-B-C1-E2-F-F1-H1-R-R1-U2-V-Z1
09004	A1-A2-B-C-D-E-H-M-R-U	09069	A-A1-A2-B-C-D-E-H-N-U-V	09160	A1-A2-B-C-D-F-F1-H-J-L-M-N-R-T-U-V-Z1	09307	A1-A2-B-N-V-Z1
09005	A1-A2-B-C-D-E-H-M-P-R-U	09075	A1-A2-B-C-D-E-H-M-R-U	09161	A-A1-A2-B-E1-F-F1-M-N-V	09308	A-A1-A2-B-C1-E2-F-F1-H1-I3-M-N-R-R1-T-V-Z-Z1
09006	A1-A2-B-C-D-E-H-M-R-U	09079	A1-A2-B-C-D-E-H-M-R-U	09172	A1-A2-B-C-D-E-H-M-R-U	09309	A-A1-A2-B-C-C1-E2-F-H1-M-N-R-V-Z1
09009	A1-A2-B-C-D-E-H-M-R-U-Z1	09090	A1-A2-B-C-D-E-H-M-P-R-U	09173	A1-A2-B-C-D-E-H-M-R-U	09313	A-A1-A2-B-C-C1-E2-F-F1-F2-H1-R-R1-V-Z1
09011	A1-A2-B-C-D-E-H-M-R-U	09094	A1-A2-B-C-D-H-M-P-R-Z1	09177	A1-A2-B-C-D-E-H-M-R-U	09315	A-A1-A2-B-C1-E2-F-N-R-R1-V-Z1
09012	A1-A2-B-C-D-E-H-M-R-U-Z1	09095	A1-A2-B-C-D-E-H-M-R-U	09180	A1-A2-B-C-D-H-M-R-U	09316	A-A1-A2-B-C1-E2-F-F1-H1-I3-M-N-R-R1-T-V-Z-Z1
09013	A1-A2-B-C-D-E-F-F1-H-M-R-U-Z1	09096	A1-A2-B-C-D-E-H-M-R-U	09186	A1-A2-B-C-D-E-H-M-R-U	09319	A-A1-A2-B-C-C1-E2-F-F1-F2-H1-R-R1-U2-V-Z1
09014	A1-A2-B-C-D-E-H-M-R-U	09103	A1-A2-B-C-D-E-H-U	09211	A1-A2-B-C-D-E-H-M-P-R-U	09320	A-A1-A2-B-C1-E2-F-H1-M-R-R1-V-Z1
09016	A1-A2-B-C-D-E-H-M-R-U	09104	A1-A2-B-C-D-H-M-R-U-Z1	09213	A1-A2-B-C-D-F-F1-H-J-L-M-N-R-T-U-V-Z1	09321	A-A1-A2-B-C1-E2-F-H1-M-N-R-R1-V-Z1
09020	A1-A2-B-C-D-E-H-M-R-U	09107	A1-A2-B-C-D-E-H-M-R-U	09214	A1-A2-B-C-D-E-H-M-R-U-Z1	09330	A-A1-A2-B-C1-E2-F-F1-H1-M-R-R1-V-Z1
09021	A1-A2-B-C-D-E-H-M-R-U-Z1	09112	A1-A2-B-C-D-E-H-M-R-U	09227	A1-A2-B-C-D-E-H-M-R-U	09333	A-A1-A2-B-C1-E2-F-F1-H1-I3-M-N-R-R1-T-V-Z1
09028	A1-A2-B-C-D-E-H-M-R-U	09114	A1-A2-B-C-D-E-H-M-R-U	09245	A1-A2-B-C-D-E-H-M-R-U	09337	A-A1-A2-B-C1-E2-F-F1-H1-M-R-R1-V-Z1
09034	A1-A2-B-C-D-E-H-M-R-U	09123	A1-A2-B-C-D-E-H-M-R-U-Z1	09250	A1-A2-B-C-D-E-H-M-R-U	09340	A-A1-A2-B-C1-F-H-N-R-V
09044	A1-A2-B-C-D-F1-H-U	09125	A-A1-A2-B-F-F1-N-O-R-R1-V-V1	09261	A1-A2-B-C-D-E-F1-H-M-R-U-V-Z1	09343	A-A1-A2-B-C1-F-M-N-V-Z1
09046	A1-A2-B-C-D-E-H-M-R-U	09126	A1-A2-B-C-D-H-M-P-R-Z1	09263	A1-A2-B-C-D-E-H-M-R-U	09347	A-A1-A2-B-C1-E2-F-H1-M-R-R1-V-Z1
09049	A1-A2-B-C-D-E-H-M-R-U	09128	A1-A2-B-C-D-E-H-M-R-U	09264	A1-A2-B-C-D-E-H-M-R-U	09348	A-A1-A2-B-C1-E2-F-F1-H1-I3-M-N-R-R1-T-V-Z-Z1
09053	A1-A2-B-C-D-E-H-M-R-U	09131	A1-A2-B-C-D-E-H-M-R-U	09265	A1-A2-B-C-D-F-F1-H-J-L-M-N-R-T-U-V-Z1	09352	A-A1-A2-B-C1-E2-F-H1-M-R-R1-V-Z1
09054	A1-A2-B-C-D-E-H-M-R-U	09136	A1-A2-B-C-D-E-F1-H-M-P-R	09302	A-A1-A2-B-C1-F-F1-H-M-N-V-Z-Z1	09354	A-A1-A2-B-C1-E2-F-H1-M-R-R1-V-Z1
09055	A1-A2-B-C-D-E-F-H-M-R-R1-U-V	09138	A1-A2-B-C-D-H-M-R-U	09304	A-A1-A2-B-C-C1-D-E2-F-F1-H1-J-L-M-N-R-R1-T-V-Z1	09355	A-A1-A2-B-C1-E2-F-H1-M-R-R1-V-Z1
09059	A1-A2-B-C-D-E-H-M-R-U	09140	A1-A2-B-C-D-E-H-M-R-U	09305	A-A1-A2-B-C1-E2-F-F1-H1-I3-M-N-R-R1-T-V-Z-Z1		
09060	A1-A2-B-C-D-E-F1-H-M-R-U-Z1	09142	A1-A2-B-C-D-E-H-M-R-U				
09067	A1-A2-B-C-D-E-H-M-R-U	09143	A1-A2-B-C-D-E-H-M-R-U				

APO/ FPO/ DPO	See Restrictions	APO/ FPO/ DPO	See Restrictions	APO/ FPO/ DPO	See Restrictions	APO/ FPO/ DPO	See Restrictions
09356	A-A1-A2-B-C1-E2-F-H1-M-N-R-R1-V-Z1	09543	A1-A2-B-F-F1-R-R1-V	09622	A1-A2-B-C-F-R-U-Z1	09727	A-A1-A2-B-B2-C-C1-D-F-F1-J-L-M-N-R-R1-T-V-Z1
09357	A-A1-A2-B-C1-E2-F-H1-M-R-R1-V-Z1	09550	A1-A2-B-F-F1-R-R1-V	09623	A1-A2-B-C-F-R-U-Z1		
09363	A-A1-A2-B-C1-E2-F-H1-M-R-R1-V-Z1	09554	A1-A2-B-F-F1-R-R1-V	09624	A1-A2-B-C-F-F1-J-L-N-T-U-V-Z1	09728	A-A1-A2-B-B2-C-C1-F-F1-J-L-N-R-R1-T-V-Z1
09365	A-A1-A2-B-C-C1-E2-F-H1-M-N-R-V-Z1	09556	A1-A2-B-F-F1-R-R1-V	09625	A1-A2-B-C-F-R-U-Z1	09729	A1-A2-B-C-F-N-R-R1-U-V-Z1
09366	A-A1-A2-B-C1-E2-F-F1-H1-M-R-R1-V-Z1	09564	A1-A2-B-F-F1-R-R1-V	09626	A1-A2-B-C-F-R-U-Z1	09730	A-A2-B-B2-C-C1-F-F1-J-L-M-N-R-R1-T-V-Z1
09378	A-A1-A2-B-C1-E2-F-F1-H1-I3-M-N-R-R1-T-V-Z1	09565	A1-A2-B-F-F1-R-R1-V	09627	A1-A2-B-C-F-R-U-Z1	09731	A-A2-B-B2-C-C1-F-F1-J-L-M-N-R-R1-T-V-Z1
09381	A-A1-A2-B-C1-E2-F-F1-H1-I3-M-N-R-R1-T-V-Z1	09566	A1-A2-B-F-F1-R-R1-V	09630	A1-A2-B-C-F-U-V	09732	A1-A2-B-N-V-Z1
09403	A1-A2-B-C-C1-M-R-U-Z1	09567	A1-A2-B-F-F1-R-R1-V	09631	A1-A2-B-C-F-R-U-Z1	09733	A1-A2-B-N-V
09421	A1-A2-B-C-C1-M-R-U-Z1	09568	A1-A2-B-V	09633	A1-A2-B-B2-C-D-F-F1-M-R-U-U1-U2-U3-V-Z1	09734	A-A1-A2-B-C-C1-F-F1-J-L-M-N-R-R1-T-V-Z1
09447	A1-A2-B-C-C1-R-U-V-Z1	09569	A1-A2-B-F-F1-R-R1-V	09636	A1-A2-B-C-F-R-U-Z1	09735	A1-A2-B-N-V-Z1
09454	A1-A2-B-C-C1-M-R-U-V-Z1	09570	A1-A2-B-F-F1-R-R1-V	09642	A1-A2-B-M-N-R-U-V	09736	A-A1-A2-B-B2-C-C1-D-F-F1-J-L-M-N-R-R1-T-V-Z1
09459	A1-A2-B-C-C1-M-R-U-Z1	09574	A1-A2-B-F-F1-R-R1-V	09643	A1-A2-B-M-R-U-V-Z1	09737	A-A1-A2-B-B2-C-C1-F-F1-I-L-M-N-R-R1-T-V-W-Y-Z-Z1
09461	A1-A2-B-C-C1-M-P-R-U-Z1	09575	A1-A2-B-F-F1-R-R1-V	09645	A1-A2-B-C-F-F1-R-U-Z1	09738	A-A1-A2-B-B2-C-C1-D-F-F1-J-L-M-N-R-R1-T-V-Z1
09463	A1-A2-B-C-C1-R-U-Z1	09576	A1-A2-B-F-F1-R-R1-V	09647	A1-A2-B-M-N-R-U-Z1	09739	A-A1-A2-B-B2-C-C1-D-F-F1-J-L-M-N-R-R1-T-V-Z1
09464	A1-A2-B-C-C1-R-U-Z1	09577	A1-A2-B-V	09648	A1-A2-B-N-R-U-V-Z1	09741	A-A1-A2-B-C1-E2-F-F1-H1-J-L-M-N-R-R1-T-V-W-Y-Z1
09468	A1-A2-B-C-C1-M-R-U-Z1	09578	A1-A2-B-F-F1-R-R1-V	09649	A1-A2-B-N-R-U-Z1	09742	A-A1-A2-B-B2-F-F1-J-L-M-N-R-T-V-Z1
09469	A1-A2-B-C-C1-R-U-Z1	09579	A1-A2-B-F-F1-R-R1-V	09701	A-A1-A2-B-B2-C-C1-D-F-F1-J-L-M-N-R-R1-T-V-Z1	09743	A-A1-A2-B-F-H-N-Q-V-Z1
09470	A1-A2-B-C-C1-M-R-U-Z1	09581	A1-A2-B-F-F1-R-R1-V	09702	A1-A2-B-C-C1-F1-M-R-R1-U	09744	A-A2-B-B2-C-C1-F-F1-J-L-M-N-R-R1-T-V-Z1
09494	A1-A2-B-C-C1-M-R-U-Z1	09582	A1-A2-B-F-F1-R-R1-V	09703	A1-A2-B-C-D-F1-H-U	09745	A-A1-A2-B-F-F1-M-N-R-R1-V-Z1
09498	A1-A2-B-C-C1-F-F1-F2-J-L-N-R-R1-T-V-Z1	09583	A1-A2-B-F-F1-R-R1-V	09704	A1-A2-B-C-O-V-V1	09747	A1-A2-B-F-J-N-U-V-Z1
09501	A1-A2-B-V	09586	A1-A2-B-F-F1-R-R1-V	09705	A1-A2-B-U	09748	A-A1-A2-B-B2-C-C1-D-F-F1-J-L-M-N-R-R1-T-V-Z1
09502	A1-A2-B-V	09587	A1-A2-B-F-F1-R-R1-V	09706	A1-A2-B-C-N-R-U-V-Z1	09749	A-A1-A2-B-F-H-N-U-V-Z1
09503	A1-A2-B-F-F1-R-R1-V	09588	A1-A2-B-V	09707	A1-A2-B-C-F-F1-J-L-M-N-R-T-U-V-Z1	09750	A-A2-B-B2-C-C1-F-F1-J-L-M-N-R-R1-T-V-Z1
09504	A1-A2-B-V	09589	A1-A2-B-V	09708	A1-A2-B	09751	A1-A2-B-C-D-E-H-M-R-U
09505	A1-A2-B-V	09590	A1-A2-B-V	09709	A1-A2-B-B2-C1-E2-F-F1-H-H1-J-L-N-R-R1-T-V-Z1	09752	A1-A2-B-C-D-F1-H-U
09506	A1-A2-B-V	09591	A1-A2-B-F-F1-R-R1-V	09710	A1-A2-B-C-C1-F-F1-J-L-M-N-R-R1-T-U-V-Z1	09753	A-A1-A2-B-F-N-V-Z1
09507	A1-A2-B-V	09592	A1-A2-B-F-F1-R-R1-V	09712	A-A1-A2-B-F-H-R-U-V-Z1	09754	A-A1-A2-B-F-H-N-Q-V-Z1
09508	A1-A2-B-F-F1-R-R1-V	09593	A1-A2-B-F-F1-R-R1-V	09714	A1-A2-B-C-C1-F1-M-R-R1-U	09755	A-A1-A2-B-B2-C-C1-D-F-F1-J-L-M-N-Q-R-R1-T-V-Z1
09509	A1-A2-B-F-F1-R-R1-V	09594	A1-A2-B-F-F1-R-R1-V	09715	A1-A2-B-F-F1-J-L-M-N-R-T-V-Z1	09756	A-A1-A2-B-B2-E3-F-F1-J-L-N-Q-R-R1-T-V-Z1
09510	A-A1-A2-B-C1-E2-F-H1-M-R-R1-V-Z1	09595	A1-A2-B-F-F1-R-R1-V	09716	A1-A2-B-C-F-F1-J-L-M-N-R-T-V-Z1	09758	A-A1-A2-B-F-F1-M-N-R-R1-V-Z1
09511	A1-A2-B-F-F1-R-R1-V	09596	A1-A2-B-F-F1-R-R1-V	09717	A-A1-A2-B-M-R-V-W-Z1		
09513	A1-A2-B-F-F1-R-R1-V	09599	A1-A2-B-F-F1-R-R1-V	09718	A1-A2-B-F-F1-J-L-M-N-R-T-U-V-Z1		
09517	A1-A2-B-F-F1-R-R1-V	09600	A1-A2-B-C-F-F1-R-U-Z1	09719	A1-A2-B-C-D-M-R-U-V-Z1		
09520	A1-A2-B-F-F1-R-R1-V	09602	A1-A2-B-C-F-F1-N-R-U-V	09720	A1-A2-B-M-R-U-V-Z1		
09523	A1-A2-B-F-F1-R-R1-V	09603	A1-A2-B-C-F-F1-R-U-V-Z1	09722	A-A1-A2-B-F-H-N-Q-V-Z1		
09522	A1-A2-B-V	09604	A1-A2-B-C-F-F1-P-R-U-V-Z1	09723	A1-A2-B-F-F1-J-L-M-N-R-T-U-V-Z1		
09524	A1-A2-B-F-F1-R-R1-V	09605	A1-A2-B-C-D-H-M-R-U-V	09724	A1-A2-B-C-C1-F1-M-R-R1-U		
09532	A1-A2-B-F-F1-R-R1-V	09606	A1-A2-B-C-D-H-M-R-U-V	09725	A-A1-A2-B-F-H-N-O-Q-V-V1-Z1		
09534	A1-A2-B-F-F1-R-R1-V	09607	A-A1-A2-B-C-F-F1-M-N-R-R1-U-U3-V-W-Z1	09726	A1-A2-B-F-F1-J-L-M-N-R-T-U-V-Z1		
		09608	A1-A2-B-C-F-N-R-U-V-Z1				
		09609	A1-A2-B-C-F-R-U-Z1				
		09610	A1-A2-B-C-F-F1-M-R-U-V-Z1				
		09613	A1-A2-B-C-F-N-U-V				
		09617	A1-A2-B-C-F-R-U-Z1				
		09618	A1-A2-B-C-F-R-U-Z1				
		09620	A1-A2-B-C-F-R-U-Z1				
		09621	A1-A2-B-C-F-R-U-Z1				

APO/ FPO/ DPO	See Restrictions	APO/ FPO/ DPO	See Restrictions	APO/ FPO/ DPO	See Restrictions	APO/ FPO/ DPO	See Restrictions
09759	A-A1-A2-B-B2-C-C1-E2-F-F1-F2-J-L-N-R-R1-T-V-Z1	09826	A-A1-A2-B-B2-C1-E1-E2-E3-F-F1-J-L-M-N-R-R1-T-V-W-Z1	09875	A-A1-A2-B-C1-E2-F-F1-H1-I3-J-L-M-N-R-R1-T-U-U4-V-Z-Z1	34055	A1-A2-B-F-F1-J-L-M-N-T-V-Z1
09760	A-A1-A2-B-B2-C-C1-D-F-F1-J-L-M-N-Q-R-R1-T-V-Z-Z1	09827	A-A1-A2-B-F-F1-J-L-M-N-R-T-V-Z1	09880	A-A1-A2-B-C1-E2-F-F1-H1-N-R-R1-U-V-Z1	34058	A1-A2-B-F-F1-R-R1-V-Z1
09762	A-A1-A2-B-B2-E3-F-F1-J-L-N-R-R1-T-V-Z1	09828	A-A1-A2-B-F-F1-I-J-L-N-T-V-Z-Z1	09890	A1-A2-B-E2-F-H1-N-R-R1-U2-V-Z1	34060	A1-A2-B-B2-C1-E2-F-F1-J-L-N-R-R1-T-V-Z1
09769	A-A1-A2-B-B2-C-C1-D-F-F1-J-L-M-N-R-R1-T-V-Z1	09829	A1-A2-B-C-N-R-V-Z1	09892	A-A1-A2-B-E2-F-F1-J-L-N-R-R1-T-V-Z1	34078	A1-A2-B-F1-N-V-Z1
09777	A-A1-A2-B-C-E1-F-F1-L-M-N-R-T	09830	A1-A2-B-C-M-N-R-V-Z1	09895	A-A1-A2-B-B2-C1-E2-F-L-N-R-T-V-W-Z1	34080	A1-A2-B-F-F1-R-R1-V
09780	A-A1-A2-B-F-H-N-R-V	09831	A1-A2-B-F-F1-J-L-N-T-U-V-Z1	09898	A1-A2-B-C-E2-F-H1-N-R1-U2-V-Z1	34081	A1-A2-B-F-F1-R-R1-V
09789	A-A1-A2-B-F-N-R-V-Z1	09832	A-A1-A2-B-U1-V-Z1	34002	A1-A2-B-F-F1-J-L-N-T-V-Z1	34082	A1-A2-B-F-F1-R-R1-V
09801	A-A1-A2-B-C1-E2-F-H1-M-N-R-R1-V-Z1	09833	A1-A2-B-U1-V-Z1	34004	A1-A2-B-F-F1-J-L-N-T-V	34083	A1-A2-B-F-F1-R-R1-V
09803	A1-A2-B-E2-E3-F-F1-H1-N-R-R1-U-V-Z1	09834	A1-A2-B-E2-E3-F-F1-R-R1-U-Z1	34007	A1-A2-B-F-F1-H-J-M-N-R-R1-V-Z1	34084	A1-A2-B-F-F1-R-R1-V
09804	A-A1-A2-B-F-F1-N-R-V-Z1	09835	A-A1-A2-B-N-V-Z1	34008	A1-A2-B-B2-D-E1-F-F1-H-H1-J-L-M-N-R-R1-T-V-Z1	34086	A1-A2-B-F-F1-R-R1-V
09805	A1-A2-B-E2-E3-F-F1-R-R1-Z1	09836	A-A1-A2-B-C-F-F1-J-L-M-N-R-T-V-Z1	34011	A1-A2-B-B2-C1-E2-F-F1-J-L-M-N-R-R1-T-V-Z1	34087	A1-A2-B-F-F1-R-R1-V
09806	A-A1-A2-B-C1-E2-F-F1-H1-J-L-M-N-R-R1-T-V-Z1	09837	A1-A2-B-E2-E3-V-Z1	34020	A1-A2-B-F-F1-J-L-M-N-T-V-Z1	34088	A1-A2-B-F-F1-R-R1-V
09808	A-A1-A2-B-B2-C1-E2-F-F1-H-H1-J-L-N-R-R1-T-V-Z1	09838	A1-A2-B-E2-E3-F-F1-U-Z1	34021	A1-A2-B-F-F1-T-J-L-M-N-V-Z1	34089	A1-A2-B-F-F1-R-R1-V
09809	A1-A2-B-F-F1-L-N-T-V-Z1	09839	A-A1-A2-B-U-V-Z1	34022	A1-A2-B-F-F1-J-L-M-N-T-V-Z1	34090	A1-A2-B-F-F1-R-R1-V
09810	A-A1-A2-B-F-F1-N-R-V-Z1	09840	A-A1-A2-B-E2-E3-V-Z1	34023	A1-A2-B-F-F1-J-L-M-N-T-V-Z1	34091	A1-A2-B-F-F1-R-R1-V
09811	A1-A2-B-E2-E3-F-F1-H1-N-R-R1-U-V-Z1	09841	A-A1-A2-B-N-R-U-Z1	34024	A1-A2-B-F-F1-J-L-M-N-T-V-Z1	34092	A1-A2-B-F-F1-R-R1-V
09812	A1-A2-B-E2-E3-F-F1-I-J-L-N-R-T-U-V-Z-Z1	09842	A-A1-A2-B-F-F1-J-L-N-R-T-V-Z1	34025	A1-A2-B-F-F1-J-L-M-N-T-V-Z1	34093	A1-A2-B-F-F1-R-R1-V
09813	A1-A2-B-E2-E3-F-F1-I3-J-L-N-R-T-U-V-Z-Z1	09844	A-A1-A2-B-C-C1-D-F-F1-J-L-M-N-R-R1-T-V-Z1	34030	A1-A2-B-F-F1-J-L-M-N-T-V-Z1	34094	A1-A2-B-F-F1-R-R1-V
09814	A1-A2-B-E2-E3-F-F1-I3-J-L-N-R-T-U-V-Z-Z1	09845	A-A1-A2-B-B2-E3-F-F1-J-L-M-N-R-T-V-Z1	34031	A1-A2-B-F-F1-J-L-M-N-T-V-Z1	34095	A1-A2-B-F-F1-R-R1-V
09815	A-A1-A2-B-F-N-R-V-Z1	09846	A-A1-A2-B-B2-C1-F-F1-J-L-N-R-R1-T-V-Z1	34032	A1-A2-B-F-F1-J-L-M-N-T-V-Z1	96201	A-A1-A2-B-F1
09816	A-A1-A2-B-B2-C-C1-E2-E3-F-F1-J-L-N-R-R1-T-V-Z1	09848	A-A1-A2-B-F-M-R-V-Z1	34033	A1-A2-B-C-F-F1-J-L-M-N-T-V-Z1	96202	A-A1-A2-B-F1-U
09817	A-A1-A2-B-B2-C1-E2-E3-F-F1-H-H1-J-L-M-N-R-T-V-Z1	09851	A-A1-A2-B-F-N-R-V-Z1	34034	A1-A2-B-F-F1-J-L-M-N-T-V-Z1	96203	A-A1-A2-B-F1
09818	A-A1-A2-B-C-F-M-V-Z1	09852	A1-A2-B-E2-E3-F-F1-H1-N-R-R1-U-V-Z1	34035	A1-A2-B-F-F1-H-J-L-M-N-T-V-Z1	96204	A-A1-A2-B-F1
09820	A-A1-A2-B-B2-F-F1-H1-J-L-M-N-R-R1-T-V-Z1	09853	A1-A2-B-E2-F-H1-R-R1-U2-V-Z1	34036	A1-A2-B-F-F1-J-L-M-N-T-V-Z1	96205	A-A1-A2-B-F1-U
09821	A-A1-A2-B-F-N-R-V-Z1	09855	A-A1-A2-B-C1-E2-F-F1-H1-M-R-R1-U2-V-Z1	34037	A1-A2-B-C-F-F1-H-I-L-M-N-T-V-Z-Z1	96206	A-A1-A2-B-F1-U
09822	A-A1-A2-B-F-R-V-Z1	09858	A1-A2-B-E2-E3-F-F1-H1-N-R-R1-U-V-Z1	34038	A1-A2-B-L-M-N-U-V-Z1	96207	A-A1-A2-B-F1-V
09823	A-A1-A2-B-F-F1-J-L-N-R-T-V-Z1	09859	A1-A2-B-C1-E2-E3-F-F1-H1-R-R1-U-V-Z1	34039	A1-A2-B-F-F1-J-L-M-N-T-V-Z1	96208	A-A1-A2-B-F1-U
09824	A-A1-A2-B-F-R-V-Z1	09861	A-A1-A2-B-F-F1-N-R-R1-V-Z1	34041	A1-A2-B-F-F1-J-L-M-N-T-V-Z1	96209	A-A1-A2-B-F-F1-J-L-N-T-U-V-Z1
09825	A-A1-A2-B-C-C1-D-F-F1-J-L-M-N-R-R1-T-V-Z1	09863	A-A1-A2-B-F-F1-N-O-R-R1-V-Z1	34042	A-A1-A2-B-C-F-F1-M-N-R-U-U1-V-W-Z1	96213	A-A1-A2-B-C-F1-R-U
		09865	A-A1-A2-B-R-U-V-Z1	34044	A-A1-A2-B-D-F-M-N-O-R-R1-V-V1-Z-Z1	96214	A-A1-A2-B-C-F1-R-U
		09868	A-A1-A2-B-E2-F-N-U-V-Z1			96218	A-A1-A2-B-F1-U
		09870	A-A1-A2-B-C1-E2-F-F1-H1-I3-J-L-M-N-R-R1-T-U4-V-Z-Z1			96224	A-A1-A2-B-F1-U
		09873	A-A1-A2-B-C1-E2-F-F1-H1-I3-J-L-M-N-R-R1-T-U4-V-Z-Z1			96251	A-A1-A2-B-F1-U
		09874	A-A1-A2-B-C1-E2-F-F1-H1-I3-J-L-M-N-R-R1-T-U4-V-Z-Z1			96257	A-A1-A2-B-F1-U
						96258	A-A1-A2-B-F1-U
						96260	A-A1-A2-B-F1-U
						96264	A-A1-A2-B-C-F1-R-U
						96266	A-A1-A2-B-C-F1-R-U
						96267	A-A1-A2-B-C-F1-R-U-V
						96269	A-A1-A2-B-F1-U-Z1
						96271	A-A1-A2-B-F1-U
						96275	A-A1-A2-B-F1-U
						96276	A-A1-A2-B-C-F1-R
						96278	A-A1-A2-B-C-F1-R-U
						96283	A-A1-A2-B-F1-U
						96284	A-A1-A2-B-F1-U
						96303	A1-A2-B-F-F1-H-J-L-M-N-T-V-W-Z1
						96306	A1-A2-B-F-F1-F2-H-M-W-Z1
						96309	A1-A2-B-C-M-R-V-W
						96310	A1-A2-B-M-W
						96319	A1-A2-B-C-M-R-W



APO/ FPO/ DPO	See Restrictions	APO/ FPO/ DPO	See Restrictions	APO/ FPO/ DPO	See Restrictions	APO/ FPO/ DPO	See Restrictions
96321	A1-A2-B-F-F1-F2-H-M-W-Z1	96385	A1-A2-B-M-W	96546	A1-A2-B-F-R-U3	96621	A1-A2-B-V
96322	A1-A2-B-F-F1-F2-H-M-W-Z1	96386	A1-A2-B-M-W	96548	A-A1-A2-B-H-M-R-U	96622	A1-A2-B-F-F1-R-R1-V
96323	A1-A2-B-C-M-R-V-W	96387	A1-A2-B-M-W	96549	A-A1-A2-B-F-F1-H-J-L-M-N-T-U-V-Z1	96628	A1-A2-B-F-F1-R-R1-V
96326	A1-A2-B-C-F-M-R-W	96388	A1-A2-B-M-W	96550	A-A1-A2-B-H-M-U-V-Z1	96629	A1-A2-B-F-F1-R-R1-V
96328	A1-A2-B-C-M-R-W	96389	A1-A2-B-M-W	96551	A-A1-A2-B-F-F1-H-J-L-M-N-T-U-V-Z1	96631	A-A1-A2-B-C1-E2-F-H1-M-R-R1-V
96330	A1-A2-B-C-M-R-W	96401	A1-A2-B-C-F-N-O-R-V-V1-Z1	96552	A1-A2-B-Z1	96632	A1-A2-B-F-F1-R-R1-V
96331	A1-A2-B-M-W	96427	A-A1-A2-B-C1-E2-F-H1-M-R-R1-V	96553	A-A1-A2-B-F-F1-H-M-R-U	96643	A1-A2-B-F-F1-R-R1-V
96336	A1-A2-B-C-M-R-V-W	96447	A1-A2-B-C-F-N-R-U3-V-V1	96554	A-A1-A2-B-F-F1-H-J-L-M-N-T-U-V-Z1	96649	A1-A2-B-F-F1-R-R1-V
96337	A1-A2-B-M-W	96501	A-A1-A2-B-N-V	96555	A1-A2-B-F-M-V	96650	A1-A2-B-F-F1-R-R1-V
96338	A1-A2-B-M-W	96502	A1-A2-B-F-N-U3-V-Z1	96557	A1-A2-B-F-M-V	96657	A1-A2-B-F-F1-R-R1-V
96339	A1-A2-B-M-V-W	96504	A-A1-A2-B-C-C1-F-F1-I-L-N-R-R1-T-V-W-Z-Z1	96562	A-A1-A2-B-B2-C-C1-D-E2-E3-F-F1-H-H1-I-L-M-N-R-T-V-Z-Z1	96660	A1-A2-B-F-F1-R-R1-V
96343	A1-A2-B-M-W	96505	A-A1-A2-B-C-C1-F-F1-I-L-N-R-R1-T-V-W-Z-Z1	96577	A-A1-A2-B-F-H-M-N-R-U	96661	A1-A2-B-F-F1-R-R1-V
96346	A1-A2-B-F-F1-F2-H-M-V-W-Z1	96507	A-A1-A2-B-F-F1-H-J-L-N-T-V-Z1	96578	A1-A2-B-B2-F1-H-J-N-R	96662	A1-A2-B-F-F1-R-R1-V
96347	A1-A2-B-F-F1-F2-H-M-W-Z1	96510	A1-A2-B-I-N-V	96595	A1-A2-B-F-U3-V-Z1	96663	A1-A2-B-F-F1-R-R1-V
96349	A1-A2-B-F-F1-F2-H-M-W-Z1	96511	A1-A2-B-I-N-V	96598	A1-A2-B-N-O-V-V1	96664	A1-A2-B-V
96350	A1-A2-B-F-F1-F2-H-M-W-Z1	96515	A1-A2-B-D-F-U3	96599	A1-A2-B-N-V	96665	A1-A2-B-V
96351	A1-A2-B-F-F1-F2-H-M-W-Z1	96516	A1-A2-B-D-F-Z1	96601	A1-A2-B-V	96666	A1-A2-B-V
96362	A1-A2-B-F-F1-F2-M-W-Z1	96517	A1-A2-B-F-U3-V-Z1	96602	A1-A2-B-V	96667	A1-A2-B-F-F1-R-R1-V
96365	A1-A2-B-C-M-R-V-W	96520	A1-A2-B-F-N-U3-V	96603	A1-A2-B-V	96668	A1-A2-B-F-F1-R-R1-V
96367	A1-A2-B-C-L-M-R-W	96521	A1-A2-B-F-F1-J-L-N-T-U3-V-Z1	96604	A1-A2-B-V	96669	A1-A2-B-F-F1-R-R1-V
96368	A1-A2-B-C-M-R-W	96530	A-A1-A2-B-F-F1-H-H1-J-L-M-N-T-U-V-Z1	96605	A1-A2-B-V	96670	A1-A2-B-V
96370	A1-A2-B-F-F1-F2-H-M-W-Z1	96531	A-A1-A2-B-C-F-F1-H-M-N-R-U-V	96606	A1-A2-B-V	96671	A1-A2-B-F-F1-R-R1-V
96372	A1-A2-B-M-W	96532	A-A1-A2-B-F-F1-H-J-L-M-N-T-U-V-Z1	96607	A1-A2-B-V	96672	A1-A2-B-F-F1-R-R1-V
96373	A1-A2-B-M-W	96534	A-A1-A2-B-F-U-Z1	96608	A1-A2-B-V	96673	A1-A2-B-V
96374	A1-A2-B-M-W	96535	A-A1-A2-B-F-F1-J-L-N-T-V-Z1	96609	A1-A2-B-V	96674	A1-A2-B-F-F1-R-R1-V
96375	A1-A2-B-M-W	96537	A1-A2-B-V-Z1	96610	A1-A2-B-V	96675	A1-A2-B-F-F1-R-R1-V
96376	A1-A2-B-M-W	96538	A1-A2-B-V-Z1	96611	A1-A2-B-V	96677	A1-A2-B-F-F1-R-R1-V
96377	A1-A2-B-M-W	96540	A1-A2-B-V-Z1	96612	A1-A2-B-V	96678	A1-A2-B-F-F1-R-R1-V
96378	A1-A2-B-M-W	96541	A1-A2-B-V	96613	A1-A2-B-V	96679	A1-A2-B-F-F1-R-R1-V
96379	A1-A2-B-M-W	96542	A1-A2-B-V-Z1	96615	A1-A2-B-F-F1-R-R1-V	96681	A1-A2-B-V
96380	A1-A2-B-M-W	96543	A1-A2-B-P-V-Z1	96616	A1-A2-B-F-F1-R-R1-V	96682	A1-A2-B-V
96382	A1-A2-B-M-W			96617	A1-A2-B-F-F1-R-R1-V	96683	A1-A2-B-V
96384	A1-A2-B-M-W			96619	A1-A2-B-V	96686	A1-A2-B-V
				96620	A1-A2-B-F-F1-R-R1-V	96691	A1-A2-B-F-F1-R-R1-V
						96692	A1-A2-B-F-F1-R-R1-V
						96693	A1-A2-B-F-F1-R-R1-V
						96694	A1-A2-B-F-F1-R-R1-V
						96695	A1-A2-B-F-F1-R-R1-V
						96696	A1-A2-B-F-F1-R-R1-V
						96698	A1-A2-B-V

## RESTRICTIONS

## LEGEND

PS Form 2976, *Customs — CN 22 (Old C 1) and Sender's Declaration* (green label)  
 PS Form 2976-A, *Customs Declaration and Dispatch Note*  
 PS Form 2976-B, *Priority Mail Express International Shipping Label and Customs Form*

AAFES = Army and Air Force Exchange Service  
 APO = Army/Air Force Post Office  
 Box R = Retired military personnel  
 DMM = *Domestic Mail Manual*  
 DPO = Diplomatic Post Office  
 FPO = Fleet Post Office  
 MOM = Military Ordinary Mail  
 MPO = Military Post Office  
 PAL = Parcel Airlift  
 PSC = Postal Service Center  
 SAM = Space Available Mail  
 USDA = United States Department of Agriculture

Note: Mail order catalogs are prohibited as SAM or PAL mail.

**A.** Securities, currency, or precious metals in their raw, unmanufactured state are prohibited. Official shipments are exempt from this restriction.

**A1.** Mail addressed to "Any Servicemember," or similar wording such as "Any Soldier," "Sailor," "Airman," or "Marine"; "Military Mail"; etc., is prohibited. Mail must be addressed to an individual or job title such as "Commander," "Commanding Officer," etc.

**A2.** APO/FPO/DPO addresses shall not include a city and/or country name.

**B.** Regardless of mail class, a customs declaration (i.e., PS Form 2976, PS Form 2976-A, or PS Form 2976-B) is required for all items weighing 16 ounces or more, or any item (regardless of weight) containing potentially dutiable mail contents (e.g., merchandise or goods) addressed to or from an APO, FPO, or DPO ZIP Code. If mailed using Priority Mail Express service, mailpieces requiring a customs form that are addressed to or from an APO, FPO, or DPO location must bear a properly completed PS Form 2976-B. No customs form is required for items weighing less than 16 ounces when the contents are not potentially dutiable (e.g., documents). The surface area of the address side of the mailpiece must be large enough to contain the applicable customs declaration. The following exceptions apply:

- Known mailers are exempt from providing customs documentation on non-dutiable letters or printed matter. (A known mailer is a business mailer who enters volume mailings through a business mail entry unit (BMEU) or other bulk mail acceptance location, pays postage through an advance deposit account, uses a permit imprint for postage payment, and submits a completed postage statement at the time of entry that certifies that the mailpieces contain no dangerous materials that are prohibited by postal regulations.)
- All federal, state, and local government agencies whose mailings are regarded as "Official Mail" are exempt from providing customs documentation on any item addressed to an APO, FPO, or DPO except for those APOs/FPOs/DPOs to which restriction "B2" applies.
- Prepaid mail from military contractors is exempt, providing the mailpiece is endorsed "Contents for Official Use — Exempt from Customs Requirements."

**B2.** All federal, state, and local government agencies must complete customs documentation when sending potentially dutiable mail addressed to or from this APO, FPO, or DPO.

**C.** Cigarettes and other tobacco products are prohibited.

**C1.** Obscene articles, prints, paintings, cards, films, videotapes, etc., and horror comics and matrices are prohibited.

**D.** Coffee is prohibited.

**E.** Medicines (prescription, over-the-counter, vitamins, and supplements) are prohibited when mailed to individuals for human or animal use. This prohibition does not apply when medicines are sent as official mail only between specifically designated agencies such as pharmaceutical distributors, hospitals, clinics, and pharmacies.

**E1.** Medicines or vaccines not conforming to French laws are prohibited.

**E2.** Any matter depicting nude or seminude persons, pornographic or sexual items, or nonauthorized political materials is prohibited. Although religious materials contrary to the Islamic faith are prohibited in bulk quantities, items for the personal use of the addressee are permissible.

**E3.** Radio transceivers, cordless telephones, global positioning systems, scanners, base stations, and handheld transmitters are prohibited.

**F.** Firearms of any type are prohibited in all classes of mail. See definitions of firearms in PUB 52, Sec. 431. This restriction does not apply to firearms mailed to or by official U.S. government agencies. The restriction for mail to this APO/FPO/DPO ZIP Code does not apply to firearms mailed from this APO/FPO/DPO ZIP Code, provided ATF and USPS regulations are met. Antique firearms are a separate category defined in PUB 52, Sec. 431.3 and ATF regulations; they do not require an ATF form.

**F1.** Privately owned weapons addressed to an individual are prohibited in any class of mail.

**F2.** Importation of firearms is restricted to one shotgun and one single shot .22 caliber rifle per individual.

**G.** Only letters, flats, and Periodicals are authorized. Parcels of any class are prohibited.

**H.** Meats, including preserved meats, whether hermetically sealed or not, are prohibited.

**H1.** Pork or pork by-products are prohibited.

**I.** Mail of all classes must fit in a mail sack. Mail may not exceed the following dimensions:

- Maximum length 20 inches.
- Maximum width 12 inches.
- Maximum height 12 inches.

The maximum length and girth combined may not exceed 68 inches.

This restriction does not apply to registered mail and official government mail marked MOM.

**I1.** This restriction does not apply to registered mail.

**I2.** This restriction does not apply to official government mail marked MOM.

**I3.** Mail may not exceed the following dimensions:

- Maximum length 27 inches.
- Maximum width 14 inches.
- Maximum height 14 inches.

**J.** Parcels may not exceed 108 inches in length and girth combined.

**K.** Mail that includes in the address the words, "Dependent Mail Section," may consist only of letter mail, newspapers, magazines, and books. No parcel of any class containing any other matter may be mailed to the Dependent Mail section. This restriction does not apply if the address does not include the words "Dependent Mail Section."

**L.** All official mail is prohibited.

**M.** Fruits, vegetables, animals, and living plants are prohibited.

**N.** Registered mail is prohibited.

**O.** Delivery status information for Extra Services is not available on USPS.com.

**P.** APO is used for the receipt and dispatch of official mail only.

**Q.** Mail may not exceed 66 pounds, and size is limited to 42 inches maximum length and 72 inches maximum length and girth combined.

**R.** All alcoholic beverages, including those mailable under PUB 52, Sec. 421, are prohibited.

**R1.** Materials used in the production of alcoholic beverages (i.e., distilling material, hops, malts, yeast, etc.) are prohibited.

**S.** Mail of all classes must fit in a mail sack. Mail may not exceed the following dimensions and weight:

- Maximum length 12 inches.
- Maximum width 12 inches.
- Maximum height 5 1/2 inches.
- Maximum weight 25 pounds.

The maximum length and girth combined may not exceed 47 inches.

**T.** Mailings of case lots of food and supplemental household shipments must be approved by the sender's parent agency prior to mailing.

**U.** Parcels must weigh less than 16 ounces when addressed to Box R. This restriction does not apply to mail endorsed "Free Matter for the Blind or Handicapped."

**U1.** Mail is limited to First-Class Mail weighing 13 ounces or less when addressed to Box R. This restriction does not apply to mail endorsed "Free Matter for the Blind or Handicapped." Videotapes are prohibited when addressed to Box R, regardless of weight.

**U2.** Mail is limited to First-Class Mail letters only when addressed to Box R.

**U3.** Mail is limited to First-Class Mail correspondence (including voice and video cassettes), newspapers, magazines, photographs, not exceeding 16 ounces, when addressed to Box R.

**U4.** Mail addressed to Box C is limited to 2 pounds, regardless of class.

**V.** Priority Mail Express Military Service (PMEMS) not available from any origin.

**V1.** USPS Tracking is not available.

**W.** Meat products, such as dried beef, salami, and sausage, may be mailed, provided they remain in their original, hermetically sealed packages and bear USDA certification. Other meats, bones, skin, hair, feathers, horns or hoofs of hoofed animals, wool samples, tobacco leaves, including chewing and pipe tobacco, snuff, cigars, and cigarettes, or obscene material, including obscene drawings, photographs, films, and carvings, are prohibited. Exception: 200 grams of tobacco per parcel are permitted duty free.

**X.** Personal mail is limited to First-Class Mail items (to include audio cassettes and voice tapes) weighing 13 ounces or less. This limitation does not apply to official mail.

**Y.** Mail is limited to First-Class and Priority Mail items only. All Periodicals, Standard Mail items, and Package Services items (including SAM and PAL) are not authorized. This restriction also applies to official mail.

**Z.** No outside pieces (OSPs).

**Z1.** The following restriction is applicable only to International Service Centers (ISC)/Exchange Offices. An Anti-Pilferage Seal (Item No O817E or O818A) is required on all pouches and sacks.

USPS® Issues New Forever® Stamp in  
*Celebrating the Lunar New Year  
Series: Year of the Monkey*



On Sale Nationwide: February 5, 2016.

## Freely Associated States (FAS) Restrictions

Effective March 19, 2015, the mailing restrictions for Freely Associated States will be listed in the Pull-Out section of the *Postal Bulletin* and updated periodically.

### Freely Associated States

Mail addressed to freely associated states is subject to certain conditions or restrictions of mailing regarding content, preparation, and handling. The FAS table below outlines these conditions as listed by each affected FAS ZIP Code™ through the use of footnoted mailing restrictions codes (see the [Restrictions](#) following the table). For additional information on available extra services for FAS destinations, see *Mailing Standards of the United States Postal Service*, Domestic Mail Manual (DMM®), part 503.

Acceptance clerks should use the table with the POS ONE terminal to determine which FAS ZIP Codes are active and which conditions of mailing apply. Inquiries may be sent to Randall Sobol at [randall.f.sobol@usps.gov](mailto:randall.f.sobol@usps.gov).

### FAS Restrictions Table

FAS Table	See Restrictions
96939	A, B
96940	A, B
96941	A, B
96942	A, B
96943	A, B

FAS Table	See Restrictions
96944	A, B
96960	A, B
96970	A, B
Marshall Islands	C
Federated States of Micronesia	C

### RESTRICTIONS LEGEND

PS Form 2976, *Customs* — CN 22 (Old C 1) and *Sender's Declaration* (green label)

PS Form 2976-A, *Customs Declaration and Dispatch Note*

FAS = Freely Associated State

- A. Bank currency (coin and paper) is prohibited.
- B. Signature Confirmation, Signature Confirmation Restricted Delivery, Adult Signature Requested, Adult Signature Restricted Delivery, Certified Mail Adult Signature Required, and Certified Mail Adult Signature Restricted Delivery not available.
- C. COD is prohibited.

— *Asia-Pacific Relations,*  
*Global Business, 7-7-16*



# USPS® Introduces *Botanical Art* Forever® Stamps



On Sale Nationwide: January 29, 2016.

# Publicity Kit: Pets Stamps (continued)

## Contacts

### Area Corporate Communications Managers

#### Capital Metro

Tom Oulette  
301-548-1465  
[thomas.r.ouellet@usps.gov](mailto:thomas.r.ouellet@usps.gov)

#### Eastern

Paul Smith  
215-863-5055  
[paul.f.smith@usps.gov](mailto:paul.f.smith@usps.gov)

#### Great Lakes

Ed Moore  
313-225-5452  
[edward.r.moore@usps.gov](mailto:edward.r.moore@usps.gov)

#### Pacific

David L. Walton (A)  
858-674-3149  
[david.walton@usps.gov](mailto:david.walton@usps.gov)

#### Northeast

Maureen Marion  
860-285-7029  
[maureen.p.marion@usps.gov](mailto:maureen.p.marion@usps.gov)

#### Southern

Polly Gibbs  
214-819-8704  
[polly.j.gibbs@usps.gov](mailto:polly.j.gibbs@usps.gov)

#### Western

John Friess  
303-313-5130  
[john.g.friess@usps.gov](mailto:john.g.friess@usps.gov)

### Government Relations Representative Listing

Your Government Relations representatives are here to serve you. They can assist you in contacting and inviting elected officials to participate in your event — please let them know.

#### Alphabetical State/Representative Listing

Area code and prefix for all extensions is 202-268-xxxx.

State	Representative	Extension
Alabama	Zahava Colicelli	3739
Alaska	David Coleman	3745
American Samoa	David Coleman	3745
Arizona	David Coleman	3745
Arkansas	Mike Porter	7217
California	Cathy Pagano	3427

State	Representative	Extension
Colorado	David Coleman	3745
Connecticut	Darrell Donnelly	6748
Delaware	James Cari	6029
District of Columbia	Darrell Donnelly	6748
Florida	Zahava Colicelli	3739
Georgia	Zahava Colicelli	3739
Guam	David Coleman	3745
Hawaii	David Coleman	3745
Idaho	David Coleman	3745
Illinois	Ernesto Sanabria	4387
Indiana	Ernesto Sanabria	4387
Iowa	Debra Blockinger	7505
Kansas	Debra Blockinger	7505
Kentucky	Talaya Simpson	4216
Louisiana	Mike Porter	7217
Maine	Zahava Colicelli	3739
Maryland	Darrell Donnelly	6748
Massachusetts	Zahava Colicelli	3739
Michigan	Debra Blockinger	7505
Minnesota	Debra Blockinger	7505
Mississippi	Mike Porter	7217
Missouri	Talaya Simpson	4216
Montana	David Coleman	3745
Nebraska	Debra Blockinger	7505
Nevada	David Coleman	3745
New Hampshire	Zahava Colicelli	3739
New Jersey	Darrell Donnelly	6748
New Mexico	Cathy Pagano	3427
New York	Zahava Colicelli	3739
North Carolina	Zahava Colicelli	3739
North Dakota	Talaya Simpson	4216
Northern Mariana Islands	David Coleman	3745
Ohio	Ernesto Sanabria	4387
Oklahoma	Mike Porter	7217
Oregon	David Coleman	3745
Pennsylvania	Ernesto Sanabria	4387
Puerto Rico	Zahava Colicelli	3739
Rhode Island	Darrell Donnelly	6748
South Carolina	Zahava Colicelli	3739
South Dakota	Talaya Simpson	4216
Tennessee	Talaya Simpson	4216
Texas	Mike Porter	7217
Utah	David Coleman	3745
Vermont	Zahava Colicelli	3739
Virgin Islands	Zahava Colicelli	3739
Virginia	Darrell Donnelly	6748
Washington	David Coleman	3745
West Virginia	Debra Blockinger	7505
Wisconsin	Debra Blockinger	7505
Wyoming	David Coleman	3745

— Public Relations,  
Corporate Communications, 7-7-16

# Policies, Procedures, and Forms Updates

## Manuals

### POM Revision: Delivery Services

Effective July 7, 2016, the Postal Service™ is revising the *Postal Operations Manual (POM)* to update the process for actual delivery in multiple-floor or multiple-unit buildings.

#### *Postal Operations Manual (POM)*

	*	*	*	*	*
<b>6</b>	<b>Delivery Services</b>				
	*	*	*	*	*
<b>61</b>	<b>Conditions of Delivery</b>				
	*	*	*	*	*
<b>617</b>	<b>Other Delivery Procedures</b>				
	*	*	*	*	*

#### **617.1 Delivery in Multiple-Floor Buildings**

*[Revise the text of 617.1 to read as follows:]*

Accountable mailpieces and/or items that do not fit into the mailbox or parcel locker are attempted in person to the addressee or authorized agent, without regard to the floor on which his or her office or apartment is located.

**Exception:** If there is no working elevator in buildings with more than three (3) floors, delivery of accountable mailpieces and/or items that do not fit into the mailbox or parcel locker (if available) will be delivered to one (1) authorized, designated location on the first floor, or PS Form 3849 will be completed and left in the customer's mailbox.

Cooperation of customers is requested, however, in making arrangements for mail to be delivered on the first floor.

\* \* \* \* \*

#### **632.622 Location and Arrangement**

\* \* \* \* \*

*[Add new item a. and redesignate current items a. and b. as new items b. and c. to read as follows:]*

- a. All new or remodeled apartment houses can only install USPS-approved 4C equipment. When installing

this equipment, a requirement is to have at least one parcel locker for every 10 customer mail compartments. For those buildings with a minimum of 10 mail compartments, there must be at least one parcel locker installed.

- b. Receptacles and parcel lockers in apartment houses should be located reasonably close to the entrance in vestibules, halls, or lobbies. The carriers must be able to serve the boxes without interference from swinging or open doors. The area must be adequately lighted to afford the best protection to the mail and to let carriers read addresses on mail and names on boxes without difficulty.
- c. Installation of standard, approved apartment receptacles in exterior walls of buildings may be authorized, provided that they are not installed directly on the street or a public sidewalk. Wherever possible, keep at least 15 feet between the boxes and the street or sidewalk; the location should be clearly visible from one or more apartment windows. A canopy must be provided, and it must be designed and located to afford maximum protection from the weather, including driving rains. In addition, adequate night lighting must be installed.

\* \* \* \* \*

We will incorporate this revision into the next online update of the POM, which is available on the Postal Service PolicyNet website:

- Go to <http://blue.usps.gov>.
- Under "Essential Links" in the left-hand column, click *PolicyNet*.
- Click *Manuals*.

The direct URL for the Postal Service PolicyNet website is <http://blue.usps.gov/cpim>.

— City Delivery Operations,  
Delivery Operations, 7-7-16



## POM Revision: Mail Receptacles

Effective July 7, 2016, the Postal Service™ is revising the *Postal Operations Manual* (POM) to update references to USPS® mail receptacle guidelines.

### *Postal Operations Manual* (POM)

	*	*	*	*	*
<b>6</b>	<b>Delivery Services</b>				
	*	*	*	*	*
<b>63</b>	<b>Modes of Delivery, Mail Receptacles, and Keys</b>				
	*	*	*	*	*
<b>632</b>	<b>Mail Receptacles</b>				
<b>632.1</b>	<b>Customer Obligation</b>				
<b>632.11</b>	<b>Responsibilities</b>				
	*	*	*	*	*

[Revise items b. and c. (updating the standards reference) to read as follows:]

- b. If curbside delivery is authorized, customers must erect curbside-mounted receptacles that comply with USPS-STD-7c (see 632.5).
- c. If sidewalk delivery is authorized, customers must erect sidewalk-mounted receptacles that comply with USPS-STD-7c (see 632.5).

\* \* \* \* \*

We will incorporate this revision into the next online update of the POM, which is available on the Postal Service PolicyNet website:

- Go to <http://blue.usps.gov>.
- Under “Essential Links” in the left-hand column, click *PolicyNet*.
- Click *Manuals*.

The direct URL for the Postal Service PolicyNet website is <http://blue.usps.gov/cpim>.

— *Delivery Strategy and Planning,*  
*Delivery Operations, 7-7-16*

## Handbooks

### Handbook M-41 Revision: Actual Delivery

Effective July 7, 2016, the Postal Service™ is revising Handbook M-41, *City Delivery Carriers Duties and Responsibilities*, to update the process for actual mail delivery in buildings without elevators.

### *Handbook M-41, City Delivery Carriers Duties and Responsibilities*

	*	*	*	*	*
<b>1</b>	<b>General</b>				
	*	*	*	*	*
<b>13</b>	<b>Delivery and Collection Rules</b>				
	*	*	*	*	*
<b>131</b>	<b>Delivery on Letter Routes</b>				
	*	*	*	*	*
<b>131.3</b>	<b>Actual Delivery</b>				
	*	*	*	*	*
<b>131.39</b>					

[Revise the text of 131.39a to read as follows:]

\* \* \* \* \*

- a. If there is no elevator in buildings with more than three (3) floors, make delivery of mailpieces, including accountable mailpieces, to the first floor; make deliveries to the second and third floors if they are occupied primarily by business offices and if the service is requested. For addresses above the third floor, delivery of accountable mailpieces and/or pieces that do not fit into the mailbox or parcel locker (if available) will be made to one (1) authorized, designated location on the first floor, or PS Form 3849 will be completed and left in the customer's mailbox.

\* \* \* \* \*

We will incorporate this revision into the next update of Handbook M-41, *City Delivery Carriers Duties and Responsibilities*, which is available on the Postal Service PolicyNet website:

- Go to <http://blue.usps.gov>.
- Under “Essential Links” in the left-hand column, click *PolicyNet*.
- Click *Handbooks*.

The direct URL for the Postal Service PolicyNet website is <http://blue.usps.gov/cpim>.

— *City Delivery Operations,*  
*Delivery Operations, 7-7-16*

## Publications

### Publication 431 Revision: Changes to Post Office Box Service and Caller Service Fee Groups

Effective July 7, 2016, Publication 431, *Post Office Box Service and Caller Service Fee Groups*, is revised to include the following changes.

#### Publication 431, *Post Office Box Service and Caller Service Fee Groups*

\* \* \* \*

[Delete the following entries:]

ZIP Code
63952

\* \* \* \*

The online version of Publication 431 is dated July 2013. Publication 431 is currently available on the Postal Service™ PolicyNet website (<http://blue.usps.gov/cpim>):

- Go to <http://blue.usps.gov>.
- Under “Essential Links” in the left-hand column, click *PolicyNet*.
- Click *PUBs*.

Offices with WebBATS Manager/Supervisor access can view current Publication 431 information by going to the WebBATS Edit Facility Information page, as follows:

1. Go to the WebBATS main menu, and select Utility> Facility>Edit Facility option.
2. View the Fee Group field on the Edit Facility Information page.

— Retail Operations,  
Retail and Customer Service Operations, 7-7-16

## Forms

### PS Form 2976-ES: Small Customs Declaration Pouch

Effective July 7, 2016, the Postal Service™ will offer the new PS Form 2976-ES, *Small Customs Declaration Pouch*, for use on small Priority Mail International® (PMI) Flat Rate Envelopes (FRE) and PMI Small Flat Rate Boxes (SFRB).

Retail offices can order the new PS Form 2976-ES from the Material Distribution Center (MDC) through the U.S. Postal Service® eBuy2 ordering system under the MDC eBuy2 catalog or by calling the touch-tone order entry (TTOE) system at 800-273-1509.

**Note:** You must be registered to use the TTOE system. To register, call 800-332-0317, option 1, extension 2925, and follow the prompts to leave a message. Once registration is complete, wait 48 hours before placing your first order.

Use the following information to order PS Form 2976-ES:

<b>PSIN:</b>	PS2976ES
<b>PSN:</b>	7530-17-000-7993
<b>Unit of Measure:</b>	EA
<b>Minimum Order Quantity:</b>	50
<b>Maximum Order Quantity:</b>	N/A
<b>Bulk Pack Quantity:</b>	1,500
<b>Price:</b>	\$0.02935
<b>Edition Date:</b>	04/16

— Policy and Programs,  
Global Trade Compliance, 7-7-16

# Organization Information

## Domestic Mail

### Labeling List Changes

Effective August 1, 2016, we are revising Labeling List(s) L001, L006, L007, L012, and L606 to reflect changes in mail processing operations. Mailers are expected to label according to these revised lists for mailings that are inducted on or after the August 1, 2016, effective date, but no later than the September 1, 2016, expiration date.

#### Labeling Lists

##### L000 General Use

\* \* \* \* \*

##### L001 5-Digit Scheme — Periodicals, Standard Mail, and Package Services Flats and Irregular Parcels

###### Changes

Column A Destination ZIP Codes	Column B Label Container To (Change From)	Column B Label Container To (Change To)	Column B Change Status
19381	WEST CHESTER PA 19380	WEST CHESTER PA 19381	New

Column A Destination ZIP Codes	Column B Label Container To (Change From)	Column B Label Container To (Change To)	Column B Change Status
19383	WEST CHESTER PA 19380	WEST CHESTER PA 19381	New
85378	SUN CITY WEST AZ 85375	SURPRISE AZ 85378	New
85379	SURPRISE AZ 85379	SURPRISE AZ 85378	New
85387	SURPRISE AZ 85379	SURPRISE AZ 85378	New
85388	SURPRISE AZ 85374	SURPRISE AZ 85378	New

\* \* \* \* \*

###### Deleted

Column A Destination ZIP Codes	Column B Label
19380	WEST CHESTER PA 19380
19382	WEST CHESTER PA 19380
85374	SURPRISE AZ 85374

\* \* \* \* \*

##### L006 5-Digit FSS Scheme — Periodical, Standard Mail, and Package Services Flats in Bundles

###### Changes

Column A Destination ZIP Codes	Column B Scheme Bundle/Container Placard (Change From)	Column C Facility Container Placard (Change From)	Column B Scheme Bundle/Container Placard (Change To)	Column C Facility Container Placard (Change To)	Column B Change To Status
02339	HANOVER MA 02339	FSS PROVIDENCE RI 028	HANOVER MA 02339	FSS MIDDLESEX-ESSEX MA 018	Existing
02346	HANOVER MA 02339	FSS PROVIDENCE RI 028	HANOVER MA 02339	FSS MIDDLESEX-ESSEX MA 018	Existing
02347	HANOVER MA 02339	FSS PROVIDENCE RI 028	HANOVER MA 02339	FSS MIDDLESEX-ESSEX MA 018	Existing
06881	WESTPORT CT 06881	FSS WESTCHESTER NY 105	WESTPORT CT 06880	FSS WESTCHESTER NY 105	Existing
11010	FRANKLIN SQUARE NY 11010	FSS BROOKLYN NY 112	FRANKLIN SQUARE NY 11010	FSS MID ISLAND NY 117	Existing
23608	NEWPORT NEWS VA 23608	FSS RICHMOND VA 230	YORKTOWN VA 23690	FSS RICHMOND VA 230	Existing

\* \* \* \* \*

###### Deleted

Column A Destination ZIP Codes	Column B Label	Column C Label
02360	PLYMOUTH MA 02360	FSS PROVIDENCE RI 028
02738	MARION MA 02738	FSS PROVIDENCE RI 028
02739	MARION MA 02738	FSS PROVIDENCE RI 028

Column A Destination ZIP Codes	Column B Label	Column C Label
02769	MARION MA 02738	FSS PROVIDENCE RI 028
02770	MARION MA 02738	FSS PROVIDENCE RI 028
02878	MARION MA 02738	FSS PROVIDENCE RI 028
02921	NEWPORT RI 02840	FSS PROVIDENCE RI 028

Column A Destination ZIP Codes	Column B Label	Column C Label
07021	ESSEX FELS NJ 07021	FSS NDC NEW JERSEY NJ 001
07027	GARWOOD NJ 07027	FSS NDC NEW JERSEY NJ 001
07054	PARSIPPANY NJ 07054	FSS NDC NEW JERSEY NJ 001
07059	WARREN NJ 07059	FSS NDC NEW JERSEY NJ 001
07069	WATCHUNG NJ 07069	FSS NDC NEW JERSEY NJ 001
07076	SCOTCH PINES NJ 07076	FSS NDC NEW JERSEY NJ 001
07410	FAIRLAWN NJ 07410	FSS NDC NEW JERSEY NJ 001
07435	NEW FOUNDLAND NJ 07435	FSS NDC NEW JERSEY NJ 001
07438	OAK RIDGE NJ 07438	FSS NDC NEW JERSEY NJ 001
07460	STOCKHOLM NJ 07460	FSS NDC NEW JERSEY NJ 001
07480	W MILFORD NJ 07480	FSS NDC NEW JERSEY NJ 001
23120	MIDLOTHIAN VA 23113	FSS RICHMOND VA 230
23691	YORKTOWN VA 23690	FSS RICHMOND VA 230
64050	INDEPENDENCE MO 64050	FSS KANSAS CITY MO 640
64051	INDEPENDENCE MO 64050	FSS KANSAS CITY MO 640
64052	INDEPENDENCE MO 64050	FSS KANSAS CITY MO 640
64053	INDEPENDENCE MO 64050	FSS KANSAS CITY MO 640
64054	INDEPENDENCE MO 64050	FSS KANSAS CITY MO 640
64056	INDEPENDENCE MO 64050	FSS KANSAS CITY MO 640
64058	INDEPENDENCE MO 64050	FSS KANSAS CITY MO 640

### L007 5-Digit Scheme — Periodical, Standard Mail, and Package Services Flats in Bundles

#### Changes

Column A Destination ZIP Codes	Column B Label Container To (Change From)	Column B Label Container To (Change To)	Column B Change To Status
85085	PHOENIX AZ 85085	PHOENIX AZ 85083	New
85086	PHOENIX AZ 85085	PHOENIX AZ 85086	New
85087	PHOENIX AZ 85085	PHOENIX AZ 85086	New
85714	TUCSON AZ 85713	TUCSON AZ 85706	New

#### Newly Added

Column A Destination ZIP Codes	Column B Label Container To	Column B Status
85083	PHOENIX AZ 85083	New
85388	SURPRISE AZ 85379	Existing
85706	TUCSON AZ 85706	New

#### Deleted

Column A Destination ZIP Codes	Column B Label
85713	TUCSON AZ 85713
* * * * *	

### L012 5-Digit ZIP Scheme Combination

#### Changes

Column A Destination ZIP Codes	Column B Label Container To (Change From)	Column B Label Container To (Change To)	Column B Change To Status
44880	ASHLAND OH 44805	TALLMADGE OH 44278	Existing
54409	ANTIGO WI 54409	ANIWA WI 54408	Existing
54410	AMHERST WI 54406	ARPIN WI 54410	New
54411	AMHERST WI 54406	ARPIN WI 54410	New
54414	ANIWA WI 54408	BIRNAMWOOD WI 54414	New
54416	ANIWA WI 54408	BIRNAMWOOD WI 54414	New
54418	ANTIGO WI 54409	ANIWA WI 54408	Existing
54421	AMHERST WI 54406	ARPIN WI 54410	New
54424	ANTIGO WI 54409	ANIWA WI 54408	Existing
54425	ANIWA WI 54408	ABBOTSFORD WI 54405	Existing
54426	ANTIGO WI 54409	ARPIN WI 54410	New
54427	ANIWA WI 54408	BIRNAMWOOD WI 54414	New
54428	ANTIGO WI 54409	ANIWA WI 54408	Existing
54437	ANTIGO WI 54409	ANIWA WI 54408	Existing
54440	AMHERST WI 54406	ARPIN WI 54410	New
54443	ANIWA WI 54408	BIRNAMWOOD WI 54414	New
54446	ANTIGO WI 54409	ANIWA WI 54408	Existing
54448	AMHERST WI 54406	ARPIN WI 54410	New
54451	ANIWA WI 54408	BIRNAMWOOD WI 54414	New
54454	ANIWA WI 54408	BIRNAMWOOD WI 54414	New
54457	PORT EDWARDS WI 54469	BABCOCK WI 54413	New
54459	ANIWA WI 54408	BIRNAMWOOD WI 54414	New
54463	ANTIGO WI 54409	ANIWA WI 54408	Existing
54465	ANTIGO WI 54409	ANIWA WI 54408	Existing
54466	AMHERST WI 54406	ARPIN WI 54410	New
54467	AMHERST WI 54406	ARPIN WI 54410	New
54469	PORT EDWARDS WI 54469	BABCOCK WI 54413	New

Column A Destination ZIP Codes	Column B Label Container To (Change From)	Column B Label Container To (Change To)	Column B Change To Status
54470	ANIWA WI 54408	BIRNAMWOOD WI 54414	New
54471	AMHERST WI 54406	ARPIN WI 54410	New
54473	AMHERST WI 54406	ARPIN WI 54410	New
54475	AMHERST WI 54406	BABCOCK WI 54413	New
54479	ANTIGO WI 54409	AUBURNDALE WI 54412	Existing
54480	ANIWA WI 54408	BIRNAMWOOD WI 54414	New
54481	STEVENS POINT WI 54481	AMHERST WI 54406	Existing
54482	STEVENS POINT WI 54481	AMHERST WI 54406	Existing
54484	ANTIGO WI 54409	AUBURNDALE WI 54412	Existing
54485	ANTIGO WI 54409	ANIWA WI 54408	Existing
54486	ANIWA WI 54408	BIRNAMWOOD WI 54414	New
54488	AMHERST WI 54406	ARPIN WI 54410	New
54489	AMHERST WI 54406	ARPIN WI 54410	New
54490	ANIWA WI 54408	BIRNAMWOOD WI 54414	New
54491	ANTIGO WI 54409	ANIWA WI 54408	Existing
54493	ANTIGO WI 54409	ANIWA WI 54408	Existing
54494	PORT EDWARDS WI 54469	BABCOCK WI 54413	New
54495	PORT EDWARDS WI 54469	BABCOCK WI 54413	New
54499	ANIWA WI 54408	BIRNAMWOOD WI 54414	New
76115	FORTH WORTH TX 76115	FORTH WORTH TX 76115	New
76134	FORTH WORTH TX 76115	FORTH WORTH TX 76115	New
98903	YAKIMA WA 98901	YAKIMA WA 98902	New
98930	GRANDVIEW WA 98930	SUNNYSIDE WA 98944	New
98942	SELAH WA 98942	ELLENSBURG WA 98926	New
98944	SELAH WA 98942	SUNNYSIDE WA 98944	New
98948	GRANDVIEW WA 98930	SUNNYSIDE WA 98944	New
98951	GRANDVIEW WA 98930	SUNNYSIDE WA 98944	New

## Newly Added

Column A Destination ZIP Codes	Column B Label Container To	Column B Status
54402	WAUSAU WI 54401	Existing
54413	BABCOCK WI 54413	New
54415	BIRNAMWOOD WI 54414	New
54417	ABBOTSFORD WI 54405	Existing
54450	BIRNAMWOOD WI 54414	New
54458	AMHERST WI 54406	Existing

Column A Destination ZIP Codes	Column B Label Container To	Column B Status
98902	YAKIMA WA 98902	New
98908	YAKIMA WA 98901	Existing
98926	ELLENSBURG WA 98926	New

## Deleted

Column A Destination ZIP Codes	Column B Label
25301	CHARLESTON WV 25333
25321	CHARLESTON WV 25333
25322	CHARLESTON WV 25333
25323	CHARLESTON WV 25333
25324	CHARLESTON WV 25333
25325	CHARLESTON WV 25333
25326	CHARLESTON WV 25333
25327	CHARLESTON WV 25333
25328	CHARLESTON WV 25333
25329	CHARLESTON WV 25333
25330	CHARLESTON WV 25333
25331	CHARLESTON WV 25333
25332	CHARLESTON WV 25333
25333	CHARLESTON WV 25333
25334	CHARLESTON WV 25333
25335	CHARLESTON WV 25333
25336	CHARLESTON WV 25333
25337	CHARLESTON WV 25333
25338	CHARLESTON WV 25333
25339	CHARLESTON WV 25333
25350	CHARLESTON WV 25333
25357	CHARLESTON WV 25333
25358	CHARLESTON WV 25333
25361	CHARLESTON WV 25333
25362	CHARLESTON WV 25333
25364	CHARLESTON WV 25333
25365	CHARLESTON WV 25333
25375	CHARLESTON WV 25333
25389	CHARLESTON WV 25333
25392	CHARLESTON WV 25333
25812	MAC ARTHUR WV 25873
25813	MAC ARTHUR WV 25873
25818	MAC ARTHUR WV 25873
25823	MAC ARTHUR WV 25873
25825	MAC ARTHUR WV 25873
25827	MAC ARTHUR WV 25873
25832	MAC ARTHUR WV 25873
25840	MAC ARTHUR WV 25873
25841	MAC ARTHUR WV 25873
25843	MAC ARTHUR WV 25873
25846	MAC ARTHUR WV 25873
25854	MAC ARTHUR WV 25873
25865	MAC ARTHUR WV 25873
25871	MAC ARTHUR WV 25873
25873	MAC ARTHUR WV 25873
25882	MAC ARTHUR WV 25873
26133	MINERAL WELLS WV 26150
26136	MINERAL WELLS WV 26150
26142	MINERAL WELLS WV 26150
26143	MINERAL WELLS WV 26150
26147	MINERAL WELLS WV 26150
26150	MINERAL WELLS WV 26150
26164	MINERAL WELLS WV 26150
26180	MINERAL WELLS WV 26150
26181	MINERAL WELLS WV 26150
41601	ALLEN KY 41601

Column A Destination ZIP Codes	Column B Label
41603	ALLEN KY 41601
41630	ALLEN KY 41601
41635	ALLEN KY 41601
41636	ALLEN KY 41601
41640	ALLEN KY 41601
41643	ALLEN KY 41601
41647	ALLEN KY 41601
41649	ALLEN KY 41601
41650	ALLEN KY 41601
41653	ALLEN KY 41601
41666	ALLEN KY 41601
41667	ALLEN KY 41601
41669	ALLEN KY 41601
48038	CLINTON TOWNSHIP MI 48038
48042	CLINTON TOWNSHIP MI 48038

\* \* \* \* \*

### L606 5-Digit Scheme — Standard Mail, First-Class Mail, and Package Services Parcels

#### Changes

Column A Destination ZIP Codes	Column B Label Container To (Change From)	Column B Label Container To (Change To)	Column B Change To Status
46809	FORT WAYNE IN 46807	FORT WAYNE IN 46809	New
46819	FORT WAYNE IN 46807	FORT WAYNE IN 46809	New

#### Newly Added

Column A Destination ZIP Codes	Column B Label Container To	Column B Status
98372	SUMNER WA 98390	New
98390	SUMNER WA 98390	New

#### Deleted

Column A Destination ZIP Codes	Column B Label
06517	NEW HAVEN CT 06519
06519	NEW HAVEN CT 06519
46807	FORT WAYNE IN 46807
55102	SAINT PAUL MN 55102
55104	SAINT PAUL MN 55104
55107	SAINT PAUL MN 55102
55110	SAINT PAUL MN 55110
55114	SAINT PAUL MN 55104
55115	SAINT PAUL MN 55110
68033	ITHACA NE 68033
68042	ITHACA NE 68033
75703	TYLER TX 75703
75709	TYLER TX 75703
89145	LAS VEGAS NV 89135

— Logistics, Network Development, and Support,  
Network Operations, 7-7-16

## Finance

### Equipment Maintenance Allowance Schedule for Rural Routes

#### Rural Carriers

In accordance with provisions of Article 9, Section 2.J.3 of Handbook EL-902, *Agreement between the United States Postal Service and the National Rural Letter Carriers' Association*, effective July 9, 2016 (pay period 15-16), the equipment maintenance allowance (EMA) will increase to 66.0 cents per mile. The EMA is 66.0 cents per mile, or a minimum of \$26.40 per day, whichever is greater.

#### Auxiliary Rural Carriers, Rural Carrier Reliefs, Rural Carrier Associates, Rural Carrier Part-Time Flexibles, and Auxiliary Assistance

Employees providing auxiliary assistance or serving auxiliary routes under provisions of Article 9, Section 2.J.5,

receive an EMA of 66.0 cents per mile or \$7.20 per hour, whichever is greater. This EMA should not exceed the amount provided in the special equipment maintenance allowance for the route stops and miles.

#### EMA Rate Schedule

The EMA rate schedule on pages [49](#) and [50](#) supersedes all previously published EMA schedules for employees receiving EMA.

— Collective Bargaining and Arbitration,  
Labor Relations, 7-7-16



[illegible]

## EMA Rate Schedule (page 2 of 2)

USPS 26-9902 MINNEAPOLIS ISC REPORT AAQSI0P1			RURAL EQUIPMENT MAINTENANCE			R A T E S C H E D U L E			DATE 06-17-16 PAGE 2										
MILES STOPS = *0640**0660**0680**0700**0720**0740**0760**0780**0800**0820**0840**0860**0880**0900**0920**0940**0960**0980**1000			BASED ON \$0.660 PER MILE			EFFECTIVE PP-YR 15-16													
8	27.90	28.00	28.10	28.20	28.30	28.40	28.50	28.60	28.70	28.80	28.90	29.00	29.10	29.20	29.30	29.40	29.50	29.60	29.70
9	28.00	28.10	28.20	28.30	28.40	28.50	28.60	28.70	28.80	28.90	29.00	29.10	29.20	29.30	29.40	29.50	29.60	29.70	29.80
10	28.10	28.20	28.30	28.40	28.50	28.60	28.70	28.80	28.90	29.00	29.10	29.20	29.30	29.40	29.50	29.60	29.70	29.80	29.90
11	28.20	28.30	28.40	28.50	28.60	28.70	28.80	28.90	29.00	29.10	29.20	29.30	29.40	29.50	29.60	29.70	29.80	29.90	30.00
12	28.30	28.40	28.50	28.60	28.70	28.80	28.90	29.00	29.10	29.20	29.30	29.40	29.50	29.60	29.70	29.80	29.90	30.00	30.10
13	28.40	28.50	28.60	28.70	28.80	28.90	29.00	29.10	29.20	29.30	29.40	29.50	29.60	29.70	29.80	29.90	30.00	30.10	30.20
14	28.50	28.60	28.70	28.80	28.90	29.00	29.10	29.20	29.30	29.40	29.50	29.60	29.70	29.80	29.90	30.00	30.10	30.20	30.30
15	28.60	28.70	28.80	28.90	29.00	29.10	29.20	29.30	29.40	29.50	29.60	29.70	29.80	29.90	30.00	30.10	30.20	30.30	30.40
16	28.70	28.80	28.90	29.00	29.10	29.20	29.30	29.40	29.50	29.60	29.70	29.80	29.90	30.00	30.10	30.20	30.30	30.40	30.50
17	28.80	28.90	29.00	29.10	29.20	29.30	29.40	29.50	29.60	29.70	29.80	29.90	30.00	30.10	30.20	30.30	30.40	30.50	30.60
18	28.90	29.00	29.10	29.20	29.30	29.40	29.50	29.60	29.70	29.80	29.90	30.00	30.10	30.20	30.30	30.40	30.50	30.60	30.70
19	29.00	29.10	29.20	29.30	29.40	29.50	29.60	29.70	29.80	29.90	30.00	30.10	30.20	30.30	30.40	30.50	30.60	30.70	30.80
20	29.10	29.20	29.30	29.40	29.50	29.60	29.70	29.80	29.90	30.00	30.10	30.20	30.30	30.40	30.50	30.60	30.70	30.80	30.90
21	29.20	29.30	29.40	29.50	29.60	29.70	29.80	29.90	30.00	30.10	30.20	30.30	30.40	30.50	30.60	30.70	30.80	30.90	31.00
22	29.30	29.40	29.50	29.60	29.70	29.80	29.90	30.00	30.10	30.20	30.30	30.40	30.50	30.60	30.70	30.80	30.90	31.00	31.10
23	29.40	29.50	29.60	29.70	29.80	29.90	30.00	30.10	30.20	30.30	30.40	30.50	30.60	30.70	30.80	30.90	31.00	31.10	31.20
24	29.50	29.60	29.70	29.80	29.90	30.00	30.10	30.20	30.30	30.40	30.50	30.60	30.70	30.80	30.90	31.00	31.10	31.20	31.30
25	29.60	29.70	29.80	29.90	30.00	30.10	30.20	30.30	30.40	30.50	30.60	30.70	30.80	30.90	31.00	31.10	31.20	31.30	31.40
26	29.70	29.80	29.90	30.00	30.10	30.20	30.30	30.40	30.50	30.60	30.70	30.80	30.90	31.00	31.10	31.20	31.30	31.40	31.50
27	29.80	29.90	30.00	30.10	30.20	30.30	30.40	30.50	30.60	30.70	30.80	30.90	31.00	31.10	31.20	31.30	31.40	31.50	31.60
28	29.90	30.00	30.10	30.20	30.30	30.40	30.50	30.60	30.70	30.80	30.90	31.00	31.10	31.20	31.30	31.40	31.50	31.60	31.70
29	30.00	30.10	30.20	30.30	30.40	30.50	30.60	30.70	30.80	30.90	31.00	31.10	31.20	31.30	31.40	31.50	31.60	31.70	31.80
30	30.10	30.20	30.30	30.40	30.50	30.60	30.70	30.80	30.90	31.00	31.10	31.20	31.30	31.40	31.50	31.60	31.70	31.80	31.90
31	30.20	30.30	30.40	30.50	30.60	30.70	30.80	30.90	31.00	31.10	31.20	31.30	31.40	31.50	31.60	31.70	31.80	31.90	32.00
32	30.30	30.40	30.50	30.60	30.70	30.80	30.90	31.00	31.10	31.20	31.30	31.40	31.50	31.60	31.70	31.80	31.90	32.00	32.10
33	30.40	30.50	30.60	30.70	30.80	30.90	31.00	31.10	31.20	31.30	31.40	31.50	31.60	31.70	31.80	31.90	32.00	32.10	32.20
34	30.50	30.60	30.70	30.80	30.90	31.00	31.10	31.20	31.30	31.40	31.50	31.60	31.70	31.80	31.90	32.00	32.10	32.20	32.30
35	30.60	30.70	30.80	30.90	31.00	31.10	31.20	31.30	31.40	31.50	31.60	31.70	31.80	31.90	32.00	32.10	32.20	32.30	32.40
36	30.70	30.80	30.90	31.00	31.10	31.20	31.30	31.40	31.50	31.60	31.70	31.80	31.90	32.00	32.10	32.20	32.30	32.40	32.50
37	30.80	30.90	31.00	31.10	31.20	31.30	31.40	31.50	31.60	31.70	31.80	31.90	32.00	32.10	32.20	32.30	32.40	32.50	32.60
38	30.90	31.00	31.10	31.20	31.30	31.40	31.50	31.60	31.70	31.80	31.90	32.00	32.10	32.20	32.30	32.40	32.50	32.60	32.70
39	31.00	31.10	31.20	31.30	31.40	31.50	31.60	31.70	31.80	31.90	32.00	32.10	32.20	32.30	32.40	32.50	32.60	32.70	32.80
40	31.10	31.20	31.30	31.40	31.50	31.60	31.70	31.80	31.90	32.00	32.10	32.20	32.30	32.40	32.50	32.60	32.70	32.80	32.90
41	31.20	31.30	31.40	31.50	31.60	31.70	31.80	31.90	32.00	32.10	32.20	32.30	32.40	32.50	32.60	32.70	32.80	32.90	33.00
42	31.30	31.40	31.50	31.60	31.70	31.80	31.90	32.00	32.10	32.20	32.30	32.40	32.50	32.60	32.70	32.80	32.90	33.00	33.10
43	31.40	31.50	31.60	31.70	31.80	31.90	32.00	32.10	32.20	32.30	32.40	32.50	32.60	32.70	32.80	32.90	33.00	33.10	33.20

## Information Security

### Don't Get Caught on the Phishing Line

CyberSafe at USPS™ presents best practices for identifying and avoiding phishing schemes. Did you recently receive an offer for a free vacation or win a giveaway sweepstakes? Think before you click!

Hackers often use similar schemes to steal personal or business information for their gain or profit. These schemes, known as phishing attempts, can greatly compromise your professional or personal well-being.

CyberSafe at USPS is highlighting key tips and best practices to identify and avoid phishing attempts when navigating your personal and business inboxes.

When receiving an email from an unknown sender, be cautious of messages that include:

- Giveaways, sweepstakes, or special promotional offers (especially near major holidays);
- Offers for free or discounted vacations;
- Solicitations for charity donations; or
- Requests for personal information in response to natural disasters, epidemics, health scares, or major political elections.

These communications may be phishing attempts aimed to steal your personal or USPS® information.

To identify and avoid phishing scams, consider the following steps when reviewing an email:

- **Assess the sender.** Make sure you recognize the sender or the email address.
- **Check for errors.** Mistakes in grammar or spelling can indicate a phishing attempt.

- **Question attachments and links.** Consider what you are opening and make sure it's from a reliable source.

After identifying a phishing trap, avoid clicking on embedded links or attachments and report the message to the Cybersecurity Operations Center (CSOC) by attaching the suspicious message to a new email and sending it to [CyberSafe@usps.gov](mailto:CyberSafe@usps.gov).

It's important to remain cautious when communicating online. "When you're online it's important to stop and think before you click on links in emails and open attachments or give out personal information," said Deputy Chief Information Security Officer, Gregory Crabb.

The CyberSafe at USPS website (<https://lite-blue.usps.gov/cyber>) includes additional helpful tips to spot phishing scams.

For more information about staying safe online and avoiding phishing attempts, visit the Department of Homeland Security Stop. Think. Connect.™ website: <http://www.dhs.gov/stophinkconnect-cyber-tips>.

Identifying and avoiding phishing traps is a top priority for USPS employees, suppliers, and customers — don't take the bait! By keeping our personal and business email accounts secure, we all can proactively safeguard our personal and USPS information.

As a community, information security is our shared responsibility, so stay CyberSafe!

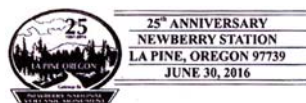
— Corporate Information Security Office,  
Chief Information Officer, 7-7-16

## Stamp Services

### Correction: Pictorial Postmarks

In the article "Pictorial Postmarks" in *Postal Bulletin* 22444 (6-23-16, page 41), the Pictorial Postmark for 25th Anniversary Newberry Station, dated June 30, 2016, was incorrect.

The correct artwork and information is shown here.



June 30, 2016

La Pine Chamber

25th Anniversary

Newberry Station

Postmaster/Philatelic

Services

51649 Huntington Road

La Pine, OR 97739-9998

— Stamp Services,  
Marketing and Sales, 7-7-16

## Stamp Announcement 16-29: Pets Stamps



© 2015 USPS

On August 2, 2016, in Las Vegas, NV, the U.S. Postal Service® will issue the *Pets* stamps (Forever® priced at 47 cents) in 20 designs, in a pressure-sensitive adhesive (PSA) double-sided booklet of 20 stamps (Item 680700).

The stamps will go on sale nationwide August 2, 2016.

With this booklet of 20 stamps, the U.S. Postal Service celebrates the animals in our lives that bring us joy, companionship, and love. The stamp art features existing photographs of different animals taken against white backgrounds. Each photograph represents animals from these groups: puppies, betta fish, iguanas, hamsters, goldfish, parrots, guinea pigs, tortoisés, rabbits, kittens, corn snakes, mice, hermit crabs, chinchillas, gerbils, dogs, parakeets, horses, cats, and geckos. Art director Derry Noyes designed the stamps with existing photographs by Eric Isselée.

snakes, mice, hermit crabs, chinchillas, gerbils, dogs, parakeets, horses, cats, and geckos. Art director Derry Noyes designed the stamps with existing photographs by Eric Isselée.

### Initial Supply to Post Offices: Item 680700, \$9.40 Pets (47-cent Forever First-Class Rate) Double-sided Booklet of 20 Stamps

Stamp Fulfillment Services will make an automatic push distribution to Post Offices™ of a quantity to cover approximately 30 days of sales. Distribution quantities for the automatic push distribution will be available by logging on to SFS Web at <https://sfsweb.usps.gov>. Post Offices may

begin ordering stamps prior to the FDOI through SFS Web. However, offices should check the website noted above to determine the amount they will receive on their automatic push distribution.

### How to Order the First-Day-of-Issue Postmark

Customers have 60 days to obtain the first-day-of-issue postmark by mail. They may purchase new stamps at their local Post Office, at The Postal Store® website at <http://www.usps.com/shop>, or by calling 800-782-6724. They should affix the stamps to envelopes of their choice, address the envelopes (to themselves or others), and place them in a larger envelope addressed to:

Pets Stamps  
United States Postal Service  
Attn: Marilyn Wassell  
1001 East Sunset Road, #2009  
Las Vegas, NV 89199-9998

After applying the first-day-of-issue postmark, the Postal Service™ will return the envelopes through the mail. There is no charge for the postmark up to a quantity of 50. There is a 5-cent charge for each additional postmark over 50. All orders must be postmarked by October 2, 2016.

### How to Order First-Day Covers

The Postal Service also offers first-day covers for new stamp issues and Postal Service stationery items postmarked with the official first-day-of-issue cancellation. Each item has an individual catalog number and is offered in the quarterly *USA Philatelic* catalog, online at <http://www.usps.com/shop>, or by calling 800-782-6724. Customers may request a free catalog by calling 800-782-6724 or writing to:

U.S. Postal Service  
Catalog Request  
PO Box 219014  
Kansas City, MO 64121-9014

### Philatelic Products

There are five philatelic products for this stamp issue:

- 680706, Press Sheet with Die-cut, \$75.20.

- 680710\*, Digital Color Postmark Keepsake (random single), \$11.95.
- 680716\*, First-Day Cover (Set of 20), \$18.20.
- 680721\*, Digital Color Postmark (Set of 20), \$32.40.
- 680730\*, Ceremony Program (random single), \$6.95.

Items with an asterisk (\*) will use the 128 barcode from Stamp Fulfillment Services. All other philatelic products will continue to use barcode series A, with the exception of the Yearbook and the Guide Book.

Issue:	Pets Stamps
Item Number:	680700
Denomination & Type of Issue:	First-Class Mail Forever
Format:	Double-Sided Booklet of 20
Series:	N/A
Issue Date & City:	August 2, 2016, Las Vegas, NV 89119
Art Director:	Derry Noyes, Washington, DC
Designer:	Derry Noyes, Washington, DC
Typographer:	Derry Noyes, Washington, DC
Existing Photos:	Eric Isselée
Modeler:	Joseph Sheeran
Manufacturing Process:	Offset
Printer:	Ashton Potter (USA) Ltd. (APU)
Printed at:	Williamsville, NY
Press Type:	Muller A76
Stamps per Booklet:	20
Print Quantity:	400,000,000 stamps
Paper Type:	Nonphosphored Type III, Block Tag
Adhesive Type:	Pressure-sensitive
Processed at:	Ashton Potter (USA) Ltd. (APU)
Stamp Orientation:	Horizontal
Image Area (w x h):	1.05 x 0.77 in./26.67 x 19.56 mm
Stamp Size (w x h):	1.19 x 0.91 in./30.23 x 23.11 mm
Full Booklet Size (w x h):	2.38 x 5.76 in./60.45 x 146.30 mm
Press Sheet Size (w x h):	23.29 x 4.76 in./ 591.57 x 120.90 mm
Colors:	Black, Cyan, Magenta, Yellow
Plate Size:	880 stamps per revolution
Plate Numbers:	"P" followed by four (4) single digits
Marginal Markings:	Header. "Pets" • Twenty First-Class Forever Stamps • Plate numbers in peel strip area • © 2015 • USPS Logo • Promotional Text in peel strip area

— Stamp Services,  
Marketing and Sales, 7-7-16

### Correction: Henry James Stamp

In the article "Stamp Announcement 16-28: Henry James Stamp," in *Postal Bulletin* 22444 (6-23-16, pages 37–38), the print quantity for philatelic item 119406, Press Sheet with Die-cut, has been updated.

The updated information is shown in bold.

- 119406, Press Sheet with Die-cut, \$106.80  
**(print quantity 1,000).**

— Stamp Services,  
Marketing and Sales, 7-7-16

## Pictorial Postmarks Announcement

As a community service, the Postal Service™ offers pictorial postmarks to commemorate local events celebrated in communities throughout the nation. A list of events for which pictorial postmarks are authorized appears below. The sponsor of the pictorial postmark appears in *italics* under the date. Also provided are illustrations of these postmarks.

People attending these local events may obtain the postmark in person at the temporary Post Office™ station established there. Those who cannot attend the event but who wish to obtain the postmark may submit a mail order request. Pictorial postmarks are available only for the dates indicated, and *requests must be postmarked no later than 30 days following the requested pictorial postmark date.*

All requests must include a stamped envelope or postcard bearing at least the minimum First-Class Mail® postage. Items submitted for postmark may not include

postage issued after the date of the requested postmark. Such items will be returned unserved.

Customers wishing to obtain a postmark should affix stamps to any envelope or postcard of their choice, address the envelope or postcard to themselves or others, insert a card of postcard thickness in envelopes for sturdiness, and tuck in the flap. Place the envelope or postcard in a larger envelope and address it to: Pictorial Postmarks, followed by the Name of the Station, Address, City, State, ZIP+4® Code, as listed below.

Customers can also send stamped envelopes and postcards without addresses for postmark, as long as they supply a larger envelope with adequate postage and their return address. After applying the pictorial postmark, the Postal Service returns the items (with or without addresses) under addressed protective cover.

The following pictorial postmarks have been extended for 30 days:



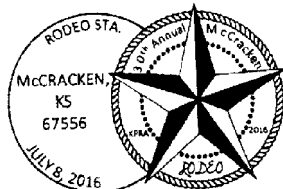
June 16, 2016

*The Mormon Miracle Pageant*  
50th Season Celebration Station  
Postmaster  
140 North Main Street  
Manti, UT 84642-9998



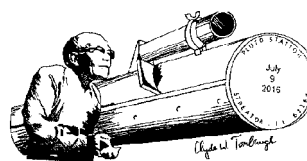
July 1, 2016

*Parrot Soda Fountain*  
Parrott Station  
Postmaster  
2300 North Harris  
Helena, MT 59601-9998



July 8, 2016

*McCracken Rodeo Association*  
McCracken Rodeo Station  
Postmaster  
307 Main Street  
McCracken, KS  
67556-9998



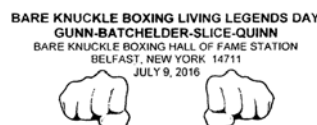
July 9, 2016

*United States Postal Service*  
Pluto Station  
Postmaster  
221 East Hickory  
Streator, IL 61364-9998



July 9, 2016

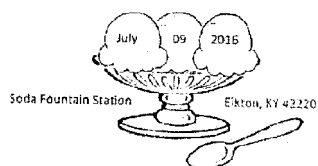
*Alexandria Township Historical Society*  
150th Anniversary Cornwall  
Brothers Store Station  
Postmaster  
13 Bethune Street  
Alexandria Bay, NY  
13607-9998



July 9, 2016

*Bare Knuckle Boxing Hall of Fame*  
Bare Knuckle Boxing Hall of  
Fame Station  
Postmaster  
53 Main Street  
Belfast, NY 14711-9998

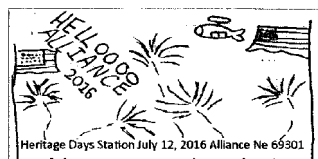




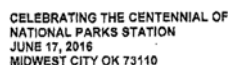
July 9, 2016  
United States Postal Service  
Soda Fountain Station  
Postmaster  
PO Box 9998  
Elkton, KY 42220-9998



July 16, 2016  
United States Postal Service  
50th Annual Porter Peach Festival  
Postmaster  
530 Main Street  
Porter, OK 74454-9998



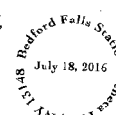
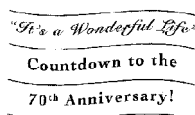
July 12, 2016  
Alliance Chamber of Commerce  
Heritage Days Station  
Postmaster  
PO Box 9998  
Alliance, NE 69301-9998



July 17-18, 2016  
OKPEX Stamp Club  
National Park Station  
Postmaster  
4025 West Reno Avenue  
Oklahoma City, OK  
73125-9998



July 16, 2016  
Kingfield Bicentennial Committee  
Town of Kingfield 200th Anniversary Station  
Postmaster  
8 Depot Street  
Kingfield, ME 04947-9998



July 18, 2016  
It's a Wonderful Life Committee  
Bedford Falls Station  
Postmaster  
38 State Street  
Seneca Falls, NY  
13148-9998



July 16, 2016  
Town of McDonough  
Bicentennial Station  
Postmaster  
1600 State Highway 220  
McDonough, NY  
13801-9998



July 19-20, 2016  
The American Federation of Teachers  
AFT Convention Station  
Customer Relations Coordinator  
100 South 1st Street, Room 127  
Minneapolis, MN  
55401-9641



July 16, 2016  
Fort Fairfield Chamber of Commerce  
Maine Potato Blossom Festival Station  
Postmaster  
289 Main Street  
Fort Fairfield, ME  
04742-9998



July 20, 2016  
United States Postal Service  
Mayville Station  
Postmaster  
PO Box 9998  
Mayville, MI 48744-9998

— Stamp Services,  
Marketing and Sales, 7-7-16

## How to Order the First-Day-of-Issue Digital Color or Traditional Postmarks

Customers have 60 days to obtain the first-day-of-issue postmarks by mail. They may purchase new stamps at their local Post Office™, by telephone at 800-STAMP-24, or at The Postal Store® website at [www.usps.com/shop](http://www.usps.com/shop).

### Traditional Postmarks

Customers should affix the stamps to envelopes of their choice, address them to themselves or others, or provide a self-addressed return envelope with sufficient postage large enough to accommodate the canceled item. Mail the request to the corresponding city of issuance. There is no charge for the first 50 postmarks. There is a 5-cent charge for each additional postmark over 50. Customers should submit a check, money order, or credit card for payment. After applying the first-day-of-issue postmark, the Postal Service™ will return the envelopes to the customer by U.S. Mail.

All postmark requests should go to the first-day-of-issue city. The first-day-of-issue city Post Office will then forward in bulk all postmark requests to Cancellation Services, Stamp Fulfillment Services, PO Box 449992, Kansas City, MO 64144-9992 by respective Post Offices.

### Digital Color Postmarks

Only select stamp issues offer a digital color postmark. Customers may submit #6 or #10 envelopes constructed of paper rated as "laser safe." The Postal Service recommends envelopes of 80-pound Accent Opaque, acid-free, 9/16" side seams with no glue on the flap. The maximum

size of all digital color postmarks is 2" high x 4" long. Allow sufficient space on the envelope to accommodate the postmark. Do not use self-adhesive labels for addresses on the envelope. Two test envelopes must be included. There is a minimum of 10 envelopes at 50 cents per postmark required at the time of servicing. Customers should submit a check, money order, or credit card for payment.

The Postal Service reserves the right to not accept hand-painted and other cachet envelopes that are not compatible with our digital color postmark equipment. The Postal Service also reserves the right to substitute traditional black rubber postmarks if use of nonspecified envelopes results in poor image quality or damage to equipment.

Customers should affix the stamps to the envelopes and address them to themselves or others for return through the mail. Or, they may include an additional self-addressed return envelope, large enough to accommodate their canceled items, with sufficient postage affixed for return of their postmarked items. Mail the request for a first-day-of-issue digital color postmark to the corresponding city of issuance. Post Offices will then forward all customer requests for digital color postmarks to Cancellation Services, Stamp Fulfillment Services, PO Box 449992, Kansas City, MO 64144-9992.

After applying the first-day-of-issue postmark, the Postal Service will return the envelopes to the customer by U.S. Mail.



Digital Color Pictorial

#### World Stamp Show-NY 2016 Folio

Special Events Coordinator  
380 West 33rd Street  
New York, NY 10199-9998

July 28, 2016



Black and White Pictorial

#### World Stamp Show-NY 2016 Folio

Special Events Coordinator  
380 West 33rd Street  
New York, NY 10199-9998

July 28, 2016



Digital Color Pictorial

#### Repeal of the Stamp Act Stamp

Special Events Coordinator  
380 West 33rd Street  
New York, NY 10199-9998

July 29, 2016

FIRST DAY OF ISSUE

# REPEAL OF THE STAMP ACT, 1766

May 29, 2016 • New York, NY 10199

**Black and White Pictorial****Repeal of the Stamp Act Stamp**

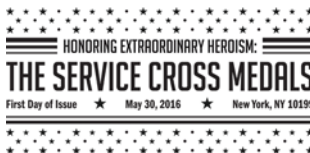
Special Events Coordinator  
380 West 33rd Street  
New York, NY 10199-9998

July 29, 2016

**Digital Color Pictorial****Honoring Extraordinary Heroism: The Service Cross Medals Stamps**

Special Events Coordinator  
380 West 33rd Street  
New York, NY 10199-9998

July 30, 2016

**Black and White Pictorial****Honoring Extraordinary Heroism: The Service Cross Medals Stamps**

Special Events Coordinator  
380 West 33rd Street  
New York, NY 10199-9998

July 30, 2016

**Digital Color Pictorial****Pluto - Explored! Stamps**

Special Events Coordinator  
380 West 33rd Street  
New York, NY 10199-9998

July 31, 2016

**Black and White Pictorial****Pluto - Explored! Stamps**

Special Events Coordinator  
380 West 33rd Street  
New York, NY 10199-9998

July 31, 2016

**Digital Color Pictorial****Views of Our Planets Stamps**

Special Events Coordinator  
380 West 33rd Street  
New York, NY 10199-9998

July 31, 2016

**Black and White Pictorial****Views of Our Planets Stamps**

Special Events Coordinator  
380 West 33rd Street  
New York, NY 10199-9998

July 31, 2016



Digital Color Pictorial

**Classics Forever Stamps**

Special Events Coordinator  
380 West 33rd Street  
New York, NY 10199-9998

August 1, 2016



Black and White Pictorial

**Classics Forever Stamps**

Special Events Coordinator  
380 West 33rd Street  
New York, NY 10199-9998

August 1, 2016



Digital Color Pictorial

**National Parks Stamps**

Special Events Coordinator  
380 West 33rd Street  
New York, NY 10199-9998

August 2, 2016



Black and White Pictorial

**National Parks Stamps**

Special Events Coordinator  
380 West 33rd Street  
New York, NY 10199-9998

August 2, 2016



Digital Color Pictorial

**Colorful Celebrations Stamps**

Special Events Coordinator  
380 West 33rd Street  
New York, NY 10199-9998

August 3, 2016



Black and White Pictorial

**Colorful Celebrations Stamps**

Special Events Coordinator  
380 West 33rd Street  
New York, NY 10199-9998

August 3, 2016



Digital Color Pictorial

**Indiana Statehood Stamp**

Postmaster  
125 West South Street  
Indianapolis, IN 46206-9998

August 7, 2016



Digital Color Pictorial

**EID Greetings Stamp**

3800 Greenfield Road  
Dearborn, MI 48120-9998

August 10, 2016



Digital Color Pictorial

**Soda Fountain Favorites Stamps**

Metro Station Post Office  
2245 Rosa L. Parks Boulevard  
Nashville, TN 37228-9998

August 30, 2016



Digital Color Pictorial

**Jaime Escalante Stamp**

Special Events  
PO Box 92282  
Washington, DC 20090-2282

September 13, 2016



Digital Color Pictorial

**Pickup Trucks Stamps**

Postmaster  
5640 East Taft Road  
Syracuse, NY 13220-9810

September 15, 2016



Digital Color Pictorial

**Henry James Stamp**

Special Events  
22403 Randolph Drive  
Dulles, VA 20103-9998

October 1, 2016



Digital Color Pictorial

**Pets Stamps**

United States Postal Service  
Attn: Marilyn Wassell  
1001 East Sunset Road, #2009  
Las Vegas, NV 89199-9998

October 2, 2016

— Stamp Services, Marketing and Sales, 7-7-16

## Supply Management

### Interest Rate on Contract Claims

The Postal Service™ periodically publishes the interest rate payable on a claim decided in a supplier's favor under the Contract Disputes Act of 1978 in the *Postal Bulletin*. This rate also applies for late payments to suppliers under the Prompt Payment Act, as amended.

The interest rate effective for the 6-month period of July 1, 2016 to December 31, 2016 is **1.875%**.

— Supply Management Infrastructure,  
Supply Management, 7-7-16



475 L'ENFANT PLAZA SW  
WASHINGTON DC 20260-5540

First-Class Mail  
Postage & Fees Paid  
USPS  
Permit No. G-10

USPS® Issues  
***Pluto—Explored!***  
Forever® Stamp Souvenir Sheet

Pluto—Explored!



NASA/The Johns Hopkins  
University Applied Physics  
Laboratory/Southwest  
Research Institute.

On Sale Nationwide: May 31, 2016.

Please recycle. 