

postal|bulletin

PUBLISHED SINCE MARCH 4, 1880

WORKING SAFE IN COLD WEATHER



See page 3



Contents

COVER STORY

Winter Safety 3

POLICIES, PROCEDURES, AND FORMS UPDATES

Handbooks

Handbook PO-603 Revision: Data Collection Devices 4

Publications

Publication 431 Revision: Changes to Post Office Box Service and Caller Service Fee Groups 6

ORGANIZATION INFORMATION

Domestic Mail

Labeling List Changes 7

Human Resources

Revised Forms and New Management Instruction: Update of Back Pay Policy 16

Information Security

Information Security on the Go 17
Amazon.com Contact Information for USPS Employees 17

Retail

Stamps by Mail — Brochure Ordering Information 18

Safety and Health

Statutory Requirement to Review and Post OSHA Form 300A Summary for Calendar Year 2015 18

Stamp Services

Stamp Announcement 16-02: La Cueva del Indio Stamp 39
Stamp Announcement 16-03: Columbia River Gorge Stamp 41
Stamp Announcement 16-04: Pears Stamp 43
Stamp Announcement 16-05: U.S. Flag Stamp 44
Stamp Announcement 16-06: Richard Allen Stamp 47
Stamp Announcement 16-07: Year of the Monkey Stamp 49
Pictorial Postmarks Announcement 51
How to Order the First-Day-of-Issue Digital Color or Traditional Postmarks 52
Supply Management
Interest Rate on Contract Claims 54

PULL-OUT INFORMATION

Fraud

Withholding of Mail Orders 19
Invalid USPS Corporate Account Numbers 19
Missing, Lost, or Stolen U.S. Money Order Forms 21
Missing, Lost, or Stolen Canadian Money Order Forms 27
Verifying U.S. Postal Service Money Orders 30
Counterfeit Canadian Money Order Forms 30
Toll-Free Number Available to Verify Canadian Money Orders 30

Other Information

Overseas Military/Diplomatic Mail 31
Freely Associated States (FAS) Restrictions 36
Thrift Savings Plan Fact Sheet 37

POSTAL BULLETIN INDEX

2015 Annual Index PB 22432 (1-7-16)

USPS National Emergency Hotline
Is your facility operating? Call 888-363-7462

Find the latest in mail and delivery information
and services offered by U.S. Postal™
in the *Postal Bulletin* at
<http://about.usps.com/postal-bulletin>.



AGENTS OF IMPACT. AGENTS OF CHANGE.

Cover Story

Winter Safety

Working outside during winter presents special challenges for employees who are exposed to cold temperatures and hazardous conditions.

Prolonged exposure to cold temperatures can cause your body to lose heat faster than it's able to produce it, which puts employees at risk of hypothermia or frostbite. Frostbite occurs when skin is exposed to extreme cold for long periods and the skin and underlying tissue freeze. The fingers, toes, and feet are most commonly affected, but other extremities including the nose, ears, and the cheeks can also develop frostbite.

At the first sign of frostbite, get out of the cold. Unless absolutely necessary, do not walk on frostbitten feet or toes. Don't rub the frostbitten area because it will increase tissue damage. Warm the affected area using body heat or by immersing in warm water; avoid using a heating pad, heat lamp, or the heat of a stove, fireplace, or radiator for

warming because direct heat can burn tissue that's already damaged. Drink warm drinks to replace lost fluid. In case of severe frostbite, seek medical attention.

Snow and icy conditions increase the occurrences of slips, trips, and falls resulting in pain and lost productivity due to injuries. Proper footwear is essential for safe walking on slippery surfaces. To prevent slips, trips, and falls, wear grippers (ice cleats), walk with care, take short steps, and only finger mail when it is safe to do so. Take extra precautions when entering and exiting your vehicle — use handrails on steps, and wait for vehicles to stop completely on snow or ice-covered roadways before crossing the street.

Always remember, "Safety Depends on Me."

— *Safety and OSHA Compliance Programs,
Employee Resource Management, 1-21-16*

Policies, Procedures, and Forms Updates

Handbooks

Handbook PO-603 Revision: Data Collection Devices

Effective January 21, 2016, the Postal Service™ is revising Handbook PO-603, *Rural Carrier Duties and Responsibilities*, to update procedures for data collection devices in Chapters 2, 3, and 4.

Handbook PO-603, *Rural Carrier Duties and Responsibilities*

* * * * *

2 Office Work of Rural Carriers

* * * * *

24 Undeliverable-as-Addressed Mail Information

* * * * *

242 Procedures for Processing Undeliverable-as-Addressed Mail

* * * * *

242.3 Accountable and Signature Mail

[Revise the second sentence of 242.3 to read as follows:]

***Return accountable mail signed receipts or signature records captured with the data collection device for delivered accountable items found in your mail during the delivery process for which accountability was not established prior to your departure for the route as provided in 431.4.

* * * * *

252.1 Acquiring Accountable Items

[Revise the fifth sentence of 252.1 to read as follows:]

***Return accountable items or signed receipts for items which the customer was unable to sign on the data collection device for any delivered accountable mail you find in your mail during the delivery process for which accountability was not established prior to your departure for the route.

* * * * *

253.1 General

[Revise the text of 253.1 to read as follows:]

As you make delivery, use PS Form 3849, *Delivery Notice/Reminder/Receipt*, as required for accountable mail.

* * * * *

253.21 Use as Notice or Receipt

[Revise the first sentence of 253.21 to read as follows:]

Use PS Form 3849 (see Exhibit 253.21) as a notice for mail that cannot be delivered on the first attempt or as a delivery receipt for accountable mail for items which the customer could not sign directly on the data collection device.***

* * * * *

253.23 Do Not Use as a Receipt

[Revise the third sentence (in parentheses) of 253.23 to read as follows:]

****(Obtain a receipt for registered COD mail on the COD tag and on PS Form 3849 when the customer is unable to sign directly on the data collection device.)*

* * * * *

341.32 Delivery

[Revise items a and b to read as follows:]

- a. If addressees indicate that they will pay for the COD parcel, detach the COD tag (PS Form 3816).
- b. Deliver the parcel after you have received all funds and the customer has signed on the data collection device. If the customer cannot sign on the data collection device for any reason, use PS Form 3849 to obtain their signature and address. If there is a difference between the amount of the charges shown on the tag and the amount of the package, collect the higher amount. If the money order fee is not correctly stated on the tag, correct the fee and report the error to your Postmaster or supervisor.

* * * * *

341.42 Delivery

[Revise items a, d, and e to read as follows:]

- a. Deliver registered articles to anyone authorized to receive mail for the addressee. This person must sign on the data collection device before you may deliver the article. If the person cannot sign on the data collection device for any reason, complete a PS Form 3849. Require identification if the customer is unknown.

* * * * *

- d. When a person other than the addressee signs for an article, the person must sign his or her own name on the data collection device. If the customer cannot sign on the data collection device for any reason, complete a PS Form 3849.
- e. If PS Form 3849 is used, complete the date of delivery and your signature (see Exhibit 253.21).

* * * * *

341.52 Delivery

[Revise items a, d, and e to read as follows:]

- a. Deliver certified articles to anyone authorized to receive mail for the addressee. This person must sign on the data collection device before you may deliver the article. If the person cannot sign on the data collection device for any reason, complete a PS Form 3849. Require identification if the customer is unknown.

* * * * *

- d. When persons other than the addressee sign for an article, they must enter their own name on the data collection device.
- e. If PS Form 3849 is used, complete the date of delivery and your signature (see Exhibit 253.21).

* * * * *

341.62 Delivery

[Revise the third and fourth sentence of 341.62 to read as follows:]

This person must sign on the data collection device before you may deliver the article. If the customer cannot sign on the device for any reason, complete PS Form 3849.

* * * * *

342.22 Signature

[Revise the text of 342.22 to read as follows:]

Use the data collection device to capture the customer signature for Priority Mail Express items. If the customer cannot sign on the device for any reason, complete PS Form 3849. If the waiver of signature option has been requested and the shipment can be delivered to the addressee’s mail receptacle or left in another secure location, follow the handheld scanner waiver of signature procedures.

* * * * *

431.1 Handling

[Revise the introduction of 431.1 to read as follows:]

Give the Postmaster or supervisor, or designee, the data collection device for clearance of delivered articles and for all of the following articles attempted for delivery:

* * * * *

[Revise item c to read as follows:]

- c. PS Forms 3849, *Delivery Notice/Reminder/Receipt*, for items not signed for on the data collection device.

* * * * *

431.2 Clearance

[Revise the text of 431.2 to read as follows:]

The Postmaster or supervisor, or designee, prints a report of articles delivered using the data collection device or clears items with a completed PS Form 3849 listed on PS Form 3867, *Accountable Mail Matter Received for Delivery* (see Exhibit 431.2).

431.3 Handling

[Revise the text of 431.3 to read as follows:]

Where the use of the PS Form 3883-A, *Firm Delivery Receipt*, has been authorized, return the original bill (as proof of delivery) and all return receipts for articles listed for clearance when unable to obtain a signature on the data collection device.

* * * * *

432.2 Clearance

[Revise the text of 432.2 to read as follows:]

The Postmaster or supervisor, or designee, clears each item on PS Form 3867 when unable to obtain a signature on the data collection device (see Exhibit 252.21c).

* * * * *

44 Disposition of Signed Forms for Numbered Insured Mail

[Revise the text of 44 to read as follows:]

Give to the clearing employee PS Form 3849 and PS Form 3811 when unable to obtain a signature on the data collection device for numbered insured mail. Where the use of PS Form 3883-A has been authorized, return the original bill (as proof of delivery) and all receipts for articles listed.

* * * * *

We will incorporate these revisions into the next online update of Handbook PO-603, *Rural Carrier Duties and Responsibilities*, which is available on the Postal Service PolicyNet website:

- Go to <http://blue.usps.gov>.
- Under “Essential Links” in the left-hand column, click *PolicyNet*.
- Click *HBKs*.

The direct URL for the Postal Service PolicyNet website is <http://blue.usps.gov/cpim>.

Publications

Publication 431 Revision: Changes to Post Office Box Service and Caller Service Fee Groups

Effective January 21, 2016, Publication 431, *Post Office Box Service and Caller Service Fee Groups*, is revised to include the following changes.

Publication 431, Post Office Box Service and Caller Service Fee Groups

* * * * *

[Revise the following entries:]

ZIP Code	Fee Group
32459	41

* * * * *

The online version of Publication 431 is dated July 2013. Publication 431 is currently available on the Postal Service™ PolicyNet website (<http://blue.usps.gov/cpim>):

- Go to <http://blue.usps.gov>.
- Under “Essential Links” in the left-hand column, click *PolicyNet*.
- Click *PUBs*.

Offices with WebBATS Manager/Supervisor access can view current Publication 431 information by going to the WebBATS Edit Facility Information page, as follows:

1. Go to the WebBATS main menu, and select Utility> Facility>Edit Facility option.
2. View the Fee Group field on the Edit Facility Information page.

— *Retail Operations,
Retail and Customer Service Operations, 1-21-16*

Organization Information

Domestic Mail

Labeling List Changes

Effective February 1, 2016, we will revise Labeling List(s) L001, L006, L007, L012, and L606 to reflect changes in mail processing operations. Mailers are expected to label according to these revised lists for mailings that are inducted on or after the February 1, 2016, effective date through the March 31, 2016, expiration date.

Note: The following ZIP Codes™ were unintentionally left out of the L009 list in the files effective on 1-1-2016: 864, 889-891, 893-895, 897, 961, and 967-969. In order to correct that error, there are “New Additions” shown below for the L009 list. These ZIP Codes were simply added back onto the list as they were previously displayed in the 12-1-2015 effective files. The “Label To” column is the same as it was previously.

Labeling Lists

L000 General Use

* * * * *

L001 5-Digit Scheme – Periodicals, Standard Mail, and Package Services Flats and Irregular Parcels

Changes

Column A Destination ZIP Codes	Column B Label Container To (Change From)	Column B Label Container To (Change To)	Column B Change Status
78702	AUSTIN TX 78701	AUSTIN TX 78719	Existing
78741	AUSTIN TX 78741	AUSTIN TX 78701	Existing
78744	AUSTIN TX 78741	AUSTIN TX 78719	Existing

Deleted

Column A Destination ZIP Codes	Column B Label
78760	AUSTIN TX 78741

* * * * *

L006 5-Digit FSS Scheme – Periodical, Standard Mail, and Package Services Flats in Bundles

Deleted

Column A Destination ZIP Codes	Column B Label	Column C Label
60564	NAPERVILLE IL 60564	FSS FOX VALLEY IL 605

Column A Destination ZIP Codes	Column B Label	Column C Label
60565	NAPERVILLE IL 60564	FSS FOX VALLEY IL 605

* * * * *

L007 5-Digit Scheme – Periodical, Standard Mail, and Package Services Flats in Bundles

Changes

Column A Destination ZIP Codes	Column B Label Container To (Change From)	Column B Label Container To (Change To)	Column B Change To Status
78702	AUSTIN TX 78701	AUSTIN TX 78719	Existing
78741	AUSTIN TX 78741	AUSTIN TX 78701	Existing
78744	AUSTIN TX 78741	AUSTIN TX 78719	Existing

Deleted

Column A Destination ZIP Codes	Column B Label
78760	AUSTIN TX 78741

* * * * *

L009 Mixed ADCs – Periodicals, Package Services Flats and Irregular Parcels, and Standard Mail Flats

Newly Added

Note: These ZIP Codes were unintentionally left out of the set of files that became effective on 1-1-2016. They have been added back into the L009 list and reflect the same “Label To” information as the previous list from 12-1-2015.

Column A Originating 3-Digit ZIP Code Prefix Group	Column B Label To (Added To)	Column B Change Status
864	MXD LAS VEGAS NV 890	New
889	MXD LAS VEGAS NV 890	New
890	MXD LAS VEGAS NV 890	New
891	MXD LAS VEGAS NV 890	New
893	MXD LAS VEGAS NV 890	New
894	MXD LAS VEGAS NV 890	New
895	MXD LAS VEGAS NV 890	New
897	MXD LAS VEGAS NV 890	New
961	MXD LAS VEGAS NV 890	New
967	MXD HONOLULU HI 967	New
968	MXD HONOLULU HI 967	New

Column A Originating 3-Digit ZIP Code Prefix Group	Column B Label To (Added To)	Column B Change Status
969	MXD HONOLULU HI 967	New

* * * * *

L012 5-Digit ZIP Scheme Combination**Changes**

Column A Destination ZIP Codes	Column B Label Container To (Change From)	Column B Label Container To (Change To)	Column B Change To Status
24201	BRISTOL VA 24201	BRISTOL VA 24202	New
24202	BRISTOL VA 24201	BRISTOL VA 24202	New
24203	BRISTOL VA 24201	BRISTOL VA 24202	New
24209	BRISTOL VA 24201	BRISTOL VA 24202	New
24210	ABINGDON VA 24210	ABINGDON VA 24211	New
24211	ABINGDON VA 24210	ABINGDON VA 24211	New
24212	ABINGDON VA 24210	ABINGDON VA 24211	New
24216	BIG STONE GAP VA 24219	ANDOVER VA 24215	New
24219	BIG STONE GAP VA 24219	ANDOVER VA 24215	New
24221	JONESVILLE VA 24263	ANDOVER VA 24215	New
24224	JONESVILLE VA 24263	BRISTOL VA 24202	New
24228	BIG STONE GAP VA 24219	BRISTOL VA 24202	New
24230	BIG STONE GAP VA 24219	BRISTOL VA 24202	New
24236	ABINGDON VA 24210	ABINGDON VA 24211	New
24243	JONESVILLE VA 24263	ABINGDON VA 24211	New
24244	JONESVILLE VA 24263	ABINGDON VA 24211	New
24248	JONESVILLE VA 24263	ANDOVER VA 24215	New
24250	BIG STONE GAP VA 24219	ANDOVER VA 24215	New
24251	BIG STONE GAP VA 24219	ANDOVER VA 24215	New
24256	WISE VA 24293	BEE VA 24217	New
24260	WISE VA 24293	BEE VA 24217	New
24263	JONESVILLE VA 24263	ANDOVER VA 24215	New
24266	WISE VA 24293	ABINGDON VA 24211	New
24273	WISE VA 24293	BEE VA 24217	New
24277	JONESVILLE VA 24263	BEE VA 24217	New
24279	WISE VA 24293	BEE VA 24217	New
24281	JONESVILLE VA 24263	ANDOVER VA 24215	New
24283	WISE VA 24293	BEE VA 24217	New

Column A Destination ZIP Codes	Column B Label Container To (Change From)	Column B Label Container To (Change To)	Column B Change To Status
24290	BIG STONE GAP VA 24219	ANDOVER VA 24215	New
24293	WISE VA 24293	BEE VA 24217	New
37602	JOHNSON CITY TN 37615	JOHNSON CITY TN 37602	New
37605	JOHNSON CITY TN 37615	JOHNSON CITY TN 37605	New
37615	JOHNSON CITY TN 37615	JOHNSON CITY TN 37602	New
37616	JONESBOROUGH TN 37659	AFTON TN 37616	New
37617	BLOUNTVILLE TN 37617	ELIZABETHTON TN 37644	New
37618	BLOUNTVILLE TN 37617	ELIZABETHTON TN 37644	New
37641	JONESBOROUGH TN 37659	AFTON TN 37616	New
37642	BLOUNTVILLE TN 37617	CHURCH HILL TN 37642	New
37643	ELIZABETHTON TN 37643	ELIZABETHTON TN 37644	New
37644	ELIZABETHTON TN 37643	ELIZABETHTON TN 37644	New
37645	BLOUNTVILLE TN 37617	CHURCH HILL TN 37642	New
37650	ERWIN TN 37650	BUTLER TN 37640	Existing
37656	ERWIN TN 37650	KINGSPORT TN 37662	New
37657	ERWIN TN 37650	BUTLER TN 37640	Existing
37659	JONESBOROUGH TN 37659	AFTON TN 37616	New
37660	KINGSPORT TN 37660	KINGSPORT TN 37662	New
37662	ERWIN TN 37650	KINGSPORT TN 37662	New
37663	KINGSPORT TN 37664	CHURCH HILL TN 37642	New
37664	KINGSPORT TN 37664	CHURCH HILL TN 37642	New
37665	KINGSPORT TN 37660	KINGSPORT TN 37662	New
37681	JONESBOROUGH TN 37659	AFTON TN 37616	New
37682	BUTLER TN 37640	ELIZABETHTON TN 37644	New
37684	JOHNSON CITY TN 37615	AFTON TN 37616	New
37686	JONESBOROUGH TN 37659	JOHNSON CITY TN 37605	New
37690	ERWIN TN 37650	AFTON TN 37616	New
37692	ERWIN TN 37650	JOHNSON CITY TN 37605	New
37694	ERWIN TN 37650	AFTON TN 37616	New
50005	ADAIR IA 50002	ALBION IA 50005	New
50025	ANITA IA 50020	ACKWORTH IA 50001	Existing
50027	BARNES CITY IA 50027	WOODBURN IA 50275	New

Column A Destination ZIP Codes	Column B Label Container To (Change From)	Column B Label Container To (Change To)	Column B Change To Status
50028	ALLEMAN IA 50007	ALDEN IA 50006	Existing
50029	BAGLEY IA 50026	ACKWORTH IA 50001	Existing
50031	ALLEMAN IA 50007	ALDEN IA 50006	Existing
50032	ALLEMAN IA 50007	ALDEN IA 50006	Existing
50033	BAGLEY IA 50026	ACKWORTH IA 50001	Existing
50034	BLAIRSBURG IA 50034	WILLIAMS IA 50271	New
50035	ALLEMAN IA 50007	ALDEN IA 50006	Existing
50038	BOONEVILLE IA 50038	WAUKEE IA 50263	New
50040	ALLEMAN IA 50007	BOONE IA 50036	New
50042	ANITA IA 50020	ACKWORTH IA 50001	Existing
50044	BUSSEY IA 50044	ACKWORTH IA 50001	Existing
50048	ADAIR IA 50002	ADEL IA 50003	New
50051	ADAIR IA 50002	ALBION IA 50005	New
50054	ALLEMAN IA 50007	WILLIAMS IA 50271	New
50055	ALLEMAN IA 50007	ALDEN IA 50006	Existing
50056	ALLEMAN IA 50007	ALDEN IA 50006	Existing
50057	BUSSEY IA 50044	ACKWORTH IA 50001	Existing
50061	CUMMING IA 50061	ACKWORTH IA 50001	Existing
50062	DALLAS IA 50062	WILLIAMS IA 50271	New
50065	DAVIS CITY IA 50065	WOODBURN IA 50275	New
50067	DAVIS CITY IA 50065	WOODBURN IA 50275	New
50069	ADAIR IA 50002	ADEL IA 50003	New
50070	ADAIR IA 50002	ADEL IA 50003	New
50071	BLAIRSBURG IA 50034	WILLIAMS IA 50271	New
50072	ADAIR IA 50002	ADEL IA 50003	New
50073	ALLEMAN IA 50007	ALDEN IA 50006	Existing
50074	DAVIS CITY IA 50065	WOODBURN IA 50275	New
50075	BLAIRSBURG IA 50034	WILLIAMS IA 50271	New
50076	ANITA IA 50020	ACKWORTH IA 50001	Existing
50078	ADAIR IA 50002	ALBION IA 50005	New
50101	BLAIRSBURG IA 50034	WILLIAMS IA 50271	New
50102	BLAIRSBURG IA 50034	WILLIAMS IA 50271	New
50104	BARNES CITY IA 50027	WOODBURN IA 50275	New
50105	BLAIRSBURG IA 50034	WILLIAMS IA 50271	New

Column A Destination ZIP Codes	Column B Label Container To (Change From)	Column B Label Container To (Change To)	Column B Change To Status
50106	ADAIR IA 50002	ALBION IA 50005	New
50108	DAVIS CITY IA 50065	WOODBURN IA 50275	New
50109	BOONEVILLE IA 50038	GRANGER IA 50109	New
50110	ANITA IA 50020	ACKWORTH IA 50001	Existing
50112	BUSSEY IA 50044	WOODBURN IA 50275	New
50115	ANITA IA 50020	ACKWORTH IA 50001	Existing
50116	BUSSEY IA 50044	ACKWORTH IA 50001	Existing
50117	ANITA IA 50020	ACKWORTH IA 50001	Existing
50120	ADAIR IA 50002	ALBION IA 50005	New
50122	ADAIR IA 50002	ALBION IA 50005	New
50127	ALLEMAN IA 50007	WILLIAMS IA 50271	New
50130	BLAIRSBURG IA 50034	WILLIAMS IA 50271	New
50132	BLAIRSBURG IA 50034	WILLIAMS IA 50271	New
50133	DAVIS CITY IA 50065	WOODBURN IA 50275	New
50135	BARNES CITY IA 50027	WOODBURN IA 50275	New
50136	BARNES CITY IA 50027	WOODBURN IA 50275	New
50137	ALLEMAN IA 50007	WILLIAMS IA 50271	New
50138	BUSSEY IA 50044	WILLIAMS IA 50271	New
50139	DAVIS CITY IA 50065	WILLIAMS IA 50271	New
50140	DAVIS CITY IA 50065	WOODBURN IA 50275	New
50141	ADAIR IA 50002	ALBION IA 50005	New
50142	ADAIR IA 50002	ALBION IA 50005	New
50143	LEIGHTON IA 50143	ALBION IA 50005	New
50144	DAVIS CITY IA 50065	WOODBURN IA 50275	New
50145	DALLAS IA 50062	WILLIAMS IA 50271	New
50148	ADAIR IA 50002	ALBION IA 50005	New
50149	CUMMING IA 50061	ACKWORTH IA 50001	Existing
50150	BUSSEY IA 50044	ACKWORTH IA 50001	Existing
50153	ALLEMAN IA 50007	WILLIAMS IA 50271	New
50154	BLAIRSBURG IA 50034	WILLIAMS IA 50271	New
50155	CUMMING IA 50061	ACKWORTH IA 50001	Existing
50157	BARNES CITY IA 50027	WOODBURN IA 50275	New

Column A Destination ZIP Codes	Column B Label Container To (Change From)	Column B Label Container To (Change To)	Column B Change To Status
50160	BAGLEY IA 50026	ACKWORTH IA 50001	Existing
50161	ALLEMAN IA 50007	ALDEN IA 50006	Existing
50162	ADAIR IA 50002	ALBION IA 50005	New
50163	DALLAS IA 50062	WILLIAMS IA 50271	New
50164	ADAIR IA 50002	ADEL IA 50003	New
50168	ALLEMAN IA 50007	WILLIAMS IA 50271	New
50169	ALLEMAN IA 50007	WILLIAMS IA 50271	New
50170	BUSSEY IA 50044	ACKWORTH IA 50001	Existing
50171	BARNES CITY IA 50027	WOODBURN IA 50275	New
50173	ADAIR IA 50002	ALBION IA 50005	New
50174	CUMMING IA 50061	ACKWORTH IA 50001	Existing
50201	BLAIRSBURG IA 50034	WILLIAMS IA 50271	New
50206	ADAIR IA 50002	ALBION IA 50005	New
50207	ALLEMAN IA 50007	WILLIAMS IA 50271	New
50210	BAGLEY IA 50026	ACKWORTH IA 50001	Existing
50211	BAGLEY IA 50026	ADEL IA 50003	New
50212	ALLEMAN IA 50007	ALDEN IA 50006	Existing
50213	DAVIS CITY IA 50065	WOODBURN IA 50275	New
50214	LEIGHTON IA 50143	ALBION IA 50005	New
50218	CUMMING IA 50061	ACKWORTH IA 50001	Existing
50219	LEIGHTON IA 50143	ALBION IA 50005	New
50222	BAGLEY IA 50026	ACKWORTH IA 50001	Existing
50223	ALLEMAN IA 50007	BOONE IA 50036	New
50225	DALLAS IA 50062	WILLIAMS IA 50271	New
50228	ALLEMAN IA 50007	WILLIAMS IA 50271	New
50229	BAGLEY IA 50026	ACKWORTH IA 50001	Existing
50230	BLAIRSBURG IA 50034	WILLIAMS IA 50271	New
50231	BLAIRSBURG IA 50034	WILLIAMS IA 50271	New
50232	BARNES CITY IA 50027	ACKWORTH IA 50001	Existing
50233	ANITA IA 50020	ACKWORTH IA 50001	Existing
50234	ADAIR IA 50002	ALBION IA 50005	New
50236	BLAIRSBURG IA 50034	WILLIAMS IA 50271	New
50237	DALLAS IA 50062	WILLIAMS IA 50271	New

Column A Destination ZIP Codes	Column B Label Container To (Change From)	Column B Label Container To (Change To)	Column B Change To Status
50239	ADAIR IA 50002	ALBION IA 50005	New
50240	BAGLEY IA 50026	ACKWORTH IA 50001	Existing
50241	BAGLEY IA 50026	ACKWORTH IA 50001	Existing
50242	ALLEMAN IA 50007	WILLIAMS IA 50271	New
50246	ALLEMAN IA 50007	ALDEN IA 50006	Existing
50247	ADAIR IA 50002	ALBION IA 50005	New
50249	ALLEMAN IA 50007	ALDEN IA 50006	Existing
50250	ADAIR IA 50002	ADEL IA 50003	New
50251	ALLEMAN IA 50007	WILLIAMS IA 50271	New
50254	CUMMING IA 50061	ACKWORTH IA 50001	Existing
50255	BARNES CITY IA 50027	WOODBURN IA 50275	New
50256	BUSSEY IA 50044	ACKWORTH IA 50001	Existing
50257	BAGLEY IA 50026	ACKWORTH IA 50001	Existing
50258	ADAIR IA 50002	ALBION IA 50005	New
50259	ADAIR IA 50002	ALBION IA 50005	New
50261	BOONEVILLE IA 50038	ADEL IA 50003	New
50262	DAVIS CITY IA 50065	WOODBURN IA 50275	New
50264	DAVIS CITY IA 50065	WOODBURN IA 50275	New
50268	BARNES CITY IA 50027	WOODBURN IA 50275	New
50269	ADAIR IA 50002	ALBION IA 50005	New
50271	BLAIRSBURG IA 50034	WILLIAMS IA 50271	New
50273	INDIANOLA IA 50125	ACKWORTH IA 50001	Existing
50275	DAVIS CITY IA 50065	WOODBURN IA 50275	New
50278	ADAIR IA 50002	ALBION IA 50005	New
50510	ALBERT CITY IA 50510	WEST BEND IA 50597	New
50514	ARMSTRONG IA 50514	ALGONA IA 50511	New
50517	ARMSTRONG IA 50514	ALGONA IA 50511	New
50518	ARMSTRONG IA 50514	WEST BEND IA 50597	New
50519	ALBERT CITY IA 50510	WEST BEND IA 50597	New
50520	BRADGATE IA 50520	WEST BEND IA 50597	New
50521	ARMSTRONG IA 50514	WEST BEND IA 50597	New
50522	ARMSTRONG IA 50514	ALGONA IA 50511	New

Column A Destination ZIP Codes	Column B Label Container To (Change From)	Column B Label Container To (Change To)	Column B Change To Status
50523	ARMSTRONG IA 50514	WEST BEND IA 50597	New
50525	CLARION IA 50525	ALGONA IA 50511	New
50527	BRADGATE IA 50520	WEST BEND IA 50597	New
50528	ARMSTRONG IA 50514	ALGONA IA 50511	New
50529	BRADGATE IA 50520	WEST BEND IA 50597	New
50530	ARMSTRONG IA 50514	WEST BEND IA 50597	New
50531	ARMSTRONG IA 50514	ALGONA IA 50511	New
50532	ALBERT CITY IA 50510	DUNCOMBE IA 50532	New
50533	CLARION IA 50525	ALGONA IA 50511	New
50535	ARMSTRONG IA 50514	WEST BEND IA 50597	New
50536	ARMSTRONG IA 50514	ALGONA IA 50511	New
50538	ARMSTRONG IA 50514	WEST BEND IA 50597	New
50539	ARMSTRONG IA 50514	ALGONA IA 50511	New
50540	FONDA IA 50540	WEST BEND IA 50597	New
50541	BRADGATE IA 50520	WEST BEND IA 50597	New
50542	ALBERT CITY IA 50510	DUNCOMBE IA 50532	New
50543	ARMSTRONG IA 50514	WEST BEND IA 50597	New
50544	ARMSTRONG IA 50514	WEST BEND IA 50597	New
50545	BRADGATE IA 50520	WEST BEND IA 50597	New
50546	ALBERT CITY IA 50510	WEST BEND IA 50597	New
50548	BRADGATE IA 50520	WEST BEND IA 50597	New
50551	FONDA IA 50540	WEST BEND IA 50597	New
50552	ARMSTRONG IA 50514	WEST BEND IA 50597	New
50554	ALBERT CITY IA 50510	WEST BEND IA 50597	New
50556	ARMSTRONG IA 50514	ALGONA IA 50511	New
50557	ARMSTRONG IA 50514	WEST BEND IA 50597	New
50558	ALBERT CITY IA 50510	WEST BEND IA 50597	New
50559	ARMSTRONG IA 50514	ALGONA IA 50511	New
50560	ALBERT CITY IA 50510	WEST BEND IA 50597	New
50561	ARMSTRONG IA 50514	WEST BEND IA 50597	New
50562	BRADGATE IA 50520	WEST BEND IA 50597	New
50563	FONDA IA 50540	WEST BEND IA 50597	New

Column A Destination ZIP Codes	Column B Label Container To (Change From)	Column B Label Container To (Change To)	Column B Change To Status
50565	ALBERT CITY IA 50510	WEST BEND IA 50597	New
50566	ARMSTRONG IA 50514	WEST BEND IA 50597	New
50567	ARMSTRONG IA 50514	WEST BEND IA 50597	New
50568	FONDA IA 50540	WEST BEND IA 50597	New
50570	ALBERT CITY IA 50510	WEST BEND IA 50597	New
50571	ALBERT CITY IA 50510	WEST BEND IA 50597	New
50573	ALBERT CITY IA 50510	WEST BEND IA 50597	New
50574	ALBERT CITY IA 50510	WEST BEND IA 50597	New
50575	FONDA IA 50540	WEST BEND IA 50597	New
50576	BRADGATE IA 50520	DUNCOMBE IA 50532	New
50577	ALBERT CITY IA 50510	WEST BEND IA 50597	New
50578	ARMSTRONG IA 50514	ALGONA IA 50511	New
50579	ARMSTRONG IA 50514	WEST BEND IA 50597	New
50581	BRADGATE IA 50520	WEST BEND IA 50597	New
50582	BRADGATE IA 50520	WEST BEND IA 50597	New
50583	ARMSTRONG IA 50514	WEST BEND IA 50597	New
50585	BRADGATE IA 50520	DUNCOMBE IA 50532	New
50588	BRADGATE IA 50520	DUNCOMBE IA 50532	New
50590	ARMSTRONG IA 50514	ALGONA IA 50511	New
50591	ALBERT CITY IA 50510	DUNCOMBE IA 50532	New
50592	BRADGATE IA 50520	DUNCOMBE IA 50532	New
50593	FONDA IA 50540	WEST BEND IA 50597	New
50594	CLARION IA 50525	ALGONA IA 50511	New
50595	ALBERT CITY IA 50510	DUNCOMBE IA 50532	New
50597	ALBERT CITY IA 50510	WEST BEND IA 50597	New
50598	ARMSTRONG IA 50514	ALGONA IA 50511	New
50599	CLARION IA 50525	ALGONA IA 50511	New
51430	ARCADIA IA 51430	CARROLL IA 51401	Existing
51431	ARCADIA IA 51430	CARROLL IA 51401	Existing
51432	ARCADIA IA 51430	CARROLL IA 51401	Existing
51433	ARCADIA IA 51430	CARROLL IA 51401	Existing
51436	ARCADIA IA 51430	CARROLL IA 51401	Existing

Column A Destination ZIP Codes	Column B Label Container To (Change From)	Column B Label Container To (Change To)	Column B Change To Status
51439	ARCADIA IA 51430	CARROLL IA 51401	Existing
51440	ARCADIA IA 51430	CARROLL IA 51401	Existing
51441	ARCADIA IA 51430	CARROLL IA 51401	Existing
51443	ARCADIA IA 51430	CARROLL IA 51401	Existing
51444	ARCADIA IA 51430	CARROLL IA 51401	Existing
51446	ARCADIA IA 51430	CARROLL IA 51401	Existing
51447	ARCADIA IA 51430	CARROLL IA 51401	Existing
51448	ARCADIA IA 51430	CARROLL IA 51401	Existing
51449	ARCADIA IA 51430	CARROLL IA 51401	Existing
51450	ARCADIA IA 51430	CARROLL IA 51401	Existing
51451	ARCADIA IA 51430	CARROLL IA 51401	Existing
51452	ARCADIA IA 51430	CARROLL IA 51401	Existing
51453	ARCADIA IA 51430	CARROLL IA 51401	Existing
51454	ARCADIA IA 51430	CARROLL IA 51401	Existing
51455	ARCADIA IA 51430	CARROLL IA 51401	Existing
51458	ARCADIA IA 51430	CARROLL IA 51401	Existing
51459	ARCADIA IA 51430	CARROLL IA 51401	Existing
51460	ARCADIA IA 51430	CARROLL IA 51401	Existing
51461	ARCADIA IA 51430	CARROLL IA 51401	Existing
51462	ARCADIA IA 51430	CARROLL IA 51401	Existing
51463	ARCADIA IA 51430	CARROLL IA 51401	Existing
51465	ARCADIA IA 51430	CARROLL IA 51401	Existing
51466	ARCADIA IA 51430	CARROLL IA 51401	Existing
51467	ARCADIA IA 51430	CARROLL IA 51401	Existing
52530	AGENCY IA 52530	OTTUMWA IA 52501	New
52531	ALBIA IA 52531	UNIONVILLE IA 52594	New
52533	BATAVIA IA 52533	UNIONVILLE IA 52594	New
52534	BEACON IA 52534	OTTUMWA IA 52501	New
52536	ALBIA IA 52531	UNIONVILLE IA 52594	New
52540	BATAVIA IA 52533	UNIONVILLE IA 52594	New
52543	BEACON IA 52534	OTTUMWA IA 52501	New
52544	ALBIA IA 52531	UNIONVILLE IA 52594	New

Column A Destination ZIP Codes	Column B Label Container To (Change From)	Column B Label Container To (Change To)	Column B Change To Status
52548	AGENCY IA 52530	OTTUMWA IA 52501	New
52549	ALBIA IA 52531	UNIONVILLE IA 52594	New
52550	DELTA IA 52550	UNIONVILLE IA 52594	New
52553	BEACON IA 52534	OTTUMWA IA 52501	New
52555	ALBIA IA 52531	UNIONVILLE IA 52594	New
52556	BATAVIA IA 52533	UNIONVILLE IA 52594	New
52557	BATAVIA IA 52533	UNIONVILLE IA 52594	New
52560	ALBIA IA 52531	UNIONVILLE IA 52594	New
52561	BEACON IA 52534	OTTUMWA IA 52501	New
52562	DELTA IA 52550	UNIONVILLE IA 52594	New
52563	DELTA IA 52550	UNIONVILLE IA 52594	New
52566	BEACON IA 52534	OTTUMWA IA 52501	New
52567	BATAVIA IA 52533	UNIONVILLE IA 52594	New
52568	DELTA IA 52550	UNIONVILLE IA 52594	New
52569	ALBIA IA 52531	UNIONVILLE IA 52594	New
52571	ALBIA IA 52531	UNIONVILLE IA 52594	New
52574	ALBIA IA 52531	UNIONVILLE IA 52594	New
52576	BATAVIA IA 52533	UNIONVILLE IA 52594	New
52577	BEACON IA 52534	OTTUMWA IA 52501	New
52580	BATAVIA IA 52533	UNIONVILLE IA 52594	New
52581	ALBIA IA 52531	UNIONVILLE IA 52594	New
52583	ALBIA IA 52531	UNIONVILLE IA 52594	New
52585	BATAVIA IA 52533	UNIONVILLE IA 52594	New
52590	ALBIA IA 52531	UNIONVILLE IA 52594	New
52591	DELTA IA 52550	UNIONVILLE IA 52594	New
52593	ALBIA IA 52531	UNIONVILLE IA 52594	New
52594	ALBIA IA 52531	UNIONVILLE IA 52594	New
52595	BEACON IA 52534	OTTUMWA IA 52501	New
52627	DANVILLE IA 52623	ARGYLE IA 52619	Existing
52632	DANVILLE IA 52623	ARGYLE IA 52619	Existing
52639	DANVILLE IA 52623	ARGYLE IA 52619	Existing
52727	BRYANT IA 52727	ANDOVER IA 52701	New

Column A Destination ZIP Codes	Column B Label Container To (Change From)	Column B Label Container To (Change To)	Column B Change To Status
52730	BRYANT IA 52727	ANDOVER IA 52701	New
52732	BRYANT IA 52727	ANDOVER IA 52701	New
52733	BRYANT IA 52727	ANDOVER IA 52701	New
52737	BENNETT IA 52721	ATALISSA IA 52720	New
52738	BENNETT IA 52721	ATALISSA IA 52720	New
52739	BENNETT IA 52721	ATALISSA IA 52720	New
52749	BENNETT IA 52721	ATALISSA IA 52720	New
52752	BENNETT IA 52721	ATALISSA IA 52720	New
52753	BRYANT IA 52727	BETTENDORF IA 52722	New
52754	BENNETT IA 52721	ATALISSA IA 52720	New
52755	BENNETT IA 52721	ATALISSA IA 52720	New
52757	BRYANT IA 52727	ANDOVER IA 52701	New
52758	BRYANT IA 52727	ANDOVER IA 52701	New
52761	BENNETT IA 52721	ATALISSA IA 52720	New
52766	BENNETT IA 52721	ATALISSA IA 52720	New
52767	BRYANT IA 52727	BETTENDORF IA 52722	New
52768	BRYANT IA 52727	BETTENDORF IA 52722	New
52771	BRYANT IA 52727	ANDOVER IA 52701	New
55807	DULUTH MN 55807	DULUTH MN 55803	Existing
55808	DULUTH MN 55807	DULUTH MN 55811	Existing
55810	DULUTH MN 55807	DULUTH MN 55802	Existing
61232	ALBANY IL 61230	ROCK ISLAND IL 61201	Existing
61234	ALEDO IL 61231	ALBANY IL 61230	Existing
61235	ALEDO IL 61231	ALBANY IL 61230	Existing
61237	ALBANY IL 61230	ALEDO IL 61231	Existing
61238	ALEDO IL 61231	ALBANY IL 61230	Existing
61258	ALEDO IL 61231	ALBANY IL 61230	Existing
61259	ALBANY IL 61230	ALEDO IL 61231	Existing
61260	ALEDO IL 61231	ROCK ISLAND IL 61201	Existing
61263	ALEDO IL 61231	ROCK ISLAND IL 61201	Existing
61265	MOLINE IL 61265	ALEDO IL 61231	Existing
61266	MOLINE IL 61265	ALBANY IL 61230	Existing
61272	ALEDO IL 61231	ROCK ISLAND IL 61201	Existing

Column A Destination ZIP Codes	Column B Label Container To (Change From)	Column B Label Container To (Change To)	Column B Change To Status
61279	ALBANY IL 61230	ROCK ISLAND IL 61201	Existing
61284	ALBANY IL 61230	ROCK ISLAND IL 61201	Existing
76102	FORT WORTH TX 76102	FORT WORTH TX 76101	New
76104	FORT WORTH TX 76102	FORT WORTH TX 76101	New
76115	FORT WORTH TX 76115	FORT WORTH TX 76106	New
76120	FORT WORTH TX 76120	FORT WORTH TX 76118	New
76124	FORT WORTH TX 76120	FORT WORTH TX 76118	New
76202	DENTON TX 76202	DENTON TX 76201	Existing
76203	DENTON TX 76202	DENTON TX 76201	Existing
76204	DENTON TX 76202	DENTON TX 76201	Existing
76206	DENTON TX 76202	DENTON TX 76206	New
76207	DENTON TX 76207	DENTON TX 76206	New
76208	DENTON TX 76207	DENTON TX 76206	New
76210	DENTON TX 76207	DENTON TX 76206	New
76311	GOREE TX 76363	ARCHER CITY TX 76351	Existing
76363	GOREE TX 76363	ARCHER CITY TX 76351	Existing
76370	GOREE TX 76363	ARCHER CITY TX 76351	Existing
76371	GOREE TX 76363	ARCHER CITY TX 76351	Existing
76372	GOREE TX 76363	ARCHER CITY TX 76351	Existing
76374	GOREE TX 76363	BURKBURNETT TX 76354	Existing
76380	GOREE TX 76363	ARCHER CITY TX 76351	Existing
76388	GOREE TX 76363	ARCHER CITY TX 76351	Existing
76429	BRECKENRIDGE TX 76424	BRYSON TX 76427	Existing
76436	BRECKENRIDGE TX 76424	BRYSON TX 76427	Existing
76710	WACO TX 76710	WACO TX 76707	Existing
76714	WACO TX 76710	WACO TX 76707	Existing
78256	SAN ANTONIO TX 78240	SAN ANTONIO TX 78256	New
78257	SAN ANTONIO TX 78240	SAN ANTONIO TX 78256	New
78379	PORTLAND TX 78374	KINGSVILLE TX 78363	Existing
78390	SAN DIEGO TX 78384	PORTLAND TX 78374	Existing
78643	LLANO TX 78643	BERTRAM TX 78605	Existing
78669	LLANO TX 78643	BERTRAM TX 78605	Existing
78733	AUSTIN TX 78733	AUSTIN TX 78732	Existing

Column A Destination ZIP Codes	Column B Label Container To (Change From)	Column B Label Container To (Change To)	Column B Change To Status
78734	AUSTIN TX 78733	AUSTIN TX 78732	Existing
79005	BOOKER TX 79005	CLAUDE TX 79019	Existing
79022	BOOKER TX 79005	DALHART TX 79022	New
79029	BOOKER TX 79005	DALHART TX 79022	New
79036	BOOKER TX 79005	DALHART TX 79022	New
79070	BOOKER TX 79005	DALHART TX 79022	New
79081	BOOKER TX 79005	DALHART TX 79022	New
79519	SWEETWATER TX 79556	ROTAN TX 79546	Existing

Newly Added

Column A Destination ZIP Codes	Column B Label Container To (Added To)	Column B Status
24215	ANDOVER VA 24215	New
24217	BEE VA 24217	New
24218	BRISTOL VA 24202	New
24220	ABINGDON VA 24211	New
24225	ABINGDON VA 24211	New
24226	BEE VA 24217	New
24237	BEE VA 24217	New
24239	BEE VA 24217	New
24245	ANDOVER VA 24215	New
24246	ANDOVER VA 24215	New
24258	ANDOVER VA 24215	New
24265	ANDOVER VA 24215	New
24269	BEE VA 24217	New
24270	ANDOVER VA 24215	New
24271	ANDOVER VA 24215	New
24272	BEE VA 24217	New
24280	BEE VA 24217	New
24282	BRISTOL VA 24202	New
24292	ABINGDON VA 24211	New
37601	JOHNSON CITY TN 37605	New
37604	JOHNSON CITY TN 37602	New
40813	HARLAN KY 40831	Existing
40856	HARLAN KY 40831	Existing
50003	ADEL IA 50003	New
50036	BOONE IA 50036	New
50111	GRANGER IA 50109	New
50263	WAUKEE IA 50263	New
50312	DES MOINES IA 50311	Existing
50323	DES MOINES IA 50309	Existing
50511	ALGONA IA 50511	New
50515	ALGONA IA 50511	New
50586	WEST BEND IA 50597	New
52501	OTTUMWA IA 52501	New
52535	OTTUMWA IA 52501	New
52537	UNIONVILLE IA 52594	New
52542	OTTUMWA IA 52501	New
52551	OTTUMWA IA 52501	New
52552	UNIONVILLE IA 52594	New
52554	OTTUMWA IA 52501	New
52565	OTTUMWA IA 52501	New

Column A Destination ZIP Codes	Column B Label Container To (Added To)	Column B Status
52570	OTTUMWA IA 52501	New
52572	UNIONVILLE IA 52594	New
52573	OTTUMWA IA 52501	New
52584	UNIONVILLE IA 52594	New
52586	OTTUMWA IA 52501	New
52588	OTTUMWA IA 52501	New
52701	ANDOVER IA 52701	New
52720	ATALISSA IA 52720	New
52722	BETTENDORF IA 52722	New
52726	ATALISSA IA 52720	New
52728	ATALISSA IA 52720	New
52731	ANDOVER IA 52701	New
52742	ANDOVER IA 52701	New
52748	BETTENDORF IA 52722	New
52750	ANDOVER IA 52701	New
52756	BETTENDORF IA 52722	New
52759	ATALISSA IA 52720	New
52760	ATALISSA IA 52720	New
52774	ANDOVER IA 52701	New
52776	ATALISSA IA 52720	New
52778	ATALISSA IA 52720	New
52804	DAVENPORT IA 52801	Existing
73960	GUYMON OK 73942	Existing
76101	FORT WORTH TX 76101	New
76106	FORT WORTH TX 76106	New
76110	FORT WORTH TX 76106	New
76112	FORT WORTH TX 76103	Existing
76113	FORT WORTH TX 76101	New
76118	FORT WORTH TX 76118	New
76148	FORT WORTH TX 76118	New
76177	FORT WORTH TX 76106	New
76261	ALVORD TX 76225	Existing
76402	STEPHENVILLE TX 76401	Existing
76459	GUSTINE TX 76455	Existing
77974	PORT LAVACA TX 77979	Existing
77982	PORT LAVACA TX 77979	Existing
78042	SAN ANTONIO TX 78045	New
78044	SAN ANTONIO TX 78045	New
78045	SAN ANTONIO TX 78045	New
78132	SAN ANTONIO TX 78132	New
78135	SAN ANTONIO TX 78132	New
78201	SAN ANTONIO TX 78201	New
78228	SAN ANTONIO TX 78201	New
78254	SAN ANTONIO TX 78238	Existing
78330	PORTLAND TX 78374	Existing
78339	PORTLAND TX 78374	Existing
78341	SAN DIEGO TX 78384	Existing
78357	SAN DIEGO TX 78384	Existing
78358	ROCKPORT TX 78382	Existing
78359	PORTLAND TX 78374	Existing
78370	KINGSVILLE TX 78363	Existing
78375	SAN DIEGO TX 78384	Existing
78629	COST TX 78614	Existing
78653	COST TX 78614	Existing
78701	AUSTIN TX 78701	New
78702	AUSTIN TX 78719	Existing
78717	AUSTIN TX 78717	New
78721	AUSTIN TX 78752	Existing
78722	AUSTIN TX 78752	Existing
78729	AUSTIN TX 78717	New
78741	AUSTIN TX 78701	New
78963	COLUMBUS TX 78934	Existing

Column A Destination ZIP Codes	Column B Label Container To (Added To)	Column B Status
79907	EL PASO TX 79907	New
79915	EL PASO TX 79915	New
79917	EL PASO TX 79907	New
79926	EL PASO TX 79915	New
88002	LAS CRUCES NM 88007	Existing
88003	LAS CRUCES NM 88021	Existing
88006	LAS CRUCES NM 88021	Existing
88013	LAS CRUCES NM 88007	Existing
88032	LAS CRUCES NM 88007	Existing
88047	LAS CRUCES NM 88021	Existing
88052	LAS CRUCES NM 88007	Existing
88054	LAS CRUCES NM 88007	Existing

Deleted

Column A Destination ZIP Codes	Column B Label
32204	JACKSONVILLE FL 32205
32205	JACKSONVILLE FL 32205
32215	JACKSONVILLE FL 32205
32220	JACKSONVILLE FL 32205
32234	JACKSONVILLE FL 32205
32320	APALACHICOLA FL 32320
32322	APALACHICOLA FL 32320
32326	APALACHICOLA FL 32320
32327	APALACHICOLA FL 32320
32328	APALACHICOLA FL 32320
32329	APALACHICOLA FL 32320
32346	APALACHICOLA FL 32320
32355	APALACHICOLA FL 32320
32358	APALACHICOLA FL 32320
32362	APALACHICOLA FL 32320
50002	ADAIR IA 50002
50007	ALLEMAN IA 50007
50010	AMES IA 50010
50011	AMES IA 50010
50012	AMES IA 50010
50013	AMES IA 50010
50014	AMES IA 50010
50020	ANITA IA 50020
50022	ANITA IA 50020
50026	BAGLEY IA 50026
50050	BAGLEY IA 50026
50058	BAGLEY IA 50026
50059	BAGLEY IA 50026
50063	ANITA IA 50020
50064	BAGLEY IA 50026
50066	BAGLEY IA 50026
50107	BAGLEY IA 50026
50119	BUSSEY IA 50044
50124	BOONEVILLE IA 50038
50125	INDIANOLA IA 50125
50128	BAGLEY IA 50026
50129	BAGLEY IA 50026
50134	BOONEVILLE IA 50038
50146	ANITA IA 50020
50152	LUTHER IA 50152
50156	LUTHER IA 50152
50167	BAGLEY IA 50026
50216	BAGLEY IA 50026
50217	BAGLEY IA 50026

Column A Destination ZIP Codes	Column B Label
50220	BAGLEY IA 50026
50226	ALLEMAN IA 50007
50235	BAGLEY IA 50026
50243	ALLEMAN IA 50007
50244	ALLEMAN IA 50007
50274	ANITA IA 50020
50277	BAGLEY IA 50026
50526	CLARION IA 50525
52623	DANVILLE IA 52623
52635	DANVILLE IA 52623
52638	ARGYLE IA 52619
52641	DANVILLE IA 52623
52642	DANVILLE IA 52623
52645	ARGYLE IA 52619
52648	ARGYLE IA 52619
52655	ARGYLE IA 52619
52656	ARGYLE IA 52619
52657	ARGYLE IA 52619
52658	ARGYLE IA 52619
52736	BRYANT IA 52727
60505	NAPERVILLE IL 60540
60540	NAPERVILLE IL 60540
61233	ALEDO IL 61231
61236	ALBANY IL 61230
61239	ALBANY IL 61230
61240	ALEDO IL 61231
61241	ALEDO IL 61231
61242	ALBANY IL 61230
61243	ALBANY IL 61230
61244	EAST MOLINE IL 61244
61254	ALEDO IL 61231
61262	ALEDO IL 61231
61273	ALEDO IL 61231
61274	ALEDO IL 61231
61282	EAST MOLINE IL 61244
76134	FORT WORTH TX 76115
76430	BRYSON TX 76427
76495	GUSTINE TX 76455
78108	MARION TX 78124
78240	SAN ANTONIO TX 78240
78611	BURNET TX 78611
78645	BURNET TX 78611
79119	AMARILLO TX 79106
88338	RUIDOSO NM 88345
88339	RUIDOSO NM 88345
88341	RUIDOSO NM 88345
88342	RUIDOSO NM 88345
88343	RUIDOSO NM 88345
88344	RUIDOSO NM 88345
88347	RUIDOSO NM 88345
88348	RUIDOSO NM 88345
88349	RUIDOSO NM 88345
88350	RUIDOSO NM 88345
88351	RUIDOSO NM 88345
88353	RUIDOSO NM 88345
88354	RUIDOSO NM 88345

* * * * *

L606 5-Digit Scheme — Standard Mail, First-Class Mail, and Package Services Parcels

Changes

Column A Destination ZIP Codes	Column B Label Container To (Change From)	Column B Label Container To (Change To)	Column B Change To Status
29409	CHARLESTON SC 29401	CHARLESTON SC 29418	Existing
29424	CHARLESTON SC 29401	CHARLESTON SC 29418	Existing
29425	CHARLESTON SC 29401	CHARLESTON SC 29418	Existing
78702	AUSTIN TX 78702	AUSTIN TX 78719	New
78719	AUSTIN TX 78702	AUSTIN TX 78719	New
78741	AUSTIN TX 78741	AUSTIN TX 78701	New
78742	AUSTIN TX 78702	AUSTIN TX 78719	New
78744	AUSTIN TX 78741	AUSTIN TX 78719	New
85383	PEORIA AZ 85381	PEORIA AZ 85383	New
85385	PEORIA AZ 85381	PEORIA AZ 85383	New
94039	MOUNTAIN VIEW CA 94041	MOUNTAIN VIEW CA 94042	New
94042	MOUNTAIN VIEW CA 94041	MOUNTAIN VIEW CA 94042	New

Newly Added

Column A Destination ZIP Codes	Column B Label Container To (Added To)	Column B Status
78701	AUSTIN TX 78701	New
81003	PUEBLO CO 81008	New
81008	PUEBLO CO 81008	New
94035	MOUNTAIN VIEW CA 94042	New

Deleted

Column A Destination ZIP Codes	Column B Label
78682	ROUND ROCK TX 78664
78712	AUSTIN TX 78712
78713	AUSTIN TX 78712
78760	AUSTIN TX 78741
85381	PEORIA AZ 85381
94040	MOUNTAIN VIEW CA 94043
94041	MOUNTAIN VIEW CA 94041
94043	MOUNTAIN VIEW CA 94043
97331	CORVALLIS OR 97330
97333	CORVALLIS OR 97330

— Logistics, Network Development, and Support,
Network Operations, 1-21-16

Human Resources

Revised Forms and New Management Instruction: Update of Back Pay Policy

The Postal Service™ created a new Management Instruction EL-430-2015-4, *Back Pay*, and revised PS Form 8038, *Employee Statement To Recover Back Pay*; PS Form 8039, *Back Pay Decision/Settlement Worksheet*; and PS Form 8041, *Prearbitration or Agency Settlement Worksheet*, to do the following:

- Simplify definitions.
- Revise wording that is no longer applicable.
- Clarify instructions.
- Fix formatting and structure to make the documents easier to use.
- Consolidate information to make the documents clearer.

The revised forms and new management instruction are now available on the Postal Service PolicyNet website:

- Go to <http://blue.usps.gov>.
- Under “Essential Links” in the left-hand column, click *PolicyNet*.
- Click *Forms or Management Instructions*.

The direct URL for the Postal Service PolicyNet website is <http://blue.usps.gov/cpim>.

— Compensation and Benefits,
Human Resources, 1-21-16

Information Security

Information Security on the Go

Information security is our shared responsibility at work, at home, and on the go. CyberSafe at USPS™ offers leading practices to keep personal and Postal Service™ information resources secure while traveling.

CyberSafe at USPS encourages everyone to consider the vigilance of their information security practices and online behavior while traveling for personal or business reasons. In an effort to raise awareness about information security, USPS® has partnered with the Department of Homeland Security's (DHS) Stop. Think. Connect.™ campaign. DHS addresses travel and information security and offers resources for travelers on their website: http://www.dhs.gov/sites/default/files/publications/Cybersecurity%20While%20Traveling_7.pdf.

Below are some tips to stay secure when preparing to travel, operating devices on the go, and returning to work:

Before leaving the office:

Lock all hard copies containing sensitive information in a secure location, such as a filing cabinet.

While on the go or traveling:

- Never leave your devices unattended in a public space.
- Before stepping away from your equipment, lock your laptop and devices in a secure location.
- Before leaving your car, lock your devices in the trunk of your car.
- Before leaving your hotel room, fasten your laptop to an unmovable object by using a locking device, such as a cable lock, or place it in the room safe.

Be secure while using the Internet on the go:

- *Stop autoconnecting.* Disable remote connectivity and Bluetooth capabilities to prevent devices from connecting to unsecured Wireless networks.
- *Think before you connect.* Connect your Postal Service mobile device to a secure, password-protected public wireless network, requiring a password provided by the wireless owner. Only secure access through Postal Service VPN is authorized when connecting to the Postal Service Intranet.
- *Avoid clicking on unknown links.* Be cautious when clicking on all hyperlinks embedded in an email. Manually type each URL in a browser window.

After returning to the office:

Check that all hard copies containing sensitive information are in the secure location in which you left them.

The CyberSafe at USPS website (<https://lite-blue.usps.gov/cyber>) includes additional helpful tips to stay secure at home, at work, and on the go. Online security is a priority for Postal Service employees, suppliers, and customers — stay safe while you're on the go!

Remember: Report information security incidents via email to cybersafe@usps.gov or call 866-USPS-CIRT (866-877-7247).

— Corporate Information Security Office,
Chief Information Officer, 1-21-16

Amazon.com Contact Information for USPS Employees

In the event of an incident involving hazardous or restricted materials related to *Amazon.com* mailpieces, Postmasters, Plant Managers, the Inspection Service, and other USPS® HAZMAT response employees who resolve these incidents may use the contact information below:

- For non-emergency HAZMAT incidents, email Amazon Dangerous Goods at hazmat-incident-notification@amazon.com.
- For emergency HAZMAT incidents, call Amazon Dangerous Goods at 206-266-6066.
- For Restricted Products or Global Trade inquiries, email the Amazon Restricted Products team at globaltradelegal@amazon.com.

To ensure a timely and complete response, the Amazon team requests that the USPS tracking number be provided, when possible, at the time of the initial contact. USPS should not provide other mailpiece or address information until Amazon confirms that the mailpiece was actually sent by *Amazon.com*. Once *Amazon.com* confirms, on the basis of the tracking number and its records that the piece was

actually sent by *Amazon.com*, the particulars of the mailing may be disclosed.

Employees are reminded to follow established protocols when responding to incidents involving hazardous materials. The Amazon contact information above is provided as an additional resource and intended to supplement, not replace, the current processes for dealing with HAZMAT incidents. For guidance, see Management Instruction EL-810-06-3, *Response to Hazardous Materials Releases*.

Employees should be aware that spills and similar incidents must be reported via the Mailpiece Incident Reporting Tool (MIRT) in the Safety Toolkit. PS Form 1770 is now obsolete. The Standard Operating Procedures for the handling and processing of hazardous materials can be found at http://blue.usps.gov/aviationsecurity/hazardous_materials_program.htm.

— Security and Crime Prevention,
Postal Inspection Service, 1-21-16

Retail

Stamps by Mail — Brochure Ordering Information

This article publishes the Stamps by Mail® (SBM) ordering and print run cut-off schedule for fiscal year (FY) 2016. Each date has a version type identified for that particular brochure. The FY 2016 ordering and print cycle cut-off dates are as follows:

Brochure Version	eBuy2 Cut-off Date	Print Run Cut-off Date
Year Round	3/18/2016	4/1/2016
Year Round	4/29/2016	5/13/2016
Year Round	6/10/2016	6/24/2016
Year Round	8/5/2016	8/19/2016

The cost per unit of 500 is \$12.50. This cost includes overprinting the address of the fulfillment office placing the order. Cyril-Scott Company must receive orders placed by mail by close of business the day of the print run cut-off

date listed here. Orders received after the cut-off date will be processed the next print run date.

Use eBuy2 to order Stamps by Mail brochures. These approved eBuy2 orders must be received by Supply Management by the eBuy2 cut-off date and approved in eBuy2 prior to a published print run cut-off date to be included in that run.

Cyril-Scott Company will deliver orders within 35 calendar days after printing. Printing begins one week after the deadline date, and actual receipt of the order will depend on the ultimate destination and the corresponding delivery service standard.

— Stamp Services,
Marketing and Sales, 1-21-16

Safety and Health

Statutory Requirement to Review and Post OSHA Form 300A Summary for Calendar Year 2015

The Occupational Safety and Health Administration (OSHA) requires all Postal Service™ installation and establishment heads to complete and post the OSHA Form 300A, *Summary of Work-Related Injuries and Illnesses*, for calendar year (CY) 2015, in accordance with 29 CFR 1904 and the *Employee and Labor Relations Manual (ELM)*, part 821, Actions in the Event of Accident, Injury, or Illness.

From February 1, 2016, through April 30, 2016, installations are required to post a copy of the OSHA Form 300A for CY 2015 in a conspicuous place at every establishment where employees work or report to work.

When reviewing the OSHA 300 Log, installation heads must pay close attention to column F. Column F includes descriptions of the injury or illness, the parts of the body affected (including which side of the body), and the object or substance that directly injured or made the person ill. For example: "Second degree burns on right forearm from acetylene torch."

Installation heads must also pay close attention to columns K and L. If an injury is identified as "days away from work" in column K or "on the job transfer or restriction" in column L, installation heads must ensure that the number of days entered is accurate.

For every entry on the OSHA 300 Log, the installation head must ensure that there is a corresponding Accident

Report Form 1769/301 in the Employee Health and Safety application, which populates the OSHA Form 301, *Injury and Illness Incident Report*.

The left side of OSHA Form 300A contains sets of information data points with a letter, such as the letter "K," that corresponds to each data point. The data points come from the OSHA 300 Log summary columns with the same letter.

The right side of the OSHA Form 300A is self-explanatory except for the North American Industrial Classification code. The code for Vehicle Maintenance Facilities is 811111; the code for all other Postal Service establishments is 491110.

Before posting and signing the OSHA Form 300A, the installation or establishment heads are required to review the OSHA 300 Log and the OSHA 300A Summary Reports. When they sign the OSHA Form 300A, they are affirming that they have reviewed both OSHA forms for accuracy and completeness, whether they use manual or automated versions of the forms.

— Safety and OSHA Compliance Programs,
Employee Resource Management, 1-21-16

Pull-Out Information

Fraud

Withholding of Mail Orders

Withholding of Mail Orders is enforced by Postmasters at the city listed below.

State, City, ZIP Code	Names and Addresses Covered
DE, Middletown 19709-1482	Any and All of Various Names, 364 East Main Street, Unit 399

— Judicial Officer, 1-21-16

Invalid USPS Corporate Account Numbers

This listing should be provided to Contract Postal Units and used by acceptance clerks in non-POS locations without intranet access to validate a USPS Corporate Account (USPSCA) number online. For all other locations, online USPSCA validation is preferred. The online validation process is outlined in the USPSCA Validation SOP on the Retail webpage. This list supersedes all previous notices,

which must be recycled. Acceptance clerks must not accept Priority Mail Express™ shipments bearing an invalid USPSCA number in the “Payment by Account” or “Agreement Number” section of the label or form.

Note: The first 6 digits of a 9-digit Custom Designed Service and Next Day Pickup Agreement make up the Corporate Account Number.

005732	019345	060147	095644	192507	193148	220494	402565	671029	824105	875011	940539	982382
006609	019444	060171	095812	192508	193150	221216	405003	681272	837412	875476	940791	982388
006889	021051	060663	096054	192525	193151	223367	436008	708382	841168	881001	941020	982453
008146	023286	061005	097621	192551	193171	226074	443560	730161	841205	884100	941630	982468
008236	023534	063007	098051	192557	193177	257109	452555	731020	841212	900241	941800	982528
008245	025283	064369	102532	192577	193319	276016	454620	731474	841231	906040	941896	982577
008646	027034	068110	107245	192579	193725	280063	467017	731668	841262	906915	948126	984116
008803	027062	070061	109474	192612	196090	300912	481197	731884	844209	907791	948180	984232
009367	027098	070076	112137	192627	199020	301239	481347	738020	845019	912278	948283	984238
009398	027253	070095	113242	192632	200366	302001	482856	740891	845035	913154	948588	989084
009846	027362	070683	115008	192637	200929	303503	483174	750147	845056	913900	948795	989097
011364	027504	070740	115010	192642	208568	303726	483191	751183	850090	914047	949350	992467
012371	027756	071487	115267	192653	210011	305000	485285	752238	851045	914063	949612	992789
013126	027875	075064	115503	192654	210015	306115	488342	752667	852930	914235	951032	995031
013243	028052	075155	115572	192656	210044	312133	495567	767560	853850	914617	954368	995035
014001	028101	075359	115664	192666	210072	322070	532479	770343	853903	918837	954446	995042
014045	028142	075832	117142	192689	210097	328021	551063	770806	853947	924124	955115	995084
014102	028298	077355	117807	192701	210127	328030	599567	770807	853986	925235	958110	995094
014151	028591	077836	118408	192709	210128	328152	605111	787188	853995	926013	968945	995157
014273	028884	078411	119005	192728	210136	330174	605769	800111	871002	926015	971129	995159
014736	029062	079809	119170	192742	210144	332855	606057	801746	871019	926018	974107	995173
015043	029133	079958	120339	192771	210159	334109	616114	802241	871022	926020	974188	995189
015419	029256	080554	125257	192780	210442	334198	627025	802263	871074	926023	980175	995211
015507	029655	085644	131299	192809	210457	338179	631447	802388	871092	926029	980372	995283
015515	029656	086002	135166	192817	210507	338243	631595	802653	871358	926549	980373	995295
016469	029676	088370	138018	192915	210511	340956	631602	804049	871420	926606	980593	995298
016587	029748	088701	142707	193104	210521	349476	631613	805364	871471	926853	980597	995305
016690	029819	088766	142976	193105	210583	370245	633670	805428	871531	928449	980954	995329
016693	029825	090653	148412	193111	210734	371050	641207	806203	871637	930214	980989	995338
016734	029837	091465	165063	193129	210807	371150	641509	806210	871660	931589	982059	995357
016760	029838	091858	174060	193136	210847	372622	641594	809047	871673	933150	982130	995369
018022	030238	092587	180209	193138	210849	372998	652100	810002	871881	933175	982231	995419
018032	038675	092630	181009	193139	210878	379534	652180	810004	873002	935249	982238	995423
018598	041065	094632	192444	193143	212893	379545	652280	811053	874005	937590	982319	995432
018619	055094	095140	192477	193145	220470	402474	668005	815023	875010	940226	982331	995520

995522	995554	995592	995665	995817	995957	997078	997155	997172	997258	998112	998508	999211
995527	995569	995600	995674	995821	995968	997080	997157	997202	998007	998127	998509	999310
995539	995573	995607	995707	995876	995977	997112	997162	997203	998013	998193	998511	999313
995546	995580	995620	995714	995887	997066	997138	997165	997222	998014	998195	998512	999329
995552	995589	995641	995763	995891	997068	997144	997171	997239	998015	998221	998513	

— *Product Information Requirements, Mail Entry and Payment Technology, 1-21-16*

Missing, Lost, or Stolen U.S. Money Order Forms

Do Not Cash — Upon Receipt, Notify Local Postal Inspectors

This listing will be provided to all Postal Service™ employees responsible for accepting and cashing postal money orders. Destroy all interim notices when the

numbers listed appear in the *Postal Bulletin*. The actual serial numbers consist of the first 10 digits on the money orders. Check for altered dollar amounts by holding money orders to the light.

010 001 0200 to 0299	040 674 7100 to 7199	073 763 0878 to 0887	122 451 9879 to 9899
010 504 1932 to 1999	040 688 8816 to 8899	073 763 0889 to 0898	122 714 6805 to 6900
011 582 1889 to 1899	041 299 6752 to 6799	077 617 5481 to 5499	124 916 0304 to 0499
011 588 2900 to 3099	041 623 8889 to 8899	077 999 4001 to 4090	126 423 0136 to 0169
012 441 0784 to 0799	041 803 6565 to 6599	078 174 4475 to 4499	127 500 2328 to 2399
012 579 5675 to 5699	043 129 1968 to 1997	078 219 4931 to 4999	160 901 2254 to 2299
013 289 6176 to 6199	043 205 5922 to 5999	078 250 4756 to 4799	161 103 6581 to 6599
013 610 0014 to 0099	044 087 3457 to 3499	078 823 8312 to 8399	161 194 2857 to 0899
014 932 1000 to 1099	044 087 4000 to 4099	079 374 0300 to 2499	162 032 4447 to 4499
014 972 0800 to 0899	044 226 2487 to 2512	079 807 2342 to 2399	163 257 1085 to 1099
015 363 0065 to 0099	044 306 4200 to 4299	082 721 0228 to 0254	164 359 2406 to 2499
017 028 3200 to 3299	044 306 4370 to 4599	083 140 5000 to 7499	166 101 1433 to 1499
018 569 5333 to 5399	045 524 4121 to 4298	083 784 8886 to 8899	167 555 5201 to 5212
018 986 5264 to 5299	046 800 9870 to 9899	083 913 6915 to 6999	167 555 5214 to 5299
019 518 2814 to 2899	047 352 4000 to 4099	084 478 3920 to 3999	169 618 6274 to 6299
020 698 5159 to 5199	048 383 7650 to 7659	086 000 8271 to 8299	171 806 6878 to 6893
020 844 7307 to 7399	048 396 3647 to 3699	086 798 3840 to 3849	173 639 4685 to 4699
020 972 8948 to 8999	051 142 0755 to 0799	088 404 4472 to 4499	174 238 2779 to 2799
022 021 9110 to 9181	051 774 8857 to 8899	088 404 5584 to 5699	174 281 9347 to 9399
022 037 1411 to 1499	051 781 2875 to 2885	088 757 8688 to 8699	175 251 2600 to 0699
022 527 9201 to 9210	051 977 7010 to 7023	088 757 9400 to 9499	176 281 7937 to 7950
022 529 1882 to 1899	052 058 7115 to 7199	089 358 2248 to 2257	176 281 7963 to 7999
023 637 7169 to 7199	054 450 1130 to 1167	090 663 9678 to 9684	176 731 6586 to 6599
024 380 4100 to 4199	057 670 0563 to 0599	091 818 0071 to 0099	178 254 5000 to 9999
024 496 6870 to 6896	058 187 3836 to 3899	093 106 9346 to 9355	178 881 9900 to 9999
025 092 0987 to 0999	058 523 3003 to 3099	093 203 0500 to 0599	180 031 2089 to 2098
025 369 5535 to 5599	058 591 1153 to 1299	093 684 3630 to 3699	180 403 7723 to 7741
025 729 1151 to 1199	058 895 3746 to 3799	094 081 5074 to 5099	180 428 4580 to 0599
025 729 1643 to 1799	059 986 0814 to 0899	094 216 2555 to 2599	182 368 7544 to 0599
026 492 3180 to 3199	060 406 7650 to 7699	094 580 7062 to 7099	182 475 3229 to 3258
027 361 0430 to 0499	063 491 8122 to 8199	094 639 4200 to 4299	182 475 3904 to 3933
027 369 4482 to 4495	063 916 9968 to 9999	095 070 7186 to 7199	182 631 0031 to 0099
027 671 8762 to 8776	064 091 4500 to 4599	095 076 8300 to 8399	182 911 6539 to 6600
027 787 9886 to 9899	065 170 0471 to 0499	095 354 6864 to 6899	184 218 2760 to 2799
027 965 9487 to 9499	065 255 7909 to 7999	097 224 1350 to 1599	185 828 1474 to 1499
028 100 8069 to 8099	065 392 6345 to 6399	100 160 3800 to 3899	186 132 7583 to 0599
028 191 1852 to 1999	066 099 2014 to 2099	104 667 6400 to 6499	186 629 0589 to 0599
028 850 3000 to 3199	066 648 2880 to 2899	104 876 8937 to 8999	187 184 6177 to 0199
029 510 1500 to 1599	066 787 3639 to 3699	112 049 4413 to 4499	187 323 8200 to 8299
030 687 0903 to 0999	066 845 7500 to 9999	112 870 9765 to 9799	187 441 6080 to 6099
030 701 3442 to 3499	067 093 3869 to 3899	113 319 2000 to 2099	188 831 6774 to 6799
031 077 4507 to 4799	068 895 0334 to 0399	114 402 3850 to 3899	188 835 6370 to 6399
032 295 7500 to 9999	070 724 4488 to 4499	114 866 5368 to 5397	189 083 1064 to 1099
034 394 1000 to 1099	070 841 9181 to 9199	116 154 2800 to 2899	189 660 9583 to 9599
034 943 0400 to 0799	070 844 2546 to 2599	116 986 4400 to 4499	191 179 0377 to 0399
035 035 4337 to 4399	070 916 1340 to 1399	117 175 1647 to 5169	192 050 5762 to 5781
037 312 7500 to 7599	071 047 5768 to 5799	117 951 4687 to 4699	194 456 8600 to 0699
037 706 9578 to 9599	071 179 9800 to 9899	117 951 5200 to 5299	195 194 6881 to 6899
037 805 3677 to 3699	071 386 3682 to 3699	119 786 3051 to 3064	198 285 2556 to 2566
037 909 5490 to 5499	071 507 6840 to 6899	119 815 8961 to 6199	199 105 0778 to 0799
037 931 4660 to 4699	072 045 9641 to 9699	119 850 7400 to 7499	199 678 2968 to 2999
039 145 6521 to 6595	072 675 8287 to 8299	119 850 7700 to 7999	202 748 5133 to 5199
040 024 3901 to 3999	073 763 0867 to 0876	121 634 0460 to 0499	202 748 5245 to 5299

202 748 5300	to	5399	379 843 5100	to	5199	403 685 8600	to	8699	421 656 2609	to	2699
202 748 5400	to	5499	380 093 9600	to	9699	404 003 0300	to	0399	421 988 9700	to	9799
203 256 1240	to	1299	380 165 1165	to	1199	404 041 8838	to	8899	422 172 4667	to	4699
204 230 3577	to	3595	381 325 4500	to	4599	404 071 4268	to	4299	422 484 4212	to	4299
205 019 0174	to	0199	381 604 2510	to	2699	404 347 5356	to	5399	422 556 1270	to	1299
207 196 9900	to	9999	381 645 9525	to	9599	404 347 5548	to	5599	422 587 7024	to	7099
207 204 0700	to	0799	383 314 3968	to	3999	404 726 4500	to	4599	422 819 7533	to	7599
207 204 0800	to	0899	383 892 1000	to	1344	404 961 5001	to	5199	422 842 5073	to	5087
207 514 3857	to	3899	383 892 1382	to	1399	405 325 0188	to	0198	422 907 7563	to	7599
208 556 4707	to	4799	384 925 3641	to	3654	406 009 4587	to	4599	424 500 6050	to	6099
210 057 4038	to	4047	385 568 2331	to	2399	406 260 6830	to	6899	424 641 8500	to	8599
210 221 0548	to	0599	385 599 7554	to	7575	406 459 6641	to	6999	424 871 6600	to	6699
214 061 4711	to	4724	385 774 2024	to	2099	406 733 3000	to	3999	425 298 2352	to	2399
214 303 6311	to	6325	386 624 1412	to	1599	407 545 1557	to	1599	425 418 4269	to	4299
214 303 6239	to	6258	386 883 8936	to	8999	407 594 0412	to	0599	425 418 4405	to	4499
214 877 4251	to	4273	387 314 5574	to	5599	407 692 9100	to	9299	426 547 4566	to	4599
215 252 3918	to	3992	387 837 6300	to	6399	407 959 2190	to	2199	427 412 6337	to	6499
218 698 2157	to	2199	388 828 0656	to	0699	408 265 2275	to	2288	427 481 0900	to	0999
218 746 0800	to	0899	389 696 2400	to	2799	408 499 7700	to	7799	428 027 2742	to	2752
219 095 0100	to	0399	389 846 3104	to	3135	408 499 7900	to	7999	429 474 4172	to	4199
219 389 1885	to	1899	389 846 3145	to	3195	408 682 8484	to	8599	429 889 2900	to	2999
219 568 7435	to	7456	389 887 9211	to	9230	408 698 7015	to	7099	430 150 4401	to	4599
219 568 7469	to	7487	389 887 9234	to	9299	409 072 3941	to	3999	430 172 9800	to	9899
221 316 5757	to	5799	390 001 3182	to	3199	410 491 2311	to	2399	430 177 1900	to	2099
223 476 3914	to	3999	390 001 3500	to	3699	410 694 8400	to	8599	430 444 9500	to	9699
223 565 4921	to	4957	390 545 5974	to	5999	410 775 1500	to	1599	430 664 4070	to	4099
223 565 4979	to	4999	391 104 6146	to	6199	410 795 7927	to	7999	432 168 8419	to	8499
224 636 4745	to	4765	391 574 1466	to	1499	410 867 0917	to	0966	432 708 6800	to	6999
224 636 4776	to	4799	391 783 3020	to	3599	410 867 0970	to	0999	432 744 1544	to	1599
224 636 4855	to	4885	391 792 6100	to	6199	411 868 1023	to	1199	432 995 9775	to	9799
224 636 4932	to	4948	392 668 2956	to	2999	411 922 2322	to	2399	433 003 5800	to	5899
224 636 4950	to	4962	392 854 8500	to	8899	412 193 0900	to	0999	433 757 3047	to	3099
224 636 4985	to	4999	393 584 7566	to	7699	412 395 8599	to	8699	433 765 4003	to	4099
224 730 2207	to	2299	393 650 0074	to	0099	412 485 6500	to	6599	434 482 7060	to	7199
225 970 0500	to	0599	393 838 8316	to	8499	412 485 6610	to	6699	434 513 2386	to	2399
225 970 0600	to	0699	393 893 6007	to	6099	412 885 5953	to	5999	434 968 3076	to	3092
225 970 0700	to	0799	394 126 6907	to	6999	414 193 3608	to	3674	435 303 1831	to	1842
227 033 8679	to	8699	394 189 0405	to	0599	414 193 3677	to	3699	435 303 1986	to	1999
227 275 9400	to	9999	394 822 3243	to	3278	414 411 7348	to	7399	435 666 6092	to	6399
228 463 2456	to	2499	394 990 1810	to	1899	414 640 0757	to	0799	436 082 6400	to	6899
228 510 4852	to	4899	395 343 3264	to	3299	414 965 1727	to	1799	436 160 6441	to	6499
229 462 8451	to	8475	395 373 3035	to	3099	417 302 8104	to	8199	437 316 7115	to	7199
229 668 5977	to	5999	395 396 9649	to	9799	417 387 6532	to	6599	437 427 0500	to	3499
229 923 9176	to	9199	395 970 3240	to	3299	417 496 6800	to	6999	439 179 2300	to	2399
229 924 6696	to	6699	397 622 4054	to	4099	417 871 9250	to	9299	439 310 0458	to	0499
230 051 9500	to	9999	397 819 8902	to	8999	417 930 9533	to	9599	440 698 1947	to	1999
273 070 8059	to	8099	398 149 7200	to	7699	418 164 6500	to	6799	440 858 6300	to	6399
273 775 7700	to	7899	399 070 0872	to	0899	418 423 9863	to	9899	440 858 6420	to	7299
302 000 0000	to	9999	399 156 7119	to	7199	418 633 5922	to	5999	441 199 1655	to	1699
349 746 2056	to	2099	399 203 5064	to	5099	418 719 8520	to	8599	443 127 3648	to	3699
350 518 7350	to	7374	399 296 9910	to	9999	418 744 2235	to	2299	443 127 4000	to	4099
360 011 1690	to	1699	399 396 8935	to	8999	418 962 2848	to	2899	443 673 7900	to	7999
360 168 6008	to	6099	399 792 7775	to	7799	419 543 0286	to	0299	443 800 9335	to	9399
360 173 8800	to	8899	399 792 8300	to	8399	419 730 0300	to	0399	444 382 8822	to	8899
360 324 2326	to	2399	400 427 1051	to	1999	420 277 0015	to	0049	444 390 1667	to	1699
362 861 3064	to	3099	401 045 1505	to	1549	420 599 0734	to	0798	444 457 3854	to	3899
373 006 2176	to	2199	401 045 1571	to	1599	420 661 4115	to	4199	450 048 4173	to	4199
374 768 2600	to	2699	401 294 2700	to	2799	420 758 9500	to	9699	450 048 4442	to	4699
375 169 4400	to	4599	401 310 9505	to	9599	420 969 3951	to	3971	450 560 5173	to	5199
375 829 3400	to	3499	401 382 5312	to	5399	420 969 3973	to	3999	450 620 3077	to	3099
375 851 9100	to	9199	402 578 7876	to	7899	421 116 3565	to	3599	450 620 3135	to	3199
376 196 0911	to	0999	403 125 6744	to	6799	421 130 9300	to	9399	450 780 2716	to	2799
378 085 3679	to	3699	403 260 7000	to	7499	421 313 4500	to	4999	450 801 2700	to	2799
378 351 1063	to	1099	403 280 6470	to	6499	421 364 5537	to	5599	451 109 2967	to	2984

451 115 4110	to	4125	465 692 3963	to	3999	483 402 2356	to	2399	502 496 6923	to	6999
451 115 4127	to	4199	465 698 8300	to	8599	483 486 5100	to	5199	503 003 2700	to	2899
451 746 0700	to	0799	465 743 7745	to	7799	483 632 1521	to	1599	503 194 5144	to	5153
452 265 0074	to	0099	466 798 6056	to	6067	483 632 2600	to	2799	503 790 9922	to	9948
452 265 0246	to	0299	467 147 4300	to	4399	483 849 1615	to	1699	504 045 4030	to	4099
452 265 0335	to	0999	468 079 5782	to	5799	484 174 4803	to	5299	504 166 0200	to	0599
452 509 1169	to	1199	469 067 2817	to	2899	484 323 8900	to	9199	504 240 1062	to	1399
452 855 6471	to	6499	469 127 8000	to	8199	484 680 5000	to	5038	504 805 3300	to	3499
452 890 4679	to	4799	469 213 0359	to	0399	484 680 5040	to	5074	505 096 0662	to	0699
452 900 8215	to	8238	469 213 0500	to	0599	484 680 5077	to	5099	505 893 7739	to	7799
453 117 9146	to	9199	469 561 8011	to	8099	485 029 4913	to	4999	505 893 7800	to	7999
453 334 3631	to	3699	469 658 1961	to	1999	486 176 0600	to	0699	506 124 0800	to	0999
453 603 7841	to	7891	469 666 9900	to	9999	486 559 7555	to	7599	506 165 7027	to	0099
453 650 1140	to	1199	469 678 1900	to	1999	486 696 3023	to	3199	506 502 5209	to	5299
453 741 1300	to	1399	469 781 4900	to	4999	488 173 7900	to	7999	506 756 1682	to	1699
454 013 2919	to	2999	469 947 6960	to	6999	488 206 4100	to	4199	506 756 1700	to	1799
454 186 2411	to	2499	470 755 5800	to	5818	488 226 0200	to	0299	506 756 1800	to	1899
454 268 4883	to	4899	471 918 0300	to	0999	488 709 3906	to	3999	506 836 5326	to	5399
454 302 5400	to	5499	471 985 2408	to	2419	488 855 8359	to	8399	508 488 6226	to	6299
454 490 8300	to	8399	472 191 6700	to	6799	489 181 8963	to	8999	508 789 8332	to	8399
454 547 7434	to	7499	472 270 2555	to	2599	489 223 2000	to	2099	508 789 8400	to	8499
454 922 4867	to	4895	472 987 0213	to	0241	489 311 1930	to	1999	509 909 0425	to	0435
455 221 1348	to	1499	472 987 0290	to	0299	489 318 6200	to	6300	510 150 2400	to	2499
455 364 2147	to	2199	473 151 2069	to	2199	489 384 0027	to	0099	510 381 3200	to	3299
455 399 5400	to	5499	473 666 9138	to	9199	489 427 0658	to	0899	510 587 9500	to	9599
455 476 0676	to	0699	473 952 3429	to	3499	489 997 5252	to	5299	510 587 9659	to	9699
455 543 0618	to	0699	474 108 5402	to	5499	490 669 5850	to	6099	510 269 9770	to	9999
456 410 9006	to	9099	474 356 5193	to	5299	490 717 7080	to	7099	511 021 5042	to	5099
456 470 4146	to	4299	474 949 3366	to	3399	490 721 6000	to	6099	511 021 5100	to	5199
456 619 4460	to	4499	475 134 9362	to	9399	490 793 1500	to	2099	511 844 0100	to	0199
457 333 2686	to	2699	475 167 9667	to	9699	490 886 8171	to	8199	511 844 0340	to	0399
457 729 1767	to	1777	475 319 3415	to	3499	490 977 9221	to	9240	600 645 3223	to	3299
457 937 8615	to	8699	475 319 3649	to	3799	491 258 8100	to	9099	601 339 1200	to	1399
458 028 9810	to	9899	475 340 6400	to	6599	491 567 1376	to	1399	601 653 5884	to	5899
458 057 2712	to	2999	475 424 8410	to	8499	492 254 4800	to	4899	601 661 7700	to	7799
458 069 9537	to	9599	475 629 9156	to	9199	492 283 5100	to	5199	601 682 5343	to	5399
458 069 9665	to	9699	475 850 6101	to	6199	492 610 6813	to	6899	601 928 1600	to	1699
458 337 5222	to	5299	475 875 2500	to	2599	493 394 5568	to	5599	602 512 2972	to	2999
458 354 7653	to	7999	476 169 8264	to	8299	493 470 2562	to	2599	602 555 2400	to	2799
458 671 8678	to	8699	476 189 3000	to	3499	493 473 7700	to	7799	602 829 7061	to	7099
458 671 8721	to	8798	476 331 2480	to	2499	493 716 2153	to	2199	603 483 9572	to	9599
458 847 5044	to	5999	477 289 8601	to	8699	494 206 2972	to	2999	603 490 7200	to	7299
459 274 7624	to	7699	477 681 5206	to	5299	494 217 3446	to	3999	603 678 7100	to	7199
459 365 5432	to	5499	478 010 4243	to	4268	494 224 0500	to	0599	603 678 7662	to	7699
459 378 5764	to	5799	478 010 4270	to	4291	495 145 0600	to	0699	603 678 7902	to	7999
459 472 4816	to	4999	478 450 5071	to	5099	496 209 7425	to	7499	603 678 8418	to	8499
460 349 6878	to	6899	478 469 7838	to	7858	496 213 8728	to	8799	603 678 8700	to	9999
460 550 1909	to	1999	478 469 7883	to	7899	496 474 5226	to	5248	604 086 0880	to	0899
460 997 5234	to	5299	479 280 9800	to	9899	497 053 8517	to	8699	604 349 1414	to	1499
461 973 6443	to	6499	479 365 9116	to	9176	497 854 8673	to	8699	604 503 7776	to	7799
462 152 0107	to	0299	479 412 9900	to	9999	498 449 8888	to	8899	605 520 9037	to	9099
462 274 1072	to	1099	479 667 6190	to	6199	498 929 8285	to	8499	605 685 4010	to	4099
462 277 8373	to	8399	479 748 9680	to	9699	498 936 5310	to	5399	605 988 6467	to	6499
462 554 6051	to	6099	479 860 7000	to	7199	499 016 5425	to	5499	607 689 7951	to	7960
463 011 5529	to	5540	480 526 2000	to	2099	499 440 8575	to	8899	607 728 1276	to	1299
463 176 4115	to	4199	480 640 6330	to	6399	499 731 6717	to	6799	608 727 7100	to	7199
463 176 4229	to	4299	480 658 0568	to	0599	500 064 1858	to	1869	608 727 7273	to	7599
463 185 2600	to	2799	480 689 5100	to	5199	500 070 5725	to	7799	608 813 9950	to	9999
463 227 7711	to	7799	481 072 9463	to	9499	501 058 0016	to	0026	609 067 5325	to	5399
463 414 4869	to	4899	481 673 0074	to	0095	501 331 0300	to	0399	609 067 5488	to	5499
463 808 3484	to	3499	482 527 1500	to	1599	501 460 0977	to	0999	609 067 5600	to	5699
463 945 7400	to	7899	482 541 5255	to	5299	502 227 7645	to	7699	609 289 6123	to	6199
464 629 9000	to	9399	482 729 6800	to	6899	502 424 0200	to	0499	609 438 4400	to	4499
464 711 4332	to	4399	483 363 7207	to	7299	502 424 0600	to	0699	609 493 1100	to	1199

609 766 8091	to	8999	633 438 6429	to	6599	648 009 6057	to	6099	670 369 7336	to	7399
609 825 4100	to	4115	633 588 7173	to	7182	648 163 5300	to	5499	670 750 7169	to	7199
609 884 2981	to	2999	634 725 0700	to	0799	648 722 5283	to	5299	671 046 6200	to	6399
609 893 1000	to	1099	634 803 3239	to	3299	648 892 3164	to	3199	671 251 5448	to	5499
610 092 3200	to	3299	634 807 2474	to	2499	649 100 3989	to	3999	671 926 5600	to	5799
610 582 4200	to	4299	634 827 5900	to	5999	649 647 0370	to	0399	672 444 2000	to	2999
611 879 6939	to	6999	634 886 3428	to	3499	649 647 0522	to	0599	672 828 3410	to	3499
612 291 8013	to	8099	635 559 3449	to	3499	649 647 5237	to	5399	673 167 5776	to	5799
612 751 5171	to	5199	636 289 6214	to	6299	649 647 9100	to	9299	675 464 3700	to	3799
612 751 5226	to	5299	636 634 8007	to	8042	649 666 7800	to	8299	675 464 4000	to	4199
612 751 6083	to	6099	637 150 1200	to	1299	650 114 7707	to	7719	676 365 5958	to	5999
612 751 6268	to	6299	637 562 5828	to	5899	650 130 3400	to	3599	676 669 1024	to	1099
612 751 6572	to	6599	638 042 1647	to	1699	650 213 0406	to	0499	677 126 6734	to	6799
612 774 2111	to	2199	638 049 4984	to	4999	650 555 1749	to	1799	677 333 9979	to	9999
612 774 2254	to	2299	638 318 1115	to	1199	650 564 1900	to	1999	677 466 1088	to	1099
612 774 2500	to	2599	638 318 1453	to	1499	650 627 4212	to	4299	678 071 4500	to	4799
614 469 0979	to	0999	638 885 0000	to	0299	650 736 2043	to	2099	678 096 7531	to	7599
614 474 3000	to	3099	638 903 4362	to	4373	650 739 1540	to	1699	679 909 2578	to	2599
614 521 3490	to	3499	639 415 1929	to	1999	651 741 4415	to	4499	680 112 9565	to	9599
614 645 1800	to	1899	639 415 2019	to	2099	651 882 2800	to	2899	680 244 0903	to	0999
614 832 1100	to	2099	639 420 6200	to	6299	652 754 6317	to	6399	680 412 6046	to	6099
615 017 7505	to	7599	639 469 3517	to	3799	653 131 4945	to	4999	680 761 6800	to	6899
617 711 6609	to	6699	639 605 2143	to	2199	653 426 3300	to	3399	681 677 0540	to	0699
617 760 5266	to	5299	639 657 8600	to	8799	653 455 4874	to	4899	682 070 1029	to	1099
617 813 3601	to	3699	640 289 7500	to	7599	654 238 0000	to	0399	682 956 6280	to	6299
618 840 9200	to	9299	640 289 7700	to	7999	654 404 3065	to	3092	682 956 6490	to	6599
619 551 7229	to	7299	641 170 4420	to	4499	654 962 2900	to	3199	682 956 6700	to	6799
619 859 3000	to	3099	641 318 3133	to	3199	655 103 5081	to	5199	682 965 1178	to	1199
620 073 9400	to	9499	641 378 6500	to	6999	655 523 2600	to	2999	682 965 1201	to	1299
621 614 7907	to	7930	641 383 8739	to	8799	656 305 2448	to	2499	683 118 2389	to	2399
621 614 7932	to	7999	641 877 3187	to	3299	657 347 4438	to	4999	683 378 2000	to	2099
621 648 8021	to	8199	641 877 3310	to	3399	657 710 8100	to	8999	683 378 2117	to	2299
621 648 8500	to	8599	642 355 8094	to	8199	657 780 0985	to	0999	683 415 1200	to	1499
621 904 8351	to	8599	642 355 8308	to	8999	658 586 1400	to	1499	683 444 8159	to	8199
621 916 1978	to	1989	642 900 0018	to	0099	658 877 8000	to	8199	685 154 7780	to	7789
622 989 8032	to	8099	643 030 6254	to	6299	658 880 8000	to	8199	685 297 7645	to	7699
623 076 9300	to	9399	644 066 0882	to	0899	659 398 7300	to	7399	685 623 5264	to	5299
623 819 5006	to	5099	644 069 0600	to	0699	659 706 8113	to	8199	685 650 9487	to	9499
623 895 8200	to	8399	644 077 7506	to	7699	659 846 7837	to	7899	685 669 4200	to	4299
623 917 0000	to	0099	644 085 8157	to	8199	660 510 4100	to	4199	685 757 8452	to	8499
623 917 0200	to	0299	644 112 9839	to	9899	660 673 0400	to	0599	686 071 2694	to	2799
624 468 5288	to	5299	644 373 9083	to	9099	661 488 5000	to	5099	686 176 3333	to	3354
624 665 3162	to	3198	644 380 1460	to	1499	661 609 9100	to	9199	686 372 3200	to	3299
625 088 6735	to	6799	644 733 4715	to	4799	661 716 9420	to	9499	686 644 5879	to	5899
625 916 9500	to	9799	644 900 9712	to	9799	661 906 6522	to	6599	686 899 1371	to	1399
625 968 8956	to	8999	644 901 0109	to	1299	662 021 8332	to	8399	686 931 7636	to	7699
627 005 3938	to	3999	644 901 1325	to	1399	662 068 0700	to	0899	687 601 0973	to	0999
627 384 3907	to	4099	644 923 6800	to	7799	662 553 0774	to	0799	687 614 6774	to	6799
627 496 7549	to	7599	644 932 4655	to	4699	663 078 7034	to	7099	688 120 9000	to	9999
627 708 3605	to	3699	645 318 7240	to	7499	663 763 5300	to	5399	688 314 3107	to	3191
627 776 2500	to	2599	645 333 1766	to	1799	663 883 7039	to	7499	690 291 1361	to	1371
628 226 3100	to	3199	645 790 8632	to	8699	663 938 9200	to	9299	690 788 2877	to	2899
628 814 4702	to	4799	645 821 0657	to	0699	664 253 8000	to	8499	690 893 5344	to	5399
628 851 9689	to	9699	645 930 7948	to	7999	664 656 3055	to	3099	690 893 5512	to	5599
629 510 7200	to	7299	645 975 0737	to	0762	665 174 6400	to	6499	690 904 1300	to	1599
629 964 4200	to	4294	646 242 6200	to	6299	665 274 8208	to	8299	690 941 6000	to	6199
630 389 3056	to	3071	646 270 7639	to	7799	665 669 5400	to	5499	691 313 6383	to	6399
630 463 0588	to	0599	646 798 4000	to	4999	666 132 8226	to	8299	691 313 6600	to	6699
631 459 9117	to	9199	647 048 7035	to	7099	666 696 2209	to	2299	691 582 8003	to	8099
631 762 9325	to	9399	647 049 2900	to	2999	666 696 2309	to	2399	691 664 1800	to	1999
632 217 4933	to	4999	647 398 8300	to	8399	667 032 9300	to	9399	691 664 2400	to	2499
632 500 0000	to	640 3999	647 398 8481	to	8499	667 729 5529	to	5599	692 727 9362	to	9399
633 110 4165	to	4199	647 437 3000	to	4999	668 383 8400	to	8699	692 798 1800	to	1899
633 110 4303	to	4499	647 811 2188	to	2199	670 368 3400	to	3499	693 249 0779	to	0799

693 249 0877	to	1699	740 277 0366	to	0392	835 813 3015	to	3099	860 275 3900	to	3999
693 445 0566	to	0999	740 332 7658	to	7671	837 672 8967	to	8999	860 518 9629	to	9699
693 448 8500	to	8999	740 348 6641	to	6658	837 784 3282	to	3299	860 600 0021	to	0999
693 645 9583	to	9599	740 351 4790	to	4799	838 176 8377	to	8399	861 158 2350	to	2599
693 965 4200	to	4299	740 374 7416	to	7499	838 518 1257	to	1299	861 367 5400	to	5499
695 741 2906	to	2999	740 470 2420	to	2443	839 718 8257	to	8299	861 637 6010	to	6099
695 947 8518	to	8599	740 514 0300	to	0499	840 323 0600	to	0699	861 979 7292	to	7499
696 662 8247	to	8299	740 523 7432	to	7449	840 875 6235	to	6299	862 216 6100	to	6199
697 447 8285	to	8296	740 535 1555	to	1580	840 910 0900	to	0999	862 263 9213	to	9299
698 042 4816	to	4899	740 557 3570	to	3579	841 349 5000	to	5099	862 271 0800	to	0999
698 131 2138	to	2157	740 650 4104	to	4140	841 805 7747	to	7899	862 271 5000	to	5099
698 227 0000	to	0099	740 684 0620	to	0800	841 805 7944	to	8099	863 871 5138	to	5199
700 065 2570	to	2599	740 701 6105	to	6114	842 226 0685	to	0695	863 949 5300	to	5399
700 065 4800	to	4899	740 705 9790	to	9799	842 685 4600	to	4699	864 088 8200	to	8299
700 190 3350	to	3359	740 726 6400	to	6500	842 685 4742	to	4999	864 426 3972	to	3999
700 228 6048	to	6099	740 748 8319	to	8329	842 860 0300	to	0399	864 520 6117	to	6136
700 650 0452	to	0499	740 765 3306	to	3399	842 898 5582	to	5599	865 151 0526	to	0599
700 666 1323	to	1349	740 774 8434	to	8499	843 062 7100	to	7199	865 500 4034	to	4099
700 786 9106	to	9142	740 779 4259	to	4299	843 077 6288	to	6299	865 883 6082	to	6099
700 859 0744	to	0758	740 786 1885	to	1899	843 077 6378	to	6399	866 004 3000	to	3999
701 028 6780	to	6899	740 790 5989	to	5999	843 758 5769	to	5778	866 442 4100	to	4899
701 213 3900	to	3999	740 803 4870	to	4879	843 786 2554	to	2699	867 366 9108	to	9118
701 267 2000	to	3999	740 820 4854	to	7836	845 656 8165	to	8199	867 633 7403	to	7499
701 335 7312	to	7399	740 827 7578	to	7594	845 727 2100	to	2199	867 737 5623	to	5699
701 369 2005	to	2050	740 917 7490	to	7499	845 746 2618	to	2635	868 169 4529	to	4599
701 499 2260	to	2299	740 918 5531	to	5549	846 390 7531	to	7599	868 173 8400	to	8599
701 503 2247	to	2299	741 037 8528	to	8551	846 918 0572	to	0599	868 514 9000	to	9099
701 541 2271	to	2299	742 030 6135	to	6149	847 237 7690	to	7699	868 566 9200	to	9299
701 553 6557	to	6599	742 033 2663	to	2674	847 284 2481	to	2499	869 200 0000	to	9999
701 578 7460	to	7469	742 040 3300	to	3309	847 374 7055	to	7065	869 387 1150	to	1199
701 578 7475	to	7499	742 151 5000	to	5014	847 374 7055	to	7065	869 505 3500	to	3599
701 601 3457	to	3499	742 191 4640	to	4649	847 636 5304	to	5399	869 523 7033	to	7099
701 605 5913	to	5999	742 192 5210	to	5224	847 700 5447	to	5499	869 566 6150	to	6167
701 695 3982	to	3999	742 222 9200	to	9210	847 723 7500	to	7599	869 800 0000	to	999 9999
701 695 4148	to	4199	742 228 9660	to	9669	849 485 3427	to	3499	870 054 4814	to	4899
701 695 4227	to	4299	742 247 6980	to	6989	849 520 9850	to	9899	870 491 4812	to	4849
701 708 1741	to	1799	742 302 7600	to	7699	849 608 1357	to	1399	870 536 5820	to	5829
701 736 3966	to	3999	805 885 8411	to	8499	849 792 2600	to	2699	870 541 7167	to	7239
701 772 0870	to	0899	806 087 1100	to	1499	850 546 1862	to	1899	870 575 8155	to	8999
701 838 2800	to	2899	806 268 9275	to	9299	851 143 6826	to	6844	870 589 0485	to	0494
701 941 0600	to	0699	806 534 3400	to	3477	851 209 9880	to	9899	870 691 7060	to	7099
702 171 1603	to	1699	807 342 3283	to	3399	851 928 9221	to	9299	872 028 4850	to	4899
702 195 5109	to	5199	808 086 7100	to	7199	852 589 6560	to	6599	872 029 9306	to	9399
702 254 9300	to	9399	808 090 3440	to	3499	853 049 3646	to	3699	872 078 3709	to	3799
702 264 7569	to	7599	808 325 5161	to	5699	854 304 4089	to	4999	872 100 0445	to	0459
702 519 0513	to	0524	808 784 8000	to	8299	854 529 2200	to	2299	900 556 4178	to	4199
702 713 1800	to	1809	830 125 0672	to	0699	854 532 0000	to	2999	900 845 0044	to	0099
702 821 5730	to	5799	830 602 5800	to	5999	855 001 6204	to	6249	900 936 0217	to	0299
702 821 5805	to	5899	830 610 3700	to	3799	855 319 9364	to	9399	900 936 0435	to	0499
702 844 6975	to	6994	830 983 3500	to	3599	855 361 3390	to	3399	901 058 5255	to	5280
702 846 6331	to	6399	830 983 3635	to	3699	856 226 0490	to	0499	901 273 1082	to	1099
702 848 3900	to	3999	831 354 1387	to	1399	856 656 5800	to	5999	901 287 5143	to	5199
702 857 7302	to	7499	831 815 8240	to	8299	856 752 0200	to	0299	901 291 2789	to	2799
702 878 0114	to	0199	832 525 3810	to	3899	857 111 1352	to	1399	901 525 7122	to	7199
703 364 1707	to	1799	833 159 1884	to	1899	857 279 3450	to	3499	902 089 1253	to	1299
740 002 7710	to	7719	833 456 2567	to	2599	857 843 4000	to	4099	902 198 9769	to	9799
740 037 6730	to	6800	833 566 3015	to	3071	858 124 7644	to	7699	902 948 1269	to	1299
740 119 2275	to	2284	834 130 5200	to	5299	858 756 3111	to	3299	902 985 0833	to	0899
740 130 6688	to	6698	834 316 5444	to	5499	859 063 8200	to	8699	903 370 6934	to	6999
740 144 2780	to	2795	834 354 8747	to	8766	859 190 0600	to	0644	904 600 6523	to	6599
740 241 9049	to	9099	834 354 8824	to	8838	859 437 5538	to	5599	904 892 0378	to	0399
740 252 9265	to	9294	835 269 5700	to	5799	859 811 2888	to	2899	904 892 0648	to	1299
740 255 1718	to	1799	835 496 7303	to	7399	859 855 8873	to	8999	905 056 2216	to	2299
740 274 2602	to	2619	835 539 5200	to	5999	860 240 8520	to	8599	905 510 6647	to	6799

905 510 6900	to	7099	911 509 9310	to	9399	919 814 3095	to	3199	925 333 5900	to	6099
905 794 0000	to	0199	911 523 3000	to	3999	919 889 5110	to	5134	925 336 2300	to	2399
905 794 0288	to	0299	912 057 9922	to	9999	919 889 5137	to	5176	926 432 5907	to	5999
905 873 6900	to	6999	912 882 0563	to	0899	919 889 5178	to	5199	926 436 3600	to	3699
905 873 7100	to	7299	913 605 2218	to	2299	919 889 5030	to	5070	927 765 6257	to	6299
905 880 8900	to	8999	913 709 2429	to	2499	919 889 5090	to	5099	928 197 8100	to	8199
905 889 7100	to	7199	913 818 3501	to	3999	919 915 2774	to	2787	928 197 8283	to	8299
906 158 1508	to	1599	914 063 4300	to	4399	920 155 4662	to	4687	928 856 2059	to	2068
906 558 8812	to	8899	914 346 7621	to	7644	920 309 9039	to	9199	930 219 1722	to	1799
906 982 2214	to	2299	914 453 1366	to	1399	920 771 5321	to	5399	930 335 7810	to	7819
907 725 8500	to	8599	914 529 6185	to	6299	920 857 5500	to	5899	931 097 9259	to	9299
907 815 0216	to	0257	914 896 4658	to	4699	920 864 3480	to	3499	931 156 1502	to	1579
908 622 4225	to	4235	915 187 8774	to	8779	920 963 4567	to	4599	931 156 1600	to	1625
908 936 9254	to	9299	915 300 2783	to	2799	921 333 7400	to	7499	931 156 1671	to	1699
909 066 4494	to	7499	915 546 6822	to	6999	921 477 3762	to	3799	932 506 6400	to	6599
909 067 7400	to	7499	915 646 5183	to	5199	922 278 1048	to	1399	932 732 1796	to	1799
909 100 1787	to	1799	915 671 3963	to	3980	922 280 2019	to	2099	932 827 9026	to	9099
909 100 1900	to	2099	915 671 3982	to	3999	922 280 2233	to	2299	932 957 2300	to	2399
909 355 0422	to	0499	915 675 2217	to	2299	922 773 0459	to	0499	933 060 6160	to	6189
909 568 8900	to	9099	916 440 3377	to	3399	923 032 7000	to	7399	933 387 2541	to	2561
909 568 9300	to	9499	916 670 6352	to	6399	923 045 3630	to	3699	933 760 3609	to	4199
909 725 7307	to	7399	916 682 5300	to	5399	923 484 3600	to	3699	933 894 0928	to	0999
909 833 0947	to	0999	916 694 1414	to	1499	923 493 9403	to	9599	934 018 2729	to	2741
910 219 8631	to	8699	916 703 0802	to	0821	923 493 9681	to	9699	934 180 0300	to	0399
910 265 1100	to	1199	917 089 0709	to	0799	923 604 4424	to	4499	934 236 3954	to	3999
910 471 7273	to	7299	917 089 0842	to	0899	923 810 7800	to	8299	934 622 8717	to	8999
910 536 2505	to	2599	917 216 2928	to	2999	924 252 1200	to	1299	935 216 0312	to	0399
910 958 7499	to	7599	917 370 6300	to	6499	924 252 1400	to	1499	935 843 2202	to	2247
911 140 1000	to	2199	917 486 4900	to	4999	924 533 0711	to	0799	936 024 8889	to	8899
911 245 2545	to	2599	918 460 0602	to	0699	924 533 2343	to	2399	936 339 4455	to	4499
911 268 9077	to	9099	918 951 7231	to	7299	924 533 2428	to	2499			
911 400 8948	to	8999	919 519 2786	to	2799	924 685 1957	to	1999			
911 508 1620	to	1799	919 536 0770	to	0799	924 946 6300	to	6699			

Missing, Lost, or Stolen Canadian Money Order Forms

Do Not Cash — Upon Receipt, Notify Local Postal Inspectors

This listing will be provided to all Postal Service™ employees responsible for accepting and cashing postal money orders. Destroy all interim notices when the numbers listed appear in the *Postal Bulletin*. The new

money order serial numbers consist of the first 9 digits. The 10th digit is a check digit only.

Do not cash outdated money orders **104 151 601 to 692 600 000**. Advise holders to send invalid money orders To Canada Post Corporation, Ottawa, Canada K1A 0B1. Check for altered dollar amounts by holding money orders to the light.

719 869 731	to	9 760	728 702 338	to	2 400	734 950 111	to	0 170	742 408 771	to	8 830
720 227 871	to	7 930	728 915 371	to	5 850	735 120 331	to	0 840	742 512 120	to	2 150
720 227 949	to	7 960	728 953 141	to	3 410	735 283 008	to	3 020	742 684 849	to	4 890
720 368 543	to	8 570	728 954 280	to	4 310	735 293 131	to	3 220	742 839 553	to	9 630
720 392 151	to	2 570	729 169 081	to	9 140	735 635 010	to	5 040	742 913 668	to	3 700
720 556 491	to	6 640	729 363 841	to	3 870	735 783 961	to	3 990	742 917 287	to	7 296
720 558 621	to	8 650	729 682 891	to	3 190	735 803 401	to	3 430	742 921 891	to	1 980
720 575 361	to	5 570	729 838 940	to	9 070	736 005 420	to	5 440	742 983 631	to	3 810
720 590 152	to	0 179	729 839 101	to	9 130	736 366 021	to	6 110	743 020 021	to	0 170
721 638 331	to	9 170	730 077 683	to	7 840	736 624 456	to	4 500	743 206 491	to	6 500
721 815 391	to	5 420	730 109 847	to	9 880	736 670 851	to	1 060	743 235 992	to	6 050
721 969 713	to	9 740	730 373 761	to	3 850	736 767 061	to	7 090	743 940 631	to	0 900
722 072 137	to	2 160	730 501 951	to	2 130	736 767 093	to	7 120	743 978 011	to	8 070
722 378 265	to	8 280	730 519 379	to	9 470	736 982 191	to	2 370	744 234 751	to	4 780
722 413 990	to	4 004	730 569 278	to	9 360	736 982 551	to	2 730	744 499 591	to	9 680
722 764 948	to	4 980	730 711 711	to	1 740	737 110 141	to	0 170	744 626 901	to	6 910
722 825 840	to	5 889	730 722 991	to	3 230	737 185 501	to	5 710	745 388 794	to	8 910
723 153 841	to	3 850	730 845 970	to	5 990	737 317 321	to	7 350	746 446 806	to	6 820
723 237 616	to	7 630	730 888 291	to	8 320	737 517 781	to	7 840	746 818 351	to	8 410
723 331 081	to	1 110	730 927 591	to	7 680	737 628 181	to	8 210	747 245 266	to	5 280
723 496 443	to	6 470	731 307 914	to	7 930	737 634 258	to	4 270	747 364 813	to	4 830
723 967 291	to	7 320	731 402 431	to	2 460	738 361 971	to	1 980	747 501 434	to	1 450
724 655 196	to	5 340	731 407 232	to	7 320	738 447 601	to	7 660	747 739 891	to	0 070
724 711 441	to	1 500	731 588 301	to	8 340	738 648 355	to	8 450	748 148 649	to	8 760
724 711 538	to	1 560	731 767 273	to	7 320	738 849 811	to	9 900	748 259 960	to	9 970
724 793 221	to	3 250	731 781 061	to	1 120	738 892 270	to	2 290	748 565 162	to	5 280
724 908 109	to	8 120	731 837 821	to	7 910	738 997 259	to	7 380	748 874 988	to	5 030
724 937 461	to	7 670	731 841 377	to	1 450	739 161 451	to	1 540	749 137 381	to	7 410
725 163 118	to	3 151	732 018 481	to	8 600	739 219 381	to	9 440	749 190 192	to	0 210
725 202 735	to	2 750	732 067 972	to	8 370	739 740 151	to	0 180	749 685 421	to	5 450
725 398 591	to	8 800	732 188 649	to	8 670	739 793 491	to	3 520	749 846 791	to	6 850
725 464 591	to	4 920	732 193 460	to	3 470	739 793 527	to	3 550	749 993 131	to	3 580
725 475 321	to	5 330	732 201 241	to	1 390	739 942 621	to	2 650	750 071 587	to	1 610
725 711 057	to	1 070	732 220 431	to	0 440	739 999 231	to	9 320	750 408 167	to	8 183
725 738 581	to	8 730	732 355 201	to	5 380	740 011 517	to	1 530	750 438 421	to	8 501
725 981 311	to	1 430	732 472 320	to	2 560	740 030 701	to	0 970	750 743 911	to	4 030
725 987 835	to	7 880	732 541 605	to	1 620	740 261 740	to	1 820	750 779 118	to	9 400
726 060 811	to	0 900	732 572 221	to	2 490	740 265 811	to	6 290	750 910 981	to	1 010
726 391 970	to	2 520	732 586 479	to	6 710	740 299 111	to	9 170	750 960 841	to	0 900
726 484 771	to	4 800	732 994 037	to	4 080	740 299 231	to	9 260	751 296 211	to	6 240
726 493 351	to	5 300	733 163 449	to	3 460	740 329 266	to	9 320	751 539 121	to	9 180
726 504 031	to	4 063	733 297 171	to	7 290	740 889 081	to	9 090	751 541 311	to	1 790
726 504 070	to	4 090	733 446 631	to	7 110	741 010 421	to	0 530	751 757 641	to	7 700
726 504 331	to	4 390	733 474 665	to	4 770	741 113 041	to	3 370	751 936 951	to	7 010
726 563 701	to	4 060	733 704 482	to	4 570	741 373 891	to	4 340	751 951 861	to	1 890
726 599 371	to	9 460	733 751 041	to	1 130	741 452 369	to	2 490	751 999 021	to	9 110
726 626 356	to	6 370	734 009 101	to	9 130	741 492 991	to	3 140	752 139 516	to	9 570
727 182 271	to	2 510	734 290 759	to	0 770	741 553 460	to	3 470	752 182 892	to	2 950
727 416 181	to	6 240	734 389 273	to	9 290	741 764 431	to	4 520	752 206 861	to	7 100
727 481 431	to	1 460	734 440 031	to	0 111	742 178 834	to	8 880	752 295 241	to	5 600
727 749 241	to	9 780	734 797 201	to	7 320	742 325 500	to	5 520	752 731 351	to	1 410
728 382 331	to	2 480	734 939 611	to	9 640	742 325 668	to	5 700	752 767 441	to	7 470

753 008 941	to	9 030	763 155 160	to	5 180	773 231 311	to	1 340	800 872 741	to	2 830
753 194 311	to	4 370	763 178 631	to	8 660	773 348 739	to	8 940	801 349 801	to	9 830
753 620 378	to	0 400	763 506 001	to	6 060	773 348 739	to	8 940	801 676 681	to	7 100
754 013 917	to	3 940	763 522 141	to	2 470	773 575 891	to	5 950	802 967 821	to	7 940
754 161 061	to	1 120	763 717 694	to	7 800	773 852 971	to	3 030	803 217 601	to	7 780
754 358 445	to	8 610	763 826 461	to	6 520	775 373 449	to	3 460	803 729 731	to	9 850
754 410 451	to	0 660	763 900 460	to	0 471	789 257 191	to	7 250	803 747 402	to	7 520
754 438 393	to	8 410	763 900 479	to	0 530	790 448 020	to	8 460	804 138 181	to	8 420
754 493 109	to	3 130	763 917 271	to	7 750	790 597 485	to	7 530	804 428 224	to	8 250
754 664 182	to	4 220	764 125 801	to	5 860	790 911 883	to	1 900	804 682 411	to	2 710
754 816 377	to	6 470	764 284 525	to	4 560	791 057 441	to	7 550	805 272 525	to	2 540
755 487 421	to	7 600	764 526 241	to	6 330	791 239 081	to	9 290	805 523 445	to	3 460
755 592 901	to	3 140	764 601 421	to	1 600	791 374 483	to	4 500	805 745 704	to	5 730
755 790 020	to	0 030	764 650 231	to	0 470	791 387 971	to	8 030	806 452 907	to	2 980
755 791 730	to	1 800	764 984 371	to	4 850	791 447 521	to	7 850	806 744 781	to	4 850
755 926 951	to	7 070	765 003 667	to	3 680	791 451 151	to	1 240	806 982 181	to	2 300
755 934 332	to	4 510	765 042 517	to	2 540	791 500 009	to	0 470	807 764 791	to	4 910
755 957 701	to	8 000	765 194 728	to	4 970	791 771 431	to	1 490	808 089 931	to	9 960
755 962 981	to	3 280	765 387 365	to	7 450	792 004 293	to	4 320	808 656 423	to	6 450
756 035 371	to	5 490	765 541 801	to	2 100	792 018 379	to	8 420	808 753 771	to	3 800
756 301 257	to	1 290	765 638 461	to	8 970	792 070 621	to	0 740	809 189 001	to	9 010
756 371 565	to	1 580	765 647 101	to	7 190	792 145 211	to	5 230	809 886 879	to	6 930
756 876 031	to	6 120	765 813 781	to	4 029	792 391 381	to	1 620	809 890 489	to	0 500
756 876 151	to	6 240	765 879 314	to	9 390	792 452 779	to	2 790	810 323 734	to	3 760
756 970 129	to	0 140	765 954 001	to	4 030	792 772 728	to	2 770	810 367 116	to	7 140
757 059 613	to	9 630	766 120 286	to	0 320	792 903 511	to	3 990	810 526 351	to	6 500
757 078 540	to	8 560	766 125 716	to	5 750	793 282 518	to	2 533	810 806 911	to	6 940
757 086 209	to	6 240	766 158 824	to	8 840	794 041 831	to	2 040	810 807 211	to	7 240
757 240 591	to	0 650	766 388 433	to	8 460	794 397 709	to	7 780	811 423 021	to	3 110
757 277 371	to	7 700	766 509 421	to	9 660	794 581 741	to	2 040	811 517 221	to	7 239
757 291 591	to	2 730	766 572 901	to	3 020	794 592 122	to	2 150	811 721 101	to	1 130
757 964 251	to	4 280	766 748 500	to	8 521	795 032 251	to	2 340	812 025 721	to	5 900
758 067 001	to	7 090	767 024 341	to	4 370	795 796 291	to	6 350	812 093 073	to	3 130
758 105 221	to	5 250	767 326 471	to	6 590	796 070 139	to	0 160	812 100 821	to	0 840
758 324 941	to	5 000	767 332 561	to	2 950	796 143 151	to	3 630	812 465 251	to	5 610
758 593 628	to	3 650	768 009 841	to	9 960	796 159 725	to	9 740	812 918 341	to	8 670
758 709 038	to	9 060	768 011 489	to	1 520	796 169 306	to	9 340	812 918 701	to	8 760
758 744 101	to	4 160	768 177 980	to	7 990	796 373 406	to	3 430	813 050 491	to	0 520
758 850 883	to	0 900	768 391 081	to	1 170	796 602 961	to	3 050	813 073 171	to	3 200
758 860 951	to	1 550	768 661 569	to	1 650	796 708 441	to	8 500	813 398 476	to	8 550
759 152 851	to	2 880	769 000 051	to	0 080	796 886 281	to	6 430	813 713 971	to	4 000
759 740 941	to	1 090	769 050 841	to	0 900	796 901 701	to	2 000	813 858 121	to	8 150
760 004 596	to	4 610	769 159 081	to	9 178	796 975 466	to	5 590	814 789 330	to	9 349
760 118 191	to	8 250	769 737 496	to	7 510	797 272 917	to	2 950	814 984 656	to	4 680
760 155 001	to	5 090	769 778 491	to	8 730	797 519 441	to	9 460	815 016 020	to	6 030
760 378 002	to	8 020	769 827 331	to	7 450	797 519 731	to	0 240	815 199 410	to	9 420
760 692 722	to	2 749	770 216 071	to	6 100	797 535 181	to	5 330	815 240 491	to	0 520
761 055 460	to	5 480	770 723 281	to	3 400	797 646 151	to	6 180	815 755 591	to	5 620
761 169 781	to	9 810	770 790 451	to	0 480	798 040 053	to	0 080	815 755 622	to	5 650
761 504 941	to	5 120	770 915 150	to	5 490	798 055 813	to	5 830	815 806 381	to	6 680
761 516 836	to	6 910	771 455 551	to	5 610	798 055 891	to	5 950	816 126 834	to	6 870
761 613 588	to	3 600	771 609 661	to	9 690	798 326 371	to	6 520	816 156 721	to	6 780
761 688 631	to	8 690	771 932 551	to	2 580	798 339 167	to	9 210	816 580 903	to	0 920
761 805 199	to	5 240	772 057 224	to	7 440	798 562 411	to	2 440	816 945 571	to	5 600
761 826 106	to	6 120	772 162 660	to	3 070	798 632 461	to	2 490	817 253 011	to	3 280
761 881 171	to	1 560	772 718 615	to	8 640	798 807 151	to	7 510	817 763 881	to	4 060
761 975 641	to	5 670	772 940 140	to	0 160	798 944 761	to	5 030	818 330 562	to	0 610
761 975 886	to	5 895	772 970 886	to	0 940	799 118 616	to	8 640	818 459 641	to	9 670
762 304 144	to	4 170	773 009 419	to	9 430	799 133 191	to	3 220	818 926 273	to	6 320
762 324 931	to	4 960	773 112 031	to	2 060	799 177 626	to	7 650	818 950 351	to	0 380
762 439 261	to	9 290	773 125 387	to	5 410	799 854 751	to	5 200	818 962 492	to	2 530
762 524 158	to	4 220	773 179 320	to	9 410	800 044 320	to	4 410	819 032 341	to	2 730
762 584 872	to	4 970	773 202 989	to	3 140	800 211 901	to	2 440	819 127 054	to	7 080
762 593 431	to	3 460	773 208 991	to	9 290	800 427 530	to	7 540	819 278 540	to	8 670

819 544 681	to	4 740	822 900 991	to	1 020	826 582 951	to	3 430	828 732 331	to	2 390
819 928 441	to	8 650	822 925 951	to	6 100	826 720 201	to	0 230	828 807 781	to	7 840
820 034 406	to	4 430	823 284 931	to	4 990	827 005 671	to	5 830	828 830 952	to	0 963
820 070 761	to	1 540	823 293 031	to	3 210	827 287 861	to	7 950	828 939 781	to	0 050
820 191 342	to	1 360	823 556 011	to	6 100	827 291 502	to	1 520	829 002 721	to	2 870
820 274 856	to	4 880	824 078 341	to	8 370	827 575 381	to	5 470	829 005 301	to	5 540
820 600 171	to	0 230	824 156 325	to	6 340	827 609 085	to	9 100	829 080 241	to	0 330
821 172 241	to	2 360	824 511 252	to	1 270	827 619 811	to	9 840	829 160 986	to	1 000
821 229 661	to	9 720	824 588 281	to	8 370	827 883 511	to	3 600	829 176 841	to	6 930
821 229 743	to	9 780	825 140 397	to	0 460	828 160 441	to	0 530	829 471 561	to	1 590
821 903 731	to	3 910	825 409 651	to	9 680	828 376 201	to	6 260	829 561 065	to	1 080
821 927 841	to	7 850	825 472 171	to	2 200	828 441 602	to	1 630	829 566 481	to	6 510
822 505 801	to	5 830	826 042 898	to	2 920	828 539 316	to	9 340	829 569 931	to	9 960
822 703 442	to	3 470	826 226 644	to	6 670	828 539 341	to	9 370			

— Criminal Investigations Group, Postal Inspection Service, 1-21-16

Verifying U.S. Postal Service Money Orders

Follow these steps to cash a Postal Service™ money order:

1. Check that the amount does not exceed the legal limit: \$1,000 for domestic, and \$700 for international postal money orders.
2. Check that the proper security features are present:
 - When held to the light, a watermark of Benjamin Franklin is repeated from top to bottom on the left side.
 - When held to the light, a dark line (security thread) runs from top to bottom with the word “USPS” repeated.
 - There should be no discoloration around the dollar amounts, which might indicate the amounts were changes.

These appear in Postal Service Notice 299, *U.S. Postal Money Order Reference Card*, or online at <https://www.usps.com/shop/money-orders.htm>.

3. If the money order seems suspicious, call the U.S. Postal Service Money Order Verification System at 866-459-7822.

Please provide this information to local banks and retailers, as they also receive Postal Service money orders for cashing.

— *Retail and Customer Service Operations, 1-21-16*

Counterfeit Canadian Money Order Forms

Do Not Cash

To be posted and used by retail window employees. As directed, destroy previous notices. Destroy all interim notices when the numbers listed appear in the Postal Bulletin.

671,819,086	686,794,382
676,612,640	686,794,426
677,891,039	686,794,427
678,282,493	686,794,431
678,916,031	687,262,502
679,552,215	687,262,503
679,694,334	687,262,525
679,751,983	687,262,526
679,800,207	687,287,578
681,130,536	687,287,581
681,844,376	687,287,582
683,594,542	694,063,898
684,683,610	694,063,899
686,619,878	694,063,980
686,619,886	701,321,725
686,619,887	

— *Criminal Investigations Group,
Postal Inspection Service, 1-21-16*

Toll-Free Number Available to Verify Canadian Money Orders

The Canada Post Corporation is now providing a toll-free number that cashing agents can call to verify the validity of Canadian Postal Money Orders. The number is 800-563-0444.

This toll-free number is printed on the back of the Canadian Postal Money Orders.

— *Criminal Investigations Group,
Postal Inspection Service, 1-21-16*

Other Information

Overseas Military/Diplomatic Mail

Mail addressed to military and diplomatic post offices overseas is subject to certain conditions or restrictions of mailing regarding content, preparation, and handling. The APO/FPO/DPO table below outlines these conditions by APO/FPO/DPO ZIP Codes™ through the use of footnoted mailing restrictions codes (see the [Restrictions](#) page following the table).

Acceptance clerks should use the table with the POS ONE terminal to determine which APO/FPO/DPO ZIP Codes are active and which conditions of mailing apply. Inquiries may be sent to the Military Postal Service Agency at <https://amps.usps.gov/ijy2/frm.htm>.

The entries under “Changes” appear in bold in the APO/FPO/DPO table starting below.

Changes

APO/FPO/DPO	Action	Effective Date	See Restrictions
APO AE 09125	Add O, V1	01/21/2016	A-A1-A2-B-F-F1-N-O-R-R1-V-V1
DPO AE 09777	Add J, V	01/21/2016	A-A1-A2-B-C-E1-F-F1-J-L-M-N-R-T-V
APO AE 09805	Remove A	01/21/2016	A1-A2-B-E2-E3-F-F1-R-R1-V-Z1
DPO AE 09813	Remove I3	01/21/2016	A1-A2-B-E2-E3-F-F1-J-L-N-R-T-U-V-Z1
DPO AE 09844	Open	01/21/2016	A-A1-A2-B-C-C1-D-F-F1-J-L-M-N-R-R1-T-V-Z1
APO AA 34044	Open	01/21/2016	A-A1-A2-B-D-F-M-N-O-R-R1-V-V1-Z-Z1
DPO AP 96504	Open	01/21/2016	A-A1-A2-B-C-C1-F-F1-I-L-N-R-R1-T-V-W-Z-Z1
DPO AP 96505	Open	01/21/2016	A-A1-A2-B-C-C1-F-F1-I-L-N-R-R1-T-V-W-Z-Z1

We have eliminated “Not Active” entries from the table below to save space and paper.

APO/FPO/DPO Table

APO/FPO/DPO	See Restrictions	APO/FPO/DPO	See Restrictions	APO/FPO/DPO	See Restrictions	APO/FPO/DPO	See Restrictions
09003	A1-A2-B-C-D-E-H-M-P-R-U	09049	A1-A2-B-C-D-E-H-M-R-U	09104	A1-A2-B-C-D-H-M-R-U-Z1	09173	A1-A2-B-C-D-E-H-M-R-U
09004	A1-A2-B-C-D-E-H-M-R-U	09053	A1-A2-B-C-D-E-H-M-R-U	09107	A1-A2-B-C-D-E-H-M-R-U	09177	A1-A2-B-C-D-E-H-M-R-U
09005	A1-A2-B-C-D-E-H-M-P-R-U	09054	A1-A2-B-C-D-E-H-M-R-U	09112	A1-A2-B-C-D-E-H-M-R-U	09180	A1-A2-B-C-D-H-M-R-U
09006	A1-A2-B-C-D-E-H-M-R-U	09055	A1-A2-B-C-D-E-F-H-M-R-R1-U-V	09114	A1-A2-B-C-D-E-H-M-R-U	09186	A1-A2-B-C-D-E-H-M-R-U
09009	A1-A2-B-C-D-E-H-M-R-U-Z1	09059	A1-A2-B-C-D-E-H-M-R-U	09123	A1-A2-B-C-D-E-H-M-R-U-Z1	09211	A1-A2-B-C-D-E-H-M-P-R-U
09011	A1-A2-B-C-D-E-H-M-R-U	09060	A1-A2-B-C-D-E-F1-H-M-R-U-Z1	09125	A-A1-A2-B-F-F1-N-O-R-R1-V-V1	09213	A1-A2-B-C-D-E-F-F1-H-J-L-M-N-R-T-U-V-Z1
09012	A1-A2-B-C-D-E-H-M-R-U-Z1	09067	A1-A2-B-C-D-E-H-M-R-U	09126	A1-A2-B-C-D-H-M-P-R-Z1	09214	A1-A2-B-C-D-E-H-M-R-U-Z1
09013	A1-A2-B-C-D-E-F-F1-H-M-R-U-Z1	09068	A1-A2-B-C-D-E-H-U-Z1	09128	A1-A2-B-C-D-E-H-M-R-U	09227	A1-A2-B-C-D-E-H-M-R-U
09014	A1-A2-B-C-D-E-H-M-R-U	09069	A-A1-A2-B-C-D-E-H-N-U-V	09131	A1-A2-B-C-D-E-H-M-R-U	09250	A1-A2-B-C-D-E-H-M-R-U
09016	A1-A2-B-C-D-E-H-M-R-U	09075	A1-A2-B-C-D-E-H-M-R-U	09136	A1-A2-B-C-D-E-F1-H-M-P-R	09261	A1-A2-B-C-D-E-F1-H-M-R-U-V-Z1
09020	A1-A2-B-C-D-E-H-M-R-U	09079	A1-A2-B-C-D-E-H-M-R-U	09138	A1-A2-B-C-D-H-M-R-U	09263	A1-A2-B-C-D-E-H-M-R-U
09021	A1-A2-B-C-D-E-H-M-R-U-Z1	09090	A1-A2-B-C-D-E-H-M-P-R-U	09140	A1-A2-B-C-D-E-H-M-R-U	09264	A1-A2-B-C-D-E-H-M-R-U
09028	A1-A2-B-C-D-E-H-M-R-U	09094	A1-A2-B-C-D-H-M-P-R-Z1	09142	A1-A2-B-C-D-E-H-M-R-U	09265	A1-A2-B-C-D-E-F-F1-H-J-L-M-N-R-T-U-V-Z1
09034	A1-A2-B-C-D-E-H-M-R-U	09095	A1-A2-B-C-D-E-H-M-R-U	09143	A1-A2-B-C-D-E-H-M-R-U	09302	A-A1-A2-B-C1-F-F1-H-M-N-V-Z-Z1
09044	A1-A2-B-C-D-F1-H-U	09096	A1-A2-B-C-D-E-H-M-R-U	09154	A1-A2-B-C-D-E-H-M-R-U	09304	A-A1-A2-B-C-C1-D-E2-F-F1-H1-J-L-M-N-R-R1-T-V-Z1
09046	A1-A2-B-C-D-E-H-M-R-U	09103	A1-A2-B-C-D-E-H-U	09172	A1-A2-B-C-D-E-H-M-R-U		

APO/ FPO/ DPO	See Restrictions	APO/ FPO/ DPO	See Restrictions	APO/ FPO/ DPO	See Restrictions	APO/ FPO/ DPO	See Restrictions
09305	A-A1-A2-B-C1-E2-F-F1-H1-I3-M-N-R-R1-T-V-Z-Z1	09403	A1-A2-B-C-C1-M-R-U-Z1	09577	A1-A2-B-V	09647	A1-A2-B-M-N-R-U-Z1
09306	A-A1-A2-B-C1-E2-F-F1-H1-R-R1-U2-V-Z1	09421	A1-A2-B-C-C1-M-R-U-Z1	09578	A1-A2-B-F-F1-R-R1-V	09648	A1-A2-B-N-R-U-V-Z1
09307	A1-A2-B-N-V-Z1	09447	A1-A2-B-C-C1-R-U-V-Z1	09579	A1-A2-B-F-F1-R-R1-V	09649	A1-A2-B-N-R-U-Z1
09308	A-A1-A2-B-C1-E2-F-F1-H1-I3-M-N-R-R1-T-V-Z-Z1	09454	A1-A2-B-C-C1-M-R-U-V-Z1	09581	A1-A2-B-F-F1-R-R1-V	09701	A-A1-A2-B-B2-C-C1-D-F-F1-J-L-M-N-R-R1-T-V-Z1
09309	A-A1-A2-B-C-C1-E2-F-H1-M-N-R-V-Z1	09459	A1-A2-B-C-C1-M-R-U-Z1	09582	A1-A2-B-F-F1-R-R1-V	09702	A1-A2-B-C-C1-F1-M-R-R1-U
09313	A-A1-A2-B-C-C1-E2-F-F1-F2-H1-R-R1-V-Z1	09461	A1-A2-B-C-C1-M-P-R-U-Z1	09583	A1-A2-B-F-F1-R-R1-V	09703	A1-A2-B-C-D-F1-H-U
09315	A-A1-A2-B-C1-E2-F-N-R-R1-V-Z1	09463	A1-A2-B-C-C1-R-U-Z1	09586	A1-A2-B-F-F1-R-R1-V	09704	A1-A2-B-C-O-V-V1
09316	A-A1-A2-B-C1-E2-F-F1-H1-I3-M-N-R-R1-T-V-Z-Z1	09464	A1-A2-B-C-C1-R-U-Z1	09587	A1-A2-B-F-F1-R-R1-V	09705	A1-A2-B-U
09319	A-A1-A2-B-C-C1-E2-F-F1-F2-H1-R-R1-U2-V-Z1	09468	A1-A2-B-C-C1-M-R-U-Z1	09588	A1-A2-B-V	09706	A1-A2-B-C-N-R-U-V-Z1
09320	A-A1-A2-B-C1-E2-F-H1-M-N-R-R1-V-Z1	09469	A1-A2-B-C-C1-R-U-Z1	09589	A1-A2-B-V	09707	A1-A2-B-C-F-F1-J-L-M-N-R-T-U-V-Z1
09321	A-A1-A2-B-C1-E2-F-H1-M-N-R-R1-V-Z1	09470	A1-A2-B-C-C1-M-R-U-Z1	09590	A1-A2-B-V	09708	A1-A2-B
09330	A-A1-A2-B-C1-E2-F-F1-H1-M-R-R1-V-Z1	09494	A1-A2-B-C-C1-M-R-U-Z1	09591	A1-A2-B-F-F1-R-R1-V	09709	A1-A2-B-B2-C1-E2-F-F1-H-H1-I3-J-L-N-R-R1-T-V-Z-Z1
09333	A-A1-A2-B-C1-E2-F-F1-H1-I3-M-N-R-R1-T-V-Z1	09498	A1-A2-B-C-C1-F-F1-F2-J-L-N-R-R1-T-V-Z1	09592	A1-A2-B-F-F1-R-R1-V	09710	A1-A2-B-C-C1-F-F1-J-L-M-N-R-R1-T-U-V-Z1
09337	A-A1-A2-B-C1-E2-F-F1-H1-M-R-R1-V-Z1	09501	A1-A2-B-V	09593	A1-A2-B-F-F1-R-R1-V	09712	A-A1-A2-B-F-H-R-U-V-Z1
09340	A-A1-A2-B-C1-F-H-N-R-V	09502	A1-A2-B-V	09594	A1-A2-B-F-F1-R-R1-V	09714	A1-A2-B-C-C1-F1-M-R-R1-U
09343	A-A1-A2-B-C1-F-M-N-V-Z1	09503	A1-A2-B-F-F1-R-R1-V	09595	A1-A2-B-F-F1-R-R1-V	09715	A1-A2-B-F-F1-J-L-M-N-R-T-V-Z1
09347	A-A1-A2-B-C1-E2-F-H1-M-R-R1-V-Z1	09504	A1-A2-B-V	09596	A1-A2-B-F-F1-R-R1-V	09716	A1-A2-B-C-F-F1-J-L-M-N-R-T-V-Z1
09348	A-A1-A2-B-C1-E2-F-F1-H1-I3-M-N-R-R1-T-V-Z-Z1	09505	A1-A2-B-V	09599	A1-A2-B-F-F1-R-R1-V	09717	A-A1-A2-B-M-R-V-W-Z1
09352	A-A1-A2-B-C1-E2-F-H1-M-R-R1-V-Z1	09506	A1-A2-B-V	09600	A1-A2-B-C-F-F1-R-U-Z1	09718	A1-A2-B-F-F1-J-L-M-N-R-T-U-V-Z1
09354	A-A1-A2-B-C1-E2-F-H1-M-R-R1-V-Z1	09507	A1-A2-B-V	09602	A1-A2-B-C-F-F1-N-R-U-V	09719	A1-A2-B-C-D-M-R-U-V-Z1
09355	A-A1-A2-B-C1-E2-F-H1-M-R-R1-V-Z1	09508	A1-A2-B-F-F1-R-R1-V	09603	A1-A2-B-C-F-F1-R-U-V-Z1	09720	A1-A2-B-M-R-U-V-Z1
09356	A-A1-A2-B-C1-E2-F-H1-M-N-R-R1-V-Z1	09509	A1-A2-B-F-F1-R-R1-V	09604	A1-A2-B-C-F-F1-P-R-U-V-Z1	09722	A-A1-A2-B-F-H-N-Q-V-Z-Z1
09357	A-A1-A2-B-C1-E2-F-H1-M-R-R1-V-Z1	09510	A-A1-A2-B-C1-E2-F-H1-M-R-R1-V-Z1	09605	A1-A2-B-C-D-H-M-R-U-V	09723	A1-A2-B-F-F1-J-L-M-N-R-T-U-V-Z1
09363	A-A1-A2-B-C1-E2-F-H1-M-R-R1-V-Z1	09511	A1-A2-B-F-F1-R-R1-V	09606	A1-A2-B-C-D-H-M-R-U-V	09724	A1-A2-B-C-C1-F1-M-R-R1-U
09365	A-A1-A2-B-C-C1-E2-F-H1-M-N-R-V-Z1	09513	A1-A2-B-F-F1-R-R1-V	09607	A-A1-A2-B-C-F-F1-M-N-R-R1-U-U3-V-W-Z1	09725	A-A1-A2-B-F-H-N-O-Q-V-V1-Z-Z1
09366	A-A1-A2-B-C1-E2-F-F1-H1-M-R-R1-V-Z1	09517	A1-A2-B-F-F1-R-R1-V	09608	A1-A2-B-C-F-N-R-U-V-Z1	09726	A1-A2-B-F-F1-J-L-M-N-R-T-U-V-Z1
09378	A-A1-A2-B-C1-E2-F-F1-H1-I3-M-N-R-R1-T-V-Z-Z1	09520	A1-A2-B-F-F1-R-R1-V	09609	A1-A2-B-C-F-R-U-Z1	09727	A-A1-A2-B-B2-C-C1-D-F-F1-J-L-M-N-R-R1-T-V-Z1
09381	A-A1-A2-B-C1-E2-F-F1-H1-I3-M-N-R-R1-T-V-Z-Z1	09523	A1-A2-B-F-F1-R-R1-V	09610	A1-A2-B-C-F-F1-M-R-U-V-Z1	09728	A-A1-A2-B-B2-C-C1-F-F1-J-L-N-R-R1-T-V-Z1
		09522	A1-A2-B-V	09613	A1-A2-B-C-F-N-U-V	09729	A1-A2-B-C-F-N-R-R1-U-V-Z1
		09524	A1-A2-B-F-F1-R-R1-V	09617	A1-A2-B-C-F-R-U-Z1	09730	A-A2-B-B2-C-C1-F-F1-J-L-M-N-R-R1-T-V-Z1
		09532	A1-A2-B-F-F1-R-R1-V	09618	A1-A2-B-C-F-R-U-Z1	09731	A-A2-B-B2-C-C1-F-F1-J-L-M-N-R-R1-T-V-Z1
		09533	A1-A2-B-F-F1-R-R1-V	09620	A1-A2-B-C-F-R-U-Z1	09732	A1-A2-B-N-V-Z1
		09534	A1-A2-B-F-F1-R-R1-V	09621	A1-A2-B-C-F-R-U-Z1	09733	A1-A2-B-N-V
		09543	A1-A2-B-F-F1-R-R1-V	09622	A1-A2-B-C-F-R-U-Z1	09734	A-A1-A2-B-C-C1-F-F1-J-L-M-N-R-R1-T-V-Z1
		09544	A1-A2-B-F-F1-R-R1-V	09623	A1-A2-B-C-F-R-U-Z1	09735	A1-A2-B-N-V-Z1
		09554	A1-A2-B-F-F1-R-R1-V	09624	A1-A2-B-C-F-F1-J-L-N-T-U-V-Z1		
		09556	A1-A2-B-F-F1-R-R1-V	09625	A1-A2-B-C-F-R-U-Z1		
		09564	A1-A2-B-F-F1-R-R1-V	09626	A1-A2-B-C-F-R-U-Z1		
		09565	A1-A2-B-F-F1-R-R1-V	09627	A1-A2-B-C-F-R-U-Z1		
		09566	A1-A2-B-F-F1-R-R1-V	09630	A1-A2-B-C-F-U-V		
		09567	A1-A2-B-F-F1-R-R1-V	09631	A1-A2-B-C-F-R-U-Z1		
		09568	A1-A2-B-V	09633	A1-A2-B-B2-C-D-F-F1-M-R-U-U1-U2-U3-V-Z1		
		09569	A1-A2-B-F-F1-R-R1-V	09636	A1-A2-B-C-F-R-U-Z1		
		09570	A1-A2-B-F-F1-R-R1-V	09642	A1-A2-B-M-N-R-U-V		
		09573	A1-A2-B-F-F1-R-R1-V	09643	A1-A2-B-M-R-U-V-Z1		
		09574	A1-A2-B-F-F1-R-R1-V	09645	A1-A2-B-C-F-F1-R-U-Z1		
		09575	A1-A2-B-F-F1-R-R1-V				
		09576	A1-A2-B-F-F1-R-R1-V				

APO/ FPO/ DPO	See Restrictions	APO/ FPO/ DPO	See Restrictions	APO/ FPO/ DPO	See Restrictions	APO/ FPO/ DPO	See Restrictions
09736	A-A1-A2-B-B2-C-C1-D-F-F1-J-L-M-N-R-R1-T-V-Z1	09805	A1-A2-B-E2-E3-F-F1-R-R1-V-Z1	09841	A-A1-A2-B-N-R-U-Z1	34021	A1-A2-B-F-F1-T-J-L-M-N-V-Z1
09737	A-A1-A2-B-B2-C-C1-F-F1-I-L-M-N-R-R1-T-V-W-Y-Z-Z1	09806	A-A1-A2-B-C1-E2-F-F1-H1-J-L-M-N-R-R1-T-V-Z1	09842	A-A1-A2-B-F-F1-J-L-N-R-T-V-Z1	34022	A1-A2-B-F-F1-J-L-M-N-T-V-Z1
09738	A-A1-A2-B-B2-C-C1-D-F-F1-J-L-M-N-R-R1-T-V-Z1	09808	A-A1-A2-B-B2-C1-E2-F-F1-H-H1-J-L-N-R-R1-T-V-Z1	09844	A-A1-A2-B-C-C1-D-F-F1-J-L-M-N-R-R1-T-V-Z1	34023	A1-A2-B-F-F1-J-L-M-N-T-V-Z1
09739	A-A1-A2-B-B2-C-C1-D-F-F1-J-L-M-N-R-R1-T-V-Z1	09809	A1-A2-B-F-F1-L-N-T-V-Z1	09845	A-A1-A2-B-B2-E3-F-F1-J-L-M-N-R-R1-T-V-Z1	34024	A1-A2-B-F-F1-J-L-M-N-T-V-Z1
09741	A-A1-A2-B-C1-E2-F-F1-H1-J-L-M-N-R-R1-T-V-W-Y-Z1	09810	A-A1-A2-B-F-F1-N-R-V-Z1	09846	A-A1-A2-B-B2-C1-F-F1-J-L-N-R-R1-T-V-Z1	34025	A1-A2-B-F-F1-J-L-M-N-T-V-Z1
09742	A-A1-A2-B-B2-F-F1-J-L-M-N-R-T-V-Z1	09811	A1-A2-B-E2-E3-F-F1-H1-N-R-R1-U-V-Z1	09848	A-A1-A2-B-F-M-R-V-Z1	34030	A1-A2-B-F-F1-J-L-M-N-T-V-Z1
09743	A-A1-A2-B-F-H-N-Q-V-Z-Z1	09812	A1-A2-B-E2-E3-F-F1-I-J-L-N-R-T-U-V-Z-Z1	09851	A-A1-A2-B-F-N-R-V-Z1	34031	A1-A2-B-F-F1-J-L-M-N-T-V-Z1
09744	A-A2-B-B2-C-C1-F-F1-J-L-M-N-R-R1-T-V-Z1	09813	A1-A2-B-E2-E3-F-F1-J-L-N-R-T-U-V-Z-Z1	09852	A1-A2-B-E2-E3-F-F1-H1-N-R-R1-U-V-Z1	34032	A1-A2-B-F-F1-J-L-M-N-T-V-Z1
09745	A-A1-A2-B-F-F1-M-N-R-R1-V-Z1	09814	A1-A2-B-E2-E3-F-F1-I3-J-L-N-R-T-U-V-Z-Z1	09853	A1-A2-B-E2-F-H1-R-R1-U2-V-Z1	34033	A1-A2-B-C-F-F1-J-L-M-N-T-V-Z1
09747	A1-A2-B-F-J-N-U-V-Z1	09815	A-A1-A2-B-F-N-R-V-Z1	09855	A-A1-A2-B-C1-E2-F-F1-H1-M-R-R1-U2-V-Z1	34034	A1-A2-B-F-F1-J-L-M-N-T-V-Z1
09748	A-A1-A2-B-B2-C-C1-D-F-F1-J-L-M-N-R-R1-T-V-Z1	09816	A-A1-A2-B-B2-C-C1-E2-E3-F-F1-J-L-N-R-R1-T-V-Z1	09858	A1-A2-B-E2-E3-F-F1-H1-N-R-R1-U-V-Z1	34035	A1-A2-B-F-F1-H-J-L-M-N-T-V-Z1
09749	A-A1-A2-B-F-H-N-U-V-Z1	09817	A-A1-A2-B-B2-C1-E2-E3-F-F1-H-H1-J-L-M-N-R-T-V-Z1	09859	A1-A2-B-C1-E2-E3-F-F1-H1-R-R1-V-Z1	34036	A1-A2-B-F-F1-J-L-M-N-T-V-Z1
09750	A-A2-B-B2-C-C1-F-F1-J-L-M-N-R-R1-T-V-Z1	09818	A-A1-A2-B-C-F-M-V-Z1	09861	A-A1-A2-B-F-F1-N-O-R-R1-V-Z1	34037	A1-A2-B-C-F-F1-H-I-L-M-N-T-V-Z1
09751	A1-A2-B-C-D-E-H-M-R-U	09820	A-A1-A2-B-B2-F-F1-H-H1-J-L-M-N-R-R1-T-V-Z1	09865	A-A1-A2-B-R-U-V-Z1	34038	A1-A2-B-L-M-N-U-V-Z1
09752	A1-A2-B-C-D-F1-H-U	09821	A-A1-A2-B-F-N-R-V-Z1	09868	A-A1-A2-B-N-U-V-Z1	34039	A1-A2-B-F-F1-J-L-M-N-T-V-Z1
09753	A-A1-A2-B-F-N-V-Z1	09822	A-A1-A2-B-F-R-V-Z1	09870	A-A1-A2-B-C1-E2-F-F1-H1-I3-J-L-M-N-R-R1-T-U4-V-Z-Z1	34041	A1-A2-B-F-F1-J-L-M-N-T-V-Z1
09754	A-A1-A2-B-F-H-N-Q-V-Z-Z1	09823	A-A1-A2-B-F-F1-J-L-N-R-T-V-Z1	09874	A-A1-A2-B-C1-E2-F-F1-H1-I3-J-L-M-N-R-R1-T-U4-V-Z-Z1	34042	A-A1-A2-B-C-F-F1-M-N-R-U-U1-V-W-Z1
09755	A-A1-A2-B-B2-C-C1-D-F-F1-J-L-M-N-Q-R-R1-T-V-Z1	09824	A-A1-A2-B-F-R-V-Z1	09875	A-A1-A2-B-C1-E2-F-F1-H1-I3-J-L-M-N-R-R1-T-U4-V-Z-Z1	34044	A-A1-A2-B-D-F-M-N-O-R-R1-V-V1-Z-Z1
09756	A-A1-A2-B-B2-E3-F-F1-J-L-N-Q-R-R1-T-V-Z-Z1	09825	A-A1-A2-B-C-C1-D-F-F1-J-L-M-N-R-R1-T-V-Z1	09880	A-A1-A2-B-C1-E2-F-F1-H1-N-R-R1-U-V-Z1	34055	A1-A2-B-F-F1-J-L-M-N-T-V-Z1
09759	A-A1-A2-B-B2-C-C1-E2-F-F1-F2-J-L-N-R-R1-T-V-Z1	09826	A-A1-A2-B-B2-C1-E1-E2-E3-F-F1-J-L-M-N-R-R1-T-V-W-Z1	09888	A1-A2-B-C-E2-F-H1-N-R-R1-U2-V-Z1	34058	A1-A2-B-F-F1-R-R1-V-Z1
09760	A-A1-A2-B-B2-C-C1-D-F-F1-J-L-M-N-Q-R-R1-T-V-Z1	09827	A-A1-A2-B-F-F1-J-L-M-N-R-T-V-Z1	09890	A1-A2-B-E2-F-H1-N-R-R1-U2-V-Z1	34060	A1-A2-B-B2-C1-E2-F-F1-J-L-N-R-R1-T-V-Z1
09762	A-A1-A2-B-B2-E3-F-F1-J-L-N-R-R1-T-V-Z1	09828	A-A1-A2-B-F-F1-J-L-N-T-V-Z1	09892	A-A1-A2-B-E2-F-F1-J-L-N-R-R1-T-V-Z1	34078	A1-A2-B-F1-N-V-Z1
09769	A-A1-A2-B-B2-C-C1-D-F-F1-J-L-M-N-R-R1-T-V-Z1	09829	A1-A2-B-C-N-R-V-Z1	09895	A-A1-A2-B-B2-C1-E2-F-L-N-R-T-V-W-Z1	34080	A1-A2-B-F-F1-R-R1-V
09777	A-A1-A2-B-C-E1-F-F1-J-L-M-N-R-T-V	09830	A1-A2-B-C-M-N-R-V-Z1	09898	A1-A2-B-C-E2-F-H1-N-R-R1-U2-V-Z1	34081	A1-A2-B-F-F1-R-R1-V
09780	A-A1-A2-B-F-H-N-R-V	09831	A1-A2-B-F-F1-J-L-N-T-U-V-Z1	34002	A1-A2-B-F-F1-J-L-N-T-V-Z1	34082	A1-A2-B-F-F1-R-R1-V
09801	A-A1-A2-B-C1-E2-F-H1-M-N-R-R1-V-Z1	09832	A-A1-A2-B-U1-V-Z1	34004	A1-A2-B-F-F1-J-L-N-T-V	34083	A1-A2-B-F-F1-R-R1-V
09803	A1-A2-B-E2-E3-F-F1-H1-N-R-R1-U-V-Z1	09833	A1-A2-B-U1-V-Z1	34007	A-A1-A2-B-C1-F-F1-M-N-R-R1-V-Z1	34084	A1-A2-B-F-F1-R-R1-V
09804	A-A1-A2-B-F-F1-N-R-V-Z1	09834	A1-A2-B-E2-E3-F-F1-R-R1-U-Z1	34008	A1-A2-B-B2-E1-F-F1-H-H1-J-L-M-N-R-R1-T-V-Z1	34090	A1-A2-B-F-F1-R-R1-V
		09835	A-A1-A2-B-N-V-Z1	34011	A1-A2-B-B2-C1-E2-F-F1-J-L-M-N-R-R1-T-V-Z1	34091	A1-A2-B-F-F1-R-R1-V
		09836	A-A1-A2-B-C-F-F1-J-L-M-N-R-T-V-Z1	34020	A1-A2-B-F-F1-J-L-M-N-T-V-Z1	34092	A1-A2-B-V
		09837	A1-A2-B-E2-E3-V-Z1			34093	A1-A2-B-V
		09838	A1-A2-B-E2-E3-U-V-Z1			34094	A1-A2-B-F-F1-R-R1-V
		09839	A-A1-A2-B-U-V-Z1			34095	A1-A2-B-F-F1-R-R1-V
		09840	A-A1-A2-B-E2-E3-V-Z1			34096	A1-A2-B-F-F1-R-R1-V
						34098	A1-A2-B-F1
						34099	A-A1-A2-B-F1-U
						96201	A-A1-A2-B-F1
						96202	A-A1-A2-B-F1-U
						96203	A-A1-A2-B-F1

APO/ FPO/ DPO	See Restrictions	APO/ FPO/ DPO	See Restrictions	APO/ FPO/ DPO	See Restrictions	APO/ FPO/ DPO	See Restrictions
96204	A-A1-A2-B-F1	96349	A1-A2-B-F-F1-F2-H-M-W-Z1	96521	A1-A2-B-F-F1-J-L-N-T-U3-V-Z1	96611	A1-A2-B-V
96205	A-A1-A2-B-F1-U					96612	A1-A2-B-V
96206	A-A1-A2-B-F1-U	96350	A1-A2-B-F-F1-F2-H-M-W-Z1	96530	A-A1-A2-B-F-F1-H-H1-J-L-M-N-T-U-V-Z1	96613	A1-A2-B-V
96207	A-A1-A2-B-F1-V					96615	A1-A2-B-F-F1-R-R1-V
96208	A-A1-A2-B-F1-U	96351	A1-A2-B-F-F1-F2-H-M-W-Z1	96531	A-A1-A2-B-C-F-F1-H-M-N-R-U-V	96616	A1-A2-B-F-F1-R-R1-V
96209	A-A1-A2-B-F-F1-J-L-N-T-U-V-Z1	96362	A1-A2-B-F-F1-F2-M-W-Z1	96532	A-A1-A2-B-F-F1-H-J-L-M-N-T-U-V-Z1	96617	A1-A2-B-F-F1-R-R1-V
96213	A-A1-A2-B-C-F1-R-U	96365	A1-A2-B-C-M-R-V-W	96534	A-A1-A2-B-F-U-Z1	96619	A1-A2-B-V
96214	A-A1-A2-B-C-F1-R-U	96367	A1-A2-B-C-L-M-R-W	96535	A-A1-A2-B-F-F1-J-L-N-T-V-Z1	96620	A1-A2-B-F-F1-R-R1-V
96218	A-A1-A2-B-F1-U	96368	A1-A2-B-C-M-R-W			96621	A1-A2-B-V
96224	A-A1-A2-B-F1-U	96370	A1-A2-B-F-F1-F2-H-M-W-Z1	96537	A1-A2-B-V-Z1	96622	A1-A2-B-F-F1-R-R1-V
96251	A-A1-A2-B-F1-U			96538	A1-A2-B-V-Z1	96628	A1-A2-B-F-F1-R-R1-V
96257	A-A1-A2-B-F1-U	96372	A1-A2-B-M-W	96540	A1-A2-B-V-Z1	96629	A1-A2-B-F-F1-R-R1-V
96258	A-A1-A2-B-F1-U	96373	A1-A2-B-M-W	96541	A1-A2-B-V	96631	A-A1-A2-B-C1-E2-F-H1-M-R-R1-V
96260	A-A1-A2-B-F1-U	96374	A1-A2-B-M-W	96542	A1-A2-B-V-Z1	96632	A1-A2-B-F-F1-R-R1-V
96264	A-A1-A2-B-C-F1-R-U	96375	A1-A2-B-M-W	96543	A1-A2-B-P-V-Z1	96643	A1-A2-B-F-F1-R-R1-V
96266	A-A1-A2-B-C-F1-R-U	96376	A1-A2-B-M-W	96546	A1-A2-B-F-R-U3	96650	A1-A2-B-F-F1-R-R1-V
96267	A-A1-A2-B-C-F1-R-U-V	96377	A1-A2-B-M-W	96548	A-A1-A2-B-H-M-R-U	96655	A1-A2-B-F-F1-R-R1-V
96269	A-A1-A2-B-F1-U-Z1	96378	A1-A2-B-M-W	96549	A-A1-A2-B-F-F1-H-J-L-M-N-T-U-V-Z1	96657	A1-A2-B-F-F1-R-R1-V
96271	A-A1-A2-B-F1-U	96379	A1-A2-B-M-W	96550	A-A1-A2-B-H-M-U-V-Z1	96660	A1-A2-B-F-F1-R-R1-V
96275	A-A1-A2-B-F1-U	96380	A1-A2-B-M-W	96551	A-A1-A2-B-F-F1-H-J-L-M-N-T-U-V-Z1	96661	A1-A2-B-F-F1-R-R1-V
96276	A-A1-A2-B-C-F1-R	96382	A1-A2-B-M-W			96662	A1-A2-B-F-F1-R-R1-V
96278	A-A1-A2-B-C-F1-R-U	96384	A1-A2-B-M-W	96552	A1-A2-B-Z1	96663	A1-A2-B-F-F1-R-R1-V
96283	A-A1-A2-B-F1-U	96385	A1-A2-B-M-W	96553	A-A1-A2-B-F-F1-H-M-R-U	96664	A1-A2-B-V
96284	A-A1-A2-B-F1-U	96386	A1-A2-B-M-W			96665	A1-A2-B-V
96303	A1-A2-B-F-F1-H-J-L-M-N-T-V-W-Z1	96387	A1-A2-B-M-W	96554	A-A1-A2-B-F-F1-H-J-L-M-N-T-U-V-Z1	96666	A1-A2-B-V
96306	A1-A2-B-F-F1-F2-H-M-W-Z1	96388	A1-A2-B-M-W			96667	A1-A2-B-F-F1-R-R1-V
96309	A1-A2-B-C-M-R-V-W	96389	A1-A2-B-M-W	96555	A1-A2-B-F-M-V	96668	A1-A2-B-F-F1-R-R1-V
96310	A1-A2-B-M-W	96401	A1-A2-B-C-F-N-O-R-V-V1-Z1	96557	A1-A2-B-F-M-V	96669	A1-A2-B-F-F1-R-R1-V
96319	A1-A2-B-C-M-R-W	96427	A-A1-A2-B-C1-E2-F-H1-M-R-R1-V	96562	A-A1-A2-B-B2-C-C1-D-E2-E3-F-F1-H-H1-I-L-M-N-R-T-V-Z-Z1	96670	A1-A2-B-V
96321	A1-A2-B-F-F1-F2-H-M-W-Z1	96447	A1-A2-B-C-F-N-R-U3-V-V1	96577	A-A1-A2-B-F-H-M-N-R-U	96671	A1-A2-B-F-F1-R-R1-V
96322	A1-A2-B-F-F1-F2-H-M-W-Z1	96501	A-A1-A2-B-N-V	96578	A1-A2-B-B2-F1-H-J-N-R	96672	A1-A2-B-F-F1-R-R1-V
96323	A1-A2-B-C-M-R-V-W	96502	A1-A2-B-F-N-U3-V-Z1			96673	A1-A2-B-V
96326	A1-A2-B-C-F-M-R-W	96504	A-A1-A2-B-C-C1-F-F1-I-L-N-R-R1-T-V-W-Z-Z1	96595	A1-A2-B-F-U3-V-Z1	96674	A1-A2-B-F-F1-R-R1-V
96328	A1-A2-B-C-M-R-W	96505	A-A1-A2-B-C-C1-F-F1-I-L-N-R-R1-T-V-W-Z-Z1	96598	A1-A2-B-N-O-V-V1	96675	A1-A2-B-F-F1-R-R1-V
96330	A1-A2-B-C-M-R-W			96599	A1-A2-B-N-V	96679	A1-A2-B-F-F1-R-R1-V
96331	A1-A2-B-M-W			96601	A1-A2-B-V	96681	A1-A2-B-V
96336	A1-A2-B-C-M-R-V-W	96507	A-A1-A2-B-F-F1-H-J-L-N-T-V-Z1	96602	A1-A2-B-V	96682	A1-A2-B-V
96337	A1-A2-B-M-W			96603	A1-A2-B-V	96683	A1-A2-B-V
96338	A1-A2-B-M-W	96510	A1-A2-B-I-N-V	96604	A1-A2-B-V	96686	A1-A2-B-V
96339	A1-A2-B-M-V-W	96511	A1-A2-B-I-N-V	96605	A1-A2-B-V	96691	A1-A2-B-F-F1-R-R1-V
96343	A1-A2-B-M-W	96515	A1-A2-B-D-F-U3	96606	A1-A2-B-V	96692	A1-A2-B-F-F1-R-R1-V
96346	A1-A2-B-F-F1-F2-H-M-V-W-Z1	96516	A1-A2-B-D-F-Z1	96607	A1-A2-B-V	96693	A1-A2-B-F-F1-R-R1-V
96347	A1-A2-B-F-F1-F2-H-M-W-Z1	96517	A1-A2-B-F-U3-V-Z1	96608	A1-A2-B-V	96694	A1-A2-B-F-F1-R-R1-V
		96520	A1-A2-B-F-N-U3-V	96609	A1-A2-B-V	96695	A1-A2-B-F-F1-R-R1-V
				96610	A1-A2-B-V	96696	A1-A2-B-F-F1-R-R1-V
						96698	A1-A2-B-V

RESTRICTIONS

LEGEND

PS Form 2976, *Customs — CN 22 (Old C 1) and Sender's Declaration* (green label)
 PS Form 2976-A, *Customs Declaration and Dispatch Note*
 PS Form 2976-B, *Priority Mail Express International Shipping Label and Customs Form*

AAFES	= Army and Air Force Exchange Service
APO	= Army/Air Force Post Office
Box R	= Retired military personnel
DMM	= <i>Domestic Mail Manual</i>
DPO	= Diplomatic Post Office
FPO	= Fleet Post Office
MOM	= Military Ordinary Mail
MPO	= Military Post Office
PAL	= Parcel Airlift
PSC	= Postal Service Center
SAM	= Space Available Mail
USDA	= United States Department of Agriculture

Note: Mail order catalogs are prohibited as SAM or PAL mail.

A. Securities, currency, or precious metals in their raw, unmanufactured state are prohibited. Official shipments are exempt from this restriction.

A1. Mail addressed to "Any Servicemember," or similar wording such as "Any Soldier," "Sailor," "Airman," or "Marine"; "Military Mail"; etc., is prohibited. Mail must be addressed to an individual or job title such as "Commander," "Commanding Officer," etc.

A2. APO/FPO/DPO addresses shall not include a city and/or country name.

B. Regardless of mail class, a customs declaration (i.e., PS Form 2976, PS Form 2976-A, or PS Form 2976-B) is required for all items weighing 16 ounces or more, or any item (regardless of weight) containing potentially dutiable mail contents (e.g., merchandise or goods) addressed to or from an APO, FPO, or DPO ZIP Code. If mailed using Priority Mail Express service, mailpieces requiring a customs form that are addressed to or from an APO, FPO, or DPO location must bear a properly completed PS Form 2976-B. No customs form is required for items weighing less than 16 ounces when the contents are not potentially dutiable (e.g., documents). The surface area of the address side of the mailpiece must be large enough to contain the applicable customs declaration. The following exceptions apply:

- Known mailers are exempt from providing customs documentation on non-dutiable letters or printed matter. (A known mailer is a business mailer who enters volume mailings through a business mail entry unit (BMEU) or other bulk mail acceptance location, pays postage through an advance deposit account, uses a permit imprint for postage payment, and submits a completed postage statement at the time of entry that certifies that the mailpieces contain no dangerous materials that are prohibited by postal regulations.)
- All federal, state, and local government agencies whose mailings are regarded as "Official Mail" are exempt from providing customs documentation on any item addressed to an APO, FPO, or DPO except for those APOs/FPOs/DPOs to which restriction "B2" applies.
- Prepaid mail from military contractors is exempt, providing the mailpiece is endorsed "Contents for Official Use — Exempt from Customs Requirements."

B2. All federal, state, and local government agencies must complete customs documentation when sending potentially dutiable mail addressed to or from this APO, FPO, or DPO.

C. Cigarettes and other tobacco products are prohibited.

C1. Obscene articles, prints, paintings, cards, films, videotapes, etc., and horror comics and matrices are prohibited.

D. Coffee is prohibited.

E. Medicines (prescription, over-the-counter, vitamins, and supplements) are prohibited when mailed to individuals for human or animal use. This prohibition does not apply when medicines are sent as official mail only between specifically designated agencies such as pharmaceutical distributors, hospitals, clinics, and pharmacies.

E1. Medicines or vaccines not conforming to French laws are prohibited.

E2. Any matter depicting nude or seminude persons, pornographic or sexual items, or nonauthorized political materials is prohibited. Although religious materials contrary to the Islamic faith are prohibited in bulk quantities, items for the personal use of the addressee are permissible.

E3. Radio transceivers, cordless telephones, global positioning systems, scanners, base stations, and handheld transmitters are prohibited.

F. Firearms of any type are prohibited in all classes of mail. See definitions of firearms in PUB 52, Sec. 431. This restriction does not apply to firearms mailed to or by official U.S. government agencies. The restriction for mail to this APO/FPO/DPO ZIP Code does not apply to firearms mailed from this APO/FPO/DPO ZIP Code, provided ATF and USPS regulations are met. Antique firearms are a separate category defined in PUB 52, Sec. 431.3 and ATF regulations; they do not require an ATF form.

F1. Privately owned weapons addressed to an individual are prohibited in any class of mail.

F2. Importation of firearms is restricted to one shotgun and one single shot .22 caliber rifle per individual.

G. Only letters, flats, and Periodicals are authorized. Parcels of any class are prohibited.

H. Meats, including preserved meats, whether hermetically sealed or not, are prohibited.

H1. Pork or pork by-products are prohibited.

I. Mail of all classes must fit in a mail sack. Mail may not exceed the following dimensions:

- Maximum length 20 inches.
- Maximum width 12 inches.
- Maximum height 12 inches.

The maximum length and girth combined may not exceed 68 inches.

This restriction does not apply to registered mail and official government mail marked MOM.

I1. This restriction does not apply to registered mail.

I2. This restriction does not apply to official government mail marked MOM.

I3. Mail may not exceed the following dimensions:

- Maximum length 27 inches.
- Maximum width 14 inches.
- Maximum height 14 inches.

J. Parcels may not exceed 108 inches in length and girth combined.

K. Mail that includes in the address the words, "Dependent Mail Section," may consist only of letter mail, newspapers, magazines, and books. No parcel of any class containing any other matter may be mailed to the Dependent Mail section. This restriction does not apply if the address does not include the words "Dependent Mail Section."

L. All official mail is prohibited.

M. Fruits, vegetables, animals, and living plants are prohibited.

N. Registered mail is prohibited.

O. Delivery status information for Extra Services is not available on USPS.com.

P. APO is used for the receipt and dispatch of official mail only.

Q. Mail may not exceed 66 pounds, and size is limited to 42 inches maximum length and 72 inches maximum length and girth combined.

R. All alcoholic beverages, including those mailable under PUB 52, Sec. 421, are prohibited.

R1. Materials used in the production of alcoholic beverages (i.e., distilling material, hops, malts, yeast, etc.) are prohibited.

S. Mail of all classes must fit in a mail sack. Mail may not exceed the following dimensions and weight:

- Maximum length 12 inches.
- Maximum width 12 inches.
- Maximum height 5 1/2 inches.
- Maximum weight 25 pounds.

The maximum length and girth combined may not exceed 47 inches.

T. Mailings of case lots of food and supplemental household shipments must be approved by the sender's parent agency prior to mailing.

U. Parcels must weigh less than 16 ounces when addressed to Box R. This restriction does not apply to mail endorsed "Free Matter for the Blind or Handicapped."

U1. Mail is limited to First-Class Mail weighing 13 ounces or less when addressed to Box R. This restriction does not apply to mail endorsed "Free Matter for the Blind or Handicapped." Videotapes are prohibited when addressed to Box R, regardless of weight.

U2. Mail is limited to First-Class Mail letters only when addressed to Box R.

U3. Mail is limited to First-Class Mail correspondence (including voice and video cassettes), newspapers, magazines, photographs, not exceeding 16 ounces, when addressed to Box R.

U4. Mail addressed to Box C is limited to 2 pounds, regardless of class.

V. Priority Mail Express Military Service (PMEMS) not available from any origin.

V1. USPS Tracking is not available.

W. Meat products, such as dried beef, salami, and sausage, may be mailed, provided they remain in their original, hermetically sealed packages and bear USDA certification. Other meats, bones, skin, hair, feathers, horns or hoofs of hoofed animals, wool samples, tobacco leaves, including chewing and pipe tobacco, snuff, cigars, and cigarettes, or obscene material, including obscene drawings, photographs, films, and carvings, are prohibited. Exception: 200 grams of tobacco per parcel are permitted duty free.

X. Personal mail is limited to First-Class Mail items (to include audio cassettes and voice tapes) weighing 13 ounces or less. This limitation does not apply to official mail.

Y. Mail is limited to First-Class and Priority Mail items only. All Periodicals, Standard Mail items, and Package Services items (including SAM and PAL) are not authorized. This restriction also applies to official mail.

Z. No outside pieces (OSPs).

Z1. The following restriction is applicable only to International Service Centers (ISC)/Exchange Offices. An Anti-Pilferage Seal (Item No O817E or O818A) is required on all pouches and sacks.

Freely Associated States (FAS) Restrictions

Effective March 19, 2015, the mailing restrictions for Freely Associated States will be listed in the Pull-Out section of the *Postal Bulletin* and updated periodically.

Freely Associated States

Mail addressed to freely associated states is subject to certain conditions or restrictions of mailing regarding content, preparation, and handling. The FAS table below outlines these conditions as listed by each affected FAS ZIP Code™ through the use of footnoted mailing restrictions codes (see the [Restrictions](#) following the table). For additional information on available extra services for FAS destinations, see *Mailing Standards of the United States Postal Service, Domestic Mail Manual (DMM®)*, part 503.

Acceptance clerks should use the table with the POS ONE terminal to determine which FAS ZIP Codes are active and which conditions of mailing apply. Inquiries may be sent to Randall Sobol at randall.f.sobol@usps.gov.

FAS Restrictions Table

FAS Table	See Restrictions
96939	A, B
96940	A, B
96941	A, B
96942	A, B
96943	A, B

FAS Table	See Restrictions
96944	A, B
96960	A, B
96970	A, B
Marshall Islands	C
Federated States of Micronesia	C

RESTRICTIONS LEGEND

PS Form 2976, *Customs* – CN 22 (Old C 1) and *Sender's Declaration* (green label)

PS Form 2976-A, *Customs Declaration and Dispatch Note*

FAS = Freely Associated State

- A. Bank currency (coin and paper) is prohibited.
- B. Signature Confirmation, Signature Confirmation Restricted Delivery, Adult Signature Requested, Adult Signature Restricted Delivery, Certified Mail Adult Signature Required, and Certified Mail Adult Signature Restricted Delivery not available.
- C. COD is prohibited.

– *Asia-Pacific Relations,
Global Business, 1-21-16*

Thrift Savings Plan Fact Sheet

ANNUAL RETURNS	G Fund	F Fund	U.S. Aggregate Index	C Fund	S&P 500 Stock Index	S * Fund	Dow Jones U.S. Completion TSM Index	I * Fund	EAFE Stock Index
1995	7.03	18.31	18.47	37.41	37.58	—	33.48	—	11.27
1996	6.76	3.66	3.63	22.85	22.96	18.52	17.18	6.27	6.14
1997	6.77	9.60	9.65	33.17	33.36	26.61	25.69	1.46	1.55
1998	5.74	8.70	8.69	28.44	28.58	7.51	8.63	20.46	20.09
1999	5.99	-0.85	-0.82	20.95	21.04	32.70	35.49	26.81	26.72
2000	6.42	11.67	11.63	-9.14	-9.10	-8.76	-15.77	-14.11	-14.17
2001	5.39	8.61	8.44	-11.94	-11.89	-9.04*	-2.52*	-21.94*	-14.88*
2002	5.00	10.27	10.26	-22.05	-22.10	-18.14	-17.80	-15.98	-15.94
2003	4.11	4.11	4.10	28.54	28.69	42.92	43.84	37.94	38.59
2004	4.30	4.30	4.34	10.82	10.88	18.03	18.10	20.00	20.25
2005	4.49	2.40	2.43	4.96	4.91	10.45	10.03	13.63	13.54
2006	4.93	4.40	4.33	15.79	15.79	15.30	15.28	26.32	26.34
2007	4.87	7.09	6.97	5.54	5.49	5.49	5.39	11.43	11.17
2008	3.75	5.45	5.24	-36.99	-37.00	-38.32	-39.03	-42.43	-43.38
2009	2.97	5.99	5.93	26.68	26.46	34.85	37.43	30.04	31.78
2010	2.81	6.71	6.54	15.06	15.06	29.06	28.62	7.94	7.75
2011	2.45	7.89	7.84	2.11	2.11	-3.38	-3.76	-11.81	-12.14
2012	1.47	4.29	4.22	16.07	16.00	18.57	17.89	18.62	17.32
2013	1.89	-1.68	-2.02	32.45	32.39	38.35	38.05	22.13	22.78
2014	2.31	6.73	5.97	13.78	13.69	7.80	7.63	-5.27	-4.90

*Rates of return for May (inception of S and I Funds) through December 2001.

MONTHLY RETURNS	G Fund	F Fund	U.S. Aggregate Index	C Fund	S&P 500 Stock Index	S * Fund	Dow Jones U.S. Completion TSM Index	I * Fund	EAFE Stock Index
2015									
Jan	0.18	2.13	2.10	-2.99	-3.00	-1.85	-1.89	1.19	0.49
Feb	0.13	-0.91	-0.94	5.75	5.75	6.05	6.03	5.97	5.98
March	0.16	0.47	0.46	-1.57	-1.58	1.24	1.23	-1.43	-1.52
April	0.15	-0.28	-0.36	0.96	0.96	-1.50	-1.55	4.11	4.08
May	0.17	-0.26	-0.24	1.29	1.29	1.84	1.83	-0.42	-0.51
June	0.17	-1.07	-1.09	-1.93	-1.94	-0.71	-0.76	-2.80	-2.83
July	0.19	0.74	0.70	2.10	2.10	-0.12	-0.12	2.08	2.08
Aug	0.18	-0.11	-0.14	-6.03	-6.03	-5.80	-5.89	-7.36	-7.36
Sept	0.18	0.75	0.68	-2.47	-2.47	-4.80	-4.84	-5.02	-5.08
Oct	0.17	0.02	0.02	8.45	8.44	5.61	5.50	7.07	7.82
Nov	0.17	-0.24	-0.26	0.31	0.30	1.75	1.66	-0.86	-1.56
Dec	0.18	-0.30	-0.32	-1.57	-1.58	-3.91	-3.91	-2.03	-1.35
LAST 12 MONTHS	2.04	0.91	0.55	1.46	1.38	-2.92	-3.42	-0.51	-0.81

The G Fund is managed internally by the Federal Retirement Thrift Investment Board. Assets of the F, C, S, and I Funds are managed externally. The Board currently has contracts with BlackRock Institutional Trust Company, N.A., to manage the F, C, S, and I Fund assets. The F, C, S, and I Funds invest in commingled trust funds, in which the assets of tax-deferred employee benefit plans are combined and invested together. The F, C, S, and I Funds and the BlackRock funds are passively managed index funds.

Future performance of the funds will vary and may be significantly different from the returns shown above. See the *Summary of the Thrift Savings Plan* for detailed information about the funds and their investment risks. The monthly returns of the TSP Funds represent net earnings for the month after deduction of accrued administrative expenses and, except for the G Fund, after deduction of trading costs and accrued investment management fees as well. The returns for the four indexes shown do not include any of these deductions.

* Implemented May 2001.

See next page for L Funds.

L Funds

Annual Returns	L Income	L 2020	L 2030	L 2040	L 2050
2006	7.59	13.72	15.00	16.53	
2007	5.56	6.87	7.14	7.36	
2008	-5.09	-22.77	-27.50	-31.53	
2009	8.57	19.14	22.48	25.19	
2010	5.74	10.59	12.48	13.89	
2011	2.23	0.41	-0.31	-0.96	
2012	4.77	10.42	12.61	14.27	15.85
2013	6.97	16.03	20.16	23.23	26.20
2014	3.77	5.06	5.74	6.22	6.37

Monthly Returns	L Income	L 2020	L 2030	L 2040	L 2050
2015					
Jan	-0.08	-0.58	-0.83	-1.02	-1.18
Feb	1.19	2.95	3.80	4.39	4.99
Mar	-0.07	-0.44	-0.58	-0.64	-0.76
Apr	0.37	0.81	0.95	1.00	1.16
May	0.30	0.50	0.62	0.72	0.78
June	-0.33	-0.97	-1.28	-1.46	-1.66
July	0.55	1.03	1.22	1.33	1.46
Aug	-1.10	-3.06	-4.04	-4.69	-5.37
Sept	-0.51	-1.67	-2.26	-2.67	-3.09
Oct	1.64	3.72	4.88	5.58	6.31
Nov	0.17	0.17	0.20	0.24	0.24
Dec	-0.28	-0.92	-1.32	-1.61	-1.85
LAST 12 MONTHS	1.85	1.35	1.04	0.73	0.45

Stamp Services

Stamp Announcement 16-02: La Cueva del Indio Stamp



©2015 USPS

On January 17, 2016, in Washington, DC, the U.S. Postal Service® issued the \$6.45 *La Cueva del Indio* Priority Mail® stamp, in one design, in a pressure-sensitive adhesive (PSA) pane of 10 stamps (Item 119100).

The stamp went on sale nationwide January 17, 2016.

With this new Priority Mail stamp, the U.S. Postal Service celebrates one of Puerto Rico's many magical and mysterious caves, La Cueva del Indio. The stamp art depicts a sunset view of La Cueva del Indio, or the Cave of the Indian, which is located near Arecibo on Puerto Rico's north coast. The cave gets its name from the great number of engravings, known as petroglyphs, found on its walls. Art director Greg Breeding designed the stamp with original art by Dan Cosgrove.

Distribution: Item 119100, La Cueva del Indio, \$6.45 Priority Mail, PSA Pane of 10 Stamps

Stamp Fulfillment Services has made an automatic push distribution to Post Offices™ of a quantity to cover approximately 30 days of sales. Post Offices may order stamps through SFS Web at <https://sfsweb.usps.gov>.

How to Order the First-Day-of-Issue Postmark

Customers have 60 days to obtain the first-day-of-issue postmark by mail. They may purchase new stamps at their

local Post Office, at The Postal Store® website at <http://www.usps.com/shop>, or by calling 800-782-6724. They should affix the stamps to envelopes of their choice, address the envelopes (to themselves or others), and place them in a larger envelope addressed to:

La Cueva del Indio Stamp
Special Events
PO Box 92282
Washington, DC 20090-2282

After applying the first-day-of-issue postmark, the Postal Service™ will return the envelopes through the mail. There is no charge for the postmark up to a quantity of 50. There is a 5-cent charge for each additional postmark over 50. All orders must be postmarked by March 17, 2016.

How to Order First-Day Covers

The Postal Service also offers first-day covers for new stamp issues and Postal Service stationery items postmarked with the official first-day-of-issue cancellation. Each item has an individual catalog number and is offered in the quarterly *USA Philatelic* catalog, online at <http://www.usps.com/shop>, or by calling 800-782-6724. Customers may request a free catalog by calling 800-782-6724 or writing to:

U.S. Postal Service
Catalog Request
PO Box 219014
Kansas City, MO 64121-9014

Philatelic Products

There are four philatelic products for this stamp issue:

- 119106, Press Sheet with Die-cut, \$387.00 (print quantity 300).
- 119108, Press Sheet without Die-cut, \$387.00 (print quantity 500).
- 119116*, First-Day Cover, \$6.89.
- 119121*, Digital Color Postmark, \$7.60.

Items with an asterisk (*) will use the 128 barcode from Stamp Fulfillment Services. All other philatelic products will continue to use barcode series A, with the exception of the Yearbook and the Guide Book.

Issue:	<i>La Cueva Del Indio</i>
Item Number:	119100
Denomination & Type of Issue:	\$6.45 Priority Mail Price
Format:	Pane of 10 (1 design)
Series:	N/A
Issue Date & City:	January 17, 2016, Washington, DC 20066
Designer:	Greg Breeding, Charlottesville, VA
Art Director:	Greg Breeding, Charlottesville, VA
Typographer:	Dan Cosgrove, Chicago, IL
Artist:	Dan Cosgrove, Chicago, IL
Modeler:	Joseph Sheeran
Manufacturing Process:	Offset, Microprint
Printer:	Ashton Potter (USA) Ltd. (APU)
Printed at:	Williamsville, NY
Press Type:	Muller A76
Stamps per Pane:	10
Print Quantity:	12 million stamps
Paper Type:	Nonphosphored Type III, Block Tag applied
Adhesive Type:	Pressure-sensitive
Processed at:	Ashton Potter (USA) Ltd. (APU)
Colors:	Black, Cyan, Magenta, Yellow
Stamp Orientation:	Horizontal
Image Area (w x h):	1.42 x 1.085 in./36.07 x 27.56 mm
Overall Size (w x h):	1.56 x 1.225 in./39.62 x 31.12 mm
Full Pane Size (w x h):	4.12 x 7.12 in./104.64 x 180.85 mm
Press Sheet Size (w x h):	8.24 x 21.36 in./209.30 x 542.54 mm
Plate Size:	180 stamps per revolution
Plate Numbers:	"P" followed by four (4) single digits
Marginal Markings:	
Front:	Plate numbers in two corners of pane
Back:	© 2015 USPS • USPS logo • Plate position diagram • UPC Code in upper right and lower left corners of pane • Static UPC Code behind each stamp • Plate Position Diagram • Website Information

— Stamp Services,
Marketing and Sales, 1-21-16

Stamp Announcement 16-03: Columbia River Gorge Stamp



© 2015 USPS

On January 17, 2016, in Washington, DC, the U.S. Postal Service® issued the \$22.95 *Columbia River Gorge* Priority Mail Express® stamp, in one design, in a pressure-sensitive adhesive (PSA) pane of 10 stamps (Item 119300).

The stamp went on sale nationwide January 17, 2016.

With this new Priority Mail Express stamp, the U.S. Postal Service celebrates the grandeur of the Columbia River Gorge. Approximately 80 miles long and up to 4,000 feet deep, the gorge runs along the Columbia River, which forms part of the border between Oregon and Washington. The stamp art captures the beauty of the Columbia River as it winds its way through the steep cliffs of the Cascade Mountain Range. The historic Vista House, sitting atop Crown Point and overlooking the river 725 feet below, shimmers in the golden light of the setting sun. Art director Phil Jordan designed the stamp with original art by Dan Cosgrove.

Distribution: Item 119300, Columbia River Gorge, \$22.95 Priority Mail Express, PSA Pane of 10 Stamps

Stamp Fulfillment Services did not make an automatic push distribution to Post Offices™. Post Offices may order stamps through SFS Web at <https://sfsweb.usps.gov>.

How to Order the First-Day-of-Issue Postmark

Customers have 60 days to obtain the first-day-of-issue postmark by mail. They may purchase new stamps at their local Post Office, at The Postal Store® website at <http://www.usps.com/shop>, or by calling 800-782-6724. They should affix the stamps to envelopes of their choice, address the envelopes (to themselves or others), and place them in a larger envelope addressed to:

Columbia River Gorge Stamp
Special Events
PO Box 92282
Washington, DC 20090-2282

After applying the first-day-of-issue postmark, the Postal Service™ will return the envelopes through the mail. There is no charge for the postmark up to a quantity of 50. There is a 5-cent charge for each additional postmark over 50. All orders must be postmarked by March 17, 2016.

How to Order First-Day Covers

The Postal Service also offers first-day covers for new stamp issues and Postal Service stationery items postmarked with the official first-day-of-issue cancellation. Each item has an individual catalog number and is offered in the quarterly *USA Philatelic* catalog, online at <http://www.usps.com/shop>, or by calling 800-782-6724. Customers may request a free catalog by calling 800-782-6724 or writing to:

U.S. Postal Service
Catalog Request
PO Box 219014
Kansas City, MO 64121-9014

Philatelic Products

There are four philatelic products for this stamp issue:

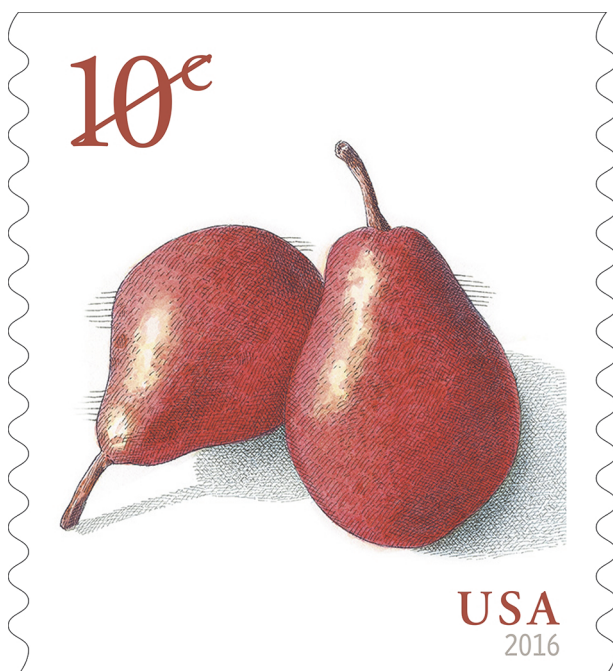
- 119306, Press Sheet with Die-cut, \$688.50 (print quantity 100).
- 119308, Press Sheet without Die-cut, \$688.50 (print quantity 250).
- 119316*, First-Day Cover, \$23.39.
- 119321*, Digital Color Postmark, \$24.10.

Items with an asterisk (*) will use the 128 barcode from Stamp Fulfillment Services. All other philatelic products will continue to use barcode series A, with the exception of the Yearbook and the Guide Book.

Issue:	<i>Columbia River Gorge</i>
Item Number:	119300
Denomination & Type of Issue:	\$22.95 Priority Mail Express Price
Format:	Pane of 10 (1 design)
Series:	N/A
Issue Date & City:	January 17, 2016, Washington, DC 20066
Designer:	Phil Jordan, Falls Church, VA
Art Director:	Phil Jordan, Falls Church, VA
Typographer:	Phil Jordan, Falls Church, VA
Artist:	Dan Cosgrove, Chicago, IL
Modeler:	Michelle Finn/Sandra Lane
Manufacturing Process:	Offset, Microprint
Printer:	Banknote Corporation of America
Printed at:	Browns Summit, NC
Press Type:	Alprinta 74
Stamps per Pane:	10
Print Quantity:	1,500,000 stamps
Paper Type:	Phosphor Tagged Paper, Overall
Adhesive Type:	Pressure-sensitive
Processed at:	Banknote Corporation of America, Browns Summit SC
Colors:	Cyan, Magenta, Yellow, Black
Stamp Orientation:	Horizontal
Image Area (w x h):	1.42 x 1.085 in./36.07 x 27.56 mm
Overall Size (w x h):	1.56 x 1.225 in./39.62 x 31.12 mm
Full Pane Size (w x h):	4.12 x 7.12 in./104.65 x 180.85 mm
Press Sheets Size (w x h):	4.12 x 21.36 in./104.65 x 542.54 mm
Plate Size:	150 stamps per revolution
Plate Numbers:	"B" followed by four (4) single digits
Marginal Markings:	
Front:	Plate numbers in two corners of pane
Back:	© 2015 USPS • USPS logo • Plate position diagram • Two (2) selvage UPC codes plus one (1) UPC code per stamp • Website information

— Stamp Services,
Marketing and Sales, 1-21-16

Stamp Announcement 16-04: Pears Stamp



© 2015 USPS

On January 17, 2016, in Washington, DC, the U.S. Postal Service® issued the 10-cent *Pears* stamp, in one design, in a pressure-sensitive adhesive (PSA) coil of 10,000 stamps (Item 799300).

The stamp went on sale nationwide January 17, 2016.

Pears, a new 10-cent definitive stamp, features two red pears on a white background. The stamp art is an existing illustration by John Burgoyne, who created the original artwork with pen and ink and watercolor. Art director Derry Noyes designed the stamp.

Distribution: Item 799300, Pears, 10 cents, PSA Coil of 10,000 Stamps

Stamp Fulfillment Services did not make an automatic push distribution to Post Offices™. Post Offices may order stamps through SFS Web at <https://sfsweb.usps.gov>.

How to Order the First-Day-of-Issue Postmark

Customers have 60 days to obtain the first-day-of-issue postmark by mail. They may purchase new stamps at their local Post Office, at The Postal Store® website at <http://www.usps.com/shop>, or by calling 800-782-6724. They should affix the stamps to envelopes of their choice, address the envelopes (to themselves or others), and place them in a larger envelope addressed to:

Pears Stamp
Special Events
PO Box 92282
Washington, DC 20090-2282

After applying the first-day-of-issue postmark, the Postal Service™ will return the envelopes through the mail. There is no charge for the postmark up to a quantity of 50. There is a 5-cent charge for each additional postmark over 50. All orders must be postmarked by March 17, 2016.

How to Order First-Day Covers

The Postal Service also offers first-day covers for new stamp issues and Postal Service stationery items postmarked with the official first-day-of-issue cancellation. Each item has an individual catalog number and is offered in the quarterly *USA Philatelic* catalog, online at <http://www.usps.com/shop>, or by calling 800-782-6724. Customers may request a free catalog by calling 800-782-6724 or writing to:

U.S. Postal Service
Catalog Request
PO Box 219014
Kansas City, MO 64121-9014

Issue:	<i>Pears</i>
Item Number:	799300
Denomination & Type of Issue:	10-cent Denominated
Format:	Coil of 10,000 (1 design)
Series:	N/A
Issue Date & City:	January 17, 2016, Washington, DC 20066
Art Director:	Derry Noyes, Washington, DC
Designer:	Derry Noyes, Washington, DC
Typographer:	Derry Noyes, Washington, DC
Existing Art:	John Burgoyne, West Barnstable, MA
Modeler:	Michelle Finn/Sandra Lane
Manufacturing Process:	Offset, Microprint
Printer:	Banknote Corporation of America
Printed at:	Browns Summit, NC
Press Type:	Alprinta 74
Stamps per Coil:	10,000
Print Quantity:	200,000,000 stamps
Paper Type:	Nonphosphored Type III
Adhesive Type:	Pressure-sensitive
Processed at:	Banknote Corporation of America, Browns Summit, NC
Colors:	Cyan, Magenta, Yellow, Black, PMS Warm Gray4, PMS 7619 Red
Stamp Orientation:	Vertical
Image Area (w x h):	0.73 x 0.84 in./18.54 x 21.34 mm
Stamp Size (w x h):	0.87 x 0.98 in./22.10 x 24.89 mm
Plate Size:	540 stamps per revolution
Plate Numbers:	"S" followed by six (6) single digits
Coil Number Frequency:	Plate numbers every 27th stamp below stamp image

— Stamp Services,
Marketing and Sales, 1-21-16

Stamp Announcement 16-05: U.S. Flag Stamp



© 2015 USPS

On January 29, 2016, in Washington, DC, the U.S. Postal Service® will issue the *U.S. Flag* First-Class Mail® stamp (Forever® priced at 49 cents), in one design. The formats available are a pressure-sensitive adhesive (PSA) booklet of 10 stamps (Item 679100) produced by security printer Banknote Corporation of America/SSP (SSP), a PSA booklet of 20 stamps (Item 680500) produced by security printers Ashton Potter (USA) Ltd (APU) and SSP, and a PSA coil of 100 stamps (Item 787300) produced by security printers APU and SSP.

The stamp will go on sale nationwide January 29, 2016.

The American flag has long symbolized the strength and spirit of our nation. This *U.S. Flag* First-Class Mail Forever stamp features a detail of Emmanuel Faure's vivid photograph of a flag waving against the background of the sky. Greg Breeding designed the stamp. Terrence W. McCaffrey was the art director.

Distribution is for the following formats:

- Item 680500, \$9.80 U. S. Flag First-Class Mail (Forever priced at 49 cents) DSBK of 20 stamps.
- Item 679100, \$4.90 U. S. Flag First-Class Mail (Forever priced at 49 cents) Booklet of 10 stamps.
- Item 787300, \$49.00 U. S. Flag First-Class Mail (Forever priced at 49 cents) PSA Coil of 100 stamps.

Stamp Fulfillment Services will not make an automatic push distribution to Post Offices™. Post Offices may begin ordering stamps prior to the FDOI through SFS Web at <https://sfsweb.usps.gov>.

How to Order the First-Day-of-Issue Postmark

Customers have 60 days to obtain the first-day-of-issue postmark by mail. They may purchase new stamps at their local Post Office, at The Postal Store® website at <http://www.usps.com/shop>, or by calling 800-782-6724. They should affix the stamps to envelopes of their choice, address the envelopes (to themselves or others), and place them in a larger envelope addressed to:

U.S. Flag Stamp
Special Events
PO Box 92282
Washington, DC 20090-2282

After applying the first-day-of-issue postmark, the Postal Service™ will return the envelopes through the mail. There is no charge for the postmark up to a quantity of 50. There is a 5-cent charge for each additional postmark over 50. All orders must be postmarked by March 29, 2016.

How to Order First-Day Covers

The Postal Service also offers first-day covers for new stamp issues and Postal Service stationery items postmarked with the official first-day-of-issue cancellation. Each item has an individual catalog number and is offered in the quarterly *USA Philatelic* catalog, online at <http://www.usps.com/shop>, or by calling 800-782-6724. Customers may request a free catalog by calling 800-782-6724 or writing to:

U.S. Postal Service
Catalog Request
PO Box 219014
Kansas City, MO 64121-9014

Philatelic Products

There is one philatelic product for the booklet of 20:

- 680516*, First-Day Cover, \$0.93.

There is one philatelic product for the coil of 100:

- 787316*, First-Day Cover, \$0.93.

There are no philatelic products for the booklet of 10.

Items with an asterisk (*) will use the 128 barcode from Stamp Fulfillment Services. All other philatelic products will continue to use barcode series A, with the exception of the Yearbook and the Guide Book.

Issue:	<i>U.S. Flag</i>
Item Number:	679100
Denomination & Type of Issue:	First-Class Mail Forever
Format:	Booklet of 10 (1 design)
Series:	N/A
Issue Date & City:	January 29, 2016, Washington, DC 20066
Art Director:	Terrence W. McCaffrey, New Braunfels, TX
Designer:	Greg Breeding, Charlottesville, VA
Typographer:	Greg Breeding, Charlottesville, VA
Existing Photo:	Emmanuel Faure
Modeler:	Michelle Finn/Sandra Lane
Manufacturing Process:	Offset, Microprint
Printer:	Banknote Corporation of America/SSP
Printed at:	Browns Summit, NC
Press Type:	Alprinta 74
Stamps per Booklet:	10
Print Quantity:	100,000,000 Stamps
Paper Type:	Phosphor Tagged Paper, Overall
Adhesive Type:	Pressure-sensitive
Processed at:	Banknote Corporation of America, Browns Summit, NC
Stamp Orientation:	Vertical
Image Area (w x h):	0.73 x .84 in./18.54 x 21.34 mm
Stamp Size (w x h):	0.87 x 0.98 in./22.10 x 24.89 mm
Booklet Size (w x h):	5.31 x 1.74 in./134.87 x 44.20 mm
Colors:	Cyan, Magenta, Yellow, Black, PMS 5405
Plate Size:	560 stamps per revolution
Plate Numbers:	"S" followed by five (5) single digits
Marginal Markings:	© 2015 USPS in peel strip area

Issue:	<i>U.S. Flag</i>
Item Number:	680500
Denomination & Type of Issue:	First-Class Mail Forever
Format:	Booklet of 20 (1 design)
Series:	N/A
Issue Date & City:	January 29, 2016, Washington, DC 20066
Art Director:	Terrence W. McCaffrey, New Braunfels, TX
Designer:	Greg Breeding, Charlottesville, VA
Typographer:	Greg Breeding, Charlottesville, VA
Existing Photo:	Emmanuel Faure
Modeler:	Joseph Sheeran
Manufacturing Process:	Offset, Microprint
Printer:	Ashton Potter (USA) Ltd. (APU)
Printed at:	Williamsville, NY
Press Type:	Muller A76
Stamps per Booklet:	20
Print Quantity:	1,250,000,000 stamps
Paper Type:	Nonphosphored Type III, Block Tag applied
Adhesive Type:	Pressure-sensitive
Processed at:	Ashton Potter (USA) Ltd. (APU)
Stamp Orientation:	Vertical
Image Area (w x h):	0.73 x 0.84 in./18.54 x 21.34 mm
Stamp Size (w x h):	0.87 x 0.98 in./22.10 x 24.89 mm
Full Booklet Size (w x h):	5.52 x 1.96 in./140.21 x 49.78 mm
Colors:	Black, Cyan, Magenta, Yellow
Plate Size:	1040 stamps per revolution
Plate Numbers:	"P" followed by four (4) single digits
Marginal Markings:	Header. "U.S. Flag" Twenty First-Class Forever Stamps • Plate numbers in peel strip area • Barcode • © 2015 USPS in peel strip area

Issue:	<i>U.S. Flag</i>
Item Number:	680500
Denomination & Type of Issue:	First-Class Mail Forever
Format:	Double-Sided Booklet of 20 (1 design)
Series:	N/A
Issue Date & City:	January 29, 2016, Washington, DC 20066
Art Director:	Terrence W. McCaffrey, New Braunfels, TX
Designer:	Greg Breeding, Charlottesville, VA
Typographer:	Greg Breeding, Charlottesville, VA
Existing Photo:	Emmanuel Faure
Modeler:	Michelle Finn/Sandra Lane
Manufacturing Process:	Offset, Microprint
Printer:	Banknote Corporation of America/SSP
Printed at:	Browns Summit, NC
Press Type:	Alprinta 74
Stamps per Booklet:	20
Print Quantity:	1,250,000,000 Stamps
Paper Type:	Phosphor Tagged Paper, Block
Adhesive Type:	Pressure-sensitive
Processed at:	Banknote Corporation of America, Browns Summit, NC
Stamp Orientation:	Vertical
Image Area (w x h):	0.71 x .82 in./18.03 x 20.83 mm
Stamp Size (w x h):	0.87 x 0.98 in./22.10 x 24.89 mm
Booklet Size (w x h):	5.52 x 1.96 in./140.21 x 49.78 mm
Colors:	Cyan, Magenta, Yellow, Black, PMS 5405
Plate Size:	960 stamps per revolution
Plate Numbers:	"S" followed by five (5) single digits
Marginal Markings:	• Plate numbers in peel strip area • © 2015 USPS in peel strip area

Issue:	<i>U.S. Flag</i>
Item Number:	787300
Denomination & Type of Issue:	First-Class Mail Forever
Format:	Coil of 100 (1 design)
Series:	N/A
Issue Date & City:	January 29, 2016, Washington, DC 20066
Art Director:	Terrence W. McCaffrey, New Braunfels, TX
Designer:	Greg Breeding, Charlottesville, VA
Typographer:	Greg Breeding, Charlottesville, VA
Existing Photo:	Emmanuel Faure
Modeler:	Michelle Finn/Sandra Lane
Manufacturing Process:	Offset, Microprint
Printer:	Banknote Corporation of America
Printed at:	Browns Summit, NC
Press Type:	Alprinta 74
Stamps per Coil:	100
Print Quantity:	1,000,000,000 stamps
Paper Type:	Phosphor Tagged Paper, Block
Adhesive Type:	Pressure-sensitive
Processed at:	Banknote Corporation of America, Browns Summit, NC
Colors:	Cyan, Magenta, Yellow, Black, PMS 5405
Stamp Orientation:	Vertical
Image Area (w x h):	0.73 x 0.84 in./18.54 x 21.34 mm
Stamp Size (w x h):	0.87 x 0.98 in./22.10 x 24.89 mm
Plate Size:	744 stamps per revolution
Plate Numbers:	"S" followed by five (5) single digits
Coil Number Frequency:	Plate numbers every 31st stamp below stamp image

Issue:	<i>U.S. Flag</i>
Item Number:	787300
Denomination & Type of Issue:	First-Class Mail Forever
Format:	Coil of 100 (1 design)
Series:	N/A
Issue Date & City:	January 29, 2016, Washington, C 20066
Art Director:	Terrence W. McCaffrey, New Braunfels, TX
Designer:	Greg Breeding, Charlottesville, VA
Typographer:	Greg Breeding, Charlottesville, VA
Existing Photo:	Emmanuel Faure
Modeler:	Joseph Sheeran
Manufacturing Process:	Offset, Microprint
Printer:	Ashton Potter (USA) Ltd. (APU)
Printed at:	Williamsville, NY
Press Type:	Muller A76
Stamps per Coil:	100
Print Quantity:	1,000,000,000 stamps
Paper Type:	Nonphosphored Type III, Block Tag applied
Adhesive Type:	Pressure-sensitive
Processed at:	Ashton Potter (USA) Ltd. (APU)
Colors:	Black, Cyan, Magenta, Yellow, PMS 5405
Stamp Orientation:	Vertical
Image Area (w x h):	0.73 x 0.84 in./18.54 x 21.34 mm
Stamp Size (w x h):	0.87 x 0.98 in./22.10 x 24.89 mm
Plate Size:	744 stamps per revolution
Plate Numbers:	"P" followed by five (5) single digits
Coil Number Frequency:	Plate numbers every 31st stamp below stamp image

— *Stamp Services,
Marketing and Sales, 1-21-16*

Stamp Announcement 16-06: Richard Allen Stamp



© 2015 USPS

On February 2, 2016, in Philadelphia, PA, the U.S. Postal Service® will issue the *Richard Allen* First-Class Mail® stamp (Forever® priced at 49 cents), in one design, in a pressure-sensitive adhesive (PSA) pane of 20 stamps (Item 473500).

The stamp will go on sale nationwide February 2, 2016.

The 39th stamp in the *Black Heritage* series commemorates preacher, activist, and civic leader Richard Allen (1760–1831), an inspiring figure whose life and work resonate profoundly in American history. This stamp coincides with the 200th anniversary of Allen’s founding of the African Methodist Episcopal (AME) Church, one of the most important institutions in African-American life, and his election and consecration as its first bishop. The stamp art is a portrait of Allen, a detail from an 1876 print titled “Bishops of the A.M.E. Church” from the collection of the Library Company of Philadelphia. Art director Greg Breeding designed the stamp.

Distribution: Item 473500, Richard Allen (Forever priced at 49 cents) Commemorative PSA Pane of 20 Stamps

Stamp Fulfillment Services will make an automatic push distribution to Post Offices™ of a quantity to cover approximately 30 days of sales. Distribution quantities for the automatic push distribution are available by logging on to SFS Web at <https://sfsweb.usps.gov>. Post Offices may begin ordering stamps prior to the FDOI through SFS Web. However, offices should check the website noted above to determine the amount they will receive on their automatic push distribution.

How to Order the First-Day-of-Issue Postmark

Customers have 60 days to obtain the first-day-of-issue postmark by mail. They may purchase new stamps at their local Post Office, at The Postal Store® website at <http://www.usps.com/shop>, or by calling 800-782-6724. They should affix the stamps to envelopes of their choice, address the envelopes (to themselves or others), and place them in a larger envelope addressed to:

Richard Allen Stamp
USPS Retail Manager
3190 South 70th Street
Philadelphia, PA 19153-9751

After applying the first-day-of-issue postmark, the Postal Service™ will return the envelopes through the mail. There is no charge for the postmark up to a quantity of 50. There is a 5-cent charge for each additional postmark over 50. All orders must be postmarked by April 2, 2016.

How to Order First-Day Covers

The Postal Service also offers first-day covers for new stamp issues and Postal Service stationery items postmarked with the official first-day-of-issue cancellation. Each item has an individual catalog number and is offered in the quarterly *USA Philatelic* catalog, online at <http://www.usps.com/shop>, or by calling 800-782-6724. Customers may request a free catalog by calling 800-782-6724 or writing to:

U.S. Postal Service
Catalog Request
PO Box 219014
Kansas City, MO 64121-9014

Philatelic Products

There are six philatelic products for this stamp issue:

- 473506, Press Sheet with Die-cut, \$58.80 (print quantity 200).
- 473508, Press Sheet without Die-cut, \$58.80 (print quantity 250).
- 473510*, Digital Color Postmark Keepsake, \$11.95.
- 473516*, First-Day Cover, \$0.93.

- 473521*, Digital Color Postmark, \$1.64.
- 473530*, Ceremony Program, \$6.95.

Items with an asterisk (*) will use the 128 barcode from Stamp Fulfillment Services. All other philatelic products will continue to use barcode series A, with the exception of the Yearbook and the Guide Book.

Issue:	<i>Richard Allen</i>
Item Number:	473500
Denomination & Type of Issue:	First-Class Mail Forever
Format:	Pane of 20 (1 design)
Series:	<i>Black Heritage</i>
Issue Date & City:	February 2, 2016, Philadelphia, PA 19147
Designer:	Greg Breeding, Charlottesville, VA
Art Director:	Greg Breeding, Charlottesville, VA
Typographer:	Greg Breeding, Charlottesville, VA
Modeler:	Joseph Sheeran
Manufacturing Process:	Offset, Microprint
Printer:	Ashton Potter (USA) Ltd. (APU)
Printed at:	Williamsville, NY
Press Type:	Muller A76
Stamps per Pane:	20
Print Quantity:	30 million stamps
Paper Type:	Nonphosphored Type III, Block Tag applied
Adhesive Type:	Pressure-sensitive
Processed at:	Ashton Potter (USA) Ltd. (APU)
Colors:	PMS 556C Green, Cyan, Magenta, Yellow, Black
Stamp Orientation:	Vertical
Image Area (w x h):	0.84 x 1.42 in./21.34 x 36.07 mm
Overall Size (w x h):	0.98 x 1.56 in./24.89 x 39.62 mm
Full Pane Size (w x h):	6.00 x 8.50 in./152.40 x 215.90 mm
Press Sheet Size (w x h):	12.00 x 25.75 in./304.80 x 654.05 mm
Plate Size:	240 stamps per revolution
Plate Numbers:	"P" followed by five(5) single digits
Marginal Markings:	
Front:	Header: "BLACK HERITAGE Celebrating Richard Allen" • Plate numbers in two corners of pane
Back:	• "BLACK HERITAGE Celebrating Richard Allen", 39TH IN A SERIES, • Verso-text, © 2015 USPS • USPS logo • Plate position diagram • UPC Code, • Promotional text

— Stamp Services,
Marketing and Sales, 1-21-16

Stamp Announcement 16-07: Year of the Monkey Stamp



©2015 USPS

On February 5, 2016, in Jamaica, NY, the U.S. Postal Service® will issue the *Year of the Monkey* First-Class Mail® stamp (Forever® priced at 49 cents), in one design, in a pressure-sensitive adhesive (PSA) pane of 12 stamps (Item 586500). **The *Year of the Monkey* \$5.88 pane of 12 stamps may not be split, and the stamps may not be sold individually.**

The stamp will go on sale nationwide February 5, 2016.

The *Year of the Monkey* stamp is the ninth of twelve stamps in the *Celebrating Lunar New Year* series. The Year of the Monkey begins on February 8, 2016, and ends on January 27, 2017. The stamp art depicts two bright reddish orange peonies against a purple background. Peonies symbolize wealth and honor in Chinese culture and often decorate the sides of the traditional drums played during the holiday festivities. Artist Kam Mak created this original painting. Art director and stamp designer Ethel Kessler incorporated elements from the previous series of Lunar New Year stamps — Clarence Lee’s intricate cut-paper design of a monkey and the Chinese character for “monkey,” drawn in grass-style calligraphy by Lau Bun — to create continuity between the stamps in the series.

Distribution: Item 586500, \$5.88 Lunar New Year: Year of the Monkey (Forever priced at 49 cents) Commemorative PSA Pane of 12 Stamps

Stamp Fulfillment Services will make an automatic push distribution to Post Offices™ of a quantity to cover approximately 30 days of sales. Distribution quantities for the automatic push distribution are available by logging on to SFS Web at <https://sfsweb.usps.gov>. Post Offices may begin ordering stamps prior to the FDOI through SFS Web. However, offices should check the website noted above to

determine the amount they will receive on their automatic push distribution.

Special Dedication Postmarks

Only the following pictorial postmark is permitted for the *Year of the Monkey* stamp. The word “Station” or the abbreviation “STA” is required somewhere in the design, because it will be a temporary station.

Guidelines for Finalizing Year of the Monkey Stamp Pictorial Postmark Art

◆ CELEBRATING LUNAR NEW YEAR



◆ CELEBRATING LUNAR NEW YEAR



To finalize the *Year of the Monkey* stamp pictorial postmark art, insert the date, city, state, and ZIP Code™ of the physical location of your event adjacent to the stamp image. Overall dimensions of the pictorial postmark must not exceed 4 inches horizontally by 2 inches vertically. Collectors prefer the dimensions 3-1/2 inches by 1.

The Postal Service™ must make all special postmarks known to collectors through advance publicity in the *Postal Bulletin*. Therefore, all special dedication cancellations must be reported to Stamp Services four weeks before the event using PS Form 413, *Pictorial Postmark Announcement/Report*. To get a copy of the form, go to <http://blue.usps.gov/formmgmt/forms/ps413.pdf>.

How to Order the First-Day-of-Issue Postmark

Customers have 60 days to obtain the first-day-of-issue postmark by mail. They may purchase new stamps at their local Post Office, at The Postal Store® website at <http://www.usps.com/shop>, or by calling 800-782-6724. They

should affix the stamps to envelopes of their choice, address the envelopes (to themselves or others), and place them in a larger envelope addressed to:

Year of the Monkey Stamp
Jamaica MPO
8840 164th Street
Jamaica, NY 11432-9998

After applying the first-day-of-issue postmark, the Postal Service will return the envelopes through the mail. There is no charge for the postmark up to a quantity of 50. There is a 5-cent charge for each additional postmark over 50. All orders must be postmarked by April 5, 2016.

How to Order First-Day Covers

The Postal Service also offers first-day covers for new stamp issues and Postal Service stationery items postmarked with the official first-day-of-issue cancellation. Each item has an individual catalog number and is offered in the quarterly *USA Philatelic* catalog, online at www.usps.com/shop, or by calling 800-782-6724. Customers may request a free catalog by calling 800-782-6724 or writing to:

U.S. Postal Service
Catalog Request
PO Box 219014
Kansas City, MO 64121-9014

Philatelic Products

There are nine philatelic products for this stamp issue:

- 586506, Press Sheet with Die-cut, \$35.28, (print quantity 500).
- 586508, Press Sheet without Die-cut, \$35.28 (print quantity 1,000).
- 586510*, Digital Color Postmark Keepsake (2 panes), \$13.95.
- 586516*, First-Day Cover, \$0.93.
- 586518*, First-Day Cover Full Pane, \$8.38.
- 586519*, First-Day Cover Cancelled Full Pane, \$8.38.
- 586521*, Digital Color Postmark, \$1.64.
- 586524*, Framed Art*, \$39.95.
- 586530*, Ceremony Program, \$6.95.

Items with an asterisk (*) will use the 128 barcode from Stamp Fulfillment Services. All other philatelic products will continue to use barcode series A, with the exception of the Yearbook and the Guide Book.

Issue:	<i>Year of the Monkey</i>
Item Number:	586500
Denomination & Type of Issue:	First-Class Mail Forever
Format:	Pane of 12 (1 design)
Series:	<i>Celebrating Lunar New Year</i>
Issue Date & City:	February 5, 2016, Jamaica, NY, 11439
Designer:	Ethel Kessler, Bethesda, MD
Art Director:	Ethel Kessler, Bethesda, MD
Typographer:	Ethel Kessler, Bethesda, MD
Artist:	Kam Mak, Brooklyn, NY
Modeler:	Michelle Finn/Sandra Lane
Manufacturing Process:	Offset, Microprint
Printer:	Banknote Corporation of America/ SSP
Printed at:	Browns Summit, NC
Press Type:	Alprinta 74
Stamps per Pane:	12
Print Quantity:	15 million stamps
Paper Type:	Phosphor Tagged Paper, Block Tag
Adhesive Type:	Pressure-sensitive
Processed at:	Banknote Corporation of America, Browns Summit SC
Colors:	Cyan, Magenta, Yellow, Black
Stamp Orientation:	Horizontal
Image Area (w x h):	1.42 x 0.84 in./36.07 x 21.34 mm
Overall Size (w x h):	1.56 x 0.98 in./39.62 x 24.89 mm
Full Pane Size (w x h):	7.24 x 5.92 in./183.90 x 150.37 mm
Press Sheets Size (w x h):	21.97 x 11.97 in./ 558.04 x 303.91 mm
Plate Size:	144 stamps per revolution
Marginal Markings:	
Back:	© 2015 USPS • USPS logo • Product Barcode (586500) • Promotional text

— Stamp Services,
Marketing and Sales, 1-21-16

Pictorial Postmarks Announcement

As a community service, the Postal Service™ offers pictorial postmarks to commemorate local events celebrated in communities throughout the nation. A list of events for which pictorial postmarks are authorized appears below. The sponsor of the pictorial postmark appears in italics under the date. Also provided are illustrations of these postmarks.

People attending these local events may obtain the postmark in person at the temporary Post Office™ station established there. Those who cannot attend the event but who wish to obtain the postmark may submit a mail order request. Pictorial postmarks are available only for the dates indicated, and requests must be postmarked no later than 30 days following the requested pictorial postmark date.

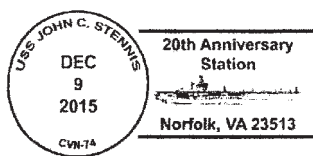
All requests must include a stamped envelope or postcard bearing at least the minimum First-Class Mail® postage. Items submitted for postmark may not include

postage issued after the date of the requested postmark. Such items will be returned unserved.

Customers wishing to obtain a postmark should affix stamps to any envelope or postcard of their choice, address the envelope or postcard to themselves or others, insert a card of postcard thickness in envelopes for sturdiness, and tuck in the flap. Place the envelope or postcard in a larger envelope and address it to: Pictorial Postmarks, followed by the Name of the Station, Address, City, State, ZIP+4® Code, as listed below.

Customers can also send stamped envelopes and postcards without addresses for postmark, as long as they supply a larger envelope with adequate postage and their return address. After applying the pictorial postmark, the Postal Service returns the items (with or without addresses) under addressed protective cover.

The following pictorial postmark has been extended for 60 days:



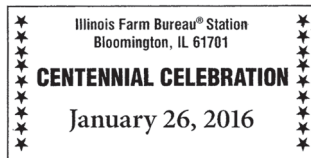
December 9, 2015
Universal Ship Cancellation Society
 20th Anniversary Station
 Postmaster
 PO Box 719
 Norfolk, VA 23501-9998

The following pictorial postmark has been extended for 30 days:



January 11-15, 2016
Uptown Station
 Pennsylvania Farm Show Station
 Branch Manager
 2347 South 7th Street
 Harrisburg, PA 17110-9998

January 26, 2016

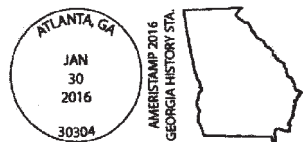


United States Postal Service
 Illinois Farm Bureau Station
 Postmaster
 1211 Towanda Avenue
 Bloomington, IL
 61701-9998

January 29, 2016



American Philatelic Society
 Ameristamp 2016 Floral Station
 Postmaster
 3900 Crown Road
 Atlanta, GA 30304-9998



January 30, 2016

American Philatelic Society
 Ameristamp 2016 Georgia
 History Station
 Postmaster
 3900 Crown Road
 Atlanta, GA 30304-9998



February 1, 2016

Valentine's Day Station
 Happy Valentine's Day
 Station
 Postmaster
 6664 Route 362
 Bliss, NY 14024-9998



January 31, 2016

American Philatelic Society
 Ameristamp 2016 Family
 Day Station
 Postmaster
 3900 Crown Road
 Atlanta, GA 30304-9998



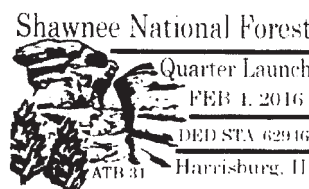
February 2, 2016

Business Improvement
 District of Sun Prairie
 Ground Hog Day Station
 Postmaster
 PO Box 9998
 Sun Prairie, WI 53590-9998



January 31, 2016

John Beargrease Sled Dog
 Marathon, Inc.
 Beargrease Station
 Postmaster
 2800 West Michigan Street
 Duluth, MN 55806-9998



February 4, 2016

Southeastern Illinois College
 Shawnee National Forest
 DED Station
 Postmaster
 101 West Church Street
 Harrisburg, IL 62946-9998

— Stamp Services,
 Marketing and Sales, 1-21-16

How to Order the First-Day-of-Issue Digital Color or Traditional Postmarks

Customers have 60 days to obtain the first-day-of-issue postmarks by mail. They may purchase new stamps at their local Post Office™, by telephone at 800-STAMP-24, or at The Postal Store® website at www.usps.com/shop.

Traditional Postmarks

Customers should affix the stamps to envelopes of their choice, address them to themselves or others, or provide a self-addressed return envelope with sufficient postage large enough to accommodate the canceled item. Mail the request to the corresponding city of issuance. There is no charge for the first 50 postmarks. There is a 5-cent charge for each additional postmark over 50. Customers should submit a check, money order, or credit card for payment. After applying the first-day-of-issue postmark, the Postal Service™ will return the envelopes to the customer by U.S. Mail.

All postmark requests should go to the first-day-of-issue city. The first-day-of-issue city Post Office will then forward in bulk all postmark requests to Cancellation Services, Stamp Fulfillment Services, PO Box 449992, Kansas City, MO 64144-9992 by respective Post Offices.

Digital Color Postmarks

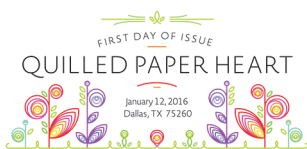
Only select stamp issues offer a digital color postmark. Customers may submit #6 or #10 envelopes constructed of paper rated as "laser safe." The Postal Service recommends envelopes of 80-pound Accent Opaque, acid-free, 9/16" side seams with no glue on the flap. The maximum size of all digital color postmarks is 2" high x 4" long. Allow sufficient space on the envelope to accommodate the postmark. Do not use self-adhesive labels for addresses on the envelope. Two test envelopes must be included. There is a minimum of 10 envelopes at 50 cents per postmark required at the time of servicing. Customers should submit a check, money order, or credit card for payment.

The Postal Service reserves the right to not accept hand-painted and other cachet envelopes that are not compatible with our digital color postmark equipment. The Postal Service also reserves the right to substitute traditional black rubber postmarks if use of nonspecified envelopes results in poor image quality or damage to equipment.

Customers should affix the stamps to the envelopes and address them to themselves or others for return through the mail. Or, they may include an additional self-addressed return envelope, large enough to accommodate their canceled items, with sufficient postage affixed for return of their postmarked items. Mail the request for a first-day-of-issue digital color postmark to the corresponding city of

issuance. Post Offices will then forward all customer requests for digital color postmarks to Cancellation Services, Stamp Fulfillment Services, PO Box 449992, Kansas City, MO 64144-9992.

After applying the first-day-of-issue postmark, the Postal Service will return the envelopes to the customer by U.S. Mail.



Digital Color Pictorial

Quilled Paper Heart Stamp
401 Tom Landry Freeway, Rm 645
Dallas, TX 75260-9998

March 12, 2016



Digital Color Pictorial

La Cueva del Indio Stamp
Special Events
PO Box 92282
Washington, DC 20090-2282

March 17, 2016



Digital Color Pictorial

Columbia River Gorge Stamp
Special Events
PO Box 92282
Washington, DC 20090-2282

March 17, 2016



Digital Color Pictorial

Botanical Art Stamps
Atlanta MPO
Postmaster
3900 Crown Road
Atlanta, GA 30304-9998

March 29, 2016



Digital Color Pictorial

Richard Allen Stamp
USPS Retail Manager
3190 South 70th Street
Philadelphia, PA 19153-9751

April 2, 2016



Black and White Pictorial

Richard Allen Stamp
USPS Retail Manager
3190 South 70th Street
Philadelphia, PA 19153-9751

April 2, 2016



Digital Color Pictorial

Year of the Monkey Stamp

Jamaica MPO
8840 164th Street
Jamaica, NY 11432-9998

April 5, 2016

— *Stamp Services, Marketing and Sales, 1-21-16*

Supply Management

Interest Rate on Contract Claims

In the *Postal Bulletin*, the Postal Service™ periodically publishes the interest rate payable on a claim decided in a supplier's favor under the Contract Disputes Act of 1978. This rate also applies for late payments to suppliers under the Prompt Payment Act, as amended.

The interest rate effective for the 6-month period of January 1, 2016, to June 30, 2016, is **2.5 percent**.

— *Supply Management Infrastructure,
Supply Management, 1-21-16*

Geometric Snowflakes

Forever® Stamps for the Holiday Season



On Sale Nationwide: October 23, 2015

475 L'ENFANT PLAZA SW
WASHINGTON DC 20260-5540

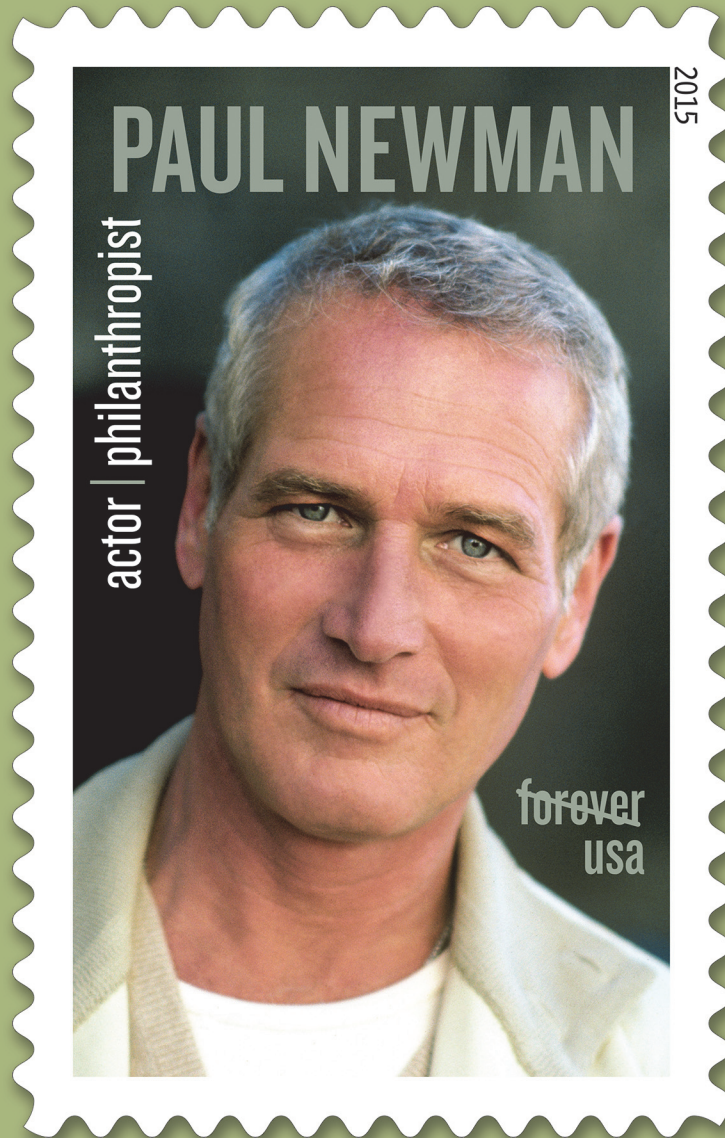
First-Class Mail
Postage & Fees Paid
USPS
Permit No. G-10

USPS[®]
Issues

*Paul
Newman*

Forever[®]
Stamp

On Sale Nationwide:
September 18, 2015.



Paul Newman photo © Steve Schapiro/Corbis