

postal|bulletin

PUBLISHED SINCE MARCH 4, 1880

**FIRE PREVENTION WEEK
OCTOBER 4-10, 2015**

**Put Smoke
Alarms in
Your Home
to Keep Your
Family Safe**

See page 3



Contents

COVER STORY

Fire Prevention Week is October 4-10, 2015: Put Smoke Alarms in Your Home to Keep Your Family Safe	3
--	---

PUBLICITY KIT: A CHARLIE BROWN CHRISTMAS STAMPS 4

POLICIES, PROCEDURES, AND FORMS UPDATES

Manuals

ELM Revision: Employee Relations	13
ELM Revision: Severance Pay	13

Handbooks

Handbook RE-6 Revision: Facilities Environmental Guide	15
---	----

Publications

Publication 223 Revision: Directives and Forms Update	35
Publication 431 Revision: Changes to Post Office Box Service and Caller Service Fee Groups	36

ORGANIZATION INFORMATION

Corporate Communications

Regulations for Proper Flag Display	38
Displaying the U.S. Flag and the POW-MIA Flag	41

Finance

Equipment Maintenance Allowance Schedule for Rural Routes	43
--	----

Human Resources

Notice to All Post Offices With Rural Delivery Service: Rural Carrier Guarantee Period	43
---	----

Mailing and Shipping Services

Mail Alert	43
----------------------	----

Stamp Services

Correction: Paul Newman Stamp	46
---	----

Pictorial Postmarks Announcement	46
How to Order the First-Day-of-Issue Digital Color or Traditional Postmarks	49

Supply Management

Excess Casing Equipment Redistribution	51
--	----

PULL-OUT INFORMATION

Fraud

Invalid USPS Corporate Account Numbers	19
Missing, Lost, or Stolen U.S. Money Order Forms	20
Missing, Lost, or Stolen Canadian Money Order Forms	26
Verifying U.S. Postal Service Money Orders	28
Counterfeit Canadian Money Order Forms	28
Toll-Free Number Available to Verify Canadian Money Orders	28

Other Information

Overseas Military/Diplomatic Mail	29
Freely Associated States (FAS) Restrictions	34

POSTAL BULLETIN

Semi-Annual Index	PB 22420 (7-23-15)
-----------------------------	--------------------

USPS National Emergency Hotline
Is your facility operating? Call 888-363-7462

Find the latest in mail and delivery information
and services offered by U.S. Postal™
in the *Postal Bulletin* at
<http://about.usps.com/postal-bulletin>.

Cover Story

Fire Prevention Week is October 4-10, 2015: Put Smoke Alarms in Your Home to Keep Your Family Safe

Almost 2,500 people die in home fires every year in the United States. Most of these people live in homes that do not have working smoke alarms. More than one-third (37 percent) of home fire deaths result from fires in which no smoke alarms were present. The risk of dying in a home fire is cut in half in homes with working smoke alarms. Smoke alarms save lives.

Smoke is poison that can kill you. Keep your family safe by putting working smoke alarms in your home. Smoke alarms make a loud noise when there is smoke in your home. You should put a smoke alarm on every level of your home, outside each sleeping area, and inside every bedroom. There are many brands of smoke alarms on the market, including alarms for people who are deaf or blind. These alarms may have strobe lights that flash and/or

vibrate to alert those who are unable to hear standard smoke alarms when they sound.

Have you checked your smoke alarm to make sure it's still working? A smoke alarm with a dead or missing battery is the same as having no smoke alarm at all. Test the alarm monthly and replace the batteries at least once a year. A smoke alarm only works when it is properly installed and regularly tested.

Some fire departments will install battery-operated alarms in your home for free. Contact your local fire department's non-emergency number for more information.

— *Safety and OSHA Compliance,
Employee Resource Management, 10-1-15*

Publicity Kit: A Charlie Brown Christmas Stamps



On October 1, 2015, this year's National Stamp Collecting Month campaign will kick-off with the *A Charlie Brown Christmas* Forever® stamps, which will be issued in Santa Rosa, CA. The stamps depict images from the 1965 TV holiday classic that will air later this fall on ABC. Postmasters are encouraged to use elements from this publicity kit to conduct local stamp dedication ceremonies any time after October 1, 2015. Postmasters are also encouraged to contact local movie theatres showing *The Peanuts Movie*, which debuts November 6, 2015, to explore the possibility of conducting ceremonies there or selling the stamps onsite.

The stamp images include: Charlie Brown holding the sapling that eventually becomes his Christmas tree; Charlie Brown and Pigpen with a snowman; Snoopy and children ice skating; the cast of the program gathered around the Christmas tree; Linus kneeling by the sparsely decorated Christmas tree; Charlie Brown checking his mailbox for a Christmas card; Charlie Brown and Linus leaning on a snowy brick wall; Charlie Brown and Linus standing by the Christmas tree; a frustrated Charlie Brown standing in front of Snoopy's doghouse; and Charlie Brown decorating the tree in front of the prize-winning lights display on Snoopy's doghouse. Art director Antonio Alcalá of Alexandria, VA, designed the stamps.

This publicity kit contains everything you need to conduct a successful event:

- Sample media advisory*;
- Sample news release*;
- Sample speech*;

- Corporate Communications manager contact listing for assistance in contacting news media to publicize the event; and
- Government Relations contacts for assistance with inviting elected officials to your event.

*Email mark.r.saunders@usps.gov for the actual documents or to request high-resolution stamp images for the news media.



Poster-sized blowups of the *A Charlie Brown Christmas* Forever stamps can be purchased through Colours Imaging, <http://coloursimaging.com>, by contacting Zach Scott at zscott@coloursinc.com or 703-379-1121.

Sample Media Advisory



POSTAL NEWS

Name

XXX.XXX.XXXX

xxx@usps.gov

usps.com/news



**[Name] Post Office Celebrates Holidays
by Dedicating A Charlie Brown Christmas Forever Stamps
Stamps Based on 1965 Holiday TV Special**

High-resolution images of the stamps are available for media use by emailing
mark.r.saunders@usps.gov.

- WHAT:** Special dedication stamp ceremony for the *A Charlie Brown Christmas* Forever stamps.
- WHO:** [Name of postal official]
[Name of other officials]
- WHEN:** [Day, Date, Time]
- WHERE:** [Name of location]
[Street address]
[City, State, ZIP + 4]
- BACKGROUND:** The [Name] Post Office begins celebrating the holiday season with a special dedication ceremony to highlight the *A Charlie Brown Christmas* Forever stamps. This booklet of 20 stamps features 10 still frames from the 1965 TV special "A Charlie Brown Christmas" (two of each design). They include: Charlie Brown holding the sapling that eventually becomes his Christmas tree; Charlie Brown and Pigpen with a snowman; Snoopy and children ice skating; the cast of the program gathering around the Christmas tree; Linus kneeling by the sparsely decorated Christmas tree; Charlie Brown checking his mailbox for a Christmas card; Charlie Brown and Linus leaning on a snowy brick wall; Charlie Brown and Linus standing by the tree; a frustrated Charlie Brown standing in front of Snoopy's doghouse; and Charlie Brown decorating the tree in front of the prize-winning lights display on Snoopy's doghouse. Art director Antonio Alcalá of Alexandria, VA, designed the stamps.

###

Please Note: For broadcast quality video and audio, photo stills and other media resources, visit the USPS Newsroom at <http://usps.com/news/welcome.htm>.

Reporters interested in speaking with regional Postal Service media contacts should go to <http://about.usps.com/news/media-contacts/usps-local-media-contacts.pdf>.

Follow us on <http://twitter.com/usps> and like us at <http://facebook.com/usps>. For more information about the Postal Service, go to <http://usps.com> and <http://usps.com/postalfacts>.

FOR IMMEDIATE RELEASE



[Date], 2015

POSTAL NEWS

Contact: Name

XXX.XXX.XXXX

xxxxx.xxxxxx@usps.gov

usps.com/news



A Charlie Brown Christmas Forever Stamps Kick-Off National Stamp Collecting Month Stamps Based on 1965 Holiday TV Classic

High-resolution images of the stamps are available for media use by emailing mark.r.saunders@usps.gov.

CITY, STATE — The [Name] Post Office began celebrating the holiday season and kicked off October as National Stamp Collecting Month by conducting a special dedication ceremony for the *A Charlie Brown Christmas* Forever stamps today. The event took place at [Name of location]. The stamps are available at the [Name] Post Office, at <http://usps.com/shop>, or by calling 1-800-STAMP-24.

“It’s never too early to get ready for the holidays,” said [Postal official title and name]. “And what better way to interest youngsters in October as National Stamp Collecting Month than these iconic stamps.”

Joining [Postal official title and name] at the ceremony were [Names and titles of other officials].

[Quotes from other officials as necessary].

This booklet of 20 stamps features 10 still frames from the 1965 TV special “A Charlie Brown Christmas” (two of each design). They include: Charlie Brown holding the sapling that eventually becomes his Christmas tree; Charlie Brown and Pigpen with a snowman; Snoopy and children ice skating; the cast of the program gathering around the Christmas tree; Linus kneeling by the sparsely decorated Christmas tree; Charlie Brown checking his mailbox for a Christmas card; Charlie Brown and Linus leaning on a snowy brick wall; Charlie Brown and Linus standing by the tree; a frustrated Charlie Brown standing in front of Snoopy’s doghouse; and Charlie Brown decorating the tree in front of the prize-winning lights display on Snoopy’s doghouse. Art director Antonio Alcalá of Alexandria, VA, designed the stamps.

The 50th anniversary of “A Charlie Brown Christmas” airs later this fall. Mendelson’s 50th anniversary music variety tribute entitled “It’s Your 50th Christmas, Charlie Brown” airs just prior to the special.



This is not the first time *Peanuts* has been celebrated on a stamp. The Postal Service issued this *Peanuts* commemorative stamp in 2001.

Stamp Collecting

The *A Charlie Brown Christmas* Forever stamps provide youngsters with the perfect start for getting into stamp collecting. For information on upcoming stamps, first-day-of-issue ceremonies and currently available stamps, visit <http://uspsstamps.com>. Be sure to take advantage of the free subscription feature to get twice-a-month updates on the latest stamp news and upcoming stamp dedication ceremonies at <https://confirmsubscription.com/h/r/92580A380F183D2E>.

The Backstory on the Christmas Special

On Dec. 9, 1965, millions of Americans learned what Christmas is all about. That evening, “A Charlie Brown Christmas,” the first animated special featuring characters from Charles Schulz’s beloved comic strip *Peanuts*, aired on CBS. Over the years, the beautifully understated ode to the holiday season has become a tradition. The program now airs annually on ABC.

Work began on “A Charlie Brown Christmas” in the spring of 1965 when Schulz met with producer Lee Mendelson and animator Bill Melendez to discuss the direction of the show. Instead of hiring adult actors, the group decided to take the then-unusual step of having children provide voices for most of the characters.

Schulz insisted that the program should not have a laugh track, which he considered cynical and unnecessary. “Let the people at home enjoy the show at their own speed,” he said, “in their own way.” Composer Vince Guaraldi also contributed a memorable jazz score. “Linus and Lucy,” a lively piano tune that plays in the film, is still synonymous with *Peanuts*.

Schulz’s script focuses on Charlie Brown’s search for the true meaning of Christmas. All around him, his friends are enjoying themselves, but he is bothered by the season’s commercialism. “I just don’t understand Christmas, I guess,” he tells Linus. “I like getting presents, and sending Christmas cards, and decorating trees and all that, but I’m still not happy.” Charlie Brown is even irked by the fact that his dog Snoopy has entered the neighborhood Christmas lights and display contest.

At the request of Lucy, Charlie Brown agrees to direct their school’s Christmas play. The production is temporarily derailed when the other children laugh at him for choosing a small sapling — not a shiny aluminum replica — as a Christmas tree. After an exasperated Charlie Brown wonders if there’s anyone who knows what Christmas is all about, Linus says that he does, and proceeds to recite a stirring rendition of the Nativity story from the Gospel of Luke. When he’s finished, he picks up his blanket and says, “That’s what Christmas is all about, Charlie Brown.”

Encouraged, Charlie Brown rushes home to decorate his small tree, only to be disappointed again when it collapses under the weight of one ornament. His pals, however, come to the rescue, turning the sapling into a glimmering masterpiece. The show concludes with the cast singing “Hark! The Herald Angels Sing.”

Watched in more than 15 million American homes, “A Charlie Brown Christmas” was a smash hit. It received rave reviews and won the George Foster Peabody Award and an Emmy Award for Outstanding Children’s Program. The show is rebroadcast annually on ABC, giving new generations of viewers a chance to discover its charms.

A Charlie Brown Christmas is being issued as a First-Class Mail Forever booklet of 20 stamps. Each stamp features one of 10 stills from “A Charlie Brown Christmas.” These Forever stamps will always be equal in value to the current First-Class Mail one-ounce price.

Ordering First-Day-of-Issue Postmarks

Customers have 60 days to obtain the first-day-of-issue postmark by mail. They may purchase new stamps at their local Post Office, at The Postal Store website at <http://usps.com/shop> or by calling 800-STAMP-24. They should affix the stamps to envelopes of their choice, address the envelopes (to themselves or others) and place them in a larger envelope addressed to:

A Charlie Brown Christmas Stamps
 Manager
 PO Box 999818
 Grand Rapids, MI 49599-9818

After applying the first-day-of-issue postmark, the Postal Service will return the envelopes through the mail. There is no charge for the postmark up to a quantity of 50. There is a 5-cent charge for each additional postmark over 50. All orders must be postmarked by Oct. 19, 2015.

Ordering First-Day Covers

The Postal Service also offers first-day covers for new stamp issues and Postal Service stationery items postmarked with the official first-day-of-issue cancellation. Each item has an individual catalog number and is offered in the quarterly *USA Philatelic* catalog, online at <http://usps.com/shop> or by calling 800-782-6724. Customers may request a free catalog by calling 800-782-6724 or writing to:

U.S. Postal Service
 Catalog Request
 PO Box 219014
 Kansas City, MO 64121-9014

Philatelic Products

This stamp issue has eight philatelic products:

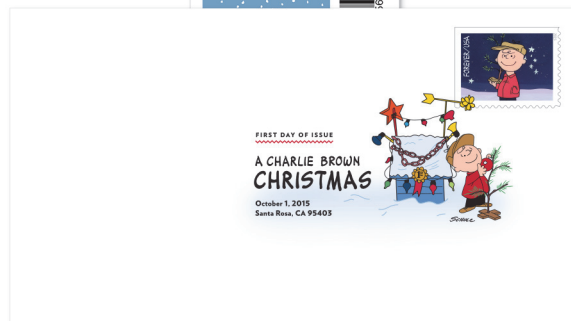
Item #680224, Framed Art, \$39.95.



Item #680221, Digital Color Postmark, set of 10, \$16.40.



Item #680210, Digital Color Postmark Keepsake (random), \$11.95.



Item #680216, First-Day Cover, set of 10, \$9.30.



Item #680231, Stamp Deck Card (random), \$0.95.

Item #680230, Ceremony Program (random), \$6.95.



FIRST-DAY-OF-ISSUE
CEREMONY
PROGRAM 
Celebrate the Art of Stamps

The Postal Service receives no tax dollars for operating expenses and relies on the sale of postage, products and services to fund its operations.

###

Please Note: For broadcast quality video and audio, photo stills and other media resources, visit the USPS Newsroom at <http://usps.com/news/welcome.htm>.

Reporters interested in speaking with regional Postal Service media contacts should go to <http://about.usps.com/news/media-contacts/usps-local-media-contacts.pdf>.

Follow us on <http://twitter.com/usps> and like us at <http://facebook.com/usps>. For more information about the Postal Service, go to <http://usps.com> and <http://usps.com/postalfacts>.

Sample Speech

[Postal Service Official's Name and Title]
United States Postal Service
A Charlie Brown Christmas Stamps
Special Dedication Ceremony
[Location]
[City, State]
[Date, Time]

Thank you all for joining us at today's event. [Optional: Add a brief comment about how this location relates to Charlie Brown, Charles Schulz, or Christmas.]

I also want to thank all of our special guests for joining us in beautiful [City/Town/Location].

In particular, I'm glad that our good friend [Name of elected official] is here, along with [any other officials who should be recognized] as we continue celebrating our holiday stamp series while launching National Stamp Collecting Month.

On December 9, 1965, millions of Americans learned what Christmas is all about. That evening, *A Charlie Brown Christmas*, the first animated special featuring characters from Charles Schulz's beloved comic strip *Peanuts*, aired on national television.

Over the next five decades, the beautifully understated ode to the holiday season has become a tradition.

Work began on *A Charlie Brown Christmas* in the spring of 1965, when Mr. Schulz met with producer Lee Mendelson and animator Bill Melendez to discuss the direction of the show. Instead of hiring adult actors, the group decided to take the then-unusual step of having children provide voices for most of the characters.

Schulz insisted that the program should not have a laugh track, which he considered cynical and unnecessary. "Let the people at home enjoy the show at their own speed," he said, "in their own way." Composer Vince Guaraldi [Pronounced: gu-a-RALD-dee] also contributed a memorable jazz score. "Linus and Lucy," a lively piano tune that plays in the film, is still synonymous with *Peanuts*.

Schulz's script focuses on Charlie Brown's search for the true meaning of Christmas. All around him, his friends are enjoying themselves, but he is bothered by the season's commercialism. Charlie Brown is even irked by the fact that his dog, Snoopy, has entered the neighborhood Christmas lights and display contest. It ends with all of the *Peanuts* gang discovering the true meaning of the season.

Watched in more than 15 million American homes, *A Charlie Brown Christmas* was a smash hit. It received rave

reviews and won the George Foster Peabody Award and an Emmy Award for Outstanding Children's Program.

A Charlie Brown Christmas is being issued as a First-Class Mail Forever booklet of 20 stamps. Each stamp features one of 10 stills from *A Charlie Brown Christmas*.

They include:

- Charlie Brown holding the sapling that eventually becomes his Christmas tree;
- Charlie Brown and Pigpen with a snowman;
- Snoopy and children ice skating;
- The cast of the program gathered around the Christmas tree;
- Linus kneeling by the sparsely decorated Christmas tree;
- Charlie Brown and Linus leaning on a snowy brick wall and another with them standing by the tree;
- A frustrated Charlie Brown standing in front of Snoopy's doghouse, and another one with him decorating the tree in front of the prize-winning lights display on Snoopy's doghouse; and
- Charlie Brown checking his mailbox for a Christmas card — our favorite at the Postal Service.

These stamps are a part of the Postal Service *Holiday Celebration* stamp series. On each stamp, the words "FOREVER USA" — in the same font used in the *Peanuts* comic strip — appear in the top right corner or along the left edge.

It is our hope that these stamps that pay tribute to *A Charlie Brown Christmas* will be on cards, letters, and packages that fill mailboxes across the country this holiday season.

Thank you.

[Pause for applause.]

So now, I would like to invite [Names of officials] to join me in saluting an American original.

Ladies and gentlemen, on behalf of the United States Postal Service, I am honored to present this lasting tribute to one of the most iconic television specials of all time, *A Charlie Brown Christmas*.

[Unveil stamp. Pose for photos.]

Area Corporate Communications Managers

Please feel free to contact your area communications manager for assistance in promoting your event.

Capital Metro

Tom Ouellette
Telephone: 301-548-1465
email: thomas.r.ouellette@usps.gov

Eastern

Paul Smith
Telephone: 215-863-5055
email: paul.f.smith@usps.gov

Great Lakes

Ed Moore
Telephone: 313-225-5452
email: edward.r.moore@usps.gov

Pacific

Don Smeraldi
Telephone: 858-674-3149
email: don.a.smeraldi@usps.gov

Northeast

Maureen Marion
Telephone: 860-285-7029
email: maureen.p.marion@usps.gov

Southern

Polly Gibbs
Telephone: 214-819-8704
email: polly.j.gibbs@usps.gov

Western

John Friess
Telephone: 303-313-5130
email: john.g.friess@usps.gov

Congressional State Representative Listing

202.268.XXXX (use government relations representative's extension).

State	Representative	Extension
Alabama	Zahava Colicelli	3739
Alaska	Mary Ann Simpson	3741
American Samoa	Xavier Hernandez	8514
Arizona	David Coleman	3745
Arkansas	Mike Porter	7217
California	Xavier Hernandez	8514
Connecticut	Darrell Donnelly	6748
Colorado	David Coleman	3745
Delaware	James Cari	6029
District of Columbia	Darrell Donnelly	6748
Florida	Zahava Colicelli	3739
Georgia	Zahava Colicelli	3739
Guam	Xavier Hernandez	8514
Hawaii	Xavier Hernandez	8514
Idaho	David Coleman	3745
Illinois	Tim Grilo	4387
Indiana	Shaun Chang	7626
Iowa	Jeryl Weaver	7505
Kansas	Jeryl Weaver	7505
Kentucky	Shaun Chang	7626
Louisiana	Mike Porter	7217
Maine	Jason Lamote	6027
Maryland	Darrell Donnelly	6748
Massachusetts	Jason Lamote	6027
Michigan	Jeryl Weaver	7505
Minnesota	Jeryl Weaver	7505
Mississippi	Mike Porter	7217
Missouri	Shaun Chang	7626
Montana	David Coleman	3745
Nebraska	Jeryl Weaver	7505
Nevada	David Coleman	3745
New Hampshire	Jason Lamote	6027
New Jersey	Darrell Donnelly	6748
New Mexico	Cathy Pagano	3427
New York	Jason Lamote	6027
North Carolina	Zahava Colicelli	3739
North Dakota	Jeryl Weaver	7505
Northern Mariana Islands	Xavier Hernandez	8514
Ohio	Tim Grilo	4387
Oklahoma	Mike Porter	7217
Oregon	David Coleman	3745
Pennsylvania	Tim Grilo	4387
Puerto Rico	Jason Lamote	6027
Rhode Island	Darrell Donnelly	6748
South Carolina	Zahava Colicelli	3739
South Dakota	Jeryl Weaver	7505
Tennessee	Shaun Chang	7626
Texas	Mike Porter	7217
Utah	David Coleman	3745
Vermont	Jason Lamote	6027
Virgin Islands	Jason Lamote	6027
Virginia	Darrell Donnelly	6748
Washington	David Coleman	3745
West Virginia	Shaun Chang	7626
Wisconsin	Jeryl Weaver	7505
Wyoming	David Coleman	3745

Policies, Procedures, and Forms Updates

Manuals

ELM Revision: Employee Relations

Effective October 1, 2015, the Postal Service™ is revising the *Employee and Labor Relations Manual* (ELM) subchapter 670 to update an obsolete reference and link to Handbook EL-603, *Equal Employment Opportunity Complaint Process*.

Employee and Labor Relations Manual (ELM)

	*	*	*	*	*
6	Employee Relations				
	*	*	*	*	*
673	Policy				
	*	*	*	*	*
673.2	Specific Comments				
	*	*	*	*	*

673.221 Discrimination

[Revise the text of 673.221 to read as follows:]

The Postal Service is committed to ensuring a workplace that is free of discrimination and to fostering a work climate in which all employees may participate, contribute, and grow to their fullest potential.

Through the EEO Complaint Processing Program, the Postal Service maintains a process of EEO counseling and

investigation for addressing and resolving complaints that arise from alleged discriminatory practices. As an alternative to precomplaint EEO counseling, the Postal Service also offers the dispute resolution process titled Resolve Employment Disputes Reach Equitable Solutions Swiftly (REDRESS).

Publication 133, *What You Need To Know About EEO*, provides an overview of the Equal Employment Opportunity (EEO) laws and the EEO complaint process in the Postal Service. Publication 94, *REDRESS*, provides an introduction to the alternative dispute resolution process.

* * * * *

We will incorporate these revisions into the next online update of the ELM, which is available on the Postal Service PolicyNet website:

- Go to <http://blue.usps.gov>.
- In the left-hand column under “Essential Links”, click *PolicyNet*.
- Click *Manuals*.

The direct URL for the Postal Service PolicyNet website is <http://blue.usps.gov/cpim>.

— EEO Compliance and Appeals
Labor Relations, 10-1-15

ELM Revision: Severance Pay

Effective October 1, 2015, the Postal Service™ is revising the *Employee and Labor Relations Manual* (ELM) section 435.1 to update severance pay policy relative to eligibility and qualifying job offer.

Employee and Labor Relations Manual (ELM)

	*	*	*	*	*
4	Pay Administration				
	*	*	*	*	*
435	Severance Pay				
	*	*	*	*	*

[Revise the title of 435.1 to read as follows and delete the text from 435.1 in its entirety:]

435.1 Eligibility and Qualifying Job Offer

[Add new 435.11 and 435.12 to read as follows:]

435.11 Eligibility

A career Postal Service employee is eligible for severance pay if the following applies:

- a. The employee is involuntarily separated.
- b. Immediately before the separation, the Postal Service, another federal agency, or both continuously employed the employee for at least 12 consecutive months without a break in service of three or more consecutive days.

A career Postal Service employee is not eligible for severance pay in the following circumstances:

- a. The employee is entitled to an immediate retirement annuity from a federal civilian retirement system or from the uniformed services.

Note: If the employee becomes eligible for a retirement annuity after being involuntarily separated, his or her eligibility for severance pay ends on the date he or she becomes eligible for the annuity and the employee will not receive any additional severance pay after that date. The employee does not reimburse the Postal Service for any severance pay received before that date.

- b. Within the 60-day period before the employee's separation, the employee receives and declines to accept a written qualifying job offer, as defined in 435.12.
- c. The employee is administratively separated because, following entry into military service, he or she has become ineligible for reemployment under USERRA (see 365.37).
- d. The employee is separated for cause on charges of misconduct, delinquency, or inefficiency.
- e. At the time of separation, the employee is receiving compensation as a beneficiary of the Federal Employees Compensation Act, except when the employee is receiving this compensation:
 - (1) Concurrently with Postal Service pay, or
 - (2) Because of someone else's death.

435.12 Qualifying Job Offer

For the purposes of 435.1, a job offer is considered qualifying if the following conditions are met:

- a. The offer is made in writing;
- b. The employee is qualified for the position offered; and
- c. The position offered is:
 1. In the Postal Service or another federal agency;

2. Within the employee's local commuting area, unless geographic mobility is a condition of employment;
3. In the same work schedule (i.e., either a full-time or part-time schedule) regardless of whether the employee is scheduled to work fewer hours in the position offered than he or she works in his or her current position;
4. Of like tenure (i.e., the expected duration of the employee's appointment);
5. Of like seniority, for bargaining positions only; and
6. Of comparable pay, as defined below:
 - (a) The position offered is "of comparable pay" if it is in the same grade or pay level as the employee's current position.
 - (b) For positions in different pay schedules, the position offered is "of comparable pay" if the maximum salary range for the position offered is the same as or exceeds the maximum salary range for the employee's current position.
 - (c) Whether a position is "of comparable pay" is determined without regard to the employee's eligibility for saved grade or pay in either the position offered or the employee's current position.

* * * * *

We will incorporate these revisions into the next online update of the ELM, which is available on the Postal Service PolicyNet website:

- Go to <http://blue.usps.gov>.
- In the left-hand column under "Essential Links", click *PolicyNet*.
- Click *Manuals*.

The direct URL for the Postal Service PolicyNet website is <http://blue.usps.gov/cpim>.

— *Compensation and Benefits,
Human Resources, 10-1-15*

Handbooks

Handbook RE-6 Revision: Facilities Environmental Guide

Effective October 1, 2015, the Postal Service™ is revising Handbook RE-6, *Facilities Environmental Guide*, to reflect changes in Postal Service policies and practices, updates to applicable laws and regulations, and changes to the Facilities and Postal Service organizations. The revised Handbook RE-6 provides an accessible, current statement of environmental policy under applicable laws, regulations, and Postal Service policies.

Major changes include: a redefined approval policy for real estate actions affecting contaminated properties; the removal of historic artwork policies and consolidation of such policies in Handbook RE-1, *U.S. Postal Service Facilities Guide to Real Property Acquisitions*, as recommended by the Office of the Inspector General; updated references to those laws and regulations applicable to the Postal Service; and the removal of outdated case studies and illustrations.

Handbook RE-6, *Facilities Environmental Guide*

* * * * *

[Revise the text of Handbook RE-6 in its entirety to read as follows:]

1 Overview

1-1 Purpose and Scope

This Handbook RE-6, *Facilities Environmental Guide* (RE-6), provides Postal Service employees with policies regarding real estate actions (e.g., purchases, sales, and leases) and design and construction (which include facility repair and alterations) that may affect the environment. This version 3 (October 2015) RE-6 replaces and supersedes all preceding versions, including version 1 (December 1997), version 2 (November 2004), and any amendments thereof.

1-2 Applicability

The policies in this publication apply to all real estate and design and construction activities of the Facilities Department with respect to owned and leased properties, and other real property interests.

1-3 Updates

The Facilities Department periodically issues revisions to this handbook. Revisions will appear in the *Postal Bulletin*, which is posted online at <https://about.usps.com/postal-bulletin/welcome.htm>.

2 The National Environmental Policy Act

2-1 Background

The National Environmental Policy Act (NEPA) was signed into law on January 1, 1970¹ and requires federal agencies² to consider the environmental impacts of their actions and decisions. Under NEPA, the Postal Service integrates environmental considerations into its decision-making and planning processes before implementing certain actions. Environmental considerations can include factors such as pollution, traffic, historic resources, and wetlands. The NEPA process engages project planners and decision-makers to assess, analyze, document, and communicate the environmental impacts of their proposed actions. NEPA's goal is to consider environmental impacts along with other factors such as cost, feasibility, and design.

2-2 Regulatory Policy and Scope

The Postal Service has issued regulations setting forth specific environmental procedures implementing NEPA. These regulations are in 39 C.F.R. part 775.

2-3 Determining NEPA Applicability and Documentation

The vice president of Facilities or his or her designee is responsible for developing NEPA policy as it affects real estate actions and design and construction actions. All proposed Facilities Department projects must undergo the appropriate level of NEPA analysis, in accordance with 39 C.F.R. part 775, to determine the level of environmental impacts. Based on that analysis, the Facilities environmental specialist may find that the NEPA regulations categorically exclude a proposed project from further NEPA consideration or that a particular project may require further NEPA study. Categorical exclusions are listed in 39 C.F.R. § 775.6. Consult with the Facilities environmental specialist and the Law Department on questions regarding application of categorical exclusions.

3 Environmental Requirements for Facilities Department Actions

3-1 Federal Regulatory and USPS Policy Considerations

The Postal Service must examine numerous federal statutes when carrying out Facilities Department actions as described in this handbook. Some statutes may require compliance as a matter of law, while others may require compliance as a matter of USPS policy, and yet others may not apply to the Postal Service due to its unique status as an independent establishment of the Executive Branch. The fol-

1. 42 U.S.C. § 4321 et seq.

2. The Postal Reorganization Act established the Postal Service as an "independent establishment of the executive branch of the Government of the United States." 39 U.S.C. § 201. Notwithstanding USPS's adherence to NEPA, USPS is not a federal agency. See 5 U.S.C. §§ 104 & 105 (defining the "executive agency" category as expressly not including USPS).

lowing are some of the federal environmental laws applicable in whole or in part to Facilities Department projects:

- Clean Water Act, 33 U.S.C. §§ 1251 et seq.
- Comprehensive Environmental Response, Compensation, and Liability Act (commonly known as “Superfund”), 42 U.S.C. §§ 9601 et seq.
- Resource Conservation and Recovery Act, 42 U.S.C. §§ 6901 et seq.
- Clean Air Act, 42 U.S.C. §§ 7401 et seq.
- Endangered Species Act, 16 U.S.C. §§ 1531 et seq.
- Safe Drinking Water Act, 42 U.S.C. §§ 300f et seq.

The Postal Service may adopt policies to voluntarily comply with certain other laws, regulations, or executive orders. For example, the Postal Service is not legally obligated to follow Executive Order 11988, Floodplain Management, or Executive Order 11990, Protection of Wetlands. However, the Postal Service issued regulations at 39 C.F.R. part 776, Floodplain and Wetland Procedures, to implement the goals of these Executive Orders.

The Postal Service also examines other environmental conditions — such as asbestos, mold, lead, and indoor air quality — in connection with Facilities Department projects. The Postal Service has a commitment to employee health and safety, including compliance with the federal Occupational and Safety Health Act (OSHA), hence the examination of these environmental conditions.

Consult with the Facilities environmental specialist and the Law Department on questions regarding applicability of laws, regulations, and policies.

3-2 State and Local Regulatory Considerations

Most states have enacted environmental statutes and regulations that complement federal laws. Some federal laws specifically authorize the states or municipalities to enforce federal law by enactment and implementation of a state program. Other state or local statutes and regulations set standards that may be stricter than the corresponding federal standard. Consult with the Law Department to determine the applicability of these statutes and programs to USPS operations and projects.

4 Environmental Due Diligence

4-1 Introduction

This section discusses environmental due diligence for the Facilities Department’s real estate actions. Environmental due diligence is intended to analyze potential environmental risks associated with the property.

4-2 Legislative Background

Federal laws define a property owner’s liability for the environmental condition of a property. Among these federal laws are: the Comprehensive Environmental Response,

Compensation, and Liability Act (CERCLA or “Superfund”), 42 U.S.C. §§ 9601 et seq.; the Resource Conservation and Recovery Act (RCRA), 42 U.S.C. § 6901; and the Clean Water Act (CWA), 33 U.S.C. §§ 1251 et seq. In many cases, CERCLA imposes strict liability on a property owner or operator that is joint and several, meaning that the particular level of culpability or contribution of contamination is irrelevant to the degree of liability.

Given the strict liability standard under CERCLA, the Postal Service conducts environmental due diligence when acquiring property in order to qualify for defenses under CERCLA. A landowner who meets the criteria of a “bona fide prospective purchaser” or “innocent landowner” receives certain protections from CERCLA liability. In order to satisfy the necessary criteria, the landowner must conduct “all appropriate inquiries” into the previous ownership and uses of the property prior to acquisition of the property. To establish these protections, the USPS environmental due diligence process must meet the “all appropriate inquiries” standard. Furthermore, following acquisition of the property, the landowner must demonstrate compliance with all continuing obligations on the property, such as land use restrictions and institutional controls, and must take “reasonable steps” to stop any continuing release of hazardous substances, prevent any threatened future release, and prevent or limit human or environmental exposure to any hazardous substances, if applicable.

4-3 Policy

4-3.1 Due Diligence

USPS policy is to conduct some level of environmental due diligence on any property proposed for use as a USPS facility. The scope of due diligence varies with the type of facility, the type of real estate action, and the environmental condition of the property.

When conducting Phase I-level environmental site assessments, the Postal Service follows the most current version of the American Society for Testing and Materials (ASTM) E1527, *Standard Practice for Environmental Site Assessments: Phase I Environmental Site Assessment Process*. The Facilities environmental specialist may advise applying other ASTM standards when a site requires further inquiry beyond the Phase I Environmental Site Assessment (e.g., a Phase II Environmental Site Assessment).

4-3.2 Acquisition

In order to effectively and efficiently operate, the Postal Service may determine that the acquisition of contaminated property is in the best interest of the Postal Service. If the property is contaminated but the applicable regulatory agency states in writing that corrective action is not required for the contamination, then the Postal Service can purchase the property without additional approvals beyond

what is required for any purchase. Health and safety concerns related to the contamination will be addressed separately as a part of any purchase.

Prior to purchasing a property that has environmental contamination at a level that, under local, state, or federal law, requires corrective action on the property, the Postal Service must take the following actions:

1. If the contamination on the property qualifies the property as a “Superfund” site under CERCLA or the state equivalent of a Superfund site, then the vice president of Facilities, the general counsel, and the vice president of Area Operations must recommend the purchase in writing, and the committee responsible for approving capital expenditures must vote to approve the purchase. In addition, the Postal Service may not occupy and/or operate in or on the purchased property until the Facilities environmental specialist, in conjunction with the area safety manager, determines that any health and safety issues related to the contamination are resolved.
2. If the property is contaminated but is *not* a “Superfund” site under CERCLA or a state equivalent Superfund site, yet the contamination on the property is such that the enforcing environmental regulatory agency would require the Postal Service to take corrective action, then the vice president of Facilities, the general counsel, and the vice president of Area Operations must provide written approval of the purchase. In addition, the Postal Service may not occupy and/or operate in or on the purchased property until the Facilities environmental specialist, in conjunction with the area safety manager, determines that any health and safety issues related to the contamination are resolved.
3. If the property is contaminated but is *not* a “Superfund” site under CERCLA or a state equivalent Superfund site, yet the contamination on the property is such that the enforcing environmental regulatory agency requires a party other than the Postal Service to take corrective action, then the Postal Service may purchase the property without additional approvals beyond what is required for any purchase. However, the Postal Service must evaluate its potential liability prior to purchase. In addition, the Postal Service may not occupy and/or operate in or on the purchased property until the Facilities environmental specialist, in conjunction with the area safety manager, determines that any health and safety issues related to the contamination are resolved.
4. If the property is solely contaminated by the Postal Service, as confirmed by the Facilities environmental specialist, then the Postal Service may purchase the property without additional approval beyond what is

required for any purchase, regardless of the type of the contamination caused by the Postal Service. Any health and safety concerns related to the contamination will be addressed independent of the purchase.

4-3.3 Leasing

In order to effectively and efficiently operate, the Postal Service may decide that it is in the best interest of the Postal Service to lease a contaminated property. Prior to the Postal Service entering into a lease of contaminated property, the Facilities environmental specialist, in conjunction with the area safety manager, must confirm that the Postal Service has addressed any health and safety concerns related to the contamination, if any exist. In addition, indemnification of the Postal Service by the landlord or other appropriate entity for matters related to the contamination may be required. Note that under some state laws and under some Brownfields Programs, the Postal Service, by entering into a lease, may be considered to be an owner/operator, and thus have owner/operator liability under environmental laws. Consult with the Law Department on applicable laws and regulations.

The USPS Environmental Due Diligence process also addresses common environmental considerations on leased properties as well as associated compliance obligations required of the Postal Service and the landlord. The Postal Service and the landlord should review these obligations and define responsibility prior to executing a lease.

4-3.4 Disposal

Prior to disposing (via sale, exchange, or any other form of transfer) of a property that has environmental contamination at a level that, under local, state, or federal law, requires corrective action on the property and/or ongoing environmental compliance requirements, the Facilities Department will consult with the Law Department to ensure, at a minimum, the following:

1. The Postal Service notifies the prospective purchasers regarding relevant environmental findings.
2. The terms of the disposal adequately protect the Postal Service from environmental liabilities connected to site contamination.
3. The Postal Service, as applicable and as allowed, properly transfers permits, consent decrees, and administrative orders on consent to the prospective purchaser.
4. The disposal of a property does not unreasonably impair third-party agreements of the Postal Service (e.g., an indemnity by a third party).

5 Environmental Oversight of the Construction Process

5-1 Introduction

The Postal Service integrates environmental considerations into design, construction, and post-construction processes for new construction projects and repair and alteration projects. The Postal Service evaluates environmental considerations in the planning stage of a project and throughout the entire construction process.

5-2 Project Responsibilities

5-2.1 Environmental Considerations

Environmental considerations for a project may include the following:

- Groundwater or soil contamination.
- Asbestos.
- Lead.
- Storage tanks.
- Mold.
- Vapor intrusion and indoor air quality.
- Floodplains.
- Wetlands.
- Historic and cultural resources.
- Environmental compliance obligations (e.g., permitting/inspection costs for fuel tanks).

5-2.2 Design Responsibilities

The Facilities environmental specialist works with the project manager to ensure that all site concerns identified during the NEPA review and environmental due diligence are incorporated into the project. During this process, the Facilities environmental specialist serves as the technical advisor on environmental and related health and safety issues (in conjunction with the area safety manager) and

assists the project manager with any special environmental requirements for inclusion in project design.

The Postal Service is committed to incorporating environmentally beneficial or sustainable design elements in its projects where practicable in accordance with the most current version of USPS Standard Design Criteria.

5-2.3 Construction Responsibilities

The Postal Service ensures that all applicable environmental permits and records or reports required by the permits are obtained.

As part of the project planning stage, the project manager and the Facilities environmental specialist identify environmental activities and mitigation measures, if any, to be implemented during construction. The Facilities environmental specialist serves as a technical advisor to the project manager on environmental matters throughout the construction process.

Contractors must comply with all applicable federal, state, and local environmental, health and safety laws, and regulations. Consult with the Law Department to determine when the laws and requirements under this Section may apply to the Postal Service and its contractors.

* * * * *

We will incorporate these revisions into the next online update of Handbook RE-6, *Facilities Environmental Guide*, which is available on the Postal Service PolicyNet website:

- Go to <http://blue.usps.gov>.
- In the left-hand column under “Essential Links”, click *PolicyNet*.
- Click *HBKs*.

The direct URL for the Postal Service PolicyNet website is <http://blue.usps.gov/cpim>.

Pull-Out Information

Fraud

Invalid USPS Corporate Account Numbers

This listing should be provided to Contract Postal Units and used by acceptance clerks in non-POS locations without intranet access to validate a USPS Corporate Account (USPSCA) number online. For all other locations, online USPSCA validation is preferred. The online validation process is outlined in the USPSCA Validation SOP on the Retail webpage. This list supersedes all previous notices,

which must be recycled. Acceptance clerks must not accept Priority Mail Express™ shipments bearing an invalid USPSCA number in the “Payment by Account” or “Agreement Number” section of the label or form.

Note: The first 6 digits of a 9-digit Custom Designed Service and Next Day Pickup Agreement make up the Corporate Account Number.

006199	016058	076906	105953	191570	192347	192964	223037	337105	551196	630230	840504	941288
006291	016131	076929	109072	191591	192355	192993	223337	337326	553413	631251	841234	941816
007035	016136	077736	109845	191602	192363	193109	223383	342029	554206	631270	841293	941868
007179	016223	078187	112509	191618	192376	193121	224032	346014	564016	631314	841407	945641
007228	016293	079416	118290	191628	192379	193126	225007	347063	570026	641950	841655	945829
007244	016323	080097	128720	191668	192389	193127	226052	358800	570035	652305	850036	946323
007258	016338	080462	131352	191674	192399	193141	227108	361350	570187	652350	850872	946378
007270	016490	080639	142094	191757	192410	193166	228001	372125	570207	652510	852985	946559
008001	016588	084000	142100	191797	192421	193192	229121	372235	571015	660227	853394	947105
008015	018089	085555	142101	191830	192429	193276	231031	376123	571023	723073	856242	949032
008074	018776	085714	142379	191831	192461	193330	232179	379305	571087	724072	895701	950031
008108	020642	089744	142667	191832	192492	193378	232288	381545	571142	730789	900003	950292
008118	021028	090858	142682	191852	192503	193393	232292	383201	573004	731394	900021	950956
008144	022166	091887	142954	191891	192513	193398	232314	384001	573033	740409	900158	950973
008521	025201	091983	150063	191918	192514	193449	232408	410225	577057	741381	900167	950996
008587	025347	092890	156150	191923	192517	193474	232412	432812	577097	744001	900223	951274
008677	026073	094045	171325	191945	192518	193502	232416	436156	581045	750107	900431	951285
008716	027227	094444	180421	191979	192521	193650	232426	441706	581169	750623	903135	951530
009144	029723	094451	191007	191991	192529	193687	232427	441760	581191	752192	908108	951901
009189	030484	094574	191010	192016	192538	196113	235132	452012	581208	760010	911034	967158
009216	030555	094984	191012	192023	192556	200163	235390	452091	581210	760013	913910	968251
009313	030562	095986	191018	192025	192592	200810	235572	452360	582005	761665	914071	968302
009457	033036	096186	191027	192032	192602	200894	235573	452693	591110	774328	914103	968319
009487	038577	096250	191032	192038	192645	208179	235579	452783	591150	791029	916015	968400
009537	041351	096823	191037	192050	192660	208786	274340	452961	591211	794003	920078	968428
009611	060036	097601	191073	192070	192663	210576	292320	452963	591313	800113	920275	968639
010781	064644	097766	191099	192075	192668	210588	294557	453023	596562	800193	921284	968976
012287	064915	097852	191125	192080	192722	220067	296552	453048	596593	800380	926232	971119
013080	065091	098382	191127	192089	192730	220123	300982	453052	596594	801414	926409	980001
014928	065100	098662	191141	192098	192735	220296	302499	454759	597542	801624	926521	980187
015275	065540	100204	191183	192111	192743	220420	304028	456002	597546	802151	927270	981485
015277	065667	100310	191228	192165	192755	220489	312314	458072	598574	802229	928154	981954
015349	067185	100431	191244	192193	192756	220491	319144	480504	599571	802305	931479	982320
015517	068435	100510	191247	192211	192766	220830	328150	481934	600058	802403	931525	982561
015534	069844	100765	191255	192214	192798	221072	328420	487277	600325	802662	931740	984009
015622	070006	100767	191276	192235	192801	221171	328442	490113	601360	802752	933012	
015689	070038	100777	191303	192250	192810	221321	329117	491116	604825	805003	933181	
015770	070537	100814	191321	192280	192822	221384	331012	494078	605038	805016	934264	
015797	070681	100824	191331	192281	192856	221405	331272	530018	605042	809135	940109	
015823	070701	100868	191344	192301	192880	221596	331361	530025	605105	813058	940143	
015828	075024	101839	191364	192306	192883	221697	331470	531732	605112	816013	940480	
016020	075200	102550	191470	192325	192895	222027	331803	537325	605153	816058	940547	
016038	076095	102632	191490	192341	192924	222310	333053	551011	606831	816426	940666	
016044	076193	102884	191543	192346	192941	222337	336602	551094	611159	836730	941218	

Missing, Lost, or Stolen U.S. Money Order Forms

Do Not Cash — Upon Receipt, Notify Local Postal Inspectors

This listing will be provided to all Postal Service™ employees responsible for accepting and cashing postal money orders. Destroy all interim notices when the

numbers listed appear in the *Postal Bulletin*. The actual serial numbers consist of the first 10 digits on the money orders. Check for altered dollar amounts by holding money orders to the light.

010 001 0200 to 0299	040 674 7100 to 7199	073 763 0878 to 0887	122 451 9879 to 9899
010 504 1932 to 1999	040 688 8816 to 8899	073 763 0889 to 0898	122 714 6805 to 6900
011 582 1889 to 1899	041 299 6752 to 6799	077 617 5481 to 5499	124 916 0304 to 0499
011 588 2900 to 3099	041 623 8889 to 8899	077 999 4001 to 4090	126 423 0136 to 0169
012 441 0784 to 0799	041 803 6565 to 6599	078 174 4475 to 4499	127 500 2328 to 2399
012 579 5675 to 5699	043 129 1968 to 1997	078 219 4931 to 4999	160 901 2254 to 2299
013 289 6176 to 6199	043 205 5922 to 5999	078 250 4756 to 4799	161 103 6581 to 6599
013 610 0014 to 0099	044 087 3457 to 3499	078 823 8312 to 8399	161 194 2857 to 0899
014 932 1000 to 1099	044 087 4000 to 4099	079 374 0300 to 2499	162 032 4447 to 4499
014 972 0800 to 0899	044 226 2487 to 2512	079 807 2342 to 2399	163 257 1085 to 1099
015 363 0065 to 0099	044 306 4200 to 4299	082 721 0228 to 0254	164 359 2406 to 2499
017 028 3200 to 3299	044 306 4370 to 4599	083 140 5000 to 7499	166 101 1433 to 1499
018 569 5333 to 5399	045 524 4121 to 4298	083 784 8886 to 8899	167 555 5201 to 5212
018 986 5264 to 5299	046 800 9870 to 9899	083 913 6915 to 6999	167 555 5214 to 5299
019 518 2814 to 2899	047 352 4000 to 4099	084 478 3920 to 3999	169 618 6274 to 6299
020 698 5159 to 5199	048 383 7650 to 7659	086 000 8271 to 8299	171 806 6878 to 6893
020 844 7307 to 7399	048 396 3647 to 3699	086 798 3840 to 3849	173 639 4685 to 4699
020 972 8948 to 8999	051 142 0755 to 0799	088 404 4472 to 4499	174 238 2779 to 2799
022 021 9110 to 9181	051 774 8857 to 8899	088 404 5584 to 5699	174 281 9347 to 9399
022 037 1411 to 1499	051 781 2875 to 2885	088 757 8688 to 8699	175 251 2600 to 0699
022 527 9201 to 9210	051 977 7010 to 7023	088 757 9400 to 9499	176 281 7937 to 7950
022 529 1882 to 1899	052 058 7115 to 7199	089 358 2248 to 2257	176 281 7963 to 7999
023 637 7169 to 7199	054 450 1130 to 1167	090 663 9678 to 9684	176 731 6586 to 6599
024 380 4100 to 4199	057 670 0563 to 0599	091 818 0071 to 0099	178 254 5000 to 9999
024 496 6870 to 6896	058 187 3836 to 3899	093 106 9346 to 9355	178 881 9900 to 9999
025 092 0987 to 0999	058 523 3003 to 3099	093 203 0500 to 0599	180 031 2089 to 2098
025 369 5535 to 5599	058 591 1153 to 1299	093 684 3630 to 3699	180 403 7723 to 7741
025 729 1151 to 1199	058 895 3746 to 3799	094 081 5074 to 5099	180 428 4580 to 0599
025 729 1643 to 1799	059 986 0814 to 0899	094 216 2555 to 2599	182 368 7544 to 0599
026 492 3180 to 3199	060 406 7650 to 7699	094 580 7062 to 7099	182 475 3229 to 3258
027 361 0430 to 0499	063 491 8122 to 8199	094 639 4200 to 4299	182 475 3904 to 3933
027 369 4482 to 4495	063 916 9968 to 9999	095 070 7186 to 7199	182 631 0031 to 0099
027 671 8762 to 8776	064 091 4500 to 4599	095 076 8300 to 8399	182 911 6539 to 6600
027 787 9886 to 9899	065 170 0471 to 0499	095 354 6864 to 6899	184 218 2760 to 2799
027 965 9487 to 9499	065 255 7909 to 7999	097 224 1350 to 1599	185 828 1474 to 1499
028 100 8069 to 8099	065 392 6345 to 6399	100 160 3800 to 3899	186 132 7583 to 0599
028 191 1852 to 1999	066 099 2014 to 2099	104 667 6400 to 6499	186 629 0589 to 0599
028 850 3000 to 3199	066 648 2880 to 2899	104 876 8937 to 8999	187 184 6177 to 0199
029 510 1500 to 1599	066 787 3639 to 3699	112 049 4413 to 4499	187 323 8200 to 8299
030 687 0903 to 0999	066 845 7500 to 9999	112 870 9765 to 9799	187 441 6080 to 6099
030 701 3442 to 3499	067 093 3869 to 3899	113 319 2000 to 2099	188 831 6774 to 6799
031 077 4507 to 4799	068 895 0334 to 0399	114 402 3850 to 3899	188 835 6370 to 6399
032 295 7500 to 9999	070 724 4488 to 4499	114 866 5368 to 5397	189 083 1064 to 1099
034 394 1000 to 1099	070 841 9181 to 9199	116 154 2800 to 2899	189 660 9583 to 9599
034 943 0400 to 0799	070 844 2546 to 2599	116 986 4400 to 4499	191 179 0377 to 0399
035 035 4337 to 4399	070 916 1340 to 1399	117 175 1647 to 5169	192 050 5762 to 5781
037 312 7500 to 7599	071 047 5768 to 5799	117 951 4687 to 4699	194 456 8600 to 0699
037 706 9578 to 9599	071 179 9800 to 9899	117 951 5200 to 5299	195 194 6881 to 6899
037 805 3677 to 3699	071 386 3682 to 3699	119 786 3051 to 3064	198 285 2556 to 2566
037 909 5490 to 5499	071 507 6840 to 6899	119 815 8961 to 6199	199 105 0778 to 0799
037 931 4660 to 4699	072 045 9641 to 9699	119 850 7400 to 7499	199 678 2968 to 2999
039 145 6521 to 6595	072 675 8287 to 8299	119 850 7700 to 7999	202 748 5133 to 5199
040 024 3901 to 3999	073 763 0867 to 0876	121 634 0460 to 0499	202 748 5245 to 5299

202 748 5300	to	5399	379 843 5100	to	5199	403 685 8600	to	8699	421 656 2609	to	2699
202 748 5400	to	5499	380 093 9600	to	9699	404 003 0300	to	0399	421 988 9700	to	9799
203 256 1240	to	1299	380 165 1165	to	1199	404 041 8838	to	8899	422 172 4667	to	4699
204 230 3577	to	3595	381 325 4500	to	4599	404 071 4268	to	4299	422 484 4212	to	4299
205 019 0174	to	0199	381 604 2510	to	2699	404 347 5356	to	5399	422 556 1270	to	1299
207 196 9900	to	9999	381 645 9525	to	9599	404 347 5548	to	5599	422 587 7024	to	7099
207 204 0700	to	0799	383 314 3968	to	3999	404 726 4500	to	4599	422 819 7533	to	7599
207 204 0800	to	0899	383 892 1000	to	1344	404 961 5001	to	5199	422 842 5073	to	5087
207 514 3857	to	3899	383 892 1382	to	1399	405 325 0188	to	0198	422 907 7563	to	7599
208 556 4707	to	4799	384 925 3641	to	3654	406 009 4587	to	4599	424 500 6050	to	6099
210 057 4038	to	4047	385 568 2331	to	2399	406 260 6830	to	6899	424 641 8500	to	8599
210 221 0548	to	0599	385 599 7554	to	7575	406 459 6641	to	6999	424 871 6600	to	6699
214 061 4711	to	4724	385 774 2024	to	2099	406 733 3000	to	3999	425 298 2352	to	2399
214 303 6311	to	6325	386 624 1412	to	1599	407 545 1557	to	1599	425 418 4269	to	4299
214 303 6239	to	6258	386 883 8936	to	8999	407 594 0412	to	0599	425 418 4405	to	4499
214 877 4251	to	4273	387 314 5574	to	5599	407 692 9100	to	9299	426 547 4566	to	4599
215 252 3918	to	3992	387 837 6300	to	6399	407 959 2190	to	2199	427 412 6337	to	6499
218 698 2157	to	2199	388 828 0656	to	0699	408 265 2275	to	2288	427 481 0900	to	0999
218 746 0800	to	0899	389 696 2400	to	2799	408 499 7700	to	7799	428 027 2742	to	2752
219 095 0100	to	0399	389 846 3104	to	3135	408 499 7900	to	7999	429 474 4172	to	4199
219 389 1885	to	1899	389 846 3145	to	3195	408 682 8484	to	8599	429 889 2900	to	2999
219 568 7435	to	7456	389 887 9211	to	9230	408 698 7015	to	7099	430 150 4401	to	4599
219 568 7469	to	7487	389 887 9234	to	9299	409 072 3941	to	3999	430 172 9800	to	9899
221 316 5757	to	5799	390 001 3182	to	3199	410 491 2311	to	2399	430 177 1900	to	2099
223 476 3914	to	3999	390 001 3500	to	3699	410 694 8400	to	8599	430 444 9500	to	9699
223 565 4921	to	4957	390 545 5974	to	5999	410 775 1500	to	1599	430 664 4070	to	4099
223 565 4979	to	4999	391 104 6146	to	6199	410 795 7927	to	7999	432 168 8419	to	8499
224 636 4745	to	4765	391 574 1466	to	1499	410 867 0917	to	0966	432 708 6800	to	6999
224 636 4776	to	4799	391 783 3020	to	3599	410 867 0970	to	0999	432 744 1544	to	1599
224 636 4855	to	4885	391 792 6100	to	6199	411 868 1023	to	1199	432 995 9775	to	9799
224 636 4932	to	4948	392 668 2956	to	2999	411 922 2322	to	2399	433 003 5800	to	5899
224 636 4950	to	4962	392 854 8500	to	8899	412 193 0900	to	0999	433 757 3047	to	3099
224 636 4985	to	4999	393 584 7566	to	7699	412 395 8599	to	8699	433 765 4003	to	4099
224 730 2207	to	2299	393 650 0074	to	0099	412 485 6500	to	6599	434 482 7060	to	7199
225 970 0500	to	0599	393 838 8316	to	8499	412 485 6610	to	6699	434 513 2386	to	2399
225 970 0600	to	0699	393 893 6007	to	6099	412 885 5953	to	5999	434 968 3076	to	3092
225 970 0700	to	0799	394 126 6907	to	6999	414 193 3608	to	3674	435 303 1831	to	1842
227 033 8679	to	8699	394 189 0405	to	0599	414 193 3677	to	3699	435 303 1986	to	1999
227 275 9400	to	9999	394 822 3243	to	3278	414 411 7348	to	7399	435 666 6092	to	6399
228 463 2456	to	2499	394 990 1810	to	1899	414 640 0757	to	0799	436 082 6400	to	6899
228 510 4852	to	4899	395 343 3264	to	3299	414 965 1727	to	1799	436 160 6441	to	6499
229 462 8451	to	8475	395 373 3035	to	3099	417 302 8104	to	8199	437 316 7115	to	7199
229 668 5977	to	5999	395 396 9649	to	9799	417 387 6532	to	6599	437 427 0500	to	3499
229 923 9176	to	9199	395 970 3240	to	3299	417 496 6800	to	6999	439 179 2300	to	2399
229 924 6696	to	6699	397 622 4054	to	4099	417 871 9250	to	9299	439 310 0458	to	0499
230 051 9500	to	9999	397 819 8902	to	8999	417 930 9533	to	9599	440 698 1947	to	1999
273 070 8059	to	8099	398 149 7200	to	7699	418 164 6500	to	6799	440 858 6300	to	6399
273 775 7700	to	7899	399 070 0872	to	0899	418 423 9863	to	9899	440 858 6420	to	7299
302 000 0000	to	9999	399 156 7119	to	7199	418 633 5922	to	5999	441 199 1655	to	1699
349 746 2056	to	2099	399 203 5064	to	5099	418 719 8520	to	8599	443 127 3648	to	3699
350 518 7350	to	7374	399 296 9910	to	9999	418 744 2235	to	2299	443 127 4000	to	4099
360 011 1690	to	1699	399 396 8935	to	8999	418 962 2848	to	2899	443 673 7900	to	7999
360 168 6008	to	6099	399 792 7775	to	7799	419 543 0286	to	0299	443 800 9335	to	9399
360 173 8800	to	8899	399 792 8300	to	8399	419 730 0300	to	0399	444 382 8822	to	8899
360 324 2326	to	2399	400 427 1051	to	1999	420 277 0015	to	0049	444 390 1667	to	1699
362 861 3064	to	3099	401 045 1505	to	1549	420 599 0734	to	0798	444 457 3854	to	3899
373 006 2176	to	2199	401 045 1571	to	1599	420 661 4115	to	4199	450 048 4173	to	4199
374 768 2600	to	2699	401 294 2700	to	2799	420 758 9500	to	9699	450 048 4442	to	4699
375 169 4400	to	4599	401 310 9505	to	9599	420 969 3951	to	3971	450 560 5173	to	5199
375 829 3400	to	3499	401 382 5312	to	5399	420 969 3973	to	3999	450 620 3077	to	3099
375 851 9100	to	9199	402 578 7876	to	7899	421 116 3565	to	3599	450 620 3135	to	3199
376 196 0911	to	0999	403 125 6744	to	6799	421 130 9300	to	9399	450 780 2716	to	2799
378 085 3679	to	3699	403 260 7000	to	7499	421 313 4500	to	4999	450 801 2700	to	2799
378 351 1063	to	1099	403 280 6470	to	6499	421 364 5537	to	5599	451 109 2967	to	2984

451 115 4110	to	4125	465 692 3963	to	3999	483 402 2356	to	2399	502 496 6923	to	6999
451 115 4127	to	4199	465 698 8300	to	8599	483 486 5100	to	5199	503 003 2700	to	2899
451 746 0700	to	0799	465 743 7745	to	7799	483 632 1521	to	1599	503 194 5144	to	5153
452 265 0074	to	0099	466 798 6056	to	6067	483 632 2600	to	2799	503 790 9922	to	9948
452 265 0246	to	0299	467 147 4300	to	4399	483 849 1615	to	1699	504 045 4030	to	4099
452 265 0335	to	0999	468 079 5782	to	5799	484 174 4803	to	5299	504 166 0200	to	0599
452 509 1169	to	1199	469 067 2817	to	2899	484 323 8900	to	9199	504 240 1062	to	1399
452 855 6471	to	6499	469 127 8000	to	8199	484 680 5000	to	5038	504 805 3300	to	3499
452 890 4679	to	4799	469 213 0359	to	0399	484 680 5040	to	5074	505 096 0662	to	0699
452 900 8215	to	8238	469 213 0500	to	0599	484 680 5077	to	5099	505 893 7739	to	7799
453 117 9146	to	9199	469 561 8011	to	8099	485 029 4913	to	4999	505 893 7800	to	7999
453 334 3631	to	3699	469 658 1961	to	1999	486 176 0600	to	0699	506 124 0800	to	0999
453 603 7841	to	7891	469 666 9900	to	9999	486 559 7555	to	7599	506 165 7027	to	0099
453 650 1140	to	1199	469 678 1900	to	1999	486 696 3023	to	3199	506 502 5209	to	5299
453 741 1300	to	1399	469 781 4900	to	4999	488 173 7900	to	7999	506 756 1682	to	1699
454 013 2919	to	2999	469 947 6960	to	6999	488 206 4100	to	4199	506 756 1700	to	1799
454 186 2411	to	2499	470 755 5800	to	5818	488 226 0200	to	0299	506 756 1800	to	1899
454 268 4883	to	4899	471 918 0300	to	0999	488 709 3906	to	3999	506 836 5326	to	5399
454 302 5400	to	5499	471 985 2408	to	2419	488 855 8359	to	8399	508 488 6226	to	6299
454 490 8300	to	8399	472 191 6700	to	6799	489 181 8963	to	8999	508 789 8332	to	8399
454 547 7434	to	7499	472 270 2555	to	2599	489 223 2000	to	2099	508 789 8400	to	8499
454 922 4867	to	4895	472 987 0213	to	0241	489 311 1930	to	1999	510 150 2400	to	2499
455 221 1348	to	1499	472 987 0290	to	0299	489 318 6200	to	6300	510 381 3200	to	3299
455 364 2147	to	2199	473 151 2069	to	2199	489 384 0027	to	0099	510 587 9500	to	9599
455 399 5400	to	5499	473 666 9138	to	9199	489 427 0658	to	0899	510 587 9659	to	9699
455 476 0676	to	0699	473 952 3429	to	3499	489 997 5252	to	5299	510 269 9770	to	9999
455 543 0618	to	0699	474 108 5402	to	5499	490 669 5850	to	6099	511 021 5042	to	5099
456 410 9006	to	9099	474 356 5193	to	5299	490 717 7080	to	7099	511 021 5100	to	5199
456 470 4146	to	4299	474 949 3366	to	3399	490 721 6000	to	6099	600 645 3223	to	3299
456 619 4460	to	4499	475 134 9362	to	9399	490 793 1500	to	2099	601 339 1200	to	1399
457 333 2686	to	2699	475 167 9667	to	9699	490 886 8171	to	8199	601 653 5884	to	5899
457 729 1767	to	1777	475 319 3415	to	3499	490 977 9221	to	9240	601 661 7700	to	7799
457 937 8615	to	8699	475 319 3649	to	3799	491 258 8100	to	9099	601 682 5343	to	5399
458 028 9810	to	9899	475 340 6400	to	6599	491 567 1376	to	1399	601 928 1600	to	1699
458 057 2712	to	2999	475 424 8410	to	8499	492 254 4800	to	4899	602 512 2972	to	2999
458 069 9537	to	9599	475 629 9156	to	9199	492 283 5100	to	5199	602 555 2400	to	2799
458 069 9665	to	9699	475 850 6101	to	6199	492 610 6813	to	6899	602 829 7061	to	7099
458 337 5222	to	5299	475 875 2500	to	2599	493 394 5568	to	5599	603 483 9572	to	9599
458 354 7653	to	7999	476 169 8264	to	8299	493 470 2562	to	2599	603 490 7200	to	7299
458 671 8678	to	8699	476 189 3000	to	3499	493 473 7700	to	7799	603 678 7100	to	7199
458 671 8721	to	8798	476 331 2480	to	2499	493 716 2153	to	2199	603 678 7662	to	7699
458 847 5044	to	5999	477 289 8601	to	8699	494 206 2972	to	2999	603 678 7902	to	7999
459 274 7624	to	7699	477 681 5206	to	5299	494 217 3446	to	3999	603 678 8418	to	8499
459 365 5432	to	5499	478 010 4243	to	4268	494 224 0500	to	0599	603 678 8700	to	9999
459 378 5764	to	5799	478 010 4270	to	4291	495 145 0600	to	0699	604 086 0880	to	0899
459 472 4816	to	4999	478 450 5071	to	5099	496 209 7425	to	7499	604 349 1414	to	1499
460 349 6878	to	6899	478 469 7838	to	7858	496 213 8728	to	8799	604 503 7776	to	7799
460 550 1909	to	1999	478 469 7883	to	7899	496 474 5226	to	5248	605 520 9037	to	9099
460 997 5234	to	5299	479 280 9800	to	9899	497 053 8517	to	8699	605 685 4010	to	4099
461 973 6443	to	6499	479 365 9116	to	9176	497 854 8673	to	8699	605 988 6467	to	6499
462 152 0107	to	0299	479 412 9900	to	9999	498 449 8888	to	8899	607 689 7951	to	7960
462 274 1072	to	1099	479 667 6190	to	6199	498 929 8285	to	8499	607 728 1276	to	1299
462 277 8373	to	8399	479 748 9680	to	9699	498 936 5310	to	5399	608 727 7100	to	7199
462 554 6051	to	6099	479 860 7000	to	7199	499 016 5425	to	5499	608 727 7273	to	7599
463 011 5529	to	5540	480 526 2000	to	2099	499 440 8575	to	8899	608 813 9950	to	9999
463 176 4115	to	4199	480 640 6330	to	6399	499 731 6717	to	6799	609 067 5325	to	5399
463 176 4229	to	4299	480 658 0568	to	0599	500 064 1858	to	1869	609 067 5488	to	5499
463 185 2600	to	2799	480 689 5100	to	5199	500 070 5725	to	7799	609 067 5600	to	5699
463 227 7711	to	7799	481 072 9463	to	9499	501 058 0016	to	0026	609 289 6123	to	6199
463 414 4869	to	4899	481 673 0074	to	0095	501 331 0300	to	0399	609 438 4400	to	4499
463 808 3484	to	3499	482 527 1500	to	1599	501 460 0977	to	0999	609 493 1100	to	1199
463 945 7400	to	7899	482 541 5255	to	5299	502 227 7645	to	7699	609 766 8091	to	8999
464 629 9000	to	9399	482 729 6800	to	6899	502 424 0200	to	0499	609 825 4100	to	4115
464 711 4332	to	4399	483 363 7207	to	7299	502 424 0600	to	0699	609 884 2981	to	2999

609 893 1000	to	1099	634 803 3239	to	3299	648 892 3164	to	3199	671 251 5448	to	5499
610 092 3200	to	3299	634 807 2474	to	2499	649 100 3989	to	3999	671 926 5600	to	5799
610 582 4200	to	4299	634 827 5900	to	5999	649 647 0370	to	0399	672 444 2000	to	2999
611 879 6939	to	6999	634 886 3428	to	3499	649 647 0522	to	0599	672 828 3410	to	3499
612 291 8013	to	8099	635 559 3449	to	3499	649 647 5237	to	5399	673 167 5776	to	5799
612 751 5171	to	5199	636 289 6214	to	6299	649 647 9100	to	9299	675 464 3700	to	3799
612 751 5226	to	5299	636 634 8007	to	8042	649 666 7800	to	8299	675 464 4000	to	4199
612 751 6083	to	6099	637 150 1200	to	1299	650 114 7707	to	7719	676 365 5958	to	5999
612 751 6268	to	6299	637 562 5828	to	5899	650 130 3400	to	3599	676 669 1024	to	1099
612 751 6572	to	6599	638 042 1647	to	1699	650 213 0406	to	0499	677 126 6734	to	6799
612 774 2111	to	2199	638 049 4984	to	4999	650 555 1749	to	1799	677 333 9979	to	9999
612 774 2254	to	2299	638 318 1115	to	1199	650 564 1900	to	1999	677 466 1088	to	1099
612 774 2500	to	2599	638 318 1453	to	1499	650 627 4212	to	4299	678 071 4500	to	4799
614 469 0979	to	0999	638 885 0000	to	0299	650 736 2043	to	2099	678 096 7531	to	7599
614 474 3000	to	3099	638 903 4362	to	4373	650 739 1540	to	1699	679 909 2578	to	2599
614 521 3490	to	3499	639 415 1929	to	1999	651 741 4415	to	4499	680 112 9565	to	9599
614 645 1800	to	1899	639 415 2019	to	2099	651 882 2800	to	2899	680 244 0903	to	0999
614 832 1100	to	2099	639 420 6200	to	6299	652 754 6317	to	6399	680 412 6046	to	6099
615 017 7505	to	7599	639 469 3517	to	3799	653 131 4945	to	4999	680 761 6800	to	6899
617 711 6609	to	6699	639 605 2143	to	2199	653 426 3300	to	3399	681 677 0540	to	0699
617 760 5266	to	5299	639 657 8600	to	8799	653 455 4874	to	4899	682 070 1029	to	1099
617 813 3601	to	3699	640 289 7500	to	7599	654 238 0000	to	0399	682 956 6280	to	6299
618 840 9200	to	9299	640 289 7700	to	7999	654 404 3065	to	3092	682 956 6490	to	6599
619 551 7229	to	7299	641 170 4420	to	4499	654 962 2900	to	3199	682 956 6700	to	6799
619 859 3000	to	3099	641 318 3133	to	3199	655 103 5081	to	5199	682 965 1178	to	1199
620 073 9400	to	9499	641 378 6500	to	6999	655 523 2600	to	2999	682 965 1201	to	1299
621 614 7907	to	7930	641 383 8739	to	8799	656 305 2448	to	2499	683 118 2389	to	2399
621 614 7932	to	7999	641 877 3187	to	3299	657 347 4438	to	4999	683 378 2000	to	2099
621 648 8021	to	8199	641 877 3310	to	3399	657 710 8100	to	8999	683 378 2117	to	2299
621 648 8500	to	8599	642 355 8094	to	8199	657 780 0985	to	0999	683 415 1200	to	1499
621 904 8351	to	8599	642 355 8308	to	8999	658 586 1400	to	1499	683 444 8159	to	8199
621 916 1978	to	1989	642 900 0018	to	0099	658 877 8000	to	8199	685 154 7780	to	7789
622 989 8032	to	8099	643 030 6254	to	6299	658 880 8000	to	8199	685 297 7645	to	7699
623 076 9300	to	9399	644 066 0882	to	0899	659 398 7300	to	7399	685 623 5264	to	5299
623 819 5006	to	5099	644 069 0600	to	0699	659 706 8113	to	8199	685 650 9487	to	9499
623 895 8200	to	8399	644 077 7506	to	7699	659 846 7837	to	7899	685 669 4200	to	4299
623 917 0000	to	0099	644 085 8157	to	8199	660 510 4100	to	4199	685 757 8452	to	8499
623 917 0200	to	0299	644 112 9839	to	9899	660 673 0400	to	0599	686 071 2694	to	2799
624 468 5288	to	5299	644 373 9083	to	9099	661 488 5000	to	5099	686 176 3333	to	3354
624 665 3162	to	3198	644 380 1460	to	1499	661 609 9100	to	9199	686 372 3200	to	3299
625 088 6735	to	6799	644 733 4715	to	4799	661 716 9420	to	9499	686 644 5879	to	5899
625 916 9500	to	9799	644 900 9712	to	9799	661 906 6522	to	6599	686 899 1371	to	1399
625 968 8956	to	8999	644 901 0109	to	1299	662 021 8332	to	8399	686 931 7636	to	7699
627 005 3938	to	3999	644 901 1325	to	1399	662 068 0700	to	0899	687 601 0973	to	0999
627 384 3907	to	4099	644 923 6800	to	7799	662 553 0774	to	0799	687 614 6774	to	6799
627 496 7549	to	7599	644 932 4655	to	4699	663 078 7034	to	7099	688 120 9000	to	9999
627 708 3605	to	3699	645 318 7240	to	7499	663 763 5300	to	5399	688 314 3107	to	3191
627 776 2500	to	2599	645 333 1766	to	1799	663 883 7039	to	7499	690 291 1361	to	1371
628 226 3100	to	3199	645 790 8632	to	8699	663 938 9200	to	9299	690 788 2877	to	2899
628 814 4702	to	4799	645 821 0657	to	0699	664 253 8000	to	8499	690 893 5344	to	5399
628 851 9689	to	9699	645 930 7948	to	7999	664 656 3055	to	3099	690 893 5512	to	5599
629 510 7200	to	7299	645 975 0737	to	0762	665 174 6400	to	6499	690 904 1300	to	1599
629 964 4200	to	4294	646 242 6200	to	6299	665 274 8208	to	8299	690 941 6000	to	6199
630 389 3056	to	3071	646 270 7639	to	7799	665 669 5400	to	5499	691 313 6383	to	6399
630 463 0588	to	0599	646 798 4000	to	4999	666 132 8226	to	8299	691 313 6600	to	6699
631 459 9117	to	9199	647 048 7035	to	7099	666 696 2209	to	2299	691 582 8003	to	8099
631 762 9325	to	9399	647 049 2900	to	2999	666 696 2309	to	2399	691 664 1800	to	1999
632 217 4933	to	4999	647 398 8300	to	8399	667 032 9300	to	9399	691 664 2400	to	2499
632 500 0000	to	640 3999	647 398 8481	to	8499	667 729 5529	to	5599	692 727 9362	to	9399
633 110 4165	to	4199	647 437 3000	to	4999	668 383 8400	to	8699	692 798 1800	to	1899
633 110 4303	to	4499	647 811 2188	to	2199	670 368 3400	to	3499	693 249 0779	to	0799
633 438 6429	to	6599	648 009 6057	to	6099	670 369 7336	to	7399	693 249 0877	to	1699
633 588 7173	to	7182	648 163 5300	to	5499	670 750 7169	to	7199	693 445 0566	to	0999
634 725 0700	to	0799	648 722 5283	to	5299	671 046 6200	to	6399	693 448 8500	to	8999

693 645 9583	to	9599	740 351 4790	to	4799	838 176 8377	to	8399	861 158 2350	to	2599
693 965 4200	to	4299	740 374 7416	to	7499	838 518 1257	to	1299	861 367 5400	to	5499
695 741 2906	to	2999	740 470 2420	to	2443	839 718 8257	to	8299	861 637 6010	to	6099
695 947 8518	to	8599	740 514 0300	to	0499	840 323 0600	to	0699	861 979 7292	to	7499
696 662 8247	to	8299	740 523 7432	to	7449	840 875 6235	to	6299	862 216 6100	to	6199
697 447 8285	to	8296	740 535 1555	to	1580	840 910 0900	to	0999	862 263 9213	to	9299
698 042 4816	to	4899	740 557 3570	to	3579	841 349 5000	to	5099	862 271 0800	to	0999
698 131 2138	to	2157	740 650 4104	to	4140	841 805 7747	to	7899	862 271 5000	to	5099
698 227 0000	to	0099	740 684 0620	to	0800	841 805 7944	to	8099	863 871 5138	to	5199
700 065 2570	to	2599	740 701 6105	to	6114	842 226 0685	to	0695	863 949 5300	to	5399
700 065 4800	to	4899	740 705 9790	to	9799	842 685 4600	to	4699	864 088 8200	to	8299
700 190 3350	to	3359	740 726 6400	to	6500	842 685 4742	to	4999	864 426 3972	to	3999
700 228 6048	to	6099	740 748 8319	to	8329	842 860 0300	to	0399	864 520 6117	to	6136
700 650 0452	to	0499	740 765 3306	to	3399	842 898 5582	to	5599	865 151 0526	to	0599
700 666 1323	to	1349	740 774 8434	to	8499	843 062 7100	to	7199	865 500 4034	to	4099
700 786 9106	to	9142	740 779 4259	to	4299	843 077 6288	to	6299	865 883 6082	to	6099
700 859 0744	to	0758	740 786 1885	to	1899	843 077 6378	to	6399	866 004 3000	to	3999
701 028 6780	to	6899	740 790 5989	to	5999	843 758 5769	to	5778	866 442 4100	to	4899
701 213 3900	to	3999	740 803 4870	to	4879	843 786 2554	to	2699	867 366 9108	to	9118
701 267 2000	to	3999	740 820 4854	to	7836	845 656 8165	to	8199	867 633 7403	to	7499
701 335 7312	to	7399	740 827 7578	to	7594	845 727 2100	to	2199	867 737 5623	to	5699
701 369 2005	to	2050	740 917 7490	to	7499	845 746 2618	to	2635	868 169 4529	to	4599
701 499 2260	to	2299	740 918 5531	to	5549	846 390 7531	to	7599	868 173 8400	to	8599
701 503 2247	to	2299	741 037 8528	to	8551	846 918 0572	to	0599	868 514 9000	to	9099
701 541 2271	to	2299	742 030 6135	to	6149	847 237 7690	to	7699	868 566 9200	to	9299
701 553 6557	to	6599	742 033 2663	to	2674	847 284 2481	to	2499	869 200 0000	to	9999
701 578 7460	to	7469	742 040 3300	to	3309	847 374 7055	to	7065	869 387 1150	to	1199
701 578 7475	to	7499	742 151 5000	to	5014	847 374 7055	to	7065	869 505 3500	to	3599
701 601 3457	to	3499	742 191 4640	to	4649	847 636 5304	to	5399	869 523 7033	to	7099
701 605 5913	to	5999	742 192 5210	to	5224	847 700 5447	to	5499	869 566 6150	to	6167
701 695 3982	to	3999	742 222 9200	to	9210	847 723 7500	to	7599	869 800 0000	to	999 9999
701 695 4148	to	4199	742 228 9660	to	9669	849 485 3427	to	3499	870 054 4814	to	4899
701 695 4227	to	4299	742 247 6980	to	6989	849 520 9850	to	9899	870 491 4812	to	4849
701 708 1741	to	1799	742 302 7600	to	7699	849 608 1357	to	1399	870 536 5820	to	5829
701 736 3966	to	3999	805 885 8411	to	8499	849 792 2600	to	2699	870 541 7167	to	7239
701 772 0870	to	0899	806 087 1100	to	1499	850 546 1862	to	1899	870 575 8155	to	8999
701 838 2800	to	2899	806 268 9275	to	9299	851 143 6826	to	6844	870 589 0485	to	0494
701 941 0600	to	0699	806 534 3400	to	3477	851 209 9880	to	9899	870 691 7060	to	7099
702 171 1603	to	1699	807 342 3283	to	3399	851 928 9221	to	9299	872 028 4850	to	4899
702 195 5109	to	5199	808 086 7100	to	7199	852 589 6560	to	6599	872 029 9306	to	9399
702 254 9300	to	9399	808 090 3440	to	3499	853 049 3646	to	3699	872 078 3709	to	3799
702 264 7569	to	7599	808 325 5161	to	5699	854 304 4089	to	4999	872 100 0445	to	0459
702 519 0513	to	0524	808 784 8000	to	8299	854 529 2200	to	2299	900 556 4178	to	4199
702 713 1800	to	1809	830 125 0672	to	0699	854 532 0000	to	2999	900 845 0044	to	0099
702 821 5730	to	5799	830 602 5800	to	5999	855 001 6204	to	6249	900 936 0217	to	0299
702 821 5805	to	5899	830 610 3700	to	3799	855 319 9364	to	9399	900 936 0435	to	0499
702 844 6975	to	6994	830 983 3500	to	3599	855 361 3390	to	3399	901 058 5255	to	5280
702 846 6331	to	6399	830 983 3635	to	3699	856 226 0490	to	0499	901 273 1082	to	1099
702 848 3900	to	3999	831 354 1387	to	1399	856 656 5800	to	5999	901 287 5143	to	5199
702 857 7302	to	7499	831 815 8240	to	8299	856 752 0200	to	0299	901 291 2789	to	2799
702 878 0114	to	0199	832 525 3810	to	3899	857 111 1352	to	1399	901 525 7122	to	7199
703 364 1707	to	1799	833 159 1884	to	1899	857 279 3450	to	3499	902 089 1253	to	1299
740 002 7710	to	7719	833 456 2567	to	2599	857 843 4000	to	4099	902 198 9769	to	9799
740 037 6730	to	6800	833 566 3015	to	3071	858 124 7644	to	7699	902 948 1269	to	1299
740 119 2275	to	2284	834 130 5200	to	5299	858 756 3111	to	3299	902 985 0833	to	0899
740 130 6688	to	6698	834 316 5444	to	5499	859 063 8200	to	8699	903 370 6934	to	6999
740 144 2780	to	2795	834 354 8747	to	8766	859 190 0600	to	0644	904 600 6523	to	6599
740 241 9049	to	9099	834 354 8824	to	8838	859 437 5538	to	5599	904 892 0378	to	0399
740 252 9265	to	9294	835 269 5700	to	5799	859 811 2888	to	2899	904 892 0648	to	1299
740 255 1718	to	1799	835 496 7303	to	7399	859 855 8873	to	8999	905 056 2216	to	2299
740 274 2602	to	2619	835 539 5200	to	5999	860 240 8520	to	8599	905 510 6647	to	6799
740 277 0366	to	0392	835 813 3015	to	3099	860 275 3900	to	3999	905 510 6900	to	7099
740 332 7658	to	7671	837 672 8967	to	8999	860 518 9629	to	9699	905 794 0000	to	0199
740 348 6641	to	6658	837 784 3282	to	3299	860 600 0021	to	0999	905 794 0288	to	0299

905 873 6900	to	6999	912 057 9922	to	9999	919 889 5110	to	5134	925 333 5900	to	6099
905 873 7100	to	7299	912 882 0563	to	0899	919 889 5137	to	5176	925 336 2300	to	2399
905 880 8900	to	8999	913 605 2218	to	2299	919 889 5178	to	5199	926 432 5907	to	5999
905 889 7100	to	7199	913 709 2429	to	2499	919 889 5030	to	5070	926 436 3600	to	3699
906 158 1508	to	1599	913 818 3501	to	3999	919 889 5090	to	5099	927 765 6257	to	6299
906 558 8812	to	8899	914 063 4300	to	4399	919 915 2774	to	2787	928 197 8100	to	8199
906 982 2214	to	2299	914 346 7621	to	7644	920 155 4662	to	4687	928 197 8283	to	8299
907 725 8500	to	8599	914 453 1366	to	1399	920 309 9039	to	9199	928 856 2059	to	2068
907 815 0216	to	0257	914 529 6185	to	6299	920 771 5321	to	5399	930 219 1722	to	1799
908 622 4225	to	4235	914 896 4658	to	4699	920 857 5500	to	5899	930 335 7810	to	7819
908 936 9254	to	9299	915 187 8774	to	8779	920 864 3480	to	3499	931 097 9259	to	9299
909 066 4494	to	7499	915 300 2783	to	2799	920 963 4567	to	4599	931 156 1502	to	1579
909 067 7400	to	7499	915 546 6822	to	6999	921 333 7400	to	7499	931 156 1600	to	1625
909 100 1787	to	1799	915 646 5183	to	5199	921 477 3762	to	3799	931 156 1671	to	1699
909 100 1900	to	2099	915 671 3963	to	3980	922 278 1048	to	1399	932 506 6400	to	6599
909 355 0422	to	0499	915 671 3982	to	3999	922 280 2019	to	2099	932 732 1796	to	1799
909 568 8900	to	9099	915 675 2217	to	2299	922 280 2233	to	2299	932 827 9026	to	9099
909 568 9300	to	9499	916 440 3377	to	3399	922 773 0459	to	0499	932 957 2300	to	2399
909 725 7307	to	7399	916 670 6352	to	6399	923 032 7000	to	7399	933 060 6160	to	6189
909 833 0947	to	0999	916 682 5300	to	5399	923 045 3630	to	3699	933 387 2541	to	2561
910 219 8631	to	8699	916 694 1414	to	1499	923 484 3600	to	3699	933 760 3609	to	4199
910 265 1100	to	1199	916 703 0802	to	0821	923 493 9403	to	9599	933 894 0928	to	0999
910 471 7273	to	7299	917 089 0709	to	0799	923 493 9681	to	9699	934 018 2729	to	2741
910 536 2505	to	2599	917 089 0842	to	0899	923 604 4424	to	4499	934 180 0300	to	0399
910 958 7499	to	7599	917 216 2928	to	2999	923 810 7800	to	8299	934 236 3954	to	3999
911 140 1000	to	2199	917 370 6300	to	6499	924 252 1200	to	1299	934 622 8717	to	8999
911 245 2545	to	2599	917 486 4900	to	4999	924 252 1400	to	1499	935 216 0312	to	0399
911 268 9077	to	9099	918 460 0602	to	0699	924 533 0711	to	0799	935 843 2202	to	2247
911 400 8948	to	8999	918 951 7231	to	7299	924 533 2343	to	2399	936 024 8889	to	8899
911 508 1620	to	1799	919 519 2786	to	2799	924 533 2428	to	2499	936 339 4455	to	4499
911 509 9310	to	9399	919 536 0770	to	0799	924 685 1957	to	1999			
911 523 3000	to	3999	919 814 3095	to	3199	924 946 6300	to	6699			

Missing, Lost, or Stolen Canadian Money Order Forms

Do Not Cash — Upon Receipt, Notify Local Postal Inspectors

This listing will be provided to all Postal Service™ employees responsible for accepting and cashing postal money orders. Destroy all interim notices when the numbers listed appear in the *Postal Bulletin*. The new

money order serial numbers consist of the first 9 digits. The 10th digit is a check digit only.

Do not cash outdated money orders **104 151 601 to 692 600 000**. Advise holders to send invalid money orders To Canada Post Corporation, Ottawa, Canada K1A 0B1. Check for altered dollar amounts by holding money orders to the light.

719 869 731	to	9 760	728 702 338	to	2 400	734 950 111	to	0 170	742 408 771	to	8 830
720 227 871	to	7 930	728 915 371	to	5 850	735 120 331	to	0 840	742 512 120	to	2 150
720 227 949	to	7 960	728 953 141	to	3 410	735 283 008	to	3 020	742 684 849	to	4 890
720 368 543	to	8 570	728 954 280	to	4 310	735 293 131	to	3 220	742 839 553	to	9 630
720 392 151	to	2 570	729 169 081	to	9 140	735 635 010	to	5 040	742 913 668	to	3 700
720 556 491	to	6 640	729 363 841	to	3 870	735 783 961	to	3 990	742 917 287	to	7 296
720 558 621	to	8 650	729 682 891	to	3 190	735 803 401	to	3 430	742 921 891	to	1 980
720 575 361	to	5 570	729 838 940	to	9 070	736 005 420	to	5 440	742 983 631	to	3 810
720 590 152	to	0 179	729 839 101	to	9 130	736 366 021	to	6 110	743 020 021	to	0 170
721 638 331	to	9 170	730 077 683	to	7 840	736 624 456	to	4 500	743 206 491	to	6 500
721 815 391	to	5 420	730 109 847	to	9 880	736 670 851	to	1 060	743 235 992	to	6 050
721 969 713	to	9 740	730 373 761	to	3 850	736 767 061	to	7 090	743 940 631	to	0 900
722 072 137	to	2 160	730 501 951	to	2 130	736 767 093	to	7 120	743 978 011	to	8 070
722 378 265	to	8 280	730 519 379	to	9 470	736 982 191	to	2 370	744 234 751	to	4 780
722 413 990	to	4 004	730 569 278	to	9 360	736 982 551	to	2 730	744 499 591	to	9 680
722 764 948	to	4 980	730 711 711	to	1 740	737 110 141	to	0 170	744 626 901	to	6 910
722 825 840	to	5 889	730 722 991	to	3 230	737 185 501	to	5 710	745 388 794	to	8 910
723 153 841	to	3 850	730 845 970	to	5 990	737 317 321	to	7 350	746 446 806	to	6 820
723 237 616	to	7 630	730 888 291	to	8 320	737 517 781	to	7 840	746 818 351	to	8 410
723 331 081	to	1 110	730 927 591	to	7 680	737 628 181	to	8 210	747 245 266	to	5 280
723 496 443	to	6 470	731 307 914	to	7 930	737 634 258	to	4 270	747 364 813	to	4 830
723 967 291	to	7 320	731 402 431	to	2 460	738 361 971	to	1 980	747 501 434	to	1 450
724 655 196	to	5 340	731 407 232	to	7 320	738 447 601	to	7 660	747 739 891	to	0 070
724 711 441	to	1 500	731 588 301	to	8 340	738 648 355	to	8 450	748 148 649	to	8 760
724 711 538	to	1 560	731 767 273	to	7 320	738 849 811	to	9 900	748 259 960	to	9 970
724 793 221	to	3 250	731 781 061	to	1 120	738 892 270	to	2 290	748 565 162	to	5 280
724 908 109	to	8 120	731 837 821	to	7 910	738 997 259	to	7 380	748 874 988	to	5 030
724 937 461	to	7 670	731 841 377	to	1 450	739 161 451	to	1 540	749 137 381	to	7 410
725 163 118	to	3 151	732 018 481	to	8 600	739 219 381	to	9 440	749 190 192	to	0 210
725 202 735	to	2 750	732 067 972	to	8 370	739 740 151	to	0 180	749 685 421	to	5 450
725 398 591	to	8 800	732 188 649	to	8 670	739 793 491	to	3 520	749 846 791	to	6 850
725 464 591	to	4 920	732 193 460	to	3 470	739 793 527	to	3 550	749 993 131	to	3 580
725 475 321	to	5 330	732 201 241	to	1 390	739 942 621	to	2 650	750 071 587	to	1 610
725 711 057	to	1 070	732 220 431	to	0 440	739 999 231	to	9 320	750 408 167	to	8 183
725 738 581	to	8 730	732 355 201	to	5 380	740 011 517	to	1 530	750 438 421	to	8 501
725 981 311	to	1 430	732 472 320	to	2 560	740 030 701	to	0 970	750 743 911	to	4 030
725 987 835	to	7 880	732 541 605	to	1 620	740 261 740	to	1 820	750 779 118	to	9 400
726 060 811	to	0 900	732 572 221	to	2 490	740 265 811	to	6 290	750 910 981	to	1 010
726 391 970	to	2 520	732 586 479	to	6 710	740 299 111	to	9 170	750 960 841	to	0 900
726 484 771	to	4 800	732 994 037	to	4 080	740 299 231	to	9 260	751 296 211	to	6 240
726 493 351	to	5 300	733 163 449	to	3 460	740 329 266	to	9 320	751 539 121	to	9 180
726 504 031	to	4 063	733 297 171	to	7 290	740 889 081	to	9 090	751 541 311	to	1 790
726 504 070	to	4 090	733 446 631	to	7 110	741 010 421	to	0 530	751 757 641	to	7 700
726 504 331	to	4 390	733 474 665	to	4 770	741 113 041	to	3 370	751 936 951	to	7 010
726 563 701	to	4 060	733 704 482	to	4 570	741 373 891	to	4 340	751 951 861	to	1 890
726 599 371	to	9 460	733 751 041	to	1 130	741 452 369	to	2 490	751 999 021	to	9 110
726 626 356	to	6 370	734 009 101	to	9 130	741 492 991	to	3 140	752 139 516	to	9 570
727 182 271	to	2 510	734 290 759	to	0 770	741 553 460	to	3 470	752 182 892	to	2 950
727 416 181	to	6 240	734 389 273	to	9 290	741 764 431	to	4 520	752 206 861	to	7 100
727 481 431	to	1 460	734 440 031	to	0 111	742 178 834	to	8 880	752 295 241	to	5 600
727 749 241	to	9 780	734 797 201	to	7 320	742 325 500	to	5 520	752 731 351	to	1 410
728 382 331	to	2 480	734 939 611	to	9 640	742 325 668	to	5 700	752 767 441	to	7 470

753 008 941	to	9 030	763 155 160	to	5 180	773 231 311	to	1 340	800 872 741	to	2 830
753 194 311	to	4 370	763 178 631	to	8 660	773 348 739	to	8 940	801 349 801	to	9 830
753 620 378	to	0 400	763 506 001	to	6 060	773 348 739	to	8 940	801 676 681	to	7 100
754 013 917	to	3 940	763 522 141	to	2 470	773 575 891	to	5 950	802 967 821	to	7 940
754 161 061	to	1 120	763 717 694	to	7 800	773 852 971	to	3 030	803 217 601	to	7 780
754 358 445	to	8 610	763 826 461	to	6 520	775 373 449	to	3 460	803 729 731	to	9 850
754 410 451	to	0 660	763 900 460	to	0 471	789 257 191	to	7 250	803 747 402	to	7 520
754 438 393	to	8 410	763 900 479	to	0 530	790 448 020	to	8 460	804 138 181	to	8 420
754 493 109	to	3 130	763 917 271	to	7 750	790 597 485	to	7 530	804 428 224	to	8 250
754 664 182	to	4 220	764 125 801	to	5 860	790 911 883	to	1 900	804 682 411	to	2 710
754 816 377	to	6 470	764 284 525	to	4 560	791 057 441	to	7 550	805 272 525	to	2 540
755 487 421	to	7 600	764 526 241	to	6 330	791 239 081	to	9 290	805 523 445	to	3 460
755 592 901	to	3 140	764 601 421	to	1 600	791 374 483	to	4 500	805 745 704	to	5 730
755 790 020	to	0 030	764 650 231	to	0 470	791 387 971	to	8 030	806 452 907	to	2 980
755 791 730	to	1 800	764 984 371	to	4 850	791 447 521	to	7 850	806 744 781	to	4 850
755 926 951	to	7 070	765 003 667	to	3 680	791 451 151	to	1 240	806 982 181	to	2 300
755 934 332	to	4 510	765 042 517	to	2 540	791 500 009	to	0 470	807 764 791	to	4 910
755 957 701	to	8 000	765 194 728	to	4 970	791 771 431	to	1 490	808 089 931	to	9 960
755 962 981	to	3 280	765 387 365	to	7 450	792 004 293	to	4 320	808 656 423	to	6 450
756 035 371	to	5 490	765 541 801	to	2 100	792 018 379	to	8 420	808 753 771	to	3 800
756 301 257	to	1 290	765 638 461	to	8 970	792 070 621	to	0 740	809 189 001	to	9 010
756 371 565	to	1 580	765 647 101	to	7 190	792 145 211	to	5 230	809 886 879	to	6 930
756 876 031	to	6 120	765 813 781	to	4 029	792 391 381	to	1 620	809 890 489	to	0 500
756 876 151	to	6 240	765 879 314	to	9 390	792 452 779	to	2 790	810 323 734	to	3 760
756 970 129	to	0 140	765 954 001	to	4 030	792 772 728	to	2 770	810 367 116	to	7 140
757 059 613	to	9 630	766 120 286	to	0 320	792 903 511	to	3 990	810 526 351	to	6 500
757 078 540	to	8 560	766 125 716	to	5 750	793 282 518	to	2 533	810 806 911	to	6 940
757 086 209	to	6 240	766 158 824	to	8 840	794 041 831	to	2 040	810 807 211	to	7 240
757 240 591	to	0 650	766 388 433	to	8 460	794 397 709	to	7 780	811 423 021	to	3 110
757 277 371	to	7 700	766 509 421	to	9 660	794 581 741	to	2 040	811 517 221	to	7 239
757 291 591	to	2 730	766 572 901	to	3 020	794 592 122	to	2 150	811 721 101	to	1 130
757 964 251	to	4 280	766 748 500	to	8 521	795 032 251	to	2 340	812 025 721	to	5 900
758 067 001	to	7 090	767 024 341	to	4 370	795 796 291	to	6 350	812 093 073	to	3 130
758 105 221	to	5 250	767 326 471	to	6 590	796 070 139	to	0 160	812 100 821	to	0 840
758 324 941	to	5 000	767 332 561	to	2 950	796 143 151	to	3 630	812 465 251	to	5 610
758 593 628	to	3 650	768 009 841	to	9 960	796 159 725	to	9 740	812 918 341	to	8 670
758 709 038	to	9 060	768 011 489	to	1 520	796 169 306	to	9 340	812 918 701	to	8 760
758 744 101	to	4 160	768 177 980	to	7 990	796 373 406	to	3 430	813 050 491	to	0 520
758 850 883	to	0 900	768 391 081	to	1 170	796 602 961	to	3 050	813 073 171	to	3 200
758 860 951	to	1 550	768 661 569	to	1 650	796 708 441	to	8 500	813 398 476	to	8 550
759 152 851	to	2 880	769 000 051	to	0 080	796 886 281	to	6 430	813 713 971	to	4 000
759 740 941	to	1 090	769 050 841	to	0 900	796 901 701	to	2 000	813 858 121	to	8 150
760 004 596	to	4 610	769 159 081	to	9 178	796 975 466	to	5 590	814 789 330	to	9 349
760 118 191	to	8 250	769 737 496	to	7 510	797 272 917	to	2 950	814 984 656	to	4 680
760 155 001	to	5 090	769 778 491	to	8 730	797 519 441	to	9 460	815 016 020	to	6 030
760 378 002	to	8 020	769 827 331	to	7 450	797 519 731	to	0 240	815 199 410	to	9 420
760 692 722	to	2 749	770 216 071	to	6 100	797 535 181	to	5 330	815 240 491	to	0 520
761 055 460	to	5 480	770 723 281	to	3 400	797 646 151	to	6 180	815 755 591	to	5 620
761 169 781	to	9 810	770 790 451	to	0 480	798 040 053	to	0 080	815 755 622	to	5 650
761 504 941	to	5 120	770 915 150	to	5 490	798 055 813	to	5 830	815 806 381	to	6 680
761 516 836	to	6 910	771 455 551	to	5 610	798 055 891	to	5 950	816 126 834	to	6 870
761 613 588	to	3 600	771 609 661	to	9 690	798 326 371	to	6 520	816 156 721	to	6 780
761 688 631	to	8 690	771 932 551	to	2 580	798 339 167	to	9 210	816 580 903	to	0 920
761 805 199	to	5 240	772 057 224	to	7 440	798 562 411	to	2 440	816 945 571	to	5 600
761 826 106	to	6 120	772 162 660	to	3 070	798 632 461	to	2 490	817 253 011	to	3 280
761 881 171	to	1 560	772 718 615	to	8 640	798 807 151	to	7 510	817 763 881	to	4 060
761 975 641	to	5 670	772 940 140	to	0 160	798 944 761	to	5 030	818 330 562	to	0 610
761 975 886	to	5 895	772 970 886	to	0 940	799 118 616	to	8 640	818 459 641	to	9 670
762 304 144	to	4 170	773 009 419	to	9 430	799 133 191	to	3 220	818 926 273	to	6 320
762 324 931	to	4 960	773 112 031	to	2 060	799 177 626	to	7 650	818 950 351	to	0 380
762 439 261	to	9 290	773 125 387	to	5 410	799 854 751	to	5 200	818 962 492	to	2 530
762 524 158	to	4 220	773 179 320	to	9 410	800 044 320	to	4 410	819 032 341	to	2 730
762 584 872	to	4 970	773 202 989	to	3 140	800 211 901	to	2 440	819 127 054	to	7 080
762 593 431	to	3 460	773 208 991	to	9 290	800 427 530	to	7 540	819 278 540	to	8 670

819 544 681	to	4 740	822 900 991	to	1 020	826 582 951	to	3 430	828 732 331	to	2 390
819 928 441	to	8 650	822 925 951	to	6 100	826 720 201	to	0 230	828 807 781	to	7 840
820 034 406	to	4 430	823 284 931	to	4 990	827 005 671	to	5 830	828 830 952	to	0 963
820 070 761	to	1 540	823 293 031	to	3 210	827 287 861	to	7 950	828 939 781	to	0 050
820 191 342	to	1 360	823 556 011	to	6 100	827 291 502	to	1 520	829 002 721	to	2 870
820 274 856	to	4 880	824 078 341	to	8 370	827 575 381	to	5 470	829 005 301	to	5 540
820 600 171	to	0 230	824 156 325	to	6 340	827 609 085	to	9 100	829 080 241	to	0 330
821 172 241	to	2 360	824 511 252	to	1 270	827 619 811	to	9 840	829 160 986	to	1 000
821 229 661	to	9 720	824 588 281	to	8 370	827 883 511	to	3 600	829 176 841	to	6 930
821 229 743	to	9 780	825 140 397	to	0 460	828 160 441	to	0 530	829 471 561	to	1 590
821 903 731	to	3 910	825 409 651	to	9 680	828 376 201	to	6 260	829 561 065	to	1 080
821 927 841	to	7 850	825 472 171	to	2 200	828 441 602	to	1 630	829 566 481	to	6 510
822 505 801	to	5 830	826 042 898	to	2 920	828 539 316	to	9 340	829 569 931	to	9 960
822 703 442	to	3 470	826 226 644	to	6 670	828 539 341	to	9 370			

— Criminal Investigations Group, Postal Inspection Service, 10-1-15

Verifying U.S. Postal Service Money Orders

Follow these steps to cash a Postal Service™ money order:

1. Check that the amount does not exceed the legal limit: \$1,000 for domestic, and \$700 for international postal money orders.
2. Check that the proper security features are present:
 - When held to the light, a watermark of Benjamin Franklin is repeated from top to bottom on the left side.
 - When held to the light, a dark line (security thread) runs from top to bottom with the word “USPS” repeated.
 - There should be no discoloration around the dollar amounts, which might indicate the amounts were changes.

These appear in Postal Service Notice 299, *U.S. Postal Money Order Reference Card*, or online at <https://www.usps.com/shop/money-orders.htm>.

3. If the money order seems suspicious, call the U.S. Postal Service Money Order Verification System at 866-459-7822.

Please provide this information to local banks and retailers, as they also receive Postal Service money orders for cashing.

— Retail and Customer Service Operations, 10-1-15

Counterfeit Canadian Money Order Forms

Do Not Cash

To be posted and used by retail window employees. As directed, destroy previous notices. Destroy all interim notices when the numbers listed appear in the Postal Bulletin.

671,819,086	686,794,382
676,612,640	686,794,426
677,891,039	686,794,427
678,282,493	686,794,431
678,916,031	687,262,502
679,552,215	687,262,503
679,694,334	687,262,525
679,751,983	687,262,526
679,800,207	687,287,578
681,130,536	687,287,581
681,844,376	687,287,582
683,594,542	694,063,898
684,683,610	694,063,899
686,619,878	694,063,980
686,619,886	701,321,725
686,619,887	

— Criminal Investigations Group,
Postal Inspection Service, 10-1-15

Toll-Free Number Available to Verify Canadian Money Orders

The Canada Post Corporation is now providing a toll-free number that cashing agents can call to verify the validity of Canadian Postal Money Orders. The number is 800-563-0444.

This toll-free number is printed on the back of the Canadian Postal Money Orders.

— Criminal Investigations Group,
Postal Inspection Service, 10-1-15

Other Information

Overseas Military/Diplomatic Mail

Mail addressed to military and diplomatic post offices overseas is subject to certain conditions or restrictions of mailing regarding content, preparation, and handling. The APO/FPO/DPO table below outlines these conditions by APO/FPO/DPO ZIP Codes™ through the use of footnoted mailing restrictions codes (see the [Restrictions](#) page following the table).

Acceptance clerks should use the table with the POS ONE terminal to determine which APO/FPO/DPO ZIP Codes are active and which conditions of mailing apply. Inquiries may be sent to the Military Postal Service Agency at <https://amps.usps.gov/ij2/frm.htm>.

The entries under “Changes” appear in bold in the APO/FPO/DPO table starting below.

Changes

APO/FPO/DPO	Action	Effective Date	See Restrictions
APO AE 09321	Add M	10/01/2015	A-A1-A2-B-C1-E2-F-H1-M-N-R-R1-V-Z1

We have eliminated “Not Active” entries from the table below to save space and paper.

APO/FPO/DPO Table

APO/ FPO/ DPO	See Restrictions	APO/ FPO/ DPO	See Restrictions	APO/ FPO/ DPO	See Restrictions	APO/ FPO/ DPO	See Restrictions
09003	A1-A2-B-C-D-E-H-M-P-R-U	09059	A1-A2-B-C-D-E-H-M-R-U	09136	A1-A2-B-C-D-E-F1-H-M-P-R	09265	A1-A2-B-C-D-E-F-F1-H-J-L-M-N-R-T-U-V-Z1
09004	A1-A2-B-C-D-E-H-M-R-U	09060	A1-A2-B-C-D-E-F1-H-M-R-U-Z1	09138	A1-A2-B-C-D-H-M-R-U	09302	A-A1-A2-B-C1-F-F1-H-M-N-V-Z-Z1
09005	A1-A2-B-C-D-E-H-M-P-R-U	09067	A1-A2-B-C-D-E-H-M-R-U	09140	A1-A2-B-C-D-E-H-M-R-U	09304	A-A1-A2-B-C-C1-D-E2-F-F1-H1-J-L-M-N-R-R1-T-V-Z1
09006	A1-A2-B-C-D-E-H-M-R-U	09068	A1-A2-B-C-D-E-H-U-Z1	09142	A1-A2-B-C-D-E-H-M-R-U	09305	A-A1-A2-B-C1-E2-F-F1-H1-I3-M-N-R-R1-T-V-Z-Z1
09009	A1-A2-B-C-D-E-H-M-R-U-Z1	09069	A-A1-A2-B-C-D-E-H-N-U-V	09143	A1-A2-B-C-D-E-H-M-R-U	09306	A-A1-A2-B-C1-E2-F-F1-H1-R-R1-U2-V-Z1
09011	A1-A2-B-C-D-E-H-M-R-U	09075	A1-A2-B-C-D-E-H-M-R-U	09154	A1-A2-B-C-D-E-H-M-R-U	09307	A1-A2-B-N-V-Z1
09012	A1-A2-B-C-D-E-H-M-R-U-Z1	09079	A1-A2-B-C-D-E-H-M-R-U	09172	A1-A2-B-C-D-E-H-M-R-U	09308	A-A1-A2-B-C1-E2-F-F1-H1-I3-M-N-R-R1-T-V-Z-Z1
09013	A1-A2-B-C-D-E-F-F1-H-M-R-U-Z1	09090	A1-A2-B-C-D-E-H-M-P-R-U	09173	A1-A2-B-C-D-E-H-M-R-U	09309	A-A1-A2-B-C1-E2-F-H1-M-N-R-V-Z1
09014	A1-A2-B-C-D-E-H-M-R-U	09094	A1-A2-B-C-D-H-M-P-R-Z1	09177	A1-A2-B-C-D-E-H-M-R-U	09313	A-A1-A2-B-C-C1-E2-F-F1-F2-H1-R-R1-V-Z1
09016	A1-A2-B-C-D-E-H-M-R-U	09095	A1-A2-B-C-D-E-H-M-R-U	09180	A1-A2-B-C-D-H-M-R-U	09315	A-A1-A2-B-C1-E2-F-N-R-R1-V-Z1
09020	A1-A2-B-C-D-E-H-M-R-U	09096	A1-A2-B-C-D-E-H-M-R-U	09186	A1-A2-B-C-D-E-H-M-R-U	09316	A-A1-A2-B-C1-E2-F-F1-H1-I3-M-N-R-R1-T-V-Z-Z1
09021	A1-A2-B-C-D-E-H-M-R-U-Z1	09103	A1-A2-B-C-D-E-H-U	09211	A1-A2-B-C-D-E-H-M-P-R-U	09319	A-A1-A2-B-C-C1-E2-F-F1-F2-H1-R-R1-U2-V-Z1
09028	A1-A2-B-C-D-E-H-M-R-U	09104	A1-A2-B-C-D-H-M-R-U-Z1	09213	A1-A2-B-C-D-E-F-F1-H-J-L-M-N-R-T-U-V-Z1	09320	A-A1-A2-B-C1-E2-F-H1-M-N-R-R1-V-Z1
09034	A1-A2-B-C-D-E-H-M-R-U	09107	A1-A2-B-C-D-E-H-M-R-U	09214	A1-A2-B-C-D-E-H-M-R-U-Z1	09321	A-A1-A2-B-C1-E2-F-H1-M-N-R-R1-V-Z1
09044	A1-A2-B-C-D-F1-H-U	09112	A1-A2-B-C-D-E-H-M-R-U	09227	A1-A2-B-C-D-E-H-M-R-U	09330	A-A1-A2-B-C1-E2-F-F1-H1-M-R-R1-V-Z1
09046	A1-A2-B-C-D-E-H-M-R-U	09114	A1-A2-B-C-D-E-H-M-R-U	09245	A1-A2-B-C-D-E-H-M-R-U	09333	A-A1-A2-B-C1-E2-F-F1-H1-I3-M-N-R-R1-T-V-Z1
09049	A1-A2-B-C-D-E-H-M-R-U	09123	A1-A2-B-C-D-E-H-M-R-U-Z1	09250	A1-A2-B-C-D-E-H-M-R-U	09337	A-A1-A2-B-C1-E2-F-F1-H1-M-R-R1-V-Z1
09053	A1-A2-B-C-D-E-H-M-R-U	09126	A1-A2-B-C-D-H-M-P-R-Z1	09261	A1-A2-B-C-D-E-F1-H-M-R-U-V-Z1		
09054	A1-A2-B-C-D-E-H-M-R-U	09128	A1-A2-B-C-D-E-H-M-R-U	09263	A1-A2-B-C-D-E-H-M-R-U		
09055	A1-A2-B-C-D-E-F-H-M-R-R1-U-V	09131	A1-A2-B-C-D-E-H-M-R-U	09264	A1-A2-B-C-D-E-H-M-R-U		

APO/ FPO/ DPO	See Restrictions	APO/ FPO/ DPO	See Restrictions	APO/ FPO/ DPO	See Restrictions	APO/ FPO/ DPO	See Restrictions
09340	A-A1-A2-B-C1-F-H-N-R-V	09510	A-A1-A2-B-C1-E2-F-H1-M-R-R1-V-Z1	09609	A1-A2-B-C-F-R-U-Z1	09724	A1-A2-B-C-C1-F1-M-R-R1-U
09343	A-A1-A2-B-C1-F-M-N-V-Z1	09511	A1-A2-B-F-F1-R-R1-V	09610	A1-A2-B-C-F-F1-M-R-U-V-Z1	09725	A-A1-A2-B-F-H-N-O-Q-V-V1-Z-Z1
09347	A-A1-A2-B-C1-E2-F-H1-M-R-R1-V-Z1	09513	A1-A2-B-F-F1-R-R1-V	09613	A1-A2-B-C-F-N-U-V	09726	A1-A2-B-F-F1-J-L-M-N-R-T-U-V-Z1
09352	A-A1-A2-B-C1-E2-F-H1-M-R-R1-V-Z1	09517	A1-A2-B-F-F1-R-R1-V	09617	A1-A2-B-C-F-R-U-Z1	09727	A-A1-A2-B-B2-C-C1-D-F-F1-J-L-M-N-R-R1-T-V-Z1
09354	A-A1-A2-B-C1-E2-F-H1-M-R-R1-V-Z1	09520	A1-A2-B-F-F1-R-R1-V	09618	A1-A2-B-C-F-R-U-Z1	09728	A-A1-A2-B-B2-C-C1-F-F1-J-L-N-R-R1-T-V-Z1
09355	A-A1-A2-B-C1-E2-F-H1-M-R-R1-V-Z1	09523	A1-A2-B-F-F1-R-R1-V	09620	A1-A2-B-C-F-R-U-Z1	09729	A1-A2-B-C-F-N-R-R1-U-V-Z1
09356	A-A1-A2-B-C1-E2-F-H1-M-N-R-R1-V-Z1	09522	A1-A2-B-V	09621	A1-A2-B-C-F-R-U-Z1	09730	A-A2-B-B2-C-C1-F-F1-J-L-M-N-R-R1-T-V-Z1
09357	A-A1-A2-B-C1-E2-F-H1-M-R-R1-V-Z1	09524	A1-A2-B-F-F1-R-R1-V	09622	A1-A2-B-C-F-R-U-Z1	09731	A-A2-B-B2-C-C1-F-F1-J-L-M-N-R-R1-T-V-Z1
09363	A-A1-A2-B-C1-E2-F-H1-M-R-R1-V-Z1	09532	A1-A2-B-F-F1-R-R1-V	09623	A1-A2-B-C-F-R-U-Z1	09732	A1-A2-B-N-V-Z1
09365	A-A1-A2-B-C1-E2-F-H1-M-N-R-V-Z1	09534	A1-A2-B-F-F1-R-R1-V	09624	A1-A2-B-C-F-F1-J-L-N-T-U-V-Z1	09733	A1-A2-B-N-V
09366	A-A1-A2-B-C1-E2-F-F1-H1-M-R-R1-V-Z1	09543	A1-A2-B-F-F1-R-R1-V	09625	A1-A2-B-C-F-R-U-Z1	09734	A-A1-A2-B-C-C1-F-F1-J-L-M-N-R-R1-T-V-Z1
09378	A-A1-A2-B-C1-E2-F-F1-H1-I3-M-N-R-R1-T-V-Z1	09554	A1-A2-B-F-F1-R-R1-V	09626	A1-A2-B-C-F-R-U-Z1	09735	A1-A2-B-N-V-Z1
09397	A-A1-A2-B-C1-E2-F-F1-H1-M-N-R-R1-T-V-Z1	09556	A1-A2-B-F-F1-R-R1-V	09627	A1-A2-B-C-F-R-U-Z1	09736	A-A1-A2-B-B2-C-C1-D-F-F1-J-L-M-N-R-R1-T-V-Z1
09403	A1-A2-B-C-C1-M-R-U-Z1	09564	A1-A2-B-F-F1-R-R1-V	09630	A1-A2-B-C-F-U-V	09737	A-A1-A2-B-B2-C-C1-F-F1-I-L-M-N-R-R1-T-V-W-Y-Z-Z1
09421	A1-A2-B-C-C1-M-R-U-Z1	09565	A1-A2-B-F-F1-R-R1-V	09631	A1-A2-B-C-F-R-U-Z1	09738	A-A1-A2-B-B2-C-C1-D-F-F1-J-L-M-N-R-R1-T-V-Z1
09447	A1-A2-B-C-C1-R-U-V-Z1	09566	A1-A2-B-F-F1-R-R1-V	09633	A1-A2-B-B2-C-D-F-F1-M-R-U-U1-U2-U3-V-Z1	09739	A-A1-A2-B-B2-C-C1-D-F-F1-J-L-M-N-R-R1-T-V-Z1
09454	A1-A2-B-C-C1-M-R-U-V-Z1	09567	A1-A2-B-F-F1-R-R1-V	09636	A1-A2-B-C-F-R-U-Z1	09741	A-A1-A2-B-C1-E2-F-F1-H1-J-L-M-N-R-R1-T-V-W-Y-Z1
09459	A1-A2-B-C-C1-M-R-U-Z1	09568	A1-A2-B-V	09642	A1-A2-B-M-N-R-U	09742	A-A1-A2-B-B2-F-F1-J-L-M-N-R-T-V-Z1
09461	A1-A2-B-C-C1-M-P-R-U-Z1	09569	A1-A2-B-F-F1-R-R1-V	09643	A1-A2-B-M-R-U-V-Z1	09743	A-A1-A2-B-F-H-N-Q-V-Z1
09463	A1-A2-B-C-C1-R-U-Z1	09570	A1-A2-B-F-F1-R-R1-V	09644	A1-A2-B-M-N-R-U-Z1	09744	A-A2-B-B2-C-C1-F-F1-J-L-M-N-R-R1-T-V-Z1
09464	A1-A2-B-C-C1-R-U-Z1	09573	A1-A2-B-F-F1-R-R1-V	09645	A1-A2-B-C-F-F1-R-U-Z1	09745	A-A1-A2-B-F-F1-M-N-R-R1-V-Z1
09468	A1-A2-B-C-C1-M-R-U-Z1	09574	A1-A2-B-F-F1-R-R1-V	09647	A1-A2-B-M-N-R-U-Z1	09747	A1-A2-B-F-J-N-U-V-Z1
09469	A1-A2-B-C-C1-R-U-Z1	09575	A1-A2-B-F-F1-R-R1-V	09648	A1-A2-B-N-R-U-V-Z1	09748	A-A1-A2-B-B2-C-C1-D-F-F1-J-L-M-N-R-R1-T-V-Z1
09470	A1-A2-B-C-C1-M-R-U-Z1	09576	A1-A2-B-F-F1-R-R1-V	09649	A1-A2-B-N-R-U-Z1	09749	A-A1-A2-B-F-H-N-U-V-Z1
09494	A1-A2-B-C-C1-M-R-U-Z1	09577	A1-A2-B-V	09701	A-A1-A2-B-B2-C-C1-D-F-F1-J-L-M-N-R-R1-T-V-Z1	09750	A-A2-B-B2-C-C1-F-F1-J-L-M-N-R-R1-T-V-Z1
09498	A1-A2-B-C-C1-F-F1-F2-J-L-N-R-R1-T-V-Z1	09578	A1-A2-B-F-F1-R-R1-V	09702	A1-A2-B-C-C1-F1-M-R-R1-U	09751	A1-A2-B-C-D-E-H-M-R-U
09501	A1-A2-B-V	09581	A1-A2-B-F-F1-R-R1-V	09703	A1-A2-B-C-D-F1-H-U	09752	A1-A2-B-C-D-F1-H-U
09502	A1-A2-B-V	09582	A1-A2-B-F-F1-R-R1-V	09704	A1-A2-B-C-O-V-V1	09753	A-A1-A2-B-F-N-V-Z1
09503	A1-A2-B-F-F1-R-R1-V	09583	A1-A2-B-F-F1-R-R1-V	09705	A1-A2-B-U	09754	A-A1-A2-B-F-H-N-Q-V-Z1
09504	A1-A2-B-V	09586	A1-A2-B-F-F1-R-R1-V	09706	A1-A2-B-C-N-R-U-V-Z1	09755	A-A1-A2-B-B2-C-C1-D-F-F1-J-L-M-N-Q-R-R1-T-V-Z1
09505	A1-A2-B-V	09587	A1-A2-B-F-F1-R-R1-V	09707	A1-A2-B-C-F-F1-J-L-M-N-R-T-U-V-Z1		
09506	A1-A2-B-V	09588	A1-A2-B-V	09708	A1-A2-B		
09507	A1-A2-B-V	09589	A1-A2-B-V	09710	A1-A2-B-C-C1-F-F1-J-L-M-N-R-R1-T-U-V-Z1		
09508	A1-A2-B-F-F1-R-R1-V	09590	A1-A2-B-V	09712	A-A1-A2-B-F-H-R-U-V-Z1		
09509	A1-A2-B-F-F1-R-R1-V	09591	A1-A2-B-F-F1-R-R1-V	09714	A1-A2-B-C-C1-F1-M-R-R1-U		
		09592	A1-A2-B-F-F1-R-R1-V	09715	A1-A2-B-F-F1-J-L-M-N-R-T-V-Z1		
		09593	A1-A2-B-F-F1-R-R1-V	09716	A1-A2-B-C-F-F1-J-L-M-N-R-T-V-Z1		
		09594	A1-A2-B-F-F1-R-R1-V	09717	A-A1-A2-B-M-R-V-W-Z1		
		09595	A1-A2-B-F-F1-R-R1-V	09718	A1-A2-B-F-F1-J-L-M-N-R-T-U-V-Z1		
		09596	A1-A2-B-F-F1-R-R1-V	09719	A1-A2-B-C-D-M-R-U-V-Z1		
		09599	A1-A2-B-F-F1-R-R1-V	09720	A1-A2-B-M-R-U-V-Z1		
		09602	A1-A2-B-C-F-F1-N-R-U-V	09722	A-A1-A2-B-F-H-N-Q-V-Z1		
		09603	A1-A2-B-C-F-F1-R-U-V-Z1	09723	A1-A2-B-F-F1-J-L-M-N-R-T-U-V-Z1		
		09604	A1-A2-B-C-F-F1-P-R-U-V-Z1				
		09605	A1-A2-B-C-D-H-M-R-U-V				
		09606	A1-A2-B-C-D-H-M-R-U-V				
		09607	A-A1-A2-B-C-F-F1-M-N-R-R1-U-U3-V-W-Z1				
		09608	A1-A2-B-C-F-N-R-U-V-Z1				

APO/ FPO/ DPO	See Restrictions	APO/ FPO/ DPO	See Restrictions	APO/ FPO/ DPO	See Restrictions	APO/ FPO/ DPO	See Restrictions
09756	A-A1-A2-B-B2-E3-F-F1-J-L-N-Q-R-R1-T-V-Z-Z1	09826	A-A1-A2-B-B2-C1-E1-E2-E3-F-F1-J-L-M-N-R-R1-T-V-W-Z1	09892	A-A1-A2-B-E2-F-F1-J-L-N-R-R1-T-V-Z1	34081	A1-A2-B-F-F1-R-R1-V
09759	A-A1-A2-B-B2-C-C1-E2-F-F1-F2-J-L-N-R-R1-T-V-Z1	09827	A-A1-A2-B-F-F1-J-L-M-N-R-T-V-Z1	09895	A-A1-A2-B-B2-C1-E2-F-I3-L-N-R-T-V-W-Z-Z1	34082	A1-A2-B-F-F1-R-R1-V
09760	A-A1-A2-B-B2-C-C1-D-F-F1-J-L-M-N-Q-R-R1-T-V-Z-Z1	09828	A-A1-A2-B-F-F1-J-L-N-T-V-Z1	09898	A1-A2-B-E2-F-H1-N-R-R1-U2-V-Z1	34083	A1-A2-B-F-F1-R-R1-V
09762	A-A1-A2-B-B2-E3-F-F1-J-L-N-R-R1-T-V-Z1	09829	A1-A2-B-C-N-R-V-Z1	34002	A1-A2-B-F-F1-J-L-N-T-V-Z1	34084	A1-A2-B-F-F1-R-R1-V
09769	A-A1-A2-B-B2-C-C1-D-F-F1-J-L-M-N-R-R1-T-V-Z1	09830	A1-A2-B-C-M-N-R-V-Z1	34004	A1-A2-B-F-F1-J-L-N-T-V	34090	A1-A2-B-F-F1-R-R1-V
09777	A-A1-A2-B-C-E1-F-F1-L-M-N-R-T	09831	A1-A2-B-F-F1-J-L-N-T-U-V-Z1	34007	A-A1-A2-B-C1-F-F1-M-N-R-R1-V-Z1	34091	A1-A2-B-F-F1-R-R1-V
09780	A-A1-A2-B-F-H-N-R-V	09832	A-A1-A2-B-U1-V-Z1	34008	A1-A2-B-B2-D-E1-F-F1-H-H1-J-L-M-N-R-R1-T-V-Z1	34092	A1-A2-B-F-F1-R-R1-V
09801	A-A1-A2-B-C1-E2-F-H1-M-N-R-R1-V-Z1	09833	A1-A2-B-U1-V-Z1	34011	A1-A2-B-B2-C1-E2-F-F1-J-L-M-N-R-R1-T-V-Z1	34093	A1-A2-B-F-F1-R-R1-V
09803	A1-A2-B-E2-E3-F-F1-H1-N-R-R1-U-V-Z1	09834	A1-A2-B-E2-E3-F-F1-R-R1-U-V-Z1	34020	A1-A2-B-F-F1-J-L-M-N-T-V-Z1	34094	A1-A2-B-F-F1-R-R1-V
09804	A-A1-A2-B-F-F1-N-R-V-Z1	09835	A-A1-A2-B-N-V-Z1	34021	A1-A2-B-F-F1-T-J-L-M-N-V-Z1	34095	A1-A2-B-F-F1-R-R1-V
09805	A-A2-B-E2-E3-F-F1-R-R1-V-Z1	09836	A-A1-A2-B-C-F-F1-J-L-M-N-R-T-V-Z1	34022	A1-A2-B-F-F1-J-L-M-N-T-V-Z1	34096	A1-A2-B-F-F1-R-R1-V
09806	A-A1-A2-B-C1-E2-F-F1-H1-J-L-M-N-R-R1-T-V-Z1	09837	A1-A2-B-E2-E3-V-Z1	34023	A1-A2-B-F-F1-J-L-M-N-T-V-Z1	34098	A1-A2-B-V
09808	A-A1-A2-B-B2-C1-E2-F-F1-H-H1-J-L-N-R-R1-T-V-Z1	09838	A1-A2-B-E2-E3-U-V-Z1	34024	A1-A2-B-F-F1-J-L-M-N-T-V-Z1	34099	A1-A2-B-V
09809	A1-A2-B-F-F1-L-N-T-V-Z1	09839	A-A1-A2-B-U-V-Z1	34025	A1-A2-B-F-F1-J-L-M-N-T-V-Z1	96201	A-A1-A2-B-F1
09810	A-A1-A2-B-F-F1-N-R-V-Z1	09840	A-A1-A2-B-E2-E3-V-Z1	34030	A1-A2-B-F-F1-J-L-M-N-T-V-Z1	96202	A-A1-A2-B-F1-U
09811	A1-A2-B-E2-E3-F-F1-H1-N-R-R1-U-V-Z1	09841	A-A1-A2-B-N-R-U-Z1	34031	A1-A2-B-F-F1-J-L-M-N-T-V-Z1	96203	A-A1-A2-B-F1
09812	A1-A2-B-E2-E3-F-F1-I-J-L-N-R-T-U-V-Z-Z1	09842	A-A1-A2-B-F-F1-J-L-N-R-T-V-Z1	34032	A1-A2-B-F-F1-J-L-M-N-T-V-Z1	96204	A-A1-A2-B-F1
09813	A1-A2-B-E2-E3-F-F1-I3-J-L-N-R-T-U-V-Z-Z1	09845	A-A1-A2-B-B2-E3-F-F1-J-L-M-N-R-T-V-Z1	34033	A1-A2-B-C-F-F1-J-L-M-N-T-V-Z1	96205	A-A1-A2-B-F1-U
09814	A1-A2-B-E2-E3-F-F1-I3-J-L-N-R-T-U-V-Z-Z1	09846	A-A1-A2-B-B2-C1-F-F1-J-L-N-R-R1-T-V-Z1	34034	A1-A2-B-F-F1-J-L-M-N-T-V-Z1	96206	A-A1-A2-B-F1-U
09815	A-A1-A2-B-F-N-R-V-Z1	09848	A-A1-A2-B-F-M-R-V-Z1	34035	A1-A2-B-F-F1-H-J-L-M-N-T-V-Z1	96207	A-A1-A2-B-F1-U
09816	A-A1-A2-B-B2-C-C1-E2-E3-F-F1-J-L-N-R-R1-T-V-Z1	09852	A1-A2-B-E2-E3-F-F1-H1-N-R-R1-U-V-Z1	34036	A1-A2-B-F-F1-J-L-M-N-T-V-Z1	96208	A-A1-A2-B-F1-U
09817	A-A1-A2-B-B2-C1-E2-E3-F-F1-H-H1-J-L-M-N-R-T-V-Z1	09853	A1-A2-B-E2-F-H1-R-R1-U2-V-Z1	34037	A1-A2-B-C-F-F1-H-I-L-M-N-T-V-Z-Z1	96209	A-A1-A2-B-F-F1-J-L-N-T-U-V-Z1
09818	A-A1-A2-B-C-F-M-V-Z1	09855	A-A1-A2-B-C1-E2-F-F1-H1-M-R-R1-U2-V-Z1	34038	A1-A2-B-L-M-N-U-V-Z1	96213	A-A1-A2-B-C-F1-R-U
09820	A-A1-A2-B-B2-F-F1-H-H1-J-L-M-N-R-R1-T-V-Z1	09858	A1-A2-B-E2-E3-F-F1-H1-N-R-R1-U-V-Z1	34039	A1-A2-B-F-F1-J-L-M-N-T-V-Z1	96214	A-A1-A2-B-C-F1-R-U
09821	A-A1-A2-B-F-N-R-V-Z1	09859	A1-A2-B-C1-E2-E3-F-F1-H1-R-R1-V-Z1	34041	A1-A2-B-F-F1-J-L-M-N-T-V-Z1	96218	A-A1-A2-B-F1-U
09822	A-A1-A2-B-F-R-V-Z1	09861	A-A1-A2-B-F-F1-N-O-R-R1-V-Z1	34042	A-A1-A2-B-C-F-F1-M-N-R-U-U1-V-W-Z1	96224	A-A1-A2-B-F1-U
09823	A-A1-A2-B-F-F1-J-L-N-R-T-V-Z1	09865	A-A1-A2-B-R-U-V-Z1	34055	A1-A2-B-F-F1-J-L-M-N-T-V-Z1	96251	A-A1-A2-B-F1-U
09824	A-A1-A2-B-F-R-V-Z1	09868	A-A1-A2-B-N-U-V-Z1	34058	A1-A2-B-F-F1-R-R1-V-Z1	96257	A-A1-A2-B-F1-U
09825	A-A1-A2-B-C-C1-D-F-F1-J-L-M-N-R-R1-T-V-Z1	09870	A-A1-A2-B-C1-E2-F-F1-H1-I3-J-L-M-N-R-R1-T-U4-V-Z-Z1	34060	A1-A2-B-B2-C1-E2-F-F1-J-L-N-R-R1-T-V-Z1	96258	A-A1-A2-B-F1-U
		09873	A-A1-A2-B-C1-E2-F-F1-H1-I3-J-L-M-N-R-R1-T-U4-V-Z-Z1	34078	A1-A2-B-F1-N-V-Z1	96260	A-A1-A2-B-F1-U
		09874	A-A1-A2-B-C1-E2-F-F1-H1-I3-J-L-M-N-R-R1-T-U4-V-Z-Z1	34080	A1-A2-B-F-F1-R-R1-V	96264	A-A1-A2-B-C-F1-R-U
		09875	A-A1-A2-B-C1-E2-F-F1-H1-I3-J-L-M-N-R-R1-T-U4-V-Z-Z1			96266	A-A1-A2-B-C-F1-R-U
		09880	A-A1-A2-B-C1-E2-F-F1-H1-N-R-R1-U-V-Z1			96267	A-A1-A2-B-C-F1-R-U-V
		09890	A1-A2-B-E2-F-F1-H1-N-R-R1-U2-V-Z1			96269	A-A1-A2-B-F1-U-Z1
						96271	A-A1-A2-B-F1-U
						96275	A-A1-A2-B-F1-U
						96276	A-A1-A2-B-C-F1-R
						96278	A-A1-A2-B-C-F1-R-U
						96283	A-A1-A2-B-F1-U
						96284	A-A1-A2-B-F1-U-V
						96303	A1-A2-B-F-F1-H-J-L-M-N-T-V-W-Z1
						96306	A1-A2-B-F-F1-F2-H-M-W-Z1
						96309	A1-A2-B-C-M-R-V-W
						96310	A1-A2-B-M-W
						96319	A1-A2-B-C-M-R-W
						96321	A1-A2-B-F-F1-F2-H-M-W-Z1
						96322	A1-A2-B-F-F1-F2-H-M-W-Z1
						96323	A1-A2-B-C-M-R-V-W
						96326	A1-A2-B-C-F-M-R-W
						96328	A1-A2-B-C-M-R-W
						96330	A1-A2-B-C-M-R-W
						96331	A1-A2-B-M-W

APO/ FPO/ DPO	See Restrictions	APO/ FPO/ DPO	See Restrictions	APO/ FPO/ DPO	See Restrictions	APO/ FPO/ DPO	See Restrictions
96336	A1-A2-B-C-M-R-V-W	96401	A1-A2-B-C-F-N-O-R-V-V1-Z1	96552	A1-A2-B-Z1	96631	A-A1-A2-B-C1-E2-F-H1-M-R-R1-V
96337	A1-A2-B-M-W			96553	A-A1-A2-B-F-F1-H-M-R-U	96643	A1-A2-B-F-F1-R-R1-V
96338	A1-A2-B-M-W	96427	A-A1-A2-B-C1-E2-F-H1-M-R-R1-V			96650	A1-A2-B-F-F1-R-R1-V
96339	A1-A2-B-M-V-W			96554	A-A1-A2-B-F-F1-H-J-L-M-N-T-U-V-Z1	96657	A1-A2-B-F-F1-R-R1-V
96343	A1-A2-B-M-W	96447	A1-A2-B-C-F-N-R-U3-V1	96555	A1-A2-B-F-M-V	96660	A1-A2-B-F-F1-R-R1-V
96346	A1-A2-B-F-F1-F2-H-M-V-W-Z1	96501	A-A1-A2-B-N-V	96557	A1-A2-B-F-M-V	96661	A1-A2-B-F-F1-R-R1-V
96347	A1-A2-B-F-F1-F2-H-M-W-Z1	96502	A1-A2-B-F-N-U3-V-Z1	96562	A-A1-A2-B-B2-C-C1-D-E2-E3-F-F1-H-H1-I-L-M-N-R-T-V-Z-Z1	96662	A1-A2-B-F-F1-R-R1-V
96349	A1-A2-B-F-F1-F2-H-M-W-Z1	96507	A-A1-A2-B-F-F1-H-J-L-N-T-V-Z1			96663	A1-A2-B-F-F1-R-R1-V
96350	A1-A2-B-F-F1-F2-H-M-W-Z1	96510	A1-A2-B-I-N-V	96577	A-A1-A2-B-F-H-M-N-R-U	96664	A1-A2-B-V
96351	A1-A2-B-F-F1-F2-H-M-W-Z1	96511	A1-A2-B-I-N-V	96578	A1-A2-B-B2-F1-H-J-N-R	96665	A1-A2-B-V
96362	A1-A2-B-F-F1-F2-M-W-Z1	96515	A1-A2-B-D-F-U3			96666	A1-A2-B-V
96365	A1-A2-B-C-M-R-V-W	96516	A1-A2-B-D-F-Z1	96595	A1-A2-B-F-U3-V-Z1	96667	A1-A2-B-F-F1-R-R1-V
96367	A1-A2-B-C-L-M-R-W	96517	A1-A2-B-F-U3-V-Z1	96598	A1-A2-B-N-O-V-V1	96668	A1-A2-B-F-F1-R-R1-V
96368	A1-A2-B-C-M-R-W	96520	A1-A2-B-F-N-U3-V	96599	A1-A2-B-N-V	96669	A1-A2-B-F-F1-R-R1-V
96370	A1-A2-B-F-F1-F2-H-M-W-Z1	96521	A1-A2-B-F-F1-J-L-N-T-U3-V-Z1	96601	A1-A2-B-V	96670	A1-A2-B-V
		96530	A-A1-A2-B-F-F1-H-H1-J-L-M-N-T-U-V-Z1	96602	A1-A2-B-V	96671	A1-A2-B-F-F1-R-R1-V
96372	A1-A2-B-M-W	96531	A-A1-A2-B-C-F-F1-H-M-N-R-U-V	96603	A1-A2-B-V	96672	A1-A2-B-F-F1-R-R1-V
96373	A1-A2-B-M-W	96532	A-A1-A2-B-F-F1-H-J-L-M-N-T-U-V-Z1	96604	A1-A2-B-V	96673	A1-A2-B-V
96374	A1-A2-B-M-W			96605	A1-A2-B-V	96674	A1-A2-B-F-F1-R-R1-V
96375	A1-A2-B-M-W	96534	A-A1-A2-B-F-U-Z1	96606	A1-A2-B-V	96675	A1-A2-B-F-F1-R-R1-V
96376	A1-A2-B-M-W	96535	A-A1-A2-B-F-F1-J-L-N-T-V-Z1	96607	A1-A2-B-V	96677	A1-A2-B-F-F1-R-R1-V
96377	A1-A2-B-M-W			96608	A1-A2-B-V	96678	A1-A2-B-F-F1-R-R1-V
96378	A1-A2-B-M-W	96537	A1-A2-B-V-Z1	96609	A1-A2-B-V	96679	A1-A2-B-F-F1-R-R1-V
96379	A1-A2-B-M-W	96538	A1-A2-B-V-Z1	96610	A1-A2-B-V	96681	A1-A2-B-V
96380	A1-A2-B-M-W	96540	A1-A2-B-V-Z1	96611	A1-A2-B-V	96682	A1-A2-B-V
96382	A1-A2-B-M-W	96541	A1-A2-B-V	96612	A1-A2-B-V	96683	A1-A2-B-V
96384	A1-A2-B-M-W	96542	A1-A2-B-V-Z1	96613	A1-A2-B-V	96686	A1-A2-B-V
96385	A1-A2-B-M-W	96543	A1-A2-B-P-V-Z1	96615	A1-A2-B-F-F1-R-R1-V	96691	A1-A2-B-F-F1-R-R1-V
96386	A1-A2-B-M-W	96544	A1-A2-B-F-R-U3	96616	A1-A2-B-F-F1-R-R1-V	96692	A1-A2-B-F-F1-R-R1-V
96387	A1-A2-B-M-W	96546	A1-A2-B-F-R-U3	96617	A1-A2-B-F-F1-R-R1-V	96693	A1-A2-B-F-F1-R-R1-V
96388	A1-A2-B-M-W	96548	A-A1-A2-B-H-M-R-U	96619	A1-A2-B-V	96694	A1-A2-B-F-F1-R-R1-V
96389	A1-A2-B-M-W	96549	A-A1-A2-B-F-F1-H-J-L-M-N-T-U-V-Z1	96620	A1-A2-B-F-F1-R-R1-V	96695	A1-A2-B-F-F1-R-R1-V
		96550	A-A1-A2-B-H-M-U-V-Z1	96621	A1-A2-B-V	96696	A1-A2-B-F-F1-R-R1-V
		96551	A-A1-A2-B-F-F1-H-J-L-M-N-T-U-V-Z1	96622	A1-A2-B-F-F1-R-R1-V	96698	A1-A2-B-V
				96628	A1-A2-B-F-F1-R-R1-V		
				96629	A1-A2-B-F-F1-R-R1-V		

RESTRICTIONS

LEGEND

PS Form 2976, *Customs — CN 22 (Old C 1) and Sender's Declaration* (green label)

PS Form 2976-A, *Customs Declaration and Dispatch Note*

PS Form 2976-B, *Priority Mail Express International Shipping Label and Customs Form*

AAFES	= Army and Air Force Exchange Service
APO	= Army/Air Force Post Office
Box R	= Retired military personnel
DMM	= <i>Domestic Mail Manual</i>
DPO	= Diplomatic Post Office
FPO	= Fleet Post Office
MOM	= Military Ordinary Mail
MPO	= Military Post Office
PAL	= Parcel Airlift
PSC	= Postal Service Center
SAM	= Space Available Mail
USDA	= United States Department of Agriculture

Note: Mail order catalogs are prohibited as SAM or PAL mail.

A. Securities, currency, or precious metals in their raw, unmanufactured state are prohibited. Official shipments are exempt from this restriction.

A1. Mail addressed to "Any Servicemember," or similar wording such as "Any Soldier," "Sailor," "Airman," or "Marine"; "Military Mail"; etc., is prohibited. Mail must be addressed to an individual or job title such as "Commander," "Commanding Officer," etc.

A2. APO/FPO/DPO addresses shall not include a city and/or country name.

B. Regardless of mail class, a customs declaration (i.e., PS Form 2976, PS Form 2976-A, or PS Form 2976-B) is required for all items weighing 16 ounces or more, or any item (regardless of weight) containing potentially dutiable mail contents (e.g., merchandise or goods) addressed to or from an APO, FPO, or DPO ZIP Code. If mailed using Priority Mail Express service, mailpieces requiring a customs form that are addressed to or from an APO, FPO, or DPO location must bear a properly completed PS Form 2976-B. No customs form is required for items weighing less than 16 ounces when the contents are not potentially dutiable (e.g., documents). The surface area of the address side of the mailpiece must be large enough to contain the applicable customs declaration. The following exceptions apply:

- Known mailers are exempt from providing customs documentation on non-dutiable letters or printed matter. (A known mailer is a business mailer who enters volume mailings through a business mail entry unit (BMEU) or other bulk mail acceptance location, pays postage through an advance deposit account, uses a permit imprint for postage payment, and submits a completed postage statement at the time of entry that certifies that the mailpieces contain no dangerous materials that are prohibited by postal regulations.)
- All federal, state, and local government agencies whose mailings are regarded as "Official Mail" are exempt from providing customs documentation on any item addressed to an APO, FPO, or DPO except for those APOs/FPOs/DPOs to which restriction "B2" applies.
- Prepaid mail from military contractors is exempt, providing the mailpiece is endorsed "Contents for Official Use — Exempt from Customs Requirements."

B2. All federal, state, and local government agencies must complete customs documentation when sending potentially dutiable mail addressed to or from this APO, FPO, or DPO.

C. Cigarettes and other tobacco products are prohibited.

C1. Obscene articles, prints, paintings, cards, films, videotapes, etc., and horror comics and matrices are prohibited.

D. Coffee is prohibited.

E. Medicines (prescription, over-the-counter, vitamins, and supplements) are prohibited when mailed to individuals for human or animal use. This prohibition does not apply when medicines are sent as official mail only between specifically designated agencies such as pharmaceutical distributors, hospitals, clinics, and pharmacies.

E1. Medicines or vaccines not conforming to French laws are prohibited.

E2. Any matter depicting nude or seminude persons, pornographic or sexual items, or nonauthorized political materials is prohibited. Although religious materials contrary to the Islamic faith are prohibited in bulk quantities, items for the personal use of the addressee are permissible.

E3. Radio transceivers, cordless telephones, global positioning systems, scanners, base stations, and handheld transmitters are prohibited.

F. Firearms of any type are prohibited in all classes of mail. See definitions of firearms in PUB 52, Sec. 431. This restriction does not apply to firearms mailed to or by official U.S. government agencies. The restriction for mail to this APO/FPO/DPO ZIP Code does not apply to firearms mailed from this APO/FPO/DPO ZIP Code, provided ATF and USPS regulations are met. Antique firearms are a separate category defined in PUB 52, Sec. 431.3 and ATF regulations; they do not require an ATF form.

F1. Privately owned weapons addressed to an individual are prohibited in any class of mail.

F2. Importation of firearms is restricted to one shotgun and one single shot .22 caliber rifle per individual.

G. Only letters, flats, and Periodicals are authorized. Parcels of any class are prohibited.

H. Meats, including preserved meats, whether hermetically sealed or not, are prohibited.

H1. Pork or pork by-products are prohibited.

I. Mail of all classes must fit in a mail sack. Mail may not exceed the following dimensions:

- Maximum length 20 inches.
- Maximum width 12 inches.
- Maximum height 12 inches.

The maximum length and girth combined may not exceed 68 inches.

This restriction does not apply to registered mail and official government mail marked MOM.

I1. This restriction does not apply to registered mail.

I2. This restriction does not apply to official government mail marked MOM.

I3. Mail may not exceed the following dimensions:

- Maximum length 27 inches.
- Maximum width 14 inches.
- Maximum height 14 inches.

J. Parcels may not exceed 108 inches in length and girth combined.

K. Mail that includes in the address the words, "Dependent Mail Section," may consist only of letter mail, newspapers, magazines, and books. No parcel of any class containing any other matter may be mailed to the Dependent Mail section. This restriction does not apply if the address does not include the words "Dependent Mail Section."

L. All official mail is prohibited.

M. Fruits, vegetables, animals, and living plants are prohibited.

N. Registered mail is prohibited.

O. Delivery status information for Extra Services is not available on USPS.com.

P. APO is used for the receipt and dispatch of official mail only.

Q. Mail may not exceed 66 pounds, and size is limited to 42 inches maximum length and 72 inches maximum length and girth combined.

R. All alcoholic beverages, including those mailable under PUB 52, Sec. 421, are prohibited.

R1. Materials used in the production of alcoholic beverages (i.e., distilling material, hops, malts, yeast, etc.) are prohibited.

S. Mail of all classes must fit in a mail sack. Mail may not exceed the following dimensions and weight:

- Maximum length 12 inches.
- Maximum width 12 inches.
- Maximum height 5 1/2 inches.
- Maximum weight 25 pounds.

The maximum length and girth combined may not exceed 47 inches.

T. Mailings of case lots of food and supplemental household shipments must be approved by the sender's parent agency prior to mailing.

U. Parcels must weigh less than 16 ounces when addressed to Box R. This restriction does not apply to mail endorsed "Free Matter for the Blind or Handicapped."

U1. Mail is limited to First-Class Mail weighing 13 ounces or less when addressed to Box R. This restriction does not apply to mail endorsed "Free Matter for the Blind or Handicapped." Videotapes are prohibited when addressed to Box R, regardless of weight.

U2. Mail is limited to First-Class Mail letters only when addressed to Box R.

U3. Mail is limited to First-Class Mail correspondence (including voice and video cassettes), newspapers, magazines, photographs, not exceeding 16 ounces, when addressed to Box R.

U4. Mail addressed to Box C is limited to 2 pounds, regardless of class.

V. Priority Mail Express Military Service (PMEMS) not available from any origin.

V1. USPS Tracking is not available.

W. Meat products, such as dried beef, salami, and sausage, may be mailed, provided they remain in their original, hermetically sealed packages and bear USDA certification. Other meats, bones, skin, hair, feathers, horns or hoofs of hoofed animals, wool samples, tobacco leaves, including chewing and pipe tobacco, snuff, cigars, and cigarettes, or obscene material, including obscene drawings, photographs, films, and carvings, are prohibited. Exception: 200 grams of tobacco per parcel are permitted duty free.

X. Personal mail is limited to First-Class Mail items (to include audio cassettes and voice tapes) weighing 13 ounces or less. This limitation does not apply to official mail.

Y. Mail is limited to First-Class and Priority Mail items only. All Periodicals, Standard Mail items, and Package Services items (including SAM and PAL) are not authorized. This restriction also applies to official mail.

Z. No outside pieces (OSPs).

Z1. The following restriction is applicable only to International Service Centers (ISC)/Exchange Offices. An Anti-Pilferage Seal (Item No O817E or O818A) is required on all pouches and sacks.

— *International Network Operations,
Global Business, 10-1-15*

Freely Associated States (FAS) Restrictions

Effective March 19, 2015, the mailing restrictions for Freely Associated States will be listed in the Pull-Out section of the *Postal Bulletin* and updated periodically.

Freely Associated States

Mail addressed to freely associated states is subject to certain conditions or restrictions of mailing regarding content, preparation, and handling. The FAS table below outlines these conditions as listed by each affected FAS ZIP Code™ through the use of footnoted mailing restrictions codes (see the [Restrictions](#) following the table). For additional information on available extra services for FAS destinations, see *Mailing Standards of the United States Postal Service, Domestic Mail Manual (DMM®)*, part 503.

Acceptance clerks should use the table with the POS ONE terminal to determine which FAS ZIP Codes are active and which conditions of mailing apply. Inquiries may be sent to Randall Sobol at randall.f.sobol@usps.gov.

FAS Restrictions Table

FAS Table	See Restrictions
96939	A, B
96940	A, B
96941	A, B
96942	A, B
96943	A, B

FAS Table	See Restrictions
96944	A, B
96960	A, B
96970	A, B
Marshall Islands	C
Federated States of Micronesia	C

RESTRICTIONS LEGEND

PS Form 2976, *Customs* — CN 22 (Old C 1) and *Sender's Declaration* (green label)

PS Form 2976-A, *Customs Declaration and Dispatch Note*

FAS = Freely Associated State

- A. Bank currency (coin and paper) is prohibited.
- B. Signature Confirmation, Signature Confirmation Restricted Delivery, Adult Signature Requested, Adult Signature Restricted Delivery, Certified Mail Adult Signature Required, and Certified Mail Adult Signature Restricted Delivery not available.
- C. COD is prohibited.

— *Asia-Pacific Relations,
Global Business, 10-1-15*

Publications

Publication 223 Revision: Directives and Forms Update

Effective October 1, 2015, Publication 223, *Directives and Forms Catalog*, is revised to include current information for the items noted in this article. See Publication 223 for complete information.

Information on how to order directives and forms is available in Chapter 1 of Publication 223.

Publication 223 is available on the Internet at <http://about.usps.com/publications/pub223.pdf>.

New

- MI EL-710-2015-1, *EAS Leadership Development*.
- MI FM-640-2015-3, *EAS Privately Owned Vehicle (POV) Program*.
- MI FM-640-2015-4, *Verifying Payment Card Industry Compliance for Service Provider Engagement*.
- MI SP-S2-2015-1, *Noncompetitive Purchases*.
- MOP CSO-05-11-2015, *Required Procedures for Environmental Regulatory Agency Site Visits and Notices of Violations*.
- TAG 730, *Return to Supplier*.
- PS 777, *Lean Six Sigma – Project Charter*.
- PS 1799, *Quote Request*.

Revised

- HBK AS-805-A, *Information Resource Certification and Accreditation Process*.

- HBK AS-805-H, *Cloud Security*.
- HBK EL-312, *Employment and Placement*.
- HBK EL-505, *Injury Compensation*.
- HBK EL-908, *Agreement Between the USPS & APWU, AFL-CIO, Covering Information Technology/Accounting Services, 2011–2016*.
- HBK EL-921, *Supervisor's Guide to Handling Grievances*.
- HBK T-5, *International Mail Operations*.
- MAN IMM, *Mailing Standards of the United States Postal Service, International Mail Manual*.
- MAN SPP, *Supplying Principles and Practices*.
- NOT 701-P, *Check First (Tear-Off Pad)*.
- PUB 223, *Directives and Forms Catalog*.
- PUB 399, *Pickup Services Field Guide*.
- PUB 553, *Employee's Guide to Understanding, Preventing, and Reporting Harassment*.
- PUB 631, *Official Election Mail: Graphic Guidelines and Logos*.
- PUB 699, *Special Requirements for Shipping Internationally*.
- SGN 525, *Extra Services Writing Table Decal*.
- PS 61, *Appointment Affidavit*.
- PS 3203-X, *Personalized Envelope Order Form*.
- PS 8676, *Rights and Permissions Application*.

Obsolete

PSIN	Ed. Date	Title	Replaced By
MI EL-710-2013-3	9/13	<i>EAS Leadership Development</i>	MI EL-710-2015-1
MI FM-640-2011-3	10/11	<i>Payment Card Industry Data Security Standard (PCI-DSS)</i>	MI FM-640-2015-4
MI FM-640-2014-3	6/14	<i>Verifying Payment Card Industry Compliance for Service Provider Engagement</i>	MI FM-640-2015-4
MI SP-S2-2011-1	1/11	<i>Noncompetitive Purchases</i>	MI SP-S2-2015-1
MOP DD-02-21-2006	2/06	<i>Postal Service Policy Statement on Sexual Orientation, Gender Identification, and Gender Stereotyping</i>	N/A
PS 3915	4/03	<i>Post Office Box Key Requisition (2-part set)</i>	N/A
PS 4983	10/12	<i>Postal Key and Lock Requisition</i>	N/A

Publication 431 Revision: Changes to Post Office Box Service and Caller Service Fee Groups

Effective October 1, 2015, Publication 431, *Post Office Box Service and Caller Service Fee Groups*, is revised to include the following changes.

Publication 431, *Post Office Box Service and Caller Service Fee Groups*

* * * * *

[Add the following entries:]

ZIP Code	Fee Group
07102	34
42356	5

* * * * *

The online version of Publication 431 is dated July 2013. Publication 431 is currently available on the Postal Service™ PolicyNet website (<http://blue.usps.gov/cpim>):

- Go to <http://blue.usps.gov>.
- Under “Essential Links” in the left-hand column, click *PolicyNet*.
- Click *PUBs*.

Offices with WebBATS Manager/Supervisor access can view current Publication 431 information by going to the WebBATS Edit Facility Information page, as follows:

1. Go to the WebBATS main menu, and select Utility> Facility>Edit Facility option.
2. View the Fee Group field on the Edit Facility Information page.

— *Retail Operations,
Retail and Customer Service Operations, 10-1-15*

USPS® Issues
Medal of Honor: Vietnam War
Forever® Stamps



On Sale Nationwide: May 25, 2015.

Organization Information

Corporate Communications

Regulations for Proper Flag Display

The regulations for the proper display of flags are contained in Part 47 of the *Administrative Support Manual* (ASM). Sections of this part of the manual are reprinted here so that Postmasters can ensure that the American flag, the Postal Service™ flag, and the MIA-POW f47 flag are displayed properly. To read all of the regulations concerning the display of flags at Postal Service facilities, click on <http://blue.usps.gov/cpim/ftp/manuals/asm/asmtc.pdf>.

Administrative Support Manual (ASM)

* * * * *

47 Flags

471 Flags at Postal Facilities

471.1 Which May Be Displayed

Except as governed by host facilities as noted in 472.21, the only flags to be displayed at postal facilities are the flag of the United States of America, the Postal Service flag, the POW-MIA flag, and, when authorized by the vice president of Corporate Communications, flags directly related to the programs, missions, and activities of the United States Postal Service. Flags of states, commonwealths, or local governments must not be displayed.

471.2 Relative Placement

471.21 When Displayed on Flagstaffs

Other flags are flown below the U.S. flag if displayed on the same flagstaff and at the same level or lower if displayed on a separate flagstaff. When the U.S. flag is flown at half-staff, all other flags are to be at half-staff.

471.22 When Displayed on Speaker's Platform

When the United States flag and the Postal Service flag are displayed on a speaker's platform in an auditorium, the United States flag must occupy the position of honor and be placed at the speaker's right as the speaker faces the audience, with the Postal Service flag at the speaker's left.

472 U.S. Flag Display

472.1 Regulations for Proper Display

472.11 Placement

If the flag of the United States is not flown from a vertical flagstaff, the following regulations apply:

- a. When the flag is displayed from a staff projecting horizontally or at an angle from the window sill, balcony,

or front of a building, the union of the flag (blue field and stars) must be placed at the peak of the staff unless the flag is at half-staff.

- b. When the flag is suspended over a sidewalk from a rope extending from a building to a pole at the edge of the sidewalk, the flag must be hoisted out, union first, from the building.
- c. When the flag is displayed otherwise than by being flown from a staff, it must be displayed flat, whether indoors or out, or so suspended that its folds fall as free as though the flag were staffed.

472.12 Respect

No disrespect may be shown to the flag of the United States of America. It must never:

- a. Be dipped to any person or thing.
- b. Be displayed with the union down save as a signal of dire distress.
- c. Be used as drapery of any sort whatsoever; never festooned, drawn back, nor up in folds, but always allowed to fall free.
- d. Touch anything beneath it, such as the ground, the floor, water, or merchandise.
- e. Be fastened, displayed, used, or stored in such a manner as will permit it to be easily torn, soiled, or damaged in any way.
- f. Be used as a covering for a ceiling.
- g. Have placed upon it, nor on any part of it, nor attached to it any mark, insignia, letter, word, figure, design, picture, or drawing of any nature.
- h. Be used as a receptacle for receiving, holding, carrying, or delivering anything.

472.13 Raising and Lowering

472.131 Full Staff

As soon after sunrise as practicable, the flag must be hoisted briskly to the peak of the staff. Care must be taken that it not touch the ground. The flag must always be displayed with the union (blue field) at the peak of the staff (unless the flag is at half-staff). No later than sunset, the flag must be lowered ceremoniously and not allowed to touch the ground. It must be folded or rolled carefully and stored where it will not be soiled or otherwise damaged. If the flag is wet when taken down, it must be carefully spread out and allowed to dry thoroughly before being stored.

472.132 Half-Staff

Displaying the flag at half-staff means lowering the flag to half the distance between the top and bottom of the staff. The flag must first be hoisted to the peak of the staff and then slowly lowered to half-staff. When the flag is lowered for the day, it must be raised again to the peak and then lowered slowly before being stored for the night. When the flag is displayed at half-staff during a period of mourning, it must be so displayed on all days included in such period.

472.14 Bad Weather

During severe weather when it is probable that the flag will be damaged, it should not be flown.

472.2 Postal Display

472.21 Where Displayed

The flag of the United States must be displayed on stationary flagstaffs at all Post Offices, branches, stations, terminals, garages, and postal facilities, including leased and rented premises. If the Post Office unit is located in a facility operated by the General Services Administration, that agency’s regulations on the display of the flag govern. If the Post Office unit is located on a military reservation, the military regulations on the display of the flag on the reservation govern.

472.22 When Displayed

When employees are on duty in a postal facility, the flag must be displayed except in severe weather as noted in 472.14. It is raised as soon after sunrise as practicable and lowered at the time of closing or no later than sunset.

472.23 When Displayed Half-Staff

472.231 Specific Days

When the flag is being displayed, it must be flown at half-staff (see 472.132) on the following dates:

May 15	Peace Officers Memorial Day (see note 1 below)
Last Monday in May	Memorial Day Observed (see note 2 below)
December 7	National Pearl Harbor Remembrance Day

Note 1: When May 15, which is the date for Peace Officers Memorial Day, falls on the third Saturday in May, which is the date for Armed Forces Day, the Postal Service follows the regulations in the United States Code (36 U.S.C. 175) and flies the U.S. flag in the full-staff position, *not* at half-staff.

Note 2: On the last Monday in May, when Memorial Day is observed, the flag must be flown at half-staff from sunrise, or the hour at which it is raised, *until 12 noon*, and then hoisted to the peak of the staff, where it must be flown until the time of closing or no later than sunset.

472.232 Deaths of Prominent Persons

When the flag is being displayed, it must be flown at half-staff on the death of any person as indicated in Exhibit 472.232.

Exhibit 472.232 Half-Staff Display on Death of a Prominent Person

On Death Of:	Flag Displayed Half-Staff:	On All Federal Buildings In:
President or former President	For 30 days from date of death.	District of Columbia; throughout the U.S., and its territories and possessions
Vice President, U.S. Chief Justice or retired Chief Justice, or Speaker of the House of Representatives	For 10 days from date of death.	
Associate Justice of Supreme Court, Cabinet member, Former Vice President, President Pro Tempore of the Senate, Majority Leader of House, or Minority Leader of House,	From date of death until interment.	Metropolitan area of District of Columbia; the state, congressional district, territory, or commonwealth
U.S. Senator, U.S. Representative, or Delegate	On date of death and following day.	
Resident Commissioner from Commonwealth of Puerto Rico	From date of death until interment.	Commonwealth of Puerto Rico
Governor of a state, territory, or possession	From date of death until interment.	The state, territory, or possession
Prominent local citizen	From date of death until immediately after funeral.	Locally
Other official, former official, or foreign dignitary	The flag is displayed half-staff under orders or instructions issued by or at the direction of the President, or according to recognized customs or practices not inconsistent with law.	

472.233 Other Occasions

Other occasions on which the flag may be displayed at half-staff include the following:

- a. On days proclaimed by the president of the United States.
- b. The heads of government departments and agencies may direct that the flag be flown at half-staff on buildings, grounds, etc., under their jurisdiction on occasions other than those specified which they consider proper. The vice president of Corporate Relations notifies area, district, and plant managers by either broadcast fax or electronic mail of such an order. They, in turn, notify the heads of all postal facilities reporting to them.
- c. The flag may be displayed at half-staff on days when funerals of returned war dead are being held locally, when the flags on municipal, county, or state buildings and business establishments generally are being displayed in that manner.

* * * * *

475 Postal Service Flag Display

475.1 Authorized Use

The Postal Service flag is authorized for use as follows:

- a. On or in front of Postal Service installations.
- b. At Postal Service ceremonies.
- c. At conferences in which the Postal Service is participating (including display in Postal Service conference rooms).
- d. At governmental or public appearances of Postal Service officers and/or executives.
- e. In the offices of Postal Service officers.
- f. By all Postal Service vice presidents of Area Operations, district managers, and all field units reporting directly to Headquarters.
- g. On the approval of a vice president, when judged to be in the best interest of the Postal Service.
- h. As otherwise authorized by the Postmaster General or designee.

475.2 Display Regulations

The Postal Service flag is displayed only in conjunction with the United States flag. The same regulations for proper display of the United States flag described in 471 and 472 must also be followed when displaying the Postal Service flag.

* * * * *

476 POW-MIA Flag Display

476.1 Policy

The Defense Authorization Act, Public Law 105-85, section 1082, requires that postal facilities display the POW-MIA flag on six specified days each year:

Armed Forces Day	Third Saturday in May
Memorial Day	Last Monday in May
Flag Day	June 14
Independence Day	July 4
National POW-MIA Recognition Day	Third Friday in September
Veterans Day	November 11

Note: If any of these days fall on a non-business day, postal facilities are required to display the POW-MIA flag on the last business day before the designated day.

476.2 Display

476.21 Description

The POW-MIA flag that may be flown at postal facilities is the National League of Families POW-MIA flag that is recognized officially and designated by Public Law 101-355, section 2.

476.22 Regulations

The POW-MIA flag must be displayed in a manner designed to ensure visibility to the public.

476.23 Placement with the United States Flag

No other flag should be placed above or, if on the same level, to the right of United States flag.

* * * * *

For a condensed version of the regulations above, see page [41](#).

Displaying the U.S. Flag and the POW-MIA Flag

U.S. Flag at Half-Staff

How to Display

Displaying the U.S. flag at *half-staff* means lowering the flag to half the distance between the top and bottom of the staff.

Specific Dates

Display the U.S. flag at half-staff on the following days each year:

- May 15: Peace Officers Memorial Day (see note 1 below).
- Last Monday in May: Memorial Day Observed (see note 2 below).
- December 7: National Pearl Harbor Remembrance Day.



Note 1: When May 15, which is the date for Peace Officers Memorial Day, falls on the third Saturday in May, which is the date for Armed Forces Day, display the U.S. flag in the full-staff position, *not* at half-staff.

Note 2: On the last Monday in May, when Memorial Day is observed, display the flag at half-staff from sunrise, or the hour at which you raise it, until noon, and then hoist it to the peak of the staff, until the time of closing or no later than sunset.

POW-MIA Flag

How to Display

In relation to the U.S. flag, display the POW-MIA flag (and any other flag) as follows:

- If displayed on the same flagstaff, place it below the U.S. flag.
- If displayed on a separate flagstaff, place it at the same level or lower. If displayed at the same level, place it on the U.S. flag's left.

When flying the U.S. flag at half-staff, fly the POW-MIA flag (and any other flags) at half-staff also.

Specific Dates

Display the POW-MIA flag on the following days each year:

- Armed Forces Day: Third Saturday in May.
- Memorial Day: Last Monday in May.
- Flag Day: June 14.
- Independence Day: July 4.
- National POW-MIA Recognition Day: Third Friday in September.
- Veterans Day: November 11.

If any of these days fall on a nonbusiness day, display the POW-MIA flag on the last business day before the designated day.

For more detailed information about flying the U.S. flag and the POW-MIA flag, see the following parts in the *Administrative Support Manual* (ASM):

- ASM 472, U.S. Flag Display.
- ASM 476, POW-MIA Flag Display.



USPS® Features Summer Harvest Forever® Stamps

On Sale Nationwide: July 11, 2015



Finance

Equipment Maintenance Allowance Schedule for Rural Routes

Rural Carriers

In accordance with the provisions of Article 9, Section 2.J.3 of Handbook EL-902, *Agreement between the United States Postal Service and the National Rural Letter Carriers' Association*, effective October 3, 2015 (pay period 22-15), the equipment maintenance allowance (EMA) will decrease to 68.5 cents per mile. The EMA is 68.5 cents per mile, or a minimum of \$27.40 per day, whichever is greater.

Auxiliary Rural Carriers, Rural Carrier Reliefs, Rural Carrier Associates, Rural Carrier Part-Time Flexibles, and Auxiliary Assistance

Employees providing auxiliary assistance or serving auxiliary routes under the provisions of Article 9, Section

2.J.5, receive an EMA of 68.5 cents per mile or \$7.45 per hour, whichever is greater. This EMA should not exceed the amount provided in the special equipment maintenance allowance for the route stops and miles.

EMA Rate Schedule

The EMA rate schedule on pages 44 and 45 supersedes all previously published EMA schedules for employees receiving EMA.

— *Collective Bargaining and Arbitration, Labor Relations, 10-1-15*

Human Resources

Notice to All Post Offices With Rural Delivery Service: Rural Carrier Guarantee Period

Postal Service™ managers must effectively manage rural carriers who work under the provisions of the Fair Labor Standards Act (FLSA) section 7(b)(2). Those carriers are paid overtime for all hours actually worked in excess of 2,080, up to 2,240, within the 52-consecutive-week guarantee period.

If a carrier works more than 2,240 hours within the guarantee period, the agreement under FLSA section 7(b)(2) is considered void, and the carrier must be compensated for all hours worked during the guarantee period in accordance with FLSA, section 7(a).

It is important that concerted effort is made to minimize the number of hours carriers work over 2,080 and strictly monitor these carriers to ensure that no carrier works in excess of 2,240 actual work hours.

This year's 2015–2016 guarantee period will begin on Saturday, October 17, 2015, and continue through Friday, October 14, 2016.

— *Rural Delivery, Rural Delivery Operations, 10-1-15*

Mailing and Shipping Services

Mail Alert

The mailings below will be deposited in the near future. Offices should process this mail according to applicable service standards with the in-home dates in mind. Mailers wishing to participate in these alerts, for mailings of 1 mil-

lion pieces or more, should contact Business Service Network Integration at 202-268-3258 at least 1 month preceding the requested delivery dates.

Requested Delivery Dates	Title of Mailing	Class and Type of Mail	Number of Pieces (Millions)	Distribution	Presort Level	Comments
10/13/15–10/16/15	Ginny's	Standard Catalog	1.0	National	3/5 Digit	Quad Graphics
10/14/15–10/17/15	Montgomery Ward	Standard Catalog	1.0	National	3/5 Digit	Quad Graphics
10/16/15–10/21/15	Enjoy Your Summer Savings Exclusive Online-Only Offers – Costco.com	Standard Letters	4.0	National	3/5 Digit	Segerdahl Graphics

— *Business Customer Support and Services, Consumer and Industry Affairs, 10-1-15*

EMA Rate Schedule (page 1 of 2)

MILES	STOPS =	*0260**0280**0300**0320**0340**0360**0380**0400**0420**0440**0460**0480**0500**0520**0540**0560**0580**0600**0620**	RURAL EQUIPMENT MAINTENANCE	R A T E S C H E D U L E	DATE 09-21-15
		BASED ON \$0.685 PER MILE	EFFECTIVE PP-YR 22-15		PAGE 1
8	27.40	27.40	27.40	27.40	27.40
9	27.40	27.40	27.40	27.40	27.40
10	27.40	27.40	27.40	27.40	27.40
11	27.40	27.40	27.40	27.40	27.40
12	27.40	27.40	27.40	27.40	27.40
13	27.40	27.40	27.40	27.40	27.40
14	27.40	27.40	27.40	27.40	27.40
15	27.40	27.40	27.40	27.40	27.40
16	27.40	27.40	27.40	27.40	27.40
17	27.40	27.40	27.40	27.40	27.40
18	27.40	27.40	27.40	27.40	27.40
19	27.40	27.40	27.40	27.40	27.40
20	27.40	27.40	27.40	27.40	27.40
21	27.40	27.40	27.40	27.40	27.40
22	27.40	27.40	27.40	27.40	27.40
23	27.40	27.40	27.40	27.40	27.40
24	27.40	27.40	27.40	27.40	27.40
25	27.40	27.40	27.40	27.40	27.40
26	27.40	27.40	27.40	27.40	27.40
27	27.40	27.40	27.40	27.40	27.40
28	27.40	27.40	27.40	27.40	27.40
29	27.40	27.40	27.40	27.40	27.40
30	27.40	27.40	27.40	27.40	27.40
31	27.40	27.40	27.40	27.40	27.40
32	27.40	27.40	27.40	27.40	27.40
33	27.40	27.40	27.40	27.40	27.40
34	27.40	27.40	27.40	27.40	27.40
35	27.40	27.40	27.40	27.40	27.40
36	27.40	27.40	27.40	27.40	27.40
37	27.40	27.40	27.40	27.40	27.40
38	27.40	27.40	27.40	27.40	27.40
39	27.40	27.40	27.40	27.40	27.40
40	27.40	27.40	27.40	27.40	27.40
41	27.40	27.40	27.40	27.40	27.40
42	27.40	27.40	27.40	27.40	27.40
43	27.40	27.40	27.40	27.40	27.40
44	27.40	27.40	27.40	27.40	27.40
45	27.40	27.40	27.40	27.40	27.40
46	27.40	27.40	27.40	27.40	27.40
47	27.40	27.40	27.40	27.40	27.40
48	27.40	27.40	27.40	27.40	27.40
49	27.40	27.40	27.40	27.40	27.40
50	27.40	27.40	27.40	27.40	27.40
51	27.40	27.40	27.40	27.40	27.40
52	27.40	27.40	27.40	27.40	27.40
53	27.40	27.40	27.40	27.40	27.40
54	27.40	27.40	27.40	27.40	27.40
55	27.40	27.40	27.40	27.40	27.40
56	27.40	27.40	27.40	27.40	27.40
57	27.40	27.40	27.40	27.40	27.40
58	27.40	27.40	27.40	27.40	27.40

EMA Rate Schedule (page 2 of 2)

USPS 26-9902
MINNEAPOLIS ISC
REPORT AAQ530PI

RURAL EQUIPMENT MAINTENANCE
BASED ON \$0.685 PER MILE

R A T E S C H E D U L E
EFFECTIVE PP-YR 22-15

DATE 09-21-15
PAGE 2

MILES STOPS = *0640**0660**0700**0720**0740**0760**0780**0800**0820**0840**0860**0880**0900**0920**0940**0960**0980**1000

8	28.90	29.00	29.10	29.20	29.30	29.40	29.50	29.60	29.70	29.80	29.90	30.00	30.10	30.20	30.30	30.40	30.50	30.60	30.70
9	29.10	29.20	29.30	29.40	29.50	29.60	29.70	29.80	29.90	30.00	30.10	30.20	30.30	30.40	30.50	30.60	30.70	30.80	30.90
10	29.20	29.30	29.40	29.50	29.60	29.70	29.80	29.90	30.00	30.10	30.20	30.30	30.40	30.50	30.60	30.70	30.80	30.90	31.00
11	29.30	29.40	29.50	29.60	29.70	29.80	29.90	30.00	30.10	30.20	30.30	30.40	30.50	30.60	30.70	30.80	30.90	31.00	31.10
12	29.40	29.50	29.60	29.70	29.80	29.90	30.00	30.10	30.20	30.30	30.40	30.50	30.60	30.70	30.80	30.90	31.00	31.10	31.20
13	29.50	29.60	29.70	29.80	29.90	30.00	30.10	30.20	30.30	30.40	30.50	30.60	30.70	30.80	30.90	31.00	31.10	31.20	31.30
14	29.60	29.70	29.80	29.90	30.00	30.10	30.20	30.30	30.40	30.50	30.60	30.70	30.80	30.90	31.00	31.10	31.20	31.30	31.40
15	29.70	29.80	29.90	30.00	30.10	30.20	30.30	30.40	30.50	30.60	30.70	30.80	30.90	31.00	31.10	31.20	31.30	31.40	31.50
16	29.80	29.90	30.00	30.10	30.20	30.30	30.40	30.50	30.60	30.70	30.80	30.90	31.00	31.10	31.20	31.30	31.40	31.50	31.60
17	29.90	30.00	30.10	30.20	30.30	30.40	30.50	30.60	30.70	30.80	30.90	31.00	31.10	31.20	31.30	31.40	31.50	31.60	31.70
18	30.00	30.10	30.20	30.30	30.40	30.50	30.60	30.70	30.80	30.90	31.00	31.10	31.20	31.30	31.40	31.50	31.60	31.70	31.80
19	30.10	30.20	30.30	30.40	30.50	30.60	30.70	30.80	30.90	31.00	31.10	31.20	31.30	31.40	31.50	31.60	31.70	31.80	31.90
20	30.20	30.30	30.40	30.50	30.60	30.70	30.80	30.90	31.00	31.10	31.20	31.30	31.40	31.50	31.60	31.70	31.80	31.90	32.00
21	30.30	30.40	30.50	30.60	30.70	30.80	30.90	31.00	31.10	31.20	31.30	31.40	31.50	31.60	31.70	31.80	31.90	32.00	32.10
22	30.40	30.50	30.60	30.70	30.80	30.90	31.00	31.10	31.20	31.30	31.40	31.50	31.60	31.70	31.80	31.90	32.00	32.10	32.20
23	30.50	30.60	30.70	30.80	30.90	31.00	31.10	31.20	31.30	31.40	31.50	31.60	31.70	31.80	31.90	32.00	32.10	32.20	32.30
24	30.60	30.70	30.80	30.90	31.00	31.10	31.20	31.30	31.40	31.50	31.60	31.70	31.80	31.90	32.00	32.10	32.20	32.30	32.40
25	30.70	30.80	30.90	31.00	31.10	31.20	31.30	31.40	31.50	31.60	31.70	31.80	31.90	32.00	32.10	32.20	32.30	32.40	32.50
26	30.80	30.90	31.00	31.10	31.20	31.30	31.40	31.50	31.60	31.70	31.80	31.90	32.00	32.10	32.20	32.30	32.40	32.50	32.60
27	30.90	31.00	31.10	31.20	31.30	31.40	31.50	31.60	31.70	31.80	31.90	32.00	32.10	32.20	32.30	32.40	32.50	32.60	32.70
28	31.00	31.10	31.20	31.30	31.40	31.50	31.60	31.70	31.80	31.90	32.00	32.10	32.20	32.30	32.40	32.50	32.60	32.70	32.80
29	31.10	31.20	31.30	31.40	31.50	31.60	31.70	31.80	31.90	32.00	32.10	32.20	32.30	32.40	32.50	32.60	32.70	32.80	32.90
30	31.20	31.30	31.40	31.50	31.60	31.70	31.80	31.90	32.00	32.10	32.20	32.30	32.40	32.50	32.60	32.70	32.80	32.90	33.00
31	31.30	31.40	31.50	31.60	31.70	31.80	31.90	32.00	32.10	32.20	32.30	32.40	32.50	32.60	32.70	32.80	32.90	33.00	33.10
32	31.40	31.50	31.60	31.70	31.80	31.90	32.00	32.10	32.20	32.30	32.40	32.50	32.60	32.70	32.80	32.90	33.00	33.10	33.20
33	31.50	31.60	31.70	31.80	31.90	32.00	32.10	32.20	32.30	32.40	32.50	32.60	32.70	32.80	32.90	33.00	33.10	33.20	33.30
34	31.60	31.70	31.80	31.90	32.00	32.10	32.20	32.30	32.40	32.50	32.60	32.70	32.80	32.90	33.00	33.10	33.20	33.30	33.40
35	31.70	31.80	31.90	32.00	32.10	32.20	32.30	32.40	32.50	32.60	32.70	32.80	32.90	33.00	33.10	33.20	33.30	33.40	33.50
36	31.80	31.90	32.00	32.10	32.20	32.30	32.40	32.50	32.60	32.70	32.80	32.90	33.00	33.10	33.20	33.30	33.40	33.50	33.60
37	31.90	32.00	32.10	32.20	32.30	32.40	32.50	32.60	32.70	32.80	32.90	33.00	33.10	33.20	33.30	33.40	33.50	33.60	33.70
38	32.00	32.10	32.20	32.30	32.40	32.50	32.60	32.70	32.80	32.90	33.00	33.10	33.20	33.30	33.40	33.50	33.60	33.70	33.80
39	32.10	32.20	32.30	32.40	32.50	32.60	32.70	32.80	32.90	33.00	33.10	33.20	33.30	33.40	33.50	33.60	33.70	33.80	33.90
40	32.20	32.30	32.40	32.50	32.60	32.70	32.80	32.90	33.00	33.10	33.20	33.30	33.40	33.50	33.60	33.70	33.80	33.90	34.00
41	32.30	32.40	32.50	32.60	32.70	32.80	32.90	33.00	33.10	33.20	33.30	33.40	33.50	33.60	33.70	33.80	33.90	34.00	34.10
42	32.40	32.50	32.60	32.70	32.80	32.90	33.00	33.10	33.20	33.30	33.40	33.50	33.60	33.70	33.80	33.90	34.00	34.10	34.20
43	32.50	32.60	32.70	32.80	32.90	33.00	33.10	33.20	33.30	33.40	33.50	33.60	33.70	33.80	33.90	34.00	34.10	34.20	34.30

Stamp Services

Correction: Paul Newman Stamp

In the article “Stamp Announcement 15-36: Paul Newman Stamp,” in *Postal Bulletin 22422* (8-20-15, pages 52–53), the technical details incorrectly list the colors as Cyan, Magenta, Yellow, Black, and Cool Gray 8. The size provided for the press sheets (11.04 x 5.88 in./280.42 x 149.35) is also incorrect.

The corrected information is given in bold:

Colors:	Cyan, Magenta, Yellow, Black
Press Sheets Size (w x h):	11.84 x 24.00 in./ 300.74 x 609.60 mm

— Stamp Services,
Marketing and Sales, 10-1-15

Pictorial Postmarks Announcement

As a community service, the Postal Service™ offers pictorial postmarks to commemorate local events celebrated in communities throughout the nation. A list of events for which pictorial postmarks are authorized appears below. The sponsor of the pictorial postmark appears in italics under the date. Also provided are illustrations of these postmarks.

People attending these local events may obtain the postmark in person at the temporary Post Office™ station established there. Those who cannot attend the event but who wish to obtain the postmark may submit a mail order request. Pictorial postmarks are available only for the dates indicated, and *requests must be postmarked no later than 30 days following the requested pictorial postmark date.*

All requests must include a stamped envelope or postcard bearing at least the minimum First-Class Mail® postage. Items submitted for postmark may not include

postage issued after the date of the requested postmark. Such items will be returned unserved.

Customers wishing to obtain a postmark should affix stamps to any envelope or postcard of their choice, address the envelope or postcard to themselves or others, insert a card of postcard thickness in envelopes for sturdiness, and tuck in the flap. Place the envelope or postcard in a larger envelope and address it to: Pictorial Postmarks, followed by the Name of the Station, Address, City, State, ZIP+4® Code, as listed below.

Customers can also send stamped envelopes and postcards without addresses for postmark, as long as they supply a larger envelope with adequate postage and their return address. After applying the pictorial postmark, the Postal Service returns the items (with or without addresses) under addressed protective cover.

The following pictorial postmark has been extended for 90 days:



June 20–December 31, 2015

United States Postal Service
Yosemite, CA Station
Postmaster — Yosemite National Park
9017 Village Drive
Yosemite, CA 95389-9998

The following pictorial postmarks have been extended for 30 days:



September 8, 2015

United States Postal Service
Saint Augustine, FL Station
Postmaster
99 King Street
Saint Augustine, FL 32084-9998

The Rock N Roll Hwy
Station
September 18, 2015
Walnut Ridge AR 72476



September 18–19, 2015

Beatles at the Ridge Music Festival
The Rock N Roll Highway Station
Postmaster
210 Southwest 3rd Street
Walnut Ridge, AR 72476-9998



September 19, 2015

Dundee Woman's Club
Centennial Celebration Station
Postmaster/Philatelic Services
279 Southwest 5th Street
Dundee, OR 97115-9998



September 23–25, 2015

Mount Airy Chamber of Commerce
Mayberry Days Station
Postmaster
111 South Main Street
Mount Airy, NC 27030-9998



ON OCTOBER 1, 1890 PRESIDENT BENJAMIN HARRISON SIGNS INTO LAW ESTABLISHING YOSEMITE AS A NATIONAL PARK. STA.

OCTOBER 1, 2015
YOSEMITE, CA 95389
STATION

October 1, 2015

United States Postal Service
Yosemite, CA Station 125th Anniversary
Postmaster — Yosemite National Park
9017 Village Drive
Yosemite, CA 95389-9998

October 2–4, 2015

Indypex
Indiana 19th — Iron Brigade
Indypex Station
Postmaster
125 West South Street,
Room 307
Indianapolis, IN 46206-9998



October 2, 2015
United States Postal Service
Tucson, AZ Station
Postmaster
920 North First Avenue
Tucson, AZ 85719-4818



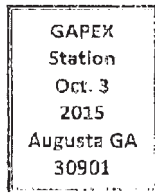
October 2–4, 2015

Federated Philatelic Clubs of Southern California
Sescal 'Ram' Station
Postmaster
7001 South Central
Avenue, #307
Los Angeles, CA
90052-9998



October 2–3, 2015
United States Postal Service
Kentucky Apple Festival of Johnson County Station
Postmaster
100 Federal Drive
Paintsville, KY 41240-9998





October 3, 2015
The Greater Augusta Stamp Club
 GAPEX Station
 Postmaster
 1434 Stovall Street
 Augusta, GA 30904-9998



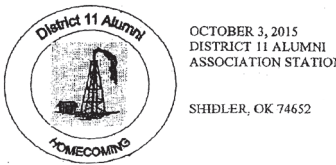
October 9, 2015
United States Postal Service
 World Post Day Station
 Retail Specialist
 1001 California Avenue,
 Room 2036
 Pittsburgh, PA 15290-9681



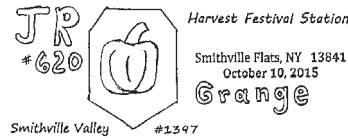
October 3, 2015
Oklahoma Czechs, Inc.
 Czech Station
 Postmaster
 900 Garth Brooks Boulevard
 Yukon, OK 73099-9998



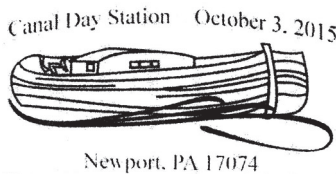
October 10, 2015
Damariscotta Pumpkinfest and Regatta
 Pumpkinfest Station
 Postmaster
 173 Main Street
 Damariscotta, ME
 04543-9998



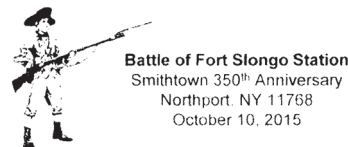
October 3, 2015
United States Postal Service
 District 11 Alumni
 Association Station
 Postmaster
 PO Box 9998
 Shidler, OK 74652-9998



October 10, 2015
Smithville Valley Grange #1397 and JR Grange #620
 Harvest Festival Station
 Postmaster
 5299 State Highway 41
 Smithville Flats, NY
 13841-9998



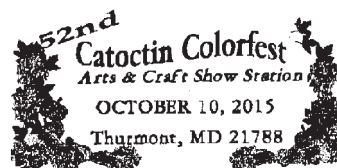
October 3, 2015
Newport Revitalization and Preservation Society, Inc.
 Canal Day Station
 Postmaster
 226 Walnut Street
 Newport, PA 17074-9998



October 10, 2015
United States Postal Service
 Battle of Fort Slongo Station
 Postmaster
 PO Box 9998
 Northport, NY 11768-9998



October 3, 2015
New Birth of Freedom Council
 Deadwood Station
 Postmaster
 307 Hellam Street
 Wrightsville, PA 17368-9998



October 10-11, 2015
Catoctin Colorfest
 52nd Catoctin Colorfest
 Arts and Craft Show
 Station
 Postmaster
 110 Water Street
 Thurmont, MD 21788-9998

— Stamp Services,
 Marketing and Sales, 10-1-15

How to Order the First-Day-of-Issue Digital Color or Traditional Postmarks

Customers have 60 days to obtain the first-day-of-issue postmarks by mail. They may purchase new stamps at their local Post Office™, by telephone at 800-STAMP-24, or at The Postal Store® website at www.usps.com/shop.

Traditional Postmarks

Customers should affix the stamps to envelopes of their choice, address them to themselves or others, or provide a self-addressed return envelope with sufficient postage large enough to accommodate the canceled item. Mail the request to the corresponding city of issuance. There is no charge for the first 50 postmarks. There is a 5-cent charge for each additional postmark over 50. Customers should submit a check, money order, or credit card for payment. After applying the first-day-of-issue postmark, the Postal Service™ will return the envelopes to the customer by U.S. Mail.

All postmark requests should go to the first-day-of-issue city. The first-day-of-issue city Post Office will then forward in bulk all postmark requests to Cancellation Services, Stamp Fulfillment Services, PO Box 449992, Kansas City, MO 64144-9992 by respective Post Offices.

Digital Color Postmarks

Only select stamp issues offer a digital color postmark. Customers may submit #6 or #10 envelopes constructed of paper rated as “laser safe.” The Postal Service recommends envelopes of 80-pound Accent Opaque, acid-free, 9/16" side seams with no glue on the flap. The maximum

size of all digital color postmarks is 2" high x 4" long. Allow sufficient space on the envelope to accommodate the postmark. Do not use self-adhesive labels for addresses on the envelope. Two test envelopes must be included. There is a minimum of 10 envelopes at 50 cents per postmark required at the time of servicing. Customers should submit a check, money order, or credit card for payment.

The Postal Service reserves the right to not accept hand-painted and other cachet envelopes that are not compatible with our digital color postmark equipment. The Postal Service also reserves the right to substitute traditional black rubber postmarks if use of nonspecified envelopes results in poor image quality or damage to equipment.

Customers should affix the stamps to the envelopes and address them to themselves or others for return through the mail. Or, they may include an additional self-addressed return envelope, large enough to accommodate their canceled items, with sufficient postage affixed for return of their postmarked items. Mail the request for a first-day-of-issue digital color postmark to the corresponding city of issuance. Post Offices will then forward all customer requests for digital color postmarks to Cancellation Services, Stamp Fulfillment Services, PO Box 449992, Kansas City, MO 64144-9992.

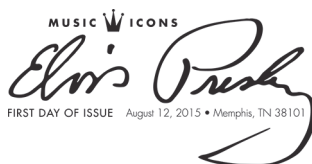
After applying the first-day-of-issue postmark, the Postal Service will return the envelopes to the customer by U.S. Mail.



United States Coast Guard Stamp
Special Events
PO Box 92282
Washington, DC 20090-2282

October 3, 2015

Digital Color Pictorial



Elvis Presley Stamp
Postmaster
555 South 3rd Street, Rm 7306
Memphis, TN 38101-9998

October 11, 2015

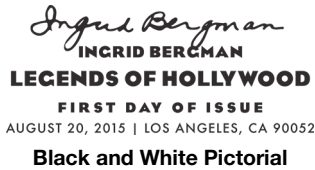
Black and White Pictorial



Elvis Presley Stamp
Postmaster
555 South 3rd Street, Rm 7306
Memphis, TN 38101-9998

October 11, 2015

Digital Color Pictorial



Ingrid Bergman Stamp
 Manager, Retail
 U.S. Postal Service, Los Angeles District October 19, 2015
 7001 South Central Avenue
 Los Angeles, CA 90052-9614

Black and White Pictorial



Ingrid Bergman Stamp
 Manager, Retail
 U.S. Postal Service, Los Angeles District October 19, 2015
 7001 South Central Avenue
 Los Angeles, CA 90052-9614

Digital Color Pictorial



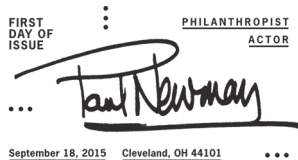
World Stamp Show Stamps
 Manager
 PO Box 999818 October 19, 2015
 Grand Rapids, MI 49599-9818

Black and White Pictorial



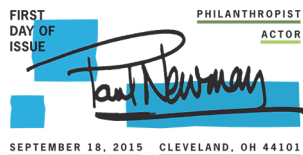
World Stamp Show Stamps
 Manager
 PO Box 999818 October 19, 2015
 Grand Rapids, MI 49599-9818

Digital Color Pictorial



Paul Newman Stamp
 Customer Relations Coordinator
 Cleveland Post Office November 17, 2015
 2200 Orange Avenue, Room 234
 Cleveland, OH 44101-9998

Black and White Pictorial



Paul Newman Stamp
 Customer Relations Coordinator
 Cleveland Post Office November 17, 2015
 2200 Orange Avenue, Room 234
 Cleveland, OH 44101-9998

Digital Color Pictorial



A Charlie Brown Christmas Stamps
 Special Events
 PO Box 7838 November 30, 2015
 San Francisco, CA 94120-7838

Black and White Pictorial



A Charlie Brown Christmas Stamps
 Special Events
 PO Box 7838 November 30, 2015
 San Francisco, CA 94120-7838

Digital Color Pictorial



Geometric Snowflakes Stamps
Special Events Coordinator
380 West 33rd Street
New York, NY 10199-9998

December 22, 2015

— Stamp Services, Marketing and Sales, 10-1-15

Supply Management

Excess Casing Equipment Redistribution

Redistribution of excess serviceable casing equipment is an environmentally advantageous and sound business practice that provides an equipment source for meeting operational needs.

Any excess serviceable casing equipment should be placed in the Excess Items Catalog (EIC) in eBuy2 for redistribution. EIC is a one-stop shop for posting and obtaining excess equipment and supplies at no additional cost to the Postal Service™. Using the EIC is a green choice as it promotes sustainability through redistribution, recycling, and disposal, which saves the Postal Service money.

All serviceable excess or surplus casing equipment resulting from changing requirements or optimization can be placed in eBuy2/EIC. Any casing equipment that cannot be redistributed through eBuy2/EIC is disposed of pursu-

ant to Handbook AS-701, *Asset Management*, Chapter 6-4, Recycling and Disposal, which may be accessed at <http://blue.usps.gov/cpim/ftp/hand/as701.pdf>.

This is an investment recovery opportunity which saves money and generates revenue for the Postal Service. For more EIC information, view the brief training video at http://blue.usps.gov/purchase/vid/EIC_Submit_New.wmv or contact the Asset Accountability Service Center (AASC) in your area at http://blue.usps.gov/purchase/assetmgt/am_aasc_home.htm for assistance.

— Asset Accountability,
Supply Management, 10-1-15

475 L'ENFANT PLAZA SW
WASHINGTON DC 20260-5540

First-Class Mail
Postage & Fees Paid
USPS
Permit No. G-10

USPS® Presents
*Ingrid
Bergman*

Forever®
Stamp
for
*Legends
of
Hollywood
Series*



Ingrid Bergman™ is a trademark of the family of Ingrid Bergman, licensed by CMG Brands, LLC.

On Sale Nationwide: August 20, 2015.