

postal|bulletin

PUBLISHED SINCE MARCH 4, 1880

National Stamp Collecting Month

Introducing the

BATMAN* STAMPS

See page 3

*TM & © DC Comics



Contents

COVER STORY

October is National Stamp Collecting Month: Holy Philately! It's Batman!	3
---	---

POLICIES, PROCEDURES, AND FORMS UPDATES

Manuals

DMM Revision: Domestic Mail Manual Streamlining	4
---	---

Publications

Publication 75, Mover's Guide, News	4
Publication 223 Revision: Directives and Forms Update	5
Publication 431 Revision: Changes to Post Office Box Service and Caller Service Fee Groups	7

Notice

Notice 123, Price List: Correction	7
--	---

ORGANIZATION INFORMATION

Finance

Equipment Maintenance Allowance Schedule for Rural Routes	8
--	---

Human Resources

Notice to All Post Offices with Rural Delivery Service: Rural Carrier Guarantee Period	8
---	---

Information Security

CISO — Why Information Security is Essential to the Postal Service	8
---	---

Mailing and Shipping Services

Mail Alert	11
------------------	----

Retail

Stamps by Mail – Brochure Ordering Information	11
--	----

Stamp Services

Stamp Announcement 14-44: Holiday Stamped Envelopes	12
Stamp Announcement 14-45: Purple Heart Medal Stamp	14
Stamp Announcement 14-46: Batman Stamps	40

2014 Stamps and Postal Stationery	42
Pictorial Postmarks Announcement	44
How to Order the First-Day-of-Issue Digital Color or Traditional Postmarks	48

Supply Management

eBuy2 Yearly Purchases of 5-Gallon Bottled Drinking Water Services from Nestle and DS Waters for Fiscal Year 2015	51
---	----

PULL-OUT INFORMATION

Fraud

Invalid USPS Corporate Account Numbers	15
Missing, Lost, or Stolen U.S. Money Order Forms	17
Missing, Lost, or Stolen Canadian Money Order Forms	23
Verifying U.S. Postal Service Money Orders	26
Counterfeit Canadian Money Order Forms	26
Toll-Free Number Available to Verify Canadian Money Orders	26

Other Information

Overseas Military/Diplomatic Mail	28
Missing Children Posters	33

Postal Bulletin Index

Semi-Annual Index	PB 22394 (7-24-14)
-------------------------	--------------------

USPS National Emergency Hotline
Is your facility operating? Call 888-363-7462

Power of the Letter®

Delivered by the United States Postal Service®

Cover Story

October is National Stamp Collecting Month: Holy Philately! It's Batman!

National Stamp Collecting month began as a joint venture of the Council of Philatelic Organizations and the United States Postal Service® back in 1981. Then-Postmaster General William F. Bolger published a statement in the *Postal Bulletin* proclaiming stamp collecting as “the world’s most popular hobby,” and urged “employees and customers alike to discover the joy of stamp collecting — the hobby of a lifetime.” Since then, the Postal Service™ has continued to promote October as National Stamp Collecting Month.

Just in time to add some extra excitement to this year’s National Stamp Collecting Month, the Postal Service will issue the *Batman Forever*® stamps on October 9, 2014 (see page 40 for stamp announcement). Since his debut in 1939, Batman has protected Gotham City from the forces of evil and has become one of the most iconic super heroes in history. Showcasing eight unique designs in a pane of 20 stamps, this new issuance celebrates the 75th anniversary of Batman and chronicles the evolution of the character, from his origins to present day. Four versions of the popular super hero are depicted on the sheet from four eras of comic book history. In addition, there are four incarnations of the Bat-Signal.

The first row of stamps features Batman with his fists clenched. This muscular, determined Caped Crusader has spent the Modern Age of Comics defending Gotham City from its most notorious villains. The second row of stamps displays Batman dramatically staring up at the Bat-Signal. By the Bronze Age of Comics, artists had encased the

hero’s spare black bat logo with a yellow oval. The insignia became the crime fighter’s trademark. The third row of stamps shows Batman swooping into the frame with his cape flying behind him. The image from the Silver Age of Comics accentuates the hero’s signature glowing white eyes and utility belt. The bottom row of stamps highlights Batman as first envisioned by creator Bob Kane during the Golden Age of Comics. The hero’s hooded mask, elongated ears, black cape, and gray suit formed his iconic visual identity.

A column on the left side of the pane includes four different circular stamps. Each is affixed with a different Bat-Signal — beginning at the top with a Modern Age version and ending at the bottom with a Golden Age depiction — the spotlight Gotham Police Commissioner James Gordon sent into the night sky to alert Batman. The background illustration features a silhouette of Batman standing on a bridge with the skyline of Gotham looming above him. Art director Greg Breeding designed the stamp pane. *The Batman Forever* stamps can be purchased at select Post Office™ locations and ordered via <http://www.usps.com/stamps>, 800-STAMP-24, and <http://www.eBay.com/stamps>. Forever stamps are always equal in value to the current First-Class Mail® one-ounce price.

— Stamp Services,
Marketing and Sales, 10-2-14.

Policies, Procedures, and Forms Updates

Manuals

DMM Revision: Domestic Mail Manual Streamlining

Effective October 6, 2014, the Postal Service™ will revise *Mailing Standards of the United States Postal Service*, Domestic Mail Manual (DMM®) sections 604 and 608, as we continue our initiative to reduce the size of the DMM without changes to standards to make it quicker, easier, and more convenient.

Section 604, Postage Payment Methods, will be renamed Postage Payment Methods and Refunds. Section 604.1.0 will be revised to remove the table of postage stamp denominations which will then be placed in Notice 123. Section 604.5.0, Permit Imprint (Indicia), and Exhibit 604.5.3.11, Indicia Formats for Official Mail and Other Classes, will be revised for clarity. Sections 705.20.0, Post-

age Due Weight Averaging Program, and 705.24.0, Scan Based Payment, will be relocated to section 604 as sections 604.11.0 and 604.12.0, respectively.

Section 608, Postal Information and Resources, will be revised. Specifically, section 705.25.0, Alaska Bypass Service, will be relocated under section 608.2.0, Domestic Mail, as sub-section 608.2.6.

Additionally, Quick Service Guide (QSG) 604d has been updated with new DMM information.

— *Product Classification,
Pricing, 10-2-14*

Publications

Publication 75, Mover's Guide, News

As of October 1, 2014, recycle any old copies of Publication 75, *Mover's Guide*. All Post Offices™ should have received the new October–December 2014 issue of Publication 75 by September 30, 2014. Similar to last quarter's shipment, the total quantity of *Mover's Guide* copies sent to your facility may have been reduced. In an effort to reduce waste and account for more customers submitting change-of-address orders online, fewer *Mover's Guide* copies are needed. There are several things you can do to conserve as well:

- Make sure customers are aware that <http://usps.com> is the most convenient, safe, and secure way for customers to submit a change-of-address order.
- Encourage carriers to take ICOA message cards on their routes instead of *Mover's Guide* copies.
- Give *Mover's Guide* copies out to *moving* customers only.

Important Reminders

- Copies of *Mover's Guide* must be kept behind the counter *ONLY*, not in inner or outer lobbies or on clerk counters.
- Customers unwilling or unable to submit their change of address at <http://www.usps.com> should be given a complete, unopened copy of *Mover's Guide*.
- Provide no more than three copies of *Mover's Guide* to each customer.
- *Mover's Guide* is printed and distributed four times a year.

Shipment Information and Inventory Management

Offices will continue to receive copies of *Mover's Guide* in one or two shipments. The first shipments should have arrived by the end of September. The second shipments will arrive 3 to 5 weeks later.

- Boxes with PINK stickers are the first shipment for this print run.
- Boxes with YELLOW stickers are the second and final shipment for this print run.

To track your office's shipment information, go to http://blue.usps.gov/purchase/operations/ops_downloads.htm and click *Mover's Guide* (Pub 75) Distribution for October–December 2014. Use the *Ctrl + F* Function, while the "Fedstrip" Column is highlighted, to search for your office. To request a shipment quantity change, call Imagitas at 800-816-6837.

ICOA Message Card Information

If your Post Office has an ICOA message card display, replenishment cards and updated banners will be mailed with your *Mover's Guide* shipments. **DO NOT THROW AWAY THE DISPLAY OR ICOA MESSAGE CARDS. THEY DO NOT EXPIRE.** The display is **REQUIRED** to be in the lobby and it must have the ICOA message cards in it at all times.

If any Post Office runs out of ICOA Message cards between shipments, use the website at <http://imagitas.com/postal-order-form.html> or call 800-816-6837 for replenishment.

— *Address Management,
Product Information, 10-2-14*

Publication 223 Revision: Directives and Forms Update

Effective October 2, 2014, Publication 223, *Directives and Forms Catalog*, is revised to include current information for the items noted in this article. See Publication 223 for complete information.

Information on how to order directives and forms is available in Chapter 1 of Publication 223.

Publication 223 is available on the Internet at <http://about.usps.com/publications/pub223.pdf>.

New

- MI AS-270-2014-5, *Postal Service Headquarters Access Control System*.
- MI AS-800-2014-4, *Cloud Computing Policy*.
- MI EL-384-2014-1, *Corporate Succession Planning*.
- MI EL-650-2014-2, *Representation of Postal Service Employees in Administrative Proceedings*.
- MI FM-640-2014-3, *Verifying Payment Card Industry Compliance for Service Provider Engagement*.
- MI FM-640-2014-4, *Government-Issued, Individually Billed Travel Charge Cards*.
- MOP FI-06-06-2014, *Policy Memo — Statistical Programs Letter #8, Fiscal Year (FY) 2014; CCCS, ODIS-RPW, IOCS, SIRVO-IODIS*.
- MOP FI-07-14-2014, *Policy Memo — Statistical Programs Letter #9, Fiscal Year (FY) 2014; ODIS-RPW*.
- MOP HR-06-10-2014, *Postal Service Policy on Workplace Harassment*.
- POS 505, *USPS Package Returns Comparison*.
- PS 4601, *Pre-Employment Statement for Commercial Drivers*.
- PS 4602, *Release of Information Form: 49 CFR Part 40 Drug and Alcohol Testing*.

Revised

- HBK AS-805-C, *Information Security for General Users*.
- HBK EL-312, *Employment and Placement*.
- HBK EL-801, *Supervisor's Safety Handbook*.
- MAN ASM, *Administrative Support Manual*.
- MAN DMM, *Mailing Standards of the United States Postal Service, Domestic Mail Manual*.
- MAN IMM, *Mailing Standards of the United States Postal Service, International Mail Manual*.
- MAN POM, *Postal Operations Manual*.
- MAN SPP, *Postal Service Supplying Principles and Practices*.
- NOT 128, *The Safety of the Mail Is Everyone's Responsibility*.

- NOT 129, *Don't Be the Victim of a Reshipping Scam!*
- POS 204, *OIG Fraud Awareness*.
- POS 336, *School Is Back in Session, Drive Defensively*.
- PUB 52, *Hazardous, Restricted, and Perishable Mail*.
- PUB 223, *Directives and Forms Catalog*.
- PS 8-A, *Request for a New Field Finance Number*.
- PS 17-G, *Federal Agency Stamp Requisition*.
- PS 991, *Application for Promotion or Assignment*.
- PS 1412, *Daily Financial Report*.
- PS 1512, *Notification of Investigation (card)*.
- PS 1723, *Assignment Order*.
- PS 1767, *Report of Hazard, Unsafe Condition, or Practice*.
- PS 2856, *Damage Report of Insured Article and Contents*.
- PS 3294, *Cash and Stamp Stock Count and Summary*.
- PS 3533, *Application for Refund of Fees, Products, and Withdrawal of Customer Accounts*.
- PS 3541-1, *Postage Statement — Periodicals — One Issue or One Edition*.
- PS 3541-3, *Postage Statement — Periodicals — One Issue or One Edition — Outside County*.
- PS 3541-5, *Postage Statement — Periodicals — One Issue or One Edition — Outside County*.
- PS 3541-7, *Postage Statement — Periodicals — One Issue or One Edition — Outside County*.
- PS 3600-FCM1, *Postage Statement — First-Class Mail and First-Class Package Service*.
- PS 3600-FCM3, *Postage Statement — First-Class Mail and First-Class Package Service — Nonautomation Prices*.
- PS 3600-FCM5, *Postage Statement — First-Class Mail and First-Class Package Service — Roundtrip DVD, CD, or Other Disc Mail*.
- PS 3600-PM1, *Postage Statement — Priority Mail — Permit Imprint*.
- PS 3600-PM3, *Postage Statement — Priority Mail — Permit Imprint — Com. Base/Com. Plus — Regional Rate Box*.
- PS 3600-PM5, *Postage Statement — Priority Mail — Permit Imprint — Negotiated Service Agreement (NSA)*.
- PS 3600-PM7, *Postage Statement — Priority Mail — Permit Imprint — Negotiated Service Agreement (NSA)*.

- PS 3600-PM9, *Postage Statement — Priority Mail — Open and Distribute — Negotiated Service Agreement (NSA)*.
- PS 3600-PM11, *Postage Statement — Priority Mail — Open and Distribute — Commercial Plus*.
- PS 3602-EZ, *Postage Statement — Standard Mail — Easy Nonautomation Letters or Flats*.
- PS 3602-N1, *Postage Statement — Nonprofit Standard Mail*.
- PS 3602-N3, *Postage Statement — Nonprofit Standard Mail — Nonautomation Letters*.
- PS 3602-N5, *Postage Statement — Nonprofit Standard Mail — Career Route Letters*.
- PS 3602-N7, *Postage Statement — Nonprofit Standard Mail — Automation Flats*.
- PS 3602-N9, *Postage Statement — Nonprofit Standard Mail — Carrier Route Flats*.
- PS 3602-N11, *Postage Statement — Nonprofit Standard Mail — Carrier Route Flats*.
- PS 3602-N13, *Postage Statement — Nonprofit Standard Mail — Marketing Parcels*.
- PS 3602-N15, *Postage Statement — Nonprofit Standard Mail — Extra Services and Fees*.
- PS 3602-NZ, *Postage Statement — Nonprofit Standard Mail — Easy Nonautomation Letters or Flats*.
- PS 3602-R1, *Postage Statement — Standard Mail*.
- PS 3602-R3, *Postage Statement — Standard Mail — Nonautomation Letters*.
- PS 3602-R5, *Postage Statement — Standard Mail — Carrier Route Letters*.
- PS 3602-R7, *Postage Statement — Standard Mail — Automation Flats*.
- PS 3602-R9, *Postage Statement — Standard Mail — Carrier Route Flats*.
- PS 3602-R11, *Postage Statement — Standard Mail — Carrier Route Flats*.
- PS 3602-R13, *Postage Statement — Standard Mail — Marketing Parcels*.
- PS 3605-R1, *Postage Statement — Package Services (Pages 1 & 2)*.
- PS 3605-R3, *Postage Statement — Package Services (Pages 3 & 4)*.
- PS 3605-R5, *Postage Statement — Package Services (Pages 5 & 6)*.
- PS 3605-R7, *Postage Statement — Package Services (Pages 7 & 8)*.
- PS 3605-R9, *Postage Statement — Package Services (Page 9 & Instruction)*.
- PS 3587, *Every Door Direct Mail (EDDM) Retail*.
- PS 3800, *Certified Mail Receipt: Domestic Mail Only*.
- PS 4000-B, *Employee Observation*.
- PS 4600, *Driver Notification and Certificate of Compliance*.
- PS 5659, *Daily Passport Application (DS-11) Transmittal*.
- PS 5957, *Requirement-by-Applciant Matrix*.
- PS 6815, *Air Transportation Certification*.
- PS 8047, *Critical Event/Individual Status Report*.
- PS 8125, *Plant-Verified Drop Shipment (PVDS) Verification and Clearance*.
- PS 8125-C, *Plant-Verified Drop Shipment (PVDS) Consolidated Verification and Clearance*.
- PS 8214, *Certificate of Safety and Health Records Transfer*.
- PS 8231, *Vendor Payment 1099 Reporting Form*.
- PS 8676-APP, *Approved Shipper Rights and Permissions Application*.

Obsolete

PSIN	Ed. Date	Title	Replaced By
MI AS-270-2013-3	1/13	<i>Postal Service Headquarters Access Control System</i>	MI AS-270-2014-5
MI EL-384-2013-2	1/13	<i>Corporate Succession Planning</i>	MI EL-384-2014-1
MI FM-640-2014-2	7/14	<i>Government-Issued, Individually Billed Travel Charge Cards</i>	MI FM-640-2014-4
MOP DD-12-22-2010b	12/10	<i>Postal Service Policy on Workplace Harassment</i>	MOP HR-06-10-2014
MOP HR-10-05-1998	10/98	<i>Interim Guidance on Compliance</i>	MAN ELM, Chapter 8
MOP HR-07-14-1999	7/99	<i>The Safety Toolkit</i>	MAN ELM, Chapter 8
MOP HR-02-25-2000	2/00	<i>Contractor Safety and Health Issues Interim Guidance</i>	HBK EL-800
PUB 188	11/95	<i>Child Safety Letter</i>	N/A
PUB 188-SP	3/94	<i>Child Safety Letter (Spanish)</i>	N/A
PUB 569	8/11	<i>Global Express Guaranteed Service</i>	N/A
PS 1760	1/84	<i>Safety & Health Change Request</i>	N/A

Publication 431 Revision: Changes to Post Office Box Service and Caller Service Fee Groups

Effective October 2, 2014, Publication 431, *Post Office Box Service and Caller Service Fee Groups*, is revised to include the following changes.

Publication 431, *Post Office Box Service and Caller Service Fee Groups*

* * * * *

[Add the following entries:]

ZIP Code	Fee Group
33660	4

* * * * *

[Revise the following entries:]

ZIP Code	Fee Group
33661	4
33662	4
33663	4
44416	6
50545	7
52581	7

The online version of Publication 431 is dated July 2013. Publication 431 is currently available on the Postal Service™ PolicyNet website (<http://blue.usps.gov/cpim>):

- Go to <http://blue.usps.gov>.
- Under “Essential Links” in the left-hand column, click *PolicyNet*.
- Click *PUBs*.

Offices with WebBATS Manager/Supervisor access can view current Publication 431 information by going to the WebBATS Edit Facility Information page, as follows:

1. Go to the WebBATS main menu, and select Utility> Facility>Edit Facility option.
2. View the Fee Group field on the Edit Facility Information page.

— Retail Operations,
Retail and Customer Service Operations, 10-2-14

Notice

Notice 123, Price List: Correction

Product Classification identified a typographical error and two missing prices in the September 7, 2014, Notice 123, *Price List*, Front Cover. The price for a First-Class Mail® 1 oz Large Envelope (flat) was identified as \$0.96 and the prices for the EDDM-Retail and Semipostal Stamps were removed. The typographical error was corrected to reflect the accurate price of \$0.98 and the prices for the EDDM-Retail and Semipostal Stamps were put back in.

The corrections on the front cover were made in the September 7, 2014 (updated 9-12-14) online version of Notice 123, *Price List*, in the September 7, 2014 online version of the *Mailing Standards of the United States Postal Service, Domestic Mail Manual (DMM®)*, and in the hard-copy version of the Notice 123, *Price List*.

— Product Classification,
Pricing, 10-2-14

Organization Information

Finance

Equipment Maintenance Allowance Schedule for Rural Routes

Rural Carriers

In accordance with the provisions of Article 9, Section 2.J.3 of the Rural Carrier National Agreement, effective October 4, 2014 (pay period 22-14), the equipment maintenance allowance (EMA) will decrease from 75.0 cents per mile to 73.5 cents per mile. The EMA is 73.5 cents per mile, or a minimum of \$29.40 per day, whichever is greater.

Auxiliary Rural Carriers, Rural Carrier Reliefs, Rural Carrier Associates, Rural Carrier Part-Time Flexibles, and Auxiliary Assistance

Employees providing auxiliary assistance or serving auxiliary routes under the provisions of Article 9, Section

2.J.5, receive an EMA of 73.5 cents per mile or \$7.95 per hour, whichever is greater. This EMA should not exceed the amount provided in the special equipment maintenance allowance for the route stops and miles.

EMA Rate Schedule

The EMA rate schedule on pages [9–10](#) supersedes all previously published EMA schedules for employees receiving EMA.

— *Collective Bargaining and Arbitration, Labor Relations, 10-2-14*

Human Resources

Notice to All Post Offices with Rural Delivery Service: Rural Carrier Guarantee Period

Postal Service™ managers must effectively manage rural carriers who work under the provisions of the *Fair Labor Standards Act* (FLSA) section 7(b)(2). Those carriers are paid overtime for all hours actually worked in excess of 2,080, up to 2,240, within the 52-consecutive-week guarantee period.

If a carrier works more than 2,240 hours within the guarantee period, the agreement under FLSA section 7(b)(2) is considered void, and the carrier must be compensated for all hours worked during the guarantee period in accordance with FLSA section 7(a).

It is important that concerted effort is made to minimize the number of hours carriers work over 2,080 and strictly monitor these carriers to ensure that no carrier works in excess of 2,240 actual work hours.

This year's 2014–2015 guarantee period will begin on Saturday, October 18, 2014, and continue through Friday, October 16, 2015.

— *Rural Delivery, Rural Delivery Operations, 10-2-14*

Information Security

CISO — Why Information Security is Essential to the Postal Service

Information security is a business imperative. Trusted information, like people and equipment, is vital to accomplishing our mission and protecting the Postal Service™ brand.

Information costs time, money, and effort to create, maintain, and deliver. We also have legal obligations to protect the confidentiality of employee, customer, and partner information.

Information security is everyone's business! Additional information can be found in Publication 805-E, *What Every Employee Needs to Know About Information Security*. A training video is also available in the Learning Management System, course #10021144, *Information Security — Our Shared Responsibility*.

— *Corporate Information Security Office, Chief Information Officer, 10-2-14*

USPS 26-9902
MINNEAPOLIS ISC
REPORT AQ0530P1

RURAL EQUIPMENT MAINTENANCE
BASED ON \$0.735 PER MILE EFFECTIVE PP-YR 22-14
R A T E S C H E D U L E

DATE 09-22-14
PAGE 2

MILES STOPS = *0640**0660**0700**0720**0740**0760**0780**0800**0820**0840**0860**0880**0900**0920**0940**0960**0980**1000

8	30.90	31.00	31.10	31.20	31.30	31.40	31.50	31.60	31.70	31.80	31.90	32.00	32.10	32.20	32.30	32.40	32.50	32.60	32.70
9	31.00	31.10	31.20	31.30	31.40	31.50	31.60	31.70	31.80	31.90	32.00	32.10	32.20	32.30	32.40	32.50	32.60	32.70	32.80
10	31.10	31.20	31.30	31.40	31.50	31.60	31.70	31.80	31.90	32.00	32.10	32.20	32.30	32.40	32.50	32.60	32.70	32.80	32.90
11	31.20	31.30	31.40	31.50	31.60	31.70	31.80	31.90	32.00	32.10	32.20	32.30	32.40	32.50	32.60	32.70	32.80	32.90	33.00
12	31.30	31.40	31.50	31.60	31.70	31.80	31.90	32.00	32.10	32.20	32.30	32.40	32.50	32.60	32.70	32.80	32.90	33.00	33.10
13	31.40	31.50	31.60	31.70	31.80	31.90	32.00	32.10	32.20	32.30	32.40	32.50	32.60	32.70	32.80	32.90	33.00	33.10	33.20
14	31.50	31.60	31.70	31.80	31.90	32.00	32.10	32.20	32.30	32.40	32.50	32.60	32.70	32.80	32.90	33.00	33.10	33.20	33.30
15	31.60	31.70	31.80	31.90	32.00	32.10	32.20	32.30	32.40	32.50	32.60	32.70	32.80	32.90	33.00	33.10	33.20	33.30	33.40
16	31.70	31.80	31.90	32.00	32.10	32.20	32.30	32.40	32.50	32.60	32.70	32.80	32.90	33.00	33.10	33.20	33.30	33.40	33.50
17	31.80	31.90	32.00	32.10	32.20	32.30	32.40	32.50	32.60	32.70	32.80	32.90	33.00	33.10	33.20	33.30	33.40	33.50	33.60
18	31.90	32.00	32.10	32.20	32.30	32.40	32.50	32.60	32.70	32.80	32.90	33.00	33.10	33.20	33.30	33.40	33.50	33.60	33.70
19	32.00	32.10	32.20	32.30	32.40	32.50	32.60	32.70	32.80	32.90	33.00	33.10	33.20	33.30	33.40	33.50	33.60	33.70	33.80
20	32.10	32.20	32.30	32.40	32.50	32.60	32.70	32.80	32.90	33.00	33.10	33.20	33.30	33.40	33.50	33.60	33.70	33.80	33.90
21	32.20	32.30	32.40	32.50	32.60	32.70	32.80	32.90	33.00	33.10	33.20	33.30	33.40	33.50	33.60	33.70	33.80	33.90	34.00
22	32.30	32.40	32.50	32.60	32.70	32.80	32.90	33.00	33.10	33.20	33.30	33.40	33.50	33.60	33.70	33.80	33.90	34.00	34.10
23	32.40	32.50	32.60	32.70	32.80	32.90	33.00	33.10	33.20	33.30	33.40	33.50	33.60	33.70	33.80	33.90	34.00	34.10	34.20
24	32.50	32.60	32.70	32.80	32.90	33.00	33.10	33.20	33.30	33.40	33.50	33.60	33.70	33.80	33.90	34.00	34.10	34.20	34.30
25	32.60	32.70	32.80	32.90	33.00	33.10	33.20	33.30	33.40	33.50	33.60	33.70	33.80	33.90	34.00	34.10	34.20	34.30	34.40
26	32.70	32.80	32.90	33.00	33.10	33.20	33.30	33.40	33.50	33.60	33.70	33.80	33.90	34.00	34.10	34.20	34.30	34.40	34.50
27	32.80	32.90	33.00	33.10	33.20	33.30	33.40	33.50	33.60	33.70	33.80	33.90	34.00	34.10	34.20	34.30	34.40	34.50	34.60
28	32.90	33.00	33.10	33.20	33.30	33.40	33.50	33.60	33.70	33.80	33.90	34.00	34.10	34.20	34.30	34.40	34.50	34.60	34.70
29	33.00	33.10	33.20	33.30	33.40	33.50	33.60	33.70	33.80	33.90	34.00	34.10	34.20	34.30	34.40	34.50	34.60	34.70	34.80
30	33.10	33.20	33.30	33.40	33.50	33.60	33.70	33.80	33.90	34.00	34.10	34.20	34.30	34.40	34.50	34.60	34.70	34.80	34.90
31	33.20	33.30	33.40	33.50	33.60	33.70	33.80	33.90	34.00	34.10	34.20	34.30	34.40	34.50	34.60	34.70	34.80	34.90	35.00
32	33.30	33.40	33.50	33.60	33.70	33.80	33.90	34.00	34.10	34.20	34.30	34.40	34.50	34.60	34.70	34.80	34.90	35.00	35.10
33	33.40	33.50	33.60	33.70	33.80	33.90	34.00	34.10	34.20	34.30	34.40	34.50	34.60	34.70	34.80	34.90	35.00	35.10	35.20
34	33.50	33.60	33.70	33.80	33.90	34.00	34.10	34.20	34.30	34.40	34.50	34.60	34.70	34.80	34.90	35.00	35.10	35.20	35.30
35	33.60	33.70	33.80	33.90	34.00	34.10	34.20	34.30	34.40	34.50	34.60	34.70	34.80	34.90	35.00	35.10	35.20	35.30	35.40
36	33.70	33.80	33.90	34.00	34.10	34.20	34.30	34.40	34.50	34.60	34.70	34.80	34.90	35.00	35.10	35.20	35.30	35.40	35.50
37	33.80	33.90	34.00	34.10	34.20	34.30	34.40	34.50	34.60	34.70	34.80	34.90	35.00	35.10	35.20	35.30	35.40	35.50	35.60
38	33.90	34.00	34.10	34.20	34.30	34.40	34.50	34.60	34.70	34.80	34.90	35.00	35.10	35.20	35.30	35.40	35.50	35.60	35.70
39	34.00	34.10	34.20	34.30	34.40	34.50	34.60	34.70	34.80	34.90	35.00	35.10	35.20	35.30	35.40	35.50	35.60	35.70	35.80
40	34.10	34.20	34.30	34.40	34.50	34.60	34.70	34.80	34.90	35.00	35.10	35.20	35.30	35.40	35.50	35.60	35.70	35.80	35.90
41	34.20	34.30	34.40	34.50	34.60	34.70	34.80	34.90	35.00	35.10	35.20	35.30	35.40	35.50	35.60	35.70	35.80	35.90	36.00
42	34.30	34.40	34.50	34.60	34.70	34.80	34.90	35.00	35.10	35.20	35.30	35.40	35.50	35.60	35.70	35.80	35.90	36.00	36.10
43	34.40	34.50	34.60	34.70	34.80	34.90	35.00	35.10	35.20	35.30	35.40	35.50	35.60	35.70	35.80	35.90	36.00	36.10	36.20

Mailing and Shipping Services

Mail Alert

The mailings below will be deposited in the near future. Offices should process this mail according to applicable service standards with the in-home dates in mind. Mailers wishing to participate in these alerts, for mailings of 1 million pieces or more, should contact Business Service Network Integration at 202-268-3258 at least 1 month preceding the requested delivery dates. The Postal Ser-

vice™ also offers electronic Mail Alerts via ADVANCE. For more information, see the *ADVANCE Notification & Tracking System Technical Guide* on the Internet at http://ribbs.usps.gov/advance/documents/tech_guides/advtech.pdf or contact the National Customer Support Center at 800-238-3150.

Requested Delivery Dates	Title of Mailing	Class and Type of Mail	Number of Pieces (Millions)	Distribution	Presort Level	Comments
9/26/14-9/30/14	Costco Oct Multi-Vendor Mailer	Standard Catalog	22.0	National	3/5 Digit	Seگردahl Graphics
10/01/14-10/04/14	The Swiss Colony	Standard Catalog	1.0	National	3/5 Digit	Quad Graphics
10/06/14-10/09/14	Through The Country Door	Standard Catalog	1.0	National	3/5 Digit	RR Donnelly
10/06/14-10/09/14	Midnight Velvet	Standard Catalog	1.0	National	3/5 Digit	Quad Graphics
10/15/14-10/18/14	Montgomery Ward	Standard Catalog	4.0	National	3/5 Digit	Quad Graphics
10/15/14-10/18/14	ASHRO	Standard Catalog	2.0	National	3/5 Digit	Quad Graphics

— Business Customer Support and Services, Consumer and Industry Affairs, 10-2-14

Retail

Stamps by Mail – Brochure Ordering Information

Note: The Stamps by Mail® brochures mailed to offices in September from the first Holiday print run contain visuals of Holiday stamps that have not been officially released. The First-Day-of-Issue (FDOI) for *Rudolph the Red-Nosed Reindeer* is November 6, 2014. These brochures should not be released to customers prior to the November First-Day-of-Issue.

This article publishes the Stamps by Mail® ordering and print run cut-off schedule for fiscal year (FY) 2015. Each date has a version type identified for that particular brochure. The FY 2015 ordering and print cycle cut-off dates are as follows:

Brochure Version	eBuy2 Cut-off Date	Print Run Cut-off Date
Year Round	10/17/2014	10/31/2014
Year Round	12/26/2014	1/9/2015
Year Round	3/20/2015	4/3/2015
Year Round	5/1/2015	5/15/2015
Year Round	6/12/2015	6/26/2015
Holiday	8/5/2015	8/21/2015

The cost per unit of 500 is \$12.50. This cost includes overprinting the address of the fulfillment office placing the order. Cyril-Scott Company must receive orders placed by mail by close of business the day of the print run cut-off date listed here. Orders received after the cut-off date will be processed the next print run date.

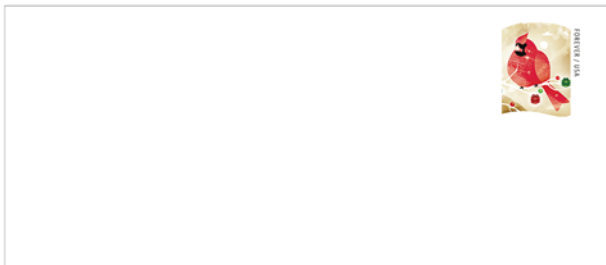
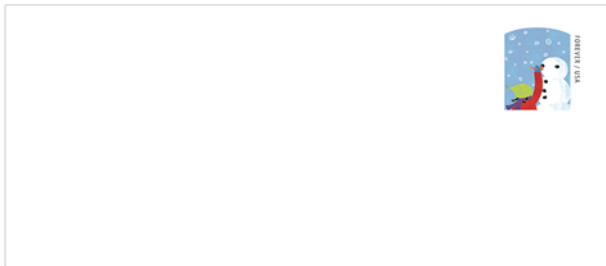
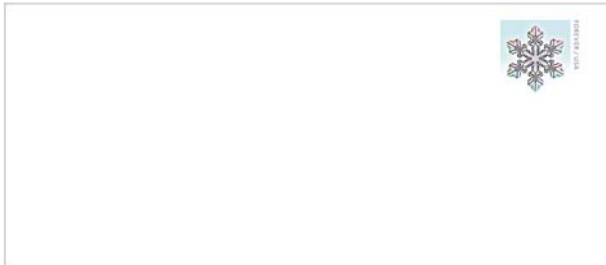
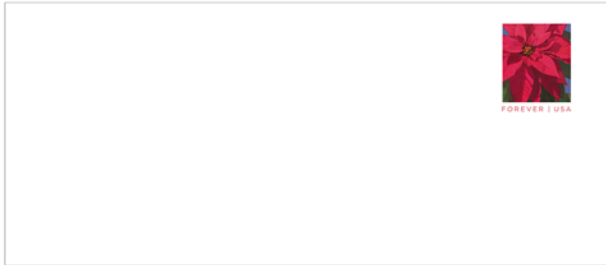
Use eBuy2 to order Stamps by Mail brochures. These approved eBuy2 orders must be received by Supply Management by the eBuy2 cut-off date and approved in eBuy2 prior to a published print run cut-off date to be included in that run.

Cyril-Scott Company will deliver orders within 35 calendar days after printing. Printing begins one week after the deadline date, and actual receipt of the order will depend on the ultimate destination and the corresponding delivery service standard.

— Stamp Services, Marketing and Sales, 10-2-14

Stamp Services

Stamp Announcement 14-44: Holiday Stamped Envelopes



© 2014 USPS

On October 1, 2014, in Washington, DC, the U.S. Postal Service® will issue three sets of 10 Holiday Stamped Envelopes with seals (Forever® First-Class Mail® priced at \$9.95 each) in pressure-sensitive adhesive (PSA) #10 Stamped Envelopes.

The envelope sets will go on sale October 1, 2014.

This holiday season, the U.S. Postal Service® will issue three different festive sets of 10 Holiday Stamped Enve-

lopes, including seals. The stamped envelope artwork is based on stamp art. The *Winter Fun* set includes five stamped envelopes displaying a red cardinal and five stamped envelopes featuring a child building a snowman. The *Poinsettia* set includes 10 stamped envelopes, each featuring a bright, cheerful rendering of America's favorite holiday flower. The *Snowflakes* set includes 10 envelopes featuring two designs — five of each design. Both snowflakes featured in the artwork were photographed with a digital camera attached to a microscope. The seals included in each of the three sets complement the stamp designs.

To learn more about the stories behind the stamped envelopes, visit <http://uspsstamps.com>.

Initial Supply to Post Offices

An initial supply of these envelope sets will be sent to the Full Philatelic Products offices only.

How to Order the First-Day-of-Issue Postmark

Customers have 60 days to obtain the first-day-of-issue postmark by mail. They may purchase the new stamped envelope sets at the Postal Store® website at <http://www.usps.com/shop>, or by calling 800-STAMP-24. They should address the envelopes (to themselves or others), and place them in a larger envelope addressed to:

Holiday Stamped Envelopes
Special Events
PO Box 92282
Washington, DC 20090-2282

After applying the first-day-of-issue postmark, the Postal Service will return the envelopes through the mail. There is no charge for the postmark up to a quantity of 50. For more than 50, customers have to pay five cents each. All orders must be postmarked by November 30, 2014.

How to Order First-Day Covers

The Postal Service also offers first-day covers for new stamp issues and Postal Service stationery items postmarked with the official first-day-of-issue cancellation. Each item has an individual catalog number and is offered in the quarterly *USA Philatelic* catalog, online at <http://usps.com/shop>, or by calling 800-782-6724. Customers may request a free catalog by calling 800-782-6724 or writing to:

U.S. Postal Service
Catalog Request
PO Box 219014
Kansas City, MO 64121-9014

Philatelic Products

These four items are considered Philatelic Products and will be issued in the following formats:

- 789834*, Snowflakes packet of 10 with seals (2 designs), \$9.95.
- 688634*, Poinsettia packet of 10 with seals (1 design), \$9.95.
- 689834*, Winter Fun packet of 10 with seals (2 designs), \$9.95.
- 689817*, Holiday Stamped Envelopes FDC (Set of 5), \$3.70.

Items with an asterisk (*) will use the 128 barcode from Stamp Fulfillment Services. All other philatelic products will continue to use barcode series A, with the exception of the Yearbook and the Guide Book.

Issue:	Holiday Envelopes: <i>Poinsettia</i>
Item Number:	688634
Denomination & Type of Issue:	Forever First-Class Stamped Envelope
Format:	#10 Regular Envelope Packet of 10, 1 design
Issue Date & City:	October 1, 2014, Washington, DC, 20090
Art Director:	Ethel Kessler, Bethesda, MD
Designer:	Ethel Kessler, Bethesda, MD
Typographer:	Ethel Kessler, Bethesda, MD
Artist:	William Low, Huntington, NY
Modeler:	Joseph Sheeran
Manufacturing Process:	Offset/Microprint "USPS"
Printer:	Ashton Potter (USA) Ltd. (APU)
Printed at:	Williamsville, NY
Press Type:	Mueller, A76
Folding Machine:	W&D #527
Print Quantity:	330,000
Paper Type:	61# Postal Envelope, Block, Type III
Adhesive Type:	Pressure-sensitive adhesive
Processed at:	Ashton Potter (USA) Ltd. (APU)
Stamp Orientation:	Vertical
Envelope Size: (w x h):	9.5 x 4.13 in./241.30 x 104.78 mm
Image Size (w x h):	1.08 x 1.40 in/27.36 x 35.43 mm
Colors:	Black, Cyan, Magenta, yellow, PMS 186 U Red, PMS 431 U Grey
Marginal Markings:	Sustainable Forestry Initiative Logo • "THIS ENVELOPE IS RECYCLABLE AND MADE WITH 30% POST CONSUMER CONTENT" • Recycling Logo • © USPS 2014

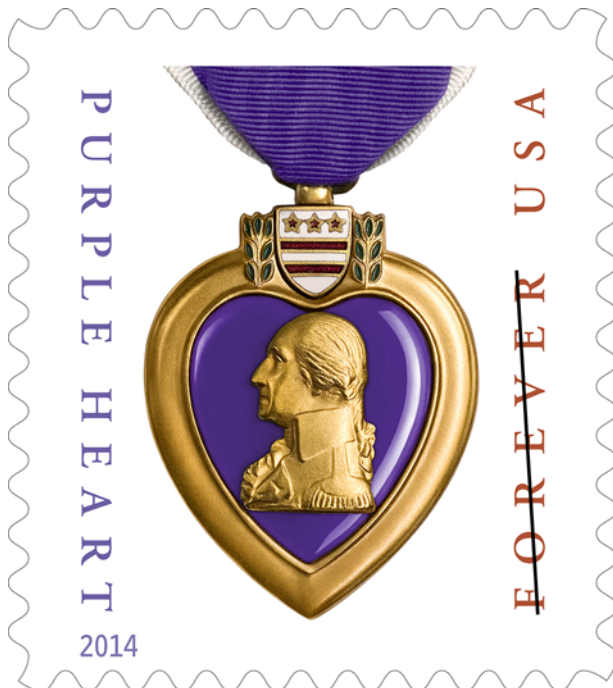
Issue:	Holiday Envelopes: <i>Snowflakes</i>
Item Number:	789834
Denomination & Type of Issue:	Forever First-Class Stamped Envelope
Format:	#10 Regular Envelope Packet of 10, 2 designs
Issue Date & City:	October 1, 2014, Washington, DC, 20090
Art Director:	William J. Gicker, Washington, DC
Designer:	Jennifer Arnold, Washington, DC
Typographer:	Jennifer Arnold, Washington, DC

Existing Photos:	Kenneth G Libbrecht
Modeler:	Joseph Sheeran
Manufacturing Process:	Offset/Microprint "USPS"
Printer:	Ashton Potter (USA) Ltd. (APU)
Printed at:	Williamsville, NY
Press Type:	Mueller, A76
Folding Machine:	W&D #527
Print Quantity:	330,000 (165,000 each design)
Paper Type:	61# Postal Envelope, Block, Type III
Adhesive Type:	Pressure-sensitive adhesive
Processed at:	Ashton Potter (USA) Ltd. (APU)
Stamp Orientation:	Horizontal
Envelope Size: (w x h):	9.5 x 4.13 in./241.30 x 104.78 mm
Image Size (w x h):	1.23 x 1.13 in./31.19 x 28.60 mm
Colors:	Black, Cyan, Magenta, Yellow, PMS 7671 U Purple, PMS 431 U Grey
Marginal Markings:	Sustainable Forestry Initiative Logo • "THIS ENVELOPE IS RECYCLABLE AND MADE WITH 30% POST CONSUMER CONTENT" • Recycling Logo • © USPS 2014

Issue:	Holiday Envelopes: <i>Winter Fun</i>
Item Number:	689834
Denomination & Type of Issue:	Forever First-Class Stamped Envelope
Format:	#10 Regular Envelope Packet of 10, 2 designs
Issue Date & City:	October 1, 2014, Washington, DC, 20090
Art Director:	Ethel Kessler, Bethesda, MD
Designer:	Ethel Kessler, Bethesda, MD
Typographer:	Ethel Kessler, Bethesda, MD
Existing Art:	Christine Roy, Janet Atkinson, Jing Jing Tsong
Modeler:	Joseph Sheeran
Manufacturing Process:	Offset/Microprint "USPS"
Printer:	Ashton Potter (USA) Ltd. (APU)
Printed at:	Williamsville, NY
Press Type:	Mueller, A76
Folding Machine:	W&D #527
Print Quantity:	330,000 (165,000 each design)
Paper Type:	61# Postal Envelope, Block, Type III
Adhesive Type:	Pressure-sensitive adhesive
Processed at:	Ashton Potter (USA) Ltd. (APU)
Stamp Orientation:	Vertical
Envelope Size: (w x h):	9.5 x 4.13 in./241.30 x 104.78 mm
Image Size (w x h):	
Snowman:	1.18 x 1.30 in/29.95 x 33.00 mm
Cardinal:	1.22 x 1.47 in/31.01 x 37.34 mm
Colors:	Black, Cyan, Magenta, Yellow, PMS 431 U Grey
Marginal Markings:	Sustainable Forestry Initiative Logo • "THIS ENVELOPE IS RECYCLABLE AND MADE WITH 30% POST CONSUMER CONTENT" • Recycling Logo • © USPS 2014

— Stamp Services,
Marketing and Sales, 10-2-14

Stamp Announcement 14-45: Purple Heart Medal Stamp



© 2012 USPS

On October 11, 2014, in Dover, DE, the U.S. Postal Service® will re-issue the *Purple Heart Medal* stamp, Forever® First Class Mail® priced at 49 cents, in one design, in a pressure-sensitive adhesive (PSA) pane of 20 stamps (Item 115400).

The *Purple Heart Medal* stamp design features a photograph taken by Ira Wexler of a Purple Heart medal awarded during World War II. The 2011 Purple Heart with Ribbon stamp was reworked in 2012 to display a slightly larger image of the Purple Heart medal on a pure white background. Designed by art director Jennifer Arnold, the stamp was given the name *Purple Heart Medal*.

To learn more about the stories behind the stamps, visit <http://uspsstamps.com>.

Initial Supply to Post Offices: Item 115400, Purple Heart Medal First-Class Mail (Forever priced at 49 cents) Commemorative PSA Pane of 20 Stamps

Stamp Fulfillment Services will not make a subsequent automatic push distribution to Post Offices™.

How to Order the First-Day-of-Issue Postmark

Customers have 60 days to obtain the first-day-of-issue postmark by mail. They may purchase new stamps at their local Post Office, at The Postal Store® website at <http://www.usps.com/shop>, or by calling 800-STAMP-24. They should affix the stamps to envelopes of their choice, address the envelopes (to themselves or others), and place them in a larger envelope addressed to:

Purple Heart Medal Stamp
Postmaster
Dover Post Office
55 Loockerman Plaza
Dover, DE 19901-9998

After applying the first-day-of-issue postmark, the Postal Service will return the envelopes through the mail. There is no charge for the postmark up to a quantity of 50. For more than 50, customers have to pay five cents each. All orders must be postmarked by December 10, 2014.

How to Order First-Day Covers

The Postal Service also offers first-day covers for new stamp issues and Postal Service stationery items postmarked with the official first-day-of-issue cancellation. Each item has an individual catalog number and is offered in the quarterly *USA Philatelic* catalog, online at <http://usps.com/shop>, or by calling 800-782-6724. Customers may request a free catalog by calling 800-782-6724 or writing to:

U.S. Postal Service
Catalog Request
PO Box 219014
Kansas City, MO 64121-9014

Philatelic Products

There are two philatelic products for this stamp issue:

- 125416*, First-Day Cover, \$0.93.
- 125431*, Stamped Deck Card, \$0.95.

Items with an asterisk (*) will use the 128 barcode from Stamp Fulfillment Services. All other philatelic products will continue to use barcode series A, with the exception of the Yearbook and the Guide Book.

(Article continues on page [39](#)).

Pull-Out Information

Fraud

Invalid USPS Corporate Account Numbers

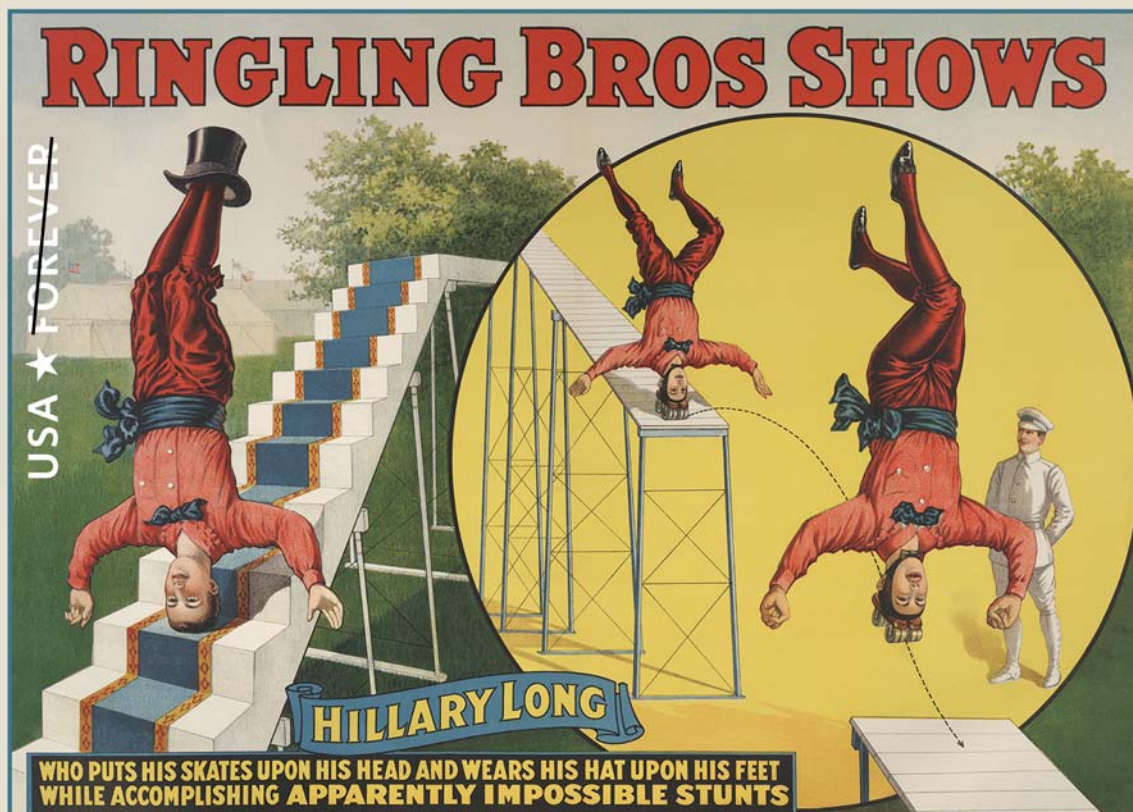
This listing should be provided to Contract Postal Units and used by acceptance clerks in non-POS locations without intranet access to validate a USPS Corporate Account (USPSCA) number online. For all other locations, online USPSCA validation is preferred. The online validation process is outlined in the USPSCA Validation SOP on the Retail webpage. This list supersedes all previous notices,

which must be recycled. Acceptance clerks must not accept Priority Mail Express™ shipments bearing an invalid USPSCA number in the “Payment by Account” or “Agreement Number” section of the label or form.

Note: The first 6 digits of a 9-digit Custom Designed Service and Next Day Pickup Agreement make up the Corporate Account Number.

005530	069084	101258	220248	221306	261004	402664	731396	802314	805429	814033	891202	945451
006024	069476	102099	220250	221307	282070	405064	734002	802319	805481	814066	891205	946594
006777	070303	102196	220311	221308	295461	432638	741391	802328	805519	814217	891211	947099
008042	070595	102820	220313	221310	301514	441454	750821	802353	805578	815025	891215	948151
008979	071406	104146	220332	221329	303102	441679	752811	802391	805585	815091	891265	948798
009455	071841	104618	220336	221334	303765	447191	752915	802395	805615	815210	891756	949121
010255	076360	105234	220350	221339	312332	452063	760002	802413	806015	815235	891789	949642
010557	076919	105415	220365	221343	312484	454105	760005	802417	806084	816047	891835	950450
012414	077695	109113	220393	221349	321269	458150	760015	802438	806087	816059	891947	950502
014807	078403	113001	220395	221352	322256	462035	760018	802476	806152	816102	891963	950528
015467	079105	117130	220397	221355	322782	469201	760051	802538	806208	816112	891975	951005
015829	080090	117517	220398	221363	323055	480062	761007	802542	809016	816205	891985	951043
018048	080736	122351	220410	221366	323147	481184	761112	802550	809040	816258	891989	951084
018793	080737	123048	220418	221369	323642	481213	762004	802584	809049	816410	895520	951102
019637	085028	123094	220435	221370	324001	481323	768003	802710	809066	816443	895660	951182
022789	085325	124139	220437	221375	325014	483314	778007	802861	809075	816446	900137	951222
023311	085913	127510	220438	221379	325102	483987	784387	802924	809090	816501	901741	951245
023518	088368	128156	220452	221390	326009	486045	785761	802958	809094	816650	902045	951341
023585	088426	128995	220453	221505	326637	495061	791026	802965	809111	816808	904364	951900
025475	090333	142289	220458	221558	326668	531427	800106	802966	809137	820002	904783	951948
026226	091427	146437	220468	222057	327079	531792	800391	802969	809172	820105	907512	958303
026439	091811	150015	220473	222063	330036	551064	800459	802977	809173	820111	910434	958304
028149	092011	152746	220482	222067	330212	551304	800488	802985	809218	820124	911187	967244
028227	092484	156054	220532	222069	332783	551341	800523	803091	809240	820402	914432	967437
028600	092642	175074	220623	22221	333407	551664	800556	803110	810023	820500	915013	968658
029738	092871	191114	220654	223038	333469	553468	800572	803125	810026	820526	915542	970645
030092	094469	192696	220754	223046	333624	553763	801133	803129	810031	820705	917830	970748
030149	094780	192845	220796	223047	335225	554337	801221	803211	810068	820810	921109	971076
030422	095508	200132	220823	223053	336072	554534	801300	803308	811003	823236	921228	972953
034312	095664	200150	221021	223054	336291	571060	801312	803318	811004	824457	926604	980594
034645	096797	200161	221073	223058	338038	600498	801325	804074	811006	824622	927620	980733
038002	096801	200233	221117	223061	339120	600528	801330	804081	811012	825100	928328	982038
038106	097561	200649	221131	223063	340138	600762	801547	804108	811014	828100	930029	983127
040203	098678	200803	221167	223065	340651	601040	801655	804130	811023	829101	930051	995594
042065	100439	207654	221186	223118	350001	602803	802013	804186	811036	830501	930070	995835
042075	100458	208176	221209	223351	351035	606517	802036	805053	812048	837177	930353	
049018	100511	210567	221249	226003	351053	618134	802062	805083	813087	840273	932612	
054089	100615	210765	221261	226010	352783	631589	802117	805150	813213	841357	933011	
061621	100703	220042	221277	226012	358002	631768	802129	805172	813214	851014	940071	
065495	100750	220158	221289	226013	359002	685086	802132	805313	813231	852802	940149	
066194	100755	220197	221293	226015	359051	701331	802181	805352	813304	871001	940366	
069007	100888	220213	221295	226016	365007	730300	802265	805403	814018	871014	941505	
069009	100903	220217	221304	232349	372325	730621	802282	805411	814025	890002	941689	

Presenting
Vintage Circus Posters
Forever® Commemorative Stamps.



2014

On Sale Nationwide: May 5, 2014.

Missing, Lost, or Stolen U.S. Money Order Forms

Do Not Cash — Upon Receipt, Notify Local Postal Inspectors

This listing will be provided to all Postal Service™ employees responsible for accepting and cashing postal money orders. Destroy all interim notices when the num-

bers listed appear in the *Postal Bulletin*. The actual serial numbers consist of the first 10 digits on the money orders. Check for altered dollar amounts by holding money orders to the light.

010 001 0200 to 0299	040 688 8816 to 8899	077 999 4001 to 4090	127 500 2328 to 2399
010 504 1932 to 1999	041 299 6752 to 6799	078 174 4475 to 4499	160 901 2254 to 2299
011 582 1889 to 1899	041 623 8889 to 8899	078 219 4931 to 4999	161 103 6581 to 6599
011 588 2900 to 3099	041 803 6565 to 6599	078 250 4756 to 4799	161 194 2857 to 0899
012 441 0784 to 0799	043 129 1968 to 1997	078 823 8312 to 8399	162 032 4447 to 4499
012 579 5675 to 5699	043 205 5922 to 5999	079 374 0300 to 2499	163 257 1085 to 1099
013 289 6176 to 6199	044 087 3457 to 3499	079 807 2342 to 2399	164 359 2406 to 2499
013 610 0014 to 0099	044 087 4000 to 4099	082 721 0228 to 0254	166 101 1433 to 1499
014 932 1000 to 1099	044 306 4200 to 4299	083 140 5000 to 7499	167 555 5201 to 5212
014 972 0800 to 0899	044 306 4370 to 4599	083 784 8886 to 8899	167 555 5214 to 5299
015 363 0065 to 0099	045 524 4121 to 4298	083 913 6915 to 6999	169 618 6274 to 6299
017 028 3200 to 3299	046 800 9870 to 9899	084 478 3920 to 3999	171 806 6878 to 6893
018 569 5333 to 5399	047 352 4000 to 4099	086 000 8271 to 8299	173 639 4685 to 4699
018 986 5264 to 5299	048 383 7650 to 7659	086 798 3840 to 3849	174 238 2779 to 2799
019 518 2814 to 2899	048 396 3647 to 3699	088 404 4472 to 4499	174 281 9347 to 9399
020 698 5159 to 5199	051 142 0755 to 0799	088 404 5584 to 5699	175 251 2600 to 0699
020 844 7307 to 7399	051 774 8857 to 8899	088 757 8688 to 8699	176 281 7937 to 7950
020 972 8948 to 8999	051 781 2875 to 2885	088 757 9400 to 9499	176 281 7963 to 7999
022 021 9110 to 9181	051 977 7010 to 7023	089 358 2248 to 2257	176 731 6586 to 6599
022 037 1411 to 1499	052 058 7115 to 7199	090 663 9678 to 9684	178 254 5000 to 9999
022 527 9201 to 9210	054 450 1130 to 1167	091 818 0071 to 0099	178 881 9900 to 9999
022 529 1882 to 1899	057 670 0563 to 0599	093 106 9346 to 9355	180 031 2089 to 2098
023 637 7169 to 7199	058 187 3836 to 3899	093 203 0500 to 0599	180 403 7723 to 7741
024 380 4100 to 4199	058 523 3003 to 3099	093 684 3630 to 3699	180 428 4580 to 0599
024 496 6870 to 6896	058 591 1153 to 1299	094 081 5074 to 5099	182 368 7544 to 0599
025 092 0987 to 0999	058 895 3746 to 3799	094 216 2555 to 2599	182 475 3229 to 3258
025 369 5535 to 5599	059 986 0814 to 0899	094 580 7062 to 7099	182 475 3904 to 3933
025 729 1151 to 1199	060 406 7650 to 7699	094 639 4200 to 4299	182 631 0031 to 0099
025 729 1643 to 1799	063 491 8122 to 8199	095 070 7186 to 7199	184 218 2760 to 2799
026 492 3180 to 3199	063 916 9968 to 9999	095 076 8300 to 8399	185 828 1474 to 1499
027 361 0430 to 0499	064 091 4500 to 4599	095 354 6864 to 6899	186 132 7583 to 0599
027 369 4482 to 4495	065 170 0471 to 0499	097 224 1350 to 1599	186 629 0589 to 0599
027 671 8762 to 8776	065 255 7909 to 7999	100 160 3800 to 3899	187 184 6177 to 0199
027 787 9886 to 9899	065 392 6345 to 6399	104 667 6400 to 6499	187 323 8200 to 8299
027 965 9487 to 9499	066 099 2014 to 2099	104 876 8937 to 8999	187 441 6080 to 6099
028 100 8069 to 8099	066 648 2880 to 2899	112 049 4413 to 4499	188 831 6774 to 6799
028 191 1852 to 1999	066 787 3639 to 3699	112 870 9765 to 9799	188 835 6370 to 6399
028 850 3000 to 3199	066 845 7500 to 9999	113 319 2000 to 2099	189 083 1064 to 1099
029 510 1500 to 1599	067 093 3869 to 3899	114 402 3850 to 3899	189 660 9583 to 9599
030 687 0903 to 0999	068 895 0334 to 0399	114 866 5368 to 5397	191 179 0377 to 0399
030 701 3442 to 3499	070 724 4488 to 4499	116 154 2800 to 2899	192 050 5762 to 5781
031 077 4507 to 4799	070 841 9181 to 9199	116 986 4400 to 4499	194 456 8600 to 0699
032 295 7500 to 9999	070 844 2546 to 2599	117 175 1647 to 5169	195 194 6881 to 6899
034 394 1000 to 1099	070 916 1340 to 1399	117 951 4687 to 4699	198 285 2556 to 2566
034 943 0400 to 0799	071 047 5768 to 5799	117 951 5200 to 5299	199 105 0778 to 0799
035 035 4337 to 4399	071 179 9800 to 9899	119 786 3051 to 3064	199 678 2968 to 2999
037 312 7500 to 7599	071 386 3682 to 3699	119 815 8961 to 6199	202 748 5133 to 5199
037 706 9578 to 9599	071 507 6840 to 6899	119 850 7400 to 7499	202 748 5245 to 5299
037 805 3677 to 3699	072 045 9641 to 9699	119 850 7700 to 7999	202 748 5300 to 5399
037 909 5490 to 5499	072 675 8287 to 8299	121 634 0460 to 0499	202 748 5400 to 5499
037 931 4660 to 4699	073 763 0867 to 0876	122 451 9879 to 9899	203 256 1240 to 1299
039 145 6521 to 6595	073 763 0878 to 0887	122 714 6805 to 6900	204 230 3577 to 3595
040 024 3901 to 3999	073 763 0889 to 0898	124 916 0304 to 0499	205 019 0174 to 0199
040 674 7100 to 7199	077 617 5481 to 5499	126 423 0136 to 0169	207 196 9900 to 9999

207 204 0700	to	0799	392 668 2956	to	2999	411 922 2322	to	2399	433 003 5800	to	5899
207 204 0800	to	0899	392 854 8500	to	8899	412 193 0900	to	0999	433 757 3047	to	3099
207 514 3857	to	3899	393 584 7566	to	7699	412 395 8599	to	8699	433 765 4003	to	4099
208 556 4707	to	4799	393 650 0074	to	0099	412 485 6500	to	6599	434 482 7060	to	7199
210 057 4038	to	4047	393 838 8316	to	8499	412 485 6610	to	6699	434 513 2386	to	2399
210 221 0548	to	0599	393 893 6007	to	6099	412 885 5953	to	5999	434 968 3076	to	3092
214 303 6311	to	6325	394 126 6907	to	6999	414 193 3608	to	3674	435 303 1831	to	1842
214 303 6239	to	6258	394 189 0405	to	0599	414 193 3677	to	3699	435 303 1986	to	1999
214 877 4251	to	4273	394 822 3243	to	3278	414 411 7348	to	7399	435 666 6092	to	6399
215 252 3918	to	3992	394 990 1810	to	1899	414 640 0757	to	0799	436 082 6400	to	6899
218 698 2157	to	2199	395 343 3264	to	3299	414 965 1727	to	1799	436 160 6441	to	6499
218 746 0800	to	0899	395 373 3035	to	3099	417 302 8104	to	8199	437 316 7115	to	7199
219 095 0100	to	0399	395 396 9649	to	9799	417 387 6532	to	6599	437 427 0500	to	3499
219 389 1885	to	1899	395 970 3240	to	3299	417 496 6800	to	6999	439 179 2300	to	2399
221 316 5757	to	5799	397 622 4054	to	4099	417 871 9250	to	9299	439 310 0458	to	0499
227 275 9400	to	9999	397 819 8902	to	8999	417 930 9533	to	9599	440 698 1947	to	1999
273 070 8059	to	8099	398 149 7200	to	7699	418 164 6500	to	6799	440 858 6300	to	6399
273 775 7700	to	7899	399 070 0872	to	0899	418 423 9863	to	9899	440 858 6420	to	7299
302 000 0000	to	9999	399 156 7119	to	7199	418 633 5922	to	5999	441 199 1655	to	1699
349 746 2056	to	2099	399 203 5064	to	5099	418 719 8520	to	8599	443 127 3648	to	3699
350 518 7350	to	7374	399 296 9910	to	9999	418 744 2235	to	2299	443 127 4000	to	4099
360 011 1690	to	1699	399 396 8935	to	8999	418 962 2848	to	2899	443 673 7900	to	7999
360 168 6008	to	6099	399 792 7775	to	7799	419 543 0286	to	0299	443 800 9335	to	9399
360 173 8800	to	8899	399 792 8300	to	8399	419 730 0300	to	0399	444 382 8822	to	8899
360 324 2326	to	2399	400 427 1051	to	1999	420 277 0015	to	0049	444 390 1667	to	1699
362 861 3064	to	3099	401 045 1505	to	1549	420 599 0734	to	0798	444 457 3854	to	3899
373 006 2176	to	2199	401 045 1571	to	1599	420 661 4115	to	4199	450 048 4173	to	4199
374 768 2600	to	2699	401 294 2700	to	2799	420 758 9500	to	9699	450 048 4442	to	4699
375 169 4400	to	4599	401 310 9505	to	9599	420 969 3951	to	3971	450 560 5173	to	5199
375 829 3400	to	3499	401 382 5312	to	5399	420 969 3973	to	3999	450 620 3077	to	3099
375 851 9100	to	9199	402 578 7876	to	7899	421 116 3565	to	3599	450 620 3135	to	3199
376 196 0911	to	0999	403 125 6744	to	6799	421 130 9300	to	9399	450 780 2716	to	2799
378 085 3679	to	3699	403 260 7000	to	7499	421 313 4500	to	4999	450 801 2700	to	2799
378 351 1063	to	1099	403 280 6470	to	6499	421 364 5537	to	5599	451 109 2967	to	2984
379 843 5100	to	5199	403 685 8600	to	8699	421 656 2609	to	2699	451 115 4110	to	4125
380 093 9600	to	9699	404 003 0300	to	0399	421 988 9700	to	9799	451 115 4127	to	4199
380 165 1165	to	1199	404 041 8838	to	8899	422 172 4667	to	4699	451 746 0700	to	0799
381 325 4500	to	4599	404 071 4268	to	4299	422 484 4212	to	4299	452 265 0074	to	0099
381 604 2510	to	2699	404 347 5356	to	5399	422 556 1270	to	1299	452 265 0246	to	0299
381 645 9525	to	9599	404 347 5548	to	5599	422 587 7024	to	7099	452 265 0335	to	0399
383 314 3968	to	3999	404 726 4500	to	4599	422 819 7533	to	7599	452 509 1169	to	1199
383 892 1000	to	1344	404 961 5001	to	5199	422 842 5073	to	5087	452 855 6471	to	6499
383 892 1382	to	1399	405 325 0188	to	0198	422 907 7563	to	7599	452 890 4679	to	4799
384 925 3641	to	3654	406 009 4587	to	4599	424 500 6050	to	6099	452 900 8215	to	8238
385 568 2331	to	2399	406 260 6830	to	6899	424 641 8500	to	8599	453 117 9146	to	9199
385 599 7554	to	7575	406 459 6641	to	6999	424 871 6600	to	6699	453 334 3631	to	3699
385 774 2024	to	2099	406 733 3000	to	3999	425 298 2352	to	2399	453 603 7841	to	7891
386 624 1412	to	1599	407 545 1557	to	1599	425 418 4269	to	4299	453 650 1140	to	1199
386 883 8936	to	8999	407 594 0412	to	0599	425 418 4405	to	4499	453 741 1300	to	1399
387 314 5574	to	5599	407 692 9100	to	9299	426 547 4566	to	4599	454 013 2919	to	2999
387 837 6300	to	6399	407 959 2190	to	2199	427 412 6337	to	6499	454 186 2411	to	2499
388 828 0656	to	0699	408 265 2275	to	2288	427 481 0900	to	0999	454 268 4883	to	4899
389 696 2400	to	2799	408 499 7700	to	7799	428 027 2742	to	2752	454 302 5400	to	5499
389 846 3104	to	3135	408 499 7900	to	7999	429 474 4172	to	4199	454 490 8300	to	8399
389 846 3145	to	3195	408 682 8484	to	8599	429 889 2900	to	2999	454 547 7434	to	7499
389 887 9211	to	9230	408 698 7015	to	7099	430 150 4401	to	4599	454 922 4867	to	4895
389 887 9234	to	9299	409 072 3941	to	3999	430 172 9800	to	9899	455 221 1348	to	1499
390 001 3182	to	3199	410 491 2311	to	2399	430 177 1900	to	2099	455 364 2147	to	2199
390 001 3500	to	3699	410 694 8400	to	8599	430 444 9500	to	9699	455 399 5400	to	5499
390 545 5974	to	5999	410 775 1500	to	1599	430 664 4070	to	4099	455 476 0676	to	0699
391 104 6146	to	6199	410 795 7927	to	7999	432 168 8419	to	8499	455 543 0618	to	0699
391 574 1466	to	1499	410 867 0917	to	0966	432 708 6800	to	6999	456 410 9006	to	9099
391 783 3020	to	3599	410 867 0970	to	0999	432 744 1544	to	1599	456 470 4146	to	4299
391 792 6100	to	6199	411 868 1023	to	1199	432 995 9775	to	9799	456 619 4460	to	4499

457 333 2686	to	2699	475 167 9667	to	9699	490 886 8171	to	8199	601 682 5343	to	5399
457 729 1767	to	1777	475 319 3415	to	3499	490 977 9221	to	9240	601 928 1600	to	1699
457 937 8615	to	8699	475 319 3649	to	3799	491 258 8100	to	9099	602 512 2972	to	2999
458 028 9810	to	9899	475 340 6400	to	6599	491 567 1376	to	1399	602 555 2400	to	2799
458 057 2712	to	2999	475 424 8410	to	8499	492 254 4800	to	4899	602 829 7061	to	7099
458 069 9537	to	9599	475 629 9156	to	9199	492 283 5100	to	5199	603 483 9572	to	9599
458 069 9665	to	9699	475 850 6101	to	6199	492 610 6813	to	6899	603 490 7200	to	7299
458 337 5222	to	5299	475 875 2500	to	2599	493 394 5568	to	5599	603 678 7100	to	7199
458 354 7653	to	7999	476 169 8264	to	8299	493 470 2562	to	2599	603 678 7662	to	7699
458 671 8678	to	8699	476 189 3000	to	3499	493 473 7700	to	7799	603 678 7902	to	7999
458 671 8721	to	8798	476 331 2480	to	2499	493 716 2153	to	2199	603 678 8418	to	8499
458 847 5044	to	5999	477 289 8601	to	8699	494 206 2972	to	2999	603 678 8700	to	9999
459 274 7624	to	7699	477 681 5206	to	5299	494 217 3446	to	3999	604 086 0880	to	0899
459 365 5432	to	5499	478 010 4243	to	4268	494 224 0500	to	0599	604 349 1414	to	1499
459 378 5764	to	5799	478 010 4270	to	4291	495 145 0600	to	0699	604 503 7776	to	7799
459 472 4816	to	4999	478 450 5071	to	5099	496 209 7425	to	7499	605 520 9037	to	9099
460 349 6878	to	6899	478 469 7838	to	7858	496 213 8728	to	8799	605 685 4010	to	4099
460 550 1909	to	1999	478 469 7883	to	7899	496 474 5226	to	5248	605 988 6467	to	6499
460 997 5234	to	5299	479 280 9800	to	9899	497 053 8517	to	8699	607 689 7951	to	7960
461 973 6443	to	6499	479 365 9116	to	9176	497 854 8673	to	8699	607 728 1276	to	1299
462 152 0107	to	0299	479 412 9900	to	9999	498 449 8888	to	8899	608 727 7100	to	7199
462 274 1072	to	1099	479 667 6190	to	6199	498 929 8285	to	8499	608 727 7273	to	7599
462 277 8373	to	8399	479 748 9680	to	9699	498 936 5310	to	5399	608 813 9950	to	9999
462 554 6051	to	6099	479 860 7000	to	7199	499 016 5425	to	5499	609 067 5325	to	5399
463 011 5529	to	5540	480 526 2000	to	2099	499 440 8575	to	8899	609 067 5488	to	5499
463 176 4115	to	4199	480 640 6330	to	6399	499 731 6717	to	6799	609 067 5600	to	5699
463 176 4229	to	4299	480 658 0568	to	0599	500 064 1858	to	1869	609 289 6123	to	6199
463 185 2600	to	2799	480 689 5100	to	5199	500 070 5725	to	7799	609 438 4400	to	4499
463 227 7711	to	7799	481 072 9463	to	9499	501 058 0016	to	0026	609 493 1100	to	1199
463 414 4869	to	4899	481 673 0074	to	0095	501 331 0300	to	0399	609 766 8091	to	8999
463 808 3484	to	3499	482 527 1500	to	1599	501 460 0977	to	0999	609 825 4100	to	4115
463 945 7400	to	7899	482 541 5255	to	5299	502 227 7645	to	7699	609 884 2981	to	2999
464 629 9000	to	9399	482 729 6800	to	6899	502 424 0200	to	0499	609 893 1000	to	1099
464 711 4332	to	4399	483 363 7207	to	7299	502 424 0600	to	0699	610 092 3200	to	3299
465 692 3963	to	3999	483 402 2356	to	2399	502 496 6923	to	6999	610 582 4200	to	4299
465 698 8300	to	8599	483 486 5100	to	5199	503 003 2700	to	2899	611 879 6939	to	6999
465 743 7745	to	7799	483 632 1521	to	1599	503 194 5144	to	5153	612 291 8013	to	8099
466 798 6056	to	6067	483 632 2600	to	2799	503 790 9922	to	9948	612 751 5171	to	5199
467 147 4300	to	4399	483 849 1615	to	1699	504 045 4030	to	4099	612 751 5226	to	5299
468 079 5782	to	5799	484 174 4803	to	5299	504 166 0200	to	0599	612 751 6083	to	6099
469 067 2817	to	2899	484 323 8900	to	9199	504 240 1062	to	1399	612 751 6268	to	6299
469 127 8000	to	8199	484 680 5000	to	5038	504 805 3300	to	3499	612 751 6572	to	6599
469 213 0359	to	0399	484 680 5040	to	5074	505 096 0662	to	0699	612 774 2111	to	2199
469 213 0500	to	0599	484 680 5077	to	5099	505 893 7739	to	7799	612 774 2254	to	2299
469 561 8011	to	8099	485 029 4913	to	4999	505 893 7800	to	7999	612 774 2500	to	2599
469 658 1961	to	1999	486 176 0600	to	0699	506 124 0800	to	0999	614 469 0979	to	0999
469 666 9900	to	9999	486 559 7555	to	7599	506 165 7027	to	0099	614 474 3000	to	3099
469 678 1900	to	1999	486 696 3023	to	3199	506 502 5209	to	5299	614 521 3490	to	3499
469 781 4900	to	4999	488 173 7900	to	7999	506 756 1682	to	1699	614 645 1800	to	1899
469 947 6960	to	6999	488 206 4100	to	4199	506 756 1700	to	1799	614 832 1100	to	2099
470 755 5800	to	5818	488 226 0200	to	0299	506 756 1800	to	1899	615 017 7505	to	7599
471 918 0300	to	0999	488 709 3906	to	3999	506 836 5326	to	5399	617 711 6609	to	6699
471 985 2408	to	2419	488 855 8359	to	8399	508 488 6226	to	6299	617 760 5266	to	5299
472 191 6700	to	6799	489 181 8963	to	8999	508 789 8332	to	8399	617 813 3601	to	3699
472 270 2555	to	2599	489 223 2000	to	2099	508 789 8400	to	8499	618 840 9200	to	9299
472 987 0213	to	0241	489 311 1930	to	1999	510 150 2400	to	2499	619 551 7229	to	7299
472 987 0290	to	0299	489 318 6200	to	6300	510 381 3200	to	3299	619 859 3000	to	3099
473 151 2069	to	2199	489 384 0027	to	0099	510 587 9500	to	9599	620 073 9400	to	9499
473 666 9138	to	9199	489 427 0658	to	0899	510 587 9659	to	9699	621 614 7907	to	7930
473 952 3429	to	3499	489 997 5252	to	5299	510 269 9770	to	9999	621 614 7932	to	7999
474 108 5402	to	5499	490 669 5850	to	6099	600 645 3223	to	3299	621 648 8021	to	8199
474 356 5193	to	5299	490 717 7080	to	7099	601 339 1200	to	1399	621 648 8500	to	8599
474 949 3366	to	3399	490 721 6000	to	6099	601 653 5884	to	5899	621 904 8351	to	8599
475 134 9362	to	9399	490 793 1500	to	2099	601 661 7700	to	7799	621 916 1978	to	1989

622 989 8032	to	8099	643 030 6254	to	6299	658 880 8000	to	8199	685 297 7645	to	7699
623 076 9300	to	9399	644 066 0882	to	0899	659 398 7300	to	7399	685 623 5264	to	5299
623 819 5006	to	5099	644 069 0600	to	0699	659 706 8113	to	8199	685 650 9487	to	9499
623 895 8200	to	8399	644 077 7506	to	7699	659 846 7837	to	7899	685 669 4200	to	4299
623 917 0000	to	0099	644 085 8157	to	8199	660 510 4100	to	4199	685 757 8452	to	8499
623 917 0200	to	0299	644 112 9839	to	9899	660 673 0400	to	0599	686 071 2694	to	2799
624 468 5288	to	5299	644 373 9083	to	9099	661 488 5000	to	5099	686 176 3333	to	3354
624 665 3162	to	3198	644 380 1460	to	1499	661 609 9100	to	9199	686 372 3200	to	3299
625 088 6735	to	6799	644 733 4715	to	4799	661 716 9420	to	9499	686 644 5879	to	5899
625 916 9500	to	9799	644 900 9712	to	9799	661 906 6522	to	6599	686 899 1371	to	1399
625 968 8956	to	8999	644 901 0109	to	1299	662 021 8332	to	8399	686 931 7636	to	7699
627 005 3938	to	3999	644 901 1325	to	1399	662 068 0700	to	0899	687 601 0973	to	0999
627 384 3907	to	4099	644 923 6800	to	7799	662 553 0774	to	0799	687 614 6774	to	6799
627 496 7549	to	7599	644 932 4655	to	4699	663 078 7034	to	7099	688 120 9000	to	9999
627 708 3605	to	3699	645 318 7240	to	7499	663 763 5300	to	5399	688 314 3107	to	3191
627 776 2500	to	2599	645 333 1766	to	1799	663 883 7039	to	7499	690 291 1361	to	1371
628 226 3100	to	3199	645 790 8632	to	8699	663 938 9200	to	9299	690 788 2877	to	2899
628 814 4702	to	4799	645 821 0657	to	0699	664 253 8000	to	8499	690 893 5344	to	5399
628 851 9689	to	9699	645 930 7948	to	7999	664 656 3055	to	3099	690 893 5512	to	5599
629 510 7200	to	7299	645 975 0737	to	0762	665 174 6400	to	6499	690 904 1300	to	1599
629 964 4200	to	4294	646 242 6200	to	6299	665 274 8208	to	8299	690 941 6000	to	6199
630 389 3056	to	3071	646 270 7639	to	7799	665 669 5400	to	5499	691 313 6383	to	6399
630 463 0588	to	0599	646 798 4000	to	4999	666 132 8226	to	8299	691 313 6600	to	6699
631 459 9117	to	9199	647 048 7035	to	7099	666 696 2209	to	2299	691 582 8003	to	8099
631 762 9325	to	9399	647 049 2900	to	2999	666 696 2309	to	2399	691 664 1800	to	1999
632 217 4933	to	4999	647 398 8300	to	8399	667 032 9300	to	9399	691 664 2400	to	2499
632 500 0000	to	640 3999	647 398 8481	to	8499	667 729 5529	to	5599	692 727 9362	to	9399
633 110 4165	to	4199	647 437 3000	to	4999	668 383 8400	to	8699	692 798 1800	to	1899
633 110 4303	to	4499	647 811 2188	to	2199	670 368 3400	to	3499	693 249 0779	to	0799
633 438 6429	to	6599	648 009 6057	to	6099	670 369 7336	to	7399	693 249 0877	to	1699
633 588 7173	to	7182	648 163 5300	to	5499	670 750 7169	to	7199	693 445 0566	to	0999
634 725 0700	to	0799	648 722 5283	to	5299	671 046 6200	to	6399	693 448 8500	to	8999
634 803 3239	to	3299	648 892 3164	to	3199	671 251 5448	to	5499	693 645 9583	to	9599
634 807 2474	to	2499	649 100 3989	to	3999	671 926 5600	to	5799	693 965 4200	to	4299
634 827 5900	to	5999	649 647 0370	to	0399	672 444 2000	to	2999	695 741 2906	to	2999
634 886 3428	to	3499	649 647 0522	to	0599	672 828 3410	to	3499	695 947 8518	to	8599
635 559 3449	to	3499	649 647 5237	to	5399	673 167 5776	to	5799	696 662 8247	to	8299
636 289 6214	to	6299	649 647 9100	to	9299	675 464 3700	to	3799	697 447 8285	to	8296
636 634 8007	to	8042	649 666 7800	to	8299	675 464 4000	to	4199	698 042 4816	to	4899
637 150 1200	to	1299	650 114 7707	to	7719	676 365 5958	to	5999	698 131 2138	to	2157
637 562 5828	to	5899	650 130 3400	to	3599	676 669 1024	to	1099	698 227 0000	to	0099
638 042 1647	to	1699	650 213 0406	to	0499	677 126 6734	to	6799	700 065 2570	to	2599
638 049 4984	to	4999	650 555 1749	to	1799	677 333 9979	to	9999	700 065 4800	to	4899
638 318 1115	to	1199	650 564 1900	to	1999	677 466 1088	to	1099	700 190 3350	to	3359
638 318 1453	to	1499	650 627 4212	to	4299	678 071 4500	to	4799	700 228 6048	to	6099
638 885 0000	to	0299	650 736 2043	to	2099	678 096 7531	to	7599	700 650 0452	to	0499
638 903 4362	to	4373	650 739 1540	to	1699	679 909 2578	to	2599	700 666 1323	to	1349
639 415 1929	to	1999	651 741 4415	to	4499	680 112 9565	to	9599	700 786 9106	to	9142
639 415 2019	to	2099	651 882 2800	to	2899	680 244 0903	to	0999	700 859 0744	to	0758
639 420 6200	to	6299	652 754 6317	to	6399	680 412 6046	to	6099	701 028 6780	to	6899
639 469 3517	to	3799	653 131 4945	to	4999	680 761 6800	to	6899	701 213 3900	to	3999
639 605 2143	to	2199	653 426 3300	to	3399	681 677 0540	to	0699	701 267 2000	to	3999
639 657 8600	to	8799	653 455 4874	to	4899	682 070 1029	to	1099	701 335 7312	to	7399
640 289 7500	to	7599	654 238 0000	to	0399	682 956 6280	to	6299	701 369 2005	to	2050
640 289 7700	to	7999	654 404 3065	to	3092	682 956 6490	to	6599	701 499 2260	to	2299
641 170 4420	to	4499	654 962 2900	to	3199	682 956 6700	to	6799	701 503 2247	to	2299
641 318 3133	to	3199	655 103 5081	to	5199	682 965 1178	to	1199	701 541 2271	to	2299
641 378 6500	to	6999	655 523 2600	to	2999	682 965 1201	to	1299	701 553 6557	to	6599
641 383 8739	to	8799	656 305 2448	to	2499	683 118 2389	to	2399	701 578 7460	to	7469
641 877 3187	to	3299	657 347 4438	to	4999	683 378 2000	to	2099	701 578 7475	to	7499
641 877 3310	to	3399	657 710 8100	to	8999	683 378 2117	to	2299	701 601 3457	to	3499
642 355 8094	to	8199	657 780 0985	to	0999	683 415 1200	to	1499	701 605 5913	to	5999
642 355 8308	to	8999	658 586 1400	to	1499	683 444 8159	to	8199	701 695 3982	to	3999
642 900 0018	to	0099	658 877 8000	to	8199	685 154 7780	to	7789	701 695 4148	to	4199

701 695 4227	to	4299	807 342 3283	to	3399	851 928 9221	to	9299	872 028 4850	to	4899
701 708 1741	to	1799	808 086 7100	to	7199	852 589 6560	to	6599	872 029 9306	to	9399
701 736 3966	to	3999	808 090 3440	to	3499	853 049 3646	to	3699	872 078 3709	to	3799
701 772 0870	to	0899	808 325 5161	to	5699	854 304 4089	to	4999	872 100 0445	to	0459
701 838 2800	to	2899	808 784 8000	to	8299	854 529 2200	to	2299	900 556 4178	to	4199
701 941 0600	to	0699	830 125 0672	to	0699	854 532 0000	to	2999	900 845 0044	to	0099
702 171 1603	to	1699	830 602 5800	to	5999	855 001 6204	to	6249	900 936 0217	to	0299
702 195 5109	to	5199	830 610 3700	to	3799	855 319 9364	to	9399	900 936 0435	to	0499
702 254 9300	to	9399	830 983 3500	to	3599	855 361 3390	to	3399	901 058 5255	to	5280
702 264 7569	to	7599	830 983 3635	to	3699	856 226 0490	to	0499	901 273 1082	to	1099
702 519 0513	to	0524	831 354 1387	to	1399	856 656 5800	to	5999	901 287 5143	to	5199
702 713 1800	to	1809	831 815 8240	to	8299	856 752 0200	to	0299	901 291 2789	to	2799
702 821 5730	to	5799	832 525 3810	to	3899	857 111 1352	to	1399	901 525 7122	to	7199
702 821 5805	to	5899	833 159 1884	to	1899	857 279 3450	to	3499	902 089 1253	to	1299
702 844 6975	to	6994	833 456 2567	to	2599	857 843 4000	to	4099	902 198 9769	to	9799
702 846 6331	to	6399	833 566 3015	to	3071	858 124 7644	to	7699	902 948 1269	to	1299
702 848 3900	to	3999	834 130 5200	to	5299	858 756 3111	to	3299	902 985 0833	to	0899
702 857 7302	to	7499	834 316 5444	to	5499	859 063 8200	to	8699	903 370 6934	to	6999
702 878 0114	to	0199	834 354 8747	to	8766	859 190 0600	to	0644	904 600 6523	to	6599
703 364 1707	to	1799	834 354 8824	to	8838	859 437 5538	to	5599	904 892 0378	to	0399
740 002 7710	to	7719	835 269 5700	to	5799	859 811 2888	to	2899	904 892 0648	to	1299
740 119 2275	to	2284	835 496 7303	to	7399	859 855 8873	to	8999	905 056 2216	to	2299
740 130 6688	to	6698	835 539 5200	to	5999	860 240 8520	to	8599	905 510 6647	to	6799
740 144 2780	to	2795	835 813 3015	to	3099	860 275 3900	to	3999	905 510 6900	to	7099
740 241 9049	to	9099	837 672 8967	to	8999	860 518 9629	to	9699	905 794 0000	to	0199
740 252 9265	to	9294	837 784 3282	to	3299	860 600 0021	to	0999	905 794 0288	to	0299
740 255 1718	to	1799	838 176 8377	to	8399	861 158 2350	to	2599	905 873 6900	to	6999
740 274 2602	to	2619	838 518 1257	to	1299	861 367 5400	to	5499	905 873 7100	to	7299
740 277 0366	to	0392	839 718 8257	to	8299	861 637 6010	to	6099	905 880 8900	to	8999
740 332 7658	to	7671	840 323 0600	to	0699	861 979 7292	to	7499	905 889 7100	to	7199
740 348 6641	to	6658	840 875 6235	to	6299	862 216 6100	to	6199	906 158 1508	to	1599
740 351 4790	to	4799	840 910 0900	to	0999	862 263 9213	to	9299	906 558 8812	to	8899
740 374 7416	to	7499	841 349 5000	to	5099	862 271 0800	to	0999	906 982 2214	to	2299
740 470 2420	to	2443	841 805 7747	to	7899	862 271 5000	to	5099	907 725 8500	to	8599
740 514 0300	to	0499	841 805 7944	to	8099	863 871 5138	to	5199	907 815 0216	to	0257
740 523 7432	to	7449	842 226 0685	to	0695	863 949 5300	to	5399	908 622 4225	to	4235
740 535 1555	to	1580	842 685 4600	to	4699	864 088 8200	to	8299	908 936 9254	to	9299
740 557 3570	to	3579	842 685 4742	to	4999	864 426 3972	to	3999	909 066 4494	to	7499
740 650 4104	to	4140	842 860 0300	to	0399	864 520 6117	to	6136	909 067 7400	to	7499
740 684 0620	to	0800	842 898 5582	to	5599	865 151 0526	to	0599	909 100 1787	to	1799
740 701 6105	to	6114	843 062 7100	to	7199	865 500 4034	to	4099	909 100 1900	to	2099
740 705 9790	to	9799	843 077 6288	to	6299	865 883 6082	to	6099	909 355 0422	to	0499
740 726 6400	to	6500	843 077 6378	to	6399	866 004 3000	to	3999	909 568 8900	to	9099
740 748 8319	to	8329	843 758 5769	to	5778	866 442 4100	to	4899	909 568 9300	to	9499
740 765 3306	to	3399	843 786 2554	to	2699	867 366 9108	to	9118	909 725 7307	to	7399
740 774 8434	to	8499	845 656 8165	to	8199	867 633 7403	to	7499	909 833 0947	to	0999
740 786 1885	to	1899	845 727 2100	to	2199	867 737 5623	to	5699	910 219 8631	to	8699
740 790 5989	to	5999	845 746 2618	to	2635	868 169 4529	to	4599	910 265 1100	to	1199
740 820 4854	to	7836	846 390 7531	to	7599	868 173 8400	to	8599	910 471 7273	to	7299
740 827 7578	to	7594	846 918 0572	to	0599	868 514 9000	to	9099	910 536 2505	to	2599
740 917 7490	to	7499	847 237 7690	to	7699	868 566 9200	to	9299	910 958 7499	to	7599
740 918 5531	to	5549	847 284 2481	to	2499	869 200 0000	to	9999	911 140 1000	to	2199
741 037 8528	to	8551	847 374 7055	to	7065	869 387 1150	to	1199	911 245 2545	to	2599
742 030 6135	to	6149	847 374 7055	to	7065	869 505 3500	to	3599	911 268 9077	to	9099
742 033 2663	to	2674	847 636 5304	to	5399	869 523 7033	to	7099	911 400 8948	to	8999
742 040 3300	to	3309	847 700 5447	to	5499	869 566 6150	to	6167	911 508 1620	to	1799
742 151 5000	to	5014	847 723 7500	to	7599	869 800 0000	to	9999 9999	911 509 9310	to	9399
742 191 4640	to	4649	849 485 3427	to	3499	870 054 4814	to	4899	911 523 3000	to	3999
742 192 5210	to	5224	849 520 9850	to	9899	870 491 4812	to	4849	912 057 9922	to	9999
742 228 9660	to	9669	849 608 1357	to	1399	870 536 5820	to	5829	912 882 0563	to	0899
805 885 8411	to	8499	849 792 2600	to	2699	870 541 7167	to	7239	913 605 2218	to	2299
806 087 1100	to	1499	850 546 1862	to	1899	870 575 8155	to	8999	913 709 2429	to	2499
806 268 9275	to	9299	851 143 6826	to	6844	870 589 0485	to	0494	913 818 3501	to	3999
806 534 3400	to	3477	851 209 9880	to	9899	870 691 7060	to	7099	914 063 4300	to	4399

914 346 7621 to 7644	918 951 7231 to 7299	923 032 7000 to 7399	930 219 1722 to 1799
914 453 1366 to 1399	919 519 2786 to 2799	923 045 3630 to 3699	930 335 7810 to 7819
914 529 6185 to 6299	919 536 0770 to 0799	923 484 3600 to 3699	931 097 9259 to 9299
914 896 4658 to 4699	919 814 3095 to 3199	923 493 9403 to 9599	931 156 1502 to 1579
915 187 8774 to 8779	919 889 5110 to 5134	923 493 9681 to 9699	931 156 1600 to 1625
915 300 2783 to 2799	919 889 5137 to 5176	923 604 4424 to 4499	931 156 1671 to 1699
915 546 6822 to 6999	919 889 5178 to 5199	923 810 7800 to 8299	932 506 6400 to 6599
915 646 5183 to 5199	919 889 5030 to 5070	924 252 1200 to 1299	932 732 1796 to 1799
915 671 3963 to 3980	919 889 5090 to 5099	924 252 1400 to 1499	932 827 9026 to 9099
915 671 3982 to 3999	919 915 2774 to 2787	924 533 0711 to 0799	932 957 2300 to 2399
915 675 2217 to 2299	920 155 4662 to 4687	924 533 2343 to 2399	933 060 6160 to 6189
916 440 3377 to 3399	920 309 9039 to 9199	924 533 2428 to 2499	933 387 2541 to 2561
916 670 6352 to 6399	920 771 5321 to 5399	924 685 1957 to 1999	933 760 3609 to 4199
916 682 5300 to 5399	920 857 5500 to 5899	924 946 6300 to 6699	933 894 0928 to 0999
916 694 1414 to 1499	920 864 3480 to 3499	925 333 5900 to 6099	934 018 2729 to 2741
916 703 0802 to 0821	920 963 4567 to 4599	925 336 2300 to 2399	934 180 0300 to 0399
917 089 0709 to 0799	921 333 7400 to 7499	926 432 5907 to 5999	934 236 3954 to 3999
917 089 0842 to 0899	921 477 3762 to 3799	926 436 3600 to 3699	934 622 8717 to 8999
917 216 2928 to 2999	922 278 1048 to 1399	927 765 6257 to 6299	935 216 0312 to 0399
917 370 6300 to 6499	922 280 2019 to 2099	928 197 8100 to 8199	935 843 2202 to 2247
917 486 4900 to 4999	922 280 2233 to 2299	928 197 8283 to 8299	936 024 8889 to 8899
918 460 0602 to 0699	922 773 0459 to 0499	928 856 2059 to 2068	936 339 4455 to 4499

— Criminal Investigations Group, Postal Inspection Service, 10-2-14

Missing, Lost, or Stolen Canadian Money Order Forms

Do Not Cash — Upon Receipt, Notify Local Postal Inspectors

This listing will be provided to all Postal Service™ employees responsible for accepting and cashing postal money orders. Destroy all interim notices when the numbers listed appear in the *Postal Bulletin*. The new money

order serial numbers consist of the first 9 digits. The 10th digit is a check digit only.

Do not cash outdated money orders **104 151 601 to 692 600 000**. Advise holders to send invalid money orders to: Canada Post Corporation, Ottawa, Canada K1A 0B1. Check for altered dollar amounts by holding money orders to the light.

719 869 731	to	9 760	728 702 338	to	2 400	734 950 111	to	0 170	742 408 771	to	8 830
720 227 871	to	7 930	728 915 371	to	5 850	735 120 331	to	0 840	742 512 120	to	2 150
720 227 949	to	7 960	728 953 141	to	3 410	735 283 008	to	3 020	742 684 849	to	4 890
720 368 543	to	8 570	728 954 280	to	4 310	735 293 131	to	3 220	742 839 553	to	9 630
720 392 151	to	2 570	729 169 081	to	9 140	735 635 010	to	5 040	742 913 668	to	3 700
720 556 491	to	6 640	729 363 841	to	3 870	735 783 961	to	3 990	742 917 287	to	7 296
720 558 621	to	8 650	729 682 891	to	3 190	735 803 401	to	3 430	742 921 891	to	1 980
720 575 361	to	5 570	729 838 940	to	9 070	736 005 420	to	5 440	742 983 631	to	3 810
720 590 152	to	0 179	729 839 101	to	9 130	736 366 021	to	6 110	743 020 021	to	0 170
721 638 331	to	9 170	730 077 683	to	7 840	736 624 456	to	4 500	743 206 491	to	6 500
721 815 391	to	5 420	730 109 847	to	9 880	736 670 851	to	1 060	743 235 992	to	6 050
721 969 713	to	9 740	730 373 761	to	3 850	736 767 061	to	7 090	743 940 631	to	0 900
722 072 137	to	2 160	730 501 951	to	2 130	736 767 093	to	7 120	743 978 011	to	8 070
722 378 265	to	8 280	730 519 379	to	9 470	736 982 191	to	2 370	744 234 751	to	4 780
722 413 990	to	4 004	730 569 278	to	9 360	736 982 551	to	2 730	744 499 591	to	9 680
722 764 948	to	4 980	730 711 711	to	1 740	737 110 141	to	0 170	744 626 901	to	6 910
722 825 840	to	5 889	730 722 991	to	3 230	737 185 501	to	5 710	745 388 794	to	8 910
723 153 841	to	3 850	730 845 970	to	5 990	737 317 321	to	7 350	746 446 806	to	6 820
723 237 616	to	7 630	730 888 291	to	8 320	737 517 781	to	7 840	746 818 351	to	8 410
723 331 081	to	1 110	730 927 591	to	7 680	737 628 181	to	8 210	747 245 266	to	5 280
723 496 443	to	6 470	731 307 914	to	7 930	737 634 258	to	4 270	747 364 813	to	4 830
723 967 291	to	7 320	731 402 431	to	2 460	738 361 971	to	1 980	747 501 434	to	1 450
724 655 196	to	5 340	731 407 232	to	7 320	738 447 601	to	7 660	747 739 891	to	0 070
724 711 441	to	1 500	731 588 301	to	8 340	738 648 355	to	8 450	748 148 649	to	8 760
724 711 538	to	1 560	731 767 273	to	7 320	738 849 811	to	9 900	748 259 960	to	9 970
724 793 221	to	3 250	731 781 061	to	1 120	738 892 270	to	2 290	748 565 162	to	5 280
724 908 109	to	8 120	731 837 821	to	7 910	738 997 259	to	7 380	748 874 988	to	5 030
724 937 461	to	7 670	731 841 377	to	1 450	739 161 451	to	1 540	749 137 381	to	7 410
725 163 118	to	3 151	732 018 481	to	8 600	739 219 381	to	9 440	749 190 192	to	0 210
725 202 735	to	2 750	732 067 972	to	8 370	739 740 151	to	0 180	749 685 421	to	5 450
725 398 591	to	8 800	732 188 649	to	8 670	739 793 491	to	3 520	749 846 791	to	6 850
725 464 591	to	4 920	732 193 460	to	3 470	739 793 527	to	3 550	749 993 131	to	3 580
725 475 321	to	5 330	732 201 241	to	1 390	739 942 621	to	2 650	750 071 587	to	1 610
725 711 057	to	1 070	732 220 431	to	0 440	739 999 231	to	9 320	750 408 167	to	8 183
725 738 581	to	8 730	732 355 201	to	5 380	740 011 517	to	1 530	750 438 421	to	8 501
725 981 311	to	1 430	732 472 320	to	2 560	740 030 701	to	0 970	750 743 911	to	4 030
725 987 835	to	7 880	732 541 605	to	1 620	740 261 740	to	1 820	750 779 118	to	9 400
726 060 811	to	0 900	732 572 221	to	2 490	740 265 811	to	6 290	750 910 981	to	1 010
726 391 970	to	2 520	732 586 479	to	6 710	740 299 111	to	9 170	750 960 841	to	0 900
726 484 771	to	4 800	732 994 037	to	4 080	740 299 231	to	9 260	751 296 211	to	6 240
726 493 351	to	5 300	733 163 449	to	3 460	740 329 266	to	9 320	751 539 121	to	9 180
726 504 031	to	4 063	733 297 171	to	7 290	740 889 081	to	9 090	751 541 311	to	1 790
726 504 070	to	4 090	733 446 631	to	7 110	741 010 421	to	0 530	751 757 641	to	7 700
726 504 331	to	4 390	733 474 665	to	4 770	741 113 041	to	3 370	751 936 951	to	7 010
726 563 701	to	4 060	733 704 482	to	4 570	741 373 891	to	4 340	751 951 861	to	1 890
726 599 371	to	9 460	733 751 041	to	1 130	741 452 369	to	2 490	751 999 021	to	9 110
726 626 356	to	6 370	734 009 101	to	9 130	741 492 991	to	3 140	752 139 516	to	9 570
727 182 271	to	2 510	734 290 759	to	0 770	741 553 460	to	3 470	752 182 892	to	2 950
727 416 181	to	6 240	734 389 273	to	9 290	741 764 431	to	4 520	752 206 861	to	7 100
727 481 431	to	1 460	734 440 031	to	0 111	742 178 834	to	8 880	752 295 241	to	5 600
727 749 241	to	9 780	734 797 201	to	7 320	742 325 500	to	5 520	752 731 351	to	1 410
728 382 331	to	2 480	734 939 611	to	9 640	742 325 668	to	5 700	752 767 441	to	7 470

753 008 941	to	9 030	763 155 160	to	5 180	773 231 311	to	1 340	800 872 741	to	2 830
753 194 311	to	4 370	763 178 631	to	8 660	773 348 739	to	8 940	801 349 801	to	9 830
753 620 378	to	0 400	763 506 001	to	6 060	773 348 739	to	8 940	801 676 681	to	7 100
754 013 917	to	3 940	763 522 141	to	2 470	773 575 891	to	5 950	802 967 821	to	7 940
754 161 061	to	1 120	763 717 694	to	7 800	773 852 971	to	3 030	803 217 601	to	7 780
754 358 445	to	8 610	763 826 461	to	6 520	775 373 449	to	3 460	803 729 731	to	9 850
754 410 451	to	0 660	763 900 460	to	0 471	789 257 191	to	7 250	803 747 402	to	7 520
754 438 393	to	8 410	763 900 479	to	0 530	790 448 020	to	8 460	804 138 181	to	8 420
754 493 109	to	3 130	763 917 271	to	7 750	790 597 485	to	7 530	804 428 224	to	8 250
754 664 182	to	4 220	764 125 801	to	5 860	790 911 883	to	1 900	804 682 411	to	2 710
754 816 377	to	6 470	764 284 525	to	4 560	791 057 441	to	7 550	805 272 525	to	2 540
755 487 421	to	7 600	764 526 241	to	6 330	791 239 081	to	9 290	805 523 445	to	3 460
755 592 901	to	3 140	764 601 421	to	1 600	791 374 483	to	4 500	805 745 704	to	5 730
755 790 020	to	0 030	764 650 231	to	0 470	791 387 971	to	8 030	806 452 907	to	2 980
755 791 730	to	1 800	764 984 371	to	4 850	791 447 521	to	7 850	806 744 781	to	4 850
755 926 951	to	7 070	765 003 667	to	3 680	791 451 151	to	1 240	806 982 181	to	2 300
755 934 332	to	4 510	765 042 517	to	2 540	791 500 009	to	0 470	807 764 791	to	4 910
755 957 701	to	8 000	765 194 728	to	4 970	791 771 431	to	1 490	808 089 931	to	9 960
755 962 981	to	3 280	765 387 365	to	7 450	792 004 293	to	4 320	808 656 423	to	6 450
756 035 371	to	5 490	765 541 801	to	2 100	792 018 379	to	8 420	808 753 771	to	3 800
756 301 257	to	1 290	765 638 461	to	8 970	792 070 621	to	0 740	809 189 001	to	9 010
756 371 565	to	1 580	765 647 101	to	7 190	792 145 211	to	5 230	809 886 879	to	6 930
756 876 031	to	6 120	765 813 781	to	4 029	792 391 381	to	1 620	809 890 489	to	0 500
756 876 151	to	6 240	765 879 314	to	9 390	792 452 779	to	2 790	810 323 734	to	3 760
756 970 129	to	0 140	765 954 001	to	4 030	792 772 728	to	2 770	810 367 116	to	7 140
757 059 613	to	9 630	766 120 286	to	0 320	792 903 511	to	3 990	810 526 351	to	6 500
757 078 540	to	8 560	766 125 716	to	5 750	793 282 518	to	2 533	810 806 911	to	6 940
757 086 209	to	6 240	766 158 824	to	8 840	794 041 831	to	2 040	810 807 211	to	7 240
757 240 591	to	0 650	766 388 433	to	8 460	794 397 709	to	7 780	811 423 021	to	3 110
757 277 371	to	7 700	766 509 421	to	9 660	794 581 741	to	2 040	811 517 221	to	7 239
757 291 591	to	2 730	766 572 901	to	3 020	794 592 122	to	2 150	811 721 101	to	1 130
757 964 251	to	4 280	766 748 500	to	8 521	795 032 251	to	2 340	812 025 721	to	5 900
758 067 001	to	7 090	767 024 341	to	4 370	795 796 291	to	6 350	812 093 073	to	3 130
758 105 221	to	5 250	767 326 471	to	6 590	796 070 139	to	0 160	812 100 821	to	0 840
758 324 941	to	5 000	767 332 561	to	2 950	796 143 151	to	3 630	812 465 251	to	5 610
758 593 628	to	3 650	768 009 841	to	9 960	796 159 725	to	9 740	812 918 341	to	8 670
758 709 038	to	9 060	768 011 489	to	1 520	796 169 306	to	9 340	812 918 701	to	8 760
758 744 101	to	4 160	768 177 980	to	7 990	796 373 406	to	3 430	813 050 491	to	0 520
758 850 883	to	0 900	768 391 081	to	1 170	796 602 961	to	3 050	813 073 171	to	3 200
758 860 951	to	1 550	768 661 569	to	1 650	796 708 441	to	8 500	813 398 476	to	8 550
759 152 851	to	2 880	769 000 051	to	0 080	796 886 281	to	6 430	813 713 971	to	4 000
759 740 941	to	1 090	769 050 841	to	0 900	796 901 701	to	2 000	813 858 121	to	8 150
760 004 596	to	4 610	769 159 081	to	9 178	796 975 466	to	5 590	814 789 330	to	9 349
760 118 191	to	8 250	769 737 496	to	7 510	797 272 917	to	2 950	814 984 656	to	4 680
760 155 001	to	5 090	769 778 491	to	8 730	797 519 441	to	9 460	815 016 020	to	6 030
760 378 002	to	8 020	769 827 331	to	7 450	797 519 731	to	0 240	815 199 410	to	9 420
760 692 722	to	2 749	770 216 071	to	6 100	797 535 181	to	5 330	815 240 491	to	0 520
761 055 460	to	5 480	770 723 281	to	3 400	797 646 151	to	6 180	815 755 591	to	5 620
761 169 781	to	9 810	770 790 451	to	0 480	798 040 053	to	0 080	815 755 622	to	5 650
761 504 941	to	5 120	770 915 150	to	5 490	798 055 813	to	5 830	815 806 381	to	6 680
761 516 836	to	6 910	771 455 551	to	5 610	798 055 891	to	5 950	816 126 834	to	6 870
761 613 588	to	3 600	771 609 661	to	9 690	798 326 371	to	6 520	816 156 721	to	6 780
761 688 631	to	8 690	771 932 551	to	2 580	798 339 167	to	9 210	816 580 903	to	0 920
761 805 199	to	5 240	772 057 224	to	7 440	798 562 411	to	2 440	816 945 571	to	5 600
761 826 106	to	6 120	772 162 660	to	3 070	798 632 461	to	2 490	817 253 011	to	3 280
761 881 171	to	1 560	772 718 615	to	8 640	798 807 151	to	7 510	817 763 881	to	4 060
761 975 641	to	5 670	772 940 140	to	0 160	798 944 761	to	5 030	818 330 562	to	0 610
761 975 886	to	5 895	772 970 886	to	0 940	799 118 616	to	8 640	818 459 641	to	9 670
762 304 144	to	4 170	773 009 419	to	9 430	799 133 191	to	3 220	818 926 273	to	6 320
762 324 931	to	4 960	773 112 031	to	2 060	799 177 626	to	7 650	818 950 351	to	0 380
762 439 261	to	9 290	773 125 387	to	5 410	799 854 751	to	5 200	818 962 492	to	2 530
762 524 158	to	4 220	773 179 320	to	9 410	800 044 320	to	4 410	819 032 341	to	2 730
762 584 872	to	4 970	773 202 989	to	3 140	800 211 901	to	2 440	819 127 054	to	7 080
762 593 431	to	3 460	773 208 991	to	9 290	800 427 530	to	7 540	819 278 540	to	8 670

819 544 681	to	4 740	822 900 991	to	1 020	826 582 951	to	3 430	828 732 331	to	2 390
819 928 441	to	8 650	822 925 951	to	6 100	826 720 201	to	0 230	828 807 781	to	7 840
820 034 406	to	4 430	823 284 931	to	4 990	827 005 671	to	5 830	828 830 952	to	0 963
820 070 761	to	1 540	823 293 031	to	3 210	827 287 861	to	7 950	828 939 781	to	0 050
820 191 342	to	1 360	823 556 011	to	6 100	827 291 502	to	1 520	829 002 721	to	2 870
820 274 856	to	4 880	824 078 341	to	8 370	827 575 381	to	5 470	829 005 301	to	5 540
820 600 171	to	0 230	824 156 325	to	6 340	827 609 085	to	9 100	829 080 241	to	0 330
821 172 241	to	2 360	824 511 252	to	1 270	827 619 811	to	9 840	829 160 986	to	1 000
821 229 661	to	9 720	824 588 281	to	8 370	827 883 511	to	3 600	829 176 841	to	6 930
821 229 743	to	9 780	825 140 397	to	0 460	828 160 441	to	0 530	829 471 561	to	1 590
821 903 731	to	3 910	825 409 651	to	9 680	828 376 201	to	6 260	829 561 065	to	1 080
821 927 841	to	7 850	825 472 171	to	2 200	828 441 602	to	1 630	829 566 481	to	6 510
822 505 801	to	5 830	826 042 898	to	2 920	828 539 316	to	9 340	829 569 931	to	9 960
822 703 442	to	3 470	826 226 644	to	6 670	828 539 341	to	9 370			

— Criminal Investigations Group, Postal Inspection Service, 10-2-14

Verifying U.S. Postal Service Money Orders

Follow these steps to cash a Postal Service™ money order:

1. Check that the amount does not exceed the legal limit: \$1,000 for domestic, and \$700 for international postal money orders.
2. Check that the proper security features are present:
 - When held to the light, a watermark of Benjamin Franklin is repeated from top to bottom on the left side.
 - When held to the light, a dark line (security thread) runs from top to bottom with the word “USPS” repeated.
 - There should be no discoloration around the dollar amounts, which might indicate the amounts were changes.

These appear in Postal Service Notice 299, *U.S. Postal Money Order Reference Card*, or online at <https://www.usps.com/shop/accepting-money-orders.htm>.

3. If the money order seems suspicious, call the U.S. Postal Service Money Order Verification System at 866-459-7822.

Please provide this information to local banks and retailers, as they also receive Postal Service money orders for cashing.

— Retail Channel Operations, 10-2-14

Counterfeit Canadian Money Order Forms

Do Not Cash

To be posted and used by retail window employees. As directed, destroy previous notices. Destroy all interim notices when the numbers listed appear in the *Postal Bulletin*.

671,819,086	686,794,382
676,612,640	686,794,426
677,891,039	686,794,427
678,282,493	686,794,431
678,916,031	687,262,502
679,552,215	687,262,503
679,694,334	687,262,525
679,751,983	687,262,526
679,800,207	687,287,578
681,130,536	687,287,581
681,844,376	687,287,582
683,594,542	694,063,898
684,683,610	694,063,899
686,619,878	694,063,980
686,619,886	701,321,725
686,619,887	

— Criminal Investigations Group,
Postal Inspection Service, 10-2-14

Toll-Free Number Available to Verify Canadian Money Orders

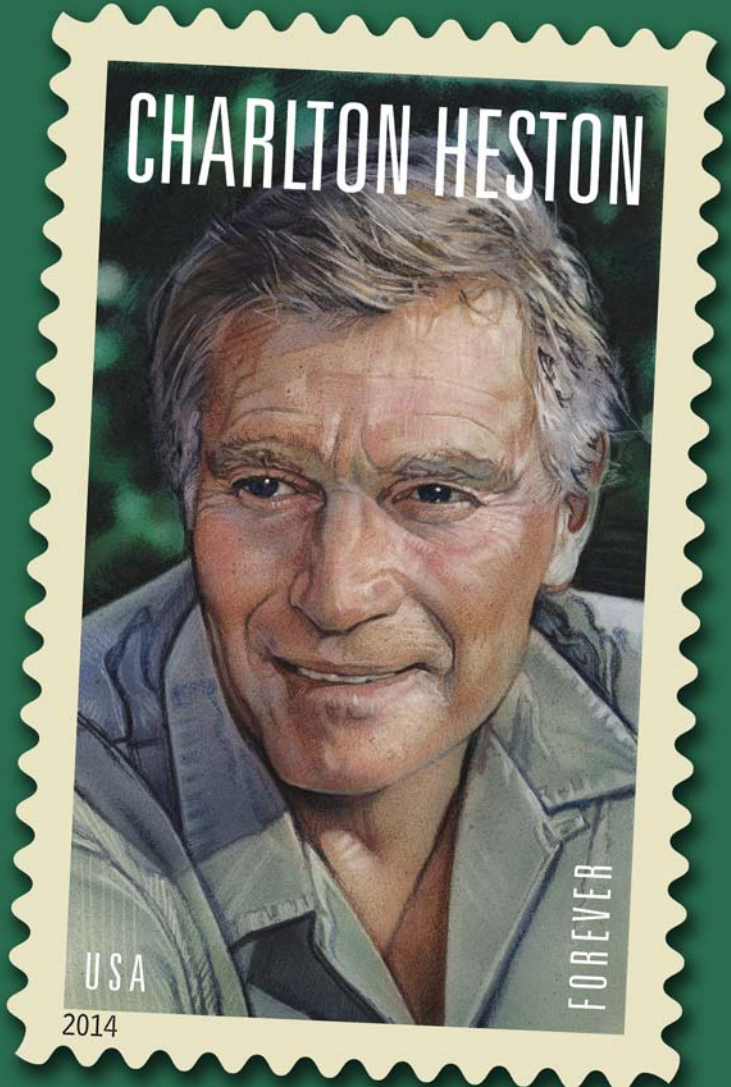
The Canada Post Corporation is now providing a toll-free number that cashing agents can call to verify the validity of Canadian Postal Money Orders. The number is 800-563-0444.

This toll-free number is printed on the back of the Canadian Postal Money Orders.

— Criminal Investigations Group,
Postal Inspection Service, 10-2-14

USPS® Presents **Charlton Heston**

Forever®
Stamp for
*Legends of
Hollywood
Series.*



On Sale Nationwide:
April 11, 2014

Name and image of Charlton Heston licensed by the Charlton Heston Family Trust.

Other Information

Overseas Military/Diplomatic Mail

Mail addressed to military and diplomatic post offices overseas is subject to certain conditions or restrictions of mailing regarding content, preparation, and handling. The APO/FPO/DPO table below outlines these conditions by APO/FPO/DPO ZIP Codes™ through the use of footnoted mailing restrictions codes (see the [Restrictions](#) page following the table).

Acceptance clerks should use the table with the POS ONE terminal to determine which APO/FPO/DPO ZIP Codes are active and which conditions of mailing apply. Inquiries may be sent to the Military Postal Service Agency at <https://amps.mpsa.mil/jy2/frm.htm>.

The entries under “Changes” appear in bold in the APO/FPO/DPO table starting below.

Changes

APO/FPO/DPO	Action	Effective Date	See Restrictions
FPO AE 09313	Open	10/02/2014	A-A1-A2-B-C-C1-E2-F-F1-F2-H1-R-R1-V-Z1
APO AE 09364	Close	10/02/2014	
APO AE 09368	Close	10/02/2014	
FPO AE 09369	Close	10/02/2014	
FPO AE 09372	Close	10/02/2014	
FPO AE 09373	Close	10/02/2014	
APO AE 09382	Close	10/02/2014	

We have eliminated “Not Active” entries from the table below to save space and paper.

APO/FPO/DPO Table

APO/ FPO/ DPO	See Restrictions	APO/ FPO/ DPO	See Restrictions	APO/ FPO/ DPO	See Restrictions	APO/ FPO/ DPO	See Restrictions
09002	A1-A2-B-C-D-E-H-M-R-U	09038	A1-A2-B-C-D-E-H-M-R-U	09103	A1-A2-B-C-D-E-H-U	09173	A1-A2-B-C-D-E-H-M-R-U
09003	A1-A2-B-C-D-E-H-M-P-R-U	09046	A1-A2-B-C-D-E-H-M-R-U	09104	A1-A2-B-C-D-H-M-R-U-Z1	09177	A1-A2-B-C-D-E-H-M-R-U
09004	A1-A2-B-C-D-E-H-M-R-U	09049	A1-A2-B-C-D-E-H-M-R-U	09107	A1-A2-B-C-D-E-H-M-R-U	09180	A1-A2-B-C-D-H-M-R-U
09005	A1-A2-B-C-D-E-H-M-P-R-U	09053	A1-A2-B-C-D-E-H-M-R-U	09112	A1-A2-B-C-D-E-H-M-R-U	09186	A1-A2-B-C-D-E-H-M-R-U
09006	A1-A2-B-C-D-E-H-M-R-U	09054	A1-A2-B-C-D-E-H-M-R-U	09114	A1-A2-B-C-D-E-H-M-R-U	09211	A1-A2-B-C-D-E-H-M-P-R-U
09009	A1-A2-B-C-D-E-H-M-R-U-Z1	09055	A1-A2-B-C-D-E-F-H-M-R-R1-U-V	09123	A1-A2-B-C-D-E-H-M-R-U-Z1	09213	A1-A2-B-C-D-E-F-F1-H-J-L-M-N-R-T-U-V-Z1
09011	A1-A2-B-C-D-E-H-M-R-U	09059	A1-A2-B-C-D-E-H-M-R-U	09126	A1-A2-B-C-D-H-M-P-R-Z1	09214	A1-A2-B-C-D-E-H-M-R-U-Z1
09012	A1-A2-B-C-D-E-H-M-R-U-Z1	09060	A1-A2-B-C-D-E-F1-H-M-R-U-Z1	09128	A1-A2-B-C-D-E-H-M-R-U	09226	A1-A2-B-C-D-E-H-M-R-U
09013	A1-A2-B-C-D-E-F-F1-H-M-R-U-Z1	09067	A1-A2-B-C-D-E-H-M-R-U	09131	A1-A2-B-C-D-E-H-M-R-U	09227	A1-A2-B-C-D-E-H-M-R-U
09014	A1-A2-B-C-D-E-H-M-R-U	09068	A1-A2-B-C-D-E-H-U-Z1	09136	A1-A2-B-C-D-E-F1-H-M-P-R	09245	A1-A2-B-C-D-E-H-M-R-U
09016	A1-A2-B-C-D-E-H-M-P-R	09069	A-A1-A2-B-C-D-E-H-N-U-V	09138	A1-A2-B-C-D-H-M-R-U	09250	A1-A2-B-C-D-E-H-M-R-U
09020	A1-A2-B-C-D-E-H-M-R-U	09075	A1-A2-B-C-D-E-H-M-R-U	09139	A1-A2-B-C-D-E-H-M-R-U	09261	A1-A2-B-C-D-E-F1-H-M-R-U-V-Z1
09021	A1-A2-B-C-D-E-H-M-R-U-Z1	09079	A1-A2-B-C-D-E-H-M-R-U	09140	A1-A2-B-C-D-E-H-M-R-U	09263	A1-A2-B-C-D-E-H-M-R-U
09028	A1-A2-B-C-D-E-H-M-R-U	09090	A1-A2-B-C-D-E-H-M-P-R-U	09142	A1-A2-B-C-D-E-H-M-R-U	09264	A1-A2-B-C-D-E-H-M-R-U
09033	A1-A2-B-C-D-E-H-M-R-U	09094	A1-A2-B-C-D-H-M-P-R-Z1	09143	A1-A2-B-C-D-E-H-M-R-U	09265	A1-A2-B-C-D-E-F-F1-H-J-L-M-N-R-T-U-V-Z1
09034	A1-A2-B-C-D-E-H-M-R-U	09095	A1-A2-B-C-D-E-H-M-R-U	09154	A1-A2-B-C-D-E-H-M-R-U	09302	A-A1-A2-B-C1-F-F1-H-M-N-V-Z-Z1
		09096	A1-A2-B-C-D-E-H-M-R-U	09172	A1-A2-B-C-D-E-H-M-R-U		

APO/ FPO/ DPO	See Restrictions	APO/ FPO/ DPO	See Restrictions	APO/ FPO/ DPO	See Restrictions	APO/ FPO/ DPO	See Restrictions
09304	A-A1-A2-C-C1-D-E2-F-F1-H1-J-K-L-M-N-R-R1-T-V-Z1	09461	A1-A2-B-C-C1-M-P-R-U-Z1	09594	A1-A2-B-V	09712	A-A1-A2-B-F-H-N-R-U-V-Z1
		09463	A1-A2-B-C-C1-R-U-Z1	09595	A1-A2-B-F-F1-R-R1-V	09713	A1-A2-B-C-F1-R
09305	A-A1-A2-B-C1-E2-F-F1-H1-M-N-R-R1-T-V-Z1	09464	A1-A2-B-C-C1-R-U-Z1	09599	A1-A2-B-F-F1-R-R1-V	09714	A1-A2-B-C-C1-F1-M-R-R1-U
09306	A-A1-A2-B-C1-E2-F-F1-H1-R-R1-U2-V-Z1	09468	A1-A2-B-C-C1-M-R-U-Z1	09602	A1-A2-B-C-F-F1-N-R-U-V	09715	A1-A2-B-F-F1-J-L-M-N-R-T-V-Z1
09307	A1-A2-B-N-V-Z1	09469	A1-A2-B-C-C1-R-U-Z1	09603	A1-A2-B-C-F-F1-R-U-V-Z1	09716	A1-A2-B-C-F-F1-J-L-M-N-R-T-V-Z1
09309	A-A1-A2-B-C1-E2-F-H1-M-N-R-V-Z1	09470	A1-A2-B-C-C1-M-R-U-Z1	09604	A1-A2-B-C-F-F1-P-R-U-V-Z1	09717	A-A1-A2-B-M-R-V-W-Z1
09310	A-A1-A2-B-C1-E2-F-H1-M-N-R-V-Z1	09494	A1-A2-B-C-C1-M-R-U-Z1	09605	A1-A2-B-C-D-H-M-R-U-V	09718	A1-A2-B-F-F1-J-L-M-N-R-T-U-V-Z1
09313	A-A1-A2-B-C1-E2-F-F1-F2-H1-R-R1-V-Z1	09496	A1-A2-B-C-C1-R-U-V-Z1	09606	A1-A2-B-C-D-H-M-R-U-V	09719	A1-A2-B-C-D-M-R-U-V-Z1
09315	A-A1-A2-B-C1-E2-F-N-R-R1-V-Z1	09498	A1-A2-B-C-C1-F-F1-F2-J-L-N-R-R1-T-V-Z1	09607	A-A1-A2-B-C-F-F1-M-N-R-R1-U-U3-V-W-Z1	09720	A1-A2-B-M-R-U-V-Z1
09320	A-A1-A2-B-C1-E2-F-H1-M-N-R-R1-V-Z1	09501	A1-A2-B-V	09608	A1-A2-B-C-F-N-R-U-V-Z1	09722	A-A1-A2-B-F-H-N-Q-V-Z-Z1
09321	A-A1-A2-B-C1-E2-F-H1-N-R-R1-V-Z1	09502	A1-A2-B-V	09609	A1-A2-B-C-F-R-U-Z1	09723	A1-A2-B-F-F1-J-L-M-N-R-T-U-V-Z1
09328	A-A1-A2-B-C1-E2-F-H1-R-R1-V-Z1	09504	A1-A2-B-V	09610	A1-A2-B-C-F-F1-M-R-U-V-Z1	09724	A1-A2-B-C-C1-F1-M-R-R1-U
09330	A-A1-A2-B-C1-E2-F-F1-H1-M-R-R1-V-Z1	09505	A1-A2-B-V	09613	A1-A2-B-C-F-N-U-V	09725	A-A1-A2-B-F-H-N-O-Q-V-V1-Z-Z1
09337	A-A1-A2-B-C1-E2-F-F1-H1-M-R-R1-V-Z1	09506	A1-A2-B-V	09617	A1-A2-B-C-F-R-U-Z1	09726	A1-A2-B-F-F1-J-L-M-N-R-T-U-V-Z1
09340	A-A1-A2-B-C1-F-H-N-R-V	09507	A1-A2-B-V	09618	A1-A2-B-C-F-R-U-Z1	09727	A-A1-A2-B-B2-C-C1-D-F-F1-J-L-M-N-R-R1-T-V-Z1
09343	A-A1-A2-B-C1-F-M-N-V-Z1	09510	A-A1-A2-B-C1-E2-F-H1-M-R-R1-V-Z1	09620	A1-A2-B-C-F-R-U-Z1	09728	A-A1-A2-B-B2-C-C1-F-F1-J-L-N-R-R1-T-V-Z1
09347	A-A1-A2-B-C1-E2-F-H1-M-R-R1-V-Z1	09513	A1-A2-B-F-F1-R-R1-V	09621	A1-A2-B-C-F-R-U-Z1	09729	A1-A2-B-C-F-N-R-R1-U-V-Z1
09352	A-A1-A2-B-C1-E2-F-H1-M-R-R1-V-Z1	09517	A1-A2-B-F-F1-R-R1-V	09622	A1-A2-B-C-F-R-U-Z1	09730	A-A2-B-B2-C-C1-F-F1-J-L-M-N-R-R1-T-V-Z1
09354	A-A1-A2-B-C1-E2-F-H1-M-R-R1-V-Z1	09520	A1-A2-B-F-F1-R-R1-V	09623	A1-A2-B-C-F-R-U-Z1	09731	A-A2-B-B2-C-C1-F-F1-J-L-M-N-R-R1-T-V-Z1
09355	A-A1-A2-B-C1-E2-F-H1-M-R-R1-V-Z1	09523	A1-A2-B-F-F1-R-R1-V	09624	A1-A2-B-C-F-F1-J-L-N-T-U-V-Z1	09732	A1-A2-B-N-V-Z1
09356	A-A1-A2-B-C1-E2-F-H1-M-N-R-R1-V-Z1	09524	A1-A2-B-F-F1-R-R1-V	09625	A1-A2-B-C-F-R-U-Z1	09733	A1-A2-B-N-V
09357	A-A1-A2-B-C1-E2-F-H1-M-R-R1-V-Z1	09532	A1-A2-B-F-F1-R-R1-V	09626	A1-A2-B-C-F-R-U-Z1	09734	A-A1-A2-B-C-C1-F-F1-J-L-M-N-R-R1-T-V-Z1
09360	A1-A2-B-V	09534	A1-A2-B-F-F1-R-R1-V	09627	A1-A2-B-C-F-R-U-Z1	09735	A1-A2-B-N-V-Z1
09363	A-A1-A2-B-C1-E2-F-H1-M-R-R1-V-Z1	09543	A1-A2-B-F-F1-R-R1-V	09630	A1-A2-B-C-F-U-V	09736	A-A1-A2-B-B2-C-C1-D-F-F1-J-L-M-N-R-R1-T-V-Z1
09365	A-A1-A2-B-C1-E2-F-H1-M-N-R-V-Z1	09554	A1-A2-B-F-F1-R-R1-V	09631	A1-A2-B-C-F-R-U-Z1	09737	A-A1-A2-B-B2-C-C1-F-F1-I-L-M-N-R-R1-T-V-W-Y-Z-Z1
09366	A-A1-A2-B-C1-E2-F-F1-H1-M-R-R1-V-Z1	09556	A1-A2-B-F-F1-R-R1-V	09633	A1-A2-B-B2-C-D-F-F1-M-R-U-U1-U2-U3-V-Z1	09738	A-A1-A2-B-B2-C-C1-D-F-F1-J-L-M-N-R-R1-T-V-Z1
09397	A-A1-A2-B-C1-E2-F-F1-H1-M-N-R-R1-T-V-Z1	09564	A1-A2-B-F-F1-R-R1-V	09636	A1-A2-B-C-F-R-U-Z1	09739	A-A1-A2-B-B2-C-C1-D-F-F1-J-L-M-N-R-R1-T-V-Z1
09403	A1-A2-B-C-C1-M-R-U-Z1	09565	A1-A2-B-F-F1-R-R1-V	09642	A1-A2-B-M-N-R-U	09741	A-A1-A2-B-C1-E2-F-F1-H1-J-L-M-N-R-R1-T-V-W-Y-Z1
09421	A1-A2-B-C-C1-M-R-U-Z1	09566	A1-A2-B-F-F1-R-R1-V	09643	A1-A2-B-M-R-U-V-Z1	09742	A-A1-A2-B-B2-F-F1-J-L-M-N-R-T-V-Z1
09447	A1-A2-B-C-C1-R-U-V-Z1	09567	A1-A2-B-F-F1-R-R1-V	09644	A1-A2-B-C-F-F1-R-U-Z1	09743	A-A1-A2-B-F-H-N-Q-V-Z-Z1
09454	A1-A2-B-C-C1-M-R-U-V-Z1	09568	A1-A2-B-V	09647	A1-A2-B-M-N-R-U-Z1		
09459	A1-A2-B-C-C1-M-R-U-Z1	09569	A1-A2-B-F-F1-R-R1-V	09648	A1-A2-B-N-R-U-V-Z1		
		09570	A1-A2-B-F-F1-R-R1-V	09649	A1-A2-B-N-R-U-Z1		
		09573	A1-A2-B-F-F1-R-R1-V	09701	A-A1-A2-B-B2-C-C1-D-F-F1-J-L-M-N-R-R1-T-V-Z1		
		09574	A1-A2-B-F-F1-R-R1-V	09702	A1-A2-B-C-C1-F1-M-R-R1-U		
		09575	A1-A2-B-F-F1-R-R1-V	09703	A1-A2-B-C-F1-H-U		
		09576	A1-A2-B-F-F1-R-R1-V	09704	A1-A2-B-C-O-V-V1		
		09577	A1-A2-B-V	09705	A1-A2-B-U		
		09578	A1-A2-B-F-F1-R-R1-V	09706	A1-A2-B-C-N-R-U-V-Z1		
		09579	A1-A2-B-F-F1-R-R1-V	09707	A1-A2-B-C-F-F1-J-L-M-N-R-T-U-V-Z1		
		09581	A1-A2-B-F-F1-R-R1-V	09708	A1-A2-B		
		09582	A1-A2-B-F-F1-R-R1-V	09710	A1-A2-B-C-C1-F-F1-J-L-M-N-R-R1-T-U-V-Z1		
		09586	A1-A2-B-F-F1-R-R1-V				
		09587	A1-A2-B-F-F1-R-R1-V				
		09588	A1-A2-B-V				
		09589	A1-A2-B-V				
		09590	A1-A2-B-V				
		09591	A1-A2-B-F-F1-R-R1-V				
		09593	A1-A2-B-V				

APO/ FPO/ DPO	See Restrictions	APO/ FPO/ DPO	See Restrictions	APO/ FPO/ DPO	See Restrictions	APO/ FPO/ DPO	See Restrictions
09744	A-A2-B-B2-C-C1-F-F1-J-L-M-N-R-R1-T-V-Z1	09814	A1-A2-B-E2-E3-F-F1-I-J-L-N-R-T-U-V-Z-Z1	09861	A-A1-A2-B-F-F1-N-O-R-R1-Z1	34037	A1-A2-B-C-F-F1-H-I-L-M-N-T-V-Z-Z1
09745	A-A1-A2-B-F-F1-M-N-R-R1-V-Z1	09816	A-A1-A2-B-B2-C-C1-E2-E3-F-F1-J-L-N-R-R1-T-V-Z1	09865	A-A1-A2-B-R-U-V-Z1	34038	A1-A2-B-L-M-N-U-V-Z1
09747	A1-A2-B-F-J-N-U-V-Z1	09817	A-A1-A2-B-B2-C1-E2-E3-F-F1-H-H1-J-L-M-N-R-T-V-Z1	09868	A-A1-A2-B-N-U-V-Z1	34039	A1-A2-B-F-F1-J-L-M-N-T-V-Z1
09748	A-A1-A2-B-B2-C-C1-D-F-F1-J-L-M-N-R-R1-T-V-Z1	09818	A-A1-A2-B-C-F-M-V-Z1	09870	A-A1-A2-B-C1-E2-F-F1-H1-I-J-L-M-N-R-R1-T-U4-V-Z-Z1	34041	A1-A2-B-F-F1-J-L-M-N-T-V-Z1
09749	A-A1-A2-B-F-H-N-U-V-Z1	09820	A-A1-A2-B-B2-F-F1-H-H1-J-L-M-N-R-R1-T-V-Z1	09873	A-A1-A2-B-C1-E2-F-F1-H1-I-J-L-M-N-R-R1-T-U4-V-Z-Z1	34042	A1-A2-B-D-F-M-N-V-Z1
09750	A-A2-B-B2-C-C1-F-F1-J-L-M-N-R-R1-T-V-Z1	09821	A-A1-A2-B-F-N-R-V-Z1	09874	A-A1-A2-B-C1-E2-F-F1-H1-I-J-L-M-N-R-R1-T-U4-V-Z-Z1	34055	A1-A2-B-F-F1-J-L-M-N-T-V-Z1
09751	A1-A2-B-C-D-E-H-M-R-U	09822	A-A1-A2-B-F-R-V-Z1	09875	A-A1-A2-B-C1-E2-F-F1-H1-I-J-L-M-N-R-R1-T-U4-V-Z-Z1	34058	A1-A2-B-F-F1-R-R1-V-Z1
09754	A-A1-A2-B-F-H-N-Q-V-Z-Z1	09823	A-A1-A2-B-F-F1-J-L-N-R-T-V-Z1	09877	A-A1-A2-B-C1-E2-F-F1-H1-I-J-L-M-N-R-R1-T-U4-V-Z-Z1	34060	A1-A2-B-B2-C1-E2-F-F1-J-L-N-R-R1-T-V-Z1
09755	A-A1-A2-B-B2-C-C1-D-F-F1-J-L-M-N-Q-R-R1-T-V-Z1	09824	A-A1-A2-B-F-R-V-Z1	09880	A-A1-A2-B-C1-E2-F-F1-H1-R-R1-U-V-Z1	34078	A1-A2-B-F1-N-V-Z1
09756	A-A1-A2-B-B2-E3-F-F1-J-L-N-Q-R-R1-T-V-Z-Z1	09825	A-A1-A2-B-C-C1-D-F-F1-J-L-M-N-R-R1-T-V-Z1	09880	A-A1-A2-B-C1-E2-F-F1-H1-R-R1-U-V-Z1	34090	A1-A2-B-F-F1-R-R1-V
09759	A-A1-A2-B-B2-C-C1-E2-F-F1-F2-J-L-N-R-R1-T-V-Z1	09826	A-A1-A2-B-B2-C1-E1-E2-E3-F-F1-J-L-M-N-R-R1-T-V-W-Z1	09880	A-A1-A2-B-C1-E2-F-F1-H1-R-R1-U-V-Z1	34091	A1-A2-B-F-F1-R-R1-V
09760	A-A1-A2-B-B2-C-C1-D-F-F1-J-L-M-N-Q-R-R1-T-V-Z-Z1	09827	A-A1-A2-B-F-F1-J-L-M-N-R-T-V-Z1	09890	A1-A2-B-E2-F-H1-N-R-R1-U2-V-Z1	34092	A1-A2-B-F-F1-R-R1-V
09762	A-A1-A2-B-B2-E3-F-F1-J-L-N-R-R1-T-V-Z1	09828	A-A1-A2-B-F-F1-J-L-N-T-V-Z1	09892	A-A1-A2-B-E2-F-F1-J-L-N-R-R1-T-V-Z1	34093	A1-A2-B-F-F1-R-R1-V
09769	A-A1-A2-B-B2-C-C1-D-F-F1-J-L-M-N-R-R1-T-V-Z1	09829	A1-A2-B-C-N-R-V-Z1	09898	A1-A2-B-E2-F-H1-N-R-R1-U2-V-Z1	34094	A1-A2-B-F-F1-R-R1-V
09777	A-A1-A2-B-C-E1-F-F1-L-M-N-R-T	09830	A1-A2-B-C-M-N-R-V-Z1	34002	A1-A2-B-F-F1-J-L-N-T-V-Z1	34098	A1-A2-B-V
09780	A-A1-A2-B-F-H-N-R-V	09831	A1-A2-B-F-F1-J-L-N-T-U-V-Z1	34004	A1-A2-B-F-F1-J-L-N-T-V	34099	A1-A2-B-V
09801	A-A1-A2-B-C1-E2-F-H1-M-N-R-R1-V-Z1	09832	A-A1-A2-B-U1-V-Z1	34007	A-A1-A2-B-C1-F-F1-M-N-R-R1-V-Z1	96201	A-A1-A2-B-F1
09802	A-A1-A2-B-F-R-V-Z1	09833	A1-A2-B-U1-V-Z1	34008	A1-A2-B-B2-D-E1-F-F1-H-H1-J-L-M-N-R-R1-T-V-Z1	96202	A-A1-A2-B-F1-U
09803	A1-A2-B-E2-E3-F-F1-H1-N-R-R1-U-V-Z1	09834	A1-A2-B-E2-E3-F-F1-R-R1-U-V-Z1	34011	A1-A2-B-B2-C1-E2-F-F1-J-L-M-N-R-R1-T-V-Z1	96203	A-A1-A2-B-F1
09804	A-A1-A2-B-F-F1-N-R-V-Z1	09835	A-A1-A2-B-N-V-Z1	34020	A1-A2-B-F-F1-J-L-M-N-T-V-Z1	96204	A-A1-A2-B-F1
09805	A-A2-B-E2-E3-F-F1-R-R1-V-Z1	09836	A-A1-A2-B-C-F-F1-J-L-M-N-R-T-V-Z1	34021	A1-A2-B-F-F1-J-L-M-N-V-Z1	96205	A-A1-A2-B-F1-U
09806	A-A1-A2-B-C1-E2-F-F1-H1-J-L-M-N-R-R1-T-V-Z1	09837	A1-A2-B-E2-E3-V-Z1	34022	A1-A2-B-D-F-F1-J-L-M-N-T-V-Z1	96206	A-A1-A2-B-F1-U
09808	A-A1-A2-B-B2-C1-E2-F-F1-H-H1-J-L-N-R-R1-T-V-Z1	09838	A1-A2-B-E2-E3-U-V-Z1	34023	A1-A2-B-F-F1-J-L-M-N-T-V-Z1	96207	A-A1-A2-B-F1-U
09809	A1-A2-B-F-F1-L-N-T-V-Z1	09839	A-A1-A2-B-U-V-Z1	34024	A1-A2-B-F-F1-J-L-M-N-T-V-Z1	96209	A-A1-A2-B-F-F1-J-L-N-T-U-V-Z1
09810	A-A1-A2-B-F-F1-N-R-V-Z1	09840	A-A1-A2-B-E2-E3-V-Z1	34025	A1-A2-B-F-F1-J-L-M-N-T-V-Z1	96213	A-A1-A2-B-F1-U
09811	A1-A2-B-E2-E3-F-F1-H1-N-R-R1-U-V-Z1	09841	A-A1-A2-B-N-R-U-Z1	34030	A1-A2-B-F-F1-J-L-M-N-T-V-Z1	96214	A-A1-A2-B-F1-U
09812	A1-A2-B-E2-E3-F-F1-I-J-L-N-R-T-U-V-Z1	09842	A-A1-A2-B-F-F1-J-L-N-R-T-V-Z1	34031	A1-A2-B-F-F1-J-L-M-N-T-V-Z1	96218	A-A1-A2-B-F1-U
09813	A-A1-A2-B-B2-C1-E2-E3-F-F1-J-L-N-R-R1-T-V-Z1	09845	A-A1-A2-B-B2-E3-F-F1-J-L-M-N-R-T-V-Z1	34032	A1-A2-B-F-F1-J-L-M-N-T-V-Z1	96224	A-A1-A2-B-F1-U
		09846	A-A1-A2-B-B2-C1-F-F1-J-L-N-R-R1-T-V-Z1	34033	A1-A2-B-C-F-F1-J-L-M-N-T-V-Z1	96257	A-A1-A2-B-F1-U
		09848	A-A1-A2-B-F-M-R-V-Z1	34034	A1-A2-B-F-F1-J-L-M-N-T-V-Z1	96258	A-A1-A2-B-F1-U
		09852	A1-A2-B-E2-E3-F-F1-H1-N-R-R1-U-V-Z1	34035	A1-A2-B-F-F1-H-J-L-M-N-T-V-Z1	96260	A-A1-A2-B-F1-U
		09853	A1-A2-B-E2-F-H1-R-R1-U2-V-Z1	34036	A1-A2-B-F-F1-J-L-M-N-T-V-Z1	96264	A-A1-A2-B-F1-U
		09855	A-A1-A2-B-C1-E2-F-F1-H1-R-R1-U2-V-Z1			96266	A-A1-A2-B-F1-U
		09858	A1-A2-B-E2-E3-F-F1-H1-N-R-R1-U-V-Z1			96267	A-A1-A2-B-F1-U-V
		09859	A1-A2-B-C1-E2-E3-F-F1-H1-R-R1-V-Z1			96269	A-A1-A2-B-F1-U-Z1
						96271	A-A1-A2-B-F1-U
						96275	A-A1-A2-B-F1-V
						96276	A-A1-A2-B-F1
						96278	A-A1-A2-B-F1-U
						96283	A-A1-A2-B-F1-U
						96284	A-A1-A2-B-F1-U-V
						96303	A1-A2-B-F-F1-H-J-L-M-N-T-V-W-Z1
						96306	A1-A2-B-F-F1-F2-H-M-W-Z1
						96309	A1-A2-B-M-V-W
						96310	A1-A2-B-M-W
						96319	A1-A2-B-M-W
						96321	A1-A2-B-F-F1-F2-H-M-W-Z1

APO/ FPO/ DPO	See Restrictions	APO/ FPO/ DPO	See Restrictions	APO/ FPO/ DPO	See Restrictions	APO/ FPO/ DPO	See Restrictions
96322	A1-A2-B-F-F1-F2-H-M-W-Z1	96380	A1-A2-B-M-W	96542	A1-A2-B-V-Z1	96620	A1-A2-B-F-F1-R-R1-V
96323	A1-A2-B-M-V-W	96382	A1-A2-B-M-W	96543	A1-A2-B-P-V-Z1	96621	A1-A2-B-V
96326	A1-A2-B-M-W	96384	A1-A2-B-M-W	96546	A1-A2-B-F-U3	96622	A1-A2-B-F-F1-R-R1-V
96328	A1-A2-B-M-W	96385	A1-A2-B-M-W	96548	A-A1-A2-B-H-M-U	96624	A1-A2-B-F-F1-R-R1-V
96330	A1-A2-B-M-W	96386	A1-A2-B-M-W	96549	A-A1-A2-B-F-F1-H-J-L-M-N-T-U-V-Z1	96628	A1-A2-B-F-F1-R-R1-V
96331	A1-A2-B-M-W	96387	A1-A2-B-M-W	96550	A-A1-A2-B-H-M-U-V-Z1	96629	A1-A2-B-F-F1-R-R1-V
96336	A1-A2-B-M-V-W	96388	A1-A2-B-M-W	96551	A-A1-A2-B-F-F1-H-J-L-M-N-T-U-V-Z1	96631	A-A1-A2-B-C1-E2-F-H1-M-R-R1-V
96337	A1-A2-B-M-W	96389	A1-A2-B-M-W	96552	A1-A2-B-Z1	96643	A1-A2-B-F-F1-R-R1-V
96338	A1-A2-B-M-W	96401	A1-A2-B-F-N-O-V-V1-Z1	96553	A-A1-A2-B-F-F1-H-M-U	96650	A1-A2-B-F-F1-R-R1-V
96339	A1-A2-B-M-V-W	96427	A-A1-A2-B-C1-E2-F-H1-M-R-R1-V	96554	A-A1-A2-B-F-F1-H-J-L-M-N-T-U-V-Z1	96657	A1-A2-B-F-F1-R-R1-V
96343	A1-A2-B-M-W	96447	A1-A2-B-F-N-U3-V-V1	96555	A1-A2-B-F-M-V	96660	A1-A2-B-F-F1-R-R1-V
96346	A1-A2-B-F-F1-F2-H-M-V-W-Z1	96501	A-A1-A2-B-N-V	96557	A1-A2-B-F-M-V	96661	A1-A2-B-F-F1-R-R1-V
96347	A1-A2-B-F-F1-F2-H-M-W-Z1	96502	A1-A2-B-F-N-U3-V-Z1	96556	A-A1-A2-B-B2-C-C1-D-E2-E3-F-F1-H-H1-I-L-M-N-R-T-V-Z-Z1	96662	A1-A2-B-F-F1-R-R1-V
96348	A1-A2-B-F-F1-F2-H-M-W-Z1	96503	A1-A2-B-F-N-U3-V	96577	A-A1-A2-B-F-H-M-N-U	96663	A1-A2-B-F-F1-R-R1-V
96349	A1-A2-B-F-F1-F2-H-M-W-Z1	96507	A-A1-A2-B-F-F1-H-J-L-N-T-V-Z1	96578	A1-A2-B-B2-F1-H-J-N-R	96664	A1-A2-B-V
96350	A1-A2-B-F-F1-F2-H-M-W-Z1	96510	A1-A2-B-I-N-V	96595	A1-A2-B-F-U3-V-Z1	96665	A1-A2-B-V
96351	A1-A2-B-F-F1-F2-H-M-W-Z1	96511	A1-A2-B-I-N-V	96598	A1-A2-B-N-O-V-V1	96666	A1-A2-B-V
96352	A1-A2-B-F-F1-F2-M-W-Z1	96515	A1-A2-B-D-F-U3	96599	A1-A2-B-N-V	96667	A1-A2-B-F-F1-R-R1-V
96365	A1-A2-B-M-V-W	96516	A1-A2-B-D-F-Z1	96601	A1-A2-B-V	96668	A1-A2-B-F-F1-R-R1-V
96367	A1-A2-B-L-M-W	96517	A1-A2-B-F-U3-V-Z1	96602	A1-A2-B-V	96669	A1-A2-B-F-F1-R-R1-V
96368	A1-A2-B-M-W	96520	A1-A2-B-F-N-U3-V	96603	A1-A2-B-V	96670	A1-A2-B-F-F1-R-R1-V
96370	A1-A2-B-F-F1-F2-H-M-W-Z1	96521	A1-A2-B-F-F1-J-L-N-T-U3-V-Z1	96604	A1-A2-B-V	96671	A1-A2-B-F-F1-R-R1-V
96372	A1-A2-B-M-W	96530	A-A1-A2-B-F-F1-H-H1-J-L-M-N-T-U-V-Z1	96605	A1-A2-B-V	96672	A1-A2-B-F-F1-R-R1-V
96373	A1-A2-B-M-W	96531	A-A1-A2-B-F-F1-H-M-N-U-V	96606	A1-A2-B-V	96673	A1-A2-B-V
96374	A1-A2-B-M-W	96532	A-A1-A2-B-F-F1-H-J-L-M-N-T-U-V-Z1	96607	A1-A2-B-V	96674	A1-A2-B-F-F1-R-R1-V
96375	A1-A2-B-M-W	96534	A-A1-A2-B-F-U-Z1	96608	A1-A2-B-V	96675	A1-A2-B-F-F1-R-R1-V
96376	A1-A2-B-M-W	96535	A-A1-A2-B-F-F1-J-L-N-T-V-Z1	96609	A1-A2-B-V	96677	A1-A2-B-F-F1-R-R1-V
96377	A1-A2-B-M-W	96537	A1-A2-B-V-Z1	96610	A1-A2-B-V	96678	A1-A2-B-F-F1-R-R1-V
96378	A1-A2-B-M-W	96538	A1-A2-B-V-Z1	96611	A1-A2-B-V	96679	A1-A2-B-F-F1-R-R1-V
96379	A1-A2-B-M-W	96540	A1-A2-B-V-Z1	96615	A1-A2-B-F-F1-R-R1-V	96681	A1-A2-B-V
		96541	A1-A2-B-V	96616	A1-A2-B-F-F1-R-R1-V	96682	A1-A2-B-V
				96617	A1-A2-B-F-F1-R-R1-V	96683	A1-A2-B-V
				96619	A1-A2-B-V	96686	A1-A2-B-V
						96698	A1-A2-B-V

RESTRICTIONS

LEGEND

PS Form 2976, *Customs — CN 22 (Old C 1) and Sender's Declaration* (green label)

PS Form 2976-A, *Customs Declaration and Dispatch Note*

AAFES	= Army and Air Force Exchange Service
APO	= Army/Air Force Post Office
Box R	= Retired military personnel
DMM	= <i>Domestic Mail Manual</i>
DPO	= Diplomatic Post Office
FPO	= Fleet Post Office
MOM	= Military Ordinary Mail
MPO	= Military Post Office
PAL	= Parcel Airlift
PSC	= Postal Service Center
SAM	= Space Available Mail
USDA	= United States Department of Agriculture

Note: Mail order catalogs are prohibited as SAM or PAL mail.

A. Securities, currency, or precious metals in their raw, unmanufactured state are prohibited. Official shipments are exempt from this restriction.

A1. Mail addressed to "Any Servicemember," or similar wording such as "Any Soldier," "Sailor," "Airman," or "Marine"; "Military Mail"; etc., is prohibited. Mail must be addressed to an individual or job title such as "Commander," "Commanding Officer," etc.

A2. APO/FPO/DPO addresses shall not include a city and/or country name.

B. Regardless of mail class, a customs declaration (PS Form 2976 or, if the customer prefers, PS Form 2976-A) is required for all items weighing 16 ounces or more or any item (regardless of weight) containing potentially dutiable mail contents (e.g., merchandise or goods) addressed to or from an APO, FPO, or DPO ZIP Code. No customs form is required for items weighing less than 16 ounces when the contents are not potentially dutiable (e.g., documents). The surface area of the address side of the mailpiece must be large enough to contain the applicable customs declaration. The following exceptions apply:

- Known mailers are exempt from providing customs documentation on non-dutiable letters or printed matter. (A known mailer is a business mailer who enters volume mailings through a business mail entry unit (BMEU) or other bulk mail acceptance location, pays postage through an advance deposit account, uses a permit imprint for postage payment, and submits a completed postage statement at the time of entry that certifies that the mailpieces contain no dangerous materials that are prohibited by postal regulations.)
- All federal, state, and local government agencies whose mailings are regarded as "Official Mail" are exempt from providing customs documentation on any item addressed to an APO, FPO, or DPO except for those APOs/FPOs/DPOs to which restriction "B2" applies.
- Prepaid mail from military contractors is exempt, providing the mailpiece is endorsed "Contents for Official Use — Exempt from Customs Requirements."

B2. All federal, state, and local government agencies must complete customs documentation when sending potentially dutiable mail addressed to or from this APO, FPO, or DPO.

C. Cigarettes and other tobacco products are prohibited.

C1. Obscene articles, prints, paintings, cards, films, videotapes, etc., and horror comics and matrices are prohibited.

D. Coffee is prohibited.

E. Medicines (prescription, over-the-counter, vitamins, and supplements) are prohibited when mailed to individuals for human or animal use. This prohibition does not apply when medicines are sent as official mail only between specifically designated agencies such as pharmaceutical distributors, hospitals, clinics, and pharmacies.

E1. Medicines or vaccines not conforming to French laws are prohibited.

E2. Any matter depicting nude or seminude persons, pornographic or sexual items, or nonauthorized political materials is prohibited. Although religious materials contrary to the Islamic faith are prohibited in bulk quantities, items for the personal use of the addressee are permissible.

E3. Radio transceivers, cordless telephones, global positioning systems, scanners, base stations, and handheld transmitters are prohibited.

F. Firearms of any type are prohibited in all classes of mail. See definitions of firearms in DMM 601.12.1.1. This restriction does not apply to firearms mailed to or by official U.S. government agencies. The restriction for mail to this APO/FPO/DPO ZIP Code does not apply to firearms mailed from this APO/FPO/DPO ZIP Code, provided ATF and USPS regulations are met. Antique firearms are a separate category defined in DMM 601.12.1.1h and ATF regulations; they do not require an ATF form.

F1. Privately owned weapons addressed to an individual are prohibited in any class of mail.

F2. Importation of firearms is restricted to one shotgun and one single shot.22 caliber rifle per individual.

G. Only letters, flats, and Periodicals are authorized. Parcels of any class are prohibited.

H. Meats, including preserved meats, whether hermetically sealed or not, are prohibited.

H1. Pork or pork by-products are prohibited.

I. Mail of all classes must fit in a mail sack. Mail may not exceed the following dimensions:

- Maximum length 20 inches.
- Maximum width 12 inches.
- Maximum height 12 inches.

The maximum length and girth combined may not exceed 68 inches.

This restriction does not apply to registered mail and official government mail marked MOM.

I1. This restriction does not apply to registered mail.

I2. This restriction does not apply to official government mail marked MOM.

J. Parcels may not exceed 108 inches in length and girth combined.

K. Mail that includes in the address the words, "Dependent Mail Section," may consist only of letter mail, newspapers, magazines, and books. No parcel of any class containing any other matter may be mailed to the Dependent Mail section. This restriction does not apply if the address does not include the words "Dependent Mail Section."

L. All official mail is prohibited.

M. Fruits, vegetables, animals, and living plants are prohibited.

N. Registered mail is prohibited.

O. Delivery status information for Extra Services is not available on USPS.com.

P. APO is used for the receipt and dispatch of official mail only.

Q. Mail may not exceed 66 pounds, and size is limited to 42 inches maximum length and 72 inches maximum length and girth combined.

R. All alcoholic beverages, including those mailable under DMM 601.12.7, are prohibited.

R1. Materials used in the production of alcoholic beverages (i.e., distilling material, hops, malts, yeast, etc.) are prohibited.

S. Mail of all classes must fit in a mail sack. Mail may not exceed the following dimensions and weight:

- Maximum length 12 inches.
- Maximum width 12 inches.
- Maximum height 5 1/2 inches.
- Maximum weight 25 pounds.

The maximum length and girth combined may not exceed 47 inches.

T. Mailings of case lots of food and supplemental household shipments must be approved by the sender's parent agency prior to mailing.

U. Parcels must weigh less than 16 ounces when addressed to Box R. This restriction does not apply to mail endorsed "Free Matter for the Blind or Handicapped."

U1. Mail is limited to First-Class Mail weighing 13 ounces or less when addressed to Box R. This restriction does not apply to mail endorsed "Free Matter for the Blind or Handicapped." Videotapes are prohibited when addressed to Box R, regardless of weight.

U2. Mail is limited to First-Class Mail letters only when addressed to Box R.

U3. Mail is limited to First-Class Mail correspondence (including voice and video cassettes), newspapers, magazines, photographs, not exceeding 16 ounces, when addressed to Box R.

U4. Mail addressed to Box C is limited to 2 pounds, regardless of class.

V. Express Mail Military Service (EMMS) not available from any origin.

V1. USPS Tracking is not available.

W. Meat products, such as dried beef, salami, and sausage, may be mailed, provided they remain in their original, hermetically sealed packages and bear USDA certification. Other meats, bones, skin, hair, feathers, horns or hoofs of hoofed animals, wool samples, tobacco leaves, including chewing and pipe tobacco, snuff, cigars, and cigarettes, or obscene material, including obscene drawings, photographs, films, and carvings, are prohibited. Exception: 200 grams of tobacco per parcel are permitted duty free.

X. Personal mail is limited to First-Class Mail items (to include audio cassettes and voice tapes) weighing 13 ounces or less. This limitation does not apply to official mail.

Y. Mail is limited to First-Class and Priority Mail items only. All Periodicals, Standard Mail items, and Package Services items (including SAM and PAL) are not authorized. This restriction also applies to official mail.

Z. No outside pieces (OSPs).

Z1. The following restriction is applicable only to International Service Centers (ISC)/Exchange Offices. An Anti-Pilferage Seal (Item No O817E or O818A) is required on all pouches and sacks.

October 2014

Have You Seen Any of These Missing Children?

Please participate in the NALC/USPS Child Alert Program. Tear out this page and carry it with you. If you have information on any of these missing persons, tell your Postal Service™ supervisor.



Name: Jairo Lopez Contreras
Born: 12-23-96
Date Missing: 1-20-05
Missing From: Fort Myers, FL
Age progressed to 16 years



Name: Bianca Damanik
Born: 1-7-03
Date Missing: 1-12-05
Missing From: Willoughby, OH
Age progressed to 11 years



Name: Adrianna Garcia
Born: 7-24-89
Date Missing: 12-29-04
Missing From: Tulsa, OK
Age progressed to 24 years



Name: Elizabeth Gill
Born: 8-21-62
Date Missing: 6-13-65
Missing From: Cape Girardeau,
MO
Age progressed to 49 years



Name: William Jones
Born: 3-5-59
Date Missing: 12-17-62
Missing From: Vineland, NJ
Age progressed to 50 years

**Please call the National Center for Missing and Exploited Children
Hot Line 1-800-843-5678
TDD 1-800-826-7653**

Missing Children Poster Display Instructions

Post Offices, classified stations, branches, and contract postal units may display this poster at their option. If the poster is displayed, it should be placed on the community bulletin board located in the Post Office™ box lobby and not in the main retail (full service) lobby. Alternatively, Missing Children posters can be maintained in a binder behind the counter to be used as a reference guide. The posters also may be posted in a prominent location where letter carriers will be able to see them before or after they go out on their routes. Making this information available to letter carriers is consistent with the NALC/USPS Child Alert Program to facilitate identification of missing children.

Companion posters, authorized for display on bulletin boards maintained by employee organizations, appear periodically in *The Postal Record*, a publication for members of the National Association of Letter Carriers.

This poster is published in cooperation with the National Center for Missing and Exploited Children, the United States Department of Justice, and the National Association of Letter Carriers. Information appearing on this poster is selected solely by the National Center for Missing and Exploited Children (NCMEC).

In addition to *Postal Bulletin* updates, NCMEC distributes information periodically. Notification of newly reported missing children is sent to designated district “Missing Children” coordinators via e-mail addresses provided by district managers. Within 24 hours of receipt of an e-mailed Missing Children poster, district coordinators should distribute copies to all Postal Service™ facilities in their districts. Missing Children posters are to be displayed as noted above for 30 days unless notification is received (from NCMEC) to remove a particular poster sooner. The e-mail network is used to distribute posters and information in only the most urgent cases of missing children. This system supplements, but does not replace, the missing children information in this *Postal Bulletin*.

Missing Children posters are available to the U.S. Postal Service® only as described above. If Postal Service employees are contacted by individuals or local agencies about displaying a sign or poster of a missing child in local Post Offices, the individual or agency should be politely informed that the U.S. Postal Service displays only those posters provided by NCMEC, because it has been designated by the U.S. Department of Justice to be the national clearinghouse and resource center for missing and exploited children. The individual or agency should then be referred to NCMEC at 800-843-5678.

If you have any information, or for free prevention tips, please call 800-THE-LOST (800-843-5678).

October 2014

Have You Seen Any of These Missing Children?

Please participate in the NALC/USPS Child Alert Program. Tear out this page and carry it with you. If you have information on any of these missing persons, tell your Postal Service™ supervisor.



Name: Bruce Kremen
Born: 7-21-53
Date Missing: 7-12-60
Missing From: Montrose, CA



Name: Dennis Martin
Born: 6-20-62
Date Missing: 6-14-69
Missing From: Blount, TN
Age progressed to 51 years



Name: James McQueary
Born: 12-3-54
Date Missing: 10-15-64
Missing From: Fairfax, OH
Age progressed to 56 years



Name: Deborah Spickler
Born: 1-22-55
Date Missing: 7-24-68
Missing From: Vernon, CT
Age progressed to 56 years.



Name: Karen Tompkins
Born: 7-25-50
Date Missing: 8-18-61
Missing From: Torrance, CA
Age progressed to 63 years

**Please call the National Center for Missing and Exploited Children
Hot Line 1-800-843-5678
TDD 1-800-826-7653**

Missing Children Poster Display Instructions

Post Offices, classified stations, branches, and contract postal units may display this poster at their option. If the poster is displayed, it should be placed on the community bulletin board located in the Post Office™ box lobby and not in the main retail (full service) lobby. Alternatively, Missing Children posters can be maintained in a binder behind the counter to be used as a reference guide. The posters also may be posted in a prominent location where letter carriers will be able to see them before or after they go out on their routes. Making this information available to letter carriers is consistent with the NALC/USPS Child Alert Program to facilitate identification of missing children.

Companion posters, authorized for display on bulletin boards maintained by employee organizations, appear periodically in *The Postal Record*, a publication for members of the National Association of Letter Carriers.

This poster is published in cooperation with the National Center for Missing and Exploited Children, the United States Department of Justice, and the National Association of Letter Carriers. Information appearing on this poster is selected solely by the National Center for Missing and Exploited Children (NCMEC).

In addition to *Postal Bulletin* updates, NCMEC distributes information periodically. Notification of newly reported missing children is sent to designated district “Missing Children” coordinators via e-mail addresses provided by district managers. Within 24 hours of receipt of an e-mailed Missing Children poster, district coordinators should distribute copies to all Postal Service™ facilities in their districts. Missing Children posters are to be displayed as noted above for 30 days unless notification is received (from NCMEC) to remove a particular poster sooner. The e-mail network is used to distribute posters and information in only the most urgent cases of missing children. This system supplements, but does not replace, the missing children information in this *Postal Bulletin*.

Missing Children posters are available to the U.S. Postal Service® only as described above. If Postal Service employees are contacted by individuals or local agencies about displaying a sign or poster of a missing child in local Post Offices, the individual or agency should be politely informed that the U.S. Postal Service displays only those posters provided by NCMEC, because it has been designated by the U.S. Department of Justice to be the national clearinghouse and resource center for missing and exploited children. The individual or agency should then be referred to NCMEC at 800-843-5678.

If you have any information, or for free prevention tips, please call 800-THE-LOST (800-843-5678).

October 2014

Have You Seen Any of These Missing Children?

Please participate in the NALC/USPS Child Alert Program. Tear out this page and carry it with you. If you have information on any of these missing persons, tell your Postal Service™ supervisor.



Name: Anthony Tumolo
Born: 2-28-52
Date Missing: 10-15-66
Missing From: Philadelphia, PA
Age progressed to 59 years



Name: John Wagner
Born: 6-27-51
Date Missing: 2-18-68
Missing From: Monroe City, MO
Age progressed to 59 years



Name: Marjorie West
Born: 6-2-33
Date Missing: 5-8-38
Missing From: Hamilton Township, PA



Name: Mark Wilson
Born: 10-4-54
Date Missing: 11-4-67
Missing From: Quincy, CA
Age progressed to 59 years

**Please call the National Center for Missing and Exploited Children
Hot Line 1-800-843-5678
TDD 1-800-826-7653**

Missing Children Poster Display Instructions

Post Offices, classified stations, branches, and contract postal units may display this poster at their option. If the poster is displayed, it should be placed on the community bulletin board located in the Post Office™ box lobby and not in the main retail (full service) lobby. Alternatively, Missing Children posters can be maintained in a binder behind the counter to be used as a reference guide. The posters also may be posted in a prominent location where letter carriers will be able to see them before or after they go out on their routes. Making this information available to letter carriers is consistent with the NALC/USPS Child Alert Program to facilitate identification of missing children.

Companion posters, authorized for display on bulletin boards maintained by employee organizations, appear periodically in *The Postal Record*, a publication for members of the National Association of Letter Carriers.

This poster is published in cooperation with the National Center for Missing and Exploited Children, the United States Department of Justice, and the National Association of Letter Carriers. Information appearing on this poster is selected solely by the National Center for Missing and Exploited Children (NCMEC).

In addition to *Postal Bulletin* updates, NCMEC distributes information periodically. Notification of newly reported missing children is sent to designated district "Missing Children" coordinators via e-mail addresses provided by district managers. Within 24 hours of receipt of an e-mailed Missing Children poster, district coordinators should distribute copies to all Postal Service™ facilities in their districts. Missing Children posters are to be displayed as noted above for 30 days unless notification is received (from NCMEC) to remove a particular poster sooner. The e-mail network is used to distribute posters and information in only the most urgent cases of missing children. This system supplements, but does not replace, the missing children information in this *Postal Bulletin*.

Missing Children posters are available to the U.S. Postal Service® only as described above. If Postal Service employees are contacted by individuals or local agencies about displaying a sign or poster of a missing child in local Post Offices, the individual or agency should be politely informed that the U.S. Postal Service displays only those posters provided by NCMEC, because it has been designated by the U.S. Department of Justice to be the national clearinghouse and resource center for missing and exploited children. The individual or agency should then be referred to NCMEC at 800-843-5678.

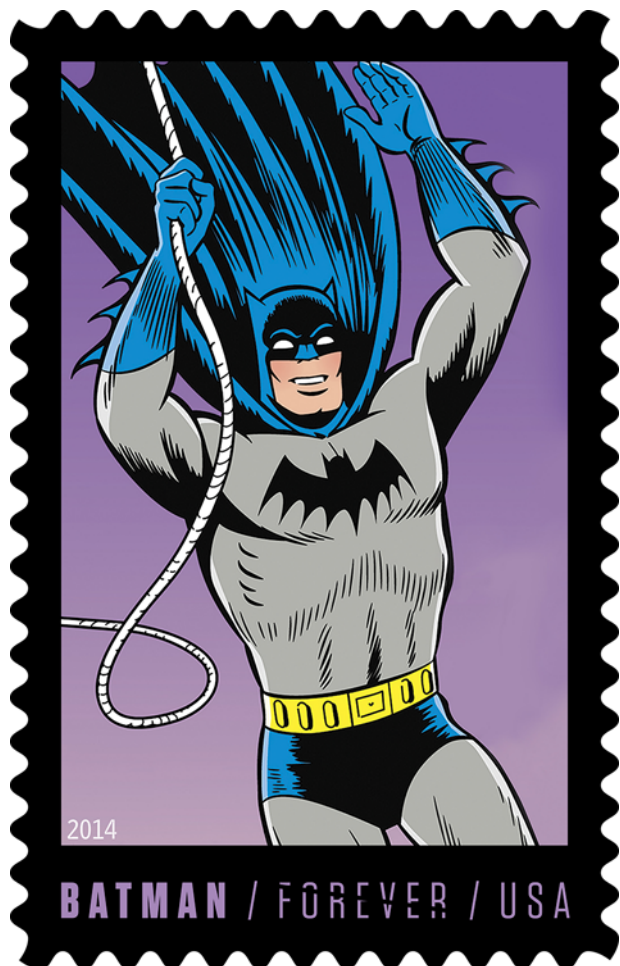
If you have any information, or for free prevention tips, please call 800-THE-LOST (800-843-5678).

Stamp Announcement 14-45: Purple Heart Medal Stamp (continued)

Issue:	<i>Purple Heart Medal Stamp</i>
Item Number:	115400
Denomination & Type of Issue:	Forever First-Class Mail
Format:	Pane of 20 (1 design)
Series:	N/A
Issue Date & City:	October 11, 2014, Dover, DE 19901
Designer:	Jennifer Arnold, Washington, DC
Art Director:	Jennifer Arnold, Washington, DC
Typographer:	Greg Breeding, Charlottesville, VA
Artist:	Ira Wexler, Braddock Heights, MD
Engraver:	WRE
Modeler:	CCL Label, Inc.
Manufacturing Process:	Gravure
Printer:	CCL Label, Inc.
Printed at:	Clinton, SC 29325
Press Type:	Dia Nippon Kiko (DNK)
Stamps per Pane:	20
Print Quantity:	70 million stamps
Paper Type:	Prephosphored, Type I
Adhesive Type:	Pressure-sensitive adhesive
Processed at:	CCL Label, Inc., Clinton, SC
Colors:	Yellow, Magenta, Cyan, Black, Purple 266, Red 1805
Stamp Orientation:	Vertical
Image Area (w x h):	0.73 x 0.84 in./18.54 x 21.34 mm
Overall Size (w x h):	0.87 x 0.98 in./22.10 x 24.90 mm
Full Pane Size (w x h):	5.25 x 4.83 in./133.35 x 122.55 mm
Plate Size:	420 stamps per revolution
Plate Numbers:	"C" followed by six (6) single digits
Marginal Markings:	
Front:	Plate numbers in four corners of pane
Back:	© 2012 USPS • USPS logo • Plate position diagram • Barcode (115400) in upper right and lower left corners of pane • Promotional text

— Stamp Services,
Marketing and Sales, 10-2-14

Stamp Announcement 14-46: Batman Stamps



© 2014 USPS

On October 9, 2014, in New York, NY, the U.S. Postal Service® will issue the *Batman* stamps (Forever® First-Class Mail® priced at 49 cents) in eight designs, in a pressure-sensitive adhesive (PSA) souvenir sheet of 20 stamps (Item 588400). **The \$9.80 *Batman* souvenir sheet may not be split, and the stamps may not be sold individually.**

The stamps will go on sale nationwide October 9, 2014.

Showcasing eight unique designs in a pane of 20 stamps, this new issuance from the U.S. Postal Service celebrates the 75th anniversary of Batman. Four versions of the iconic DC Comics super hero are depicted from four eras of comic book history. In addition, there are four circular stamps showcasing the evolution of the Bat-Signal. The background illustration features a silhouette of Batman standing on a bridge with the skyline of Gotham City looming above him. The verso side of the pane features two illustrations of Batman and text about the history of the character. Art director Greg Breeding designed the stamp pane.

To learn more about the stories behind the stamps, visit <http://uspsstamps.com>.

Initial Supply to Post Offices: Item 588400, Batman First-Class Mail (Forever priced at \$9.80 and sold as a pane) Commemorative Souvenir Sheet of 20 Stamps

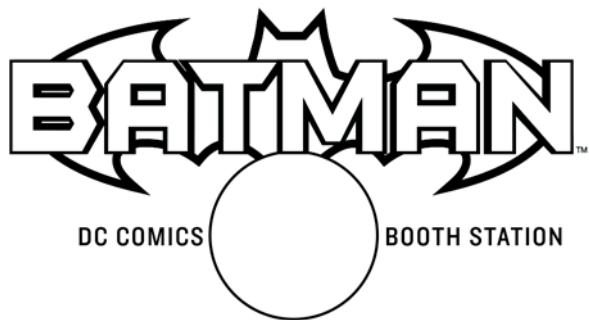
Stamp Fulfillment Services will make a subsequent automatic push distribution to Post Offices™ of a quantity to cover approximately 30 days of sales. Distribution quantities for the automatic push distribution are available by logging on to SFS Web at <https://sfsweb.usps.gov>. Post Offices may begin ordering stamps prior to the FDOI through SFS Web. However, offices should check the website noted above to determine the amount they will receive on their automatic push distribution.

Special Dedication Postmarks

Only the following pictorial postmark is permitted for the *Batman* stamp. The word “Station” or the abbreviation “STA” is required somewhere in the design, because it will be a temporary station.

Guidelines for Finalizing the Batman Stamp Pictorial Postmark Art





To finalize the *Batman* stamp pictorial postmark art, insert the date, city, state and ZIP™ Code of the physical location of your event adjacent to the stamp image. Overall dimensions of the pictorial postmark must not exceed 4 inches horizontally by 2 inches vertically. Collectors prefer the dimensions 3-1/2 inches by 1.

The Postal Service™ must make all special postmarks known to collectors through advance publicity in the *Postal Bulletin*. Therefore, all special dedication cancellations must be reported to Stamp Services four weeks before the events using PS Form 413, *Pictorial Postmark Announcement/Report*. To get a copy of the form, go to <http://blue.usps.gov/formmgmt/forms/ps413.pdf>.

How to Order the First-Day-of-Issue Postmark

Customers have 60 days to obtain the first-day-of-issue postmark by mail. They may purchase new stamps at their local Post Office, at The Postal Store® website at <http://www.usps.com/shop>, or by calling 800-STAMP-24. They should affix the stamps to envelopes of their choice, address the envelopes (to themselves or others), and place them in a larger envelope addressed to:

Batman Stamps
 Special Events Coordinator
 380 West 33rd Street, Room 4032
 New York, NY 10199-9998

After applying the first-day-of-issue postmark, the Postal Service will return the envelopes through the mail. There is no charge for the postmark up to a quantity of 50. For more than 50, customers have to pay five cents each. All orders must be postmarked by December 8, 2014.

How to Order First-Day Covers

The Postal Service also offers first-day covers for new stamp issues and Postal Service stationery items postmarked with the official first-day-of-issue cancellation. Each item has an individual catalog number and is offered in the quarterly *USA Philatelic* catalog, online at <http://usps.com/shop>, or by calling 800-782-6724. Customers may request a free catalog by calling 800-782-6724 or writing to:

U.S. Postal Service
Catalog Request
PO Box 219014
Kansas City, MO 64121-9014

Philatelic Products

There are nine philatelic products for this stamp issue:

- 588406, Press Sheet with Die cut, \$88.20 (print quantity 2,500).
- 588408, Press Sheet without Die cut, \$88.20 (print quantity 2,500).
- 588410*, Digital Color Postmark Keepsake (random), \$11.95.
- 588416*, First-Day Cover (set of 8), \$7.44.
- 588421*, Digital Color Postmark (set of 8), \$13.12.
- 588424*, Framed Art, \$39.95.
- 588430*, Ceremony Program (random), \$6.95.
- 588431*, Stamp Deck Card, \$0.95.
- 588432*, Stamp Deck Card with Digital Color Postmark, \$1.99.

Items with an asterisk (*) will use the 128 barcode from Stamp Fulfillment Services. All other philatelic products will

continue to use barcode series A, with the exception of the Yearbook and the Guide Book.

The \$9.80 Batman souvenir sheet may not be split, and the stamps may not be sold individually, and should be tracked in AIC 018 as a Philatelic product.

Issue:	Batman stamps
Item Number:	588400
Denomination & Type of Issue:	Forever First-Class Mail
Format:	Pane of 20 (8 designs)
Series:	N/A
Issue Date & City:	October 9, 2014, New York, NY 10199
Designer:	Greg Breeding, Charlottesville, VA
Art Director:	Greg Breeding, Charlottesville, VA
Typographer:	Greg Breeding, Charlottesville, VA
Modeler:	Donald Woo
Manufacturing Process:	Offset/Microprint
Printer:	Banknote Corporation of America/SSP
Printed at:	Browns Summit, NC
Press Type:	Alprinta Model 74
Stamps per Pane:	20
Print Quantity:	80 million stamps
Paper Type:	Phosphor Block Tagged
Adhesive Type:	Pressure-sensitive adhesive
Processed at:	Banknote Corporation of America, Browns Summit SC
Colors:	Cyan, Magenta, Yellow, Black
Stamp Orientation:	Round/Vertical
Image Area (w x h):	0.84 x 1.42 in./21.34 x 36.07 mm
Round:	1.04 x 1.04 in./26.42 x 26.42 mm
Overall Size (w x h):	0.98 x 1.56 in./24.89 x 39.62 mm
Full Pane Size (w x h):	8.5 x 7.25 in./215.90 x 184.15 mm
Press Sheets Size (w x h):	25.5 x 21.75 in./ 647.70 x 552.45 mm
Plate Size:	180 stamps per revolution
Plate Numbers:	N/A
Marginal Markings:	
Back:	© 2014 USPS • USPS logo • Plate position diagram • Barcode (588400) • Promotional text • Batman logo and Trademark Information • DC Comics • Batman images • Batman Story line

— Stamp Services,
Marketing and Sales, 10-2-14

2014 Stamps and Postal Stationery

This schedule is subject to change.

Updated Announcement 14-N

This is a periodic announcement of new stamps and postal stationery items being issued during the calendar year. For additional information on stamps and stamp products, visit The Postal Store® website at www.usps.com/shop.

NOTE	ISSUE	NATIONWIDE FIRST-DAY-OF-ISSUE	FIRST-DAY CITY/STATE	FORMAT	DEADLINE
N	4¢ Chippendale Chair	Jan 2	Kansas City, MO 64108	WAG coil of 10,000 (M)	Mar 16
N, DC	Year of the Horse (Celebrating Lunar New Year) (46¢ Forever)	Jan 15	San Francisco, CA 94188	PSA pane of 12 (C)	Mar 22
N, DC	Cut Paper Heart (Love) (46¢ Forever)	Jan 21	New York, NY 10199	PSA pane of 20 (M)	Mar 22
N, C, DC	49¢ Ferns	Jan 27	Kansas City, MO 64108	PSA coil of 3,000/PSA coil of 10,000 (5 designs) (M)	Apr 1
N, C, DC	The Star-Spangled Banner (49¢ Forever)	Jan 28	Independence, MO 64050	PSA double-sided booklet of 20 (APU)/ PSA coil of 100 (APU/CCL) (M)	Apr 1
N, P, DC	Shirley Chisholm (Black Heritage) (49¢ Forever)	Jan 31	Brooklyn, NY 11201	PSA pane of 20 (C)	Apr 1

NOTE	ISSUE	NATIONWIDE FIRST-DAY- OF-ISSUE	FIRST-DAY CITY/STATE	FORMAT	DEADLINE
N, C, DC	34¢ Hummingbird (Post Card Rate)	Feb 7	Kansas City, MO 64108	PSA pane of 20 & coil of 100 (APU) (M)	Apr 8
N, C, DC	70¢ Great Spangled Fritillary (Butterfly)	Feb 10	Kansas City, MO 64108	PSA pane of 20 (CCL) (M)	Apr 11
N, C, DC	21¢ Abraham Lincoln Memorial Statue (2nd oz)	Feb 12	Springfield, IL 62701	PSA pane of 20 & coil of 100 (M) (CCL)	Apr 13
N, DC	Winter Flowers (49¢ Forever)	Feb 14	Little Rock, AR 72202	PSA double-sided booklet of 20 (4 designs) (SSP) (M)	Apr 15
N, C, DC	91¢ Ralph Ellison (Literary Arts) (3 oz)	Feb 18	Kansas City, MO 64108	PSA pane of 20 (CCL) (M)	Apr 19
N, DC	70¢ Wedding Cake (Weddings) — 2014 Reissue	Feb 22	Mesa, AZ 85201	PSA pane of 20 (SSP) (M)	Apr 23
N, C, DC	The Star-Spangled Banner (49¢ Forever)	Mar 3	Washington, DC 20066	PSA double-sided booklet of 20 (CCL/SSP)/PSA coil of 100 (SSP)/ATM booklet of 18 (SSP) (M)	May 2
N, DC	\$5.60 Verrazano-Narrows Bridge: Priority Mail	Mar 4	Brooklyn, NY 11201	PSA pane of 10 (M) (Priority Mail)	May 3
N, DC	Ferns (49¢ Forever)	Mar 6	Kansas City, MO 64108	PSA coil 10,000 (5 designs) (M)	May 5
N, P, DC	Jimi Hendrix (Music Icons) (49¢ Forever)	Mar 13	Austin, TX 78710	PSA pane of 16 (C)	May 12
N, C, DC	70¢ C. Alfred "Chief" Anderson (Distinguished Americans) (2 oz)	Mar 13	Bryn Mawr, PA 19010	PSA pane of 20 (APU) (M)	May 12
N, C, DC	\$19.99 USS Arizona Memorial: Priority Mail Express	Mar 13	Honolulu, HI 96820	PSA pane of 10 (Priority Mail Express) (SSP) (M)	May 12
N, C	A Flag for All Seasons Reprint (49¢ Forever)	Mar 17	Liberty, MO 64068	PSA booklet (4 designs) (M)	May 16
N, DC	70¢ Yes, I Do (Weddings) — 2014 Reissue	Mar 21	St. Louis, MO 63155	PSA pane of 20 (APU) (M)	May 20
N	Tree Stamped Card (38¢ Forever)	Mar 28	New York, NY 10199	Stamped Card Single, Stamped Card Double, Stamped Card Sheet (APU)	May 27
N, C, DC	Songbirds (49¢ Forever)	Apr 5	Dallas, TX 75260	PSA double-sided booklet of 20 (10 designs) (M)	Jun 4
N, P, DC	Charlton Heston (Legends of Hollywood) (49¢ Forever)	Apr 11	Los Angeles, CA 90052	PSA pane of 20 (APU) (C)	Jun 10
N, C, DC	2014 Global: Sea Surface Temperatures (\$1.15 Forever)	Apr 22	Washington, DC 20066	PSA pane of 10 (APU) (M)	Jun 21
N, DC	Red, White, and Blue (Patriotic) (49¢ Forever)	Apr 25	San Francisco, CA 94188	PSA coil of 10,000 (4 designs) (M)	Jun 24
N, DC	Where Dreams Blossom — 2014 Reissue	May 2	Acton, MA 01720	PSA pane of 20 (M)	Jul 1
N, P, DC	Vintage Circus Posters (49¢ Forever)	May 5	Sarasota, FL 34230	PSA pane of 16 (8 designs) (C)	Jul 4
N, DC	Harvey Milk (49¢ Forever)	May 22	Washington, DC 20066	PSA pane of 20 (C)	Jul 21
N, DC	Nevada Statehood (49¢ Forever)	May 29	Las Vegas, NV 89199	PSA pane of 20 (C)	Jul 28
N, P, DC	Hot Rods (49¢ Forever)	Jun 6	York, PA 17402	PSA booklet of 20 (2 designs) (M)	Aug 5
N, P, DC	Medal Of Honor: Korean War (49¢ Forever)	Jul 26	Arlington, VA 22201	PSA prestige folio of 20 (2 designs) (C)	Sep 24
N, P, DC	Civil War:1864 (Civil War Sesquicentennial) (49¢ Forever)	Jul 30	Petersburg, VA 23803 Mobile, AL 36601	PSA souvenir sheet of 12 (2 designs) (C)	Sep 28
N, DC	Farmers Markets (49¢ Forever)	Aug 7	Washington, DC 20066	PSA pane of 20 (4 designs) (C)	Oct 6
N, P, DC	Janis Joplin (Music Icons) (49¢ Forever)	Aug 8	San Francisco, CA 94188	PSA pane of 16 (C)	Oct 7
N, DC	Hudson River School (49¢ Forever)	Aug 21	Hartford, CT 06101	PSA double-sided booklet of 20 (4 designs) (M)	Oct 20
N, DC	Christmas Contemporary Poinsettia (Reprint) (49¢ Forever)	Aug 21	Hartford, CT 06101	PSA booklet of 20 (M)	Oct 20
N, P, DC	The War of 1812: Fort McHenry (49¢ Forever)	Sep 13	Baltimore, MD 21233	PSA pane of 20 (C)	Nov 12
N, DC	Celebrity Chefs (49¢ Forever)	Sep 26	Chicago, IL 60699	PSA pane of 20 (5 designs) (C)	Nov 25
N, C	\$5.75 Glade Creek Grist Mill: Priority Mail	Sep 29	Danese, WV 25831	PSA pane of 10 (M) (Priority Mail)	Nov 28

NOTE	ISSUE	NATIONWIDE FIRST-DAY-OF-ISSUE	FIRST-DAY CITY/STATE	FORMAT	DEADLINE
N	Breast Cancer Research (Semipostal) (60¢ Forever) (Reissue)	Sep 30	Sacramento, CA 95814	PSA pane of 20 (M)	Nov 29
N	Holiday Stamped Envelopes (Pionsettia, Winter Fun, and Snowflakes) (1st class)	Oct 1	Washington, DC 20066	PSA #10 stamped envelopes with seals (Set of 10) (M)	Nov 30
N, P, DC	Batman (49¢ Forever)	Oct 9	New York, NY 10199	PSA souvenir sheet of 20 (8 designs) (C)	Dec 8
N, C	Winter Fun (49¢ Forever)	Oct 23	New York, NY 10199	PSA double-sided booklet of 20 (4 designs) (M)	Dec 22
N, C	Global: Silver Bells Wreath (Holiday) (\$1.15 Forever)	Oct 23	New York, NY 10199	PSA pane of 10 (M)	Dec 22
N, P, DC	Rudolph the Red-Nosed Reindeer (Holiday Celebration: Holiday) (49¢ Forever)	Nov TBD	TBD	PSA double-sided booklet of 20 (4 designs) Souvenir Mini Sheet (2 designs) (M)	
N, DC	Christmas Magi (49¢ Forever)	Nov 19	Washington, DC 20066	PSA double-sided booklet of 20 (M)	Jan 18
N, P, DC	Wilt Chamberlain (49¢ Forever)	Dec 5	Philadelphia, PA 19104	PSA pane of 20 (2 designs) (C)	Feb 3

Note Descriptions

C: Change in previously announced date, site, and/or rate

DC.: Digital Color Postmark

N: New issue

P: Pictorial first day postmark

S: Special Dedication Postmark

(C): Collectible

(M): Mail use

1. Customers must affix additional postage to bring total postage to at least the minimum First-Class Mail® price for an envelope or stamped card, depending on which is used. Also, the cost for a stamped envelope is the value of the postage plus 14 cents, and the cost for a stamped card is the value of the postage plus 4 cents.

— Stamp Services,
Marketing and Sales, 10-2-14

Pictorial Postmarks Announcement

As a community service, the Postal Service™ offers pictorial postmarks to commemorate local events celebrated in communities throughout the nation. A list of events for which pictorial postmarks are authorized appears below. The sponsor of the pictorial postmark appears in italics under the date. Also provided are illustrations of these postmarks.

People attending these local events may obtain the postmark in person at the temporary Post Office™ station established there. Those who cannot attend the event but who wish to obtain the postmark may submit a mail order request. Pictorial postmarks are available only for the dates indicated, and *requests must be postmarked no later than 30 days following the requested pictorial postmark date.*

All requests must include a stamped envelope or postcard bearing at least the minimum First-Class Mail® postage. Items submitted for postmark may not include

postage issued after the date of the requested postmark. Such items will be returned unserved.

Customers wishing to obtain a postmark should affix stamps to any envelope or postcard of their choice, address the envelope or postcard to themselves or others, insert a card of postcard thickness in envelopes for sturdiness, and tuck in the flap. Place the envelope or postcard in a larger envelope and address it to: Pictorial Postmarks, followed by the Name of the Station, Address, City, State, ZIP+4® Code, as listed below.

Customers can also send stamped envelopes and postcards without addresses for postmark, as long as they supply a larger envelope with adequate postage and their return address. After applying the pictorial postmark, the Postal Service returns the items (with or without addresses) under addressed protective cover.

The following pictorial postmarks have been extended for 60 days:



September 12-14, 2014

Maryland Society War of 1812

Fort McHenry Station

Supervisor-MOWS

900 East Fayette Street, Room 507

Baltimore, MD 21233-9998



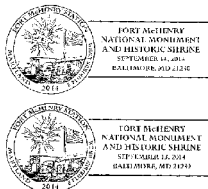
September 12-14, 2014
Star-Spangled Spectacular 200
 National Star-Spangled Banner Bicentennial
 Supervisor-MOWS
 900 East Fayette Street
 Baltimore, MD 21233-9998



September 13-14, 2014
National Park Service
 Fort McHenry Bicentennial
 Supervisor-MOWS
 900 East Fayette Street, Room 507
 Baltimore, MD 21233-9998



September 13-14, 2014
United States Mint
 Fort McHenry Station
 Supervisor-MOWS
 900 East Fayette Street, Room 507
 Baltimore, MD 21233-9998



September 13-14, 2014
FSK American Photoplay MPT
 Francis Scott Key Bicentennial
 Supervisor-MOWS
 900 East Fayette Street, Room 507
 Baltimore, MD 21233-9998



September 14, 2014
Baltimore National Heritage Area
 Battle Hymn Station
 Supervisor-MOWS
 900 East Fayette Street, Room 507
 Baltimore, MD 21233-9998

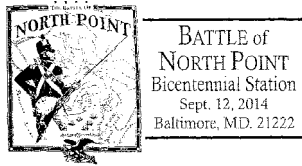
The following pictorial postmarks have been extended for 30 days:



September 6, 2014
Friends of Beaver Creek
 East Liverpool-United States Postal Services
 Kimberly McKnight
 700 Dresden Avenue
 East Liverpool, OH 43920-1838



September 6-7, 2014
World War 1 Station
 World War 1 Station
 Postmaster
 1124 Pacific Street
 Omaha, NE 68108-9998



September 12, 2014

MD National Guard 175th Infantry Regiment
Battle of North Point Bicentennial
Supervisor-MOWS
900 East Fayette Street, Room 507
Baltimore, MD 21233-9998



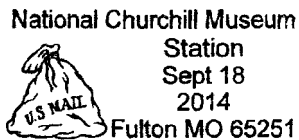
September 13, 2014

Joe Jackson Hotel Restoration Committee
Vallonia Post Office
Postmaster
2380 South Main
Vallonia, IN 47281-9998



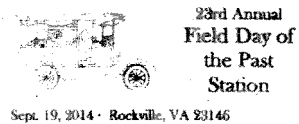
September 13, 2014

Homestead Festival
Princeton-Main Post Office
Postmaster
326 South Main Street
Box 9998
Princeton, IL 61356-9998



September 18, 2014

*Central MO PCC for "Mail Crawl at the Mail Call"
(A traveling Smithsonian Exhibit)*
National Churchill Museum
Postmaster-Fulton MO Post Office
301 Court Street
Fulton, MO 65251-9998



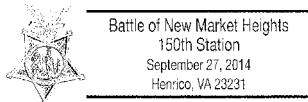
September 19-21, 2014

Field Of the Past Committee
23rd Annual Field Day of the Past Station
Postmaster
16590 Pouncey Tract Road
Rockville, VA 23146-9998



September 27, 2014

Dayton Stamp Club
Dawn Patrol Rendezvous Station
Postmaster
United States Postal Services
PO Box 9998
Dayton, OH 45401-9998



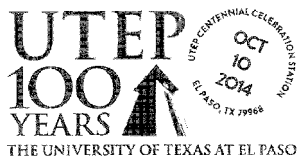
September 27-29, 2014

Henrico County
Battle of New Market Heights 150th
Station Manager
5300 Klockner Road
Henrico, VA 23231-9998



Antique Station
September 28, 2014
Batsto, NJ 08037

September 28, 2014
Batsto Citizens Committee
Antique Station
Postmaster
114 South 3rd Street
Hammonton, NJ 08037-9998



September 30 & October 10, 2014
University of Texas at El Paso
UTEP Centennial Celebration Station
Postmaster
8401 Boeing Drive
El Paso, TX 79910-9998



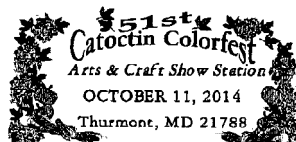
September 30, 2014
Stephen Decatur Chapter #4, Universal Ship Cancellation Society
Margaret L. Sellers-Main Office Windows
Postmaster
11251 Rancho Carmel Drive
San Diego, CA 92199-9709



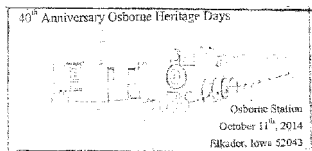
October 1, 2014
Stephen Decatur Chapter #4, Universal Ship Cancellation Society
Margaret L. Sellers-Main Office Windows
Postmaster
11251 Rancho Carmel Drive
San Diego, CA 92199-9709



October 4-5, 2014
The Salvation Army
The Ray & Joan Kroc Center
Station
Postmaster
401 Market Street
Camden, NJ 08103-9998



October 11-12, 2014
Catoctin Colorfest
51st Catoctin Colorfest Arts
& Craft Show
Postmaster-James J.
Adams
110 Water Street
Thurmont, MD 21788-9998



October 11, 2014
Clayton County Conservation Board
Main Post Office
Chris J. Werner-Postmaster
105 Mulberry Street
PO Box 9998
Elkader, IA 52043-9998



October 15-31, 2014
Huntingdon County Visitors Bureau
Huntingdon Pennsylvania
Ghoulest Small Town-
Philatelic Station
Postmaster
401 Washington Street
Huntingdon, PA
16652-9998



October 11, 2014
Dover Stamp Club
Dover Stamp Club Station
Postmaster
55 The Plaza
Dover, DE 19901-9998



October 17-19, 2014
Federated Philatelic Clubs of Southern California
SesCal Reel Station
Postmaster
7001 South Central Avenue,
#307
Los Angeles, CA
90052-9998

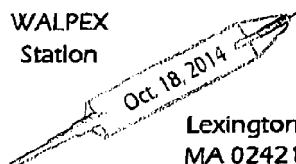
October 17-19, 2014

*Federated Philatelic Clubs
of Southern California*SESCAL Station
Postmaster
7001 South Central Avenue,
#307
Los Angeles, CA
90052-9998

October 18, 2014

Cedar Creek Foundation
Battle of Cedar Creek 150th
Reenactment
Postmaster
7922 Main Street
Middletown, VA
22645-9998

October 17-19, 2014

*Federated Philatelic Clubs
of Southern California*SESCAL 75th Station
Postmaster
7001 South Central Avenue,
#307
Los Angeles, CA
90052-9998WALPEX
Station

October 18, 2014

United States Postal Service
WALPEX Station
Postmaster
1661 Massachusetts
Avenue
Lexington, MA 02420-9998

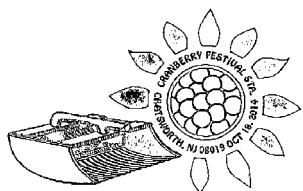
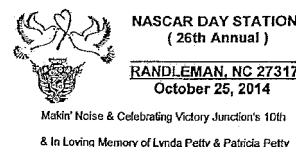
October 18, 2014

*Rotary Club of San Antonio
Florida*San Antonio Post Office
Cathy Merritt
12231 Main Street
San Antonio, FL
33576-9998

October 19, 2014

Cedar Creek Foundation
Battle of Cedar Creek 150th
Anniversary
Postmaster
7922 Main Street
Middletown, VA
22645-9998

October 18, 2014

*Festival Committee of
Chatsworth*Cranberry Festival Station
Postmaster
9 2nd Avenue
Chatsworth, NJ
08019-9998October 25-
November 24, 2014*Randleman City Chamber of
Commerce*Randleman-Main Post
Office
Postmaster
611 West Academy Street
Randleman, NC
27317-9998— Stamp Services,
Marketing and Sales, 10-2-14

How to Order the First-Day-of-Issue Digital Color or Traditional Postmarks

Customers have 60 days to obtain the first-day-of-issue postmarks by mail. They may purchase new stamps at their local Post Office™, by telephone at 800-STAMP-24, or at The Postal Store® website at www.usps.com/shop.

Traditional Postmarks

Customers should affix the stamps to envelopes of their choice, address them to themselves or others, or provide a self-addressed return envelope with sufficient postage large enough to accommodate the canceled item. Mail the request to the corresponding city of issuance. There is no charge for the first 50 postmarks. There is a 5-cent charge

for each additional postmark over 50. Customers should submit a check, money order, or credit card for payment. After applying the first-day-of-issue postmark, the Postal Service™ will return the envelopes to the customer by U.S. Mail.

All postmark requests should go to the first-day-of-issue city. The first-day-of-issue city Post Office will then forward in bulk all postmark requests to Cancellation Services, Stamp Fulfillment Services, PO Box 449992, Kansas City, MO 64144-9992 by respective Post Offices.

Digital Color Postmarks

Only select stamp issues offer a digital color postmark. Customers may submit #6 or #10 envelopes constructed of paper rated as “laser safe.” The Postal Service recommends envelopes of 80-pound Accent Opaque, acid-free, 9/16" side seams with no glue on the flap. The maximum size of all digital color postmarks is 2" high x 4" long. Allow sufficient space on the envelope to accommodate the postmark. Do not use self-adhesive labels for addresses on the envelope. Two test envelopes must be included. There is a minimum of 10 envelopes at 50 cents per postmark required at the time of servicing. Customers should submit a check, money order, or credit card for payment.

The Postal Service reserves the right to not accept hand-painted and other cachet envelopes that are not compatible with our digital color postmark equipment. The Postal Service also reserves the right to substitute traditional black

rubber postmarks if use of nonspecified envelopes results in poor image quality or damage to equipment.

Customers should affix the stamps to the envelopes and address them to themselves or others for return through the mail. Or, they may include an additional self-addressed return envelope, large enough to accommodate their canceled items, with sufficient postage affixed for return of their postmarked items. Mail the request for a first-day-of-issue digital color postmark to the corresponding city of issuance. Post Offices will then forward all customer requests for digital color postmarks to Cancellation Services, Stamp Fulfillment Services, PO Box 449992, Kansas City, MO 64144-9992.

After applying the first-day-of-issue postmark, the Postal Service will return the envelopes to the customer by U.S. Mail.



Digital Color Pictorial

Farmers Markets Stamp
Special Events
PO Box 92282
Washington, DC 20090-2282

October 6, 2014



Digital Color Pictorial

Janis Joplin Stamp
Retail Manager
PO Box 7838
San Francisco, CA 94120-7838

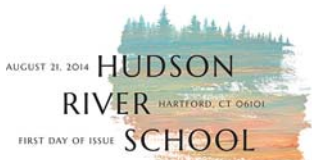
October 8, 2014



Black and White Pictorial

Janis Joplin Stamp
Retail Manager
PO Box 7838
San Francisco, CA 94120-7838

October 8, 2014



Digital Color Pictorial

Hudson River School Stamps
Hartford Post Office
MOWU
141 Weston Street
Hartford, CT 06101-9998

October 20, 2014



Black and White Pictorial

War of 1812: Ft. McHenry Stamp
Postmaster
900 E. Fayette Street
Baltimore, MD 21233-9998

November 12, 2014



Digital Color Pictorial

War of 1812: Ft. McHenry Stamp

Postmaster
900 E. Fayette Street
Baltimore, MD 21233-9998

November 12, 2014



Digital Color Pictorial

Celebrity Chefs Stamps

Retail Specialist
433 West Harrison Street
Chicago, IL 60699-9611

November 26, 2014



Digital Color Pictorial

Glade Creek Grist Mill Stamp

Postmaster
Danese Post Office
PO Box 9998
Danese, WV 25831-9998

November 28, 2014



Digital Color Pictorial

Winter Fun Stamps

Special Events Coordinator
380 West 33rd Street, Room 4032
New York, NY 10199-9998

December 22, 2014



Digital Color Pictorial

Global Forever: Silver Bells Wreath Stamp

Special Events Coordinator
380 West 33rd Street, Room 4032
New York, NY 10199-9998

December 22, 2014



Black and White Pictorial

Batman Stamps

Special Events Coordinator
380 West 33rd Street, Room 4032
New York, NY 10199-9998

December 8, 2014



Digital Color Pictorial

Batman Stamps

Special Events Coordinator
380 West 33rd Street, Room 4032
New York, NY 10199-9998

December 8, 2014

Supply Management

eBuy2 Yearly Purchases of 5-Gallon Bottled Drinking Water Services from Nestle and DS Waters for Fiscal Year 2015

All sites purchasing yearly 5-gallon bottled water service from Nestle, marketed as Arrowhead, Calistoga, Deer Park, Ice Mountain, Ozarka, Poland Spring, or Zephyrhills, or from DS Waters, marketed as Alhambra, Belmont, Crystal Springs, Hinckley Springs, Kentwood Springs, Sierra Springs, or Sparkletts, are required to reorder yearly via eBuy2 “on-catalog.”

These sites are also requested to process their requisitions for Fiscal Year (FY) 2015 after October 1, 2014. **All requisitions must be processed and approved prior to October 15, 2014, to avoid a lapse in service.** Processing of requisitions is required during this period because the supplier needs to have your FY 2015 on-catalog requisition in the eBuy2 system in order to invoice your FEDSTRIP.

Note: Some sites cannot receive service directly from Nestle or DS Waters. These sites are authorized to purchase “off-catalog” as long as Nestle or DS Waters have stated that they will not service those specific locations. Locations wishing to renew bottled water service for FY 2015 should note the following to help ensure smooth service throughout next year:

- When submitting orders on eBuy2, estimate how much product your office will need for all of FY 2015 (October 1, 2014 to September 30, 2015).
- All orders must match the Area for which they belong; eBuy orders with items for mixed Areas will be cancelled.

- Coolers and/or dispenser rentals must be entered for the entire year (12 months).
- Customers ordering cups should estimate and request enough for the entire fiscal year.
- **For DS Waters customers only** — For every bottle of water ordered, there must be an equal bottle deposit quantity ordered.

Consult the following MLBs for more bottled drinking water information, including step-by-step ordering instructions:

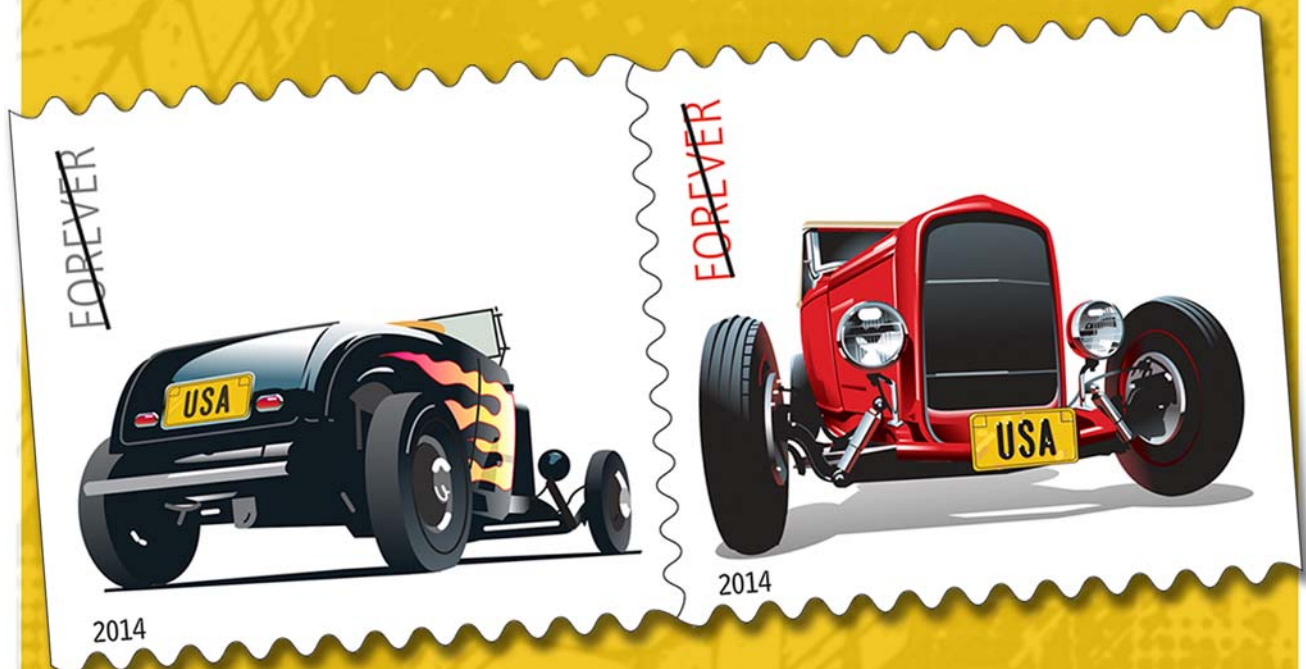
- MLB-CO-07-009 — Nestle: http://blue.usps.gov/purchase/_pdf/ops_mlb07-009.pdf.
- MLB-CO-07-010 — DS Waters: http://blue.usps.gov/purchase/_pdf/ops_mlb07-010.pdf.

This service is not for “emergency,” national disaster-type bottled water purchases. For all emergency bottled water requirements, please refer to *Material Logistics Bulletin* (MLB) MLB-CO-07-001 — http://blue.usps.gov/purchase/_pdf/ops_mlb07-001.pdf.

If you have any questions, contact DaWone Hunter at 214-819-7115 or via email at dawone.m.hunter@usps.gov.

— *Operational Supplies and MTE, Supply Management, 10-2-14*

USPS® Releases
Hot Rods
Forever® Stamps.



On Sale Nationwide: June 6, 2014.