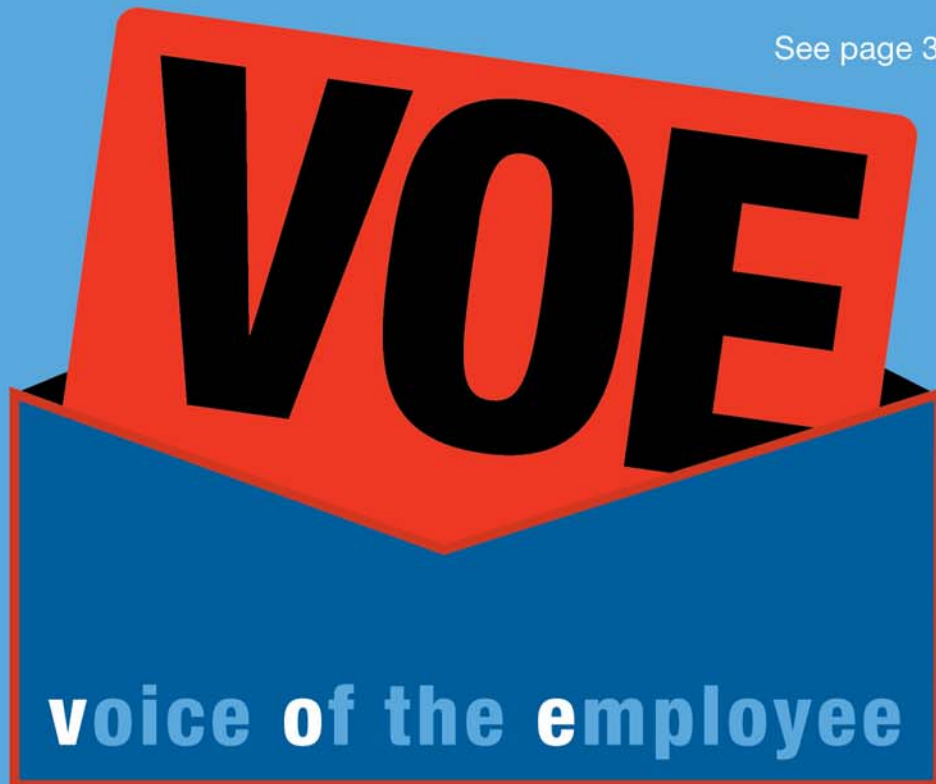


postal|bulletin

PUBLISHED SINCE MARCH 4, 1880

LET YOUR
OPINION
BE HEARD.
EVERY VOICE COUNTS.

See page 3



Return your Quarter 4 surveys by August 18



Contents

COVER STORY

Fourth Quarter Voice of the Employee Surveys are in the Mail	3
---	---

POLICIES, PROCEDURES, AND FORMS UPDATES

Publications

Publication 75, Mover's Guide, News	4
Publication 223 Revision: Directives and Forms Update	4
Publication 431 Revision: Changes to Post Office Box Service and Caller Service Fee Groups	5

ORGANIZATION INFORMATION

Employee Resource Management

National Employee Emergency Hotline Enhancements	6
--	---

Finance

Travel Card Credit Limits Lowered to One Dollar on Infrequent Traveler's Accounts	7
Equipment Maintenance Allowance Schedule for Rural Routes	10
BSA Updates	10

Information Security

Fortifying Standards — Credit Card Security Training Available	30
---	----

Mailing and Shipping Services

Mail Alert	30
------------------	----

Stamp Services

Pictorial Postmarks Announcement	31
How to Order the First-Day-of-Issue Digital Color or Traditional Postmarks	33
Stamp Announcement 14-34: Farmers Markets Stamps	37

Supply Management

Interest Rate on Contract Claims	38
--	----

PULL-OUT INFORMATION

Fraud

Withholding of Mail Orders	13
Invalid USPS Corporate Account Numbers	13
Missing, Lost, or Stolen U.S. Money Order Forms	15
Missing, Lost, or Stolen Canadian Money Order Forms	20
Verifying U.S. Postal Service Money Orders	23
Counterfeit Canadian Money Order Forms	23
Toll-Free Number Available to Verify Canadian Money Orders	23

Other Information

Overseas Military/Diplomatic Mail	24
---	----

Postal Bulletin Index

Annual Index	PB 22381 (1-23-14)
--------------------	--------------------

USPS National Emergency Hotline
Is your facility operating? Call 888-363-7462

The Last Mile™
Delivered by the United States Postal Service®

Cover Story

Fourth Quarter Voice of the Employee Surveys are in the Mail

Each quarter, 25% of employees are invited to participate in the Voice of the Employee (VOE) survey — the Postal Service's measure of employee engagement. Employee engagement is the degree to which employees come to work each day willing and able to use their best efforts, ideas, and abilities toward helping the Postal Service™ provide the best possible service. Engaged employees believe in what they do, exert discretionary effort, adapt well to change, and proactively address new opportunities. High levels of engagement lead to positive organizational outcomes such as customer satisfaction, productivity, safety, and retention.

Employees are most engaged when they have the right tools, information, training, and leadership to do their job. Engaged employees know how the work they do is aligned to the goals of the Postal Service, and they are enabled and

motivated to achieve results. That's why the VOE survey invites employees to give the Postal Service their opinions on topics such as communication, trust, diversity, respect, and leadership.

Participation in the VOE is voluntary and entirely confidential. Responses go directly to an independent party who tabulates the results and reports them back to the Postal Service in summary form.

If you are invited to participate in the VOE this quarter, take some time — on-the-clock — to let your voice be heard.

— *Learning and Development,
Employee Resource Management, 7-10-14*

Policies, Procedures, and Forms Updates

Publications

Publication 75, Mover's Guide, News

As of July 1, 2014, recycle any old copies of Publication 75, *Mover's Guide*. All Post Offices™ should have received the new July–September 2014 issue of Publication 75 by June 30, 2014. Similar to last quarter's shipment, the total quantity of *Mover's Guide* copies sent to your facility may have been reduced. In an effort to reduce waste and account for more customers submitting change-of-address orders online, fewer *Mover's Guide* copies are needed. There are several things you can do to conserve as well:

- Make sure customers are aware that USPS.com® is the most convenient, safe, and secure way for customers to submit a change-of-address order.
- Encourage carriers to take ICOA message cards on their routes instead of *Mover's Guide* copies.
- Give *Mover's Guide* copies out to *moving* customers only.

Important Reminders

- Copies of *Mover's Guide* must be kept behind the counter *ONLY*, not in inner or outer lobbies or on clerk counters.
- Customers unwilling or unable to submit their change of address at www.usps.com should be given a complete, unopened copy of *Mover's Guide*.
- Provide no more than three copies of *Mover's Guide* to each customer.
- *Mover's Guide* is printed and distributed four times a year.

Shipment Information and Inventory Management

Offices will continue to receive copies of *Mover's Guide* in one or two shipments. The first shipments should have

arrived by the end of June. The second shipments will arrive 3 to 5 weeks later.

- Boxes with BLUE stickers are the first shipment for this print run.
- Boxes with ORANGE stickers are the second and final shipment for this print run.

To track your office's shipment information, go to http://blue.usps.gov/purchase/operations/ops_downloads.htm and click *Mover's Guide* (Pub 75) Distribution for July–September 2014. Use the Ctrl + F Function, while the “Fedstrip” Column is highlighted, to search for your office. To request a shipment quantity change, call Imagitas at 800-816-6837.

ICOA Message Card Information

If your Post Office has an ICOA message card display, replenishment cards and updated banners will be mailed with your *Mover's Guide* shipments. **DO NOT THROW AWAY THE DISPLAY OR ICOA MESSAGE CARDS. THEY DO NOT EXPIRE.** The display is **REQUIRED** to be in the lobby and it must have the ICOA message cards in it at all times.

If any Post Office runs out of ICOA Message cards between shipments, use the website at <http://imagitas.com/contact/postal-request-form/> or call 800-816-6837 for replenishment.

— Address Management,
Product Information, 7-10-14

Publication 223 Revision: Directives and Forms Update

Effective July 10, 2014, Publication 223, *Directives and Forms Catalog*, is revised to include current information for the items noted in this article. See Publication 223 for complete information.

Information on how to order directives and forms is available in Chapter 1 of Publication 223.

Publication 223 is available on the Internet at <http://about.usps.com/publications/pub223.pdf>.

New

- MI AS-800-2014-2, *Managed Mobile Computing*.

- MI DM-505-2014-1, *Business Reply Mail — Management Oversight Review*.
- MI FM-512-2014-4, *Software Capitalization*.
- MI FM-640-2014-2, *Government-Issued Individually Billed Travel Charge Cards*.
- POS 326-B, *Heat Stress: Tips to Prevent Heat Stress*.
- POS 341, *You Are Your Most Important Delivery*.
- PUB 335, *Safe and Secure Wallet Card*.
- PUB 338, *Threats Are No Laughing Matter*.

- PUB 339, *You Are Your Most Important Delivery.*
- PS 6815, *Air Transportation Certification.*

Revised

- HBK AS-353, *Guide to Privacy, the Freedom of Information Act, and Records Management.*
- HBK AS-805, *Information Security.*
- HBK EL-380, *Postal Career Executive Service.*
- HBK F-15, *Travel and Relocation.*
- HBK MS-172-VOL-A, *Flats Canceler/Stacker Model 15 (with Modified Canceler), System/Maintenance Information.*
- MAN IMM, *Mailing Standards of the United States Postal Service, International Mail Manual.*
- POS 209, *Dog Bite.*
- PUB 99, *We, The Postal Service.*
- PUB 223, *Directives and Forms Catalog.*
- PUB 266, *Blueprint for Facility Security.*

- PUB 307, *Stop Unsolicited Sexually Oriented Advertisements in Your Mail.*
- PUB 621, *Premium Forwarding Service Residential: Guidebook for Employees.*
- PS 3002, *Data Request.*
- PS 3203, *Personalized Stamped Envelopes Brochure Order Form.*
- PS 3526, *Statement of Ownership, Management, and Circulation (All Publications Except Requester Publications).*
- PS 3526-R, *Statement of Ownership, Management, and Circulation (Requester Publications Only).*
- PS 3813, *Insured Mail Receipt — Domestic Only — \$200 and Under.*
- PS 3813-P, *Insured Mail Receipt — Domestic Only — Over \$200.*
- PS 4004-C, *Customized Packaging Business Case.*
- PS 4004-SP, *Specialized Packaging Order Form.*

Obsolete

PSIN	Ed. Date	Title	Replaced By
MI DM-505-2013-3	6/13	<i>Business Reply Mail — Management Review</i>	MI DM-505-2014-1
MI FM-512-1999-4	10/99	<i>Software Capitalization</i>	MI FM-512-2014-4
MI FM-640-2013-2	3/13	<i>Government-Issued Individually Billed Travel Charge Cards</i>	MI FM-640-2014-2

— Brand and Policy, Corporate Communications, 7-10-14

Publication 431 Revision: Changes to Post Office Box Service and Caller Service Fee Groups

Effective July 10, 2014, Publication 431, *Post Office Box Service and Caller Service Fee Groups*, is revised to include the following changes.

Publication 431, Post Office Box Service and Caller Service Fee Groups

* * * * *

[Revise the following entries:]

ZIP Code	Fee Group
15476	5
30261	34

* * * * *

[Delete the following entries:]

ZIP Code	ZIP Code
17057B	64646
29102A	69367
34278B	84742
47986	76095C
54764	92545
55703	96919
56140	

* * * * *

The online version of Publication 431 is dated July 2010. Publication 431 is currently available on the Postal Service™ PolicyNet website (<http://blue.usps.gov/cpim>):

- Go to <http://blue.usps.gov>.
- Under “Essential Links” in the left-hand column, click *PolicyNet*.
- Click *PUBs*.

Offices with WebBATS access can view current Publication 431 information by generating a WebBATS Facility Information Report as follows:

1. Go to the WebBATS main menu, and select *Reports*. The reports page opens.
2. Under the Clients/System column, System category, click *Facility Information*.
3. View the Fee Group field in the report.

— Retail Services, Retail Channel Operations, 7-10-14

Organization Information

Employee Resource Management

National Employee Emergency Hotline Enhancements

Recent events have shown that additional measures should be put into place to provide assistance to Areas or Districts to ensure employees are safe and accounted for in emergency situations. To assist in these unique situations, there have been enhancements to the Toll-Free National Employee Emergency Hotline System.

In **specific** situations, such as an Active Shooter or extreme weather event, the Human Resources (HR) Manager or designee will instruct employees to call the Toll-

Free hotline number: 888-EMERGNC (888-363-7462), listen to the message, then press “5”. The employee will be connected to a U.S. Postal Service® Call Center agent who allows them to report their status.

Procedures for Employees

The following are specific situations when the enhancement feature would be activated and includes procedures employees should follow:

<i>If the emergency situation is...</i>	<i>Then...</i>
Extreme Weather Event (e.g., Tornado, Earthquake)	<ol style="list-style-type: none"> 1. Call the Toll-Free hotline number to check on opening status of a facility by entering the first 3 digits of the office ZIP™ Code, and confirm by entering “1”. HQ employees use ZIP Code “000”. 2. Enter “5” after listening to the recorded message and the employee will be connected to an agent. 3. Inform agent of the employee’s safe status and provide requested contact information. 4. Call back to the hotline periodically to check for updates. <p>Anticipated weather events: If serious weather is predicted, the call centers will be alerted and staffed in advance to receive calls. Area Vice Presidents and District Managers in consultation with Headquarters Operations, Chief Human Resources Officer, and National Preparedness Office determine whether to alert call centers in advance.</p>
An Active Shooter	<ol style="list-style-type: none"> 1. Leave the building (if possible). 2. Do not go to Rally Points (find a safe place). 3. Once safe, call the Employee Emergency Hotline number to provide accountability of your safety. To do this, enter the first 3 digits of the office ZIP Code, and confirm by entering “1”. HQ employees use ZIP Code “000”. 4. Once the recorded message starts, you may enter “5” at any time to be connected to an agent. 5. Inform agent of the employee’s safe status. 6. Call back to the hotline periodically to check for updates.

As this information is gathered by HRSSC and/or the Eagan IT Corporate Help Desk, it will be given to the Area and/or District HR Manager.

Instructions for Area, District, or Headquarters’ Management

Instructions on how to update the National Employee Emergency Hotline Number message are available in the

Postal Alert Notification System (PANS) at <https://pans/pans/> or through the ONP Knowledge Base/Help Desk at <http://rmdweb.usps.gov/onlinehelp/default.asp?sys=19>.

— Human Resources, HQ,
Employee Resource Management, 7-10-14

Finance

Travel Card Credit Limits Lowered to One Dollar on Infrequent Traveler’s Accounts

Beginning July 14, 2014, employees that have had no travel card activity in 24 months or more will be considered an infrequent traveler. The credit limit on infrequent traveler’s accounts will be lowered to one dollar. The following steps must be followed to request a credit limit increase if your credit limit is lowered to one dollar due to infrequent travel:

- Follow the existing practice in your department, area, or district for requesting authorization to travel.
- Once travel is approved, send an email to the local travel card coordinator and attach the documenta-

tion approving the travel. This should be done as soon as possible to avoid delays in making travel arrangements. See the list of travel card program coordinators below.

- The local travel card coordinator will increase the credit limit to the approved limit based on employee group type, (i.e., EAS or Craft).

Note: Travel cards will be monitored every 12 months for inactivity. Accounts that have no activity will be lowered to one dollar.

Travel Card Program Coordinators

CAPITAL METRO AREA		
Area Office	Cathy White	410-347-4305
Atlanta	Nicole Pettway	770-717-3586
Baltimore	Jennifer Carroll	410-347-4302
Capital	Cathy White	410-347-4305
Northern VA	Phil Gleason	703-698-6440
Richmond	Gracie Crawley-Reed	804-775-6247
Greensboro	Carol Campbell	336-668-1212
Mid-Carolina	Sharon Cooke	704-424-4451
Gr. South Carolina	Tammy Bynum	803-926-6503
EASTERN AREA		
Area Office	Mark Tappe/Pierre Defelice	412-494-2574/412-494-2573
Ohio Valley	Jennifer Waller	513-684-5410
Northern Ohio	Karen Ellis/Cheryl Woods-Moss	216-443-4371/216-443-4572
Central PA	Mary Wagner/Paul Klassner	717-257-2171/570-969-5180
Philadelphia	Leslie Gakoumis/Thomas Grill	215-863-5013/215-863-5012
Western PA	Mary Jo Ruschel	412-359-7654
South Jersey	Gail Chrzanowski/Pete Mazza	856-933-4422/856-933-6028
Appalachian	Judy Dearien	304-561-1182
Kentuckiana	Mary Rumbaugh/Shelly Lomax	502-454-1885/502-454-1814
Western New York	Phil Burn/Paul Czaja	716-846-2525/716-846-2447
Tennessee	Mary Hatcher	615-885-9156
GREAT LAKES AREA		
Area Office	Rita Casimiro/April Forman	608-246-4791/630-539-1356
Central Illinois	Kirstyne (Tina) Little/Laura McNulty	708-563-7958/708-563-7942
Chicago	Laura Jones	312-983-8255
Detroit	Tony Carnegie/Krystal Morrison	313-226-8115/313-226-8662
Greater Michigan	Mark Westra/Joan Fifelski	616-336-5304/616-336-5303
Greater Indiana	Angie Watkins	371-870-8271
Gateway	Brenda Minor/Angela Clay	314-436-3905/314-436-4588
Lakeland	Dale Bajurny/Kellie Frey	414-287-2210/414-270-2044
NORTHEAST AREA		
Area Office	Mary Neokleous	860-285-7154
Caribbean	Mario Brenes/Rosalind Robles	787-622-1605/787-622-1713
Long Island	Richard Harrison/Anthony Speciale	631-467-0586/516-228-7613
New York	Linda Dewar/Yuey Chow	212-330-3879/212-330-3891
Northern New Jersey	Cynthia Wells/Sherylann Alia/Frankie Worthy	973-468-7174/732-819-3817/ 732-819-3816
Triboro	Edmund Williams/Sylvia Patterson	718-348-3888/718-348-3897
Westchester	Valentina Desouza/Gloria Haynes	914-697-7097/914-697-7121
Albany	Tim Maloney/Lisa Dostal	518-452-2215/518-452-2352
Greater Boston	Ann Wood/Linda Peterson	978-664-7636/617-654-5433
Connecticut Valley	John Rogers/Lorie Little/Nicholas Brignola	401-276-8641/860-524-6010/ 203-782-7245
Northern New England	Marie Haas/Denise Gonneville/Lynne Kokoski	603-665-7931/207-871-8466/ 603-665-7934

PACIFIC AREA

Area Office	Don Vaughn/Jade Hua	856-674-3125/858-674-2694
Bay Valley	Daphne Hawk/Nancy Joves	510-874-8341/510-874-8547
Honolulu	Lloyd Nakata/Ann Rilveria	808-423-3740/808-423-3728
Los Angeles	Ingrid McMillan/Daniel Mastren	323-586-1717/323-586-1700
Sacramento	Sharon Kubochi/Julie Chu	916-373-8501/916-373-8526
San Diego	Michael McCarthy/Annette Goetz	858-674-0285/858-674-0324
San Francisco	Mayumi Nazareno/Dale Low	415-550-5280/415-550-5507
Santa Ana	Laura Francis-Mirwald/Debra Collins	714-662-6382/714-662-6253
Sierra Coastal	Clemen Baladad/Ana Mariscal	661-775-6810/661-775-6800

SOUTHERN AREA

Area Office	Ray Vincent/Karen Cooper	214-819-8685/214-819-8649
Alabama	Veronique Wallace/Kimberly Harper	205-521-0204/205-521-0054
Arkansas	Clarissa Engel/Patty Koonce-White	501-228-4220/501-228-4130
Dallas	Yolanda Flores/Dimpu John	972-462-2271/972-393-6603
Fort Worth	Rose Casillas	817-317-3501
Gulf Atlantic	Joshua Campbell/Rod Spelts	904-359-2852/478-752-8508
Houston	Jaime Acevedo/Catherine Vuong	713-226-3194/713-226-3002
Louisiana	Kyle Laurendine/Annette Hampton	504-589-1082/504-589-1077
Mississippi	Sandi Johnson/Tina Henry	601-351-7267/601-351-7385
Oklahoma	Elisha Moore/Linda Moore	405-815-2401
Rio Grande	Ruben Cerna/Ann Angell	210-368-1201/210-368-1651
South Florida	Joe Viola/Elizabeth Myers	954-926-1860/954-436-4486
Suncoast	Daniel Bohn/Olivia Mulloy	407-444-3042/407-333-4835

WESTERN AREA

Area Office	Gloria Diedrich/Marilyn Ross	303-313-5713/303-313-5777
Alaska	Blessie Lochmann	907-564-2815
Arizona	Eileen Acosta	602-882-6526
Central Plains	Mary Nicholson/Mary Lewis	402-930-4451/402-930-4455
Colorado/Wyoming	Yen Ha/Marionnette Bennett	303-853-6148/303-853-6692
Dakotas	Linda Butterfield/Mary Anderson	605-333-2762/605-333-2660
Hawkeye	Jan Thompson/Sam Bilsing	515-251-2266/515-251-2265
Mid-America	Elaine Hathaway/Peggy Bradfield/Edith Guinn	816-374-9773/816-374-9251/ 816-374-9246
Nevada-Sierra	Lyly Gelles/Dennis Deluca	775-788-0705/702-361-9302
Northland	Lynn Knafla/Teri Cathey	612-349-0326/612-349-4415
Portland	Wendell Beck/Kenneth Vaughn	503-294-2805/503-294-2465
Salt Lake City	Sue Evans/Patrick Crosby	801-974-2301/801-974-2399
Seattle	Gail Patterson	253-214-1804

CFO/OFFICER'S/BOG/PRC/RESTRICTED CARDS

CFO/HQ Finance	Kim Alston	202-268-3621
Board of Governors	Kim Alston	202-268-3621
Treasurer	Kim Alston	202-268-3621
Postal Regulatory Commission	Kim Alston	202-268-3621
Restricted Cards	Kim Alston	202-268-3621
Officer's	Debbie Gorman	202-268-2296
Accounting Center Support	Nancy Hester	651-406-2152
Eagan ASC	Chris Zilmer/AI Woodford	651-406-1473/651-406-2004
San Mateo ASC	Juan (JJ) Chen/Daniel Urrutia	650-377-1098/650-377-5331
St Louis ASC	Linda Grames	314-436-6952
VP Supply Management	Frelencia Williams/Vanessa Smith	202-268-6576/202-268-4234

CHIEF HR OFFICER (CHRO)

CHRO	Donna Talley/Patty Hodor	202-268-8555/202-268-5808
VP Employee Resource Management	Angela Champion	202-268-6633
HRSSC, Greensboro	Susan Luf	336-662-4045
VP Labor Relations	Marian Simmons/Gina Henson	202-268-7190/202-268-2334

CHIEF INFORMATION OFFICER (CIO)

CIO And Information Technology	James Jee	202-268-2362
Eagan IBSSC	Chris Zilmer/AI Woodford	651-406-1473/651-406-2004
San Mateo IBSSC	Rose Marie Johnson	650-377-5370
St. Louis IBSSC	John Monda	314-340-2206
Wilkes-Barre IBSSC	Sandra Castrignano	570-830-5808
Raleigh Nissc	Larry Williams	919-501-9507
VP Mail Entry & Payment Tech	Deborah Cumbo	202-268-6393

VP Engineering Systems	Camellia Sanglay/Kozue Bear	703-280-7084/703-280-7150
VP Product Information	Carol McNair/Denise Bryant	202-268-7458/202-268-4180
CHIEF MARKETING & SALES OFFICER (CMSO)		
CMSO	Esther Karl	202-268-7691
Online & Marketing Services	Ruby Gaskins	202-268-4990
VP Pricing	Esther Karl	202-268-7691
VP New Products And Innovation	Alisa Anderson	202-268-3177
VP Secure Digital Solutions	Esther Karl	202-268-7691
Stamp Fulfillment	Cathy Mays	816-545-1253
VP Sales	James Wise/Sahra Mohamud	202-268-4535/202-268-5941
VP Global Business	Robert Graham/Jean Tucker	202-268-3348/202-268-2888
GENERAL COUNSEL		
General Counsel	Robin Sindorf/Anastasia Bartholomew	202-268-4817/202-268-5212
INSPECTION SERVICE		
HQ Inspection Service	Linda Johannes	202-268-4246
Detroit Division	Winifred Burris	313-226-8193
Seattle Division	Norman Esteban	206-442-6302
Los Angeles Division	Memrie Davies	626-405-1247
San Francisco Division	Cindy Toy	415-778-5890
Chicago Division	Karen Abernathy	312-983-6281
Denver Division	Jeffrey Trippe	303-313-5378
Miami Division	Theresa Hamilton	954-436-7222
Atlanta Division	Diane Bowler	404-608-4628
Ft. Worth Division	Kathy Throckmorton	817-359-2710
Houston Division	Nikia King	713-238-4452
Charlotte Division	Patricia Markuszka	704-329-9150
Washington Metro Division	Ella Johnson	410-715-7740
Internal Affairs Division	Linda Johannes	202-268-4246
Pittsburgh Division	Amy Lytle	412-359-7980
Philadelphia Metro Division	Florencia Hanna	610-668-4595
Boston Division	Kathleen Bell	617-556-4462
New York Metro Division	Duquesa Wright/Grace Quinones	212-330-2306/212-330-3350
Newark Division	Nancy Manuelian	973-693-5445
Security Investigative SRV CTR	Andrea Brown//Peggy Kirk	901-747-7793/901-747-7758
Criminal Investigative SRV CTR	Joe Hernandez	312-669-5669
Technical Services	Le Tran	703-948-3190
Career Development Division	Rosemarie Maloney	301-983-7150
Phoenix Division	Sharon Robins	602-223-3268
INSPECTOR GENERAL		
Inspector General	Carolyn McClam/Gloriet Moton	703-248-7863/703-248-7861
PMG/DPMG/COO		
PMG/DPMG/COO	Yolanda Womack/Brenda Adams	202-268-3506/202-268-2283
VP Corporate Communications	Bobby Fitzgerald	202-268-6394
VP Consumer & Industry Affairs	Phillis Walden/June Fisher	202-268-3225/202-268-5565
VP Gov Relations & Public Policy	Moneke Kearney	202-268-2182
VP Delivery & Post Office Operations	Carl Smith/Omega Ruth	202-268-3720/202-268-3171
VP Facilities	Jim Allen/Vicky Miles	202-268-5766/214-819-7226
VP Channel Access	Carole Johnson-brown	202-268-2871
VP Network Operations	Wanda Gowan	202-268-3439
International Operations	Brenda Howard/Carol Redmon	202-268-7729/202-268-6675
Maintenance Technical Support CTR, Norman, OK	Chari Forrest	405-573-2227
Sustainability	Brenda Adams	202-268-2283

Equipment Maintenance Allowance Schedule for Rural Routes

Rural Carriers

Effective July 12, 2014 (pay period 16-14), in accordance with the provisions of Article 9, Section 2.J.3 of the Rural Carrier National Agreement, the equipment maintenance allowance (EMA) will increase from 72.0 cents per mile to 75.0 cents per mile. The EMA is 75.0 cents per mile, or a minimum of \$30.00 per day, whichever is greater.

Auxiliary Rural Carriers, Rural Carrier Reliefs, Rural Carrier Associates, Rural Carrier Part-Time Flexibles, and Auxiliary Assistance

Employees providing auxiliary assistance or serving auxiliary routes under provisions of Article 9, Section 2.J.5,

receive an EMA of 75.0 cents per mile or \$8.10 per hour, whichever is greater. This EMA should not exceed the amount provided in the special equipment maintenance allowance for the route stops and miles.

EMA Rate Schedule

The EMA rate schedule on pages [11–12](#) supersedes all previously published EMA schedules for employees receiving EMA.

— *Collective Bargaining and Arbitration, Labor Relations, 7-10-14*

BSA Updates

Printing of Money Orders

All Retail Associates and other Postal Service™ personnel who sell money orders should allow all the money orders in a transaction to finish printing, once that process has started, even if some of the money orders are incorrect. This means that if you are printing a series of money orders and you discover there is an error, do not stop the printing process and try to correct the problem. Instead, void the printed money orders that need to be corrected following standard procedures and then replace them in a new transaction.

For example, if you are printing out a series of international money orders and the system prompts you to load a domestic money order, you would then know it is likely that there was a keying error in the initial transaction. In that case, insert a domestic money order and let it print. Stopping that process in the middle can lead to erroneous or confusing transaction reports that require more work to resolve and adversely affect our BSA compliance efforts.

Note: If you discover an error and have already started to print, let all the money orders finish printing, then void out the errors and create the correct money orders in a new transaction.

Mandatory Field

The Occupation field is mandatory on PS Form 8105-A, *Funds Transaction Report*, and must be filled out whenever an 8105-A is required.

Completing PS Form 8105-A for Law Enforcement or another Government Agency

When an agent of a federal law enforcement agency or other Government Agency, such as the Postal Inspection Service, the Internal Revenue Service, or the U.S. National Park Service, purchases Postal Service money orders in an amount of \$3,000 or greater for official business, the following procedures must be followed on the 8105-A form:

- Put the Agency Name in the “LAST NAME” field and put the Agent/Government Employee Name in the “FIRST NAME” field (specifically, last name (space) first name). This is required — see example:

LAST NAME	FIRST NAME
USPS	Doe, John

- Put the agency’s Tax Identification Number (TIN) or Employer Identification Number (EIN) in the Social Security Number field on the form instead of the agent’s Social Security Number. If the agency’s TIN/EIN is not available, use the Postal Service’s TIN.
- Put the agent’s official ID number (from his/her government ID) in the “Other ID No.” field on the form.
- Put the agency name in the “Type of Other ID” field on the form.
- Put the agent’s Date of Birth in the Date of Birth Field. This is required.

— *BSA Program Office, Corporate Treasury, 7-10-14*

Rural Equipment Maintenance (Page 2of 2)

USPS	26-9502	RURAL EQUIPMENT MAINTENANCE	R A T E S C H E D U L E	DATE 06-18-14																
MINNEAPOLIS ISC				PAGE 2																
REPORT AR0530PI																				
MILES	STOPS =	*0640**0660**0700**0720**0740**0760**0780**0800**0820**0840**0860**0880**0900**0920**0940**0960**0980**1000																		
		BASED ON \$0.750 PER MILE	EFFECTIVE PP-YR 16-14																	
8	31.50	31.60	31.70	31.80	31.90	32.00	32.10	32.20	32.30	32.40	32.50	32.60	32.70	32.80	32.90	33.00	33.10	33.20	33.30	
9	31.70	31.80	31.90	32.00	32.10	32.20	32.30	32.40	32.50	32.60	32.70	32.80	32.90	33.00	33.10	33.20	33.30	33.40	33.50	33.60
10	31.90	32.00	32.10	32.20	32.30	32.40	32.50	32.60	32.70	32.80	32.90	33.00	33.10	33.20	33.30	33.40	33.50	33.60	33.70	33.80
11	32.10	32.20	32.30	32.40	32.50	32.60	32.70	32.80	32.90	33.00	33.10	33.20	33.30	33.40	33.50	33.60	33.70	33.80	33.90	34.00
12	32.30	32.40	32.50	32.60	32.70	32.80	32.90	33.00	33.10	33.20	33.30	33.40	33.50	33.60	33.70	33.80	33.90	34.00	34.10	34.20
13	32.50	32.60	32.70	32.80	32.90	33.00	33.10	33.20	33.30	33.40	33.50	33.60	33.70	33.80	33.90	34.00	34.10	34.20	34.30	34.40
14	32.70	32.80	32.90	33.00	33.10	33.20	33.30	33.40	33.50	33.60	33.70	33.80	33.90	34.00	34.10	34.20	34.30	34.40	34.50	34.60
15	32.90	33.00	33.10	33.20	33.30	33.40	33.50	33.60	33.70	33.80	33.90	34.00	34.10	34.20	34.30	34.40	34.50	34.60	34.70	34.80
16	33.10	33.20	33.30	33.40	33.50	33.60	33.70	33.80	33.90	34.00	34.10	34.20	34.30	34.40	34.50	34.60	34.70	34.80	34.90	35.00
17	33.30	33.40	33.50	33.60	33.70	33.80	33.90	34.00	34.10	34.20	34.30	34.40	34.50	34.60	34.70	34.80	34.90	35.00	35.10	35.20
18	33.50	33.60	33.70	33.80	33.90	34.00	34.10	34.20	34.30	34.40	34.50	34.60	34.70	34.80	34.90	35.00	35.10	35.20	35.30	35.40
19	33.70	33.80	33.90	34.00	34.10	34.20	34.30	34.40	34.50	34.60	34.70	34.80	34.90	35.00	35.10	35.20	35.30	35.40	35.50	35.60
20	33.90	34.00	34.10	34.20	34.30	34.40	34.50	34.60	34.70	34.80	34.90	35.00	35.10	35.20	35.30	35.40	35.50	35.60	35.70	35.80
21	34.10	34.20	34.30	34.40	34.50	34.60	34.70	34.80	34.90	35.00	35.10	35.20	35.30	35.40	35.50	35.60	35.70	35.80	35.90	36.00
22	34.30	34.40	34.50	34.60	34.70	34.80	34.90	35.00	35.10	35.20	35.30	35.40	35.50	35.60	35.70	35.80	35.90	36.00	36.10	36.20
23	34.50	34.60	34.70	34.80	34.90	35.00	35.10	35.20	35.30	35.40	35.50	35.60	35.70	35.80	35.90	36.00	36.10	36.20	36.30	36.40
24	34.70	34.80	34.90	35.00	35.10	35.20	35.30	35.40	35.50	35.60	35.70	35.80	35.90	36.00	36.10	36.20	36.30	36.40	36.50	36.60
25	34.90	35.00	35.10	35.20	35.30	35.40	35.50	35.60	35.70	35.80	35.90	36.00	36.10	36.20	36.30	36.40	36.50	36.60	36.70	36.80
26	35.10	35.20	35.30	35.40	35.50	35.60	35.70	35.80	35.90	36.00	36.10	36.20	36.30	36.40	36.50	36.60	36.70	36.80	36.90	37.00
27	35.30	35.40	35.50	35.60	35.70	35.80	35.90	36.00	36.10	36.20	36.30	36.40	36.50	36.60	36.70	36.80	36.90	37.00	37.10	37.20
28	35.50	35.60	35.70	35.80	35.90	36.00	36.10	36.20	36.30	36.40	36.50	36.60	36.70	36.80	36.90	37.00	37.10	37.20	37.30	37.40
29	35.70	35.80	35.90	36.00	36.10	36.20	36.30	36.40	36.50	36.60	36.70	36.80	36.90	37.00	37.10	37.20	37.30	37.40	37.50	37.60
30	35.90	36.00	36.10	36.20	36.30	36.40	36.50	36.60	36.70	36.80	36.90	37.00	37.10	37.20	37.30	37.40	37.50	37.60	37.70	37.80
31	36.10	36.20	36.30	36.40	36.50	36.60	36.70	36.80	36.90	37.00	37.10	37.20	37.30	37.40	37.50	37.60	37.70	37.80	37.90	38.00
32	36.30	36.40	36.50	36.60	36.70	36.80	36.90	37.00	37.10	37.20	37.30	37.40	37.50	37.60	37.70	37.80	37.90	38.00	38.10	38.20
33	36.50	36.60	36.70	36.80	36.90	37.00	37.10	37.20	37.30	37.40	37.50	37.60	37.70	37.80	37.90	38.00	38.10	38.20	38.30	38.40
34	36.70	36.80	36.90	37.00	37.10	37.20	37.30	37.40	37.50	37.60	37.70	37.80	37.90	38.00	38.10	38.20	38.30	38.40	38.50	38.60
35	36.90	37.00	37.10	37.20	37.30	37.40	37.50	37.60	37.70	37.80	37.90	38.00	38.10	38.20	38.30	38.40	38.50	38.60	38.70	38.80
36	37.10	37.20	37.30	37.40	37.50	37.60	37.70	37.80	37.90	38.00	38.10	38.20	38.30	38.40	38.50	38.60	38.70	38.80	38.90	39.00
37	37.30	37.40	37.50	37.60	37.70	37.80	37.90	38.00	38.10	38.20	38.30	38.40	38.50	38.60	38.70	38.80	38.90	39.00	39.10	39.20
38	37.50	37.60	37.70	37.80	37.90	38.00	38.10	38.20	38.30	38.40	38.50	38.60	38.70	38.80	38.90	39.00	39.10	39.20	39.30	39.40
39	37.70	37.80	37.90	38.00	38.10	38.20	38.30	38.40	38.50	38.60	38.70	38.80	38.90	39.00	39.10	39.20	39.30	39.40	39.50	39.60
40	37.90	38.00	38.10	38.20	38.30	38.40	38.50	38.60	38.70	38.80	38.90	39.00	39.10	39.20	39.30	39.40	39.50	39.60	39.70	39.80
41	38.10	38.20	38.30	38.40	38.50	38.60	38.70	38.80	38.90	39.00	39.10	39.20	39.30	39.40	39.50	39.60	39.70	39.80	39.90	40.00
42	38.30	38.40	38.50	38.60	38.70	38.80	38.90	39.00	39.10	39.20	39.30	39.40	39.50	39.60	39.70	39.80	39.90	40.00	40.10	40.20
43	38.50	38.60	38.70	38.80	38.90	39.00	39.10	39.20	39.30	39.40	39.50	39.60	39.70	39.80	39.90	40.00	40.10	40.20	40.30	40.40

Pull-Out Information

Fraud

Withholding of Mail Orders

Withholding of Mail Orders is enforced by Postmasters at the cities listed below.

State, City, ZIP Code	Names and Addresses Covered
CA, Westminster 92683-7572	Any and All of Various Names, 15568 Brookhurst Street, PMB 221
PA, Pittsburgh 15213-2540	Any and All Names Except the Surname Anderson, 141 Robinson Street, Apt. 3

— Judicial Officer, 7-10-14

Invalid USPS Corporate Account Numbers

This listing should be provided to Contract Postal Units and used by acceptance clerks in non-POS locations without intranet access to validate a USPS Corporate Account (USPSCA) number online. For all other locations, online USPSCA validation is preferred. The online validation process is outlined in the USPSCA Validation SOP on the Retail webpage. This list supersedes all previous notices,

which must be recycled. Acceptance clerks must not accept Priority Mail Express™ shipments bearing an invalid USPSCA number in the “Payment by Account” or “Agreement Number” section of the label or form.

Note: The first 6 digits of a 9-digit Custom Designed Service and Next Day Pickup Agreement make up the Corporate Account Number.

006368	023674	031074	046200	064140	080637	100762	187034	220377	306005	402912	531785	600037
006800	025112	031085	046301	064315	080737	100793	192587	220389	306863	436118	531833	600168
006859	025475	031136	047204	064992	085685	100802	192948	220409	306869	436120	531841	600179
008338	025479	032135	047211	065198	085913	100855	198263	220451	306975	436262	531865	600203
008615	025494	032150	048070	065379	088096	100893	200132	220477	307044	436366	531866	600219
008617	026001	032152	049003	065584	088148	100905	200300	220479	312350	436399	531883	600229
008825	026060	033033	049013	065704	089158	100958	200362	220532	314607	436462	531888	600260
009022	026412	034043	049018	065799	089189	101241	200506	220584	314834	441679	532002	600263
009267	026439	034312	049316	065817	089956	102639	200511	220709	321068	450030	532011	600304
009332	026470	034608	050086	066141	090181	103416	200649	220734	325419	452063	532345	600321
009405	026616	034660	051096	067205	090851	104120	200803	220796	326728	458150	532360	600498
009488	027296	036107	052003	067207	092629	105385	207654	220823	327053	463098	532383	600504
009533	027424	037047	052010	068066	093096	105787	207701	221151	327304	480062	532386	600509
009581	027502	037068	053009	068256	093314	109120	207853	221312	327306	481259	532416	600527
009924	027512	037110	053042	068372	093651	112130	208802	221345	327777	481312	532904	600529
009949	028018	038140	053046	069131	096035	112136	208903	221375	328441	481411	532975	600530
010757	028081	038274	053091	069382	096113	113200	208953	222139	331197	481933	537146	600539
011390	028125	038526	054089	069819	096166	115169	210070	223040	331604	483314	542170	600547
011413	028141	038613	054266	070034	096303	117214	210158	223050	331757	483361	544051	600577
012219	028207	038669	055073	071418	097349	119510	210508	223052	333149	483987	551183	600614
013244	028873	039016	056054	071551	097531	122266	210566	223056	334173	486347	551268	600626
015829	029405	039100	056065	071841	097944	124020	210859	223077	334344	492050	551359	600663
018487	029538	040122	056090	073201	098622	126001	212671	223087	335642	495139	551391	600672
018498	029598	041154	057018	074180	098678	126043	216027	223364	336072	530012	551742	600678
019235	029649	041332	058038	075714	098789	130026	220003	240511	336291	531306	553015	600685
019255	030006	041339	060005	075872	098822	142289	220042	273082	336583	531557	553036	600728
019465	030020	041356	060175	075932	098851	150015	220068	280089	338255	531562	554378	600745
020600	030092	042001	060509	077517	098881	152144	220082	282900	339120	531597	554608	600751
021042	030149	042004	060521	077695	100179	152216	220102	292610	340549	531598	558020	600805
021089	030408	043018	060926	078415	100309	152882	220217	300105	349214	531621	564030	600859
021771	030463	043020	061109	080090	100563	173066	220218	300506	370041	531654	591250	600916
023311	030464	043203	061737	080262	100615	175074	220248	301001	381090	531730	598670	600956
023518	030522	044306	063427	080351	100620	178013	220289	301252	402100	531765	600001	601039
023666	031014	046069	064059	080531	100681	180042	220312	303518	402409	531784	600012	601052

601274	602953	607368	629059	652525	730541	782441	816005	895560	913090	927402	937672	951852
601827	602999	607599	629065	680001	730574	785447	816358	898019	913131	927620	941505	951889
602004	603191	607603	630024	681025	731270	787184	820107	898057	914105	927729	945695	951948
602029	604367	607658	630027	681651	740319	790001	836422	898062	914499	927873	946484	954094
602087	605011	607730	630068	681662	740965	791004	841583	898071	915447	928121	947243	958303
602169	606112	607788	631010	685101	747008	791016	841812	900164	917239	928409	947257	967201
602227	606116	608131	631046	685276	750289	800102	843007	900420	917241	928474	948510	968332
602289	606322	608155	631171	718002	752012	801168	852663	901634	917371	928679	948735	968646
602433	606334	608228	631245	719031	759010	801483	852802	902045	917617	930019	949307	969207
602440	606398	608268	631314	720033	760003	801539	853595	902553	917641	930054	950745	972953
602521	606430	610100	631853	722194	760011	802462	853969	906953	918444	930072	950974	974169
602658	606609	610104	631932	722242	760692	802475	871675	907238	921109	931418	951131	980199
602668	606622	610123	633012	727086	761005	802476	895268	907299	921228	931443	951294	982469
602685	606653	610156	633024	727087	761414	803253	895295	907427	921335	931759	951514	995281
602695	606879	610158	641269	729035	761553	803308	895336	907662	925082	931838	951640	995428
602720	607026	620049	652150	729060	762067	805562	895366	907693	926400	932811	951697	995538
602743	607109	622027	652205	729072	764003	808011	895512	910438	926604	935084	951815	995594
602868	607220	626137	652265	730255	765630	809213	895520	912019	926737	937463	951828	998302
602937	607364	627031	652370	730260	775248	809415	895527	913001	926816	937522	951847	

— Product Information Requirements, Mail Entry and Payment Technology, 7-10-14

Missing, Lost, or Stolen U.S. Money Order Forms

Do Not Cash — Upon Receipt, Notify Local Postal Inspectors

This listing will be provided to all Postal Service™ employees responsible for accepting and cashing postal money orders. Destroy all interim notices when the num-

bers listed appear in the *Postal Bulletin*. The actual serial numbers consist of the first 10 digits on the money orders. Check for altered dollar amounts by holding money orders to the light.

010 001 0200 to 0299	040 688 8816 to 8899	077 999 4001 to 4090	127 500 2328 to 2399
010 504 1932 to 1999	041 299 6752 to 6799	078 174 4475 to 4499	160 901 2254 to 2299
011 582 1889 to 1899	041 623 8889 to 8899	078 219 4931 to 4999	161 103 6581 to 6599
011 588 2900 to 3099	041 803 6565 to 6599	078 250 4756 to 4799	161 194 2857 to 0899
012 441 0784 to 0799	043 129 1968 to 1997	078 823 8312 to 8399	162 032 4447 to 4499
012 579 5675 to 5699	043 205 5922 to 5999	079 374 0300 to 2499	163 257 1085 to 1099
013 289 6176 to 6199	044 087 3457 to 3499	079 807 2342 to 2399	164 359 2406 to 2499
013 610 0014 to 0099	044 087 4000 to 4099	082 721 0228 to 0254	166 101 1433 to 1499
014 932 1000 to 1099	044 306 4200 to 4299	083 140 5000 to 7499	167 555 5201 to 5212
014 972 0800 to 0899	044 306 4370 to 4599	083 784 8886 to 8899	167 555 5214 to 5299
015 363 0065 to 0099	045 524 4121 to 4298	083 913 6915 to 6999	169 618 6274 to 6299
017 028 3200 to 3299	046 800 9870 to 9899	084 478 3920 to 3999	171 806 6878 to 6893
018 569 5333 to 5399	047 352 4000 to 4099	086 000 8271 to 8299	173 639 4685 to 4699
018 986 5264 to 5299	048 383 7650 to 7659	086 798 3840 to 3849	174 238 2779 to 2799
019 518 2814 to 2899	048 396 3647 to 3699	088 404 4472 to 4499	174 281 9347 to 9399
020 698 5159 to 5199	051 142 0755 to 0799	088 404 5584 to 5699	175 251 2600 to 0699
020 844 7307 to 7399	051 774 8857 to 8899	088 757 8688 to 8699	176 281 7937 to 7950
020 972 8948 to 8999	051 781 2875 to 2885	088 757 9400 to 9499	176 281 7963 to 7999
022 021 9110 to 9181	051 977 7010 to 7023	089 358 2248 to 2257	176 731 6586 to 6599
022 037 1411 to 1499	052 058 7115 to 7199	090 663 9678 to 9684	178 254 5000 to 9999
022 527 9201 to 9210	054 450 1130 to 1167	091 818 0071 to 0099	178 881 9900 to 9999
022 529 1882 to 1899	057 670 0563 to 0599	093 106 9346 to 9355	180 031 2089 to 2098
023 637 7169 to 7199	058 187 3836 to 3899	093 203 0500 to 0599	180 403 7723 to 7741
024 380 4100 to 4199	058 523 3003 to 3099	093 684 3630 to 3699	180 428 4580 to 0599
024 496 6870 to 6896	058 591 1153 to 1299	094 081 5074 to 5099	182 368 7544 to 0599
025 092 0987 to 0999	058 895 3746 to 3799	094 216 2555 to 2599	182 475 3229 to 3258
025 369 5535 to 5599	059 986 0814 to 0899	094 580 7062 to 7099	182 475 3904 to 3933
025 729 1151 to 1199	060 406 7650 to 7699	094 639 4200 to 4299	182 631 0031 to 0099
025 729 1643 to 1799	063 491 8122 to 8199	095 070 7186 to 7199	184 218 2760 to 2799
026 492 3180 to 3199	063 916 9968 to 9999	095 076 8300 to 8399	185 828 1474 to 1499
027 361 0430 to 0499	064 091 4500 to 4599	095 354 6864 to 6899	186 132 7583 to 0599
027 369 4482 to 4495	065 170 0471 to 0499	097 224 1350 to 1599	186 629 0589 to 0599
027 671 8762 to 8776	065 255 7909 to 7999	100 160 3800 to 3899	187 184 6177 to 0199
027 787 9886 to 9899	065 392 6345 to 6399	104 667 6400 to 6499	187 323 8200 to 8299
027 965 9487 to 9499	066 099 2014 to 2099	104 876 8937 to 8999	187 441 6080 to 6099
028 100 8069 to 8099	066 648 2880 to 2899	112 049 4413 to 4499	188 831 6774 to 6799
028 191 1852 to 1999	066 787 3639 to 3699	112 870 9765 to 9799	188 835 6370 to 6399
028 850 3000 to 3199	066 845 7500 to 9999	113 319 2000 to 2099	189 083 1064 to 1099
029 510 1500 to 1599	067 093 3869 to 3899	114 402 3850 to 3899	189 660 9583 to 9599
030 687 0903 to 0999	068 895 0334 to 0399	114 866 5368 to 5397	191 179 0377 to 0399
030 701 3442 to 3499	070 724 4488 to 4499	116 154 2800 to 2899	192 050 5762 to 5781
031 077 4507 to 4799	070 841 9181 to 9199	116 986 4400 to 4499	194 456 8600 to 0699
032 295 7500 to 9999	070 844 2546 to 2599	117 175 1647 to 5169	195 194 6881 to 6899
034 394 1000 to 1099	070 916 1340 to 1399	117 951 4687 to 4699	198 285 2556 to 2566
034 943 0400 to 0799	071 047 5768 to 5799	117 951 5200 to 5299	199 105 0778 to 0799
035 035 4337 to 4399	071 179 9800 to 9899	119 786 3051 to 3064	199 678 2968 to 2999
037 312 7500 to 7599	071 386 3682 to 3699	119 815 8961 to 6199	202 748 5133 to 5199
037 706 9578 to 9599	071 507 6840 to 6899	119 850 7400 to 7499	202 748 5245 to 5299
037 805 3677 to 3699	072 045 9641 to 9699	119 850 7700 to 7999	202 748 5300 to 5399
037 909 5490 to 5499	072 675 8287 to 8299	121 634 0460 to 0499	202 748 5400 to 5499
037 931 4660 to 4699	073 763 0867 to 0876	122 451 9879 to 9899	203 256 1240 to 1299
039 145 6521 to 6595	073 763 0878 to 0887	122 714 6805 to 6900	204 230 3577 to 3595
040 024 3901 to 3999	073 763 0889 to 0898	124 916 0304 to 0499	205 019 0174 to 0199
040 674 7100 to 7199	077 617 5481 to 5499	126 423 0136 to 0169	207 196 9900 to 9999

207 204 0700 to 0799	392 668 2956 to 2999	411 922 2322 to 2399	433 003 5800 to 5899
207 204 0800 to 0899	392 854 8500 to 8899	412 193 0900 to 0999	433 757 3047 to 3099
207 514 3857 to 3899	393 584 7566 to 7699	412 395 8599 to 8699	433 765 4003 to 4099
208 556 4707 to 4799	393 650 0074 to 0099	412 485 6500 to 6599	434 482 7060 to 7199
210 057 4038 to 4047	393 838 8316 to 8499	412 485 6610 to 6699	434 513 2386 to 2399
210 221 0548 to 0599	393 893 6007 to 6099	412 885 5953 to 5999	434 968 3076 to 3092
214 303 6311 to 6325	394 126 6907 to 6999	414 193 3608 to 3674	435 303 1831 to 1842
214 303 6239 to 6258	394 189 0405 to 0599	414 193 3677 to 3699	435 303 1986 to 1999
214 877 4251 to 4273	394 822 3243 to 3278	414 411 7348 to 7399	435 666 6092 to 6399
215 252 3918 to 3992	394 990 1810 to 1899	414 640 0757 to 0799	436 082 6400 to 6899
218 698 2157 to 2199	395 343 3264 to 3299	414 965 1727 to 1799	436 160 6441 to 6499
218 746 0800 to 0899	395 373 3035 to 3099	417 302 8104 to 8199	437 316 7115 to 7199
219 095 0100 to 0399	395 396 9649 to 9799	417 387 6532 to 6599	437 427 0500 to 3499
219 389 1885 to 1899	395 970 3240 to 3299	417 496 6800 to 6999	439 179 2300 to 2399
221 316 5757 to 5799	397 622 4054 to 4099	417 871 9250 to 9299	439 310 0458 to 0499
227 275 9400 to 9999	397 819 8902 to 8999	417 930 9533 to 9599	440 698 1947 to 1999
273 070 8059 to 8099	398 149 7200 to 7699	418 164 6500 to 6799	440 858 6300 to 6399
273 775 7700 to 7899	399 070 0872 to 0899	418 423 9863 to 9899	440 858 6420 to 7299
302 000 0000 to 9999	399 156 7119 to 7199	418 633 5922 to 5999	441 199 1655 to 1699
349 746 2056 to 2099	399 203 5064 to 5099	418 719 8520 to 8599	443 127 3648 to 3699
350 518 7350 to 7374	399 296 9910 to 9999	418 744 2235 to 2299	443 127 4000 to 4099
360 011 1690 to 1699	399 396 8935 to 8999	418 962 2848 to 2899	443 673 7900 to 7999
360 168 6008 to 6099	399 792 7775 to 7799	419 543 0286 to 0299	443 800 9335 to 9399
360 173 8800 to 8899	399 792 8300 to 8399	419 730 0300 to 0399	444 382 8822 to 8899
360 324 2326 to 2399	400 427 1051 to 1999	420 277 0015 to 0049	444 390 1667 to 1699
362 861 3064 to 3099	401 045 1505 to 1549	420 599 0734 to 0798	444 457 3854 to 3899
373 006 2176 to 2199	401 045 1571 to 1599	420 661 4115 to 4199	450 048 4173 to 4199
374 768 2600 to 2699	401 294 2700 to 2799	420 758 9500 to 9699	450 048 4442 to 4699
375 169 4400 to 4599	401 310 9505 to 9599	420 969 3951 to 3971	450 560 5173 to 5199
375 829 3400 to 3499	401 382 5312 to 5399	420 969 3973 to 3999	450 620 3077 to 3099
375 851 9100 to 9199	402 578 7876 to 7899	421 116 3565 to 3599	450 620 3135 to 3199
376 196 0911 to 0999	403 125 6744 to 6799	421 130 9300 to 9399	450 780 2716 to 2799
378 085 3679 to 3699	403 260 7000 to 7499	421 313 4500 to 4999	450 801 2700 to 2799
378 351 1063 to 1099	403 280 6470 to 6499	421 364 5537 to 5599	451 109 2967 to 2984
379 843 5100 to 5199	403 685 8600 to 8699	421 656 2609 to 2699	451 115 4110 to 4125
380 093 9600 to 9699	404 003 0300 to 0399	421 988 9700 to 9799	451 115 4127 to 4199
380 165 1165 to 1199	404 041 8838 to 8899	422 172 4667 to 4699	451 746 0700 to 0799
381 325 4500 to 4599	404 071 4268 to 4299	422 484 4212 to 4299	452 265 0074 to 0099
381 604 2510 to 2699	404 347 5356 to 5399	422 556 1270 to 1299	452 265 0246 to 0299
381 645 9525 to 9599	404 347 5548 to 5599	422 587 7024 to 7099	452 265 0335 to 0999
383 314 3968 to 3999	404 726 4500 to 4599	422 819 7533 to 7599	452 509 1169 to 1199
383 892 1000 to 1344	404 961 5001 to 5199	422 842 5073 to 5087	452 855 6471 to 6499
383 892 1382 to 1399	405 325 0188 to 0198	422 907 7563 to 7599	452 890 4679 to 4799
384 925 3641 to 3654	406 009 4587 to 4599	424 500 6050 to 6099	452 900 8215 to 8238
385 568 2331 to 2399	406 260 6830 to 6899	424 641 8500 to 8599	453 117 9146 to 9199
385 599 7554 to 7575	406 459 6641 to 6999	424 871 6600 to 6699	453 334 3631 to 3699
385 774 2024 to 2099	406 733 3000 to 3999	425 298 2352 to 2399	453 603 7841 to 7891
386 624 1412 to 1599	407 545 1557 to 1599	425 418 4269 to 4299	453 650 1140 to 1199
386 883 8936 to 8999	407 594 0412 to 0599	425 418 4405 to 4499	453 741 1300 to 1399
387 314 5574 to 5599	407 692 9100 to 9299	426 547 4566 to 4599	454 013 2919 to 2999
387 837 6300 to 6399	407 959 2190 to 2199	427 412 6337 to 6499	454 186 2411 to 2499
388 828 0656 to 0699	408 265 2275 to 2288	427 481 0900 to 0999	454 268 4883 to 4899
389 696 2400 to 2799	408 499 7700 to 7799	428 027 2742 to 2752	454 302 5400 to 5499
389 846 3104 to 3135	408 499 7900 to 7999	429 474 4172 to 4199	454 490 8300 to 8399
389 846 3145 to 3195	408 682 8484 to 8599	429 889 2900 to 2999	454 547 7434 to 7499
389 887 9211 to 9230	408 698 7015 to 7099	430 150 4401 to 4599	454 922 4867 to 4895
389 887 9234 to 9299	409 072 3941 to 3999	430 172 9800 to 9899	455 221 1348 to 1499
390 001 3182 to 3199	410 491 2311 to 2399	430 177 1900 to 2099	455 364 2147 to 2199
390 001 3500 to 3699	410 694 8400 to 8599	430 444 9500 to 9699	455 399 5400 to 5499
390 545 5974 to 5999	410 775 1500 to 1599	430 664 4070 to 4099	455 476 0676 to 0699
391 104 6146 to 6199	410 795 7927 to 7999	432 168 8419 to 8499	455 543 0618 to 0699
391 574 1466 to 1499	410 867 0917 to 0966	432 708 6800 to 6999	456 410 9006 to 9099
391 783 3020 to 3599	410 867 0970 to 0999	432 744 1544 to 1599	456 470 4146 to 4299
391 792 6100 to 6199	411 868 1023 to 1199	432 995 9775 to 9799	456 619 4460 to 4499

622 989 8032 to 8099	643 030 6254 to 6299	658 880 8000 to 8199	685 297 7645 to 7699
623 076 9300 to 9399	644 066 0882 to 0899	659 398 7300 to 7399	685 623 5264 to 5299
623 819 5006 to 5099	644 069 0600 to 0699	659 706 8113 to 8199	685 650 9487 to 9499
623 895 8200 to 8399	644 077 7506 to 7699	659 846 7837 to 7899	685 669 4200 to 4299
623 917 0000 to 0099	644 085 8157 to 8199	660 510 4100 to 4199	685 757 8452 to 8499
623 917 0200 to 0299	644 112 9839 to 9899	660 673 0400 to 0599	686 071 2694 to 2799
624 468 5288 to 5299	644 373 9083 to 9099	661 488 5000 to 5099	686 176 3333 to 3354
624 665 3162 to 3198	644 380 1460 to 1499	661 609 9100 to 9199	686 372 3200 to 3299
625 088 6735 to 6799	644 733 4715 to 4799	661 716 9420 to 9499	686 644 5879 to 5899
625 916 9500 to 9799	644 900 9712 to 9799	661 906 6522 to 6599	686 899 1371 to 1399
625 968 8956 to 8999	644 901 0109 to 1299	662 021 8332 to 8399	686 931 7636 to 7699
627 005 3938 to 3999	644 901 1325 to 1399	662 068 0700 to 0899	687 601 0973 to 0999
627 384 3907 to 4099	644 923 6800 to 7799	662 553 0774 to 0799	687 614 6774 to 6799
627 496 7549 to 7599	644 932 4655 to 4699	663 078 7034 to 7099	688 120 9000 to 9999
627 708 3605 to 3699	645 318 7240 to 7499	663 763 5300 to 5399	688 314 3107 to 3191
627 776 2500 to 2599	645 333 1766 to 1799	663 883 7039 to 7499	690 291 1361 to 1371
628 226 3100 to 3199	645 790 8632 to 8699	663 938 9200 to 9299	690 788 2877 to 2899
628 814 4702 to 4799	645 821 0657 to 0699	664 253 8000 to 8499	690 893 5344 to 5399
628 851 9689 to 9699	645 930 7948 to 7999	664 656 3055 to 3099	690 893 5512 to 5599
629 510 7200 to 7299	645 975 0737 to 0762	665 174 6400 to 6499	690 904 1300 to 1599
629 964 4200 to 4294	646 242 6200 to 6299	665 274 8208 to 8299	690 941 6000 to 6199
630 389 3056 to 3071	646 270 7639 to 7799	665 669 5400 to 5499	691 313 6383 to 6399
630 463 0588 to 0599	646 798 4000 to 4999	666 132 8226 to 8299	691 313 6600 to 6699
631 459 9117 to 9199	647 048 7035 to 7099	666 696 2209 to 2299	691 582 8003 to 8099
631 762 9325 to 9399	647 049 2900 to 2999	666 696 2309 to 2399	691 664 1800 to 1999
632 217 4933 to 4999	647 398 8300 to 8399	667 032 9300 to 9399	691 664 2400 to 2499
632 500 0000 to 640 3999	647 398 8481 to 8499	667 729 5529 to 5599	692 727 9362 to 9399
633 110 4165 to 4199	647 437 3000 to 4999	668 383 8400 to 8699	692 798 1800 to 1899
633 110 4303 to 4499	647 811 2188 to 2199	670 368 3400 to 3499	693 249 0779 to 0799
633 438 6429 to 6599	648 009 6057 to 6099	670 369 7336 to 7399	693 249 0877 to 1699
633 588 7173 to 7182	648 163 5300 to 5499	670 750 7169 to 7199	693 445 0566 to 0999
634 725 0700 to 0799	648 722 5283 to 5299	671 046 6200 to 6399	693 448 8500 to 8999
634 803 3239 to 3299	648 892 3164 to 3199	671 251 5448 to 5499	693 645 9583 to 9599
634 807 2474 to 2499	649 100 3989 to 3999	671 926 5600 to 5799	693 965 4200 to 4299
634 827 5900 to 5999	649 647 0370 to 0399	672 444 2000 to 2999	695 741 2906 to 2999
634 886 3428 to 3499	649 647 0522 to 0599	672 828 3410 to 3499	695 947 8518 to 8599
635 559 3449 to 3499	649 647 5237 to 5399	673 167 5776 to 5799	696 662 8247 to 8299
636 289 6214 to 6299	649 647 9100 to 9299	675 464 3700 to 3799	697 447 8285 to 8296
636 634 8007 to 8042	649 666 7800 to 8299	675 464 4000 to 4199	698 042 4816 to 4899
637 150 1200 to 1299	650 114 7707 to 7719	676 365 5958 to 5999	698 131 2138 to 2157
637 562 5828 to 5899	650 130 3400 to 3599	676 669 1024 to 1099	698 227 0000 to 0099
638 042 1647 to 1699	650 213 0406 to 0499	677 126 6734 to 6799	700 065 2570 to 2599
638 049 4984 to 4999	650 555 1749 to 1799	677 333 9979 to 9999	700 065 4800 to 4899
638 318 1115 to 1199	650 564 1900 to 1999	677 466 1088 to 1099	700 190 3350 to 3359
638 318 1453 to 1499	650 627 4212 to 4299	678 071 4500 to 4799	700 228 6048 to 6099
638 885 0000 to 0299	650 736 2043 to 2099	678 096 7531 to 7599	700 650 0452 to 0499
638 903 4362 to 4373	650 739 1540 to 1699	679 909 2578 to 2599	700 666 1323 to 1349
639 415 1929 to 1999	651 741 4415 to 4499	680 112 9565 to 9599	700 786 9106 to 9142
639 415 2019 to 2099	651 882 2800 to 2899	680 244 0903 to 0999	700 859 0744 to 0758
639 420 6200 to 6299	652 754 6317 to 6399	680 412 6046 to 6099	701 028 6780 to 6899
639 469 3517 to 3799	653 131 4945 to 4999	680 761 6800 to 6899	701 213 3900 to 3999
639 605 2143 to 2199	653 426 3300 to 3399	681 677 0540 to 0699	701 267 2000 to 3999
639 657 8600 to 8799	653 455 4874 to 4899	682 070 1029 to 1099	701 335 7312 to 7399
640 289 7500 to 7599	654 238 0000 to 0399	682 956 6280 to 6299	701 369 2005 to 2050
640 289 7700 to 7999	654 404 3065 to 3092	682 956 6490 to 6599	701 499 2260 to 2299
641 170 4420 to 4499	654 962 2900 to 3199	682 956 6700 to 6799	701 503 2247 to 2299
641 318 3133 to 3199	655 103 5081 to 5199	682 965 1178 to 1199	701 541 2271 to 2299
641 378 6500 to 6999	655 523 2600 to 2999	682 965 1201 to 1299	701 553 6557 to 6599
641 383 8739 to 8799	656 305 2448 to 2499	683 118 2389 to 2399	701 578 7460 to 7469
641 877 3187 to 3299	657 347 4438 to 4999	683 378 2000 to 2099	701 578 7475 to 7499
641 877 3310 to 3399	657 710 8100 to 8999	683 378 2117 to 2299	701 601 3457 to 3499
642 355 8094 to 8199	657 780 0985 to 0999	683 415 1200 to 1499	701 605 5913 to 5999
642 355 8308 to 8999	658 586 1400 to 1499	683 444 8159 to 8199	701 695 3982 to 3999
642 900 0018 to 0099	658 877 8000 to 8199	685 154 7780 to 7789	701 695 4148 to 4199

701 695 4227 to 4299
 701 708 1741 to 1799
 701 736 3966 to 3999
 701 772 0870 to 0899
 701 838 2800 to 2899
 701 941 0600 to 0699
 702 171 1603 to 1699
 702 195 5109 to 5199
 702 254 9300 to 9399
 702 264 7569 to 7599
 702 519 0513 to 0524
 702 713 1800 to 1809
 702 821 5730 to 5799
 702 821 5805 to 5899
 702 844 6975 to 6994
 702 846 6331 to 6399
 702 848 3900 to 3999
 702 857 7302 to 7499
 702 878 0114 to 0199
 703 364 1707 to 1799
740 002 7710 to 7719
 740 119 2275 to 2284
 740 130 6688 to 6698
 740 144 2780 to 2795
 740 241 9049 to 9099
 740 252 9265 to 9294
 740 255 1718 to 1799
 740 274 2602 to 2619
 740 277 0366 to 0392
 740 332 7658 to 7671
 740 348 6641 to 6658
 740 351 4790 to 4799
 740 374 7416 to 7499
 740 470 2420 to 2443
 740 514 0300 to 0499
 740 523 7432 to 7449
 740 535 1555 to 1580
 740 557 3570 to 3579
 740 650 4104 to 4140
 740 684 0620 to 0800
 740 701 6105 to 6114
 740 705 9790 to 9799
 740 726 6400 to 6500
 740 748 8319 to 8329
 740 765 3306 to 3399
 740 774 8434 to 8499
 740 786 1885 to 1899
 740 790 5989 to 5999
 740 820 4854 to 7836
 740 827 7578 to 7594
 740 917 7490 to 7499
 740 918 5531 to 5549
 741 037 8528 to 8551
 742 030 6135 to 6149
 742 033 2663 to 2674
 742 040 3300 to 3309
 742 151 5000 to 5014
 742 191 4640 to 4649
 742 192 5210 to 5224
 742 228 9660 to 9669
805 885 8411 to 8499
 806 087 1100 to 1499
 806 268 9275 to 9299
 806 534 3400 to 3477

807 342 3283 to 3399
 808 086 7100 to 7199
 808 090 3440 to 3499
 808 325 5161 to 5699
 808 784 8000 to 8299
830 125 0672 to 0699
 830 602 5800 to 5999
 830 610 3700 to 3799
 830 983 3500 to 3599
 830 983 3635 to 3699
 831 354 1387 to 1399
 831 815 8240 to 8299
 832 525 3810 to 3899
 833 159 1884 to 1899
 833 456 2567 to 2599
 833 566 3015 to 3071
 834 130 5200 to 5299
 834 316 5444 to 5499
 834 354 8747 to 8766
 834 354 8824 to 8838
 835 269 5700 to 5799
 835 496 7303 to 7399
 835 539 5200 to 5999
 835 813 3015 to 3099
 837 672 8967 to 8999
 837 784 3282 to 3299
 838 176 8377 to 8399
 838 518 1257 to 1299
 839 718 8257 to 8299
840 323 0600 to 0699
 840 875 6235 to 6299
 840 910 0900 to 0999
 841 349 5000 to 5099
 841 805 7747 to 7899
 841 805 7944 to 8099
 842 226 0685 to 0695
 842 685 4600 to 4699
 842 685 4742 to 4999
 842 860 0300 to 0399
 842 898 5582 to 5599
 843 062 7100 to 7199
 843 077 6288 to 6299
 843 077 6378 to 6399
 843 758 5769 to 5778
 843 786 2554 to 2699
 845 656 8165 to 8199
 845 727 2100 to 2199
 845 746 2618 to 2635
 846 390 7531 to 7599
 846 918 0572 to 0599
 847 237 7690 to 7699
 847 284 2481 to 2499
 847 374 7055 to 7065
 847 374 7055 to 7065
 847 636 5304 to 5399
 847 700 5447 to 5499
 847 723 7500 to 7599
 849 485 3427 to 3499
 849 520 9850 to 9899
 849 608 1357 to 1399
 849 792 2600 to 2699
850 546 1862 to 1899
 851 143 6826 to 6844
 851 209 9880 to 9899

851 928 9221 to 9299
 852 589 6560 to 6599
 853 049 3646 to 3699
 854 304 4089 to 4999
 854 529 2200 to 2299
 854 532 0000 to 2999
 855 001 6204 to 6249
 855 319 9364 to 9399
 855 361 3390 to 3399
 856 226 0490 to 0499
 856 656 5800 to 5999
 856 752 0200 to 0299
 857 111 1352 to 1399
 857 279 3450 to 3499
 857 843 4000 to 4099
 858 124 7644 to 7699
 858 756 3111 to 3299
 859 063 8200 to 8699
 859 190 0600 to 0644
 859 437 5538 to 5599
 859 811 2888 to 2899
 859 855 8873 to 8999
860 240 8520 to 8599
 860 275 3900 to 3999
 860 518 9629 to 9699
 860 600 0021 to 0999
 861 158 2350 to 2599
 861 367 5400 to 5499
 861 637 6010 to 6099
 861 979 7292 to 7499
 862 216 6100 to 6199
 862 263 9213 to 9299
 862 271 0800 to 0999
 862 271 5000 to 5099
 863 871 5138 to 5199
 863 949 5300 to 5399
 864 088 8200 to 8299
 864 426 3972 to 3999
 864 520 6117 to 6136
 865 151 0526 to 0599
 865 500 4034 to 4099
 865 883 6082 to 6099
 866 004 3000 to 3999
 866 442 4100 to 4899
 867 366 9108 to 9118
 867 633 7403 to 7499
 867 737 5623 to 5699
 868 169 4529 to 4599
 868 173 8400 to 8599
 868 514 9000 to 9099
 868 566 9200 to 9299
 869 200 0000 to 9999
 869 387 1150 to 1199
 869 505 3500 to 3599
 869 523 7033 to 7099
 869 566 6150 to 6167
 869 800 0000 to 999 9999
870 054 4814 to 4899
 870 491 4812 to 4849
 870 536 5820 to 5829
 870 541 7167 to 7239
 870 575 8155 to 8999
 870 589 0485 to 0494
 870 691 7060 to 7099

872 028 4850 to 4899
 872 029 9306 to 9399
 872 078 3709 to 3799
 872 100 0445 to 0459
900 556 4178 to 4199
 900 845 0044 to 0099
 900 936 0217 to 0299
 900 936 0435 to 0499
 901 058 5255 to 5280
 901 273 1082 to 1099
 901 287 5143 to 5199
 901 291 2789 to 2799
 901 525 7122 to 7199
 902 089 1253 to 1299
 902 198 9769 to 9799
 902 948 1269 to 1299
 902 985 0833 to 0899
 903 370 6934 to 6999
 904 600 6523 to 6599
 904 892 0378 to 0399
 904 892 0648 to 1299
 905 056 2216 to 2299
 905 510 6647 to 6799
 905 510 6900 to 7099
 905 794 0000 to 0199
 905 794 0288 to 0299
 905 873 6900 to 6999
 905 873 7100 to 7299
 905 880 8900 to 8999
 905 889 7100 to 7199
 906 158 1508 to 1599
 906 558 8812 to 8899
 906 982 2214 to 2299
 907 725 8500 to 8599
 907 815 0216 to 0257
 908 622 4225 to 4235
 908 936 9254 to 9299
 909 066 4494 to 7499
 909 067 7400 to 7499
 909 100 1787 to 1799
 909 100 1900 to 2099
 909 355 0422 to 0499
 909 568 8900 to 9099
 909 568 9300 to 9499
 909 725 7307 to 7399
 909 833 0947 to 0999
910 219 8631 to 8699
 910 265 1100 to 1199
 910 471 7273 to 7299
 910 536 2505 to 2599
 910 958 7499 to 7599
 911 140 1000 to 2199
 911 245 2545 to 2599
 911 268 9077 to 9099
 911 400 8948 to 8999
 911 508 1620 to 1799
 911 509 9310 to 9399
 911 523 3000 to 3999
 912 057 9922 to 9999
 912 882 0563 to 0899
 913 605 2218 to 2299
 913 709 2429 to 2499
 913 818 3501 to 3999
 914 063 4300 to 4399

914 346 7621	to	7644	918 951 7231	to	7299	923 032 7000	to	7399	930 219 1722	to	1799
914 453 1366	to	1399	919 519 2786	to	2799	923 045 3630	to	3699	930 335 7810	to	7819
914 529 6185	to	6299	919 536 0770	to	0799	923 484 3600	to	3699	931 097 9259	to	9299
914 896 4658	to	4699	919 814 3095	to	3199	923 493 9403	to	9599	931 156 1502	to	1579
915 187 8774	to	8779	919 889 5110	to	5134	923 493 9681	to	9699	931 156 1600	to	1625
915 300 2783	to	2799	919 889 5137	to	5176	923 604 4424	to	4499	931 156 1671	to	1699
915 546 6822	to	6999	919 889 5178	to	5199	923 810 7800	to	8299	932 506 6400	to	6599
915 646 5183	to	5199	919 889 5030	to	5070	924 252 1200	to	1299	932 732 1796	to	1799
915 671 3963	to	3980	919 889 5090	to	5099	924 252 1400	to	1499	932 827 9026	to	9099
915 671 3982	to	3999	919 915 2774	to	2787	924 533 0711	to	0799	932 957 2300	to	2399
915 675 2217	to	2299	920 155 4662	to	4687	924 533 2343	to	2399	933 060 6160	to	6189
916 440 3377	to	3399	920 309 9039	to	9199	924 533 2428	to	2499	933 387 2541	to	2561
916 670 6352	to	6399	920 771 5321	to	5399	924 685 1957	to	1999	933 760 3609	to	4199
916 682 5300	to	5399	920 857 5500	to	5899	924 946 6300	to	6699	933 894 0928	to	0999
916 694 1414	to	1499	920 864 3480	to	3499	925 333 5900	to	6099	934 018 2729	to	2741
916 703 0802	to	0821	920 963 4567	to	4599	925 336 2300	to	2399	934 180 0300	to	0399
917 089 0709	to	0799	921 333 7400	to	7499	926 432 5907	to	5999	934 236 3954	to	3999
917 089 0842	to	0899	921 477 3762	to	3799	926 436 3600	to	3699	934 622 8717	to	8999
917 216 2928	to	2999	922 278 1048	to	1399	927 765 6257	to	6299	935 216 0312	to	0399
917 370 6300	to	6499	922 280 2019	to	2099	928 197 8100	to	8199	935 843 2202	to	2247
917 486 4900	to	4999	922 280 2233	to	2299	928 197 8283	to	8299	936 024 8889	to	8899
918 460 0602	to	0699	922 773 0459	to	0499	928 856 2059	to	2068	936 339 4455	to	4499

— Criminal Investigations Group, Postal Inspection Service, 7-10-14

Missing, Lost, or Stolen Canadian Money Order Forms

Do Not Cash — Upon Receipt, Notify Local Postal Inspectors

This listing will be provided to all Postal Service™ employees responsible for accepting and cashing postal money orders. Destroy all interim notices when the numbers listed appear in the *Postal Bulletin*. The new money

order serial numbers consist of the first 9 digits. The 10th digit is a check digit only.

Do not cash outdated money orders **104 151 601 to 692 600 000**. Advise holders to send invalid money orders to: Canada Post Corporation, Ottawa, Canada K1A 0B1. Check for altered dollar amounts by holding money orders to the light.

719 869 731	to	9 760	724 793 221	to	3 250	727 749 241	to	9 780	731 588 301	to	8 340
720 227 871	to	7 930	724 908 109	to	8 120	728 382 331	to	2 480	731 767 273	to	7 320
720 227 949	to	7 960	724 937 461	to	7 670	728 702 338	to	2 400	731 781 061	to	1 120
720 368 543	to	8 570	725 163 118	to	3 151	728 915 371	to	5 850	731 837 821	to	7 910
720 392 151	to	2 570	725 202 735	to	2 750	728 953 141	to	3 410	731 841 377	to	1 450
720 556 491	to	6 640	725 398 591	to	8 800	728 954 280	to	4 310	732 018 481	to	8 600
720 558 621	to	8 650	725 464 591	to	4 920	729 169 081	to	9 140	732 067 972	to	8 370
720 575 361	to	5 570	725 475 321	to	5 330	729 363 841	to	3 870	732 188 649	to	8 670
720 590 152	to	0 179	725 711 057	to	1 070	729 682 891	to	3 190	732 193 460	to	3 470
721 638 331	to	9 170	725 738 581	to	8 730	729 838 940	to	9 070	732 201 241	to	1 390
721 815 391	to	5 420	725 981 311	to	1 430	729 839 101	to	9 130	732 220 431	to	0 440
721 969 713	to	9 740	725 987 835	to	7 880	730 077 683	to	7 840	732 355 201	to	5 380
722 072 137	to	2 160	726 060 811	to	0 900	730 109 847	to	9 880	732 472 320	to	2 560
722 378 265	to	8 280	726 391 970	to	2 520	730 373 761	to	3 850	732 541 605	to	1 620
722 413 990	to	4 004	726 484 771	to	4 800	730 501 951	to	2 130	732 572 221	to	2 490
722 764 948	to	4 980	726 493 351	to	5 300	730 519 379	to	9 470	732 586 479	to	6 710
722 825 840	to	5 889	726 504 031	to	4 063	730 569 278	to	9 360	732 994 037	to	4 080
723 153 841	to	3 850	726 504 070	to	4 090	730 711 711	to	1 740	733 163 449	to	3 460
723 237 616	to	7 630	726 504 331	to	4 390	730 722 991	to	3 230	733 297 171	to	7 290
723 331 081	to	1 110	726 563 701	to	4 060	730 845 970	to	5 990	733 446 631	to	7 110
723 496 443	to	6 470	726 599 371	to	9 460	730 888 291	to	8 320	733 474 665	to	4 770
723 967 291	to	7 320	726 626 356	to	6 370	730 927 591	to	7 680	733 704 482	to	4 570
724 655 196	to	5 340	727 182 271	to	2 510	731 307 914	to	7 930	733 751 041	to	1 130
724 711 441	to	1 500	727 416 181	to	6 240	731 402 431	to	2 460	734 009 101	to	9 130
724 711 538	to	1 560	727 481 431	to	1 460	731 407 232	to	7 320	734 290 759	to	0 770

792 070 621	to	0 740	800 044 320	to	4 410	813 073 171	to	3 200	822 925 951	to	6 100
792 145 211	to	5 230	800 211 901	to	2 440	813 398 476	to	8 550	823 284 931	to	4 990
792 391 381	to	1 620	800 427 530	to	7 540	813 713 971	to	4 000	823 293 031	to	3 210
792 452 779	to	2 790	800 872 741	to	2 830	813 858 121	to	8 150	823 556 011	to	6 100
792 772 728	to	2 770	801 349 801	to	9 830	814 789 330	to	9 349	824 078 341	to	8 370
792 903 511	to	3 990	801 676 681	to	7 100	814 984 656	to	4 680	824 156 325	to	6 340
793 282 518	to	2 533	802 967 821	to	7 940	815 016 020	to	6 030	824 511 252	to	1 270
794 041 831	to	2 040	803 217 601	to	7 780	815 199 410	to	9 420	824 588 281	to	8 370
794 397 709	to	7 780	803 729 731	to	9 850	815 240 491	to	0 520	825 140 397	to	0 460
794 581 741	to	2 040	803 747 402	to	7 520	815 755 591	to	5 620	825 409 651	to	9 680
794 592 122	to	2 150	804 138 181	to	8 420	815 755 622	to	5 650	825 472 171	to	2 200
795 032 251	to	2 340	804 428 224	to	8 250	815 806 381	to	6 680	826 042 898	to	2 920
795 796 291	to	6 350	804 682 411	to	2 710	816 126 834	to	6 870	826 226 644	to	6 670
796 070 139	to	0 160	805 272 525	to	2 540	816 156 721	to	6 780	826 582 951	to	3 430
796 143 151	to	3 630	805 523 445	to	3 460	816 580 903	to	0 920	826 720 201	to	0 230
796 159 725	to	9 740	805 745 704	to	5 730	816 945 571	to	5 600	827 005 671	to	5 830
796 169 306	to	9 340	806 452 907	to	2 980	817 253 011	to	3 280	827 287 861	to	7 950
796 373 406	to	3 430	806 744 781	to	4 850	817 763 881	to	4 060	827 291 502	to	1 520
796 602 961	to	3 050	806 982 181	to	2 300	818 330 562	to	0 610	827 575 381	to	5 470
796 708 441	to	8 500	807 764 791	to	4 910	818 459 641	to	9 670	827 609 085	to	9 100
796 886 281	to	6 430	808 089 931	to	9 960	818 926 273	to	6 320	827 619 811	to	9 840
796 901 701	to	2 000	808 656 423	to	6 450	818 950 351	to	0 380	827 883 511	to	3 600
796 975 466	to	5 590	808 753 771	to	3 800	818 962 492	to	2 530	828 160 441	to	0 530
797 272 917	to	2 950	809 189 001	to	9 010	819 032 341	to	2 730	828 376 201	to	6 260
797 519 441	to	9 460	809 886 879	to	6 930	819 127 054	to	7 080	828 441 602	to	1 630
797 519 731	to	0 240	809 890 489	to	0 500	819 278 540	to	8 670	828 539 316	to	9 340
797 535 181	to	5 330	810 323 734	to	3 760	819 544 681	to	4 740	828 539 341	to	9 370
797 646 151	to	6 180	810 367 116	to	7 140	819 928 441	to	8 650	828 732 331	to	2 390
798 040 053	to	0 080	810 526 351	to	6 500	820 034 406	to	4 430	828 807 781	to	7 840
798 055 813	to	5 830	810 806 911	to	6 940	820 070 761	to	1 540	828 830 952	to	0 963
798 055 891	to	5 950	810 807 211	to	7 240	820 191 342	to	1 360	828 939 781	to	0 050
798 326 371	to	6 520	811 423 021	to	3 110	820 274 856	to	4 880	829 002 721	to	2 870
798 339 167	to	9 210	811 517 221	to	7 239	820 600 171	to	0 230	829 005 301	to	5 540
798 562 411	to	2 440	811 721 101	to	1 130	821 172 241	to	2 360	829 080 241	to	0 330
798 632 461	to	2 490	812 025 721	to	5 900	821 229 661	to	9 720	829 160 986	to	1 000
798 807 151	to	7 510	812 093 073	to	3 130	821 229 743	to	9 780	829 176 841	to	6 930
798 944 761	to	5 030	812 100 821	to	0 840	821 903 731	to	3 910	829 471 561	to	1 590
799 118 616	to	8 640	812 465 251	to	5 610	821 927 841	to	7 850	829 561 065	to	1 080
799 133 191	to	3 220	812 918 341	to	8 670	822 505 801	to	5 830	829 566 481	to	6 510
799 177 626	to	7 650	812 918 701	to	8 760	822 703 442	to	3 470	829 569 931	to	9 960
799 854 751	to	5 200	813 050 491	to	0 520	822 900 991	to	1 020			

Verifying U.S. Postal Service Money Orders

Follow these steps to cash a Postal Service™ money order:

1. Check that the amount does not exceed the legal limit: \$1,000 for domestic, and \$700 for international postal money orders.
2. Check that the proper security features are present:
 - When held to the light, a watermark of Benjamin Franklin is repeated from top to bottom on the left side.
 - When held to the light, a dark line (security thread) runs from top to bottom with the word “USPS” repeated.
 - There should be no discoloration around the dollar amounts, which might indicate the amounts were changes.

These appear in Postal Service Notice 299, *U.S. Postal Money Order Reference Card*, or online at <https://www.usps.com/shop/accepting-money-orders.htm>.

3. If the money order seems suspicious, call the U.S. Postal Service Money Order Verification System at 866-459-7822.

Please provide this information to local banks and retailers, as they also receive Postal Service money orders for cashing.

— Retail Channel Operations, 7-10-14

Counterfeit Canadian Money Order Forms

Do Not Cash

To be posted and used by retail window employees. As directed, destroy previous notices. Destroy all interim notices when the numbers listed appear in the *Postal Bulletin*.

671,819,086	686,794,382
676,612,640	686,794,426
677,891,039	686,794,427
678,282,493	686,794,431
678,916,031	687,262,502
679,552,215	687,262,503
679,694,334	687,262,525
679,751,983	687,262,526
679,800,207	687,287,578
681,130,536	687,287,581
681,844,376	687,287,582
683,594,542	694,063,898
684,683,610	694,063,899
686,619,878	694,063,980
686,619,886	701,321,725
686,619,887	

— Criminal Investigations Group,
Postal Inspection Service, 7-10-14

Toll-Free Number Available to Verify Canadian Money Orders

The Canada Post Corporation is now providing a toll-free number that cashing agents can call to verify the validity of Canadian Postal Money Orders. The number is 800-563-0444.

This toll-free number is printed on the back of the Canadian Postal Money Orders.

— Criminal Investigations Group,
Postal Inspection Service, 7-10-14

Other Information

Overseas Military/Diplomatic Mail

Mail addressed to military and diplomatic post offices overseas is subject to certain conditions or restrictions of mailing regarding content, preparation, and handling. The APO/FPO/DPO table below outlines these conditions by APO/FPO/DPO ZIP Codes™ through the use of footnoted mailing restrictions codes (see the [Restrictions](#) page following the table).

Acceptance clerks should use the table with the POS ONE terminal to determine which APO/FPO/DPO ZIP Codes are active and which conditions of mailing apply. Inquiries may be sent to the Military Postal Service Agency at <https://amps.mpsa.mil/jy2/frm.htm>.

The entries under “Changes” appear in bold in the APO/FPO/DPO table starting below.

Changes

APO/FPO/DPO	Action	Effective Date	See Restrictions
APO AE 09711	Close	07/10/2014	
DPO AE 09808	Open	07/10/2014	A-A1-A2-B-B2-C1-E2-F-F1-H-H1-I-L-N-R-R1-T-V-Z-Z1

We have eliminated “Not Active” entries from the table below to save space and paper.

APO/FPO/DPO Table

APO/ FPO/ DPO	See Restrictions	APO/ FPO/ DPO	See Restrictions	APO/ FPO/ DPO	See Restrictions	APO/ FPO/ DPO	See Restrictions
09002	A1-A2-B-C-D-E-H-M-R-U	09049	A1-A2-B-C-D-E-H-M-R-U	09114	A1-A2-B-C-D-E-H-M-R-U	09214	A1-A2-B-C-D-E-H-M-R-U-Z1
09003	A1-A2-B-C-D-E-H-M-P-R-U	09053	A1-A2-B-C-D-E-H-M-R-U	09123	A1-A2-B-C-D-E-H-M-R-U-Z1	09226	A1-A2-B-C-D-E-H-M-R-U
09004	A1-A2-B-C-D-E-H-M-R-U	09054	A1-A2-B-C-D-E-H-M-R-U	09126	A1-A2-B-C-D-E-H-M-P-R-Z1	09227	A1-A2-B-C-D-E-H-M-R-U
09005	A1-A2-B-C-D-E-H-M-P-R-U	09055	A1-A2-B-C-D-E-F-H-M-R-R1-U-V	09128	A1-A2-B-C-D-E-H-M-R-U	09245	A1-A2-B-C-D-E-H-M-R-U
09006	A1-A2-B-C-D-E-H-M-R-U	09059	A1-A2-B-C-D-E-H-M-R-U	09131	A1-A2-B-C-D-E-H-M-R-U	09250	A1-A2-B-C-D-E-H-M-R-U
09009	A1-A2-B-C-D-E-H-M-R-U-Z1	09060	A1-A2-B-C-D-E-F1-H-M-R-U-Z1	09136	A1-A2-B-C-D-E-F1-H-M-P-R	09261	A1-A2-B-C-D-E-F1-H-M-R-U-V-Z1
09011	A1-A2-B-C-D-E-H-M-R-U	09067	A1-A2-B-C-D-E-H-M-R-U	09138	A1-A2-B-C-D-H-M-R-U	09263	A1-A2-B-C-D-E-H-M-R-U
09012	A1-A2-B-C-D-E-H-M-R-U-Z1	09068	A1-A2-B-C-D-E-H-U-Z1	09139	A1-A2-B-C-D-E-H-M-R-U	09264	A1-A2-B-C-D-E-H-M-R-U
09013	A1-A2-B-C-D-E-F-F1-H-M-R-U-Z1	09069	A-A1-A2-B-C-D-E-H-N-U-V	09140	A1-A2-B-C-D-E-H-M-R-U	09265	A1-A2-B-C-D-F-F1-H-L-M-N-R-T-U
09014	A1-A2-B-C-D-E-H-M-R-U	09075	A1-A2-B-C-D-E-H-M-R-U	09142	A1-A2-B-C-D-E-H-M-R-U	09302	A-A1-A2-B-C1-F-F1-H-M-N-V-Z-Z1
09016	A1-A2-B-C-D-E-H-M-P-R	09079	A1-A2-B-C-D-E-H-M-R-U	09143	A1-A2-B-C-D-E-H-M-R-U	09304	A-A1-A2-C-C1-D-E2-F-F1-H1-J-K-L-M-N-R-R1-T-V-Z1
09020	A1-A2-B-C-D-E-H-M-R-U	09090	A1-A2-B-C-D-E-H-M-P-R-U	09154	A1-A2-B-C-D-E-H-M-R-U	09306	A-A1-A2-B-C1-E2-F-F1-H1-R-R1-U2-V-Z1
09021	A1-A2-B-C-D-E-H-M-R-U-Z1	09094	A1-A2-B-C-D-H-M-P-R-Z1	09172	A1-A2-B-C-D-E-H-M-R-U	09307	A1-A2-B-N-V-Z1
09028	A1-A2-B-C-D-E-H-M-R-U	09095	A1-A2-B-C-D-E-H-M-R-U	09173	A1-A2-B-C-D-E-H-M-R-U	09309	A-A1-A2-B-C1-E2-F-H1-M-N-R-V-Z1
09033	A1-A2-B-C-D-E-H-M-R-U	09096	A1-A2-B-C-D-E-H-M-R-U	09177	A1-A2-B-C-D-E-H-M-R-U	09310	A-A1-A2-B-C1-E2-F-H1-M-N-R-V-Z1
09034	A1-A2-B-C-D-E-H-M-R-U	09103	A1-A2-B-C-D-E-H-U	09180	A1-A2-B-C-D-H-M-R-U	09315	A-A1-A2-B-C1-E2-F-N-R-R1-V-Z1
09038	A1-A2-B-C-D-E-H-M-R-U	09104	A1-A2-B-C-D-H-M-R-U-Z1	09186	A1-A2-B-C-D-E-H-M-R-U	09320	A-A1-A2-B-C1-E2-F-H1-M-N-R-R1-V-Z1
09046	A1-A2-B-C-D-E-H-M-R-U	09107	A1-A2-B-C-D-E-H-M-R-U	09211	A1-A2-B-C-D-E-H-M-P-R-U	09321	A-A1-A2-B-C1-E2-F-H1-N-R-R1-V-Z1
		09112	A1-A2-B-C-D-E-H-M-R-U	09213	A1-A2-B-C-D-F-F1-H-L-M-N-R-U		

APO/ FPO/ DPO	See Restrictions	APO/ FPO/ DPO	See Restrictions	APO/ FPO/ DPO	See Restrictions	APO/ FPO/ DPO	See Restrictions
09328	A-A1-A2-B-C1-E2-F-H1-R-R1-V-Z1	09463	A1-A2-B-C-C1-R-U-Z1	09582	A1-A2-B-F-F1-R-R1-V	09648	A1-A2-B-N-R-U-V-Z1
09330	A-A1-A2-B-C1-E2-F-F1-H1-M-R-R1-V-Z1	09464	A1-A2-B-C-C1-R-U-Z1	09586	A1-A2-B-F-F1-R-R1-V	09649	A1-A2-B-N-R-U-Z1
09337	A-A1-A2-B-C1-E2-F-F1-H1-M-R-R1-V-Z1	09468	A1-A2-B-C-C1-M-R-U-Z1	09587	A1-A2-B-F-F1-R-R1-V	09701	A-A1-A2-B-B2-C-C1-D-F-F1-J-L-M-N-R-R1-T-V-Z1
09340	A-A1-A2-B-C1-F-H-N-R-V	09469	A1-A2-B-C-C1-R-U-Z1	09588	A1-A2-B-V	09702	A1-A2-B-C-C1-F1-M-R-R1-U
09343	A-A1-A2-B-C1-F-M-N-V-Z1	09470	A1-A2-B-C-C1-M-R-U-Z1	09589	A1-A2-B-V	09703	A1-A2-B-C-F1-H-U
09347	A-A1-A2-B-C1-E2-F-H1-M-R-R1-V-Z1	09494	A1-A2-B-C-C1-M-R-U-Z1	09590	A1-A2-B-V	09704	A1-A2-B-C-O-V-V1
09352	A-A1-A2-B-C1-E2-F-H1-M-R-R1-V-Z1	09496	A1-A2-B-C-C1-R-U-V-Z1	09591	A1-A2-B-F-F1-R-R1-V	09705	A1-A2-B-U
09354	A-A1-A2-B-C1-E2-F-H1-M-R-R1-V-Z1	09498	A1-A2-B-C-C1-F-F1-F2-J-L-N-R-R1-T-V-Z1	09593	A1-A2-B-V	09706	A1-A2-B-C-N-R-U-V-Z1
09355	A-A1-A2-B-C1-E2-F-H1-M-R-R1-V-Z1	09498	A1-A2-B-C-C1-F-F1-F2-J-L-N-R-R1-T-V-Z1	09594	A1-A2-B-V	09707	A1-A2-B-C-F1-J-L-M-N-R-T-U-V
09356	A-A1-A2-B-C1-E2-F-H1-M-N-R-R1-V-Z1	09501	A1-A2-B-V	09595	A1-A2-B-F-F1-R-R1-V	09708	A1-A2-B
09357	A-A1-A2-B-C1-E2-F-H1-M-R-R1-V-Z1	09502	A1-A2-B-V	09599	A1-A2-B-F-F1-R-R1-V	09710	A1-A2-B-C-C1-F1-L-M-N-R-R1-T-U-V
09360	A1-A2-B-V	09504	A1-A2-B-V	09602	A1-A2-B-C-F-F1-N-R-U-V	09712	A-A1-A2-B-F-H-N-R-U-V-Z1
09363	A-A1-A2-B-C1-E2-F-H1-M-R-R1-V-Z1	09505	A1-A2-B-V	09603	A1-A2-B-C-F-F1-R-U-V-Z1	09713	A1-A2-B-C-F1-R
09364	A-A1-A2-B-C1-E2-F-H1-M-N-R-R1-V-Z1	09506	A1-A2-B-V	09604	A1-A2-B-C-F-F1-P-R-U-V-Z1	09714	A1-A2-B-C-C1-F1-M-R-R1-U
09365	A-A1-A2-B-C1-E2-F-H1-M-N-R-V-Z1	09507	A1-A2-B-V	09605	A1-A2-B-C-D-H-M-R-U-V	09715	A1-A2-B-F1-L-M-N-R-T-V
09366	A-A1-A2-B-C1-E2-F-F1-H1-M-R-R1-V-Z1	09510	A-A1-A2-B-C1-E2-F-H1-M-R-R1-V-Z1	09606	A1-A2-B-C-D-H-M-R-U-V	09716	A1-A2-B-C-F-F1-L-M-N-R-V
09367	A-A1-A2-B-B2-C1-E2-F-H1-M-N-R-R1-V-Z1	09513	A1-A2-B-F-F1-R-R1-V	09607	A-A1-A2-B-C-F-F1-M-R-R1-U-U3-V-W-Z1	09717	A-A1-A2-B-M-R-V-W-Z1
09368	A-A1-A2-B-C1-E2-F-H1-M-N-R-V-Z1	09517	A1-A2-B-F-F1-R-R1-V	09608	A1-A2-B-C-F-N-R-U-V-Z1	09718	A1-A2-B-F-F1-L-M-N-R-T-U-V
09369	A-A1-A2-B-C1-E2-F-H1-M-R-R1-V	09520	A1-A2-B-F-F1-R-R1-V	09609	A1-A2-B-C-F-R-U-Z1	09719	A1-A2-B-C-D-M-R-U-V-Z1
09370	A-A1-A2-B-C1-E2-F-H1-M-N-R-R1-V-Z1	09523	A1-A2-B-F-F1-R-R1-V	09610	A1-A2-B-C-F-F1-M-R-U-V-Z1	09720	A1-A2-B-M-R-U-V-Z1
09372	A-A1-A2-B-C1-E2-F-H1-M-R-R1-V	09522	A1-A2-B-V	09613	A1-A2-B-C-F-N-U-V	09722	A-A1-A2-B-F-H-N-Q-V-Z1
09373	A-A1-A2-B-C1-E2-F-H1-M-R-R1-V	09524	A1-A2-B-F-F1-R-R1-V	09617	A1-A2-B-C-F-R-U-Z1	09723	A1-A2-B-F-F1-L-M-N-R-T-U-V-Z1
09382	A-A1-A2-B-C1-E2-F-H1-M-N-R-R1-V-Z1	09532	A1-A2-B-F-F1-R-R1-V	09618	A1-A2-B-C-F-R-U-Z1	09724	A1-A2-B-C-C1-F1-M-R-R1-U
09383	A-A1-A2-B-C1-E2-F-H1-M-N-R-R1-V-Z1	09534	A1-A2-B-F-F1-R-R1-V	09620	A1-A2-B-C-F-R-U-Z1	09725	A-A1-A2-B-F-H-N-O-Q-V-V1-Z1
09397	A-A1-A2-B-C1-E2-F-F1-H1-M-N-R-R1-T-V-Z1	09543	A1-A2-B-F-F1-R-R1-V	09621	A1-A2-B-C-F-R-U-Z1	09726	A1-A2-B-F-F1-L-M-N-R-T-U-V
09403	A1-A2-B-C-C1-M-R-U-Z1	09544	A1-A2-B-F-F1-R-R1-V	09622	A1-A2-B-C-F-R-U-Z1	09727	A-A1-A2-B-B2-C-C1-D-F-F1-J-L-M-N-R-R1-T-V-Z1
09421	A1-A2-B-C-C1-M-R-U-Z1	09554	A1-A2-B-F-F1-R-R1-V	09623	A1-A2-B-C-F-R-U-Z1	09728	A-A1-A2-B-B2-C-C1-F-F1-J-L-N-R-R1-T-V-Z1
09447	A1-A2-B-C-C1-R-U-V-Z1	09556	A1-A2-B-F-F1-R-R1-V	09624	A1-A2-B-C-F-N-U	09729	A1-A2-B-C-F-N-R-R1-U-V-Z1
09454	A1-A2-B-C-C1-M-R-U-V-Z1	09564	A1-A2-B-F-F1-R-R1-V	09625	A1-A2-B-C-F-R-U-Z1	09730	A-A2-B-B2-C-C1-F-F1-J-L-M-N-R-R1-T-V-Z1
09459	A1-A2-B-C-C1-M-R-U-Z1	09565	A1-A2-B-F-F1-R-R1-V	09626	A1-A2-B-C-F-R-U-Z1	09731	A-A2-B-B2-C-C1-F-F1-J-L-M-N-R-R1-T-V-Z1
09461	A1-A2-B-C-C1-M-P-R-U-Z1	09566	A1-A2-B-F-F1-R-R1-V	09627	A1-A2-B-C-F-R-U-Z1	09732	A1-A2-B-N-V-Z1
		09567	A1-A2-B-F-F1-R-R1-V	09630	A1-A2-B-C-F-U-V	09733	A1-A2-B-N-V
		09568	A1-A2-B-V	09631	A1-A2-B-C-F-R-U-Z1	09734	A-A1-A2-B-C-C1-F-F1-J-L-M-N-R-R1-T-V-Z1
		09569	A1-A2-B-F-F1-R-R1-V	09633	A1-A2-B-B2-C-D-F-F1-M-R-U-U1-U2-U3-V-Z1		
		09570	A1-A2-B-F-F1-R-R1-V	09636	A1-A2-B-C-F-R-U-Z1		
		09573	A1-A2-B-F-F1-R-R1-V	09642	A1-A2-B-M-N-R-U		
		09574	A1-A2-B-F-F1-R-R1-V	09643	A1-A2-B-M-R-U-V-Z1		
		09575	A1-A2-B-F-F1-R-R1-V	09644	A1-A2-B-M-R-U-V-Z1		
		09576	A1-A2-B-F-F1-R-R1-V	09645	A1-A2-B-C-F-F1-R-U-Z1		
		09577	A1-A2-B-V	09647	A1-A2-B-M-N-R-U-Z1		
		09578	A1-A2-B-F-F1-R-R1-V				
		09579	A1-A2-B-F-F1-R-R1-V				
		09581	A1-A2-B-F-F1-R-R1-V				

APO/ FPO/ DPO	See Restrictions	APO/ FPO/ DPO	See Restrictions	APO/ FPO/ DPO	See Restrictions	APO/ FPO/ DPO	See Restrictions
09735	A1-A2-B-N-V-Z1	09804	A-A1-A2-B-F-F1-N-R-V-Z1	09837	A1-A2-B-E2-E3-V-Z1	34020	A1-A2-B-F-F1-J-L-M-N-T-V-Z1
09736	A-A1-A2-B-B2-C-C1-D-F-F1-J-L-M-N-R-R1-T-V-Z1	09805	A-A2-B-E2-E3-F-F1-R-R1-V-Z1	09838	A1-A2-B-E2-E3-U-V-Z1	34021	A1-A2-B-F-F1-T-J-L-M-N-V-Z1
09737	A-A1-A2-B-B2-C-C1-F-F1-I-L-M-N-R-R1-T-V-W-Y-Z-Z1	09806	A-A1-A2-B-C1-E2-F-F1-H1-L-M-N-R-R1-T-V-Z1	09839	A-A1-A2-B-U-V-Z1	34022	A1-A2-B-D-F-F1-J-L-M-N-T-V-Z1
09738	A-A1-A2-B-B2-C-C1-D-F-F1-J-L-M-N-R-R1-T-V-Z1	09808	A-A1-A2-B-B2-C1-E2-F-F1-H-H1-I-L-N-R-R1-T-V-Z-Z1	09840	A-A1-A2-B-E2-E3-V-Z1	34023	A1-A2-B-F-F1-J-L-M-N-T-V-Z1
09739	A-A1-A2-B-B2-C-C1-D-F-F1-J-L-M-N-R-R1-T-V-Z1	09809	A1-A2-B-F-F1-L-N-T-V-Z1	09841	A-A1-A2-B-N-R-U-Z1	34024	A1-A2-B-F-F1-L-M-N-T-V-Z1
09741	A-A1-A2-B-C1-E2-F-F1-H1-J-L-M-N-R-R1-T-V-W-Y-Z1	09810	A-A1-A2-B-F-F1-N-R-V-Z1	09842	A-A1-A2-B-M-N-R-Z1	34025	A1-A2-B-F-F1-J-L-M-N-T-V-Z1
09742	A-A1-A2-B-B2-F-F1-J-L-M-N-R-T-V-Z1	09811	A1-A2-B-E2-E3-F-F1-H1-N-R-R1-U-V-Z1	09845	A-A1-A2-B-B2-E3-F-F1-L-M-N-T-V-Z1	34030	A1-A2-B-F-F1-J-L-M-N-T-V-Z1
09743	A-A1-A2-B-F-H-N-Q-V-Z-Z1	09812	A1-A2-B-E2-E3-F-F1-I-L-N-R-T-U-V-Z-Z1	09846	A-A1-A2-B-B2-C1-F-F1-J-L-N-R-R1-T-V-Z1	34031	A1-A2-B-F-F1-J-L-M-N-T-V-Z1
09744	A-A2-B-B2-C-C1-F-F1-J-L-M-N-R-R1-T-V-Z1	09813	A-A1-A2-B-B2-C1-E2-E3-F-F1-J-L-N-R-R1-T-V-Z1	0'9848	A-A1-A2-B-F-M-R-V-Z1	34032	A1-A2-B-F-F1-J-L-M-N-T-V-Z1
09745	A-A1-A2-B-F-F1-M-N-R-R1-V-Z1	09814	A1-A2-B-E2-E3-F-F1-I-L-N-R-T-U-V-Z-Z1	09852	A1-A2-B-E2-E3-F-F1-H1-N-R-R1-U-V-Z1	34033	A1-A2-B-C-F-F1-J-L-M-N-T-V-Z1
09747	A1-A2-B-F-J-N-U-V-Z1	09816	A-A1-A2-B-B2-C-C1-E2-E3-F-F1-J-L-N-R-R1-T-V-Z1	09853	A1-A2-B-E2-F-H1-R-R1-U2-V-Z1	34034	A1-A2-B-F-F1-J-L-M-N-T-V-Z1
09748	A-A1-A2-B-B2-C-C1-D-F-F1-J-L-M-N-R-R1-T-V-Z1	09817	A-A1-A2-B-B2-C1-E2-E3-F-F1-H-H1-J-L-M-N-R-T-V-Z1	09855	A-A1-A2-B-C1-E2-F-F1-H1-R-R1-U2-V-Z1	34035	A1-A2-B-F-F1-H-J-L-M-N-T-V-Z1
09749	A-A1-A2-B-F-H-N-U-V-Z1	09818	A-A1-A2-B-C-F-M-V-Z1	09858	A1-A2-B-E2-E3-F-F1-H1-N-R-R1-U-V-Z1	34036	A1-A2-B-F-F1-J-L-M-N-T-V-Z1
09750	A-A2-B-B2-C-C1-F-F1-J-L-M-N-R-R1-T-V-Z1	09820	A-A1-A2-B-B2-F-F1-H-H1-J-L-M-N-R-R1-T-V-Z1	09859	A1-A2-B-C1-E2-E3-F-F1-H1-R-R1-V-Z1	34037	A1-A2-B-C-F-F1-H-I-L-M-N-T-V-Z-Z1
09751	A1-A2-B-C-D-E-H-M-R-U	09821	A-A1-A2-B-F-N-R-V-Z1	09861	A-A1-A2-B-F-F1-N-O-R-R1-Z1	34038	A1-A2-B-L-M-N-U-V-Z1
09754	A-A1-A2-B-F-H-N-Q-V-Z-Z1	09822	A-A1-A2-B-F-R-V-Z1	09865	A-A1-A2-B-R-U-V-Z1	34039	A1-A2-B-F-F1-J-L-M-N-T-V-Z1
09755	A-A1-A2-B-B2-C-C1-D-F-F1-J-L-M-N-Q-R-R1-T-V-Z-Z1	09823	A-A1-A2-B-F-F1-L-N-R-T-V-Z1	09868	A-A1-A2-B-N-U-V-Z1	34041	A1-A2-B-F-F1-J-L-M-N-T-V-Z1
09756	A-A1-A2-B-B2-E3-F-F1-J-L-N-Q-R-R1-T-V-Z-Z1	09824	A-A1-A2-B-F-R-V-Z1	09870	A-A1-A2-B-C1-E2-F-F1-H1-I-L-M-N-R-R1-T-U-U4-V-Z-Z1	34042	A1-A2-B-D-F-M-N-V-Z1
09759	A-A1-A2-B-B2-C-C1-E2-F-F1-F2-J-L-N-R-R1-T-V-Z1	09825	A-A1-A2-B-C-C1-D-F-F1-J-L-M-N-R-R1-T-V-Z1	09874	A-A1-A2-B-C1-E2-F-F1-H1-I-L-M-N-R-R1-T-U-U4-V-Z-Z1	34055	A1-A2-B-F-F1-J-L-M-N-T-V-Z1
09760	A-A1-A2-B-B2-C-C1-D-F-F1-J-L-M-N-Q-R-R1-T-V-Z-Z1	09826	A-A1-A2-B-B2-C1-E1-E2-E3-F-F1-L-M-N-R-R1-T-V-W-Z1	09875	A-A1-A2-B-C1-E2-F-F1-H1-I-L-M-N-R-R1-T-U-U4-V-Z-Z1	34058	A1-A2-B-F-F1-R-R1-V-Z1
09762	A-A1-A2-B-B2-E3-F-F1-J-L-N-R-R1-T-V-Z1	09827	A-A1-A2-B-F-F1-L-N-R-T-V-Z1	09880	A-A1-A2-B-C1-E2-F-F1-H1-R-R1-U-V-Z1	34060	A1-A2-B-B2-C1-E2-F-F1-J-L-N-R-R1-T-V-Z1
09769	A-A1-A2-B-B2-C-C1-D-F-F1-J-L-M-N-R-R1-T-V-Z1	09828	A-A1-A2-B-F-F1-J-L-N-T-V-Z1	09888	A1-A2-B-E2-F-H1-N-R-R1-U2-V-Z1	34078	A1-A2-B-F1-N-V-Z1
09777	A-A1-A2-B-C-E1-F-F1-L-M-N-R-T	09829	A1-A2-B-C-N-R-V-Z1	09890	A1-A2-B-E2-F-H1-N-R-R1-U2-V-Z1	34090	A1-A2-B-F-F1-R-R1-V
09780	A-A1-A2-B-F-H-N-R-V	09830	A1-A2-B-C-M-N-R-V-Z1	09892	A-A1-A2-B-E2-F-F1-L-N-R-R1-T-V-Z1	34091	A1-A2-B-F-F1-R-R1-V
09801	A-A1-A2-B-C1-E2-F-H1-M-N-R-R1-V-Z1	09831	A1-A2-B-F-F1-L-N-T-U-V-Z1	09898	A1-A2-B-E2-F-H1-N-R-R1-U2-V-Z1	34092	A1-A2-B-F-F1-R-R1-V
09802	A-A1-A2-B-F-R-V-Z1	09832	A-A1-A2-B-U1-V-Z1	34002	A1-A2-B-F-F1-J-L-N-T-U-Z1	34093	A1-A2-B-F-F1-R-R1-V
09803	A1-A2-B-E2-E3-F-F1-H1-N-R-R1-U-V-Z1	09833	A1-A2-B-U1-V-Z1	34004	A1-A2-B-F-F1-J-L-N-T-V	34094	A1-A2-B-F-F1-R-R1-V
		09834	A1-A2-B-E2-E3-F-F1-R-R1-U-V-Z1	34007	A-A1-A2-B-C1-F-F1-M-N-R-R1-V-Z1	34098	A1-A2-B-V
		09835	A-A1-A2-B-N-V-Z1	34008	A1-A2-B-B2-D-E1-F-F1-H-H1-J-L-M-N-R-R1-T-V-Z1	34099	A1-A2-B-V
		09836	A-A1-A2-B-C-F-F1-L-M-N-T-V-Z1	34011	A1-A2-B-B2-C1-E2-F-F1-J-L-M-N-R-R1-T-V-Z1	96201	A-A1-A2-B-F1
						96202	A-A1-A2-B-F1-U
						96203	A-A1-A2-B-F1
						96204	A-A1-A2-B-F1
						96205	A-A1-A2-B-F1-U
						96206	A-A1-A2-B-F1-U

APO/ FPO/ DPO	See Restrictions	APO/ FPO/ DPO	See Restrictions	APO/ FPO/ DPO	See Restrictions	APO/ FPO/ DPO	See Restrictions
96207	A-A1-A2-B-F1-V	96350	A1-A2-B-F-F1-F2-H-M-W-Z1	96532	A-A1-A2-B-F-F1-H-J-L-M-N-T-U-V	96620	A1-A2-B-F-F1-R-R1-V
96209	A-A1-A2-B-F-F1-J-L-N-T-U	96351	A1-A2-B-F-F1-F2-H-M-W-Z1	96534	A-A1-A2-B-F-U-Z1	96621	A1-A2-B-V
96213	A-A1-A2-B-F1-U	96362	A1-A2-B-F-F1-F2-M-W-Z1	96535	A-A1-A2-B-F-F1-L-N-T-V	96622	A1-A2-B-F-F1-R-R1-V
96214	A-A1-A2-B-F1-U	96365	A1-A2-B-M-V-W	96537	A1-A2-B-V-Z1	96624	A1-A2-B-F-F1-R-R1-V
96218	A-A1-A2-B-F1-U	96367	A1-A2-B-L-M-W	96538	A1-A2-B-V-Z1	96628	A1-A2-B-F-F1-R-R1-V
96224	A-A1-A2-B-F1-U	96368	A1-A2-B-M-W	96540	A1-A2-B-V-Z1	96629	A1-A2-B-F-F1-R-R1-V
96257	A-A1-A2-B-F1-U	96370	A1-A2-B-F-F1-F2-H-M-W-Z1	96541	A1-A2-B-V	96631	A-A1-A2-B-C1-E2-F-H1-M-R-R1-V
96258	A-A1-A2-B-F1-U	96372	A1-A2-B-M-W	96542	A1-A2-B-V-Z1	96643	A1-A2-B-F-F1-R-R1-V
96260	A-A1-A2-B-F1-U	96373	A1-A2-B-M-W	96543	A1-A2-B-P-V-Z1	96650	A1-A2-B-F-F1-R-R1-V
96264	A-A1-A2-B-F1-U	96374	A1-A2-B-M-W	96546	A1-A2-B-F-U3	96657	A1-A2-B-F-F1-R-R1-V
96266	A-A1-A2-B-F1-U	96375	A1-A2-B-M-W	96548	A-A1-A2-B-H-M-U	96660	A1-A2-B-F-F1-R-R1-V
96267	A-A1-A2-B-F1-U-V	96376	A1-A2-B-M-W	96549	A-A1-A2-B-H-M-N-U	96661	A1-A2-B-F-F1-R-R1-V
96269	A-A1-A2-B-F1-U-Z1	96377	A1-A2-B-M-W	96550	A-A1-A2-B-H-M-U-V-Z1	96662	A1-A2-B-F-F1-R-R1-V
96271	A-A1-A2-B-F1-U	96378	A1-A2-B-M-W	96551	A-A1-A2-B-F-F1-H-L-M-N-T-U	96663	A1-A2-B-F-F1-R-R1-V
96275	A-A1-A2-B-F1-V	96379	A1-A2-B-M-W	96552	A1-A2-B-Z1	96664	A1-A2-B-V
96276	A-A1-A2-B-F1	96380	A1-A2-B-M-W	96553	A-A1-A2-B-F-F1-H-M-U	96665	A1-A2-B-V
96278	A-A1-A2-B-F1-U	96382	A1-A2-B-M-W	96554	A-A1-A2-B-F-F1-H-L-M-N-T-U	96666	A1-A2-B-V
96283	A-A1-A2-B-F1-U	96384	A1-A2-B-M-W	96555	A1-A2-B-F-M-V	96667	A1-A2-B-F-F1-R-R1-V
96284	A-A1-A2-B-F1-U-V	96385	A1-A2-B-M-W	96557	A1-A2-B-F-M-V	96668	A1-A2-B-F-F1-R-R1-V
96303	A1-A2-B-F-F1-H-J-L-M-N-T-W	96386	A1-A2-B-M-W	96558	A-A1-A2-B-B2-C-C1-D-E2-E3-F-F1-H-H1-I-L-M-N-R-T-V-Z-Z1	96669	A1-A2-B-F-F1-R-R1-V
96306	A1-A2-B-F-F1-F2-H-M-W-Z1	96387	A1-A2-B-M-W	96577	A-A1-A2-B-F-H-M-N-U	96670	A1-A2-B-V
96309	A1-A2-B-M-V-W	96388	A1-A2-B-M-W	96578	A1-A2-B-B2-F1-H-J-N-R	96671	A1-A2-B-F-F1-R-R1-V
96310	A1-A2-B-M-W	96389	A1-A2-B-M-W	96595	A1-A2-B-F-U3-V-Z1	96672	A1-A2-B-F-F1-R-R1-V
96319	A1-A2-B-M-W	96401	A1-A2-B-F-N-O-V-V1-Z1	96598	A1-A2-B-N-O-V-V1	96673	A1-A2-B-V
96321	A1-A2-B-F-F1-F2-H-M-W-Z1	96427	A-A1-A2-B-C1-E2-F-H1-M-R-R1-V	96599	A1-A2-B-N-V	96674	A1-A2-B-F-F1-R-R1-V
96322	A1-A2-B-F-F1-F2-H-M-W-Z1	96447	A1-A2-B-F-N-U3-V-V1	96601	A1-A2-B-V	96675	A1-A2-B-F-F1-R-R1-V
96323	A1-A2-B-M-V-W	96501	A-A1-A2-B-N-V	96602	A1-A2-B-V	96677	A1-A2-B-F-F1-R-R1-V
96326	A1-A2-B-M-W	96502	A1-A2-B-F-N-U3-V-Z1	96603	A1-A2-B-V	96678	A1-A2-B-F-F1-R-R1-V
96328	A1-A2-B-M-W	96503	A1-A2-B-F-N-U3-V	96604	A1-A2-B-V	96679	A1-A2-B-F-F1-R-R1-V
96330	A1-A2-B-M-W	96507	A-A1-A2-B-F-F1-H-L-N-T-V	96605	A1-A2-B-V	96681	A1-A2-B-V
96336	A1-A2-B-M-V-W	96510	A1-A2-B-I-N-V	96606	A1-A2-B-V	96682	A1-A2-B-V
96337	A1-A2-B-M-W	96511	A1-A2-B-I-N-V	96607	A1-A2-B-V	96683	A1-A2-B-V
96338	A1-A2-B-M-W	96515	A1-A2-B-D-F-U3	96608	A1-A2-B-V	96686	A1-A2-B-V
96339	A1-A2-B-M-V-W	96516	A1-A2-B-D-F-Z1	96609	A1-A2-B-V	96698	A1-A2-B-V
96343	A1-A2-B-M-W	96517	A1-A2-B-F-U3-V-Z1	96610	A1-A2-B-V		
96346	A1-A2-B-F-F1-F2-H-M-V-W-Z1	96520	A1-A2-B-F-N-U3-V	96611	A1-A2-B-V		
96347	A1-A2-B-F-F1-F2-H-M-W-Z1	96521	A1-A2-B-F-F1-L-N-T-U3	96615	A1-A2-B-F-F1-R-R1-V		
96348	A1-A2-B-F-F1-F2-H-M-W-Z1	96530	A-A1-A2-B-F-F1-H-H1-L-M-N-T-U-V	96616	A1-A2-B-F-F1-R-R1-V		
96349	A1-A2-B-F-F1-F2-H-M-W-Z1	96531	A-A1-A2-B-F-F1-H-M-N-U-V	96617	A1-A2-B-F-F1-R-R1-V		
				96619	A1-A2-B-V		

RESTRICTIONS

LEGEND

PS Form 2976, *Customs — CN 22 (Old C 1) and Sender's Declaration* (green label)

PS Form 2976-A, *Customs Declaration and Dispatch Note*

AAFES	= Army and Air Force Exchange Service
APO	= Army/Air Force Post Office
Box R	= Retired military personnel
DMM	= <i>Domestic Mail Manual</i>
DPO	= Diplomatic Post Office
FPO	= Fleet Post Office
MOM	= Military Ordinary Mail
MPO	= Military Post Office
PAL	= Parcel Airlift
PSC	= Postal Service Center
SAM	= Space Available Mail
USDA	= United States Department of Agriculture

Note: Mail order catalogs are prohibited as SAM or PAL mail.

A. Securities, currency, or precious metals in their raw, unmanufactured state are prohibited. Official shipments are exempt from this restriction.

A1. Mail addressed to "Any Servicemember," or similar wording such as "Any Soldier," "Sailor," "Airman," or "Marine"; "Military Mail"; etc., is prohibited. Mail must be addressed to an individual or job title such as "Commander," "Commanding Officer," etc.

A2. APO/FPO/DPO addresses shall not include a city and/or country name.

B. Regardless of mail class, a customs declaration (PS Form 2976 or, if the customer prefers, PS Form 2976-A) is required for all items weighing 16 ounces or more or any item (regardless of weight) containing potentially dutiable mail contents (e.g., merchandise or goods) addressed to or from an APO, FPO, or DPO ZIP Code. No customs form is required for items weighing less than 16 ounces when the contents are not potentially dutiable (e.g., documents). The surface area of the address side of the mailpiece must be large enough to contain the applicable customs declaration. The following exceptions apply:

- Known mailers are exempt from providing customs documentation on non-dutiable letters or printed matter. (A known mailer is a business mailer who enters volume mailings through a business mail entry unit (BMEU) or other bulk mail acceptance location, pays postage through an advance deposit account, uses a permit imprint for postage payment, and submits a completed postage statement at the time of entry that certifies that the mailpieces contain no dangerous materials that are prohibited by postal regulations.)
- All federal, state, and local government agencies whose mailings are regarded as "Official Mail" are exempt from providing customs documentation on any item addressed to an APO, FPO, or DPO except for those APOs/FPOs/DPOs to which restriction "B2" applies.
- Prepaid mail from military contractors is exempt, providing the mailpiece is endorsed "Contents for Official Use — Exempt from Customs Requirements."

B2. All federal, state, and local government agencies must complete customs documentation when sending potentially dutiable mail addressed to or from this APO, FPO, or DPO.

C. Cigarettes and other tobacco products are prohibited.

C1. Obscene articles, prints, paintings, cards, films, videotapes, etc., and horror comics and matrices are prohibited.

D. Coffee is prohibited.

E. Medicines (prescription, over-the-counter, vitamins, and supplements) are prohibited when mailed to individuals for human or animal use. This prohibition does not apply when medicines are sent as official mail only between specifically designated agencies such as pharmaceutical distributors, hospitals, clinics, and pharmacies.

E1. Medicines or vaccines not conforming to French laws are prohibited.

E2. Any matter depicting nude or seminude persons, pornographic or sexual items, or nonauthorized political materials is prohibited. Although religious materials contrary to the Islamic faith are prohibited in bulk quantities, items for the personal use of the addressee are permissible.

E3. Radio transceivers, cordless telephones, global positioning systems, scanners, base stations, and handheld transmitters are prohibited.

F. Firearms of any type are prohibited in all classes of mail. See definitions of firearms in DMM 601.12.1.1. This restriction does not apply to firearms mailed to or by official U.S. government agencies. The restriction for mail to this APO/FPO/DPO ZIP Code does not apply to firearms mailed from this APO/FPO/DPO ZIP Code, provided ATF and USPS regulations are met. Antique firearms are a separate category defined in DMM 601.12.1.1h and ATF regulations; they do not require an ATF form.

F1. Privately owned weapons addressed to an individual are prohibited in any class of mail.

F2. Importation of firearms is restricted to one shotgun and one single shot.22 caliber rifle per individual.

G. Only letters, flats, and Periodicals are authorized. Parcels of any class are prohibited.

H. Meats, including preserved meats, whether hermetically sealed or not, are prohibited.

H1. Pork or pork by-products are prohibited.

I. Mail of all classes must fit in a mail sack. Mail may not exceed the following dimensions:

- Maximum length 20 inches.
- Maximum width 12 inches.
- Maximum height 12 inches.

The maximum length and girth combined may not exceed 68 inches.

This restriction does not apply to registered mail and official government mail marked MOM.

I1. This restriction does not apply to registered mail.

I2. This restriction does not apply to official government mail marked MOM.

J. Parcels may not exceed 108 inches in length and girth combined.

K. Mail that includes in the address the words, "Dependent Mail Section," may consist only of letter mail, newspapers, magazines, and books. No parcel of any class containing any other matter may be mailed to the Dependent Mail section. This restriction does not apply if the address does not include the words "Dependent Mail Section."

L. All official mail is prohibited.

M. Fruits, vegetables, animals, and living plants are prohibited.

N. Registered mail is prohibited.

O. Delivery status information for Extra Services is not available on USPS.com.

P. APO is used for the receipt and dispatch of official mail only.

Q. Mail may not exceed 66 pounds, and size is limited to 42 inches maximum length and 72 inches maximum length and girth combined.

R. All alcoholic beverages, including those mailable under DMM 601.12.7, are prohibited.

R1. Materials used in the production of alcoholic beverages (i.e., distilling material, hops, malts, yeast, etc.) are prohibited.

S. Mail of all classes must fit in a mail sack. Mail may not exceed the following dimensions and weight:

- Maximum length 12 inches.
- Maximum width 12 inches.
- Maximum height 5 1/2 inches.
- Maximum weight 25 pounds.

The maximum length and girth combined may not exceed 47 inches.

T. Mailings of case lots of food and supplemental household shipments must be approved by the sender's parent agency prior to mailing.

U. Parcels must weigh less than 16 ounces when addressed to Box R. This restriction does not apply to mail endorsed "Free Matter for the Blind or Handicapped."

U1. Mail is limited to First-Class Mail weighing 13 ounces or less when addressed to Box R. This restriction does not apply to mail endorsed "Free Matter for the Blind or Handicapped." Videotapes are prohibited when addressed to Box R, regardless of weight.

U2. Mail is limited to First-Class Mail letters only when addressed to Box R.

U3. Mail is limited to First-Class Mail correspondence (including voice and video cassettes), newspapers, magazines, photographs, not exceeding 16 ounces, when addressed to Box R.

U4. Mail addressed to Box C is limited to 2 pounds, regardless of class.

V. Express Mail Military Service (EMMS) not available from any origin.

V1. USPS Tracking is not available.

W. Meat products, such as dried beef, salami, and sausage, may be mailed, provided they remain in their original, hermetically sealed packages and bear USDA certification. Other meats, bones, skin, hair, feathers, horns or hoofs of hoofed animals, wool samples, tobacco leaves, including chewing and pipe tobacco, snuff, cigars, and cigarettes, or obscene material, including obscene drawings, photographs, films, and carvings, are prohibited. Exception: 200 grams of tobacco per parcel are permitted duty free.

X. Personal mail is limited to First-Class Mail items (to include audio cassettes and voice tapes) weighing 13 ounces or less. This limitation does not apply to official mail.

Y. Mail is limited to First-Class and Priority Mail items only. All Periodicals, Standard Mail items, and Package Services items (including SAM and PAL) are not authorized. This restriction also applies to official mail.

Z. No outside pieces (OSPs).

Z1. The following restriction is applicable only to International Service Centers (ISC)/Exchange Offices. An Anti-Pilferage Seal (Item No O817E or O818A) is required on all pouches and sacks.

— *International Network Operations,
Global Business, 7-10-14*

Presenting
Vintage Circus Posters
Forever® Commemorative Stamps.



2014

On Sale Nationwide: May 5, 2014.

Information Security

Fortifying Standards — Credit Card Security Training Available



The Postal Service™ is offering training on Payment Card Industry (PCI) data security standards for employees who handle credit card transactions (see article at <https://liteblue.usps.gov/news/link/2013/05may/news02s3.htm>).

The following required annual courses are available in the Learning Management System:

- PCI Protecting Payment Cardholder Data: Everyone's Responsibility, course 10022027.

- PCI Protecting Payment Card Information: Back Office Training, course 10023203.
- PCI OWASP Top 10, course 10021914 (for developers only).
- PCI Administrator Security Awareness Training, course 10023202 (for database, system, and network administrators).

The PCI standards, which aim to protect customer credit card information, apply to organizations that store, process, or transmit cardholder data. The Postal Service processes more than 1 million card payment transactions per day.

Compliance with these standards improves the Postal Service's ability to avoid credit data security breaches, strengthens its reputation as a safe merchant, and helps meet DRIVE business goals.

"Creating a safer PCI-compliant transactional environment builds customer trust, and trust means more business for the Postal Service," said Jeffrey Merritt, program manager, Information Technology.

Consult your local training administrator for further details or send an email to PCI.PMO@usps.gov.

— Corporate Information Security Office,
Chief Information Officer, 7-10-14

Mailing and Shipping Services

Mail Alert

The mailings below will be deposited in the near future. Offices should process this mail according to applicable service standards with the in-home dates in mind. Mailers wishing to participate in these alerts, for mailings of 1 million pieces or more, should contact Business Service Network Integration at 202-268-3258 at least 1 month preceding the requested delivery dates. The Postal Ser-

vice™ also offers electronic Mail Alerts via ADVANCE. For more information, see the *ADVANCE Notification & Tracking System Technical Guide* on the Internet at http://ribbs.usps.gov/advance/documents/tech_guides/advtech.pdf or contact the National Customer Support Center at 800-238-3150.

Requested Delivery Dates	Title of Mailing	Class and Type of Mail	Number of Pieces (Millions)	Distribution	Presort Level	Comments
7/12/14–7/15/14	Publishers Clearing House — NP309X	Standard Letter	1.721	National	3/5 Digit	Farrington Distribution Corporation
7/12/14–7/15/14	Publishers Clearing House — NP319X	Standard Letter	2.678	National	3/5 Digit	Farrington Distribution Corporation
7/12/14–7/15/14	Publishers Clearing House — PB299X	Standard Letter	3.425	National	3/5 Digit	Farrington Distribution Corporation
7/12/14–7/15/14	Publishers Clearing House — PB289X	Standard Letter	1.300	National	3/5 Digit	Farrington Distribution Corporation
7/14/14–7/17/14	Ginny's	Standard Catalog	1.0	National	3/5 Digit	Quad Graphics
7/15/14–7/17/14	Publishers Clearing House — NP300	Standard Letter	1.771	National	3/5 Digit	Farrington Distribution Corporation
7/15/14–7/17/14	Publishers Clearing House — NP301	Standard Letter	2.728	National	3/5 Digit	Farrington Distribution Corporation

Requested Delivery Dates	Title of Mailing	Class and Type of Mail	Number of Pieces (Millions)	Distribution	Presort Level	Comments
7/15/14-7/17/14	Publishers Clearing House – PB290	Standard Letter	3.500	National	3/5 Digit	Farrington Distribution Corporation
7/15/14-7/17/14	Publishers Clearing House – PB291	Standard Letter	1.3	National	3/5 Digit	Farrington Distribution Corporation
7/21/14-7/24/14	Midnight Velvet	Standard Catalog	1.0	National	3/5 Digit	Quad Graphics
7/25/14-7/29/14	August 2014 Costco.com	Standard Flats	4.0	National	3/5 Digit	Seگردahl Graphics

– Business Customer Support and Services, Consumer and Industry Affairs, 7-10-14

Stamp Services

Pictorial Postmarks Announcement

As a community service, the Postal Service™ offers pictorial postmarks to commemorate local events celebrated in communities throughout the nation. A list of events for which pictorial postmarks are authorized appears below. The sponsor of the pictorial postmark appears in italics under the date. Also provided are illustrations of these postmarks.

People attending these local events may obtain the postmark in person at the temporary Post Office™ station established there. Those who cannot attend the event but who wish to obtain the postmark may submit a mail order request. Pictorial postmarks are available only for the dates indicated, and *requests must be postmarked no later than 30 days following the requested pictorial postmark date.*

All requests must include a stamped envelope or postcard bearing at least the minimum First-Class Mail® postage. Items submitted for postmark may not include

postage issued after the date of the requested postmark. Such items will be returned unserved.

Customers wishing to obtain a postmark should affix stamps to any envelope or postcard of their choice, address the envelope or postcard to themselves or others, insert a card of postcard thickness in envelopes for sturdiness, and tuck in the flap. Place the envelope or postcard in a larger envelope and address it to: Pictorial Postmarks, followed by the Name of the Station, Address, City, State, ZIP+4® Code, as listed below.

Customers can also send stamped envelopes and postcards without addresses for postmark, as long as they supply a larger envelope with adequate postage and their return address. After applying the pictorial postmark, the Postal Service returns the items (with or without addresses) under addressed protective cover.

The following pictorial postmark has been extended for 90 days:



Abraham Lincoln Signs
1864 Yosemite Grant
Sesquicentennial Station
June 30, 2014
Yosemite, CA 95389

June 30, 2014
National Park Service
Sesquicentennial 150th
Postmaster – John Reynolds
9015 Lodge Drive
Yosemite National Park, CA 95389-9998

The following pictorial postmark has been extended for 60 days:



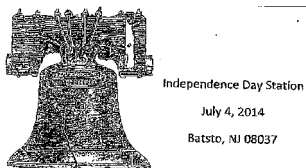
BATTLE OF ST. LEONARD'S CREEK
JUNE 1814 BICENTENNIAL STATION
JUNE 26, 2014
SAINT LEONARD, MD, 20685

June 26, 2014
Jefferson Patterson Park
Battle of Saint Leonard's Creek Bicentennial
Postmaster – Tamara Stout
4244 Saint Leonard Road, Suite 100
Saint Leonard, MD 20685-9998

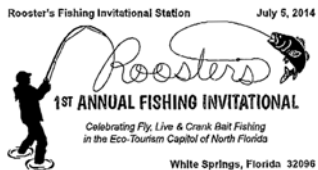
The following pictorial postmarks have been extended for 30 days:



June 20-21, 2014
 OKPEX Stamp Club
 OKPEX Station
 Postmaster
 4025 West Reno Avenue
 Oklahoma City, OK 73125-9802



July 4, 2014
 Batsto Citizens Committee
 Independence Day Station
 Postmaster
 114 3rd Street
 Hammonton, NJ 08037-9998



July 5, 2014
 Town of White Springs
 Rooster's Fishing Invitational Station
 Postmaster
 16555 Spring Street
 White Springs, FL 32096-9998



July 9, 2014
 United States Postal Service
 Charlton Heston Station
 Postmaster
 PO Box 9998
 Saint Helen, MI 48656-9998



July 12, 2014
 Sesquicentennial Event
 2014
 Middletown Post Office
 Postmaster
 7227 Hollow Road
 Middletown, MD
 21769-9998



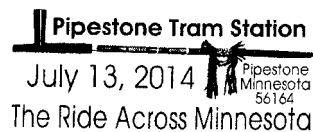
July 12, 2014
 National Park Service
 150th Anniversary
 Philatelic Clerk
 2 Massachusetts Avenue
 NE
 Washington, DC
 20002-9998



July 12, 2014
 Rowe Post Office
 Rowe Old Home Day
 Station
 Postmaster Relief
 321 Zoar Road, Suite 1
 Rowe, MA 01367-9998



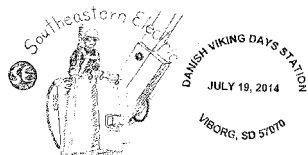
July 12, 2014
 Batsto Citizens Committee
 Second Saturday Station
 Postmaster
 114 3rd Street
 Hammonton, NJ
 08037-9998



July 13, 2014
 Chamber of Commerce
 Pipestone Tram Station
 Postmaster
 PO Box 9998
 Pipestone, MN 56164-9998



July 25-August 1, 2014
 Philadelphia Post Office
 Neshoba County Fair
 Station
 Postmaster
 1 Government Street
 Philadelphia, MS
 39350-9998



July 19, 2014
 Viborg Post Office
 Danish Viking Days Station
 Postmaster
 PO Box 9998
 Viborg, SD 57070-9998



July 25, 2014
 The Postal History
 Foundations
 Arizona Territorial Station
 Postmaster
 920 North First Avenue
 Tucson, AZ 85719-4818



July 20, 2014
 NACUMS
 Evergreen Station
 Robert Galtrude
 4001 South Pine Street
 Tacoma, WA 98411-9998

150th Anniversary Station
 150th Anniversary
 July 26, 2014
 Dickerson Rd PA 15430



July 26, 2014
 United States Postal Service
 125th Anniversary Station
 Retail Specialist
 1001 California Avenue,
 Room 2036
 Pittsburgh, PA 15290-9681



July 20, 2014
 United States Postal Service
 58th Annual Bitely Home
 Coming Family Fun Station
 Postmaster
 PO Box 9998
 Bitely, MI 49309-9998

— Stamp Services,
 Marketing and Sales, 7-10-14

How to Order the First-Day-of-Issue Digital Color or Traditional Postmarks

Customers have 60 days to obtain the first-day-of-issue postmarks by mail. They may purchase new stamps at their local Post Office™, by telephone at 800-STAMP-24, or at The Postal Store® website at www.usps.com/shop.

Traditional Postmarks

Customers should affix the stamps to envelopes of their choice, address them to themselves or others, or provide a self-addressed return envelope with sufficient postage large enough to accommodate the canceled item. Mail the request to the corresponding city of issuance. There is no charge for the first 50 postmarks. There is a 5-cent charge for each additional postmark over 50. Customers should submit a check, money order, or credit card for payment. After applying the first-day-of-issue postmark, the Postal Service™ will return the envelopes to the customer by U.S. Mail.

All postmark requests should go to the first-day-of-issue city. The first-day-of-issue city Post Office will then forward in bulk all postmark requests to Cancellation Services, Stamp Fulfillment Services, PO Box 449992, Kansas City, MO 64144-9992 by respective Post Offices.

Digital Color Postmarks

Only select stamp issues offer a digital color postmark. Customers may submit #6 or #10 envelopes constructed of paper rated as “laser safe.” The Postal Service recommends envelopes of 80-pound Accent Opaque, acid-free, 9/16" side seams with no glue on the flap. The maximum size of all digital color postmarks is 2" high x 4" long. Allow sufficient space on the envelope to accommodate the postmark. Do not use self-adhesive labels for addresses on the envelope. Two test envelopes must be included. There is a minimum of 10 envelopes at 50 cents per postmark required at the time of servicing. Customers should submit a check, money order, or credit card for payment.

The Postal Service reserves the right to not accept hand-painted and other cachet envelopes that are not compatible with our digital color postmark equipment. The Postal Service also reserves the right to substitute traditional black rubber postmarks if use of nonspecified envelopes results in poor image quality or damage to equipment.

Customers should affix the stamps to the envelopes and address them to themselves or others for return through the mail. Or, they may include an additional self-addressed return envelope, large enough to accommodate their can-

celed items, with sufficient postage affixed for return of their postmarked items. Mail the request for a first-day-of-issue digital color postmark to the corresponding city of issuance. Post Offices will then forward all customer requests for digital color postmarks to Cancellation Services, Stamp Fulfillment Services, PO Box 449992, Kansas City, MO 64144-9992.

After applying the first-day-of-issue postmark, the Postal Service will return the envelopes to the customer by U.S. Mail.



Harvey Milk Stamp
Special Events
PO Box 92282
Washington, DC 20090-2282

July 21, 2014



Nevada Statehood Stamp
USPS Customer Relations Coordinator
1001 East Sunset Road, Rm 1030
Las Vegas, NV 89199-9998

July 28, 2014



Hot Rods Stamps
Postmaster
3435 Concord Rd
York, PA 17402-9998

August 5, 2014



Hot Rods Stamps
Postmaster
3435 Concord Rd
York, PA 17402-9998

August 5, 2014



Medal of Honor: Korean War
Special Events
PO Box 92282
Washington, DC 20090-2282

September 24, 2014



Medal of Honor: Korean War
Special Events
PO Box 92282
Washington, DC 20090-2282

September 24, 2014



Digital Color Pictorial

Civil War: 1864 (Mobile, AL)

Supervisor Customer Service Support
250 Saint Joseph Street
Mobile, AL 36601-9998

September 28, 2014



Black and White Pictorial

Civil War: 1864 (Mobile, AL)

Supervisor Customer Service Support
250 Saint Joseph Street
Mobile, AL 36601-9998

September 28, 2014



Digital Color Pictorial

Civil War: 1864 (Petersburg, VA)

Retail Manager – Richmond District
1801 Brook Road
Richmond, VA 23232-9640

September 28, 2014



Black and White Pictorial

Civil War: 1864 (Petersburg, VA)

Retail Manager – Richmond District
1801 Brook Road
Richmond, VA 23232-9640

September 28, 2014



Digital Color Pictorial

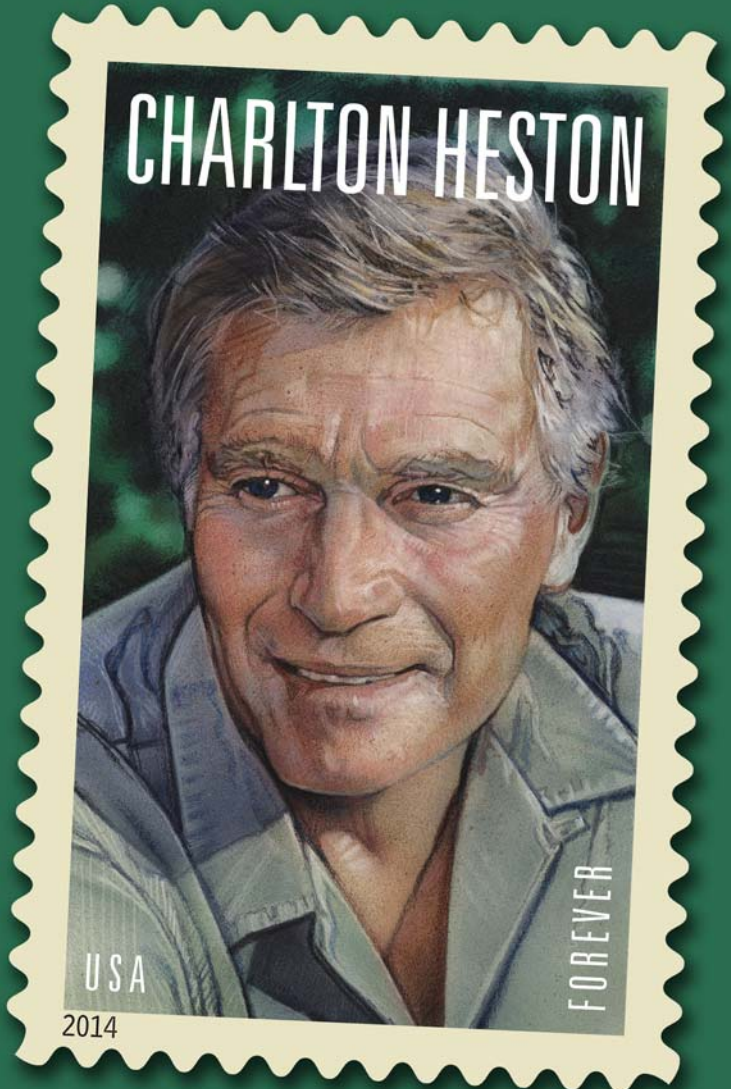
Farmers Markets

Special Events
PO Box 92282
Washington, DC 20090-2282

October 6, 2014

USPS® Presents ***Charlton Heston***

Forever®
Stamp for
*Legends of
Hollywood
Series.*



On Sale Nationwide:
April 11, 2014

Name and image of Charlton Heston licensed by the Charlton Heston Family Trust.

Stamp Announcement 14-34: Farmers Markets Stamps



© 2014 USPS

On August 7, 2014, in Washington, DC, at The White House Farmers Market, the U.S. Postal Service® will issue *Farmers Markets* (Forever® First-Class Mail priced at 49-cents), in four designs, in a pressure-sensitive adhesive (PSA) pane of 20 stamps (Item 472500).

The stamps will go on sale nationwide August 7, 2014.

The U.S. Postal Service celebrates the abundance and bounty of America's farmers markets with four colorful seven-tenant stamps depicting a table laden with products found at a typical farmers market. The stamp on the far left has, among its products, various baked goods, artisan cheeses, and eggs. The produce on the second stamp includes vegetables and fruits. Cut flowers adorn the third stamp. The stamp on the far right features live plants. Most items bear handwritten labels that identify the product and its price. Text on the back of the pane of 20 stamps describes the appeal of *Farmers Markets*. Art director Greg Breeding designed the stamps, which were illustrated by Robin Moline.

To learn more about the stories behind the stamps, visit <http://uspsstamps.com>.

Distribution: Item 472500, 49-cent Forever, Farmers Markets PSA Pane of 20 Stamps

The Binghamton, Dulles, and Kansas City Stamp Distribution Centers (SDCs) will receive an automatic distribution quantity for a PSA pane of 20 stamps. Distributions are rounded up to the nearest master carton size of 40,000 stamps.

Initial Supply to Post Offices

Stamp Fulfillment Services will make a subsequent automatic push distribution to Post Offices™ of a quantity to cover approximately 30 days of sales. Distribution quantities for the automatic push distribution will be posted, by finance number and unit ID, on the AssetManagement SDC

webpage at http://blue.usps.gov/purchase/assetmgnt/am_sdchome.htm. Post Offices may preorder these stamps prior to FDOI through the eBuy2 SEAM Catalog. However, offices should check the website noted above to determine the amount they will receive on their automatic push distribution.

How to Order the First-Day-of-Issue Postmark

Customers have 60 days to obtain the first-day-of-issue postmark by mail. They may purchase new stamps at their local Post Office, at The Postal Store® website at www.usps.com/shop, or by calling 800-STAMP-24. They should affix the stamps to envelopes of their choice, address the envelopes (to themselves or others), and place them in a larger envelope addressed to:

Farmers Markets
Special Events
PO Box 92282
Washington, DC 20090-2282

After applying the first-day-of-issue postmark, the Postal Service will return the envelopes through the mail. There is no charge for the postmark up to a quantity of 50. For more than 50, customers have to pay five cents each. All orders must be postmarked by October 6, 2014.

How to Order First-Day Covers

The Postal Service also offers first-day covers for new stamp issues and Postal Service stationery items postmarked with the official first-day-of-issue cancellation. Each item has an individual catalog number and is offered in the quarterly *USA Philatelic* catalog, online at <http://usps.com/shop>, or by calling 800-782-6724. Customers may request a free catalog by calling 800-782-6724 or writing to:

U.S. Postal Service
Catalog Request
PO Box 219014
Kansas City, MO 64121-9014

Philatelic Products

There are ten philatelic products for this stamp issue:

- 472506* Press Sheet w/Die cut, \$49.00 (print quantity 1,000).
- 472508* Press Sheet w/o Die cut, \$49.00 (print quantity 1,500).
- 472510* Digital Color Postmark Keepsake (Set of 4), \$16.95.
- 472516* First-Day Cover (Set of 4), \$3.72.
- 472521* Digital Color Postmark (Set of 4), \$6.56.
- 472523* Notecards \$13.95.
- 472524* Framed Art, \$39.95.
- 472530* Ceremony Program, \$6.95.
- 472531* Stamped Deck Card, \$0.95.
- 472532* Stamped Deck Card w/Digital Color Postmark, \$1.99.

Items with an asterisk (*) will use the 128 barcode from Stamp Fulfillment Services. All other philatelic products will continue to use barcode series A, with the exception of the Yearbook and the Guide Book.

Issue:	<i>Farmers Markets</i> Stamps
Item Number:	472500
Denomination & Type of Issue:	First-Class Mail Forever
Format:	Pane of 20 (4 designs)
Series:	N/A
Issue Date & City:	August 7, 2014, Washington, DC
Designer:	Greg Breeding, Charlottesville, VA
Art Director:	Greg Breeding, Charlottesville, VA
Typographer:	Greg Breeding, Charlottesville, VA
Artist:	Robin Moline, Lakeland, MN
Modeler:	Joseph Sheeran
Manufacturing Process:	Offset
Printer:	Ashton Potter (USA) Ltd. (APU)
Printed at:	Williamsville, NY
Press Type:	Muller A76
Stamps per Pane:	20
Print Quantity:	100 million stamps
Paper Type:	Nonphosphored Type III, Block Tag
Adhesive Type:	Pressure-sensitive adhesive
Processed at:	Ashton Potter (USA) Ltd. (APU)
Colors:	Black, Cyan, Magenta, Yellow
Stamp Orientation:	Vertical
Image Area (w x h):	0.77 x 1.11 in./19.56 x 28.07 mm
Overall Size (w x h):	0.91 x 1.19 in./23.11 x 30.23 mm
Full Pane Size (w x h):	4.75 x 8.25 in./120.65 x 209.55 mm
Press Sheet Size (w x h):	23.75 x 8.25 in./603.25 x 209.55 mm
Plate Size:	300 stamps per revolution
Plate Numbers:	"P" followed by 1111 (4) single digits
Marginal Markings:	
Front:	Plate number • Year of issue • Header (<i>Farmers Markets</i>)
Back:	© 2014 USPS • USPS logo • Plate position diagram • Barcode (472500) • Descriptive text • Promotional text

— *Stamp Services,
Marketing and Sales, 7-10-14*

Supply Management

Interest Rate on Contract Claims

In the *Postal Bulletin*, the Postal Service™ periodically publishes the interest rate payable on a claim decided in a supplier's favor under the Contract Disputes Act of 1978. This rate also applies for late payments to suppliers under the Prompt Payment Act, as amended.

The interest rate effective for the 6-month period beginning July 1, 2014, and ending December 31, 2014, is 2 percent.

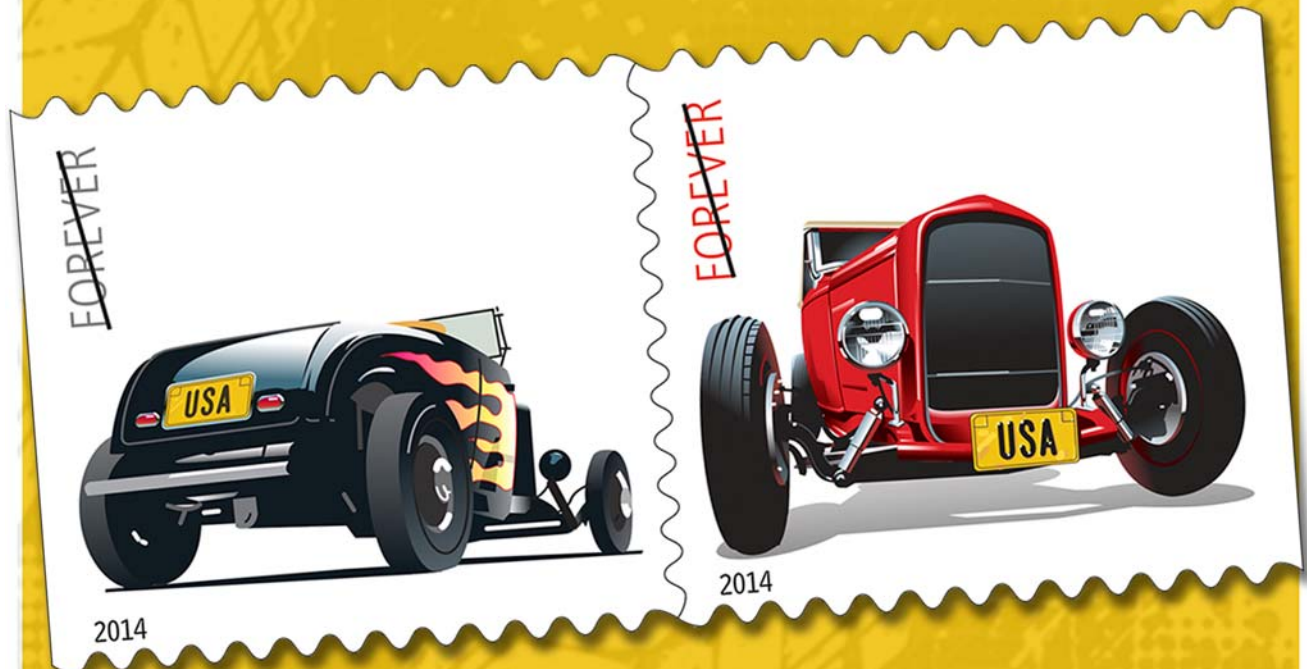
— *Supply Management Infrastructure, Supply Management, 7-10-14*

USPS® Presents
Shirley Chisholm
Forever® Stamp for the
Black Heritage Series.

USA FOREVER
2014
SHIRLEY CHISHOLM

On Sale Nationwide: January 31, 2014

USPS® Releases
Hot Rods
Forever® Stamps.



On Sale Nationwide: June 6, 2014.