

postal|bulletin

PUBLISHED SINCE MARCH 4, 1880



Ray Charles Forever® Stamp

On Sale Nationwide: September 23, 2013.



5 | DMM Revision: Balloting Materials Postage
13 | Handbook F-1 Revision: Increasing Capital Threshold

See page 3



Contents

COVER STORY

Ray Charles Stamp 3

POLICIES, PROCEDURES, AND FORMS UPDATES

Manuals

DMM Revision: Modification of Return Address Requirement for Periodicals Publications 5

DMM Revision: Balloting Materials Postage 5

DMM Revision: U.S. Postal Service Registered Trademarks 7

IMM Revision: Updates to the Individual Country Listings for China, Kyrgyzstan, and Russia 8

IMM Revision: Adhesive-backed Envelope Applied to Dutiable Mail 10

IMM Revision: U.S. Postal Service Registered Trademarks 10

Handbooks

Handbook AS-353 Revision: Guide to Privacy and the Freedom of Information Act 11

Handbook F-1 Revision: Increasing Capital Threshold 13

Publications

Publication 431 Revision: Changes to Post Office Box Service and Caller Service Fee Groups 13

ORGANIZATION INFORMATION

Ethics Office

Same-Sex Marriages and Federal Ethics Rules 14

Mailing and Shipping Services

Mail Alert 14

Stamp Services

Stamp Announcement 13-40: Stamp Collecting: Inverted Jenny Stamp 15

Stamp Announcement 13-41: Poinsettia Stamp 17

Stamp Announcement 13-42: Virgin and Child by Jan Gossaert Stamp 36

Stamp Announcement 13-43: Holy Family Stamp 38

Stamp Announcement 13-44: Snowflakes Stamp 40

2013 Stamps and Postal Stationery 42

Pictorial Postmarks Announcement 44

How to Order the First-Day-of-Issue Digital Color or Traditional Postmarks 46

Sustainability

Use Slim Jims – Secured Lobby Recycling Containers. 51

PULL-OUT INFORMATION

Fraud

Invalid USPS Corporate Account Numbers 19

Missing, Lost, or Stolen U.S. Money Order Forms 21

Missing, Lost, or Stolen Canadian Money Order Forms 27

Verifying U.S. Postal Service Money Orders 29

Counterfeit Canadian Money Order Forms 29

Toll-Free Number Available to Verify Canadian Money Orders 29

Other Information

Overseas Military/Diplomatic Mail 30

Postal Bulletin Index

Semi-Annual Index PB 22367 (7-11-13)

USPS National Emergency Hotline
Is your facility operating? Call 888-363-7462



Cover Story

Ray Charles Stamp

First Day of Issue: September 23, 2013 | Los Angeles, CA & Atlanta, GA

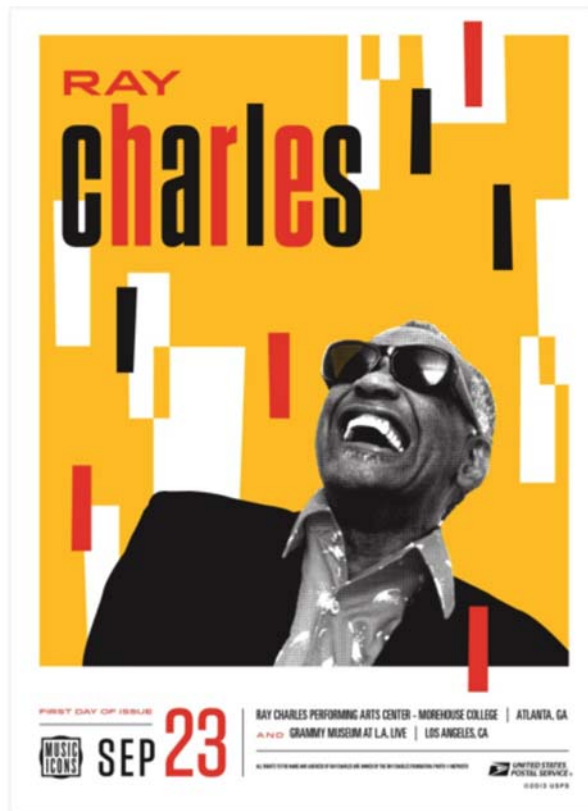
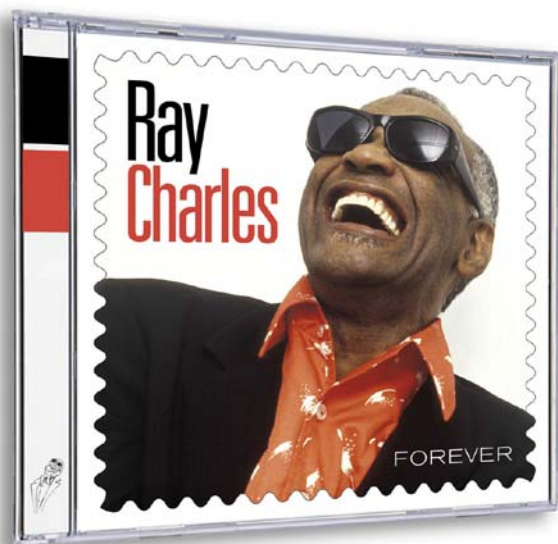


The U.S. Postal Service® proudly honors inspiring musician Ray Charles with the *Ray Charles Forever*® stamp, the third issuance in the *Music Icons* series. This extraordinary composer, singer, and pianist, blind since the age of seven, went beyond category, blending blues, gospel, country, jazz, and soul music in a unique and highly influential pop music style. His many hits included “I’ve Got a Woman,” “Georgia on My Mind,” and “I Can’t Stop Loving You.”

Looking back over the course of his long career, there seemed little Charles couldn’t do. His work spanned almost the entire breadth of American music and brought him 17 Grammy Awards, plus an award for lifetime achievement in 1987. His many other prizes include the National Medal of Arts (1993), the Polar Music Award (1989), and the Kennedy Center Honors in 1986. That same year, he was inducted into the Rock and Roll Hall of Fame.

The *Ray Charles Forever* stamp art features an image of Charles, taken later in his career, by Yves Carrère. The stamp sheet was designed to evoke the appearance of a vintage 45 rpm record sleeve. One side of the sheet includes the stamps and the image of a record appearing to peek out of the top of the sleeve. A larger version of Charles’ photograph and the *Music Icons* series logo appear on the reverse side. Art director Ethel Kessler worked on the stamp sheet with designer Neal Ashby.

In celebration of the new *Ray Charles Forever* stamp, the U.S. Postal Service is releasing two new products (shown on the next page): the *Ray Charles Forever CD* (\$9.99, Item #842717), featuring his remastered classics and previously unreleased material, and the *Ray Charles Limited Edition Screen Print Poster*, a lively graphic print reminiscent of mid-century album covers that features Charles in his iconic sunglasses (\$14.95 — Item #579525). Both products will be available for purchase at <http://www.usps.com/shop>, 800-STAMP-24, and <http://www.eBay.com/stamps> on September 23, 2013. The CD will also be available at select Post Office™ locations. See the 22370 issue of the *Postal Bulletin* (8-22-13) for more information regarding all the related *Ray Charles Forever* stamp products.



— Stamp Services, Marketing and Sales, 9-5-13

Policies, Procedures, and Forms Updates

Manuals

DMM Revision: Modification of Return Address Requirement for Periodicals Publications

Effective October 7, 2013, the Postal Service™ will revise *The Mailing Standards of the United States Postal Service*, Domestic Mail Manual (DMM®) section 602.1.5.3 to modify the requirement for a return address on a Periodicals publication in any wrapper to apply to publications that are in an opaque wrapper. Publications that are poly-wrapped or in another clear wrapper will not be required to bear an external return address unless they have an endorsement requiring physical return of the publication. This revision brings that standard into alignment with the standard in DMM 707.3.2.3 for return addresses on Periodicals publications.

Postal Service employees at Post Offices™ and other delivery units are reminded not to perform any manual markups of undeliverable Periodicals publications, and that all undeliverable Periodicals publications must be sent to the designated Computerized Forwarding System (CFS) unit.

Mailing Standards of the United States Postal Service, Domestic Mail Manual (DMM)

* * * * *

600 Basic Standards for All Mailing Services

* * * * *

602 Addressing

1.0 Elements of Addressing

* * * * *

1.5 Return Addresses

* * * * *

1.5.3 Required Use of Return Addresses

The sender's domestic return address must appear legibly on:

* * * * *

[Revise item 1.5.3f as follows:]

- f. Periodicals in envelopes or opaque wrappers.

* * * * *

We will incorporate these revisions into the next update of the online DMM, which is available via Postal Explorer® at <http://pe.usps.com>.

— Product Classification, Pricing, 9-5-13

DMM Revision: Balloting Materials Postage

Effective October 7, 2013, the Postal Service™ will revise *Mailing Standards of the United States Postal Service*, Domestic Mail Manual (DMM®) 703.8 to require that the balloting materials for all types of ballots, whether disseminated in hardcopy or electronically, must indicate in a prominent location the proper amount of First-Class Mail® postage that must be paid. This information must be included in the balloting materials (i.e., on the ballot, ballot instructions, mailing instructions, or the envelope) with the marking "First-Class Mail postage must be applied." Alternatively, the marking "Apply First-Class Mail postage here" could be printed in the upper right corner of the address side of the envelope used by the voter to return the ballot to election officials. The Postal Service will also accept approved variations of the above markings.

Additionally, balloting materials must indicate, in a prominent location, the specific amount of First-Class Mail postage required for the return of the ballot to election officials.

The marking requirements will not apply to balloting materials that meet one of the following exceptions:

- The balloting materials are qualified under the special exemption for military and overseas voting.
- The ballot is returned under Business Reply Mail® service.
- Return postage is guaranteed through a postage due account.
- Postage on the ballot is prepaid by stamps, meter, or Permit Reply Mail.

* * * * *

Mailing Standards of the United States Postal Service, Domestic Mail Manual (DMM)

* * * * *

700 Special Standards

[Revise the heading of 703 to read as follows:]

703 Nonprofit Standard Mail and/or Other Unique Eligibility

* * * * *

[Revise the heading of 8.0 to read as follows:]

8.0 Balloting Materials

[Renumber 8.1 and 8.2 as 8.2 and 8.3. Add new 8.1 to read as follows:]

8.1 Basic Standards

8.1.1 Definition

Balloting materials include postcard applications, all ballot types, voting instructions, mailing instructions, and return envelopes.

8.1.2 Exceptions to Standards

An exception to the marking and verification standards in 8.1.3 through 8.1.5 is granted for one of the following reasons:

- a. Ballots are mailed under 8.2, Special Exemption.
- b. Ballots are returned under 505.1.0, Business Reply Mail.
- c. A postage due account has been established to guarantee the payment of return postage.
- d. Prepayment of return postage is made by stamps, meter, or Permit Reply Mail.

8.1.3 Postage

Except for ballots which meet one of the exceptions under 8.1.2, balloting materials for any election, whether disseminated in hardcopy or electronically, must indicate in a prominent location that the proper amount of postage must be paid. This information must be included in the balloting materials with the marking “First-Class Mail postage must be applied.” Alternatively, the marking “Apply First-Class Mail postage here” may be printed in the upper right corner of the address side of the return envelope. Approved ver-

sions will also be acceptable in either location. Election officials should consult with Postal Service officials to assist with mailpiece design and barcode placement, and to determine the proper amount of postage required for mailing ballots to voters or returning ballots to election officials.

8.1.4 Notification of Postage Requirement on Return Ballots

Except for ballots meeting one of the exceptions under 8.1.2, all ballot types for any election, whether disseminated in hardcopy or electronically, must indicate in a prominent location on the balloting materials the specific amount of First-Class Mail postage required for return by mail to election officials.

8.1.5 Verification

Except for ballots which meet one of the exceptions under 8.1.2, each mailing must be accompanied by a complete sample mailpiece.

* * * * *

[Revise the heading of renumbered 8.2 to read as follows:]

8.2 Special Exemption

8.2.1 Definition

[Revise the introductory text of renumbered 8.2.1 to read as follows:]

Balloting materials may be sent through the mail without prepayment of postage to enable persons in the following categories to apply for registration and vote by absentee ballot when absent from the place of voting residence and otherwise eligible to vote as an absentee:

* * * * *

[Delete renumbered heading 8.3, Marking, and renumber 8.3.1 as 8.2.5, Exhibit 8.3.1 as Exhibit 8.2.5, 8.3.2 as 8.2.6, Exhibit 8.3.2 as Exhibit 8.2.6, and 8.3.3 as 8.2.7.]

* * * * *

We will incorporate these revisions into the next update of the online DMM, which is available via Postal Explorer[®] at <http://pe.usps.com>.

— Product Classification,
Pricing, 9-5-13

DMM Revision: U.S. Postal Service Registered Trademarks

Effective October 7, 2013, the Postal Service™ will revise *Mailing Standards of the United States Postal Service*, Domestic Mail Manual (DMM®) 608.7, which will update the Postal Service registered trademarks used throughout the DMM.

Mailing Standards of the United States Postal Service, Domestic Mail Manual (DMM)

* * * * *

600 Basic Standards for All Mailing Services

* * * * *

608 Postal Information and Resources

* * * * *

7.0 Trademarks and Copyrights of the USPS

[Revise the heading of 7.1 to read as follows:]

7.1 Use of USPS Trademarks

[Revise 7.1 in its entirety to read as follows:]

USPS trademarks must be used in the form listed in this section. Proper use of any USPS trademarks may require capitalizing the initial letters, or all the letters of the acronym, to distinguish them from terms not used as trademarks. Words and phrases that are registered trademarks may also use the registration symbol ®; words and phrases that are not registered but are still USPS trademarks may use the TM symbol. If the registration or TM symbol is *not* used, a reference should be placed at the beginning or end of the document, indicating the marks that are used in the publication with the following notation preceding the marks: “The following marks are among the many marks belonging to the U.S. Postal Service and are not an exhaustive list”. Registered USPS marks include, but are not limited to:

- | | |
|----------------------------|-----------------------------------|
| 1-800-ASK-USPS | Parcel Post |
| Air Mail | Parcel Select |
| Business Reply Mail | Parcel Select Lightweight |
| Certified Mail | PC Postage |
| Click-N-Ship | PFS |
| Click-N-Ship for Business | Pickup on Demand |
| Commercial Base | Postal Explorer |
| Commercial Plus | Premium Forwarding Service |
| Critical Mail | Priority Mail |
| DMM | Priority Mail Flat Rate |
| EDDM | Priority Mail International |
| EDDM Retail | Priority Mail Open and Distribute |
| ePacket | Priority Mail Regional Rate |
| EVS | Priority Mail Regional Rate Box |
| e-VS | Priority Mail Returns |
| Express Mail | Return to Sender |
| Express Mail International | RIBBS |
| FAST | Stamps by Mail |
| FastForward | Stamps to Go |

- | | |
|--------------------------------|------------------------------|
| First-Class Mail | Standard Mail |
| First-Class Mail International | U.S. Postage Paid |
| First-Class Package | The Postal Service |
| Forever | The Postal Store |
| Global Express Guaranteed | U.S. Postal Service |
| GXG | United States Postal Service |
| IMb | USPS |
| IMb Tracing | USPS Delivery Confirmation |
| IMM | USPS Electronic Postmark |
| Intelligent Mail | USPS ePacket |
| International Surface Air Lift | USPS Package Intercept |
| IPA | USPS Returns |
| ISAL | USPS Web Tools |
| Market Mail | USPS.com |
| Media Mail | ZIP |
| MERLIN | ZIP+4 |

[Revise the heading of 7.2 to read as follows:]

7.2 Common Law Marks or USPS Marks with Pending Trademark Applications

[Revise 7.2 in its entirety to read as follows:]

The following is a list of Common Law Marks or USPS marks with pending trademark applications that appear throughout the DMM. The TM may be used after these marks and the same trademark rules apply whenever these services or terms appear in the DMM (**Note:** this list changes frequently and some of these marks may become registered and will require the ®):

- | | |
|---|---|
| ACS | Priority Mail 2-Day |
| Carrier Pickup | Priority Mail 3 Day Delivery |
| CASS | Priority Mail 3 Day Delivery Guaranteed |
| CASS Certified | Priority Mail 3-Day |
| Courtesy Reply Mail | Priority Mail Express |
| Delivery Confirmation | Priority Mail Express 1-Day |
| FCPIS | Priority Mail Express 2-Day |
| First-Class | Priority Mail Express 3-Day |
| First-Class Package | Priority Mail Express DPO |
| International Service | Priority Mail Express Flat Rate Box |
| First-Class Package Service | Priority Mail Express International |
| IMRS | Priority Mail Express Military |
| International Business Reply | Priority Mail Express Offshore |
| International Priority Airmail | Priority Mail Express Open and Distribute |
| M-Bag | Priority Mail Intl |
| Open and Distribute | QBRM |
| Parcel Select Regional Ground | Qualified Business Reply |
| P.O. Box | Registered Mail |
| PO Box | Signature Confirmation |
| Post Office | Standard Post |
| Post Office Box | U.S. Mail |
| Postal Service | US Postage Paid |
| Postmaster General | US Postal Service |
| POSTNET | USPSCA |
| Priority Mail 1 Day Delivery | USPS Picture Permit |
| Priority Mail 1 Day Delivery Guaranteed | USPS Tracking |
| Priority Mail 1-Day | |

Priority Mail 2 Day Delivery
Priority Mail 2 Day Delivery
Guaranteed

ZIP Code

* * * * *

We will incorporate this revision into the next update of the online DMM, which is available via Postal Explorer® at <http://pe.usps.com>.

— Product Classification,
Pricing, 9-5-13

IMM Revision: Updates to the Individual Country Listings for China, Kyrgyzstan, and Russia

Effective October 7, 2013, the Postal Service™ will revise *Mailing Standards of the United States Postal Service*, International Mail Manual (IMM®) to reflect changes in the Individual Country Listings (ICLs) for China, Kyrgyzstan, and Russia.

Please note the following ICL changes, resulting from notices forwarded by the Universal Postal Union (UPU) via International Bureau Circulars (IBCs), or from formal requests made by the destination country:

- China: As indicated in UPU IBC 128, dated July 15, 2013, and IBC 134, dated July 22, 2013, China updated its policy regarding customs and additionally advised that items containing powders, liquids, and lithium batteries that are transported via air into China will be forwarded to the final destination via ground transportation, which could result in delay.
- Kyrgyzstan: As indicated in UPU IBC 145, dated August 5, 2013, Kyrgyzstan has modified its list of restrictions by prohibiting postage stamps when sent by Registered Mail™ service.
- Russia: Russian Post has updated its listings of prohibited and restricted items on its website at http://www.russianpost.ru/rp/serve/en/home/postuslug/internationalmail/goodslist_import.

Mailing Standards of the United States Postal Service, International Mail Manual (IMM)

* * * * *

Individual Country Listings

* * * * *

China

Country Conditions for Mailing

* * * * *

Restrictions

[In the introductory paragraph, revise the last sentence to read as follows:]

***However, the following articles are admitted in the quantities/values indicated, and any articles that do not meet the

requirements mentioned below will be returned to origin or confiscated in accordance with China's internal laws:

* * * * *

Observations

[Revise the Observations section in its entirety to read as follows (the previous text about articles not meeting stated requirements has been moved to the Restrictions section):]

Items that contain powders, liquids, lithium batteries, or lithium cells are prohibited for carriage by domestic air transport within China. Any of these items that are approved for international air transport and arrive at the initial gateways in China will be forwarded via ground transportation to their next destination. China Post will accept no liability for the delay in delivering these items. Mailers should be aware of the following customs requirements in China:

1. Items for personal use mailed to China are subject to duty and tax. However, items imported for personal use are exempt from duty and tax, if such duties and taxes are equal to or less than 50 CNY.
2. Items for personal use imported into China (not including items imported from Hong Kong, Macau, and Taiwan) may not exceed 1,000 CNY. When items imported for personal use exceed the allowed value limit, three outcomes are possible:
 - a. The items will be returned.
 - b. If Customs determines that the items are not for personal use but are actually intended for commercial use, the items will be cleared using commercial customs procedures.
 - c. If Customs determines that the items are actually intended for personal use, then supporting documents such as a trade contract, commercial invoice, packing list, waybill, customs declaration brokerage authorization agreement, import and export license, or other similar documentation will need to be provided.
3. If imported items are intended for commercial use, commercial customs clearance will be applied.
4. China Customs permits only shippers and consignees that are registered declarants or other registered

enterprises to present items that must be accompanied by the documents mentioned in paragraph 3c above. Individuals or companies that are not registered with China Customs to affect clearance are advised to entrust the customs clearance process to enterprises that are specifically registered with China Customs for this purpose.

* * * * *

Kyrgyzstan

Country Conditions for Mailing

* * * * *

Restrictions

[Insert the following entry in alphabetical order to read as follows:]

Postage stamps, whether canceled or uncanceled, are prohibited when sent by Registered Mail service. Kyrgyz Post will accept no liability for any loss or damage to incoming registered items containing such articles.

* * * * *

Russia (Russian Federation)

Country Conditions for Mailing

Prohibitions

[Revise the Prohibitions section in its entirety to read as follows:]

Alcohol products and ethyl alcohol, beer.

Ammunition, and parts thereof.

Calls to extreme and terrorist activities or public justification of terrorism.

Currency of the Russian Federation; foreign currency.

Documents of current and personal correspondence and any correspondence exchanged by the persons not being the sender and recipient or a person residing therewith.

Electric fishing systems and equipment consisting of electric signal generators with connected conductors and accumulators (batteries), employed together to fish biological aquatic resources using electric current.

Equipment for fishing/catching the aqueous biological resources.

Explosives; inflammatory substances, blasting devices, and firing agents.

Hazardous wastes.

Indecent and immoral items.

Items that by their nature or packaging may be hazardous for the postal personnel or ordinary population, or may soil

or damage other mail units, postal equipment, or property of the third party.

Ready mesh fishing nets made from synthetic or other polyamide monothreads, with a thread diameter less than 0.5 mm and mesh size less than 100 mm (length of mesh at one side less than 50 mm).

Live animals (see exception for bees, leeches, and silkworms in the Restrictions list).

Materials containing Nazi ideas or symbols, or ideas or symbols that might be confused with those of Nazi ideology.

Narcotics, psychotropic substances, and precursors, including in drug form.

Ozone-depleting substances.

Pathogenic or potentially pathogenic organisms.

Perishable items.

Plant-protection products subject to the provisions of Annexes A and B to the Stockholm Convention on Persistent Organic Pollutants of May 22, 2001.

Poisonous substances other than precursors of narcotics and psychotropic substances.

Pornographic materials.

Precious stones of any kind or natural diamonds, except for jewelry.

Printed books, newspapers, pictures, and other products of the printing industry, manuscripts, and miscellaneous documents containing information that could be detrimental to State security, social order, public morals, or property rights, including intellectual property and other interests of natural and legal persons.

Printed or audiovisual materials that are manufactured or distributed in violation of the legal requirements on elections and referenda in member countries of the Eurasian Economic Community Customs Union.

Printed or audiovisual materials if any of the following apply:

- They are items that propagate extremist or terrorist activities or publicly justify terrorism.
- They are items of a pornographic nature.
- They are items intended to spread propaganda containing Nazi ideas or symbols, or ideas or symbols that might be confused with those of Nazi ideology.
- They are items containing information that could be prejudicial to the political and economic interests of Russia, to public safety, or to the health and morality of its citizens.

Tobacco products or smoking mixtures of any kind.

Weapons of any kind, and parts thereof.

Restrictions

[Revise the Restrictions section in its entirety to read as follows:]

The following items may be sent only when used for personal use subject to appropriate permission from the Russian national controlling authority:

- Cryptographic devices and equipment with the cryptographic function.
- Radioelectric devices and/or high-frequency civil devices, including built-ins or parts of other goods.
- Bees, leeches, and silkworms accompanied by a veterinary certificate.

The following items are prohibited when sent to or from the address of private individuals for needs that are not related to company activities:

- Scrap and waste from ferrous and non-ferrous metals.
- Nonmanufactured precious metals, precious metal scrap and waste, ores and concentrated precious

metal products, and primary products containing precious metals.

- Mineral substances (nonmanufactured natural stones).
- Information about the Earth's interior.
- Technical devices designed for eavesdropping.
- Human organs and/or tissues, and blood and its components.
- Radioactive materials.
- Cultural artifacts.
- Plants of any kind and in any form, including seeds.

* * * * *

We will incorporate these revisions into the next update of the online IMM, which is available via Postal Explorer® at <http://pe.usps.com>.

— Product Classification,
Pricing, 9-5-13

IMM Revision: Adhesive-backed Envelope Applied to Dutiable Mail

Effective October 7, 2013, the Postal Service™ will revise *Mailing Standards of the United States Postal Service*, International Mail Manual (IMM®) section 713.11 to clarify that the adhesive-backed envelope applied to inbound dutiable mail is issued by Customs and Border Protection (not by the Treasury Department).

Mailing Standards of the United States Postal Service, International Mail Manual (IMM)

* * * * *

7 Treatment of Inbound Mail**710 U.S. Customs Information**

* * * * *

713 Treatment of Dutiable Mail at Delivery Office**713.1 Detection and Dispatch of Dutiable Mail****713.11 Detecting Dutiable Items**

[Revise the last sentence to read as follows:]

***Dutiable mail will bear the “Original” and “Addressee Receipt” copies of CBP Form 3419ALT, which are enclosed in an orange adhesive-backed Customs and Border Protection envelope attached to the wrapper or envelope.

* * * * *

We will incorporate this revision into the next update of the online IMM, which is available via Postal Explorer® at <http://pe.usps.com>.

— Product Classification,
Pricing, 9-5-13

IMM Revision: U.S. Postal Service Registered Trademarks

Effective October 7, 2013, the Postal Service™ will revise *Mailing Standards of the United States Postal Service*, International Mail Manual (IMM®) to add part 116, which will list Postal Service trademarks that appear throughout the IMM.

Listing the marks in this part will negate the need to use the registered symbol (®) or the trademark symbol (™) throughout the IMM.

We will incorporate this revision into the next update of the online IMM, which is available via Postal Explorer® at <http://pe.usps.com>.

— Product Classification,
Pricing, 9-5-13

Handbooks

Handbook AS-353 Revision: Guide to Privacy and the Freedom of Information Act

Effective September 5, 2013, the Postal Service™ is revising Handbook AS-353, *Guide to Privacy and the Freedom of Information Act*, to include the following modifications, which were published in the *Federal Register* on July 18, 2013 (78 FR 43247 – 43249).

The U.S. Postal Service® is amending systems of records (SOR) 100.000, General Personnel Records, and 100.100, Recruiting, Examining, and Placement Records, to account for the current practice of collecting the personal email addresses of applicants and potential applicants for Postal Service employment. Additionally, SOR 100.300, Employee Development and Training Records, is being updated to facilitate the assessment services of contractors as part of its continued effort to develop and hire talent into leadership positions. Employee assessments will now be included among the record categories for that system. Lastly, the Postal Service is amending SOR 100.600, Personnel Research Records, to enable Human Resources to contact former employees via their personal email addresses for the purpose of obtaining feedback so that the Postal Service may continuously improve its processes. Additionally, the category of “veterans status” is being added to the existing categories of personnel research information. A minor change is also being made to clarify that Employee Identification Numbers, which are used to identify Postal Service employees in other records systems, will be a category of records in this system.

Handbook AS-353, *Guide to Privacy and the Freedom of Information Act*

* * * * *

Appendix – Privacy Act Systems of Records

* * * * *

Section E. Complete Text of Systems of Records

* * * * *

USPS 100.000 – General Personnel Records

* * * * *

Categories of Records in the System

[Revise the text of 1 to read as follows:]

1. Employee, former employee, and family member information: Name(s), Social Security Number(s), Employee Identification Number, date(s) of birth, place(s) of birth, marital status, postal assignment information, work contact information, home address(es)

and phone number(s), personal email address, finance number(s), duty location, and pay location.

* * * * *

USPS 100.100 – Recruiting, Examining, and Placement Records

* * * * *

Categories of Records in the System

[Revise the text of 1 to read as follows:]

1. Applicant, potential applicants with candidate profiles, and employee information: Name(s), Social Security Number(s), Candidate Identification Number, Employee Identification Number, date(s) of birth, postal assignment or vacancy/job posting history information, work contact information, home address(es) and phone number(s), personal email address, finance number(s), duty location, and pay location.

* * * * *

USPS 100.300 – Employee Development and Training Records

* * * * *

System Location

[Revise the text to read as follows:]

Management training centers, Integrated Business Solutions Services Centers, other USPS facilities where career development and training records are stored, and contractor sites.

* * * * *

Categories of Records in the System

[Revise the text of 2 to read as follows:]

2. Employee development and training information: Records related to career development, work history, assessments, skills bank participation, USPS- and non-USPS-sponsored training, examinations, evaluations of training, and USPS lodging when a discrepancy report is filed against the student about unauthorized activities while occupying the room.

* * * * *

USPS 100.600 – Personnel Research Records

* * * * *

Categories of Individuals Covered by the System

[Revise the text to read as follows:]

Potential applicants for USPS employment, applicants for USPS employment, USPS employee applicants for reassignment and/or promotion, employees whose work records or solicited responses are used in research projects, and former USPS employees.

Categories of Records in the System

[Revise the text of 1 and 2 to read as follows:]

1. Applicant, potential applicant with candidate profile, and employee information: Name, Social Security Number, Candidate Identification Number, Employee Identification Number (EIN), or respondent identification code, place of birth, postal assignment or vacancy/posting information, work contact information, home address and phone number(s), personal email address, finance number(s), duty location, and pay location.
2. Personnel research information: Records related to race, ethnicity, sex, tenure, age, veteran status, and disability status (only if volunteered by the individual); research project identifiers; and other information pertinent to personnel research.

* * * * *

Purpose(s)

[Revise the text of 2 to read as follows:]

2. To assess the impact of selection decisions on applicants in race, ethnicity, sex, tenure, age, veteran status, and disability categories.

* * * * *

Retrievability

[Revise the text to read as follows:]

By individual name, Social Security Number, Candidate Identification Number, Employee Identification Number, personal email address, respondent identification code, research project identifiers, postal assignment or vacancy/

posting information, duty or pay location, or location where data were collected.

* * * * *

Notification Procedure

[Revise the text to read as follows:]

Individuals wanting to know if information about them is maintained in this system of records must address inquiries to the Vice President, Employee Resource Management, 475 L'Enfant Plaza SW, Washington, DC 20260. In cases of studies involving information not collected through an examination, individuals must address inquiries to the system manager. Inquiries must contain full name; Candidate Identification Number, Employee Identification Number, or respondent identification code, and subject or purpose of research/survey; and date and location of their participation.

* * * * *

Record Source Categories

[Revise the text to read as follows:]

USPS employees, former employees, applicants, and potential applicants with candidate profiles who provide information to personnel research programs and other systems of records.

* * * * *

We will incorporate these revisions into the next online issue of Handbook AS-353, *Guide to Privacy and the Freedom of Information Act*, which is available on the Postal Service PolicyNet website:

- Go to <http://blue.usps.gov>.
- Under "Essential Links" in the left-hand column, click *PolicyNet*.
- On the PolicyNet page, click *HBKs*.

(The direct URL for the Postal Service PolicyNet website is <http://blue.usps.gov/cpim>.)

— Privacy Office,
General Counsel and Executive Vice President, 9-5-13

Handbook F-1 Revision: Increasing Capital Threshold

Effective October 1, 2013, the Postal Service™ will revise Handbook F-1, *Accounting and Reporting Policy*, to reflect an increase in the capital threshold amount for property and equipment.

Handbook F-1, *Accounting and Reporting Policy*

* * * * *

3 Assets

* * * * *

3-6 Property and Equipment

[Revise the text to read as follows:]

Property and equipment must be safeguarded against theft, loss, and misuse. The Postal Service must conduct physical inventories of capital property and equipment items on a recurring basis.

Equipment items which have a service life of more than one year and with an acquisition cost of \$10,000 or over and leasehold improvements of \$10,000 or over are deemed to be “capital” items and must be recorded as an asset on the general ledger and subject to annual inventory procedures.

All building and land additions, equal to or greater than \$10,000, are capitalized and recorded as assets on the general ledger.

The Postal Service expenses equipment purchased for purposes of research and development at the time of acquisition.

Capital property and equipment authorization authority is specified in Handbook F-66, *General Investment Policies and Procedures*.

Facilities Service Offices (FSOs) are responsible for notifying Finance on a timely basis for the acquisition and disposal of buildings, land, and leasehold improvements.

Equipment items with an acquisition cost of under \$10,000 and leasehold improvements under \$10,000 are deemed to be “non-capital” items and are expensed when acquired. Non-capital items must be safeguarded but are not subject to annual inventory procedures.

* * * * *

We will incorporate these revisions into the next online edition of Handbook F-1, *Accounting and Reporting Policy*, on the Postal Service PolicyNet website:

- Go to <http://blue.usps.gov>.
- In the left-hand column, under “Essential Links,” click *PolicyNet*.
- Click *HBKs*.

(The direct URL for the Postal Service PolicyNet website is <http://blue.usps.gov/cpim>.)

— *Assets and Payables, Controller, 9-5-13*

Publications

Publication 431 Revision: Changes to Post Office Box Service and Caller Service Fee Groups

Effective September 5, 2013, Publication 431, *Post Office Box Service and Caller Service Fee Groups*, is revised to include the following changes.

Publication 431, *Post Office Box Service and Caller Service Fee Groups*

* * * * *

[Revise the following entries:]

ZIP Code	Fee Group
33564	34
70835	5
76565	6

* * * * *

The online version of Publication 431 is dated July 2010. Publication 431 is currently available on the Postal Service™ PolicyNet website (<http://blue.usps.gov/cpim>):

- Go to <http://blue.usps.gov>.
- Under “Essential Links” in the left-hand column, click *PolicyNet*.
- Click *PUBs*.

Offices with WebBATS access can view current Publication 431 information by generating a WebBATS Facility Information Report as follows:

1. Go to the WebBATS main menu, and select *Reports*. The reports page opens.
2. Under the Clients/System column, System category, click *Facility Information*.
3. View the Fee Group field in the report.

— *Retail Services, Channel Access, 9-5-13*

Organization Information

Ethics Office

Same-Sex Marriages and Federal Ethics Rules

Following last June's Supreme Court decision on the Defense of Marriage Act, the federal ethics rules will now apply to employees in same-sex marriages in the same way that they apply to all married employees.

The ethics rules affect married employees in a number of ways. Every employee required to file a public or confidential financial disclosure report must include the spouse's finances on the next report. In addition, a spouse's financial interests are treated as if they were the employee's under the conflict of interest laws. For example, an employee may not work on any assignments that will affect the spouse's financial interests.

The criminal conflict-of-interest statutes and the financial disclosure reporting requirements do not apply in the same manner to employees in domestic partnerships or civil unions. However, employees in these kinds of relationships still might be disqualified from working on assignments affecting their partners or members of their households.

Anyone with questions about the ethics rules that apply to married employees should contact the Ethics Office at 202-268-6346 or send an email to ethics.help@usps.gov.

— Chief Ethics Officer,
Office of the Postmaster General, 9-5-13

Mailing and Shipping Services

Mail Alert

The mailings below will be deposited in the near future. Offices should process this mail according to applicable service standards with the in-home dates in mind. Mailers wishing to participate in these alerts, for mailings of 1 million pieces or more, should contact Business Service Network Integration at 202-268-3258 at least 1 month preceding the requested delivery dates. The Postal Ser-

vice™ also offers electronic Mail Alerts via ADVANCE. For more information, see the *ADVANCE Notification & Tracking System Technical Guide* on the Internet at http://ribbs.usps.gov/advance/documents/tech_guides/advtech.pdf or contact the National Customer Support Center at 800-238-3150.

Requested Delivery Dates	Title of Mailing	Class and Type of Mail	Number of Pieces (Millions)	Distribution	Presort Level	Comments
9/5/13-9/7/13	jcp — Wk31 Billion \$\$ Jewelry	Standard A/Flat	4.0	National	3/5 Digit	Harte-Hanks/RRD
9/9/13-9/11/13	jcp — Wk31 Women's Mailer	Standard A/Flat	5.5	National	3/5 Digit	Harte-Hanks/RRD
9/13/13-9/16/13	jcp — Wk32 Reactivation	Standard A/Letter	2.0	National	3/5 Digit	Harte-Hanks/RRD
9/16/13-9/18/13	jcp — Wk33 Men's Mailer	Standard A/Flat	3.5	National	3/5 Digit	Harte-Hanks/RRD
9/16/13-9/18/13	jcp — Wk33 Preview	Standard A/Letter	5.0	National	3/5 Digit	Harte-Hanks/RRD

— Business Customer Support and Services, Consumer and Industry Affairs, 9-5-13

Stamp Services

Stamp Announcement 13-40: Stamp Collecting: Inverted Jenny Stamp



© 2013 USPS

On September 22, 2013, in Washington, DC, at the National Postal Museum, the Postal Service™ will issue a \$2.00 *Stamp Collecting: Inverted Jenny*, commemorative stamp in one design in a pressure-sensitive adhesive (PSA) souvenir sheet of six stamps (Item 580000). **The \$12.00 Stamp Collecting: Inverted Jenny souvenir sheet may not be split, and the stamps may not be sold individually and should be tracked in AIC 092 as a philatelic product.**

The stamp will go on sale nationwide September 22, 2013.

This souvenir sheet features a new version of perhaps the most famous error in the history of U.S. stamps: the *Inverted Jenny*, a 1918 misprint that mistakenly showed a biplane flying wrong side up. Reprinted with a \$2.00 denomination to make them easily distinguishable from the 24-cent originals, the six *Inverted Jennys* on this sheet commemorate the many ways a single stamp can turn a moment in history upside down. Working with art director Antonio Alcalá, Steven Noble created selvaige artwork that depicts the National Postal Museum, aviation pioneer Reuben H. Fleet, and a map of the first regular airmail service route.

To learn more about the stories behind the stamps, visit <http://www.beyondtheperf.com>.

Distribution and Initial Supply to Post Offices: Item 580000, \$12.00 Stamp Collecting: Inverted Jenny Commemorative PSA Souvenir Sheet of Six Stamps

A special automatic distribution will be done to all Post Offices™ for this souvenir sheet. The exact distribution quantities for the automatic distribution will be posted, by finance number and Unit ID, on the Asset Management SDC webpage at http://blue.usps.gov/purchase/assetmgnt/am_sdchome.htm. Post Offices will NOT be able to preorder these stamps prior to first-day-of-issue, and they will not be able to order additional stamps through the Stamp Distribution Centers (SDCs) and Stamp Distribution Offices (SDOs) once they have sold their automatic distribution quantities.

Customers may purchase these souvenir sheets at The Postal Store® website at <http://www.usps.com/shop>, <http://www.ebay.com/stamps>, or by calling 800-STAMP-24.

How to Order the First-Day-of-Issue Postmark

Customers have 60 days to obtain the first-day-of-issue postmark by mail. They may purchase new stamps at their local Post Office, at The Postal Store® website at <http://www.usps.com/shop>, or by calling 800-STAMP-24. They should affix the stamps to envelopes of their choice, address the envelopes (to themselves or others), and place them in a larger envelope addressed to:

Stamp Collecting: Inverted Jenny Stamp
Special Cancellations
PO Box 92282
Washington, DC 20090-2282

After applying the first-day-of-issue postmark, the Postal Service will return the envelopes through the mail. There is no charge for the postmark up to a quantity of 50. For more than 50, customers have to pay five cents each. All orders must be postmarked by November 22, 2013.

How to Order First-Day Covers

The Postal Service also offers first-day covers for new stamp issues and Postal Service stationery items postmarked with the official first-day-of-issue cancellation. Each item has an individual catalog number and is offered in the quarterly *USA Philatelic* catalog, online at <http://usps.com/shop> or by calling 800-782-6724. Customers may request a free catalog by calling 800-782-6724 or writing to:

U.S. Postal Service
Catalog Request
PO Box 219014
Kansas City, MO 64121-9014

Philatelic Products

There are nine philatelic products available for this stamp issue:

- 580006, Press Sheet with Die Cuts, \$72.00 (print quantity of 2,500).
- 580008, Press Sheet without Die Cuts, \$72.00 (print quantity of 3,000).
- 580010*, Keepsake (Souvenir Sheet & Digital Color Postmark Set), \$15.95.
- 580016*, First-Day Cover, \$2.44.
- 580018*, First-Day Cover (Full Sheet), \$14.50.
- 580019*, First-Day Cancelled (Full Sheet), \$14.50.
- 580021*, Digital Color Postmark, \$3.15.
- 580027, Limited Edition, \$200.00 (see item description below).
- 580030*, Ceremony Program, \$6.95.

Limited Edition, Item 580027 (Limited 10 per Customer)



Merging past with present, the limited-quantity *Inverted Jenny Collector's Edition* (Item 580027 pictured above) pays tribute to the beloved stamp, taking collectors up close to the intaglio printing process behind the 2013 *Stamp Collecting: Inverted Jenny* stamps. The set includes: a series of collectible proofs pulled during the time of the 2013 production, showing each intaglio color in isolation; an authentic section of the die wipe used during the press run; one mint and one cancelled sheet of *Stamp Collecting: Inverted Jenny Forever*[®] stamps; a 48-page booklet that reveals the story of the stamp, from how the initial error leaked to why the Postal Service is issuing the new version; and a protective box that bears an ornamental seal showing the stamp name and biplane in hand-drawn lettering.

The set is priced at \$200 and only 5,000 will be sold. Pre-orders will be accepted through October 15, 2013, while supplies last, via <http://www.usps.com/shop> or 800-STAMP-24 with fulfillment in December.

Items with an asterisk (*) will use the 128 barcode from Stamp Fulfillment Services. All other philatelic products will continue to use barcode series A, with the exception of the Yearbook and the Guide Book.

Issue:	<i>Stamp Collecting: Inverted Jenny</i>
Item Number:	580000
Denomination & Type of Issue:	\$2.00 Commemorative
Format:	Souvenir Sheet of 6 (1 design)
Series:	N/A
Issue Date & City:	September 22, 2013, Washington, DC 20066 (National Postal Museum)
Art Director:	Antonio Alcalá, Alexandria, VA
Designer:	Antonio Alcalá, Alexandria, VA
Typographer:	Antonio Alcalá, Alexandria, VA
Artist:	Steven Noble, Petaluma, CA
Modeler:	Donald Woo
Manufacturing Process:	Intaglio/Offset
Engraver:	N/A
Printer:	Banknote Corporation of America
Printed at:	Browns Summit, NC
Press Type:	Goebel/670, Phoenix
Stamps per Sheet:	6
Print Quantity:	13,200,600 stamps
Paper Type:	Nonphosphored, Type III
Adhesive Type:	Pressure-sensitive
Processed at:	Banknote Corporation of America, Browns Summit, NC
Stamp Orientation:	Horizontal
Image Area (w x h):	0.861 x 0.7299 in./21.87 x 18.54 mm
Stamp Size (w x h):	1.0023 x 0.87 in./25.46 x 22.10 mm
Full Pane Size (w x h):	5.0 x 3.5 in./127.0 x 88.90 mm
Colors:	PMS 7401 (Yellow), Intaglio Red, Intaglio Dark Blue, Intaglio Light Blue
Plate Size:	108 stamps per revolution
Plate Numbers:	N/A
Marginal Markings:	
Front:	Header: "STAMP COLLECTING" "INVERTED JENNY" at bottom of pane printed upside down
Back:	Header: "STAMP COLLECTING" • "INVERTED JENNY" at bottom of pane printed upside down • Verso text printed upside down • © 2013 USPS • USPS Logo • Plate position diagram Barcode (580000) in lower left hand corner of pane Promotional text

— Stamp Services,
Marketing and Sales, 9-5-13

Stamp Announcement 13-41: Poinsettia Stamp



© 2013 USPS

On October 10, 2013, in New York, New York, at the American Stamp Dealers Association stamp show, the Postal Service™ will issue a *Poinsettia* (Forever® priced at 46 cents) First-Class mail® stamp in one design in a pressure-sensitive adhesive (PSA) booklet of 20 stamps (Item 688600) and a PSA automated teller machine (ATM) booklet of 18 stamps (Item 586000).

The stamp will go on sale nationwide October 10, 2013.

The U.S. Postal Service® continues its tradition of issuing beautiful and classic holiday stamps with *Poinsettia*, a bright, cheerful rendering of America's favorite holiday flower. The stamp art depicts the rich red and vibrant green leaves surrounding the flower — the cluster of small, rather modest cup-shaped structures in the center. The red “petals” that we think of as the flower are actually modified leaves called bracts. The art reference for this stamp was a potted poinsettia. Designed by art director Ethel Kessler, *Poinsettia* features the work of William Low.

To learn more about the stories behind the stamps, visit <http://www.beyondtheperf.com>.

Distribution: Item 688600, \$9.20 Poinsettia (Forever priced at 46 cents) First-Class Mail PSA Booklet of 20 Stamps

Stamp distribution offices (SDOs) and stamp distribution centers (SDCs) will receive their standard automatic distribution quantity for a PSA booklet of 20 stamps. Distributions are rounded up to the nearest master carton size of 4,000 booklets. The stamps will be shipped and sold as a booklet of 20 (\$9.20).

Initial Supply to Post Offices

SDOs/SDCs will make a subsequent automatic distribution to all Post Offices™ of a quantity to cover approximately 45 days of sales. Post Offices may preorder these stamps 30 days prior to first-day-of-sale through the eBuy2 SEAM Catalog. However, offices should first check the website to determine the amount they will receive on their automatic push prior to placing a preorder: <http://topkkssgshst/sites/SDCReports/Lists/StampAutomatics/default.aspx>. Post Offices should not sell the stamp prior to first-day-of-issue.

Sales Policy

All Post Offices should maintain a sufficient inventory level of this item until the stamp is officially withdrawn from sale. If supplies run low, Post Offices must reorder additional quantities using their normal ordering procedures.

Distribution: Item 586000, \$8.28 Poinsettia (Forever priced at 46 cents) First-Class Mail PSA ATM Booklet of 18 Stamps

A distribution is planned for select APC units; specific information will follow in a Retail Digest.

How to Order the First-Day-of-Issue Postmark

Customers have 60 days to obtain the first-day-of-issue postmark by mail. They may purchase new stamps at their local Post Office, at The Postal Store® website at <http://www.usps.com/shop>, or by calling 800-STAMP-24. They should affix the stamps to envelopes of their choice, address the envelopes (to themselves or others), and place them in a larger envelope addressed to:

Poinsettia Stamp
Special Events Coordinator
380 W. 33rd Street, Rm. 4032
New York, NY 10199-9998

After applying the first-day-of-issue postmark, the Postal Service will return the envelopes through the mail. There is no charge for the postmark up to a quantity of 50. For more than 50, customers have to pay five cents each. All orders must be postmarked by December 10, 2013.

How to Order First-Day Covers

The Postal Service also offers first-day covers for new stamp issues and Postal Service stationery items postmarked with the official first-day-of-issue cancellation. Each item has an individual catalog number and is offered in the quarterly *USA Philatelic* catalog, online at <http://usps.com/shop> or by calling 800-782-6724. Customers may request a free catalog by calling 800-782-6724 or writing to:

U.S. Postal Service
Catalog Request
PO Box 219014
Kansas City, MO 64121-9014

Philatelic Products

There are seven philatelic products available for this stamp issue:

- 688606, Press Sheet with Die Cuts, \$73.60 (print quantity of 2,500).
- 688608, Press Sheet without Die Cuts, \$73.60 (print quantity of 2,500).
- 688610*, Keepsake (Bklt and Digital Color Postmark Set), \$10.95.
- 688616*, First-Day Cover, \$0.90.
- 688621*, Digital Color Postmark, \$1.61.
- 586016*, ATM First-Day Cover, \$0.90.
- 586021*, ATM Digital Color Postmark, \$1.61.

Items with an asterisk (*) will use the 128 barcode from Stamp Fulfillment Services. All other philatelic products will continue to use barcode series A, with the exception of the Yearbook and the Guide Book.

Issue:	<i>Poinsettia</i>
Item Number:	688600
Denomination & Type of Issue:	First-Class Mail Forever
Format:	Double-sided Booklet of 20 (1 design)
Series:	<i>Holiday Celebrations</i>
Issue Date & City:	October 10, 2013, New York, NY 10199 (ASDA Stamp Show)
Art Director:	Ethel Kessler, Bethesda, MD
Designer:	Ethel Kessler, Bethesda, MD
Typographer:	Ethel Kessler, Bethesda, MD
Artist:	William Low, Huntington, NY
Modeler:	Donald Woo
Manufacturing Process:	Offset/Microprint "USPS"
Engraver:	N/A
Printer:	Banknote Corporation of America
Printed at:	Browns Summit, NC
Press Type:	Alprinta, 74
Stamps per Booklet:	20
Print Quantity:	1 billion stamps
Paper Type:	Prephosphored, Type II
Adhesive Type:	Pressure-sensitive
Processed at:	Banknote Corporation of America, Browns Summit, NC
Stamp Orientation:	Vertical
Image Area (w x h):	0.77 x 1.05 in./19.55 x 26.67 mm
Stamp Size (w x h):	0.91 x 1.19 in./23.11 x 30.22 mm
Full Booklet Size (w x h):	5.74 x 2.38 in./145.80 x 60.45 mm
Colors:	Cyan, Magenta, Yellow, Black
Plate Size:	480 stamps per revolution
Plate Numbers:	"S" followed by four (4) single digits
Marginal Markings:	
Front:	Header: "POINSETTIA" • "Twenty First-Class Forever® Stamps" • Plate numbers in peel strip area • © 2013 USPS in peel strip area • Barcode (15645688605)

Issue:	<i>Poinsettia</i>
Item Number:	586000
Denomination & Type of Issue:	First-Class Mail Forever
Format:	ATM Booklet of 18 (1 design)
Series:	<i>Holiday Celebrations</i>
Issue Date & City:	October 10, 2013, New York, NY 10199 (ASDA Stamp Show)
Art Director:	Ethel Kessler, Bethesda, MD
Designer:	Ethel Kessler, Bethesda, MD
Typographer:	Ethel Kessler, Bethesda, MD
Artist:	William Low, Huntington, NY
Engraver:	WRE
Modeler:	Avery Dennison, Designed and Engineered Solutions
Manufacturing Process:	Gravure
Printer:	Avery Dennison (AVR)
Printed at:	AVR, Clinton, SC
Press Type:	Dia Nippon Kiko (DNK)
Stamps per Booklet:	18
Print Quantity:	252 million stamps
Paper Type:	Phosphored, Overall/ Nonphosphored, Type III
Adhesive Type:	Pressure-sensitive
Processed at:	AVR, Clinton, SC
Colors:	Cyan, Magenta, Yellow, Black
Stamp Orientation:	Vertical
Image Area (w x h):	0.73 x 0.84 in./18.54 x 21.34 mm
Overall Size (w x h):	0.87 x 0.982 in./22.10 x 24.94 mm
Booklet Size (w x h):	2.61 x 6.125 in./66.29 x 155.58 mm
Plate Size:	540 stamps per revolution
Plate Numbers:	"V" followed by four (4) single digits
Marginal Markings:	
Front Cover:	Header: "POINSETTIA" • "EIGHTEEN FIRST FIRST-CLASS FOREVER® STAMPS" • © 2013 USPS • USPS logo • Barcode (015645586000)
Stamp Side:	Plate block numbers in peel strip area

— Stamp Services,
Marketing and Sales, 9-5-13

Pull-Out Information

Fraud

Invalid USPS Corporate Account Numbers

This listing should be provided to Contract Postal Units and used by acceptance clerks in non-POS locations without intranet access to validate a USPS Corporate Account (USPSCA) number online. For all other locations, online USPSCA validation is preferred. The online validation process is outlined in the USPSCA Validation SOP on the Retail webpage. This list supersedes all previous notices,

which must be recycled. Acceptance clerks must not accept Priority Mail Express™ shipments bearing an invalid USPSCA number in the “Payment by Account” or “Agreement Number” section of the label or form.

Note: The first 6 digits of a 9-digit Custom Designed Service and Next Day Pickup Agreement make up the Corporate Account Number.

005281	038607	097251	142893	274190	358051	495124	604126	631187	631980	683219	752832	840293
005974	038671	097591	152740	286062	358063	503066	604637	631210	631997	685119	752913	840495
006138	041003	097636	152793	292237	362074	515100	606233	631218	633015	685254	753020	840624
006692	041114	097640	156103	292604	363017	515105	608245	631241	641500	685257	756010	841240
007231	044296	097801	178018	292605	363021	524004	611165	631246	652110	685258	756011	841349
008138	044298	098292	181065	292664	366076	524138	618015	631266	652111	685294	757540	851002
008141	052012	098659	191859	292724	372664	531593	618035	631272	652125	685306	757605	852626
008150	060023	098903	192448	293089	372992	531751	618050	631281	652130	686011	759003	852966
008192	060889	100064	192872	295479	379233	551021	618051	631282	652140	686012	770324	891577
008247	064274	100104	192947	296233	379545	551029	618095	631299	652190	687019	770678	895003
008344	066219	100201	207485	296518	381191	551057	619026	631305	652240	691060	774332	895079
008393	070203	100203	208881	300352	381553	551203	620017	631333	652325	691512	774347	895474
008772	070637	100240	208914	300529	381564	551258	620050	631336	652340	693511	780112	895579
008948	070739	100257	209299	303002	405043	551306	620097	631338	652410	693519	782523	898087
008989	071162	100318	210019	305013	405177	551309	622016	631344	652430	701052	782565	900159
009273	071633	100369	210086	311022	405190	551313	624069	631349	666185	701060	787190	900254
009349	074201	100490	210099	312381	430205	551378	624073	631352	666300	719036	787756	900477
009415	075330	100525	210100	314009	431065	551398	624092	631354	666720	723044	787926	906507
009419	075862	100578	210103	314261	432015	551948	625113	631396	670006	724010	796001	907229
009564	076032	100807	210114	314289	432017	551964	626007	631404	671015	730022	800105	907292
009721	076707	100878	210115	314828	432029	551977	626130	631446	672001	730390	801337	907742
013106	076862	101781	210116	317346	432037	553024	627015	631522	672009	740308	801412	912387
014497	078916	101997	210117	319097	432040	553125	627064	631568	672036	740508	802181	915563
016880	079111	102378	210122	321078	432172	553298	627142	631569	672492	740857	802452	915696
019531	079963	102772	210130	321275	432317	553313	627143	631580	674400	741353	802468	917626
019995	080070	104113	210140	322044	432322	553676	628013	631601	680046	741573	802543	917637
020303	080138	104221	210141	322457	432733	553745	628105	631606	680078	741646	804041	917864
020514	086000	104524	210143	327067	432962	554242	628126	631608	681317	741687	804165	917877
020652	088034	104625	210181	327674	433002	554244	629052	631618	681356	741910	805014	918204
021754	089750	109728	210428	328730	443051	554249	629090	631646	681413	750003	808021	918510
023133	090026	109873	210438	328910	443569	554302	629106	631679	681462	750205	809017	918891
023672	090197	109915	210575	329079	444812	554329	629111	631680	681483	750212	809105	920017
025408	091906	109987	210793	329504	450221	557018	629145	631695	681521	750430	809129	920130
025504	093006	113544	210855	329579	452188	558064	629147	631747	681566	750447	810041	921040
026192	093249	117093	210863	331831	452469	591044	630002	631765	681567	750570	813025	921054
026219	093573	117096	210874	334129	454188	591600	630007	631794	681610	750737	813224	921207
026284	093590	117132	210887	335309	465142	598593	630009	631795	681647	751095	814030	921387
026408	093809	117191	210894	336690	471059	600234	630012	631805	681650	752090	814079	922084
026600	094257	117207	212382	340632	471102	600656	630442	631823	681652	752114	815014	926310
026606	095355	117597	220364	340728	480054	600659	631030	631824	681660	752171	815095	926317
026648	095480	118579	220423	340976	481178	600810	631037	631846	681665	752329	815124	926511
027100	095703	122394	221303	352004	481219	600884	631098	631859	681667	752377	816010	927392
028502	095861	142054	242460	352122	486193	601610	631140	631895	681668	752445	820104	927405
031270	096733	142091	251003	357007	488047	601709	631152	631896	681669	752701	820467	927410
034654	097117	142713	263004	357013	490719	601793	631160	631909	683015	752709	833502	928183
038421	097157	142746	272243	358033	493075	603156	631163	631916	683017	752746	837171	928445

928459	933349	940035	948780	948827	948861	950343	951325	958725	970875	972646	982202
930080	937322	947234	948797	948843	950003	950361	951331	958907	971052	974026	982555
931087	937548	948192	948800	948849	950026	950567	951766	958967	971082	974159	982658
931444	937781	948248	948803	948852	950045	950606	952100	968554	971112	975004	
931972	939076	948621	948804	948853	950106	950610	958328	969099	971116	975026	
932584	939600	948638	948819	948856	950124	950954	958570	970509	972328	980494	
933228	939605	948761	948820	948859	950178	951315	958663	970522	972489	980674	

— *Product Information Requirements, Mail Entry and Payment Technology, 9-5-13*

Missing, Lost, or Stolen U.S. Money Order Forms

Do Not Cash — Upon Receipt, Notify Local Postal Inspectors

This listing will be provided to all Postal Service™ employees responsible for accepting and cashing postal money orders. Destroy all interim notices when the num-

bers listed appear in the *Postal Bulletin*. The actual serial numbers consist of the first 10 digits on the money orders. Check for altered dollar amounts by holding money orders to the light.

010 001 0200 to 0299	040 688 8816 to 8899	077 999 4001 to 4090	127 500 2328 to 2399
010 504 1932 to 1999	041 299 6752 to 6799	078 174 4475 to 4499	160 901 2254 to 2299
011 582 1889 to 1899	041 623 8889 to 8899	078 219 4931 to 4999	161 103 6581 to 6599
011 588 2900 to 3099	041 803 6565 to 6599	078 250 4756 to 4799	161 194 2857 to 0899
012 441 0784 to 0799	043 129 1968 to 1997	078 823 8312 to 8399	162 032 4447 to 4499
012 579 5675 to 5699	043 205 5922 to 5999	079 374 0300 to 2499	163 257 1085 to 1099
013 289 6176 to 6199	044 087 3457 to 3499	079 807 2342 to 2399	164 359 2406 to 2499
013 610 0014 to 0099	044 087 4000 to 4099	082 721 0228 to 0254	166 101 1433 to 1499
014 932 1000 to 1099	044 306 4200 to 4299	083 140 5000 to 7499	167 555 5201 to 5212
014 972 0800 to 0899	044 306 4370 to 4599	083 784 8886 to 8899	167 555 5214 to 5299
015 363 0065 to 0099	045 524 4121 to 4298	083 913 6915 to 6999	169 618 6274 to 6299
017 028 3200 to 3299	046 800 9870 to 9899	084 478 3920 to 3999	173 639 4685 to 4699
018 569 5333 to 5399	047 352 4000 to 4099	086 000 8271 to 8299	174 238 2779 to 2799
018 986 5264 to 5299	048 383 7650 to 7659	086 798 3840 to 3849	174 281 9347 to 9399
019 518 2814 to 2899	048 396 3647 to 3699	088 404 4472 to 4499	175 251 2600 to 0699
020 698 5159 to 5199	051 142 0755 to 0799	088 404 5584 to 5699	176 281 7937 to 7950
020 844 7307 to 7399	051 774 8857 to 8899	088 757 8688 to 8699	176 281 7963 to 7999
020 972 8948 to 8999	051 781 2875 to 2885	088 757 9400 to 9499	176 731 6586 to 6599
022 021 9110 to 9181	051 977 7010 to 7023	089 358 2248 to 2257	178 254 5000 to 9999
022 037 1411 to 1499	052 058 7115 to 7199	090 663 9678 to 9684	178 881 9900 to 9999
022 527 9201 to 9210	054 450 1130 to 1167	091 818 0071 to 0099	180 031 2089 to 2088
022 529 1882 to 1899	057 670 0563 to 0599	093 106 9346 to 9355	180 403 7723 to 7741
023 637 7169 to 7199	058 187 3836 to 3899	093 203 0500 to 0599	180 428 4580 to 0599
024 380 4100 to 4199	058 523 3003 to 3099	093 684 3630 to 3699	182 368 7544 to 0599
024 496 6870 to 6896	058 591 1153 to 1299	094 081 5074 to 5099	182 475 3229 to 3258
025 092 0987 to 0999	058 895 3746 to 3799	094 216 2555 to 2599	182 475 3904 to 3933
025 369 5535 to 5599	059 986 0814 to 0899	094 580 7062 to 7099	182 631 0031 to 0099
025 729 1151 to 1199	060 406 7650 to 7699	094 639 4200 to 4299	184 218 2760 to 2799
025 729 1643 to 1799	063 491 8122 to 8199	095 070 7186 to 7199	185 828 1474 to 1499
026 492 3180 to 3199	063 916 9968 to 9999	095 076 8300 to 8399	186 132 7583 to 0599
027 361 0430 to 0499	064 091 4500 to 4599	095 354 6864 to 6899	186 629 0589 to 0599
027 369 4482 to 4495	065 170 0471 to 0499	097 224 1350 to 1599	187 184 6177 to 0199
027 671 8762 to 8776	065 255 7909 to 7999	100 160 3800 to 3899	187 323 8200 to 8299
027 787 9886 to 9899	065 392 6345 to 6399	104 667 6400 to 6499	187 441 6080 to 6099
027 965 9487 to 9499	066 099 2014 to 2099	104 876 8937 to 8999	188 831 6774 to 6799
028 100 8069 to 8099	066 648 2880 to 2899	112 049 4413 to 4499	188 835 6370 to 6399
028 191 1852 to 1999	066 787 3639 to 3699	112 870 9765 to 9799	189 083 1064 to 1099
028 850 3000 to 3199	066 845 7500 to 9999	113 319 2000 to 2099	189 660 9583 to 9599
029 510 1500 to 1599	067 093 3869 to 3899	114 402 3850 to 3899	191 179 0377 to 0399
030 687 0903 to 0999	068 895 0334 to 0399	114 866 5368 to 5397	192 050 5762 to 5781
030 701 3442 to 3499	070 724 4488 to 4499	116 154 2800 to 2899	194 456 8600 to 0699
031 077 4507 to 4799	070 841 9181 to 9199	116 986 4400 to 4499	195 194 6881 to 6899
032 295 7500 to 9999	070 844 2546 to 2599	117 175 1647 to 5169	199 105 0778 to 0799
034 394 1000 to 1099	070 916 1340 to 1399	117 951 4687 to 4699	199 678 2968 to 2999
034 943 0400 to 0799	071 047 5768 to 5799	117 951 5200 to 5299	202 748 5133 to 5199
035 035 4337 to 4399	071 179 9800 to 9899	119 786 3051 to 3064	202 748 5245 to 5299
037 312 7500 to 7599	071 386 3682 to 3699	119 815 8961 to 6199	202 748 5300 to 5399
037 706 9578 to 9599	071 507 6840 to 6899	119 850 7400 to 7499	202 748 5400 to 5499
037 805 3677 to 3699	072 045 9641 to 9699	119 850 7700 to 7999	203 256 1240 to 1299
037 909 5490 to 5499	072 675 8287 to 8299	121 634 0460 to 0499	205 019 0174 to 0199
037 931 4660 to 4699	073 763 0867 to 0876	122 451 9879 to 9899	207 196 9900 to 9999
039 145 6521 to 6595	073 763 0878 to 0887	122 714 6805 to 6900	207 204 0700 to 0799
040 024 3901 to 3999	073 763 0889 to 0898	124 916 0304 to 0499	207 204 0800 to 0899
040 674 7100 to 7199	077 617 5481 to 5499	126 423 0136 to 0169	208 556 4707 to 4799

210 221 0548	to	0599	395 970 3240	to	3299	417 496 6800	to	6999	439 179 2300	to	2399
212 397 3500	to	3599	397 622 4054	to	4099	417 871 9250	to	9299	439 310 0458	to	0499
227 275 9400	to	9999	397 819 8902	to	8999	417 930 9533	to	9599	440 698 1947	to	1999
273 070 8059	to	8099	398 149 7200	to	7699	418 164 6500	to	6799	440 858 6300	to	6399
273 775 7700	to	7899	399 070 0872	to	0899	418 423 9863	to	9899	440 858 6420	to	7299
302 000 0000	to	9999	399 156 7119	to	7199	418 633 5922	to	5999	441 199 1655	to	1699
349 746 2056	to	2099	399 203 5064	to	5099	418 719 8520	to	8599	443 127 3648	to	3699
350 518 7350	to	7374	399 296 9910	to	9999	418 744 2235	to	2299	443 127 4000	to	4099
360 011 1690	to	1699	399 396 8935	to	8999	418 962 2848	to	2899	443 673 7900	to	7999
360 168 6008	to	6099	399 792 7775	to	7799	419 543 0286	to	0299	443 800 9335	to	9399
360 173 8800	to	8899	399 792 8300	to	8399	419 730 0300	to	0399	444 382 8822	to	8899
360 324 2326	to	2399	400 427 1051	to	1999	420 277 0015	to	0049	444 390 1667	to	1699
362 861 3064	to	3099	401 045 1505	to	1549	420 599 0734	to	0798	444 457 3854	to	3899
373 006 2176	to	2199	401 045 1571	to	1599	420 661 4115	to	4199	450 048 4173	to	4199
374 768 2600	to	2699	401 294 2700	to	2799	420 758 9500	to	9699	450 048 4442	to	4699
375 169 4400	to	4599	401 310 9505	to	9599	420 969 3951	to	3971	450 560 5173	to	5199
375 829 3400	to	3499	401 382 5312	to	5399	420 969 3973	to	3999	450 620 3077	to	3099
375 851 9100	to	9199	402 578 7876	to	7899	421 116 3565	to	3599	450 620 3135	to	3199
376 196 0911	to	0999	403 125 6744	to	6799	421 130 9300	to	9399	450 780 2716	to	2799
378 085 3679	to	3699	403 260 7000	to	7499	421 313 4500	to	4999	450 801 2700	to	2799
378 351 1063	to	1099	403 280 6470	to	6499	421 364 5537	to	5599	451 109 2967	to	2984
379 843 5100	to	5199	403 685 8600	to	8699	421 656 2609	to	2699	451 115 4110	to	4125
380 093 9600	to	9699	404 003 0300	to	0399	421 988 9700	to	9799	451 115 4127	to	4199
380 165 1165	to	1199	404 041 8838	to	8899	422 172 4667	to	4699	451 746 0700	to	0799
381 325 4500	to	4599	404 071 4268	to	4299	422 484 4212	to	4299	452 265 0074	to	0099
381 604 2510	to	2699	404 347 5356	to	5399	422 556 1270	to	1299	452 265 0246	to	0299
381 645 9525	to	9599	404 347 5548	to	5599	422 587 7024	to	7099	452 265 0335	to	0999
383 314 3968	to	3999	404 726 4500	to	4599	422 819 7533	to	7599	452 509 1169	to	1199
383 892 1000	to	1344	404 961 5001	to	5199	422 842 5073	to	5087	452 855 6471	to	6499
383 892 1382	to	1399	405 325 0188	to	0198	422 907 7563	to	7599	452 890 4679	to	4799
384 925 3641	to	3654	406 009 4587	to	4599	424 500 6050	to	6099	452 900 8215	to	8238
385 568 2331	to	2399	406 260 6830	to	6899	424 641 8500	to	8599	453 117 9146	to	9199
385 599 7554	to	7575	406 459 6641	to	6999	424 871 6600	to	6699	453 334 3631	to	3699
385 774 2024	to	2099	406 733 3000	to	3999	425 298 2352	to	2399	453 603 7841	to	7891
386 624 1412	to	1599	407 545 1557	to	1599	425 418 4269	to	4299	453 650 1140	to	1199
386 883 8936	to	8999	407 594 0412	to	0599	425 418 4405	to	4499	453 741 1300	to	1399
387 314 5574	to	5599	407 692 9100	to	9299	426 547 4566	to	4599	454 013 2919	to	2999
387 837 6300	to	6399	407 959 2190	to	2199	427 412 6337	to	6499	454 186 2411	to	2499
388 828 0656	to	0699	408 265 2275	to	2288	427 481 0900	to	0999	454 268 4883	to	4899
389 696 2400	to	2799	408 499 7700	to	7799	428 027 2742	to	2752	454 302 5400	to	5499
389 846 3104	to	3135	408 499 7900	to	7999	429 474 4172	to	4199	454 490 8300	to	8399
389 846 3145	to	3195	408 682 8484	to	8599	429 889 2900	to	2999	454 547 7434	to	7499
389 887 9211	to	9230	408 698 7015	to	7099	430 150 4401	to	4599	454 922 4867	to	4895
389 887 9234	to	9299	409 072 3941	to	3999	430 172 9800	to	9899	455 221 1348	to	1499
390 001 3182	to	3199	410 491 2311	to	2399	430 177 1900	to	2099	455 364 2147	to	2199
390 001 3500	to	3699	410 694 8400	to	8599	430 444 9500	to	9699	455 399 5400	to	5499
390 545 5974	to	5999	410 775 1500	to	1599	430 664 4070	to	4099	455 476 0676	to	0699
391 104 6146	to	6199	410 795 7927	to	7999	432 168 8419	to	8499	455 543 0618	to	0699
391 574 1466	to	1499	410 867 0917	to	0966	432 708 6800	to	6999	456 410 9006	to	9099
391 783 3020	to	3599	410 867 0970	to	0999	432 744 1544	to	1599	456 470 4146	to	4299
391 792 6100	to	6199	411 868 1023	to	1199	432 995 9775	to	9799	456 619 4460	to	4499
392 668 2956	to	2999	411 922 2322	to	2399	433 003 5800	to	5899	457 333 2686	to	2699
392 854 8500	to	8899	412 193 0900	to	0999	433 757 3047	to	3099	457 729 1767	to	1777
393 584 7566	to	7699	412 395 8599	to	8699	433 765 4003	to	4099	457 937 8615	to	8699
393 650 0074	to	0099	412 485 6500	to	6599	434 482 7060	to	7199	458 028 9810	to	9899
393 838 8316	to	8499	412 485 6610	to	6699	434 513 2386	to	2399	458 057 2712	to	2999
393 893 6007	to	6099	412 885 5953	to	5999	434 968 3076	to	3092	458 069 9537	to	9599
394 126 6907	to	6999	414 193 3608	to	3674	435 303 1831	to	1842	458 069 9665	to	9699
394 189 0405	to	0599	414 193 3677	to	3699	435 303 1986	to	1999	458 337 5222	to	5299
394 822 3243	to	3278	414 411 7348	to	7399	435 666 6092	to	6399	458 354 7653	to	7999
394 990 1810	to	1899	414 640 0757	to	0799	436 082 6400	to	6899	458 671 8678	to	8699
395 343 3264	to	3299	414 965 1727	to	1799	436 160 6441	to	6499	458 671 8721	to	8798
395 373 3035	to	3099	417 302 8104	to	8199	437 316 7115	to	7199	458 847 5044	to	5999
395 396 9649	to	9799	417 387 6532	to	6599	437 427 0500	to	3499	459 274 7624	to	7699

459 365 5432	to	5499	478 010 4243	to	4268	494 224 0500	to	0599	608 813 9950	to	9999
459 378 5764	to	5799	478 010 4270	to	4291	495 145 0600	to	0699	609 067 5325	to	5399
459 472 4816	to	4999	478 450 5071	to	5099	496 209 7425	to	7499	609 067 5488	to	5499
460 349 6878	to	6899	478 469 7838	to	7858	496 213 8728	to	8799	609 067 5600	to	5699
460 550 1909	to	1999	478 469 7883	to	7899	496 474 5226	to	5248	609 289 6123	to	6199
460 997 5234	to	5299	479 280 9800	to	9899	497 053 8517	to	8699	609 438 4400	to	4499
461 973 6443	to	6499	479 365 9116	to	9176	497 854 8673	to	8699	609 493 1100	to	1199
462 152 0107	to	0299	479 412 9900	to	9999	498 449 8888	to	8899	609 766 8091	to	8999
462 274 1072	to	1099	479 667 6190	to	6199	498 929 8285	to	8499	609 825 4100	to	4115
462 277 8373	to	8399	479 748 9680	to	9699	498 936 5310	to	5399	609 884 2981	to	2999
462 554 6051	to	6099	479 860 7000	to	7199	499 016 5425	to	5499	609 893 1000	to	1099
463 011 5529	to	5540	480 526 2000	to	2099	499 440 8575	to	8899	610 092 3200	to	3299
463 176 4115	to	4199	480 640 6330	to	6399	499 731 6717	to	6799	610 582 4200	to	4299
463 176 4229	to	4299	480 658 0568	to	0599	500 064 1858	to	1869	611 879 6939	to	6999
463 185 2600	to	2799	480 689 5100	to	5199	500 070 5725	to	7799	612 291 8013	to	8099
463 227 7711	to	7799	481 072 9463	to	9499	501 058 0016	to	0026	612 751 5171	to	5199
463 414 4869	to	4899	481 673 0074	to	0095	501 331 0300	to	0399	612 751 5226	to	5299
463 808 3484	to	3499	482 527 1500	to	1599	501 460 0977	to	0999	612 751 6083	to	6099
463 945 7400	to	7899	482 541 5255	to	5299	502 227 7645	to	7699	612 751 6268	to	6299
464 629 9000	to	9399	482 729 6800	to	6899	502 424 0200	to	0499	612 751 6572	to	6599
464 711 4332	to	4399	483 363 7207	to	7299	502 424 0600	to	0699	612 774 2111	to	2199
465 692 3963	to	3999	483 402 2356	to	2399	502 496 6923	to	6999	612 774 2254	to	2299
465 698 8300	to	8599	483 486 5100	to	5199	503 003 2700	to	2899	612 774 2500	to	2599
465 743 7745	to	7799	483 632 1521	to	1599	503 194 5144	to	5153	614 469 0979	to	0999
466 798 6056	to	6067	483 632 2600	to	2799	503 790 9922	to	9948	614 474 3000	to	3099
467 147 4300	to	4399	483 849 1615	to	1699	504 045 4030	to	4099	614 521 3490	to	3499
468 079 5782	to	5799	484 174 4803	to	5299	504 166 0200	to	0599	614 645 1800	to	1899
469 067 2817	to	2899	484 323 8900	to	9199	504 240 1062	to	1399	614 832 1100	to	2099
469 127 8000	to	8199	484 680 5000	to	5038	504 805 3300	to	3499	615 017 7505	to	7599
469 213 0359	to	0399	484 680 5040	to	5074	505 893 7739	to	7799	617 711 6609	to	6699
469 213 0500	to	0599	484 680 5077	to	5099	505 893 7800	to	7999	617 760 5266	to	5299
469 561 8011	to	8099	485 029 4913	to	4999	506 124 0800	to	0999	617 813 3601	to	3699
469 658 1961	to	1999	486 176 0600	to	0699	506 165 7027	to	0099	618 840 9200	to	9299
469 666 9900	to	9999	486 559 7555	to	7599	506 502 5209	to	5299	619 551 7229	to	7299
469 678 1900	to	1999	486 696 3023	to	3199	506 836 5326	to	5399	619 859 3000	to	3099
469 781 4900	to	4999	488 173 7900	to	7999	508 488 6226	to	6299	620 073 9400	to	9499
469 947 6960	to	6999	488 206 4100	to	4199	508 789 8332	to	8399	621 614 7907	to	7930
470 755 5800	to	5818	488 226 0200	to	0299	508 789 8400	to	8499	621 614 7932	to	7999
471 918 0300	to	0999	488 709 3906	to	3999	600 645 3223	to	3299	621 648 8021	to	8199
471 985 2408	to	2419	488 855 8359	to	8399	601 339 1200	to	1399	621 648 8500	to	8599
472 191 6700	to	6799	489 181 8963	to	8999	601 653 5884	to	5899	621 904 8351	to	8599
472 270 2555	to	2599	489 223 2000	to	2099	601 661 7700	to	7799	621 916 1978	to	1989
472 987 0213	to	0241	489 311 1930	to	1999	601 682 5343	to	5399	622 989 8032	to	8099
472 987 0290	to	0299	489 318 6200	to	6300	601 928 1600	to	1699	623 076 9300	to	9399
473 151 2069	to	2199	489 384 0027	to	0099	602 512 2972	to	2999	623 819 5006	to	5099
473 666 9138	to	9199	489 427 0658	to	0899	602 555 2400	to	2799	623 895 8200	to	8399
473 952 3429	to	3499	489 997 5252	to	5299	602 829 7061	to	7099	623 917 0000	to	0099
474 108 5402	to	5499	490 669 5850	to	6099	603 483 9572	to	9599	623 917 0200	to	0299
474 356 5193	to	5299	490 717 7080	to	7099	603 490 7200	to	7299	624 468 5288	to	5299
474 949 3366	to	3399	490 721 6000	to	6099	603 678 7100	to	7199	624 665 3162	to	3198
475 134 9362	to	9399	490 793 1500	to	2099	603 678 7662	to	7699	625 088 6735	to	6799
475 167 9667	to	9699	490 886 8171	to	8199	603 678 7902	to	7999	625 916 9500	to	9799
475 319 3415	to	3499	490 977 9221	to	9240	603 678 8418	to	8499	625 968 8956	to	8999
475 319 3649	to	3799	491 258 8100	to	9099	603 678 8700	to	9999	627 005 3938	to	3999
475 340 6400	to	6599	491 567 1376	to	1399	604 086 0880	to	0899	627 384 3907	to	4099
475 424 8410	to	8499	492 254 4800	to	4899	604 349 1414	to	1499	627 496 7549	to	7599
475 629 9156	to	9199	492 283 5100	to	5199	604 503 7776	to	7799	627 708 3605	to	3699
475 850 6101	to	6199	492 610 6813	to	6899	605 520 9037	to	9099	627 776 2500	to	2599
475 875 2500	to	2599	493 394 5568	to	5599	605 685 4010	to	4099	628 226 3100	to	3199
476 169 8264	to	8299	493 470 2562	to	2599	605 988 6467	to	6499	628 814 4702	to	4799
476 189 3000	to	3499	493 473 7700	to	7799	607 689 7951	to	7960	628 851 9689	to	9699
476 331 2480	to	2499	493 716 2153	to	2199	607 728 1276	to	1299	629 510 7200	to	7299
477 289 8601	to	8699	494 206 2972	to	2999	608 727 7100	to	7199	629 964 4200	to	4294
477 681 5206	to	5299	494 217 3446	to	3999	608 727 7273	to	7599	630 389 3056	to	3071

630 463 0588	to	0599	646 798 4000	to	4999	666 132 8226	to	8299	691 313 6600	to	6699
631 459 9117	to	9199	647 048 7035	to	7099	666 696 2209	to	2299	691 582 8003	to	8099
631 762 9325	to	9399	647 049 2900	to	2999	666 696 2309	to	2399	691 664 1800	to	1999
632 217 4933	to	4999	647 398 8300	to	8399	667 032 9300	to	9399	691 664 2400	to	2499
632 500 0000	to	640 3999	647 398 8481	to	8499	667 729 5529	to	5599	692 727 9362	to	9399
633 110 4165	to	4199	647 437 3000	to	4999	668 383 8400	to	8699	692 798 1800	to	1899
633 110 4303	to	4499	647 811 2188	to	2199	670 368 3400	to	3499	693 249 0779	to	0799
633 438 6429	to	6599	648 009 6057	to	6099	670 369 7336	to	7399	693 249 0877	to	1699
633 588 7173	to	7182	648 163 5300	to	5499	670 750 7169	to	7199	693 445 0566	to	0999
634 725 0700	to	0799	648 722 5283	to	5299	671 046 6200	to	6399	693 448 8500	to	8999
634 803 3239	to	3299	648 892 3164	to	3199	671 251 5448	to	5499	693 645 9583	to	9599
634 807 2474	to	2499	649 100 3989	to	3999	671 926 5600	to	5799	693 965 4200	to	4299
634 827 5900	to	5999	649 647 0370	to	0399	672 444 2000	to	2999	695 741 2906	to	2999
634 886 3428	to	3499	649 647 0522	to	0599	672 828 3410	to	3499	695 947 8518	to	8599
635 559 3449	to	3499	649 647 5237	to	5399	673 167 5776	to	5799	696 662 8247	to	8299
636 289 6214	to	6299	649 647 9100	to	9299	675 464 3700	to	3799	697 447 8285	to	8296
636 634 8007	to	8042	649 666 7800	to	8299	675 464 4000	to	4199	698 042 4816	to	4899
637 150 1200	to	1299	650 114 7707	to	7719	676 365 5958	to	5999	698 131 2138	to	2157
637 562 5828	to	5899	650 130 3400	to	3599	676 669 1024	to	1099	698 227 0000	to	0099
638 042 1647	to	1699	650 213 0406	to	0499	677 126 6734	to	6799	700 065 2570	to	2599
638 049 4984	to	4999	650 555 1749	to	1799	677 333 9979	to	9999	700 065 4800	to	4899
638 318 1115	to	1199	650 564 1900	to	1999	677 466 1088	to	1099	700 190 3350	to	3359
638 318 1453	to	1499	650 627 4212	to	4299	678 071 4500	to	4799	700 228 6048	to	6099
638 885 0000	to	0299	650 736 2043	to	2099	678 096 7531	to	7599	700 650 0452	to	0499
638 903 4362	to	4373	650 739 1540	to	1699	679 909 2578	to	2599	700 666 1323	to	1349
639 415 1929	to	1999	651 741 4415	to	4499	680 112 9565	to	9599	700 786 9106	to	9142
639 415 2019	to	2099	651 882 2800	to	2899	680 244 0903	to	0999	700 859 0744	to	0758
639 420 6200	to	6299	652 754 6317	to	6399	680 412 6046	to	6099	701 028 6780	to	6899
639 469 3517	to	3799	653 131 4945	to	4999	680 761 6800	to	6899	701 213 3900	to	3999
639 605 2143	to	2199	653 426 3300	to	3399	681 677 0540	to	0699	701 267 2000	to	3999
639 657 8600	to	8799	653 455 4874	to	4899	682 070 1029	to	1099	701 335 7312	to	7399
640 289 7500	to	7599	654 238 0000	to	0399	682 956 6280	to	6299	701 369 2005	to	2050
640 289 7700	to	7999	654 404 3065	to	3092	682 956 6490	to	6599	701 499 2260	to	2299
641 170 4420	to	4499	654 962 2900	to	3199	682 956 6700	to	6799	701 503 2247	to	2299
641 318 3133	to	3199	655 103 5081	to	5199	682 965 1178	to	1199	701 541 2271	to	2299
641 378 6500	to	6999	655 523 2600	to	2999	682 965 1201	to	1299	701 553 6557	to	6599
641 383 8739	to	8799	656 305 2448	to	2499	683 118 2389	to	2399	701 578 7460	to	7469
641 877 3187	to	3299	657 347 4438	to	4999	683 378 2000	to	2099	701 578 7475	to	7499
641 877 3310	to	3399	657 710 8100	to	8999	683 378 2117	to	2299	701 601 3457	to	3499
642 355 8094	to	8199	657 780 0985	to	0999	683 415 1200	to	1499	701 605 5913	to	5999
642 355 8308	to	8999	658 586 1400	to	1499	683 444 8159	to	8199	701 695 3982	to	3999
642 900 0018	to	0099	658 877 8000	to	8199	685 154 7780	to	7789	701 695 4148	to	4199
643 030 6254	to	6299	658 880 8000	to	8199	685 297 7645	to	7699	701 695 4227	to	4299
644 066 0882	to	0899	659 398 7300	to	7399	685 623 5264	to	5299	701 708 1741	to	1799
644 069 0600	to	0699	659 706 8113	to	8199	685 650 9487	to	9499	701 736 3966	to	3999
644 077 7506	to	7699	659 846 7837	to	7899	685 669 4200	to	4299	701 772 0870	to	0899
644 085 8157	to	8199	660 510 4100	to	4199	685 757 8452	to	8499	701 838 2800	to	2899
644 112 9839	to	9899	660 673 0400	to	0599	686 071 2694	to	2799	701 941 0600	to	0699
644 373 9083	to	9099	661 488 5000	to	5099	686 176 3333	to	3354	702 171 1603	to	1699
644 380 1460	to	1499	661 609 9100	to	9199	686 372 3200	to	3299	702 195 5109	to	5199
644 733 4715	to	4799	661 716 9420	to	9499	686 644 5879	to	5899	702 254 9300	to	9399
644 900 9712	to	9799	661 906 6522	to	6599	686 899 1371	to	1399	702 264 7569	to	7599
644 901 0109	to	1299	662 021 8332	to	8399	686 931 7636	to	7699	702 519 0513	to	0524
644 901 1325	to	1399	662 068 0700	to	0899	687 601 0973	to	0999	702 713 1800	to	1809
644 923 6800	to	7799	662 553 0774	to	0799	687 614 6774	to	6799	702 821 5730	to	5799
644 932 4655	to	4699	663 078 7034	to	7099	688 120 9000	to	9999	702 821 5805	to	5899
645 318 7240	to	7499	663 763 5300	to	5399	688 314 3107	to	3191	702 844 6975	to	6994
645 333 1766	to	1799	663 883 7039	to	7499	690 291 1361	to	1371	702 846 6331	to	6399
645 790 8632	to	8699	663 938 9200	to	9299	690 788 2877	to	2899	702 848 3900	to	3999
645 821 0657	to	0699	664 253 8000	to	8499	690 893 5344	to	5399	702 857 7302	to	7499
645 930 7948	to	7999	664 656 3055	to	3099	690 893 5512	to	5599	702 878 0114	to	0199
645 975 0737	to	0762	665 174 6400	to	6499	690 904 1300	to	1599	703 364 1707	to	1799
646 242 6200	to	6299	665 274 8208	to	8299	690 941 6000	to	6199	740 002 7710	to	7719
646 270 7639	to	7799	665 669 5400	to	5499	691 313 6383	to	6399	740 119 2275	to	2284

740 130 6688	to	6698	835 813 3015	to	3099	860 275 3900	to	3999	905 510 6900	to	7099
740 144 2780	to	2795	837 672 8967	to	8999	860 518 9629	to	9699	905 794 0000	to	0199
740 241 9049	to	9099	837 784 3282	to	3299	860 600 0021	to	0999	905 794 0288	to	0299
740 252 9265	to	9294	838 176 8377	to	8399	861 158 2350	to	2599	905 873 6900	to	6999
740 255 1718	to	1799	838 518 1257	to	1299	861 367 5400	to	5499	905 873 7100	to	7299
740 274 2602	to	2619	839 718 8257	to	8299	861 637 6010	to	6099	905 880 8900	to	8999
740 277 0366	to	0392	840 323 0600	to	0699	861 979 7292	to	7499	905 889 7100	to	7199
740 332 7658	to	7671	840 875 6235	to	6299	862 216 6100	to	6199	906 158 1508	to	1599
740 348 6641	to	6658	840 910 0900	to	0999	862 263 9213	to	9299	906 558 8812	to	8899
740 351 4790	to	4799	841 349 5000	to	5099	862 271 0800	to	0999	906 982 2214	to	2299
740 374 7416	to	7499	841 805 7747	to	7899	862 271 5000	to	5099	907 725 8500	to	8599
740 470 2420	to	2443	841 805 7944	to	8099	863 871 5138	to	5199	907 815 0216	to	0257
740 514 0300	to	0499	842 226 0685	to	0695	863 949 5300	to	5399	908 622 4225	to	4235
740 523 7432	to	7449	842 685 4600	to	4699	864 088 8200	to	8299	908 936 9254	to	9299
740 535 1555	to	1580	842 685 4742	to	4999	864 426 3972	to	3999	909 066 4494	to	7499
740 557 3570	to	3579	842 860 0300	to	0399	864 520 6117	to	6136	909 067 7400	to	7499
740 650 4104	to	4140	842 898 5582	to	5599	865 151 0526	to	0599	909 100 1787	to	1799
740 684 0620	to	0800	843 062 7100	to	7199	865 500 4034	to	4099	909 100 1900	to	2099
740 701 6105	to	6114	843 077 6288	to	6299	865 883 6082	to	6099	909 355 0422	to	0499
740 705 9790	to	9799	843 077 6378	to	6399	866 004 3000	to	3999	909 568 8900	to	9099
740 726 6400	to	6500	843 758 5769	to	5778	866 442 4100	to	4899	909 568 9300	to	9499
740 748 8319	to	8329	843 786 2554	to	2699	867 366 9108	to	9118	909 725 7307	to	7399
740 765 3306	to	3399	845 656 8165	to	8199	867 633 7403	to	7499	909 833 0947	to	0999
740 774 8434	to	8499	845 727 2100	to	2199	867 737 5623	to	5699	910 219 8631	to	8699
740 786 1885	to	1899	845 746 2618	to	2635	868 169 4529	to	4599	910 265 1100	to	1199
740 790 5989	to	5999	846 390 7531	to	7599	868 173 8400	to	8599	910 471 7273	to	7299
740 820 4854	to	7836	846 918 0572	to	0599	868 514 9000	to	9099	910 536 2505	to	2599
740 827 7578	to	7594	847 237 7690	to	7699	868 566 9200	to	9299	910 958 7499	to	7599
740 917 7490	to	7499	847 284 2481	to	2499	869 200 0000	to	9999	911 140 1000	to	2199
740 918 5531	to	5549	847 374 7055	to	7065	869 387 1150	to	1199	911 245 2545	to	2599
741 037 8528	to	8551	847 374 7055	to	7065	869 505 3500	to	3599	911 268 9077	to	9099
742 030 6135	to	6149	847 636 5304	to	5399	869 523 7033	to	7099	911 400 8948	to	8999
742 033 2663	to	2674	847 700 5447	to	5499	869 566 6150	to	6167	911 508 1620	to	1799
742 040 3300	to	3309	847 723 7500	to	7599	869 800 0000	to	999 9999	911 509 9310	to	9399
742 151 5000	to	5014	849 485 3427	to	3499	870 054 4814	to	4899	911 523 3000	to	3999
742 192 5210	to	5224	849 520 9850	to	9899	870 491 4812	to	4849	912 057 9922	to	9999
742 228 9660	to	9669	849 608 1357	to	1399	870 536 5820	to	5829	912 882 0563	to	0899
805 885 8411	to	8499	849 792 2600	to	2699	870 541 7167	to	7239	913 605 2218	to	2299
806 087 1100	to	1499	850 546 1862	to	1899	870 575 8155	to	8999	913 709 2429	to	2499
806 268 9275	to	9299	851 143 6826	to	6844	870 589 0485	to	0494	913 818 3501	to	3999
806 534 3400	to	3477	851 209 9880	to	9899	870 691 7060	to	7099	914 063 4300	to	4399
807 342 3283	to	3399	851 928 9221	to	9299	872 028 4850	to	4899	914 346 7621	to	7644
808 086 7100	to	7199	852 589 6560	to	6599	872 029 9306	to	9399	914 453 1366	to	1399
808 090 3440	to	3499	853 049 3646	to	3699	872 078 3709	to	3799	914 529 6185	to	6299
808 325 5161	to	5699	854 304 4089	to	4999	872 100 0445	to	0459	914 896 4658	to	4699
808 784 8000	to	8299	854 529 2200	to	2299	900 556 4178	to	4199	915 187 8774	to	8779
830 125 0672	to	0699	854 532 0000	to	2999	900 845 0044	to	0099	915 300 2783	to	2799
830 602 5800	to	5999	855 001 6204	to	6249	900 936 0217	to	0299	915 546 6822	to	6999
830 610 3700	to	3799	855 319 9364	to	9399	900 936 0435	to	0499	915 646 5183	to	5199
830 983 3500	to	3599	855 361 3390	to	3399	901 058 5255	to	5280	915 671 3963	to	3980
830 983 3635	to	3699	856 226 0490	to	0499	901 273 1082	to	1099	915 671 3982	to	3999
831 354 1387	to	1399	856 656 5800	to	5999	901 287 5143	to	5199	915 675 2217	to	2299
831 815 8240	to	8299	856 752 0200	to	0299	901 291 2789	to	2799	916 440 3377	to	3399
832 525 3810	to	3899	857 111 1352	to	1399	901 525 7122	to	7199	916 670 6352	to	6399
833 159 1884	to	1899	857 279 3450	to	3499	902 089 1253	to	1299	916 682 5300	to	5399
833 456 2567	to	2599	857 843 4000	to	4099	902 198 9769	to	9799	916 694 1414	to	1499
833 566 3015	to	3071	858 124 7644	to	7699	902 948 1269	to	1299	916 703 0802	to	0821
834 130 5200	to	5299	858 756 3111	to	3299	902 985 0833	to	0899	917 089 0709	to	0799
834 316 5444	to	5499	859 063 8200	to	8699	903 370 6934	to	6999	917 089 0842	to	0899
834 354 8747	to	8766	859 190 0600	to	0644	904 600 6523	to	6599	917 216 2928	to	2999
834 354 8824	to	8838	859 437 5538	to	5599	904 892 0378	to	0399	917 370 6300	to	6499
835 269 5700	to	5799	859 811 2888	to	2899	904 892 0648	to	1299	917 486 4900	to	4999
835 496 7303	to	7399	859 855 8873	to	8999	905 056 2216	to	2299	918 460 0602	to	0699
835 539 5200	to	5999	860 240 8520	to	8599	905 510 6647	to	6799	918 951 7231	to	7299

919 519 2786	to	2799	922 278 1048	to	1399	924 946 6300	to	6699	932 827 9026	to	9099
919 536 0770	to	0799	922 280 2019	to	2099	925 333 5900	to	6099	932 957 2300	to	2399
919 814 3095	to	3199	922 280 2233	to	2299	925 336 2300	to	2399	933 060 6160	to	6189
919 889 5110	to	5134	922 773 0459	to	0499	926 432 5907	to	5999	933 387 2541	to	2561
919 889 5137	to	5176	923 032 7000	to	7399	926 436 3600	to	3699	933 760 3609	to	4199
919 889 5178	to	5199	923 045 3630	to	3699	927 765 6257	to	6299	933 894 0928	to	0999
919 889 5030	to	5070	923 484 3600	to	3699	928 197 8100	to	8199	934 018 2729	to	2741
919 889 5090	to	5099	923 493 9403	to	9599	928 197 8283	to	8299	934 180 0300	to	0399
919 915 2774	to	2787	923 493 9681	to	9699	928 856 2059	to	2068	934 236 3954	to	3999
920 155 4662	to	4687	923 604 4424	to	4499	930 219 1722	to	1799	934 622 8717	to	8999
920 309 9039	to	9199	923 810 7800	to	8299	930 335 7810	to	7819	935 216 0312	to	0399
920 771 5321	to	5399	924 252 1200	to	1299	931 097 9259	to	9299	935 843 2202	to	2247
920 857 5500	to	5899	924 252 1400	to	1499	931 156 1502	to	1579	936 024 8889	to	8899
920 864 3480	to	3499	924 533 0711	to	0799	931 156 1600	to	1625	936 339 4455	to	4499
920 963 4567	to	4599	924 533 2343	to	2399	931 156 1671	to	1699			
921 333 7400	to	7499	924 533 2428	to	2499	932 506 6400	to	6599			
921 477 3762	to	3799	924 685 1957	to	1999	932 732 1796	to	1799			

— Criminal Investigations Group, Postal Inspection Service, 9-5-13

Missing, Lost, or Stolen Canadian Money Order Forms

Do Not Cash — Upon Receipt, Notify Local Postal Inspectors

This listing will be provided to all Postal Service™ employees responsible for accepting and cashing postal money orders. Destroy all interim notices when the numbers listed appear in the *Postal Bulletin*. The new money

order serial numbers consist of the first 9 digits. The 10th digit is a check digit only.

Do not cash outdated money orders **104 151 601 to 692 600 000**. Advise holders to send invalid money orders to: Canada Post Corporation, Ottawa, Canada K1A 0B1. Check for altered dollar amounts by holding money orders to the light.

719 869 731	to	9 760	728 382 331	to	2 480	734 797 201	to	7 320	742 178 834	to	8 880
720 227 871	to	7 930	728 702 338	to	2 400	734 939 611	to	9 640	742 325 500	to	5 520
720 227 949	to	7 960	728 915 371	to	5 850	734 950 111	to	0 170	742 325 668	to	5 700
720 368 543	to	8 570	728 953 141	to	3 410	735 120 331	to	0 840	742 408 771	to	8 830
720 392 151	to	2 570	728 954 280	to	4 310	735 283 008	to	3 020	742 512 120	to	2 150
720 556 491	to	6 640	729 169 081	to	9 140	735 293 131	to	3 220	742 684 849	to	4 890
720 558 621	to	8 650	729 363 841	to	3 870	735 635 010	to	5 040	742 839 553	to	9 630
720 575 361	to	5 570	729 682 891	to	3 190	735 783 961	to	3 990	742 913 668	to	3 700
720 590 152	to	0 179	729 838 940	to	9 070	735 803 401	to	3 430	742 917 287	to	7 296
721 638 331	to	9 170	729 839 101	to	9 130	736 005 420	to	5 440	742 921 891	to	1 980
721 815 391	to	5 420	730 077 683	to	7 840	736 366 021	to	6 110	742 983 631	to	3 810
721 969 713	to	9 740	730 109 847	to	9 880	736 624 456	to	4 500	743 020 021	to	0 170
722 072 137	to	2 160	730 373 761	to	3 850	736 670 851	to	1 060	743 206 491	to	6 500
722 378 265	to	8 280	730 501 951	to	2 130	736 767 061	to	7 090	743 235 992	to	6 050
722 413 990	to	4 004	730 519 379	to	9 470	736 767 093	to	7 120	743 940 631	to	0 900
722 764 948	to	4 980	730 569 278	to	9 360	736 982 191	to	2 370	743 978 011	to	8 070
722 825 840	to	5 889	730 711 711	to	1 740	736 982 551	to	2 730	744 234 751	to	4 780
723 153 841	to	3 850	730 722 991	to	3 230	737 110 141	to	0 170	744 499 591	to	9 680
723 237 616	to	7 630	730 845 970	to	5 990	737 185 501	to	5 710	744 626 901	to	6 910
723 331 081	to	1 110	730 888 291	to	8 320	737 317 321	to	7 350	745 388 794	to	8 910
723 496 443	to	6 470	730 927 591	to	7 680	737 517 781	to	7 840	746 446 806	to	6 820
723 967 291	to	7 320	731 307 914	to	7 930	737 628 181	to	8 210	746 818 351	to	8 410
724 655 196	to	5 340	731 402 431	to	2 460	737 634 258	to	4 270	747 245 266	to	5 280
724 711 441	to	1 500	731 407 232	to	7 320	738 361 971	to	1 980	747 364 813	to	4 830
724 711 538	to	1 560	731 588 301	to	8 340	738 447 601	to	7 660	747 501 434	to	1 450
724 793 221	to	3 250	731 767 273	to	7 320	738 648 355	to	8 450	747 739 891	to	0 070
724 908 109	to	8 120	731 781 061	to	1 120	738 849 811	to	9 900	748 148 649	to	8 760
724 937 461	to	7 670	731 837 821	to	7 910	738 892 270	to	2 290	748 259 960	to	9 970
725 163 118	to	3 151	731 841 377	to	1 450	738 997 259	to	7 380	748 565 162	to	5 280
725 202 735	to	2 750	732 018 481	to	8 600	739 161 451	to	1 540	748 874 988	to	5 030
725 398 591	to	8 800	732 067 972	to	8 370	739 219 381	to	9 440	749 137 381	to	7 410
725 464 591	to	4 920	732 188 649	to	8 670	739 740 151	to	0 180	749 190 192	to	0 210
725 475 321	to	5 330	732 193 460	to	3 470	739 793 491	to	3 520	749 685 421	to	5 450
725 711 057	to	1 070	732 201 241	to	1 390	739 793 527	to	3 550	749 846 791	to	6 850
725 738 581	to	8 730	732 220 431	to	0 440	739 942 621	to	2 650	749 993 131	to	3 580
725 981 311	to	1 430	732 355 201	to	5 380	739 999 231	to	9 320	750 071 587	to	1 610
725 987 835	to	7 880	732 472 320	to	2 560	740 011 517	to	1 530	750 408 167	to	8 183
726 060 811	to	0 900	732 541 605	to	1 620	740 030 701	to	0 970	750 438 421	to	8 501
726 391 970	to	2 520	732 572 221	to	2 490	740 261 740	to	1 820	750 743 911	to	4 030
726 484 771	to	4 800	732 586 479	to	6 710	740 265 811	to	6 290	750 779 118	to	9 400
726 493 351	to	5 300	732 994 037	to	4 080	740 299 111	to	9 170	750 910 981	to	1 010
726 504 031	to	4 063	733 163 449	to	3 460	740 299 231	to	9 260	750 960 841	to	0 900
726 504 070	to	4 090	733 297 171	to	7 290	740 329 266	to	9 320	751 296 211	to	6 240
726 504 331	to	4 390	733 446 631	to	7 110	740 889 081	to	9 090	751 539 121	to	9 180
726 563 701	to	4 060	733 474 665	to	4 770	741 010 421	to	0 530	751 541 311	to	1 790
726 599 371	to	9 460	733 704 482	to	4 570	741 113 041	to	3 370	751 757 641	to	7 700
726 626 356	to	6 370	733 751 041	to	1 130	741 373 891	to	4 340	751 936 951	to	7 010
727 182 271	to	2 510	734 009 101	to	9 130	741 452 369	to	2 490	751 951 861	to	1 890
727 416 181	to	6 240	734 290 759	to	0 770	741 492 991	to	3 140	751 999 021	to	9 110
727 481 431	to	1 460	734 389 273	to	9 290	741 553 460	to	3 470	752 139 516	to	9 570
727 749 241	to	9 780	734 440 031	to	0 111	741 764 431	to	4 520	752 182 892	to	2 950

752 206 861	to	7 100	762 439 261	to	9 290	773 125 387	to	5 410	799 854 751	to	5 200
752 295 241	to	5 600	762 524 158	to	4 220	773 179 320	to	9 410	800 044 320	to	4 410
752 731 351	to	1 410	762 584 872	to	4 970	773 202 989	to	3 140	800 211 901	to	2 440
752 767 441	to	7 470	762 593 431	to	3 460	773 208 991	to	9 290	800 427 530	to	7 540
753 008 941	to	9 030	763 155 160	to	5 180	773 231 311	to	1 340	800 872 741	to	2 830
753 194 311	to	4 370	763 178 631	to	8 660	773 348 739	to	8 940	801 349 801	to	9 830
753 620 378	to	0 400	763 506 001	to	6 060	773 348 739	to	8 940	801 676 681	to	7 100
754 013 917	to	3 940	763 522 141	to	2 470	773 575 891	to	5 950	802 967 821	to	7 940
754 161 061	to	1 120	763 717 694	to	7 800	773 852 971	to	3 030	803 217 601	to	7 780
754 358 445	to	8 610	763 826 461	to	6 520	775 373 449	to	3 460	803 729 731	to	9 850
754 410 451	to	0 660	763 900 460	to	0 471	789 257 191	to	7 250	803 747 402	to	7 520
754 438 393	to	8 410	763 900 479	to	0 530	790 448 020	to	8 460	804 138 181	to	8 420
754 493 109	to	3 130	763 917 271	to	7 750	790 597 485	to	7 530	804 428 224	to	8 250
754 664 182	to	4 220	764 125 801	to	5 860	790 911 883	to	1 900	804 682 411	to	2 710
754 816 377	to	6 470	764 284 525	to	4 560	791 057 441	to	7 550	805 272 525	to	2 540
755 487 421	to	7 600	764 526 241	to	6 330	791 239 081	to	9 290	805 523 445	to	3 460
755 592 901	to	3 140	764 601 421	to	1 600	791 374 483	to	4 500	805 745 704	to	5 730
755 790 020	to	0 030	764 650 231	to	0 470	791 387 971	to	8 030	806 452 907	to	2 980
755 791 730	to	1 800	764 984 371	to	4 850	791 447 521	to	7 850	806 744 781	to	4 850
755 926 951	to	7 070	765 003 667	to	3 680	791 451 151	to	1 240	806 982 181	to	2 300
755 934 332	to	4 510	765 042 517	to	2 540	791 500 009	to	0 470	807 764 791	to	4 910
755 957 701	to	8 000	765 194 728	to	4 970	791 771 431	to	1 490	808 089 931	to	9 960
755 962 981	to	3 280	765 387 365	to	7 450	792 004 293	to	4 320	808 656 423	to	6 450
756 035 371	to	5 490	765 541 801	to	2 100	792 018 379	to	8 420	808 753 771	to	3 800
756 301 257	to	1 290	765 638 461	to	8 970	792 070 621	to	0 740	809 189 001	to	9 010
756 371 565	to	1 580	765 647 101	to	7 190	792 145 211	to	5 230	809 886 879	to	6 930
756 876 031	to	6 120	765 813 781	to	4 029	792 391 381	to	1 620	809 890 489	to	0 500
756 876 151	to	6 240	765 879 314	to	9 390	792 452 779	to	2 790	810 323 734	to	3 760
756 970 129	to	0 140	765 954 001	to	4 030	792 772 728	to	2 770	810 367 116	to	7 140
757 059 613	to	9 630	766 120 286	to	0 320	792 903 511	to	3 990	810 526 351	to	6 500
757 078 540	to	8 560	766 125 716	to	5 750	793 282 518	to	2 533	810 806 911	to	6 940
757 086 209	to	6 240	766 158 824	to	8 840	794 041 831	to	2 040	810 807 211	to	7 240
757 240 591	to	0 650	766 388 433	to	8 460	794 397 709	to	7 780	811 423 021	to	3 110
757 277 371	to	7 700	766 509 421	to	9 660	794 581 741	to	2 040	811 517 221	to	7 239
757 291 591	to	2 730	766 572 901	to	3 020	794 592 122	to	2 150	811 721 101	to	1 130
757 964 251	to	4 280	766 748 500	to	8 521	795 032 251	to	2 340	812 025 721	to	5 900
758 067 001	to	7 090	767 024 341	to	4 370	795 796 291	to	6 350	812 093 073	to	3 130
758 105 221	to	5 250	767 326 471	to	6 590	796 070 139	to	0 160	812 100 821	to	0 840
758 324 941	to	5 000	767 332 561	to	2 950	796 143 151	to	3 630	812 465 251	to	5 610
758 593 628	to	3 650	768 009 841	to	9 960	796 159 725	to	9 740	812 918 341	to	8 670
758 709 038	to	9 060	768 011 489	to	1 520	796 169 306	to	9 340	812 918 701	to	8 760
758 744 101	to	4 160	768 177 980	to	7 990	796 373 406	to	3 430	813 050 491	to	0 520
758 850 883	to	0 900	768 391 081	to	1 170	796 602 961	to	3 050	813 073 171	to	3 200
758 860 951	to	1 550	768 661 569	to	1 650	796 708 441	to	8 500	813 398 476	to	8 550
759 152 851	to	2 880	769 000 051	to	0 080	796 886 281	to	6 430	813 713 971	to	4 000
759 740 941	to	1 090	769 050 841	to	0 900	796 901 701	to	2 000	813 858 121	to	8 150
760 004 596	to	4 610	769 159 081	to	9 178	796 975 466	to	5 590	814 789 330	to	9 349
760 118 191	to	8 250	769 737 496	to	7 510	797 272 917	to	2 950	814 984 656	to	4 680
760 155 001	to	5 090	769 778 491	to	8 730	797 519 441	to	9 460	815 016 020	to	6 030
760 378 002	to	8 020	769 827 331	to	7 450	797 519 731	to	0 240	815 199 410	to	9 420
760 692 722	to	2 749	770 216 071	to	6 100	797 535 181	to	5 330	815 240 491	to	0 520
761 055 460	to	5 480	770 723 281	to	3 400	797 646 151	to	6 180	815 755 591	to	5 620
761 169 781	to	9 810	770 790 451	to	0 480	798 040 053	to	0 080	815 755 622	to	5 650
761 504 941	to	5 120	770 915 150	to	5 490	798 055 813	to	5 830	815 806 381	to	6 680
761 516 836	to	6 910	771 455 551	to	5 610	798 055 891	to	5 950	816 126 834	to	6 870
761 613 588	to	3 600	771 609 661	to	9 690	798 326 371	to	6 520	816 156 721	to	6 780
761 688 631	to	8 690	771 932 551	to	2 580	798 339 167	to	9 210	816 580 903	to	0 920
761 805 199	to	5 240	772 057 224	to	7 440	798 562 411	to	2 440	816 945 571	to	5 600
761 826 106	to	6 120	772 162 660	to	3 070	798 632 461	to	2 490	817 253 011	to	3 280
761 881 171	to	1 560	772 718 615	to	8 640	798 807 151	to	7 510	817 763 881	to	4 060
761 975 641	to	5 670	772 940 140	to	0 160	798 944 761	to	5 030	818 330 562	to	0 610
761 975 886	to	5 895	772 970 886	to	0 940	799 118 616	to	8 640	818 459 641	to	9 670
762 304 144	to	4 170	773 009 419	to	9 430	799 133 191	to	3 220	818 926 273	to	6 320
762 324 931	to	4 960	773 112 031	to	2 060	799 177 626	to	7 650	818 950 351	to	0 380

818 962 492	to 2 530	821 927 841	to 7 850	826 042 898	to 2 920	828 539 341	to 9 370
819 032 341	to 2 730	822 505 801	to 5 830	826 226 644	to 6 670	828 732 331	to 2 390
819 127 054	to 7 080	822 703 442	to 3 470	826 582 951	to 3 430	828 807 781	to 7 840
819 278 540	to 8 670	822 900 991	to 1 020	826 720 201	to 0 230	828 830 952	to 0 963
819 544 681	to 4 740	822 925 951	to 6 100	827 005 671	to 5 830	828 939 781	to 0 050
819 928 441	to 8 650	823 284 931	to 4 990	827 287 861	to 7 950	829 002 721	to 2 870
820 034 406	to 4 430	823 293 031	to 3 210	827 291 502	to 1 520	829 005 301	to 5 540
820 070 761	to 1 540	823 556 011	to 6 100	827 575 381	to 5 470	829 080 241	to 0 330
820 191 342	to 1 360	824 078 341	to 8 370	827 609 085	to 9 100	829 160 986	to 1 000
820 274 856	to 4 880	824 156 325	to 6 340	827 619 811	to 9 840	829 176 841	to 6 930
820 600 171	to 0 230	824 511 252	to 1 270	827 883 511	to 3 600	829 471 561	to 1 590
821 172 241	to 2 360	824 588 281	to 8 370	828 160 441	to 0 530	829 561 065	to 1 080
821 229 661	to 9 720	825 140 397	to 0 460	828 376 201	to 6 260	829 566 481	to 6 510
821 229 743	to 9 780	825 409 651	to 9 680	828 441 602	to 1 630	829 569 931	to 9 960
821 903 731	to 3 910	825 472 171	to 2 200	828 539 316	to 9 340		

— Criminal Investigations Group, Postal Inspection Service, 9-5-13

Verifying U.S. Postal Service Money Orders

Follow these steps to cash a Postal Service™ money order:

1. Check that the amount does not exceed the legal limit: \$1,000 for domestic, and \$700 for international postal money orders.
2. Check that the proper security features are present:
 - When held to the light, a watermark of Benjamin Franklin is repeated from top to bottom on the left side.
 - When held to the light, a dark line (security thread) runs from top to bottom with the word “USPS” repeated.
 - There should be no discoloration around the dollar amounts, which might indicate the amounts were changes.

These appear in Postal Service Notice 299, *U.S. Postal Money Order Reference Card*, or online at <https://www.usps.com/shop/accepting-money-orders.htm>.

3. If the money order seems suspicious, call the U.S. Postal Service Money Order Verification System at 866-459-7822.

Please provide this information to local banks and retailers, as they also receive Postal Service money orders for cashing.

— Retail Services,
Retail Products and Services, 9-5-13

Counterfeit Canadian Money Order Forms

Do Not Cash

To be posted and used by retail window employees. As directed, destroy previous notices. Destroy all interim notices when the numbers listed appear in the *Postal Bulletin*.

671,819,086	686,794,382
676,612,640	686,794,426
677,891,039	686,794,427
678,282,493	686,794,431
678,916,031	687,262,502
679,552,215	687,262,503
679,694,334	687,262,525
679,751,983	687,262,526
679,800,207	687,287,578
681,130,536	687,287,581
681,844,376	687,287,582
683,594,542	694,063,898
684,683,610	694,063,899
686,619,878	694,063,980
686,619,886	701,321,725
686,619,887	

— Criminal Investigations Group,
Postal Inspection Service, 9-5-13

Toll-Free Number Available to Verify Canadian Money Orders

The Canada Post Corporation is now providing a toll-free number that cashing agents can call to verify the validity of Canadian Postal Money Orders. The number is 800-563-0444.

This toll-free number is printed on the back of the Canadian Postal Money Orders.

— Criminal Investigations Group,
Postal Inspection Service, 9-5-13

Other Information

Overseas Military/Diplomatic Mail

Mail addressed to military and diplomatic post offices overseas is subject to certain conditions or restrictions of mailing regarding content, preparation, and handling. The APO/FPO/DPO table below outlines these conditions by APO/FPO/DPO ZIP Codes™ through the use of footnoted mailing restrictions codes (see the [Restrictions](#) page following the table).

Acceptance clerks should use the table with the integrated retail terminal (IRT) or POS ONE terminal to determine which APO/FPO/DPO ZIP Codes are active and which conditions of mailing apply. Inquiries may be sent to the Military Postal Service Agency at <https://amps.mpsa.mil/jy2/frm.htm>.

The entries under “Changes” appear in bold in the APO/FPO/DPO table starting below.

Changes

APO/FPO/DPO	Action	Effective Date	See Restrictions
APO AE 09311	Close	09/05/2013	
FPO AE 09312	Close	09/05/2013	
APO AE 09314	Close	09/05/2013	
FPO AE 09835	Add N	09/05/2013	A-A1-A2-B-N-V-Z1
APO AA 34044	Close	09/05/2013	

We have eliminated “Not Active” entries from the table below to save space and paper.

APO/FPO/DPO Table

APO/ FPO/ DPO	See Restrictions	APO/ FPO/ DPO	See Restrictions	APO/ FPO/ DPO	See Restrictions	APO/ FPO/ DPO	See Restrictions
09002	A1-A2-B-C-D-E-H-M-R-U	09038	A1-A2-B-C-D-E-H-M-R-U	09081	A1-A2-B-C-D-E-H-M-R-U	09139	A1-A2-B-C-D-E-H-M-R-U
09003	A1-A2-B-C-D-E-H-M-P-R-U	09042	A1-A2-B-C-D-E-H-M-R-U	09090	A1-A2-B-C-D-E-H-M-P-R-U	09140	A1-A2-B-C-D-E-H-M-R-U
09004	A1-A2-B-C-D-E-H-M-R-U	09046	A1-A2-B-C-D-E-H-M-R-U	09094	A1-A2-B-C-D-H-M-P-R-U	09142	A1-A2-B-C-D-E-H-M-R-U
09005	A1-A2-B-C-D-E-H-M-P-R-U	09049	A1-A2-B-C-D-E-H-M-R-U	09095	A1-A2-B-C-D-E-H-M-R-U	09143	A1-A2-B-C-D-E-H-M-R-U
09006	A1-A2-B-C-D-E-H-M-R-U	09053	A1-A2-B-C-D-E-H-M-R-U	09096	A1-A2-B-C-D-E-H-M-R-U	09154	A1-A2-B-C-D-E-H-M-R-U
09008	A-A1-A2-B-C-D-E-H-M-P-R-U	09054	A1-A2-B-C-D-E-H-M-R-U	09099	A1-A2-B-C-D-E-H-M-R-U	09172	A1-A2-B-C-D-E-H-M-R-U
09009	A1-A2-B-C-D-E-H-M-R-U	09055	A1-A2-B-C-D-E-F-H-M-R-R1-U-V	09102	A1-A2-B-C-D-E-H-M-R-U	09173	A1-A2-B-C-D-E-H-M-R-U
09011	A1-A2-B-C-D-E-H-M-R-U	09058	A1-A2-B-C-D-E-H-M-R-U	09103	A1-A2-B-C-D-E-H-U	09177	A1-A2-B-C-D-E-H-M-R-U
09012	A1-A2-B-C-D-E-H-M-R-U	09059	A1-A2-B-C-D-E-H-M-R-U	09104	A1-A2-B-C-D-H-M-R-U	09180	A1-A2-B-C-D-H-M-R-U
09013	A1-A2-B-C-D-E-F-F1-H-M-R-U-Z1	09060	A1-A2-B-C-D-E-F1-H-M-R-U	09107	A1-A2-B-C-D-E-H-M-R-U	09186	A1-A2-B-C-D-E-H-M-R-U
09014	A1-A2-B-C-D-E-H-M-R-U	09063	A1-A2-B-C-D-E-L-H-M-R-U	09112	A1-A2-B-C-D-E-H-M-R-U	09211	A1-A2-B-C-D-E-H-M-P-R-U
09020	A1-A2-B-C-D-E-H-M-R-U	09067	A1-A2-B-C-D-E-H-M-R-U	09114	A1-A2-B-C-D-E-H-M-R-U	09213	A1-A2-B-C-D-E-F-F1-H-L-M-N-R-U
09021	A1-A2-B-C-D-E-H-M-R-U	09068	A1-A2-B-C-D-E-H-U-Z1	09123	A1-A2-B-C-D-E-H-M-R-U	09214	A1-A2-B-C-D-E-H-M-R-U
09028	A1-A2-B-C-D-E-H-M-R-U	09069	A-A1-A2-B-C-D-E-H-U-V	09126	A1-A2-B-C-D-H-M-P-R-U	09226	A1-A2-B-C-D-E-H-M-R-U
09033	A1-A2-B-C-D-E-H-M-R-U	09075	A1-A2-B-C-D-E-H-M-R-U	09128	A1-A2-B-C-D-E-H-M-R-U	09227	A1-A2-B-C-D-E-H-M-R-U
09034	A1-A2-B-C-D-E-H-M-R-U	09079	A1-A2-B-C-D-E-H-M-R-U	09131	A1-A2-B-C-D-E-H-M-R-U	09229	A1-A2-B-C-D-E-H-M-R-U
				09136	A1-A2-B-C-D-E-F1-H-M-P-R		
				09138	A1-A2-B-C-D-H-M-R-U		

APO/ FPO/ DPO	See Restrictions	APO/ FPO/ DPO	See Restrictions	APO/ FPO/ DPO	See Restrictions	APO/ FPO/ DPO	See Restrictions
09237	A1-A2-B-C-D-E-H-M-R-U-V	09363	A-A1-A2-B-C1-E2-F-H1-M-R-R1-V-Z1	09520	A1-A2-B-F-F1-R-R1-V	09627	A1-A2-B-C-F-U
09245	A1-A2-B-C-D-E-H-M-R-U	09364	A-A1-A2-B-C1-E2-F-H1-M-N-R-R1-V-Z1	09522	A1-A2-B-V	09630	A1-A2-B-C-F-U-V
09250	A1-A2-B-C-D-E-H-M-R-U	09365	A-A1-A2-B-C1-E2-F-H1-M-N-R-V-Z1	09524	A1-A2-B-F-F1-R-R1-V	09631	A1-A2-B-C-F-U
09261	A1-A2-B-C-D-E-F1-H-M-R-U-V	09366	A-A1-A2-B-C1-E2-F-F1-H1-M-R-R1-V-Z1	09532	A1-A2-B-F-F1-R-R1-V	09633	A1-A2-B-B2-C-D-F-F1-M-R-U-U1-U2-U3-V-Z1
09263	A1-A2-B-C-D-E-H-M-R-U	09367	A-A1-A2-B-B2-C1-E2-F-H1-M-N-R-R1-V-Z1	09534	A1-A2-B-F-F1-R-R1-V	09636	A1-A2-B-C-F-U
09264	A1-A2-B-C-D-E-H-M-R-U	09368	A-A1-A2-B-C1-E2-F-H1-M-N-R-V-Z1	09543	A1-A2-B-F-F1-R-R1-V	09642	A1-A2-B-M-N-R-U
09265	A1-A2-B-C-D-E-F-F1-H-L-M-N-R-T-U	09369	A-A1-A2-B-C1-E2-F-H1-M-R-R1-V	09545	A1-A2-B-V	09643	A1-A2-B-M-R-U-V
09267	A1-A2-B-C-D-E-H-M-R-U	09370	A-A1-A2-B-C1-E2-F-H1-M-N-R-R1-V-Z1	09549	A1-A2-B-V	09645	A1-A2-B-C-F-F1-U
09301	A-A1-A2-B-C1-E2-F-H1-I-M-N-R-R1-V-Z-Z1	09372	A-A1-A2-B-C1-E2-F-H1-M-R-R1-V	09554	A1-A2-B-F-F1-R-R1-V	09647	A1-A2-B-N-R-U
09302	A-A1-A2-B-C1-F-F1-H-M-N-V-Z-Z1	09373	A-A1-A2-B-C1-E2-F-H1-M-R-R1-V	09556	A1-A2-B-F-F1-R-R1-V	09648	A1-A2-B-N-U-V-Z1
09304	A-A1-A2-C-C1-D-E2-F-F1-H1-J-K-L-M-N-R-R1-T-V-Z1	09374	A-A1-A2-B-C1-E2-F-F1-H1-I-M-N-R-V-Z-Z1	09564	A1-A2-B-F-F1-R-R1-V	09649	A1-A2-B-N-U-Z1
09306	A-A1-A2-B-C1-E2-F-F1-H1-R-R1-U2-V-Z1	09380	A-A1-A2-B-C1-E2-F-H1-M-N-R-R1-V-Z1	09565	A1-A2-B-F-F1-R-R1-V	09701	A-A1-A2-B-B2-C-C1-D-F-F1-J-L-M-N-R-R1-T-V-Z1
09307	A1-A2-B-N-V-Z1	09382	A-A1-A2-B-C1-E2-F-H1-M-N-R-R1-V-Z1	09566	A1-A2-B-F-F1-R-R1-V	09702	A1-A2-B-C-C1-F1-M-R-R1-U
09309	A-A1-A2-B-C1-E2-F-H1-M-N-R-V-Z1	09383	A-A1-A2-B-C1-E2-F-H1-M-N-R-R1-V-Z1	09567	A1-A2-B-F-F1-R-R1-V	09703	A1-A2-B-C-F1-H-U
09310	A-A1-A2-B-C1-E2-F-H1-M-R-V-Z1	09387	A-A1-A2-B-C1-E2-F-H1-M-R-V	09568	A1-A2-B-V	09704	A1-A2-B-C-O-V-V1
09313	A-A1-A2-B-C1-E2-F-H1-M-N-R-R1-V-Z1	09394	A-A1-A2-B-C1-E2-F-F1-H1-M-N-R-R1-V-Z1	09569	A1-A2-B-F-F1-R-R1-V	09705	A1-A2-B-U
09315	A-A1-A2-B-C1-E2-F-N-R-R1-V-Z1	09397	A-A1-A2-B-C1-E2-F-F1-H1-M-N-R-R1-S-T-V-Z-Z1	09570	A1-A2-B-F-F1-R-R1-V	09706	A1-A2-B-C-N-R-U-V
09320	A-A1-A2-B-C1-E2-F-H1-M-R-R1-V-Z1	09403	A1-A2-B-C-C1-M-R-U	09574	A1-A2-B-F-F1-R-R1-V	09707	A1-A2-B-C-F1-J-L-M-N-R-T-U-V
09321	A-A1-A2-B-C1-E2-F-H1-N-R-R1-V-Z1	09421	A1-A2-B-C-C1-M-R-U	09575	A1-A2-B-F-F1-R-R1-V	09708	A1-A2-B
09328	A-A1-A2-B-C1-E2-F-H1-R-R1-V-Z1	09447	A1-A2-B-C-C1-R-U-V	09576	A1-A2-B-F-F1-R-R1-V	09710	A1-A2-B-C-C1-F1-L-M-N-R-R1-T-U
09330	A-A1-A2-B-C1-E2-F-F1-H1-M-R-R1-V-Z1	09454	A1-A2-B-C-C1-M-R-U-V	09577	A1-A2-B-V	09711	A1-A2-B-F1-N-R-Z1
09337	A-A1-A2-B-C1-E2-F-F1-H1-M-R-R1-V-Z1	09459	A1-A2-B-C-C1-M-R-U	09578	A1-A2-B-F-F1-R-R1-V	09713	A1-A2-B-C-F1-R
09339	A-A1-A2-B-C1-E2-F-H1-M-R-R1-V-Z1	09461	A1-A2-B-C-C1-M-P-R-U	09579	A1-A2-B-F-F1-R-R1-V	09714	A1-A2-B-C-C1-F1-M-R-R1-U
09340	A-A1-A2-B-C1-F-H-N-R-V	09463	A1-A2-B-C-C1-R-U	09581	A1-A2-B-F-F1-R-R1-V	09715	A1-A2-B-F1-L-M-N-R-T-V
09343	A-A1-A2-B-C1-F-M-N-V-Z1	09464	A1-A2-B-C-C1-R-U	09582	A1-A2-B-F-F1-R-R1-V	09716	A1-A2-B-C-F-F1-L-M-N-R-V
09347	A-A1-A2-B-C1-E2-F-H1-M-R-R1-V-Z1	09466	A1-A2-B-C-C1-R-U	09586	A1-A2-B-F-F1-R-R1-V	09717	A-A1-A2-B-M-R-V-W
09348	A-A1-A2-B-C1-E2-F-F1-H1-I-M-N-R-R1-V-Z-Z1	09468	A1-A2-B-C-C1-M-R-U	09587	A1-A2-B-F-F1-R-R1-V	09718	A1-A2-B-F-F1-L-M-N-R-T-U-V
09352	A-A1-A2-B-C1-E2-F-H1-M-R-R1-V-Z1	09469	A1-A2-B-C-C1-R-U	09588	A1-A2-B-V	09719	A1-A2-B-C-D-M-R-U-V
09353	A-A1-A2-B-C1-E2-F-H1-M-R-R1-V-Z1	09470	A1-A2-B-C-C1-M-R-U	09589	A1-A2-B-V	09720	A1-A2-B-M-R-U-V
09354	A-A1-A2-B-C1-E2-F-H1-M-R-R1-V-Z1	09494	A1-A2-B-C-C1-M-R-U	09590	A1-A2-B-V	09722	A-A1-A2-B-F-H-N-Q-V-Z-Z1
09355	A-A1-A2-B-C1-E2-F-H1-M-R-R1-V-Z1	09496	A1-A2-B-C-C1-R-U-V	09591	A1-A2-B-F-F1-R-R1-V	09723	A1-A2-B-F-F1-L-M-N-R-T-U-V-Z1
09356	A-A1-A2-B-C1-E2-F-H1-M-R-R1-V-Z1	09498	A1-A2-B-C-C1-F-F1-F2-J-L-N-R-R1-T-V-Z1	09593	A1-A2-B-V	09724	A1-A2-B-C-C1-F1-M-R-R1-U
09357	A-A1-A2-B-C1-E2-F-H1-M-R-R1-V-Z1	09501	A1-A2-B-V	09594	A1-A2-B-V	09725	A-A1-A2-B-F-H-N-O-Q-V-V1-Z-Z1
09360	A1-A2-B-V	09502	A1-A2-B-V	09595	A1-A2-B-F-F1-R-R1-V	09726	A1-A2-B-F-F1-L-M-N-R-T-U-V
		09503	A1-A2-B-V	09599	A1-A2-B-F-F1-R-R1-V	09727	A-A1-A2-B-B2-C-C1-D-F-F1-J-L-M-N-R-R1-T-V-Z1
		09504	A1-A2-B-V	09602	A1-A2-B-C-F-F1-N-R-U-V	09728	A-A1-A2-B-B2-C-C1-F-F1-J-L-N-R-R1-T-V-Z1
		09505	A1-A2-B-V	09603	A1-A2-B-C-F-F1-R-U-V	09729	A1-A2-B-C-F-N-R-R1-U-V
		09506	A1-A2-B-V	09604	A1-A2-B-C-F-F1-P-R-U-V	09730	A-A2-B-B2-C-C1-F-F1-J-L-M-N-R-R1-T-V-Z1
		09507	A1-A2-B-V	09605	A1-A2-B-C-D-H-M-R-U-V	09731	A-A2-B-B2-C-C1-F-F1-J-L-M-N-R-R1-T-V-Z1
		09508	A1-A2-B-V	09606	A1-A2-B-C-D-H-M-R-U-V	09732	A1-A2-B-N-V-Z1
		09509	A1-A2-B-V	09607	A-A1-A2-B-C-F-F1-M-R-R1-U-U3-V-W	09733	A1-A2-B-N-V
		09510	A-A1-A2-B-C1-E2-F-H1-M-R-R1-V-Z1	09608	A1-A2-B-C-F-N-U-V	09734	A-A1-A2-B-C-C1-F-F1-J-L-M-N-R-R1-T-V-Z1
		09511	A1-A2-B-V	09609	A1-A2-B-C-F-U	09735	A1-A2-B-N-V-Z1
		09513	A1-A2-B-F-F1-R-R1-V	09610	A1-A2-B-C-F-F1-M-R-U-V		
		09517	A1-A2-B-F-F1-R-R1-V	09613	A1-A2-B-C-F-U-V		
				09617	A1-A2-B-C-F-U		
				09618	A1-A2-B-C-F-U		
				09620	A1-A2-B-C-F-U		
				09621	A1-A2-B-C-F-U		
				09622	A1-A2-B-C-F-U		
				09623	A1-A2-B-C-F-U		
				09624	A1-A2-B-C-F-N-U		
				09625	A1-A2-B-C-F-U		
				09626	A1-A2-B-C-F-U		

APO/ FPO/ DPO	See Restrictions	APO/ FPO/ DPO	See Restrictions	APO/ FPO/ DPO	See Restrictions	APO/ FPO/ DPO	See Restrictions
09736	A-A1-A2-B-B2-C-C1-D-F-F1-J-L-M-N-R-R1-T-V-Z1	09811	A1-A2-B-E2-E3-F-F1-H1-N-R-R1-U-V-Z1	09853	A1-A2-B-E2-F-H1-R-R1-U2-V-Z1	34033	A1-A2-B-C-F-F1-J-L-M-N-T-V-Z1
09737	A-A1-A2-B-B2-C-C1-F-F1-I-L-M-N-R-R1-T-V-W-Y-Z-Z1	09812	A1-A2-B-E2-E3-F-F1-I-L-N-R-T-U-V-Z-Z1	09855	A-A1-A2-B-C1-E2-F-F1-H1-R-R1-U2-V-Z1	34034	A1-A2-B-F-F1-J-L-M-N-T-V-Z1
09738	A-A1-A2-B-B2-C-C1-D-F-F1-J-L-M-N-R-R1-T-V-Z1	09813	A-A1-A2-B-B2-C1-E2-E3-F-F1-J-L-N-R-R1-T-V-Z1	09858	A1-A2-B-E2-E3-F-F1-H1-N-R-R1-U-V-Z1	34035	A1-A2-B-F-F1-H-J-L-M-N-T-V-Z1
09739	A-A1-A2-B-B2-C-C1-D-F-F1-J-L-M-N-R-R1-T-V-Z1	09814	A1-A2-B-E2-E3-F-F1-I-L-N-R-T-U-V-Z-Z1	09859	A1-A2-B-C1-E2-E3-F-F1-H1-R-R1-V-Z1	34036	A1-A2-B-F-F1-J-L-M-N-T-V-Z1
09741	A-A1-A2-B-C1-E2-F-F1-H1-J-L-M-N-R-R1-T-V-W-Y-Z1	09816	A-A1-A2-B-B2-C-C1-E2-E3-F-F1-J-L-N-R-R1-T-V-Z1	09865	A-A1-A2-B-V-Z1	34037	A1-A2-B-C-F-F1-H-I-L-M-N-T-V-Z1
09742	A-A1-A2-B-B2-F-F1-J-L-M-N-R-T-V-Z1	09817	A-A1-A2-B-B2-C1-E2-E3-F-F1-H-H1-J-L-M-N-R-T-V-Z1	09866	A-A1-A2-B-C1-E2-F-F1-H-M-N-O-R-R1-V-V1-Z1	34038	A1-A2-B-L-M-N-U-V-Z1
09743	A-A1-A2-B-F-H-N-Q-V-Z-Z1	09818	A-A1-A2-B-C-F-M-V-Z1	09868	A-A1-A2-B-N-U-V-Z1	34039	A1-A2-B-F-F1-J-L-M-N-T-V-Z1
09744	A-A2-B-B2-C-C1-F-F1-J-L-M-N-R-R1-T-V-Z1	09820	A-A1-A2-B-B2-F-F1-H-H1-J-L-M-N-R-R1-T-V-Z1	09870	A-A1-A2-B-C1-E2-F-F1-H1-I-L-M-N-R-R1-T-U-U4-V-Z-Z1	34041	A1-A2-B-F-F1-J-L-M-N-T-V-Z1
09745	A-A1-A2-B-F-F1-M-N-R-R1-V-Z1	09821	A-A1-A2-B-F-N-R-V-Z1	09873	A-A1-A2-B-C1-E2-F-F1-H1-I-L-M-N-R-R1-T-U-U4-V-Z-Z1	34042	A1-A2-B-D-F-M-N-V-Z1
09747	A1-A2-B-F-J-N-U-V-Z1	09822	A-A1-A2-B-F-R-V-Z1	09874	A-A1-A2-B-C1-E2-F-F1-H1-I-L-M-N-R-R1-T-U-U4-V-Z-Z1	34055	A1-A2-B-F-F1-J-L-M-N-T-V-Z1
09748	A-A1-A2-B-B2-C-C1-D-F-F1-J-L-M-N-R-R1-T-V-Z1	09823	A-A1-A2-B-F-F1-L-N-R-T-V-Z1	09875	A-A1-A2-B-C1-E2-F-F1-H1-I-L-M-N-R-R1-T-U-U4-V-Z-Z1	34058	A1-A2-B-F-F1-R-R1-V-Z1
09749	A-A1-A2-B-F-H-N-V-Z1	09824	A-A1-A2-B-F-R-V-Z1	09880	A-A1-A2-B-C1-E2-F-F1-H1-R-R1-U-V-Z1	34060	A1-A2-B-B2-C1-E2-F-F1-J-L-N-R-R1-T-V-Z1
09750	A-A2-B-B2-C-C1-F-F1-J-L-M-N-R-R1-T-V-Z1	09825	A-A1-A2-B-C-C1-D-F-F1-J-L-M-N-R-R1-T-V-Z1	09889	A1-A2-B-E2-F-H1-N-R-R1-U2-V-Z1	34078	A1-A2-B-F1-N-V-Z1
09751	A1-A2-B-C-D-E-H-M-R-U	09826	A-A1-A2-B-B2-C1-E1-E2-E3-F-F1-L-M-N-R-R1-T-V-W-Z1	09890	A1-A2-B-E2-F-H1-N-R-R1-U2-V-Z1	34090	A1-A2-B-F-F1-R-R1-V
09752	A1-A2-B-C-D-H-U	09827	A-A1-A2-B-F-F1-L-N-R-T-V-Z1	09892	A-A1-A2-B-E2-F-F1-L-N-R-R1-T-V-Z1	34092	A1-A2-B-F-F1-R-R1-V
09759	A-A1-A2-B-B2-C-C1-E2-F-F1-F2-J-L-N-R-R1-T-V-Z1	09828	A-A1-A2-B-F-F1-J-L-N-T-V-Z1	09898	A1-A2-B-E2-F-H1-N-R-R1-U2-V-Z1	34093	A1-A2-B-V
09762	A-A1-A2-B-B2-E3-F-F1-J-L-N-R-R1-T-V-Z1	09829	A1-A2-B-C-N-R-V-Z1	34002	A1-A2-B-F-F1-J-L-N-T-U-Z1	34098	A1-A2-B-V
09769	A-A1-A2-B-B2-C-C1-D-F-F1-J-L-M-N-R-R1-T-V-Z1	09830	A1-A2-B-C-M-N-R-V-Z1	34004	A1-A2-B-F-F1-J-L-N-T-V	34099	A1-A2-B-V
09777	A-A1-A2-B-C-E1-F-F1-L-M-N-R-T	09831	A1-A2-B-F-F1-L-N-T-U-V-Z1	34007	A-A1-A2-B-C1-F-F1-M-N-R-R1-V-Z1	96201	A-A1-A2-B
09780	A-A1-A2-B-F-H-N-R-V	09832	A-A1-A2-B-U1-V-Z1	34008	A1-A2-B-B2-D-E1-F-F1-H-H1-J-L-M-N-R-R1-T-V-Z1	96202	A-A1-A2-B-U
09798	A1-A2-B-C-D-H-L-U-V	09833	A1-A2-B-U1-V-Z1	34011	A1-A2-B-B2-C1-E2-F-F1-J-L-M-N-R-R1-T-V-Z1	96203	A-A1-A2-B
09801	A-A1-A2-B-C1-E2-F-H1-M-N-R-R1-V-Z1	09834	A1-A2-B-E2-E3-F-F1-R-R1-U-V-Z1	34020	A1-A2-B-F-F1-J-L-M-N-T-V-Z1	96204	A-A1-A2-B
09802	A-A1-A2-B-F-R-V-Z1	09835	A-A1-A2-B-N-V-Z1	34021	A1-A2-B-F-F1-T-J-L-M-N-V-Z1	96205	A-A1-A2-B-U
09803	A1-A2-B-E2-E3-F-F1-H1-N-R-R1-U-V-Z1	09836	A-A1-A2-B-C-F-F1-L-M-N-T-V-Z1	34022	A1-A2-B-D-F-F1-J-L-M-N-T-V-Z1	96206	A-A1-A2-B-U
09804	A-A1-A2-B-F-F1-N-R-V-Z1	09837	A1-A2-B-E2-E3-V-Z1	34023	A1-A2-B-F-F1-J-L-M-N-T-V-Z1	96207	A-A1-A2-B-V
09805	A-A2-B-E2-E3-F-F1-R-R1-V-Z1	09838	A1-A2-B-E2-E3-U-V-Z1	34024	A1-A2-B-F-F1-L-M-N-T-V-Z1	96209	A-A1-A2-B-F-F1-J-L-N-T-U
09806	A-A1-A2-B-C1-E2-F-F1-H1-L-M-N-R-R1-T-V-Z1	09839	A-A1-A2-B-U-V-Z1	34025	A1-A2-B-F-F1-J-L-M-N-T-V-Z1	96213	A-A1-A2-B-U
09807	A-A1-A2-B-C1-E2-F-H1-M-N-R-R1-V-Z1	09840	A-A1-A2-B-E2-E3-V-Z1	34030	A1-A2-B-F-F1-J-L-M-N-T-V-Z1	96214	A-A1-A2-B-U
09809	A1-A2-B-F-F1-L-N-T-V-Z1	09841	A-A1-A2-B-N-R-U-Z1	34031	A1-A2-B-F-F1-J-L-M-N-T-V-Z1	96218	A-A1-A2-B-U
09810	A-A1-A2-B-F-F1-N-R-V-Z1	09842	A-A1-A2-B-M-N-R-Z1	34032	A1-A2-B-F-F1-J-L-M-N-T-V-Z1	96224	A-A1-A2-B-U
		09844	A-A1-A2-B-C-F-N-U-V-Z1			96257	A-A1-A2-B-U
		09845	A-A1-A2-B-B2-E3-F-F1-L-M-N-T-V-Z1			96258	A-A1-A2-B-U
		09846	A-A1-A2-B-B2-C1-F-F1-J-L-N-R-R1-T-V-Z1			96260	A-A1-A2-B-U
		09848	A-A1-A2-B-F-M-R-V-Z1			96264	A-A1-A2-B-U
		09852	A1-A2-B-E2-E3-F-F1-H1-N-R-R1-U-V-Z1			96266	A-A1-A2-B-U
						96267	A-A1-A2-B-U-V
						96269	A-A1-A2-B-U-Z1
						96271	A-A1-A2-B-U
						96275	A-A1-A2-B-V
						96276	A-A1-A2-B
						96278	A-A1-A2-B-U
						96283	A-A1-A2-B-U
						96284	A-A1-A2-B-U-V
						96303	A1-A2-B-F-F1-H-J-L-M-N-T-W

APO/ FPO/ DPO	See Restrictions	APO/ FPO/ DPO	See Restrictions	APO/ FPO/ DPO	See Restrictions	APO/ FPO/ DPO	See Restrictions
96306	A1-A2-B-F-F1-F2-H-M-W-Z1	96377	A1-A2-B-M-W	96542	A1-A2-B-V-Z1	96620	A1-A2-B-F-F1-R-R1-V
96309	A1-A2-B-M-V-W	96378	A1-A2-B-M-W	96543	A1-A2-B-P-V-Z1	96621	A1-A2-B-V
96310	A1-A2-B-M-W	96379	A1-A2-B-M-W	96546	A1-A2-B-F-U3	96622	A1-A2-B-F-F1-R-R1-V
96319	A1-A2-B-M-W	96380	A1-A2-B-M-W	96548	A-A1-A2-B-H-M-U	96624	A1-A2-B-F-F1-R-R1-V
96321	A1-A2-B-F-F1-F2-H-M-W-Z1	96382	A1-A2-B-M-W	96549	A-A1-A2-B-H-M-N-U	96628	A1-A2-B-F-F1-R-R1-V
96322	A1-A2-B-F-F1-F2-H-M-W-Z1	96384	A1-A2-B-M-W	96550	A-A1-A2-B-H-M-U-V-Z1	96629	A1-A2-B-F-F1-R-R1-V
96323	A1-A2-B-M-V-W	96385	A1-A2-B-M-W	96551	A-A1-A2-B-F-F1-H-L-M-N-T-U	96643	A1-A2-B-F-F1-R-R1-V
96326	A1-A2-B-M-W	96386	A1-A2-B-M-W	96552	A1-A2-B-Z1	96650	A1-A2-B-F-F1-R-R1-V
96328	A1-A2-B-M-W	96387	A1-A2-B-M-W	96553	A-A1-A2-B-F-F1-H-M-U	96657	A1-A2-B-F-F1-R-R1-V
96330	A1-A2-B-M-W	96388	A1-A2-B-M-W	96554	A-A1-A2-B-F-F1-H-L-M-N-T-U	96660	A1-A2-B-F-F1-R-R1-V
96336	A1-A2-B-M-V-W	96389	A1-A2-B-M-W	96555	A1-A2-B-F-M-V	96661	A1-A2-B-F-F1-R-R1-V
96337	A1-A2-B-M-W	96401	A1-A2-B-F-N-O-V-V1-Z1	96557	A1-A2-B-F-M-V	96662	A1-A2-B-F-F1-R-R1-V
96338	A1-A2-B-M-W	96427	A-A1-A2-B-C1-E2-F-H1-M-R-R1-V	96562	A-A1-A2-B-B2-C-C1-D-E2-E3-F-F1-H-H1-I-L-M-N-R-T-V-Z-Z1	96663	A1-A2-B-F-F1-R-R1-V
96339	A1-A2-B-M-V-W	96447	A1-A2-B-F-N-U3-V-V1	96577	A-A1-A2-B-F-H-M-N-U	96664	A1-A2-B-V
96343	A1-A2-B-M-W	96501	A-A1-A2-B-N-V	96578	A1-A2-B-B2-F1-H-J-N-R	96665	A1-A2-B-V
96346	A1-A2-B-F-F1-F2-H-M-V-W-Z1	96502	A1-A2-B-F-N-U3-V-Z1	96595	A1-A2-B-F-U3-V-Z1	96666	A1-A2-B-V
96347	A1-A2-B-F-F1-F2-H-M-W-Z1	96503	A1-A2-B-F-N-U3-V	96598	A1-A2-B-N-O-V-V1	96667	A1-A2-B-F-F1-R-R1-V
96348	A1-A2-B-F-F1-F2-H-M-W-Z1	96507	A-A1-A2-B-F-F1-H-L-N-T-V	96599	A1-A2-B-N-V	96668	A1-A2-B-F-F1-R-R1-V
96349	A1-A2-B-F-F1-F2-H-M-W-Z1	96510	A1-A2-B-I-N-V	96601	A1-A2-B-V	96669	A1-A2-B-F-F1-R-R1-V
96350	A1-A2-B-F-F1-F2-H-M-W-Z1	96511	A1-A2-B-I-N-V	96602	A1-A2-B-V	96670	A1-A2-B-V
96351	A1-A2-B-F-F1-F2-H-M-W-Z1	96515	A1-A2-B-D-F-U3	96603	A1-A2-B-V	96671	A1-A2-B-F-F1-R-R1-V
96362	A1-A2-B-F-F1-F2-M-W-Z1	96516	A1-A2-B-D-F-Z1	96604	A1-A2-B-V	96672	A1-A2-B-F-F1-R-R1-V
96365	A1-A2-B-M-V-W	96517	A1-A2-B-F-U3-V-Z1	96605	A1-A2-B-V	96673	A1-A2-B-V
96367	A1-A2-B-L-M-W	96520	A1-A2-B-F-N-U3-V	96606	A1-A2-B-V	96674	A1-A2-B-F-F1-R-R1-V
96368	A1-A2-B-M-W	96521	A1-A2-B-F-F1-L-N-T-U3	96607	A1-A2-B-V	96675	A1-A2-B-F-F1-R-R1-V
96370	A1-A2-B-F-F1-F2-H-M-W-Z1	96522	A1-A2-B-F-N-U-Z1	96608	A1-A2-B-V	96677	A1-A2-B-F-F1-R-R1-V
96372	A1-A2-B-M-W	96530	A-A1-A2-B-F-F1-H-H1-L-M-N-T-U-V	96609	A1-A2-B-V	96678	A1-A2-B-F-F1-R-R1-V
96373	A1-A2-B-M-W	96531	A-A1-A2-B-F-F1-H-M-N-U-V	96610	A1-A2-B-V	96679	A1-A2-B-F-F1-R-R1-V
96374	A1-A2-B-M-W	96532	A-A1-A2-B-F-F1-H-J-L-M-N-T-U-V	96611	A1-A2-B-V	96681	A1-A2-B-V
96375	A1-A2-B-M-W	96534	A-A1-A2-B-F-U-Z1	96613	A-A1-A2-B-C1-E2-F-H1-I-M-R-R1-U2-V-Z-Z1	96682	A1-A2-B-V
96376	A1-A2-B-M-W	96535	A-A1-A2-B-F-F1-L-N-T-V	96614	A-A1-A2-B-C1-E2-F-H1-I-M-R-R1-U2-V-Z-Z1	96683	A1-A2-B-V
		96537	A1-A2-B-V-Z1	96615	A1-A2-B-F-F1-R-R1-V	96686	A1-A2-B-V
		96538	A1-A2-B-V-Z1	96616	A1-A2-B-F-F1-R-R1-V	96687	A1-A2-B-V
		96540	A1-A2-B-V-Z1	96617	A1-A2-B-F-F1-R-R1-V	96698	A1-A2-B-V
		96541	A1-A2-B-V	96619	A1-A2-B-V		

RESTRICTIONS

LEGEND

PS Form 2976, *Customs — CN 22 (Old C 1) and Sender's Declaration* (green label)

PS Form 2976-A, *Customs Declaration and Dispatch Note*

AAFES	= Army and Air Force Exchange Service
APO	= Army/Air Force Post Office
Box R	= Retired military personnel
DMM	= <i>Domestic Mail Manual</i>
DPO	= Diplomatic Post Office
FPO	= Fleet Post Office
MOM	= Military Ordinary Mail
MPO	= Military Post Office
PAL	= Parcel Airlift
PSC	= Postal Service Center
SAM	= Space Available Mail
USDA	= United States Department of Agriculture

Note: Mail order catalogs are prohibited as SAM or PAL mail.

A. Securities, currency, or precious metals in their raw, unmanufactured state are prohibited. Official shipments are exempt from this restriction.

A1. Mail addressed to "Any Servicemember," or similar wording such as "Any Soldier," "Sailor," "Airman," or "Marine"; "Military Mail"; etc., is prohibited. Mail must be addressed to an individual or job title such as "Commander," "Commanding Officer," etc.

A2. APO/FPO/DPO addresses shall not include a city and/or country name.

B. Regardless of mail class, a customs declaration (PS Form 2976 or, if the customer prefers, PS Form 2976-A) is required for all items weighing 16 ounces or more or any item (regardless of weight) containing potentially dutiable mail contents (e.g., merchandise or goods) addressed to or from an APO, FPO, or DPO ZIP Code. No customs form is required for items weighing less than 16 ounces when the contents are not potentially dutiable (e.g., documents). The surface area of the address side of the mailpiece must be large enough to contain the applicable customs declaration. The following exceptions apply:

- Known mailers are exempt from providing customs documentation on non-dutiable letters or printed matter. (A known mailer is a business mailer who enters volume mailings through a business mail entry unit (BMEU) or other bulk mail acceptance location, pays postage through an advance deposit account, uses a permit imprint for postage payment, and submits a completed postage statement at the time of entry that certifies that the mailpieces contain no dangerous materials that are prohibited by postal regulations.)
- All federal, state, and local government agencies whose mailings are regarded as "Official Mail" are exempt from providing customs documentation on any item addressed to an APO, FPO, or DPO except for those APOs/FPOs/DPOs to which restriction "B2" applies.
- Prepaid mail from military contractors is exempt, providing the mailpiece is endorsed "Contents for Official Use — Exempt from Customs Requirements."

B2. All federal, state, and local government agencies must complete customs documentation when sending potentially dutiable mail addressed to or from this APO, FPO, or DPO.

C. Cigarettes and other tobacco products are prohibited.

C1. Obscene articles, prints, paintings, cards, films, videotapes, etc., and horror comics and matrices are prohibited.

D. Coffee is prohibited.

E. Medicines (prescription, over-the-counter, vitamins, and supplements) are prohibited when mailed to individuals for human or animal use. This prohibition does not apply when medicines are sent as official mail only between specifically designated agencies such as pharmaceutical distributors, hospitals, clinics, and pharmacies.

E1. Medicines or vaccines not conforming to French laws are prohibited.

E2. Any matter depicting nude or seminude persons, pornographic or sexual items, or nonauthorized political materials is prohibited. Although religious materials contrary to the Islamic faith are prohibited in bulk quantities, items for the personal use of the addressee are permissible.

E3. Radio transceivers, cordless telephones, global positioning systems, scanners, base stations, and handheld transmitters are prohibited.

F. Firearms of any type are prohibited in all classes of mail. See definitions of firearms in DMM 601.12.1.1. This restriction does not apply to firearms mailed to or by official U.S. government agencies. The restriction for mail to this APO/FPO/DPO ZIP Code does not apply to firearms mailed from this APO/FPO/DPO ZIP Code, provided ATF and USPS regulations are met. Antique firearms are a separate category defined in DMM 601.12.1.1h and ATF regulations; they do not require an ATF form.

F1. Privately owned weapons addressed to an individual are prohibited in any class of mail.

F2. Importation of firearms is restricted to one shotgun and one single shot.22 caliber rifle per individual.

G. Only letters, flats, and Periodicals are authorized. Parcels of any class are prohibited.

H. Meats, including preserved meats, whether hermetically sealed or not, are prohibited.

H1. Pork or pork by-products are prohibited.

I. Mail of all classes must fit in a mail sack. Mail may not exceed the following dimensions:

- Maximum length 20 inches.
- Maximum width 12 inches.
- Maximum height 12 inches.

The maximum length and girth combined may not exceed 68 inches.

This restriction does not apply to registered mail and official government mail marked MOM.

I1. This restriction does not apply to registered mail.

I2. This restriction does not apply to official government mail marked MOM.

J. Parcels may not exceed 108 inches in length and girth combined.

K. Mail that includes in the address the words, "Dependent Mail Section," may consist only of letter mail, newspapers, magazines, and books. No parcel of any class containing any other matter may be mailed to the Dependent Mail section. This restriction does not apply if the address does not include the words "Dependent Mail Section."

L. All official mail is prohibited.

M. Fruits, vegetables, animals, and living plants are prohibited.

N. Registered mail is prohibited.

O. Delivery status information for Extra Services is not available on USPS.com.

P. APO is used for the receipt and dispatch of official mail only.

Q. Mail may not exceed 66 pounds, and size is limited to 42 inches maximum length and 72 inches maximum length and girth combined.

R. All alcoholic beverages, including those mailable under DMM 601.12.7, are prohibited.

R1. Materials used in the production of alcoholic beverages (i.e., distilling material, hops, malts, yeast, etc.) are prohibited.

S. Mail of all classes must fit in a mail sack. Mail may not exceed the following dimensions and weight:

- Maximum length 12 inches.
- Maximum width 12 inches.
- Maximum height 5 1/2 inches.
- Maximum weight 25 pounds.

The maximum length and girth combined may not exceed 47 inches.

T. Mailings of case lots of food and supplemental household shipments must be approved by the sender's parent agency prior to mailing.

U. Parcels must weigh less than 16 ounces when addressed to Box R. This restriction does not apply to mail endorsed "Free Matter for the Blind or Handicapped."

U1. Mail is limited to First-Class Mail weighing 13 ounces or less when addressed to Box R. This restriction does not apply to mail endorsed "Free Matter for the Blind or Handicapped." Videotapes are prohibited when addressed to Box R, regardless of weight.

U2. Mail is limited to First-Class Mail letters only when addressed to Box R.

U3. Mail is limited to First-Class Mail correspondence (including voice and video cassettes), newspapers, magazines, photographs, not exceeding 16 ounces, when addressed to Box R.

U4. Mail addressed to Box C is limited to 2 pounds, regardless of class.

V. Express Mail Military Service (EMMS) not available from any origin.

V1. Delivery Confirmation service is not available.

W. Meat products, such as dried beef, salami, and sausage, may be mailed, provided they remain in their original, hermetically sealed packages and bear USDA certification. Other meats, bones, skin, hair, feathers, horns or hoofs of hoofed animals, wool samples, tobacco leaves, including chewing and pipe tobacco, snuff, cigars, and cigarettes, or obscene material, including obscene drawings, photographs, films, and carvings, are prohibited. Exception: 200 grams of tobacco per parcel are permitted duty free.

X. Personal mail is limited to First-Class Mail items (to include audio cassettes and voice tapes) weighing 13 ounces or less. This limitation does not apply to official mail.

Y. Mail is limited to First-Class and Priority Mail items only. All Periodicals, Standard Mail items, and Package Services items (including SAM and PAL) are not authorized. This restriction also applies to official mail.

Z. No outside pieces (OSPs).

Z1. The following restriction is applicable only to International Service Centers (ISC)/Exchange Offices. An Anti-Pilferage Seal (Item No O817E or O818A) is required on all pouches and sacks.

**DID YOU
KNOW** 

**In 2012,
USPS issued
109 million
money
orders.**



Stamp Announcement 13-42: Virgin and Child by Jan Gossaert Stamp



© 2013 USPS

On October 11, 2013, in New York, New York, at the American Stamp Dealers Association stamp show, the Postal Service™ will issue a *Virgin and Child by Jan Gossaert* (Forever® First-Class Mail priced at 46 cents) stamp in one design in a pressure-sensitive adhesive (PSA) booklet of 20 stamps (Item 688700).

The stamp will go on sale nationwide October 11, 2013.

This new Christmas stamp features a detail of Jan Gossaert's 1531 oil-on-wood painting, *Virgin and Child*, from the collection of the Cleveland Museum of Art. Gossaert (circa 1478-1532) was a Netherlandish artist credited with being one of the first to bring the innovations of the Italian Renaissance to northern Europe. Richard Sheaff served as art director for this issue.

To learn more about the stories behind the stamps, visit <http://www.beyondtheperf.com>.

Distribution: Item 688700, \$9.20 Virgin and Child by Jan Gossaert (Forever priced at 46 cents) First-Class Mail PSA Booklet of 20 Stamps

Stamp distribution offices (SDOs) and stamp distribution centers (SDCs) will receive their standard automatic distribution quantity for a PSA booklet of 20 stamps. Distributions are rounded up to the nearest master carton size of 4,000 booklets. The stamps will be shipped and sold as a booklet of 20 (\$9.20).

Initial Supply to Post Offices

SDOs/SDCs will make a subsequent automatic distribution to all Post Offices™ of a quantity to cover approximately 45 days of sales. Post Offices may preorder these stamps 30 days prior to first-day-of-issue through the eBuy2 SEAM Catalog. However, offices should first check the website to determine the amount they will receive on their automatic push prior to placing a preorder: <http://topkksghst/sites/SDCReports/Lists/StampAutomatics/default.aspx>. Post Offices should not sell the stamp prior to first-day-of-issue.

Sales Policy

All Post Offices should maintain a sufficient inventory level of this item until the stamp is officially withdrawn from sale. If supplies run low, Post Offices must reorder additional quantities using their normal ordering procedures.

How to Order the First-Day-of-Issue Postmark

Customers have 60 days to obtain the first-day-of-issue postmark by mail. They may purchase new stamps at their local Post Office, at The Postal Store® website at <http://www.usps.com/shop>, or by calling 800-STAMP-24. They should affix the stamps to envelopes of their choice, address the envelopes (to themselves or others), and place them in a larger envelope addressed to:

Virgin and Child by Jan Gossaert Stamp
Special Events Coordinator
380 W. 33rd Street, Rm. 4032
New York, NY 10199-9998

After applying the first-day-of-issue postmark, the Postal Service will return the envelopes through the mail. There is no charge for the postmark up to a quantity of 50. For more than 50, customers have to pay five cents each. All orders must be postmarked by December 11, 2013.

How to Order First-Day Covers

The Postal Service also offers first-day covers for new stamp issues and Postal Service stationery items post-marked with the official first-day-of-issue cancellation. Each item has an individual catalog number and is offered in the quarterly *USA Philatelic* catalog, online at <http://usps.com/shop> or by calling 800-782-6724. Customers may request a free catalog by calling 800-782-6724 or writing to:

U.S. Postal Service
 Catalog Request
 PO Box 219014
 Kansas City, MO 64121-9014

Philatelic Products

There are four philatelic products available for this stamp issue:

- 688710*, Keepsake (Bklt and Digital Color Postmark Set), \$10.95.
- 688716*, First-Day Cover, \$0.90.
- 688721*, Digital Color Postmark, \$1.61.
- 688730*, Ceremony Program, \$6.95.

Items with an asterisk (*) will use the 128 barcode from Stamp Fulfillment Services. All other philatelic products will continue to use barcode series A, with the exception of the Yearbook and the Guide Book.

Issue:	<i>Virgin and Child by Jan Gossaert</i>
Item Number:	688700
Denomination & Type of Issue:	First-Class Forever
Format:	Doubled-sided Booklet of 20 (1 design)
Series:	<i>Holiday Celebrations</i>
Issue Date & City:	October 11, 2013, New York, NY 10199 (ASDA Stamp Show)
Designer:	Richard Sheaff, Scottsdale, AZ
Art Director:	Richard Sheaff, Scottsdale, AZ
Typographer:	Richard Sheaff, Scottsdale, AZ
Existing Art:	Jan Gossaert
Modeler:	Donald Woo
Manufacturing Process:	Offset/Microprint "USPS"
Engraver:	N/A
Printer:	Banknote Corporation of America
Printed at:	Browns Summit, NC
Press Type:	Alprinta, 74
Stamps per Booklet:	20
Print Quantity:	400 million stamps
Paper Type:	Phosphor, Overall
Adhesive Type:	Pressure-sensitive
Processed at:	Banknote Corporation of America, Browns Summit, NC
Stamp Orientation:	Vertical
Image Area (w x h):	0.77 x 1.05 in./19.55 x 26.67 mm
Stamp Size (w x h):	0.91 x 1.19 in./23.11 x 30.22 mm
Booklet Size (w x h):	5.74 x 2.38 in./145.80 x 60.45 mm
Colors:	Cyan, Magenta, Yellow, Black, Panetone 8003 (Gold)
Plate Size:	480 stamps per revolution
Plate Numbers:	"S" followed by five (5) single digits
Marginal Markings:	
Front Cover:	Header: "CHRISTMAS" • "VIRGIN AND CHILD" • JAN GOSSAERT • TWENTY FIRST-CLASS FOREVER® STAMPS" • Barcode (015645688704) • © 2013 USPS in peel strip area • Plate numbers in peel strip area

— Stamp Services,
 Marketing and Sales, 9-5-13

Stamp Announcement 13-43: Holy Family Stamp



© 2013 USPS

On October 11, 2013, in New York, New York, at the American Stamp Dealers Association stamp show, the Postal Service™ will issue a *Holy Family* (Forever® First-Class Mail priced at 46 cents) stamp in one design in a pressure-sensitive adhesive (PSA) pane of 20 stamps (Item 582000).

The stamp will go on sale nationwide October 11, 2013.

The *Holy Family* stamp, first issued in 2012, celebrates Christmas with a scene from the Nativity story that reminds us of the joys of the season: family, togetherness, and the birth of Jesus. The stamp art depicts Joseph leading a donkey that carries Mary and the baby Jesus, guided by a star shining in the twilight of a desert sky. Art director William Gicker, designer Greg Breeding, and illustrator Nancy Stahl created this evocative image of the Holy Family.

To learn more about the stories behind the stamps, visit <http://www.beyondtheperf.com>.

Distribution: Item 582000, Holy Family (Forever priced at 46 cents) First-Class Mail PSA Pane of 20 Stamps

Stamp distribution offices (SDOs) and stamp distribution centers (SDCs) will receive their normal automatic distribution quantity for a PSA pane of 20 stamps.

Distributions are rounded up to the nearest master carton size of 40,000 stamps.

Initial Supply to Post Offices

SDOs/SDCs will NOT make an automatic distribution to Post Offices™. Post Offices requiring these items must requisition them from the ebuy2 SEAM Catalog or via Tough-tone ordering. Post Offices may preorder these stamps 30 days prior to first-day-of-issue. Post Offices should not sell the stamp prior to first-day-of-issue.

Sales Policy

All Post Offices should maintain a sufficient inventory level of this item until the stamp is officially withdrawn from sale. If supplies run low, Post Offices must reorder additional quantities using their normal ordering procedures.

How to Order the First-Day-of-Issue Postmark

Customers have 60 days to obtain the first-day-of-issue postmark by mail. They may purchase new stamps at their local Post Office, at The Postal Store® website at <http://www.usps.com/shop>, or by calling 800-STAMP-24. They should affix the stamps to envelopes of their choice, address the envelopes (to themselves or others), and place them in a larger envelope addressed to:

Holy Family Stamp
Special Events Coordinator
380 W. 33rd Street, Rm. 4032
New York, NY 10199-9998

After applying the first-day-of-issue postmark, the Postal Service will return the envelopes through the mail. There is no charge for the postmark up to a quantity of 50. For more than 50, customers have to pay five cents each. All orders must be postmarked by December 11, 2013.

How to Order First-Day Covers

The Postal Service also offers first-day covers for new stamp issues and Postal Service stationery items postmarked with the official first-day-of-issue cancellation. Each item has an individual catalog number and is offered in the quarterly *USA Philatelic* catalog, online at <http://usps.com/shop> or by calling 800-782-6724. Customers may request a free catalog by calling 800-782-6724 or writing to:

U.S. Postal Service
Catalog Request
PO Box 219014
Kansas City, MO 64121-9014

Philatelic Products

There are eight philatelic products available for this stamp issue:

- 582006, Press Sheet with Die Cuts, \$92.00 (print quantity of 2,500).

- 582008, Press Sheet without Die Cuts, \$92.00 (print quantity of 2,500).
- 582010*, Keepsake (Pane and Digital Color Postmark Set), \$10.95.
- 582016*, First-Day Cover, \$0.90.
- 582021*, Digital Color Postmark, \$1.61.
- 582030*, Ceremony Program, \$6.95.
- 582031*, Stamp Deck Card, \$0.95.
- 582032*, Stamp Deck Card with Digital Color Postmark, \$1.96.

Items with an asterisk (*) will use the 128 barcode from Stamp Fulfillment Services. All other philatelic products will continue to use barcode series A, with the exception of the Yearbook and the Guide Book.

Issue:	<i>Holy Family</i>
Item Number:	582000
Denomination & Type of Issue:	First-Class Forever
Format:	Pane of 20 (1 design)
Series:	N/A
Issue Date & City:	October 11, 2013, New York, NY 10199 (ASDA Stamp Show)
Designer:	Greg Breeding, Charlottesville, VA
Art Director:	William J. Gicker, USPS
Typographer:	Greg Breeding, Charlottesville, VA
Artist:	Nancy Stahl, New York, NY
Modeler:	Donald Woo
Manufacturing Process:	Offset/Microprint "USPS"
Engraver:	N/A
Printer:	Banknote Corporation of America
Printed at:	Browns Summit, NC
Press Type:	Alprinta, 74
Stamps per Pane:	20
Print Quantity:	300 million stamps
Paper Type:	Phosphor Tagged
Adhesive Type:	Pressure-sensitive
Processed at:	Banknote Corporation of America, Browns Summit, NC
Stamp Orientation:	Vertical
Image Area (w x h):	0.77 x 1.05 in./19.56 x 26.67 mm
Stamp Size (w x h):	0.91 x 1.19 in./23.11 x 30.22 mm
Pane Size (w x h):	5.425 x 5.635 in./137.80 x 143.13 mm
Colors:	PMS 8520 (Bronze), Cyan, Magenta, Yellow, Black
Plate Size:	200 stamps per revolution
Plate Numbers:	"S" followed by five (5) single digits
Marginal Markings:	
Front:	Plate block numbers in four corners of pane
Back:	© 2011 USPS • USPS logo • Barcode (582000) in upper right and lower left corners of pane • Plate position diagram • Promotional text

— Stamp Services,
Marketing and Sales, 9-5-13

Stamp Announcement 13-44: Snowflakes Stamp



© 2013 USPS

On October 1, 2013, in Weston, Missouri, the Postal Service™ will issue the *Snowflakes* presorted standard non-denominated stamp (priced @ 10 cents) in five designs in a pressure-sensitive adhesive (PSA) coil of 10,000 stamps (Item 789800).

The stamp will go on sale nationwide October 1, 2013.

This holiday season, the U.S. Postal Service® will issue five festive snowflake stamps in the Presorted Standard price (10 cents) for bulk mail users. Each stamp features a photograph of a different snowflake, set against a background of colors that fade from white at the bottom to icy blues and purples at the top. To photograph these snowflakes, fallen snowflakes were rapidly transferred from a cardboard collecting surface to a glass slide and inserted into a high-resolution microscope. Photographs were made with a digital camera attached to the microscope. William J. Gicker was the art director for the stamp issue. Jennifer Arnold designed the stamps using existing photographs by Kenneth Libbrecht, a professor at the California Institute of Technology.

To learn more about the stories behind the stamps, visit <http://www.beyondtheperf.com>.

Distribution: Item 789800, Snowflakes (Presorted Standard Non-denominated priced @ 10 cents) PSA Coil of 10,000 Stamps

Stamp distribution offices (SDOs) and stamp distribution centers (SDCs) will receive their normal automatic distribution quantity for a PSA coil of 10,000. Distributions are rounded up to the nearest master carton size of 10 coils.

Initial Supply to Post Offices

SDOs/SDCs will NOT make an automatic distribution to Post Offices™. Post Offices requiring these items must requisition them from their designated SDO/SDC using PS Form 17, *Stamp Requisition/Stamp Return*. Once the SDCs have received their distribution of this item (estimated September 25, 2013), Post Offices will be able to preorder these stamps through the eBuy2 SEAM Catalog.

Post Offices should not sell the stamp prior to first-day-of-issue.

Sales Policy

All Post Offices should maintain a sufficient inventory level of this item until the stamp is officially withdrawn from sale. If supplies run low, Post Offices must reorder additional quantities using their normal ordering procedures.

How to Order the First-Day-of-Issue Postmark

Customers have 60 days to obtain the first-day-of-issue postmark by mail. They may purchase new stamps at their local Post Office or by calling 800-STAMP-24. They should affix the stamps to envelopes of their choice, address the envelopes (to themselves or others), and place them in a larger envelope addressed to:

Snowflakes (Presorted Standard) Stamp
Postmaster
18205 Library Drive
Weston, MO 64098-9998

After applying the first-day-of-issue postmark, the Postal Service will return the envelopes through the mail. There is no charge for the postmark up to a quantity of 50. For more than 50, customers have to pay five cents each. All orders must be postmarked by December 1, 2013.

How to Order First-Day Covers

The Postal Service also offers first-day covers for new stamp issues and Postal Service stationery items postmarked with the official first-day-of-issue cancellation. Each item has an individual catalog number and is offered in the quarterly *USA Philatelic* catalog, online at <http://usps.com/shop> or by calling 800-782-6724. Customers may request a free catalog by calling 800-782-6724 or writing to:

U.S. Postal Service
Catalog Request
PO Box 219014
Kansas City, MO 64121-9014

Philatelic Products

There is one philatelic product available for this stamp issue:

- 789816*, First-Day Covers, Set of 5, \$5.00.

Items with an asterisk (*) will use the 128 barcode from Stamp Fulfillment Services. All other philatelic products will continue to use barcode series A, with the exception of the Yearbook and the Guide Book.

Issue:	<i>Snowflakes</i>
Item Number:	789800
Denomination & Type of Issue:	Presorted Standard (Non-denominated)
Format:	Coil of 10,000 (5 designs)
Series:	N/A
Issue Date & City:	October 1, 2013, Weston, MO 64098 (No Ceremony)
Art Director:	William J. Gicker, Washington, DC
Designer:	Jennifer Arnold, Washington, DC
Existing Photos:	Kenneth G. Libbrecht
Engraver:	WRE
Modeler:	CCL Label, Inc.
Manufacturing Process:	Gravure
Printer:	CCL Label, Inc.
Printed at:	Clinton, SC
Press Type:	Dia Nippon Kiko (DNK)
Stamps per Coil:	10,000
Print Quantity:	500 million stamps
Paper Type:	Nonphosphored, Type III
Adhesive Type:	Pressure-sensitive
Processed at:	AVR, Clinton, SC
Colors:	Cyan, Magenta, Yellow, Black, Powder Blue (628), Light Purple (2706), Light Blue (2707), Dark Purple (7671)
Stamp Orientation:	Vertical
Image Area (w x h):	0.84 x 0.73 in./21.34 x 18.54 mm
Stamp Size (w x h):	0.98 x 0.87 in./24.89 x 22.09 mm
Plate Size:	300 stamps per revolution
Plate Numbers:	"C" followed by eight (8) single digits
Coil Number Frequency:	Plate block numbers centered every 30th stamp below stamp image

— Stamp Services,
Marketing and Sales, 9-5-13

2013 Stamps and Postal Stationery

This schedule is subject to change.

Updated Announcement 13-E

This is a periodic announcement of new stamps and postal stationery items being issued during the calendar year. For additional information on stamps and stamp products, visit The Postal Store® website at www.usps.com/shop.

NOTE	ISSUE	NATIONWIDE FIRST-DAY- OF-ISSUE	FIRST-DAY CITY/STATE	FORMAT	DEADLINE
N	Emancipation Proclamation (45¢ Forever)	Jan 1	Washington, DC 20066	PSA pane of 20 (C)	Mar 2
N	46¢ Kaleidoscope Flowers	Jan 14	Kansas City, MO 64108	Coil of 3,000 Coil of 10,000 (M) (4 designs)	Mar 14
N	Year of the Snake (Celebrating Lunar New Year) (45¢ Forever)	Jan 16	San Francisco, CA 94188	PSA pane of 12 (C)	Mar 16
N	33¢ Apples	Jan 17	Yakima, WA 98903	PSA pane of 20 Coil of 100 (M) (4 designs)	Mar 17
N	66¢ Wedding Cake	Jan 18	Louisville, KY 40231 (APS Stamp Show)	PSA Pane of 20 (M)	Mar 18
N	66¢ Spicebush Swallowtail (Butterfly)	Jan 23	Pine Mountain, GA 31822	PSA pane of 20 (M)	Mar 23
N	86¢ Tufted Puffin	Jan 23	Seward, AK 99664	PSA pane of 20 (M)	Mar 23
N	\$5.60 Arlington Green Bridge	Jan 25	Norcross, GA 30071 (Southeastern Stamp Show)	PSA pane of 10 (M) (Priority Mail)	Mar 25
N	Global International (\$1.10 Forever)	Jan 28	New York, NY 10199	PSA pane of 20 (M)	Mar 28
N	Sealed with Love (46¢ Forever)	Jan 30	Loveland, CO 80538	PSA pane of 20 (M)	Mar 31
N	\$19.95 Grand Central Terminal	Feb 1	New York, NY 10199	PSA pane of 10 (M) (Express Mail)	Apr 1
N	Rosa Parks (46¢ Forever)	Feb 4	Dearborn, MI 48120 Detroit, MI 48233	PSA pane of 20 (C)	Apr 5
N	Muscle Cars (46¢ Forever)	Feb 22	Daytona Beach, FL 32114	PSA pane of 20 (C) (5 designs)	Apr 23
N	Bank Swallow (46¢ Forever)	Mar 1	Sacramento, CA 95813	WAG Stamped Envelope #10 WAG Stamped Envelope #10W WAG Stamped Envelope #9 WAG Stamped Envelope #9W WAG Envelope #6¾ WAG Envelope #6¾W	Apr 30
N	Bank Swallow (46¢ Forever)	Mar 1	Sacramento, CA 95813	PSA Envelope #10 PSA Envelope #10W PSA Envelope #9 PSA Envelope #9W PSA Envelope #6¾ PSA Envelope #6¾W	Apr 30
N	Modern Art in America (46¢ Forever)	Mar 07	New York, NY 10199	PSA pane of 12 (C) (12 designs)	May 6
N	Deer (35¢ Forever)	Mar 8	Middleburg, VA 20117	Stamped Card Single Stamped Card Double Stamped Card Sheet	May 7
N	46¢ Patriotic Star	Mar 19	San Francisco, CA 94188	PSA Coil of 10,000 (M)	May 18
N	La Florida (46¢ Forever)	Apr 3	St. Augustine, FL 32084	PSA pane of 16 (C) (4 designs)	Jun 2
N	Vintage Seed Packets (46¢ Forever)	Apr 5	Oaks, PA 19456 (National Stamp Exhibition/Flower Show)	PSA booklet of 20 (M) (10 designs)	Jun 4
N	Where Dreams Blossom (46¢ Forever)	Apr 11	New York, NY 10199 (ASDA Stamp Show)	PSA pane of 20 (M)	Jun 10
N	66¢ Yes I Do	Apr 11	New York, NY 10199 (ASDA Stamp Show)	PSA pane of 20 (M)	Jun 10
N	A Flag for All Seasons (46¢ Forever)	May 3	Weston, MA 02493 (Spellman Museum of Stamp & Postal History)	PSA coil of 100 (4 designs) (M)	Jul 2
N	Lydia Mendoza (Music Icons) (46¢ Forever)	May 15	San Antonio, TX 78284	PSA pane of 16 (C)	Jul 14
N	A Flag for All Seasons (46¢ Forever)	May 17	Rochester, NY 14692 (ROPEX/NTSS Stamp Show)	PSA booklet of 20 (M) 2 versions, Sennett and Ashton Potter	Jul 16

NOTE	ISSUE	NATIONWIDE FIRST-DAY- OF-ISSUE	FIRST-DAY CITY/STATE	FORMAT	DEADLINE
N	Civil War 1863 - Vicksburg (46¢ Forever) Civil War 1863 - Gettysburg (46¢ Forever)	May 23	Vicksburg, MS 39180 Gettysburg, PA 17325	PSA Souvenir sheet of 12 (C) (2 designs)	Jul 22
N	Johnny Cash (Music Icons) (46¢ Forever)	Jun 5	Nashville, TN 37202	PSA pane of 16 (C)	Aug 4
N	West Virginia Statehood (46¢ Forever)	Jun 20	Charleston, WV 25301	PSA pane of 20 (C)	Aug 19
N	New England Coastal Lighthouses (46¢ Forever)	Jul 13	Portland, ME 04101	PSA pane of 20 (C) (5 designs)	Sep 11
N	New England Coastal Lighthouses (46¢ Forever)	Jul 13	New London, CT 06320	PSA pane of 20 (C) (5 designs)	Sep 11
N	New England Coastal Lighthouses (46¢ Forever)	Jul 13	Narragansett, RI 02882	PSA pane of 20 (C) (5 designs)	Sep 11
N	New England Coastal Lighthouses (46¢ Forever)	Jul 13	Boston, MA 02205	PSA pane of 20 (C) (5 designs)	Sep 11
N	New England Coastal Lighthouses (46¢ Forever)	Jul 13	New Castle, NH 03854	PSA pane of 20 (C) (5 designs)	Sep 11
N	Made in America - Building a Nation (46¢ Forever)	Aug 8	Washington, DC 20066	PSA pane of 12 (12 Designs) 5 Selvage Designs	Oct 7
N	A Flag for All Season (46¢ Forever)	Aug 8	Milwaukee, WI 53203 (APS Stamp Show)	PSA booklet of 20 (M) 1 version, Avery (4 designs)	Oct 7
N	EID (46¢ Forever)	Aug 8	Milwaukee, WI 53203 (APS Stamp Show)	PSA pane of 20 (M)	Oct 7
N	1¢ Bobcat	Aug 9	Milwaukee, WI 53203 (APS Stamp Show)	WAG Coil of 10,000 (M)	Oct 8
N	Folk Art Eagle (46¢ Forever)	Aug 9	Milwaukee, WI 53203 (APS Stamp Show)	WAG Stamped Envelope #10 WAG Stamped Envelope #10W WAD Stamped Envelope #9 WAG Stamped Envelope #9W WAG Envelope #6¾ WAG Envelope #6¾W	Oct 8
N	Folk Art Eagle (46¢ Forever)	Aug 9	Milwaukee, WI 53203 (APS Stamp Show)	PSA Envelope #10 PSA Envelope #10W PSA Envelope #9 PSA Envelope #9W PSA Envelope #6¾ PSA Envelope #6¾W	Oct 8
N	A Flag for All Seasons (46¢ Forever)	Aug 16	Independence, OH 44131 (Americover Stamp Show)	PSA booklet of 10 (4 designs)	Oct 15
N	Althea Gibson (Black Heritage) (46¢ Forever)	Aug 23	Flushing, NY 11355	PSA pane of 20 (C)	Oct 22
N	The 1963 March on Washington (46¢ Forever)	Aug 23	Washington, DC 20066	PSA pane of 20 (C)	Oct 22
N	Battle of Lake Erie (War of 1812) (46¢ Forever)	Sep 10	Put-in-Bay, OH 43456	PSA Souvenir sheet of 20 (C)	Nov 9
N	\$2.00 Stamp Collecting: Inverted Jenny	Sep 22	Washington, DC 20066	PSA Souvenir sheet of 6 (C)	Nov 21
N	Ray Charles (Music Icons) (46¢ Forever)	Sep 23	Los Angeles, CA 90052 Atlanta, GA 30304	PSA pane of 16 (C)	Nov 22
N	Snowflake Presorted Standard	Oct 1	Weston, MO 64098	PSA Coil of 10,000 (M) (5 designs)	Nov 30
N	Christmas Contemporary Poinsettia (46¢ Forever)	Oct 10	New York, NY 10199	PSA booklet of 20 ATM booklet of 18 (M)	Dec 9
N	Virgin & Child by Jan Gossaert (46¢ Forever)	Oct 11	New York, NY 10199	PSA booklet of 20 (M)	Dec 10
N	Holy Family (46¢ Forever)	Oct 11	New York, NY 10199	PSA pane of 20 (M)	Dec 10
N,C	Global Holiday: Evergreen Wreath (\$1.10 Forever)	TBD	TBD	PSA pane of 10 (M)	
N	Hanukkah (46¢ Forever)	Nov TBD	TBD	PSA Pane of 20 (M)	
N	Christmas Contemporary Gingerbread Houses (46¢ Forever)	Nov TBD	TBD	PSA booklet of 20 (4 designs) (M)	
N	Medal of Honor (46¢ Forever)	Nov TBD	Washington, DC 20066	PSA Souvenir sheet of 20 (C) (2 designs)	

NOTE	ISSUE	NATIONWIDE FIRST-DAY- OF-ISSUE	FIRST-DAY CITY/STATE	FORMAT	DEADLINE
N	Harry Potter (46c Forever)	Nov TBD	TBD	TBD	
N	Kwanzaa (46c Forever)	Dec TBD	TBD	PSA pane of 20 (M)	

Note Descriptions

C: Change in previously announced date, site, and/or rate

DC.: Digital Color Postmark

N: New issue

P: Pictorial first day postmark

S: Special Dedication Postmark

(C): Collectible

(M): Mail use

1. Customers must affix additional postage to bring total postage to

at least the minimum First-Class Mail® price for an envelope or stamped card, depending on which is used. Also, the cost for a stamped envelope is the value of the postage plus 11 cents, and the cost for a stamped card is the value of the postage plus 3 cents.

— Stamp Services,
Marketing and Sales, 9-5-13

Pictorial Postmarks Announcement

As a community service, the Postal Service™ offers pictorial postmarks to commemorate local events celebrated in communities throughout the nation. A list of events for which pictorial postmarks are authorized appears below. The sponsor of the pictorial postmark appears in italics under the date. Also provided are illustrations of these postmarks.

People attending these local events may obtain the postmark in person at the temporary Post Office™ station established there. Those who cannot attend the event but who wish to obtain the postmark may submit a mail order request. Pictorial postmarks are available only for the dates indicated, and *requests must be postmarked no later than 30 days following the requested pictorial postmark date.*

All requests must include a stamped envelope or postcard bearing at least the minimum First-Class Mail® postage. Items submitted for postmark may not include

postage issued after the date of the requested postmark. Such items will be returned unserved.

Customers wishing to obtain a postmark should affix stamps to any envelope or postcard of their choice, address the envelope or postcard to themselves or others, insert a card of postcard thickness in envelopes for sturdiness, and tuck in the flap. Place the envelope or postcard in a larger envelope and address it to: Pictorial Postmarks, followed by the Name of the Station, Address, City, State, ZIP+4® Code, as listed below.

Customers can also send stamped envelopes and postcards without addresses for postmark, as long as they supply a larger envelope with adequate postage and their return address. After applying the pictorial postmark, the Postal Service returns the items (with or without addresses) under addressed protective cover.

The following pictorial postmarks have been extended for 30 days:



August 17, 2013

I Spy Reading
I Spy Reading Station
Postmaster
PO Box 9998
Perry, NY 14530-9998



August 23, 2013

United States Postal Service
March on Washington Station
Postmaster
351 24th Street North
Birmingham, AL 35203-9998



Western Minnesota Steam
Threshers Reunion
Rollag Station
Hawley MN 56549
August 30, 2013

August 30–September 2, 2013

United States Postal Service
Rollag Station
Postmaster
503 Front Street
Hawley, MN 56549-9998

September 7, 2013

Windmill Weekend
Committee
Windmill Weekend Station
Postmaster
50 Brackett Road
North Eastham, MA
02651-9998



September 13, 2013

Fort McHenry National Monument
Dedication Station
Main Office Window Service
900 East Fayette Street,
Room 118
Baltimore, MD 21233-9998



Septemberfest Station



September 7, 2013
Septemberfest Committee
Septemberfest Station
Postmaster
220 South Broadway
Pennsville, NJ 08070-9998

September 13, 2013

Buffalo & Erie County Naval
& Military Park
Buffalo Naval and Military
Park Station
Postmaster
1200 William Street,
Room 200
Buffalo, NY 14240-9998



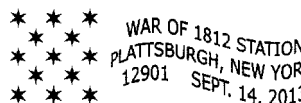
September 7, 2013

Ryegate 250th Committee
Ryegate Station
Postmaster
57 Papermill Road
East Ryegate, VT
05042-9998



September 14, 2013

United States Postal Service
War of 1812 Station
Postmaster
10 Miller Street
Plattsburgh, NY
12901-9998



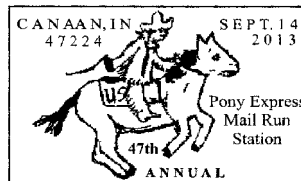
September 7–8, 2013

Omaha Stamp Show
Civil War Station
Postmaster
1124 Pacific Street
Omaha, NE 68108-9998



September 14, 2013

Canaan Restoration Council
47th Annual Pony Express
Mail Run Station
Postmaster
8988 N. Canaan Main Street
Canaan, IN 47224-9998



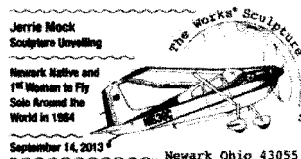
September 13, 2013

ODOT & City of Cascade
Locks Tourism
Cascade Locks Station
Postmaster/Philatelic
Services
461 NW Wanapa Street
Cascade Locks, OR
97014-9998

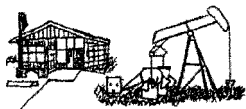


September 14, 2013

United States Postal Service
The Works Sculpture
Station
Postmaster
70 E. Church Street
Newark, OH 43055-9998

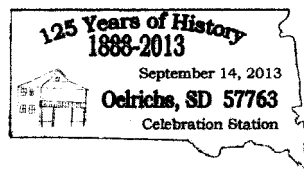


LANCE CREEK STATION TO LUSK STATION
SEPTEMBER 14, 2013



September 14, 2013

Lusk Pony Express
Lance Creek Station to Lusk
Station
Postmaster
PO Box 9998
Lusk, WY 82225-9998



September 14, 2013

*Oelrichs 125th Year
Celebration Committee*
Celebration Station
Postmaster
411 Main Street
Oelrichs, SD 57763-9998



September 14, 2013

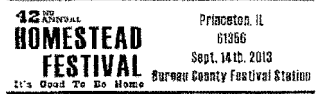
United States Postal Service
McClintock Park Station
Postmaster
PO Box 9998
Laingsburg, MI 48848-9998



110th Anniversary
Of The Mitchell
Carnegie Building
16 Sept 2013

September 16, 2013

Mitchell Carnegie Building
110th Anniversary Station
Postmaster
200 W. 5th Avenue
Mitchell, SD 57301-9998



September 14, 2013

*Homestead Festival
Committee*
Bureau County Festival
Station
Postmaster
326 S. Main
Princeton, IL 61356-9998



25th Anniversary
Mitchell Area
Historical Society
16 Sept 2013

September 16, 2013

*Mitchell Area Historical
Society*
25th Anniversary Station
Postmaster
200 W. 5th Avenue
Mitchell, SD 57301-9998

— Stamp Services,
Marketing and Sales, 9-5-13

How to Order the First-Day-of-Issue Digital Color or Traditional Postmarks

Customers have 60 days to obtain the first-day-of-issue postmarks by mail. They may purchase new stamps at their local Post Office™, by telephone at 800-STAMP-24, or at The Postal Store® website at www.usps.com/shop.

Traditional Postmarks

Customers should affix the stamps to envelopes of their choice, address them to themselves or others, or provide a self-addressed return envelope with sufficient postage large enough to accommodate the canceled item. Mail the request to the corresponding city of issuance. There is no charge for the first 50 postmarks. There is a 5-cent charge for each additional postmark over 50. Customers should submit a check, money order, or credit card for payment. After applying the first-day-of-issue postmark, the Postal Service™ will return the envelopes to the customer by U.S. Mail.

All postmark requests should go to the first-day-of-issue city. The first-day-of-issue city Post Office will then forward in bulk all postmark requests to Cancellation Ser-

vices, Stamp Fulfillment Services, PO Box 449992, Kansas City, MO 64144-9992 by respective Post Offices.

Digital Color Postmarks

Only select stamp issues offer a digital color postmark. Customers may submit #6 or #10 envelopes constructed of paper rated as "laser safe." The Postal Service recommends envelopes of 80-pound Accent Opaque, acid-free, 9/16" side seams with no glue on the flap. The maximum size of all digital color postmarks is 2" high x 4" long. Allow sufficient space on the envelope to accommodate the postmark. Do not use self-adhesive labels for addresses on the envelope. Two test envelopes must be included. There is a minimum of 10 envelopes at 50 cents per postmark required at the time of servicing. Customers should submit a check, money order, or credit card for payment.

The Postal Service reserves the right to not accept hand-painted and other cachet envelopes that are not compatible with our digital color postmark equipment. The Postal Service also reserves the right to substitute traditional black rubber postmarks if use of nonspecified enve-

lopes results in poor image quality or damage to equipment.

Customers should affix the stamps to the envelopes and address them to themselves or others for return through the mail. Or, they may include an additional self-addressed return envelope, large enough to accommodate their canceled items, with sufficient postage affixed for return of their postmarked items. Mail the request for a first-day-of-

issue digital color postmark to the corresponding city of issuance. Post Offices will then forward all customer requests for digital color postmarks to Cancellation Services, Stamp Fulfillment Services, PO Box 449992, Kansas City, MO 64144-9992.

After applying the first-day-of-issue postmark, the Postal Service will return the envelopes to the customer by U.S. Mail.



Digital Color Pictorial

New England Coastal Lighthouse (Boston Harbor) Stamp

Postmaster
25 Dorchester Avenue, Rm. 3011
Boston, MA 02205-9600

September 13, 2013

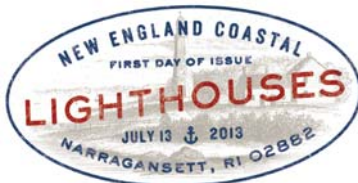


Digital Color Pictorial

New England Coastal Lighthouse (New London Harbor) Stamp

Postmaster
27 Masonic Street
New London, CT 06320-9998

September 13, 2013



Digital Color Pictorial

New England Coastal Lighthouse (Point Judith) Stamp

Postmaster
551 Kingstown Road
Wakefield, RI 02879-9998

September 13, 2013



Digital Color Pictorial

New England Coastal Lighthouse (Portland Head) Stamp

Postmaster
125 Forest Avenue
Portland, ME 04101-9998

September 13, 2013



Digital Color Pictorial

New England Coastal Lighthouse (Portsmouth Harbor) Stamp

Postmaster
73 Main Street
New Castle, NH 03854-9998

September 13, 2013



Digital Color Pictorial

Eid Stamp

Main Office Window Unit
PO Box 5066
Milwaukee, WI 53201-5066

October 8, 2013



Digital Color Pictorial

Bobcat Stamp

Main Office Window Unit
PO Box 5066
Milwaukee, WI 53201-5066

October 9, 2013



Digital Color Pictorial

A Flag for All Seasons Stamp

Main Office Window Unit
PO Box 5066
Milwaukee, WI 53201-5066

October 8, 2013



Digital Color Pictorial

A Flag for All Seasons Stamp

Marketing
2200 Orange Avenue, Rm. 206
Cleveland, OH 44101-9996

October 16, 2013



Digital Color Pictorial

Made in America ~ Building a Nation Stamps

Special Cancellations
PO Box 92282
Washington, DC 20090-2282

October 8, 2013



Black and White Pictorial

Made in America ~ Building a Nation Stamps

Special Cancellations
PO Box 92282
Washington, DC 20090-2282

October 8, 2013



Digital Color Pictorial

Althea Gibson Stamp

Retail Manager
1050 Forbell Street
Brooklyn, NY 11256-9998

October 23, 2013



Althea Gibson Stamp
Retail Manager
1050 Forbell Street
Brooklyn, NY 11256-9998

October 23, 2013

Black and White Pictorial



War of 1812: Battle of Lake Erie Stamp
Postmaster
2200 Orange Avenue, Rm. 206
Cleveland, OH 44101-9998

November 10, 2013

Digital Color Pictorial



War of 1812: Battle of Lake Erie Stamp
Postmaster
2200 Orange Avenue, Rm. 206
Cleveland, OH 44101-9998

November 10, 2013

Black and White Pictorial



Stamp Collecting: Inverted Jenny Stamp
Special Cancellations
PO Box 92282
Washington, DC 20090-2282

November 22, 2013

Digital Color Pictorial



Stamp Collecting: Inverted Jenny Stamp
Special Cancellations
PO Box 92282
Washington, DC 20090-2282

November 22, 2013

Black and White Pictorial



Ray Charles Stamp (Atlanta)
(Address Unavailable)

November 23, 2013

Digital Color Pictorial



Ray Charles Stamp (Atlanta)
(Address Unavailable)

November 23, 2013

Black and White Pictorial



Digital Color Pictorial

Ray Charles Stamp (Los Angeles)
(Address Unavailable)

November 23, 2013



Black and White Pictorial

Ray Charles Stamp (Los Angeles)
(Address Unavailable)

November 23, 2013



Digital Color Pictorial

Poinsettia Stamp
Special Events Coordinator
380 W. 33rd Street, Rm. 4032
New York, NY 10199-9998

December 10, 2013



Digital Color Pictorial

Virgin and Child by Jan Gossaert Stamp
Special Events Coordinator
380 W. 33rd Street, Rm. 4032
New York, NY 10199-9998

December 11, 2013



Digital Color Pictorial

Holy Family Stamp
Special Events Coordinator
380 W. 33rd Street, Rm. 4032
New York, NY 10199-9998

December 11, 2013

Sustainability

Use Slim Jims – Secured Lobby Recycling Containers



To demonstrate the USPS® Green commitment, Post Offices™ are encouraged to participate in the Post Office Box Lobby Recycling Program. Your PO Box™ customers can recycle their mail in specially designed secured recycling containers that the Postal Service™ has deployed to more than 12,000 Post Offices with PO Box lobbies nationwide. These secure containers carry the message, “Read, Respond, and Recycle Your Mail.”

The Postal Service can make significant reductions in its solid waste disposal costs if customers recycle their mail after they have finished with it. By offering customers the opportunity to recycle their mail right in the lobby, the USPS can also play an important role in meeting customers’ environmental expectations. Now is a very good time to renew our customer’s participation in USPS recycling and sustainability programs. Containers are offered on a first come, first served basis, while supplies last.

Affected Postmasters should use the eBuy on-catalog requisition system to order the “Slim Jim” secure recycling containers from the Topeka, Kansas Material Distribution Center. Search for items using the PSN number listed below (without the dashes). If your office does not have access to eBuy, order using touch-tone order entry (TTOE): Call 800-273-1509.

Note: You must be registered to use TTOE. To register, call 800-332-0317, option 1, extension 2925, and follow the prompts to leave a message. Please wait 48 hours after registration before placing your first order. For complete TTOE ordering instructions, visit the Materials Customer Service website at http://blue.usps.gov/purchase/_doc/ops_ttoeins.doc or call 800-332-0317, option 4, option 4.

Use the following information to order Slim Jims. Order containers based on the rule of thumb that one container serves up to 500 active PO boxes. If two containers are needed (i.e. Slim Jim Double), order PSN 4250-15-000-0664. If three containers are needed (i.e., Slim Jim Double and Slim Jim Single), order the single and double container. Maximum order is limited to three containers.

Single

Description:	Container, Recycled Lobby Mail, 23 GL W/LOCKING LID (QTY = 1 EA)
PSN:	4250-12-000-7649
Unit of Measure:	EA
Minimum Order Quantity:	1
Bulk Pack Quantity:	1
Quick Pick Number:	N/A
Price:	\$0.00
Edition Date:	NA

Double

Description:	Container, Recycled Lobby Mail, 23 GL W/LOCKING LID (QTY = 2 EA)
PSN:	4250-15-000-0664
Unit of Measure:	EA
Minimum Order Quantity:	2
Bulk Pack Quantity:	2
Quick Pick Number:	N/A
Price:	\$0.00
Edition Date:	NA

— Corporate Sustainability Initiatives,
Office of Sustainability, 9-5-13



475 L'ENFANT PLAZA SW
WASHINGTON DC 20260-5540

First-Class Mail
Postage & Fees Paid
USPS
Permit No. G-10

The background of the main text area is a collage. It features a large, stylized "USPS" logo in white with a black outline. Behind the logo, there are images of US dollar bills and the dome of the United States Capitol building. The text "receives no federal tax dollars for its operations." is written in a white, sans-serif font with a black outline, stacked in four lines below the logo.

USPS[®]

receives no
federal tax
dollars for its
operations.