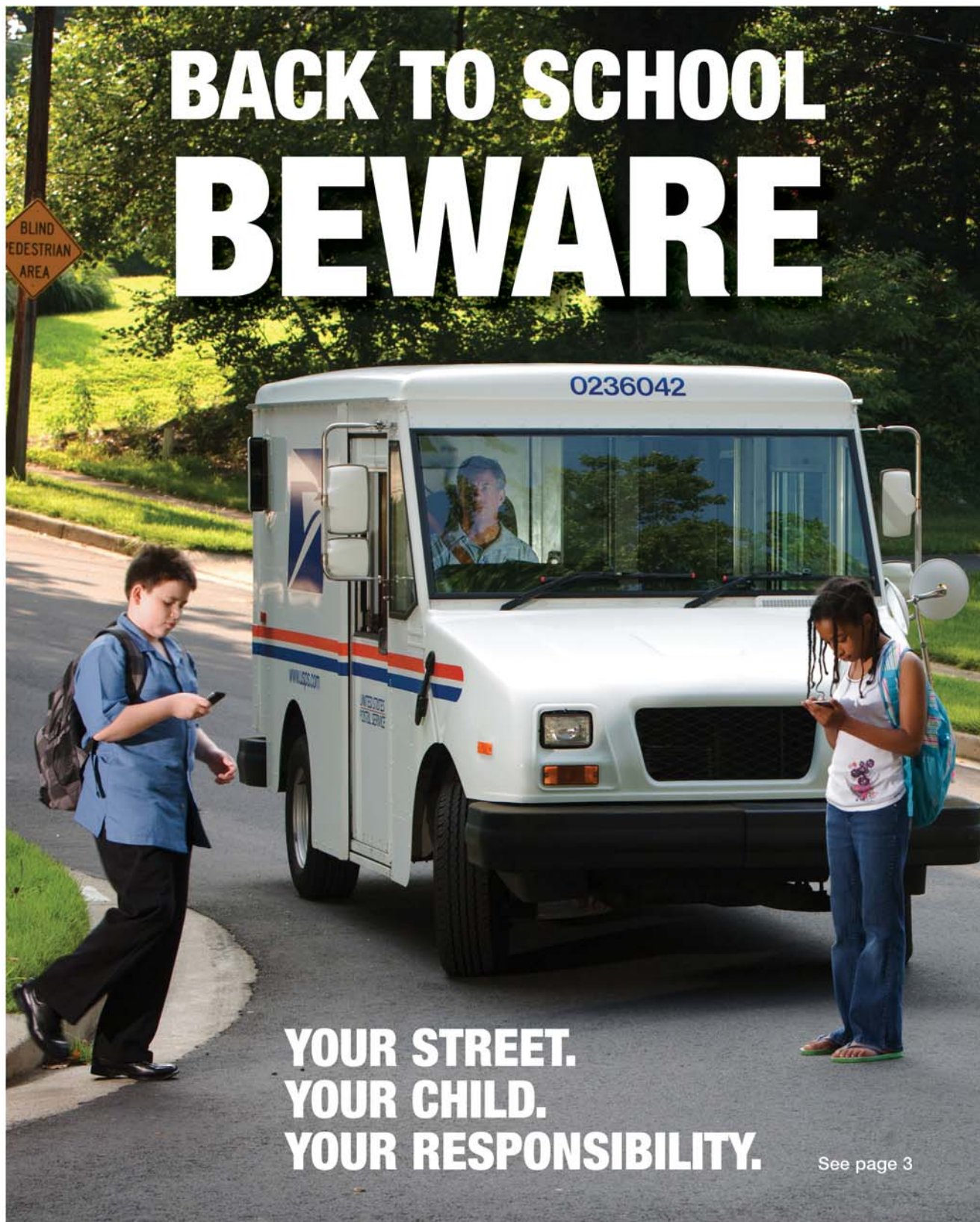


usps postal|bulletin

PUBLISHED SINCE MARCH 4, 1880



BACK TO SCHOOL BEWARE

**YOUR STREET.
YOUR CHILD.
YOUR RESPONSIBILITY.**

See page 3



Contents

COVER STORY

Be Aware! It's Back to School Time 3

POLICIES, PROCEDURES, AND FORMS UPDATES

Handbooks

Handbook AS-701 Revision: Reporting and Disposing of Inspection Service Items 4
Revised Handbook AS-805, Information Security 4

Publications

Publication 431 Revision: Changes to Post Office Box Service and Caller Service Fee Groups 5

ORGANIZATION INFORMATION

Address Management

Post Office Changes 6

Finance

Fiscal Year 2011 Closing Guidance: Message from the Controller 10

Mailing and Shipping Services

Qualified Business Reply Mailers Transitioning to the Intelligent Mail Barcode 12
Mail Alert 13
Upgrades to Every Door Direct Mail Simplified Mailing Process Tool 13

Retail

Stop Sending Copies of PS form 8176, Premium Forwarding Service Application to Headquarters 14

Stamps/Philately

Stamp Announcement 11-39: Lady Liberty and U.S. Flag 15
Stamp Announcement 11-40: Barbara Jordan 33
Stamp Announcement 11-41: Save Vanishing Species 35
Stamp Announcement 11-42: Romare Bearden 38
Stamp Stock Items Withdrawn From Regular Sale and From Sale at Philatelic Centers 40
Pictorial Postmarks Announcement 41
How to Order the First Day of Issue Digital Color or Traditional Postmarks 45

PULL-OUT INFORMATION

Fraud

Withholding of Mail Orders 17
Invalid Express Mail Corporate Account Numbers 17
Missing, Lost, or Stolen U.S. Money Order Forms 19
Missing, Lost, or Stolen Canadian Money Order Forms 24
Verifying U.S. Postal Service Money Orders 26
Counterfeit Canadian Money Order Forms 26
Toll-Free Number Available to Verify Canadian Money Orders 26

Other Information

Overseas Military/Diplomatic Mail 27
Displaying the U.S. Flag and the POW-MIA Flag 32

Postal Bulletin Index

Semi-Annual Index PB 22315 (7-18-11)



Save Vanishing Species Stamp

USPS National Emergency Hotline
Is your facility operating? Call 888-363-7462



UNITED STATES
POSTAL SERVICE®

Cover Story

Be Aware! It's Back to School Time

Beginning in August, children start returning to school. This means an increase in young pedestrians wandering into roadways or darting from hidden places. More than ever, drivers need to take extra precautions to avoid accidents with pedestrians.

We are all familiar with the need to be extra careful when driving at or near schools or playgrounds. But, there are several precautions drivers need to adopt while driving through residential areas:

1. Avoid distracted driving. Limit the following while driving:
 - Cell phone use.
 - Eating and drinking.
 - Radio use.
 - Talking to passengers.
2. Be especially alert for children riding bikes and waiting at bus stops.
3. Be aware of the effects of excessive sunlight on your sight.
4. Go as slowly as you need to ensure the safety of yourself and others.

We urge all of you to be extra cautious now that school is open. Let's protect our most precious commodity — our children. Drive defensively at all times, whether you're on the clock or off.

— *Testing and Assessment, Employee Resource Management, 8-25-11*

Policies, Procedures, and Forms Updates

Handbooks

Handbook AS-701 Revision: Reporting and Disposing of Inspection Service Items

Effective immediately, Handbook AS-701, *Material Management*, is revised to update the policy for reporting and disposing of Inspection Service controlled items.

Handbook AS-701, *Material Management*

	*	*	*	*	*
6	Asset Recovery: Redistribution, Recycling, and Disposal				
	*	*	*	*	*
62	Material Identification and Reporting				
	*	*	*	*	*
624	Reporting of Inactive Inventory				
	*	*	*	*	*
624.2	Reporting Methods				
	*	*	*	*	*
624.24	Special Equipment Reporting				
	*	*	*	*	*

624.243 Inspection Service Items

[Revise text to read as follows:]

Excess Inspection Service controlled items (see Exhibit 624.243) are reported by memorandum to the local postal inspector in charge and listed on the EIC. See section 645.2

for recycling and disposal instructions for Inspection Service controlled items.

* * * * *

Exhibit 624.243 Special Approval for Inspection Service–Controlled Items

[Replace reference to “EXSEL” with “EIC”.]

	*	*	*	*	*
64	Recycling and Disposal				
	*	*	*	*	*
645	Material Requiring Special Approval				
	*	*	*	*	*

645.2 Inspection Service Controlled Items

[Revise text to read as follows:]

Inspection Service controlled items (see Exhibit 624.243) that are identified for disposal must be reported to the local postal inspector in charge who will issue disposition instructions. Security containers (aka “safes”) must have the entire locking mechanism including the internal linkages in the door removed before they can be sold, recycled, or otherwise trashed.

* * * * *

— *Asset Management Performance and Accountability, Supply Management, 8-25-11*

Revised Handbook AS-805, Information Security

Effective immediately, Handbook AS-805, *Information Security*, is revised. The July 2011 edition has been updated to do the following:

- Align responsibilities of vice presidents of functional areas and executive sponsors, and align responsibilities of vice president of IT Operations and portfolio managers.
- Add responsibilities for functional system coordinators.
- Add generic architectural standards.
- Clarify requirements for protecting nonpublic Postal Service™ information.
- Address separation of duties of developers.
- Update the requirements associated with the development, system integration testing (SIT), and customer acceptance testing (CAT) environments.
- Address single sign-on.
- Remove references to Access Control Facility (ACF2).
- Implement Office of Inspector General (OIG) audit findings.
- Implement Sarbanes-Oxley Act (SOX) recommendations.

- Describe the implementation of the data loss prevention (DLP) program.
- Update wireless requirements.
- Add Consensus Audit Guidelines to address the continuing monitoring requirements delineated in National Institute of Standards and Technology Special Publication 800-53.

Handbook AS-805 is now available on the Postal Service PolicyNet website:

- Go to <http://blue.usps.gov>.
- Under “Essential Links” in the left-hand column, click *PolicyNet*.
- On the PolicyNet page, click *HBKs*.

(The direct URL for the Postal Service PolicyNet website is <http://blue.usps.gov/cpim>.)

The direct URLs for Handbook AS-805 (July 2011) are:

- PDF version: <http://about.usps.com/handbooks/as805.pdf>
- HTML 508-compliant version: <http://about.usps.com/handbooks/as805/welcome.htm>

Note: Offices should update references/links to Handbook AS-805 in local documents.

— Corporate Information Security,
Chief Information Officer, 8-25-11

Publications

Publication 431 Revision: Changes to Post Office Box Service and Caller Service Fee Groups

Effective August 25, 2011, Publication 431, *Post Office Box Service and Caller Service Fee Groups*, is revised to include the following changes.

Publication 431, *Post Office Box Service and Caller Service Fee Groups*

* * * * *

[Add the following entries:]

ZIP Code	Fee Group
95417	3

* * * * *

[Revise the following entries:]

ZIP Code	Fee Group
92605	5

* * * * *

[Delete the following entries:]

ZIP Code
13342
25152
54434

The online version of Publication 431 is dated July 2010. Publication 431 is currently available on the Postal Service™ PolicyNet website (<http://blue.usps.gov/cpim>):

- Go to <http://blue.usps.gov>.
- Under “Essential Links” in the left-hand column, click *PolicyNet*.
- Click *PUBs*.

Offices with WebBATS access can view current Publication 431 information by generating a WebBATS Facility Information Report as follows:

1. Go to the WebBATS main menu, and select *Reports*. The reports page opens.
2. Under the Clients/System column, System category, click *Facility Information*.
3. View the Fee Group field in the report.

— Special Services,
Channel Access, 8-25-11

Organization Information

Address Management

Post Office Changes

Old/ New	Finance No.	ZIP Code	State	P.O. Name	County/ Parish	Station/Branch/ Unit	Unit Type	Effective Date	Comments
Old New	05-5508 05-5508	94612 94612	CA CA	Oakland Oakland	Alameda Alameda	Kaiser Center Main Office	Classified Station Post Office	05/20/2011 05/20/2011	Classified station discontinued. Retain ZIP Code™. Continue to use Oakland CA 94612 as last line of address.
Old New	05-6462 05-6462	94804 94804	CA CA	Richmond Richmond	Contra Costa Contra Costa	Station A Main Office	Classified Station Post Office	05/31/2011 05/31/2011	Classified station discontinued. Retain ZIP Code. Continue to use Richmond CA 94804 as last line of address.
Old New	05-6834 05-6834	95116 95116	CA CA	San Jose San Jose	Santa Clara Santa Clara	Station D Main Office	Classified Station Post Office	03/31/2011 03/31/2011	Classified station discontinued. Retain ZIP Code. Continue to use San Jose CA 95116 as last line of address.
Old New	18-2565 18-8217	50433 50433	IA IA	Dougherty Sheffield	Cerro Gordo Cerro Gordo	Main Office Dougherty	Post Office Place Name	10/30/2009 07/13/2011	Post Office™ discontinued. Retain ZIP Code. Establish a place name. Continue to use Dougherty IA 50433 as last line of address.
Old New	18-1377 18-1377	52573 52573	IA IA	Cantril Cantril	Van Buren Van Buren	Mount Sterling Mount Sterling	Community Post Office Place Name	03/26/2004 03/26/2004	Community Post Office discontinued. Retain ZIP Code. Establish a place name. Continue to use Mount Sterling IA 52573 as last line of address.
Old New	18-7596 18-3762	50657 50657	IA IA	Reinbeck Grundy Center	Grundy Grundy	Morrison Morrison	Community Post Office Place Name	06/24/2011 06/24/2011	Community Post Office discontinued. Retain ZIP Code. Establish a place name. Continue to use Morrison IA 50657 as last line of address. This amends <i>Postal Bulletin 22315</i> .
Old New	16-1542 16-1542	60649 60649	IL IL	Chicago Chicago	Cook Cook	Station N Main Office	Classified Station Post Office	05/14/2011 05/14/2011	Classified station discontinued. Retain ZIP Code. Continue to use Chicago IL 60649 as last line of address.
Old New	17-4037 17-4037	46231 46231	IN IN	Indianapolis Indianapolis	Marion Marion	Bridgeport Main Office	Classified Branch Post Office	07/02/2011 07/02/2011	Classified branch discontinued. Retain ZIP Code. Continue to use Indianapolis IN 46231 as last line of address.

Old/ New	Finance No.	ZIP Code	State	P.O. Name	County/ Parish	Station/Branch/ Unit	Unit Type	Effective Date	Comments
Old New	17-2409 17-2409	46312 46312	IN IN	East Chicago East Chicago	Lake Lake	Chicago Avenue Main Office	Classified Station Post Office	07/02/2011 07/02/2011	Classified station discontinued. Retain ZIP Code. Continue to use East Chicago IN 46312 as last line of address.
Old New	17-1441 17-5225	47110 47142	IN IN	Central Mauckport	Harrison Harrison	Main Office Central	Post Office Place Name	07/09/2011 08/13/2011	Post Office discontinued. Retain ZIP Code. Establish a place name. Continue to use Central IN 47110 as last line of address.
Old New	20-8240 20-8240	41477 41477	KY KY	West Liberty West Liberty	Morgan Morgan	Wrigley Wrigley	Community Post Office Place Name	07/31/2010 07/31/2010	Community Post Office discontinued. Retain ZIP Code. Establish a place name. Continue to use Wrigley KY 41477 as last line of address.
Old New	20-7108 20-8476	41255 41255	KY KY	Sitka Wittensville	Johnson Johnson	Main Office Sitka	Post Office Place Name	07/16/2011 07/16/2011	Post Office discontinued. Retain ZIP Code. Establish a place name. Continue to use Sitka KY 41255 as last line of address.
Old New	20-5576 20-6328	42441 42441	KY KY	Nebo Providence	Hopkins Hopkins	Main Office Nebo	Post Office Place Name	11/27/2009 08/13/2011	Post Office discontinued. Retain ZIP Code. Establish a place name. Continue to use Nebo KY 42441 as last line of address.
Old New	24-0799 24-0799	02119 02119	MA MA	Boston Boston	Suffolk Suffolk	Main Office Roxbury	Post Office Place Name	07/30/2011	This announcement changes the preferred last line of this ZIP Code from Boston MA to Roxbury MA. Use Roxbury MA 02119 as last line of address.
Old New	24-0799 24-0799	02120 02120	MA MA	Boston Boston	Suffolk Suffolk	Main Office Roxbury Crossing	Post Office Place Name	07/30/2011	This announcement changes the preferred last line of this ZIP Code from Boston MA to Roxbury Crossing MA. Use Roxbury Crossing MA 02120 as last line of address.
Old New	24-0799 24-0799	02121 02121	MA MA	Boston Boston	Suffolk Suffolk	Main Office Dorchester	Post Office Place Name	07/30/2011	This announcement changes the preferred last line of this ZIP Code from Boston MA to Dorchester MA. Use Dorchester MA 02121 as last line of address.

Old/ New	Finance No.	ZIP Code	State	P.O. Name	County/ Parish	Station/Branch/ Unit	Unit Type	Effective Date	Comments
Old New	24-0799 24-0799	02122 02122	MA MA	Boston Boston	Suffolk Suffolk	Main Office Dorchester	Post Office Place Name	07/30/2011	This announcement changes the preferred last line of this ZIP Code from Boston MA to Dorchester MA. Use Dorchester MA 02122 as last line of address.
Old New	24-0799 24-0799	02125 02125	MA MA	Boston Boston	Suffolk Suffolk	Main Office Dorchester	Post Office Place Name	07/30/2011	This announcement changes the preferred last line of this ZIP Code from Boston MA to Dorchester MA. Use Dorchester MA 02125 as last line of address.
Old New	25-2400 25-2400	48128 48128	MI MI	Dearborn Dearborn	Wayne Wayne	Teleford Main Office	Classified Station Post Office	06/25/2011 06/25/2011	Classified station discontinued. Retain ZIP Code. Continue to use Dearborn MI 48128 as last line of address.
Old New	25-2490 25-2490	48211 48211	MI MI	Detroit Detroit	Wayne Wayne	Fisher Main Office	Classified Station Post Office	06/25/2011 06/25/2011	Classified station discontinued. Retain ZIP Code. Continue to use Detroit MI 48211 as last line of address.
Old New	28-0204 28-8646	63432 63432	MO MO	Arbela Wyaconda	Scotland Scotland	Main Office Arbela	Post Office Place Name	07/16/2011 07/16/2011	Post Office discontinued. Retain ZIP Code. Establish a place name. Continue to use Arbela MO 63432 as last line of address.
Old New	28-1638 28-4488	63535 63535	MO MO	Coatsville Lancaster	Schuyler Schuyler	Main Office Coatsville	Post Office Place Name	07/30/2011 07/30/2011	Post Office discontinued. Retain ZIP Code. Establish a place name. Continue to use Coatsville MO 63535 as last line of address.
Old New	36-8888 36-8888	28784 28784	NC NC	Zirconia Zirconia	Henderson Henderson	Tuxedo Tuxedo	Community Post Office Place Name	05/26/2011 07/25/2011	Community Post Office discontinued. Retain ZIP Code. Establish a place name. Continue to use Tuxedo NC 28784 as last line of address.
Old New	36-2912 36-2912	28052 28052	NC NC	Gastonia Gastonia	Gaston Gaston	West Gastonia Main Office	Classified Station Post Office	07/16/2011 07/29/2011	Classified station discontinued. Retain ZIP Code. Continue to use Gastonia NC 28052 as last line of address.
Old New	35-0515 35-5015	11030 11030	NY NY	Manhasset Manhasset	Nassau Nassau	Strathmore Main Office	Classified Branch Post Office	04/09/2011 05/19/2011	Classified branch discontinued. Retain ZIP Code. Continue to use Manhasset NY 11030 as last line of address.

Old/ New	Finance No.	ZIP Code	State	P.O. Name	County/ Parish	Station/Branch/ Unit	Unit Type	Effective Date	Comments
Old New	38-8908 38-4515	44492 44492	OH OH	West Point Lisbon	Columbiana Columbiana	Main Office West Point	Post Office Place Name	09/30/2008 07/23/2011	Post Office discontinued. Retain ZIP Code. Establish a place name. Continue to use West Point OH 44492 as last line of address.
Old New	40-6784 40-6784	97205 97205	OR OR	Portland Portland	Multnomah Multnomah	Solomon Courthouse Main Office	Classified Station Post Office	01/28/2011 01/28/2011	Classified station discontinued. Retain ZIP Code. Continue to use Portland OR 97205 as last line of address.
Old New	41-1392 41-0952	15828 15828	PA PA	Clarington Brookville	Forest Forest	Main Office Clarington	Post Office Place Name	02/20/2004 02/20/2004	Post Office discontinued. Retain ZIP Code. Establish a place name. Continue to use Clarington PA 15828 as last line of address.
Old New	41-9236 41-8380	16261 16261	PA PA	Widnoon Templeton	Armstrong Armstrong	Main Office Widnoon	Post Office Place Name	02/03/2005 02/03/2005	Post Office discontinued. Retain ZIP Code. Establish a place name. Continue to use Widnoon PA 16261 as last line of address.
Old New	41-9152 41-7408	15565 15565	PA PA	West Salisbury Salisbury	Somerset Somerset	Main Office West Salisbury	Post Office Place Name	08/20/2004 07/23/2011	Post Office discontinued. Retain ZIP Code. Establish a place name. Continue to use West Salisbury PA 15565 as last line of address.
Old New	41-3952 41-5008	16645 16645	PA PA	Irvona Madera	Clearfield Clearfield	Glen Hope Glen Hope	Community Post Office Place Name	07/31/2010 07/31/2010	Community Post Office discontinued. Retain ZIP Code. Establish a place name. Continue to use Glen Hope PA 16645 as last line of address.
Old New	56-5480 56-5480	53235 53235	WI WI	Milwaukee Milwaukee	Milwaukee Milwaukee	Main Office Saint Francis	Post Office Place Name	07/30/2011	This announcement changes the preferred last line of this ZIP Code from Milwaukee WI to Saint Francis WI. Use Saint Francis WI 53235 as last line of address.

Finance

Fiscal Year 2011 Closing Guidance: Message from the Controller

I ask that each of you continue your efforts to control expenses. It is important that we carry this effort through to the end of the fiscal year by controlling discretionary activity. This does not mean curtailing business, but it does mean making prudent choices by deferring or eliminating noncritical activity, and purchasing goods or services throughout the year, rather than at the end of the fiscal year, simply because there are available budget funds. Please encourage your contractors to bill us in a timely manner for goods received and services rendered, so we can recognize the expense before the end of the fiscal year.

The following instructions will assist you, when appropriate, in helping the Postal Service™ close its financial books in a timely and efficient manner.

Tim O'Reilly
Vice President, Controller

I. Instructions for Fiscal Year 2011 Closing

All organizations are requested to limit their expenditures to essential spending. Accordingly, all vice presidents should review discretionary spending to ensure the Postal Service attains its financial target for this fiscal year (FY).

The instructions and reporting dates in this *Postal Bulletin* supplement procedures followed during the normal monthly or quarterly reporting schedule.

II. Fiscal Year

The Postal Service prepares its annual reports on a government FY basis, which comprises 365 days (366 in leap years), always ending on September 30.

III. End of Year Processing Activities and Timelines, Contract Modifications, and Requisitions

Capital and expense requisitions and requests for contract modifications will not be accepted by Supply Management after September 2.

Capital purchase card transactions will be accepted by Supply Management through September 12. **Note:** If the transaction is not processed by the vendor within the VISA monthly cut-off (i.e., September 18), the transaction will be applied to FY 2012.

Also, organizations should limit capital commitments, particularly for Postal Service support equipment, to essential needs.

The schedule for Supply Management processing is as follows:

For requisitions received...	Funds are processed as follows...
On or before September 2, 2011	Supply Management will issue the required contract or modification for Accounting Services, San Mateo, to process against FY 2011 funds.
On or after September 3, 2011	Supply Management will issue the required contract or modification for Accounting Services, San Mateo, to process against FY 2012 funds.

Hardcopy paper commitment documents must be forwarded to Accounting Services, San Mateo, no later than Friday, September 16.

Electronic files must be transmitted to Accounting Services as follows:

Send electronic files for...	To...	No later than...
Contract Authoring and Management System (CAMS)	San Mateo	September 30, 2011
Facilities capital commitments and expense payments	St. Louis	September 30, 2011

Appropriate receiving reports or certified invoices for goods and services received by September 30 must be received by Accounting Services, San Mateo, no later than Monday, October 3.

Note:

1. Expedite processing of receiving reports and certified invoices as these documents are used to charge expense to the proper FY.
2. Additionally, review contracts to ensure sufficient funds are available by Friday, September 2 to process invoices.
3. Supply Management will process all requisitions for the issuance of contracts against FY 2011 funds according to the following priorities:
 - Priority 1 — Capital commitment requisitions.
 - Priority 2 — Expense commitment requisitions.

IV. Accruals

Year-end Closing:

1. Goods received and services rendered through September 30, 2011, will no longer be accrued at a finance number level. Only invoices certified and received by San Mateo by Monday, October 3, will be charged to FY 2011.

Headquarters budget coordinators, engineering coordinators, IT coordinators, and the Office of Inspector General will be required to meet with Corporate Financial Reporting to discuss accrual amounts for both capital and expense items. Accruals must meet the minimums of \$20,000 cumulative per finance number, and additionally each invoice must be at least \$5,000.

V. Submission Schedules (Appendix)

The table below describes the schedule for submitting forms by required submission date.

Form #	Item	Submit by	Submit to	Received by Date
N/A	Back pay awards	All offices	Eagan	August 2
PS 7381	Requisition for Supplies, Services, or Equipment	All offices	Supply Management (HQ)	September 2
PS 1233	Project Financial Change/Completion Report (to add site prep cost to an existing assets or CIP)	St. Louis	San Mateo	September 9
PS 17	Stamp Requisition/Stamp Return	Field offices	SSC/SDO	September 12
PS 1839	Payment Record for Carrier Drive Out Agreements	Field offices	Scanning & Imaging Ctr.	September 12
PS 1164-A	Claim for Reimbursement for Postal Supervisors (for Employee Business Expenses only)	Field offices	Scanning & Imaging Ctr.	September 12
N/A	E-mail from HQ Asset Mgmt. Budget & cost analyst to add inventory items to fixed assets or CIP	Topeka, KS	San Mateo	September 12
PS 969	Material Recycling and Disposal (retirement)	Field Offices	San Mateo	September 16
PS 2880	Physical Inventory — Certification/Adjustments (retirement or addition)	Field Offices	San Mateo	September 16
N/A	Hardcopy paper commitment documents	Supply Management (HQ)	San Mateo	September 16
PS 8232	Payment for Personal Services Contracts	Field offices	Scanning & Imaging Ctr.	September 19
N/A	All Recognition and Incentive Awards*	All offices	eAwards	September 22
N/A	Government Printing Office	Supply Management (HQ)	San Mateo	September 23
PS 8162	Capital Property Record	Field Offices	San Mateo	September 23
Spreadsheet Capitalization	Addition, adjustment, add-on, etc.	Program Managers through HQ Payable	San Mateo	September 23
PS 4541	Order-Invoice for Vehicle Repair (commercial work order)	Field offices	Support VMF	September 23
PS 4503	Vehicle Delivery Control Sheet	VMF	San Mateo	September 23
PS 4587	Request to Repair, Replace, or Dispose of Postal-Owned Vehicle	VMF	San Mateo	September 23
SF 97	The U.S. Government Certificate of Release of a Motor Vehicle	Field offices	San Mateo	September 23
PS 1902	Justification for Billing Accounts Receivable (nonpayroll)	Field Offices	San Mateo	September 23
N/A	eTravel (approving official)	All offices	St. Louis	September 26
N/A	eTravel (receipts)	All offices	Back Office	September 26
PS 8049	Vehicle Hire Pay Adjustment	Field offices	St. Louis	September 26
N/A	Vehicle Hire Payment Certification reports	Field offices	Support VMF	September 26
N/A	Tort claims	All offices	Scanning & Imaging Ctr.	September 26
PS 8230	Authorization for Payment	All offices	Scanning & Imaging Ctr.	September 27
PS 3533	Application for Refund of Fees, Products and Withdrawal of Customer Accounts	Field offices	Scanning & Imaging Ctr.	September 27
N/A	Government Travel Account (GTA)	St. Louis	St. Louis	September 29
N/A	Telecommunications (CMIS)	Raleigh Network Operations	San Mateo	September 29
PS 3637-G	Batch Header for Official Mail (attach supporting documents)	Field offices	Scanning & Imaging Ctr.	September 30
N/A	CTEL	Profitline	San Mateo	September 30
N/A	Arbitration — related payments	All offices	San Mateo	September 30
PS 2146	Employee's Claim for Personal Property	All offices	San Mateo	September 30

Form #	Item	Submit by	Submit to	Received by Date
N/A	Commitments (CAMS) through APEX-CAMS electronic interface	Supply Management (HQ)	San Mateo	September 30
N/A	Direct vendor delivery (DVD) and eBuy**	Topeka MDC	San Mateo	September 30
N/A	eBuy utilities	All offices	eBuy Post/ Certify Module	September 30
N/A	Material Distribution Mgmt. Sys. (MDIMS) invoices	Topeka, KS	San Mateo	September 30
N/A	National Customer Mgmt. Sys. (NCMS) invoices	Stamp Fulfillment Services	San Mateo	September 30
N/A	Program Cost Tracking Sys. (PCTS) invoices	PCTS Systems Administrator	San Mateo	September 30
N/A	UTIL – Energy Initiatives	Energy United/ NISC	San Mateo	September 30
N/A	Inter-Agency Payment and Collection (IPAC) certified invoices	Field Offices	San Mateo	September 30
N/A	National Transportation Services (NTSP)	Supply Management (HQ)	San Mateo	September 30
PS 1129	Cashier Reimbursement Voucher and/or Accountability Report (Imprest fund)	All offices (Imprest)	San Mateo	September 30
N/A	Gasoline credit card (fleet card)	U.S. Bank	San Mateo	October 1
N/A	Project facility system	Facilities	St. Louis	October 1
N/A	Money order vouchers	Field offices	St. Louis	October 1
NA	Solution for Enterprise Asset Management (SEAM)	Topeka KS	San Mateo	October 1
N/A	BPA cover sheets	All offices	San Mateo	October 3
N/A	National Service Agreement (NSA) certified invoices	Mgr. of Pricing Strategy	San Mateo	October 3
N/A	Capital and expense receiving report	All offices	San Mateo	October 3
N/A	Certified invoices – supplies and services, bulk fuel and oil purchases, motor vehicle parts, nonmetered heating fuel	All offices	San Mateo	October 3
N/A	U.S. Bank VISA accrual	U.S. Bank	San Mateo	October 3
N/A	Relocation Management Firm (RMF) accruals	Accounting, (HQ)	Relocation	October 4
N/A	Commercial Bank Reconciliations	U.S. Bank, JP Morgan Chase, and Citibank	Eagan	October 6

* Per PMG memo dated July 1, awards for nonbargaining employees are suspended.

** Do not place orders for DVD or eBuy purchases from October 1 through October 3, 2011, except for critical needs.

Address questions concerning these instructions to the appropriate Accounting Services location or Finance office indicated in table above.

– Accounting Policy, Controller, 8-25-11

Mailing and Shipping Services

Qualified Business Reply Mailers Transitioning to the Intelligent Mail Barcode

USPS® has revised procedures for Qualified Business Reply Mail™ (QBRM™) customers transitioning to the Intelligent Mail® barcode (IMb™). Unless other aspects of their mailpiece design change, mailers are not required to submit samples or reapply for approval in the QBRM program when transitioning to the IMb by replacing the POST-NET™ barcode with the IMb on existing approved QBRM letters and postcards.

The change makes it easier for mailers to migrate to the 31-digit Intelligent Mail barcode (IMb). The first step to creating BRM with the IMb is for BRM permit holders to obtain a mailer identifier (MID) number. Business mailers can down-

load Business Reply Mail® with Intelligent Mail® Barcodes at <https://www.usps.com/business/doc/BRMIMBInstructions6-22-11.doc>.

To qualify for QBRM prices and fees, valid BRM permit holders must submit a PS Form 6805, *Qualified Business Reply Mail (QBRM) Application*, which can be found at <http://about.usps.com/forms/ps6805.pdf>.

– Transactions & Correspondence,
Domestic Products, 8-25-11

Mail Alert

The mailings below will be deposited in the near future. Offices should honor the requested home delivery dates. Mailers wishing to participate in these alerts, for mailings of 1 million pieces or more, should contact Business Service Network Integration at 202-268-3258 at least 1 month preceding the requested delivery dates. The Postal Service™

also offers electronic Mail Alerts via ADVANCE. For more information, see the *ADVANCE Notification & Tracking System Technical Guide* on the Internet at http://ribbs.usps.gov/advance/documents/tech_guides/advtech.pdf or contact the National Customer Support Center at 800-238-3150.

Requested Delivery Dates	Title of Mailing	Class and Type of Mail	Number of Pieces (Millions)	Distribution	Presort Level	Comments
08/27/11–08/30/11	jcp — Wk 31 Labor Day Home	Standard Flat & Letter	4.5	National	Car-Rt	Harte-Hanks/RRD
08/29/11–09/01/11	Home at Five	Standard Catalog	1.0	Nationwide	3/5 Digit, Car-Rt	Quad Graphics Lomira, WI
09/06/11–09/09/11	Costco.com Mailer	Standard Flat	2.9	National	3/5 Digit, Car-Rt	Seگردahl Graphics
09/07/11–09/09/11	Nordstrom Sept. Book	Standard Flat	1.825	National	3/5 Digit, Car-Rt	Arandell
09/08/11–09/10/11	jcp — Wk 33 Little Red Book	Standard Flat & Letter	5.7	National	Car-Rt	Harte-Hanks/RRD
09/08/11–09/11/11	jcp — Wk 33 Men’s Matter of Style	Standard Flat & Letter	3.0	National	Car-Rt	Harte-Hanks/RRD

— *Business Service Network Integration, Sales, 8-25-11*

Upgrades to Every Door Direct Mail Simplified Mailing Process Tool

Every Door Direct Mail (EDDM) relies on an online, interactive resource known as the Simplified Mailing Process (SMP) tool (<https://smp.usps.gov/>). The tool helps businesses determine which type of mailing they qualify for (EDDM or EDDM Retail) and which localities to market to, then walks them through the process of selecting carrier routes and producing documentation. Use of the tool is optional for mailers.

The SMP tool requires frequent updating to stay current. Its first revision, being issued this month, features the following:

- A mapping upgrade (effective August 19) so mailers can locate new streets missing from the earlier version of the tool.

- Easier navigation.
- Modifications so the SMP tool will now identify carrier routes with fewer than 200 delivery points.

Mapping upgrades will occur twice a year.

For more information about EDDM and EDDM Retail, go to www.uspseverydoor.com/.

— *Transactions & Correspondence, Domestic Products, 8-25-11*

Retail

Stop Sending Copies of PS form 8176, Premium Forwarding Service Application to Headquarters

Offices are no longer required to send a copy of PS Form 8176, *Premium Forwarding Service® (PFS®) Application*, to Headquarters (HQ). In 2005, the application was a four-part form and “Distribution: Copy 3 — HQ” was sent to Headquarters. The form has been revised multiple times and “Distribution: Copy 3 — HQ” has not been a part of the application for several years, but we continue to get copies of the application. Many offices continue to use the 2005 or 2006 edition of the form, and others are making copies of “Distribution: Copy 1 — Post Office” and sending it to HQ.

Please use the most current, January 2011, edition of the form. It has a new format and the Terms and Conditions have been updated. You can order the current edition of the form from the Material Distribution Center and use touch-tone order entry (TTOE). Call 800-273-1509.

Note: You must be registered to use TTOE. To register, call 800-332-0317, option 1, extension 2925, and follow the prompts to leave a message. (Wait 48 hours after registering before placing your first order.)

Use the following information to order PS Form 8176:

PSIN:	PS 8176
PSN:	7530-07-000-6197
Unit of Measure:	EA
Minimum Order Quantity:	1
Maximum Order Quantity:	1000
Bulk Pack Quantity:	1000
Quick Pick Number:	640
Price:	\$0.0712
Edition Date:	01/11

See Publication 621, *PFS Guidebook for Employees*, for PFS rules. You can access Publication 621 online at <http://blue.usps.gov/cpim/ftp/pubs/pub621.pdf>.

— Special Services,
Channel Access, 8-25-11

Stamps/Philately

Stamp Announcement 11-39: Lady Liberty and U.S. Flag



© 2010 USPS

On September 14, 2011, in Washington, DC, the Postal Service™ will issue a *Lady Liberty and U.S. Flag* stamp (Forever® priced at 44 cents), se-tenant pair (two designs) in a pressure-sensitive adhesive (PSA) double-sided booklet of 20 stamps (Item 679400).

The *Lady Liberty and U.S. Flag* se-tenant stamps feature photographs of world-recognized symbols of the United States. Raimund Linke's close-photograph of the Lady Liberty replica at the New York-New York Hotel & Casino in Las Vegas, Nevada, appears on the stamp art. The photograph of the U.S. flag is by Ron Watts. Terrence W. McCafrey was the art director.

The stamp will go on sale nationwide September 14, 2011.

Distribution: Item 679400, First-Class Mail Lady Liberty and U.S. Flag (Forever priced at 44 cents), PSA Double-Sided Booklet of 20 Stamps

Stamp distribution offices (SDOs) and stamp distribution centers (SDCs) will receive a standard distribution of the *Lady Liberty and U.S. Flag* (Forever @ 44 cents) stamp. Distributions are rounded up to the nearest master carton size of 4,000 booklets.

Initial Supply to Post Offices

SDOs/SDCs will not make a subsequent automatic distribution to Post Offices for this item. *Post Offices may order this new First-Class Mail® Forever book from their designated SDC/SDO. Post Offices may preorder this item 30 days before the September 14 first day issue date to*

ensure their office has quantity available. SDOs/SDCs should not distribute Item 679400 to Post Offices before August 31, 2011.

How to Order the First Day of Issue Postmark

Customers have 60 days to obtain the first day of issue postmark by mail. They may purchase new stamps at their local Post Office™ facility, at The Postal Store® website at www.usps.com/shop, or by calling 800-STAMP-24. They should affix the stamps to envelopes of their choice, address the envelopes (to themselves or others), and place them in a larger envelope addressed to:

Lady Liberty and U.S. Flag Stamp
Special Cancellations
PO Box 92282
Washington, DC 20090-2282

After applying the first day of issue postmark, the Postal Service will return the envelopes through the mail. There is no charge for the postmark. All orders must be postmarked by November 14, 2011.

How to Order First Day Covers

Stamp Fulfillment Services also offers first day covers for new stamp issues and Postal Service stationery items postmarked with the official first day of issue cancellation. Each item has an individual catalog number and is offered in the quarterly *USA Philatelic Catalog*. Customers may request a free catalog by calling 800-STAMP-24 or writing to:

Information Fulfillment
Dept. 6270
U.S. Postal Service
PO Box 219014
Kansas City, MO 64121-9014

Philatelic Products

There is one philatelic product available for this stamp issue:

- 679463*, First Day Cover Set of 2, \$1.76.

Items with an asterisk (*) will use the 128 barcode from Stamp Fulfillment Services. All other philatelic products will continue to use barcode series A, with the exception of the Yearbook and the Guide Book.

Issue:	<i>Lady Liberty and U.S. Flag</i>
Item Number:	679400
Denomination & Type of Issue:	Nondenominated First-Class Mail Forever
Format:	Double-sided Booklet of 20 (2 designs)
Series:	N/A
Issue Date & City:	September 14, 2011, Washington, DC 20066 (No Ceremony)
Designer:	Terrence W. McCaffrey, USPS
Art Director:	Terrence W. McCaffrey, USPS
Typographer:	Terrence W. McCaffrey, USPS
Existing Photo:	Ron Watts
Existing Photo:	Raimund Linke
Modeler:	Donald Woo
Manufacturing Process:	Offset/Microprint "4evr"
Engraver:	N/A
Printer:	Banknote Corporation of America, Inc./SSP
Printed at:	Browns Summit, NC
Press Type:	Alprinta, 74
Stamps per Booklet:	20
Print Quantity:	750 million stamps
Paper Type:	Type II
Adhesive Type:	Pressure-sensitive
Processed at:	Unique Binders, Fredericksburg, VA
Stamp Orientation:	Vertical
Image Area (w x h):	0.71 x 0.82 in./18.03 x 20.83 mm
Stamp Size (w x h):	0.87 x 0.98 in./22.09 x 24.89 mm
Booklet Size (w x h):	1.96 x 5.52 in./49.78 x 140.21 mm
Colors:	PMS 534 (Dark Blue), PMS 5625 (Light Green), PMS 7427 (Red), PMS 341 (Green), Black, PMS 302 (Blue)
Plate Size:	526 stamps per revolution
Plate Numbers:	"S" followed by six (6) single digits
Marginal Markings:	
Front:	© 2010 USPS • Barcode (679400) • Plate numbers

Issue:	<i>Lady Liberty and U.S. Flag</i>
Item Number:	679400
Denomination & Type of Issue:	Nondenominated First-Class Mail Forever
Format:	Double-sided Booklet of 20 (2 designs)
Series:	N/A
Issue Date & City:	September 14, 2011, Washington, DC 20066 (No Ceremony)
Designer:	Terrence W. McCaffrey, USPS
Art Director:	Terrence W. McCaffrey, USPS
Typographer:	Terrence W. McCaffrey, USPS
Existing Photo:	Ron Watts
Existing Photo:	Raimund Linke
Modeler:	Avery Dennison, Designed and Engineered Solutions
Manufacturing Process:	Gravure
Engraver:	Trident
Printer:	Avery Dennison (AVR)
Printed at:	Clinton, SC
Press Type:	Dia Nippon Kiko (DNK)
Stamps per Booklet:	20
Print Quantity:	750 million stamps
Paper Type:	Prephosphored, Type II

Adhesive Type:	Pressure-sensitive
Processed at:	AVR, Clinton, SC
Stamp Orientation:	Vertical
Image Area (w x h):	0.733x 0.840 in./18.54 x 21.34 mm
Stamp Size (w x h):	0.870 x 0.980 in./22.10 x 24.94 mm
Booklet Size (w x h):	1.96 x 5.50 in./49.78 x 139.79 mm
Colors:	Magenta, Yellow, Cyan, Black, PMS 534 (Blue)
Plate Size:	840 stamps per revolution
Plate Numbers:	"V" followed by five (5) single digits
Marginal Markings:	
Front:	© 2010 USPS in peel strip area • Plate numbers in peel strip area • Barcode "679400"

Issue:	<i>Lady Liberty and U.S. Flag</i>
Item Number:	679400
Denomination & Type of Issue:	Nondenominated First-Class Mail Forever
Format:	Double-sided Booklet of 20 (2 design)
Series:	N/A
Issue Date & City:	September 14, 2011, Washington, DC 20066 (No Ceremony)
Designer:	Terrence W. McCaffrey, USPS
Art Director:	Terrence W. McCaffrey, USPS
Typographer:	Terrence W. McCaffrey, USPS
Existing Photo:	Ron Watts
Existing Photo:	Raimund Linke
Modeler:	Joseph Sheeran
Manufacturing Process:	Offset, Microprint, "4evr"
Printer:	Ashton Potter (USA) Ltd. (APU)
Printed at:	Williamsville, NY
Print Quantity:	750 million stamps
Adhesive Type:	Pressure-sensitive
Processed at:	Ashton Potter (USA) Ltd.
Press Type:	Mueller Martini, A76
Stamps per Booklet:	20
Paper Type:	Prephosphored, Type II
Adhesive Type:	Pressure-sensitive
Colors:	
Cover Side:	Black, Cyan, Magenta, Yellow, PMS 534 (Blue)
Stamp Side:	Black, Cyan, Magenta, Yellow, PMS 534 (Blue)
Stamp Orientation:	Vertical
Image Area (w x h):	0.73 x .84 in./18.54 x 21.34 mm
Overall Size (w x h):	0.87 x .98 in./22.10 x 24.89 mm
Flat Booklet Size (w x h):	5.52 x 1.96 in./140.21 x 49.78 mm
Plate Size:	1,040 stamps per revolution
Plate Numbers:	"P" followed by five (5) single digits
Marginal Markings:	
Cover Side:	© 2010 USPS in peel strip area • Plate numbers in peel strip area • Barcode "679400"

— Stamp Services,
Government Relations and Public Policy, 8-25-11

Pull-Out Information

Fraud

Withholding of Mail Orders

Withholding of Mail Orders are enforced by postmasters at the cities listed below.

State, City ZIP Code	Names and Addresses Covered
MD, Hyattsville 20783-1027	Any and all names except the surnames Hresko and Milligan, 3050 Powder Mill Rd.
MD, Hyattsville 20783-1028	Any and all names except the surnames Helfrich and Rayner, 3100 Powder Mill Rd.

— Judicial Officer, 8-25-11

Invalid Express Mail Corporate Account Numbers

This listing should be provided to Contract Postal Units and used by acceptance clerks in non-POS locations without intranet access to validate an Express Mail Corporate Account (EMCA) number online. For all other locations, online EMCA validation is preferred. The online validation process is outlined in the EMCA Validation SOP on the Retail webpage. This list supersedes all previous notices,

which must be recycled. Acceptance clerks must not accept Express Mail® shipments bearing an invalid EMCA number in the “Payment by Account” or “Agreement Number” section of the Express Mail label or form.

Note: The first 6 digits of a 9-digit Custom Designed Service and Next Day Pickup Agreement make up the Corporate Account Number.

005370	019078	038279	077469	100486	146125	210054	210848	221013	321182	336448	462012	551042
005888	019924	038511	077516	100628	148365	210056	210856	221375	321192	337058	462026	551134
006014	020653	039004	078412	100660	150224	210058	210862	232200	321207	338073	464226	551135
006018	021001	044003	079084	100752	150273	210061	210867	232400	321227	340654	466610	551254
006315	021045	045200	080011	100754	152026	210064	210872	235318	321233	358060	471002	551404
006668	021294	046043	080082	100773	152031	210069	210883	274100	321255	361356	481433	551783
006690	021412	047002	080093	100819	152176	210076	210888	275001	321266	361360	481834	551912
006720	021542	049305	080148	101308	152482	210079	210892	296475	321276	378136	482795	551950
007301	021623	056021	080210	102969	152657	210080	210895	296524	322476	402416	482992	553731
008054	021757	057118	080243	104323	152677	210081	210898	301337	323332	402520	483105	553786
008159	021980	060074	080267	105087	152817	210088	210899	301542	325010	403990	483287	553913
008173	022009	060197	080295	109006	152872	210091	212342	301547	325037	403997	488042	553947
008231	022122	060350	080370	110532	153002	210106	212505	303514	326340	404098	488049	554066
008292	022226	061147	080390	112264	153003	210110	212522	303515	326493	405027	489295	557015
008330	022275	061201	080395	113010	159271	210118	212571	303516	326511	405034	496143	558101
008386	022351	064316	080415	113016	165084	210237	212626	305545	326607	405094	531169	574004
008752	022390	065174	080427	113506	165113	210281	212632	306268	327406	405102	531782	591456
008935	022438	065289	080520	113849	165403	210310	212636	312206	327538	405996	531811	598639
009167	022456	068069	085575	114391	175076	210449	212684	312252	327720	405997	531821	600001
009203	022549	069316	091004	115265	192581	210493	212936	314364	328026	411008	531859	600034
009314	022606	069369	091912	115826	192584	210542	212945	314826	328111	412001	531860	600072
009368	022612	069741	092020	115902	192596	210571	212960	317301	329630	436143	531895	600113
009515	022658	070002	093428	117032	192616	210693	212980	319127	330117	441189	532294	600181
009637	022663	070012	094485	117234	192852	210701	220046	320010	330693	441407	532296	600443
010368	022962	070744	094774	118024	193209	210705	220052	320098	331223	441554	532649	600572
010787	027930	070954	095348	119024	193577	210706	220185	321004	332004	441734	532762	600665
011058	028117	071279	095556	119087	193618	210717	220214	321021	332255	452007	532862	600710
011103	028133	071318	095653	120351	197003	210718	220275	321051	333029	452097	532965	600806
015778	028603	071321	096663	122441	198109	210719	220353	321054	333232	452707	537120	600940
016338	028887	075598	097812	132002	198221	210758	220394	321058	334108	452808	537145	601588
016745	029554	076084	098198	133025	210017	210779	220414	321062	335122	452894	537149	601783
018029	029843	076319	098201	134074	210022	210788	220425	321077	335185	454418	537379	602038
018043	030453	076491	100264	139156	210025	210796	220727	321128	335272	454455	544048	602359
018124	031181	077088	100454	142181	210027	210816	221000	321145	335329	461119	544131	602632

604119	608289	752381	794041	853638	902441	915446	921693	930234	945522	946608	950333	968955
605044	611234	752595	799086	853650	902744	915688	921697	931528	945549	947081	950372	970628
605086	617179	752994	799285	853755	902869	917431	921708	931659	945715	947090	950388	970793
605121	631464	756021	801684	853794	902931	917511	921767	931989	945726	947228	950952	970800
605561	641130	760039	802369	853883	907544	918145	921859	932510	945822	948174	951239	970817
606070	641887	761311	809227	853887	907574	918606	921912	932630	945837	948251	951304	970961
606219	672022	764002	814010	853916	907811	918700	922155	932777	945839	948377	951559	971012
606552	712008	769001	830500	853965	907831	920003	924431	935153	945872	948525	951677	971079
606558	721071	770460	833205	856528	910317	920052	924457	935209	945890	948593	953209	971080
606672	722086	771712	841318	860143	911074	920059	924667	936088	945961	948597	958131	971095
606750	722152	772594	852134	871366	912373	920329	925123	937291	945984	948603	958147	972967
606958	722201	774370	852445	875004	912436	920330	925146	937461	946119	948613	958188	973221
607045	722239	782002	852671	891464	913139	920450	925200	937616	946334	948628	958649	980710
607089	722256	782033	852718	891828	913174	921086	926007	937683	946395	948655	958684	981764
607156	722262	782612	852874	895907	913369	921188	926168	937815	946437	948707	958961	982042
607311	722269	785435	853047	900210	913958	921280	926429	940267	946495	948715	958976	982109
607493	723096	787055	853147	900331	914300	921426	926501	940503	946500	948741	967008	982292
607763	731313	787149	853211	900394	914538	921502	927406	940551	946501	948744	968246	982406
608044	741495	791001	853352	900409	914857	921526	927664	945230	946506	948765	968508	982464
608046	744134	791178	853563	901410	914894	921577	928512	945258	946549	948808	968666	995912
608119	750366	791216	853590	901902	915189	921593	928559	945308	946567	948844	968668	997296

— Product Information Requirements, Mail Entry & Payment Technology, 8-25-11

Missing, Lost, or Stolen U.S. Money Order Forms

Do Not Cash — Upon Receipt, Notify Local Postal Inspectors

This listing will be provided to all Postal Service™ employees responsible for accepting and cashing postal money orders. Destroy all interim notices when the numbers listed appear in the *Postal Bulletin*. The actual serial

numbers consist of the first 10 digits on the money orders. Check for altered dollar amounts by holding money orders to the light.

010 001 0200 to 0299	043 205 5922 to 5999	083 140 5000 to 7499	176 281 7963 to 7999
010 504 1932 to 1999	044 087 3457 to 3499	083 784 8886 to 8899	176 731 6586 to 6599
011 582 1889 to 1899	044 087 4000 to 4099	083 913 6915 to 6999	178 254 5000 to 9999
011 588 2900 to 3099	044 306 4200 to 4299	084 478 3920 to 3999	178 881 9900 to 9999
012 579 5675 to 5699	044 306 4370 to 4599	086 000 8271 to 8299	180 031 2089 to 2098
013 289 6176 to 6199	045 524 4121 to 4298	086 798 3840 to 3849	180 403 7723 to 7741
013 610 0014 to 0099	046 800 9870 to 9899	088 404 4472 to 4499	180 428 4580 to 0599
014 932 1000 to 1099	047 352 4000 to 4099	088 404 5584 to 5699	182 368 7544 to 0599
014 972 0800 to 0899	048 383 7650 to 7659	088 757 8688 to 8699	182 475 3229 to 3258
015 363 0065 to 0099	048 396 3647 to 3699	088 757 9400 to 9499	182 475 3904 to 3933
017 028 3200 to 3299	051 142 0755 to 0799	089 358 2248 to 2257	182 631 0031 to 0099
018 569 5333 to 5399	051 774 8857 to 8899	093 106 9346 to 9355	186 132 7583 to 0599
018 986 5264 to 5299	051 781 2875 to 2885	093 203 0500 to 0599	186 629 0589 to 0599
019 518 2814 to 2899	051 977 7010 to 7023	093 684 3630 to 3699	187 184 6177 to 0199
020 698 5159 to 5199	052 058 7115 to 7199	094 081 5074 to 5099	187 323 8200 to 8299
020 844 7307 to 7399	054 450 1130 to 1167	094 216 2555 to 2599	188 835 6370 to 6399
020 972 8948 to 8999	057 670 0563 to 0599	094 580 7062 to 7099	189 083 1064 to 1099
022 021 9110 to 9181	058 187 3836 to 3899	094 639 4200 to 4299	191 179 0377 to 0399
022 037 1411 to 1499	058 523 3003 to 3099	095 070 7186 to 7199	210 221 0548 to 0599
022 527 9201 to 9210	058 591 1153 to 1299	095 076 8300 to 8399	227 275 9400 to 9999
022 529 1882 to 1899	058 895 3746 to 3799	095 354 6864 to 6899	273 070 8059 to 8099
023 637 7169 to 7199	059 986 0814 to 0899	097 224 1350 to 1599	273 775 7700 to 7899
024 380 4100 to 4199	060 406 7650 to 7699	100 160 3800 to 3899	302 000 0000 to 9999
024 496 6870 to 6896	063 491 8122 to 8199	104 667 6400 to 6499	349 746 2056 to 2099
025 092 0987 to 0999	063 916 9968 to 9999	104 876 8937 to 8999	350 518 7350 to 7374
025 369 5535 to 5599	064 091 4500 to 4599	112 049 4413 to 4499	360 011 1690 to 1699
025 729 1151 to 1199	065 170 0471 to 0499	112 870 9765 to 9799	360 168 6008 to 6099
025 729 1643 to 1799	065 255 7909 to 7999	114 402 3850 to 3899	360 173 8800 to 8899
026 492 3180 to 3199	065 392 6345 to 6399	114 866 5368 to 5397	360 324 2326 to 2399
027 361 0430 to 0499	066 099 2014 to 2099	116 154 2800 to 2899	362 861 3064 to 3099
027 369 4482 to 4495	066 648 2880 to 2899	116 986 4400 to 4499	373 006 2176 to 2199
027 671 8762 to 8776	066 787 3639 to 3699	117 175 1647 to 5169	374 768 2600 to 2699
027 787 9886 to 9899	066 845 7500 to 9999	117 951 4687 to 4699	375 169 4400 to 4599
027 965 9487 to 9499	067 093 3869 to 3899	117 951 5200 to 5299	375 829 3400 to 3499
028 100 8069 to 8099	068 895 0334 to 0399	119 786 3051 to 3064	375 851 9100 to 9199
028 191 1852 to 1999	070 724 4488 to 4499	119 815 8961 to 6199	376 196 0911 to 0999
028 850 3000 to 3199	070 841 9181 to 9199	119 850 7400 to 7499	378 085 3679 to 3699
029 510 1500 to 1599	070 844 2546 to 2599	119 850 7700 to 7999	378 351 1063 to 1099
030 687 0903 to 0999	070 916 1340 to 1399	121 634 0460 to 0499	379 843 5100 to 5199
030 701 3442 to 3499	071 047 5768 to 5799	122 451 9879 to 9899	380 093 9600 to 9699
031 077 4507 to 4799	071 179 9800 to 9899	122 714 6805 to 6900	380 165 1165 to 1199
032 295 7500 to 9999	071 386 3682 to 3699	124 916 0304 to 0499	381 325 4500 to 4599
034 394 1000 to 1099	071 507 6840 to 6899	126 423 0136 to 0169	381 604 2510 to 2699
034 943 0400 to 0799	072 045 9641 to 9699	160 901 2254 to 2299	381 645 9525 to 9599
035 035 4337 to 4399	072 675 8287 to 8299	161 103 6581 to 6599	383 314 3968 to 3999
037 706 9578 to 9599	073 763 0867 to 0876	161 194 2857 to 0899	383 892 1000 to 1344
037 805 3677 to 3699	073 763 0878 to 0887	162 032 4447 to 4499	383 892 1382 to 1399
037 909 5490 to 5499	073 763 0889 to 0898	163 257 1085 to 1099	384 925 3641 to 3654
037 931 4660 to 4699	077 617 5481 to 5499	166 101 1433 to 1499	385 568 2331 to 2399
039 145 6521 to 6595	077 999 4001 to 4090	167 555 5201 to 5212	385 599 7554 to 7575
040 024 3901 to 3999	078 174 4475 to 4499	167 555 5214 to 5299	385 774 2024 to 2099
040 674 7100 to 7199	078 219 4931 to 4999	169 618 6274 to 6299	386 624 1412 to 1599
040 688 8816 to 8899	078 250 4756 to 4799	173 639 4685 to 4699	386 883 8936 to 8999
041 299 6752 to 6799	078 823 8312 to 8399	174 238 2779 to 2799	387 314 5574 to 5599
041 623 8889 to 8899	079 374 0300 to 2499	174 281 9347 to 9399	387 837 6300 to 6399
041 803 6565 to 6599	079 807 2342 to 2399	175 251 2600 to 0699	388 828 0656 to 0699
043 129 1968 to 1997	082 721 0228 to 0254	176 281 7937 to 7950	389 696 2400 to 2799

389 846 3104 to 3135	410 694 8400 to 8599	432 995 9775 to 9799	458 057 2712 to 2999
389 846 3145 to 3195	410 775 1500 to 1599	433 003 5800 to 5899	458 069 9537 to 9599
389 887 9211 to 9230	410 795 7927 to 7999	433 757 3047 to 3099	458 069 9665 to 9699
389 887 9234 to 9299	410 867 0917 to 0966	433 765 4003 to 4099	458 337 5222 to 5299
390 001 3182 to 3199	410 867 0970 to 0999	434 482 7060 to 7199	458 354 7653 to 7999
390 001 3500 to 3699	411 868 1023 to 1199	434 513 2386 to 2399	458 671 8678 to 8699
390 545 5974 to 5999	411 922 2322 to 2399	434 968 3076 to 3092	458 671 8721 to 8798
391 104 6146 to 6199	412 193 0900 to 0999	435 303 1831 to 1842	458 847 5044 to 5999
391 574 1466 to 1499	412 395 8599 to 8699	435 303 1986 to 1999	459 274 7624 to 7699
391 783 3020 to 3599	412 485 6500 to 6599	435 666 6092 to 6399	459 365 5432 to 5499
391 792 6100 to 6199	412 485 6610 to 6699	436 082 6400 to 6899	459 378 5764 to 5799
392 668 2956 to 2999	412 885 5953 to 5999	436 160 6441 to 6499	459 472 4816 to 4999
392 854 8500 to 8899	414 193 3608 to 3674	437 316 7115 to 7199	460 349 6878 to 6899
393 584 7566 to 7699	414 193 3677 to 3699	437 427 0500 to 3499	460 550 1909 to 1999
393 650 0074 to 0099	414 411 7348 to 7399	439 179 2300 to 2399	460 997 5234 to 5299
393 838 8316 to 8499	414 640 0757 to 0799	439 310 0458 to 0499	461 973 6443 to 6499
393 893 6007 to 6099	414 965 1727 to 1799	440 698 1947 to 1999	462 152 0107 to 0299
394 126 6907 to 6999	417 302 8104 to 8199	440 858 6300 to 6399	462 274 1072 to 1099
394 189 0405 to 0599	417 387 6532 to 6599	440 858 6420 to 7299	462 277 8373 to 8399
394 822 3243 to 3278	417 496 6800 to 6999	441 199 1655 to 1699	462 554 6051 to 6099
394 990 1810 to 1899	417 871 9250 to 9299	443 127 3648 to 3699	463 011 5529 to 5540
395 343 3264 to 3299	417 930 9533 to 9599	443 127 4000 to 4099	463 176 4115 to 4199
395 373 3035 to 3099	418 164 6500 to 6799	443 673 7900 to 7999	463 176 4229 to 4299
395 396 9649 to 9799	418 423 9863 to 9899	443 800 9335 to 9399	463 185 2600 to 2799
395 970 3240 to 3299	418 633 5922 to 5999	444 382 8822 to 8899	463 227 7711 to 7799
397 622 4054 to 4099	418 719 8520 to 8599	444 390 1667 to 1699	463 414 4869 to 4899
397 819 8902 to 8999	418 744 2235 to 2299	444 457 3854 to 3899	463 808 3484 to 3499
398 149 7200 to 7699	418 962 2848 to 2899	450 048 4173 to 4199	463 945 7400 to 7899
399 070 0872 to 0899	419 543 0286 to 0299	450 048 4442 to 4699	464 629 9000 to 9399
399 156 7119 to 7199	419 730 0300 to 0399	450 560 5173 to 5199	464 711 4332 to 4399
399 203 5064 to 5099	420 277 0015 to 0049	450 620 3077 to 3099	465 692 3963 to 3999
399 296 9910 to 9999	420 599 0734 to 0798	450 620 3135 to 3199	465 698 8300 to 8599
399 396 8935 to 8999	420 661 4115 to 4199	450 780 2716 to 2799	465 743 7745 to 7799
399 792 7775 to 7799	420 758 9500 to 9699	450 801 2700 to 2799	466 798 6056 to 6067
399 792 8300 to 8399	420 969 3951 to 3971	451 109 2967 to 2984	467 147 4300 to 4399
400 427 1051 to 1999	420 969 3973 to 3999	451 115 4110 to 4125	468 079 5782 to 5799
401 045 1505 to 1549	421 116 3565 to 3599	451 115 4127 to 4199	469 067 2817 to 2899
401 045 1571 to 1599	421 130 9300 to 9399	451 746 0700 to 0799	469 127 8000 to 8199
401 294 2700 to 2799	421 313 4500 to 4999	452 265 0074 to 0099	469 213 0359 to 0399
401 310 9505 to 9599	421 364 5537 to 5599	452 265 0246 to 0299	469 213 0500 to 0599
401 382 5312 to 5399	421 656 2609 to 2699	452 265 0335 to 0999	469 561 8011 to 8099
402 578 7876 to 7899	421 988 9700 to 9799	452 509 1169 to 1199	469 658 1961 to 1999
403 125 6744 to 6799	422 172 4667 to 4699	452 855 6471 to 6499	469 666 9900 to 9999
403 260 7000 to 7499	422 484 4212 to 4299	452 890 4679 to 4799	469 678 1900 to 1999
403 280 6470 to 6499	422 556 1270 to 1299	452 900 8215 to 8238	469 781 4900 to 4999
403 685 8600 to 8699	422 587 7024 to 7099	453 117 9146 to 9199	469 947 6960 to 6999
404 003 0300 to 0399	422 819 7533 to 7599	453 334 3631 to 3699	470 755 5800 to 5818
404 041 8838 to 8899	422 842 5073 to 5087	453 603 7841 to 7891	471 918 0300 to 0999
404 071 4268 to 4299	422 907 7563 to 7599	453 650 1140 to 1199	471 985 2408 to 2419
404 347 5356 to 5399	424 500 6050 to 6099	453 741 1300 to 1399	472 191 6700 to 6799
404 347 5548 to 5599	424 641 8500 to 8599	454 013 2919 to 2999	472 270 2555 to 2599
404 726 4500 to 4599	424 871 6600 to 6699	454 186 2411 to 2499	472 987 0213 to 0241
404 961 5001 to 5199	425 298 2352 to 2399	454 268 4883 to 4899	472 987 0290 to 0299
405 325 0188 to 0198	425 418 4269 to 4299	454 302 5400 to 5499	473 151 2069 to 2199
406 009 4587 to 4599	425 418 4405 to 4499	454 490 8300 to 8399	473 666 9138 to 9199
406 260 6830 to 6899	426 547 4566 to 4599	454 547 7434 to 7499	473 952 3429 to 3499
406 459 6641 to 6999	427 412 6337 to 6499	454 922 4867 to 4895	474 108 5402 to 5499
406 733 3000 to 3999	427 481 0900 to 0999	455 221 1348 to 1499	474 356 5193 to 5299
407 545 1557 to 1599	428 027 2742 to 2752	455 364 2147 to 2199	474 949 3366 to 3399
407 594 0412 to 0599	429 474 4172 to 4199	455 399 5400 to 5499	475 134 9362 to 9399
407 692 9100 to 9299	429 889 2900 to 2999	455 476 0676 to 0699	475 167 9667 to 9699
407 959 2190 to 2199	430 150 4401 to 4599	455 543 0618 to 0699	475 319 3415 to 3499
408 265 2275 to 2288	430 172 9800 to 9899	456 410 9006 to 9099	475 319 3649 to 3799
408 499 7700 to 7799	430 177 1900 to 2099	456 470 4146 to 4299	475 340 6400 to 6599
408 499 7900 to 7999	430 444 9500 to 9699	456 619 4460 to 4499	475 424 8410 to 8499
408 682 8484 to 8599	430 664 4070 to 4099	457 333 2686 to 2699	475 629 9156 to 9199
408 698 7015 to 7099	432 168 8419 to 8499	457 729 1767 to 1777	475 850 6101 to 6199
409 072 3941 to 3999	432 708 6800 to 6999	457 937 8615 to 8699	475 875 2500 to 2599
410 491 2311 to 2399	432 744 1544 to 1599	458 028 9810 to 9899	476 169 8264 to 8299

476 189 3000	to	3499	494 224 0500	to	0599	610 092 3200	to	3299	636 289 6214	to	6299
476 331 2480	to	2499	495 145 0600	to	0699	610 582 4200	to	4299	636 634 8007	to	8042
477 289 8601	to	8699	496 209 7425	to	7499	611 879 6939	to	6999	637 150 1200	to	1299
477 681 5206	to	5299	496 213 8728	to	8799	612 291 8013	to	8099	637 562 5828	to	5899
478 010 4243	to	4268	496 474 5226	to	5248	612 751 5171	to	5199	638 042 1647	to	1699
478 010 4270	to	4291	497 053 8517	to	8699	612 751 5226	to	5299	638 049 4984	to	4999
478 450 5071	to	5099	497 854 8673	to	8699	612 751 6083	to	6099	638 318 1115	to	1199
478 469 7838	to	7858	498 449 8888	to	8899	612 751 6268	to	6299	638 318 1453	to	1499
478 469 7883	to	7899	498 929 8285	to	8499	612 751 6572	to	6599	638 885 0000	to	0299
479 280 9800	to	9899	498 936 5310	to	5399	612 774 2111	to	2199	638 903 4362	to	4373
479 365 9116	to	9176	499 016 5425	to	5499	612 774 2254	to	2299	639 415 1929	to	1999
479 412 9900	to	9999	499 440 8575	to	8899	612 774 2500	to	2599	639 415 2019	to	2099
479 667 6190	to	6199	499 731 6717	to	6799	614 469 0979	to	0999	639 420 6200	to	6299
479 748 9680	to	9699	500 064 1858	to	1869	614 474 3000	to	3099	639 469 3517	to	3799
479 860 7000	to	7199	500 070 5725	to	7799	614 521 3490	to	3499	639 605 2143	to	2199
480 526 2000	to	2099	501 058 0016	to	0026	614 645 1800	to	1899	639 657 8600	to	8799
480 640 6330	to	6399	501 331 0300	to	0399	614 832 1100	to	2099	640 289 7500	to	7599
480 658 0568	to	0599	502 227 7645	to	7699	615 017 7505	to	7599	640 289 7700	to	7999
480 689 5100	to	5199	502 424 0200	to	0499	617 711 6609	to	6699	641 170 4420	to	4499
481 072 9463	to	9499	502 424 0600	to	0699	617 760 5266	to	5299	641 318 3133	to	3199
481 673 0074	to	0095	503 003 2700	to	2899	617 813 3601	to	3699	641 378 6500	to	6999
482 527 1500	to	1599	503 194 5144	to	5153	618 840 9200	to	9299	641 383 8739	to	8799
482 541 5255	to	5299	503 790 9922	to	9948	619 551 7229	to	7299	641 877 3187	to	3299
482 729 6800	to	6899	504 045 4030	to	4099	619 859 3000	to	3099	641 877 3310	to	3399
483 363 7207	to	7299	504 166 0200	to	0599	620 073 9400	to	9499	642 355 8094	to	8199
483 402 2356	to	2399	504 240 1062	to	1399	621 614 7907	to	7930	642 355 8308	to	8999
483 486 5100	to	5199	504 805 3300	to	3499	621 614 7932	to	7999	642 900 0018	to	0099
483 632 1521	to	1599	505 893 7739	to	7799	621 648 8021	to	8199	643 030 6254	to	6299
483 632 2600	to	2799	505 893 7800	to	7999	621 648 8500	to	8599	644 066 0882	to	0899
483 849 1615	to	1699	506 124 0800	to	0999	621 904 8351	to	8599	644 069 0600	to	0699
484 174 4803	to	5299	506 165 7027	to	0099	621 916 1978	to	1989	644 077 7506	to	7699
484 323 8900	to	9199	600 645 3223	to	3299	622 989 8032	to	8099	644 085 8157	to	8199
484 680 5000	to	5038	601 339 1200	to	1399	623 076 9300	to	9399	644 112 9839	to	9899
484 680 5040	to	5074	601 653 5884	to	5899	623 819 5006	to	5099	644 373 9083	to	9099
484 680 5077	to	5099	601 661 7700	to	7799	623 895 8200	to	8399	644 380 1460	to	1499
485 029 4913	to	4999	601 682 5343	to	5399	623 917 0000	to	0099	644 733 4715	to	4799
486 176 0600	to	0699	601 928 1600	to	1699	623 917 0200	to	0299	644 900 9712	to	9799
486 559 7555	to	7599	602 512 2972	to	2999	624 468 5288	to	5299	644 901 0109	to	1299
486 696 3023	to	3199	602 555 2400	to	2799	624 665 3162	to	3198	644 901 1325	to	1399
488 173 7900	to	7999	602 829 7061	to	7099	625 088 6735	to	6799	644 923 6800	to	7799
488 206 4100	to	4199	603 483 9572	to	9599	625 916 9500	to	9799	644 932 4655	to	4699
488 226 0200	to	0299	603 490 7200	to	7299	625 968 8956	to	8999	645 318 7240	to	7499
488 709 3906	to	3999	603 678 7100	to	7199	627 005 3938	to	3999	645 333 1766	to	1799
488 855 8359	to	8399	603 678 7662	to	7699	627 384 3907	to	4099	645 790 8632	to	8699
489 181 8963	to	8999	603 678 7902	to	7999	627 496 7549	to	7599	645 821 0657	to	0699
489 223 2000	to	2099	603 678 8418	to	8499	627 708 3605	to	3699	645 930 7948	to	7999
489 311 1930	to	1999	603 678 8700	to	9999	627 776 2500	to	2599	645 975 0737	to	0762
489 318 6200	to	6300	604 086 0880	to	0899	628 226 3100	to	3199	646 242 6200	to	6299
489 384 0027	to	0099	604 349 1414	to	1499	628 814 4702	to	4799	646 270 7639	to	7799
489 427 0658	to	0899	604 503 7776	to	7799	628 851 9689	to	9699	646 798 4000	to	4999
489 997 5252	to	5299	605 520 9037	to	9099	629 510 7200	to	7299	647 048 7035	to	7099
490 669 5850	to	6099	605 685 4010	to	4099	629 964 4200	to	4294	647 049 2900	to	2999
490 717 7080	to	7099	605 988 6467	to	6499	630 389 3056	to	3071	647 398 8300	to	8399
490 721 6000	to	6099	607 689 7951	to	7960	630 463 0588	to	0599	647 398 8481	to	8499
490 793 1500	to	2099	607 728 1276	to	1299	631 459 9117	to	9199	647 437 3000	to	4999
490 886 8171	to	8199	608 727 7100	to	7199	631 762 9325	to	9399	647 811 2188	to	2199
490 977 9221	to	9240	608 727 7273	to	7599	632 217 4933	to	4999	648 009 6057	to	6099
491 258 8100	to	9099	608 813 9950	to	9999	632 500 0000	to	640 3999	648 163 5300	to	5499
491 567 1376	to	1399	609 067 5325	to	5399	633 110 4165	to	4199	648 722 5283	to	5299
492 254 4800	to	4899	609 067 5488	to	5499	633 110 4303	to	4499	648 892 3164	to	3199
492 283 5100	to	5199	609 067 5600	to	5699	633 438 6429	to	6599	649 100 3989	to	3999
492 610 6813	to	6899	609 289 6123	to	6199	633 588 7173	to	7182	649 647 0370	to	0399
493 394 5568	to	5599	609 438 4400	to	4499	634 725 0700	to	0799	649 647 0522	to	0599
493 470 2562	to	2599	609 493 1100	to	1199	634 803 3239	to	3299	649 647 5237	to	5399
493 473 7700	to	7799	609 766 8091	to	8999	634 807 2474	to	2499	649 647 9100	to	9299
493 716 2153	to	2199	609 825 4100	to	4115	634 827 5900	to	5999	649 666 7800	to	8299
494 206 2972	to	2999	609 884 2981	to	2999	634 886 3428	to	3499	650 114 7707	to	7719
494 217 3446	to	3999	609 893 1000	to	1099	635 559 3449	to	3499	650 130 3400	to	3599

650 213 0406 to 0499
 650 555 1749 to 1799
 650 564 1900 to 1999
 650 627 4212 to 4299
 650 736 2043 to 2099
 650 739 1540 to 1699
 651 741 4415 to 4499
 651 882 2800 to 2899
 652 754 6317 to 6399
 653 131 4945 to 4999
 653 426 3300 to 3399
 653 455 4874 to 4899
 654 238 0000 to 0399
 654 404 3065 to 3092
 654 962 2900 to 3199
 655 103 5081 to 5199
 655 523 2600 to 2999
 656 305 2448 to 2499
 657 347 4438 to 4999
 657 710 8100 to 8999
 657 780 0985 to 0999
 658 586 1400 to 1499
 658 877 8000 to 8199
 658 880 8000 to 8199
 659 398 7300 to 7399
 659 706 8113 to 8199
 659 846 7837 to 7899
660 510 4100 to 4199
 660 673 0400 to 0599
 661 488 5000 to 5099
 661 609 9100 to 9199
 661 716 9420 to 9499
 661 906 6522 to 6599
 662 021 8332 to 8399
 662 068 0700 to 0899
 662 553 0774 to 0799
 663 078 7034 to 7099
 663 763 5300 to 5399
 663 883 7039 to 7499
 663 938 9200 to 9299
 664 253 8000 to 8499
 664 656 3055 to 3099
 665 174 6400 to 6499
 665 274 8208 to 8299
 665 669 5400 to 5499
 666 132 8226 to 8299
 666 696 2209 to 2299
 666 696 2309 to 2399
 667 032 9300 to 9399
 667 729 5529 to 5599
 668 383 8400 to 8699
670 368 3400 to 3499
 670 369 7336 to 7399
 670 750 7169 to 7199
 671 046 6200 to 6399
 671 251 5448 to 5499
 671 926 5600 to 5799
 672 444 2000 to 2999
 672 828 3410 to 3499
 673 167 5776 to 5799
 675 464 3700 to 3799
 675 464 4000 to 4199
 676 365 5958 to 5999
 676 669 1024 to 1099
 677 126 6734 to 6799
 677 333 9979 to 9999
 677 466 1088 to 1099
 678 071 4500 to 4799

678 096 7531 to 7599
 679 909 2578 to 2599
680 112 9565 to 9599
 680 244 0903 to 0999
 680 412 6046 to 6099
 680 761 6800 to 6899
 681 677 0540 to 0699
 682 070 1029 to 1099
 682 956 6280 to 6299
 682 956 6490 to 6599
 682 956 6700 to 6799
 682 965 1178 to 1199
 682 965 1201 to 1299
 683 118 2389 to 2399
 683 378 2000 to 2099
 683 378 2117 to 2299
 683 415 1200 to 1499
 683 444 8159 to 8199
 685 154 7780 to 7789
 685 297 7645 to 7699
 685 623 5264 to 5299
 685 650 9487 to 9499
 685 669 4200 to 4299
 685 757 8452 to 8499
 686 071 2694 to 2799
 686 176 3333 to 3354
 686 372 3200 to 3299
 686 644 5879 to 5899
 686 899 1371 to 1399
 686 931 7636 to 7699
 687 601 0973 to 0999
 687 614 6774 to 6799
 688 120 9000 to 9999
 688 314 3107 to 3191
690 291 1361 to 1371
 690 788 2877 to 2899
 690 893 5344 to 5399
 690 893 5512 to 5599
 690 904 1300 to 1599
 690 941 6000 to 6199
 691 313 6383 to 6399
 691 313 6600 to 6699
 691 582 8003 to 8099
 691 664 1800 to 1999
 691 664 2400 to 2499
 692 727 9362 to 9399
 692 798 1800 to 1899
 693 249 0779 to 0799
 693 249 0877 to 1699
 693 445 0566 to 0999
 693 448 8500 to 8999
 693 645 9583 to 9599
 693 965 4200 to 4299
 695 741 2906 to 2999
 695 947 8518 to 8599
 696 662 8247 to 8299
 697 447 8285 to 8296
 698 042 4816 to 4899
 698 131 2138 to 2157
 698 227 0000 to 0099
700 065 2570 to 2599
 700 065 4800 to 4899
 700 190 3350 to 3359
 700 228 6048 to 6099
 700 650 0452 to 0499
 700 666 1323 to 1349
 700 786 9106 to 9142
 700 859 0744 to 0758

701 028 6780 to 6899
 701 213 3900 to 3999
 701 267 2000 to 3999
 701 335 7312 to 7399
 701 369 2005 to 2050
 701 499 2260 to 2299
 701 503 2247 to 2299
 701 541 2271 to 2299
 701 553 6557 to 6599
 701 578 7460 to 7469
 701 578 7475 to 7499
 701 601 3457 to 3499
 701 605 5913 to 5999
 701 695 3982 to 3999
 701 695 4148 to 4199
 701 695 4227 to 4299
 701 708 1741 to 1799
 701 736 3966 to 3999
 701 772 0870 to 0899
 701 838 2800 to 2899
 701 941 0600 to 0699
 702 171 1603 to 1699
 702 195 5109 to 5199
 702 254 9300 to 9399
 702 264 7569 to 7599
 702 519 0513 to 0524
 702 713 1800 to 1809
 702 821 5730 to 5799
 702 821 5805 to 5899
 702 844 6975 to 6994
 702 846 6331 to 6399
 702 848 3900 to 3999
 702 857 7302 to 7499
 702 878 0114 to 0199
 703 364 1707 to 1799
740 002 7710 to 7719
 740 119 2275 to 2284
 740 130 6688 to 6698
 740 144 2780 to 2795
 740 241 9049 to 9099
 740 252 9265 to 9294
 740 255 1718 to 1799
 740 277 0366 to 0392
 740 332 7658 to 7671
 740 348 6641 to 6658
 740 351 4790 to 4799
 740 374 7416 to 7499
 740 470 2420 to 2443
 740 514 0300 to 0499
 740 523 7432 to 7449
 740 535 1555 to 1580
 740 650 4104 to 4140
 740 684 0620 to 0800
 740 701 6105 to 6114
 740 705 9790 to 9799
 740 726 6400 to 6500
 740 765 3306 to 3399
 740 774 8434 to 8499
 740 786 1885 to 1899
 740 790 5989 to 5999
 740 820 4854 to 7836
 740 827 7578 to 7594
 740 917 7490 to 7499
 740 918 5531 to 5549
 741 037 8528 to 8551
 742 040 3300 to 3309
805 885 8411 to 8499
 806 087 1100 to 1499

806 268 9275 to 9299
 806 534 3400 to 3477
 807 342 3283 to 3399
 808 086 7100 to 7199
 808 090 3440 to 3499
 808 325 5161 to 5699
 808 784 8000 to 8299
830 125 0672 to 0699
 830 602 5800 to 5999
 830 610 3700 to 3799
 830 983 3500 to 3599
 830 983 3635 to 3699
 831 354 1387 to 1399
 831 815 8240 to 8299
 832 525 3810 to 3899
 833 159 1884 to 1899
 833 456 2567 to 2599
 833 566 3015 to 3071
 834 130 5200 to 5299
 834 316 5444 to 5499
 834 354 8747 to 8766
 834 354 8824 to 8838
 835 269 5700 to 5799
 835 496 7303 to 7399
 835 539 5200 to 5999
 835 813 3015 to 3099
 837 672 8967 to 8999
 837 784 3282 to 3299
 838 176 8377 to 8399
 838 518 1257 to 1299
 839 718 8257 to 8299
840 323 0600 to 0699
 840 875 6235 to 6299
 840 910 0900 to 0999
 841 349 5000 to 5099
 841 805 7747 to 7899
 841 805 7944 to 8099
 842 226 0685 to 0695
 842 685 4600 to 4699
 842 685 4742 to 4999
 842 860 0300 to 0399
 842 898 5582 to 5599
 843 062 7100 to 7199
 843 077 6288 to 6299
 843 077 6378 to 6399
 843 758 5769 to 5778
 843 786 2554 to 2699
 845 656 8165 to 8199
 845 727 2100 to 2199
 845 746 2618 to 2635
 846 390 7531 to 7599
 846 918 0572 to 0599
 847 237 7690 to 7699
 847 284 2481 to 2499
 847 374 7055 to 7065
 847 374 7055 to 7065
 847 636 5304 to 5399
 847 700 5447 to 5499
 847 723 7500 to 7599
 849 485 3427 to 3499
 849 520 9850 to 9899
 849 608 1357 to 1399
 849 792 2600 to 2699
850 546 1862 to 1899
 851 143 6826 to 6844
 851 209 9880 to 9899
 851 928 9221 to 9299
 852 589 6560 to 6599

853 049 3646	to	3699	869 800 0000	to	999 9999	910 219 8631	to	8699	920 963 4567	to	4599
854 304 4089	to	4999	870 054 4814	to	4899	910 265 1100	to	1199	921 333 7400	to	7499
854 529 2200	to	2299	870 491 4812	to	4849	910 471 7273	to	7299	921 477 3762	to	3799
854 532 0000	to	2999	870 536 5820	to	5829	910 536 2505	to	2599	922 278 1048	to	1399
855 001 6204	to	6249	870 541 7167	to	7239	910 958 7499	to	7599	922 280 2019	to	2099
855 319 9364	to	9399	870 575 8155	to	8999	911 140 1000	to	2199	922 280 2233	to	2299
855 361 3390	to	3399	870 589 0485	to	0494	911 245 2545	to	2599	922 773 0459	to	0499
856 226 0490	to	0499	870 691 7060	to	7099	911 268 9077	to	9099	923 032 7000	to	7399
856 656 5800	to	5999	872 028 4850	to	4899	911 400 8948	to	8999	923 045 3630	to	3699
856 752 0200	to	0299	872 029 9306	to	9399	911 508 1620	to	1799	923 484 3600	to	3699
857 111 1352	to	1399	872 078 3709	to	3799	911 509 9310	to	9399	923 493 9403	to	9599
857 279 3450	to	3499	872 100 0445	to	0459	911 523 3000	to	3999	923 493 9681	to	9699
857 843 4000	to	4099	900 556 4178	to	4199	912 057 9922	to	9999	923 604 4424	to	4499
858 124 7644	to	7699	900 845 0044	to	0099	912 882 0563	to	0899	923 810 7800	to	8299
858 756 3111	to	3299	900 936 0217	to	0299	913 605 2218	to	2299	924 252 1200	to	1299
859 063 8200	to	8699	900 936 0435	to	0499	913 709 2429	to	2499	924 252 1400	to	1499
859 190 0600	to	0644	901 058 5255	to	5280	913 818 3501	to	3999	924 533 0711	to	0799
859 437 5538	to	5599	901 273 1082	to	1099	914 063 4300	to	4399	924 533 2343	to	2399
859 811 2888	to	2899	901 287 5143	to	5199	914 346 7621	to	7644	924 533 2428	to	2499
859 855 8873	to	8999	901 291 2789	to	2799	914 453 1366	to	1399	924 685 1957	to	1999
860 240 8520	to	8599	901 525 7122	to	7199	914 529 6185	to	6299	924 946 6300	to	6699
860 275 3900	to	3999	902 089 1253	to	1299	914 896 4658	to	4699	925 333 5900	to	6099
860 518 9629	to	9699	902 198 9769	to	9799	915 187 8774	to	8779	925 336 2300	to	2399
860 600 0021	to	0999	902 948 1269	to	1299	915 300 2783	to	2799	926 432 5907	to	5999
861 158 2350	to	2599	902 985 0833	to	0899	915 546 6822	to	6999	926 436 3600	to	3699
861 367 5400	to	5499	903 370 6934	to	6999	915 646 5183	to	5199	927 765 6257	to	6299
861 637 6010	to	6099	904 600 6523	to	6599	915 671 3963	to	3980	928 197 8100	to	8199
861 979 7292	to	7499	904 892 0378	to	0399	915 671 3982	to	3999	928 197 8283	to	8299
862 216 6100	to	6199	904 892 0648	to	1299	915 675 2217	to	2299	928 856 2059	to	2068
862 263 9213	to	9299	905 056 2216	to	2299	916 440 3377	to	3399	930 219 1722	to	1799
862 271 0800	to	0999	905 510 6647	to	6799	916 670 6352	to	6399	930 335 7810	to	7819
862 271 5000	to	5099	905 510 6900	to	7099	916 682 5300	to	5399	931 097 9259	to	9299
863 871 5138	to	5199	905 794 0000	to	0199	916 694 1414	to	1499	931 156 1502	to	1579
863 949 5300	to	5399	905 794 0288	to	0299	916 703 0802	to	0821	931 156 1600	to	1625
864 088 8200	to	8299	905 873 6900	to	6999	917 089 0709	to	0799	931 156 1671	to	1699
864 426 3972	to	3999	905 873 7100	to	7299	917 089 0842	to	0899	932 506 6400	to	6599
864 520 6117	to	6136	905 880 8900	to	8999	917 216 2928	to	2999	932 732 1796	to	1799
865 151 0526	to	0599	905 889 7100	to	7199	917 370 6300	to	6499	932 827 9026	to	9099
865 500 4034	to	4099	906 158 1508	to	1599	917 486 4900	to	4999	932 957 2300	to	2399
865 883 6082	to	6099	906 558 8812	to	8899	918 460 0602	to	0699	933 060 6160	to	6189
866 004 3000	to	3999	906 982 2214	to	2299	918 951 7231	to	7299	933 387 2541	to	2561
866 442 4100	to	4899	907 725 8500	to	8599	919 519 2786	to	2799	933 760 3609	to	4199
867 366 9108	to	9118	907 815 0216	to	0257	919 536 0770	to	0799	933 894 0928	to	0999
867 633 7403	to	7499	908 622 4225	to	4235	919 814 3095	to	3199	934 018 2729	to	2741
867 737 5623	to	5699	908 936 9254	to	9299	919 889 5110	to	5134	934 180 0300	to	0399
868 169 4529	to	4599	909 066 4494	to	7499	919 889 5178	to	5199	934 236 3954	to	3999
868 173 8400	to	8599	909 067 7400	to	7499	919 889 5030	to	5070	934 622 8717	to	8999
868 514 9000	to	9099	909 100 1787	to	1799	919 889 5090	to	5099	935 216 0312	to	0399
868 566 9200	to	9299	909 100 1900	to	2099	919 915 2774	to	2787	935 843 2202	to	2247
869 200 0000	to	9999	909 355 0422	to	0499	920 155 4662	to	4687	936 024 8889	to	8899
869 387 1150	to	1199	909 568 8900	to	9099	920 309 9039	to	9199	936 339 4455	to	4499
869 505 3500	to	3599	909 568 9300	to	9499	920 771 5321	to	5399			
869 523 7033	to	7099	909 725 7307	to	7399	920 857 5500	to	5899			
869 566 6150	to	6167	909 833 0947	to	0999	920 864 3480	to	3499			

Missing, Lost, or Stolen Canadian Money Order Forms

Do Not Cash — Upon Receipt, Notify Local Postal Inspectors

This listing will be provided to all Postal Service™ employees responsible for accepting and cashing postal money orders. Destroy all interim notices when the numbers listed appear in the *Postal Bulletin*. The new money order serial numbers consist of the first 9 digits. The 10th digit is a check digit only.

Do not cash outdated money orders **104 151 601 to 692 600 000**. Advise holders to send invalid money orders to: Canada Post Corporation, Ottawa, Canada K1A 0B1. Check for altered dollar amounts by holding money orders to the light.

719 869 731	to	9 760	728 702 338	to	2 400	734 950 111	to	0 170	742 408 771	to	8 830
720 227 871	to	7 930	728 915 371	to	5 850	735 120 331	to	0 840	742 512 120	to	2 150
720 227 949	to	7 960	728 953 141	to	3 410	735 283 008	to	3 020	742 684 849	to	4 890
720 368 543	to	8 570	728 954 280	to	4 310	735 293 131	to	3 220	742 839 553	to	9 630
720 392 151	to	2 570	729 169 081	to	9 140	735 635 010	to	5 040	742 913 668	to	3 700
720 556 491	to	6 640	729 363 841	to	3 870	735 783 961	to	3 990	742 917 287	to	7 296
720 558 621	to	8 650	729 682 891	to	3 190	735 803 401	to	3 430	742 921 891	to	1 980
720 575 361	to	5 570	729 838 940	to	9 070	736 005 420	to	5 440	742 983 631	to	3 810
720 590 152	to	0 179	729 839 101	to	9 130	736 366 021	to	6 110	743 020 021	to	0 170
721 638 331	to	9 170	730 077 683	to	7 840	736 624 456	to	4 500	743 206 491	to	6 500
721 815 391	to	5 420	730 109 847	to	9 880	736 670 851	to	1 060	743 235 992	to	6 050
721 969 713	to	9 740	730 373 761	to	3 850	736 767 061	to	7 090	743 940 631	to	0 900
722 072 137	to	2 160	730 501 951	to	2 130	736 767 093	to	7 120	743 978 011	to	8 070
722 378 265	to	8 280	730 519 379	to	9 470	736 982 191	to	2 370	744 234 751	to	4 780
722 413 990	to	4 004	730 569 278	to	9 360	736 982 551	to	2 730	744 499 591	to	9 680
722 764 948	to	4 980	730 711 711	to	1 740	737 110 141	to	0 170	744 626 901	to	6 910
722 825 840	to	5 889	730 722 991	to	3 230	737 185 501	to	5 710	745 388 794	to	8 910
723 153 841	to	3 850	730 845 970	to	5 990	737 317 321	to	7 350	746 446 806	to	6 820
723 237 616	to	7 630	730 888 291	to	8 320	737 517 781	to	7 840	746 818 351	to	8 410
723 331 081	to	1 110	730 927 591	to	7 680	737 628 181	to	8 210	747 245 266	to	5 280
723 496 443	to	6 470	731 307 914	to	7 930	737 634 258	to	4 270	747 364 813	to	4 830
723 967 291	to	7 320	731 402 431	to	2 460	738 361 971	to	1 980	747 501 434	to	1 450
724 655 196	to	5 340	731 407 232	to	7 320	738 447 601	to	7 660	747 739 891	to	0 070
724 711 441	to	1 500	731 588 301	to	8 340	738 648 355	to	8 450	748 148 649	to	8 760
724 711 538	to	1 560	731 767 273	to	7 320	738 849 811	to	9 900	748 259 960	to	9 970
724 793 221	to	3 250	731 781 061	to	1 120	738 892 270	to	2 290	748 565 162	to	5 280
724 908 109	to	8 120	731 837 821	to	7 910	738 997 259	to	7 380	748 874 988	to	5 030
724 937 461	to	7 670	731 841 377	to	1 450	739 161 451	to	1 540	749 137 381	to	7 410
725 163 118	to	3 151	732 018 481	to	8 600	739 219 381	to	9 440	749 190 192	to	0 210
725 202 735	to	2 750	732 067 972	to	8 370	739 740 151	to	0 180	749 685 421	to	5 450
725 398 591	to	8 800	732 188 649	to	8 670	739 793 491	to	3 520	749 846 791	to	6 850
725 464 591	to	4 920	732 193 460	to	3 470	739 793 527	to	3 550	749 993 131	to	3 580
725 475 321	to	5 330	732 201 241	to	1 390	739 942 621	to	2 650	750 071 587	to	1 610
725 711 057	to	1 070	732 220 431	to	0 440	739 999 231	to	9 320	750 408 167	to	8 183
725 738 581	to	8 730	732 355 201	to	5 380	740 011 517	to	1 530	750 438 421	to	8 501
725 981 311	to	1 430	732 472 320	to	2 560	740 030 701	to	0 970	750 743 911	to	4 030
725 987 835	to	7 880	732 541 605	to	1 620	740 261 740	to	1 820	750 779 118	to	9 400
726 060 811	to	0 900	732 572 221	to	2 490	740 265 811	to	6 290	750 910 981	to	1 010
726 391 970	to	2 520	732 586 479	to	6 710	740 299 111	to	9 170	750 960 841	to	0 900
726 484 771	to	4 800	732 994 037	to	4 080	740 299 231	to	9 260	751 296 211	to	6 240
726 493 351	to	5 300	733 163 449	to	3 460	740 329 266	to	9 320	751 539 121	to	9 180
726 504 031	to	4 063	733 297 171	to	7 290	740 889 081	to	9 090	751 541 311	to	1 790
726 504 070	to	4 090	733 446 631	to	7 110	741 010 421	to	0 530	751 757 641	to	7 700
726 504 331	to	4 390	733 474 665	to	4 770	741 113 041	to	3 370	751 936 951	to	7 010
726 563 701	to	4 060	733 704 482	to	4 570	741 373 891	to	4 340	751 951 861	to	1 890
726 599 371	to	9 460	733 751 041	to	1 130	741 452 369	to	2 490	751 999 021	to	9 110
726 626 356	to	6 370	734 009 101	to	9 130	741 492 991	to	3 140	752 139 516	to	9 570
727 182 271	to	2 510	734 290 759	to	0 770	741 553 460	to	3 470	752 182 892	to	2 950
727 416 181	to	6 240	734 389 273	to	9 290	741 764 431	to	4 520	752 206 861	to	7 100
727 481 431	to	1 460	734 440 031	to	0 111	742 178 834	to	8 880	752 295 241	to	5 600
727 749 241	to	9 780	734 797 201	to	7 320	742 325 500	to	5 520	752 731 351	to	1 410
728 382 331	to	2 480	734 939 611	to	9 640	742 325 668	to	5 700	752 767 441	to	7 470

753 008 941	to	9 030	763 155 160	to	5 180	773 231 311	to	1 340	800 872 741	to	2 830
753 194 311	to	4 370	763 178 631	to	8 660	773 348 739	to	8 940	801 349 801	to	9 830
753 620 378	to	0 400	763 506 001	to	6 060	773 348 739	to	8 940	801 676 681	to	7 100
754 013 917	to	3 940	763 522 141	to	2 470	773 575 891	to	5 950	802 967 821	to	7 940
754 161 061	to	1 120	763 717 694	to	7 800	773 852 971	to	3 030	803 217 601	to	7 780
754 358 445	to	8 610	763 826 461	to	6 520	775 373 449	to	3 460	803 729 731	to	9 850
754 410 451	to	0 660	763 900 460	to	0 471	789 257 191	to	7 250	803 747 402	to	7 520
754 438 393	to	8 410	763 900 479	to	0 530	790 448 020	to	8 460	804 138 181	to	8 420
754 493 109	to	3 130	763 917 271	to	7 750	790 597 485	to	7 530	804 428 224	to	8 250
754 664 182	to	4 220	764 125 801	to	5 860	790 911 883	to	1 900	804 682 411	to	2 710
754 816 377	to	6 470	764 284 525	to	4 560	791 057 441	to	7 550	805 272 525	to	2 540
755 487 421	to	7 600	764 526 241	to	6 330	791 239 081	to	9 290	805 523 445	to	3 460
755 592 901	to	3 140	764 601 421	to	1 600	791 374 483	to	4 500	805 745 704	to	5 730
755 790 020	to	0 030	764 650 231	to	0 470	791 387 971	to	8 030	806 452 907	to	2 980
755 791 730	to	1 800	764 984 371	to	4 850	791 447 521	to	7 850	806 744 781	to	4 850
755 926 951	to	7 070	765 003 667	to	3 680	791 451 151	to	1 240	806 982 181	to	2 300
755 934 332	to	4 510	765 042 517	to	2 540	791 500 009	to	0 470	807 764 791	to	4 910
755 957 701	to	8 000	765 194 728	to	4 970	791 771 431	to	1 490	808 089 931	to	9 960
755 962 981	to	3 280	765 387 365	to	7 450	792 004 293	to	4 320	808 656 423	to	6 450
756 035 371	to	5 490	765 541 801	to	2 100	792 018 379	to	8 420	808 753 771	to	3 800
756 301 257	to	1 290	765 638 461	to	8 970	792 070 621	to	0 740	809 189 001	to	9 010
756 371 565	to	1 580	765 647 101	to	7 190	792 145 211	to	5 230	809 886 879	to	6 930
756 876 031	to	6 120	765 813 781	to	4 029	792 391 381	to	1 620	809 890 489	to	0 500
756 876 151	to	6 240	765 879 314	to	9 390	792 452 779	to	2 790	810 323 734	to	3 760
756 970 129	to	0 140	765 954 001	to	4 030	792 772 728	to	2 770	810 367 116	to	7 140
757 059 613	to	9 630	766 120 286	to	0 320	792 903 511	to	3 990	810 526 351	to	6 500
757 078 540	to	8 560	766 125 716	to	5 750	793 282 518	to	2 533	810 806 911	to	6 940
757 086 209	to	6 240	766 158 824	to	8 840	794 041 831	to	2 040	810 807 211	to	7 240
757 240 591	to	0 650	766 388 433	to	8 460	794 397 709	to	7 780	811 423 021	to	3 110
757 277 371	to	7 700	766 509 421	to	9 660	794 581 741	to	2 040	811 517 221	to	7 239
757 291 591	to	2 730	766 572 901	to	3 020	794 592 122	to	2 150	811 721 101	to	1 130
757 964 251	to	4 280	766 748 500	to	8 521	795 032 251	to	2 340	812 025 721	to	5 900
758 067 001	to	7 090	767 024 341	to	4 370	795 796 291	to	6 350	812 093 073	to	3 130
758 105 221	to	5 250	767 326 471	to	6 590	796 070 139	to	0 160	812 100 821	to	0 840
758 324 941	to	5 000	767 332 561	to	2 950	796 143 151	to	3 630	812 465 251	to	5 610
758 593 628	to	3 650	768 009 841	to	9 960	796 159 725	to	9 740	812 918 341	to	8 670
758 709 038	to	9 060	768 011 489	to	1 520	796 169 306	to	9 340	812 918 701	to	8 760
758 744 101	to	4 160	768 177 980	to	7 990	796 373 406	to	3 430	813 050 491	to	0 520
758 850 883	to	0 900	768 391 081	to	1 170	796 602 961	to	3 050	813 073 171	to	3 200
758 860 951	to	1 550	768 661 569	to	1 650	796 708 441	to	8 500	813 398 476	to	8 550
759 152 851	to	2 880	769 000 051	to	0 080	796 886 281	to	6 430	813 713 971	to	4 000
759 740 941	to	1 090	769 050 841	to	0 900	796 901 701	to	2 000	813 858 121	to	8 150
760 004 596	to	4 610	769 159 081	to	9 178	796 975 466	to	5 590	814 789 330	to	9 349
760 118 191	to	8 250	769 737 496	to	7 510	797 272 917	to	2 950	814 984 656	to	4 680
760 155 001	to	5 090	769 778 491	to	8 730	797 519 441	to	9 460	815 016 020	to	6 030
760 378 002	to	8 020	769 827 331	to	7 450	797 519 731	to	0 240	815 199 410	to	9 420
760 692 722	to	2 749	770 216 071	to	6 100	797 535 181	to	5 330	815 240 491	to	0 520
761 055 460	to	5 480	770 723 281	to	3 400	797 646 151	to	6 180	815 755 591	to	5 620
761 169 781	to	9 810	770 790 451	to	0 480	798 040 053	to	0 080	815 755 622	to	5 650
761 504 941	to	5 120	770 915 150	to	5 490	798 055 813	to	5 830	815 806 381	to	6 680
761 516 836	to	6 910	771 455 551	to	5 610	798 055 891	to	5 950	816 126 834	to	6 870
761 613 588	to	3 600	771 609 661	to	9 690	798 326 371	to	6 520	816 156 721	to	6 780
761 688 631	to	8 690	771 932 551	to	2 580	798 339 167	to	9 210	816 580 903	to	0 920
761 805 199	to	5 240	772 057 224	to	7 440	798 562 411	to	2 440	816 945 571	to	5 600
761 826 106	to	6 120	772 162 660	to	3 070	798 632 461	to	2 490	817 253 011	to	3 280
761 881 171	to	1 560	772 718 615	to	8 640	798 807 151	to	7 510	817 763 881	to	4 060
761 975 641	to	5 670	772 940 140	to	0 160	798 944 761	to	5 030	818 330 562	to	0 610
761 975 886	to	5 895	772 970 886	to	0 940	799 118 616	to	8 640	818 459 641	to	9 670
762 304 144	to	4 170	773 009 419	to	9 430	799 133 191	to	3 220	818 926 273	to	6 320
762 324 931	to	4 960	773 112 031	to	2 060	799 177 626	to	7 650	818 950 351	to	0 380
762 439 261	to	9 290	773 125 387	to	5 410	799 854 751	to	5 200	818 962 492	to	2 530
762 524 158	to	4 220	773 179 320	to	9 410	800 044 320	to	4 410	819 032 341	to	2 730
762 584 872	to	4 970	773 202 989	to	3 140	800 211 901	to	2 440	819 127 054	to	7 080
762 593 431	to	3 460	773 208 991	to	9 290	800 427 530	to	7 540	819 278 540	to	8 670

819 544 681	to	4 740	822 900 991	to	1 020	826 582 951	to	3 430	828 732 331	to	2 390
819 928 441	to	8 650	822 925 951	to	6 100	826 720 201	to	0 230	828 807 781	to	7 840
820 034 406	to	4 430	823 284 931	to	4 990	827 005 671	to	5 830	828 830 952	to	0 963
820 070 761	to	1 540	823 293 031	to	3 210	827 287 861	to	7 950	828 939 781	to	0 050
820 191 342	to	1 360	823 556 011	to	6 100	827 291 502	to	1 520	829 002 721	to	2 870
820 274 856	to	4 880	824 078 341	to	8 370	827 575 381	to	5 470	829 005 301	to	5 540
820 600 171	to	0 230	824 156 325	to	6 340	827 609 085	to	9 100	829 080 241	to	0 330
821 172 241	to	2 360	824 511 252	to	1 270	827 619 811	to	9 840	829 160 986	to	1 000
821 229 661	to	9 720	824 588 281	to	8 370	827 883 511	to	3 600	829 176 841	to	6 930
821 229 743	to	9 780	825 140 397	to	0 460	828 160 441	to	0 530	829 471 561	to	1 590
821 903 731	to	3 910	825 409 651	to	9 680	828 376 201	to	6 260	829 561 065	to	1 080
821 927 841	to	7 850	825 472 171	to	2 200	828 441 602	to	1 630	829 566 481	to	6 510
822 505 801	to	5 830	826 042 898	to	2 920	828 539 316	to	9 340	829 569 931	to	9 960
822 703 442	to	3 470	826 226 644	to	6 670	828 539 341	to	9 370			

— Criminal Investigations Group, Postal Inspection Service, 8-25-11

Verifying U.S. Postal Service Money Orders

Follow these steps to cash a Postal Service™ money order:

1. Check that the amount does not exceed the legal limit: \$1,000 for domestic, and \$700 for international postal money orders.
2. Check that the proper security features are present:
 - When held to the light, a watermark of Benjamin Franklin is repeated from top to bottom on the left side.
 - When held to the light, a dark line (security thread) runs from top to bottom with the word “USPS” repeated.
 - There should be no discoloration around the dollar amounts, which might indicate the amounts were changes.

These appear in Postal Service Notice 299, *U.S. Postal Money Order Reference Card*, or online at <https://www.usps.com/shop/accepting-money-orders.htm>.

3. If the money order seems suspicious, call the U.S. Postal Service Money Order Verification System at 866-459-7822.

Please provide this information to local banks and retailers, as they also receive Postal Service money orders for cashing.

— Special Services,
Channel Access, 8-25-11

Counterfeit Canadian Money Order Forms

Do Not Cash

To be posted and used by retail window employees. As directed, destroy previous notices. Destroy all interim notices when the numbers listed appear in the *Postal Bulletin*.

671,819,086	686,794,382
676,612,640	686,794,426
677,891,039	686,794,427
678,282,493	686,794,431
678,916,031	687,262,502
679,552,215	687,262,503
679,694,334	687,262,525
679,751,983	687,262,526
679,800,207	687,287,578
681,130,536	687,287,581
681,844,376	687,287,582
683,594,542	694,063,898
684,683,610	694,063,899
686,619,878	694,063,980
686,619,886	701,321,725
686,619,887	

— Criminal Investigations Group,
Postal Inspection Service, 8-25-11

Toll-Free Number Available to Verify Canadian Money Orders

The Canada Post Corporation is now providing a toll-free number that cashing agents can call to verify the validity of Canadian Postal Money Orders. The number is 800-563-0444.

This toll-free number is printed on the back of the Canadian Postal Money Orders.

— Criminal Investigations Group,
Postal Inspection Service, 8-25-11

Other Information

Overseas Military/Diplomatic Mail

Mail addressed to military and diplomatic post offices overseas is subject to certain conditions or restrictions of mailing regarding content, preparation, and handling. The APO/FPO/DPO table below outlines these conditions by APO/FPO/DPO ZIP Codes™ through the use of footnoted mailing restrictions codes (see the [Restrictions](#) page following the table).

Acceptance clerks should use the table with the integrated retail terminal (IRT) or POS ONE terminal to determine which APO/FPO/DPO ZIP Codes are active and

which conditions of mailing apply. **Acceptance clerks may contact the Military Postal Service Agency with any questions regarding APO/FPO/DPO ZIP Codes, toll free, at 800-810-6098, Monday–Friday, 0730–1600 ET.**

For Express Mail Military Service (EMMS) availability, all acceptance clerks must refer to the local hardcopy EMMS directory.

The entries under “Changes” appear in bold in the APO/FPO/DPO table starting below.

Changes

APO/FPO/DPO	Action	Effective Date	See Restrictions
APO AE 09319	Open	09/07/2011	A-A1-B-C1-E2-F-H1-N-R-R1-U2-V-Z1
APO AE 09336	Close	08/25/2011	
APO AE 09367	Remove Z; Add Z1	08/25/2011	A-A1-B-B2-C1-E2-F-H1-M-R-R1-V-Z1
APO AE 09382	Add N	08/25/2011	A-A1-B-C1-E2-F-H1-M-N-R-R1-V-Z1

We have eliminated “Not Active” entries from the table below to save space and paper.

APO/FPO/DPO Table

APO/ FPO/ DPO	See Restrictions	APO/ FPO/ DPO	See Restrictions	APO/ FPO/ DPO	See Restrictions	APO/ FPO/ DPO	See Restrictions
09002	A1-B-C-D-H-M-R-U	09059	A1-B-C-D-H-M-R-U	09131	A1-B-C-D-H-M-R-U	09265	A1-B-C-D-F1-H-M-N-R-U
09003	A1-B-C-D-H-M-P-R-U	09060	A1-B-C-D-F1-H-M-R-U	09136	A1-B-C-D-F1-H-M-R	09267	A1-B-C-D-H-M-R-U
09004	A1-B-C-D-H-M-R-U	09063	A1-B-C-D-L-H-M-R-U	09137	A1-B-C-D-F1-H-M-R-U	09301	A-A1-B-C1-E2-F-H1-M-R-R1-V-Z1
09005	A1-B-C-D-H-M-P-R-U	09067	A1-B-C-D-H-M-R-U	09138	A1-B-C-D-H-M-R-U	09302	A-A1-B-C1-F-F1-H-M-N-V-Z-Z1
09006	A1-B-C-D-H-M-R-U	09068	A1-B-C-D-H-U-Z1	09139	A1-B-C-D-H-M-R-U	09304	A-A1-B-C1-E2-F-H1-M-R-V-Z1
09007	A1-B-C-D-H-M-R-U	09069	A-A1-B-C-D-H-U-V	09140	A1-B-C-D-H-M-R-U	09305	A-A1-B-C1-E2-F-H1-M-R-R1-V-Z1
09008	A-A1-B-C-D-H-M-P-R-U	09075	A1-B-C-D-H-M-R-U	09142	A1-B-C-D-F-F1-H-P-R-U	09306	A-A1-B-C1-E2-F-H1-R-R1-U2-V-Z1
09009	A1-B-C-D-F1-H-M-R-U	09079	A1-B-C-D-H-M-R-U	09143	A1-B-C-D-H-M-R-U	09307	A1-B-N-V-Z1
09011	A1-B-C-D-H-M-R-U	09081	A1-B-C-D-H-M-R-U	09154	A1-B-C-D-H-M-R-U	09308	A-A1-B-C1-E2-F-H1-M-R-V-Z1
09012	A1-B-C-D-F-F1-H-M-R-U	09088	A1-B-C-D-H-M-R-U	09172	A1-B-C-D-H-M-R-U	09309	A-A1-B-C1-E2-F-H1-M-R-R1-V-Z1
09013	A1-B-C-D-F-F1-H-M-R-U-Z1	09090	A1-B-C-D-H-M-P-R-U	09173	A1-B-C-D-H-M-R-U	09310	A-A1-B-C1-E2-F-H1-M-R-V-Z1
09014	A1-B-C-D-H-M-R-U	09092	A1-B-C-D-H-M-R-U	09177	A1-B-C-D-H-M-R-U	09311	A-A1-B-C1-E2-F-H1-M-R-V-Z1
09020	A1-B-C-D-H-M-R-U	09094	A1-B-C-D-F-F1-H-M-P-R	09180	A1-B-C-D-H-M-R-U	09312	A-A1-B-C1-E2-F-H1-R-R1-U2-V-Z1
09021	A1-B-C-D-F1-H-M-R-U	09095	A1-B-C-D-H-M-R-U	09186	A1-B-C-D-H-M-R-U	09313	A-A1-B-C1-E2-F-H1-M-R-R1-V-Z1
09028	A1-B-C-D-H-M-R-U	09096	A1-B-C-D-H-M-R-U	09211	A1-B-C-D-H-M-P-R-U	09314	A-A1-B-C1-E2-F-H1-M-R-R1-V-Z1
09033	A1-B-C-D-H-M-R-U	09099	A1-B-C-D-H-M-R-U	09213	A1-B-C-D-F1-H-M-R-U	09315	A-A1-B-C1-E2-F-H1-M-N-R-R1-V-Z1
09034	A1-B-C-D-H-M-R-U	09100	A1-B-C-D-H-M-R-U	09214	A1-B-C-D-F1-H-M-R-U		
09038	A1-B-C-D-H-M-R-U	09102	A1-B-C-D-H-M-R-U	09226	A1-B-C-D-F1-H-M-R-U		
09042	A1-B-C-D-H-M-R-U	09103	A1-B-C-D-H-U	09227	A1-B-C-D-F1-H-M-R-U		
09046	A1-B-C-D-H-M-R-U	09104	A1-B-C-D-F1-H-M-R-U	09229	A1-B-C-D-H-M-R-U		
09049	A1-B-C-D-H-M-R-U	09107	A1-B-C-D-H-M-R-U	09237	A1-B-C-D-H-M-R-U-V		
09051	A1-B-C-D-H-M-R-U	09112	A1-B-C-D-H-M-R-U	09245	A1-B-C-D-H-M-R-U		
09053	A1-B-C-D-H-M-R-U	09114	A1-B-C-D-H-M-R-U	09250	A1-B-C-D-H-M-R-U		
09054	A1-B-C-D-H-M-R-U	09123	A1-B-C-D-F1-H-M-R-U	09261	A1-B-C-D-F1-H-M-R-U-V		
09055	A1-B-C-D-F-H-M-R-R1-U-V	09126	A1-B-C-D-F-F1-H-M-P-R	09263	A1-B-C-D-H-M-R-U		
09058	A1-B-C-D-H-M-R-U	09128	A1-B-C-D-H-M-R-U	09264	A1-B-C-D-H-M-R-U		

APO/ FPO/ DPO	See Restrictions	APO/ FPO/ DPO	See Restrictions	APO/ FPO/ DPO	See Restrictions	APO/ FPO/ DPO	See Restrictions
09316	A-A1-B-C1-E2-F-H1-M-R-R1-U2-V-Z1	09368	A-A1-B-C1-E2-F-H1-M-N-R-V-Z1	09524	A1-B-F-F1-R-R1-V	09633	A1-B-B2-C-D-F-F1-M-R-U-U1-U2-U3-V-Z1
09317	A-A1-B-C1-E2-F-H1-M-R-R1-V-Z1	09369	A-A1-B-C1-E2-F-H1-M-R-R1-V	09532	A1-B-F-F1-R-R1-V	09636	A1-B-C-F-U
09319	A-A1-B-C1-E2-F-H1-M-R-R1-U2-V-Z1	09370	A-A1-B-C1-E2-F-H1-M-R-R1-V-Z1	09534	A1-B-F-F1-R-R1-V	09642	A1-B-M-N-R-U
09320	A-A1-B-C1-E2-F-H1-M-R-R1-V-Z1	09372	A-A1-B-C1-E2-F-H1-M-R-R1-V	09543	A1-B-F-F1-R-R1-V	09643	A1-B-M-R-U
09321	A-A1-B-C1-E2-F-H1-M-R-R1-V-Z1	09373	A-A1-B-C1-E2-F-H1-M-R-R1-V	09545	A1-B-V	09645	A1-B-C-F-F1-U
09327	A-A1-B-C1-E2-F-H1-M-R-R1-V-Z1	09374	A-A1-B-C1-E2-F-H1-M-R-V-Z1	09549	A1-B-V	09647	A1-B-N-R-U
09328	A-A1-B-C1-E2-F-H1-R-R1-V-Z1	09378	A-A1-B-C1-E2-F-H1-M-R-R1-U2-V-Z1	09554	A1-B-F-F1-R-R1-V	09648	A1-B-N-U-V-Z1
09330	A-A1-B-C1-E2-F-H1-M-R-R1-V-Z1	09380	A-A1-B-C1-E2-F-H1-M-R-R1-V-Z1	09556	A1-B-F-F1-R-R1-V	09649	A1-B-N-U-Z1
09331	A-A1-B-C1-E2-F-H1-M-R-R1-V-Z1	09382	A-A1-B-C1-E2-F-H1-M-N-R-R1-V-Z1	09557	A1-B-F-F1-R-R1-V	09701	A-A1-B-B2-C-C1-D-F-J-L-M-N-R-R1-T-V-Z1
09332	A-A1-B-C1-E2-F-H1-M-R-R1-V-Z1	09383	A-A1-B-C1-E2-F-H1-M-R-R1-V-Z1	09564	A1-B-F-F1-R-R1-V	09702	A1-B-C-C1-F1-M-R-R1-U
09333	A-A1-B-C1-E2-F-H1-M-R-R1-V-Z1	09384	A-A1-B-C1-E2-F-H1-M-R-R1-V-Z1	09565	A1-B-F-F1-R-R1-V	09703	A1-B-C-F1-H-U
09334	A-A1-B-C1-E2-F-H1-M-R-R1-V-Z1	09387	A-A1-B-C1-E2-F-H1-M-R-V	09567	A1-B-F-F1-R-R1-V	09704	A1-B-C-V
09337	A-A1-B-C1-E2-F-H1-M-R-R1-V-Z1	09391	A-A1-B-C1-E2-F-H1-M-R-R1-V-Z1	09568	A1-B-V	09705	A1-B-U
09338	A-A1-B-C1-E2-F-H1-M-R-R1-U2-V-Z1	09393	A-A1-B-C1-E2-F-H1-M-R-R1-V-Z1	09569	A1-B-F-F1-R-R1-V	09706	A1-B-C-N-R-U-V
09340	A-A1-B-C1-F-H-R-V	09394	A-A1-B-C1-E2-F-F1-H1-M-N-R-R1-V-Z1	09570	A1-B-F-F1-R-R1-V	09707	A1-B-C-J-M-N-R-U-V
09342	A-A1-B-C1-E2-F-H1-M-R-R1-U2-V-Z1	09396	A-A1-B-C1-E2-F-H1-M-R-R1-U2-V-Z1	09573	A1-B-F-F1-R-R1-V	09708	A1-B
09343	A-A1-B-C1-F-M-N-V-Z1	09397	A-A1-B-C1-E2-F-F1-H1-M-N-R-R1-S-T-V-Z1	09574	A1-B-F-F1-R-R1-V	09709	A1-B-F1-H
09344	A-A1-B-C1-E2-F-H1-M-R-R1-V-Z1	09403	A1-B-C-C1-M-R-U	09575	A1-B-F-F1-R-R1-V	09710	A1-B-C-C1-F1-M-N-R-R1-U
09347	A-A1-B-C1-E2-F-H1-M-R-R1-V-Z1	09421	A1-B-C-C1-M-R-U	09576	A1-B-F-F1-R-R1-V	09711	A1-B-F1-N-R-Z1
09348	A-A1-B-C1-E2-F-H1-M-R-R1-U2-V-Z1	09447	A1-B-C-C1-R-U-V	09577	A1-B-V	09713	A1-B-C-F1-R
09350	A-A1-B-C1-E2-F-H1-M-R-R1-V-Z1	09454	A1-B-C-C1-M-R-U-V	09578	A1-B-F-F1-R-R1-V	09714	A1-B-C-C1-F1-M-R-R1-U
09352	A-A1-B-C1-E2-F-H1-M-R-R1-V-Z1	09459	A1-B-C-C1-M-R-U	09579	A1-B-F-F1-R-R1-V	09715	A1-B-F1-M-R
09353	A-A1-B-C1-E2-F-H1-M-R-R1-V-Z1	09461	A1-B-C-C1-M-P-R-U	09581	A1-B-F-F1-R-R1-V	09716	A1-B-C-M-N-R-V
09354	A-A1-B-C1-E2-F-H1-M-R-R1-V-Z1	09463	A1-B-C-C1-R-U	09582	A1-B-F-F1-R-R1-V	09717	A-A1-B-M-R-V-W
09355	A-A1-B-C1-E2-F-H1-M-R-R1-V-Z1	09464	A1-B-C-C1-R-U	09586	A1-B-F-F1-R-R1-V	09718	A1-B-F-I-M-N-R-U-V-Z
09356	A-A1-B-C1-E2-F-H1-M-R-R1-V-Z1	09466	A1-B-C-C1-M-R-U	09587	A1-B-F-F1-R-R1-V	09719	A1-B-C-D-M-R-U-V
09357	A-A1-B-C1-E2-F-H1-M-R-R1-V-Z1	09468	A1-B-C-C1-M-R-U	09588	A1-B-V	09720	A1-B-M-R-U-V
09359	A-A1-B-C1-E2-F-H1-M-R-R1-V-Z1	09469	A1-B-C-C1-R-U	09589	A1-B-V	09721	A1-B-N-R-U-V-Z1
09360	A1-B-V	09470	A1-B-C-C1-M-R-U	09590	A1-B-V	09722	A-A1-B-F-H-N-Q-V-Z-Z1
09363	A-A1-B-C1-E2-F-H1-M-R-R1-V-Z1	09494	A1-B-C-C1-M-R-U	09591	A1-B-F-F1-R-R1-V	09723	A1-B-M-N-R-U-V-Z1
09364	A-A1-B-C1-E2-F-H1-M-N-R-R1-V-Z1	09496	A1-B-C-C1-R-U-V	09593	A1-B-V	09724	A1-B-C-C1-F1-M-R-R1-U
09365	A-A1-B-C1-E2-F-H1-M-R-R1-V-Z1	09498	A1-B-C-C1-F-F1-F2-J-L-N-R-R1-T-V-Z1	09594	A1-B-V	09726	A1-B-M-N-R-U-V
09366	A-A1-B-C1-E2-F-H1-M-R-R1-V-Z1	09501	A1-B-V	09596	A1-B-V	09727	A-A1-B-B2-C-C1-D-F-J-L-M-N-R-R1-T-V-Z1
09367	A-A1-B-B2-C1-E2-F-H1-M-R-R1-V-Z1	09502	A1-B-V	09599	A1-B-F-F1-R-R1-V	09728	A-A1-B-B2-C-C1-F-J-L-N-R-R1-T-V-Z1
		09503	A1-B-V	09600	A1-B-C-F-F1-N-R-U-V	09729	A1-B-C-F-N-R-R1-U-V
		09504	A1-B-V	09603	A1-B-C-F-F1-R-U-V	09730	A-B-B2-C-C1-F-J-L-M-N-R-R1-T-V-Z1
		09505	A1-B-V	09604	A1-B-C-F-F1-P-R-U-V	09731	A-B-B2-C-C1-F-J-L-M-N-R-R1-T-V-Z1
		09506	A1-B-V	09605	A1-B-C-D-H-M-R-U-V	09732	A1-B-N-V-Z1
		09507	A1-B-V	09606	A1-B-C-D-H-M-R-U-V	09733	A1-B-N-V
		09508	A1-B-V	09607	A-A1-B-C-F-F1-M-R-R1-U-U3-V-W	09734	A-A1-B-C-C1-F-J-L-M-N-R-R1-T-V-Z1
		09509	A1-B-V	09608	A1-B-C-F-N-U-V	09735	A1-B-N-V-Z1
		09510	A-A1-B-C1-E2-F-H1-M-R-R1-V-Z1	09609	A1-B-C-F-U	09736	A-A1-B-B2-C-C1-D-F-J-L-M-N-R-R1-T-V-Z1
		09511	A1-B-V	09610	A1-B-C-F-F1-M-R-U-V	09737	A-A1-B-B2-C-C1-F-I-L-M-N-R-R1-T-V-W-Y-Z-Z1
		09513	A1-B-F-F1-R-R1-V	09611	A1-B-C-F-F1-R-U-V	09738	A-A1-B-B2-C-C1-D-F-J-L-M-N-R-R1-T-V-Z1
		09517	A1-B-F-F1-R-R1-V	09613	A1-B-C-F-U-V	09739	A-A1-B-B2-C-C1-D-F-J-L-M-N-R-R1-T-V-Z1
				09617	A1-B-C-F-U		
				09618	A1-B-C-F-U		
				09620	A1-B-C-F-U		
				09621	A1-B-C-F-U		
				09622	A1-B-C-F-U		
				09623	A1-B-C-F-U		
				09624	A1-B-C-F-U		
				09625	A1-B-C-F-U		
				09626	A1-B-C-F-U		
				09627	A1-B-C-F-U		
				09630	A1-B-C-F-U-V		
				09631	A1-B-C-F-U		

APO/ FPO/ DPO	See Restrictions	APO/ FPO/ DPO	See Restrictions	APO/ FPO/ DPO	See Restrictions	APO/ FPO/ DPO	See Restrictions
09741	A-A1-B-C1-E2-F-F1-H1-J-L-M-N-R-R1-T-V-W-Y-Z1	09820	A-A1-B-B2-F-H-H1-J-L-M-N-R-R1-T-V-Z1	09880	A-A1-B-C1-E2-F-H1-R-R1-U-V-Z1	96209	A-A1-B-J-L-N-T-U
		09821	A-A1-B-F-N-R-V-Z1	09890	A1-B-E2-F-H1-N-R-R1-U2-V-Z1	96213	A-A1-B-U
09742	A-A1-B-B2-F-F1-J-L-M-N-R-T-V-Z1	09822	A-A1-B-F-R-V-Z1			96214	A-A1-B-U
09743	A-A1-B-F-H-N-Q-V-Z-Z1	09823	A-A1-B-F-R-V-Z1	09892	A-A1-B-E2-F-N-R-R1-V-Z1	96218	A-A1-B-U
09744	A-B-B2-C-C1-F-J-L-M-N-R-R1-T-V-Z1	09824	A-A1-B-F-R-V-Z1	09898	A1-B-E2-F-H1-N-R-R1-U2-V-Z1	96224	A-A1-B-U
09745	A-A1-B-F-F1-M-N-R-R1-V-Z1	09825	A-A1-B-C-C1-D-F-J-L-M-N-R-R1-T-V-Z1	34002	A1-B-J-L-N-U-Z1	96257	A-A1-B-U
09747	A1-B-F-J-N-U-V-Z1	09826	A-A1-B-B2-C1-E1-E2-E3-F-L-M-N-R-R1-T-V-W-Z1	34004	A1-B-J-L-N-T-U-V	96258	A-A1-B-U
09748	A-A1-B-B2-C-C1-D-F-J-L-M-N-R-R1-T-V-Z1	09827	A-A1-B-F-F1-N-R-V-Z1	34006	A-A1-B-C1-F1-N-V-Z1	96260	A-A1-B-U
09749	A-A1-B-F-H-N-V-Z1	09828	A1-B-J-L-N-T-V-Z1	34007	A-A1-B-C1-F-F1-M-N-R-R1-V-Z1	96262	A-A1-B-U-V
09750	A-B-B2-C-C1-F-J-L-M-N-R-R1-T-V-Z1	09829	A1-B-C-N-R-V-Z1	34008	A1-B-B2-D-E1-F-H-H1-J-L-M-N-R-R1-T-V-Z1	96264	A-A1-B-U
09751	A1-B-C-D-H-M-R-U	09830	A1-B-C-M-N-R-V-Z1	34011	A1-B-B2-C1-E2-F-J-L-M-N-R-R1-T-V-Z1	96266	A-A1-B-U
09752	A1-B-C-D-H-U	09831	A1-B-F-N-U-V-Z1	34020	A1-B-J-L-M-N-U-V-Z1	96267	A-A1-B-U-V
09758	A-A1-B-B2-C-C1-F-J-L-M-N-R-R1-T-V-Z1	09832	A-A1-B-U1-V-Z1	34021	A1-B-J-L-M-N-U-V-Z1	96269	A-A1-B-U
09759	A-A1-B-B2-C-C1-E2-F-F1-F2-J-L-N-R-R1-T-V-Z1	09833	A1-B-U1-V-Z1	34022	A1-B-D-F-J-L-M-N-U-V-Z1	96271	A-A1-B-U
09762	A-A1-B-B2-E3-F-F1-J-L-N-R-R1-T-V-Z1	09834	A1-B-F-F1-R-R1-V-Z1	34023	A1-B-J-L-M-N-U-V-Z1	96275	A-A1-B-V
09769	A-A1-B-B2-C-C1-D-F-J-L-M-N-R-R1-T-V-Z1	09835	A-A1-B-V-Z1	34024	A1-B-J-L-M-N-U-V-Z1	96276	A-A1-B
09771	A-A1-B-C-E1-N-R-V	09836	A-A1-B-C-F-M-V-Z1	34025	A1-B-F-J-L-M-N-U-V-Z1	96278	A-A1-B-U
09777	A-A1-B-C-E1-M-N-R	09837	A1-B-V-Z1	34030	A1-B-J-L-M-N-U-V-Z1	96283	A-A1-B-U
09780	A-A1-B-F-H-N-R-V	09838	A1-B-V-Z1	34031	A1-B-J-L-M-N-U-V-Z1	96284	A-A1-B-U-V
09798	A1-B-C-D-H-L-U-V	09839	A-A1-B-U-V-Z1	34032	A1-B-J-L-M-N-T-U-V-Z1	96303	A1-B-H-J-L-M-N-T-W
09801	A-A1-B-C1-E2-F-H1-M-N-R-R1-V-Z1	09840	A-A1-B-V-Z1	34033	A1-B-C-F-J-L-M-N-V-Z1	96306	A1-B-F-F1-F2-H-M-W
09803	A1-B-E2-E3-F-H1-N-R-R1-U1-V-Z1	09841	A-A1-B-N-R-U-Z1	34034	A1-B-J-L-M-N-V-Z1	96309	A1-B-M-V-W
09804	A-A1-B-F-F1-N-R-V-Z1	09842	A-A1-B-M-N-R-Z1	34035	A1-B-H-J-L-M-N-U-V-Z1	96310	A1-B-M-W
09805	A-B-F-F1-R-R1-V-Z1	09844	A-A1-B-C-F-N-U-V-Z1	34036	A1-B-J-L-M-N-U-V-Z1	96319	A1-B-M-W
09806	A-A1-B-C1-E2-F-H1-L-M-N-R-R1-V-Z1	09845	A-A1-B-B2-E3-F-F1-L-M-N-T-V-Z1	34037	A1-B-C-F-H-I-L-M-N-V-Z1	96321	A1-B-F-F1-F2-H-M-W
09807	A-A1-B-C1-E2-F-H1-M-N-R-R1-V-Z1	09846	A-A1-B-B2-C1-F-J-L-N-R-R1-T-V-Z1	34038	A1-B-L-M-N-U-V-Z1	96322	A1-B-F-F1-F2-H-M-W
09809	A1-B-V-Z1	09852	A1-B-E2-E3-F-H1-N-R-R1-U1-V-Z1	34039	A1-B-J-L-M-N-U-V-Z1	96323	A1-B-M-V-W
09810	A-A1-B-F-F1-N-R-V-Z1	09853	A1-B-E2-F-H1-R-R1-U2-V-Z1	34041	A1-B-J-L-M-N-T-U-V-Z1	96326	A1-B-M-W
09811	A1-B-E2-E3-F-H1-N-R-R1-U1-V-Z1	09855	A-A1-B-C1-E2-F-H1-R-R1-U2-V-Z1	34042	A1-B-D-F-M-N-V-Z1	96328	A1-B-M-W
09812	A1-B-E2-E3-F-F1-I-N-R-U-V-Z1	09858	A1-B-E2-E3-F-H1-N-R-R1-U1-V-Z1	34050	A1-B-V	96330	A1-B-M-W
09813	A-A1-B-B2-C1-E2-E3-F-J-L-N-R-R1-T-V-Z1	09859	A1-B-C1-F-F1-H1-N-R-R1-V-Z1	34055	A1-B-J-L-M-N-U-V-Z1	96336	A1-B-M-V-W
09814	A1-B-E2-E3-F-F1-I-N-R-U-V-Z1	09862	A-A1-B-N-V-Z1	34058	A1-B-B2-C1-E2-F-J-L-N-R-R1-T-V-Z1	96337	A1-B-M-W
09815	A-A1-B-C1-E2-F-H1-M-R-R1-V-Z1	09865	A-A1-B-V-Z1	34060	A1-B-F1-N-V-Z1	96338	A1-B-M-W
09816	A-A1-B-B2-C-C1-E2-E3-F-J-L-N-R-R1-T-V-Z1	09866	A-A1-B-N-U-V-Z1	34078	A1-B-F1-N-V-Z1	96339	A1-B-M-V-W
09817	A-A1-B-B2-C1-E2-E3-F-F1-H-H1-J-L-M-N-R-T-V-Z1	09870	A-A1-B-C1-E2-F-H1-M-R-R1-U-V-Z1	34090	A1-B-F-F1-R-R1-V	96343	A1-B-M-W
09818	A-A1-B-C-F-M-V-Z1	09871	A-A1-B-C1-E2-F-H1-M-N-R-R1-U-V-Z1	34091	A1-B-F-F1-R-R1-V	96346	A1-B-F-F1-F2-H-M-V-W
		09872	A-A1-B-C1-E2-F-H1-M-N-R-R1-U-V-Z1	34092	A1-B-F-F1-R-R1-V	96347	A1-B-F-F1-F2-H-M-W
		09873	A-A1-B-C1-E2-F-H1-M-N-R-R1-U-V-Z1	34093	A1-B-F-F1-R-R1-V	96348	A1-B-F-F1-F2-H-M-W
		09874	A-A1-B-C1-E2-F-H1-M-N-R-R1-U-V-Z1	34095	A1-B-V	96349	A1-B-F-F1-F2-H-M-W
		09875	A-A1-B-C1-E2-F-H1-M-N-R-R1-U-V-Z1	34098	A1-B-V	96350	A1-B-F-F1-F2-H-M-W
		09876	A-A1-B-C1-E2-F-H1-M-N-P-R-R1-U-V-Z1	34099	A1-B-V	96351	A1-B-F-F1-F2-H-M-W
				96201	A-A1-B	96355	A1-B-M-W
				96202	A-A1-B-U	96376	A1-B-M-W
				96203	A-A1-B	96377	A1-B-M-W
				96204	A-A1-B	96378	A1-B-M-W
				96205	A-A1-B-U	96379	A1-B-M-W
				96206	A-A1-B-U	96384	A1-B-M-W
				96207	A-A1-B-V	96386	A1-B-M-W

APO/ FPO/ DPO	See Restrictions	APO/ FPO/ DPO	See Restrictions	APO/ FPO/ DPO	See Restrictions	APO/ FPO/ DPO	See Restrictions
96387	A1-B-M-W	96537	A1-B-V	96605	A1-B-V	96663	A1-B-F-F1-R-R1-V
96388	A1-B-M-W	96538	A1-B-V	96606	A1-B-V	96664	A1-B-V
96401	A1-B-F-N-V-Z1	96540	A1-B-V	96607	A1-B-V	96665	A1-B-V
96426	A-A1-B-C1-E2-F-H1-M-R-V	96541	A1-B-V	96608	A1-B-V	96666	A1-B-V
96427	A-A1-B-C1-E2-F-H1-M-R-R1-V	96542	A1-B-V	96609	A1-B-V	96667	A1-B-F-F1-R-R1-V
96447	A1-B-F-N-U3-V-V1	96543	A1-B-P-V	96610	A1-B-V	96668	A1-B-F-F1-R-R1-V
96501	A-A1-B-N-V	96544	A1-B-F-N-U3-V	96611	A1-B-V	96669	A1-B-F-F1-R-R1-V
96502	A1-B-F-N-U3-V	96546	A1-B-F-U3	96612	A1-B-F-F1-R-R1-V	96670	A1-B-V
96503	A1-B-F-N-U3-V	96548	A-A1-B-H-M-U	96613	A-A1-B-C1-E2-F-H1-I-M-R-R1-U2-V-Z-Z1	96671	A1-B-F-F1-R-R1-V
96507	A-A1-B-F-V	96549	A-A1-B-H-M-U	96614	A-A1-B-C1-E2-F-H1-I-M-R-R1-U2-V-Z-Z1	96672	A1-B-F-F1-R-R1-V
96510	A1-B-I-N-V	96550	A-A1-B-H-M-U-V	96615	A1-B-F-F1-R-R1-V	96673	A1-B-V
96511	A1-B-I-N-V	96551	A-A1-B-H-M-N-U	96616	A1-B-F-F1-R-R1-V	96674	A1-B-F-F1-R-R1-V
96515	A1-B-D-F-U3	96552	A1-B	96617	A1-B-F-F1-R-R1-V	96677	A1-B-F-F1-R-R1-V
96516	A1-B-D-F	96553	A-A1-B-F-F1-H-M-U	96619	A1-B-V	96678	A1-B-F-F1-R-R1-V
96517	A1-B-F-U3-V	96554	A-A1-B-H-M-U	96620	A1-B-F-F1-R-R1-V	96679	A1-B-F-F1-R-R1-V
96518	A1-B-V	96555	A1-B-F-M-V	96621	A1-B-V	96681	A1-B-V
96520	A1-B-F-N-U3-V	96557	A1-B-F-M-V	96622	A1-B-F-F1-R-R1-V	96682	A1-B-V
96521	A1-B-F-N-U3	96562	A-A1-B-B2-C-C1-D-E2-E3-F-F1-H-H1-I-L-M-N-R-T-V-Z-Z1	96624	A1-B-F-F1-R-R1-V	96683	A1-B-V
96522	A1-B-F-N-U	96577	A-A1-B-F-H-M-U	96628	A1-B-F-F1-R-R1-V	96686	A1-B-V
96530	A-A1-B-F-F1-H-H1-M-N-U-V	96595	A1-B-V	96629	A1-B-F-F1-R-R1-V	96687	A1-B-V
96531	A-A1-B-F-F1-H-M-N-U-V	96598	A1-B-N-V	96643	A1-B-F-F1-R-R1-V	96698	A1-B-V
96532	A-A1-B-H-J-L-M-N-T-U-V	96599	A1-B-N-V	96650	A1-B-F-F1-R-R1-V		
96534	A-A1-B-F-U	96601	A1-B-V	96657	A1-B-F-F1-R-R1-V		
96535	A-A1-B-F-V	96602	A1-B-V	96660	A1-B-F-F1-R-R1-V		
		96603	A1-B-V	96661	A1-B-F-F1-R-R1-V		
		96604	A1-B-V	96662	A1-B-F-F1-R-R1-V		

RESTRICTIONS

LEGEND

PS Form 2976, *Customs — CN 22 (Old C 1) and Sender's Declaration* (green label)

PS Form 2976-A, *Customs Declaration and Dispatch Note*

AAFES	= Army and Air Force Exchange Service
APO	= Army/Air Force Post Office
Box R	= Retired military personnel
DMM	= <i>Domestic Mail Manual</i>
DPO	= Diplomatic Post Office
FPO	= Fleet Post Office
MOM	= Military Ordinary Mail
MPO	= Military Post Office
PAL	= Parcel Airlift
PSC	= Postal Service Center
SAM	= Space Available Mail
USDA	= United States Department of Agriculture

Note: Mail order catalogs are prohibited as SAM or PAL mail.

A. Securities, currency, or precious metals in their raw, unmanufactured state are prohibited. Official shipments are exempt from this restriction.

A1. Mail addressed to "Any Servicemember," or similar wording such as "Any Soldier," "Sailor," "Airman," or "Marine"; "Military Mail"; etc., is prohibited. Mail must be addressed to an individual or job title such as "Commander," "Commanding Officer," etc.

B. Regardless of mail class, a customs declaration form is required for all items weighing 16 ounces or more, or any item (regardless of weight) containing potentially dutiable mail contents (e.g., merchandise) addressed to an APO, FPO, or DPO ZIP Code. PS Form 2976 is required for items weighing less than 16 ounces, and PS Form 2976-A is required for items weighing 16 ounces or more. No customs form is required for items weighing less than 16 ounces when the contents are not potentially dutiable (e.g., documents). When the surface area of the address side of the mailpiece is not large enough to contain a PS Form 2976-A, the smaller PS Form 2976 may be substituted (e.g., the Priority Mail Small Flat Rate Box). The following exceptions apply:

- Known mailers are exempt from providing customs documentation on non-dutiable letters or printed matter. (A known mailer is a business mailer who enters volume mailings through a business mail entry unit (BMEU) or other bulk mail acceptance location, pays postage through an advance deposit account, uses a permit imprint for postage payment, and submits a completed postage statement at the time of entry that certifies that the mailpieces contain no dangerous materials that are prohibited by postal regulations.)
- All federal, state, and local government agencies whose mailings are regarded as "Official Mail" are exempt from providing customs documentation on any item addressed to an APO, FPO, or DPO except for those APOs/FPOs/DPOs to which restriction "B2" applies.
- Prepaid mail from military contractors is exempt, providing the mailpiece is endorsed "Contents for Official Use — Exempt from Customs Requirements."

B2. All federal, state, and local government agencies must complete customs documentation when sending potentially dutiable mail addressed to or from this APO, FPO, or DPO.

C. Cigarettes and other tobacco products are prohibited.

C1. Obscene articles, prints, paintings, cards, films, videotapes, etc., and horror comics and matrices are prohibited.

D. Coffee is prohibited.

E1. Medicines or vaccines not conforming to French laws are prohibited.

E2. Any matter depicting nude or seminude persons, pornographic or sexual items, or nonauthorized political materials is prohibited. Although religious materials contrary to the Islamic faith are prohibited in bulk quantities, items for the personal use of the addressee are permissible.

E3. Radio transceivers, cordless telephones, global positioning systems, scanners, base stations, and handheld transmitters are prohibited.

F. Firearms of any type are prohibited in all classes of mail. See definitions of firearms in DMM 601.11.1.c. This restriction does not apply to firearms mailed to or by official U.S. government agencies. The restriction for mail to this APO/FPO/DPO ZIP Code does not apply to firearms mailed from this APO/FPO/DPO ZIP Code, provided ATF and USPS regulations are met. Antique firearms are a separate category defined in DMM 601.11.2 and ATF regulations; they do not require an ATF form.

F1. Privately owned weapons addressed to an individual are prohibited in any class of mail.

F2. Importation of firearms is restricted to one shotgun and one single shot.22 caliber rifle per individual.

G. Only letters, flats, and Periodicals are authorized. Parcels of any class are prohibited.

H. Meats, including preserved meats, whether hermetically sealed or not, are prohibited.

H1. Pork or pork by-products are prohibited.

I. Mail of all classes must fit in a mail sack. Mail may not exceed the following dimensions:

- Maximum length 20 inches.
- Maximum width 12 inches.
- Maximum height 12 inches.

The maximum length and girth combined may not exceed 68 inches.

This restriction does not apply to registered mail and official government mail marked MOM.

I1. This restriction does not apply to registered mail.

I2. This restriction does not apply to official government mail marked MOM.

J. Parcels may not exceed 108 inches in length and girth combined.

K. Mail that includes in the address the words, "Dependent Mail Section," may consist only of letter mail, newspapers, magazines, and books. No parcel of any class containing any other matter may be mailed to the Dependent Mail section. This restriction does not apply if the address does not include the words "Dependent Mail Section."

L. All official mail is prohibited.

M. Fruits, vegetables, animals, and living plants are prohibited.

N. Registered mail is prohibited.

O. Delivery status information for Extra Services is not available on USPS.com.

P. APO is used for the receipt and dispatch of official mail only.

Q. Mail may not exceed 66 pounds, and size is limited to 42 inches maximum length and 72 inches maximum length and girth combined.

R. All alcoholic beverages, including those mailable under DMM 601.11.7, are prohibited.

R1. Materials used in the production of alcoholic beverages (i.e., distilling material, hops, malts, yeast, etc.) are prohibited.

S. Mail of all classes must fit in a mail sack. Mail may not exceed the following dimensions and weight:

- Maximum length 12 inches.
- Maximum width 12 inches.
- Maximum height 5 1/2 inches.
- Maximum weight 25 pounds.

The maximum length and girth combined may not exceed 47 inches.

T. Mailings of case lots of food and supplemental household shipments must be approved by the sender's parent agency prior to mailing.

U. Parcels must weigh less than 16 ounces when addressed to Box R. This restriction does not apply to mail endorsed "Free Matter for the Blind or Handicapped."

U1. Mail is limited to First-Class Mail weighing 13 ounces or less when addressed to Box R. This restriction does not apply to mail endorsed "Free Matter for the Blind or Handicapped." Videotapes are prohibited when addressed to Box R, regardless of weight.

U2. Mail is limited to First-Class Mail letters only when addressed to Box R.

U3. Mail is limited to First-Class Mail correspondence (including voice and video cassettes), newspapers, magazines, photographs, not exceeding 16 ounces, when addressed to Box R.

V. Express Mail Military Service (EMMS) not available from any origin.

V1. Delivery Confirmation service is not available.

W. Meat products, such as dried beef, salami, and sausage, may be mailed, provided they remain in their original, hermetically sealed packages and bear USDA certification. Other meats, bones, skin, hair, feathers, horns or hoofs of hoofed animals, wool samples, tobacco leaves, including chewing and pipe tobacco, snuff, cigars, and cigarettes, or obscene material, including obscene drawings, photographs, films, and carvings, are prohibited. Exception: 200 grams of tobacco per parcel are permitted duty free.

X. Personal mail is limited to First-Class Mail items (to include audio cassettes and voice tapes) weighing 13 ounces or less. This limitation does not apply to official mail.

Y. Mail is limited to First-Class and Priority Mail items only. All Periodicals, Standard Mail items, and Package Services items (including SAM and PAL) are not authorized. This restriction also applies to official mail.

Z. No outside pieces (OSPs).

Z1. The following restriction is applicable only to International Service Centers (ISC)/Exchange Offices. An Anti-Pilferage Seal (Item No O817E or O818A) is required on all pouches and sacks.

Displaying the U.S. Flag and the POW-MIA Flag

U.S. Flag at Half-Staff

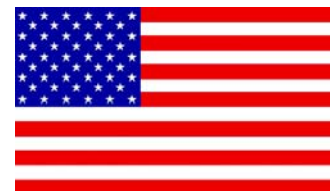
How to Display

Displaying the U.S. flag at *half-staff* means lowering the flag to half the distance between the top and bottom of the staff.

Specific Dates

Display the U.S. flag at half-staff on the following days each year:

- May 15: Peace Officers Memorial Day (see note 1 below).
- Last Monday in May: Memorial Day Observed (see note 2 below).
- December 7: National Pearl Harbor Remembrance Day.



Note 1: When May 15, which is the date for Peace Officers Memorial Day, falls on the third Saturday in May, which is the date for Armed Forces Day, display the U.S. flag in the full-staff position, *not* at half-staff.

Note 2: On the last Monday in May, when Memorial Day is observed, display the flag at half-staff from sunrise, or the hour at which you raise it, until noon, and then hoist it to the peak of the staff, until the time of closing or no later than sunset.

POW-MIA Flag

How to Display

In relation to the U.S. flag, display the POW-MIA flag (and any other flag) as follows:

- If displayed on the same flagstaff, place it below the U.S. flag.
- If displayed on a separate flagstaff, place it at the same level or lower. If displayed at the same level, place it on the U.S. flag's left.

When flying the U.S. flag at half-staff, fly the POW-MIA flag (and any other flags) at half-staff also.

Specific Dates

Display the POW-MIA flag on the following days each year:

- Armed Forces Day: Third Saturday in May.
- Memorial Day: Last Monday in May.
- Flag Day: June 14.
- Independence Day: July 4.
- National POW-MIA Recognition Day: Third Friday in September.
- Veterans Day: November 11.

If any of these days fall on a nonbusiness day, display the POW-MIA flag on the last business day before the designated day.

For more detailed information about flying the U.S. flag and the POW-MIA flag, see the following parts in the *Administrative Support Manual (ASM)*:

- ASM 472, U.S. Flag Display.
- ASM 476, POW-MIA Flag Display.



Stamp Announcement 11-40: Barbara Jordan



© 2010 USPS

On September 16, 2011, in Houston, Texas, the Postal Service™ will issue a *Barbara Jordan* commemorative stamp (Forever® priced at 44 cents), in one design in a pressure-sensitive adhesive (PSA) pane of 20 stamps (Item 466200).

The U.S. Postal Service® honors Barbara Jordan, one of the most respected and influential politicians of the 20th century, as part of the *Black Heritage Series*; it is the 34th stamp in the series. Jordan captured the attention and admiration of the nation with her intelligence and integrity, eloquent oratory, ardent defense of the Constitution, and staunch advocacy rights for all Americans. The portrait featured on the stamp is an oil painting by Albert Slark, based on an undated black-and-white photograph of Jordan. Verso text appears on the back of the stamp pane. Art director Richard Sheaff designed the stamp.

The stamp will go on sale nationwide September 16, 2011.

**Distribution: Item 466200, First-Class Mail
Barbara Jordan (Forever priced at 44 cents), PSA
Pane of 20 Stamps**

Stamp distribution offices (SDOs) and stamp distribution centers (SDCs) will receive 100 percent of their standard automatic distribution quantity for a PSA sheet stamp. Distributions are rounded up to the nearest master carton size of 40,000 stamps.

Initial Supply to Post Offices

SDOs/SDCs will make subsequent automatic distribution to Post Offices of a quantity to cover approximately 45 days of sales. Distribution quantities for the automatic distribution will be posted, by finance number and unit ID, on the Asset Management SDC webpage at http://blue.usps.gov/purchase/assetmgnt/am_sdchome.htm. SDOs/SDCs must not distribute this commemorative sheet to Post Offices before September 2, 2011.

Additional Supply

Post Offices requiring additional quantities of Item 466200 must requisition them from their designated SDO/SDC *after the first day of issue* using PS Form 17, *Stamp Requisition/Stamp Return*. SDOs requiring additional commemorative sheets must order them from the appropriate SDC using PS Form 17.

Sales Policy

All Post Offices must acquire and maintain a supply of each new commemorative stamp for a minimum of 90 days from the first day of issue, and beyond that as long as customer demand exists, until inventory is depleted, or until the stamp is officially withdrawn from sale. If supplies run low, Post Offices must reorder additional quantities using their normal ordering procedures.

How to Order the First Day of Issue Postmark

Customers have 60 days to obtain the first day of issue postmark by mail. They may purchase new stamps at their local Post Office™ facility, at The Postal Store® website at www.usps.com/shop, or by calling 800-STAMP-24. They should affix the stamps to envelopes of their choice, address the envelopes (to themselves or others), and place them in a larger envelope addressed to:

Barbara Jordan Stamp
USPS District Office — Retail
600 N. Sam Houston Pkwy. W
Houston, TX 77067-9997

After applying the first day of issue postmark, the Postal Service will return the envelopes through the mail. There is no charge for the postmark. All orders must be postmarked by November 16, 2011.

How to Order First Day Covers

Stamp Fulfillment Services also offers first day covers for new stamp issues and Postal Service stationery items post-marked with the official first day of issue cancellation. Each item has an individual catalog number and is offered in the quarterly *USA Philatelic Catalog*. Customers may request a free catalog by calling 800-STAMP-24 or writing to:

Information Fulfillment
Dept. 6270
U.S. Postal Service
PO Box 219014
Kansas City, MO 64121-9014

Philatelic Products

There are five philatelic products available for this stamp issue:

- 466261*, First Day Cover, \$0.88.
- 466265*, Digital Color Postmark, \$1.60.
- 466276*, Diary Page and Maxi Card, \$13.95.
- 466291*, Ceremony Program, \$6.95.
- 466299, Cancellation Keepsake (DCP w/Pane), \$10.95.

Items with an asterisk (*) will use the 128 barcode from Stamp Fulfillment Services. All other philatelic products will continue to use barcode series A, with the exception of the Yearbook and the Guide Book.

Issue:	<i>Barbara Jordan</i>
Item Number:	466200
Denomination & Type of Issue:	First-Class Mail® Forever
Format:	Pane of 20 (one design)
Series:	<i>Black Heritage</i>
Issue Date & City:	September 16, 2011, Houston, TX 77210
Designer:	Richard Sheaff, Scottsdale, AZ
Art Director:	Richard Sheaff, Scottsdale, AZ
Typographer:	Richard Sheaff, Scottsdale, AZ
Artist:	Albert Slark, Ajax, Ontario, Canada
Modeler:	Joseph Sheeran
Manufacturing Process:	Offset/Microprint "USPS"
Engraver:	N/A
Printer:	Ashton Potter (USA) Ltd. (APU)
Printed at:	Williamsville, NY
Press Type:	Stevens, Vari-size Security Press
Stamps per Pane:	20
Print Quantity:	100 million stamps
Paper Type:	Prephosphored, Type II
Adhesive Type:	Pressure-sensitive
Processed at:	Ashton Potter (USA) Ltd. (APU)
Stamp Orientation:	Vertical
Image Area (w x h):	0.84 x 1.42 in./21.34 x 36.07 mm
Overall Size (w x h):	0.98 x 1.56 in./24.98 x 39.62 mm
Full Pane Size (w x h):	5.92 x 7.15 in./150.37 x 181.61 mm
Colors:	Black, Cyan, Magenta, Yellow, PMS 480C (Beige)
Plate Size:	180 stamps per revolution
Plate Numbers:	"P" followed by five (5) single digits
Marginal Markings:	
Front:	Header: "BLACK HERITAGE 34 TH IN A SERIES • Plate numbers in four corners of pane
Back:	© 2010 USPS • Plate position diagram • USPS logo • Barcode (466200) in upper right and lower left corners of pane • Verso text on back of each stamp

— Stamp Services,
Government Relations and Public Policy, 8-25-11

Stamp Announcement 11-41: Save Vanishing Species



© 2011 USPS

On September 20, 2011, in Washington, DC, the Postal Service™ will issue a *Save Vanishing Species* semipostal stamp (priced at 55 cents), in one design in a pressure-sensitive adhesive (PSA) pane of 20 stamps (Item 576600).

With the issuance of the *Save Vanishing Species* semipostal stamp, The U.S. Postal Service® is proud to support conservation funds that are helping to create hope for the future. Under the Multinational Species Conservation Funds Semipostal Stamp Act of 2010, the Postal Service will transfer the net proceeds from the sale of this stamp to the U.S. Fish and Wildlife Service to support the Multinational Species Conservation Funds. As of 2011, these funds include the African Elephant Conservation Fund, the Asian Elephant Conservation Fund, the Great Ape Conservation Fund, the Rhinoceros and Tiger Conservation Fund, and the Marine Turtle Conservation Fund. Silhouettes of animals representing each fund appear on the bottom of the stamp pane. The stamp features an illustration of an Amur tiger cub. Artist Nancy Stahl based the animal silhouettes and the stamp art on photographs of wildlife. Derry Noyes served as the art director.

The stamp will go on sale nationwide September 20, 2011.

Distribution: Item 576600, Save Vanishing Species Semipostal (priced at 55 cents), PSA Pane of 20 Stamps

Stamp distribution offices (SDOs) and stamp distribution centers (SDCs) will receive approximately 100 percent of their standard automatic distribution quantity for a PSA sheet stamp. Distributions are rounded up to the nearest master carton size of 40,000 stamps.

Initial Supply to Post Offices

SDOs/SDCs will make subsequent automatic distribution to Post Offices of a quantity to cover approximately 45 days of sales. Distribution quantities for the automatic distribution will be posted, by finance number and unit ID, on the Asset Management SDC webpage at http://blue.usps.gov/purchase/assetmgnt/am_sdchome.htm. SDOs/SDCs must not distribute this commemorative sheet to Post Offices before September 6, 2011.

Additional Supply

Post Offices requiring additional quantities of Item 576600 must requisition them from their designated SDO/SDC *after the first day of issue* using PS Form 17, *Stamp Requisition/Stamp Return*. SDOs requiring additional commemorative sheets must order them from the appropriate SDC using PS Form 17.

Sales Policy

As has been the case with current and previous semipostal stamp issues, all Post Offices should maintain a sufficient inventory level of this item until the stamp is officially withdrawn from sale. The stamp is well supported by a variety of organizations and individuals who expect that the stamp will be available at all Post Offices. If supplies run low, Post Offices must reorder additional quantities using their normal ordering procedures.

How to Order the First Day of Issue Postmark

Customers have 60 days to obtain the first day of issue postmark by mail. They may purchase new stamps at their local Post Office™ facility, at The Postal Store® website at www.usps.com/shop, or by calling 800-STAMP-24. They should affix the stamps to envelopes of their choice, address the envelopes (to themselves or others), and place them in a larger envelope addressed to:

Save Vanishing Species Stamp
Special Cancellations
PO Box 92282
Washington, DC 20090-9998

After applying the first day of issue postmark, the Postal Service will return the envelopes through the mail. There is no charge for the postmark. All orders must be postmarked by November 21, 2011.

Special Dedication Postmarks

Only the following pictorial postmarks are permitted for the *Save Vanishing Species* stamp. The word "Station" or the abbreviation "STA" is required somewhere in the design, because it will be a temporary station.



Finished Artwork



Unfinished Artwork



Finished Artwork



Unfinished Artwork



Finished Artwork



Unfinished Artwork



Finished Artwork



Unfinished Artwork



Finished Artwork



Unfinished Artwork



Finished Artwork



Unfinished Artwork

Guidelines for Finalizing Save Vanishing Species Stamp Pictorial Postmark Art

To finalize the *Save Vanishing Species* stamp pictorial postmark art, insert the date, city, state, and ZIP Code™ of the physical location of your event adjacent to the stamp image. Overall dimensions of the pictorial postmark must not exceed 4 inches horizontally by 2 inches vertically. Collectors prefer the dimensions 3 1/2 inches by 1 inch.

The Postal Service must make all special postmarks known to collectors through advance publicity in the *Postal Bulletin*. Therefore, all special dedication cancellations must be reported to Stamp Services 4 weeks before the events using PS Form 413, *Pictorial Postmark Announcement/Report*. To get a copy of the form, go to <http://blue.usps.gov/formmgmt/forms/ps413.pdf>.

How to Order First Day Covers

Stamp Fulfillment Services also offers first day covers for new stamp issues and Postal Service stationery items postmarked with the official first day of issue cancellation. Each item has an individual catalog number and is offered in the quarterly *USA Philatelic Catalog*. Customers may request a free catalog by calling 800-STAMP-24 or writing to:

Information Fulfillment
Dept. 6270
U.S. Postal Service
PO Box 219014
Kansas City, MO 64121-9014

Philatelic Products

There are six philatelic products available for this stamp issue:

- 576662*, First Day Cover, \$0.99.
- 576665*, Digital Color Postmark, \$1.71.
- 576671*, First Day of Issue Collection (Pane/Postmark Card/Program), \$19.50.
- 576691*, Ceremony Program, \$7.06.
- 576694, Notecards (Set of 10 w/stamps), \$15.95.
- 576699*, Cancellation Keepsake (Digital Color Postmark w/Pane), \$12.95.

Items with an asterisk (*) will use the 128 barcode from Stamp Fulfillment Services. All other philatelic products will continue to use barcode series A, with the exception of the Yearbook and the Guide Book.

Issue:	<i>Save Vanishing Species</i>
Item Number:	576600
Denomination & Type of Issue:	Nondenominated First-Class Mail Semipostal (55 cents)
Format:	Pane of 20 (1 design)
Series:	N/A
Issue Date & City:	September 20, 2011, Washington, DC 20066
Designer:	Derry Noyes, Washington, DC
Art Director:	Derry Noyes, Washington, DC
Artist:	Nancy Stahl, New York, NY
Typographer:	Derry Noyes, Washington, DC
Engraver:	WRE
Modeler:	Avery Dennison, Designed and Engineered Solutions
Manufacturing Process:	Gravure
Printer:	Avery Dennison (AVR)
Printed at:	AVR, Clinton, SC
Press Type:	Dia Nippon Kiko (DNK)
Stamps per Pane:	20
Print Quantity:	100 million stamps
Paper Type:	Nonphosphored, Type III, Block
Adhesive Type:	Pressure-sensitive
Processed at:	AVR, Clinton, SC
Colors:	Yellow, Magenta, Cyan, Black, Green, Pane (Green), Text (Green)
Stamp Orientation:	Vertical
Image Area (w x h):	1.127 x 1.161 in./28.63 x 29.49 mm
Overall Size (w x h):	1.225 x 1.225 in./31.12 x 31.12 mm
Full Pane Size (w x h):	7.125 x 8.50 in./180.98 x 215.90 mm
Plate Size:	160 stamps per revolution
Plate Numbers:	"V" followed by seven (7) single digits
Marginal Markings:	
Front:	Header: "Save Vanishing Species AFRICAN ELEPHANT · MARINE TURTLE · GREAT APE · TIGER · ASIAN ELEPHANT · RHINOCEROS" • "MULTINATIONAL SPECIES CONSERVATION FUNDS" at bottom of pane • Plate numbers in two bottom corners of pane
Back:	Header: "Save Vanishing Species" • Narrative text" 2011 USPS • USPS logo • Plate position diagram • Barcode (576600) in lower right and left hand corners of pane • Proprietary notice at bottom of pane • Silhouette image of each animal in text represented at bottom on pane

— Stamp Services,
Government Relations and Public Policy, 8-25-11

Stamp Announcement 11-42: Romare Bearden



© 2010 USPS

On September 28, 2011, in New York, New York, the Postal Service™ will issue a *Romare Bearden* commemorative stamp (Forever® priced at 44 cents), in four designs in a pressure-sensitive adhesive (PSA) pane of 16 stamps (Item 467700).

With this stamp sheet, the U.S. Postal Service® honors Romare Bearden (1911–1988), one of the 20th Century's most distinguished American artists. Four collages by Bearden are featured in the stamp art: *Conjunction (1971)*; *Odysseus: Poseidon, The Sea God — Enemy of the Odysseus (1977)*; *Prevalence of Ritual: Conjur Woman (1964)*; and *Falling Star (1979)*. The selvage features a photograph of Bearden taken by Frank Stewart in the early 1980s. The photo has been cropped. Art director Derry Noyes designed the stamp pane.

The stamp will go on sale nationwide September 28, 2011.

Distribution: Item 467700, First-Class Mail Romare Bearden (Forever priced at 44 cents), PSA Pane of 16 Stamps

Stamp distribution offices (SDOs) and stamp distribution centers (SDCs) will receive approximately 50 percent of their standard automatic distribution quantity for a PSA sheet stamp. Distributions are rounded up to the nearest master carton size of 32,000 stamps.

Initial Supply to Post Offices

SDOs/SDCs will make subsequent automatic distribution to Post Offices of a quantity to cover approximately 45 days of sales. Distribution quantities for the automatic distribution will be posted, by finance number and unit ID, on the Asset Management SDC webpage at http://blue.usps.gov/purchase/assetmgnt/am_sdchome.htm. SDOs/SDCs must not distribute this commemorative sheet to Post Offices before September 14, 2011.

Additional Supply

Post Offices requiring additional quantities of Item 467700 must requisition them from their designated SDO/SDC *after the first day of issue* using PS Form 17, *Stamp*

Requisition/Stamp Return. SDOs requiring additional commemorative sheets must order them from the appropriate SDC using PS Form 17.

Sales Policy

All Post Offices must acquire and maintain a supply of each new commemorative stamp for a minimum of 90 days from the first day of issue, and beyond that as long as customer demand exists, until inventory is depleted, or until the stamp is officially withdrawn from sale. If supplies run low, Post Offices must reorder additional quantities using their normal ordering procedures.

How to Order the First Day of Issue Postmark

Customers have 60 days to obtain the first day of issue postmark by mail. They may purchase new stamps at their local Post Office™ facility, at The Postal Store® website at www.usps.com/shop, or by calling 800-STAMP-24. They should affix the stamps to envelopes of their choice, address the envelopes (to themselves or others), and place them in a larger envelope addressed to:

Romare Bearden Stamp
Postmaster
421 Eighth Ave., Room 2029B
New York, NY 10199-9998

After applying the first day of issue postmark, the Postal Service will return the envelopes through the mail. There is no charge for the postmark. All orders must be postmarked by November 28, 2011.

How to Order First Day Covers

Stamp Fulfillment Services also offers first day covers for new stamp issues and Postal Service stationery items postmarked with the official first day of issue cancellation. Each item has an individual catalog number and is offered in the quarterly *USA Philatelic Catalog*. Customers may request a free catalog by calling 800-STAMP-24 or writing to:

Information Fulfillment
Dept. 6270
U.S. Postal Service
PO Box 219014
Kansas City, MO 64121-9014

Philatelic Products

There are five philatelic products available for this stamp issue:

- 467763*, First Day Cover Set of 4, \$3.52.
- 467768*, Digital Color Postmark Set of 4, \$6.40.
- 467776, Diary Page and Pane, \$12.95.
- 467791*, Ceremony Program, \$6.95.
- 467999*, Cancellation Keepsake (4 Digital Color Postmarks w/Pane), \$13.95.

Items with an asterisk (*) will use the 128 barcode from Stamp Fulfillment Services. All other philatelic products will continue to use barcode series A, with the exception of the Yearbook and the Guide Book.

Issue:	<i>Romare Bearden</i>
Item Number:	467700
Denomination & Type of Issue:	First-Class Mail® Forever
Format:	Pane of 16 (4 designs)
Series:	N/A
Issue Date & City:	September 28, 2011, New York, NY 10199
Designer:	Margaret Bauer, Washington, DC
Art Director:	Derry Noyes, Washington, DC
Typographer:	Margaret Bauer, Washington, DC
Existing Art:	Romare Bearden, New York, NY
Engraver:	Trident

Modeler:	Avery Dennison, SPD
Manufacturing Process:	Gravure
Printer:	Avery Dennison (AVR)
Printed at:	AVR, Clinton, SC
Press Type:	Dia Nippon Kiko (DNK)
Stamps per Pane:	16
Print Quantity:	40 million stamps
Paper Type:	Nonphosphored, Type III, Block
Adhesive Type:	Pressure-sensitive
Processed at:	AVR, Clinton, SC
Colors:	Yellow, Magenta, Cyan, Black, 125 (Tan)
Stamp Orientation:	Square
Image Area (w x h):	1.085 x 1.085 in./27.5 x 27.5 mm
Overall Size (w x h):	1.225 x 1.225 in./31.11 x 31.11 mm
Full Pane Size (w x h):	7.00 x 8.00 in./177.8 x 203.2 mm
Plate Size:	128 stamps per revolution
Plate Numbers:	"V" followed by five (5) single digits
Marginal Markings:	
Front:	Header: "Romare Bearden 1911–1988" Plate numbers in one corner of pane
Back:	© 2010 USPS • USPS logo • plate position diagram • Barcode (467700) lower right corner of pane • Narrative text Proprietary notice

— Stamp Services,
Government Relations and Public Policy, 8-25-11

Stamp Stock Items Withdrawn From Regular Sale and From Sale at Philatelic Centers

Effective close-of-business September 30, 2011, all Post Offices™, stations, branches, postal stores, vending outlets, and authorized philatelic centers must (1) withdraw the stamp stock items and products listed below and their related vending and store-prepared stamp items from sale and (2) prepare them for destruction. Submit items to destruction sites according to local established procedures, under the guidelines in Handbook F-101, *Field Accounting Procedures*, and subchapter 11-6, Returning Stock to the Stamp Distribution Office or Stamp Distribution Center.

Do not permit sales of the stamp stock items, products, and their related vending and store-prepared stamp items listed below at retail counters and outlets after September 30, 2011. Stamp items listed with an asterisk (*) remain on sale at Stamp Fulfillment Services via the *USA Philatelic Catalog*.

Note: This notice does not apply to philatelic products unless specifically listed below. Philatelic products that contain or are packaged with stamps removed from sale will remain on sale until further notice.

Item Number	Description
113100*	\$0.28 Polar Bear Pane of 20
113555	\$17.50 Old Faithful Express Mail — OMAS
113955	\$4.90 Mackinaw Bridge Priority Mail — OMAS
123761	\$0.82 Purple Heart FDC
123793	\$9.62 Purple Heart Keepsake
263061	\$0.61 Elk Window Envelope FDC — OMAS
458196	\$21.95 Discounted Cultural Diary
465100	\$0.44 Mother Teresa Pane of 20
465161	\$0.82 Mother Teresa FDC
465165	\$1.50 Mother Teresa DCP
465191*	\$6.95 Mother Teresa Ceremony Program
465199*	\$10.95 Mother Teresa DCP Keepsake
465200*	\$0.44 Negro Leagues Baseball Pane of 20
465263	\$1.64 Negro Leagues Baseball FDC Set of 2
465268	\$3.00 Negro Leagues Baseball DCP Set of 2
465273*	\$18.95 Negro Leagues Baseball We are the Ship Book
465274*	\$16.94 Negro Leagues Baseball Commemorative Folio
465276*	\$12.95 Negro Leagues Baseball Diary Page
465291*	\$6.95 Negro Leagues Baseball Ceremony Program
465299*	\$11.95 Negro Leagues DCP w/Full Sheet Keepsake
465400	\$0.44 Scouting Pane of 20
465461	\$0.82 Scouting FDC
465465	\$1.50 Scouting DCP
465500*	\$0.44 Sunday Funnies Pane of 20
465563	\$4.10 Sunday Funnies FDC Set of 5
465568	\$7.50 Sunday Funnies DCP Set of 5
465584*	\$79.20 Sunday Funnies Uncut Press Sheet
465591*	\$6.95 Sunday Funnies Ceremony Program
465599*	\$16.95 Sunday Funnies Cancellation Keepsake
465900*	\$0.44 Julia de Burgos Pane of 20

Item Number	Description
465961	\$0.82 Julia de Burgos FDC
465991*	\$6.95 Julia de Burgos Ceremony Program
465993*	\$9.95 Julia de Burgos FDC Keepsake
466161	\$0.82 Winslow Homer FDC
466165	\$1.50 Winslow Homer DCP
466191	\$6.95 Winslow Homer Ceremony Program
466199	\$10.95 Winslow Homer DCP Keepsake
465762	\$6.90 Hawaiian Rain Forest FDC Full Pane
465764	\$6.90 Hawaiian Rain Forest First Day Cancellation Full Pane
465784	\$35.20 Hawaiian Rain Forest Uncut Press Sheet
465791	\$6.95 Hawaiian Rain Forest Ceremony Program
465793	\$11.95 Hawaiian Rain Forest FDC w/Full Sheet Keepsake
569000	\$7.02 Nondenominated ATM Booklet of 18
575200*	\$8.80 Pansies in a Basket Pane of 20
576000	\$8.80 Adopt a Shelter Pet Pane of 20
677755	\$8.80 (2008) Liberty Bell DB Booklet of 20 — OMAS
677761	\$0.80 Forever Stamp FDC
786500*	\$21.00 Flags of Our Nation Series 1 Coil of 50
786600*	\$21.00 Flags of Our Nation Series 2 Coil of 50
787500*	\$22.00 Flags of Our Nation Series 3 Coil of 50
885400*	\$8.95 Hawaiian Rain Forest Premium Postal Cards
885401	\$8.95 Hawaiian Rain Forest Premium Postal Cards
890900*	\$19.95 36 th Edition The Postal Guide to U.S. Stamps
896600*	\$14.95 Early TV Memories Postal Cards
896601	\$14.95 Early TV Memories Postal Cards
896900*	\$8.95 Kelp Forest Stamped Postal Cards
990900*	\$59.95 2009 Commemorative Yearbook
Listed stamp items were taken off-sale at Regular Sales Units. Effective September 30, 2011, they are off sale at SFS.	
113091	\$6.95 Richard Wright Ceremony Program
113191	\$6.95 Polar Bear Ceremony Program
223100	\$0.31 Koi Single Cut Stamped Card
223200	\$0.62 Koi Double Stamped Card
465399	\$14.95 Cowboys of the Silver Screen Cancellation Keepsake
465384	\$79.20 Cowboys of the Silver Screen Uncut Press Sheet
568200	\$0.75 Great Smoky Mountains Pane of 20
785700	\$17.00 (17-cent) Bighorn Sheep PSA Coil of 100
787200	\$28.00 (28-cent) Polar Bear Coil of 100
Listed stamp items were taken off sale at SFS. Effective September 30, 2011, they are off sale in the field.	
440091	\$6.95 Winter Olympics Ceremony Program
466100	\$0.44 Winslow Homer Pane of 20
465700	\$4.40 Hawaiian Rainforest Souvenir Sheet of 10
677700	\$8.80 (2008) Liberty Bell DB Booklet of 20
787000	\$44.00 U.S. Flag Coil of 100

— Stamp Services,
Government Relations and Public Policy, 8-25-11

Pictorial Postmarks Announcement

As a community service, the Postal Service™ offers pictorial postmarks to commemorate local events celebrated in communities throughout the nation. A list of events for which pictorial postmarks are authorized appears below. The sponsor of the pictorial postmark appears in italics under the date. Also provided are illustrations of these postmarks.

People attending these local events may obtain the postmark in person at the temporary Post Office™ station established there. Those who cannot attend the event but who wish to obtain the postmark may submit a mail order request. Pictorial postmarks are available only for the dates indicated, and *requests must be postmarked no later than 30 days following the requested pictorial postmark date.*

All requests must include a stamped envelope or postcard bearing at least the minimum First-Class Mail® postage. Items submitted for postmark may not include

postage issued after the date of the requested postmark. Such items will be returned unserved.

Customers wishing to obtain a postmark should affix stamps to any envelope or postcard of their choice, address the envelope or postcard to themselves or others, insert a card of postcard thickness in envelopes for sturdiness, and tuck in the flap. Place the envelope or postcard in a larger envelope and address it to: Pictorial Postmarks, followed by the Name of the Station, Address, City, State, ZIP+4® Code, as listed below.

Customers can also send stamped envelopes and postcards without addresses for postmark, as long as they supply a larger envelope with adequate postage and their return address. After applying the pictorial postmark, the Postal Service returns the items (with or without addresses) under addressed protective cover.

The following pictorial postmark has been extended for 30 days:



August 20, 2011
Wild Blueberry Festival Committee
 Wild Blueberry Festival Station
 Postmaster
 51 Court St.
 Machias, ME 04654-9998



August 24, 2011
The Huntington Library
 San Marino Station
 Postmaster
 2960 Huntington Dr.
 San Marino, CA 91104-9998



August 25, 2011
Outer Banks Stamp Club
 Hatteras Post Office
 Postmaster
 PO Box 9998
 Hatteras, NC 27943-9998



August 24, 2011
Gaysville Community Church & Historical Society
 Steeple Raising Station
 Postmaster
 35 Bridge St.
 Gaysville, VT 05746-9998



August 25, 2011
Alaska State Fair
 Alaska State Fair Station
 Postmaster
 500 S. Cobb St.
 Palmer, AK 99645-9998



STATE FAIR POST OFFICE STATION
ST. PAUL, MN 55108

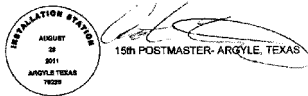
August 25–Sept. 5, 2011

United States Postal Service
Minnesota State Fair Station
Postmaster
PO Box 645014
St. Paul, MN 55164-5001



August 27, 2011

150th Anniversary
Stiftungsfest, Inc.
Stiftungsfest Station
Postmaster
PO Box 9998
Norwood-Young America,
MN 55368-9998



August 26, 2011

United States Postal Service
Installation Station
Postmaster
440 Highway 377 N
Argyle, TX 76226-9998



August 27, 2011

The Village of Wilson
Wilson Centennial Station
Postmaster
PO Box 9998
Wilson, WI 54027-9998



August 26, 2011

United States LST Association
26th Annual Reunion Station
Postmaster
320 S. Commercial St.
Branson, MO 65616-9998



August 27, 2011

Danby — Mt. Tabor
Historical Society
Anniversary Station
Postmaster
214 North Main St.
Danby, VT 05739-9998



August 26, 2011

Le Sueur County Pioneer Power
Le Sueur Pioneer Power Station
Postmaster
PO Box 9998
Le Sueur, MN 56058-9998



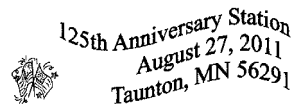
August 27, 2011

Town of Pawlet
250 Years Pawlet Charter Station
Postmaster
2841 VT Route 153
West Pawlet, VT 05775-9998



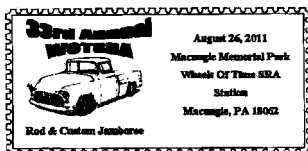
August 26, 2011

Freedom Bicentennial Committee
Town of Freedom
Bicentennial Station
Postmaster
11481 Route 98
Freedom, NY 14065-9998



August 27, 2011

Taunton Anniversary Committee
125th Anniversary Station
Postmaster
PO Box 9998
Taunton, MN 56291-9998



August 26–28, 2011

Wheels of Time Street Rod Association
Wheels of Time SRA Station
Postmaster
51 West End Trail
Macungie, PA 18062-9998

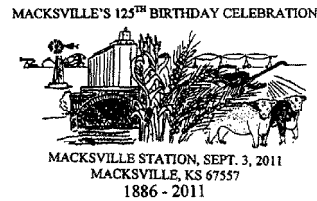


August 27, 2011

Dayton Stamp Club
Civil War 150th Anniversary Station
Postmaster
PO Box 9998
Dayton, OH 45401-9998



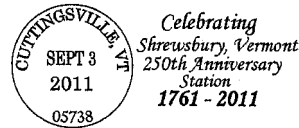
August 28, 2011
 Dayton Stamp Club
 Civil War 150th Anniversary Station
 Postmaster
 PO Box 9998
 Dayton, OH 45401-9998



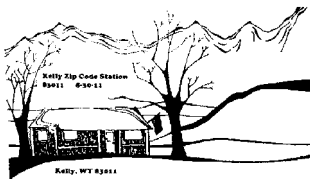
September 3, 2011
 Macksville Centennial Committee
 Macksville Station
 Postmaster
 PO Box 9998
 Macksville, KS 67557-9998



August 29, 2011
 Outer Banks Stamp Club
 Civil War Sequicentennial Station
 Postmaster
 PO Box 9998
 Hatteras, NC 27943-9998



September 3, 2011
 Shrewsbury Historical Society
 250th Anniversary Station
 Postmaster
 5446 VT Route 103
 Cuttingsville, VT 05738-9998



August 30, 2011
 United States Postal Service
 Kelly ZIP Code Station
 Postmaster
 PO Box 9998
 Kelly, WY 83011-9998



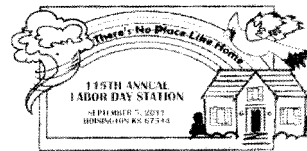
Hot Air Station
 Laclede, MO 64651
 September 3, 2011

September 3, 2011
 Greenhills Ballooning Association
 Hot Air Station
 Postmaster
 607 Pershing Dr.
 Laclede, MO 64651-9998



Hot Air Station
 Laclede, MO 64651
 September 1, 2011

September 1, 2011
 Green Hills Ballooning Assoc.
 Hot Air Station
 Postmaster
 607 Pershing Dr.
 Laclede, MO 64651-9998



September 5, 2011
 United States Postal Service
 115th Annual Labor Day Station
 Postmaster
 121 East 2nd St.
 Hoisington, KS 67544-9998



September 2-3, 2011
 Merchantville Stamp Club
 Merpex Station
 Postmaster
 2700 Mount Ephraim Ave.
 Camden, NJ 08104-9998



September 7-11, 2011
 United States Postal Service
 Sandwich Fair Station
 Postmaster
 22 N. Eddy St.
 Sandwich, IL 60548-9998



September 2-5, 2011
 United States Postal Service
 Rollag Station
 Postmaster
 503 Front St.
 Hawley, MN 56549-9998

— Stamp Services,
 Government Relations and Public Policy, 8-25-11

DID YOU KNOW?

**More than 1 million
iPhone, iPod touch
and iPad customers
have downloaded the
U.S. Postal Service
mobile app.**



How to Order the First Day of Issue Digital Color or Traditional Postmarks

Customers have 60 days to obtain the first day of issue postmarks by mail. They may purchase new stamps at their local Post Office™, by telephone at 800-STAMP-24, or at The Postal Store® website at www.usps.com/shop.

Traditional Postmarks

Customers should affix the stamps to envelopes of their choice, address them to themselves or others, or provide a self-addressed return envelope with sufficient postage large enough to accommodate the canceled item. Mail the request to the corresponding city of issuance. There is no charge for the first 50 postmarks. There is a 5-cent charge for each additional postmark over 50. Customers should submit a check, money order, or credit card for payment. After applying the first day of issue postmark, the Postal Service™ will return the envelopes to the customer by U.S. Mail.

All postmark requests should go to the first day of issue city. The first day of issue city Post Office will then forward in bulk all postmark requests to Cancellation Services, Stamp Fulfillment Services, PO Box 449992, Kansas City, MO 64144-9992 by respective Post Offices.

Digital Color Postmarks

Only select stamp issues offer a digital color postmark. Customers may submit #6 or #10 envelopes constructed of paper rated as “laser safe.” The Postal Service recommends envelopes of 80-pound Accent Opaque, acid-free, 9/16" side seams with no glue on the flap. The maximum

size of all digital color postmarks is 2" high x 4" long. Allow sufficient space on the envelope to accommodate the postmark. Do not use self-adhesive labels for addresses on the envelope. Two test envelopes must be included. There is a minimum of 10 envelopes at 50 cents per postmark required at the time of servicing. Customers should submit a check, money order, or credit card for payment.

The Postal Service reserves the right to not accept hand-painted and other cachet envelopes that are not compatible with our digital color postmark equipment. The Postal Service also reserves the right to substitute traditional black rubber postmarks if use of nonspecified envelopes results in poor image quality or damage to equipment.

Customers should affix the stamps to the envelopes and address them to themselves or others for return through the mail. Or, they may include an additional self-addressed return envelope, large enough to accommodate their canceled items, with sufficient postage affixed for return of their postmarked items. Mail the request for a first day of issue digital color postmark to the corresponding city of issuance. Post Offices will then forward all customer requests for digital color postmarks to Cancellation Services, Stamp Fulfillment Services, PO Box 449992, Kansas City, MO 64144-9992.

After applying the first day of issue postmark, the Postal Service will return the envelopes to the customer by U.S. Mail.



Digital Color Pictorial

Pioneers of American Industrial Design Stamp

Special Events August 29, 2011
 421 8th Ave., Rm. 2029B
 New York, NY 10199-9998
 2.6587 x 1.25 inches



Digital Color Pictorial

Owney the Postal Dog Stamp

Special Cancellations September 27, 2011
 PO Box 92282
 Washington, DC 20090-2282
 2.4706 x 1.3210 inches



Digital Color Pictorial

U.S. Merchant Marine Stamp
c/o Postmaster
1 Welwyn Rd.
Great Neck, NY 11021-9998

September 28, 2011

2.6736 x 1.1803 inches



Black and White Pictorial

Flags of Our Nation: Set 5 Stamps
Postmaster
850 Twin Rivers Drive
Columbus, OH 43216-9998

October 11, 2011

2.8100 x 1.2808 inches



Digital Color Pictorial

Flags of Our Nation: Set 5 Stamps
Postmaster
850 Twin Rivers Drive
Columbus, OH 43216-9998

October 11, 2011

2.6917 x 1.2977 inches

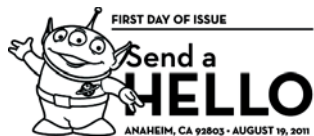


Digital Color Pictorial

Eid Stamp
Postmaster
850 Twin Rivers Drive
Columbus, OH 43216-9998

October 12, 2011

2.651 x 1.2441 inches



Black and White Pictorial

Send a Hello Stamp
Postmaster
701 N. Loara Street
Anaheim, CA 92803-9998

October 19, 2011

2.7169 x 1.1505 inches



Digital Color Pictorial

Send a Hello Stamp
Postmaster
701 N. Loara Street
Anaheim, CA 92803-9998

October 19, 2011

2.5630 x 1.2500 inches



Digital Color Pictorial

Edward Hopper Stamp
Postmaster
Provincetown, MA 02657-9998

October 24, 2011

2.5055 x 1.2499 inches



Black and White Pictorial

Barbara Jordan Stamp
USPS District Office — Retail
600 N. Sam Houston Pkwy. W
Houston, TX 77067-9997

November 16, 2011



Digital Color Pictorial

Barbara Jordan Stamp
USPS District Office – Retail
600 N. Sam Houston Pkwy. W
Houston, TX 77067-9997

November 16, 2011



Digital Color Pictorial

Romare Bearden Stamp
Postmaster
421 Eighth Ave., Room 2029B
New York, NY 10199-9998

November 28, 2011

– Stamp Services, Government Relations and Public Policy, 8-25-11



475 L'ENFANT PLAZA SW
WASHINGTON DC 20260-5540

First-Class Mail
Postage & Fees Paid
USPS
Permit No. G-10

The background of the main text area is a collage. It features a large, stylized "USPS" logo in white with a black outline. Behind the logo, there are images of US dollar bills and the dome of the United States Capitol building. The text "receives no federal tax dollars for its operations." is written in a white, sans-serif font with a black outline, stacked in four lines below the logo.

USPS[®]

receives no
federal tax
dollars for its
operations.