

usps postal|bulletin

PUBLISHED SINCE MARCH 4, 1880



**YOU
ARE
THE
BRAND.**



Contents

POLICIES, PROCEDURES, AND FORMS UPDATES

Manuals

DMM Revision: Container Preparation Options for Saturation Flats With Detached Address Labels	3
DMM Revision: Catalogs — A Definition	4
IMM Revision: U.S. Customs and Border Protection Form	4
IMM Revision: New Mailing Standards to Comply With Office of Foreign Assets Control Regulations	5
IMM Revision: Accounting Procedures for Customs Clearance and Delivery Fee	6

Handbooks

Handbook F-23 Revision: Security, Acquisitions, and Revenue	7
---	---

Publications

Publication 431 Revision: Changes to Post Office Box Service and Caller Service Fee Groups	8
--	---

ORGANIZATION INFORMATION

Intelligent Mail and Address Quality

Post Office Changes	9
-------------------------------	---

Mailing and Shipping Services

Mail Alert	10
Nine-digit Mailer ID Conformance Notice	10

Philately

Stamp Announcement 10-22: Nature of America: Hawaiian Rain Forest	11
Stamp Announcement 10-23: Mother Teresa	30
Pictorial Postmarks Announcement	32
How to Order the First Day of Issue Digital Color or Traditional Postmarks	38

Supply Management

USPS Headquarters Managers and Field Installation Heads: August 2010 Semi-Annual Capital Property Review	39
--	----

PULL-OUT INFORMATION

Fraud

Domestic Orders	13
Invalid Express Mail Corporate Account Numbers	14
Missing, Lost, or Stolen U.S. Money Order Forms	16
Missing, Lost, or Stolen Canadian Money Order Forms	21
Verifying U.S. Postal Service Money Orders	23
Counterfeit Canadian Money Order Forms	23
Toll-Free Number Available to Verify Canadian Money Orders	23

Other Information

Overseas Military/Diplomatic Mail	24
---	----

Postal Bulletin Index

Semi-Annual Index	PB 22288 (7-1-10)
-----------------------------	-------------------



Mother Teresa Stamp

USPS National Emergency Hotline
Is your facility operating? Call 888-363-7462



**UNITED STATES
POSTAL SERVICE®**

Policies, Procedures, and Forms Updates

Manuals

DMM Revision: Container Preparation Options for Saturation Flats With Detached Address Labels

Effective August 2, 2010, the Postal Service™ will revise *Mailing Standards of the United States Postal Service, Domestic Mail Manual (DMM®)* section 602.4.3 to provide new containerization and palletization options for the preparation of saturation flats with detached address labels (DALs).

Current mailing standards limit containerization of DALs, and their corresponding flats, to being placed in cartons or made into bundles and placed in sacks. To optimize the use of the required barcodes on DALs mailed with saturation flats, mailers will have the option to place the DALs in letter trays, allowing efficient processing of the mailpieces on automation equipment. We also clarify the standards for the optional preparation of placing bundles of saturation flats on 5-digit pallets instead of placing the bundles in 5-digit sacks.

Mailing Standards of the United States Postal Service, Domestic Mail Manual (DMM)

	*	*	*	*	*
600	Basic Standards for All Mailing Services				
	*	*	*	*	*
602	Addressing				
	*	*	*	*	*
4.0	Detached Address Labels (DALs)				
	*	*	*	*	*
4.3	Mail Preparation				
	*	*	*	*	*

4.3.2 Basic Standards for DALs

[Revise the text of 4.3.2 to read as follows:]

The DALs must be presorted, counted, and prepared by 5-digit ZIP Code delivery area. Only DALs for the same 5-digit area may be placed in the same carton, sack, or tray. DAL mailings claimed at carrier route basic or walk-sequence prices must be further prepared under the corresponding standards. Mailers must prepare DALs as bundles in sacks, or in cartons, unless prepared in trays under 4.3.6 when mailed with saturation flats. Different size cartons may be used in the same mailing, but each must be filled with dun-

nage as necessary to ensure that the DALs retain their orientation and presort integrity while in transit. Each carton of DALs must bear a label showing the information in 4.3.5 unless a mailing identification number is used (see 4.3.1). Multiple containers of DALs must be numbered sequentially (“1 of __,” “2 of __,” etc.).

4.3.3 Basic Standards for Items Distributed With DALs

[Revise text of 4.3.3 as follows:]

Except for bundles of saturation flats placed directly on pallets under 4.3.6, the items to be distributed with DALs must be placed in cartons or prepared in bundles placed in sacks, as appropriate for the type of item and subject to the standards for the price claimed. A label bearing the content description information in 4.3.5 must be affixed to each carton, sacked bundle, or pallet unless a mailing identification number is used (see 4.3.1). Cartons of items (including those on pallets) may be of different sizes but must be filled with dunnage as necessary to ensure the integrity of the items while in transit. The gross weight of each carton or sack must not be more than 40 pounds.

* * * * *

[Renumber current 4.3.6 as new 4.3.7 and add new 4.3.6 as follows:]

4.3.6 Optional Tray and Bundle Preparation

Mailers may prepare DALs in letter trays according to 245.7.0, when DALs are used for mailings of saturation flats. Bundles of saturation flats to be distributed with DALs may be prepared on 5-digit pallets under 4.3.7. The mail may not be prepared on pallets when the Drop Shipment Product indicates the delivery unit that serves the 5-digit pallet destination cannot handle pallets. For such delivery units, mail with DALs must be prepared in sacks. The tray(s) of corresponding DALs must be placed on top of the accompanying pallet of flats, and the pallet contents must be secured with stretchwrap to avoid separation in transportation and processing. All containers must be labeled according to 4.3.5.

[Revise heading and text of renumbered 4.3.7 as follows:]

4.3.7 Optional Container Preparation

Cartons, bundles of flats, and sacks of items may be placed on 5-digit pallets meeting the standards in 705.8.0.

Cartons or trays of DALs must be placed on pallets with the corresponding items under 4.3 and 705.8.0. The USPS plant manager at whose facility a DAL mailing is deposited may authorize other containers for the portion of the mailing to be delivered in that plant's service area.

* * * * *

— Mailing Standards, Pricing, 7-29-10

DMM Revision: Catalogs — A Definition

Effective August 2, 2010, the Postal Service™ will revise *Mailing Standards of the United States Postal Service, Domestic Mail Manual (DMM®)* adding a definition of the term catalog in section 301.1, Physical Standards for Flats.

With the January 2011 *PostalOne!*® release, a catalog indicator will be added to the drop-down box in the processing category field and to the processing category for Standard Mail® postage statements. Customers who present flat-size Standard Mail mailpieces that meet the DMM description of catalogs will be asked to identify the mailpiece as a catalog in the processing category field.

Mailing Standards of the United States Postal Service, Domestic Mail Manual (DMM)

* * * * *

300 Commercial Flats

301 Physical Standards

1.0 Physical Standards for Flats

1.1 General Definition of Flat-Size Mail

Flat-size mail other than that in 3.0, *Physical Standards for Automation Flats*, is:

* * * * *

[Revise item d and add new item e as follows:]

- d. Any piece that may have other size or weight standards for mail claimed at certain prices, mail ad-

We will incorporate these revisions into the next printed version of the DMM and into the monthly update of the online DMM, which is available via Postal Explorer® at <http://pe.usps.com>.

dressed to certain APO/FPOs, or mail sent by the Department of State to U.S. government personnel abroad.

- e. Classified as catalogs mailed under 1.4.

* * * * *

[Renumber current items 1.4 through 1.8 as 1.5 through 1.9 and add new 1.4 as follows:]

1.4 Catalogs

A catalog is a bound flat-sized mailpiece with at least 16 pages, meeting the criteria in 1.0. Catalogs provide a listing of products offered for sale arranged systematically and include images, photographs or illustrations of the products, descriptive details, and prices. Catalogs must contain an order form, a phone number, or a web address to place orders and provide shipping options for the products offered for sale.

* * * * *

We will incorporate these revisions into the next printed version of the DMM and into the monthly update of the online DMM, which is available via Postal Explorer® at <http://pe.usps.com>.

— Mailing Standards,
Pricing, 7-29-10

IMM Revision: U.S. Customs and Border Protection Form

Effective September 7, 2010, the Postal Service™ will revise *Mailing Standards of the United States Postal Service, International Mail Manual (IMM®)* to refer to U.S. Customs and Border Protection (CBP) Form 3419ALT, *Mail Entry*, which replaces Customs Form (CF) 3419, *Mail Entry — Customs*. This revision affects sections throughout subchapter 710 and also sections 764.24, 772.2, and 772.32.

Currently, CBP officers affix CBP Form 3419ALT to an inbound package to indicate that the package requires payment of duty. CBP then returns the package to the Postal Service for processing and delivery.

In addition, as requested by CBP, we will revise the appropriate IMM sections to reflect that the adhesive-backed Treasury Department envelope containing CBP Form 3419ALT is orange.

We will incorporate these revisions into the next printed version of the IMM and into the monthly update of the online IMM, which is available via Postal Explorer® at <http://pe.usps.com>.

— Mailing Standards,
Pricing, 7-29-10

IMM Revision: New Mailing Standards to Comply With Office of Foreign Assets Control Regulations

Effective September 7, 2010, the Postal Service™ will add a new subchapter 510 to *Mailing Standards of the United States Postal Service*, International Mail Manual (IMM®) to comply with the Office of Foreign Assets Control (OFAC) regulations, in conformance with Title 31, Code of Federal Regulations (CFR), Chapter V, in which the U.S. Department of the Treasury prohibits mailers from sending items to certain countries and recipients.

In addition, we will update the Individual Country Listings for Cuba, Iran, North Korea, and Sudan to stipulate that under OFAC regulations there are specific “country programs” that include broad sanctions. Thus, prior to mailing any item to these destinations, mailers should refer to IMM 510 or go to www.treas.gov/ofac for additional information.

We will also revise the Individual Country Listings for Belarus and for Kosovo. Unlike Cuba, Iran, North Korea, and Sudan, neither Belarus nor Kosovo has a country program that includes broad sanctions; rather, OFAC regulations that affect Belarus and Kosovo are now codified under the new IMM 510.

Mailing Standards of the United States Postal Service, International Mail Manual (IMM)

* * * * *

5 Nonpostal Export Regulations

[Insert new subchapter 510 to read as follows:]

510 Office of Foreign Assets Control (OFAC) Regulations – U.S. Department of the Treasury

511 General

The Office of Foreign Assets Control (OFAC) of the U.S. Department of the Treasury administers and enforces economic and trade sanctions based on U.S. foreign policy and national security goals against targeted foreign countries and regimes, terrorists, narcotics traffickers, those engaged in activities related to the proliferation of weapons of mass destruction, and other threats to the national security, foreign policy, or economy of the United States.

512 Prohibited Destinations, Specially Designated Nationals, and Blocked Persons

Mailers may not send items to certain countries (Cuba, Iran, North Korea, and Sudan) or to a “blocked person.” Blocked persons include individuals and entities (regardless of the mailing destination) that are listed on the OFAC Specially Designated Nationals (SDN) list. The SDN list is available online at www.treas.gov/offices/enforcement/ofac/sdn/t11sdn.pdf.

513 Additional Standards

In addition to the restrictions in 512, mailers may not send items to an entity if a blocked person owns 50 percent or more of that entity.

514 Exceptions

Many OFAC sanctions programs have exemptions that cover the mailing of items such as certain humanitarian donations, personal communications containing nothing of value, or informational materials like books, newspapers, and CDs. In addition, under each sanctions program OFAC has established “general licenses” that authorize shipments under certain conditions. If no exemption or general license applies, a mailing may be allowed if the mailer applies for and obtains a “specific license” from OFAC.

The exemptions and general licenses are specific to each sanctions program, and mailers are advised to review the OFAC regulations applicable to the relevant sanctions program.

515 Mailer Compliance

Mailers are required to comply with these regulations. Mailers may be subject to civil and criminal penalties for failing to comply with any part of OFAC’s regulations.

516 Additional Information

For additional information, including an explanation of each sanctions program, licenses, and exemptions, see the relevant set of OFAC’s regulations for each sanctions program in 31 C.F.R. Chapter V, available at www.treas.gov/ofac, or contact OFAC at 202-622-2000.

* * * * *

Individual Country Listings

* * * * *

Belarus

* * * * *

Restrictions

* * * * *

[Delete the fourth restriction, which starts with “Mailers may not send items to a blocked person....”]

* * * * *

Cuba

Country Conditions for Mailing

* * * * *

[Replace the second paragraph of the introduction with the following two paragraphs:]

The Office of Foreign Assets Control (OFAC) of the U.S. Department of the Treasury administers sanctions that restrict the mailing of items to certain destinations and recipients, including a broad sanctions program against Cuba. Prior to mailing any items to Cuba, mailers should refer to IMM 510 or access www.treas.gov/ofac for additional information.

In addition, prior to mailing, mailers mailing gift parcels and humanitarian donations must abide by the rules in 15 CFR § 740.12, or with the rules for consumer communications devices, computers, and software in 15 CFR § 740.19, which can be accessed at www.gpoaccess.gov/cfr. The maximum weight is 4 pounds. Potentially dutiable items may be confiscated upon entering Cuba or returned to sender.

* * * * *

Iran

Country Conditions for Mailing

[Revise the introductory paragraph to read as follows:]

The Office of Foreign Assets Control (OFAC) of the U.S. Department of the Treasury administers sanctions that restrict the mailing of items to certain destinations and recipients, including a broad sanctions program against Iran. Prior to mailing any items to Iran, mailers should refer to IMM 510 or access www.treas.gov/ofac for additional information.

* * * * *

Korea, Democratic People's Republic of (North Korea)

Country Conditions for Mailing

[Insert the following paragraph to be the first paragraph in the introduction:]

The Office of Foreign Assets Control (OFAC) of the U.S. Department of the Treasury administers sanctions that

restrict the mailing of items to certain destinations and recipients, including a broad sanctions program against North Korea. Prior to mailing any items to North Korea, mailers should refer to IMM 510 or access www.treas.gov/ofac for additional information.

* * * * *

Kosovo, Republic of

* * * * *

Observations

[Revise the text to read as follows:]

Certain shipments may require a license by the U.S. Commerce Department under the Export Administration Regulations (see 530).

* * * * *

Sudan

Country Conditions for Mailing

[Revise the introductory paragraph to read as follows:]

The Office of Foreign Assets Control (OFAC) of the U.S. Department of the Treasury administers sanctions that restrict the mailing of items to certain destinations and recipients, including a broad sanctions program against Sudan. Prior to mailing any items to Sudan, mailers should refer to IMM 510 or access www.treas.gov/ofac for additional information.

* * * * *

We will incorporate these revisions into the next printed version of the IMM and into the monthly update of the online IMM, which is available via Postal Explorer[®] at <http://pe.usps.com>.

— Mailing Standards, Pricing, 7-29-10

IMM Revision: Accounting Procedures for Customs Clearance and Delivery Fee

Effective September 7, 2010, the Postal Service[™] will revise *Mailing Standards of the United States Postal Service*, International Mail Manual (IMM[®]) parts 712 and 713 to update accounting procedures for customs clearance and delivery fees to reflect current accounting procedures and to refer to the accounting procedures in Postal Service Handbook F-101, *Field Accounting Procedures*.

Mailing Standards of the United States Postal Service, International Mail Manual (IMM)

* * * * *

7 Treatment of Inbound Mail

710 U.S. Customs Information

* * * * *

712 Customs Clearance and Delivery Fee

712.1 Description

* * * * *

712.13 Accounting for the Postal Service Fee

[Revise 712.13 to read as follows:]

The Postal Service fee, which is retained by the U.S. Postal Service, is accounted for by using the procedures in Handbook F-101, *Field Accounting Procedures*, subchapter 7-2.

[Delete 712.14 in its entirety.]

* * * * *

713 Treatment of Dutiable Mail at Delivery Office

* * * * *

713.4 Payment of Duty

* * * * *

713.46 Recording and Reporting Collections

[Revise 713.46 to read as follows:]

Post Office facilities making delivery/collection of dutiable mail must follow the recording and reporting procedures in Handbook F-101, *Field Accounting Procedures*, subchapter 7-2.

We will incorporate these revisions into the next printed version of the IMM and into the monthly update of the online IMM, which is available via Postal Explorer® at <http://pe.usps.com>.

— *Mailing Standards, Pricing, 7-29-10*

Handbooks

Handbook F-23 Revision: Security, Acquisitions, and Revenue

Effective immediately, Handbook F-23, *Accounting Policy Reference*, is revised to reflect current Postal Service™ policy on security, acquisitions, and revenue.

Handbook F-23, Accounting Policy Reference

* * * * *

2 General Policies

* * * * *

2-7 Financial System Access

2-7.1 Security

[Revise 2-7.1 to read as follows:]

Financial system access must work within Information Technology’s (IT’s) framework for security. IT grants access only with a properly authorized request. The intent of these policies is that only individuals who have the knowledge, training, and appropriate authority required to carry out their duties and responsibilities have access to financial systems.

* * * * *

3 Assets

* * * * *

3-7 Property and Equipment

* * * * *

3-7.2 Specific Policies

3-7.2.1 Buildings

3-7.2.1.1 Acquisitions

* * * * *

[Revise the second paragraph of 3-7.2.1.1 to read as follows:]

The Postal Service capitalizes the costs of all acquisitions of buildings, regardless of cost. The Postal Service records building costs in a buildings account after the earliest of the following occurs:

* * * * *

6 Revenue

* * * * *

[Revise the third paragraph of 6 to read as follows:]

The Postal Service records revenue from sources other than postage when earned or when the related service is rendered. This revenue includes revenue from such sources as postal money orders, passports, and retail merchandise. The Postal Service records revenue from consignment stamp sales as the funds produced when those sales are collected.

* * * * *

We will incorporate these revisions into the next printed version of Handbook F-23 and into the next online update, available on the Postal Service™ PolicyNet website:

- Go to <http://blue.usps.gov>.
- In the left-hand column under “Essential Links”, click *PolicyNet*.
- Click *HBKs*.

(The direct URL for the Postal Service PolicyNet website is <http://blue.usps.gov/cpim>.)

— *Field and International Accounting, Controller, 7-29-10*

Publications

Publication 431 Revision: Changes to Post Office Box Service and Caller Service Fee Groups

Effective July 29, 2010, Publication 431, *Post Office Box Service and Caller Service Fee Groups*, is revised to include the following changes.

Publication 431, *Post Office Box Service and Caller Service Fee Groups*

* * * * *

[Add the following entries:]

ZIP Code	Fee Group
01930	2
04635	5
04645	4
38145	5
38147	5
38148	5
38152	5
50657	4
52140	5
90410	3
90411	3

* * * * *

[Delete the following entry:]

ZIP Code
47199

* * * * *

The online version of Publication 431 is dated May 11, 2009. Publication 431 is currently available on the Postal Service™ PolicyNet website (<http://blue.usps.gov/cpim>):

- Go to <http://blue.usps.gov>.
- Under “Essential Links” in the left-hand column, click *PolicyNet*.
- Click *PUBs*.

Offices with WebBATS access can view current Publication 431 information by generating a WebBATS Facility Information Report as follows:

1. Go to the WebBATS main menu, and select *Reports*. The reports page opens.
2. Under the Clients/System column, System category, click *Facility Information*.
3. View the Fee Group field in the report.

— *Special Services,
Retail Products and Services, 7-29-10*

Organization Information

Intelligent Mail and Address Quality

Post Office Changes

Old/ New	Finance No.	ZIP Code	State	P.O. Name	County/ Parish	Station/Branch/ Unit	Unit Type	Effective Date	Comments
Old	18-8721	50252	IA	Swan	Marion	Main Office	Post Office	05/31/2005	Post Office™ discontinued. Retain ZIP™ Code. Establish a place name. Continue to use Swan IA 50252 as last line of address.
New	18-3942	50252	IA	Hartford	Marion	Swan	Place Name	05/01/2010	
Old	39-0847	74529	OK	Blocker	Pittsburg	Main Office	Post Office	05/15/2005	Post Office discontinued. Retain ZIP Code. Establish a place name. Continue to use Blocker OK 74529 as last line of address.
New	39-5104	74529	OK	Mcalester	Pittsburg	Blocker	Place Name	04/17/2010	
Old	41-3568	18201	PA	Hazleton	Luzerne	Broad Street	Classified Station	04/05/2009	Classified station discontinued. Retain ZIP Code. Continue to use Hazleton PA 18201 as last line of address.
New	41-3568	18201	PA	Hazleton	Luzerne	Main Office	Post Office	06/08/2010	
Old	54-2842	98024	WA	Fall City	King	Main Office	Post Office		Realign ZIP Code boundaries. Use Issaquah WA 98075 as last line of address for the 282 deliveries previously in ZIP Code 98024.
New	54-3878	98075	WA	Issaquah	King	Main Office	Post Office	09/01/2010	
Old	54-3878	98075	WA	Issaquah	King	Sammamish	Place Name		Realign ZIP Code boundaries. Use Issaquah WA 98029 as last line of address for the 83 deliveries previously in ZIP Code 98075.
New	54-3878	98029	WA	Issaquah	King	Main Office	Post Office	09/01/2010	
Old	54-2786	98247	WA	Everson	Whatcom	Main Office	Post Office		Realign ZIP Code boundaries. Use Lynden WA 98264 as last line of address for the 13 deliveries previously in ZIP Code 98247.
New	54-2786	98264	WA	Lynden	Whatcom	Main Office	Post Office	09/01/2010	
Old	54-3878	98027	WA	Issaquah	King	Main Office	Post Office		Realign ZIP Code boundaries. Use Bellevue WA 98006 as last line of address for the 6 deliveries previously in ZIP Code 98027.
New	54-0602	98006	WA	Bellevue	King	Main Office	Post Office	09/01/2010	
Old	56-4980	53593	WI	Madison	Dane	Verona	Classified Branch		Realign ZIP Code boundaries. Use Middleton WI 53562 as last line of address for the 16 deliveries previously in ZIP Code 53593.
New	56-4980	53562	WI	Madison	Dane	Middleton	Classified Branch	07/31/2010	

Mailing and Shipping Services

Mail Alert

The mailings below will be deposited in the near future. Offices should honor the requested home delivery dates. Mailers wishing to participate in these alerts, for mailings of 1 million pieces or more, should contact Business Service Network Integration at 202-268-3258 at least 1 month preceding the requested delivery dates. The Postal Service™ also offers

electronic Mail Alerts via ADVANCE. For more information, see the *ADVANCE Notification & Tracking System Technical Guide* on the Internet at http://ribbs.usps.gov/advance/documents/tech_guides/advtech.pdf or contact the National Customer Support Center at 800-238-3150.

Requested Delivery Dates	Title of Mailing	Class and Type of Mail	Number of Pieces (Millions)	Distribution	Presort Level	Comments
7/30/10–8/2/10	Life Line Screening	Standard Letter	2.0	Nationwide	3/5 Digit	Mail-America Forest, VA
7/31/10–8/3/10	JCP — Wk 27 Huge Sale	Standard Letter	11.1	National	Car-RT	Harte-Hanks/RRD
8/2/10–8/4/10	JCP — Wk K27 BTS Sephora	Standard Letter	1.4	National	Car-RT	Harte-Hanks/RRD
8/2/10–8/5/10	Seventh Avenue	Standard Catalog	6.6	Nationwide	Car-RT 3/5 Digit	Quad Graphics Lomira, WI
8/4/10–8/5/10	JCP — Wk 27 Direct PC	Standard Letter	5.0	National	Car-RT	Harte-Hanks/RRD
8/4/10–8/6/10	JCP — Wk 28 Friends/Family	Standard Letter	6.1	National	Car-RT	Harte-Hanks/RRD
8/4/10–8/6/10	Nordstrom August Season Launch	Standard Flat	1.5	National	Car-RT 3/5 Digit	Arandell
8/5/10–8/7/10	JCP — Wk 28 BTS \$10 Appreciation	Standard Letter	27.1	National	Car-RT	Harte-Hanks/RRD
8/7/10–8/10/10	JCP — Wk 28 Hottest BTS Sale	Standard Letter	8.1	National	Car-RT	Harte-Hanks/RRD
8/9/10–8/11/10	24-Hour Pharmacist	Standard Flats	1.3	Worldwide	Car-RT 3/5 Digit	Rodale/ALG Worldwide
8/9/1–08/12/10	Midnight Velvet	Standard Catalog	2.3	Nationwide	Car-RT 3/5 Digit	Quad Graphics Martinsburg, WV
8/9/10–8/12/10	Monroe and Main	Standard Catalog	2.4	Nationwide	Car-RT 3/5 Digit	RR Donnelly Warsaw, IN

— *Business Service Network Integration, Sales, 7-29-10*

Nine-digit Mailer ID Conformance Notice

The Postal Service™ is requiring all customers using Confirmation Services (such as Delivery Confirmation™ or Signature Confirmation™) and Electronic Verification System (eVS®) to use a mailer identification (MID) number that begins with the number 9 when the MID contains nine digits.

A MID number can be a six-digit or nine-digit numeric code. A nine-digit MID must begin with the number 9. Some customers currently use nine-digit MIDs that do not conform to this rule.

Conforming MIDs are defined as the following:

- A six-digit MID must begin with 0–8.
- A nine-digit MID must begin with 9.

All nonconforming nine-digit MIDs must be changed to a new conforming nine-digit MID.

Letters were sent between April and June 2010 to all Confirmation Services and eVS customers that communicated assignment of new conforming nine-digit MIDs. Cus-

tomers have until January 31, 2011, to convert to the newly assigned MID.

The assignment of new MIDs will enable mailers to take advantage of recent and planned Mailer ID system upgrades that enable centralized, automated customer profile management including MID assignment. Future enhancements include the following:

- Registration and self-service capabilities to participate in multiple programs through the business customer gateway.
- Intelligent Mail® features and the Intelligent Mail package barcode (IM®pb).

For questions about managed accounts, contact your Business Services Network representative. For all other questions, contact the National Customer Support Center at 877-264-9693, option 3.

— *Product Visibility Systems, Product Visibility and Operational Performance, 7-29-10*

Philately

Stamp Announcement 10-22: Nature of America: Hawaiian Rain Forest

HAWAIIAN RAIN FOREST

12TH IN A SERIES



N A T U R E O F A M E R I C A

© 2009 USPS

On September 1, 2010, in Hawaii National Park, Hawaii, the Postal Service™ will issue 44-cent *Nature of America: Hawaiian Rain Forest* commemorative stamps in ten designs in a pressure-sensitive adhesive (PSA) pane of 10 (Item 465700) and a \$8.95 Premium Stamped Postal Card Set of 10 (Item 885400). Designed by Ethel Kessler, Bethesda, Maryland, the stamps go on sale nationwide September 1, 2010.

Featuring a Hawaiian rain forest, the 2010 *Nature of America* issuance is the 12th stamp pane in an educational series focusing on the beauty and complexity of major plant and animal communities in the United States.

The setting for the colorful acrylic painting on the stamp pane is a rain forest on Hawaii's largest island, which is also named Hawaii. Artist John Dawson, Hilo, Hawaii, painted the scene and each of the previous ones in the *Nature of America* series: Sonoran Desert (1999), Pacific Coast Rain Forest (2000), Great Plains Prairie (2001), Longleaf Pine Forest (2002), Arctic Tundra (2003), Pacific Coral Reef (2004), Northeast Deciduous Forest (2005), Southern Flor-

ida Wetlands (2006), Alpine Tundra (2007), Great Lakes Dunes (2008), and Kelp Forest (2009).

Twenty-four species were depicted, and the scene itself is completely imaginary. Even so, every species depicted could be encountered in a Hawaiian rain forest, and all of the species and their interactions are appropriate and were recommended by scientists.

How to Order the First Day of Issue Postmark

Customers have 60 days to obtain the first day of issue postmark by mail. They may purchase new stamps at their local Post Office™, at The Postal Store® website at www.usps.com/shop, or by calling 800-STAMP-24. They should affix the stamps to envelopes of their choice, address the envelopes (to themselves or others), and place them in a larger envelope addressed to:

Nature of America: Hawaiian Rain Forest Stamp
Postmaster
Hawaii National Park
1 Kilauea Military CP
Hawaii National Park, HI 96718-9997

Issue:	<i>Nature of America:Hawaiian Rain Forest</i>
Item Number:	465700
Denomination & Type of Issue:	44-cent Commemorative
Format:	Pane of 10 (10 designs)
Series:	<i>Nature of America</i>
Issue Date & City:	September 1, 2010, Hawaii National Park, HI 96718
Designer:	Ethel Kessler, Bethesda, MD
Art Director:	Ethel Kessler, Bethesda, MD
Typographer:	Ethel Kessler, Bethesda, MD
Artist:	John D. Dawson, Hilo, HI
Modeler:	Donald Woo
Manufacturing Process:	Offset/Microprint "USPS"
Printer:	Banknote Corporation of America, Inc./SSP
Printed at:	Browns Summit, NC
Press Type:	Alprinta, 74
Stamps per Pane:	10
Print Quantity:	25 million stamps
Paper Type:	Phosphor Tagged, Block
Adhesive Type:	Pressure-sensitive
Processed at:	Unique Binders, Fredericksburg, VA
Stamp Orientation:	Horizontal and Vertical
Image Area (w x h):	1.40 x 1.065 in./35.56 x 27.05 mm
Overall Size (w x h):	1.56 x 1.225 in./39.62 x 31.12 mm
Full Pane Size (w x h):	9.125 x 6.6875 in./231.78 x 169.86 mm
Colors:	Cyan, Magenta, Yellow, Black, PMS 5635 (Green), PMS 1665 (Orange)
Plate Size:	80 stamps per revolution
Plate Numbers:	N/A
Marginal Markings:	
Front:	Header: "HAWAIIAN RAIN FOREST" • 12 TH IN A SERIES in top right hand corner
Back:	"HAWAIIAN RAIN FOREST" • Descriptive text of pane and name of plants and animals featured • © 2009 USPS • Barcode (465700) • "NATURE OF AMERICA — This series of stamps features the beauty and complexity of plant and animal communities in the United States" at bottom of pane

After applying the first day of issue postmark, the Postal Service will return the envelopes through the mail. There is no charge for the postmark. All orders must be postmarked by November 1, 2010.

How to Order First Day Covers

Stamp Fulfillment Services also offers first day covers for new stamp issues and Postal Service stationery items postmarked with the official first day of issue cancellation. Each item has an individual catalog number and is offered in the quarterly *USA Philatelic Catalog*. Customers may request a free catalog by calling 800-STAMP-24 or writing to:

Information Fulfillment
Dept. 6270
U.S. Postal Service
PO Box 219014
Kansas City, MO 64121-9014

Issue:	<i>Nature of America:Hawaiian Rain Forest</i>
Item Number:	885400
Denomination & Type of Issue:	44-cent Stamped Postal Card
Format:	\$8.95 Stamped Postal Card Set of 10 (10 designs)
Series:	<i>Nature of America</i>
Issue Date & City:	September 1, 2010, Hawaii National Park, HI 96718
Designer:	Ethel Kessler, Bethesda, MD
Art Director:	Ethel Kessler, Bethesda, MD
Typographer:	Ethel Kessler, Bethesda, MD
Artist:	John Dawson, Hilo, HI
Modeler:	Joseph Sheeran
Engraver:	N/A
Manufacturing Process:	Offset
Printer:	Sterling Sommer, Inc.
Printed at:	Tonawanda, NY
Finishers:	Ashton Potter (USA) Ltd. (APU)
Finished at:	Williamsville, NY
Press Type:	Heidelberg, Speedmaster
Print Quantity:	100,600 cards
Paper Type:	Nonphosphored, Type III, Block
Adhesive Type:	N/A
Colors:	Black, Cyan, Magenta, Yellow, PMS 1665 (Orange)
Stamp Orientation:	Horizontal and Vertical
Card Orientation:	Horizontal
Image Area (w x h):	7.00 x 5.00 in./177.80 x 127.00 mm
Overall Size (w x h):	7.00 x 10.00 in./177.80 x 254.00 mm
Plate Size:	18 cards per revolution
Plate Numbers:	N/A
Marginal Markings:	N/A
(Other) Front:	"HAWAIIAN RAIN FOREST"
Back:	© 2010 USPS • Header: "NATURE OF AMERICA" • Informational text for each of the ten images

Philatelic Products

There are seven philatelic products available for this stamp issue:

- 465762*, First Day Cover Full Pane, \$6.90.
- 465764*, First Day Cancelled Full Pane, \$6.90.
- 465784, Uncut Press Sheet, \$35.20.
- 465791*, Ceremony Program, \$6.95.
- 465793*, First Day Cover w/Full Pane Keepsake, \$11.95.
- 465798, Limited Edition Collector's Set, \$99.95.
- 885400/01, Oversized Premium Post Cards, \$8.95.

(Article continues on page 29.)

Pull-Out Information

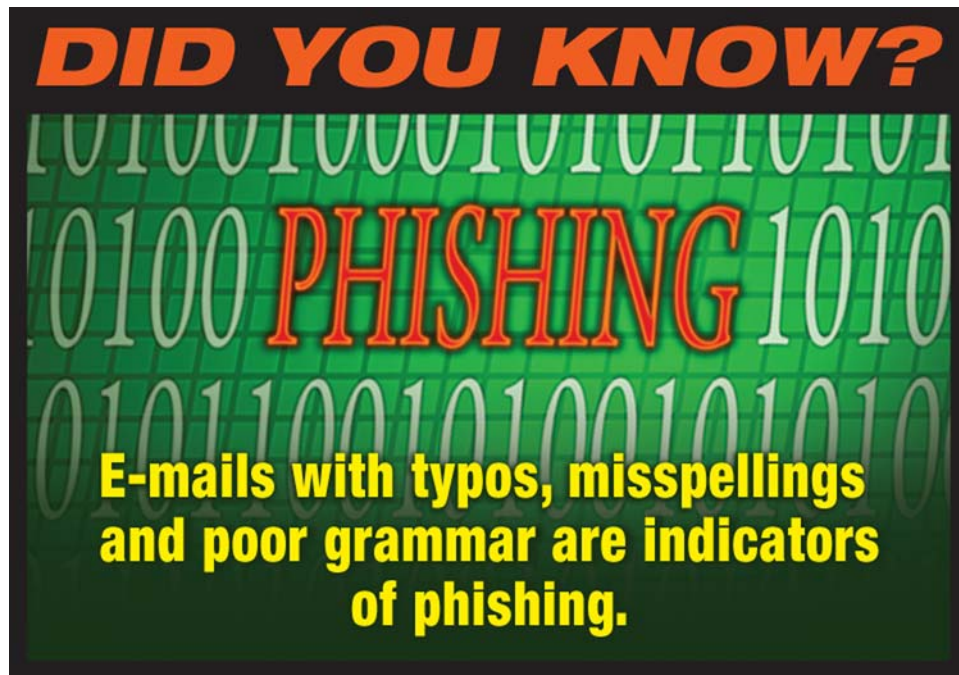
Fraud

Domestic Orders

False Representation. Enforced by postmasters at the cities listed below.

State, City ZIP Code	Names and Addresses Covered	Product
NC, Charlotte 28241-7369	Asset Recover and R.P. Associates, Inc., PO Box 7369	False representation scheme
CA, Sacramento 95860-0895	Municipal Independent Services Agency, PO Box 60895	False billing scheme

— Judicial Officer, 7-29-10



Invalid Express Mail Corporate Account Numbers

These numbers are to be posted and used by retail/acceptance clerks. This listing supersedes all previous notices, which must be recycled. Retail/acceptance clerks must not accept Express Mail® shipments bearing any of

the invalid numbers (listed below) in the “customer number” or “agreement number” section of the label or form.

Note: The first 6 digits of a 9-digit Custom Designed Service and Next Day Pickup Agreement make up the Corporate Account Number.

005005	018060	027079	029758	069944	076332	089400	118049	159030	295270	331433	350088	441438
005278	018556	027115	029761	070206	076358	089521	119022	159043	300029	331673	350091	441725
005350	018681	027130	029962	071218	076374	089526	119107	159070	300284	332001	352816	441740
005833	018864	027137	030181	071262	076444	089697	125009	159099	300524	332141	358039	441748
006006	018928	027143	030362	071311	076621	089777	125441	159108	301020	332216	370023	441752
006294	018985	027150	038118	071393	076676	089936	127103	159272	301296	332306	371019	447117
006330	019116	027152	038436	071405	076741	090277	142142	159281	301379	332356	381247	449012
006601	019219	027190	041200	071421	076883	090541	142324	165075	302610	332395	392601	450006
006804	019256	027317	041322	071468	076951	092377	142405	165095	303772	332446	402031	450028
007103	019361	027367	055089	071519	076991	093855	142592	165100	303774	332456	402040	450099
007147	019481	027377	055099	071522	077423	096515	142649	165104	303915	332987	402064	451085
007360	019542	027411	055184	071534	077521	096558	142731	165107	305099	333086	402138	452222
008089	019594	027542	055240	071586	078010	096621	142900	165126	305100	333173	402289	452257
008222	019678	027578	056048	071665	078038	097505	146049	165226	305802	333246	402294	452363
008333	019772	027729	060133	071670	078043	097590	146085	165325	305817	333252	402351	452897
008339	019839	027741	060274	071725	078072	097831	146087	165372	305884	333344	402482	454224
008673	019933	027798	060513	071832	078184	097846	146091	165386	306666	333826	402569	454283
008708	019951	027832	060681	071873	078235	097861	146099	182008	306919	333860	402591	454374
008715	019977	027898	060939	071922	078417	098521	146100	191571	312341	334029	402669	454657
008771	020091	028048	060950	075006	078850	098764	146101	192427	312532	334102	402824	454670
008820	020248	028051	061253	075032	078870	100724	146102	192721	314379	334110	402967	454835
008972	020477	028103	061411	075065	078912	100747	146107	192779	315039	334116	403999	471045
009021	020527	028199	061602	075066	079002	101953	146112	193112	320004	334331	405115	471081
009035	020566	028234	061747	075073	079007	103352	146357	193417	320018	334505	405133	471090
009039	020612	028255	061755	075103	079038	105055	146447	196088	320602	335131	420024	473039
009182	020626	028271	062063	075205	079042	105067	146503	197002	321091	335143	420043	477031
009445	021276	028293	063105	075222	079055	106482	146605	197054	321390	335227	420061	477032
009461	021452	028296	063135	075239	079084	108352	146657	198234	322004	335228	420300	477039
009468	021598	028317	064025	075251	079093	108631	148100	200395	322011	336186	423019	477040
009534	022144	028410	064225	075256	079130	108942	150058	200850	323491	337050	423051	477052
009568	022929	028521	064271	075291	079300	109009	151061	200970	323627	337102	423077	477055
009892	023010	028532	064528	075301	079368	109187	152017	207298	323630	337131	424015	477070
009917	023079	028541	064584	075320	079600	109201	152023	207751	323726	338090	424027	481287
011282	023120	028629	064731	075337	080321	110434	152093	220369	324033	338247	424048	481699
011401	023170	028789	064960	075366	085127	110481	152271	221264	325099	339103	424051	481796
014050	023193	028831	065116	075424	088051	110802	152399	221599	325605	340031	424054	485028
014215	023217	028837	065593	075489	088099	113039	152460	223153	326791	340032	424060	489495
014368	023225	028937	065636	075502	088105	113042	152505	225023	327046	340078	424066	495173
014423	023602	028948	065829	075530	088183	113044	152516	228010	327776	340247	425001	495478
014513	025088	028974	066059	075580	088264	113341	152519	229111	328840	340401	430097	496081
014618	025181	028993	067023	075624	088278	113498	152535	230021	328998	340413	430177	500008
014622	025200	029050	067030	075734	088407	113541	152659	232388	329562	340437	430185	503006
014662	025261	029138	067228	075869	088503	114628	152718	232399	329631	340518	431022	504041
014729	025285	029205	068080	075953	088629	115065	152775	235548	330017	340612	431027	511006
014920	025288	029237	068166	075979	088637	115370	152828	235565	330189	344041	431028	522008
015023	026134	029333	069245	076049	088689	115442	152848	235567	330279	349032	431053	524096
015024	026221	029342	069325	076051	088710	115586	152886	235584	330725	349033	432223	525049
015067	026312	029390	069388	076081	088725	115864	152888	260011	330800	349489	432292	526016
015438	026324	029454	069432	076096	088774	117392	153072	260046	330920	349636	432400	527007
015546	026540	029461	069522	076162	088777	117503	154038	275126	331015	349662	432897	527061
015636	026601	029471	069526	076164	088778	117684	154053	277027	331016	349717	432919	531738
015783	026633	029534	069586	076225	089107	117913	156134	282957	331203	349718	433032	531801
016687	027044	029542	069727	076231	089167	117938	156253	285005	331208	349725	436288	531830
016980	027061	029694	069772	076241	089398	117994	159024	292548	331403	349843	436454	531853

537404	605101	662139	701138	701684	711043	716011	787154	841309	853813	906352	926561	951672
551136	605126	662184	701158	701697	711056	722267	787155	841312	853821	906616	926566	951926
551205	605845	662204	701166	701702	711148	731350	787156	841324	853917	907220	926848	954469
551377	606418	662256	701184	701723	711184	731505	787157	841328	853957	907559	926862	958983
551608	607731	662398	701191	701745	711250	731521	787158	841334	891207	907608	926956	958984
551937	612052	662545	701196	701751	711266	731761	787159	841336	891580	907638	927268	967128
551976	616104	662559	701198	701820	711323	731796	787167	841338	891944	907860	927361	967154
553374	617173	662571	701229	701849	711353	735084	787986	841476	891996	907906	927379	967253
554230	618044	662623	701241	701855	711440	740502	791087	841502	895001	910418	927404	967257
554937	620042	666030	701243	701863	711447	740972	794019	841574	895003	912309	927519	967435
570023	624094	666590	701247	701871	711459	741344	799091	841592	895021	912388	927576	968189
580003	628152	672481	701258	701896	711506	741400	799172	841672	895023	913116	928348	968423
581019	629017	674105	701267	701898	711523	741662	799266	841701	895050	913148	931027	968431
581073	629022	683002	701268	701913	711588	745008	800001	841778	895066	914074	931680	968432
581186	629143	701001	701293	701919	711595	749125	801350	841835	895352	914664	932803	968476
581195	630016	701003	701317	701924	711606	750040	801569	841876	895353	915128	932815	968548
581209	630019	701006	701327	701946	711622	750073	801605	841998	898003	917047	933198	968649
585220	631007	701009	701333	705031	711623	751013	802257	843008	898013	917329	933333	968665
585223	631056	701014	701347	705067	711625	751047	802907	843077	900066	917348	933484	968785
585244	631062	701018	701354	705146	711637	752190	803131	844005	900077	917361	934021	968876
585257	631205	701019	701361	705192	711640	752225	804034	844006	900115	917498	934226	968889
585279	631227	701021	701369	705225	711647	752341	804190	844107	900133	917627	935019	968896
585298	631370	701022	701379	705231	711661	752795	805365	844131	900399	917746	935079	968918
591205	631413	701027	701382	705232	711665	754001	806036	844150	900403	918079	937345	969064
597543	631441	701030	701389	705237	711667	761009	809086	844191	900851	918382	937857	969172
600074	631506	701031	701397	705238	712001	761121	813070	844237	901129	918454	939616	970019
600159	631622	701033	701405	706155	712003	761547	820930	846001	901184	920056	940331	970428
600172	631629	701036	701406	708647	712019	761723	833209	846004	901331	920155	940562	970965
600182	631648	701037	701415	708648	712105	762092	833503	846007	901472	921379	940731	972759
600465	631845	701038	701426	708651	712111	770025	836900	846009	901742	921556	941357	975011
600627	631921	701039	701427	708654	712112	770166	840005	846179	901968	922067	945730	982148
601010	633008	701040	701428	708656	712186	770891	840041	847008	902185	922260	945860	982574
601012	641099	701058	701430	708658	712238	772948	840044	847013	902259	926026	946196	982618
601023	648116	701066	701431	708659	712239	775275	840051	847019	902405	926266	946420	992328
601354	652105	701070	701433	708661	713008	777215	840057	847104	902674	926285	946485	992502
602012	652155	701085	701435	711001	713009	778005	840078	847145	903605	926363	947049	992764
602324	652760	701092	701436	711005	713035	782765	840127	847174	904724	926380	947068	995221
602457	657101	701108	701441	711008	713081	785400	840357	850107	906034	926390	948537	995381
602672	657105	701110	701443	711009	713090	785561	840400	852535	906060	926416	948600	997081
602976	658127	701120	701512	711017	713096	787151	840458	852906	906130	926418	949605	997175
604160	660044	701122	701527	711027	713105	787152	840497	853026	906340	926462	951037	998122
604214	661079	701126	701565	711033	713115	787153	841308	853466	906342	926477	951207	

— Product Information Requirements, Business Mail Entry & Payment Technologies, 7-29-10

Missing, Lost, or Stolen U.S. Money Order Forms

Do Not Cash — Upon Receipt, Notify Local Postal Inspectors

This listing will be provided to all Postal Service™ employees responsible for accepting and cashing postal money orders. Destroy all interim notices when the numbers listed appear in the *Postal Bulletin*. The actual serial

numbers consist of the first 10 digits on the money orders. Check for altered dollar amounts by holding money orders to the light.

010 001 0200 to 0299	041 623 8889 to 8899	079 374 0300 to 2499	273 070 8059 to 8099
010 504 1932 to 1999	041 803 6565 to 6599	079 807 2342 to 2399	273 775 7700 to 7899
011 582 1889 to 1899	043 129 1968 to 1997	082 721 0228 to 0254	302 000 0000 to 9999
011 588 2900 to 3099	043 205 5922 to 5999	083 140 5000 to 7499	349 746 2056 to 2099
012 579 5675 to 5699	044 087 3457 to 3499	083 784 8886 to 8899	350 518 7350 to 7374
013 289 6176 to 6199	044 087 4000 to 4099	083 913 6915 to 6999	360 011 1690 to 1699
013 610 0014 to 0099	044 306 4200 to 4299	084 478 3920 to 3999	360 168 6008 to 6099
014 932 1000 to 1099	044 306 4370 to 4599	086 000 8271 to 8299	360 173 8800 to 8899
014 972 0800 to 0899	045 524 4121 to 4298	086 798 3840 to 3849	360 324 2326 to 2399
015 363 0065 to 0099	046 800 9870 to 9899	088 404 4472 to 4499	362 861 3064 to 3099
017 028 3200 to 3299	047 352 4000 to 4099	088 404 5584 to 5699	373 006 2176 to 2199
018 569 5333 to 5399	048 383 7650 to 7659	088 757 8688 to 8699	374 768 2600 to 2699
018 986 5264 to 5299	048 396 3647 to 3699	088 757 9400 to 9499	375 169 4400 to 4599
019 518 2814 to 2899	051 142 0755 to 0799	089 358 2248 to 2257	375 829 3400 to 3499
020 698 5159 to 5199	051 774 8857 to 8899	093 106 9346 to 9355	375 851 9100 to 9199
020 844 7307 to 7399	051 781 2875 to 2885	093 203 0500 to 0599	376 196 0911 to 0999
020 972 8948 to 8999	051 977 7010 to 7023	093 684 3630 to 3699	378 085 3679 to 3699
022 021 9110 to 9181	052 058 7115 to 7199	094 081 5074 to 5099	378 351 1063 to 1099
022 037 1411 to 1499	054 450 1130 to 1167	094 216 2555 to 2599	379 843 5100 to 5199
022 527 9201 to 9210	057 670 0563 to 0599	094 580 7062 to 7099	380 093 9600 to 9699
022 529 1882 to 1899	058 187 3836 to 3899	094 639 4200 to 4299	380 165 1165 to 1199
023 637 7169 to 7199	058 523 3003 to 3099	095 070 7186 to 7199	381 325 4500 to 4599
024 380 4100 to 4199	058 591 1153 to 1299	095 076 8300 to 8399	381 604 2510 to 2699
024 496 6870 to 6896	058 895 3746 to 3799	095 354 6864 to 6899	381 645 9525 to 9599
025 092 0987 to 0999	059 986 0814 to 0899	097 224 1350 to 1599	383 314 3968 to 3999
025 369 5535 to 5599	060 406 7650 to 7699	100 160 3800 to 3899	383 892 1000 to 1344
025 729 1151 to 1199	063 491 8122 to 8199	104 667 6400 to 6499	383 892 1382 to 1399
025 729 1643 to 1799	063 916 9968 to 9999	104 876 8937 to 8999	384 925 3641 to 3654
026 492 3180 to 3199	064 091 4500 to 4599	112 049 4413 to 4499	385 568 2331 to 2399
027 361 0430 to 0499	065 170 0471 to 0499	112 870 9765 to 9799	385 599 7554 to 7575
027 369 4482 to 4495	065 255 7909 to 7999	114 402 3850 to 3899	385 774 2024 to 2099
027 671 8762 to 8776	065 392 6345 to 6399	114 866 5368 to 5397	386 624 1412 to 1599
027 787 9886 to 9899	066 099 2014 to 2099	116 154 2800 to 2899	386 883 8936 to 8999
027 965 9487 to 9499	066 648 2880 to 2899	116 986 4400 to 4499	387 314 5574 to 5599
028 100 8069 to 8099	066 787 3639 to 3699	117 175 1647 to 5169	387 837 6300 to 6399
028 191 1852 to 1999	066 845 7500 to 9999	117 951 4687 to 4699	388 828 0656 to 0699
028 850 3000 to 3199	067 093 3869 to 3899	117 951 5200 to 5299	389 696 2400 to 2799
029 510 1500 to 1599	068 895 0334 to 0399	119 815 8961 to 6199	389 846 3104 to 3135
030 687 0903 to 0999	070 724 4488 to 4499	119 850 7400 to 7499	389 846 3145 to 3195
030 701 3442 to 3499	070 841 9181 to 9199	119 850 7700 to 7999	389 887 9211 to 9230
031 077 4507 to 4799	070 844 2546 to 2599	121 634 0460 to 0499	389 887 9234 to 9299
032 295 7500 to 9999	070 916 1340 to 1399	122 451 9879 to 9899	390 001 3182 to 3199
034 394 1000 to 1099	071 047 5768 to 5799	122 714 6805 to 6900	390 001 3500 to 3699
034 943 0400 to 0799	071 179 9800 to 9899	124 916 0304 to 0499	390 545 5974 to 5999
035 035 4337 to 4399	071 386 3682 to 3699	126 423 0136 to 0169	391 104 6146 to 6199
037 706 9578 to 9599	071 507 6840 to 6899	160 901 2254 to 2299	391 574 1466 to 1499
037 805 3677 to 3699	072 045 9641 to 9699	161 103 6581 to 6599	391 783 3020 to 3599
037 909 5490 to 5499	072 675 8287 to 8299	162 032 4447 to 4499	391 792 6100 to 6199
037 931 4660 to 4699	077 617 5481 to 5499	163 257 1085 to 1099	392 668 2956 to 2999
039 145 6521 to 6595	077 999 4001 to 4090	166 101 1433 to 1499	392 854 8500 to 8899
040 024 3901 to 3999	078 174 4475 to 4499	178 254 5000 to 9999	393 584 7566 to 7699
040 674 7100 to 7199	078 219 4931 to 4999	178 881 9900 to 9999	393 650 0074 to 0099
040 688 8816 to 8899	078 250 4756 to 4799	210 221 0548 to 0599	393 838 8316 to 8499
041 299 6752 to 6799	078 823 8312 to 8399	227 275 9400 to 9999	393 893 6007 to 6099

394 126 6907	to	6999	414 193 3608	to	3674	435 303 1831	to	1842	458 069 9665	to	9699
394 189 0405	to	0599	414 193 3677	to	3699	435 303 1986	to	1999	458 337 5222	to	5299
394 822 3243	to	3278	414 411 7348	to	7399	435 666 6092	to	6399	458 354 7653	to	7999
394 990 1810	to	1899	414 640 0757	to	0799	436 082 6400	to	6899	458 671 8678	to	8699
395 343 3264	to	3299	414 965 1727	to	1799	436 160 6441	to	6499	458 671 8721	to	8798
395 373 3035	to	3099	417 302 8104	to	8199	437 316 7115	to	7199	458 847 5044	to	5999
395 396 9649	to	9799	417 387 6532	to	6599	437 427 0500	to	3499	459 274 7624	to	7699
395 970 3240	to	3299	417 496 6800	to	6999	439 179 2300	to	2399	459 365 5432	to	5499
397 622 4054	to	4099	417 871 9250	to	9299	439 310 0458	to	0499	459 378 5764	to	5799
397 819 8902	to	8999	417 930 9533	to	9599	440 698 1947 to 1999			459 472 4816	to	4999
398 149 7200	to	7699	418 164 6500	to	6799	440 858 6300	to	6399	460 349 6878 to 6899		
399 070 0872	to	0899	418 423 9863	to	9899	440 858 6420	to	7299	460 550 1909	to	1999
399 156 7119	to	7199	418 633 5922	to	5999	441 199 1655	to	1699	460 997 5234	to	5299
399 203 5064	to	5099	418 719 8520	to	8599	443 127 3648	to	3699	461 973 6443	to	6499
399 296 9910	to	9999	418 744 2235	to	2299	443 127 4000	to	4099	462 152 0107	to	0299
399 396 8935	to	8999	418 962 2848	to	2899	443 673 7900	to	7999	462 274 1072	to	1099
399 792 7775	to	7799	419 543 0286	to	0299	443 800 9335	to	9399	462 277 8373	to	8399
399 792 8300	to	8399	419 730 0300	to	0399	444 382 8822	to	8899	462 554 6051	to	6099
400 427 1051 to 1999			420 277 0015 to 0049			444 390 1667	to	1699	463 011 5529	to	5540
401 045 1505	to	1549	420 599 0734	to	0798	444 457 3854	to	3899	463 176 4115	to	4199
401 045 1571	to	1599	420 661 4115	to	4199	450 048 4173 to 4199			463 176 4229	to	4299
401 294 2700	to	2799	420 758 9500	to	9699	450 048 4442	to	4699	463 185 2600	to	2799
401 310 9505	to	9599	420 969 3951	to	3971	450 560 5173	to	5199	463 227 7711	to	7799
401 382 5312	to	5399	420 969 3973	to	3999	450 620 3077	to	3099	463 414 4869	to	4899
402 578 7876	to	7899	421 116 3565	to	3599	450 620 3135	to	3199	463 808 3484	to	3499
403 125 6744	to	6799	421 130 9300	to	9399	450 780 2716	to	2799	463 945 7400	to	7899
403 260 7000	to	7499	421 313 4500	to	4999	450 801 2700	to	2799	464 629 9000	to	9399
403 280 6470	to	6499	421 364 5537	to	5599	451 109 2967	to	2984	464 711 4332	to	4399
403 685 8600	to	8699	421 656 2609	to	2699	451 115 4110	to	4125	465 692 3963	to	3999
404 003 0300	to	0399	421 988 9700	to	9799	451 115 4127	to	4199	465 698 8300	to	8599
404 041 8838	to	8899	422 172 4667	to	4699	451 746 0700	to	0799	465 743 7745	to	7799
404 071 4268	to	4299	422 484 4212	to	4299	452 265 0074	to	0099	466 798 6056	to	6067
404 347 5356	to	5399	422 556 1270	to	1299	452 265 0246	to	0299	467 147 4300	to	4399
404 347 5548	to	5599	422 587 7024	to	7099	452 265 0335	to	0999	468 079 5782	to	5799
404 726 4500	to	4599	422 819 7533	to	7599	452 509 1169	to	1199	469 067 2817	to	2899
404 961 5001	to	5199	422 842 5073	to	5087	452 855 6471	to	6499	469 127 8000	to	8199
405 325 0188	to	0198	422 907 7563	to	7599	452 890 4679	to	4799	469 213 0359	to	0399
406 009 4587	to	4599	424 500 6050	to	6099	452 900 8215	to	8238	469 213 0500	to	0599
406 260 6830	to	6899	424 641 8500	to	8599	453 117 9146	to	9199	469 561 8011	to	8099
406 459 6641	to	6999	424 871 6600	to	6699	453 334 3631	to	3699	469 658 1961	to	1999
406 733 3000	to	3999	425 298 2352	to	2399	453 603 7841	to	7891	469 666 9900	to	9999
407 545 1557	to	1599	425 418 4269	to	4299	453 650 1140	to	1199	469 678 1900	to	1999
407 594 0412	to	0599	425 418 4405	to	4499	453 741 1300	to	1399	469 781 4900	to	4999
407 692 9100	to	9299	426 547 4566	to	4599	454 013 2919	to	2999	469 947 6960	to	6999
407 959 2190	to	2199	427 412 6337	to	6499	454 186 2411	to	2499	470 755 5800 to 5818		
408 265 2275	to	2288	427 481 0900	to	0999	454 268 4883	to	4899	471 918 0300	to	0999
408 499 7700	to	7799	428 027 2742	to	2752	454 302 5400	to	5499	471 985 2408	to	2419
408 499 7900	to	7999	429 474 4172	to	4199	454 490 8300	to	8399	472 191 6700	to	6799
408 682 8484	to	8599	429 889 2900	to	2999	454 547 7434	to	7499	472 270 2555	to	2599
408 698 7015	to	7099	430 150 4401 to 4599			454 922 4867	to	4895	472 987 0213	to	0241
409 072 3941	to	3999	430 172 9800	to	9899	455 221 1348	to	1499	472 987 0290	to	0299
410 491 2311 to 2399			430 177 1900	to	2099	455 364 2147	to	2199	473 151 2069	to	2199
410 694 8400	to	8599	430 444 9500	to	9699	455 399 5400	to	5499	473 666 9138	to	9199
410 775 1500	to	1599	430 664 4070	to	4099	455 476 0676	to	0699	473 952 3429	to	3499
410 795 7927	to	7999	432 168 8419	to	8499	455 543 0618	to	0699	474 108 5402	to	5499
410 867 0917	to	0966	432 708 6800	to	6999	456 410 9006	to	9099	474 356 5193	to	5299
410 867 0970	to	0999	432 744 1544	to	1599	456 470 4146	to	4299	474 949 3366	to	3399
411 868 1023	to	1199	432 995 9775	to	9799	456 619 4460	to	4499	475 134 9362	to	9399
411 922 2322	to	2399	433 003 5800	to	5899	457 333 2686	to	2699	475 167 9667	to	9699
412 193 0900	to	0999	433 757 3047	to	3099	457 729 1767	to	1777	475 319 3415	to	3499
412 395 8599	to	8699	433 765 4003	to	4099	457 937 8615	to	8699	475 319 3649	to	3799
412 485 6500	to	6599	434 482 7060	to	7199	458 028 9810	to	9899	475 340 6400	to	6599
412 485 6610	to	6699	434 513 2386	to	2399	458 057 2712	to	2999	475 424 8410	to	8499
412 885 5953	to	5999	434 968 3076	to	3092	458 069 9537	to	9599	475 629 9156	to	9199

475 850 6101	to	6199	492 610 6813	to	6899	609 766 8091	to	8999	633 438 6429	to	6599
475 875 2500	to	2599	493 394 5568	to	5599	609 825 4100	to	4115	633 588 7173	to	7182
476 169 8264	to	8299	493 470 2562	to	2599	609 884 2981	to	2999	634 725 0700	to	0799
476 189 3000	to	3499	493 473 7700	to	7799	609 893 1000	to	1099	634 803 3239	to	3299
476 331 2480	to	2499	493 716 2153	to	2199	610 092 3200 to 3299			634 807 2474	to	2499
477 289 8601	to	8699	494 206 2972	to	2999	610 582 4200	to	4299	634 827 5900	to	5999
477 681 5206	to	5299	494 217 3446	to	3999	611 879 6939	to	6999	634 886 3428	to	3499
478 010 4243	to	4268	494 224 0500	to	0599	612 291 8013	to	8099	635 559 3449	to	3499
478 010 4270	to	4291	495 145 0600	to	0699	612 751 5171	to	5199	636 289 6214	to	6299
478 450 5071	to	5099	496 209 7425	to	7499	612 751 5226	to	5299	636 634 8007	to	8042
478 469 7838	to	7858	496 213 8728	to	8799	612 751 6083	to	6099	637 150 1200	to	1299
478 469 7883	to	7899	496 474 5226	to	5248	612 751 6268	to	6299	637 562 5828	to	5899
479 280 9800	to	9899	497 053 8517	to	8699	612 751 6572	to	6599	638 042 1647	to	1699
479 365 9116	to	9176	497 854 8673	to	8699	612 774 2111	to	2199	638 049 4984	to	4999
479 412 9900	to	9999	498 449 8888	to	8899	612 774 2254	to	2299	638 318 1115	to	1199
479 667 6190	to	6199	498 929 8285	to	8499	612 774 2500	to	2599	638 318 1453	to	1499
479 748 9680	to	9699	498 936 5310	to	5399	614 469 0979	to	0999	638 885 0000	to	0299
479 860 7000	to	7199	499 016 5425	to	5499	614 474 3000	to	3099	638 903 4362	to	4373
480 526 2000 to 2099			499 440 8575	to	8899	614 521 3490	to	3499	639 415 1929	to	1999
480 640 6330	to	6399	499 731 6717	to	6799	614 645 1800	to	1899	639 415 2019	to	2099
480 658 0568	to	0599	500 064 1858 to 1869			614 832 1100	to	2099	639 420 6200	to	6299
480 689 5100	to	5199	500 070 5725	to	7799	615 017 7505	to	7599	639 469 3517	to	3799
481 072 9463	to	9499	501 331 0300	to	0399	617 711 6609	to	6699	639 605 2143	to	2199
481 673 0074	to	0095	502 227 7645	to	7699	617 760 5266	to	5299	639 657 8600	to	8799
482 527 1500	to	1599	502 424 0200	to	0499	617 813 3601	to	3699	640 289 7500 to 7599		
482 541 5255	to	5299	502 424 0600	to	0699	618 840 9200	to	9299	640 289 7700	to	7999
482 729 6800	to	6899	503 003 2700	to	2899	619 551 7229	to	7299	641 170 4420	to	4499
483 363 7207	to	7299	503 194 5144	to	5153	619 859 3000	to	3099	641 318 3133	to	3199
483 402 2356	to	2399	504 045 4030	to	4099	620 073 9400 to 9499			641 378 6500	to	6999
483 486 5100	to	5199	504 166 0200	to	0599	621 614 7907	to	7930	641 383 8739	to	8799
483 632 1521	to	1599	504 240 1062	to	1399	621 614 7932	to	7999	641 877 3187	to	3299
483 632 2600	to	2799	600 645 3223 to 3299			621 648 8021	to	8199	641 877 3310	to	3399
483 849 1615	to	1699	601 339 1200	to	1399	621 648 8500	to	8599	642 355 8094	to	8199
484 174 4803	to	5299	601 653 5884	to	5899	621 904 8351	to	8599	642 355 8308	to	8999
484 323 8900	to	9199	601 661 7700	to	7799	621 916 1978	to	1989	642 900 0018	to	0099
484 680 5000	to	5038	601 682 5343	to	5399	622 989 8032	to	8099	643 030 6254	to	6299
484 680 5040	to	5074	601 928 1600	to	1699	623 076 9300	to	9399	644 066 0882	to	0899
484 680 5077	to	5099	602 512 2972	to	2999	623 819 5006	to	5099	644 069 0600	to	0699
485 029 4913	to	4999	602 555 2400	to	2799	623 895 8200	to	8399	644 077 7506	to	7699
486 176 0600	to	0699	602 829 7061	to	7099	623 917 0000	to	0099	644 085 8157	to	8199
486 559 7555	to	7599	603 483 9572	to	9599	623 917 0200	to	0299	644 112 9839	to	9899
486 696 3023	to	3199	603 490 7200	to	7299	624 468 5288	to	5299	644 373 9083	to	9099
488 173 7900	to	7999	603 678 7100	to	7199	624 665 3162	to	3198	644 380 1460	to	1499
488 206 4100	to	4199	603 678 7662	to	7699	625 088 6735	to	6799	644 733 4715	to	4799
488 226 0200	to	0299	603 678 7902	to	7999	625 916 9500	to	9799	644 900 9712	to	9799
488 709 3906	to	3999	603 678 8418	to	8499	625 968 8956	to	8999	644 901 0109	to	1299
488 855 8359	to	8399	603 678 8700	to	9999	627 005 3938	to	3999	644 901 1325	to	1399
489 181 8963	to	8999	604 086 0880	to	0899	627 384 3907	to	4099	644 923 6800	to	7799
489 223 2000	to	2099	604 349 1414	to	1499	627 496 7549	to	7599	644 932 4655	to	4699
489 311 1930	to	1999	604 503 7776	to	7799	627 708 3605	to	3699	645 318 7240	to	7499
489 318 6200	to	6300	605 520 9037	to	9099	627 776 2500	to	2599	645 333 1766	to	1799
489 384 0027	to	0099	605 685 4010	to	4099	628 226 3100	to	3199	645 790 8632	to	8699
489 427 0658	to	0899	605 988 6467	to	6499	628 814 4702	to	4799	645 821 0657	to	0699
489 997 5252	to	5299	607 689 7951	to	7960	628 851 9689	to	9699	645 930 7948	to	7999
490 669 5850 to 6099			607 728 1276	to	1299	629 510 7200	to	7299	645 975 0737	to	0762
490 717 7080	to	7099	608 727 7100	to	7199	629 964 4200	to	4294	646 242 6200	to	6299
490 721 6000	to	6099	608 727 7273	to	7599	630 389 3056 to 3071			646 270 7639	to	7799
490 793 1500	to	2099	608 813 9950	to	9999	630 463 0588	to	0599	646 798 4000	to	4999
490 886 8171	to	8199	609 067 5325	to	5399	631 459 9117	to	9199	647 048 7035	to	7099
490 977 9221	to	9240	609 067 5488	to	5499	631 762 9325	to	9399	647 049 2900	to	2999
491 258 8100	to	9099	609 067 5600	to	5699	632 217 4933	to	4999	647 398 8300	to	8399
491 567 1376	to	1399	609 289 6123	to	6199	632 500 0000	to	640 3999	647 398 8481	to	8499
492 254 4800	to	4899	609 438 4400	to	4499	633 110 4165	to	4199	647 437 3000	to	4999
492 283 5100	to	5199	609 493 1100	to	1199	633 110 4303	to	4499	647 811 2188	to	2199

648 009 6057	to	6099	670 369 7336	to	7399	693 249 0877	to	1699	740 348 6641	to	6658
648 163 5300	to	5499	670 750 7169	to	7199	693 445 0566	to	0999	740 351 4790	to	4799
648 722 5283	to	5299	671 046 6200	to	6399	693 448 8500	to	8999	740 374 7416	to	7499
648 892 3164	to	3199	671 251 5448	to	5499	693 645 9583	to	9599	740 470 2420	to	2443
649 100 3989	to	3999	671 926 5600	to	5799	693 965 4200	to	4299	740 514 0300	to	0499
649 647 0370	to	0399	672 444 2000	to	2999	695 741 2906	to	2999	740 523 7432	to	7449
649 647 0522	to	0599	672 828 3410	to	3499	695 947 8518	to	8599	740 535 1555	to	1580
649 647 5237	to	5399	673 167 5776	to	5799	696 662 8247	to	8299	740 650 4104	to	4140
649 647 9100	to	9299	675 464 3700	to	3799	697 447 8285	to	8296	740 684 0620	to	0800
649 666 7800	to	8299	675 464 4000	to	4199	698 042 4816	to	4899	740 701 6105	to	6114
650 114 7707	to	7719	676 365 5958	to	5999	698 131 2138	to	2157	740 705 9790	to	9799
650 130 3400	to	3599	676 669 1024	to	1099	698 227 0000	to	0099	740 726 6400	to	6500
650 213 0406	to	0499	677 126 6734	to	6799	700 065 2570	to	2599	740 765 3306	to	3399
650 555 1749	to	1799	677 333 9979	to	9999	700 065 4800	to	4899	740 774 8434	to	8499
650 564 1900	to	1999	677 466 1088	to	1099	700 190 3350	to	3359	740 786 1885	to	1899
650 627 4212	to	4299	678 071 4500	to	4799	700 228 6048	to	6099	740 790 5989	to	5999
650 736 2043	to	2099	678 096 7531	to	7599	700 650 0452	to	0499	740 820 4854	to	7836
650 739 1540	to	1699	679 909 2578	to	2599	700 666 1323	to	1349	740 827 7578	to	7594
651 741 4415	to	4499	680 112 9565	to	9599	700 786 9106	to	9142	740 917 7490	to	7499
651 882 2800	to	2899	680 244 0903	to	0999	700 859 0744	to	0758	740 918 5531	to	5549
652 754 6317	to	6399	680 412 6046	to	6099	701 028 6780	to	6899	741 037 8528	to	8551
653 131 4945	to	4999	680 761 6800	to	6899	701 213 3900	to	3999	742 040 3300	to	3309
653 426 3300	to	3399	681 677 0540	to	0699	701 267 2000	to	3999	805 885 8411	to	8499
653 455 4874	to	4899	682 070 1029	to	1099	701 335 7312	to	7399	806 087 1100	to	1499
654 238 0000	to	0399	682 956 6280	to	6299	701 369 2005	to	2050	806 268 9275	to	9299
654 404 3065	to	3092	682 956 6490	to	6599	701 499 2260	to	2299	806 534 3400	to	3477
654 962 2900	to	3199	682 956 6700	to	6799	701 503 2247	to	2299	807 342 3283	to	3399
655 103 5081	to	5199	682 965 1178	to	1199	701 541 2271	to	2299	808 086 7100	to	7199
655 523 2600	to	2999	682 965 1201	to	1299	701 553 6557	to	6599	808 090 3440	to	3499
656 305 2448	to	2499	683 118 2389	to	2399	701 578 7460	to	7469	808 325 5161	to	5699
657 347 4438	to	4999	683 378 2000	to	2099	701 578 7475	to	7499	808 784 8000	to	8299
657 710 8100	to	8999	683 378 2117	to	2299	701 601 3457	to	3499	830 125 0672	to	0699
657 780 0985	to	0999	683 415 1200	to	1499	701 605 5913	to	5999	830 602 5800	to	5999
658 586 1400	to	1499	683 444 8159	to	8199	701 695 3982	to	3999	830 610 3700	to	3799
658 877 8000	to	8199	685 154 7780	to	7789	701 695 4148	to	4199	830 983 3500	to	3599
658 880 8000	to	8199	685 297 7645	to	7699	701 695 4227	to	4299	830 983 3635	to	3699
659 398 7300	to	7399	685 623 5264	to	5299	701 708 1741	to	1799	831 354 1387	to	1399
659 706 8113	to	8199	685 650 9487	to	9499	701 736 3966	to	3999	831 815 8240	to	8299
659 846 7837	to	7899	685 669 4200	to	4299	701 772 0870	to	0899	832 525 3810	to	3899
660 510 4100	to	4199	685 757 8452	to	8499	701 838 2800	to	2899	833 159 1884	to	1899
660 673 0400	to	0599	686 071 2694	to	2799	701 941 0600	to	0699	833 456 2567	to	2599
661 488 5000	to	5099	686 176 3333	to	3354	702 171 1603	to	1699	833 566 3015	to	3071
661 609 9100	to	9199	686 372 3200	to	3299	702 195 5109	to	5199	834 130 5200	to	5299
661 716 9420	to	9499	686 644 5879	to	5899	702 254 9300	to	9399	834 316 5444	to	5499
661 906 6522	to	6599	686 899 1371	to	1399	702 264 7569	to	7599	834 354 8747	to	8766
662 021 8332	to	8399	686 931 7636	to	7699	702 519 0513	to	0524	834 354 8824	to	8838
662 068 0700	to	0899	687 601 0973	to	0999	702 713 1800	to	1809	835 269 5700	to	5799
662 553 0774	to	0799	687 614 6774	to	6799	702 821 5730	to	5799	835 496 7303	to	7399
663 078 7034	to	7099	688 120 9000	to	9999	702 821 5805	to	5899	835 539 5200	to	5999
663 763 5300	to	5399	688 314 3107	to	3191	702 844 6975	to	6994	835 813 3015	to	3099
663 883 7039	to	7499	690 291 1361	to	1371	702 846 6331	to	6399	837 672 8967	to	8999
663 938 9200	to	9299	690 788 2877	to	2899	702 848 3900	to	3999	837 784 3282	to	3299
664 253 8000	to	8499	690 893 5344	to	5399	702 857 7302	to	7499	838 176 8377	to	8399
664 656 3055	to	3099	690 893 5512	to	5599	702 878 0114	to	0199	838 518 1257	to	1299
665 174 6400	to	6499	690 904 1300	to	1599	703 364 1707	to	1799	839 718 8257	to	8299
665 274 8208	to	8299	690 941 6000	to	6199	740 002 7710	to	7719	840 323 0600	to	0699
665 669 5400	to	5499	691 313 6383	to	6399	740 119 2275	to	2284	840 875 6235	to	6299
666 132 8226	to	8299	691 313 6600	to	6699	740 130 6688	to	6698	840 910 0900	to	0999
666 696 2209	to	2299	691 582 8003	to	8099	740 144 2780	to	2795	841 349 5000	to	5099
666 696 2309	to	2399	691 664 1800	to	1999	740 241 9049	to	9099	841 805 7747	to	7899
667 032 9300	to	9399	691 664 2400	to	2499	740 252 9265	to	9294	841 805 7944	to	8099
667 729 5529	to	5599	692 727 9362	to	9399	740 255 1718	to	1799	842 226 0685	to	0695
668 383 8400	to	8699	692 798 1800	to	1899	740 277 0366	to	0392	842 685 4600	to	4699
670 368 3400	to	3499	693 249 0779	to	0799	740 332 7658	to	7671	842 685 4742	to	4999

842 860 0300	to	0399	863 949 5300	to	5399	906 982 2214	to	2299	920 771 5321	to	5399
842 898 5582	to	5599	864 088 8200	to	8299	907 725 8500	to	8599	920 857 5500	to	5899
843 062 7100	to	7199	864 426 3972	to	3999	907 815 0216	to	0257	920 864 3480	to	3499
843 077 6288	to	6299	864 520 6117	to	6136	908 622 4225	to	4235	920 963 4567	to	4599
843 077 6378	to	6399	865 151 0526	to	0599	908 936 9254	to	9299	921 333 7400	to	7499
843 758 5769	to	5778	865 500 4034	to	4099	909 066 4494	to	7499	921 477 3762	to	3799
843 786 2554	to	2699	865 883 6082	to	6099	909 067 7400	to	7499	922 278 1048	to	1399
845 656 8165	to	8199	866 004 3000	to	3999	909 100 1787	to	1799	922 280 2019	to	2099
845 727 2100	to	2199	866 442 4100	to	4899	909 100 1900	to	2099	922 280 2233	to	2299
845 746 2618	to	2635	867 366 9108	to	9118	909 355 0422	to	0499	922 773 0459	to	0499
846 390 7531	to	7599	867 633 7403	to	7499	909 568 8900	to	9099	923 032 7000	to	7399
846 918 0572	to	0599	867 737 5623	to	5699	909 568 9300	to	9499	923 045 3630	to	3699
847 237 7690	to	7699	868 169 4529	to	4599	909 725 7307	to	7399	923 484 3600	to	3699
847 284 2481	to	2499	868 173 8400	to	8599	909 833 0947	to	0999	923 493 9403	to	9599
847 374 7055	to	7065	868 514 9000	to	9099	910 219 8631 to 8699			923 493 9681	to	9699
847 374 7055	to	7065	868 566 9200	to	9299	910 265 1100	to	1199	923 604 4424	to	4499
847 636 5304	to	5399	869 200 0000	to	9999	910 471 7273	to	7299	923 810 7800	to	8299
847 700 5447	to	5499	869 387 1150	to	1199	910 536 2505	to	2599	924 252 1200	to	1299
847 723 7500	to	7599	869 505 3500	to	3599	910 958 7499	to	7599	924 252 1400	to	1499
849 485 3427	to	3499	869 523 7033	to	7099	911 140 1000	to	2199	924 533 0711	to	0799
849 520 9850	to	9899	869 566 6150	to	6167	911 245 2545	to	2599	924 533 2343	to	2399
849 608 1357	to	1399	869 800 0000	to	9999	911 268 9077	to	9099	924 533 2428	to	2499
849 792 2600	to	2699	870 054 4814 to 4899			911 400 8948	to	8999	924 685 1957	to	1999
850 546 1862 to 1899			870 491 4812	to	4849	911 508 1620	to	1799	924 946 6300	to	6699
851 143 6826	to	6844	870 536 5820	to	5829	911 509 9310	to	9399	925 333 5900	to	6099
851 209 9880	to	9899	870 541 7167	to	7239	911 523 3000	to	3999	925 336 2300	to	2399
851 928 9221	to	9299	870 575 8155	to	8999	912 057 9922	to	9999	926 432 5907	to	5999
852 589 6560	to	6599	870 589 0485	to	0494	912 882 0563	to	0899	926 436 3600	to	3699
853 049 3646	to	3699	870 691 7060	to	7099	913 605 2218	to	2299	927 765 6257	to	6299
854 304 4089	to	4999	872 028 4850	to	4899	913 709 2429	to	2499	928 197 8100	to	8199
854 529 2200	to	2299	872 029 9306	to	9399	913 818 3501	to	3999	928 197 8283	to	8299
854 532 0000	to	2999	872 078 3709	to	3799	914 063 4300	to	4399	928 856 2059	to	2068
855 001 6204	to	6249	872 100 0445	to	0459	914 346 7621	to	7644	930 219 1722 to 1799		
855 319 9364	to	9399	900 556 4178 to 4199			914 453 1366	to	1399	930 335 7810	to	7819
855 361 3390	to	3399	900 845 0044	to	0099	914 529 6185	to	6299	931 097 9259	to	9299
856 226 0490	to	0499	900 936 0217	to	0299	914 896 4658	to	4699	931 156 1502	to	1579
856 656 5800	to	5999	900 936 0435	to	0499	915 187 8774	to	8779	931 156 1600	to	1625
856 752 0200	to	0299	901 058 5255	to	5280	915 300 2783	to	2799	931 156 1671	to	1699
857 111 1352	to	1399	901 273 1082	to	1099	915 546 6822	to	6999	932 506 6400	to	6599
857 279 3450	to	3499	901 287 5143	to	5199	915 646 5183	to	5199	932 732 1796	to	1799
857 843 4000	to	4099	901 291 2789	to	2799	915 671 3963	to	3980	932 827 9026	to	9099
858 124 7644	to	7699	901 525 7122	to	7199	915 671 3982	to	3999	932 957 2300	to	2399
858 756 3111	to	3299	902 089 1253	to	1299	915 675 2217	to	2299	933 060 6160	to	6189
859 063 8200	to	8699	902 198 9769	to	9799	916 440 3377	to	3399	933 387 2541	to	2561
859 190 0600	to	0644	902 948 1269	to	1299	916 670 6352	to	6399	933 760 3609	to	4199
859 437 5538	to	5599	902 985 0833	to	0899	916 682 5300	to	5399	933 894 0928	to	0999
859 811 2888	to	2899	903 370 6934	to	6999	916 694 1414	to	1499	934 018 2729	to	2741
859 855 8873	to	8999	904 600 6523	to	6599	916 703 0802	to	0821	934 180 0300	to	0399
860 240 8520 to 8599			904 892 0378	to	0399	917 089 0709	to	0799	934 236 3954	to	3999
860 275 3900	to	3999	904 892 0648	to	1299	917 089 0842	to	0899	934 622 8717	to	8999
860 518 9629	to	9699	905 056 2216	to	2299	917 216 2928	to	2999	935 216 0312	to	0399
860 600 0021	to	0999	905 510 6647	to	6799	917 370 6300	to	6499	935 843 2202	to	2247
861 158 2350	to	2599	905 510 6900	to	7099	917 486 4900	to	4999	936 024 8889	to	8899
861 367 5400	to	5499	905 794 0000	to	0199	918 460 0602	to	0699	936 339 4455	to	4499
861 637 6010	to	6099	905 794 0288	to	0299	918 951 7231	to	7299			
861 979 7292	to	7499	905 873 6900	to	6999	919 519 2786	to	2799			
862 216 6100	to	6199	905 873 7100	to	7299	919 536 0770	to	0799			
862 263 9213	to	9299	905 880 8900	to	8999	919 814 3095	to	3199			
862 271 0800	to	0999	905 889 7100	to	7199	919 915 2774	to	2787			
862 271 5000	to	5099	906 158 1508	to	1599	920 155 4662 to 4687					
863 871 5138	to	5199	906 558 8812	to	8899	920 309 9039	to	9199			

Missing, Lost, or Stolen Canadian Money Order Forms

Do Not Cash — Upon Receipt, Notify Local Postal Inspectors

This listing will be provided to all Postal Service™ employees responsible for accepting and cashing postal money orders. Destroy all interim notices when the numbers listed appear in the *Postal Bulletin*. The new money order serial numbers consist of the first 9 digits. The 10th digit is a check digit only.

Do not cash outdated money orders **104 151 601 to 692 600 000**. Advise holders to send invalid money orders to: Canada Post Corporation, Ottawa, Canada K1A 0B1. Check for altered dollar amounts by holding money orders to the light.

719 869 731	to	9 760	728 702 338	to	2 400	734 950 111	to	0 170	742 408 771	to	8 830
720 227 871	to	7 930	728 915 371	to	5 850	735 120 331	to	0 840	742 512 120	to	2 150
720 227 949	to	7 960	728 953 141	to	3 410	735 283 008	to	3 020	742 684 849	to	4 890
720 368 543	to	8 570	728 954 280	to	4 310	735 293 131	to	3 220	742 839 553	to	9 630
720 392 151	to	2 570	729 169 081	to	9 140	735 635 010	to	5 040	742 913 668	to	3 700
720 556 491	to	6 640	729 363 841	to	3 870	735 783 961	to	3 990	742 917 287	to	7 296
720 558 621	to	8 650	729 682 891	to	3 190	735 803 401	to	3 430	742 921 891	to	1 980
720 575 361	to	5 570	729 838 940	to	9 070	736 005 420	to	5 440	742 983 631	to	3 810
720 590 152	to	0 179	729 839 101	to	9 130	736 366 021	to	6 110	743 020 021	to	0 170
721 638 331	to	9 170	730 077 683	to	7 840	736 624 456	to	4 500	743 206 491	to	6 500
721 815 391	to	5 420	730 109 847	to	9 880	736 670 851	to	1 060	743 235 992	to	6 050
721 969 713	to	9 740	730 373 761	to	3 850	736 767 061	to	7 090	743 940 631	to	0 900
722 072 137	to	2 160	730 501 951	to	2 130	736 767 093	to	7 120	743 978 011	to	8 070
722 378 265	to	8 280	730 519 379	to	9 470	736 982 191	to	2 370	744 234 751	to	4 780
722 413 990	to	4 004	730 569 278	to	9 360	736 982 551	to	2 730	744 499 591	to	9 680
722 764 948	to	4 980	730 711 711	to	1 740	737 110 141	to	0 170	744 626 901	to	6 910
722 825 840	to	5 889	730 722 991	to	3 230	737 185 501	to	5 710	745 388 794	to	8 910
723 153 841	to	3 850	730 845 970	to	5 990	737 317 321	to	7 350	746 446 806	to	6 820
723 237 616	to	7 630	730 888 291	to	8 320	737 517 781	to	7 840	746 818 351	to	8 410
723 331 081	to	1 110	730 927 591	to	7 680	737 628 181	to	8 210	747 245 266	to	5 280
723 496 443	to	6 470	731 307 914	to	7 930	737 634 258	to	4 270	747 364 813	to	4 830
723 967 291	to	7 320	731 402 431	to	2 460	738 361 971	to	1 980	747 501 434	to	1 450
724 655 196	to	5 340	731 407 232	to	7 320	738 447 601	to	7 660	747 739 891	to	0 070
724 711 441	to	1 500	731 588 301	to	8 340	738 648 355	to	8 450	748 148 649	to	8 760
724 711 538	to	1 560	731 767 273	to	7 320	738 849 811	to	9 900	748 259 960	to	9 970
724 793 221	to	3 250	731 781 061	to	1 120	738 892 270	to	2 290	748 565 162	to	5 280
724 908 109	to	8 120	731 837 821	to	7 910	738 997 259	to	7 380	748 874 988	to	5 030
724 937 461	to	7 670	731 841 377	to	1 450	739 161 451	to	1 540	749 137 381	to	7 410
725 163 118	to	3 151	732 018 481	to	8 600	739 219 381	to	9 440	749 190 192	to	0 210
725 202 735	to	2 750	732 067 972	to	8 370	739 740 151	to	0 180	749 685 421	to	5 450
725 398 591	to	8 800	732 188 649	to	8 670	739 793 491	to	3 520	749 846 791	to	6 850
725 464 591	to	4 920	732 193 460	to	3 470	739 793 527	to	3 550	749 993 131	to	3 580
725 475 321	to	5 330	732 201 241	to	1 390	739 942 621	to	2 650	750 071 587	to	1 610
725 711 057	to	1 070	732 220 431	to	0 440	739 999 231	to	9 320	750 408 167	to	8 183
725 738 581	to	8 730	732 355 201	to	5 380	740 011 517	to	1 530	750 438 421	to	8 501
725 981 311	to	1 430	732 472 320	to	2 560	740 030 701	to	0 970	750 743 911	to	4 030
725 987 835	to	7 880	732 541 605	to	1 620	740 261 740	to	1 820	750 779 118	to	9 400
726 060 811	to	0 900	732 572 221	to	2 490	740 265 811	to	6 290	750 910 981	to	1 010
726 391 970	to	2 520	732 586 479	to	6 710	740 299 111	to	9 170	750 960 841	to	0 900
726 484 771	to	4 800	732 994 037	to	4 080	740 299 231	to	9 260	751 296 211	to	6 240
726 493 351	to	5 300	733 163 449	to	3 460	740 329 266	to	9 320	751 539 121	to	9 180
726 504 031	to	4 063	733 297 171	to	7 290	740 889 081	to	9 090	751 541 311	to	1 790
726 504 070	to	4 090	733 446 631	to	7 110	741 010 421	to	0 530	751 757 641	to	7 700
726 504 331	to	4 390	733 474 665	to	4 770	741 113 041	to	3 370	751 936 951	to	7 010
726 563 701	to	4 060	733 704 482	to	4 570	741 373 891	to	4 340	751 951 861	to	1 890
726 599 371	to	9 460	733 751 041	to	1 130	741 452 369	to	2 490	751 999 021	to	9 110
726 626 356	to	6 370	734 009 101	to	9 130	741 492 991	to	3 140	752 139 516	to	9 570
727 182 271	to	2 510	734 290 759	to	0 770	741 553 460	to	3 470	752 182 892	to	2 950
727 416 181	to	6 240	734 389 273	to	9 290	741 764 431	to	4 520	752 206 861	to	7 100
727 481 431	to	1 460	734 440 031	to	0 111	742 178 834	to	8 880	752 295 241	to	5 600
727 749 241	to	9 780	734 797 201	to	7 320	742 325 500	to	5 520	752 731 351	to	1 410
728 382 331	to	2 480	734 939 611	to	9 640	742 325 668	to	5 700	752 767 441	to	7 470

753 008 941	to	9 030	763 155 160	to	5 180	773 231 311	to	1 340	800 872 741	to	2 830
753 194 311	to	4 370	763 178 631	to	8 660	773 348 739	to	8 940	801 349 801	to	9 830
753 620 378	to	0 400	763 506 001	to	6 060	773 348 739	to	8 940	801 676 681	to	7 100
754 013 917	to	3 940	763 522 141	to	2 470	773 575 891	to	5 950	802 967 821	to	7 940
754 161 061	to	1 120	763 717 694	to	7 800	773 852 971	to	3 030	803 217 601	to	7 780
754 358 445	to	8 610	763 826 461	to	6 520	775 373 449	to	3 460	803 729 731	to	9 850
754 410 451	to	0 660	763 900 460	to	0 471	789 257 191	to	7 250	803 747 402	to	7 520
754 438 393	to	8 410	763 900 479	to	0 530	790 448 020	to	8 460	804 138 181	to	8 420
754 493 109	to	3 130	763 917 271	to	7 750	790 597 485	to	7 530	804 428 224	to	8 250
754 664 182	to	4 220	764 125 801	to	5 860	790 911 883	to	1 900	804 682 411	to	2 710
754 816 377	to	6 470	764 284 525	to	4 560	791 057 441	to	7 550	805 272 525	to	2 540
755 487 421	to	7 600	764 526 241	to	6 330	791 239 081	to	9 290	805 523 445	to	3 460
755 592 901	to	3 140	764 601 421	to	1 600	791 374 483	to	4 500	805 745 704	to	5 730
755 790 020	to	0 030	764 650 231	to	0 470	791 387 971	to	8 030	806 452 907	to	2 980
755 791 730	to	1 800	764 984 371	to	4 850	791 447 521	to	7 850	806 744 781	to	4 850
755 926 951	to	7 070	765 003 667	to	3 680	791 451 151	to	1 240	806 982 181	to	2 300
755 934 332	to	4 510	765 042 517	to	2 540	791 500 009	to	0 470	807 764 791	to	4 910
755 957 701	to	8 000	765 194 728	to	4 970	791 771 431	to	1 490	808 089 931	to	9 960
755 962 981	to	3 280	765 387 365	to	7 450	792 004 293	to	4 320	808 656 423	to	6 450
756 035 371	to	5 490	765 541 801	to	2 100	792 018 379	to	8 420	808 753 771	to	3 800
756 301 257	to	1 290	765 638 461	to	8 970	792 070 621	to	0 740	809 189 001	to	9 010
756 371 565	to	1 580	765 647 101	to	7 190	792 145 211	to	5 230	809 886 879	to	6 930
756 876 031	to	6 120	765 813 781	to	4 029	792 391 381	to	1 620	809 890 489	to	0 500
756 876 151	to	6 240	765 879 314	to	9 390	792 452 779	to	2 790	810 323 734	to	3 760
756 970 129	to	0 140	765 954 001	to	4 030	792 772 728	to	2 770	810 367 116	to	7 140
757 059 613	to	9 630	766 120 286	to	0 320	792 903 511	to	3 990	810 526 351	to	6 500
757 078 540	to	8 560	766 125 716	to	5 750	793 282 518	to	2 533	810 806 911	to	6 940
757 086 209	to	6 240	766 158 824	to	8 840	794 041 831	to	2 040	810 807 211	to	7 240
757 240 591	to	0 650	766 388 433	to	8 460	794 397 709	to	7 780	811 423 021	to	3 110
757 277 371	to	7 700	766 509 421	to	9 660	794 581 741	to	2 040	811 517 221	to	7 239
757 291 591	to	2 730	766 572 901	to	3 020	794 592 122	to	2 150	811 721 101	to	1 130
757 964 251	to	4 280	766 748 500	to	8 521	795 032 251	to	2 340	812 025 721	to	5 900
758 067 001	to	7 090	767 024 341	to	4 370	795 796 291	to	6 350	812 093 073	to	3 130
758 105 221	to	5 250	767 326 471	to	6 590	796 070 139	to	0 160	812 100 821	to	0 840
758 324 941	to	5 000	767 332 561	to	2 950	796 143 151	to	3 630	812 465 251	to	5 610
758 593 628	to	3 650	768 009 841	to	9 960	796 159 725	to	9 740	812 918 341	to	8 670
758 709 038	to	9 060	768 011 489	to	1 520	796 169 306	to	9 340	812 918 701	to	8 760
758 744 101	to	4 160	768 177 980	to	7 990	796 373 406	to	3 430	813 050 491	to	0 520
758 850 883	to	0 900	768 391 081	to	1 170	796 602 961	to	3 050	813 073 171	to	3 200
758 860 951	to	1 550	768 661 569	to	1 650	796 708 441	to	8 500	813 398 476	to	8 550
759 152 851	to	2 880	769 000 051	to	0 080	796 886 281	to	6 430	813 713 971	to	4 000
759 740 941	to	1 090	769 050 841	to	0 900	796 901 701	to	2 000	813 858 121	to	8 150
760 004 596	to	4 610	769 159 081	to	9 178	796 975 466	to	5 590	814 789 330	to	9 349
760 118 191	to	8 250	769 737 496	to	7 510	797 272 917	to	2 950	814 984 656	to	4 680
760 155 001	to	5 090	769 778 491	to	8 730	797 519 441	to	9 460	815 016 020	to	6 030
760 378 002	to	8 020	769 827 331	to	7 450	797 519 731	to	0 240	815 199 410	to	9 420
760 692 722	to	2 749	770 216 071	to	6 100	797 535 181	to	5 330	815 240 491	to	0 520
761 055 460	to	5 480	770 723 281	to	3 400	797 646 151	to	6 180	815 755 591	to	5 620
761 169 781	to	9 810	770 790 451	to	0 480	798 040 053	to	0 080	815 755 622	to	5 650
761 504 941	to	5 120	770 915 150	to	5 490	798 055 813	to	5 830	815 806 381	to	6 680
761 516 836	to	6 910	771 455 551	to	5 610	798 055 891	to	5 950	816 126 834	to	6 870
761 613 588	to	3 600	771 609 661	to	9 690	798 326 371	to	6 520	816 156 721	to	6 780
761 688 631	to	8 690	771 932 551	to	2 580	798 339 167	to	9 210	816 580 903	to	0 920
761 805 199	to	5 240	772 057 224	to	7 440	798 562 411	to	2 440	816 945 571	to	5 600
761 826 106	to	6 120	772 162 660	to	3 070	798 632 461	to	2 490	817 253 011	to	3 280
761 881 171	to	1 560	772 718 615	to	8 640	798 807 151	to	7 510	817 763 881	to	4 060
761 975 641	to	5 670	772 940 140	to	0 160	798 944 761	to	5 030	818 330 562	to	0 610
761 975 886	to	5 895	772 970 886	to	0 940	799 118 616	to	8 640	818 459 641	to	9 670
762 304 144	to	4 170	773 009 419	to	9 430	799 133 191	to	3 220	818 926 273	to	6 320
762 324 931	to	4 960	773 112 031	to	2 060	799 177 626	to	7 650	818 950 351	to	0 380
762 439 261	to	9 290	773 125 387	to	5 410	799 854 751	to	5 200	818 962 492	to	2 530
762 524 158	to	4 220	773 179 320	to	9 410	800 044 320	to	4 410	819 032 341	to	2 730
762 584 872	to	4 970	773 202 989	to	3 140	800 211 901	to	2 440	819 127 054	to	7 080
762 593 431	to	3 460	773 208 991	to	9 290	800 427 530	to	7 540	819 278 540	to	8 670

819 544 681	to 4 740	822 703 442	to 3 470	826 042 898	to 2 920	828 441 602	to 1 630
819 928 441	to 8 650	822 900 991	to 1 020	826 226 644	to 6 670	828 539 316	to 9 340
820 034 406	to 4 430	822 925 951	to 6 100	826 582 951	to 3 430	828 539 341	to 9 370
820 070 761	to 1 540	823 284 931	to 4 990	826 720 201	to 0 230	828 732 331	to 2 390
820 191 342	to 1 360	823 293 031	to 3 210	827 005 671	to 5 830	828 830 952	to 0 963
820 274 856	to 4 880	823 556 011	to 6 100	827 287 861	to 7 950	828 939 781	to 0 050
820 600 171	to 0 230	824 078 341	to 8 370	827 291 502	to 1 520	829 002 721	to 2 870
821 172 241	to 2 360	824 156 325	to 6 340	827 575 381	to 5 470	829 005 301	to 5 540
821 229 661	to 9 720	824 511 252	to 1 270	827 609 085	to 9 100	829 080 241	to 0 330
821 229 743	to 9 780	824 588 281	to 8 370	827 619 811	to 9 840	829 160 986	to 1 000
821 903 731	to 3 910	825 140 397	to 0 460	827 883 511	to 3 600	829 176 841	to 6 930
821 927 841	to 7 850	825 409 651	to 9 680	828 160 441	to 0 530	829 471 561	to 1 590
822 505 801	to 5 830	825 472 171	to 2 200	828 376 201	to 6 260		

— Criminal Investigations Group, Postal Inspection Service, 7-29-10

Verifying U.S. Postal Service Money Orders

Follow these steps to cash a Postal Service™ money order:

1. Check that the amount does not exceed the legal limit: \$1,000 for domestic, and \$700 for international postal money orders.
2. Check that the proper security features are present:
 - When held to the light, a watermark of Benjamin Franklin is repeated from top to bottom on the left side.
 - When held to the light, a dark line (security thread) runs from top to bottom with the word “USPS” repeated.
 - There should be no discoloration around the dollar amounts, which might indicate the amounts were changes.

These appear in Postal Service Notice 299, *U.S. Postal Money Order Reference Card*, or online at <http://www.usps.com/missingmoneyorders/security.htm>.

3. If the money order seems suspicious, call the U.S. Postal Service Money Order Verification System at 866-459-7822.

Please provide this information to local banks and retailers, as they also receive Postal Service money orders for cashing.

— Special Services,
Retail Products and Services, 7-29-10

Counterfeit Canadian Money Order Forms

Do Not Cash

To be posted and used by retail window employees. As directed, destroy previous notices. Destroy all interim notices when the numbers listed appear in the *Postal Bulletin*.

671,819,086	686,794,382
676,612,640	686,794,426
677,891,039	686,794,427
678,282,493	686,794,431
678,916,031	687,262,502
679,552,215	687,262,503
679,694,334	687,262,525
679,751,983	687,262,526
679,800,207	687,287,578
681,130,536	687,287,581
681,844,376	687,287,582
683,594,542	694,063,898
684,683,610	694,063,899
686,619,878	694,063,980
686,619,886	701,321,725
686,619,887	

— Criminal Investigations Group,
Postal Inspection Service, 7-29-10

Toll-Free Number Available to Verify Canadian Money Orders

The Canada Post Corporation is now providing a toll-free number that cashing agents can call to verify the validity of Canadian Postal Money Orders. The number is 800-563-0444.

This toll-free number is printed on the back of the Canadian Postal Money Orders.

— Criminal Investigations Group,
Postal Inspection Service, 7-29-10

Other Information

Overseas Military/Diplomatic Mail

Mail addressed to military and diplomatic post offices overseas is subject to certain conditions or restrictions of mailing regarding content, preparation, and handling. The APO/FPO/DPO table below outlines these conditions by APO/FPO/DPO ZIP™ Codes through the use of footnoted mailing restrictions codes (see the [Restrictions](#) page following the table).

Acceptance clerks should use the table with the integrated retail terminal (IRT) or POS ONE terminal to determine which APO/FPO/DPO ZIP Codes are active and

which conditions of mailing apply. **Acceptance clerks may contact the Military Postal Service Agency with any questions regarding APO/FPO/DPO ZIP Codes, toll free, at 800-810-6098, Monday–Friday, 0730–1600 ET.**

For Express Mail Military Service (EMMS) availability, all acceptance clerks must refer to the local hardcopy EMMS directory.

The entries under “Changes” appear in bold in the APO/FPO/DPO table starting below.

Changes

APO/FPO/DPO	Action	Effective Date	See Restrictions
FPO AE 09567	Add F-F1-R-R1	Immediately	A1-B-F-F1-R-R1-V

We have eliminated “Not Active” entries from the table below to save space and paper.

APO/FPO/DPO Table

APO/ FPO/ DPO	See Restrictions	APO/ FPO/ DPO	See Restrictions	APO/ FPO/ DPO	See Restrictions	APO/ FPO/ DPO	See Restrictions
09002	A1-B-C-D-M-R-U	09067	A1-B-C-D-M-R-U	09143	A1-B-C-D-M-R-U	09308	A-A1-B-C1-E2-F-H1-M-R-V-Z1
09003	A1-B-C-D-M-P-R-U	09068	A1-B-C-D-U-Z1	09154	A1-B-C-D-M-R-U	09309	A-A1-B-C1-E2-F-H1-M-R-R1-V-Z1
09004	A1-B-C-D-M-R-U	09069	A-A1-B-C-D-U-V	09172	A1-B-C-D-M-R-U	09310	A-A1-B-C1-E2-F-H1-M-R-V-Z1
09005	A1-B-C-D-M-P-R-U	09075	A1-B-C-D-M-R-U	09173	A1-B-C-D-M-R-U	09311	A-A1-B-C1-E2-F-H1-M-R-V-Z1
09006	A1-B-C-D-M-R-U	09079	A1-B-C-D-M-R-U	09177	A1-B-C-D-M-R-U	09312	A-A1-B-C1-E2-F-H1-R-R1-U2-V-Z1
09007	A1-B-C-D-M-R-U	09080	A1-B-C-D-F1-M-R-U	09180	A1-B-C-D-M-R-U	09313	A-A1-B-C1-E2-F-H1-M-R-R1-V-Z1
09008	A-A1-B-C-D-M-P-R-U	09081	A1-B-C-D-M-R-U	09186	A1-B-C-D-M-R-U	09314	A-A1-B-C1-E2-F-H1-M-R-R1-V-Z1
09009	A1-B-C-D-F1-M-R-U	09086	A1-B-C-D-M-R-U	09211	A1-B-C-D-M-P-R-U	09315	A-A1-B-C1-E2-F-H1-M-N-R-R1-V-Z1
09011	A1-B-C-D-M-R-U	09088	A1-B-C-D-M-R-U	09213	A1-B-C-D-F1-M-R-U	09316	A-A1-B-C1-E2-F-H1-M-R-R1-U2-V-Z1
09012	A1-B-C-D-F-F1-M-R-U	09090	A1-B-C-D-M-P-R-U	09214	A1-B-C-D-F1-M-R-U	09317	A-A1-B-C1-E2-F-H1-M-R-R1-V-Z1
09013	A1-B-C-D-F-F1-M-R-U-Z1	09092	A1-B-C-D-M-R-U	09226	A1-B-C-D-F1-M-R-U	09318	A-A1-B-C1-F-F1-M-N-V-Z-Z1
09014	A1-B-C-D-M-R-U	09094	A1-B-C-D-F-F1-M-P-R	09227	A1-B-C-D-F1-M-R-U	09320	A-A1-B-C1-E2-F-H1-M-R-R1-V-Z1
09020	A1-B-C-D-M-R-U	09095	A1-B-C-D-M-R-U	09229	A1-B-C-D-M-R-U	09321	A-A1-B-C1-E2-F-H1-M-R-R1-V-Z1
09021	A1-B-C-D-F1-M-R-U	09096	A1-B-C-D-M-R-U	09237	A1-B-C-D-M-R-U-V	09322	A-A1-B-C1-E2-F-H1-R-R1-U2-V-Z1
09028	A1-B-C-D-M-R-U	09099	A1-B-C-D-M-R-U	09245	A1-B-C-D-M-R-U	09327	A-A1-B-C1-E2-F-H1-M-R-R1-V-Z1
09033	A1-B-C-D-M-R-U	09100	A1-B-C-D-M-R-U	09250	A1-B-C-D-M-R-U	09328	A-A1-B-C1-E2-F-H1-N-R-R1-V-Z1
09034	A1-B-C-D-M-R-U	09102	A1-B-C-D-M-R-U	09261	A1-B-C-D-F1-M-R-U-V	09330	A-A1-B-C1-E2-F-H1-M-R-R1-V-Z1
09038	A1-B-C-D-M-R-U	09103	A1-B-C-D-U	09263	A1-B-C-D-M-R-U		
09042	A1-B-C-D-M-R-U	09104	A1-B-C-D-F1-M-R-U	09264	A1-B-C-D-M-R-U		
09046	A1-B-C-D-M-R-U	09107	A1-B-C-D-M-R-U	09266	A1-B-C-D-F1-M-N-R-U		
09049	A1-B-C-D-M-R-U	09112	A1-B-C-D-M-R-U	09266	A1-B-C-D-M-R-U		
09051	A1-B-C-D-M-R-U	09114	A1-B-C-D-M-R-U	09267	A1-B-C-D-M-R-U		
09053	A1-B-C-D-M-R-U	09123	A1-B-C-D-F1-M-R-U	09301	A-A1-B-C1-E2-F-H1-M-R-R1-V-Z1		
09054	A1-B-C-D-M-R-U	09126	A1-B-C-D-F-F1-M-P-R	09302	A-A1-B-C1-F-F1-M-N-V-Z-Z1		
09055	A1-B-C-D-F-M-R-R1-U-V	09128	A1-B-C-D-M-R-U	09304	A-A1-B-C1-E2-F-H1-M-R-V-Z1		
09056	A1-B-C-D-M-R-U	09131	A1-B-C-D-M-R-U	09305	A-A1-B-C1-E2-F-H1-M-R-R1-V-Z1		
09058	A1-B-C-D-M-R-U	09136	A1-B-C-D-F1-M-R	09306	A-A1-B-C1-E2-F-H1-R-R1-U2-V-Z1		
09059	A1-B-C-D-M-R-U	09137	A1-B-C-D-F1-M-R-U	09307	A1-B-N-V-Z1		
09060	A1-B-C-D-F1-M-R-U	09138	A1-B-C-D-M-R-U				
09063	A1-B-C-D-L-M-R-U	09139	A1-B-C-D-M-R-U				
		09140	A1-B-C-D-M-R-U				
		09142	A1-B-C-D-F-F1-P-R-U				

APO/ FPO/ DPO	See Restrictions	APO/ FPO/ DPO	See Restrictions	APO/ FPO/ DPO	See Restrictions	APO/ FPO/ DPO	See Restrictions
09331	A-A1-B-C1-E2-F-H1-M-R-R1-V-Z1	09369	A-A1-B-C1-E2-F-H1-M-R-R1-V	09505	A1-B-V	09613	A1-B-C-F-U-V
09332	A-A1-B-C1-E2-F-H1-M-R-R1-V-Z1	09370	A-A1-B-C1-E2-F-H1-M-R-R1-V-Z1	09506	A1-B-V	09617	A1-B-C-F-U
09333	A-A1-B-C1-E2-F-H1-M-R-R1-V-Z1	09371	A-A1-B-C1-E2-F-H1-M-R-V	09507	A1-B-V	09618	A1-B-C-F-U
09334	A-A1-B-C1-E2-F-H1-M-R-R1-V-Z1	09372	A-A1-B-C1-E2-F-H1-M-R-R1-V	09508	A1-B-V	09620	A1-B-C-F-U
09336	A-A1-B-C1-E2-F-H1-R-R1-U2-V-Z1	09373	A-A1-B-C1-E2-F-H1-M-R-R1-V	09509	A1-B-V	09621	A1-B-C-F-U
09337	A-A1-B-C1-E2-F-H1-M-R-R1-V-Z1	09374	A-A1-B-C1-E2-F-H1-M-R-V-Z1	09510	A-A1-B-C1-E2-F-H1-M-R-R1-V-Z1	09622	A1-B-C-F-U
09338	A-A1-B-C1-E2-F-H1-M-R-R1-U2-V-Z1	09375	A-A1-B-C1-E2-F-H1-M-R-V-Z1	09511	A1-B-V	09623	A1-B-C-F-U
09339	A-A1-B-C1-E2-F-H1-M-N-R-R1-V-Z1	09376	A-A1-B-C1-E2-F-H1-M-R-R1-V	09513	A1-B-F-F1-R-R1-V	09624	A1-B-C-F-U
09340	A-A1-B-C1-F-R-V	09377	A-A1-B-C1-E2-F-H1-M-R-R1-V	09517	A1-B-F-F1-R-R1-V	09625	A1-B-C-F-U
09342	A-A1-B-C1-E2-F-H1-M-R-R1-V-Z1	09378	A-A1-B-C1-E2-F-H1-M-R-R1-U2-V-Z1	09524	A1-B-F-F1-R-R1-V	09626	A1-B-C-F-U
09343	A-A1-B-C1-F-M-N-V-Z1	09380	A-A1-B-C1-E2-F-H1-M-R-R1-V-Z1	09532	A1-B-F-F1-R-R1-V	09627	A1-B-C-F-U
09344	A-A1-B-C1-E2-F-H1-M-R-R1-V-Z1	09381	A-A1-B-C1-E2-F-H1-M-R-R1-U2-V-Z1	09534	A1-B-F-F1-R-R1-V	09630	A1-B-C-F-U-V
09347	A-A1-B-C1-E2-F-H1-M-R-R1-V-Z1	09382	A-A1-B-C1-E2-F-H1-M-R-R1-V-Z1	09543	A1-B-F-F1-R-R1-V	09631	A1-B-C-F-U
09348	A-A1-B-C1-E2-F-H1-M-R-R1-U2-V-Z1	09383	A-A1-B-C1-E2-F-H1-M-R-R1-V-Z1	09545	A1-B-V	09633	A1-B-B2-C-D-F-F1-M-R-U-U1-U2-U3-V-Z1
09350	A-A1-B-C1-E2-F-H1-M-R-R1-V-Z1	09387	A-A1-B-C1-E2-F-H1-M-R-V	09549	A1-B-V	09636	A1-B-C-F-U
09351	A-A1-B-C1-E2-F-H1-M-R-V-Z1	09389	A-A1-B-C1-E2-F-H1-M-R-V	09554	A1-B-F-F1-R-R1-V	09642	A1-B-M-N-R-U
09352	A-A1-B-C1-E2-F-H1-M-R-R1-V-Z1	09391	A-A1-B-C1-E2-F-H1-M-R-R1-V-Z1	09556	A1-B-F-F1-R-R1-V	09643	A1-B-M-R-U
09353	A-A1-B-C1-E2-F-H1-M-R-R1-V-Z1	09393	A-A1-B-C1-E2-F-H1-M-R-R1-V-Z1	09557	A1-B-F-F1-R-R1-V	09645	A1-B-C-F-F1-U
09354	A-A1-B-C1-E2-F-H1-M-R-R1-V-Z1	09396	A-A1-B-C1-E2-F-H1-M-R-R1-U2-V-Z1	09564	A1-B-F-F1-R-R1-V	09647	A1-B-N-R-U
09355	A-A1-B-C1-E2-F-H1-M-R-R1-V-Z1	09402	A-A1-B-C-F-R-R1-U3-W	09565	A1-B-F-F1-R-R1-V	09648	A1-B-N-U-V-Z1
09357	A-A1-B-C1-E2-F-H1-M-R-R1-V-Z1	09403	A1-B-C-C1-M-R-U	09566	A1-B-F-F1-R-R1-V	09649	A1-B-N-U-Z1
09358	A-A1-B-C1-E2-F-F1-H1-M-N-R-R1-T-V-W-Z1	09421	A1-B-C-C1-M-R-U	09567	A1-B-F-F1-R-R1-V	09701	A-A1-B-B2-C-C1-D-F-L-M-N-R-R1-T-V-Z1
09359	A-A1-B-C1-E2-F-H1-M-R-R1-V-Z1	09447	A1-B-C-C1-R-U-V	09568	A1-B-V	09702	A1-B-C-C1-F1-M-R-R1-U
09360	A1-B-V	09454	A1-B-C-C1-M-R-U-V	09569	A1-B-F-F1-R-R1-V	09703	A1-B-C-F1-U
09361	A-A1-B-C1-E2-F-H1-M-R-R1-U2-V-Z1	09456	A1-B-C-C1-H-H1-M-R-Z1	09570	A1-B-F-F1-R-R1-V	09704	A1-B-C-V
09362	A-A1-B-C1-E2-F-H1-R-V-Z1	09459	A1-B-C-C1-M-R-U	09573	A1-B-F-F1-R-R1-V	09705	A1-B-U
09363	A-A1-B-C1-E2-F-H1-M-R-R1-V-Z1	09461	A1-B-C-C1-M-P-R-U	09574	A1-B-F-F1-R-R1-V	09706	A1-B-C-N-R-U-V
09364	A-A1-B-C1-E2-F-H1-M-N-R-R1-V-Z1	09463	A1-B-C-C1-R-U	09575	A1-B-F-F1-R-R1-V	09707	A1-B-C-N-R-U-V
09365	A-A1-B-C1-E2-F-H1-M-R-R1-V-Z1	09464	A1-B-C-C1-R-U	09576	A1-B-F-F1-R-R1-V	09708	A1-B
09366	A-A1-B-C1-E2-F-H1-M-R-R1-V-Z1	09468	A1-B-C-C1-M-R-U	09577	A1-B-V	09709	A1-B-F1
09368	A-A1-B-C1-E2-F-H1-M-R-V-Z1	09469	A1-B-C-C1-R-U	09578	A1-B-F-F1-R-R1-V	09710	A1-B-C-C1-F1-M-N-R-R1-U
		09470	A1-B-C-C1-M-R-U	09579	A1-B-F-F1-R-R1-V	09711	A1-B-F1-N-R-Z1
		09494	A1-B-C-C1-M-R-U	09581	A1-B-F-F1-R-R1-V	09713	A1-B-C-F1-R
		09496	A1-B-C-C1-R-U-V	09582	A1-B-F-F1-R-R1-V	09714	A1-B-C-C1-F1-M-R-R1-U
		09498	A1-B-C-C1-F-F1-F2-L-N-R-R1-T-V-Z1	09586	A1-B-F-F1-R-R1-V	09715	A1-B-F1-M-R
		09501	A1-B-V	09587	A1-B-F-F1-R-R1-V	09716	A1-B-C-D-M-N-R-U-V
		09502	A1-B-V	09588	A1-B-V	09717	A-A1-B-M-R-V-W
		09503	A1-B-V	09589	A1-B-V	09718	A1-B-F-I-N-R-U-V
		09504	A1-B-V	09590	A1-B-V	09719	A1-B-C-D-M-R-U-V
				09591	A1-B-F-F1-R-R1-V	09720	A1-B-M-R-U-V
				09593	A1-B-V	09721	A1-B-N-R-U-V-Z1
				09594	A1-B-V	09722	A-A1-B-F-N-V-Z1
				09596	A1-B-V	09723	A1-B-M-N-R-U-V-Z1
				09599	A1-B-F-F1-R-R1-V	09724	A1-B-C-C1-F1-M-R-R1-U
				09601	A1-B-C-F-F1-R-U-V	09726	A1-B-M-N-R-U-V
				09602	A1-B-C-F-F1-N-R-U	09727	A-A1-B-B2-C-C1-D-F-I-L-M-N-R-R1-T-V-Z1
				09603	A1-B-C-F-F1-R-U-V	09728	A-A1-B-B2-C-C1-F-I-L-N-R-R1-T-V-Z1
				09604	A1-B-C-F-F1-P-R-U-V	09729	A1-B-C-F-N-R-R1-U-V
				09605	A1-B-C-D-M-R-U-V		
				09606	A1-B-C-D-M-R-U-V		
				09607	A-A1-B-C-F-F1-M-R-R1-U-U3-V-W		
				09608	A1-B-C-F-N-U-V		
				09609	A1-B-C-F-U		
				09610	A1-B-C-F-F1-M-R-U-V		

APO/ FPO/ DPO	See Restrictions	APO/ FPO/ DPO	See Restrictions	APO/ FPO/ DPO	See Restrictions	APO/ FPO/ DPO	See Restrictions
09730	A-B-B2-C-C1-F-L-M-N-R-R1-T-V-Z1	09807	A-A1-B-C1-E2-F-H1-M-N-R-R1-V-Z1	09865	A-A1-B-V-Z1	96204	A-A1-B
09731	A-B-B2-C-C1-F-L-M-N-R-R1-T-V-Z1	09808	A-A1-B-C1-E2-F-H1-M-R-V	09868	A-A1-B-U-V-Z1	96205	A-A1-B-U
09732	A1-B-N-V-Z1	09809	A1-B-V-Z1	09870	A-A1-B-C1-E2-F-H1-M-R-R1-U-V-Z1	96206	A-A1-B-U
09733	A1-B-V	09810	A-A1-B-F-F1-N-R-V-Z1	09880	A-A1-B-C1-E2-F-H1-R-R1-U-V-Z1	96207	A-A1-B-V
09734	A-A1-B-C-C1-F-I-L-M-N-R-R1-T-V-Z1	09811	A1-B-E2-E3-F-H1-N-R-R1-U1-V-Z1	09890	A1-B-E2-F-H1-N-R-R1-U2-V-Z1	96209	A-A1-B-L-N-U
09735	A1-B-N-V-Z1	09812	A1-B-E2-E3-F-F1-I-N-R-U-V-Z1	09892	A-A1-B-E2-F-N-R-R1-V-Z1	96213	A-A1-B-U
09736	A-A1-B-B2-C-C1-D-F-L-M-N-R-R1-T-V-Z1	09813	A-A1-B-B2-C1-E2-E3-F-I-L-N-R-R1-T-V-Z1	09898	A1-B-E2-F-H1-N-R-R1-U2-V-Z1	96214	A-A1-B-U
09737	A-A1-B-B2-C-C1-F-I-L-M-N-R-R1-T-V-W-Y-Z1	09814	A1-B-E2-E3-F-F1-I-N-R-U-V-Z1	34002	A1-B-L-N-U-Z1	96218	A-A1-B-U
09738	A-A1-B-B2-C-C1-D-F-L-M-N-R-R1-T-V-Z1	09815	A-A1-B-C1-E2-F-H1-M-R-R1-V-Z1	34004	A-B-L-N-U-V	96224	A-A1-B-U
09739	A-A1-B-B2-C-C1-D-F-I-L-M-N-R-R1-T-V-Z1	09816	A-A1-B-B2-C-C1-E2-E3-F-L-N-R-R1-T-V-Z1	34006	A-A1-B-C1-F1-N-V-Z1	96257	A-A1-B-U
09741	A-A1-B-C1-E2-F-F1-H1-L-M-N-R-R1-T-V-W-Y-Z1	09817	A-A1-B-B2-C1-E2-E3-F1-H-H1-L-M-N-R-T-V-Z1	34007	A-A1-B-C1-F-F1-M-N-R-R1-V-Z1	96258	A-A1-B-U
09742	A-A1-B-B2-F-F1-I-L-M-N-R-T-V-Z1	09818	A-A1-B-C-F-M-V-Z1	34008	A1-B-B2-D-E1-F-H-H1-L-M-N-R-R1-T-V-Z1	96260	A-A1-B-U
09743	A-A1-B-F-N-V-Z1	09819	A-A1-B-P-R-V-Z1	34011	A1-B-B2-C1-E2-F-I-L-M-N-R-R1-T-V-Z1	96262	A-A1-B-U-V
09744	A-B-B2-C-C1-F-L-M-N-R-R1-T-V-Z1	09820	A-A1-B-B2-F-H-H1-I-L-M-N-R-R1-T-V-Z1	34020	A1-B-L-M-N-U-V-Z1	96264	A-A1-B-U
09745	A-A1-B-F-F1-M-N-R-R1-V-Z1	09821	A-A1-B-F-R-V-Z1	34021	A1-B-L-M-N-U-V-Z1	96266	A-A1-B-U
09746	A-A1-B-C-E1-N-V-Z1	09822	A-A1-B-F-R-V-Z1	34022	A1-B-D-F-L-M-N-U-V-Z1	96267	A-A1-B-U-V
09747	A1-B-F-J-N-U-V-Z1	09823	A-A1-B-F-R-V-Z1	34023	A1-B-L-M-N-U-V-Z1	96269	A-A1-B-U
09748	A-A1-B-B2-C-C1-D-F-L-M-N-R-R1-T-V-Z1	09824	A-A1-B-F-R-V-Z1	34024	A1-B-L-M-N-U-V-Z1	96271	A-A1-B-U
09749	A-A1-B-F-N-V-Z1	09825	A-A1-B-C-C1-D-F-L-M-N-R-R1-T-V-Z1	34025	A1-B-F-L-M-N-U-V-Z1	96275	A-A1-B-V
09750	A-B-B2-C-C1-F-L-M-N-R-R1-T-V-Z1	09827	A-A1-B-F-F1-N-R-V-Z1	34030	A1-B-L-M-N-U-V-Z1	96276	A-A1-B
09751	A1-B-C-D-M-R-U	09828	A1-B-L-N-V-Z1	34031	A1-B-L-M-N-U-V-Z1	96278	A-A1-B-U
09752	A1-B-C-D-U	09829	A1-B-C-N-R-V-Z1	34032	A1-B-L-M-N-U-V-Z1	96283	A-A1-B-U
09754	A1-B-U	09830	A1-B-C-M-N-R-V-Z1	34033	A1-B-C-F-L-M-N-V-Z1	96284	A-A1-B-U-V
09755	A1-B-U	09831	A1-B-F-N-U-V-Z1	34034	A1-B-L-M-N-V-Z1	96297	A-A1-B-U
09756	A1-B-U	09832	A-A1-B-U1-V-Z1	34035	A1-B-H-L-M-N-U-V-Z1	96303	A1-B-H-L-M-N-V-W
09757	A1-B-U	09833	A1-B-U1-V-Z1	34036	A1-B-L-M-N-U-V-Z1	96306	A1-B-F-F1-F2-H-M-W
09758	A-A1-B-B2-C-C1-F-L-M-N-R-R1-T-V-Z1	09834	A1-B-F-F1-R-R1-V-Z1	34037	A1-B-C-F-H-I-L-M-N-V-Z1	96309	A1-B-M-V-W
09759	A-A1-B-B2-C-C1-E2-F-F1-F2-L-N-R-R1-T-V-Z1	09835	A-A1-B-V-Z1	34038	A1-B-L-M-N-U-V-Z1	96310	A1-B-M-W
09762	A-A1-B-B2-E3-F-F1-L-N-R-R1-T-V-Z1	09836	A-A1-B-C-F-M-V-Z1	34039	A1-B-L-M-N-U-V-Z1	96319	A1-B-M-W
09769	A-A1-B-B2-C-C1-D-F-I-L-M-N-R-R1-T-V-Z1	09837	A1-B-V-Z1	34041	A1-B-L-M-N-U-V-Z1	96321	A1-B-F-F1-F2-H-M-W
09777	A-A1-B-C-E1-M-N-R	09838	A1-B-V-Z1	34042	A1-B-D-F-M-N-V-Z1	96322	A1-B-F-F1-F2-H-M-W
09780	A-A1-B-F-N-R-V	09839	A-A1-B-U-V-Z1	34050	A1-B-V	96323	A1-B-M-V-W
09798	A1-B-C-D-L-U-V	09840	A-A1-B-V-Z1	34055	A1-B-L-M-N-U-V-Z1	96326	A1-B-M-W
09801	A-A1-B-C1-E2-F-H1-M-N-R-R1-V-Z1	09841	A-A1-B-N-R-U-Z1	34058	A1-B-F-F1-R-R1-V-Z1	96328	A1-B-M-W
09803	A1-B-E2-E3-F-H1-N-R-R1-U1-V-Z1	09842	A-A1-B-M-N-R-Z1	34060	A1-B-B2-C1-E2-F-I-L-N-R-R1-T-V-Z1	96330	A1-B-M-W
09804	A-A1-B-F-F1-N-R-V-Z1	09843	A-A1-B-L-N-V	34078	A1-B-F1-N-V-Z1	96336	A1-B-M-V-W
09805	A-B-F-F1-R-R1-V-Z1	09844	A-A1-B-C-F-N-U-V-Z1	34090	A1-B-F-F1-R-R1-V	96365	A1-B-M-V-W
09806	A-A1-B-C1-E2-F-H1-M-N-R-R1-V-Z1	09852	A1-B-E2-E3-F-H1-N-R-R1-U1-V-Z1	34091	A1-B-F-F1-R-R1-V	96367	A1-B-L-M-W
		09853	A1-B-E2-F-H1-R-R1-U2-V-Z1	34092	A1-B-F-F1-R-R1-V	96368	A1-B-M-W
		09855	A-A1-B-C1-E2-F-H1-R-R1-U2-V-Z1	34093	A1-B-F-F1-R-R1-V	96370	A1-B-F-F1-F2-H-M-W
		09858	A1-B-E2-E3-F-H1-N-R-R1-U1-V-Z1	34095	A1-B-V	96372	A1-B-M-W
		09859	A1-B-C1-F-F1-H1-N-R-R1-V-Z1	34098	A1-B-V	96373	A1-B-M-W
				34099	A1-B-V	96374	A1-B-M-W
				96201	A-A1-B	96375	A1-B-M-W
				96202	A-A1-B-U	96376	A1-B-M-W
				96203	A-A1-B		

APO/ FPO/ DPO	See Restrictions	APO/ FPO/ DPO	See Restrictions	APO/ FPO/ DPO	See Restrictions	APO/ FPO/ DPO	See Restrictions
96377	A1-B-M-W	96531	A-A1-B-F-F1-H-M-N-U-V	96601	A1-B-V	96657	A1-B-F-F1-R-R1-V
96378	A1-B-M-W			96602	A1-B-V	96660	A1-B-F-F1-R-R1-V
96379	A1-B-M-W	96532	A-A1-B-H-L-M-N-U-V	96603	A1-B-V	96661	A1-B-F-F1-R-R1-V
96384	A1-B-M-W	96534	A-A1-B-F	96604	A1-B-V	96662	A1-B-F-F1-R-R1-V
96386	A1-B-M-W	96535	A-A1-B-F-V	96605	A1-B-V	96663	A1-B-F-F1-R-R1-V
96387	A1-B-M-W	96537	A1-B-V	96606	A1-B-V	96664	A1-B-V
96388	A1-B-M-W	96538	A1-B-V	96607	A1-B-V	96665	A1-B-V
96401	A1-B-F-N-V-Z1	96540	A1-B-V	96608	A1-B-V	96666	A1-B-V
96426	A-A1-B-C1-E2-F-H1-M-R-V	96541	A1-B-V	96609	A1-B-V	96667	A1-B-F-F1-R-R1-V
		96542	A1-B-V	96610	A1-B-V	96668	A1-B-F-F1-R-R1-V
96427	A-A1-B-C1-E2-F-H1-M-R-R1-V	96543	A1-B-P-V	96611	A1-B-V	96669	A1-B-F-F1-R-R1-V
		96544	A1-B-F-N-U3-V	96612	A1-B-F-F1-R-R1-V	96670	A1-B-V
96447	A1-B-F-N-U3-V	96546	A1-B-F-U3	96613	A-A1-B-C1-E2-F-H1-I-M-R-R1-U2-V-Z-Z1	96671	A1-B-F-F1-R-R1-V
96501	A-A1-B-N-V	96548	A-A1-B-H-M-U			96672	A1-B-F-F1-R-R1-V
96502	A1-B-F-N-U3-V	96549	A-A1-B-H-M-U	96614	A-A1-B-C1-E2-F-H1-I-M-R-R1-U2-V-Z-Z1	96673	A1-B-V
96503	A1-B-F-N-U3-V	96550	A-A1-B-H-M-U-V			96674	A1-B-F-F1-R-R1-V
96507	A-A1-B-F-V	96551	A-A1-B-H-M-N-U	96615	A1-B-F-F1-R-R1-V	96675	A1-B-F-F1-R-R1-V
96510	A1-B-I-N-V	96552	A1-B	96616	A1-B-F-F1-R-R1-V	96677	A1-B-F-F1-R-R1-V
96511	A1-B-I-N-V	96553	A-A1-B-F-F1-H-M-U	96617	A1-B-F-F1-R-R1-V	96678	A1-B-F-F1-R-R1-V
96515	A1-B-D-F-U3	96554	A-A1-B-H-M-U	96619	A1-B-V	96679	A1-B-F-F1-R-R1-V
96516	A1-B-D-F	96555	A1-B-F-M-V	96620	A1-B-F-F1-R-R1-V	96681	A1-B-V
96517	A1-B-F-U3-V	96557	A1-B-F-M-V	96621	A1-B-V	96682	A1-B-V
96518	A1-B-V	96562	A-A1-B-B2-C-C1-D-E2-E3-F-F1-H-H1-I-L-M-N-R-T-V-Z-Z1	96622	A1-B-F-F1-R-R1-V	96683	A1-B-V
96520	A1-B-F-N-U3-V			96624	A1-B-F-F1-R-R1-V	96686	A1-B-V
96521	A1-B-F-N-U3			96628	A1-B-F-F1-R-R1-V	96687	A1-B-V
96522	A1-B-F-N-U	96577	A-A1-B-F-H-M-U	96629	A1-B-F-F1-R-R1-V	96698	A1-B-V
96530	A-A1-B-F-F1-H-H1-M-N-U-V	96595	A1-B-V	96643	A1-B-F-F1-R-R1-V		
		96598	A1-B-N-V	96650	A1-B-F-F1-R-R1-V		
		96599	A1-B-N-V				

RESTRICTIONS

LEGEND

PS Form 2976, *Customs — CN 22 (Old C 1) and Sender's Declaration* (green label)

PS Form 2976-A, *Customs Declaration and Dispatch Note*

AAFES	= Army and Air Force Exchange Service
APO	= Army/Air Force Post Office
Box R	= Retired military personnel
DMM	= <i>Domestic Mail Manual</i>
DPO	= Diplomatic Post Office
FPO	= Fleet Post Office
MOM	= Military Ordinary Mail
MPO	= Military Post Office
PAL	= Parcel Airlift
PSC	= Postal Service Center
SAM	= Space Available Mail
USDA	= United States Department of Agriculture

Note: Mail order catalogs are prohibited as SAM or PAL mail.

A. Securities, currency, or precious metals in their raw, unmanufactured state are prohibited. Official shipments are exempt from this restriction.

A1. Mail addressed to "Any Servicemember," or similar wording such as "Any Soldier," "Sailor," "Airman," or "Marine"; "Military Mail"; etc., is prohibited. Mail must be addressed to an individual or job title such as "Commander," "Commanding Officer," etc.

B. Regardless of mail class, a customs declaration form is required for all items weighing 16 ounces or more, or any item (regardless of weight) containing potentially dutiable mail contents (e.g., merchandise) addressed to an APO, FPO, or DPO ZIP Code. PS Form 2976 is required for items weighing less than 16 ounces, and PS Form 2976-A is required for items weighing 16 ounces or more. No customs form is required for items weighing less than 16 ounces when the contents are not potentially dutiable (e.g., documents). When the surface area of the address side of the mailpiece is not large enough to contain a PS Form 2976-A, the smaller PS Form 2976 may be substituted (e.g., the Priority Mail Small Flat Rate Box). The following exceptions apply:

- Known mailers are exempt from providing customs documentation on non-dutiable letters or printed matter. (A known mailer is a business mailer who enters volume mailings through a business mail entry unit (BMEU) or other bulk mail acceptance location, pays postage through an advance deposit account, uses a permit imprint for postage payment, and submits a completed postage statement at the time of entry that certifies that the mailpieces contain no dangerous materials that are prohibited by postal regulations.)
- All federal, state, and local government agencies whose mailings are regarded as "Official Mail" are exempt from providing customs documentation on any item addressed to an APO, FPO, or DPO except for those APOs/FPOs/DPOs to which restriction "B2" applies.
- Prepaid mail from military contractors is exempt, providing the mailpiece is endorsed "Contents for Official Use — Exempt from Customs Requirements."

B2. All federal, state, and local government agencies must complete customs documentation when sending potentially dutiable mail addressed to or from this APO, FPO, or DPO.

C. Cigarettes and other tobacco products are prohibited.

C1. Obscene articles, prints, paintings, cards, films, videotapes, etc., and horror comics and matrices are prohibited.

D. Coffee is prohibited.

E1. Medicines or vaccines not conforming to French laws are prohibited.

E2. Any matter depicting nude or seminude persons, pornographic or sexual items, or nonauthorized political materials is prohibited. Although religious materials contrary to the Islamic faith are prohibited in bulk quantities, items for the personal use of the addressee are permissible.

E3. Radio transceivers, cordless telephones, global positioning systems, scanners, base stations, and handheld transmitters are prohibited.

F. Firearms of any type are prohibited in all classes of mail. See definitions of firearms in DMM 601.11.1.1c. This restriction does not apply to firearms mailed to or by official U.S. government agencies. The restriction for mail to this APO/FPO/DPO ZIP Code does not apply to firearms mailed from this APO/FPO/DPO ZIP Code, provided ATF and USPS regulations are met. Antique firearms are a separate category defined in DMM 601.11.2 and ATF regulations; they do not require an ATF form.

F1. Privately owned weapons addressed to an individual are prohibited in any class of mail.

F2. Importation of firearms is restricted to one shotgun and one single shot.22 caliber rifle per individual.

G. Only letters, flats, and Periodicals are authorized. Parcels of any class are prohibited.

H. Meats, including preserved meats, whether hermetically sealed or not, are prohibited.

H1. Pork or pork by-products are prohibited.

I. Mail of all classes must fit in a mail sack. Mail may not exceed the following dimensions:

- Maximum length 20 inches.
- Maximum width 12 inches.
- Maximum height 12 inches.

The maximum length and girth combined may not exceed 68 inches.

This restriction does not apply to registered mail and official government mail marked MOM.

I1. This restriction does not apply to registered mail.

I2. This restriction does not apply to official government mail marked MOM.

J. Parcels may not exceed 108 inches in length and girth combined.

K. Mail that includes in the address the words, "Dependent Mail Section," may consist only of letter mail, newspapers, magazines, and books. No parcel of any class containing any other matter may be mailed to the Dependent Mail section. This restriction does not apply if the address does not include the words "Dependent Mail Section."

L. All official mail is prohibited.

M. Fruits, vegetables, animals, and living plants are prohibited.

N. Registered mail is prohibited.

O. Delivery status information for Extra Services is not available on USPS.com.

P. APO is used for the receipt and dispatch of official mail only.

Q. Mail may not exceed 66 pounds, and size is limited to 42 inches maximum length and 72 inches maximum length and girth combined.

R. All alcoholic beverages, including those mailable under DMM 601.11.7, are prohibited.

R1. Materials used in the production of alcoholic beverages (i.e., distilling material, hops, malts, yeast, etc.) are prohibited.

S. Mail of all classes must fit in a mail sack. Mail may not exceed the following dimensions and weight:

- Maximum length 12 inches.
- Maximum width 12 inches.
- Maximum height 5 1/2 inches.
- Maximum weight 25 pounds.

The maximum length and girth combined may not exceed 47 inches.

T. Mailings of case lots of food and supplemental household shipments must be approved by the sender's parent agency prior to mailing.

U. Parcels must weigh less than 16 ounces when addressed to Box R. This restriction does not apply to mail endorsed "Free Matter for the Blind or Handicapped."

U1. Mail is limited to First-Class Mail weighing 13 ounces or less when addressed to Box R. This restriction does not apply to mail endorsed "Free Matter for the Blind or Handicapped." Videotapes are prohibited when addressed to Box R, regardless of weight.

U2. Mail is limited to First-Class Mail letters only when addressed to Box R.

U3. Mail is limited to First-Class Mail correspondence (including voice and video cassettes), newspapers, magazines, photographs, not exceeding 16 ounces, when addressed to Box R.

V. Express Mail Military Service (EMMS) not available from any origin.

V1. Delivery Confirmation service is not available.

W. Meat products, such as dried beef, salami, and sausage, may be mailed, provided they remain in their original, hermetically sealed packages and bear USDA certification. Other meats, bones, skin, hair, feathers, horns or hoofs of hoofed animals, wool samples, tobacco leaves, including chewing and pipe tobacco, snuff, cigars, and cigarettes, or obscene material, including obscene drawings, photographs, films, and carvings, are prohibited. Exception: 200 grams of tobacco per parcel are permitted duty free.

X. Personal mail is limited to First-Class Mail items (to include audio cassettes and voice tapes) weighing 13 ounces or less. This limitation does not apply to official mail.

Y. Mail is limited to First-Class and Priority Mail items only. All Periodicals, Standard Mail items, and Package Services items (including SAM and PAL) are not authorized. This restriction also applies to official mail.

Z. No outside pieces (OSPs).

Z1. The following restriction is applicable only to International Service Centers (ISC)/Exchange Offices. An Anti-Pilferage Seal (Item No O817E or O818A) is required on all pouches and sacks.

Stamp Announcement 10-22: Nature of America: Hawaiian Rain Forest (continued)



Featuring a Hawaiian rain forest, the 2010 *Nature of America* issuance is the 12th and final stamp pane in an educational series focusing on the beauty and complexity of major plant and animal communities in the United States. These oversized stamped cards (885400/01) feature the beautiful art featured on the stamp pane. Each card includes a preprinted stamp; no extra postage necessary to mail.

Also included is the Limited Edition Collector's Set (465798). This limited edition box set includes all 12 panes from the series and an autographed card numbered and signed by the artist, John Dawson. It also comes with 12 custom designed protective folders and a 36-page booklet with commentary and special sketches. It will be housed in a special box and will be limited to a production run of 2,000.

Items with an asterisk (*) will use the 128 barcode from Stamp Fulfillment Services. All other philatelic products will continue to use barcode series A, with the exception of the Yearbook and the Guide Book.

Distribution: Item 465700, \$4.40 Nature of America: Hawaiian Rain Forest, PSA Pane of 10 Stamps

Stamp distribution offices (SDOs) and stamp distribution centers (SDCs) will receive approximately 25 percent of their standard automatic distribution quantity for a PSA sheet stamp. Distributions are rounded up to the nearest master carton size of 2,000 panes (20,000 stamps).

Initial Supply to Post Offices

SDOs/SDCs will make a subsequent automatic distribution to Post Offices of 25 percent of their standard automatic distribution quantity using PS Form 17, *Stamp Requisition/Stamp Return*. SDOs must not distribute this commemorative sheet to Post Offices before August 18, 2010.

The \$4.40 *Nature of America: Hawaiian Rain Forest* commemorative sheet may not be split, and the stamps may not be sold individually.

Additional Supply

Post Offices requiring additional quantities of Item 465700 must requisition them from their designated SDO/SDC using PS Form 17. SDOs requiring additional commemorative sheets must order them from the appropriate SDC using PS Form 17. For fulfilling supplemental orders from SDOs, the six SDCs will receive additional commemorative sheets.

Sales Policy

All Post Offices must acquire and maintain a supply of each new commemorative stamp as long as customer demand exists, until inventory is depleted, or until the stamp is officially withdrawn from sale. If supplies run low, Post Offices must reorder additional quantities using their normal ordering procedures.

— Stamp Services,
Government Relations and Public Policy, 7-29-10

Stamp Announcement 10-23: Mother Teresa



© 2009 USPS

On September 5, 2010, in Washington, DC, the Postal Service™ will issue a 44-cent, *Mother Teresa* commemorative stamp in one design in a pressure-sensitive (PSA) pane of 20 stamps (Item 465100). The stamp, designed by Derry Noyes, Washington, DC, goes on sale nationwide September 5, 2010.

With this stamp, the U.S. Postal Service® recognizes Mother Teresa, who received the Nobel Peace Prize in 1979 for her humanitarian work. The stamp features a portrait of Mother Teresa painted by award-winning artist Thomas Blackshear, II of Colorado Springs, Colorado.

How to Order the First Day of Issue Postmark

Customers have 60 days to obtain the first day of issue postmark by mail. They may purchase new stamps at their local Post Office™, at The Postal Store® website at www.usps.com/shop, or by calling 800-STAMP-24. They

Issue:	<i>Mother Teresa</i>
Item Number:	465100
Denomination & Type of Issue:	44-cent Commemorative
Format:	Pane of 20 (1 design)
Series:	N/A
Issue Date & City:	September 5, 2010, Washington, DC 20066
Designer:	Derry Noyes, Washington, DC
Art Director:	Derry Noyes, Washington, DC
Typographer:	Derry Noyes, Washington, DC
Artist:	Thomas Blackshear, II, Colorado Springs, CO
Engraver:	Trident
Modeler:	Avery Dennison, SPD
Manufacturing Process:	Gravure
Printer:	Avery Dennison (AVR)
Printed at:	Clinton, SC
Press Type:	Dia Nippon Kiko (DNK)
Stamps per Pane:	20
Print Quantity:	60 million stamps
Paper Type:	Prephosphored, Type II
Adhesive Type:	Pressure-sensitive
Processed at:	AVR, Clinton, SC
Colors:	Cyan, Magenta, Yellow, Black
Stamp Orientation:	Vertical
Image Area (w x h):	.84 x 1.42 in./21.34 x 36.07 mm
Overall Size (w x h):	.99 x 1.56 in./25.14 x 39.62 mm
Full Pane Size (w x h):	5.85 x 7.25 in./148.59 x 184.15 mm
Plate Size:	200 stamps per revolution
Plate Numbers:	"V" followed by four (4) single digits
Marginal Markings	
Front:	Plate numbers in four corners of pane
Back:	© 2009 USPS • USPS logo • Plate position diagram • Barcode (465100) in two corners • Price: ".44 x 20 = \$8.80 • Brief description of Mother Teresa • Trademark information

should affix the stamps to envelopes of their choice, address the envelopes (to themselves or others), and place them in a larger envelope addressed to:

Mother Teresa Stamp
Special Cancellations
PO Box 92282
Washington, DC 20090-2282

After applying the first day of issue postmark, the Postal Service will return the envelopes through the mail. There is no charge for the postmark. All orders must be postmarked by November 5, 2010.

Special Dedication Postmarks

Only the following pictorial postmark is permitted for the *Mother Teresa* stamp. The word "Station" or the abbreviation "STA" is required somewhere in the design, because it will be a temporary station.

Guidelines for Finalizing Mother Teresa Stamp Pictorial Postmark Art



Finished Artwork



Unfinished Artwork

To finalize the *Mother Teresa* stamp pictorial postmark art, insert the date, city, state, and ZIP™ Code of the physical location of your event adjacent to the stamp image. Overall dimensions of the pictorial postmark must not exceed 4 inches horizontally by 2 inches vertically. Collectors prefer the dimensions 3 1/2 inches by 1 inch.

How to Order First Day Covers

Stamp Fulfillment Services also offers first day covers for new stamp issues and Postal Service stationery items postmarked with the official first day of issue cancellation. Each item has an individual catalog number and is offered in the quarterly *USA Philatelic Catalog*. Customers may request a free catalog by calling 800-STAMP-24 or writing to:

Information Fulfillment
Dept. 6270
U.S. Postal Service
PO Box 219014
Kansas City, MO 64121-9014

Philatelic Products

There are four philatelic products available for this stamp issue:

- 465161*, First Day Cover, \$0.82.
- 465165*, Digital Color Postmark, \$1.50.

- 465191*, Ceremony Program, \$6.95.
- 465199*, Digital Color Postmark Keepsake, \$10.95.

Items with an asterisk (*) will use the 128 barcode from Stamp Fulfillment Services. All other philatelic products will continue to use barcode series A, with the exception of the Yearbook and the Guide Book.

Distribution: Item 465100, 44-cent Mother Teresa, PSA Pane of 20 Stamps

Stamp distribution offices (SDOs) and stamp distribution centers (SDCs) will receive approximately 50 percent of their standard automatic distribution quantity for a PSA sheet stamp. Distributions are rounded up to the nearest master carton size of 40,000 stamps.

Initial Supply to Post Offices

SDOs/SDCs will make a subsequent automatic distribution to Post Offices of 50 percent of their standard automatic distribution quantity using PS Form 17, *Stamp Requisition/Stamp Return*. SDOs must not distribute this commemorative sheet to Post Offices before August 23, 2010.

Additional Supply

Post Offices requiring additional quantities of Item 465100 must requisition them from their designated SDO/SDC using PS Form 17. SDOs requiring additional commemorative sheets must order them from the appropriate SDC using PS Form 17. For fulfilling supplemental orders from SDOs, each of the six SDCs will receive additional commemorative sheets.

Sales Policy

All Post Offices must acquire and maintain a supply of each new commemorative stamp as long as customer demand exists, until inventory is depleted, or until the stamp is officially withdrawn from sale. If supplies run low, Post Offices must reorder additional quantities using their normal ordering procedures.

— Stamp Services,
Government Relations and Public Policy, 7-29-10

Pictorial Postmarks Announcement

As a community service, the Postal Service™ offers pictorial postmarks to commemorate local events celebrated in communities throughout the nation. A list of events for which pictorial postmarks are authorized appears below. The sponsor of the pictorial postmark appears in italics under the date. Also provided are illustrations of these postmarks.

People attending these local events may obtain the postmark in person at the temporary Post Office™ station established there. Those who cannot attend the event but who wish to obtain the postmark may submit a mail order request. Pictorial postmarks are available only for the dates indicated, and *requests must be postmarked no later than 30 days following the requested pictorial postmark date.*

All requests must include a stamped envelope or postcard bearing at least the minimum First-Class Mail® postage. Items submitted for postmark may not include

postage issued after the date of the requested postmark. Such items will be returned unserved.

Customers wishing to obtain a postmark should affix stamps to any envelope or postcard of their choice, address the envelope or postcard to themselves or others, insert a card of postcard thickness in envelopes for sturdiness, and tuck in the flap. Place the envelope or postcard in a larger envelope and address it to: Pictorial Postmarks, followed by the Name of the Station, Address, City, State, ZIP+4® Code, as listed below.

Customers can also send stamped envelopes and postcards without addresses for postmark, as long as they supply a larger envelope with adequate postage and their return address. After applying the pictorial postmark, the Postal Service returns the items (with or without addresses) under addressed protective cover.

The following pictorial postmark has been extended for 120 days:

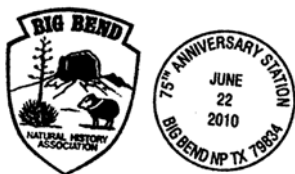


May 11, 2010

NPS Glacier National Park and U.S. Postal Service HQ
Lake McDonald Station

Supervisor Stamp Fulfillment Services
8300 Underground Dr. N. E. Pillar 210
Kansas City, MO 64144-9998

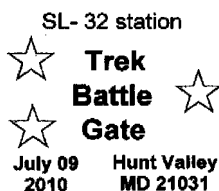
The following pictorial postmark has been extended for 60 days:



June 22, 2010

Big Bend Natural History Association

75th Anniversary Station
Postmaster
1 Hwy. 385 Panther Junction
Big Bend National Park, TX 79834-9998



July 9–11, 2010

Shore Leave 32
SL-32 Station Trek
Battle Gate
Postmaster
115 Wight Ave.
Cockeysville, MD
21030-9998



July 15, 2010

Louisville Slugger Museum
Negro Leagues Baseball
Downtown Station
Postmaster
PO Box 9998
Louisville, KY 40203-9998



July 15, 2010

U.S. Postal Service
Negro Leagues Baseball
First Day of Sale Station
Postmaster
PO Box 9998
San Francisco, CA
94107-9998



July 16, 2010

California State Fair
Dennis the Menace Station
Postmaster
2000 Royal Oaks Dr.
Sacramento, CA
95813-9998

July 16, 2010
 California State Fair
 Calvin and Hobbes Station
 Postmaster
 2000 Royal Oaks Dr.
 Sacramento, CA
 95813-9998



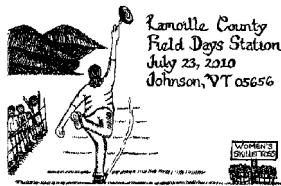
July 21, 2010
 U.S. Postal Service
 Archie and Gang Visit the
 Rye NY Station
 Postmaster
 41 Purdy Ave.
 Rye, NY 10580-9998

July 16, 2010
 California State Fair
 Archie Station
 Postmaster
 2000 Royal Oaks Dr.
 Sacramento, CA
 95813-9998



July 23, 2010
 BSA Troop 2049 National
 Jamboree Contingent
 Jamboree Departure Station
 Postmaster
 4600 S.W. 34th St.
 Gainesville, FL
 32608-9998

July 16, 2010
 California State Fair
 Beetle Bailey Station
 Postmaster
 2000 Royal Oaks Dr.
 Sacramento, CA
 95813-9998



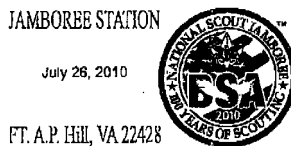
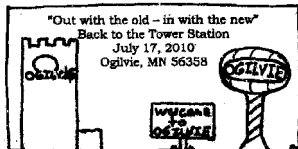
July 23, 2010
 Lamoille Field Days
 Committee
 Lamoille County Field Days
 Station
 Postmaster
 115 Lower Main St. W.
 Johnson, VT 05656-9998

July 16, 2010
 California State Fair
 Garfield Station
 Postmaster
 2000 Royal Oaks Dr.
 Sacramento, CA
 95813-9998



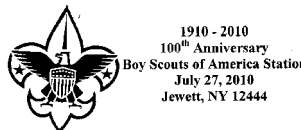
July 24, 2010
 Cowlitz River Valley
 Historical Society
 Morton Depot Station
 Postmaster
 PO Box 9998
 Morton, WA 98356-9998

July 17, 2010
 Back to the Tower
 Committee
 Back to the Tower Station
 Postmaster
 200 N. Hill Ave.
 Ogilvie, MN 56358-9998



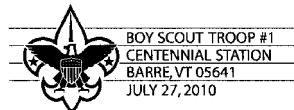
July 26–August 4, 2010
 BSA National Scout
 Jamboree
 Jamboree Station
 Postmaster
 PO Box 9998
 Fort AP Hill, VA
 24428-9998

July 18, 2010
 Knik Museum
 Celebration Station
 Postmaster
 401 Main St.
 Wasilla, AK 99687-9998



July 27, 2010
 Boy Scouts of America
 100th Anniversary Station
 Postmaster
 4800 Route 23C
 Jewett, NY 12444-9998

July 19, 2010
 U.S. Postal Service
 National Champions Station
 Postmaster
 PO Box 9998
 Columbia, SC 29201-9998



July 27, 2010
 Washington County Stamp
 Club
 Boy Scout Troop #1
 Centennial Station
 Postmaster
 3 S. Main St.
 Worcester, VT 05641-9998



July 29, 2010

Merrick Mint

America's Beautiful
Yosemite National Park
Station
Postmaster
PO Box 9998
Yosemite, CA 95389-9998



July 29, 2010

California State Fair

Adventures in Automobiling
Station
Postmaster
2000 Royal Oaks Dr.
Sacramento, CA
95813-9998



July 29-31, 2010

U.S. Postal Service

Harrisburg Homecoming
Station
Postmaster
1019 Columbus St.
Harrisburg, OH
43126-9998



July 30, 2010

California State Fair

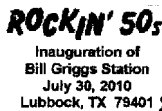
Tractor Pull Station
Postmaster
2000 Royal Oaks Dr.
Sacramento, CA
95813-9998



July 30, 2010

U.S. Postal Service

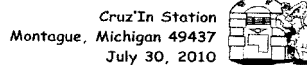
Still At Sea Station U.S.S.
Indianapolis CA-35
Postmaster
125 W. South St.
Indianapolis, IN
46206-9998



July 30, 2010

South Plains Stamp Club

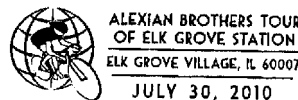
Rockin' 50's Inauguration of
Bill Griggs Station
Postmaster
PO Box 68999
Lubbock, TX 79414-8999



July 30, 2010

U.S. Postal Service

Cruz'In Station
Postmaster
PO Box 9998
Montague, MI 49437-9998



July 30-August 1, 2010

U.S. Postal Service

Alexian Brothers Tour of Elk
Grove Station
Postmaster
909 W. Euclid Ave.
Arlington Heights, IL 60004-
9998



July 31, 2010

U.S. Postal Service

Rockford Airfest 2010
Station
Postmaster
5225 Harrison Ave.
Rockford, IL 61125-9998



July 31, 2010

Wilson Chamber of Commerce and Wilson Fire Dept

50th After Harvest Czech
Festival Station
Postmaster
PO Box 9998
Wilson, KS 67490-9998



July 31, 2010

California State Fair

Know Your Farmer Know
Your Food Station
Postmaster
2000 Royal Oaks Dr.
Sacramento, CA
95813-9998



July 31, 2010

Jonesville Parish

200th Campmeeting Station
Postmaster
PO Box 9998
Jonesville, VA 24263-9998



July 31, 2010
Piscataquis River Festival
 Piscataquis River Festival Station
 Postmaster
 37 High St.
 Guilford, ME 04443-9998



August 3, 2010
Fort Stanwix Stamp Club
 Fort Stanwix Station
 Postmaster
 110 E. Garden St.
 Rome, NY 13440-9998



July 31, 2010
U.S. Postal Service
 Horsefest Station
 Postmaster
 111 Main St. W.
 Taylor, ND 58656-9998



August 3, 2010
U.S. Postal Service
 Belle Jim Hotel Station
 Postmaster
 215 N. Bowie
 Jasper, TX 75951-9998



July 31, 2010
Jamaica Old Home Day Committee
 Jamaica Old Home Day Station
 Postmaster
 3912 Vermont Rte. 30
 Jamaica, VT 05343-9998



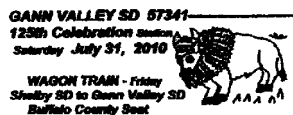
August 3-8, 2010
Michigan Womyn's Music Festival Committee
 Michigan Womyn's Music Festival Station
 Postmaster
 PO Box 9998
 Walhalla, MI 49458-9998



July 31, 2010
BSA Greater Denver Area
 Commerce City Station
 Philatelic Clerk
 951 20th St.
 Denver, CO 80202-2510



August 4, 2010
U.S. Postal Service
 TPTR Station
 Postmaster
 840 S. Main St.
 Jayton, TX 79528-9998



July 31, 2010
U.S. Postal Service
 125th Celebration Station
 Postmaster
 229 Main St.
 Gann Valley, SD
 57341-9998



August 4, 2010
BSA Troop 2049 National Jamboree Contingent
 Welcome Home Station
 Postmaster
 4600 S.W. 34th St.
 Gainesville, FL
 32608-9998



August 1, 2010
California State Fair
 Closing Day Station
 Postmaster
 2000 Royal Oaks Dr.
 Sacramento, CA
 95813-9998



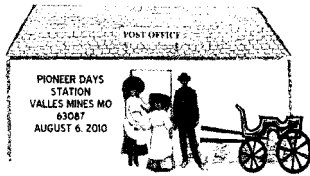
August 5-7, 2010
U.S. Postal Service
 U.S. Open of Surfing Station
 Postmaster
 PO Box 9998
 Huntington Beach, CA
 92648-9998



August 2-6, 2010
National Speleological Society
 National Speleological Society Convention Station
 Postmaster
 22 Essex Way
 Essex Junction, VT 05452-9998



August 5-7, 2010
McAlisterville Bicentennial Committee
 McAlisterville Bicentennial Station
 Postmaster
 PO Box 9998
 McAlisterville, PA
 17107-9998



August 6, 2010

Pioneer Days Festival
Pioneer Days Station
Postmaster
3225 Hwy. V
Valles Mines, MO
63087-9998



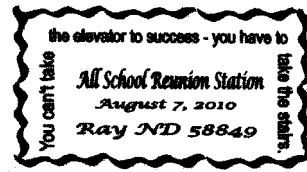
August 7, 2010

McGregor Centennial Committee
Centennial Station
Postmaster
18 Madison St. N.
McGregor, ND
58755-9998



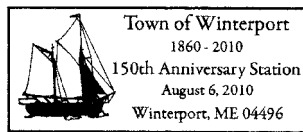
August 6, 2010

Pierre Sesquicentennial Committee
Pierre Sesquicentennial Station
Postmaster
111 S. Main St.
Pierre, ID 83546-9998



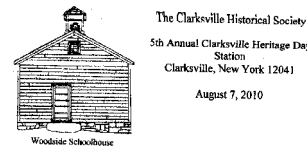
August 7, 2010

Ray Alumni
All School Reunion Station
Postmaster
8 Main St.
Ray, ND 58849-9998



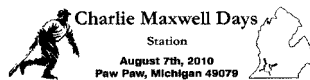
August 6, 2010

Winterport Area Business Association
Town Winterport
1860-2010 150th
Anniversary Station
Postmaster
400 S. Main St.
Winterport, ME
04496-9998



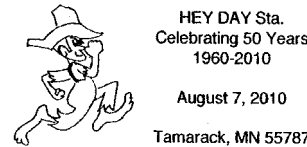
August 7, 2010

Clarksville Historical Society
5th Annual Clarksville
Heritage Day Station
Postmaster
1067 Delaware Tpk.
Clarksville, NY
12041-9998



August 7, 2010

City of Paw Paw
Charlie Maxwell Station
Postmaster
PO Box 9998
Paw Paw, MI 49079-9998



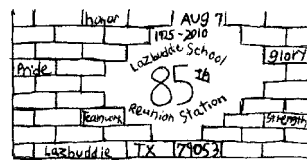
August 7, 2010

Tamarack Activities Club
Hey Day Station
Postmaster
PO Box 9998
Tamarack, MN
55787-9998



August 7, 2010

Historical Village Days Committee
Edna Station
Postmaster
PO Box 9998
Prudenville, MI
48651-9998



August 7, 2010

U.S. Postal Service
Lazbuddie School Reunion
Station
Postmaster
Hwy. 1172
Lazbuddie, TX
79053-9998



August 7, 2010

U.S. Postal Service
Covered Wagon Days
Station
Postmaster
PO Box 9998
Del Norte, CO 81132-9998



August 7, 2010

Strait Stamp Society
Strait Stamp Society Station
Postmaster
240 S. Sunnyside Ave.
Sequim, WA 98382-9998



43rd ANNUAL SHOW
WESTERN ILLINOIS THRESHERS
STATION
AUGUST 7, 2010
HAMILTON, IL 62341

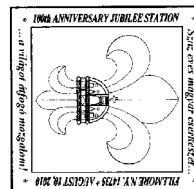
August 7, 2010
*Western IL Threshers
Committee*
Western Illinois Threshers
Station
Postmaster
1160 Broadway St.
Hamilton, IL 62341-9998



August 9-15, 2010
U.S. Postal Service
City of Riders Rally Station
Postmaster
820 Kinship Rd.
Sturgis, SD 57785-9998



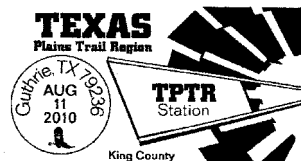
August 7, 2010
U.S. Postal Service
50th Anniversary Birthday
Station
Postmaster
300 E. Bonita Ave.
San Dimas, CA
91773-9998



August 10, 2010
Hungarian Scouts
100th Anniversary Jubilee
Station
Postmaster
54 W. Main St.
Fillmore, NY 14735-9998



August 8, 2010
USPS and BSA
Boy Scouts of America
Station
Postmaster
488 Broadway
Monticello, NY
12701-9998



August 11, 2010
U.S. Postal Service
TPTR Station
Postmaster
Hwy. 83 N.
Guthrie, TX 79236-9998



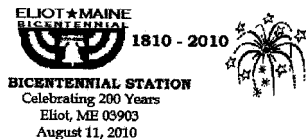
August 8, 2010
*Mayor, Harveys Lake
Borough*
Harveys Lake Homecoming
Weekend Station
Postmaster
PO Box 9998
Harveys Lake, PA
18618-9998



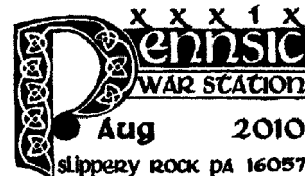
August 11, 2010
BSA David Smith
Scouting Centennial Station
Postmaster
PO Box 9998
Harmony, NC 28634-9998



August 9, 2010
*NALC National Association
of Letter Carriers*
NALC 2010 Convention
Station
Postmaster
PO Box 9998
Anaheim, CA 92802-9998



August 11, 2010
*Eliot Bicentennial
Committee*
Bicentennial Station
Postmaster
33 Levesque Dr.
Eliot, ME 03903-9998



August 9-13, 2010
*Spalding Abbey Philatelic
Society*
Pennsic War Station
Postmaster Annual
400 S. Main St.
Slippery Rock, PA
16057-9998



August 11, 2010
U.S. Postal Service
Archie and the Gang Visit
Mamaroneck NY Station
Postmaster
309 Mount Pleasant Ave.
Mamaroneck, NY
10543-9998

— Stamp Services,
Government Relations and Public Policy, 7-29-10

How to Order the First Day of Issue Digital Color or Traditional Postmarks

Customers have 60 days to obtain the first day of issue postmarks by mail. They may purchase new stamps at their local Post Office™, by telephone at 800-STAMP-24, or at The Postal Store® website at www.usps.com/shop.

Traditional Postmarks

Customers should affix the stamps to envelopes of their choice, address them to themselves or others, or provide a self-addressed return envelope with sufficient postage large enough to accommodate the canceled item. Mail the request to the corresponding city of issuance. There is no charge for the first 50 postmarks. There is a 5-cent charge for each additional postmark over 50. Customers should submit a check, money order, or credit card for payment. After applying the first day of issue postmark, the Postal Service™ will return the envelopes to the customer by U.S. Mail.

All postmark requests should go to the first day of issue city. The first day of issue city Post Office will then forward in bulk all postmark requests to Cancellation Services, Stamp Fulfillment Services, PO Box 449992, Kansas City, MO 64144-9992 by respective Post Offices.

Digital Color Postmarks

Only select stamp issues offer a digital color postmark. Customers may submit #6 or #10 envelopes constructed of paper rated as "laser safe." The Postal Service recommends envelopes of 80-pound Accent Opaque, acid-free, 9/16" side seams with no glue on the flap. The maximum

size of all digital color postmarks is 2" high x 4" long. Allow sufficient space on the envelope to accommodate the postmark. Do not use self-adhesive labels for addresses on the envelope. Two test envelopes must be included. There is a minimum of 10 envelopes at 50 cents per postmark required at the time of servicing. Customers should submit a check, money order, or credit card for payment.

The Postal Service reserves the right to not accept hand-painted and other cachet envelopes that are not compatible with our digital color postmark equipment. The Postal Service also reserves the right to substitute traditional black rubber postmarks if use of nonspecified envelopes results in poor image quality or damage to equipment.

Customers should affix the stamps to the envelopes and address them to themselves or others for return through the mail. Or, they may include an additional self-addressed return envelope, large enough to accommodate their canceled items, with sufficient postage affixed for return of their postmarked items. Mail the request for a first day of issue digital color postmark to the corresponding city of issuance. Post Offices will then forward all customer requests for digital color postmarks to Cancellation Services, Stamp Fulfillment Services, PO Box 449992, Kansas City, MO 64144-9992.

After applying the first day of issue postmark, the Postal Service will return the envelopes to the customer by U.S. Mail.

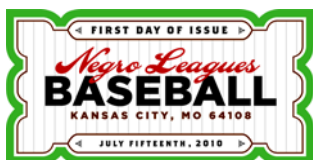


Black and White Pictorial

Negro Leagues Baseball Stamp

Postmaster
300 W. Pershing Road
Kansas City, MO 64108-9998

September 15, 2010



Digital Color Pictorial

Negro Leagues Baseball Stamp

Postmaster
300 W. Pershing Road
Kansas City, MO 64108-9998

September 15, 2010

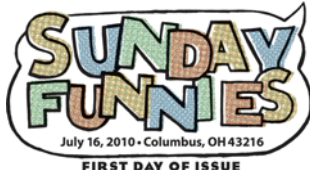


Black and White Pictorial

Sunday Funnies Stamp

850 Twin Rivers Drive, Retail, Rm. 416
Columbus, OH 43216-9653

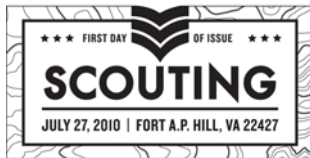
September 17, 2010



Digital Color Pictorial

Sunday Funnies Stamp

850 Twin Rivers Drive, Retail, Rm. 416 September 17, 2010
 Columbus, OH 43216-9653



Black and White Pictorial

Scouting Stamp

Postmaster September 27, 2010
 117 Milford Street
 Bowling Green, VA 22427-9998



Digital Color Pictorial

Scouting Stamp

Postmaster September 27, 2010
 117 Milford Street
 Bowling Green, VA 22427-9998

– Stamp Services, Government Relations and Public Policy, 7-29-10

Supply Management

USPS Headquarters Managers and Field Installation Heads: August 2010 Semi-Annual Capital Property Review

The next Semi-Annual Capital Property Review will commence on August 2, 2010; the completion deadline is August 18, 2010. The list of items to be verified by the selected finance numbers will be sent out by e-mail from “Materials, Customer Service – Topeka, KS” the week of August 2, 2010.

The Semi-Annual Capital Property Reviews are a Sarbanes-Oxley (SOX) requirement. A list of finance numbers that receive a Semi-Annual Capital Property Certification Report, but do not submit it on time, will be provided to senior management.

The instructions on how to conduct the Semi-Annual Capital Property Review will be posted on the Asset Accountability Service Center’s (AASC’s) website at http://blue.usps.gov/purchase/_doc/am_aasc_fieldInstruction.doc. The AASCs are also available for guidance and support. Handbook AS-701, *Material Management*, is under revision; instructions and guidelines provided by the AASCs will supersede Handbook AS-701 where there are conflicts.

– Asset Management Performance & Accountability, Supply Management, 7-29-10



475 L'ENFANT PLAZA SW
WASHINGTON DC 20260-5540

First-Class Mail
Postage & Fees Paid
USPS
Permit No. G-10

DID YOU KNOW?

A photograph showing a hand holding a blue handheld scanner over a USPS shipping label. The scanner is positioned over a barcode on the label. In the background, a red USPS mailbox is visible with a label that includes the address "BROOK NY NY" and "ECHO HILLS MD" and the date "112 TUE".

**World-class
shipping depends
on world-class
scanning.**