

usps postal|bulletin

PUBLISHED SINCE MARCH 4, 1880

PRIORITY MAIL®

A simpler way to ship.



Contents

POLICIES, PROCEDURES, AND FORMS UPDATES

Handbooks

Handbook F-101 Revision: Procedure for Reconciling Banking Activities	3
Handbook F-101 Revision: New Policy for Administrator and Supervisor Roles in POS	4
Handbook F-101 Revision: Handling Employee Receivables	5
Handbook F-101 Revision: New Addresses for Pacific and Southeast Office of Inspector General Field Offices	9
Handbook PO-603 Revision: Delivery Point Sequencing Letter Mail Formal Review	9

Publications

Publication 431 Revision: Changes to Post Office Box Service and Caller Service Fee Groups	10
Publication 52 Revision: Clarification of Nonregulated Patient Specimen Packaging Standards	10

Management Instructions

New Management Instruction EL-810-2010-1, Confined Space Safety Program	11
---	----

ORGANIZATION INFORMATION

Domestic Mail

Free Mail Program for U.S. Armed Forces	12
---	----

Finance

Household Diary Study	33
---------------------------------	----

Intelligent Mail and Address Quality

Post Office Changes	35
-------------------------------	----

Mailing and Shipping Services

Mail Alert	36
Postage Due Unit Address List	37

Philately

Stamp Announcement 10-08: Bill Mauldin	38
Stamp Stock Items Withdrawn From Regular Sale and From Sale at Philatelic Centers	39
Pictorial Postmarks Announcement	40
How to Order the First Day of Issue Digital Color or Traditional Postmarks	41
Update: Abstract Expressionists	43

Retail

Stop Sending Copies of PS Form 8176, Premium Forwarding Service Application, to Headquarters	43
--	----

Supply Management

Material Service Centers Transitioned Into Asset Accountability Service Centers	43
---	----

PULL-OUT INFORMATION

Fraud

Invalid Express Mail Corporate Account Numbers	13
Missing, Lost, or Stolen U.S. Money Order Forms	15
Missing, Lost, or Stolen Canadian Money Order Forms	21
Verifying U.S. Postal Service Money Orders	24
Counterfeit Canadian Money Order Forms	24
Toll-Free Number Available to Verify Canadian Money Orders	24

Other Information

Overseas Military/Diplomatic Mail	26
Thrift Savings Plan Fact Sheet	31



Bill Mauldin Stamp

USPS National Emergency Hotline
Is your facility operating? Call 888-363-7462



UNITED STATES POSTAL SERVICE®

Policies, Procedures, and Forms Updates

Handbooks

Handbook F-101 Revision: Procedure for Reconciling Banking Activities

Effective immediately, Handbook F-101, *Field Accounting Procedures*, is revised to include the following enhancements to the Narrowcast report for Chesapeake banking expenses:

- Postal retail units (PRUs) will now receive a daily Narrowcast report for all Chesapeake expenses related to Debit/Credit, Sure Money, and Change Fund expenses.
- PRUs will now receive a daily Narrowcast report for bank deposit expenses greater than \$25.00.

The monthly Enterprise Data Warehouse (EDW) Narrowcast report for Chesapeake banking expenses, titled Monthly Reconciliation Exceptions Report, has been replaced with the *Daily Reconciliation Exceptions Report*.

Bank deposit expenses \$25 and less are expensed to a service-wide finance number and will not appear on the new *Daily Reconciliation Exceptions Report*. A new report in the Accounting Data Mart (ADM), titled *H.Q. Banking Expenses \$25 and Less*, is now available to provide a daily report of bank deposit expenses amounting to \$25 or less. To view bank deposit expenses less than \$25, log into the ADM and access the report by clicking the following: Accounting>Shared Reports>SAFR>ASC>HQ Banking Expenses \$25 and Less.

Handbook F-101, *Field Accounting Procedures*

* * * * *

8 Financial Differences — AICs 247 and 647

* * * * *

8-3 Reconciliation Exceptions

[Revise the title of 8-3.1 to read as follows:]

8-3.1 For Banking, Credit and Debit Cards, Sure Money, and Change Funds

* * * * *

8-3.1.2 Procedure

[Revise the introductory paragraph of 8-3.1.2 to read as follows:]

The procedure for reconciling Chesapeake banking activities (Bank Deposit, Debit/Credit, Sure Money, and Change Fund expenses) is as follows:

* * * * *

[Revise 8-3.1.2 b to read as follows:]

- b. An EDW Narrowcast report is sent daily, via e-mail (or hard copy for offices without e-mail) as follows:
 - (1) For all Debit/Credit, Sure Money, and Change Fund expenses.
 - (2) For bank deposit expenses greater than \$25.00.

Bank deposit expenses \$25 or less are expensed to a service-wide finance number. To view bank deposit expenses \$25 or less, log into ADM and access the report by clicking the following:

Accounting>Shared Reports>SAFR>ASC>HQ Banking Expenses \$25 and Less.

Note: For amounts equal to or more than \$10,000, the accounting reconciliation branch (ARB) notifies the unit by telephone or e-mail within 5 days. If the ARB is unable to contact the unit, it will contact the district Finance office for assistance.

* * * * *

We will incorporate this revision into the quarterly online update of Handbook F-101 available on the Postal Service PolicyNet website:

- Go to <http://blue.usps.gov>.
- Under “Essential Links” in the left-hand column, click *PolicyNet*.
- On the PolicyNet page, click *HBKs*.

(The direct URL for the Postal Service PolicyNet website is <http://blue.usps.gov/cpim>.)

Handbook F-101 Revision: New Policy for Administrator and Supervisor Roles in POS

Effective internal controls require managing high level roles in our retail systems.

Effective immediately, Handbook F-101, *Field Accounting Procedures*, is revised to include the new policy to manage the number of administrator and supervisor roles in POS as follows:

Administrator Roles: All POS units, regardless of size, must have one administrator role and one backup. Larger offices (with more than five window terminals), as well as offices where business hours extend into a third tour of operations, may, at the discretion of local management, add a third administrator role. No unit shall be authorized more than three administrator roles.

Supervisor Roles: All POS units, regardless of size, must have one supervisor role and one backup (a maximum of two backups are optional). Larger offices (with more than five window terminals), as well as offices where business hours extend into a third tour of operations, may, at the discretion of local management, add a fourth supervisor role. No unit shall be authorized more than four supervisor roles.

All POS units must be in compliance with the new policy for administrative roles and supervisor roles by March 25, 2010.

Handbook F-101, *Field Accounting Procedures*

* * * * *

2 Roles and Responsibilities

* * * * *

2-4 Field Unit Managers

* * * * *

[Add new 2-4.8 to read as follows:]

2-4.8 Retail Roles

Field unit managers must control segment and high level roles in POS units as follows:

1. Limit the number of authorized high level roles.
 - **Administrator Roles:** All POS units, regardless of size, must have one administrator role and one backup. Larger offices (with more than five window terminals), as well as offices where business hours extend into a third tour of operations, may, at the discretion of local management, add a third administrator role. No unit shall be authorized more than three administrator roles.
 - **Supervisor Roles:** All POS units, regardless of size, must have one supervisor role and one backup (a maximum of two backups are optional). Larger offices (with more than five window terminals), as well as offices where business hours extend into a third tour of operations, may, at the discretion of local management, add a fourth

supervisor role. No unit shall be authorized more than four supervisor roles.

2. Remove roles in POS.

An RA must be removed (terminated) from the POS system no later than the employee's last day of work when any of the following occurs:

- The RA is separated from the Postal Service.
- The RA bids to another position that does not require use of the POS system.
- The RA bids to another PRU. (Exception: Relief and pool RAs do not have to be removed from the POS system at a unit where they occasionally work.)

To remove (terminate) an RA in the POS system, see the *POS ONE Procedures Guide*, which is available on the POS ONE Program Office website:

- a. Go to <http://eagnmnsxfbo/posone>.
- b. Under "User Information," click *Training*.
- c. Click *NCR POS ONE Training Links and Online Guides*.
- d. Click *NCR Procedures Guide* (the most current version available).

Note: Only an employee assigned a POS ONE Administrator role at the PRU can remove (terminate) a user (employee) from the POS system.

* * * * *

13 Stamp Stock and Cash Credits

* * * * *

13-8 Cash Credits

* * * * *

13-8.2 Cash Retained

* * * * *

[Delete the fifth paragraph and its three accompanying bullets.]

* * * * *

13-8.6 Handling Inactive Cash Retained Credits

[Revise 13-8.6.d to read as follows:]

- d. Remove the accountable role from the RA in the POS system (see criteria for removing an accountable role in part 2-4.8). It is not necessary to remove (terminate) the RA from the POS system if the RA's job description requires the use of the POS system at that PRU.

* * * * *

Index

[Add to Index:]

roles, retail roles (POS), 2-4.8

* * * * *

We will incorporate this revision into the quarterly online update of Handbook F-101 available on the Postal Service PolicyNet website:

- Go to <http://blue.usps.gov>.
- Under “Essential Links” in the left-hand column, click *PolicyNet*.

- On the PolicyNet page, click *HBKs*.
(The direct URL for the Postal Service PolicyNet website is <http://blue.usps.gov/cpim>.)

— *Field and International Accounting, Controller, 2-25-10*

Handbook F-101 Revision: Handling Employee Receivables

Effective February 25, 2010, Handbook F-101, *Field Accounting Procedures*, is revised to streamline the collections process for employee receivables and to include handling of newly created employee items for bargaining unit and non-bargaining unit employees. To comply with the Debt Collection Act and National Bargaining Agreement, Accounting Services now follows a three-step process when initiating collections. Accounting Services sends the installation head/postal official in charge the following documents:

Note: Each document includes a cover page, detailing the steps to be taken.

1. Accounting Services provides an invoice and either a letter of demand (LOD) for a bargaining employee or letter of debt determination (LDD) for a non-bargaining unit employee.

The installation head/postal official in charge must:

- Follow instructions on the cover page.
- Issue the invoice with an LOD or LDD, if applicable, to the employee.

The installation head or postal official in charge must issue the invoice and LOD, if it has not already been issued, to the employee.

2. Approximately 45 days from date of an invoice, Accounting Services provides:
 - A cover page with instructions.
 - A Notice of Involuntary Administrative Salary Offset Under the Debt Collection Act.
 - A Statement of Debtor’s Rights and Responsibility.
 - 39 CFR Part 961 — Rules of Practice in Proceedings Relative to Employee Hearing Petitions under Section 5 of the Debt Collection Act.

The installation head/postal official in charge is responsible for:

- Following instructions on the cover page.
 - Issuing the Notice, Statement, and 39 CFR to the employee, if the invoice has not been paid in full or a payroll deduction has not been established.
3. Approximately 90 days from the date of invoice, Accounting Services issues a completed PS Form 3239, *Payroll Deduction Authorization to Liquidate Postal Service Indebtedness*.

The installation head/postal official in charge must:

- Follow instructions on the cover page.
- If no grievance has been filed within the designated 14 days, no petition for hearing has been requested, the invoice has not been paid in full, or a payroll deduction has not been established, sign the completed PS Form 3239. Submit the form to the USPS® Scanning and Imaging Center (SIC). Give one copy to the employee and keep a copy on file.

Handbook F-101, *Field Accounting Procedures*

	*	*	*	*	*
15	Employee Items				
	*	*	*	*	*
15-2	Accounts Receivable				
	*	*	*	*	*
15-2.6	Handling Unresolved Employee Items				
	*	*	*	*	*

[Revise the last paragraph to read as follows:]

The following tables describe handling (clearing) employee items for bargaining unit employees.

15-2.6.1 Bargaining Unit Employees

Employee Items...	Schedule...	Process
Stamp Stock Credit or Cash Credit shortage (exceeding tolerance or a final count)... (AIC 764, Employee Cash Shortage) or (AIC 767, Employee Stamp Credit Shortage)	If an employee does not pay in full, the supervisor must initiate collections process immediately...	The installation head or postal official in charge of the unit where the employee shortage occurred, or an emergency salary or advance travel was issued, initiates the collection process by issuing the employee a letter of demand. Unless a grievance is filed within 14 days of the issued letter of demand, the installation head/postal official in charge will: <ol style="list-style-type: none"> 1. Complete PS Form 1902, <i>Justification for Billing Accounts Receivable</i>. 2. Make the appropriate accounting entries: <ul style="list-style-type: none"> ■ For AIC 767, clear in AIC 367 and offset to AIC 636. ■ For AIC 764, clear in AIC 364 and offset to AIC 636. ■ For AIC 754, clear in AIC 354 and offset to AIC 636. ■ For AIC 755, clear in AIC 355 and offset to AIC 636. 3. Attach a system-generated PS Form 3544 and receipt for the PS Form 1902. 4. Submit the information to the Scanning and Imaging Center (SIC) at the following address: USPS SCANNING AND IMAGING CENTER PO Box 9000 Sioux Falls SD 57117-9000
Employee emergency salary issued... (AIC 754, Authorized Emergency Salary Issued)	Upon employee receipt of original or replacement payroll check, the employee must repay the unit where the emergency salary was issued. If not paid within two pay periods, the supervisor of the unit where emergency salary was issued must initiate the collections process.	Accounting Services will initiate the collection process in compliance with the National Bargaining Agreement and the Debt Collection Act. <ol style="list-style-type: none"> a. Upon receipt of PS Form 1902, Accounting Services will provide to the employee's installation head or postal official the following: <ul style="list-style-type: none"> ■ A cover page with instructions. ■ An invoice. ■ A letter of demand.
Travel advance issued... (AIC 755, Emergency Travel Advance Issued)	After the travel is completed, the employee must submit travel expense and pay. If not resolved (paid) within 90 days after travel, the supervisor of the unit where the travel advance was issued must initiate the collections process.	Follow the instructions included in the cover page. The installation head or postal official in charge must issue the invoice and letter of demand, if it has not already been issued, to the employee. <ol style="list-style-type: none"> b. Approximately 45 days from date of invoice, Accounting Services will provide: <ul style="list-style-type: none"> ■ A cover page with instructions. ■ A Notice of Involuntary Administrative Salary Offset Under the Debt Collection Act. ■ A Statement of Debtor's Rights and Responsibility. ■ 39 CFR Part 961 — Rules of Practice in Proceedings Relative to Employee Hearing Petitions under Section 5 of the Debt Collection Act.
		Follow the instructions included. Issue the Notice, Statement, and 39 CFR Part 961 to the employee if no grievance has been filed, if the invoice has not been paid in full, or if a payroll deduction has not been established. <ol style="list-style-type: none"> c. Approximately 90 days from the date of invoice, Accounting Services will provide: <ul style="list-style-type: none"> ■ A cover page with instructions. ■ A completed PS Form 3239, <i>Payroll Deduction Authorization to Liquidate Postal Service Indebtedness</i>. Follow the instructions included. The installation head or postal official in charge must complete and sign the PS Form 3239 then submit it to the USPS SIC, if no grievance has been filed within the designated 14 days, if no petition for hearing has been requested, if the invoice has not been paid in full, or if a payroll deduction has not been established. Also, provide a copy to the employee and maintain a copy on file.

15-2.6.2 Non-Bargaining Unit Employees

Employee Items...	Schedule...	Process
Stamp Stock Credit or Cash Credit shortage (exceeding tolerance or a final count)... (AIC 764, Employee Cash Shortage) or (AIC 767, Employee Stamp Credit Shortage)	If an employee does not pay in full, the supervisor must initiate the collections process immediately...	The installation head or postal official in charge of the unit where the employee shortage occurred, or the emergency salary or advance travel was issued, initiates the collection process as follows: <ol style="list-style-type: none"> a. Complete PS Form 1902, <i>Justification for Billing Accounts Receivable</i>. b. Make the appropriate accounting entries: <ul style="list-style-type: none"> ■ For AIC 767, clear in AIC 367 and offset to AIC 636. ■ For AIC 764, clear in AIC 364 and offset to AIC 636. ■ For AIC 754, clear in AIC 354 and offset to AIC 636. ■ For AIC 755, clear in AIC 355 and offset to AIC 636. c. Attach a system-generated PS Form 3544 and receipt to the PS Form 1902. d. Submit the information to the SIC at the following address: USPS SCANNING AND IMAGING CENTER PO Box 9000 Sioux Falls SD 57117-9000
Employee emergency salary issued... (AIC 754, Authorized Emergency Salary Issued)	Upon employee receipt of original or replacement payroll check, the employee must repay the unit where emergency salary was issued. If not paid within two pay periods, the supervisor of the unit where emergency salary was issued must initiate the collections process.	Accounting Services will initiate the collection process in compliance with the Debt Collection Act. <ol style="list-style-type: none"> a. Upon receipt of PS Form 1902, Accounting Services will provide to the employee's installation head or postal official the following: <ul style="list-style-type: none"> ■ A cover page with instructions. ■ An invoice. ■ A letter of debt determination. Follow the instructions included. The installation head or postal official in charge must issue the invoice and the letter of debt determination to the employee. <ol style="list-style-type: none"> b. Approximately 45 days from date of invoice, Accounting Services will provide: <ul style="list-style-type: none"> ■ A cover page with instructions. ■ A Notice of Involuntary Administrative Salary Offset Under the Debt Collection Act. ■ A Statement of Debtor's Rights and Responsibility. ■ 39 CFR Part 961 — Rules of Practice in Proceedings Relative to Employee Hearing Petitions under Section 5 of the Debt Collection Act. Follow the instructions included. Issue the Notice, Statement and 39 CFR Part 961 to the employee, if no reconsideration has been requested, if the invoice has not been paid in full, or if a payroll deduction has not been established. <ol style="list-style-type: none"> c. Approximately 90 days from date of invoice, Accounting Services will provide: <ul style="list-style-type: none"> ■ A cover page with instructions. ■ A completed PS Form 3239, <i>Payroll Deduction Authorization to Liquidate Postal Service Indebtedness</i>. Follow the instructions included. The installation head or postal official in charge must sign PS Form 3239 and submit it to the SIC if no reconsideration has been requested, if no petition for hearing has been requested, if the invoice has not been paid in full, or if a payroll deduction has not been established. Also, provide a copy to the employee and maintain a copy on file.
Travel advance issued... (AIC 755, Emergency Travel Advance Issued)	After the travel is completed, the employee must submit travel expenses and pay. If not resolved (paid) within 90 days after travel, the supervisor of the unit where the travel advance was issued must initiate the collections process.	Accounting Services will initiate the collection process in compliance with the Debt Collection Act. <ol style="list-style-type: none"> a. Upon receipt of PS Form 1902, Accounting Services will provide to the employee's installation head or postal official the following: <ul style="list-style-type: none"> ■ A cover page with instructions. ■ An invoice. ■ A letter of debt determination. Follow the instructions included. The installation head or postal official in charge must issue the invoice and the letter of debt determination to the employee. <ol style="list-style-type: none"> b. Approximately 45 days from date of invoice, Accounting Services will provide: <ul style="list-style-type: none"> ■ A cover page with instructions. ■ A Notice of Involuntary Administrative Salary Offset Under the Debt Collection Act. ■ A Statement of Debtor's Rights and Responsibility. ■ 39 CFR Part 961 — Rules of Practice in Proceedings Relative to Employee Hearing Petitions under Section 5 of the Debt Collection Act. Follow the instructions included. Issue the Notice, Statement and 39 CFR Part 961 to the employee, if no reconsideration has been requested, if the invoice has not been paid in full, or if a payroll deduction has not been established. <ol style="list-style-type: none"> c. Approximately 90 days from date of invoice, Accounting Services will provide: <ul style="list-style-type: none"> ■ A cover page with instructions. ■ A completed PS Form 3239, <i>Payroll Deduction Authorization to Liquidate Postal Service Indebtedness</i>. Follow the instructions included. The installation head or postal official in charge must sign PS Form 3239 and submit it to the SIC if no reconsideration has been requested, if no petition for hearing has been requested, if the invoice has not been paid in full, or if a payroll deduction has not been established. Also, provide a copy to the employee and maintain a copy on file.

[Add new 15-2.6.3 to read as follows:]

15-2.6.3 Payroll Related Receivables (Non 1902)

Employee Receivables...	General Reason...	Process
Payroll-related (leave buyback or adjustment, overpayment, payroll adjustments, others)	<p>Late or no submission of required documentation such as:</p> <ul style="list-style-type: none"> ■ PS Form 50, <i>Notification of Personnel Action</i>. ■ PS Form 2240, <i>Pay, Leave, or Other Hours Pay Adjustment Report</i>. ■ PS Form 2240-F, <i>FLSA Overtime Adjustment Request</i>. ■ PS Form 2240-R (RA), <i>Rural Pay or Leave Adjustment Request for PS Form 1314 (-A)</i>. 	<p>Accounting Services will initiate the collection process in compliance with the National Bargaining Agreement and the Debt Collection Act.</p> <p>a. Accounting Services will provide to the employee's installation head or postal official in charge:</p> <ul style="list-style-type: none"> ■ A cover page with instructions. ■ An invoice. ■ A letter of demand or letter of debt determination. <p>Follow the instructions included on the cover page. The installation head or postal official in charge must issue the invoice and, if applicable, the letter of demand or letter of debt determination to the employee.</p> <p>b. Approximately 45 days from date of invoice, Accounting Services will provide:</p> <ul style="list-style-type: none"> ■ A cover page with instructions. ■ A Notice of Involuntary Administrative Salary Offset Under the Debt Collection Act. ■ A Statement of Debtor's Rights and Responsibility. ■ 39 CFR Part 961 — Rules of Practice in Proceedings Relative to Employee Hearing Petitions under Section 5 of the Debt Collection Act. <p>Follow the instructions included. Issue the Notice, Statement, and 39 CFR Part 961 to the employee if no grievance is filed by bargaining employee, no reconsideration is requested by a non-bargaining employee, if the invoice has not been paid in full, or if a payroll deduction has not been established.</p> <p>c. Approximately 90 days from the date of invoice, Accounting Services will provide:</p> <ul style="list-style-type: none"> ■ A cover page with instructions. ■ A completed PS Form 3239, <i>Payroll Deduction Authorization to Liquidate Postal Service Indebtedness</i>. <p>Follow the instructions included. The installation head or postal official in charge must sign the PS Form 3239 and submit it to the SIC if no grievance is filed by a bargaining employee, if no reconsideration has been requested by a non-bargaining unit employee, if no petition for hearing has been requested, if the invoice has not been paid in full, or if a payroll deduction has not been established. Also, provide a copy to the employee and maintain a copy on file.</p>

For additional information, go to <http://blue.usps.gov/wps/portal/accounting/library/references>. Under "Handouts: Employee Receivables", you will find flowcharts, letters, and quick references.

We will incorporate this revision into the quarterly online update of Handbook F-101 available on the Postal Service PolicyNet website:

- Go to <http://blue.usps.gov>.
- Under "Essential Links" in the left-hand column, click *PolicyNet*.
- On the PolicyNet page, click *HBKs*.

(The direct URL for the Postal Service PolicyNet website is <http://blue.usps.gov/cpim>.)

Handbook F-101 Revision: New Addresses for Pacific and Southeast Office of Inspector General Field Offices

Effective immediately, Handbook F-101, *Field Accounting Procedures*, Appendix B-2 is revised to reflect new addresses for Office of Inspector General (OIG) Field Offices in the Southeast and Pacific Areas.

Handbook F-101 Revision, *Field Accounting Procedures*

* * * * *

Appendix B Contacts and Addresses

* * * * *

B-2 Office of Inspector General Field Offices

[Revise address for the Pacific Area Field Office and Southeast Area Field Office as follows:]

OIG Field Office	Postal Districts
AREA SPECIAL AGENT IN CHARGE PACIFIC AREA FIELD OFFICE PO BOX 90189 LONG BEACH CA 90809-0189	Bay Valley Honolulu Los Angeles Sacramento San Diego San Francisco Santa Ana Van Nuys

AREA SPECIAL AGENT IN CHARGE SOUTHEAST AREA FIELD OFFICE PO BOX 161288 ATLANTA GA 30321-1288	Alabama Atlanta Central Florida Mississippi North Florida South Florida South Georgia Suncoast Tennessee
---	--

* * * * *

We will incorporate this revision into the quarterly online update of Handbook F-101 available on the Postal Service PolicyNet website:

- Go to <http://blue.usps.gov>.
- Under “Essential Links” in the left-hand column, click *PolicyNet*.
- On the PolicyNet page, click *HBKs*.

(The direct URL for the Postal Service PolicyNet website is <http://blue.usps.gov/cpim>.)

– *Field and International Accounting, Controller, 2-25-10*

Handbook PO-603 Revision: Delivery Point Sequencing Letter Mail Formal Review

Effective January 22, 2010, Handbook PO-603, *Rural Carrier Duties and Responsibilities*, 541.42 was revised, reinstating the language as originally written in 1994 concerning delivery point sequencing (DPS) letter mail processing on rural routes.

Handbook PO-603, *Rural Carrier Duties and Responsibilities*

* * * * *

5 Inspection, Count, and Adjustment of Rural Routes

* * * * *

54 Compensation Adjustments

541 Requirements

* * * * *

541.4 Automation Processed Mail

* * * * *

541.42 Formal Review of DPS Letter Mail Processing

[Revise 541.42 to read as follows:]

If a route receiving DPS mail frequently experiences significant decreases in the quality of the DPS mail or there is a disproportionate reduction in DPS volume in relationship to the total letter volume of the route, the carrier may make a written request asking for a formal review of the DPS processing for the route. If the formal review indicates a zone or route is no longer being properly processed on automated equipment, quality has deteriorated significantly, or a pattern of random automated processing is revealed, management will take corrective action to ensure that the processing is returned to levels equivalent to those experienced during the previous mail count period.

However, if corrective action has not resolved the problem within 30 calendar days of the carrier’s written request, management will prepare a PS Form 4003, *Official Rural Route Description*, discontinuing the application of DPS standards. The DPS volume will be reclassified as sector/segment mail (if processing standards are achievable) or raw mail, as appropriate, and a base hour change made to adjust the route evaluation. The Form 4003 will be pro-

cessed with an effective date beginning with the first day of the pay period in which the carrier provided written notification requesting a review of DPS processing.

* * * * *

We will incorporate this revision into the next printed version of Handbook PO-603 and into the next online update, available on the Postal Service™ PolicyNet website:

- Go to <http://blue.usps.gov>.

- Under “Essential Links” in the left-hand column, click *PolicyNet*.

- On the PolicyNet page, click *HBKs*.

(The direct URL for the Postal Service PolicyNet website is <http://blue.usps.gov/cpim>.)

— Rural Delivery,

Delivery and Post Office Operations, 2-25-10

Publications

Publication 431 Revision: Changes to Post Office Box Service and Caller Service Fee Groups

Effective February 25, 2010, Publication 431, *Post Office Box Service and Caller Service Fee Groups*, is revised to include the following changes.

Publication 431, Post Office Box Service and Caller Service Fee Groups

* * * * *

[Add the following entries:]

ZIP Code	Fee Group
01203	2
32514	4
45248	4
53789	3
65283	5

* * * * *

[Delete the following entries:]

ZIP Code
40603
41535
42375
48769
55741

* * * * *

[Revise the following entry:]

ZIP Code	Fee Group
64131	4

The online version of Publication 431 is dated January 31, 2008. Changes made after January 31, 2008, have been published in the *Postal Bulletin*, and are also reflected in WebBATS. Publication 431 is currently available on the Postal Service™ PolicyNet website (<http://blue.usps.gov/cpim>):

- Go to <http://blue.usps.gov>.

- Under “Essential Links” in the left-hand column, click *PolicyNet*.

- Click *PUBs*.

Offices with WebBATS access can view current Publication 431 information by generating a WebBATS Facility Information Report as follows:

1. Go to the WebBATS main menu, and select *Reports*. The reports page opens.
2. Under the Clients/System column, System category, click *Facility Information*.
3. View the Fee Group field in the report.

— Special Services,

Retail Products and Services, 2-25-10

Publication 52 Revision: Clarification of Nonregulated Patient Specimen Packaging Standards

Effective March 14, 2010, the Postal Service™ will revise Publication 52 *Hazardous, Restricted, and Perishable Mail*, Exhibit 346.327 to provide the proper packaging standards for nonregulated patient specimens.

With this revision, patient specimens that fall under the nonregulated material category must be properly packaged when presented for mailing and are subject to the packaging standards in DMM 601.17.8.

Publication 52, Hazardous, Restricted, and Perishable Mail

* * * * *

3 Hazardous Materials

* * * * *

34 Mailability by Hazard Class

	*	*	*	*	*
346	Toxic Substances and Infectious Substances (Hazard Class 6)				
	*	*	*	*	*
346.3	Packaging, Marking, Labeling, and Documentation				
	*	*	*	*	*
346.32	Division 6.2, Infectious Substances				
	*	*	*	*	*
346.327	Proper Packaging of Mailable Materials				

	*	*	*	*	*
Exhibit 346.327	Packaging References for Mailable Materials, Infectious Substances (Hazard Class 6, Division 6.2)				

[Revise the Patient Specimen entry to replace “n/a” under the Nonregulated column with “346.325”.]

	*	*	*	*	*
--	---	---	---	---	---

We will incorporate this revision into the next online update of Publication 52 available via Postal Explorer® at <http://pe.usps.com>.

— *Mailing Standards, Pricing, 2-25-10*

Management Instructions

New Management Instruction EL-810-2010-1, Confined Space Safety Program

Management instruction (MI) EL-810-2010-1, *Confined Space Safety Program*, January 15, 2010, is now available on PolicyNet. Effective immediately, MI-EL-810-93-1, *Confined Space Safety*, September 1993, is obsolete.

The new MI contains updated organization and web references and updated policies. The most significant policy change relates to the process for reclassifying confined spaces, as follows:

- Spaces previously classified as *non-permit-required* due to the presence of electrical or mechanical hazards addressed by lockout procedures will need to be re-inventoried and identified as *permit-required* spaces.
- As a result, when Postal Service™ employees need to enter these spaces, the spaces must be reclassified temporarily as non-permit-required.

Consult the servicing safety office for more information.

MI EL-810-2010-1 is available on the Postal Service PolicyNet website:

- Go to <http://blue.usps.gov>.
- Under “Essential Links” in the left-hand column, click *PolicyNet*.
- Then click *MI*s.

The direct URL for the Postal Service PolicyNet website is <http://blue.usps.gov/cpim>.

— *Safety and Environmental Performance Management, Employee Resource Management, 2-25-10*

Organization Information

Domestic Mail

Free Mail Program for U.S. Armed Forces

Under the provisions of Title 39 of the United States Code (U.S.C.) 3401(a)(1) and pursuant to Executive Order 12556, dated April 16, 1986, the Secretary of Defense may authorize or terminate free mail privileges for members of the U.S. Armed Forces and designated civilians directly supporting military operations in designated international locations.

Accordingly, the Secretary of Defense has authorized free mail privileges for members of the U.S. Armed Forces and designated civilians deployed in Algeria, Angola, Senegal, Botswana, Burkina Faso, Democratic Republic of the Congo, Gabon, Ghana, Guinea, Tanzania, Mozambique, Liberia, Libya, Mali, Morocco, Nigeria, South Africa, Tunisia, and Uganda.

The following list includes the current locations for which the Secretary of Defense has authorized free mail privileges for members of the U.S. Armed Forces and designated civilians directly supporting military operations. This list supersedes the list in the article titled "Free Mail Program for U.S. Armed Forces" published in *Postal Bulletin* 22271 (11-05-09, page 72).

Africa

- Algeria.
- Angola.
- Senegal.
- Botswana.
- Burkina Faso.
- Democratic Republic of the Congo.
- Gabon.
- Ghana.
- Guinea.
- Tanzania.
- Mozambique.
- Liberia.
- Libya.
- Mali.
- Morocco.
- Nigeria.
- South Africa.
- Tunisia.
- Uganda.

Operation Desert Spring

- Kuwait — Kabal.

Operation Enduring Freedom

- Afghanistan.
- Bahrain.
- Djibouti.
- Ethiopia.
- Kuwait.
- Kyrgyzstan.
- Qatar.
- United Arab Emirates.
- Aboard ships in the Gulf of Aden.
- Aboard ships in the Gulf of Oman.
- Aboard ships in the North Arabian Sea (that portion of the Arabian Sea that lies north of 10 degrees north latitude and west of 68 degrees east longitude).
- Aboard ships in the Persian Gulf.
- Aboard ships in the Red Sea.

Operation Enduring Freedom — Philippines

- The southern Philippine islands of Mindanao and Tawi Tawi.
- Jolo on the southern Philippine island of Sulu.
- Province of Basilan.

Operation Iraqi Freedom

- Iraq.

Operation Joint Forge/Joint Guardian

- Former Republic of Yugoslavia:
 - Bosnia-Herzegovina.
 - Macedonia.
 - Serbia-Montenegro (including Kosovo and Vojvodina).

In accordance with 39 U.S.C. 3401(a)(1)(B), free mail privileges will also be extended to individuals hospitalized for disease or injury in a facility under the jurisdiction of the Armed Forces as a result of service in these designated areas.

Personnel who are authorized this privilege may mail — without postage — letters, postcards, and sound recordings (audio or video recordings) having the character of personal correspondence to any place in the United States, to any U.S. possession or territory, or to any military post office (APO/FPO).

Pull-Out Information

Fraud

Invalid Express Mail Corporate Account Numbers

These numbers are to be posted and used by retail/acceptance clerks. This listing supersedes all previous notices, which must be recycled. Retail/acceptance clerks must not accept Express Mail® shipments bearing any of

the invalid numbers (listed below) in the “customer number” or “agreement number” section of the label or form.

Note: The first 6 digits of a 9-digit Custom Designed Service and Next Day Pickup Agreement make up the Corporate Account Number.

005843	014856	027831	080344	111442	152172	165092	192533	222049	330682	441753	503050	527016
006437	014859	028495	080578	111714	152193	165094	192608	222080	331004	445143	503052	527039
007161	014864	028830	085395	111901	152222	165236	192664	227114	333736	450027	503128	527042
007282	014873	028921	088310	112032	152274	165249	192667	229075	333815	452002	503201	527046
008118	014880	029415	088760	112056	152289	165418	192703	241001	333915	452072	503248	527047
008280	014907	029675	090589	112085	152322	184064	192733	254010	334106	452911	503254	527054
008398	014946	030085	090816	112347	152324	191005	192745	254017	334434	452920	504202	527058
008767	015002	030114	091765	112460	152328	191044	192760	260035	335136	453047	505001	527059
008819	015015	030576	091780	112461	152351	191046	192761	272279	335181	454430	505005	527060
008840	015030	032044	092589	112730	152363	191064	192821	274201	336679	454439	506012	528036
009293	015047	037037	092709	112938	152372	191089	192946	275001	337039	454697	510031	531404
009420	015077	038407	093787	115145	152389	191112	192955	275070	337084	454829	511002	531422
009428	015084	041055	095708	115367	152440	191145	192979	277019	339287	456042	511003	531874
009470	015111	041135	097156	115508	152441	191203	193339	281000	340031	471246	511005	549108
009527	015217	048001	097167	117155	152509	191257	193387	283470	340253	477172	511015	551019
009648	015334	048300	097476	118858	152531	191296	193642	286040	344002	480006	511021	551126
009698	015483	053011	098087	119007	152532	191313	200114	286165	349714	480064	511030	551151
009800	015571	058024	098268	119315	152546	191319	200201	287048	352652	480065	511031	551164
010674	015625	060325	098576	119421	152560	191330	200346	292721	352834	480095	511850	551300
011346	016047	060781	100008	120294	152569	191349	200601	297032	352837	480102	512040	553065
012242	016423	061519	100123	125285	152652	191363	200781	298027	357012	480457	514001	553281
012345	016769	061560	100274	125294	152698	191582	200825	301025	358615	480565	514004	554072
013100	018474	064925	100309	127041	152734	191594	200953	301267	361104	480661	516410	558079
014017	018698	065445	100496	127077	152751	191595	206128	301384	366051	480706	520022	563009
014031	018755	065735	100562	128142	152761	191649	208017	302152	381405	481215	520040	577092
014111	019207	068085	100598	129958	152774	191673	208269	302583	381558	483435	522022	585287
014148	019242	068131	100776	129962	152796	191818	208520	303506	381838	483537	522025	596183
014175	020082	068151	103263	130037	152819	191845	209280	303630	395205	483654	522032	600013
014190	020420	068323	103318	133058	152826	191877	210008	312131	395252	484025	522042	600024
014281	020430	068501	103352	142018	152834	191912	210021	312210	402737	485098	522049	600038
014303	020453	068540	103411	142033	152880	191944	210047	314333	405023	488004	523003	600080
014317	021813	068719	103476	142036	152994	191972	210055	314689	424065	490689	523007	600117
014350	021900	069118	103589	142155	153001	191974	210094	314972	431035	490724	524007	600611
014433	021949	069270	104572	142322	156059	191984	210123	314973	432008	495132	524015	600774
014469	022003	069729	105023	142409	156064	191998	210138	315032	432038	496124	524055	600804
014477	022435	070472	105124	142454	156065	192024	210139	317347	432591	496162	524085	600902
014603	022495	070478	105618	142552	156116	192078	210142	321079	432623	496196	524097	601345
014614	022546	070512	106507	142757	156130	192093	210265	322197	432832	496202	524101	601592
014664	022607	070677	107278	142823	156163	192115	210767	322578	436005	497275	524108	604255
014719	022804	071954	108246	142888	156169	192204	210791	324046	436021	500002	525039	604724
014735	022829	075051	108731	146192	156230	192232	210860	327404	436356	500007	525044	605127
014746	022921	075234	109038	146752	156252	192300	210866	328061	436435	501002	525057	605185
014753	023092	076040	109554	150109	159252	192320	212715	328115	436470	501016	525058	606009
014772	025240	077926	109634	150117	159259	192368	212935	329578	441038	502008	526005	606597
014786	026251	077943	109803	151103	165073	192391	220356	330013	441165	503005	526021	606703
014808	026267	078030	109945	152020	165081	192404	220428	330144	441260	503011	526029	606889
014810	026533	079096	111356	152116	165090	192439	220429	330370	441623	503018	526035	607065
014821	027101	080142	111416	152117	165091	192506	221139	330376	441728	503045	526042	607235

607471	658207	705070	752025	782734	891212	895913	904726	921158	937100	946339	949637	971030
607523	658229	711503	757537	785562	891223	900017	906036	921567	937469	946363	949645	972282
608204	658233	720030	760007	787104	891236	900035	906323	921735	937484	946453	950105	980590
608379	658250	722175	760109	802054	891237	900099	906343	921785	937817	946462	950295	980743
610101	662212	723067	763017	802430	891238	900107	906935	921789	937853	946480	950718	982327
612008	662407	723077	770287	802722	891243	900155	907616	921802	940563	947134	950732	982646
612013	666115	730100	770289	806163	891250	900295	910011	921846	940584	947220	950990	983105
613102	701007	730142	770467	807035	891254	900300	911273	922053	940613	948031	954491	983122
616089	701102	730471	770541	809206	891260	900427	913111	922354	941492	948184	958104	988038
631177	701121	730552	770870	816002	891262	900454	913686	924516	941734	948445	958124	995368
631914	701206	730881	770883	832039	891275	900488	914376	926095	941817	948509	958929	995383
638105	701211	731047	770979	840085	891277	900539	914586	926214	945541	948523	967181	995418
641383	701313	731677	770991	845011	891295	900857	914831	926262	945737	948552	967188	995512
641492	701342	731929	774055	846198	891296	901114	915188	926447	945738	948598	967425	995536
641599	701350	741376	774056	852554	891311	901409	915448	926587	945740	948647	968212	995558
641633	701392	741721	774065	853587	891388	901440	915576	926670	945746	948659	968250	995759
641921	701401	744141	775011	853837	891442	901906	916031	927368	945808	948673	968333	997071
648103	701404	747021	777006	853919	891679	902004	917670	928393	945960	948686	968568	
648104	701432	750006	778010	853955	891708	902157	918267	928479	945976	948717	968602	
648182	701548	750176	780076	860062	891847	902907	918361	928522	946225	948752	968680	
653002	701690	750353	782021	891205	891984	903371	918952	931126	946261	948807	970247	
656133	701731	750434	782109	891209	891986	903921	920093	931397	946262	948812	970948	
658187	701856	750760	782236	891210	891988	904303	921153	933411	946270	949533	970977	

– Product Information Requirements, Business Mail Entry & Payment Technologies, 2-25-10

Missing, Lost, or Stolen U.S. Money Order Forms

Do Not Cash — Upon Receipt, Notify Local Postal Inspectors

This listing will be provided to all Postal Service™ employees responsible for accepting and cashing postal money orders. Destroy all interim notices when the numbers listed appear in the *Postal Bulletin*. The actual serial

numbers consist of the first 10 digits on the money orders. Check for altered dollar amounts by holding money orders to the light.

010 001 0200 to 0299	041 803 6565 to 6599	079 807 2342 to 2399	273 775 7700 to 7899
010 504 1932 to 1999	043 129 1968 to 1997	082 721 0228 to 0254	302 000 0000 to 9999
011 582 1889 to 1899	043 205 5922 to 5999	083 140 5000 to 7499	349 746 2056 to 2099
011 588 2900 to 3099	044 087 3457 to 3499	083 784 8886 to 8899	350 518 7350 to 7374
012 579 5675 to 5699	044 087 4000 to 4099	083 913 6915 to 6999	360 011 1690 to 1699
013 289 6176 to 6199	044 306 4200 to 4299	084 478 3920 to 3999	360 168 6008 to 6099
013 610 0014 to 0099	044 306 4370 to 4599	086 000 8271 to 8299	360 173 8800 to 8899
014 932 1000 to 1099	045 524 4121 to 4298	086 798 3840 to 3849	360 324 2326 to 2399
014 972 0800 to 0899	046 800 9870 to 9899	088 404 4472 to 4499	362 861 3064 to 3099
015 363 0065 to 0099	047 352 4000 to 4099	088 404 5584 to 5699	373 006 2176 to 2199
017 028 3200 to 3299	048 383 7650 to 7659	088 757 8688 to 8699	374 768 2600 to 2699
018 569 5333 to 5399	048 396 3647 to 3699	088 757 9400 to 9499	375 169 4400 to 4599
018 986 5264 to 5299	051 142 0755 to 0799	089 358 2248 to 2257	375 829 3400 to 3499
019 518 2814 to 2899	051 774 8857 to 8899	093 106 9346 to 9355	375 851 9100 to 9199
020 698 5159 to 5199	051 781 2875 to 2885	093 203 0500 to 0599	376 196 0911 to 0999
020 844 7307 to 7399	051 977 7010 to 7023	093 684 3630 to 3699	378 085 3679 to 3699
020 972 8948 to 8999	052 058 7115 to 7199	094 081 5074 to 5099	378 351 1063 to 1099
022 021 9110 to 9181	054 450 1130 to 1167	094 216 2555 to 2599	379 843 5100 to 5199
022 037 1411 to 1499	057 670 0563 to 0599	094 580 7062 to 7099	380 093 9600 to 9699
022 527 9201 to 9210	058 187 3836 to 3899	094 639 4200 to 4299	380 165 1165 to 1199
023 637 7169 to 7199	058 523 3003 to 3099	095 070 7186 to 7199	381 325 4500 to 4599
024 380 4100 to 4199	058 591 1153 to 1299	095 076 8300 to 8399	381 604 2510 to 2699
024 496 6870 to 6896	058 895 3746 to 3799	095 354 6864 to 6899	381 645 9525 to 9599
025 092 0987 to 0999	059 986 0814 to 0899	097 224 1350 to 1599	383 314 3968 to 3999
025 369 5535 to 5599	060 406 7650 to 7699	100 160 3800 to 3899	383 892 1000 to 1344
025 729 1151 to 1199	063 491 8122 to 8199	104 667 6400 to 6499	383 892 1382 to 1399
025 729 1643 to 1799	063 916 9968 to 9999	104 876 8937 to 8999	384 925 3641 to 3654
026 492 3180 to 3199	064 091 4500 to 4599	112 049 4413 to 4499	385 568 2331 to 2399
027 361 0430 to 0499	065 170 0471 to 0499	112 870 9765 to 9799	385 599 7554 to 7575
027 369 4482 to 4495	065 255 7909 to 7999	114 402 3850 to 3899	385 774 2024 to 2099
027 671 8762 to 8776	065 392 6345 to 6399	114 866 5368 to 5397	386 624 1412 to 1599
027 787 9886 to 9899	066 099 2014 to 2099	116 154 2800 to 2899	386 883 8936 to 8999
027 965 9487 to 9499	066 648 2880 to 2899	116 986 4400 to 4499	387 314 5574 to 5599
028 100 8069 to 8099	066 787 3639 to 3699	117 175 1647 to 5169	387 837 6300 to 6399
028 191 1852 to 1999	066 845 7500 to 9999	117 951 4687 to 4699	388 828 0656 to 0699
028 850 3000 to 3199	067 093 3869 to 3899	117 951 5200 to 5299	389 696 2400 to 2799
029 510 1500 to 1599	068 895 0334 to 0399	119 815 8961 to 6199	389 846 3104 to 3135
030 687 0903 to 0999	070 724 4488 to 4499	119 850 7400 to 7499	389 846 3145 to 3195
030 701 3442 to 3499	070 841 9181 to 9199	119 850 7700 to 7999	389 887 9211 to 9230
031 077 4507 to 4799	070 844 2546 to 2599	121 634 0460 to 0499	389 887 9234 to 9299
032 295 7500 to 9999	070 916 1340 to 1399	122 451 9879 to 9899	390 001 3182 to 3199
034 394 1000 to 1099	071 047 5768 to 5799	122 714 6805 to 6900	390 001 3500 to 3699
034 943 0400 to 0799	071 179 9800 to 9899	124 916 0304 to 0499	390 545 5974 to 5999
035 035 4337 to 4399	071 386 3682 to 3699	126 423 0136 to 0169	391 104 6146 to 6199
037 706 9578 to 9599	071 507 6840 to 6899	160 901 2254 to 2299	391 574 1466 to 1499
037 805 3677 to 3699	072 045 9641 to 9699	161 103 6581 to 6599	391 783 3020 to 3599
037 909 5490 to 5499	072 675 8287 to 8299	162 032 4447 to 4499	391 792 6100 to 6199
037 931 4660 to 4699	077 617 5481 to 5499	163 257 1085 to 1099	392 668 2956 to 2999
039 145 6521 to 6595	077 999 4001 to 4090	166 101 1433 to 1499	392 854 8500 to 8899
040 024 3901 to 3999	078 174 4475 to 4499	178 254 5000 to 9999	393 584 7566 to 7699
040 674 7100 to 7199	078 219 4931 to 4999	178 881 9900 to 9999	393 650 0074 to 0099
040 688 8816 to 8899	078 250 4756 to 4799	210 221 0548 to 0599	393 838 8316 to 8499
041 299 6752 to 6799	078 823 8312 to 8399	227 275 9400 to 9999	393 893 6007 to 6099
041 623 8889 to 8899	079 374 0300 to 2499	273 070 8059 to 8099	394 126 6907 to 6999

394 189 0405	to	0599	414 193 3677	to	3699	435 303 1986	to	1999	458 337 5222	to	5299
394 822 3243	to	3278	414 411 7348	to	7399	435 666 6092	to	6399	458 354 7653	to	7999
394 990 1810	to	1899	414 640 0757	to	0799	436 082 6400	to	6899	458 671 8678	to	8699
395 343 3264	to	3299	414 965 1727	to	1799	436 160 6441	to	6499	458 671 8721	to	8798
395 373 3035	to	3099	417 302 8104	to	8199	437 316 7115	to	7199	458 847 5044	to	5999
395 396 9649	to	9799	417 387 6532	to	6599	437 427 0500	to	3499	459 274 7624	to	7699
395 970 3240	to	3299	417 496 6800	to	6999	439 179 2300	to	2399	459 365 5432	to	5499
397 622 4054	to	4099	417 871 9250	to	9299	439 310 0458	to	0499	459 378 5764	to	5799
397 819 8902	to	8999	417 930 9533	to	9599	440 698 1947	to	1999	459 472 4816	to	4999
398 149 7200	to	7699	418 164 6500	to	6799	440 858 6300	to	6399	460 349 6878	to	6899
399 070 0872	to	0899	418 423 9863	to	9899	440 858 6420	to	7299	460 550 1909	to	1999
399 156 7119	to	7199	418 633 5922	to	5999	441 199 1655	to	1699	460 997 5234	to	5299
399 203 5064	to	5099	418 719 8520	to	8599	443 127 3648	to	3699	461 973 6443	to	6499
399 296 9910	to	9999	418 744 2235	to	2299	443 127 4000	to	4099	462 152 0107	to	0299
399 396 8935	to	8999	418 962 2848	to	2899	443 673 7900	to	7999	462 274 1072	to	1099
399 792 7775	to	7799	419 543 0286	to	0299	443 800 9335	to	9399	462 277 8373	to	8399
399 792 8300	to	8399	419 730 0300	to	0399	444 382 8822	to	8899	462 554 6051	to	6099
400 427 1051	to	1999	420 277 0015	to	0049	444 390 1667	to	1699	463 011 5529	to	5540
401 045 1505	to	1549	420 599 0734	to	0798	444 457 3854	to	3899	463 176 4115	to	4199
401 045 1571	to	1599	420 661 4115	to	4199	450 048 4173	to	4199	463 176 4229	to	4299
401 294 2700	to	2799	420 758 9500	to	9699	450 048 4442	to	4699	463 185 2600	to	2799
401 310 9505	to	9599	420 969 3951	to	3971	450 560 5173	to	5199	463 227 7711	to	7799
401 382 5312	to	5399	420 969 3973	to	3999	450 620 3077	to	3099	463 414 4869	to	4899
402 578 7876	to	7899	421 116 3565	to	3599	450 620 3135	to	3199	463 808 3484	to	3499
403 125 6744	to	6799	421 130 9300	to	9399	450 780 2716	to	2799	463 945 7400	to	7899
403 260 7000	to	7499	421 313 4500	to	4999	450 801 2700	to	2799	464 629 9000	to	9399
403 280 6470	to	6499	421 364 5537	to	5599	451 109 2967	to	2984	464 711 4332	to	4399
403 685 8600	to	8699	421 656 2609	to	2699	451 115 4110	to	4125	465 692 3963	to	3999
404 003 0300	to	0399	421 988 9700	to	9799	451 115 4127	to	4199	465 698 8300	to	8599
404 041 8838	to	8899	422 172 4667	to	4699	451 746 0700	to	0799	465 743 7745	to	7799
404 071 4268	to	4299	422 484 4212	to	4299	452 265 0074	to	0099	466 798 6056	to	6067
404 347 5356	to	5399	422 556 1270	to	1299	452 265 0246	to	0299	467 147 4300	to	4399
404 347 5548	to	5599	422 587 7024	to	7099	452 265 0335	to	0999	468 079 5782	to	5799
404 726 4500	to	4599	422 819 7533	to	7599	452 509 1169	to	1199	469 067 2817	to	2899
404 961 5001	to	5199	422 842 5073	to	5087	452 855 6471	to	6499	469 127 8000	to	8199
405 325 0188	to	0198	422 907 7563	to	7599	452 890 4679	to	4799	469 213 0359	to	0399
406 009 4587	to	4599	424 500 6050	to	6099	452 900 8215	to	8238	469 213 0500	to	0599
406 260 6830	to	6899	424 641 8500	to	8599	453 117 9146	to	9199	469 561 8011	to	8099
406 459 6641	to	6999	424 871 6600	to	6699	453 334 3631	to	3699	469 658 1961	to	1999
406 733 3000	to	3999	425 298 2352	to	2399	453 603 7841	to	7891	469 666 9900	to	9999
407 545 1557	to	1599	425 418 4269	to	4299	453 650 1140	to	1199	469 678 1900	to	1999
407 594 0412	to	0599	425 418 4405	to	4499	453 741 1300	to	1399	469 781 4900	to	4999
407 692 9100	to	9299	426 547 4566	to	4599	454 013 2919	to	2999	469 947 6960	to	6999
407 959 2190	to	2199	427 412 6337	to	6499	454 186 2411	to	2499	470 755 5800	to	5818
408 265 2275	to	2288	427 481 0900	to	0999	454 268 4883	to	4899	471 918 0300	to	0999
408 499 7700	to	7799	428 027 2742	to	2752	454 302 5400	to	5499	471 985 2408	to	2419
408 499 7900	to	7999	429 474 4172	to	4199	454 490 8300	to	8399	472 191 6700	to	6799
408 682 8484	to	8599	429 889 2900	to	2999	454 547 7434	to	7499	472 270 2555	to	2599
408 698 7015	to	7099	430 150 4401	to	4599	454 922 4867	to	4895	472 987 0213	to	0241
409 072 3941	to	3999	430 172 9800	to	9899	455 221 1348	to	1499	472 987 0290	to	0299
410 491 2311	to	2399	430 177 1900	to	2099	455 364 2147	to	2199	473 151 2069	to	2199
410 694 8400	to	8599	430 444 9500	to	9699	455 399 5400	to	5499	473 666 9138	to	9199
410 775 1500	to	1599	430 664 4070	to	4099	455 476 0676	to	0699	473 952 3429	to	3499
410 795 7927	to	7999	432 168 8419	to	8499	455 543 0618	to	0699	474 108 5402	to	5499
410 867 0917	to	0966	432 708 6800	to	6999	456 410 9006	to	9099	474 356 5193	to	5299
410 867 0970	to	0999	432 744 1544	to	1599	456 470 4146	to	4299	474 949 3366	to	3399
411 868 1023	to	1199	432 995 9775	to	9799	456 619 4460	to	4499	475 134 9362	to	9399
411 922 2322	to	2399	433 003 5800	to	5899	457 333 2686	to	2699	475 167 9667	to	9699
412 193 0900	to	0999	433 757 3047	to	3099	457 729 1767	to	1777	475 319 3415	to	3499
412 395 8599	to	8699	433 765 4003	to	4099	457 937 8615	to	8699	475 319 3649	to	3799
412 485 6500	to	6599	434 482 7060	to	7199	458 028 9810	to	9899	475 340 6400	to	6599
412 485 6610	to	6699	434 513 2386	to	2399	458 057 2712	to	2999	475 424 8410	to	8499
412 885 5953	to	5999	434 968 3076	to	3092	458 069 9537	to	9599	475 629 9156	to	9199
414 193 3608	to	3674	435 303 1831	to	1842	458 069 9665	to	9699	475 850 6101	to	6199

475 875 2500	to	2599	493 394 5568	to	5599	609 893 1000	to	1099	634 803 3239	to	3299
476 169 8264	to	8299	493 470 2562	to	2599	610 092 3200	to	3299	634 807 2474	to	2499
476 189 3000	to	3499	493 473 7700	to	7799	610 582 4200	to	4299	634 827 5900	to	5999
476 331 2480	to	2499	493 716 2153	to	2199	611 879 6939	to	6999	634 886 3428	to	3499
477 289 8601	to	8699	494 206 2972	to	2999	612 291 8013	to	8099	635 559 3449	to	3499
477 681 5206	to	5299	494 217 3446	to	3999	612 751 5171	to	5199	636 289 6214	to	6299
478 010 4243	to	4268	494 224 0500	to	0599	612 751 5226	to	5299	636 634 8007	to	8042
478 010 4270	to	4291	495 145 0600	to	0699	612 751 6083	to	6099	637 150 1200	to	1299
478 450 5071	to	5099	496 209 7425	to	7499	612 751 6268	to	6299	637 562 5828	to	5899
478 469 7838	to	7858	496 213 8728	to	8799	612 751 6572	to	6599	638 042 1647	to	1699
478 469 7883	to	7899	496 474 5226	to	5248	612 774 2111	to	2199	638 049 4984	to	4999
479 280 9800	to	9899	497 053 8517	to	8699	612 774 2254	to	2299	638 318 1115	to	1199
479 365 9116	to	9176	497 854 8673	to	8699	612 774 2500	to	2599	638 318 1453	to	1499
479 412 9900	to	9999	498 449 8888	to	8899	614 469 0979	to	0999	638 885 0000	to	0299
479 667 6190	to	6199	498 929 8285	to	8499	614 474 3000	to	3099	638 903 4362	to	4373
479 748 9680	to	9699	498 936 5310	to	5399	614 521 3490	to	3499	639 415 1929	to	1999
479 860 7000	to	7199	499 016 5425	to	5499	614 645 1800	to	1899	639 415 2019	to	2099
480 526 2000	to	2099	499 440 8575	to	8899	614 832 1100	to	2099	639 420 6200	to	6299
480 640 6330	to	6399	499 731 6717	to	6799	615 017 7505	to	7599	639 469 3517	to	3799
480 658 0568	to	0599	500 064 1858	to	1869	617 711 6609	to	6699	639 605 2143	to	2199
480 689 5100	to	5199	500 070 5725	to	7799	617 760 5266	to	5299	639 657 8600	to	8799
481 072 9463	to	9499	501 331 0300	to	0399	617 813 3601	to	3699	640 289 7500	to	7599
481 673 0074	to	0095	502 227 7645	to	7699	618 840 9200	to	9299	640 289 7700	to	7999
482 527 1500	to	1599	502 424 0200	to	0499	619 551 7229	to	7299	641 170 4420	to	4499
482 541 5255	to	5299	502 424 0600	to	0699	619 859 3000	to	3099	641 318 3133	to	3199
482 729 6800	to	6899	503 194 5144	to	5153	620 073 9400	to	9499	641 378 6500	to	6999
483 363 7207	to	7299	504 045 4030	to	4099	621 614 7907	to	7930	641 383 8739	to	8799
483 402 2356	to	2399	504 166 0500	to	240 1399	621 614 7932	to	7999	641 877 3187	to	3299
483 486 5100	to	5199	600 645 3223	to	3299	621 648 8021	to	8199	641 877 3310	to	3399
483 632 1521	to	1599	601 339 1200	to	1399	621 648 8500	to	8599	642 355 8094	to	8199
483 632 2600	to	2799	601 653 5884	to	5899	621 904 8351	to	8599	642 355 8308	to	8999
483 849 1615	to	1699	601 661 7700	to	7799	621 916 1978	to	1989	642 900 0018	to	0099
484 174 4803	to	5299	601 682 5343	to	5399	622 989 8032	to	8099	643 030 6254	to	6299
484 323 8900	to	9199	601 928 1600	to	1699	623 076 9300	to	9399	644 066 0882	to	0899
484 680 5000	to	5038	602 512 2972	to	2999	623 819 5006	to	5099	644 069 0600	to	0699
484 680 5040	to	5074	602 555 2400	to	2799	623 895 8200	to	8399	644 077 7506	to	7699
484 680 5077	to	5099	602 829 7061	to	7099	623 917 0000	to	0099	644 085 8157	to	8199
485 029 4913	to	4999	603 483 9572	to	9599	623 917 0200	to	0299	644 112 9839	to	9899
486 176 0600	to	0699	603 490 7200	to	7299	624 468 5288	to	5299	644 373 9083	to	9099
486 559 7555	to	7599	603 678 7100	to	7199	624 665 3162	to	3198	644 380 1460	to	1499
486 696 3023	to	3199	603 678 7662	to	7699	625 088 6735	to	6799	644 733 4715	to	4799
488 173 7900	to	7999	603 678 7902	to	7999	625 916 9500	to	9799	644 900 9712	to	9799
488 206 4100	to	4199	603 678 8418	to	8499	625 968 8956	to	8999	644 901 0109	to	1299
488 226 0200	to	0299	603 678 8700	to	9999	627 005 3938	to	3999	644 901 1325	to	1399
488 709 3906	to	3999	604 086 0880	to	0899	627 384 3907	to	4099	644 923 6800	to	7799
488 855 8359	to	8399	604 349 1414	to	1499	627 496 7549	to	7599	644 932 4655	to	4699
489 181 8963	to	8999	604 503 7776	to	7799	627 708 3605	to	3699	645 318 7240	to	7499
489 223 2000	to	2099	605 520 9037	to	9099	627 776 2500	to	2599	645 333 1766	to	1799
489 311 1930	to	1999	605 685 4010	to	4099	628 226 3100	to	3199	645 790 8632	to	8699
489 318 6200	to	6300	605 988 6467	to	6499	628 814 4702	to	4799	645 821 0657	to	0699
489 384 0027	to	0099	607 689 7951	to	7960	628 851 9689	to	9699	645 930 7948	to	7999
489 427 0658	to	0899	607 728 1276	to	1299	629 510 7200	to	7299	645 975 0737	to	0762
489 997 5252	to	5299	608 727 7100	to	7199	629 964 4200	to	4294	646 242 6200	to	6299
490 669 5850	to	6099	608 727 7273	to	7599	630 389 3056	to	3071	646 270 7639	to	7799
490 717 7080	to	7099	608 813 9950	to	9999	630 463 0588	to	0599	646 798 4000	to	4999
490 721 6000	to	6099	609 067 5325	to	5399	631 459 9117	to	9199	647 048 7035	to	7099
490 793 1500	to	2099	609 067 5488	to	5499	631 762 9325	to	9399	647 049 2900	to	2999
490 886 8171	to	8199	609 067 5600	to	5699	632 217 4933	to	4999	647 398 8300	to	8399
490 977 9221	to	9240	609 289 6123	to	6199	632 500 0000	to	640 3999	647 398 8481	to	8499
491 258 8100	to	9099	609 438 4400	to	4499	633 110 4165	to	4199	647 437 3000	to	4999
491 567 1376	to	1399	609 493 1100	to	1199	633 110 4303	to	4499	647 811 2188	to	2199
492 254 4800	to	4899	609 766 8091	to	8999	633 438 6429	to	6599	648 009 6057	to	6099
492 283 5100	to	5199	609 825 4100	to	4115	633 588 7173	to	7182	648 163 5300	to	5499
492 610 6813	to	6899	609 884 2981	to	2999	634 725 0700	to	0799	648 722 5283	to	5299

648 892 3164	to 3199	671 251 5448	to 5499	693 645 9583	to 9599	740 470 2420	to 2443
649 100 3989	to 3999	671 926 5600	to 5799	693 965 4200	to 4299	740 514 0300	to 0499
649 647 0370	to 0399	672 444 2000	to 2999	695 741 2906	to 2999	740 523 7432	to 7449
649 647 0522	to 0599	672 828 3410	to 3499	695 947 8518	to 8599	740 535 1555	to 1580
649 647 5237	to 5399	673 167 5776	to 5799	696 662 8247	to 8299	740 650 4104	to 4140
649 647 9100	to 9299	675 464 3700	to 3799	697 447 8285	to 8296	740 684 0620	to 0800
649 666 7800	to 8299	675 464 4000	to 4199	698 042 4816	to 4899	740 701 6105	to 6114
650 114 7707	to 7719	676 365 5958	to 5999	698 131 2138	to 2157	740 705 9790	to 9799
650 130 3400	to 3599	676 669 1024	to 1099	698 227 0000	to 0099	740 726 6400	to 6500
650 213 0406	to 0499	677 126 6734	to 6799	700 065 2570	to 2599	740 765 3306	to 3399
650 555 1749	to 1799	677 333 9979	to 9999	700 065 4800	to 4899	740 774 8434	to 8499
650 564 1900	to 1999	677 466 1088	to 1099	700 190 3350	to 3359	740 786 1885	to 1899
650 627 4212	to 4299	678 071 4500	to 4799	700 228 6048	to 6099	740 790 5989	to 5999
650 736 2043	to 2099	678 096 7531	to 7599	700 650 0452	to 0499	740 820 4854	to 7836
650 739 1540	to 1699	679 909 2578	to 2599	700 666 1323	to 1349	740 827 7578	to 7594
651 741 4415	to 4499	680 112 9565	to 9599	700 786 9106	to 9142	740 917 7490	to 7499
651 882 2800	to 2899	680 244 0903	to 0999	700 859 0744	to 0758	740 918 5531	to 5549
652 754 6317	to 6399	680 412 6046	to 6099	701 028 6780	to 6899	741 037 8528	to 8551
653 131 4945	to 4999	680 761 6800	to 6899	701 213 3900	to 3999	742 040 3300	to 3309
653 426 3300	to 3399	681 677 0540	to 0699	701 267 2000	to 3999	805 885 8411	to 8499
653 455 4874	to 4899	682 070 1029	to 1099	701 335 7312	to 7399	806 087 1100	to 1499
654 238 0000	to 0399	682 956 6280	to 6299	701 369 2005	to 2050	806 268 9275	to 9299
654 404 3065	to 3092	682 956 6490	to 6599	701 499 2260	to 2299	806 534 3400	to 3477
654 962 2900	to 3199	682 956 6700	to 6799	701 503 2247	to 2299	807 342 3283	to 3399
655 103 5081	to 5199	682 965 1178	to 1199	701 541 2271	to 2299	808 086 7100	to 7199
655 523 2600	to 2999	682 965 1201	to 1299	701 553 6557	to 6599	808 090 3440	to 3499
656 305 2448	to 2499	683 118 2389	to 2399	701 578 7460	to 7469	808 325 5161	to 5699
657 347 4438	to 4999	683 378 2000	to 2099	701 578 7475	to 7499	808 784 8000	to 8299
657 710 8100	to 8999	683 378 2117	to 2299	701 601 3457	to 3499	830 125 0672	to 0699
657 780 0985	to 0999	683 415 1200	to 1499	701 605 5913	to 5999	830 602 5800	to 5999
658 586 1400	to 1499	683 444 8159	to 8199	701 695 3982	to 3999	830 610 3700	to 3799
658 877 8000	to 8199	685 154 7780	to 7789	701 695 4148	to 4199	830 983 3500	to 3599
658 880 8000	to 8199	685 297 7645	to 7699	701 695 4227	to 4299	830 983 3635	to 3699
659 398 7300	to 7399	685 623 5264	to 5299	701 708 1741	to 1799	831 354 1387	to 1399
659 706 8113	to 8199	685 650 9487	to 9499	701 736 3966	to 3999	831 815 8240	to 8299
659 846 7837	to 7899	685 669 4200	to 4299	701 772 0870	to 0899	832 525 3810	to 3899
660 510 4100	to 4199	685 757 8452	to 8499	701 838 2800	to 2899	833 159 1884	to 1899
660 673 0400	to 0599	686 071 2694	to 2799	701 941 0600	to 0699	833 456 2567	to 2599
661 488 5000	to 5099	686 176 3333	to 3354	702 171 1603	to 1699	833 566 3015	to 3071
661 609 9100	to 9199	686 372 3200	to 3299	702 195 5109	to 5199	834 130 5200	to 5299
661 716 9420	to 9499	686 644 5879	to 5899	702 254 9300	to 9399	834 316 5444	to 5499
661 906 6522	to 6599	686 899 1371	to 1399	702 264 7569	to 7599	834 354 8747	to 8766
662 021 8332	to 8399	686 931 7636	to 7699	702 519 0513	to 0524	834 354 8824	to 8838
662 068 0700	to 0899	687 601 0973	to 0999	702 713 1800	to 1809	835 269 5700	to 5799
662 553 0774	to 0799	687 614 6774	to 6799	702 821 5730	to 5799	835 496 7303	to 7399
663 078 7034	to 7099	688 120 9000	to 9999	702 821 5805	to 5899	835 539 5200	to 5999
663 763 5300	to 5399	688 314 3107	to 3191	702 844 6975	to 6994	835 813 3015	to 3099
663 883 7039	to 7499	690 291 1361	to 1371	702 846 6331	to 6399	837 672 8967	to 8999
663 938 9200	to 9299	690 788 2877	to 2899	702 848 3900	to 3999	837 784 3282	to 3299
664 253 8000	to 8499	690 893 5344	to 5399	702 857 7302	to 7499	838 176 8377	to 8399
664 656 3055	to 3099	690 893 5512	to 5599	702 878 0114	to 0199	838 518 1257	to 1299
665 174 6400	to 6499	690 904 1300	to 1599	703 364 1707	to 1799	839 718 8257	to 8299
665 274 8208	to 8299	690 941 6000	to 6199	740 002 7710	to 7719	840 323 0600	to 0699
665 669 5400	to 5499	691 313 6383	to 6399	740 119 2275	to 2284	840 875 6235	to 6299
666 132 8226	to 8299	691 313 6600	to 6699	740 130 6688	to 6698	840 910 0900	to 0999
666 696 2209	to 2299	691 582 8003	to 8099	740 144 2780	to 2795	841 349 5000	to 5099
666 696 2309	to 2399	691 664 1800	to 1999	740 241 9049	to 9099	841 805 7747	to 7899
667 032 9300	to 9399	691 664 2400	to 2499	740 252 9265	to 9294	841 805 7944	to 8099
667 729 5529	to 5599	692 727 9362	to 9399	740 255 1718	to 1799	842 226 0685	to 0695
668 383 8400	to 8699	692 798 1800	to 1899	740 277 0366	to 0392	842 685 4600	to 4699
670 368 3400	to 3499	693 249 0779	to 0799	740 332 7658	to 7671	842 685 4742	to 4999
670 369 7336	to 7399	693 249 0877	to 1699	740 348 6641	to 6658	842 860 0300	to 0399
670 750 7169	to 7199	693 445 0566	to 0999	740 351 4790	to 4799	842 898 5582	to 5599
671 046 6200	to 6399	693 448 8500	to 8999	740 374 7416	to 7499	843 062 7100	to 7199

843 077 6288	to	6299	864 088 8200	to	8299	906 558 8812	to	8899	919 915 2774	to	2787
843 077 6378	to	6399	864 426 3972	to	3999	906 982 2214	to	2299	920 155 4662	to	4687
843 758 5769	to	5778	864 520 6117	to	6136	907 725 8500	to	8599	920 309 9039	to	9199
843 786 2554	to	2699	865 151 0526	to	0599	907 815 0216	to	0257	920 771 5321	to	5399
845 656 8165	to	8199	865 500 4034	to	4099	908 622 4225	to	4235	920 857 5500	to	5899
845 727 2100	to	2199	865 883 6082	to	6099	908 936 9254	to	9299	920 864 3480	to	3499
845 746 2618	to	2635	866 004 3000	to	3999	909 066 4494	to	7499	920 963 4567	to	4599
846 390 7531	to	7599	866 442 4100	to	4899	909 067 7400	to	7499	921 333 7400	to	7499
846 918 0572	to	0599	867 366 9108	to	9118	909 100 1787	to	1799	921 477 3762	to	3799
847 237 7690	to	7699	867 633 7403	to	7499	909 100 1900	to	2099	922 278 1048	to	1399
847 284 2481	to	2499	867 737 5623	to	5699	909 355 0422	to	0499	922 280 2019	to	2099
847 374 7055	to	7065	868 169 4529	to	4599	909 568 8900	to	9099	922 280 2233	to	2299
847 374 7055	to	7065	868 173 8400	to	8599	909 568 9300	to	9499	922 773 0459	to	0499
847 636 5304	to	5399	868 514 9000	to	9099	909 725 7307	to	7399	923 032 7000	to	7399
847 700 5447	to	5499	868 566 9200	to	9299	909 833 0947	to	0999	923 045 3630	to	3699
847 723 7500	to	7599	869 200 0000	to	9999	910 219 8631	to	8699	923 484 3600	to	3699
849 485 3427	to	3499	869 387 1150	to	1199	910 265 1100	to	1199	923 493 9403	to	9599
849 520 9850	to	9899	869 505 3500	to	3599	910 471 7273	to	7299	923 493 9681	to	9699
849 608 1357	to	1399	869 523 7033	to	7099	910 536 2505	to	2599	923 604 4424	to	4499
849 792 2600	to	2699	869 566 6150	to	6167	910 958 7499	to	7599	923 810 7800	to	8299
850 546 1862	to	1899	869 800 0000	to	999 9999	911 140 1000	to	2199	924 252 1200	to	1299
851 143 6826	to	6844	870 054 4814	to	4899	911 245 2545	to	2599	924 252 1400	to	1499
851 209 9880	to	9899	870 491 4812	to	4849	911 268 9077	to	9099	924 533 0711	to	0799
851 928 9221	to	9299	870 536 5820	to	5829	911 400 8948	to	8999	924 533 2343	to	2399
852 589 6560	to	6599	870 541 7167	to	7239	911 508 1620	to	1799	924 533 2428	to	2499
853 049 3646	to	3699	870 575 8155	to	8999	911 509 9310	to	9399	924 685 1957	to	1999
854 304 4089	to	4999	870 589 0485	to	0494	911 523 3000	to	3999	924 946 6300	to	6699
854 529 2200	to	2299	870 691 7060	to	7099	912 057 9922	to	9999	925 333 5900	to	6099
854 532 0000	to	2999	872 028 4850	to	4899	912 882 0563	to	0899	925 336 2300	to	2399
855 001 6204	to	6249	872 029 9306	to	9399	913 605 2218	to	2299	926 432 5907	to	5999
855 319 9364	to	9399	872 078 3709	to	3799	913 709 2429	to	2499	926 436 3600	to	3699
855 361 3390	to	3399	872 100 0445	to	0459	913 818 3501	to	3999	927 765 6257	to	6299
856 226 0490	to	0499	900 556 4178	to	4199	914 063 4300	to	4399	928 197 8100	to	8199
856 656 5800	to	5999	900 845 0044	to	0099	914 346 7621	to	7644	928 197 8283	to	8299
856 752 0200	to	0299	900 936 0217	to	0299	914 453 1366	to	1399	928 856 2059	to	2068
857 111 1352	to	1399	900 936 0435	to	0499	914 529 6185	to	6299	930 219 1722	to	1799
857 279 3450	to	3499	901 058 5255	to	5280	914 896 4658	to	4699	930 335 7810	to	7819
857 843 4000	to	4099	901 273 1082	to	1099	915 187 8774	to	8779	931 097 9259	to	9299
858 124 7644	to	7699	901 287 5143	to	5199	915 300 2783	to	2799	931 156 1502	to	1579
858 756 3111	to	3299	901 291 2789	to	2799	915 546 6822	to	6999	931 156 1600	to	1625
859 063 8200	to	8699	901 525 7122	to	7199	915 646 5183	to	5199	931 156 1671	to	1699
859 190 0600	to	0644	902 089 1253	to	1299	915 671 3963	to	3980	932 506 6400	to	6599
859 437 5538	to	5599	902 198 9769	to	9799	915 671 3982	to	3999	932 732 1796	to	1799
859 811 2888	to	2899	902 948 1269	to	1299	915 675 2217	to	2299	932 827 9026	to	9099
859 855 8873	to	8999	902 985 0833	to	0899	916 440 3377	to	3399	932 957 2300	to	2399
860 240 8520	to	8599	903 370 6934	to	6999	916 670 6352	to	6399	933 060 6160	to	6189
860 275 3900	to	3999	904 600 6523	to	6599	916 682 5300	to	5399	933 387 2541	to	2561
860 518 9629	to	9699	904 892 0378	to	0399	916 694 1414	to	1499	933 760 3609	to	4199
860 600 0021	to	0999	904 892 0648	to	1299	916 703 0802	to	0821	933 894 0928	to	0999
861 158 2350	to	2599	905 056 2216	to	2299	917 089 0709	to	0799	934 018 2729	to	2741
861 367 5400	to	5499	905 510 6647	to	6799	917 089 0842	to	0899	934 180 0300	to	0399
861 637 6010	to	6099	905 510 6900	to	7099	917 216 2928	to	2999	934 236 3954	to	3999
861 979 7292	to	7499	905 794 0000	to	0199	917 370 6300	to	6499	934 622 8717	to	8999
862 216 6100	to	6199	905 794 0288	to	0299	917 486 4900	to	4999	935 216 0312	to	0399
862 263 9213	to	9299	905 873 6900	to	6999	918 460 0602	to	0699	935 843 2202	to	2247
862 271 0800	to	0999	905 873 7100	to	7299	918 951 7231	to	7299	936 024 8889	to	8899
862 271 5000	to	5099	905 880 8900	to	8999	919 519 2786	to	2799	936 339 4455	to	4499
863 871 5138	to	5199	905 889 7100	to	7199	919 536 0770	to	0799			
863 949 5300	to	5399	906 158 1508	to	1599	919 814 3095	to	3199			



DID YOU KNOW?

**Coils of First-Class
Mail stamps are
available at *usps.com*.**

The image features a collage of USA44 First-Class Mail stamps with an American flag design. The stamps are arranged in a way that suggests they are part of a coil. The text 'DID YOU KNOW?' is prominently displayed at the top in a bold, white, sans-serif font. Below the collage, the text 'Coils of First-Class Mail stamps are available at usps.com.' is written in a bold, red, sans-serif font.

Missing, Lost, or Stolen Canadian Money Order Forms

Do Not Cash — Upon Receipt, Notify Local Postal Inspectors

This listing will be provided to all Postal Service™ employees responsible for accepting and cashing postal money orders. Destroy all interim notices when the numbers listed appear in the *Postal Bulletin*. The new money order serial numbers consist of the first 9 digits. The 10th digit is a check digit only.

Do not cash outdated money orders **104 151 601 to 692 600 000**. Advise holders to send invalid money orders to: Canada Post Corporation, Ottawa, Canada K1A 0B1. Check for altered dollar amounts by holding money orders to the light.

719 869 731	to	9 760	728 382 331	to	2 480	734 797 201	to	7 320	742 178 834	to	8 880
720 227 871	to	7 930	728 702 338	to	2 400	734 939 611	to	9 640	742 325 500	to	5 520
720 227 949	to	7 960	728 915 371	to	5 850	734 950 111	to	0 170	742 325 668	to	5 700
720 368 543	to	8 570	728 953 141	to	3 410	735 120 331	to	0 840	742 408 771	to	8 830
720 392 151	to	2 570	728 954 280	to	4 310	735 283 008	to	3 020	742 512 120	to	2 150
720 556 491	to	6 640	729 169 081	to	9 140	735 293 131	to	3 220	742 684 849	to	4 890
720 558 621	to	8 650	729 363 841	to	3 870	735 635 010	to	5 040	742 839 553	to	9 630
720 575 361	to	5 570	729 682 891	to	3 190	735 783 961	to	3 990	742 913 668	to	3 700
720 590 152	to	0 179	729 838 940	to	9 070	735 803 401	to	3 430	742 917 287	to	7 296
721 638 331	to	9 170	729 839 101	to	9 130	736 005 420	to	5 440	742 921 891	to	1 980
721 815 391	to	5 420	730 077 683	to	7 840	736 366 021	to	6 110	742 983 631	to	3 810
721 969 713	to	9 740	730 109 847	to	9 880	736 624 456	to	4 500	743 020 021	to	0 170
722 072 137	to	2 160	730 373 761	to	3 850	736 670 851	to	1 060	743 206 491	to	6 500
722 378 265	to	8 280	730 501 951	to	2 130	736 767 061	to	7 090	743 235 992	to	6 050
722 413 990	to	4 004	730 519 379	to	9 470	736 767 093	to	7 120	743 940 631	to	0 900
722 764 948	to	4 980	730 569 278	to	9 360	736 982 191	to	2 370	743 978 011	to	8 070
722 825 840	to	5 889	730 711 711	to	1 740	736 982 551	to	2 730	744 234 751	to	4 780
723 153 841	to	3 850	730 722 991	to	3 230	737 110 141	to	0 170	744 499 591	to	9 680
723 237 616	to	7 630	730 845 970	to	5 990	737 185 501	to	5 710	744 626 901	to	6 910
723 331 081	to	1 110	730 888 291	to	8 320	737 317 321	to	7 350	745 388 794	to	8 910
723 496 443	to	6 470	730 927 591	to	7 680	737 517 781	to	7 840	746 446 806	to	6 820
723 967 291	to	7 320	731 307 914	to	7 930	737 628 181	to	8 210	746 818 351	to	8 410
724 655 196	to	5 340	731 402 431	to	2 460	737 634 258	to	4 270	747 245 266	to	5 280
724 711 441	to	1 500	731 407 232	to	7 320	738 361 971	to	1 980	747 364 813	to	4 830
724 711 538	to	1 560	731 588 301	to	8 340	738 447 601	to	7 660	747 501 434	to	1 450
724 793 221	to	3 250	731 767 273	to	7 320	738 648 355	to	8 450	747 739 891	to	0 070
724 908 109	to	8 120	731 781 061	to	1 120	738 849 811	to	9 900	748 148 649	to	8 760
724 937 461	to	7 670	731 837 821	to	7 910	738 892 270	to	2 290	748 259 960	to	9 970
725 163 118	to	3 151	731 841 377	to	1 450	738 997 259	to	7 380	748 565 162	to	5 280
725 202 735	to	2 750	732 018 481	to	8 600	739 161 451	to	1 540	748 874 988	to	5 030
725 398 591	to	8 800	732 067 972	to	8 370	739 219 381	to	9 440	749 137 381	to	7 410
725 464 591	to	4 920	732 188 649	to	8 670	739 740 151	to	0 180	749 190 192	to	0 210
725 475 321	to	5 330	732 193 460	to	3 470	739 793 491	to	3 520	749 685 421	to	5 450
725 711 057	to	1 070	732 201 241	to	1 390	739 793 527	to	3 550	749 846 791	to	6 850
725 738 581	to	8 730	732 220 431	to	0 440	739 942 621	to	2 650	749 993 131	to	3 580
725 981 311	to	1 430	732 355 201	to	5 380	739 999 231	to	9 320	750 071 587	to	1 610
725 987 835	to	7 880	732 472 320	to	2 560	740 011 517	to	1 530	750 408 167	to	8 183
726 060 811	to	0 900	732 541 605	to	1 620	740 030 701	to	0 970	750 438 421	to	8 501
726 391 970	to	2 520	732 572 221	to	2 490	740 261 740	to	1 820	750 743 911	to	4 030
726 484 771	to	4 800	732 586 479	to	6 710	740 265 811	to	6 290	750 779 118	to	9 400
726 493 351	to	5 300	732 994 037	to	4 080	740 299 111	to	9 170	750 910 981	to	1 010
726 504 031	to	4 063	733 163 449	to	3 460	740 299 231	to	9 260	750 960 841	to	0 900
726 504 070	to	4 090	733 297 171	to	7 290	740 329 266	to	9 320	751 296 211	to	6 240
726 504 331	to	4 390	733 446 631	to	7 110	740 889 081	to	9 090	751 539 121	to	9 180
726 563 701	to	4 060	733 474 665	to	4 770	741 010 421	to	0 530	751 541 311	to	1 790
726 599 371	to	9 460	733 704 482	to	4 570	741 113 041	to	3 370	751 757 641	to	7 700
726 626 356	to	6 370	733 751 041	to	1 130	741 373 891	to	4 340	751 936 951	to	7 010
727 182 271	to	2 510	734 009 101	to	9 130	741 452 369	to	2 490	751 951 861	to	1 890
727 416 181	to	6 240	734 290 759	to	0 770	741 492 991	to	3 140	751 999 021	to	9 110
727 481 431	to	1 460	734 389 273	to	9 290	741 553 460	to	3 470	752 139 516	to	9 570
727 749 241	to	9 780	734 440 031	to	0 111	741 764 431	to	4 520	752 182 892	to	2 950

752 206 861	to	7 100	762 439 261	to	9 290	773 125 387	to	5 410	799 854 751	to	5 200
752 295 241	to	5 600	762 524 158	to	4 220	773 179 320	to	9 410	800 044 320	to	4 410
752 731 351	to	1 410	762 584 872	to	4 970	773 202 989	to	3 140	800 211 901	to	2 440
752 767 441	to	7 470	762 593 431	to	3 460	773 208 991	to	9 290	800 427 530	to	7 540
753 008 941	to	9 030	763 155 160	to	5 180	773 231 311	to	1 340	800 872 741	to	2 830
753 194 311	to	4 370	763 178 631	to	8 660	773 348 739	to	8 940	801 349 801	to	9 830
753 620 378	to	0 400	763 506 001	to	6 060	773 348 739	to	8 940	801 676 681	to	7 100
754 013 917	to	3 940	763 522 141	to	2 470	773 575 891	to	5 950	802 967 821	to	7 940
754 161 061	to	1 120	763 717 694	to	7 800	773 852 971	to	3 030	803 217 601	to	7 780
754 358 445	to	8 610	763 826 461	to	6 520	775 373 449	to	3 460	803 729 731	to	9 850
754 410 451	to	0 660	763 900 460	to	0 471	789 257 191	to	7 250	803 747 402	to	7 520
754 438 393	to	8 410	763 900 479	to	0 530	790 448 020	to	8 460	804 138 181	to	8 420
754 493 109	to	3 130	763 917 271	to	7 750	790 597 485	to	7 530	804 428 224	to	8 250
754 664 182	to	4 220	764 125 801	to	5 860	790 911 883	to	1 900	804 682 411	to	2 710
754 816 377	to	6 470	764 284 525	to	4 560	791 057 441	to	7 550	805 272 525	to	2 540
755 487 421	to	7 600	764 526 241	to	6 330	791 239 081	to	9 290	805 523 445	to	3 460
755 592 901	to	3 140	764 601 421	to	1 600	791 374 483	to	4 500	805 745 704	to	5 730
755 790 020	to	0 030	764 650 231	to	0 470	791 387 971	to	8 030	806 452 907	to	2 980
755 791 730	to	1 800	764 984 371	to	4 850	791 447 521	to	7 850	806 744 781	to	4 850
755 926 951	to	7 070	765 003 667	to	3 680	791 451 151	to	1 240	806 982 181	to	2 300
755 934 332	to	4 510	765 042 517	to	2 540	791 500 009	to	0 470	807 764 791	to	4 910
755 957 701	to	8 000	765 194 728	to	4 970	791 771 431	to	1 490	808 089 931	to	9 960
755 962 981	to	3 280	765 387 365	to	7 450	792 004 293	to	4 320	808 656 423	to	6 450
756 035 371	to	5 490	765 541 801	to	2 100	792 018 379	to	8 420	808 753 771	to	3 800
756 301 257	to	1 290	765 638 461	to	8 970	792 070 621	to	0 740	809 189 001	to	9 010
756 371 565	to	1 580	765 647 101	to	7 190	792 145 211	to	5 230	809 886 879	to	6 930
756 876 031	to	6 120	765 813 781	to	4 029	792 391 381	to	1 620	809 890 489	to	0 500
756 876 151	to	6 240	765 879 314	to	9 390	792 452 779	to	2 790	810 323 734	to	3 760
756 970 129	to	0 140	765 954 001	to	4 030	792 772 728	to	2 770	810 367 116	to	7 140
757 059 613	to	9 630	766 120 286	to	0 320	792 903 511	to	3 990	810 526 351	to	6 500
757 078 540	to	8 560	766 125 716	to	5 750	793 282 518	to	2 533	810 806 911	to	6 940
757 086 209	to	6 240	766 158 824	to	8 840	794 041 831	to	2 040	810 807 211	to	7 240
757 240 591	to	0 650	766 388 433	to	8 460	794 397 709	to	7 780	811 423 021	to	3 110
757 277 371	to	7 700	766 509 421	to	9 660	794 581 741	to	2 040	811 517 221	to	7 239
757 291 591	to	2 730	766 572 901	to	3 020	794 592 122	to	2 150	811 721 101	to	1 130
757 964 251	to	4 280	766 748 500	to	8 521	795 032 251	to	2 340	812 025 721	to	5 900
758 067 001	to	7 090	767 024 341	to	4 370	795 796 291	to	6 350	812 093 073	to	3 130
758 105 221	to	5 250	767 326 471	to	6 590	796 070 139	to	0 160	812 100 821	to	0 840
758 324 941	to	5 000	767 332 561	to	2 950	796 143 151	to	3 630	812 465 251	to	5 610
758 593 628	to	3 650	768 009 841	to	9 960	796 159 725	to	9 740	812 918 341	to	8 670
758 709 038	to	9 060	768 011 489	to	1 520	796 169 306	to	9 340	812 918 701	to	8 760
758 744 101	to	4 160	768 177 980	to	7 990	796 373 406	to	3 430	813 050 491	to	0 520
758 850 883	to	0 900	768 391 081	to	1 170	796 602 961	to	3 050	813 073 171	to	3 200
758 860 951	to	1 550	768 661 569	to	1 650	796 708 441	to	8 500	813 398 476	to	8 550
759 152 851	to	2 880	769 000 051	to	0 080	796 886 281	to	6 430	813 713 971	to	4 000
759 740 941	to	1 090	769 050 841	to	0 900	796 901 701	to	2 000	813 858 121	to	8 150
760 004 596	to	4 610	769 159 081	to	9 178	796 975 466	to	5 590	814 789 330	to	9 349
760 118 191	to	8 250	769 737 496	to	7 510	797 272 917	to	2 950	814 984 656	to	4 680
760 155 001	to	5 090	769 778 491	to	8 730	797 519 441	to	9 460	815 016 020	to	6 030
760 378 002	to	8 020	769 827 331	to	7 450	797 519 731	to	0 240	815 199 410	to	9 420
760 692 722	to	2 749	770 216 071	to	6 100	797 535 181	to	5 330	815 240 491	to	0 520
761 055 460	to	5 480	770 723 281	to	3 400	797 646 151	to	6 180	815 755 591	to	5 620
761 169 781	to	9 810	770 790 451	to	0 480	798 040 053	to	0 080	815 755 622	to	5 650
761 504 941	to	5 120	770 915 150	to	5 490	798 055 813	to	5 830	815 806 381	to	6 680
761 516 836	to	6 910	771 455 551	to	5 610	798 055 891	to	5 950	816 126 834	to	6 870
761 613 588	to	3 600	771 609 661	to	9 690	798 326 371	to	6 520	816 156 721	to	6 780
761 688 631	to	8 690	771 932 551	to	2 580	798 339 167	to	9 210	816 580 903	to	0 920
761 805 199	to	5 240	772 057 224	to	7 440	798 562 411	to	2 440	816 945 571	to	5 600
761 826 106	to	6 120	772 162 660	to	3 070	798 632 461	to	2 490	817 253 011	to	3 280
761 881 171	to	1 560	772 718 615	to	8 640	798 807 151	to	7 510	817 763 881	to	4 060
761 975 641	to	5 670	772 940 140	to	0 160	798 944 761	to	5 030	818 330 562	to	0 610
761 975 886	to	5 895	772 970 886	to	0 940	799 118 616	to	8 640	818 459 641	to	9 670
762 304 144	to	4 170	773 009 419	to	9 430	799 133 191	to	3 220	818 926 273	to	6 320
762 324 931	to	4 960	773 112 031	to	2 060	799 177 626	to	7 650	818 950 351	to	0 380

818 962 492	to	2 530	821 903 731	to	3 910	825 409 651	to	9 680	828 376 201	to	6 260
819 032 341	to	2 730	821 927 841	to	7 850	825 472 171	to	2 200	828 441 602	to	1 630
819 127 054	to	7 080	822 505 801	to	5 830	826 042 898	to	2 920	828 539 316	to	9 340
819 278 540	to	8 670	822 703 442	to	3 470	826 226 644	to	6 670	828 539 341	to	9 370
819 544 681	to	4 740	822 900 991	to	1 020	826 582 951	to	3 430	828 732 331	to	2 390
819 928 441	to	8 650	822 925 951	to	6 100	826 720 201	to	0 230	828 830 952	to	0 963
820 034 406	to	4 430	823 284 931	to	4 990	827 005 671	to	5 830	828 939 781	to	0 050
820 070 761	to	1 540	823 293 031	to	3 210	827 287 861	to	7 950	829 002 721	to	2 870
820 191 342	to	1 360	823 556 011	to	6 100	827 291 502	to	1 520	829 005 301	to	5 540
820 274 856	to	4 880	824 078 341	to	8 370	827 575 381	to	5 470	829 080 241	to	0 330
820 600 171	to	0 230	824 156 325	to	6 340	827 609 085	to	9 100	829 160 986	to	1 000
821 172 241	to	2 360	824 511 252	to	1 270	827 619 811	to	9 840	829 176 841	to	6 930
821 229 661	to	9 720	824 588 281	to	8 370	827 883 511	to	3 600			
821 229 743	to	9 780	825 140 397	to	0 460	828 160 441	to	0 530			

— Criminal Investigations Group, Postal Inspection Service, 2-25-10

Verifying U.S. Postal Service Money Orders

Follow these steps to cash a Postal Service™ money order:

1. Check that the amount does not exceed the legal limit: \$1,000 for domestic, and \$700 for international postal money orders.
2. Check that the proper security features are present:
 - When held to the light, a watermark of Benjamin Franklin is repeated from top to bottom on the left side.
 - When held to the light, a dark line (security thread) runs from top to bottom with the word “USPS” repeated.
 - There should be no discoloration around the dollar amounts, which might indicate the amounts were changes.

These appear in Postal Service Notice 299, *U.S. Postal Money Order Reference Card*, or online at <http://www.usps.com/missingmoneyorders/security.htm>.

3. If the money order seems suspicious, call the U.S. Postal Service Money Order Verification System at 866-459-7822.

Please provide this information to local banks and retailers, as they also receive Postal Service money orders for cashing.

— *Special Services,
Retail Products and Services, 2-25-10*

Counterfeit Canadian Money Order Forms

Do Not Cash

To be posted and used by retail window employees. As directed, destroy previous notices. Destroy all interim notices when the numbers listed appear in the *Postal Bulletin*.

671,819,086	686,794,382
676,612,640	686,794,426
677,891,039	686,794,427
678,282,493	686,794,431
678,916,031	687,262,502
679,552,215	687,262,503
679,694,334	687,262,525
679,751,983	687,262,526
679,800,207	687,287,578
681,130,536	687,287,581
681,844,376	687,287,582
683,594,542	694,063,898
684,683,610	694,063,899
686,619,878	694,063,980
686,619,886	701,321,725
686,619,887	

— *Criminal Investigations Group,
Postal Inspection Service, 2-25-10*

Toll-Free Number Available to Verify Canadian Money Orders

The Canada Post Corporation is now providing a toll-free number that cashing agents can call to verify the validity of Canadian Postal Money Orders. The number is 800-563-0444.

This toll-free number is printed on the back of the Canadian Postal Money Orders.

— *Criminal Investigations Group,
Postal Inspection Service, 2-25-10*

DID YOU KNOW?

**Americans have selected
USPS as the most trusted
government agency for
five years in a row.**

Other Information

Overseas Military/Diplomatic Mail

Mail addressed to military and diplomatic post offices overseas is subject to certain conditions or restrictions of mailing regarding content, preparation, and handling. The APO/FPO/DPO table below outlines these conditions by APO/FPO/DPO ZIP™ Codes through the use of footnoted mailing restrictions codes (see the [Restrictions](#) page following the table).

Acceptance clerks should use the table with the integrated retail terminal (IRT) or POS ONE terminal to deter-

mine which APO/FPO/DPO ZIP Codes are active and which conditions of mailing apply. **Acceptance clerks may contact the Military Postal Service Agency with any questions regarding APO/FPO/DPO ZIP Codes, toll free, at 800-810-6098, Monday–Friday, 0730–1600 ET.**

For Express Mail Military Service (EMMS) availability, all acceptance clerks must refer to the local hardcopy EMMS directory.

We have eliminated “Not Active” entries from the table below to save space and paper.

APO/FPO/DPO Table

APO/ FPO/ DPO	See Restrictions	APO/ FPO/ DPO	See Restrictions	APO/ FPO/ DPO	See Restrictions	APO/ FPO/ DPO	See Restrictions
09001	A1-B-B1-C-D-U	09079	A1-B-B1-C-D-U	09211	A1-B-B1-C-D-P-U	09315	A-A1-B-B1-C1-E2-F-H1-M-N-R-R1-V-Z1
09002	A1-B-B1-C-D-U	09080	A1-B-B1-C-D-F1-R-U	09213	A1-B-B1-C-D-F1-R-U	09316	A-A1-B-B1-C1-E2-F-H1-M-R-R1-U2-V-Z1
09003	A1-B-B1-C-D-P-U	09081	A1-B-B1-C-D-U	09214	A1-B-B1-C-D-F1-R-U	09317	A-A1-B-B1-C1-E2-F-H1-M-R-R1-V-Z1
09004	A1-B-B1-C-D-U	09086	A1-B-B1-C-D-U	09226	A1-B-B1-C-D-U	09318	A-A1-B-B1-C1-F-F1-M-N-V-V1-Z-Z1
09005	A1-B-B1-C-D-P-U	09088	A1-B-B1-C-D-U	09227	A1-B-B1-C-D-U	09320	A-A1-B-B1-C1-E2-F-H1-M-R-R1-V-Z1
09006	A1-B-B1-C-D-U	09090	A1-B-B1-C-D-P-U	09229	A1-B-B1-C-D-U	09321	A-A1-B-B1-C1-E2-F-H1-M-R-R1-V-Z1
09007	A1-B-B1-C-D-U	09092	A1-B-B1-C-D-U	09237	A1-B-B1-C-D-U-V	09322	A-A1-B-B1-C1-E2-F-H1-R-R1-U2-V-Z1
09008	A-A1-B-B1-C-D-P-U	09094	A1-B-B1-C-D-F-F1-P-R	09245	A1-B-B1-C-D-U	09324	A-A1-B-B1-C1-E2-F-H1-R-R1-U2-V-Z1
09009	A1-B-B1-C-D-F1-R-U	09095	A1-B-B1-C-D-U	09250	A1-B-B1-C-D-U	09327	A-A1-B-B1-C1-E2-F-H1-M-R-R1-V-Z1
09011	A1-B-B1-C-D-U	09096	A1-B-B1-C-D-U	09261	A1-B-B1-C-D-F1-R-U-V	09330	A-A1-B-B1-C1-E2-F-H1-M-R-R1-V-Z1
09012	A1-B-B1-C-D-F-F1-R-U	09099	A1-B-B1-C-D-U	09263	A1-B-B1-C-D-U	09331	A-A1-B-B1-C1-E2-F-H1-M-R-R1-V-Z1
09013	A1-B-B1-C-D-F-F1-U-Z1	09100	A1-B-B1-C-D-U	09264	A1-B-B1-C-D-U	09332	A-A1-B-B1-C1-E2-F-H1-M-R-R1-V-Z1
09014	A1-B-B1-C-D-U	09102	A1-B-B1-C-D-U	09265	A1-B-B1-C-D-F1-N-R-U	09333	A-A1-B-B1-C1-E2-F-H1-M-R-R1-V-Z1
09020	A1-B-B1-C-D-U	09103	A1-B-B1-C-D-U	09266	A1-B-B1-C-D-U	09334	A-A1-B-B1-C1-E2-F-H1-M-R-R1-V-Z1
09021	A1-B-B1-C-D-F1-R-U	09104	A1-B-B1-C-D-F1-R-U	09267	A1-B-B1-C-D-U	09336	A-A1-B-B1-C1-E2-F-H1-R-R1-U2-V-Z1
09028	A1-B-B1-C-D-U	09107	A1-B-B1-C-D-U	09301	A-A1-B-B1-C1-E2-F-H1-M-R-R1-V-Z1	09337	A-A1-B-B1-C1-E2-F-H1-M-R-R1-V-Z1
09033	A1-B-B1-C-D-U	09112	A1-B-B1-C-D-U	09302	A-A1-B-B1-C1-F-F1-M-N-V-V1-Z-Z1	09338	A-A1-B-B1-C1-E2-F-H1-M-R-R1-U2-V-Z1
09034	A1-B-B1-C-D-U	09114	A1-B-B1-C-D-U	09304	A-A1-B-B1-C1-E2-F-H1-M-R-V-Z1	09339	A-A1-B-B1-C1-E2-F-H1-M-N-R-R1-V-Z1
09038	A1-B-B1-C-D-U	09123	A1-B-B1-C-D-F1-R-U	09305	A-A1-B-B1-C1-E2-F-H1-M-R-R1-V-Z1	09340	A-A1-B-B1-C1-F-R-V
09042	A1-B-B1-C-D-U	09126	A1-B-B1-C-D-F-F1-P-R	09306	A-A1-B-B1-C1-E2-F-H1-R-R1-U2-V-Z1	09342	A-A1-B-B1-C1-E2-F-H1-M-R-R1-V-Z1
09046	A1-B-B1-C-D-U	09128	A1-B-B1-C-D-U	09307	A1-B-B1-N-V-Z1	09343	A-A1-B-B1-C1-F-M-N-V-Z1
09049	A1-B-B1-C-D-U	09131	A1-B-B1-C-D-U	09308	A-A1-B-B1-C1-E2-F-H1-M-R-V-Z1		
09051	A1-B-B1-C-D-U	09136	A1-B-B1-C-D-F1-R	09309	A-A1-B-B1-C1-E2-F-H1-M-R-R1-V-Z1		
09053	A1-B-B1-C-D-U	09137	A1-B-B1-C-D-F1-R-U	09310	A-A1-B-B1-C1-E2-F-H1-M-R-V-Z1		
09054	A1-B-B1-C-D-U	09138	A1-B-B1-C-D-U	09311	A-A1-B-B1-C1-E2-F-H1-M-R-V-Z1		
09055	A1-B-B1-C-D-F-R-R1-U-V	09139	A1-B-B1-C-D-U	09312	A-A1-B-B1-C1-E2-F-H1-R-R1-U2-V-Z1		
09056	A1-B-B1-C-D-U	09140	A1-B-B1-C-D-U	09314	A-A1-B-B1-C1-E2-F-H1-M-R-R1-V-Z1		
09058	A1-B-B1-C-D-U	09142	A1-B-B1-C-D-F-F1-P-R-U				
09059	A1-B-B1-C-D-U	09143	A1-B-B1-C-D-U				
09060	A1-B-B1-C-D-F1-R-U	09154	A1-B-B1-C-D-U				
09063	A1-B-B1-C-D-L-U	09166	CLOSE				
09067	A1-B-B1-C-D-U	09172	A1-B-B1-C-D-U				
09068	A1-B-B1-C-D-U-Z1	09173	A1-B-B1-C-D-U				
09069	A-A1-B-B1-C-D-U-V	09177	A1-B-B1-C-D-U				
09075	A1-B-B1-C-D-U	09180	A1-B-B1-C-D-U				
		09186	A1-B-B1-C-D-U				

APO/ FPO/ DPO	See Restrictions	APO/ FPO/ DPO	See Restrictions	APO/ FPO/ DPO	See Restrictions	APO/ FPO/ DPO	See Restrictions
09344	A-A1-B-B1-C1-E2-F-H1-M-R-R1-V-Z-Z1	09383	A-A1-B-B1-C1-E2-F-H1-M-R-R1-V-Z1	09566	A1-B-B1-F-F1-R-R1-V	09649	A1-B-B1-N-U-Z1
09348	A-A1-B-B1-C1-E2-F-H1-M-R-R1-U2-V-Z1	09387	A-A1-B-B1-C1-E2-F-H1-M-R-V	09567	A1-B-B1-V-V1	09701	A-A1-B-B1-B2-C-C1-D-F-M-N-R-R1-T-V-Z1
09350	A-A1-B-B1-C1-E2-F-H1-M-R-R1-V-Z1	09388	A-A1-B-B1-C1-E2-F-H1-M-R-V	09568	A1-B-B1-V	09702	A1-B-B1-C-C1-F1-M-R-R1-U
09351	A-A1-B-B1-C1-E2-F-H1-M-R-V-Z1	09389	A-A1-B-B1-C1-E2-F-H1-M-R-V	09569	A1-B-B1-F-F1-R-R1-V	09703	A1-B-B1-C-F1-U
09353	A-A1-B-B1-C1-E2-F-H1-M-R-R1-V-Z1	09391	A-A1-B-B1-C1-E2-F-H1-M-R-R1-V-Z1	09570	A1-B-B1-F-F1-R-R1-V	09704	A1-B-B1-C-V
09354	A-A1-B-B1-C1-E2-F-H1-M-R-R1-V-Z1	09393	A-A1-B-B1-C1-E2-F-H1-M-R-R1-V-Z1	09573	A1-B-B1-F-F1-R-R1-V	09705	A1-B-B1-U
09355	A-A1-B-B1-C1-E2-F-H1-M-R-R1-V-Z1	09396	A-A1-B-B1-C1-E2-F-H1-M-R-R1-U2-V-Z1	09574	A1-B-B1-F-F1-R-R1-V	09706	A1-B-B1-C-N-R-U-V
09356	A-A1-B-B1-C1-E2-F-H1-M-R-R1-V-Z1	09402	A-A1-B-B1-C-F-R-R1-U3-W	09575	A1-B-B1-F-F1-R-R1-V-V1	09707	A1-B-B1-C-N-R-U-V
09357	A-A1-B-B1-C1-E2-F-H1-M-R-R1-V-Z1	09421	A1-B-B1-C-C1-R-U	09576	A1-B-B1-F-F1-R-R1-V	09708	A1-B-B1
09358	A-A1-B-B1-C1-E2-F-F1-H1-M-N-R-R1-T-V-W-Z1	09447	A1-B-B1-C-C1-R-U-V	09577	A1-B-B1-V	09709	A1-B-B1-F1
09359	A-A1-B-B1-C1-E2-F-H1-M-R-R1-V-Z1	09454	A1-B-B1-C-C1-R-U-V	09578	A1-B-B1-F-F1-R-R1-V	09710	A1-B-B1-C-C1-F1-M-N-R-R1-U
09360	A1-B-B1-V	09456	A1-B-B1-C-C1-H-H1-M-R-Z1	09579	A1-B-B1-F-F1-R-R1-V	09711	A1-B-B1-F1-N-R-Z1
09361	A-A1-B-B1-C1-E2-F-H1-M-R-R1-U2-V-Z1	09459	A1-B-B1-C-C1-R-U	09581	A1-B-B1-F-F1-R-R1-V	09713	A1-B-B1-C-F1-R
09362	A-A1-B-B1-C1-E2-F-H1-R-V-Z1	09461	A1-B-B1-C-C1-F-F1-P-R-U	09582	A1-B-B1-F-F1-R-R1-V	09714	A1-B-B1-C-C1-F1-M-R-R1-U
09363	A-A1-B-B1-C1-E2-F-H1-M-R-R1-V-Z1	09463	A1-B-B1-C-C1-R-U	09586	A1-B-B1-F-F1-R-R1-V	09715	A1-B-B1-F1-R
09364	A-A1-B-B1-C1-E2-F-H1-M-N-R-R1-V-Z1	09464	A1-B-B1-C-C1-R-U	09587	A1-B-B1-F-F1-R-R1-V	09716	A1-B-B1-C-D-N-R-U-V
09365	A-A1-B-B1-C1-E2-F-H1-M-R-R1-V-Z1	09468	A1-B-B1-C-C1-R-U	09588	A1-B-B1-V-V1	09717	A-A1-B-B1-M-R-V-W
09366	A-A1-B-B1-C1-E2-F-H1-M-R-R1-V-Z1	09469	A1-B-B1-C-C1-R-U	09589	A1-B-B1-V-V1	09718	A1-B-B1-F-I-N-R-U-V
09367	A-A1-B-B1-C1-E2-F-H1-M-R-V	09470	A1-B-B1-C-C1-R-U	09590	A1-B-B1-V	09719	A1-B-B1-C-F1-R-V
09369	A-A1-B-B1-C1-E2-F-H1-M-R-R1-V	09494	A1-B-B1-C-C1-R-U	09591	A1-B-B1-F-F1-R-R1-V-V1	09720	A1-B-B1-R-U-V
09371	A-A1-B-B1-C1-E2-F-H1-M-R-V	09496	A1-B-B1-C-C1-R-U-V	09593	A1-B-B1-V	09721	A1-B-B1-N-R-U-V-Z1
09372	A-A1-B-B1-C1-E2-F-H1-M-R-R1-V	09498	A1-B-B1-C-C1-F-F1-F2-N-R-R1-T-U-V-Z1	09594	A1-B-B1-V-V1	09722	A-A1-B-B1-F-N-V-Z-Z1
09373	A-A1-B-B1-C1-E2-F-H1-M-R-R1-V	09501	A1-B-B1-V-V1	09596	A1-B-B1-V	09723	A1-B-B1-N-R-U-V-Z1
09374	A-A1-B-B1-C1-E2-F-H1-M-R-V-Z1	09502	A1-B-B1-V	09599	A1-B-B1-F-F1-R-R1-V	09724	A1-B-B1-C-C1-F1-M-R-R1-U
09375	A-A1-B-B1-C1-E2-F-H1-M-R-V-Z1	09503	A1-B-B1-V	09601	A1-B-B1-C-F-F1-R-U-V	09726	A1-B-B1-N-R-U-V
09376	A-A1-B-B1-C1-E2-F-H1-M-R-R1-V	09504	A1-B-B1-V-V1	09602	A1-B-B1-C-F-F1-N-R-U	09727	A-A1-B-B1-B2-C-C1-D-F-I-M-N-Q-R-R1-T-V-Z-Z1
09377	A-A1-B-B1-C1-E2-F-H1-M-R-R1-V	09505	A1-B-B1-V-V1	09603	A1-B-B1-C-F-F1-R-U-V	09729	A1-B-B1-C-F-N-R-R1-U-V
09378	A-A1-B-B1-C1-E2-F-H1-M-R-R1-U2-V-Z1	09506	A1-B-B1-V-V1	09604	A1-B-B1-C-F-F1-P-R-U-V	09730	A-A1-B-B1-B2-C-C1-F-M-N-R-R1-T-V-Z1
09380	A-A1-B-B1-C1-E2-F-H1-M-R-R1-V-Z1	09507	A1-B-B1-V-V1	09605	A1-B-B1-C-D-U-V	09731	A-A1-B-B1-B2-C-C1-F-M-N-R-R1-T-V-Z1
09381	A-A1-B-B1-C1-E2-F-H1-M-R-R1-U2-V-Z1	09508	A1-B-B1-V	09606	A1-B-B1-C-D-U-V	09732	A1-B-B1-N-V-Z1
09382	A-A1-B-B1-C1-E2-F-H1-M-R-R1-V-Z1	09509	A1-B-B1-V	09607	A-A1-B-B1-C-F-F1-M-R-R1-U-U3-V-W	09733	A1-B-B1-V
		09511	A1-B-B1-V	09608	A1-B-B1-C-F-N-U-V	09734	A-A1-B-B1-B2-C-C1-D-F-I-M-N-Q-R-R1-T-V-Z-Z1
		09513	A1-B-B1-F-F1-R-R1-V	09609	A1-B-B1-C-F-U	09735	A1-B-B1-N-V-Z1
		09517	A1-B-B1-F-F1-R-R1-V	09610	A1-B-B1-C-F-U	09736	A-A1-B-B1-B2-C-C1-D-F-M-N-R-R1-T-V-Z1
		09524	A1-B-B1-F-F1-R-R1-V	09613	A1-B-B1-C-F-U-V	09737	A-A1-B-B1-B2-C-C1-D-F-I-M-N-Q-R-R1-T-V-Z-Z1
		09532	A1-B-B1-F-F1-R-R1-V	09617	A1-B-B1-C-F-U	09738	A-A1-B-B1-B2-C-C1-D-F-I-M-N-Q-R-R1-T-V-Z-Z1
		09534	A1-B-B1-F-F1-R-R1-V	09618	A1-B-B1-C-F-U	09739	A-A1-B-B1-B2-C-C1-D-F-I-M-N-Q-R-R1-T-V-Z-Z1
		09543	A1-B-B1-F-F1-R-R1-V	09620	A1-B-B1-C-F-U	09741	A-A1-B-B1-C1-E2-F-F1-H1-M-N-R-R1-T-V-W-Y-Z1
		09545	A1-B-B1-V	09621	A1-B-B1-C-F-U		
		09549	A1-B-B1-V	09622	A1-B-B1-C-F-U		
		09554	A1-B-B1-F-F1-R-R1-V	09623	A1-B-B1-C-F-U		
		09556	A1-B-B1-V	09624	A1-B-B1-C-F-U		
		09557	A1-B-B1-F-F1-R-R1-V	09625	A1-B-B1-C-F-U		
		09564	A1-B-B1-F-F1-R-R1-V	09626	A1-B-B1-C-F-U		
		09565	A1-B-B1-F-F1-R-R1-V	09627	A1-B-B1-C-F-U		
				09630	A1-B-B1-C-F-U-V		
				09631	A1-B-B1-C-F-U		
				09636	A1-B-B1-C-F-U		
				09642	A1-B-B1-N-R-U		
				09643	A1-B-B1-R-U		
				09645	A1-B-B1-C-F-F1-U		
				09647	A1-B-B1-N-R-U		
				09648	A1-B-B1-N-U-V-Z1		

APO/ FPO/ DPO	See Restrictions	APO/ FPO/ DPO	See Restrictions	APO/ FPO/ DPO	See Restrictions	APO/ FPO/ DPO	See Restrictions
09742	A-A1-B-B1-B2-F-F1-I-M-N-Q-R-T-V-Z-Z1	09815	A-A1-B-B1-C1-E2-F-H1-M-R-R1-V-Z1	34002	A1-B-B1-L-N-U-Z1	34082	A-A1-B-B1-F-F1-N-R-R1-S-V
09743	A-A1-B-B1-F-N-V-Z-Z1	09816	A-A1-B-B1-B2-C1-E2-E3-F-I-L-N-Q-R-R1-T-V-Z-Z1	34004	A-B-B1-L-N-U-V	34083	A-A1-B-B1-F-F1-N-R-R1-S-V
09744	A-B-B1-B2-C-C1-F-M-N-R-R1-T-V-Z1	09817	A-A1-B-B1-B2-C1-E2-E3-F-F1-H-H1-M-N-R-R1-T-V-Z1	34006	A-A1-B-B1-C1-F1-N-V-Z1	34084	A-A1-B-B1-F-F1-N-R-R1-S-V
09745	A-A1-B-B1-B2-F-F1-M-N-R-R1-V-Z1	09819	A-A1-B-B1-P-R-V-Z1	34007	A-A1-B-B1-C1-F-F1-M-N-R-R1-V-Z1	34085	A-A1-B-B1-F-F1-N-R-R1-S-V
09746	A-A1-B-B1-C-E1-N-V-Z-Z1	09820	A-A1-B-B1-B2-F-H-H1-I-L-M-N-Q-R-R1-T-V-Z-Z1	34008	A-A1-B-B1-C1-F1-V-Z1	34086	A-A1-B-B1-F-F1-N-R-R1-S-V
09747	A1-B-B1-F-J-N-U-V-Z1	09821	A-A1-B-B1-F-R-V-Z1	34020	A1-B-B1-L-M-N-U-V-Z1	34087	A-A1-B-B1-F-F1-N-R-R1-S-V
09748	A-A1-B-B1-B2-C-C1-D-F-I-M-N-Q-R-R1-T-V-Z-Z1	09822	A-A1-B-B1-F-R-V-Z1	34021	A1-B-L-M-N-U-V-Z1	34088	A-A1-B-B1-F-F1-N-R-R1-S-V
09749	A-A1-B-B1-F-N-V-Z1	09823	A-A1-B-B1-F-R-V-Z1	34022	A1-B-B1-D-F-L-M-N-U-V-Z1	34089	A-A1-B-B1-F-F1-N-R-R1-S-V
09750	A-B-B1-B2-C-C1-F-M-N-Q-T-V-Z-Z1	09824	A-A1-B-B1-F-R-V-Z1	34023	A1-B-B1-L-M-N-U-V-Z1	34090	A1-B-B1-F-F1-R-R1-V
09751	A1-B-B1-C-D-U	09825	A-A1-B-B1-C-C1-D-F-M-N-R-R1-T-V-Z1	34024	A1-B-B1-L-M-N-U-V-Z1	34091	A1-B-B1-F-F1-R-R1-V
09752	A1-B-B1-C-D-U	09827	A-A1-B-B1-F-F1-N-R-V-Z1	34025	A1-B-B1-F-L-M-N-U-V-Z1	34092	A1-B-B1-F-F1-R-R1-V
09754	A1-B-B1-U	09828	A1-B-B1-N-V-Z1	34030	A1-B-B1-L-M-N-U-V-Z1	34093	A1-B-B1-F-F1-R-R1-V
09755	A1-B-B1-U	09830	A1-B-B1-C-N-R-V-Z1	34031	A1-B-B1-L-M-N-U-V-Z1	34095	A1-B-B1-V
09756	A1-B-B1-U	09831	A1-B-B1-F-N-U-V-Z1	34032	A1-B-B1-L-M-N-U-V-Z1	34098	A1-B-B1-V
09757	A1-B-B1-U	09832	A-A1-B-B1-U1-V-Z1	34033	A1-B-B1-C-F-L-M-N-V-Z1	34099	A1-B-B1-V-V1
09758	A-A1-B-B1-B2-C-C1-F-M-N-R-R1-T-V-Z1	09833	A1-B-B1-U1-V-Z1	34034	A1-B-B1-L-M-N-V-Z1	96201	A-A1-B-B1
09759	A-A1-B-B1-B2-C-C1-E2-F-F1-F2-N-R-R1-T-V-Z1	09834	A1-B-B1-F-F1-R-R1-V-Z1	34035	A1-B-B1-H-L-M-N-U-V-Z1	96202	A-A1-B-B1-U
09762	A-A1-B-B1-B2-E3-F-F1-I-N-Q-R-R1-T-V-Z-Z1	09835	A-A1-B-B1-V-Z1	34036	A1-B-B1-L-M-N-U-V-Z1	96203	A-A1-B-B1
09769	A-A1-B-B1-B2-C-C1-D-F-I-M-N-Q-R-R1-T-V-Z-Z1	09836	A-A1-B-B1-C-F-M-V-Z1	34037	A1-B-B1-C-F-H-I-L-M-N-V-Z-Z1	96204	A-A1-B-B1
09777	A-A1-B-B1-C-E1-N-R	09837	A1-B-B1-V-Z1	34038	A1-B-B1-L-M-N-U-V-Z1	96205	A-A1-B-B1-U
09780	A-A1-B-B1-F-N-R-V	09838	A1-B-B1-V-Z1	34039	A1-B-B1-L-M-N-U-V-Z1	96206	A-A1-B-B1-U
09798	A1-B-B1-C-D-L-U-V	09839	A-A1-B-B1-U-V-Z1	34041	A1-B-B1-L-M-N-U-V-Z1	96207	A-A1-B-B1-V
09801	A-A1-B-B1-C1-E2-F-H1-M-N-R-R1-V-Z1	09840	A-A1-B-B1-V-Z1	34042	A1-B-B1-D-F-M-N-V-Z1	96209	A-A1-B-B1-N-U-V
09803	A1-B-B1-E2-E3-F-H1-N-R-R1-U1-V-Z1	09841	A-A1-B-B1-N-R-U-Z1	34050	A1-B-B1-V	96213	A-A1-B-B1-U
09804	A-A1-B-B1-F-F1-N-R-V-Z1	09842	A-A1-B-B1-N-R-Z1	34055	A1-B-B1-L-M-N-U-V-Z1	96214	A-A1-B-B1-U
09805	A-B-B1-F-F1-R-R1-V-Z1	09843	A-A1-B-B1-N-V	34058	A1-B-B1-F-F1-R-R1-V-Z1	96218	A-A1-B-B1-U
09806	A-A1-B-B1-C1-E2-F-H1-M-N-R-R1-V-Z1	09844	A-A1-B-B1-C-F-N-U-V-Z1	34060	A-A1-B-B1-F-F1-N-R-R1-S-V	96224	A-A1-B-B1-U
09807	A-A1-B-B1-C1-E2-F-H1-M-N-R-R1-V-Z1	09852	A1-B-B1-E2-E3-F-H1-N-R-R1-U1-V-Z1	34061	A-A1-B-B1-F-F1-N-R-R1-S-V	96257	A-A1-B-B1-U
09808	A-A1-B-B1-C1-E2-F-H1-M-R-V	09853	A1-B-B1-E2-F-H1-R-R1-U2-V-Z1	34062	A-A1-B-B1-F-F1-N-R-R1-S-V	96258	A-A1-B-B1-U
09809	A1-B-B1-V-Z1	09855	A-A1-B-B1-C1-E2-F-H1-R-R1-U2-V-Z1	34063	A-A1-B-B1-F-F1-N-R-R1-S-V	96260	A-A1-B-B1-U
09810	A-A1-B-B1-F-F1-N-R-V-Z1	09858	A1-B-B1-E2-E3-F-H1-N-R-R1-U1-V-Z1	34064	A-A1-B-B1-F-F1-N-R-R1-S-V	96262	A-A1-B-B1-U-V
09811	A1-B-B1-E2-E3-F-H1-N-R-R1-U1-V-Z1	09859	A1-B-B1-C1-F-F1-H1-N-R-R1-V-Z1	34065	A-A1-B-B1-F-F1-N-R-R1-S-V	96264	A-A1-B-B1-U
09812	A1-B-B1-E2-E3-F-F1-I-N-R-U-V-Z-Z1	09865	A-A1-B-B1-V-Z1	34066	A-A1-B-B1-F-F1-N-R-R1-S-V	96266	A-A1-B-B1-U
09813	A-A1-B-B1-B2-C-C1-E2-E3-F-F1-F2-N-R-R1-T-V-Z1	09866	A-A1-B-B1-U-V-Z1	34067	A-A1-B-B1-F-F1-N-R-R1-S-V	96267	A-A1-B-B1-U-V
09814	A1-B-B1-E2-E3-F-F1-I-N-R-U-V-Z-Z1	09870	A-A1-B-B1-C1-E2-F-H1-M-R-R1-U-V-Z1	34068	A-A1-B-B1-F-F1-N-R-R1-S-V	96271	A-A1-B-B1-U
		09880	A-A1-B-B1-C1-E2-F-H1-R-R1-U-V-Z1	34069	A-A1-B-B1-F-F1-N-R-R1-S-V	96275	A-A1-B-B1-V
		09890	A1-B-B1-E2-F-H1-N-R-R1-U2-V-Z1	34078	A1-B-B1-F1-N-V-Z1	96276	A-A1-B-B1
		09892	A-A1-B-B1-E2-F-N-R-R1-V-Z1	34080	A-A1-B-B1-F-F1-N-R-R1-S-V	96278	A-A1-B-B1-U
		09898	A1-B-B1-E2-F-H1-N-R-R1-U2-V-Z1	34081	A-A1-B-B1-F-F1-N-R-R1-S-V	96283	A-A1-B-B1-U
						96284	A-A1-B-B1-U-V
						96297	A-A1-B-B1-U
						96303	A1-B-B1-H-M-N-V-W
						96306	A1-B-B1-F-F1-F2-H-M-W
						96309	A1-B-B1-M-V-W
						96310	A1-B-B1-M-W
						96311	CLOSE
						96319	A1-B-B1-M-W

APO/ FPO/ DPO	See Restrictions	APO/ FPO/ DPO	See Restrictions	APO/ FPO/ DPO	See Restrictions	APO/ FPO/ DPO	See Restrictions
96321	A1-B-B1-F-F1-F2-H-M-W	96384	A1-B-B1-M-W	96546	A1-B-B1-F-U3	96622	A1-B-B1-F-F1-R-R1-V
96322	A1-B-B1-F-F1-F2-H-M-W	96386	A1-B-B1-M-W	96548	A-A1-B-B1-H-M-U	96624	A1-B-B1-F-F1-R-R1-V
96323	A1-B-B1-M-V-W	96387	A1-B-B1-M-W	96549	A-A1-B-B1-H-M-U	96628	A1-B-B1-F-F1-R-R1-V
96326	A1-B-B1-M-W	96388	A1-B-B1-M-W	96550	A-A1-B-B1-H-M-U-V	96643	A1-B-B1-F-F1-R-R1-V
96328	A1-B-B1-M-W	96401	A1-B-B1-F-N-V-Z1	96551	A-A1-B-B1-H-M-U	96650	A1-B-B1-F-F1-R-R1-V
96330	A1-B-B1-M-W	96426	A-A1-B-B1-C1-E2-F-H1-M-R-V	96552	A1-B-B1	96657	A1-B-B1-F-F1-R-R1-V
96336	A1-B-B1-M-V-W	96427	A-A1-B-B1-C1-E2-F-H1-M-R-R1-V	96553	A-A1-B-B1-F-F1-H-M-U	96660	A1-B-B1-F-F1-R-R1-V
96337	A1-B-B1-M-W	96447	A1-B-B1-F-N-U3-V-V1	96554	A-A1-B-B1-H-M-U	96661	A1-B-B1-F-F1-R-R1-V
96338	A1-B-B1-M-W	96501	A-A1-B-B1-N-V	96555	A1-B-B1-F-M-V	96662	A1-B-B1-F-F1-R-R1-V
96339	A1-B-B1-M-V-W	96502	A1-B-F-N-U3-V	96557	A1-B-B1-F-M-V	96663	A1-B-B1-F-F1-R-R1-V
96343	A1-B-B1-M-W	96503	A1-B-B1-F-N-U3-V	96562	A-A1-B-B1-B2-C-C1-D-E2-E3-F-F1-H-H1-I-M-N-R-R1-T-V-Z-Z1	96664	A1-B-B1-V-V1
96346	A1-B-B1-F-F1-F2-H-M-V-W	96507	A-A1-B-B1-F-V	96595	A1-B-B1-V	96665	A1-B-B1-V
96347	A1-B-B1-F-F1-F2-H-M-W	96510	A1-B-B1-I-N-V	96598	A1-B-B1-N-V	96666	A1-B-B1-V-V1
96348	A1-B-B1-F-F1-F2-H-M-W	96511	A1-B-B1-I-N-V	96599	A1-B-B1-N-V	96667	A1-B-B1-F-F1-R-R1-V
96349	A1-B-B1-F-F1-F2-H-M-W	96515	A1-B-B1-D-F-U3	96601	A1-B-B1-V-V1	96668	A1-B-B1-F-F1-R-R1-V-V1
96350	A1-B-B1-F-F1-F2-H-M-W	96516	A1-B-B1-D-F	96602	A1-B-B1-V	96669	A1-B-B1-F-F1-R-R1-V
96351	A1-B-B1-F-F1-F2-H-M-W	96517	A1-B-B1-F-U3-V	96603	A1-B-B1-V	96670	A1-B-B1-V-V1
96362	A1-B-B1-F-F1-F2-M-W	96518	A1-B-B1-V	96604	A1-B-B1-V	96671	A1-B-B1-F-F1-R-R1-V
96365	A1-B-B1-M-V-W	96520	A1-B-B1-F-N-U3-V	96605	A1-B-B1-V-V1	96672	A1-B-B1-F-F1-R-R1-V
96366	A1-B-B1-L-M-W	96521	A1-B-B1-F-N-U3	96606	A1-B-B1-V	96673	A1-B-B1-V-V1
96367	A1-B-B1-L-M-W	96522	A1-B-B1-F-N-U	96607	A1-B-B1-V	96674	A1-B-B1-F-F1-R-R1-V
96368	A1-B-B1-M-W	96530	A-A1-B-B1-F-F1-H-H1-M-N-U-V	96608	A1-B-B1-V	96675	A1-B-B1-F-F1-R-R1-V
96370	A1-B-B1-F-F1-F2-H-M-W	96531	A-A1-B-B1-F-F1-H-M-N-U-V	96609	A1-B-B1-V	96676	A1-B-B1-F-F1-R-R1-V
96372	A1-B-B1-M-W	96532	A-A1-B-B1-F-F1-H-M-N-U-V	96610	A1-B-B1-V	96677	A1-B-B1-F-F1-R-R1-V
96373	A1-B-B1-M-W	96534	A-A1-B-B1-F	96611	A1-B-B1-V	96678	A1-B-B1-F-F1-R-R1-V
96374	A1-B-B1-M-W	96535	A-A1-B-B1-F-V	96612	A1-B-B1-F-F1-R-R1-V	96679	A1-B-B1-F-F1-R-R1-V
96375	A1-B-B1-M-W	96537	A1-B-B1-V	96613	A-A1-B-B1-C1-E2-F-H1-I-M-R-R1-U2-V-Z-Z1	96681	A1-B-B1-V-V1
96376	A1-B-B1-M-W	96538	A1-B-B1-V	96614	A-A1-B-B1-C1-E2-F-H1-I-M-R-R1-U2-V-Z-Z1	96682	A1-B-B1-V-V1
96377	A1-B-B1-M-W	96540	A1-B-B1-V	96615	A1-B-B1-F-F1-R-R1-V	96683	A1-B-B1-V-V1
96378	A1-B-B1-M-W	96541	A1-B-B1-V	96616	A1-B-B1-F-F1-R-R1-V	96686	A1-B-B1-V-V1
96379	A1-B-B1-M-W	96542	A1-B-B1-V	96617	A1-B-B1-F-F1-R-R1-V	96687	A1-B-B1-V-V1
		96543	A1-B-B1-P-V	96619	A1-B-B1-V	96698	A1-B-B1-V-V1
		96544	A1-B-B1-F-N-U3-V	96620	A1-B-B1-F-F1-R-R1-V		
				96621	A1-B-B1-V		

RESTRICTIONS

LEGEND

PS Form 2976, *Customs — CN 22 (Old C 1) and Sender's Declaration* (green label)

PS Form 2976-A, *Customs Declaration and Dispatch Note*

AAFES	= Army and Air Force Exchange Service
APO	= Army/Air Force Post Office
Box R	= Retired military personnel
DMM	= <i>Domestic Mail Manual</i>
DPO	= Diplomatic Post Office
FPO	= Fleet Post Office
MOM	= Military Ordinary Mail
MPO	= Military Post Office
PAL	= Parcel Airlift
PSC	= Postal Service Center
SAM	= Space Available Mail
USDA	= United States Department of Agriculture

Note: Mail order catalogs are prohibited as SAM or PAL mail.

A. Securities, currency, or precious metals in their raw, unmanufactured state are prohibited. Official shipments are exempt from this restriction.

A1. Mail addressed to "Any Servicemember," or similar wording such as "Any Soldier," "Sailor," "Airman," or "Marine"; "Military Mail"; etc., is prohibited. Mail must be addressed to an individual or job title such as "Commander," "Commanding Officer," etc.

B. PS Form 2976-A is required for all mail weighing 16 ounces or more, with exceptions noted below. In addition, mailers must properly complete required customs documentation when mailing any potentially dutiable mail addressed to an APO, FPO, or DPO regardless of weight. The following are exceptions to the requirement for customs documentation on nondutiable mail that weighs 16 ounces or more:

- Known mailers are exempt from providing customs documentation on non-dutiable letters, and printed matter weighing 16 ounces or more. (A known mailer is anyone who legally applies a permit imprint to a mailpiece. Mail with meter postage is not considered to be from a known mailer.)
- All federal, state, and local government agencies are exempt from providing customs documentation on mail addressed to an APO, FPO, or DPO except for those APOs/FPO/DPOs to which restriction B2 applies.
- Prepaid mail from military contractors is exempt, providing the mailpiece is endorsed "Contents for Official Use — Exempt from Customs Requirements."

B1. PS Form 2976 or 2976-A is required. Articles are liable for customs duty and/or purchase tax unless they are bona fide gifts intended for use by military personnel or their dependents. When the contents of a parcel meet these requirements, the mailer must endorse the customs form, "Certified to be a bona fide gift, personal effects, or items for personal use of military personnel and dependents," under the heading, Description of Contents. **Exceptions:** All other exceptions listed in restriction B above are applicable to this restriction.

B2. All federal, state, and local government agencies must complete customs documentation when sending mail addressed to or from this APO, FPO, or DPO weighing 16 ounces or more.

C. Cigarettes and other tobacco products are prohibited.

C1. Obscene articles, prints, paintings, cards, films, videotapes, etc., and horror comics and matrices are prohibited.

D. Coffee is prohibited.

E1. Medicines or vaccines not conforming to French laws are prohibited.

E2. Any matter depicting nude or seminude persons, pornographic or sexual items, or nonauthorized political materials is prohibited. Although religious materials contrary to the Islamic faith are prohibited in bulk quantities, items for the personal use of the addressee are permissible.

E3. Radio transceivers, cordless telephones, global positioning systems, scanners, base stations, and handheld transmitters are prohibited.

F. Firearms of any type are prohibited in all classes of mail. See definitions of firearms in DMM 601.11.1.1c. This restriction does not apply to firearms mailed to or by official U.S. government agencies. The restriction for mail to this APO/FPO/DPO ZIP Code does not apply to firearms mailed from this APO/FPO/DPO ZIP Code, provided ATF and USPS regulations are met. Antique firearms are a separate category defined in DMM 601.11.2 and ATF regulations; they do not require an ATF form.

F1. Privately owned weapons addressed to an individual are prohibited in any class of mail.

F2. Importation of firearms is restricted to one shotgun and one single shot.22 caliber rifle per individual.

G. Only letters, flats, and Periodicals are authorized. Parcels of any class are prohibited.

H. Meats, including preserved meats, whether hermetically sealed or not, are prohibited.

H1. Pork or pork by-products are prohibited.

I. Mail of all classes must fit in a mail sack. Mail may not exceed the following dimensions:

- Maximum length 20 inches.
- Maximum width 12 inches.
- Maximum height 12 inches.

The maximum length and girth combined may not exceed 68 inches.

This restriction does not apply to registered mail and official government mail marked MOM.

I1. This restriction does not apply to registered mail.

I2. This restriction does not apply to official government mail marked MOM.

J. Parcels may not exceed 108 inches in length and girth combined.

K. Mail that includes in the address the words, "Dependent Mail Section," may consist only of letter mail, newspapers, magazines, and books. No parcel of any class containing any other matter may be mailed to the Dependent Mail section. This restriction does not apply if the address does not include the words "Dependent Mail Section."

L. All official mail is prohibited.

M. Fruits, vegetables, animals, and living plants are prohibited.

N. Registered mail is prohibited.

O. Delivery status information for Extra Services is not available on USPS.com.

P. APO is used for the receipt and dispatch of official mail only.

Q. Mail may not exceed 66 pounds, and size is limited to 42 inches maximum length and 72 inches maximum length and girth combined.

R. All alcoholic beverages, including those mailable under DMM 601.11.7, are prohibited.

R1. Materials used in the production of alcoholic beverages (i.e., distilling material, hops, malts, yeast, etc.) are prohibited.

S. Mail of all classes must fit in a mail sack. Mail may not exceed the following dimensions and weight:

- Maximum length 12 inches.
- Maximum width 12 inches.
- Maximum height 5 1/2 inches.
- Maximum weight 25 pounds.

The maximum length and girth combined may not exceed 47 inches.

T. Mailings of case lots of food and supplemental household shipments must be approved by the sender's parent agency prior to mailing.

U. Parcels must weigh less than 16 ounces when addressed to Box R. This restriction does not apply to mail endorsed "Free Matter for the Blind or Handicapped."

U1. Mail is limited to First-Class Mail weighing 13 ounces or less when addressed to Box R. This restriction does not apply to mail endorsed "Free Matter for the Blind or Handicapped." Videotapes are prohibited when addressed to Box R, regardless of weight.

U2. Mail is limited to First-Class Mail letters only when addressed to Box R.

U3. Mail is limited to First-Class Mail correspondence (including voice and video cassettes), newspapers, magazines, photographs, not exceeding 16 ounces, when addressed to Box R.

V. Express Mail Military Service (EMMS) not available from any origin.

V1. Delivery Confirmation service is not available.

W. Meat products, such as dried beef, salami, and sausage, may be mailed, provided they remain in their original, hermetically sealed packages and bear USDA certification. Other meats, bones, skin, hair, feathers, horns or hoofs of hoofed animals, wool samples, tobacco leaves, including chewing and pipe tobacco, snuff, cigars, and cigarettes, or obscene material, including obscene drawings, photographs, films, and carvings, are prohibited. Exception: 200 grams of tobacco per parcel are permitted duty free.

X. Personal mail is limited to First-Class Mail items (to include audio cassettes and voice tapes) weighing 13 ounces or less. This limitation does not apply to official mail.

Y. Mail is limited to First-Class and Priority Mail items only. All Periodicals, Standard Mail items, and Package Services items (including SAM and PAL) are not authorized. This restriction also applies to official mail.

Z. No outside pieces (OSPs).

Z1. The following restriction is applicable only to International Service Centers (ISC)/Exchange Offices. An Anti-Pilferage Seal (Item No O817E or O818A) is required on all pouches and sacks.

Thrift Savings Plan Fact Sheet

Returns were updated February 1, 2010.

ANNUAL RETURNS	G Fund	F Fund	LBA Bond Index	C Fund	S&P 500 Stock Index	S * Fund	Wilshire 4500 Stock Index	I * Fund	EAFE Stock Index
1994	7.22	-2.96	-2.92	1.33	1.32	—	-2.66	—	7.75
1995	7.03	18.31	18.47	37.41	37.58	—	33.48	—	11.27
1996	6.76	3.66	3.63	22.85	22.96	18.52	17.18	6.27	6.14
1997	6.77	9.60	9.65	33.17	33.36	26.61	25.69	1.46	1.55
1998	5.74	8.70	8.69	28.44	28.58	7.51	8.63	20.46	20.09
1999	5.99	-0.85	-0.82	20.95	21.04	32.70	35.49	26.81	26.72
2000	6.42	11.67	11.63	-9.14	-9.10	-8.76	-15.77	-14.11	-14.17
2001	5.39	8.61	8.44	-11.94	-11.89	-2.22*	-2.52*	-15.42*	-14.88*
2002	5.00	10.27	10.26	-22.05	-22.10	-18.14	-17.80	-15.98	-15.94
2003	4.11	4.11	4.10	28.54	28.69	42.92	43.84	37.94	38.59
2004	4.30	4.30	4.34	10.82	10.88	18.03	18.10	20.00	20.25
2005	4.49	2.40	2.43	4.96	4.91	10.45	10.03	13.63	13.54
2006	4.93	4.40	4.33	15.79	15.79	15.30	15.28	26.32	26.34
2007	4.87	7.09	6.97	5.54	5.49	5.49	5.39	11.43	11.17
2008	3.75	5.45	5.24	-36.99	-37.00	-38.32	-39.03	-42.43	-43.38
2009	2.97	5.99	5.93	26.68	26.46	34.85	37.43	30.04	31.78

*Rates of return for May (inception of S and I Funds) through December 2001.

MONTHLY RETURNS	G Fund	F Fund	LBA Bond Index	C Fund	S&P 500 Stock Index	S * Fund	Wilshire 4500 Stock Index	I * Fund	EAFE Stock Index
2009									
Feb	0.21	-0.39	-0.38	-10.64	-10.65	-10.22	-9.78	-10.23	-10.26
March	0.24	1.38	1.39	8.81	8.76	8.64	8.62	7.20	6.34
April	0.21	0.49	0.48	9.58	9.57	15.00	15.03	12.13	12.80
May	0.25	0.78	0.73	5.60	5.59	3.97	4.16	13.41	11.83
June	0.27	0.54	0.57	0.24	0.20	0.73	0.84	-1.08	-0.57
July	0.28	1.59	1.61	7.58	7.56	8.66	9.01	9.74	9.13
Aug	0.28	1.03	1.04	3.62	3.61	3.85	3.74	4.87	5.44
Sept	0.26	1.07	1.05	3.74	3.73	5.94	5.81	3.79	3.83
Oct	0.26	0.51	0.49	-1.86	-1.86	-5.51	-5.41	-2.41	-1.25
Nov	0.26	1.30	1.29	6.00	6.00	3.85	3.98	3.16	2.00
Dec	0.25	-1.55	-1.56	1.94	1.93	6.57	6.65	1.43	1.44
2010									
Jan	0.29	1.54	1.53	-3.60	-3.60	-2.43	-2.39	-5.17	-4.41
LAST 12 MONTHS	3.08	8.56	8.51	33.33	33.14	43.31	37.12	40.01	39.68

Fund	Invested In	Index Tracked
G — Government Securities Investment Fund	Special issues of U.S. Treasury securities	N/A
F — Fixed Income Index Investment Fund	Barclays U.S. Debt Index Fund	Lehman Brothers U.S. Aggregate bond index
C — Common Stock Index Investment Fund	Barclays Equity Index Fund	S&P 500 stock index
S — Small Capitalization Stock Index Investment Fund	Barclays Extended Market Index Fund	Wilshire 4500 stock index
I — International Stock Index Investment Fund	Barclays EAFE Index Fund	Europe, Australasia, and Far East stock index

Future performance of the funds will vary and may be significantly different from the returns shown above. See the *Summary of the Thrift Savings Plan* for detailed information about the funds and their investment risks. The monthly returns of the TSP Funds represent net earnings for the month after deduction of accrued administrative expenses and, except for the G Fund, after deduction of trading costs and accrued investment management fees as well. The returns for the four indexes shown do not include any of these deductions.

* Implemented May 2001.

See next page for new L Funds.

Returns were updated December 1, 2009.

L Funds

Annual Returns	L 2040	L 2030	L 2020	L 2010	L Income
2006	16.53	15.00	13.72	11.09	7.59
2007	7.36	7.14	6.87	6.40	5.56
2008	-33.53	-27.50	-22.77	-10.53	-5.09
2009	25.19	22.48	19.14	10.03	8.57
Monthly Returns	L 2040	L 2030	L 2020	L 2010	L Income
2009					
Feb	-8.52	-7.47	-6.22	-2.95	-1.98
Mar	7.08	6.30	5.35	2.82	2.06
Apr	9.38	8.20	6.79	3.20	2.37
May	6.19	5.45	4.66	2.28	1.70
June	0.09	0.12	0.14	0.24	0.26
July	7.01	6.16	5.16	2.44	1.94
Aug	3.41	3.02	2.57	1.30	1.07
Sept	3.56	3.14	2.63	1.32	1.08
Oct	-2.15	-1.81	-1.39	-0.38	-0.26
Nov	3.98	3.55	3.00	1.47	1.27
Dec	2.12	1.85	1.50	0.70	0.59
2010					
Jan	-2.88	-2.49	-2.03	-0.58	-0.45
LAST 12 MONTHS	31.68	27.99	23.63	12.33	10.00

The L Funds are invested in the five individual TSP funds.

Domestic Mail (continued)

Free mail originating from the above overseas locations should have a complete APO or FPO return address, the word "Free" in the upper right corner, and a complete delivery address. In most cases, the mailpiece will also exhibit an APO or FPO postmark. Free mail receives First-Class Mail® service; however, it may not be registered, insured, or certified.

All employees who handle and deliver mail should be made aware of this free mail privilege. Do not collect postage upon delivery; do not return this mail to the sender for postage. Mail having the appearance of free mail under this program should never be returned to sender. Submit questions regarding the legitimacy of users of this program to

the Military Postal Service Agency. The agency's contact information is as follows:

Military Postal Service Agency
2461 Eisenhower Ave.
Alexandria, VA 22331-0006
Telephone: Toll free: 800-810-6098,
Monday–Friday, 7:30 A.M.–4:00 P.M. ET
Fax: 703-325-9534
DSN prefix: 221
e-mail: mpsawebcontacts@hqda.army.mil

— *International Operations,
Global Business, 2-25-10*

Finance

Household Diary Study

The Postal Service's Household Diary Study (HDS), conducted since 1987, provides information about the contents of the mail sent and received by our customers in U.S. households. The Postal Service™ uses this information to help understand why and how customers use the mail. The results are used to:

- Forecast mail volume.
- Plan marketing strategies.
- Provide information for rate-setting purposes.

The HDS is administered at Headquarters by the Office of Demand Forecasting and Analysis, Finance. NuStats, the HDS survey research firm contractor since July 1999, conducts the interviews and collects and analyzes the HDS data throughout the year.

HDS is a two-stage survey. Stage 1 is the Household Interview. NuStats sends an advance letter, signed by the postmaster general, to a representative sample of U.S. households. This letter emphasizes the importance of the HDS and asks for participation. Sample households are contacted either by telephone or in person and asked about the mail they send and receive, their adoption and use of various communications' technologies, their attitudes about mail service in general, and information relating to their household and personal demographics. Respondent households are recruited to participate in HDS Stage 2.

Stage 2 is the Mail Diary. NuStats asks households that agree to participate in Stage 2 to record information about the mail they send and receive for a 7-day period from Monday to Sunday. Information recorded includes number

of mailpieces received and sent, industry mail source, mail characteristics, and attitudes regarding mail received. As an incentive for HDS Stage 2 participation, households are offered the options of receiving \$30 or a roll of 100 First-Class Mail® stamps.

Customers who participate in Stage 2 of the HDS can expect to receive their incentive about 2 months after they return the diary packet to NuStats.

Data gathered in both HDS stages is available in a final report, *The Household Diary Study — Mail Use and Attitudes*. The report is published in hard copy and an electronic file. Order forms for the latest HDS report may be obtained via the Postal Service Internet at www.usps.com/householddiary.

For additional information, contact either of the following individuals:

John Pickett
Telephone: 202-268-2641
Fax: 202-268-6841
e-mail: john.pickett@usps.gov

John Mazzone
Telephone: 202-268-4169
Fax: 202-268-6841
e-mail: john.f.mazzone@usps.gov

Study participants may also contact NuStats directly for help or information at 888-441-8777 or usps@nustats.com.

— *Office of Demand Forecasting and Analysis,
Finance, 2-25-10*

DID YOU KNOW?

A photograph showing a stack of US dollar bills, with a hand holding a pen over them, suggesting financial transactions or revenue.

Business mail acceptance and drop shipments account for more than 60 percent of USPS annual revenue.

Intelligent Mail and Address Quality

Post Office Changes

Old/ New	Finance No.	ZIP Code	State	P.O. Name	County/ Parish	Station/Branch/ Unit	Unit Type	Effective Date	Comments
Old New	05-6834 05-6948	95117 95050	CA CA	San Jose Santa Clara	Santa Clara Santa Clara	Main Office Main Office	Post Office Post Office	07/01/2010	Realign ZIP™ Code boundaries. Use Santa Clara CA 95050 as last line of address for the 250 deliveries previously in ZIP Code 95117.
Old New	28-5814 28-5814	64645 64645	MO MO	Newtown Newtown	Sullivan Sullivan	Harris Harris	Community Post Office Place Name	05/16/2009 05/30/2009	Community Post Office discontinued. Retain ZIP Code. Establish a place name. Continue to use Harris MO 64645 as last line of address.
Old New	30-0510 30-4305	68923 68923	NE NE	Atlanta Holdrege	Phelps Phelps	Main Office Atlanta	Post Office Place Name	11/20/2007 01/16/2010	Post Office discontinued. Retain ZIP Code. Establish a place name. Continue to use Atlanta NE 68923 as last line of address.
Old New	38-4207 38-9149	43752 43752	OH OH	Laings Woodsfield	Monroe Monroe	Main Office Laings	Post Office Place Name	10/01/2005 01/16/2010	Post Office discontinued. Retain ZIP Code. Establish a place name. Continue to use Laings OH 43752 as last line of address.
Old New	38-4816 38-3941	43757 43757	OH OH	Malaga Jerusalem	Monroe Monroe	Main Office Malaga	Post Office Place Name	05/26/2001 01/16/2010	Post Office discontinued. Retain ZIP Code. Establish a place name. Continue to use Malaga OH 43757 as last line of address.
Old New	38-5530 38-3087	43760 43760	OH OH	Mount Perry Glenford	Perry Perry	Main Office Mount Perry	Post Office Place Name	11/18/2005 01/16/2010	Post Office discontinued. Retain ZIP Code. Establish a place name. Continue to use Mount Perry OH 43760 as last line of address.
Old New	40-2032 40-2016	97425 97733	OR OR	Crescent Lake Crescent	Klamath Klamath	Main Office Crescent Lake	Post Office Place Name	12/06/2005 05/09/2009	Community Post Office and ZIP Code discontinued. Establish a place name. Crescent Lake OR becomes an acceptable last line for use with ZIP Code 97733.
Old New	41-4976 41-4976	15132 15132	PA PA	Mckeesport Mckeesport	Allegheny Allegheny	Central Main Office	Classified Station Post Office	12/28/2005 05/23/2009	Classified station discontinued. Retain ZIP Code. Continue to use Mckeesport PA 15132 as last line of address.
Old New	46-6012 46-6138	57758 57758	SD SD	Mud Butte Newell	Meade Meade	Main Office Mud Butte	Post Office Place Name	09/26/2008 11/21/2009	Post Office discontinued. Retain ZIP Code. Establish a place name. Continue to use Mud Butte SD 57758 as last line of address.

Old/ New	Finance No.	ZIP Code	State	P.O. Name	County/ Parish	Station/Branch/ Unit	Unit Type	Effective Date	Comments
Old	47-8964	37848	TN	Washburn	Grainger	Powder Springs	Community Post Office	09/30/2005	Community Post Office discontinued. Retain ZIP Code. Establish a place name. Continue to use Powder Springs TN 37848 as last line of address.
New	47-8964	37848	TN	Washburn	Grainger	Powder Springs	Place Name	06/30/2009	
Old	51-9360	23459	VA	Virginia Beach	Virginia Beach City	Main Office	Post Office	02/27/2010	Realign ZIP Code boundaries. Use Virginia Beach VA 23451 as last line of address for the 218 deliveries previously in ZIP Code 23459.
New	51-9360	23451	VA	Virginia Beach	Virginia Beach City	Main Office	Post Office		
Old New	51-6522 51-9360	23521 23459	VA VA	Norfolk Virginia Beach	Norfolk City Norfolk City	Main Office Main Office	Post Office Post Office	02/27/2010	Realign ZIP Code boundaries. Use Virginia Beach VA 23459 as last line of address for the 1 delivery previously in ZIP Code 23521.
Old New	51-6522 51-9360	23521 23455	VA VA	Norfolk Virginia Beach	Norfolk City Norfolk City	Main Office Main Office	Post Office Post Office		

— Address Management, Intelligent Mail and Address Quality, 2-25-10

Mailing and Shipping Services

Mail Alert

The mailings below will be deposited in the near future. Offices should honor the requested home delivery dates. Mailers wishing to participate in these alerts, for mailings of 1 million pieces or more, should contact Business Service Network Integration at 202-268-3258 at least 1 month preceding the requested delivery dates. The Postal Service™

also offers electronic Mail Alerts via ADVANCE. For more information, see the *ADVANCE Notification & Tracking System Technical Guide* on the Internet at http://ribbs.usps.gov/advance/documents/tech_guides/advtech.pdf or contact the National Customer Support Center at 800-238-3150.

Requested Delivery Dates	Title of Mailing	Class and Type of Mail	Number of Pieces (Millions)	Distribution	Presort Level	Comments
2/25/10–2/27/10	March 2010 BSG Shopping Guides	Standard Letter	1.0	National	3/5 Digit Car-RT	Henry Wurst, Inc.
2/27/10–3/2/10	JCP — Credit GO	Standard Flat & Letter	8.0	National	Car-RT	Harte-Hanks
2/27/10–3/2/10	JCP — Multi-Div Sale Catalog	Standard Catalog	7.5	National	Car-RT	Harte-Hanks
2/27/10–3/2/10	Life Line Screening	Standard Letter	2.0	Nationwide	3/5 Digit	Mail America Forest, VA
3/1/10–3/4/10	GINNY'S	Standard Catalog	2.1	Nationwide	Barcoded 3/5 Digit Car-RT	Quad Graphics, Lomira, WI
3/4/10–3/6/10	JCP Week 6 Little Red Book	Standard Flat	8.0	National	Car-RT	RRD/Harte-Hanks
3/6/10–3/9/10	JCP — Spring Home Catalog	Standard Catalog	3.7	National	Car-RT	RRD/Harte-Hanks

Requested Delivery Dates	Title of Mailing	Class and Type of Mail	Number of Pieces (Millions)	Distribution	Presort Level	Comments
3/6/10–3/9/10	JCP — Week 6 Spring Sale	Standard Letter	8.6	National	Car-RT	Harte-Hanks
3/8/10–3/10/10	JCP — Week 6 Home Sale	Standard Flat	5.0	National	Car-RT	Harte-Hanks
3/10/10–3/12/10	Nordstrom March Catalog	Standard Flat	1.693	Nationwide	Barcoded 3/5 Digit Car-RT	Arandell Milwaukee, WI
3/11/10–3/13/10	JCP — Week 7 Billion Dollar	Standard Flat & Letter	5.4	National	Car-RT	Harte-Hanks

— Business Service Network Integration, Sales, 2-25-10

Postage Due Unit Address List

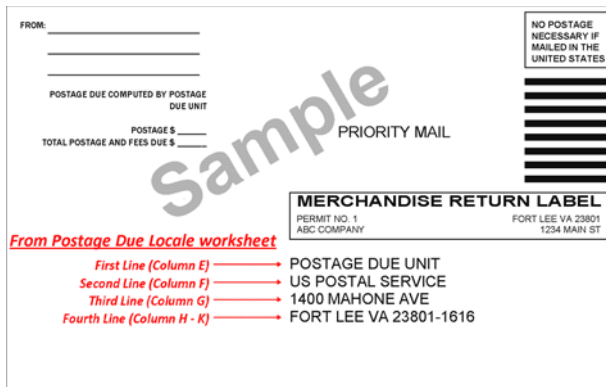
An address list of postage due units has been produced to help with the creation of Merchandise Return Service labels. The list is located on the Intelligent Mail and Address Quality (IMAQ) website at <http://imaq/AMS/addman/reports/aqreports/specialreports/Postage%20Due%20Locales.xls>.

The information on the IMAQ website contains an instruction page on how to use the list, the postage due locales, and a sample Merchandise Return Service (MRS) label (see below).

The postage due address list provides the following benefits:

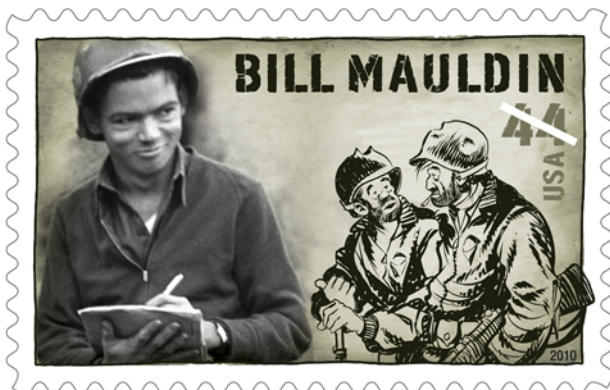
1. Eliminates the manual validation of addresses, as addresses have been extracted from the Address Management System (AMS).
2. Significantly reduces the amount of time currently used to locate the required information from MRS labels when setting up a new account.
3. Eliminates time consuming effort of manually contacting Post Office™ facilities to obtain postage due unit addresses and finance numbers.
4. Provides direction for all necessary information required for MRS labels when setting up MRS accounts.
5. Provides a central location, and is easily accessible to postal employees.

— Expedited Operations, Expedited Shipping, 2-25-10



Philately

Stamp Announcement 10-08: Bill Mauldin



© 2009 USPS

On March 31, 2010, in Santa Fe, New Mexico, the Postal Service™ will issue a 44-cent, *Bill Mauldin* commemorative stamp in one design in a pressure-sensitive (PSA) pane of 20 stamps (Item 466000). The stamp, designed by Terrence W. McCaffrey, USPS®, goes on sale nationwide March 31, 2010.

The U.S. Postal Service® honors Bill Mauldin, one of America's favorite cartoonists. During World War II, military readers got a knowing laugh from Mauldin's characters Willie and Joe, who gave their civilian audience an idea of what life was like for soldiers. After the war, Mauldin became a popular and influential editorial cartoonist.

U.S. Postal Service Art Director Terrence W. McCaffrey chose to honor Mauldin through a combination of photography and an example of Mauldin's art. The photograph of Bill Mauldin is by John Phillips, a photographer for *Life* magazine; it was taken in Italy on December 31, 1943. Mauldin's cartoon, showing characters Willie and Joe, is used courtesy of the 45th Infantry Division Museum in Oklahoma City, Oklahoma.

How to Order the First Day of Issue Postmark

Customers have 60 days to obtain the first day of issue postmark by mail. They may purchase new stamps at their local Post Office™, at The Postal Store® website at www.usps.com/shop, or by calling 800-STAMP-24. They should affix the stamps to envelopes of their choice, address the envelopes (to themselves or others), and place them in a larger envelope addressed to:

Bill Mauldin Stamp
120 South Federal Place
Santa Fe, NM 87501-9998

After applying the first day of issue postmark, the Postal Service will return the envelopes through the mail. There is no charge for the postmark. All orders must be postmarked by May 31, 2010.

Issue:	<i>Bill Mauldin</i>
Item Number:	466000
Denomination & Type of Issue:	44-cent Commemorative
Format:	Pane of 20 (1 design)
Issue Date & City:	March 31, 2010, Santa Fe, NM 87501
Art Director:	Terrence W. McCaffrey, USPS
Designer:	Terrence W. McCaffrey, USPS
Engraver:	N/A
Modeler:	Joseph Sheeran
Manufacturing Process:	Offset, Microprint "USPS"
Printer:	Ashton Potter (USA) Ltd. (APU)
Printed at:	Williamsville, NY
Press Type:	Mueller Martini, A76
Stamps per Pane:	20
Print Quantity:	20 million stamps
Paper Type:	Nonphosphored, Type III, Block Tagged
Adhesive Type:	Pressure-sensitive
Processed at:	Ashton Potter (USA) Ltd.
Colors:	Black, Cyan, Magenta, Yellow
Stamp Orientation:	Horizontal
Image Area (w x h):	1.42 x .84 in./36.07 x 21.34mm
Overall Size (w x h):	1.56 x .98 in./39.62 x 24.89 mm
Full Pane Size (w x h):	7.24 x 5.95 in./183.90 x 151.13 mm
Plate Size:	240 stamps per revolution
Plate Numbers:	"P" followed by four (4) single digits
Marginal Markings:	
Front:	Plate numbers in four corners
Back:	© 2009 USPS • USPS logo • Plate position diagram • Barcode (466000) in two corners • Price • Verso text behind each stamp • Proprietary notice

How to Order First Day Covers

Stamp Fulfillment Services also offers first day covers for new stamp issues and Postal Service stationery items postmarked with the official first day of issue cancellation. Each item has an individual catalog number and is offered in the quarterly *USA Philatelic Catalog*. Customers may request a free catalog by calling 800-STAMP-24 or writing to:

Information Fulfillment
Dept. 6270
U.S. Postal Service
PO Box 219014
Kansas City, MO 64121-9014

Philatelic Products

There are four philatelic products available for this stamp issue:

- 466061*, First Day Cover, \$0.82.
- 466065*, Digital Color Postmark, \$1.50.
- 466091*, Ceremony Program, \$6.95.
- 466099*, Digital Color Postmark Keepsake, \$10.95.

Items with an asterisk (*) will use the 128 barcode from Stamp Fulfillment Services. All other philatelic products will

continue to use barcode series A, with the exception of the Yearbook and the Guide Book.

Distribution: Item 466000, 44-cent Bill Mauldin, PSA Pane of 20 Stamps

Stamp distribution offices (SDOs) will receive approximately 18–22 percent of their standard automatic distribution quantity for a PSA sheet stamp. Distributions are rounded up to the nearest master carton size of 40,000 stamps.

Initial Supply to Post Offices

SDOs will make a subsequent automatic distribution to Post Offices of 15 percent of their standard automatic distribution quantity using PS Form 17, *Stamp Requisition/Stamp Return*. SDOs must not distribute this commemorative sheet to Post Offices before March 22, 2010.

Additional Supply

Post Offices requiring additional commemorative sheets must requisition them from their designated SDO/SDC

using PS Form 17. SDOs requiring additional commemorative sheets must order them from the appropriate accountable paper depository (APD) or stamp distribution center (SDC) using PS Form 17.

For fulfilling supplemental orders from SDOs, the New York APD, Dulles SDC, and Kansas City SDC will receive additional commemorative sheets.

Sales Policy

All Post Offices must acquire and maintain a supply of each new commemorative stamp as long as customer demand exists, until inventory is depleted, or until the stamp is officially withdrawn from sale. If supplies run low, Post Offices must reorder additional quantities using their normal ordering procedures.

– Stamp Services,
Government Relations and Public Policy, 2-25-10

Stamp Stock Items Withdrawn From Regular Sale and From Sale at Philatelic Centers

Effective close-of-business March 31, 2010, all Post Office™ facilities, stations, branches, postal stores, vending outlets, and authorized philatelic centers must (1) withdraw the stamp stock items and products listed below and their related vending and store-prepared stamp items from sale and (2) prepare them for destruction. Submit items to destruction sites according to local established procedures, under the guidelines in Handbook F-101, *Field Accounting Procedures*, and subchapter 11-6, Returning Stock to the SDO or SSC.

Do not permit sales of the stamp stock items, products, and their related vending and store-prepared stamp items listed below at retail counters and outlets after March 31, 2010. Stamp items listed with an asterisk (*) remain on sale at Stamp Fulfillment Services (SFS) via the *USA Philatelic Catalog*.

Note: This notice does not apply to philatelic products unless specifically listed below. Philatelic products that contain or are packaged with stamps removed from sale will remain on sale until further notice.

Item Number	Description
113400	\$4.95 Redwood Forest (Priority Mail)
113461	\$5.33 Redwood Forest (Priority Mail) First Day Cover
113500	\$17.50 Old Faithful (Express Mail)
113561	\$17.88 Old Faithful (Express Mail) First Day Cover
223500	\$0.27 Miami University Stamped Card
223561	\$0.40 Miami University Stamped Card First Day Cover
223591	\$6.95 Miami University Stamped Card Ceremony Program
463399*	\$10.30 Early TV Memories Keepsake
464100	\$0.42 Alaska Statehood
464161	\$0.82 Alaska Statehood First Day Cover
464165	\$1.50 Alaska Statehood Digital Color Postmark

Item Number	Description
464191	\$6.95 Alaska Statehood Ceremony Program
464199	\$9.90 Alaska Statehood Digital Color Postmark Keepsake
464300	\$0.42 Oregon Statehood
464361	\$0.80 Oregon Statehood First Day Cover
464365	\$1.50 Oregon Statehood Digital Color Postmark
464391	\$6.95 Oregon Statehood Ceremony Program
464399	\$9.90 Oregon Statehood Digital Color Postmark Keepsake
464400	\$0.42 Edgar Allan Poe
464461	\$0.80 Edgar Allan Poe First Day Cover
464465	\$1.50 Edgar Allan Poe Digital Color Postmark
464491	\$6.95 Edgar Allan Poe Ceremony Program
464499	\$9.90 Edgar Allan Poe Digital Color Postmark Keepsake
464700	\$0.42 Abraham Lincoln
464763	\$3.20 Abraham Lincoln First Day Cover
464768	\$6.00 Abraham Lincoln Digital Color Postmark Set 4
464784	\$50.40 Abraham Lincoln Uncut Press Sheet
464791*	\$6.95 Abraham Lincoln Ceremony Program
464799	\$14.40 Abraham Lincoln Digital Color Postmark Keepsake
573800	\$0.42 Lunar New Year — Year of the Ox
573861	\$0.80 Lunar New Year — Ox First Day Cover
573862	\$7.52 Lunar New Year — Ox First Day Cover Full Pane
573864	\$7.54 Lunar New Year — Ox Cancelled Full Pane
573865	\$1.50 Lunar New Year — Ox Digital Color Postmark
573884	\$45.36 Lunar New Year — Ox Uncut Press Sheet
573891	\$6.95 Lunar New Year — Ox Ceremony Program
573900	\$0.42 Civil Rights Pioneers
573962	\$5.02 Civil Rights Pioneers First Day Cover Full Pane
573964	\$5.02 Civil Rights Pioneers CNC Full Pane
573991	\$6.95 Civil Rights Pioneers Ceremony Program
573993	\$7.54 Civil Rights Pioneers Keepsake

Listed stamp items were taken off sale at regular sales units. Effective March 31, 2010, they are off sale at SFS.

573899	\$6.54 Lunar New Year — Ox Digital Color Postmark Keepsake
--------	--

Listed stamp items were previously removed from sales in the field, but will remain on sale at SFS until further notice.

464580	\$15.95 Gulf Coast Lighthouses Premium Stamped Stationery
897700/01	\$14.95 The Simpsons Stamped Postal Cards

— Stamp Services,
Government Relations and Public Policy, 2-25-10

Pictorial Postmarks Announcement

As a community service, the Postal Service™ offers pictorial postmarks to commemorate local events celebrated in communities throughout the nation. A list of events for which pictorial postmarks are authorized appears below. The sponsor of the pictorial postmark appears in italics under the date. Also provided are illustrations of these postmarks.

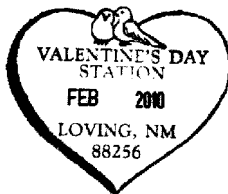
People attending these local events may obtain the postmark in person at the temporary Post Office™ station established there. Those who cannot attend the event but who wish to obtain the postmark may submit a mail order request. Pictorial postmarks are available only for the dates indicated, and *requests must be postmarked no later than 30 days following the requested pictorial postmark date.*

All requests must include a stamped envelope or postcard bearing at least the minimum First-Class Mail® postage. Items submitted for postmark may not include

postage issued after the date of the requested postmark. Such items will be returned unserved.

Customers wishing to obtain a postmark should affix stamps to any envelope or postcard of their choice, address the envelope or postcard to themselves or others, insert a card of postcard thickness in envelopes for sturdiness, and tuck in the flap. Place the envelope or postcard in a larger envelope and address it to: Pictorial Postmarks, followed by the Name of the Station, Address, City, State, ZIP+4® Code, as listed below.

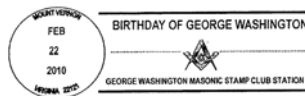
Customers can also send stamped envelopes and postcards without addresses for postmark, as long as they supply a larger envelope with adequate postage and their return address. After applying the pictorial postmark, the Postal Service returns the items (with or without addresses) under addressed protective cover.



February 1–28, 2010
U.S. Postal Service
Valentines Day Station
Postmaster
PO Box 9998
Loving, NM 88256-9998



February 7, 2010
U.S. Postal Service
Bazaar Station
Postmaster/Philatelic Services
201 Thirteenth St.
Oakland, CA 94612-9998



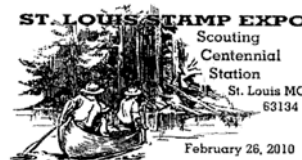
February 22, 2010
George Washington Masonic Stamp Club
George Washington Masonic Stamp Club Station
Postmaster
3500 T Mount Vernon Memorial Hwy.
Mt. Vernon, VA 22121-9998
February 25, 2010



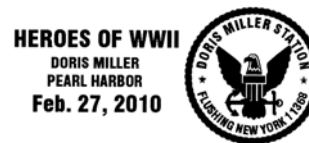
U.S. Postal Service
150th Anniversary Station
Postmaster
4212 Trenton Rd.
Overpeck, OH 45055-9998



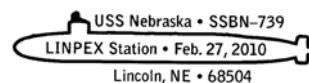
February 26, 2010
Anchorage Philatelic Society
APEX Station
Station Manager
344 W. 3rd Ave.
Anchorage, AK 99501-2713



February 26–28, 2010
Regency Superior Stamp Co.
St. Louis Stamp Expo
Scouting Centennial Station
Manager
7450 Natural Bridge Rd.
St. Louis, MO 63121-9998



February 27, 2010
U.S. Postal Service
Doris Miller Station
Postmaster
41–65 Main St.
Flushing, NY 11355-9998



February 27–28, 2010
Lincoln Stamp Club
LINPEX Station
Postmaster
PO Box 9998
Lincoln, NE 68501-9998



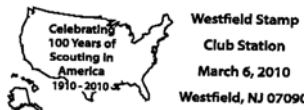
February 27–28, 2010
 U.S. Postal Service
 Toledo Stamp Expo Station
 Postmaster
 PO Box 9998
 Holland, OH 43528-9998



March 6, 2010
 Universal Ship Cancellation
 Society
 Commissioning Day Naval
 Weapons Station
 Postmaster
 2929 Westminster Ave.
 Seal Beach, CA 90740-9998



March 1, 2010
 Shrine of Saint Patrick
 Happy Saint Patrick's Day
 Station
 Postmaster
 PO Box 9998
 Saint Patrick, MO
 63466-9998



March 6, 2010
 Westfield Stamp Club
 Westfield Stamp Club
 Station
 Station Manager
 183 Central Ave.
 Westfield, NJ 07090-9998



March 3, 2010
 Pioneer Park Days
 Pioneer Park Days
 Celebration Station
 Postmaster
 3141 U.S. Hwy 17 S
 Zolfo Springs, FL
 33890-4762



March 6, 2010
 SE Wisconsin Hunting &
 Fishing Exposition
 SE Wisconsin Hunting &
 Fishing Expo Station
 Postmaster
 38 S. Main St.
 Oconomowoc, WI
 53066-9998



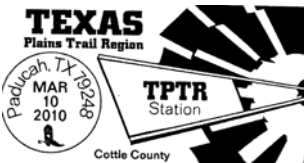
March 3, 2010
 U.S. Postal Service
 TPTR Station
 Postmaster
 1000 West Ave.
 Wellington, TX 79095-9998



March 7, 2010
 SE Wisconsin Hunting &
 Fishing Exposition
 SE Wisconsin Hunting &
 Fishing Expo Station
 Postmaster
 38 S. Main St.
 Oconomowoc, WI
 53066-9998



March 4, 2010
 Whitman Expo
 Whitman Coin and
 Collectibles Baltimore Expo
 Station
 Manager MOWS
 900 E. Fayette St.
 Baltimore, MD 21233-9715



March 10, 2010
 U.S. Postal Service
 TPTR Station
 Postmaster
 718 10th St.
 Paducah, TX 79248-9998

— Stamp Services,
 Government Relations and Public Policy, 2-25-10

How to Order the First Day of Issue Digital Color or Traditional Postmarks

Customers have 60 days to obtain the first day of issue postmarks by mail. They may purchase new stamps at their local Post Office™, by telephone at 800-STAMP-24, or at The Postal Store® website at www.usps.com/shop.

Traditional Postmarks

Customers should affix the stamps to envelopes of their choice, address them to themselves or others, or provide a self-addressed return envelope with sufficient postage large enough to accommodate the canceled item. Mail the request to the corresponding city of issuance. There is no charge for the first 50 postmarks. There is a 5-cent charge for each additional postmark over 50. Customers should

submit a check, money order, or credit card for payment. After applying the first day of issue postmark, the Postal Service™ will return the envelopes to the customer by U.S. Mail.

All postmark requests should go to the first day of issue city. The first day of issue city Post Office will then forward in bulk all postmark requests to Cancellation Services, Stamp Fulfillment Services, PO Box 449992, Kansas City, MO 64144-9992 by respective Post Offices.

Digital Color Postmarks

Only select stamp issues offer a digital color postmark. Customers may submit #6 or #10 envelopes constructed of

paper rated as “laser safe.” The Postal Service recommends envelopes of 80-pound Accent Opaque, acid-free, 9/16" side seams with no glue on the flap. The maximum size of all digital color postmarks is 2" high x 4" long. Allow sufficient space on the envelope to accommodate the postmark. Do not use self-adhesive labels for addresses on the envelope. Two test envelopes must be included. There is a minimum of 10 envelopes at 50 cents per postmark required at the time of servicing. Customers should submit a check, money order, or credit card for payment.

The Postal Service reserves the right to not accept hand-painted and other cachet envelopes that are not compatible with our digital color postmark equipment. The Postal Service also reserves the right to substitute traditional black rubber postmarks if use of nonspecified enve-

lopes results in poor image quality or damage to equipment.

Customers should affix the stamps to the envelopes and address them to themselves or others for return through the mail. Or, they may include an additional self-addressed return envelope, large enough to accommodate their canceled items, with sufficient postage affixed for return of their postmarked items. Mail the request for a first day of issue digital color postmark to the corresponding city of issuance. Post Offices will then forward all customer requests for digital color postmarks to Cancellation Services, Stamp Fulfillment Services, PO Box 449992, Kansas City, MO 64144-9992.

After applying the first day of issue postmark, the Postal Service will return the envelopes to the customer by U.S. Mail.



Digital Color Pictorial

Celebrating Lunar New Year Stamp

Year of the Tiger Stamp
7001 South Central, Room 338
Los Angeles, CA 90052-9998

March 15, 2010



Digital Color Pictorial

Distinguished Sailors Stamp

Special Cancellations
PO Box 92282
Washington, DC 20090-2282

April 6, 2010



Digital Color Pictorial

Abstract Expressionists Stamp

Postmaster
1200 William Street
Buffalo, NY 14240-9998

May 12, 2010



Black and White Pictorial

Bill Mauldin Stamp

120 South Federal Place
Santa Fe, NM 87501-9998

May 31, 2010



Digital Color Pictorial

Bill Mauldin Stamp

120 South Federal Place
Santa Fe, NM 87501-9998

May 31, 2010

Update: Abstract Expressionists

In the article “Stamp Announcement 10-07: Abstract Expressionists” in *Postal Bulletin* 22278 (2-11-10, pages 51–52) the address for “How to Order the First Day of Issue Postmark” was unavailable at the time of publication. It is now available and is as follows:

Abstract Expressionists Stamp
c/o Postmaster
1200 William Street
Buffalo, NY 14240-9998

— *Stamp Services, Government Relations and Public Policy, 2-25-10*

Retail

Stop Sending Copies of PS Form 8176, Premium Forwarding Service Application, to Headquarters

Offices are no longer required to send a copy of PS Form 8176, *Premium Forwarding Service*® (PFS®) *Application*, to Headquarters. This requirement ended in 2007 when the application was revised and page 4 (HQ copy) was removed. In 2005, the PFS program office at Headquarters (HQ) required a copy of page 4 when PFS was an

experiment. However, the experiment ended in 2007 when PFS became an official product offering. Offices that still send copies to HQ are wasting workhours and money — especially some offices that send them by Express Mail®, Registered Mail®, and Priority Mail® service.

— *Special Services, Retail Products and Services, 2-25-10*

Supply Management

Material Service Centers Transitioned Into Asset Accountability Service Centers

The Material Service Centers (MSCs) have transitioned into Asset Accountability Service Centers (AASCs) and all will now be either domiciled with or located near area offices. For further information, see the websites or call the contact numbers of the asset accountability inventory control specialists for each area below.

Windsor Asset Accountability Service Centers: http://blue.usps.gov/purchase/assetmgnt/am_aasc_wind_dc.htm.

- Capital Metro Area — Washington, DC: 202-636-2123
- Northeast Area — Windsor, CT: 860-285-7326

Chicago Asset Accountability Service Centers: http://blue.usps.gov/purchase/assetmgnt/am_aasc_chi_pitt.htm.

- Eastern Area — Pittsburgh, PA: 412-494-2625
- Great Lakes Area — Carol Stream, IL: 630-260-5623

Memphis Asset Accountability Service Centers: http://blue.usps.gov/purchase/assetmgnt/am_aasc_mem_dal.htm
Southwest Area — Dallas, TX: 214-819-7120

- Southeast Area — Memphis, TN: 901-747-7522

*Denver Asset Accountability Service Centers: http://blue.usps.gov/purchase/assetmgnt/am_aasc_den_sand.htm

- Western Area — Denver (Aurora), CO: 303-743-1304
- Pacific Area — San Diego, CA: 858-674-2607

*The San Francisco MSC will be closing by May 4, 2010, and material management services will be provided by the Denver AASC.

The AASCs are now open at all service locations, with inventory control specialists providing the following services for asset accountability needs in the areas of Inven-

tory Optimization and Management and Support and Guidance:

Inventory Optimization and Management

- Monitor and analyze inventory data to make recommendations for process improvements designed to reduce inventory costs.
- Develop processes and procedures to ensure inventory accuracy and accountability.
- Conduct audits to verify compliance with policies and procedures.
- Oversee the semi-annual capital property records review process.
- Establish redistribution and disposition policies and practices to protect the best interests of the Postal Service™.
- Coordinate local and national investment recovery initiatives.

Support and Guidance

- Support the implementation of new asset management technologies and system solutions.
- Develop training and policies concerning the control and disposition of assets.
- Provide training and guidance on inventory control and the disposition of assets.

Contact National Materials Customer Service, 800-332-0317 option 4, option 4, for bill of lading requests and excess equipment inquiries.

— *SCM Strategies, Supply Management, 2-25-10*



475 L'ENFANT PLAZA SW
WASHINGTON DC 20260-5540

First-Class Mail
Postage & Fees Paid
USPS
Permit No. G-10

DID YOU KNOW?

usps.com is one of the
most frequently visited
government sites.

http://www.