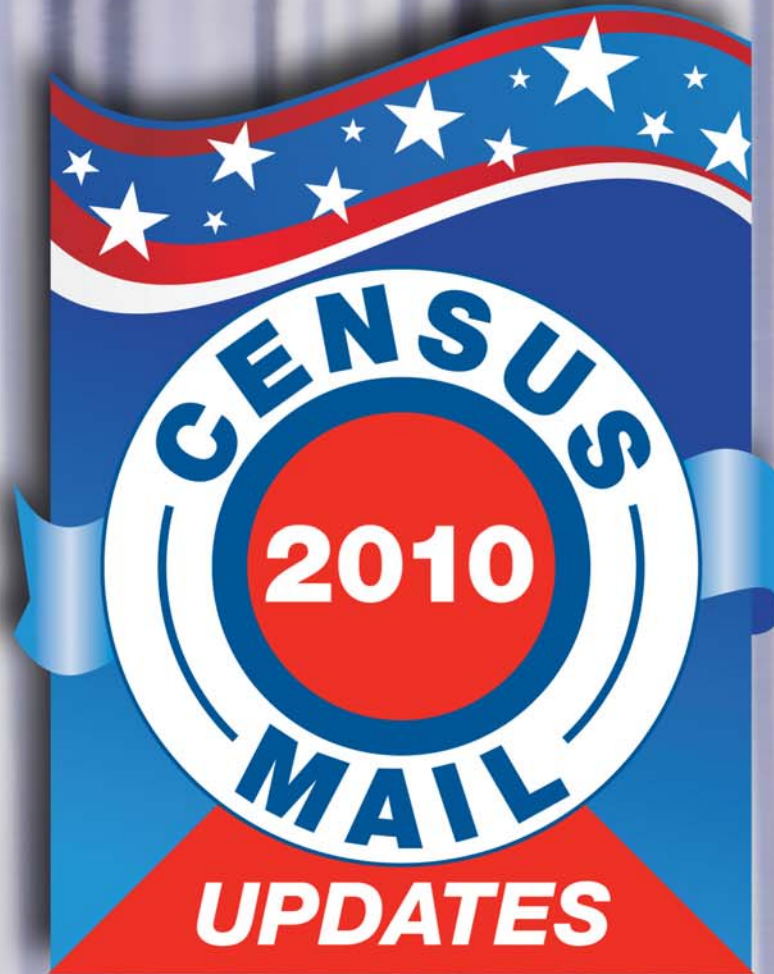


# usps postal|bulletin

PUBLISHED SINCE MARCH 4, 1880

## 2010 Census



## EVERYONE EVERYWHERE

See page 41

# Contents

## POLICIES, PROCEDURES, AND FORMS UPDATES

### Manuals

DMM Revision: Move Update Assessment Charges for Automation and Presort First-Class Mail and All Standard Mail Mailings . . . . .	3
DMM Revision: Treatment of Undeliverable Books and Sound Recordings . . . . .	6
DMM Revision: Priority Mail Commercial Plus Cubic Prices . . . . .	7
DMM Revision: Advertisements for Animals and Sharp Instruments for Use in Animal Fighting Ventures are Nonmailable . . . . .	8
POM Revision: Treatment of Undeliverable Items . . . . .	9

### Handbooks

Handbook F-15 Revision: Mileage Rates . . . . .	10
Reminder: Notification to Destroy/Recycle Handbook PO-250, Consumer Answer Book . . . . .	10

### Publications

Publication 223 Revision: Directives and Forms Update . . . . .	10
Publication 431 Revision: Changes to Post Office Box Service and Caller Service Fee Groups . . . . .	11
Publication 9, USA Philatelic Catalog, Is Now Available . . . . .	12
Mover's Guide News: January 2010 Mover's Guide Has Been Distributed . . . . .	12

## ORGANIZATION INFORMATION

### Finance

Renewal of Form W-5, Earned Income Credit Advance Payment Certificate . . . . .	13
Form W-4 Completion for Employees Claiming Exempt Status for 2010 . . . . .	13

### Intelligent Mail and Address Quality

Post Office Changes . . . . .	14
2010 Census . . . . .	41
Do Not Obliterate the Barcode . . . . .	42
Intelligent Mail Barcode Service Talk . . . . .	42

### Mailing and Shipping Services

Mail Alert . . . . .	45
New Express Mail Label for Military Absentee Voting . . . . .	47

### Philately

Stamp Announcement 10-06: Forever Stamp (Liberty Bell) . . . . .	49
Pictorial Postmarks Announcement . . . . .	50
Correction: Mackinac Bridge (Priority Mail) Stamp . . . . .	52
Correction: Ceremony Program Price . . . . .	52
How to Order the First Day of Issue Digital Color or Traditional Postmarks . . . . .	53

### Retail

Stop Sending Copies of PS Form 8176, Premium Forwarding Service Application, to Headquarters . . . . .	55
---	----

### Safety

Correction: Maintaining an OSHA Form 300 Log . . . . .	55
--	----

## PULL-OUT INFORMATION

### Fraud

Invalid Express Mail Corporate Account Numbers . . . . .	17
Missing, Lost, or Stolen U.S. Money Order Forms . . . . .	19
Missing, Lost, or Stolen Canadian Money Order Forms . . . . .	24
Verifying U.S. Postal Service Money Orders . . . . .	27
Counterfeit Canadian Money Order Forms . . . . .	27
Toll-Free Number Available to Verify Canadian Money Orders . . . . .	27

### Other Information

Overseas Military/Diplomatic Mail . . . . .	28
Missing Children Posters . . . . .	33
Thrift Savings Plan Fact Sheet . . . . .	39

## Postal Bulletin Index

Annual Index . . . . .	PB 22276 (1-14-10)
------------------------	--------------------



Forever Stamp

**USPS National Emergency Hotline**  
Is your facility operating? Call 888-363-7462



# Policies, Procedures, and Forms Updates

## Manuals

### DMM Revision: Move Update Assessment Charges for Automation and Presort First-Class Mail and All Standard Mail Mailings

Effective January 4, 2010, the Postal Service™ revised various sections throughout *Mailing Standards of the United States Postal Service*, Domestic Mail Manual (DMM®) to describe the changes and procedures for how Move Update assessment charges are handled. (See 74 Fed. Reg. 68538–41, December 28, 2009).

In the October 27, 2009, *Federal Register* (74 FR 55140–42), the Postal Service provided notice of new Move Update assessment charges for First-Class Mail® and Standard Mail® mailpieces. On November 25, 2009, the Postal Regulatory Commission (PRC) issued Order No. 348 on Move Update, which modified the Postal Service's requested Mail Classification Schedule (MCS) language filed on October 15, 2009. The Commission's modifications affect the Move Update standard published on October 27, 2009.

A change-of-address error tolerance of 30 percent for determining whether a mailing fails the Move Update portion of performance-based verification (PBV) testing was added to the MCS. Second, the Commission included language applying a \$0.07 Move Update noncompliance charge to a Standard Mail mailing that does not comply with the Move Update standards.

PBV procedures introduced in Spring 2009 allow the Postal Service to sample mailings during the acceptance process to compare mailpiece addresses within the sample against the National Change of Address Link (NCOA<sup>Link</sup>®) database. For the Move Update portion of PBV, addresses on the verification sample are compared to the NCOA<sup>Link</sup> database, and the ratio of the number of failed COAs (addresses that should have been but were not updated per Postal Service records) to the number of actual COAs (all changed addresses for addresses in the mailing) is calculated. If this ratio for the sample is sufficiently high, as detailed below in the DMM language, the mailing is subject to additional charges. Mailers are offered the option of taking the mailing back and reworking it to avoid Move Update assessment charges.

The Move Update standard is not new. It is designed to reduce the number of mailpieces in a mailing that require forwarding, return, or disposal as waste, thus reducing Postal Service costs. The standard also helps to assure that mail reaches its intended recipients in a timely manner. All known mailings of commercial First-Class Mail pieces that did not follow address updating requirements have been subject to single-piece First-Class Mail prices for each piece in the mailing since 1997. In the absence of any action, the same consequence would have applied to Stan-

dard Mail commercial mailings where addresses were found not to have been updated. This would have meant a substantial increase in postage for Standard Mail mailings. To mitigate this effect, the Postal Service announced in 2008 that it would charge \$0.07 per piece for all pieces in Standard Mail mailings which fail the Move Update PBV test. In addition, in its October 15, 2009, notice filed with the Postal Regulatory Commission, after extensive consultation with mailers, the Postal Service announced that in PBV testing, only mailings with a sample error rate (failed COAs/total COAs) greater than 30 percent would be subject to the charge, and that samples with five or fewer failed pieces would not be subject to the assessment, regardless of the error rate.

The Move Update assessment charge was originally intended for May 2009 implementation. However, in response to customer concerns, we deferred implementation until January 2010, as announced in the April 6, 2009, *Federal Register* final rule. The Postal Service also decided to apply a \$0.07 per piece additional postage charge for First-Class Mail pieces found in mailings with a Move Update error rate of greater than 30 percent based on Postal Service PBV samplings at acceptance, with the five pieces or fewer exception discussed above.

Assessment charges are not designed to permit customers to substitute payment of the Move Update assessment charge for the implementation of appropriate processes that meet the requirements of the Move Update standard. They are designed to facilitate the acceptance of mail in the event that the PBV Move Update process determines that a sample of the mailing has failed above a given tolerance according to that process. Mailers who claim presorted or automation prices for First-Class Mail pieces, or any price category for Standard Mail pieces, must certify that they have used a Postal Service–approved Move Update process on their mailing list within 95 days before the mailing date. Such certification has been a longstanding requirement for First-Class Mail presort and automation prices, and was extended to be an eligibility standard for Standard Mail prices in November 2008. When a mailer does not certify that she or he used any Move Update method for a particular mailing, that mailing is then ineligible for any presorted First-Class Mail or Standard Mail price. Mailings for which the mailer has not certified on the postage statement that a Move Update method was used for meeting the Move Update standard for that mailing do not qualify for First-Class Mail presorted or automation prices or any Standard Mail prices. Only the single-piece First-Class Mail prices are available for such a mailing.

Mailers can find additional information about the general policies and procedures for meeting the Move Update standard in Publication 363, *Updating Address Lists is a Smart Move*, available the RIBBS website at [http://ribbs.usps.gov/move\\_update/documents/tech\\_guides/PUB363.pdf](http://ribbs.usps.gov/move_update/documents/tech_guides/PUB363.pdf). This publication also describes the four primary and two alternative Move Update methods available for updating mailing lists.

The following DMM changes vary from the DMM changes published on October 27, 2009. The application of the Move Update assessment charge is described directly, rather than by reference to a website.

### **Mailing Standards of the United States Postal Service, Domestic Mail Manual (DMM)**

	*	*	*	*	*
<b>200</b>	<b>Commercial Mail Letters and Cards</b>				
	*	*	*	*	*
<b>230</b>	<b>First-Class Mail</b>				
<b>233</b>	<b>Prices and Eligibility</b>				
	*	*	*	*	*
<b>3.0</b>	<b>Basic Standards for First-Class Mail Letters</b>				
	*	*	*	*	*
<b>3.5</b>	<b>Move Update Standard</b>				
	*	*	*	*	*

*[Add new 3.5.4 to read as follows:]*

#### **3.5.4 Basis for Move Update Assessment Charge**

Mailings are subject to a Move Update assessment charge if more than 30 percent of addresses with a change of address (COA) are not updated, based on the error rate found in USPS sampling at acceptance during Performance-Based Verification. Specifically, mailings for which the sample contains greater than 30 percent failed COAs out of the total COAs are subject to additional postage charges as follows:

- The percentage of the mailing paying the charge is based on the percentage of failed pieces above 30 percent.
- Each of the assessed pieces is subject to the \$0.07 per piece charge.
- As an example, if 40% of COAs in the sample are not updated, then the charge is applied to 10% (=40% - 30%) of the total mailing.

- Mailings for which the sample has five or fewer pieces that were not updated for a COA are not subject to the assessment, regardless of the failure percentage.

\* \* \* \* \*

#### **240 Standard Mail**

#### **243 Prices and Eligibility**

\* \* \* \* \*

### **3.0 Basic Standards for Standard Mail Letters**

\* \* \* \* \*

#### **3.9 Move Update Standard**

##### **3.9.1 Basic Standards**

\*\*\*Addresses subject to the Move Update standard must meet these requirements:

\* \* \* \* \*

*[Delete item 3.9.1d in its entirety.]*

\* \* \* \* \*

*[Add new 3.9.4 to read as follows:]*

##### **3.9.4 Basis for Move Update Assessment Charges**

Mailings are subject to a Move Update assessment charge if more than 30 percent of addresses with a change of address (COA) are not updated, based on the error rate found in USPS sampling at acceptance during Performance-Based Verification. Specifically, mailings for which the sample contains greater than 30 percent failed COAs out of the total COAs are subject to additional postage charges as follows:

- The percentage of the mailing paying the charge is based on the percentage of failed pieces above 30 percent.
- Each of the assessed pieces is subject to the \$0.07 per piece charge.
- As an example, if 40% of COAs in the sample are not updated, then the charge is applied to 10% (=40% - 30%) of the total mailing.
- Mailings for which the sample has five or fewer pieces that were not updated for a COA are not subject to the assessment, regardless of the failure percentage.

\* \* \* \* \*

#### **300 Commercial Mail Flats**

\* \* \* \* \*

**330 First-Class Mail**

**333 Prices and Eligibility**

\* \* \* \* \*

**3.0 Eligibility Standards for First-Class Mail Flats**

\* \* \* \* \*

**3.5 Move Update Standard**

\* \* \* \* \*

[Add new 3.5.4 to read as follows:]

**3.5.4 Basis for Move Update Assessment Charge**

Mailings are subject to a Move Update assessment charge if more than 30 percent of addresses with a change of address (COA) are not updated, based on the error rate found in USPS sampling at acceptance during Performance-Based Verification. Specifically, mailings for which the sample contains greater than 30 percent failed COAs out of the total COAs are subject to additional postage charges as follows:

- The percentage of the mailing paying the charge is based on the percentage of failed pieces above 30 percent.
- Each of the assessed pieces is subject to the \$0.07 per piece charge.
- As an example, if 40% of COAs in the sample are not updated, then the charge is applied to 10% (=40% - 30%) of the total mailing.
- Mailings for which the sample has five or fewer pieces that were not updated for a COA are not subject to the assessment, regardless of the failure percentage.

\* \* \* \* \*

**340 Standard Mail**

**343 Prices and Eligibility**

\* \* \* \* \*

**3.0 Basic Standards for Standard Mail Flats**

\* \* \* \* \*

**3.9 Move Update Standard**

**3.9.1 Basic Standards**

\*\*\*Addresses subject to the Move Update standard must meet these requirements:

\* \* \* \* \*

[Delete item 3.9.1d in its entirety.]

\* \* \* \* \*

[Add new 3.9.4 to read as follows:]

**3.9.4 Basis for Move Update Assessment Charge**

Mailings are subject to a Move Update assessment charge if more than 30 percent of addresses with a change of address (COA) are not updated, based on the error rate found in USPS sampling at acceptance during Performance-Based Verification. Specifically, mailings for which the sample contains greater than 30 percent failed COAs out of the total COAs are subject to additional postage charges as follows:

- The percentage of the mailing paying the charge is based on the percentage of failed pieces above 30 percent.
- Each of the assessed pieces is subject to the \$0.07 per piece charge.
- As an example, if 40% of COAs in the sample are not updated, then the charge is applied to 10% (=40% - 30%) of the total mailing.
- Mailings for which the sample has five or fewer pieces that were not updated for a COA are not subject to the assessment, regardless of the failure percentage.

\* \* \* \* \*

**400 Commercial Parcels**

\* \* \* \* \*

**430 First-Class Mail**

**433 Prices and Eligibility**

\* \* \* \* \*

**3.0 Basic Standards for First-Class Mail Parcels**

\* \* \* \* \*

**3.5 Move Update Standard**

\* \* \* \* \*

[Add new 3.5.4 to read as follows:]

**3.5.4 Basis for Move Update Assessment Charge**

Mailings are subject to a Move Update assessment charge if more than 30 percent of addresses with a change of address (COA) are not updated, based on the error rate found in USPS sampling at acceptance during Performance-Based Verification. Specifically, mailings for which the sample contains greater than 30 percent failed COAs out of the total COAs are subject to additional postage charges as follows:

- The percentage of the mailing paying the charge is based on the percentage of failed pieces above 30 percent.

- b. Each of the assessed pieces is subject to the \$0.07 per piece charge.
- c. As an example, if 40% of COAs in the sample are not updated, then the charge is applied to 10% (=40% - 30%) of the total mailing.
- d. Mailings for which the sample has five or fewer pieces that were not updated for a COA are not subject to the assessment, regardless of the failure percentage.

\* \* \* \* \*

#### 440 Standard Mail

#### 443 Prices and Eligibility

\* \* \* \* \*

### 3.0 Basic Standards for Standard Mail Parcels

\* \* \* \* \*

### 3.9 Move Update Standard

#### 3.9.1 Basic Standards

\*\*\*Addresses subject to the Move Update standard must meet these requirements:

\* \* \* \* \*

*[Delete item 3.9.1d in its entirety.]*

\* \* \* \* \*

*[Add new 3.9.4 to read as follows:]*

#### 3.9.4 Basis for Move Update Assessment Charge

Mailings are subject to a Move Update assessment charge if more than 30 percent of addresses with a change of address (COA) are not updated, based on the error rate found in USPS sampling at acceptance during Performance-Based Verification. Specifically, mailings for which the sample contains greater than 30 percent failed COAs out of the total COAs are subject to additional postage charges as follows:

- a. The percentage of the mailing paying the charge is based on the percentage of failed pieces above 30 percent.
- b. Each of the assessed pieces is subject to the \$0.07 per piece charge.
- c. As an example, if 40% of COAs in the sample are not updated, then the charge is applied to 10% (=40% - 30%) of the total mailing.
- d. Mailings for which the sample has five or fewer pieces that were not updated for a COA are not subject to the assessment, regardless of the failure percentage.

\* \* \* \* \*

We will incorporate this revision into the next printed version of the DMM and into the next update of the online DMM available via Postal Explorer<sup>®</sup> at <http://pe.usps.com>.

— Mailing Standards, Pricing, 1-28-10

## DMM Revision: Treatment of Undeliverable Books and Sound Recordings

Effective February 1, 2010, the Postal Service<sup>™</sup> will revise *Mailing Standards of the United States Postal Service*, Domestic Mail Manual (DMM<sup>®</sup>) 507.1.9 to update the standards for the disposal or treatment of books and sound recordings that are undeliverable as addressed (UAA) in their original packaging. The disposal of these items as waste will simplify handling procedures and reduce costs.

### ***Mailing Standards of the United States Postal Service, Domestic Mail Manual (DMM)***

\* \* \* \* \*

#### 500 Additional Services

\* \* \* \* \*

#### 507 Mailer Services

##### 1.0 Treatment of Mail

\* \* \* \* \*

##### 1.9 Dead Mail

\* \* \* \* \*

*[Delete 1.9.2 in its entirety and renumber current 1.9.3 as new 1.9.2.]*

\* \* \* \* \*

We will incorporate this revision into the next printed version of the DMM and into the next update of the online DMM available via Postal Explorer<sup>®</sup> at <http://pe.usps.com>.

— Mailing Standards, Pricing, 1-28-10



### DMM Revision: Priority Mail Commercial Plus Cubic Prices

Effective February 1, 2010, the Postal Service™ is revising *Mailing Standards of the United States Postal Service*, Domestic Mail Manual (DMM®) parts 401, 402, 423, 424, and 425 to clarify standards for Priority Mail® commercial plus cubic prices that went into effect on January 4, 2010.

As a reminder, hardcopy postage statements will be allowed for customers who pay postage with permit imprints and submit postage statements and computerized manifests. The Postal Service will provide advance notice for mandatory compliance with the submission of electronic postage statements.

#### **Mailing Standards of the United States Postal Service, Domestic Mail Manual (DMM)**

	*	*	*	*	*
<b>400</b>					
<b>Commercial Parcels</b>					
<b>401</b>					
<b>Physical Standards</b>					
<b>1.0</b>					
<b>Physical Standards for Parcels</b>					
	*	*	*	*	*
<b>1.3</b>					
<b>Maximum Weight and Size</b>					
<i>[Revise the second sentence of 1.3 as follows:]</i>					
***Lower weight limits apply to Priority Mail mailed at commercial plus cubic prices, First-Class Mail, Standard Mail, and Bound Printed Matter.***					
	*	*	*	*	*
<b>2.0</b>					
<b>Additional Physical Standards by Class of Mail</b>					
	*	*	*	*	*
<b>2.2</b>					
<b>Priority Mail</b>					
<b>2.2.1</b>					
<b>Physical Standards of Mailpieces</b>					
<i>[Revise the first sentence of 2.2.1 as follows:]</i>					
The maximum weight is 70 pounds, except mailpieces entered at commercial plus cubic prices, for which the maximum weight is 20 pounds.***					
	*	*	*	*	*
<b>402</b>					
<b>Elements on the Face of a Mailpiece</b>					
	*	*	*	*	*
<b>2.0</b>					
<b>Placement and Content of Markings</b>					
	*	*	*	*	*

### **2.3 Priority Mail Commercial Plus Cubic Markings—Permit Imprint**

*[Revise 2.3 and add new item “c” as follows:]*

Priority Mail permit imprint pieces claiming the commercial plus cubic price must bear the applicable marking, printed on the piece or produced as part of the permit imprint indicia. Place the marking directly above, directly below, or to the left of the postage. Approved markings are as follows:

- a. Cubic
- b. CUBIC
- c. cubic

\* \* \* \* \*

### **420 Priority Mail**

### **423 Prices and Eligibility**

\* \* \* \* \*

### **3.0 Basic Standards for Priority Mail**

#### **3.1 Definition**

*[Revise 3.1 as follows:]*

Priority Mail is an expedited service and may contain any mailable matter weighing no more than 70 pounds. Lower weight limits apply to commercial plus cubic (see 1.4); APO/FPO mail subject to 703.2.0 and 703.4.0; and Department of State mail subject to 703.3.0.

\* \* \* \* \*

### **424 Postage Payment and Documentation**

#### **1.0 Basic Standards for Postage Payment**

#### **1.1 Postage Payment Options**

\* \* \* \* \*

*[Add new 1.1.3 as follows:]*

#### **1.1.3 Commercial Plus Cubic Pricing**

Commercial plus cubic prices may be paid with:

- a. USPS-approved PC Postage products when registered end-users use a qualifying shipping label.
- b. Permit imprint under 2.0. Mailers also must use the Electronic Verification System (eVS) program or submit an electronic postage statement with a computerized manifest under 705.2.0.

\* \* \* \* \*

**425 Mail Preparation**

\* \* \* \* \*

**2.0 Marking**

\* \* \* \* \*

**2.4 Price Marking for Commercial Plus Cubic Prices—Permit Imprint Indicia***[Revise 2.4 and add new item “c” as follows:]*

Priority Mail pieces claiming the commercial plus cubic price must bear the appropriate marking, printed on the piece or produced as part of the permit imprint indicia.

Place the marking directly above, directly below, or to the left of the postage. Markings are as follows:

- a. Cubic
- b. CUBIC
- c. cubic

We will include these revisions in the next update of the online DMM on Postal Explorer® at <http://pe.usps.com> and in the next printed edition of the DMM.

— *Mailing Standards, Pricing, 1-28-10*

## DMM Revision: Advertisements for Animals and Sharp Instruments for Use in Animal Fighting Ventures are Nonmailable

Effective February 1, 2010, the Postal Service™ will revise *Mailing Standards of the United States Postal Service*, Domestic Mail Manual (DMM®) 601.9.3.1, 601.11.20, and 601.12.5.7, to align our standards with section 26 (7 U.S.C. 2156) of the Animal Welfare Act as amended by the Food, Conservation, and Energy Act of 2008.

The Act’s amendments added prohibitions on using USPS® to advertise an animal for use in an animal fighting venture or to advertise a knife, gaff, or any other sharp instruments designed or intended to be attached to the leg of a bird for use in an animal fighting venture. In addition, the Act also revised the definition of the term “animal fighting venture” to refer to “any event, in or affecting interstate or foreign commerce involving a fight conducted or to be conducted between at least two animals”.

### ***Mailing Standards of the United States Postal Service, Domestic Mail Manual (DMM)***

\* \* \* \* \*

**600 Basic Standards for All Mailing Services****601 Mailability**

\* \* \* \* \*

**9.0 Perishable**

\* \* \* \* \*

**9.3 Live Animals***[Revise the heading and text of 9.3.1, as follows:]***9.3.1 Prohibition on Animals Intended for Use in an Animal Fighting Venture**

An animal is nonmailable if such animal is being mailed for the purpose of having it participate in an animal fighting venture (7 U.S.C. 2156). This standard applies regardless of whether such venture is permitted under the laws of the state in which it is conducted. Violators can be subject to the criminal penalties in 18 U.S.C. 49. See 11.20 for the prohibition on mailing sharp instruments intended for use in an animal fighting venture and 12.5.7 for restrictions on

mailing written, printed, or graphic matter related to animal fighting ventures.

For this standard:

- a. The term *animal* means any live bird, or any live mammal (e.g., dog), except human.
- b. The term *animal fighting venture* means any event, in or affecting interstate or foreign commerce, that involves a fight conducted or to be conducted between at least two animals for purposes of sport, wagering, or entertainment (excluding any activity whose primary purpose involves using one or more animals in hunting other animals).
- c. The term *state* means any state of the United States, the District of Columbia, the Commonwealth of Puerto Rico, or any U.S. territory or possession.

\* \* \* \* \*

**11.0 Other Restricted and Nonmailable Matter**

\* \* \* \* \*

*[Revise the heading and text of 11.20, as follows:]***11.20 Prohibition on Sharp Instruments Intended for Use in an Animal Fighting Venture**

The interstate or international mailing of a knife, a gaff, or any other sharp instrument attached, or designed or intended to be attached, to the leg of a bird for use in an animal fighting venture (as defined in section 9.3.1b) is prohibited (7 U.S.C. 2156). Violators can be subject to the criminal penalties in 18 U.S.C. 49. See 9.3.1 for the prohibition on mailing animals intended for use in an animal fighting venture and 12.5.7 for the restrictions on mailing written, printed, or graphic matter related to animal fighting ventures.

\* \* \* \* \*

**12.0 Written, Printed, and Graphic Matter Generally****12.5 Other Nonmailable Matter**

\* \* \* \* \*



[Revise the heading and text of 12.5.7, as follows:]

**12.5.7 Restriction on Matter Related to Animal Fighting Ventures**

This standard does not pertain to written, printed, or graphic matter related to fighting ventures involving live birds if such fight is permitted under the laws of the state in which the fight is to take place (7 U.S.C. 2156). The terms *animal*, *animal fighting venture*, and *state* are defined in 9.3.1. Written, printed, or graphic matter is nonmailable if it:

- a. Advertises an animal for use in an animal fighting venture;

- b. Advertises a knife, a gaff, or any other sharp instrument attached, or designed or intended to be attached, to the leg of a bird for use in an animal fighting venture; or

- c. Promotes or in any other manner furthers an animal fighting venture.

\* \* \* \* \*

We will incorporate this revision into the next printed version of the DMM and into the next update of the online DMM available via Postal Explorer® at <http://pe.usps.com>.

— Mailing Standards, Pricing, 1-28-10

**POM Revision: Treatment of Undeliverable Items**

Effective February 1, 2010, the Postal Service™ will revise the *Postal Operations Manual* (POM) to update the standards for the treatment of unidentified items. The disposal of these items as waste will simplify handling procedures and reduce costs

**Postal Operations Manual (POM)**

\* \* \* \* \*

**6 Delivery Services**

\* \* \* \* \*

**69 Dead Mail**

**691 General**

\* \* \* \* \*

**691.2 Opening and Examination**

[Revise 691.2 to read as follows:]

Except for unendorsed Standard Mail items, all undeliverable First-Class Mail, Standard Mail, and Package Services items that cannot be returned because of an incorrect, incomplete, illegible, or missing return address are opened and examined at the Mail Recovery Center (MRC) to identify the sender or addressee. Insured First-Class parcels containing Standard Mail or Package Services enclosures (sent under DMM S913) are handled the same way.

**691.3 Insured and COD Matter**

**691.31 Holding Period**

[Revise 691.31 to read as follows:]

The Postal Service holds Insured Mail and COD mailpieces for 1 week after they become dead. On a weekly basis, send such pieces to the MRC.

\* \* \* \* \*

**691.4 Items Loose in the Mail**

\* \* \* \* \*

**691.45 Unidentified Items**

[Revise the introductory paragraph of 691.45 to read as follows:]

Treat unidentified items of value (\$25 or more) as dead mail. Except for money (see 691.41) and uncanceled stamps (see 691.42), reuse for business purposes only, donate, recycle, or, as a last resort, dispose of as waste all unidentified items without value as follows:

\* \* \* \* \*

**692 Mail Recovery Centers**

**692.1 Dead Letter and Parcel Mail**

**692.11 Addresses**

[Revise 692.11 to read as follows:]

The MRC address to send administrative mail is as follows:

Atlanta Mail Recovery Center  
U.S. Postal Service  
PO Box 44161  
Atlanta, GA 30378-1161

The MRC address to send undeliverable mail is as follows:

Atlanta Mail Recovery Center  
U.S. Postal Service  
5345 Fulton Industrial Blvd. SW  
Atlanta, GA 30378-2400

\* \* \* \* \*

[Delete 692.12 through 692.16 and renumber 692.17 through 692.19 as new 692.12 through 692.14.]

\* \* \* \* \*

We will incorporate these revisions into the next printed version of the POM and also into the online update, available on the Postal Service PolicyNet website:

- Go to <http://blue.usps.gov>.
- In the left-hand column under “Essential Links”, click *PolicyNet*.
- Click *HBKs*.

The direct, URL for the Postal Service PolicyNet website is <http://blue.usps.gov/cpim>.

— Mailing Standards, Pricing, 1-28-10

## Handbooks

### Handbook F-15 Revision: Mileage Rates

Effective January 1, 2010, Handbook F-15, *Travel and Relocation*, was revised to reflect reimbursement rates for travel and relocation.

#### Handbook F-15, *Travel and Relocation*

\* \* \* \* \*

#### Part IV Appendices

#### Appendix A Rates

#### A-1 Standard Mileage Rates

#### A-1.1 Mileage Rates

[Revise A-1.1 to read as follows:]

Vehicle	Rate per mile (Including Alaska)
Privately owned automobile	\$0.50
Privately owned motorcycle	\$0.47
Privately owned airplane	\$1.29

#### A-1.2 Reimbursement for Postal Service Supervisors

[Revise the first paragraph of A-1.2 to read as follows:]

Postal Service supervisors (see 5-5.2.1.2) will be reimbursed at the rate of \$6.00 per day or 50 cents per mile,

whichever is greater, when a privately owned vehicle is used. Do *not* use the eTravel system when claiming the \$6.00 daily rate, because the excess of the daily rate over the actual mileage is taxable as compensation to the claimant. You should claim the \$6.00 daily rate by submitting PS Form 1164-A, *Claim for Reimbursement for Postal Supervisors*, to the Scanning and Imaging Center.

\* \* \* \* \*

We will incorporate these revisions into the next printed edition of Handbook F-15 and into the next update of the online version accessible on the Postal Service™ PolicyNet website:

- Go to <http://blue.usps.gov>.
- Under “Essential Links” in the left-hand column, click *PolicyNet*.
- On the PolicyNet page, click *HBKs*.

(The direct URL for the Postal Service PolicyNet website is <http://blue.usps.gov/cpim>.)

— Assets & Payables, Finance, 1-28-10

### Reminder: Notification to Destroy/Recycle Handbook PO-250, Consumer Answer Book

Handbook PO-250, *Consumer Answer Book*, is obsolete as previously posted in *Postal Bulletin 22272* (11-19-09, page 15). All editions of HBK PO-250 are obsolete and must be destroyed/recycled.

— Field Support and Integration, Consumer Advocate, 1-28-10

## Publications

### Publication 223 Revision: Directives and Forms Update

Effective immediately, Publication 223, *Directives and Forms Catalog*, is revised to include current information for the items noted in this article. See Publication 223 for complete information.

Information on how to order directives and forms is available in chapter 1 of Publication 223.

Publication 223 is available on the Internet at [www.usps.com/cpim/ftp/pubs/pub223.pdf](http://www.usps.com/cpim/ftp/pubs/pub223.pdf).

#### New

- HBK SP-1, *Highway Contract Routes* — *Contract Delivery Services*.

- LAB 11-DOD, *DOD Express Mail Label (Absentee Ballot)*.
- MI EL-670-2009-7, *Inclusiveness and Diversity Advisory Committee*.
- MI FM-110-2009-2, *Sarbanes-Oxley Policy for System Changes and System Freeze Period*.
- MOP COO-10-22-2009, *Postal Service Policy Dealing with Business Customers Mailing Cigarettes*.
- PS 6886-A, *Thrift Savings Plan* — *Request for Makeup Contributions for Retirement Coverage Error*.

#### Revised

- HBK AS-805, *Information Security*.

- HBK EL-912, *Agreement Between United States Postal Service and American Postal Workers Union, AFL-CIO, 2006–2010.*
- HBK F-20-A, *Accounting Services Systems and Processes.*
- HBK F-101, *Field Accounting Procedures.*
- MAN ELM 20, *Employee and Labor Relations Manual.*
- NOT 67, *Automation Template.*
- PUB 9, *USA Philatelic Catalog Request With Business Reply Card.*
- PUB 12, *Health Benefits Open Season Administrative and Processing Information.*
- PS 1887, *Order for Overprinted PS Form 3849.*
- PS 5556, *CPU December 2009 Stamp Order Form.*

### Obsolete

PSIN	Edition Date	Title	Replaced By
HBK P-5	10/04	<i>Highway Contract Routes — Box Delivery Service</i>	HBK SP-1
MI EL-670-95-1	05/95	<i>Diversity and Affirmative Action Advisory Committee</i>	MI EL-670-2009-7
MOP EN-12-16-1994	12/94	<i>Mercury-Containing Lamps Disposal</i>	N/A
PUB 78	09/03	<i>eTravel Helpful Hints</i>	N/A
PUB 332	03/00	<i>Rewarding Results-Ideas Program</i>	N/A
PUB 619	07/07	<i>Get in the USPS Business Line</i>	N/A

— Information Policies and Procedures, Corporate Communications, 1-28-10

## Publication 431 Revision: Changes to Post Office Box Service and Caller Service Fee Groups

Effective January 28, 2010, Publication 431, *Post Office Box Service and Caller Service Fee Groups*, is revised to include the following changes.

### Publication 431, *Post Office Box Service and Caller Service Fee Groups*

\* \* \* \* \*

[Add the following entries:]

ZIP Code	Fee Group
11853	1
47740	4
47747	4
47750	4
80236	5
97076	4

\* \* \* \* \*

[Change the following entries:]

ZIP Code	Fee Group
38358	5
74149	4
97384	6

\* \* \* \* \*

The online version of Publication 431 is dated January 31, 2008. Changes made after January 31, 2008, have been published in the *Postal Bulletin*, and are also reflected in WebBATS. Publication 431 is currently available on the Postal Service™ PolicyNet website (<http://blue.usps.gov/cpim>):

- Go to <http://blue.usps.gov>.
- Under “Essential Links” in the left-hand column, click *PolicyNet*.
- Click *PUBs*.

Offices with WebBATS access can view current Publication 431 information by generating a WebBATS Facility Information Report as follows:

1. Go to the WebBATS main menu, and select *Reports*. The reports page opens.
2. Under the Clients/System column, System category, click *Facility Information*.
3. View the Fee Group field in the report.

— Special Services,  
Retail Products and Services, 1-28-10

## Publication 9, USA Philatelic Catalog, Is Now Available

Postmasters should order and use Publication 9, *USA Philatelic Catalog*, to attract new customers to the world of stamps and stamp products. Sales made through the *USA Philatelic Catalog* are credited back to the customer's ZIP™ Code; that's revenue for your office with no effort on your part.

Use the eBay On-Catalog system to order Publication 9 from the Material Distribution Center (MDC) by On-Catalog requisition; search for items using the PSN listed below without dashes. If your office does not have access to eBay, you may order using touch-tone order entry (TTOE): Call 800-273-1509.

**Note:** You must be registered to use TTOE. To register, call 800-332-0317, option 1, extension 2925, and follow the prompts to leave a message. (Wait 48 hours after registering before placing your first order). For complete TTOE ordering instructions, visit the Materials Customer Service website at

[http://blue.usps.gov/purchase/\\_doc/ops\\_ttoeins.doc](http://blue.usps.gov/purchase/_doc/ops_ttoeins.doc) or call National Materials Customer Service at 800-332-0317, option 4.

<b>PSIN:</b>	PUB9
<b>PSN:</b>	7610-03-000-4604
<b>Unit of Measure:</b>	EA
<b>Minimum Order Quantity:</b>	50
<b>Maximum Order Quantity:</b>	500
<b>Bulk Pack Quantity:</b>	2,200
<b>Quick Pick Number:</b>	458
<b>Price:</b>	\$0.00
<b>Edition Date:</b>	1/10

— Stamp Services,  
Government Relations and Public Policy, 1-28-10

## Mover's Guide News: January 2010 Mover's Guide Has Been Distributed

The January 2010 issue of Publication 75, *Mover's Guide*, has been shipped to all Post Offices™. Please recycle all expired versions.

### Mover's Guide Schedule Information

- *Mover's Guide* is printed and distributed three times per year — December (for January use), April (for May use), and August (for September use).
- Offices will receive *Mover's Guide* copies in one or two shipments. The first shipments arrived in mid-December. The second shipments will arrive 4 to 6 weeks later. Shipments will be sent in quantities of 25, 100, and 300.
- Your facility may receive *Mover's Guide* copies addressed to other offices. Please check the labels and forward the guides as necessary. Remember to scan delivery confirmations affixed to each box.

### Behind the Counter Program

- All Post Offices are now participating in the Behind the Counter program. To be in compliance with this program, you must continue to keep *Mover's Guide* copies behind the counter so that they are inaccessible to customers without the help of a retail associate.
- Customers who request a *Mover's Guide* should be reminded of the convenient opportunity to submit their change-of-address request at [www.usps.com](http://www.usps.com). Internet Change of Address (ICOA) transactions provide customers with the most convenient, safe, and secure way to change their address. Furthermore, online requests reduce processing time, improve address accuracy, and generate significant revenue for the Postal Service™.

- Give customers unwilling or unable to submit their change-of-address request at [www.usps.com](http://www.usps.com) a complete, unopened copy of *Mover's Guide*.

### Inventory Management

- To find out when your office will receive shipments, check the following website: [http://blue.usps.gov/purchase/operations/ops\\_downloads.htm](http://blue.usps.gov/purchase/operations/ops_downloads.htm).
- To change the quantity your office receives, call 800-816-6837 or visit [http://blue.usps.gov/delret/L4CustServSupp\\_Mover.htm](http://blue.usps.gov/delret/L4CustServSupp_Mover.htm).
- Businesses and other organizations must purchase the *Mover's Guide* and can obtain order forms by calling Imagitas at 800-816-6837.
- For further information, see our Frequently Asked Questions at [http://blue.usps.gov/retail/\\_SiteOps/\\_pdf/moveguide\\_faqs\\_12jan07.pdf](http://blue.usps.gov/retail/_SiteOps/_pdf/moveguide_faqs_12jan07.pdf).

### Catalog Address Change and Request Card

- The Catalog Address Change and Request Card is attached to PS Form 3575, *Change-of-Address Order*, and allows movers to let catalogers know their new address.
- **Important Note:** The Catalog Address Change and Request Card must be **detached** from the PS Form 3575, the catalog description card, and the online adoption message. The Catalog Address Change and Request Card and PS Form 3575 should be mailed separately. **This is important for change-of-address processing.**

— Address Management,  
Intelligent Mail and Address Quality, 1-28-10

# Organization Information

## Finance

### Renewal of Form W-5, Earned Income Credit Advance Payment Certificate

Form W-5, *Earned Income Credit Advance Payment Certificate*, which allows eligible employees to receive advance payment of their earned income credit, must be renewed for 2010. All certificates currently in effect expired at the end of calendar year 2009 and must be renewed by submitting a new Form W-5 as soon as possible.

As noted in previous articles, there has been a permanent change in procedure concerning the processing of these forms. Employees must now send their forms directly to Accounting Services in Eagan, Minnesota. This procedural change will enable Accounting Services to process these forms in a more timely and efficient manner. Internal Revenue Service (IRS) regulations specifically prohibit any retroactive changes or additions to the information submitted on the original Form W-5. Any changes, corrections, or additions to a Form W-5 require the submission of a new form.

To ensure the new forms will be effective as early as possible in calendar year 2010, Accounting Services should receive them at the address shown below no later

than Wednesday, February 17, 2010. Receipt by then will ensure the information on the form will be effective as soon as possible in 2010.

Attn: Financial Reporting Section  
Accounting Services  
2825 Lone Oak Parkway  
Eagan, MN 55121-9617

#### Reminders:

- Administrative and managerial employees must not provide tax advice to employees concerning the completion of Forms W-5. Employees are responsible for proper and timely submission of their form.
- IRS regulations mandate employers submit copies of all Forms W-5 received for their employees. After receipt and processing in Eagan, a copy of each form will be sent to the IRS for its review.

— Payroll, Finance, 1-28-10

### Form W-4 Completion for Employees Claiming Exempt Status for 2010

Internal Revenue Service (IRS) regulations permit employees who anticipate no federal tax liability for 2010 to continue to claim total exemption from federal tax withholding provided they owed no federal taxes for 2009. These regulations also require a new Form W-4, *Employee's Withholding Allowance Certificate*, be submitted every calendar year by employees claiming an exempt status. However, because of *PostalEASE*, it is no longer necessary for these employees to file a hard copy Form W-4.

Employees may meet IRS filing requirements concerning exempt Forms W-4 by either logging onto *PostalEASE* via the USPS® Intranet at <http://blue.usps.gov> or by calling *PostalEASE* toll-free at 877-477-3273, option 1. Follow the Form W-4 instructions provided by *PostalEASE*, and your form will be updated for calendar year 2010. If you need to contact the HR Shared Service Center (HRSSC) in Greensboro concerning this matter, call 877-477-3273, option 5.

Any employee currently in an exempt status who does not submit a new Form W-4 claiming a continuation of the exempt status will be converted to a taxable status, effective Pay Period (PP) 05-10. For an exempt status to remain effective into the next year, the IRS requires completion, submission, and acceptance of a new form no later than February

17. Since February 17 falls within PP 05-10, updated Form W-4 information must be entered into *PostalEASE* no later than Wednesday, **February 17, 2010**. Entry of the information by that date will ensure continuation of the exempt status for 2010.

Any employee who claimed exempt status for 2009 and doesn't submit a new Form W-4 will have federal taxes withheld at the rate normally applicable to an employee claiming "Single" with "0" allowances. Employees with an exempt status (as of PP 26-09) will receive printed messages on their earnings statement during PP 03-10 and PP 04-10 reminding them a new Form W-4 is required.

#### Reminders

- All administrative and managerial employees are prohibited from providing any tax advice to employees concerning the completion of Form W-4.
- Sending information concerning exempt Form W-4 to Eagan Accounting Services is no longer required.

— Payroll, Finance, 1-28-10

## Intelligent Mail and Address Quality

### Post Office Changes

Old/ New	Finance No.	ZIP Code	State	P.O. Name	County/ Parish	Station/Branch/ Unit	Unit Type	Effective Date	Comments
Old New	18-9585 18-5823	50681 50681	IA IA	Westgate Maynard	Fayette Fayette	Main Office Westgate	Post Office Place Name	08/08/2007 10/25/2009	Post Office™ discontinued. Retain ZIP™ Code. Establish a place name. Continue to use Westgate IA 50681 as last line of address.
Old New	18-4077 18-5508	51541 51541	IA IA	Henderson Macedonia	Mills Mills	Main Office Henderson	Post Office Place Name	10/24/2008 11/21/2009	Post Office discontinued. Retain ZIP Code. Establish a place name. Continue to use Henderson IA 51541 as last line of address.
Old New	18-2115 18-2106	50842 50842	IA IA	Cromwell Creston	Union Union	Main Office Cromwell	Post Office Place Name	06/23/2008 12/12/2009	Post Office discontinued. Retain ZIP Code. Establish a place name. Continue to use Cromwell IA 50842 as last line of address.
Old New	18-9360 18-6111	52170 52170	IA IA	Waterville Monona	Allamakee Alamakee	Main Office Waterville	Post Office Place Name	09/03/2008 09/26/2009	Post Office discontinued. Retain ZIP Code. Establish a place name. Continue to use Waterville IA 52170 as last line of address.
Old New	17-0517 17-9053	47011 47011	IN IN	Bennington Vevay	Switzerland Switzerland	Main Office Bennington	Post Office Place Name	04/13/2009 07/25/2009	Post Office discontinued. Retain ZIP Code. Establish a place name. Continue to use Bennington IN 47011 as last line of address.
Old New	17-5511 17-3432	47261 47261	IN IN	Millhousen Greensburg	Decatur Decatur	Main Office Millhousen	Post Office Place Name	08/22/2009 10/31/2009	Post Office discontinued. Retain ZIP Code. Establish a place name. Continue to use Millhousen IN 47261 as last line of address.
Old New	17-2893 17-0473	47430 47421	IN IN	Fort Ritner Bedford	Washington Washington	Main Office Fort Ritner	Post Office Place Name	05/12/2006 10/24/2009	Post Office and ZIP Code discontinued. Establish a place name. Fort Ritner IN becomes an acceptable last line for use with ZIP Code 47421.
Old New	17-0792 17-1221	47514 47514	IN IN	Branchville Cannelton	Perry Perry	Main Office Branchville	Post Office Place Name	06/02/2003 10/10/2009	Post Office discontinued. Retain ZIP Code. Establish a place name. Continue to use Branchville IN 47514 as last line of address.
Old New	17-7656 17-1221	47576 47576	IN IN	Saint Croix Cannelton	Perry Perry	Main Office Saint Croix	Post Office Place Name	04/01/2006 10/10/2009	Post Office discontinued. Retain ZIP Code. Establish a place name. Continue to use Saint Croix IN 47576 as last line of address.
Old New	20-5396 20-5396	42287 42261	KY KY	Morgantown Morgantown	Butler Butler	Welchs Creek Welchs Creek	Community Post Office Community Post Office	 12/23/2009	Realign ZIP Code boundaries. Use Welchs Creek KY 42261 as last line of address for the 100 deliveries previously in ZIP Code 42287.



Old/ New	Finance No.	ZIP Code	State	P.O. Name	County/ Parish	Station/Branch/ Unit	Unit Type	Effective Date	Comments
Old New	20-8452 20-4000	40495 40336	KY KY	Winston Irvine	Estill Estill	Main Office Winston	Post Office Place Name	11/30/2007 09/12/2009	Post Office and ZIP Code discontinued. Establish a place name. Winston KY becomes an acceptable last line for use with ZIP Code 40336.
Old New	20-4656 20-8328	41833 41833	KY KY	Linefork Whitesburg	Letcher Letcher	Main Office Linefork	Post Office Place Name	05/30/2008 11/07/2009	Post Office discontinued. Retain ZIP Code. Establish a place name. Continue to use Linefork KY 41833 as last line of address.
Old New	20-0476 20-7512	42124 42124	KY KY	Beaumont Summer Shade	Metcalfe Metcalfe	Main Office Beaumont	Post Office Place Name	05/01/2008 11/07/2009	Post Office discontinued. Retain ZIP Code. Establish a place name. Continue to use Beaumont KY 42124 as last line of address.
Old New	20-6032 20-3612	42364 42364	KY KY	Pellville Hawesville	Hancock Hancock	Main Office Pellville	Post Office Community Post Office	01/18/2007 09/19/2009	Post Office discontinued. Retain ZIP Code. Establish a Community Post Office. Continue to use Pellville KY 42364 as last line of address.
Old New	20-2456 20-1216	42733 42733	KY KY	Elk Horn Campbellsville	Taylor Taylor	Main Office Elk Horn	Post Office Place Name	12/31/2007 09/12/2009	Post Office discontinued. Retain ZIP Code. Establish a place name. Continue to use Elk Horn KY 42733 as last line of address.
Old New	33-3630 33-3630	07732 07732	NJ NJ	Highlands Highlands	Monmouth Monmouth	Fort Hancock Fort Hancock	Classified Branch Place Name	12/08/2008 12/08/2008	Classified Branch discontinued. Retain ZIP Code. Establish a place name. Continue to use Fort Hancock NJ 07732 as last line of address.
Old New	39-6204 39-4554	73764 73764	OK OK	Omega Kingfisher	Kingfisher Kingfisher	Main Office Omega	Post Office Place Name	07/20/2007 11/21/2009	Post Office discontinued. Retain ZIP Code. Establish a place name. Continue to use Omega OK 73764 as last line of address.
Old New	40-1280 40-9376	97416 97416	OR OR	Camas Valley Winston	Douglas Douglas	Main Office Camas Valley	Post Office Community Post Office	12/13/2006 10/17/2009	Post Office discontinued. Retain ZIP Code. Establish a Community Post Office. Continue to use Camas Valley OR 97416 as last line of address.
Old New	41-7076 41-7076	15853 15853	PA PA	Ridgway Ridgway	Elk Elk	Portland Mills Main Office	Community Post Office Post Office	02/01/1974 05/30/2009	Community Post Office discontinued. Retain ZIP Code. Use Ridgway PA 15853 as last line of address.
Old New	41-2512 41-2512	16321 16321	PA PA	Endeavor Endeavor	Forest Forest	East Hickory East Hickory	Community Post Office Place Name	05/30/2009 05/30/2009	Community Post Office discontinued. Retain ZIP Code. Establish a place name. Continue to use East Hickory PA 16321 as last line of address.
Old New	47-0984 47-5568	38010 38010	TN TN	Braden Mason	Fayette Fayette	Main Office Braden	Post Office Fayette	04/22/2005 11/21/2009	Post Office discontinued. Retain ZIP Code. Establish a place name. Continue to use Braden TN 38010 as last line of address.

Old/ New	Finance No.	ZIP Code	State	P.O. Name	County/ Parish	Station/Branch/ Unit	Unit Type	Effective Date	Comments
Old New	47-0156 47-0168	38542 38542	TN TN	Allred Alpine	Overton Overton	Main Office Allred	Post Office Place Name	04/30/2004 11/21/2009	Post Office discontinued. Retain ZIP Code. Establish a place name. Continue to use Allred TN 38542 as last line of address.
Old New	56-7890 56-2470	54657 54657	WI WI	Steuben Eastman	Crawford Crawford	Main Office Steuben	Post Office Place Name	08/20/2007 01/09/2010	Post Office discontinued. Retain ZIP Code. Establish a place name. Continue to use Steuben WI 54657 as last line of address.
Old New	55-0966 55-1482	25665 25667	WV WV	Borderland Chattaroy	Mingo Mingo	Main Office Borderland	Post Office Place Name	04/21/1999 06/20/2009	Post Office and ZIP Code discontinued. Establish a place name. Boderland WV becomes an acceptable last line for use with ZIP Code 25667.
Old New	55-0870 55-7950	25025 25025	WV WV	Blount Tad	Kanawha Kanawha	Main Office Blount	Post Office Place Name	10/28/1999 10/24/2009	Post Office discontinued. Retain ZIP Code. Establish a place name. Continue to use Blount WV 25025 as last line of address.

— Address Management, Intelligent Mail and Address Quality, 1-28-10

(Section continued on page [41](#))

# Pull-Out Information

## Fraud

### Invalid Express Mail Corporate Account Numbers

These numbers are to be posted and used by retail/acceptance clerks. This listing supersedes all previous notices, which must be recycled. Retail/acceptance clerks must not accept Express Mail® shipments bearing any of

the invalid numbers (listed below) in the “customer number” or “agreement number” section of the label or form.

**Note:** The first 6 digits of a 9-digit Custom Designed Service and Next Day Pickup Agreement make up the Corporate Account Number.

006377	015360	019508	025339	069035	075269	075747	076207	076901	105967	152154	321001	358071
006758	015393	019523	025395	069139	075278	075749	076220	076911	106445	152506	322289	358989
008024	015495	019534	026276	069145	075281	075755	076228	076921	107242	152858	326182	372507
008028	015530	019560	026539	069267	075318	075766	076239	076941	107298	152984	327105	386079
008102	015539	019612	027082	069377	075328	075767	076247	076958	109470	156195	327253	402022
008234	015558	019613	027493	069505	075332	075768	076250	076960	109635	165200	327402	402367
008273	015576	019651	028021	069705	075334	075770	076251	076963	110003	165322	328071	402607
008368	015590	019702	028437	069821	075335	075789	076297	076980	110370	192154	328723	405014
008592	015639	019703	028475	069886	075336	075792	076307	076984	110599	192648	328996	424047
008599	015698	019732	029636	069910	075338	075795	076309	078052	111122	192903	329073	430203
008726	015804	019737	029705	071425	075342	075797	076325	080344	111264	206049	329268	432559
008823	016030	019745	031287	071445	075345	075822	076340	085704	111604	208918	329503	432954
008847	016077	019784	038100	071451	075357	075838	076359	088776	111617	210120	330032	439524
008853	016174	019852	040090	071456	075371	075839	076384	089576	111989	210137	330128	441072
008896	016289	019856	042104	071467	075376	075840	076391	090492	112006	212367	330218	441164
008909	016414	019859	042315	071478	075408	075844	076393	090654	112031	220144	331278	441540
009240	016426	019899	043050	071497	075430	075849	076394	092764	112070	220326	331408	441710
009378	016549	019905	052106	071501	075450	075861	076396	093534	112076	220426	331444	441742
009505	016551	019913	053002	071513	075460	075876	076437	093997	112079	220659	331701	443200
009601	016566	019916	055005	071515	075488	075920	076440	094413	112082	220776	331806	443562
009629	016633	019941	055124	071528	075494	075924	076444	095815	112083	222033	332365	452674
010196	016659	019981	055141	071577	075495	075927	076448	096506	112512	232373	332370	456022
010423	016691	019999	055172	071582	075504	075929	076462	098043	112813	235531	333044	460109
010789	016747	020118	055187	071603	075509	075939	076487	098208	112852	263026	333075	461129
012334	018052	021108	055196	071614	075515	075940	076560	098731	113547	265012	333186	462017
014012	018118	021194	055223	071625	075521	075942	076583	100022	113923	280158	334732	467105
014104	018174	021225	060063	071636	075537	075959	076613	100508	115018	296540	335219	471245
014117	018203	021278	060379	071637	075546	075973	076645	100512	115106	296554	335273	473061
014125	018205	021572	060403	071644	075551	075983	076687	100534	115196	300097	335882	474024
014133	018407	021608	060559	071650	075561	075986	076694	100557	115326	300528	336185	477086
014163	018478	021836	062056	071651	075565	076029	076712	100573	115521	300727	336220	477156
014277	019137	021924	064022	075009	075572	076030	076720	100575	115950	301224	336227	483035
014327	019210	022033	064663	075014	075588	076042	076735	100591	117014	301235	336269	489316
014547	019239	022095	064806	075021	075590	076045	076756	100637	117150	301395	336270	495145
014563	019253	022157	065092	075045	075609	076053	076762	100731	117436	301396	337088	495146
014566	019309	022186	065972	075050	075628	076083	076777	103226	117663	301448	337112	496035
014613	019398	022232	067045	075133	075634	076098	076786	103229	118055	301459	337202	531336
014733	019413	022347	067209	075135	075635	076104	076787	103237	119110	301482	338089	531690
014806	019436	022355	068030	075150	075636	076105	076797	103360	119514	301494	339102	531894
014831	019448	022461	068032	075192	075671	076107	076798	103372	120156	301561	340229	544066
014949	019450	022623	068065	075198	075686	076108	076823	103458	124177	301589	347090	547557
014978	019478	022626	068077	075199	075694	076110	076846	103651	125463	306657	349102	551085
015028	019485	022634	068319	075201	075697	076111	076848	103834	134031	306929	349750	551115
015053	019486	022662	068395	075207	075720	076117	076860	105060	142045	309017	349844	551175
015145	019496	022670	068476	075254	075735	076131	076882	105210	142979	311165	349861	551206
015189	019499	022765	068532	075258	075737	076134	076892	105640	146390	314336	349864	551218
015254	019500	022870	068572	075259	075739	076172	076897	105736	150038	314431	349889	551221
015262	019506	022895	069015	075262	075740	076189	076898	105907	150249	320122	349971	551235

551236	553417	554700	601033	641627	750325	840011	891538	915022	928505	941744	967219	968708
551247	553461	554703	601053	641781	752008	840019	891646	915133	928543	945242	967237	968849
551256	553480	554704	601091	641952	752148	840047	891841	915145	928621	945307	967260	968892
551262	553487	554714	601238	641999	760151	840120	891843	915723	930069	945559	967295	968937
551267	553504	554715	601639	658111	770021	840492	891960	916013	930294	945729	967297	968951
551293	553549	554902	601815	658225	770374	841054	891967	917340	931423	948091	967321	968991
551355	553550	554928	601836	662089	770527	841244	891968	917514	931463	948463	968233	969029
551589	553593	554979	601975	662090	770769	841246	891978	917625	931579	948601	968268	969062
551603	553616	554987	601981	662163	770821	841252	891983	917759	932698	948730	968326	970215
551716	553743	557020	602113	666150	771042	841934	891987	920010	933253	948806	968334	970586
551818	553823	557028	602295	672005	771995	843069	891989	920022	933516	948839	968366	970886
551867	553863	557032	603163	681638	772987	846212	891996	921055	933545	949382	968383	970955
551869	553882	558062	604129	681671	773077	847003	895020	921538	935274	949650	968388	971018
551883	553889	558096	605113	<b>701013</b>	773499	847018	895546	925114	937844	950312	968412	971061
551889	553894	559044	606020	708566	774061	852589	<b>900074</b>	926032	937861	950488	968413	971063
551903	553922	559060	606557	711656	774069	853238	900110	926187	937884	950880	968419	977040
551909	553949	564026	607231	712167	778323	853515	900547	926269	940364	950999	968434	980045
551941	553996	570014	607458	722153	782135	853870	900648	926346	940369	951151	968462	980482
551959	554005	570066	608106	740099	782149	853895	906003	926373	940412	951636	968477	980764
551963	554026	571022	610231	740385	793001	856182	906119	926454	940422	951721	968488	982051
551980	554043	572022	616112	740548	794211	891214	906262	926464	940458	952283	968509	982490
551997	554205	577001	620050	741140	795002	891246	907349	926489	940549	953356	968512	982534
553138	554214	581143	627136	741141	<b>800240</b>	891274	907626	926492	940588	958192	968525	982642
553165	554300	591855	630021	741529	800364	891322	911001	926562	940863	958637	968547	992752
553179	554347	598672	631945	741733	802347	891331	913099	926752	940960	967112	968569	995102
553264	554353	<b>600180</b>	641026	741761	802459	891357	913134	926827	941074	967146	968577	997173
553304	554541	600662	641196	750103	805365	891363	913160	927415	941546	967151	968595	
553322	554588	601005	641612	750109	809238	891384	914058	928319	941626	967175	968610	
553364	554697	601028	641618	750288	811027	891404	914809	928421	941667	967176	968701	

— Product Information Requirements, Business Mail Entry & Payment Technologies, 1-28-10

## Missing, Lost, or Stolen U.S. Money Order Forms

**Do Not Cash — Upon Receipt, Notify Local Postal Inspectors**

This listing will be provided to all Postal Service™ employees responsible for accepting and cashing postal money orders. Destroy all interim notices when the numbers listed appear in the *Postal Bulletin*. The actual serial

numbers consist of the first 10 digits on the money orders. Check for altered dollar amounts by holding money orders to the light.

<b>010 504 1932 to 1999</b>	043 129 1968 to 1997	<b>082 721 0228 to 0254</b>	<b>302 000 0000 to 9999</b>
011 582 1889 to 1899	043 205 5922 to 5999	083 140 5000 to 7499	<b>349 746 2056 to 2099</b>
011 588 2900 to 3099	044 087 3457 to 3499	083 784 8886 to 8899	<b>350 518 7350 to 7374</b>
012 579 5675 to 5699	044 087 4000 to 4099	083 913 6915 to 6999	<b>360 011 1690 to 1699</b>
013 289 6176 to 6199	044 306 4200 to 4299	084 478 3920 to 3999	360 168 6008 to 6099
013 610 0014 to 0099	044 306 4370 to 4599	086 000 8271 to 8299	360 173 8800 to 8899
014 932 1000 to 1099	045 524 4121 to 4298	086 798 3840 to 3849	360 324 2326 to 2399
014 972 0800 to 0899	046 800 9870 to 9899	088 404 4472 to 4499	362 861 3064 to 3099
015 363 0065 to 0099	047 352 4000 to 4099	088 404 5584 to 5699	<b>373 006 2176 to 2199</b>
017 028 3200 to 3299	048 383 7650 to 7659	088 757 8688 to 8699	374 768 2600 to 2699
018 569 5333 to 5399	048 396 3647 to 3699	088 757 9400 to 9499	375 169 4400 to 4599
018 986 5264 to 5299	<b>051 142 0755 to 0799</b>	089 358 2248 to 2257	375 829 3400 to 3499
019 518 2814 to 2899	051 774 8857 to 8899	<b>093 106 9346 to 9355</b>	375 851 9100 to 9199
<b>020 698 5159 to 5199</b>	051 781 2875 to 2885	093 203 0500 to 0599	376 196 0911 to 0999
020 844 7307 to 7399	051 977 7010 to 7023	093 684 3630 to 3699	378 085 3679 to 3699
020 972 8948 to 8999	052 058 7115 to 7199	094 081 5074 to 5099	378 351 1063 to 1099
022 021 9110 to 9181	054 450 1130 to 1167	094 216 2555 to 2599	379 843 5100 to 5199
022 037 1411 to 1499	057 670 0563 to 0599	094 580 7062 to 7099	<b>380 093 9600 to 9699</b>
022 527 9201 to 9210	058 187 3836 to 3899	094 639 4200 to 4299	380 165 1165 to 1199
023 637 7169 to 7199	058 523 3003 to 3099	095 070 7186 to 7199	381 325 4500 to 4599
024 380 4100 to 4199	058 591 1153 to 1299	095 076 8300 to 8399	381 604 2510 to 2699
024 496 6870 to 6896	058 895 3746 to 3799	095 354 6864 to 6899	381 645 9525 to 9599
025 092 0987 to 0999	059 986 0814 to 0899	097 224 1350 to 1599	383 314 3968 to 3999
025 369 5535 to 5599	<b>060 406 7650 to 7699</b>	<b>100 160 3800 to 3899</b>	383 892 1000 to 1344
025 729 1151 to 1199	063 491 8122 to 8199	104 667 6400 to 6499	383 892 1382 to 1399
025 729 1643 to 1799	063 916 9968 to 9999	104 876 8937 to 8999	384 925 3641 to 3654
026 492 3180 to 3199	064 091 4500 to 4599	<b>112 049 4413 to 4499</b>	385 568 2331 to 2399
027 361 0430 to 0499	065 170 0471 to 0499	112 870 9765 to 9799	385 599 7554 to 7575
027 369 4482 to 4495	065 255 7909 to 7999	114 402 3850 to 3899	385 774 2024 to 2099
027 671 8762 to 8776	065 392 6345 to 6399	114 866 5368 to 5397	386 624 1412 to 1599
027 787 9886 to 9899	066 099 2014 to 2099	116 154 2800 to 2899	386 883 8936 to 8999
027 965 9487 to 9499	066 648 2880 to 2899	116 986 4400 to 4499	387 314 5574 to 5599
028 100 8069 to 8099	066 787 3639 to 3699	117 175 1647 to 5169	387 837 6300 to 6399
028 191 1852 to 1999	066 845 7500 to 9999	117 951 4687 to 4699	388 828 0656 to 0699
028 850 3000 to 3199	067 093 3869 to 3899	117 951 5200 to 5299	389 696 2400 to 2799
029 510 1500 to 1599	068 895 0334 to 0399	119 815 8961 to 6199	389 846 3104 to 3135
<b>030 687 0903 to 0999</b>	<b>070 724 4488 to 4499</b>	119 850 7400 to 7499	389 846 3145 to 3195
030 701 3442 to 3499	070 841 9181 to 9199	119 850 7700 to 7999	389 887 9211 to 9230
031 077 4507 to 4799	070 844 2546 to 2599	<b>121 634 0460 to 0499</b>	389 887 9234 to 9299
032 295 7500 to 9999	070 916 1340 to 1399	122 451 9879 to 9899	<b>390 001 3182 to 3199</b>
034 394 1000 to 1099	071 047 5768 to 5799	122 714 6805 to 6900	390 001 3500 to 3699
034 943 0400 to 0799	071 179 9800 to 9899	124 916 0304 to 0499	390 545 5974 to 5999
035 035 4337 to 4399	071 386 3682 to 3699	126 423 0136 to 0169	391 104 6146 to 6199
037 706 9578 to 9599	071 507 6840 to 6899	<b>160 901 2254 to 2299</b>	391 574 1466 to 1499
037 805 3677 to 3699	072 045 9641 to 9699	161 103 6581 to 6599	391 783 3020 to 3599
037 909 5490 to 5499	072 675 8287 to 8299	162 032 4447 to 4499	391 792 6100 to 6199
037 931 4660 to 4699	077 617 5481 to 5499	163 257 1085 to 1099	392 668 2956 to 2999
039 145 6521 to 6595	077 999 4001 to 4090	166 101 1433 to 1499	392 854 8500 to 8899
<b>040 024 3901 to 3999</b>	078 174 4475 to 4499	178 254 5000 to 9999	393 584 7566 to 7699
040 674 7100 to 7199	078 219 4931 to 4999	178 881 9900 to 9999	393 650 0074 to 0099
040 688 8816 to 8899	078 250 4756 to 4799	<b>210 221 0548 to 0599</b>	393 838 8316 to 8499
041 299 6752 to 6799	078 823 8312 to 8399	<b>227 275 9400 to 9999</b>	393 893 6007 to 6099
041 623 8889 to 8899	079 374 0300 to 2499	<b>273 070 8059 to 8099</b>	394 126 6907 to 6999
041 803 6565 to 6599	079 807 2342 to 2399	273 775 7700 to 7899	394 189 0405 to 0599

394 822 3243	to	3278	414 411 7348	to	7399	435 666 6092	to	6399	458 354 7653	to	7999
394 990 1810	to	1899	414 640 0757	to	0799	436 082 6400	to	6899	458 671 8678	to	8699
395 343 3264	to	3299	414 965 1727	to	1799	436 160 6441	to	6499	458 671 8721	to	8798
395 373 3035	to	3099	417 302 8104	to	8199	437 316 7115	to	7199	458 847 5044	to	5999
395 396 9649	to	9799	417 387 6532	to	6599	437 427 0500	to	3499	459 274 7624	to	7699
395 970 3240	to	3299	417 496 6800	to	6999	439 179 2300	to	2399	459 365 5432	to	5499
397 622 4054	to	4099	417 871 9250	to	9299	439 310 0458	to	0499	459 378 5764	to	5799
397 819 8902	to	8999	417 930 9533	to	9599	<b>440 698 1947</b>	<b>to</b>	<b>1999</b>	459 472 4816	to	4999
398 149 7200	to	7699	418 164 6500	to	6799	440 858 6300	to	6399	<b>460 349 6878</b>	<b>to</b>	<b>6899</b>
399 070 0872	to	0899	418 423 9863	to	9899	440 858 6420	to	7299	460 550 1909	to	1999
399 156 7119	to	7199	418 633 5922	to	5999	441 199 1655	to	1699	460 997 5234	to	5299
399 203 5064	to	5099	418 719 8520	to	8599	443 127 3648	to	3699	461 973 6443	to	6499
399 296 9910	to	9999	418 744 2235	to	2299	443 127 4000	to	4099	462 152 0107	to	0299
399 396 8935	to	8999	418 962 2848	to	2899	443 673 7900	to	7999	462 274 1072	to	1099
399 792 7775	to	7799	419 543 0286	to	0299	443 800 9335	to	9399	462 277 8373	to	8399
399 792 8300	to	8399	419 730 0300	to	0399	444 382 8822	to	8899	462 554 6051	to	6099
<b>400 427 1051</b>	<b>to</b>	<b>1999</b>	<b>420 277 0015</b>	<b>to</b>	<b>0049</b>	444 390 1667	to	1699	463 011 5529	to	5540
401 045 1505	to	1549	420 599 0734	to	0798	444 457 3854	to	3899	463 176 4115	to	4199
401 045 1571	to	1599	420 661 4115	to	4199	<b>450 048 4173</b>	<b>to</b>	<b>4199</b>	463 176 4229	to	4299
401 294 2700	to	2799	420 758 9500	to	9699	450 048 4442	to	4699	463 185 2600	to	2799
401 310 9505	to	9599	420 969 3951	to	3971	450 560 5173	to	5199	463 227 7711	to	7799
401 382 5312	to	5399	420 969 3973	to	3999	450 620 3077	to	3099	463 414 4869	to	4899
402 578 7876	to	7899	421 116 3565	to	3599	450 620 3135	to	3199	463 808 3484	to	3499
403 125 6744	to	6799	421 130 9300	to	9399	450 780 2716	to	2799	463 945 7400	to	7899
403 260 7000	to	7499	421 313 4500	to	4999	450 801 2700	to	2799	464 629 9000	to	9399
403 280 6470	to	6499	421 364 5537	to	5599	451 109 2967	to	2984	464 711 4332	to	4399
403 685 8600	to	8699	421 656 2609	to	2699	451 115 4110	to	4125	465 692 3963	to	3999
404 003 0300	to	0399	421 988 9700	to	9799	451 115 4127	to	4199	465 698 8300	to	8599
404 041 8838	to	8899	422 172 4667	to	4699	451 746 0700	to	0799	465 743 7745	to	7799
404 071 4268	to	4299	422 484 4212	to	4299	452 265 0074	to	0099	466 798 6056	to	6067
404 347 5356	to	5399	422 556 1270	to	1299	452 265 0246	to	0299	467 147 4300	to	4399
404 347 5548	to	5599	422 587 7024	to	7099	452 265 0335	to	0999	468 079 5782	to	5799
404 726 4500	to	4599	422 819 7533	to	7599	452 509 1169	to	1199	469 067 2817	to	2899
404 961 5001	to	5199	422 842 5073	to	5087	452 855 6471	to	6499	469 127 8000	to	8199
405 325 0188	to	0198	422 907 7563	to	7599	452 890 4679	to	4799	469 213 0359	to	0399
406 009 4587	to	4599	424 500 6050	to	6099	452 900 8215	to	8238	469 213 0500	to	0599
406 260 6830	to	6899	424 641 8500	to	8599	453 117 9146	to	9199	469 561 8011	to	8099
406 459 6641	to	6999	424 871 6600	to	6699	453 334 3631	to	3699	469 658 1961	to	1999
406 733 3000	to	3999	425 298 2352	to	2399	453 603 7841	to	7891	469 666 9900	to	9999
407 545 1557	to	1599	425 418 4269	to	4299	453 650 1140	to	1199	469 678 1900	to	1999
407 594 0412	to	0599	425 418 4405	to	4499	453 741 1300	to	1399	469 781 4900	to	4999
407 692 9100	to	9299	426 547 4566	to	4599	454 013 2919	to	2999	469 947 6960	to	6999
407 959 2190	to	2199	427 412 6337	to	6499	454 186 2411	to	2499	<b>470 755 5800</b>	<b>to</b>	<b>5818</b>
408 265 2275	to	2288	427 481 0900	to	0999	454 268 4883	to	4899	471 918 0300	to	0999
408 499 7700	to	7799	428 027 2742	to	2752	454 302 5400	to	5499	471 985 2408	to	2419
408 499 7900	to	7999	429 474 4172	to	4199	454 490 8300	to	8399	472 191 6700	to	6799
408 682 8484	to	8599	429 889 2900	to	2999	454 547 7434	to	7499	472 270 2555	to	2599
408 698 7015	to	7099	<b>430 150 4401</b>	<b>to</b>	<b>4599</b>	454 922 4867	to	4895	472 987 0213	to	0241
409 072 3941	to	3999	430 172 9800	to	9899	455 221 1348	to	1499	472 987 0290	to	0299
<b>410 491 2311</b>	<b>to</b>	<b>2399</b>	430 177 1900	to	2099	455 364 2147	to	2199	473 151 2069	to	2199
410 694 8400	to	8599	430 444 9500	to	9699	455 399 5400	to	5499	473 666 9138	to	9199
410 775 1500	to	1599	430 664 4070	to	4099	455 476 0676	to	0699	473 952 3429	to	3499
410 795 7927	to	7999	432 168 8419	to	8499	455 543 0618	to	0699	474 108 5402	to	5499
410 867 0917	to	0966	432 708 6800	to	6999	456 410 9006	to	9099	474 356 5193	to	5299
410 867 0970	to	0999	432 744 1544	to	1599	456 470 4146	to	4299	474 949 3366	to	3399
411 868 1023	to	1199	432 995 9775	to	9799	456 619 4460	to	4499	475 134 9362	to	9399
411 922 2322	to	2399	433 003 5800	to	5899	457 333 2686	to	2699	475 167 9667	to	9699
412 193 0900	to	0999	433 757 3047	to	3099	457 729 1767	to	1777	475 319 3415	to	3499
412 395 8599	to	8699	433 765 4003	to	4099	457 937 8615	to	8699	475 319 3649	to	3799
412 485 6500	to	6599	434 482 7060	to	7199	458 028 9810	to	9899	475 340 6400	to	6599
412 485 6610	to	6699	434 513 2386	to	2399	458 057 2712	to	2999	475 424 8410	to	8499
412 885 5953	to	5999	434 968 3076	to	3092	458 069 9537	to	9599	475 629 9156	to	9199
414 193 3608	to	3674	435 303 1831	to	1842	458 069 9665	to	9699	475 850 6101	to	6199
414 193 3677	to	3699	435 303 1986	to	1999	458 337 5222	to	5299	475 875 2500	to	2599



476 169 8264	to	8299	493 470 2562	to	2599	<b>610 092 3200</b>	<b>to</b>	<b>3299</b>	634 807 2474	to	2499
476 189 3000	to	3499	493 473 7700	to	7799	610 582 4200	to	4299	634 827 5900	to	5999
476 331 2480	to	2499	493 716 2153	to	2199	611 879 6939	to	6999	634 886 3428	to	3499
477 289 8601	to	8699	494 206 2972	to	2999	612 291 8013	to	8099	635 559 3449	to	3499
477 681 5206	to	5299	494 217 3446	to	3999	612 751 5171	to	5199	636 289 6214	to	6299
478 010 4243	to	4268	494 224 0500	to	0599	612 751 5226	to	5299	636 634 8007	to	8042
478 010 4270	to	4291	495 145 0600	to	0699	612 751 6083	to	6099	637 150 1200	to	1299
478 450 5071	to	5099	496 209 7425	to	7499	612 751 6268	to	6299	637 562 5828	to	5899
478 469 7838	to	7858	496 213 8728	to	8799	612 751 6572	to	6599	638 042 1647	to	1699
478 469 7883	to	7899	496 474 5226	to	5248	612 774 2111	to	2199	638 049 4984	to	4999
479 280 9800	to	9899	497 053 8517	to	8699	612 774 2254	to	2299	638 318 1115	to	1199
479 365 9116	to	9176	497 854 8673	to	8699	612 774 2500	to	2599	638 318 1453	to	1499
479 412 9900	to	9999	498 449 8888	to	8899	614 469 0979	to	0999	638 885 0000	to	0299
479 667 6190	to	6199	498 929 8285	to	8499	614 474 3000	to	3099	638 903 4362	to	4373
479 748 9680	to	9699	498 936 5310	to	5399	614 521 3490	to	3499	639 415 1929	to	1999
479 860 7000	to	7199	499 016 5425	to	5499	614 645 1800	to	1899	639 415 2019	to	2099
<b>480 526 2000</b>	<b>to</b>	<b>2099</b>	499 440 8575	to	8899	614 832 1100	to	2099	639 420 6200	to	6299
480 640 6330	to	6399	499 731 6717	to	6799	615 017 7505	to	7599	639 469 3517	to	3799
480 658 0568	to	0599	<b>500 064 1858</b>	<b>to</b>	<b>1869</b>	617 711 6609	to	6699	639 605 2143	to	2199
480 689 5100	to	5199	500 070 5725	to	7799	617 760 5266	to	5299	639 657 8600	to	8799
481 072 9463	to	9499	501 331 0300	to	0399	617 813 3601	to	3699	<b>640 289 7500</b>	<b>to</b>	<b>7599</b>
481 673 0074	to	0095	502 227 7645	to	7699	618 840 9200	to	9299	640 289 7700	to	7999
482 527 1500	to	1599	502 424 0200	to	0499	619 551 7229	to	7299	641 170 4420	to	4499
482 541 5255	to	5299	502 424 0600	to	0699	619 859 3000	to	3099	641 318 3133	to	3199
482 729 6800	to	6899	503 194 5144	to	5153	<b>620 073 9400</b>	<b>to</b>	<b>9499</b>	641 378 6500	to	6999
483 363 7207	to	7299	504 045 4030	to	4099	621 614 7907	to	7930	641 383 8739	to	8799
483 402 2356	to	2399	504 166 0500	to	240 1399	621 614 7932	to	7999	641 877 3187	to	3299
483 486 5100	to	5199	<b>600 645 3223</b>	<b>to</b>	<b>3299</b>	621 648 8021	to	8199	641 877 3310	to	3399
483 632 1521	to	1599	601 339 1200	to	1399	621 648 8500	to	8599	642 355 8094	to	8199
483 632 2600	to	2799	601 653 5884	to	5899	621 904 8351	to	8599	642 355 8308	to	8999
483 849 1615	to	1699	601 661 7700	to	7799	621 916 1978	to	1989	642 900 0018	to	0099
484 174 4803	to	5299	601 682 5343	to	5399	622 989 8032	to	8099	643 030 6254	to	6299
484 323 8900	to	9199	601 928 1600	to	1699	623 076 9300	to	9399	644 066 0882	to	0899
484 680 5000	to	5038	602 512 2972	to	2999	623 819 5006	to	5099	644 069 0600	to	0699
484 680 5040	to	5074	602 555 2400	to	2799	623 895 8200	to	8399	644 077 7506	to	7699
484 680 5077	to	5099	602 829 7061	to	7099	623 917 0000	to	0099	644 085 8157	to	8199
485 029 4913	to	4999	603 483 9572	to	9599	623 917 0200	to	0299	644 112 9839	to	9899
486 176 0600	to	0699	603 490 7200	to	7299	624 468 5288	to	5299	644 373 9083	to	9099
486 559 7555	to	7599	603 678 7100	to	7199	624 665 3162	to	3198	644 380 1460	to	1499
486 696 3023	to	3199	603 678 7662	to	7699	625 088 6735	to	6799	644 733 4715	to	4799
488 173 7900	to	7999	603 678 7902	to	7999	625 916 9500	to	9799	644 900 9712	to	9799
488 206 4100	to	4199	603 678 8418	to	8499	625 968 8956	to	8999	644 901 0109	to	1299
488 226 0200	to	0299	603 678 8700	to	9999	627 005 3938	to	3999	644 901 1325	to	1399
488 709 3906	to	3999	604 086 0880	to	0899	627 384 3907	to	4099	644 923 6800	to	7799
488 855 8359	to	8399	604 349 1414	to	1499	627 496 7549	to	7599	644 932 4655	to	4699
489 181 8963	to	8999	604 503 7776	to	7799	627 708 3605	to	3699	645 318 7240	to	7499
489 223 2000	to	2099	605 520 9037	to	9099	627 776 2500	to	2599	645 333 1766	to	1799
489 311 1930	to	1999	605 685 4010	to	4099	628 226 3100	to	3199	645 790 8632	to	8699
489 318 6200	to	6300	605 988 6467	to	6499	628 814 4702	to	4799	645 821 0657	to	0699
489 384 0027	to	0099	607 689 7951	to	7960	628 851 9689	to	9699	645 930 7948	to	7999
489 427 0658	to	0899	607 728 1276	to	1299	629 510 7200	to	7299	645 975 0737	to	0762
489 997 5252	to	5299	608 727 7100	to	7199	629 964 4200	to	4294	646 242 6200	to	6299
<b>490 669 5850</b>	<b>to</b>	<b>6099</b>	608 727 7273	to	7599	<b>630 389 3056</b>	<b>to</b>	<b>3071</b>	646 270 7639	to	7799
490 717 7080	to	7099	608 813 9950	to	9999	630 463 0588	to	0599	646 798 4000	to	4999
490 721 6000	to	6099	609 067 5325	to	5399	631 459 9117	to	9199	647 048 7035	to	7099
490 793 1500	to	2099	609 067 5488	to	5499	631 762 9325	to	9399	647 049 2900	to	2999
490 886 8171	to	8199	609 067 5600	to	5699	632 217 4933	to	4999	647 398 8300	to	8399
490 977 9221	to	9240	609 289 6123	to	6199	632 500 0000	to	640 3999	647 398 8481	to	8499
491 258 8100	to	9099	609 438 4400	to	4499	633 110 4165	to	4199	647 437 3000	to	4999
491 567 1376	to	1399	609 493 1100	to	1199	633 110 4303	to	4499	647 811 2188	to	2199
492 254 4800	to	4899	609 766 8091	to	8999	633 438 6429	to	6599	648 009 6057	to	6099
492 283 5100	to	5199	609 825 4100	to	4115	633 588 7173	to	7182	648 163 5300	to	5499
492 610 6813	to	6899	609 884 2981	to	2999	634 725 0700	to	0799	648 722 5283	to	5299
493 394 5568	to	5599	609 893 1000	to	1099	634 803 3239	to	3299	648 892 3164	to	3199

649 100 3989	to	3999	671 926 5600	to	5799	693 965 4200	to	4299	740 535 1555	to	1580
649 647 0370	to	0399	672 444 2000	to	2999	695 741 2906	to	2999	740 650 4104	to	4140
649 647 0522	to	0599	672 828 3410	to	3499	695 947 8518	to	8599	740 684 0620	to	0800
649 647 5237	to	5399	673 167 5776	to	5799	696 662 8247	to	8299	740 701 6105	to	6114
649 647 9100	to	9299	675 464 3700	to	3799	697 447 8285	to	8296	740 705 9790	to	9799
649 666 7800	to	8299	675 464 4000	to	4199	698 042 4816	to	4899	740 726 6400	to	6500
<b>650 114 7707</b>	<b>to</b>	<b>7719</b>	676 365 5958	to	5999	698 131 2138	to	2157	740 765 3306	to	3399
650 130 3400	to	3599	676 669 1024	to	1099	698 227 0000	to	0099	740 774 8434	to	8499
650 213 0406	to	0499	677 126 6734	to	6799	<b>700 065 2570</b>	<b>to</b>	<b>2599</b>	740 786 1885	to	1899
650 555 1749	to	1799	677 333 9979	to	9999	700 065 4800	to	4899	740 790 5989	to	5999
650 564 1900	to	1999	677 466 1088	to	1099	700 190 3350	to	3359	740 820 4854	to	7836
650 627 4212	to	4299	678 071 4500	to	4799	700 228 6048	to	6099	740 827 7578	to	7594
650 736 2043	to	2099	678 096 7531	to	7599	700 650 0452	to	0499	740 917 7490	to	7499
650 739 1540	to	1699	679 909 2578	to	2599	700 666 1323	to	1349	740 918 5531	to	5549
651 741 4415	to	4499	<b>680 112 9565</b>	<b>to</b>	<b>9599</b>	700 786 9106	to	9142	741 037 8528	to	8551
651 882 2800	to	2899	680 244 0903	to	0999	700 859 0744	to	0758	742 040 3300	to	3309
652 754 6317	to	6399	680 412 6046	to	6099	701 028 6780	to	6899	<b>805 885 8411</b>	<b>to</b>	<b>8499</b>
653 131 4945	to	4999	680 761 6800	to	6899	701 213 3900	to	3999	806 087 1100	to	1499
653 426 3300	to	3399	681 677 0540	to	0699	701 267 2000	to	3999	806 268 9275	to	9299
653 455 4874	to	4899	682 070 1029	to	1099	701 335 7312	to	7399	806 534 3400	to	3477
654 238 0000	to	0399	682 956 6280	to	6299	701 369 2005	to	2050	807 342 3283	to	3399
654 404 3065	to	3092	682 956 6490	to	6599	701 499 2260	to	2299	808 086 7100	to	7199
654 962 2900	to	3199	682 956 6700	to	6799	701 503 2247	to	2299	808 090 3440	to	3499
655 103 5081	to	5199	682 965 1178	to	1199	701 541 2271	to	2299	808 325 5161	to	5699
655 523 2600	to	2999	682 965 1201	to	1299	701 553 6557	to	6599	808 784 8000	to	8299
656 305 2448	to	2499	683 118 2389	to	2399	701 578 7460	to	7469	<b>830 125 0672</b>	<b>to</b>	<b>0699</b>
657 347 4438	to	4999	683 378 2000	to	2099	701 578 7475	to	7499	830 602 5800	to	5999
657 710 8100	to	8999	683 378 2117	to	2299	701 601 3457	to	3499	830 610 3700	to	3799
657 780 0985	to	0999	683 415 1200	to	1499	701 605 5913	to	5999	830 983 3500	to	3599
658 586 1400	to	1499	683 444 8159	to	8199	701 695 3982	to	3999	830 983 3635	to	3699
658 877 8000	to	8199	685 154 7780	to	7789	701 695 4148	to	4199	831 354 1387	to	1399
658 880 8000	to	8199	685 297 7645	to	7699	701 695 4227	to	4299	831 815 8240	to	8299
659 398 7300	to	7399	685 623 5264	to	5299	701 708 1741	to	1799	832 525 3810	to	3899
659 706 8113	to	8199	685 650 9487	to	9499	701 736 3966	to	3999	833 159 1884	to	1899
659 846 7837	to	7899	685 669 4200	to	4299	701 772 0870	to	0899	833 456 2567	to	2599
<b>660 510 4100</b>	<b>to</b>	<b>4199</b>	685 757 8452	to	8499	701 838 2800	to	2899	833 566 3015	to	3071
660 673 0400	to	0599	686 071 2694	to	2799	701 941 0600	to	0699	834 130 5200	to	5299
661 488 5000	to	5099	686 176 3333	to	3354	702 171 1603	to	1699	834 316 5444	to	5499
661 609 9100	to	9199	686 372 3200	to	3299	702 195 5109	to	5199	834 354 8747	to	8766
661 716 9420	to	9499	686 644 5879	to	5899	702 254 9300	to	9399	834 354 8824	to	8838
661 906 6522	to	6599	686 899 1371	to	1399	702 264 7569	to	7599	835 269 5700	to	5799
662 021 8332	to	8399	686 931 7636	to	7699	702 519 0513	to	0524	835 496 7303	to	7399
662 068 0700	to	0899	687 601 0973	to	0999	702 713 1800	to	1809	835 539 5200	to	5999
662 553 0774	to	0799	687 614 6774	to	6799	702 821 5730	to	5799	835 813 3015	to	3099
663 078 7034	to	7099	688 120 9000	to	9999	702 821 5805	to	5899	837 672 8967	to	8999
663 763 5300	to	5399	688 314 3107	to	3191	702 844 6975	to	6994	837 784 3282	to	3299
663 883 7039	to	7499	<b>690 291 1361</b>	<b>to</b>	<b>1371</b>	702 846 6331	to	6399	838 176 8377	to	8399
663 938 9200	to	9299	690 788 2877	to	2899	702 848 3900	to	3999	838 518 1257	to	1299
664 253 8000	to	8499	690 893 5344	to	5399	702 857 7302	to	7499	839 718 8257	to	8299
664 656 3055	to	3099	690 893 5512	to	5599	702 878 0114	to	0199	<b>840 323 0600</b>	<b>to</b>	<b>0699</b>
665 174 6400	to	6499	690 904 1300	to	1599	703 364 1707	to	1799	840 875 6235	to	6299
665 274 8208	to	8299	690 941 6000	to	6199	<b>740 002 7710</b>	<b>to</b>	<b>7719</b>	840 910 0900	to	0999
665 669 5400	to	5499	691 313 6383	to	6399	740 119 2275	to	2284	841 349 5000	to	5099
666 132 8226	to	8299	691 313 6600	to	6699	740 130 6688	to	6698	841 805 7747	to	7899
666 696 2209	to	2299	691 582 8003	to	8099	740 144 2780	to	2795	841 805 7944	to	8099
666 696 2309	to	2399	691 664 1800	to	1999	740 241 9049	to	9099	842 226 0685	to	0695
667 032 9300	to	9399	691 664 2400	to	2499	740 255 1718	to	1799	842 685 4600	to	4699
667 729 5529	to	5599	692 727 9362	to	9399	740 277 0366	to	0392	842 685 4742	to	4999
668 383 8400	to	8699	692 798 1800	to	1899	740 348 6641	to	6658	842 860 0300	to	0399
<b>670 368 3400</b>	<b>to</b>	<b>3499</b>	693 249 0779	to	0799	740 351 4790	to	4799	842 898 5582	to	5599
670 369 7336	to	7399	693 249 0877	to	1699	740 374 7416	to	7499	843 062 7100	to	7199
670 750 7169	to	7199	693 445 0566	to	0999	740 470 2420	to	2443	843 077 6288	to	6299
671 046 6200	to	6399	693 448 8500	to	8999	740 514 0300	to	0499	843 077 6378	to	6399
671 251 5448	to	5499	693 645 9583	to	9599	740 523 7432	to	7449	843 758 5769	to	5778

843 786 2554	to	2699	865 151 0526	to	0599	907 815 0216	to	0257	920 771 5321	to	5399
845 656 8165	to	8199	865 500 4034	to	4099	908 622 4225	to	4235	920 857 5500	to	5899
845 727 2100	to	2199	865 883 6082	to	6099	908 936 9254	to	9299	920 864 3480	to	3499
845 746 2618	to	2635	866 004 3000	to	3999	909 066 4494	to	7499	920 963 4567	to	4599
846 390 7531	to	7599	866 442 4100	to	4899	909 067 7400	to	7499	921 333 7400	to	7499
846 918 0572	to	0599	867 366 9108	to	9118	909 100 1787	to	1799	921 477 3762	to	3799
847 237 7690	to	7699	867 633 7403	to	7499	909 100 1900	to	2099	922 278 1048	to	1399
847 284 2481	to	2499	867 737 5623	to	5699	909 355 0422	to	0499	922 280 2019	to	2099
847 374 7055	to	7065	868 169 4529	to	4599	909 568 8900	to	9099	922 280 2233	to	2299
847 374 7055	to	7065	868 173 8400	to	8599	909 568 9300	to	9499	922 773 0459	to	0499
847 636 5304	to	5399	868 514 9000	to	9099	909 725 7307	to	7399	923 032 7000	to	7399
847 700 5447	to	5499	868 566 9200	to	9299	909 833 0947	to	0999	923 045 3630	to	3699
847 723 7500	to	7599	869 200 0000	to	9999	<b>910 219 8631 to 8699</b>			923 484 3600	to	3699
849 485 3427	to	3499	869 387 1150	to	1199	910 265 1100	to	1199	923 493 9403	to	9599
849 520 9850	to	9899	869 505 3500	to	3599	910 471 7273	to	7299	923 493 9681	to	9699
849 608 1357	to	1399	869 523 7033	to	7099	910 536 2505	to	2599	923 604 4424	to	4499
849 792 2600	to	2699	869 566 6150	to	6167	910 958 7499	to	7599	923 810 7800	to	8299
<b>850 546 1862 to 1899</b>			869 800 0000	to	999 9999	911 140 1000	to	2199	924 252 1200	to	1299
851 143 6826	to	6844	<b>870 054 4814 to 4899</b>			911 245 2545	to	2599	924 252 1400	to	1499
851 209 9880	to	9899	870 491 4812	to	4849	911 268 9077	to	9099	924 533 0711	to	0799
851 928 9221	to	9299	870 536 5820	to	5829	911 400 8948	to	8999	924 533 2343	to	2399
852 589 6560	to	6599	870 541 7167	to	7239	911 508 1620	to	1799	924 533 2428	to	2499
853 049 3646	to	3699	870 575 8155	to	8999	911 509 9310	to	9399	924 685 1957	to	1999
854 304 4089	to	4999	870 589 0485	to	0494	911 523 3000	to	3999	924 946 6300	to	6699
854 529 2200	to	2299	870 691 7060	to	7099	912 057 9922	to	9999	925 333 5900	to	6099
854 532 0000	to	2999	872 028 4850	to	4899	912 882 0563	to	0899	925 336 2300	to	2399
855 001 6204	to	6249	872 029 9306	to	9399	913 605 2218	to	2299	926 432 5907	to	5999
855 319 9364	to	9399	872 078 3709	to	3799	913 709 2429	to	2499	926 436 3600	to	3699
855 361 3390	to	3399	872 100 0445	to	0459	913 818 3501	to	3999	927 765 6257	to	6299
856 226 0490	to	0499	<b>900 556 4178 to 4199</b>			914 063 4300	to	4399	928 197 8100	to	8199
856 656 5800	to	5999	900 845 0044	to	0099	914 346 7621	to	7644	928 197 8283	to	8299
856 752 0200	to	0299	900 936 0217	to	0299	914 453 1366	to	1399	928 856 2059	to	2068
857 111 1352	to	1399	900 936 0435	to	0499	914 529 6185	to	6299	<b>930 219 1722 to 1799</b>		
857 279 3450	to	3499	901 058 5255	to	5280	914 896 4658	to	4699	930 335 7810	to	7819
857 843 4000	to	4099	901 273 1082	to	1099	915 187 8774	to	8779	931 097 9259	to	9299
858 124 7644	to	7699	901 287 5143	to	5199	915 300 2783	to	2799	931 156 1502	to	1579
858 756 3111	to	3299	901 291 2789	to	2799	915 546 6822	to	6999	931 156 1600	to	1625
859 063 8200	to	8699	901 525 7122	to	7199	915 646 5183	to	5199	931 156 1671	to	1699
859 190 0600	to	0644	902 089 1253	to	1299	915 671 3963	to	3980	932 506 6400	to	6599
859 437 5538	to	5599	902 198 9769	to	9799	915 671 3982	to	3999	932 732 1796	to	1799
859 811 2888	to	2899	902 948 1269	to	1299	915 675 2217	to	2299	932 827 9026	to	9099
859 855 8873	to	8999	902 985 0833	to	0899	916 440 3377	to	3399	932 957 2300	to	2399
<b>860 240 8520 to 8599</b>			903 370 6934	to	6999	916 670 6352	to	6399	933 060 6160	to	6189
860 275 3900	to	3999	904 600 6523	to	6599	916 682 5300	to	5399	933 387 2541	to	2561
860 518 9629	to	9699	904 892 0378	to	0399	916 694 1414	to	1499	933 760 3609	to	4199
860 600 0021	to	0999	904 892 0648	to	1299	916 703 0802	to	0821	933 894 0928	to	0999
861 158 2350	to	2599	905 056 2216	to	2299	917 089 0709	to	0799	934 018 2729	to	2741
861 367 5400	to	5499	905 510 6647	to	6799	917 089 0842	to	0899	934 180 0300	to	0399
861 637 6010	to	6099	905 510 6900	to	7099	917 216 2928	to	2999	934 236 3954	to	3999
861 979 7292	to	7499	905 794 0000	to	0199	917 370 6300	to	6499	934 622 8717	to	8999
862 216 6100	to	6199	905 794 0288	to	0299	917 486 4900	to	4999	935 216 0312	to	0399
862 263 9213	to	9299	905 873 6900	to	6999	918 460 0602	to	0699	935 843 2202	to	2247
862 271 0800	to	0999	905 873 7100	to	7299	918 951 7231	to	7299	936 024 8889	to	8899
862 271 5000	to	5099	905 880 8900	to	8999	919 519 2786	to	2799	936 339 4455	to	4499
863 871 5138	to	5199	905 889 7100	to	7199	919 536 0770	to	0799			
863 949 5300	to	5399	906 158 1508	to	1599	919 814 3095	to	3199			
864 088 8200	to	8299	906 558 8812	to	8899	919 915 2774	to	2787			
864 426 3972	to	3999	906 982 2214	to	2299	<b>920 155 4662 to 4687</b>					
864 520 6117	to	6136	907 725 8500	to	8599	920 309 9039	to	9199			

## Missing, Lost, or Stolen Canadian Money Order Forms

### Do Not Cash — Upon Receipt, Notify Local Postal Inspectors

This listing will be provided to all Postal Service™ employees responsible for accepting and cashing postal money orders. Destroy all interim notices when the numbers listed appear in the *Postal Bulletin*. The new money order serial numbers consist of the first 9 digits. The 10th digit is a check digit only.

Do not cash outdated money orders **104 151 601 to 692 600 000**. Advise holders to send invalid money orders to: Canada Post Corporation, Ottawa, Canada K1A 0B1. Check for altered dollar amounts by holding money orders to the light.

719 869 731	to	9 760	728 702 338	to	2 400	734 950 111	to	0 170	742 408 771	to	8 830
<b>720 227 871</b>	<b>to</b>	<b>7 930</b>	728 915 371	to	5 850	735 120 331	to	0 840	742 512 120	to	2 150
720 227 949	to	7 960	728 953 141	to	3 410	735 283 008	to	3 020	742 684 849	to	4 890
720 368 543	to	8 570	728 954 280	to	4 310	735 293 131	to	3 220	742 839 553	to	9 630
720 392 151	to	2 570	729 169 081	to	9 140	735 635 010	to	5 040	742 913 668	to	3 700
720 556 491	to	6 640	729 363 841	to	3 870	735 783 961	to	3 990	742 917 287	to	7 296
720 558 621	to	8 650	729 682 891	to	3 190	735 803 401	to	3 430	742 921 891	to	1 980
720 575 361	to	5 570	729 838 940	to	9 070	736 005 420	to	5 440	742 983 631	to	3 810
720 590 152	to	0 179	729 839 101	to	9 130	736 366 021	to	6 110	743 020 021	to	0 170
721 638 331	to	9 170	<b>730 077 683</b>	<b>to</b>	<b>7 840</b>	736 624 456	to	4 500	743 206 491	to	6 500
721 815 391	to	5 420	730 109 847	to	9 880	736 670 851	to	1 060	743 235 992	to	6 050
721 969 713	to	9 740	730 373 761	to	3 850	736 767 061	to	7 090	743 940 631	to	0 900
722 072 137	to	2 160	730 501 951	to	2 130	736 767 093	to	7 120	743 978 011	to	8 070
722 378 265	to	8 280	730 519 379	to	9 470	736 982 191	to	2 370	744 234 751	to	4 780
722 413 990	to	4 004	730 569 278	to	9 360	736 982 551	to	2 730	744 499 591	to	9 680
722 764 948	to	4 980	730 711 711	to	1 740	737 110 141	to	0 170	744 626 901	to	6 910
722 825 840	to	5 889	730 722 991	to	3 230	737 185 501	to	5 710	745 388 794	to	8 910
723 153 841	to	3 850	730 845 970	to	5 990	737 317 321	to	7 350	746 446 806	to	6 820
723 237 616	to	7 630	730 888 291	to	8 320	737 517 781	to	7 840	746 818 351	to	8 410
723 331 081	to	1 110	730 927 591	to	7 680	737 628 181	to	8 210	747 245 266	to	5 280
723 496 443	to	6 470	731 307 914	to	7 930	737 634 258	to	4 270	747 364 813	to	4 830
723 967 291	to	7 320	731 402 431	to	2 460	738 361 971	to	1 980	747 501 434	to	1 450
724 655 196	to	5 340	731 407 232	to	7 320	738 447 601	to	7 660	747 739 891	to	0 070
724 711 441	to	1 500	731 588 301	to	8 340	738 648 355	to	8 450	748 148 649	to	8 760
724 711 538	to	1 560	731 767 273	to	7 320	738 849 811	to	9 900	748 259 960	to	9 970
724 793 221	to	3 250	731 781 061	to	1 120	738 892 270	to	2 290	748 565 162	to	5 280
724 908 109	to	8 120	731 837 821	to	7 910	738 997 259	to	7 380	748 874 988	to	5 030
724 937 461	to	7 670	731 841 377	to	1 450	739 161 451	to	1 540	749 137 381	to	7 410
725 163 118	to	3 151	732 018 481	to	8 600	739 219 381	to	9 440	749 190 192	to	0 210
725 202 735	to	2 750	732 067 972	to	8 370	739 740 151	to	0 180	749 685 421	to	5 450
725 398 591	to	8 800	732 188 649	to	8 670	739 793 491	to	3 520	749 846 791	to	6 850
725 464 591	to	4 920	732 193 460	to	3 470	739 793 527	to	3 550	749 993 131	to	3 580
725 475 321	to	5 330	732 201 241	to	1 390	739 942 621	to	2 650	<b>750 071 587</b>	<b>to</b>	<b>1 610</b>
725 711 057	to	1 070	732 220 431	to	0 440	739 999 231	to	9 320	750 408 167	to	8 183
725 738 581	to	8 730	732 355 201	to	5 380	<b>740 011 517</b>	<b>to</b>	<b>1 530</b>	750 438 421	to	8 501
725 981 311	to	1 430	732 472 320	to	2 560	740 030 701	to	0 970	750 743 911	to	4 030
725 987 835	to	7 880	732 541 605	to	1 620	740 261 740	to	1 820	750 779 118	to	9 400
726 060 811	to	0 900	732 572 221	to	2 490	740 265 811	to	6 290	750 910 981	to	1 010
726 391 970	to	2 520	732 586 479	to	6 710	740 299 111	to	9 170	750 960 841	to	0 900
726 484 771	to	4 800	732 994 037	to	4 080	740 299 231	to	9 260	751 296 211	to	6 240
726 493 351	to	5 300	733 163 449	to	3 460	740 329 266	to	9 320	751 539 121	to	9 180
726 504 031	to	4 063	733 297 171	to	7 290	740 889 081	to	9 090	751 541 311	to	1 790
726 504 070	to	4 090	733 446 631	to	7 110	741 010 421	to	0 530	751 757 641	to	7 700
726 504 331	to	4 390	733 474 665	to	4 770	741 113 041	to	3 370	751 936 951	to	7 010
726 563 701	to	4 060	733 704 482	to	4 570	741 373 891	to	4 340	751 951 861	to	1 890
726 599 371	to	9 460	733 751 041	to	1 130	741 452 369	to	2 490	751 999 021	to	9 110
726 626 356	to	6 370	734 009 101	to	9 130	741 492 991	to	3 140	752 139 516	to	9 570
727 182 271	to	2 510	734 290 759	to	0 770	741 553 460	to	3 470	752 182 892	to	2 950
727 416 181	to	6 240	734 389 273	to	9 290	741 764 431	to	4 520	752 206 861	to	7 100
727 481 431	to	1 460	734 440 031	to	0 111	742 178 834	to	8 880	752 295 241	to	5 600
727 749 241	to	9 780	734 797 201	to	7 320	742 325 500	to	5 520	752 731 351	to	1 410
728 382 331	to	2 480	734 939 611	to	9 640	742 325 668	to	5 700	752 767 441	to	7 470

753 008 941	to	9 030	763 155 160	to	5 180	773 231 311	to	1 340	800 872 741	to	2 830
753 194 311	to	4 370	763 178 631	to	8 660	773 348 739	to	8 940	801 349 801	to	9 830
753 620 378	to	0 400	763 506 001	to	6 060	773 348 739	to	8 940	801 676 681	to	7 100
754 013 917	to	3 940	763 522 141	to	2 470	773 575 891	to	5 950	802 967 821	to	7 940
754 161 061	to	1 120	763 717 694	to	7 800	773 852 971	to	3 030	803 217 601	to	7 780
754 358 445	to	8 610	763 826 461	to	6 520	775 373 449	to	3 460	803 729 731	to	9 850
754 410 451	to	0 660	763 900 460	to	0 471	<b>789 257 191</b>	<b>to</b>	<b>7 250</b>	803 747 402	to	7 520
754 438 393	to	8 410	763 900 479	to	0 530	<b>790 448 020</b>	<b>to</b>	<b>8 460</b>	804 138 181	to	8 420
754 493 109	to	3 130	763 917 271	to	7 750	790 597 485	to	7 530	804 428 224	to	8 250
754 664 182	to	4 220	764 125 801	to	5 860	790 911 883	to	1 900	804 682 411	to	2 710
754 816 377	to	6 470	764 284 525	to	4 560	791 057 441	to	7 550	805 272 525	to	2 540
755 487 421	to	7 600	764 526 241	to	6 330	791 239 081	to	9 290	805 523 445	to	3 460
755 592 901	to	3 140	764 601 421	to	1 600	791 374 483	to	4 500	805 745 704	to	5 730
755 790 020	to	0 030	764 650 231	to	0 470	791 387 971	to	8 030	806 452 907	to	2 980
755 791 730	to	1 800	764 984 371	to	4 850	791 447 521	to	7 850	806 744 781	to	4 850
755 926 951	to	7 070	765 003 667	to	3 680	791 451 151	to	1 240	806 982 181	to	2 300
755 934 332	to	4 510	765 042 517	to	2 540	791 500 009	to	0 470	807 764 791	to	4 910
755 957 701	to	8 000	765 194 728	to	4 970	791 771 431	to	1 490	808 089 931	to	9 960
755 962 981	to	3 280	765 387 365	to	7 450	792 004 293	to	4 320	808 656 423	to	6 450
756 035 371	to	5 490	765 541 801	to	2 100	792 018 379	to	8 420	808 753 771	to	3 800
756 301 257	to	1 290	765 638 461	to	8 970	792 070 621	to	0 740	809 189 001	to	9 010
756 371 565	to	1 580	765 647 101	to	7 190	792 145 211	to	5 230	809 886 879	to	6 930
756 876 031	to	6 120	765 813 781	to	4 029	792 391 381	to	1 620	809 890 489	to	0 500
756 876 151	to	6 240	765 879 314	to	9 390	792 452 779	to	2 790	<b>810 323 734</b>	<b>to</b>	<b>3 760</b>
756 970 129	to	0 140	765 954 001	to	4 030	792 772 728	to	2 770	810 367 116	to	7 140
757 059 613	to	9 630	766 120 286	to	0 320	792 903 511	to	3 990	810 526 351	to	6 500
757 078 540	to	8 560	766 125 716	to	5 750	793 282 518	to	2 533	810 806 911	to	6 940
757 086 209	to	6 240	766 158 824	to	8 840	794 041 831	to	2 040	810 807 211	to	7 240
757 240 591	to	0 650	766 388 433	to	8 460	794 397 709	to	7 780	811 423 021	to	3 110
757 277 371	to	7 700	766 509 421	to	9 660	794 581 741	to	2 040	811 517 221	to	7 239
757 291 591	to	2 730	766 572 901	to	3 020	794 592 122	to	2 150	811 721 101	to	1 130
757 964 251	to	4 280	766 748 500	to	8 521	795 032 251	to	2 340	812 025 721	to	5 900
758 067 001	to	7 090	767 024 341	to	4 370	795 796 291	to	6 350	812 093 073	to	3 130
758 105 221	to	5 250	767 326 471	to	6 590	796 070 139	to	0 160	812 100 821	to	0 840
758 324 941	to	5 000	767 332 561	to	2 950	796 143 151	to	3 630	812 465 251	to	5 610
758 593 628	to	3 650	768 009 841	to	9 960	796 159 725	to	9 740	812 918 341	to	8 670
758 709 038	to	9 060	768 011 489	to	1 520	796 169 306	to	9 340	812 918 701	to	8 760
758 744 101	to	4 160	768 177 980	to	7 990	796 373 406	to	3 430	813 050 491	to	0 520
758 850 883	to	0 900	768 391 081	to	1 170	796 602 961	to	3 050	813 073 171	to	3 200
758 860 951	to	1 550	768 661 569	to	1 650	796 708 441	to	8 500	813 398 476	to	8 550
759 152 851	to	2 880	769 000 051	to	0 080	796 886 281	to	6 430	813 713 971	to	4 000
759 740 941	to	1 090	769 050 841	to	0 900	796 901 701	to	2 000	813 858 121	to	8 150
<b>760 004 596</b>	<b>to</b>	<b>4 610</b>	769 159 081	to	9 178	796 975 466	to	5 590	814 789 330	to	9 349
760 118 191	to	8 250	769 737 496	to	7 510	797 272 917	to	2 950	814 984 656	to	4 680
760 155 001	to	5 090	769 778 491	to	8 730	797 519 441	to	9 460	815 016 020	to	6 030
760 378 002	to	8 020	769 827 331	to	7 450	797 519 731	to	0 240	815 199 410	to	9 420
760 692 722	to	2 749	<b>770 216 071</b>	<b>to</b>	<b>6 100</b>	797 535 181	to	5 330	815 240 491	to	0 520
761 055 460	to	5 480	770 723 281	to	3 400	797 646 151	to	6 180	815 755 591	to	5 620
761 169 781	to	9 810	770 790 451	to	0 480	798 040 053	to	0 080	815 755 622	to	5 650
761 504 941	to	5 120	770 915 150	to	5 490	798 055 813	to	5 830	815 806 381	to	6 680
761 516 836	to	6 910	771 455 551	to	5 610	798 055 891	to	5 950	816 126 834	to	6 870
761 613 588	to	3 600	771 609 661	to	9 690	798 326 371	to	6 520	816 156 721	to	6 780
761 688 631	to	8 690	771 932 551	to	2 580	798 339 167	to	9 210	816 580 903	to	0 920
761 805 199	to	5 240	772 057 224	to	7 440	798 562 411	to	2 440	816 945 571	to	5 600
761 826 106	to	6 120	772 162 660	to	3 070	798 632 461	to	2 490	817 253 011	to	3 280
761 881 171	to	1 560	772 718 615	to	8 640	798 807 151	to	7 510	817 763 881	to	4 060
761 975 641	to	5 670	772 940 140	to	0 160	798 944 761	to	5 030	818 330 562	to	0 610
761 975 886	to	5 895	772 970 886	to	0 940	799 118 616	to	8 640	818 459 641	to	9 670
762 304 144	to	4 170	773 009 419	to	9 430	799 133 191	to	3 220	818 926 273	to	6 320
762 324 931	to	4 960	773 112 031	to	2 060	799 177 626	to	7 650	818 950 351	to	0 380
762 439 261	to	9 290	773 125 387	to	5 410	799 854 751	to	5 200	818 962 492	to	2 530
762 524 158	to	4 220	773 179 320	to	9 410	<b>800 044 320</b>	<b>to</b>	<b>4 410</b>	819 032 341	to	2 730
762 584 872	to	4 970	773 202 989	to	3 140	800 211 901	to	2 440	819 127 054	to	7 080
762 593 431	to	3 460	773 208 991	to	9 290	800 427 530	to	7 540	819 278 540	to	8 670

819 544 681	to	4 740	822 703 442	to	3 470	826 042 898	to	2 920	828 441 602	to	1 630
819 928 441	to	8 650	822 900 991	to	1 020	826 226 644	to	6 670	828 539 316	to	9 340
<b>820 034 406</b>	<b>to</b>	<b>4 430</b>	822 925 951	to	6 100	826 582 951	to	3 430	828 539 341	to	9 370
820 070 761	to	1 540	823 284 931	to	4 990	826 720 201	to	0 230	828 732 331	to	2 390
820 191 342	to	1 360	823 293 031	to	3 210	827 005 671	to	5 830	828 830 952	to	0 963
820 274 856	to	4 880	823 556 011	to	6 100	827 287 861	to	7 950	828 939 781	to	0 050
820 600 171	to	0 230	824 078 341	to	8 370	827 291 502	to	1 520	829 002 721	to	2 870
821 172 241	to	2 360	824 156 325	to	6 340	827 575 381	to	5 470	829 005 301	to	5 540
821 229 661	to	9 720	824 511 252	to	1 270	827 609 085	to	9 100	829 080 241	to	0 330
821 229 743	to	9 780	824 588 281	to	8 370	827 619 811	to	9 840	829 160 986	to	1 000
821 903 731	to	3 910	825 140 397	to	0 460	827 883 511	to	3 600	829 176 841	to	6 930
821 927 841	to	7 850	825 409 651	to	9 680	828 160 441	to	0 530			
822 505 801	to	5 830	825 472 171	to	2 200	828 376 201	to	6 260			

— Criminal Investigations Group, Postal Inspection Service, 1-28-10



## Verifying U.S. Postal Service Money Orders

Follow these steps to cash a Postal Service™ money order:

1. Check that the amount does not exceed the legal limit: \$1,000 for domestic, and \$700 for international postal money orders.
2. Check that the proper security features are present:
  - When held to the light, a watermark of Benjamin Franklin is repeated from top to bottom on the left side.
  - When held to the light, a dark line (security thread) runs from top to bottom with the word “USPS” repeated.
  - There should be no discoloration around the dollar amounts, which might indicate the amounts were changes.

These appear in Postal Service Notice 299, *U.S. Postal Money Order Reference Card*, or online at <http://www.usps.com/missingmoneyorders/security.htm>.

3. If the money order seems suspicious, call the U.S. Postal Service Money Order Verification System at 866-459-7822.

Please provide this information to local banks and retailers, as they also receive Postal Service money orders for cashing.

— *Special Services,  
Retail Products and Services, 1-28-10*

## Counterfeit Canadian Money Order Forms

### Do Not Cash

To be posted and used by retail window employees. As directed, destroy previous notices. Destroy all interim notices when the numbers listed appear in the *Postal Bulletin*.

671,819,086	686,794,382
676,612,640	686,794,426
677,891,039	686,794,427
678,282,493	686,794,431
678,916,031	687,262,502
679,552,215	687,262,503
679,694,334	687,262,525
679,751,983	687,262,526
679,800,207	687,287,578
681,130,536	687,287,581
681,844,376	687,287,582
683,594,542	694,063,898
684,683,610	694,063,899
686,619,878	694,063,980
686,619,886	701,321,725
686,619,887	

— *Criminal Investigations Group,  
Postal Inspection Service, 1-28-10*

## Toll-Free Number Available to Verify Canadian Money Orders

The Canada Post Corporation is now providing a toll-free number that cashing agents can call to verify the validity of Canadian Postal Money Orders. The number is 800-563-0444.

This toll-free number is printed on the back of the Canadian Postal Money Orders.

— *Criminal Investigations Group,  
Postal Inspection Service, 1-28-10*

## Other Information

### Overseas Military/Diplomatic Mail

Mail addressed to military and diplomatic post offices overseas is subject to certain conditions or restrictions of mailing regarding content, preparation, and handling. The APO/FPO/DPO table below outlines these conditions by APO/FPO/DPO ZIP™ Codes through the use of footnoted mailing restrictions codes (see the [Restrictions](#) page following the table).

Acceptance clerks should use the table with the integrated retail terminal (IRT) or POS ONE terminal to deter-

mine which APO/FPO/DPO ZIP Codes are active and which conditions of mailing apply. **Acceptance clerks may contact the Military Postal Service Agency with any questions regarding APO/FPO/DPO ZIP Codes, toll free, at 800-810-6098, Monday–Friday, 0730–1600 ET.**

For Express Mail Military Service (EMMS) availability, all acceptance clerks must refer to the local hardcopy EMMS directory.

We have eliminated “Not Active” entries from the table below to save space and paper.

### APO/FPO/DPO Table

APO/ FPO/ DPO	See Restrictions	APO/ FPO/ DPO	See Restrictions	APO/ FPO/ DPO	See Restrictions	APO/ FPO/ DPO	See Restrictions
09001	A1-B-B1-C-D-U	09080	A1-B-B1-C-D-F1-R-U	09214	A1-B-B1-C-D-F1-R-U	09317	A-A1-B-B1-C1-E2-F-H1-M-R-R1-V-Z1
09002	A1-B-B1-C-D-U	09081	A1-B-B1-C-D-U	09226	A1-B-B1-C-D-U	09318	A-A1-B-B1-C1-F-F1-M-N-V-V1-Z-Z1
09003	A1-B-B1-C-D-P-U	09086	A1-B-B1-C-D-U	09227	A1-B-B1-C-D-U	09320	A-A1-B-B1-C1-E2-F-H1-M-R-R1-V-Z1
09004	A1-B-B1-C-D-U	09088	A1-B-B1-C-D-U	09229	A1-B-B1-C-D-U	09321	A-A1-B-B1-C1-E2-F-H1-M-R-R1-V-Z1
09005	A1-B-B1-C-D-P-U	09090	A1-B-B1-C-D-P-U	09237	A1-B-B1-C-D-U-V	09322	A-A1-B-B1-C1-E2-F-H1-R-R1-U2-V-Z1
09006	A1-B-B1-C-D-U	09092	A1-B-B1-C-D-U	09245	A1-B-B1-C-D-U	09324	A-A1-B-B1-C1-E2-F-H1-R-R1-U2-V-Z1
09007	A1-B-B1-C-D-U	09094	A1-B-B1-C-D-F-F1-P-R	09250	A1-B-B1-C-D-U	09327	A-A1-B-B1-C1-E2-F-H1-M-R-R1-V-Z1
09008	A-A1-B-B1-C-D-P-U	09095	A1-B-B1-C-D-U	09261	A1-B-B1-C-D-F1-R-U-V	09330	A-A1-B-B1-C1-E2-F-H1-M-R-R1-V-Z1
09009	A1-B-B1-C-D-F1-R-U	09096	A1-B-B1-C-D-U	09263	A1-B-B1-C-D-U	09331	A-A1-B-B1-C1-E2-F-H1-M-R-R1-V-Z1
09011	A1-B-B1-C-D-U	09099	A1-B-B1-C-D-U	09264	A1-B-B1-C-D-U	09332	A-A1-B-B1-C1-E2-F-H1-M-R-R1-V-Z1
09012	A1-B-B1-C-D-F-F1-R-U	09100	A1-B-B1-C-D-U	09265	A1-B-B1-C-D-F1-N-R-U	09333	A-A1-B-B1-C1-E2-F-H1-M-R-R1-V-Z1
09013	A1-B-B1-C-D-F-F1-U-Z1	09102	A1-B-B1-C-D-U	09266	A1-B-B1-C-D-U	09334	A-A1-B-B1-C1-E2-F-H1-M-R-R1-V-Z1
09014	A1-B-B1-C-D-U	09103	A1-B-B1-C-D-U	09267	A1-B-B1-C-D-U	09336	A-A1-B-B1-C1-E2-F-H1-R-R1-U2-V-Z1
09020	A1-B-B1-C-D-U	09104	A1-B-B1-C-D-F1-R-U	09301	A-A1-B-B1-C1-E2-F-H1-M-R-R1-V-Z1	09337	A-A1-B-B1-C1-E2-F-H1-M-R-R1-V-Z1
09021	A1-B-B1-C-D-F1-R-U	09107	A1-B-B1-C-D-U	09302	A-A1-B-B1-C1-F-F1-M-N-V-V1-Z-Z1	09338	A-A1-B-B1-C1-E2-F-H1-M-R-R1-U2-V-Z1
09028	A1-B-B1-C-D-U	09112	A1-B-B1-C-D-U	09304	A-A1-B-B1-C1-E2-F-H1-M-R-V-Z1	09339	A-A1-B-B1-C1-E2-F-H1-M-N-R-R1-V-Z1
09033	A1-B-B1-C-D-U	09114	A1-B-B1-C-D-U	09305	A-A1-B-B1-C1-E2-F-H1-M-R-R1-V-Z1	09340	A-A1-B-B1-C1-F-R-V
09034	A1-B-B1-C-D-U	09123	A1-B-B1-C-D-F1-R-U	09306	A-A1-B-B1-C1-E2-F-H1-R-R1-U2-V-Z1	09342	A-A1-B-B1-C1-E2-F-H1-M-R-R1-V-Z1
09038	A1-B-B1-C-D-U	09126	A1-B-B1-C-D-F-F1-P-R	09307	A1-B-B1-N-V-Z1	09343	A-A1-B-B1-C1-F-M-N-V-Z1
09042	A1-B-B1-C-D-U	09128	A1-B-B1-C-D-U	09308	A-A1-B-B1-C1-E2-F-H1-M-R-V-Z1	09344	A-A1-B-B1-C1-E2-F-H1-M-R-R1-V-Z1
09046	A1-B-B1-C-D-U	09131	A1-B-B1-C-D-U	09309	A-A1-B-B1-C1-E2-F-H1-M-R-V-Z1	09348	A-A1-B-B1-C1-E2-F-H1-M-R-R1-U2-V-Z1
09049	A1-B-B1-C-D-U	09136	A1-B-B1-C-D-F1-R	09310	A-A1-B-B1-C1-E2-F-H1-M-R-V-Z1		
09051	A1-B-B1-C-D-U	09137	A1-B-B1-C-D-F1-R-U	09311	A-A1-B-B1-C1-E2-F-H1-M-R-V-Z1		
09053	A1-B-B1-C-D-U	09138	A1-B-B1-C-D-U	09312	A-A1-B-B1-C1-E2-F-H1-R-R1-U2-V-Z1		
09054	A1-B-B1-C-D-U	09139	A1-B-B1-C-D-U	09314	A-A1-B-B1-C1-E2-F-H1-M-R-R1-V-Z1		
09055	A1-B-B1-C-D-F-R-R1-U-V	09140	A1-B-B1-C-D-U	09315	A-A1-B-B1-C1-E2-F-H1-M-N-R-R1-V-Z1		
09056	A1-B-B1-C-D-U	09142	A1-B-B1-C-D-F-F1-P-R-U	09316	A-A1-B-B1-C1-E2-F-H1-M-R-R1-U2-V-Z1		
09058	A1-B-B1-C-D-U	09143	A1-B-B1-C-D-U				
09059	A1-B-B1-C-D-U	09154	A1-B-B1-C-D-U				
09060	A1-B-B1-C-D-F1-R-U	09166	CLOSE				
09063	A1-B-B1-C-D-L-U	09172	A1-B-B1-C-D-U				
09067	A1-B-B1-C-D-U	09173	A1-B-B1-C-D-U				
09068	A1-B-B1-C-D-U-Z1	09177	A1-B-B1-C-D-U				
09069	A-A1-B-B1-C-D-U-V	09180	A1-B-B1-C-D-U				
09075	A1-B-B1-C-D-U	09186	A1-B-B1-C-D-U				
09079	A1-B-B1-C-D-U	09211	A1-B-B1-C-D-P-U				
		09213	A1-B-B1-C-D-F1-R-U				

APO/ FPO/ DPO	See Restrictions	APO/ FPO/ DPO	See Restrictions	APO/ FPO/ DPO	See Restrictions	APO/ FPO/ DPO	See Restrictions
09350	A-A1-B-B1-C1-E2-F-H1-M-R-R1-V-Z1	09388	A-A1-B-B1-C1-E2-F-H1-M-R-V	09570	A1-B-B1-F-F1-R-R1-V	09702	A1-B-B1-C-C1-F1-M-R-R1-U
09351	A-A1-B-B1-C1-E2-F-H1-M-R-V-Z1	09389	A-A1-B-B1-C1-E2-F-H1-M-R-V	09573	A1-B-B1-F-F1-R-R1-V	09703	A1-B-B1-C-F1-U
09353	A-A1-B-B1-C1-E2-F-H1-M-R-R1-V-Z1	09391	A-A1-B-B1-C1-E2-F-H1-M-R-R1-V-Z1	09574	A1-B-B1-F-F1-R-R1-V	09704	A1-B-B1-C-V
09354	A-A1-B-B1-C1-E2-F-H1-M-R-R1-V-Z1	09393	A-A1-B-B1-C1-E2-F-H1-M-R-R1-V-Z1	09575	A1-B-B1-F-F1-R-R1-V-V1	09705	A1-B-B1-U
09355	A-A1-B-B1-C1-E2-F-H1-M-R-R1-V-Z1	09396	A-A1-B-B1-C1-E2-F-H1-M-R-R1-U2-V-Z1	09576	A1-B-B1-F-F1-R-R1-V	09706	A1-B-B1-C-N-R-U-V
09356	A-A1-B-B1-C1-E2-F-H1-M-R-R1-V-Z1	09402	A-A1-B-B1-C-F-R-R1-U3-W	09577	A1-B-B1-V	09707	A1-B-B1-C-N-R-U-V
09357	A-A1-B-B1-C1-E2-F-H1-M-R-R1-V-Z1	09421	A1-B-B1-C-C1-R-U	09578	A1-B-B1-F-F1-R-R1-V	09708	A1-B-B1
09358	A-A1-B-B1-C1-E2-F-F1-H1-M-N-R-R1-T-V-W-Z1	09447	A1-B-B1-C-C1-R-U-V	09579	A1-B-B1-F-F1-R-R1-V	09709	A1-B-B1-F1
09359	A-A1-B-B1-C1-E2-F-H1-M-R-R1-V-Z1	09454	A1-B-B1-C-C1-R-U-V	09581	A1-B-B1-F-F1-R-R1-V	09710	A1-B-B1-C-C1-F1-M-N-R-R1-U
09360	A1-B-B1-V	09456	A1-B-B1-C-C1-H-H1-M-R-Z1	09582	A1-B-B1-F-F1-R-R1-V	09711	A1-B-B1-F1-N-R-Z1
09361	A-A1-B-B1-C1-E2-F-H1-M-R-R1-U2-V-Z1	09459	A1-B-B1-C-C1-R-U	09586	A1-B-B1-F-F1-R-R1-V	09713	A1-B-B1-C-F1-R
09362	A-A1-B-B1-C1-E2-F-H1-R-V-Z1	09461	A1-B-B1-C-C1-F-F1-P-R-U	09587	A1-B-B1-F-F1-R-R1-V	09714	A1-B-B1-C-C1-F1-M-R-R1-U
09363	A-A1-B-B1-C1-E2-F-H1-M-R-R1-V-Z1	09463	A1-B-B1-C-C1-R-U	09588	A1-B-B1-V-V1	09715	A1-B-B1-F1-R
09364	A-A1-B-B1-C1-E2-F-H1-M-N-R-R1-V-Z1	09464	A1-B-B1-C-C1-R-U	09589	A1-B-B1-V-V1	09716	A1-B-B1-C-D-N-R-U-V
09365	A-A1-B-B1-C1-E2-F-H1-M-R-R1-V-Z1	09468	A1-B-B1-C-C1-R-U	09590	A1-B-B1-V	09717	A-A1-B-B1-M-R-V-W
09366	A-A1-B-B1-C1-E2-F-H1-M-R-R1-V-Z1	09469	A1-B-B1-C-C1-R-U	09591	A1-B-B1-F-F1-R-R1-V-V1	09718	A1-B-B1-F-I-N-R-U-V
09367	A-A1-B-B1-C1-E2-F-H1-M-R-V	09470	A1-B-B1-C-C1-R-U	09593	A1-B-B1-V	09719	A1-B-B1-C-F1-R-R-V
09369	A-A1-B-B1-C1-E2-F-H1-M-R-R1-V	09474	A1-B-B1-C-C1-R-U	09594	A1-B-B1-V-V1	09720	A1-B-B1-R-U-V
09371	A-A1-B-B1-C1-E2-F-H1-M-R-V	09494	A1-B-B1-C-C1-R-U	09596	A1-B-B1-V	09721	A1-B-B1-N-R-U-V-Z1
09372	A-A1-B-B1-C1-E2-F-H1-M-R-R1-V	09496	A1-B-B1-C-C1-R-U-V	09599	A1-B-B1-F-F1-R-R1-V	09722	A-A1-B-B1-F-N-V-Z-Z1
09373	A-A1-B-B1-C1-E2-F-H1-M-R-R1-V	09498	A1-B-B1-C-C1-F-F1-F2-N-R-R1-T-U-V-Z1	09601	A1-B-B1-C-F-F1-R-U-V	09723	A1-B-B1-N-R-U-V-Z1
09374	A-A1-B-B1-C1-E2-F-H1-M-R-V-Z1	09501	A1-B-B1-V-V1	09602	A1-B-B1-C-F-F1-N-R-U	09724	A1-B-B1-C-C1-F1-M-R-R1-U
09375	A-A1-B-B1-C1-E2-F-H1-M-R-V-Z1	09502	A1-B-B1-V	09603	A1-B-B1-C-F-F1-R-U-V	09726	A1-B-B1-N-R-U-V
09376	A-A1-B-B1-C1-E2-F-H1-M-R-R1-V	09503	A1-B-B1-V	09604	A1-B-B1-C-F-F1-P-R-U-V	09727	A-A1-B-B1-B2-C-C1-D-F-I-M-N-Q-R-R1-T-V-Z-Z1
09377	A-A1-B-B1-C1-E2-F-H1-M-R-R1-V	09504	A1-B-B1-V-V1	09605	A1-B-B1-C-D-U-V	09729	A1-B-B1-C-F-N-R-R1-U-V
09378	A-A1-B-B1-C1-E2-F-H1-M-R-R1-U2-V-Z1	09505	A1-B-B1-V-V1	09606	A1-B-B1-C-D-U-V	09730	A-A1-B-B1-B2-C-C1-F-M-N-R-R1-T-V-Z1
09380	A-A1-B-B1-C1-E2-F-H1-M-R-R1-V-Z1	09506	A1-B-B1-V-V1	09607	A-A1-B-B1-C-F-F1-M-R-R1-U-U3-V-W	09731	A-A1-B-B1-B2-C-C1-F-M-N-R-R1-T-V-Z1
09381	A-A1-B-B1-C1-E2-F-H1-M-R-R1-U2-V-Z1	09507	A1-B-B1-V-V1	09608	A1-B-B1-C-F-N-U-V	09732	A1-B-B1-N-V-Z1
09382	A-A1-B-B1-C1-E2-F-H1-M-R-R1-V-Z1	09508	A1-B-B1-V	09609	A1-B-B1-C-F-U	09733	A1-B-B1-V
09383	A-A1-B-B1-C1-E2-F-H1-M-R-R1-V-Z1	09509	A1-B-B1-V	09610	A1-B-B1-C-F-F1-R-U-V	09734	A-A1-B-B1-B2-C-C1-D-F-I-M-N-Q-R-R1-T-V-Z-Z1
09387	A-A1-B-B1-C1-E2-F-H1-M-R-V	09510	A-A1-B-B1-C1-E2-F-H1-M-R-R1-V-Z1	09613	A1-B-B1-C-F-U-V	09735	A1-B-B1-N-V-Z1
		09511	A1-B-B1-V	09617	A1-B-B1-C-F-U	09736	A-A1-B-B1-B2-C-C1-D-F-M-N-R-R1-T-V-Z1
		09513	A1-B-B1-F-F1-R-R1-V	09618	A1-B-B1-C-F-U	09737	A-A1-B-B1-B2-C-C1-D-F-I-M-N-Q-R-R1-T-V-Z-Z1
		09517	A1-B-B1-F-F1-R-R1-V	09620	A1-B-B1-C-F-U	09738	A-A1-B-B1-B2-C-C1-D-F-I-M-N-Q-R-R1-T-V-Z-Z1
		09524	A1-B-B1-F-F1-R-R1-V	09621	A1-B-B1-C-F-U	09739	A-A1-B-B1-B2-C-C1-D-F-I-M-N-Q-R-R1-T-V-Z-Z1
		09532	A1-B-B1-F-F1-R-R1-V	09622	A1-B-B1-C-F-U	09741	A-A1-B-B1-C1-E2-F-F1-H1-M-N-R-R1-T-V-W-Y-Z1
		09534	A1-B-B1-F-F1-R-R1-V	09623	A1-B-B1-C-F-U	09742	A-A1-B-B1-B2-F-F1-I-M-N-Q-R-T-V-Z-Z1
		09543	A1-B-B1-F-F1-R-R1-V	09624	A1-B-B1-C-F-U	09743	A-A1-B-B1-F-N-V-Z-Z1
		09545	A1-B-B1-V	09625	A1-B-B1-C-F-U		
		09549	A1-B-B1-V	09626	A1-B-B1-C-F-U		
		09554	A1-B-B1-F-F1-R-R1-V	09627	A1-B-B1-C-F-U		
		09556	A1-B-B1-V	09630	A1-B-B1-C-F-U-V		
		09557	A1-B-B1-F-F1-R-R1-V	09631	A1-B-B1-C-F-U		
		09564	A1-B-B1-F-F1-R-R1-V	09636	A1-B-B1-C-F-U		
		09565	A1-B-B1-F-F1-R-R1-V	09642	A1-B-B1-N-R-U		
		09566	A1-B-B1-F-F1-R-R1-V	09643	A1-B-B1-R-U		
		09567	A1-B-B1-V-V1	09645	A1-B-B1-C-F-F1-U		
		09568	A1-B-B1-V	09647	A1-B-B1-N-R-U		
		09569	A1-B-B1-F-F1-R-R1-V	09648	A1-B-B1-N-U-V-Z1		
				09649	A1-B-B1-N-U-Z1		
				09701	A-A1-B-B1-B2-C-C1-D-F-M-N-R-R1-T-V-Z1		

APO/ FPO/ DPO	See Restrictions	APO/ FPO/ DPO	See Restrictions	APO/ FPO/ DPO	See Restrictions	APO/ FPO/ DPO	See Restrictions
09744	A-B-B1-B2-C-C1-F-M-N-R-R1-T-V-Z1	09816	A-A1-B-B1-B2-C1-E2-E3-F-I-L-N-Q-R-R1-T-V-Z1	34004	A-B-B1-L-N-U-V	96264	A-A1-B-B1-U
09745	A-A1-B-B1-B2-F-F1-M-N-R-R1-V-Z1	09817	A-A1-B-B1-B2-C1-E2-E3-F-F1-H-H1-M-N-R-R1-T-V-Z1	34006	A-A1-B-B1-C1-F1-N-V-Z1	96266	A-A1-B-B1-U
09746	A-A1-B-B1-C-E1-N-V-Z1	09819	A-A1-B-B1-P-R-V-Z1	34007	A-A1-B-B1-C1-F-F1-M-N-R-R1-V-Z1	96267	A-A1-B-B1-U-V
09747	A1-B-B1-F-J-N-U-V-Z1	09820	A-A1-B-B1-B2-F-H-H1-I-L-M-N-Q-R-R1-T-V-Z1	34008	A-A1-B-B1-C1-F1-V-Z1	96269	A-A1-B-B1-U
09748	A-A1-B-B1-B2-C-C1-D-F-I-M-N-Q-R-R1-T-V-Z1	09821	A-A1-B-B1-F-R-V-Z1	34020	A1-B-B1-L-M-N-U-V-Z1	96271	A-A1-B-B1-U
09749	A-A1-B-B1-F-N-V-Z1	09822	A-A1-B-B1-F-R-V-Z1	34021	A1-B-L-M-N-U-V-Z1	96275	A-A1-B-B1-V
09750	A-B-B1-B2-C-C1-F-M-N-Q-T-V-Z1	09823	A-A1-B-B1-F-R-V-Z1	34022	A1-B-B1-D-F-L-M-N-U-V-Z1	96276	A-A1-B-B1
09751	A1-B-B1-C-D-U	09824	A-A1-B-B1-F-R-V-Z1	34023	A1-B-B1-L-M-N-U-V-Z1	96278	A-A1-B-B1-U
09752	A1-B-B1-C-D-U	09825	A-A1-B-B1-C-C1-D-F-M-N-R-R1-T-V-Z1	34024	A1-B-B1-L-M-N-U-V-Z1	96283	A-A1-B-B1-U
09754	A1-B-B1-U	09827	A-A1-B-B1-F-F1-N-R-V-Z1	34025	A1-B-B1-F-L-M-N-U-V-Z1	96284	A-A1-B-B1-U-V
09755	A1-B-B1-U	09828	A1-B-B1-N-V-Z1	34030	A1-B-B1-L-M-N-U-V-Z1	96297	A-A1-B-B1-U
09756	A1-B-B1-U	09830	A1-B-B1-C-N-R-V-Z1	34031	A1-B-B1-L-M-N-U-V-Z1	96303	A1-B-B1-M-N-V-W
09757	A1-B-B1-U	09831	A1-B-B1-F-N-U-V-Z1	34032	A1-B-B1-L-M-N-U-V-Z1	96306	A1-B-B1-F-F1-F2-M-W
09758	A-A1-B-B1-B2-C-C1-F-M-N-R-R1-T-V-Z1	09832	A-A1-B-B1-U1-V-Z1	34033	A1-B-B1-C-F-L-M-N-V-Z1	96309	A1-B-B1-M-V-W
09759	A-A1-B-B1-B2-C1-E2-F-F1-F2-I-N-R-R1-T-V-Z1	09833	A1-B-B1-U1-V-Z1	34034	A1-B-B1-L-M-N-V-Z1	96310	A1-B-B1-M-W
09762	A-A1-B-B1-B2-E3-F-F1-I-N-Q-R-R1-T-V-Z1	09834	A1-B-B1-F-F1-R-R1-V-Z1	34035	A1-B-B1-H-L-M-N-U-V-Z1	96311	CLOSE
09769	A-A1-B-B1-B2-C-C1-D-F-I-M-N-Q-R-R1-T-V-Z1	09835	A-A1-B-B1-V-Z1	34036	A1-B-B1-L-M-N-U-V-Z1	96319	A1-B-B1-M-W
09777	A-A1-B-B1-C-E1-N-R	09836	A-A1-B-B1-C-F-M-V-Z1	34037	A1-B-B1-C-F-H-I-L-M-N-V-Z1	96321	A1-B-B1-F-F1-F2-M-W
09780	A-A1-B-B1-F-N-R-V	09837	A1-B-B1-V-Z1	34038	A1-B-B1-L-M-N-U-V-Z1	96322	A1-B-B1-F-F1-F2-M-W
09798	A1-B-B1-C-D-L-U-V	09838	A1-B-B1-V-Z1	34039	A1-B-B1-L-M-N-U-V-Z1	96323	A1-B-B1-M-V-W
09801	A-A1-B-B1-C1-E2-F-H1-M-N-R-R1-V-Z1	09839	A-A1-B-B1-U-V-Z1	34041	A1-B-B1-L-M-N-U-V-Z1	96326	A1-B-B1-M-W
09803	A1-B-B1-E2-E3-F-H1-N-R-R1-U1-V-Z1	09840	A-A1-B-B1-V-Z1	34042	A1-B-B1-D-F-M-N-V-Z1	96328	A1-B-B1-M-W
09804	A-A1-B-B1-F-F1-N-R-V-Z1	09841	A-A1-B-B1-N-R-U-Z1	34050	A1-B-B1-V	96330	A1-B-B1-M-W
09805	A-B-B1-F-F1-R-R1-V-Z1	09842	A-A1-B-B1-N-R-Z1	34055	A1-B-B1-L-M-N-U-V-Z1	96336	A1-B-B1-M-V-W
09806	A-A1-B-B1-C1-E2-F-H1-M-N-R-R1-V-Z1	09843	A-A1-B-B1-N-V	34058	A1-B-B1-F-F1-R-R1-V-Z1	96347	A1-B-B1-F-F1-F2-M-W
09807	A-A1-B-B1-C1-E2-F-H1-M-N-R-R1-V-Z1	09844	A-A1-B-B1-C-F-N-U-V-Z1	34078	A1-B-B1-F1-N-V-Z1	96348	A1-B-B1-F-F1-F2-M-W
09808	A-A1-B-B1-C1-E2-F-H1-M-R-V	09852	A1-B-B1-E2-E3-F-H1-N-R-R1-U1-V-Z1	34090	A1-B-B1-F-F1-R-R1-V	96349	A1-B-B1-F-F1-F2-M-W
09809	A1-B-B1-V-Z1	09853	A1-B-B1-E2-E3-F-H1-N-R-R1-U2-V-Z1	34091	A1-B-B1-F-F1-R-R1-V	96350	A1-B-B1-F-F1-F2-M-W
09810	A-A1-B-B1-F-F1-N-R-V-Z1	09855	A-A1-B-B1-C1-E2-F-H1-R-R1-U2-V-Z1	34092	A1-B-B1-F-F1-R-R1-V	96351	A1-B-B1-F-F1-F2-M-W
09811	A1-B-B1-E2-E3-F-H1-N-R-R1-U1-V-Z1	09858	A1-B-B1-E2-E3-F-H1-N-R-R1-U1-V-Z1	34093	A1-B-B1-F-F1-R-R1-V	96362	A1-B-B1-F-F1-F2-M-W
09812	A1-B-B1-E2-E3-F-F1-I-N-R-U-V-Z1	09859	A1-B-B1-C1-F-F1-H1-N-R-R1-V-Z1	34095	A1-B-B1-V	96365	A1-B-B1-M-V-W
09813	A-A1-B-B1-B2-C-C1-E2-E3-F-I-L-N-Q-R-R1-T-V-Z1	09865	A-A1-B-B1-V-Z1	34098	A1-B-B1-V	96367	A1-B-B1-L-M-W
09814	A1-B-B1-E2-E3-F-F1-I-N-R-U-V-Z1	09868	A-A1-B-B1-U-V-Z1	34099	A1-B-B1-V-V1	96368	A1-B-B1-M-W
09815	A-A1-B-B1-C1-E2-F-H1-M-R-R1-V-Z1	09870	A-A1-B-B1-C1-E2-F-H1-M-R-R1-U-V-Z1	96201	A-A1-B-B1	96370	A1-B-B1-F-F1-F2-M-W
		09880	A-A1-B-B1-C1-E2-F-H1-R-R1-U-V-Z1	96202	A-A1-B-B1-U	96372	A1-B-B1-M-W
		09890	A1-B-B1-E2-F-H1-N-R-R1-U2-V-Z1	96203	A-A1-B-B1	96373	A1-B-B1-M-W
		09892	A-A1-B-B1-E2-F-N-R-R1-V-Z1	96204	A-A1-B-B1	96374	A1-B-B1-M-W
		09898	A1-B-B1-E2-F-H1-N-R-R1-U2-V-Z1	96205	A-A1-B-B1-U	96375	A1-B-B1-M-W
		34002	A1-B-B1-L-N-U-Z1	96206	A-A1-B-B1-U	96376	A1-B-B1-M-W
				96207	A-A1-B-B1-U	96377	A1-B-B1-M-W
				96209	A-A1-B-B1-N-U-V	96378	A1-B-B1-M-W
				96213	A-A1-B-B1-U	96379	A1-B-B1-M-W
				96214	A-A1-B-B1-U	96384	A1-B-B1-M-W
				96218	A-A1-B-B1-U	96386	A1-B-B1-M-W
				96224	A-A1-B-B1-U	96387	A1-B-B1-M-W
				96257	A-A1-B-B1-U	96388	A1-B-B1-M-W
				96258	A-A1-B-B1-U	96401	A1-B-B1-F-N-V-Z1
				96260	A-A1-B-B1-U	96426	A-A1-B-B1-C1-E2-F-H1-M-R-V
				96262	A-A1-B-B1-U-V		

APO/ FPO/ DPO	See Restrictions	APO/ FPO/ DPO	See Restrictions	APO/ FPO/ DPO	See Restrictions	APO/ FPO/ DPO	See Restrictions
96427	A-A1-B-B1-C1-E2-F-H1-M-R-R1-V	96542	A1-B-B1-V	96610	A1-B-B1-V	96668	A1-B-B1-F-F1-R-R1-V-V1
96447	A1-B-B1-F-N-U3-V-V1	96543	A1-B-B1-P-V	96611	A1-B-B1-V	96669	A1-B-B1-F-F1-R-R1-V
96501	A-A1-B-B1-N-V	96544	A1-B-B1-F-N-U3-V	96612	A1-B-B1-F-F1-R-R1-V	96670	A1-B-B1-V-V1
96502	A1-B-F-N-U3-V	96546	A1-B-B1-F-U3	96613	A-A1-B-B1-C1-E2-F-H1-I-M-R-R1-U2-V-Z-Z1	96671	A1-B-B1-F-F1-R-R1-V
96503	A1-B-B1-F-N-U3-V	96548	A-A1-B-B1-H-M-U	96614	A-A1-B-B1-C1-E2-F-H1-I-M-R-R1-U2-V-Z-Z1	96672	A1-B-B1-F-F1-R-R1-V
96507	A-A1-B-B1-F-V	96549	A-A1-B-B1-H-M-U	96615	A1-B-B1-F-F1-R-R1-V	96673	A1-B-B1-V-V1
96510	A1-B-B1-I-N-V	96550	A-A1-B-B1-H-M-U-V	96616	A1-B-B1-F-F1-R-R1-V	96674	A1-B-B1-F-F1-R-R1-V
96511	A1-B-B1-I-N-V	96551	A-A1-B-B1-H-M-U	96617	A1-B-B1-F-F1-R-R1-V	96675	A1-B-B1-F-F1-R-R1-V
96515	A1-B-B1-D-F-U3	96552	A1-B-B1	96619	A1-B-B1-V	96677	A1-B-B1-F-F1-R-R1-V
96516	A1-B-B1-D-F	96553	A-A1-B-B1-F-F1-H-M-U	96620	A1-B-B1-F-F1-R-R1-V	96678	A1-B-B1-F-F1-R-R1-V
96517	A1-B-B1-F-U3-V	96554	A-A1-B-B1-H-M-U	96621	A1-B-B1-V	96679	A1-B-B1-F-F1-R-R1-V
96518	A1-B-B1-V	96555	A1-B-B1-F-M-V	96622	A1-B-B1-F-F1-R-R1-V	96681	A1-B-B1-V-V1
96520	A1-B-B1-F-N-U3-V	96557	A1-B-B1-F-M-V	96624	A1-B-B1-F-F1-R-R1-V	96682	A1-B-B1-V-V1
96521	A1-B-B1-F-N-U3	96562	A-A1-B-B1-B2-C-C1-D-E2-E3-F-F1-H-H1-I-M-N-R-R1-T-V-Z-Z1	96628	A1-B-B1-F-F1-R-R1-V	96683	A1-B-B1-V-V1
96522	A1-B-B1-F-N-U	96595	A1-B-B1-V	96643	A1-B-B1-F-F1-R-R1-V	96686	A1-B-B1-V-V1
96530	A-A1-B-B1-F-F1-H-H1-M-N-U-V	96598	A1-B-B1-N-V	96650	A1-B-B1-F-F1-R-R1-V	96687	A1-B-B1-V-V1
96531	A-A1-B-B1-F-F1-H-M-N-U-V	96599	A1-B-B1-N-V	96657	A1-B-B1-F-F1-R-R1-V	96698	A1-B-B1-V-V1
96532	A-A1-B-B1-F-F1-H-M-N-U-V	96601	A1-B-B1-V-V1	96660	A1-B-B1-F-F1-R-R1-V		
96534	A-A1-B-B1-F	96602	A1-B-B1-V	96661	A1-B-B1-F-F1-R-R1-V		
96535	A-A1-B-B1-F-V	96603	A1-B-B1-V	96662	A1-B-B1-F-F1-R-R1-V		
96537	A1-B-B1-V	96604	A1-B-B1-V	96663	A1-B-B1-F-F1-R-R1-V		
96538	A1-B-B1-V	96605	A1-B-B1-V-V1	96664	A1-B-B1-V-V1		
96540	A1-B-B1-V	96606	A1-B-B1-V	96665	A1-B-B1-V		
96541	A1-B-B1-V	96607	A1-B-B1-V	96666	A1-B-B1-V-V1		
		96608	A1-B-B1-V	96667	A1-B-B1-F-F1-R-R1-V		
		96609	A1-B-B1-V				

## RESTRICTIONS

### LEGEND

PS Form 2976, *Customs — CN 22 (Old C 1) and Sender's Declaration* (green label)

PS Form 2976-A, *Customs Declaration and Dispatch Note*

AAFES	= Army and Air Force Exchange Service
APO	= Army/Air Force Post Office
Box R	= Retired military personnel
DMM	= <i>Domestic Mail Manual</i>
DPO	= Diplomatic Post Office
FPO	= Fleet Post Office
MOM	= Military Ordinary Mail
MPO	= Military Post Office
PAL	= Parcel Airlift
PSC	= Postal Service Center
SAM	= Space Available Mail
USDA	= United States Department of Agriculture

Note: Mail order catalogs are prohibited as SAM or PAL mail.

**A.** Securities, currency, or precious metals in their raw, unmanufactured state are prohibited. Official shipments are exempt from this restriction.

**A1.** Mail addressed to "Any Servicemember," or similar wording such as "Any Soldier," "Sailor," "Airman," or "Marine"; "Military Mail"; etc., is prohibited. Mail must be addressed to an individual or job title such as "Commander," "Commanding Officer," etc.

**B.** PS Form 2976-A is required for all mail weighing 16 ounces or more, with exceptions noted below. In addition, mailers must properly complete required customs documentation when mailing any potentially dutiable mail addressed to an APO, FPO, or DPO regardless of weight. The following are exceptions to the requirement for customs documentation on nondutiable mail that weighs 16 ounces or more:

- Known mailers are exempt from providing customs documentation on non-dutiable letters, and printed matter weighing 16 ounces or more. (A known mailer is anyone who legally applies a permit imprint to a mailpiece. Mail with meter postage is not considered to be from a known mailer.)
- All federal, state, and local government agencies are exempt from providing customs documentation on mail addressed to an APO, FPO, or DPO except for those APOs/FPO/DPOs to which restriction B2 applies.
- Prepaid mail from military contractors is exempt, providing the mailpiece is endorsed "Contents for Official Use — Exempt from Customs Requirements."

**B1.** PS Form 2976 or 2976-A is required. Articles are liable for customs duty and/or purchase tax unless they are bona fide gifts intended for use by military personnel or their dependents. When the contents of a parcel meet these requirements, the mailer must endorse the customs form, "Certified to be a bona fide gift, personal effects, or items for personal use of military personnel and dependents," under the heading, Description of Contents. **Exceptions:** All other exceptions listed in restriction B above are applicable to this restriction.

**B2.** All federal, state, and local government agencies must complete customs documentation when sending mail addressed to or from this APO, FPO, or DPO weighing 16 ounces or more.

**C.** Cigarettes and other tobacco products are prohibited.

**C1.** Obscene articles, prints, paintings, cards, films, videotapes, etc., and horror comics and matrices are prohibited.

**D.** Coffee is prohibited.

**E1.** Medicines or vaccines not conforming to French laws are prohibited.

**E2.** Any matter depicting nude or seminude persons, pornographic or sexual items, or nonauthorized political materials is prohibited. Although religious materials contrary to the Islamic faith are prohibited in bulk quantities, items for the personal use of the addressee are permissible.

**E3.** Radio transceivers, cordless telephones, global positioning systems, scanners, base stations, and handheld transmitters are prohibited.

**F.** Firearms of any type are prohibited in all classes of mail. See definitions of firearms in DMM 601.11.1.1c. This restriction does not apply to firearms mailed to or by official U.S. government agencies. The restriction for mail to this APO/FPO/DPO ZIP Code does not apply to firearms mailed from this APO/FPO/DPO ZIP Code, provided ATF and USPS regulations are met. Antique firearms are a separate category defined in DMM 601.11.2 and ATF regulations; they do not require an ATF form.

**F1.** Privately owned weapons addressed to an individual are prohibited in any class of mail.

**F2.** Importation of firearms is restricted to one shotgun and one single shot.22 caliber rifle per individual.

**G.** Only letters, flats, and Periodicals are authorized. Parcels of any class are prohibited.

**H.** Meats, including preserved meats, whether hermetically sealed or not, are prohibited.

**H1.** Pork or pork by-products are prohibited.

**I.** Mail of all classes must fit in a mail sack. Mail may not exceed the following dimensions:

- Maximum length 20 inches.
- Maximum width 12 inches.
- Maximum height 12 inches.

The maximum length and girth combined may not exceed 68 inches.

This restriction does not apply to registered mail and official government mail marked MOM.

**I1.** This restriction does not apply to registered mail.

**I2.** This restriction does not apply to official government mail marked MOM.

**J.** Parcels may not exceed 108 inches in length and girth combined.

**K.** Mail that includes in the address the words, "Dependent Mail Section," may consist only of letter mail, newspapers, magazines, and books. No parcel of any class containing any other matter may be mailed to the Dependent Mail section. This restriction does not apply if the address does not include the words "Dependent Mail Section."

**L.** All official mail is prohibited.

**M.** Fruits, vegetables, animals, and living plants are prohibited.

**N.** Registered mail is prohibited.

**O.** Delivery status information for Extra Services is not available on USPS.com.

**P.** APO is used for the receipt and dispatch of official mail only.

**Q.** Mail may not exceed 66 pounds, and size is limited to 42 inches maximum length and 72 inches maximum length and girth combined.

**R.** All alcoholic beverages, including those mailable under DMM 601.11.7, are prohibited.

**R1.** Materials used in the production of alcoholic beverages (i.e., distilling material, hops, malts, yeast, etc.) are prohibited.

**T.** Mailings of case lots of food and supplemental household shipments must be approved by the sender's parent agency prior to mailing.

**U.** Parcels must weigh less than 16 ounces when addressed to Box R. This restriction does not apply to mail endorsed "Free Matter for the Blind or Handicapped."

**U1.** Mail is limited to First-Class Mail weighing 13 ounces or less when addressed to Box R. This restriction does not apply to mail endorsed "Free Matter for the Blind or Handicapped." Videotapes are prohibited when addressed to Box R, regardless of weight.

**U2.** Mail is limited to First-Class Mail letters only when addressed to Box R.

**U3.** Mail is limited to First-Class Mail correspondence (including voice and video cassettes), newspapers, magazines, photographs, not exceeding 16 ounces, when addressed to Box R.

**V.** Express Mail Military Service (EMMS) not available from any origin.

**V1.** Delivery Confirmation service is not available.

**W.** Meat products, such as dried beef, salami, and sausage, may be mailed, provided they remain in their original, hermetically sealed packages and bear USDA certification. Other meats, bones, skin, hair, feathers, horns or hoofs of hoofed animals, wool samples, tobacco leaves, including chewing and pipe tobacco, snuff, cigars, and cigarettes, or obscene material, including obscene drawings, photographs, films, and carvings, are prohibited. Exception: 200 grams of tobacco per parcel are permitted duty free.

**X.** Personal mail is limited to First-Class Mail items (to include audio cassettes and voice tapes) weighing 13 ounces or less. This limitation does not apply to official mail.

**Y.** Mail is limited to First-Class and Priority Mail items only. All Periodicals, Standard Mail items, and Package Services items (including SAM and PAL) are not authorized. This restriction also applies to official mail.

**Z.** No outside pieces (OSPs).

**Z1.** The following restriction is applicable only to International Service Centers (ISC)/Exchange Offices. An Anti-Pilferage Seal (Item No O817E or O818A) is required on all pouches and sacks.

— *International Network Operations,  
Global Business, 1-28-10*

January 2010

## Have You Seen Any of These Missing Children?

Please participate in the NALC/USPS Child Alert Program. Tear out this page and carry it with you. If you have information on any of these missing persons, tell your Postal Service™ supervisor.



**Name:** Freddricka Baker  
Born: 8-12-92  
Date Missing: 12-12-09  
Missing From: Miami, FL



**Name:** Sarah Cleo  
Born: 6-6-92  
Date Missing: 11-16-09  
Missing From: Palm Bay, FL



**Name:** Chelsea Colleps  
Born: 2-7-92  
Date Missing: 11-3-09  
Missing From: Tampa, FL



**Name:** Breeanna Duncan  
Born: 3-13-92  
Date Missing: 12-14-09  
Missing From: Vero Beach, FL

**Please call the National Center for Missing and Exploited Children  
Hot Line 1-800-843-5678  
TDD 1-800-826-7653**

### Missing Children Poster Display Instructions

Post Offices, classified stations, branches, and contract postal units may display this poster at their option. If the poster is displayed, it should be placed on the community bulletin board located in the Post Office™ box lobby and not in the main retail (full service) lobby. Alternatively, Missing Children posters can be maintained in a binder behind the counter to be used as a reference guide. The posters also may be posted in a prominent location where letter carriers will be able to see them before or after they go out on their routes. Making this information available to letter carriers is consistent with the NALC/USPS Child Alert Program to facilitate identification of missing children.

Companion posters, authorized for display on bulletin boards maintained by employee organizations, appear periodically in *The Postal Record*, a publication for members of the National Association of Letter Carriers.

This poster is published in cooperation with the National Center for Missing and Exploited Children, the United States Department of Justice, and the National Association of Letter Carriers. Information appearing on this poster is selected solely by the National Center for Missing and Exploited Children (NCMEC).

In addition to *Postal Bulletin* updates, NCMEC distributes information periodically. Notification of newly reported missing children is sent to designated district “Missing Children” coordinators via e-mail addresses provided by district managers. Within 24 hours of receipt of an e-mailed Missing Children poster, district coordinators should distribute copies to all Postal Service™ facilities in their districts. Missing Children posters are to be displayed as noted above for 30 days unless notification is received (from NCMEC) to remove a particular poster sooner. The e-mail network is used to distribute posters and information in only the most urgent cases of missing children. This system supplements, but does not replace, the missing children information in this *Postal Bulletin*.

Missing Children posters are available to the U.S. Postal Service® only as described above. If Postal Service employees are contacted by individuals or local agencies about displaying a sign or poster of a missing child in local Post Offices, the individual or agency should be politely informed that the U.S. Postal Service displays only those posters provided by NCMEC, because it has been designated by the U.S. Department of Justice to be the national clearinghouse and resource center for missing and exploited children. The individual or agency should then be referred to NCMEC at 800-843-5678.

If you have any information, or for free prevention tips, please call 800-THE-LOST (800-843-5678).



January 2010

## Have You Seen Any of These Missing Children?

Please participate in the NALC/USPS Child Alert Program. Tear out this page and carry it with you. If you have information on any of these missing persons, tell your Postal Service™ supervisor.



**Name:** Victor Guerrero  
Born: 6-2-92  
Date Missing: 12-2-09  
Missing From: Tampa, FL



**Name:** John Krauss  
Born: 10-21-92  
Date Missing: 1-5-10  
Missing From: Palatka, FL



**Name:** Hector Lebron  
Born: 9-10-92  
Date Missing: 12-5-09  
Missing From: Tampa, FL



**Name:** Mark Martin  
Born: 10-19-93  
Date Missing: 11-7-09  
Missing From: Anderson, SC

**Please call the National Center for Missing and Exploited Children  
Hot Line 1-800-843-5678  
TDD 1-800-826-7653**

### Missing Children Poster Display Instructions

Post Offices, classified stations, branches, and contract postal units may display this poster at their option. If the poster is displayed, it should be placed on the community bulletin board located in the Post Office™ box lobby and not in the main retail (full service) lobby. Alternatively, Missing Children posters can be maintained in a binder behind the counter to be used as a reference guide. The posters also may be posted in a prominent location where letter carriers will be able to see them before or after they go out on their routes. Making this information available to letter carriers is consistent with the NALC/USPS Child Alert Program to facilitate identification of missing children.

Companion posters, authorized for display on bulletin boards maintained by employee organizations, appear periodically in *The Postal Record*, a publication for members of the National Association of Letter Carriers.

This poster is published in cooperation with the National Center for Missing and Exploited Children, the United States Department of Justice, and the National Association of Letter Carriers. Information appearing on this poster is selected solely by the National Center for Missing and Exploited Children (NCMEC).

In addition to *Postal Bulletin* updates, NCMEC distributes information periodically. Notification of newly reported missing children is sent to designated district “Missing Children” coordinators via e-mail addresses provided by district managers. Within 24 hours of receipt of an e-mailed Missing Children poster, district coordinators should distribute copies to all Postal Service™ facilities in their districts. Missing Children posters are to be displayed as noted above for 30 days unless notification is received (from NCMEC) to remove a particular poster sooner. The e-mail network is used to distribute posters and information in only the most urgent cases of missing children. This system supplements, but does not replace, the missing children information in this *Postal Bulletin*.

Missing Children posters are available to the U.S. Postal Service® only as described above. If Postal Service employees are contacted by individuals or local agencies about displaying a sign or poster of a missing child in local Post Offices, the individual or agency should be politely informed that the U.S. Postal Service displays only those posters provided by NCMEC, because it has been designated by the U.S. Department of Justice to be the national clearinghouse and resource center for missing and exploited children. The individual or agency should then be referred to NCMEC at 800-843-5678.

If you have any information, or for free prevention tips, please call 800-THE-LOST (800-843-5678).

January 2010

## Have You Seen Any of These Missing Children?

Please participate in the NALC/USPS Child Alert Program. Tear out this page and carry it with you. If you have information on any of these missing persons, tell your Postal Service™ supervisor.



**Name:** Erica Shales  
Born: 3-26-92  
Date Missing: 1-4-10  
Missing From: Lehigh Acres, FL



**Name:** Sylvia Valdo  
Born: 10-23-92  
Date Missing: 1-7-10  
Missing From: Fort Lauderdale,  
FL



**Name:** Byron Watson  
Born: 1-25-92  
Date Missing: 1-4-10  
Missing From: Fort Lauderdale,  
FL

**Please call the National Center for Missing and Exploited Children  
Hot Line 1-800-843-5678  
TDD 1-800-826-7653**

### Missing Children Poster Display Instructions

Post Offices, classified stations, branches, and contract postal units may display this poster at their option. If the poster is displayed, it should be placed on the community bulletin board located in the Post Office™ box lobby and not in the main retail (full service) lobby. Alternatively, Missing Children posters can be maintained in a binder behind the counter to be used as a reference guide. The posters also may be posted in a prominent location where letter carriers will be able to see them before or after they go out on their routes. Making this information available to letter carriers is consistent with the NALC/USPS Child Alert Program to facilitate identification of missing children.

Companion posters, authorized for display on bulletin boards maintained by employee organizations, appear periodically in *The Postal Record*, a publication for members of the National Association of Letter Carriers.

This poster is published in cooperation with the National Center for Missing and Exploited Children, the United States Department of Justice, and the National Association of Letter Carriers. Information appearing on this poster is selected solely by the National Center for Missing and Exploited Children (NCMEC).

In addition to *Postal Bulletin* updates, NCMEC distributes information periodically. Notification of newly reported missing children is sent to designated district “Missing Children” coordinators via e-mail addresses provided by district managers. Within 24 hours of receipt of an e-mailed Missing Children poster, district coordinators should distribute copies to all Postal Service™ facilities in their districts. Missing Children posters are to be displayed as noted above for 30 days unless notification is received (from NCMEC) to remove a particular poster sooner. The e-mail network is used to distribute posters and information in only the most urgent cases of missing children. This system supplements, but does not replace, the missing children information in this *Postal Bulletin*.

Missing Children posters are available to the U.S. Postal Service® only as described above. If Postal Service employees are contacted by individuals or local agencies about displaying a sign or poster of a missing child in local Post Offices, the individual or agency should be politely informed that the U.S. Postal Service displays only those posters provided by NCMEC, because it has been designated by the U.S. Department of Justice to be the national clearinghouse and resource center for missing and exploited children. The individual or agency should then be referred to NCMEC at 800-843-5678.

If you have any information, or for free prevention tips, please call 800-THE-LOST (800-843-5678).

## Thrift Savings Plan Fact Sheet

Returns were updated January 4, 2010.

ANNUAL RETURNS	G Fund	F Fund	LBA Bond Index	C Fund	S&P 500 Stock Index	S * Fund	Wilshire 4500 Stock Index	I * Fund	EAFE Stock Index
1994	7.22	-2.96	-2.92	1.33	1.32	—	-2.66	—	7.75
1995	7.03	18.31	18.47	37.41	37.58	—	33.48	—	11.27
1996	6.76	3.66	3.63	22.85	22.96	18.52	17.18	6.27	6.14
1997	6.77	9.60	9.65	33.17	33.36	26.61	25.69	1.46	1.55
1998	5.74	8.70	8.69	28.44	28.58	7.51	8.63	20.46	20.09
1999	5.99	-0.85	-0.82	20.95	21.04	32.70	35.49	26.81	26.72
2000	6.42	11.67	11.63	-9.14	-9.10	-8.76	-15.77	-14.11	-14.17
2001	5.39	8.61	8.44	-11.94	-11.89	-2.22*	-2.52*	-15.42*	-14.88*
2002	5.00	10.27	10.26	-22.05	-22.10	-18.14	-17.80	-15.98	-15.94
2003	4.11	4.11	4.10	28.54	28.69	42.92	43.84	37.94	38.59
2004	4.30	4.30	4.34	10.82	10.88	18.03	18.10	20.00	20.25
2005	4.49	2.40	2.43	4.96	4.91	10.45	10.03	13.63	13.54
2006	4.93	4.40	4.33	15.79	15.79	15.30	15.28	26.32	26.34
2007	4.87	7.09	6.97	5.54	5.49	5.49	5.39	11.43	11.17
2008	3.75	5.45	5.24	-36.99	-37.00	-38.32	-39.03	-42.43	-43.38

\*Rates of return for May (inception of S and I Funds) through December 2001.

MONTHLY RETURNS	G Fund	F Fund	LBA Bond Index	C Fund	S&P 500 Stock Index	S * Fund	Wilshire 4500 Stock Index	I * Fund	EAFE Stock Index
<b>2009</b>									
Jan	0.19	-0.86	-0.88	-8.41	-8.43	-8.19	-7.47	-11.93	-9.81
Feb	0.21	-0.39	-0.38	-10.64	-10.65	-10.22	-9.78	-10.23	-10.26
March	0.24	1.38	1.39	8.81	8.76	8.64	8.62	7.20	6.34
April	0.21	0.49	0.48	9.58	9.57	15.00	15.03	12.13	12.80
May	0.25	0.78	0.73	5.60	5.59	3.97	4.16	13.41	11.83
June	0.27	0.54	0.57	0.24	0.20	0.73	0.84	-1.08	-0.57
July	0.28	1.59	1.61	7.58	7.56	8.66	9.01	9.74	9.13
Aug	0.28	1.03	1.04	3.62	3.61	3.85	3.74	4.87	5.44
Sept	0.26	1.07	1.05	3.74	3.73	5.94	5.81	3.79	3.83
Oct	0.26	0.51	0.49	-1.86	-1.86	-5.51	-5.41	-2.41	-1.25
Nov	0.26	1.30	1.29	6.00	6.00	3.85	3.98	3.16	2.00
Dec	0.25	-1.55	-1.56	1.94	1.93	6.57	6.65	1.43	1.44
<b>LAST 12 MONTHS</b>	<b>2.97</b>	<b>5.99</b>	<b>5.93</b>	<b>26.68</b>	<b>26.46</b>	<b>34.85</b>	<b>37.43</b>	<b>30.04</b>	<b>31.78</b>

Fund	Invested In	Index Tracked
G — Government Securities Investment Fund	Special issues of U.S. Treasury securities	N/A
F — Fixed Income Index Investment Fund	Barclays U.S. Debt Index Fund	Lehman Brothers U.S. Aggregate bond index
C — Common Stock Index Investment Fund	Barclays Equity Index Fund	S&P 500 stock index
S — Small Capitalization Stock Index Investment Fund	Barclays Extended Market Index Fund	Wilshire 4500 stock index
I — International Stock Index Investment Fund	Barclays EAFE Index Fund	Europe, Australasia, and Far East stock index

Future performance of the funds will vary and may be significantly different from the returns shown above. See the *Summary of the Thrift Savings Plan* for detailed information about the funds and their investment risks. The monthly returns of the TSP Funds represent net earnings for the month after deduction of accrued administrative expenses and, except for the G Fund, after deduction of trading costs and accrued investment management fees as well. The returns for the four indexes shown do not include any of these deductions.

\* Implemented May 2001.

See next page for new L Funds.

Returns were updated December 1, 2009.

### L Funds

<b>Annual Returns</b>	<b>L 2040</b>	<b>L 2030</b>	<b>L 2020</b>	<b>L 2010</b>	<b>L Income</b>
2006	16.53	15.00	13.72	11.09	7.59
2007	7.36	7.14	6.87	6.40	5.56
2008	-33.53	-27.50	-22.77	-10.53	-5.09
<b>Monthly Returns</b>	<b>L 2040</b>	<b>L 2030</b>	<b>L 2020</b>	<b>L 2010</b>	<b>L Income</b>
<b>2009</b>					
Jan	-7.67	-6.69	-5.58	-2.61	-1.74
Feb	-8.52	-7.47	-6.22	-2.95	-1.98
Mar	7.08	6.30	5.35	2.82	2.06
Apr	9.38	8.20	6.79	3.20	2.37
May	6.19	5.45	4.66	2.28	1.70
June	0.09	0.12	0.14	0.24	0.26
July	7.01	6.16	5.16	2.44	1.94
Aug	3.41	3.02	2.57	1.30	1.07
Sept	3.56	3.14	2.63	1.32	1.08
Oct	-2.15	-1.81	-1.39	-0.38	-0.26
Nov	3.98	3.55	3.00	1.47	1.27
Dec	2.12	1.85	1.50	0.70	0.59
<b>LAST 12 MONTHS</b>	<b>25.19</b>	<b>22.48</b>	<b>19.14</b>	<b>10.03</b>	<b>8.57</b>

The L Funds are invested in the five individual TSP funds.

## Intelligent Mail and Address Quality

### 2010 Census: EVERYONE. EVERYWHERE.

It's up to us to deliver the count for America.

With the start of a new decade, it's time to count the nation's population again, and the U.S. government is relying on the Postal Service™ to make it happen. Our organization has a critically important role in the success of the 2010 census. USPS® will process and deliver census forms and other mailpieces to every household in the nation.

Through mid-April, the Census Bureau will send six separate mailings — a total of 447 million pieces. For the Postal Service, it means \$200 million in revenue as well as

an opportunity to provide a valuable community service.

"This is the single largest mailing ever in U.S. history," says Tom Day, senior vice president, Intelligent Mail and Address Quality. "It will have an impact on the lives of millions of Americans. Every postal employee plays a role in making this very important mailing program successful."

He adds, "We have planned for these mailings, working closely with the Census Bureau, and we're prepared. And we're going to do what we do best —

deliver for the nation."

The census mailings also will take advantage of Full Service Intelligent Mail, providing both the Postal Service and the Census Bureau important information, including start-the-clock data, address correction, and mailpiece tracking. "The use of Full Service will provide crucial feedback about this important mailing and assure faster processing," says Day.

"We'll get important operational data so we can respond quickly to any issues that might arise."

The census is required by the Constitution to take place every 10 years. The data collected helps

determine how federal funding is distributed to states and communities, and how many seats a state has in the U.S. House of Representatives. With just 10 questions, the 2010 census questionnaire is one of the shortest in history.

As part of its public awareness campaign, the Census Bureau is telling Americans, "We can't move forward until you mail it back." And we'll be there to move the mail timely and efficiently.

America is counting on us.



### CENSUS AND USPS

#### How will the mailing affect postal operations?

- Census mail should be treated like other mail. It should not be trayed.

#### What does it mean for delivery units?

- Ensure correct handling.
- Do NOT mark through or obliterate Intelligent Mail® barcode.
- Do NOT affix any labels over Intelligent Mail barcode.
- Use only clear space on front of envelope to mark up First-Class Mail®.
- Undeliverable-as-addressed mailpieces must be endorsed with correct reason for return.
- Carriers and delivery office staff must ensure all undeliverable Intelligent Mail barcoded First-Class Mail is sent to PARS (letters) or CFS (flats). Census mail can be commingled with other undeliverable-as-addressed mail.

#### What does it mean for processing operations?

- All census mail should be processed on automated equipment, including the AFCS for letters and the AFSM or FSS for flats.
- Intelligent Mail barcode scans will generate important Origin Confirm, Destination Confirm, and address correction data.

### 2010 CENSUS MAILINGS

#### Limited advance letter — In-home delivery dates: Feb. 17–19

\* 12 million pieces

#### Advance letter — In-home delivery dates: March 8–10

\* 123 million pieces

#### Survey questionnaire — In-home dates: March 15–17

\* 123 million pieces (13 million flats, 110 million letter-size with inserted BRM envelopes)

#### Reminder postcard — In-home dates: March 22–24

\* 135 million pieces

#### Mail-out/mail-back blanket survey questionnaire — In-home dates: April 1–3

\* 32 million pieces

#### Mail-out/mail-back target survey questionnaire — In-home dates: April 6–13

\* 15 million pieces

\* Approximate pieces

## Do Not Obliterate the Barcode

The Intelligent Mail® barcode contains important data that is used to provide mailers — including the Census Bureau — with information, such as when the mailing entered the mailstream and undeliverable or address correction information. But technology cannot reliably produce this information if it can't read the barcode.

That's why the Postal Service™ is telling employees to make sure they don't obliterate the barcode as mail moves through the system. Specifically, employees should not

mark through, obliterate, or affix any labels over the Intelligent Mail barcode.

Also, the Postal Service wants to make sure that when employees mark up First-Class Mail® items, they use only clear space on the front of the envelope, being careful not to mark over any address or barcode information.

— Address Management,  
Intelligent Mail and Address Quality, 1-28-10

## Intelligent Mail Barcode Service Talk

For your convenience, we have reprinted a service talk on the Intelligent Mail® barcode as well as a copy of a poster that illustrates how to handle undeliverable-as-addressed (UAA) mail with an Intelligent Mail barcode.

The Intelligent Mail barcode for letters and flats is an evolution of USPS® barcode technology. Its design uses four different “states” of bars: full, ascender, descender, and tracker. It has more overall data capacity than the traditional “two-state” short and tall bars for POSTNET™ and PLANET Code® barcodes.



The Intelligent Mail barcode contains:

- A Barcode ID, which identifies pre-sort information, if needed.
- A Service Type Identifier, which identifies the class of mail, service requests, and endorsements.
- A Mailer Identifier (MID), which uniquely identifies the mailpiece owner/sender.
- A Serial or Sequence Number, which uniquely identifies the mailpiece to facilitate tracking in transit and may identify the addressee to the mailer.
- The Delivery Point ZIP Code used for sorting and routing the mail.



The POSTNET barcode contains:

- The Delivery Point (routing ZIP Code).

The Intelligent Mail barcode includes data that allows for single or multiple product or service requests. It can uniquely identify up to a billion mailpieces in a single mailing and allows for improved barcode read rates on automated equipment.

Mailer services currently available for letters and flats through the Intelligent Mail barcode include Full Service Automation Discounts & Benefits; OneCode Confirm™ Mailer subscription, which allows mailers to track their mail; and Full Service and OneCode Address Change Service (ACS), which satisfies Move Update requirements.

The Intelligent Mail barcode data must be available on each mailpiece for processing from acceptance to delivery, including mail that has been identified as UAA.

When UAA mail is sent to the Postal Automated Redirection System (PARS) or Computerized Forwarding System (CFS) to be processed, the Intelligent Mail barcode is necessary to provide electronic address correction or Nixie information to the mailer. Marking through or covering the barcode prevents PARS and CFS from providing that information electronically.

A common misconception is that UAA mail, also commonly referred to as Return to Sender (RTS) mail, is also loop mail\*. This is not true. Loop mail is defined as “mail sent to an incorrect destination as a result of a wrong barcode and/or wrong ZIP Code”. UAA mail is defined as “mail that can not be delivered as addressed”. There are two types of UAA mail:

1. Change-of-address (COA)-related mail is UAA either because the customer has moved and filed a change of address request with USPS, or the delivery employee filed a “Moved, Left No Address” or “Box Closed, No Order” COA request.
2. Nixie-related mail is UAA for reasons other than a COA on file, such as “No Such Number”, “Attempted Not Known”, or “Refused”.

Mail that is UAA due to either a COA or Nixie reason *and* has an Intelligent Mail barcode or ACS indicators (#B) in the address block must be processed through PARS or CFS. The barcode, #B information, and original name and address must always be available for processing.

**Never mark through, obliterate, or cover the Intelligent Mail barcode, “#B” ACS indicators, or original name and address information on UAA mail.**

\*See Management Instruction PO-420-2008-1, *Loop Mail Program*, for loop mail procedures, as needed.

— Address Management,  
Intelligent Mail and Address Quality, 1-28-10



# Do Not Obliterate or Cover Any Portion of an IM Barcode or Address on UAA Mail

Obliterating the IM barcode or address block information with slash marks or RTS stamps/stickers will hamper Automation, PARS and CFS processing of UAA mail.

Thousands of mailers request ACS™ through the #B or IM barcode. It is vital that this mail be sent to PARS or CFS so the service requested can be properly provided.

Send **all** UAA First-Class™ with IM barcode or #B to PARS or CFS.

Send **all** UAA Periodicals with IM barcode or #B to CFS. PARS can not process Periodicals.

Send **all** UAA STD/Nonprofit & Bound Printed Matter with Ancillary Endorsements and IM barcode or #B to PARS or CFS.

Send **all** UAA Parcels with #B to CFS.

or CFS.

- Electronic Service Requested
  - Address Service Requested
  - Change Service Requested
- Reminder:** Only PARS and CFS can generate electronic address corrections for mailers.



**Some samples of what NOT to do:**

**DO NOT Obliterate Traditional ACS™ (#B) and/or IM Barcode**  
Electronic address correction cannot be generated. ACS Customers DO NOT want hardcopy notices.

**DO NOT Cover Address Block or IM Barcode**  
Electronic address correction cannot be generated. Address cannot be read if RTS.

**DO NOT Slash through Address or IM Barcode**  
Neither PARS nor CFS equipment can process this malpiece.

**A sample of what TO do:**  
Nixie Return Reason or Carrier/Clerk Endorsement is correctly placed in a location that does not obliterate the address or any barcodes. The Address Block, including ACS Information, is clear of all extraneous markings.



**DID YOU KNOW?**

**Coils of First-Class  
Mail stamps are  
available at *usps.com*.**

The image shows several overlapping USA44 First-Class Mail stamps with an American flag design. The stamps are arranged in a way that suggests they are part of a coil. The text 'USA44' is visible on several stamps. The background is white with a subtle reflection effect.

## Mailing and Shipping Services

### Mail Alert

The mailings below will be deposited in the near future. Offices should honor the requested home delivery dates. Mailers wishing to participate in these alerts, for mailings of 1 million pieces or more, should contact Business Service Network Integration at 202-268-3258 at least 1 month preceding the requested delivery dates. The Postal Service™

also offers electronic Mail Alerts via ADVANCE. For more information, see the *ADVANCE Notification & Tracking System Technical Guide* on the Internet at [http://ribbs.usps.gov/advance/documents/tech\\_guides/advtech.pdf](http://ribbs.usps.gov/advance/documents/tech_guides/advtech.pdf) or contact the National Customer Support Center at 800-238-3150.

Requested Delivery Dates	Title of Mailing	Class and Type of Mail	Number of Pieces (Millions)	Distribution	Presort Level	Comments
1/28/10–1/30/10	February 2010 BSG Shopping Guides	Standard Letter	1.0	National	3/5 Digit Car-RT	Henry Wurst, Inc.
1/28/10–1/30/10	JCP – Wk 1 Home Signature	Standard Flat	10.0	National	Car-RT	Harte-Hanks
1/28/10–1/30/10	JCP – Wk 1 Valentine's Jewelry	Standard Flat & Letter	4.7	National	Car-RT	Harte-Hanks
1/30/10–2/2/10	JCP – Spring Country Catalog	Standard Catalog	2.3	National	Car-RT	RRD/Harte-Hanks
1/30/10–2/2/10	JCP – Wk 1 Bonus Sale	Standard Letter	8.1	National	Car-RT	Harte-Hanks
1/30/10–2/2/10	JCP – Women's Catalog	Standard Catalog	2.1	National	Car-RT	RRD/Harte-Hanks
2/1/10–2/4/10	Ginny's	Standard Catalog	1.1	Nationwide	Barcoded 3/5 Digit Car-RT	Quad Graphics, Lomira, WI
2/3/10–2/5/10	JCP – Wk 2 Friends/Family	Standard Letter	8.1	National	Car-RT	Harte-Hanks
2/3/10–2/6/10	Through the Country Door	Standard Catalog	2.2	Nationwide	Barcoded 3/5 Digit Car-RT	Quad Graphics, Lomira, WI
2/6/10–2/9/10	JCP – Men's Spring Catalog	Standard Catalog	1.2	National	Car-RT	RRD/Harte-Hanks
2/6/10–2/9/10	JCP – Spring Home Sale Catalog	Standard Catalog	4.1	National	Car-RT	RRD/Harte-Hanks
2/8/10–2/10/10	JCP – Wk 2 Direct Postcard	Standard Letter	8.5	National	Car-RT	Harte-Hanks
2/8/10–2/10/10	Life Line Screening, #11 Logo Envelope, Created Handwriting Font	Standard Letter	2.0	Nationwide	3/5 Digit	Mail America, Forest, VA
2/10/10–2/12/10	Nordstrom February Season Launch	Standard Flat	1.875	Nationwide	Barcoded 3/5 Digit Car-RT	Arandell, Milwaukee, WI
2/10/10–2/13/10	Monroe & Main	Standard Catalog	1.8	Nationwide	Barcoded 3/5 Digit Car-RT	RR Donnelly, Warsaw, IN
2/10/10–2/13/10	Montgomery Ward	Standard Catalog	2.5	Nationwide	Barcoded 3/5 Digit Car-RT	Quad Graphics, Lomira, WI
2/11/10–2/13/10	JCP – Wk Privilege Credit	Standard Letter	16.3	National	Car-RT	Harte-Hanks

– Business Service Network Integration, Sales, 1-28-10

A roll of USA44 postage stamps is shown, partially unrolled, revealing the American flag design. The stamps are white with a blue field containing white stars and a red and white striped field. The text "USA44" is visible on the stamps. The roll is set against a background of horizontal stripes.

***DID YOU KNOW?***

**USPS**  
**will not**  
**raise the price**  
**of First-Class**  
**Mail postage**  
**during 2010.**

### New Express Mail Label for Military Absentee Voting

Military personnel in APO/FPO locations will be able to return absentee ballots via Express Mail® service using the new Express Mail Label 11-DOD. This blue Express Mail label will be affixed to the top of the absentee ballot return envelope or flat. The absentee ballot return envelope may be as small as a #10 business-sized envelope or as large as a flat-sized envelope.

This label is unique and only for use with absentee ballots originating from overseas military postal locations. These Express Mail shipments will arrive from International Service Centers in Express Mail sacks and must remain in the Express Mail stream to the delivery unit. Both the Waiver of Signature request and Guaranteed by End of Day

endorsement are printed on the blue label. No deviation for delivery by a specific time is necessary, and the shipments should always be delivered on the day they arrive at the delivery Post Office™ facility.

This is a joint federal agency initiative between the Postal Service™ and the Military Post Office of the Department of Defense. The Express Mail Label 11-DOD affixed to the absentee ballot envelope or flat will allow United States service men and women to track their vote all the way to the county or parish election office while generating new revenue for the Postal Service.

— Expedited Operations, Expedited Shipping, 1-28-10





# Bring Home the Vote


with Express Mail



**Watch for Label 11-DOD on Absentee Ballots**

WARNING! FAILURE TO SIGN BACK OF ENVELOPE WILL INVALIDATE YOUR BALLOT.  
(Name and address of sender is on back of envelope)

VBMC-R-Vt (3/08)


**EXPRESS<sup>®</sup>**  
**MAIL**  
UNITED STATES POSTAL SERVICE

ONLY FOR USE WITH  
ABSENTEE BALLOTS FROM  
THE MILITARY POSTAL SYSTEM

Postage Paid for by the  
Department of Defense

**WAIVER OF  
SIGNATURE**


Guaranteed By End Of Day

LABEL 11- DOD JAN 2010

EM 123 456 789 US

Front

**OFFICIAL ABSENTEE VOTER BALLOT**  
(To be Opened only by Election Canvassing Board)

  
 REGISTRAR OF VOTERS  
 COUNTY OF ANY STATE  
 PO BOX 12345  
 ANY CITY US 23456-7890

**Follow the Process – Scan and Deliver It!**

Waiver of Signature, Guaranteed By End Of Day



## Philately

### Stamp Announcement 10-06: Forever Stamp (Liberty Bell)



On February 3, 2010, in Washington, DC, the Postal Service™ will re-issue the nondenominated First-Class Mail® definitive, *Forever Stamp™ (Liberty Bell)* in one design in a pressure-sensitive adhesive (PSA) automated teller machine (ATM) sheetlet of 18 stamps (Item 573300).

This issuance varies from the previous printing of the same item number in that the print method and printer have changed. Because the stamps are used to re-supply ATM and Post Office™ Automated Postal Center® (APC®) machines only in those locations as the need arises, this re-issue will be available initially only in the first day city of Washington, DC, and by mail order through Stamp Fulfillment Services in Kansas City, Missouri. The ATM *Forever Stamp (Liberty Bell)* sheetlet of 18 was previously issued in 2008 as Item 569900 and in February 2009 as the current Item 573300.

#### How to Order the First Day of Issue Postmark

Customers have 60 days to obtain the first day of issue postmark by mail. They may purchase new stamps at their local Post Office, at the Postal Store® website at [www.usps.com/shop](http://www.usps.com/shop), or by calling 800-STAMP-24. They should affix the stamps to envelopes of their choice, address the envelopes (to themselves or others), and place them in a larger envelope addressed to:

Forever Stamp (Liberty Bell)  
Special Cancellations  
PO Box 92282  
Washington, DC 20090-2282

Issue:	<i>Forever Stamp (Liberty Bell)</i>
Item Number:	573300
Denomination & Type of Issue:	Nondenominated First-Class
Format:	ATM Sheetlet of 18 (1 design)
Series:	N/A
Issue Date & City:	February 3, 2010, Washington, DC 20066 (No Ceremony)
Designer:	Carl T. Herrman, North Las Vegas, NV
Art Director:	Carl T. Herrman, North Las Vegas, NV
Typographer:	Carl T. Herrman, North Las Vegas, NV
Engraver:	N/A
Modeler:	Joseph Sheeran
Manufacturing Process:	Offset, Microprint "FOREVER"
Printer:	Ashton Potter (USA) Ltd. (APU)
Printed at:	Williamsville, NY
Press Type:	Mueller Martini, A76
Stamps per Pane:	20
Print Quantity:	540 million stamps
Paper Type:	Nonphosphored, Type III, Block Taggant
Adhesive Type:	Pressure-sensitive
Processed at:	Ashton Potter (USA) Ltd.
Colors:	Black, Cyan, Magenta, Yellow, PMS 876 (Copper)
Stamp Orientation:	Vertical
Image Area (w x h):	0.73 x 0.84 in./18.54 x 21.34 mm
Overall Size (w x h):	0.87 x 0.98 in./22.10 x 24.89 mm
Full Pane Size (w x h):	2.61 x 6.125 in./66.29 x 155.58 mm
Plate Size:	720 stamps per revolution
Plate Numbers:	"P" followed by five (5) single digits
Marginal Markings:	
Cover:	Header: "FOREVER" • 18 First-Class stamps
Other:	USPS logo • Barcode (573300) • Stamp ordering information
Stamp Side:	© 2007 USPS • Plate numbers in one position • "2009" print year using PMS 876 (Copper)

After applying the first day of issue postmark, the Postal Service will return the envelopes through the mail. There is no charge for the postmark. All orders must be postmarked by April 3, 2010.

#### How to Order First Day Covers

Stamp Fulfillment Services also offers first day covers for new stamp issues and Postal Service stationery items postmarked with the official first day of issue cancellation. Each item has an individual catalog number and is offered in the quarterly *USA Philatelic Catalog*. Customers may request a free catalog by calling 800-STAMP-24 or writing to:

Information Fulfillment  
Dept. 6270  
U.S. Postal Service  
PO Box 219014  
Kansas City, MO 64121-9014

## Philatelic Products

There is one philatelic product available for this stamp issue:

- 523361\*, First Day Cover, \$0.82.

Items with an asterisk (\*) will use the 128 barcode from Stamp Fulfillment Services. All other philatelic products will continue to use barcode series A, with the exception of the Yearbook and the Guide Book.

**Distribution: Item 573300 Nondenominated (\$7.92 Value) Forever Stamp (Liberty Bell), PSA ATM Sheetlet of 18**

Stamp distribution offices (SDOs) will not receive automatic distributions of the re-issued *Forever (Liberty Bell)*, ATM sheetlets of 18. Distributions will be sent only to Stamp Fulfillment Services, the Dulles Stamp Distribution Center (SDC), the Kansas City SDC, and the San Francisco

Accountable Paper Depository (APD). Distributions are rounded up to the nearest master carton size (12,000 sheetlets).

## Initial Supply to Post Offices

SDOs will not make a subsequent automatic distribution to Post Offices. Only Post Offices equipped with APCs or Post Offices serving authorized ATM customers may order Item 573300 from their designated SDO using a separate PS Form 17, *Stamp Requisition/Stamp Return*. SDOs must not distribute sheetlets to Post Offices before February 3, 2010. SDOs should continue to issue their current inventory of the *Forever (Liberty Bell)* ATM sheetlet before ordering the re-issued stamp.

— *Stamp Services,  
Government Relations and Public Policy, 1-28-10*

## Pictorial Postmarks Announcement

As a community service, the Postal Service™ offers pictorial postmarks to commemorate local events celebrated in communities throughout the nation. A list of events for which pictorial postmarks are authorized appears below. The sponsor of the pictorial postmark appears in italics under the date. Also provided are illustrations of these postmarks.

People attending these local events may obtain the postmark in person at the temporary Post Office™ station established there. Those who cannot attend the event but who wish to obtain the postmark may submit a mail order request. Pictorial postmarks are available only for the dates indicated, and *requests must be postmarked no later than 30 days following the requested pictorial postmark date.*

All requests must include a stamped envelope or postcard bearing at least the minimum First-Class Mail® postage. Items submitted for postmark may not include

postage issued after the date of the requested postmark. Such items will be returned unserved.

Customers wishing to obtain a postmark should affix stamps to any envelope or postcard of their choice, address the envelope or postcard to themselves or others, insert a card of postcard thickness in envelopes for sturdiness, and tuck in the flap. Place the envelope or postcard in a larger envelope and address it to: Pictorial Postmarks, followed by the Name of the Station, Address, City, State, ZIP+4® Code, as listed below.

Customers can also send stamped envelopes and postcards without addresses for postmark, as long as they supply a larger envelope with adequate postage and their return address. After applying the pictorial postmark, the Postal Service returns the items (with or without addresses) under addressed protective cover.



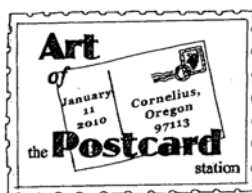
January 8, 2010

*U.S. Postal Service*  
America Loves Elvis Station  
Postmaster  
2000 Royal Oaks Dr.  
Sacramento, CA  
95813-9998



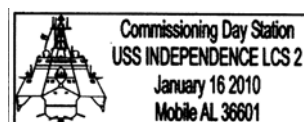
January 14, 2010

*Clemson University*  
Year of the Tiger Clemson  
University Station  
Postmaster  
PO Box 9998  
Clemson, SC 29631



January 11, 2010

*U.S. Postal Service*  
Art of the Post Card Station  
Postmaster/Philatelic  
Services  
1639 Baseline St.  
Cornelius, OR 97113-9998



January 16, 2010

*Universal Ship Cancellation Society*  
Commissioning Day Station  
Postmaster  
250 Saint Joseph St.  
Mobile, AL 36601-9998



Pownal  
250<sup>th</sup> Anniversary  
Station  
  
Pownal, VT 05261  
January 28, 2010



January 28, 2010  
*Pownal Historical Society*  
250th Anniversary Station  
Postmaster  
635 Rte. 346  
Pownal, VT 05261-9998



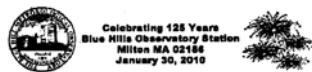
February 1, 2010  
*U.S. Postal Service*  
Valentines Day Station  
Postmaster  
6664 Rte. 362  
Bliss, NY 14024-9998



January 30, 2010  
*Sun Prairie Chamber of Commerce*  
Groundhog Station  
PO Box 9998  
Sun Prairie, WI 53590-9998



February 1-14, 2010  
*USPS Annual Valentine Re-Mailing Program*  
Valentine Station  
Postmaster  
446 E. 29th St.  
Loveland, CO 80538-9998



January 30, 2010  
*U.S. Postal Service*  
Blue Hills Observatory  
Station  
Postmaster  
25 Dorchester Ave.,  
Rm. 3011  
Boston, MA 02205-9600



February 2, 2010  
*Sun Prairie Chamber of Commerce*  
Groundhog Station  
PO Box 9998  
Sun Prairie, WI 53590-9998



January 31, 2010  
*John Beargrease Sled Dog Marathon*  
Beargrease Station  
Postmaster  
2800 W. Michigan St.  
Duluth, MN 55806-9998



February 3, 2010  
*U.S. Postal Service*  
TPTR Station  
Postmaster  
402 Main St.  
Panhandle, TX 79068-9998



February 1, 2010  
*U.S. Postal Service*  
Love Station  
Postmaster  
PO Box 9998  
Romance, AR 72136-9998



February 4, 2010  
*Postal History Foundation*  
Distinguished Sailors  
Station  
Postmaster  
920 N. First Ave.  
Tucson, AZ 85719-4808



February 1, 2010  
*Merchants, Restaurants, & Professionals of Romeo, MI*  
Romeo & Juliette Valentine  
Romantic Station  
Postmaster  
119 Church St.  
Romeo, MI 48065-9998



February 6, 2010  
*Chinese American Friendship Assn. of Maine*  
Chinese New Year Station  
Postmaster  
125 Forest Ave.  
Portland, ME 04101-9998



February 1, 2010  
*Merchants, Restaurants, & Professionals of Romeo, MI*  
Romeo & Juliette Valentine  
Romantic Station  
Postmaster  
356 Bowdoin Rd.  
Juliette, GA 31046-9998



February 6, 2010  
*Centennial Special Events Committee*  
BSA Centennial Rally  
Station  
Postmaster  
3 New St.  
Crosswicks, NJ 08515-9998



February 7–21, 2010  
*Friends of Hartville*  
 Valentine Station  
 Postmaster  
 PO Box 9998  
 Hartville, WY 82215-9998



February 10, 2010  
*U.S. Postal Service*  
 TPTR Station  
 Postmaster  
 217 SE 2nd St.  
 Dimmitt, TX 79027-9998



February 9–10, 2010  
*U.S. Postal Service*  
 APPL Partnership  
 Convention & Trade Show  
 Station  
 Postmaster/Philatelic  
 Window  
 2535 Midway Dr.  
 San Diego, CA 92186-9998

— *Stamp Services,  
 Government Relations and Public Policy, 1-28-10*

### Correction: Mackinac Bridge (Priority Mail) Stamp

In the article “Stamp Announcement 10-03: “Mackinac Bridge (Priority Mail)” in *Postal Bulletin* 22275 (12-31-09, page 39), the first day of issue location on page 39 has been changed to Mackinaw City, Michigan.

In the technical details table, the Issue Date and City should read: “February 3, 2010, Mackinaw City, MI 49701”.

The address for “How to Order the First Day of Issue Postmark” is as follows:

Mackinaw Bridge (Priority Mail) Stamp  
 306 E. Central Ave.  
 Mackinaw City, MI 49701-9998

— *Stamp Services, Government Relations and Public Policy, 1-28-10*

### Correction: Ceremony Program Price

In the article “Correction: Lunar New Year: Year of the Tiger” in *Postal Bulletin* 22275 (12-31-09, page 44), the Ceremony Program (Item 574391) price was corrected to \$9.95. The correct price is **\$6.95** as stated in *Postal Bulletin* 22274 (12-17-09).

The correction article should have corrected the article “Stamp Announcement 10-02: Vancouver 2010 Olympic Winter Games” in *Postal Bulletin* 22274 (12-17-09, pages 53–55). The Ceremony Program (Item 440091) on page 54, under Philatelic Products, should be **\$6.95** instead of \$9.95.

— *Stamp Services, Government Relations and Public Policy, 1-28-10*

## How to Order the First Day of Issue Digital Color or Traditional Postmarks

Customers have 60 days to obtain the first day of issue postmarks by mail. They may purchase new stamps at their local Post Office™, by telephone at 800-STAMP-24, or at The Postal Store® website at [www.usps.com/shop](http://www.usps.com/shop).

### Traditional Postmarks

Customers should affix the stamps to envelopes of their choice, address them to themselves or others, or provide a self-addressed return envelope with sufficient postage large enough to accommodate the canceled item. Mail the request to the corresponding city of issuance. There is no charge for the first 50 postmarks. There is a 5-cent charge for each additional postmark over 50. Customers should submit a check, money order, or credit card for payment. After applying the first day of issue postmark, the Postal Service™ will return the envelopes to the customer by U.S. Mail.

All postmark requests should go to the first day of issue city. The first day of issue city Post Office will then forward in bulk all postmark requests to Cancellation Services, Stamp Fulfillment Services, PO Box 449992, Kansas City, MO 64144-9992 by respective Post Offices.

### Digital Color Postmarks

Only select stamp issues offer a digital color postmark. Customers may submit #6 or #10 envelopes constructed of paper rated as “laser safe.” The Postal Service recommends envelopes of 80-pound Accent Opaque, acid-free, 9/16" side seams with no glue on the flap. The maximum

size of all digital color postmarks is 2" high x 4" long. Allow sufficient space on the envelope to accommodate the postmark. Do not use self-adhesive labels for addresses on the envelope. Two test envelopes must be included. There is a minimum of 10 envelopes at 50 cents per postmark required at the time of servicing. Customers should submit a check, money order, or credit card for payment.

The Postal Service reserves the right to not accept hand-painted and other cachet envelopes that are not compatible with our digital color postmark equipment. The Postal Service also reserves the right to substitute traditional black rubber postmarks if use of nonspecified envelopes results in poor image quality or damage to equipment.

Customers should affix the stamps to the envelopes and address them to themselves or others for return through the mail. Or, they may include an additional self-addressed return envelope, large enough to accommodate their canceled items, with sufficient postage affixed for return of their postmarked items. Mail the request for a first day of issue digital color postmark to the corresponding city of issuance. Post Offices will then forward all customer requests for digital color postmarks to Cancellation Services, Stamp Fulfillment Services, PO Box 449992, Kansas City, MO 64144-9992.

After applying the first day of issue postmark, the Postal Service will return the envelopes to the customer by U.S. Mail.



Digital Color Pictorial

**Celebrating Lunar New Year Stamp**  
 Year of the Tiger Stamp  
 7001 South Central, Room 338  
 Los Angeles, CA 90052-9998

March 15, 2010

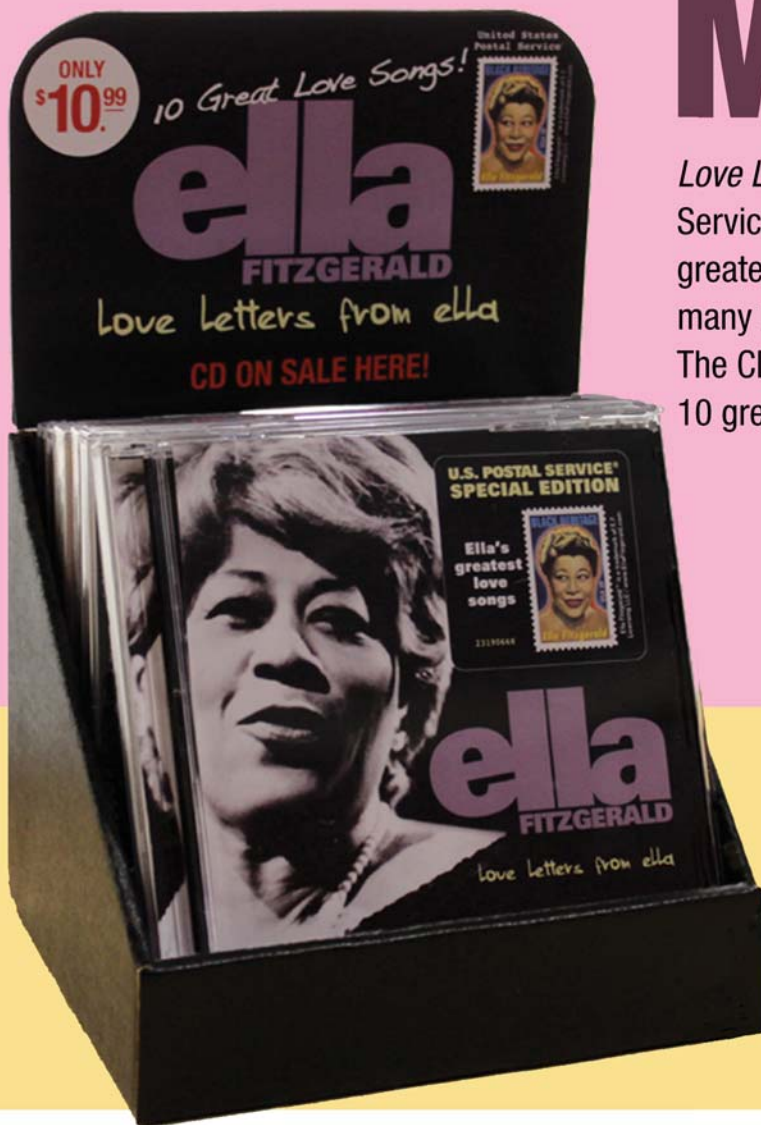


Digital Color Pictorial

**Distinguished Sailors Stamp**  
 Special Cancellations  
 PO Box 92282  
 Washington, DC 20090-2282

April 6, 2010

# Just in time for Valentine's Day and Black History Month



*Love Letters from Ella*, a U.S. Postal Service® CD featuring Ella Fitzgerald's greatest love songs is now available in many larger Post Offices™ nationwide. The CD, which sells for \$10.99, features 10 great love songs, including:

*Please Don't Talk About Me  
When I'm Gone*

*Cry Me a River*

*You Turned the Tables on Me*

*I've Got the World on a String*

*Witchcraft*

*My Old Flame*

*The One I Love*

*Take Love Easy*

*Our Love Is Here to Stay*

*Some Other Spring*

## Retail

### Stop Sending Copies of PS Form 8176, Premium Forwarding Service Application, to Headquarters

Offices are no longer required to send a copy of PS Form 8176, *Premium Forwarding Service*<sup>®</sup> (*PFS*<sup>®</sup>) *Application*, to Headquarters. This requirement ended in 2007 when the application was revised and page 4 (HQ copy) was removed. In 2005, the PFS program office at Headquarters (HQ) required a copy of page 4 when PFS was an experiment. However, the experiment ended in 2007 when PFS became an official product offering. Offices that still send copies to HQ are wasting workhours and money—especially some offices that send them by Express Mail<sup>®</sup>, Registered Mail<sup>®</sup>, and Priority Mail<sup>®</sup> service.

— *Special Services, Retail Products and Services, 1-28-10*

## Safety

### Correction: Maintaining an OSHA Form 300 Log

In the article “Establishment and Installation Heads: Statutory Requirement to Review and Post OSHA Form 300A Summary for Calendar Year 2009” in *Postal Bulletin 22276* (1-14-10, pages 40–41) a note was included that gave incorrect information.

In the section titled “Reviewing and Closing Out the OSHA Form 300 Log”, disregard the following Note after item 5:

**Note:** Installations or establishments with 10 or fewer total employees at anytime during the calendar year are not required to maintain and update an OSHA Form 300 Log.

The Occupational Safety and Health Administration (OSHA) requires all postal installations and establishments to maintain an OSHA 300 Log.

— *Safety and Environmental Performance Management, Employee Resource Management, 1-28-10*





475 L'ENFANT PLAZA SW  
WASHINGTON DC 20260-5540

First-Class Mail  
Postage & Fees Paid  
USPS  
Permit No. G-10

***DID YOU KNOW?***

**EAP has an easy-to-use  
website with  
information and links to  
resources covering just  
about any life issue.**

***[www.EAP4YOU.com](http://www.EAP4YOU.com)***