

POSTAL BULLETIN

PUBLISHED SINCE MARCH 4, 1880

PB 21966, FEBRUARY 26, 1998

CONTENTS

The *Postal Bulletin* is also available on the World Wide Web at <<http://www.usps.gov>>.

Administrative Services

Publication 247 Correction: Supply and Equipment Catalog	2
New Release of F3 Fill Forms	2
Directives and Forms Update	5

Customer Relations

Mail Alert	7
------------------	---

Domestic Mail

DMM Correction: Advance Payment of Annual Fees	8
DMM Revision: Products Mailable at Nonprofit Standard Mail Rates	8
Overseas Military Mail	9

Fraud Alert

Foreign Order No. 413	21
Withholding of Mail Orders	21
Domestic Orders	21
Missing, Lost, or Stolen U.S. Money Order Forms	22
Missing, Lost, or Stolen Canadian Money Order Forms	25
Counterfeited Canadian Money Order Forms	26
800 Number Available to Verify Canadian Money Orders	26
Invalid Express Mail Corporate Account Numbers	27

International Mail

IMM Correction: International Mail — Global Priority Mail (GPM)	31
IMM Revision: International Mail — Special Services Changes	32
International Customized Mail	33
International Customized Mail	33
Revised International Surface Air Lift (ISAL), PS Tag 155	34

Philately

Stamp Announcement 98-9: Alexander Calder Commemorative Stamps	35
Updated Publications for Community Activities Now Available	36
Stamp Announcement 98-10: Henry R. Luce Definitive Stamp	37
Celebrate The Century™ — 1900–1910 Retail Merchandise Promotion	38
Stamps Withdrawn From Regular Sale and From Sale at Philatelic Centers	39
Pictorial Cancellations Announcement 98-4 ...	40

Post Offices

Post Office Changes Number 98-2	43
---------------------------------------	----

Postal Employees

Thrift Savings Plan Fact Sheet	45
--------------------------------------	----

Postal Bulletin Indexes

1997 Annual Index	PB 21962 (1-1-98)
-------------------------	-------------------

Administrative Services

PUBLICATION 247 CORRECTION

Supply and Equipment Catalog

In *Postal Bulletin* 21964 (1-29-98), the stock number for Publication 247, *Supply and Equipment Catalog*, was incorrect. The correct stock number is PSN 7610-02-000-7982. Publication 247 can be ordered by Touch-Tone Order Entry or by sending a completed PS Form 7380, *MDC Supply Requisition*, to:

ATTN SUPPLY REQUISITIONS
TOPEKA MDC
500 SW MONTARA PKWY
TOPEKA KS 66624-9702

PS Form 7380 also can be faxed to the Topeka MDC by dialing 785-861-2939.

—*Inventory Management,
Purchasing and Materials, 2-26-98*

New Release of F3 Fill Forms

An updated batch of F3 Fill forms has been released. These forms are used with F3 Fill for Windows, version 1.54E. This release includes both new and revised forms. All obsolete forms have been removed from this batch.

F3 is the corporate standard for the automation of internal postal forms. The F3 Fill software enables USPS employees and contractors to complete automated postal forms on their computers. These intelligent forms perform functions such as calculating, routing, generating pop-up lists, and providing help screens.

The Postal Service has a corporate license for F3 Fill software. This includes a right to copy and distribute to all USPS employees and contractors for USPS business purposes.

Postal employees and contractors may obtain copies of the forms and/or F3 Fill software from the following sources:

- Intranet (USPS Blue Web Server): <http://fcsc.usps.gov/lanpub/F3Fill.htm>.
- General Technology Inc.: 800-989-5484 (request F3 Fill forms for February 1998).
- Field employees: Contact your local IS manager.
- HQ employees: Call the Help Desk: 202-268-5588.
- F3 Fill Software Only: Customer Support, Field Computing Service Center: 800-877-7435 (option 5, option 0). Order forms from General Technology Inc. (above).

The above sources also have the following related documents:

- FORMLIST.DOC: List of current automated forms including file date and size.
- FORMCHG.DOC: Summary of form changes including official updates, revisions, new forms, obsolete forms, outdated forms, and software tips.
- 7381DB.DOC: Instructions for database use of PS7381. Includes Year 2000 conversion procedures.
- INSTALLW.DOC: Software/form installation instructions for standalone users of F3 Fill for Windows.

The following document is available only on the Intranet (USPS Blue Web Server) at

<http://fcsc.usps.gov/lanpub/F3Fill.htm>:

- FORMINST.DOC: Instructions for updating form files through use of a script file (F3-02-98.EXE) available on the Web site mentioned above. These instructions can be used by IS personnel or WIN 95 standalone users.

To request that a form be automated or to request enhancements to an existing automated form:

- Send an email to F3 FILL FORM REQUEST.
- Leave a voice message with your form request on 202-268-4096.

The following forms are available in the **February 1998** production batch. This current list of production forms can be found in the FORMLIST.DOC file dated 1/29/98. Also, before using these forms, please review FORMCHG.DOC (dated 1/29/98) for a summary of form changes and software tips.

The February 1998 production batch also includes Year 2000 compliant forms. For instructions on converting your existing two-digit-year vardata files to four-digit-year vardata files, please see **FORMCHG.DOC**.

** Note: The BFF Date column gives the date the form file was created and NOT the official edition date at the bottom of each printed form.

Form Number	Form Name	BFF Date**	BFF Size
BUCKSLIP	Routing Slip	4/17/96	10632
PS 17	Stamp Requisition	9/17/97	36835
PS 144	Prior Federal Civilian and Military Service Statement	6/25/97	262049
PS 150	Postmaster Workload Information	7/22/96	54889
PS 337	Clearance Record for Separated Employee	1/17/97	46875
PS 546	Post Office Telephone Number Register	10/10/97	20450
PS 571	Discrepancy of \$100 or More in Financial Responsibility	6/24/97	42376
PS 800-B	Money Order Post Audit Request	4/24/96	17396
PS 928	Materiel Inventory Change	3/2/94	20285
PS 969	Materiel Recycling and Disposal	11/21/97	65090
PS 990	Vacancy Announcement	6/14/94	5978
PS 991	Application for Promotion or Assignment	4/11/97	71720
PS 99-M	Application for Management Associate Position	3/7/94	128185
PS 99-REQ	Requirements Page of PS 991	6/27/96	36698
PS 1011	Travel Advance Request and Itinerary Schedule	6/3/97	29027
PS 1012	Travel Voucher	7/17/97	108277
PS 1012-A	Travel Voucher — Continuation Sheet	7/18/97	75150
PS 1129	Cashier Reimbursement Voucher and/or Accountability Report	1/22/97	30641
PS 1164	Claim for Reimbursement	7/17/97	107149
PS 1221	Advanced Sick Leave Authorization	10/16/96	9811
PS 1231	Board of Governors/Officers Expense Report	10/5/95	66065
PS 1236-A	Weekly Loan, Transfer, and Training Hours	6/30/97	286416
PS 1261	Non-Transactor Report	10/3/97	56781
PS 1357	Request for Computer Access	7/30/96	100819
PS 1360	Information Systems Security Incident Report	4/16/97	33850
PS 1444-A*	Audit Evaluation Checklist	1/28/98	319733
PS 1476	PSDS EMR Items Transcript	2/13/96	204305
PS 1510	Mail/Loss Rifling Report	3/27/97	73661
PS 1555	Statement of Account (CAGs A-L)	10/9/96	277020

Form Number	Form Name	BFF Date**	BFF Size
PS 1564-A	Delivery Instructions	7/19/96	60296
PS 1567	Requisition for Rubber and Steel Stamps Only	4/24/96	18107
PS 1576	Requisition for Duplicating Service	10/2/96	24088
PS 1590	Supplies and Equipment Receipt	3/4/94	14085
PS 1627	General Purpose Ruled Form	4/18/96	81192
PS 1716	Notice of Vacancy in Assignments	10/3/97	7774
PS 1723	Assignment Order	10/3/95	33420
PS 1727	Award Recommendation/ Authorization	10/3/95	17921
PS 1752	Health Unit Daily Record	7/18/97	252642
PS 1770	Hazardous Materials Incident Report	6/3/97	44922
PS 1782	Training Request and Authorization	4/25/96	32577
PS 1783	On-the-Job Safety Review/Analysis	3/4/94	98613
PS 1796-A	Qualifications Rating Sheet for Senior Qualified Positions	4/8/97	90685
PS 1796-B	Qualifications Rating Sheet for Best Qualified Positions	7/16/97	157560
PS 1864	Voucher and Schedule of Payments	1/9/98	49368
PS 1902	Justification For Billing Accounts Receivable	5/14/97	26340
PS 1997	Health Unit Case Record	7/17/97	104198
PS 2013	Sensitive Security Clearance Processing Request	7/18/96	22424
PS 2025	Contract Personnel Questionnaire	7/26/96	85128
PS 2106	Adjudication — Tort Claims	12/1/97	43820
PS 2181	Authorization and Release	7/22/96	10908
PS 2181-C	Authorization and Release — Background Investigation	7/22/96	14636
PS 2198	Accident Report — Tort Claim	3/4/94	25582
PS 2240	Pay, Leave, or Other Hours Adjustment Request	10/23/96	65924
PS 2432	Individual Training Progress Report	7/7/97	92516
PS 2487	Requisition for Test Materials	2/12/97	20139
PS 2548	Individual Training Record	4/11/96	22768
PS 2550	Interview Notice	10/7/96	22557
PS 2608	Grievance Summary — Step 1	10/16/96	17718
PS 2609	Grievance Summary — Step 2	7/17/95	24358
PS 2610	Grievance Summary — Step 3	3/4/94	11178
PS 2629	Free Trial Test Agreement	5/17/96	10850
PS 2805	Military Deposit Worksheet	4/29/96	39015
PS 2880	Physical Inventory	9/19/97	37970
PS 3037	Telecommunications Service Request	2/13/96	31919

Form Number	Form Name	BFF Date**	BFF Size
PS 3239	Payroll Deduction Authorization to Liquidate Postal Service Indebtedness	12/8/97	30226
PS 3533	Application and Voucher for Refund of Postage Fees	10/22/96	65489
PS 3621-A	Renewal Notice for Annual Fee(s)	4/9/97	25722
PS 3655*	International Surface Airlift (ISAL) Direct Shipment Option Advisement and Confirmation of Transportation	10/23/97	47703
PS 3749	Irregularities in the Preparation of Mail	10/24/96	57763
PS 3823	Packaging Improvement Notice	10/17/96	31942
PS 3970-T	Donated Leave Transfer	4/8/97	15324
PS 3971	Request For or Notification of Absence	1/27/98	55131
PS 4314-C	Consumer Service Card	9/10/97	31222
PS 4503	Vehicle Delivery Control Sheet	1/16/98	75957
PS 4508	Vehicle Maintenance Facility Inventory Order	10/5/95	51943
PS 4533	MVS Schedule	3/8/94	49486
PS 4541	Order — Invoice for Vehicle Repair	7/8/97	42535
PS 4583	Physical Fitness Inquiry for Motor Vehicle Operators	3/9/94	36676
PS 4587	Request to Repair, Replace, or Dispose of Postal-Owned Vehicle	4/23/96	44053
PS 4594	Vehicle Sales Request and Report	10/22/97	45299
PS 4595	Sale Purchase Agreement	3/9/94	28963
PS 4777	Maintenance Checklist	9/6/95	186927
PS 4805	Maintenance Work Record Sheet	4/23/96	59994
PS 4872	Claim for Subsistence Expenses — Temporary Quarters	6/30/97	175263
PS 4983	Postal Key and Lock Requisition	1/5/98	25802
PS 4984	Repair Parts Requisition	3/9/94	30066
PS 5305	Security Supervisor Daily Report	10/17/97	39869
PS 5309	Incident Report	10/16/97	35897
PS 5407	Highway Contract Route Survey/Service Change	7/22/97	75085
PS 5429	Certification of Exceptional Contract Service Performed	6/30/97	86265
PS 5560*	Team Project Planning Worksheet	12/9/97	163559
PS 5637	Express Mail Corporate Account/Custom Designed Agreement	1/22/96	71404
PS 5900	Hiring Worksheet	10/22/96	91995

Form Number	Form Name	BFF Date**	BFF Size
PS 6075	Status of Employee Benefits	4/1/97	18254
PS 7314	Medical Agreement	7/15/97	85247
PS 7330	Amendment to Solicitation	7/18/97	18643
PS 7366	Funded Procurement Request	10/5/95	34705
PS 7380	Supply Center Requisition	10/2/96	31264
PS 7381	Requisition for Supplies, Services, or Equipment	1/13/98	123471
PS 7431	Requisition for Pressure Sensitive Labels and Rack Holders	1/9/98	37630
PS 8006	Uniform Allowance Code Sheet (For Regular, Contract, or Work Clothes Program)	7/22/96	17969
PS 8038	Employee Statement to Recover Back Pay	1/3/97	72267
PS 8039	Back Pay Decision/Settlement Worksheet	1/23/97	294878
PS 8059	Request for Relocation Management Firm (RMF) Service	6/3/97	16306
PS 8139-A	Telephone Requirements — Large Systems (13–5,000 instruments)	2/28/96	330211
PS 8139-B	Telephone Requirements — Small Systems (2–12 instruments)	3/1/96	189385
8139-PG1	Attachment to PS 8139-A	3/4/96	131552
PS 8179-C	Individual Development Plan	4/24/96	32648
PS 8181	Project Service Agreement (PSA)	10/2/95	55684
PS 8187	Hazardous and Regulated Substance Release Notification	1/22/97	79727
PS 8192*	FEDSTRIP/Address Activity Code Request	10/22/97	35959
PS 8194*	Record of Environmental Consideration	1/8/98	13736
PS 8195	Operational Environmental Checklist	1/21/97	73406
PS 8203*	Order/Solicitation/Offer/Award	7/22/97	55675
PS 8210*	Work Authorization — Asbestos	1/16/98	42617
PS 8215*	Statistical Programs Employee Training Profile	1/23/98	210516
PS 8216*	Statistical Programs Planning Calendar for Monitoring Data Collectors	1/22/98	75516

* This form is available in F3 Fill only; not available in paper.

Database Files

DBF Name	DBF Date	DBF Size
PS7381	1/22/98	5954

—Corporate Information Services,
Information Systems, 2-26-98

Directives and Forms Update

Effective immediately, Publication 223, *Directives and Forms Catalog* (November 1997), is revised. The tables below contain the document ID, edition date, title, national stock number (NSN), and the postal and public supply source for all new, revised, and obsolete directives and forms. Use this article to keep Publication 223 current. Information on how to order directives and forms can be

found in chapter 1 of Publication 223.

IWEB = Intranet = <http://blue.usps.gov>; click on "Corporate Information," then "Policies and Procedures," then "Publications."

WWW = USPS webpage = www.usps.gov.

PE = Postal Explorer.

F3 = F3 Fill Software.

New Directives

Document ID	Edition Date	Title	NSN	Org	USPS Source	Public Source	Comments
PUB 554	12/1/97	Supplier Diversity Terms	7610-04-000-3649		MDH	HQO	

Revised Directives

Document ID	Edition Date	Title	NSN	Org	USPS Source	Public Source	Comments
LAB 100	11/1/97	Nonstandard Size Surcharge	7690-03-000-9028	MKT	MDC	N/A	
MAN DMM	1/1/98	Domestic Mail Manual	7610-03-000-9331	MKT	MDC	GPO	Issue 53 is contained in Postal Explorer 6.0.
MAN IMM	10/9/97	International Mail Manual	7610-02-000-9904	IBU	MDC	GPO	Issue 19 is contained in Postal Explorer 6.0 and loaded on USPS Intranet.
NOT 123	10/12/97	Ratefold	7610-03-000-9257	MKT	MDC	P/F	

Obsolete Directives

Document ID	Edition Date	Title	Obsolete Date	Comments
MI AS-840-95-16	9/22/95	Process for Issuing Guidance and Direction for the Postal Computing Environment	12/12/97	Contents incorporated in HBK AS-820 dated 10/97.
TAG 184	10/1/96	UPU CN 84 (Old CN 24) Sack Tag (YELLOW)	1/2/98	Combined with TAG 183, which is now CP 83/84.

New Forms

Form Number	Edition Date	Oldest Usable Date	Title	NSN	Where Used	USPS Source	Public Source	Unit of Issue	Org
PS 3655	7/97	7/97	International Surface Airlift (ISAL) Direct Shipment Option Advisement and Confirmation of Transportation	F3 Fill	AE	3F	N/A	EA	IBU
PS 3804	11/97	11/97	Return Receipt for Merchandise	7530-02-000-9031	PU	MDC	PO	EA	MKT

Revised Forms

Form Number	Edition Date	Oldest Usable Date	Title	NSN	Where Used	USPS Source	Public Source	Unit of Issue	Org
PS 1096	12/97	12/97	Receipt	7530-02-000-7346	PS	MDC	N/A	100 per pad	FIN
PS 8192	10/97	10/97	FEDSTRIP/Address Activity Code Request	F3 Fill	PO	F3	N/A	EA	PM

Obsolete Forms

Form Number	Edition Date	Title	Obsolete Date	Replaced By
PS 5930	4/1/87	Discipline Tracking System Data Collection Form	12/3/97	
PS 8-A	6/84	Destination Distribution of Carrier Presort Third-Class Bulk Mailing	12/29/97	
PS 8-BF	4/85	Listing of Third-Class Bulk Mailings Basic and Five Digit Presorted Rates	12/29/97	
PS 8-C	7/83	Listing of Carrier Presort Bulk Mailing Accepted During Average Haul Week	12/29/97	
PS 8-D	3/85	ZIP Code Data for Basic and 5-Digit Presort Third-Class Bulk Mail	12/29/97	
PS 15-C	10/81	Postmaster's Check-In of Form 15	12/30/97	
PS 15-E	7/86	Second-Class Publications to Foreign Destinations — Postage Affixed at the Periodical Rate	12/29/97	
PS 22	9/82	Test Showing Density of Mail by Subclass	12/29/97	
PS 22-A	9/86	Density Test of International Airmail	12/29/97	
PS 22-C	9/86	Test of Density of Various Classes of Mail at Bulk Mail Centers	12/29/97	
PS 22-D	9/86	Density Test of International Surface Mail	12/29/97	
PS 22-E	9/86	Density Test of Express Mail	12/29/97	
PS 44-A	11/87	Outbound Mail to Canada	12/29/97	
PS 44-B	11/87	Inbound Mail from Canada	12/29/97	
PS 46-X	2/87	Data Collection Sampling Inbound Foreign Mail	12/29/97	
PS 76	5/87	Revenue and Cost Analysis — Forms 3547 and 3579 — Number of Forms by Class of Mail	12/30/97	
PS 105-A	7/94	Incoming Mails From Foreign Countries and the Canal Zone Received During the Postal Qtr.	12/30/97	
PS 105-B	5/75	Weight Per Parcel Tests — Parcel Post Received from Canada	12/30/97	
PS 160	9/73	Block Voucher	12/30/97	
PS 206	9/1/80	Transmittal of Draft Correspondence for PMG Signature	12/3/97	
PS 239	11/75	Preliminary Certification of Employee Eligibility for Unemployment Compensation	12/3/97	
PS 423	3/80	List of Overseas Military Mail Sampling Units	12/30/97	
PS 811	6/91	Postal-Owned, Contract, and Vehicle Service Driver's Time	12/30/97	
PS 814	3/86	Vehicle Operation Report	12/30/97	
PS 1130	12/84	Statistical Programs Daily Workhours Report	12/30/97	
PS 1134	6/85	Advance Selection Log	12/30/97	
PS 1135	6/85	AP Stratum Totals	12/30/97	
PS 1140	10/85	Sample of Mail to the Military (APOs and FPOs)	12/30/97	
PS 1145	6/85	Tally Sheet	12/30/97	
PS 1150	10/85	Sample of Mail to Foreign Countries	12/30/97	
PS 1188-B	11/73	Foreign Revenue, Pieces & Weight Probability Program — Total Errors Detected by Regional Editors	12/30/97	
PS 1188-C	11/73	Foreign Revenue, Pieces & Weight Probability Program — Total Errors Detected by Regional Editors	12/30/97	
PS 1345	11/87	Request for Service Award Certificate/Letter	12/3/97	
PS 1385	3/71	IDIS Notification of Rescheduled and Canceled Tests	1/2/98	
PS 1430-A	7/81	Daily Report of Pieces and Weight	1/2/98	
PS 1430-B	2/91	Daily Report of Pieces and Weight for Agriculture Bulletins	1/2/98	
PS 1430-D	5/96	Quarterly Report of Pieces, Revenue and Weight	1/2/98	
PS 1430-E	4/80	Daily Report of Pieces and Weight from the House and Senate Postal Units	1/2/98	
PS 1430-F	2/91	Daily Report of Pieces and Weight of Expedited Pouches	1/2/98	
PS 1445	9/79	Worksheet for In-Office Cost Review	1/2/98	
PS 1559	4/93	Metered/Precanceled Stamp System (MPSS) Revenue Analysis Worksheet (Domestic)	1/2/98	
PS 1950	9/74	Multiple Use Adjustment Register	1/2/98	
PS 2600-T	6/83	In-Office Cost System Questionnaire — Training	1/2/98	
PS 2601-A	7/89	TRACS 1A — Air	1/2/98	
PS 2601-H	7/89	TRACS 1H — Highway	1/2/98	
PS 2601-K	7/91	TRACS 1K — Amtrak	1/2/98	

PS 2601-R	7/89	TRACS 1R — Rail	1/2/98
PS 2602	7/91	TRACS 2 (Surface)	1/2/98
PS 2602-K	7/91	TRACS 2K (Amtrak)	1/2/98
PS 2603-A	7/89	TRACS 3A — Air	1/2/98
PS 4238-1	11/78	Index List	1/2/98
PS 4238-2	11/78	Engineering Documentation — Data List	1/2/98
PS 4238-3	11/78	Engineering Documentation — Record of Revisions	1/2/98
PS 4238-4	11/78	Engineering Documentation — Revision Status of Sheets	1/2/98
PS 4238-5	11/78	Engineering Documentation — Revision Status of Sheets	1/2/98
PS 4238-6	11/78	Engineering Documentation — Data List Format	1/2/98
PS 5167	10/88	Routing and Protection for Coded and High Value Shipments	12/3/97
PS 5168	10/88	Coded and High Value Registered Mail — Dispatch Instructions	12/3/97
PS 7506	5/75	Mark II Overhaul Maintenance Control	1/2/98
PS 7506-A	5/75	Mark II Facer-Canceler Inspection and Release Report	1/2/98
PS 7506-B	5/75	Mark II Facer Canceler Overhaul Final Assembly and Test	1/2/98
PS 7506-C	5/75	Final Assembly Inspection Report	1/2/98
PS 7506-D	5/75	In-Plant Acceptance Testing Report	1/2/98
PS 7506-E	5/75	Packing and Shipping Inspection Report	1/2/98
PS 7506-F	5/75	Field Operational Test Data Sheet 1 Throughput	1/2/98

—Corporate Publishing & Information Management, Information Systems, 2-26-98

Customer Relations

Mail Alert

The mailings below will be deposited in the near future. Offices should honor the requested home delivery dates. Mailers wishing to participate in these alerts, for mailings of

1 million pieces or more, should contact Customer Relations Program Management at 202-268-5885 at least 1 month preceding the requested delivery dates.

Title of Mailing	Class and Type of Mail	Requested Delivery Date	Number of Pieces (Millions)	Distribution	Presort Level	Comments
Billy Graham Letter	Standard A/ltr	Feb. 16–Feb. 27	1.6	Nationwide	3/5-Digit, basic, barcode	3 7/8" x 7 1/8", Minneapolis, MN
DECISION Magazine	Standard A/flat	Feb. 23–Feb. 27	1.5	Nationwide	CR-RT, 3/5-Digit, basic, barcode	8" x 10 5/8", 44 pages, Minneapolis, MN
JCPenney Spring 25%	Standard A/ltr	Feb. 24–Feb. 26	30.0	Nationwide	CR-RT	ACE/Smyrna, GA
Sears Home Fashions	Standard A	Feb. 26–Feb. 28	2.0	Nationwide	CR-RT	
Sears KidVantage	Standard A	Mar. 2–Mar. 5	2.1	Nationwide	CR-RT	
LL Bean Inc 1998 Womens	Standard A/flat	Mar. 3–Mar. 5	4.2	Nationwide	CR-RT, 3/5-Digit, basic	7 7/16" x 10 1/4", 88 pages
The Company Store, Kitchen & Home	Standard A/flat	Mar. 7–Mar. 16	2.1	Nationwide	CR-RT, presorted	Quad/Graphics, Saratoga Springs, NY
Carol Wright Mailing	Standard A/ltr	Mar. 9–Mar. 14	25.0	Nationwide	CR-RT, walk-sequence	6" x 9" envelope; Elm City, NC
LL Bean Inc 1998 Spring Sporting	Standard A/flat	Mar. 10–Mar. 12	2.4	Nationwide	CR-RT, 3/5-Digit, basic	7 15/16" x 10 1/2", 144 pages
Eddie Bauer Spring Sale 1	Standard A/flat	Mar. 11–Mar. 13	2.7	Nationwide	3-Digit SCF	10" x 13", Harte Hanks

—Customer Relations, Marketing, 2-26-98

Domestic Mail

DMM CORRECTION

Advance Payment of Annual Fees

Effective February 26, 1998, *Domestic Mail Manual* (DMM) E110.4.1 is corrected to add information regarding First-Class Mail presort mailing fees that was inadvertently left out. DMM Issue 54 will include this change.

Domestic Mail Manual (DMM)

E	Eligibility	*	*	*	*	*
E100	First-Class Mail	*	*	*	*	*
E110	Basic Standards	*	*	*	*	*

4.0 FEES

4.1 Presort Mailing

[Add the following at the end of the section:]

* * * The fee may be paid in advance only for the next year and only during the last 30 days of the current service period. The fee charged is that which is in effect on the date of payment.

* * * * *

—Mail Preparation and Standards,
Marketing Systems, 2-26-98

DMM REVISION

Products Mailable at Nonprofit Standard Mail Rates

Effective January 1, 1998, *Domestic Mail Manual* (DMM) E670.5.10 is revised to reflect an increase from \$6.93 to \$7.10 for low-cost products mailable at Nonprofit Standard Mail rates. Under statutory restrictions implemented in DMM E670, products may not be mailed at the Nonprofit Standard Mail rates unless the products meet at least one of three exceptions. Under the Internal Revenue Code, a *low-cost item* is one of these exceptions.

The value of a low-cost item (the actual cost to the authorized organization) is determined each year by the Internal Revenue Service and is based on cost-of-living. For 1998, the maximum limit for the value of a low-cost item has been adjusted to \$7.10.

This revision will appear in DMM Issue 54 (scheduled for release on July 1, 1998).

Domestic Mail Manual (DMM)

E	Eligibility	*	*	*	*	*
E600	Standard Mail	*	*	*	*	*
E670	Nonprofit Standard Mail	*	*	*	*	*

5.0 ELIGIBLE AND INELIGIBLE MATTER

* * * * *

5.10 Products Mailable at Nonprofit Standard Mail Rates

The following products are mailable at Nonprofit Standard Mail rates:

- a. Low-cost items within the meaning of 26 USC 513(h)(2), Internal Revenue Code. At the beginning of each calendar year, the value of low-cost items is adjusted for cost of living. Effective January 1, 1998, the standard established that the cost of such items may not exceed \$7.10. This cost is the cost to the authorized organization that mails the items or on whose behalf the items are mailed.

* * * * *

—Business Mail Acceptance, Marketing Systems, 2-26-98

Overseas Military Mail

Mail addressed to, from, or between military post offices overseas is subject to certain conditions or restrictions of mailing regarding content, preparation, and handling. The table below outlines these conditions by APO/FPO ZIP Codes through the use of footnoted mailing restriction codes, which appear on the page following the table.

Acceptance clerks should use this table with the inte-

grated retail terminal (IRT) to determine whether an APO/FPO ZIP Code is active and which conditions of mailing apply. For Express Mail Military Service (EMMS) availability, refer to the local hardcopy EMMS directory.

The complete table appears in the last *Postal Bulletin* of each month.

Conditions Applied to Mail Addressed to Military Post Offices Overseas

APO/ FPO	See Restrictions	APO/ FPO	See Restrictions	APO/ FPO	See Restrictions
09001	Not Active	09041	Not Active	09081	B-B1-C-D-U
09002	Not Active	09042	B-B1-C-D-U	09082	Not Active
09003	Not Active	09043	Not Active	09083	Not Active
09004	Not Active	09044	Not Active	09084	Not Active
09005	Not Active	09045	B-B1-C-D-U	09085	Not Active
09006	Not Active	09046	B-B1-C-D-U	09086	B-B1-C-D-U
09007	B-B1-C-D-U	09047	Not Active	09087	Not Active
09008	Not Active	09048	Not Active	09088	Not Active
09009	B-B1-C-D-U	09049	Not Active	09089	B-B1-C-D-U
09010	Not Active	09050	B-B1-C-D-U	09090	B-B1-C-D-U
09011	Not Active	09051	Not Active	09091	Not Active
09012	B-B1-C-D-U	09052	Not Active	09092	Not Active
09013	Not Active	09053	B-B1-C-D-U	09093	Not Active
09014	B-B1-C-D-U	09054	B-B1-C-D-U	09094	B-B1-C-D
09015	Not Active	09055	Not Active	09095	B-B1-C-D-U
09016	Not Active	09056	B-B1-C-D-U	09096	B-B1-C-D-U
09017	Not Active	09057	Not Active	09097	Not Active
09018	Not Active	09058	B-B1-C-D-U	09098	B-B1-C-D-U
09019	Not Active	09059	B-B1-C-D-U	09099	B-B1-C-D-U
09020	Not Active	09060	B-B1-C-D-U	09100	B-B1-C-D-U
09021	B-B1-C-D-U	09061	Not Active	09101	Not Active
09022	Not Active	09062	Not Active	09102	B-B1-C-D-U
09023	Not Active	09063	B-B1-C-D-L-U	09103	B-B1-D-U
09024	Not Active	09064	Not Active	09104	B-B1-C-D-U
09025	Not Active	09065	Not Active	09105	Not Active
09026	Not Active	09066	Not Active	09106	Not Active
09027	Not Active	09067	B-B1-C-D-U	09107	B-B1-C-D-U
09028	B-B1-C-D-U	09068	Not Active	09108	Not Active
09029	Not Active	09069	B-B1-C-D-U	09109	Not Active
09030	Not Active	09070	Not Active	09110	B-B1-C-D-U
09031	B-B1-C-D-U	09071	Not Active	09111	B-B1-C-D-U
09032	Not Active	09072	Not Active	09112	B-B1-C-D-U
09033	B-B1-C-D-U	09073	Not Active	09113	Not Active
09034	B-B1-C-D-U	09074	B-B1-C-D-U	09114	B-B1-C-D-U
09035	Not Active	09075	Not Active	09115	Not Active
09036	B-B1-C-D-U	09076	B-B1-C-D-U	09116	Not Active
09037	Not Active	09077	Not Active	09117	Not Active
09038	Not Active	09078	Not Active	09118	Not Active
09039	Not Active	09079	Not Active	09119	Not Active
09040	Not Active	09080	B-B1-C-D-U	09120	Not Active

APO/ FPO	See Restrictions	APO/ FPO	See Restrictions	APO/ FPO	See Restrictions
09121	Not Active	09173	B-B1-C-D-U	09226	B-B1-C-D-U
09122	Not Active	09174	Not Active	09227	B-B1-C-D-U
09123	B-B1-C-D-U	09175	B-B1-C-D-U	09228	Not Active
09124	Not Active	09176	Not Active	09229	B-B1-C-D-U
09125	Not Active	09177	B-B1-C-D-U	09230	Not Active
09126	B-B1-C-D	09178	B-B1-C-D-U	09231	Not Active
09127	Not Active	09179	Not Active	09232	Not Active
09128	B-B1-C-D-U	09180	B-B1-C-D-U	09233	Not Active
09129	Not Active	09181	Not Active	09234	Not Active
09130	Not Active	09182	B-B1-C-D-U	09235	Not Active
09131	B-B1-C-D-U	09183	B-B1-C-D-U	09236	Not Active
09132	Not Active	09184	Not Active	09237	B-B1-C-D-U
09133	Not Active	09185	B-B1-C-D-U	09238	Not Active
09134	Not Active	09186	B-B1-C-D-U	09239	Not Active
09135	Not Active	09187	Not Active	09240	Not Active
09136	B-B1-C-D	09188	Not Active	09241	Not Active
09137	B-B1-C-D-U	09189	Not Active	09242	Not Active
09138	B-B1-C-D-U	09190	Not Active	09243	Not Active
09139	B-B1-C-D	09191	Not Active	09244	B-B1-C-D-U
09140	B-B1-C-D-U	09192	Not Active	09245	B-B1-C-D-U
09141	Not Active	09193	Not Active	09246	Not Active
09142	B-B1-C-D-U	09194	Not Active	09247	Not Active
09143	B-B1-C-D-U	09195	Not Active	09248	Not Active
09144	Not Active	09196	Not Active	09249	Not Active
09145	Not Active	09197	Not Active	09250	B-B1-C-D-U
09146	Not Active	09198	Not Active	09251	Not Active
09147	Not Active	09199	Not Active	09252	B-B1-C-D-U
09148	Not Active	09201	Not Active	09253	Not Active
09149	Not Active	09202	Not Active	09254	Not Active
09150	Not Active	09203	Not Active	09255	Not Active
09151	Not Active	09204	Not Active	09256	Not Active
09152	Not Active	09205	Not Active	09257	Not Active
09153	Not Active	09206	Not Active	09258	Not Active
09154	B-B1-C-D-U	09207	Not Active	09259	Not Active
09155	Not Active	09208	Not Active	09260	Not Active
09156	Not Active	09209	Not Active	09261	Not Active
09157	B-B1-C-D-U	09210	Not Active	09262	B-B1-C-D-U
09158	Not Active	09211	B-B1-C-D-U	09263	B-B1-C-D-U
09159	Not Active	09212	B-B1-C-D-U	09264	B-B1-C-D-U
09160	Not Active	09213	B-B1-C-D-U	09265	B-B1-C-D-N-U
09161	Not Active	09214	B-B1-C-D-U	09266	B-B1-C-D-U
09162	Not Active	09215	Not Active	09267	B-B1-C-D-U
09163	Not Active	09216	Not Active	09268	Not Active
09164	Not Active	09217	Not Active	09269	Not Active
09165	B-B1-C-D-U	09218	Not Active	09270	Not Active
09166	B-B1-C-D-U	09219	Not Active	09271	Not Active
09167	Not Active	09220	Not Active	09272	Not Active
09168	Not Active	09221	Not Active	09273	Not Active
09169	B-B1-C-D-U	09222	Not Active	09274	Not Active
09170	Not Active	09223	Not Active	09275	Not Active
09171	Not Active	09224	Not Active	09276	Not Active
09172	B-B1-C-D-U	09225	B-B1-C-D-U	09277	Not Active

APO/ FPO	See Restrictions	APO/ FPO	See Restrictions	APO/ FPO	See Restrictions
09278	Not Active	09330	Not Active	09383	Not Active
09279	Not Active	09331	Not Active	09384	Not Active
09280	Not Active	09332	Not Active	09385	Not Active
09281	Not Active	09334	Not Active	09386	Not Active
09282	Not Active	09335	Not Active	09387	Not Active
09283	Not Active	09336	Not Active	09388	Not Active
09284	Not Active	09337	Not Active	09389	Not Active
09285	Not Active	09338	Not Active	09390	Not Active
09286	Not Active	09339	Not Active	09391-0001	B-B1-X
09287	Not Active	09340	Not Active	09392-0001	B-B1
09288	Not Active	09341	Not Active	09393	Not Active
09289	Not Active	09342	Not Active	09394	Not Active
09290	Not Active	09343	Not Active	09395	Not Active
09291	Not Active	09344	Not Active	09396	A-B-B1-F
09292	Not Active	09345	Not Active	09397	A-B-B1-C1-F-R
09293	Not Active	09346	Not Active	09398	B-B1
09294	Not Active	09347	Not Active	09399	B-B1-C-D-U
09295	Not Active	09348	Not Active	09401	Not Active
09296	Not Active	09349	Not Active	09402	Not Active
09297	Not Active	09350	Not Active	09403	Not Active
09298	Not Active	09351	Not Active	09404	Not Active
09299	Not Active	09352	Not Active	09405	Not Active
09301-0001	A-B-B1-F-F1-R	09353	Not Active	09406	Not Active
09301-8580	A-B-B1-F-F1-R	09354	Not Active	09407	Not Active
09302-0002	B-B1-E2-F-H1-I-R-R1-U2	09355	Not Active	09408	Not Active
09303	B-B1-E2-F-H1-I-R-R1-U2-Z1	09356	Not Active	09409	B-B1-C-C1-U
09304	B-B1-E2-F-H1-I-R-R1-U2-Z1	09357	Not Active	09410	Not Active
09305	Not Active	09358	Not Active	09411	Not Active
09306	Not Active	09359	Not Active	09412	Not Active
09307	Not Active	09360-0005	B-B1-I-N	09413	Not Active
09308	Not Active	09361	Not Active	09414	Not Active
09309	Not Active	09362	Not Active	09415	Not Active
09310	Not Active	09363	Not Active	09416	Not Active
09311	Not Active	09364	Not Active	09417	Not Active
09312	Not Active	09365	Not Active	09418	Not Active
09313	Not Active	09366	Not Active	09419	Not Active
09314	Not Active	09367	Not Active	09420	Not Active
09315	Not Active	09368	Not Active	09421	B-B1-C-C1-U
09316	Not Active	09369	Not Active	09422	Not Active
09317	Not Active	09370	Not Active	09423	Not Active
09318	Not Active	09371-0001	A-B-B1-F-F1-R	09424	Not Active
09319	Not Active	09372-0004	A-B-B1-F-F1-R	09425	Not Active
09320	Not Active	09373	Not Active	09426	Not Active
09321	Not Active	09374	Not Active	09427	Not Active
09322	Not Active	09375	Not Active	09428	Not Active
09323	Not Active	09376	Not Active	09429	Not Active
09324	Not Active	09377	Not Active	09430	Not Active
09325	Not Active	09378	Not Active	09431	Not Active
09326	Not Active	09379	Not Active	09432	Not Active
09327	Not Active	09380	Not Active	09433	Not Active
09328	Not Active	09381	Not Active	09434	Not Active
09329	Not Active	09382	Not Active	09435	Not Active

APO/ FPO	See Restrictions	APO/ FPO	See Restrictions	APO/ FPO	See Restrictions
09436	Not Active	09488	Not Active	09541	Not Active
09437	Not Active	09489	Not Active	09542	B
09438	Not Active	09490	Not Active	09543	B
09439	Not Active	09491	Not Active	09544	Not Active
09440	Not Active	09492	Not Active	09545	B
09441	Not Active	09493	Not Active	09546	Not Active
09442	Not Active	09494	B-B1-C-C1-U	09547	Not Active
09443	Not Active	09495	Not Active	09548	Not Active
09444	Not Active	09496	B-B1-C-C1-U	09549	B
09445	Not Active	09497	Not Active	09550	B
09446	Not Active	09498	B-B1-C-C1-U	09551	Not Active
09447	B-B1-C-C1-U	09499	B-B1-C-C1-U	09552	Not Active
09448	B-B1-C-C1-U	09501	B	09553	Not Active
09449	Not Active	09502	B	09554	B-B1
09450	Not Active	09503	B	09555	Not Active
09451	Not Active	09504	B	09556	B
09452	Not Active	09505	B	09557	B
09453	Not Active	09506	B	09558	B
09454	B-B1-C-C1-U	09507	B	09559	Not Active
09455	Not Active	09508	B	09560	Not Active
09456	B-B1-C-C1-U	09509	B	09561	Not Active
09457	Not Active	09510	B-C-I	09562	Not Active
09458	Not Active	09511	B	09563	B
09459	B-B1-C-C1-U	09512	Not Active	09564	B
09460	Not Active	09513	Not Active	09565	B
09461	B-B1-C-C1-U	09514	Not Active	09566	B
09462	Not Active	09515	Not Active	09567	B
09463	B-B1-C-C1-U	09516	Not Active	09568	B
09464	B-B1-C-C1-U	09517	B	09569	B
09465	Not Active	09518	Not Active	09570	B
09466	Not Active	09519	Not Active	09571	Not Active
09467	Not Active	09520	Not Active	09572	Not Active
09468	B-B1-C-C1-U	09521	B	09573	B
09469	B-B1-C-C1-U	09522	Not Active	09574	B
09470	B-B1-C-C1-U	09523	Not Active	09575	B
09471	Not Active	09524	B	09576	B
09472	Not Active	09525	Not Active	09577	B
09473	Not Active	09526	Not Active	09578	B
09474	Not Active	09527	Not Active	09579	B
09475	Not Active	09528	Not Active	09580	Not Active
09476	Not Active	09529	Not Active	09581	B
09477	Not Active	09530	Not Active	09582	B
09478	Not Active	09531	Not Active	09583	Not Active
09479	Not Active	09532	B	09584	Not Active
09480	Not Active	09533	Not Active	09585	Not Active
09481	Not Active	09534	B	09586	B
09482	Not Active	09535	Not Active	09587	B
09483	Not Active	09536	B	09588	B
09484	Not Active	09537	Not Active	09589	Not Active
09485	Not Active	09538	Not Active	09590	B
09486	Not Active	09539	Not Active	09591	B
09487	Not Active	09540	Not Active	09592	Not Active

APO/ FPO	See Restrictions	APO/ FPO	See Restrictions	APO/ FPO	See Restrictions
09593	B	09646	Not Active	09698	Not Active
09594	B	09647	B-B1-N-U	09699	Not Active
09595	B	09648	Not Active	09701	Not Active
09596	B	09649	Not Active	09702	Not Active
09597	Not Active	09650	Not Active	09703	B-B1-C-F1
09598	Not Active	09651	Not Active	09704	B-B1-C-D
09599	B	09652	Not Active	09705	B-B1-U
09601	B-B1-C-F-F1-U	09653	Not Active	09706	B-B1-C-D-U
09602	Not Active	09654	Not Active	09707	B-B1-C-D-N-U
09603	B-B1-C-F-F1-U	09655	Not Active	09708	B-B1
09604	Not Active	09656	Not Active	09709	B-B1-F1
09605	Not Active	09657	Not Active	09710	B-B1
09606	Not Active	09658	Not Active	09711	Not Active
09607	Not Active	09659	Not Active	09712	Not Active
09608	Not Active	09660	Not Active	09713	B-B1-C-F1
09609	B-B1-C-F-U	09661	Not Active	09714	B-B1
09610	B-B1-C-F-U	09662	Not Active	09715	B-B1-F1
09611	Not Active	09663	Not Active	09716	B-B1-C-D-N-U
09612	B-B1-C-F-U	09664	Not Active	09717	B-B1-M-W
09613	B-B1-C-F-U	09665	Not Active	09718	B-B1-F-I-N-U
09614	Not Active	09666	Not Active	09719	Not Active
09615	Not Active	09667	Not Active	09720	B-B1-U
09616	Not Active	09668	Not Active	09721	B-B1-N-U
09617	B-B1-C-F-U	09669	Not Active	09722	B-B1-C-D-N-U
09618	B-B1-C-F-U	09670	Not Active	09723	B-B1-N-U
09619	B-B1-C-F-U	09671	Not Active	09724	B-B1
09620	B-B1-C-F-U	09672	Not Active	09725	B-C
09621	B-B1-C-F-U	09673	Not Active	09726	B-B1-N-U
09622	B-B1-C-F-U	09674	Not Active	09727	Not Active
09623	B-B1-C-F-U	09675	Not Active	09728	B-C
09624	B-B1-C-F-U	09676	Not Active	09729	B-C
09625	B-B1-C-F-U	09677	Not Active	09730	Not Active
09626	B-B1-C-F-U	09678	Not Active	09731	Not Active
09627	B-B1-C-F-U	09679	Not Active	09732	B-B1
09628	B-B1-C-F-F1-U	09680	Not Active	09733	B-B1-I
09629	Not Active	09681	Not Active	09734	Not Active
09630	B-B1-C-F-U	09682	Not Active	09735	B-B1
09631	B-B1-C-F-U	09683	Not Active	09736	Not Active
09632	Not Active	09684	Not Active	09737	Not Active
09633	Not Active	09685	Not Active	09738	Not Active
09634	Not Active	09686	Not Active	09739	Not Active
09635	Not Active	09687	Not Active	09740	Not Active
09636	B-B1-C-F-U	09688	Not Active	09741	Not Active
09637	Not Active	09689	Not Active	09742	Not Active
09638	B-B1-C-E2-F-U	09690	Not Active	09743	Not Active
09639	Not Active	09691	Not Active	09744	Not Active
09640	Not Active	09692	Not Active	09745	Not Active
09641	Not Active	09693	Not Active	09746	Not Active
09642	B-B1-N-U	09694	Not Active	09747	Not Active
09643	B-B1-U	09695	Not Active	09748	Not Active
09644	B-B1-U	09696	Not Active	09749	Not Active
09645	B-B1-U	09697	Not Active	09750	Not Active

APO/ FPO	See Restrictions	APO/ FPO	See Restrictions	APO/ FPO	See Restrictions
09751	Not Active	09803	B-B1-E2-E3-F-H1-I-R-R1-U1-Z1	09849	Not Active
09752	Not Active			09850	Not Active
09753	Not Active	09804	B-B1-E2-E3-F-H1-I-R-R1-U1-Z1	09851	Not Active
09754	Not Active			09852	B-B1-E2-E3-F-H1-I-R-R1-U1-Z1
09755	Not Active	09805	B-B1-E2-E3-F-H1-I-R-R1-U1-Z1	09853	B-B1-E2-F-H1-I-R-R1-U2-Z1
09756	Not Active	09806	Not Active	09854	B-B1-E2-F-H1-I-R-R1-U2-Z1
09757	Not Active	09807	Not Active	09855	B-B1-F-H1-I-R-U1-Z1
09758	Not Active	09808	B-B1-E2-E3-F-H1-I-R-R1-U1-Z1	09856	Not Active
09759	Not Active			09857	Not Active
09760	Not Active	09809	B-B1-E2-E3-F-H1-I-R-R1-U1-Z1	09858	B-B1-E2-E3-F-H1-I-R-R1-U1-Z1
09761	Not Active				
09762	Not Active	09810	B-B1-E2-E3-F-H1-I-R-R1-U1-Z1	09859	Not Active
09763	Not Active			09860	Not Active
09764	Not Active	09811	B-B1-E2-E3-F-H1-I-R-R1-U1-Z1	09861	Not Active
09765	Not Active			09862	Not Active
09766	Not Active	09812	B-B1-E2-E3-F-F1-I-N-R-U-Z1	09863	Not Active
09767	Not Active	09813	Not Active	09864	Not Active
09768	Not Active	09814	B-B1-E2-E3-F-F1-I-N-R-U-Z1	09865	A-B-B1-Z1
09769	Not Active	09815	Not Active	09866	Not Active
09770	Not Active	09816	Not Active	09867	A-B-B1-F-I-R-R1-Z1
09771	Not Active	09817	Not Active	09868	A-B-B1-U-Z1
09772	Not Active	09818	Not Active	09869	Not Active
09773	Not Active	09819	A-B-F-P-Z1	09870	Not Active
09774	Not Active	09820	Not Active	09871	B-B1-E2-E3-F-H1-I-R-U1-Z1
09775	Not Active	09821	A-B-F-Z1	09872	B-B1-E2-E3-F-H1-I-R-R1-U2-Z1
09776	Not Active	09822	A-B-F-Z1		
09777	A-B-B1-C-E1-N	09823	A-B-F-Z1	09873	B-B1-E2-F-H1-R-R1-U2-Z1
09778	Not Active	09824	A-B-F-Z1	09874	Not Active
09779	A-B-B1-C1-F-R	09825	Not Active	09875	B-B1-E2-F-H1-R-R1-U2-Z1
09780	A-B-B1-C1-F-R	09826	B-B1-E2-F-H1-I-R-R1-U1-Z1	09876	B-B1-E2-F-H1-I-R-R1-U2-Z1
09781	A-B-B1-C1-F-R	09827	A-B-F-Z1	09877	B-B1-E2-F-H1-R-R1-U2-Z1
09782	A-B-B1-C1-F-R	09828	B-I-N-Z1	09878	Not Active
09783	A-B-B1-C1-F-I-N-R	09829	B-I-N-Z1	09879	B-B1-E2-F-H1-I-R-R1-U2-Z1
09784	Not Active	09830	B-B1-C-Z1	09880	B-B1-E2-F-H1-I-R-R1-U2-Z1
09785	A-B-B1-C1-F-I-N-R	09831	B-B1-F-N-U-Z1	09881	B-B1-E2-F-H1-I-R-R1-U2-Z1
09786	A-B-B1-C1-F-I-N-R	09832	B-B1-U1-Z1	09882	B-B1-E2-E3-F-H1-I-R-R1-U2-Z1
09787	A-B-B1-C1-F-I-N-R	09833	B-B1-U1-Z1		
09788	A-B-B1-C1-F-R	09834	B-B1-Z1	09883	B-B1-E2-F-H1-R-R1-U2-Z1
09789	A-B-B1-C1-F-R	09835	A-B-B1-Z1	09884	B-B1-E2-F-H1-R-R1-U2-Z1
09790	A-B-B1-C1-F-I-N-R	09836	A-B-B1-C-F-M-Z1	09885	B-B1-E2-F-H1-R-R1-U2-Z1
09791	A-B-B1-C1-E1-F-I-M-R	09837	B-B1-Z1	09886	B-B1-E2-F-H1-R-R1-U2-Z1
09792	B-B1-C-F-U	09838	B-B1-Z1	09887	B-B1-E2-F-H1-R-R1-U2-Z1
09793	A-B-B1-C1-F-R	09839	A-B-B1-U-Z1	09888	B-B1-E2-F-H1-I-R-R1-U2-Z1
09794	A-B-B1-C1-F-R	09840	Not Active	09889	B-B1-E2-F-H1-I-R-R1-U2-Z1
09795	A-B-B1-C1-F-I-N-R	09841	A-B-B1-Z1	09890	B-B1-E2-F-H1-I-R-R1-U3-Z1
09796	A-B-B1-C1-F-I-N-R	09842	A-B-B1-Z1	09891	B-B1-E2-F-H1-R-R1-U2-Z1
09797	Not Active	09843	A-B-B1-Z1	09892	A-B-B1-F-I-R-R1-Z1
09798	Not Active	09844	Not Active	09893	B-B1-E2-F-H1-I-R-R1-U2-Z1
09799	Not Active	09845	Not Active	09894	B-B1-E2-E3-F-H1-I-R-R1-U1-Z1
09801	Not Active	09846	Not Active		
09802	B-B1-E2-E3-F-H1-I-R-R1-U1-Z1	09847	Not Active	09895	B-B1-E2-F-H1-R-R1-U2-Z1
		09848	Not Active		

APO/ FPO	See Restrictions	APO/ FPO	See Restrictions	APO/ FPO	See Restrictions
09896	B-B1-E2-E3-F-H1-I-R-R1-U2-Z1	09947	Not Active	09998	Not Active
09897	B-B1-Z1	09948	Not Active	09999	Not Active
09898	B-B1-E2-F-H1-I-R-R1-U2-Z1	09949	Not Active	34001	B-B1-U
09899	B-F-N-Z1	09950	Not Active	34002	B-B1-U
09901	Not Active	09951	Not Active	34003	Not Active
09902	Not Active	09952	Not Active	34004	B-B1-U
09903	Not Active	09953	Not Active	34005	B-B1-U
09904	Not Active	09954	Not Active	34006	B-B1
09905	Not Active	09955	Not Active	34007	Not Active
09906	Not Active	09956	Not Active	34008	Not Active
09907	Not Active	09957	Not Active	34009	B-B1
09908	Not Active	09958	Not Active	34010	Not Active
09909	Not Active	09959	Not Active	34011	B-B1
09910	Not Active	09960	Not Active	34012	B-B1-U
09911	Not Active	09961	Not Active	34013	Not Active
09912	Not Active	09962	Not Active	34014	Not Active
09913	Not Active	09963	Not Active	34015	Not Active
09914	Not Active	09964	Not Active	34016	Not Active
09915	Not Active	09965	Not Active	34017	Not Active
09916	Not Active	09966	Not Active	34018	Not Active
09917	Not Active	09967	Not Active	34019	Not Active
09918	Not Active	09968	Not Active	34020	B-B1-M-N
09919	Not Active	09969	Not Active	34021	B-M-N
09920	Not Active	09970	Not Active	34022	B-B1-D-F-M
09921	Not Active	09971	Not Active	34023	B-B1-M-N
09922	Not Active	09972	Not Active	34024	B-B1-M-N
09923	Not Active	09973	Not Active	34025	B-B1-F-N-U
09924	Not Active	09974	Not Active	34026	Not Active
09925	Not Active	09975	Not Active	34027	Not Active
09926	Not Active	09976	Not Active	34028	Not Active
09927	Not Active	09977	Not Active	34029	Not Active
09928	Not Active	09978	Not Active	34030	B-B1-I-M
09929	Not Active	09979	Not Active	34031	B-B1-M-N
09930	Not Active	09980	Not Active	34032	B-M-N
09931	Not Active	09981	Not Active	34033	B-C-F-M-N
09932	Not Active	09982	Not Active	34034	B-B1-M-N
09933	Not Active	09983	Not Active	34035	B-B1-H-M-N
09934	Not Active	09984	Not Active	34036	B-M-N
09935	Not Active	09985	Not Active	34037	B-B1-C-F-H-I-M-N
09936	Not Active	09986	Not Active	34038	B-B1-M-N
09937	Not Active	09987	Not Active	34039	B
09938	Not Active	09988	Not Active	34040	B
09939	Not Active	09989	Not Active	34041	B-B1-M-N-U
09940	Not Active	09990	Not Active	34042	B-B1-D-F-M
09941	Not Active	09991	Not Active	34043	Not Active
09942	Not Active	09992	Not Active	34044	Not Active
09943	Not Active	09993	Not Active	34045	B-B1-I-N
09944	Not Active	09994	Not Active	34046	Not Active
09945	Not Active	09995	Not Active	34047	Not Active
09946	Not Active	09996	Not Active	34048	Not Active
		09997	Not Active	34049	Not Active

APO/ FPO	See Restrictions	APO/ FPO	See Restrictions	APO/ FPO	See Restrictions
34050	B	96203	A-B	96255	Not Active
34051	B	96204	A-B-B1	96256	Not Active
34052	Not Active	96205	A-B-B1-U	96257	A-B-B1-U
34053	B	96206	A-B-B1-U	96258	A-B-B1-U
34054	Not Active	96207	A-B-B1	96259	A-B-B1-U
34055	B-N	96208	A-B-B1-U	96260	A-B-B1-U
34056	Not Active	96209	Not Active	96261	Not Active
34057	Not Active	96210	Not Active	96262	A-B-B1-U
34058	B-B1	96211	Not Active	96263	Not Active
34059	Not Active	96212	A-B-B1-U	96264	A-B-B1-U
34060	Not Active	96213	Not Active	96265	Not Active
34061	B-B1-U	96214	A-B-B1-U	96266	A-B-B1-U
34062	Not Active	96215	A-B-B1-U	96267	A-B-B1-U
34063	Not Active	96216	Not Active	96268	Not Active
34064	Not Active	96217	A-B-B1-U	96269	A-B-B1-U
34065	Not Active	96218	A-B-B1-U	96270	Not Active
34066	Not Active	96219	A-B-B1-U	96271	A-B-B1-U
34067	Not Active	96220	A-B-B1-U	96272	Not Active
34068	Not Active	96221	A-B-B1-U	96273	Not Active
34069	Not Active	96222	Not Active	96274	Not Active
34070	Not Active	96223	Not Active	96275	A-B-B1
34071	Not Active	96224	A-B-B1-U	96276	A-B-B1
34072	Not Active	96225	Not Active	96277	Not Active
34073	Not Active	96226	Not Active	96278	A-B-B1-U
34074	Not Active	96227	Not Active	96279	Not Active
34075	Not Active	96228	Not Active	96280	Not Active
34076	Not Active	96229	Not Active	96281	Not Active
34077	B-Y	96230	Not Active	96282	Not Active
34078	Not Active	96231	Not Active	96283	A-B-B1-U
34079	Not Active	96232	Not Active	96284	A-B-B1-U
34080	Not Active	96233	Not Active	96285	Not Active
34081	Not Active	96234	Not Active	96286	Not Active
34082	Not Active	96235	Not Active	96287	Not Active
34083	Not Active	96236	Not Active	96288	Not Active
34084	Not Active	96237	Not Active	96289	Not Active
34085	Not Active	96238	Not Active	96290	Not Active
34086	B	96239	Not Active	96291	Not Active
34087	Not Active	96240	Not Active	96292	Not Active
34088	Not Active	96241	Not Active	96293	Not Active
34089	Not Active	96242	Not Active	96294	Not Active
34090	B	96243	Not Active	96295	Not Active
34091	B	96244	Not Active	96296	Not Active
34092	B	96245	Not Active	96297	A-B-B1-U
34093	B	96246	Not Active	96298	Not Active
34094	Not Active	96247	Not Active	96299	Not Active
34095	B	96248	Not Active	96301	Not Active
34096	Not Active	96249	Not Active	96302	Not Active
34097	Not Active	96250	Not Active	96303	Not Active
34098	B	96251	A-B-B1-U	96304	Not Active
34099	B	96252	Not Active	96305	Not Active
96201	A-B	96253	Not Active	96306	B-B1-M-W
96202	Not Active	96254	Not Active	96307	Not Active

APO/ FPO	See Restrictions	APO/ FPO	See Restrictions	APO/ FPO	See Restrictions
96308	Not Active	96360	Not Active	96413	Not Active
96309	B-B1-M-W	96361	Not Active	96414	Not Active
96310	B-B1-M-W	96362	B-B1-M-W	96415	Not Active
96311	Not Active	96363	Not Active	96416	Not Active
96312	Not Active	96364	B-B1-L-M-W	96417	Not Active
96313	B-B1-F-F1-F2-M-W	96365	B-B1-M-W	96418	Not Active
96314	Not Active	96366	Not Active	96419	Not Active
96315	Not Active	96367	B-B1-L-M-W	96420	Not Active
96316	Not Active	96368	B-B1-M-W	96421	Not Active
96317	Not Active	96369	Not Active	96422	Not Active
96318	Not Active	96370	B-B1-M-W	96423	Not Active
96319	B-B1-M-W	96371	Not Active	96424	Not Active
96320	Not Active	96372	B-B1-M-W	96425	Not Active
96321	B-B1-F-F1-F2-M-W	96373	B-B1-M-W	96426	Not Active
96322	B-B1-F-F1-F2-M-W	96374	B-B1-M-W	96427	Not Active
96323	B-B1-M-W	96375	B-B1-M-W	96428	Not Active
96324	Not Active	96376	B-B1-M-W	96429	Not Active
96325	Not Active	96377	B-B1-M-W	96430	Not Active
96326	B-B1-M-W	96378	B-B1-M-W	96431	Not Active
96327	Not Active	96379	B-B1-M-W	96432	Not Active
96328	B-B1-M-W	96380	Not Active	96433	Not Active
96329	Not Active	96381	Not Active	96434	Not Active
96330	B-B1-M-W	96382	Not Active	96435	Not Active
96331	Not Active	96383	Not Active	96436	Not Active
96332	Not Active	96384	B-B1-M-W	96437	Not Active
96333	Not Active	96385	Not Active	96438	Not Active
96334	Not Active	96386	B-B1-M-W	96439	Not Active
96335	Not Active	96387	B-B1-M-W	96440	B-B1-F
96336	B-B1-M-W	96388	B-B1-M-W	96441	Not Active
96337	B-B1-M-W	96389	Not Active	96442	Not Active
96338	B-B1-M-W	96390	Not Active	96443	Not Active
96339	B-B1-M-W	96391	Not Active	96444	Not Active
96340	Not Active	96392	Not Active	96445	Not Active
96341	Not Active	96393	Not Active	96446	Not Active
96342	Not Active	96394	Not Active	96447	Not Active
96343	B-B1-M-W	96395	Not Active	96448	Not Active
96344	Not Active	96396	Not Active	96449	Not Active
96345	Not Active	96397	Not Active	96450	Not Active
96346	Not Active	96398	Not Active	96451	Not Active
96347	B-B1-F-F1-F2-M-W	96399	Not Active	96452	Not Active
96348	B-B1-F-F1-F2-M-W	96401	Not Active	96453	Not Active
96349	B-B1-F-F1-F2-M-W	96402	Not Active	96454	Not Active
96350	B-B1-F-F1-F2-M-W	96403	Not Active	96455	Not Active
96351	B-B1-F-F1-F2-M-W	96404	Not Active	96456	Not Active
96352	Not Active	96405	Not Active	96457	Not Active
96353	Not Active	96406	Not Active	96458	Not Active
96354	Not Active	96407	Not Active	96459	Not Active
96355	Not Active	96408	Not Active	96460	Not Active
96356	Not Active	96409	Not Active	96461	Not Active
96357	Not Active	96410	Not Active	96462	Not Active
96358	Not Active	96411	Not Active	96463	Not Active
96359	Not Active	96412	Not Active	96464	Not Active

APO/ FPO	See Restrictions	APO/ FPO	See Restrictions	APO/ FPO	See Restrictions
96465	Not Active	96518	B-B1	96570	Not Active
96466	Not Active	96519	Not Active	96571	Not Active
96467	Not Active	96520	B-F-U3	96572	Not Active
96468	Not Active	96521	B-F	96573	Not Active
96469	Not Active	96522	B-F-U	96574	Not Active
96470	Not Active	96523	Not Active	96575	Not Active
96471	Not Active	96524	Not Active	96576	Not Active
96472	Not Active	96525	Not Active	96577	Not Active
96473	Not Active	96526	Not Active	96578	Not Active
96474	Not Active	96527	Not Active	96579	Not Active
96475	Not Active	96528	Not Active	96580	A-B-B1-H-I-M-N-U
96476	Not Active	96529	Not Active	96581	Not Active
96477	Not Active	96530	A-B-B1-H-M-N-U	96582	Not Active
96478	Not Active	96531	B-B1-H-M	96583	Not Active
96479	Not Active	96532	Not Active	96584	Not Active
96480	Not Active	96533	Not Active	96585	Not Active
96481	Not Active	96534	A-B-F	96586	Not Active
96482	Not Active	96535	A-B-B1-F	96587	Not Active
96483	Not Active	96536	B-B1	96588	Not Active
96484	Not Active	96537	B-B1	96589	Not Active
96485	Not Active	96538	B-B1	96590	Not Active
96486	Not Active	96539	Not Active	96591	Not Active
96487	Not Active	96540	B-B1	96592	Not Active
96488	Not Active	96541	B-B1	96593	Not Active
96489	Not Active	96542	B-B1	96594	A-B-B1-H-I-M-N-U
96490	B-B1	96543	B-B1-P	96595	B-B1
96491	Not Active	96544	Not Active	96596	A-B-B1-H-I-M-N-U
96492	Not Active	96545	A-B-B1-H-I-M-N-U	96597	A-B-B1-H-I-M-N-U
96493	Not Active	96546	B-F-U3	96598	B
96494	Not Active	96547	Not Active	96599	B
96495	Not Active	96548	A-B-B1-H-M-U	96601	B
96496	Not Active	96549	A-B-B1-H-M-U	96602	B
96497	Not Active	96550	Not Active	96603	B
96498	Not Active	96551	A-B-B1-H-M-U	96604	B
96499	Not Active	96552	A-B-B1-H-M-U	96605	B-O
96501	Not Active	96553	A-B-B1-H-I-M-N-U	96606	B
96502	Not Active	96554	A-B-B1-H-M-U	96607	B
96503	Not Active	96555	B-B1-F-M	96608	B
96504	Not Active	96556	B	96609	B
96505	B	96557	B-B1-F-M	96610	B
96506	B	96558	B	96611	B
96507	Not Active	96559	Not Active	96612	B
96508	B	96560	Not Active	96613	Not Active
96509	Not Active	96561	Not Active	96614	Not Active
96510	Not Active	96562	Not Active	96615	Not Active
96511	B-B1-I-N	96563	Not Active	96616	Not Active
96512	Not Active	96564	Not Active	96617	Not Active
96513	Not Active	96565	Not Active	96618	B
96514	Not Active	96566	Not Active	96619	Not Active
96515	B-B1-F	96567	Not Active	96621	B
96516	B	96568	Not Active	96622	B
96517	B-B1-F-U3	96569	Not Active	96623	B

APO/ FPO	See Restrictions	APO/ FPO	See Restrictions	APO/ FPO	See Restrictions
96624	B	96667	B	96660	B
96625	B	96668	B	96661	B
96626	Not Active	96669	B	96662	B
96627	Not Active	96670	B	96663	B
96628	B	96671	B	96664	B
96629	B	96672	B	96665	B
96630	Not Active	96673	B	96666	B
96631	Not Active	96674	B	96667	B
96632	Not Active	96675	B	96668	B
96633	Not Active	96676	B	96669	B
96634	B	96677	B	96670	B
96635	B	96678	B	96671	B
96636	Not Active	96679	B	96672	B
96637	Not Active	96680	Not Active	96673	B
96638	Not Active	96681	B	96674	B
96639	Not Active	96682	B	96675	B
96640	Not Active	96683	B	96676	B
96641	Not Active	96684	B	96677	B
96642	Not Active	96685	Not Active	96678	B
96643	B	96686	B	96679	B
96644	Not Active	96687	B	96680	Not Active
96645	Not Active	96688	Not Active	96681	B
96646	Not Active	96689	Not Active	96682	B
96647	Not Active	96690	Not Active	96683	B
96648	Not Active	96691	Not Active	96684	B
96649	Not Active	96692	Not Active	96685	Not Active
96650	Not Active	96693	Not Active	96686	B
96651	Not Active	96694	Not Active	96687	B
96652	Not Active	96695	Not Active	96688	Not Active
96653	Not Active	96696	Not Active	96689	Not Active
96654	Not Active	96697	Not Active	96690	Not Active
96655	Not Active	96698	B	96691	Not Active
96656	Not Active	96699	Not Active	96692	Not Active
96657	B	96650	Not Active	96693	Not Active
96658	Not Active	96651	Not Active	96694	Not Active
96659	Not Active	96652	Not Active	96695	Not Active
96660	B	96653	Not Active	96696	Not Active
96661	B	96654	Not Active	96697	B
96662	B	96655	Not Active	96698	B
96663	B	96656	Not Active	96699	Not Active
96664	B	96657	B		
96665	B	96658	Not Active		
96666	B	96659	Not Active		

RESTRICTIONS

LEGEND

Form 2976, *Customs* — CN22Form 2976-A, *Customs Declaration and Dispatch Note*

AAFES	= Army and Air Force Exchange Service
APO	= Army/Air Force Post Office
Box R	= Retired military personnel
FPO	= Fleet Post Office
DMM	= <i>Domestic Mail Manual</i>
MOM	= Military Ordinary Mail
MPO	= Military Post Office
PAL	= Parcel Airlift
PSC	= Postal Service Center
SAM	= Space Available Mail
USDA	= United States Department of Agriculture

Note: Mail order catalogs are prohibited as SAM or PAL mail.

A. Securities, currency, or precious metals in their raw, unmanufactured state are prohibited. Official shipments are exempt from this restriction.

B. Form 2976-A is required for all mail weighing 16 ounces or more. **Exceptions:** Prepaid mail from contractors addressed to a military organization for official use need not bear a customs declaration, but must be endorsed "Contents for Official Use-Exempt from Customs Requirement." Official mail from government agencies does not require a customs declaration or exemption endorsement. Known Mailers may use either Form 2976-A on each item or Form 2976 (or facsimile) with a mail manifest in conjunction with a packing list. Form 2976 must state "packing list enclosed." The packing list must include a description of the items, the dollar values of the items, and the complete address including the PSC box number and APO/FPO ZIP Code of the addressee, the date of mailing, the insurance registry number, if applicable, and the serial number of any item over \$25 in value and any electrical item over \$15 in value. The packing list should be enclosed in the parcel or attached to the outside of the parcel. The mail manifest which itemizes all parcels that a Known Mailer deposits will be given to Postal Official at Business Mail Acceptance Unit. Form 2976 may be used if the mailer does not wish to list the contents on the wrapper or in any case if the value exceeds \$400. Affix only the upper portion of the label on the package. A completed Form 2976-A (listing the contents and value in US dollars) must be enclosed in the package.

B1. Form 2976 or 2976-A is required. Articles are liable for customs duty and/or purchase tax unless they are bona fide gifts intended for use by military personnel or their dependents. When the contents of a parcel meet these requirements, the mailer must endorse the customs form, "Certified to be a bona fide gift, personal effects, or items for personal use of military personnel and dependents," under the heading, Description of Contents. **Exceptions:** All other exceptions listed in restriction B above are applicable to this restriction.

C. Cigarettes and other tobacco products are prohibited.

C1. Obscene articles, prints, paintings, cards, films, videotapes, etc., and horror comics and matrices are prohibited.

D. Coffee is prohibited.

E1. Medicines or vaccines not conforming to French laws are prohibited.

E2. Any matter containing religious materials contrary to Islamic faith or depicting nude or seminude persons, pornographic or sexual items, or nonauthorized political materials is prohibited.

E3. Radio transceivers, cordless telephones, global positioning systems, scanners, base stations, and hand-held transmitters are prohibited.

F. Firearms of any type are prohibited in all classes of mail. See definitions of firearms in DMM C022.1.1. This restriction does not apply to firearms mailed to or by official U.S. government agencies.

F1. Privately owned weapons addressed to an individual are prohibited in any class of mail.

F2. Importation of firearms is restricted to one shotgun and one single shot .22 caliber rifle per individual.

G. Only First-Class letters, Periodicals, and Standard Mail (A) are authorized.

H. Meats, including preserved meats, whether hermetically sealed or not, are prohibited.

H1. Pork or pork by-products are prohibited.

I. Mail of all classes must fit in a mail sack. Mail may not exceed the following dimensions:

Length

42" 72" length and girth combined
 over 42" to 44" 24" girth
 over 44" to 46" 20" girth
 over 46" to 48" 16" girth
 Maximum length 48"

This restriction does not apply to registered mail and official government mail marked MOM.

I1. This restriction does not apply to registered mail.

I2. This restriction does not apply to official government mail marked MOM.

K. Mail that includes in the address the words, "Dependent Mail Section," may consist only of letter mail, newspapers, magazines, and books. No parcel of any class containing any other matter may be mailed to the Dependent Mail section. This restriction does not apply if the address does not include the words "Dependent Mail Section."

L. All official mail is prohibited.

M. Fruits, animals, and living plants are prohibited.

N. Registered mail is prohibited.

O. Personal mail addressed to vessels using this number is limited to unregistered First-Class Mail and certified mail. Other classes of mail are prohibited.

P. APO is used for the receipt and dispatch of official mail only.

Q. Mail may not exceed 66 pounds, and size is limited to 42 inches maximum length and 72 inches maximum length and girth combined.

R. All alcoholic beverages, including those mailable under DMM C021, are prohibited.

R1. Materials used in the production of alcoholic beverages (i.e., distilling material, hops, malts, yeast, etc.) are prohibited.

T. Mailings of case lots of food and supplemental household shipments must be approved by the sender's parent agency prior to mailing.

U. Parcels must weigh less than 16 ounces when addressed to Box R. This restriction does not apply to mail endorsed "Free Matter for the Blind or Handicapped."

U1. Mail is limited to First-Class Mail weighing 11 ounces or less when addressed to Box R. This restriction does not apply to mail endorsed "Free Matter for the Blind or Handicapped." Videotapes are prohibited when addressed to Box R, regardless of weight.

U2. Mail is limited to First-Class letters only when addressed to Box R.

U3. Mail is limited to First-Class correspondence (including voice and video cassettes), newspapers, magazines, photographs, not exceeding 16 ounces, when addressed to Box R.

W. Meat products, such as dried beef, salami, and sausage, may be mailed, provided they remain in their original, hermetically sealed packages and bear USDA certification. Other meats, bones, skin, hair, feathers, horns or hoofs of hoofed animals, wool samples, tobacco leaves, including chewing and pipe tobacco, snuff, cigars, and cigarettes, or obscene material, including obscene drawings, photographs, films, and carvings, are prohibited. Exception: 200 grams of tobacco per parcel are permitted duty free.

X. Personal mail is limited to First-Class Mail (to include audio cassettes and voice tapes) weighing 11 ounces or less. This limitation does not apply to official mail.

Y. Mail is limited to First-Class and Priority Mail only. All Periodicals, Standard Mail (A), and Standard Mail (B) (including SAM and PAL) are not authorized. This restriction also applies to official mail.

Z. No outside pieces (OSPs).

Z1. The Anti-Pilferage Seal (Item No O818-A) is required on all pouches and sacks.

—International and Military Mail Operations,
 International Business Unit, 2-26-98

Fraud Alert

ALL PERSONNEL PROCESSING MAIL FOR DISPATCH ABROAD

Foreign Order No. 413

Keep all foreign order notices for use as reference.

Tentative Orders

A tentative *Lottery Order* has been issued against the following:

Australia

ALA
PO BOX 169
AUBURN 2144 NSW
AUSTRALIA

BLS
PO BOX 169
AUBURN 2144 NSW
AUSTRALIA

BLS
PO BOX 819
TULLAMARINE VIC 3043
AUSTRALIA

Final Orders

The Tentative Decision and Order issued against the following has become final:

Canada

MONEY LIST OFFICE
549 COLUMBIA ST
PO BOX 250 STN MAIN
NEW WESTMINSTER BC V3L 4Y6
CANADA

Do not dispatch any mail to the above. Place the mailpieces in a pouch endorsed Foreign Order Mail and send it to:

POSTMASTER
CLAIMS INQUIRY
JAMES A FARLEY BLDG RM 2029A
NEW YORK NY 10199-9652

Do not place any endorsement on the mailpieces themselves. Personnel may post this notice at the outgoing primary. They must post it on the Foreign Order Board at all processing and distribution plants, designated International exchange offices, and customer service plants.

Withholding of Mail Orders

Withholding of mail orders is enforced by postmasters at the cities listed below:

State/City	Names Covered
CA, Beverly Hills 90212-1672	Any And All Names, 9899 Santa Monica Blvd. #448
CA, Fullerton 92831-1709	Pacific Productions, 3310 Yorba Linda Blvd., Suite 312
CA, Lawndale 90260-1517	Any And All Names, 14402 Hawthorne Blvd. #271
CA, Redondo Beach 90277-6803	Any And All Names, 817 Torrance Blvd. #156
MI, Flint 48504-0044	Any And All Of Various Names, P.O. Box 4044
PA, Collegeville 19426-3911	Any And All Various Names Including The Surname Lacen, 3815 Ridge Pike, Box #55

Domestic Orders

False representation is enforced by the postmasters at the cities listed below:

State/City	Names Covered	Product
CA, Encino 91416-6520	First American Financial Services, P.O. Box 20096	A credit card scheme.
CA, Beverly Hills 90212-4542	Colonial Financial Services, 505 S. Beverly Drive, #1065	
CA, Tarzana 91356-4103	Colonial Financial Services, 18653 Ventura Blvd., #1000	
CA, Northridge 91328-0190	Colonial Financial Services, P.O. Box 280190	
CA, Santa Clarita 91380-9007	Fallbrook Financial Services, P.O. Box 907	
FL, St. Petersburg 33710-3918	Knezeak Associates, Philip Knezeak, 6822 22nd Avenue North, Room 347	A work at home scheme.
TX, Houston 77205-0311	Alva Doyle, d/b/a Doylejet, P.O. Box 60311	A failure to furnish ordered products.

—Judicial Officer, 2-26-98

Missing, Lost, or Stolen U.S. Money Order Forms

Do Not Cash — Upon Receipt, Notify Local Postal Inspectors

This listing will be provided to all Postal Service employees responsible for accepting and cashing Postal money orders. All interim notices should be destroyed when the numbers listed appear in the *Postal Bulletin*. The actual serial numbers consist of the first 10 digits on the money orders. Check for altered dollar amounts by holding money orders to the light.

The *Postal Bulletin* is available on the World Wide Web on the U.S. Postal Service home page at <http://www.usps.gov>. To access a *Postal Bulletin*, go to

“Business,” then to “Business Publications,” and then to “The Postal Bulletin.”

The *Postal Bulletin* is also available on the Postal Service Intranet. Click on “Corporate Information,” then “Policies and Procedures,” then “Postal Bulletin.”

Back issues through *Postal Bulletin* 21883A (1-1-95) are available for downloading, as are the 1995, 1996, and 1997 annual indexes. Once downloaded, the *Postal Bulletin*, including all forms and posters, may be read and printed.

210 221 0548 to	391 104 6146 to	6199	405 325 0188 to	0198	420 277 0015 to	0049
210 221 0599	391 574 1466 to	1499	406 009 4587 to	4599	420 599 0734 to	0798
273 775 7700 to	391 783 3020 to	3599	406 260 6830 to	6899	420 661 4115 to	4199
273 775 7899	391 792 6100 to	6199	406 459 6641 to	6999	420 758 9500 to	9699
302 000 0000 to	392 668 2956 to	2999	406 733 3000 to	3999	420 969 3951 to	3971
302 123 9999	392 854 8500 to	8899	407 545 1557 to	1599	420 969 3973 to	3999
349 746 2056 to	393 584 7566 to	7699	407 594 0412 to	0599	421 116 3565 to	3599
2099	393 650 0074 to	0099	407 692 9100 to	9299	421 130 9300 to	9399
350 518 7350 to	393 838 8316 to	8499	407 959 2190 to	2199	421 313 4500 to	4999
7374	393 893 6007 to	6099	408 265 2275 to	2288	421 364 5537 to	5599
360 011 1690 to	394 126 6907 to	6999	408 499 7700 to	7799	421 656 2609 to	2699
1699	394 189 0405 to	0599	408 499 7900 to	7999	421 988 9700 to	9799
360 168 6008 to	394 822 3243 to	3278	408 682 8484 to	8599	422 172 4667 to	4699
360 173 8800 to	394 990 1810 to	1899	408 698 7015 to	7099	422 484 4212 to	4299
362 861 3064 to	395 343 3264 to	3299	409 072 3941 to	3999	422 556 1270 to	1299
373 006 2176 to	395 373 3035 to	3099	410 491 2311 to	2399	422 587 7024 to	7099
2199	395 396 9649 to	9799	410 694 8400 to	8599	422 819 7533 to	7599
374 768 2600 to	395 970 3240 to	3299	410 775 1500 to	1599	422 842 5073 to	5087
375 169 4400 to	397 622 4054 to	4099	410 795 7927 to	7999	422 907 7563 to	7599
375 829 3400 to	397 819 8902 to	8999	410 867 0917 to	0966	424 500 6050 to	6099
375 851 9100 to	398 149 7200 to	7699	410 867 0970 to	0999	424 641 8500 to	8599
376 196 0911 to	399 070 0872 to	0899	411 868 1023 to	1199	424 871 6600 to	6699
376 196 0911 to	399 156 7119 to	7199	411 922 2322 to	2399	425 298 2352 to	2399
378 085 3679 to	399 203 5064 to	5099	412 193 0900 to	0999	425 418 4269 to	4299
378 351 1063 to	399 296 9910 to	9999	412 395 8599 to	8699	425 418 4405 to	4499
379 843 5100 to	399 396 8935 to	8999	412 485 6500 to	6599	426 547 4566 to	4599
380 093 9600 to	399 792 7775 to	7799	412 485 6610 to	6699	427 412 6337 to	6499
9699	399 792 8300 to	8399	412 885 5953 to	5999	427 481 0900 to	0999
380 165 1165 to	400 427 1051 to	1999	414 193 3608 to	3674	428 027 2742 to	2752
381 325 4500 to	401 045 1505 to	1549	414 193 3677 to	3699	429 474 4172 to	4199
381 604 2510 to	401 045 1571 to	1599	414 411 7348 to	7399	429 889 2900 to	2999
381 645 9525 to	401 294 2700 to	2799	414 640 0757 to	0799	430 150 4401 to	4599
383 314 3968 to	401 310 9505 to	9599	414 965 1727 to	1799	430 172 9800 to	9899
383 892 1000 to	401 382 5312 to	5399	417 302 8104 to	8199	430 177 1900 to	2099
383 892 1382 to	402 578 7876 to	7899	417 387 6532 to	6599	430 444 9500 to	9699
384 925 3641 to	403 125 6744 to	6799	417 496 6800 to	6999	430 664 4070 to	4099
385 568 2331 to	403 260 7000 to	7499	417 871 9250 to	9299	432 168 8419 to	8499
385 599 7554 to	403 280 6470 to	6499	417 930 9533 to	9599	432 708 6800 to	6999
385 774 2024 to	403 685 8600 to	8699	418 164 6500 to	6799	432 744 1544 to	1599
386 624 1412 to	404 003 0300 to	0399	418 423 9863 to	9899	432 995 9775 to	9799
386 883 8936 to	404 041 8838 to	8899	418 633 5922 to	5999	433 003 5800 to	5899
387 314 5574 to	404 071 4268 to	4299	418 719 8520 to	8599	433 757 3047 to	3099
387 837 6300 to	404 347 5356 to	5399	418 744 2235 to	2299	433 765 4003 to	4099
388 828 0656 to	404 347 5548 to	5599	418 962 2848 to	2899	434 482 7060 to	7199
389 696 2400 to	404 726 4500 to	4599	419 543 0286 to	0299	434 513 2386 to	2399
389 846 3104 to	404 961 5001 to	5199	419 730 0300 to	0399	434 968 3076 to	3092
389 846 3145 to						
389 887 9211 to						
389 887 9234 to						
390 001 3182 to						
3199						
390 001 3500 to						
390 545 5974 to						

435 303 1831	to	1842	458 337 5222	to	5299	475 875 2500	to	2599	493 394 5568	to	5599
435 303 1986	to	1999	458 354 7653	to	7999	476 169 8264	to	8299	493 470 2562	to	2599
435 666 6092	to	6399	458 671 8678	to	8699	476 189 3000	to	3499	493 473 7700	to	7799
436 082 6400	to	6899	458 671 8721	to	8798	476 331 2480	to	2499	493 716 2153	to	2199
436 160 6441	to	6499	458 847 5044	to	5999	477 289 8601	to	8699	494 206 2972	to	2999
437 316 7115	to	7199	459 274 7624	to	7699	477 681 5206	to	5299	494 217 3446	to	3999
437 427 0500	to	3499	459 365 5432	to	5499	478 010 4243	to	4268	494 224 0500	to	0599
439 179 2300	to	2399	459 378 5764	to	5799	478 010 4270	to	4291	495 145 0600	to	0699
439 310 0458	to	0499	459 472 4816	to	4999	478 450 5071	to	5099	496 209 7425	to	7499
440 698 1947	to	1999	460 349 6878	to	6899	478 469 7838	to	7858	496 213 8728	to	8799
440 858 6300	to	6399	460 550 1909	to	1999	478 469 7883	to	7899	496 474 5226	to	5248
440 858 6420	to	7299	460 997 5234	to	5299	479 280 9800	to	9899	497 053 8517	to	8699
441 199 1655	to	1699	461 973 6443	to	6499	479 365 9116	to	9176	497 854 8673	to	8699
443 127 3648	to	3699	462 152 0107	to	0299	479 412 9900	to	9999	498 449 8888	to	8899
443 127 4000	to	4099	462 274 1072	to	1099	479 667 6190	to	6199	498 929 8285	to	8499
443 673 7900	to	7999	462 277 8373	to	8399	479 748 9680	to	9699	498 936 5310	to	5399
443 800 9335	to	9399	462 554 6051	to	6099	479 860 7000	to	7199	499 016 5425	to	5499
444 382 8822	to	8899	463 011 5529	to	5540	480 526 2000	to	2099	499 440 8575	to	8899
444 390 1667	to	1699	463 176 4115	to	4199	480 640 6330	to	6399	499 731 6717	to	6799
444 457 3854	to	3899	463 176 4229	to	4299	480 658 0568	to	0599	500 064 1858	to	1869
450 048 4173	to	4199	463 185 2600	to	2799	480 689 5100	to	5199	500 070 5725	to	7799
450 048 4442	to	4699	463 227 7711	to	7799	481 072 9463	to	9499	600 645 3223	to	3299
450 560 5173	to	5199	463 414 4869	to	4899	481 673 0074	to	0095	601 339 1200	to	1399
450 620 3077	to	3099	463 808 3484	to	3499	482 527 1500	to	1599	601 661 7700	to	7799
450 620 3135	to	3199	463 945 7400	to	7899	482 541 5255	to	5299	601 682 5343	to	5399
450 780 2716	to	2799	464 629 9000	to	9399	482 729 6800	to	6899	601 928 1600	to	1699
450 801 2700	to	2799	464 711 4332	to	4399	483 363 7207	to	7299	602 512 2972	to	2999
451 109 2967	to	2984	465 692 3963	to	3999	483 402 2356	to	2399	602 555 2400	to	2799
451 115 4110	to	4125	465 698 8300	to	8599	483 486 5100	to	5199	602 829 7061	to	7099
451 115 4127	to	4199	465 743 7745	to	7799	483 632 1521	to	1599	603 483 9572	to	9599
452 265 0074	to	0099	466 798 6056	to	6067	483 632 2600	to	2799	603 490 7200	to	7299
452 265 0246	to	0299	467 147 4300	to	4399	483 849 1615	to	1699	603 678 7100	to	7199
452 265 0335	to	0999	468 079 5782	to	5799	484 174 4803	to	5299	603 678 7662	to	7699
452 509 1169	to	1199	469 067 2817	to	2899	484 323 8900	to	9199	603 678 7902	to	7999
452 855 6471	to	6499	469 127 8000	to	8199	484 680 5000	to	5038	603 678 8418	to	8499
452 890 4679	to	4799	469 213 0359	to	0399	484 680 5040	to	5074	603 678 8700	to	9999
452 900 8215	to	8238	469 213 0500	to	0599	484 680 5077	to	5099	604 086 0880	to	0899
453 117 9146	to	9199	469 561 8011	to	8099	485 029 4913	to	4999	604 349 1414	to	1499
453 334 3631	to	3699	469 658 1961	to	1999	486 176 0600	to	0699	604 503 7776	to	7799
453 603 7841	to	7891	469 666 9900	to	9999	486 559 7555	to	7599	605 520 9037	to	9099
453 650 1140	to	1199	469 678 1900	to	1999	486 696 3023	to	3199	605 685 4010	to	4099
453 741 1300	to	1399	469 781 4900	to	4999	488 173 7900	to	7999	605 988 6467	to	6499
454 013 2919	to	2999	469 947 6960	to	6999	488 206 4100	to	4199	607 689 7951	to	7960
454 186 2411	to	2499	470 755 5800	to	5818	488 226 0200	to	0299	607 728 1276	to	1299
454 268 4883	to	4899	471 918 0300	to	0999	488 709 3906	to	3999	608 727 7100	to	7199
454 302 5400	to	5499	471 985 2408	to	2410	488 855 8359	to	8399	608 727 7273	to	7599
454 490 8300	to	8399	472 191 6700	to	6799	489 181 8963	to	8999	608 813 9950	to	9999
454 547 7434	to	7499	472 270 2555	to	2599	489 223 2000	to	2099	609 067 5325	to	5399
454 922 4867	to	4895	472 987 0213	to	0241	489 311 1930	to	1999	609 067 5488	to	5499
455 221 1348	to	1499	472 987 0290	to	0299	489 318 6200	to	6300	609 067 5600	to	5699
455 364 2147	to	2199	473 151 2069	to	2199	489 384 0027	to	0099	609 289 6123	to	6199
455 399 5400	to	5499	473 666 9138	to	9199	489 427 0658	to	0899	609 438 4400	to	4499
455 476 0676	to	0699	473 952 3429	to	3499	489 997 5252	to	5299	609 493 1100	to	1199
455 543 0618	to	0699	474 108 5402	to	5499	490 669 5850	to	6099	609 766 8091	to	8999
456 410 9006	to	9099	474 356 5193	to	5299	490 717 7080	to	7099	609 825 4100	to	4115
456 470 4146	to	4299	474 949 3366	to	3399	490 721 6000	to	6099	609 884 2981	to	2999
456 619 4460	to	4499	475 134 9362	to	9399	490 793 1500	to	2099	609 893 1000	to	1099
457 333 2686	to	2699	475 167 9667	to	9699	490 886 8171	to	8199	610 092 3200	to	3299
457 729 1767	to	1777	475 319 3415	to	3499	490 977 9221	to	9240	610 582 4200	to	4299
457 937 8615	to	8699	475 319 3649	to	3799	491 258 8100	to	9099	611 879 6939	to	6999
458 028 9810	to	9899	475 340 6400	to	6599	491 567 1376	to	1399	612 291 8013	to	8099
458 057 2712	to	2999	475 424 8410	to	8499	492 254 4800	to	4899	612 751 5171	to	5199
458 069 9537	to	9599	475 629 9156	to	9199	492 283 5100	to	5199	612 751 5226	to	5299
458 069 9665	to	9699	475 850 6101	to	6199	492 610 6813	to	6899	612 751 6083	to	6099

612 751 6268	to	6299	635 559 3449	to	3499	648 009 6057	to	6099	666 132 8226	to	8299
612 751 6572	to	6599	636 289 6214	to	6299	648 163 5300	to	5499	666 696 2209	to	2299
612 774 2111	to	2199	636 634 8007	to	8042	648 722 5283	to	5299	666 696 2309	to	2399
612 774 2254	to	2299	637 150 1200	to	1299	648 892 3164	to	3199	667 032 9300	to	9399
612 774 2500	to	2599	637 562 5828	to	5899	649 100 3989	to	3999	667 729 5529	to	5599
614 469 0979	to	0999	638 042 1647	to	1699	649 647 0370	to	0399	668 383 8400	to	8699
614 474 3000	to	3099	638 049 4984	to	4999	649 647 0522	to	0599	670 368 3400 to 3499		
614 521 3490	to	3499	638 318 1115	to	1199	649 647 5237	to	5399	670 369 7336	to	7399
614 645 1800	to	1899	638 318 1453	to	1499	649 647 9100	to	9299	670 750 7169	to	7199
614 832 1100	to	2099	638 885 0000	to	0299	649 666 7800	to	8299	671 046 6200	to	6399
615 017 7505	to	7599	638 903 4362	to	4373	650 114 7707 to 7719			671 251 5448	to	5499
617 711 6609	to	6699	639 415 1929	to	1999	650 130 3400	to	3599	671 926 5600	to	5799
617 760 5266	to	5299	639 415 2019	to	2099	650 213 0406	to	0499	672 444 2000	to	2999
617 813 3601	to	3699	639 420 6200	to	6299	650 555 1749	to	1799	672 828 3410	to	3499
618 840 9200	to	9299	639 469 3517	to	3799	650 564 1900	to	1999	673 167 5776	to	5799
619 551 7229	to	7299	639 605 2143	to	2199	650 627 4212	to	4299	675 464 3700	to	3799
619 859 3000	to	3099	639 657 8600	to	8799	650 736 2043	to	2099	675 464 4000	to	4199
620 073 9400 to 9499			640 289 7500 to 7599			650 739 1540	to	1699	676 365 5958	to	5999
621 614 7907	to	7930	640 289 7700	to	7999	651 741 4415	to	4499	677 466 1088	to	1099
621 614 7932	to	7999	641 170 4420	to	4499	651 882 2800	to	2899	680 112 9565 to 9599		
621 648 8021	to	8199	641 318 3133	to	3199	652 754 6317	to	6399	700 065 2570 to 2599		
621 648 8500	to	8599	641 378 6500	to	6999	653 131 4945	to	4999	700 065 4800	to	4899
621 904 8351	to	8599	641 383 8739	to	8799	653 426 3300	to	3399	700 190 3350	to	3359
621 916 1978	to	1989	641 877 3187	to	3299	653 455 4874	to	4899	700 228 6048	to	6099
622 989 8032	to	8099	641 877 3310	to	3399	654 238 0000	to	0399	700 650 0452	to	0499
623 076 9300	to	9399	642 355 8094	to	8199	654 404 3065	to	3092	700 666 1323	to	1349
623 819 5006	to	5099	642 355 8308	to	8999	654 962 2900	to	3199	700 786 9106	to	9142
623 895 8200	to	8399	642 900 0018	to	0099	655 103 5081	to	5199	700 859 0744	to	0758
623 917 0000	to	0099	643 030 6254	to	6299	655 523 2600	to	2999	701 028 6780	to	6899
623 917 0200	to	0299	644 066 0882	to	0899	656 305 2448	to	2499	701 213 3900	to	3999
624 468 5288	to	5299	644 069 0600	to	0699	657 347 4438	to	4999	701 267 2000	to	3999
624 665 3162	to	3198	644 077 7506	to	7699	657 710 8100	to	8999	701 335 7312	to	7399
625 088 6735	to	6799	644 085 8157	to	8199	657 780 0985	to	0999	701 369 2005	to	2050
625 916 9500	to	9799	644 112 9839	to	9899	658 586 1400	to	1499	701 503 2247	to	2299
625 968 8956	to	8999	644 373 9083	to	9099	658 877 8000	to	8199	701 553 6557	to	6599
627 005 3938	to	3999	644 380 1460	to	1499	659 398 7300	to	7399	701 601 3457	to	3499
627 384 3907	to	4099	644 733 4715	to	4799	659 846 7837	to	7899	701 605 5913	to	5999
627 496 7549	to	7599	644 900 9712	to	9799	660 510 4100 to 4199			701 708 1741	to	1799
627 708 3605	to	3699	644 901 0109	to	1299	660 673 0400	to	0599	701 708 1741	to	1799
627 776 2500	to	2599	644 901 1325	to	1399	661 488 5000	to	5099	701 736 3966	to	3999
628 226 3100	to	3199	644 923 6800	to	7799	661 609 9100	to	9199	701 838 2800	to	2899
628 814 4702	to	4799	644 932 4655	to	4699	661 716 9420	to	9499	701 941 0600	to	0699
628 851 9689	to	9699	644 932 4792	to	4799	661 906 6522	to	6599	702 171 1603	to	1699
629 510 7200	to	7299	645 318 7240	to	7499	662 021 8332	to	8399	702 254 9300	to	9399
629 964 4200	to	4294	645 333 1766	to	1799	662 068 0700	to	0899	806 087 1100 to 1499		
630 389 3056 to 3071			645 790 8632	to	8699	662 553 0774	to	0799	806 268 9275	to	9299
630 463 0588	to	0599	645 821 0657	to	0699	663 078 7034	to	7099	806 534 3400	to	3477
631 459 9117	to	9199	645 930 7948	to	7999	663 763 5300	to	5399	807 342 3283	to	3399
631 762 9325	to	9399	645 975 0737	to	0762	664 253 8000	to	8499	808 086 7100	to	7199
632 217 4933	to	4999	646 242 6200	to	6299	664 656 3055	to	3099	808 090 3440	to	3499
632 500 0000	to	99 9999	646 270 7639	to	7799	665 174 6400	to	6499	808 325 5161	to	5699
633 110 4165	to	4199	646 798 4000	to	4999	665 274 8208	to	8299	808 784 8000	to	8299
633 110 4303	to	4499	647 048 7035	to	7099	666 669 5400	to	5499	870 054 4814 to 4899		
633 438 6429	to	6599	647 049 2900	to	2999				870 491 4812	to	4849
633 588 7173	to	7182	647 398 8300	to	8399				870 541 7167	to	7239
634 725 0700	to	0799	647 398 8481	to	8499						
634 803 3239	to	3299	647 437 3000	to	4999						
634 807 2474	to	2499	647 811 2188	to	2199						
634 827 5900	to	5999									
634 886 3428	to	3499									

Missing, Lost, or Stolen Canadian Money Order Forms

Do Not Cash — Upon Receipt, Notify Local Postal Inspectors

This listing will be provided to all Postal Service employees responsible for accepting and cashing Postal money orders. Destroy any interim notices when the numbers listed appear in the *Postal Bulletin*. The new money order serial numbers consist of the first nine digits. The 10th digit is a check digit only.

Do not cash new style money orders **000 000 001 to 692 600 000**. Advise holders to send invalid money orders to: Canada Post Corporation, Ottawa, Canada K1A 0B1. Check for altered dollar amounts by holding money orders to the light.

000 000 001 to 692 600 000	702 051 501 to 1 750	708 116 251 to 6 310	718 466 370 to 6 420
692 720 871 to 0 900	702 053 601 to 3 800	708 138 301 to 8 480	718 568 451 to 8 479
692 876 955 to 7 050	702 104 368 to 4 900	709 222 591 to 2 920	718 590 741 to 0 770
693 290 380 to 0 400	702 128 306 to 8 400	709 243 479 to 3 500	718 714 210 to 4 370
693 290 426 to 0 450	702 179 891 to 9 900	709 411 171 to 1 320	718 795 881 to 6 000
694 063 700 to 3 897	702 260 751 to 0 850	709 649 804 to 9 820	718 961 721 to 1 780
694 063 900 to 4 000	702 410 595 to 1 050	709 733 281 to 3 580	718 982 001 to 2 300
694 550 501 to 0 530	702 660 151 to 0 540	710 046 813 to 6 840	719 869 731 to 9 760
694 595 031 to 5 050	702 723 429 to 3 450	710 358 093 to 8 166	720 227 871 to 7 930
694 595 087 to 5 300	703 004 401 to 4 820	710 358 257 to 8 270	720 227 949 to 7 960
694 698 551 to 8 650	703 083 819 to 4 020	711 021 501 to 1 510	720 368 543 to 8 570
695 105 313 to 5 350	703 432 131 to 2 230	711 049 411 to 9 560	720 392 151 to 2 570
695 142 809 to 3 050	703 626 061 to 6 090	711 408 045 to 8 090	720 556 491 to 6 640
695 144 666 to 4 700	703 863 121 to 3 240	712 003 381 to 3 650	720 558 621 to 8 650
695 272 601 to 2 750	703 863 477 to 3 540	712 104 220 to 4 230	720 575 361 to 5 570
695 277 576 to 7 650	703 867 801 to 7 980	712 327 861 to 7 890	720 590 152 to 0 179
695 530 761 to 0 800	704 030 628 to 0 640	712 327 952 to 7 980	721 638 331 to 9 170
696 487 701 to 7 800	704 154 024 to 4 120	712 647 061 to 7 090	721 815 391 to 5 420
696 784 101 to 4 550	704 227 561 to 7 829	713 284 171 to 4 260	721 969 713 to 9 740
696 870 601 to 0 650	704 227 831 to 8 069	713 292 871 to 2 990	722 072 137 to 2 160
697 047 501 to 7 600	704 228 071 to 8 100	714 035 101 to 5 160	722 378 265 to 8 280
697 052 101 to 2 350	704 420 344 to 0 490	714 155 011 to 5 400	722 413 990 to 4 004
697 217 251 to 7 400	704 568 751 to 8 990	714 328 231 to 8 440	722 764 948 to 4 980
697 249 952 to 0 050	704 965 301 to 5 770	714 442 952 to 2 980	722 825 840 to 5 889
697 414 886 to 4 900	705 116 780 to 6 790	714 562 843 to 2 860	723 153 841 to 3 850
697 469 606 to 9 700	705 280 801 to 0 980	714 590 391 to 0 430	723 237 616 to 7 630
697 850 401 to 0 750	705 475 651 to 6 040	714 609 811 to 9 930	723 331 081 to 1 110
698 098 446 to 8 550	705 566 127 to 6 280	714 609 961 to 9 990	723 496 443 to 6 470
698 300 251 to 0 300	705 740 581 to 0 730	714 807 181 to 7 240	723 967 291 to 7 320
698 504 383 to 4 650	705 782 796 to 2 820	714 871 321 to 1 500	724 655 196 to 5 340
698 533 927 to 4 200	705 822 271 to 2 480	714 928 529 to 8 590	724 711 441 to 1 500
698 562 268 to 2 400	706 180 148 to 0 290	715 128 183 to 8 330	724 711 538 to 1 560
699 090 686 to 0 750	706 184 041 to 4 220	715 144 171 to 4 470	724 793 221 to 3 250
699 752 699 to 2 850	706 357 861 to 8 190	715 197 211 to 7 570	724 908 109 to 8 120
700 068 473 to 8 500	706 382 419 to 2 430	715 595 910 to 6 180	724 937 461 to 7 670
700 161 501 to 1 650	706 628 735 to 8 820	715 941 781 to 1 810	725 163 118 to 3 151
700 202 522 to 2 700	706 638 211 to 8 420	715 962 421 to 2 480	725 202 735 to 2 750
700 290 275 to 0 300	706 817 959 to 8 000	716 477 396 to 7 430	725 398 591 to 8 800
700 465 730 to 5 750	707 034 391 to 4 450	716 556 635 to 6 660	725 464 591 to 4 920
700 561 444 to 1 550	707 292 636 to 2 660	717 191 648 to 1 690	725 475 321 to 5 330
701 423 101 to 3 150	707 441 401 to 1 687	717 193 161 to 3 490	725 711 057 to 1 070
701 625 469 to 5 550	707 441 836 to 1 940	717 228 591 to 8 680	725 738 581 to 8 730
701 643 829 to 3 850	707 958 541 to 8 570	717 333 902 to 3 950	725 981 311 to 1 430
701 945 451 to 5 500	707 960 107 to 0 160	717 739 745 to 9 910	725 987 835 to 7 880
702 033 701 to 4 050	708 059 941 to 60 000	717 884 991 to 5 050	726 060 811 to 0 900
	708 115 830 to 5 860	718 026 171 to 6 290	726 391 970 to 2 520

726 484 771	to	4 800	730 077 683	to	7 840	732 086 374	to	6 400	734 588 040	to	8 370
726 493 351	to	5 300	730 109 847	to	9 880	732 188 649	to	8 670	734 736 661	to	6 810
726 504 031	to	4 063	730 373 761	to	3 850	732 193 460	to	3 470	734 797 201	to	7 320
726 504 070	to	4 090	730 501 951	to	2 130	732 201 241	to	1 390	734 950 111	to	0 170
726 504 331	to	4 390	730 519 379	to	9 470	732 220 431	to	0 440	735 120 331	to	0 840
726 563 701	to	4 060	730 569 278	to	9 360	732 355 201	to	5 380	735 123 061	to	3 690
726 599 371	to	9 460	730 711 711	to	1 740	732 446 761	to	6 850	735 293 131	to	3 220
727 182 271	to	2 510	730 722 991	to	3 230	732 472 320	to	2 560	736 366 051	to	6 110
727 416 181	to	6 240	730 845 970	to	5 990	732 507 811	to	7 900	736 670 851	to	1 060
727 481 431	to	1 460	730 888 291	to	8 320	732 541 605	to	1 620	737 628 098	to	8 120
727 749 241	to	9 780	730 927 591	to	7 680	732 572 221	to	2 490	737 628 181	to	8 210
728 382 331	to	2 480	731 307 914	to	7 930	732 586 479	to	6 710	737 634 258	to	4 270
728 458 201	to	8 260	731 402 431	to	2 460	732 961 261	to	1 320			
728 702 338	to	2 400	731 407 232	to	7 320	732 994 037	to	4 080			
728 915 371	to	5 850	731 588 301	to	8 340	733 163 449	to	3 460			
728 953 141	to	3 410	731 703 211	to	3 240	733 297 171	to	7 290			
729 169 081	to	9 140	731 767 273	to	7 320	733 446 631	to	7 110			
729 363 841	to	3 870	731 781 061	to	1 120	733 474 665	to	4 770			
729 682 891	to	3 190	731 841 377	to	1 450	733 704 482	to	4 570			
729 838 940	to	9 070	731 837 821	to	7 910	733 751 041	to	1 130			
729 839 101	to	9 130	732 018 481	to	8 600	733 971 138	to	1 210			
			732 067 972	to	8 370	734 389 273	to	9 290			
						734 440 031	to	0 111			

—*Inspection Service, 2-26-98*

Counterfeited Canadian Money Order Forms

Do Not Cash

To be posted and used by retail window employees. As directed, destroy previous notices. All interim notices should be destroyed when the numbers listed appear in the *Postal Bulletin*.

671,819,086	686,794,382
676,612,640	686,794,426
677,891,039	686,794,427
678,282,493	686,794,431
678,916,031	687,262,502
679,552,215	687,262,503
679,751,983	687,262,525
679,694,334	687,262,526
679,800,207	687,287,578
681,130,536	687,287,581
681,844,376	687,287,582
683,594,542	694,063,898
684,683,610	694,063,899
686,619,878	694,063,980
686,619,886	701,321,725
686,619,887	

—*Inspection Service, 2-26-98*

800 Number Available to Verify Canadian Money Orders

The Canada Post Corporation is now providing an 800 number that cashing agents can call to verify the validity of Canadian Postal Money Orders. The number is 1-800-563-0444.

This 800 number is printed on the back of the Canadian Postal Money Orders.

—*Inspection Service, 2-26-98*

Invalid Express Mail Corporate Account Numbers

These numbers are to be posted and used by retail/acceptance clerks. This listing supersedes all previous notices, which must be destroyed. Retail/acceptance clerks must not accept Express Mail shipments bearing any of the invalid numbers (listed below) in the "customer number" or

"agreement number" section of the label or form.

Note: The first 6 digits of a 9-digit Custom Designed Service and Next Day Pickup Service Agreement make up the Corporate Account Number.

005180	009729	020315	025419	046056	068027	078419	090638	092530	094685	096427	097792	102108
005214	009945	020447	026068	049077	068126	078840	090639	092624	094698	096467	097850	102112
005243	010256	020505	026224	049304	068171	078890	090708	092639	094708	096492	097875	102190
005337	010363	020520	026236	050051	068269	078910	090787	092666	094730	096513	097916	102360
005513	010492	020550	026395	053017	068292	080038	091008	092788	094746	096531	097929	102466
005550	010537	020564	027109	055023	068310	080040	091046	092804	094775	096562	097932	102565
005648	010578	021017	027273	055166	068426	080097	091076	092811	094779	096573	097962	102623
005767	010633	021026	027637	057010	068429	080190	091125	092957	094786	096574	098052	102971
005794	010652	021050	027878	058005	069028	080202	091208	093045	094843	096578	098057	103132
005805	010665	021054	027895	060110	069203	080277	091217	093083	094904	096596	098062	103143
005883	010694	021161	027926	060134	069268	080307	091229	093091	094912	096604	098070	103163
005901	011302	021242	027929	060374	069621	080402	091233	093155	094983	096609	098073	103167
005945	011336	021247	028182	060647	069871	080405	091240	093366	094989	096617	098107	103179
005964	012301	021267	028238	060768	070256	080419	091257	093397	095007	096648	098121	103500
006180	012335	021315	028244	061131	070293	080430	091262	093443	095154	096651	098125	103573
006296	013105	021365	028318	061133	070300	080484	091285	093540	095172	096700	098168	103760
006357	013219	021389	028593	061138	070341	080535	091293	093587	095242	096719	098176	103771
006423	014233	021465	028771	061441	070466	080554	091298	093606	095247	096738	098193	103804
006832	014805	021477	028792	061443	070483	080559	091332	093650	095372	096759	098195	103821
006872	014950	021482	028829	062076	070551	080579	091339	093663	095412	096786	098222	103859
006949	015017	021545	028857	063491	070569	080585	091346	093668	095431	096802	098234	103879
006973	015165	021565	028918	064032	070609	080620	091404	093732	095446	096809	098245	104062
007125	015204	021635	029446	064270	070753	080680	091421	093776	095484	096863	098255	104067
007179	015555	021666	029460	064279	070779	085362	091437	093873	095585	097001	098256	104108
007252	016140	021769	029568	064441	070786	085385	091638	093880	095686	097027	098371	104132
007277	016142	021833	029614	064481	070936	085399	091668	093934	095745	097031	098384	104211
007287	016353	021838	029644	064506	070967	085422	091697	093938	095785	097033	098447	104252
007375	016529	021856	029657	064584	070977	085916	091708	094033	095823	097044	098485	104300
007398	016554	021932	029740	064660	070994	088115	091727	094060	095841	097059	098562	104301
008206	016654	021935	029786	064864	071110	088274	091736	094091	095856	097164	098589	104360
008254	016788	021985	030008	065322	071153	088582	091738	094102	095903	097181	098628	104429
008294	018057	022001	030460	065350	071172	088610	091742	094132	095982	097197	100091	104441
008423	018272	022107	030487	065506	071506	088622	091828	094138	096008	097216	100102	104446
008445	018392	022177	032034	065529	075086	088729	091834	094143	096030	097260	100152	104474
008480	018431	022180	032115	065684	075373	089176	091844	094154	096031	097350	100270	104475
008567	018447	022190	034029	065833	075427	089518	091941	094251	096033	097358	100351	104485
008580	018683	022223	034625	065878	075485	089682	092031	094261	096064	097402	100491	104529
008614	018759	022521	037111	065976	075784	089742	092077	094298	096093	097406	100590	104534
008640	018787	022686	038094	065994	076153	090163	092094	094348	096117	097411	100610	104586
008648	018788	022737	038210	066024	076502	090164	092109	094390	096217	097431	100875	104595
008754	018875	022810	040038	066172	076614	090217	092227	094403	096284	097509	101234	104601
008814	018943	022889	040134	066355	076757	090260	092234	094410	096296	097510	101239	104610
008835	018993	022891	040301	066448	076792	090344	092275	094423	096300	097577	101315	104617
008880	019071	022948	040316	067104	076959	090477	092327	094496	096320	097646	101456	104640
008961	019072	023367	040349	067108	077374	090499	092337	094554	096325	097657	101459	104645
009089	019184	023552	041017	067134	077482	090500	092379	094584	096335	097684	101730	105153
009373	019192	023621	042007	067167	077617	090539	092439	094587	096343	097686	101785	105504
009420	019238	024021	042307	067225	077740	090559	092466	094595	096383	097763	101808	105544
009544	019281	025190	044080	067311	077911	090565	092487	094599	096385	097770	101916	105991
009562	019294	025241	044106	067319	078111	090587	092497	094641	096397	097783	101988	106303
009599	019676	025334	044304	068008	078206	090627	092510	094664	096401	097787	102035	106465

106484	113244	125393	170147	206044	209229	272050	322002	333595	340402	402842	441668	478011
106572	113327	125424	170302	206117	209263	272161	322054	333734	340441	405004	441697	478840
107048	113481	126037	171259	206126	210004	272190	322087	333838	340485	405022	441701	480003
107247	113692	128132	173066	206127	210005	272289	322153	334281	340792	405123	441702	480027
107332	113767	128916	178063	207024	210168	272301	322232	334638	340929	405194	441808	480100
108235	113840	130016	180039	207102	210287	274105	322273	334959	340940	405200	441810	480111
108237	113874	131012	180077	207129	210329	274117	322276	335002	340955	410007	441845	480325
108426	113907	132047	180111	207284	210336	274315	322294	335041	344071	410222	441849	480515
108440	113912	132206	182013	207308	210546	274377	322299	335051	344111	410236	441855	480522
108761	113962	132214	183016	207327	210553	275100	322581	335062	344129	421038	441888	480710
108779	114482	134021	184001	207566	210558	276062	322758	335063	344139	430030	441949	480716
108879	114524	134053	184004	207608	210562	280160	322968	335067	344195	430144	441966	480720
109168	114554	135221	184060	207609	210567	282677	323056	335068	347098	430173	441980	480925
109555	115066	136050	185063	207622	212316	282678	323160	335076	349431	432458	443006	481300
109613	115079	136123	186025	207649	212368	282712	323184	335080	349532	432508	443261	481441
109669	115112	142107	186038	207657	212401	282780	323540	335081	349548	432652	443441	481469
109683	115139	142110	187001	207717	212682	282875	324026	335083	349569	432736	445035	481470
109796	115171	142208	187004	207753	212880	282876	324466	335084	349638	432810	445121	481508
109800	115172	142652	187018	207772	220190	283516	325038	335223	349668	432875	450023	481517
109820	115319	142853	187067	207782	220225	285016	325053	335243	349674	432924	450057	481523
109839	115436	142980	187078	207815	220319	286070	325626	335343	349845	432929	450104	481544
110173	115487	146338	191062	207822	220339	286105	325635	335465	351069	432930	450112	481553
110229	115652	146340	191074	207830	220360	286148	325803	335508	352704	441044	450179	481605
110261	115759	146387	191096	207836	220540	287041	325875	335523	352718	441077	451009	481610
110285	117239	146393	191172	207846	220722	292357	326250	335603	359045	441094	451062	481639
110334	117243	146402	191267	207849	220735	293297	326531	335655	361167	441100	452093	481655
110378	117256	146417	191311	207854	220842	293304	326675	336002	361276	441102	452096	481657
110399	117324	146499	191325	207870	221003	294330	327827	336010	363031	441111	452107	481660
110496	117412	146560	191708	207872	221200	296493	327839	336028	363117	441156	452225	481668
110739	117489	146585	191838	207880	221262	296494	328488	336038	363126	441162	452732	481675
110774	117490	146612	191861	207886	221457	296496	328906	336057	364002	441163	452751	481709
111047	117575	146668	191929	208193	221521	300078	329673	336058	365041	441168	453003	481718
111292	117594	146683	192069	208214	221598	300294	330043	336059	365066	441216	453013	481719
111316	117716	146739	192290	208340	221613	300645	330110	336062	366003	441222	453023	481745
111317	118019	146769	192434	208379	221649	301083	330207	336257	366153	441226	454483	481824
111414	118121	146780	192508	208406	221651	301100	330231	336370	372997	441240	454498	481884
111453	118192	146825	192583	208445	222321	301132	330236	336500	378135	441262	454581	481890
111484	118491	150245	192611	208446	223267	301191	330269	336547	379269	441272	454731	481898
111491	118741	151220	192753	208463	223352	303740	330795	337008	379511	441273	454785	481936
111626	118983	151223	192801	208519	224022	305329	330868	337027	379515	441279	456033	481945
111685	119064	152024	193569	208522	229024	305408	331034	337380	379527	441302	458064	482209
111750	119343	152072	193574	208533	230013	306628	331050	337445	381065	441303	458139	482243
111777	119451	152075	193690	208586	232304	306849	331737	337515	381197	441337	462222	482281
111880	119490	152184	195050	208629	235183	307041	331913	338018	381383	441342	462253	482319
111883	120155	152665	196125	208643	235262	311015	332032	338020	381447	441346	462326	482352
111994	120315	152795	196171	208677	235281	311197	332088	338284	381490	441375	462364	482354
112719	121257	156193	198211	208678	235311	311592	332200	339006	381741	441479	462637	482361
112752	122314	159124	199062	208691	235399	312453	332320	339032	381950	441513	462717	482366
112794	123152	159242	200163	208704	242803	314947	332509	339127	382034	441517	462898	482370
112833	124006	165052	200290	208714	244012	320081	332594	339215	391085	441536	463042	482387
113009	124060	165061	200386	208758	248681	320179	332820	339404	391160	441543	464009	482397
113025	124145	165063	200397	208775	253269	320202	332845	339466	392226	441558	464041	482410
113125	124154	165115	200426	208870	254009	320982	332867	339824	392552	441561	464175	482451
113133	125038	165185	200440	208873	257129	321005	333031	339861	400057	441562	465113	482453
113175	125066	165204	200610	208932	258009	321028	333133	340015	402078	441569	466602	482499
113192	125087	165346	200669	209102	261020	321098	333401	340114	402252	441570	468116	482516
113230	125204	170070	200730	209190	265020	321143	333463	340150	402466	441628	469167	482581
113237	125329	170132	200913	209225	265026	321275	333531	340173	402619	441667	477151	482594

482604	511670	600332	605792	630003	633001	701931	752662	771933	805488	841751	856032	900114
482610	511710	600362	606003	631005	637120	701942	752668	772752	805568	841955	856241	900240
482613	526010	600392	606009	631006	641011	701953	752738	773472	806139	846209	856247	900722
482632	526036	600455	606035	631014	641105	701962	752880	777220	806149	847080	856259	901025
482636	531157	600462	606050	631051	641181	705055	754016	781059	808015	847188	856267	901109
482643	531180	600463	606091	631058	641559	708559	757060	782017	809083	850030	856353	901158
482645	531494	600552	606100	631066	641809	708579	757161	782178	809139	850158	856439	901225
482647	531551	600691	606140	631095	641906	720019	757545	782661	809143	850494	856444	901475
482698	531573	600807	606225	631106	641923	722142	757585	784365	809200	850689	856456	901531
482727	531669	600823	606261	631179	641975	730079	757600	784368	809236	850761	856462	901579
482746	532236	600853	606263	631181	652405	730104	760017	784398	809244	850914	856468	901834
482794	532601	600889	606331	631264	657111	730126	760029	785348	809312	852189	856530	901958
482814	532849	601040	606335	631287	658113	730333	760043	785737	810020	852350	856583	902203
482826	532892	601118	606449	631300	658193	730350	760065	790008	810025	852430	860016	902217
482852	532909	601128	606518	631308	658220	730384	760078	790018	811026	852546	860089	902223
482878	537299	601165	606543	631406	660021	730446	760092	790049	811032	852758	860123	902311
482894	537338	601188	606544	631407	660043	730458	760093	790309	812018	852834	860142	902327
482897	549105	601204	606766	631468	660093	730529	760113	791017	812035	852876	871022	902344
482901	549171	601302	606930	631513	661053	730898	760118	791026	812053	852878	871100	902355
482922	551001	601333	607116	631514	662232	731015	760301	793014	813012	852948	871370	902367
482925	551050	601377	607435	631516	662374	731028	760335	793044	813217	852956	871401	902380
482944	551520	601388	607547	631543	662467	731270	760697	793051	814074	852964	871487	902491
482961	551741	601591	607573	631545	662661	731294	760740	794261	815015	852965	871511	902532
483466	551756	601647	607600	631554	665110	731353	761040	794264	815036	852988	871523	902578
483492	551782	601705	608057	631558	672075	731373	761042	794375	815103	853004	871583	902596
483604	551913	601732	608129	631562	672104	731710	761051	794399	815134	853008	871596	902631
483648	551915	601793	608213	631565	680033	740046	761053	794403	815212	853010	871597	902675
483706	553559	601833	608225	631607	680034	740295	761083	794479	816103	853016	871606	903151
483812	553604	601911	608247	631630	680060	740402	761087	796538	816136	853024	871620	903309
483843	553764	601920	608286	631636	681133	741004	761120	796553	816139	853030	875016	903347
483949	553905	602062	608301	631638	681484	741643	761339	797220	816147	853060	875018	903541
483993	553960	602258	608374	631650	681609	743021	761359	797230	816301	853069	882116	903728
484028	554407	602461	608377	631674	685253	750022	761384	799095	820470	853078	891200	903751
485068	554708	602579	608433	631685	685279	750024	761449	799129	826341	853080	891203	903847
485220	557031	602615	608467	631688	687009	750048	761476	799180	832034	853084	891212	903990
485290	558025	602809	608469	631705	693510	750066	761529	799261	832035	853090	891215	904020
485304	570003	602827	608483	631706	701061	750261	761557	800190	832082	853093	891327	904210
485305	573007	602896	608528	631722	701076	750312	761567	800502	833215	853106	891377	906006
485320	573024	602923	608551	631723	701091	750317	761589	800540	833220	853128	891398	906008
486465	575079	603103	609329	631727	701115	750689	761766	802006	833420	853141	891494	906083
487270	580001	603125	610135	631737	701170	750690	761862	802125	834031	853177	891521	906110
489337	581218	603129	610137	631751	701172	750825	763011	802146	837169	853179	891572	906236
490664	585221	603168	610144	631759	701186	750828	763094	802212	837172	853201	891638	906370
492122	591973	603188	610149	631771	701188	750878	764008	802224	840300	853208	891642	906387
494130	598560	604154	611108	631788	701270	750971	765613	802347	840436	853212	891698	906574
495143	598615	604172	611151	631798	701301	751034	766514	802436	840452	853219	891709	906594
495366	598640	604177	612069	631809	701334	751035	767568	802630	840482	853230	891711	906850
495460	600035	604268	613145	631818	701356	752312	770060	802702	840488	853235	891784	907055
495488	600088	604664	614019	631862	701365	752354	770079	802900	840524	853240	891795	907091
495542	600133	604711	616086	631871	701544	752388	770091	803039	840539	853250	891807	907131
496080	600134	604756	616135	631889	701552	752455	770336	803043	840541	853264	895023	907216
496129	600156	604804	618119	631898	701556	752466	770488	803134	841008	853286	895205	907270
496175	600164	604838	619003	631912	701792	752469	770535	803261	841047	853322	895322	907357
503004	600250	604878	620034	631939	701794	752473	770634	803319	841123	853404	895345	907384
505025	600311	605500	625110	631953	701811	752518	770679	803322	841137	853425	895533	907394
505900	600313	605616	628123	631964	701821	752542	770682	803323	841146	853426	895564	907481
506038	600318	605683	629094	631969	701832	752569	771014	804095	841532	856010	895568	907591
507006	600323	605732	629114	631990	701886	752646	771801	805415	841681	856012	898081	907668

907903	915521	921087	926056	926964	927894	931447	940575	941258	948419	958560	970684	982095
907908	915528	921141	926094	926972	927895	931485	940620	941311	948499	958689	970715	982169
910253	915546	921145	926117	926998	927916	931499	940625	941339	949156	958697	970722	982173
910384	915626	921174	926167	927033	928129	931582	940636	941396	949578	958822	970741	982214
911306	915634	921196	926201	927051	928140	931584	940711	941406	950038	958832	970744	982219
911912	915660	921227	926207	927101	928153	931718	940754	941410	950041	958864	970745	982233
912403	917025	921256	926289	927120	928174	931921	940782	941424	950086	958871	972748	984258
913004	917110	921363	926377	927129	928175	931926	940789	941438	950552	958884	972784	992195
913412	917304	921412	926392	927172	928184	931984	940827	941463	950736	958885	973114	992354
913471	917346	921427	926462	927248	928206	934239	940864	941479	950772	959068	973304	992461
913516	917594	921446	926468	927336	928247	934244	940868	941487	950813	960083	980166	992606
913549	918140	921498	926476	927338	928286	934282	940921	941491	950870	960733	980389	992632
913791	918168	921499	926500	927339	928323	937478	940941	941496	951069	967212	980565	995054
913854	918628	921571	926530	927354	928356	937814	940968	941521	951501	967310	980599	995106
913919	918756	921577	926546	927433	928371	940027	940970	941713	951762	967391	980685	995296
913930	920033	921581	926614	927460	928394	940142	941017	941717	951845	967421	980697	995408
914204	920139	921661	926633	927505	928408	940189	941033	941799	951868	968204	980707	995451
914423	920152	921809	926645	927563	928479	940206	941082	941840	952211	968255	980739	995511
914447	920186	921874	926680	927574	928656	940234	941111	941841	952333	968298	980871	995793
914552	920189	921917	926686	927626	928701	940240	941115	941881	952335	968355	980896	995941
914584	920212	922179	926719	927633	928725	940246	941116	941929	953329	968467	981893	997228
914757	920233	922214	926734	927639	928764	940319	941132	941956	954115	968858	981939	997290
914861	920268	922295	926738	927647	930227	940381	941161	941975	954117	969047	981941	999315
915035	920289	924360	926764	927656	930379	940396	941170	945343	954426	969104	981959	
915191	920318	924452	926788	927673	930387	940397	941195	945901	954702	970328	981982	
915197	920324	924482	926836	927837	931078	940471	941198	945962	955002	970467	982034	
915226	920328	924637	926931	927852	931092	940507	941209	948271	958386	970520	982048	
915510	920384	925221	926944	927891	931211	940562	941217	948400	958559	970648	982057	

—Express and Priority Mail, Marketing, 2-26-98

International Mail

IMM CORRECTION

International Mail — Global Priority Mail (GPM)

Postal Bulletin 21964 (1-29-98) contained an announcement about Global Priority Mail that did not reflect a recent revision to 226.63 of the *International Mail Manual* (IMM). The revised text for that IMM reference, which originally appeared in *Postal Bulletin* 21963 (1-15-98), is reprinted here:

International Mail Manual (IMM)

* * * * *

2 Conditions for Mailing

* * * * *

220 Letters and Letter Packages

* * * * *

226.63 GPM Customs Form Requirements

If the GPM mailpiece weighs	And it contains	Required Customs Form(s)
Less than 16 ounces	Documents; business papers; or non-dutiable printed matter.	No Form Required.
	Dutiable printed matter or merchandise items with a value under \$400.	Affix a completed PS Form 2976 (green label) to the exterior of the mailpiece.
	Merchandise items with a value of \$400 or more.	Place a completed PS Form 2976-A inside the packaging. Affix the upper left section of PS Form 2976 (green label) to the exterior of the mailpiece.
16 ounces or more	Documents; business papers; dutiable and non-dutiable printed matter; or merchandise items with a value under \$400.	Affix a completed PS Form 2976 (green label) to the exterior of the mailpiece.
	Merchandise items with a value of \$400 or more.	Place a completed PS Form 2976-A inside the packaging. Affix the upper left section of PS Form 2976 (green label) to the exterior of the mailpiece.

Note: These customs form requirements are applicable to GPM Flat-Rate envelopes, GPM Flat-Rate boxes, and GPM Variable Weight Postage Option mailpieces.

* * * * *

This change to 226.63 will be incorporated into IMM Issue 20.

—Pricing, Costing, & Classification
International Business Unit, 2-26-98

IMM REVISION

International Mail — Special Services Changes

Effective immediately, *International Mail Manual (IMM)* 385.2 and the Individual Country Listings are revised to reflect the following special services changes:

Recorded Delivery

Recorded delivery service is now available to Ascension, Belize, Cuba, Grenada, Guinea-Bissau, Iran, Lebanon, Maldives, Nicaragua, Saint Helena, Sao Tome and Principe, Tonga, Tuvalu, and Vietnam. Recorded delivery service is no longer available to Greece.

Return Receipt

Recorded delivery mail is being added to the Return Receipt entries in the Individual Country Listings for Ascension, Belize, Cuba, Grenada, Guinea-Bissau, Iran, Lebanon, Maldives, Nicaragua, Saint Helena, Sao Tome and Principe, Tonga, Tuvalu, and Vietnam. Recorded delivery mail is being deleted from the Return Receipt entry for Greece.

International Mail Manual (IMM)

	*	*	*	*	*
3	Special Services				
	*	*	*	*	*
385	Recorded Delivery				
	*	*	*	*	*
385.2	Availability				
	*	*	*	*	*

[The list of destination countries is changed as follows:]

Afghanistan
Ascension
Bahrain
Bangladesh
Belize
Bhutan
Bolivia
Brunei Darussalam
Burkina Faso
Burundi
Central African Republic
China

Colombia
Congo, Democratic Republic of the
Croatia
Cuba
Czech Republic
Dominican Republic
Fiji
Gabon
Germany
Ghana
Grenada
Guinea
Guinea-Bissau
Guyana
Iran
Iraq
Italy
Korea, Republic of
Lebanon
Libya
Macedonia
Malaysia
Maldives
Nepal
Netherlands
Nicaragua
Pakistan
Romania
Rwanda
Saint Helena
Sao Tome and Principe
Spain
Swaziland
Syrian Arab Republic
Tonga
Tunisia
Tuvalu
Uganda
Vietnam
Zambia

These changes to IMM 385.2 and to the Individual Country Listings will be incorporated into Issue 20 of the IMM.

—Pricing, Costing, & Classification,
International Business Unit, 2-26-98

International Customized Mail

On January 26, 1998, the United States Postal Service (USPS) entered into an International Customized Mail Service agreement with a qualifying mailer. In accordance with *International Mail Manual* (IMM) 294, the USPS hereby makes public the following information about that service agreement:

- a. **Term:** January 26, 1998, through January 26, 2001.
- b. **Type of Mail:** Packages: Every item must comply with the size limits for GPL set forth in IMM 623.3. The piece weight for packages over the term of this agreement must comply with the weight limits for GPL set forth in IMM 623.3 and not to exceed 44 pounds. Every item must comply with the preparation requirements as set forth in IMM 620 for GPL, except as those requirements conflict with applicable specific preparation requirements set forth in the agreement. A unique permit number will be used for all Qualifying Mail.
- c. **Destination Countries:** Japan and United Kingdom.
- d. **Service Provided by the U.S. Postal Service:** The USPS has agreed to (1) furnish the mailer with the sacks, tags, and other supplies that the mailer is required to use for Qualifying Mail; (2) provide the mailer or mailing agent with the training necessary for them to prepare ICM mail in conformity with the requirements for Qualifying Mail; (3) arrange with air and surface carriers, as appropriate for Qualifying Mail to be transported internationally for delivery by the foreign postal administration; (4) establish a prearranged address where "return" items from Japan and the

United Kingdom will be consolidated and returned directly to the qualifying mailer on a pre-established frequency.

- e. **Minimum Volume Commitments:** 250,000 GPL mailpieces.
- f. **Worksharing:** The mailer has agreed to (1) pay postage for qualifying mail in accordance with IMM 623.42 and as outlined in the ICM agreement; (2) provide a measurement system, acceptable to the RCSC, as specified in the service agreement; (3) maintain an established number of pieces over the course of the service agreement; (4) tender qualifying mail to the USPS at the designated detached mail unit; and (5) coordinate a schedule of mailings and provide notifications as specified in the service agreement.
- g. **Rate:** The rate is as follows:
 - For qualifying annual GPL volumes of 250,000–500,000, 4.0 percent off of published rates.
 - For qualifying annual GPL volumes of 500,001–750,000, 4.5 percent off of published rates.
 - For qualifying annual GPL volumes of 750,001–1 million, 5.0 percent off of published rates.
 - For qualifying annual GPL volumes > 1 million, 6.0 percent off of published rates.

—Sales and Customer Support,
International Business Unit, 2-26-98

International Customized Mail

On February 5, 1998, the United States Postal Service (USPS) entered into an International Customized Mail Service agreement with a qualifying mailer. In accordance with *International Mail Manual* (IMM) 294, the USPS hereby makes public the following information about that service agreement:

- a. **Term:** February 9, 1998, through February 8, 2000.
- b. **Type of Mail:** Packages: Every item must comply with the size limits for GPL set forth in IMM 623.3. The piece weight for packages over the term of this agreement must comply with the weight limits for GPL set forth in IMM 623.3 and not to exceed 44 pounds. Every item must comply with the preparation requirements set forth in IMM 620 for GPL, except as those requirements conflict with applicable specific preparation requirements set forth in the agreement. A unique permit number will be used for all Qualifying Mail. Catalogs: Every item must comply with the size limits

for ISAL set forth in IMM 246.8. The piece weight for packages over the term of this agreement must comply with the weight limits for ISAL set forth in IMM 246.8. Average weight per piece shall not exceed 5.5 ounces. Every item must comply with the preparation requirements as set forth in IMM 246.9 for ISAL, except as those requirements conflict with applicable specific preparation requirements set forth in the agreement. A unique permit number will be used for Qualifying Mail.

- c. **Destination Countries:** Japan and Germany.
- d. **Service Provided by the U.S. Postal Service:** The USPS has agreed to (1) furnish the mailer with the sacks, tags, and other supplies that the mailer is required to use for Qualifying Mail; (2) provide the mailer or mailing agent with the training necessary for them to prepare ICM mail in conformity with the requirements for Qualifying Mail; (3) arrange with air and sur-

face carriers, as appropriate for Qualifying Mail to be transported internationally for delivery by the foreign postal administration; (4) establish a prearranged address where "return" items from Japan and Germany will be consolidated and returned directly to the qualifying mailer on a preestablished frequency.

- e. **Minimum Volume Commitments:** 400,000 pounds annually.
- f. **Worksharing:** The mailer has agreed to (1) pay postage for qualifying mail in accordance with IMM 623.42 and as outlined in the ICM agreement; (2) provide a measurement system, acceptable to the RCSC, as specified in the service agreement; (3) maintain an established number of pieces over the course of the

service agreement; (4) tender qualifying mail to the USPS at the designated detached mail unit; and (5) coordinate a schedule of mailings and provide notifications as specified in the service agreement.

- g. **Rate:** The rate for qualifying mail is as follows:
For parcels to Japan and Germany, published GPL rates.
For catalogs to Japan, published ISAL rates.
For catalogs to Germany, 5 percent off of published rates.

—Sales and Customer Support,
International Business Unit, 2-26-98

Revised International Surface Air Lift (ISAL), PS Tag 155

Effective February 28, 1998, customers preparing ISAL mailings should use the revised (October 1997) ISAL sack tag. The new PS Tag 155 is now more customer friendly, with an area for a USPS standard, customer-provided barcode. Additional information fields have been added that will assist us in responding to customer inquiries regarding their ISAL shipments.

These tags are now available at the material distribution centers. Upon receipt of the new tags, post offices and customers should discard all earlier versions. Instructions for completing PS Tag 155 are as follows:

Mailer Information (Completed by Mailer)

1. A USPS standard, customer-provided barcode is "optional." If used, the barcode should be affixed in the designated area at the top of the tag.
2. **City:** Enter the three-letter code of the destination city. See codes listed in Appendix E of Publication 31, *International Surface Airlift (ISAL) Service Guide*.
3. **Date of mailing:** It is the same as the mailing date on PS Form 3650, *Statement of Mailing*.

4. **To:** Enter either the country name (only those countries listed in Appendix E of Publication 31 are approved for ISAL service) or the appropriate Drop Ship ISAL International Service Center when dispatching working bundles or residue mail.
5. **Rate group:** Circle the individual rate group of mail in the sack. Do not mix rate groups.
6. **Kilograms:** Enter the combined weight of the sack and its contents in kilograms (1 pound = 0.45 kilogram).
7. **ISAL Permit Number:** Enter the complete 10-digit number. The first five digits should be the origin ZIP Code and the last five digits the permit number.

Example: 19004-00024

USPS Use Only Section (Completed by USPS Dispatching Office)

1. **Origin:** Enter the three-digit alpha code of the airstop from which the ISAL mailing is dispatched.
2. **Dispatch Date:** Enter the actual date the mail was dispatched to the air carrier.
3. **Assigned Air Carrier:** Enter the contracted air carrier's two/three-letter identifier.

—International and Military Mail Operations,
International Business Unit, 2-26-98

Philately

STAMP ANNOUNCEMENT 98-9

Alexander Calder Commemorative Stamps



Copyright USPS 1997

The Postal Service will issue five 32-cent Alexander Calder commemorative stamps, in a pane of 20 (Item 4457), on March 25, 1998, in Washington, D.C. These stamps go on sale nationwide March 26, 1998.

Designed by Derry Noyes of Washington, D.C., the stamps feature five of Calder's kinetic sculptures: *Rearing Stallion*; *Portrait of a Young Man*; *Black Cascade*, *13 Verticals*; *Un effet du japonais*; and *Untitled*. This colorful souvenir sheet coincides with the 100th anniversary of Alexander Calder's birth.

How to Order the First Day of Issue Postmark

Customers have 30 days to obtain the first day of issue postmark by mail. They may purchase the new stamps at their local post office, affix the stamps to envelopes of their choice, address the envelopes (to themselves or others), and place them in a larger envelope addressed to:

ALEXANDER CALDER STAMPS
POSTMASTER
900 BRENTWOOD RD NE
WASHINGTON DC 20066-9991

After applying the first day of issue postmark, the Postal Service will return the envelopes through the mail. There is no charge for the postmark. All orders must be postmarked by April 24, 1998.

Stamp Fulfillment Services also offers first day covers for new stamp issues and postal stationery items postmarked with the official first day of issue cancellation. Each item has an individual catalog number and is offered in the quarterly *USA Philatelic* catalog. Customers may request a free

Issue:	Alexander Calder
Denomination & Type of Issue:	32-cent commemorative
Format:	Pane of 20 (five designs)
Issue Date & City:	March 25, 1998, Washington, DC 20066
National Sale Date:	March 26, 1998
Artist:	Alexander Calder
Designer/Art Director/Typographer:	Derry Noyes, Washington, DC
Engraver:	Armotek Industries
Modeler:	Donald H. Woo
Manufacturing Process:	Gravure
Printer:	Stamp Venturers
Colors (PMS Colors):	Red, yellow, blue, tone black, cool gray, and line black
Image Area:	1.09 x 1.41 in. / 27.686 x 35.814 mm
Overall Size:	1.24 x 1.56 in. / 31.496 x 39.620 mm
Full Pane Size:	9.00 x 6.568 in. / 228.6 x 176.73 mm
Plate Numbers:	"S" followed by six single digits
Marginal Markings:	"© USPS 1997" • Price • Position Diagram • Plate Numbers
Catalog Item Number:	445740 Pane of 20 — \$6.40 445761 First Day Cover — \$5.3

catalog by writing to:

INFORMATION FULFILLMENT
US POSTAL SERVICE
DEPT 6270
PO BOX 419014
KANSAS CITY MO 64141-6014

or by telephoning 1-800-STAMP-24.

First day covers remain on sale for at least 1 year after the stamps' issuance.

Distribution

Stamp distribution offices (SDOs) and stamp distribution networks (SDNs) will receive one-half of their standard distribution for a 20-stamps-per-pane issue, rounded to the nearest master carton size (50,000 stamps).

SDOs and SDNs will make subsequent automatic distributions to post offices for one-half of their standard distribution, using Form 3309, *Advice of Shipment/Stamp Invoice*, and Form 17, *Stamp Requisition*. SDOs and SDNs must not distribute stamps to post offices before March 18, 1998.

Philatelic Requirement

SDOs and SDNs with an authorized philatelic center will receive automatic distributions of this stamp in six positions for subsequent distributions to each center:

Offices That Service the Following Philatelic Windows	Will Receive This Quantity of the Alexander Calder Commemorative Panes
1	12,000
2	24,000
3	36,000
4	48,000
6	100,000
12	150,000
20	250,000

Additional Supply

Post offices requiring additional panes must requisition them from their designated SDO or SDN, using a separate Form 17. SDOs requiring additional panes must order them from their accountable paper depositories (APDs) using a separate Form 17.

For filling supplemental orders, APDs in New York, New York; Memphis, Tennessee; Chicago, Illinois; and Denver, Colorado, will receive 2,950,000 panes. APDs in Washington, D.C., and San Francisco, California, and the Kansas City, Missouri, SDN will receive 3,000,000 panes.

Sales Policy

All post offices must acquire and maintain a supply of each new commemorative stamp as long as customer demand exists or until the stamp is officially withdrawn from sale, generally 1 year from the date of issue. If supplies run low, post offices must reorder additional quantities through their normal ordering procedures.

—Stamp Services, Marketing, 2-26-98

Updated Publications for Community Activities Now Available

Two USPS publications have been updated for use during any community activity, including as a free gift for children touring postal facilities. Designed as family activities, both are now available from the material distribution centers (MDCs).

Publication 39 is the new *United States Postal Service Coloring and Activity Book*. The redesigned and reformatted book includes such activities as puzzles, word scrambles, and quizzes (with answers). Publication 39, targeted to children age seven and under, was previously issued as the *United States Postal Service Postage Coloring Book*.

Publication 192 has been completely reformatted as the *Treasury of Stamps Poster*, with a theme tied to the new Celebrate The Century™ (CTC) stamp program. The 24" x 42" four-color poster features exciting graphics and encourages stamp collecting, specifically the CTC stamps honoring significant people, events, and trends from the 1950s through the 1990s. Beginning this month, over six million children in grades 3–6 began using CTC educational kits dis-

tributed free to teachers nationwide. The first kit provides easy-to-execute lessons relating to the 1950s; kits for other decades will be distributed throughout the 2-year CTC program. Publication 192, targeted to children ages 8–12, was last issued as a set of stamp trading cards.

Copies of Publication 39 (NSN 7610-03-000-9154, Quick Pick Number 269, \$.20 each, Bulk Pack Quantity 200, issue increment 50) and Publication 192 (NSN 7610-03-000-9314, Quick Pick Number 420, \$.18 each, Bulk Pack Quantity 300, issue increment 75) can be ordered by Touch-Tone Order Entry by sending a completed PS Form 7380, *MDC Supply Requisition*, to the following address:

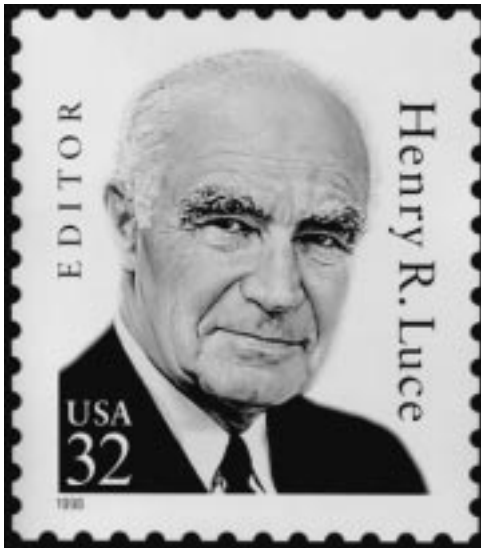
ATTN SUPPLY REQUISITIONS
TOPEKA MDC
500 SW MONTARA PKWY
TOPEKA KS 66624-9702

PS Form 7380 also can be faxed to the Topeka MDC by dialing 785-861-2939.

—Stamp Services, Marketing, 2-26-98

STAMP ANNOUNCEMENT 98-10

Henry R. Luce Definitive Stamp



Copyright USPS 1997

The Postal Service will issue a 32-cent Henry R. Luce definitive stamp in a pane of 20 (Item 1068) on April 3, 1998, in New York, New York. The stamp goes on sale nationwide April 4, 1998.

Designed by Richard Sheaff of Scottsdale, Arizona, the engraved stamp design is based on a photograph of Henry R. Luce taken by Alfred Eisenstadt in 1962. Henry R. Luce became one of America's top editors and publishers, founding *Time*, *Fortune*, *Life*, and *Sports Illustrated* magazines. This stamp is an addition to the Great Americans series.

How to Order the First Day of Issue Postmark

Customers have 30 days to obtain the first day of issue postmark by mail. They may purchase the new stamp at their local post office, affix the stamps to envelopes of their choice, address the envelopes (to themselves or others), and place them in a larger envelope addressed to:

HENRY R LUCE STAMP
 POSTMASTER SPECIAL EVENTS
 PO BOX 2001 JAF BLDG
 NEW YORK NY 10116-2001

After applying the first day of issue postmark, the Postal Service will return the envelopes through the mail. There is no charge for the postmark. All orders must be postmarked by May 3, 1998.

Stamp Fulfillment Services also offers first day covers for new stamp issues and postal stationery items postmarked with the official first day of issue cancellation. Each item has an individual catalog number and is offered in the quarterly

Issue:	Henry R. Luce
Denomination & Type of Issue:	32-cent definitive
Format:	Pane of 20 (one design)
Series:	Great Americans
Issue Date & City:	April 3, 1998, New York, NY 10199
National Sale Date:	April 4, 1998
Art:	Based on photograph by Alfred Eisenstadt
Designer/Art Director/Typographer:	Richard Sheaff, Scottsdale, AZ
Engraver:	Milos Ondracek
Modeler & Printer:	Banknote Corporation of America
Manufacturing Process:	Intaglio
Colors (PMS Colors):	Red
Image Area:	0.692 x 0.802 in. / 17.58 x 20.37 mm
Overall Size:	0.840 x 0.990 in. / 21.34 x 25.15 mm
Full Pane Size:	5.040 x 4.950 in. / 128.02 x 125.73 mm
Plate Numbers:	"B" followed by one single digit
Marginal Markings:	"© USPS 1997" • Plate Numbers • Position Diagram • Price
Catalog Item Number:	106840 Pane of 20 — \$6.40 106861 First Day Cover — \$.53

USA Philatelic catalog. Customers may request a free catalog by writing to:

INFORMATION FULFILLMENT
 US POSTAL SERVICE
 DEPT 6270
 PO BOX 419014
 KANSAS CITY MO 64141-6014

or by telephoning 1-800-STAMP-24.

First day covers remain on sale for at least 1 year after the stamp's issuance.

Distribution

All stamp distribution offices (SDOs) and stamp distribution networks (SDNs) will receive approximately one-quarter their standard quantities for a 20-stamps-per-pane issue, rounded to the nearest master carton size (100,000 stamps).

Initial Supply

The Minneapolis Information System Service Center will not use Form 3309, *Advice of Shipment/Stamp Invoice*, to distribute this definitive stamp. To obtain initial quantities of this stamp, post offices must immediately submit Form 17, *Stamp Requisition*, to their designated SDOs or SDNs.

SDOs and SDNs must not distribute these stamps to post offices before March 25, 1998.

Additional Supply

Accountable paper depositories will not receive stamps for filling supplemental orders. Post offices requiring additional stamps must requisition them from their designated SDO or SDN on a separate Form 17, *Stamp Requisition*.

Philatelic Requirement

SDOs and SDNs with an authorized philatelic center will receive approximately one-half of their automatic distributions of this stamp in eight positions for subsequent distributions to each center:

Offices That Service the Following Philatelic Windows	Will Receive This Quantity of the Henry R. Luce Definitive Stamp
1	16,000
2	16,000
3	32,000
4	32,000
6	100,000
12	100,000
20	200,000

—Stamp Services, Marketing, 2-26-98

Celebrate The Century™ — 1900–1910 Retail Merchandise Promotion

In early March, 26,000 offices nationwide will begin receiving retail merchandise depicting the Teddy Bear and WW I Uncle Sam stamps that are part of the 1900–1910 Celebrate The Century™ series. To commemorate these stamps, the following items will be available for sale:

Item Number	Item	Price
98370010	Teddy Bear Lapel Pin	\$1.99
98370012	WW I Uncle Sam Lapel Pin	\$1.99
98350031	Teddy Bear Magnet	\$2.99
98350033	WW I Uncle Sam Magnet	\$2.99
98350034	Teddy Bear Key Chain	\$3.99
98350036	WW I Uncle Sam Key Chain	\$3.99
98410017	Teddy Bear Mouse Pad	\$5.99
98410018	WW I Uncle Sam Mouse Pad	\$5.99
98440018	Teddy Bear Note Card Tin	\$9.99
98460035	Teddy Bear Card w/necklace	\$6.99

No merchandiser is being sent out for this product. All items are pegged (except the Teddy Bear tins) and ready to hang on the slat wall. Tins may be placed on existing acrylics, a slat-wall shelf, or the retail counter, if space is available.

Outlets previously designated by districts as having large, mobile or mini-slatwalls will participate. Each participating outlet will receive a one-time distribution. To ensure a total sell through, limited quantities of each product are being distributed. No discounts are planned. Do not return any product until you receive specific instructions from Headquarters.

Merchandise may be transferred among participating offices using the transfer procedures in place.

The Celebrate The Century™ 1900–1910 promotion begins immediately upon receipt of the merchandise. Report sales in AIC 098.

In April 1998, retail merchandise created with the Crayola stamp image will be added to the assortment. Further information on this product will be described in a future *Postal Bulletin*.

—Retail Products and Services, Marketing, 2-26-98

Stamps Withdrawn From Regular Sale and From Sale at Philatelic Centers

Effective March 22, 1998, all post offices, stations, branches, postal retail stores, vending outlets, and authorized philatelic centers must withdraw the stamp stock items listed below from sale and prepare them for destruction. The stamp stock items should be submitted to destruction sites according to local established procedures, under the guidelines in Handbook F-1, *Post Office Accounting Procedures*, section 45, Destroying Stamp Stock.

Absolutely no sales of the stamp stock listed are permitted after March 22, 1998. These stamp stock items are also being removed from sale at Stamp Fulfillment Services (SFS).

Item Number	Description
Stamp Items	
4467	32-cent Prehistoric Animals Stamps
4485	32-cent Tennessee Statehood Stamps
4486	32-cent Riverboat Stamps
4487	32-cent Rural Free Delivery Stamps
4489	32-cent Songwriters Stamps
4490	32-cent Big Band Leaders Stamp
4494	32-cent Iowa Statehood Stamps
5513	\$5.76 Holiday Sledding ATM Sheetlet
5516	32-cent Holiday Children & Santa Stamps
5519	32-cent Holiday Madonna & Child Stamps
6642	\$6.40 Holiday Children & Santa Booklet
6653	\$6.40 Great Lakes Lighthouses Booklet
6654	\$6.40 Tennessee Statehood Sheetlet
6655	\$6.40 Contemporary Holiday Booklet
6660	\$6.40 Holiday Madonna & Child Booklet
6662	\$6.40 Iowa Statehood Sheetlet
Products	
8888	\$9.95 Prehistoric Animal Commemorative Book
9873	\$4.95 Prehistoric Animal StampFolio
9969	\$7.95 Prehistoric Animal Panel
8851	\$19.95 Tennessee Statehood Souvenir
8853	\$14.95 Tennessee Statehood Poster
9869	\$9.95 Tennessee Statehood StampFolio
9968	\$7.95 Tennessee Statehood Panel

Item Number	Description
Stamp Items	
8864A-G	\$3.95 Riverboat Pages
8865	\$14.95 Riverboat Souvenir
8866	\$12.95 Riverboat Poster
9876	\$4.95 Riverboat StampFolio
9974	\$7.95 Riverboat Panel
9973	\$7.95 Rural Free Delivery Panel
8867	\$19.95 Songwriters Souvenir
9977	\$7.95 Songwriters Panel
8867	\$19.95 Big Band Leaders Souvenir
8857	\$14.95 Iowa Statehood Souvenir
8868	\$9.95 Iowa Statehood Poster
9936	\$4.95 Iowa Statehood StampFolio
9972	\$7.95 Iowa Statehood Panel
9900	\$7.95 Traditional Holiday Panel
9901	\$7.95 Contemporary Holiday Panel
9958	\$7.95 Winter Garden Flower Panel
9872	\$4.95 Fall Garden Flower StampFolio
9892	\$7.95 Fall Garden Flower Panel

The following stamp items are withdrawn from sale at philatelic windows and SFS. However, they will remain on sale at the regular sales windows and postal retail stores until quantities are exhausted.

Item Number	Description
Gum Adhesive Stamps and Books	
4418	32-cent American Indian Dances Stamps
6624	\$6.40 Winter Garden Flower Booklet
6648	\$6.40 Fall Garden Flower Booklet
Products	
8850	\$14.95 American Indian Dance Souvenir
8852	\$29.95 American Indian Dance Open Edition
9875	\$9.95 American Indian Dance StampFolio
9975	\$7.95 American Indian Dance Panel

Pictorial Cancellations Announcement 98-4

As a community service, the Postal Service offers pictorial cancellations to commemorate local events celebrated in communities throughout the nation. A list of upcoming events for which pictorial cancellations are authorized appears below. If available, the sponsor of the pictorial cancellation appears in italics under the date. Also provided, as space permits, are illustrations of those cancellations that were reproducible and available at press time.

People attending these local events may obtain the cancellation in person at the temporary post office station established there. Those who cannot attend the event, but who wish to obtain the cancellation, may submit a mail order request. Pictorial cancellations are available only for the dates indicated, and *requests must be postmarked no later than 30 days following the requested pictorial cancellation date.*

All requests must include a stamped envelope or postcard bearing at least the minimum First-Class Mail postage (32 cents per envelope or 20 cents per postcard). Items sub-

mitted for cancellation may not include postage issued after the date of the requested cancellation. Such items will be returned unserved.

Customers wishing to obtain a cancellation should affix stamps to any envelope or postcard of their choice, address the envelope or postcard to themselves or others, insert a card of postcard thickness in envelopes for sturdiness, and tuck in the flap. Place the envelope or postcard in a larger envelope and address it to: PICTORIAL CANCELLATIONS, followed by the NAME OF THE STATION, ADDRESS, CITY, STATE, ZIP + 4 CODE, exactly as listed below (using all capitals and no punctuation, except the hyphen in the ZIP + 4 code).

After applying the pictorial cancellation, the Postal Service returns the envelope or postcard through the mail. Customers who want their serviced item returned under protected cover should include a larger, stamped, self-addressed envelope.



February 6, 1998

CELEBRATE THE CENTURY STATION
POSTMASTER
1801 BROOK RD
RICHMOND VA 23232-9998



February 14, 1998

MASSANUTTEN STATION
POSTMASTER
PO BOX 1227
HARRISONBURG VA 22801-9998



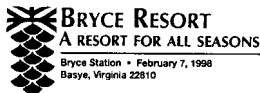
February 7, 1998

PINE TREE CAMP SNOWMOBILE RIDE-IN
STATION
POSTMASTER
84 MAIN ST
NEWPORT ME 04953-9998



February 14, 1998

CELEBRATE THE CENTURY STATION
POSTMASTER
PO BOX 9998
WEWELA SD 57578-9998



February 7, 1998

BRYCE STATION
POSTMASTER
PO BOX 3
BASYE VA 22810-9998



February 15-March 15, 1998

TRIPLE NICKEL STATION
POSTMASTER
2300 SYLVAN AVE
MODESTO CA 95355-9998



February 10, 1998

CELEBRATE THE CENTURY STATION
POSTMASTER
PO BOX 9998
HARROLD SD 57536-9998



February 16, 1998

Luis Munoz Marin Foundation
CENTENARIO STATION
POSTMASTER
41 CALLE MUNOZ RIVERA
BARRANQUITAS PR 00794-9998



February 13-15, 1998

Blue Grass Darting Association
16TH ANNUAL EASY MONEY OPEN DART
TOURNAMENT STATION
POSTMASTER
PO BOX 9998
LEXINGTON KY 40505-9998



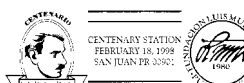
February 17, 1998

CELEBRATE THE CENTURY STATION
POSTMASTER
PO BOX 9998
BLUNT SD 57522-9998



February 14, 1998

WARR ACRES STATION
POSTMASTER
6001 NW 23RD
OKLAHOMA CITY OK 73122-9998



February 18, 1998

Luis Munoz Marin Foundation
CENTENARIO STATION
POSTMASTER
585 AVE FD ROOSEVELT
SAN JUAN PR 00936-9998



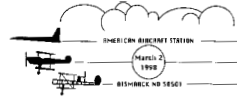
February 19, 1998
WAKE CENTENNIAL STATION
 POSTMASTER
 RTE 625 & RTE 626
 WAKE VA 23176-9998



March 1-30, 1998
HAPPY ST PATRICKS DAY STATION
 POSTMASTER
 PO BOX 9998
 ST PATRICK MO 63466-9998



February 19-22, 1998
RI SPRING FLOWER GARDEN SHOW
 STATION
 POSTMASTER
 181 CORLISS ST
 PROVIDENCE RI 02903-9998



March 2 & 3, 1998
CELEBRATE THE CENTURY STATION
 POSTMASTER
 113 MAIN AVE
 TURTLE LAKE ND 58575-9998



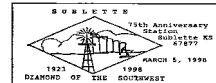
February 21, 1998
CELEBRATE THE CENTURY
 POSTMASTER
 PO BOX 9998
 HIGHMORE SD 57345-9998



March 4-8, 1998
PIONEER PARK DAYS STATION
 POSTMASTER
 3141 US HWY 17 S
 ZOLFO SPRINGS FL 33890-9998



February 21, 1998
FEDERATED GARDEN CLUBS OF
CONNECTICUT FLOWER STATION
 POSTMASTER
 271 BARBOUR ST
 HARTFORD CT 06120-9998



March 5, 1998
75TH ANNIVERSARY STATION
 POSTMASTER
 PO BOX 9998
 SUBLETTE KS 67877-9998



February 21, 1998
BLACK HISTORY CELEBRATION STATION
 POSTMASTER
 3300 ODD FELLOWS RD
 LYNCHBURG VA 24506-9998



March 6-8, 1998
COIN & CURRENCY STATION
 POSTMASTER
 900 E FAYETTE ST
 BALTIMORE MD 21333-9715



February 22, 1998
Luis Munoz Marin Foundation
FUNDACION LMM STATION
 POSTMASTER
 585 AVE FD ROOSEVELT
 SAN JUAN PR 00936-9998



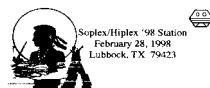
March 6, 1998
HASTINGS MUSEUM STATION
 POSTMASTER
 300 N KANSAS AVE
 HASTINGS NE 68901-9998



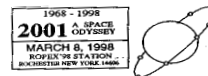
February 28, 1998
BOK KAI FESTIVAL STATION
 POSTMASTER
 407 C ST
 MARYSVILLE CA 95901-9998



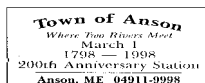
March 6, 1998
ROPEX 98 STATION
 POSTMASTER
 1335 JEFFERSON RD
 ROCHESTER NY 14692-9998



February 28 & March 1, 1998
South Plains Stamp Club
SOPLEX/HIPEX 98 STATION
 POSTMASTER
 1515 AVE G
 LUBBOCK TX 79402-9998



March 7, 1998
ROPEX 98 STATION
 POSTMASTER
 1335 JEFFERSON RD
 ROCHESTER NY 14692-9998



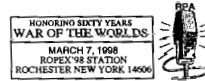
March 1, 1998
WHERE TWO RIVERS MEET STATION
 POSTMASTER
 PO BOX 9998
 ANSON ME 04911-9998



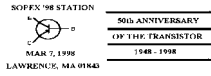
March 7, 1998
BIKE RACE STATION
 POSTMASTER
 404 NEW YORK ST
 REDLANDS CA 92374-9998



March 7 & 8, 1998
 The Knoxville Philatelic Society
 KNOXPEX STATION
 POSTMASTER
 1237 E WESIGARBER RD
 KNOXVILLE TN 37950-9998



March 8, 1998
 ROPEX 98 STATION
 POSTMASTER
 1335 JEFFERSON RD
 ROCHESTER NY 14692-9998



March 7 & 8, 1998
 SOPEX STATION 1998
 POSTMASTER
 431 COMMON ST
 LAWRENCE MA 01842-9998



March 9, 1998
 BICENTENNIAL STATION
 POSTMASTER
 PO BOX 9998
 FABIUS NY 13063-9998



March 7 & 8, 1998
 SPRINGPEX STATION
 POSTMASTER
 6540 FRANCONIA RD
 SPRINGFIELD VA 22150-9998



March 9, 1998
 BICENTENNIAL STATION
 POSTMASTER
 PO BOX 9998
 APULIA STATION NY 13020-9998



March 7 & 8, 1998
 BOCOPEX STAMP SHOW STATION
 POSTMASTER
 1905 15TH ST
 BOULDER CO 80302-9998



March 9, 1998
 ANNIVERSARY STATION
 POSTMASTER
 9 TAYLORS MILLS RD
 ENGLISHTOWN NJ 07726-9998



March 7 & 8, 1998
 NOVAPEX STATION
 POSTMASTER
 2323 CHUM CREEK RD
 REDDING CA 96049-9998

Post Offices

Post Office Changes Number 98-2

Old/ New	Finance No.	ZIP Code	State	P.O. Name	County/ Parish	Station/Branch/ Unit	Unit Type	Effective Date	Comments
Old	11-9120	32784	FL	Umatilla	Lake	Dona Vista	Community Post Office	11/30/96	Community Post Office discontinued. Retain ZIP Code. Umatilla FL becomes an acceptable last line for use with ZIP Code 32784. This amends PB 21964.
New	11-9120	32784	FL	Umatilla	Lake	Main Office	Post Office	11/30/96	
Old	18-8325	51110	IA	Sioux City	Woodbury	Main Office	Post Office	1/1/98	ZIP Code discontinued. Use Sioux City IA 51111 as last line of address for deliveries previously in ZIP Code 51110.
New	18-8325	51111	IA	Sioux City	Woodbury	Main Office	Post Office	1/1/98	
Old	18-8325	51107	IA	Sioux City	Woodbury	Main Office	Post Office	1/1/98	ZIP Code discontinued. Use Sioux City IA 51106 as last line of address for deliveries previously in ZIP Code 51107.
New	18-8325	51106	IA	Sioux City	Woodbury	Main Office	Post Office	1/1/98	
Old	32-1920	03231	NH	East Andover	Merrimack	Main Office	Post Office	3/1/98	ZIP Code changed to serve post office boxes only. Use ZIP Code 03216 for all deliveries previously in ZIP Code 03231.
New	32-1920	03216	NH	Andover	Merrimack	Main Office	Post Office	3/1/98	
Old	31-4880	89117	NV	Las Vegas	Clark	Spring Valley Station	Classified Station	7/1/98	Establish a new ZIP Code for a delivery area. Use Las Vegas NV 89147 as last line of address for a portion of the deliveries previously in ZIP Code 89117.
New	31-4880	89147	NV	Las Vegas	Clark	Spring Valley Station	Classified Station	7/1/98	
Old	31-4880	89102	NV	Las Vegas	Clark	Garside Station	Classified Station	7/1/98	Establish a new ZIP Code for a delivery area. Use Las Vegas NV 89146 as last line of address for a portion of the deliveries previously in ZIP Code 89102.
New	31-4880	89146	NV	Las Vegas	Clark	Garside Station	Classified Station	7/1/98	
Old	46-7146	57701	SD	Rapid City	Pennington	Post Office	Main Office	7/1/98	Establish a new ZIP Code for a delivery area. Use Rapid City SD 57703 as last line of address for a portion of the deliveries previously in ZIP Code 57701.
New	46-7146	57703	SD	Rapid City	Pennington	Post Office	Main Office	7/1/98	
Old	46-7146	57701	SD	Rapid City	Pennington	Main Office	Post Office	7/1/98	Realign ZIP Code boundaries. Use Rapid City SD 57701 as last line of address for a portion of the deliveries previously in ZIP Code 57702.
New	46-7146	57702	SD	Rapid City	Pennington	Main Office	Post Office	7/1/98	

Old/ New	Finance No.	ZIP Code	State	P.O. Name	County/ Parish	Station/Branch/ Unit	Unit Type	Effective Date	Comments
Old	51-1750	23320	VA	Chesapeake	Chesapeake City	Main Office	Post Office	7/1/98	Realign ZIP Code boundaries. Use Chesapeake VA 23322 as last line of address for a portion of the deliveries previously in ZIP Code 23320.
New	51-1750	23322	VA	Chesapeake	Chesapeake City	Main Office	Post Office	7/1/98	
Old	56-8640	53186	WI	Waukesha	Waukesha	Main Office	Post Office	7/1/98	Establish a new ZIP Code for a delivery area. Use Waukesha WI 53189 as last line of address for a portion of the deliveries previously in ZIP Code 53186.
New	56-8640	53189	WI	Waukesha	Waukesha	Main Office	Post Office	7/1/98	
Old	56-8640	53188	WI	Waukesha	Waukesha	Main Office	Post Office	7/1/98	Establish a new ZIP Code for a delivery area. Use Waukesha WI 53189 as last line of address for a portion of the deliveries previously in ZIP Code 53188.
New	56-8640	53189	WI	Waukesha	Waukesha	Main Office	Post Office	7/1/98	

—Address Management, Operations Support, 2-26-98

NOTICE TO ALL EMPLOYEES

THRIFT SAVINGS PLAN FACT SHEET

C, F, and G Fund Monthly Returns

Released February 10, 1998

MONTHS	C	F	G
1989 JAN.-DEC. %	31.03	13.89*	8.81
1990	-3.15	8.00*	8.90
1991	30.77	15.75	8.15
1992	7.70	7.20	7.23
1993	10.13	9.52	6.14
1994	1.33	-2.96	7.22
1995	37.41	18.31	7.03
1996	22.85	3.66	6.76
1997	33.17	9.60	6.77
1997			
FEBRUARY	.79	.24	.51
MARCH	-4.13	-1.11	.57
APRIL	6.00	1.49	.58
MAY	6.07	.94	.58
JUNE	4.45	1.18	.56
JULY	7.94	2.69	.57
AUGUST	-5.59	-.86	.53
SEPTEMBER	5.46	1.48	.54
OCTOBER	-3.38	1.45	.54
NOVEMBER	4.61	.46	.50
DECEMBER	1.71	1.01	.52
1998			
JANUARY	1.12	1.28	.51
LAST 12 MONTHS	26.77	10.67	6.71

*Through 1990 the F Fund was invested in the Wells Fargo Bond Index Fund.

The C Fund is invested in the Barclays Equity Index Fund, which tracks the S&P 500 stock index. The F Fund is invested in the Barclays U.S. Debt Index Fund, which tracks the Lehman Brothers Aggregate Bond index. Because of expenses and changing balances in the C and F Funds, their returns vary from Barclays' returns. The G Fund is invested in special issues of U.S. Treasury securities.

Future performance of the three funds will vary and may differ significantly from the returns shown above. See the "Summary of the Thrift Savings Plan" for detailed information about the funds and their investment risks.

The monthly C, F, and G Fund returns represent net earnings after deduction of accrued administrative expenses. The C and F Fund returns also reflect the deduction of trading costs and accrued investment management fees.

The C, F, and G Fund monthly returns are dollar-weighted: they reflect net earnings on the changing balances invested during the month. The C, F, and G Fund returns for the last 12 months assume, except for the crediting of earnings, unchanging balances (time-weighting) from month to month and that earnings are compounded on a monthly basis.

Federal Retirement Thrift Investment Board



Please post on bulletin boards.
Destroy all previous notices.

This page intentionally left blank

This page intentionally left blank



475 L'ENFANT PLAZA SW
WASHINGTON DC 20260-1540

First-Class Mail
Postage & Fees Paid
USPS
Permit No. G-10

Postal Service Orders for Postal Bulletin

- New Order Change of Address
(Include *Postal Bulletin* mailing label.)

Attention Line _____

Postal Facility Name _____

Delivery Address _____

City _____ State _____ ZIP+4 _____

Person to Contact
() _____

Daytime Telephone _____

- Change Quantity of Subscription
(Include *Postal Bulletin* mailing label.)

Current Quantity _____ New Quantity _____

Distribution: The GPO distributes the *Postal Bulletin* for the Postal Service to all postal facilities except classified stations and branches, contract postal units, and detached mail units, which receive copies from their administrative post office.

Missing Issues: If postal facilities that receive the *Bulletin* from GPO do not receive their order, they should call the *Postal Bulletin* editor at 202-268-2836. All other facilities should contact their administrative post office.

Address and Quantity Changes and Subscription Problems: Postal facilities may send address and quantity changes and subscription queries via cc:Mail to POSTAL BULLETIN or via the Internet to pbulleti@email.usps.gov. Please include old and new address and quantities, and the "P00" subscription number from your address label. Postal facilities may also complete this form and mail it to:

ATTN POSTAL BULLETIN
US POSTAL SERVICE
475 L'ENFANT PLZ SW RM 2800
WASHINGTON DC 20260-1540

All other facilities should contact their administrative post office.

Single Copies (back to 1 year): To order extra copies or back issues, call MDC Customer Service at 800-332-0317 or send PS Form 7380, *MDC Supply Requisition*, to:

MATERIAL DISTRIBUTION CENTER
ATTN SUPPLY REQUISITIONS
500 SW MONTARA PKY
TOPEKA KS 66624-9602

Please use the correct item number: 7690-04-000-2598.



Public Orders for Postal Bulletin

- New Order Change of Address
(Include *Postal Bulletin* mailing label.)

Attention Line _____

Company Name _____

Delivery Address _____

City _____ State _____ ZIP+4 _____
() _____

Daytime Telephone _____

Subscription: Domestic - \$83.00 per year; International - \$103.75 per year

Subscription Orders: 202-512-1800

Subscription Inquiries: 202-512-1806 Fax: 202-512-2250

Single Copies (back to 16 issues): Domestic - \$5.00; International - \$6.25

- Enter _____ Annual Subscription(s).
Total Amount \$ _____

- Send _____ additional copies of Bulletin # _____
Total Amount \$ _____

- GPO deposit account [] [] [] [] [] [] [] [] - []

- Check/money order payable to: Superintendent of Documents

- VISA MasterCard

Credit Card Number _____ Expiration Date _____

Signature _____

Mail Completed Form and Payment To:

SUPERINTENDENT OF DOCUMENTS
US GOVERNMENT PRINTING OFFICE
PO BOX 371954
PITTSBURGH PA 15250-7954