

POSTAL BULLETIN

PUBLISHED SINCE MARCH 4, 1880

PB 21890—MARCH 30, 1995

CONTENTS

Administrative Services

Procedures for Accessing Material Logistics Bulletins on the Topeka Electronic Bulletin Board System	2
Thrift Savings Plan Materials—TSP BK05, TSP-15	2

Customer Services

Mail Alert	3
------------------	---

Domestic Mail

APO/FPO Changes	4
Customers' Requests for Account Information	1
New Authorized Independent Audit Bureaus for Second-Class Publishers	5
Treasury Department Checks	5

Finance

13-Period Year Calendar—1996-1997	11
1996 Postal Fiscal Year Calendar	10
Deadlines for Non-SFAS 1099 1995 Calendar Year Data	9
General Classification of Accounts (<i>Handbook F-8 Revision</i>)	6

Fraud Alert

Domestic Order	12
Foreign Order Number 356 (<i>All Personnel Processing Mail for Dispatch Abroad</i>)	12
Invalid Express Mail Corporate Account Numbers ..	18
Missing Canadian Money Order Forms	15
Missing U.S. Money Order Forms	13
Withholding of Mail Orders	12

Philately

32-Cent Liberty Bell Security Stamped Envelope ..	29
32-Cent Love (Cherub) Special Stamp	32
32-Cent Love Spiral Heart Envelope	30
32-Cent Richard M. Nixon Stamp	28
55-Cent Love (Cherub) Self-Adhesive Stamp Convertible Booklet	33
55-Cent Love (Cherub) Special Stamp	34
\$6.40 Love (Cherub) Special Stamp Booklet	35
Availability of Additional "G" Series Stationery Items	35
Change in the First Day of Sale and Sale City of \$6.40 Flag Over Porch Self-Adhesive Stamp Booklet Only	35
Marilyn Monroe Commemorative Stamp Issuance Plans	36
Pictorial Cancellations Announcement Number 7 ..	22
Stamp Announcement 95-9 (<i>Kids Care! Commemorative Stamps</i>)	39
Stamp Announcement 95-10 (<i>Richard Nixon Commemorative Stamp</i>)	40
Stamp Announcement 95-11 (<i>Bessie Coleman Commemorative Stamp</i>)	41

Post Office

Post Office Changes Number 7	42
------------------------------------	----

Customers' Requests for Account Information

The Postal Service periodically receives requests for records of past transaction activities from customers who maintain various accounts with us. The records custodian at a postal facility will furnish, upon receipt of a written request from the customer who holds the account, transaction information for the permits or accounts listed below:

1. Business Reply Account.
2. Advance Deposit Account for Permit Imprint Mailings.
3. Express Mail Postage Trust Account.
4. Postage Due Account.
5. Advance Deposit Account for Second-Class Mailings.
6. Intelpost Advance Deposits.

The records custodian must not furnish account transaction information to anyone other than the customer who holds the account. Upon request, the records custodian will provide available information such as opening and closing balances, deposits, and withdrawals, including dates of transactions. The period of activity requested by the customer cannot exceed the retention period for the postal account records. The customer must pay the fees listed below before the record is made available. Upon request, the fee may be deducted from the customer's account. Fees will be recorded in AIC 198 (Freedom of Information Act) fees, FOIA Account 43388.

Period of Activity Occurrence	Fee for Each Account From Which Information Is Being Sought
For Automated Postal Bookkeeping:	
Activity within current postal quarter	Free
Activity within previous 3 quarters	\$10.00 per quarter
Activity prior to previous 3 quarters	\$25.00 per quarter
For Manual Postal Bookkeeping:	
Any period of past activity	Use FOIA fees in <i>Administrative Support Manual 352.72</i> to assess labor and copying charges

Current administrative procedures generally require that postal personnel issue receipts for deposits and charges, and copies of billed mailing statements, whenever activity is transacted against a customer's account. Customers should be encouraged to use these receipts for their own accounting purposes.

—*Business Mail Acceptance, Marketing Systems, 3-30-95*

Latest Quarterly Index: 1994 Annual Index:
PB 21886, 2-2-95 PB 21888, 3-2-95



ADMINISTRATIVE SERVICES

Thrift Savings Plan Materials—TSP BK05, TSP-15

New Edition of TSP BK05 Distributed. Prior Editions Obsolete

The Thrift Savings Plan (TSP) recently released a new edition of the booklet TSP BK05, *Thrift Savings Plan Annuities* (March 1995). The material distribution centers (MDCs) are distributing this item to Human Resources personnel at customer services district offices, area offices, processing and distribution centers, bulk mail centers, airport mail centers, remote encoding centers, Headquarters, and selected Headquarters field units.

Personnel services offices should provide the annuities booklet to TSP participants upon request and inform separating participants of its availability. Personnel services offices *are not* required to include the annuity booklet in the withdrawal package they provide to separating TSP participants. The March 1995 version of TSP BK05 re-

flects recent changes to the TSP withdrawal program and describes the new procedure and forms for requesting an annuity.

Upon receipt of the March 1995 version, offices must destroy all prior versions of TSP BK05.

TSP-15 Obsolete

As part of the recent changes to the TSP withdrawal program, Form TSP-15, *Change in Marital Status*, has been declared obsolete. Personnel services offices must destroy all copies of this form.

For information on the changes to the TSP withdrawal program, refer to the article "Thrift Savings Plan Policy Changes" printed in the December 22, 1994, *Postal Bulletin*.

—*Compensation and Benefits,
Human Resources, 3-30-95*

Procedures for Accessing Material Logistics Bulletins on the Topeka Electronic Bulletin Board System

Active Purchasing and Materials *Material Logistics Bulletins* (MLBs) dating from 1988 to the present are now available via modem from the Electronic Bulletin Board System (EBBS) at Topeka, KS. Electronic access is being provided in addition to the normal, hardcopy distribution. All MLBs are in the Word for Windows 6.0 format. Offices that cannot access EBBS should request hardcopies from their Purchasing and Materials service center.

To access MLBs on EBBS:

1. Set modem parity to none, data to 8, and stops to 1. EBBS can support up to 14.4K baud rate.
2. Dial either 800-808-6997 or 913-861-2875.
3. Read the screen prompts to log in as a user.
4. At the main menu, type L and press Enter for file libraries.
5. Type S MLB and press Enter for select a library, and change to the MLB library.

To list the available MLBs:

1. Type F and press Enter for find file.

2. Type F and press Enter for by file name (alphabetically).
3. Press Enter to start at the beginning of the alphabet.
4. Type C and press Enter for the current library.

To download a MLB:

1. Type D and press Enter.
2. Type the MLB name and press Enter.
3. Select the appropriate download method (Zmodem recommended for 9600 baud and above and Xmodem for below 9600).

To download information files:

1. Download "_ALL_MLB.DOC" to obtain a list of current MLBs, containing a short description and issuance and expiration dates.
2. Download "MLB.EXE" to obtain a compressed MLB listing.
3. Type MLB and press Enter to decompress.

—*Inventory Management,
Purchasing and Materials, 3-30-95*

CUSTOMER SERVICES

Mail Alert

The mailings below will be deposited in the near future. Offices should honor the requested home delivery dates. Mailers wishing to participate in these alerts, for mailings

of 1 million pieces or more, should contact Sales Management at 202-268-2271, 1 month preceding the requested delivery dates.

Title of Mailing	Class and Type of Mail	Requested Delivery Dates	Number of Pieces (millions)	Distribution	Presort Level	Comments
Fashion Gal, Fashionation, Something Special, Right Price, Fashion Mine, Show Off, Tempo Warehouse of Fashion	Third/Letter	Mar. 30-Apr. 4	1.7	Nationwide	Carrt, 3/5-Digit, Basic	6" x 11" multicolor 12-page mailer; Gateway Apparel
JCPenney, Super Shoe	Third/Postcard	Apr. 1-4	2.8	Nationwide	Carrt	Harte-Hankes
Sears Retail	Third/Bulk	Apr. 3-5	6.0	Nationwide	Carrt	8 1/2" x 11"
L. L. Bean, Inc., Summer Full	Third/Bulk	Apr. 4-6	7.6	Nationwide	Carrt, 5-Digit, Basic	7 7/8" x 9"
Talbots/Summer 1995	Third/Bulk	Apr. 4-6	2.1	Nationwide	Carrt, 3/5-Digit, Basic	8" x 10 3/4" catalog
JCPenney, Super Summer Sale	Third/Catalog	Apr. 6-8	8.6	Nationwide	Carrt	RR Donnelley
Fashion Gal, Fashionation, Something Special, Right Price, Fashion Mine, Show Off, Tempo Warehouse of Fashion	Third/Letter	Apr. 8-10	1.7	Nationwide	Carrt, 3/5-Digit, Basic	6" x 11" multicolor 4-page mailer; Gateway Apparel
Dow Jones/Wall Street Journal	Third/Letter	Apr. 10-18	2.0	Nationwide	Carrt, 5-Digit, Barcoded	7 3/4" x 4"
AT&T 800 Consumers Shopper Guide	Fourth/BPM	Apr. 10-26	1.0	Nationwide	Carrt, 3/5-Digit	
Carol Wright Mailing	Third/Bulk	Apr. 11-13	30.0	Nationwide	Carrt	6" x 9" kraft envelope
Montgomery Ward	Third/Letter	Apr. 17-18	5.5	Nationwide	Carrt	6 1/8" x 10 1/4"
Sears Retail	Third/Bulk	Apr. 17-19	18.0	Nationwide	Carrt	8 1/2" x 11", 60 pages
Billy Graham Letter	Third/Letter	Apr. 17-28	1.5	Nationwide	Carrt, Barcoded, 3/5-Digit, Basic	8 1/4" x 10 5/8" 44-page magazine; Minneapolis, MN
JCPenney Dress Carnival	Third/Brochure	Apr. 19-21	2.2	Nationwide	Carrt	Harte-Hanks
Eddie Bauer April Summer	Third/Catalog	Apr. 19-21	1.2	Nationwide	Carrt, 3/5-Digit, Basic	RR Donnelley
AT&T 800 Business Buyers Guide	Fourth/BPM	Apr. 19-25	1.1	Nationwide	Carrt, 3/5-Digit	
Montgomery Ward	Third/Letter	Apr. 24-25	5.5	Nationwide	Carrt	6 1/8" x 10 1/4"
Sears Cosmetics	Third/Bulk	Apr. 24-26	2.3	Nationwide	Carrt	

—Sales, 3-30-95

DOMESTIC MAIL

APO/FPO Changes

Make the following changes to the appropriate effective dates in the table contained in the article titled "Conditions Applied to Mail Addressed to Military Post Offices Overseas" published in *Postal Bulletin* 21889, dated March 16, 1995.

APO/FPO	Action	Effective Date	See Restrictions
09097	Not Active	Immediately	
09207	Not Active	Immediately	

Table 2. Contingency Military ZIP Codes

APO/FPO	Action	Effective Date	See Restrictions
09301-4220	Not Active	Immediately	
09301-6350	Not Active	Immediately	
09310-7080	Active	Immediately	A-B1-F-F1-I-R
09320-2310	Not Active	Immediately	
09320-2320	Not Active	Immediately	
09320-2330	Not Active	Immediately	
09320-2380	Not Active	Immediately	
09320-2390	Not Active	Immediately	
09330-9310	Active	Immediately	None
09335-0410	Active	Immediately	A-B1-F-F1-I-R
09360-0005	Active	Immediately	I-N
09361-0001	Not Active	Immediately	
09361-0002	Not Active	Immediately	
09361-0003	Not Active	Immediately	
09361-0004	Not Active	Immediately	
09361-0005	Not Active	Immediately	
09361-0006	Not Active	Immediately	
09361-0007	Not Active	Immediately	
09361-0008	Not Active	Immediately	
09361-0009	Not Active	Immediately	
09380-9010	Not Active	Immediately	
09380-9130	Not Active	Immediately	
09380-9180	Not Active	Immediately	
09381-0950	Not Active	Immediately	
09383-0070	Not Active	Immediately	
09383-0110	Not Active	Immediately	
09383-0120	Not Active	Immediately	
09383-0130	Not Active	Immediately	
09383-0180	Not Active	Immediately	

APO/FPO	Action	Effective Date	See Restrictions
09383-0190	Not Active	Immediately	
09383-0290	Not Active	Immediately	
09383-0330	Not Active	Immediately	
09383-0780	Not Active	Immediately	
09383-0920	Not Active	Immediately	
09383-0940	Not Active	Immediately	
09383-0950	Not Active	Immediately	
09383-1080	Not Active	Immediately	
09383-1110	Not Active	Immediately	
09383-1120	Not Active	Immediately	
09383-1130	Not Active	Immediately	
09383-1180	Not Active	Immediately	
09383-1190	Not Active	Immediately	
09383-1210	Not Active	Immediately	
09383-1220	Not Active	Immediately	
09383-1230	Not Active	Immediately	
09383-1280	Not Active	Immediately	
09383-1290	Not Active	Immediately	
09383-1310	Not Active	Immediately	
09383-1320	Not Active	Immediately	
09383-1380	Not Active	Immediately	
09383-1390	Not Active	Immediately	
09383-4220	Not Active	Immediately	
09383-5180	Not Active	Immediately	
09383-6030	Not Active	Immediately	
09383-9020	Not Active	Immediately	
09383-9070	Not Active	Immediately	
09383-9080	Not Active	Immediately	
09383-9210	Not Active	Immediately	
09383-9220	Not Active	Immediately	
09383-9230	Not Active	Immediately	
09383-9240	Not Active	Immediately	
09384-2320	Not Active	Immediately	
09384-2390	Not Active	Immediately	
09384-6210	Not Active	Immediately	
09384-9220	Not Active	Immediately	
09385-0020	Not Active	Immediately	
09385-0080	Not Active	Immediately	
09385-1110	Not Active	Immediately	
09385-1150	Not Active	Immediately	

New Authorized Independent Audit Bureaus for Second-Class Publishers

Under *Domestic Mail Manual* (DMM) E216, publishers must maintain certain records to confirm eligibility for second-class mailing privileges. Records must be available for review and verification by Postal Service employees; however, pursuant to DMM E216.2.2 and E216.2.3, a publisher may, in specified circumstances, elect to have a USPS-authorized independent audit bureau conduct audits of its records.

Effective immediately, Verified Audit Circulation of Mill Valley, CA, and Certified Audit of Circulations Inc. of Wayne, NJ, are authorized to perform audits. The names, addresses, telephone and fax numbers of all authorized independent audit bureaus are as follows:

AUDIT BUREAU OF CIRCULATIONS
900 N MEACHAM RD
SCHAUMBURG IL 60173-4968
Telephone 708-605-0909
Fax 708-605-0483

BPA INTERNATIONAL INC
270 MADISON AVE
NEW YORK NY 10016-0699
Telephone 212-779-3200
Fax 212-725-1721

CERTIFIED AUDIT OF CIRCULATIONS INC
PO BOX 379
WAYNE NJ 07470-7036
Telephone 201-785-3000
Fax 201-785-8341

VERIFIED AUDIT CIRCULATION
319 MILLER AVE
MILL VALLEY CA 94941-2109
Telephone 415-383-3623
Fax 415-383-7950

—*Business Mail Acceptance,
Marketing Systems, 3-30-95*

Treasury Department Checks

April Supplemental Security income checks and Veteran's Administration compensation and pension checks, normally delivered on the first of the month, are scheduled for delivery on Friday, March 31, 1995. The envelopes will bear the legend:

Postmaster: Requested delivery date is the
31st day of the month

—*Service Policies and Programs,
Operations Support, 3-30-95*

FINANCE

HANDBOOK F-8 REVISION

General Classification of Accounts

The following text consolidates Handbook F-8, *General Classification of Accounts*, memoranda (issued from Accounting Period (A/P) 01, Fiscal Year (FY) 1995 through A/P 03, FY 1995). Personnel should insert these additions and changes in the appropriate locations in the handbook. A future edition of Handbook F-8 will include these changes.

I. New Account Numbers

Account Title

13225 Accounts Receivable—Foreign Countries—Inbound Direct Entry Mail—Air LC & AO

This account is used to record amounts due from foreign countries for the delivery of letters, cards, and other articles by air prepared to meet US domestic mail standards.

1. Balance (debit) represents amounts receivable from foreign countries as stated above.
2. Debit entries include receivables due from foreign countries for letters, cards, and other articles.
3. Credit entries include amounts received from foreign countries and adjustments.

NOTE: Restricted to finance number 67-7890 only.

13226 Accounts Receivable—Foreign Countries—Inbound International Business Reply Mail—Air AO

This account is used to record amounts due from foreign countries for the delivery of international business reply mail.

1. Balance (debit) represents amounts receivable from foreign countries as stated above.
2. Debit entries include receivables due from foreign countries for letters, cards, and other articles.
3. Credit entries include amounts received from foreign countries and adjustments.

NOTE: Restricted to finance number 67-7890 only.

13324 Accounts Receivable—Internal Revenue Service—Federal Tax Refund Offset

This account is used to record receivables collected through the Federal Tax Refund Offset program.

13325

1. Balance (debit) represents accounts receivable due from Internal Revenue Service (IRS).
2. Debit entries include accounts receivable due from IRS. (Credit contra account 13490.)
3. Credit entries include payments received or amounts written off. (Debit contra account 13490.)

Accounts Receivable—Internal Revenue Service—Tax Refund—Offset Pending

This account is used to record the pending receivables to be sent to IRS for tax refund offset.

1. Balance (debit) represents the pending accounts receivable to be sent to IRS for tax refund offset.
2. Debit entries include accounts receivable due from IRS. (Credit contra account 13490.)
3. Credit entries include payments received or amounts written off. (Debit contra account 13490.)

13326

Accounts Receivable—Department of Defense (DOD)—Federal Salary Offset

This account is used to record receivables collected through the Federal Salary Offset program.

1. Balance (debit) represents accounts receivable due from DOD through the Federal Salary Offset program.
2. Debit entries include accounts receivable due from DOD. (Credit contra account 13490.)
3. Credit entries include payments received or amounts written off. (Debit contra account 13490.)

23225

Accounts Payable and Accruals—Foreign Countries—Outbound Direct Entry Mail—Foreign Administrations

This account is used to record amounts due to foreign countries for the delivery of letters, cards, and other articles by air prepared to meet foreign domestic mail standards.

Balance (credit) represents amount payable to foreign countries for the delivery of letters, cards, and other articles by air as stated above.

NOTE: Restricted to finance number 67-7890 only.

23226 Accounts Payable and Accruals—Foreign Countries—Outbound International Business Reply Mail—Air—LC/AO

This account is used to record amounts due to foreign countries for the delivery of letters, cards, and other articles by air prepared to meet foreign domestic mail standards.

Balance (credit) represents amount payable to foreign countries for the delivery of letters, cards, and other articles by air as stated above.

NOTE: Restricted to finance number 67-7890 only.

25312 Prepayments (Deferred Revenues)—Deposits with Postmasters (Trust) Field Disbursements

This account is used to record trust funds withdrawn by postmasters for field disbursements. This account is assigned account identifier codes for Statement of Account purposes.

AIC	GLA	Description
326	25312	Disbursements Sent to San Mateo ISC
426	25312	Disbursements Paid for Field Offices

The above AICs are not trust/suspense AICs.

Standard Field Accounting Offices will use AIC 326 to offset entries withdrawn from trust. The entries withdrawn from trust will be entered in the APARS II system to be paid at the San Mateo ISC. When bills are paid by the San Mateo ISC, AIC 426 will be used as the balancing entry.

32134 Postal Service Equity—Capital Equity—Prior Year Adjustments—Non-Fund

This account is used to record prior fiscal year non-fund adjustments.

43391 Revenue—Retail Services—Traveler's Cheques Fees—Two Signatures

This account is used to record revenue generated from the sale of traveler's cheques.

1. Balance (credit) is revenue from customer fees.
2. Credit entries are amounts reported in AIC 084.
3. Debit entries are adjustments.

43392 Revenue—Retail Services—Traveler's Cheques Fees—Two Signatures Fee Transfer

This account is used to record the transfer of traveler's cheque fees to American Express.

1. Balance (debit) represents the amount of traveler's cheque fees transferred to American Express.
2. Debit entries are amounts reported in AIC 485.
3. Credit entries are adjustments.

43393 Revenue—Retail Services—Gift Cheques Fees

This account is used to record revenue generated from the sale of gift cheques.

1. Balance (credit) is revenue from customer fees.
2. Credit entries are amounts reported in AIC 155.
3. Debit entries are adjustments.

43394 Revenue—Retail Services—Gift Cheques Fees Transfer

This account is used to record the gift cheque fee transfer.

1. Balance (debit) represents the amount of gift cheques fees transferred to American Express.
2. Debit entries are amounts reported in AIC 484.
3. Credit entries are adjustments.

43396 Revenue—Retail Services—International Philatelic Sales

This account is used to record international philatelic sales at the Kansas City Philatelic Fulfillment Center.

1. Balance (credit) is revenue from international sales.
2. Credit entries are amounts reported in AIC 096.
3. Debit entries are adjustments.

43997 Revenue—Retail Services—International Philatelic Sales Returns

This account is used to record international philatelic sales returns received at the Kansas City Philatelic Fulfillment Center.

1. Balance (debit) represents international sales returns.
2. Debit entries are amounts reported in AIC 536.
3. Debit entries are adjustments.

52433 Supplies, Materials, and Services—Other Services—International Philatelic—Fulfillment Center

This account is used to record the cost associated with international philatelic sales.

1. Balance (debit) represents year-to-date expenses associated with international philatelic sales.
2. Debit entries are amounts reported in AIC 562.
3. Credit entries are adjustments.

56672 Other Operating Expenses—Miscellaneous—Payments—Custom Duties—Canada Post/Purolator

This account is used to record the payments of customs duties to Canada Post/Purolator.

1. Balance (debit) represents the year-to-date expenses of customs duties to Canada Post/Purolator.
2. Debit entries include current and prior period payments.
3. Credit entries include adjustments.

56677 Other Operating Expenses—Miscellaneous—Commissions on International Philatelic Sales

This account is used to record the amount of commissions to foreign governments for international philatelic sales.

1. Balance (debit) represents the year-to-date commissions for international philatelic sales.
2. Debit entries include current and prior period commissions.
3. Credit entries include adjustments.

II. Account Title and Description Changes

Change the account title and descriptions as indicated.

From Account	Title and Description
43390	Revenue—Retail Services—Traveler's Cheques Fees—One Signature

This account is used to record revenue generated from the sale of traveler's cheques (1) signature.

43392 Revenue—Retail Services—Traveler's Cheques Fees—Two Signatures and Gift Cheques Fees Transfer

This account is used to record the transfer of traveler's cheque and gift cheque fees to American Express.

1. Balance (debit) represents the amount of traveler's cheque and gift cheque fees transferred to American Express.
2. Debit entries are amounts reported in AIC 485.
3. Credit entries are adjustments.

43393 Revenue—Retail Services—Traveler's Cheque and Gift Cheque Fees—One and Two Signatures

This account is used to record revenue generated from the sale of traveler's cheques and gift cheques.

1. Balance (credit) represents revenue from customer fees as stated above.
2. Credit entries are amounts reported in AIC 155.
3. Debit entries are adjustments.

43396 Revenue—Retail Services—International Philatelic Sales

F-8-95-R-15, item number 2, change AIC 096 to 092, which changes account 43396.096 to 43396.092.

NOTE: Restricted to Kansas City Philatelic Fulfillment Center.

43397 Revenue—Retail Services—International Philatelic Sales Returns

F-8-95-R-15, item number 2, change AIC 536 to 563, which changes account 43397.536 to 43397.563.

III. New Subaccounts

Subaccount	Title
.092	Replacement Checks
.093	Accounts Payable Miscellaneous Accounts

The above subaccounts are to be used with account 23438. These subaccounts are restricted to the St. Louis ISSC.

Add subaccounts .063, Transfer from Other USPS Locations, and .064, Transfer to Other USPS Locations, as indicated.

- 17940.063** Property, Plant and Equipment in Service—Accumulated Depreciation—Retail Equipment—Transfer from Other USPS Locations
- 17940.064** Property, Plant and Equipment in Service—Accumulated Depreciation—Retail Transfer to Other USPS Locations
- 17950.063** Property, Plant and Equipment in Service—Accumulated Depreciation—Postal Support Equipment—Transfer from Other USPS Locations
- 17950.064** Property, Plant and Equipment in Service—Accumulated Depreciation—Postal Support Equipment—Transfer to Other USPS Locations

IV. Account Number Deletions

Delete account numbers 42106, Postage Pal, and 42108.091, Revenue—Postage Stock Walk In Revenue, for AIC 091.

Delete account number 43394.484, Revenue—Retail—Gift Cheques Fees Transfer. All data must be transferred to account 43393.155.

V. Additions to Chapter 3—Chart of Accounts

Account

- | Number | Account |
|--------------|--|
| 13225 | Accounts Receivable—Foreign Countries—Inbound Direct Entry Mail—Air LC & AO |
| 13226 | Accounts Receivable—Foreign Countries—Inbound International Business Reply Mail—Air AO |
| 13324 | Accounts Receivable—Internal Revenue Service—Federal Tax Refund Offset |
| 13325 | Accounts Receivable—Internal Revenue Service—Tax Refund—Offset Pending |

- 13326** Accounts Receivable—Department of Defense (DOD)—Federal Salary Offset
- 23225** Accounts Payable and Accruals—Foreign Countries—Outbound Direct Entry Mail—Foreign Administrations
- 23226** Accounts Payable and Accruals—Foreign Countries—Outbound International Business Reply Mail—Air—LC/AO
- 25312** Prepayments (Deferred Revenues)—Deposits with Postmasters (Trust) Field Disbursements
- 32134** Postal Service Equity—Capital Equity—Prior Year Adjustments—Non-Fund
- 43391** Revenue—Retail Services—Traveler's Cheques Fees—Two Signatures
- 43392** Revenue—Retail Services—Traveler's Cheques Fees—Two Signatures Fee Transfer
- 43393** Revenue—Retail Services—Gift Cheques Fees
- 43394** Revenue—Retail Services—Gift Cheques Fees Transfer
- 43396** Revenue—Retail Services—International Philatelic Sales
- 43997** Revenue—Retail Services—International Philatelic Sales Returns
- 52433** Supplies, Materials, and Services—Other Services—International Philatelic—Fulfillment Center
- 56672** Other Operating Expenses—Miscellaneous—Payments—Custom Duties—Canada Post/Purolator
- 56677** Other Operating Expenses—Miscellaneous—Commissions on International Philatelic Sales

VI. Correction to Postal Bulletin

Page 56, PB 21883 (12-22-84), account 523327 should be corrected to read 52327.

—National Accounting, Finance, 3-30-95

Deadlines for Non-SFAS 1099 1995 Calendar Year Data

Facilities not paying vendors by the Standard Field Accounting System (SFAS) Accounts Payable Module or by the Accounts Payable Accounting and Reporting System (APARS II) must submit a separate payment log for all Internal Revenue Service (IRS) reportable vendor payments. It is imperative that offices prepare only a vendor payment log for the money order payments that it has actually made. Payments that are made on the office's behalf by another office, i.e., district, area, or ISC, will be reported by that entity. The schedule for Non-SFAS

1099 data to be submitted to the district and the San Mateo Accounting Service Center (SMASC) is as follows:

Quarter End Date	Due to District	Due to SMASC
3-31-95	4-11-95	4-20-95
6-30-95	7-12-95	7-21-95
9-30-95	10-12-95	10-21-95
12-31-95	1-10-96	To be determined

—Corporate Accounting, Finance, 3-30-95

1996 POSTAL FISCAL YEAR CALENDAR

This calendar should be removed from this POSTAL BULLETIN, holepunched, and inserted in the front of the Accountbook.

1996 POSTAL FISCAL YEAR CALENDAR

Postal Quarter	Accounting Period	From	Through	Holidays*	Pay Periods
I	1	September 16, 1995	October 13, 1995	October 9	20 and 21
	2	October 14, 1995	November 10, 1995		22 and 23
	3	November 11, 1995	December 8, 1995	November 11 November 23 December 25	24 and 25
II	4	December 9, 1995	January 5, 1996	January 1	26 and 1
	5	January 6, 1996	February 2, 1996	January 15	2 and 3
	6	February 3, 1996	March 1, 1996	February 19	4 and 5
III	7	March 2, 1996	March 29, 1996		6 and 7
	8	March 30, 1996	April 26, 1996		8 and 9
	9	April 27, 1996	May 24, 1996		10 and 11
IV	10	May 25, 1996	June 21, 1996	May 27	12 and 13
	11	June 22, 1996	July 19, 1996	July 4	14 and 15
	12	July 20, 1996	August 16, 1996		16 and 17
	13	August 17, 1996	September 13, 1996	September 2	18 and 19

*See DMM G011 Exhibit 1.5 for Holiday Service Levels and ELM 518 for Holiday Leave.

U.S. POSTAL SERVICE																					
13-Period Year Calendar - 1996-1997 *																					
Pay Period	POSTAL FY 1996 September 16, 1995 - September 13, 1996							Month	Week	Postal Quarter	Accounting Period	Holidays	Month	Pay Period	POSTAL FY 1997 September 14, 1996 - September 12, 1997						
	S	S	M	T	W	T	F								S	S	M	T	W	T	F
09/16						22	SEP	1				SEP	09/14					20			
20	23					29		2					20	21				27			
21	30					6		3	I	1			21	28				4			
	7	9				13	OCT	4			Columbus Day		21	5				11			
	14					20		5				OCT	22	12	14			18			
22	21					27		6					22	19				25			
	28					3		7	I	2			23	26				1			
23	4					10		8					23	2				8			
	11					17	NOV	9			Veterans Day Thanksgiving Day		24	9	11			15			
24	18				23	24		10					24	16				22			
	25					1		11	I	3			25	23			28	29			
25	2					8		12					25	30				6			
	9					15	DEC	13			Christmas Day New Year's Day		26	7				13			
26	16					22		14					26	14				20			
	23	25				29		15	II	4		1	21	21	25			27			
1	30	1				5		16			Martin Luther King Jr.'s Birthday		1	28			1	3			
	6					12	JAN	17				JAN	2	4				10			
2	13	15				19		18					2	11				17			
	20					26		19	II	5			3	18	20			24			
3	27					2		20					3	25				31			
	3					9	FEB	21			Washington's Birthday		4	1				7			
4	10					16		22					4	8				14			
	17	19				23		23	II	6			5	15	17			21			
5	24					1		24					5	22				28			
	2					8	MAR	25					6	1				7			
6	9					15		26					6	8				14			
	16					22		27	III	7			7	15				21			
7	23					29		28					7	22				28			
	30					5	APR	29					8	29				4			
8	6					12		30					8	5				11			
	13					19		31	III	8			9	12				18			
9	20					26		32					9	19				25			
	27					3	MAY	33					10	26				2			
10	4					10		34					10	3				9			
	11					17		35	III	9			11	10				16			
11	18					24		36			Memorial Day		11	17				23			
	25	27				31	JUN	37					12	24	26			30			
12	1					7		38					12	31				6			
	8					14		39	IV	10			13	7				13			
13	15					21		40					13	14				20			
	22					28	JUL	41			Independence Day		14	21				27			
14	29				4	5		42					14	28				4			
	6					12		43	IV	11			15	5				11			
15	13					19		44					15	12				18			
	20					26	AUG	45					16	19				25			
16	27					2		46					16	26				1			
	3					9		47	IV	12			17	2				8			
17	10					16		48					17	9				15			
	17					23	SEP	49			Labor Day		18	16				22			
18	24					30		50					18	23				29			
	31	2				6		51	IV	13			19	30				5			
19	7					13		52					19	6				12			

* This two-year calendar conforms to the Postal Service 13-period accounting year and represents fiscal years 1996 and 1997.
 NOTE: Legal holidays observed are: Columbus Day, the second Monday in October; Veterans Day, November 11; Thanksgiving Day, the fourth Thursday in November; Christmas Day, December 25; New Year's Day, January 1; Martin Luther King Jr.'s Birthday, the third Monday in January; Washington's Birthday, the third Monday in February; Memorial Day, the last Monday in May; Independence Day, July 4; and Labor Day, the first Monday in September. See DMM G011 Exhibit 1.5 for Holiday Service Levels and ELM 518 for Holiday Leave.

FRAUD ALERT

ALL PERSONNEL PROCESSING MAIL FOR DISPATCH ABROAD

Foreign Order Number 356

Keep all foreign order notices for use as reference.

Tentative Orders

A tentative Lottery Order has been issued against the following:

Australia

International Lottery Agents
 P.O. Box 4745
 Kingston ACT 2604
 Australia

Do not dispatch any mail to the above. Place the mailpieces in a pouch endorsed Foreign Order Mail and send it to:

POSTMASTER
 CLAIMS INQUIRY AND UNDELIVERABLE MAIL
 JAMES A FARLEY BUILDING RM 2029A
 NEW YORK NY 10199-9543

Do not place any endorsement on the mailpieces themselves.

Personnel may post this notice at the outgoing primary. They must post it on the Foreign Order Board at all processing and distribution plants, designated international exchange offices, and customer service plants.

—Judicial Officer, 3-30-95

Withholding of Mail Orders

Withholding of mail orders is enforced by postmasters at cities listed below:

State/City	Names Covered
CA, Anaheim 92806-2916	Any And All Names, 414 N. State College Blvd., #C-106
CA, El Cajon 92021-8951	Any And All Of Various Names, 668 Farview St., and at 1464 Graves Ave., #107
CA, El Cajon 92021-8951	
CA, Westminster 92683-3769	Great Western, 6765 Westminster Blvd., Ste. C, #424
IL, Carol Stream 60188-3404	Any And All Of Various Names Other Than The Names Avonne S. Meeker, Avonne Meeker, Paul E. Meeker, Paul Meeker, 730 Bluff St., Apt. No. 104, and at 360-23 W. Schick Rd., Ste. 164, and at 142 S. Gary Ave., Ste. 1282
IL, Bloomington 60108-2902	
IL, Bloomington 60182-2226	
OH, Cincinnati 45247-7620	All Mail Addressed to Premier Incorporated or Kathy Williamson, P. O. Box 140, 5465 N. Bend Rd.
OH, Reynoldsburg 43068-6175	The Surname Of Fenner, P.O. Box 1175

—Judicial Officer, 3-30-95

Domestic Orders

False representation is enforced by postmaster at city listed below:

State/City	Names Covered	Product
AZ, Phoenix 85018-7431	Edwin E. Ward, 2929 N. 36th St., #13, and	The ordering of merchandise and failing to pay for it.
AZ, Phoenix 85060-0032, -0031 and -0543.	P. O. Boxes 80032, 80331, and 86543	

—Judicial Officer, 3-30-95

Missing U.S. Money Order Forms—Do Not Cash

To be posted and used by retail window employees. As directed, destroy previous notices. Any interim notices should be destroyed when the numbers listed appear in

the *Postal Bulletin*. The actual serial numbers consist of the first 10 digits on the money orders.

273 775 7700	to	399 156 7119	to	7199	418 962 2848	to	2899	444 390 1667	to	1699
	273 775 7899	399 203 5064	to	5099	419 543 0286	to	0299	444 457 3854	to	3899
302 000 0000	to	399 296 9909	to	9999	419 730 0300	to	0399	450 048 4173	to	4199
	302 123 9999	399 792 8300	to	8399	420 277 0015	to	0049	450 048 4442	to	4699
349 746 2056	to	399 396 8935	to	8999	420 599 0734	to	0798	450 560 5173	to	5199
350 518 7350	to	400 427 1051	to	1999	420 661 4115	to	4199	450 620 3077	to	3099
360 011 1690	to	401 045 1505	to	1549	420 758 9500	to	9699	450 620 3135	to	3199
360 173 8800	to	401 045 1571	to	1599	420 969 3951	to	3971	450 780 2716	to	2799
362 861 3064	to	401 294 2700	to	2799	420 969 3973	to	3999	450 801 2700	to	2799
373 006 2176	to	401 310 9505	to	9599	421 116 3565	to	3599	451 109 2967	to	2984
374 768 2600	to	401 382 5312	to	5399	421 130 9300	to	9399	451 115 4110	to	4125
375 169 4400	to	402 578 7876	to	7899	421 313 4500	to	4999	451 115 4127	to	4199
375 829 3400	to	403 125 6744	to	6799	421 364 5537	to	5599	452 265 0074	to	0099
375 851 9100	to	403 260 7000	to	7499	421 656 2609	to	2699	452 265 0246	to	0299
376 196 0911	to	403 280 6470	to	6499	421 988 9700	to	9799	452 265 0335	to	0999
378 085 3679	to	403 685 8600	to	8699	422 172 4667	to	4699	452 509 1169	to	1199
378 351 1063	to	404 003 0300	to	0399	422 484 4212	to	4299	452 855 6471	to	6499
379 843 5100	to	404 041 8838	to	8899	422 556 1270	to	1299	452 890 4679	to	4799
380 093 9600	to	404 071 4268	to	4299	422 587 7024	to	7099	452 900 8215	to	8238
380 165 1165	to	404 347 5356	to	5399	422 819 7533	to	7599	453 117 9146	to	9199
381 325 4500	to	404 347 5548	to	5599	422 842 5073	to	5087	453 334 3631	to	3699
381 604 2510	to	404 726 4500	to	4599	422 907 7563	to	7599	453 603 7841	to	7891
381 645 9525	to	404 961 5001	to	5199	424 500 6050	to	6099	453 650 1140	to	1199
383 314 3968	to	405 325 0188	to	0198	424 641 8500	to	8599	454 013 2919	to	2999
383 892 1000	to	406 009 4587	to	4599	424 871 6600	to	6699	454 186 2411	to	2499
383 892 1382	to	406 260 6830	to	6899	425 298 2352	to	2399	454 268 4883	to	4899
384 925 3641	to	406 459 6641	to	6999	425 418 4269	to	4299	454 302 5400	to	5499
385 568 2331	to	406 733 3000	to	3999	425 418 4405	to	4499	454 490 8300	to	8399
385 599 7554	to	407 545 1557	to	1599	426 547 4566	to	4599	454 547 7434	to	7499
385 774 2024	to	407 594 0412	to	0599	427 412 6337	to	6499	454 922 4867	to	4895
386 624 1412	to	407 692 9100	to	9299	427 481 0900	to	0999	455 221 1348	to	1499
386 883 8936	to	407 959 2190	to	2199	428 027 2742	to	2752	455 364 2147	to	2199
387 314 5574	to	408 265 2275	to	2288	429 474 4172	to	4199	455 399 5400	to	5499
387 837 6300	to	408 499 7700	to	7799	429 889 2900	to	2999	455 476 0676	to	0699
388 828 0656	to	408 499 7900	to	7999	430 150 4401	to	4599	455 543 0618	to	0699
389 696 2400	to	408 682 8484	to	8599	430 172 9800	to	9899	456 410 9006	to	9099
389 846 3104	to	408 698 7015	to	7099	430 177 1900	to	2099	456 470 4146	to	4299
389 846 3145	to	409 072 3941	to	3999	430 444 9500	to	9699	456 619 4460	to	4499
389 887 9211	to	409 072 3941	to	3999	430 664 4070	to	4099	457 333 2686	to	2699
389 887 9234	to	410 491 2311	to	2399	432 168 8419	to	8499	457 729 1767	to	1777
390 001 3182	to	410 694 8400	to	8599	432 708 6800	to	6999	457 937 8615	to	8699
390 001 3500	to	410 775 1500	to	1599	432 744 1544	to	1599	458 028 9810	to	9899
390 545 5974	to	410 795 7927	to	7999	432 995 9775	to	9799	458 057 2712	to	2999
391 104 6146	to	410 867 0917	to	0966	433 003 5800	to	5899	458 337 5222	to	5299
391 574 1466	to	410 867 0970	to	0999	433 757 3047	to	3099	458 354 7653	to	7999
391 783 3020	to	411 868 1023	to	1199	433 765 4003	to	4099	458 671 8678	to	8699
391 792 6100	to	411 922 2322	to	2399	434 482 7060	to	7199	458 671 8721	to	8798
392 668 2956	to	412 193 0900	to	0999	434 513 2386	to	2399	458 847 5044	to	5999
392 854 8500	to	412 395 8599	to	8699	434 968 3076	to	3092	459 274 7624	to	7699
393 584 7566	to	412 485 6500	to	6599	435 303 1831	to	1842	459 365 5432	to	5499
393 650 0074	to	412 485 6610	to	6699	435 303 1986	to	1999	459 378 5764	to	5799
393 838 8316	to	412 885 5953	to	5999	435 666 6092	to	6399	459 472 4816	to	4999
393 893 6007	to	414 193 3608	to	3674	436 082 6400	to	6899	460 349 6878	to	6899
394 126 6907	to	414 193 3677	to	3699	436 160 6441	to	6499	460 550 1909	to	1999
394 189 0405	to	414 411 7348	to	7399	436 160 6441	to	6499	460 550 1909	to	1999
394 822 3243	to	414 411 7348	to	7399	437 316 7115	to	7199	460 997 5234	to	5299
394 990 1810	to	414 640 0757	to	0799	437 316 7115	to	7199	461 973 6443	to	6499
395 343 3264	to	414 965 1727	to	1799	437 427 0500	to	3499	462 152 0107	to	0299
395 373 3035	to	417 302 8104	to	8199	439 310 0458	to	0499	462 274 1072	to	1099
395 396 9649	to	417 387 6532	to	6599	440 698 1947	to	1999	462 277 8373	to	8399
395 970 3240	to	417 496 6800	to	6999	440 858 6300	to	6399	463 117 5529	to	5540
397 622 4054	to	417 871 9250	to	9299	440 858 6420	to	7299	463 176 4115	to	4199
397 819 8902	to	417 930 9533	to	9599	441 199 1655	to	1699	463 176 4228	to	4299
398 149 7200	to	418 164 6500	to	6799	443 127 3648	to	3699	463 185 2600	to	2799
399 070 0872	to	418 423 9863	to	9899	443 127 4000	to	4099	463 227 7711	to	7799
		418 633 5922	to	5999	443 673 7900	to	7999	463 274 1072	to	1099
		418 719 8520	to	8599	443 800 9335	to	9399	463 414 4869	to	4899
		418 744 2235	to	2299	444 382 8822	to	8899	463 808 3484	to	3499

Missing U.S. Money Order Forms—Do Not Cash—Continued

463 945 7400	to	7899	478 010 4270	to	4291	490 886 8171	to	8199	609 067 5488	to	5499
464 629 9000	to	9399	478 469 7838	to	7858	490 977 9221	to	9240	609 067 5600	to	5699
464 711 4332	to	4399	478 469 7883	to	7899	491 258 8100	to	9099	609 289 6123	to	6199
465 692 3963	to	3999	479 280 9800	to	9899	491 567 1376	to	1399	609 438 4400	to	4499
465 698 8300	to	8599	479 365 9116	to	9176	492 254 4800	to	4899	609 493 1100	to	1199
465 743 7745	to	7799	479 412 9900	to	9999	492 283 5100	to	5199	609 766 8100	to	8999
466 798 6056	to	6067	479 667 6190	to	6199	492 610 6813	to	6899	609 825 4100	to	4115
467 147 4300	to	4399	479 748 9680	to	9699	493 470 2562	to	2599	609 884 2981	to	2999
468 079 5782	to	5799	479 860 7000	to	7199	493 473 7700	to	7799	609 893 1000	to	1099
469 067 2817	to	2899	480 526 2000	to	2099	493 716 2153	to	2199	610 582 4200	to	4299
469 127 8000	to	8199	480 640 6330	to	6399	494 206 2972	to	2999	611 285 8073	to	8074
469 213 0359	to	0399	480 689 5100	to	5199	494 217 3446	to	3999	611 879 6939	to	6999
469 213 0500	to	0599	481 673 0074	to	0095	494 224 0500	to	0599	612 291 8013	to	8099
469 658 1961	to	1999	482 527 1500	to	1599	496 209 7425	to	7499	612 751 5171	to	5199
469 666 9900	to	9999	482 541 5255	to	5299	496 213 8728	to	8799	612 751 5226	to	5299
469 678 1900	to	1999	482 729 6800	to	6899	496 474 5226	to	5248	612 751 6083	to	6099
469 781 4900	to	4999	483 363 7207	to	7299	497 053 8517	to	8699	612 751 6268	to	6299
469 947 6960	to	6999	483 402 2356	to	2399	497 854 8673	to	8699	612 751 6572	to	6599
470 755 5800	to	5818	483 486 5100	to	5199	498 449 8888	to	8899	612 774 2111	to	2199
471 918 0300	to	0999	483 632 1521	to	1599	498 929 8285	to	8499	612 774 2254	to	2299
471 985 2408	to	2419	483 632 2600	to	2799	498 936 5310	to	5399	612 774 2500	to	2599
472 191 6700	to	6799	483 849 1615	to	1699	499 016 5425	to	5499	614 469 0979	to	0999
472 270 2555	to	2599	484 174 4803	to	5299	499 440 8575	to	8899	614 474 3000	to	3099
472 987 0213	to	0241	484 323 8900	to	9199	499 731 6717	to	6799	614 521 3490	to	3499
472 987 0290	to	0299	484 680 5000	to	5038	500 064 1858	to	1869	614 645 1800	to	1899
473 151 2069	to	2199	484 680 5040	to	5074	600 645 3223	to	3299	614 832 1100	to	2099
473 666 9138	to	9199	484 680 5077	to	5099	601 339 1200	to	1399	617 760 5266	to	5299
473 952 3429	to	3499	485 029 4913	to	4999	601 661 7700	to	7799	617 813 3601	to	3699
474 108 5402	to	5499	486 176 0600	to	0699	601 682 5343	to	5399	619 859 3000	to	3099
474 356 5193	to	5299	486 559 7555	to	7599	601 928 1600	to	1699	620 073 9400	to	9499
474 949 3366	to	3399	486 696 3023	to	3199	602 555 2400	to	2799	700 065 4800	to	4899
475 134 9362	to	9399	488 173 7900	to	7999	602 829 7061	to	7099	700 190 3350	to	3359
475 167 9664	to	9699	488 206 4100	to	4199	603 483 9572	to	9599	700 228 6048	to	6099
475 319 3415	to	3499	488 226 0200	to	0299	603 490 7200	to	7299	700 650 0452	to	0499
475 319 3649	to	3799	488 855 8359	to	8399	603 678 7100	to	7199	700 859 0744	to	0758
475 340 6400	to	6599	489 181 8963	to	8999	603 678 7662	to	7699	701 028 6780	to	6899
475 424 8410	to	8499	489 311 1930	to	1999	603 678 7902	to	7999	701 213 3900	to	3999
475 629 9156	to	9199	489 318 6200	to	6300	603 678 8418	to	8499	701 267 2000	to	3999
475 850 6101	to	6199	489 223 2000	to	2099	603 678 8700	to	9999	806 087 1100	to	1499
475 875 2500	to	2599	489 384 0027	to	0099	604 086 0880	to	0899	806 268 9275	to	9299
476 169 8264	to	8299	489 427 0658	to	0899	605 520 9037	to	9099	806 534 3400	to	3477
476 189 3000	to	3499	489 997 5252	to	5299	605 685 4010	to	4099	807 342 3283	to	3399
476 331 2480	to	2499	490 669 5850	to	6099	605 988 6467	to	6499	808 090 3440	to	3499
477 289 8601	to	8699	490 717 7080	to	7099	607 728 1276	to	1299	808 325 5161	to	5699
477 681 5206	to	5299	490 721 6000	to	6099	608 727 7273	to	7599	870 054 4814	to	4899
478 010 4243	to	4268	490 793 1500	to	2099	609 067 5325	to	5399	870 491 4812	to	4849

Check for altered dollar amounts by holding money orders to the light.

Missing Canadian Money Order Forms—Do Not Cash

To be posted and used by retail window employees. As directed, destroy previous notices. Destroy any interim notices when the numbers listed appear in the *Postal Bulletin*. The new money order serial numbers consist of the first nine digits. The 10th digit is a check digit only. In

addition to this listing, do not cash: (1) all card type orders, and (2) new style money orders 000,000,001 to 627,000,000. Advise holders to send invalid money orders to: CANADA POST CORPORATION, OTTAWA, CANADA K1A 0B1.

627,079,501	to	9,900	643,243,401	to	3,500	658,853,204	to	3,700	671,883,301	to	3,900
627,097,438	to	7,500	643,452,130	to	2,200	658,860,201	to	0,300	672,052,001	to	2,100
627,171,001	to	1,400	643,726,901	to	7,500	659,860,569	to	0,590	672,271,301	to	2,500
627,974,001	to	4,300	643,736,201	to	6,400	659,900,808	to	0,901	672,344,466	to	4,500
628,196,859	to	7,100	644,475,893	to	6,300	659,913,171	to	3,240	672,349,801	to	
628,390,001	to	0,300	644,858,601	to	8,800	660,304,493	to	4,600			350,100
628,455,689	to	6,200	644,932,601	to	3,100	660,596,601	to	6,700	672,439,641	to	9,700
628,600,766	to	1,000	644,941,801	to	2,100	660,644,144	to	4,300	672,481,401	to	1,700
629,893,459	to	3,500	644,990,601	to	0,900	661,162,159	to	2,220	672,695,171	to	5,240
630,199,031	to	9,100	645,167,901	to	8,200	661,165,221	to	5,250	672,696,211	to	6,280
630,233,957	to	4,300	645,541,101	to	1,300	661,179,997	to		672,893,127	to	3,140
630,252,101	to	2,200	645,550,622	to	0,700			180,020	673,052,969	to	3,200
630,301,208	to	1,300	645,605,886	to	5,900	661,183,221	to	3,260	673,074,401	to	5,300
630,331,801	to	2,100	646,262,901	to	3,200	661,187,652	to	7,690	673,759,973	to	
630,334,070	to	4,600	646,264,363	to	4,400	661,581,517	to	1,600			760,000
630,342,552	to	2,600	646,270,054	to	0,085	661,997,658	to	7,686	673,784,461	to	4,700
630,642,629	to	2,700	646,321,801	to	2,000	662,987,487	to	7,500	673,849,090	to	9,120
630,904,718	to	4,900	646,322,201	to	2,800	663,119,201	to	9,300	673,993,701	to	3,800
630,995,315	to	5,400	646,505,901	to	6,100	663,352,552	to	2,700	675,044,601	to	4,900
631,381,731	to	1,800	646,509,616	to	9,700	663,636,414	to	6,500	676,297,901	to	8,000
631,817,556	to	7,600	646,875,648	to	5,700	664,514,929	to	5,000	676,483,147	to	3,200
631,846,614	to	6,700	646,876,001	to	6,200	664,625,114	to	5,200	676,496,501	to	6,600
631,937,924	to	7,966	646,899,702	to	9,713	664,689,941	to		676,498,101	to	8,150
632,448,956	to	9,300	646,993,871	to	3,930			690,000	676,528,845	to	8,870
632,939,648	to	9,800	647,061,150	to	1,200	664,774,743	to	4,800	676,663,323	to	3,340
633,135,035	to	5,300	647,291,842	to	2,000	665,080,644	to	0,700	676,691,301	to	1,340
633,175,518	to	5,600	647,993,501	to	3,700	665,241,112	to	1,200	676,820,548	to	0,700
633,537,840	to	7,900	647,993,801	to	4,000	665,956,831	to	6,880	676,974,331	to	4,410
634,141,201	to	1,500	648,020,140	to	0,200	665,967,877	to	7,920	677,138,046	to	8,200
634,328,501	to	8,600	648,056,401	to	6,600	666,025,401	to	5,800	677,167,453	to	7,500
634,839,201	to	9,300	648,117,901	to	8,200	666,209,330	to	9,400	677,463,901	to	4,000
634,848,780	to	8,800	648,171,861	to	1,900	666,210,847	to	0,900	677,876,420	to	6,500
635,296,451	to	6,500	648,213,372	to	3,500	666,395,901	to	6,100	678,642,061	to	2,100
635,298,587	to	8,600	648,484,665	to	4,700	666,647,247	to	7,258	678,697,951	to	8,010
635,312,907	to	3,000	648,578,708	to	8,799	666,662,073	to	2,100	678,674,980	to	5,000
635,468,101	to	8,200	648,683,301	to	3,400	666,696,251	to	6,300	679,221,751	to	1,900
635,681,001	to	1,100	649,376,401	to	6,600	667,040,021	to	0,600	679,230,119	to	0,200
635,699,601	to		649,730,009	to	0,100	667,382,231	to	2,300	679,237,471	to	7,700
		700,600	650,621,501	to	1,700	667,398,541	to	8,600	679,345,508	to	5,540
636,000,201	to	0,300	650,678,503	to	8,580	667,435,145	to	5,200	679,474,201	to	4,300
636,012,675	to	2,700	650,707,956	to	7,980	667,486,601	to	6,800	680,062,901	to	3,000
636,030,135	to	0,200	651,854,961	to	5,010	667,521,407	to	1,600	680,173,023	to	3,100
636,042,001	to	2,200	651,897,201	to	7,240	667,752,069	to	2,300	680,374,523	to	4,700
636,863,001	to	3,100	651,948,119	to	8,130	667,916,445	to	6,500	680,409,401	to	9,800
636,931,725	to	1,800	651,948,703	to	8,750	667,926,278	to	6,300	680,463,338	to	3,800
637,043,605	to	3,700	651,974,610	to	4,620	668,104,101	to	4,800	680,693,701	to	4,400
637,860,101	to	0,200	652,121,238	to	1,248	668,155,938	to	6,000	681,457,001	to	7,100
639,522,101	to	2,400	653,053,022	to	3,100	668,220,001	to	1,000	681,717,331	to	7,390
639,857,736	to	7,900	653,151,811	to	1,830	668,222,101	to	3,400	681,774,980	to	4,999
640,272,919	to	3,200	653,317,761	to	7,800	668,583,651	to	3,700	681,883,291	to	3,310
640,281,501	to	1,600	653,506,601	to	7,000	668,584,001	to	4,010	681,896,616	to	6,650
640,666,076	to	6,200	653,620,693	to	0,700	668,588,581	to	8,600	681,918,357	to	8,399
641,011,901	to	2,600	653,822,586	to	2,800	668,659,099	to	9,200	681,951,205	to	1,300
641,121,411	to	1,500	654,345,814	to	5,900	668,789,430	to	9,440	682,154,556	to	4,700
641,196,269	to	6,300	654,563,101	to	3,300	668,970,201	to	0,700	682,171,562	to	1,800
641,309,609	to	9,658	654,568,825	to	8,900	669,677,719	to	7,735	682,194,101	to	4,300
641,574,196	to	4,650	655,365,961	to	6,030	669,893,581	to	3,700	682,749,963	to	0,200
641,583,509	to	3,600	655,387,856	to	7,870	670,374,867	to	5,000	682,895,301	to	5,500
641,962,607	to	2,630	657,044,001	to	4,100	670,993,101	to	3,180	682,899,401	to	9,800
642,415,969	to	6,000	657,341,465	to	1,478	670,994,962	to	5,000	683,148,063	to	8,100
642,983,001	to	3,100	657,364,301	to	4,500	670,996,971	to	7,040	683,284,001	to	4,100
643,022,701	to	2,900	657,769,501	to	9,600	671,601,379	to	1,400	684,491,501	to	1,800
643,201,801	to	2,000	658,539,001	to	9,300	671,672,253	to	2,300	684,549,048	to	9,080

Missing Canadian Money Order Forms—Do Not Cash—Continued

684,560,109	to	0,120	686,066,714	to	7,000	695,277,576	to	7,650	698,533,927	to	4,200
684,664,801	to	5,000	686,325,801	to	5,900	695,530,761	to	0,800	699,090,686	to	0,750
684,669,118	to	9,140	686,567,807	to	7,860	696,487,701	to	7,800	699,752,699	to	2,850
684,793,877	to	3,940	687,145,501	to	5,600	696,784,101	to	4,550	700,161,501	to	1,650
684,797,821	to	7,860	690,412,901	to	3,400	696,870,601	to	0,650	700,261,701	to	2,000
685,145,309	to	5,800	692,876,955	to	7,050	697,047,501	to	7,600	700,465,730	to	5,750
685,207,545	to	7,600	693,290,380	to	0,400	697,052,101	to	2,350	701,423,101	to	3,150
685,210,901	to	1,000	693,290,426	to	0,450	697,217,251	to	7,400	701,643,828	to	3,850
685,807,531	to	7,580	694,595,031	to	5,300	697,249,952	to	0,050	702,033,701	to	4,050
685,857,451	to	7,530	694,698,551	to	8,650	697,469,606	to	9,700	702,051,501	to	1,750
685,900,425	to	0,439	694,745,458	to	5,600	697,850,401	to	0,750	702,053,601	to	3,800
685,814,051	to	4,130	695,105,313	to	5,350	697,945,701	to	5,850	702,104,368	to	4,900
685,953,580	to	3,620	695,142,809	to	3,050	698,098,446	to	8,550	702,410,595	to	1,050
685,955,441	to	5,480	695,144,666	to	4,700	698,300,251	to	0,300			
686,006,601	to	7,000	695,272,601	to	2,750						

Check for altered dollar amounts by holding money orders to the light.

—Inspection Service, 3-30-95

Counterfeited Canadian Money Order Forms—Do Not Cash

To be posted and used by retail window employees. As directed, destroy previous notices. Any interim notices

should be destroyed when the numbers listed appear in the *Postal Bulletin*.

—*Inspection Service, 3-30-95*

671,819,086	686,619,886
676,612,640	686,619,887
677,891,039	686,794,382
678,282,493	686,794,426
678,916,031	686,794,427
679,552,215	686,794,431
679,751,983	687,262,502
679,694,334	687,262,503
679,800,207	687,262,525
681,130,536	687,262,526
681,844,376	687,287,578
683,594,542	687,287,581
684,683,610	687,287,582
686,619,878	

Invalid Express Mail Corporate Account Numbers

To be posted and used by retail/acceptance clerks. This listing supersedes all previous notices, which must be destroyed. Retail/acceptance clerks must not accept Express Mail shipments bearing any of the invalid numbers (listed below) in the "customer

number" or "agreement number" section of the label or form.

Note: The first 6 digits of a 9-digit Custom Designed Service and Next Day Pickup Service Agreement make up the Corporate Account Number.

005011	010286	019036	023367	038310	065758	069812	080568	093760	104575	111768	115653	146621
005028	010419	019038	023454	040091	065843	069813	080750	094017	105030	111809	115670	146673
005200	010424	019093	023458	040098	065891	069839	085192	094082	105073	111832	115741	148235
005375	010468	019113	023483	041039	065899	069859	085214	094098	105105	111868	115769	150139
005415	010547	019144	023496	041144	065920	069881	085221	094129	105127	111884	115794	150140
005447	010568	019153	025187	041189	066005	069884	085224	094217	105165	111923	115867	150171
005544	011120	019159	025220	042088	066022	069918	085231	094573	105190	111939	116022	151144
005623	011161	019196	025221	044087	066117	069930	085236	095439	105216	111955	117093	152023
005646	011235	019201	025310	046007	066126	069933	085307	095460	105265	111967	117096	152106
005656	011256	019269	025342	046012	066289	069968	085356	095504	105267	112092	117177	152138
005668	011300	019281	026245	047004	066292	069978	085358	095592	105312	112099	117239	152196
005674	012176	019345	026381	049024	066388	070141	085387	095619	105346	112101	117538	152211
005723	013084	019367	026406	049050	066397	070173	085401	095795	105378	112126	118064	152260
005753	013210	019370	026411	049064	067037	070207	085407	095948	105404	112136	118077	152373
005777	014295	019387	026418	050025	067051	070758	085439	096145	105424	112162	118654	152415
005842	014381	019449	026469	050031	068038	071073	085458	096249	105426	112220	118715	152579
005866	014538	019489	026481	051007	068040	071302	085470	096275	105436	112223	118791	152612
005915	014572	019490	027199	052012	068058	071390	085482	096394	105475	112238	118795	152624
005916	014591	019508	027203	053056	068065	071524	085500	096516	105489	112326	118908	152646
005971	015001	019512	027299	054169	068068	075136	085507	096838	105540	112344	119086	152657
005988	015070	019523	027386	055003	068069	075193	085510	096880	105636	112458	119100	152835
006142	015141	019544	027438	055037	068074	075243	085537	097048	105675	112471	119125	152840
006161	015147	019552	027507	055130	068076	075253	085541	097137	106180	112507	119159	152849
006224	015158	019555	027552	057053	068088	075332	085560	097141	106192	112625	119204	152866
006310	015340	019574	027666	058026	068090	075579	085577	097343	106455	112679	119277	152879
006324	015347	019590	027740	058041	068178	075629	085592	100072	107320	112692	119388	152977
006345	015359	019591	027792	058054	068200	075665	085631	100231	108073	112703	119396	152979
006387	016080	019599	027804	060025	068262	075719	085697	100738	108124	112706	119406	156047
006415	016282	019611	027835	060060	068453	075736	085729	100987	108273	112715	119418	156077
006436	016609	019614	027853	060110	068455	075738	088304	101365	108335	112731	120124	156088
006615	016729	019619	027909	060124	068472	075742	088340	101633	108343	112734	120242	156095
006618	016914	019634	028024	060177	068537	075761	088355	101676	108442	112821	120262	156104
006657	018086	019659	028097	060331	068593	075853	088420	101813	108443	112831	121248	156177
006673	018173	019662	028141	060354	068600	075900	088456	101954	108455	112842	122166	156182
006727	018223	019674	028243	060487	068623	075978	088477	101976	109195	112849	122342	156207
006776	018244	019712	028325	060500	068637	076035	088531	102009	109217	112850	122343	159098
006868	018246	019738	028368	060508	069063	076260	088571	102184	109293	112874	123030	165146
006933	018283	019740	028419	060603	069101	076262	088594	102587	109299	112883	125084	165184
006962	018289	019741	028565	060727	069124	076459	088600	102593	109542	112900	125166	165267
006996	018290	019755	028570	060736	069125	076738	089102	102740	109585	112910	125263	165268
007140	018315	019758	028910	060943	069147	076772	089600	102894	109607	112917	125340	165283
007142	018337	019761	028945	061119	069154	076775	089641	102900	109658	112922	125366	165405
007144	018383	019827	028964	061268	069163	076916	089729	102925	109787	112987	126026	170131
007301	018391	019838	029014	061320	069164	076934	089733	103081	110162	112992	127072	170148
008081	018405	019841	029120	061335	069285	076961	089794	103104	110356	113055	128510	170151
008082	018453	019858	029147	061413	069288	076964	089824	103127	110361	113102	128928	170219
008170	018474	019873	029213	061623	069290	077086	089896	103166	110436	113190	129891	170247
008211	018516	019879	029248	062014	069305	077215	089904	103195	110568	113375	132108	170250
008380	018526	019943	029325	063144	069347	077239	089917	103206	110634	113575	132402	171087
008486	018541	019989	029422	064073	069357	077301	090107	103209	110767	113698	135123	171107
008517	018627	020116	029429	064098	069368	077327	090145	103514	110778	113710	135198	171113
008570	018633	020310	029470	064146	069404	077452	090262	103537	110787	113932	136102	171142
008596	018650	020418	029483	064183	069411	077552	090359	103558	111109	113978	136106	171175
008796	018683	020439	029860	064201	069438	077604	090602	103580	111110	113985	136108	171241
009022	018727	021155	030017	064246	069440	077678	090830	103583	111169	113990	139106	171245
009138	018733	021408	030084	064312	069444	078855	091444	103616	111185	114105	142316	171247
009164	018752	021575	030161	064370	069457	078858	091451	103738	111211	114281	142572	173057
009221	018757	021631	030165	064381	069466	078871	091516	103791	111226	114285	142653	174061
009227	018759	021657	030200	064706	069485	079010	091763	103825	111283	114291	142657	174065
009284	018775	021702	030224	064719	069493	079067	091857	103827	111334	114424	142685	174070
009315	018780	021825	030307	064937	069494	079141	091967	103833	111377	114453	142693	175052
009409	018797	021859	030350	064971	069504	079150	092001	103835	111519	114459	142752	175064
009466	018827	022136	031025	064972	069520	079741	092054	103881	111549	114461	142861	175065
009639	018841	022363	031038	065059	069560	079771	092086	103888	111580	114498	142873	175071
009780	018869	022493	031149	065078	069599	079772	092394	103890	111591	114520	142938	175078
009850	018876	022562	031161	065199	069631	079894	092416	103899	111606	114571	142941	176052
009865	018884	022578	032018	065436	069660	079980	092512	103917	111609	115013	142949	176058
009943	018892	022718	033101	065443	069710	080045	092842	103941	111611	115258	142982	176071
009955	018949	022764	034033	065465	069761	080047	093023	104096	111631	115262	142986	176078
009979	018954	022890	037014	065510	069770	080158	093257	104237	111638	115491	146332	176090
010172	018990	022950	038081	065522	069783	080194	093337	104320	111653	115571	146445	176093
010183	018993	022983	038127	065656	069794	080304	093433	104445	111658	115635	146504	176097
010246	019001	023186	038141	065683	069798	080476	093513	104468	111707	115642	146589	176115

Invalid Express Mail Corporate Account Numbers—Continued

176118	196070	220543	282508	301311	305525	307004	312430	330151	335432	352678	381887	443214
176135	196092	220581	282642	301438	305581	307005	312440	330305	335447	356027	381907	443224
176139	196096	220690	282716	301451	305613	307009	314193	330505	335453	358022	381925	443234
176143	196100	220695	283380	301547	305664	307034	314568	330753	335484	358023	383100	443259
178020	196108	220710	283401	301553	305671	311005	314602	331037	335495	361140	383103	443293
178034	196109	220733	283538	301580	305677	311017	314617	331081	335498	361231	386057	443296
180065	196113	220759	283557	301598	305682	311044	314821	331151	335510	361243	387013	444022
180104	196127	221191	286023	301634	305683	311090	317129	331162	335584	361284	388042	444080
180120	196131	221248	286041	301636	305706	311105	317211	331164	335587	361289	388058	444086
181009	196145	221282	286156	301679	305740	311123	319063	331224	335600	366021	388066	444088
182015	196146	221298	286191	301682	305827	311124	319064	331229	335713	366028	389006	444100
185078	196154	221311	292257	301718	305830	311134	319083	331373	335792	366112	392319	444203
186013	198025	221312	292347	301730	305870	311135	319099	331434	335794	372300	392611	444204
187005	198106	221334	292511	301775	305889	311137	320021	331488	335810	372322	392614	444363
191015	198122	221369	292528	301793	305903	311138	320025	331605	335812	372365	393112	444463
191035	198165	221377	293077	301872	305921	311150	320035	331694	335825	372408	394229	444464
191047	200071	221423	293218	301895	305927	311156	320093	331718	335836	372415	395216	444516
191078	200222	221444	294153	301907	305998	311161	320152	331746	335843	372422	395218	444811
191159	200276	221451	294252	301933	306018	311183	320172	331759	336128	372454	397034	444822
191161	200348	221461	294379	302078	306030	311194	320748	331819	336176	372470	397037	444842
191199	200357	221486	294455	302135	306051	311199	320853	331876	336285	372495	397039	444850
191202	200392	221506	294481	302137	306096	311209	320981	331884	336424	372518	400040	444852
191234	200396	221531	294483	302164	306109	311210	320991	331915	336447	372560	402021	444862
191250	200539	221570	295394	302195	306113	311214	321039	332080	336536	372580	402071	445011
191270	200599	221572	295398	302237	306114	311234	321089	332313	336543	372638	402085	445015
191283	200732	221593	295407	302243	306116	311255	321093	332500	336555	372684	402267	445020
191345	200861	221634	295425	302269	306147	311262	321134	332557	336646	372709	402285	445027
191382	200914	222025	296340	302334	306172	311281	321211	332674	337029	372722	402382	445033
191400	200997	222044	296344	302343	306185	311293	321225	332771	337094	372735	402957	445035
191417	207007	222127	296369	302344	306192	311296	322104	332773	337169	372737	405028	445040
191546	207179	222136	296439	302353	306202	311299	322111	332794	337213	372743	405080	445042
191625	207210	222160	297042	302365	306210	311309	322127	332816	337318	372752	405098	445072
191648	207459	222181	300030	302397	306260	311319	322146	332912	337350	372755	405103	445119
191685	207572	222185	300039	302406	306264	311322	322192	332956	338147	372759	405132	445122
191692	207583	222231	300059	302409	306325	311362	322193	333009	338181	372765	405138	445123
191710	207685	222263	300062	302418	306329	311363	322210	333016	338199	372769	410019	445133
191746	207696	222265	300075	302447	306330	311379	322244	333036	338218	372786	410126	445140
191769	207703	223029	300081	302496	306342	311382	322271	333051	338235	372807	410132	445141
191781	207720	223142	300100	302507	306347	311386	322331	333056	338293	372826	410213	445151
191824	207765	223291	300107	302523	306361	311396	322362	333077	338294	372835	423068	445153
191886	207806	223341	300122	302530	306364	311402	322406	333078	338303	372856	427018	447044
191892	207810	225009	300123	302534	306389	311403	322481	333081	338309	372858	430090	447052
191948	208121	226056	300150	302569	306394	311406	322490	333092	339065	372861	432465	447062
192003	208169	229053	300153	302590	306401	311408	322540	333102	339116	372882	432529	447076
192064	208201	232040	300158	302606	306419	311413	322553	333104	339291	372887	432687	447086
192071	208237	232047	300204	302618	306440	311422	322661	333112	339298	372894	432845	447140
192073	208564	232211	300214	302644	306450	311424	322769	333135	339311	372902	436177	447146
192095	208685	232261	300225	302690	306477	311425	322806	333202	339576	372911	436244	447148
192153	208707	232279	300229	302714	306501	311431	322907	333203	339849	372914	436287	447150
192163	208810	232282	300234	302756	306514	311436	323043	333233	339887	372931	436346	447166
192187	208832	232289	300241	302824	306528	311441	323067	333272	339891	372935	436404	448013
192223	208865	235133	300249	302826	306555	311444	323071	333325	340127	372943	436413	448025
192245	208910	235145	300250	302849	306560	311451	323623	333330	340226	372948	436437	448027
192276	208923	235294	300251	302930	306586	311452	324463	333338	340315	372970	439201	448028
192279	209126	235338	300256	303653	306604	311458	325030	333372	340528	374009	439203	448030
192297	210016	236040	300262	303690	306627	311469	325034	333378	340642	374038	439204	448033
192348	210026	240240	300264	303695	306636	311473	325051	333409	340663	374045	439501	448035
192371	210069	242804	300277	303783	306638	311484	325230	333495	340664	374053	439502	448037
192375	210075	245226	300299	303799	306672	311491	325260	333519	340670	374057	439521	448038
192394	210143	245229	300312	303861	306673	311497	325740	333522	340722	374108	439522	448044
192437	210189	253265	300324	303871	306680	311499	326271	333538	340740	374129	439525	449018
192578	210191	253290	300369	303931	306692	311500	326372	333540	340752	380193	439527	449027
192630	210199	260024	300380	303975	306702	311506	326460	333542	340765	380197	441023	450141
192670	210220	261032	300389	303981	306721	311510	326496	333590	340828	381047	441073	450193
192679	210253	261033	300396	305036	306726	311574	326619	333597	340890	381104	441113	451017
192744	210291	265005	300416	305050	306730	311580	326625	333742	340917	381142	441339	451090
192762	210302	271096	300419	305070	306735	311581	326640	333822	344005	381179	441381	452139
192784	210317	271124	300428	305076	306747	311590	326649	333905	344021	381183	441382	452191
192835	212546	272004	300430	305079	306773	311601	326679	333958	344024	381192	441431	452333
192848	212564	272106	300435	305131	306780	311613	326691	333966	344036	381314	441435	452375
192856	212599	272122	300462	305133	306837	311621	328246	333997	344062	381357	441474	453002
192869	212631	272143	300475	305140	306839	311623	328744	334023	349037	381386	441577	454264
192984	212708	272216	300518	305163	306843	311631	328774	334024	349122	381390	441608	454285
192991	212748	272344	300527	305199	306854	311635	328777	334164	349162	381542	441625	454668
193212	212864	274045	300563	305218	306856	311639	328827	334241	349185	381551	441647	456026
193251	212870	274301	300628	305230	306861	311643	328842	334271	349292	381599	441736	458051
193310	216015	275008	300736	305296	306879	311684	328874	334924	349358	381652	441874	461046
193438	220065	275037	300831	305362	306897	312154	328888	335059	349446	381669	441898	462190
193532	220099	275061	300870	305417	306909	312278	329153	335118	350061	381693	441984	462475
193538	220147	276263	300886	305432	306940	312287	329171	335192	351025	381703	443038	462578
193656	220238	280117	301033	305468	306963	312308	329561	335218	351038	381710	443166	462597
193700	220307	281107	301106	305478	306964	312384	330068	335254	352589	381742	443183	462667
193702	220536	282162	301135	305512								

Invalid Express Mail Corporate Account Numbers—Continued

462812	497084	554943	600866	607396	670006	740202	772434	802307	841004	901632	907968	926287
462854	497218	554945	600901	607572	672016	740270	772477	802316	841042	901649	910288	926602
462881	497234	554952	600932	607586	672030	740394	772757	802333	841047	901859	910393	926659
462897	502004	554975	600954	607690	672041	740645	772858	802569	841480	901969	911179	926740
462899	503022	558043	601040	607833	672081	740709	772946	802592	841821	902047	912220	926788
463016	503026	559032	601054	607984	672186	740747	773440	802597	841852	902099	912322	926889
464082	503045	559058	601077	608010	672247	740952	775334	802614	841959	902115	913500	926920
464098	503048	563021	601189	608092	672356	741031	775335	802715	841975	902137	913593	926952
465014	503125	563041	601226	608112	672360	741056	777005	802766	841996	902249	913792	927022
466517	503136	570019	601235	608267	672465	741213	777217	802778	844158	902266	913847	927049
468286	503140	570033	601252	608319	672503	741251	780096	802783	846118	902362	914420	927065
468361	503198	570091	601264	608344	672519	741322	781065	802784	846177	902368	914514	927074
471073	503209	570112	601273	608399	672581	741329	782464	802877	847173	902396	914936	927160
471082	503218	570138	601322	608470	672590	741345	782751	802891	850154	902457	915136	927207
471095	503220	570141	601323	608499	672599	741436	782774	802936	850163	902477	915208	927295
472027	503266	571037	601339	608558	674200	741739	782799	802954	850695	902526	915231	927355
473006	510050	571041	601342	608560	674280	741859	782808	802995	850915	902617	915319	927379
473090	511018	571064	601390	610132	674295	741860	782809	803112	850954	902658	917007	927394
473107	511660	571067	601406	610164	674300	741908	782826	803286	852170	902660	917106	927457
474038	520029	571081	601461	611214	678034	743093	782856	804096	852329	902723	917137	927462
476006	523021	571082	601481	612043	679014	744151	784161	804110	852612	902729	917144	927549
477119	524015	573007	601529	612071	680049	749165	784169	804133	852632	902798	917553	927624
477142	524067	573016	601612	614008	681128	749166	784197	805143	852702	902960	917563	927627
480055	526022	573021	601669	615004	681404	750029	784342	805200	852744	903121	917833	927689
480136	526024	573025	601764	616002	681586	750092	785312	805257	852776	903132	917898	927764
480281	531146	573037	601765	616030	681587	750111	785317	805295	852793	903209	917983	927821
480323	531351	573038	601839	616063	683007	750187	785335	805447	852861	903222	918018	927830
480540	531429	574001	601898	616138	684009	750233	785349	805461	856121	903336	918093	927858
480695	531457	574020	601905	617003	685079	750388	785353	805464	856189	903438	918137	927937
480783	531467	574023	601924	619024	685131	750542	785375	805494	856347	903467	918422	927938
480786	531515	575080	601996	624055	688007	750984	785381	805522	856404	903634	918459	927965
480806	532225	577033	602003	627032	688009	751014	785428	805526	856410	903762	918473	927970
480876	532433	577045	602052	627038	701153	751179	785438	806025	860069	903777	918556	928337
481374	532475	577052	602076	627059	701200	752077	785449	806047	860070	903792	918576	928353
481421	532528	581118	602412	627093	701262	752147	785469	809023	871045	903811	918585	928361
481527	532532	581154	602442	628079	701966	752181	785474	809030	871055	903873	918586	928366
481540	532832	581183	602494	628107	705094	752259	785475	809038	871057	903885	918658	928440
481548	532921	585245	602497	629051	706168	752267	785476	809047	871059	903922	918678	930225
481581	537118	585251	602523	629068	708294	752272	785478	809062	871341	903939	918816	930241
481588	537160	585276	602711	629097	708312	752293	785506	809114	871356	903943	918845	930311
481614	537292	591070	602727	631081	708345	752301	785738	809117	871408	904147	918850	930350
481680	544042	591140	602758	631124	708527	752625	786060	809150	871459	904148	918921	931324
481715	544052	591225	602761	631130	708540	752746	785588	809216	871489	904151	918959	931358
481829	549157	596507	602774	631145	711359	752997	787702	809235	871490	904173	920010	931467
482316	549158	596508	602797	631204	711528	757017	787709	809246	871507	904198	920094	931638
482338	551299	597510	602909	631310	712237	757022	787793	810052	871512	904201	920121	931655
482380	551343	597532	602948	631328	717005	757038	787878	810102	871514	904234	920269	931664
482391	551685	597538	603132	631380	721012	757518	788071	812022	871534	904242	920439	931839
482395	551745	598504	604113	631500	721040	757615	789007	813016	874040	904326	921037	931842
482583	551791	598523	604120	631547	721046	760061	790022	813026	891309	904336	921106	931893
482708	551810	598543	604617	631585	722113	760706	791006	813230	891433	904340	921165	931947
482755	553203	598546	604653	631610	722177	760716	791182	814077	891443	904354	921213	931985
482802	553248	598570	604753	631739	722223	760720	791389	814201	891632	904384	921298	932751
482847	553257	598581	604894	631747	723066	760731	794014	815010	895068	904458	921319	933166
483123	553262	598585	604941	631763	730030	761049	794180	815023	895080	906134	921340	933171
483285	553270	598587	605107	631922	730036	761052	796554	815034	895540	906254	921371	933476
483315	553347	598590	605266	631966	730080	761642	797002	815132	895574	906312	921499	934208
483511	553370	598592	605275	641019	730100	761690	799014	815175	898073	906332	921531	934231
483596	553400	598597	605276	641197	730101	763003	799050	815177	900039	906341	921588	935166
483658	553411	598603	605292	641268	730290	764013	799054	816007	900042	906347	921717	937286
483815	553482	598613	605548	641363	730298	765508	799056	816031	900056	906357	921759	937409
483973	553649	598616	605580	641479	730346	765536	799065	816122	900079	906363	921764	937508
483985	553659	599510	606006	641495	730453	765594	799082	816134	900084	906373	921786	937697
485093	553741	599529	606013	641524	730585	766513	800216	816241	900113	906383	921806	937769
485152	553796	599530	606063	641552	730635	767565	800248	816265	900125	906385	921815	939138
485189	553828	600011	606067	641869	730661	770077	800293	816357	900155	906386	921829	939544
485214	553833	600018	606072	641902	730684	770148	800370	816504	900375	906609	921854	939577
488326	553834	600089	606281	648141	730721	770271	800431	816999	900401	906627	921872	940033
488404	553853	600097	606342	648173	730877	770281	800440	826800	900510	906629	921887	940390
490144	553865	600127	606358	648179	730906	770297	800489	832053	900548	907017	921936	940694
490437	553870	600156	606370	652420	731022	770376	800507	833179	900620	907022	921990	940706
490587	554024	600253	606619	656113	731026	770395	801164	833213	900656	907032	921998	940802
492038	554301	600257	606646	657116	731216	770396	801189	833280	900711	907056	922260	940830
493051	554351	600307	606667	658145	731343	770407	801349	833601	900756	907059	922276	940849
494195	554352	600309	606730	658146	731677	770418	801355	836725	900839	907107	922290	940920
495193	554566	600313	606915	658224	731729	771159	801379	840050	900874	907234	924173	941071
495237	554598	600347	606950	662165	731861	771453	801382	840149	900900	907237	924283	941104
495277	554618	600549	607037	662521	731995	771567	801413	840240	900904	907311	924390	941149
495283	554630	600569	607041	662525	735060	771653	801451	840318	900915	907351	926089	941183
495293	554707	600592	607059	662560	735068	771679	801511	840371	900921	907382	926090	941286
495383	554741	600596	607098	662609	735072	771740	801523	840386	901084	907489	926116	941339
495429	554755	600672	607145	662612	740048	771813	801643	840439	901148	907581	926139	941637
495432	554856	600688	607314									

Invalid Express Mail Corporate Account Numbers—Continued

945363	946426	949722	950324	951250	958685	960073	968491	970218	970337	972816	980800	992272
945733	947054	950062	950328	951343	958707	967048	968584	970240	970348	972856	980802	992334
945846	947074	950102	950329	951354	958736	967144	968736	970252	970353	972968	980862	992405
945857	947109	950177	950339	951371	958759	967153	968782	970254	970380	974209	980939	992429
945859	948042	950184	950392	951690	958766	967210	968939	970261	970404	980235	981836	992434
945880	948128	950210	950394	951701	958767	967245	968952	970264	970429	980367	981845	995043
945889	948203	950225	950642	951714	958769	968237	968974	970281	970476	980386	984200	995096
945988	948223	950249	951082	953247	958781	968296	969068	970291	970513	980474	984212	995285
946168	948246	950254	951140	954413	958792	968400	969082	970304	970530	980531	985032	995713
946245	948300	950301	951181	955001	959060	968444	970118	970309	972348	980675	985084	995776
946412	949163	950307	951207	958650	960031	968446	970144	970315	972380	980732	992191	995929

—Express and Priority Mail, Marketing, 3-30-95

PHILATELY

Pictorial Cancellations Announcement 95-7

As a community service, the Postal Service offers pictorial cancellations to commemorate local events celebrated in communities throughout the nation. A list of upcoming events for which pictorial cancellations are authorized appears below. If available, the sponsor of the pictorial cancellation appears in italics under the date. Also provided, as space permits, are illustrations of those cancellations that were reproducible and available at press time.

People attending these local events may obtain the cancellation in person at the temporary post office station established there. Those who cannot attend the event, but who wish to obtain the cancellation, may submit a mail order request. Pictorial cancellations are available only for the dates indicated, and *requests must be post-marked no later than 30 days following the requested pictorial cancellation date.*

All requests must include a stamped envelope or postcard bearing at least the minimum First-Class Mail post-

age (32 cents per envelope or 20 cents per postcard). Items submitted for cancellation may not include postage issued after the date of the requested cancellation. Such items will be returned unserved.

Customers wishing to obtain a cancellation should affix stamps to any envelope or postcard of their choice, address the envelope or postcard to themselves or others, insert a card of postcard thickness in envelopes for sturdiness, and tuck in the flap. Place the envelope or postcard in a larger envelope and address it to: PICTORIAL CANCELLATIONS, followed by the NAME OF THE STATION, ADDRESS, CITY, STATE, ZIP + 4 CODE, exactly as listed below (using all capitals and no punctuation, except the hyphen in the ZIP + 4 code).

After applying the pictorial cancellation, the Postal Service returns the envelope or postcard through the mail. Customers who want their serviced item returned under protected cover should include a larger, stamped, self-addressed envelope.



April 1, 1995
20TH ANNIVERSARY STATION
POSTMASTER
102 CHURCH ST
BELZONI MS 39038-9998



April 1, 1995
CATFISH FESTIVAL STATION
POSTMASTER
200 N SUMMIT ST
CRESCENT CITY FL 32112-2302



April 1, 1995
50TH ANNIVERSARY PENTAGON
STATION
POSTMASTER
SPECIAL CANCELLATION UNIT
900 BRENTWOOD RD NE
WASHINGTON DC 20066-9998



April 1, 1995
Centennial Committee of Peachland NC
CENTENNIAL STATION
POSTMASTER
PO BOX 9998
PEACHLAND NC 28133-9998



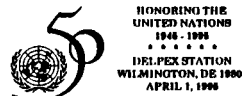
April 1, 1995
50TH ANNIVERSARY STATION
POSTMASTER
601 N MAIN ST
SOUTH BOSTON VA 24592-9998



April 1, 1995
Centennial Committee of Peachland NC
CENTENNIAL STATION
POSTMASTER
PO BOX 9998
PEACHLAND NC 28133-9998



April 1, 1995
ANDREW JACKSON STATION
POSTMASTER
401 E SOUTH ST
JACKSON MS 39205-9998



April 1, 1995
DELPEX STATION
POSTMASTER
WILMINGTON DE 19850-9998



April 1, 1995
BICENTENNIAL STATION
POSTMASTER
40 MAIN ST
COOPERSTOWN NY 13326-9998



April 1, 1995
GRANT PARISH DOGWOOD FESTIVAL
STATION
POSTMASTER
PO BOX 9998
POLLOCK LA 71467-9998

Pictorial Cancellations Announcement 95-7—Continued



April 1, 1995
 JOE PHILLIPS MEMORIAL STATION
 POSTMASTER
 7300 MAIN ST
 RALSTON NE 68127-9998



April 1-2, 1995
 SHEPEX 95 STATION
 POSTMASTER
 522 N 9TH ST
 SHEBOYAN WI 53081-9998



April 1, 1995
 SPRINGTIME TALLAHASSEE STATION
 POSTMASTER
 W PARK AVE & S BRONOUGH ST
 TALLAHASSEE FL 32301-7716



April 2, 1995
 BRASSPEX STATION
 POSTMASTER
 135 GRAND ST
 WATERBURY CT 06701-9998



April 1-2, 1995
 FLOWERTOWN STATION
 POSTMASTER
 301 N GUM ST
 SUMMERVILLE SC 29483-9998



April 3-5, 1995
 ACS STATION
 POSTMASTER
 ANAHEIM CA 92808-9998



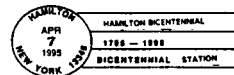
April 1-2, 1995
 KINGDOMS OF THE SEAS STATION
 POSTMASTER
 4730 S 24TH ST
 OMAHA NE 68107-9998



April 6, 1995
 Albuquerque Dukes
 CHAMPIONS STATION
 POSTMASTER
 ALBUQUERQUE NM 87106-9998



April 1-2, 1995
 MAPLE FESTIVAL STATION 95
 POSTMASTER
 40 MAIN ST
 MARATHON NY 13803-9998



April 7, 1995
 BICENTENNIAL STATION
 POSTMASTER
 32 BROAD ST
 HAMILTON NY 13346-9998



April 1-2, 1995
 Numismatic Club
 NUMISMATIC STATION
 POSTMASTER
 4600 MARK IV PKY
 FORT WORTH TX 76161-9998



April 7, 1995
 City of Fairfield
 WHERE IS FAIRFIELD STATION
 POSTMASTER
 600 KENTUCKY ST
 FAIRFIELD CA 94533-9998



April 1-2, 1995
 Park Forest Stamp Club
 POSTMASTER
 375 OSWEGO ST
 PARK FOREST IL 60466-9998



April 7, 1995
 OPEN HOUSE STATION
 POSTMASTER
 324 W MAIN ST
 MARLOW OK 73055-9998



April 1-2, 1995
 SAGINAW VALLEY STAMP SOCIETY
 STATION
 POSTMASTER
 SAGINAW MI 48605-9998



April 7-9, 1995
 95 CENTENNIAL STATION
 POSTMASTER
 850 TWIN RIVERS DR
 COLUMBUS OH 43216-9653

Pictorial Cancellations Announcement 95-7—Continued



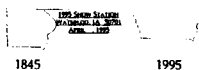
April 7-9, 1995
 ROPEX STATION
 POSTMASTER
 1335 JEFFERSON RD
 ROCHESTER NY 14692-9998



April 8-9, 1995
 FLAMINGO FEST STATION
 POSTMASTER
 4160 W 16TH AVE
 HIALEAH FL 33012-9998



April 7-9, 1995
 WESPNEK STATION
 POSTMASTER
 100 FISHER AVE
 WHITE PLAINS NY 10602-9998



April 8-9, 1995
 IOWA FEDERATION OF STAMP CLUB
 1995 SHOW STATION
 POSTMASTER
 300 SYCAMORE
 WATERLOO IA 50101-9998



April 8, 1995
 BOK TOWER GARDENS STATION
 POSTMASTER
 LAKE WALES FL 33853-9998



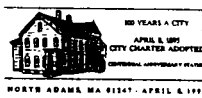
April 8-9, 1995
 NORTH STAR STATION
 POSTMASTER
 100 S FIRST ST
 MINNEAPOLIS MN 55401-9611



April 8, 1995
 CAREER STATION
 POSTMASTER
 205 WASHINGTON ST
 SARATOGA SPRINGS NY 12666-9998



April 9, 1995
 CENTENNIAL STATION
 POSTMASTER
 122 E PIKE ST
 JACKSON CENTER OH 45334-9998



April 8, 1995
 CENTENNIAL ANNIVERSARY STATION
 POSTMASTER
 67 SUMMER ST
 NORTH ADAMS MA 01247-9998



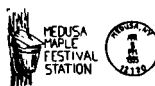
April 10, 1995
 WHOOPIING IT UP ON THE PLATTE
 STATION
 POSTMASTER
 204 W SOUTH FRONT ST
 GRAND ISLAND NE 68801-9998



April 8, 1995
 CHESTER STATION
 POSTMASTER
 PO BOX 9998
 CHESTER OK 73838-9998



April 11, 1995
 CAPPER STATION
 POSTMASTER
 TOPEKA KS 66604-9998



April 8, 1995
 MEDUSA MAPLE FESTIVAL STATION
 POSTMASTER
 MAIN ST ROUTE 351
 MEDUSA NY 12120-9998



April 11, 1995
 THE CAPPER STATION
 POSTMASTER
 424 S KANSAS AVE
 TOPEKA KS 66603-9611



April 8, 1995
 THE TOPEKA STAMP SHOW STATION
 POSTMASTER
 424 S KANSAS AVE
 TOPEKA KS 66603-9998



April 11-May 11, 1995
 FARMERS LIBRARY STATION
 POSTMASTER
 1105 WASHINGTON BLVD
 BELPRE OH 45714-9998

Pictorial Cancellations Announcement 95-7—Continued



April 12, 1995
FDR STATION
 POSTMASTER
 1 E MARKET ST
 HYDE PARK NY 12538-9998



April 15, 1995
AZALEA FESTIVAL STATION
 POSTMASTER
 110 JOHNSON ST
 PICKENS SC 29671-9998



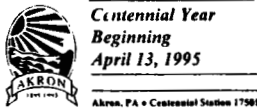
April 12, 1995
Guffey Community Association
GUFFEY CENTENNIAL STATION
 POSTMASTER
 1517 CANYON RD
 GUFFEY CO 80820-9998

F.D.R. FUNERAL TRAIN STATION



HYDE PARK, NEW YORK 12538
 APRIL 15, 1995

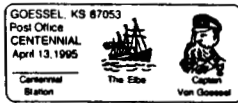
April 15, 1995
FDR FUNERAL TRAIN STATION
 POSTMASTER
 HYDE PARK NY 12538-9998



April 13, 1995
AKRON PA CENTENNIAL STATION
 17501
 POSTMASTER
 PO BOX 9998
 AKRON PA 17501-9998



April 15, 1995
CHEYENNE-ARAPAHO STATION
 POSTMASTER
 701 E MAIN ST
 HAMMON OK 73650-9998



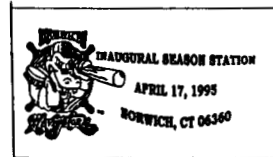
April 13, 1995
CENTENNIAL STATION
 POSTMASTER
 PO BOX 9998
 GOESSEL KS 67053-9998



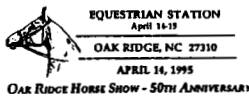
April 15, 1995
Parent-Teacher Organization
BLUEGRASS AND FIDDLERS' JAMBOREE
HOLLADAY STATION
 HOLLADAY TN 38341
 POSTMASTER
 HOLLADAY TN 38341-9998



April 13, 1995
Delano Chamber of Commerce
HERITAGE STATION
 POSTMASTER
 DELANO CA 93215-9998



April 17, 1995
INUAGURAL SEASON STATION
 POSTMASTER
 240 MAIN ST
 NORWICH CT 06360-9998



April 14-15, 1995
EQUESTRIAN STATION
 POSTMASTER
 PO BOX 9998
 OAK RIDGE NC 27310-9998



April 17-23, 1995
LIBERTY MUTUAL LEGENDS OF GOLF
PGA WEST STADIUM STATION
 POSTMASTER
 51321 AVENIDA BERMUDAS
 LA QUINTA CA 92253-9998



April 14-16, 1995
MINICON 30 STATION
 POSTMASTER
 100 S FIRST ST
 MINNEAPOLIS MN 55401-9998

PGA WEST • THE STADIUM STATION
 APRIL 17 1995 • LA QUINTA, CALIFORNIA 92253



April 14-24, 1995
SESQUICENTENNIAL STATION
 POSTMASTER
 686 S SEGUIN ST
 NEW BRAUNFELS TX 78130-9998



April 18, 1995
ERNIE PYLE STATION
 POSTMASTER
 171 MAPLE ST
 DANA IN 47847-9998



April 18, 1995
OLD TOWN HIGH SCHOOL BAND STATION
 POSTMASTER
 146 CENTER ST
 OLD TOWN ME 04468-9998

Pictorial Cancellations Announcement 95-7—Continued



April 19-22, 1995
 104TH CONTINENTAL CONGRESS
 DAR CONSTITUTION HALL STATION
 POSTMASTER
 SPECIAL CANCELLATION UNIT
 900 BRENTWOOD RD NE
 WASHINGTON DC 20066-9998



April 22, 1995
 EARTH DAY STATION
 POSTMASTER
 PO BOX 9998
 EARTH TX 79031-9998



April 21, 1995
 Department of Environment-City of
 Chicago
 EARTH DAY STATION
 POSTMASTER
 320 N CLARK ST
 CHICAGO IL 60610-9998



April 22, 1995
 GRANTS BIRTHPLACE STATION
 POSTMASTER
 111 BROADWAY ST
 MOSCOW OH 45133-9998

Earth Day Celebrates
 25th Anniversary



April 21, 1995
 EARTH DAY STATION
 POSTMASTER
 2105 E COOK ST
 SPRINGFIELD IL 62703-9998



April 22, 1995
 Hartford County Tourism
 SPACESHIP EARTH STATION
 POSTMASTER
 PO BOX A
 HAVRE DE GRACE MD 21078-9998

National Championship Station
 Memorial Stadium



FINISHED BUSINESS

April 21, 1995
 NATIONAL CHAMPIONSHIP STATION
 POSTMASTER
 700 R ST
 LINCOLN NE 68501-9998



April 22, 1995
 Juneau Philatelic Society
 PANEX XXXV STATION
 POSTMASTER
 PO BOX 39997
 JUNEAU AK 99803-9998



SELMAN VEHICLE MAINTENANCE FACILITY
 POLLUTION PREVENTION STATION
 EDISON, NEW JERSEY 08899
 APRIL 21, 1995

April 21, 1995
 POLLUTION PREVENTION STATION
 POSTMASTER
 21 KILMER RD
 EDISON NJ 08899-9998



April 22, 1995
 SELMAN FIELD STATION
 POSTMASTER
 501 STERLING RD
 MONROE LA 71203-9998



April 21, 1995
 WILLIAM CARL GARNER VISITOR
 CENTER STATION
 POSTMASTER
 PO BOX 9998
 HEBER SPRINGS AR 72543-9998



April 22, 1995
 TULIPS A BLOOM STATION
 POSTMASTER
 203 W BLACKWELL ST
 BLACKWELL OK 74631-9998



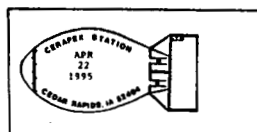
April 21-23, 1995
 25TH ANNUAL DOGWOOD FESTIVAL
 STATION
 POSTMASTER
 114 S FORSYTHE ST
 PIKETON OH 45661-9998



April 22, 1995
 US Postal Service
 BAYFRONT PARK STATION
 POSTMASTER
 PO BOX 829631
 PEMBROKE PINES FL 33082-9631



April 22, 1995
 BANGOR HISTORICAL SOCIETY
 STATION
 POSTMASTER
 202 HARLOW ST
 BANGOR ME 04401-9998



April 22-23, 1995
 CERAPEX STATION
 POSTMASTER
 615 6TH AVE SE
 CEDAR RAPIDS IA 52401-9998

Pictorial Cancellations Announcement 95-7—Continued

Cotton Gin Station



BURTON, TEXAS 77835
HOME OF THE COTTON GIN FESTIVAL
APRIL 23, 1995

April 22-23, 1995
COTTON GIN STATION
POSTMASTER
PO BOX 9998
BURTON TX 77835-9998

The following pictorial for INCOME TAX NIGHT STATION will be available on April 17 at the locations listed below:



FLAMINGO FEST STATION
APRIL 22, 1995
HIALEAH, FL 33012

April 22-23, 1995
Kiwanis Club
FLAMINGO FEST STATION
POSTMASTER
4160 W 16TH AVE
HIALEAH FL 33012-9998



POSTMASTER
811 PAULISON AVE
CLIFTON NJ 07015-9998

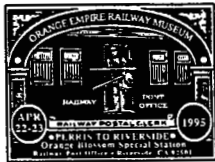
POSTMASTER
150 POMPTON PLAINS CROSSROADS
WAYNE NJ 07470



APRIL 1995
ORANGE BLOSSOM FESTIVAL STATION
RIVERSIDE, CALIFORNIA
92501-9998

April 22-23, 1995
ORANGE BLOSSOM FESTIVAL STATION
POSTMASTER
4150 CHICAGO AVE
RIVERSIDE CA 92507-9998

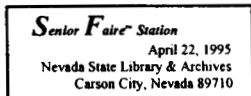
POSTMASTER
310 N BROAD ST
ELIZABETH NJ 07207-9998



April 22-23, 1995
ORANGE BLOSSOM SPECIAL STATION
POSTMASTER
4150 CHICAGO AVE
RIVERSIDE CA 92502-9998

POSTMASTER
2 FEDERAL SQ
NEWARK NJ 07102-9998

POSTMASTER
332 RAMAPO VALLEY RD
OAKLAND NJ 07436-9998



Senior Faire Station
April 22, 1995
Nevada State Library & Archives
Carson City, Nevada 89710

April 22-23, 1995
SENIOR FAIRE STATION
POSTMASTER
RENO NV 89510-9998

POSTMASTER
155 CLINTON RD
W CALDWELL NJ 07006-9998



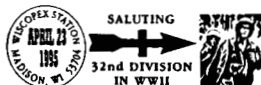
April 22-23, 1995
STAMP SHOW STATION
POSTMASTER
1232 MAIN AVE
CLIFTON NJ 07011-9998

POSTMASTER
33 E MIDLAND AVE
PARAMUS NJ 07652-9998



April 22-23, 1995
Wilksburg Stamp Club
EXHIBITION STATION
POSTMASTER
PO BOX 17109
PITTSBURGH PA 15235-0109

POSTMASTER
229 MAIN ST
FORT LEE NJ 07024-9998



April 22-23, 1995
WISCOPEX STATION
POSTMASTER
3902 MILWAUKEE ST
MADISON WI 53714-9998

Pictorial Cancellations Announcement 95-7—Continued



POSTMASTER
123 MILTON AVE
RAHWAY NJ 07065-9998

POSTMASTER
2717 STATE ROUTE 23
NEWFOUNDLAND NJ 07435-9998

POSTMASTER
201 WATCHUNG AVE
PLAINFIELD NJ 07060-9998

POSTMASTER
49 W MT PLEASANT AVE
LIVINGSTON NJ 07039-9998

—Stamp Management, Marketing, 3-30-95

32-Cent Richard M. Nixon Stamp

Issue:
Richard M. Nixon

Denomination:
32 cents

Format:
Pane of 50 stamps

Item No:
4477

Issue Date:
April 26, 1995

First Day City:
Yorba Linda, CA

National Sales Date:
April 27, 1995

Printer:
Banknote Corporation of America

Master Carton Size:
125,000 stamps

The 32-cent Richard M. Nixon stamp goes on sale April 26 in Yorba Linda, CA. This stamp was issued in tribute to Richard Nixon's life and is one of a series of stamps in honor of former presidents. The portrait of Richard M. Nixon was created by Daniel Schwartz of New York, NY.

Distribution

Post offices with authorized philatelic centers will receive the following automatic distribution of the 32-cent

Richard M. Nixon stamp printed by Banknote Corporation of America.

Offices That Receive Four-Position Stock in These Quantities	Will Receive This Quantity of the 32-Cent Richard M. Nixon Stamp
20,000	30,000
40,000	60,000
60,000	90,000
80,000	125,000
125,000	250,000
250,000	375,000
375,000	625,000
625,000	875,000

All stamp distribution offices (SDOs) will receive approximately one-third of their standard automatic distribution quantities for 50-stamp commemorative stamps, rounded to the nearest carton size (125,000). SDOs will make subsequent shipments to post offices, using Forms 3309, *Advice of Shipment/Stamp Invoice*. SDOs must not distribute stamps to post offices before April 18.

Additional Supply

Each of the accountable paper depositories (APDs) will receive 1,625,000 of these stamps and the stamp distribution networks (SDNs) will receive 375,000 stamps for filling supplemental orders. SDOs requiring additional stamps must order them from their appropriate APD, using separate Forms 17-A, *Accountable Items Requisition From Stamp Distribution Office*. All other post offices requiring quantities of this stamp should immediately requisition them from their designated SDO on separate Forms 17-A.

—Stamp Services, Marketing, 3-30-95

32-Cent Liberty Bell Security Stamped Envelope

Issue:
Liberty Bell Security Envelope

Denominated Value:
32 cents

Format:
#9 regular envelope
#9 window envelope

Item No:
2156—#9 regular envelope
2157—#9 window envelope

Issue Date:
May 16, 1995

First Day City:
Washington, DC

National Sales Date:
May 17, 1995

Printer:
Westvaco

Master Carton Size:
#9 envelope—2,500

The 32-cent Liberty Bell Security stamped envelope goes on sale May 16 in Washington, DC. This envelope is available in size #9, regular and window. A future *Postal Bulletin* will include collector information.

Distribution

Stamp distribution offices (SDOs) will receive an automatic distribution of both envelopes for philatelic pur-

poses. Post offices with authorized philatelic centers will receive an automatic distribution of both envelopes from their SDO based on their previous established quantities.

CAG A–G post offices requiring bulk quantities of these envelopes should submit Forms 3205, *Requisition for Plain Stamped Envelopes*, to:

PHILATELIC FULFILLMENT SERVICE CENTER
PO BOX 419178
KANSAS CITY MO 64179-0988

Item numbers are listed in the chart below. Requisitions will be filled as fast as manufacturing and distribution permits. All other post offices requiring less than bulk quantities of these envelopes must requisition these envelopes by submitting a separate Form 17-A, *Accountable Items Requisitioned From Stamp Distribution Office*, to their designated SDO.

Printed Stamped Envelopes

These envelopes are also available with a preprinted return address for customers. Customers should indicate on Form 3203, *Printed Stamped Envelopes Order*, sizes, correct item numbers, quantities, and cost of envelopes they are ordering. Customers should mail the form with the proper remittance in a preprinted reply envelope or a plain envelope addressed to:

PHILATELIC FULFILLMENT SERVICE CENTER
PO BOX 419178
KANSAS CITY MO 64179-0988

Customers must pay by check or money order. Customers will not receive the envelopes before May 17, 1995.

Selling Price for 32-Cent Security Plain Stamped Envelopes

Envelope Type	Style	Denomination	Item No.	Less Than 500 Each	500	1,000
Security (regular)	#9	\$0.32	2156	\$0.38	\$172.00	\$344.00
Security (window)	#9	0.32	2157	0.38	173.00	346.00

Selling Price for 32-Cent Security Printed Stamped Envelopes

Envelope Type	Style	Denomination	Item No.	50	500	1,000
Security (regular)	#9	\$0.32	2156	—	\$176.40	\$352.80
Security (window)	#9	0.32	2157	—	177.40	354.80
Security (household) regular	#9	0.32	2108	\$19.20	—	—
Security (household) window	#9	0.32	2109	19.30	—	—

Please allow 3 to 4 weeks for delivery.

Shipping and Handling Charges for Personalized Envelope Program (Effective April 1, 1995)

Boxes of 50		Boxes of 500	
Amount of Order	Fee	Quantity	Fee
\$0.01 to \$20.00	\$3.20	1	\$5.20
20.01 to 50.00	4.20	2 or more	9.20
50.01 to 80.00	5.20		
80.01 to 110.00	6.20	Maximum shipping	
110.01 to 140.00	7.20	charge is \$9.20.	
140.01 to 170.00	8.20		

32-Cent Love Spiral Heart Envelope

Issue:

Love Spiral Heart

Denominated Value:

32 cents

Format:

#10 regular envelope
#6¾ regular envelope

Item No.:

2159—#10 regular envelope
2639—#6¾ regular envelope
2120—#10 banded envelope
2630—#6¾ banded envelope

Issue Date:

May 12, 1995

First Day City:

Lakeville, PA

National Sales Date:

May 13, 1995

Printer:

Westvaco

Master Carton Size:

#10 envelope—2,500
#6¾ envelope—5,000

The 32-cent Love Spiral Heart stamped envelope goes on sale May 12 in Lakeville, PA. This envelope is available in sizes #6¾ and #10, regular and banded. A future *Postal Bulletin* will include collector information.

Distribution

Stamp distribution offices (SDOs) will receive an automatic distribution of both sizes of these regular envelopes based on the new automatic distribution schedule estab-

lished for commemorative envelopes. Post offices with authorized philatelic centers will receive an automatic distribution from their SDO based on their previously established quantities. All other post offices are to requisition an initial quantity of these envelopes by submitting a separate Form 17-A, *Accountable Items Requisitioned From Stamp Distribution Office*, to their designated SDO.

CAG A–G post offices requiring additional bulk quantities of these envelopes should submit a Form 3205, *Requisition for Plain Stamped Envelopes*, following the established envelope ordering schedule to:

PHILATELIC FULFILLMENT SERVICE CENTER
PO BOX 419178
KANSAS CITY MO 64179-0988

Item numbers are listed in the following chart.

Vending Machines

The Love Spiral Heart envelopes are banded in units of five envelopes for use in vending machines. Requisitions for the banded #6¾, Item 2630, and the banded #10, Item 2120, envelopes will be filled as fast as manufacturing and distribution permit.

Printed Stamped Envelopes

These envelopes are also available with a preprinted return address for customers. Customers should indicate on Form 3203, *Printed Stamped Envelopes Order*, sizes, correct item numbers, quantities, and cost of envelopes they are ordering. Customers should mail the form with the proper remittance in a preprinted reply envelope or a plain envelope addressed to:

PHILATELIC FULFILLMENT SERVICE CENTER
PO BOX 419178
KANSAS CITY MO 64179-0988

Customers must pay by check or money order. Customers will not receive the envelopes before May 13, 1995.

Selling Price for 32-Cent Love Spiral Heart Plain Stamped Envelopes

Envelope Type	Style	Denomination	Item No.	Less Than 50 Each	500	1,000
Love (regular)	#6¾	\$0.32	2639	\$0.38	\$170.50	\$341.00
Love	#10	0.32	2159	0.38	175.00	350.00

Selling Price for 32-Cent Love Spiral Heart Printed Stamped Envelopes

Envelope Type	Style	Denomination	Item No.	50	500	1,000
Love (regular)	#6¾	\$0.32	2639	—	\$174.90	\$349.80
Love	#10	0.32	2159	—	179.40	358.80
Love (household)	#6¾	0.32	2626	\$19.00	—	—
Love	#10	0.32	2125	19.20	—	—

Please allow 3 to 4 weeks for delivery.

32-Cent Love Spiral Heart Envelope—Continued

**Shipping and Handling Charges for
Personalized Envelope Program
(Effective April 1, 1995)**

Boxes of 50		Boxes of 500	
Amount of Order	Fee	Quantity	Fee
\$0.01 to \$20.00	\$3.20	1	\$5.20
20.01 to 50.00	4.20	2 or more	9.20
50.01 to 80.00	5.20		
80.01 to 110.00	6.20	Maximum shipping	
110.01 to 140.00	7.20	charge is \$9.20.	
140.01 to 170.00	8.20		

—Stamp Distribution, Marketing, 3-30-95

32-Cent Love (Cherub) Special Stamp

Issue:

Love (Cherub) Special

Denomination:

32 cents

Format:

Pane of 50 stamps

Item No.:

5595

Issue Date:

May 12, 1995

First Day City:

Lakeville, PA

National Sales Date:

May 13, 1995

Printer:

Bureau of Engraving and Printing

Master Carton Size:

150,000 stamps

The 32-cent Love (Cherub) Special stamp, Item 5595, goes on sale May 12 in Lakeville, PA. This stamp, featuring a contemplative cherub, is ideal for wedding invitations and similar personal mailings.

Distribution

All stamp distribution offices (SDOs) will receive their standard automatic distribution quantities for 50-stamps-per-pane commemorative stamps, rounded to the nearest master carton size (150,000 stamps). SDOs will make subsequent, automatic shipments to post offices, using Forms 3309, *Advice of Shipment/Stamp Invoice*. SDOs must not distribute stamps to post offices before May 4, 1995.

Philatelic Requirements

Post offices with authorized philatelic centers will receive the following automatic distributions in six positions:

Offices That Receive Four-Position Stock in These Quantities	Will Receive This Quantity of 32-Cent Love (Cherub) Special Stamps
20,000	30,000
40,000	60,000
60,000	90,000
80,000	120,000
125,000	150,000
250,000	300,000
375,000	450,000
625,000	750,000

Each accountable paper depository (APD) will receive 3,000,000 and the stamp distribution networks (SDNs) will receive 7,500,000 Love (Cherubs) Special Stamps for filling supplemental orders.

Additional Supply

CAG A–G post offices requiring additional stamps in bulk quantities should immediately submit Forms 3356, *Stamp Requisition—Bulk Quantities*, for item 5595 to the Bureau of Engraving and Printing. Orders must be submitted in the following quantities: 25,000; 50,000; 75,000; 100,000; and multiples of 150,000 to a maximum of 6,000,000 stamps per requisition.

All other post offices requiring fewer than 25,000 stamps should requisition them from their designated SDOs, using Forms 17, *Stamp Requisition*.

For the vending program, 7,500,000 stamps will be provided in the form of 1,500,000 packets of 5 stamps and 12,000,000 stamps will be provided in the form of 1,200,000 packets of 10 stamps.

—Stamp Services, Marketing, 3-30-95

55-Cent Love (Cherub) Self-Adhesive Stamp Convertible Booklet

Issue:

Love (Cherub)

Denominated Value:

55 cents

Format:

Convertible booklet of 20 self-adhesive stamps

Item No.:

6644

Issue Date:

May 12, 1995

First Day City:

Lakeville, PA

National Sales Date:

May 13, 1995

Printer:

Banknote Corporation of America

Master Carton Size:

4,500 booklets

The 55-cent Love (Cherub) self-adhesive convertible booklets go on sale May 12, 1995, in Lakeville, PA. This stamp, featuring a contemplative cherub, is ideal for wedding invitations and similar personal mailings. This stamp meets the new First-Class and third-class 2-ounce letter rate for domestic mail. A future *Postal Bulletin* will include collector information.

Distribution

All stamp distribution offices (SDOs) will receive approximately one-third of their standard automatic distribution quantities for a 20-stamp booklet, rounded to the nearest master carton size (4,500 booklets).

Philatelic Requirement

Post offices with authorized philatelic centers will receive the following automatic distribution:

Offices That Receive Four-Position Stock in These Quantities	Will Receive This Quantity of the 55-Cent Love (Cherub) Booklets
20,000	4,500
40,000	4,500
60,000	4,500
80,000	4,500
125,000	9,000
250,000	18,000
375,000	27,000
625,000	45,000

The Minneapolis Information System Service Center will not provide a distribution listing or Forms 3309, *Advice of Shipment/Stamp Invoice*. To obtain quantities, post offices must immediately submit separate Forms 17-A, *Accountable Items Requisition From Stamp Distribution Offices*, to their designated SDOs. SDOs must not distribute booklets to post offices before May 4, 1995. There will not be back-up quantities of this item at the accountable paper depositories.

—Stamp Distribution, Marketing, 3-30-95

55-Cent Love (Cherub) Special Stamp

Issue:

Love (Cherub) Special

Denomination:

55 cents

Format:

Pane of 50 stamps

Item No.:

5504

Issue Date:

May 12, 1995

First Day City:

Lakeville, PA

National Sales Date:

May 13, 1995

Printer:

Bureau of Engraving and Printing

Master Carton Size:

150,000 stamps

The 55-cent Love (Cherub) Special stamp, Item 5504, goes on sale May 12 in Lakeville, PA. This stamp, featuring a contemplative cherub, is ideal for wedding invitations and similar personal mailings. This stamp meets the new First-Class and third-class 2-ounce letter rate for domestic mail.

Distribution

All stamp distribution offices (SDOs) will receive their standard automatic distribution quantities for 50-stamps-per-pane commemorative stamps, rounded to the nearest master carton size (150,000 stamps). SDOs will make subsequent, automatic shipments to post offices, using

Forms 3309, *Advice of Shipment/Stamp Invoice*. SDOs must not distribute stamps to post offices before May 4, 1995.

Philatelic Requirements

Post offices with authorized philatelic centers will receive the following automatic distributions in six positions:

Offices That Receive Four-Position Stock in These Quantities	Will Receive This Quantity of 32-Cent Love (Cherub) Special Stamps
20,000	30,000
40,000	60,000
60,000	90,000
80,000	120,000
125,000	150,000
250,000	300,000
375,000	450,000
625,000	750,000

Each accountable paper depository (APD) will receive 3,000,000 and the stamp distribution networks (SDNs) will receive 7,500,000 Love (Cherubs) Special stamps for filling supplemental orders.

Additional Supply

CAG A-G post offices requiring additional stamps in bulk quantities should immediately submit Forms 3356, *Stamp Requisition Bulk Quantities*, for Item 5595 to the Bureau of Engraving and Printing. Orders must be submitted in the following quantities: 25,000; 50,000; 75,000; 100,000; and multiples of 150,000 to a maximum of 6,000,000 stamps per requisition.

All other post offices requiring fewer than 25,000 stamps should requisition them from their designated SDOs, using Forms 17, *Stamp Requisition*.

—Stamp Services, Marketing, 3-30-95

\$6.40 Love (Cherub) Special Stamp Booklet

Issue:

Love (Cherub) Special

Denomination:

\$6.40

Format:

Booklet of 20

Item No.:

6665

Issue Date:

May 12, 1995

First Day City:

Lakeville, PA

National Sales Date:

May 13, 1995

Printer:

Bureau of Engraving and Printing

Master Carton Size:

4,500 booklets

The \$6.40 Love (Cherub) Special stamp booklet, Item 6665, goes on sale May 12 in Lakeville, PA. This stamp booklet, featuring a contemplative cherub, is ideal for wedding invitations and similar personal mailings.

Distribution

Each stamp distribution office (SDO) with authorized philatelic centers will receive booklet quantities as listed to provide subsequent automatic distribution to each philatelic center.

Offices That Receive Four-Position Stock in These Quantities	Will Receive This Quantity of \$6.40 Love (Cherub) Special Stamp Booklets
20,000	4,500
40,000	4,500
60,000	4,500
80,000	4,500
125,000	9,000
250,000	18,000
375,000	27,000
625,000	45,000

All SDOs will receive automatic distributions, using the new booklet automatic quantities for the Love (Cherub) Special stamp booklets. SDOs will make subsequent automatic distributions to post offices, using Forms 3309, *Advice of Shipment/Stamp Invoice*. SDOs must not distribute these booklets to post offices before May 4.

Each accountable paper depository (APD) will receive 270,000 and the stamp distribution networks (SDNs) will receive 1,800,000 additional booklets for filling supplemental orders.

Additional Supply

Before post offices submit a requisition to the Bureau of Engraving and Printing (BEP), they must first requisition from their designated SDO. Each SDO must also requisition from their designated APD.

CAG A-G post offices requiring additional booklets must submit Forms 3356, *Stamp Requisition—Bulk Quantities*, to BEP. They must submit requisitions in the standard ordering quantity: 1,500 booklets; 3,000 booklets; 4,500 booklets; and multiples of 4,500 to a maximum of 270,000 booklets per requisition.

All other post offices requiring less than bulk quantities of this booklet should immediately requisition them from their designated SDO on a separate Form 17, *Stamp Requisition*.

—Stamp Services, Marketing, 3-30-95

Change in the First Day of Sale and Sale City of \$6.40 Flag Over Porch Self-Adhesive Stamp Booklet Only

Postal Bulletin 21889, March 16, on page 21, stated that the Flag Over Porch self-adhesive stamp booklet, Item 6673, goes on sale May 19 in Aurora, CO. The sale date has been changed to April 18, and the sale city has been changed to Washington, DC. Therefore, all post offices will place this booklet on sale nationwide April 19. SDOs must not distribute stamps to post offices before April 11, 1995. Please note that this change is for the self-adhesive stamp booklet only.

—Stamp Services, Marketing, 3-30-95

Availability of Additional "G" Series Stationery Items

The Postal Service is making the following "G" series stationery items available for sale through regular and philatelic windows. Post offices requiring quantities of these envelopes must requisition them from their stamp distribution office through normal ordering procedures.

Item No.	Description	Price
2121	"G" #10 regular envelope	\$0.38 ea.
2122	"G" #10 window envelope	0.38 ea.
2623	"G" #6¾ regular envelope	0.38 ea.
2624	"G" #6¾ window envelope	0.38 ea.

—Stamp Distribution, Marketing, 3-30-95

Marilyn Monroe Commemorative Stamp Issuance Plans

This article is a continuation of the Marilyn Monroe commemorative stamp issuance plans that were published in *Postal Bulletin* 21889, 3-16-95, pages 23–25, which included information on local stamp ceremonies, temporary philatelic stations, pictorial cancellations, products, advertising and promotion, and publicity. Also included was a Marilyn Monroe Commemorative Stamp Event Notice of Intent form on page 26. Some post offices may not have seen the form because it was inadvertently separated from the issuance plans by a nonrelated article entitled “1995 Envelope Ordering Schedule” (bottom of page 25). Therefore, the deadline for submitting the notice of intent form has been changed from March 30 to April 13.

More information on pictorial cancellations, products, ordering instructions for stamp pins and publicity follows.

Marilyn Monroe Pictorial Cancellation

Stamp Management has approved several designs for a special pictorial cancellation to commemorate Marilyn Monroe stamp events. Marilyn Monroe pictorial cancellations are designed exclusively for commemorating events associated with the issuance of the Marilyn Monroe stamp and may not be offered at nonrelated events.

To obtain unfinished cancellation art, and instructions on how to finish the design, please complete the Marilyn Monroe Pictorial Cancellation Art order form, found in this *Postal Bulletin*, and mail to:

MARILYN MONROE STAMP EVENT COORDINATOR
STAMP MANAGEMENT
US POSTAL SERVICE
475 L ENFANT PLAZA SW RM 4474E
WASHINGTON DC 20260-2437

The deadline for submitting requests for unfinished cancellation art is April 13.

Licensed Products

A list of the licensed products (T-shirts, mugs, posters, etc.) and authorized vendors will be sent, under separate cover, to those post offices that are participating in events associated with the issuance of the Marilyn Monroe stamp.

Marilyn Monroe Stamp Pins

Marilyn Monroe stamp pins may be purchased in packages of 100 pins at \$65.75. These stamp pins may be sold at events or used for promotional purposes. Post offices may purchase the stamp pins with a credit card or money order only.

To order, complete the Marilyn Monroe Stamp Pin Order Form, found in this *Postal Bulletin*, and fax to: 816-545-1212 or mail to:

PHILATELIC FULFILLMENT SERVICE CENTER
PO BOX 419219
KANSAS CITY MO 64141-6219

The deadline for ordering stamp pins is April 30.

Publicity

Corporate Relations will provide fill-in news releases, publicity ideas, and questions and answers for internal and external audiences to all postmasters, under separate cover, by April 7.

—Stamp Management, Marketing, 3-30-95

Marilyn Monroe Pictorial Cancellation Art Order Form

To obtain unfinished cancellation art, and instructions on how to finish the design, please complete this form and mail to: MARILYN MONROE STAMP EVENT COORDINATOR, STAMP MANAGEMENT, US POSTAL SERVICE, 475 L ENFANT PLAZA SW RM 4474E, WASHINGTON DC 20260-2437. Marilyn Monroe pictorial cancellation art is available to post offices that are conducting events associated with the issuance of the Marilyn Monroe stamp only. Requests from post offices that have not submitted a Marilyn Monroe Commemorative Stamp Event Notice of Intent form will not be honored. The deadline for requesting cancellation art is April 13.

Please type or print:

Name

Title

Postal Facility

Delivery Address

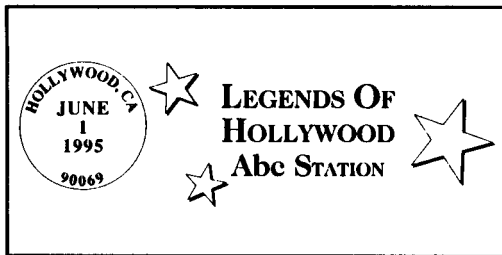
City State ZIP+4

() _____

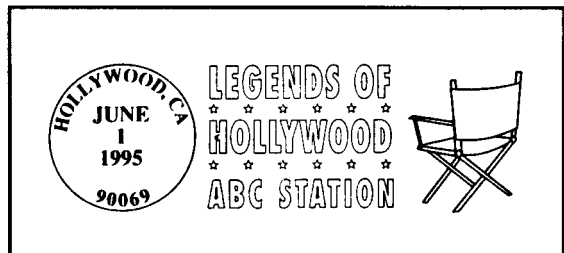
Daytime Telephone Number

Please indicate the cancellation you prefer by placing a check in the box next to the design. Check one only.

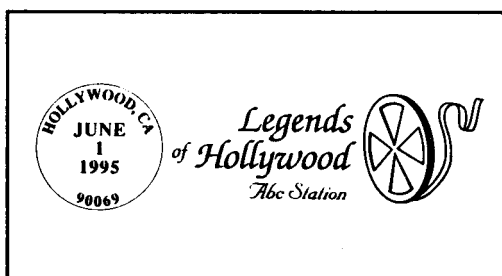
1.



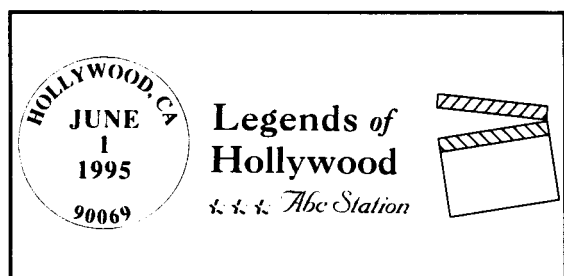
3.



2.



4.



Marilyn Monroe Stamp Pin Order Form

To order Marilyn Monroe stamp pins, complete this form and fax to: 816-545-1212 or mail to: PHILATELIC FULFILLMENT SERVICE CENTER, PO BOX 419219, KANSAS CITY MO 64141-6219. This offer is available to post offices that are conducting events associated with the issuance of the Marilyn Monroe stamp only. Orders from post offices that have not submitted a Marilyn Monroe Commemorative Stamp Event Notice of Intent form will not be honored.

Please type or print:

Payment Method:

Name

Post offices may purchase stamp pins with a credit card or money order only. Please do not send cash.

Title

- Make money order payable to: U.S. Postal Service
- VISA or MasterCard (check one)

Postal Facility

Credit Card Number Expiration Date

Delivery Address

Signature of card holder

City State ZIP+4

(_____) _____
Daytime Telephone Number

Please enter the quantity (number of packs) and the total cost of your order in the appropriate box below. Marilyn Monroe stamp pins are sold in packs of 100 only.

ITEM	DESCRIPTION	PRICE (per pack)	QUANTITY (number of packs)	TOTAL COST (price x number of packs)
4474P	Marilyn Monroe Stamp Pins (packs of 100 pins)	\$65.75		\$

Source Code 4488

MARILYN MONROE STAMP PINS ARE AVAILABLE ONLY THROUGH THIS OFFER.

OFFER EXPIRES APRIL 30, 1995.

***** Mail & Fax orders only *****

STAMP ANNOUNCEMENT 95-9

Kids Care! Commemorative Stamps

The Postal Service will issue 32-cent Kids Care! commemorative stamps in a block of 4, pane of 16, on April 20 in Washington, DC. The stamp designs were selected from more than 150,000 entries to the Postal Service and McDonald's Environmental Stamp Design Contest, which challenged kids, 8 to 13 years old, to design stamps with a theme of preserving the environment. The Citizen's Stamp Advisory Committee and Postmaster General Runyon selected 4 winners from 102 finalists based on originality of idea, creative expression, neatness, suitability for stamp production, and artistic ability.

One stamp, designed by Christy Millard of Lakewood, CO, features the earth being cleaned in a bathtub. The second stamp, designed by Melody Kiper of Shreveport, LA, features a beach clean-up scene. The third stamp, designed by Brian Hailes of Millville, UT, depicts a man planting a tree, and the fourth stamp, designed by Jennifer Michalove of Stonington, CT, features a house being connected with the power of the sun.



Copyright USPS 1994

How to Order the First Day of Issue Postmark



Customers have 30 days to obtain the first day of issue postmark by mail. They may purchase the new stamps at their local post office, affix the stamps to envelopes of their choice, address the envelopes (to themselves or others), insert a card of postcard thickness, tuck in the flap, and place the envelopes in a larger envelope addressed to:

CUSTOMER SUPPLIED ENVELOPE
 KIDS CARE STAMP
 POSTMASTER
 900 BRENTWOOD RD NE
 WASHINGTON DC 20066-9991

After applying the first day of issue postmark, the Postal Service returns the envelopes through the mail. There is no charge for the postmark. All orders must be postmarked by May 20, 1995.

The Philatelic Fulfillment Service Center also offers first day covers for new stamp issues. The covers are plain (non-cachet) envelopes with the new stamps affixed and postmarked with the official first day of issue cancellation. Each cover has an individual catalog number and is offered in the quarterly *Stamps*, etc. catalog. Customers may request a free catalog by writing:

PHILATELIC FULFILLMENT SERVICE CENTER
 US POSTAL SERVICE
 PO BOX 419424
 KANSAS CITY MO 64141-6424

or by telephoning 1-800-STAMP24.

First day covers remain on sale for at least 90 days after each stamp's issuance.

—Stamp Management, Marketing, 3-30-95

Issue:

Kids Care!

Denomination:

32 cents

Format:

Sheet of 16 stamps (4 designs)

Item No.:

4473

Issue Date:

April 20, 1995

Nationwide Sale Date:

April 21, 1995

Issue City & State:

Washington, DC

Designers:

Christy Millard, Lakewood, CO
 Melody Kiper, Shreveport, LA
 Brian Hailes, Millville, UT
 Jennifer Michalove, Stonington, CT

Art Director:

Terry McCaffrey, Stamp Services, USPS

Typographer:

Richard Sheaff, Norwood, MA

Project Manager:

Terry McCaffrey

Manufacturing Process:

Offset lithography

Printer:

Ashton Potter USA

Colors:

Process yellow, magenta, cyan, black, and green

Size:

1.10 x 1.42 in/27.9 x 36.1 mm (image area)
 1.24 x 1.56 in/31.5 x 39.6 mm (overall)
 7.8 x 7.47 in/198.1 x 189.7 mm (full pane)

Marginal Markings:

© USPS 1994, Plate Position Diagram, Price

STAMP ANNOUNCEMENT 95-10

Richard Nixon Commemorative Stamp

The Postal Service honors Richard Nixon with the issuance of a 32-cent commemorative stamp on April 26 in Yorba Linda, CA. Yorba Linda is Nixon's birthplace and home of the Nixon Presidential Library.

Richard Milhous Nixon, the 37th president of the United States, was born January 9, 1913. Nixon began his six decades (1940s through the 1990s) of public life as a California congressman. He was Dwight D. Eisenhower's vice president for two terms and was defeated in 1960 by John F. Kennedy for the presidential election.

In 1968, Nixon won the presidency and was overwhelmingly reelected in 1972. As president, he was instrumental in ending U.S. involvement in the Vietnam War and establishing U.S. relations with communist China. Nixon resigned from his presidential position on August 9, 1974.

During the late 1980s, Nixon emerged as an elder statesman and foreign-policy expert. Nixon died on April 22, 1994, at age 81.



Copyright USPS 1994

How to Order the First Day of Issue Postmark

Customers have 30 days to obtain the first day of issue postmark by mail. They may purchase the new stamps at their local post office, affix the stamps to envelopes of their choice, address the envelopes (to themselves or others), insert a card of postcard thickness, tuck in the flap, and place the envelopes in a larger envelope addressed to:

CUSTOMER SUPPLIED ENVELOPE
RICHARD M NIXON STAMP
POSTMASTER
YORBA LINDA CA 92686-9991

After applying the first day of issue postmark, the Postal Service returns the envelopes through the mail. There is no charge for the postmark. All orders must be postmarked by May 26, 1995.

The Philatelic Fulfillment Service Center also offers first day covers for new stamp issues. The covers are plain (non-cachet) envelopes with the new stamps affixed and postmarked with the official first day of issue cancellation. Each cover has an individual catalog number and is offered in the quarterly *Stamps etc.* catalog. Customers may request a free catalog by writing:

PHILATELIC FULFILLMENT SERVICE CENTER
US POSTAL SERVICE
PO BOX 419424
KANSAS CITY MO 64141-6424

or by telephoning 1-800-STAMP24.

First day covers remain on sale for at least 90 days after each stamp's issuance.

—Stamp Management, Marketing, 3-30-95

Issue:

Richard M. Nixon

Denomination:

32 cents

Format:

Pane of 50

Item No.:

4477

Issue Date:

April 26, 1995

Nationwide Sale Date:

April 27, 1995

Issue City & State:

Yorba Linda, CA

Designer:

Daniel Schwartz, New York, NY

Art Director:

Carl Herrman, Ponte Vedra Beach, FL

Typographer:

John Boyd, Anagraphics, New York, NY

Project Manager:

Terry McCaffrey, Stamp Services, USPS

Manufacturing Process:

Combination offset-intaglio

Printer:

Banknote Corporation of America

Colors:

Process yellow, magenta, cyan, and black (offset); black and red (intaglio)

Size:

0.84 x 1.41 in/21.33 x 35.81 mm (image area)

0.99 x 1.56 in/25.41 x 39.62 mm (overall)

9.36 x 10.90 in/237.6 x 276.6 mm (full pane)

Plate Numbers:

"B" followed by 4 single digits plus 1 digit

Marginal Markings:

© USPS 1994, Plate Position Diagram, Price

STAMP ANNOUNCEMENT 95-11

Bessie Coleman Commemorative Stamp

The Postal Service honors Bessie Coleman with the issuance of a 32-cent commemorative stamp on April 27 in Chicago, IL. Designed by Chris Calle of Ridgefield, CT, the stamp depicts Coleman in the leather helmet and goggles she wore as a 1920's barnstormer.

Bessie Coleman, the world's first black female aviator, was born in the late 1800s, in Atlanta, TX. After being teased by her brother that French women flew airplanes, Coleman vowed that she too would learn to fly. Because of her race and gender, Coleman was forced to pursue her dream outside of the United States. In 1921, she earned her pilot's license from the Fédération Aéronautique Internationale in Europe.

Coleman eventually returned to the United States where she became a barnstormer, stunt flying across the country. On April 30, 1926, while practicing for an exhibition, Coleman fell from her plane to her death.



Copyright USPS 1994

How to Order the First Day of Issue Postmark



Customers have 30 days to obtain the first day of issue postmark by mail. They may purchase the new stamps at their local post office, affix the stamps to envelopes of their choice, address the envelopes (to themselves or others), insert a card of postcard thickness, tuck in the flap, and place the envelopes in a larger envelope addressed to:

CUSTOMER SUPPLIED ENVELOPE
 BESSIE COLEMAN STAMP
 POSTMASTER
 CHICAGO IL 60607-9991

After applying the first day of issue postmark, the Postal Service returns the envelopes through the mail. There is no charge for the postmark. All orders must be postmarked by May 27, 1995.

The Philatelic Fulfillment Service Center also offers first day covers for new stamp issues. The covers are plain (non-cachet) envelopes with the new stamps affixed and postmarked with the official first day of issue cancellation. Each cover has an individual catalog number and is offered in the quarterly *Stamps, etc.* catalog. Customers may request a free catalog by writing:

PHILATELIC FULFILLMENT SERVICE CENTER
 US POSTAL SERVICE
 PO BOX 419424
 KANSAS CITY MO 64141-6424

or by telephoning 1-800-STAMP24.

First day covers remain on sale for at least 90 days after each stamp's issuance.

—Stamp Management, Marketing, 3-30-95

Issue:

Bessie Coleman

Denomination:

32 cents

Format:

Pane of 50

Item No.:

4476

Issue Date:

April 27, 1995

Nationwide Sale Date:

April 28, 1995

Issue City & State:

Chicago, IL

Designer:

Chris Calle, Ridgefield, CT

Art Director:

Richard D. Sheaff, Norwood, MA

Typographer:

Richard D. Sheaff

Project Manager:

Joseph Brockert, Stamp Services, USPS

Manufacturing Process:

Combination offset-intaglio

Printer:

Bureau of Engraving and Printing

Colors:

Dark gray (PMS 440) and red (PMS 186)

Size:

0.84 x 1.41 in/21.33 x 35.81 mm (image area)

0.99 x 1.56 in/25.41 x 39.62 mm (overall)

9.10 x 10.24 in/231.1 x 260.1 mm (full pane)

Plate Numbers:

1 single digit

Marginal Markings:

© USPS 1994, Plate Position Diagram, Price

POST OFFICE

Post Office Changes Number 7

Old/ New	Finance No.	ZIP Code	State	P.O. Name	County/Parish	Station/Branch/ Unit	Unit Type	Effective Date	Comments
Old	044653	72401	AR	Jonesboro	Craighead	Main Office	Post Office	7-1-95	Establish a new ZIP Code for a delivery area. Use Jonesboro AR 72404 as last line of address for a portion of the deliveries previously in ZIP Code 72401.
New	044653	72404	AR	Jonesboro	Craighead	Main Office	Post Office	7-1-95	
Old	072304	81132	CO	Del Norte	Rio Grande	Main Office	Post Office	10-1-94	This announcement expands the use of ZIP Code 81132 to include city delivery. Use Del Norte CO 81132 as last line of address.
New	072304	81132	CO	Del Norte	Rio Grande	Main Office	Post Office	10-1-94	
Old	072664	80615	CO	Eaton	Weld	Main Office	Post Office	1-8-94	This announcement expands the use of ZIP Code 80615 to include city delivery. Use Eaton CO 80615 as last line of address.
New	072664	80615	CO	Eaton	Weld	Main Office	Post Office	1-8-94	
Old	116840	32738	FL	Orange City	Volusia	Main Office	Post Office	8-10-95	Establish a new ZIP Code for post office boxes. Establish a new classified branch. Use Deltona FL 32739 as last line of address.
New	116840	32739	FL	Orange City	Volusia	Deltona Pines	Classified Branch	8-10-95	
Old	122233	30130	GA	Cumming	Forsyth	Main Office	Post Office	5-1-95	Establish a new ZIP Code for post office boxes. Use Cumming GA 30128 as last line of address for post office boxes previously in ZIP Code 30130.
New	122233	30128	GA	Cumming	Forsyth	Main Office	Post Office	5-1-95	
Old	161542	60642	IL	Chicago	Cook	Evergreen Park	Classified Branch	7-1-95	ZIP Code discontinued. Use Chicago IL 60655 as last line of address for a portion of the deliveries previously in ZIP Code 60642.
New	161542	60655	IL	Chicago	Cook	Mount Greenwood	Classified Station	7-1-95	
Old	161542	60642	IL	Chicago	Cook	Evergreen Park	Classified Branch	7-1-95	ZIP Code discontinued. Establish a new ZIP Code for a delivery area. Use Evergreen Park IL 60805 as last line of address for a portion of the deliveries previously in ZIP Code 60642. This amends PB 21888.
New	161542	60805	IL	Chicago	Cook	Evergreen Park	Classified Branch	7-1-95	

Post Office Changes Number 7—Continued

Old/ New	Finance No.	ZIP Code	State	P.O. Name	County/Parish	Station/Branch/ Unit	Unit Type	Effective Date	Comments
Old	166744	61045	IL	Rochelle	Ogle	Kings	Community Post Office	5-7-95	Community post office and ZIP Code discontinued. Establish a place name. Kings IL becomes an acceptable place name for use with ZIP Code 61068.
New	166744	61068	IL	Rochelle	Ogle	Kings	Place Name	5-7-95	
Old	183186	50553	IA	Fonda	Calhoun	Knoke	Community Post Office	4-10-95	Community post office and ZIP Code discontinued. Use Pomeroy IA 50575 as last line of address for deliveries previously in ZIP Code 50553.
New	187326	50575	IA	Pomeroy	Calhoun	Main Office	Post Office	4-10-95	
Old	275213	38648	MS	Mineral Wells	Desoto	Main Office	Post Office	12-31-94	Post office and ZIP Code discontinued. Establish a place name. Mineral Wells MS becomes an acceptable place name for use with ZIP Code 38654.
New	275785	38654	MS	Olive Branch	Desoto	Mineral Wells	Place Name	12-31-94	
Old	276916	39070	MS	Rolling Fork	Issaquena	Filter	Community Post Office	4-15-95	Community post office and ZIP Code discontinued. Establish a place name. Filter MS becomes an acceptable place name for use with ZIP Code 39159.
New	276916	39159	MS	Rolling Fork	Issaquena	Filter	Place Name	4-15-95	
Old	304770	68379	NE	Julian	Nemaha	Main Office	Post Office	3-11-95	Post office and ZIP Code discontinued. Establish a place name. Julian NE becomes an acceptable place name for use with ZIP Code 68378.
New	304740	68378	NE	Johnson	Nemaha	Julian	Place Name	3-11-95	
Old	347938	88435	NM	Santa Rosa	Guadalupe	Pastura	Community Post Office	5-6-95	Community post office and ZIP Code discontinued. Pastura NM becomes an acceptable place name for use with ZIP Code 88435.
New	347938	88435	NM	Santa Rosa	Guadalupe	Pastura	Place Name	5-6-95	
Old	388561	44281	OH	Wadsworth	Medina	Main Office	Post Office	5-1-95	Establish a new ZIP Code for post office boxes. Establish a new classified station. Use Wadsworth OH 44282 as last line of address for post office boxes previously in ZIP Code 44281. This amends PB 21886.
New	388561	44282	OH	Wadsworth	Medina	Wadsworth	Classified Station	5-1-95	

Post Office Changes Number 7—Continued

Old/ New	Finance No.	ZIP Code	State	P.O. Name	County/Parish	Station/Branch/ Unit	Unit Type	Effective Date	Comments
Old	417540	18505	PA	Scranton	Lackawanna	Main Office	Post Office	5-1-95	Establish a new ZIP Code for post office boxes. Establish a new classified station. Use Scranton PA 18502 as last line of address.
New	417540	18502	PA	Scranton	Lackawanna	Steamtown	Classified Station	5-1-95	
Old	480910	78006	TX	Boerne	Kendall	Main Office	Post Office	7-1-95	Establish a new ZIP Code for a delivery area. Use Fair Oaks Ranch TX 78015 as last line of address for a portion of the deliveries previously in ZIP Code 78006.
New	480910	78015	TX	Boerne	Kendall	Fair Oaks Ranch	Place Name	7-1-95	
Old	482270	75265	TX	Dallas	Dallas	Main Office	Post Office	5-1-95	Establish a new ZIP Code for post office boxes. Use Dallas TX 75267 as last line of address.
New	482270	75267	TX	Dallas	Dallas	Main Office	Post Office	5-1-95	
Old	482270	75287	TX	Dallas	Dallas	Bent Tree	Classified Station	5-1-95	Establish a new ZIP Code for post office boxes. Use Dallas TX 75370 as last line of address for post office boxes previously in ZIP Code 75287.
New	482270	75370	TX	Dallas	Dallas	Bent Tree	Classified Station	5-1-95	
Old	483270	77541	TX	Freeport	Brazoria	Main Office	Post Office	5-1-95	Establish a new ZIP Code for post office boxes. Use Freeport TX 77542 as last line of address for post office boxes previously in ZIP Code 77541.
New	483270	77542	TX	Freeport	Brazoria	Main Office	Post Office	5-1-95	

—Address Management, Operations Support, 3-30-95

