

# Perforations



Last month meeting was interesting — There were three items on the agenda, 1) club elections, 2) Topics for 2025 and 3) former club Vice President Ron Bruner stamp collection.

Ron willed his collection of German and British Pacific Dependencies to the club with the provision that the club would determine its distribution.

While we were discussing possible outcomes, Ron's sister and brother-in-law dropped by and provided additional insight on Ron's collecting habits and history of the collection.

In the end, the club members ended up examining the two tables of albums, bought and took home the entire collection — the club treasury is now \$1200.00 richer.



Ron Bruner (1942-2023)



As to the election, Tom, Bill, Dave and Gary were retained for another year and the topics discussion was moved to this month's meeting – any interesting ideas out there?

We will also view a **YOUTUBE** video **"German hyperinflation 1921 to 1923 stamps"**

## Next Stamp Show

March 25

Mo	Tu	We	Th	Fr	Sa	Su
					1	2
3	4	5	6	7	8	9
10	11	12	13	14	15	16
17	18	19	20	21	22	23
24	25	26	27	28	29	30
31						

March 01 - 02  
MSDA WI - Appleton  
Stamp Show  
DoubleTree by Hilton  
Appleton  
150 S Nicolet Rd  
Appleton WI



## Topical Stamp Collecting

Topical (or thematic) stamp collecting is the collecting of postage stamps relating to a particular subject or concept. Topics can be almost anything, from stamps on stamps, birds, trains and poets on stamps, to famous physicians and scientists, along with historical people and events on stamps, which is often a standard theme for many stamp issuing countries.

The earliest stamps simply depicted boring busts of reigning monarchs, important figures, or coats of arms, but over time stamps started to be produced with a wider range of designs.

Bears appeared on provisional stamps of St. Louis in 1845, while the beaver was featured on the earliest stamps of Canada.

Now more than 170 years later, the variety of designs on stamps is enormous, giving topical collectors plenty of scope to find stamps for their chosen theme. In fact, so many stamps have been issued

## Next Meeting

February 25

Mo	Tu	We	Th	Fr	Sa	Su
					1	2
3	4	5	6	7	8	9
10	11	12	13	14	15	16
17	18	19	20	21	22	23
24	25	26	27	28		

- 1) Topics for 2025
- 2) YOUTUBE Video

Next Meeting:

2:00-PM on Tuesday, 25 February 2025

Grayslake Historical Society — Any Changes will be posted on: [lcpshome.org](http://lcpshome.org)



Tom Willer - Presidents  
Officers: Bill Schultz – Vice President  
Dave Sadler – Secretary/Webmaster  
Gary Olson – Treasurer

that some popular themes, such as ships or birds, have become nearly impossible to complete.

This variety has further given topical collectors the ability to specialize further, such as by looking for only square-rigged sailing ships, only flightless birds or maybe squirrels.

Interested? Let us look at the **American Topical Association (ATA)**. <https://americantopical.org/>

**What is the ATA?** — the world's largest organization dedicated to topical and thematic collecting. We focus on the adventure and the fun of collecting and how it enhances the experiences of life.

The **ATA** was founded in 1949 to bring together people who enjoy collecting postage stamps by topics. Throughout **ATA's** history, that mission has not changed, but **ATA** has grown as topical collecting has become one of the most popular areas of philately.

Through its numerous programs and services, **ATA** has encouraged beginning, as well as experienced, topical enthusiasts to collect, research, study and share their topics. Members have enthusiastically shared knowledge and research and have encouraged others.

Another important aspect of **ATA** is to hold competitive exhibitions, where topical philatelists can display their work. The **ATA** holds the only all-thematic stamp exhibition in the U.S. each year.

**Membership** in the American Topical Association brings a wide variety of benefits for collectors of all ages and experience levels. The most popular benefits are the awarding-winning journal, *Topical Time*, and access to the most comprehensive topical checklist database in the world. But members also discover a host of other reasons to be a part of the **ATA** adventure. You can learn about the membership types below or explore the advantages of membership on the benefits page here.

**ATA online store** is the spot for ordering **ATA** handbooks, show and first day covers, **Taste of Topicals™ series** and a variety of gifts and philatelic specialty items. All items are listed with domestic postage included unless otherwise noted.

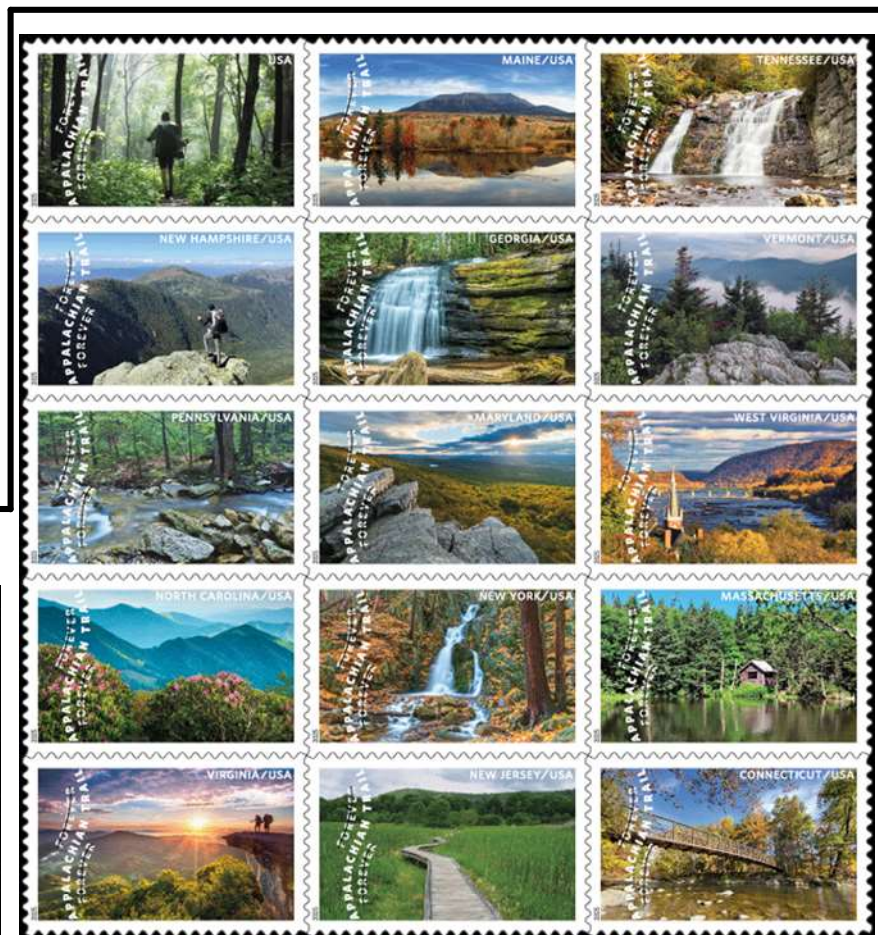


From: Wikipedia & ATA site

**New Issues for February**



(10c) American Vistas (Presorted Standard) – 21 Feb



The Appalachian Trail – 28 Feb



Minister of the Lake County (IL)  
 Philatelic Society - established 1935  
 Website: LCPSS@GMAIL.COM  
 Lake County  
 Philatelic Society