

June 2022

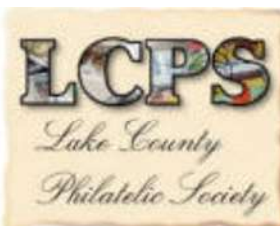
Volume 22 Number 6

Newsletter of the Lake County (IL)

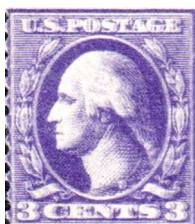
Philatelic Society - Established 1933

Website: LCPShome.org

Perforations



Last month Bill Schultz presented on Britain's longest running stamp series — **the Machin's**, in keeping with the Platinum Jubilee of Elizabeth II, Britain's longest reigning monarch.



This month, bring your glasses as we may be seeing double with Jerry Nylander's presentation **"Two for the Price of One."**



S T A M P	<p>August 13 & 14 TOSAPEX 2022 St. Francis Lions Club Community Center 3476 East Howard AVE St. Francis WI</p>	S H O W S
	<p>September 16-18 MILCOPEX Brookfield Convention Center 325 South Moorland Rd Brookfield WI</p>	
	<p>September 24 SUPEX 2022 American Legion Hall 900 S. La Grange Rd La Grange IL</p>	
	<p>October 01 Quad City Stamp Club Stamp Fair Faith Lutheran Church Moline 1611 41st Street Moline IL</p>	
	<p>November 18-20 CHICAGOPEX Westin Chicago Northwest 400 Park Blvd Itasca IL</p>	
	<p>2023 January 07 Midwest Stamp Dealers Association Waukesha Expo Center - Forum Building 1000 Northview Rd Waukesha WI</p>	
<p>Treasures' Report: Total: \$2,960.21</p>		



First Bureau issues — In 1893, the Bureau of Engraving and Printing (BEP) competed for the postage stamp printing contract and winning against the giant printing companies National Bank Note Company and the current supplier, the American/Continental Bank Note Company on the first try — something that has been debated about to the present day.

For the postage issues of the 1894 series, the Bureau took over the plates of the 1890 small banknote series but modified them by **adding triangles to the upper corners** of the designs. In addition, three new designs were added because the Post Office elected to add \$1.00, \$2.00, and \$5.00 stamps to the series — breaking the tradition of the 90¢ being the high value stamp.



Next Meeting:
7-PM on Wednesday 29 June 2022
Grayslake Library and Via ZOOM
Any Changes will be posted on: lcpshome.org

Officers:
Dave Schenkel/Tom Willer – Copresidents
Ron Bruner – Vice President
Dave Sadler – Secretary
Ed Pieklo – Treasurer

Production pains, mainly perforation problems were common on this first 1894 issue as the BEP was new to this industrial production step having, in the past, only produced our national currency and postcards up to this point that only required slicing and dicing.

In 1895 counterfeits of the 2c value were discovered, which prompted the BEP to begin printing stamps on watermarked paper for the first time in U.S. postal history. The watermarks imbedded the **logo U S P S** into the paper in double-lined letters.

In all, the Bureau's definitive issues of the 1890s consisted of 13 different denominations ranging from 1 cent to 5 dollars and may be differentiated by the presence or absence of this watermark, which would appear on all U. S. Postage stamps of this series. Series 1894 (Scott 246 - 263) shown below – unwatermarked.

In the final issue of 1898, the colors of many denominations were changed to bring the series into conformity with the recommendations of the Universal Postal Union. The aim was to ensure that in all its member nations, stamps for given classes of mail would appear in the same colors. Accordingly, 1c stamps (postcards) were now green and 5¢ stamps (international mail) were now blue, while 2c stamps remained red. This further cascaded in that was necessary to replace the blue and green on higher values with other colors (10c Orange-brown, 15c Olive). U.S. postage continued to reflect this color-coding quite strictly until the mid-1930s, continuing also in the invariable use of purple for 3¢ stamps. Scott numbers for this subseries are #279 – 284.



Scott 246
Ultramarine

Scott 247
Blue

Scott 248
Pink

Scott 249
Lake



Scott 250
Type I

Scott 251
Type II

Scott 252
Type III



Scott 253

Scott 254

Scott 255

Scott 256

Scott 257

Scott 258

Scott 259

Scott 260

2022 USPS Stamp Program June



June 14



June 20



June 20



Scott 261

Scott 262

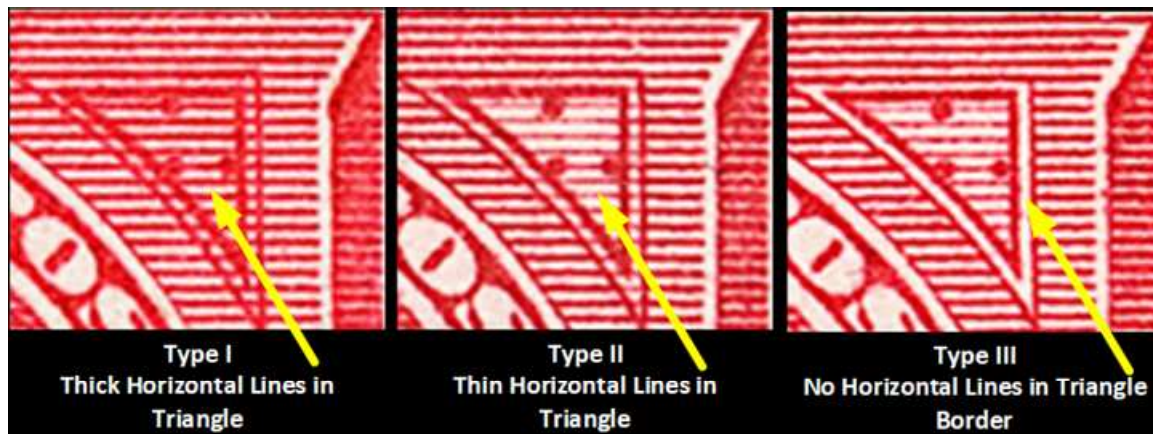
Scott 263



DLWM

The 1895 issue added the **Double-Line Watermark (DLWM)**:

247 > 263 / 250 > 265 / 251 > 266
252 > 267 / 253 > 268 / 254 > 269
255 > 270 / 256 > 271 / 257 > 272
258 > 273 / 259 > 274 / 260 > 275
261 > 276 / 262 > 277 / 263 > 278



Type I
Thick Horizontal Lines in
Triangle

Type II
Thin Horizontal Lines in
Triangle

Type III
No Horizontal Lines in
Triangle
Border

2c Types