

March 2022

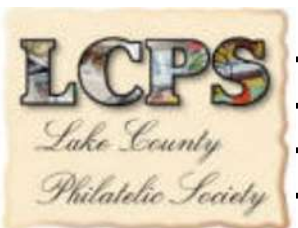
Volume 22 Number 3

Newsletter of the Lake County (IL)

Philatelic Society - Established 1933

Website: [LCPSHOME.ORG](http://LCPSHOME.ORG)

# Perforations



Are you frustrated with the cost of filling those last spaces without a third mortgage or are you lucky enough to have completed a collection – what do you do next?

The answer to these questions were answered last month when we braved the icy cold weather to view the presentation **“How to Start a New Stamp Collection”** by **Dave Schenkel** (from somewhere the sun shines and the temperature rarely is below 70°) where he offered several options and ideas to further clutter our basements and office spaces (note: he will be returning to land of potholes in early April).



Note: Two members have already launched new collecting endeavors — Chuck is now “lost” in conquering Canada and Bill is moving on from squirrels to Canadian Christmas seals.

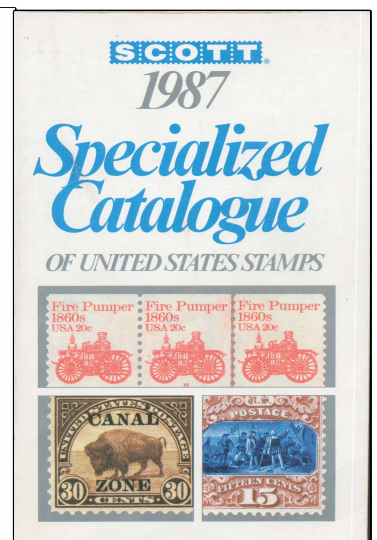
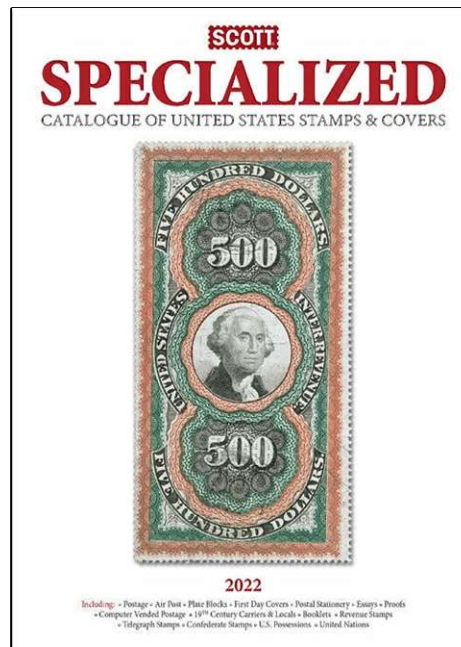
This month, we’ll hear about **“World War II Propaganda Stamps and Forgeries - Part II”** by Ed Pieklo.

**The Stamp Catalogue** — At the last stamp show I picked up a **1987 Scotts Specialized Catalogue of the United States** for free.

Going through it quickly, I found it easier to navigate through and scan the items. Why is that I asked myself – being the Physics geek, I had to compare this artifact with the current 2022 edition.



S T A M P	<b>June 18 &amp; 19</b> <b>MSDA Chicago West</b> <b>IUOE Local 150 HALL</b> <b>6200 Joliet road</b> <b>Countryside IL</b>	S H O W S
	<b>August 13 &amp; 14</b> <b>TOSAPEX 2022</b> <b>St. Francis Lions Club Community Center</b> <b>3476 East Howard AVE</b> <b>St. Francis WI</b>	
<b>Treasures' Report:</b> <b>Total: \$2,950.10</b>		



The Catalogues @ 30% Size

Next Meeting:

**7-PM on Tuesday 22 March 2022**

**Grayslake Library and Via ZOOM**

Any Changes will be posted on: [lcpshome.org](http://lcpshome.org)



**Officers:**  
**Dave Schenkel – President**  
**Ron Bruner – Vice President**  
**Dave Sadler – Secretary**  
**Ed Pieklo – Treasurer**



Quantitatively the two edition breakout as shown in the table below:

ITEM	1987 Edition	2022 Edition	ABS Dif	COMP Difference
Length (in)	9.000	10.875	1.875	1.208
Width (in)	6.000	8.013	2.125	1.335
Thickness (in)	1.500	1.500	0.000	1.000
Volume (in <sup>3</sup> )	81.000	130.704	49.704	1.614
Weight (oz)	31.160	87.180	56.020	2.798
L/R margins	0.125	0.375	0.250	3.000
Text Width	5.750	7.263	1.513	1.263
TOP margin	0.500	0.750	0.250	1.500
BTM Margin	0.750	0.250	-0.500	-0.333
Text Height	7.750	9.875	2.125	1.274
Printed Page Area (in <sup>2</sup> )	44.563	71.717	27.155	1.609
Book Cost	\$20.00	\$139.99	119.99	7.000
Cost/oz	\$0.64	\$1.61	0.96	2.502
Highest Scott #	2245	5614	3369	2.501
Cost/Scott #	\$0.00891	\$0.02494	0.01603	2.799
Images (A#)	1615	4448	2833	2.754
Cost/Image	\$0.01238	\$0.03147	0.01909	2.541

Or you would need a volume that is 2.6 inches thick to contain the information found in the 2022 volume.

**Other physical attributes:** Two columns format in 1987 versus three in the 2022 edition. The 1987 images were smaller and grayscale versus the larger color images found in the current edition. Font size in the earlier edition for headers was 10/12pt compared to the 9pt of new one. Main text size was the same, but the 1987 edition font appears to be narrower. Paper brightness of 1987 would be about 85-90 compared to the 90-95 of the current edition.

Qualitatively, I found the older edition was easier to read the information in the interior page margins, the lower brightness paper reduced the eye strain from reflection interference. The thicker paper laid flatter. Being two columnned, and the images being grayscale made the information easier to extract for each individual item.

In the current 2022 edition I find the color images detected from the readability of the information on each stamp and cluttered due to white spacing between the three columns

#### 2022 USPS Stamp Program — March (11 stamps)



03 March (ugly)



14 March



14 March



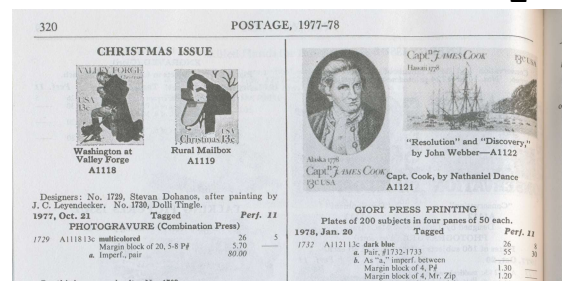
24 March



24 March

Qualitatively, I found the older edition was easier to read the information in the interior page margins, the lower brightness paper reduced the eye strain from reflection interference.

The thicker paper laid flatter – less convex curving and being two columnned and the images being grayscale made the information easier to extract for each individual item. (see images below – note the scan of the 1987 is grayer due to the reflectivity of the paper when illuminated during scanning)



Note the additional 'White Space'

After comparing the two formats, I would prefer a two column format on less bright paper with the color images cropped, eliminating the die cut/perfs. I think this would be a more readable book.