

January 2020

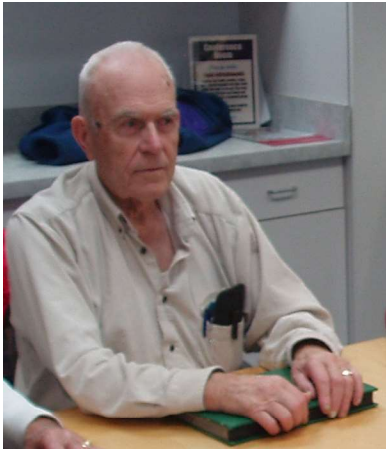
Volume 20 Number 11

Newsletter of the Lake County (IL)

Philatelic Society - Established 1933

Website: [LCPSHOME.ORG](http://LCPSHOME.ORG)

# Perforations



One of our long time club member, Richard Boysen, passed away 2019 December 17.

He was born 1924 December 01 in Libertyville, IL. Richard was a Packers fan and was the past owner of the Boysen Well Drilling. He was retired from Peter Baker Asphalt and a member of both Illinois and National Well Drilling Association.

He collected Sweden and Great Britain. He collecting days gradually waned as he lost his vision.

Nonetheless, he still attended many of our monthly meetings. Finally he was forced to quit collecting and when his sight finally left him, he also stopped coming to meetings in 2011.

Last month found many of us at the annual holiday brunch at the Golden Corral. Fourteen members/family members were in attendance —and this year everyone walked away with a door prize.

This month, the meeting will be on a MONDAY, the 27<sup>th</sup> of January at the Grayslake Library at 7pm.

Scheduled are 1) the annual elections, 2) brunch comments, 3) a lecture on Postal Stationery (Dave Sadler), 4) payment of the annual dues (\$5.00 for those who missed the Brunch) and as always, 5) bring items for trade/sale or donation.

The Warren-Newport Library will be the future location for the **February (25<sup>th</sup>)** and the **March (24<sup>th</sup>)** meetings.



**Postal Stationery** — A postal item, such as a stamped envelope, letter sheet, postal card, *lettercard*, aerogram or wrapper, with an imprinted stamp or inscription indicating that a specific rate of postage or related service has been prepaid.



**Treasures' Report: Total – \$4,000+**

**Local  
Stamp  
Shows**

**Stampfest**  
Gonzaga Hall  
1435 S. 92nd St  
West Allis IL  
**February 29 - March 01**

**ASDA Show**  
Holiday Inn Chicago Oakbrook  
17 W. 350 22nd St.  
Oakbrook Terrace IL  
**March 20 - 22**

**MSDA Milwaukee Stamp Show**  
Crowne Plaza Hotel Milwaukee Airport  
6401 S. 13th St  
Milwaukee WI  
**May 16 - 17**



**Next meeting:**

**7-PM on Monday 27 January 2020**  
**at the Grayslake Library**  
**100 Library Lane - Grayslake IL 60030**



**Officers:**  
**Dr Tom Willer – President**  
**Bill Schultz – Vice President**  
**Dave Sadler – Secretary**  
**Ed Pieklo – Treasurer**

## Local Stamp Shows: 2020

### MSDA Chicago North Stamp Show

Ramada Inn Wheeling  
1090 S Milwaukee Ave  
Wheeling IL  
January 25 and 26

### Stampfest

Gonzaga Hall  
1435 S. 92nd St  
West Allis IL  
February 29 - March 01

### ASDA Show

Holiday Inn Chicago Oakbrook  
17 W. 350 22nd St.  
Oakbrook Terrace IL  
March 20 - 22

### MSDA Milwaukee Stamp Show

Crowne Plaza Hotel  
Milwaukee Airport  
6401 S. 13th St  
Milwaukee WI  
May 16 - 17

### Compex Stamp Show

Guerin Preparatory High School  
8001 W Belmont Ave  
River Grove IL  
May 29-31

### MSDA Chicago North Stamp Show

Ramada Inn Wheeling  
1090 S. Milwaukee Ave  
Wheeling IL  
July 25 - 26

### MSDA Chicago West Stamp Show

Holiday Inn Chicago Oak Brook  
17W350 22nd St  
Brook Terrace IL  
September 19 - 20

### MILCOPEX '20

Crowne Plaza Hotel  
Milwaukee Airport  
6401 South 13th St.  
Milwaukee,  
September 25 - 27

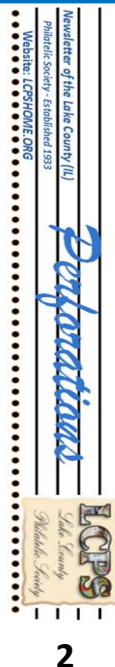
### CHICAGOPEX

Westin Chicago Northwest  
400 Park Blvd.  
Itasca IL  
November 20 - 22

Additional shows will be announced  
as info becomes available.

**U.S. Stamp Program** — this year the Postal Service has 38 new stamps scheduled for the first five month of 2020. They are:

Issue Date	Description
2020.01.11	Lunar New Year: Rat ( <i>the first on a new Lunar New Year series</i> )
2020.01.18	\$7.75 Bia Bend Priority Mail
2020.01.18	\$26.35 Grand Island Ice Caves Express Mail
2020.01.23	Love: Made of Hearts
2020.01.30	Gwen Ifill ( <i>Black Heritage</i> )
2020.02.03	(10c) Presorted Star
2020.02.14	Let's Celebrate
2020.02.21	Wild Orchids (10 designs)
2020.03.04	Arnold Palmer
2020.03.14	Maine Statehood
2020.04.02	Wedding (1oz): Contemporary Boutonniere
2020.04.02	Wedding (2oz): Garden Corsage
2020.04.18	Earth Day
2020.04.24	Global Chrysanthemum
2020.05.13	American Gardens (10 designs)
2020.05.21	Voices of Harlem Renaissance (4 designs)



### General Types of Postal Stationery:

**Aerograms** — were offered a form of letter sheet called an aerogram consisting of a blank sheet of paper with folding instructions and adhesive flaps that becomes its own envelope, and carried prepaid postage - discontinued in 2006.

**Letter sheets** — Before 1845 correspondence was not enclosed in an envelope. Letters were folded, sealed, addressed and postmarked on the outside. This continued even after adhesive postage stamps were introduced. These became available in the U.S. in 1861.

**Postal cards** — Postal cards are postal stationery and have a printed or embossed indicium. In the United States, they were first produced in 1873. Some of the forms taken by postal cards include the regular single card, the attached message-reply cards, airmail postal cards, and official postal cards used for official government business with a "penalty for private use".

**Stamped envelopes** — In August 1852 an act of the U.S. Congress authorized the Postmaster General to provide "suitable letter envelopes with such watermarks or other guards against counterfeits... with the addition of the value or denomination of the postage stamps so printed or impressed thereon...". The first result was the 1853 Nesbitt issues of stamped envelopes, named after the contractor who produced them for the government. Considering the different envelope sizes, knives, colors, dies to print the indicia, and denominations there are literally thousands of different stamped envelopes produced for the US.

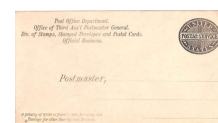
**Wrappers** — The manufacture of wrappers for the sending of newspapers or periodicals began in the U.S. in 1861. The first wrappers were rectangular pieces of paper with gum to seal it on one end and an embossed envelope stamp or indicium on it. They were removed from the items for sale in 1934.



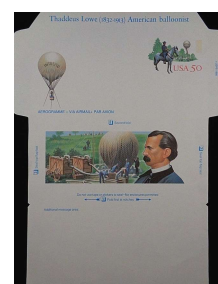
Rate-Change  
Envelope



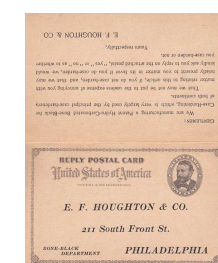
Postal Card



Official Envelope



Aerogram



Reply Postal  
Card