

May 2018

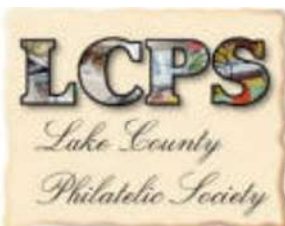
Volume 18 Number 05

Newsletter of the Lake County (IL)

Philatelic Society - Established 1933

Website: LCPSHOME.ORG

Perforations



Last month, Tom began the topic about how each of us started collecting stamps (he'll continue this at the June meeting), and what we are doing to add to our collections.

This month, we'll be looking at those wonderful stamps produced between 1908 and 1922. It is amazing how five basic stamp designs has generated so many different Scott numbers – mainly the USPOD trying to reduce the cost of stamp production.



This month's meeting will be at the Grayslake Library on WEDNESDAY (23 May) at 7pm.



Results of the 2017 Linn's U.S. stamp popularity poll — The results of the 2017 *Linn's* United States Stamp Popularity Poll have been tabulated, and voters gave a decisive win to the Total Solar Eclipse forever stamp as the overall favorite stamp of the year.

The Total Solar Eclipse stamp received 395 votes as the overall favorite stamp of 2017, more than twice the 192 votes earned by the second-place finisher, the WPA (Works Progress Administration) Posters set of 10 issued March 7, 2017.

The John F. Kennedy was chosen as the most important commemorative issue of 2017.



2016?



Category	Best Design	Worst Design	Most Important	Least Necessary
2017 Commemoratives	Total Solar Eclipse	Oscar de la Renta	John F. Kennedy	Disney Villains
2017 Definitives	Liliuokalani Gardens	Uncle Sam's Hat	Alzheimer's	Delicioso
2017 Postal Stationery	Northern Cardinal forever stamped envelope	Azulillo Chilean Blue Crocus forever postal card and double reply postal card	Liliuokalani Gardens Priority Mail stamped envelope	Azulillo Chilean Blue Crocus forever postal card and double reply postal card
Favorite stamp of 2017		Total Solar Eclipse		



The younger voters selected "Sharks" as their favorite group of stamps.

Treasures' Report: Total – \$ \$3,351.29 (\$1,500.00 in a CD)

Local Stamp Shows

Compex 2018
Guerin College Preparatory High School
8001 W. Belmont Ave
River Grove IL
June 1-3

MSDA MILWAUKEE STAMP SHOW
Crowne Plaza Milwaukee Airport
6401 South 13th ST
Milwaukee WI
June 30 and July 1

MSDA Spring Show
Ramada Inn Wheeling
1090 S Milwaukee Ave
Wheeling, IL
July 7 and 8

Next meeting:

7-PM on Wednesday 23 May 2017
at the Grayslake Library
100 Library Lane - Grayslake IL 60030



Officers:

Dr Tom Willer – President
Bill Schultz – Vice President
Dave Sadler – Secretary
Ed Pieklo – Treasurer

Simplified Washington-Franklins (Scott 343-Scott 547)

Washington Identifier

Perforation	Watermark	Press & Other	1 Cent 1	Two Cents	2 Cents 2	3c-\$1.00
Imperforate	DL			344		345-347
	SL	Flat Plate	408	384	409	
		Rotary Plate			459	
	none	Flat Plate	481		482-482A	483-485
		Offset	531		532-534B	535
Perforation	Watermark	Press & Other	1 Cent 1	Two Cents	2 Cents 2	3c-\$1.00
Perf 8½ Coil	SL	Horiz. Perf	410	391	411	
		Vert. Perf	412	393	413	394-396
Perf 10 Horiz. Coil	SL	Flat Plate	441		442	
		Rotary Plate	448		449-450	
	none		486		487-488	489
Perf 10 Vert. Coil	SL	Flat Plate	443		444	445-447
		Rotary Plate	452		453-455	456-458
	none		490		491-492	493-496
Perf 12 Horiz. Coil	DL			349		350-351
	SL			386		
Perf 12 Vert. Coil	DL			353		354-356
	SL			388		389
Perforation	Watermark	Press & Other	1 Cent 1	Two Cents	2 Cents 2	3c-\$1.00
	SL		424		425	426-430
Perf 10	none	Flat Plate	462		463	464-469
		Rotary Plate	543			
Perf 11	DL			519		
	SL				461	
	none	Flat Plate	498		499-500	501-507
		Rotary Plate	544-545		546	
Perf 12	DL	White Paper		332		333-342
		Blue Gray Paper		358		359-366
	SL	White Paper	405	375	406	373-382, 407
Perf 12½	none	Offset	536			
Perf 11 x 10	none	Rotary Plate	538		539-540	541
Perf 10 x 11	none	Rotary Plate	542			

Franklin Identifier

Perforation	Watermark	Press & Other	One Cent	8c - \$1.00
Imperforate	DL		343	
	SL	Flat Plate	383	
Perforation	Watermark	Press & Other	One Cent	8c - \$1.00
Perf 8½ Coil	SL	Horiz. Perf	390	
		Vert. Perf	392	
Perf 10 Vert. Coil	none			497
Perf 12 Horiz. Coil	DL		348	
	SL		385	
	DL		352	
Perf 12 Vert. Coil	SL		387	
Perforation	Watermark	Press & Other	One Cent	8c - \$1.00
	DL			460
	SL			431-440
Perf 10	none	Flat Plate		470-478
Perf 11	none	Flat Plate		508-518
Perf 12	DL	White Paper		422-423
	SL	White Paper		414-441

The Five Designs:



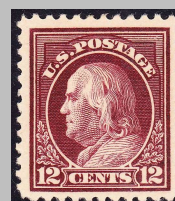
Washington
1908



Franklin 1908



Washington
1912



Franklin 1917



High Value Franklin

U S P S

Double line
watermark (DL)

U S P S

Single line
watermark (SL)

The "**Washington-Franklin**" series of United States postage stamps of 1908-1922, also known as the "**Third Bureau Issues**", are perhaps the most difficult US stamps to identify. In addition to new techniques for printing (i.e. rotary press, offset) and ways of offering stamps to the public (coil stamps) a new watermark (single-line USPS) was used for the first time. Additionally, an odd type of paper, known as "bluish" paper, was used for a brief period in 1909

Interesting website:
<http://www.jamesdire.net/W-F.html>