

March

Volume 17 Number 03

Newsletter of the Lake County (IL)

Philatelic Society - Established 1933

Website: LCPSHOME.ORG

Perforations

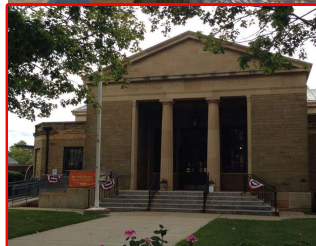


Last month we were treated to a Tom Willer talk about **"America's Second Largest Postal Museum"** or maybe *"A funny thing Happened on the Way to a Sporting Event in Michigan"*. In essence, Tom and his wife stumbled onto a little known gem of an exhibit featuring Postal memorabilia – **The Michael W. Schragg Post Office and US Postal Museum** (202 East Michigan Avenue, Marshall, MI).

The museum is located in the basement of the United States Post Office and can be accessed through the entrance on Madison Street. The Post Office building, a Greek Revival architectural style with a copper roof, was constructed in 1932 of Marshall sandstone. The interior may be viewed during regular post office hours (Cost \$5.00 - Call for appointment). The idea for the downstairs museum occurred during Marshall's 1987 historic home tour. At that time postmaster Mike Schragg displayed a number of old postal artifacts throughout the building.

Many people thought that the entire post office was a museum rather than an official working post office. After the tour Mr. Schragg began organizing the collection of postal antiques in the basement. One of the many features of the museum is a store front post office from the 1890's. Another large item is a horse drawn mail buggy. The buggy, which is in excellent working condition, was built in 1905 and used for rural mail deliveries. Other postal artifacts include old uniforms, railroad mail sacks, assorted mail boxes, and a 1931 Model T mail truck.

This month, Bill Schultz will talk about **"A look at the Hobby -- Number of New Issues/year and Linn's price trends"** in reference to our LCPS 'investment group'. Please feel free to bring your own stamp investment ideas.



Treasures' Report: Total – \$3,475.25

Local
Stamp
Shows

MSDA STAMP SHOW
Country Inn and Suites
600 Milwaukee Ave
Prospect Heights IL
April 8 and 9



Compex 2017
Forest View Education Center
2121 S Goebbert Rd
Arlington Hgts IL
May 19, 20 and 21

MSDA STAMP SHOW
Country Inn & Suites
600 N Milwaukee Ave
Prospect Heights IL
July 8 and 9



MSDA STAMP SHOW
Lindner Conference Center
610 E Butterfield RD
Lombard IL
September 9 and 10



Next meeting:

7-PM on Tuesday 28 March 2017

at the Grayslake Library

100 Library Lane - Grayslake, IL 60030



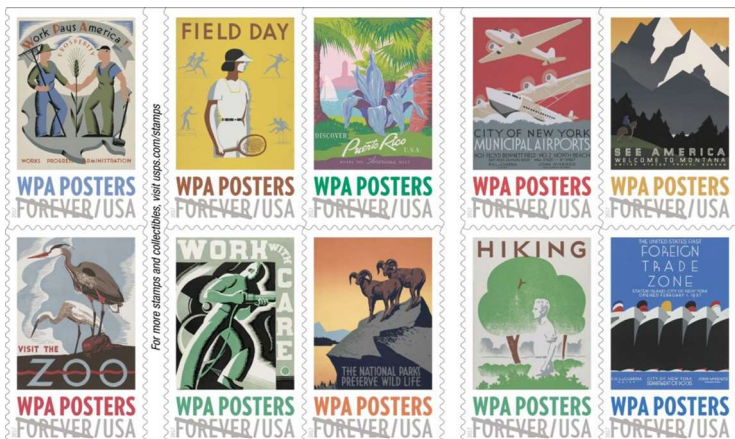
Officers:

Dr Tom Willer – President

Bill Schultz – Vice President

Dave Sadler – Secretary

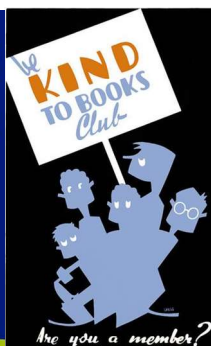
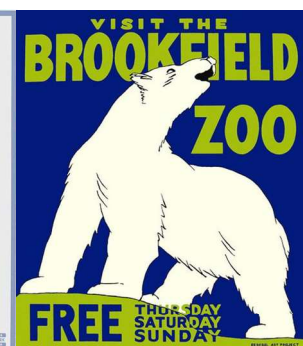
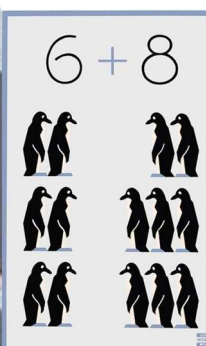
Ed Pieklo – Treasurer



WPA Poster Issue. On 07 March, the USPS issued a Double-sided Booklet of 20 stamps featuring 10 different posters that advertised the Works Progress Administration from 1935-1943.

The posters that appear on this issue are from 1935 to 1936, as part of the New Deal Works Progress Administration, the WPA Federal Art Project created posters to publicize local exhibits, theater productions and health and educational programs. The WPA Posters were also created as part of the Federal Arts Program and the Federal Theater Project. The main goal of the WPA Federal Art Project was to employ struggling artists.

As you can see, they covered the topics as the law was written, but sadly, there does not appear to be one associated with philately.



This theme has also been used on other stamps, such as Scott 4801 — **Made In America (Building a Nation)** Souvenir Sheet that featured 12 photographs by artist hired by the government to show America working. Most of this set was provided by Lewis Hine.



Besides posters, the WPA funded artwork that graced many a post office across the US. The upper image is found in Prosser, WA Post Office "Mail Train in the 80's" by Ernest Norling (1937). The lower image is from the old Wenatchee, WA Post Office "The Saga of Wenatchee" by Peggy Strong (1940).



The WPA has been honored previously in the 1998 "Celebrate The Century: 1930's" pane of 15 (Scott 3185e).

Only one stamp was issued in the 1930's that referenced the the era was Scott 732 (3c National Recovery Act). This stamp



references the governments efforts to regulate industry in an attempt to raise prices after severe deflation and stimulate economic recovery.

