

October 2016

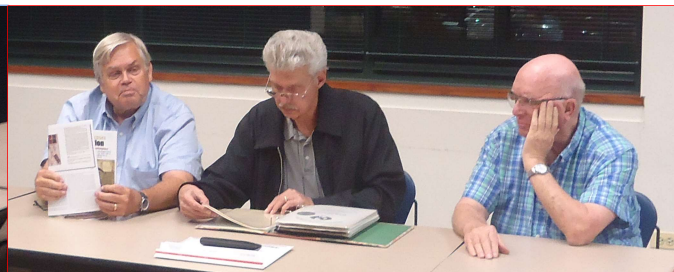
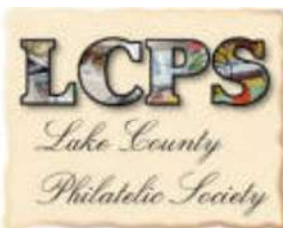
Volume 16 Number 10

Newsletter of the Lake County (IL)

Philatelic Society - Established 1933

Website: LCPSHOME.ORG

Perforations



Last month, we discussed "**Specialty Aspect of Your Stamp Collection**" where members shared and discussed the "what, why and how" their collections have evolved. It came to be. Items such as "Cool Stuff 1 and 2", an album featuring of items collected in Occupied Japan at the end of WWII, early U.S. postal stationery were among the items shared and discussed

This month we'll look at "**Online Stamp Collecting Challenges**", with everyone/anyone invited to bring examples of past problems with eBay or other online services (ideally on a flash drive to share), or just war stories.

We also have the Christmas party direction to finalize and discuss the upcoming Chicagopex.



CHICAGOPEX – 2016 and the 130th Anniversary of the Chicago Philatelic Society

The year is fast coming to an end – meaning it is time for **Chicagopex 2016** (November 17-19) at the Westin Chicago Northwest, 400 Park Blvd, Itasca, IL.

This year, the convening societies are the **American Air Mail Society and the Scandinavian Collectors Club, Society of Israel Philatelists, Great Britain Collectors Club, British Caribbean Philatelic Study Group and the Philatelic Society for Greater Southern Africa.**

This year there will be more than 80 dealers in addition to the auctions and exhibits.

The **United Nations Postal Administration** and the **US Postal Service** will also be on hand to sell current issues to collectors

Also hosted will be the 50th Literature Exhibition, along with the annual Philatelic Exhibition — one of the largest and most prestigious in the country.

Treasures' Report: Total – \$ 3,349.65

Local Stamp Shows

Chicagopex 2016

Westin Chicago Northwest
400 Park Blvd Itasca IL
November 18 - 20



MSDA STAMP SHOW

Crowne Plaza Milwaukee Airport
6401 South 13th St
Milwaukee WI
December 3 - 4



MSDA STAMP SHOW

Lindner Conf Center
610 E. Butterfield Rd.,
Lombard IL
December 10 and 11



MSDA STAMP SHOW

Country Inn and Suites
600 Milwaukee Ave
Prospect Heights IL



Next meeting:

7-PM on Tuesday, 25 October 2016
at the Grayslake Library
100 Library Lane - Grayslake, IL 60030

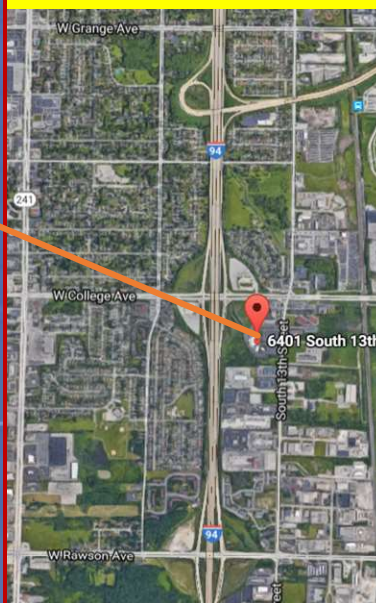


Officers:

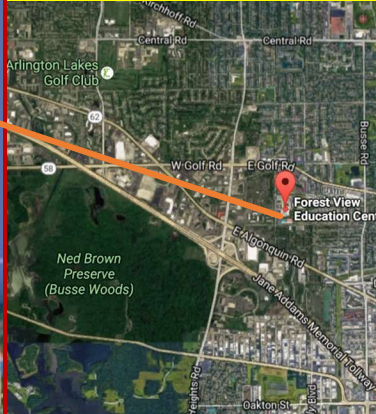
Dr Tom Willer – President
Bill Schultz – Vice President
Dave Sadler – Secretary
Ed Pieklo – Treasurer

Local Stamp Show Locations

MSDA Milwaukee and MILCOPEX (September)

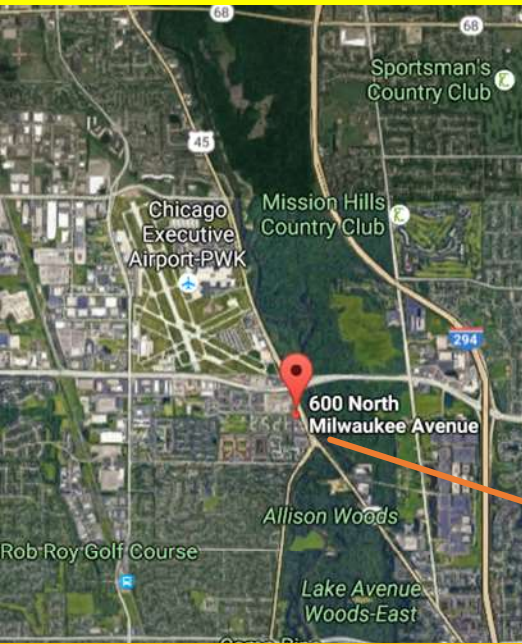


Complex - Arlington Heights IL (May)

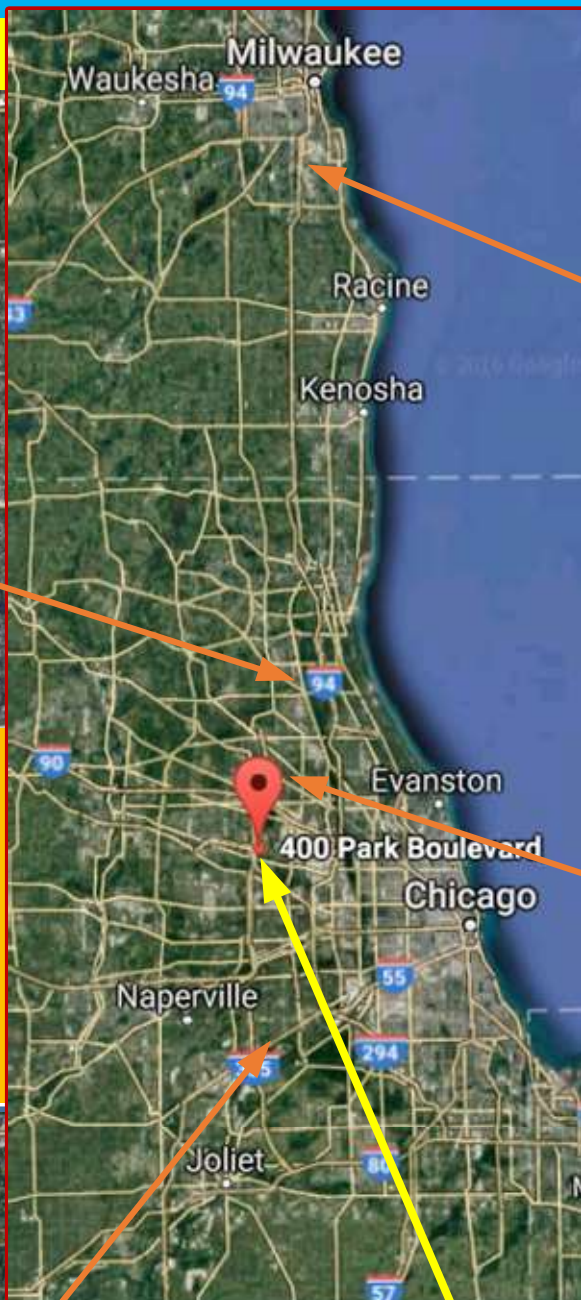


There are three annual shows, Complex (May), Milcopex (September) and Chicagopex (November).

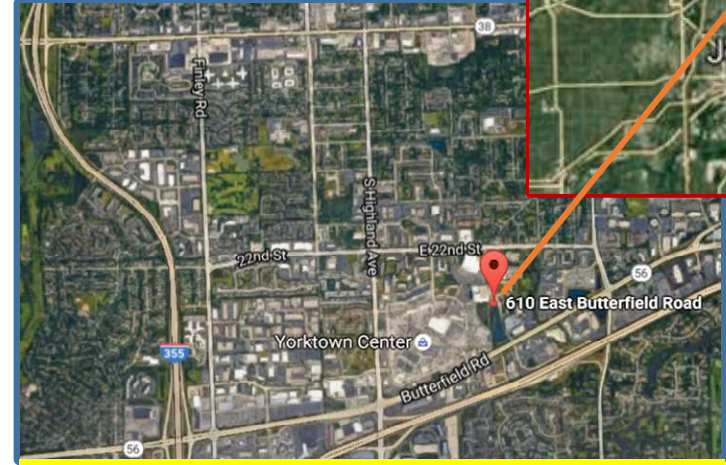
MSDA Chicago – North (Prospect Heights)



There are five venues for stamp shows in the Chicago-Milwaukee area within 50 miles of Grayslake.



MSDA Chicago – East (Lombard)



The Midwest Stamp Dealers sponsor between five and seven shows divided between Milwaukee, Prospect Heights and Lombard.



Chicagopex – Itasca (November)

