

September 2014

Volume 14 Number 09

Newsletter of the Lake County (IL)

Philatelic Society - Established 1933

Website: LCPSHOME.ORG



Perforations

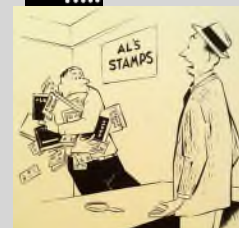


For our August meeting, Bill Schultz presented a presentation on Perfins or 'Holey Stamps' he obtained while attending the APS Summer Education Week. We each recieved two examples of the subject stamps and learned something of their background and some guidelines on how to collect them.



This month is the semi-annual stamp **Buy/Sell and Swap** event.

Bring your extras, want list and see if you can fill some of those vacant spots in your collection.



Original Jack Cole Cartoon -1954



Hollywood and Stamps — Seventy-five years ago, in 1939, according to Turner Classic Movies, was the peak of the Hollywood studio systems assembly line for motion pictures that, over the years, has been reflected on stamps issued by the USPS.



Scott 926

In 1990, the USPS issued a four stamps that depicted four of the top grossing movies produced in 1939 and considered for the 12th Academy Awards event. They included, *The Wizard of Oz* (Scott 2445), *Gone With the Wind* (Scott 2446), *Beau Geste* (Scott 2447) and *Stagecoach* (Scott 2448).



Treasures' Report: Total – \$ 3,261.88

Local Stamp Shows

Milcopex 2014
Crown Plaza, Milwaukee
Airport
6401 S 13th St
Milwaukee WI
September 19, 20 and 21

MSDA Fall Show
Comfort Inn and Suites
600 Milwaukee Ave
Prospect Heights, IL
October 11 and 12

Chicagopex
Westin
Chicago Northwest
400 Park Boulevard
Itasca IL
November 21, 22 and 23



Frostypex
St Aloysius' Gonzaga Hall
1435 S 92nd Street
West Allis, WI
December 06 and 07

Next meeting:
7-PM on Tuesday, 23 September 2014
at the Grayslake Library
100 Library Lane - Grayslake, IL 60030



Officers:

Dr Tom Willer – President
Bill Schultz – Vice President
Dave Sadler – Secretary
Ed Pieklo – Treasurer

These stamps were not the first – the first was issued in 1944 which commemorated the “**50th Anniversary of Motion Picture’s**” depicting military personnel watching a film in a Pacific island setting.

With this in mind, can you think of any other stamps issued that link back to these four 1939 movies?

Looking at the **Legends of Hollywood Series**, we have Gary Cooper (Scott 4421) who starred in **Beau Geste**, Judy Garland (Scott 4077) in **Wizard of Oz** and John Wayne (Scott 3876) in **Stagecoach**.

Other stamps have honored people that had a role in these films are: Alfred Newman (Scott 3343) - **Beau Geste**: music, Harold Arlen (Scott 3100) - **Wizard of Oz**: songs: music, E.Y. (Yip) Harburg (Scott 3905) - **Wizard of Oz**: songs: lyrics, Margaret Mitchell (Scott 2168) - **Gone with the Wind**: author, Hattie McDaniel (Scott 3996) - first Black to win an Oscar: **Gone With the Wind**, Max Steiner (Scott 3339) - **Gone With the Wind**: music and John Ford (Scott 4668) – **Stagecoach**: director.

And finally, the stamp that honored the year’s ‘Best Picture’ – Scott 3185i - **Gone With the Wind** issued as part of the **Celebrate the Century** Issue for the 1930’s.



Scott 4077



Scott 4421



Scott 3876



Scott 3100



Scott 3343



Scott 2168



Scott 3996



Scott 4668



Scott 3185i



Can you think of any more stamps that are related to these four movies?

This weekend (September 19-21) is **MILCOPEX**, a National Show sponsored by the Milwaukee Philatelic Society. This year it is located at the Crowne Plaza Milwaukee Airport, 6401 South 13th St., Milwaukee, WI.

The theme for the show is “**200TH ANNIVERSARY OF THE STAR SPANGLED BANNER.**” Along with the dealer’s, will be the Military Postal History Society, Universal Ship Cancellation Society, American Society of Polar Philatelists, Mobile Post Office Society and, of course, the Wisconsin Postal History Society.

Parking is free but there is a \$2.00 admission fee for the show.

