



Last month, Bill Schultz presented an excellent presentation on post cards and brought in examples of the many different types of cards available during the "Golden Age" (1890-1915). His presentation is available on the club's website.

Walter gave the monthly Treasures report — we currently have \$3, 196.15 in the bank.

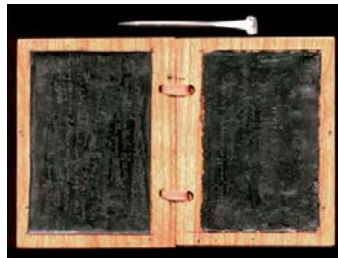
This month's presentation: "Disposing Your Stamp Collection - Preparing a Significant Other to Dispose of Your Collection" from an article by David Weisber and presented by Chuck Skittino and Tom Willer.

We also need to start thinking about the Holiday Brunch in December and if we are going to put up a display in the library like we did last November.

Postal History - Part II. The Roman Empire built the most advanced postal delivery system known until the time that of China's service. The Roman Empire area covers the whole Mediterranean. During that time reliable communication from Rome to governors and military officials in the more remote provinces was a necessity.

Rome needs the development of "*cursus publicus*" meaning public course. It is a state sponsored series of post roads with interval relay stations. By the use of "public course" riders could travel as fast as 170 miles in a 24-hour period.

Originally, the Romans wrote their letters on wax tablets and on thin sheets of woods where the Egyptians preferred to use papyrus. By the time of Emperor Hadrian, velum was introduced and used in Europe ending only after, in the 15th century, when China introduced paper via Asia Minor and Byzantine Empire. With the collapse of the Western Roman Empire collapsed 476 CE, the postal system was not destroyed immediately. Vestiges continue to exist until 9th century before it became fragmented and fell into disuse. The Byzantine Empire lasted 900 more years until it was eventually absorbed into the Islamic Caliphate and later the Ottoman Empire after 1453 CE.



Wax Tablet 300 CE



"Express" 1276



Service Area: Northern Europe 1620's

In the middle ages, there were postal services in Europe but none of them are in general use. Postal services in the middle age were exclusively used for trade guilds (such as the Metzger Post of Germany served the guild of butchers), merchants of the Hanseatic League, Venice and the Italian city states, universities, and religious houses and orders.

Next Meeting:

Tuesday, 7 pm
24 July 2012
at the
Grayslake Area
Public Library
100 Library Lane
Grayslake, IL

2012-2013 Officers:

Dr Tom Willer – President
Bill Schultz – Vice President
Dave Sadler – Secretary
Walter F. Veile - Treasurer

NSDA Chicago Show
White Eagle Banquet Hall
6839 N. Milwaukee Ave
Niles IL
04-05 August

MSDA WEST SHOW
Lindner Conf. Center
660 E. BUTTERFIELD RD
LOMBARD, IL
11-12 August