

January 2007

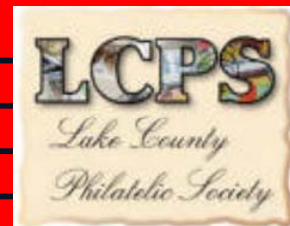
Volume 7 Number 1

Newsletter of the Lake County (IL)

Philatelic Society

Website: WWW.LCPSHOME.ORG

Perforations



Parcel Post Presentation Setup

Parcel Post stamps were the subject of the presentation given by Marty Cain (also the Program Chairman/Newsletter Editor of *The Skirmish Line* for the Lake County Civil War Roundtable -- the local Civil War interest group).



Scott Q8

The high lights of the presentation were:

- 1) the stamps were issued to track the number of parcels mailed;
- 2) once the data was collected they were discontinued;
- 3) they were not well received in the field by postal workers (unfriendly design flaws – same color, similar denomination design) and;
- 4) the series included the first airplane stamp (Q8) to be issued in the world – about six years before Air Post service was offered.

This month we will vote for our favorite (and not so favorite) stamps of 2006. We will be using the stamp id numbers found on the Linn's printed ballot. The LCPS ballot and designs can be found on pages 3 and 4. A prize will be awarded to the member who comes closest to the Linn's poll results.

For those who wish to vote in the "real" poll, you can either go to their website (<http://www.linns.com/>) or mail in a copy of the ballot found on page 78 of the January 1, 2007 issue.

Treasures' Report: Checking Account -- \$724.49; Savings Account -- 1,478.36; Total -- \$2,202.85

Future Area Philatelic Events:

Cicero-Berwyn Stamp Brouse	January 21, 2007 [0830-1430]	Sokol-Tabol Hall 6630 W 16th ST Berwyn IL
Midwest Stamp Dealers Association	January 27-28, 2007	Wingate Inn 600 Milwaukee Ave Prospect Heights IL
Cicero-Berwyn Stamp Brouse	February 18, 2007 [0830-1430]	Sokol-Tabol Hall 6630 W 16th ST Berwyn IL
LAKE COUNTY PHILATELIC SOCIETY	February 27, 2007 [1900 - 2100]	Warren-Newport Library 224 N O'Plaine RD Gurnee IL
Cicero-Berwyn Stamp Brouse	March 18, 2007 [0830-1430]	Sokol-Tabol Hall 6630 W 16th ST Berwyn IL
♦LAKE COUNTY PHILATELIC SOCIETY (change)	[MONDAY] March 19, 2007 [1900 - 2100]	Warren-Newport Library 224 N O'Plaine RD Gurnee IL
Midwest Stamp Dealers Association	March 31/April 1, 2007	Wingate Inn 600 Milwaukee Ave Prospect Heights IL

Next meeting:
7PM on Tuesday 23 January 2007
at the Warren-Newport Library
224 North O'Plaine Road, Gurnee IL



Officers:
Dr Tom Willer – President
Bill Schultz – Vice President
Howard Shaughnessy – Secretary
Walter F. Veile - Treasurer

On December 9th we attempted to eat our way through the Vernon Hills Old Country Buffet at our annual Holiday Brunch. By using the club's rebate on dues and the buffet's senior discount the out of pocket cost was about \$1.50 (for paid up club members) for all you could eat - not too bad a price.

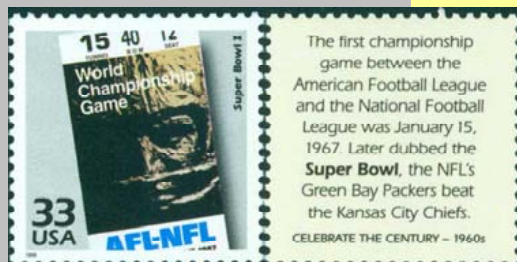
LCPS President Tom Willer took this photo of the group towards the end of the event.



2

Lake County Philatelic Society
34390 Tanageray Dr
Grayslake IL 60017-4017

A Century of Sports On Stamps



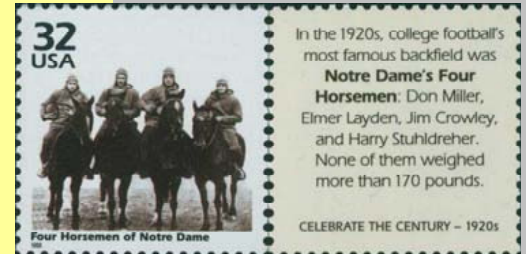
Scott 3188l

On February 4, 2007 at 1700, the one event that shuts down most of the nation (and fills the malls with bored wives) will start in Dolphin Stadium -- Super Bowl XLI.

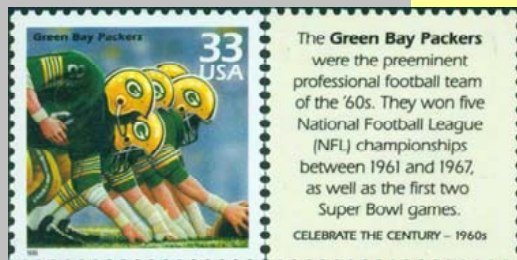
The Super Bowl event has made it four appearances on stamps of the 150 stamp **Celebrate the Century** series issued at the end of the *last* century.

In general, sports and sporting events were will represented in this series - 21 (~15%) with baseball the favorite with seven entries (1900, 1920, 1940, 1950 - 2, 1960, 1990). Football with six (1920, 1960 - 2, 1970 - 2, 1980), Boxing - three (1900, 1910, 1950) and one each for Track, Golf, Auto Racing, Horse racing and Figure Skating rounded out the count.

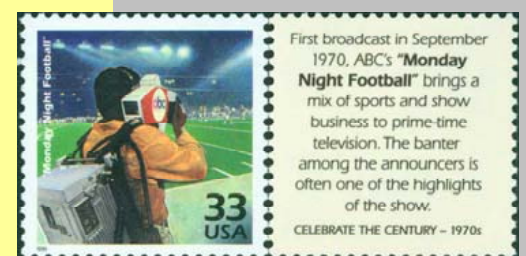
One final note – dues are coming due



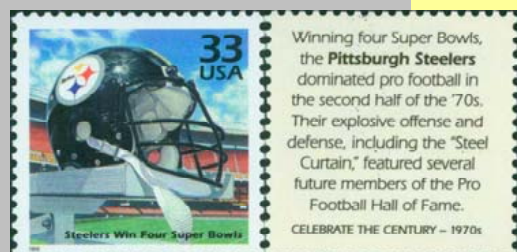
Scott 3184l



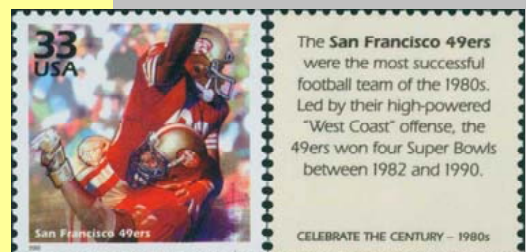
Scott 3188d



Scott 3189l



Scott 3189e



Scott 3190c



1



2



3



4



5



6



7



8



9



10



11



14



12



13



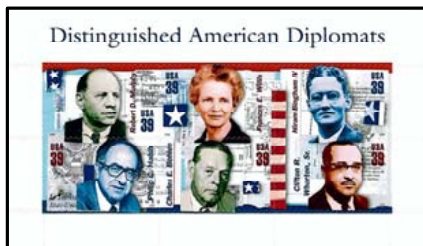
15



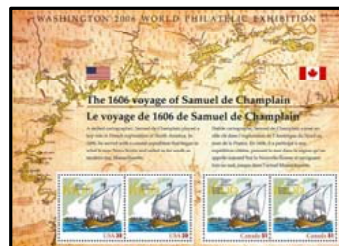
16



17



18



19



20

2006 US COMMEMORATIVES

- 1 - Favorite Children's Book Animals
- 2 - Hattie McDaniel
- 3 - Winter Olympics
- 4 - Benjamin Franklin
- 5 - Happy New Years
- 6 - Samuel de Champlain
- 7 - Art of Disney: Romance
- 8 - Katherine Anne Potter
- 9 - Amber Alert
- 10 - Judy Garland
- 11 - Sugar Ray Robinson
- 12 - Washington 2006
- 13 - Wonders of America
- 14 - American Motorcycles
- 15 - DC Comic Book Super Heroes
- 16 - Southern Florida Wetland
- 17 - Gee's Bend Quilts
- 18 - Distinguished American Diplomats
- 19 - Samuel de Champlain Sheet
- 20 - Baseball Sluggers

VOTE FOR (2006 US COMMEMORATIVE):

Best Design: _____

Worst Design: _____

Most Important: _____

Least Necessary: _____



2006 US DEFINITIVE'S

- 21 - Snowflakes
- 22 - Christmas
- 23 - \$4.05 X-Plane
- 24 - \$14.40 X-Plane
- 25 - Jonas Salk
- 26 - Albert Sabin
- 27 - Buckeye Butterfly
- 28 - Two Bluebirds Love
- 29 - American Crops
- 30 - Bryce Canyon
- 31 - Liberty and Flag
- 32 - Doves
- 33 - Smoky Mountains
- 34 - Yosemite

VOTE FOR (2006 US DEFINITIVE):

Best Design: _____

Worst Design: _____

Most Important: _____

Least Necessary: _____



36



38

2006 US POSTAL STATIONERY

- 35 - X-Plane stamped envelope (see #23)
- 36 - Benjamin Franklin stamped envelope
- 37 - Art of Disney: Romance picture postal cards (see #7)
- 38 - Pikes Peak postal card
- 39 - Baseball Sluggers picture postal cards (see #20)
- 40 - DC Comic Book Super Heroes picture postal cards (see #15)
- 41 - Southern Florida Wetland picture postal cards (see #16)

And the first stamps of 2007 are:

- January 10 - 39¢ Ella Fitzgerald
- January 11 - 39¢ Oklahoma Centennial
- January 13 - 39¢ Love: Hershey's Kisses



VOTE FOR (2006 US STATIONERY):

Best Design: _____

Worst Design: _____

Most Important: _____

Least Necessary: _____

AND FOR YOUR
FAVORITE STAMP
OF 2006:

