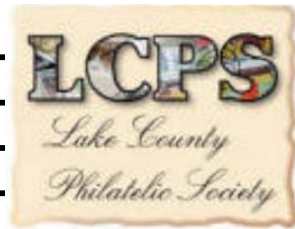


Perforations



In February, we discussed the recovery of the "Ice House" cover. This item was stolen almost forty years ago and turned up at a Chicago area stamp store last month.

The cover is now under the FBI's 'protective custody' in Indianapolis (where it was stolen from the Baker collection) until a new owner can be determined.

The cover is special, in that all transfer points are noted/stamped from its origin in Boston MA to Calcutta India in 1873. When stolen, it was insured for \$1000.00. We'll have to see how the insurance lawyers make out as the custody battle moves over the next few years.

It was during the open discussion that Bill Shultz pointed out the need for safeguarding ones collection. This can be by protecting in say a bank safety deposit box or some other 'safe' spot. The need for insurance was also highlighted. The cost of which is not to prohibitive.

The open discussion had both members and guest describing thefts that happened to them and others.

This month we will be reviewing the Postal Service's offerings of 2005 and voting on what we liked (and what could easily be forgotten). See the last two pages for B/W illustrations of the USPS 2005 Stamp Program. This year should be even more exciting with the rate change generating a whole slew of definitives ... and as usual, bring anything for show/tell and swap.

April might find us in Egypt and Israel



Four-and-one-half years ago for the small sum of (three *ra*ke hikes)

<u>DOMESTIC SERVICE</u>	<u>JAN 8, 2006</u>	<u>JUN 30, 2002</u>	<u>JUL 1, 2001</u>
First-Class			
Letter, up to one-ounce	.39 (14.7%)	.37	.34
Letter, additional ounce	.24 (4%)	.23	.23
Postcard	.24 (13%)	.23	.21
Stamped Stationery			
Stamped envelope	.47 (11.9%)	.45	.42
Stamped card	.26 (13%)	.25	.23
Express Mail			
Up to ½ pound	14.40 (15.7%)	13.65	12.45
Priority Mail			
Up to 1 pound	4.05 (15.7%)	3.85	3.50
Over 1 pound/2 pounds	4.20/6.05	3.95/5.75	3.95



Meetings at 7PM on the fourth Tuesday of each month (except December) at the Warren-Newport Library
224 North O'Plaine Road, Gurnee IL



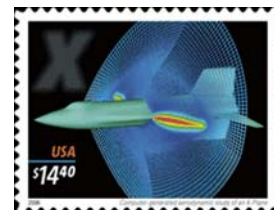
Officers: Dr Tom Willer – President
Bill Schultz – Vice President
Howard Shaughnessy – Secretary
Walter F. Veile - Treasurer

Website: WWW.LCPSHOME.ORG



March 2006 Issues – a busy (14 stamps) and expensive (\$23.94) month

Wednesday, March 1st: 39¢ & 63¢ Our Wedding Stamps two designs
 Wednesday, March 8th: 63¢ Dr. Jonas Salk
 87¢ Dr. Albert Sabin
 24¢ Common Buckeye Butterfly
 39¢ Official Penalty Mail
 39¢ Flag & Lady Liberty
 Thursday, March 16th: 39¢ Crops of the Americas (five designs)
 Friday, March 17th: \$4.05 X-Plane Priority Mail
 \$14.40 X-Plane Express Mail



Information from the USPS Postal Bulletin(s) -- <http://www.usps.com/cpim/ftp/bulletin/pb2006.htm>

DC Comics Superheroes -- July 2006

This is the first stamp pane (20 stamps) honoring comic book super heroes to be issued by the Postal Service.

Half of the stamps on the DC Comics Super Heroes pane show portraits of characters; the others show covers of individual comic books devoted to their exploits. Beginning with the classic covers, a separate paragraph below briefly comments on each stamp.

Ever since Superman was introduced to readers in 1938, super heroes have been nearly synonymous with the comic book medium. Their fantastic adventures provide an escape from the everyday while simultaneously encouraging readers to feel that individuals can make a difference.

Comic books aren't simply "kid stuff" - adults have always been among their readers, and the form has attracted its share of serious artists and writers. And super heroes have responded to social and political issues from the start, fighting corporate greed and political corruption during the Depression, for example, and then becoming patriotic defenders of national interests during World War II. -- From: http://www.usps.com/communications/news/stamps/2005/sr05_054.htm

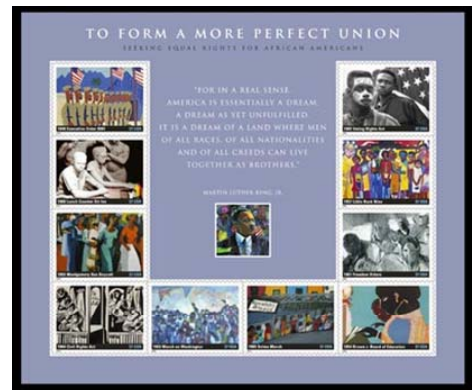




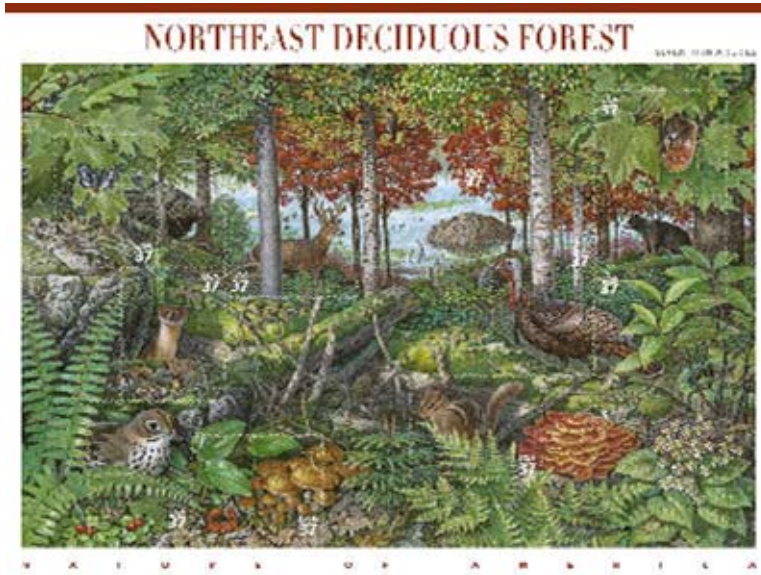
3895



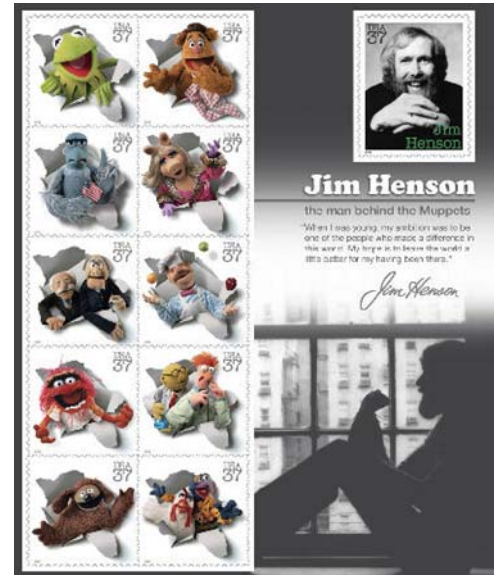
3910



3927



3899



3944



3896



3897



3936



3930



3911



3904



3943



3898



3905



3903a



3915a



3935a



3909a



3929a



3948a



3964a



3952a



39XX



3759



3938



3942a



3925a